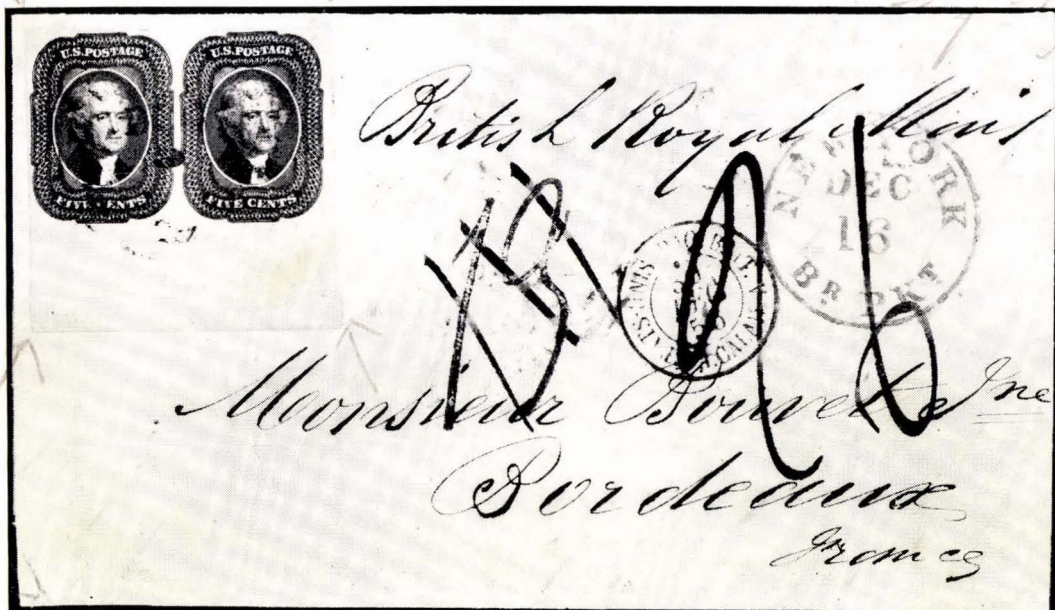


376th SALE

A DISTINGUISHED COLLECTION
OF

**UNITED STATES
POSTAGE STAMPS**



Sold by order of the owner

AT UNRESERVED PUBLIC AUCTION

Thursday, June 4th, 1970 at 1:00 P.M.

Robert A. Siegel
AUCTIONS

10 EAST 52nd STREET NEW YORK, N.Y. 10022

Tel.: 212 PLaza 3-6421

CONDITIONS OF SALE

1. The terms of sale are strictly cash to the highest bidder. All buyers are expected to pay for lots within three days of receipt, unless special arrangements have been made prior to the sale.
2. All bids are per lot as numbered in the catalogue and not per piece, unless otherwise announced by the auctioneer at the time of sale.
3. Any lot, the description of which is incorrect is returnable, but only within three days of receipt. All disputed lots must be returned intact as received and lots containing five or more stamps are not returnable at any time. No lots may be returned by purchasers who have had the opportunity to examine them prior to the sale. No illustrated lots may be returned because of centering, margins or other factors shown in the illustration.
4. Successful mail bidders, unless they are known to us or supply acceptable references, will be notified of the amount of the lots secured for them, and are expected to send payment in full before the lots are forwarded.
5. If the purchase price has not been paid within the time limit, or lots taken up within seven days from date of sale, they may be resold and any losses arising from such sale charged to the defaulter.
6. All lots are sold as genuine but should any lot be proved otherwise by written opinion of any competent, responsible authority acceptable to us, immediate refund of the full purchase price will be made, provided that any such claim is made within 25 days from date of sale. If claim is not made within this period no lots are returnable for any reason at any time. Naturally, so long as we are notified within the 25 day period that an opinion is being sought the matter will remain open until such opinion is rendered. We will not be responsible for any charges incurred by the buyer for expertization fees and costs.
7. The right is reserved to group two or more lots, also withdraw any lot or lots from the sale, or to act on behalf of the seller.
8. Until paid for in full all lots remain the property of Robert A. Siegel Auction Galleries, Inc.
9. No commission is charged for buying at our sales, but all forwarding charges will be added to the purchase price. Shipment will be made to a post office box only if the buyer has also furnished a street address. All large lots unsuitable for parcel post will be sent by REA Express collect, or, upon request, REA Air Express collect.
10. Upon written application lots may be sent for examination prior to the auction, condition upon being mailed back by registered mail, adequately insured, within 24 hours of receipt. The applicant is completely responsible for all lots sent for examination, and for the insurance of same against mishap, from the time of receipt until they are actually received back, and is to pay all expenses of postage and insurance. No lots can be sent for inspection within ten days of the date of sale.
11. The placing of a bid shall constitute acceptance of the foregoing conditions of sale.

ROBERT A. SIEGEL

ANDREW LEVITT, Licensed Auctioneers

In sending bids, always state the highest price you are prepared to pay for the lot. Your limit will not be used as a starting bid unless absolutely necessary.

DESCRIPTIONS

Extremely Fine—the finest condition for noteworthy, outstanding copies.

Very Fine (VF)—means that there is a slight deviation from the above.

Fine (F)—means that the perforations do not touch the design on issues after 1890, but in some cases may just touch in earlier issues; if used, fairly lightly cancelled.

Very Good (VG)—means that the appearance is generally fine but that the perforations cut the design slightly.

Good (G)—means average off-centering; or fairly attractive with slight defects.

Original gum (OG)—is not to be expected on 19th Century stamps unless so stated.

Mint—have never been hinged.

Scott 1970 Specialized Catalogue used for cataloguing lots of U.S. and Possessions.
Scott 1970 Standard Catalogue for others.

JUNE 4th, 1970

ROBERT A. SIEGEL AUCTION GALLERIES, Inc.

New York, N. Y. 10022

Tel.: 753-6421 (Area Code 212)

Please purchase for me at your auction to be held, **June 4th, 1970**, the lots named below, the prices annexed being my limit on each lot. I agree to remit for purchases in accordance with the **Conditions of Sale** and to return no lots later than three days after receipt.

REFERENCES PLEASE
(if unknown to us)

SIGNED

New York State residents kindly include
County in address.

County

[illegible]

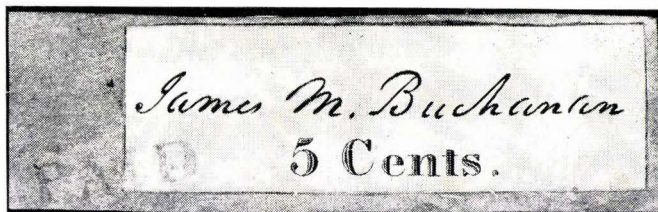
VALUATIONS

Upon request, estimate of value furnished on any lots in this auction.

Thursday, June 4th, 1970 — 1:00 P. M.

UNITED STATES

POSTMASTERS' PROVISIONALS



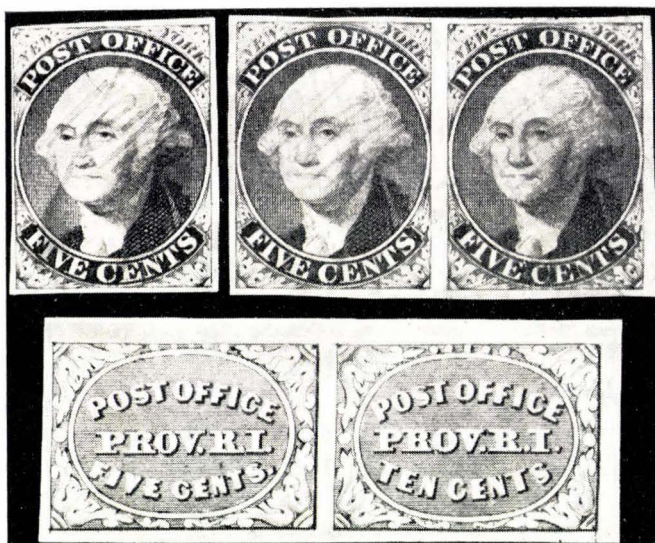
- 1 **Baltimore, Md., 5c Black on Bluish (3X3).** Large parts of Frame Lines on all sides, Neatly tied by Blue "Paid" on small piece, Fine, Ex-Crocker
(Photo) 2300.00



- 2 ★ **New York, N. Y., 5c Black (9X1).** Margins to just touched at L. R. corner, Intense Color & Sharp Impression, faint corner crease, Fine appearance
(Photo) 225.00
- 3 **New York, N. Y., 5c Black (9X1).** Large Margins, tied on small piece by large Red "New York 5 Paid" Foreign Mail pmk., Very Fine, Scarce
(Photo) E. IX
- 4 **New York, N. Y., 5c Black (9X1).** Pos. 2, Double Transfer at B. Margins all around, bold ms. cancel, Fine (Photo) 165.00
- 5 **New York, N. Y., 5c Black on Pelure Paper (9X1).** Large Margins, neat Blue ms. cancel, tiny tear, Very Fine appearance 120.00
- 6 **New York, N. Y., 5c Black (9X1).** Large Margins to barely touched at U. L., Red Grid cancel & part matching "Paid", small natural pre-printing paper wrinkle, Fine 120.00

LOTS ON VIEW FROM JUNE 1st

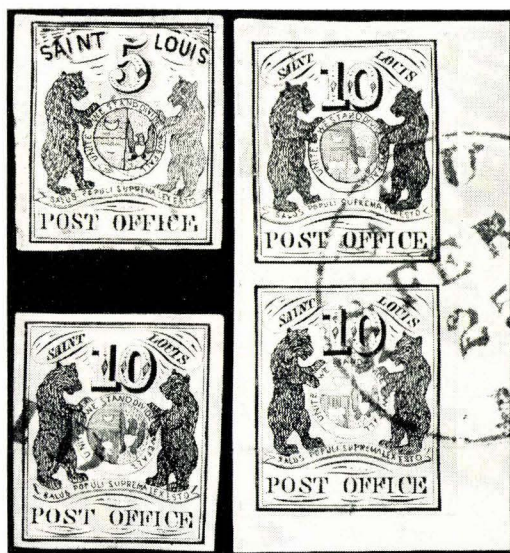
OFFICES CLOSED SAT., MEMORIAL DAY



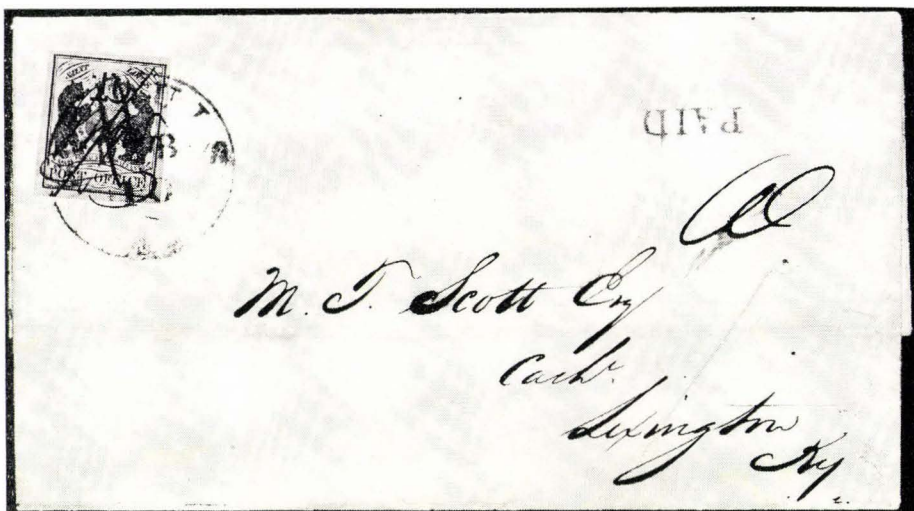
- 7 **New York, N. Y., 5c Black (9X1).** Pos. 1, Margins all around, light ms. cancel, tiny thin speck, Fine appearance **(Photo)** 110.00
- 8 **New York, N. Y., 5c Black on Pelure Paper (9X1).** Clear to Large Margins, Unusually Intense Shade, neat Blue ms. cancel, faint crease, Fine appearance 120.00
- 9 **New York, N. Y., 5c Black (9X1).** Horiz. Pair, Large Margins, faint Red "New York" pmk. & matching Grid cancels, light crease in one, other Very Fine, A handsome pair **(Photo)** 275.00+
- 10 ★ **Providence, R.I., 5c-10c Black (10X1-10X2) Horiz. Se-tenant Pair,** Large Margins, tiny thin in margin of 10c, otherwise Extremely Fine **(Photo)** 450.00
- 11 ★ **Providence, R.I., 5c-10c Black (10X1-10X2).** Cpl. Sheet of 12, fresh, nearly full o. g., Very Fine **(Photo)** 1,300.00
- 12 R **Providence, R.I., 5c-10c Black, Reprint (10X1R-10X2R).** Cpl. Sheet of 12, Very Fine 375.00
- 13 **St. Louis, Mo., 5c Black on Greenish (11X1).** Ty. II, Huge Margins, Wonderful Sharp Color & Impression, light Red Town pmk., tiny tear in top margin just touches design, otherwise Extremely Fine **(Photo)** 1,300.00+
- 14 **St. Louis, Mo., 10c Black on Greenish (11X2).** Ty. III, Huge Margins, Wonderful Impression, neat Red "Paid" cancel, faint negligible wrinkle, still Extremely Fine **(Photo)** 1,100.00
- 15 **St. Louis, Mo. 10c Black on Greenish (11X2).** Vertical Pair, Ty. I & Ty. II, Huge Margins, tied on small piece by Red "St. Louis, Mo.," pmk., the lower stamp has been severed horizontally at the bear's paws & neatly rejoined, Top stamp is Extremely Fine, A Very Pretty Piece **(Photo)** 2,200.00+




11




13-15



- 16  St. Louis, Mo., 10c Black on Greenish (11X2). Ty. III. Huge Margins, initialled "J.M.W." (John M. Wimer, Postmaster), usual neat ms. cancel & tied by Red "St. Louis, Mo." pmk, matching "Paid" and ms. "10" on neat folded cover to Lexington, Ky., Extremely Fine, This cover, with the stamp initialled by the postmaster, is believed to be unique (Photo) 1,850.00+



- 17  St. Louis, Mo., 10c Black on Greenish (11X2). Vertical Pair, Ty. I & Ty. II, Margins to barely touched, beautifully tied by neat Red "St. Louis, Mo." pmks., matching "Paid" and ms. "20" on fresh neat folded cover to Philadelphia, Very Handsome, from the Charnley & Whelan Correspondence., Exceptionally Scarce without the usual ms. cancel. (Photo) 3650.00+






- 18 **St. Louis, Mo., 5c, 10c Black on Bluish Pelure Paper (11X7, 11X8). Complete Reconstruction of Plate III, Three examples each of both values, Margins to touched, one 5c with Red Grid cancel, all others with ms. cancels, one of each value is sound, others have faults as usual, due to the extremely fragile quality of the pelure paper, A remarkable & Exceedingly Rare Offering** **(Photo)** 18,000.00

1847 ISSUE



- 19 ★ **5c Orange Brown (1b). Margins all around, Magnificent Rich Color & Sharp Impression, Dot in "S" variety, Very Fine** **(Photo)** 300.00
- 20 ★ **5c Red Brown (1). Large Margins, Deep Color & Impression, faint creases, Very Fine appearance** **(Photo)** 285.00



- 21 **5c Red Brown (1).** Large to Enormous Margins incl. Sheet Margin at L., Beautiful Rich Color & Early Impression, neat Red Grid cancel, Extremely Fine, a Beauty (Photo) 60.00
- 22 **5c Brown (1).** Large Margins, Excellent Color & Impression, neat Blue Grid cancel, Extremely Fine (Photo) 62.50
- 23 **5c Orange Brown (1b).** Large Margins, Unusually Rich Color & Fine Impression, neat Blue Town pmk., Extremely Fine (Photo) 65.00
- 24 **5c Brown (1).** Large Margins, Wonderful Color & Impression, Blue Town pmk., Extremely Fine (Photo) 60.00
- 25 **5c Grayish Brown (1a).** Margins all around, Incredible Color, Beautifully struck Philadelphia Blue "Paid" in Octagon cancel, trivial tiny margin tear, otherwise Very Fine (Photo) 95.00
- 26 **5c Grayish Brown (1a) Horiz. Pair.** Ample to Large Margins, Fine Color & Impression, neat Red Grid cancels, faint horiz. crease, Very Fine appearance (Photo) 170.00
- 27  **5c Bright Red Brown (1).** Brilliant Color, Gorgeous Impression, Large Margins all around, tied by Red Square Grid, matching **New York, 5 cts, Jul. 16"** pmk. on 1847 folded letter to Albany, Extremely early use & an unusual color for July 1847, addressed to Rufus H. King, an historic personage, Trace of filing fold shows on the cover, not visible on the stamp, Extremely Fine (Photo) 80.00+
- 28  **5c Orange Brown (1b).** Rich shade, Fine Impression, Margins all around, tied by Blue "Philada, Pa. 5 cts" pmk. & Red French Transit on July 1850 folded letter **To Paris, "Colonies & C. Art 13"** in Red Box, French 15 decimes Due mark, Very Fine (Photo) **E. XIII**
- 29  **5c Brown (1) Vertical Pair,** Beautiful Shade, Fine Impression, Large to Huge Margins, incl. B. Sheet Margin, nicely tied by Blue "Baltimore, Md." pmk. matching "10" in oval on neat folded 1849 letter to Boston, Extremely Fine (Photo) 225.00



23

Pa



32

*Mr. Ludlow Beebe & Co.
Boston*



37

*W. Ross Esq.
Oxford*



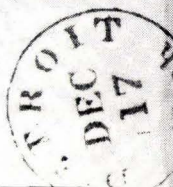
27



Paris

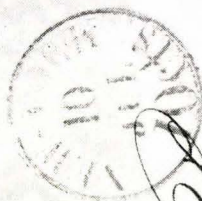


38



36

*Mr. Cornwall & Co.
Lancaster
Pa*



28

*Mr. Persifer Frazer
Care of Messrs. Hottel & Co.
Paris*



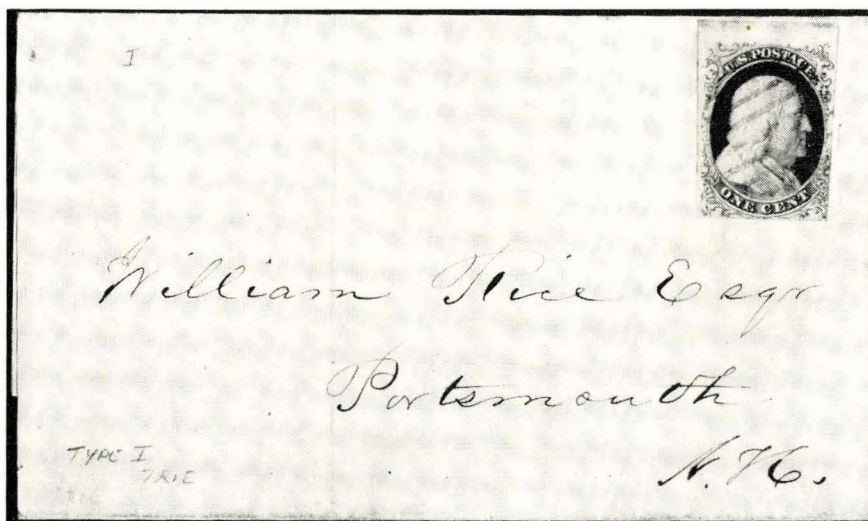


- 30 **10c Black (2).** Large Margins, Beautiful Intense Color & Sharp Proof-Like Impression, neat Blue Town pmks., Extremely Fine (Photo) 195.00
- 31 **10c Black (2).** Large Margins incl. part of adjoining stamp at T., Wonderful Color & Impression, Red Grid cancel, Extremely Fine (Photo) 190.00
- 32 **10c Black (2).** Large Margins, Marvelous Color & Impression, light Red Grid cancel, Extremely Fine (Photo) 190.00
- 33 **10c Black (2).** Double Transfer in "X" at Lower Right, Pos. 2R, Large Margins, Red Grid cancel, Very Fine (Photo) 300.00
- 34 **10c Black (2).** Large Margins, Deep Color & Impression, Blue Town cancel, faint creases, Very Fine appearance (Photo) 195.00
- 35 **10c Black (2).** Horiz. Pair, Large margins, Deep Intense Color & Sharp Impression, Brilliant Red Grid cancels, light crease in R. stamp, other Extremely Fine, a Very Handsome Pair (Photo) 550.00
- 36  **10c Black (2).** Wonderful Color & Impression, Huge margins, tied by Bright Red Grid, matching "New York, 10 cts, 10 Jul." on 1847 folded cover to Louisville, Ky., Second earliest date on record, Extremely Fine, A Gorgeous Cover (Photo) 235.00+
- 37  **10c Black (2).** Wonderful color & Impression, Huge margins, neatly tied by Red Square Grid, matching N. Y. pmk. on 1848 folded letter to "M.C.R. Road Agent" at Detroit, Extremely Fine an Outstanding Gem, Ex-Caspary (Photo) 235.00
- 38  **10c Greenish Black (2).** Gorgeous color, Sharp Impression, Large to Huge margins, tied by Vivid Red Grid, matching "Detroit, Mich" pmk. on Dec. 1847 folded letter to N. Y., Extremely Fine & Handsome (Photo) 235.00
- 39  **10c Full Black (2).** Marvelous color & Impression, Incredible margins showing next stamps T. & L., tied by brilliant Red Grid, matching "U. S. Express Mail, Boston" & "Due 10," a fresh Ludlow, Beebe folded cover to Philadelphia, Extremely Fine (Photo) 250.00+



- 40 **10c Black (2).** Fine color & Impression, Ample to Huge margins with bit of next stamp at B., tied on 1848 folded letter by "Philada., Pa., 10 cts, Feb. 29" repeated on the cover to Dubuque, Ill., Very Fine, only one other leap year dated cover known, ex-Gibson, A Handsome Rarity (Photo) E. XVI
- 41 ★ **5c Red Brown, Reproduction (3).** Margins all around, faint corner crease, Very Fine appearance (Photo) 200.00
- 42 ★ **10c Black, Reproduction (4).** Margins all around, Very Fine (Photo) 265.00

1851 ISSUE



- 43 **1c Blue, Ty. I, Pos. 7R1E (5).** Large margins incl. T. sheet margin except tips of ornaments touched at L. R., Rich Color, just tied by neat Red Grid, on printed circular dated July 12, 1851, A Handsome cover with a Fine Example of one of the Most Desired Rarities (Photo) 5,500.00+



- 44 ★ **1c Blue, Ty. II (7).** Large to Clear margins, Bright Color, fresh, large part o. g., Very Fine (Photo) 95.00
- 45 **1c Blue, Ty. II (7).** Pos. 89R2, Major Double Transfer, Large to Enormous margins showing parts of adjoining stamps at sides, Blue Town pmk., Extremely Fine, Gem (Photo) 28.50
- 46 **1c Blue, Ty. II (7).** Pos. 8L1E, Large margins, Lovely Color, neat Blue Grid cancel., Extremely Fine (Photo) 24.50
- 47 **1c Blue, Ty. II (7).** Large to Huge margins with parts of two adjoining stamps, Rich Color, light Blue Town pmk., Extremely Fine (Photo) 24.50
- 48 ✉ **1c Dark Blue, Plate 3 (7).** Margins all around, Typical "mottling" of Pl. 3, Bold "Paid" cancel. & tied by "Savannah, Ga." pmk. to Providence, R. I., docketed May 9, 1856, Earliest known use of Pl. 3, Extremely Fine, signed "Ashbrook," ex-Emerson (Photo) **E. IX**
- 49 **1c Blue, Ty. IIIa (8A).** Pos. 55R1E, Large margins, Beautiful Rich Color, neat Town pmk., Very Fine, signed "Ashbrook" (Photo) 120.00
- 50 ★ **1c Blue, Ty. IV (9).** Pos. 100R1L, Large to Huge margins, Rich Color, fresh, o. g., couple tiny thins, Very Fine appearance (Photo) 67.50
- 51 **1c Blue, Ty. IV (9).** Large to Enormous margins incl. L. Pane margin & Center Line, Lovely Color, Blue Town pmk., faint crease mostly in margin, Extremely Fine appearance (Photo) 21.00
- 52 **1c Blue, Ty. IV (9).** Recut once at T., Large margins incl. parts of two adjoining stamps, Rich Color, light Town pmk., Very Fine (Photo) 21.00
- 53 **1c Blue, Ty. IV (9).** Margins all around, Town pmks., Very Fine 20.00
- 54 **1c Blue, Ty. IV (9).** Horiz. Strip of Three, Pos. 8-9-10L1L, each a diff. Recut combination, Large to Huge margins incl. Pane margins & Center Line, Deep Rich Color, Town pmks., Extremely Fine (Photo) 80.00+

48

Pk,



Wm. H. Voochens & Co.

76

Shannon over
L. B. D. 116
Elizabetha Crook
y

55

Toledo
Ohio



71

Wm. H. Voochens & Co.
Wm. H. Voochens & Co.

57



NEW YORK
U.S.A.





Superior Paper Co.
Utica for John Smith

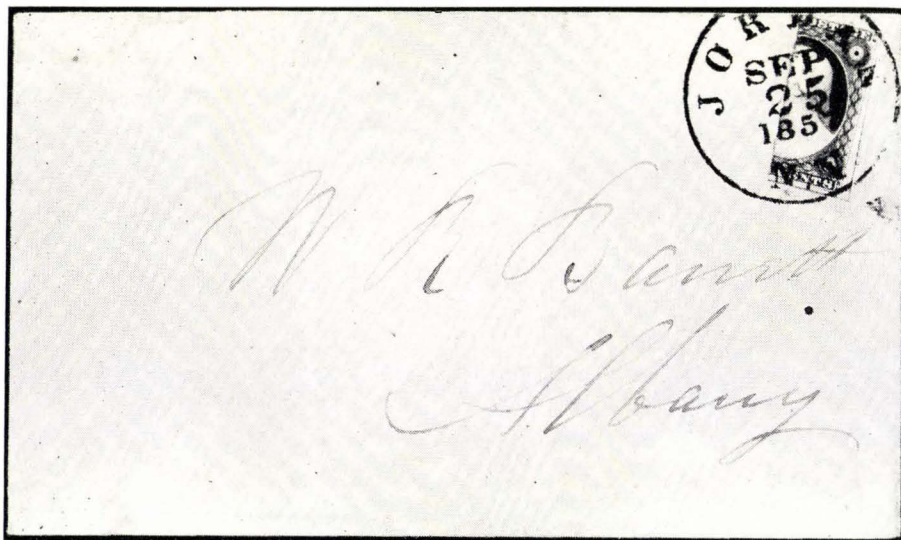
Utica
New York


59



Dr. W. H. Voochens
Utica
New York

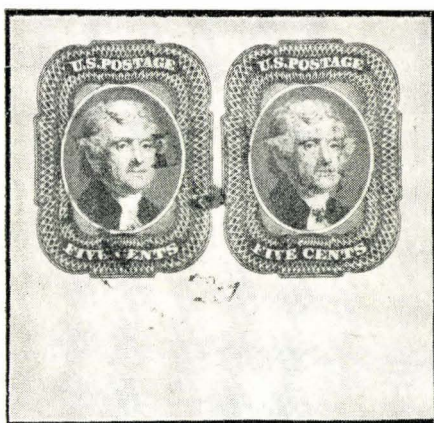
- 55  **1c Blue, Ty. IV (9). Vertical Strip of Three, Pos. 71-81-91R1L.** Full Left & Bottom corner sheet margins, with Center Line, Huge R. margin, T. stamp just touched at T., tied by neat N.Y. town pmk. on cover to Beaver, Pa., Bold Red "5" for forwarding to Toledo, O., Wonderfully Fine cover, signed "Ashbrook," ex-Fleckenstein (Photo) E. XIII
- 56 ★ **3c Orange Brown (10).** Margins all around, Gorgeous Rich Color, fresh, large part o. g., tiny corner crease, otherwise Extremely Fine (Photo) 130.00
- 57  **3c Orange Brown (10).** Margins all around, tied by Bold, Perfect "Troy & New York, Steam Boat" in Blue Box, matching "2 cts" in Double circle on Oct. 1851 folded cover to Utica, N.Y., Illustrated in Ashbrook, Vol. II, p. 232, Extremely Fine, Gem (Photo) E. XIII
- 58 ★  **3c Red (11). Block,** Large margins, Rich Color, fresh, o. g., tiny natural paper inclusion in one, Very Fine (Photo) 125.00
- 59  **3c Rose Red (11). Pos. 10R2. Recut Button,** Fantastic margins with enormous (5/8") T.R. corner margins, tied by "Urbana, O." pmk. on small cover to Illinois, an Incredibly Beautiful & Matchless cover, Ex-Chase, West (Photo) E. X



- 60  **3c Brownish Carmine, Vertical Half Used as 1c (11c).** Perfectly tied by Bold "Jordan, N. Y., Sep. 25, 1857" pmk. on fresh, neat cover to Albany, Signed by Dr. Carroll Chase, Ex-West, with another cover from same correspondence to verify, Extremely Fine, Very Rare (Photo) 900.00
- 61 **5c Red Brown (12).** Large margins, Beautiful Rich Color, neat Town pmk., Extremely Fine (Photo) 130.00
- 62 **5c Red Brown (12).** Large margins incl. parts of two adjoining stamps, Lovely Color, neat Town pmk., small crease in U. R. corner margin entirely Clear of design, still Extremely Fine (Photo) 130.00
- 63 **5c Red Brown (12).** Large margins, Rich Color, neat "1857" year date pmk., Very Fine (Photo) 130.00

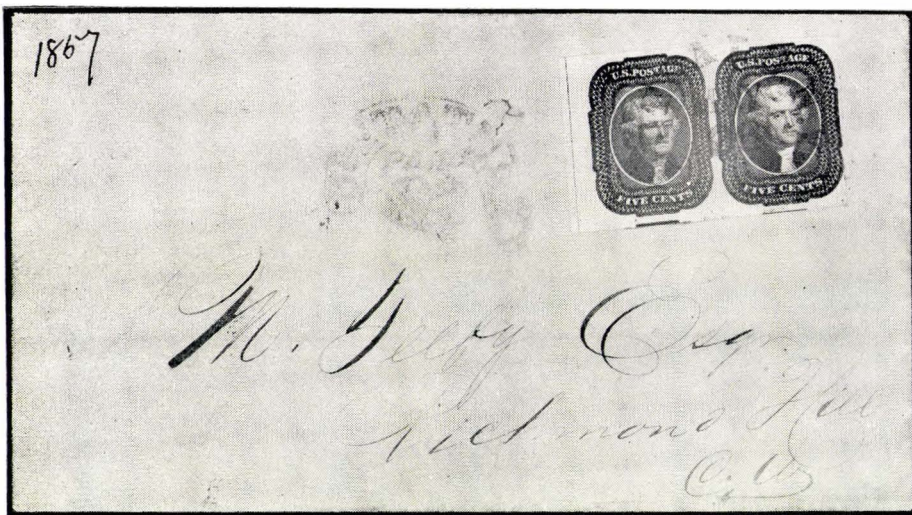



- 64 **5c Red Brown (12). Pos. 23R1, Plate Defect, Large margins, neat "Paid" in Circle cancels., corner crease, Very Fine appearance, Brookman writes that only seven or eight Imperforates with this variety are on record, see pp. 219-220 (Photo) 190.00+**
- 65 **5c Red Brown (12). Horiz. Pair, Margins all around, Deep Color, neat Town pmk., faint tiny thin in one, other Very Fine (Photo) 365.00**



- 66 **5c Red Brown (12). The Celebrated Phenomenal Horizontal Sheet Margin Pair, Perfection! with Huge margins incl. the Enormous Full Sheet Margins at bottom, Lightly cancelled by New Orleans pmk., on small immaculate 1856 folded cover to Bordeaux, France, wonderful array of various transit receiving & due markings; a Matchless Gem, Ex-Caspary, where it was described as "One of the most beautiful items of a collection in which beauty abounds" (Photo, Front Cover) E. XVI**


6M to Cole



- 67  **5c Dark Red Brown (12). Horiz. Pair**, with L. Pane margin & Guide Line, shows parts of two stamps below, large to clear margins T. & R., **Incredible deep color** & wonderfully clear impression; Tied by rimless "Buffalo, N.Y." pmk. on cover to Canada, with Red Exchange marking in arc., Extremely Fine, A Marvelous showpiece, Ex-Caspary **(Photo)** E. XVI

1800



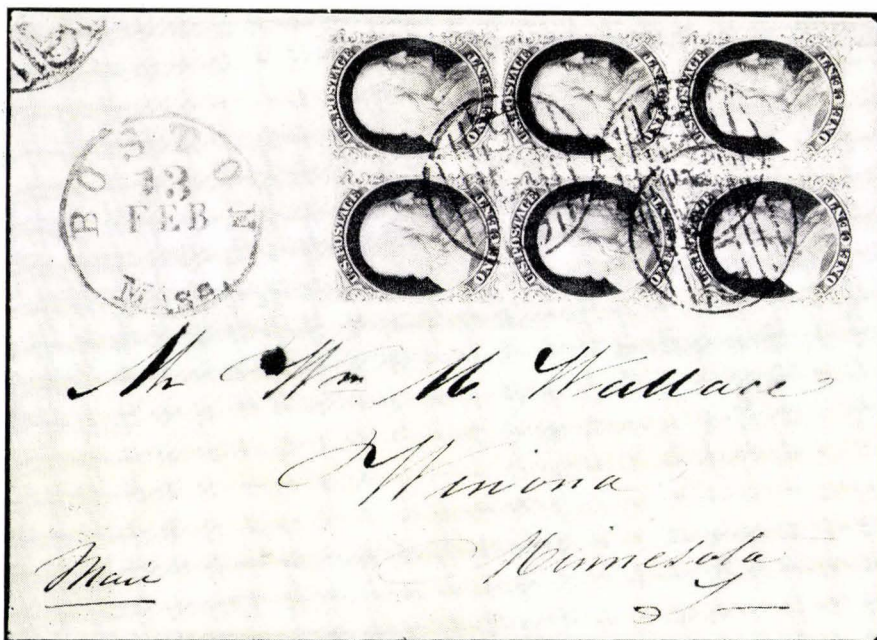
- 68 ★ **10c Green, Ty. I (13). Pos. 99R1, "Curl" in Left "X"**, Large margins, Lovely Bright Color, fresh, faint crease, Very Fine appearance **(Photo)** 1,600.00
- 69 **10c Green, Ty. I (13). Large Margins, Deep Color, Red Grid cancel,** Very Fine **(Photo)** 195.00
- 70 **10c Green, Ty. I (13). Large Margins, Rich Color, Town pmk., couple light creases,** Very Fine appearance **(Photo)** 190.00
- 71  **10c Green, Ty. I (13). Large margins, neatly tied by "San Francisco, Cal." pmk. on buff cover to Illinois, Negligible tiny bend in corner margin, well clear of design,** Very Fine **(Photo)** 275.00



- 72 10c Green, Ty. II (14). Large Margins, Magnificent, Sharp Proof-Like Impression, light Red Town pmk., Extremely Fine (Photo) 42.50
- 73 10c Green, Ty. II (14). Large to Huge Margins, Rich Color, Town pmk., Extremely Fine (Photo) 40.00
- 74 10c Green, Ty. III (15). Large to Huge Margins, Deep Color, light Town pmk., Extremely Fine (Photo) 40.00
- 75 10c Green, Ty. III (15). Large Margins, Wonderful Color, light Town pmk., Very Fine (Photo) 40.00
- 76 10c Green, Ty. III, Ty. IV (15, 16). Combination Strip of Three, The middle stamp Recut at Top Pos. 86L, Tied by Brilliant Red Grid on cover to Germany, matching "N. Y. Br. Pkt., 7, Paid" & "Aachen, Franco" in Box, Large margins except L. stamp touched, the R. pair, incl. the recut is Very Fine, Cover has unimportant clipped corner, A magnificent & rare cover (Photo) E. XII
- 77 10c Green, Ty. IV (16). Pos. 55L, Recut at B., Large to Huge Margins, Beautiful Color, neat Town pmk., tiny thin, Extremely Fine appearance (Photo) 300.00
- 78 12c Black (17). Large Margins, neat Town pmk., Extremely Fine (Photo) 37.50
- 79 12c Gray Black (17). Large to Huge Margins, light Red Grid cancel, Extremely Fine (Photo) 40.00
- 80 12c Black (17). Large Margins incl. parts of three adjoining stamps, Intense Color, light cancel, faint corner crease, Extremely Fine appearance (Photo) 37.50
- 81 12c Black (17). Vertical Sheet Margin Pair with part Imprint, Pos. 70-80R, Large to Gigantic Margins, Rich Intense Color, Town pmks., tiny closed tear in B. stamp, other is Extremely Fine, a Wonderful Pair (Photo) 85.00 +
- 82 12c Black (17). Horiz. Pair, Large Margins to just touched at L. L., Rich Color, neat Red Grid cancels, Fine-Very Fine 90.00

1857 ISSUE

- 83 ★ 1c Blue, Ty. I, Ty. II (18, 20). Combination Block of Six, Pos. 77-78, 87-88, 97-98L12, Pos. 78 & 87 are Ty. II, others Ty. I, Wonderful Rich Color with characteristic Plate 12 ink film impression, Very Fine, a Rare & Handsome Piece (Photo) 1080.00+
- 84 1c Blue, Ty. I (18). Well Centered, Bright Color, neat Grid cancel, Very Fine (Photo) 110.00
- 85 1c Blue, Ty. I (18). Red Grid cancel, couple nibbed perfs., otherwise Very Fine 120.00
- 86 1c Blue, Ty. I (18). Town pmk., couple nibbed perfs., otherwise Very Fine 110.00
- 87 1c Blue, Ty. I (18). Wonderfully well centered, Tied by neat "Westminster, Md." pmk. on fresh yellow cover to Frederick, Md. Extremely Fine (Photo) 135.00
- 88 1c Blue, Ty. I, Pl. 12, 3c Rose, Pl. 10 (18, 26a). Both perfectly tied by N. Y. Duplex, The 1c paying Carrier fee to The P. O., both Well Centered, Very Fine, Scarce combination, The cover neatly mended at T., Handsome cover (Photo) 140.00+
- 89 1c Dark Blue, Ty. Ia (19). Pos. 100R4, Gorgeous Rich Color, neat Town pmk., separated by scissors partly blunting perf. tips at R., otherwise Very Fine, signed "Ashbrook" (Photo) 325.00
- 90 1c Blue, Ty. II (20). Well Centered, Red Carrier cancel, Very Fine (Photo) 47.50
- 91 1c Blue, Ty. II, Ty. IIIa (20, 22). First with Red Grid, small thins, Very Fine appearance 75.00



- 92 1c Blue, Ty. III, Ty. IIIA, Pl. 4 (21, 22). Two Vertical Strips of Three, originally a Block of Six, Combinations of Types. L. Strip Tys. IIIA, III, III; R. Strip Tys. IIIA, III, IIIA, respectively, neatly tied by "Boston, Paid", Red "Boston, Mass." pmk. on fresh blue folded cover to Winona, Minn., Very Fine, Ex-Caspary (Photo) E. XV



58



103



105



83



93

94



98

99



106



84



89



90








100



101







102

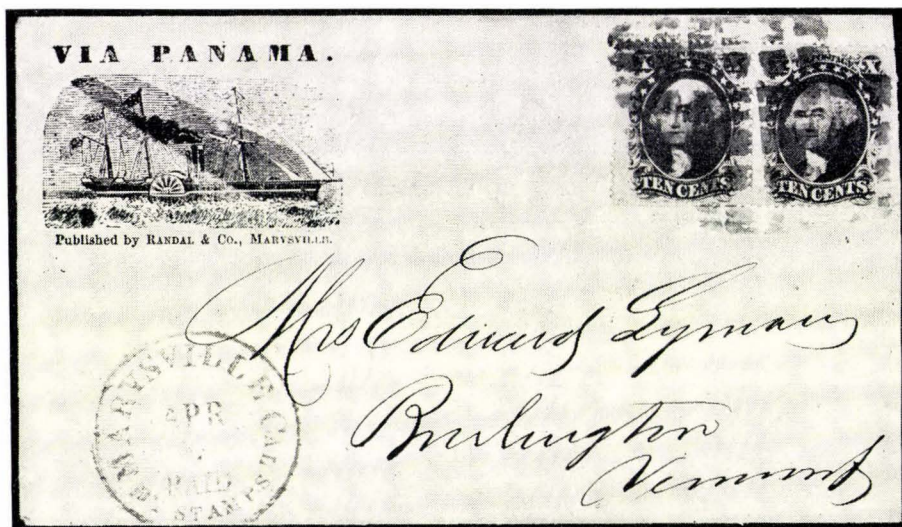
93	1c Blue, Ty. IIIa (22), Plate 11, Rich Color, light Town pmk., Very Fine (Photo)	37.50
94	1c Blue, Ty. IIIa (22). Plate 11, Rich Color, Red Carrier cancel, Very Fine (Photo)	50.00
95	1c Blue, Ty. IIIa (22). Plate 11, Grid cancel, Very Fine	37.50
96	 1c Blue, Ty. IIIA, Pl. 11 (22). Tied with 3c Red (26) on fresh, neat corner card cover by N. Y. Duplex paying Carrier fee to The P. O. Stamps shows two clear guide lines at R., Fine, Very Handsome (Photo)	E. V
97	 1c Blue, Ty. IIIA, Pl. 11 (22). Tied with 3c Red (26) by neat N. Y. duplex, paying Carrier Fee on neat cover, Beautifully Centered, one B. perf short, otherwise Very Fine, Attractive (Photo)	E. V
98	1c Blue, Ty. IV (23). Recut Once at Top, Deep Color, neat Town pmk., Very Fine, Scarce (Photo)	60.00
99	1c Blue, Ty. IV (23). Recut Once at T., Twice at B., Bright Color, light Town pmk., Very Fine, Scarce (Photo)	60.00
100	1c Blue, Ty. IV (23). Pos. 81L1L, Triple Transfer, One Inverted, Rich Color, neat Town pmk., Very Fine, Extremely Scarce (Photo)	135.00
101	1c Blue, Ty. IV (23). Pos. 91L1L, Triple Transfer, One Inverted, Deep Color, light Town pmk., Fine, Scarce (Photo)	135.00
102	1c Blue, Ty. IV (23). Pos. 91L1L, Triple Transfer, One Inverted, couple nibbed perfs., otherwise Fine (Photo)	135.00
103	1c Blue, Ty. IV (23). Horiz. Pair, Pos. 39-40L1L, the latter with Plate Crack , Rich Color, neat "Savannah, Geo." pmk, couple slightly nibbed perf. tips, otherwise Very Fine, signed "Ashbrook" with note "Very Rare Perforated" (Photo)	257.50+
104	★  1c Blue, Ty. V (24). Sheet Corner Block of Six, Rich Color, fresh o. g., U. R. stamp rounded corner, bit reinforced in margin, otherwise Very Fine	126.50
105	★  1c Blue, Ty. V (24). R. Imprint Plate No. 9P Block of Eight, Bright Color, fresh, o. g., Couple tiny thins in two, bit reinforced, otherwise Very Fine (Photo)	350.00
106	★  3c Red (26). Block, Pos. 87-88, 97-98R15, Pos. 87 a Major Double Transfer with Rosettes Double & Line Through "Postage," fresh, o. g., Fine-Very Fine, the Double Transfer is listed but unpriced, Exceedingly Scarce (Photo)	E. X


LOTS ON VIEW FROM JUNE 1st
OFFICES CLOSED SAT., MEMORIAL DAY



- 107 ★ 5c Brick Red (27). Block, Magnificent Rich Color, Brilliant, Fresh, o. g., tiny thin in one stamp, otherwise Very Fine, this is **the only unused block on record**, an Incredible Showpiece, Ex-Worthington, Hind, Sinkler (Photo) 15,000.00
- 108 5c Brick Red (27). Marvelous Color, neat Town pmk., couple short perfs., otherwise Very Fine (Photo) 110.00
- 109 ✉ 5c Brick Red (27). Vertical Strip of Three, Gorgeous color, Beautifully centered, tied by "New Orleans, La." pmk. on 1859 folded cover to France, "Boston, Paid 12" & French transits, one stamp has negligible light bend, Remarkably Fine, Signed "Ashbrook," with P. F. Certificate (Photo) 350.00+
- 110 ★ 5c Red Brown (28). Block, Wonderful Rich Color, fresh, o. g., a few perfs. clipped at B. of L. R. stamp, otherwise Fine, Handsome & Rare (Photo) 6,000.00
- 111 5c Indian Red (28A). Magnificent Rich Color, neat Town pmks., Very Fine (Photo) 250.00
- 112 5c Brown, Ty. I (29). Vert. Pair, Well Centered, Rich Color, light Town pmk., Very Fine (Photo) 110.00
- 113 ★ 5c Orange Brown (30). Fresh, o. g., faint crease, Very Fine appearance (Photo) 72.50
- 114 ★ 5c Orange Brown, (30). Block of Nine, Fresh, o. g., Well centered, Rich Color, tiny thin spot in middle left stamp, others Very Fine, a Lovely Block, Ex-Caspary (Photo) 830.00+
- 115 5c Orange Brown (30). Rich Color, Grid cancel, Very Fine (Photo) 85.00
- 116 ✉ 5c Orange Brown (30). Centered bit to R., tied by "New York" town pmk., Red Grid cancel., paying 5c Inland rate on cover to Gouda, Holland, Boston, London & Gouda transits, Fine, Exceedingly Scarce, with P. F. Certificate (Photo) 450.00
- 117 ★ 5c Brown, Ty. II (30A). Block, Fresh, o. g., Rich Color, Very Fine (Photo) 400.00
- 118 5c Brown, Ty. II (30A). Red Grid Cancel, Very Fine (Photo) 37.50

- 119 **5c Brown, Ty. II (30A).** Bold Grid cancel, couple nibbed perfs., otherwise Very Fine 32.50
- 120 **5c-24c 1857 Issue (30A, 36, 37).** First has Blue pmk., others Red Cancellations, two with tiny tears, 24c pulled perf., F.-V. F. appearance 117.50
- 121 **10c Green, Ty. I (31).** Wonderfully Well Centered, Lovely Color, neat Town pmk., Extremely Fine (Photo) 125.00
- 122 **10c Green, Ty. I (31).** Well Centered, Light Cancel, Very Fine (Photo) 125.00
- 123  **10c Green, Ty. I, II, III (31, 32, 33). Vertical Strip of Three, Pos. 70-80-90L1, Combination of the three types,** Beautifully centered, Perforated Pane margin at R., Tied by "New Orleans, La." pmk. on 1859 folded cover to France, Red "New-Paid-York, 12" pmk., Extremely Fine, an Extraordinary Showpiece, Signed "Ashbrook" (Photo) **E. XIII**
- 124 **10c Green, Ty. II, III, V (32, 33, 35, Pair).** First and last Red Cancels, small flaws, Very Fine appearance 68.50
- 125 **10c Green, Ty. IV (34). Recut at Top, Pos. 74L.** Well Centered, Bold Town pmk., Extremely Fine (Photo) 190.00
- 126  **10c Green, Ty. IV (34) Recut at B., Pos. 54L1,** Rich color, Wonderfully well centered, tied by neat, light town pmk. on fresh Orange cover to California, Extremely Fine (Photo) 245.00
- 127  **10c Green, Ty. V (35).** Block, Fresh, o. g., Rich Color & Impression, pinpoint thin speck in one, others Very Fine (Photo) 175.00
- 128 **10c Green, Ty. V (35). Miniature Sheet Reconstruction of Plate II,** both L. & R. Panes, each pane containing 12 stamps showing Cpl. Imprints within perforations & the Center Line, choice well centered stamps with attractive cancels, Very Fine, a Handsome & Unusual offering, Cat. \$288.00 as ordinary —
- 129  **10c Green, Ty. V (35).** Wonderfully well centered, tied by Perfect Bold "San Francisco, Cal., Feb. 13, 1860" pmk. on Official Wells, Fargo & Co. envelope, Over-all design picturing the W. F. Office in Red on Yellow, Letter enclosed on W. F. letter head, ms. "Overland Mail," Extremely Fine (Photo) **E. X**



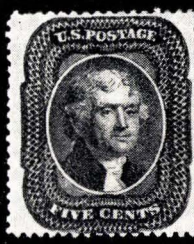
- 130  **10c Deep Green, Ty. V (35). Horiz. Pair,** Tied by Bold Blue Square Dot Grid, matching "Marysville, Cal., Paid By Stamps" pmk. on Illustrated cover "Via Panama," & Old Side-Wheel "Steamship," Randal & Co. Marysville Imprint, Exceptionally Fine & Handsome (Photo) **E. XIII**



108



111



113



115



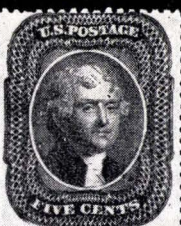
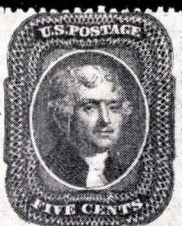
118



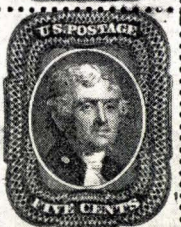
112



121



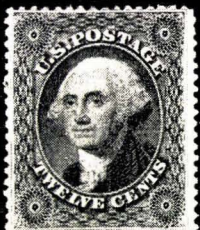
114



122



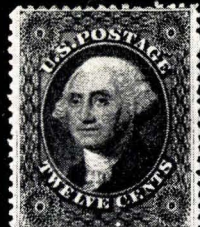
125



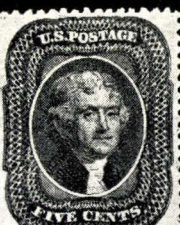
131



132



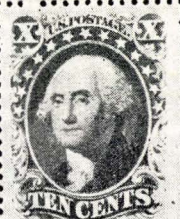
135



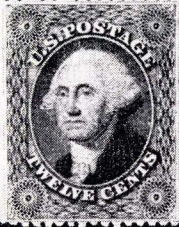
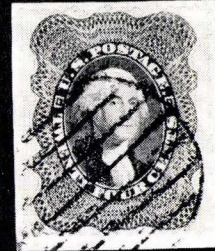
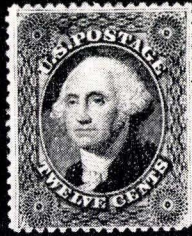
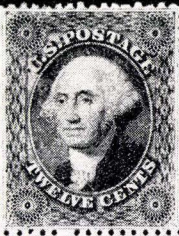
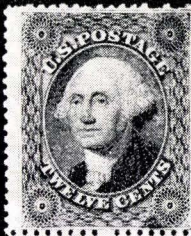
117



127



131	★	12c Black (36). Fresh, o. g., Very Fine	(Photo)	50.00
132		12c Black (36). Bold, "Socked-on-the-Nose" Red "19" Cancel., Beautiful Strike, Very Fine	(Photo)	40.00
133		12c Black (36). Horiz. Strip of Three, Neat Town pmks., light crease, Very Fine appearance		57.50
134	✉	12c Black, Pl. I (36). Horiz. Pair, Well Centered, tied by Red "Phila., Br. Pkt. 19" on neat 1858 cover to England, Very Fine, Scarce in such beautiful condition	(Photo)	E. VII
135	★	12c Black, Plate III (36b). Fresh, o. g., Brilliant Impression, Very Fine	(Photo)	42.50
136	★	12c Intense Black Plate III (36b). Fresh, o. g., rounded corner perf., otherwise Very Fine		42.50
137	★	12c Black, Plate III (36b). Block, Fresh, o. g., one stamp two nibbed perfs, otherwise a Very Fine and Scarce Block	(Photo)	325.00
138	★	24c Gray Lilac (37a). Rich Color, fresh, o. g., light crease, Fine appearance		90.00
139		24c Gray Lilac (37a). Nicely Centered, neat Red Boston "Paid" in Grid cancel., Very Fine	(Photo)	60.00
140		24c Gray Lilac (37a). Rich Color, tied on small piece by Grid cancel, Very Fine	(Photo)	55.00
141		24c Gray Lilac (37a). Light Grid Cancel, small marginal thin, V. F. appearance		55.00
142		24c Gray Lilac (37). Deep Color, clear Red "Paid" in Circle cancel, tiny thin, Very Fine appearance		85.00
143		24c Lilac (37). Horiz. Pair, Red Grid Cancels, bit reinforced, Extremely Fine, Ex-Caspary	(Photo)	150.00+
144	★	30c Orange (38). Fresh, Large part o. g., Very Fine	(Photo)	92.50
145	★	30c Orange (38). Block, Fresh, o. g., Brilliant Color, Very Fine, a Rare and Beautiful Block	(Photo)	800.00
146		30c Orange (38). Rich Color, Neat Grid Cancel, tiny corner crease, Very Fine appearance		65.00
147		30c Orange (38). Red Grid cancel, Fine		70.00
148		30c Orange (38). Bold Boston "Paid" in Grid cancel, Fine		65.00
149		30c Orange (38). Vertical Pair, neat Target cancels, light corner crease in one, other Fine	(Photo)	225.00
150	✉	30c Orange (38). Remarkably Well Centered, tied by "New Orleans, La." pmk. & part of Red "New York, 21" transit on small, neat mourning cover to Paris, Very Fine, Handsome	(Photo)	200.00
151	★	90c Blue (39). Beautiful Rich Color, fresh, o. g., Fine	(Photo)	300.00
152	★	90c Blue (39). Rich Color, fresh, part o. g., Fine	(Photo)	300.00
153	★	90c Blue (39). Horizontal Pair, Beautiful Rich Color, fresh, o. g., Very Fine	(Photo)	725.00
154	★	90c Blue (39). Block, Gorgeous Deep Color, Brilliant, Fresh, o. g., tiny marginal tear in one, otherwise Extremely Fine, a Beautiful Block	(Photo)	1,800.00



137

136

139

140

143

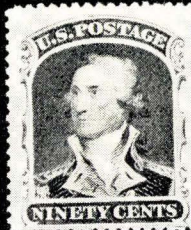
144



149

145

154



151

152

153

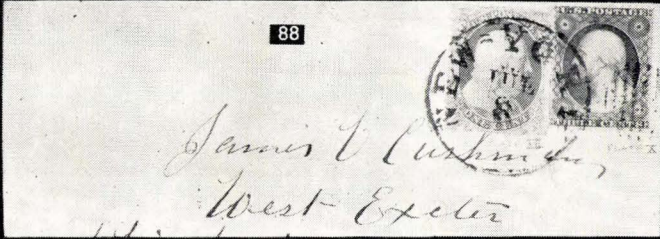
REPRINTS OF 1857 ISSUE



- | | | |
|-------|---|------------------|
| 155 ★ | 1c Bright Blue, Reprint (40). Faint corner crease, Very Fine appearance | (Photo) 140.00 |
| 156 ★ | 3c Scarlet, Reprint (41). Brilliant Color, single nibbed perf., otherwise Very Fine | (Photo) 650.00 |
| 157 ★ | 5c Orange Brown, Reprint (42). Rich Color, separated at R. by scissors as often blunting several perfs., otherwise Fine | (Photo) 235.00 |
| 158 ★ | 10c Blue Green, Reprint (43). Deep Color, separated by scissors at sides blunting several perf tips as often, otherwise Very Fine | (Photo) 450.00 |
| 159 ★ | 12c Greenish Black, Reprint (44). Wonderful Color, couple nibbed perfs., otherwise Very Fine | (Photo) 485.00 |
| 160 ★ | 24c Blackish Violet, Reprint (45). Beautiful Rich Color, faint corner crease, Very Fine appearance | (Photo) 550.00 |
| 161 ★ | 30c Yellow Orange, Reprint (46). Brilliant Color, Fine | (Photo) 750.00 |
| 162 | 30c Yellow Orange, Reprint (46). "Three Rivers" (Mass?) Duplex pmk., Interesting Illegal Usage as this issue was never valid for postal use, Fine, Most Unusual | (Photo) — |
| 163 ★ | 90c Deep Blue, Reprint (47). Gorgeous Rich Color, perfs. at R. blunted due to separation by scissors as often, otherwise Fine | (Photo) 1,000.00 |
| 164 | 90c Deep Blue, Reprint (47). Doubtful Red Grid cancel, small thins, Very Fine appearing, this issue never valid for postal use | (Photo) — |



87



88



96



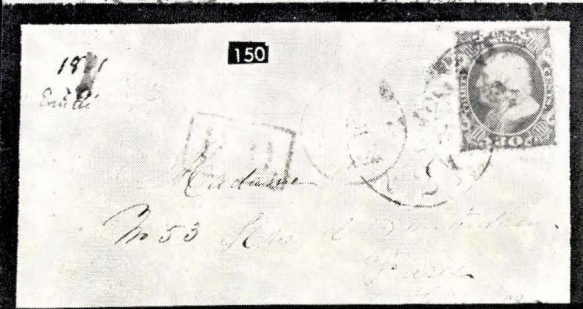
97



109



126



150



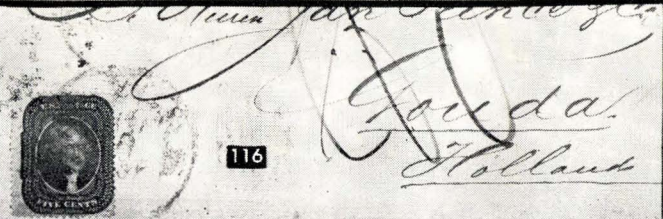
134



129



123



116

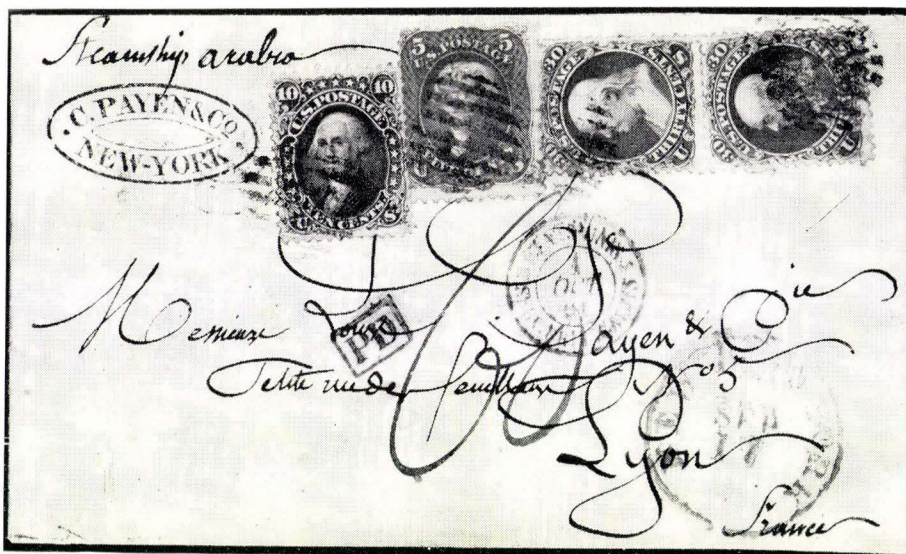


230

1861 "FIRST DESIGNS"



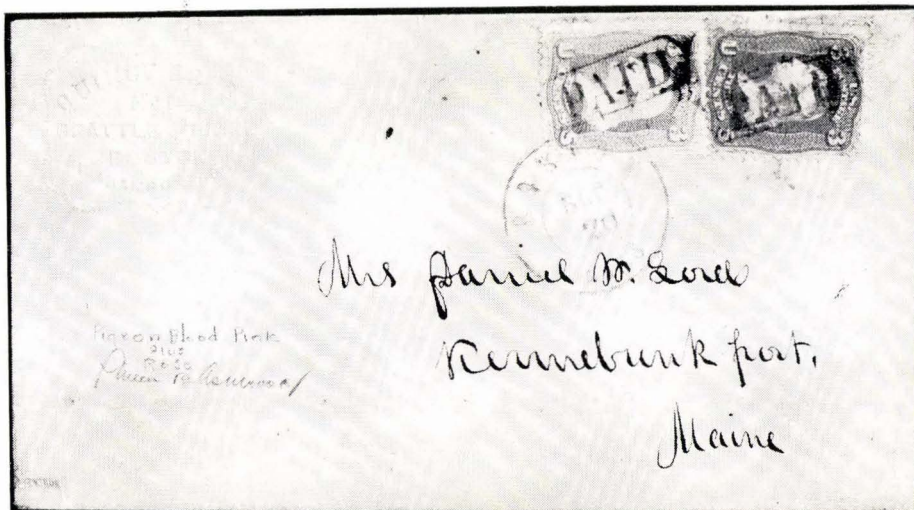
- 165 ★ 3c Brown Rose, "First Design" (56). Fresh, o. g. Very Fine (Photo) 175.00
- 166 ★ 3c Brown Rose, "First Design" (56). Fresh, o. g., Very Fine (Photo) 175.00
- 167 10c Dark Green, "First Design" (58). Deep Rich Shade, Neat Grid Cancel, Very Fine (Photo) 180.00



- 168 ✉ 10c Dark Green "First Design" (58). Used with 5c Buff (67) & Vertical Pair 30c Orange (71) paying 75c postage N. Y. to France. All tied by neat Grids, Red "New-Paid-York, Sep. 17" pmk., The earliest date of record for the 10c #58 which is Extremely Fine, the 5c is a bit off center, the 30c Pair Very Fine, A Marvelous, Matchless cover, Signed "Ashbrook" Ex-L. B. Mason (Photo) E. XIV
- 169 24c Violet, "First Design" (60). Wonderfully Well Centered, Rich Color, neat Blue cancel, tiny closed marginal tear, Extremely Fine appearance (Photo) 130.00

1861 ISSUE

- 170 S ☐ **1c-90c 1861-66 Issue, "Specimen" Overprints (Bet. 63S-78S). Blocks,**
Cpl. Set as issued except for 12c, fresh, o. g., F.-V. F., Scarce 140.00+
- 171 ★ ☐ **1c Blue (63). Horiz. Block of Six,** with T. Sheet Margin, Fresh, o. g.,
pinpoint paper inclusion in one, A Very Fine, Handsome Block **(Photo)** 148.50+



- 172 ☒ **3c Pigeon Blood Pink (64a). Tied with 3c Rose (65),** by "Paid" in Frame
& Red Boston pmk. on neat cover to Maine, Embossed Corner Card of
"Quincy House" Boston, Signed "Ashbrook", Ex-Brown, Gorgeous
cover, Remarkable combination of the two colors, Very Fine **(Photo)** **E. XIV**
- 173 ★ **3c Lake (66).** Wonderful Bright Color, Double Transfer, fresh, o. g., Fine
(Photo) 450.00
- 174 **5c Buff (67).** Well Centered Boston Paid cancel, minute perf. tear, V. F.
appearance **(Photo)** 57.50
- 175 **5c Buff (67).** Pretty Red Town cancel, Tiny corner crease, Very Fine
appearance **(Photo)** 60.00
- 176 **10c Green (68). Horiz. Strip of Three,** Bold "Steam Ship" Cancels, two
Strikes, Very Fine **(Photo)** **E. IV**
- 177 **24c Red Lilac (70).** Beautiful Deep Color, Brilliant Red Grid Cancel,
Very Fine, a Striking Stamp 18.00
- 178 **24c Steel Blue (70b).** Fresh Color, Light Red Cancel, Very Fine **(Photo)** 48.50+
- 179 **24c-90c 1861 Issue (70-72).** First has Red Cancel., negligible corner
creases, V. F. appearance 76.50
- 180 ★ **30c Orange (71).** Fresh, o. g., perfs touch right, Very Good 70.00
- 181 ★ **90c Blue (72).** Well Centered, Rich Color, fresh, o. g., Very Fine **(Photo)** 190.00

182	★	90c Blue (72). Block, Beautiful Bright Color, fresh, o. g., tiny closed tear in one stamp, some minor reinforcement, otherwise Fine-Very Fine, Rare & Attractive (Photo)	1,250.00
183		90c Blue (72). Well Centered, Deep Rich Shade, Pretty Geometric Cancel, light crease, Extremely Fine appearance (Photo)	45.00
184	★	2c Black (73). Block, Brilliant, Fresh, o. g., F.-V. F. (Photo)	135.00
185	★	2c Black, Imperforate (73, Unlisted type). Vert. Pair, with B. Sheet margin, Fresh, o. g., Extremely Fine and Rare (Photo)	E. XIII
186	★	2c Black, Imperforate (73, Unlisted type) Block, Large Margins, fresh, o. g., crease in top Pair, B. Pair Extremely Fine, a Great Rarity (Photo)	E. XV
187	★	3c Scarlet (74). Brilliant Color, fresh, o. g., Extremely Fine (Photo)	900.00
188	★	24c Grayish Lilac (78a). Fresh, large part o. g., Fine (Photo)	37.50

1867 GRILLED ISSUES

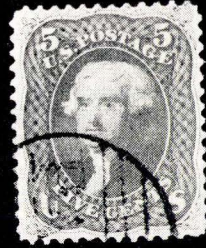
189		3c Rose, Grilled all Over (79). Exceptional Centering for this, with all perf. intact, neat quartered cork cancel., Extremely Fine (Photo)	175.00
190	★	3c Rose, C. Grill (83). Nicely Centered, fresh, o. g., Very Fine (Photo)	185.00
191		3c Rose, D. Grill (85). Well Centered, neat Town pmk., small filled thin shows on face, Very Fine appearance (Photo)	42.50
192		2c Black, Z. Grill (85B). Intense Color, neat Blue cancels, single short perf., otherwise Very Fine (Photo)	47.50
193	★	1c Blue, E. Grill (86). Nicely Centered, fresh, o. g., Very Fine (Photo)	70.00
194	★	10c Green, E. Grill (89). Block, Fresh, o. g., Rich Color, Well Centered, several perfs. reinforced, a Very Fine and Rare Block (Photo)	1,100.00
195		10c Green, E. Grill (89). Well Centered, bold cancel, Extremely Fine (Photo)	17.50
196		1c Blue, F. Grill (92). Neat cancel, Very Fine (Photo)	16.00
197	★	2c Black, F. Grill (93). Block, Exceptional Centering, Fresh, o. g., Extremely Fine (Photo)	135.00
198		2c Black, F. Grill (93). Well Centered, Beautiful Bold Red cancel, Extremely Fine (Photo)	12.00
199		5c Black Brown, F. Grill (95a). Nicely Centered, Blue Town pmk., tiny thin, Very Fine appearance (Photo)	57.50+
200	★	10c Green, F. Grill (96). Block, Beautifully Centered, fresh, o. g., Very Fine, A Choice Block (Photo)	550.00
201		10c Yellow Green, F. Grill (96). Well Centered, neat cancel, Extremely Fine (Photo)	12.00
202	★	12c Black, F. Grill (97). Block, Well Centered, Brilliant, Fresh, o. g., Extremely Fine, a Remarkable Block (Photo)	700.00
203	★	15c Black, F. Grill (98). Block, fresh, o. g., Nicely Centered, very faint crease in B. pair, couple small gum soaks, nevertheless a Handsome & Attractive Block (Photo)	500.00
204		24c Gray Lilac, F. Grill (99). Bold cork cancel, Fine (Photo)	80.00
205		30c Orange, F. Grill (100). Nicely Centered, Deep Color, bold cork cancels, Very Fine (Photo)	50.00
206		90c Blue, F. Grill (101). Nicely Centered, Rich Color, neat cancel, Extremely Fine (Photo)	170.00
207		90c Blue, F. Grill (101). Remarkable Centering, Deep Color, neat cancels, tiny thin in grill, Extremely Fine appearance (Photo)	170.00



171



173



174



175



178



176



181



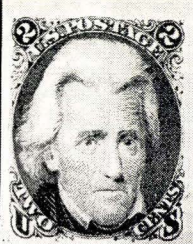
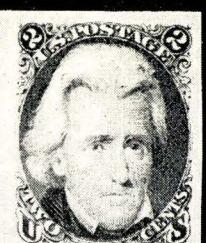
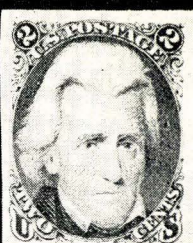
183



187



182



184

185

186

1861 RE-ISSUES



208 ★	1c Blue, Re-Issue (102). Well Centered, Extremely Fine	(Photo)	125.00
209 ★	1c Blue, Re-Issue (102). Fine	(Photo)	125.00
210 ★	2c Black, Re-Issue (103). With Sheet margin at R., fresh, o. g., Very Fine	(Photo)	550.00
211 ★	3c Brown Red, Re-Issue (104). Beautiful Color, fresh, o. g., Fine, Scarce	(Photo)	725.00
212 ★	5c Light Brown, Re-Issue (105). Rich Color, fresh, o. g., Fine	(Photo)	525.00
213 ★	10c Green, Re-Issue (106). Fresh, large part o. g., Very Fine	(Photo)	575.00
214 ★	12c Black, Re-Issue (107). Wonderful Intense Color, fresh, o. g., Very Fine	(Photo)	750.00
215 ★	15c Black, Re-Issue (108). Deep Intense Color, fresh, o. g., Fine	(Photo)	625.00
216 ★	24c Deep Violet, Re-Issue (109). Lovely Rich Color, fresh, o. g., Fine	(Photo)	725.00
217 ★	30c Brownish Orange, Re-Issue (110). Wonderful Bright Color, fresh, o. g., Fine	(Photo)	1,100.00
218 ★	90c Blue, Re-Issue (111). Gorgeous Rich Color, fresh, o. g., Fine, Hand-some Example of this Rarity	(Photo)	1,250.00



194



197



189

190



200

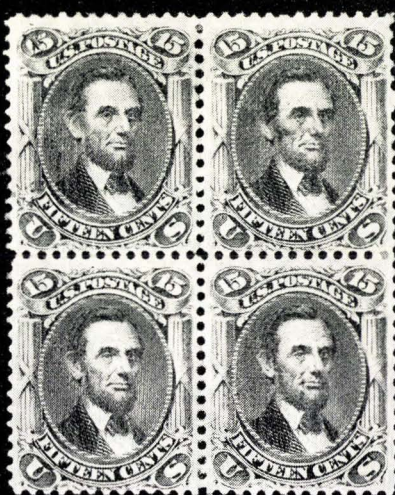


202



192

193



203



198



201



204



205



206



207

1869 PICTORIAL ISSUE

219	★	1c Buff (112). Block, Wonderful Rich Color, fresh, o. g., light natural gum wrinkle in one, Fine	(Photo) 300.00
220		10c-15c Pictorials (116-117, 119). F.-V. F.	62.00
221		10c-30c Pictorials (116, 117, 119, 121, two). Small faults, some only negligible, F.-V. F. appearance	167.00
222		10c-30c Pictorials (116-117, 119, 121). Minute imperfections, mostly negligible corner creases, F.-V. F. appearance	114.50
223		10c-30c Pictorials (116-117, 119, 121). Light creases, Fine appearance	114.50
224		15c Brown & Blue, Ty. I (118). Light Cancel, centered slightly to bot. right, Very Fine	(Photo) 82.50
225		15c Brown & Blue, Ty. I (118). Well Centered, two partly blunted perf. tips, still Very Fine	(Photo) 82.50
226		15c Brown & Blue, Ty. I (118). Used, Fine	82.50
227		15c Brown & Blue, Ty. I (118). Deep Colors, Bold Geometric Cancel, minute internal paper break, Fine appearance	82.50
228	★	15c Brown & Blue, Ty. II (119). Sheet Margin Block, Gorgeous Rich Colors, Nicely Centered, Fresh, o. g., Very Fine, a Beautiful Piece	(Photo) 750.00



229		15c Brown & Blue, Ty. II, Center Inverted (119b). Rich Colors, light cancel, Corner repaired, looks Fine, Presentable Example of this Rarity	(Photo) 4,500.00
230	✉	15c Brown & Blue, Ty. II (119). Well Centered, tied by bold Grid cancels together with 2c Brown & 6c Ultramarine (113, 115), each centered to one side, Red "New York-Registered" pmk. & matching "Paid All" on 1869 folded cover to Italy, Very Pretty, a Wonderful & Scarce Combination	(Photo) E. XI
231	★	24c Green & Violet (120). Exceptionally Well Centered, Magnificent Deep Colors, fresh, o. g., Extremely Fine	(Photo) 250.00
232		24c Green & Violet, Center Inverted (120b). Bright Fresh Colors, light cancel, faint internal crease, otherwise Fine, a Choice & Handsome Rarity	(Photo) 3,500.00



233	24c Green & Violet (120). Neat Geometric Cancel, Very Fine (Photo)	90.00
234	24c Green & Violet (120). Well Centered, Brilliant Colors, Light Cancel, small thin spot, Extremely Fine appearance (Photo)	90.00
235	24c Green & Violet (120). Bright Colors, Well Centered, light crease, V. F. appearance	90.00
236	24c Green & Violet (120). Red Leaf Cancel, Good Colors, perfs just in at top, Attractive	110.00
237 ★	30c Blue & Carmine (121). Well Centered, Lovely Rich Colors, Extremely Fine (Photo)	300.00
238	90c Carmine & Black (122). Well Centered, Fresh Colors, Light Cancel, Very Fine, a Beautiful Stamp (Photo)	235.00
239	90c Carmine & Black (122). Well Centered, Deep Rich Colors, unusual "Registered" with Bars cancel, tiny thin, Very Fine appearance (Photo)	235.00
240	90c Carmine & Black (122). Rich Colors, small thin, Very Fine appearance (Photo)	235.00

1869 RE-ISSUES

241 ★	1c Buff, Re-Issue (123). Well Centered, tiny corner perf. crease, otherwise Very Fine (Photo)	100.00
242 ★	2c Brown, Re-Issue (124). Fresh, part o. g., Fine (Photo)	140.00
243	2c Brown, Re-Issue (124). Used, Very Fine (Photo)	70.00
244 ★	Blue, Re-Issue (126). Bright Color, fresh, crackly o. g., Fine (Photo)	260.00
245 ★	10c Yellow, Re-Issue (127). Brilliant Color, fresh, large part o. g., couple tiny corner perf. creases, otherwise Very Fine (Photo)	285.00
246 ★	12c Green, Re-Issue (128). Well Centered, Rich Color, Extremely Fine (Photo)	350.00
247 ★	15c Brown & Blue, Re-Issue (129). Beautiful Colors, fresh, o. g., Fine (Photo)	400.00
248	15c Brown & Blue, Re-Issue (129). Registry cancel, Fine (Photo)	180.00
249 ★	24c Green & Violet, Re-Issue (130). Wonderful Colors, fresh, large part o. g., Very Fine (Photo)	315.00
250 ★	24c Green & Violet, Re-Issue (130). Brilliant Colors, Fresh, part o. g., nibbed perf., otherwise Very Fine (Photo)	315.00
251 ★	30c Blue & Carmine, Re-Issue (131). Wonderfully Well Centered, Beautiful Bright Colors, Extremely Fine (Photo)	475.00
252	30c Blue & Carmine, Re-Issue (131). Well Centered, Light Registry Cancel, Rich Colors, Very Fine (Photo)	250.00
253 ★	90c Carmine & Black, Re-Issue (132). Well Centered, Rich Brilliant Colors, Fresh, o. g., Extremely Fine, a Gorgeous Gem, with P. F. Certificate (Photo)	800.00
254	90c Carmine & Black, Re-Issue (132). Well Centered, Gorgeous Rich Colors, neat Registry cancel, Extremely Fine, Scarce (Photo)	500.00
255 ★	1c Buff, Re-Issue (133). Fresh, o. g., small thin, Very Fine appearance	72.50

1870 NATIONAL BANK NOTE CO. ISSUES

256 ★田	7c Vermilion, Grill (138). Block of Six with L. Sheet Margin, Beautiful Bright Color, fresh, o. g., lightly hinged once, one row of grill points, shows clearly on four stamps, other two with faint traces, Very Fine, a Handsome Showpiece (Photo)	1,370.00+
257	10c Brown, Grill (139). Extremely Fine (Photo)	80.00
258 ★	24c Purple (153). Marvelously well Centered, Gorgeous Rich Color, Large part o. g., Extremely Fine, a Gem (Photo)	77.50
259	24c Purple (153). Two Shades, Well Centered, one has Red Cancel, Very Fine (Photo)	31.50
260	24c Purple (153). Three Beautiful Shades, tiny corner creases or thin spot, V. F. appearance (Photo)	42.00
261	30c Black (154). Rich Shade, Exceptional Centering, Red Cancel, Extremely Fine (Photo)	25.00
262	90c Carmine (155). Well Centered, Deep Shade, Red pmk., barest trace of toning on few perf. tips, still Very Fine (Photo)	60.00



1873 CONTINENTAL BANK NOTE CO. ISSUES

263	★	2c Brown (157). Horiz. Block of Six, with part B. Imprint, Fresh, o. g., Brilliant Color, Very Fine	(Photo)	110.00
264	★	3c Green (158). U. R. Corner Block of 12, Fresh, o. g., Exceptionally Well Centered, Brilliant Color, Extremely Fine		110.00+
265	★	6c Dull Pink (159). Fresh, Large part o. g., small thin spot, V. F. appearance		40.00
266	★	6c Dull Pink (159). Wide str. edge at left, Fresh, Large part o. g., tiny tears in str. edge, V. F. appearance		40.00
267	★	6c Dull Pink (159). Block, str. edge at left, Fresh, o. g., Bright Color, Very Fine		175.00
268	★	6c Dull Pink (159). Block, tiny closed tear in one, others Fine	(Photo)	175.00
269	★	7c Vermilion (160). Block, Gorgeous Bright Color, Brilliant Fresh, o. g., Very Fine, an Exceptionally Choice Block	(Photo)	500.00
270	★	7c Orange Vermilion (160). Block, with R. Sheet margin, Rich Color, Fresh, o. g., perfs. touch at bot., Fine Block		500.00
271	★	10c Brown (161). T. Imprint Strip of Four, fresh, o. g., Fine	(Photo)	160.00+
272	★	10c Brown (161). Block, with R. Sheet margin, Beautifully Centered, Deep Rich Color, light crease in bot. Pair, T. Pair Extremely Fine	(Photo)	375.00
273	★	90c Rose Carmine (166). Fresh, Large part o. g., Rich Shade, Very Fine	(Photo)	185.00
274	★	2c Vermilion (178). Block, Fresh, o. g., Very Fine	(Photo)	165.00
275	★	5c Blue (179). Very Fine		28.00

AMERICAN BANK NOTE CO. ISSUES

276	★	1c Dark Ultramarine (182). Fresh, o. g., one partly nibbed perf., otherwise Very Fine		24.50
277	★	2c Vermilion (183). B. Imprint Block of eight, Fresh, Mint, Very Fine		90.00+
278	★	10c Brown (188). Very Fine	(Photo)	65.00
279	★	10c Brown (188). Extra wide margin at R., faint corner crease, Very Fine appearance	(Photo)	65.00
280	★	10c Brown (188). Fine		65.00
281	★	15c Red Orange (189). Block, Well Centered, Fresh, o. g., Brilliant Color, Extremely Fine	(Photo)	100.00
282	★	15c Orange (189a). Block, fresh, o. g., Very Fine	(Photo)	100.00
283	★	30c Full Black (190). Well Centered, small thins, Very Fine appearance	(Photo)	70.00
284	★	90c Carmine (191). Rich Color, fresh, o. g., Very Fine	(Photo)	185.00
285	★	90c Carmine (191). Well Centered, Fresh, o. g., light corner crease, V. F. appearance	(Photo)	185.00



263



268



269



272



271



281



282



274



288



301



292



297



286	★	1c Gray Blue (206). Block, fresh, o. g., Very Fine	30.00
287	★	6c Brown Red (208a). Mint, Very Fine	(Photo) 37.50
288	★	6c Brown Red (208a). Block, Fresh, o. g., Very Fine	(Photo) 250.00
289	★	6c Brown Red (208a). Block, str. edge at right, Fresh, Large part o. g., Well Centered, slightly reinforced in one spot, Very Fine	250.00
290	★	10c Brown (209). Block, fresh, o. g., small faults in two, others F.-V. F.	75.00
291	★	4c Blue Green (211). Block, fresh, o. g., thin in one, others F.-V. F.	80.00
292	★	2c Pale Red Brown, Special Printing (211B). U. L. Sheet Corner Margins, fresh, o. g., "H. F. C(olman)" handstamp, Extremely Fine with P. F. Certificate	(Photo) 140.00
293	★	1c Ultramarine (212). Block of Six, fresh, o. g., Very Fine	51.00
294	★	3c Vermilion (214). Block, fresh, o. g., Very Fine	37.50
295	★	3c Vermilion (214). T. Imprint Plate No. 421 Block of ten, Brilliantly Fresh, stamps Mint, F.-V. F.	93.00+
296	★	30c Orange Brown (217). Well Centered, fresh, o. g., Extremely Fine	(Photo) 42.50
297	★	30c Orange Brown (217). T. Imprint Plate No. 405 Strip of Five, Fresh, o. g., Exceptional Centering, Brilliant Color, small tear in sheet margin, stamps Extremely Fine	(Photo) 275.00
298	★	90c Purple (218). Well Centered, Fresh, o. g., Very Fine	(Photo) 120.00
299	□	90c Purple (218). Block, Well Centered, Light Registry cancels, one stamp short perf., otherwise a Very Fine Block	160.00
300	★	1c-30c 1890 Issue (219-228). Incl. 2c Lake, fresh, o. g., Fine-Very Fine	126.10
301	★	30c Black (228). Block, fresh, o. g., Very Fine	(Photo) 155.00
302	★	90c Orange (229). Fresh, o. g., Extremely Fine	(Photo) 52.50
303	★	90c Orange (229). Fresh, o. g., Very Fine	(Photo) 52.50

1893 COLUMBIAN ISSUE

304	★	1c-10c	Columbian (230-237). Fresh, o. g., Fine-Very Fine	81.75
305	★	1c, 2c	Columbian (230, 231). Blocks, Mint, F.-V. F.	37.00
306	★	1c, 2c	Columbian (230, 231). Blocks, Mint, Fine-Very Fine	37.00
307	★	3c	Columbian (232). Block, Mint, Fine	40.00
308	★	4c	Columbian (233). Block, Fresh, o. g., Very Fine	50.00



309	★	4c	Columbian, Blue Error (233a). Gorgeous Color, fresh, o. g., Fine, Attractive Example of this Rarity (Photo)	4,000.00
310	★	5c	Columbian (234). Block, Mint, F.-V. F.	57.50
311	★	6c	Columbian (235). Block, Mint, F.-V. F.	65.00
312	★	8c	Columbian (236). Block, Mint, F.-V. F.	50.00
313	★	15c	Columbian (238). Fresh, o. g., Fine	32.50
314	★	15c	Columbian (238). Block, Deep Rich Color, fresh, o. g., tiny surface rub affects one stamp, others Extremely Fine	170.00
315	★	30c	Columbian (239). Fresh, o. g., Very Fine	45.00
316	★	30c	Columbian (239). Block, Well Centered, Magnificent Rich Color, fresh, o. g., Extremely Fine (Photo)	210.00
317	★	50c	Columbian (240). Deep Color, Fine	70.00
318	★	50c	Columbian (240). Block of Six, with B. Sheet Margin, Plate No. 77 & part Imprint, Well Centered, Wonderful Deep Color, fresh, o. g., Extremely Fine (Photo)	540.00+
319	★	\$1.00	Columbian (241). Brilliant Color, fresh, large part o. g., Very Fine (Photo)	200.00
320	★	\$1.00	Columbian (241). L.L. Sheet Corner Block, with Letter "W" Brilliant Color, fresh, o. g., tiny stain in one, others Fine-Very Fine, Attractive (Photo)	875.00
321	★	\$2.00	Columbian (242). Well Centered, Deep Rich Color, fresh, o. g., Extremely Fine (Photo)	230.00



- 322 ★ 田 \$2.00 Columbian (242). Block of Nine, Exceptionally Well Centered, Lovely Rich Color, fresh, o.g., small faint crease in two at B., others Extremely Fine, a Handsome & Wonderful Block (Photo) 2,020.00+
- 323 ★ \$3.00 Columbian (243). Well Centered, Rich Color, small thin, Extremely Fine appearance (Photo) 325.00
- 324 ★ \$3.00 Columbian (243). Nicely Centered, Rich Color, couple tiny thin specks, Very Fine appearance (Photo) 325.00
- 325 ★ 田 \$3.00 Columbian (243). Block, Beautiful Color, large part o.g., faults affect all but one, bit reinforced, still an Attractive & Scarce Block (Photo) 2,750.00
- 326 ★ \$4.00 Columbian (244). Well Centered, Gorgeous Deep Color, Extremely Fine (Photo) 400.00
- 327 ★ \$4.00 Columbian (244). Lovely Color, fresh, o.g., small thins, Very Fine appearance (Photo) 400.00

LOTS ON VIEW FROM JUNE 1st

OFFICES CLOSED SAT., MEMORIAL DAY



316



325



318



319



321



323



324



326



320



327



329



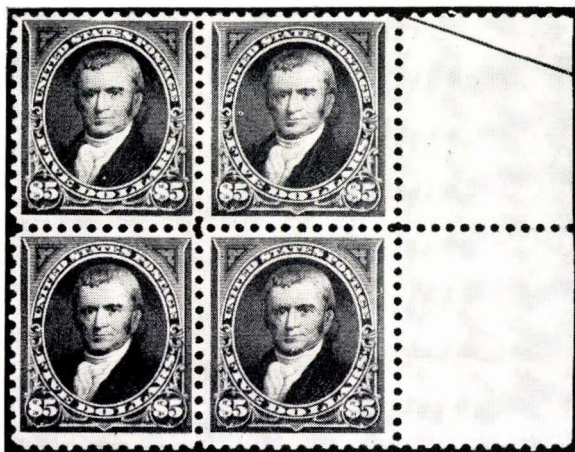
- 328 \$4.00 Columbian (244). Used Block, Wonderfully Well Centered, Magnificent Rich Color, neat Target cancel, trivial pinpoint thin speck in margin of one, others Extremely Fine, an Exceptional Showpiece (Photo) 2,500.00
- 329 ★ \$5.00 Columbian (245). Well Centered, fresh, large part o. g., small thins, Very Fine appearance (Photo) 450.00



- 330 ★ \$5.00 Columbian (245). B. Imprint Plate No. 108 Strip of Four, Beautifully Centered, Wonderful Intense Color, fresh, o. g., Extremely Fine, a Magnificent Showpiece (Photo) 4,500.00

1894 - 98 ISSUES

- 331 ★ 2c Carmine Lake (249). Block, fresh, o. g., Fine-Very Fine 45.00
- 332 ★ 50c Orange (260). Block, fresh, o. g., tiny natural wrinkle in one, horiz. perms weak, otherwise Very Fine (Photo) 150.00
- 333 ★ \$1.00 Black, Ty. II (261A). Part o. g., closed tear, Fine appearance 155.00



- 334 ★ 50c Dark Green (263). Block, with Sheet Margin & Half Arrow at R.,
Lovely Deep Color, fresh, o. g., Very Fine, Exceedingly Rare in this Con-
dition (Photo) 1,950.00



- | | | |
|-------|---|----------------|
| 335 ★ | 50c Red Orange (275a). Fresh, o. g., Very Fine | 35.00 |
| 336 ★ | \$1.00 Black, Ty. I (276). Fresh, o. g., Very Fine | (Photo) 90.00 |
| 337 ★ | \$1.00 Black, Ty. I (276). Fresh, o. g., faint internal wrinkle, otherwise
Very Fine | (Photo) 90.00 |
| 338 ★ | \$2.00 Bright Blue (277a). Fresh, o. g., Very Fine | (Photo) 110.00 |
| 339 ★ | \$2.00 Bright Blue (277a). Fresh, o. g., Very Fine | (Photo) 110.00 |
| 340 ★ | \$2.00 Dark Blue (277). T. Imprint Plate No. 84 Strip of Three, Beautiful
Deep Color, fresh, o. g., Extremely Fine | (Photo) 450.00 |
| 341 ★ | \$5.00 Dark Green (278). Lovely Deep Color, fresh, o. g., Very Fine
..... | (Photo) 260.00 |

1898 TRANS-MISSISSIPPI ISSUE



342	★	1c Trans-Mississippi (285). Block, fresh, o. g., Extremely Fine	27.50
343	★	1c-10c Trans-Mississippi (285-290). Fresh, o. g., Fine-Very Fine	110.00
344	★	5c Trans-Mississippi (288). U. R. Sheet Corner Block of Six, with Plate No. 618, fresh, o. g., Fine-Very Fine	118.00
345	★	8c Trans-Mississippi (289). Block, fresh, o. g., Very Fine	110.00
346	★	10c Trans-Mississippi (290). Block, fresh, o. g., Extremely Fine (Photo)	140.00
347	★	50c Trans-Mississippi (291). With Sheet margin & Imprint at B., Deep Color, Well Centered, Extremely Fine	(Photo) 125.00
348	★	50c Trans-Mississippi (291). Nicely Centered, Deep Rich Color, fresh, o. g., Very Fine	(Photo) 125.00
349	★	\$1.00 Trans-Mississippi (292). Large part o. g., couple tiny thins, Very Fine appearance	(Photo) 265.00
350	★	\$1.00 Trans-Mississippi (292). Deep Intense Color, fresh, o. g., Fine (Photo)	265.00
351	★	\$2.00 Trans-Mississippi (293). Well Centered, Rich Color, fresh, o. g., Very Fine	(Photo) 350.00



- 352 ★ 田 \$2.00 Trans-Mississippi (293). L. L. Sheet Corner Block, Magnificent Deep Color, Brilliant & Fresh, o. g., lightly hinged once, Fine-Very Fine, a Handsome Piece (Photo) 3,000.00

ESTIMATES

Our sales contain many 19th Century covers and fancy cancellations. We have had many requests to give the estimated cash value on these lots. We are trying to place a fair net valuation on each lot as a guide for bidding when no catalogue value portrays the true value. The chart below will be used, for example E. IV means our estimate cash value on this lot is \$30.00 to \$40.00. Lots may actually realize more or less than these estimates and under no circumstances are these estimates to be considered reserves but merely a guide to bidding.

E. I	up to \$10.00	E. IX	\$150.00 to \$200.00
E. II	\$10.00 to \$20.00	E. X	\$200.00 to \$250.00
E. III	\$20.00 to \$30.00	E. XI	\$250.00 to \$350.00
E. IV	\$30.00 to \$40.00	E. XII	\$350.00 to \$500.00
E. V.	\$40.00 to \$50.00	E. XIII	\$500.00 to \$750.00
E. VI	\$50.00 to \$75.00	E. XIV	\$750.00 to \$1000.00
E. VII	\$75.00 to \$100.00	E. XV	\$1000.00 to \$2500.00
E. VIII	\$100.00 to \$150.00	E. XVI	over \$2500.00

1901 PAN-AMERICAN ISSUE



- 353 ★ **1c Pan-American, Center Inverted (294a).** Wonderfully Well Centered, Extremely Fine, a Choice Example of this Popular Rarity **(Photo)** 3,000.00
- 354 ★ **1c Pan-American, Center Inverted (294a).** Perfs barely touch at right, Fine Copy of this Rare stamp **(Photo)** 3,000.00



- 355 ★ **2c Pan-American, Center Inverted (295a).** Centered to left, small thin spot, Fine appearing Copy of this much sought-after Rarity **(Photo)** 15,000.00



- 356 ★ **4c Pan-American, Center Inverted (296a).** Nicely Centered, couple slightly blunted perf. tips, otherwise a Fine & Desirable Copy of this Popular Rarity, with P. F. Certificate **(Photo)** 4,750.00
- 357 ★ **4c Pan-American, Center Inverted, "Specimen" Overprint (296b).** Fine, Handsome Example of this Rarity **(Photo)** 1,900.00
- 358 ★ **1c-10c Pan-American (294-299).** 10c small thin, otherwise F.-V. F. set 90.00

1902 ISSUE

359 ★	1c–15c Issue (300–309). Very Fine	70.20
360 ★	15c Olive Green (309). Block, Fine–Very Fine	100.00
361 ★	50c Orange (310). Very Fine	55.00
362 ★	\$1.00 Black (311). Well Centered, Extremely Fine (Photo)	100.00



363 ★	\$1.00 Black (311). Block, Exceptionally Well Centered, Extremely Fine (Photo)	525.00
364 ★	\$2.00 Dark Blue (312). Very Fine (Photo)	150.00
365 ★	\$2.00 Dark Blue (312). R. Sheet margin Block, Well Centered, one stamp thin, others Very Fine (Photo)	725.00
366 ★	\$5.00 Dark Green (313). Single nibbed perf. tip, otherwise Fine (Photo)	300.00
367 ★	\$5.00 Dark Green (313). Block, Beautifully Centered, minor gum disturbances, otherwise Extremely Fine, Rare & Handsome (Photo)	1,750.00
368 ★	5c Blue, Imperforate (315). Block, Very Fine (Photo)	575.00
369 ★	5c Blue, Imperforate (315). Block, Very Fine (Photo)	575.00
370 ★	5c Blue, Imperforate (315). Block, Very Fine (Photo)	575.00

1904–09 ISSUES

371 ★	1c–10c Louisiana Purchase (323–327). Fine–Very Fine Set	112.25
372 ★	1c–13c 1908 Issue (331–333, 337, 339). Blocks, Fine–Very Fine	101.50
373 ★	3c–15c 1908 Issue (333–340). Fine–Very Fine	50.50
374 ★	50c Violet (341). Very Fine (Photo)	45.00
375 ★	\$1.00 Violet Brown (342). Very Fine (Photo)	75.00
376 ★	5c Blue, Coil (351). Pair, Very Fine	48.00
377 ★	5c Blue, Coil (355). Pair, Fine–Very Fine	40.00

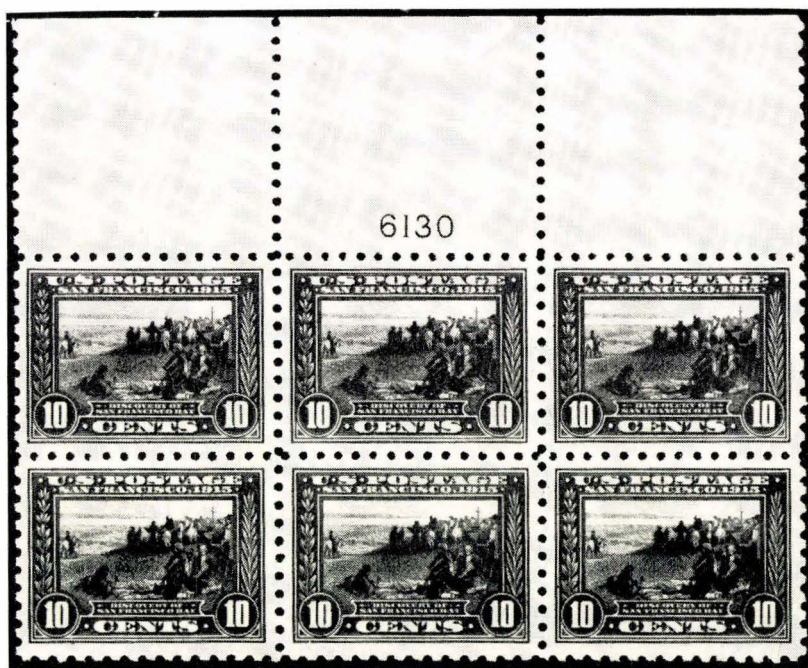
1909 BLUISH PAPER



- | | | | |
|-----|---|--|------------------|
| 378 | ★ | 1c Green, Bluish (357). Block, Very Fine | 70.00 |
| 379 | ★ | 2c Carmine, Bluish (358). Block, Well Centered, Extremely Fine | 62.50 |
| 380 | ★ | 3c Deep Violet, Bluish (359). Very Fine | (Photo) 375.00 |
| 381 | ★ | 4c Orange Brown, Bluish (360). Nicely Centered, faint negligible corner gum wrinkle, still a Very Fine Example of this Sought-after Rarity | (Photo) 4,500.00 |
| 382 | ★ | 5c Blue, Bluish (361). Well Centered, Extremely Fine | (Photo) 1,250.00 |
| 383 | ★ | 6c Red Orange, Bluish (362). Well Centered, Extremely Fine | (Photo) 285.00 |
| 384 | ★ | 8c Olive Green, Bluish (363). Centered to L. R., Attractive Example of this Rarity | (Photo) 4,500.00 |
| 385 | ★ | 13c Blue Green, Bluish (365). Nicely Centered, tiny natural paper inclusion, otherwise Very Fine | (Photo) 675.00 |
| 386 | ★ | 15c Pale Ultramarine, Bluish (366). Well Centered, Very Fine | (Photo) 285.00 |
| 387 | ★ | 15c Pale Ultramarine, Bluish (366). Block, few perfs. strengthened, Fine-Very Fine, a Scarce Block | (Photo) 1,250.00 |

1910-16 ISSUES

388	★	3c-8c 1910 Issue (376-380). Blocks, incl. two shades 3c, some hinge remnants, otherwise F.-V. F.	139.50
389	★	10c Yellow (381). Block, Fine-Very Fine	52.50
390	★	5c Panama-Pacific (399). Extremely Fine (Photo)	20.00
391	★	10c Orange Yellow, Panama-Pacific (400). Extremely Fine (Photo)	32.50
392	★	10c Orange, Panama-Pacific (400A). Extremely Fine (Photo)	60.00
393	★	1c, 2c Panama-Pacific, Perf. 10 (401, 402). Very Fine	25.75
394	★	5c Panama-Pacific, Perf. 10 (403). Very Fine (Photo)	55.00
395	★	10c Panama-Pacific, Perf. 10 (404). Mint, Very Fine (Photo)	235.00
396	★	10c Panama-Pacific, Perf. 10 (404). Mint T. Sheet margin copy, Very Fine (Photo)	235.00



397	★	10c Panama-Pacific, Perf. 10 (404). T. Plate No. 6130 Block of Six, Perfectly Centered, Extremely Fine, a Marvelous Piece (Photo)	2,200.00
398	★	7c Black (407). T. Sheet Margin Block, with Plate No., Fine	60.00
399	★	8c-30c 1912 Issue (414-420). Very Fine	68.85
400	★	15c Gray (418). Block, Very Fine	45.00
401	★	50c Violet (421). Mint, Extremely Fine (Photo)	85.00
402	★	\$1.00 Violet Brown (423). Very Fine (Photo)	90.00
403	★	3c-5c 1914 Issue (426-428). Blocks, Fine-Very Fine	55.50

404	★	2c Carmine, Imperforate (459). Small thin speck, V. F. appearance	65.00
405	★	2c Carmine, Imperforate (459). Horiz. Pair, Very Fine (Photo)	130.00
406	★	10c Orange Yellow (472). B. Sheet margin Block, Fine-Very Fine	95.00
407	★	20c Light Ultramarine (476). Margin Block with Plate No., tiny natural paper inclusion in one, otherwise F.-V. F.	125.00
408	★	\$2.00 Dark Blue (479). Fine	52.50
409	★	\$5.00 Light Green (480). Very Fine	50.00
410	★	\$5.00 Light Green (480). Block, Very Fine	220.00

1917-20 ISSUES

411	★	4c-50c 1917 Issue (503, 506, 507, 509-513, 517). Blocks, hinge remnants, otherwise F.-V. F.	89.75
412	★	5c Rose, Error (505). Fine	100.00
413	★	5c Rose, Error (505). Single Error in Block of Six, natural paper pore in Error, otherwise F.-V. F.	100.00+
414	★	\$1.00 Violet Brown (518). Block, Very Fine	45.00
415	★	\$2.00 Orange Red & Black (523). Very Fine (Photo)	110.00
416	★	\$2.00 Orange Red & Black (523). Block, Fine-Very Fine (Photo)	450.00
417	★	\$5.00 Deep Green & Black (524). Block, Very Fine	190.00



418	★	2c Carmine Rose, Ty. II (539). Block, Very Fine, Exceedingly Scarce & Handsome (Photo)	2,250.00
419	★	\$2.00 Carmine & Black (547). Very Fine	37.50
420	★	\$2.00 Carmine & Black (547). Block, Very Fine	155.00



362



364



366



374



375



368

369

370



390



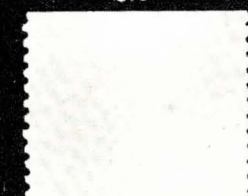
391



392



394



396



395



401



402



405



415



416

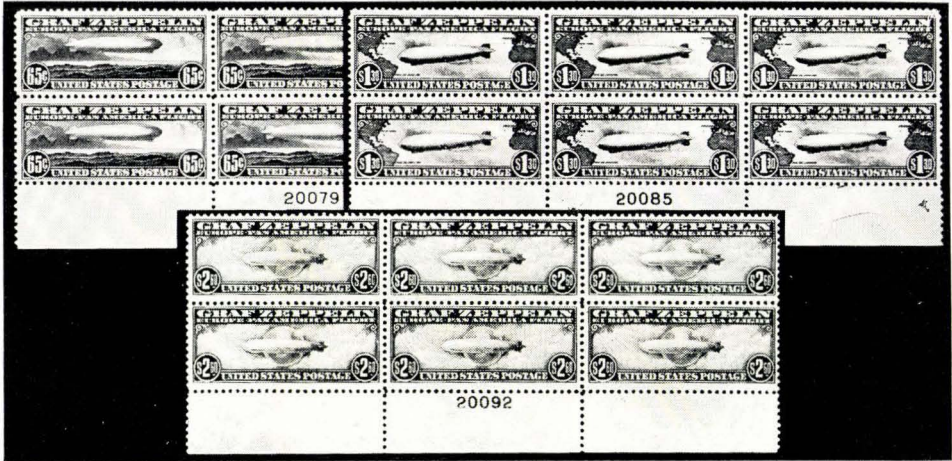


422



AIRPOST ISSUES

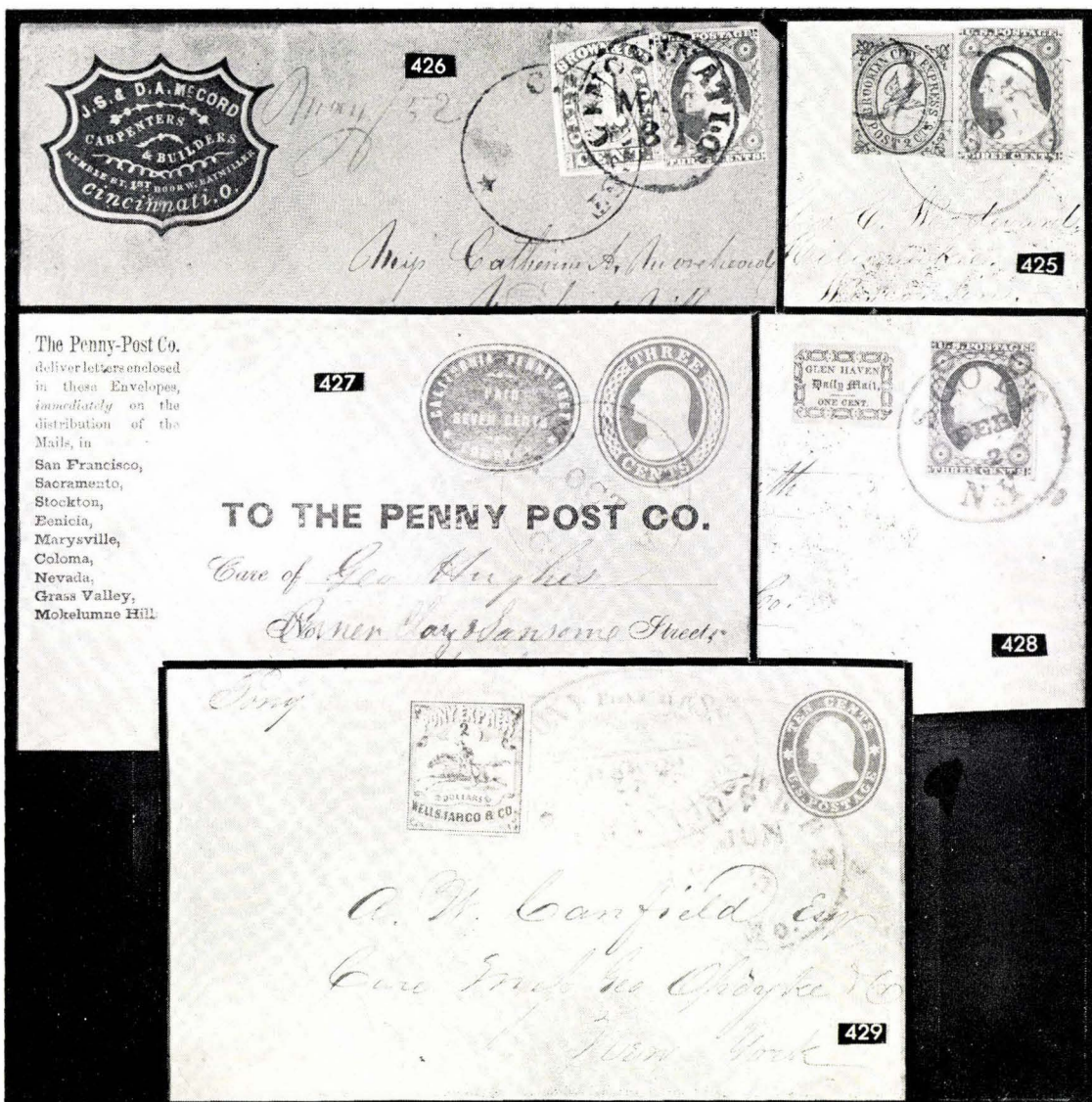
- 421 ★ 6c-24c 1918-23 Airposts (C1-C6). Fine-Very Fine sets 141.00
- 422 ★ 65c-\$2.60 Graf Zeppelin (C13-C15). Very Fine set (Photo) 600.00



- 423 ★ 65c-\$2.60 Graf Zeppelin (C13-C15). B. Plate No. Blocks of Six, tiny thin affects one stamp in each, otherwise Fine-Very Fine set (Photo) 4,950.00
- 424 ★ 6c Carmine Airpost, Horiz. Pair, Imperforate Between (C25b). Horiz. Strip of five, Middle Pair, the Error, Blue Crayon Lines as always, Perfectly Centered, Extremely Fine, Ex-Lilly 1500.00

CARRIERS & LOCALS, ETC.

- 425 ☒ Brooklyn City Express, 2c Black on Blue (28L5). Tied together with 3c Red (11) on small neat cover to Wisconsin, Both with margins all around, The 3c creased before using, the local also with concentric cancel., Choice & Handsome cover (Photo) E. X
- 426 ☒ Brown & Co's. City Post, 1c Black (29L1). Tied with 3c Red (11) by "City Post" & Cincinnati, O." town pmk. on cover to Pa., with Carpenter's Blue Corner card; Both stamps with margins to slightly touched, edges of cover corners worn, Choice & Handsome Example of this scarce Local combination (Photo) 450.00
- 427 ☒ California Penny Post Co., 7c Vermilion (34LU7). Impressed on 3c Red on Buff Entire (U10) Neat, Sharp "Benicia, Cal." pmk. to S. F., Cover with list of towns served, Very Fine (Photo) 400.00
- 428 ☒ Glen Haven Daily Mail, 1c Black on Green Glazed (71L3). Tied together with 3c Red (11) by Sharp "Scott, N. Y." pmk. on cover to R.I., Large margins to just touched, Handsome cover & Very Rare as the local is hardly ever found tied (Photo) 250.00



- 429 **Wells, Fargo & Co, Pony Express, \$2.00 Red (143L1).** Clear to Large margins, tied by neat Blue "Running Pony" oval, San Francisco, on 10c Green, Star Die Entire (U34) to N. Y., Green "St. Joseph, Mo." pmk., a 12-day Pony trip, Very Fine example of this Rare Historic usage, Ex-Caspary (Photo) 2250.00
- 430 **New Jersey Bank Bill, \$5.00** New Brunswick with engraved portraits of Washington & Franklin as on the 5c & 10c 1847, Rawdon, Wright, Hatch & Edson Imprint, Fresh, Crisp, Immaculate, Beautiful Collateral Item

E. III

END OF SALE — THANK YOU

PRICES REALIZED

A "must" for those who want to keep abreast of the current market for stamps.

Both buyers and sellers will find them an invaluable aid in determining the actual values of philatelic material.

ANNUAL SUBSCRIPTION	\$7.50
---------------------------	--------

Any single auction	\$1.00
--------------------------	--------

LATE BIDS

We have been receiving an increasing number of bids after an auction takes place. Some of these bids would probably have been successful and were apparently mailed in time. However, to avoid such disappointment, please mail your bids early; mails often take longer than usual.

IS YOUR COLLECTION FOR SALE?

REALIZE IMMEDIATE CASH
PLUS THE ADDED ADVANTAGE OF
SELLING THROUGH OUR AUCTIONS

If desired, we will advance immediate cash up to 75% of our appraisal value, of what your collection should realize at auction. There is no interest charge.

Your collection will then be sold in one of our coming auction sales. All stamps are expertly and advantageously lotted in attractive, well illustrated catalogs. Lotting is meticulously planned under our personal supervision. Commission is 20% of the gross realization. There is no lotting fee or any other charges. Final settlement is made within five weeks after the sale. We have been continuously conducting stamp auctions in the United States for over thirty-nine years.

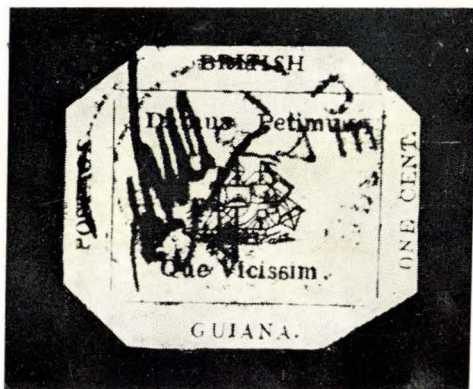
Valuable collections and stamp holdings are especially wanted, but we will accept properties valued from \$500 upwards. Send all stamps direct for appraisal. Auction advance will be remitted shortly after receipt. If not entirely pleased, stamps will be returned at our expense. If circumstances warrant due to bulk or value, we will travel anywhere to inspect important properties.

ROBERT A. SIEGEL
AUCTION GALLERIES, Inc.

(Licensed and Bonded Auctioneer)

10 EAST 52nd STREET
NEW YORK, N. Y. 10022
Tel. (PL 3-6421)

THE MOST VALUABLE STAMP IN THE WORLD



The British Guiana, 1856 "One Cent" was recently sold by us for \$280,000.00 in our 1970 auction sale of Rarities of the World.

* * *

We are already looking ahead to our 1971 Rarity Sale and if you have U.S. or Foreign Rarities to offer, of suitable quality or value for these outstanding auctions, we suggest you advise us promptly of what you have. Many would-be sellers have been disappointed by not reserving space for important lots they wished to sell in our Rarity Auctions. Therefore, please advise us **now** . . . you don't have to send us the stamps at this time, just let us know what you would like to include.

ROBERT A. SIEGEL AUCTION GALLERIES, Inc.
10 East 52nd Street
New York, N. Y. 10022

PRICES REALIZED

June 4th, 1970

A Distinguished Collection
of

UNITED STATES
POSTAGE STAMPS

376TH SALE

1 1450.00	55 650.00	108 110.00	162 525.00	216 600.00	270 250.00	324 200.00	378 60.00
2 80.00	56 160.00	109 425.00	163 675.00	217 950.00	271 180.00	325 1200.00	379 62.50
3 190.00	57 725.00	110 3200.00	164 525.00	218 1050.00	272 550.00	326 475.00	380 375.00
4 75.00	58 100.00	111 425.00	165 160.00	219 290.00	273 170.00	327 250.00	381 3500.00
5 47.50	59 270.00	112 160.00	166 150.00	220 35.00	274 200.00	328 1700.00	382 1050.00
6 57.50	60 1800.00	113 60.00	167 160.00	221 37.50	275 36.00	329 350.00	383 320.00
7 75.00	61 170.00	114 725.00	168 1900.00	222 38.00	276 18.00	330 6000.00	384 2100.00
8 47.50	62 125.00	115 120.00	169 145.00	223 29.00	277 105.00	331 4500.00	385 350.00
9 125.00	63 150.00	116 700.00	170 380.00	224 55.00	278 65.00	332 105.00	386 220.00
10 170.00	64 85.00	117 460.00	171 120.00	225 42.50	279 35.00	333 45.00	387 700.00
11 800.00	65 260.00	118 60.00	172 1600.00	226 21.00	280 37.50	334 2300.00	388 50.00
12 200.00	66 6000.00	119 23.00	173 350.00	227 26.00	281 125.00	335 34.00	389 29.00
13 750.00	67 4600.00	120 32.50	174 45.00	228 1050.00	282 110.00	336 90.00	390 40.00
14 850.00	68 1250.00	121 325.00	175 47.50	229 1450.00	283 70.00	337 72.50	391 42.50
15 1600.00	69 190.00	122 175.00	176 45.00	230 290.00	284 200.00	338 115.00	392 70.00
16 2300.00	70 105.00	123 725.00	177 45.00	231 340.00	285 62.50	339 110.00	393 22.00
17 2200.00	71 210.00	124 26.00	178 62.50	232 2800.00	286 36.00	340 550.00	394 60.00
18 5250.00	72 105.00	125 250.00	179 45.00	233 95.00	287 50.00	341 350.00	395 220.00
19 400.00	73 75.00	126 500.00	180 32.00	234 70.00	288 230.00	342 37.50	396 250.00
20 210.00	74 85.00	127 100.00	181 210.00	235 37.50	289 100.00	343 75.00	397 4600.00
21 230.00	75 75.00	128 170.00	182 800.00	236 40.00	290 17.00	344 95.00	398 29.00
22 110.00	76 500.00	129 500.00	183 62.50	237 325.00	291 40.00	345 110.00	399 62.50
23 170.00	77 190.00	130 1150.00	184 150.00	238 250.00	292 230.00	346 200.00	400 30.00
24 95.00	78 67.50	131 65.00	185 475.00	239 105.00	293 40.00	347 190.00	401 110.00
25 85.00	79 85.00	132 70.00	186 1050.00	240 160.00	294 30.00	348 135.00	402 105.00
26 120.00	80 42.50	133 20.00	187 1100.00	241 80.00	295 90.00	349 170.00	403 29.00
27 240.00	81 600.00	134 140.00	188 36.00	242 105.00	296 60.00	350 155.00	404 35.00
28 750.00	82 57.50	135 60.00	189 525.00	243 62.50	297 220.00	351 525.00	405 95.00
29 500.00	83 1000.00	136 32.00	190 270.00	244 200.00	298 145.00	352 4500.00	406 52.50
30 230.00	84 75.00	137 280.00	191 26.00	245 210.00	299 80.00	353 3200.00	407 90.00
31 350.00	85 42.50	138 32.00	192 47.50	246 340.00	300 95.00	354 1450.00	408 28.00
32 260.00	86 50.00	139 52.50	193 145.00	247 340.00	301 180.00	355 8000.00	409 35.00
33 260.00	87 340.00	140 75.00	194 1650.00	248 190.00	302 75.00	356 3200.00	410 150.00
34 90.00	88 75.00	141 40.00	195 40.00	249 280.00	303 70.00	357 1550.00	411 32.00
35 400.00	89 280.00	142 35.00	196 26.00	250 160.00	304 47.50	358 50.00	412 65.00
36 800.00	90 62.50	143 200.00	197 400.00	251 525.00	305 35.00	359 55.00	413 80.00
37 600.00	91 37.50	144 105.00	198 35.00	252 240.00	306 26.00	360 90.00	414 50.00
38 475.00	92 1550.00	145 1200.00	199 52.50	253 1150.00	307 21.00	361 60.00	415 90.00
39 525.00	93 55.00	146 42.50	200 675.00	254 800.00	308 50.00	362 145.00	416 320.00
40 4250.00	94 67.50	147 30.00	201 52.50	255 28.00	309 3250.00	363 575.00	417 160.00
41 115.00	95 37.50	148 42.50	202 1350.00	256 1100.00	310 50.00	364 180.00	418 2600.00
42 210.00	96 47.50	149 85.00	203 475.00	257 120.00	311 60.00	365 500.00	419 40.00
43 5000.00	97 42.50	150 400.00	204 65.00	258 220.00	312 50.00	366 190.00	420 145.00
44 105.00	98 90.00	151 170.00	205 55.00	259 27.00	313 28.00	367 1400.00	421 115.00
45 190.00	99 62.50	152 170.00	206 260.00	260 17.00	314 105.00	368 400.00	422 460.00
46 50.00	100 450.00	153 750.00	207 120.00	261 65.00	315 37.50	369 375.00	423 3800.00
47 50.00	101 80.00	154 2000.00	208 135.00	262 45.00	316 400.00	370 375.00	424 1000.00
48 260.00	102 80.00	155 70.00	209 72.50	263 150.00	317 45.00	371 70.00	425 250.00
49 180.00	103 150.00	156 700.00	210 625.00	264 145.00	318 800.00	372 40.00	426 400.00
50 50.00	104 75.00	157 190.00	211 575.00	265 20.00	319 340.00	373 35.00	427 525.00
51 50.00	105 250.00	158 350.00	212 350.00	266 15.00	320 950.00	374 55.00	428 300.00
52 32.50	106 240.00	159 400.00	213 625.00	267 100.00	321 375.00	375 90.00	429 2700.00
53 30.00		160 475.00	214 800.00	268 80.00	322 2400.00	376 36.00	430 17.00
54 325.00	107 21000.00	161 600.00	215 475.00	269 575.00	323 160.00	377 26.00	