

378th SALE

UNITED STATES
CHINA, CHINESE TREATY PORTS
SHANGHAI

GREAT BRITAIN
BRITISH COMMONWEALTH
Barbados, Canada, Newfoundland, Trinidad

GENERAL FOREIGN
Austria, Belgium, France, Latin America,
Israel, Switzerland, and many others

LOTS BY COUNTRY

Sold By Order of the Various Owners

With many choice items from the
Dolores Hertz Collection

AT PUBLIC AUCTION
IN SIX SESSIONS

Tuesday, July 14th, 1970 at 1:30 P. M.

Wednesday, July 15th, 1970 at 1:30 P. M.

Thursday, July 16th, 1970 at 1:30 P. M. and 7:30 P. M.

Friday, July 17th, 1970 at 11:00 A. M. and 1:30 P. M.

Robert A. Siegel
AUCTIONS

10 EAST 52nd STREET NEW YORK, N. Y. 10022

Tel: 212 PLaza 3-6422

CONDITIONS OF SALE

1. The terms of sale are strictly cash to the highest bidder. All buyers are expected to pay for lots within three days of receipt, unless special arrangements have been made prior to the sale.
2. All bids are per lot as numbered in the catalogue and not per piece, unless otherwise announced by the auctioneer at the time of sale.
3. Any lot, the description of which is incorrect is returnable, but only within three days of receipt. All disputed lots must be returned intact as received and lots containing five or more stamps are not returnable at any time. No lots may be returned by purchasers who have had the opportunity to examine them prior to the sale. No illustrated lots may be returned because of centering, margins or other factors shown in the illustration.
4. Successful mail bidders, unless they are known to us or supply acceptable references, will be notified of the amount of the lots secured for them, and are expected to send payment in full before the lots are forwarded.
5. If the purchase price has not been paid within the time limit, or lots taken up within seven days from date of sale, they may be resold and any losses arising from such sale charged to the defaulter.
6. All lots are sold as genuine but should any lot be proved otherwise by written opinion of any competent, responsible authority acceptable to us, immediate refund of the full purchase price will be made, provided that any such claim is made within 25 days from date of sale. If claim is not made within this period no lots are returnable for any reason at any time. Naturally, so long as we are notified within the 25 day period that an opinion is being sought the matter will remain open until such opinion is rendered. We will not be responsible for any charges incurred by the buyer for expertization fees and costs.
7. The right is reserved to group two or more lots, also withdraw any lot or lots from the sale, or to act on behalf of the seller.
8. Until paid for in full all lots remain the property of Robert A. Siegel Auction Galleries, Inc.
9. No commission is charged for buying at our sales, but all forwarding charges will be added to the purchase price. Shipment will be made to a post office box only if the buyer has also furnished a street address. All large lots unsuitable for parcel post will be sent by REA Express collect, or, upon request, REA Air Express collect.
10. Upon written application lots may be sent for examination prior to the auction, condition upon being mailed back by registered mail, adequately insured, within 24 hours of receipt. The applicant is completely responsible for all lots sent for examination, and for the insurance of same against mishap, from the time of receipt until they are actually received back, and is to pay all expenses of postage and insurance. No lots can be sent for inspection within ten days of the date of sale.
11. The placing of a bid shall constitute acceptance of the foregoing conditions of sale.

ROBERT A. SIEGEL

ANDREW LEVITT, Licensed Auctioneers

In sending bids, always state the highest price you are prepared to pay for the lot. Your limit will not be used as a starting bid unless absolutely necessary.

DESCRIPTIONS

Extremely Fine—the finest condition for noteworthy, outstanding copies.

Very Fine (VF)—means that there is a slight deviation from the above.

Fine (F)—means that the perforations do not touch the design on issues after 1890, but in some cases may just touch in earlier issues; if used, fairly lightly cancelled.

Very Good (VG)—means that the appearance is generally fine but that the perforations cut the design slightly.

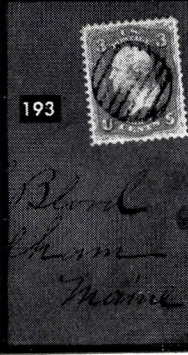
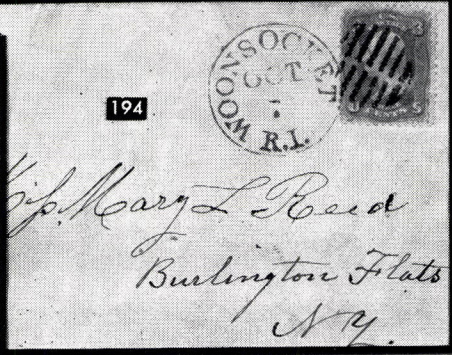
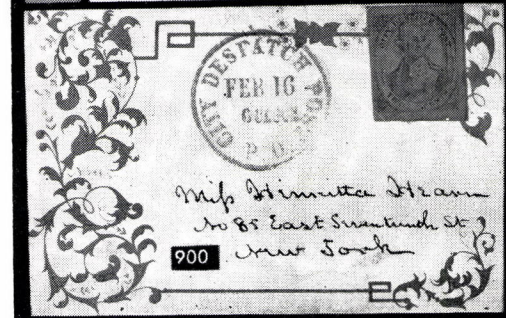
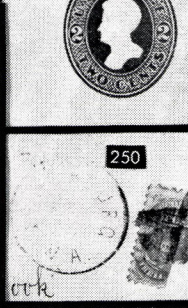
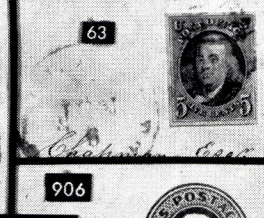
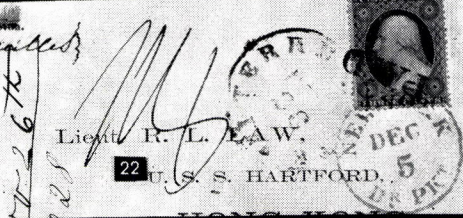
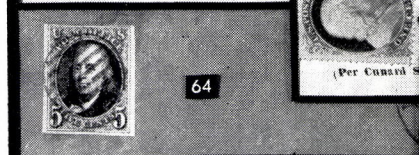
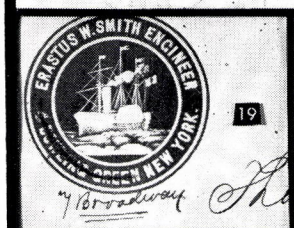
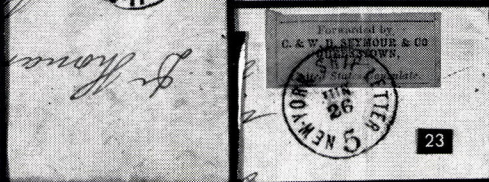
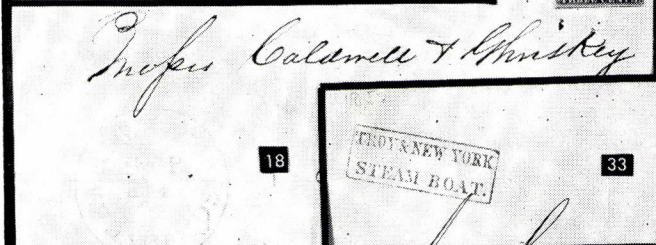
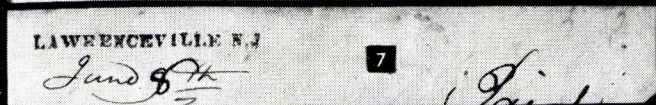
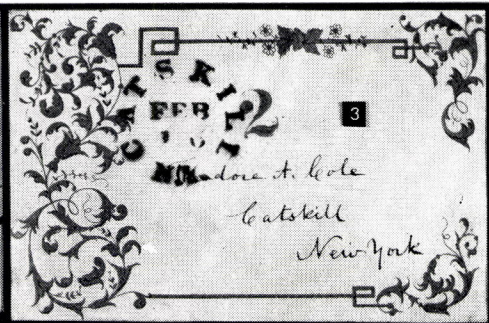
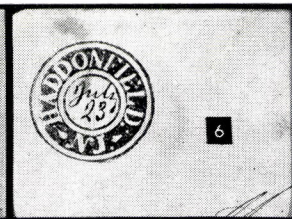
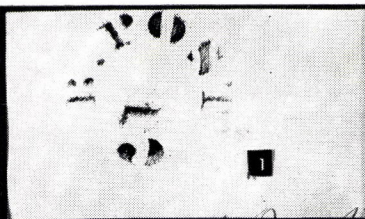
Good (G)—means average off-centering; or fairly attractive with slight defects.

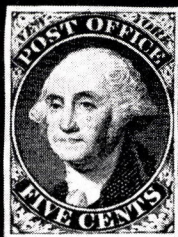
Original gum (OG)—is not to be expected on 19th Century stamps unless so stated.

Mint—have never been hinged.

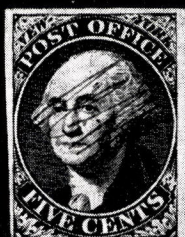
Scott 1970 Specialized Catalogue used for cataloguing lots of U.S. and Possessions.

Scott 1970 Standard Catalogue for others.

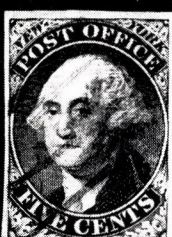




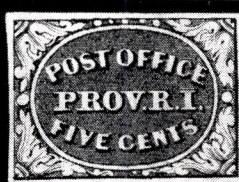
45



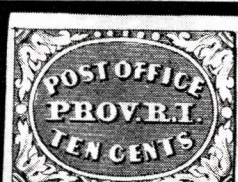
46



47



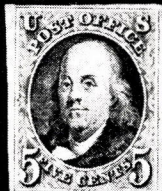
49



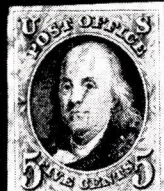
50



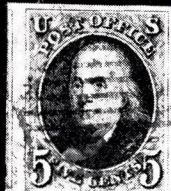
51



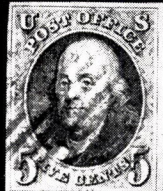
52



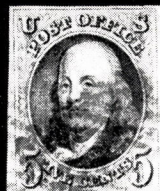
53



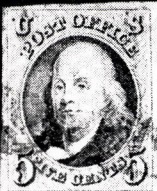
54



55



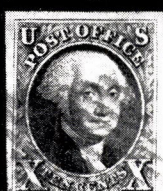
57



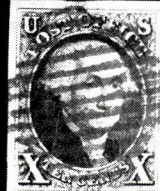
60



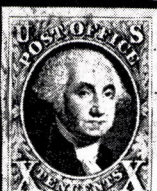
61



70



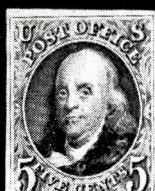
71



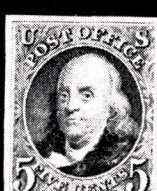
72



74



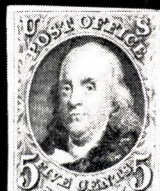
79



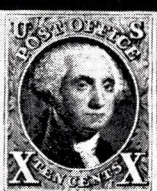
80



81



82



83



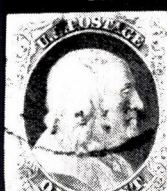
84



86



87



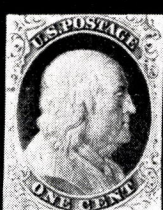
88



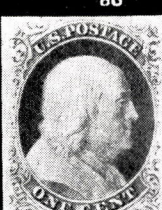
93



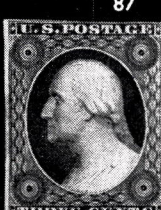
94



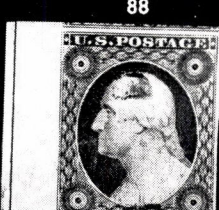
95



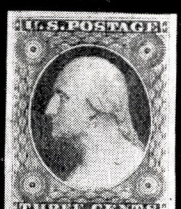
96



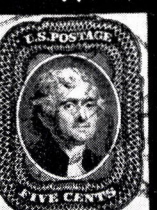
98



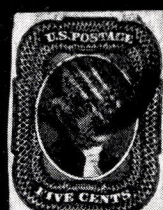
110



107



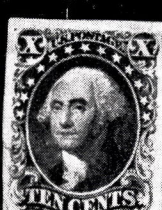
134



135



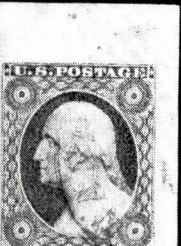
136



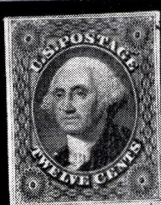
138



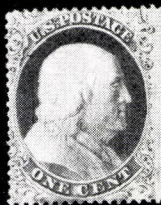
140



111



141



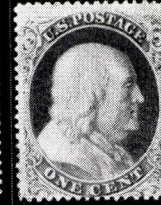
142



144



145



146



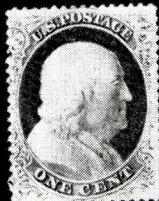
147



151



149



150



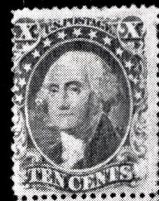
152



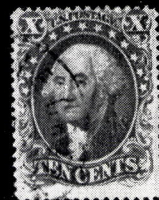
154



155



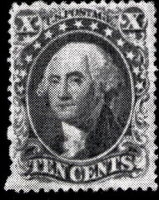
163



160



161



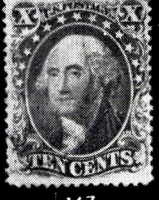
162



164



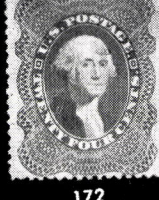
165



167



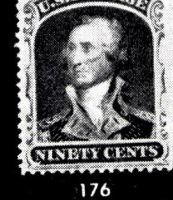
168



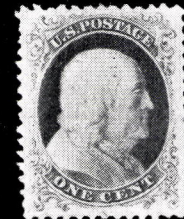
172



174



176



177



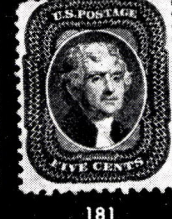
178



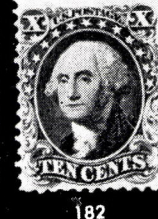
179



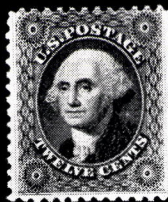
180



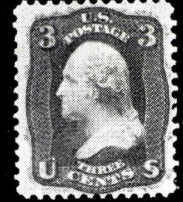
181



182



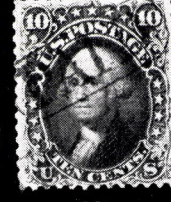
183



184



185



186



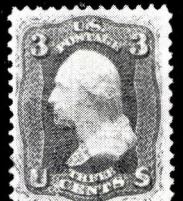
187



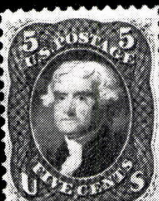
188



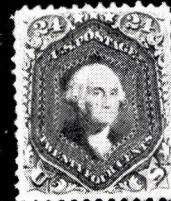
191



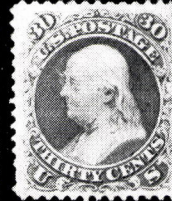
192



198



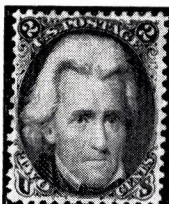
201



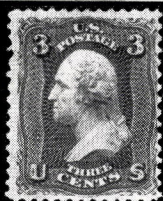
203



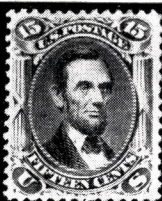
204



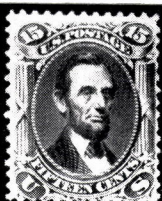
206



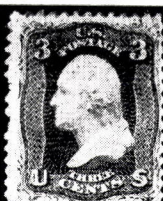
209



213



214



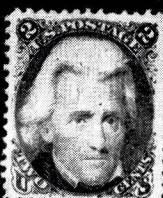
217



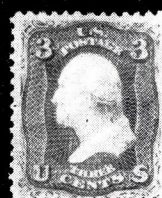
218



219



220



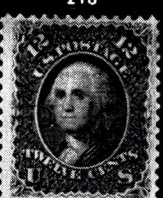
222



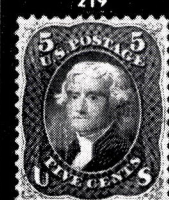
223



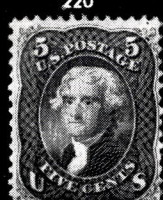
225



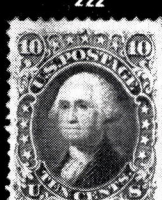
228



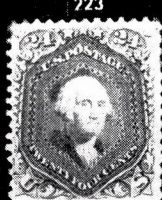
231



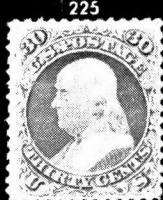
232



233



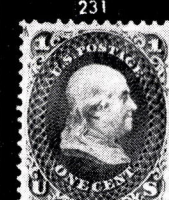
236



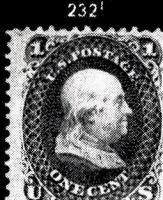
237



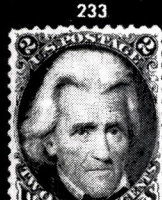
238



239



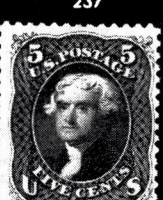
240



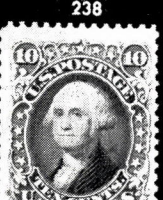
241



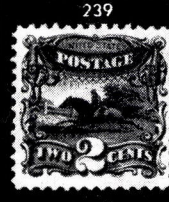
242



243



244



249



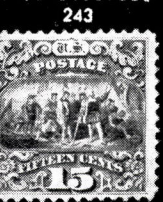
253



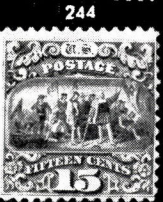
254



256



258



259



260



261



264



265



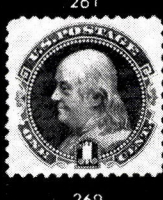
266



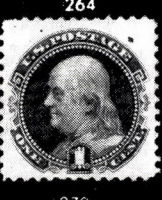
267



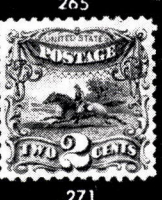
268



269



270



271



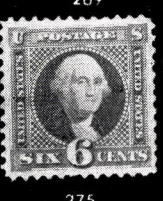
272



273



274



275



276



277



278



279



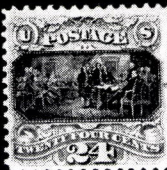
280



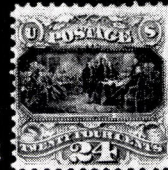
281



282



283



284



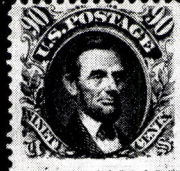
285



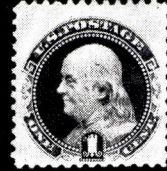
286



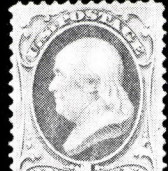
287



288



289



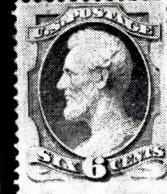
291



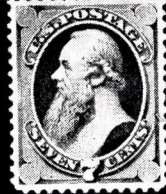
292



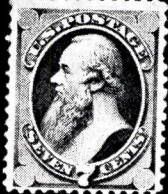
294



295



297



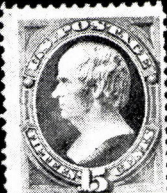
298



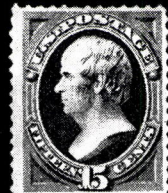
299



300



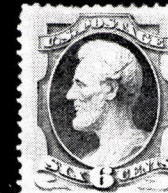
301



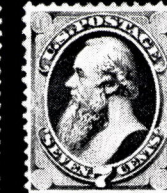
302



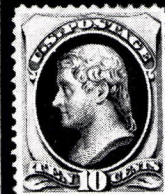
303



306



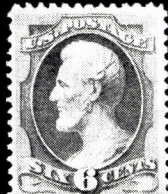
309



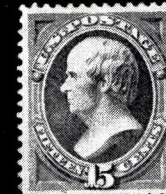
312



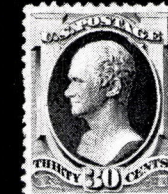
316



321



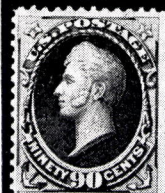
330



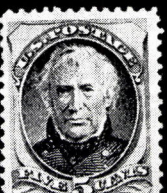
331



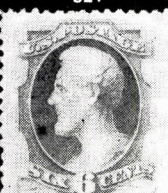
334



335



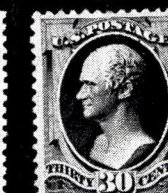
337



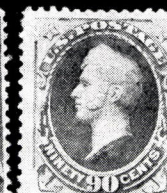
339



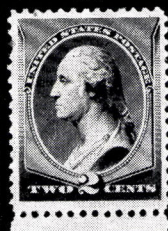
342



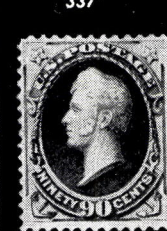
343



346



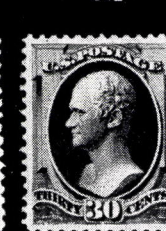
354



347



352



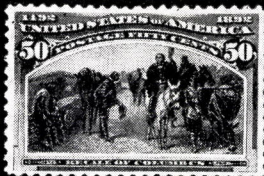
355



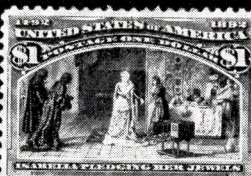
357



358



389



391



392



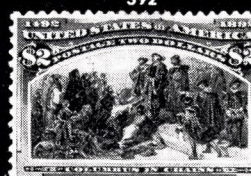
393



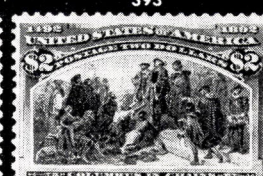
394



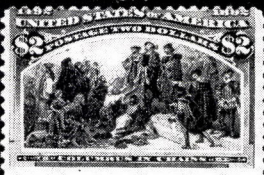
395



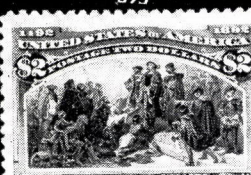
396



397



398



399



401



402



403



404



405



406



407



408



409



410



411



412



413



414



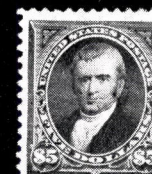
419



420



421



422

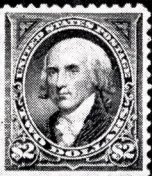


426

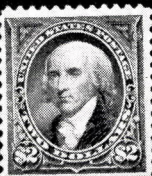


429

76



431



432



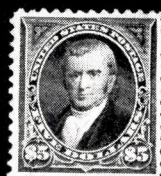
433



434



435



436



327



375



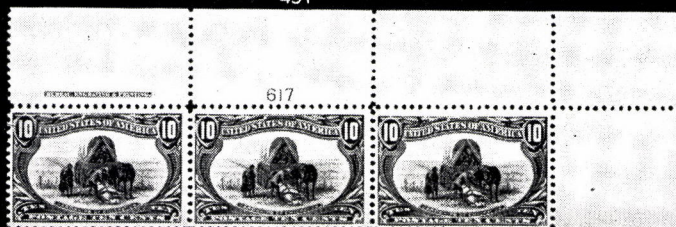
445



448



451



453



454



326



455



471



503



565



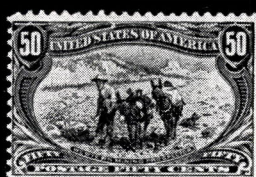
456



457



458



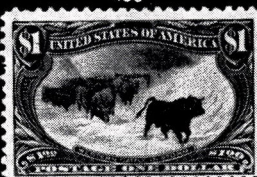
459



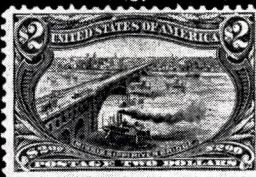
460



461



462



464



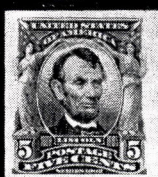
465



487



489



491



490



502



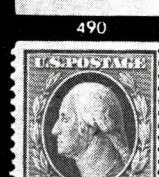
505 EX



513



522



523



524



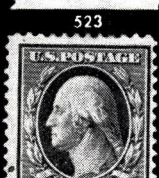
526



527



529



530



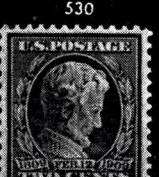
531



532



533



538



528



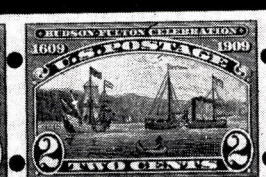
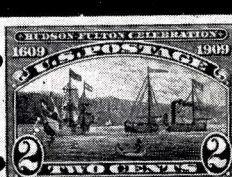
543



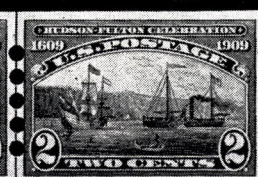
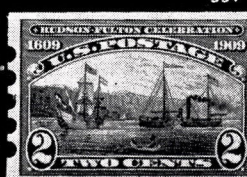
551



552



544



545



554

559

571

581



574

575

595

600

604



606

609

610

620



603



616

621

622

642



652

633

643



632

653

654

664



689

691

703

735



712

713

738

741

740



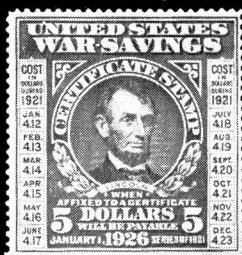
566



640



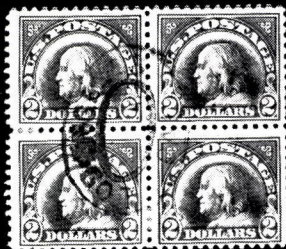
641



863



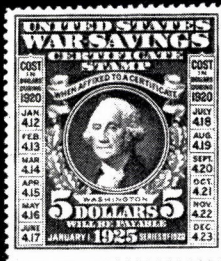
617



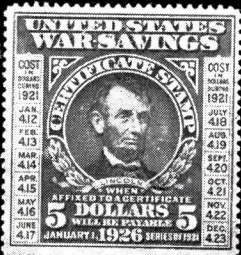
645



793



861

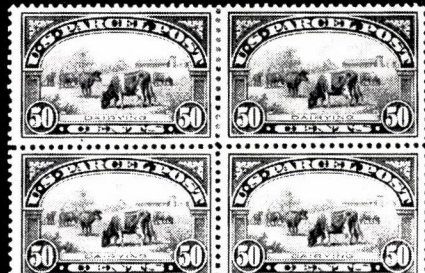


864

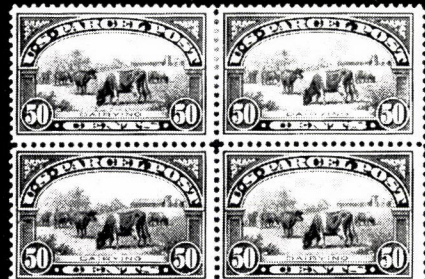


10208

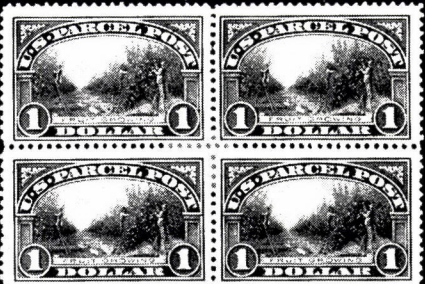
636



881



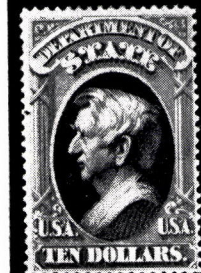
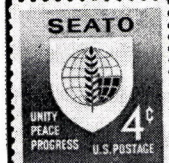
882



887

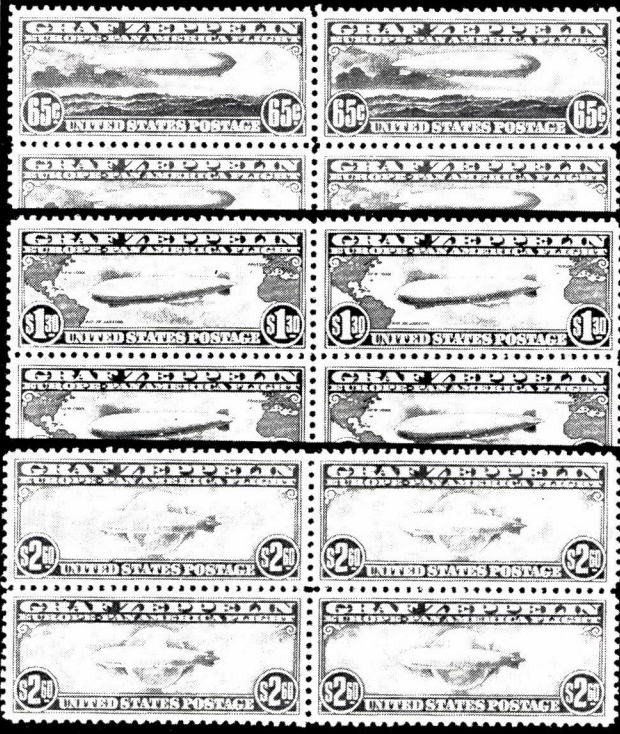


888





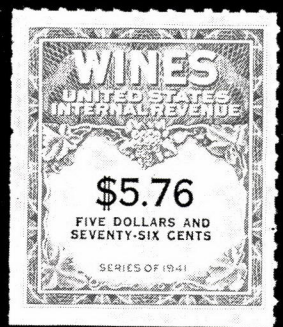
787



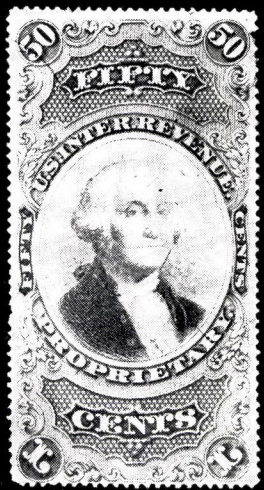
776



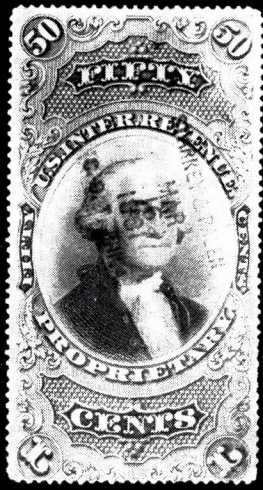
794



958



946



947



897



849



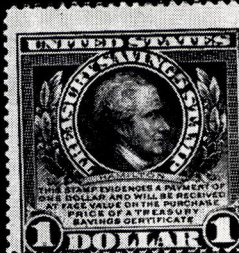
852



853



854



865



879



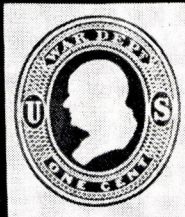
885



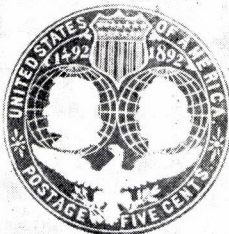
893



894



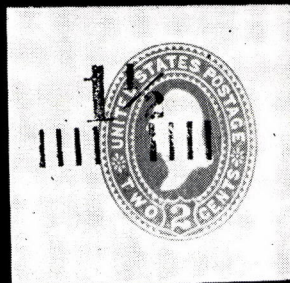
917



907



924



911



922



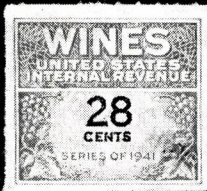
921



929



932



954



924



931



936



942



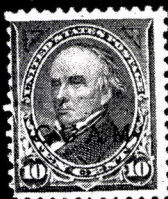
943



949



951



1017



1018



1019



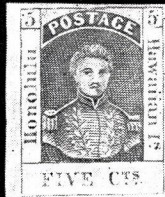
1022



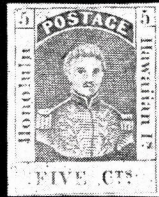
1023



1024



1025



1026



1028



1029



1030



1031



1032



1033



1034



1035



1036



1037



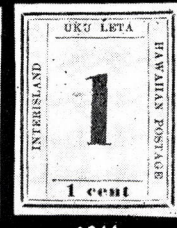
1038



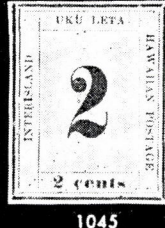
1040



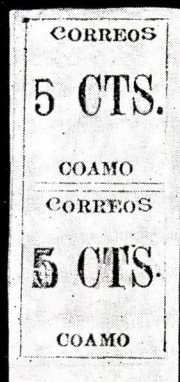
1042



1044



1045



1038



1046



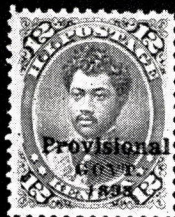
1047



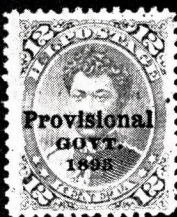
1048



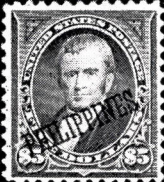
1057



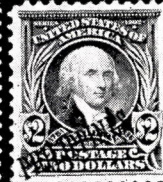
1065



1067



1083



1084



1091



1100



1108



1109



1110



1111



1120 EX



1126



1127



1125



1131



1133



1136



1145



1143



1147



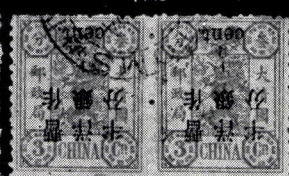
1148



1149



1139



1146



1143



1155



1156



1158



1170



1153



1150



1163



1174



1182



1171



1176



1180



1185



1183



1186



1190



1191



1203



1204



1188



1208



1212



1226



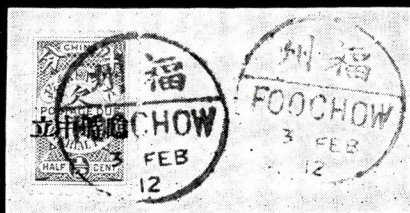
1227



1241



1242



1243



1245



1249



1257



1266



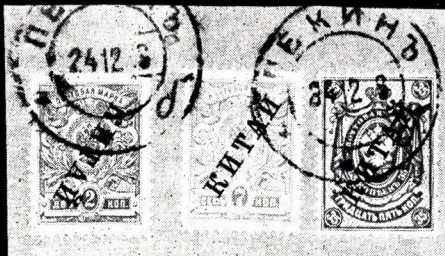
1271



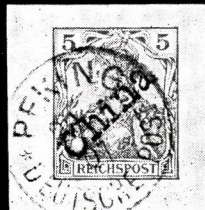
1269



1258



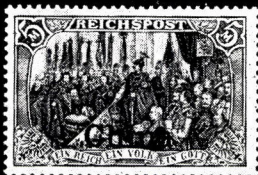
1259



1270



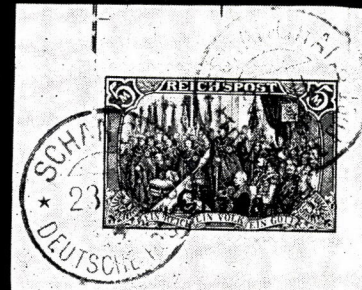
1272



1277



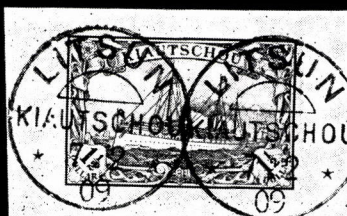
1283



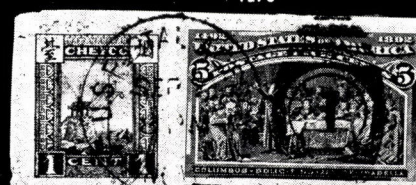
1278



1297 EX



1288



1322



1098



1101



1102 EX



1134



1107



1157



1113



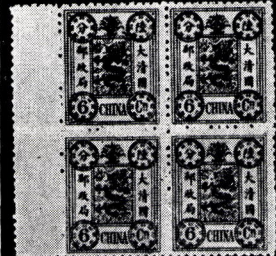
1121



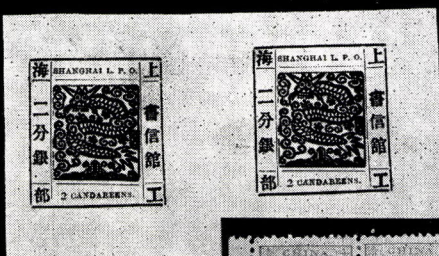
1293



1179



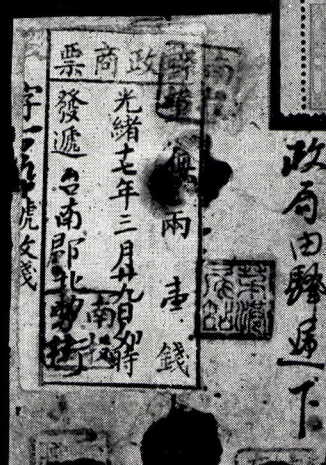
1137



1443



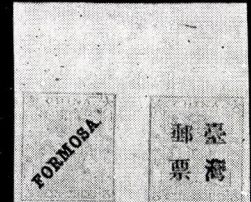
1175



1302



1181



1290 EX



1294 EX



1195



1261



1184



1207



1209



1229



1210



1211



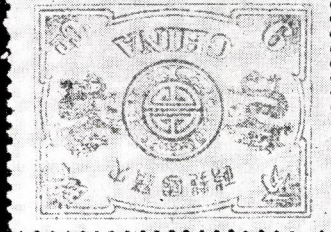
1230



1231



1130



1232



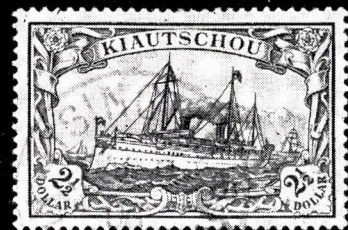
1274



1221



1285



1247



1273



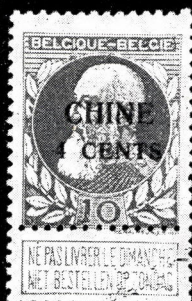
1541



1479



1252 EX



1275



1205





1246

葛 燦 文 先
法 学 第 二 卷
国 子 以 天 子

1128



PAR AVION

1244

Miss Macgowan
Amoy

1304

4 2 1 郵 號

1313



1315



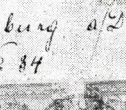
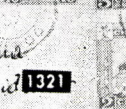
1316



1317



1318



Reverend Roussel
Mission des Freres Dominicains
Amoy

1305

1306

郵 票 號 4 2 1

Per Post Mail

1320



1328



Mr. W. E. Bay
Exeter S.S.
Luffield
ll Rugby
Co. Warwickshire.

Mr. W. E. Bay

1329

Miss Woods
20 Ashurst Ave.
Washington
U.S.A.
Pennsylvania



1327

Mr. Esq.
Shanghai



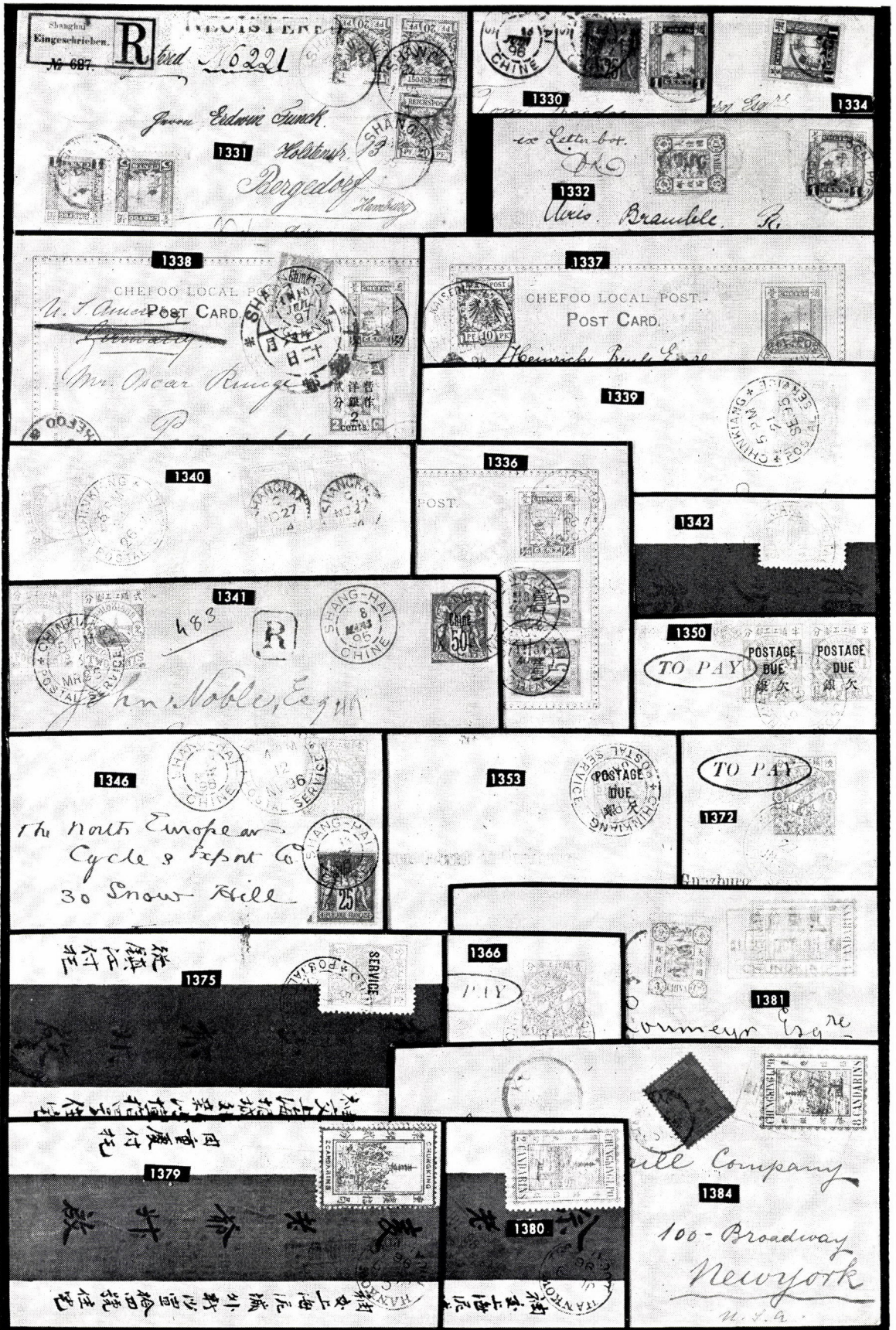
Jakobina
Fr. Schmidt

1321

Marburg a.D.
Hesse N. 84

Miss.





Shanghai
Eingeschrieben.
No 687.
R
No 16221
From Edwin Tunk.
Holländer.
Bergedoff
Hamburg

1330
1331
1332
Letter box.
Vries. Bramble. R.

1338
CHEFOO LOCAL POST CARD
U. S. China Post CARD
Mr. Oscar Rung
P

1337
CHEFOO LOCAL POST CARD
Heinrich Rung

1340
SHANGHAI
POSTAL

1336
POST

1342

1341
483
R
SHANGHAI
CHINE
John Noble, Esq.

1343

1350
POSTAGE DUE
TO PAY
銀欠

1346
The North European
Cycle & Export Co.
30 Snow Hill

1353
POSTAGE DUE
TO PAY
銀欠

1372
TO PAY
銀欠

1375
SHANGHAI
SERVICE
TO PAY
銀欠

1366
TO PAY
銀欠

1381
L'Union
Commerce

1379
SHANGHAI
TO PAY
銀欠

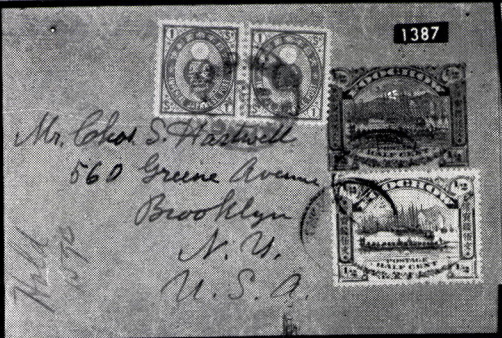
1380
SHANGHAI
TO PAY
銀欠

1384
Will Company
100-Broadway
New York
U.S.A.

1387

Mr. Chas. S. Hartsell
560 Greene Avenue
Brooklyn
N. Y.
U. S. A.

7/11/1970



1385

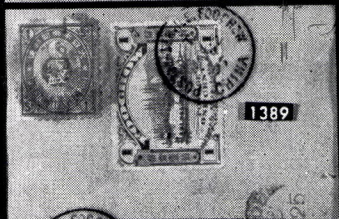


1386

Walter Walker



1389



1390

Registered

1394

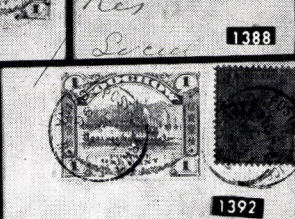
A. Dinning, Esq.



1388

Kes

Loose



1405



1399



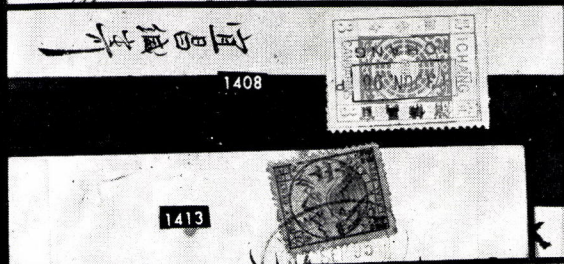
1392

EROD,



1408

1413



1397



1416

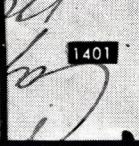
THE CENTRAL CHINA PRESS,
KEWKIANG, CHINA.



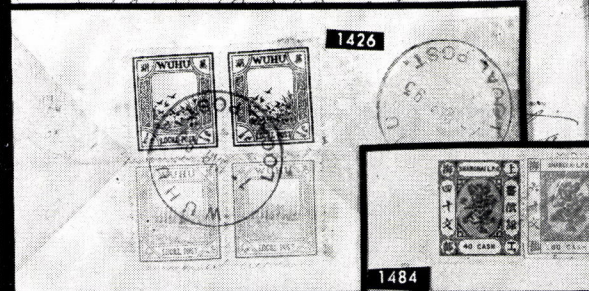
1415



1401



1426



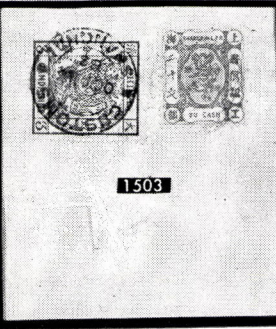
1417



1508



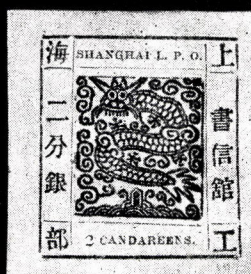
1503



1432

1420





1442



1452



1461



1488



1489



1453



1456



1471



1478



1457



1477



1467



1487



1490



1491



1495



1492



1497



1500



1502



1504



1506



1536



1537



1540



1513

1510

1511

1515

1512

1514

1516

1520

1535

1522

1530

1578

1579

1577

1584

1667

1666

1710

1690



1455



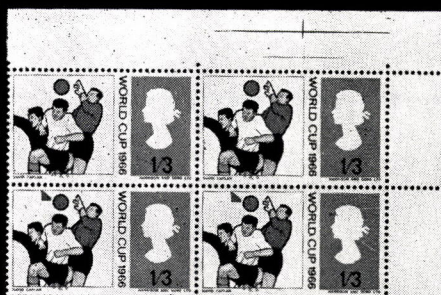
1560



1566



1571



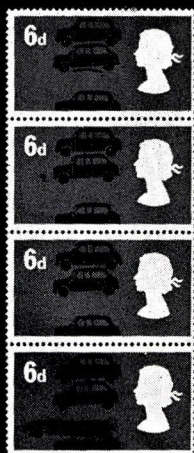
1559



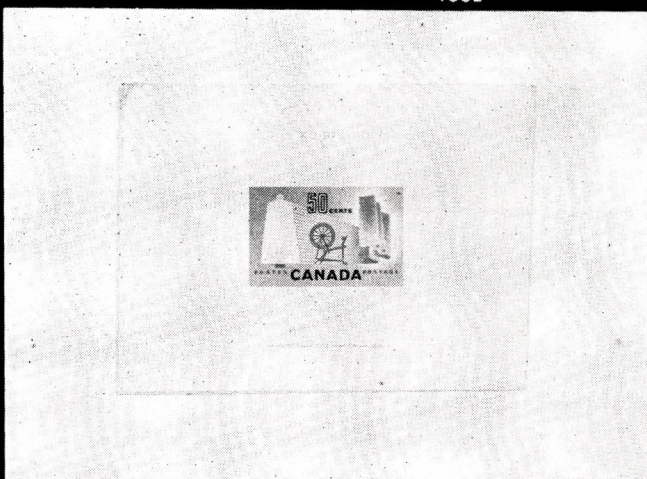
1694



1562



1569



1635



1553



1639



1651



1671



1668



1647



1700



1741 EX



1669



1670



1672



1545



1550



1552



1547



1554



1556



1558



1555



1557



1567



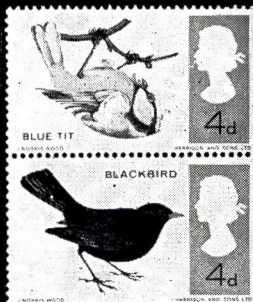
1548



1549



1568



1563



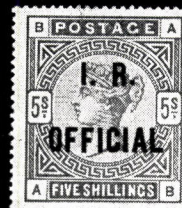
1572



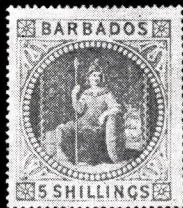
1587



1581



1573



1600



1589



1590



1592



1594



1599



1608



1610



1613



1614



1615



1604



1601



1623



1624



1625



1626



1627



1628



1629



1630



1638 EX



1637



1641



1658



1664 EX



1653



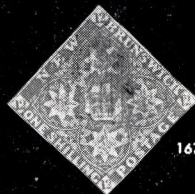
1650



1673



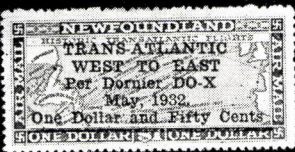
1674



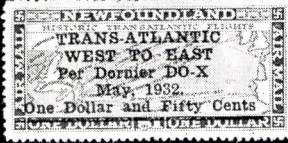
1676



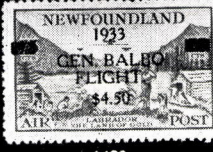
1675



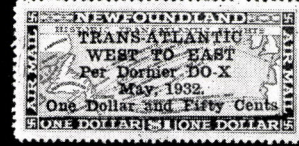
1686



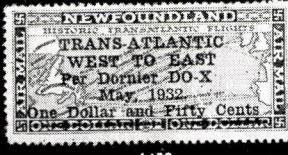
1687



1692



1688



1689



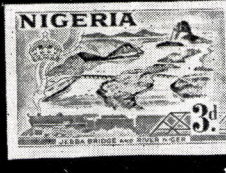
1693



1696



1697



1702



1717



1708



1705



1736



1738



1720



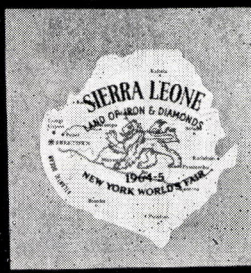
1729 EX



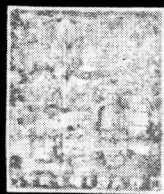
1735



1713



1731



1741



1742



1745



1746



1747



1748



1749



1750



1752



1753



1754



1764



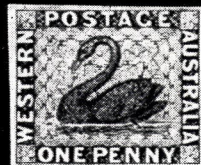
1759



1766



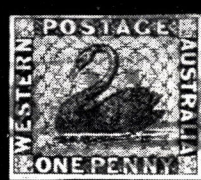
1767



1768



1769



1772



1802



1770



1784



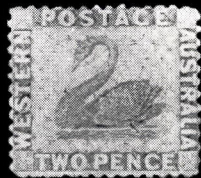
1787



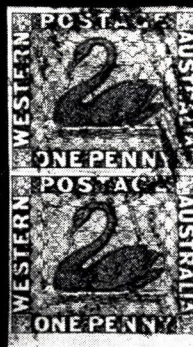
1800



1803



1810



1773



1814

Registered
REGISTERED

UNITED STATES OF AMERICA
NEW YORK, N. Y.
76335

1725

Thompson's Mustang
& Co.

1781

Mrs. J. W. S. J. J.
Marine Building

1779

Perth
C. D. F. 9

1776

Perth
C. D. F. 9

Office
of London
England

1778

Perth
C. D. F. 9

1776

Perth
C. D. F. 9

Office
of London
England

1782

Perth
C. D. F. 9

Perth
C. D. F. 9

Perth
C. D. F. 9

Perth
C. D. F. 9

1780

Mrs. Mepham
Forest Road
East Grinstead

1783

Perth
C. D. F. 9

Perth
C. D. F. 9

Perth
C. D. F. 9

Perth
C. D. F. 9

1785

Perth
C. D. F. 9

Perth
C. D. F. 9

Perth
C. D. F. 9

Perth
C. D. F. 9

1793

Perth
C. D. F. 9

Perth
C. D. F. 9

Perth
C. D. F. 9

Perth
C. D. F. 9

1794

Perth
C. D. F. 9

Perth
C. D. F. 9

Perth
C. D. F. 9

Perth
C. D. F. 9

1795

Perth
C. D. F. 9

Perth
C. D. F. 9

Perth
C. D. F. 9

Perth
C. D. F. 9

1792

Perth
C. D. F. 9

Perth
C. D. F. 9

Perth
C. D. F. 9

Perth
C. D. F. 9

1791

Perth
C. D. F. 9

Perth
C. D. F. 9

Perth
C. D. F. 9

Perth
C. D. F. 9

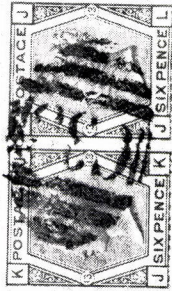
1798

Perth
C. D. F. 9

Perth
C. D. F. 9

Perth
C. D. F. 9

Perth
C. D. F. 9

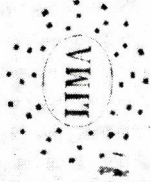


2355

2355



1909



2353

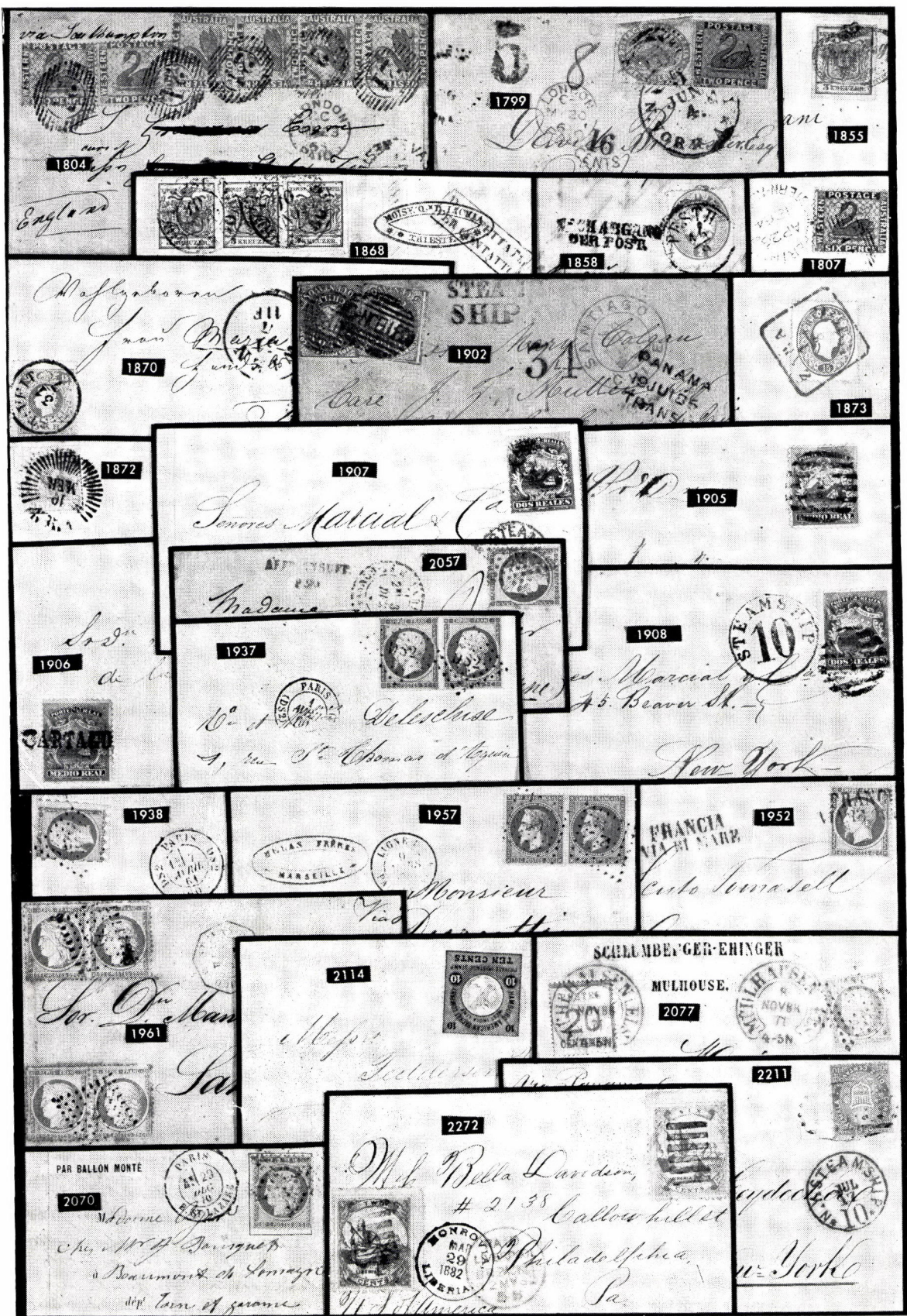
Don D. Luis Morales
Encargado de Negocios del Peru

82 Rue
Fairbairn
Paris



1737

1. *Robertson & Co*
 2. *Wm. H. Brown*
 3. *Wm. H. Brown*
 4. *Wm. H. Brown*
 5. *Wm. H. Brown*
 6. *Wm. H. Brown*
 7. *Wm. H. Brown*
 8. *Wm. H. Brown*
 9. *Wm. H. Brown*
 10. *Wm. H. Brown*
 11. *Wm. H. Brown*
 12. *Wm. H. Brown*
 13. *Wm. H. Brown*
 14. *Wm. H. Brown*
 15. *Wm. H. Brown*
 16. *Wm. H. Brown*
 17. *Wm. H. Brown*
 18. *Wm. H. Brown*
 19. *Wm. H. Brown*
 20. *Wm. H. Brown*
 21. *Wm. H. Brown*
 22. *Wm. H. Brown*
 23. *Wm. H. Brown*
 24. *Wm. H. Brown*
 25. *Wm. H. Brown*
 26. *Wm. H. Brown*
 27. *Wm. H. Brown*
 28. *Wm. H. Brown*
 29. *Wm. H. Brown*
 30. *Wm. H. Brown*
 31. *Wm. H. Brown*
 32. *Wm. H. Brown*
 33. *Wm. H. Brown*
 34. *Wm. H. Brown*
 35. *Wm. H. Brown*
 36. *Wm. H. Brown*
 37. *Wm. H. Brown*
 38. *Wm. H. Brown*
 39. *Wm. H. Brown*
 40. *Wm. H. Brown*
 41. *Wm. H. Brown*
 42. *Wm. H. Brown*
 43. *Wm. H. Brown*
 44. *Wm. H. Brown*
 45. *Wm. H. Brown*
 46. *Wm. H. Brown*
 47. *Wm. H. Brown*
 48. *Wm. H. Brown*
 49. *Wm. H. Brown*
 50. *Wm. H. Brown*
 51. *Wm. H. Brown*
 52. *Wm. H. Brown*
 53. *Wm. H. Brown*
 54. *Wm. H. Brown*
 55. *Wm. H. Brown*
 56. *Wm. H. Brown*
 57. *Wm. H. Brown*
 58. *Wm. H. Brown*
 59. *Wm. H. Brown*
 60. *Wm. H. Brown*
 61. *Wm. H. Brown*
 62. *Wm. H. Brown*
 63. *Wm. H. Brown*
 64. *Wm. H. Brown*
 65. *Wm. H. Brown*
 66. *Wm. H. Brown*
 67. *Wm. H. Brown*
 68. *Wm. H. Brown*
 69. *Wm. H. Brown*
 70. *Wm. H. Brown*
 71. *Wm. H. Brown*
 72. *Wm. H. Brown*
 73. *Wm. H. Brown*
 74. *Wm. H. Brown*
 75. *Wm. H. Brown*
 76. *Wm. H. Brown*
 77. *Wm. H. Brown*
 78. *Wm. H. Brown*
 79. *Wm. H. Brown*
 80. *Wm. H. Brown*
 81. *Wm. H. Brown*
 82. *Wm. H. Brown*
 83. *Wm. H. Brown*
 84. *Wm. H. Brown*
 85. *Wm. H. Brown*
 86. *Wm. H. Brown*
 87. *Wm. H. Brown*
 88. *Wm. H. Brown*
 89. *Wm. H. Brown*
 90. *Wm. H. Brown*
 91. *Wm. H. Brown*
 92. *Wm. H. Brown*
 93. *Wm. H. Brown*
 94. *Wm. H. Brown*
 95. *Wm. H. Brown*
 96. *Wm. H. Brown*
 97. *Wm. H. Brown*
 98. *Wm. H. Brown*
 99. *Wm. H. Brown*
 100. *Wm. H. Brown*

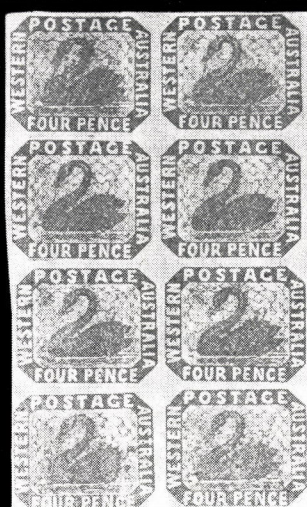




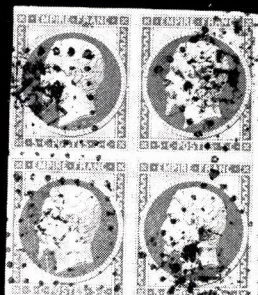
1775



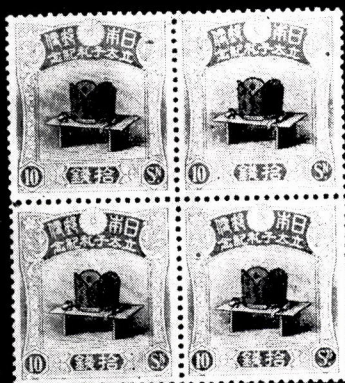
1801



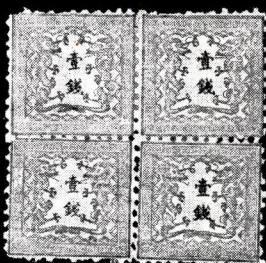
1786



1936



2265



2258



1979



2266



2396



2406



2115



1821



1824



1844



1876



1904



1917



1930



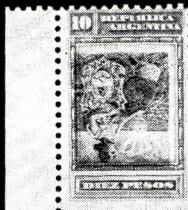
1947



1963



1822



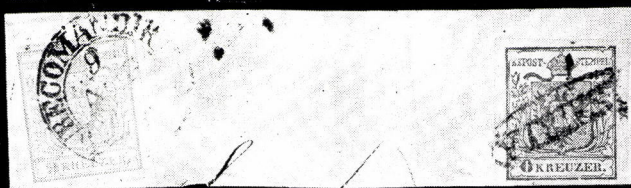
1823



1832



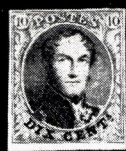
1833



1871



1877



1878



1879



1880



1882



1884



1885



1887



1889



1912



1915



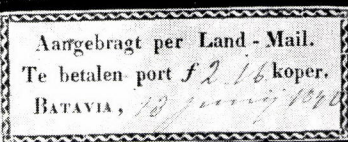
1916



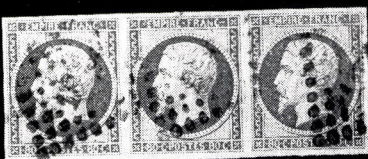
1918



1922



1919



1946



1960



1970



1980



1981



1986



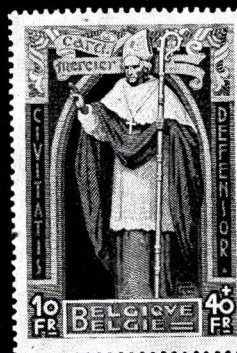
1988



1835



1894 EX



1896 EX



1897 EX



1988



1992



1995



2015 EX



2016 EX



2017 EX



2022



2027



2048 EX



2045



2052



2053



2049



2050



2086 EX



2087 EX



2103 EX



2090 EX



2091 EX



2117



2130



2239



2238



2240



2241



2244



2246



2249



2255



2256



2260



2259



2262



2275



2292



2293



2294



2295



2295



2296



2299



2305



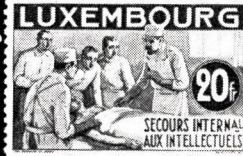
2306



2309



2310



2313



2145 EX



2146 EX



2150 EX



2155 EX



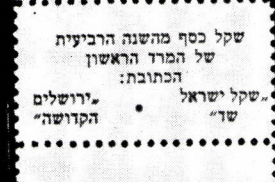
2164



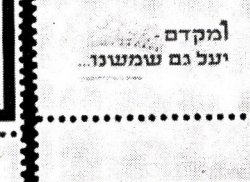
2163 EX



2183



2171



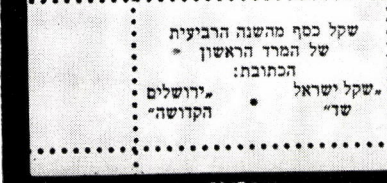
2194



2232



2209



2147 EX



2170



2218



2229



2151



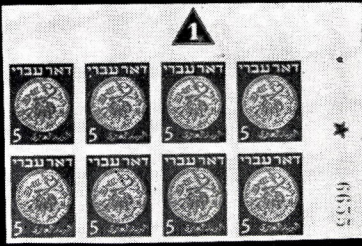
2157



2210



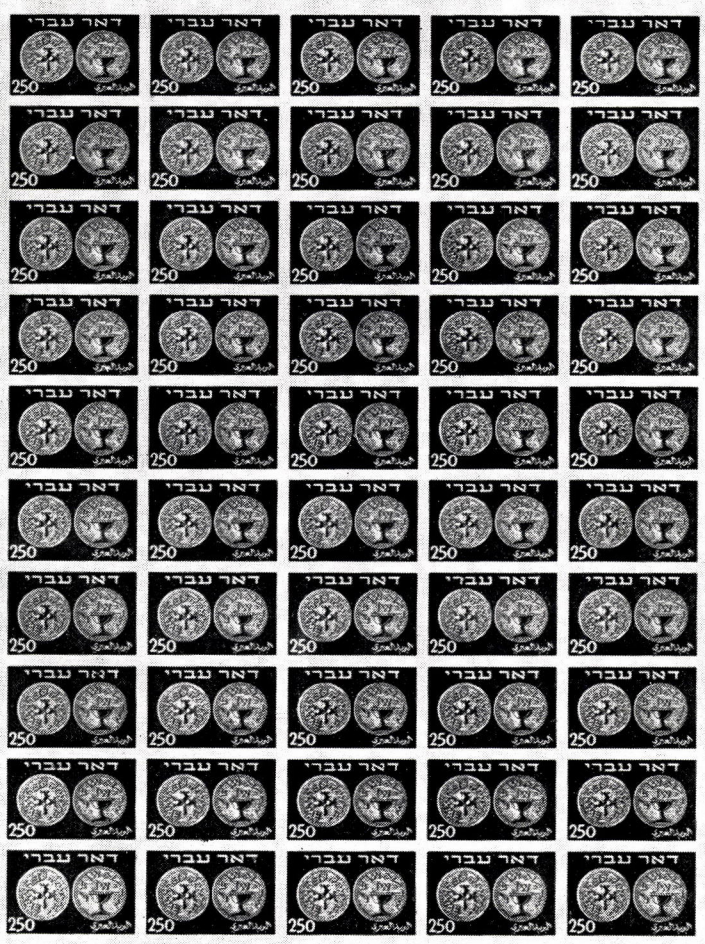
2211



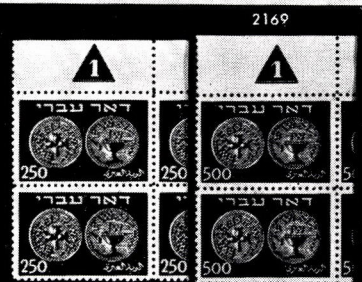
2158



2166



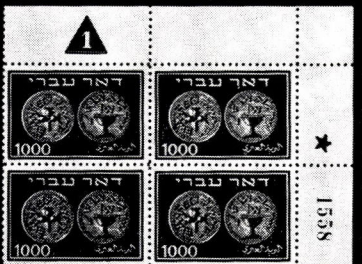
שקל כסף מחשבת השנה של חדר האשון
המבנות: ירושלים • שטת ישראל • הקדושה



2166



שקל כסף מחשבת השנה של חדר האשון
המבנות: ירושלים • שטת ישראל • הקדושה



1538



שקל כסף מחשבת השנה של חדר האשון
המבנות: ירושלים • שטת ישראל • הקדושה



2168



2219



2220



2212



2221



2234



2226



2230



2236



2225 EX



2231



2235



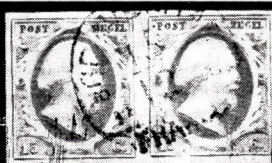
2228



2315



2316



2323



2324



2325



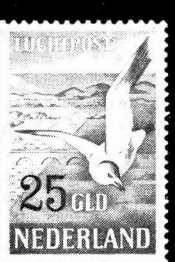
2326



2327



2329



2380



2336



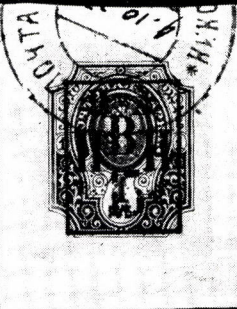
2372



2379



2382



2400



2391



2402



2403



2404



2405



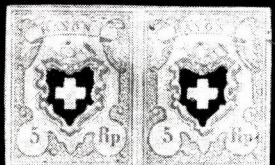
2412



2419



2416



2420



2421



2422



2423



2472 EX



2425



2428



2435



2439



2444



2445



2452



2453



2454



2454



2462



2286

2285

2283

2149

2351

2345

2338

2339

2358

2342

2341

2346

2350

2348

2364

2356

2359

2347

2393




2357

2370













2473

2466

2394

- 1336  **1893, ½c Green Postal Card, Red Chefoo pmk., in Combination with French Offices in China 5c Green (1),** two Copies, tied by Shanghai pmks., Blue Shanghai L.P.O. pmk., Used 1894 to England, tiny tear in card, otherwise V. F. (Photo) E. V
- 1337  **1893, ½c Green Postal Card, Clear Chefoo pmk., in Combination with Germany 10pf Carmine (48),** tied by Shanghai pmk., Blue Shanghai L.P.O. pmk., Capetown Receiving pmk., Used 1894 to South Africa, small address erasure, otherwise V. F. (Photo) E. V
- 1338  **1893, ½c Green Postal Card, Tied in Combination with China 2c on 2c Yellow Green (67) faulty and with French Offices in China 5c Green (1)** by Chefoo pmk., Large Shanghai Cancel, French Shanghai pmk. and by Passaic, N. J. pmk., also Chefoo 1897 Customs pmk., small surface abrasion, otherwise Fine (Photo) E. VII

CHINKIANG

- 1339  **1894, 1c Blue (Roman 2).** Tied by Clear "Postal Services, Chinkiang" pmk. on 1895 cover to Shanghai, Very Fine, Ex-Newbury (Photo) E. III
- 1340  **1894, 1c Blue (Roman 2).** Tied by Clear "Postal Services, Chingkiang" pmk., in Combination with Hong Kong 5c Ultramarine (40). Horiz. Pair, tied by Shanghai pmks. on 1894 cover to New York, Very Fine, signed Bloch (Photo) E. VIII
- 1341  **1894, 2c Brown, 4c Yellow (Roman 3-4).** Tied by Clear "Postal Services Chingkiang" pmk., in Combination with French Offices in China, 50c Carmine (9), tied by Shanghai pmk. on Registered 1895 cover to U. S., Very Fine (Photo) E. IX
- 1342  **1894, 5c Emerald Green (Roman 5).** Tied by Clear "Postal Services Chingkiang" pmk. on Immaculate 1894 Red & White Native Cover, Blue Shanghai Backstamp, Very Fine, Very Pretty (Photo) E. III
- 1343  **1894, 6c Violet (Roman 6).** Centered R. B., Tied by Clear "Postal Services Chingkiang" pmk. on Neat Small 1894 Registered cover to Shanghai, Very Fine cover E. III
- 1344  **1895, ½c Rose (Roman 12).** Tied by "Postal Services, Chinkiang" pmk., in Combination with French Offices in China 5c Green (1), tied by Shanghai pmk., Red Paris transit on 1895 "China Gazette" Circular to Switzerland, Fine E. VIII
- 1345  **1895, 1c Blue (Roman 13).** Tied by Clear "Postal Services Chinkiang" pmk. on back of 1895 Red & White Native Cover, Blue Shanghai Backstamp, Very Fine E. III
- 1346  **1895, 1c Blue (Roman 13).** Tied by "Postal Service Chingkiang" pmk., in Combination with French Offices in China 25c Black on Rose (6), tied by Shanghai pmk., Clear Strikes on 1896 Cover to London, Very Fine (Photo) E. VIII
- 1347  **1895, 2c Brown (Roman 14).** Tied by Clear "Postal Services Chinkiang" pmk., on flap of 1895 Red & White Native Cover, Blue Shanghai Backstamp, Very Fine E. III
- 1348  **1895, 6c Violet (Roman 17).** Tied by Clear "Postal Services, Chinkiang" pmk. on flap of 1895 Red & White Native Cover, Blue 1895 Backstamp, Very Fine E. III
- 1349  **1895, 10c Orange (Roman 18).** Tied by Clear "Postal Services, Chinkiang" pmk. on flap of Immaculate Red & White 1895 Native Cover, Blue Shanghai Backstamp, Extremely Fine E. III
- 1350  **1894, ½c Rose, Postage Due (Roman 22).** Horiz. Pair, tied by "Postal Services, Chinkiang" and by "To pay" in oval, Clear Strike on 1895 local cover, Very Fine (Photo) E. III

LONDON

PHILYMPIA,

SEPTEMBER 18th - 26th, 1970

We will have a double stand at this important International Stamp Show which will bring together collectors from all over the world.

If you have a specialized collection, or worth-while individual items, covers or stamps, which you would like to have us present to this distinguished gathering of philatelist we would be pleased to act in your behalf at private sale.

This offers you an exceptional opportunity to present unusual items to a world-wide clientele.

Let us know what you have to offer. Our terms are modest and you can be assured of our best efforts.

Robert A. Siegel

IS YOUR COLLECTION FOR SALE?

REALIZE IMMEDIATE CASH
PLUS THE ADDED ADVANTAGE OF
SELLING THROUGH OUR AUCTIONS

We will advance immediate cash up to 75% of our appraisal value, of what your collection should realize at auction. There is no interest charge.

Your collection will then be sold in one of our coming auction sales. All stamps are expertly and advantageously lotted in attractive, well illustrated catalogs. Lotting is meticulously planned under our personal supervision. Commission is 20% of the gross realization. There is no lotting fee or any other charges. Final settlement is made within five weeks after the sale. We have been continuously conducting stamp auctions in the United States for over thirty-four years.

Valuable collections and stamp holdings are especially wanted, but we will accept properties valued from \$500 upwards. Send all stamps direct for appraisal. Auction advance will be remitted shortly after receipt. If not entirely pleased, stamps will be returned at our expense. If circumstances warrant due to bulk or value, we will travel anywhere to inspect important properties.

ROBERT A. SIEGEL
AUCTION GALLERIES, Inc.

(Licensed and Bonded Auctioneer)

10 EAST 52nd STREET
NEW YORK, N. Y. 10022
(Tel. PL 3-6422)