

Bought lot #118

RARITIES of the world



Robert A. Siegel
AUCTIONS

391st SALE

RARITIES
OF THE
WORLD

The Property of Various Owners
and Estates, including the Estate
of Robert W. Baughman

Sold by their order

AT UNRESERVED PUBLIC AUCTION

TUESDAY, MARCH 23rd, 1971 at 7:00 P.M.

AT THE WALDORF-ASTORIA HOTEL

JADE ROOM, PARK AVENUE AND 50th STREET

Robert A. Siegel
AUCTIONS

10 EAST 52nd STREET NEW YORK, N. Y. 10022

Tel.: 212 PLaza 3-6421

FOREWORD

After our 1970 Rarity Sale in which we sold the famed British Guiana "One Cent" of 1856, the world's most valuable stamp which realized \$280,000.00, we were asked again and again "What are you going to do for an encore ?".

We think this 1971 Auction Sale of Rarities of the World is a good answer. We are offering to the highest bidder many of the rarest and most beautiful stamps, blocks and covers known to the collecting world. It is difficult to know where to begin to describe some of these sensational lots. We will have to let the catalogue tell its own story though we feel we must mention a few of the individual lots, which we do without prejudice to the remainder, for they are consistently of comparable beauty and rarity.

The sale commences with a complete set of original signatures of the fifty-six Signers of the Declaration of Independence which includes the actual signatures of many of the most famous names in American History. Most of the few existing sets are in museums or archives and this may well be the last opportunity to acquire a set in its entirety. In the area of Presidential Franks is the only known cover franked by President Grover Cleveland.

A section of Postmasters' Provisionals presents an "Alexandria, Va." and a "Millbury, Mass.", two of the rarest items known in this group. The regular postal issues offer a beautiful block of the 5¢ 1847, in addition to choice covers. In the 10¢ 1847 one finds covers with the diagonal and the vertical bisect, among other choice items. In the 1851 Issue, the connoisseur will have the opportunity to bid for a pair of the 1¢ Blue combining Type I and Type Ib with a Red "Paid" cancellation, a pair of indescribable beauty and utmost rarity. The 3¢ 1851 include the complete reconstruction of the thirteen plates used for the issue, all put back through careful study into their original positions. These are just two of many beautiful lots of this classic issue.

The 1857 Issue opens with one of the most beautiful blocks in existence, a Block of Nine of the 1¢ Blue containing the Rare Type III Position 99R2. It is positively matchless in its beauty, and, of course, unique, in fact there are many unique items throughout the entire sale, one of which is the 5¢ Brown of 1857, Printed on Both Sides. Perhaps the most sensational lots in the 1857 series are the imperforates of the 24¢, 30¢ and 90¢, the 24¢ and 30¢ are offered in singles and pairs and the 90¢ is offered in the unique pair. However, cover collectors will look with envy upon the magnificent cover with the 90¢ Blue, used in combination with the 30¢, 10¢ and a pair of 1¢, called "the finest 90¢ 1860 cover known to Philately."

The rare "First Designs" of 1861 are represented by beautiful examples of the 1¢ Indigo, 12¢ Black and 30¢ Red Orange, two of the latter. These

are among the rarest of all United States stamps and are worthy of superlatives to describe them.

Among other beautiful lots is what may be considered the finest 2¢ "Black Jack" bisect in existence, as well as a complete one on cover with a 1¢ Blue tied by the striking "Devil & Pitchfork" cancellation.

The 1869 series offers all three of the Inverted Centers and in the most beautiful condition imaginable. Also offered in this group is the newly discovered error of the 15¢ Brown & Blue with the Center Double and Inverted. This error was discovered by our own staff.

It is simply too much to try and detail the beautiful material in this auction. Here will be found the Columbian Issue complete in Imprint Plate Number strips of four. Wonderful blocks of the Trans-Mississippi Issue including a Plate Block of the \$2.00. All of the Pan-American Inverted Centers are present, as well as a set of this issue in complete mint sheets. Later some very choice Bluish Papers will be found with the rare 4¢, 5¢ and 8¢ in unusually beautiful condition. There is the 3¢ "Orangeburg" Coil on cover, many rare and unusual errors in the 20th Century Issues, a pair of the rare 2¢ Harding, Rotary Press, Perforated II, Complete mint sheets of the Kansas and Nebraska overprints and several newly discovered errors in some of the more recent issues.

Among a beautiful group of Air Post stamps special note should be made of a wonderfully fine 24¢ 1918 with Center Inverted, one of the most beautiful examples in existence. Then one finds the immaculate, unique series of the Graf Zeppelin Large Die Proofs on Wove Paper in a special presentation album dedicated to Dr. Hugo Eckener, with each signed individually by Dr. Eckener himself.

A wonderful group of Western Covers presents a number of the finest and most beautiful postal history pieces known, topped by a matchless Pony Express Patriotic Cover, certainly one of the most spectacular Pony covers in existence.

Later in the catalogue will be found the unique part sheet of 90 of the Canal Zone 1¢ Green, Type III overprint, a new original find. Also, offered for the first time is a pair of the newly discovered United Nations 6¢ Air Post Imperforate, a remarkable error.

Following the United States issues is a choice selection of Foreign rarities which include the seldom-seen "Mercury" Newspaper stamps of Austria, a wonderful group of British Guiana rarities, some very lovely Canada including a block of the "Seaway" with Inverted Center and a "Seaway" invert on original cover. There are rare Liberia, Mauritius, Monaco and some very pretty Newfoundland, to mention just a scattering of the unusual lots which abound.

So, if one asks "What are we going to do for an encore ?" . . . Here's our answer.

Robert A. Siegel

RESERVATIONS

Because of limited seating it is advisable to make reservations in advance for this sale. This can be done by letter or telephone call to our office.

A souvenir of the occasion will be given to all who have made advance reservations.

We take this opportunity to express our thanks to Mr. William Kahan of New York for the assistance rendered in the preparation of the color plates in this catalogue.

The Bid Sheet will be found at the end of the Catalogue, Pages 71 & 72, Conditions of Sale on Page 70.

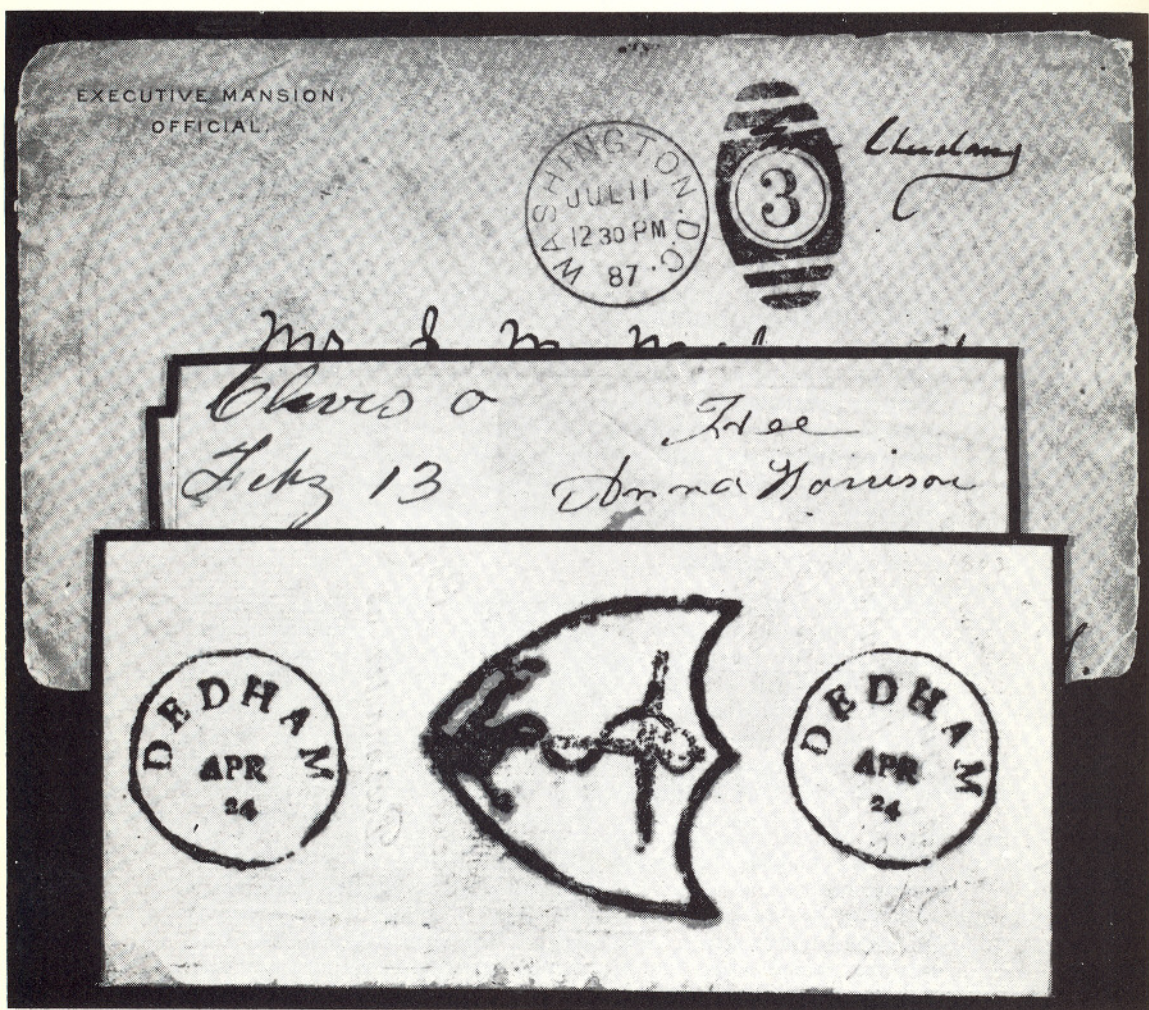
UNITED STATES

AUTOGRAPHS AND FREE FRANKS

- 1 **A COMPLETE SET OF ORIGINAL SIGNATURES OF THE SIGNERS OF THE AMERICAN DECLARATION OF INDEPENDENCE.** From an original find made in Pennsylvania. All are on small slips of paper, clothmounted and beautifully framed. There are fifty-six signatures in all. Many of the slips are lightly toned as might be expected considering their age; a few of the minor signers slips are heavily toned but these are of lesser importance. There are fine examples of the rare signatures such as Arthur Middleton of South Carolina, William Hooper and Joseph Hughes of North Carolina, Thomas Lynch, Jr., of South Carolina and the rarest of them all, Button Gwinnet of Georgia, together with the signatures of such famous Americans as John Hancock, Thomas Jefferson, John Adams and Benjamin Franklin. Up to the present time fewer than forty complete sets of the "Signers" have been assembled and most are in museums or archives where they are most unlikely ever to come on the market. The series offered here may well be the last opportunity to acquire a set of "Signers" in its entirety. The value of the complete set may be estimated at \$12,000.00 upwards
- 2 **ANDREW JACKSON,** Holograph signed letter, dated May 8, 1814 to his wife, Rachel. 1½ pages entirely in his handwriting and recounting his campaign against the Creek Nation and shortly before the Battle of New Orleans in the War of 1812 where his victory established him as a foremost candidate for the Presidency. Much of the letter is personal in nature, regarding his health. It gives his proposed itinerary and requests that his wife meet him in Nashville. This historic letter is in a wonderful state of preservation and is contained in a handsome, leather-bound case. E.XV
- 3 **ROBERT E. LEE,** Ten holograph signed letters, all from personal correspondence with his closest friend, John Mackay (whom he addresses as "Jack"). The letters cover a period from February 27, 1834 to February 6, 1843 and are from an original find. This was the period when Lee was given important assignments with the Army Engineers and when he was assigned to various missions for the construction of Forts, and in Rivers and Harbor work. The elegance of his language, his vivid descriptions of his work, together with warm, personal references present a wonderful picture of this great military leader who had great love for his family. It is a character study without equal and is of inestimable value to students of the life of this great American. All the letters are in an excellent state of preservation and are contained in a handsome, leather-bound case. Their value is estimated at upward of \$5000.00

LOTS ON VIEW:

*Monday, Tuesday, March 22nd, 23rd, from 10:00 A.M.
to 3:30 P.M. Also by Appointment at an earlier Date.*

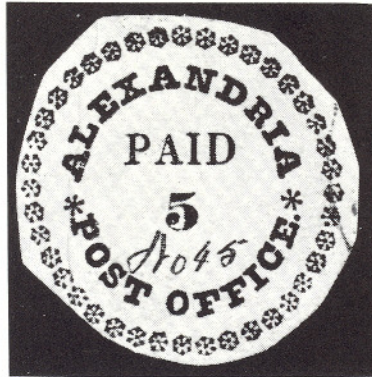


- 4 ☒ **GROVER CLEVELAND**, Autograph Frank on Executive Mansion envelope to Brooklyn, N.Y., Bold "Washington D.C. Jul. 11, '87" postmark. Cover trifle aged and corners worn, immaterial since this is the only known cover franked by President Cleveland E.XV
- 5 ☒ **ANNA HARRISON**, (widow of William Henry Harrison) Free Frank, ms. "Cleves, O., Feb'y. 13" postmark., Fine and Rare President's Widow's frank E.XII

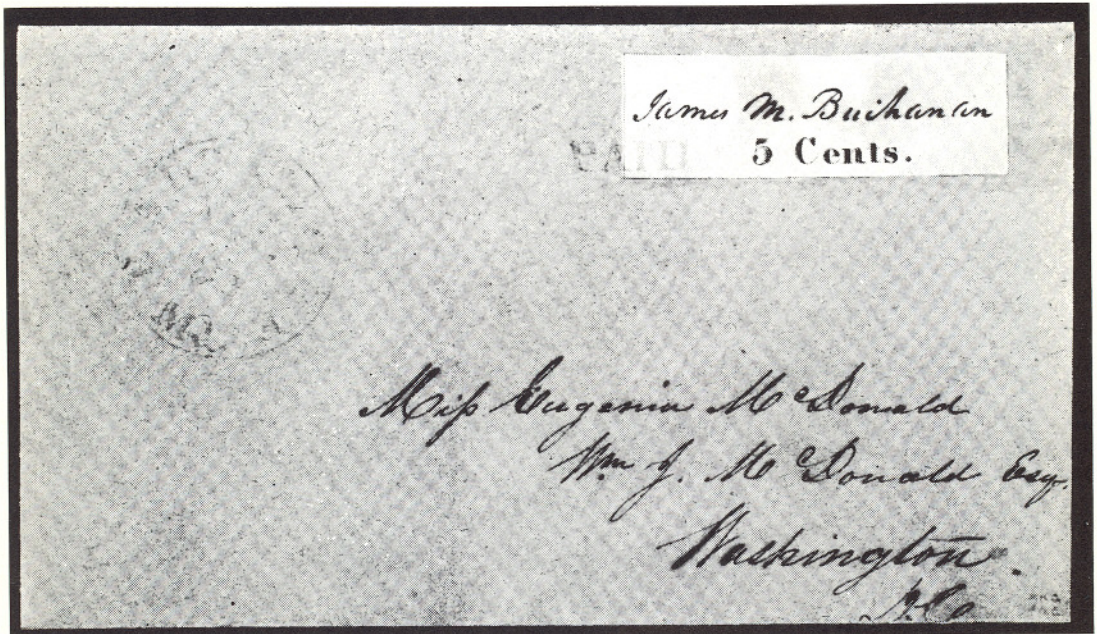
STAMPLESS COVERS

- 6 ☒ **Dedham (Mass.) Apr. 24**, Two Bold Strikes, Incredible Huge Anchor in Shield postmark on 1806 official Post Office accounting notice. Extremely Fine, A Very Great Rarity, being the only one on record, Ex-Lehman E.XIV

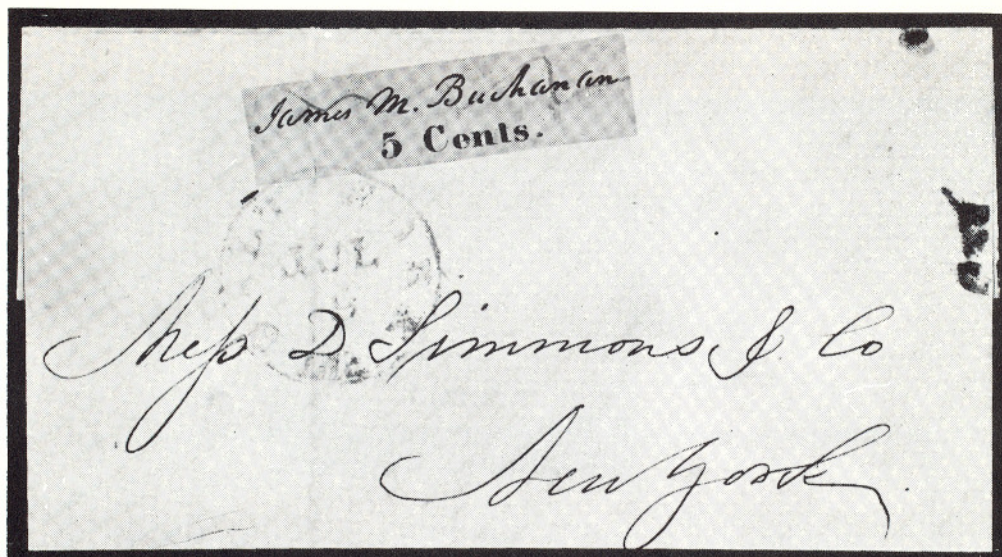
POSTMASTERS' PROVISIONALS



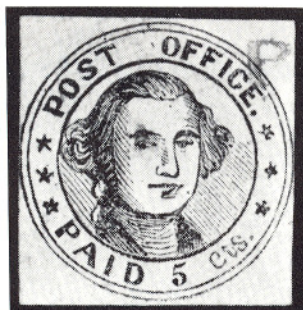
- 7 Alexandria, Va., 5c Black on Buff, Ty. I (IXI). Cut to shape, as always, well clear of design. Red postmark, "No. 45" in ms., minor natural paper fold at left; Excellent color and impression. By far the finest of the three known and the only one bearing a postmark. Accompanied by a contemporary Alexandria cover with the same Red postmark. Ex-Worthington, Caspary, Lilly 13,500.00



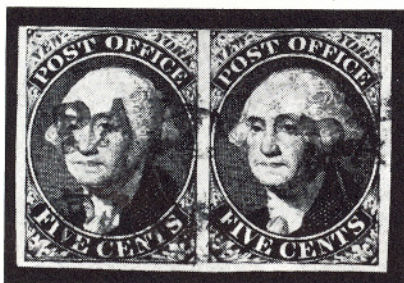
- 7A Baltimore, Md. 5c Black on Bluish (3x3). Frame lines or parts of frame lines show on all four sides; Perfectly tied by neat Blue "Paid", matching "Baltimore, Md." postmark on cover to Washington, D.C., Very minor toning from the gum, Very Fine A Handsome Rarity, with P.F. Certificate 3500.00



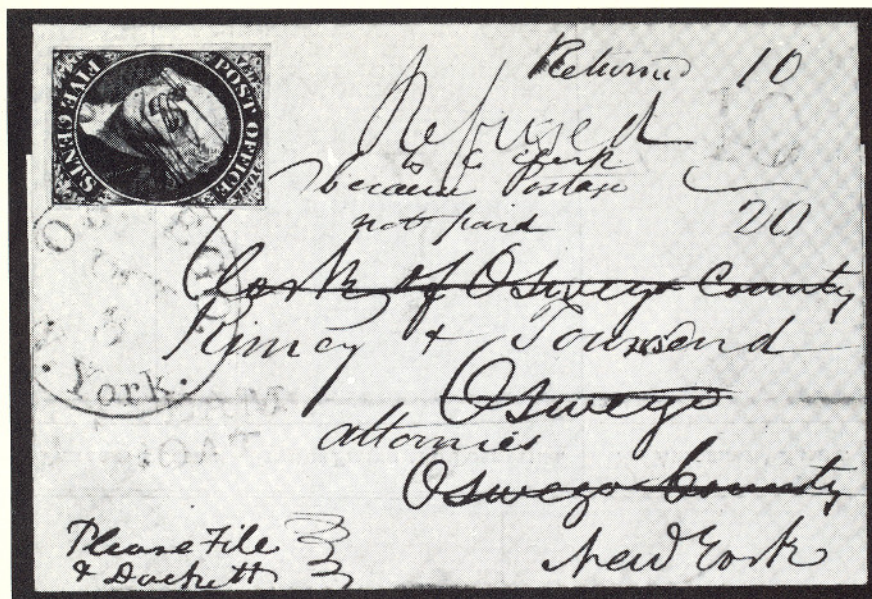
- 8 ☒ Baltimore, Md., 5c Black on Bluish (3X3). Small margins well clear of design, neat ms. cancel and tied by Blue "Baltimore, Md." postmark. Creased by filing fold. Fresh, clean and attractive, Ex-Green, Meroni 3,500.00



- 9 Millbury, Mass. 5c Black on Bluish (7X1). Margins all around, Sharp Impression, neat red "P" of "Paid" cancel. Faint crease in corner, otherwise Very Fine. One of the best and most attractive examples of this celebrated rarity in existence. Ex-Moody..... (Photo, Front Cover 13,000.00



- 10 New York, N.Y., 5c Black, Without Signature (9X1c). Horiz. Pair, Pos. 31-32, L. stamp with Bottom Frame Line Double. Three Hugh Margins, narrower, but well clear at top. Red "Paid" in are neatly struck three times. Very Fine, A Magnificent Pair E.XII



- 11 ☒ New York, N.Y., 5c Black (9X1). Clear to mostly large margins all around. Tied by Red "Oswego, N. York" postmark, also Red "Steam Boat", two lines on the cover. Remarkable usage with "Returned 10" and "Refused by C. Clerk because postage not paid." with Red "10"; sent back to N.Y. from Oswego because County Clerk did not understand that the stamp paid the postage. Used on a Sept. 1846 legal form cover sent for filing. Very Fine E.XIV



- 12 ☒ New York, N.Y., 5c Intense Black (9X1). Margins all around, neat ms. cancel and just tied by edge of "U.S. Express Mail, N. York" matching "Paid" and ms. "5" on March 1846 Quaker dated letter to Worcester, Mass., Very Fine and Rare. The cancel. unlisted E.XIV



- 13 St. Louis, Mo., 10c Black on Greenish, Ty. II (11X2). Three excellent margins, ample at bottom. Red town and neat ms. cancel. Choice and handsome example of this classic 1200.00



- 14 ☒ St. Louis, Mo., 10c Black on Greenish (11X2). Mostly clear to large margins, barely touched at extreme T. L. Nicely tied by Red "St. Louis, Mo." postmark, matching "Paid", ms. "10" and "Due 10" on fresh "Charnley & Whelan" folded letter to Phila'da. Pa. Very Choice and Handsome 2000.00+



- 14A St. Louis, Mo. 10c Black on Greenish (11x2). Vertical Pair, Large margins to frame line touched in places; Tied by Brilliant Red "St. Louis, Nov. 22 (1845)" postmark, matching "Paid" and ms. "20". A fresh "Charnley & Whelan" cover, Very Handsome and Exceedingly Rare; First month of use 4000.00+

ROOSEVELT PROOF ALBUM

- 15 P The Roosevelt Proof Album. The Complete Small Die Proof Series as issued in 1904 containing 302 U.S. Issues and 6 Cuba. 1847-1902 in Original Leather-Bound Presentation Album. Only 85 albums were prepared and only a very few have been preserved in their original state. A Very Fine and Rare Collection 7575.00

ESTIMATES

Our sales contain many 19th Century covers and fancy cancellations. We have had many requests to give the estimated cash value on these lots. We are trying to place a fair net valuation on each lot as a guide for bidding when no catalogue value portrays the true value. The chart below will be used, for example E. IV means our estimated cash value on this lot is \$30.00 to \$40.00. Lots may actually realize more or less than these estimates and under no circumstances are these estimates to be considered reserves but merely a guide to bidding.

E. I	up to \$10.00	E. IX	\$150.00 to \$200.00
E. II	\$10.00 to \$20.00	E. X	\$200.00 to \$250.00
E. III	\$20.00 to \$30.00	E. XI	\$250.00 to \$350.00
E. IV	\$30.00 to \$40.00	E. XII	\$350.00 to \$500.00
E. V	\$40.00 to \$50.00	E. XIII	\$500.00 to \$750.00
E. VI	\$50.00 to \$75.00	E. XIV	\$750.00 to \$1000.00
E. VII	\$75.00 to \$100.00	E. XV	\$1000.00 to \$2500.00
E. VIII	\$100.00 to \$150.00	E. XVI	over \$2500.00

1847 ISSUE

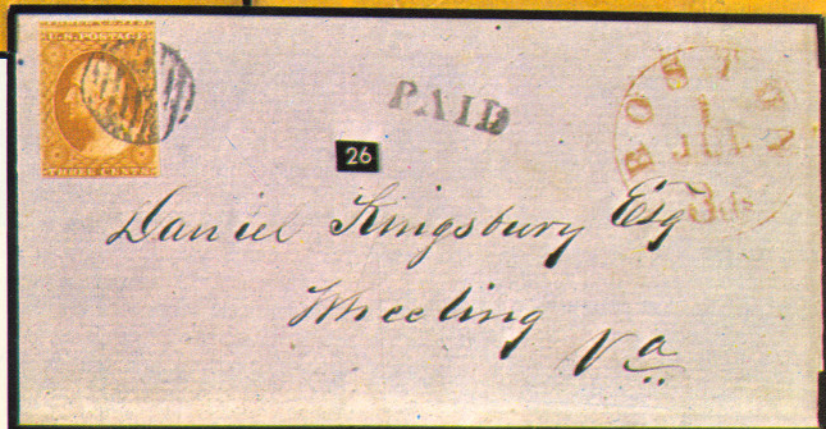
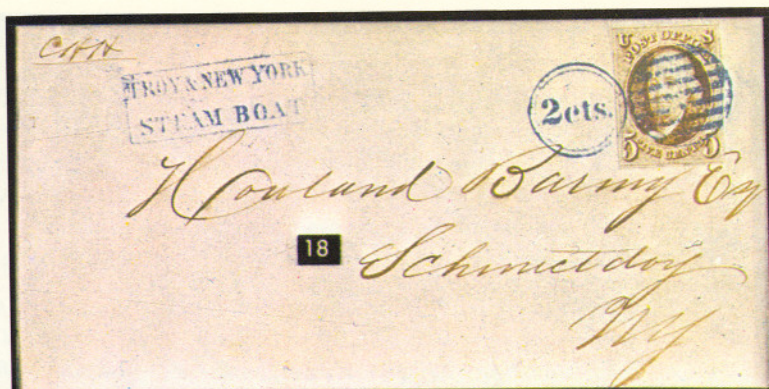
- 16 ★ 5c Orange Brown (1b) Block, Large margins all around. Brilliant Color and Impression, Remarkably fresh, with full o.g., minor negligible gum crease in R. Pair. Extremely Fine, one of the choicest blocks in existence, with P. F. Certificate, Ex-Seymour (Photo P.13) 4250.00
- 17 ☒ 5c Brown (1). Large margins, tied by Red "St. Louis, Mo. 5" postmark, struck again on the cover which is a gorgeous Lady's Valentine Envelope with handsome floral designs in Bronze; Entire back of cover covered with beautiful Bronze scroll-work. Very Fine, with P. F. Certificate (Photo P.13) E.XV
- 18 ☒ 5c Red Brown (1). Large margins to trifle in at R., Tied by Blue Grid and by Bold "2cts" in Blue circle, matching "Troy and New York Steam Boat" in Box on 1851 folded letter headed "Troy, N.Y." to Schenectady, N.Y. Faint crease along filing fold, Choice and Handsome cover, Rare (Photo P.13) E.XIII
- 19 ☒ 5c Orange Brown (1b) Vertical Pair, Beautiful color and Impression, Huge Margins, Tied by Bold, Blue "Troy, N.Y." postmark on 1850 envelope to Canada, ms. "4½" Canada due mark and Red Canadian transits; Extremely Fine, A Gem (Photo P.13) E.XIII




- 20 ★ 10c Black (2) Horiz. Pair, Large to Huge margins, Wonderful Intense color and sharp impression, Brilliant, fresh o.g., crease and tiny thin in L. stamp, the other is Extremely Fine, A Handsome Pair 4250.00
- 21 ☒ 10c Black (2). Large margins all around, Tied by Bright Red Grid, Light, readable "Narraguagus, Me." postmark on fresh folded cover to N.Y. City, Extremely Fine (Photo P.13) 250.00
- 22 ☒ 10c Black (2). Large margins, Fine color & Sharp Impression. Tied by neat Red Grid, matching "Jefferson City, Mo." postmark to San Jose, California. Small part of flap on back restored, stamp Very Fine. Attractive, unusual and rare usage of 10c 1847 to California, rate was 10c because under 3000 miles (Photo P.13) E.XIV




16







- 23  10c Black, Diagonal Half used as 5c (2a). Least bit in at R., neat ms. cancel and well tied by Orange Red Grids, matching "Gardiner, Me." postmark. Fine and fresh, from the Evans correspondence to Brattleborough, Vt. 2400.00



- 24  10c Black, Vertical Half used as 5c (2b). Large margins, beautifully tied by Red Grid, matching "New Haven, Ct." postmark on 1851 folded letter to Chelsea, Mass. Very light filing crease in stamp, still one of the finest known examples of this very rare bisect, Ex-Schenck, with P. F. Certificate 4250.00

1851 ISSUE

- 25 1c Blue, Ty. I, Ib (5,5b) Combination Pair, Pos. 6-7R1E, Rich color, Mostly large margins, the tip of one bottom scroll being just barely touched. Brilliant Red "Paid" criss-crossed on each stamp. A Gorgeous, Glorious Pair of utmost beauty and rarity, with P. F. Certificate which states "genuine and sound but for a slight scrape along the top." Ex-Newbury (Photo P.17) E.XVI
- 26  3c Orange Brown (10). Huge to clear margins, Tied by neat Grid on First Day Cover, Red "Boston, 1 Jul., 3cts" postmark. A folded cover to Wheeling, Va. dated July 1, 1851. A postscript reads "I send hereon the first stamp I use under the new law." Very Fine, a Gem of utmost Rarity, Ex-Richey (Photo P.13) 2150.00
- 27 3c Orange Brown, 3c Red (10, 11). The Complete Reconstruction of the Thirteen Plates used for printing this issue, 2600 different positions, which include every listed and unlisted plating variety. Beautifully mounted and written-up on suitable album pages. Some minor faults as might be expected but generally above average plating quality with many Fine—Very Fine examples, particularly in the later colors. There are corner margin copies, sheet margins, reconstructed imprints, center lines etc. A Choice and Valuable Collection of Exhibition Stature E.XVI
- 28 ★ 10c Green, Ty. I (13). Large to Enormous Margins with bottom sheet margin. Lovely, Rich color, fresh, o.g., creased along edge of design at top, Extremely Fine appearance (Photo P.17) 1750.00
- 29 ★ 10c Green, Type II (14). Large to Enormous Margins, incl. full Top Sheet Margin, Rich color, fresh, o.g., crease in sheet margin only, well clear of design, stamp is Extremely Fine (Photo P.17) 235.00
- 30 ★ 10c Green, Ty. III (15). Large Margins, Deep Color, fresh, o.g., light crease at lower right, just clear of design, otherwise Extremely Fine (Photo P.17) 235.00
- 31 10c Green, Ty. II, IV (14, 16) Combination Pair, Pos. 63-64L1, latter Recut Top and Bottom, Large to Huge Margins, Deep Color, Bold "N.Y. Ocean Mail" cancels, Extremely Fine, A wonderful pair, with P. F. Certificate (Photo P.17) E.XIII
- 32  12c Black (17) Horiz. Pair, Large Margins to R. stamp close at bottom, worn corner at T.L., Tied by Blue Grid, matching "Keene, N.H." postmark on Ocean Penny Postage pictorial Propaganda Cover. The sender has interlined his own ideas neatly in blue ink. Cover flap a bit torn, Attractive appearance, Rare usage of scarce design (Photo P.25) E.X
- 33 12c Black, Printed on Both Sides (17c). Margins to slightly in, Clear, Bold back impression, A Great Rarity, perhaps four known, Ex-W. Brown (Photo P.17) 1100.00



- 34 ★田 1c Blue, Ty. II, III (20, 21). Combination Block of Nine with bottom sheet margin, Pos. 78-80, 88-90, 98-100R2, the Center stamp in bottom row the excessively rare Type III, Pos. 99R2, the finest example of the Type III. Gorgeous deep color, Fresh, o.g., Well Centered and Immaculate. Pos. 89R2 the enormous Double Transfer at bottom. A couple of faint gum bends on two Type II; the Type III and Double Transfer are perfect. A matchless, unique block of incomparable beauty and rarity, Ex-Caspary, Lilly E.XVI



25



28



29



37



30



31



33



35



39



49

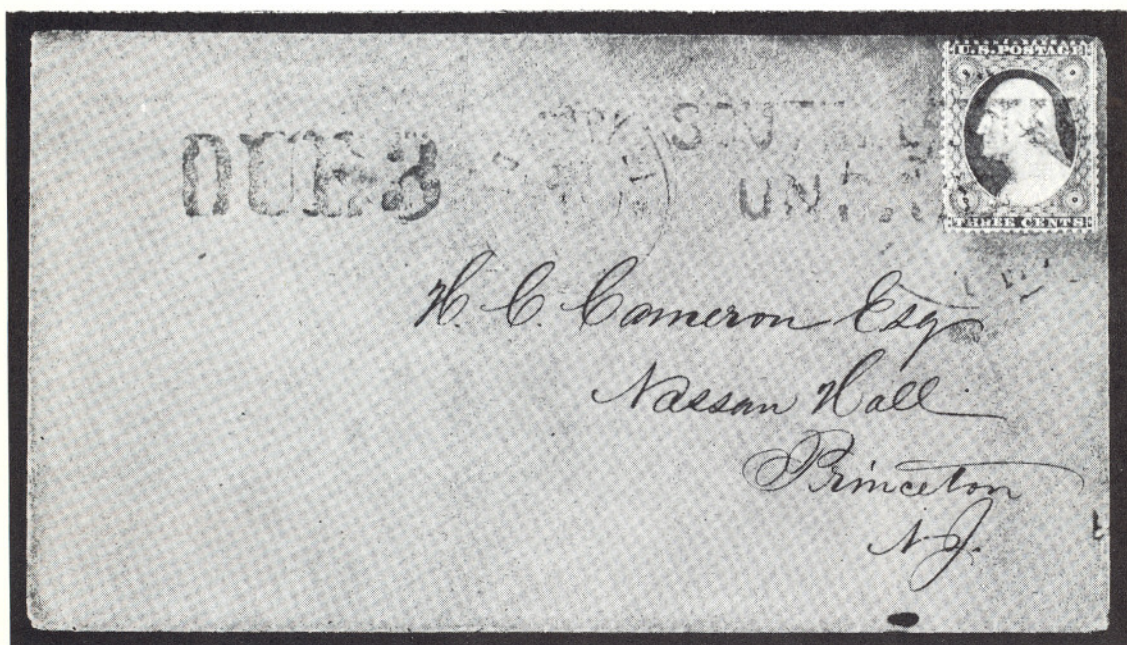


40



51

- 35 1c Blue, Ty. III, IIIa (21, 22). Combination Strip of Three Center stamp Ty. IIIa, End stamps Ty. III, Pos. 64-66L4, Rich color, Beautifully centered, Tied on small piece, Very Fine, Ex-Newbury (Photo P.17) 310.00+
- 36 ★ 1c Blue, Ty. V (24). Complete Sheet of 100, with full left Imprint and Pl. No. 10. Well Centered, nearly full o.g., couple of minor bends and a few tiny gum thins, nevertheless a scarce and handsome sheet; a row of wild perfs. caused by a fold-over at upper left adds to the desirability of this handsome sheet 2585.00+
- 37 ★ 3c Dull Red, Imperforate Horizontally (26c). Vertical Pair, with top sheet margin, top stamp broken by crease, bottom stamp slightly cut in at bottom. Very Rare, unpriced unused (used pair cat. \$1400.00) with P. F. Certificate (Photo P.17) —




- 38 ☒ 3c Rose (26). Tied by Bold Blue "South'n Letter, Unpaid" two lines, matching "Due 3" and fairly clear "Louisville, Ky." postmark which appears to be June 26, 1861, used to Princeton N.J. A Fine example of this very rare usage, with P. F. Certificate and Confederate Stamp Alliance authentication E.XVI
- 39 ★ 5c Brown, Ty. II Printed on Both Sides (30b). Clear back impression, a few blunted perfs along one side, Fine, Extremely Rare, believed to be Unique (Photo P.17) 1450.00
- 40 10c Green, Ty. I (31). Horiz. Strip of Three, Pos. 98-100R1 #99R with "Curl in left X", #100R a major Double Transfer. The Very Rare wide setting of perforations with large top and bottom margins; neat grid cancellation, Beautifully Centered, Very Fine, Ex-Newbury (Photo P.17) 435.00+



- 41 ★田 10c Green Ty. II, III, IV, (32, 33, 34). Combination Block, Pos. 63-64, 73-74L1; Both Right stamps Type IV; Pos. 64L the very scarce Recut top and bottom, #65L Recut at top; the others Type II and III. Brilliant and Fresh, o.g. Barest trace of crease in right pair. A magnificent block of the highest order of rarity. Ex-Caspary, Lilly (Unpriced as block, cat. \$3950.00 as four singles) E.XVI
- 42 匣 10c Green, Ty. II (32) Horiz., Pair Centered to left bottom, tied with 1c Blue, Ty. V (24) on 3c Red on Buff Entire (U10) paying 24c rate to England, forwarded to Paris, charges paid by contemporary 2p and 6p Great Britain, reforwarded in Paris with 10c French postage. An incredible combination with stamps of three nations, Ex-Brown (Photo P.25) E.XI
- 43 ★田 24c Lilac, 30c Orange, 90c Blue (37, 38, 39). Blocks, Each with left sheet margin, Part Imprint and Pl. No. 1, the 30c and 90c with o.g., A few insignificant faults, really quite immaterial in blocks of such beauty and rarity, Ex-Caspary (Photo P.21) E.XVI
- 44 ★ 24c Lilac, Imperforate (37c). Large to Huge Margins, Extremely Fine, with P. F. Certificate (Photo P.21) 600.00
- 45 ★ 24c Lilac, Imperforate (37c) Horiz. Pair, Large Margins to left stamp barely touched at top, Faint horiz. bend, still Fine—Very Fine, one of only two pairs on record (Photo P.21) 4250.00
- 46 ★ 30c Orange, Imperforate (38a). Large to Huge margins, incl. bottom sheet margin, Extremely Fine, with P. F. Certificate..... (Photo P.21) 1100.00
- 47 ★ 30c Orange, Imperforate (38a). Horiz. pair, Margins virtually all around, tip of top ornament of right stamp just touched, yet Very Fine, one of only three pairs on record (Photo P.21) 4750.00
- 48 ★ 90c Blue, Imperforate (39a). The Matchless Unique, Horizontal Pair, Deep, Fresh Color, Large Margins, pinpoint thin speck in right stamp, otherwise Extremely Fine; The only pair in existence, Ex-Ferrari (Photo, Back Cover) 10,000.00
- 49 90c Blue (39). Wonderfully Well Centered, Light "New York" postmark with 1861 Year Date, Extremely Fine (Photo P.21) 900.00+



- 50  90c Blue (39). 30c Orange, 10c Green and 1c Blue (Pair) (24, 35, 38), Tied with neat Boston "Paid" in grid cancels, all paying the \$1.32 quadruple rate to Port Elizabeth, Cape of Good Hope, via London; Red "London, Jy 27, '61" postmark, Red crayon \$1.12 credit to British P.O. and Cape of Good Hope receiving mark. One 1c stamp nicked, all others Very Fine. An Extremely Rare and Handsome cover, only four covers with the 90c #39 being on record; An outstanding "Gem"!; Ex-Jacobs, Emerson, Newbury; stated by the late Stanley B. Ashbrook to be "the finest 90c 1860 cover known to Philately" E.XVI

- 51 ★ 1c Bright Blue, Reprint (40) Block, Very Fine, Very Rare.....
..... (Photo P.17) 1200.00



44



46



45



47

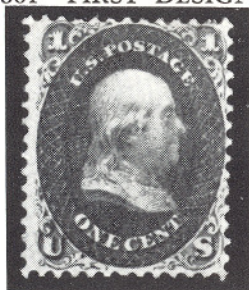


48

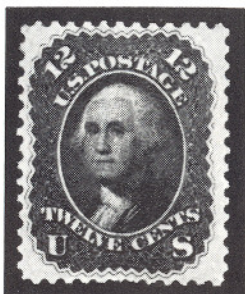


43EX

1861 "FIRST DESIGNS"



- 52 ★ 1c Indigo, "First Design" (55). Brilliant, Deep Color, Fresh, o.g., One of the finest of the few known examples of this exceedingly rare stamp (Photo, Back Cover) 11,000.00
- 53 ★田 3c Brown Rose, "First Design" (56). Block, Fresh, o.g., Very Fine (Photo P.32) 900.00
- 54 ✉ 10c Green, "First Design" (58). Tied by Grid, "San Francisco, Cal. Dec. 17, 1861" postmark on neat cover to N.Y., forwarded to Massachusetts, with 3c Rose (65) and Boyd Local, 1c Black on Blue Gray (20L18) tied by N.Y. Duplex, with target; the 10c also with ms. transit marking, An incredible and Extremely rare combination (Photo P.25) E.XII




- 55 ★ 12c Black, "First Design" (59). Exceptional Centering, Brilliant, Fresh, o.g., Couple of insignificant partly blunted perf. tips at bottom, nevertheless Very Fine, One of the choicest of the few known examples of this very great rarity 23,500.00








- 56 ★ 30c Red Orange, "First Design" (61). Gorgeous, Rich color, Fresh, o.g., One of the finest of the few known, A magnificent rarity (Photo, Back Cover) 8000.00
- 57 ★ 30c Red Orange, "First Design" (61). Brilliant, Deep color, part o.g., light crease, Very Fine appearance, An attractive example of this very rare stamp, with copy of P. F. Certificate 8000.00


1861-67 ISSUES

- 58  1c Blue, 2c Black (63, 73). Nicely centered and beautifully tied on cover to Vermont by "Devil and Pitchfork" with "West Meriden, Conn." postmark. An Incredibly Fine example of this rare and attractive cancellation, A "Gem" (Photo P.25) E.XII



- 59 ★ 3c Rose, Imperforate Horizontally (65d). Vertical Pair, Fresh, Very Fine, with A.B.E. Certificate 600.00
- 60 ★  3c Lake (66). Block, with Top Imprint, Fresh, o.g., Very Fine and Handsome 2250.00+
- 61 ★  3c Lake, Imperforate (66a). Block, Large margins, Part o.g., Very Fine, with P. F. Certificate 1200.00
- 62  90c Deep Blue (72). Three Singles, one with R. pane margin and arrow, one Fine, others Very Fine, used with 30c Orange (71) and two 10c Green (68) (one damaged) all tied together by Dark Blue targets, matching "Stockton, Cal." postmark, on front only to Rockport, Mass., originally a heavy letter requiring \$3.20 rate as shown in ms. on the cover; the gum has bleached the blue cover at a few perf. edges. A sensational rarity; probably the only multiple 90c use known from California, Ex-Seybold, signed "Ashbrook" (Photo P.25) E.XV
- 63 ★ 2c Black, Imperforate (73 var.). Horiz. Pair, on slightly grayed experimental paper, Huge margins, Fresh, o.g., Extremely Fine (Photo P.28) E.XI
- 64  2c Black, Diagonal Half Used as 1c (73a). In pair with a complete stamp paying regular 3c rate. Perfectly tied by patent targets and "White Creek, N.Y." postmark. Fresh, Clean and Extremely Fine, A sensationally beautiful cover, truly an Exhibition piece..... (Photo P.25) E.XIII
- 65 ★ 2c Black "Z" Grill (85B). Horiz. Pair, Centered to top left, Mint, Fine (Photo P.32) 525.00
- 66 ★  24c Gray Lilac, "F" Grill (99). Block with right sheet margin, Pretty color, Fresh, o.g., with additional grills in sheet margin. Centered to top, Fine, Scarce block (Photo P.25) 1150.00

1869 PICTORIAL ISSUE

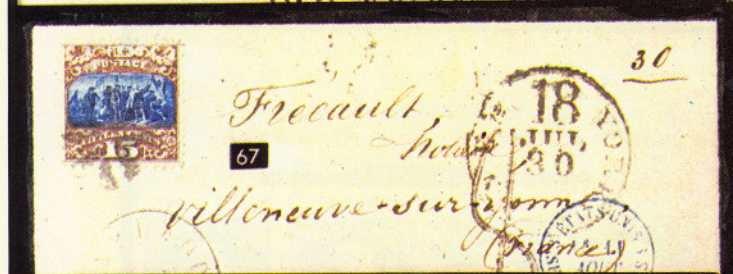
- 67  15c Dark Brown and Blue (119a). Wonderfully Well centered, Rich colors, tied by small, neat "Cross-Roads", "Oakland, Cal." postmark on small, fresh Mourning envelope to France, "New—18—York" transit and 8 decime French Due Mark, Extremely Fine and Handsome (Photo P.25) E.X



- 68 15c Brown and Blue, Center Inverted (119b). Well Centered, Rich, Deep Colors, clear Solid Star cancel. Extremely Fine, probably the finest known used example of this standard rarity, Ex-Moody and "Ambassador" Collection 5500.00
- 69 15c Brown and Blue, Center Inverted and Double (119b var.). The newly discovered error, hitherto unknown and unsuspected. So far, the only one on record. Expertly repaired and of Fine appearance, with P. F. Certificate (issued before discovery of the Double Center) E.XVI



- 70 24c Green and Violet, Center Inverted (120b). Beautifully Centered, Wide Margins, Brilliant colors. Light cork cancel., Extremely Fine, A Magnificent Gem, Ex-Moody, and "Ambassador" Collection 4500.00
- 71 30c Blue and Carmine, Flags Inverted (121b). Well Centered, Wonderful Deep colors, neat cork cancel., Trivial rounded corner perf., still Very Fine, one of the few Very Choice Examples of this Great Rarity 17,000.00
- 72 P 15c, 24c, 30c, 90c 1869 Issue, Centers Inverted, Plate Proofs on card (120Pa—122Pa, 129Pa). Very Fine Set (Photo P.28) 2800.00



- 73 ✉ 24c Green & Violet (120). Tied with 10c Yellow (116) by odd "Oval of Wedges" (N.Y. For'n Mail) on small, Fresh cover to Lima, Peru, the 10c also tied by Red "24" for British P.O. credit; Bold postmark of British P.O. in Panama, both stamps Fine, Fresh and Bright; A Gorgeous cover, one of the finest and most unusual 24c 1869 covers in existence, with P. F. Certificate..... (Photo P.25) E.XVI
- 74 ★ 90c Carmine and Black (122). Fresh, Deep Color, Remarkably Well Centered, Very Fine (Photo P.28) 825.00
- 75 ★ 90c Carmine and Black, Re-Issue (132). Brilliant, Deep Colors, Extremely Fine (Photo P.28) 950.00





BANK NOTE ISSUES

- 76 ★ 3c Green, Imperforate (147c). Horiz. Pair, with bottom sheet margin, slight, even toning, Very Fine, signed S. A. (Spencer Anderson) (Photo P.28) 450.00
- 77 ✉ 24c Purple (153). Tied with Horiz. Pair 10c Brown (150) by Bold "Cross-Roads" cancel, all paying the double 22c rate to Lima, Peru; Neat Magenta "San Francisco, Cal. Paid" matching Bold "24"; All stamps Very Fine, A Choice and Handsome Showpiece (Photo P.25) E.X



- 78 ★ 2c Vermilion, Imperforate (178a). Block of Twelve, Top Imprint and Pl. No. 161, with P. F. Certificate which states "genuine . . with crease along the bottom stamps, a tear partly across the top margin and some natural paper creases". A Great Rarity, and Most Attractive. Catalogued as pairs 6,000.00+
- 79 ★ 7c Scarlet Vermilion, Special Printing (196). Brilliant Color, small thin at top, Fine appearance, Very scarce (Photo P.28) 1,600.00
- 80 田 2c Green, Imperforate (213a). Block of Six, Large Margins, incl. left sheet margin, tied on piece by neat "Hoboken, N.J., Mar. 25, 1890" postmark, Very Fine and Rare (Photo P.25) 975.00+

COLUMBIAN ISSUE

- 81  1c—\$5.00 **Columbian (230-245)**. Complete set, tied on 10c Columbian Entire (U351) incl. 10c Orange, Special Delivery (E3) by "Worlds Fair, Chicago, Oct. 30, 1893" Exposition Station postmark, The Last Day of the Fair; Mixed centering, the \$5.00 with small tear, nevertheless a remarkable and spectacular cover E.XIV
- 82 ★ 2c **Columbian, Imperforate (231b)**. Vertical Pair, faults, as usual, Very Fine appearance (Photo P.28) 950.00
- 83 ★ 4c **Blue, Columbian Error (233a)**. Wonderful color, Unusually Well Centered, Fresh, o.g., trifling pin-point thin speck, otherwise Extremely Fine, A Choice Example of this Popular Rarity, with P. F. Certificate, Ex-Lilly, Seymour (Photo P.28) 4,650.00
- 84 4c **Blue, Columbian Error (233a)**. Exceptionally Well Centered, Wonderful Bright color, neat town postmark; minor thin, Extremely Fine appearance, Very Rare used, with P. F. Certificate, Ex-Seymour (Photo P.28) 1,800.00
- 85 ★ 1c—30c **Columbian (230-239)**. Imprint Plate No. Strips of Four, Fresh, nearly all o.g., 5c minor thins, otherwise a Fine—Very Fine and Handsome Group (Photo Ex. P.29) 1,382.50
- 86 ★ 50c **Columbian (240)**. Bottom Imprint "S", Pl. No. 77 Strip of Four, Fresh, o.g., Very Fine (Photo P.29) 550.00
- 87 ★ \$1.00 **Columbian (241)**. Top Imprint "W" Pl. No. 93 Strip of Four, Gorgeous color, Fresh, o.g., small thin in one, trivial tiny specks in two others, otherwise Very Fine (Photo P.29) 1,500.00
- 88 ★ \$2.00 **Columbian (242)**. Bottom Imprint "AA" Pl. No. 105 Strip of Four, Deep, Brilliant Color, Fresh, o.g., tiny thin in one, otherwise Very Fine (Photo P.29) 1,700.00
- 89 ★ \$3.00 **Columbian (243)**. Bottom Imprint "BB" Pl. No. 106 Strip of Four, Beautifully Centered, Brilliant Color, o.g., tiny thin spots in two stamps and in selvage, otherwise Very Fine (Photo P.29) 3,750.00
- 90 ★ \$4.00 **Columbian (244)**. Bottom Imprint "CC" Pl. No. 107 Strip of Four, Wonderful Rich Color, Fresh, o.g., Well Centered, small thin spot in selvage, stamps Very Fine (Photo P.29) 5,500.00
- 91 ★ \$5.00 **Columbian (245)**. Bottom Imprint "DD" Pl. No. 108 Strip of Four, Deep Rich color, tiny natural paper speck in one stamp, minor thinning at outer edge of selvage, Stamps Very Fine (Photo P.29) 5,750.00
- 91A ★ 1c—\$5.00 **Columbian (230-245)**. The Foregoing Set of Imprint, Plate Number Strips of Four, (Lots No. 85-91) offered as a single lot, providing the bid exceeds the total for which the individual lots were sold. A Magnificent Offering of Great Rarity, once sold in our 1964 Rarity Sale and described by Brookman in his books on United States stamps 19,632.50
- 92 ★  \$4.00 **Columbian (244)**. Block, Very Well Centered, Reperforated at Top, Fresh color, slightly disturbed gum, Very Fine appearance, A Rare and Handsome Block (Photo P.32) 5,250.00
- 93 ★  5c **Brown, Imperforate Horizontally (255c)**. Block, o.g., minor gum disturbance and tiny thin, Very Fine appearance..... (Photo P.32) 1,000.00
- 94 ★  \$5.00 **Dark Green (278)**. Left Arrow Block, Beautifully centered, Large part o.g., Extremely Fine (Photo P.32) 1,650.00



63



65



72



74



75



76



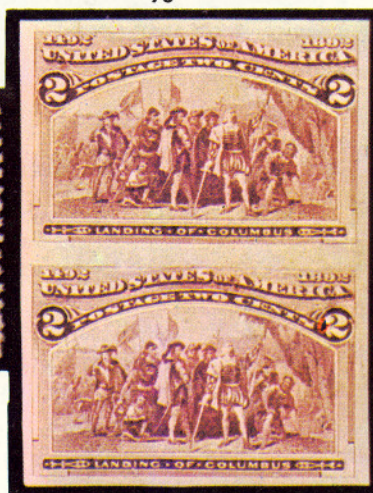
83



84



79



82



85EX



86



88



90



87



87



89



91

TRANS-MISSISSIPPI ISSUE

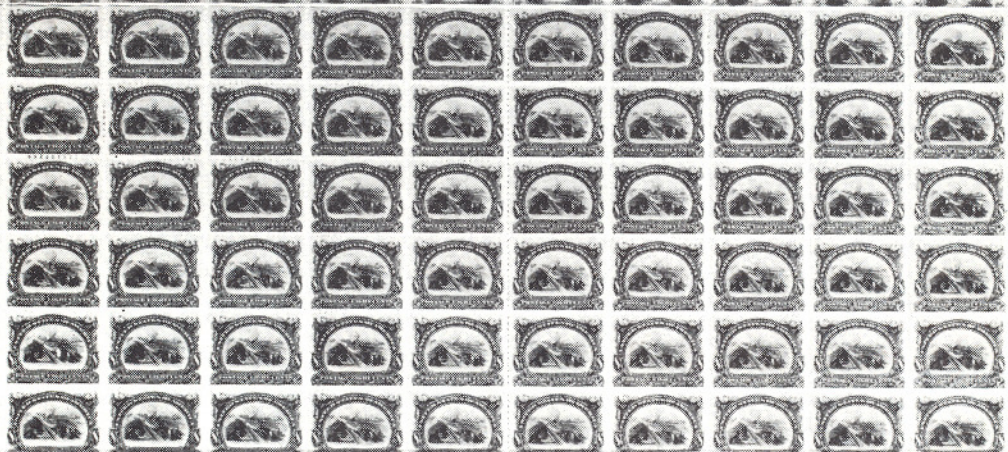
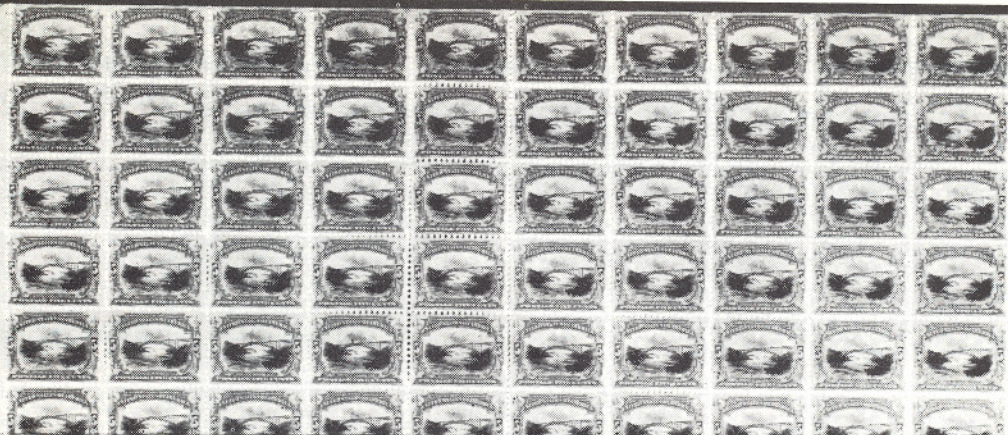
- 95 P 1c—\$2.00 Trans-Mississippi Large Die Proofs (285P-293P). Complete Set, Very Fine (Photo Ex. P.32) 1,380.00



- 96 ★田 50c Trans-Mississippi (291). Block, Fresh, o.g., Very Fine 1,100.00
- 97 ★ \$1.00 Trans-Mississippi (292). Pair, Bottom Imprint and Plate No. 606, Mint, Very Fine 1,000.00



- 98 ★田 \$1.00 Trans-Mississippi (292). Block, Beautifully centered, Fresh, o.g., couple of negligible toned specks in gum, otherwise Extremely Fine, Ex-Newbury 2,750.00
- 99 ★田 \$1.00 Trans-Mississippi (292). Block, Trivial toning in few perforations on one stamp, otherwise Very Fine 2,750.00
- 100 ★田 \$2.00 Trans-Mississippi (293). Block, Fresh, o.g., Beautiful color, Nicely centered, Very Fine, Ex-Bingham, Seymour (Photo P.32) 3,850.00



1151

1154

102EX

1151

100
100



56



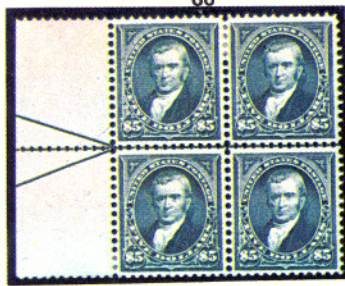
66



92



93



94



95 EX



100



108



109



110



111

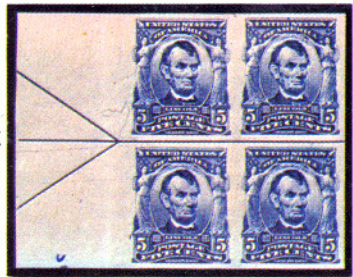


115



112

114EX



121





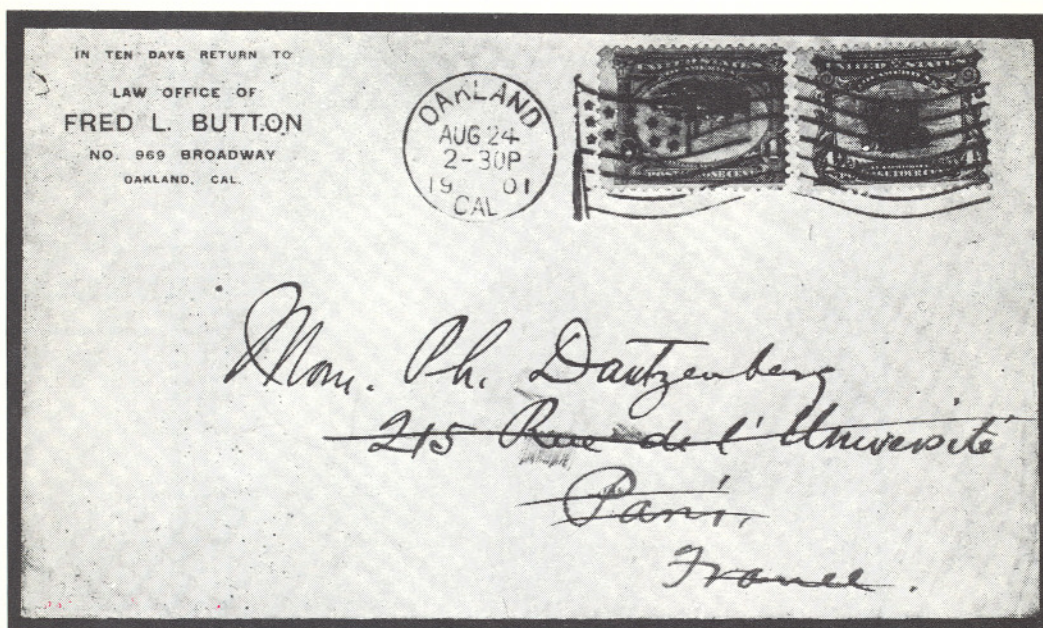
- 101 ★ 田 \$2.00 Trans-Mississippi (293). Bottom Imprint Pl. No. 613 Block, Brilliant, Mint, Well Centered, Wonderful Rich Color, Extremely Fine, a Magnificent Showpiece of Great Beauty and Rarity 12,000.00

PAN-AMERICAN ISSUE

- 102 ★ 1c-10c Pan-American (294-299). The Set in Complete Mint Sheets of 100, Mostly Fine—Very Fine, A Magnificent Series (Photo Ex. P.31) 13,829.50



- 103 ★ 1c Pan-American, Center Inverted (294a). Wonderfully Well Centered, Trivial faint gum bend, negligible gum thin, Extremely Fine appearance 3,500.00



- 104 ☒ 1c Pan-American, Center Inverted (294a). Perforations touch at Right, tied with 4c Pan-American (296) by "Oakland, Cal., Aug. 24, 1901" Flag machine Cancel on attorney's return card cover to France; The late Philip H. Ward once called this "the greatest twentieth century cover known to philately." Fine 2,150.00+



- 105 ★ 2c Pan-American, Center Inverted (295a). Well Centered, Huge Margins, Rich Color, Stitch Watermark at Top, Extremely Fine, one of the Finest Known Examples of this Great Rarity, with P. F. Certificate, Ex-"Ambassador", Seymour (Photo, Front Cover) 16,500.00
- 106 ★ 4c Pan-American, Center Inverted (296a). Skillfully repaired, Fine looking, with P. F. Certificate 5,250.00
- 107 ★ 4c Pan-American, Center Inverted "Specimen" Overprint (296b). Centered to Bottom, Fine example of this desirable error, with P. F. Certificate 2,200.00

1902-1906 ISSUES

- 108 ★田 \$1.00 Black (311). Block, Very Fine (Photo P.32) 575.00
- 109 ★田 \$2.00 Dark Blue (312). Block of Six, Very Fine (Photo P.32) 1,130.00+
- 110 ★田 \$5.00 Dark Green (313). Block, Very Fine 1,900.00

- 111 ★田 5c Blue, Imperforate (315). Block, with Right Imprint, Small Printing smudge at L. B., Very Fine (Photo P.32) 600.00+
- 112 ★田 5c Blue, Imperforate (315). Center Line Block, Mint, Very Fine (Photo P.32) 2,000.00
- 113 ★田 5c Blue, Imperforate (315). Mint Block of Fourteen, Very Fine 2,100.00
- 114 ★田 5c Blue, Imperforate (315). Complete Set of Arrow Blocks, all Mint, tiny marginal nick in one stamp, others Very Fine..... (Photo Ex. P.32) 2,700.00
- 115 ★田 2c Carmine, Rouletted Horizontally (319 var.). Block of Six, Rouletted between Top Pairs, Blind Perforations between Bottom Pairs, light hinge reinforcement, Very Fine and Rare (Photo P.32) 1,200.00+
- 116 ★ 1c Jamestown (328). Sheet of 100, Top Plate No. 3543, Mostly Well Centered, selvage missing on five (not involving Plate Blocks) Fine—Very Fine, Scarce Sheet 559.00

1909 BLuish PAPERS

- 117 ★ 4c Orange Brown, Bluish (360). Wonderfully well centered, Extremely Fine, signed "E. Stern" (Photo P.36) 5,000.00
- 118 ★ 5c Blue, Bluish, (361). Very Fine with P. F. Certificate **BOUGHT @ 1,350.-**
..... (Photo P.36) 1,400.00
- 119 ★ 8c Olive Green, Bluish (363). Better than usual centering, a single partly nibbed perforation at bottom, otherwise Very Fine (Photo P.36) 5,000.00
- 120 ★ 13c Blue Green, Bluish (365). Beautifully Centered, Extremely Fine, with P. F. Certificate (Photo P.36) 725.00
- 121 ★田 15c Pale Ultramarine, Bluish (366). Block, Very Fine (Photo P.32) 1,500.00

ORANGEBURG COILS

- 122 田 3c Deep Violet, "Orangeburg" Coil (389). Tied by wavy lines. "Orangeburg, N.Y., Jun. 3, 1911" postmark on "Bell & Company" cover, another Bell & Co. cover from the same correspondence used with a 3c Coil #394 accompanies, Fine & Rare, with P. F. Certificate (Photo P.45) 2,300.00
- 123 田 3c Deep Violet, Coil (394). Paste-up Single tied on First Day Cover showing Earliest Known Use, (one day earlier than previously recorded) "Orangeburg, N.Y., Nov. 23, 1911" machine postmark with "Bell & Company" corner card and from the same correspondence as the 3c Orangeburg Coil Cover offered in the preceding lot, Very Fine, Extremely Rare, possibly unique (Photo P.45) 500.00+

1912-1921 ISSUES

- 124 ★田 5c Blue, Panama-Pacific (399). Right Plate Number 6129 Block of Eight, Mint, Fine—Very Fine (Photo P.37) 419.00
- 125 ★田 10c Orange Yellow, Panama-Pacific (400). Bottom Plate Number 6130 Block of Six, Very Fine (Photo P.37) 525.00
- 126 ★田 10c Orange, Panama-Pacific Perf. 10 (404). Bottom Plate Number 6130 Block of Six, Very Fine (Photo P.37) 2,400.00
- X 127 ★ 2c Red, Type I, Coil (449). Line Pair, Very Fine, With P. F. Certificate (Photo P.36) 1,000.00



117



119



120



118



132



128



144



127



148



135

136



149



129A



125



126



124



129



131



133



137



146



138



151



153



197



150

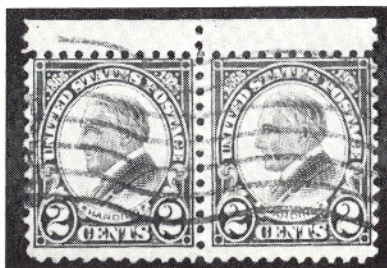


169

- 128 2c Carmine, U.S. Automatic Vending Co., Type III Perforations (459). Neat Machine cancel, Very Fine, with P. F. Certificate, a Great Rarity, not listed used or as a single, unused pairs catalogue \$2,000.00 (Photo P.36) —
- 129 ★田 2c Carmine, Imperforate (482). Matched set of the Four Plate Number 7942 Blocks of Six, the 5c Error Plate, Mint, Bottom selvedge touches Plate Number, others Very Fine (Photo P.37) 480.00
- 129A 8c Olive Bistre, Vertical Pair, Imperforate Between (508b). Neat cancels, tiny tear in bottom stamp, A great Rarity, believed to be unique (Photo P.36) —
- 130 ★ \$5.00 Green and Black (524). Complete Sheet of 100, Mint, Fine—Very Fine, A Rare Sheet (Photo P.42) 5,435.00
- 131 ★田 3c Offset, Type III, Printed on Both Sides (529b). Block of Ten, Complete Back impression over two end stamps and selvedge, Back impression inverted in relation to the normal stamps, Fine, Very Scarce (Photo P.37) 700.00+
- 132 ★ 2c Offset, Type VII, Imperforate (534B). Horizontal Pair, Left Sheet Margin and Half Arrow, Very Fine, with P. F. Certificate (Photo P.36) 1,150.00
- 133 田 2c Offset, Type VII, Imperforate (534B). Block, used, Very Fine, Very Scarce (Photo P.37) 1,000.00
- 134 E 2c Rose, 5c Blue, 1914 Peace Centennial Essays, Large Die Proofs on India, Sunk Mounted on 7½" x 6½" cards; the stamps never made because of World War I; with typewritten letters of Harry S. New, Postmaster General and R. S. Regar, Third Assistant Postmaster General which state that only 5 sets were made, Rare & Handsome, Extremely Fine (Photo P.47) E.XIV
- 135 ★ 1c Green (544). Brilliant Mint, a Choice Example of this Rarity, unpriced unused, with photo-copy of P. F. Certificate (Photo P.36) E.XVI
- 136 1c Green (544). Precancelled "Saint Louis, Missouri" in three lines, Fine, Very Scarce, especially from Saint Louis (Photo P.36) 675.00

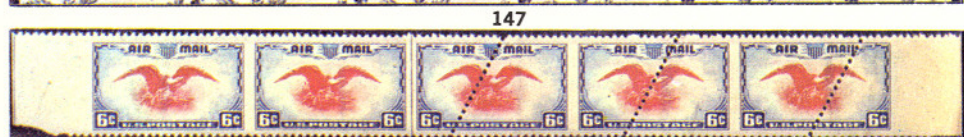
1922 ISSUE — TO DATE

- 137 ★田 5c Blue, Imperforate (557a). Block, Very Fine, "Ward" guarantee mark in sheet margin (Photo P.37) 900.00
- 138 ★田 10c Orange, Imperforate (562b). Block, without gum as always, Very Fine, Signed "Ward" (Photo P.37) 900.00



- 139 2c Harding, Rotary, Perforated 11 (613). Horizontal Pair with Top Sheet margin, neat machine cancel, Centered bit to Top, Fine, the "Discovery" Pair and of the utmost rarity 10,000.00

- 140 P 1c—5c Lexington-Concord, Large Die Proofs (617P-619P). Die Sunk on 8" x 6" cards, each with typed "Approved, March 2, 1925" (March 3, 1925 on 5c) and signed "Harry S. New, P. M. General", Very Fine (Photo P.47) 900.00+
- 141 ★ 1c—10c Kansas Overprints (658-668). The Set in complete Mint Sheets of 100, small piece of selvage missing on 5c, Much better than usual centering, Mostly Fine—Very Fine (Photo Ex. P.42) 7,470.35
- 142 ★ 1c—10c Nebraska Overprints (669-679). The Set in complete Mint Sheets of 100, part selvage missing on 3c, Much better than usual centering, Mostly Fine—Very Fine (Photo Ex. P.42) 7,852.15
- 143 P 3c William Penn, Large Die Proof on India (724P). Die Sunk on 7½" x 5¾" card, Very Fine (Photo P.47) 375.00
- 144 3c Transcontinental Railroad, Printed on Both Sides (922 var.). Lightly cancelled, the reverse impression is light, but clear in every detail, Very Fine, unlisted (Photo P.36) —
- 145 ★ 1c Green, Pair with Full Vertical Gutter Between (1209 var.). Two Complete Sheets of 100 with consecutive Plate Numbers 28062 and 28063, each with One Error Strip of Four and another nearly full pair directly below, Very Fine, Unlisted, a Rare and Unusual offering (Photo P.40) E.XII
- 146 ★ 5c Booklet Pane, Imperforate Vertically (1213d var.). Mint Pane of Seven, The Right Block of Five completely Imperforate Vertically, the Left Vertical Pair with foldover crease (Which caused the error) and straddle margin showing 3 mm. of stamps from adjoining pane. Shows two slogan labels, one imperforate between, A Startling and Spectacular Error (Photo P.47) E.XV
- 147 ★ 5c American Music Issue (1252 var.). Complete Mint Sheet of Fifty, Top Right Plate Number 27854, Freak Perforation, Vertically through middle of stamps, Left Vertical Row showing 10 mm. wide gutter and approximately half of the stamp from adjoining pane, A Spectacular and Rare Freak (Photo P.47) E.XIII
- 148 ★ 6c Brown, Coil, Imperforate Horizontally (1298a). Vertical Strip of Three, Very Fine, the rare endwise coil error (Photo P.36) E.XIII
- 149 ★ 5c Blue, Coil, Imperforate (1304b). Mint Pair, Extremely Fine (Photo P.36) 375.00
- 150 ★ 5c Blue, Coil, Imperforate (1304b). Horizontal Strip of Four, Mint, Very Fine (Photo P.37) 750.00
- 151 ★ 6c Waterfowl, Vertical Pair, Imperforate Between (1362a). Mint, Very Fine (Photo P.37) E.XII
- 152 ★ 6c 1968 Christmas Error, Yellow Plate Numbers and Light Yellow Color Omitted (1363 var.). Complete Sheet of Fifty, Very Fine, Unlisted Error E.XV
- 153 ★ 6c 1968 Christmas, Imperforate (1363b). Horizontal Pair, Very Fine, Mint (Photo P.37) E.XIII
- 153A 6c 1970 "Nativity" Christmas Issue, Black Color and Plate Number Omitted (1406 var.). Block of Ten, with Upper Right Plate Numbers, the Black number omitted from the Block of Four at Left. Mint, with Red Building in background instead of the normal Brown color. Very Fine, a choice example of this newly discovered error, Very Rare E.XV



8900



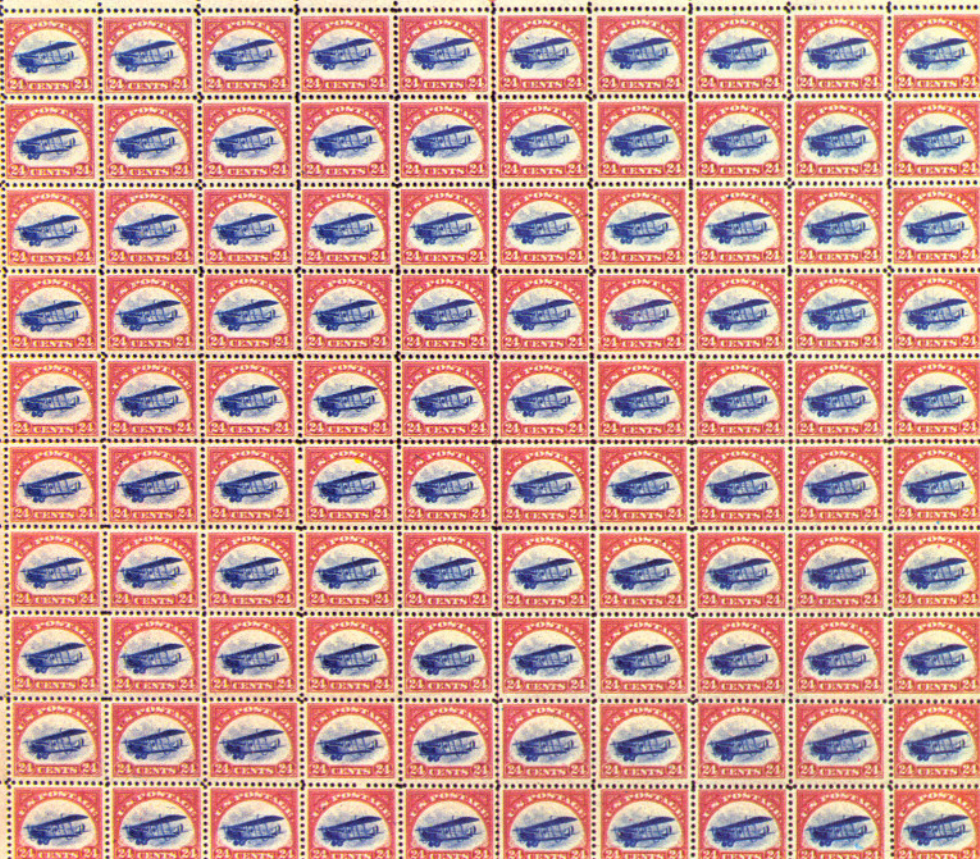
154

TOP

8493

8492

TOP



8179

8178

6

130



18192

141 EX



18235

142 EX



AIRPOSTS

- 154 ★ 16c Green, Airpost (C2). Complete Mint Sheet of 100, Better than usual centering, Mostly Fine—Very Fine (Photo P.41) 4,020.00
- 155 ★田 24c Carmine Rose and Blue, Airpost (C3). Block of Twelve, Top Arrow, two Plate Nos. and two "Top", Very Fine (Photo P.44) 675.00
- 156 ★田 24c Carmine and Blue Airpost (C3). Block of Twelve, Top Arrow, two Plate Nos. and two "Top". Left stamps with small, natural pre-printing fold, Mint, Very Fine (Photo P.44) 675.00
- 157 ★ 24c Carmine and Blue, Airpost (C3). Complete Mint Sheet of 100, Left Arrow and Double Top, Excellent Centering, Mostly Very Fine (Photo P.41) 3,435.00



- 158 ★ 24c Carmine Rose and Blue Airpost, Center Inverted (C3a). Well Centered, Brilliant and Fresh, Extremely Fine, a Magnificent Example of this Most Popular U.S. Rarity, from the "Ambassador" Collection (Photo, Front Cover) 30,000.00
- 159 ☒ 8c — 24c 1923 Airpost (C4-C6). Set of three First Day Covers used from Washington, D.C., Very Fine (Photo P.45) 535.00
- 160 P 65c — \$2.60 Graf Zeppelin, Large Die Proofs on Wove Paper (C13aP-C15aP). The Set, in Handsome, Black Leather Presentation Album, with dedication to Dr. Hugo Eckener by Walter F. Brown, Postmaster General, affirming it to be printed from the original dies. Each with autographed note by Dr. Eckener. A Magnificent Unique Series, One of the Most Outstanding of all modern Postal History Pieces (Photo P.47) E.XVI
- 161 ★田 65c — \$2.60 Graf Zeppelin (C13-C15). Blocks, with Plate Numbers. Some gum disturbances, trivial gum thins, Fine—Very Fine Appearance (Photo P.44) 2,525.00
- 162 ★田 65c — \$2.60 Graf Zeppelin (C13-C15). The Set, Top or Bottom Plate Number Blocks of Six, Mint, Very Fine (Photo P.44) 5,200.00
- 163 ☒ 65c — \$2.60 Graf Zeppelin (C13-C15). Set of Three, on individual First Day Covers, each backstamped with "Washington, Apr. 19, 1930" Registry postmark, Very Fine (Photo P.45) 1,025.00
- 164 ★田 50c Chicago Zeppelin (C18). Matched Set of Top and Bottom Plate Number Blocks of Six, Pl. #21171, Pl. #21172, Mint, Very Fine, a couple of inconsequential gum skips, mentioned only for the sake of accuracy (Photo Ex. P.45) 1,800.00



155



161



156



20087



20091



162



168

164EX



195

EELL & COMPANY
INCORPORATED
MANUFACTURING CHEMISTS
ORANGEBURG, NEW YORK
U. S. A.

122



123



ZEPPELIN MAIL

AIR MAIL



REGISTER
OR
INSURE
MAILABLE MAIL



ZEPPELIN MAIL

AIR MAIL



REGISTER
OR
INSURE
MAILABLE MAIL



163

159

ZEPPELIN MAIL

AIR MAIL



REGISTER
OR
INSURE
MAILABLE MAIL

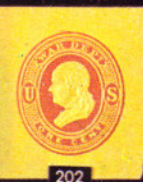


197C



197B

197A



202

200

REVALUED



P. O. DUE

198



201

199

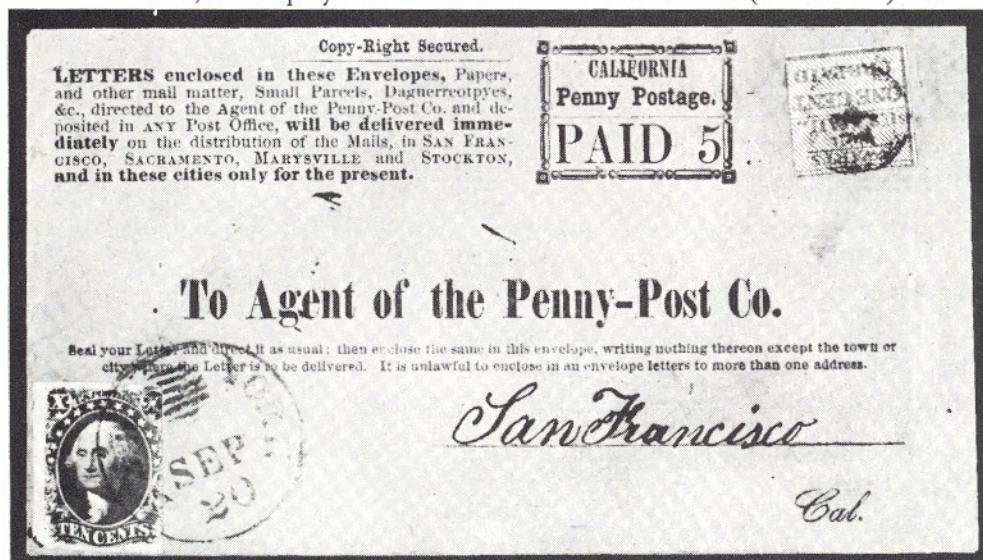


203

- 165 ★田 6c Dark Blue and Carmine, Airpost, Imperforate Horizontally (C23a). Bottom Arrow Block, Mint, Extremely Fine (Photo P.40) 300.00+
- 166 ★ 6c Dark Blue and Carmine, Airpost, Imperforate Vertically (C23b). Error Pair, in Horizontal Strip of Five, freak diagonal perforations through others, Very Fine, Rare (Photo P.40) 4,250.00+
- 167 ★田 15c Bright Blue Green, Airpost, Imperforate Between (C35a). Error Block in Top Sheet Margin Block of ten with Plate No. Mint, Very Fine, Rare, only twenty pairs known (Photo P.40) 2,750.00+
- 168 ★田 10c First Man on Moon (C76 var.). Block, Error, Flag omitted on Astronaut's Shoulder (also Red color missing on capsule), Top Right Corner Block with Red Plate No. 31401, Mint, Very Fine (Photo P.44) E.XI
- 169 ★ 16c Red and Blue, Airpost Special Delivery, Imperforate Vertically (CE2a). Pair with Sheet Margin at Right, Very Fine, Exceedingly Rare (Photo P.37) 1,850.00

WESTERN COVERS

- 170 ☒ Auraria, K. T., Aug. 2, 1859, Mostly clear postmark in Two Lines tied by "Stockton, Cal." postmark to San Francisco, the Penny Post choice example of this Denver fore-runner, only a mere handful known, Ex-Wiltsee (Photo P.48) E.XV
- 171 ☒ California Penny Post Co., 10c Blue (34L3). Margins to trifle in, Tied by Blue "Penny Post Co., San Francisco" on cover to San Francisco, endorsed "On Official Business", Very choice and Rare cover, Ex-Casparly (Photo P.48) E.XV



- 172 ☒ California Penny Post Co., 5c Black on Buff (Unlisted, similar design to Type L98D in Scott Specialized Catalogue) A Westbound Cover, taken to the Post Office by Swarts N.Y. Local Post with 1c Blue (136L14). Fine, barely tied, Ocean Postage paid by 10c Green, Type II (14) Three large margins, trifle in at Right, tied by Bold "N.Y. Ocean Mail" postmark to San Francisco. Envelope with extensive printed instructions for use, An incredible rarity, Ex-Knapp E.XVI



143



134



140 EX



THE THREE IMPRESSIONS APPEARING IN THIS BOOK-LET ARE DIE PROOFS TAKEN FROM THE MASTER DIES OF THE THREE SPECIAL POSTAGE STAMPS ISSUED BY THE POST OFFICE DEPARTMENT OF THE UNITED STATES OF AMERICA TO CARRY LETTERS AND PORTAL CARDS ORIGINATING IN THE UNITED STATES ON THE GRAF-ZEPPELIN FLIGHT FROM FRIEDRICHSHAFEN TO NEW YORK VIA SEVILLE AND RIO DE JANEIRO.

THESE DIE PROOFS ARE PRESENTED TO DR. HUGO ECKENER, COMMANDER OF THE GRAF-ZEPPELIN, WITH THE COMPLIMENTS OF THE POST OFFICE DEPARTMENT, AND WITH THE HOPE THAT THE SPECIAL STAMPS WILL SERVE TO COMMEMORATE THE FIRST FLIGHT TO SOUTH AMERICA BY A LIGHTER-THAN-AIR CRAFT, AND THEREBY DRAW PUBLIC ATTENTION TO A PROMISING INDUSTRY, TO THE DEVELOPMENT OF WHICH DR. ECKENER HAS MADE A NOTABLE CONTRIBUTION.

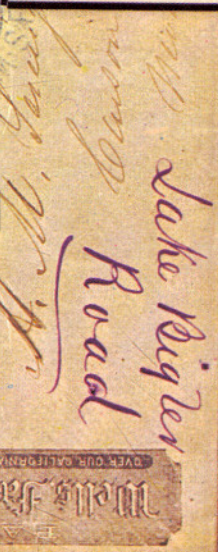
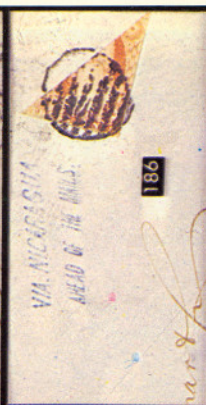
Nathan D. Brown
POSTMASTER GENERAL

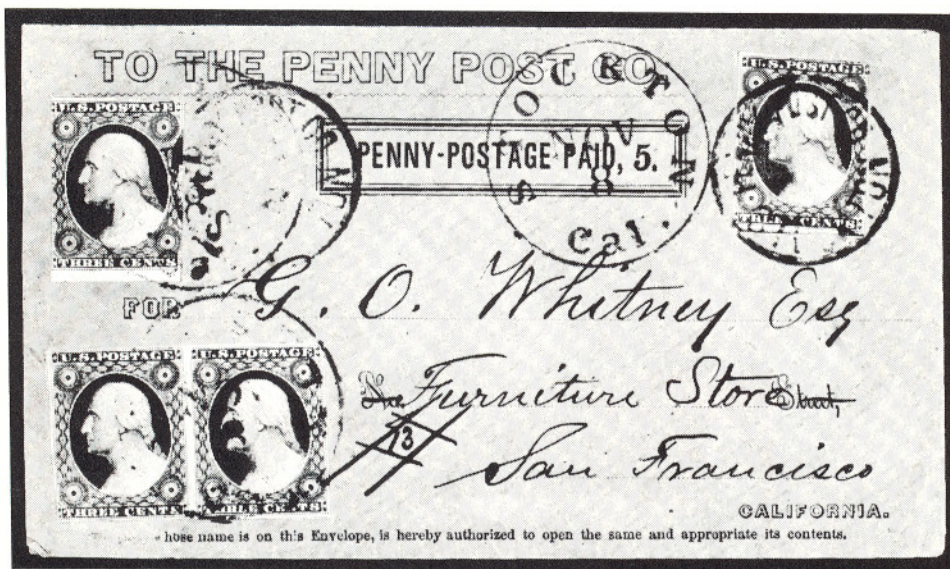
WASHINGTON, D. C.,
APRIL 16, 1930.



This die proof, which was presented to me by the Post Office Department of the United States, is in turn presented by me to my friend, L. R. C. G. Cole, in recognition and appreciation of his accomplishment as the world's foremost airmail collector.

Lt. E. E. E.





- 173 ☒ California Penny Post Co., 5c Black on Buff (34LU9). Used with Horizontal Pair and Two Singles, 3c Red (11). Margins to trifle in, one perfectly tied by Bold "Penny Post Co., Stockton", others tied by "Stockton, Cal." postmark to San Francisco, the Penny Post cancel of utmost rarity on a stamp. A magnificent Exhibition Piece, Ex-Chase, Knapp E.X
- 174 ☒ Forwarded by John Durand & Co., New York, Clear Red Oval on both sides of folded cover to San Francisco, 40c postage paid by 10c Green, Type III (15) Horizontal Strip of Four, Enormous margins all around, tied by "New York, Jul. 21, 1856" postmark, one stamp with filing crease, otherwise Very Fine, ms. "Per Steamer Ariel via Aspinwall" (Photo P.48) E.X
- 175 ☒ Humboldt Express, 25c Brown (86L1). Large to Huge margins, except outer frame touched at extreme L. B. Corner, tied on 3c Pink Entire (U34) with "Langton's Pioneer Express" printed frank, by Blue Langton Oval "Star City" and Blue Wells, Fargo & Co., Nevada" to Placerville. Slight soiling, penmark on stamp, probably a control. Slightly reduced at Left; A Very Rare cover (Photo P.48) 1,500.00+
- 176 ☒ Jacksonville, Or. Bold postmark, matching "10" on Miners' Pictorial Cover, "Mining Scene" showing panning of gold, and building a flume, unusually fresh cover to Maine, Very Fine (Photo P.49) E.XII
- 177 ☒ Overland, via Los Angeles, U.S. Mail, Imprinted on Blue 4-Horse Stage Coach Cover, "The Star of the Union, California," below; 10c Green, Type V (35) tied by "San Francisco, Cal., Jan. 6, 1860" and Bold Blue "San Francisco City Letter Express" in Fancy Frame, matching "Paid" in Box, an incredibly choice and handsome rarity, one of the Greatest Western Postal History Covers in existence, Ex-Knapp (Photo P.48) E.XVI



- 178 ☒ Overland, Via Placerville & Salt Lake, Bold capitals on Large Six-Horse Stage Coach cover, "Randal & Co., Marysville" Imprint, 10c Green, Type V (35) tied by "Oroville, Cal., Dec. 21, 1859" to Maine, A wonderful example of the Rare Chorpensing Route usage in a Very unusual type, Possibly Unique, Ex-West E.XV



- 179 ☒ Overland, via Placerville, with Fantastic Old R. R. Train, Imprint of "Julius Jacobs, Post Office Literary Depot, Folsom, Cal.", 10c Green, Type III, (33) minor perforation flaws, tied by "Folsom City, Cal." postmark to Michigan, one of the very rare Chorpensing Route Covers via Placerville and Salt Lake City, a Marvelous cover, believed to be unique, Ex-Wiltsee E.XV



206

231

233



235



232



247



255



216



207A



209



213



214



215



227



229



230



226



228A



228



238



242



243



244



245



256



- 180 ☒ **Per Overland Mail Stage, Via Los Angeles**, Imprint on "Choo-Choo" envelope picturing old train, 10c Green, Type V (35) tied by 1858 "San Francisco, Cal.," postmark on fresh cover to Mass., Very Fine, Rare Type, a Gorgeous example of this attractive R. R. Propaganda cover E.XIV
- 181 ☒ **San Francisco, Cal.**, Clear postmark ties 3c Red (11). Huge margins to touched T. R., on **California Pictorial Envelope**, Miners working "Long Tom", a sluice box, Local use to Nevada City, Cal., Very Fine, Ex-Knapp, Jessup (Photo P.48) E.XII
- 182 ☒ **San Francisco, Cal.**, Bold postmark ties 10c Green, Type I (13). Large margins all around to 1855 Notice of Protest; sent to "John Gregory, New York" (of Gregory's Express) with Bold "Missent" Very Fine (Photo P.48) 300.00+
- 183 ☒ **San Francisco News Letter**, for Sept. 5, 1857, Handsome pictorial design embodying old Side-Wheel Steamer and R. R. train, 1c Circular rate postage paid by a 1c Blue, Type II (7). Three large margins, bit in at Top, to New Orleans, La., Handsome and desirable example of this attractive Postal History piece (Photo P.49) E.XIII
- 184 ☒ **Steamer, Via Panama**, Bold Imprint and Picture of Side-Wheel Steamer, 10c Green, Type V (35). Fine, tied by 1856 San Francisco, Cal. postmark on neat cover to Mass., Very Fine and Rare Cover (Photo P.48) E.XIII
- 185 ☒ **Tehama, Cal.** Bold Blue Balloon type postmark ties **Horizontal Pair 5c Brown (1)**. Three large margins, trifle in at bottom on cover to Washington, D.C., the only 1847 cover used from California on record, An incomparable Rarity, Ex-Brown, Jessup (Photo P.49) E.XV

- 186 ☒ **Via Nicaragua, Ahead of the Mails, Two Lines, Blue Slanting Caps, Bold Strike, 3c Red (11d). Diagonal Half paying 1c Circular Rate, on front only to New York, "Circular, San Frc'o., May 31/53" in blue crayon, one of two known, written up in Chase, 3c 1851, page 217, with Copy of P. F. Certificate, Ex-Chase, Brown, A Great Rarity (Photo P.49) E.XV**
- 187 ☒ **Via Nicaragua Ahead of the Mails, Bold Red truncated octagon, 12c Black, Diagonal Half used as 6c (17a). Perfectly tied by Bold "New York, Sep. 9" postmark to Mass., ms. "Via Nicaragua", one of the finest existing examples of the bisect accepted for prepayment, A "Gem" (Photo P.49) E.XV**
- 188 ☒ **Via Nicaragua Ahead of the Mails, Clear Red truncated octagon, 12c Black, Diagonal Half used as 6c (17a). tied by bold "New York, 7cts" on 1853 folded letter to New Bedford, Mass. A gorgeous example of the bisect not accepted in prepayment with 7c Due from addressee, the 5c unpaid rate plus 2c Ship Fee charged only for carriage from New York to Mass. since it was carried by the Nicaragua messenger from California to New York. A wonderful cover, Exceedingly scarce, from the "Rarity Sale, '69" (Photo P.49) E.XV**
- 189 ☒ **Via Nicaragua, Ahead of the Mails, Leland, Perfect strike in Blue truncated octagon, 6c postage paid by a fine pair of 3c Red (11) plated 72-73L3, tied by N.Y. postmark, on fresh cover to Mass., A remarkably fine cover, probably the finest existing example of this rare marking, Ex-Mason, Wiltsee (Photo P.49) E.XV**
- 190 ☒ **Forwarded Via Nicaragua From Noisy Carriers Publishing Hall, San Francisco, in clear Blue Frame, though "Forwarded" not well struck, on 6c Green Entire (U13) to Mass., "Steam Ship" two lines, on stamp and Bold "Due 6", cover docketed Jan. 15, 1854 on back, Fine and Rare. Ex-Clifford (Photo P.48) E.X**
- 191 ☒ **Weaverville, Cal. Fairly clear oval postmark, Bold "Paid" and "10" on Illustrated California Temperance Envelope showing Fountain, Waterfall and Symbolic Female Figure in the Clouds. No flap and small neatly mended tear, otherwise Very Fine and Scarce (Photo P.49) E.XI**
- 192 ☒ **Wells, Fargo & Co., Pony Express, \$2.00 Red (143L1). Margins all around, tied by Blue "Running Pony" oval of San Francisco, on 10c Green Star Die Entire (U32); A multicolor California Patriotic Cover, Flag and Cannon, with Motto, Red "Hutchings & Rosenfeld" Imprint, Green "St. Joseph, Mo." postmark on the embossed stamp, dates showing a 12 day Pony trip, sent to New York, Fresh and Very Fine, A Grand Showpiece of the utmost Rarity and certainly one of the most spectacular Pony Covers in existence (Photo P.49) 8,000.00**
- 193 ☒ **Wells, Fargo & Co., Pony Express, 25c Red (143L9). Large margins, incl. Right Sheet margin, tied by W. F. & Co. Blue Double Circle "S. Frc'o" on 3c Pink Entire (U34). W. F. & Co. Printed Frank (Thorp Type E) vertically at Left, Over-all lithographed envelope of Gould & Curry Silver Mining Co., to Carson City. "Lake Bigler Road" in ms. (Lake Bigler an early name for Lake Tahoe) Extremely Fine and Handsome (Photo P.49) 1,900.00+**
- 194 ★ **\$1.00 Red Wells, Fargo Pony Express (143L3). Complete Sheet of Forty with wide gutter down center of sheet, two rows lightly creased, otherwise Very Fine with P. F. Certificate 1,000.00+**



236A

236E

236D

236B

236C

236F

236G

236H



236



239



237



241



246



249



240



250



251



252



259A



257



248



259



253



261A

POSTAGE DUE, SPECIAL DELIVERY

- 195 ★ 1c Rose, Postage Due (J59). Top Star Imprint Plate No. 5510 Block of Six, Fine—Very Fine, with P. F. Certificate. According to notes from the "U.S. Specialist" July, 1966, which accompanies, this is the only example of Plate No. 5510 on record (Photo P.44) 675.00+
- 196 ★ 1c Postage Due, "1" Omitted (J89a). Block, Mint, Very Fine..... (Photo P.44) 600.00
- 197 ★ 10c Blue, Special Delivery, Imperforate (E4a). Vertical Pair, Fresh, o.g., small thin in Bottom stamp, other Very Fine (Photo P.37) 800.00

POSTAL STATIONERY

- 197A ☒ 6c Red on White, Star Die, Entire (U30). Unused, Size 7, Very Fine (Photo P.45) 425.00
- 197B ☒ 6c Red on Buff, Star Die, Entire (U31). Unused, Size 7, small tear at U. L. corner, otherwise Very Fine (Photo P.45) 750.00
- 197C ☒ 10c Green on White, Star Die, Entire (U32). Unused, Size 3, Very Fine, Rare (Photo P.45) 1,700.00
- 198 ☒ 3c Pink on Orange, Entire (U37). Very slight aging of paper, Fine, Rare Entire (Photo P.45) 700.00
- 199 ☒ 2c Carmine, Washington Bicentennial on Blue, Die 1, Error, Entire (U525b). Unused, Size 13, Fresh, Extremely Fine, one of two known copies, the Greatest of the Twentieth Century Envelope Rarities, Ex-Lilly, with P. F. Certificate (Photo P.45) 4,500.00
- 200 ☒ 6c on 6c Airpost Entire (UC20a). Unused, Very Fine example of this Rare Error, with P. F. Certificate (Photo P.45) 750.00



204



212



205

- 201 ☒ 6c Dark Red on Cream, War (UO24). Unused Entire, Very Fine, one of the Rare U.S. Postal Stationery Entires (Thorp #6138) (Photo P.45) 500.00
- 202 ★ 1c Red on Orange, War (UO45A). Cut Square, Unused, Large Margins, Very Fine, A Very Great Rarity, Unknown as an Entire and one of the two known cut squares, as stated by Barkhausen, Obviously the catalogue value of \$500.00 does not reflect the rarity; we have never before seen it in over 40 years of professional experience (Photo P.45) E.XV
- 203 ☒ 5c Weather Service, Postal Card, Yellow and Black Omitted (UX57 var.). Unused, Very Fine, a Magnificent Error (Photo P.45) E.XII

REVENUE STAMPS

- 204 6c Proprietary (R31c). Rich color, unusually well centered for this, neat Printed Cancel. "A. M. F. Co. Aug. 9, 1871" Very Fine and Rare 450.00+
- 205 ★ \$5.00 Proprietary, Violet Paper (RB10a). Brilliant unused, nearly full o.g., Very Fine (Cat. \$700.00 used) E.XIV

U. S. POSSESSIONS

- 206 ★ ☒ CANAL ZONE, 1904, 8c on 50c Bistre Brown (15, 15 var.). Block, Top Pair "Panama" 15 mm. long, Fine, Handsome Block of this Great Rarity, with P. F. Certificate (Photo P.52) 3,000.00+
- 207 ★ — 1924, 1c Green, Ty. III Overprint (67). The Celebrated and Unique part sheet of 90, from a new original find; usual tropical gum and waxed interleaving adheres to back, Mixed Centering, perfs. touch on a few; A Marvelous showpiece of utmost rarity.... (Photo P.63) 14,900.00+
- 207A1962, 4c "Thatcher Ferry Bridge", Error, Silver Bridge Omitted (157a). Mint, Extremely Fine, A Rare and Spectacular Error (Photo P.53) E.XVI
- 208 ★ GUAM, 1899, 10c Brown, Type I (8). Complete Sheet of 100, Fresh, o.g., Fine—Very Fine 829.00
- 209 ★ — 1899, 10c Brown, Type II (9). Fresh, Large part o.g., Fine Copy of this Rare Stamp (Photo P.53) 800.00
- 210 ☒ HAWAII, 1853, 13c Dark Red (6). Margins to slightly in, Neat Pencil cancel on cover to Mass., Horizontal Pair 3c Red (11) affixed over the Hawaii Stamp and tied by neat "San Francisco, Cal." postmark, Red "Honolulu, U.S. Postage Paid" postmark at upper left, Fine example of a Rare usage (Photo P.66) E.XIV
- 211 ★ — 1869, 2c Red (29). Complete Sheet of Fifteen, Brilliant, Fresh, Insignificant toning, Extremely Fine 405.00+
- 212 ★ PUERTO RICO, 1942, 30c Vermilion, Rectified Spirits, Brilliant Color, Fine, Issued without gum, A Very Rare stamp, possibly the only known example in collector's hands, and the only record of it ever being offered E.XV

UNITED NATIONS

- 213 ★ UNITED NATIONS, 1951, 6c Henna Brown, Airpost Imperforate (C1 var.). Sheet Margin Pair, from the unique Discovery Sheet, Very Fine, A Brand New Rarity (Photo P.53) E.XVI



217



218



220



221



224



223



225

GENERAL FOREIGN

- 214 ★ AUSTRIA, 1851, (6kr). Yellow "Mercury" Newspaper Stamp (P2). Three Huge Margins, Barely touched at Right, Good Color and Impression, Handstamp on back barely shows through, a Fine Example of this Classic Rarity, signed "Bloch" with Friedl Certificate (Photo P.53) 8,000.00
- 215 ★ — 1851, (30kr). Rose, "Mercury" Newspaper Stamp (P3). Cut in at left, framelines show on other sides, Good Color, Fresh, small part o.g., Unused Copies of this stamp are Extremely Rare, with Friedl Certificate (Photo P.53) 11,000.00
- 216 ★田 BRITISH COLUMBIA & VANCOUVER ISLAND, 1860, 2½p Dull Rose (2). Block of Nine, Part Left Sheet Margin with inscription, Fresh, o.g., Light gum crease in Top strip, others Very Fine, Rare and Handsome Block (Photo P.52) 720.00+

BRITISH GUIANA

- 217 1850, 8c Black on Green, "Cotton Reel" (4). Cut Square, Margins to slightly in, neat town postmark, Initialed "E. D. W." Trivial thin speck, otherwise Fine, A most attractive example of this Classic Rarity, signed Moens, deCoppet (Photo P.60) 5,000.00
- 218 1850, 12c Black on Blue, "Cotton Reel" (5). Horizontal Pair, Partly cut to shape, Light "Demerara" town postmark, Initialed "E. D. W." Couple of tiny thin specks, otherwise Very Fine, A Choice Rarity (Photo P.60) E.XV
- 219 ☒ 1850, 12c Black on Pale Blue, "Cotton Reel" (5a). Cut Square, with clear to large margins; Tied by edge of light town postmark on June 1851 folded letter headed "Berbice" to Demerara, minor aging, creased by filing fold, otherwise Very Fine (Photo P.66) 3,750.00+
- 220 ★田 1852, 1c Black on Magenta (6). Block, Fresh, nearly full o.g., Huge margins, small scissors cut in margin far from design, crease in right pair, otherwise Very Fine, By far the finest of the two blocks known, Ex-Ferrari (Photo P.60) 11,000.00+
- 221 1852, 1c, 2c "Ships", Surface Colored Paper (6, 7). Large margins, light town postmarks, the 2c on small piece, Both with small faults, as usual, Attractive appearance (Photo P.60) 2,950.00
- 222 ☒ 1853-59, 1c Red (9). Horizontal Strip of Four, Margins virtually all around, barely touched at T. L. corner; tied by neat, light "Demerara, Mr. 6, '60" on folded cover to George Town, a Very Fine & Handsome Rarity (Photo P.66) 1,200.00+
- 223 ★ 1856, 4c Black on Magenta (14). Huge margins, Initialed "E. D. W.", minute imperfections, Very Fine appearing, Believed to be the only unused example in existence, Ex-Ferrari (Photo P.60) E.XVI
- 224 1856, 4c Black on Magenta (14). Incredible Large margins, including bottom sheet margin, Clear "Demerara, Ap. 16, 1856" postmark, slight crease, otherwise Very Fine (Photo P.60) 2,500.00
- 225 1856, 4c Black on Carmine Rose (14a). Large Even margins, Clear "Demerara" postmark, initialed "E. D. W.", Very Fine, seldom seen in such beautiful conditions (Photo P.60) 3,250.00

CANADA

- 226 1851, 3p Red, Beaver, Laid Paper (1). Vertical Strip of Three, Margins all around, Fresh Color, Light Target Cancels, bottom stamp pinhole, others Fine—Very Fine, Handsome and Attractive (Photo P.53) 495.00
- 227 1851, 6p Grayish Purple, Laid Paper (2). Vertical Pair, Large to Huge Margins, Fresh Color, clear Laid Lines, Target cancels, pinhole in one, otherwise an Extremely Fine Pair (Photo P.53) 380.00+
- 228 1851, 6p Grayish Purple, Laid Paper (2). Horizontal Strip of Three, Large to Huge Margins, showing part of another stamp, except smaller at B. L. corner, Rich Color, Very Fine, a Beautiful and Rare Strip (Photo P.53) 570.00+
- 228A 1851 12p Black, Laid Paper (3). Ample to Large Margins, Target cancel, Expertly Repaired, Very Fine appearing, with P. F. Certificate (Photo, Front Cover) 9500.00
- 229 ★ 1857, 7½p, Green (9). Large to Huge margins, Fresh, Bright Color, tiny natural paper inclusion barely shows, otherwise Very Fine, with P. F. Certificate (Photo, Back Cover) 1,600.00
- 230 ★ 1858, 6p Gray Violet, Perforated (13a). Rich Color, Fresh, Usual centering, Handsome Example of this Rare Stamp, with P. F. Certificate (Photo P.53) 1,650.00
- 231 ★田 1864, 2c Rose (20). Horizontal Block of Six, Fresh, Large part o.g., few blunted perf. tips on one, still Fine—Very Fine, a Rare Block Holmes (Photo P.52) 825.00+
- 232 田 1897, \$4.00 Purple, Jubilee (64). Block, Beautifully Centered, Neat Magenta "Winnipeg" town postmark, Extremely Fine and Handsome (Photo P.52) 640.00+
- 233 ★田 1959, 5c "Seaway" Center Inverted (387a). Block, Mint, Very Fine (Photo P.52) 10,000.00+
- 234 田 1959, 5c "Seaway" Center Inverted (387a). Tied by light machine cancel "Smith's Falls, Ont., 1959" postmark on neat, small cover (no flap), Very Fine, an Extreme Rarity on cover in 1959 use; only three covers believed known (Photo P.66) 2,500.00+
- 235 ★田 CAPE OF GOOD HOPE, 1855, 1/- Dark Green (6a). Square Block of Eight, Rich, Deep Color, Fresh, o.g., Trivial faint gum bend, still Very Fine and Handsome (Photo P.52) 800.00+
- 236 ★ GERMAN EAST AFRICA, Belgian Occupation, 1916, 5fr Ochre and Black "Ruanda" and "Urundi" handstamps (N8, N16). Fine, Very Fine, with handstamp guarantee "S. H. B." (Photo P.57) 750.00

ISRAEL

- 236A 1948, 250m-1000m First Issue (7-9). Tab Blocks, with Left Bottom Corner margins, Mint, Extremely Fine (Photo P.56) E.XVI
- 236B 1948, 250m-1000m First Issue (7-9). Upper Right Corner Plate Number Blocks of Four, Mint, Extremely Fine (Photo P.56) 2140.00+
- 236C 1948, 3m-50m First Postage Dues (J1-J5). Complete sheets of One Hundred, A Very Fine Set of Great Rarity (Photo P.65) 17,490.00+

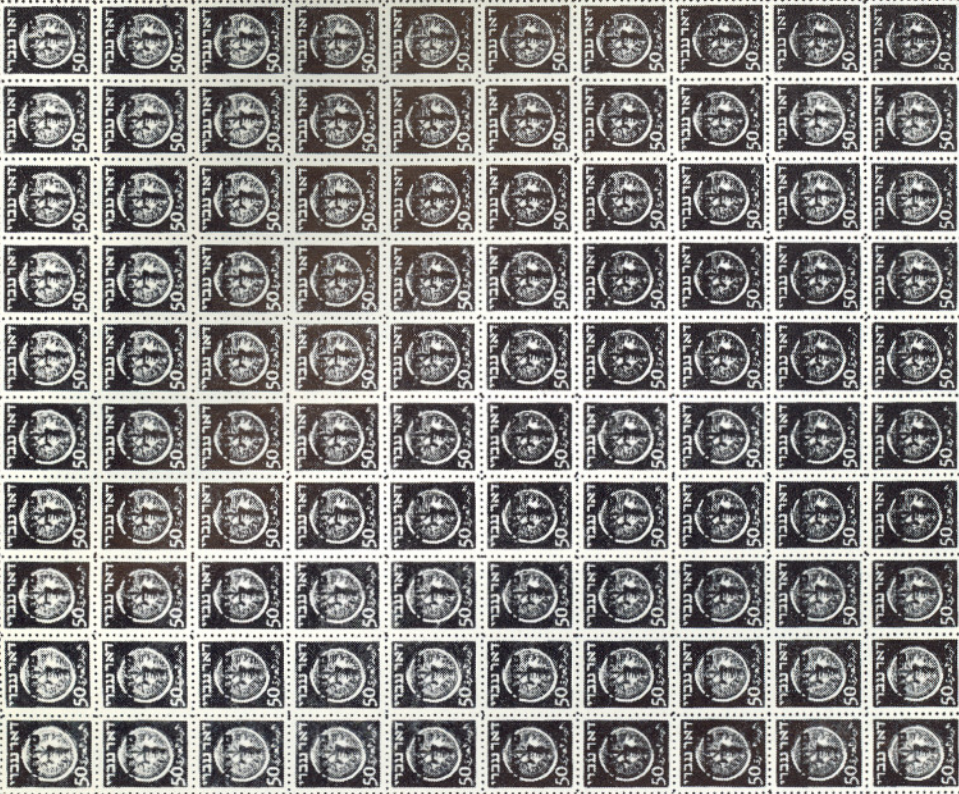


- 236D 1948, 20m Postage Due, Imperforate, Without Overprint (J4 var.).
Block, with Top Sheet Margin, Mint, Very Fine
..... Mosden (Photo P.56) 1600.00
- 236E 1948, 20m Postage Due, Imperforate, Without Overprint (J4 var.).
Tab Block, Tint spots in one tab far from design, Stamps Very Fine
..... Mosden (Photo P.56) 3200.00
- 237 LABUAN, 1905, 25c, \$2.00, \$5.00 Local Overprints (119, 121,
122). #119 unused, tropical gum, others with neat town cancels,
the \$2.00 with B. P. A. Certificate, Very Fine (Photo P.57) 590.00
- 238 ★ LAGOS, 1886, 10/- Brown Violet (37). Unusually Well Centered,
Fresh, o.g., Very Fine (Photo P.57) 600.00
- 239 ★ LIBERIA, 1901, \$2.00 Brown on Yellow "Ordinary" Overprint
(80). Very Fine, Signed "Champion" (Photo P.57) 650.00
- 240 ★ — 1901, \$5.00 Carmine and Black "Ordinary" Overprint (81).
Fine, signed "Champion", An exceedingly rare stamp
..... (Photo P.57) 1,200.00
- 241 ★ — 1902, 75c on \$1.00 Ultramarine and Black (93). T. L. Sheet
Corner margins, centered to Right, Fine, signed "Champion"
..... (Photo P.57) 500.00
- 242 ★ LUXEMBOURG, 1852, 10c Black (1a). Margins all around, Fresh,
part o.g., Beautiful Color and Impression, Very Fine, with Nuss-
baum Certificate (Photo P.53) 900.00
- 243 ★ — 1852, 1sg Brown Red (2a). Margins all around, Fresh, Full
o.g., Brilliant, Very Fine, with Balasse Certificate (Photo P.53) 400.00
- 244 MAURITIUS, 1848, 2p Blue on Bluish, Early Impression (6).
Margin all around, Beautiful Color and Impression, showing the
Vertical Lines in the Background, Light Cancel, Very Fine
..... (Photo, Front Cover) 1,700.00
- 245 ★ MESOPOTAMIA, 1917, 1/4a on 5pa Violet (N13). Unused, with-
out gum, Irregular perforations, as usual, Fine, with B. P. A.
Certificate, the rarest of the Baghdads, only eight believed known
..... (Photo P.43) 600.00
- 246 ★ MEXICO, 1935, 20c Amelia Earhart (C74). Very Fine Example of
this Rarity (Photo P.57) 1,250.00
- 247 ★ MONACO, 1946, 100fr Red, Airpost, Inverted Overprint (C9a).
Full top and bottom Sheet margins, Very Fine and Rare, with Behr
Certificate, which states that only ten are known (Photo P.52) 2,000.00
- 248 ☒ NATAL, 1857, 6p Green (2). Tied by oval "Pietermartizburg"
postmark, large "6d" on cover to England, R. P. S. Certificate,
Scarce and Fine Cover (Photo P.66) E.XIII
- 249 ★ NEW BRITAIN, 1914, 2/- on 2mk "G. R. I." Overprint (13).
Unusually well centered, Very Fine (Photo P.57) 400.00
- 250 ★ NEWFOUNDLAND, 1857, 1/- Scarlet Vermilion (9). Margins
clear all around, Gorgeous Deep Rich Color, Fresh, Fine Example
of this Rarity, with R. P. S. Certificate (Photo P.57) 3,250.00

0277

1

1



1

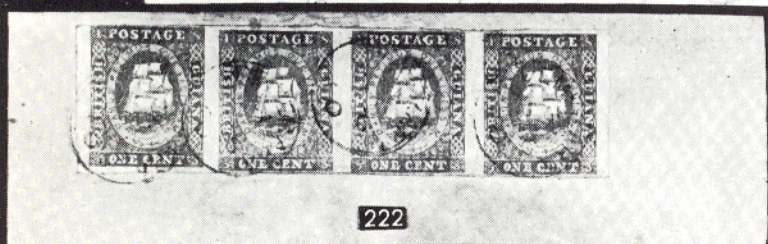
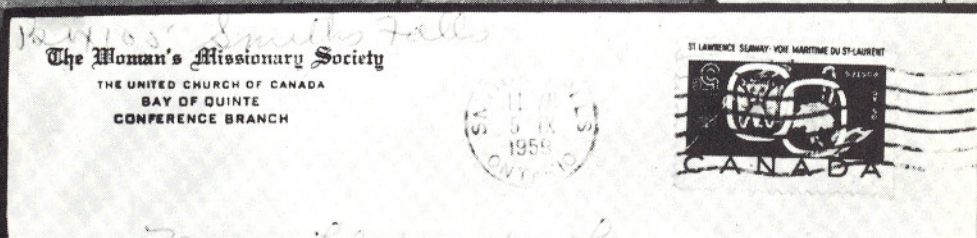
1



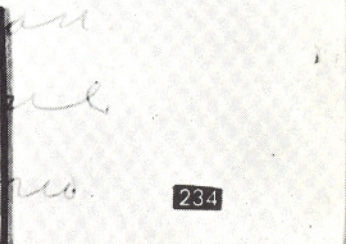


210

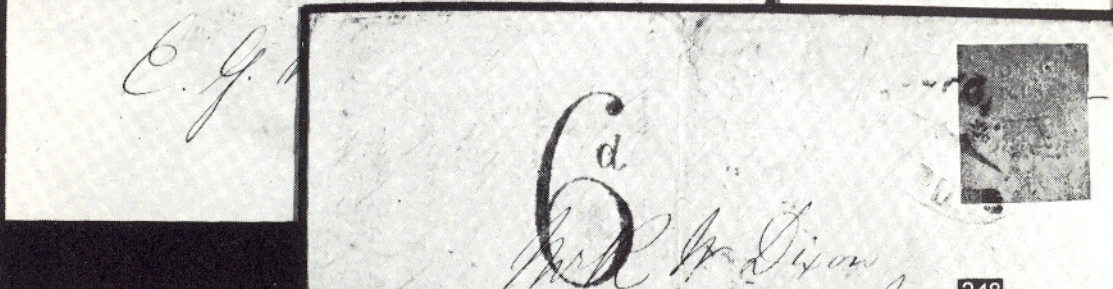
219



222



234



248



260



254



- 251 ★ — 1860, 1/- Orange (15). Rich, Bright color, Small margins to slightly in at top and bottom, An acceptable example of an exceedingly rare stamp, With P. F. Certificate (Photo P.57) 5,250.00
- 252 ★ — 1861, 1p Reddish Brown (16). Three large margins, partly touched one point at right, Fine, Fresh example of this classic Rarity, with B. P. A. Certificate (Photo P.57) 1,500.00
- 252A ★ — 1933, 5c, 10c Pictorial Airpost, Imperforate (C13a, C14a). Each in a Complete Mint Sheet of 50, Very Fine (Photo P.67) 5,875.00+
- 253 NATAL, 1857, 6p Green (2). Tied by oval "Pietermaritzburg" around, Gorgeous Color and Impression, Light Cancel, minute faint thin speck, Extremely Fine appearance (Photo P.57) 925.00
- 254 ☒ — 1851, 1/- Dull Violet (7). Large Margins all around, nicely tied on Registered cover to Halifax, backstamped "Newport, N.S., July 7, 1860" tiny crease in right corner, otherwise Very Fine, Very Rare when used singly (Photo P.66) 950.00+
- 255 ★ RHODESIA, 1966, 5/- on 1/3 Churchill, Independence Overprint (222). Complete Sheet of Sixty, Overprint Shifted, showing the Correct Position in U. L. Corner, with gradual displacement, showing the Bars outside the stamp at B. L., Very Fine and Rare Sheet (Normal stamps catalogue \$1,650.00) (Photo P.52) E.XV
- 256 RUSSIA, 1902, 15k Brown Violet and Blue, Center Inverted (62a). Lightly Cancelled, Well Centered, a Beautiful Example of this Rarity (Photo P.53) 600.00
- 257 ★ SAMOA, 1914, 1/- on 1mk "G. R. I.", "Shillings" variety (110a). Beautifully Centered, Very Fine, signed "Bloch" and with Friedl Certificate (Photo P.57) 1,100.00
- 258 ★ — 1914, 3/-, 5/- "G. R. I." Overprints (112, 113). #113 has gum thin, other Fine (Photo P.57) 875.00
- 259 ★ SIERRA LEONE, 1914, £2, £5, George V (120, 121). £2 with R. B. Corner Margin and Plate No. 1, £5 trifle toned by tropical otherwise Very Fine (Photo P.57) 1,225.00
- 259A SWITZERLAND, 1848, Geneva, 5c Black on Dark Green (2L4). Rich color, large margins, Brilliant Red Fancy Cross cancel, Very Fine (Photo, Back Cover) 600.00
- 260 ☒ TWO SICILIES, 1859, 5g Vermilion, 20g Dark Gray Violet (14, 17). Two of latter, all paying 45gr postage on 1859 folded cover Agireale to N.Y., All with large margins, except 5g barely touched at B., neatly tied by usual ornamental frame, Cover tear mended, Stamps Fine—Very Fine, Very Scarce and Attractive (Photo P.66) 1,030.00+
- 261 VENEZUELA, 1871 2c Yellow, Center Inverted (23e). Margins to just touched, neat ms. cancel., A Fine example of this Very Rare Stamp (Photo P.57) 1000.00

END OF SALE — THANK YOU

IS YOUR COLLECTION FOR SALE?

REALIZE IMMEDIATE CASH
PLUS THE ADDED ADVANTAGE OF
SELLING THROUGH OUR AUCTIONS

If desired, we will advance immediate cash up to 75% of our appraisal value, of what your collection should realize at auction. There is no interest charge.

Your collection will then be sold in one of our coming auction sales. All stamps are expertly and advantageously lotted in attractive, well illustrated catalogs. Lotting is meticulously planned under our personal supervision. Commission is 20% of the gross realization. There is no lotting fee or any other charges. Final settlement is made within five weeks after the sale. We have been continuously conducting stamp auctions in the United States for over forty years.

Valuable collections and stamp holdings are especially wanted, but we will accept properties valued from \$500 upwards. Send all stamps direct for appraisal. Auction advance will be remitted shortly after receipt. If not entirely pleased, stamps will be returned at our expense. If circumstances warrant due to bulk or value, we will travel anywhere to inspect important properties.

ROBERT A. SIEGEL
AUCTION GALLERIES, Inc.

(Licensed and Bonded Auctioneer)

10 EAST 52nd STREET
NEW YORK, N. Y. 10022
Tel. (212) 753-6421

CONDITIONS OF SALE

1. The terms of sale are strictly cash on delivery to the highest bidder unless special arrangements have been made prior to the sale.
2. All bids are per lot as numbered in the catalogue and not per piece, unless otherwise announced by the auctioneer at the time of sale.
3. Any lot, the description of which is incorrect is returnable, but only within three days of receipt. All disputed lots must be returned intact as received and lots containing five or more stamps are not returnable at any time. No lots may be returned by purchasers who have had the opportunity to examine them prior to the sale. No illustrated lots may be returned because of centering, margins or other factors shown in the illustration.
4. Successful bidders, unless they are known to us or supply acceptable references are expected to make payment in full before the lots are delivered. Mail bidders will be notified of the amount of their purchases. We reserve the right in our sole and absolute discretion to demand cash at the time a lot is knocked down to any bidder who has not previously established credit with us or whose account is in arrears. In the event any buyer refuses to pay cash for any lot at the time it is knocked down to him, the auctioneer reserves the right to re-offer the lot immediately for sale to the highest bidder.
5. If the purchase price has not been paid within the time limit, or lots taken up within seven days from date of sale, they may be resold and any losses arising from such sale charged to the defaulter.
6. All lots are sold as genuine but should any lot be proved otherwise by written opinion of any competent, responsible authority acceptable to us, immediate refund of the full purchase price will be made, provided that any such claim is made within 25 days from date of sale. If claim is not made within this period no lots are returnable for any reason at any time. Naturally, so long as we are notified within the 25 day period that an opinion is being sought the matter will remain open until such opinion is rendered. We will not be responsible for any charges incurred by the buyer for expertization fees and costs.
7. The right is reserved to group two or more lots, also withdraw any lot or lots from the sale, or to act on behalf of the seller.
8. Until paid for in full all lots remain the property of Robert A. Siegel Auction Galleries, Inc.
9. No commission is charged for buying at our sales, but all forwarding charges will be added to the purchase price. Shipment will be made to a post office box only if the buyer has also furnished a street address. All large lots unsuitable for parcel post will be sent by REA Express collect, or, upon request, REA Air Express collect.
10. Upon written application lots may be sent for examination prior to the auction, condition upon being mailed back by registered mail, adequately insured, within 24 hours of receipt. The applicant is completely responsible for all lots sent for examination, and for the insurance of same against mishap, from the time of receipt until they are actually received back, and is to pay all expenses of postage and insurance. No lots can be sent for inspection within ten days of the date of sale.
11. The placing of a bid shall constitute acceptance of the forging condition of sale.

ROBERT A. SIEGEL

ANDREW LEVITT, Licensed Auctioneers

In sending bids, always state the highest price you are prepared to pay for the lot. Your limit will not be used as a starting bid unless absolutely necessary.

DESCRIPTIONS

Extremely Fine—the finest condition for noteworthy, outstanding copies.

Very Fine (VF)—means that there is a slight deviation from the above.

Fine (F)—means that the perforations do not touch the design on issues after 1890, but in some cases may just touch in earlier issues; if used, fairly lightly cancelled.

Very Good (VG)—means that the appearance is generally fine but that the perforations cut the design slightly.

Good (G)—means average off-centering; or fairly attractive with slight defects.

Original gum (OG)—is not to be expected on 19th Century stamps unless so stated.

Mint—with original gum and never hinged.

Plate Blocks—Minor perforation separation in selvage only is not noted in description.

Reduced selvage noted on tops; on sides and bottoms only if plate number is touched or cut into.

Scott 1971 Specialized Catalogue used for cataloging lots of U.S. and Possessions.

Scott 1971 Standard Catalogue for others.

MARCH 23rd, 1971

10 East 52nd Street

New York, N. Y. 10022

Tel: 753-6421 (Area Code 212)

Please purchase for me at your auction to be held March 23rd, 1971, the lots named below, the prices annexed being my limit on each lot. I agree to remit for purchases in accordance with the Conditions of Sale and to return no lots later than three days after receipt.

REFERENCES PLEASE

(if unknown to us)

SIGNED

New York State residents kindly include
County in address.

County

[illegible]

VALUATIONS

Upon request, estimate of value furnished on any lots in this auction.

391st SALE

List of Prices Realized

RARITIES OF THE WORLD



TUESDAY, MARCH 23, 1971

Total Realization \$700,555.00

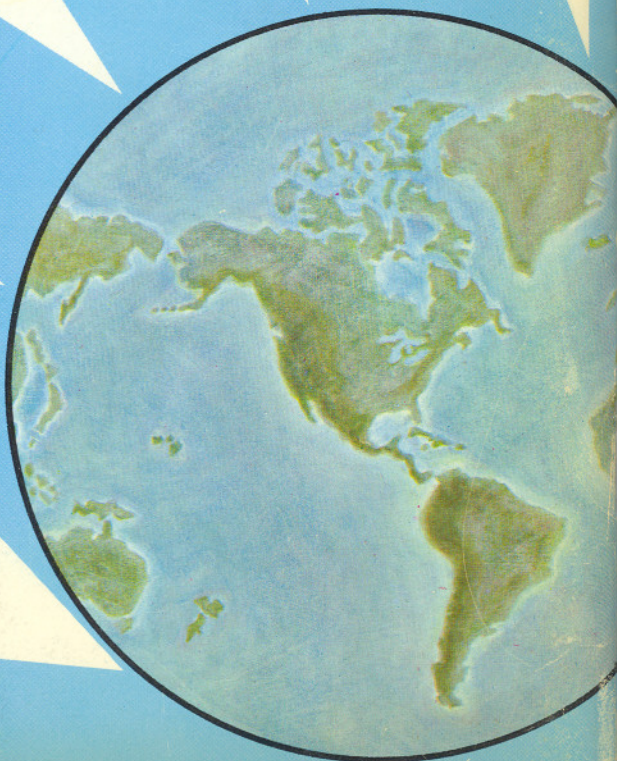
Robert A. Siegel
AUCTIONS

10 EAST 52nd STREET NEW YORK, N. Y. 10022

Tel: PLaza 3-6422

Lot #	Price	Lot #	Price	Lot #	Price	Lot #	Price	Lot #	Price
1	10,000.00	54	650.00	113	1,450.00	166	6,000.00	217	400.00
2	675.00	55	20,000.00	114	2,700.00	167	3,200.00	218	1,350.00
3	2,000.00	56	7,250.00	115	600.00	168	450.00	219	1,100.00
4	900.00	57	4,600.00	116	400.00	169	1,850.00	220	10,000.00
5	900.00	58	950.00	117	6,000.00	170	800.00	221	260.00
6	1,000.00	59	800.00	118	1,350.00	171	2,300.00	222	725.00
7	10,000.00	60	4,200.00	119	3,200.00	172	2,900.00	223	3,000.00
7A	2,200.00	61	1,150.00	120	900.00	173	2,100.00	224	1,300.00
8	1,250.00	62	1,900.00	121	1,450.00	174	375.00	225	2,100.00
9	9,250.00	63	375.00	122	2,300.00	175	1,050.00	226	500.00
10	550.00	64	1,050.00	123	650.00	176	500.00	227	300.00
11	1,450.00	65	375.00	124	425.00	177	2,900.00	228	800.00
12	950.00	66	575.00	125	750.00	178	1,450.00	228A	2,600.00
13	850.00	67	900.00	126	4,000.00	179	1,800.00	229	725.00
14	2,100.00	68	14,000.00	127	1,450.00	180	1,000.00	230	700.00
14A	2,500.00	69	2,900.00	128	725.00	181	450.00	231	675.00
15	4,500.00	70	8,500.00	129	450.00	182	300.00	232	700.00
16	5,750.00	71	25,000.00	129A	625.00	183	850.00	233	5,250.00
17	950.00	72	2,800.00	130	4,400.00	184	650.00	234	1,650.00
18	725.00	73	3,800.00	131	700.00	185	2,500.00	235	800.00
19	800.00	74	1,000.00	132	1,100.00	186	1,250.00	236	550.00
20	4,600.00	75	950.00	133	900.00	187	1,700.00	236A	3,200.00
21	450.00	76	475.00	134	1,000.00	188	3,800.00	236B	1,250.00
22	675.00	77	625.00	135	5,250.00	189	800.00	236C	7,500.00
23	1,550.00	78	4,000.00	136	625.00	190	200.00	236D	240.00
24	2,900.00	79	650.00	137	725.00	191	325.00	236E	450.00
25	10,500.00	80	1,550.00	138	700.00	192	10,500.00	237	550.00
26	2,100.00	81	1,550.00	139	14,500.00	193	2,800.00	238	300.00
27	3,800.00	82	950.00	140	850.00	194	525.00	239	350.00
28	1,850.00	83	3,200.00	141		195	850.00	240	725.00
29	500.00	84	1,900.00	142	7,000.00	196	425.00	241	350.00
30	525.00	85		143	270.00	197	625.00	242	325.00
31	800.00	to	16,000.00	144	270.00	197A	210.00	243	400.00
32	375.00	91A		145	475.00	197B	280.00	244	1,300.00
33	1,300.00	92	2,800.00	146	1,250.00	197C	950.00	245	280.00
34	25,000.00	93	900.00	147	800.00	198	600.00	246	160.00
35	600.00	94	1,250.00	148	1,200.00	199	3,000.00	247	1,300.00
36	1,600.00	95	1,150.00	149	325.00	200	400.00	248	375.00
37	475.00	96	1,150.00	150	525.00	201	400.00	249	300.00
38	2,800.00	97	1,000.00	151	550.00	202	1,550.00	250	1,100.00
39	1,100.00	98	1,800.00	152	1,400.00	203	400.00	251	600.00
40	900.00	99	1,450.00	153	500.00	204	400.00	252	600.00
41	7,000.00	100	7,000.00	153A	2,000.00	205	800.00	252A	2,900.00
42	950.00	101	16,000.00	154	3,800.00	206	2,100.00	253	400.00
43	9,750.00	102	8,750.00	155	575.00	207	5,000.00	254	1,100.00
44	850.00	103	1,850.00	156	625.00	207A	2,700.00	255	850.00
45	4,000.00	104	3,000.00	157	2,700.00	208	500.00	256	360.00
46	1,300.00	105	13,000.00	158	36,000.00	209	750.00	257	600.00
47	4,000.00	106	1,800.00	159	425.00	210	1,200.00	258	325.00
48	17,000.00	107	1,500.00	160	7,500.00	211	290.00	259	450.00
49	1,700.00	108	575.00	161	1,250.00	212	575.00	259A	500.00
50	28,000.00	109	800.00	162	5,250.00	213	2,200.00	260	210.00
51	1,200.00	110	1,350.00	163	900.00	214	1,000.00	261	400.00
52	9,250.00	111	475.00	164	1,300.00	215	725.00		
53	700.00	112	2,500.00	165	450.00	216	425.00		





Robert A. Siegel Auction Galleries, Inc.
Prices Realized for
Sale 391 March 23, 1971 1971 Rarities of the World

Lot#	Realized	Lot#	Realized	Lot#	Realized	Lot#	Realized	Lot#	Realized
1	10,000	35	600	71	25,000	106	1,800	141	7,000
2	675	36	1,600	72	2,800	107	1,500	142	7,000
3	2,000	37	475	73	3,800	108	575	143	270
4	900	38	2,800	74	1,000	109	800	144	270
5	900	39	1,100	75	950	110	1,350	145	475
6	1,000	40	900	76	475	111	475	146	1,250
7	10,000	41	7,000	77	625	112	2,500	147	800
7A	2,200	42	950	78	4,000	113	1,450	148	1,200
8	1,250	43	9,750	79	650	114	2,700	149	325
9	9,250	44	850	80	1,550	115	600	150	525
10	550	45	4,000	81	1,550	116	400	151	550
11	1,450	46	1,300	82	950	117	6,000	152	1,400
12	950	47	4,000	83	3,200	118	1,350	153	500
13	850	48	17,000	84	1,900	119	3,200	153A	2,000
14	2,100	49	1,700	85	16,000	120	900	154	3,800
14A	2,500	50	28,000	86	16,000	121	1,450	155	575
15	4,500	51	1,200	87	16,000	122	2,300	156	625
16	5,750	52	9,250	88	16,000	123	650	157	2,700
17	950	53	700	89	16,000	124	425	158	36,000
18	725	54	650	90	16,000	125	750	159	425
19	800	55	20,000	91	16,000	126	4,000	160	7,500
20	4,600	56	7,250	91A	16,000	127	1,450	161	1,250
21	450	57	4,600	92	2,800	128	725	162	5,250
22	675	58	950	93	900	129	450	163	900
23	1,550	59	800	94	1,250	129A	625	164	1,300
24	2,900	60	4,200	95	1,150	130	4,400	165	450
25	10,500	61	1,150	96	1,150	131	700	166	6,000
26	2,100	62	1,900	97	1,000	132	1,100	167	3,200
27	3,800	63	375	98	1,800	133	900	168	450
28	1,850	64	1,050	99	1,450	134	1,000	169	1,850
29	500	65	375	100	7,000	135	5,250	170	800
30	525	66	575	101	16,000	136	625	171	2,300
31	800	67	900	102	8,750	137	725	172	2,900
32	375	68	14,000	103	1,850	138	700	174	375
33	1,300	69	2,900	104	3,000	139	14,500	175	1,050
34	25,000	70	8,500	105	13,000	140	850	176	500

Robert A. Siegel Auction Galleries, Inc.
 Prices Realized for
 Sale 391 March 23, 1971 1971 Rarities of the World

Lot#	Realized	Lot#	Realized	Lot#	Realized
177	2,900	209	750	239	350
178	1,450	210	1,200	240	725
179	1,800	211	290	241	350
180	1,000	212	575	242	325
181	450	213	2,200	243	400
182	300	214	1,000	244	1,300
183	850	215	725	245	280
184	650	216	425	246	160
185	2,500	217	400	247	1,300
186	1,250	218	1,350	248	375
187	1,700	219	1,100	249	300
188	3,800	220	10,000	250	1,100
189	800	221	260	251	600
190	200	222	725	252	600
191	325	223	3,000	252A	2,900
192	10,500	224	1,300	253	400
193	2,800	225	2,100	254	1,100
194	525	226	500	255	850
195	850	227	300	256	360
196	425	228	800	257	600
197	625	228A	2,600	258	325
197A	210	229	725	259	450
197B	280	230	700	259A	500
197C	950	231	675	260	210
198	600	232	700	261	400
199	3,000	233	5,250		
200	400	234	1,650		
201	400	235	800		
202	1,550	236	550		
203	400	236A	3,200		
204	400	236B	1,250		
205	800	236C	7,500		
206	2,100	236D	240		
207	5,000	236E	450		
207A	2,700	237	550		
208	500	238	300		