

395th SALE

UNITED STATES
and
POSSESSIONS



THE ROBERT B. GREENES COLLECTION

Sold by his Order



AT UNRESERVED PUBLIC AUCTION

Thursday, May 13th, 1971 at 1:00 P. M. and 7:00 P. M.

Robert A. Siegel
AUCTIONS

10 EAST 52nd STREET NEW YORK, N. Y. 10022

Tel: PLaza 3-6422

CONDITIONS OF SALE

1. The terms of sale are strictly cash on delivery to the highest bidder unless special arrangements have been made prior to the sale.
2. All bids are per lot as numbered in the catalogue and not per piece, unless otherwise announced by the auctioneer at the time of sale.
3. Any lot, the description of which is incorrect is returnable, but only within three days of receipt. All disputed lots must be returned intact as received and lots containing five or more stamps are not returnable at any time. No lots may be returned by purchasers who have had the opportunity to examine them prior to the sale. No illustrated lots may be returned because of centering, margins or other factors shown in the illustration.
4. Successful bidders, unless they are known to us or supply acceptable references are expected to make payment in full before the lots are delivered. Mail bidders will be notified of the amount of their purchases. We reserve the right in our sole and absolute discretion to demand cash at the time a lot is knocked down to any bidder who has not previously established credit with us or whose account is in arrears. In the event any buyer refuses to pay cash for any lot at the time it is knocked down to him, the auctioneer reserves the right to re-offer the lot immediately for sale to the highest bidder.
5. If the purchase price has not been paid within the time limit, or lots taken up within seven days from date of sale, they may be resold and any losses arising from such sale charged to the defaulter.
6. All lots are sold as genuine but should any lot be proved otherwise by written opinion of any competent, responsible authority acceptable to us, immediate refund of the full purchase price will be made, provided that any such claim is made within 25 days from date of sale. If claim is not made within this period no lots are returnable for any reason at any time. Naturally, so long as we are notified with the 25 day period that an opinion is being sought the matter will remain open until such opinion is rendered. We will not be responsible for any charges incurred by the buyer for expertization fees and costs.
7. The right is reserved to group two or more lots, also withdraw any lot or lots from the sale, or to act on behalf of the seller.
8. Until paid for in full all lots remain the property of Robert A. Siegel Auction Galleries, Inc.
9. No commission is charged for buying at our sales, but all forwarding charges will be added to the purchase price. Shipment will be made to a post office box only if the buyer has also furnished a street address. All large lots unsuitable for parcel post will be sent by REA Express collect, or, upon request, REA Air Express collect.
10. Upon written application lots may be sent for examination prior to the auction, condition upon being mailed back by registered mail, adequately insured, within 24 hours of receipt. The applicant is completely responsible for all lots sent for examination, and for the insurance of same against mishap, from the time of receipt until they are actually received back, and is to pay all expenses of postage and insurance. No lots can be sent for inspection within ten days of the date of sale.
11. The placing of a bid shall constitute acceptance of the foregoing conditions of sale.

ROBERT A. SIEGEL
ANDREW LEVITT, Licensed Auctioneers

In sending bids, always state the highest price you are prepared to pay for the lot.
Your limit will not be used as a starting bid unless absolutely necessary.

DESCRIPTIONS

Extremely Fine—the finest condition for noteworthy, outstanding copies.

Very Fine (VF)—means that there is a slight deviation from the above.

Fine (F)—means that the perforations do not touch the design on issues after 1890, but in some cases may just touch in earlier issues; if used, fairly lightly cancelled.

Very Good (VG)—means that the appearance is generally fine but that the perforations cut the design slightly.

Good (G)—means average off-centering; or fairly attractive with slight defects.

Original gum (OG)—is not to be expected on 19th Century stamps unless so stated.

Mint—with original gum and never hinged.

Plate Blocks—Minor perforation separation in selvage only is not noted in description.

Reduced selvage note on tops; on sides and bottoms only if plate number is touched or cut into.

Scott 1971 Specialized Catalogue used for cataloguing lots of U.S. and Possessions.

Scott 1971 Standard Catalogue for others.

MAY 13th, 1971

ROBERT A. SIEGEL AUCTION GALLERIES, Inc.

10 East 52nd Street

New York, N. Y. 10022

Tel.: 753-6421 (Area Code 212)

Please purchase for me at your auction to be held **May 13th, 1971**, the lots named below, the prices annexed being my limit on each lot. I agree to remit for purchases in accordance with the **Conditions of Sale** and to return no lots later than three days after receipt.

REFERENCES PLEASE

(if unknown to us)

SIGNED

New York State residents kindly include
County in address.

County

[illegible]

VALUATIONS

Upon request, estimate of value furnished on any lots in this auction.

FIRST SESSION

THURSDAY AFTERNOON, MAY 13th, 1971 — 1:00 P. M.

UNITED STATES

POSTMASTERS' PROVISIONALS

1	R	☒	New Haven, Conn. 5c Red on Buff, Facsimile Entire (8XU1R). Facsimile strike on cover with matching New Haven pmk. & Blue "Paid" in scroll, Very Fine	E. II
2			New York, 5c Black (9X1). Pos. 29, Margins to touched, neat Blue ms. cancel., faint vert. crease, Fine appearance	110.00
3			New York, 5c Black (9X1). Pos. 27, Margins to just clear, neat Blue ms. cancel., U. L. corner repaired, Fine appearance	110.00
4			New York, 5c Black, Without Signature (9X1C). Margins all around, Blue ms. & Red Town pmk., which appears to indicate a Virginia usage, although typical Blue pen cancel would seem to indicate a N. Y. origin, the Red Town possibly a forwarding mark, Very Fine, Most Unusual (Photo)	200.00+
5	★		Providence, R. I., 5c Black (10X1). Margins all around, some stains & corner thin, Fine appearance	75.00
6	R		Providence, R. I., 5c Black, Reprint (10X1R). L. L. Sheet Corner Margins, Extremely Fine	30.00
7	★		Providence, R. I., 10c Black (10X2). Large to Huge Margins, with Sheet Corners, Extremely Fine, with P. F. Certificate, A Beauty	(Photo) 300.00
8	R		Providence, R. I., 10c Black, Reprint (10X2R). Large Margins, tiny pin-hole, Very Fine appearance	75.00
9			St. Louis, Mo., 5c Gray Lilac (11X4). Large Margins to just clear at B., neat ms. cancel, tiny tear & corner crease, Very Fine appearance, with P. F. Certificate	(Photo) 2,000.00

1847 ISSUE

10			5c Orange Brown (1b). Large to Huge Margins, Wonderful Color, Red Town pmk., filled thin, Extremely Fine appearance	(Photo) 70.00
11			5c Brown (1). Large Margins, Good Color & Impression, Blue Town pmk., tiny thin, Very Fine appearance	(Photo) 67.50
12			5c Red Brown (1). Large Margins, Dot in "S" variety, clear Blue Numeral "10" cancels, creases, Very Fine appearance	(Photo) 200.00
13			5c Brown (1). Margins close but clear, faint ms. cancel, corner crease, Fine appearance	30.00
14			5c Red Brown (1). Margins added, Black Grid cancel, Very Fine looking	72.50

LOTS ON VIEW FROM MAY 7th

OFFICES OPEN SATURDAY BEFORE SALE

15	10c Black (2). Large Margins to just touched at T., small part Red Town pmk. & faint ms. cancel, Fine	200.00
16 ★	5c Red Brown, Reproduction (3). Margins to just touched, small thin, Fine appearance	225.00
17 ★	10c Black, Reproduction (4). Margins all around, Very Fine (Photo)	300.00

1851 ISSUE

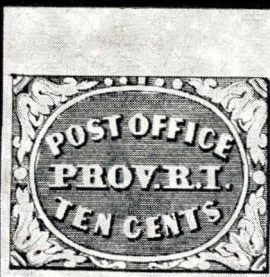
18	1c Blue, Ty. Ib (5b). Pos. 9R1E, Large Margins, Beautiful Deep Color & Sharp, Early Impression, light Red Grid cancel, tiny thin, Extremely Fine appearance (Photo)	95.00
19	1c Blue, Ty. II, III (7, 8). Vert. Combination Pair, Pos. 89-99R2, Margins to slightly in, Rich Color & Sharp Impression clearly showing the Double Transfers found on both positions, bold Mobile, Ala. pmks., couple negligible internal wrinkles, an Exceedingly Rare Pair (Photo)	—
20	1c Blue, Ty. IIIa (8A). Plate 4, Ample to Large Margins, bold Town pmk., light corner crease, Very Fine appearance (Photo)	130.00
21	1c Blue, Ty. IV (9). Pos. 44L1L, Double Transfer, Large Margins, Red Town pmk. & Boston "Paid" in Grid, Very Fine, Ex-Newbury (Photo)	26.50
22	3c Orange Brown (10). Seven, Margins to touched, two with small Boston "Paid" in Grid cancel, Rich Shades, F.-V. F.	60.00
23	3c Red (11). Pos. 47R6, Lines on Bust, Bottom of Medallion Circle Recut, Margins to touched, faults, Fine appearance, Scarce position	85.00
24	3c Red (11). Pos. 92L1L, Line through "Three Cents" & Rosettes Doubled, & Pos. 66R2L, "Gents", Margins to in, Fine	51.55
25	5c Red Brown (12). Large Margins to just touched at L., Rich Color, neat Red Grid cancel, small part Foreign Transit, Fine (Photo)	150.00
26	10c Green, Ty. I (13). Pos. 91R1, Ample to Huge Margins, neat Town pmk., faint vert. crease, Extremely Fine appearance (Photo)	200.00
27	10c Green, Ty. II (14). Pos. 31L1, Double Transfer, Ample to Large Margins except in at B., Blue Town pmk., Fine	70.00
28	10c Green, Ty. IV (16). Pos. 64L1, Recut at T. & B., Large Margins, neat cancel, thinned at T., Very Fine appearance (Photo)	400.00
29	10c Green, Ty. IV (16). Pos. 64L1, Recut at T. & B., Large Margins to just touched at T., neat Town pmk., Fine (Photo)	400.00

1857 ISSUE

30 ★	1c Blue, Ty. I (18). Part o. g., small thin, Fine appearance	180.00
31	1c Blue, Ty. Ic (19 var.). Pos. 91R4, the scarce sub-variety of Ty. Ia, Boston "Paid" in Grid & Red Town cancels, Fine (Photo)	E. VIII
32 ★	1c Blue, Ty. II (20). Rich Color, Fine (Photo)	100.00
33	1c Blue Ty. III (21). Town pmks., Fine (Photo)	110.00
34 ★	1c Blue, Ty. IIIa (22). Deep Color, faint crease, Very Good appearance	95.00
35	1c Blue, Ty. IV (23). Pos. 76L1L, Double Transfer, neat Town pmk., slight thins, Fine appearance	65.00
36 ★	3c Rose, Ty. I (25). Very Good	90.00
37 ★	3c Rose, Ty. I (25). Corner crease, Very Good appearance	90.00
38	5c Red Brown (28). Town pmk., reperfed, small flaws, Very Good appearance	77.50
39	5c Indian Red (28A). Deep Color, Town pmk., few perf faults, Very Good appearance	285.00
40 ★	5c Brown, Ty. I (29). Faults, Fine appearance	160.00
41 ★	5c Orange Brown (30). Corner creases, Fine appearance	80.00
42 ★	5c Brown, Ty. II (30A). Reperfed at R. & B., Fine appearance	85.00



4



7



9



10



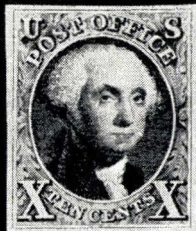
11



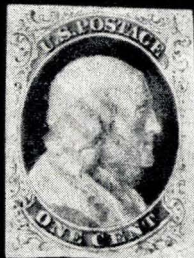
19



12



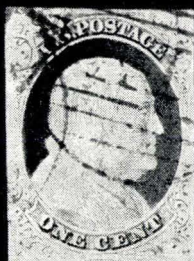
17



18



20



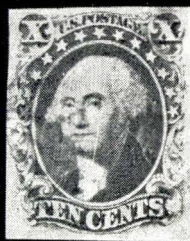
21



25



26



28



29



31



32



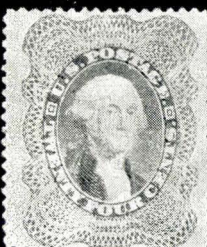
33



46



47



50



51



53



54

43	5c Brown, Ty. II (30A). Grid cancel, shows small part of Imprint within perfs. at R., several short perfs. at L., otherwise Very Fine	37.50
44	5c Brown, Ty. II (30A). "San Francisco, 1861" year date pmk., few with nibbed perfs., otherwise Fine	40.00
45	10c Green, Ty. I (31). Light Town pmk., Very Good	135.00
46	10c Green, Ty. IV (34). Pos. 65L1, Recut at T., Neat Grid cancel, light corner crease, Fine appearance	(Photo) 200.00
47	12c Black (36). Bold "1860" year date pmk., Very Fine	(Photo) 21.50
48 ★	12c Black, Pl. 3 (36b). Fine	47.50
49 ★	12c Black, Pl. 3 (36b). Small thin, Fine appearance	47.50
50 ★	24c Gray Lilac (37a). Tiny thin, Very Fine appearance	(Photo) 100.00
51	24c Lilac (37). Red Grid cancel, Very Fine	(Photo) 65.00
52 ★	30c Orange (38). Margins repaired, looks Very Fine	100.00
53 ★	90c Blue (39). Deep Color, small thins, Fine appearance	(Photo) 350.00
54	90c Blue (39). Bold Town pmk., small thin, Fine appearance, Scarce, the Philatelic Foundation has declined to express an opinion on this stamp. The stamp has, however, been examined by leading experts and is considered to be genuine	(Photo) 900.00

REPRINTS OF 1857 ISSUE



55 - 62

55 ★	1c Bright Blue, Reprint (40). Couple slightly nibbed perfs., otherwise Very Fine	(Photo) 160.00
56 ★	3c Scarlet, Reprint (41). Wonderful Vivid Color, Very Fine	(Photo) 775.00
57 ★	5c Orange Brown, Reprint (42). Nice Color, couple partly nibbed perfs., otherwise Very Fine	(Photo) 285.00
58 ★	10c Blue Green, Reprint (43). Lovely Color, natural s.e., at R., Very Good	(Photo) 525.00
59 ★	12c Greenish Black, Reprint (44). Intense Color, Fine, with P. F. Certificate	(Photo) 575.00
60 ★	24c Blackish Violet, Reprint (45). Pretty Color, Fine, with P. F. Certificate	(Photo) 650.00

- 61 ★ **30c Yellow Orange, Reprint (46).** Brilliant Color, Fine, with P. F. Certificate **(Photo)** 875.00
- 62 ★ **90c Deep Blue, Reprint (47).** Beautiful Deep Color, Very Fine, with P. F. Certificate **(Photo)** 1,150.00

1861 "FIRST DESIGNS"

- 63 ★ **3c Brown Rose, "First Design" (56).** Fresh, o. g., crease opening into tear at T., Fine appearance 200.00
- 64 **10c Dark Green, "First Design" (58).** Red Town pmk., Fine **(Photo)** 210.00
- 65 **24c Violet, "First Design" (60).** Blue Grid & Town cancels, small Red ms. marking, reperfed at L., small faults, Fine appearance 155.00

1861 ISSUE

- 66 ★ **3c Pink (64).** Pretty Color, large part o. g., one pulled perf. at B., otherwise Very Fine, Ex-Casparly **(Photo)** 875.00
- 67 **3c Pink (64).** Pretty Color, neat Boston "Paid" in Grid cancel, faint stain, otherwise Fine, with P. F. Certificate **(Photo)** 100.00
- 68 ★ **3c Rose, Imperforate (65c).** Horiz. Pair, Large Margins, Very Fine **(Photo)** 125.00
- 69 ★ **3c Rose (65).** Block, fresh, o. g., V. G.—Fine 40.00
- 70 ★ **3c Lake (66).** Deep Color, fresh, o. g., Fine, with P. F. Certificate **(Photo)** 500.00
- 71 **5c Buff, Brown Yellow, Olive Yellow (67, 67a, 67b).** The three shades, small faults, Fine appearance 190.00
- 72 **10c Green (68).** Ten stamps, wide range of shades from Yellow Green to Dark Green, cancels incl. "Paid", Red, Geometric, F.—V. F. 60.00
- 73 **30c Orange (71).** Six, cancels incl. spoked wheel, foreign transit, etc., Fine Lot 90.00
- 74 ★ **5c Red Brown (75).** Faint crease, Very Good appearance 160.00
- 75 **5c "Fire Red" (75 var.).** Exceptional Color, bold Town pmk., small flaws Fine appearance, Scarce Shade **(Photo)** —
- 76 ★ **15c Black (77).** Very Good 110.00
- 77 ★ **24c Lilac (78).** Fine **(Photo)** 42.50
- 78 **24c Lilac (78).** Eight Shades, cancels incl. Reds, Blues, Geometrics, mostly Fine Lot 100.00+

1867 GRILLED ISSUE

- 79 ★ **3c Rose, Grilled all Over (79).** Virtually all perfs. intact, crease & thin spots, Fine appearance, with P. F. Certificate **(Photo)** 750.00

LOTS ON VIEW FROM MAY 7th

OFFICES OPEN SATURDAY BEFORE SALE



80	5c Brown, Grilled All Over (80). Used, with manuscript cancel, and as is typical in this issue, a minor flaw, in this case a small corner margin crease at T. R. A Magnificent Rarity, Brookman has written that only four or five used examples are known . This is one of the Finer copies on record, and is the first used example we have ever sold at auction, with P. F. Certificate (Photo) 27,500.00
81	3c Rose, C. Grill (83). Small faults, Very Fine appearance 52.50
82	2c Black, D. Grill (84). Light Target cancel, couple nibbed perfs. at T., Very Good 185.00
83	3c Rose, D. Grill (85). Very Good 45.00
84	2c Black, Z. Grill (85B). Corner crease, Very Good appearance 50.00
85	3c Rose, Z. Grill (85C). Neat Geometric cancel, Very Good 190.00
86	12c Black, Z. Grill (85E). Fine (Photo) 125.00
87	12c Black, Z. Grill (85E). Faults, Very Good appearance 125.00
88 ★	5c Brown, F. Grill (95). Fine (Photo) 225.00
89 ★	5c Brown, F. Grill (95). Small closed tear, Very Good appearance 225.00
90 ★	10c Yellow Green, F. Grill (96). Very Good 67.50
91 ★	24c Gray Lilac, F. Grill (99). Fresh, o. g., Very Good, Scarce (Photo) 225.00
92 ★	30c Orange, F. Grill (100). Straight edge at R., Very Good 290.00
93 ★	90c Blue, F. Grill (101). Good Color, faulty, Fine appearance (Photo) 525.00
94	90c Blue, F. Grill (101). Reperfed, Very Good appearance 185.00

1861 RE-ISSUES

95 ★	1c Blue, Re-Issue (102). Small part o. g. couple perfs. bent, otherwise Fine (Photo) 145.00
96 ★	2c Black, Re-Issue (103). Deep Color, faint stain, otherwise Fine, with P. F. Certificate (Photo) 650.00
97 ★	3c Brown Red, Re-Issue (104). Rich Color, fresh, Very Fine, with P. F. Certificate (Photo) 875.00
98 ★	5c Light Brown, Re-Issue (105). Large Margins, fresh, Very Fine, with P. F. Certificate (Photo) 625.00
99 ★	10c Green, Re-Issue (106). Huge Margins, fresh, o. g., one perf. added at U. L., Extremely Fine appearance, with P. F. Certificate (Photo) 700.00
100 ★	12c Black, Re-Issue (107). Brilliant Color & Impression, fresh o. g., few perf. tips stained, otherwise Very Fine, with P. F. Certificate (Photo) 900.00



95 - 104

- | | | |
|-------|---|------------------|
| 101 ★ | 15c Black, Re-Issue (108). Deep Color, fresh, part o. g., Fine, with P. F. Certificate | (Photo) 750.00 |
| 102 ★ | 24c Deep Violet, Re-Issue (109). Lovely Color, fresh, small part o. g., one slightly short perf., otherwise Very Fine, with P. F. Certificate (Photo) | 875.00 |
| 103 ★ | 30c Brownish Orange, Re-Issue (110). Rich Color, fresh, Very Fine, with P. F. Certificate | (Photo) 1,300.00 |
| 104 ★ | 90c Blue, Re-Issue (111). Beautiful Deep Color, fresh part o. g., faint corner perf. bend otherwise Extremely Fine, with P. F. Certificate | (Photo) 1,500.00 |

1869 PICTORIAL ISSUE

- | | | |
|-------|--|----------------|
| 105 ★ | 1c Buff (112). Fine | 67.50 |
| 106 | 1c Buff (112). Five, incl. shades, one with Blue cancel, small flaws, Fine appearance | 112.50 |
| 107 ★ | 2c Brown, 3c Ultramarine (113, two, 114, four). Diff. Shades, small flaws, Fine appearance | 155.00 |
| 108 ★ | 6c Ultramarine (115). Tiny thin, Very Fine appearance | (Photo) 110.00 |
| 109 ★ | 10c Yellow (116). Part o. g., few nibbed perfs. at T., small flaws, Fine appearance | 115.00 |
| 110 ★ | 12c Green (117). Large part o. g., crease, Fine appearance | (Photo) 110.00 |
| 111 ★ | 15c Brown & Blue, Ty. I (118). Corner perf. crease, otherwise Fine (Photo) | 375.00 |

112	15c Brown & Blue, Ty. I (118). Corner perf. crease, otherwise Fine	90.00
113 ★	24c Green & Violet (120). Very Good	300.00
114	24c Green & Violet (120). Bold Town & Target cancels, crease, Very Fine appearance	(Photo) 115.00
115	24c Green & Violet (120). Small thin, Fine appearance	110.00
116 ★	30c Blue & Carmine (121). Centered to T., Fine	(Photo) 365.00
117	30c Blue & Carmine (121). Neat cancel, reperfed at T., small flaws, Very Fine appearance	60.00
118	90c Carmine & Black (122). Very Good	260.00

1869 RE-ISSUES

119 ★	1c Buff, Re-Issue (123). Corner creases, Fine appearance	115.00
120 ★	2c Brown, Re-Issue (124). Large part o. g., tiny thin, Fine appearance	(Photo) 160.00
121 ★	3c Blue, Re-Issue (125). Bright Color, fresh, traces of o. g., Fine, with P. F. Certificate	(Photo) 850.00
122 ★	6c Blue, Re-Issue (126). Nice Color, part o. g., Very Good	315.00
123 ★	10c Yellow, Re-Issue (127). Bright Color, Very Fine, with P. F. Certificate	(Photo) 335.00
124 ★	12c Green, Re-Issue (128). Deep Color, large part o. g., Very Good	(Photo) 400.00
125 ★	15c Brown & Blue, Re-Issue (129). Wonderful Deep Color, single partly blunted perf., otherwise Very Fine	(Photo) 475.00
126 ★	24c Green & Violet, Re-Issue (130). Deep Colors, large part o. g., Fine	(Photo) 385.00
127 ★	24c Green & Violet, Re-Issue (130). Pretty Colors, small part o. g., single nibbed perf., otherwise Fine	(Photo) 385.00
128 ★	30c Blue & Carmine, Re-Issue (131). Bright Colors, Fine	(Photo) 575.00
129 ★	90c Carmine & Black, Re-Issue (132). Bright Colors, tiny thin, separated by scissors partly blunting several perf. tips, Fine appearance	(Photo) 950.00
130 ★	1c Buff, Re-Issue (133). Reperfed at B., Fine appearance	95.00

NATIONAL BANK NOTE CO. ISSUE

131	6c Carmine, Grill (137). Fine	47.50
132	7c Vermilion, Grill (138). Reperfed at R., Fine appearance	45.00
133	10c Brown, Grill (139). Blue cancel, light crease, Fine appearance	90.00



134

136

134	12c Dull Violet, Grill (140). Horiz. Pair, Well Centered, Target cancels, faint grill shows as few clear points on one, traces on other, Very Fine, with A.P. S. Certificate stating "passed on by Lester C. Brookman"	(Photo) 1,200.00
135	15c Orange, Grill (141). Neat ms. cancel, couple nibbed perfs., otherwise Fine	82.50
136 ★	30c Black, Grill (143). Lightly grilled, reperfed, Fine appearance, Scarce	(Photo) 775.00



64



66



67



68



70



75



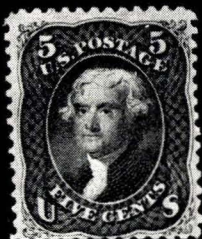
77



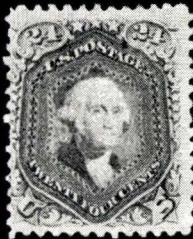
79



86



88



91



93



108



110



111



114



116



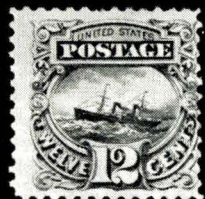
120



121



122



123



125



126



127



128



129

137	30c Black, Grill (143). Light cancel, tiny perf. tear, Fine appearance	190.00
138	90c Carmine, Grill (144). Small faults, Fine appearance	150.00
139 ★	24c Purple (153). Very Good	85.00
140 ★	24c Purple (153). Part o. g., few short perfs. & margin nicked, Very Good appearance	85.00
141 ★	90c Dark Carmine (155). Fresh, o. g., crease, Very Good appearance	270.00

CONTINENTAL BANK NOTE CO. ISSUES

142 ★	1c Ultramarine, 2c Brown (156, four, 157, two). Shades, some small flaws, mostly Fine	82.00
143 ★	2c Brown, Double Paper (157b). Part o. g., Very Good	70.00
144	3c Green (158). Remarkably clear Offset Impression on back of used stamp, Wonderful Freak	E. II
145 ★	3c Green, Double Paper (158c). Block, portion of backing torn away, Very Good	100.00
146 ★	6c Dull Pink, 10c Brown (159, 161). Corner creases, Fine appearance	87.00
147 ★	7c Vermilion (160). Fresh, o. g., reperfed at L., Fine appearance	80.00
148 ★	7c Vermilion (160). Small faults, Fine appearance	80.00
149 ★	12c Blackish Violet (162). Deep Color, few nibbed perfs., otherwise Fine (Photo)	125.00
150 ★	15c Yellow Orange (163). Part o. g., hinge thin, reperfed, Fine appearance	115.00
151 ★	15c Yellow Orange (163). Very Good	115.00
152 ★	30c Gray Black (165). Fine	(Photo) 110.00
153 ★	30c Greenish Black (165a). Very Good	110.00

SPECIAL PRINTING ON HARD PAPER



154

155

156

154 ★	2c Dark Brown, Special Printing (168). Rich Color, separated by scissors as usual, most perfs. intact, Fine, with P. F. Certificate	(Photo) 1,400.00
155 ★	7c Reddish Vermilion, Special Printing (171). Well Centered, Brilliant Color, a few short perfs as often otherwise Extremely Fine, with P. F. Certificate (Photo)	1,300.00
156 ★	24c Dull Purple, Special Printing (175). Rich Color, separated by scissors as usual, Very Fine, with P. F. Certificate	(Photo) 1,100.00
157 E	2c Vermilion, 5c Blue, on Experimental Horizontally Ribbed Paper (178E, 179E). Fresh, o. g., Very Good	E. III
158 ★	2c Vermilion (178). Reperfed B., Very Fine appearance	36.50

1879 AMERICAN BANK NOTE CO. ISSUE

159 ★	1c-3c 1879 Bank Notes (182-184). Fine-Very Fine	43.00
160 ★	10c Brown (187). Small thins, Fine appearance (Photo)	150.00
161 ★	10c Brown (188). Fine (Photo)	72.50
162 ★	10c Black Brown (188b). Wonderful Deep Color, tiny marginal thin, Fine appearance, Scarce (Photo)	225.00
163 ★	30c Greenish Black (190a). Small thins, Very Fine appearance (Photo)	92.50
164 ★	30c Full Black (190). Regummed over small flaws, Fine appearance	77.50
165 ★	90c Carmine (191). Deep Color, small marginal thin & couple nibbed perfs. at T., Very Fine appearance (Photo)	210.00

166

167

168



169

170

171

172

166 ★	90c Carmine, Imperforate (191b). Horiz. Pair, Large to Huge Margins, Wonderful Deep Color, fresh, part o. g., Extremely Fine & Rare (Photo)	1,250.00
-------	---	----------

SPECIAL PRINTING ON SOFT PAPER

167 ★	1c Dark Ultramarine, Special Printing (192). Deep Color, fresh, a Fine Example of this Rarity, with P. F. Certificate (Photo)	3,500.00
168 ★	7c Scarlet Vermillion, Special Printing (196). Bright Color, small thin at T., paper slightly toned, Fine appearance, with P. F. Certificate	(Photo) 1,600.00
169 ★	10c Deep Brown, Special Printing (197). Well Centered, Rich Color, light thinning, Extremely Fine appearance, a Most Attractive Example of this Rarity, with P. F. Certificate	(Photo) 3,250.00
170 ★	12c Blackish Purple, Special Printing (198). Centered U. L., paper lightly toned, a Presentable Example of this Rarity, with P. F. Certificate (Photo)	2,450.00
171 ★	24c Dark Violet, Special Printing (200). Well Centered, Deep Color, Fine, with P. F. Certificate	(Photo) 1,100.00
172 ★	5c Gray Brown, Special Printing (205c). Excellent Color, couple small thin spots, Fine appearance, a Most Attractive Example of this Great Rarity, with P. F. Certificate	(Photo) 8,000.00

1881-87 AMERICAN BANK CO. ISSUES

173 ★	1c-10c 1881-88 Bank Notes (205, 209, 211, 212, 214-216). Fresh, o. g. hinge remnants, Fine	89.00
174 ★	1c Gray Blue, Punched with Eight Small Holes in a Circle (206b). Fresh, o. g., Fine	(Photo) 60.00
175 ★	3c Blue Green, Punched with Eight Small Holes in Circle (207b). Fresh, o. g., Fine	(Photo) 80.00
176 ★	6c Rose, Brown Red (208, 208a). Fresh, o. g. small faults, Fine appearance	92.50
177 ★	1c-3c 1883-87 Bank Notes (210, eight, 212, 213, 214, three). Fresh, o. g., incl. pair & strip of four of #210, pair of #214, F-VF	63.85
178 ★	2c Pale Red Brown, Special Printing (211B). Mint, Fine, with P. F. Certificate	(Photo) 150.00
179 ★	30c Orange Brown (217). Fresh, o. g., single short perf., otherwise V. F.	47.50
180 ★	30c Orange Brown (217). Fresh, o. g., Fine	47.50
181 ★	90c Purple (218). Part o. g., reperfed at R., small faults, Fine appearance	135.00

1890 ISSUE

182 ★	1c Dull Blue, Imperforate (219c). Horiz. Pair, fresh, o. g., crease in one, other Very Fine	(Photo) 100.00
183 ★	2c Lake, Imperforate (219De). L. Arrow Block, crease in B. pair, otherwise Very Fine	50.00
184 ★	2c Carmine (220, 220a). Two Blocks, one normal, other with "Cap on left 2" fresh, o. g., Fine	25.50
185 ★	2c Carmine, Imperforate (220d). B. Imprint "K" Plate No. 56 Block of 16, some light staining, two with faults, otherwise Very Fine, Scarce	(Photo) —
186 ★	4c Dark Brown, Imperforate (222a). Horiz. Pair, fresh, o. g., thins in one, other Very Fine	(Photo) 135.00
187 ★	5c Chocolate, Imperforate (223a). Horiz. Pair, fresh, o. g., V. F.	(Photo) 130.00
188 ★	6c Brown Red, Imperforate (224a). Horiz. Pair, fresh, o. g., couple tiny thins or surface scuffs, Very Fine appearance	135.00
189 ★	10c Green, Imperforate (226a). Horiz. Pair, fresh, o. g., Very Fine	(Photo) 160.00
190 ★	15c Indigo, Imperforate (227a). Horiz. Pair, fresh, o. g., Very Fine	(Photo) 225.00
191 ★	30c Black, Imperforate (228a). Vert. Pair, fresh, o. g., Very Fine	(Photo) 400.00
192 ★	90c Orange (229). Fresh, o. g., hinge thin, Very Fine appearance	57.50

COLUMBIAN ISSUE

193 ★	1c-5c Columbian (230-234). Fresh o. g., Fine-Very Fine	44.25
194 ★	1c Columbian (230). T. Imprint "VV" Plate No. 197 Strip of Four, Mint, Very Fine	45.00
195 ★	2c Columbian (231). B. Imprint "SS" Plate No. Strip of Four, fresh, o. g., Fine-Very Fine	45.00
196 ★	2c Columbian (231). Block, all show "Broken Hat" variety, fresh, o. g., Fine-Very Fine	21.00
197 ★	3c Columbian (232). T. Imprint "L" Plate No. 57 Strip of Four, fresh, o. g., Fine	77.50
198 ★	4c Columbian (233). B. Imprint "D" Plate No. 20 Strip of Four, fresh, o. g., small thins, Very Fine appearance	100.00
199 ★	5c Columbian (234). T. Imprint "B" Plate No. 6 Strip of Four, fresh, o. g., narrow selvage, F.-V. F.	110.00
200 ★	6c Columbian (235). B. Imprint "Z" Plate No. 104 Strip of Four, fresh, o. g., thin in selvage of one, otherwise Fine	120.00



149



152



160



161



162



163



165



174



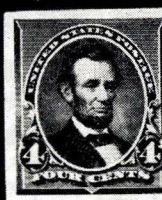
175



178



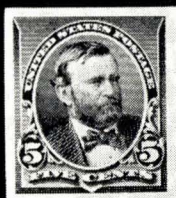
182



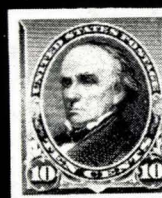
186



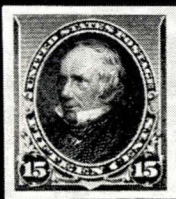
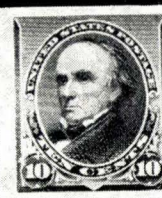
191



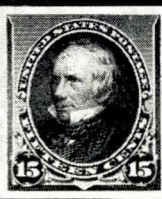
187



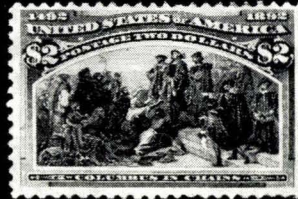
189



190



206



208



210



211



212



213



214

201 ★	8c Columbian (236). B. Imprint "II" Plate No. 132 Strip of Four, Mint, Very Fine (Photo)	110.00
202 ★	10c Columbian (237). B. Imprint "Y" Plate No. 102 Strip of Four, o. g., reinforced where separated, Very Good (Photo)	160.00
203 ★	15c-50c Columbian (238-240). Each reperfed, Very Fine appearance (Photo)	172.50
204 ★	30c Columbian (239). Well Centered, Large part o. g., reperfed at top and negligible corner perf. bend, V. F. appearance (Photo)	50.00
205 ★	30c Columbian (239). B. Imprint "N" Plate No. 59 Strip of Four, fresh, o. g., Fine (Photo)	375.00
206 ★	\$1.00 Columbian (241). Bright Color, fresh, o. g., small thin, Extremely Fine appearance (Photo)	240.00
207	\$1.00 Columbian (241). Used, Rich Color, thin spot, Fine appearance (Photo)	145.00
208 ★	\$2.00 Columbian (242). Deep Color, large part o. g., small thins, Very Fine appearance (Photo)	275.00
209	\$2.00 Columbian (242). Used, small thin spots, Fine appearance (Photo)	135.00
210 ★	\$3.00 Columbian (243). Deep Color, Fine (Photo)	400.00
211 ★	\$4.00 Columbian (244). Good Color, couple light corner creases, Very Fine appearance (Photo)	500.00
212 ★	\$4.00 Columbian (244). Small thin, Fine appearance (Photo)	500.00
213 ★	\$5.00 Columbian (245). Very Good (Photo)	550.00
214	\$5.00 Columbian (245). Light Cancel, perf barely in at top, tiny thin specks, Fine appearance (Photo)	350.00

1894 ISSUE

215 ★	3c Purple, Imperforate (253a). Horiz. Pair, part o. g., corner crease in one, couple light wrinkles, Very Fine appearance (Photo)	140.00
216 ★	4c Dark Brown, Imperforate (254a). Block, fresh, o. g. small thin in one, others Very Fine (Photo)	300.00
217 ★	10c Green, Imperforate (258a). Block, large part o. g., hinge thins, Very Fine appearance (Photo)	300.00
218 ★	50c Orange (260). Fresh, o. g., Fine (Photo)	35.00
219 ★	\$1.00 Black, Ty. I (261). Fresh, o. g., small faults, Very Fine appearance (Photo)	120.00
220 ★	\$1.00 Black, Ty. II (261A). Fresh, o. g., Very Good (Photo)	180.00
221 ★	\$2.00 Bright Blue (262a). Mint, Fine (Photo)	175.00
222 ★	\$5.00 Dark Green (263). Reperfed at L., regummed over thin, Fine appearance (Photo)	400.00

1895 ISSUE

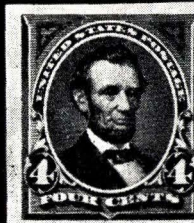
223 ★	1c Blue, Imperforate (264c). Horiz. Sheet Corner Pair, part o. g., Very Fine (Photo)	100.00
224 ★	1c Blue, Imperforate (264c). Horiz. Pair, fresh, o. g., thinned at T., Very Fine appearance (Photo)	100.00
225 ★	2c Carmine, Ty. III, Imperforate (267a). Horiz. Pair, fresh, o. g., tiny thin & gum crease, Very Fine appearance (Photo)	85.00
226 ★	3c Purple, Imperforate (268a). Horiz. Pair, fresh, o. g., vert. crease in margin between stamps, otherwise Very Fine (Photo)	145.00
227 ★	3c Purple, Imperforate (268a). Horiz. Pair, couple small closed tears. Very Fine appearance (Photo)	145.00
228 ★	4c Dark Brown, Imperforate (269a). Horiz. Pair, fresh, o. g., Very Fine (Photo)	145.00



221



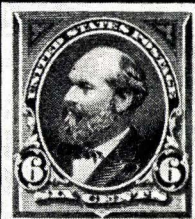
226



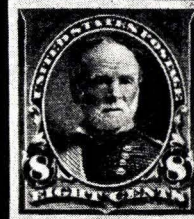
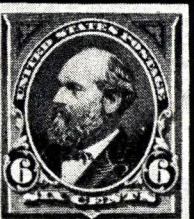
228



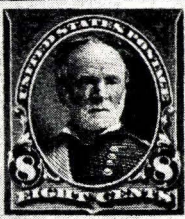
222



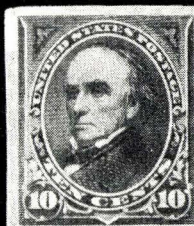
230



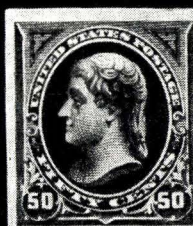
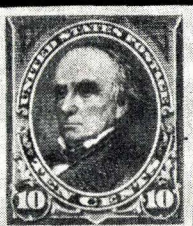
232



231



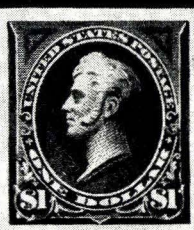
233



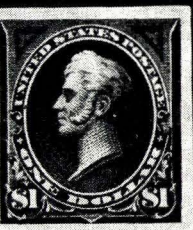
234



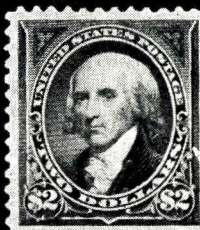
235



236



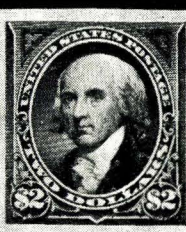
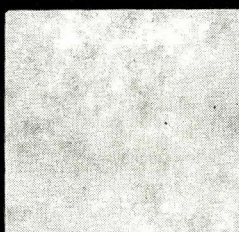
237



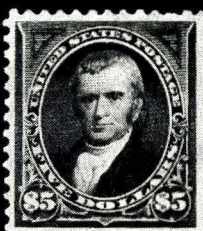
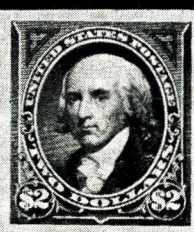
238



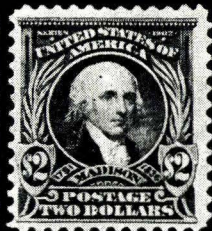
239



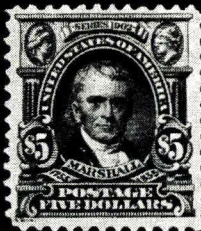
240



256



267



268

229 ★	5c Chocolate, Imperforate (270b). Horiz. Pair, fresh, o. g., small scissors cut in margin between stamps, otherwise Very Fine	145.00
230 ★	6c Dull Brown, Imperforate (271b). Horiz. Pair, fresh, o. g., Very Fine (Photo)	150.00
231 ★	6c Dull Brown, Wmkd. "USIR" (271a). Bold Registry pmk., clear "I" wmk., Very Fine, Scarce	100.00
232 ★	8c Violet Brown, Imperforate (272b). Horiz. Pair, fresh, o. g., tiny thins, Very Fine appearance	180.00
233 ★	10c Dark Green, Imperforate (273a). Horiz. Pair, fresh, o. g., small thins, Very Fine appearance	150.00
234 ★	50c Red Orange, Imperforate (275a). Horiz. Pair, fresh, large part o. g., small repair in T. margin, Very Fine appearance	625.00
235 ★	\$1.00 Black, Ty. I (276). Fine	100.00
236 ★	\$1.00 Black, Ty. I, Imperforate (276b). Horiz. Pair, fresh, large part o. g., tiny thin in one, other Very Fine	650.00
237 ★	\$1.00 Black, Ty. II (276A). Large part o. g., single perf. added at B., Very Fine appearance	210.00
238 ★	\$2.00 Dark Blue (277). Small thin, Fine appearance	125.00
239	\$2.00 Dark Blue (277). Neat cancel, Fine	85.00
240 ★	\$2.00 Dark Blue, Imperforate (277b). Horiz. Pair, with Full Sheet Margin at L., fresh, o. g. L. stamp thin, other Very Fine	850.00
241 ★	\$5.00 Dark Green (278). Reperfed at T., Very Fine appearance (Photo)	290.00
242	\$5.00 Dark Green (278). Small faults, Fine appearance	80.00
243 ★	2c Orange Red, Booklet Pane (279 Bed). Fresh, o. g., Fine-Very Fine	35.00

TRANS - MISSISSIPPI ISSUE

244 ★	1c-10c Trans-Mississippi (285-290). With Plate Nos. or Imprint, fresh, o. g., 1c & 2c small faults, perfs. just touch 10c, others F.-V.F.	120.00
245 ★	1c, 2c Trans-Mississippi (285, 286). T. Imprint Plate No. Pairs, Mint, Fine	33.00
246 ★	4c Trans-Mississippi (287). T. Imprint Plate No. 634 Pair, Mint, Very Good	60.00
247 ★	5c Trans-Mississippi (288). B. Imprint Plate No. 618 Pair, Mint, Fine	60.00
248 ★	8c Trans-Mississippi (289). T. Imprint Plate No. 609 Pair, o. g., Very Good	85.00
249 ★	10c Trans-Mississippi (290). T. Imprint Plate No. 617 Pair, Mint, Fine-Very Fine	115.00
250 ★	50c Trans-Mississippi (291). Fresh, o. g., Fine	140.00
251 ★	50c Trans-Mississippi (291). B. Imprint Plate No. 603 Pair, fresh, o. g., Very Fine	500.00
252 ★	\$1.00 Trans-Mississippi (292). Large part o. g., slight hinge thin, Fine appearance	315.00
253 ★	\$1.00 Trans-Mississippi (292). T. Imprint Plate No. 606 Pair, Mint, Fine-Very Fine	1,000.00
254	\$1.00 Trans-Mississippi (292). Used, tiny thin speck, Fine appearance	185.00
255 ★	\$2.00 Trans-Mississippi (293). Fresh, o. g., reperfed, hinge thins, Fine appearance	425.00
256 ★	\$2.00 Trans-Mississippi (293). B. Imprint Plate No. 613 Pair, fresh, o. g., thinned, Fine appearance	1,500.00
257	\$2.00 Trans-Mississippi (293). Used, sealed tear in U.L. corner, Fine appearance	225.00

LOTS ON VIEW FROM MAY 7th

OFFICES OPEN SATURDAY BEFORE SALE



249



250



251



252



253



255



256

PAN - AMERICAN ISSUE



258

260

- 258 ★ 1c Pan-American, Center Inverted (294a). Small thin, a Fine appearing Example of this Popular Rarity (Photo) 3,500.00



- 259 ★ 2c Pan-American, Center Inverted (295a). Nicely Centered, Very Fine, a Most Handsome Example of this Great Rarity, with P. F. Certificate (Photo) 16,500.00
- 260 ★ 4c Pan-American, Center Inverted (296a). Small closed tear & tiny thin, still an Attractive Example of this Rarity, with P. F. Certificate (Photo) 5,250.00
- 261 ★ 1c-10c Pan American (294-299). Incl. two shades of 2c, Fine-Very Fine Set 103.00
- 262 ★ 1c Pan-American (294). B. Arrow, Imprint, Plate Nos. 1112, 1156 Block of 20, Mint, perfs barely in on a few, V.G.-V.F. 241.00
- 263 ★ 2c Pan-American (295). B. Arrow, Imprint, Plate Nos. 1114, 1187 Block of 20 (10x2), Mint, Fine 246.00
- 264 ★ 5c Pan-American (297). B. Imprint Double Plate No. Strip of Four with half arrow, crease in one, couple hinge remnants, others F.-V.F. (Photo) 108.00

1902 - 03 ISSUE

- 265 ★ 1c-50c 1902 Issue (300-310). Most with hinge remnants or thins, F.-V.F. appearance 127.85
- 266 ★ \$1.00 Black (311). Faults, Fine appearance 110.00
- 267 ★ \$2.00 Dark Blue (312). Fine (Photo) 165.00
- 268 ★ \$5.00 Dark Green (313). Fine (Photo) 335.00
- 269 ★ 1c Blue Green, Booklet Pane (300b). Some minor gum toning, otherwise Fine 37.50
- 270 ★ 2c Carmine, Booklet Pane (301c). With Guide Line (E), Fine-Very Fine 32.50
- 271 ★ 5c Blue, Imperforate (315). Mint, with Sheet Margin at B., slightly toned, otherwise Very Fine 150.00
- 272 ★ 5c Blue, Imperforate (315). Mint Block, Very Fine (Photo) 600.00
- 273 ★ 5c Blue, Coil (317). Pair, perforations between partially strengthened, otherwise Fine-Very Fine, with P. F. Certificate (Photo) 1,200.00



AMERICAN BANK NOTE COMPANY.

K

No. 5 6

185



I I

AMERICAN BANK NOTE COMPANY.

No. 13 2

201



No. 5 9

AMERICAN BANK NOTE COMPANY.

N

205



1140

1141

264



272



No. 477

306

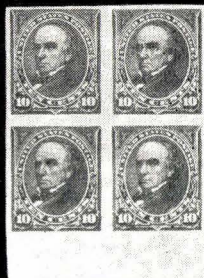


5394

315



216



217



223



3556

288



6313

325



6147

321



278

273

- 274 ★ 1c Blue, Coil, (318). Pair, Fine-Very Fine, with P. F. Certificate (Photo) 1,100.00
- 275 ★ 2c 1903 Issue (319, 319a, 319b, 319c, 319f). Seven Blocks, Study of Shades, incl. Carmine Die II, few heavy hinges or thins, otherwise F.-V. F. 35.80+
- 276 ★ 2c Lake, Die II, Booklet Pane (319hf). Mint, Fine-Very Fine 45.00
- 277 ★ 2c Carmine, Lake, Scarlet, Imperforates (320, 320a, 320b). Blocks, incl. two of last, Very Fine 126.00
- 278 ★ 2c Carmine, Coil (322). Pair, small thin spot in one, other Very Fine, with A. P. S. & P. F. Certificate (Photo) 1,100.00

LOUISIANA PURCHASE, JAMESTOWN ISSUES

- 279 ★ 1c-10c Louisiana Purchase (323-327). All but 5c hinge thins or other faults, F.-V. F. appearance 120.75
- 280 ★ 1c Louisiana Purchase (323). Cpl. Sheet of 50, small separation at str. edge, Fine Sheet 553.50



- 281 ★ 2c Louisiana Purchase, Imperforate Horizontally (324a). R. Sheet Margin Pair, a Fine & Wonderful Example of this Rare Error (Photo) 2,650.00

282	★	2c Louisiana Purchase (324). T. Imprint Plate No. 2082 Block of Six, V. G.—Fine	113.00
283	★	3c Louisiana Purchase (325). Cpl. Sheet of 50, Mint, F.—V. F.	1,322.50
284	★	5c Louisiana Purchase (326). T. Imprint Plate No. 2098 Pair, Mint, F.—V. F.	85.00
285	★	10c Louisiana Purchase (327). B. Imprint Plate No. 2106 Pair, Mint, Fine (Photo)	200.00
286	★	1c Jamestown (328). T. Imprint Plate No. 3546 Block of Ten, V. G.—Fine	108.50
287	★	5c Jamestown (330). Very Fine	(Photo) 32.50
288	★	5c Jamestown (330). T. Plate No. 3556 Block of Six, Fine—Very Fine (Photo)	675.00

1908-09 ISSUE

289	★	50c Violet (341). Fine	47.50
290	★	\$1.00 Violet Brown (342). Reperfed at R., Fine appearance	85.00
291	★	1c-5c 1908 Imperforates (343-347). Blocks, natural gum crease affects two in 5c block, otherwise Very Fine Set	120.90
292	★	1c-5c 1908 Coils (348-351). Pairs, 4c with Guide Line, V. G.—Fine	106.75
293	★	1c-5c 1909 Coils (352-355). Pairs, 1c with Guide Line, hinge remnants, Very Good—Fine	111.00
294	★	2c Carmine, Coil (353). Strip of Six, pulled perf. on one, V. G.—Fine	42.00
295	★	10c Yellow, Coil (356). Pair, Fine, with P. F. Certificate	(Photo) 650.00

BLUISH PAPERS

296	★	1c Green, 2c Carmine, Bluish (357, 358). Mint, 2c reperfed at R., other Fine	33.50
-----	---	--	-------



297

299

300

302

297	★	3c Deep Violet, Bluish (359). Fine.	(Photo) 415.00
-----	---	--	----------------



298	★	4c Orange Brown, Bluish (360). Fine, Handsome Example of this Rarity, with P. F. Certificate	(Photo) 5,000.00
299	★	5c Blue, Bluish (361). Reperfed at R., Fine appearance, a Most Presentable Example of this Rarity	(Photo) 1,400.00
300	★	6c Red Orange, Bluish (362). Mint, Fine	(Photo) 325.00



- 301 ★ 8c Olive Green, Bluish (363). Reperfed at B., Fine appearance, Attractive Example of this Rarity, with P. F. Certificate (Photo) 5,000.00
- 302 ★ 10c Yellow, Bluish (365). Tiny natural paper inclusion, otherwise Fine (Photo) 350.00



- 303 ★ 13c Blue Green, Bluish (365). Mint, reperfed at R., Fine appearance, with copy of P. F. Certificate (Photo) 725.00
- 304 ★ 15c Pale Ultramarine, Bluish (366). Mint, tiny natural paper inclusion, otherwise Very Fine (Photo) 315.00
- 305 ★ 15c Pale Ultramarine, Bluish (366). Mint Block, Fine-Very Fine (Photo) 1,500.00

1909 COMMEMORATIVE ISSUES

- 306 ★ 2c Lincoln (367). T. Star Imprint Plate No. 4977 Block of Six, narrow selvedge, Fine-Very Fine (Photo) 75.00
- 307 ★ 2c Lincoln (367). T. Star Imprint Plate No. 4984 Block of Six, narrow selvedge, Very Good-Fine 75.00
- 308 ★ 2c 1909 Imperforate Commemoratives (368, 371, 373). Horiz. Pairs, V. F. 70.00
- 309 ★ 2c Lincoln, Imperforate (368). Block, Very Fine 38.00
- 310 ★ 2c Lincoln, Imperforate (368). R. Star Imprint Plate No. 4984 Block of Six, natural gum wrinkle in one, otherwise Very Fine 75.00

311	★	2c Lincoln, Bluish (369). Mint, Fine	55.00
312	★	2c Alaska-Yukon (370). T. Plate No. 5208 Block of Six, V. G.—Fine	90.00
313	★	2c Alaska-Yukon, Imperforate (371). Block, natural gum crease in two, otherwise Very Fine	53.00
314	★	2c Alaska-Yukon, Imperforate (371). R. Imprint Plate No. 5251 Block of Six, several natural gum wrinkles, otherwise Very Fine	75.00
315	★	2c Hudson-Fulton (372). L. Plate No. 5394 Block of Six, F.—V. F. (Photo)	75.00
316	★	2c Hudson-Fulton, Imperforate (373). Mint Block, Very Fine	49.00
317	★	2c Hudson-Fulton, Imperforate (373). R. Plate No. 5393 Block of Six, slight hinge thin, Very Fine appearance	75.00
318	★	1c-2c 1910 Coils (385-387, 390, 391). Strips of Four, #387 in Strip of Five, #386, #387, #390, #391 all with Guide Lines, few hinge remnants or thins, otherwise V. G.—Fine	129.75
319	★	2c Carmine, Coil (388). Pair, 3mm spacing, Very Fine	140.00
320	★	1c-5c 1910-13 Coils (392-396). Pairs, 1c & 5c with with Guide Lines, 2c with paste-Up, heavy hinges or thins, couple ink spots on one 2c, Fine—Very Fine appearance	95.50

PANAMA-PACIFIC ISSUES

321	★	1c Panama-Pacific (397). T. Plate No. 6147 Block of Six, Mint, Very Fine (Photo)	90.00
322	★	1c Panama-Pacific (397). B. Plate No. 6132 Block of Six, Very Fine	90.00
323	★	1c-5c Panama-Pacific (397-399, 402). Fine—Very Fine	50.70
324	★	1c-10c Panama-Pacific (397-400). Fine	65.70
325	★	2c Panama-Pacific (398). B. Plate No. 6313 Block of Six, Mint, F.—V. F. (Photo)	92.50



326

327

326	★	5c Panama-Pacific (399). R. Plate No. 6134 Block of Six, Mint, Very Fine (Photo)	375.00
327	★	10c Orange Yellow, Panama-Pacific (400). L. Plate No. 6139 Block of Six, Fine—Very Fine	525.00
328	★	10c Orange, Panama-Pacific (400A). Natural gum wrinkle, otherwise Very Fine	67.50
329	★	1c Panama-Pacific, Perf. 10 (401). L. Plate No. 6549 Block of Six, Mint, Fine—Very Fine	125.00

- 330 ★ 2c Panama-Pacific, Perf. 10 (402). T. Plate No. 7035 Block of Six, Mint, Fine (Photo) 350.00
- 331 ★ 5c Panama-Pacific, Perf. 10 (403). Hinge thin, Very Fine appearance 58.50



- 332 ★ 5c Panama-Pacific, Perf. 10 (403). L. Plate No. 6133 Block of Six, Fine-Very Fine (Photo) 600.00
- 333 ★ 10c Orange, Panama-Pacific, Perf. 10 (404). Perfs. just clear at T., Fine (Photo) 250.00

1912 - 15 ISSUES

- 334 ★ 7c Black (407). T. Sheet Margin Block with Plate No. 67.50
- 335 ★ 1c Green, 2c Carmine, Coils (404-413). Guide Line Pairs, F.-V. F. 36.00
- 336 ★ 8c-30c 1912 Issue (414-420). Fine-Very Fine 73.25
- 337 ★ 50c Violet (421). Gum disturbed, otherwise Very Fine 90.00
- 338 ★ 50c Violet (422). Hinge thin, Fine appearance 47.50
- 339 ★ \$1.00 Violet Brown (423). Gum disturbed, otherwise Fine 100.00
- 340 ★ 1c-30c 1914 Issue (424-439). Fine-Very Fine 155.45
- 341 ★ 1c-12c 1914 Issue (424-429, 431, 435). Fine 32.95
- 342 ★ 1c Green, Perf. 12X10 (424a). Slight thin, Fine appearance, Scarce (Photo) 175.00
- 343 ★ 1c Green, 2c Rose Red (424, 425). R. Imprint "Coil Stamps" Blocks of 10, small faults, V. G.-Fine appearance 70.00
- 344 ★ 1c Green, Booklet Pane (424d). Two Cpl. Unexploded Booklets, each containing 16 panes, mixed centering, mostly Fine 32.00+
- 345 ★ 2c Rose Red (425). L. Imprint "Coil Stamps" Plate No. 6568 Block of 12, Fine 35.80
- 346 ★ 50c Violet (440). Fine (Photo) 140.00
- 347 ★ 50c Violet (440). Fine (Photo) 140.00
- 348 ★ 1c-5c 1914 Coils (441-444, 447). Guide Line Pairs, Fine-Very Fine 49.75
- 349 ★ 3c Violet, Coil (445). Pair, Fine 115.00
- 350 ★ 4c Brown, Coil (446). Pair, Fine 52.50



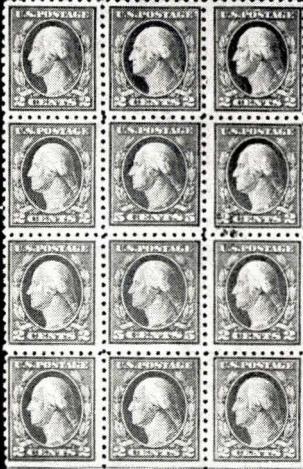
329



330



369



359



399



379



381



390



395



403



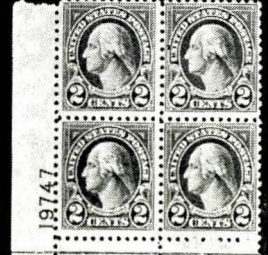
374



401



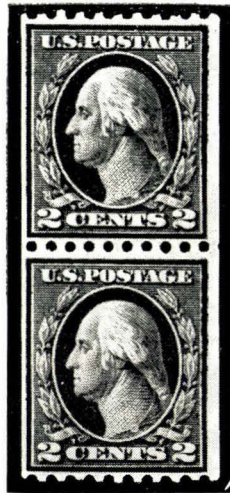
409



424



372



- 351 ★ 2c Red, Coil, Ty. I (449). Pair, Fine-Very Fine, signed "Geo. B. Sloane," with P. F. Certificate (Photo) 800.00
- 352 ★ 2c Red, Coil, Ty. I (453). Joint Line Pair, Fine (Photo) 47.50
- 353 ★ 2c Carmine, Coil, Ty. II (454). Mint Pair, Fine 65.00
- 354 ★ 2c Carmine, Imperforate Coil (459). Mint, Very Fine 70.00
- 355 ★ 2c Carmine, Imperforate Coil (459). Mint Pair, Fine-Very Fine (Photo) 140.00
- 356 ★ \$1.00 Violet Black (460). Fine (Photo) 155.00

1916 - 20 ISSUES

- 357 ★ 1c-15c 1916 Issue (462-466, 468-475). Fine-Very Fine 144.20
- 358 ★ 1c-20c 1916 Issue (462-466, 468, 470-473, 475-476). 3c creased, 20c thin, others mostly Fine 138.65
- 359 ★ 5c Carmine, Error (467). Block of Twelve, Two Middle Stamps the Errors, Fine-Very Fine (Photo) 400.00
- 360 ★ \$1.00 Violet Black (478). Fine (Photo) 150.00
- 361 ★ \$2.00 Dark Blue (479). Hinge thin, Very Fine appearance 55.00
- 362 ★ \$2.00 Dark Blue (479). Faint corner crease, Fine appearance 55.00
- 363 ★ \$5.00 Light Green (480). Very Fine 52.50
- 364 ★ \$5.00 Light Green (480). Fine 52.50
- 365 ★ 1c-3c 1916-17 Imperforates (481, 482, 483, 484). Blocks, 1c & 2c in blocks of six, Very Fine 32.75
- 366 ★ 5c Carmine, Error, Imperforate (485). Block of Nine, Middle Stamp the Error, Mint, Huge Margins, Extremely Fine (Photo) 3,250.00



- 367 ★ 2c Carmine, Coil, Ty. II (491). Joint Line Pair, Extremely Fine, a Great Rarity, with P. F. Certificate (Photo) 1,250.00



285



287



295

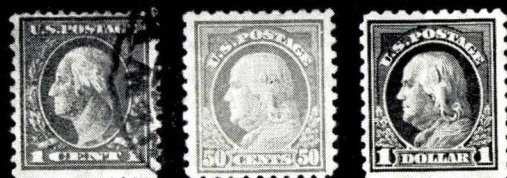


319



334

346



342

347

356



355

373



384



402



378



380



406



408



423



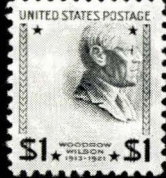
425



433



445



446



422



444

368	★	1c—\$1.00 1917 Issue (498—499, 501—504, 506—518). Study of Shades, 45 stamps, mostly two or three shades of each, nearly all F.—V. F.	131.31
369	★田	1c Green, Imperforate Vertically Between (498b). Block, hinge thin in T. pair, other Pair, Fine (Photo)	120.00
370	★	1c Green, Deep Green, 2c Rose, Carmine, Booklet Panes (498e, 499e, 552a, 554c). Seven Cpl. Unexploded Combination Booklets, incl. three booklets containing 12 panes of #498e & #499e, four booklets containing 16 panes of 552a & 554c, Fine—Very Fine	30.80
371	★	1c Green, "A. E. F." Booklet Pane of 30 (498f). Fine—Very Fine	100.00
372	★	2c Rose, "A. E. F." Booklet Pane of 30 (499f). With Original Booklet Covers, Fine—Very Fine, with P. F. Certificate, Rare (Photo)	1,100.00
373	★	2c Rose, Ty. Ia (500). Mint, Fine (Photo)	60.00
374	★田	2c Deep Rose, Ty. Ia (500). T. Plate No. F10208 Block of Six, Mint, Fine (Photo)	400.00
375	★	3c Violet, Ty. I, II, Booklet Panes (501b, 502b). Two Cpl. Unexploded Booklets each containing two panes, Fine—Very Fine	24.00
376	★田	5c Rose, Error (505). Single Error in Block of Six, Fine	110.00+
377	★	\$1.00 Deep Brown (518b). Slight hinge thin, Fine appearance	85.00
378	★	\$2.00 Orange Red & Black (523). Tiny natural paper inclusion, otherwise Fine (Photo)	115.00
379	★田	\$2.00 Orange Red & Black (523). Center Line Block, Fine—Very Fine (Photo)	490.00
380	★	\$5.00 Deep Green & Black (524). Very Fine (Photo)	50.00
381	★田	\$5.00 Deep Green & Black (524). Center Line Block, Mint, Fine—Very Fine (Photo)	230.00
382	★田	1c—3c Offsets, Double Impressions (525d, 528c, 530a). Blocks, couple pulled perms. on 1c, two 2c stamp s. e., otherwise V. G.—Fine	118.00
383	★田	2c Carmine, Offsets, Ty. IV, VI, VII (526, 528A, 528B). T. Plate No. Blocks of Six, Fine—Very Fine	56.00
384	★	3c Violet, Offset, Ty. III, Printed on Both Sides (529b). With Sheet Margin at T., showing Plate No. One Entire Stamp & part of another printed on gummed side, Very Fine & Rare (Photo)	350.00
385	★田	3c Violet, Ty. III, Purple, Ty. IV (529, 530). Study of Shades, 27 Blocks, Fine—Very Fine	35.40
386	★田	1c—3c Offset, Imperforates (531, 532, 534, 534A, 535). Blocks, hinge remnants, couple thins, otherwise Very Fine	104.00
387	★田	2c Carmine, Offset Imperforate, Ty. V (533). L. L. Sheet Corner Block, Very Fine	80.00

LOTS ON VIEW FROM MAY 7th

OFFICES OPEN SATURDAY BEFORE SALE



- 388 ★ 2c Carmine, Offset, Imperforate, Ty. VII (534B). T. Sheet Margin Block with Plate No. 12809, Huge Margins showing parts of eight adjoining stamps, Extremely Fine, Ex-Simon (Photo) 2,400.00
- 389 ★ 3c Victory (537). T. Plate No. F9414 Block of Six, V. G.-Fine 82.50
- 390 ★ 3c Red Violet, Victory (537a). Block, Fine-Very Fine, with P. F. Certificate (Photo) 200.00
- 391 ★ 1c-3c 1919 Issue (538, 539, 541). Blocks, two shades of each, V. G.-Fine 95.50



392

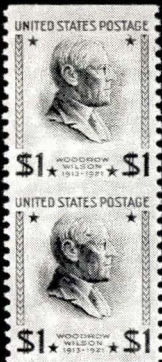
393

- 392 ★ 2c Carmine Rose, Ty. II (539). Fine, Scarce, with P. F. Certificate (Photo) 600.00
- 393 1c Green (544). Neat machine cancel, an Attractive Example of this Scarce Stamp, with P. F. Certificate (Photo) 675.00
- 394 ★ \$2.00 Carmine & Black (547). Very Fine 38.50
- 395 ★ \$2.00 Carmine & Black (547). Center Line Block, Very Fine (Photo) 170.00
- 396 ★ 1c Green, 2c Carmine Rose (548, 549). Very Fine 32.50

397	★	1c, 2c Pilgrim (548, 549). T. Plate No. Blocks of Six, Fine-Very Fine	96.00
398	★	2c Pilgrim (549). L. Plate No. 12472 Block of Six, Fine-Very Fine	57.50
399	★	5c Pilgrim (550). R. Plate No. 12426 Block of Six, Fine-Very Fine (Photo)	300.00

1922 ISSUE TO DATE

400	★	½c-\$5.00 1922 Issue (551-573). Fine-Very Fine Set	120.71
401	★	2c Carmine, Imperforate Vertically (554a). Block, Fine	(Photo) 150.00
402	★	10c Orange, Imperforate Horizontally (562a). Vert. Pair, kraft paper affixed to stamp at B. mending tear, small thin in one, Scarce	(Photo) 350.00
403	★	\$5.00 Carmine Lake & Dark Blue (573a). Center Line Block, Mint, couple light natural gum wrinkles, Fine-Very Fine	(Photo) 155.00
404	★	1c Green, 2c Carmine (578, 579). Blocks, V. G.-Fine	83.50
405	★	2c Carmine, Booklet Pane (583a). Cpl. Unexploded Booklet containing six panes, Fine	48.00+
406	★	2c Carmine (595). Very Fine	(Photo) 27.50
407	★	2c Carmine (595). Block, closed tear in B. Pair, others Fine	115.00
408	★	2c Carmine, Coil, Ty. I, II (599, 599A). Combination Joint Line Strip of Four, Mint, Pair at L. is Ty. II, Pair at R. Ty. I, Fine	(Photo) 310.00+
409	★	2c Harding, Perf. 10 (612). U. R. Plate No. 14867 Block, crease in selvedge, otherwise F.-V. F.	(Photo) 130.00
410	★	1c, 2c Huguenot-Walloon (614, 615). L. or B. Plate No. Blocks of Six, Fine-Very Fine	51.50
411	★	5c Huguenot-Walloon (616). L. Plate No. 15754 Block of Six, Very Fine	(Photo) 125.00
412	★	5c Huguenot-Walloon (616). T. Half Arrow Plate No. F. 15754 Block of Ten, minor hinge reinforcements in extreme selvage, otherwise Mint, Very Fine	205.00
413	★	1c-5c Lexington-Concord (617-619). L. or R. Plate No. Blocks of Six, Fine-Very Fine Set	142.50
414	★	2c Norse-American (620). T. Arrow Double Plate No. Block of 12, Fine-Very Fine	109.40
415	★	2c, 5c Norse-American (620, 621). Center Line Blocks, Fine-Very Fine Set	57.00
416	★	5c Norse-American (621). T. Arrow Double Plate No. Block of Eight, Very Fine, Choice	(Photo) 325.00
417	★	5c Ericsson (628). L. Plate No. 18609 Block of Six, F.-V. F.	50.00
418	★	2c White Plains Souvenir Sheet (630). Mint, F.-V. F.	120.00
419	★	2c White Plains Souvenir Sheet (630). Dot over "S" Variety, left Sheet margin slightly trimmed, otherwise F.-V. F.	130.00
420	★	2c White Plains Souvenir Sheet (630). Dot over "S" of "States" variety, Fine	130.00
421	★	2c White Plains Souvenir Sheet (630). V. G.-Fine	120.00
422	★	1c Green, Vertical Pair, Imperforate Between (632b). Fine, Scarce (Photo)	100.00
423	★	2c Carmine, Ty. II, Pair with Full Horizontal Gutter Between (634A var.). Mint, Fine & Rare	(Photo) 500.00
424	★	2c Carmine, Ty. II (634A). L. L. Plate No. 19747 Blocks, Mint, Fine (Photo)	525.00
425	★	7c Black, Vert. Pair, Imperforate Between (639a). With Sheet Margin at L., Very Fine	(Photo) 100.00
426	★	2c Molly Pitcher, Wide Spacing (646 var.). Vert. Pair, Mint, F.-V. F.	27.50
427	★	2c, 5c Hawaii (647, 648). Plate No. Blocks, V. G.-Fine Set	162.50
428	★	2c, 5c Aeronautics (649, 650). L. & B. Plate No. Blocks of Six, F.-V. F. Set	37.25
429	★	1c-10c Kans.-Nebr. Overprints (658-679). Fine-Very Fine Sets	139.65
430	★	1c Kans. Overprint, Wide Spacing (658 var.). Vert. Margin Block of Eight showing two panes with wide spacing, Mint, Very Fine	80.00+
431	★	2c Kans. Overprint, Wide Spacing (660 var.). Vert. Block of Eight showing two pairs with wide spacing	(Photo) 120.00+



449



457



458



464



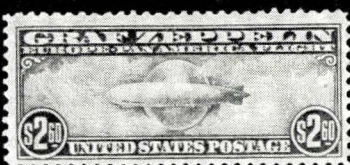
465



466



467



490



460



488



498



519



524



522



526



548



549



550



554



556



560

- 432 ★ ½c-10c Washington Bicentennial (704-715). Plate No. Blocks, 6c without portion selvedge, otherwise mostly F.-V. F. Set 152.20
- 433 ★ 3c Deep Violet, Vertical Pair, Imperforate Between (720c). Fine-Very Fine (Photo) 150.00



- 434 ★ 5c Kosciuszko, Imperforate Vertically (734a). B. Sheet Margin Block, Very Fine, a Rare Showpiece (Photo) 1,450.00
- 435 ★ 1c-10c Parks (740-749). T. or B. Plate No. Blocks of Six, couple natural paper wrinkles, F.-V. F. Set 64.75
- 436 ★ 1c-3c Farleys (752, 753, 766-770). Center Line or Crossed Gutter Blocks, Very Fine 83.75
- 437 ★ 1c-16c Farley, Imperforate (754-765, 771). Center Line Blocks, Very Fine Set 124.00
- 438 ★ 1c-10c Farley Parks (754-765). Matched T. & B. Plate No. Blocks of Six, Very Fine Set 185.00
- 439 ★ 1c, 3c Farley Chicago Souvenir Sheets (766, 767). Cpl. Sheets of Nine Panes each, Very Fine 250.00
- 440 ★ 3c Farley Byrd Souvenir Sheet (768). Cpl. Sheet of 25 panes, Very Fine 187.00
- 441 ★ 1c-3c Farley Parks Souvenir Sheets (769, 770). Cpl. Sheets of 20 panes each, marginal tear in 3c sheet clear of design, Very Fine 340.00
- 442 ★ 16c Farley, Airpost, Special Delivery (771). Matched T. & B. Plate No. 21315 Blocks of Six, Very Fine 60.00
- 443 ★ ½c-\$5.00 Presidential (803-834). Study of Shades, most incl. \$5.00 represented by two shades, F.-V. F. 70.17
- 444 ★ 1½c Presidential, Horiz. Pair, Imperforate Between (805b). Mint, Very Fine (Photo) 150.00
- 445 ★ 1½c Presidential, Pair with Full Horizontal Gutter Between (805 var.). Mint, Fine & Scarce (Photo) 150.00
- 446 ★ \$1.00 Presidential (832). Mint, vignette shifted into frame, Very Fine Freak (Photo) E. III
- 447 ★ \$1.00 Presidential, Watermarked (832b). Mint, Fine 40.00
- 448 ★ \$1.00 Presidential, Wmk. (832b). Center Line Block, Very Fine (Photo) 150.00+
- 449 ★ \$1.00 Red Violet & Black, Presidential, Imperforate Horizontally (832d). Vert. Pair, Mint, Very Fine (Photo) 450.00
- 450 ★ \$1.00-\$5.00 Presidential (832-834). Center Line Blocks, Very Fine 131.00
- 451 ★ 1c-10c Famous Americans (859-893). Blocks, Very Fine Set 70.64



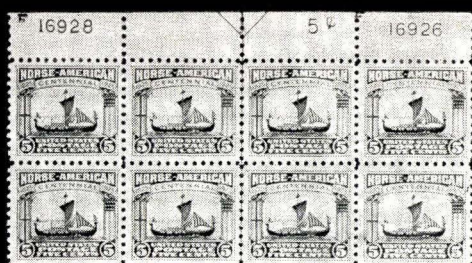
411



448



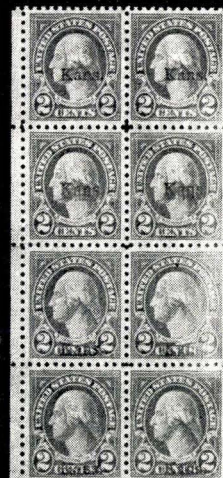
470



416



455



431



471



474



431



472



476



477



478

452	★	1c-10c Famous Americans (859-893). Plate No. Blocks, Fine-Very Fine Set	214.80
453	★	1c-3c Defense, Horiz. Pairs, Imperforate Between (899b, 900a, 901a). 1c perf. tear as often in sheet margin, others Very Fine	69.50
454	★	5c Overrun Countries (909-921). T. Sheet Margin Name Strips of Ten, Mint, Very Fine Set	41.82
455	★	\$5.00 Hamilton (1053). U. L. Plate No. 25367 Block, Mint, Very Fine (Photo)	90.00
456	★	1c-4½c 1954-59 Coils (1054, 1055-1059). Joint Line Strip of Five, each showing from 10-40% of Plate No., Very Fine Lot	E. III
457	★	3c Deep Violet, Imperforate Coil (1057a). Mint Pair, Extremely Fine (Photo)	550.00
458	★	4c Red Violet, Imperforate Coil (1058a). Joint Line Strip of Three, Mint, Extremely Fine (Photo)	195.00
459	★	8c Bolivar (1126). Block, Blue Wreaths almost entirely omitted, Very Fine Freak	E. III
460	★	4c Seato, Vert. Pair, Imperforate Between (1151a). Error Pair in Strip of Five, Mint, Very Fine (Photo of Error Pair Only)	200.00
461	★	5c Dark Blue Gray, Booklet Pane (1213a). Miscut pane showing virtually cpl. Plate No. 28214 in margin, Very Fine	E. II
462	★	5c Letter Carrier (1238). U. R. Plate No. Block, Wonderful Freak, showing light but distinct Doubling of Red & Gray Impressions, also two Red Plate Nos. 27611 and 27612, Mint, Very Fine	E. III
463	★	5c Florida, Yellow Omitted (1271a). Mint, with Sheet Margin at B., Extremely Fine	E. IV
464	★	5c Blue, Coil, Imperforate (1304b). Mint Pair, Extremely Fine (Photo)	375.00
465	★	6c Gray Brown, Coil, Imperforate (1305a). Mint Pair, Extremely Fine (Photo)	125.00
466	★	6c Walt Disney, Ocher Omitted (1355a). Mint, Very Fine (Photo)	E. X
467	★	6c Grandma Moses, Black & Prussian Blue Omitted (1370b). Mint, Extremely Fine, one the most spectacular modern errors (Photo)	E. XI

AIR POST ISSUES

468	★	6c-24c 1918 Airposts (C1-C3). Very Fine set	86.00
469	★	6c-24c 1918-23 Airposts (C1-C6). Very Fine Sets	158.50
470	★	6c Orange, Airpost (C1). Center Line Block, Very Fine (Photo)	100.00
471	★	6c Orange, Airpost (C1). T. Arrow Plate No. 9155 Block of Six, Mint, Fine-Very Fine (Photo)	425.00
472	★	6c Orange, Airpost (C1). T. Arrow Plate No. 9155 No. Block of Six, light crease in three, Very Fine appearance (Photo)	425.00
473	★	16c Green, Airpost (C2). Center Line Block, Very Fine (Photo)	155.00
474	★	16c Green, Airpost (C2). T. Arrow Plate No. 8900 Block of Eight, tiny natural paper inclusion in one, couple natural gum creases, otherwise Very Fine (Photo)	670.00
475	★	24c Carmine Rose & Blue, Airpost (C3). Center Line Block, Fine	130.00
476	★	24c Carmine Rose & Blue, Airpost (C3). T. Arrow Double Plate No. Block of 12, with Double "Top", couple natural gum skips, Fine-Very Fine (Photo)	675.00
477	★	8c Dark Green Airpost (C4). L. Plate No. 14824 Block of Six, Mint, Fine-Very Fine (Photo)	275.00
478	★	16c Dark Blue, Airpost (C5). L. Plate No. 14828 Block of Sixteen, Mint, Fine (Photo)	998.00
479	★	10c-20c Map, Airpost (C7-C9). T. Plate No. Blocks of Six, Very Fine Set	69.00
480	★	10c-20c Map, Airpost (C7-C9). T. or B. Plate No. Blocks of Six, one 15c stamp with gum crease, otherwise Very Fine Set	69.00
481	★	10c Lindbergh, Airpost (C10). B. Plate No. 19005 Block of Six, Very Fine (Photo)	67.50



481



486



494



500



597

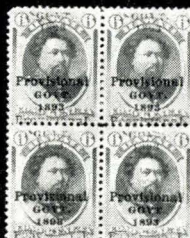


789



660

675



750



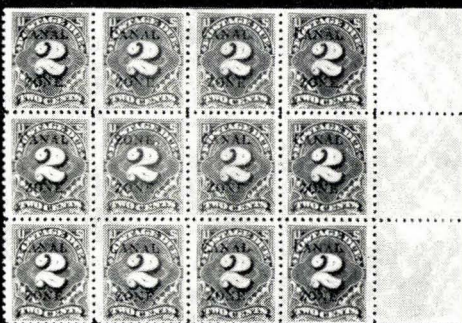
806



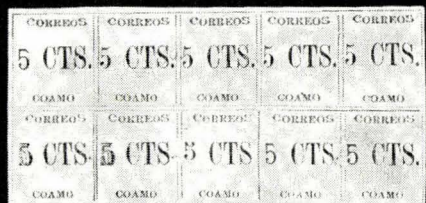
635



639



685



853



656



658

482	★	10c Lindbergh, Airpost, Booklet Pane (C10a). Cpl. Unexploded Booklet containing two panes, Very Fine	60.00
483	★	5c Carmine & Blue, Airpost (C11). T. Double Plate No. Block of Six, with Double "Top", Fine-Very Fine	35.00
484	★	5c Carmine & Blue, Airpost (C11). T. Double Plate No. Block of Six, with Double "Top", Fine-Very Fine	35.00
485	★	5c Carmine & Blue, Airpost (C11). T. Double Plate No. Block of Six, with Red "Top", Fine	20.00
486	★	5c Violet, Airpost (C12). B. Plate No. 20187 Block of Six, Mint, Very Fine (Photo)	100.00
487	★	65c Graf Zeppelin (C13). Very Fine	120.00
488	★	65c-\$2.60 Graf Zeppelin (C13-C15). Mint, \$1.30 natural gum wrinkle, Very Fine Set	600.00
489	★	65c-\$2.60 Graf Zeppelin (C13-C15). B. Plate No. Blocks of Six, Well Centered, few natural gum skips or wrinkles, Very Fine, Choice Set (Photo)	5,200.00
490	★	\$2.60 Graf Zeppelin (C15). Fine	300.00
491	★	5c-8c 1931-34 Airposts (C16, C17, C19). Plate No. Blocks, Fine-Very Fine	46.50
492	★	50c Chicago Zeppelin (C18). Very Fine	50.00
493	★	50c Chicago Zeppelin (C18). Pinpoint thin speck, Very Fine appearance	50.00
494	★	50c Chicago Zeppelin (C18). T. Plate No. 21178 Block of Six, Mint, Fine-Very Fine	450.00
495	★	20c-50c Trans-Pacific, Airposts (C20-C22). T. or B. Plate No. Blocks of Six, Mint, Very Fine Set	73.00
496	★	20c-50c Trans-Pacific, Airposts (C20-C22). T. or B. Plate No. Blocks of Six, natural narrow selvage, few natural gum bends, otherwise F.-V.F.	73.00
497	★	25c, 50c Trans-Pacific, Airposts (C20, C22). T. Plate No. Blocks of Six & Eight, latter with natural narrow selvage, Fine-Very Fine	51.20
498	★	6c Dark Blue & Carmine, Airpost, Imperforate Horizontally (C23a). Pair, Fine	150.00
499	★	6c Ultramarine & Carmine, Airpost, Error (C23c). With Plate No. at T., Fine, signed "Bruechig" & "Kessler"	75.00
500	★	6c Ultramarine & Carmine, Airpost, Error (C23c). T. Double Plate No. Block, Mint, Very Fine	400.00+
501	✉	6c Ultramarine & Carmine, Airpost, Error (C23c). Tied on Cacheted Flight cover, small tear at bot., V.F. appearance Scarce	75.00
502	★	30c Trans-Atlantic, Airpost (C24). T. Plate No. 22382 Block of Six, Mint, few light natural gum bends, Very Fine	75.00
503	★	30c Trans-Atlantic, Airpost (C24). T. Plate No. 22381 Block of Six, Mint, light wrinkle in two, otherwise Fine-Very Fine	75.00
504	★	6c-50c 1941 Airposts (C25-C31). Plate No. Blocks, Mint, Very Fine Set	62.75



- 505 ★ 15c Bright Blue Green, Airpost, Horizontal Pair, Imperf. Between (C35a). Mint, Very Fine, a Most Attractive Example of this Rarity, Ex-Matthews
- (Photo) 1,375.00

506 ★	6c Carmine, Airpost, Booklet Panes (C39a). Ten Unexploded Booklets each containing two panes, F.-V. F.	35.00
507 ★	80c Hawaii (C46). Three Plate No. Blocks, U. L., U. R., & L. L., Very Fine	60.00
508 ★	7c Blue, Airpost, Booklet Panes (C51a). 15 Mint Panes, F.-V. F.	45.00
509 ★	7c Blue, Carmine, Airpost, Booklet Panes (C51a, C60a). Mint, Very Fine	18.00
510 ★	7c Blue, Carmine, Airpost, Booklet Panes (C51a, C60a). Mint, Very Fine	18.00
511 ★	7c Blue, Carmine, Airpost, Booklet Panes (C51a, C60a). Mint, Very Fine	18.00
512 ★	7c Carmine, Airpost, Booklet Panes (C60a). Two Unexploded Booklets containing two panes, Booklets printed in both Red & Blue, Very Fine	60.00
513 ★	7c Carmine, Airpost, Booklet Panes (C60a). 10 Mint Panes, F.-V. F.	150.00
514 ★	7c Carmine, Airpost, Booklet Panes (C60a). 10 Mint Panes, F.-V. F.	150.00
515 ★	7c Carmine, Airpost, Booklet Panes (C60a). 10 Mint Panes, F.-V. F.	150.00
516 ★	7c Carmine, Airpost, Booklet Panes (C60a). 11 Mint Panes, F.-V. F.	165.00
517 ★	8c, 10c Carmine, Airpost, Booklet Panes (C64b, C64c, C72b, C72c). Seventeen Unexploded Booklets containing 55 panes, interesting variety, incl. panes sizes, luminescent, experimental booklets, slogans, etc., Fine-Very Fine	69.00

SPECIAL DELIVERY, POSTAGE DUE, OFFICES IN CHINA

518 ★	10c Blue, Special Delivery (E2). Vert. Pair, fresh, o. g., F.-V. F.	65.00
519 ★	10c Blue, Spec. Delivery (E4). Fresh, Large part o. g., Fine (Photo)	85.00
520 ★	10c Pale Ultramarine, Spec. Delivery (E10). Few perf. tips tiny bit blunted, otherwise Very Fine	50.00
521 ★	10c Gray Violet, Special Delivery (E12). L. Plate No. 13917 Block of Six, Fine	50.00
522 ★	10c Gray Violet, Special Delivery, Horiz. Pair, Imperforate Between (E15c). Fine (Photo)	100.00
523 ★	50c Red Brown, Postage Due (J21). Fresh, Large part o. g., tiny tear, V. F. appearance	85.00
524 ★	50c Deep Claret, Postage Due (J50). Very Fine (Photo)	50.00
525 ★	3c Carmine Lake, Postage Due (J54). Fine	31.50
526 ★	1c Rose, Postage Due (J59). Fine, Scarce (Photo)	90.00
527 ★	2c-\$2.00, Offices in China (K1-K18). Fine-Very Fine Set	146.50

POSTAL STATIONERY

528	2c Red, Green, Centennial, Entires (U218-U219, U221). Unused, Very Fine	49.00
529	2c Red, Green, Centennial, Entires (U218-U219, U221). Unused, one has hinge remnants on flap, F.-V. F.	49.00
530	1c-10c Columbian Entires (U348-U351). Collection of 65 Unused Entires, incl. Variety of Sizes, Knives, Dies, also five with Specimen Opt., Nearly all Very Fine	44.65
531	5c Columbian, Slate Brown on White, Error, Entire (U350a). Unused, Size 7, Very Fine (Photo)	130.00
532	5c Columbian, Slate Brown on White, Error, Entire (U350a). Unused, Size 7, Very Fine	130.00
533	1c-5c Washington Bicentennial, Entires (U523-U528). 12 Unused Entires, sizes 5 & 8, incl. Die 2, U525a, Very Fine Set	32.60
534	6c on 5c Carmine on White, Airpost, Entire (UC23). Unused, Very Fine (Photo)	200.00
535	4c Social Security, Postal Card, Blue Omitted (UX51b). Unused, Very Fine (Photo)	E. XII
536	4c Carmine & Blue Paid Reply Postal Card, Message printed on Both Halves (UY16a). Unused, Unfolded, Very Fine	75.00

EXPOSITION POST CARDS

537	✉	Columbian Exposition , 1893, Set of 10 multicolor cards on UX10, with original wrapper in green, Very Fine, USPCC Set No. 2, First Edition, Series No. 1, EX15-24, 24Wc	E. III
538	✉	Columbian Exposition , 1893, Cpl. Set of 12 multicolor cards on UX10, Very Fine, USPCC Set No. 6, Third Edition, EX50-61	E. IV
539	✉	Columbian Exposition Post Card , 1893, Cpl. Set of 12 in black on UX10, with original wrapper, prepared by Girsch & Rohster, N. Y., Very Fine, USPCC Set No. 7, EX62-73, 73Wb	E. IV
540	✉	Columbian Exposition Post Card , 1893, Publisher Unknown, multicolor card showing Machinery Building, Yellow background to Columbus head, Black Inscription, printed on UX10, Very Fine, USPCC Set No. 10, EX79	E. II
541	✉	Trans-Mississippi Exposition , 1898, Set of diff. multicolor cards on UX14, Very Fine USPCC #EX 89-98	E. IV
542	✉	St. Louis World's Fair , 1904 Louisiana-Purchase Exposition) 8 Diff. Multi-color Cards, Used, Very Fine	E. II

UNITED STATES COLLECTIONS

543	★	U. S. Booklet Panes , 1900-68, Collection of 36 panes, some earlies with faults, others nearly all F.-V. F.	134.25
544	★	U. S. Booklet Panes , 1918-68, 26 Cpl. Unexploded Booklets containing a total of 102 panes, interesting variety of booklet types & sizes, etc., some showing parts of Plate Nos., nearly all F.-V. F.	84.43+
545	★	U. S. Collection , 1851-1969, Collection of 1942 Mostly Unused Stamps, incl. 1851 Issue with Values to 10c, 1857 to 30c, 1861 to 90c, Grills to to 30c, 1869 to 12c, Bank Notes to 90c, 1890 to 90c, 1894, 95 to \$1.00, Columbus to 15c, Commems., Postage Dues, Spec. Delivery, Parcel Posts cpl. set, Many High Values, Better items, Many have faults, mostly small, Balance F.-V. F.	7,317.31
546	★	U. S. Freaks , 20 unused stamps, most with shifted or misplaced perfs., Very Fine Lot	E. III
547	★	U. S. Plate No. Blocks , 1923-64, Collection of 228 Plate No. Blocks of 4 or 6, some duplication, incl. nice showing of earlier commemorative issues, also incl. Airpost & few Special Delivery & Postage Dues, some with small faults, others nearly all Fine-Very Fine	1,071.40

CONFEDERATE STATES

POSTMASTERS' PROVISIONALS

548		Athens, Ga. 5c Dull Purple (5X1) Large to Huge Margins, Black "Paid" Cancel, Very Fine	(Photo) 110.00
549		Charleston, S. C., 5c Blue (16X1) . Used, Very Fine	(Photo) 65.00
550		Macon, Ga., 5c Black on Gray Green (53X2) . Margins all around, Black Town pmk., Very Fine, signed Bloch	(Photo) 200.00
551	★	Memphis, Tenn., 2c Blue (56X1) . Horiz. Pair, Clear to Large Margins, Fresh, Very Fine	30.00+
552		Mobile, Ala., 5c Blue (58X2) . Margins all around, tied by Neat Mobile pmk. on small piece, Very Fine	35.00
553		Nashville, Tenn., 5c Brick Red (61X3) . Just Clear to Large Margins, Blue town pmk., light crease, Fine appearance	125.00
554		Nashville, Tenn., 5c Violet Brown (61X5) . Light Blue pmk., Margins all around, pinpoint thin speck, V. F. appearance	(Photo) 150.00
555		Petersburg, Va., 5c Red (65X1) . Margins to barely touched at top and right, Blue pmk., Fresh Color, Very Good	90.00

GENERAL ISSUES

556 ★	2c Green (3). Margins all around, Fresh, thin spots, Very Fine appearance (Photo)	82.50
557	10c Rose (5). Clear to Huge Margins, Fresh Color, ms. "X" Cancel, faint hinge thin, Fine appearance	58.50
558 ★田	2c Brown Red (8). Block, Fresh, o. g., Margins all around, Very Fine	38.50
559	10c Blue, "TEN" (9). Margins all around, incl. Sheet Margin at L., ms. cancel, lightly toned, otherwise Very Fine	32.50
560	10c Blue, Frame Line (10). Huge Margins at Sides to just touched at top, showing full Frame Lines at L. & R., Mobile, Ala. pmk., Fine (Photo)	275.00
561 ★	Confederate States, 1861-64, Collection of 52 Mostly Unused Stamps, incl. 7 Postmaster Provisionals; Shades, 10c Blue Peforated, some with small faults, Balance F.-V.F.	486.25

END OF FIRST SESSION

LOTS ON VIEW FROM MAY 7th

OFFICES OPEN SATURDAY BEFORE SALE

ESTIMATES

Our sales offer many covers, cancellations, varieties and other items for which there is no catalogue value or where catalogue value does not reflect the actual value. In order to assist our clients, we are placing a fair net valuation on such lots as a guide to bidders. The chart below will be used. For example, E. IV means that our estimated net value on the lot is \$30.00 to \$40.00. Lots may actually realize more or less than our estimates, which are under no circumstances to be considered reserves but merely a guide to bidding.

E. I	up to \$10.00	E. IX	\$150.00 to \$200.00
E. II	\$10.00 to \$20.00	E. X	\$200.00 to \$250.00
E. III	\$20.00 to \$30.00	E. XI	\$250.00 to \$350.00
E. IV	\$30.00 to \$40.00	E. XII	\$350.00 to \$500.00
E. V	\$40.00 to \$50.00	E. XIII	\$500.00 to \$750.00
E. VI	\$50.00 to \$75.00	E. XIV	\$750.00 to \$1000.00
E. VII	\$75.00 to \$100.00	E. XV	\$1000.00 to 2500.00
E. VIII	\$100.00 to \$150.00	E. XVI	over \$2500.00

SECOND SESSION

THURSDAY EVENING, MAY 13th, 1971 — 7:30 P. M.

U. S. POSSESSIONS

CANAL ZONE

1904 HANDSTAMP OVERPRINTS

562 ★	1904, 2c Rose (1). Both "Panama" Reading Up, with sheet margin at T., small surface rub, otherwise Fine, signed "H. F. C(olman)"	90.00
563 ★	1904, 2c Rose, "Canal Zone" Inverted (1a). Both "Panama" Reading Down, natural s. e. at B., one pulled perf., otherwise Fine, with P. F. Certificate (Photo)	160.00
564 ★	1904, 2c Rose, "Panama" Reading Up & Down (1, 1d). Horiz. Pair, stamp at L. the variety, in combination with stamp at R. showing both "Panama" Reading Up, part o. g., couple pulled perfs. on the stamp at R., the variety is Fine, Scarce, Ex De Voss (Photo)	240.00+
565 ★	1904, 5c Blue (2). Perfs. just touch at T., signed "H. F. C(olman)"	45.00
566 ★	1904, 5c Blue, "Canal Zone" Inverted (2a). Tropical gum, Fine, Scarce (Photo)	190.00
567 ★	1904, 5c Blue, "Canal Zone" Double (2b). Fine, Scarce, signed "J M. Bartels" (Photo)	225.00
568 ★	1904, 10c Yellow (3). Small part o. g., thin, Fine appearance	60.00
569	1904, 10c Yellow, "Canal Zone" Inverted (3a). Tied on small piece by "June 27, 1904" pmk., natural s. e. at B., Fine, Ex De Voss (Photo)	160.00

1904 OVERPRINTS ON U. S. ISSUE

570 ★	1904, 1c-10c Overprints (4-8). Some hinge remnants, otherwise Fine Set	78.50
571 ★	1904, 8c Violet (7). Sheet Corner Block, U. L. stamp with Broken "L" in "Canal", hinge reinforced, otherwise Fine	110.00

1904 - 06 OVERPRINTS ON PANAMA PROVISIONAL ISSUES

572 ★	1904, 1c Green (9, 9a, 9b). Two Blocks, one stamp in each with "Canal" or "Zone" in Antique Type, F.-V. F.	47.40+
573 ★	1904, 2c Rose, Inverted Overprint (10a). Mint, Fine	37.50
574 ★	1905, 2c Rose, "Zone" in Antique Type (11, 11a). Block, U. R. stamp the variety, faint crease in two stamps at L., otherwise Fine	27.45
575 ★	1904, 5c Blue, "Canal", "Zone" in Antique Type (12, 12a, 12b). Two Blocks, with one stamp in each showing the variety, Fine-Very Fine	27.20
576	1904, 5c Blue, "Canal Zone" Double (12c). Neat cancel, few nibbed perfs., otherwise Fine (Photo)	100.00
577 ★	1904, 10c Yellow, "Canal" in Antique Type (13, 13a). Block, U. L. stamp the variety, F.-V. F.	47.25+
578 ★	1904, 10c Yellow, "Zone" in Antique Type (13b). Mint, Very Fine, Ex-Conger	25.00

579	★	1904, 10c Yellow, "Panama" Double (13c). Very Good, only 80 Issued (Photo)	150.00
580	★田	1904, 10c Yellow, Inverted "M" in Panama (13, 13 var.). Block, U. R. stamp the variety, F.-V. F.	27.25+
581	★田	1904, 10c Yellow, "Panama" Reading Down (13, 13 var.). B. Sheet Margin Block, L. R. stamp the variety, Very Fine	34.75+
582	★田	1904, 10c Yellow, "Panama" Overprint in Red Brown (13d). Block of Six, s. e. at T., otherwise Very Fine, Ex Conger	60.00+
583	★	1904, 8c on 50c Bistre Brown, "Canal Zone" Inverted (14b). Fine (Photo)	85.00
584	★田	1904, 8c on 50c Bistre Brown, "Panama" Overprint in Rose Brown (14c). L. Sheet Margin Block of 12, incl. one stamp with Antique "Z" in Zone, different varieties of the figure "8", Very Fine	90.00+
585	★	1904, 8c on 50c Bistre Brown (15). Couple nibbed perfs., otherwise Fine, with P. F. Certificate (Photo)	550.00
586	★田	1905, 8c on 50c Bistre Brown, "Zone" in Antique Type (18, 18a). Block, L. L. stamp the variety, wrinkle in B. pair, otherwise Very Fine	79.50+
587	★田	1905, 8c on 50c Bistre Brown, "Panama" 15 mm Long (18, 18 var.). Block, pair at T. the variety, Fine	63.00+
588		1905, 8c on 50c Bistre Brown, "Panama" Reading Up & Down (18b). Bold Target cancel, Very Fine, Ex Conger	25.00
589	★田	1906, 8c on 50c Bistre Brown, "Canal" in Antique Type (19, 19a, 19 var.). Block of Eight, one stamp at L. the variety, also two stamps at T. with "Panama" 15 mm long, Fine-Very Fine, Ex Conger	105.00+
590	★	1906, 8c on 50c Bistre Brown, "Zone" in Antique Type (19b). Fine	30.00
591	★田	1906, 8c on 50c Bistre Brown, "Zone" in Antique Type (19, 19b). Block, L. R. stamp the variety, Fine-Very Fine, Ex Conger	60.00+
592	★田	1906, 8c on 50c Bistre Brown, "Panama" 15 mm Long (19, 19 var.). R. Sheet Margin Block with part Imprint, pair at T. the variety, couple short perfs. on one, otherwise Fine	45.00+
593	★田	1906, 8c on 50c Bistre Brown, "Zone" in Antique Type (20, 20b). Block, L. R. stamp the variety, Fine	42.50
594	★田	1906, 8c on 50c Bistre Brown, "Zone" in Antique Type (20, 20b, 20 var.) Block, U. L. stamp the variety, also L. R. stamp with "Panama" Reading Up, Fine, Ex-Conger	57.50+
595	★	1906, 8c on 50c Bistre Brown, "8 cts." Omitted (20d). Couple partly blunted perfs., otherwise Fine, only 50 Issued (Photo)	200.00

1906-21 OVERPRINTS ON PANAMA DEFINITE ISSUES

596	★	1907, 1c Green & Black, Horiz. Pair, Imperforate Between (22a). Very Fine (Photo)	100.00
597	★田	1907, 1c Green & Black, Double Overprint (22e). Block, without gum, tropical staining on back, otherwise Very Fine (Photo)	180.00+
598		1907, 1c Green & Black, Inverted Center & Overprint Reading Up (22g). Light cancel, corner thin, Very Fine appearance (Photo)	375.00
599	★	1907, 1c Green & Black (22, 22 var.). Two Horiz. Pairs, one variety in each, incl. "ana" for "Canal", "one" for "Zone", without gum & tropical toning on back, otherwise Fine	25.00+
600	★	1906, 2c Red & Black, Double Overprint (23c). Perfs. on two sides creased, otherwise Very Fine (Photo)	60.00
601	★	1906, 2c Red & Black, Double Overprint, One Diagonal (23d). Without gum, otherwise Very Fine, Ex Conger (Photo)	125.00



563



564



566



567



569



576



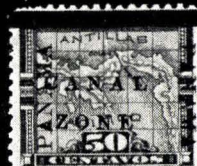
579



583



585



595



596



598



600



604



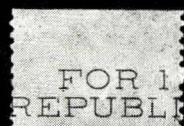
601



608



617



615



627



643



609



637



644



645EX



647



648



653



654



687



664



- 602 ★ 1906, 5c Ultramarine & Black, Double Overprint (24c). Block, Fine-Very Fine, Scarce (Photo) 500.00+
- 603 ★ 1909, 1c Dark Green & Black, Ty. I, Booklet Pane, Handmade, Perforated Margins (31c). Margins bit cut into when made, Fine for this 90.00
- 604 ★ 1909, 2c Vermilion & Black, Ty. I, Imperforate Horizontally (32a). Pair, Very Fine, only 20 Issued (Photo) 100.00
- 605 ★ 1909, 2c Vermilion & Black, Ty. I, Booklet Pane, Handmade, Perforated Margins (32c). Very Fine 55.00



- 606 ★ 1909, 5c Blue & Black, Ty. I, Double Overprint (33a) Block, Fine & Scarce (Photo) 300.00+
- 607 ★ 1910, 8c Violet & Black, Ty. I, Vertical Pair, One Without Overprint (34a). Fine, Rare, only 10 Issued (Photo) 300.00
- 608 ★ 1911, 10c on 13c Gray, "10 cts." Inverted (36b). Fine (Photo) 45.00
- 609 ★ 1913, 1c Green & Black, Ty. III, Vertical Pair, One Without Overprint (38a). Tropical gum soaks, otherwise Fine (Photo) 125.00

610 ★	1913, 1c Green & Black, Ty. II, Booklet Pane, Imperf. Margins (38b). Without tab at T., no gum, otherwise F.-V. F.	70.00
611 ★	1912, 2c Vermilion & Black, Ty. II, Booklet Pane, Imperf. Margins (39c). Without gum, otherwise Very Fine	50.00
612 ★	1912, 2c Vermilion & Black, Ty. II, Booklet Pane, Imperf. Margins (39c). Tiny thin in tab, otherwise Very Fine	50.00
613 ★	1912, 2c Vermilion & Black, Ty. II Booklet Pane, Handmade, Perforated Margins (39c). Very Good	60.00
614 ★	1912, 2c Vermilion & Black, Ty. II, Inverted Overprint, Reading Down (39d). Very Fine	17.50
615 ★	1912, 2c Vermilion & Black, Inverted Center & Overprint Reading Down (39e). Very Fine	42.50 (Photo)



616 ★	1912, 2c Vermilion & Black, Ty. II, Handmade Booklet Pane, Perf. Margins, Inverted Center & Overprint Reading Down (39f). With original covers & interleaving, Fine, Rare	500.00 (Photo)
617 ★	1915, 1c Green & Black, Ty. III (46). Misplaced, Split Overprint, perfs. touch at T., Unusual Freak	45.00+ (Photo)
618 ★	1915, 1c Green & Black, Ty. III, Inverted Overprint Reading Down (46a). With Sheet Margin at R., tropical gum, Fine	50.00
619 ★	1915, 1c Green & Black, Ty. III, Double Overprint (46b). Very Good	47.50
620	1920, 2c Orange Vermilion & Black, Ty. III (47). Used, Fine	25.00
621 ★	1918, 1c Green & Black, Inverted Overprint, Reading Down (52a). Fine	40.00
622 ★	1918, 1c Green & Black, Ty. IV, Booklet Pane (52b). Three Panes in Original Booklet, waxed interleaving adheres to gum, some tropical toned specks on one, otherwise F.-V. F., Scarce	210.00+

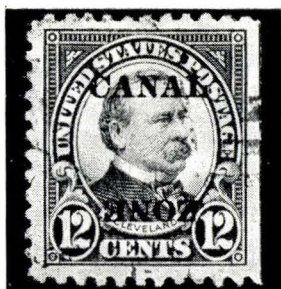
623	★	1918, 2c Vermilion & Black, Ty. IV, Inverted Overprint Reading Down (53a). Sheet Corner Block, reinforced where separated, Very Good	40.00
624	★	1918, 2c Vermilion & Black, Ty. IV, Booklet Pane (53c). Fine-Very Fine	75.00
625	★	1921, 1c Green & Black, Ty. V, Inverted Overprint, Reading Down (55a). Block, Mint, Very Fine	40.00
626	★	1920, 2c Orange Vermilion & Black, Ty. V, Double Overprint (56a). Very Fine	40.00
627	★	1920, 2c Orange Vermilion & Black, Ty. V, Double Overprint, One Reading Down (56b). Mint, Fine (Photo)	60.00
628	★	1920, 2c Orange Vermilion & Black, Ty. V, "Canal" Double (56e). Horiz. Strip of Five, stamp at R. the Error, Fine	89.00+
629	★	1920, 2c Orange Vermilion & Black, Ty. V, "Zone" Double (56f). Sheet Margin at L. shows "Canal", Mint, Very Fine	55.00
630	★	1920, 2c Orange Vermilion & Black, Ty. V, "Zone" Double (56f). Error in Horiz. Pair with normal, sheet margin at L. shows "Canal", Mint, Very Fine	55.00+
631	★	1920, 2c Orange Vermilion & Black, Ty. V, Booklet Pane (56g). Fine-Very Fine	60.00
632	★	1920, 50c, \$1.00 Views (58, 59). Hinge thins, Very Fine appearance	103.50
633	★	1920, 1b Dark Violet & Black (59). Fine	38.50
634	★	1921, 1c-50c 1921 Issue (60-66). Fine-Very Fine Set	52.10
635	★	1921, 1c Green, Booklet Pane (60b). Fine-Very Fine (Photo)	95.00
636	★	1921, 2c Carmine, Inverted Overprint, Reading Down (61a). Very Fine	25.00
637	★	1921, 2c Carmine, Double Overprint (61b). Error in Vert. Pair with normal, F.-V. F., Ex De Voss (Photo)	110.00
638	★	1921, 2c Carmine, Booklet Pane (61f). Some faint tropical toning, otherwise F.-V. F., Scarce (Photo)	135.00
639	★	1921, 5c Blue, Large Type Red Overprint Reading Down (62a). Block, Fine	36.00
640	★	1921, 5c Blue, Small Ty. V Overprint in Red (62b). Perfs. just touch at L.	25.00
641	★	1921, 5c Blue, Small Ty. V Overprint in Black (62c). L. Sheet Margin Block, Fine-Very Fine	50.00
642	★	1921, 10c Violet, Inverted Overprint, Reading Down (63a). Very Fine	17.50

1924 - 31 OVERPRINTS ON REGULAR U. S. ISSUES

643	★	1924, 1c Green, Ty. III (67). Slight thin, Very Fine appearance (Photo)	140.00
644	★	1924, 1c Green, Ty. III, "Zone Canal" Reading Down (67a). Faint crease, Fine appearance (Photo)	175.00
645	★	1924, 5c-24c Arms, Un-Issued Values. Fine-Very Fine Set, Scarce, listed after #69, without catalogue numbers (Photo Ex)	175.00
646	★	1924-25, ½c-\$1.00 Overprints (70-81). Hinge remnants, otherwise F.-V. F. Set	98.40
647	★	1924, 1c Deep Green, Inverted Overprint (71a). Perfs. just touch at R., only 50 Issued, signed "Economist" (Photo)	120.00
648	★	1924, 1c Deep Green "Zone" Inverted (71b). Natural s. e. at R. as always, Fine, Ex De Voss (Photo)	60.00
649	★	1924, 1c Deep Green, Overprinted "Zone Canal" (71d). Natural s. e. at B., Fine	45.00
650	★	1924-27, 1c Deep Green, 2c Carmine, Booklet Panes (71e, 101a). Fine-Very Fine	29.50

LOTS ON VIEW FROM MAY 7th

OFFICES OPEN SATURDAY BEFORE SALE



- 651 1924, 12c Brown Violet, "Zone" Inverted (76a). Light cancel, natural s. e. at R. as always, Very Fine, a Wonderful Rarity, with P. F. Certificate (Photo) 850.00
- 652 ★ 1925-28, 2c-\$1.00 1925-28 Overprints (84-95). Hinge remnants, otherwise F.-V. F. Set 102.10
- 653 ★ 1926, 2c Carmine, Overprinted "Zone Canal" (84b). Fine (Photo) 50.00
- 654 ★ 1926, 2c Carmine (84 var.). Horiz. Pair, overprint on stamp at R. 9 mm spacing, stamp at L. 11 mm spacing, Very Fine (Photo) —
- 655 ★ 1926, 2c Carmine, Booklet Pane (84d). Fine 30.00
- 656 ★ 1925, 3c Violet, Overprinted "Zone Zone" (85a). Block, U. R. stamp the Error, Fine-Very Fine (Photo) 135.00+
- 657 ★ 1926, 5c Dark Blue, "Canal" Inverted (86b). In Horiz. Pair with normal, natural s. e. at T., centered to R., Fine 45.00
- 658 ★ 1926, 5c Dark Blue, Inverted Overprint (86c). Block, Fine, only 80 Issued (Photo) 280.00
- 659 ★ 1926, 5c Dark Blue, Overprinted "Zone Canal" (86e). With Sheet Margin at R., Very Good, Ex De Voss 40.00
- 660 ★ 1926, 5c Dark Blue, Overprinted "Zone Canal" (86e). Block, Fine, Ex-Tows, Lilly, with P. F. Certificate (Photo) 160.00+



661

662

- 661 ★ 1926, 5c Dark Blue, Overprinted "Zone Canal", & "Zone" Only (86e, 86f). L. R. Sheet Corner Block, with two stamps of each variety, Fine, a Rare Block, Ex-Tows, Lilly, with P. F. Certificate (Photo) 430.00+

- 662 ★ 1926, 5c Dark Blue, Vertical Pair, One Without Overprint, Other Overprint Inverted (86g). Block, with two error pairs, Fine-Very Fine, Rare only 10 Issued, Ex-Tows, Lilly, with P. F. Certificate (Photo) 700.00+



- 663 ★ 1925, 10c Orange, Overprinted "Zone Zone" (87a). Error, Pos. LR18 in Block of 12, Fine, a Great Rarity, with P. F. Certificate (Photo) 1,500.00+
- 664 ★ 1926, 17c Black, Overprinted "Zone" Only (91a). Natural s.e. at R. with Sheet Margin at B., Fine, only 20 Issued (Photo) 70.00
- 665 ★ 1926, 17c Black, Overprint "Zone Canal" (91c). With Sheet Margin at L., Fine 27.50
- 666 ★ 1927, 2c Carmine, Booklet Pane (97b). Fine 55.00

1928 & LATER ISSUES

- 667 ★ 1928-34, 2c Carmine, 3c Deep Violet, Booklet Panes (106a, 117a). Three Cpl. Unexploded Booklets, incl. two 2c Booklets with two panes in one & four panes in other, the 3c Booklet with two panes, F.-V. F. 20.00+
- 668 ★ 1933, 3c Deep Violet, Booklet Pane, Handmade, Perforated Margins (115c). Cpl. Unexploded Booklet containing two panes, in Horizontal Arrangement, Fine-Very Fine 45.00+
- 669 ★ 1933, 3c Deep Violet, Booklet Pane, Handmade, Perforated Margins (115c). Cpl. Unexploded Booklet containing two panes, in Horizontal Arrangement, Fine-Very Fine 45.00+
- 670 ★ 1933, 3c Deep Violet, Booklet Pane, Handmade, Perforated Margins (115c). Cpl. Unexploded Booklet containing two panes, in Vertical Arrangement, Fine-Very Fine 45.00+
- 671 ★ 1934, 3c Deep Violet, Booklet Pane, Handmade, Perforated Margins (117b). Fine-Very Fine 12.50
- 672 ★ 1939, 1c-50c Canal Anniversary (120-135). Very Fine Set 42.00

AIRPOSTS, POSTAGE DUES & OFFICIALS

673	★	1929, 15c on 1c Green, Ty. I, Airpost (C1). L. Plate No. 115180 Block of Six, F.-V. F.	28.50
674	★	1929-31, 10c-25c Airposts C1-C5). Fine-Very Fine	40.75
675	★	1931, 15c on 1c Yellow Green, Ty. II, Airpost (C2). Block, Very Fine (Photo)	130.00
676	★	1939, 5c-\$1.00 Canal Anniversary (C15-C20). Very Fine Set	29.90
677	★	1951, 31c Cerise, Airpost, Imperforate Vertically (C25a). Pair, Fine, Ex-De Voss (Photo)	300.00
678		1941, 5c-40c Airpost Officials, Ty. II (CO8-CO12). 20c light crease, otherwise F.-V. F. Set (Photo)	165.00
679	★	1914, 1c-10c Rose Carmine, Postage Due (J1-J3). 10c light crease, others Fine-Very Fine	87.00
680	★	1915, 1c Olive Brown, Postage Due, Ty. V Overprint Reading Down (J4a). Block, tiny thin in one, others Very Fine, Ex Conger	40.00
681	★	1915, 1c-10c Postage Dues (J7-J9). Blocks, Fine-Very Fine	85.00
682	★	1924, 1c-10c Postage Dues (J12-J14). Used, Fine	28.00
683	★	1925, 10c Orange, "Postage Due" Double (J17a). Very Good	90.00
684	★	1925, 10c Orange, Postage Due, "E" of "Postage" Omitted (J17b). Error in Horiz. Pair with normal, natural s. e. at B., Fine	61.00+
685	★	1925, 2c Carmine Rose, Postage Due, Overprinted "Zone Zone" (J19a). Error, Pos. LR18, in Block of 12, Fine-Very Fine, with P. F. Certificate (Photo)	419.00+



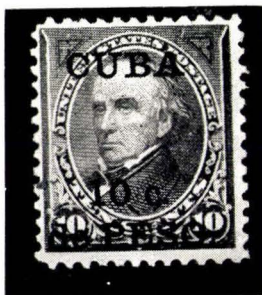
- 686 ★ 1925, 10c Carmine Rose, Postage Due, Vert. Pair, One Without Overprint (J20a). T. Imprint Star Plate No. 6555 Block of Six, comprising three vert. pairs with the top stamp in each without overprint, Fine, a Fabulous & Unique Piece, with P. F. Certificate (Photo) E. XV

687 ★	1925, 10c Rose Red, Postage Due, Double Overprint (J20c). Centered to T., Fine (Photo)	75.00
688	1941, 50c Rose Lilac, Ty. 1A, Official (O8). Fine, Scarce (Photo)	110.00
689	Canal Zone, 1904-68, Collection of 297 used & unused stamps, wide variety of issues with many cpl. sets, strong in Panama Overprints with many unused, also incl. Airpost, Postage Due & Officials, a few varieties, booklet panes & first day covers, nearly all F.-V. F.	598.81

POSTAL STATIONERY

690	✉ 1916, 1c Green & Black, 2c Red & Black, Entires (U1, U2a). Unused, incl. two shades of 1c, Very Fine	31.50
691	✉ 1916, (2c) Black, Head & Overprint Only, Entire (U2b). Unused, Very Fine (Photo)	100.00
692	✉ 1916, 2c Red, Frame Only, Entire (U2c). Unused, Very Fine (Photo)	150.00
693	✉ 1921, 1c Green, Entire (U3). "Cristobal, Canal Zone" machine cancel, blue crayon marking, Very Fine (Photo)	80.00
694	✉ 1921, 2c Red, Entire (U4). "Pedro Miguel" duplex pmk., Very Fine	25.00
695	✉ 1923, 2c Carmine, Entire (U5). Unused, Very Fine	47.50
696	✉ 1912, 3c on 2c Carmine, Entire (U12). Unused, Very Fine	30.00
697	✉ 1934, 3c on 2c Carmine, Entire (U14). Unused, Very Fine (Photo)	75.00
698	✉ 1918, 10c on 5c Black & Red, Registration Envelope (UF1). Small Size, Unused, Very Fine, Scarce (Photo)	300.00
699	✉ 1907, 1c on 2c Carmine, Postal Card, "Canal" 13 mm Long (UX1d). Unused, Very Fine (Photo)	60.00
700	✉ 1908, 1c Green & Black, Postal Card (UX2). Unused, Very Fine	30.00
701	✉ 1908, 1c Green & Black, Postal Card, "Canal" 15 mm Long (UX2d). "Tabernilla, C. Z." Duplex pmk. to Chicago, couple minor corner creases, otherwise Very Fine	30.00
702	✉ 1910-13, 1c Green & Black, Postal Cards (UX3-UX4). Used, Very Fine	26.00
703	✉ 1921, 1c Green, Postal Card (UX5). Unused, Very Fine, Scarce (Photo)	150.00
704	✉ 1924, 1c Green, Postal Card (UX6). Unused, Very Fine, Scarce (Photo)	135.00
705	✉ 1935, 1c Green on Buff, Postal Card, Double Overprint (UX10a). Unused, Very Fine, Rare (Photo)	100.00
706	✉ Canal Zone Postal Stationery, 1916-69 Collection of 59 Entires, 51 Postal Cards & 5 Cut Squares, nearly all unused, incl. duplication of later issues, Very Fine	151.56

CUBA



707 ★	1899, 10c on 10c Brown, Ty. II (226A). Fresh, o. g., Fine, Rare, with P. F. Certificate (Photo)	800.00
-------	--	--------



677



678 EX



688



712



713



714



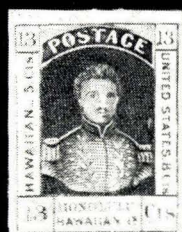
715



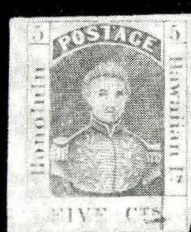
718



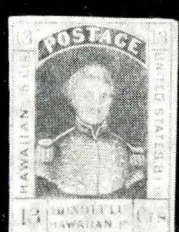
719



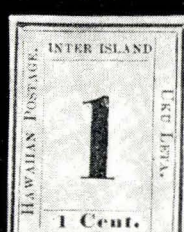
720



722



723



727



728



730



731



734



735



740



743



744



745



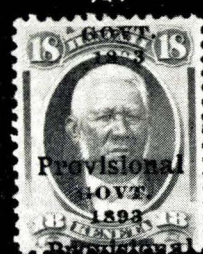
749



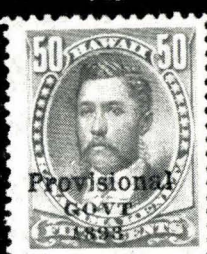
751



752



758



759



760

- 708 ★ 1899, 1c-5c Cut Squares (U1-U15, U17-U18, W1-W2). U18 & W2 used, Very Fine 46.05
- 709 ☒ Cuba Postal Stationery, 1899, 17 unused & 2 used Entires, 3 unused Postal Cards, Very Fine Lot 81.30

GUAM

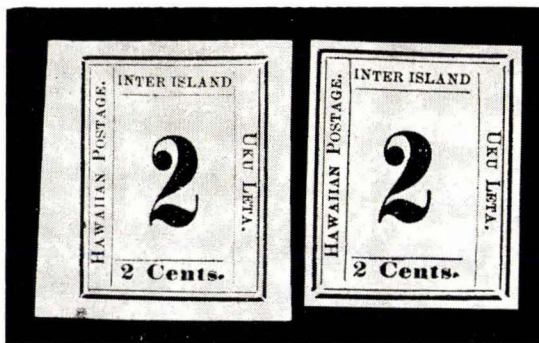
- 710 ★ 1899, 1c-50c Overprints (1-8, 11). Fresh, o. g., Very Fine 97.50
- 711 ★ 1899, 1c-\$1.00 Overprints (1, 2, 4, 6-8, 10-12, E1). Nearly all o. g., most have small faults, F.-V. F. appearance 156.50
- 712 ★ 1899, 10c Brown, Ty. II (9). Large part o. g., slight tropical staining around perfs., otherwise Fine, Rare, with P. F. Certificate (Photo) 800.00
- 713 ★ 1899, 50c Orange (11). Fresh, o. g., Very Fine (Photo) 25.00
- 714 ★ 1899, \$1.00 Black, Ty. I (12). Fresh, o. g., Very Fine (Photo) 40.00
- 715 ★ 1899, \$1.00 Black, Ty II (13). Light stain on back, Very Good with P. F. Certificate (Photo) 525.00
- 716 1930, 2c, 4c Guam Guard Mail (M1, M2). Used, Fine-Very Fine Set 120.00
- 717 ★ 1930, 1c, 2c Guam Guard Mail (M3, M4). 2c with small nick at T., otherwise Very Fine Set 51.50
- 718 ★ 1930, 2c Green, Error "Graud" (M7a). Very Fine (Photo) 60.00
- 719 ★ 1930, 2c Green, Error "Mial" (M7b). Very Fine (Photo) 60.00

HAWAII

- 720 ★ 1853, 13c Dark Red (6). Margins all around, Fresh, Brilliant Color, tiny thin in top margin, Very Fine appearance (Photo) 145.00
- 721 1857, 5c Blue (8). Margins to touched, part of "San Francisco" pmk., faults, Fine appearance 155.00
- 722 1861, 5c Blue (9). Large Margins to closer at L. R., neat ms. cancel, Very Fine (Photo) 70.00
- 723 ★ 1868, 13c Dull Rose, Re-Issue (11). Margins all around, Very Fine (Photo) 125.00
- 724 R 1889, 13c Orange Red, Reprint (11R). Margins to just touched at T., tiny thin, Fine appearance 125.00

TYPE - SET NUMERALS

(Types & Platings according to Westerberg)



725

726

- 725 ★ 1860, 2c Black on Greenish Blue (14). Plate 3-Gx, Type 8, Huge Margins, Bright & Fresh, faint vert. crease, Extremely Fine appearance, Ex-Casparry, Burrus (Photo) 750.00

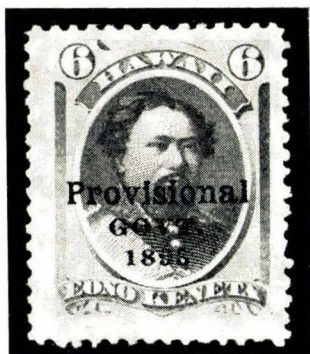
726 ★	1864, 2c Black on Blue Gray (18). Plate 5-A, Type 8, Large Margins, small thin at T., Very Fine appearance, Ex-Burrus (Photo)	260.00
727 ★	1864, 1c Black (19). Plate 6-A, Type 1, Margins all around, few faint internal wrinkles, otherwise Very Fine (Photo)	120.00
728 ★	1865, 5c Blue on Blue (21). Plate 9-A, Ty. 6, Margins all around, faint corner crease, Very Fine appearance (Photo)	125.00
729	1865, 5c Blue on Blue (21). Plate 9-A, Ty. 5, Large Margins, bit faded, small thins, Very Fine appearance	125.00
730 ★	1865, 5c Blue on Blue (22). Plate 12-A, Ty. 9, Large Margins, Extremely Fine (Photo)	90.00
731 ★	1864, 1c Black (23). Plate 8-A, Ty. 4, Large Margins, fresh, o. g., Very Fine (Photo)	50.00
732 ★	1864, 1c Black (23). Plate 8-A, Ty. 8, Margins all around, tiny closed tear, Very Fine appearance	50.00
733 ★	1864, 1c Black (23). Plate 8-A, Ty. II, Margins to just touched, Fine	50.00
734 ★	1864, 2c Black (24). Plate 7-A, Ty. 8, Large to Huge Margins, Extremely Fine (Photo)	50.00
735 ★	1865, 1c Dark Blue (25). Plate 11-A, Ty. 6, Margins all around, Very Fine (Photo)	75.00
736 ★	1865, 2c Dark Blue (26). Plate 10-A, Ty. 3, Margins to touched, Fine	65.00

PORTRAIT ISSUES

737 ★	1861, 2c Pale Rose (27). Margins to just touched, natural gum crease, otherwise Fine	75.00
738 ★	1863, 2c Carmine Rose (28a). Margins all around, fresh, o. g., tiny thin, Very Fine appearance	60.00
739 ★	1883, \$1.00 Rose Red (49). Fine	40.00
740 ★	1886, 2c Orange Vermilion (50). Large to Huge Margins, fresh, o. g., Extremely Fine (Photo)	85.00
741 S	1889, 2c Carmine, "Reprint" (51S). Block, Large Margins, fresh, o. g., Very Fine	24.00+

PROVISIONAL GOVERNMENT

742 ★	1893, 1c, 2c, 18c, No Period After "Govt" (53b, 54b, 66b, 71c). Fine-Very Fine	43.50
743 ★	1893, 1c Purple, Double Overprint (53c). Rounded corner perf. crease, faint internal wrinkle, otherwise Fine, Scarce (Photo)	55.00
744 ★	1893, 1c Blue, Double Overprint (54a). Large part o. g., Fine (Photo)	55.00
745 ★	1893, 1c Green, Double Overprint (55b). Large part o. g., Very Fine (Photo)	50.00
746 ★	1893, 2c Brown, No Period after "Govt" (56, 56a). Horiz. Pair, Mint, stamp at L. the variety, other is normal, Very Fine	37.50
747	1893, 2c Dull Violet, Double Overprint (57b). Used, Fine	55.00
748 ★	1893, 5c Deep Indigo, No Period After "Govt" (58a). Fresh, o. g., Fine	32.50
749 ★	1893, 5c Ultramarine, Inverted Overprint (59a). Fresh, o. g., Very Fine (Photo)	160.00
750 ★	1893, 6c Green, Double Overprint (60a). Block, fresh, large part o. g., Very Fine, with P. F. Certificate (Photo)	320.00+
751 ★	1893, 10c Black, Double Overprint (61a). Fine (Photo)	80.00
752 ★	1893, 12c Black, Double Overprint (62a). Fresh, o. g., Very Fine (Photo)	60.00
753 ★	1893, 25c Dark Violet, No Period After "Govt" (64a). Large part o. g., Very Fine	27.50
754 ★	1893, 2c Rosy Vermilion, No Period After "Govt" (65a). Perfs. close at R., Fine	55.00



755 ★	1893, 6c Green, Black Ovpt. (66c). Wide Margins. Fresh, o. g., A Very Fine Example of this Great Rarity, with P. F. Certificate (Photo)	1,200.00
756 ★	1893, 12c Red Lilac (69). Large part o. g., small tear at B., Very Fine appearance	65.00
757 ★	1893, 15c Red Brown, Double Overprint (70a). Few irregular perfs. at T., otherwise Fine	50.00
758 ★	1893, 18c Dull Rose, Double Overprint (71a). Fresh, o. g., Very Fine (Photo)	45.00
759 ★	1893, 50c Red, No Period After "Govt" (72b). Fresh, o. g., Very Fine (Photo)	45.00
760 ★	1893, \$1.00 Rose Red, No Period After "Govt" (73a). Fine (Photo)	80.00
761 ★	Hawaii, 1858-99, Collection of 84 stamps, nearly all unused, strong in issues after 1864, some small faults, mostly Fine-Very Fine	868.75

POSTAL STATIONERY

762 ☒	1884, 2c Pink, Blue Inside, Entire (U6). Unused, the Pink shade listed in UPSS as #12a, Very Fine	32.50
763 ☒	1884, 4c Red, Blue Inside, Entire (U7). Unused, Very Fine (Photo)	45.00
764 ☒	1884, 5c Blue, Blue Inside, Entire (U8). Unused, Very Fine (Photo)	50.00
765 ☒	1884, 10c Black, Blue Inside, Entire (U9). Unused, thin in back flap, otherwise Very Fine (Photo)	75.00
766 ☒	1893, 10c Black, Blue Inside, Provisional Overprint, Entire (U14). Unused, Very Fine	37.50
767 ☒	1893, 10c Black, Special Delivery, Entire (UE1). Unused, small part of flap separated, otherwise Very Fine	25.00
768 ☒	1883-89, 1c-2c Paid Reply Postal Cards (UY1-UY4). Unused, Unsevered, Very Fine	42.00
769 ☒	Wells Fargo & Co., Kingdom of Hawaii. Printed Frank in Brown on White Envelope, Blue Inside, Size 6, Very Fine	E. II
770 ☒	Hawaii Postal Stationery, 1884-93, Collection of 13 unused Entirets, 3 used & unused Cut Squares, & 10 unused & one used Postal Cards, nearly all Very Fine	80.95

PHILIPPINES


771 ★	1899, 50c Orange (212). Fresh, o. g., Fine (Photo)	60.00
772	1899, 50c Orange (212). Neat cancel, Fine	47.50
773 ★	1899-1901, 1c-50c Overprint (213-222). Fresh, o. g., F-V. F.	58.55
774 ★	1903-04 1c-50c Overprints (226-236, 240). Some with small flaws or without gum, banalance F.-V. F.	68.75
775 ★	1901, \$1.00 Black, Ty. I (233). Without gum, perfs. just touch at L.	80.00
776 ★	1901, \$1.00 Black, Ty. II (233A). Fine, signed "H. F. C(olman)" (Photo)	225.00
777 ★	1901, \$2.00 Dark Blue (224). Very Fine (Photo)	100.00
778 ★	1901, \$5.00 Dark Green (225). Small hinge thin, Very Fine appearance (Photo)	200.00

779 ★	1903, \$1.00 Black (237). Centered to T., Fine	65.00
780 ★	1904, \$2.00 Dark Blue (238). Thins & surface scuff, Fine appearance	165.00
781 ★	1904, \$5.00 Dark Green (239). Heavy hinge remnants, Very Good	210.00
782 ★	1903, 2c Carmine, Booklet Pane (240a). Without tab at T., otherwise Very Good	65.00
783 ★	1906, 4c Carmine, Booklet Pane (242b). Fine-Very Fine, with covers	27.50
784 ★	1911-13, 2c Green, 4c Carmine Lake, Booklet Panes (261a, 262b). 2c with with cover, V. G.-Fine	47.50
785 ★	1911-13, 4p Deep Blue (273). Reperfed at T., Very Fine appearance (Photo)	160.00
786 ★	1911-13, 10p Deep Green (274). Slight gum disturbance, otherwise Very Fine	57.50
787 ★	1914-23, 2c Green, 4c Carmine, Booklet Panes (276a, 277a). One stamp thin in 2c, light crease in couple 4c, Fine appearance	50.00
788 ★	1914, 4c Carmine, Booklet Pane (277a). With identification noted in ink on tab, otherwise F.-V. F.	27.50
789 ★	1918, 2c Green Booklet Pane (285a). Fine, Ex-Lilly	80.00
790 ★	1917-25, 2c-6c Booklet Panes (290e, 291b, 292c). V. G.-Fine	34.75
791 ★	1917-26, 1p-10p Arms (300-302, 304). Very Fine	66.00
792 ★	1926, 2c Green & Black, Horiz. Pair, Imperforate Between (319a). Very Fine	45.00
793 ★	1926, 16c Olive Green & Black, Horiz. Pair, Imperforate Between (321a). Very Fine	50.00
794 ★	1925-31 2c-10p Portraits & Arms, Imperforate (340-353). All in Horiz. Pairs except singles of 2p & 4p. Very Fine Set	175.64
795 ★	1939, 8c Violet, "Commonwealth" (436a). The variety with natural s. e. at L. as always in block of six with five normal, Mint, Very Fine	20.00+

"VICTORY" OVERPRINTS







796 ★	1944, 2c Rose, Booklet Pane, Handstamped "Victory" (463a). Waxed interleaving adheres to back, mixed centering, A Great Rarity, with P. F. Certificate	900.00
-------	--	--------

- 797  **1944, 4c Yellow Green, Handstamped "Victory" (465).** Tied on cover by "Tacloban, Leyte, P. I." duplex pmk., Very Fine, unpriced on cover, signed "Economist"



798

800

- 798 ★ **1944, 6c Dark Brown, Handstamped "Victory" (466).** With Plate No. at T., couple light natural gum wrinkles, Very Fine, Rare, with P. F. Certificate, Ex-Meyerson (Photo) 500.00
- 799 ★ **1944, 6c Yellow Green, Handstamped "Victory" (467).** With Plate No. at B., Very Fine, with P. F. Certificate (Photo) 75.00
- 800 ★ **1944, 6c Dark Brown, Handstamped "Victory" (468).** Very Fine, Rare, with P. F. Certificate, Ex-Meyerson 300.00
- 801 ★ **1944, 6c Carmine, Handstamped "Victory" (469).** Very Fine (Photo) 60.00
- 802 ★ **1944, 6c Orange, Handstamped "Victory" (470).** Very Fine, Scarce, with P. F. Certificate (Photo) 250.00
- 803  **1944, 6c Dark Green, Handstamped "Victory" (471).** Tied on legal size First Day Cover, by "Tacloban, Leyte, P. I., Nov. 8" duplex pmk., natural s. e. at R., Fine, unpriced on cover (Photo) —
- 804  **1944, 8c Violet, Handstamped "Victory" (472).** Tied on cover by "Tacloban, Leyte, P. I." duplex pmk. Very Fine, unpriced on cover —
- 805  **1944, 10c Carmine Rose, Handstamped "Victory" (473).** Tied together with 2c Apple Green "Victory" (464) by "Tacloban, Leyte, P. I." duplex pmk., couple tiny closed tears in 10c stamp, Fine appearance, unpriced on cover (Photo) —
- 806 ★  **1944, 10c Carmine Rose, Handstamped "Victory" (474).** Block, Fine, Rare (Photo) 260.00+
- 807 ★ **1944, 12c Ultramarine, Handstamped "Victory" (475).** Fine, with P. F. Certificate (Photo) 125.00



771



776



777



778



785



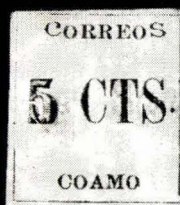
134797



802



807



852



809



810



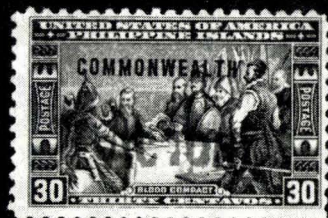
801



811



814



815



818



819



821



822



823



826



828

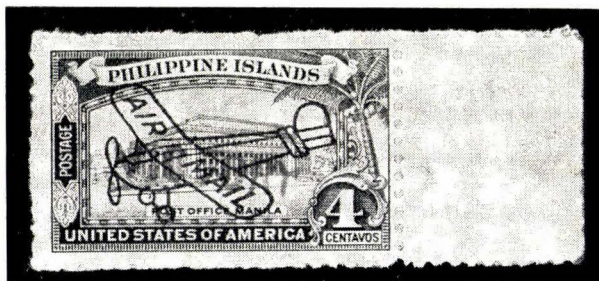


835

808	✉	1944, 12c Purple, Handstamped "Victory" (477). Tied on cover by "Tacloban, Leyte, P. I." duplex pmk., with Plate No. at B., Very Fine unpriced on cover, signed "Economist" (Photo) —
809	★	1944, 16c Dark Blue, Handstamped "Victory" (478). Very Fine, Rare, with P. F. Certificate, Ex-Meyerson (Photo) 375.00
810	★	1944, 16c Dark Blue, Handstamped "Victory" (479). With s. e. at L., tiny thin, Fine appearance, Very Scarce (Photo) 200.00
811	★	1944, 16c Dark Blue, Handstamped "Victory" (480). Very Fine, signed "Bloch" (Photo) 100.00
812	★	1944, 20c Light Olive Green, Handstamped "Victory" (481). Fine 20.00
813	✉	1944, 20c Light Olive Green, Handstamped "Victory" (481). Tied on cover by "Tacloban, Leyte, P. I." duplex pmk., Very Fine, unpriced on cover —
814	★	1944, 30c Orange Red, Handstamped "Victory" (482). Natural s. e. at L., part o. g., otherwise Very Fine (Photo) 100.00
815	★	1944, 30c Orange Red, Handstamped "Victory" (483). Fine, with P. F. Certificate (Photo) 150.00
816	★	1945, 10p Gray, 20p Henna Brown, Overprinted "Victory" (495, 496). Very Fine 46.00

AIRPOSTS

817	★	1926, 2c-30c Madrid-Manila (C1-C6, C9-C12). Some with tropical toned specks on gum or hinge remnants, F.-V. F. 106.50
818	★	1926, 16c Light Olive Green, Madrid Manila (C7). Perfs. in at L., only 300 Issued, signed "Kessler", "W. B.(rueggeman) Manila", "Bloch", with Friedl Certificate (Photo) 575.00
819	★	1926, 16c Olive Bistre, Red Overprint, Madrid-Manila (C8). Perfs. just touch at R., Rare, only 100 Issued, signed, "Kessler", "Sanabria, N. Y.," "W. B.(rueggeman) Manila", with P. F. Certificate, Ex-Matthews (Photo) 575.00
820	★	1926, 2p Violet Brown, Madrid-Manila (C13). Perfs. in at R., hinge thins, Very Good appearance 165.00
821	★	1926, 4p Dark Blue, Madrid-Manila (C14). Perfs touch at L. one pulled perf., only 700 Issued, signed "Bloch" (Photo) 300.00
822	★	1926, 10p Deep Green, Madrid-Manila (C15). Some o. g., Fine, only 500 Issued signed "W. B.(rueggeman) Manila", with P. F. Certificate (Photo) 550.00
823	★	1926, 26c Blue Green, Madrid-Manila (C16). Perfs. just touch at L., re-gummed, Rare, only 100 Issued, signed "Kessler", "Sanabria, N. Y.," with P. F. Certificate, Ex-Matthews (Photo) 650.00
824	★	1926, 1p Pale Violet, Madrid-Manila (C17). Fine 62.50



825	★	1944, 4c Rose Carmine, Airpost, Handstamped "Victory" (C63). With Sheet Margin at R., interleaving adheres to gum on back, Fine, Rare, with P. F. Certificate, Ex-Meyerson (Photo) 700.00
-----	---	--

SPECIAL DELIVERY, POSTAGE DUE

- 826 ★ 1907, 10c Ultramarine, Special Delivery Special Printing (E2A). Fine, with P. F. Certificate (Photo) 350.00
- 827 ★ 1931, 20c Dull Violet, Imperforate, Special Delivery (E6). R. Arrow Block, Very Fine 27.00+
- 828 ★ 1944, 20c Dull Violet, Special Delivery, Handstamped "Victory" (E8). Without gum, light toning, otherwise Fine, signed "Bloch" (Photo) 100.00
- 829 ✉ 1944, 20c Blue Violet, Special Delivery, Handstamped "Victory" (E9). Tied on cover by "Tacloban, Leyte, P.I." duplex pmk., Fine, unpriced on cover (Photo) —
- 830 ★ 1944, 2c–20c Postage Dues, Handstamped "Victory" (J16–J22). Cpl. Set, several with tropical toned specks or waxed interleaving on back, otherwise F.–V. F. Scarce 250.00

OFFICIALS

- 831 1944, 2c Rose, Official, Handstamped "Victory" (O38). Used, Fine, signed "Economist" 75.00
- 832 ★ 1944, 2c Apple Green, Official, Handstamped "Victory" (O39). Block, waxed interleaving adheres to gum, otherwise Very Fine, signed "Economist" 25.00
- 833 ★ 1944, 4c Yellow Green, Official, Handstamped "Victory" (O40). Fine, signed "Economist" 20.00



- 834 ★ 1944, 6c Dark Brown, Official, Handstamped "Victory" (O40A). Tropical gum, toned on back, otherwise Fine, a Great Rarity, unlisted unused, the used listing unpriced, with P. F. Certificate (Photo) —
- 835 ★ 1944, 10c Rose Carmine, Official, Handstamped "Victory" (O41). Very Fine, Scarce, signed "Economist" with P. F. Certificate (Photo) 200.00
- 836 ★ 1906–38 Post Office Seals (OX1–OX7, OX10–OX12). OX4 tear, OX6 crease, others F.–V. F. 73.15
- 837 ★ 1942–44, Japanese Occupation. Collection of 60 unused stamps, & two used Souvenir Sheets, virtually cpl., also 11 pieces used & unused Entires & Postal Cards, Fine–Very Fine 66.63

POSTAL STATIONERY

838	✉	1944, 4c Carmine on White, "Victory" Handstamp, Entire (U44). "Tacloban, P. I." Duplex pmk., general request corner card, to Military APO address, Very Fine, Rare, with P. F. Certificate, Ex-Meyerson (Photo)	200.00
839	✉	1944, 4c Olive Green on White, "Victory" Handstamp, Entire (U45). Used with 2c Apple Green "Victory" (464), "Palo, Leyte, P.I." Duplex pmk., general request corner card, to Military APO, Very Fine	50.00+
840	✉	1903, 1c Black, Postal Card (UX3). Unused, Full Mint, without View printed on back (the way most are found) Very Fine & Rare	200.00+ (Photo)
841	✉	1903, 2c Black, Postal Card (UX4). Unused, Very Fine	80.00 (Photo)
842	✉	1906, 1c Black, Postal Card (UX7). Unused, Very Fine	50.00
843	✉	1906, 2c Black, Postal Card (UX8). "Manila, P. I., May 12, 1907" Duplex pmk. to Posen, Germany, with Posen receiving mark on front, Very Fine, Rare, with P. F. Certificate	150.00 (Photo)
844	✉	1944, 2c Green on Buff, "Victory" Handstamp, Postal Card (UX20). Unused, Very Fine	40.00
845	✉	1944, 2c Red on Pale Buff, "Victory" Handstamp, Postal Card (UX21). Unused, Very Fine, with P. F. Certificate, Ex-Meyerson	100.00 (Photo)
846	✉	1944, 2c Red on Pale Buff, "Victory" Handstamp, Postal Card (UX22). "Jaro, Leyte, P. I." Duplex pmk., with ms. date "Jan. 26, 1945", & typed message at L. "First Day Cover of the Reopening of Jaro Post Office", Very Fine, Unpriced used	— (Photo)
847	✉	1899-1908, 1c-5c Postal Stationery (U1-U27, U30-U39, W1-W4). Unused Entires, Very Fine	217.15
848	✉	1900-45, 1c-4c Postal Cards, Collection of 20 diff. unused cards, Very Fine	67.15
849	✉	1908-1911, 2c-4c Official Envelopes (Bet. UPSS #OB1-OB35). Nine Diff. unused entires, with Official Corner Cards or "O. B." Overprints, Very Fine	80.00 UPSS
850	✉	1899-1945, 1c-4c Postal Stationery. Balance of Collection incl. 18 used & unused entires, 22 used & unused cards, the latter incl. several First Day Covers, Fine-Very Fine	103.25+
851	★	Philippines, 1899-1946, Collection of 347 nearly all unused stamps & 11 Booklet Panes neatly mounted on Scott Specialty pages, incl. Portraits & Arms to 10p, Pictorials, "Commonwealth" Overprints cpl. to 5p, two handstamped "Victory" covers, also strong in Airposts, Postage Dues, Special Delivery & Officials, majority of issues in cpl. sets, few earlies small flaws, others nearly all F.-V. F., Attractive	759.57

PUERTO RICO

852	★	1898, 5c Black, "Coamo" Provisional (201). Pos. 6, Margins all around, handstamp on back shows through, otherwise Very Fine	85.00 (Photo)
853	★	1898, 5c Black, "Coamo" Provisional (201). Cpl. Sheet of Ten, small thins in first stamp, otherwise Very Fine, with P. F. Certificate, Ex-Burrus	900.00 (Photo)
854	★	1899, 10c Postage Due (J3, J3a). Two, both 25° & 36° angle overprints, fresh, o. g., Fine	47.50
855	★	1899, 2c Carmine on Amber, Full Corner (U6). Unused, Very Fine, signed "J. M. Bartels", "Sloane"	60.00
856	✉	1899, 2c Carmine on Amber, Die 2, Entire (U6). "Arecibo, Sta., "Porto Rico, Aug., 19, 1899" Duplex pmk., "Sucesories de Roses & Co." corner card to New York, Fine, the U. P. S. S. Catalogue records only one used example of this Great Rarity, signed "George B. Sloane"	300.00 (Photo)
857		1899, 2c Carmine on Oriental Buff, Cut Square (U7). Neat cancel, Very Fine, signed "Sloane"	30.00

Para retirar el contenido cortar la cubierta sobre la línea roja.

Espacio para
franqueo
ordinario.



698

RECOMENDADOS Y DE
APARQUETE
gane a un empleado de la Oficina
de correos y obtener el recibo
de la oficina.

TERED

Shaw
Am 35-8
1-3



693



692



691

SOCIAL SECURITY
POSTAGE
4c

535



534



531

RECOMENDADOS Y DE
APARQUETE
gane a un empleado de la Oficina
de correos y obtener el recibo
de la oficina.



763



705



704



703



702



699



697



7267



808



805



803



765



764



PHILIPPINES

UNIVERSAL POSTAL UNION
UNITED STATES OF AMERICA
(Etats-Unis d'Amérique)
WRITE ON THE ADDRESS ON THIS SIDE

841



840



PHILIPPINES

THE SPACE BELOW IS RESERVED FOR POSTAGE.
THE SPACE BELOW IS FOR THE ADDRESS ONLY.



838

William Magers
Postal Services Section
APO 70



829



From E. Cusaban
Jaro, Leyte
Cebu



FIRST DAY COVER
OF
JARO POSTOFFICE

846



POSTAL CARD
THE SPACE BELOW IS FOR THE ADDRESS ONLY

Dr. A. B. Potter
Secretary to the President
Capitol Building, Tacloban, Leyte



PORTO RICO

860



PORTO RICO

856



POSTAL CARD
THE SPACE BELOW IS FOR THE ADDRESS ONLY

845





MAIL
MAY 12 1984
P.O. BOX 1030
UNITED STATES OF AMERICA
THE ADDRESS ON THIS SIDE

843

Philippines
Jaro, Leyte

From W. J.
Jaro, Leyte

858	1899, 2c Carmine on Oriental Buff, Die 2, Black Overprint, Cut Square (U12). "Arecibo Sta., Porto Rico" Duplex pmk., Very Fine	50.00
859	 1899-1900, 1c-2c Postal Stationery (U15-U18, UX1, UX2, UX3). Unused Entires & Cards, Very Fine	41.25
860	 1899, 2c Carmine on Oriental Buff, Die 3, Black Overprint, Entire (U13). "San Juan & Camuy, R. P. O., Jun. 18, 1900" duplex pmk., "Sucesories de Roses & Co." corner card, to San Juan, crease at L., otherwise Very Fine, only three entires known, all are used. Signed "Sloane" & with P. F. Certificate	275.00
861	★ Balance of Possessions, 58 mostly unused stamps & 9 cut squares, incl. Cuba, Guam & Puerto Rico, some small faults, mostly Fine	185.18

END OF SALE — THANK YOU

LOTS ON VIEW FROM MAY 7th

OFFICES OPEN SATURDAY BEFORE SALE

PRICES REALIZED

*Invaluable and almost indispensable guides
to the current market.*

Price \$1.00 for each individual sale.

Annual subscription \$10.00.

OBJECTIVITY

Objectivity is without a doubt one of the most important attributes of a successful philatelic auctioneer. It is the quality of treating each lot he offers dispassionately, unemotionally and with full regard for the interests of both the seller and the ultimate buyer.

It means the careful lotting and presentation of the material offered to the best advantage of the seller. It means that each and every lot must be described precisely as it is; not as one might wish it to be. It means that where the value of lots are estimated such estimates must represent a fair market value; not an excessive figure in the hope that such a price might be realized nor at an unreasonably low figure to the disadvantage of the seller which might discourage future clients.

Objectivity is a cardinal point in our dealing with the public. It is a principle which has been carefully inculcated to our staff of true professionals whose cumulative years of knowledge and experience give us a status second to none.

Objectivity, together with integrity and responsibility are the keystones in our dealing with the public. By adhering to these principles we consistently render the ultimate in service. Whether you are a buyer or a seller these unmatched services are available. May we hear from you?

Robert A. Siegel
AUCTIONS

10 EAST 52nd STREET NEW YORK, N. Y. 10022
Tel.: 212 PLaza 3-6421

IS YOUR COLLECTION FOR SALE?

REALIZE IMMEDIATE CASH
PLUS THE ADDED ADVANTAGE OF
SELLING THROUGH OUR AUCTIONS

We will advance immediate cash up to 75% of our appraisal value, of what your collection should realize at auction. There is no interest charge.

Your collection will then be sold in one of our coming auction sales. All stamps are expertly and advantageously lotted in attractive, well illustrated catalogs. Lotting is meticulously planned under our personal supervision. Commission is 20% of the gross realization. There is no lotting fee or any other charges. Final settlement is made within five weeks after the sale. We have been continuously conducting stamp auctions in the United States for over forty-one years.

Valuable collections and stamp holdings are especially wanted, but we will accept properties valued from \$500 upwards. Send all stamps direct for appraisal. Auction advance will be remitted shortly after receipt. If not entirely pleased, stamps will be returned at our expense. If circumstances warrant due to bulk or value, we will travel anywhere to inspect important properties.

ROBERT A. SIEGEL
AUCTION GALLERIES, Inc.

(Licensed and Bonded Auctioneer)

10 EAST 52nd STREET
NEW YORK, N. Y. 10022
(Tel. PL 3-6422)

ROBERT A. SIEGEL AUCTION GALLERIES, Inc.

10 EAST 52ND STREET
NEW YORK, N. Y. 10022

395TH SALE

PRICES REALIZED

MAY 13TH, 1971

UNITED STATES
AND
POSSESSIONS

GROSS REALIZATION \$171,178.00

1st Session									
1 15.00	62 1200.00	123 280.00	186 52.50	250 65.00	311 35.00	375 20.00	438 85.00	501 37.50	
2 35.00	63 95.00	124 95.00	187 90.00	251 380.00	312 57.50	376 80.00	439 290.00	502 95.00	
3 14.00	64 120.00	125 300.00	188 50.00	252 110.00	313 14.00	377 17.00	440 290.00	503 90.00	
4 125.00	65 35.00	126 240.00	189 125.00	253 950.00	314 60.00	378 50.00	441 28.00	504 52.50	
5 35.00	66 675.00	127 180.00	190 210.00	254 85.00	315 55.00	379 300.00	442 36.00	505 1900.00	
6 30.00	67 50.00	128 320.00	191 300.00	255 170.00	316 28.00	380 35.00	443 145.00	506 37.50	
7 350.00	68 140.00	129 270.00	192 30.00	256 500.00	317 60.00	381 130.00	444 90.00	507 42.50	
8 14.00	69 14.00	130 15.00	193 40.00	257 40.00	318 55.00	382 15.00	445 40.00	508 20.00	
9 600.00	70 360.00	131 32.00	194 20.00	258 950.00	319 130.00	383 32.00	446 27.00	509 510.00	
10 30.00	71 65.00	132 14.00	195 17.00		320 40.00	384 300.00	447 90.00	510 19.00	
11 35.00	72 20.00	133 37.50	196 21.00	259 11,500.00	321 160.00	385 22.00	448 500.00	511 512.50	
12 95.00	73 50.00	134 950.00	197 32.00		322 60.00	386 40.00	449 70.00	512 67.50	
13 19.00	74 80.00	135 47.50	198 20.00	260 1450.00	323 35.00	387 47.50	450 19.00	513 72.50	
14 37.50	75 55.00	136 425.00	199 42.50	261 42.50	324 27.00	388 2900.00	451 100.00	514 80.00	
15 55.00	76 40.00	137 65.00	200 32.50	262 150.00	325 105.00	389 65.00	452 25.00	515 95.00	
16 85.00	77 36.00	138 85.00	201 67.50	263 170.00	326 500.00	390 135.00	453 16.00	516 50.00	
17 200.00	78 32.00	139 50.00	202 45.00	264 32.00	327 575.00	391 27.00	454 65.00	517 42.50	
18 125.00	79 145.00	140 14.00	203 35.00	265 32.00	328 40.00	392 440.00	455 20.00	518 50.00	
19 230.00		141 140.00	204 16.00	266 18.00	329 125.00	393 425.00	456 550.00	519 38.00	
20 110.00	80 10,000.00	142 13.00	205 260.00	267 95.00	330 375.00	394 28.00	457 160.00	520 521.00	
21 45.00	81 19.00	143 30.00	206 100.00	268 200.00	331 23.00	395 120.00	458 15.00	521 62.50	
22 21.00	82 45.00	144 16.00	207 65.00	269 32.00	332 700.00	396 25.00	459 145.00	522 18.00	
23 10.00	83 21.00	145 13.00	208 95.00	270 32.00	333 125.00	397 62.50	460 6.00	523 47.50	
24 8.50	84 9.00	146 13.00	209 24.00	271 60.00	334 11.00	398 28.00	461 16.00	524 32.00	
25 90.00	85 115.00	147 23.00	210 220.00	272 400.00	335 24.00	399 210.00	462 180.00	525 70.00	
26 150.00	86 140.00	148 30.00	211 180.00	273 900.00	336 38.00	400 65.00	463 320.00	526 115.00	
27 18.00	87 15.00	149 38.00	212 160.00	274 900.00	337 45.00	401 52.50	464 95.00	527 28.00	
28 340.00	88 130.00	150 16.00	213 160.00	275 20.00	338 11.00	402 70.00	465 180.00	528 24.00	
29 170.00	89 23.00	151 52.50	214 110.00	276 38.00	339 55.00	403 85.00	466 340.00	529 32.50	
30 45.00	90 45.00	152 85.00	215 70.00	277 70.00	340 85.00	404 16.00	467 29.00	530 85.00	
31 190.00	91 80.00	153 20.00	216 170.00	278 750.00	341 9.00	405 32.50	468 120.00	531 37.50	
32 60.00	92 32.50	154 900.00	217 140.00	279 24.00	342 55.00	406 40.00	469 50.00	532 17.00	
33 62.50	93 75.00	155 1100.00	218 20.00	280 190.00	343 14.00	407 230.00	470 380.00	533 85.00	
34 46.00	94 22.00	156 1000.00	219 50.00	281 3200.00	344 21.00	408 90.00	471 210.00	534 325.00	
35 38.00	95 60.00	157 17.00	220 110.00	282 45.00	345 13.00	409 28.00	472 100.00	535 50.00	
36 23.00	96 290.00	158 21.00	221 120.00	283 525.00	346 80.00	410 85.00	473 525.00	536 37.50	
37 27.00	97 800.00	159 21.00	222 95.00	284 47.50	347 70.00	411 105.00	474 67.50	537 47.50	
38 11.00	98 700.00	160 32.50	223 67.50	285 85.00	348 40.00	412 75.00	475 240.00	538 67.50	
39 42.50	99 400.00	161 40.00	224 32.50	286 67.50	349 62.50	413 42.50	476 750.00	539 21.00	
40 36.00	100 650.00	162 42.50	225 30.00	287 42.00	350 42.50	414 17.00	477 105.00	540 95.00	
41 32.00	101 475.00	163 20.00	226 60.00	288 850.00	351 800.00	415 300.00	478 21.00	541 25.00	
42 24.00	102 525.00	164 17.00	227 30.00	289 29.00	352 55.00	416 80.00	479 65.00	542 60.00	
43 15.00	103 950.00	165 57.50	228 130.00	290 40.00	353 60.00	417 75.00	480 52.50	543 50.00	
44 12.00	104 1400.00	166 1300.00	229 67.50	291 42.50	354 65.00	418 72.50	481 400.00	544 1900.00	
45 23.00	105 26.00	167 3600.00	230 120.00	292 50.00	355 115.00	419 70.00	482 35.00	545 50.00	
46 125.00	106 18.00	168 550.00	231 105.00	293 40.00	356 95.00	420 60.00	483 22.00	546 280.00	
47 26.00	107 60.00	169 3200.00	232 72.50	294 18.00	357 75.00	421 72.50	484 180.00	547 120.00	
48 22.00	108 40.00	170 950.00	233 60.00	295 575.00	358 30.00	422 210.00	485 70.00	548 72.50	
49 9.00	109 21.00	171 650.00	234 400.00	296 26.00	359 210.00	423 280.00	486 425.00	549 30.00	
50 50.00	110 21.00	172 5500.00	235 62.50	297 270.00	360 85.00	424 24.00	487 60.00	550 65.00	
51 70.00	111 250.00	173 15.00	236 500.00	298 3800.00	361 16.00	425 70.00	488 4600.00	551 45.00	
52 38.00	112 13.00	174 26.00	237 60.00	299 550.00	362 19.00	426 75.00	489 200.00	552 72.50	
53 120.00	113 170.00	175 52.50	238 65.00	300 105.00	363 32.00	427 18.00	490 67.50	553 37.50	
54 160.00	114 72.50	176 32.50	239 50.00	301 2100.00	364 28.00	428 67.50	491 34.00	554 65.00	
55 70.00	115 19.00	177 24.00	240 350.00	302 160.00	365 13.00	429 100.00	492 300.00	555 28.00	
56 600.00	116 240.00	178 130.00	241 150.00	303 400.00	366 3400.00	430 120.00	493 80.00	556 32.00	
57 145.00	117 16.00	179 35.00	242 18.00	304 160.00	367 1850.00	431 75.00	494 26.00	557 140.00	
58 220.00	118 70.00	180 22.00	243 32.50	305 675.00	368 50.00	432 45.00	495 125.00	558 38.00	
59 375.00	119 16.00	181 19.00	244 37.50	306 55.00	369 45.00	433 1400.00	496 32.00	559 180.00	
60 525.00	120 60.00	182 50.00	245 14.00	307 17.00	370 32.00	434 26.00	497 290.00		
61 550.00	121 550.00	183 18.00	246 14.00	308 45.00	371 70.00	435 32.00			
	122 72.50	184 14.00	247 24.00	309 21.00	372 800.00				
		185 120.00	248 27.00	310 50.00	373 45.00				
			249 45.00		374 280.00				

2nd Session

562	35.00	598	150.00	636	26.00	674	24.00	712	450.00	750	270.00	788	14.00	826	320.00
563	85.00	599	12.00	637	72.50	675	90.00	713	30.00	751	67.50	789	65.00	827	9.00
564	110.00	600	27.00	638	360.00	676	18.00	714	50.00	752	62.50	790	38.00	828	60.00
565	23.00	601	65.00	639	24.00	677	260.00	715	260.00	753	25.00	791	45.00	829	80.00
566	90.00	602	400.00	640	21.00	678	135.00	716	110.00	754	28.00	792	20.00	830	95.00
567	160.00	603	45.00	641	28.00	679	47.50	717	57.50	755	1850.00	793	30.00	831	65.00
568	40.00	604	80.00	642	13.00	680	32.00	718	125.00	756	14.00	794	47.50	832	9.00
569	90.00	605	32.00	643	100.00	681	60.00	719	125.00	757	70.00	795	22.00	833	12.00
570	34.00	606	175.00	644	90.00	682	16.00	720	72.50	758	36.00	796	340.00	834	2000.00
571	40.00	607	240.00	645	130.00	683	36.00	721	25.00	759	37.50	797	22.00	835	170.00
572	35.00	608	42.00	646	45.00	684	34.00	722	18.00	760	62.50	798	600.00	836	15.00
573	30.00	609	47.50	647	80.00	685	200.00	723	80.00	761	400.00	799	65.00	837	47.50
574	20.00	610	26.00	648	45.00	686	2000.00	724	55.00	762	52.50	800	575.00	838	120.00
575	20.00	611	21.00	649	32.00	687	35.00	725	750.00	763	52.50	801	70.00	839	47.50
576	55.00	612	17.00	650	21.00	688	170.00	726	180.00	764	52.50	802	180.00	840	160.00
577	36.00	613	50.00	651	1000.00	689	240.00	727	52.50	765	57.50	803	110.00	841	62.50
578	20.00	614	18.00	652	65.00	690	22.00	728	62.50	766	57.50	804	14.00	842	32.00
579	100.00	615	40.00	653	34.00	691	70.00	729	30.00	767	14.00	805	17.00	843	320.00
580	21.00	616	750.00	654	30.00	692	105.00	730	80.00	768	29.00	806	57.50	844	10.00
581	25.00	617	26.00	655	22.00	693	50.00	731	52.50	769	27.00	807	37.50	845	95.00
582	36.00	618	26.00	656	62.50	694	17.00	732	15.00	770	55.00	808	100.00	846	42.50
583	45.00	619	22.00	657	34.00	695	20.00	733	19.00	771	34.00	809	600.00	847	72.50
584	67.50	620	23.00	658	110.00	696	34.00	734	40.00	772	26.00	810	130.00	848	29.00
585	325.00	621	32.00	659	26.00	697	80.00	735	42.50	773	38.00	811	57.50	849	25.00
586	40.00	622	105.00	660	120.00	698	220.00	736	26.00	774	28.00	812	14.00	850	52.50
587	25.00	623	29.00	661	325.00	699	47.50	737	28.00	775	15.00	813	25.00	851	190.00
588	23.00	624	80.00	662	550.00	700	12.00	738	30.00	776	115.00	814	23.00	852	46.00
589	60.00	625	29.00	663	1050.00	701	27.00	739	21.00	777	67.50	815	55.00	853	850.00
590	23.00	626	35.00	664	70.00	702	20.00	740	90.00	778	75.00	816	22.00	854	28.00
591	26.00	627	50.00	665	22.00	703	190.00	741	14.00	779	28.00	817	21.00	855	40.00
592	21.00	628	72.50	666	50.00	704	100.00	742	28.00	780	46.00	818	24.00	856	575.00
593	25.00	629	36.00	667	20.00	705	120.00	743	52.50	781	52.50	819	450.00	857	22.00
594	27.00	630	36.00	668	47.00	706	80.00	744	40.00	782	50.00	820	55.00	858	40.00
595	125.00	631	180.00	669	47.50	707	725.00	745	55.00	783	25.00	821	125.00	859	40.00
596	80.00	632	52.50	670	50.00	708	27.00	746	30.00	784	34.00	822	240.00	860	550.00
597	110.00	633	21.00	671	11.00	709	28.00	747	47.50	785	52.50	823	260.00	861	75.00
		634	37.50	672	30.00	710	95.00	748	21.00	786	36.00	824	20.00		
		635	75.00	673	22.00	711	67.50	749	200.00	787	45.00	825	500.00		