



Robert A. Siegel
AUCTIONS

120 EAST 56th STREET
NEW YORK CITY, N.Y.

RARITIES of the
world

409th Sale

**RARITIES
OF THE
WORLD**

The Property of Various Owners
Sold by their order

AT PUBLIC AUCTION

THURSDAY, MARCH 23rd, 1972 at 7:30 P.M.

AT THE HOTEL PIERRE
ROOF GARDEN
Fifth Avenue at Sixty-First Street

Robert A. Siegel
AUCTIONS

120 EAST 56th STREET NEW YORK, N.Y. 10022

Tel.: 212 PLaza 3-6421

FOREWORD

It is very gratifying to us to know that our annual auctions of "Rarities of the World" are being eagerly anticipated throughout the entire year. Barely had we completed our 1971 Rarity Sale when we were being asked what is in store for 1972.

Here is our 1972 offering, which has taken nearly a year to assemble, and we take pardonable pride in saying that we think it "measures up". Maybe it is a bit repetitious to call attention to certain special lots when all one has to do is examine the pages of this catalogue but there are a number of things we feel deserving of special mention which we make without prejudice to the other beautiful rarities in the auction. However, before we proceed to "special mention" we should like to say that this sale has been nearly a year in being put together. It has represented careful selection and no one will be surprised if we say that much more material has been rejected than accepted for this sale. However, a number of very choice and interesting items have had to be turned down because they were offered us too late for inclusion. Many of them, we hope, will be in our 1973 Rarity Sale, for which even now, we welcome material.

The sale opens with an Abraham Lincoln Free Frank, followed by a remarkable collection of autographed letters, with some franked, by James A. Garfield. Then follows a dazzling selection of Postmasters' Provisionals featuring the unique unused 5¢ Baltimore. There are three "Brattleboros", the "New Haven 5¢ Red" on cover, some outstanding 5¢ New York including Foreign Mail covers, a Providence 5¢ cover and a literal "zoo" of choice St. Louis "Bears". The 1847 Issue offers some startling lots including a 10¢ Vertical Bisect and a July 17th, 1847 use of the 10¢ on cover to Canada. There is the 10¢ Reproduction on Vertically Laid Paper, an unlisted variety and probably unique.

The 1851 section offers all of the rare types of the 1¢ Blue, the finest item being a matchless Type III, 99R2 tied on original cover by a Red Carrier cancellation. This cover was once one of the most famous items in the great Newbury Collection. Among lovely items in the 1857 issue is the 90¢ Imperforate, an exceedingly rare stamp.

In the rare 1861 "First Designs" there are examples of every denomination. The 1¢ and 12¢, always outstanding rarities are probably the finest in existence. In the regular 1861-67 issues there is an unused 3¢ Pink in exceptional condition and the unique block of 18 of the 3¢ "F" Grill Printed on Both Sides.

The 1869 Pictorials feature one of the most spectacular items ever offered, the magnificent set of 15¢, 24¢, 30¢ and 90¢ Proofs, with Centers Inverted in Imprint Plate Number Blocks of Eight. This is only one of several lots of beauty in this attractive group. The "Bank Note" issues feature a remarkable showing of the rare Special Printings. There are twenty-one lots in all of these seldom offered rarities including both the Hard and Soft paper varieties. This group catalogues at more than \$54,000.00 which gives some idea of the scope and rarity.

In the Columbian and Trans-Mississippi Issues there are some beautiful blocks of most of the dollar values. The Columbians also offer a choice example of the 4¢ Blue, Error of Color. The Pan-American series is offered in a set of complete sheets and some choice examples of all the Inverted Center errors. The 2¢ Inverted Center is one of the finest in existence. There are some rare coils and imperforate blocks of the 1902 Series. The 1909 Bluish Paper issue offers many rare items including both the 4¢ and 8¢, which are among the more elusive 20th Century issues.

The Panama-Pacific issue presents one item of exceptional importance, a complete sheet of seventy of the 10¢ Orange, Perforated 10. Words fail to do justice to this glorious rarity. The later 20th Century issues feature some spectacular errors. There are imperforate and part perforate blocks of the 8¢ Multicolor Flag issues, including Plate Number blocks. There is also one of the most unusual errors ever found, the 6¢ "Grandma Moses" with Black and Prussian Blue colors entirely omitted. This is offered in a complete mint sheet of fifty and is one of only two sheets believed found. Another similar type error is a sheet of fifty of the 8¢ "Decade of Space" with Red and Blue colors omitted. This, too, is one of two sheets on record.

The Air Post section features a choice set of the Graf Zeppelins in Plate Number Blocks of Six as well as some startling errors. One is the 10¢ "Curtiss Jenny" of 1968 with Red color omitted, the only authenticated example on record. There are also choice "Buffalo Balloon" 5¢ Blue, a single and a tete-beche pair. Officials, Locals, Postal Stationery and Western Covers are sections offering magnificent rarities including some exceptional Pony Express Covers. Confederates present several Postmasters' Provisionals, all of great rarity. Canal Zone, Hawaii and The Philippines all offer lots of unusual interest and there are some extremely rare Die Proofs of early United Nations Issues.

There are choice "pickings" among the Foreign stamps offered which include the Bermuda 1970 5¢ "Poinsettia" Imperforate error in an imprint block. There are choice Canada including two 12p Black of 1851 and a mint 5¢ "Seaway" Center Inverted. There are some very rare Air Post issues including the first "Cilicia", the "Ile de France", all of the rare Newfoundland "Trans-Atlantics" unused including the "Hawker", the "Di Pinedo" and the "Columbia". In German Offices in China there is a block of the 30pf with Handstamp Overprint, an astounding rarity and there is the rarest of all the King Edward VII issues the famed £25 Northern Rhodesia. There are two of the rare "Lady McLeod" stamps of Trinidad one being on original cover, an immensely rare offering.

We could continue with lot after lot for we mention just a few of the nearly 300 lots in the sale. Each and every one are worthy of special mention so we suggest that you give the catalogue careful examination. You will find the catalogue to be fully illustrated and with color plates of a few "beauties".

Since space is limited it is advisable to make reservations in advance to assure being seated. A call to our office will suffice. The usual light refreshments will be served following the sale. Colored slides of nearly every lot will be projected on a screen for everyone to see.

Robert A. Siegel

RESERVATIONS

Because of limited seating it is advisable to make reservations in advance for this sale. It can be done by letter or telephone call to our office.

A souvenir of the occasion will be given to all who have made advance reservations.

UNITED STATES

FREE FRANKS AND AUTOGRAPHS

- 1 ☒ **A. LINCOLN**, Autographed Free Frank, as President, "Washington, D.C., Free, 1864" pmk. on cover front, addressed in Lincoln's own handwriting to Felix R. Brunot of Pittsburgh, famous engineer and philanthropist, Handsome and Scarce **E.XII**
- 2 **JAMES A. GARFIELD**, A significant, historic collection of letters of the Hon. James Abram Garfield, written mostly while he served in the House of Representatives. Virtually all are in the 1870's and 1880 just up to the time he was nominated for President. All are to his close friend and Executor, Dr. John P. Robinson of Mentor, Ohio, in whose estate these letters were found. Much of the correspondence is personal in nature but many important political comments are to be found in them. **There are 58 autographed letters**, many of which are holographs. In addition there are seven envelopes (some with letters) franked by him as a Member of Congress. There is also one letter franked by his widow and two letters to Dr. Robinson respecting the Garfield funeral arrangements, one endorsed by Mrs. Garfield approving these arrangements. Additionally there are six Garfield family letters, written and signed by some of his children. The file contains an extensive amount of material of Dr. Robinson most of which relates to the doctor's own business affairs but among the many letters may be found items of Garfield interest. This is a most unusual collection with virtually all the letters in fine condition (though where there are covers some are damaged in opening). The few stamps are of no consequence. The letters provide a wonderful insight into the life of a good and worthy public figure whose tragic end deprived the nation of his leadership **E.XV**

PROOF COLLECTION

- 3 P **Hybrid Large Die Proofs**, Extensive set covering all issues 1845-1893, incl. Postage, Officials, Dues, Special Delivery, Newspapers, Carriers, etc. 191 different, bound into three leather-bound books. Very Fine and Handsome lot, each one Die Sunk on 5½" x 8" cards to resemble large die proofs **E.XVI**


POSTMASTERS' PROVISIONALS



- 4 ★ **Baltimore, Md. 5c Black on Bluish (3X3)**. Brilliant, Fresh, large part o.g., showing all or parts of four frame lines. Very Fine, a wonderful example of this matchless rarity, the only one known unused, Ex-Lilly **12,000.00**

LOTS ON VIEW:

*Wednesday, Thursday, March 22nd, 23rd, from 10:00 A.M.
to 3:30 P.M.*

- 5  Baltimore, Md. 5c Blue on Buff Entire (3XU4). Unusually clear impression, Bold "Paid" and "5" in circle, matching "Baltimore, Md." pmk on cover to Reading, Pa. Sealing Wax stain in center of cover, otherwise Very Fine, with P.F. Certificate 2,500.00

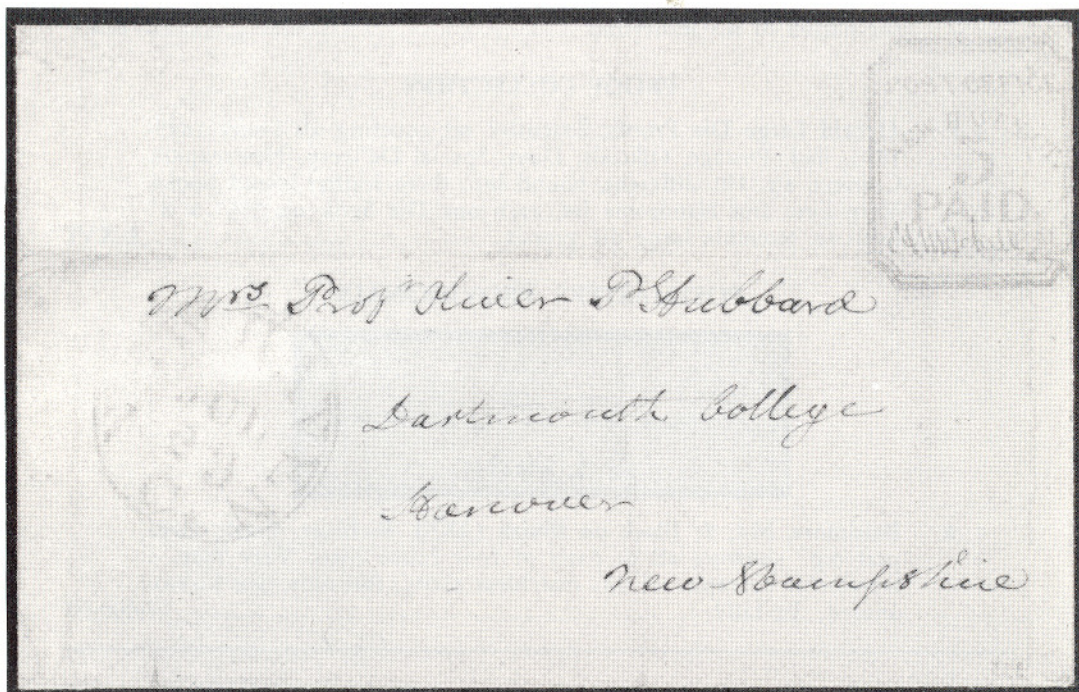



6

7

8

- 6 Brattleboro, Vt., 5c Black on Buff (5X1). Margins nearly all around, showing parts of dividing lines at sides and part of next stamp at bottom, partly touching at top. Red "D" (of "Paid") cancel. Gorgeous Impression, A Very Choice example of this classic rarity 3,750.00
- 7 Brattleboro, Vt., 5c Black on Buff (5X1). Margins nearly all around, outer line shaved in places and showing part of next stamp at left. Beautiful Sharp Impression, Neatly struck "PAID" cancel. in Red, Exceptionally Fresh, Fine 3,750.00
- 8 Brattleboro, Vt., 5c Black on Buff (5X1). Large margins all around, for once! Light Red cancel. tiny, inconsequential crease in tip of corner, otherwise Very Fine, with P.F. Certificate 3,750.00

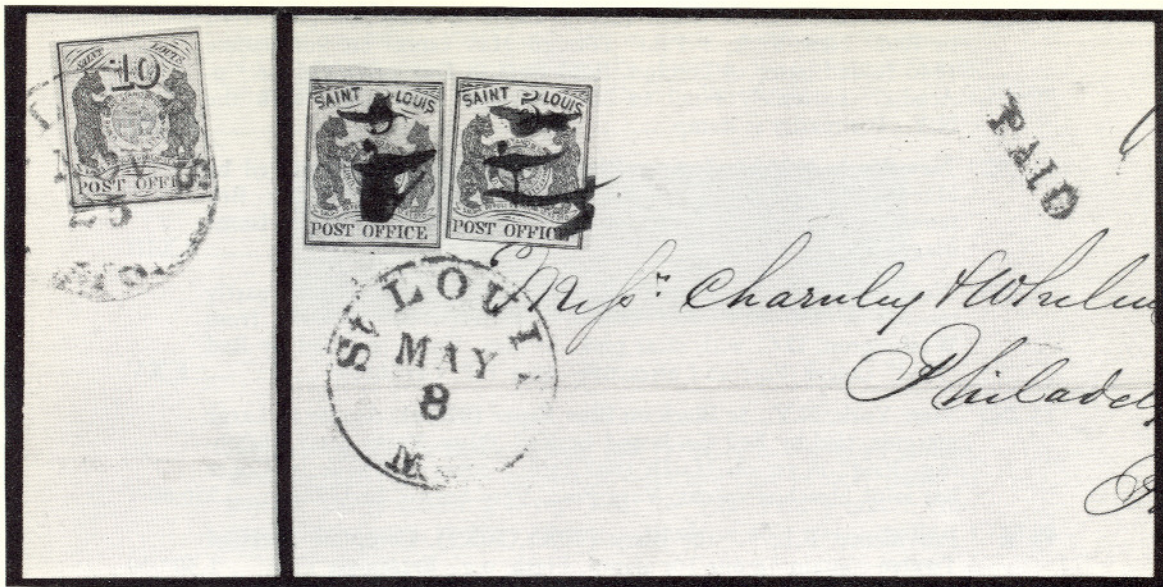


- 9  New Haven, Conn., 5c Red on White (8XU1). Fine, full impression, signature in magenta. Red "New Haven, Ct. Jul. 23" pmk. to Hanover, N.H. Some restoration to the cover, Fine appearance and of the highest order of rarity. Ex-Ferrari, with P.F. Certificate (Unpriced on the white envelope, cat. \$32,500.00 on the bluish)

- 10 ☒ **New York, N.Y., 5c Black (9X1).** Large to Huge margins, Tied by Red "New York, 5 Paid" Foreign Mail cancel on immaculate 1846 folded letter to London. Bold English Due marking, ms. "p. Acadia", Extremely Fine, an ideal Foreign Mail cover with the N.Y. Postmaster's stamp **E.XIII**
- 11 ☒ **New York, N.Y., 5c Intense Black (9X1).** Large margins, tied by blue ms. on neat folded 31 July 1845 letter to Belgium, "Str. Britannia" in ms. and large Boxed Red Transit. Rare and Handsome usage, Very Fine **E.XIII**
- 12 ☒ **New York, N.Y., 5c Black (9X1).** Large margins three sides, partly touches at bottom. Major Double Transfer Pos. 7. Used from Washington, D.C. with clear pmk. to New York, just tied by Red "Paid" cancel. Fine and attractive, with P.F. Certificate **E.XV**
- 13 ☒ **New York, N.Y., 5c Black on Blue Paper (9X1a).** Ample to Large margins, tied by Red Grids and by Red "New York, 5cts", matching "Paid" in arc on March 1847 folded cover to Rhode Is. Cover has faint bleached specks, Very Fine, Very Scarce, Ex-Gibson 550.00+
- 14 ★ **Providence, R.I., 5c, 10c Black (10X1, 10X2).** Complete Sheet of Twelve containing one 10c stamp, Fresh, o.g., Extremely Fine 1,300.00
- 15 ☒ **Providence, R.I., 5c Black (10X1).** Margins all around, neat, light quill pen "V" cancel. as usual, Red "Providence, R.I.," pmk., matching "Paid" & "5" on folded cover to New York, Very Fine 900.00
- 16 ☒ **St. Louis, Mo., 5c Black on Greenish, Ty. II (11X1).** Large margins all around, tied by neat ms. cancel & filing crease, Red. "St. Louis, Mo." pmk. matching "Paid" on Jan. 1847 folded cover to Quincy, Ill. Very Fine appearance 2,000.00



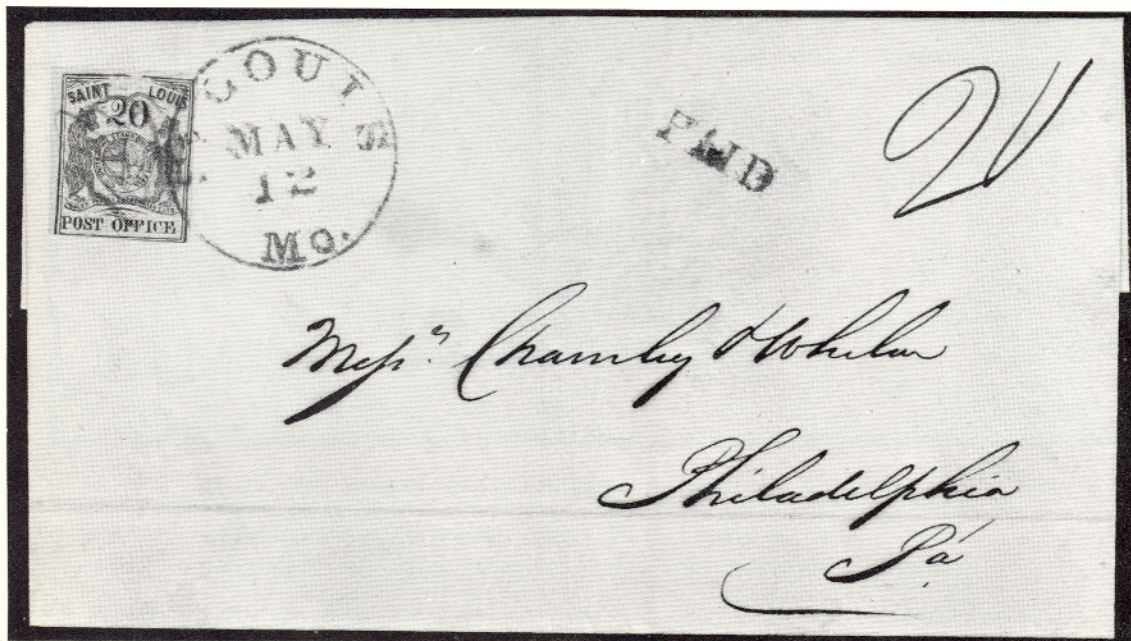
- 17 **St. Louis, Mo. 10c Black on Greenish (11X2).** Vertical Pair, Ty. II, III, Incredible margins all around incl. bottom sheet margin. Perfectly tied by Brilliant Red "St. Louis, Mo." pmk. on small piece. Gorgeous impression and color, Extremely Fine. An "Exhibition Piece" of exceptional rarity being without the usual pen cancellation 2,200.00+



18

19

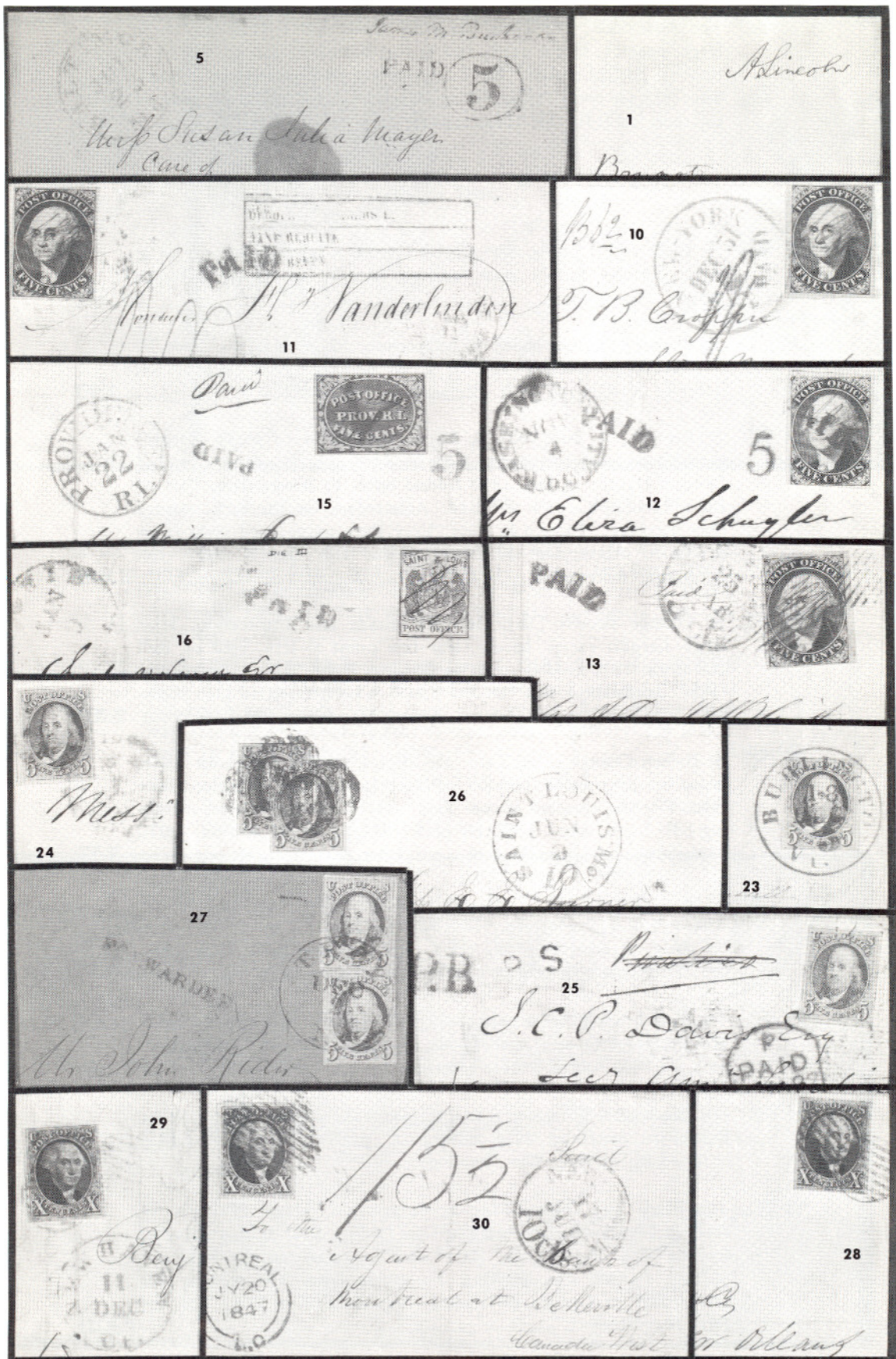
- 18 ☒ St. Louis, Mo. 10c Black on Greenish (11X2). Large margins all around, tied by Bright Red "St. Louis, Mo." pmk., matching "Paid" ms. "10" on immaculate "Charnley & Whelan" cover to Phil'a. Extremely Fine and Rare, being without the customary pen cancellation 1,700.00+
- 19 ☒ St. Louis, Mo. 5c Black on Gray Lilac (11X4). Two singles, Both Type III, Large margins nearly all around, each partly touched at one point, usual ms. cancel tying right stamp. Remarkably sharp impression & fine color. A Fine & Handsome "Charnley & Whelan" cover to Phil'a. with P.F. Certificate 5,000.00
- 20 St. Louis, Mo. 10c Black on Gray Lilac (11X5). Huge margins, Neat Red pmk. expertly repaired in side margins. An Extremely Fine looking example of this popular rarity 1,300.00

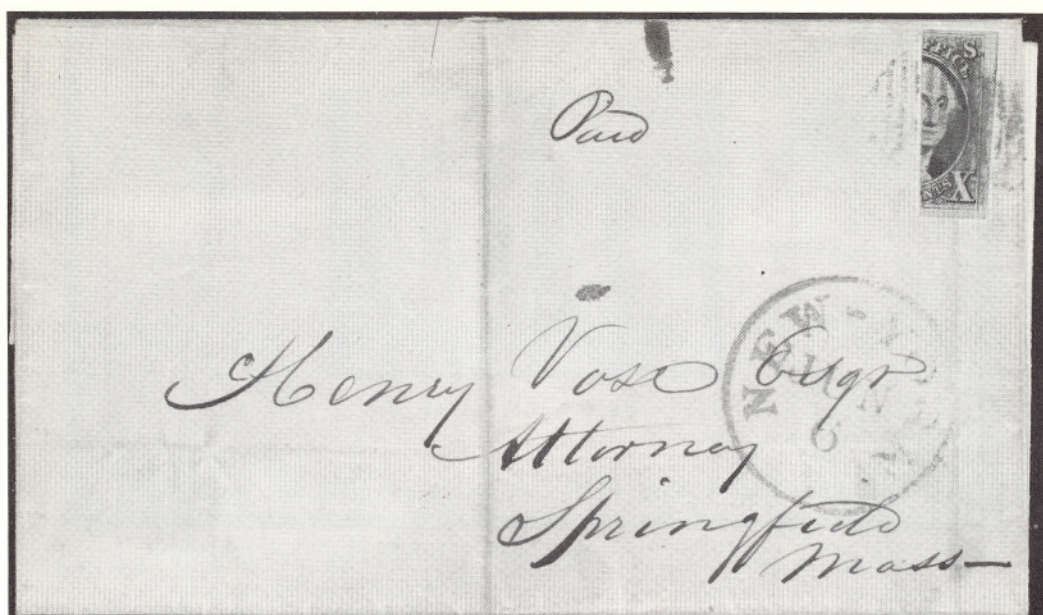


- 21 ☒ St. Louis, Mo., 20c Black on Gray Lilac, Ty. I (11X6). Three large margins, frame partly touched at bottom, faint ms. cancel & tied by Brilliant Red "St. Louis, Mo." pmk. matching "Paid", ms. "20" on fresh "Charnley & Whelan" cover to Phil'a. One of the most beautiful 20c "Bear" covers known, with P.F. Certificate 8,500.00

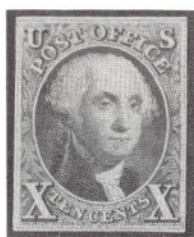
1847 ISSUE

- 22 ★☐ 5c Brown (1). Block, Margins all around except T.R. stamp in at right. Streaky brown gum, creases, mostly in margin between stamps, Scarce block 4,750.00
- 23 ☒ 5c Brown (1). Fine color & Impression, Large Margins, Tied by Perfect Bold "Burlington, Vt., 5" in Red on immaculate folded letter to Staatsburgh, N.Y., Extremely Fine, A "Gem" E.XI
- 24 ☒ 5c Brown (1). Fine color & Impression, Large to Huge Margins with bit of next left stamp, Tied by Blue cancel and part of Red London transit on Jan. 1850 folded letter to Amsterdam, Part of Blue Philadelphia pmk and Red "Amsterdam" on the back, various Due markings. Extremely Fine, Very Rare usage with only three covers to Amsterdam believed known with the 5c 1847. Ex-Armitage, Ackerman E.XIII
- 25 ☒ 5c Orange Brown (1b). Beautiful shade and Impression, Four large margins except barely clear one point at left. Tied by Red cancel. on 1850 folded cover to London, Bold "P.B." and part of "P.S." handstamps. Red London pmks on both sides, no Due markings but "Paid" in ms. deleted. A very Handsome and Rare cover E.XII
- 26 ☒ 5c Brown Orange (1b). Two overlapping singles, Gorgeous color, Beautiful Impression on Very Blue Paper. Huge margins three sides, line just touched at top. Tied by Brilliant Red Grids, matching "St. Louis, Mo." pmk. on neat envelope to So. Boston, Mass. A striking and unusual cover E.XI
- 27 ☒ 5c Red Brown (1). Two singles, Fine color, Late Impression, Ample to Large Margins, Tied by Bold Blue "Troy, N.Y." pmk. on cover to Rensselaerville, N.Y. Red "Forwarded", Very Fine, the "Forwarded" handstamp extremely scarce on the 1847 Issue E.XI
- 28 ☒ 10c Full Black (2). Intense Color, Magnificent Impression, Large Margins, tied by neat Red Grids, matching "Montgomery, Ala." pmk. on 1849 folded Banker's letter to New Orleans, La. Very Fine 275.00
- 29 ☒ 10c Black (2). Fine Shade & Impression, Large Margins, Tied by Red Grids, matching "New Haven, Ct." pmk. on Dec. 1849 folded letter to Milwaukee, Wis., Extremely Fine 275.00
- 30 ☒ 10c Black (2). Fine Shade & Impression, Huge Margins all around. Tied by Red Square Grid on 17 July 1847 folded cover to Canada. Red "New York, 10cts" and Canadian transits, bold ms. "1/5½" Canada due marking. Extremely Fine, The earliest 10c 1847 cover to Canada on record. An "Exhibition Piece" of the First Magnitude E.XIII





- 31 ☒ 10c Black, Vertical Half used as 5c (2b). Large Margins, Tied by Red Grid, Matching "New York" pmk. on June 1851 folded cover to Springfield, Mass. Faint filing crease, otherwise Very Fine, #37 in the Brookman list of known bisects 4,250.00



- 32 ★ 10c Black, Reproduction on Bluish Vertically Laid Paper (4 var.). Clear Margins all around, Fine, A Major Variety long recognized by leading students, Probably Unique, See Brookman, Vol. I, Page 98

ESTIMATES

Our sales contain many 19th Century covers and fancy cancellations. We have had many requests to give the estimated cash value on these lots. We are trying to place a fair net valuation on each lot as a guide for bidding when no catalogue value portrays the true value. The chart below will be used, for example E. IV means our estimated cash value on this lot is \$30.00 to \$40.00. Lots may actually realize more or less than these estimates and under no circumstances are these estimates to be considered reserves but merely a guide to bidding.

E. I	up to \$10.00	E. IX	\$150.00 to \$200.00
E. II	\$10.00 to \$20.00	E. X	\$200.00 to \$250.00
E. III	\$20.00 to \$30.00	E. XI	\$250.00 to \$350.00
E. IV	\$30.00 to \$40.00	E. XII	\$350.00 to \$500.00
E. V	\$40.00 to \$50.00	E. XIII	\$500.00 to \$750.00
E. VI	\$50.00 to \$75.00	E. XIV	\$750.00 to \$1000.00
E. VII	\$75.00 to \$100.00	E. XV	\$1000.00 to \$2500.00
E. VIII	\$100.00 to \$150.00	E. XVI	over \$2500.00



33

34

- 33 1c Blue, Type I, Pos. 7R1E (5). Large margins, incl. top sheet margin, to in at right. Neat ms. cancel, tiny crease in top margin far from design. A most acceptable example of this always desirable rarity 5,750.00
- 34 ★ 1c Blue, Ty. Ib, Pos. 6R1E (5b). Rich color, Margins all around, incl. Top Sheet Margin, Light corner crease, otherwise Extremely Fine, with P.F. Certificate 1,400.00
- 35 ☒ 1c Dark Blue, Ty. Ia (6). Large to Huge Margins, with parts of next stamp at top and left. Perfectly tied by Black "New York Carrier" cancel on small neat local cover, Very Fine 750.00+



- 36 ★田 1c Blue, Ty. II (7). Horizontal Block of Eight, Pos. 41-44, 51-54R2. Fresh, part o.g., Wonderful margins all around incl. part left pane margin and parts of adjoining stamps at top. An incredibly beautiful block, Extremely Fine 1,200.00+
- 37 1c Blue, Ty. II Cracked Plate (7). Complete Reconstruction of the Major Crack, Pos. 2, 12, 13, 23, 33L2. Pos. 13L is just in at top, Fine; others with large margins all around and Very Fine, Pos. 23 with ms. cancel. A very choice reconstruction 500.00



- 38 1c Blue, Ty. III, Pos. 99R2 (8). The finest example of this rare type. Large to Gigantic Margins incl. full bottom sheet margin; Perfectly tied by Red "New York Carrier" pmk. on small, neat Lady's envelope. Extremely Fine, of impeccable quality and beauty. One of the greatest 1c 1851 covers in existence, Ex-Newbury E.XVI
- 39 3c Red (11). Two Pairs Used From Canada, Tied by clear "London, U.C., Oct. 31, 1856" in rimless circle, struck twice over each stamp on cover to Buffalo (N.Y.). Stamps cut in and creased before use, one has broken in two, nevertheless attractive and an extraordinary rarity E.XIII



40

41

43

- 40 ★ 5c Red Brown (12). Huge Margins, incl. part right sheet margin. Gorgeous Rich Color, Fresh, Extremely Fine 1,350.00
- 41 ★ 5c Red Brown (12). Margins all around, Rich Color, Fine, with P.F. Certificate stating "genuine uncanceled and slightly soiled". The soiling is almost imaginary 1,350.00
- 42 5c Red Brown (12). Huge Margins all around, Tied by "New Orleans, La." and Red "New York, Br. Transit" on 1856 folded letter to Paris. Bold French "26 decimes" Due mark. Extremely Fine, A "Showpiece" 450.00
- 43 ★ 10c Green, Ty. I (13). Clear to mostly large margins. Fresh and Very Fine, with P.F. Certificate 1,750.00
- 44 12c Black, Diagonal Half used as 6c (17a). Nicely tied by "San Francisco, Cal." pmk. on neat folded cover to New York, Light filing crease at left, otherwise Very Fine, with P.F. Certificate 1,500.00

1857 ISSUE

- 45 ★田 1c Blue, Ty. I, II (18,20). Combination Block, The bottom pair both Ty. I, top pair Ty. II, Fresh, o.g. Fine, A scarce block 700.00
- 46 1c Blue, Ty. II, IV (20,23). Combination Vertical Pair, Pos. 4, 14 R1L. Exceptionally well centered, Wonderful Fresh color, neat "New York" pmk. Extremely Fine, A fantastic pair of great rarity, probably the finest known 575.00
- 47 5c Indian Red (28A). Vertical Strip of Three, Brilliant, Rich color, Light 1859 year date pmk. Nicely centered for this issue, Fine, Signed "S.B.A." (Stanley B. Ashbrook) 1,200.00
- 48 ★田 12c Black, Pl. III (36b). Block, Large part o.g., All stamps show Double Frame Lines, Left and Right, respectively; Centered towards top left, Fine, for this issue 350.00+
- 49 ★ 24c Red Lilac (37b). Splendid color, small part o.g., Fine, Much scarcer than cat. value would indicate 350.00



50

55

- 50 ★ 24c Lilac, Imperforate (37c). Large to Huge Margins, incl. left sheet margin. Initialed "E.F." in sheet margin, Very Fine. Much scarcer than cat. value would indicate 600.00
- 51 田 24c Lilac (37). Block, Bold Grid cancels. Centered to left bottom, small faults. Nice appearance and a very scarce block 900.00
- 52 田 24c Lilac (39). Tied by Bold "Gallipolis, O." pmk., with 3c Red (26) ms. cancel. and just tied by "New York, 18" transit pmk. on Patriotic Cover (Multicolor Crossed Flags) to Switzerland. Clear "Short Paid" and splendid sequence of transit markings on back. A Choice and Handsome cover EXII
- 53 ★田 30c Orange (38). Block, Fresh, o.g., Rich, Deep, Color, Better than usual centering, Fine-Very Fine 1,000.00
- 54 ★ 90c Blue (39). Horiz. Pair from the top row with position dots and each with Double Transfer at top. Fresh, o.g., centered bit to bottom. Tiny, pinhead thin specks, otherwise Fine. Very scarce in multiples 900.00+
- 55 ★ 90c Blue, Imperforate (39a). Ample to Large margins all around. Deep, Rich color, Very Fine 1,850.00



56

58

59

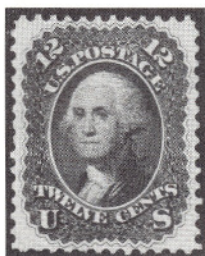
60

- 56 ★ 3c Scarlet, Reprint (41). Better than usual centering, Fine, Scarce 800.00
- 57 P 12c Black, Reprint, Proof on Cardboard (44P). Complete Sheet of 100, Very Fine and Handsome 1,625.00+
- 58 ★ 30c Yellow Orange, Reprint (46). Unusually well centered for this, Very Fine 950.00
- 59 ★ 30c Yellow Orange, Reprint (46). Gorgeous color, a single nibbed perf. Fine, with P.F. Certificate 950.00
- 60 ★ 90c Deep Blue, Reprint (47). Beautiful color, Fresh. Small, faint crease in corner. Very Fine appearing example of this handsome rarity, with P.F. Certificate 1,300.00

1861 "FIRST DESIGN"



- 61 ★ 1c Indigo, "First Design" (55). Fresh, o.g., Rich color, Very Fine. Probably the finest of the few known examples of this famed rarity 12,000.00
- 62 ★ 3c Brown Rose, "First Design" (56). Block, Mint, Fine-Very Fine 950.00
- 63 ★ 5c Brown, "First Design" (57). Beautifully centered, small thin at top and a few short perfs. as often, Very Fine appearance, with P.F. Certificate 7,000.00
- 64 ✉ 10c Dark Green, "First Design", 5c Brown Yellow (58,67a). Each tied by "Jamaica Plain, Mass." pmk on small envelope to Paris, Oct. 15, 1861 use with Red "Boston, Paid 12" & Red French transits. A few nibbed perf on 10c. Handsome and Rare combination E.XII



- 65 ★ 12c Black, "First Design" (59). Beautifully centered, Fresh, o.g., Extremely Fine, Probably the finest of the mere handful known of this very great rarity, with P.F. Certificate 25,000.00
- 66 ★ 24c Grayish Lilac, "First Design" (60a). Fresh color, part o.g., Fine, with P.F. Certificate 1,300.00
- 67 ★ 30c Red Orange, "First Design" (61). Rich, Deep color, Fresh, A Fine and Handsome Rarity 8,000.00
- 68 ★ 90c Dull Blue, "First Design" (62). Wonderfully well centered, Rich color, microscopic split in one perf., still one of the finest examples known of this great rarity 11,000.00

1861-1867 ISSUES



69

71

72

73

- 69 ★ 3c Pink (64). Brilliant color, Fresh, full o.g., negligible tiny gum buckle, Very Fine. A Gorgeous example of this rare stamp in exceptional condition, Ex-Caspary 875.00
- 70 ★田 3c Rose, Imperforate (65c). Block of Six, Very Fine, Scarce 375.00+
- 71 ★ 3c Lake (66). Brilliant color, Fresh, o.g., Fine 550.00
- 72 ★ 5c Buff (67). Beautifully centered, Fresh, Bright color, Very Fine, despite a single partly short perf. at top. Seldom seen in such choice quality 650.00
- 73 ★ 3c Scarlet (74). Rich color, Fine and Fresh, with P.F. Certificate 1,200.00
- 74 ★ 3c Rose, Grill All Over, Imperforate (79a). Horiz. Pair, Fresh, o.g., Very slight stains and light gum bend, Very Fine appearance, with P.F. Certificate 700.00
- 75 ★ 2c Black, "D" Grill (84). Horiz. Pair, Fresh, o.g., Perfs. bit in at right. Multiples of this stamp are extremely scarce and desirable; with P.F. Certificate 1,400.00



- 76 ★田 15c Black, "E" Grill (91). Block, Fresh, full o.g., One stamp shows minute toned speck. Fine, A Very Rare and Lovely Block, with P.F. Certificate 2,750.00



14



22



45



48



51



37



53



62



70



90



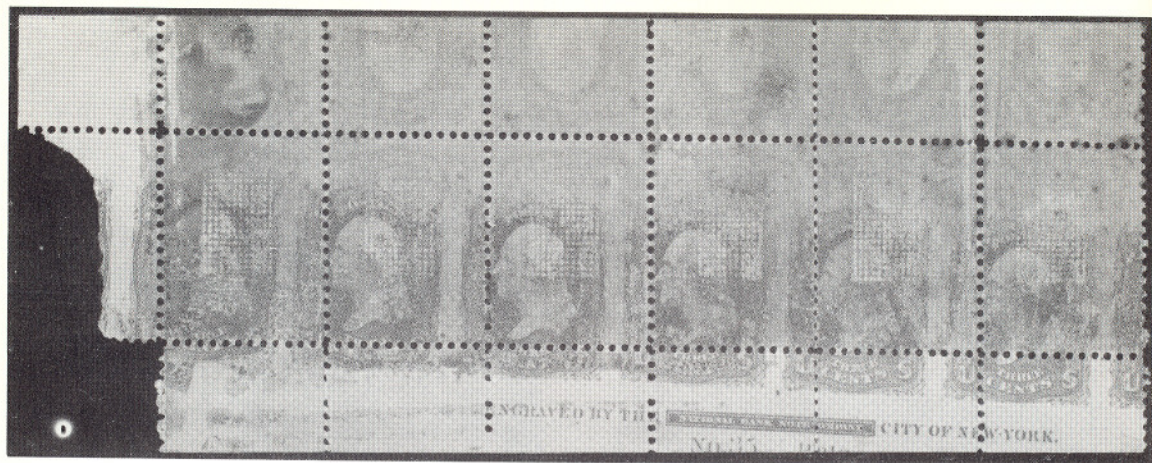
104



117



105A



- 77 ★ 3c Bright Red, "F" Grill, Printed on Both Sides (94f). Upper Left Sheet Corner Block of Eighteen with strong, almost complete impression on the back of a Horizontal Strip of Six with Full Imprint and Plate No. 35. Mint, Fine-Very Fine. A Sensational, Unique Showpiece 1,740.00+
- 78 ★ 3c Brown Red, Re-Issue (104). Negligible crease across tip of corner perf., still Very Fine 925.00
- 79 ★ 90c Blue, Re-Issue (111). Rich Deep color, Well Centered, Faint creases at right, Very Fine appearance, with P.F. Certificate 1,650.00

1869 PICTORIAL ISSUE

- 80 P 15c, 24c, 30c, 90c Pictorial Issue Proofs, Centers Inverted (120P, 121P, 122P, 129P). Complete in Imprint, Plate Number Blocks of Eight. The Magnificent, Unique Set! Immaculate, An Astounding "Exhibition Piece" 26,000.00

ANNUAL SUBSCRIPTION FOR AUCTION CATALOGUES

<u>For Customers in the United States and Canada</u>	<u>Catalogues Only</u>	<u>Catalogues & Prices Realized</u>
Sent by Regular Mail	\$ 5.00	\$10.00
Sent by Air Mail	\$20.00	\$25.00
<u>For Customers in all other Countries sent by Air Mail</u>		
All Catalogues	\$30.00	\$40.00
Catalogues of Foreign and British Area only	\$10.00	\$15.00
(Foreign Subscriptions must be paid in U.S. Funds)		

No. 92

NATIONAL BANK NOTE C. NEW YORK



No. 93

NATIONAL BANK NOTE C. NEW YORK



No. 94

NATIONAL BANK NOTE C. NEW YORK

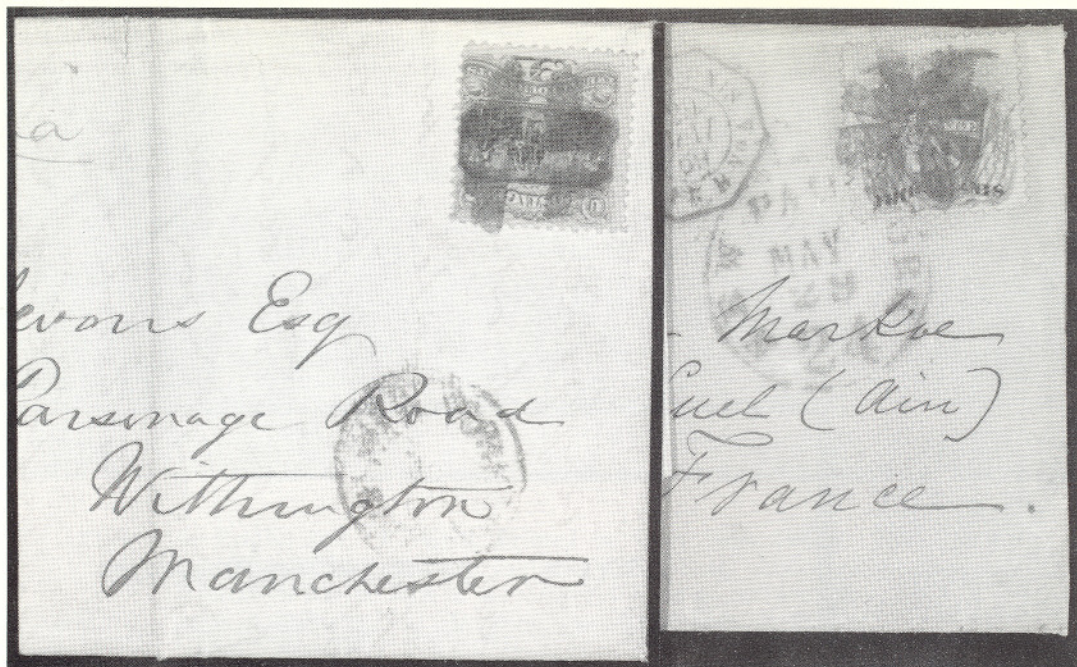


NATIONAL BANK NOTE C. NEW YORK

No. 95



80



81

82

- 81 ☒ 24c Green & Violet (120). Centered trifle to right, tied by "Four Hearts arranged in Circle" on August 1869 double-weight folded letter to England, ms. "p. Russia". Fresh colors, Fine, with P.F. Certificate 1,800.00
- 82 ☒ 30c Blue & Carmine (121). Rich Colors, Beautifully centered, tied by rosette and Red "New-Paid-York, 24, May 29" (1869), Red French transit pmk. in octagon, on neat cover to France, Very Fine, Ex-Knapp, Very early usage just two weeks after issue 2,250.00

83

85



84

86

87

88

89

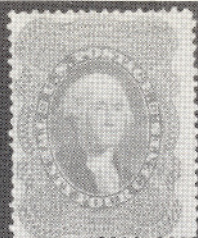
- 83 ★ 90c Carmine & Black (122). Rich, Deep colors, large part o.g., Centered least bit to right, Very Fine 900.00
- 84 ★田 10c Yellow, Re-Issue (127). Block, Centered slightly to left, some perms. reinforced. Fresh and Attractive, Very few blocks are known 4,000.00
- 85 ★ 12c Green, Re-Issue (128). Wide margins, Brilliant and Fresh, Extremely Fine 425.00
- 86 ★ 15c Brown & Blue, Re-Issue, Imperforate Horizontally (129a). Brilliant and Fresh, o.g., Wide margins, Beautifully centered, Extremely Fine, with P.F. Certificate. Probably the finest known example of this rare variety 650.00
- 87 ★ 30c Blue & Carmine, Re-Issue (131). Large margins, Rich, Bright colors, Fresh, o.g., Extremely Fine 600.00
- 88 ★ 30c Blue & Carmine, Re-Issue (131). Gorgeous colors, Remarkably fresh and Very Fine 600.00
- 89 ★ 90c Carmine & Black, Re-Issue (132). Fresh, o.g., A Lovely Copy of this Rarity, Very Fine 1,000.00
- 90 ★田 1c Brown Orange, Re-Issue (133a). Horizontal Block of Eight. Issued without gum, Very Fine 800.00

BANK NOTE ISSUES

- 91 ★田 3c Green, Grill (136). Block of Thirty-two, top Imprint & Plate No. 8, Brilliant and Fresh, o.g., Hinged in margin only with all stamps mint. Left pane margin with half-arrow. Wonderfully well centered throughout, Extremely Fine, Probably the largest block in existence E.XVI
- 92 ★田 3c Green, Grill Imperforate (136b). Horizontal Block of Twenty, Brilliant, Fresh, full o.g., Two extra grill impressions in left margin. Vertical crease between stamps at center, otherwise Extremely Fine, A marvelous and Very Rare block 4,000.00+
- 93 ☒ 24c Purple (153). Tied by Bold "Propeller" cancel., Well Centered, "New York, Br. Transit, Apr. 2" (1870) pmk., Probable earliest known use of this stamp, on cover to France. British & French year-dated (1870) transits, also Due markings. Very Fine and Spectacular cover E.XI
- 94 ☒ 24c Purple (153). Well centered, Tied by N.Y.F.M. cancel Ty. G17, partly clear strike on neat cover to "Sidney, Australia", forwarded to Melbourne, charge paid by two New South Wales 2p Blue (53) Fine sequence of transit pmks. Very Fine and an Extremely scarce combination use E.XI
- 95 ★ 1c Ultramarine, Imperforate (156f). Vertical Strip of Three, Large margins to lower stamps slightly in at right, o.g., slightly toned and crease between top pair, with P.F. Certificate. Very Rare, unpriced unused E.XIII



20



49



54



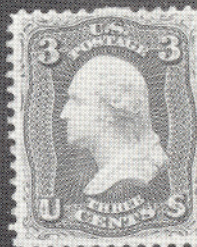
46



47



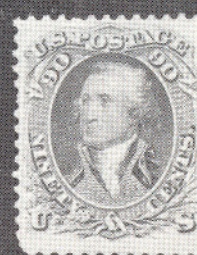
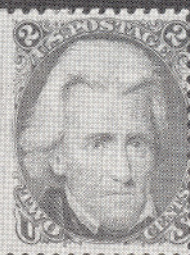
74



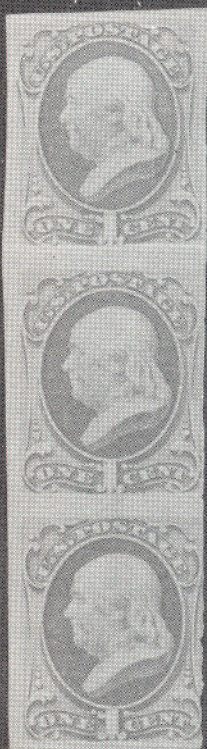
78



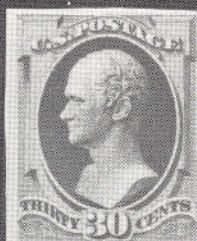
75



79



95



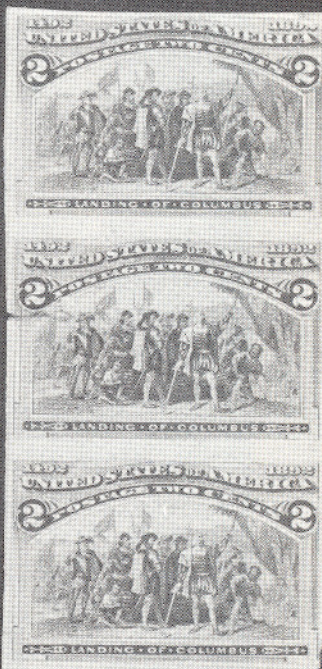
119



120



126



121

SPECIAL PRINTINGS — HARD PAPER

96

97

98

99



100

101

102

103

- 96 ★ 3c Blue Green, Special Printing (169). Rich color, only a few trimmed perfs., faint, tiny toned spot on bust, nevertheless Very Fine. A beautiful example of one of the rarest and most elusive of all the Special Printings, with A.P.S. Certificate 3,500.00
- 97 ★ 7c Reddish Vermilion, Special Printing (171). Some perfs. trimmed, as usual, tiny tear at top. Very Fine appearance, with A.P.S. Certificate 1,300.00
- 98 ★ 10c Pale Brown, Special Printing (172). Some perfs. trimmed, as usual, Left bottom half-arrow, bit thin, otherwise Fine, with A.P.S. Certificate 2,500.00
- 99 ★ 15c Bright Orange, Special Printing (174). Brilliant color, some perfs trimmed, as usual. Faint, almost imaginary crease, otherwise Very Fine, with A.P.S. Certificate 2,400.00
- 100 ★ 24c Dull Purple, Special Printing (175). Faint horizontal crease, otherwise Fine, with A.P.S. Certificate 1,200.00
- 101 ★ 30c Greenish Black, Special Printing (176). Fresh color, some perfs, trimmed, as usual. A choice example of this rarity, with P.F. Certificate 2,600.00
- 102 ★ 90c Violet Carmine, Special Printing (177). Extremely Fine copy of this rare stamp, with P.F. Certificate 2,600.00
- 103 ★ 90c Violet Carmine, Special Printing (177). Well centered, some perfs trimmed, as usual, Very Fine, with P.F. Certificate 2,600.00
- 104 ★田 5c Blue, Continental Grill (179c). Block, Fresh o.g., perfs touch at bottom, light crease in lower pair, Very Rare in a block, with P.F. Certificate 500.00
- 105 ★ 2c Carmine Vermilion, Special Printing (180). Perfs trimmed two sides, as usual. Thin at top, Fine appearance, one of the rarest of all the Special Printings, with P.F. Certificate 8,000.00
- 105A★田 10c Brown, Combination Block (187,188). Top Right stamp #187, others #188. Fresh, o.g., perfs. slightly in at bottom, minor separation, Very Rare, with P.F. Certificate E.XIII



105	106	107	108
109	110	111	112
113	114	115	116

- 106 ★ 1c Dark Ultramarine, Special Printing (192). Brilliant and Fresh, Centered bit to left bottom. A fine example of this outstanding rarity, with P.F. Certificate 3,750.00
- 107 ★ 6c Dull Rose, Special Printing (195). Very Fine, with A.P.S. Certificate. An exceptionally choice example of this extremely rare stamp 3,200.00
- 108 ★ 7c Vermilion, Special Printing (196). Two almost invisible thin specks, otherwise Extremely Fine copy of this rarity, with P.F. Certificate 1,600.00
- 109 ★ 10c Deep Brown, Special Printing (197). Extremely Fine, a marvelous copy of this very rare stamp, with P.F. Certificate 3,250.00
- 110 ★ 12c Blackish Purple, Special Printing (198). Str. edge at right, Very Fine, with A.P.S. Certificate, A choice example of this rarity 2,450.00
- 111 ★ 12c Blackish Purple, Special Printing (198). Well centered, minute thin and faint toning, visible mainly on the back. An Extremely Fine appearing copy of this very rare stamp, with P.F. Certificate 2,450.00
- 112 ★ 15c Orange, Special Printing (199). Brilliant color, Fresh, faint crease in corner, otherwise Very Fine, with P.F. Certificate. A very elusive rarity 3,000.00
- 113 ★ 24c Dark Violet, Special Printing (200). An Extremely Fine copy of this Rare stamp, with P.F. Certificate 1,100.00
- 114 ★ 24c Dark Violet, Special Printing (200). Very Fine, with P.F. Certificate, A most handsome example 1,100.00

- 115 ★ 30c Greenish Black, Special Printing (201). Remarkably well centered, slightly thin, Extremely Fine appearance. A very rare stamp, with A.P.S. Certificate 2,750.00
- 116 ★ 90c Dull Carmine, Special Printing (202). Thin spot, Fine appearance, with P.F. Certificate, Very rare 3,000.00

OTHER BANK NOTE ISSUES

- 117 ★田 1c Gray Blue, Punched with 8 Small Holes in Circle (206b). Bottom Imprint Plate Number Block of Twelve. Mint, Centered way to upper left but a probably unique block of this scarce stamp 720.00+
- 118 ★田 2c Pale Red Brown, Special Printing (211B). Block, Top Left Corner Sheet Margins, Mint, Extremely Fine, with P.F. Certificate. A marvelous block 850.00+
- 119 ★ 30c Orange Brown, Imperforate (217a). Horizontal Pair, Three large margins, trifle narrow at top. Fine, with P.F. Certificate 550.00
- 120 ★ 90c Orange, Imperforate (229a). Horizontal Pair, Fresh, o.g., Large margins, Very Fine & Handsome 650.00

COLUMBIAN ISSUE

- 121 ★ 2c Columbian, Imperforate (231a). Vertical Strip of Three, all with defects, as always. Fine appearing, Extremely rare in a strip 1,875.00+



- 122 ★ 4c Blue, Columbian Error of Color (233a). Brilliant Mint, Centered slightly to bottom, Very Fine, with photo-copy of P.F. Certificate for a pair from which this was taken 4,650.00
- 123 ★田 50c Columbian (240). Block, Fresh, o.g., Very Fine 500.00
- 124 ★田 50c Columbian (240). Block, Exceptionally well centered, Fresh, o.g., slight hinge reinforcement, Very Fine 500.00
- 125 ★田 \$1.00 Columbian (241). Block, Fresh, o.g., minor gum wrinkles in top pair, few horizontal perfs reinforced, otherwise Fine 1,250.00
- 126 ★ \$3.00 Columbian (243). Rich color, Wide margins and beautifully centered, Crackly o.g., Extremely Fine 425.00



- 127 ★田 \$3.00 Columbian (243). Block, Fresh Mint, Brilliant color, Centered bit to top 3,600.00
- 128 田 \$3.00 Columbian (243). Block, Rich, deep color, neat "Ozone Park, N.Y., Jan. 20, 1894" pmk. struck once in center. Minor separation reinforced, otherwise Very Fine, Handsome and rare block 1,900.00



- 129 ★田 \$4.00 Columbian (244). Block, Rich color, Fresh, o.g., Centered trifle to top, Fine, A Rare and Handsome Block 5,500.00

1894-1895 ISSUES

- 130 ★ 6c Brown, Imperforate Horizontally (256a). Vertical Pair, Fresh, o.g., Fine and Scarce 425.00
- 131 ★田 \$1.00 Black, Ty. I (261). Block, Fresh, o.g., Unusually Fine centering, two negligible pin-point thin specks, otherwise Very Fine 585.00
- 132 ★田 \$1.00 Black, Ty. II (261A). Block, Fresh, o.g., few perfs. a bit strengthened, Fine-Very Fine 900.00
- 133 田 1c Blue, 4c Brown, Imperforate (264c, 269a). Horizontal Pair of each, nicely tied on 1900 Registered cover. Large margins, 4c creased in margin between stamps, one 1c with small scissors cut. A Very Attractive and Rare cover, with P.F. Certificate E.XI
- 134 ★田 50c Orange (275). Top Imprint Plate No. 75 Block of Six, Fresh, o.g., Very Fine 700.00
- 135 ★ \$2.00 Dark Blue, Imperforate (277b). Horizontal Pair, Magnificent Rich color, Brilliant o.g., Very Fine, A Rare and Beautiful Pair 850.00
- 136 ★ \$5.00 Dark Green (278). Full Lower Right Sheet Corner Margins, Fresh, o.g., Extremely Fine, A "Gem" 310.00
- 137 ★田 \$5.00 Deep Green (278). Block, Exceptional Centering, Wonderful Rich color, part o.g., Very Fine, A Rare Block 1,600.00



92



91



118



131



123



124



125



132



134



146



138 EX

TRANS-MISSISSIPPI ISSUE

- 138 P 1c-\$2.00 Trans-Mississippi, Large Die Proofs (285P-293P). The complete set, on India, Die Sunk on small cards. Fresh, Extremely Fine 1,625.00
- 139 ★田 50c Trans-Mississippi (291). Block, Fresh, o.g., minor thins and crease involve two stamps, Very Fine appearance 1,100.00
- 140 ★ \$1.00 Trans-Mississippi (292). Top Imprint, Plate No. 606 Pair, Fresh, o.g., Exceptionally well centered, Extremely Fine, A Gorgeous Pair, with P.F. Certificate 1,150.00
- 141 ★田 \$1.00 Trans-Mississippi (292). Block, Fresh, large part o.g., Some horizontal perfs. reinforced, otherwise Very Fine 3,000.00
- 142 ★田 \$1.00 Trans-Mississippi (292). Block, Fresh, o.g., Reperforated at right, Fine-Very Fine appearance 3,000.00
- 143 ★田 \$2.00 Trans-Mississippi (293). Mint Marginal Block, Rich Color, Fine 4,250.00
- 144 ★田 \$2.00 Trans-Mississippi (293). Block, Fresh, o.g., reperforated one side, otherwise Fine 4,250.00
- 145 田 \$2.00 Trans-Mississippi (293). Block, Light oval Registry cancel, Nicely centered, slight reinforcement, otherwise Very Fine 1,700.00

ESTIMATES

Our sales contain many 19th Century covers and fancy cancellations. We have had many requests to give the estimated cash value on these lots. We are trying to place a fair net valuation on each lot as a guide for bidding when no catalogue value portrays the true value. The chart below will be used, for example E. IV means our estimated cash value on this lot is \$30.00 to \$40.00. Lots may actually realize more or less than these estimates and under no circumstances are these estimates to be considered reserves but merely a guide to bidding.

E. I	up to \$10.00	E. IX	\$150.00 to \$200.00
E. II	\$10.00 to \$20.00	E. X	\$200.00 to \$250.00
E. III	\$20.00 to \$30.00	E. XI	\$250.00 to \$350.00
E. IV	\$30.00 to \$40.00	E. XII	\$350.00 to \$500.00
E. V	\$40.00 to \$50.00	E. XIII	\$500.00 to \$750.00
E. VI	\$50.00 to \$75.00	E. XIV	\$750.00 to \$1000.00
E. VII	\$75.00 to \$100.00	E. XV	\$1000.00 to \$2500.00
E. VIII	\$100.00 to \$150.00	E. XVI	over \$2500.00



139



140



141



142



143



144



145

TWENTIETH CENTURY ISSUES

- 146 P 1c-10c Pan-American, Large Die Proofs (294P-299P). The Complete Set on India, Die Sunk on Cards, Fresh, Extremely Fine 600.00
- 147 ★ 1c-10c Pan-American (294-299). The Complete Set of Full Sheets of One Hundred! An unusually fresh set with above average centering, the majority being Fine-Very Fine. A Rare and Handsome Set 16,090.00+



148

149

150

- 148 ★ 1c Pan-American, Inverted Center (294a). Well Centered, Fresh & bright, Expertly regummed. A choice and handsome copy of this rare stamp, Very Fine 3,500.00
- 149 ★ 1c Pan-American, Inverted Center (294a). Exceptionally Fresh, tiny corner perf. crease. A Very Fine appearing example of this rare stamp 3,500.00
- 150 ★ 1c Pan-American, Inverted Center (294a). Part o.g., Tiny, almost negligible thins. Fine appearing example of this always popular rarity 3,500.00



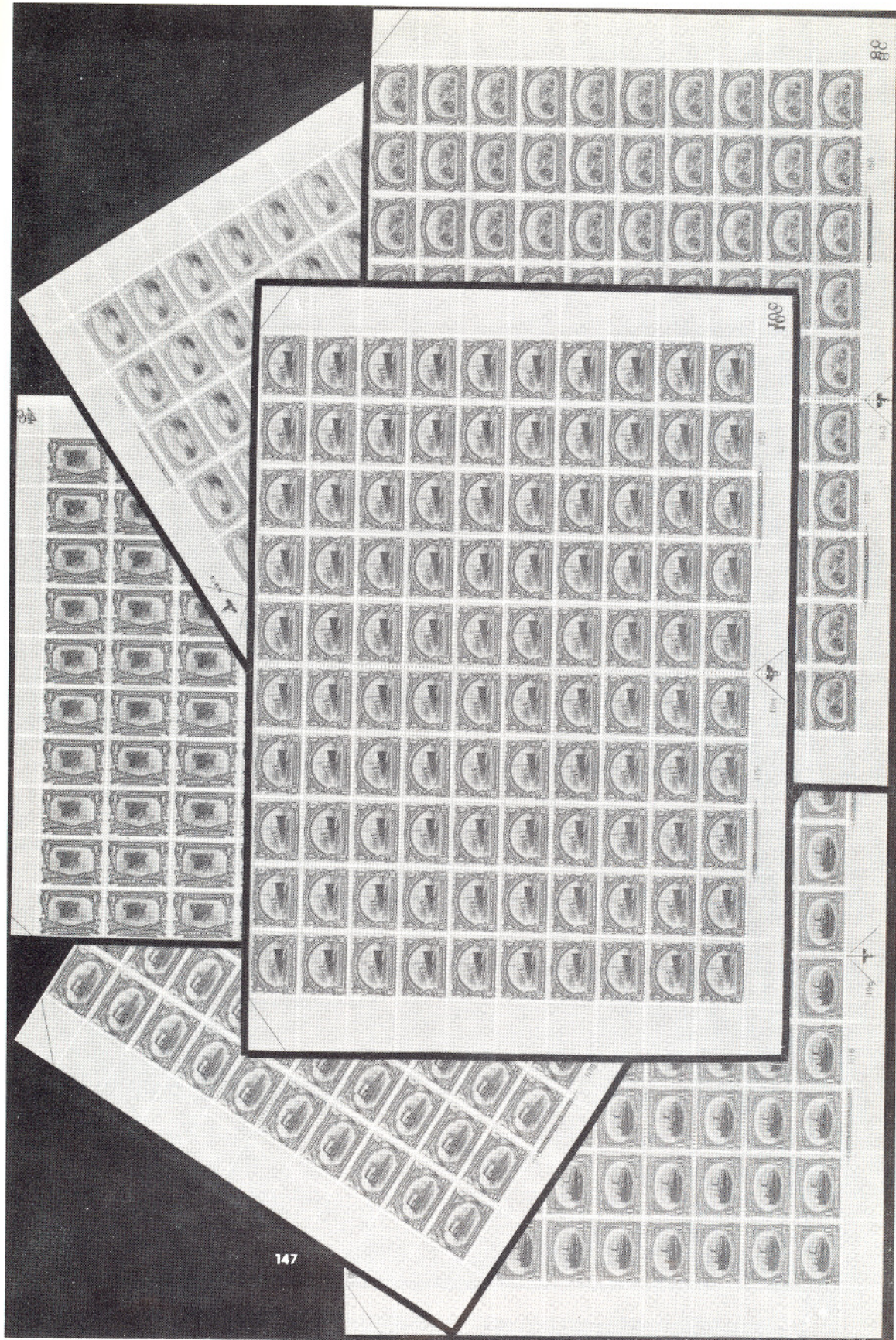
- 151 ★ 2c Pan-American, Inverted Center (295a). Exceptionally Well Centered, Extremely Fine, in fact, one of the finest existing copies of this rarest of U.S. 20th Century Inverted Centers, Ex-Lilly, with P.F. Certificate 18,000.00

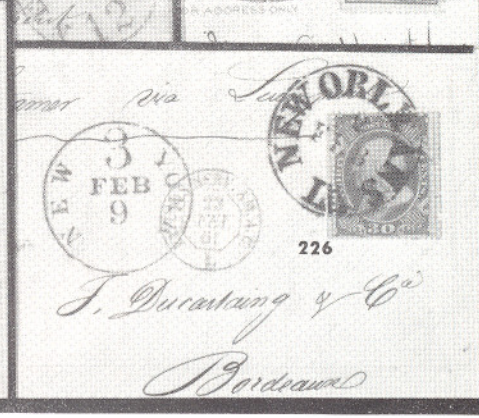
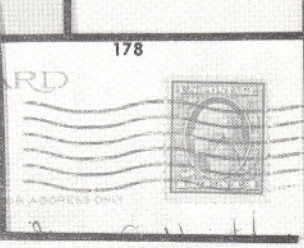
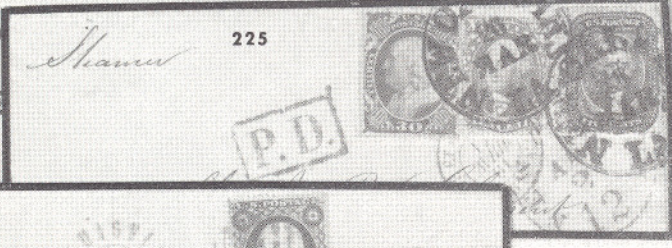
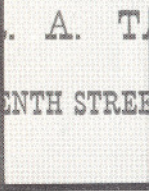
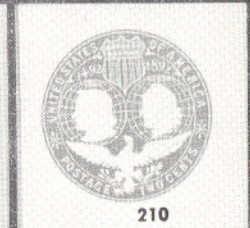
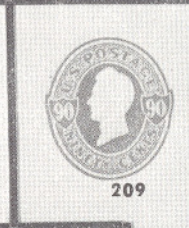
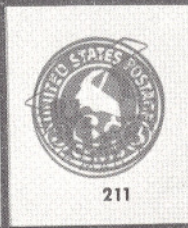
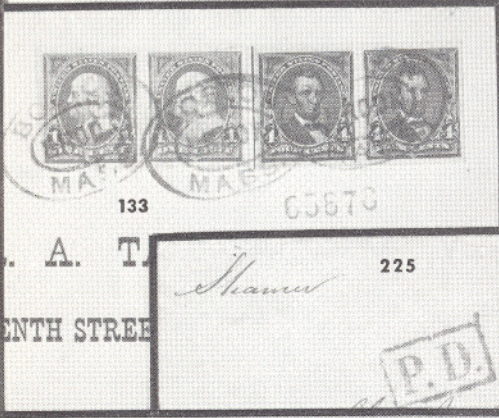
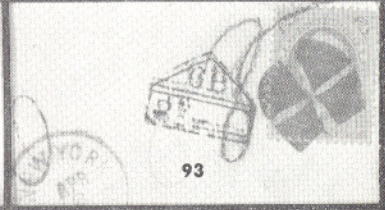
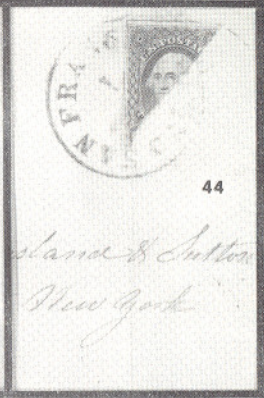
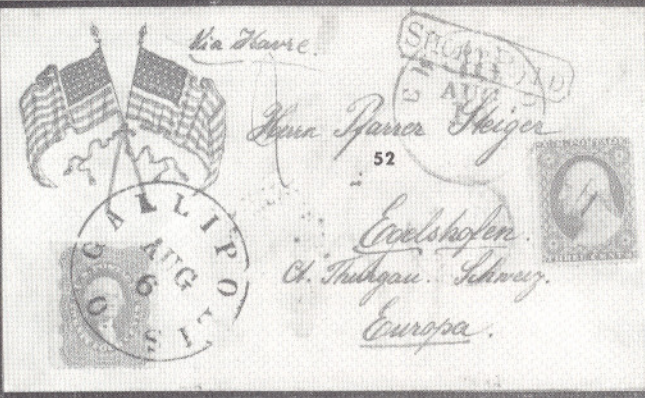


152

153

- 152 ★ 4c Pan-American, Inverted Center (296a). With sheet margin, perfs. barely in at bottom, small part o.g., two tiny thin specks yet a very presentable copy of this rarity 5,750.00
- 153 ★ 4c Pan-American, Inverted Center, "Specimen" Ovpt. (296b). Fresh and Fine 2,600.00







137

154



155



163



169



156



167



172



170



184



181



193



18804

180



185

33

- 154 田 \$5.00 Dark Green (313). Block, Neat Registry cancel, Very Fine 900.00
- 155 ★田 5c Blue, Imperforate (315). Mint Block, with sheet margin, Very Fine 650.00
- 156 ★田 5c Blue, Imperforate (315). Mint Block of Fourteen, Extremely Fine 2,270.00
- 157 ★田 5c Blue, Imperforate (315). Matched Set of the Four Imprint, Plate No. 2953 Blocks of Six, Very Fine and Handsome set of great rarity 7,000.00



- 158 ★ 5c Blue, Endwise Coil (317). Vertical Strip of Four, Perfs partly strengthened in top pair, Fine-Very Fine. A Very Rare and Handsome Strip 2,700.00+
- 159 ★ 1c Blue Green, Coil (318). Pair, Beautifully centered, negligible gum disturbance, Very Fine, with P.F. Certificate 1,150.00
- 160 ★ 1c Blue Green, Coil (318). Horizontal Paste-up Strip of Four with Guide Line., A few perfs. very slightly strengthened, signed "Ward". A Very Fine strip of Exceptional Rarity 2,250.00
- 161 ★ 2c Carmine, Vertical Pair Rouletted Between (319 var.). In Vertical Strip of Three, Top pair the variety; Bottom pair with blind perfs. Very Fine, with photo-copy of P.F. Certificate for block of six of which this strip was once a part 600.00+
- 162 ★ 10c Yellow, Coil (356). Guide Line Pair, Fine, with P.F. Certificate 1,100.00

Bureau, Engraving & Printing

2953



2953

Bureau, Engraving & Printing



Bureau, Engraving & Printing

2953

157

Bureau, Engraving & Printing

2953



BLUISH PAPERS

- 163 ★田 3c Deep Violet, Bluish (359). Block, Very Fine 1,850.00



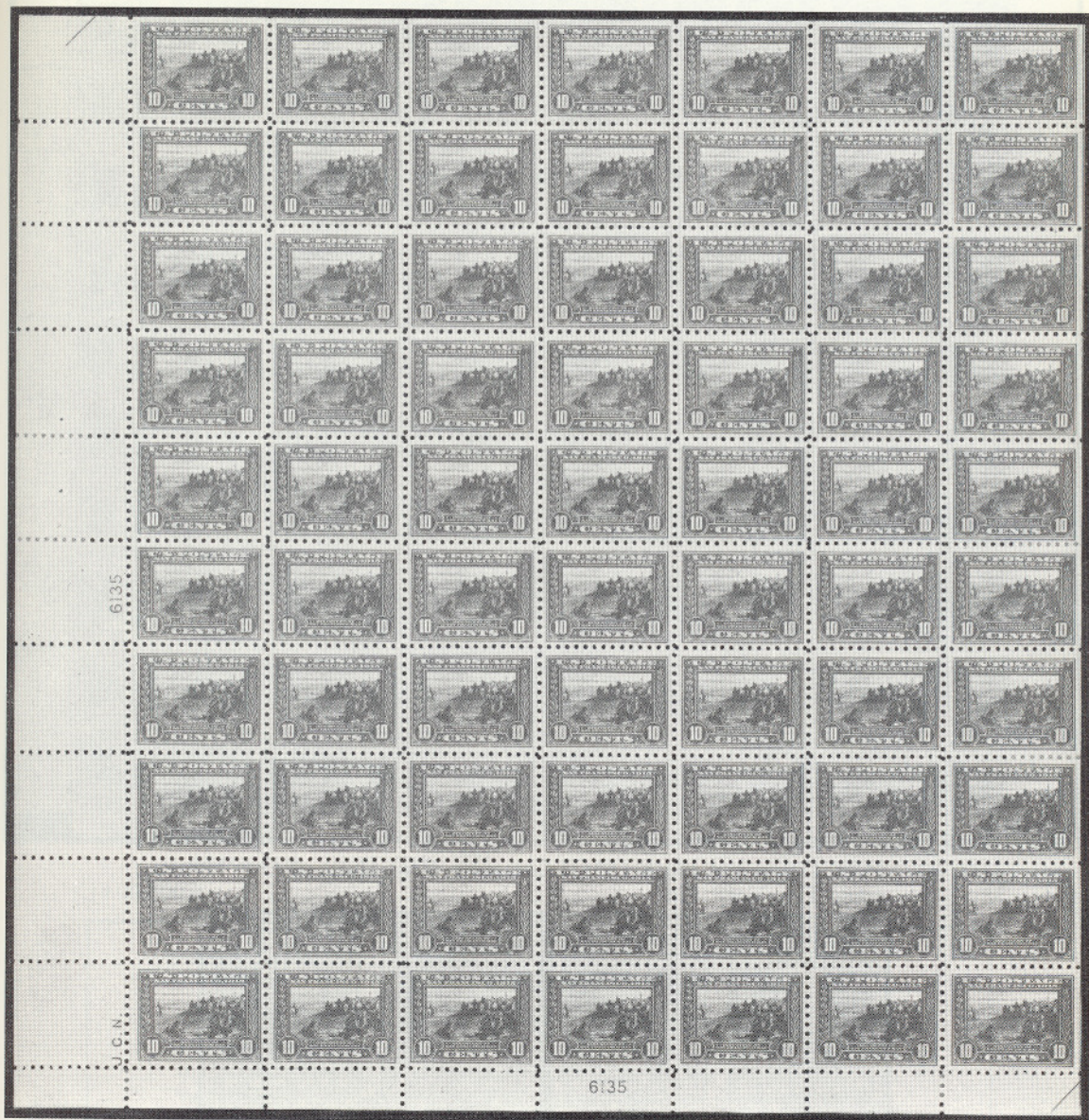
- 164 ★ 4c Orange Brown, Bluish (360). Marginal single, Centered trifle to bottom. Two microscopic thin specks, otherwise a Fine copy of this Rare stamp, with P.F. Certificate 5,500.00
- 165 ★ 8c Olive Green, Bluish (363). Mint, A Fine example of this Rarity 5,500.00
- 166 ★ 8c Olive Green, Bluish (363). Bottom perfs. barely touch, Faint gum crease. Fine example of this standard rarity, with P.F. Certificate 5,500.00
- 167 ★田 10c Yellow, Bluish (364). Block, Unusually fresh, Fine-Very Fine, A Scarce block 1,600.00



- 168 ★田 13c Blue Green, Bluish (365). Bottom Imprint Plate No. Block of Six. Fresh, Few perfs barely touch at top. Fine, A Very Rare and Handsome Block 6,250.00
- 169 ★田 2c Lincoln, Bluish (369). Top Star Imprint Plate No. 4976 Block of Six. Tiny natural paper inclusion in one stamp, Very Fine 800.00

PANAMA-PACIFIC ISSUES

- 170 ★ 5c Panama-Pacific (399). Right Plate No. 6129 Block of Six, Mint, minute natural flaw in top margin of lower right stamp, otherwise Very Fine. A choice and very scarce block 500.00



- 171 ★ 10c Panama-Pacific, Perf. 10 (404). Complete Mint Sheet of Seventy! Exceptional Centering, the two Plate Number blocks and almost the entire balance of the sheet being Very Fine. A Sensational, Stupendous Sheet of the utmost rarity 25,250.00+

LATER TWENTIETH CENTURY ISSUES

- 172 ★ 50c Violet (440). Left Sheet Margin Block of Six, Mint, Well Centered, Extremely Fine 925.00
- 173 ★ 30c Orange Red, Perf. 10 at Bottom (516 var.). Vertical Pair, Bottom stamp the variety. Mint, Very Fine, the variety listed in Scott as "Perf. 10 at top" only and unpriced. Very Rare E.XIV








- 174 ★ 田 \$2.00 Red Orange and Black (523). Block, Vertical Line at Center, Very Fine 525.00



- 175 ★ \$5.00 Green and Black (524). Complete Mint Sheet of One Hundred, Fine-Very Fine 6,000.00+



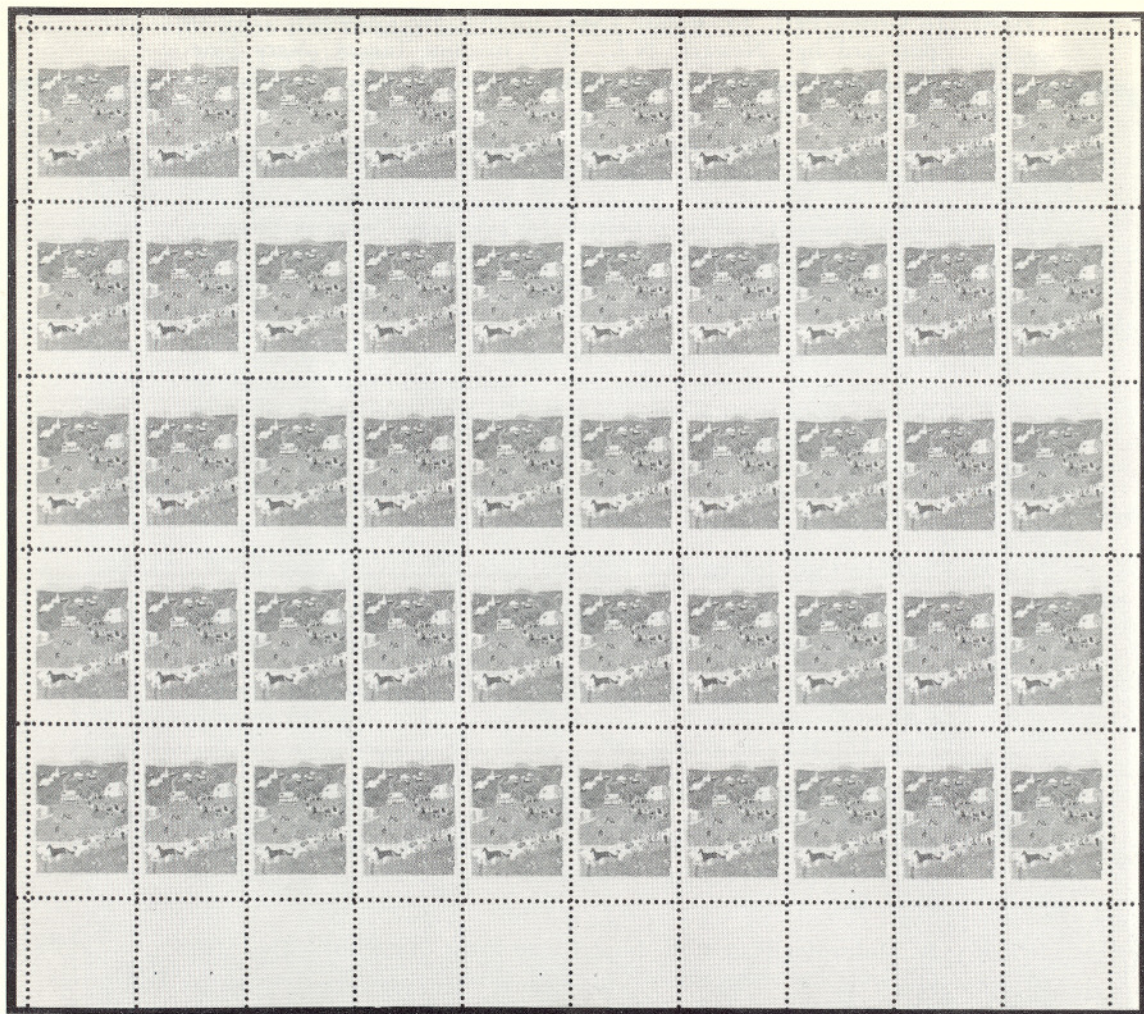
- 176 ★ 田 2c Carmine, Offset, Ty. VII, Imperforate (534B). Block, Minute natural inclusion speck, Very Fine 2,500.00
- 177 ★ 田 1c Gray Green, Offset, Rossbach Perf. 12½, Imperforate Vertically (536a). Block, "H.F. Colman" handstamp guarantee on back, Very Fine 570.00+

- 178  1c Green, Perf. 11, Rotary (544). Beautifully Centered, Tied on post-card by "Newark, N.J." 1923 machine cancel., Very Fine, Much scarcer than catalogue value would indicate, with P.F. Certificate 800.00
- 179 ★  1c-10c Kans., Nebr. Overprints (658-679). Plate Number Blocks, Complete sets, Fine-Very Fine 1,186.50
- 180 ★  3c Nebraska, Overprint Omitted (672a). Plate Number Block of Sixteen, two stamps without overprint. The Plate Number block shows the overprint in top selvage. Very Fine, A Very Scarce Error 834.50+
- 181 ★  6c Gray Brown, Imperforate Between Vertically (1284 var.). Irregular Block of Nine plus three portions from a Folded-Over Booklet Pane, containing one complete and one nearly complete error pairs. Mint, Very Fine and Rare, unlisted in Scott E.XIII
- 182 ★ 4c Black, Lincoln, Coil, Imperforate (1303 var.). Horizontal Strip of Three, Mint, Very Fine, not yet listed in catalogue E.XIII
- 183 ★ 5c Blue, Coil, Imperforate (1304b). Pair, Mint, Very Fine 375.00
- 184 ★  8c Multicolor Flag, Imperforate (1338Fi). Mint Block, Extremely Fine, Unpriced in catalogue —
- 185 ★  8c Multicolor Flag, Imperforate (1338Fi). Mint Block of Twenty; Bottom Double Plate Numbers and Triple "Mail Early", Extremely Fine, Unpriced in catalogue —
- 186 ★  8c Multicolor Flag, Imperforate Between (1338F Var.). Mint Block of Twenty; Top Double Plate Numbers and Triple "Mail Early". Alternate Vertical Rows are imperforate, yielding ten Imperforate Between Pairs, Extremely Fine, Unlisted in Scott, A Very Rare variety —
- 187 ★ 8c Multicolor Flag, Coil, Imperforate Error (1338Gh). Mint Strip of Four, Extremely Fine E.XII
- 188 ★ 6c "Waterfowl" Multicolor, Vertical Pair Imperforate Between (1362a). Mint, Very Fine 600.00

ESTIMATES

Our sales offer many covers, cancellations, varieties and other items for which there is no catalogue value or where catalogue value does not reflect the actual value. In order to assist our clients, we are placing a fair net valuation on such lots as a guide to bidders. The chart below will be used. For example, E. IV means that our estimated net value on the lot is \$30.00 to \$40.00. Lots may actually realize more or less than our estimates, which are under no circumstances to be considered reserves but merely a guide to bidding.

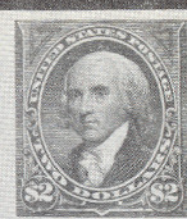
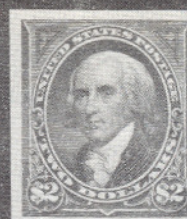
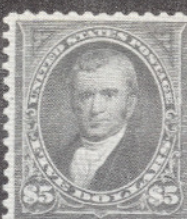
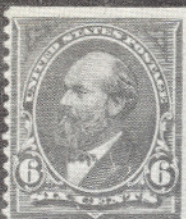
E. I	up to \$10.00	E. IX	\$150.00 to \$200.00
E. II	\$10.00 to \$20.00	E. X	\$200.00 to \$250.00
E. III	\$20.00 to \$30.00	E. XI	\$250.00 to \$350.00
E. IV	\$30.00 to \$40.00	E. XII	\$350.00 to \$500.00
E. V	\$40.00 to \$50.00	E. XIII	\$500.00 to \$750.00
E. VI	\$50.00 to \$75.00	E. XIV	\$750.00 to \$1000.00
E. VII	\$75.00 to \$100.00	E. XV	\$1000.00 to \$2500.00
E. VIII	\$100.00 to \$150.00	E. XVI	over \$2500.00



- 189 ★ 6c Grandma Moses, Error, Black and Prussian Blue Omitted (1370b). Complete Mint Sheet of Fifty! Well Centered throughout, Perfection! A fantastic error, one of the most spectacular that has ever occurred. As far as we know this is one of only two sheets found, establishing it as an outstanding 20th Century Rarity 17,500.00+
- 190 ★ 8c Deep Claret, Eisenhower, Imperforate Coil (1402a). Mint Strip of Four, Centered slightly to bottom, Fine E.XIII



- 191 ★ 6c "Doll Carriage" Christmas, 1970, Black completely omitted (1418 var.). Mint, Extremely Fine, A startling, fantastic error, of which only four are believed to exist —



135



136



183



188

130



182



205



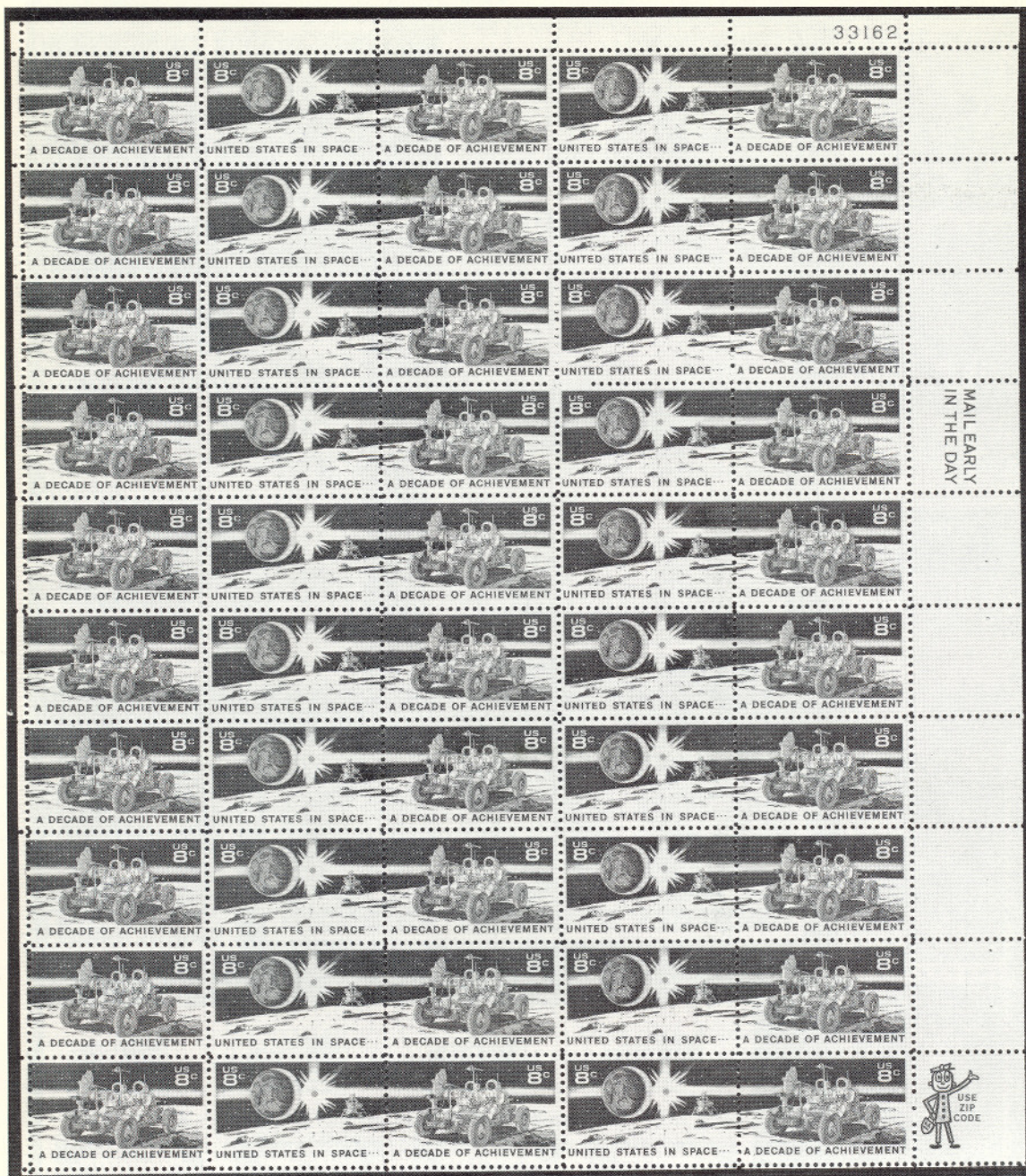
173



187



190



- 192 ★ 8c "Decade of Space Achievement" Error, Red and Blue Colors, Omitted (1434-1435 var.). Complete Mint Sheet of Fifty, Top Right Plate No. 33162, Perfection! A newly discovered sensational error of which there are only two recorded sheets to date, establishing it as an error of major importance E.XVI

AIR POST ISSUES

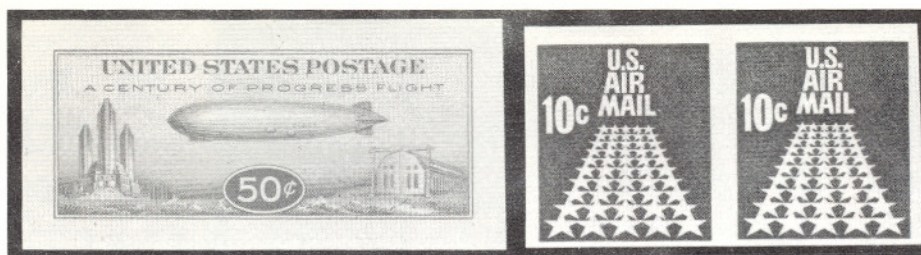
- 193 ★ 16c Dark Blue, 1923 Air Post (C5) Left Plate No. 14829 Block of Six, Fine-Very Fine 800.00
- 194 ★ 24c Carmine, 1923 Air Post (C6). Bottom Plate No. 14843 Block of Six, Fine-Very Fine 925.00



- 195 ★田 65c Graf Zeppelin (C13). Top Plate No. 20079 Block of Six,
Few natural gum bends, Very Fine 1,100.00
- 196 ★ 65c-\$2.60 Graf Zeppelin (C13-C15). Complete Set, all with Bot-
tom Plate Numbers, Very Fine 650.00+
- 197 ★田 65c-\$2.60 Graf Zeppelin (C13-C15). Blocks, Very Fine Set 2,725.00



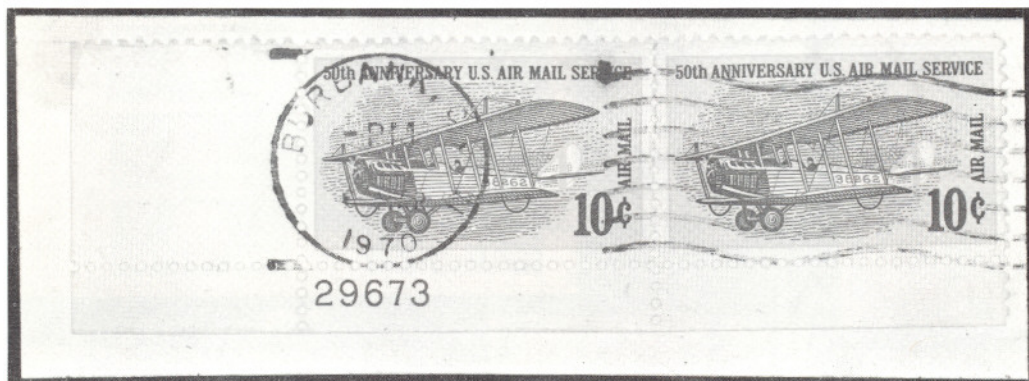
198 ★ 65c-\$2.60 Graf Zeppelin (C13-C15). Mint Top Plate Number
 Blocks of Six. \$1.30 has "Sanabria" handstamp guarantee, An
 unusually choice and handsome set, Very Fine 5,850.00



199

200

- 199 P 50c Chicago Zeppelin, Small Die Proof (C18P). Very Fine, Very Rare, Only two believed known 1,250.00
- 200 ★ 10c Carmine, Air Post, Coil, Imperforate (C73 var.). Horizontal Pair, Mint, Very Fine, unlisted in Scott E.XIII

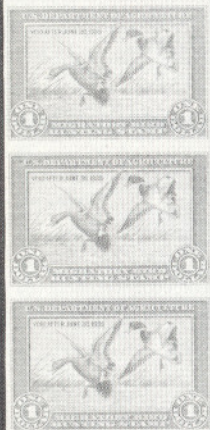


- 201 10c Air Post, Multicolor, Error, Red Color Omitted (C74 var.). Newly discovered and striking Giori Press error, used. Left Bottom Corner Margins and Plate. No. 29673 in Black. Very Fine, with photo-copies of letters from The Bureau of Engraving and Printing authenticating the error and A.P.S. Certificate —
- 201 A 10c Air Post, Multicolor, Error, Red Color Omitted (C74 var.). Another example of this newly discovered error, similar to preceding lot but with bottom sheet margin only, being in a pair with Lot #201. Very Fine, Very Rare as these two are the only authenticated examples so far discovered, With A.P.S. Certificate —
- 201 B 10c Air Post, Multicolor, Error, Red Color Omitted (C74 var.). The preceding two lots, which comprise a horizontal pair on small piece, "Burbank, Cal. 1970" machine postmark, offered as one lot provided the bid exceeds the realization of the two preceding lots —

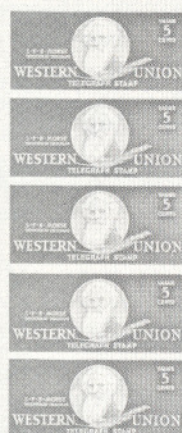
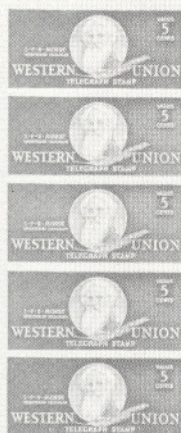


186

207



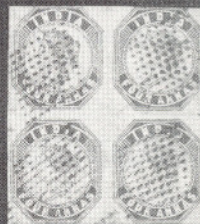
232



208EX



194



261



286

223



224

202

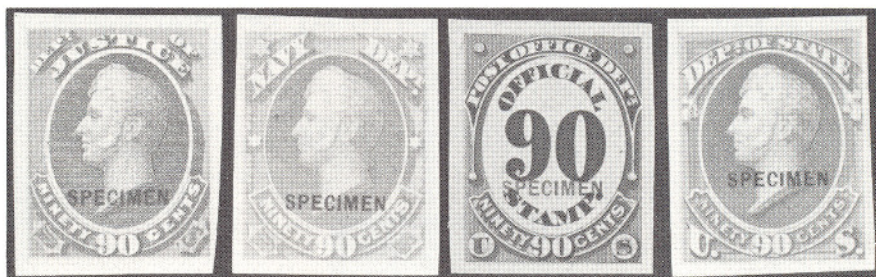


203



- 202 ★ 5c Deep Blue, "Buffalo Balloon" 1877 (CL1). Large Margins, Fresh, o.g., Crease across corner, otherwise Extremely Fine 1,000.00
- 203 ★ 5c Deep Blue, "Buffalo Balloon" 1877, Tete-Beche Vertical Pair (CL1a). Huge margins, Fresh, o.g., prominent printing flaw on one. Light crease shows in margin only, between stamps, light natural gum bend in one, nevertheless Extremely Fine. A magnificent rarity and grossly undercatalogued in its initial catalogue listing of \$2750 E.XVI

OFFICIAL STAMPS, ETC.

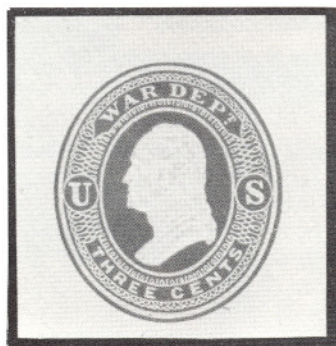


- 204 S 1c-90c Departments "Specimen" Overprints, Imperforate (01S var. -067S var., 072S var.-093S var.). A Very Fine set of the Utmost Rarity E.XVI
- 205 S 2c Interior, "Sepcimen" Error (016SDa). Perfs. bit in at top, Fresh, Very Scarce as no more than 13 can exist; with P.F. Certificate 475.00
- 206 ★ 1c Interior, Soft Paper (096). Bottom Imprint Plate No. Block of Eighteen, Fresh, o.g., Fine-Very Fine, Rare & Handsome Show-piece, Cat. \$355.00 as plain blocks —

- 207 ★ \$1.00 Blue, Hunting Permit, Imperforate (RW1a). Vertical Strip of Three, Top sheet margin and Right half-arrow. Light crease and tiny thin involve two stamps. Without gum, as usual; Very Fine appearance, Rare piece 1,125.00+
- 208 ★ Western Union Telegraph Co., 1940 1c-25c Imperforates (16T99a-16T103a). Complete Set in Imperforate panes of Ten each. Mint, Very Fine and Scarce, Unpriced in catalogue E.XV

POSTAL STATIONERY

- 209 ☒ 90c Carmine on Cream, Entire (U213). Unused, Very Fine 300.00
- 210 ☒ 2c Columbian, Dark Slate, Error of Color, Entire (U349a). Size 8, With printed return card "Baidland, Wash. Co., Pa." an essential for this error. Tiny, insignificant pen-stroke at bottom, nevertheless Very Fine and Rare E.XII
- 211 ☒ 6c Orange, Air Post, Entire with added impression of 3c Purple, Circular Die #U436a (UC3a). Uncancelled, with Hartford, Conn. return card, addressed but never used, as gum on flap is intact. Very Fine, claimed to be unique (Thorp #5048 \$1000.00), with P.F. Certificate which when issued was completely confused in the Scott numbers 750.00+



- 212 ★ 3c Dark Red on Amber, War, Reay (U021). Cut Square, Unused, Fresh, Very Fine, with P.F. Certificate, Extremely Rare 1,750.00

CARRIERS & LOCALS



- 213 ★ U.S. City Despatch Post, 3c Black on Green, Colored Through (6LB4). Huge margins, Marvelous Color, A Magnificent Copy of this Great Rarity, only one other is known. Ex-Caspary, Lilly, with P.F. Certificate E.XVI



PAID
Wells Fargo & Co.
THROUGH OUR CALIFORNIA AND ATLANTIC EXPRESS.



216
Mr. J. L. Dietz
Genl. Dutcher
133 William St
New York



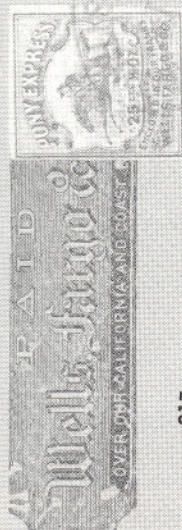
215
Edward Hinckley
Mission Merchant
New York



PAID
Wells Fargo & Co.
THROUGH OUR CALIFORNIA AND ATLANTIC EXPRESS.

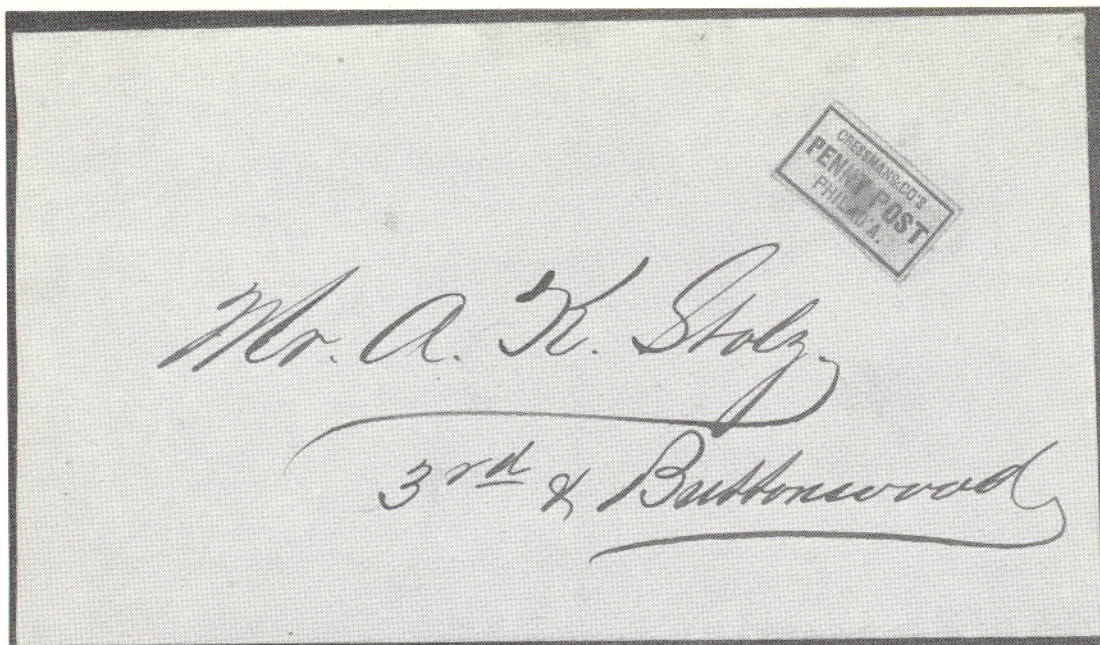


218
Mr. James McHenry
p. 411 Clay St
San Francisco
Calif.



PAID
Wells Fargo & Co.
THROUGH OUR CALIFORNIA AND ATLANTIC EXPRESS.

217
Mr. Morning, Call
San Francisco

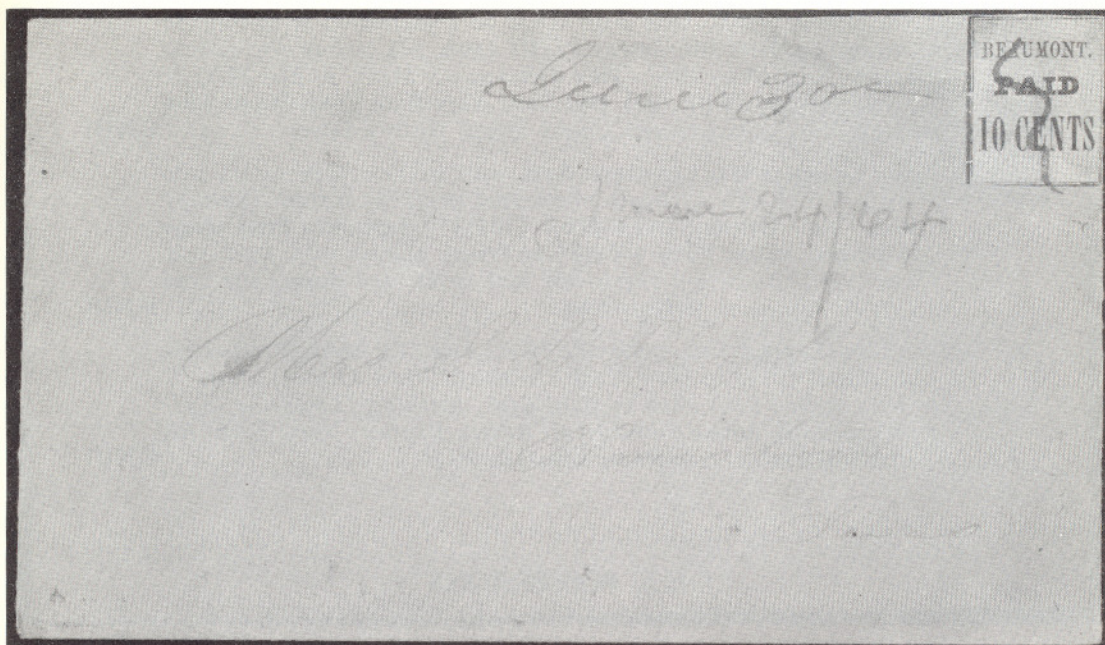


- 214 ☒ Cressman & Co's Penny Post, (1c) Gold on Lilac (53L2). Margins to barely touched, on fresh buff cover, Very Fine, The Only Known Example, Ex-Ferrari, Caspary, Lilly 1,250.00+

WESTERN COVERS

- 215 ☒ Overland, San Francisco, via Los Angeles, U.S. Mail, Imprinted on 4-Horse Stagecoach Cover to New York; Postage paid by a 1c Blue, Ty. V (24) and Strip of Three 3c Red, Ty. I (25) all tied by "San Francisco, Cal., Jun. 24, 1859". Very Fine, A wonderful example of one of the scarcest types of stagecoach covers known, A magnificent showpiece! E.XIV
- 216 ☒ Wells, Fargo & Co. Pony Express, \$1.00 Red (143L3). Margins all around, Tied by Blue "Running Pony" of San Francisco on 10c Star Die Entire (U32) Red Wells, Fargo Frank to New York. Small mended tear in cover. A Very Fine example of this romantic, historic service, Ex-Caspary 2,250.00
- 217 ☒ Wells, Fargo & Co. Pony Express, 25c Blue (143L8). Large margins all around, Tied by Blue oval "Virginia City, N.T. (partly clear) on 3c Pink on Buff Entire (U35) to San Francisco, Very Fine, An exceptionally choice Pony cover 1,600.00
- 218 ☒ Wells, Fargo & Co., Pony Express 25c Blue (143L8). Three large margins, incl. right sheet margin; slightly in at top. Tied by Blue W.F. oval "Aurora", on 3c Pink on Buff Entire (U35) to San Francisco, with W.F. Frank. A choice & handsome cover with one of the scarest Nevada Pony uses 1,600.00+

CONFEDERATE STATES



- 219 ☒ Beaumont, Tex., 10c Black on Pink (12X2). Margins to frame lines just cut, tied by neat ms. cancel on 1864 cover to Houston, Fine, Very Rare 2,250.00






220

221

222

- 220 ★ Greenville, Ala., 5c Red & Blue, Ty. I (33X1). Clear to Large margins, Fresh, bright colors, tiny corner creases otherwise Very Fine, with P.F. Certificate 1,500.00
- 221 Marion, Va., 5c Black (55X1). Margins virtually all around, Light town cancel., Negligible corner bend and pin-head thin speck, Fine, as these come 1,000.00
- 222 Nashville, Tenn., 10c Green (61X6). Large margins to frame line barely touched at top. Neat Blue Nashville town cancel. Rich, fresh color, Unusually Fine for this rare provisional which is almost always found with defects 800.00
- 223 ★田 10c Rose (5). Block, Three large margins, partly touched at top left. Excellent color, Tiny, negligible thin speck, as often, A Rare and Handsome block, With P.F. Certificate 1,000.00
- 224 ★ 1c Orange (14). Half Sheet of Fifty, Fresh, o.g., two stamps creased. A Fresh and Extraordinary piece, Very Fine 1,450.00+

U.S. COVERS USED IN THE CONFEDERACY

- 225  30c Orange (38)., Very Fine, Used in combination with Fine 5c Brown, Ty. II & 10c Green, Ty. III (30A, 33) paying 45c rate to France, all tied by Bold "New Orleans, 25 Mar." & Red N.Y. & French Transits with 1861 year date. **Very Rare Confederate State usage**, Very attractive and Choice Postal History Cover E.XIII
- 226  30c Orange (38). Cut from sheet with scissors with excess side margins and only a couple of blunted perfs. at bottom. Tied by Bold "New Orleans, La., 2 Feb." (1861) Independent State usage to France. Black "New-3-York" & French transit with 1861 year date. Very choice and excessively rare cover used during the nine days of Louisiana Independence E.XIII
- 227  Adams Express Co., Louisville, Ky., Aug. 12, 1861, Bold circle on folded cover to New York, docketed "New Orleans, Aug. 5, 1861; 3c Red (26) Tied by Blue Grid, matching "Louisville, Ky." pmk., Pencil notes, probably of Adams Express, Very Fine, An unusually choice example of this rare usage E.XIII

U.S. POSSESSIONS

CANAL ZONE



228

229

230

- 228 ★ 1904, 1c Green, Double Overprint (9d). Without gum, as usual. A Very Fine example of this Rarity, with P.F. Certificate 1,200.00
- 229 ★ 1904, 8c on 50c Bistre Brown (15). Vertical Pair, each with a different type of "8". Extremely Fine, with P.F. Certificate, An outstanding Rarity 1,100.00+
- 230 ★ 1962, 4c Black, Silver Bridge Omitted (157a). Mint, Beautifully Centered, Extremely Fine. A Very Rare Error of which only 50 can exist. Priced for the first time in the 1972 Specialized Catalogue at \$2000.00 which completely ignores recent auction realizations; one sold in our 1971 Rarity Sale for \$2700.00 —



- 231 HAWAII, 1857, 5c Blue on Thin White (8). Ample to Huge margins except barely touched at one point. Tied in combination with U.S. 12c Black (17) by "San Francisco, Cal." pmk. Clear Red "Honolulu, U.S. Postage Paid" on fresh cover to Virginia. The 5c has minor bend in top margin; the 12c faint creases before using and trifle in at top left; Otherwise Fine. A Rare and attractive combination, Ex-Harris, with P.F. Certificate 2,100.00

PHILIPPINES

- 232 ★ 1944, 2c Rose, "Victory" Handstamp, Booklet Pane of Six (463a). Waxed protection paper adheres to back, as usual. Fine, an exceedingly rare Booklet Pane, with P.F. Certificate 900.00
- 233 ★ 1966, 6c "Smuggling" Inverted Overprint (946 var.). Complete Sheet of 100, all with Inverted Overprint, Mint, Very Fine and Scarce E.XIII



234

235

- 234 ★ 1944, 6c Dark Brown, Official, "Victory" Handstamp (040A). Part o.g., trifle toned, as usual with this issue, Fine, A Great Rarity, with P.F. Certificate 1,750.00
- 235 ★ 1944, 20c Light Olive Green, Official "Victory" Handstamp (043). Light toning, as usual, centered to left, Fine, One of the rarest of all the "Victory" overprints, with P.F. Certificate 1,750.00

UNITED NATIONS

- 236 P 1952, 5c Blue, Large Die Proof (12P). Die No. 95107, Beautiful Impression on White Card, mounted on 4x4" Gray card, Very Fine E.XII
- 237 P 1958, 4c Red Brown, 8c Black, Trial Colors, Large Die Proofs (65, 66TC). 4c on Glazed Card, Die No. 101785; 8c on Matte Card, Die No. 101786, Each mounted on 5½x4" white card, Very Fine E.XIV
- 238 EP 1958, 4c Black, Human Rights, Composite Essay & Die Proof, Trial Color (67E, P). The essay with complete design except for the numeral of value; the proof in Black, a Trial Color. Die impression on glazed card, both mounted together on 5½x4" white card, Very Fine, Probably Unique E.XII
- 239 P 1959, 7c Blue, Air Post Envelope (UC3P). Die Proof of stamp in color and embossed, on rough card, mounted on 5½x4" white card, Very Fine and Rare E.XII
- 239A ★ 1964, 15c Multicolor, Air Post, Error, Gray Omitted (C11 var.). Mint, Very Fine and Rare, only one sheet of fifty ever found E.XIII

We call attention to a notable auction sale of

UNITED STATES STAMPS

19th CENTURY

April 6th, 7th, 1972

Proofs, Essays, Covers, Singles

Multiples, with many beautiful rarities.

Lavishly illustrated catalogues now available at 50¢ mailing charges;
\$1.00 with Prices Realized. (Without charge at our offices).

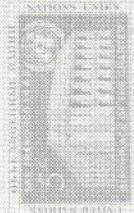
30/786



237



30/787



30/787

236



239



239A



238





240

241

257

- 240 ★田 AUSTRIA, 1936, 10s Dolfuss (380). Lower Right Sheet Corner Block, Mint, Extremely Fine, A Very Rare Block 1,500.00+
- 241 ★田 BERMUDA, 1970, 5c Poinsettia, Imperforate (259a). Mint Block, Lower Right Corner Margins and Full Imprint, Extremely Fine. This imprint block is possibly unique as only one sheet of this error was found. Listed in Scott but unpriced E.XIV
- 242 ★ BRITISH EAST AFRICA, 1898, 50r Lilac (109). Fine, Seldom seen high value 800.00

CANADA



243

244

245

246

- 243 ★ 1851, 3p Red "Beaver" (1). Clear to Huge margins, Fresh, Brilliant color, nearly full original crackly gum. A magnificent copy of this Very Rare stamp, Very Fine 2,750.00
- 244 ★ 1851, 12p Black (3). Right margin restored, faults. An attractive looking copy of this classic Rarity 16,500.00
- 245 1851, 12p Black (3). Strong Laid lines, Margins nearly all around, Defects repaired. A Fine looking example of this always desirable rarity, with Royal Certificate 10,000.00
- 246 ★ 1857, 7 1/2p Green (9). Large Margins, Glorious Brilliant color and Impression. Nearly full o.g., negligible faint marginal crease. A wonderful and most attractive copy of this Very Rare and Handsome stamp 1,750.00
- 247 1859, 6p Gray Violet, Perforated (13a). Exceptionally Rich color, Bare trace of Red cancel. Small corner thin, A Fine appearing example of this very scarce stamp 750.00



- 248 ✉ 1898, 2(c) on Two-Thirds of 3c Carmine, "Port Hood" Provisional (88c). Well tied by "Port Hood, Jan 3, '99" pmk on fresh local cover. Fine example of this very rare provisional, with P.F. Certificate 1,250.00



- 249 ★ 1959, 5c Red & Blue, "Seaway" Center Inverted (387a). Brilliant Mint, Extremely Fine, with P.F. Certificate 2,500.00
- 250 ★ CAPE OF GOOD HOPE, 1900, Mafeking, 1p Blue on Blue, Imperforate (178a). Upper Left Sheet Corner Pair, Wide Margins, Deep, Fresh Colors, light bend, Extremely Fine appearance and an extraordinarily rare variety 1,430.00
- 251 ★ CEYLON, 1912, 100r Gray Black (216). With top sheet margin, Mint, Very Fine 1,000.00
- 252 ☒ CHINA, Offices in Sinkiang, 1932-33, 5c-30c Air Post (C1-C4). Complete set on Flown Cover, with additional postage, all nicely tied by clear "Tihwa (Urumsit)" pmk. & Tientsin transit pmk. Very Fine and Rare E.XIII
- 252A ★ CILICIA, 1920, 2pi on 15c Gray Green, Air Post (C1). Centered to top right, as usual, Fine example of this Rarity, with P.F. Certificate 1,650.00
- 252B ★ —, 1920, 5pi on 40c Red & Gray Blue, Air Post (C2). Very Fine example of this rare stamp, with P.F. Certificate 1,650.00
- 253 DOMINICAN REPUBLIC, 1865, 1r Black on Straw, Laid Paper (4). Sheet Corner Copy, Large to Huge margins showing dividing lines three sides, complete at left & bottom. Light grid cancel. A Very-Fine example of this Rare stamp 475.00
- 254 ★ FRANCE, 1852, 10c Pale Bistre on Yellowish (10). Clear to Large Margins, Fresh. Small flaws, Fine appearing example of this Rarity, with Friedl Certificate 4,000.00
- 255 ★ —, 1928, 10fr on 90c, 1.50fr "Ile de France" (C3, C4). Perfs. touch on 1.50fr, other Very Fine, signed "Thiaude" 1.50fr also with P.F. Certificate 3,100.00
- 255A ★ —, Offices in Turkey, 1885, 1pi on 25c Yellow on Straw, Error "T Piastre 1" (1 var.). Beautifully centered and Fresh, A Very Rare error, listed only in Yvert, unpriced E.XII

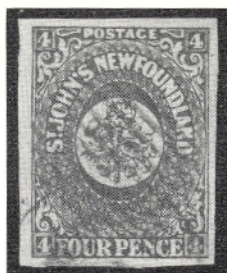
LOTS ON VIEW:

*Wednesday, Thursday, March 22nd, 23rd, from 10:00 A.M.
to 3:30 P.M.*



- 256 田 GERMANY, Offices in China, 1900, 30pf Orange & Black, Handstamp Overprint (21) Block, Tied by Fieldpost pmk. on small piece. Very Fine, An Outstanding Showpiece of the Utmost Rarity, with Friedemann Certificate 7,000.00+
- 257 ★田 GREAT BRITAIN, 1929, £1Black, U.P.U. Congress (209). Block, Mint, Very Fine 800.00
- 258 ★ —, 1962, 3p Violet, Nat'l Productivity Year, Error, Queen's Head Omitted (388a). Fine Mint example of this rare and unusual error 900.00
- 259 田 ICELAND, 1897, 3a on 5a Green, "Prir" Ovpt. (33). Tied by Bold "Reykjavik, Nov. 11, 1897" pmk. on Printed Circular in Icelandic and English advertising the new stamp. Cover has minor crease, the stamp is Extremely Fine, A Very Rare Cover E.XIII
- 260 ★ —, 1873, 4s Green, Official, Perf. 14x13½ (01). Fresh, o.g., perfs. in at top, Very Rare 1,400.00
- 261 田 INDIA, 1854, 4a Deep Red & Blue (6). Block, Margins to barely touched in places, Unusually rich colors, neat "Diamond of Dots" cancel. on each and with light Red Transit pmk. A fresh and lovely block, Very Rare in this exceptional condition E.XII
- 262 ★ —, 1866, 8a Violet, "Service" Ovpt. (014). Fresh, o.g., perfs. just in at right. A handsome copy of this great rarity 900.00
- 263 ★ ITALY, 1933, 5.25L-44.75L Triptych, "Servizio Di Stato" (C01). Mint, Extremely Fine, signed Elliott 1,500.00
- 264 ★ MONACO, 1885, 5fr Rose on Green (10). Fresh and Fine, with Friedl Certificate 825.00
- 265 NEW BRUNSWICK, 1851, 1/- Bright Violet (3). Clear to Huge margins, Fresh Color, Light grid cancel., small tear at left, Very Fine appearance 1,000.00

NEWFOUNDLAND



- 266 1857, 4p Scarlet Vermilion (4). Large Margins all around, Deep Color, Extremely Fine, with P.F. Certificate, A Beauty! 1,100.00



267

268

269

270

- 267 ★ 1919, 3c Red Brown, "Hawker" Air Post (C1). Signed "J.A.R." (P.M. General J.A. Robinson) on back, Fresh, Very Fine, A Lovely Copy of this Very Rare stamp 7,000.00
- 268 ★ 1927, 60c Black, "De Pinedo" Air Post (C4). Well Centered, barely visible faint translucent spot in one perf., Very Fine, A Remarkably Choice copy of this Great Rarity 12,500.00
- 269 1927, 60c Black, "De Pinedo" Air Post (C4). Neat machine cancel., Very slight paper toning, Very Fine, with P.F. Certificate 4,000.00
- 270 ★ 1930, 50c on 36c "Columbia" Air Post (C5). Well Centered, "Sanabria" handstamp guarantee, Choice copy of this Rarity, Very Fine 2,500.00



- 271 ★ NORTHERN NIGERIA, 1904, £25 Green & Carmine. Edw. VII (18A). The Fabulous and Rarest stamp of the King Edward Issues, only six are known to exist. Brilliant and Fresh, light natural gum crackle which in no way detracts from the beauty of this Outstanding Exhibition Piece, Ex-Lilly, with Royal Certificate 20,000.00



242



250



247



253



251



254



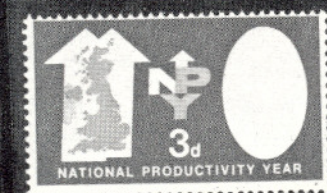
255



255 A



262



258



265



260



263



264



281



273



274



278



282



275



277



284



252 A



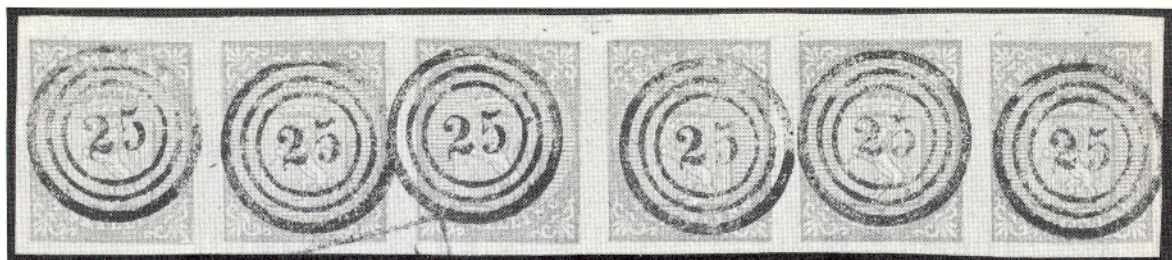
287



252 B



276



- 272 NORWAY, 1855, 4sk Blue (1). Horizontal Strip of Six, Huge Margins, Bold numeral "25" (Bergen) on each stamp. Faint horizontal crease, otherwise Extremely Fine. A most desirable showpiece of outstanding beauty and rarity E.XVI
- 273 ★ NOVA SCOTIA, 1851, 1p Red Brown (1). Margins all around, Exceptionally fresh, Brilliant Color & Impression, A Lovely Copy, Extremely Fine 300.00
- 274 PORTUGAL, 1962 Boy Scouts, Double Impression of Frame (885a). Neatly cancelled, Very Fine, An Extremely Rare Error E.XIV
- 275 ★ ROMAN STATES, 1852, 50b Blue (10). Large to Huge margins three sides, barely in at right. Full o.g., Brilliant and Fresh, Gorgeous Impression, A Most Desirable example of this rare stamp 2,000.00
- 276 R ROMANIA, Moldavia, 1858, 27pa-108pa First Issue Reprints (1R-4R). A Very Fine set of Great Rarity, Possibly Unique. Ex-King Carol, with Friedl Certificate E.XV
- 277 ★ RYUKYU ISLANDS, 1952, 100y on 2y Rose Violet (17). Mint, Very Fine 475.00
- 278 ST. PIERRE & MIQUELON, 1885, 25c on 1fr Bronze Green on Straw (7). Large margins, used, tiny negligible margin crease, otherwise a Very Fine example of this scarce stamp, signed "Bloch" 500.00
- 279 ☒ SCHLESWIG-HOLSTEIN, 1850, 2s Rose & Pink (2). Three copies, Margins all around, tied by Bold "28" in Grid, "Oldesloe" pmk. on bit worn 1851 cover, ms. "6 5/8 Loth" (weight) and additional 2s Due marking. One of the Greatest German Postal History Rarities. An Outstanding Showpiece, Ex-Seybold, Nehrlich E.XVI



- 280 SWITZERLAND, 1850, 2½r Black and Red, Post Locale, Without Frame (4). Margins virtually all around, Brilliant Color & Impression. Tiny thin speck, Fine appearing example of this classic rarity 5,000.00
- 281 ★ TASMANIA, 1856, 1p Deep Red, Unwatermarked (7). Ample to Enormous margins except just clear in upper right corner. Full sheet margin at left. Magnificent deep color and Lovely impression. Negligible faint diagonal bend. A marvelous and most attractive copy of this rare stamp 750.00
- 282 TRINIDAD, 1847 (5c) Blue, "Lady McLeod" (S.G. #1). Brilliant Impression, Pretty Color, Clear margins virtually all around; crease at left, otherwise Fine and of extreme rarity 2,500.00



252

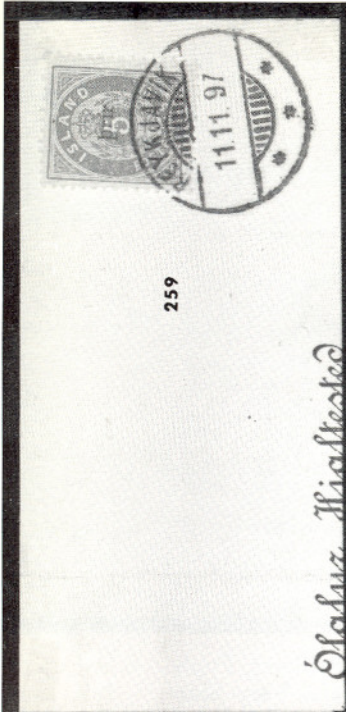
PAR AVION

航空郵便

Glaser, H. H. H. H. H. H.



279



259

6/10/97



285

Mrs. H. L. Coulton & Co.




P. L.



Glaser, H. H. H. H. H. H.



Pres. Lopez. Gobernador Arque
Port of Spain

- 283  —, 1847, (5c) Blue, "Lady McLeod" (S.G. #1). Brilliant, Fresh color, Ample to Large Margins, ms. cancel. as always, Very Fine on June 12, 1847 folded letter from San Fernando to Port of Spain. A Gorgeous, Historic cover of utmost rarity E.XVI
- 284 ★ VATICAN CITY, 1934, 2.55L on 2.50L Red Orange, No Comma (38a). Very Fine, Scarce, with Friedl Certificate and signed "Bloch", "one of the two positions which shows mere trace of dot". 900.00
- 285  VENEZUELA, 1859, ½r Orange (1). Horizontal Strip of Six, Margins all around, Neatly tied by Blue "Caracas" pmks. on 1861 cover to La Guayra, small scissors cut in one & faint bend in cover affects one stamp, nevertheless a Very Fine and Beautiful Cover showing an Extremely Rare usage E.XIII
- 286 ★  VICTORIA, 1850, 1p Rose (2). Horizontal Block of Six, Ample to Huge margins, except upper left stamp partly touched at left. Beautiful Deep Rich Color, Fresh, full o.g., light creases; few tiny ink specks at top and one has minute thin. A Very Rare, Handsome and Desirable Block 450.00
- 287 ★ ZANZIBAR, 1913, 200r Black & Brown, "Dhow" (140). Well Centered, crackly o.g., Very Fine, with Buhler Certificate 1,300.00

END OF SALE
THANK YOU

MARCH 23rd, 1972

100

120 EAST 56th STREET

Tel: 753-6421 (Area Code 212)

Please purchase for me at your auction to be held March 23rd, 1972 the lots named below, the prices annexed being my limit on each lot. I agree to remit for purchases in accordance with the Conditions of Sale and return no lots later than five days after receipt.

REFERENCES PLEASE
(if unknown to us)

SIGNED

New York State residents kindly include
County in address.

County

[illegible]

Upon request, estimate of value furnished on any lots in this auction.

CONDITIONS OF SALE

1. The terms of sale are strictly cash on delivery to the highest bidder unless special arrangements have been made prior to the sale.
2. All bids are per lot as numbered in the catalogue unless otherwise announced by the auctioneer at the time of sale. The right is reserved to group two or more lots; to withdraw any lot or lots from the sale, or to act in behalf of the seller. The auctioneer shall regulate the bidding and in the event of a dispute between buyers his decision shall be final.
3. Any lot, the description of which is incorrect is returnable, but only within five days of receipt and in any case it must be received by the auctioneer within four weeks from the date of the auction. All disputed lots must be returned intact as received and the following lots may not be returned for any reason whatsoever: Lots containing ten or more stamps; Lots from buyers who have had the opportunity to examine them before the sale; Lots described as having defects or faults may not be returned because of faults. No illustrated lots may be returned because of centering, margins or other factors shown in the illustration.
4. Successful bidders, unless they are known to us or supply acceptable references are expected to make payment in full before the lots are delivered. Mail bidders will not be notified of the amount of their purchases. We reserve the right in our sole and absolute discretion to demand cash payment at the time a lot is knocked down to any bidder who has not previously established credit with us or whose account is in arrears. In the event any buyer refuses to pay cash for any lot at the time it is knocked down to him, the auctioneer reserves the right to re-offer the lot immediately for sale to the highest bidder.
5. If the purchase price has not been paid within the time limit, nor lots taken up within seven days from date of sale they may be resold and any loss arising from such sale will be charged to the defaulter. Any account more than thirty days in arrears is subject to a late payment charge of 1½% per month so long as the account remains in arrears.
6. All lots are sold as genuine but should any lot be proved otherwise by written opinion of any competent, responsible authority acceptable to us, immediate refund of the full purchase price will be made, provided that such claim is made within 25 days from date of sale. If claim is not made within this period, no lots are returnable for any reason at any time. So long as we are notified within the 25 day period that an opinion is being sought the matter will remain open until such opinion is rendered. We will not be responsible for any charges incurred by the buyer for expertization fees and costs unless the opinion states the item is not genuine, in which case we will pay a maximum fee of \$10.00 for each such item.
7. Until paid in full, all lots remain the property of Robert A. Siegel Auction Galleries, Inc. in behalf of the seller.
8. All forwarding charges will be added to the purchase price. The mode of shipment shall be at our option unless we are given specific instructions.
9. Lots may be sent for inspection to buyers known to us upon written application. All such lots must be returned to us by registered mail, adequately insured and within 24 hours after receipt. The applicant assumes all responsibility and for insurance against all risks from time of receipt until they are actually received back by us, and is to pay all expenses of postage and insurance. No lots can be sent for inspection within ten days of the date of sale. Large lots and collections cannot be sent for inspection.
10. The placing of a bid shall constitute acceptance of the foregoing conditions of sale.

ROBERT A. SIEGEL

SYLVESTER COLBY, Licensed Auctioneers

DESCRIPTIONS

EXTREMELY FINE: The finest condition for noteworthy, outstanding copies.

VERY FINE: (V.F.) In prime condition such as to satisfy the requirements of particular collectors.

FINE: (F) Perforations or margins do not touch design on issues after 1890 but in some cases may just touch in earlier issues. If used, fairly light cancellation.

VERY GOOD: (V.G.) Generally nice appearance but margins or perforations may cut in slightly.

GOOD: Average off-centering or fairly attractive with slight defects.

ORIGINAL GUM is not to be expected on 19th century stamps unless so stated in the description.

MINT: With original gum and never hinged.

Scott 1972 Specialized Catalogue used for listing lots of U.S. & Possessions. Scott 1972 Standard Catalogue for others.

IS YOUR COLLECTION FOR SALE?

REALIZE IMMEDIATE CASH
PLUS THE ADDED ADVANTAGE OF
SELLING THROUGH OUR AUCTIONS

If desired, we will advance immediate cash up to 75% of our appraisal value, of what your collection should realize at auction. There is no interest charge.

Your collection will then be sold in one of our coming auction sales. All stamps are expertly and advantageously lotted in attractive, well illustrated catalogs. Lotting is meticulously planned under our personal supervision. Commission is 20% of the gross realization. There is no lotting fee or any other charges. Final settlement is made within five weeks after the sale. We have been continuously conducting stamp auctions in the United States for over forty years.

Valuable collections and stamp holdings are especially wanted, but we will accept properties valued from \$500 upwards. Send all stamps direct for appraisal. Auction advance will be remitted shortly after receipt. If not entirely pleased, stamps will be returned at our expense. If circumstances warrant due to bulk or value, we will travel anywhere to inspect important properties.

ROBERT A. SIEGEL
AUCTION GALLERIES, Inc.

(Licensed and Bonded Auctioneer)

120 EAST 56th STREET
NEW YORK, N. Y. 10022
Tel. (212) 753-6421

409th SALE

List of Prices Realized

RARITIES OF THE WORLD



THURSDAY, MARCH 23, 1972

Total Realization \$602,710.00

Robert A. Siegel

AUCTION GALLERIES, INC.

120 EAST 56 STREET
NEW YORK CITY, N.Y., 10022

Tel.: (212) 753-6421

Lot #	Price	Lot #	Price	Lot #	Price	Lot #	Price	Lot #	Price
1	800.00	60	1,000.00	118	1,050.00	177	350.00	234	1,400.00
2	3,700.00	61	10,000.00	119	450.00	178	850.00	235	1,900.00
3	3,700.00	62	625.00	120	750.00	179	950.00	236	260.00
4	11,000.00	63	3,600.00	121	950.00	180	550.00	237	450.00
5	1,100.00	64	700.00	122	4,000.00	181	1,300.00	238	260.00
6	3,100.00	65	23,000.00	123	500.00	182	625.00	239	260.00
7	3,200.00	66	575.00	124	400.00	183	375.00	239A	450.00
8	3,100.00	67	5,000.00	125	650.00	184	425.00	240	850.00
9	12,500.00	68	7,000.00	126	650.00	185	3,000.00	241	950.00
10	625.00	69	950.00	127	1,650.00	186	2,700.00	242	280.00
11	800.00	70	625.00	128	1,050.00	187	325.00	243	1,900.00
12	1,600.00	71	475.00	129	3,200.00	188	700.00	244	2,700.00
13	900.00	72	750.00	130	425.00	189	11,000.00	245	1,200.00
14	1,550.00	73	850.00	131	280.00	190	300.00	246	850.00
15	1,050.00	74	625.00	132	575.00	191	3,200.00	247	170.00
16	1,150.00	75	575.00	133	325.00	192	17,000.00	248	2,200.00
17	5,000.00	76	1,900.00	134	950.00	193	850.00	249	1,550.00
18	2,900.00	77	1,950.00	135	950.00	194	900.00	250	1,000.00
19	2,200.00	78	625.00	136	500.00	195	800.00	251	675.00
20	800.00	79	1,050.00	137	1,350.00	196	600.00	252	450.00
21	5,250.00	80	25,000.00	138	1,000.00	197	1,850.00	252A	900.00
22	1,750.00	81	1,900.00	139	625.00	198	6,500.00	252B	900.00
23	650.00	82	3,700.00	140	1,400.00	199	1,600.00	253	200.00
24	1,150.00	83	1,000.00	141	1,450.00	200	550.00	254	525.00
25	550.00	84	1,200.00	142	1,600.00	201	6,750.00	255	1,500.00
26	350.00	85	625.00	143	3,750.00	201A		255A	125.00
27	400.00	86	1,100.00	144	2,500.00	201B	1,250.00	256	4,000.00
28	400.00	87	650.00	145	750.00	202		257	625.00
29	425.00	88	475.00	146	550.00	203	4,300.00	258	600.00
30	900.00	89	1,250.00	147	12,000.00	204	7,750.00	259	450.00
31	2,700.00	90	950.00	148	1,800.00	205	1,000.00	260	550.00
32	600.00	91	3,000.00	149	1,800.00	206	400.00	261	300.00
33	1,900.00	92	4,600.00	150	1,000.00	207	1,100.00	262	375.00
34	1,300.00	93	525.00	151	16,500.00	208	650.00	263	850.00
35	1,900.00	94	950.00	152	3,000.00	209	140.00	264	325.00
36	1,800.00	95	525.00	153	2,000.00	210	325.00	265	220.00
37	675.00	96	2,400.00	154	950.00	211	400.00	266	1,050.00
38	19,000.00	97	500.00	155	400.00	212	1,150.00	267	4,000.00
39	375.00	98	1,250.00	156	1,500.00	213	2,100.00	268	7,000.00
40	2,900.00	99	1,550.00	157	6,000.00	214	2,600.00	269	2,000.00
41	1,000.00	100	800.00	158	1,900.00	215	1,200.00	270	1,200.00
42	1,300.00	101	1,750.00	159	950.00	216	2,700.00	281	12,500.00
43	1,750.00	102	3,800.00	160	1,250.00	217	1,900.00	272	2,700.00
44	700.00	103	1,900.00	161	350.00	218	1,650.00	273	220.00
45	850.00	104	400.00	162	1,250.00	219	800.00	274	260.00
46	Withdrawn	105	3,000.00	163	1,700.00	220	1,200.00	275	300.00
47	800.00	105A	425.00	164	2,500.00	221	725.00	276	1,250.00
48	200.00	106	2,400.00	165	3,400.00	222	650.00	277	400.00
49	400.00	107	4,000.00	166	2,300.00	223	1,000.00	278	325.00
50	1,050.00	108	850.00	167	1,250.00	224	1,600.00	279	12,000.00
51	425.00	109	3,400.00	168	3,250.00	225	750.00	280	800.00
52	550.00	110	1,450.00	169	900.00	226	750.00	281	260.00
53	1,450.00	111	1,500.00	170	575.00	227	475.00	282	900.00
54	750.00	112	1,900.00	171	28,000.00	228	850.00	283	2,400.00
55	2,500.00	113	1,550.00	172	800.00	229	1,100.00	284	350.00
56	575.00	114	850.00	173	400.00	230	2,500.00	285	525.00
57	1,000.00	115	1,700.00	174	375.00	231	1,200.00	286	280.00
58	1,250.00	116	1,700.00	175	4,200.00	232	650.00	287	700.00
59	500.00	117	375.00	176	1,800.00	233	220.00		



James M. Buckner on
5 Cents.





5



Mr. Edwin Schuyler



Paul
PAID



5



Miss A. B. B. B.

Dr. B. B. B. B.

Franklin Co.



E. D.



Esq.

Mr. Markoe

Wm. Yangs



Mr. Edward Amick

Mr. Fargo & Co.



Morning Call



Wells Fargo & Co.
THROUGH OUR CALIFORNIA & ATLANTIC EXPRESS



Mr. Robt. E. Dietz
Super. Dietz & Co.
132 William St.
New York

Mr. S. S. McLaughlin
Midway Station
Aug. Co. Va.



No. 22

NATIONAL BANK NOTE CO. NEW YORK
STREET 100 N. 100 N. 100 N. 100 N.



NATIONAL BANK NOTE CO. NEW YORK

1872



NATIONAL BANK NOTE CO. NEW YORK

1872



NATIONAL BANK NOTE CO. NEW YORK

No. 23





6135



Robert A. Siegel Auction Galleries, Inc.
 Prices Realized for
 Sale 409 March 23, 1972 1972 Rarities of the World

Lot#	Realized	Lot#	Realized	Lot#	Realized	Lot#	Realized	Lot#	Realized
1	800	37	675	74	625	109	3,400	145	750
2	3,700	38	19,000	75	575	110	1,450	146	550
3	3,700	39	375	76	1,900	111	1,500	147	12,000
4	11,000	40	2,900	77	1,950	112	1,900	148	1,800
5	1,100	41	1,000	78	625	113	1,550	149	1,800
6	3,100	42	1,300	79	1,050	114	850	150	1,000
7	3,200	43	1,750	80	25,000	115	1,700	151	16,500
8	3,100	44	700	81	1,900	116	1,700	152	3,000
9	12,500	45	850	82	3,700	117	375	153	2,000
10	625	47	800	83	1,000	118	1,050	154	950
11	800	48	200	84	1,200	119	450	155	400
12	1,600	49	400	85	625	120	750	156	1,500
13	900	50	1,050	86	1,100	121	950	157	6,000
14	1,550	51	425	87	650	122	4,000	158	1,900
15	1,050	52	550	88	475	123	500	159	950
16	1,150	53	1,450	89	1,250	124	400	160	1,250
17	5,000	54	750	90	950	125	650	161	350
18	2,900	55	2,500	91	3,000	126	650	162	1,250
19	2,200	56	575	92	4,600	127	1,650	163	1,700
20	800	57	1,000	93	525	128	1,050	164	2,500
21	5,250	58	1,250	94	950	129	3,200	165	3,400
22	1,750	59	500	95	525	130	425	166	2,300
23	650	60	1,000	96	2,400	131	280	167	1,250
24	1,150	61	10,000	97	500	132	575	168	3,250
25	550	62	625	98	1,250	133	525	169	900
26	350	63	3,600	99	1,550	134	950	170	575
27	400	64	700	100	800	135	950	171	28,000
28	400	65	23,000	101	1,750	136	500	172	800
29	425	66	575	102	3,800	137	1,350	173	400
30	900	67	5,000	103	1,900	138	1,000	174	375
31	2,700	68	7,000	104	400	139	625	175	4,200
32	600	69	950	105	3,000	140	1,400	176	1,800
33	1,900	70	625	105A	425	141	1,450	177	350
34	1,300	71	475	106	2,400	142	1,600	178	850
35	1,900	72	750	107	4,000	143	3,750	179	950
36	1,800	73	850	108	850	144	2,500	180	550

Robert A. Siegel Auction Galleries, Inc.
 Prices Realized for
 Sale 409 March 23, 1972 1972 Rarities of the World

Lot#	Realized	Lot#	Realized	Lot#	Realized	Lot#	Realized
181	1,300	216	2,700	251	675	284	350
182	625	217	1,900	252	450	285	525
183	375	218	1,650	252A	900	286	280
184	425	219	800	252B	900	287	700
185	3,000	220	1,200	253	200		
186	2,700	221	725	254	525		
187	325	222	650	255	1,500		
188	700	223	1,000	255A	125		
189	11,000	224	1,600	256	4,000		
190	300	225	750	257	625		
191	3,200	226	750	258	600		
192	17,000	227	475	259	450		
193	850	228	850	260	550		
194	900	229	1,100	261	300		
195	800	230	2,500	262	375		
197	1,850	231	1,200	263	850		
198	6,500	232	650	264	325		
199	1,600	233	220	265	220		
200	550	234	1,400	266	1,050		
201	6,750	235	1,900	267	4,000		
201 A	6,750	236	260	268	7,000		
201B	6,750	237	450	269	2,000		
202	1,250	238	260	270	1,200		
203	4,300	239	260	271	12,500		
204	7,750	239A	450	272	2,700		
205	1,000	240	850	273	220		
206	400	241	950	274	360		
207	1,100	242	280	275	300		
208	650	243	1,900	276	1,250		
209	140	244	2,700	277	400		
210	325	245	1,200	278	325		
211	400	246	850	279	12,000		
212	1,150	247	170	280	800		
213	2,100	248	2,200	281	260		
214	2,600	249	1,550	282	900		
215	1,200	250	1,000	283	2,400		