

416th SALE

UNITED STATES
and
FOREIGN STAMPS



AT PUBLIC AUCTION
IN NEW HAVEN, CONNECTICUT

At the 86th Annual Convention of
the American Philatelic Society

Saturday, September 16th, 1972 at 1:00 P.M.

AT
SHERATON PARK PLAZA HOTEL
NEW HAVEN, CONN.

Robert A. Siegel

AUCTION GALLERIES, INC.

120 East 56th STREET
NEW YORK CITY, N. Y. 10022
Tel.: (212) 753-6421

CONDITIONS OF SALE

1. The terms of sale are strictly cash on delivery to the highest bidder unless special arrangements have been made prior to the sale.
2. All bids are per lot as numbered in the catalogue unless otherwise announced by the auctioneer at the time of sale. The right is reserved to group two or more lots; to withdraw any lot or lots from the sale, or to act in behalf of the seller. The auctioneer shall regulate the bidding and in the event of a dispute between buyers his decision shall be final.
3. Any lot, the description of which is incorrect is returnable, but only within five days of receipt and in any case it must be received by the auctioneer within four weeks from the date of the auction. All disputed lots must be returned intact as received and the following lots may not be returned for any reason whatsoever: Lots containing ten or more stamps; Lots from buyers who have had the opportunity to examine them before the sale; Lots described as having defects or faults may not be returned because of faults. No illustrated lots may be returned because of centering, margins or other factors shown in the illustration.
4. Successful bidders, unless they are known to us or supply acceptable references are expected to make payment in full before the lots are delivered. Mail bidders will be notified of the amount of their purchases. We reserve the right in our sole and absolute discretion to demand cash payment at the time a lot is knocked down to any bidder who has not previously established credit with us or whose account is in arrears. In the event any buyer refuses to pay cash for any lot at the time it is knocked down to him, the auctioneer reserves the right to re-offer the lot immediately for sale to the highest bidder.
5. If the purchase price has not been paid within the time limit, nor lots taken up within seven days from date of sale they may be resold and any loss arising from such sale will be charged to the defaulter. Any account more than thirty days in arrears is subject to a late payment charge of 1½% per month so long as the account remains in arrears.
6. All lots are sold as genuine but should any lot be proved otherwise by written opinion of any competent, responsible authority acceptable to us, immediate refund of the full purchase price will be made, provided that such claim is made within 25 days from date of sale. If claim is not made within this period, no lots are returnable for any reason at any time. So long as we are notified within the 25 day period that an opinion is being sought the matter will remain open until such opinion is rendered. We will not be responsible for any charges incurred by the buyer for expertization fees and costs unless the opinion states the item is not genuine, in which case we will pay a maximum fee of \$10.00 for each such item.
7. Until paid in full, all lots remain the property of Robert A. Siegel Auction Galleries, Inc. in behalf of the seller.
8. All forwarding charges will be added to the purchase price. The mode of shipment shall be at our option unless we are given specific instructions.
9. Lots may be sent for inspection to buyers known to us upon written application. All such lots must be returned to us by registered mail, adequately insured and within 24 hours after receipt. The applicant assumes all responsibility and for insurance against all risks from time of receipt until they are actually received back by us, and is to pay all expenses of postage and insurance. No lots can be sent for inspection within ten days of the date of sale. Large lots and collections cannot be sent for inspection.
10. The placing of a bid shall constitute acceptance of the foregoing conditions of sale.

ROBERT A. SIEGEL

SYLVESTER COLBY, Licensed Auctioneers

DESCRIPTIONS

EXTREMELY FINE: The finest, condition for noteworthy, outstanding copies.

VERY FINE: (V. F.) In prime condition such as to satisfy the requirements of particular collectors.

FINE: (F) Perforations or margins do not touch design on issues after 1890 but in some cases may just touch in earlier issues. If used, fairly light cancellation.

VERY GOOD: (V. G.) Generally nice appearance but margins or perforations may cut in slightly.

GOOD: Average off-centering or fairly attractive with slight defects.

ORIGINAL GUM is not to be expected on 19th century stamps unless so stated in the description.

MINT: With original gum and never hinged.

Scott 1972 Specialized Catalogue used for listing lots of U.S. & Possessions. Scott 1972 Standard Catalogue for others.

416th SALE

SEPTEMBER 16th, 1972

BID SHEET

ROBERT A. SIEGEL AUCTION GALLERIES, Inc.
120 East 56th Street
New York, N. Y. 10022
Tel.: 753-6421 (Area Code 212)



Please purchase for me at your auction to be held **September 16th, 1972**, the lots named below, the prices annexed being my limit on each lot. I agree to remit for purchases in accordance with the **Conditions of Sale** and to return no lots later than three days after receipt.

REFERENCES PLEASE
(if unknown to us)

SIGNED

.....
.....
.....

New York State residents kindly include
County in address.

.....
County

| Lot | Bid | Lot | Bid | Lot | Bid |
|-----|-----|-----|-----|-----|-----|
| | | | | | |
| | | | | | |
| | | | | | |
| | | | | | |
| | | | | | |
| | | | | | |
| | | | | | |
| | | | | | |
| | | | | | |
| | | | | | |
| | | | | | |
| | | | | | |
| | | | | | |
| | | | | | |
| | | | | | |
| | | | | | |
| | | | | | |
| | | | | | |
| | | | | | |
| | | | | | |
| | | | | | |
| | | | | | |
| | | | | | |

MAIL BIDS
Mail bids should be sent to our New York offices until September 13th.
After that date to us at the **SHERATON PARK PLAZA HOTEL, NEW HAVEN, CONN. 06510.**

| Lot | Bid | Lot | Bid | Lot | Bid |
|-----|-----|-----|-----|-----|-----|
| | | | | | |
| | | | | | |
| | | | | | |
| | | | | | |
| | | | | | |
| | | | | | |
| | | | | | |
| | | | | | |
| | | | | | |
| | | | | | |
| | | | | | |
| | | | | | |
| | | | | | |
| | | | | | |
| | | | | | |
| | | | | | |
| | | | | | |
| | | | | | |
| | | | | | |

ESTIMATES

Our sales offer many covers, cancellations, varieties and other items for which there is no catalogue value or where catalogue value does not reflect the actual value. In order to assist our clients, we are placing a fair net valuation on such lots as a guide to bidders. The chart below will be used. For example, E. IV means that our estimated net value on the lot is \$30.00 to \$40.00. Lots may actually realize more or less than our estimates, which are under no circumstances to be considered reserves but merely a guide to bidding.

| | | | |
|---------|----------------------|---------|------------------------|
| E. I | up to \$10.00 | E. IX | \$150.00 to \$200.00 |
| E. II | \$10.00 to \$20.00 | E. X | \$200.00 to \$250.00 |
| E. III | \$20.00 to \$30.00 | E. XI | \$250.00 to \$350.00 |
| E. IV | \$30.00 to \$40.00 | E. XII | \$350.00 to \$500.00 |
| E. V | \$40.00 to \$50.00 | E. XIII | \$500.00 to \$750.00 |
| E. VI | \$50.00 to \$75.00 | E. XIV | \$750.00 to \$1000.00 |
| E. VII | \$75.00 to \$100.00 | E. XV | \$1000.00 to \$2500.00 |
| E. VIII | \$100.00 to \$150.00 | E. XVI | over \$2500.00 |

MAIL BIDS

Mail bids should be sent to our New York offices until September 13th. After that date to us at the SHERATON PARK PLAZA HOTEL, NEW HAVEN, CONN. 06510.

Saturday, September 16th, 1972 at 1:00 P. M.

UNITED STATES

STAMPLESS COVERS

- 1 ☒ Norton, Mass., in Black Rectangle, Jun. 7 Date between Town & State, ms. "5", slight toned specks, Fine 1848 Stampless E. II

POSTMASTERS' PROVISIONALS

- 1A R New Haven, Conn., 5c Red, 1872 Reprint (8XUIR). Large Margin, small thins, Very Fine appearance E. V
2 New York, N. Y., 5c Black (9X1). Large Margins except barely touched at B. R., Bold Blue ms. cancel, Fine (Photo) 100.00
3 New York, N. Y., 5c Black on Pelure Paper, Without Signature (9X1c). Ample to Large Margins, Blue ms. & Red "Paid" in arc cancel, Very Fine (Photo) 375.00+
4 R New York, N. Y., 5c Blue, Reprint on Bond (9X1R). Extremely Fine (Photo) 90.00
5 ★ Providence, R. I., 5c Black (10X1). Pos. 12, Large margins incl. full RB Corner margins, Large Part o. g., small light insignificant surface rub, otherwise Extremely Fine 75.00
6 ★ Providence, R. I., 10c Black (10X2). Large to Huge Margins, Fresh Extremely Fine (Photo) 300.00

1847 ISSUE

- 7 5c Brown (1). Large to Huge Margins, Bright Orange Red cancel, Extremely Fine (Photo) 67.50
8 5c Red Brown (1). Large to Huge Margins All Around, Neat Red N. Y. Square Grid Cancel, Extremely Fine (Photo) 67.50

LOTS ON VIEW AT OUR OFFICES IN N. Y.

September 11th, 12th, 13th

IN NEW HAVEN AT OUR BOOTH

September 14th, 15th, 16th

| | | |
|------|--|--------|
| 9 | 5c Red Brown (1). Ample to Huge Margins, Pretty Framed Orange Grid Cancel, small, light crease, Extremely Fine Appearance (Photo) | 95.00 |
| 10 | 5c Red Brown (1). Ample to Large Margins, Gorgeous Deep Shade, Blue Town Pmk., tiny insignificant corner crease entirely in margin, otherwise Fine | 70.00 |
| 11 | 5c Brown (1). Ample to Huge Margins, except slightly in T. R., Rich Color & Impression, Faint, almost invisible ms. cancel, appears Unused, Very Attractive | 32.50 |
| 12 | 10c Black (2). Large to Huge Margins, Black Grid Cancels, Extremely Fine & Choice (Photo) | 250.00 |
| 13 | 10c Black (2). Ample to Huge Margins, Part R. Sheet Margin, Light Red Grid Cancel, Very Fine (Photo) | 225.00 |
| 14 | 10c Black (2). Clear Margins All Around, Bold Red Cork Cancel, light corner crease, Fine Appearance | 225.00 |
| 15 | 10c Black (2). Right margin skillfully added, Red Grid Cancel, Very Fine Looking | 225.00 |
| 16 ★ | 5c Red Brown, Reproduction (3). Margins except bit cut in at left, otherwise Fine | 235.00 |
| 17 ★ | 10c Black, Reproduction (4). Large Margins, Fresh & Very Fine (Photo) | 325.00 |

1851 ISSUE

| | | |
|------|---|--------|
| 18 | 1c Blue, Ty. Ib (5b). Pos. 6RIE, Large Margins except bit in at B. R., Neat Blue ms. cancel, Lovely Color, tiny faults, Fine Appearance, One of the Best Examples of its type (Photo) | 475.00 |
| 19 | 1c Dark Blue, Ty. Ia (6). Pos. 97R4, Curl in "C" of Cent, Large Margins Three Sides, L. Margin bit irregular, Blue Town & ms. cancels, nick at B. restored, Fairly Attractive | 600.00 |
| 20 | 1c Blue, Ty. II (7). Ample to Large Margins, Fresh Rich Color, Very Fine (Photo) | 25.00 |
| 21 | 1c Blue Ty. II, IV, 3c Red, 12c Black (7, 9, 11(3), 17). 3c Shades, Very Good-Very Fine | 93.05 |
| 22 | 1c Blue, Ty. IIIa (8A). Large Margins All Around, Light Town Pmk., tiny toned specks, small crease at T., mostly in margin, Very Fine Appearance (Photo) | 140.00 |
| 23 | 1c Blue, Ty. IIIa (8A). Plate IV, "C" Relief, Margins to slightly cut in, Light cancel, shows type clearly | 140.00 |
| 24 ★ | 1c Dark Blue, Ty. IV (9a). Pos. 97L1L, Strong D. T., Ample to Large Margins, Fresh, Rich Color, Very Fine & Handsome (Photo) | 85.00 |
| 25 ☐ | 1c Blue, Ty. IV (9). Block, Pos. 86-87, 96-97L1L, all show Double Transfers, Margins except just in on T. R. stamps, faint creases, small surface scuff on one, nearly invisible ms. cancel, Fine-Very Fine Appearance (Photo) | 300.00 |
| 26 | 1c Deep Blue, Ty. IV (9). Pos. 2R1L, Recut Twice at B., Double Transfer, Large Margins, Rich 1852 Color, Neat Town Pmk., light corner crease, Extremely Fine Appearance | 26.50+ |
| 27 | 1c Blue, Ty. IV (9). Large to Enormous Margins showing Large Part of Next Stamp at T., Neat Grid Cancel, tiny corner crease, otherwise Very Fine | 22.50 |
| 28 | 1c Blue, Ty. IV (9). Pos. 51L1L, Large to Huge Margins except barely touched at T., Part L Sheet Margin, Clear New York Ocean Mail Cancel , Fine & Scarce (Photo) | E. VI |
| 29 | 1c Blue, Ty. IV (9). Horiz. Pair, Large to Enormous Margins Showing Parts of Three other Stamps, neat ms. cancels, light corner crease otherwise Very Fine | 52.50 |

| | | |
|----|---|--|
| 30 | ✉ | 3c Orange Brown (10). Five lines recut U. L. Triangle, Pos. 47L0 Margins all around, Beautifully tied by large "Plymouth Hollow, Ct. pmk. on Apr. 1852 folded letter, Very Fine (Photo) 110.00+ |
| 31 | ★ | 3c Dull Red (11). Block, Margins except just touched in couple places, few creases, one showing through, Fine-Very Fine Appearance 150.00 |
| 32 | ✉ | 3c Red (11). Huge to Enormous Margins, Brilliant Color, tied by Morris, N. Y. pmk. on Cover to New Hampshire, Extremely Fine E. III |
| 33 | ✉ | 3c Red, Ty I, II, IIa (10, 11, 25, 26, 26a). 63 Covers, #10(1), #11(35), #25(2), #26(24), #26a(1), Very Good-Very Fine 160.00 |
| 34 | | 5c Red Brown (12). Huge margins to barely touched at bottom, showing part of next R. stamp, Neat cancel, pin-point thin speck, Fine Appearance (Photo) 150.00 |

| | | |
|----|--|---|
| 35 | | 5c Red Brown (12). Horiz. Strip of Three, Large to Huge Margins, incl. part R. Sheet margin, Rich color, neat "Wellsboro, Pa." pmk., Left stamp has tiny, inconsequential pinhole, Right Pair Extremely Fine, A Magnificent Strip (Photo) 625.00 |
|----|--|---|

| | | |
|----|--|---|
| 36 | | 10c Green, Ty. I (13). Large Margins except just touched at T. L., Neat Framed Grid Cancel, Fine (Photo) 225.00 |
| 37 | | 10c Green, Ty. II (14). Pos. 74R1, Ample to Large Margins, Light cancel, Very Fine (Photo) 45.00 |
| 38 | | 10c Green, Ty. II (14). Large to Huge Margins Three Sides, barely touched at top left Square Dot Grid Cancel, Fine & Handsome 45.00 |
| 39 | | 10c Green, Ty. III (15). Huge Margins, Deep Fresh Color Black & Red Cancels, Extremely Fine (Photo) 47.50 |
| 40 | | 10c Green,, Ty. III (15). Ample to Huge Margins, Brilliant Red Town Pmk., Very Fine (Photo) 47.50 |
| 41 | | 10c Dark Green, Ty. III (15). Large Margins All Around, Rich Color, tiny insignificant sealed tear entirely in margin, otherwise Very Fine 45.00 |
| 42 | | 10c Green Ty. IV (16). Recut at Top, 86L. Ample to Huge Margins, Rich Color, Light Town pmk., Fine (Photo) 325.00 |
| 43 | | 12c Black (17). Three Huge margins, well clear at bottom, neat, light cancel, Very Fine (Photo) 40.00 |
| 44 | | 12c Gray Black (17). Ample to Large Margins, Light Cancel, light crease, Very Fine Appearance 40.00 |

1857 ISSUE

| | | |
|----|---|--|
| 45 | | 1c Blue, Ty. I (18). Light Cancel, small sealed tear, Fine Appearance 120.00 |
| 46 | ✉ | 1c Blue, Ty. I, 3c Rose (18, 65). Centered bit to L., tied by Bold incomplete New York Sep. 4, 1861 Pmk. to Rockland Co. N. Y., (Late Usage), 3c has perf. faults, 1c Fine, without flap, Scarce Combination Cover Attractive (Photo) E. VII |
| 47 | | 1c Blue, Ty. Ia (19). Rich Color, Light Town Pmk., reperfed at B., L. perfs touch, Fine Appearance (Photo) 375.00 |
| 48 | | 1c Blue, Ty. II (20). Pos. 23L2, Major Cracked Plate, Framed Grid Cancel, Very Scarce Plate Variety on the Perforated Issues, Very Fine, as these come (Photo) 110.00 |
| 49 | ✉ | 1c Blue, Ty. II (20). Tied on Aug. 1857 circular by Boston pmk. with "Paid" Centered bit to top, Fine 55.00 |
| 50 | | 1c Blue, Ty. III (21). Plate IV, Light ms. cancel, Very Fine (Photo) 125.00 |
| 51 | | 1c Blue Ty. IIIa, V, 3c Red Ty. I, II, 5c Brown, Ty. II (22, 24(4), 25(2), 26(3), 30A(1). Two #26 Unused, one o. g., Very Good-Very Fine 141.00 |
| 52 | | 1c Blue, Ty. IV (23). Rich Color, 1858 Year Date Cancel, centered to T., Very Good 70.00 |

| | | |
|------|---|--------------|
| 53 | 1c Blue, Ty. V (24). Two Shades, one with Phila. octagon cancel tied to small piece, other with Black N. Y. Carrier cancel, Fine & Attractive | E. II |
| 54 ★ | 3c Rose, Ty. I (25). Large Part o. g., tiny rubbed specks, Very well centered, Very Fine appearance (Photo) | 110.00 |
| 55 | 3c Red (26). Tied on small piece by clear Blue "Chicago Supplementary Mail" pmk. Ty. C, Very Fine (Photo) | 75.00+ |
| 56 | 5c Brick Red (27). Nicely Centered, tiny toned speck, shows mostly on back, neat town cancel, Fine (Photo) | 125.00 |
| 57 | 5c Red Brown (28). Rich Color, Light Town Pmk., Fine (Photo) | 75.00 |
| 58 | 5c Indian Red (28A). Deep Rich Color, Town cancel centered to B., corner creases, nevertheless an Attractive Example of this scarce color (Photo) | 300.00 |
| 59 | 5c Brown, Ty. I (29). 1860 Year date Cancel, Fresh Color, tiny thin spot, Fine Appearance | 57.50 |
| 60 | 5c Dark Brown, Ty. I (29). Horiz. Strip of Three, on piece, tied by Bold "New Orleans, La." pmks., perfs. just in a B., Fine & Handsome Strip (Photo) | 190.00 |
| 61 ★ | 5c Brown, Ty. II (30A). Minute sealed tear, Very Fine Appearance | 90.00 |
| 62 | 5c Brown, Ty. II (30A). Bold Magenta Grid Cancel, centered trifle to L., Very Fine | 45.00 |
| 63 | 10c Green, Ty. I (31). Sealed tear, Fine Appearance | 135.00 |
| 64 | 10c Green, Ty. II, III (32-33). Red Cancels, Fine | 57.00 |
| 65 | 10c Dark Green, Ty. IV (34). Recut at Top, 74L, Light Red town pmk., R. perfs. touch, Fine (Photo) | 235.00 |
| 66 ★ | 10c Green, Ty. V (35). Fresh, Gorgeous Color, Very Fine (Photo) | 33.50 |
| 67 ★ | 10c Green, Ty. V (35). Block, Fresh, Large Part o. g., minor gum thins in T. pair, others Very Fine, Attractive Block (Photo) | 200.00 |
| 68 ★ | 12c Black, Pl. III (36b). Nicely centered, Fresh, Very Fine (Photo) | 52.50 |
| 69 ★ | 12c Black, Plate III (36b). Fresh, couple nibbed perfs., centered to T., Nice Looking | 52.50 |
| 70 | 12c Black, Pl. I (36). Two, each tied to small piece, one with Bold "Towsontown, Md." pmk., other with the scarce "Copper Mines, Polk Co., Tenn." pmk. in large circle, Fine | 36.00 |
| 71 | 12c Black, Plate III (36b). Block, Town & ms. cancels, major defects, reinforced, Fairly Nice Looking, Scarce | 275.00 |
| 72 ★ | 24c Gray (37). Large Part o. g., Fresh, single partly blunted perf. tip, otherwise Very Fine (Photo) | 115.00 |
| 73 ★ | 24c Gray (37). Fresh & Fine (Photo) | 115.00 |
| 74 ★ | 30c Orange (38). Fresh, Brilliant Color, Fine (Photo) | 120.00 |
| 75 ★ | 30c Orange (38). Fresh, single blunted perf. tip, Fine appearance (Photo) | 120.00 |
| 76 | 30c Orange (38). Blue "Baltimore, Md." pmk., Fine (Photo) | 72.50 |
| 77 ★ | 90c Deep Blue (39). Fresh, Brilliant Color, centers to B.L., Fine (Photo) | 400.00 |
| 78 | 90c Blue (39). Oval N. Y. Reg. Cancel, tiny sealed tear, Fine Appearance Late postmark, probably applied through favor | — |

1857 REPRINTS

| | | |
|------|---|--------|
| 79 ★ | 1c Bright Blue, Reprint (40). Very Fine (Photo) | 160.00 |
| 80 ★ | 3c Scarlet, Reprint (41). Fresh, Brilliant Color, Very Fine (Photo) | 800.00 |
| 81 ★ | 5c Orange Brown, Reprint (42). Fresh, couple partly nibbed perfs., Very Fine Appearance (Photo) | 300.00 |
| 82 ★ | 10c Blue Green, Reprint (43). Fresh, Lovely Color, centered slightly to B., Fine (Photo) | 550.00 |
| 83 ★ | 12c Greenish Black, Reprint (44). Fresh, couple partly nibbed perf. tips, from the customary scissors cuts, Fine (Photo) | 600.00 |

| | | |
|------|--|------------------|
| 84 ★ | 24c Blackish Violet, Reprint (45). Pretty Color, Fresh & Fine (Photo) | 675.00 |
| 85 ★ | 30c Yellow Orange, Reprint (46). Fresh, Brilliant Color, Fine (Photo) | 950.00 |
| 86 ★ | 90c Deep Blue, Reprint (47). Fresh, Rich Color, couple of partly blunted perf. tips, otherwise Very Fine | (Photo) 1,300.00 |

1861 "FIRST DESIGN"

| | | |
|------|---|----------------|
| 87 ★ | 3c Brown Rose, "First Design" (56). Fresh, o. g., Very Fine | (Photo) 225.00 |
| 88 | 10c Dark Green, "First Design" (58). Neat Red Cancel, Fresh Color, single partly blunted perf. tip, otherwise Very Fine | (Photo) 210.00 |
| 89 | 24c Grayish Lilac, "First Color" (60a). Light Target Cancel, couple nibbed perfs., Fine Appearance | 150.00 |

1861 ISSUE

| | | |
|------|--|--------|
| 90 ★ | 1c Blue, 3c Rose (63, 65). Two Shades of Each, Fresh, tiny trivial faults, Fine-Very Fine Appearance | 73.00 |
| 91 | 1c-30 1861 Issues (63, 65, 68-69, 71, 73, 76-78). 12c perfs. in, others Fine-Very Fine | 84.95 |
| 92 | 3c Pink (64). Rich Color, Light Grid Cancel, small nick B. R., otherwise Fine | 100.00 |

| | | |
|------|--|-----------------|
| 93 | 3c Rose (65). Imperf. pane margin at L, tiny corner perf. crease, Clear Bold "Masonic All-Seeing Eye" cancel in Blue, one of the best examples known of this rare cancel, Ex-Knapp | (Photo) E. VIII |
| 94 | 3c Rose (65). Fine, Tied on small piece by perfect, bold Waterbury, Conn. "Veined Leaf" cancel, as fine an example of this scarce & pretty cancel, as could be desired | (Photo) E. V |
| 95 | 3c Rose (65). Left imperf. pane margin, Wonderfully clear, bold strike of the Waterbury, Conn. "Bridgeport Fireman" cancel. in full detail, A Choice Example of This Rare cancellation | (Photo) E. IX |
| 96 ☒ | 3c Rose (65). On Leed's Patent Envelope, grid cancel (not tied), & matching Washington, D. C. Pmk. to New York, Bold Four Line "Forwarded By U. S. Sanitary Commission" Handstamp, Sanitary Commission Corner Card, without flap, couple small tears otherwise Very Fine & Very Scarce | E. VI |

| | | |
|-------|--|----------------|
| 97 ★ | 5c Olive Yellow (67b). Exceptionally Well Centered, Fresh, Brilliant Color, small faults, Extremely Fine Appearance | (Photo) 650.00 |
| 98 ★ | 10c Dark Green (68a). Fresh, o. g., light crease, Fine Appearance | 40.00 |
| 99 | 2c-90c 1861-66 Issues (68-70, 72-73, 75-78). Small faults, Fine-Very Fine Appearance | 165.00 |
| 100 | 2c-30c 1861-94 Issues (Betw 68-255). 18 Stamps, 14 Diff., incl. grills, Bank Notes, some have small faults or perfs. touch, Very Good-Very Fine Appearance | 280.00 |
| 101 ★ | 12c Black (69). Fresh, tiny almost invisible sealed tear, Fine Appearance | 62.50 |
| 102 | 24c Steel Blue (70b). Beautifully centered, Bold "Paid" in box cancel., slight toning & trifling perf. creases, Very Fine appearance | (Photo) 52.50+ |
| 103 | 24c Steel Blue (70b). Blurry cancel., R. perfs touch | 52.50 |
| 104 ☒ | 30c Orange (71). Fine, Tied by grid on neat cover to Bombay, East Indies, Red "Philad'a" transit, partial strike, French 1866 transits, sent to a U. S. Naval Officer, Scarce & attractive | (Photo) E. VII |

| | | | |
|-----|---|---|------------------------|
| 105 | ☒ | 30c Orange (71). Centered bit to L. B., Fine, Tied by grid on small cover to Island of Ceylon, Indian Ocean , also tied by edge of Red Philad'a transit, 1866 French transit & Ceylon receiving pmk., Fine cover to a U. S. Naval Officer (Photo) | E. VII 57.50 |
| 106 | | 90c Blue (72). Light Red Split Cork Cancel., tiny faults, Fine Appearance | 32.50 |
| 107 | ★ | 2c Black (73). Wonderfully Well Centered, Extremely Fine (Photo) | 7.00 |
| 108 | | 2c Black (73). Huge Margins, Well Centered, Extremely Fine, a Magnificent Stamp (Photo) | E. IV 95.00 |
| 109 | ☒ | 2c Black (73). Centered to T., tied by Brilliant Red Geometric with matching "New York City, Jul. 17" Pmk. on Small Neat Cover, Very Fine | 125.00 |
| 110 | ★ | 5c Brown (76). Two Shades, tiny imperfections, Fine-Very Fine Appearance | |
| 111 | ★ | 15c Black (77). Fresh, single nibbed perf., otherwise Fine | |

1867 GRILLED ISSUES

| | | | |
|-----|---|--|--------|
| 112 | | 3c Rose, Grilled All Over (79). Split Cork Cancel, irregular perfs. as always, centered far to L., Presentable Example of this Scarce Stamp (Photo) | 225.00 |
| 113 | | 3c Rose, C. Grill (83). Split Cork Cancel, couple tiny toned specks Fine Appearance | 57.50 |
| 114 | | 2c Black, D. Grill (84). Clear Grill, Town Pmk., centered far to T. L., Scarce stamp | 200.00 |
| 115 | | 3c Rose, D. Grill (85). Small, Neat Rosette Cancel, few blunted perfs., centered far to L. | 50.00 |
| 116 | | 3c Rose, Z. Grill (85C). Light Cancel, centered to B. R., Scarce ... (Photo) | 200.00 |
| 117 | | 12c Black, Z. Grill (85E). Tiny thin specks, Very Fine Appearance (Photo) | 125.00 |
| 118 | | 1c-15c E. Grill (86, 88-91). Tiny faults, Fine-Very Fine Appearance | 140.85 |
| 119 | ★ | 2c Black, E. Grill (87). Reperfed at L., Very Fine Appearance | 45.00 |
| 120 | | 1c-15c F. Grills (92-93, 96-98). Tiny, insignificant faults, Very Fine Appearance | 69.25 |
| 121 | ★ | 2c Black, Split F. Grill (93d). Large Part o. g., tiny faults, Very Fine Appearance (Photo) | 45.00+ |
| 122 | | 2c Black, F. Grill (93). Incredible "Boardwalk" Margins at Sides, perfs. just in at B., tiny sealed tear in L. margin only, nevertheless an Amazing Stamp | 7.75+ |
| 123 | ★ | 3c Rose Red, F. Grill (94). Fresh, Brilliant Color, Large Part o. g., Extremely Fine & Handsome (Photo) | 15.00 |
| 124 | ★ | 5c Brown, F. Grill (95). Fresh, just touched at T. R. | 225.00 |
| 125 | ★ | 5c Black Brown, F. Grill (95a). Fresh, Gorgeous Color, perfs. just in at L. & T., Scarce (Photo) | 335.00 |
| 126 | | 24c Gray Lilac, F. Grill (99). Nicely Centered, minute corner flaw at L. R., Very Fine Appearance | 90.00 |
| 127 | | 30c Orange, F. Grill (100). Reperf. at L., Very Fine Appearance | 60.00 |
| 128 | | 90c Blue, F. Grill (101). Creased corner perf., otherwise Fine ... (Photo) | 175.00 |

1861 RE-ISSUES

| | | | |
|-----|---|---|--------|
| 129 | ★ | 1c Blue, Re-Issue (102). Part o. g., Very Fine with P. F. Certificate (Photo) | 145.00 |
| 130 | ★ | 2c Black, Re-Issue (103). O. g., light gum stain, otherwise Fine, with P. F. Certificate (Photo) | 725.00 |
| 131 | ★ | 3c Brown Red, Re-Issue (104). Fresh, o. g., Beautiful Color, few bottom perfs slightly blunted by scissor separation, as often, Very Fine with P. F. Certificate (Photo) | 925.00 |
| 132 | ★ | 5c Light Brown, Re-Issue (105). Fresh, o. g., Rich Color, reperfed at T., otherwise Fine, with P. F. Certificate (Photo) | 650.00 |

| | | | |
|-----|---|--|----------|
| 133 | ★ | 10c Green, Re-Issue (106). Part o. g., light crease, Fine Appearance, with P. F. Certificate (Photo) | 750.00 |
| 134 | ★ | 12c Black, Re-Issue (107). Fresh, o. g., centered to R., with P. F. Certificate (Photo) | 975.00 |
| 135 | ★ | 15c Black, Re-Issue (108). Large Part o. g., Fresh, centered to R. (Photo) | 800.00 |
| 136 | ★ | 24c Deep Violet, Re-Issue (109). Fresh, Part o. g., Gorgeous Color, centered slightly to R., with P. F. Certificate (Photo) | 950.00 |
| 137 | ★ | 30c Brownish Orange, Re-Issue (110). Part o. g., light crease, centered to L., with P. F. Certificate (Photo) | 1,400.00 |
| 138 | ★ | 90c Blue, Re-Issue (111). Fresh, Part o. g., Fine, with P. F. Certificate (Photo) | 1,650.00 |

1869 PICTORIAL ISSUE

| | | | |
|-----|---|---|---------------|
| 139 | ★ | 1c Buff (112). Fresh & Fine (Photo) | 67.50 |
| 140 | ★ | 1c Buff (112). B. L. Sheet Corner Block, Fresh, perfs. shifted way into design at T., Scarce (Photo) | 375.00 |
| 141 | ★ | 2c Brown, 3c Ultramarine (113, 114). Fresh, o. g., trivial faults, Fine appearance (Photo) | 61.00 |
| 142 | | 2c Brown (113). Partly struck Masonic Square & Compass, faults, Very Fine Looking, Scarce Cancel. | E. II |
| 143 | ✉ | 2c Brown, 3c Ultramarine (113, 114). 34 Covers, three of first, incl. some Hotel Corner Cards, Very Good-Very Fine (Photo) | E. III |
| 144 | ★ | 6c Ultramarine (115). Light, even toning, Fine Appearance (Photo) | 125.00 |
| 145 | ★ | 6c Ultramarine (115). Block, Fresh, Large Part o. g., B. L. stamp has corner fault, centered T. L., Fine (Photo) | 700.00 |
| 146 | ★ | 10c Yellow (116). Well Centered and Fresh, Very Fine (Photo) | 135.00 |
| 147 | | 10c Yellowish Orange (116). Nicely Centered, Rich Color, Clear Circular "Steamship" New York Cancel, single short perf., Very Fine Appearance | 40.00 |
| 148 | ★ | 12c Green (117). Fresh, o. g., Fine (Photo) | 125.00 |
| 149 | ★ | 15c Brown & Blue, Ty. I, Double Grill (118b). Part o. g., small flaws, centered to B., Fine Appearance, Normal cats. \$400.00, variety unpriced unused, Scarce (Photo) | — |
| 150 | | 15c Brown & Blue Ty. I, II (118-119). Each has small tear, Fine-Very Fine Appearance (Photo) | 117.00 |
| 151 | ★ | 24c Green & Violet (120). Reperfed at R., slight toning Fine Appearance (Photo) | 350.00 |
| 152 | | 90c Carmine & Black (122). Light Cancel, tiny sealed tear, centered bit to L., Fine Appearance (Photo) | 260.00 |

1869 RE-ISSUES

| | | | |
|-----|---|--|--------|
| 153 | ★ | 1c Buff, Re-Issue (123). Large Part o. g., light corner crease, Very Fine Appearance (Photo) | 115.00 |
| 154 | ★ | 2c Brown, Re-Issue (124). Fresh, o. g., Beautiful Impression, small filled in surface thin, Extremely Fine Appearance (Photo) | 160.00 |
| 155 | ★ | 3c Blue, Re-Issue (125). Fresh, o. g., Lovely Color & Impression, light crease, Extremely Fine Appearance (Photo) | 850.00 |
| 156 | ★ | 6c Blue, Re-Issue (126). Fresh, single partly blunted perf., otherwise Very Fine (Photo) | 325.00 |
| 157 | ★ | 6c Blue, Re-Issue (126). Bright Color, Fresh, Part o. g., separated by scissors at R., all perfs. intact, Fine (Photo) | 325.00 |
| 158 | ★ | 10c Yellow, Re-Issue (127). Large Part o. g., tiny natural paper inclusion, Very Fine (Photo) | 365.00 |

| | | |
|-------|---|------------------|
| 159 ★ | 12c Green, Re-Issue (128). Fresh, Large Part o. g., couple very slightly blunted perfs., otherwise Extremely Fine | (Photo) 425.00 |
| 160 ★ | 15c Brown & Blue, Re-Issue (129). Fresh, single partly nibbed perf., otherwise Very Fine | (Photo) 500.00 |
| 161 ★ | 24c Green & Violet, Re-Issue (130). Fresh Color & Impression, perfs. close at L., Fine | (Photo) 400.00 |
| 162 ★ | 30c Blue & Carmine, Re-Issue (131). Part o. g., faint thin speck & few toned perf. tips, Very Fine Appearance | (Photo) 600.00 |
| 163 ★ | 90c Carmine & Black, Re-Issue (132). Well Centered, light overall toning, still Extremely Fine | (Photo) 1,000.00 |

| | | |
|-------|--|-------|
| 164 ★ | 1c Brown Orange, Re-Issue (133). Nicely Centered, minute sealed tear, Very Fine Appearance | 90.00 |
| 165 ★ | 1c Brown, Re-Issue (133a). Faint thin spot, Fine Appearance | 90.00 |

NATIONAL BANK NOTE CO. ISSUES

| | | |
|-------|--|----------------|
| 166 | 6c Carmine, Grill (137). Fine | 45.00 |
| 167 | 30c Black, Grill (143). Light grill, perfs. in at R | 200.00 |
| 168 ★ | 1c-3c 1870 Issue (145-147). Large Part o. g., 1c has corner crease, otherwise Fine Lot | 45.00 |
| 169 ★ | 1c Ultramarine (145). Block, Fresh, o. g., small sealed tear in one, perfs. just in at T | 120.00 |
| 170 ★ | 6c Carmine (148). Fresh Color, Fine | (Photo) 55.00 |
| 171 ☒ | 6c Carmine (148). Seven Covers, All Used to England, couple N. Y. F. M. Cancels, two with nicks, otherwise Fine | E. III |
| 172 ★ | 7c Vermilion (149). Fresh, Brilliant Color, single pulled perf., otherwise Fine | 75.00 |
| 173 ★ | 10c Brown (150). Fresh, o. g., Nicely Centered, couple nibbed perf. tips, Very Fine Appearance | 60.00 |
| 174 ★ | 12c Violet (151). Very faint toning, almost entirely on back, Very Fine appearance | (Photo) 120.00 |
| 175 ☒ | 12c Violet (151). Tied by Bold Red N. Y. F. M. Grid similar to Ty. F12a, Matching "New York Paid All" & Supplementary Mail Ty. A in Red, Paton & Company Forwarding Agent Backstamp, to Liverpool, England, piece missing from back, also minor ink stains on edge, Scarce | E. IV |
| 176 ★ | 15c Bright Orange (153). Single nibbed perf., otherwise Fine | (Photo) 82.50 |

CONTINENTAL BANK NOTE CO. ISSUES

| | | |
|-------|---|------------------|
| 177 ★ | 1c-6c 1873 Issue (156-159). Fresh, Large Part o. g., tiny trivial faults, Fine-Very Fine Appearance | 88.50 |
| 178 ★ | 7c Vermilion (160). Large Part o. g., tiny nick at T. L., Fine Appearance | 87.50 |
| 179 ★ | 10c Brown (161). Fresh, Very Fine | (Photo) 45.00 |
| 180 ★ | 90c Rose Carmine (166). Fresh, o. g., Lovely Color, Fine | (Photo) 225.00 |
| 181 ★ | 90c Rose Carmine (166). Tiny flaws, centered to T | 225.00 |
| 182 ★ | 7c Vermilion, Special Printing (171). Fresh, Nicely Centered, few slightly nibbed perf. tips, Very Fine Appearance, with P. F. Certificate | (Photo) 1,300.00 |
| 183 ★ | 12c Dark Violet, Special Printing (173). Brilliant Color, centered bit to R., A Fine Example of this Scarce Stamp, with P F Certificate | (Photo) 1,450.00 |
| 184 ★ | 24c Purple, Special Printing (175). Rich Color, perfs. trimmed at B. & few others blunted by scissor separation, Normal for this issue, Fine appearance, Scarce | (Photo) 1,200.00 |

| | | |
|-------|---|-------|
| 185 ★ | 2c Vermilion, 5c Blue (178-179). First o. g., tiny trivial faults, Fine Appearance | 75.00 |
|-------|---|-------|

AMERICAN BANK NOTE CO. ISSUES

| | | |
|-------|--|----------------------|
| 186 ★ | 1c-3c, 15c 1879 Issue (182-184, 189). Large Part o. g., 1c has tiny thin speck, otherwise Fine-Very Fine | 70.50 |
| 187 ★ | 5c Blue (185). Fresh Color, some irregular perfs. T. & L., otherwise Extremely Fine | (Photo) 35.00 |
| 188 ☒ | 5c Blue, Brown (185, 205). Tied by "Stratham, N. H." Cancels on Fresh 1880, 1884 covers to China, Foochow & Hong Kong Backstamps, Very Fine | E. III |
| 189 ★ | 6c Pink (186). Fresh, Large part o. g., tiny thin speck, Very Fine Appearance | (Photo) 95.00 |
| 190 ★ | 6c Dull Pink (186). Well Centered, o. g., tiny thin speck in margin, Extremely Fine Appearance | (Photo) 95.00 |
| 191 | 6c Pink (186). Clear Skull & Crossbones Cancel, Very Fine | (Photo) E. IV |
| 192 ★ | 10c Brown (187). Fresh, o. g., Fine, Scarce | (Photo) 150.00 |
| 193 ★ | 10c Black Brown (188b). Lovely Rich Color, centered slightly to top, Fine & Handsome, with P. F. Certificate | (Photo) 225.00 |
| 194 ★ | 30c Full Black (190). Large Part o. g., tiny thin speck, Very Fine Appearance | (Photo) 82.50 |
| 195 ★ | 90c Carmine (191). Large Part o. g., Fresh Color, tiny thin spot, Very Fine Appearance, with wide margins | (Photo) 235.00 |

| | | |
|-------|---|------------------|
| 196 ★ | 24c Dark Violet, Special Printing (200). Fresh Color, All Perfs. Intact, few perfs. barely touch at L., Very Fine for this, with P. F. Certificate | (Photo) 1,100.00 |
|-------|---|------------------|

| | | |
|--------|--|----------------|
| 197 ★ | 1c-10c 1882-88 Issues (205-207, 209-215). Mostly o. g., many have tiny faults, two shades of #209, Fine-Very Fine Appearance | 115.10 |
| 198 ★☐ | 1c Gray Blue (206). Block, Fresh, o. g., Fine-Very Fine | 35.00 |
| 199 ★ | 6c Rose, 6c Brown Red (208, 208a). Both Shades, Large Part o. g., first has tiny thin specks, latter small sealed tear, Fine-Very Fine Appearance | 95.00 |
| 200 ★ | 2c Pale Red Brown, Special Printing (211B). Fresh, o. g., couple tiny thin specks, Very Fine Appearance | (Photo) 175.00 |
| 201 ★☐ | 3c Vermilion (214). Block, Fresh, o. g., Fine | 45.00 |
| 202 ★☐ | 3c Vermilion (214). R. Margin Block of Eight (4 x 2), Mint, Fine-Very Fine | 90.00 |
| 203 ★ | 30c Orange Brown (217). Fresh, o. g., minor gum soaks, otherwise Very Fine | 50.00 |
| 204 ★ | 90c Purple (218). Fresh, Large Part o. g., Fine | (Photo) 150.00 |
| 205 ★ | 90c Purple (218). Fresh, o. g., wide s. e. at L., Fine | (Photo) 150.00 |
| 206 ★ | 1c-90c 1890 Issue (219-229). Mostly o. g., a number of small thins, some trivial, incl. 10c-90c Fine-Very Fine Appearing Set | 209.10 |

COLUMBIAN ISSUE

| | | |
|-------|--|--------|
| 207 ★ | 1c-8c Columbians (230-233, 235-236). Fresh, o. g., Well Centered, Exceptionally Fine | 56.75 |
| 208 ★ | 1c-10c Columbians (230-237). Nearly All o. g., Fine-Very Fine | 92.75 |
| 209 ★ | 1c-15c Columbian (230-238). Some o. g., 8c-15c have small faults, others Fine-Very Fine | 132.50 |
| 210 ★ | 1c-15c Columbian (230-238). Some o. g., mostly small faults, Very Good-Very Fine Appearance | 132.50 |

| | | | |
|-----|---|--|---------|
| 211 | ★ | 1c-50c Columbian (230, 234, 236-237, 240). Large Part o. g., faults or perfs. close, Very Good-Very Fine | 136.50 |
| 212 | ★ | 1c Columbian (230). Block of 20 (5 x 4), few light toned spots, Very Good-Fine | 102.00+ |
| 213 | ★ | 2c-6c Columbian (231-233, 235). Fresh, o. g., Brilliant and Mint, Very Fine, Choice lot | 41.25 |
| 214 | ★ | 2c-30c Columbians (231-233, 235, 238-239). Large Part o. g., Fine-Very Fine | 136.25 |
| 215 | ★ | 2c Columbian (231). Block of Six with Part Imprint & Plate No. 169, Rich Color, tiny sealed tear in one, otherwise Fine | 29.00+ |
| 216 | ★ | 2c Columbian (231). Vertical Strip of Three, Blocks of Four & Six, three stamps have s. e., Fine-Very Fine | 61.25 |
| 217 | ★ | 2c Columbian (231). Vertical Strip of Three, Blocks of Four & Six, Fine-Very Fine | 61.25 |
| 218 | ★ | 2c Columbian (231). Block of 9 (3x 3) with Part Imprint & Double Letter "Q", two stamps have tiny faults, perf. strengthening, mostly in selvedge, otherwise Fine-Very Fine | 41.25+ |
| 219 | ★ | 2c Columbian (231). R. Corner Margin Block of Eight (2 x 4), with Double Letter "Q", few perfs. lightly strengthened, Very Fine | 40.00+ |
| 220 | ★ | 3c Columbian (232). R. Margin Block of Six, imperf. margin at T., light crease in B. pair, otherwise Very Good-Fine | 64.00 |
| 221 | ★ | 3c Columbian (232). Block of 15 (5 x 3), few light creases, one has sealed tear, some insignificant perf. strengthening, Very Fine Appearing & Handsome Columbian Multiple | 156.50 |
| 222 | ★ | 4c Columbian (233). Part R. Imprint Block, couple tiny light toned specks, otherwise Fine-Very Fine | 57.50+ |
| 223 | ★ | 4c Columbian (233). L. Imprint Block of 12 (3 x 4), few tiny toned specks & overall faint toning, otherwise Very Fine | 165.00+ |
| 224 | ★ | 4c Columbian (233). B. Imprint, Letter "D" Plate No. 18 Block of Ten, few tiny negligible toned specks, otherwise Fine-Very Fine (Photo) | 410.00 |
| 225 | ★ | 5c Columbian (234). Block of Eight (4 x 2), Fresh, Rich Shade, perfs. strengthened between blocks, Fine-Very Fine | 130.00 |
| 226 | ★ | 5c Columbian (234). R. Imprint Block of Nine (3 x 3), most have faults, some trivial, Fine-Very Fine Appearance | 132.50 |
| 227 | ★ | 5c Columbian (234). Block of Ten (5 x 2), s. e. at T., light crease in one, otherwise Fine | 157.00 |
| 228 | ★ | 5c Columbian (234). Block of 12 (4 x 3), few light creases, s. e. at T., Very Good-Fine | 184.00 |
| 229 | ★ | 5c Columbian (234). B. Imprint, Letter "B" & Plate No. 6 Block of Ten, Fresh, few slightly blunted perfs., otherwise Very Fine (Photo) | 427.00 |
| 230 | ★ | 10c Columbian (237). Fresh and Very Fine (Photo) | 22.50 |
| 231 | ★ | 15c Columbian (238). Fresh, o. g., Very Fine (Photo) | 40.00 |
| 232 | ★ | 30c Columbian (239). Fresh, o. g., Brilliant, Extremely Fine (Photo) | 55.00 |
| 233 | ★ | 30c Columbian (239). Fresh, Very Fine (Photo) | 55.00 |
| 234 | ★ | 30c Columbian (239). Fresh, Fine | 55.00 |
| 235 | ★ | 30c Columbian (239). Brilliant, Fresh Color, o. g., light bend, otherwise Fine | 55.00 |
| 236 | | 30c, 50c Columbians (239, 240). Fine-Very Fine | 67.50 |
| 237 | ★ | 50c Columbian (240). Fresh, Rich Color, Well Centered, Exceptionally Fine (Photo) | 85.00 |
| 238 | ★ | 50c Columbian (240). Fresh, Color, Very Fine (Photo) | 85.00 |
| 239 | ★ | 50c Columbian (240). Deep Color, trivial faults, well centered Very Fine appearance | 85.00 |
| 240 | ★ | 50c Columbian (240). Fresh, o. g., Fine | 85.00 |
| 241 | ★ | 50c Columbian (240). Fresh, Large Part o. g., Fine | 85.00 |
| 242 | ★ | \$1.00 Columbian (241). Brilliant Color, tiny corner perf. tip bend, still Very Fine (Photo) | 250.00 |

| | | |
|-------|---|--------|
| 243 ★ | \$1.00 Columbian (241). Well Centered, Beautiful Color, slight surface rubbing, otherwise Very Fine (Photo) | 250.00 |
| 244 ★ | \$1.00 Columbian (241). Fresh, Large Part o. g., minute pinhole, Fine Appearance (Photo) | 250.00 |
| 245 ★ | \$1.00 Columbian (241). Rich Color, light corner creases, Fine Appearance (Photo) | 250.00 |
| 246 ★ | \$1.00 Columbian (241). Part o. g., small faults, R. perfs. touch | 250.00 |
| 247 ★ | \$2.00 Columbian (242). Lovely Color, reperfed at B., Very Fine Appearance (Photo) | 290.00 |
| 248 ★ | \$2.00 Columbian (242). Large Part o. g., tiny thin specks, Fine Appearance (Photo) | 290.00 |
| 249 ★ | \$2.00 Columbian (242). Small thin spot, centered to R., Fine Appearance (Photo) | 290.00 |
| 250 ★ | \$3.00 Columbian (243). Well Centered, light creases, Extremely Fine Appearance (Photo) | 425.00 |
| 251 ★ | \$3.00 Columbian (243). Brilliant Color, small filled thin spot, Fine Appearance (Photo) | 425.00 |
| 252 | \$3.00 Columbian (243). Light Cancel, Very Fine (Photo) | 250.00 |
| 253 ★ | \$4.00 Columbian (244). Nicely Centered, creased, Very Fine Appearance (Photo) | 600.00 |
| 254 ★ | \$4.00 Columbian (244). Pale Aniline Rose, Pretty Color, reperf. T. & thin Very Fine Appearance (Photo) | 600.00 |
| 255 ★ | \$4.00 Columbian (244). Rich Color, small internal wrinkle, Fine (Photo) | 600.00 |
| 256 ★ | \$5.00 Columbian (245). Tiny thin spot, Very Fine Appearance (Photo) | 650.00 |
| 257 ★ | \$5.00 Columbian (245). Fresh, small paper inclusion, Fine (Photo) | 650.00 |
| 258 ★ | \$5.00 Columbian (245). Reperforated, Small faults, Fairly attractive (Photo) | 650.00 |
| 259 | \$5.00 Columbian (245). Reg. Cancel., faint paper indentation caused by heavily struck cancel line, Fine (Photo) | 350.00 |

1894-95 ISSUES

| | | |
|-------|--|--------|
| 257 ★ | \$5.00 Columbian (245). Fresh, small paper inclusion, Fine (Photo) | 650.00 |
| 261 ★ | 1c-50c 1894-98 Issues (Betw 248-283). 12 Diff., Nearly All o. g., small faults, some trivial, Fine-Very Fine Appearance | 115.50 |
| 262 ★ | \$1.00 Black, Ty. I (261). Fresh, o. g., Fine (Photo) | 135.00 |
| 263 ★ | \$1.00 Black, Ty. II (261A). Fresh, o. g., Fine (Photo) | 200.00 |
| 264 ★ | \$2.00 Dark Blue (262). Rich Color, o. g., perfs just touch at R. (Photo) | 195.00 |
| 265 ★ | \$5.00 Dark Green (263). Lovely Color, Large Part o. g., reperf. at R., B. perfs. barely touch (Photo) | 475.00 |
| 266 ★ | 1c-15c 1895 Issue (264-265, 267-274). o. g., Fine-Very Fine | 73.95 |
| 267 ★ | 50c Red Orange (275a). Fresh, Very Fine (Photo) | 42.50 |
| 268 ★ | 50c Red Orange (275a). Fresh, o. g., Fine | 42.50 |
| 269 ★ | \$1.00 Black, Ty. I (276). Well Centered, o. g., Very Fine (Photo) | 110.00 |
| 270 ★ | \$1.00 Black, Ty. I (276). Minute perf. tip thin, V. F. appearance (Photo) | 110.00 |
| 271 ★ | \$1.00 Black, Ty. II (276A). Fresh, o. g., repaired, Fine Looking | 225.00 |
| 272 ★ | \$2.00 Dark Blue (277). Fresh, o. g., Very Fine (Photo) | 135.00 |
| 273 | \$2.00 Dark Blue (277). Used, barest trace of thin speck in wmk., Fine appearance | 80.00 |
| 274 ★ | \$5.00 Dark Green (278). Lovely Color, Large Part o. g., small thin spot Very Fine Appearance (Photo) | 310.00 |
| 275 ★ | 4c-15c 1898 Issue (280-282C, 284). Large Part o. g., Fine-Very Fine | 63.15 |

TRANS-MISSISSIPPI ISSUE

| | | |
|-------|--|--------|
| 276 ★ | 1c-8c Trans-Mississippi (285-289). Fresh, part o. g., Fine-Very Fine | 89.50 |
| 277 ★ | 1c-10c Trans-Mississippi (285-290). Fresh, o. g., 5c T. perfs. touch, others Fine-Very Fine | 129.50 |

| | | | |
|-----|---|--|--------|
| 278 | ★ | 1c-10c Trans-Mississippi (285-290). Mostly o. g., few small faults, Very Good-Very Fine Appearance | 129.50 |
| 279 | ★ | 1c Trans-Mississippi (285). Imprint & Plate No. 600, 601, 607, & 635 Strips of Five, some perf. strengthening, perfs. touch on one, others Fine-Very Fine | 164.00 |
| 280 | ★ | ▣ 1c Trans-Mississippi (285). Block of Six, s.e. at R., few perfs. lightly strengthened, Very Fine | 44.00 |
| 281 | ★ | ▣ 1c Trans-Mississippi (285). L. Margin Block of Ten (5x2), perfs. lightly strengthened, Very Fine | 74.00 |
| 282 | ★ | ▣ 1c-Trans-Mississippi (285). L. Margin Block of Ten (5x2), some perfs. lightly strengthened, Fine-Very Fine | 74.00 |
| 283 | ★ | ▣ 1c Trans-Mississippi (285). Block of 20 (5x4), imperf. sheet margin at R., Fine-Very Fine | 148.00 |
| 284 | ★ | ▣ 1c Trans-Mississippi (285). Block of 20 (5x4), imperf. center line at R., small nick in one, others Fine-Very Fine | 148.00 |
| 285 | ★ | ▣ 1c Trans-Mississippi, #285(44), All in Blocks of Four or Larger, some have faults or perfs. touch, others Fine-Very Fine | 326.00 |
| 286 | ★ | 4c Trans-Mississippi (287). Fresh, Mint, Extremely Fine (Photo) | 24.00 |
| 287 | ★ | 4c Trans-Mississippi (287). B. Imprint & Plate No. 636 Pair, Fresh, o. g., Very Good | 67.50 |
| 288 | ★ | 5c Trans-Mississippi (288). T. Imprint & Plate No. 618 Pair, Fresh, o. g., Fine | 65.00 |
| 289 | ★ | 8c Trans-Mississippi (289). T. Imprint & Plate No. 609 Pair, Fresh, o. g., centered to T. R. | 90.00 |
| 290 | ★ | 10c Trans-Mississippi (290). Fresh and Fine | 40.00 |
| 291 | ★ | 10c Trans-Mississippi (290). T. Imprint & Plate No. 604 Pair, Fresh, o. g., Very Good | 120.00 |
| 292 | ★ | 50c Trans-Mississippi (291). Fresh, tiny sealed tear, Fine Appearance (Photo) | 145.00 |
| 293 | ★ | 50c Trans-Mississippi (291). Fresh o. g., small thin spot, Fine Appearance (Photo) | 145.00 |
| 294 | ★ | \$1.00 Trans-Mississippi (292). Fresh, Fine (Photo) | 350.00 |
| 295 | ★ | \$1.00 Trans-Mississippi (292). Fresh, couple slightly nibbed perf. tips, otherwise Fine (Photo) | 350.00 |
| 296 | ★ | \$2.00 Trans-Mississippi (293). Fresh Color, tiny thin specks, Fine Appearance (Photo) | 475.00 |

EVEN THOUGH WE'VE MENTIONED IT ELSEWHERE IN THE CATALOGUE WE CALL SPECIAL ATTENTION TO THE FACT THAT 19th CENTURY UNUSED STAMPS ARE NOT EXPECTED TO HAVE ORIGINAL GUM (O.G.) UNLESS SPECIFICALLY MENTIONED IN THE DESCRIPTION.

PAN-AMERICAN ISSUE

| | | | |
|-----|---|--|----------|
| 297 | ★ | 1c-10c Pan-American (294-299). Large Part o. g., 4c s.e., otherwise Very Good-Very Fine Set | 102.50 |
| 298 | ★ | 1c-10c 1901, 1913 Commems (294-296, 397-398, 400). Faults or perfs. close, Very Good-Very Fine Appearance | 72.35 |
| 299 | ★ | 4c Pan-American, Center Inverted, "Specimen" ovpt. (296b). Small sealed tear at bottom, Fine appearance, with P. F. Certificate (Photo) | 2,600.00 |
| 300 | ★ | 5c-10c Pan-American (297-299). Large Part o. g., Fine-Very Fine | 74.50 |



2



6



7



8



9



12



13



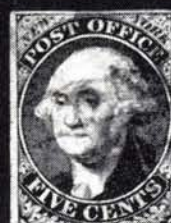
17



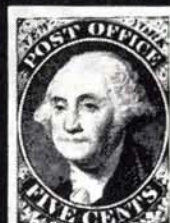
18



20



3



4



25



22



24



28



34



35



55



36



37



39



40



42



43



47



48



50



54



56



57



58



65



60



67

66

68

72

73

74

75

76

77

79

80

81

82

83

84

85

86

87

88

93

95

94

97

102

107

108

112

116

117

121

123

125

128

129

130

131

132

133

134



135



136



137



138



140



139



146



145



148



149



151



152



153



154



155



156



157



158



159



160



161



162



163



170



174



176



179



180



182



183



184



187



189



190



191



192



193



194



195



196



200



204



205



230



231



232



233



237



238



242



243



244



245



247



248



249



250



251



252



253



254



255



256



257



258



259



262



263



264



265



267



269



270



272



274



286



292



293



294



295



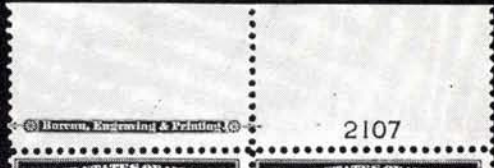
296



299



2098



2107



313



316



322



324



325



336



375



383



427



400



426



382



440



460



463



341



392



344



395



396



397



398



399



412



413



414



428



437 EX



447



452



457



641

450 EX



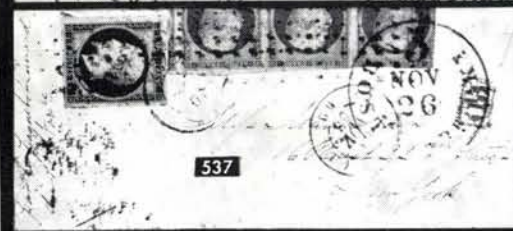
INTERNATIONALE
POSTWERTZEICHEN-AUSSTELLUNG
WIEN 1933

488



462

641





468



469



472



473 EX



487



492 EX



493 EX



494 EX



523



491



499



500



501



502



503



504



508



509



516



511



526



512



535



554



542



557



562



543



563



576



585



586



572



594 EX



601



592



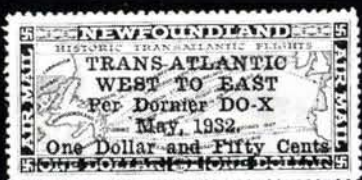
593



598



599



603



604



611



609



622



627 EX



630



631 EX



610



634



636



637



633



638



639



640



647



646

| | | | |
|-----|---|--|--------|
| 301 | ★ | 5c Pan-American (297). B. Imprint, Half Arrow & Plate No. 1140 Strip of Four, Very Fine | 98.00 |
| 302 | ★ | 8c Pan-American (298). T. Imprint & Plate No. 1150 Strip of Three, Fine | 100.00 |
| 303 | ☒ | 2c Carmine (301). Tied by "U. S. Postal Agency, Shanghai" Duplex Pmk., with additional franking on back, China 1c #111, cover has numerous faults, Very scarce Combination Usage | E. II |

LOUISIANA PURCHASE, JAMESTOWN ISSUES

| | | | |
|-----|---|--|----------------|
| 304 | ★ | 1c-10c Louisiana Purchase (323-327). 3c disturbed gum, otherwise Very Good-Fine Set | 127.25 |
| 305 | ★ | 1c-5c 1904-13 Commems. (323-326, 328-329, 398-399, 401-402). Mostly small faults or perfs. touch, Very Good-Very Fine Appearance | 106.35 |
| 306 | ★ | 1c Louisiana Purchase (323). T. & B. Imprint & Plate No. 2161 Pairs, Fine-Very Fine | 57.00 |
| 307 | ★ | 1c Louisiana Purchase (323). T. & B. Imprint & Plate No. 2130 Pairs, Very Good | 57.00 |
| 308 | ★ | 2c-10c Louisiana Purchase (324-327). No gum, otherwise Fine lot | 119.00 |
| 309 | ★ | 2c Louisiana Purchase (324). T. & B. Imprint & Plate No. 2082 Pairs, perfs. just touch on one stamp, others Fine-Very Fine | 52.00 |
| 310 | ★ | 2c Louisiana Purchase (324). T. & B. Imprint & Plate No. 2147 Pairs, one centered bit to L., Fine-Very Fine | 52.00 |
| 311 | ★ | 3c Louisiana Purchase (325). B. Imprint & Plate No. 2101 Pair, centered to T. R., Fine | 70.00 |
| 312 | ★ | 3c Louisiana Purchase (325). T. Imprint & Plate No. 2104 Pair, perfs. touch on one | 70.00 |
| 313 | ★ | 5c Louisiana Purchase (326). T. Imprint & Plate No. 2098 Pair, Very Fine | (Photo) 85.00 |
| 314 | ★ | 5c Louisiana Purchase (326). B. Imprint & Plate No. 2100 Pair, perfs. just touch on one | 85.00 |
| 315 | ★ | 10c Louisiana Purchase (327). Reperfed at R., Fine Appearance | 67.50 |
| 316 | ★ | 10c Louisiana Purchase (327). T. Imprint & Plate No. 2107 Pair, Very Good-Fine | (Photo) 200.00 |
| 317 | ★ | 5c Jamestown (330). Perfs Clear all around, Very Fine | 35.00 |
| 318 | ★ | 5c Jamestown (330). Light negligible toning, otherwise Very Fine | 35.00 |
| 319 | ★ | 5c Jamestown (330). Perfs. touch at B., Fine for this | 35.00 |

1908-1915 ISSUES

| | | | |
|-------|----|--|------------------|
| 320 | ★☐ | 13c Blue Green (339). Vert. Block of Six, str. edge at right, Fine | 47.00 |
| 321 | ★☐ | 15c Ultramarine (340). Block, Fine | 42.00 |
| 322 | ★ | 3c Violet, Coil (345). Shermack Ty. III Strip of Four, Mint, Fine (Photo) | 280.00 |
| 323 | ★ | 4c Orange Brown, Coil (350). Guide Line Pair, Very Fine | 42.50 |
| <hr/> | | | |
| 324 | ★ | 8c Olive Green, Bluish (363). Wonderfully Well Centered, with Two P. F. Certificates both stating it is genuine Bluish Paper but one also states "reperforated at right". If this is reperforated it has been done with an incredible degree of skill & some well-known experts disagree with this opinion | (Photo) 5,500.00 |
| <hr/> | | | |
| 325 | ★ | 10c Yellow, Bluish (364). L. L. Sheet Corner Single, Fine | (Photo) 365.00 |
| 326 | ★☐ | 2c Lincoln, Imperforate (368). Block, 3 mm Spacing, Very Fine | 48.00 |
| 327 | ★☐ | 2c Alaska-Yukon, Imperforate (371). Block, Very Fine | 53.00 |
| 328 | ★☐ | 2c Hudson-Fulton (372). T. Imprint & Plate No. 5390 Block of Six, few perfs. lightly strengthened, otherwise Mint, Very Fine | 85.00 |

| | | | | |
|-----|---|---|---|--------|
| 329 | ★ | 田 | 1c-2c, 5c 1910 Issue (374-375, 378). Imprint & Plate No. Blocks of Six, first two with "A", last with Star, Mint, Very Good | 100.00 |
| 330 | ★ | 田 | 1c-2c, 1910 (374-375, 378). B. Plate No. Blocks of Six, first two light toning, last has one with small thin, Very Good | 95.00 |
| 331 | ★ | 田 | 2c Lake (375). B. Small Star, Imprint & Plate No. 5546 Block of Six, tiny ink speck on two, otherwise Very Fine, Unpriced as Plate Block in Scott, Scarce | 96.00+ |
| 332 | ★ | | 5c Panama Pacific (399). Very Fine | 22.00 |
| 333 | ★ | | 10c Orange Yellow, 10c Orange (400-400A). Regummed, tiny flaws, Fine-Very Fine Appearance | 111.00 |
| 334 | ★ | | 5c Panama-Pacific, Perf. 10 (403). Large Part o. g., small gum soak spot on back only, otherwise Very Fine | 58.50 |
| 335 | ★ | | 5c Panama-Pacific, Perf. 10 (403). Mint, light overall toning, otherwise Fine | 58.50 |
| 336 | ★ | | 10c Panama-Pacific, Perf. 10 (404). Reperfed at L., Fine Appearance (Photo) | 285.00 |

1914-1920 ISSUES

| | | | | |
|-----|---|---|---|-------|
| 337 | ★ | 田 | 4c Brown (427). B. Plate No. 6010 Block of Six, couple short perms. on two stamps, otherwise Fine-Very Fine | 90.00 |
| 338 | ★ | | \$5.00 Light Green (480). Fine | 52.50 |
| 339 | ★ | 田 | 3c Violet, Ty. II, Imperforate (484). R. Plate No. 8330 Block of Six, Mint, Very Fine | 22.50 |

| | | | | |
|------|---|--|---|--------|
| 339A | ★ | | 2c Carmine, Coil, Ty. II (491). Pair, Just clear at top, Fine, with APS Certificate | 975.00 |
|------|---|--|---|--------|

| | | | | |
|-----|---|---|---|---------|
| 340 | ★ | 田 | 2c Rose, Ty. I (499g). Blocks of Six with Pl. No., "Double Impression", Fine-Very Fine | 120.00 |
| 341 | ★ | 田 | 2c Deep Rose, Ty. Ia (500). T. Plate No. 10208 Block of Six, Mint, light natural bend, centered to B.L., Very Good, Scarce (Photo) | 575.00 |
| 342 | ★ | 田 | 7c Black, 8c Olive (507-508). Plate No. Blocks of Six, T. #13950 & R. #12567 Respectively, selvedge bit reduced, Fine | 72.50 |
| 343 | ★ | | \$5.00 Deep Green & Black (524). Regummed, Very Fine appearance | 55.00 |
| 344 | ★ | 田 | 3c Purple, Ty. IV, Printed on Both Sides (530b). Block, Shows Parts of Six Impressions, one nearly complete, also large diagonal pre-print paper fold, Very Scarce Printing Error (Photo of Back) | 140.00 |
| 345 | ★ | 田 | 1c Green, Gray Green (531). Eight Blocks, each with diff. Plate No. Very Fine | 120.00 |
| 346 | ★ | 田 | 2c Carmine Rose, Offset, Ty. IV (532). Block of 25, (5x5), Privately Rouletted, hinge reinforcements, otherwise Very Fine | 189.00+ |
| 347 | ★ | 田 | 2c Carmine, Offset, Ty. VI (534A). The Four Arrow & Center Line Blocks, Very Fine | 250.00 |
| 348 | | | 2c Carmine, Ty. VII Offset Imperforate (534B). Shermack Perf. Ty. III, Fine | 50.00 |
| 349 | ★ | | \$2.00 Carmine & Black (547). Mint, Very Fine | 40.00 |
| 350 | ★ | 田 | 1c Pilgrim (548). Cpl. Sheet of 70, incl. T. & L. Plate No. 12418 Blocks of Six, several rows are soiled including both plate no. blocks, others Fine-Very Fine | 186.00 |
| 351 | ★ | 田 | 1c Pilgrim (548). Sheet of 70, incl. T. Plate No. 12420 Block of Six, L. selvedge missing, Mint, Very Good-Very Fine | 160.00 |
| 352 | ★ | 田 | 1c Pilgrim (548). Part sheet of 59 incl. T. & L. Plate No. 12418 Blocks of Six, a few lightly soiled, others, incl. Plate No. Blocks are Fine-Very Fine | 165.00 |

| | | | | |
|-----|---|---|--|--------|
| 353 | ★ | 田 | 1c Pilgrim (548). Sheet of 70, incl. T. Plate No. 12418 Block of Six, L. selvedge missing, a few stamps are soiled, others Mint, Very Good-Very Fine | 160.00 |
| 354 | ★ | 田 | 1c Pilgrim (548). Part Sheet of 56, incl. Plate No. 12428 Block of Six, Mint, Very Good-Fine | 138.00 |
| 355 | ★ | 田 | 1c Pilgrim (548). Block of 49, a few toned or tiny faults, others Mint, Very Good-Fine | 89.00 |
| 356 | ★ | 田 | 5c Pilgrim (550). Block of 20 (3x6 plus 2), with imperf. center line, Mint, light pre-print wrinkle on four of the str. edges Very Good-Very Fine | 310.50 |

1922 ISSUES-TO DATE

| | | | | |
|-----|---|---|--|--------|
| 357 | ★ | 田 | 15c Gray (566). R. Plate No. 19140 Block of Six, few perfs. in selvedge lightly strengthened, otherwise Mint, Fine | 42.50 |
| 358 | ★ | 田 | 50c Lilac (570). L. Plate No. 14043 Block of Six, few perfs. lightly strengthened, otherwise Mint, Fine | 100.00 |
| 359 | ★ | 田 | 1c Green, 2c Carmine Imperforate (575, 577). Center Line Blocks, Mint, Very Fine | 39.00 |
| 360 | ★ | 田 | 1c Green (578). Mint Block, with Imperf. Sheet Margin at B., Very Good | 58.50 |
| 361 | ★ | 田 | 1c Green, 2c Carmine, Rotary (578-579). Star & Plate No. 14588 & 14666 respectively, Very Fine for these | 140.00 |
| 362 | ★ | 田 | 1c-10c 1923 Issue (581-591). Plate No. Blocks, a few Mint, Very Good-Very Fine Set | 274.50 |
| 363 | ★ | 田 | 2c Harding, Rotary, (612). Block, Well Centered, Very Fine | 24.00 |
| 364 | ★ | 田 | 5c Huguenot-Walloon (616). Block with Plate No., two T. stamps the Broken Circle Variety, stamps are Mint, Fine | 67.00 |
| 365 | ★ | 田 | 5c Lexington-Concord (619). R. Plate No. 16807 Block of Six, Mint, Very Fine | 90.00 |
| 366 | ★ | 田 | 5c Lexington-Concord (619). T. Plate No. 16807 Block of Six, some perfs. lightly strengthened, otherwise Mint, Fine | 90.00 |
| 367 | ★ | 田 | 2c-5c Norse-American (620-621). Blocks, microscopic pin hole in one 5c, otherwise Very Fine Set | 51.25 |
| 368 | ★ | 田 | 2c-5c Norse American (620-621). Center Line Blocks, Fine-Very Fine | 57.00 |
| 369 | ☒ | | 2c-5c Norse-American (620, 621). Set of First Day Covers from Washington, F.-V. F. | 23.00 |
| 370 | ★ | | 2c White Plains Souvenir Sheet (630). Fine-Very Fine | 125.00 |
| 371 | ★ | 田 | 2c-5c Hawaii (647-648). Plate No. Blocks, Fine | 200.00 |
| 372 | ★ | 田 | 5c Aeronautics (650). L. & R. Plate No. 19659 Blocks of Six, Fine | 65.00 |
| 373 | ★ | 田 | 1½c-9c Kans.-Nebr. Overprints (660-661, 667, 670, 673, 678). Blocks, Very Good-Very Fine | 122.50 |
| 374 | ★ | 田 | ½c-\$5.00 1938 Presidentials (803-834). On Cacheted, Addressed First Day Covers, few lower values have toned perf. tips, \$5.00 has small insect hole in cachet, otherwise Very Fine Set | 109.00 |
| 375 | ★ | | 3c Presidential (807 Var.). Horiz. Pair with Full Vertical Gutter Between, Mint, Fine, listed but unpriced (Photo) | E. X |
| 376 | ★ | 田 | \$1.00 Presidential (832). Block, Vignette Shifted Well into R. Margin, Mint, Very Fine | E. II |
| 377 | ★ | 田 | \$5.00 Carmine & Black (834). Plate No. Block, tiny pre-print paper fold, otherwise Very Fine, mint | 150.00 |
| 378 | ★ | | 1c-10c Presidential Coils (839-851). Cpl. Set of Line Pairs, mostly Mint, Fine-Very Fine | 67.20 |
| 379 | ☒ | | 1c-10c Famous Americans (859-893). Blocks of Four or Larger on Cacheted, Addressed First Day Covers, one 1c toned, otherwise Very Fine Set | 96.62 |
| 380 | ☒ | | 1c-\$5.00 1965 Issue (1278-1295) All in Plate No. Blocks on Cacheted Unaddressed First Day Covers, Very Fine | 152.50 |

| | | | | |
|-----|---|---|--|----------------|
| 381 | ★ | ▣ | \$1.00 Airlift (1341). Two Plate No. Blocks of Four, Diff. Nos., Mint, Very Fine | 26.00 |
| 382 | ★ | | 6c Walt Disney, (1355a). "Walt Disney" and "6c" Omitted, Mint, Very Fine | 350.00 (Photo) |

| | | | | |
|-----|---|--|---|----------------|
| 383 | ★ | | 6c 1970 Christmas, Error, Black ("Christmas" & "U.S.") Omitted (1414 var.). Newly discovered & Exceedingly Rare Error, the Companion of errors of similar nature sold in our 1972 Rarity Sale & Sale No. 414, June 1972; Because of the irregular occurrence of this error, only five are believed to exist, Mint, Perfection | (Photo) E. XVI |
|-----|---|--|---|----------------|

AIR POST STAMPS

| | | | | |
|-----|---|---|--|------------------|
| 384 | ★ | ▣ | 6c Orange, Airpost (C1). Block, slightly reinforced, Fine-Very Fine | 95.00 |
| 385 | ★ | ▣ | 24c Carmine Rose & Blue (C3). T. L. Corner Margin Block, small natural paper inclusion in one, otherwise Very Good-Fine | 135.00 |
| 386 | ★ | ▣ | 24c Carmine Rose & Blue, Airpost (C3). Block, gum bit disturbed, small thin spots in two, V. F. appearance | 135.00 |
| 387 | ★ | ▣ | 8c Dark Green, Airpost (C4). Block, Fine | 45.00 |
| 388 | ★ | ▣ | 10c Map, Air Post (C7). B. Plate No. 18248 Block of Six, Mint, Very Fine | 32.50 |
| 389 | ★ | ▣ | 10c-15c Map, Air Post (C7-C8). B. Plate No. Blocks of Six, small sealed tear in selvage of 15c, couple minor gum skips, otherwise Very Fine | 67.50 |
| 390 | ★ | ▣ | 5c-50c 1926-47 Air Post (C7-C9, C11, C20-C23, C34-C35, CE2). Mint Blocks, C20 Fine, others Very Fine | 62.30 |
| 391 | ★ | ▣ | 20c Map, Air Post (C9). B. Plate No. 18893 Block of Six, Fine-Very Fine | 67.50 |
| 392 | ★ | ▣ | 10c Lindbergh, Air Post (C10). B. Plate No. 19004 Block of Six, Mint, Very Fine | 135.00 (Photo) |
| 393 | ★ | ▣ | 10c Lindbergh, Air Post (C10). L. Plate No. 19003 Block of Six, selvage bit reduced, Very Fine | 135.00 |
| 394 | ★ | | 10c Lindbergh, Booklet Pane (C10a). Fine-Very Fine | 32.50 |
| 395 | ★ | ▣ | 5c Violet, Air Post (C12). R. Plate No. 19944 Block of Six, selvage reduced, Mint, Very Fine | 175.00 (Photo) |
| 396 | ★ | ▣ | 65c Graf Zeppelin (C13). Block, with Plate No., Mint, Very Fine (Photo) | 525.00 |
| 397 | ★ | ▣ | 65c Graf Zeppelin (C13). Block, Fine-Very Fine | 525.00 (Photo) |
| 398 | ★ | ▣ | 65c-\$2.60 Graf Zeppelin (C13-C15). Blocks, first & last with Plate No., Fine-Very Fine | 2,725.00 (Photo) |
| 399 | ★ | ▣ | 65c-\$2.60 Graf Zeppelin (C13-C15). Top Plate No. Blocks of Six, couple tiny gum skips, lightly hinged in selvage only otherwise Mint, Very Fine, Choice Set | 5,850.00 (Photo) |

| | | | | |
|-----|---|---|--|----------------|
| 400 | ★ | | \$2.60 Graf Zeppelin (C15). Fine | 325.00 (Photo) |
| 401 | ✉ | | \$2.60 Graf Zeppelin (C15). Tied on Legal Size Cacheted Cover, cover buckled when going through canceling machine lightly creasing the stamp, otherwise Fine | 235.00 |
| 402 | ★ | | 50c Chicago Zeppelin (C18). Natural gum bends, Very Fine | 50.00 |
| 403 | ★ | | 50c Chicago Zeppelin (C18). Mint, Fine | 50.00 |
| 404 | ★ | | 50c Chicago Zeppelin (C18). Minute toned speck, otherwise Mint, Fine | 50.00 |
| 405 | ★ | ▣ | 50c Chicago Zeppelin (C18). Block, Mint, Very Fine | 210.00 |
| 406 | ★ | ▣ | 50c Chicago Zeppelin (C18). Block, tiny natural paper inclusion in one, Mint, Very Fine | 210.00 |
| 407 | ★ | ▣ | 50c Chicago Zeppelin (C18). Block, Fine-Very Fine | 210.00 |
| 408 | ★ | ▣ | 50c Chicago Zeppelin (C18). Block, light natural gum bends in two, otherwise Very Fine | 210.00 |

| | | | | |
|-------|---|---|--|--------|
| 409 | ★ | ⊞ | 50c Chicago Zeppelin (C18). Block, usual tiny gum skips & light natural bends, Mint, Very Fine | 210.00 |
| 410 | ★ | ⊞ | 50c Chicago Zeppelin (C18). Block with T. Plate No. 21172, Mint, F.-V. F. | 210.00 |
| 411 | ★ | ⊞ | 50c Chicago Zeppelin (C18). Block, few light natural gum bends, Mint, Very Fine | 210.00 |
| <hr/> | | | | |
| 412 | ★ | ⊞ | 50c Chicago Zeppelin (C18). T. Plate No. 21177 Block of Six, usual light natural bends, Mint, Very Fine (Photo) | 500.00 |
| 413 | ★ | ⊞ | 50c Chicago Zeppelin (C18). B. Plate No. 21178 Block of Six, usual natural gum bends, Very Fine (Photo) | 500.00 |
| 414 | ★ | ⊞ | 50c Chicago Zeppelin (C18). B. Plate No. 21171 Block of Six, usual tiny gum skips & gum bends, Mint, Fine-Very Fine (Photo) | 500.00 |
| <hr/> | | | | |
| 415 | ★ | ⊞ | 20c-25c Trans-Atlantic Air Post (C20-C21). Plate No. Blocks of Six, selvege slightly reduced on first, Mint, Fine-Very Fine | 61.30 |
| 416 | ★ | ⊞ | 50c Trans-Pacific Air Post (C22). T. Plate No. 21628 Block of Six, selvedge bit reduced, Mint, Very Fine | 70.00 |
| 417 | ★ | ⊞ | 30c Trans-Atlantic Air Post (C24). B. Plate No. 22382 Block of Six, Mint, Fine-Very Fine | 130.00 |
| 418 | ★ | ⊞ | 30c Trans-Atlantic Air Post (C24). T. Plate No. 22383 Block of Six, faint toning on two stamps, small nick in L. selvedge & small gum skip, otherwise Fine-Very Fine | 130.00 |
| 419 | ★ | ⊞ | 50c Orange, Air Post (C31). B. R. Plate No. 22778 Block, Mint, Very Fine | 75.00 |
| 420 | ★ | ⊞ | 50c Orange, Air Post (C31). B. R. Plate No. 22779 Block, Mint, Very Fine | 75.00 |
| 421 | ★ | ⊞ | 50c Orange, Air Post (C31). B. L. Plate No. 22779 Block, Mint Very Fine | 75.00 |
| 422 | ★ | ⊞ | 80c Hawaii (C46). U. R. Plate No. 24593 Block of Four, Mint, V. F. | 32.00 |
| 423 | ★ | ⊞ | 80c Hawaii (C46). Two Plate No. Blocks of Four, Diff. Nos., Mint, Very Fine | 64.00 |
| 424 | ★ | | 7c Blue, Carmine, Airpost Coils (C52, C61). Line Pairs, F.-V. F. | 48.00 |
| 425 | ★ | | 10c Moon Air Post, Missing Color (C76 Var). Red on Shoulder Patch Completely Missing, Mint, Very Fine | E. IV |

POSTAGE DUES, OFFICIALS

| | | | | |
|-----|---|---|--|---------|
| 426 | ★ | | 1c Carmine Rose Postage Dues, Value Omitted (J89a). Mint, Very Fine (Photo) | 150.00 |
| 427 | ★ | | 3c Carmine Postage Due, Value Omitted (J91a). Vertical Strip of Three, Top Stamp the Error, Middle Stamp Numeral Partially Missing, Mint, Very Fine, Listed but Unpriced, Scarce (Photo) | E. XII |
| 428 | ★ | ⊞ | 15c Agriculture Dept. (O7). Block of Six, with Part T. Imprint, Fresh, o. g., perfs. touch at R., Scarce Block (Photo) | 140.00+ |
| 429 | ★ | ⊞ | 15c Navy Dept. (O42). Block, Large Part o. g., Very Good | 80.00 |
| 430 | | | 1c-90c State Dept. (O57-O67). 7c, 24c unused, others used, 10s, 24c have tiny tears, 90c corner crease & short perfs, otherwise Fine-Very Fine | 103.40 |

POSTAL STATIONERY, ETC.

| | | | | |
|-----|---|---|--|---------|
| 431 | ⊞ | | 5c Blue on Fawn, Entire, Die 1 (U176). Unused, Very Fine | 75.00 |
| 432 | ⊞ | | 10c Brown, Entires, Dies 1 & 2 (U187-U194). Unused, Very Fine | 40.25 |
| 433 | ⊞ | | 1c Green on Brown Glazed Wrapper (W427). Entire, Very Fine | 25.00 |
| 434 | ★ | ⊞ | Boyd's City Express, 1c Green (20L15). Cpl. Sheet of 100, o. g., vert. crease in one row, couple scuffs in margin, balance Very Fine | 125.00+ |

REVENUE STAMPS

| | |
|-----|---|
| 435 | <div style="display: flex; align-items: center;"> 田 <div style="flex-grow: 1;"> \$1.00 Mortgage, Imperforate (R73a). Block, Large Margins to in at R., also strip of three & single of \$1.00 Conveyance (R66a), all on Original Document with several other lower values, stamps creased along folds, Scarce </div> <div style="text-align: right; vertical-align: bottom;">161.08+</div> </div> |
| 436 | <div style="display: flex; align-items: center;"> 田 <div style="flex-grow: 1;"> 2c Orange & Black, Inverted Center (R135b). Neat ms. cancel, extra row of Freak Diagonal Perfs., perfs. touch at R., Scarce </div> <div style="text-align: right; vertical-align: bottom;">60.00</div> </div> |
| 437 | <div style="display: flex; align-items: center;"> ★ <div style="flex-grow: 1;"> 1c-\$20.00 Stock Transfer, Imperforate (RD67 var.-RD85 var.) 17 Different Horiz. Pairs, Without dated overprint & without gum, as issued, Newly discovered varieties, Very Fine & Scarce (Photo Ex) </div> <div style="text-align: right; vertical-align: bottom;">E. XVI</div> </div> |
| 438 | <div style="display: flex; align-items: center;"> 田 <div style="flex-grow: 1;"> \$10,000.00 Stock Transfer, 1949 (RD312). Cut & Handstamp Cancels, tiny thin spot, Very Fine Appearance </div> <div style="text-align: right; vertical-align: bottom;">115.00</div> </div> |
| 439 | <div style="display: flex; align-items: center;"> 田 <div style="flex-grow: 1;"> (7c) on 2c Blue 1917-18 Playing Cards, Inverted Surcharges (RF6a, RF10a). Very Fine </div> <div style="text-align: right; vertical-align: bottom;">25.00</div> </div> |
| 440 | <div style="display: flex; align-items: center;"> 田 <div style="flex-grow: 1;"> (7c) on 2c Blue 1917-18 Playing Cards, Inverted Surcharge (RF7a). Thin in corner as often, Fine Appearance, Very Scarce, only 25 claimed to be known (Photo) </div> <div style="text-align: right; vertical-align: bottom;">100.00</div> </div> |
| 441 | <div style="display: flex; align-items: center;"> 田 <div style="flex-grow: 1;"> (7c) on 2c Blue 1917-18 Playing Cards, Normal & Inverted Surcharges (RF10(2), RF10a(28)). A few have thin spots, most are Fine </div> <div style="text-align: right; vertical-align: bottom;">310.00</div> </div> |
| 442 | <div style="display: flex; align-items: center;"> 田 <div style="flex-grow: 1;"> \$30.00, \$60.00 Silver Tax (RG19, RG20). Cut Cancel, Very Fine </div> <div style="text-align: right; vertical-align: bottom;">50.00</div> </div> |
| 443 | <div style="display: flex; align-items: center;"> 田 <div style="flex-grow: 1;"> \$60.00 Silver Tax (RG20). Very Fine, Uncut </div> <div style="text-align: right; vertical-align: bottom;">30.00</div> </div> |
| 444 | <div style="display: flex; align-items: center;"> 田 <div style="flex-grow: 1;"> \$100.00 Silver Tax, Series of 1944 (RG130). Uncut, minute perf break, otherwise V. F. </div> <div style="text-align: right; vertical-align: bottom;">30.00</div> </div> |
| 445 | <div style="display: flex; align-items: center;"> 田 <div style="flex-grow: 1;"> 1c-\$20.00 Tobacco Sale Tax (RJ1-RJ11). Fine-Very Fine set </div> <div style="text-align: right; vertical-align: bottom;">45.80</div> </div> |
| 446 | <div style="display: flex; align-items: center;"> 田 <div style="flex-grow: 1;"> 3p. "Pine Tree", Massachusetts Colonial Revenue (RM3). Embossed on Partly Printed 1756 Writ of Attachment, Fine </div> <div style="text-align: right; vertical-align: bottom;">40.00</div> </div> |

| | |
|-----|--|
| 447 | <div style="display: flex; align-items: center;"> ★ <div style="flex-grow: 1;"> Revenues For Use in America, 1765, 2/6 Embossed on Blue (RM31a). The so-called "Boston Tea Party" stamp, Unused with original metal strip. Sharp, Clear Impression, on original laid paper piece with control label #287 affixed on back, Remarkably Fine & Fresh (Photo) </div> <div style="text-align: right; vertical-align: bottom;">450.00+</div> </div> |
|-----|--|

| | |
|-----|--|
| 448 | <div style="display: flex; align-items: center;"> 田 <div style="flex-grow: 1;"> 1c-3c Dr. Kilmer Provisional Revenues (RS310-RS315). Fine-Very Fine Sets </div> <div style="text-align: right; vertical-align: bottom;">47.00</div> </div> |
| 449 | <div style="display: flex; align-items: center;"> 田 <div style="flex-grow: 1;"> 1c-\$2000.00 Rectification Tax Stamps (RZ1-RZ18). Complete Set, Very Fine </div> <div style="text-align: right; vertical-align: bottom;">203.00</div> </div> |

TELEGRAPH STAMPS

| | |
|-----|---|
| 450 | <div style="display: flex; align-items: center;"> ★ <div style="flex-grow: 1;"> Western Union Telegraph Co. 1940, 1c-25c Imperforate (16T99a-16T103a), Complete Set in Imperforate Panes of Ten, Mint, Very Fine & Scarce, Unpriced in Catalogue (Photo Ex) </div> <div style="text-align: right; vertical-align: bottom;">E. XV</div> </div> |
|-----|---|

CONFEDERATE STATES

| | |
|-----|---|
| 451 | <div style="display: flex; align-items: center;"> ★ <div style="flex-grow: 1;"> New Orleans 2c Blue, 2c Red, 5c Brown (62X1-62X3). Ample to Large Margins, first & last have small thin spots, Very Fine Appearance </div> <div style="text-align: right; vertical-align: bottom;">85.00</div> </div> |
| 452 | <div style="display: flex; align-items: center;"> 田 <div style="flex-grow: 1;"> 5c Dark Blue, St. 2 (4), Block, Ample to Large Margins, o. g., gum toned, few spots show on face, otherwise Fine-Very Fine (Photo) </div> <div style="text-align: right; vertical-align: bottom;">65.00</div> </div> |
| 453 | <div style="display: flex; align-items: center;"> 田 <div style="flex-grow: 1;"> 5c Light Blue (6). Half Sheet of 50 with Full Sheet Margins all Around, Mint, Very Fine </div> <div style="text-align: right; vertical-align: bottom;">130.00</div> </div> |
| 454 | <div style="display: flex; align-items: center;"> 田 <div style="flex-grow: 1;"> 2c Brown Red (8), Block, Large Margins All Around with Part Sheet Margin at L., Full Margin at T., Mint, Very Fine </div> <div style="text-align: right; vertical-align: bottom;">38.50</div> </div> |

| | | | | |
|-----|---|---|--|------------------------|
| 455 | ★ | ☐ | 10c Blue (11). Blocks, Large Margins All Around, Fresh, Three Distinct Shades, tiny toned speck on one, Very Fine | 30.00+ |
| 456 | ★ | ☐ | 10c Greenish Blue (11c). Block of 25 (5X5), Large Margins All Around except close or just in on three, Fresh o. g., Mostly Mint, All but three Very Fine | 69.25+ |
| 457 | ★ | ☐ | 20c Green (13). Block, Large Margins with Full Sheet Margin at T. & Wide Vertical Gutter, Mint, Very Fine (Photo) | E. VI |
| 458 | ★ | ☐ | 20c Yellow Green (13a). Block, Ample to Large Margins All Around, o. g., Pretty Shade, few gum toned specks, otherwise Fine-Very Fine ... | 31.00 |
| 459 | ★ | ☐ | 20c Green (13). Top Sheet Corner Block of 30, incl. Pos. 24L (DT), Fresh, Mint, Very Fine | 243.00+ |
| 460 | | | 20c Green (13). Large to Huge Margins, Part R. Sheet Margin, just touched at B., Blue Town pmk., Fine | (Photo) 55.00 |
| 461 | ★ | ☐ | 1c Orange (14). Block, Large Margins All Around, Fresh & Very Fine (Photo) | 120.00 |
| 462 | ★ | ☐ | 1c Orange (14). Block of 25 (5X5) with Full Corner Margins, Large Margins Elsewhere, except bit close on two, two rows with creases, Very Fine appearance, Scarce Piece | (Photo) 691.50+ |

U. S. POSSESSIONS

CANAL ZONE

| | | | | |
|-----|---|--|--|----------------------|
| 463 | ★ | | 1912, 2c Vermilion & Black, Ty. II, Inverted Center (39e). No gum, few slightly blunted perms., otherwise Very Fine | (Photo) 60.00 |
| 464 | ★ | | 1924-25, 1c-15c Overprints (71, 73-76, 78). Perfs. touch on 10c, others Fine-Very Fine | 33.65 |
| 465 | ☒ | | 1923, 2c Carmine on White (U5). Unused Entire, Very Fine ... | 47.50 |
| 466 | ☒ | | 1924, 1c Green, Postal Card (UX6). Unused, Very Fine, Scarce (Photo) | 135.00 |
| 467 | ★ | | GUAM 1898, 10c Blue, Special Delivery (E1). Fresh, o. g., Very Fine | 35.00 |

HAWAII

| | | | | |
|-----|---|--|--|-----------------------|
| 468 | | | 1863, 2c Carmine Rose on Vert. Laid (28a). Clear to Large Margins, Fresh, Large part o. g., Fine | (Photo) 60.00 |
| 469 | ★ | | 1869, 2c Red (29). U. R. Corner Pair, Huge Margins, Fresh, o. g., Very Fine | (Photo) 50.00+ |
| 470 | ☒ | | 1864, 2c Vermilion (31). Tied by large target cancel, Honolulu pmk., on cover. Fine | 45.00 |
| 471 | | | HAWAII, Black Revenue Stamp (Meyer Harris 405). Printed on Certificate of Clearance, dated Kawaihae 1864, Upper Half of Document, Very Fine | E. VIII |

PHILIPPINES

| | | | | |
|-----|---|--|--|--------------------------|
| 472 | ★ | | 1901, \$5.00 Dark Green (225). Fresh, Very Fine | (Photo) 220.00 |
| 473 | S | | 1917-25, 2c-10p Portraits, "Specimen" Overprints (290S-304S, E5S). 10p closed tear, others V. G.-Fine | (Photo Ex) 183.00 |
| 474 | ★ | | 1925, 1p-10p Coat of Arms, Imperforate (350-353). Very Fine | 91.50 |
| 475 | ★ | | 1926, 2c-30c Madrid-Manila Flight (C1-C6, C9-C12). Fine | 96.50 |

LARGE & MISCELLANEOUS U.S. LOTS

| | | | |
|-----|--------|---|---------|
| 476 | U. S., | Balance of Collection, 1851-1971, Many Hundreds of Used & Unused Stamps Many Better items, Airposts, Dues, Spec. Delivery, Mixed Quality, but Many are F.-V. F. | E. VIII |
| 477 | ☒ | Cover Miscellany, 1851-1917, Suitcase Full, mostly 2c & 3c Bank Notes, incl. a few nice Corner Cards & Cancels, condition is variable, also incl. some postal cards, foreign & stampless, balance of an original find | E. VIII |
| 478 | ☒ | U. S. Sanitary Commission, Study of 18 Covers, several Diff. Style Corner Cards, three with #26, nine with #65, one with three 1c #63, five with Member of Congress Free Frank, Very Good-Very Fine | E. V |
| 479 | ☒ | R. P. O. Covers, 1880-87, 14, All with 2c & 3c Bank Notes, several Florida, little duplication, Very Good-Very Fine | E. IV |
| 480 | ★☒ | U. S. Commems., 1938-50, 516 Unused Stamps, Nearly all in Plate No. Blocks, Virtually all F.-V. F. | E. III |
| 481 | ★☒ | U. S. Miscellany, 178 Nearly All Unused Stamps, incl. Airposts, C1, C4(2) Blocks & Plate No. Blocks, Special Delivery Plate No. Blocks, Special Handling Set in Blocks, 1c & 3c War Dept. (soft paper) in Large Blocks, Many Mint, a few Very Good, Mostly Fine-Very Fine | 176.87 |

UNITED NATIONS

| | | | |
|-----|----|--|----------|
| 482 | ★☒ | 1951-61, 1c-\$1.00 Pictorials, Commems., Airposts (1-37, 39-84, 86-92). Part Sheets of 30, each Showing two Inscription Blocks, Mint, Very Fine 3,596.72 | |
| 483 | ★ | 1955, 3c-8c Anniversary Souvenir Sheet #38 (10). Mint, Very Fine | 1,100.00 |
| 484 | ★ | 1955, 3c-8c Anniversary Souvenir Sheet #38(10). Mint, Very Fine | 1,100.00 |
| 485 | ★ | 1955, 3c-8c Anniversary Souvenir Sheet, Second Printing, #38a(10). Mint, Very Fine | 1,200.00 |
| 486 | ★ | 1960, 4c-8c 15th Anniversary Souvenir Sheet #85(30). Mint, Very Fine | 150.00 |

FOREIGN STAMPS

| | | | |
|-----|---|---|-------------------|
| 487 | ★ | AUSTRIA, 1936, 10s Dollfuss (380). Very Fine | (Photo) 375.00 |
| 488 | ★ | — 1933, 50g Wipa Souvenir Sheet (B111). Faint tropical toning on back, barely visible on front, otherwise Very Fine | (Photo) 1,150.00 |
| 489 | ★ | — 1933, 12g-64g Vienna Relief (B112-B117). Very Fine set | 119.00 |
| 490 | ★ | — 1950-53, 60g-20s Birds (C54-C60). Mint, Very Fine set | 180.00 |
| 491 | ★ | BELGIUM 1863, 40c Carmine Rose (16). Well Centered, couple slightly irregular perf. tips as often, Very Fine for this | (Photo) 120.00 |
| 492 | ★ | — 1932, 10c-10fr Cardinal Mercier (B114-B122). Mint, Very Fine set | (Photo Ex) 260.00 |
| 493 | ★ | — 1932, 10c-10fr Cardinal Mercier (B114-B122). Barest traces of toning or heavy hinges, otherwise F.-V. F. set | (Photo Ex) 260.00 |
| 494 | ★ | — 1933, 5c-10fr Orval (B132-B143). Light tropical toning on some, bit heavily hinged, otherwise V. F. set | (Photo Ex) 440.00 |
| 495 | ★ | — 1952, 40fr U. P. U. Congress (B514). Mint, Very Fine | 65.00 |
| 496 | ★ | BRAZIL, 1943-50, 1.20cr-3.80cr Airposts, Imperforate (C48 var, C54 var, C66 var, C67 var, C80 var). Horiz. Pairs, Very Fine | Sanabria 200.00 |

| | | | |
|-------|---|----------|--------|
| 497 ★ | — 1944, 40c-1cr Airpost Overprints, Not Issued (Sanabria #91-96). Fine-Very Fine set, Rare | Sanabria | 210.00 |
| 498 ★ | BULGARIA , 1879-1947, Collection of 742 Mostly Unused Stamps & 1 Souvenir Sheet, Wide Range of Issues, with Pictorials, Commems., Opts., Semipostals, Airposts, Dues, Parcel Posts Many cpl. Sets Better Values, a few have tiny faults, mostly Fine-Very Fine | | 615.40 |

CANADA

| | | | |
|-------|--|---------|--------|
| 499 | 1851, 3p Red, Laid Paper (1) . Large Margins All Around, Fresh, Neat Blue Target Cancel, Extremely Fine | (Photo) | 180.00 |
| 500 | 1852, 3p Red (4) . Large Margins All Around, Very Fine | (Photo) | 52.50 |
| 501 | 1855, 6p Greenish Gray (5b) . Large to Huge Margins, Gorgeous Color & Impression, Light Cancel, Extremely Fine with P.F. Certificate | (Photo) | 225.00 |
| 502 | 1857, ½p Rose, (8) . Large Margins to just into outer frameline L. R., Clear "18" in Target Cancel, faint corner crease, Very Fine Appearance | (Photo) | 100.00 |
| <hr/> | | | |
| 503 | 1857, 7½p Green (9) . Faint ms. and Target cancels, Huge Margins all around, Deep Rich Color, Very Fine, a Beautiful Stamp | (Photo) | 450.00 |
| <hr/> | | | |
| 504 | 1859, 10c Black Brown (16) . Faults, still an Attractive Example of this Scarce Stamp | (Photo) | 400.00 |
| 505 ★ | 1888, 10c Brown Red (45) , Fresh, Part o. g., Fine | | 20.00 |
| 506 ★ | 1893, 20c Vermilion, 50c Deep Blue (46-47) . Fresh Colors, o. g., 50c has tiny natural corner paper bend Very Fine | | 70.00 |
| 507 ★ | 1897, ½c-50c Jubilee (50-60) . O. g., Fine-Very Fine | | 131.75 |
| <hr/> | | | |
| 508 ★ | 1897, \$1.00 Jubilee (61) . Deep Rich Color, o. g., small light natural internal wrinkle, Fine | (Photo) | 130.00 |
| 509 ★ | 1897, \$2.00 Jubilee (62) . Fresh o. g., faint corner crease, otherwise Fine | (Photo) | 275.00 |
| 510 ★ | 1897, \$3.00 Jubilee (63) . Fresh, o. g., tiny natural gum wrinkle Very Fine | (Photo) | 300.00 |
| 511 ★ | 1897, \$4.00 Jubilee (64) . Fresh, o. g., minor natural gum wrinkling, Fine | (Photo) | 325.00 |
| 512 ★ | 1897, \$5.00 Jubilee (65) . Fresh, o. g., minute, almost imaginary ½ mm crease in margin, otherwise Very Fine | (Photo) | 300.00 |
| <hr/> | | | |
| 513 ★ | 1897-1902, ½c-20c Victoria (66-84) . O. g., most are bit heavily hinged, otherwise Fine-Very Fine Sets | | 204.25 |
| 514 ★ | 1903, 20c Olive Green, Edw. VII (94) . Fresh, part o. g., Very Fine | | 85.00 |
| 515 ★ | 1912-25, 1c-\$1.00 Geo. V (104-122, 120a) . Two low values & 5c dk. blue have small thins, others Fine-Very Fine, Cpl. Set | | 114.75 |
| 516 ★ | 1912-1924, 1c-3c George V Coils, Imperforates (123-134, 136-138) . Fifteen Diff. Pairs, one #124 has small thin speck, one #126 has toned spot, others Fine-Very Fine | | 203.00 |
| 517 ★ | 1924, 2c Deep Green, Perf. 8 Vertically (128a) . Vert. Pair, First Printing, Fine | Bileski | 75.00 |
| 518 ★ | 1928-29, 1c-\$1.00 Geo. V, Views (149-159) . Fine-Very Fine Set | | 107.50 |
| 519 ★ | 1930-31, 1c-\$1.00 Geo. V, Views (162-177) . Fine-Very Fine Set | | 55.00 |
| 520 ★ | 1950, 50c Dull Green (294) . Matched Set of Plate No. Blocks, Mint, Very Fine | | 56.00+ |
| 521 ★ | 1953, \$1.00 Gray (321) . Matched Set of Plate No. Blocks, Mint, Very Fine | | 40.00+ |

| | | |
|-------|--|-------------------------|
| 522 | 1875, 8c Blue, Registration (F3). Light Cancel, tiny sealed tear, Very Fine Appearance | 75.00 |
| 523 | 1950, 10c Black Brown, Official, Pair, One Without "G" (O26a). Used, Very Fine | (Photo) 225.00 |
| 524 ★ | 1919, 25c Orange, War Savings Stamps (Holmes FWS1). Four Copies on Thrift Card, two have str. edges, Very Fine | Holmes 20.00+ |
| 525 ★ | CANADA, 1858-1935, Neatly Mounted Collection of 162 Mostly Unused Stamps, incl. #12, 1859 Values to 17c, Large Queens Cpl. Used Set, 3c Laid Paper, Small Queen Values to 8c Unused, Edw. to 10c, Tercentenary Cpl. Set Unused, Pictorials, Commems, Values to \$1.00., Coil Pairs, Air Posts, Dues, some earlies have small faults, Balance Fine-Very Fine | 809.65 |
| 526 ★ | COLOMBIA, 1950, 20c Light Green, "Colombia" Double (C169 var). Very Fine | (Photo) Sanabria 100.00 |
| 527 ★ | — 1951, 40c-5p Airposts, Overprint Omitted (C200 var-C204 var, C207 var). Very Fine, signed Kessler | Sanabria 150.00 |
| 528 ★ | CRETE, 1905, 2L-3d "Revolutionary" Issue (74-81). Fine-Very Fine ... | 86.50 |
| 529 ★ | — 1908, 10L-5d Overprints (103-110). Fine-Very Fine set | 76.00 |
| 530 ★ | CUBA, 1928-39, 1c-\$1.00 Commems., Airposts (284-293, 299-303, C4-C11, C30). Fine-Very Fine | 64.20 |
| 531 ★ | DANZIG, 1924-25, 1g-10g Views (193-199). Very Fine set | 81.00 |

FRANCE

| | | |
|-------|---|-----------------|
| 532 ☒ | 1849-60, 10c-1fr Ceres, Napoleon (2, two, 7, three, 10, six, 11, two, 14, three, 21, three). Six 1853-1854 Covers, all from same correspondence to New York, most are cut in, Scarce lot | 2,836.50 |
| 533 ☒ | 1849-52, 10c Bistre, 1fr Carmine (9, 10, three). Large Margins to barely touched, tied by Roller Grids, Paris pmk. and "N. York, Br. Pkt 5" on Small 1853 cover to New York, Fine and Pretty | (Photo) 495.00+ |
| 534 ☒ | 1849-52, 10c Bistre, 1fr Carmine (9, 10). Horiz. Strip of Three of last, folded over flap, tied by Stars of Dots and by "N. York Br. Pkt. 5" on 1853 cover to New York, Margins Nearly all around, small cover tear, Very Attractive | 495.00+ |
| 535 | 1852, 10c Bistre (10). Horiz. Strip of Three, Large to Huge Margins, showing part of next Stamp at L., light horiz. bend, Very Fine appearance, an Outstanding Showpiece | (Photo) 330.00+ |
| 536 ☒ | 1852, 10c Bistre (10). Margins all around, tied with additional postage by "DS2" in Grid on small 1853 cover to U. S., 10c is Very Fine (Photo) | 110.00+ |
| 537 ☒ | 1853, 1fr Napoleon (21). Large to Huge Margins, tied in Combination with 10c Bistre (10), Strip of three, folded over flap, by roller Cancel on 1853 cover to New York, the strip is cut in at places, the rare #21 Very Fine | (Photo) 780.00+ |
| 538 ☒ | 1853, 1fr Napoleon (21). Huge Margin, showing part of next stamp to barely touched in 2 spots, tied in combination with three copies of 10c Bistre (10), one Margins all around, others defective and not counted, on 1853 cover to New York | (Photo) 560.00+ |
| 539 ☒ | 1852, 10c Bistre (10). Horiz. Strips of Three, Margins all around, tied by roller grid with 1fr Lake (21), defective and not counted on 1854 cover to New York | (Photo) 330.00+ |
| 540 ★ | 1870-76, 10c-15c Bordeaux, Ceres, Sage (48, 63, 80). Minute faults, F.-V. F. appearance | 282.50 |
| 541 ★ | 1929, 10fr Ultramarine, Ty. I (251). Mint, Very Fine | 32.50 |
| 542 ★ | 1929, 20fr Red Brown, Ty. I (253). Fine | (Photo) 75.00 |
| 543 ★ | 1922, 5fr Orphans (B19). Very Fine | (Photo) 45.00 |

| | | | |
|-----|---|--|---------|
| 544 | ★ | 1935-36, 50c-75c Semipostals #B42-B43 (7 sets), #B45(9), #B46(9). Mint, Very Fine | 242.50 |
| 545 | ★ | 1927, 2fr-5fr First Airposts (C1-C2). No gum, otherwise F.-V.F. set | 110.00 |
| 546 | ☒ | FRANCE, 1849-70, 19 Covers, Nearly all with Napoleon Issue franking, all Used to U.S., Diff. Frankings, Variety of Cancellations, most have faults, Good-Very Fine | E. III |
| 547 | | FRENCH COLONIES, 1871, 20c Blue, Ceres (11). Margins all around, thin spots, Scarce "PP" in Box Cancel, Very Fine strike | E. III |
| 548 | ★ | FRENCH COLONIES, 1859-1968, Collection of 609 Nearly all Unused Stamps, 2 Souvenir Sheets & 2 Presentation Sheets, incl. General Issues, Chad, French Occupation of Libia, Senegal, a few earlys with small flaws, Balance Nearly all F.-V.F. | 502.29 |
| 549 | ★ | GERMANY, 1872, ½g-18kr Large Shield (16, 18, 23, 26-27). Fresh, Large part o.g., 2g pinpoint thin specks, others F.-V.F. | 65.50 |
| 550 | ★ | — 1948, 60pf-5m Buildings, Perf. 11 (654, 658-661). Fine-Very Fine .. | 76.00 |
| 551 | | — 1935, 3pf-25pf Ostropa Souvenir Sheet (B68). Used, light toning as usual, Very Fine | 110.00 |
| 552 | | — 1936, 3pf-40pf Olympic Souvenir Sheets (B91-B92), with special Berlin First Day Cancellations, V.F. | 20.00+ |
| 553 | ☒ | 1930, 4 m South America Flight (C39). Tied to Cacheted Cover by May 19, 1930 Zeppelin Pmk. with additional franking, 2 m Eagle #C33, & 2 m Zeppelin #C36, Friedrichshafen to Lakehurst Leg, Very Fine ... | 103.50+ |
| 554 | ★ | GIBRALTAR 1927, £1 Orange & Black (92). Very Fine (Photo) | 70.00 |

GREAT BRITAIN

| | | | |
|-----|----|---|-----------------|
| 555 | ☒ | 1847, 1/-Green (5). Margins All Around, just clear at R., tied by Red "Paid" in Arc, on Small Neat 1853 Cover to New York, Very Fine | 25.00+ |
| 556 | | 1867, 10p Red Brown, Deep Red Brown (53, 53a). Used in Malta, each with "A25" Cancel, V.G.-Fine | Gibbons £16 |
| 557 | ★ | 1929, £1 Black, Postal Congress (209). Fine (Photo) | 200.00 |
| 558 | ★ | 1934, 2/6-10/-Geo. V (222-224). Very Fine set | 105.00 |
| 559 | ★ | Queen Elizabeth Coronation, 1953, Complete Issue (106), Fine-Very Fine .. | 58.01 |
| 560 | ★ | George VI, Elizabeth II Coronations, 1937, 1953, Complete Issues (308), Fine-Very Fine | 101.81 |
| 561 | ★ | GREECE, 1861, 1L Dull Chocolate on Cream (8). Clear to Large Margins, thin speck in corner, Fine appearance | 50.00 |
| 562 | | — 1896, 5d Olympics (127). Used, Fine (Photo) | 150.00 |
| 563 | ★ | — 1900, 50L on 250 L on 40L Violet (164). Pinpoint thin speck, Fine appearance | (Photo) 220.00 |
| 564 | ★☐ | — 1946, 300d on 80L Indigo & Yellow Brown (477). Block, Freak foldover with both B. Stamps partly printed on face & partly on back, Very Fine | E. II |
| 565 | ★ | GUATEMALA, 1931-50, 1c-1q Air Post (Betw C17-CO7). 72 Diff., incl. one Souvenir Sheet, mostly in Cpl. Sets, Fine-Very Fine | 136.45 |
| 566 | ★ | — 1931-50, 1c-1q Air Post (Betw C17-VO6). 69 Diff., Mostly Cpl. Sets, Fine-Very Fine | 107.70 |
| 567 | ★ | — 1935-37, 2c-1q Air Post "For Domestic Use" (C32-C46). Fine-Very Fine Set | 73.55 |
| 568 | ★ | — 1935-37, 1c-5q Air Posts "For Foreign Use" (C47-C69). Fine-Very Fine Set | 100.55 |
| 569 | ★ | — 1935-37, 1c-5q Air Post "For Foreign Use" (C47-C69). Very Fine Set .. | 100.55 |
| 570 | P | HONDURAS, 1939, 2c, 5c, 50c, 1L Airpost Officials, Plate Proofs (CO44P, CO45P, CO49P, CO50P). Pairs of first three, single of last, Very Fine | Sanabria 210.00 |
| 571 | ★☐ | — 1955, 1c-1L Rotary (C231-C240). Blocks, Very Fine, set | 129.16 |

| | | | |
|-----|---|--|--------------------|
| 572 | ★ | ICELAND, 1933, 1k-10k Balbo Flight (C12-C14). Fine-Very Fine Set (Photo) 1,125.00 | |
| 573 | ★ | INDIA, 1860-65, 8p Lilac (19, 21). Blocks, incl. two Shades of latter, Fresh, o. g., few minute toning specks on gum, V. G.-V. F. | 38.00+ |
| 574 | ★ | ISRAEL 1948, 3m-250m First Issue (1-7). Mint, Very Fine | 70.00 |
| 575 | ★ | — 1949, 10m Tabul Souvenir Sheet (16). Mint, Very Fine | 70.00 |
| 576 | ★ | ITALY, Offices Abroad, Estero, 1874, 10c Buff (4). Fresh, Large part o. g., Fine | (Photo) 200.00 |
| 577 | ★ | — Aegean Isls., 1933, 5.25L-44.75I Balbo Tryptich (C26-C27). Fine-Very Fine Set | 65.00 |
| 578 | ★ | JAPAN 1905 3s Rose Red (110). Fine | 37.50 |
| 579 | ★ | JAPAN, 1894- 1966, Collection of 531 Nearly all Unused Stamps & 54 Souvenir Sheets, incl. Pictorials, Commems., Semipostals, Airposts, Many cpl. sets, Virtually all F.-V.F. | 570.28 |
| 580 | ★ | KOREA, 1948, 5w-10w Olympics (85-86). First tiny light crease, otherwise Very Fine set | 40.00 |
| 581 | ★ | — 1951, 500w Souvenir Sheets (132-173). Complete Set incl. both errors, 154a & 155a, without gum, Very Fine | 97.50 |
| 582 | ★ | — 1955, 20h-71h Rotary Souvenir Sheets (213 var-215 var). Very Fine set, only 500 Issued | Michel DM 1,200.00 |

LIBERIA

| | | | |
|-----|---|--|-------------------------|
| 583 | ★ | 1954-55, 5c Soccer Imperforate, 12c-50c U. N. Presentation Sheets (347 var, C78-C81 var). Block of First, Mint, Very Fine | E. III |
| 584 | ★ | 1941, 3c-10c "Air Mail" Overprint Only (C14a var-C16a var). Both Red and Blue overprints, V. F. sets | Sanabria 120.00 |
| 585 | ★ | 1941, 50c on 2c Red Orange, First Flight (C18). Very Fine, with P. F. Certificate | (Photo) 150.00 |
| 586 | | 1944, \$1.00 on 3c Olive Green, "\$100" Variety (C49 var.). Used, Very Fine, signed Kessler | (Photo) Sanabria 125.00 |
| 587 | ★ | 1952, 1c-50c Founding of Liberia Souvenir Sheet, Frame of 25c Omitted (C69 var). Sanabria #105a, Very Fine, signed Kessler | Sanabria 150.00 |
| 588 | ★ | 1952, 25c U. N. Souvenir Sheets, Perf. & Imperforate, Serial No. Omitted (C70a var). Mint, V. F. set | Sanabria 85.00 |
| 589 | ★ | 1953, 12c-\$1.00 Views, Imperforate (C71 var-C76 var). Horiz. Pairs, Very Fine Mint set | Sanabria 120.00 |
| 590 | ★ | 1953, 12c-\$1.00 Views Souvenir Sheets (C71 var-C76 var). Very Fine Mint set | Sanabria 300.00 |
| 591 | ★ | 1955, 10c-15c Rotary, Red, Bistre Colors Omitted (C97 var-C98 var). Perf. & Imperforate, Very Fine sets | Sanabria 300.00 |
| 592 | ★ | LUBECK, 1859, 1s Orange (2), Margins 3 sides, just in at top, Fresh, o. g., Very Scarce | (Photo) 225.00 |
| 593 | | LUXEMBOURG, 1852, 1sg Rose (3). Large Margins all around, Gorgeous Color & Impression, Extremely Fine | (Photo) 50.00 |
| 594 | ★ | — 1935, 5c-20fr Intellectuals (B65A-B65Q). Nearly all Mint, Very Fine set | (Photo Ex) 400.00 |
| 595 | ★ | LUXEMBOURG, 1906-56, Collection of 320 Nearly all Unused Stamps & 4 Souvenir Sheets, Mostly in cpl. 1930 to 1956 sets, incl. European Council, Centilux, Semipostals, etc., Virtually all Very Fine | 783.11 |
| 596 | ★ | MONACO, 1919, 2c-1fr Semipostals (B2-B7). Thins, Fine appearance ... | 110.00 |
| 597 | ★ | — 1942-50, 50c-1000fr. Airposts, Imperforate (C2 var-C9 var, C14 var-C35 var). Most are Mint, Very Fine sets | Sanabria 305.00 |

NETHERLANDS

| | | |
|-------|---|-------------------|
| 598 ★ | 1852, 5c Blue (1). Large Margins all around Fresh, o. g., Very Fine (Photo) | 300.00 |
| 599 | 1852, 15c Orange (3). Margins all around, Deep Shade, Very Fine (Photo) | 55.00 |
| 600 ★ | 1949, 1g-10g Juliana (319-322). 5g light bend, others Very Fine | 89.50 |
| 601 ★ | 1951, 15g-25g Seagull (C13-C14). Very Fine set (Photo) | 120.00 |
| 602 ★ | NEWFOUNDLAND, 1865-68, 5c Black, 13c Orange (26, 30). Fresh, perfs just touch one side, Very Good | 75.00 |
| 603 ★ | — 1932, \$1.50 on \$1.00 Do.-X Flight (C12). Very Fine (Photo) | 200.00 |
| 604 | NEW ZEALAND, 1856, 1/-Blue Green (12). Margins all around, Neat Grid Cancel, Fresh Color, tiny scissors cut at top, Very Fine appearance (Photo) | 285.00 |
| 605 ★ | NICARAGUA, 1932, 40c on 50c Bistre Brown, 1 cor on 1 cor Dull Violet, Unissued Airposts, Inverted Overprints (Sanabria #82b, 84b). Last minute corner crease, other Very Fine | Sanabria 135.00 |
| 606 ★ | OLDENBURG, 1861, ½g Green (10). Large Margins to barely touched in one spot, Fresh and Fine | 100.00 |
| 607 ★ | PANAMA, 1906-07, ½c-2c, 5c-50c Inverted Center (185, 187, 189-193 vars.). ½c & 5c bit thin, others Very Fine | Yvert, Fr. 855.00 |
| 608 ★ | PARAGUAY, 1945, 20c-10g Flags, Imperforate (C147 var-C153 var). Mint Corner Blocks, three high values diagonal creases, otherwise V. F. set | Sanabria 120.00 |
| 609 ★ | QUEENSLAND, 1860, 1/-Dull Violet (11). Vert. Pair. Fresh & Very Fine (Photo) | 170.00+ |
| 610 ★ | ROMANIA, 1859, 80pa Red (10). Large to Huge Margins, Fresh, Crackly o. g., small nick at R., otherwise Very Fine (Photo) | 150.00 |
| 611 | RUSSIA, 1857, 10k. Brown & Blue (1). Large Margins, Town pmk., & ms. date, Very Fine (Photo) | 110.00 |
| 612 ★ | — 1949, 2r Violet Brown (1341A). Block, Mint, Very Fine | 80.00 |
| 613 ★ | — 5k-20k Stratosphere (C37-C39). Very Fine Set | 100.00 |

RYUKYU ISLANDS

| | | |
|-------|---|--------|
| 614 ★ | 1952, 10y on 50s Carmine Rose, Ty. I, II, III (16, 16a, 16b). L. Shaped Strips of Three of each, F.-V. F. | 72.00 |
| 615 ★ | 1958, ½c Orange, Imperf. Between (44 Var.). Horiz. Pair, perfs. close at B. | E. III |
| 616 ★ | 1958, 1c Yellow Green, Imperf. Between (45 Var.). Vertical Pair, Very Fine | E. III |
| 617 ★ | 1958, 1c Yellow Green, Imperf. Between (45 Var.). Horiz. Pair, perfs. just in at R. | E. III |
| 618 ★ | 1958, 2c Dark Blue, Imperf. Between (46 Var.). Horiz. Pair, Fine-Very Fine | E. III |
| 619 ★ | 1958, 3c Dark Carmine, Imperf. Between (47 Var.). Vertical Pair, Fine | E. III |
| 620 ★ | 1958, 3c Deep Carmine, Imperf. Between (47 Var.). Horiz. Pair, Very Good-Fine | E. III |
| 621 ★ | 1958, 4c Green, Imperf. Between (48 Var.). Vertical Pair, Very Fine | E. III |
| 622 ★ | 1958, 5c Orange, Imperf. Between (49 Var.). Horiz. Pair, Very Fine (Photo) | E. III |
| 623 ★ | 1958, 25c Violet Blue, Imperf. Between (51 Var.). Horiz. Pair, light crease in one, perfs close on other, Attractive & Scarce | E. III |
| 624 ★ | RYUKYU ISLANDS, 1948-67, Collection of 172 Virtually all Unused Stamps, incl. Commems., Pictorials, Airposts, Many cpl. sets, Nearly all F.-V. F. | 183.37 |
| 625 ★ | SALVADOR, 1935, 5c-1col Central American Games (538-542, C36-C40). Fine-Very Fine Set | 140.00 |
| 626 ★ | SAN MARINO, 1949, 100L Stagecoach (304). Cpl. Sheet of Six, Fine-Very Fine | 180.00 |

| | | |
|-------|---|---------|
| 627 ★ | — 1931, 50c-10L First Air Posts (C1-C10). Fine-Very Fine Set (Photo Ex) | 333.80 |
| 628 ★ | — 1951, 300L Stagecoach (C75). Cpl. Sheet of Six, light crease in selvage & trivial wrinkling, otherwise Mint, Very Fine | 200.00 |
| 629 ★ | SOMALIA, 1924, 3rp on 5L Manzoni (66). Very Good | 210.00 |
| 630 | SPAIN, 1851, 6r Blue (10). Large Margins to close at top, Good Color, Fine (Photo) | 375.00 |
| 631 ★ | — 1931, 5c-1p Montserrat Airposts, Imperforate (C68 var-C72 var). Gum bit dry, Very Fine set (Photo Ex) | 342.00 |
| 632 ★ | — 1938, 45c Defenders of Madrid, Air Post (CB6). Fine | 90.00 |
| 633 ★ | — Burgos, 1937, 25c Ultramarine, Airpost (C7LC11). Fine (Photo) | 200.00 |
| 634 ★ | — Canary Island 1936, 80c on 2c Orange Brown, Green Overprint Inverted (9LC7 var). Sanabria #13a, no gum, otherwise Very Fine, signed Sanabria, Rare, only 50 Issued (Photo) Sanabria | 150.00 |
| 635 ☒ | SURINAM, 1931, 10c-1½g Do.-X Flight (C8-C14). Cpl. set, tied by Do. X Cachet pmks. on Flight Cover to Curacao, Large Purple Cachet on Flap, Very Fine (Photo) | E. VIII |

SWITZERLAND

| | | |
|-------|--|---------|
| 636 | Zurich, 1843, 6r Black, Vertical Red Lines (1L2). Clear to Huge Margins, showing Dividing Lines on Three Sides, Beautiful Impression, tiny surface rub, otherwise Fine (Photo) | 400.00 |
| 637 | Geneva, 1845, 5c Black on Yellow Green, Small Eagle (2L2). Frameline cut in at B. & R. to Huge Margins other sides, showing part of next stamp at L., Fresh Color, Red Geneva Cross Cancel, minute thin speck, Fine appearance (Photo) | 600.00 |
| 638 | Geneva, 1946, 5c Black on Yellow Green, Large Eagle (2L3). Margins to barely touched in one place, thinned, Fine appearance (Photo) | 350.00 |
| 639 | 1850, 2½rp Black & Red, Orts. Post, With Cross (1). Pos. 21, Large to Huge Margins, showing dividing lines on Three Sides, small thin spots, Very Fine appearance (Photo) | 300.00 |
| 640 | 1850, 2½r Black & Red Orts. Post (1). Large Margins, except narrow in one spot, Fine (Photo) | 300.00 |
| 641 ★ | 1934, 5c-20c Naba Souvenir Sheet (226). Bit heavily hinged, otherwise Very Fine (Photo) | 250.00 |
| 642 ★ | 1938, 3fr-10fr High Values (244-246). Very Fine Set | 66.00 |
| 643 ★ | SYRIA, 1937-43, ½pi-50pi Airposts, Imperforate (C80 var-C88 var, C99 var-C106 var). Very Fine sets Sanabria | 130.00 |
| 644 ★ | — 1944, 200pi-500pi Shukri Souvenir Sheets (C107 var-C108 var). No gum, otherwise Very Fine set Sanabria | 150.00 |
| 645 ★ | TRIESTE, Zone A, Revenue Stamps, 96 Unused & 20 Used Stamps, Values to 1000L, Many Scarce, Virtually all F.-V.F. E. V | |
| 646 | TUSCANY, 1851, 1cr Brown Carmine (4a). Vert. Pair, Clear to Huge Margins, showing parts of two other stamps, faint natural paper wrinkle, Very Fine (Photo) | 60.00+ |
| 647 | — 1857, 1cr Carmine (12). Horiz. Pair, Margins Nearly all around, Blue "P D" Cancel, faint fold in margin between stamps otherwise Very Fine, signed Diena (Photo) | 220.00+ |
| 648 ★ | YEMEN, 1947, 1b-1d "U.S. Flight" (Sanabria 3-14, 21-28, 33-36). Opt. on #4 Inverted, Mint, Very Fine sets Sanabria | 185.00 |

MAIL BIDS

Mail bids should be sent to our New York offices until September 13th. After that date to us at the SHERATON PARK PLAZA HOTEL, NEW HAVEN, CONN. 06510.

LARGE LOTS & COLLECTIONS

| | | |
|-------|---|----------------|
| 649 ★ | AGUERA, ANDORRA, 1920-40 , Collection of 114 Unused Stamps, Mostly in cpl. sets, Values to 10p, 20f, Mostly stuck down, otherwise F.-V.F. lot | 424.12 |
| 650 | AUSTRIA, 1850-1936 , Collection of 590 Used & Unused Stamps, incl. Exceptional Showing of Semipostals, with 1924-36 Issues Virtually cpl., Airposts with Cpl. sets to 10s, some earlies faulty, most are stuck down or show traces of tropical toning, otherwise Mostly F.-V.F. | 1,731.06 |
| 651 | BELGIUM, 1849-1952 , Collection of 425 Used & Unused Stamps & 2 Souvenir Sheets, incl. Excellent Showing of Semipostals with Many Better sets, such as Crown Opts., Most are stuck down or tropical toning, some earlies faulty, otherwise F.-V.F. | 1,642.09 |
| 652 | BRAZIL, 1843-1948 , Collection of 741 Used & Unused Stamps & 3 Souvenir Sheets, incl. 30r, 60r, 90r Bull's Eyes, Third Issue to 280r, 430r, 600r, Don Pedros to 1000r, Pictorials, Commems., Semipostals, Airposts, Dues, Newspapers, Some earlies have faults, many are stuck down or show faint tropical toning, otherwise Mostly F.-V.F. | 1,323.83 |
| 653 | BRAZIL, 1850-1904 , Collection of Many hundreds of Stamps, Showing Wide Range of Shades, Cancellations, incl. Grids, Stars, Rosettes, towns, Mostly F.-V.F. | E. VII |
| 654 | BRITISH COMMONWEALTH, 1840-1957 , Many hundreds of Used & Unused Stamps, incl. Large number of complete sets, with many Better items, Wide Variety of Colonies, Values to £1, Blocks, Mostly F.-V.F. | E. VIII |
| 655 | CHILE, 1853-1949 , Collection of 450 Used & Unused Stamps, incl. Imperforates, Pictorials, Commems., Opts., Semipostals, Airposts, Dues, Officials, Many Cpl. sets, High Values, some earlies cut in or small faults, some stuck down, Balance F.-V.F. | 586.30 |
| 656 ★ | CYRENAICA, ERITREA, 1892-1934 , Collection of 305 Virtually all Unused Stamps, incl. Pictorials, Commems., Semipostals, Airposts, Mostly Cpl. sets, incl. Many Better, many are stuck down, some have traces of tropical toning, otherwise F.-V.F. | 671.25 |
| 657 ★ | DANZIG, 1920-39 , Collection of 285 Mostly Unused Stamps, incl. Opts., Pictorials, Commems., Semipostals, Airposts, Dues, Many Cpl. sets, Many are stuck down, a few show tropical discoloration, otherwise F.-V.F. | 437.82 |
| 658 ★ | DUTCH INDIES, NETHERLANDS ANTILLES, 1870-1942 , Collection of 291 Mostly Unused Stamps, incl. Pictorials, Commems., Semipostals, Airposts, Many cpl. sets, Values to 5g, a number have faint tropical toning or are stuck down, otherwise Mostly F.-V.F. | 600.50 |
| 659 | FRANCE, 1849-1937 , Collection of 367 Used & Unused Stamps, incl. Le Havre, Cpl. Sinking Fund Issues, Airposts to 50fr, Many Better items, Mixed quality, with faults, tropical toning, some discolored, many stuck down, Exciting lot | 2,067.49 |
| 660 ★ | ROTARY, REFUGEE ,HUNGER TOPICALS, 1955-63 , Collection of 924 Unused Stamps & 33 Souvenir Sheets, mounted in album, Very Fine | E. VIII |
| 661 | RUSSIA, 1927-40 , 223 Used Stamps, Mostly in sets incl. Blocks, Nearly all F.-V.F. | E. V |
| 662 | GENERAL FOREIGN, 1840-90 , Collection of 1840 Mostly Used Stamps in Old German Album, Many Better items, all stuck down, mixed quality, but Many F.-V.F., Enormous Cat. Value | E. IX |
| 663 | GENERAL FOREIGN, 1860-1958 , Many hundreds of Used & Unused Stamps, Mostly 20th Cent., Wide Range of Countries, Issues, Many cpl. sets, Better Values, Mostly F.-V.F. | E. VIII |

END OF SALE — THANK YOU

**In Recent Years We Have Sold a
Greater Dollar Value in United States
Stamps and Covers Than All Other
Auction Firms in the World. This is an
Indisputable Fact!**



Robert A. Siegel

AUCTION GALLERIES, INC.

120 East 56th STREET

NEW YORK CITY, N. Y. 10022

Tel.: (212) 753-6421

THE TWO OF US

Robert A. Siegel, INC.



THE LARGEST AND FINEST STOCK OF
UNITED STATES STAMPS
IN NEW YORK

WANT LISTS AND SPECIAL
REQUIREMENTS GIVEN PROMPT
AND CAREFUL ATTENTION

Robert A. Siegel
AUCTION GALLERIES, INC.

CONDUCTING OUTSTANDING
AUCTION SALES OF SCARCE STAMPS
FOR MORE THAN FORTY-TWO YEARS

SUBSCRIBE FOR
ILLUSTRATED CATALOGUES
OVER 20 SALES A YEAR

| | |
|----------------------------|---------|
| Annual Subscription | \$ 5.00 |
| With prices realized | \$10.00 |

HOW CAN WE BE OF SERVICE TO YOU?

120 EAST 56 STREET, NEW YORK CITY, N. Y. 10022 (212) 753-6421

IS YOUR COLLECTION FOR SALE?

REALIZE IMMEDIATE CASH
PLUS THE ADDED ADVANTAGE OF
SELLING THROUGH OUR AUCTIONS

We will advance immediate cash up to 75% of our appraisal value, of what your collection should realize at auction. There is no interest charge.

Your collection will then be sold in one of our coming auction sales. All stamps are expertly and advantageously lotted in attractive, well illustrated catalogs. Lotting is meticulously planned under our personal supervision. Commission is 20% of the gross realization. There is no lotting fee or any other charges. Final settlement is made within five weeks after the sale. We have been continuously conducting stamp auctions in the United States for over forty-two years.

Valuable collections and stamp holdings are especially wanted, but we will accept properties valued from \$500 upwards. Send all stamps direct for appraisal. Auction advance will be remitted shortly after receipt. If not entirely pleased, stamps will be returned at our expense. If circumstances warrant due to bulk or value, we will travel anywhere to inspect important properties.

ROBERT A. SIEGEL
AUCTION GALLERIES, Inc.

(Licensed and Bonded Auctioneer)

120 EAST 56th STREET
NEW YORK, N. Y. 10022

(Tel. 753-6421)

ROBERT A. SIEGEL AUCTION GALLERIES, Inc.

120 EAST 56TH STREET
NEW YORK, N. Y. 10022

416TH SALE

PRICES REALIZED

SEPTEMBER 16TH, 1972

UNITED STATES
AND
FOREIGN STAMPS

GROSS REALIZATION \$90,784.00

| | | | | | | | | | | | |
|----|--------|----|--------|-----|--------|-----|---------|-----|---------|-----|--------|
| 1 | 21.00 | 42 | 325.00 | 84 | 400.00 | 126 | 60.00 | 168 | 35.00 | 210 | 45.00 |
| 1A | 40.00 | 43 | 50.00 | 85 | 475.00 | 127 | 52.50 | 169 | 45.00 | 211 | 57.50 |
| 2 | 57.50 | 44 | 23.00 | 86 | 900.00 | 128 | 105.00 | 170 | 57.50 | 212 | 20.00 |
| 3 | 180.00 | 45 | 42.50 | 87 | 270.00 | 129 | 140.00 | 171 | 22.00 | 213 | 105.00 |
| 4 | 105.00 | 46 | 70.00 | 88 | 150.00 | 130 | 600.00 | 172 | 24.00 | 214 | 52.50 |
| 5 | 45.00 | 47 | 160.00 | 89 | 52.50 | 131 | 850.00 | 173 | 50.00 | 215 | 14.00 |
| 6 | 250.00 | 48 | 250.00 | 90 | 24.00 | 132 | 475.00 | 174 | 100.00 | 216 | 23.00 |
| 7 | 85.00 | 49 | 17.00 | 91 | 42.50 | 133 | 575.00 | 175 | 57.50 | 217 | 32.50 |
| 8 | 100.00 | 50 | 180.00 | 92 | 30.00 | 134 | 475.00 | 176 | 25.00 | 218 | 12.00 |
| 9 | 60.00 | 51 | 47.50 | 93 | 350.00 | 135 | 675.00 | 177 | 35.00 | 219 | 20.00 |
| 10 | 50.00 | 52 | 32.50 | 94 | 57.50 | 136 | 600.00 | 178 | 52.50 | 220 | 18.00 |
| 11 | 37.50 | 53 | 16.00 | 95 | 350.00 | 137 | 1050.00 | 179 | 50.00 | 221 | 50.00 |
| 12 | 325.00 | 54 | 29.00 | 96 | 160.00 | 138 | 1100.00 | 180 | 150.00 | 222 | 23.00 |
| 13 | 180.00 | 55 | 57.60 | 97 | 350.00 | 139 | 45.00 | 181 | 45.00 | 223 | 55.00 |
| 14 | 135.00 | 56 | 100.00 | 98 | 30.00 | 140 | 115.00 | 182 | 550.00 | 224 | 240.00 |
| 15 | 70.00 | 57 | 65.00 | 99 | 80.00 | 141 | 28.00 | 183 | 1000.00 | 225 | 60.00 |
| 16 | 85.00 | 58 | 135.00 | 100 | 50.00 | 142 | 16.00 | 184 | 525.00 | 226 | 45.00 |
| 17 | 250.00 | 59 | 14.00 | 101 | 20.00 | 143 | 32.50 | 185 | 30.00 | 227 | 45.00 |
| 18 | 350.00 | 60 | 115.00 | 102 | 37.50 | 144 | 35.00 | 186 | 25.00 | 228 | 37.50 |
| 19 | 240.00 | 61 | 42.50 | 103 | 11.00 | 145 | 280.00 | 187 | 35.00 | 229 | 320.00 |
| 20 | 26.00 | 62 | 45.00 | 104 | 160.00 | 146 | 145.00 | 188 | 29.00 | 230 | 25.00 |
| 21 | 32.50 | 63 | 26.00 | 105 | 170.00 | 147 | 30.00 | 189 | 100.00 | 231 | 50.00 |
| 22 | 145.00 | 64 | 28.00 | 106 | 23.00 | 148 | 67.50 | 190 | 75.00 | 232 | 100.00 |
| 23 | 67.50 | 65 | 200.00 | 107 | 80.00 | 149 | 230.00 | 191 | 30.00 | 233 | 37.50 |
| 24 | 90.00 | 66 | 40.00 | 108 | 60.00 | 150 | 28.00 | 192 | 150.00 | 234 | 26.00 |
| 25 | 200.00 | 67 | 140.00 | 109 | 70.00 | 151 | 135.00 | 193 | 210.00 | 235 | 24.00 |
| 26 | 35.00 | 68 | 65.00 | 110 | 52.50 | 152 | 100.00 | 194 | 85.00 | 236 | 42.50 |
| 27 | 26.00 | 69 | 15.00 | 111 | 85.00 | 153 | 50.00 | 195 | 140.00 | 237 | 105.00 |
| 28 | 135.00 | 70 | 25.00 | 112 | 75.00 | 154 | 60.00 | 196 | 850.00 | 238 | 72.50 |
| 29 | 37.50 | 71 | 45.00 | 113 | 20.00 | 155 | 600.00 | 197 | 67.50 | 239 | 42.50 |
| 30 | 65.00 | 72 | 72.50 | 114 | 62.50 | 156 | 270.00 | 198 | 17.00 | 240 | 52.50 |
| 31 | 65.00 | 73 | 55.00 | 115 | 13.00 | 157 | 200.00 | 199 | 52.50 | 241 | 47.50 |
| 32 | 30.00 | 74 | 65.00 | 116 | 135.00 | 158 | 150.00 | 200 | 95.00 | 242 | 145.00 |
| 33 | 45.00 | 75 | 62.50 | 117 | 150.00 | 159 | 280.00 | 201 | 26.00 | 243 | 110.00 |
| 34 | 50.00 | 76 | 67.50 | 118 | 75.00 | 160 | 280.00 | 202 | 42.50 | 244 | 67.50 |
| 35 | 200.00 | 77 | 250.00 | 119 | 32.50 | 161 | 270.00 | 203 | 32.50 | 245 | 72.50 |
| 36 | 135.00 | 78 | 50.00 | 120 | 45.00 | 162 | 300.00 | 204 | 85.00 | 246 | 50.00 |
| 37 | 42.50 | 79 | 110.00 | 121 | 52.50 | 163 | 850.00 | 205 | 52.50 | 247 | 150.00 |
| 38 | 25.00 | 80 | 575.00 | 122 | 12.00 | 164 | 21.00 | 206 | 75.00 | 248 | 170.00 |
| 39 | 67.50 | 81 | 210.00 | 123 | 47.50 | 165 | 22.00 | 207 | 75.00 | 249 | 67.50 |
| 40 | 55.00 | 82 | 360.00 | 124 | 160.00 | 166 | 36.00 | 208 | 52.50 | 250 | 325.00 |
| 41 | 32.50 | 83 | 325.00 | 125 | 210.00 | 167 | 52.50 | 209 | 37.50 | 251 | 170.00 |

| | | | | | | | | | | | | | | | | | | | |
|-----|---------|------|---------|-----|---------|-----|---------|-----|--------|-----|--------|-----|--------|-----|--------|-----|--------|-----|--------|
| 252 | 250.00 | 315 | 19.00 | 377 | 135.00 | 439 | 21.00 | 501 | 300.00 | 563 | 42.50 | 584 | 21.00 | 605 | 13.00 | 624 | 100.00 | 645 | 30.00 |
| 253 | 300.00 | 316 | 80.00 | 378 | 60.00 | 440 | 52.50 | 502 | 35.00 | 564 | 7.00 | 585 | 47.50 | 606 | 20.00 | 625 | 40.00 | 646 | 29.00 |
| 254 | 250.00 | 317 | 55.00 | 379 | 29.00 | 441 | 32.50 | 503 | 575.00 | 565 | 30.00 | 586 | 30.00 | 607 | 42.50 | 626 | 47.50 | 647 | 57.50 |
| 255 | 300.00 | 318 | 18.00 | 380 | 42.50 | 442 | 20.00 | 504 | 42.50 | 566 | 25.00 | 587 | 26.00 | 608 | 16.00 | 627 | 72.50 | 648 | 28.00 |
| 256 | 375.00 | 319 | 11.00 | 381 | 11.00 | 443 | 36.00 | 505 | 12.00 | 567 | 20.00 | 588 | 12.00 | 609 | 105.00 | 628 | 37.50 | 649 | 52.50 |
| 257 | 300.00 | 320 | 20.00 | 382 | 220.00 | 444 | 19.00 | 506 | 62.50 | 568 | 24.00 | 589 | 18.00 | 610 | 23.00 | 629 | 24.00 | 650 | 200.00 |
| 258 | 105.00 | 321 | 25.00 | 383 | 2500.00 | 445 | 20.00 | 507 | 30.00 | 569 | 24.00 | 590 | 57.50 | 611 | 65.00 | 630 | 52.50 | 651 | 200.00 |
| 259 | 260.00 | 322 | 270.00 | 384 | 55.00 | 446 | 42.50 | 508 | 30.00 | 570 | 23.00 | 591 | 40.00 | 612 | 15.00 | 631 | 145.00 | 652 | 160.00 |
| 261 | 45.00 | 323 | 75.00 | 385 | 57.50 | 447 | 350.00 | 509 | 130.00 | 571 | 30.00 | 592 | 26.00 | 613 | 24.00 | 632 | 20.00 | 653 | 115.00 |
| 262 | 35.00 | 324 | 4500.00 | 386 | 60.00 | 448 | 42.50 | 510 | 320.00 | 572 | 475.00 | 593 | 45.00 | 614 | 40.00 | 633 | 45.00 | 654 | 160.00 |
| 263 | 130.00 | 325 | 250.00 | 387 | 26.00 | 449 | 105.00 | 511 | 145.00 | 573 | 9.00 | 594 | 130.00 | | | 634 | 22.00 | 655 | 62.50 |
| 264 | 67.50 | 326 | 35.00 | 388 | 32.50 | 450 | 1050.00 | 512 | 280.00 | 574 | 18.00 | 595 | 170.00 | | | 635 | 105.00 | 656 | 70.00 |
| 265 | 210.00 | 327 | 32.50 | 389 | 47.50 | 451 | 44.00 | 513 | 110.00 | 575 | 35.00 | 596 | 13.00 | | | 636 | 105.00 | 657 | 95.00 |
| 266 | 65.00 | 328 | 67.50 | 390 | 25.00 | 452 | 52.50 | 514 | 45.00 | 576 | 21.00 | 597 | 50.00 | | | 637 | 100.00 | 658 | 135.00 |
| 267 | 37.50 | 329 | 55.00 | 391 | 52.50 | 453 | 105.00 | 515 | 45.00 | 577 | 15.00 | 598 | 115.00 | | | 638 | 40.00 | 659 | 250.00 |
| 268 | 26.00 | 330 | 23.00 | 392 | 130.00 | 454 | 45.00 | 516 | 35.00 | 578 | 15.00 | 599 | 40.00 | | | 639 | 75.00 | 660 | 115.00 |
| 269 | 100.00 | 331 | 67.50 | 393 | 100.00 | 455 | 19.00 | 517 | 47.50 | 579 | 200.00 | 600 | 45.00 | | | 640 | 105.00 | 661 | 35.00 |
| 270 | 75.00 | 332 | 23.00 | 394 | 26.00 | 456 | 42.50 | 518 | 52.50 | 580 | 7.00 | 601 | 52.50 | | | 641 | 100.00 | 662 | 240.00 |
| 271 | 40.00 | 333 | 42.50 | 395 | 75.00 | 457 | 115.00 | 519 | 32.00 | 581 | 57.50 | 602 | 16.00 | | | 642 | 21.00 | 663 | 145.00 |
| 272 | 110.00 | 334 | 30.00 | 396 | 360.00 | 458 | 15.00 | 520 | 26.00 | 582 | 50.00 | 603 | 85.00 | | | 643 | 17.00 | | |
| 273 | 28.00 | 335 | 16.00 | 397 | 325.00 | 459 | 190.00 | 521 | 21.00 | 583 | 21.00 | 604 | 85.00 | | | 644 | 23.00 | | |
| 274 | 160.00 | 336 | 115.00 | 398 | 1800.00 | 460 | 42.50 | 522 | 21.00 | | | | | | | | | | |
| 275 | 35.00 | 337 | 42.50 | 399 | 6500.00 | 461 | 160.00 | 523 | 170.00 | | | | | | | | | | |
| 276 | 75.00 | 338 | 30.00 | 400 | 290.00 | 462 | 220.00 | 524 | 18.00 | | | | | | | | | | |
| 277 | 70.00 | 339 | 23.00 | 401 | 95.00 | 463 | 34.00 | 525 | 290.00 | | | | | | | | | | |
| 278 | 37.50 | 339A | 650.00 | 402 | 29.00 | 464 | 15.00 | 526 | 15.00 | | | | | | | | | | |
| 279 | 37.50 | 340 | 62.50 | 403 | 30.00 | 465 | 26.00 | 527 | 20.00 | | | | | | | | | | |
| 280 | 14.00 | 341 | 270.00 | 404 | 21.00 | 466 | 140.00 | 528 | 16.00 | | | | | | | | | | |
| 281 | 32.50 | 342 | 36.00 | 405 | 120.00 | 467 | 35.00 | 529 | 24.00 | | | | | | | | | | |
| 282 | 35.00 | 343 | 26.00 | 406 | 110.00 | 468 | 80.00 | 530 | 14.00 | | | | | | | | | | |
| 283 | 45.00 | 344 | 80.00 | 407 | 120.00 | 469 | 90.00 | 531 | 20.00 | | | | | | | | | | |
| 284 | 42.50 | 345 | 52.50 | 408 | 100.00 | 470 | 37.50 | 532 | 290.00 | | | | | | | | | | |
| 285 | 50.00 | 346 | 70.00 | 409 | 110.00 | 471 | 75.00 | 533 | 150.00 | | | | | | | | | | |
| 286 | 38.00 | 347 | 120.00 | 410 | 135.00 | 472 | 180.00 | 534 | 70.00 | | | | | | | | | | |
| 287 | 20.00 | 348 | 37.50 | 411 | 120.00 | 473 | 52.50 | 535 | 170.00 | | | | | | | | | | |
| 288 | 35.00 | 349 | 40.00 | 412 | 450.00 | 474 | 40.00 | 536 | 50.00 | | | | | | | | | | |
| 289 | 40.00 | 350 | 80.00 | 413 | 375.00 | 475 | 37.50 | 537 | 425.00 | | | | | | | | | | |
| 290 | 25.00 | 351 | 55.00 | 414 | 325.00 | 476 | 160.00 | 538 | 85.00 | | | | | | | | | | |
| 291 | 40.00 | 352 | 67.50 | 415 | 37.50 | 477 | 140.00 | 539 | 72.50 | | | | | | | | | | |
| 292 | 32.50 | 353 | 57.50 | 416 | 40.00 | 478 | 250.00 | 540 | 30.00 | | | | | | | | | | |
| 293 | 50.00 | 354 | 37.50 | 417 | 105.00 | 479 | 65.00 | 541 | 11.00 | | | | | | | | | | |
| 294 | 160.00 | 355 | 23.00 | 418 | 75.00 | 480 | 32.50 | 542 | 22.00 | | | | | | | | | | |
| 295 | 170.00 | 356 | 90.00 | 419 | 50.00 | 481 | 67.50 | 543 | 22.00 | | | | | | | | | | |
| 296 | 150.00 | 357 | 17.00 | 420 | 50.00 | 482 | 1400.00 | 544 | 65.00 | | | | | | | | | | |
| 297 | 57.50 | 358 | 90.00 | 421 | 50.00 | 483 | 700.00 | 545 | 17.00 | | | | | | | | | | |
| 298 | 20.00 | 359 | 25.00 | 422 | 18.00 | 484 | 700.00 | 546 | 32.50 | | | | | | | | | | |
| 299 | 1400.00 | 360 | 17.00 | 423 | 36.00 | 485 | 725.00 | 547 | 12.00 | | | | | | | | | | |
| 300 | 37.50 | 361 | 150.00 | 424 | 37.50 | 486 | 62.50 | 548 | 90.00 | | | | | | | | | | |
| 301 | 80.00 | 362 | 160.00 | 425 | 55.00 | 487 | 130.00 | 549 | 14.00 | | | | | | | | | | |
| 302 | 55.00 | 364 | 24.00 | 426 | 62.50 | 488 | 425.00 | 550 | 18.00 | | | | | | | | | | |
| 303 | 15.00 | 365 | 75.00 | 427 | 170.00 | 489 | 32.50 | 551 | 38.00 | | | | | | | | | | |
| 304 | 52.50 | 366 | 57.50 | 428 | 72.50 | 490 | 70.00 | 552 | 9.00 | | | | | | | | | | |
| 305 | 24.00 | 367 | 16.00 | 429 | 27.00 | 491 | 32.50 | 553 | 40.00 | | | | | | | | | | |
| 306 | 19.00 | 368 | 25.00 | 430 | 24.00 | 492 | 125.00 | 554 | 30.00 | | | | | | | | | | |
| 307 | 15.00 | 369 | 13.00 | 431 | 47.50 | 493 | 85.00 | 555 | 26.00 | | | | | | | | | | |
| 308 | 29.00 | 370 | 90.00 | 432 | 30.00 | 494 | 150.00 | 556 | 12.00 | | | | | | | | | | |
| 309 | 21.00 | 371 | 125.00 | 433 | 13.00 | 495 | 22.00 | 557 | 100.00 | | | | | | | | | | |
| 310 | 27.00 | 372 | 35.00 | 434 | 50.00 | 496 | 25.00 | 558 | 55.00 | | | | | | | | | | |
| 311 | 32.50 | 373 | 35.00 | 435 | 30.00 | 497 | 26.00 | 559 | 17.00 | | | | | | | | | | |
| 312 | 25.00 | 374 | 27.00 | 436 | 25.00 | 498 | 80.00 | 560 | 30.00 | | | | | | | | | | |
| 313 | 67.50 | 375 | 170.00 | 437 | 2000.00 | 499 | 280.00 | 561 | 9.00 | | | | | | | | | | |
| 314 | 35.00 | 376 | 21.00 | 438 | 21.00 | 500 | 72.50 | 562 | 32.50 | | | | | | | | | | |

(615)
(616)
(617)
(618) 350.00
(619)
(620)
(621)
(622)
(623)