

# UNITED STATES STAMPS 1845-1869

*The Collection of a Distinguished Connoisseur*



*Robert A. Siegel*

AUCTION GALLERIES, INC.

120 East 56th Street  
NEW YORK CITY, N. Y. 10022  
Tel.: (212) 753-6421





418th SALE

# UNITED STATES STAMPS

1845 - 1869

The Collection of a Distinguished Connoisseur

Sold by his order

AT PUBLIC AUCTION

Tuesday and Wednesday

October 10 & 11, 1972

at 1:30 P.M. Each Day

*Robert A. Siegel*

AUCTION GALLERIES, INC.

120 East 56th STREET

NEW YORK CITY, N. Y. 10022

Tel.: (212) 753-6421



## CONDITIONS OF SALE

1. The terms of sale are strictly cash on delivery to the highest bidder unless special arrangements have been made prior to the sale.
2. All bids are per lot as numbered in the catalogue unless otherwise announced by the auctioneer at the time of sale. The right is reserved to group two or more lots; to withdraw any lot or lots from the sale, or to act in behalf of the seller. The auctioneer shall regulate the bidding and in the event of a dispute between buyers his decision shall be final.
3. Any lot, the description of which is incorrect is returnable, but only within five days of receipt and in any case it must be received by the auctioneer within four weeks from the date of the auction. All disputed lots must be returned intact as received and the following lots may not be returned for any reason whatsoever: Lots containing ten or more stamps; Lots from buyers who have had the opportunity to examine them before the sale; Lots described as having defects or faults may not be returned because of faults. No illustrated lots may be returned because of centering, margins or other factors shown in the illustration.
4. Successful bidders, unless they are known to us or supply acceptable references are expected to make payment in full before the lots are delivered. Mail bidders will be notified of the amount of their purchases. We reserve the right in our sole and absolute discretion to demand cash payment at the time a lot is knocked down to any bidder who has not previously established credit with us or whose account is in arrears. In the event any buyer refuses to pay cash for any lot at the time it is knocked down to him, the auctioneer reserves the right to re-offer the lot immediately for sale to the highest bidder.
5. If the purchase price has not been paid within the time limit, nor lots taken up within seven days from date of sale they may be resold and any loss arising from such sale will be charged to the defaulter. Any account more than thirty days in arrears is subject to a late payment charge of 1½% per month so long as the account remains in arrears.
6. All lots are sold as genuine but should any lot be proved otherwise by written opinion of any competent, responsible authority acceptable to us, immediate refund of the full purchase price will be made, provided that such claim is made within 25 days from date of sale. If claim is not made within this period, no lots are returnable for any reason at any time. So long as we are notified within the 25 day period that an opinion is being sought the matter will remain open until such opinion is rendered. We will not be responsible for any charges incurred by the buyer for expertization fees and costs unless the opinion states the item is not genuine, in which case we will pay a maximum fee of \$10.00 for each such item.
7. Until paid in full, all lots remain the property of Robert A. Siegel Auction Galleries, Inc. in behalf of the seller.
8. All forwarding charges will be added to the purchase price. The mode of shipment shall be at our option unless we are given specific instructions.
9. Lots may be sent for inspection to buyers known to us upon written application. All such lots must be returned to us by registered mail, adequately insured and within 24 hours after receipt. The applicant assumes all responsibility and for insurance against all risks from time of receipt until they are actually received back by us, and is to pay all expenses of postage and insurance. No lots can be sent for inspection within ten days of the date of sale. Large lots and collections cannot be sent for inspection.
10. The placing of a bid shall constitute acceptance of the foregoing conditions of sale.

**ROBERT A. SIEGEL**

**SYLVESTER COLBY**, Licensed Auctioneers

### DESCRIPTIONS

**EXTREMELY FINE:** The finest, condition for noteworthy, outstanding copies.

**VERY FINE:** (V.F.) In prime condition such as to satisfy the requirements of particular collectors.

**FINE:** (F) Perforations or margins do not touch design on issues after 1890 but in some cases may just touch in earlier issues. If used, fairly light cancellation.

**VERY GOOD:** (V.G.) Generally nice appearance but margins or perforations may cut in slightly.

**GOOD:** Average off-centering or fairly attractive with slight defects.

**ORIGINAL GUM** is not to be expected on 19th century stamps unless so stated in the description.

**MINT:** With original gum and never hinged.

Scott 1972 Specialized Catalogue used for listing lots of U.S. & Possessions. Scott 1972 Standard Catalogue for others.



## OCTOBER 10 &amp; 11, 1972

**ROBERT A. SIEGEL AUCTION GALLERIES, Inc.**

New York, N. Y. 10022

**Tel.: 753-6421 (Area Code 212)**

Please purchase for me at your auction to be held **October 10 & 11, 1972**, the lots named below, the prices annexed being my limit on each lot. I agree to remit for purchases in accordance with the **Conditions of Sale** and to return no lots later than three days after receipt.

REFERENCES PLEASE  
(if unknown to us)

SIGNED

New York State residents kindly include  
County in address.

County

[illegible]

Upon request, estimate of value furnished on any lots in this auction.





# FIRST SESSION

TUESDAY, OCTOBER 10th, 1972 — 1:30 P. M.

## UNITED STATES STAMPS

### POSTMASTERS' PROVISIONALS

#### NEW YORK, N. Y.

- |   |   |         |
|---|---|---------|
| 1 | <b>New York, N. Y. 5c Black on Bluish (9X1).</b> B. R. Sheet Corner Margins, Enormous Margins, Brilliant Color & Gorgeous Impression, Pretty Red Grid Cancel, Extremely Fine, Wonderfully Beautiful ..... (Photo)     | 125.00  |
| 2 | <b>New York, N. Y. 5c Black on Bluish (9X1).</b> Pos. 4, Double Transfer, Large to Huge Margins, showing part of stamp at R., usual Blue ms cancel, Extremely Fine ..... (Photo)                                      | 100.00+ |
| 3 | <b>New York, N. Y. 5c Black on Bluish (9X1).</b> Pos. 23, Large Margins all around, Blue pen cancel, Extremely Fine ..... (Photo)   | 100.00  |
| 4 | <b>New York, N. Y. 5c Black on Bluish (9X1).</b> Pos. 3, Large margins all around, tied by Red "New York, 5cts" on small piece, Very Fine, scarce type of postmark ..... (Photo)                                      | 135.00  |
| 5 | <b>New York, N. Y. 5c Black on Bluish (9X1).</b> Large to Huge Margins, showing part of stamp at B., Red Grid Cancel, Sharply struck, embossing stamp, Very Fine & Handsome ..... (Photo)                             | 125.00  |
| 6 | <b>New York, N. Y. 5c Black on Bluish (9X1).</b> Two Singles, Pos. 24, 25, Large Margins all around, Brilliant Color & Sharp Impression, tied by Blue ms. cancel on small piece, Very Fine, A Showpiece ..... (Photo) | 200.00  |

#### 1847 ISSUE

#### FIVE CENT BROWN (SHADES)

- |   |   |       |
|---|---|-------|
| 7 | <b>5c Red Brown (1).</b> Huge to Enormous Margins, showing Sheet Margin at R. & part of stamp at T., Beautiful Color, Red Grid Cancel, Extremely Fine ..... (Photo)                 | 67.50 |
| 8 | <b>5c Pale Brown (1).</b> Fine color & Impression, Huge Margins all around, showing parts of two other stamps, Brilliant Red Grid, Pretty Strike, Extremely Fine ..... (Photo)      | 67.50 |
| 9 | <b>5c Dark Brown (1a).</b> Large to Huge Margins, showing Sheet Margin at R. & part of stamp at B., Neat Red Grid Cancel, Extremely Fine, A fantastic late impression ..... (Photo) | 67.50 |

**LOTS ON VIEW FROM OCTOBER 5, 1972**  
**OFFICES OPEN SATURDAY BEFORE SALE**  
**AND ON COLUMBUS DAY, OCTOBER 9, 1972**

10	<b>5c Red Brown (1).</b> Large to Huge Margins, showing <b>Sheet Margin at L.</b> , Beautiful Color, Blue Grid Cancel, Extremely Fine, Extra wide margin at Top Left indicates this could be a corner stamp ..... (Photo)	70.00
11	<b>5c Orange Brown (1b).</b> Large to Huge Margins, Brilliant Color & Impression, <b>Black "U.S. Express Mail N. York"</b> pmk., Extremely Fine, This postmark scarce in Black ..... (Photo)	135.00+
12	<b>5c Red Brown (1).</b> Huge Margins, showing Sheet Margin at L. & part of next stamp at T., Fantastic Rich Color, Magnificent Impression, Blue town pmk., Extremely Fine, a Gem ..... (Photo)	70.00
13	<b>5c Red Brown (1).</b> <b>B. R. Sheet Corner Margins</b> , Large Margins other Sides, Beautiful Color & Impression. <b>Blue "5"</b> Cancel, Extremely Fine, A Magnificent Stamp, with P. F. Certificate ..... (Photo)	160.00
14	<b>5c Orange Brown (1b).</b> Large Margins all around, Black "Boston" pmk., Extremely Fine, This postmark very scarce on a stamp ..... (Photo)	75.00+
15	<b>5c Brown (1).</b> Large Margins all around, tied by Scarce <b>Black Philadelphia</b> pmk., Extremely Fine, with P. F. Certificate ..... (Photo)	75.00
16	<b>5c Orange Brown (1b).</b> Margins all around, Magnificent Deep Rich Color, Gorgeous Impression, Fantastic Strike of <b>Dark Red Chicago "5" in Cog-wheel</b> Cancel, a Rare and Extremely Fine Gem, Ex-Newbury .... (Photo)	E. XIII
17	<b>5c Red Brown (1).</b> <b>U. R. Sheet Corner Margins</b> , Large Margins other sides, Brilliant Color & Impression, Neat Red Grid Cancel, an inconsequential faint line shows in sheet margin, Extremely Fine, a Magnificent Stamp of Matchless Beauty ..... (Photo)	67.50
18	<b>5c Red Brown (1).</b> Margins all around, Neatly Struck <b>Blue "Paid"</b> Cancel, Very Fine ..... (Photo)	100.00
19	<b>5c Red Brown (1).</b> Large Margins, Brilliant Color & Impression, Pretty Blue <b>"Paid"</b> Cancel, Perfectly Struck in Center, Exceptionally Fine, A Showpiece ..... (Photo)	100.00
20	<b>5c Brown (1).</b> Large Margins, minor natural paper wrinkle, Clear Strike of the Rare <b>Red 17-Bar Fine Grid used on Hudson River Mail</b> , a Gorgeous Rarity, Ex-Caspary ..... (Photo)	E. XII
21	<b>5c Red Brown (1).</b> Enormous Margins, showing parts of two other stamps & <b>Sheet Margin at L.</b> , Brilliant Color, Blue town pmk., light paper wrinkle, Extremely Fine appearance, a Most Desirable Stamp ..... (Photo)	70.00
22	<b>5c Red Brown (1).</b> Margins all around, tied on small piece by portion of <b>Blue Baltimore Rail Road</b> pmk. (Remele B1-c) Bold Complete Strike on the piece, Very Fine, Scarce ..... (Photo)	250.00
23	<b>5c Brown (1).</b> Dot in "S" Variety, Large Margins all around, The Rare Trenton <b>Five Point Open Star</b> Cancel in Blue, tiny insignificant corner crease, Very Fine appearance, Ex-Caspary ..... (Photo)	E. XIII
24	<b>5c Orange Brown (1b)</b> Large to Huge Margins, showing part of other stamp at B. & Sheet Margin at R., <b>Red "5"</b> Cancel, Very Fine .... (Photo)	160.00
25	<b>5c Brown Orange (1b).</b> Wonderful Color, Large Margins, light Red Way Cancel, Neat Strike, Very Fine ..... (Photo)	E. VIII
26	<b>5c Dark Brown (1a).</b> Margins all around, Huge at T., Rich Color, Fine Impression, Bold Black Grid Cancel, Neatly Struck, Very Fine .... (Photo)	75.00
27	<b>5c Red Brown (1).</b> Margins all around, Deep Rich Color, Brilliant Impression, Pretty <b>Green Dotted Grid</b> cancel, barest trace of paper wrinkle, Very Fine, a Most Beautiful Stamp ..... (Photo)	225.00
28	<b>5c Dark Brown (1).</b> Margins all around, Huge on three sides, tied by Bold <b>Red "Paid" in Arc</b> on small piece, Very Fine, scarce cancel on the stamp ..... (Photo)	100.00





1



2



3



4



5



6



7



8



9



10



11



12



13



15



14



16



17



18



19



20



21



22

29	<b>5c Dark Brown (1a).</b> B. Sheet Margin, Margins all around, small scissors cut in top margin, not touching stamp, Red Grid Cancel, Very Fine <b>(Photo)</b>	67.50
30	<b>5c Red Brown (1).</b> Large Margins incl. R. Sheet Margin Beautiful Color, Sharp Impression, Pretty Red Grid Cancel, barest traces of toning, Very Fine <b>(Photo)</b>	67.50
31	<b>5c Blackish Brown (1).</b> Horiz. Pair with R. Sheet Margin, Large to Huge Margins, showing part of another Stamp, Gorgeous Deep Rich Color, Marvelous Sharp Impression, Red Grid Cancels, Very Fine, a Magnificent Pair <b>(Photo)</b>	200.00

#### TEN CENT BLACK

32	<b>10c Black (2).</b> Huge to Enormous Margins, showing part of next stamp at B., Deep Rich Color & Impression, Light Blue Grid Cancel, Extremely Fine, An Incredible Showpiece <b>(Photo)</b>	235.00
33	<b>10c Black (2).</b> Margins all around, Huge at R., Beautiful Deep Shade, Gorgeous Impression, Neat Red Grid Cancel, Extremely Fine & Handsome <b>(Photo)</b>	225.00
34	<b>10c Black (2).</b> Huge Margins, Brilliant Impression, Rich <b>Green Grid</b> Cancel, Extremely Fine, a Magnificent & Handsome Classic <b>(Photo)</b>	400.00
35	<b>10c Black (2).</b> Large to Enormous Margins, showing parts of two other stamps, Brilliant Impression, Deep Intense Shade, <b>Red "10"</b> Cancel, Extremely Fine, a Beautiful Stamp <b>(Photo)</b>	275.00
36	<b>10c Black (2).</b> Huge Margins, showing parts of two other stamps & Sheet Margin at L., Beautiful Impression, Blue Grid Cancel, Extremely Fine Showpiece <b>(Photo)</b>	235.00
37	<b>10c Black (2).</b> Large Margins, incl. Sheet Margin at R., Marvelous Impression, Rich Shade, Neat Red Grid Cancel, Extremely Fine, Strikingly Beautiful <b>(Photo)</b>	225.00
38	<b>10c Black (2).</b> B. L. Sheet Corner Margins, Huge Margins other Sides, showing part of stamp at R., Beautiful Impression, Blue pmk., Extremely Fine, a Gorgeous Gem of Fantastic Beauty <b>(Photo)</b>	235.00
39	<b>10c Black (2).</b> Ample to Large Margins, Sharp Impression, Bold <b>Red Numeral "10"</b> Cancel, Very Fine, with P. F. Certificate <b>(Photo)</b>	275.00
40	<b>10c Black (2).</b> Margins all around, tied by Clear Blue <b>"Baltimore Rail Road"</b> pmk. (Remele B1-c) on small piece, Very Fine <b>(Photo)</b>	350.00
41	<b>10c Black (2).</b> Large to Huge Margins, showing part of next stamp at T., Rich Impression, Faint ms. cancel and <b>Green Grid</b> , light crease, Extremely Fine appearance <b>(Photo)</b>	E. X
42	<b>10c Black (2).</b> Horiz. Pair, Pos. 93-94R, Large Margins, Huge at R., showing part of next stamp, Brilliant Red Grid Cancels, Extremely Fine and Spectacular Pair <b>(Photo)</b>	650.00

#### 1847 REPRODUCTIONS

43 ★	<b>5c Red Brown, Reproduction (3).</b> B. R. Sheet Corner Margin, Huge Margins other Sides, Extremely Fine, a Magnificent Gem <b>(Photo)</b>	235.00
44 ★	<b>10c Black, Reproduction (4).</b> Large Margins, incl. Full Sheet Margin at B., Extremely Fine, a Gem <b>(Photo)</b>	325.00
45 ★	<b>10c Black, Reproduction (4).</b> Margins all around, incl. Sheet Margin at T., Very Fine, A Most Beautiful Stamp <b>(Photo)</b>	325.00





23



24



25



26



28



29



27



30



31



32



33



34



35



44



36



37



38



39



45



43



40



41



42



46



48



47



# 1851 ISSUE

## ONE CENT BLUE

46	<b>1c Blue, Ty. II (7).</b> Large to Gigantic Margins, showing Sheet Margin at L., parts of two other stamps, Rich Deep Color, Clear " <b>Paid</b> " Cancel, Extremely Fine ..... (Photo)	35.00
47	<b>1c Blue, Ty. II (7).</b> Pos. 10R1E, Enormous to Gigantic Margins, showing Sheet Corner, parts of two other Stamps, Gorgeous Deep Color, Blue "Charleston, S. C." pmk., Extremely Fine, Incredibly Beautiful .... (Photo)	25.00
48	<b>1c Blue, Ty. II (7).</b> Enormous Margins all around, showing parts of five other stamps, Blue Grid Cancel, Extremely Fine Gem ..... (Photo)	26.00
49	<b>1c Blue, Ty. II (7).</b> Pos. 2L2, <b>Cracked Plate</b> , Huge Margins, showing parts of two other stamps, Neat town Cancellation, Extremely Fine, Simply Magnificent ..... (Photo)	100.00
50	<b>1c Blue, Ty. II (7).</b> Huge Margins, incl. U. L. Sheet Corner, part of next bottom stamp, <b>Brilliant Red</b> pmk., Extremely Fine ..... (Photo)	32.50
51	<b>1c Blue, Ty. II (7).</b> Huge Margins, incl. Sheet Margin at L., and parts of two other stamps, Beautiful Color & Impression, <b>Brilliant Red</b> "Mobile, Ala.", "Paint" pmk., Extremely Fine, a Gorgeous Gem ..... (Photo)	32.50
52	<b>1c Blue, Ty. II (7).</b> Huge to Enormous Margins, showing parts of four other stamps, Brilliant Color & Impression, Red "New York" pmk., Extremely Fine, Unbelievably Handsome ..... (Photo)	32.50
53	<b>1c Blue, Ty. II (7).</b> Huge to Enormous Margins, showing parts of four other stamps, Gorgeous Impression, Neat <b>Small Boston "Paid in Grid"</b> Cancel, Extremely Fine, a Gem, This cancellation is seldom seen on the 1c Blue ..... (Photo)	28.50+
54	<b>1c Blue, Ty. II (7).</b> Huge Margins all around, showing parts of four other stamps, Beautiful Color, Pretty <b>Red</b> Grid Cancel, Extremely Fine (Photo)	32.50
55	<b>1c Blue, Ty. II (7).</b> Margins to barely touched, Lovely Color, Pretty Blue " <b>I</b> " in <b>Double Octagon</b> of Philadelphia, Scarce & Very Fine, Ex-Newbury ..... (Photo)	47.50+
56	<b>1c Blue, Ty. II (7).</b> Pos. 30L1E, Margins all around, incl. Sheet Margin at R., Deep Color, Sharp Impression, <b>Brilliant Red</b> Cincinnati pmk., Extremely Fine, a Beauty ..... (Photo)	32.50
57	<b>1c Blue, Ty. II (7).</b> Large to Huge Margins, showing part of next stamp, Blue "Cincinnati, Ohio" pmk., Very Fine ..... (Photo)	26.00
58	<b>1c Blue, Ty. II (7).</b> Sheet Margin at R. to just in, Fresh Color, Pretty Red " <b>Paid</b> " in Arc, struck twice, Very Fine Strikes, Rare cancel on the 1c ..... (Photo)	35.00
59	<b>1c Blue, Ty. II (7).</b> Large to Huge Margins, showing parts of two other stamps, Beautiful Impression, tied by Clear "New Haven, Conn., 1857" pmk., Gorgeous Strike, on small piece, Extremely Fine ..... (Photo)	26.50
60	<b>1c Blue, Ty. II (7).</b> Pos. 87R1E, Large to Huge Margins, Gorgeous Fresh Color, Neatly tied by Blue Phila. pmk. on small piece, Extremely Fine & Handsome, Ex-Emerson ..... (Photo)	26.00
61	<b>1c Blue, Ty. II (7).</b> Huge Margins all around, showing parts of two other stamps, Fresh Color, tied by Blue "Toledo, Ohio" pmk. on small piece, Extremely Fine, A Gorgeous Showpiece ..... (Photo)	26.00
62	<b>1c Blue, Ty. II (7).</b> Vert. Pair, Pos. 50, 60L1E, Huge to Enormous Margins, incl. <b>R. Pane Margin with Center Line</b> , parts of two other Stamps, Fresh Color, Sharp Impression, Neat Black Grid Cancels, Extremely Fine & Scarce ..... (Photo)	65.00+
63	<b>1c Blue, Ty. II (7).</b> Vert. Pair, Pos. 90, 100L1E, <b>Wide Corner Margins with Center Line and Guide Dot</b> , Large to Huge Margins other sides, showing Large part of another stamp, Brilliant Color & Impression, Extremely Fine, a Magnificent Exhibition Piece ..... (Photo)	65.00+





49



50



51



52



53



54



55



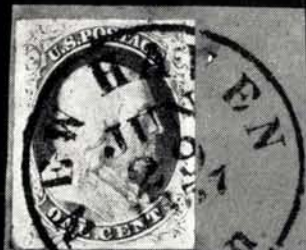
56



57



58



59



61



60



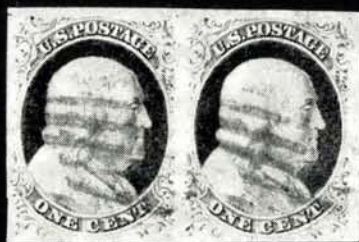
66



62



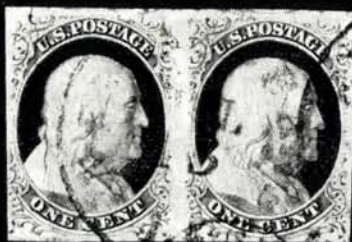
63



64



67



65



68

64	<b>1c Blue, Ty. II (7). Horiz. Pair</b> , Pos. 7-8L1E, Huge Margins all around, Rich Color, Blue Grid Cancel, Extremely Fine, a Wonderful Pair <b>(Photo)</b>	65.00
65	<b>1c Blue, Ty. II (7). Horiz. Pair</b> , Pos. 33-34L2, L. Stamp <b>Cracked Plate</b> , Huge Margins Nearly all around, showing parts of four other stamps, Very Fine <b>(Photo)</b>	140.00
66	<b>1c Blue, Ty. IIIa (8A)</b> . Wide Break at T., Huge Margins to narrow at one point, neat town pmk., Very Fine, Outstanding example of the type <b>(Photo)</b>	140.00
67	<b>1c Blue, Ty. IV (9)</b> . Large to Gigantic Margins, showing large parts of three other stamps, Beautiful Color, Light New York pmk., Extremely Fine, a Wonderful Stamp <b>(Photo)</b>	22.50
68	<b>1c Blue, Ty. IV (9)</b> . Large to Enormous Margins, showing parts of three other stamps, Rich Color, Extremely Fine, a Gem, in the handsome 1852 color <b>(Photo)</b>	22.50
69	<b>1c Blue, Ty. IV (9)</b> . Huge Margins all around, incl. Sheet Margin at L., showing parts of two other stamps, Gorgeous Fresh Color, Light Grid Cancel, Extremely Fine, Ex-Green, Unbelievably Beautiful <b>(Photo)</b>	22.50
70	<b>1c Blue, Ty. IV (9)</b> . Recut once at T., Huge Margins, showing parts of two other stamps, Bold "New Orleans" pmk., perfect strike, Extremely Fine, Fantastically Beautiful <b>(Photo)</b>	23.50
71	<b>1c Blue, Ty. IV (9)</b> . Huge to Gigantic Margins, showing parts of five other stamps, Extremely Fine, a Gorgeous Stamp <b>(Photo)</b>	22.50
72	<b>1c Blue, Ty. IV (9)</b> . Huge Margins, incl. Sheet Margin at R., showing parts of two other stamps, "Madison & Indianapolis R. R." pmk. (Remele M2-b), Extremely Fine <b>(Photo)</b>	65.00
73	<b>1c Blue, Ty. IV (9)</b> . Recut once at T. & Twice at B., <b>Olive Green</b> town pmk., Very Fine <b>(Photo)</b>	85.00
74	<b>1c Blue, Ty. IV (9)</b> . Huge Margins, showing parts of three other stamps, Deep Rich Color, <b>Blue "Criss Cross" Grid</b> Cancel, Extremely Fine, A Beauty <b>(Photo)</b>	23.50+
75	<b>1c Blue, Ty. IV (9)</b> . Huge Margins, showing parts of two other stamps and Sheet Margin at L., Brilliant Color & impression, <b>Red</b> Cancel, Extremely Fine, a Magnificent Stamp <b>(Photo)</b>	25.00
76	<b>1c Blue, Ty. IV (9)</b> . Enormous Margins, showing Sheet Margin at R. & parts of three other stamps, Beautiful Sharp Impression, Extremely Fine, a Magnificent Stamp <b>(Photo)</b>	22.50
77	<b>1c Blue, Ty. IV (9)</b> . Large to Huge Margins, showing parts of three other stamps, Gorgeous Impression, Pretty Color, <b>Red Carrier</b> pmk., Extremely Fine <b>(Photo)</b>	35.00
78	<b>1c Blue, Ty. IV (9)</b> . Large to Enormous Margins, showing parts of three other stamps, Clear 1856 French transit pmk., Extremely Fine, a Beautiful Stamp <b>(Photo)</b>	22.50+
79	<b>1c Blue, Ty. IV (9)</b> . Large to Enormous Margins, showing parts of four other stamps, Rich Color & Impression, Blue "Hamilton, Ohio" pmks., Extremely Fine, a Marvelous Gem <b>(Photo)</b>	23.50
80	<b>1c Blue, Ty. IV (9)</b> . Huge Margins, showing parts of two other stamps, Marvelous Color & Impression, Neat Blue Grid Cancel, Extremely Fine <b>(Photo)</b>	23.50
81	<b>1c Blue, Ty. IV (9)</b> . Huge Margins, Rich Color & Impression, Clear " <b>Paid</b> " Cancel, Gorgeous Strike, Extremely Fine, Exceptionally Handsome <b>(Photo)</b>	28.50
82	<b>1c Blue, Ty. IV (9)</b> . Large Margins all around, Brilliant Color, Sharp Impression, <b>Red "Paid"</b> Cancel, Extremely Fine, Ex-Emerson <b>(Photo)</b>	28.50
83	<b>1c Blue, Ty. IV (9)</b> . Huge Margins, showing parts of three other stamps, Blue " <b>Paid 3</b> " in Circle Cancel, Extremely Fine <b>(Photo)</b>	28.50
84	<b>1c Blue, Ty. IV (9)</b> . Huge Margins all around, Deep Rich Color, Clear " <b>WAY</b> " Cancel, Extremely Fine, a Gem, Ex Chase, Emerson, Rare cancel on the 1c <b>(Photo)</b>	60.00





69



70



71



72



73



74



75



76



77



78



79



80



81



82



83



84



85



86



87



88



89



90



91



92



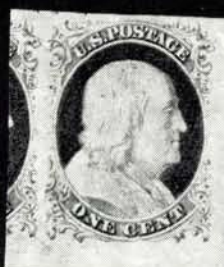
93



94



95



96



97



85	<b>1c Blue, Ty. IV (9).</b> Recut Once at T., Large to Huge Margins, showing part of next stamp, Clear " <b>1ct</b> " in rectangle, <b>St. Louis Carrier Cancel</b> , Very Fine, Scarce Marking ..... (Photo)	42.50
86	<b>1c Blue, Ty. IV (9).</b> Recut Once at T., Twice at B., Bold <b>Open Star</b> Cancel, Unusual and Very Fine ..... (Photo)	<b>E. VI</b>
87	<b>1c Blue, Ty. IV (9).</b> Large Margins, showing part of next stamp, Gorgeous Deep Color, Clear <b>Black N. Y. Carrier</b> pmk., Very Fine ..... (Photo)	42.50
88	<b>1c Blue, Ty. IV (9).</b> Large to Huge Margins, showing part of next stamp, Rich Color, Boston pmk. with "Paid", Very Fine ..... (Photo)	28.50
89	<b>1c Blue, Ty. IV (9).</b> Huge Margins, incl. <b>Pane Margin with Center Line at L.</b> , showing parts of two other stamps, Gorgeous Color, Boston pmk. with "Paid", Extremely Fine Gem ..... (Photo)	22.50+
90	<b>1c Blue, Ty. IV (9).</b> Recut once at T., twice at B., Double Transfer, Pos. 21L1L, <b>Full Sheet Margin at L.</b> , Generous portion of other stamp at R., Deep Color, Light Cancel, Exceptionally Fine ..... (Photo)	26.50
91	<b>1c Blue, Ty. IV (9).</b> Large to Huge Margins, incl. <b>Sheet Margin at L.</b> , Light Blue town pmk., Extremely Fine & Handsome ..... (Photo)	23.50
92	<b>1c Blue, Ty. IV (9).</b> U. R. Sheet Corner Margins, Pos. 10L1L, showing <b>Large Sheet Margins with Center Line and Guide Dot</b> , part of other stamp at L., trifle close at bottom, Most Desirable, A Choice position piece (Photo)	30.00+
93	<b>1c Blue, Ty. IV (9).</b> Double Transfer, Pos. 27L1L, Deep Rich Color, Huge Margins, showing parts of three other stamps, Blue Grid cancel, Extremely Fine, a Beauty ..... (Photo)	26.50
94	<b>1c Blue, Ty. IV (9).</b> Large to Huge Margins, showing part of next stamp, Exceptionally Brilliant Color & Impression, <b>Red Mobile, Ala. "Paint"</b> pmk., Exceptionally Fine ..... (Photo)	25.00
95	<b>1c Blue, Ty. IV (9).</b> Huge to Enormous Margins, showing parts of three other stamps, Brilliant Color, Neat Grid Cancel, Extremely Fine, Incredibly Beautiful ..... (Photo)	22.50
96	<b>1c Blue, Ty. IV (9).</b> Double Transfer, Pos. 100L1L, Incredible Margins, showing R. B. Sheet Corner and parts of three other stamps, Light Blue town pmk., Extremely Fine, An Unbelievably Gorgeous stamp .... (Photo)	23.50+
97	<b>1c Blue, Ty. IV (9).</b> Double Transfer, Pos. 100L1L, Enormous to Gigantic Margins, showing large parts of Corner Sheet Margins and of three other stamps (one of these has small crease), an Extremely Fine Showpiece (Photo)	23.50
98	<b>1c Blue, Ty. IV (9).</b> Huge Margins, but diagonal cut involves parts of two adjoining stamps, Clear "Jacksonville, Flor." pmk., Marvelous Color, The stamp itself is Extremely Fine ..... (Photo)	22.50
99	<b>1c Blue, Ty. IV (9).</b> Clear to Huge Margins, incl. Sheet Margin at L., tied by <b>Red N. Y. Carrier</b> pmk. on small piece, Very Fine ..... (Photo)	35.00
100	<b>1c Blue, Ty. IV (9), R. Pane Margin showing Center Line</b> , Large Margins other Sides, tied by "Nashville, Ten.", 1857 pmk., Beautiful Strike, on small piece, Very Fine, Ex-Caspary ..... (Photo)	32.50
101	<b>1c Blue, Ty. IV (9).</b> Recut once at T., twice at B., Huge Margins all around, showing part of next stamp, Rich Deep Color, tied by "New Haven, Con." 1856 pmk., Extremely Fine ..... (Photo)	26.50
102	<b>1c Blue, Ty. IV (9).</b> Recut once at B., Pos. 7R1L, Huge Margins, tied by town pmk., ms. date on small piece, Extremely Fine ..... (Photo)	35.00
103	<b>1c Blue, Ty. IV (9).</b> Margins to just in at bottom, Rich Color, tied by Bold <b>Red "Drop 1" in Box</b> on small piece, Very Fine & Rare Strike .... (Photo)	<b>E. VII</b>
104	<b>1c Blue, Ty. IV (9). L. L. Sheet Corner Margins</b> , Pos. 91R1L, other sides Huge to Enormous Margins, Rich Color, tied by "Ashland, Ohio" pmk. on small piece, Extremely Fine, a Magnificent stamp ..... (Photo)	23.50





98



99



100



101



102



105



104

106



107



103

108



109



110



111



112



113



114



115



116



117



119



105	<b>1c Blue, Ty. IV (9). Horiz. Pair</b> , Huge Margins, showing parts of three other stamps, tied by Boston pmk. with "Paid" on small piece, Beautiful Color & Impression, Extremely Fine & Handsome ..... (Photo)	52.50
-----	--	-------

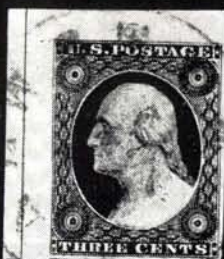
### THREE CENT ORANGE BROWN

106	<b>3c Orange Brown (10)</b> . Pos. 23L5E, Huge Margins, showing parts of two other stamps, Rich Color & Gorgeous Impression, Extremely Fine (Photo)	11.50
107	<b>3c Copper Brown (10)</b> . Large to Huge Margins, showing part of next stamp, Brilliant Color, Blue Phila. pmk., Very Fine ..... (Photo)	15.00
108	<b>3c Copper Brown (10)</b> . Large Margins all around, Lovely Color, Pretty Grid Cancel, Neatly Struck, Very Fine ..... (Photo)	15.00
109	<b>3c Copper Brown (10)</b> . Large to Huge Margins, showing parts of two other stamps, Rich Color, "Paid", Struck twice and Light Grid Cancels, Very Fine ..... (Photo)	17.50
110	<b>3c Orange Brown (11)</b> . Huge Margins, showing parts of two other stamps & <b>Pane Margin with Center Line at R.</b> , Rich Full Color, the scarce Intermediate color, a transitional shade sometimes called "Provisional Orange Brown", Extremely Fine ..... (Photo)	E. IV
111	<b>3c Orange Brown (10)</b> . Incredible Margins, showing Large parts of five other stamps & <b>Pane Margin with Center Line at L.</b> , Gorgeous Color, Extremely Fine, An Exciting "Conversation Piece" ..... (Photo)	11.50
112	<b>3c Orange Brown (10)</b> . Pos. 90L2E, Large to Huge Margins, showing parts of two other stamps, Sheet Margin at R., <b>Green Grid cancel</b> , Extremely Fine ..... (Photo)	40.00
113	<b>3c Orange Brown (10)</b> . Pos. 80L5E, Huge Margins, showing part of next stamp, Gorgeous Deep Color, Pretty <b>Circle of "V's" Rosette Cancel</b> , Lovely Strike, Extremely Fine ..... (Photo)	E. III
114	<b>3c Copper Brown (10)</b> . Margins all around, Beautiful Shade, <b>Solid Star in Circle Cancel</b> , Beautiful Strike, natural paper inclusion, Very Fine (Photo)	E. IV
115	<b>3c Orange Brown (10)</b> . Margins all around, Deep Color, Bold <b>Maltese Cross Cancel</b> , Very Fine ..... (Photo)	E. IV
116	<b>3c Copper Brown (10)</b> . Large to Huge Margins, incl. Sheet Margin at T., Rich Color, Gorgeous strike of the small <b>Boston "Paid"</b> in Grid Cancel, Extremely Fine ..... (Photo)	17.50
117	<b>3c Orange Brown (10)</b> . Pos. 24L1E, Large Margins all around, Rich Color, <b>Brilliant Green Grid Cancel</b> , Very Fine ..... (Photo)	40.00
118	<b>3c Orange Brown (10)</b> . Pos. 32LO, Huge Margin, showing parts of two other Stamps, Brilliant Color, <b>Green town pmk.</b> , pinhole in top margin, Extremely Fine appearance ..... (Photo)	40.00
119	<b>3c Orange Brown (10)</b> . Pos. 93L2E, Huge to Enormous Margins, showing Sheet Margin at B., Parts of three other Stamps, Neat Red Grid Cancel, Extremely Fine ..... (Photo)	11.50
120	<b>3c Orange Brown (10)</b> . <b>B. R. Sheet Corner Margins</b> , Huge to Enormous Margins, showing parts of two other stamps, Beautiful Color, Pretty Grid Cancel, Extremely Fine ..... (Photo)	11.50
121	<b>3c Orange Brown (10)</b> . <b>U. L. Sheet Corner Margins with Center Line</b> , Huge Margins other Sides, showing part of other stamp, Pos. 1RO, Incredible Color, Blue town pmk., Extremely Fine, an Outstanding Gem (Photo)	12.00+
122	<b>3c Orange Brown (10)</b> . Pos. 1R5E, <b>Sheet Corner Margins with Full Straddle</b> , Margins nearly cpl. on other Sides, Rich Color, Sharp Impression, Very Attractive ..... (Photo)	11.50
123	<b>3c Orange Brown (10)</b> . <b>U. R. Sheet Corner Pair with Center Line Full Straddle</b> , Pos. 9-10L7, Brilliant Rich Color, the late shade "Stockholm Depot, N. Y." pmk., perfect strike, margin close at one spot at bottom, a Marvelous Pair of Fantastic Beauty ..... (Photo)	35.00+





120



121



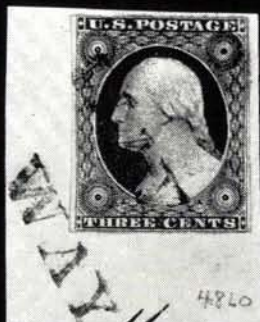
122



125



123



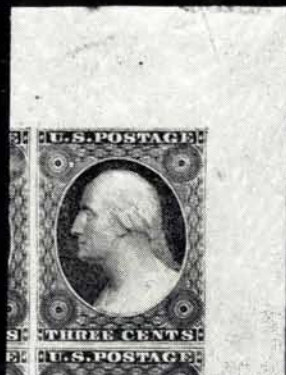
128



124



133



132



126



134



135



136



137



138



139



140

124	<b>3c Copper Brown (10). B. L. Sheet Corner Strip of Three</b> , Margins other Sides Mostly Huge, showing parts of three other stamps; R. stamp just clear at top right, Deep Rich Color, a Wonderful Strip of Great Beauty, & with abnormal recuts on two ..... <b>(Photo)</b>	75.00+
125	<b>3c Orange Brown (10). Block</b> , Huge Margins, showing parts of four other stamps, Phila. pmks., Extremely Fine, a Magnificent Block, Incredible to find in such marvelous condition ..... <b>(Photo)</b>	350.00
126	<b>3c Orange Brown (10)</b> . Huge Margins, showing parts of two other stamps, Gorgeous Color, tied by Pretty <b>Red Grid</b> , matching "Cincinnati, O." pmk. on small piece, Extremely Fine, a Gem ..... <b>(Photo)</b>	11.50
127	<b>3c Orange Brown (10)</b> . Large Margins all around, showing part of another stamp, tied by Bold <b>"Paid"</b> , struck twice, "New Haven, Ct." pmk. on small piece, Very Fine .....	17.50
128	<b>3c Orange Brown (10)</b> . Large Margins to barely touched, tied by clear <b>"Way"</b> Cancel, another Strike, on small piece, Very Fine strikes <b>(Photo)</b>	32.50
129	<b>3c Copper Brown (10)</b> . Large Margins all around, Marvelous Color & Impression, tied by Small <b>"Paid"</b> in Grid and by Red Boston 29 Aug. 3 cts pmk. on Small piece, Very Fine .....	17.50
130	<b>3c Copper Brown (10)</b> . Pos. 76R5E, Large to Huge Margins, Magnificent Color & Impression, tied by Small Neat <b>"Paid"</b> in Grid and by Red Boston 16 Aug. pmk. on small piece, Very Fine .....	17.50
131	<b>3c Copper Brown (10)</b> . Two Gorgeous Shades, Large to Huge Margins, Neat Grid & Geometric Cancels, small thin spots, Extremely Fine appearance .....	30.00+

### THREE CENT RED (SHADES)

132	★ <b>3c Claret (11a). U. R. Sheet Corner Margins</b> , Enormous Margins other Sides, showing Large portions of three other stamps, Fresh, Rich Color, Extremely Fine, a Fantastic Stamp ..... <b>(Photo)</b>	27.50+
133	<b>3c Red (11)</b> . Enormous to Gigantic Margins, showing parts of all eight surrounding stamps, Rich Color, Neat Grid Cancel, Extremely Fine, a Gem ..... <b>(Photo)</b>	E. III
134	<b>3c Red (11)</b> . Enormous Margins, showing parts of seven other stamps, Beautiful Color & Impression, Extremely Fine ..... <b>(Photo)</b>	E. III
135	<b>3c Claret (11a)</b> . Huge to Gigantic Margins, showing parts of four other stamps & Sheet Margin at R., Extremely Fine ..... <b>(Photo)</b>	E. III
136	<b>3c Claret (11a)</b> . Pos. 26L2L, Large to Enormous Margins, showing parts of five other stamps, Extremely Fine, A Gorgeous "Gem" ..... <b>(Photo)</b>	E. III
137	<b>3c Red (11)</b> . Large Margins, Beautiful Color & Impression, <b>"Paid 3"</b> in Two Lines Cancel, Very Fine ..... <b>(Photo)</b>	E. III
138	<b>3c Red (11)</b> . Large Margins, Beautiful Color & Impression, Bold <b>"3"</b> Cancel, Very Fine and Pretty ..... <b>(Photo)</b>	E. III
139	<b>3c Red (11)</b> . Large to Huge Margins, incl. Sheet Margin at L., part of other stamp, Bold <b>Red "Paid"</b> Cancel, Gorgeous Strike, Extremely Fine & Handsome ..... <b>(Photo)</b>	E. IV
140	<b>3c Red (11)</b> . Large to Huge Margins, Beautiful <b>Red "3"</b> under <b>Boxed "Paid"</b> Cancel, Magnificent Strike, Extremely Fine ..... <b>(Photo)</b>	E. VI
141	<b>3c Brownish Carmine (11)</b> . Three large margins, narrow at B., Unusual Blue <b>"Paid 3"</b> cancel., open <b>"3"</b> , <b>"Paid"</b> through middle, all in circle, Splendid strike, scarce & Handsome, Ex-Newbury ..... <b>(Photo)</b>	E. IV
142	<b>3c Red (11)</b> . Pos. 51L4, Beautiful Shade, Margins all around, Clear <b>"24"</b> in Circle Cancel, Very Fine ..... <b>(Photo)</b>	E. IV
143	<b>3c Claret (11a)</b> . Margins Virtually all around, Clear <b>Intertwined Star</b> Cancel, Very Fine Strike ..... <b>(Photo)</b>	E. III





141



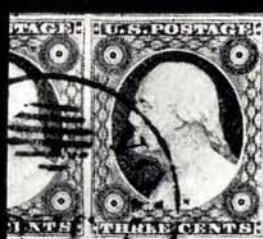
142



143



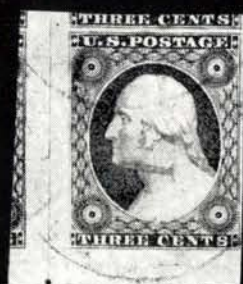
144



145



146



148



147



149



151



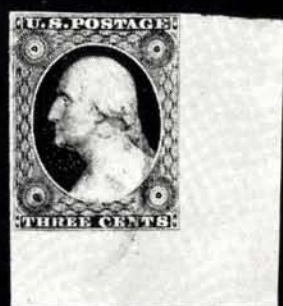
150



152



153



156



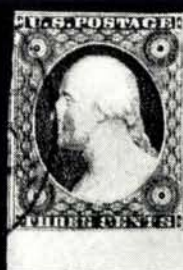
154



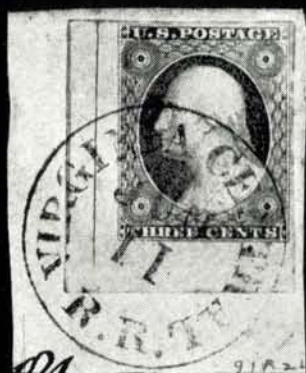
155



159



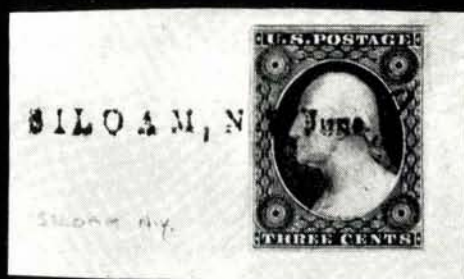
162



157



158



161

144	<b>3c Red (11).</b> Margins all around, Pretty <b>Sunburst</b> Cancel, Very Fine & Unusual ..... (Photo)	E. III
145	<b>3c Red (11).</b> Pos. 43L1L, Huge to Enormous Margins showing parts of Six other stamps, "N. Y. Ocean Mail" pmk., Extremely Fine .... (Photo)	E. III
146	<b>3c Red (11).</b> Huge Margins, Beautiful Color & Impression, clear " <b>N. York Steamship</b> " in circle Cancel, Extremely Fine .... (Photo)	E. III
147	<b>3c Red (11).</b> Large to Huge Margins, showing <b>Sheet Margin with Center Line at L., Str. Line Blue "Steamboat"</b> Cancel, Very Fine ..... (Photo)	22.50
148	<b>3c Red (11).</b> Large to Incredible Margins, showing <b>Full Straddle at L., Sheet Margin at B. Center Line &amp; Guide Dot</b> , parts of three other stamps, Blue pmk., Very Fine, An utterly fantastic "Gem" ..... (Photo)	E. VI
149	<b>3c Red (11).</b> Pos. 51R3, Huge Margins, showing parts of four other stamps & Sheet Margin at L., Extremely Fine ..... (Photo)	E. III
150	<b>3c Red (11).</b> Large to Enormous Margins, showing parts of two other stamps & <b>Wide Sheet Margin with part Imprint</b> , Extremely Fine (Photo)	E. IV
151	<b>3c Red (11).</b> Pos. 91L3, <b>B. L. Sheet Corner Margins</b> , Large Margins other sides, Fresh Color, Extremely Fine ..... (Photo)	E. V
152	<b>3c Red (11).</b> <b>U. L. Sheet Corner with Center Line</b> , Large Margins other Sides, Rich Color, Extremely Fine, A Gorgeous Showpiece ..... (Photo)	E. V
153	<b>3c Red (11).</b> <b>U. R. Sheet Corner Margins, with Center Line</b> , Huge Margins other Sides, Brilliant Sharp Impression, Extremely Fine, a Magnificent Gem (Photo)	E. V
154	<b>3c Red (11).</b> Pos. 1R1L, Enormous Margins, showing <b>Sheet Corner Margins with Center Line</b> & parts of two other stamps, Part of Blue " <b>Virga. &amp; Tenn. R. R.</b> " pmk., Extremely Fine (Remele V4a), Ex-Newbury (Photo)	E. VI
155	<b>3c Red (11).</b> Pos. 1R3, <b>T. L. Sheet Corner Margins</b> , Large Margins other Sides, except narrow in one tiny spot, <b>Red town pmk.</b> , Very Fine (Photo)	E. V
156	<b>3c Red (11).</b> <b>B. R. Sheet Corner Margins</b> , Large Margins other Sides, Deep Shade, Very Fine ..... (Photo)	E. V
157	<b>3c Red (11).</b> <b>B. L. Sheet Corner Margins, showing Full Straddle at L.</b> , Large Margins other Sides, tied by Clear " <b>Virginia Central R. R.</b> " pmk., (Remele V3a), on small piece, Extremely Fine, A Fantastic Gem (Photo)	E. VIII
158	<b>3c Red (11).</b> Pos. 99L3, Margins all around, tied by <b>Brilliant Green "South Framingham, Mass."</b> pmk. on small piece, Beautiful Strike, Very Fine (Photo)	25.00
159	<b>3c Red (11).</b> Margins all around, tied by Bold " <b>5 Cts. Due</b> " in <b>Blue</b> , Beautiful Strike, on small piece, Very Fine, Scarce, almost never seen on a stamp ..... (Photo)	E. IV
160	<b>3c Red (11).</b> Large to Huge Margins, incl. Sheet Margin at T., tied by Blue " <b>University of Va.</b> " pmk. on small piece, Very Fine .....	E. II
161	<b>3c Red (11).</b> Huge Margins, showing part of other stamp, Deep Rich Color & Impression, tied by <b>Str. Line "Siloam, N. Y., June"</b> and ms. "3" on small piece, Scarce & Extremely Fine, Incredibly Beautiful ..... (Photo)	E. III
162	<b>3c Red (11).</b> Pos. 92L1L, <b>Line through "Three Cents"</b> , Margins all around, incl. Sheet Margin at B., Very Fine Example of this Scarce Variety (Photo)	32.50
163	<b>3c Red (11).</b> <b>Five Line Recut in U. L. Triangle</b> , Large Margins, Small dotted Grid cancel, Very Fine ..... (Photo)	30.00
164	<b>3c Red, Claret (11, 11a).</b> Two Beautiful Shades, each with Sheet Margin and Large Margins other Sides, Blue pmks., Very Fine .....	E. II
165	<b>3c Red (11).</b> <b>Vert. Pair</b> , Huge Margins, except narrow in one spot, showing <b>Sheet Margin with Center Line at R.</b> , Wonderful Color, " <b>Paid 1</b> " in <b>Circle</b> Cancels, a Beautiful and Striking Pair ..... (Photo)	E. VII
166	<b>3c Red (11).</b> <b>Horiz. Strip of Three</b> , Huge Margins all around, showing parts of five other stamps, Brilliant Color, bordering on Orange Brown, Light Grid Cancels, Extremely Fine, a Lovely Strip .... (Photo)	15.00+



167	<b>3c Red (11). Horiz. Strip of Three</b> , Margins Virtually all around, "Paid 3" in Circle Cancels, Neat Strikes, a Very Pretty Strip ..... (Photo)	<b>E. IV</b>
168	<b>3c Red, Claret (11, 11a)</b> . Three Beautiful Shades, Large to Huge Margins, tied by Red Grid pmks., on small pieces, Very Fine, Choice lot .....	<b>E. II</b>
169	<b>3c Red (11)</b> . Four Shades, Diff. <b>Star</b> Cancels, Large margins all around, Very Fine .....	<b>E. IV</b>
170	<b>3c Red (11)</b> . Five Beautiful Shades, Diff. <b>Paid</b> Cancellations, Large to Huge Margins, Very Fine .....	<b>E. IV</b>
171	<b>3c Rose Red (11). Horiz. Strip of Six</b> , Pos. 43-48L4, Margins Nearly all around, showing parts of four other stamps, Rich Shade, Sharp Impression, Red Grid Cancels, a Lovely Strip ..... (Photo)	<b>E. V</b>

#### FIVE CENT RED BROWN

172	<b>5c Red Brown (12)</b> . Large to Huge Margins, showing parts of two other stamps, Beautiful Color & Impression, Lightly Cancelled, Extremely Fine (Photo)	150.00
173	<b>5c Red Brown (12)</b> . Large to Huge Margins, showing part of next stamp, Beautiful Deep Color, Extremely Fine ..... (Photo)	150.00
174	<b>5c Red Brown (12)</b> . Margins all around, Rich Dark Color, Blue town pmk., Exceptionally Fine, A Gorgeous Stamp ..... (Photo)	160.00
175	<b>5c Red Brown (12)</b> . Three extra large margins incl. L. sheet margin, large margin R., showing part of stamp at T., Gorgeous Color, Light Cancel, Exceptionally Fine & Handsome ..... (Photo)	150.00
176	<b>5c Red Brown (12)</b> . Large Margins, Deep Rich Color, "Charleston, S. C." pmk., Extremely Fine ..... (Photo)	150.00
177	<b>5c Red Brown (12)</b> . Large Margins, Deep Rich Color, Deep Indigo Blue town pmk., Extremely Fine ..... (Photo)	160.00
178	<b>5c Red Brown (12)</b> . Huge Margins, showing parts of two other stamps, Fresh Color, Red & Black pmks., Lightly Struck, Extremely Fine, Outstandingly Beautiful ..... (Photo)	160.00
179	<b>5c Red Brown (12)</b> . Large to Huge Margins, <b>Red Grid</b> Cancel, Gorgeous Color, Extremely Fine ..... (Photo)	160.00
180	<b>5c Red Brown (12)</b> . Margins all around, Huge on three Sides, showing parts of three other stamps, trivial corner crease in extreme tip of U. R. margin, still a Magnificent Stamp of Extraordinary Beauty ..... (Photo)	150.00
181	<b>5c Red Brown (12)</b> . Margins all around, Huge on two Sides, showing parts of two other stamps, Rich Color, Light Cancel, Exceptionally Fine Show-piece ..... (Photo)	150.00
182	<b>5c Red Brown (12)</b> . Margins all around, Bold <b>STEAM SHIP</b> two lines cancel, (used on incoming N. Y. Ship Mail), Very Fine, Rare cancel on this stamp ..... (Photo)	375.00
183	<b>5c Red Brown (12)</b> . Margins all around, Rich Color, "Steamship" Cancellation, Very Fine ..... (Photo)	375.00
184	<b>5c Red Brown (12)</b> . Margins all around, Neat Black "Paid" Cancel, Very Fine ..... (Photo)	225.00
185	<b>5c Red Brown (12)</b> . Margins all around, Lovely Color, Neat "Paid" in Circle Cancel, Very Fine ..... (Photo)	225.00
186	<b>5c Red Brown (12)</b> . Large Margins, Beautiful Color, tied by Black & Red pmks. on small piece, Very Fine ..... (Photo)	160.00
187	<b>5c Red Brown (12)</b> . Large Margins to just touched at bottom tied by Bold <b>Boston Paid</b> Cancel, on small piece, Fine, Very Striking ..... (Photo)	150.00

# TEN CENT GREEN

188	<b>10c Green, Ty. I (13).</b> Large to Huge Margins, Rich Color, <b>Bright Red Grid</b> Cancel, Extremely Fine ..... (Photo)	250.00
189	<b>10c Green, Ty. I (13).</b> Large to Huge Margins, showing trace of next stamp at T., Beautiful Color, <b>"New York Ocean Mail"</b> pmk., Extremely Fine (Photo)	225.00
190	<b>10c Green, Ty. I (13).</b> <b>R. B. Corner Pane Margins, with Center Line at R.</b> Pos. 100L, Large margins other sides, Bold <b>Solid Star</b> cancel., Extremely Fine & Striking ..... (Photo)	225.00+
191	<b>10c Green, Ty. I (13).</b> Large to Enormous Margins, showing Sheet Margin at B., generous portion of stamp at T., Magnificent Color, Extremely Fine ..... (Photo)	225.00
192	<b>10c Green, Ty. I (13).</b> Large to Huge Margins, Blue town pmk., Very Fine (Photo)	235.00
193	<b>10c Green, Ty. II (14).</b> Enormous Margins all around, showing parts of two other Stamps, an Extremely Fine Showpiece ..... (Photo)	45.00
194	<b>10c Green, Ty. II (14).</b> Gigantic Margins all around, incl. Sheet Margin at L., showing parts of two other stamps, Gorgeous Color, town pmk., and <b>Red Aachen</b> transit Extremely Fine, a Phenomenal Stamp, Ex-Newbury (Photo)	48.50
195	<b>10c Green, Ty. II (14).</b> Large to Huge Margins, incl. Sheet Margin at L., part of next stamp at T., Rich Color, Extremely Fine ..... (Photo)	45.00
196	<b>10c Green, Ty. II (14).</b> <b>T. L. Corner Sheet Margins,</b> Large Margins other Sides, Excellent Color, Light Grid Cancel, Extremely Fine, a Beauty (Photo)	45.00
197	<b>10c Green, Ty. II (14).</b> Large to Huge Margins, Blue town pmk., Very Fine (Photo)	46.00
198	<b>10c Green, Ty. II (14).</b> Large Margins all around, Deep Color, Bold <b>Red "Paid"</b> Cancel, Struck Twice, Wonderfully Fine ..... (Photo)	60.00
199	<b>10c Green, Ty. II (14).</b> R. Sheet Margin, Large margins other Sides, tied by <b>Bright Red</b> Mobile, Ala. pmk. on Blue Cuba <b>"NA1"</b> Cancel, Very Fine, Unusual and Pretty ..... (Photo)	48.50
200	<b>10c Green, Ty. II (14).</b> <b>Horiz. Pair,</b> Huge Margins, Gorgeous Color & Impression, <b>"Alexandria, Va."</b> pmks., Extremely Fine, a Magnificent Showpiece ..... (Photo)	125.00
201	<b>10c Green, Ty. II (14).</b> <b>Vert. Pair,</b> Large to Huge Margins, Deep Rich Color, <b>Red town</b> pmks., tiny scissors cut in margin between stamps, Very Fine ..... (Photo)	125.00
202	<b>10c Green, Ty. II, III (14, 15).</b> <b>Vert. Combination Pair,</b> Huge to Enormous Margins, showing parts of two other Stamps, Brilliant Color & Impression, Lightly Cancelled, Extremely Fine, a Magnificent Pair of Incredible Beauty ..... (Photo)	130.00
203	<b>10c Green, Ty. II, IV (14, 16).</b> <b>Horiz. Combination Pair,</b> Pos. 55-56L, <b>55L Recut at Bottom,</b> Margins all around, Gorgeous Rich Color, Lightly Cancelled, Very Fine, a Beautiful Pair ..... (Photo)	475.00
204	<b>10c Green, Type III (15).</b> Huge Margins all around incl. Sheet Margin at L., showing parts of two other Stamps, Deep Color, Extremely Fine, a Glorious Stamp ..... (Photo)	45.00
205	<b>10c Green, Ty. III (15).</b> Huge Margins, showing trace of next stamp at R., Rich Color, Pretty <b>Red Grid</b> Cancel, Extremely Fine ..... (Photo)	47.50
206	<b>10c Green, Ty. III (15).</b> Huge Margins all around( Gorgeous Strike of <b>"Paid"</b> in Circle Cancel, Extremely Fine, a Magnificent Stamp .... (Photo)	65.00
207	<b>10c Green, Ty. III (15).</b> Large Margins all around, Fresh Color, Neat <b>"Paid"</b> Cancel, Perfect Strike, Very Fine ..... (Photo)	65.00
208	<b>10c Green, Ty. III (15).</b> Margins all around, Huge T. & B. <b>Bold "3"</b> Cancel, Very Fine & Unused ..... (Photo)	65.00





165



163



166



167



172



171



173



174



175



176



177



178



179



180



181



182



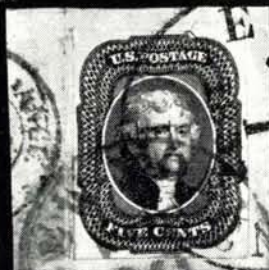
183



184



185



186



187



209	<b>10c Green, Ty. III (15).</b> Huge Margins, "N. Y. Steam Ship" in Circle Cancel, Extremely Fine ..... (Photo)	100.00
210	<b>10c Green, Ty. III (15).</b> Huge Margins, incl. Sheet Margin at R., showing part of next stamp at T., Pretty Color, Extremely Fine ..... (Photo)	45.00
211	<b>10c Green, Ty. III (15).</b> Large to Huge Margins, <b>Sheet Margin with Center Line at L.</b> , Fantastic Color & Impression, Blue "Cincinnati" pmk., Extremely Fine, a Beauty ..... (Photo)	46.00
212	<b>10c Green, Ty. III (15).</b> Margins all around, Beautiful Deep Shade, Brilliant Red "Paid" Cancel, Magnificent Strike, Very Fine ..... (Photo)	65.00
213	<b>10c Green, Ty. III (15).</b> Large to Huge Margins, showing part of stamp at R., <b>Magenta Grid</b> Cancel, Very Fine ..... (Photo)	50.00
214	<b>10c Green, Ty. III (15).</b> Large to Huge Margins, incl. <b>Sheet Margin at R.</b> showing <b>Center Line</b> , Deep Color, Very Fine ..... (Photo)	45.00
215	<b>10c Green, Ty. III (15).</b> Large Margins all around, Rich Color, Pretty <b>Blue Grid of Square Dots</b> Cancel, tiny corner crease, V. F. appearance ..... (Photo)	46.00
216	<b>10c Green, Ty. III, IV (15, 16).</b> Horiz. <b>Combination Pair</b> , Pos. 63-64L, Pos. 64L is the Recut T. & B., Huge Margins, showing parts of two other stamps, Gorgeous Rich Color, an Extremely Fine Pair of Exquisite Beauty ..... (Photo)	475.00+
217	<b>10c Green, Ty. III, IV (15, 16)</b> <b>Combination Strip of Three</b> , Pos. 85-87L, <b>Middle Stamp Recut at Top</b> , Margins all around, Mostly Huge, Deep Rich Color, a Magnificent Strip of Exceptional Beauty ..... (Photo)	545.00+
218	<b>10c Green, Ty. IV (16).</b> Pos. 74L, <b>Recut at T.</b> , Large to Huge Margins, showing parts of two other stamps, Rich Color, <b>Red Grid</b> Cancel, Extremely Fine, a Very Beautiful Stamp ..... (Photo)	350.00
219	<b>10c Green, Ty. IV (16).</b> Pos. 3R, <b>Recut at T.</b> , Huge Margins all around, showing part of next stamp at R., Deep Color, Extremely Fine, a Gem ..... (Photo)	325.00

## TWELVE CENT BLACK

220	<b>12c Black (17).</b> Incredible Margins, showing Sheet Margin at T. and parts of five other stamps, extra wide at sides, Neat, Black Grid & Red town Cancellations, Stitch Wmk., natural paper cloudiness, Extremely Fine, a Magnificent Showpiece, Unbelievably Beautiful ..... (Photo)	42.50
221	<b>12c Black (17).</b> Huge Margins all around, showing parts of two other stamps, Gorgeous Intense Color & Fine Impression, <b>Red "Paint"</b> "Mobile, Ala." pmk., Extremely Fine, Simply Gorgeous ..... (Photo)	42.50
222	<b>12c Black (17).</b> Large to Huge Margins, showing parts of three other stamps, Sharp Impression, Blue town pmk., Extremely Fine ..... (Photo)	42.50
223	<b>12c Black (17).</b> Huge Margins, showing parts of five other stamps, Beautiful Impression, Light Cancel, Extremely Fine, An Incredible stamp ..... (Photo)	40.00
224	<b>12c Black (17).</b> Large Margins, incl. Sheet Margin at R., Black Grid & <b>Red "19"</b> Cancels, Extremely Fine ..... (Photo)	E. VII
225	<b>12c Black (17).</b> Huge Margins, Showing part of next stamp at R., Beautiful Impression, <b>Red town</b> , pmk., Extremely Fine, with part Top Sheet margin ..... (Photo)	42.50+
226	<b>12c Black (17).</b> Enormous Margins, showing parts of four other stamps and Sheet Margin at R., Beautiful <b>Red Grid</b> Cancel, Extremely Fine, A Wonderfully Handsome Exhibition piece ..... (Photo)	42.50
227	<b>12c Black (17).</b> Huge Margins, incl. Sheet Margin at L. with Center Line, showing part of another stamp, Rich Shade, Sharp Impression, Neat Black "New Orleans" pmk., Extremely Fine, a Beauty ..... (Photo)	40.00
228	<b>12c Black (17).</b> Margins all around, Beautiful Early Impression, Clear <b>Red "10"</b> in Circle Cancel, Wonderful Strike, Very Fine ..... (Photo)	E. VII





188



189



190



192



191



199



193



194



195



196



197



200



201



198



203



204



205



206



202



207



210



211



208



209



212



213



214

229	<b>12c Black (17).</b> Margins all around, Huge at T. showing part of next stamp, tied by <b>Red "Paid" in frame</b> , on small piece, Very Fine <b>(Photo)</b>	<b>E. VIII</b>
230	<b>12c Black (17).</b> Large to Huge Margins, showing part of stamp at T., Stitch Wmk., Clear, Chicopee, Mass. <b>Intertwined Star</b> cancel. Perfect Strike, Very Fine <b>(Photo)</b>	<b>E. VIII</b>
231	<b>12c Black (17).</b> Large Margins, Bold <b>Blue "Paid"</b> Cancel, Struck Twice, Very Fine <b>(Photo)</b>	70.00
232	<b>12c Black (17).</b> Margins all around, Huge L. & B., showing parts of two other Stamps, Beautiful Impression, Blue "Cincinnati, O." pmk., Very Fine <b>(Photo)</b>	42.50
233	<b>12c Black (17).</b> L. Pane Margin, trace of Center Line, Ample to Huge Margins other Sides, showing part of stamp at B., Pretty Red Grid Cancel, Very Fine, a Wonderful Stamp <b>(Photo)</b>	42.50
234	<b>12c Black (17).</b> Large Margins, Brilliant <b>Red Grid</b> Cancel, tiny pin point thin speck, Very Fine appearance <b>(Photo)</b>	42.50
235	<b>12c Black (17).</b> Margins all around, tied by Beautiful "Socked-on-the-Nose" <b>Red "Griffin, Ga."</b> pmk. on small piece, Very Fine & Striking <b>(Photo)</b>	42.50
236	<b>12c Black (17).</b> Horiz. Pair, Fantastic Margins, showing Sheet Margin at L. and parts of six other stamps, Sharp Impression, Light Cancel, negligible tiny corner crease at bottom right, a Magnificent Pair of Great Beauty, Ex-Caspary <b>(Photo)</b>	95.00
237	<b>12c Black (17).</b> Horiz. Pair, Large to Huge Margins, showing parts of three other Stamps, Rich Color & Sharp Impression, L. Stamp Clear Double Transfer, Extremely Fine, a Wonderful Pair <b>(Photo)</b>	95.00
238	<b>12c Black (17).</b> Horiz. Pair, Large Margins, except barely touched in one spot at lower right, Bold <b>Bright Red "19"</b> Cancels, Marvelous Strikes, a Beautiful Pair <b>(Photo)</b>	95.00+
239	<b>12c Black (17).</b> Vert. Pair, Margins all around, Bold Black Grid Cancels, Very Fine <b>(Photo)</b>	95.00
240	<b>12c Black (17).</b> Horiz. Pair, Clear to Large Margins, Rich Color & Impression, tied by Brilliant Red " <b>Mobile, Ala., July 1</b> " pmk. and by Orange Foreign transit on small piece, Very Fine and Handsome <b>(Photo)</b>	110.00+
241	<b>12c Black (17).</b> Horiz. Pair, Huge Margins to frame line barely touched in one spot; showing parts of three other stamps, tied by Red Grids, Red New York, London markings on small piece, a Very Pretty Piece, The R. stamp Extremely Fine <b>(Photo)</b>	95.00
242	<b>12c Black (17).</b> Horiz. Pair, Large Margins three Sides, just touched at right, Beautiful Early Impression, tied with <b>Pair of 3c Red (11)</b> by Blue "Cincinnati, O." pmks, Clear Strikes on small piece, showing Red " <b>Franca</b> ", Very Handsome, Ex-Caspary <b>(Photo)</b>	90.00+

## 1857 ISSUE

### ONE CENT BLUE

243	<b>1c Blue, Ty. I (18).</b> Marvelous Color & Impression, Very Fine, a Beautiful Stamp <b>(Photo)</b>	120.00
244	<b>1c Blue, Ty. I (18).</b> Exceptional Color, Very Fine <b>(Photo)</b>	120.00
245	<b>1c Blue, Ty. I (18).</b> Fresh Color, Grid Cancel and part of boxed "Advertised", Very Fine <b>(Photo)</b>	120.00+
246	<b>1c Blue, Ty. II (20).</b> Plate XII, Exceptional Centering, Extremely Fine <b>(Photo)</b>	40.00
247	<b>1c Blue, Ty. II (20).</b> Plate XII, Beautiful Color, Exceptional Centering, <b>Vivid Red grid</b> cancel, Extremely Fine, A marvelous example from this little-used plate <b>(Photo)</b>	42.50





215



216



217



218



219



220



221



222



223



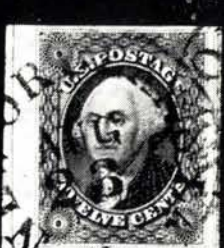
224



225



226



227



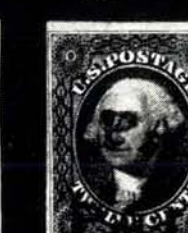
228



229



230



231



232



235



233



236



234



237



238



239



248	1c Blue, Ty. II (20). Pos. 23L2, <b>The Big Crack</b> , Very Fine, Very Scarce (Photo)	110.00
249	1c Blue, Ty. II (20). Octagonal "West Hartford, Conn." Fancy Grid with Postmasters initials "LB", Very Fine (Photo)	40.00
250	1c Blue, Ty. II (20). Plate XII, Neat <b>Red Carrier</b> pmk., Very Fine (Photo)	50.00
251	1c Blue, Ty. III (21). Well Centered, Rich Color, Neat Grid Cancel, Ex- tremely Fine (Photo)	125.00
252	1c Blue, Ty. III (21). Well Centered, Deep Color, Blue Cancel, small thin spot, Extremely Fine appearance (Photo)	130.00
253	1c Blue, Ty. III (21). Tied by Pretty <b>Red Carrier</b> pmk. on small piece, Very Fine (Photo)	150.00
254	1c Blue, Ty. III (21). <b>Horiz. Pair</b> , Rich Color, Neat Grid Cancels, one stamp a single short perf., otherwise an Extremely Fine Pair, Ex-Water- house (Photo)	285.00
255	1c Blue, Ty. IIIA (22). Brilliant Deep Color, Sharp Impression, Extremely Fine (Photo)	42.50
256	1c Blue, Ty. IIIA (22). Well Centered, Brilliant Color & Impression, tied by Pretty New York Carrier pmk. on small piece, Extremely Fine (Photo)	60.00
257	1c Blue, Ty. IIIA (22). Marvelous Centering, Lovely Color, Extremely Fine (Photo)	42.50
258	1c Blue, Ty. IIIA (22). Plate XI, Very Lightly Cancelled, Exceptionally Fine (Photo)	42.50
259	1c Blue, Ty. IIIA (22). Plate XI, Well Centered, Neatly tied by town pmk. on small piece, Very Fine (Photo)	42.50
260	1c Blue, Ty. V (24). Pretty <b>Star Cancel</b> , Very Fine Strike (Photo)	E. III
261	1c Blue, Ty. V (24). Clear "3" in Circle Cancel, Very Fine (Photo)	17.50
262	1c Blue, Ty. V (24). Brilliant <b>Green Grid</b> Cancel, Extremely Fine (Photo)	40.00
263	1c Blue, Ty. V (24). Well Centered, <b>Purple Maltese Cross</b> Cancel, Ex- tremely Fine (Photo)	E. IV
264	1c Blue, Ty. V (24). Pos. 51L8 with <b>Part Imprint</b> inside perfs., Very Fine (Photo)	E. III
265	1c Blue, Ty. V (24). Light corner crease, Large "M" in Circle Cancel, Very Fine Strike (Photo)	E. III
266	1c Blue, Ty. V (24). Bold "J" in Circle Cancel, Very Fine Strike (Photo)	E. III
267	1c Blue, Ty. V (24). Tied by Bold <b>Balt. Paid</b> in Double Circle Cancel on small piece, Very Fine (Photo)	E. II
268	1c Blue, Ty. V (24). Tied by <b>Green "Clarksburgh, Va."</b> pmk. on piece of embossed cover, Marvelous Strike, Very Fine (Photo)	40.00
269	1c Blue, Ty. V (24). Tied by Blue " <b>Baltimore Rail Road</b> " pmk., (Remele Blc) Bold Strike, on small piece, Very Fine and Beautiful (Photo)	E. VII
270	1c Blue, Ty. V (24). <b>Horiz. Pair</b> , tied by Blue <b>Balt(imore) Paid in Double</b> <b>Circle</b> Cancels, Extremely Fine (Photo)	E. III
271	1c Blue, Ty. V (24). Two Shades, one tied by Clear Blue University of Va. pmk., Very Fine (Photo)	E. II
272	1c Blue, Ty. V (24). Three Shades, each with Diff. <b>Carrier</b> pmk. Very Fine, Choice lot (Photo)	E. II
273	☐ 1c Blue, Ty. IV (24). <b>Block</b> , Blue Grids and Cincinnati pmks., few perfs bit strengthened, Very Fine (Photo)	110.00
274	☐ 1c Blue, Ty. V (24). <b>Block</b> with T. Sheet Margin, New Orleans 1858 pmks., U. R. stamp negligible surface rubs, otherwise Very Fine and Handsome Block (Photo)	110.00

**LOTS ON VIEW FROM OCTOBER 5, 1972**  
**OFFICES OPEN SATURDAY BEFORE SALE**  
**AND ON COLUMBUS DAY, OCTOBER 9, 1972**





240



241



253



251



252



254



255



256



257



258



259



260



261



262



263



264



265



266



242



243



244



245



246



247



248



249



250



### THREE CENT (CANCELS)

275	<b>3c Rose (25).</b> Tied by Bold <b>"Ship"</b> Cancel, Marvelous Strike, on small piece, Very Pretty ..... (Photo)	E. III
276	<b>3c Red (26).</b> U. L. Sheet Corner Margins, tied by Bold "Hornellsville, N. Y., 1859" pmk. on small piece, Very Fine .....	E. II
277	<b>3c Red (26).</b> Clear "Conshohocken, Pa." <b>Shield in Circle</b> Cancel, Very Fine Strike ..... (Photo)	E. III
278	<b>3c Red (26).</b> "Harrisburg, Pa." <b>Masonic Square &amp; Compass in Circle</b> Cancel, Very Fine ..... (Photo)	E. III
279	<b>3c Red (26).</b> Well Centered, Bold <b>"Free"</b> , Extremely Fine ..... (Photo)	17.50
280	<b>3c Red (26).</b> Deep Shade, <b>Steamboat</b> Cancel, Bold Strike, Very Fine (Photo)	15.00
281	<b>3c Red (26).</b> Exceptionally Well Centered, Bold <b>"Due"</b> Cancel, Unusually Clear Strike, Extremely Fine ..... (Photo)	E. III
282	<b>3c Red (26).</b> Deep Shade, Bold <b>"New York Ship"</b> pmk., Fine .... (Photo)	E. III
283	<b>3c Red (26).</b> Tied by Bold Large <b>"Steamer Perry"</b> in Circle Cancel on small piece, Beautiful complete Strike, usual centering but wonderful example of the cancel ..... (Photo)	E. V
284	<b>3c Red (26).</b> Tied by Clear <b>"Lou. &amp; Fran. &amp; Lex. &amp; Fran. R. R., Spring Station"</b> pmk. in Blue on small piece, Very Fine, Beautiful Example of this Rare marking (Remele L10S-f) .....	E. III
285	<b>3c Red (26).</b> Tied by Large <b>"N. York Steamship"</b> in Circle Cancel on small piece, Beautiful Strike, Very Fine ..... (Photo)	35.00
286	<b>3c Red (26).</b> Vert. Pair, tied by <b>"Boston Br. Pkt."</b> pmk., Gorgeous Strike, on small piece, Very Fine ..... (Photo)	E. IV
287	<b>3c Red (26).</b> Tied by <b>Blue Waving Flag</b> Cancel on small piece, Fine (Photo)	E. V
288	<b>3c Red (26).</b> Tied by Pretty <b>Green "Paid 3"</b> in Circle on small piece, Brilliant Strike, Very Fine ..... (Photo)	E. III
289	<b>3c Red (26).</b> Tied by Bold <b>Green "Green Cut, Ga."</b> pmk. on small piece, Gorgeous Strike, Very Fine ..... (Photo)	18.50
290	<b>3c Red (26).</b> Pretty <b>"Post Office Business, Free"</b> in Double Oval Cancel, Beautiful Strike, Short Perf. ....	E. II
291	<b>3c Red (26).</b> Four Str. Lines <b>"Hartland, Michigan, April . . ., 185 . ."</b> pmk., Very Fine Strike ..... (Photo)	E. III
292	<b>3c Red (26).</b> Pretty <b>Star of David</b> Cancel, Very Fine Strike ..... (Photo)	E. II
293	<b>3c Red (26).</b> Bold Negative <b>8-point Star in Circle</b> Cancel, Very Fine Strike ..... (Photo)	E. III
294	<b>3c Red (26).</b> <b>Monogram in Fancy Squared Circle</b> Cancel, tiny tear at top, otherwise Very Fine .....	E. II
295	<b>3c Red (26).</b> Horiz. Pair, Bold <b>Green Grid</b> Cancells, a Very Fine and Striking Pair ..... (Photo)	37.00
296	<b>3c Red (26).</b> Two Shades, Diff. <b>Star</b> Cancells, Very Fine Strikes .....	E. II
297	<b>3c Red (26).</b> Four Shades, three diff. "5"s and one "10" Cancel, Very Fine Strikes, Choice lot .....	E. III
298	<b>3c Red (26).</b> Four Shades, Diff. Cancells, incl. Red Carrier, Blue French transit, Sunburst, Very Fine Strikes, Choice lot .....	E. III

### FIVE CENT BROWN (SHADES)

299	<b>5c Brick Red (27).</b> Well Centered, Lovely Deep Color, Light Cancel, Extremely Fine, Ex-Newbury ..... (Photo)	125.00
300	<b>5c Brick Red (27).</b> Well Centered, Rich Color, Light 1859 town pmk., Extremely Fine, A marvelous example, seldom seen in such utterly magnificent condition ..... (Photo)	125.00
301	<b>5c Brick Red (27).</b> Bright Color, Light Cancel, Very Fine ..... (Photo)	125.00





267



268



270



269



273



274



275



283



277



278



280



281



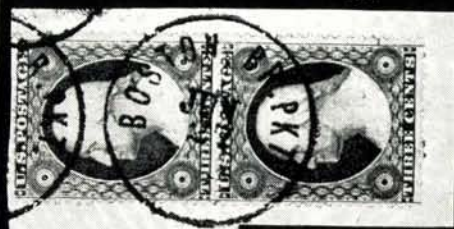
279



282



285



286



287



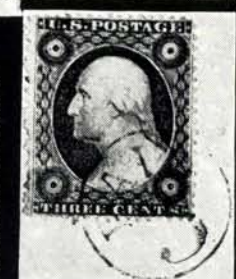
291



292



293



288



302	<b>5c Brick Red (27).</b> Beautiful Color, Small Blue <b>Dotted Grid</b> Cancel in square, Perfect Strike, Very Fine, A Rare cancel on this stamp .... <b>(Photo)</b>	125.00+
303	<b>5c Brick Red (27).</b> Horiz. Pair, Well Centered, Rich Color, New Orleans pmk., Red New York transit, minor perf. reinforcements, an Extremely Fine and Wonderful Pair, Ex-Newbury ..... <b>(Photo)</b>	275.00
304	<b>5c Brick Red (27).</b> Horiz. Pair, Fresh Color, Light Cancel, tiny corner perf. toning in one, Very Fine, Beautiful Pair ..... <b>(Photo)</b>	275.00
305	<b>5c Red Brown (28).</b> Remarkably Well Centered, Light Cancel, Brilliant and Extremely Fine ..... <b>(Photo)</b>	75.00
306	<b>5c Red Brown (28).</b> Fresh Color, Black & Red town cancels, Exceptionally Fine ..... <b>(Photo)</b>	77.50
307	<b>5c Red Brown (28).</b> Vert. Pair, Magnificent Color, Well Centered, Lightly Cancelled, Extremely Fine ..... <b>(Photo)</b>	165.00
308	<b>5c Deep Red Brown (28).</b> Horiz. Strip of Three, Beautifully Centered, Bright Color, tied by "Water Cure, Pa." pmk. on small piece, Extremely Fine, Magnificent Showpiece ..... <b>(Photo)</b>	300.00
309	<b>5c Red Brown (28).</b> Horiz. Strip of Three, tied by town and Red "New York, Paid, 6" pmks, on portion of 1858 cover, tiny toning spots, negligible short perf. on one, otherwise Very Fine ..... <b>(Photo)</b>	300.00
310	<b>5c Indian Red (28A).</b> Well Centered, Gorgeous Rich Color, Light town pmk., Extremely Fine, a Wonderful Gem, with P.F. Certificate of pair from which this magnificent stamp was taken ..... <b>(Photo)</b>	300.00
311	<b>5c Indian Red (28A).</b> Well Centered, Deep Rich Color, Wonderful Impression, "New Orleans, 1858" pmk., Sheet Margin with Perforated Center Line at L., Extremely Fine, a Gem ..... <b>(Photo)</b>	300.00
312	<b>5c Indian Red (28A).</b> Brilliant Color, Choice Impression, Blue & Red Cancellation, Very Fine, a Gorgeous Stamp ..... <b>(Photo)</b>	325.00
313	<b>5c Indian Red (28A).</b> Brilliant Color, tied to small piece by Bold "PAID" Cancel, tiny toned spot, perfs. in at left, a Rare and Handsome Piece <b>(Photo)</b>	300.00+
314	<b>5c Indian Red (28A).</b> Horiz. Pair with R. Margin showing perforated Center Line, Brilliant Color, Blue Cancel, one stamp blunt perf. tip, slightly reinforced, a Very Fine and Rare Pair ..... <b>(Photo)</b>	800.00
315	<b>5c Brown, Ty. I (29).</b> Perfectly Centered, Deep Rich Color, barely Cancelled, Extremely Fine, a Magnificent Gem, Ex-Newbury ..... <b>(Photo)</b>	52.50
316	<b>5c Brown, Ty. I (29).</b> Well Centered, Fresh Color, Bold "Paid" Cancel, Extremely Fine & Eye-catching ..... <b>(Photo)</b>	75.00
317	<b>5c Brown, Ty. I (29).</b> Exceptional Centering, Fresh, Red town pmk., Extremely Fine ..... <b>(Photo)</b>	57.50
318	<b>5c Brown, Ty. I (29).</b> Perfectly Centered, Pretty Shade, 1860 town pmk., Extremely Fine ..... <b>(Photo)</b>	57.50
319	<b>5c Brown, Ty. I (29).</b> Rich Color, Blue town pmk., Very Fine .... <b>(Photo)</b>	55.00
320	<b>5c Brown, Ty. I (29).</b> Separated by scissors at sides, showing parts of both other stamps, perfs. shifted to right, Spectacular Piece ..... <b>(Photo)</b>	52.50
321	<b>5c Orange Brown, Ty. II (30).</b> Well Centered, Brilliant Color & Sharp Impression, Red Cancel, Extremely Fine, Ex-Newbury ..... <b>(Photo)</b>	130.00
322	<b>5c Orange Brown, Ty. II (30).</b> Vert. Pair, Brilliant Red Grid and Red French Ship Cancels, a Rare and Beautiful Pair, Extremely Fine, Ex-Newbury ..... <b>(Photo)</b>	400.00
323	<b>5c Brown, Ty. II (30A).</b> Well Centered, Neat Black Grid Cancel, Extremely Fine ..... <b>(Photo)</b>	37.50
324	<b>5c Brown, Ty. II (30A).</b> Perfectly Centered, Black & Red Cancels, Extremely Fine, with unusually wide margins ..... <b>(Photo)</b>	42.50
325	<b>5c Brown, Ty. II (30A).</b> Perfectly Centered, Deep Blue Grid Cancel, Lovely Strike, Extremely Fine ..... <b>(Photo)</b>	42.50





295

299

300

289



301

302

303

305



307

304



309

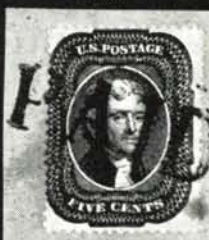


310

311



308



312

313

314

315

316



317

318

319

320

321



326	<b>5c Brown, Ty. II (30A). Deep Shade, Wonderfully Well Centered, Perfect Blue "Louisville, Ky." pmk., Extremely Fine</b> ..... (Photo)	42.50
327	<b>5c Brown, Ty. II (30A). Perfs in at bottom, rounded corner perf., Gorgeous Green Grid Cancel, Very Fine and Choice Strike, Very Scarce</b> .... (Photo)	120.00
328	<b>5c Brown, Ty. II (30A). Rich Color, Bright Blue and Brilliant Red Cancels, couple irregular perfs. at bottom, still Very Fine, Colorful and Stunning</b> ..... (Photo)	42.50
329	<b>5c Brown, Ty. II (30A). Well Centered, Rich Color, Bold Red Grid Cancel, one short perf., otherwise Very Fine</b> ..... (Photo)	42.50
330	<b>5c Brown, Ty. II (30A). Beautiful Color &amp; Impression, Large part of Clear Black "Boston Br. Pkt." pmk., Very Fine</b> ..... (Photo)	E. VIII
331	<b>5c Orange Brown, Ty. II (30A). Large part of Pretty Bright Red "Boston Br. Pkt." pmk., negligible gum toning on back, Very Fine</b> ..... (Photo)	E. VII
332	<b>5c Brown, Ty. II (30A). Fine Centering, tied on piece by Bold Blue Baltimore pmk., Red "New York Br. Pkt." pmk., Pretty and Colorful, Very Attractive piece</b> ..... (Photo)	42.50
333	<b>5c Brown, Ty. II, 10c Green, Ty. V (30A, 35). Tied by Clear "Paid" Cancels on small piece, Extremely Fine, Pretty Piece, Ex-Newbury</b> .... (Photo)	75.00+
334	<b>5c Brown, Ty. II (30A). Vert. Pair, Well Centered, Deep Shade, Brilliant Red Grid Cancels, Extremely Fine, A Gorgeous Pair</b> ..... (Photo)	85.00+
335	<b>5c Brown, Ty. II (30A). Horiz. Pair, Blue "Louisville, Ky." pmk., Very Fine &amp; Handsome</b> ..... (Photo)	85.00+
336	<b>5c Brown, Ty. II, 30c Orange (30A, 38). Horiz. Strip of Three of first tied by Vivid Red Grids on small piece, 5c centered to bottom, 30c Very Fine, Handsome Showpiece</b> ..... (Photo)	195.00+

#### TEN CENT GREEN

337	<b>10c Green, Ty. I (31). Rich Color, Bright Green town pmk., centered bit to top, Very Fine</b> ..... (Photo)	225.00
338	<b>10c Green, Ty. I (31). Rich Color, Brilliant Red pmk., Fine</b> ..... (Photo)	145.00
339	<b>10c Green, Ty. I (31). Horiz. Strip of Three, Exceptionally Well Centered, Rich Color, Neat Grid Cancels, a Very Fine Strip of the Utmost Rarity, listed in Scott but unpriced, with P. F. Certificate (Cat. \$460.00 as pair &amp; single)</b> ..... (Photo)	—
340	<b>10c Green, Ty. II (32). Well Centered, Rich Color, Neat Black &amp; Red pmks., Extremely Fine</b> ..... (Photo)	28.50
341	<b>10c Green, Ty. II (32). Deep Rich Shade, Brilliant Red New York pmk., Very Fine</b> ..... (Photo)	28.50
342	<b>10c Green, Ty. II (32). Pretty Blue Grid Cancel, Bold Stunning Strike, Very Fine</b> ..... (Photo)	27.50
343	<b>10c Green, Ty. II (32). Beautiful Color, Clear "Paid" Cancel, centered very slightly to top, Very Fine</b> ..... (Photo)	37.50
344	<b>10c Green, Ty. II (32). Horiz. Pair, Rich Color, Fine Centering, Clear "New York Ocean Mail" pmk., Gorgeous Strike</b> ..... (Photo)	E. VI
345	<b>10c Green, Ty. II, IV (32, 34). Combination Strip of Three, Pos. 52-54L1, R. Stamp Recut at B., Deep Rich Color, tied by Black &amp; Red Cancellations on small piece, Mixed Centering, Fine-Very Fine, A Gorgeous Strip of Great Beauty</b> ..... (Photo)	326.50
346	<b>10c Green, Ty. III (33). Well Centered, Black town and Blue French transit pmks., Extremely Fine</b> ..... (Photo)	27.50
347	<b>10c Green, Ty. III (33). "Jumbo" Margins, Black New Orleans pmk., Extremely Fine</b> ..... (Photo)	26.50
348	<b>10c Green, Ty. III (33). Blue Cincinnati pmk., Very Fine</b> ..... (Photo)	27.50
349	<b>10c Green, Ty. III (33). Fresh Color, Clear Circular "Steamship" Cancel, Very Fine</b> ..... (Photo)	55.00





324

325

326

327

328



322



329



330



331



333



332



335



337



338



334



336



340



341



339



342



344



350	<b>10c Green, Ty. III, IV (33, 34). Horiz. Combination Pair, Pos. 86-87L1, L. Stamp Recut at T., Exceptionally Well Centered, Black Grid Cancels, Very Fine, a Wonderful Pair</b> ..... (Photo)	300.00
351	<b>10c Green, Ty. IV (34). Pos. 64L1, Recut T. &amp; B., Well Centered, Rich Color, Unusual Black Grid, Extremely Fine, a Gem</b> ..... (Photo)	300.00
352	<b>10c Green, Ty. IV (34). Pos. 3R1. Recut at T., Lightly Cancelled, Very Fine</b> ..... (Photo)	225.00
353	<b>10c Green, Ty. IV (34). Pos. 74L1, Recut at T., Beautiful Color, Blue town pmk., centered bit to top, Trimmed from sheet with scissors leaving sharp edges to perfs., Very Fine</b> ..... (Photo)	225.00
354	<b>10c Green, Ty. V (35). Well Centered, Blue Cincinnati pmk., Very Fine</b> ..... (Photo)	14.00
355	<b>10c Green, Ty. V (35). Well Centered, Red "Paid" in circle cancel., Very Fine &amp; Handsome</b> ..... (Photo)	14.00
356	<b>10c Green, Ty. V (35). Part Imprint within Margin, tied by pmk. &amp; Neat Grid on small piece, Spectacular</b> ..... (Photo)	13.00+
357	<b>10c Green, Ty. V (35). Wide Imperf. margin with Center Line at L., Blue Chicago Supplementary Mail pmk., Very Fine &amp; Rare</b> ..... (Photo)	40.00+
358	<b>10c Green, Ty. V (35). Wide Imperf. margin with Center Line at L., Blue town pmk., Very Fine</b> ..... (Photo)	14.00
359	<b>10c Green, Ty. V (35). Red "New York, Paid" pmk., Very Fine</b> .... (Photo)	14.00
360	<b>10c Green, Ty. V (35). Part Imprint within Margin, tied by neat Red Grid on small piece, Very Fine</b> ..... (Photo)	E. III
361	<b>10c Green, Ty. V (35). Bright Red Dotted Grid Cancel, Very Fine</b> (Photo)	14.00
362	<b>10c Green, Ty. V (35). Beautiful Centering and Color, Dark Magenta Town Cancel, Very Fine, Scarce</b> ..... (Photo)	20.00
363	<b>10c Green, Ty. V (35). Deep Rich Color, Bold "10" Cancel, Very Fine</b> ..... (Photo)	40.00
364	<b>10c Green, Ty. V (35). Rich Shade, Bold "10" Cancel, small scissors cut at top, Fine appearance</b> ..... (Photo)	40.00
365	<b>10c Green, Ty. V (35). Fine Centering, Scarce Large "10" Cancel, Very Fine Bold Strike</b> ..... (Photo)	40.00
366	<b>10c Green, Ty. V (35). Bold Pentagon within Star Cancel, Very Fine</b> ..... (Photo)	E. III
367	<b>10c Green, Ty. V (35). Rich Color, Well Centered, Beautiful Quill Pen "Weston, Mass" "W" Cancel, Extremely Fine, Very scarce on this stamp</b> ..... (Photo)	E. IV
368	<b>10c Green, Ty. V (35). Rich Color, San Francisco pmk. &amp; Bold Red "19" Cancel, Struck Twice, Extremely Fine</b> ..... (Photo)	40.00
369	<b>10c Green, Ty. V (35). Well Centered, Deep Shade, Clear "Boston Br. Pkt. Paid" pmk., Extremely Fine</b> .... (Photo)	E. III
370	<b>10c Green, Ty. V (35). Large part of Clear "New York Ocean Mail" pmk., Very Fine</b> ..... (Photo)	E. III
371	<b>10c Green, Ty. V (35). Clear New York Ocean Mail pmk. in Red, Exceptionally Fine Example of this Extremely Rare Cancellation in Red, Very few known, believed to have been used for a short time on mail to Havana, Cuba</b> ..... (Photo)	E. IX
372	<b>10c Green, Ty. V (35). Well Centered, Deep Shade, tied by Red Grid, and by "New York Ocean Mail" pmk. on small piece, Extremely Fine</b> ..... (Photo)	E. III
373	<b>10c Green, Ty. V (35). Deep Shade, Large part of Bold "New York, Ship" Cancellation, Very Fine</b> ..... (Photo)	E. III
374	<b>10c Green, Ty. V (35). Mobile, Ala. 1859 pmk. over Str. Line "Steam", Very Fine, a Beauty</b> ..... (Photo)	E. IV
375	<b>10c Green, Ty. V (35). Neatly Struck Green town pmk., couple clipped perfs. at bottom, Brilliant and Very Fine Strike</b> ..... (Photo)	40.00
376	<b>10c Green, Ty. V (35). "Paid 3" in Circle Cancel, Very Fine</b> ..... (Photo)	20.00





343



345



346



347



348



349



350



351



352



353



354



355



356



357



358



359



360



361



362



363



364



365



366



367



368



369



370



371



373



374



375



376



384



377



378



379



380



382



377	10c Green, Ty. V (35). Part Imprint within Margin, Clear "Paid" in Circle Cancel, Very Fine ..... (Photo)	20.00
378	10c Green, Ty. V (35). Deep Rich Shade, "Paid" in Fancy Grid Cancel, Very Fine and Handsome, a Gem ..... (Photo)	E. V
379	10c Green, Ty. V (35). Neat Chicopee, Mass. "Intertwined Star" Cancel, Wonderful Strike, Very Fine ..... (Photo)	E. IV
380	10c Green, Ty. V (35). Circular "Steamship" Cancellation, minute tear at bottom, Very Fine appearance ..... (Photo)	28.50
381	10c Green, Ty. V (35). Full Straddle at L., tied by clear "Council Bluffs, Iowa" 1860 pmk. on small piece, Fine, Beautiful Strike, Exceptionally wide straddle ....	E. III
382	10c Green, Ty. V (35). Fine Centering, tied by Clear "Boston Br. Pkt." pmk. on small piece, Fantastic Strike ..... (Photo)	E. IV
383	10c Green, Ty. V (35). Well Centered, Beautiful Shade, Brown Town Cancel, tiny thin spot, Very Fine appearance ..... (Photo)	14.00
384	10c Green, Ty. V (35). Vert. Pair, Deep Shade, Black New York 1860 pmk. & Bold Red Grid Cancels, Very Fine ..... (Photo)	30.00+
385	10c Green, Ty. V (35). Horiz. Pair, "Alexandria, Va." pmks., Very Fine ..... (Photo)	30.00
386	10c Green, Type V (35). Horiz. Pair, Brilliant Red Grid Cancels, Fine and Handsome Pair ..... (Photo)	30.00+
387	10c Green, Ty. V (35). Horiz. Strip of Three, Neat Boston "Paid" in Grid Cancels, Extremely Fine, a Gorgeous Strip ..... (Photo)	43.00+

#### TWELVE CENT BLACK

388	12c Black, Plate III (36b). Bright Red Grid Cancel, Beautiful Strike, Extremely Fine ..... (Photo)	21.50
389	12c Black (36). Brilliant Red Grid Cancel and Red town pmk., Very Fine ..... (Photo)	21.50
390	12c Black (36). Neat Black Grid Cancel, Pretty Strike, Very Fine ..... (Photo)	19.00
391	12c Black, Plate III (36b). Pretty "Socked-on-the-Nose" Black Rosette Cancel, Perfect Strike on a choice, Beautifully centered stamp, Very Fine ..... (Photo)	20.00+
392	12c Black, Plate III (36b). Clear Bright Green Grid Cancel, Pretty Strike, Very Fine ..... (Photo)	70.00
393	12c Black (36). Tied by clear Red "Paid" in Circle Cancel, Bold "3" on small piece, Very Fine ..... (Photo)	E. IV
394	12c Black (36). Imperf. Pane Margin at L., part of other stamp at R., tied by Black "Mobile, Ala." pmk. on small piece, Very Fine, Very Pretty ..... (Photo)	19.00
395	12c Black (36). Straddle Copy, showing Center Line and Large part of other Stamp at R., Red Grid Cancel, Fine Centering, Very Attractive ..... (Photo)	21.50+
396	12c Black (36). Horiz. Pair, slightly reinforced, Bold "Paid" in Circle Cancels, Very Fine ..... (Photo)	70.00+
397	12c Black (36). Horiz. Pair, Fine Centering, tied by Str. Line "Charlestown, Md." Cancel on small piece, Pretty Strike, Handsome and Very Rare ..... (Photo)	E. VI
398	12c Black, Plate III (36b). Vert. Pair, Wonderfully Well Centered, Wide side margins, Exceptionally Fine ..... (Photo)	43.50

**LOTS ON VIEW FROM OCTOBER 5, 1972  
OFFICES OPEN SATURDAY BEFORE SALE  
AND ON COLUMBUS DAY, OCTOBER 9, 1972**





385



387



388



386



389



390



391



392



393



394



397



395



396



399



400



398



401



402



404



403



405



406



407



408



409



411



412



410



## TWENTY-FOUR CENT GRAY

399	<b>24c Lilac (37).</b> Deep Rich Color, "Boston Paid" Cancel, Neatly Struck, Extremely Fine ..... (Photo)	60.00
400	<b>24c Gray (37).</b> Brilliant, Fresh Red Grid Cancel, Extremely Fine, A Show-piece ..... (Photo)	65.00
401	<b>24c Gray (37).</b> Exceptional Centering, "San Francisco, 1864" pmk., Extremely Fine, a Beauty ..... (Photo)	60.00
402	<b>24c Lilac (37).</b> Imperf. Straddle Margin with Center Line at R., Light Grid Cancel, paper faintly toned, still Extremely Fine, a Phenominal Stamp ..... (Photo)	60.00
403	<b>24c Gray (37).</b> Tied by Blue "Cincinnati, O." pmk., transits on small piece, Extremely Fine ..... (Photo)	62.50
404	<b>24c Gray (37).</b> Deep Shade, Very Fine ..... (Photo)	60.00
405	<b>24c Red Lilac (37b).</b> Well Centered, Black & Red Cancellations, Very Fine, an Exceptional Copy ..... (Photo)	65.00
406	<b>24c Gray (37).</b> Part of Blue Cincinnati pmk., Very Fine ..... (Photo)	62.50
407	<b>24c Gray (37).</b> Bright Red "Boston Br. Pkt. Paid" pmk., applied twice, Beautiful Strikes, rounded corner perf., Very Fine Example of this Rare Usage ..... (Photo)	E. VII
408	<b>24c Gray (37).</b> Beautiful Centering, Red Grid Cancel, minute corner perf. crease, Extremely Fine appearance ..... (Photo)	65.00
409	<b>24c Gray Lilac (37a).</b> Imperf. Pane Margin with Center Line at L., Beautiful Shade, tied by Vivid Red "Boston Br. Pkt. Paid" pmk. on small piece, Stunning Strike, Very Fine, A Gorgeous stamp, Ex-Caspary ..... (Photo)	200.00
410	<b>24c Gray (37).</b> Rich color & Impression, tied by Blue "Clarksville, Ten." 1860 pmk. on small piece, Very Fine ..... (Photo)	62.50
411	<b>24c Gray (37).</b> Tied by Blue "Baltimore, Md." pmk. on small piece, light corner crease, Very Fine appearance ..... (Photo)	62.50
412	<b>24c Lilac (37).</b> Fine Centering, Beautiful Color, Clear "New York Ocean Mail" pmk., Very Fine Strike, a Rare cancel on this stamp ..... (Photo)	E. X
413	<b>24c Lilac (37).</b> Horiz. Pair, Fantastic Color, Well Centered, Striking Bright Red Grid Cancels, Extremely Fine, A Magnificent Pair .... (Photo)	160.00+
414	<b>24c Gray (37).</b> Horiz. Pair, Well Centered, Blue town pmk., Very Fine, Scarce ..... (Photo)	160.00+

## THIRTY CENT ORANGE

415	<b>30c Orange (38).</b> Well Centered, Magnificent Color, Extremely Fine, Outstanding! ..... (Photo)	70.00
416	<b>30c Orange (38).</b> Beautiful Centering, Deep Shade, Very Lightly Cancelled, Extremely Fine, A Gorgeous stamp ..... (Photo)	70.00
417	<b>30c Orange (38).</b> Nicely Centered, Deep Shade, Large Five pointed Star Cancel, Extremely Fine ..... (Photo)	E. VIII
418	<b>30c Orange (38).</b> Well Centered, Brilliant Rich Color, Red Grid Cancel, Red German transit, Extremely Fine, A Gorgeous Showpiece ..... (Photo)	75.00
419	<b>30c Orange (38).</b> Gorgeous Deep Rich Shade, Pretty Black Grid Cancel, Exceptionally Fine ..... (Photo)	70.00
420	<b>30c Orange (38).</b> Well Centered, tied by Pretty Black Grid and by Red Boxed "Aachen, Franco" on small piece, Extremely Fine ..... (Photo)	75.00
421	<b>30c Orange (38).</b> Rich, Deep Color, Black "Mobile, Ala. 1860" and bit of Red New York pmks., Very Fine ..... (Photo)	75.00
422	<b>30c Orange (38).</b> Well Centered, Pretty Color, "New York 1861" pmk., Wonderfully Fine, A Gorgeous stamp ..... (Photo)	72.50
423	<b>30c Orange (38).</b> Well Centered and Fresh, Red "New York, Paid" pmk., microscopic scuff on two perf. tips, Very Fine ..... (Photo)	75.00





413



414



415



416



417



418



419



421



422



420



433



423



424



425



426



427



428



431



432



434



435



436



437

If not called for in ten days return to

**Merrimac House,**

Cor. Merrimac & Friend Streets,  
Near the B. & M., Fitchburg,  
and Eastern Depots. **BOSTON.**

Thoroughly Renovated, Painted & Furnished.  
TERMS, \$2.00 PER DAY.

JAS. L. HANSON & Co., Proprietors.

Connected with the House is a Sale Stable.  
Room for One Hundred Horses.



*Mr Edward O'Connell*  
*Proprietor*  
*Grand Hotel de Russie*

*To Russia (United)*

424	<b>30c Orange (38).</b> Bold Blue Grid & Light Red Cancels, Very Fine, in a rich deep shade ..... (Photo) 75.00
425	<b>30c Orange (38).</b> Vivid Color, Pretty Dotted Grid Cancel, Very Fine & Handsome ..... (Photo) 70.00
426	<b>30c Orange (38).</b> Beautiful Rich Color, Clear Green "Paid" Cancel, Pretty Strike, perfs just in at top, Fine, Rare cancel ..... (Photo) 150.00
427	<b>30c Orange (38).</b> Deep Shade, Bright Red "Paid" in Circle Cancel, Fine Centering, Very Handsome ..... (Photo) 85.00
428	<b>30c Orange (38).</b> Deep Shade, Clearly Struck "172" in Concentric octagon, postmark of Singapore while under British India P. O., Used as a forwarding postmark on a cover to the Far East, Fine, Extremely Rare usage ..... (Photo) E. VIII
429	<b>30c Orange (38).</b> Perfs. touch at top, tied by Pretty Washington City, D. C., Free" 1861 pmk. on small piece, Fine ..... 70.00+
430	✉ <b>30c Orange (38).</b> Used with two 3c Red (26) all tied by neat Boston "Paid" on large part of cover front, Red "New York Paid All, Br. Transit". Claimed to have been used to Russia on a basis of part of the address; such evidence is not conclusive, simply a Fine & Rare usage, demonstrating a very uncommon rate ..... (Photo) E. VII

#### NINETY CENT BLUE

431	<b>90c Blue (39).</b> Used, Clear "New York Ocean Mail" pmk., Beautiful Color, Tiny thin spot, Very Fine appearing Example of this very great Rarity, only three on record with this cancellation, with P. F. Certificate, "A Sensational Beauty" ..... (Photo) 1,000.00+
432	<b>90c Blue (39).</b> Clear "New York Ocean Mail" Cancellation, Rich Color, Fine Example of this Great Rarity, Only three examples with this pmk. believed known, signed Ashbrook, with P. F. Certificate ..... (Photo) 1,000.00+
433	<b>90c Blue (39).</b> Tied by Brilliant Red Grid on 1¾"x3½" portion of Cover, with Clear Red "S. L. Calcutta G. P. O. Ja 10, 1861" pmk., Fine, a Beautiful and Very Rare Piece ..... (Photo) 1,200.00

#### 1861 "FIRST COLOR"

434	<b>24c Violet, First Color, (60).</b> Well Centered, Brilliant Color, Neat Grid Cancel, Extremely Fine ..... (Photo) 150.00
435	<b>24c Violet, First Color, (60).</b> Well Centered, Deep Color, Blue Grid Cancel, Exceptionally Fine ..... (Photo) 155.00
436	<b>24c Violet, First Color, (60).</b> Deep Rich Color, Blue Grid Cancel, barest trace of toning on back only, Very Fine & Handsome ..... (Photo) 155.00
437	<b>24c Violet, First Color, (60).</b> Well Centered, Rich Color, Cork Cancel, tied by Large part of Bold Str. Line "Paid All" on small piece, short perf., otherwise Extremely Fine ..... (Photo) 190.00
438	<b>24c Violet, First Color, (60).</b> Well Centered, Deep Rich Color, tied by Blue Grid, by Blue "Louisville, Ky.", and by Bold Red "3" on small part of cover, Extremely Fine ..... (Photo) 160.00
439	<b>24c Grayish Lilac, First Color, (60a).</b> Well Centered, Fresh Color, Pretty thin bar Grid Cancel, Very Fine ..... (Photo) 135.00
440	<b>24c Grayish Lilac, First Color, (60a).</b> Bold Blue "Cincinnati, O." pmk., Very Fine ..... (Photo) 155.00





438



439



440



441



442



443



444



445



446



447



448



449



450



451



452



453



454



455



456



457



459



458



461



# 1861 ISSUE

## ONE CENT BLUE

441	<b>1c Blue (63).</b> "Jumbo" Margins, Splendid Color, <b>Red New York "Paid"</b> pmk., Extremely Fine, a Beauty ..... (Photo)	E. IV
442	<b>1c Blue (63).</b> Bold <b>Green Grid Cancel &amp; town pmk.</b> , Splendid Strike, Very Fine ..... (Photo)	27.50
443	<b>1c Ultramarine (63a).</b> Wonderful Centering <b>Red Carrier pmk.</b> , Extremely Fine ..... (Photo)	15.00+
444	<b>1c Blue (63).</b> Clear <b>"US Mail City Delivery"</b> in Double Circle pmk., Extremely Fine and strikingly Beautiful carrier cancel ..... (Photo)	E. VII
445	<b>1c Blue (63).</b> Well Centered, Clear <b>"New York, B. W., Leeds &amp; Franklin"</b> Patent Cancel, Marvelous Strike, Extremely Fine & Rare .... (Photo)	E. VI
446	<b>1c Light Blue (63).</b> Perfectly Centered, Neat <b>Red Carrier pmk.</b> , Extremely Fine ..... (Photo)	9.00
447	<b>1c Blue (63).</b> Beautiful Bold <b>Salem "Witch"</b> Cancel, Gorgeous Strike ..... (Photo)	E. VI
448	<b>1c Blue (63).</b> Bold <b>Circle of Wedges</b> Cancel, Fantastic Strike, a Beauty ..... (Photo)	E. IV
449	<b>1c Blue (63).</b> Pretty <b>"R" in Small Ornate Circle</b> Cancel, Beautiful Strike of this well-known "Rockville, Conn." cancel., Very Fine ..... (Photo)	E. IV
450	<b>1c Blue (63).</b> Bold <b>Red Geometric</b> Cancel, Very Fine & Handsome (Photo)	E. IV
451	<b>1c Blue (63).</b> Neat <b>"Drop"</b> Cancel, Very Fine Strike Very Scarce (Photo)	E. IV
452	<b>1c Light Blue (63).</b> "Jumbo" Margins, Well Centered, <b>Negative Shield</b> in Circle Cancel, Unusual, negligible corner crease, Extremely Fine appearance ..... (Photo)	E. III
453	<b>1c Indigo (63).</b> Horiz. Pair, Beautiful Color, <b>Green</b> Cancels, Extremely Fine ..... (Photo)	55.00
454	<b>1c Blue (63).</b> Horiz. Pair, <b>"10" in Circle</b> Cancels, Pretty Strikes, a True Showpiece ..... (Photo)	43.00+
455	<b>1c Light Blue (63).</b> Horiz. Pair, Bold <b>Star in Square</b> Cancel, New York pmk., Very Fine Strike, Beautiful Pair ..... (Photo)	E. V
456	<b>1c Blue (63).</b> Horiz. Pair, Bold <b>"3"</b> Cancels, Very Fine Strikes (Photo)	43.00+
457	<b>1c Blue (63).</b> Horiz. Pair, one stamp nibbed perf., Neatly Struck <b>"Paid"</b> Cancels, a Very Fine Pair ..... (Photo)	18.00+
458	<b>1c Blue (63).</b> Horiz. Strip of Three, Bold <b>Fancy Star Cancels, Str. Line "Shed's Corners"</b> on small piece, Very Fine, Spectacular ..... (Photo)	E. VII
459	<b>1c Blue, 5c Buff (63, 67).</b> Tied together by Clear <b>"Boston Paid"</b> Cancel, Beautiful Colors, Well Centered, a Very Fine and Spectacular Piece, Perfectly matched ..... (Photo)	94.00+

## THREE CENT PINK

460	<b>3c Pink (64).</b> Beautiful Color, Fine Centering, Large part of Blue <b>"Louisville &amp; Cin. S B"</b> pmk., Very Fine Example of this Scarce Steamboat Cancellation ..... (Photo)	165.00+
461	<b>3c Pink (64).</b> Horiz. Pair, tied by <b>"Louisville, Ky."</b> Duplex pmk. on small piece, small faults, Very Fine appearance ..... (Photo)	200.00

**LOTS ON VIEW FROM OCTOBER 5, 1972**  
**OFFICES OPEN SATURDAY BEFORE SALE**  
**AND ON COLUMBUS DAY, OCTOBER 9, 1972**



### THREE CENT ROSE

462	3c Rose (65). Bold "Brattleboro Vt." Blue "Man Thumbing His Nose" Cancel, Unusually Clear Strike, centered to right, Wonderful example of this rare & much sought after cancel .... (Photo)	E. X
463	3c Rose (65). "West Meriden," Conn. Devil & Pitchfork Cancel, Very Fine Strike, Sharp & Clear .... (Photo)	E. VII
464	3c Rose (65). Tiny sealed tear at bottom, "Lincoln" Within Circle of Stars Cancel, Very Fine Strike of this scarce "Albany, N. Y." cancel .... (Photo)	E. IV
465	3c Rose (65). Well Centered, Beautiful Negative Monogram in Circle Cancel, Extremely Fine .... (Photo)	E. IV
466	3c Rose (65). Fantastic Strike of "Mittineague, Mass." Star in Star with UNION Cancel in Blue Pentagon, Extremely Fine .... (Photo)	E. VII
467	3c Rose (65). Clear "N & W" with Star Cancel of the "Norwich & Worcester Railroad", Unusually Beautiful Strike, Very Fine .... (Photo)	E. III
468	3c Rose (65). Bold "Ship" Cancel, Fantastic Strike, Very Fine .... (Photo)	11.00
469	3c Rose (65). Blue Negative "67" in Square Cancel, Very Fine .... (Photo)	E. IV
470	3c Rose (65). Bold Star with circle in center Cancel, Struck twice, Very Fine .... (Photo)	E. II
471	3c Rose (65). Unusually Clear "Woonsocket Falls, N. Y." "Nix" Between Arcs Cancel, Very Fine .... (Photo)	E. IV
472	3c Rose (65). Clear Bold "St. Louis & Keokuk S. B." pmk., almost complete strike, Very Fine .... (Photo)	E. III
473	3c Rose (65). Str. edge at right, Deer's Head in Circle Cancel, Scarce, Very Fine .... (Photo)	E. III
474	3c Rose (65). Red Star in Star Cancel, Bold Strike, Very Fine .... (Photo)	E. III
475	3c Rose (65). Brilliant Red "5" Cancel, Fantastic Strike, Very Fine (Photo)	E. III
476	3c Rose (65). Skull & Crossbones Cancel, Bold, perfect strike, Very Fine (Photo)	E. VI
477	3c Rose (65). Pretty Blue "Pompey, N. Y." Anchor in Circle Cancel, on small piece, Very Fine .... (Photo)	E. III
478	3c Rose (65). Well Centered, Square & Compass, Cancel, Very Fine (Photo)	E. III
479	3c Rose (65). Olive "Paid 3" in Circle Cancel, Very Fine, Unusual, strong color .... (Photo)	E. III
480	2c Black, 3c Rose (65, 73). Gigantic Copy of last, tied together with a Marvelous Strike of "N. York Steamship" pmk., a Fantastic Item, matching opposite imperf. pane margins .... (Photo)	E. VIII
481	3c Rose, 10c Green, 30c Orange (65, 68, Pair, 71). Tied by Magenta Diamond Grid Cancels on small piece, Very Attractive ....	39.50

### FIVE CENT BUFF (SHADES)

482	5c Buff (67). Well Centered, Black & Red pmks., Extremely Fine, Very seldom seen in this condition .... (Photo)	62.50
483	5c Buff (67). Well Centered, Perfect neat Grid Cancel, Extremely Fine (Photo)	60.00
484	5c Buff (67). Rich Color, Brilliant Red Grid Cancel, Very Fine .... (Photo)	62.50
485	5c Buff (67). Red "New York, Br. Pkt." pmk., Clear Strike, Very Fine & Handsome .... (Photo)	62.50
486	5c Buff (67). Red "New York, Paid" pmk., Very Fine, Striking & Colorful (Photo)	62.50
487	5c Buff (67). Pretty Shade, Blue "Cincinnati" pmk., Full Strike, Very Fine, Very Choice .... (Photo)	62.50
488	5c Olive Yellow (67b). Neat Boston "Paid" Cancel, Very Fine, A Showpiece (Photo)	65.00

489	<b>5c Brown Yellow (67a).</b> Fresh Color, Unusual Blue Grid Cancel, on small piece, Very Fine ..... (Photo)	65.00+
490	<b>5c Brown Yellow (67a).</b> Horiz. Pair, Well Centered, Gorgeous Color, Small Blue Grid Cancels, slight reinforced, Extremely Fine, Extraordinarily Beautiful ..... (Photo)	215.00+
491	<b>5c Buff, 10c Green (67, 68).</b> Used together on small piece, tied by Red Grid Cancels, Fine ..... (Photo)	70.00

#### TEN CENT GREEN

492	<b>10c Green (68).</b> Attractive "Paid" in Fancy Circle Cancel, Gorgeous Strike, Extremely Fine ..... (Photo)	E. V
493	<b>10c Green (68).</b> Well Centered, nibbed perf., Bold Star in Circle Cancel, Very Fine Strike ..... (Photo)	E. II
494	<b>10c Green (68).</b> Bold Two Str. Lines Steam Ship Cancel, Very Fine (Photo)	18.50
495	<b>10c Green (68).</b> Magnificent Deep Color, Well Centered, "N. York Steamship" pmk., Extremely Fine ..... (Photo)	18.50
496	<b>10c Green (68).</b> Well Centered, Rich Color, Green Grid Cancel, Extremely Fine ..... (Photo)	25.00
497	<b>10c Green (68).</b> Huge Margins, Red "28" Cancel, Very fine ..... (Photo)	15.00
498	<b>10c Green (68).</b> Tied by Bright Red Oval "China and Japan Steam Service" Cancel, Very Fine, a Beautiful Example of this Rare Cancel ..... (Photo)	E. VIII
499	<b>10c Green (68).</b> "Jumbo" Copy with Full Straddle at L., tied by "N. York Steamship" pmk. on small piece, Extremely Fine, a Gem ..... (Photo)	18.50+
500	<b>10c Green (68).</b> Scarce Union Soldier's Head Cancel, Beautiful Strike, Very Fine ..... (Photo)	E. VII
501	<b>10c Green (68).</b> Rich Shade, Clear Red "Paid 1" in Circle Cancel, Gorgeous Strike, Very Fine ..... (Photo)	E. V
502	<b>10c Green (68).</b> Beautiful Shade, Bold "U S" in Circle Cancel, Very Fine Strike ..... (Photo)	E. III
503	<b>10c Green (68).</b> Fine Centering, Bright Green Leaf Cancel, Very Fine Strike ..... (Photo)	E. III
504	<b>10c Green (68).</b> "Healdsburg, Cal." Flag Cancel, Splendid Strike, Fine, Scarce ..... (Photo)	E. VI
505	<b>10c Green (68).</b> Horiz. Strip of Four, Black town pmks. & "Paid" Cancels, Very Fine, a Gorgeous Strip of Great Beauty in the Deep Color & on the thin paper of the First Design ..... (Photo)	E. V

#### END OF FIRST SESSION

### A REMINDER

Mails are often slow. After nearly every auction we receive some 25 to 50 late bid sheets, many of which would have been successful. We can only repeat . . . **PLEASE MAIL YOUR BIDS EARLY!** Use Air Mail if you are in doubt as to being on time.





460



462



463



464



465



466



467



468



469



470



471



472



473



474



475



476



478



477



479



480



482



483



484



485



486



487



488



490



491



489



492



493



494



495



496



497

## SECOND SESSION

WEDNESDAY, OCTOBER 11th, 1972 — 1:30 P. M.

### TWELVE CENT BLACK

506	<b>12c Black (69).</b> Large Margins, Lightly Cancelled, Extremely Fine <b>(Photo)</b>	10.00
507	<b>12c Black (69).</b> Gorgeous Centering, Margins and Shade, Pretty <b>Grid of Dashes</b> Cancel, Extremely Fine ..... <b>(Photo)</b>	10.00
508	<b>12c Black (69).</b> Sharp Impression, Blue Grid Cancel, Extremely Fine <b>(Photo)</b>	11.00
509	<b>12c Black (69).</b> Well Centered, Large Margins, Black & Red Cancellations, Extremely Fine ..... <b>(Photo)</b>	13.00
510	<b>12c Black (69).</b> Well Centered, " <b>Paid</b> " in Fancy Circle Cancel, Extremely Fine ..... <b>(Photo)</b>	21.50
511	<b>12c Black (69).</b> Brilliant Red " <b>New York, Paid</b> " pmk., Extremely Fine <b>(Photo)</b>	13.00
512	<b>12c Black (69).</b> Well Centered, Bold Red Grid Cancel, Pretty and Extremely Fine ..... <b>(Photo)</b>	13.00
513	<b>12c Black (69).</b> Well Centered, Sharp Impression, Red Grid Cancel, Extremely Fine ..... <b>(Photo)</b>	13.00
514	<b>12c Black (69).</b> Well Centered, Neat Target Cancel, Pretty Strike, Extremely Fine ..... <b>(Photo)</b>	10.00
515	<b>12c Black (69).</b> Deep Rich Shade, Well Centered, Bold Maltese Cross Cancel, Extremely Fine ..... <b>(Photo)</b>	E. III
516	<b>12c Black (69).</b> Well Centered, Bold Negative Star of David in Circle Cancel, Very Fine ..... <b>(Photo)</b>	E. III
517	<b>12c Black (69).</b> Bright Red Cancellation, Very Fine ..... <b>(Photo)</b>	13.00
518	<b>12c Black (69).</b> Tied by Blue Grid, Red New York and London Paid pmks., on small piece, Very Fine and Pretty ..... <b>(Photo)</b>	11.00
519	<b>12c Black (69).</b> Bright Red " <b>New York, Paid All</b> " pmk., Very Fine Strike <b>(Photo)</b>	13.00
520	<b>12c Black (69).</b> Vert. Pair, Blue town pmks., Extremely Fine, a Beautiful Pair ..... <b>(Photo)</b>	22.50
521	<b>12c Black (69).</b> Horiz. Pair, Neat Target Cancels, Very Fine .. <b>(Photo)</b>	22.50
522	<b>12c Black (69).</b> Horiz. Pair, Neat " <b>Paid</b> " in Oval Cancels, tied by town pmk. on small piece, Fine ..... <b>(Photo)</b>	43.00

### TWENTY-FOUR CENT (SHADES)

523	<b>24c Red Violet (70).</b> Magnificent Centering, Brilliant Color, Neat Grid Cancel, Extremely Fine, a Fantastic Stamp ..... <b>(Photo)</b>	16.00
524	<b>24c Red Lilac (70).</b> Brilliant Color & Impression, Neat Grid Cancel, Extremely Fine ..... <b>(Photo)</b>	16.00
525	<b>24c Red Lilac (70).</b> Perfectly Centered, Pretty Blue Target Cancel, Extremely Fine, a Marvelous Stamp ..... <b>(Photo)</b>	17.00
526	<b>24c Red Lilac (70).</b> Rich Color, Blue Baltimore pmk., Extremely Fine, Extra choice ..... <b>(Photo)</b>	17.00
527	<b>24c Red Lilac (70).</b> Vivid Color, Beautiful Centering, Pretty Red Grid Cancel, Extremely Fine, a Gem ..... <b>(Photo)</b>	20.00





498



500



501



502



499



503



504



505



506



507



508



509



510



511



512



513



514



515



516



517



520



519



521



522



523



524



525



526



528	<b>24c Red Lilac (70).</b> Deep Dark Color, Bold Six-Point Star in Circle Cancel, Extremely Fine ..... (Photo)	E. III
529	<b>24c Red Lilac (70).</b> Rich Color, Pretty Red Grid Cancel, Extremely Fine (Photo)	20.00
530	<b>24c Red Lilac (70).</b> Well Centered, Bright Red Circle of Wedges Cancel, Extremely Fine & Colorful ..... (Photo)	20.00
531	<b>24c Red Lilac (70).</b> Brilliant Color, Blue "Paid" Cancel, Marvelous Strike, Extremely Fine, a Gem ..... (Photo)	45.00
532	<b>24c Red Lilac (70).</b> Nicely Centered, Fancy Four pointed Star in Circle Cancel, Extremely Fine ..... (Photo)	E. III
533	<b>24c Red Lilac (70).</b> Well Centered, Fresh Color, Pretty Fancy Rosette Cancel, Exceptionally Fine ..... (Photo)	E. V
534	<b>24c Red Violet (70).</b> Wide Straddle at L., Well Centered Large Margins, Negative Star of David Cancel, Exceptionally Fine ..... (Photo)	E. III
535	<b>24c Brown Lilac (70a).</b> Odd Six pointed Truncated Star in Circle Cancel, Very Fine & unusual ..... (Photo)	E. III
536	<b>24c Red Lilac (70).</b> Fresh Color, Bold Six pointed Star in Circle Cancel, Beautiful Strike, Very Fine ..... (Photo)	E. IV
537	<b>24c Red Lilac (70).</b> Bold Purple Four pointed Solid Star, Very Fine (Photo)	E. III
538	<b>24c Red Lilac (70).</b> Pretty Color, Fancy Negative "V" in Square Grid Cancel, Very Fine, Scarce ..... (Photo)	E. IV
539	<b>24c Red Violet (70).</b> Rich Color, Light Boston "Paid" Cancel, Very Fine & Handsome ..... (Photo)	16.00
540	<b>24c Red Lilac (70).</b> Brilliant Color, Str. Line "Free" Cancel, Pretty Strike, small surface abrasion at top, Very Fine appearance, Rare cancel. on the 24c ..... (Photo)	E. IV
541	<b>24c Brown Lilac (70a).</b> Wide Straddle at L., showing Large part of other stamp, Beautiful Centering, Light Target Cancel, Extremely Fine, an Extraordinary stamp ..... (Photo)	16.00+
542	<b>24c Red Lilac (70).</b> Magnificent Centering, Brilliant Color, Bright Red Grid Cancel, Expertly reperf. at L., Extremely Fine appearance	20.00
543	<b>24c Red Violet (70).</b> Rich Color & Impression, tied by Bold Star in Circle Cancel, Red New York packet pmk. on small piece, Exceptionally Fine ..... (Photo)	16.00
544	<b>24c Steel Blue (70b).</b> Rich Color, tied by Black Target & by Red town pmk. on small piece, Very Fine ..... (Photo)	52.50+
545	<b>24c Steel Blue (70b).</b> Nicely Struck "Paid" Cancel, Exceptional centering, Very Fine ..... (Photo)	52.50+
546	<b>24c Steel Blue (70b).</b> Part Red Circle of Wedges Cancel and Black "Paid" in Oval Cancel, Fine & Colorful ..... (Photo)	52.50+
547	<b>24c Steel Blue (70b).</b> Well Centered, one short perf., Bold Star in Circle, Very Fine Strike on a beautiful stamp ..... (Photo)	E. IV
548	<b>24c Steel Blue (70b).</b> Horiz. Pair, Exceptional Centering & Color, Brilliant Red Grid Cancels, slightly reinforced, Extremely Fine, Ex-Water-house, A marvelous pair ..... (Photo)	105.00+

### THIRTY CENT ORANGE

549	<b>30c Orange (71).</b> Well Centered, Rich Shade, Magenta Grid Cancel, Extremely Fine ..... (Photo)	17.50
550	<b>30c Orange (71).</b> Rich Color, Well Centered, Bold Blue Circle of Wedges Cancel, Very Fine ..... (Photo)	16.50+
551	<b>30c Orange (71).</b> Fancy Seven point Star in Octagon Cancel, Stunning Strike, Very Fine ..... (Photo)	E. III
552	<b>30c Orange (71).</b> Beautiful Color, Bold Sunburst Cancel, Very Fine & Striking ..... (Photo)	E. VI





527

528

529

530

531

532



533

534

535

536

537

538



539

540

541

543



544

545

546

547

548



549

550

551

552

553

554



555

556

557

558

559



560

561

562

563

564

565



553	<b>30c Orange (71).</b> Pretty Shade, Clear Negative <b>Star of David in Circle</b> Cancel, Marvelous Strike, Very Fine ..... (Photo)	E. IV
554	<b>30c Orange (71).</b> Bold Str. Line " <b>Paid</b> " Cancel, Incredible Strike, Very Fine, a Beautiful Stamp ..... (Photo)	30.00
555	<b>30c Orange (71).</b> Beautifully Struck " <b>St. Louis, Mo.</b> " pmk., Very Fine & Handsome ..... (Photo)	E. III
556	<b>30c Orange (71).</b> Rich Color, Bold <b>Red Waffle Grid (Criss-Cross)</b> Cancel, Fantastic Strike, Very Fine, A sensational cancel ..... (Photo)	E. VI
557	<b>30c Orange (71).</b> Fresh Color, Clear Blue " <b>ered</b> " (registered) Cancel, Very Fine, Rare on this stamp ..... (Photo)	E. III
558	<b>30c Orange (71).</b> Full Straddle at L., <b>Clear Leaf</b> Cancel, Very Fine (Photo)	E. III
559	<b>30c Orange (71).</b> Gorgeous Color, Bold <b>Red Star in Circle</b> Cancel, Very Fine Strike ..... (Photo)	E. III
560	<b>30c Orange (71).</b> Bold <b>Union Soldier's Head</b> , Cancel, Very Fine Strike, Rare, especially when so well struck ..... (Photo)	E. VII
561	<b>30c Orange (71).</b> Rich Shade, Pretty <b>Circle of Diamonds</b> Cancel, Very Fine Strike ..... (Photo)	E. III
562	<b>30c Orange (71).</b> Blunted perf. tip, Clear <b>Red "12"</b> Cancel, Very Fine Strike, Rare ..... (Photo)	E. VII
563	<b>30c Orange (71).</b> Deep Shade, <b>Small Fancy Leaf</b> Cancel, Beautiful Strike, Very scarce type ..... (Photo)	E. III
564	<b>30c Orange (71).</b> Fine Centering, Deep Color, Pretty <b>Dotted Grid in Circle</b> Cancel, Very Fine Strike ..... (Photo)	E. III
565	<b>30c Orange (71).</b> Fine Centering, Clear <b>Anchor in Dotted Grid</b> Cancel., (French Packet usage), Very Fine Strike ..... (Photo)	E. IV
566	<b>30c Orange (71).</b> Fancy Target Cancel, outer ring serrated, Bold Strike, Fine ..... (Photo)	E. III
567	<b>30c Orange (71).</b> Bold <b>Hexagon in Hexagon</b> Cancel, Fine ..... (Photo)	E. III
568	<b>30c Orange (71).</b> Black Target over Red " <b>New York Paid 12</b> " pmk., tiny corner perf. creases, V. F. appearance ..... (Photo)	20.00
569	<b>30c Orange (71).</b> Red New York Paid pmk., Fine ..... (Photo)	30.00
570	<b>30c Orange (71).</b> Neat Blue Target & Grid Cancels, Fine and Very Pretty ..... (Photo)	16.50

#### NINETY CENT BLUE (SHADES)

571	<b>90c Dark Blue (72).</b> Deep Rich Color, Well Centered, Neatly Struck Boston " <b>Paid</b> " Cancels, Extremely Fine, A wonderfully handsome "Gem" (Photo)	48.50
572	<b>90c Blue (72).</b> Gorgeous Color and Centering, Neat <b>Target</b> Cancel, Extremely Fine ..... (Photo)	48.50
573	<b>90c Deep Blue (72).</b> Perfectly Centered, Rich Color, <b>Grid Cancel</b> , Extremely Fine ..... (Photo)	48.50
574	<b>90c Blue (72).</b> Brilliant Color & Impression, Large Margins, Clear " <b>Cincinnati, O.</b> " pmk., Extremely Fine, an immaculate Beauty, Ex-Newbury ..... (Photo)	50.00
575	<b>90c Light Blue (72a).</b> Gorgeous Color, Neatly Struck <b>Square-Dotted Grid</b> Cancel, Extremely Fine ..... (Photo)	48.50
576	<b>90c Blue (72).</b> Deep Shade, Magnificent Centering, Pretty Grid Cancel, Extremely Fine ..... (Photo)	48.50
577	<b>90c Blue (72).</b> Well Centered, Rich Color, <b>Brilliant Red town pmk.</b> , a single negligible short perf., still an exceptionally Fine Stamp, with P. F. Certificate, Ex-Caspary ..... (Photo)	57.50
578	<b>90c Light Blue (72a).</b> Well Centered, Rare <b>Blue Oval Grid</b> Cancel, Exceptionally Fine ..... (Photo)	50.00
579	<b>90c Blue (72).</b> "Jumbo" margins, Unusual <b>Leaf</b> Cancel, Deep Shade, a Beauty, Wonderfully Fine ..... (Photo)	48.50
580	<b>90c Blue (72).</b> Fresh Color, Fancy Black Cancel, Very Fine ..... (Photo)	48.50





566



567



569



570



571



572



573



574



575



576



577



578



579



580



581



582



583



584



585



586



587



588



590



591



592



593



594



595



596



597



598



599



600



601



602



603



604



589



581	<b>90c Dark Blue (72b).</b> Bright <b>Red Grid</b> Cancel, Very Fine, Gorgeous & Colorful ..... (Photo)	57.50
582	<b>90c Light Blue (72a).</b> Well Centered, Blue "Cincinnati, O." pmk., Very Fine & Attractive ..... (Photo)	50.00
583	<b>90c Blue (72).</b> Gorgeous Shade, <b>Bright Red Grid</b> Cancel, Very Fine, a particularly Beautiful Stamp ..... (Photo)	57.50
584	<b>90c Blue (72).</b> Fresh Color, Bold <b>4-Bar Grid</b> Cancel, Very Fine (Photo)	48.50
585	<b>90c Blue (72).</b> Vivid Color, Neat <b>Fine Line Grid</b> Cancel, centered bit to bottom, perfs. clear, Very Choice ..... (Photo)	48.50

## TWO CENT "BLACK JACK"

Special attention is called to the many rare and unusual cancellations in this group, as well as the sensational position pieces.

586	<b>2c Black (73).</b> Fantastic Margins, Light Cancel, an Extremely Fine Gem, an Incredible Stamp ..... (Photo)	7.00
587	<b>2c Black (73).</b> Enormous Copy, showing Full Straddle at R., part of another Stamp at L., Large Margins T. & B., Pretty Target Cancel, Extremely Fine, a Wonderful & utterly fantastic stamp ..... (Photo)	7.00
588	<b>2c Black (73).</b> Huge Margin Three Sides, showing Str. edge at L., part of other stamp at R., Blue Cincinnati pmk., Remarkable Copy ..... (Photo)	7.00
589	<b>2c Black (73).</b> Enormous Margins Three Sides, showing Full Straddle at R., part of next stamp at L. inside Margin, Sheet Margin at T., light crease, still a Spectacular Stamp ..... (Photo)	7.00
590	<b>2c Black (73).</b> Huge Margins, Neat Patent Target Cancel, Extremely Fine, a Wonderful Stamp ..... (Photo)	7.00
591	<b>2c Black (73).</b> Large Margins, Perfectly Centered, Blue Grid of Square Dots Cancel, Extremely Fine ..... (Photo)	7.50
592	<b>2c Black (73).</b> Huge Margins, Well Centered, Extremely Fine ..... (Photo)	7.00
593	<b>2c Black (73).</b> Exceptionally Well Centered, Fancy Shield-like Grid Cancel, Bold Strike, Extremely Fine ..... (Photo)	7.00
594	<b>2c Black (73).</b> Huge Margins, showing part of next stamp within margins, Blue Cork Cancel, Extremely Fine, a Fantastic Stamp ..... (Photo)	7.50
595	<b>2c Intense Black (73).</b> Huge Margins, incl. Full Straddle at L., Pretty Blue Target Cancel, Extremely Fine, a Magnificent Stamp ..... (Photo)	7.50
596	<b>2c Black (73).</b> Exceptional Centering, Unusual 7-Ring Target Cancel, Full Strike, Extremely Fine ..... (Photo)	7.00
597	<b>2c Black (73).</b> Large margins, N. Y. City pmk., Exceptionally Fine; this cancel used on Carrier letters ..... (Photo)	7.00
598	<b>2c Black (73).</b> Bright <b>Red</b> Cancellation, Very Fine ..... (Photo)	12.00
599	<b>2c Black (73).</b> Bold <b>Red 5-Bar Grid</b> Cancel, Very Fine ..... (Photo)	12.00
600	<b>2c Black (73).</b> Bold <b>Red Grid of Diamonds</b> Cancel, Very Fine (Photo)	12.00
601	<b>2c Black (73).</b> Pretty <b>Green Negative Shamrock</b> cancel, Very Fine & Rare ..... (Photo)	75.00+
602	<b>2c Black (73).</b> Magnificent Centering, Bold <b>4-Point Open Star</b> in Circle Cancel, Extremely Fine ..... (Photo)	E. IV
603	<b>2c Black (73).</b> Bold <b>Blue Star in Circle</b> Cancel, Extremely Fine (Photo)	E. IV
604	<b>2c Black (73).</b> Beautiful Negative <b>Red Five pointed Star in Circle</b> Cancel, Extremely Fine ..... (Photo)	E. VI
605	<b>2c Black (73).</b> Centered, Beautiful <b>Red "New York City" Carrier</b> pmk., Extremely Fine, a Gem ..... (Photo)	E. VIII
606	<b>2c Black (73).</b> Bold <b>Grid of Diamonds</b> Cancel in Blue, Stunning Strike, Very Fine ..... (Photo)	E. III
607	<b>2c Black (73).</b> Deep Shade, Beautiful Impression, Bold Bright <b>Red Interrupted Grid</b> Cancel, Very Fine ..... (Photo)	12.00





605



606



607



608



609



610



611



612



613



614



615



616



617



618



619



620



621



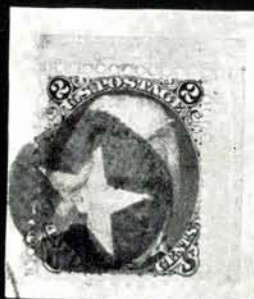
622



623



624



626



625



627



628



629



631



632



633



635



636

608	<b>2c Black (73).</b> Tied by Bold <b>Small Shield</b> Cancel on small piece, Very Fine and Handsome ..... (Photo)	E. VI
609	<b>2c Black (73).</b> Well Centered, Large part of Clear <b>Boxed "Railroad"</b> Cancel, Extremely Fine, a Gorgeous Gem ..... (Photo)	95.00
610	<b>2c Black (73).</b> Clear <b>"Free"</b> in Oval Cancel, Pretty Strike, Very Fine ..... (Photo)	E. V
611	<b>2c Black (73).</b> Fine Centering, Bold <b>"Free"</b> Cancel, Very Fine Strike ..... (Photo)	E. III
612	<b>2c Black (73).</b> Scarce <b>"Post Office, Free"</b> in Double Oval Cancel, Fine, Scarce ..... (Photo)	E. V
613	<b>2c Black (73).</b> Marvelous Centering, Large Margins, Bold Red <b>"Paid All"</b> Cancel, Extremely Fine ..... (Photo)	E. VII
614	<b>2c Black (73).</b> Scarce Blue <b>"Balto. Paid"</b> in Double Circle Cancel, Very Fine ..... (Photo)	E. III
615	<b>2c Black (73).</b> Clear <b>Str. Line "April 10"</b> Cancel Very Fine, A Gorgeous Stamp ..... (Photo)	E. IV
616	<b>2c Black (73).</b> Boxed <b>"Towanda N. Y."</b> Cancel in <b>Purple</b> , Fine, Rare ..... (Photo)	E. IV
617	<b>2c Black (73).</b> Bold <b>"A"</b> in Circle Cancel, Fine ..... (Photo)	E. III
618	<b>2c Black (73).</b> Bold <b>"W"</b> Cancel, Fine ..... (Photo)	E. III
619	<b>2c Black (73).</b> Bold <b>"U S"</b> in Circle Cancel, Very Fine ..... (Photo)	E. V
620	<b>2c Black (73).</b> Deep Intense Black, Fine Centering, <b>"Corry, Pa."</b> Eagle Cancel, Scarce on this ..... (Photo)	E. VI
621	<b>2c Black (73).</b> Gorgeous Impression, Clear <b>"Athol, Mass."</b> Diamond Cancel, Extremely Fine, a Marvelous Stamp ..... (Photo)	E. V
622	<b>2c Black (73).</b> Pretty <b>Grid of Diamonds</b> Cancel Very Fine ..... (Photo)	7.00
623	<b>2c Black (73).</b> Bold <b>Five pointed Star</b> in Circle Cancel, Very Fine (Photo)	E. III
624	<b>2c Black (73).</b> Centered bit to B., Bold <b>"Brookline, Mass."</b> Negative Star in Dotted Circle Cancel, a Magnificent Strike of this Spectacular cancel. .... (Photo)	E. V
625	<b>2c Black (73).</b> Fine Centering, tied by <b>Star in Fancy Pentagon</b> in Greenish Blue on small piece, Very Fine Strike ..... (Photo)	E. III
626	<b>2c Black (73).</b> U. R. <b>Sheet Corner Margins</b> , tied by Bold <b>Negative Star in Circle</b> Cancel on small piece, small perf. nick, Most attractive (Photo)	E. IV
627	<b>2c Black (73).</b> Beautiful margins, Pretty <b>Circle of Hollow Triangles</b> Cancel, Very Fine ..... (Photo)	E. IV
628	<b>2c Black (73).</b> Well Centered, Part of <b>"Waterbury, Conn"</b> Clover Leaf, Cancel. Very Fine ..... (Photo)	E. V
629	<b>2c Black (73).</b> Bold Blue <b>Star in Circle</b> Cancel, Very Fine ..... (Photo)	E. III
630	<b>2c Black (73).</b> Pretty Blue <b>Star in Geometric</b> Cancel, Very Fine ..... (Photo)	E. III
631	<b>2c Black (73).</b> Deep Shade, <b>Red Grid of Diamonds</b> Cancel, Very Fine & Handsome ..... (Photo)	12.00
632	<b>2c Black (73).</b> Centered to top, <b>Brown Square of Dots</b> Cancel, Very Fine Strike, Ex-Waterhouse ..... (Photo)	E. II
633	<b>2c Black (73).</b> Fine Centering, Bold Blue <b>Maltese Cross</b> Cancel, Gorgeous Strike ..... (Photo)	E. II
634	<b>2c Black (73).</b> Nnbbed perf., Well Centered, Bold Blue <b>Fancy Segmented Circle</b> Cancel, Very Fine Strike ..... (Photo)	E. II
635	<b>2c Black (73).</b> Attractive <b>Geometric</b> Cancel, Very Fine ..... (Photo)	E. III
636	<b>2c Black (73).</b> <b>Green</b> Cancel, Fine ..... (Photo)	75.00
637	<b>2c Black (73).</b> Tied by Neat Blue <b>Grid</b> on small piece, Fine ..... (Photo)	7.50
638	<b>2c Black (73).</b> Centered bit to left, Bold <b>Red Solid Square</b> Cancel, Marvelous Strike ..... (Photo)	12.00
639	<b>2c Black (73).</b> Well Centered, a few nibbed perfs., <b>Red Star in Circle</b> Cancel, Bold Strike, Very Fine ..... (Photo)	E. III





643



638



639



640



644



645



652



646



647



648



649



650



651



653



654



655



656



657



658



659



660



661



662



663



666



667



665



640	2c Black (73). "Jumbo" Margins, Perfectly Centered, Beautifully Struck Circle of "V"s Cancel, minute sealed tear, Extremely Fine appearance, a Gorgeous Showpiece ..... (Photo)	7.00
641	2c Black (73). Sheet Margin with part Imprint at R. tied by Rosette in Circle Cancel on small piece, Fine ..... E. II	
642	2c Black (73). Tied by Star in Circle Cancel, Clear Petersburg, Va. pmk. on small piece, light crease, Unusually Fine Strikes ..... E. II	
643	2c Black (73). Large Margins, Well Centered, tied by Bold Red Grid, "New York City" pmk. on small piece, Extremely Fine ..... (Photo)	12.00
644	2c Black (73). Horiz. Pair, tied by Blue Grid and by Matching Chicago pmk. on small piece, Very Fine ..... (Photo)	15.00+

#### FIVE CENT BROWN (SHADES)

645	5c Red Brown (75). Beautiful Color & Impression, Light Red Grid Cancel, Exceptionally Fine ..... (Photo)	45.00
646	5c Red Brown (75). Blue "Paid" in Circle Cancel, Struck twice, Extremely Fine ..... (Photo)	60.00
647	5c Red Brown (75). Rich Color, "Paid" in Circle Cancel, Very Fine (Photo)	60.00
648	5c Red Brown (75). Nicely Centered, Small Spoked Wheel Cancel, Pretty Strike, Very Fine ..... (Photo)	37.50+
649	5c Red Brown (75). Fresh Color, Brilliant Red Grid Cancel, Very Fine (Photo)	45.00
650	5c Red Brown (75). Rich Color, Brilliant Red Rosette Cancel, Remarkably Fine & colorful ..... (Photo)	45.00
651	5c Red Brown (75). Deep Shade, Clear "Paid" in Circle Cancel, Fine (Photo)	60.00
652	5c Red Brown (75). Two Copies, tied by Neat Cork Cancel on small piece, minor perf. flaws at top, otherwise Very Fine, an unusually rich color (Photo)	75.00
653	5c Brown (76). Well Centered, Rich Color, Neat Target Cancel, Extremely Fine ..... (Photo)	10.00
654	5c Brown (76). Bold Cogwheel with Dot in Center Cancel, Beautiful Strike, Extremely Fine ..... (Photo)	E. III
655	5c Brown (76). Red "Fulton Bank" Revenue Cancel, Very Fine, Clear Strike ..... (Photo)	E. IV
656	5c Brown (76). Clear, Perfectly Struck Blue "Cincinnati, O." pmk., Very Fine ..... (Photo)	11.00
657	5c Brown (76). Blue Circle of Wedges Cancel, Pretty Strike, Very Fine, Ex-Waterhouse ..... (Photo)	11.00
658	5c Brown (76). Bright Red Grid Cancel, Very Fine ..... (Photo)	15.00
659	5c Brown (76). Huge Margins, incl. Full Straddle at R., Neat Negative Star of David Cancel, Very Fine ..... (Photo)	E. III
660	5c Brown (76). Rich Color, Unusual 12-Bar Grid Cancel, Very Fine (Photo)	10.00
661	5c Brown (76). Beautiful Color, Neat, Small "Paid" Cancel, Very Fine (Photo)	25.00
662	5c Brown (76). Attractive Hollow Star in Heptagon Cancel, Beautiful Strike, Very Fine ..... (Photo)	E. III
663	5c Brown (76). Red Cancel, Very Fine ..... (Photo)	15.00
664	5c Brown (76). Neat Target Cancel in Ultramarine, light corner crease, V. F. appearance ..... (Photo)	11.00
665	5c Brown (76). Vert. Strip of Three, Lightly Cancelled, Exceptionally Fine, Remarkably Rich Color ..... (Photo)	33.50+
666	5c Brown, 10c Green, 30c Orange (68, 71, 76). Tied, slightly overlapping by Star in Circle Cancels on small piece, Handsome and Attractive (Photo)	E. V



# FIFTEEN CENT BLACK

667	<b>15c Black (77).</b> Marvelous Centering, Neat 6-Bar Grid Cancel, Extremely Fine ..... (Photo)	17.50
668	<b>15c Black (77).</b> Wonderful Impression, Pretty Blue Target Cancel, Gorgeous Strike, Extremely Fine ..... (Photo)	18.50
669	<b>15c Black (77).</b> Well Centered, <b>Red</b> Cancel, Extremely Fine ..... (Photo)	25.00
670	<b>15c Black (77).</b> Rich Impression, Red town pmk. and Beautiful <b>Bold "L"</b> Cancel, Extremely Fine, Ex-Newbury ..... (Photo)	E. VI
671	<b>15c Black (77).</b> Well Centered, <b>Bold Star in Circle</b> Cancel, Extremely Fine ..... (Photo)	E. IV
672	<b>15c Black (77).</b> Well Centered, Deep Rich Impression, Clear Negative <b>Star of David</b> in Circle Cancel, Extremely Fine ..... (Photo)	E. IV
673	<b>15c Black (77).</b> Deep Shade, Clear San Francisco <b>Cogwheel</b> Cancel, Very Fine ..... (Photo)	E. III
674	<b>15c Black (77).</b> Well Centered, Neat <b>Anchor in Dotted Grid</b> (French Packet) Cancel, Very Fine ..... (Photo)	E. V
675	<b>15c Black (77).</b> Well Centered, Huge Imperf. Pane Margin at left, with top "Arrow", Neat "Cincinnati, O." pmk. in Blue, Very Fine, An eye-catching beauty ..... (Photo)	18.50+
676	<b>15c Black (77).</b> Sharp, Fresh Impression, Fine Centering, Stunning <b>Sunburst</b> Cancel, Very Fine Strike ..... (Photo)	E. III
677	<b>15c Black (77).</b> U. L. <b>Sheet Corner Margins</b> , <b>Rosette</b> Cancel and New York pmk., perfs touch, Very Pretty ..... (Photo)	E. III

# TWENTY-FOUR CENT LILAC (SHADES)

678	<b>24c Lilac (78).</b> "Jumbo" Margins, Magnificent Centering, Fresh Color, Neat Blue Grid Cancel, Extremely Fine, a Glorious Stamp ..... (Photo)	13.50
679	<b>24c Grayish Lilac (78a).</b> Deep Intense Shade, Marvelous Impression, Well Centered, Neat town pmk., Extremely Fine ..... (Photo)	12.50
680	<b>24c Lilac (78).</b> Well Centered, Deep Shade, Extremely Fine ..... (Photo)	12.50
681	<b>24c Grayish Lilac (78a).</b> Magnificent Centering, Rich Deep Shade, <b>Circle of Wedges</b> Cancel, Extremely Fine ..... (Photo)	12.50
682	<b>24c Lilac (78).</b> Beautiful Centering, Blue town pmk., Extremely Fine ..... (Photo)	13.50
683	<b>24c Lilac (78).</b> Beautiful Centering, Bright <b>Red "Boston Br. Pkt. Paid"</b> pmk., Very Fine, an "eye-catcher" ..... (Photo)	19.00+
684	<b>24c Lilac (78).</b> Well Centered, <b>Bold Maltese Cross in Circle</b> Cancel, Exceptionally Fine ..... (Photo)	E. III
685	<b>24c Lilac (78).</b> Well Centered, Black " <b>Hingham, Mass.</b> " " <b>Bat</b> " Cancel, Red London transit pmk., Extremely Fine ..... (Photo)	E. IV
686	<b>24c Lilac (78).</b> <b>Bold Magenta Cross in Box</b> Cancel, Very Fine, Extremely scarce & attractive cancel. .... (Photo)	E. V
687	<b>24c Grayish Lilac (78a).</b> Full Straddle at L., Large margins, Rich Color, <b>Bold Horse's Head</b> Cancel, Very Fine, Ex-Emerson, A marvelous stamp ..... (Photo)	E. VII
688	<b>24c Lilac (78).</b> Centered to top, <b>Bold Union Soldier's Portrait</b> Cancel, Wonderful Strike, Very Scarce ..... (Photo)	E. VII
689	<b>24c Lilac (78).</b> <b>Bold Geometric Cross</b> Cancel, Very Fine Strike ..... (Photo)	E. III
690	<b>24c Lilac (78).</b> Beautiful Color, <b>Bold Small Purple Grid</b> cancel. Very Fine, Ex-Emerson ..... (Photo)	E. III
691	<b>24c Lilac (78).</b> Pretty Color, Blue Cancel, Very Fine ..... (Photo)	13.50
692	<b>24c Lilac (78).</b> Neat Boston <b>Paid</b> Cancel, Nicely Centered, Very Fine ..... (Photo)	12.50

693	<b>24c Lilac (78).</b> Reperfed at left, Pretty <b>Bright Green Fancy Grid</b> Cancel, Very Fine Strike, Very Scarce ..... <b>(Photo)</b>	65.00
694	<b>24c Lilac (78).</b> Bold <b>Circle of Arrow Heads</b> Cancel, Very Fine Strike ..... <b>(Photo)</b>	<b>E. III</b>
695	<b>24c Gray Lilac (78).</b> Tied by Bold <b>Red Five pointed Star</b> in Circle, Red "Supplementary Mail," on small piece, Very Attractive ..... <b>(Photo)</b>	<b>E. III</b>
696	<b>24c Lilac (78).</b> Horiz. Pair, Neat, Centered, "Hingham, Mass." "Bat" Cancels, Beautiful Strikes, Extremely Fine, A remarkable pair .... <b>(Photo)</b>	<b>E. VI</b>

## 1867 GRILLED ISSUE

### GRILLED ALL OVER

697	<b>3c Rose, Grilled all over (79).</b> Perfs. Virtually Intact all around, <b>Shield</b> Cancel, Well centered, an Outstanding Stamp, Unusual in this exceptional condition ..... <b>(Photo)</b>	225.00
698	<b>3c Rose, Grilled all over (79).</b> Perfs. practically intact, Very Fine, with P. F. Certificate ..... <b>(Photo)</b>	225.00

### "C." GRILL

699	<b>3c Rose, C. Grill (83).</b> Fresh Color, Light Cancel, Extremely Fine, with P. F. Certificate ..... <b>(Photo)</b>	57.50
700	<b>3c Rose, C. Grill (83).</b> Well Centered, Neat Grid Cancel bars of varying thickness, Very Fine, Unusual ..... <b>(Photo)</b>	57.50+
701	<b>3c Rose, C. Grill (83).</b> Blue <b>R. P. O.</b> pmk., Extremely Fine, Scarce <b>(Photo)</b>	60.00

### "D." GRILL

702	<b>3c Rose, D. Grill (85).</b> Well Centered, Pretty, Neat " <b>Circle of Wedges</b> " Cancel, Very Fine ..... <b>(Photo)</b>	50.00
703	<b>3c Rose, D. Grill (85).</b> Maltese Cross Cancel, Extremely Fine, A Sensational example ..... <b>(Photo)</b>	50.00+

### "Z." GRILL

704	<b>2c Black, Z. Grill (85B).</b> Well Centered, Large margins, Bold <b>Star in Circle</b> Cancel, Extremely Fine ..... <b>(Photo)</b>	60.00
705	<b>2c Black, Z. Grill (85B).</b> Marvelous Margins, Cork Cancel, Extremely Fine ..... <b>(Photo)</b>	60.00
706	<b>2c Black, Z. Grill (85B).</b> Blue Cancellation, Extremely Fine .... <b>(Photo)</b>	65.00
707	<b>2c Black, Z. Grill (85B).</b> Red town pmk., Very Fine ..... <b>(Photo)</b>	70.00
708	<b>2c Black, Z. Grill (85B).</b> Brilliant, Blue <b>Star in Star in Circle</b> Cancel, Gorgeous Strike, Very Fine ..... <b>(Photo)</b>	65.00
709	<b>2c Black, Z. Grill (85B).</b> Bold <b>Red Star in Circle</b> Cancel, Fine, Very Striking ..... <b>(Photo)</b>	70.00+
710	<b>2c Black, Z. Grill (85B).</b> Bright Red Cancel, Fine ..... <b>(Photo)</b>	70.00
711	<b>12c Black, Z. Grill (85E).</b> Well Centered, Blue Cancel, Extremely Fine ..... <b>(Photo)</b>	125.00
712	<b>12c Black, Z. Grill (85E).</b> Rosette cancel. Very Fine ..... <b>(Photo)</b>	125.00





668

669

670

671

672

673



674



675



676



678



677



679



680



681



682



683



684



685



686



687



688



689



690



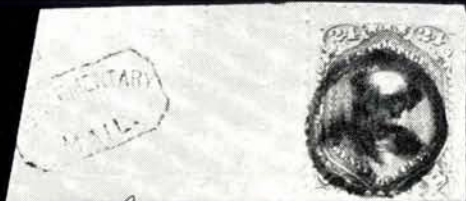
691



692



693



695



694



696



697



698



699



700



701



702



703



704



705

## "E." GRILL

### ONE CENT BLUE

713	<b>1c Blue, E. Grill (86).</b> Neat Dotted Grid Cancel, Very Fine .... (Photo)	31.50
714	<b>1c Blue, E. Grill (86).</b> Bold Blue Circle of Wedges Cancel, nibbed perf., otherwise Very Fine, Pretty Stamp ..... (Photo)	33.50
715	<b>1c Blue, E. Grill (86).</b> Perfs touch at right, Bold Bright Red Geometric Cancel, Very Fine and Stunning Strike ..... (Photo)	37.50
716	<b>1c Blue, E. Grill (86).</b> Well Centered, Bold "OK" between Bars Cancel, Marvelous Strike, Extremely Fine & Scarce ..... (Photo)	E. VI
717	<b>1c Blue, E. Grill (86).</b> Wide Str. edge at L., Well Centered, Bold Chicago "KK(K)" Cancel, Very Fine Strike ..... (Photo)	E. VI
718	<b>1c Blue, E. Grill (86).</b> Pretty Blue Grid Cancel, Fine ..... (Photo)	33.50
719	<b>1c Blue, E. Grill (86).</b> Deep Rich Shade, Bold Star Cancel, minute flaws, Extremely Fine appearance ..... (Photo)	31.50
720	<b>1c Blue, E. Grill (86).</b> Horiz. Pair, Gorgeous Shade, Pretty Blue Four pointed Star in Circle Cancel, slightly reinforced, Fine and Handsome Pair (Photo)	70.00

### TWO CENT BLACK

721	<b>2c Black, E. Grill (87).</b> Pretty Blue Grid Cancel, Very Fine .... (Photo)	12.50
722	<b>2c Black, E. Grill (87).</b> Bold Red Cancel, Very Fine ..... (Photo)	16.50
723	<b>2c Black, E. Grill (87).</b> Bold Star in Circle Cancel, Neat Strike, Very Fine ..... (Photo)	E. III
724	<b>2c Black, E. Grill (87).</b> Well Centered, Clear "Paid" Cancel, Extremely Fine ..... (Photo)	21.50
725	<b>2c Black, E. Grill (87).</b> San Francisco Cogwheel Cancel, Very Fine (Photo)	E. III
726	<b>2c Black, E. Grill (87).</b> Clear, Nicely Centered Sunburst Cancel, Magnificent Strike, Very Fine ..... (Photo)	E. III
727	<b>2c Black, E. Grill (87).</b> Clear Blue Circle of "V"s Cancel, Gorgeous Strike, Very Fine ..... (Photo)	E. III
728	<b>2c Black, E. Grill (87).</b> Blue Leaf Cancel, Very Fine ..... (Photo)	E. III
729	<b>2c Black, E. Grill (87).</b> Large part of Clear "Paid All" Cancel, centered bit to bottom, Very Fine ..... (Photo)	25.00
730	<b>2c Black, E. Grill (87).</b> Huge margins, Red "N. Y. City" pmk., minute closed tear, Extremely Fine appearance, an Extremely Handsome Stamp (Photo)	16.50
731	<b>2c Black, E. Grill (87).</b> Horiz. Pair, Bold "B" Cancels, right stamp couple nibbed perfs., other Extremely Fine ..... (Photo)	E. IV

### 3c, 10c, 12c, 15c ISSUES

732	<b>3c Rose, E. Grill (88).</b> Padlock Cancel, Fine ..... (Photo)	E. III
733	<b>10c Green, E. Grill (89).</b> Well Centered, Light Cancel, Very Fine (Photo)	22.50
734	<b>10c Green, E. Grill (89).</b> Well Centered, Blue Target and Red pmk., nibbed corner perf., otherwise Very Fine ..... (Photo)	27.50
735	<b>10c Green, E. Grill (89).</b> Vert. Pair, Large Margins, incl. Full Straddle at L., Well Centered, Extremely Fine, a Magnificent Pair ..... (Photo)	47.50
736	<b>12c Black, E. Grill (90).</b> Perfectly Centered, Beautiful Impression, Light Cancel, Extremely Fine, a Gem ..... (Photo)	22.50
737	<b>12c Black, E. Grill (90).</b> Perfectly Centered, Blue Cancel, Extremely Fine ..... (Photo)	23.50
738	<b>12c Black, E. Grill (90).</b> "Jumbo" Margins, Marvelous Centering, Extremely Fine, a Beauty ..... (Photo)	22.50





706



707



708



709



710



711



712



713



714



715



716



717



718



719



720



721



722



723



724



725



726



727



728



729



730



731



732



733



734



736



737



738



739



741



742



743



[ 743 ]



739	12c Black, E. Grill (90). Lightly Cancelled, Extremely Fine ..... (Photo)	22.50
740	12c Black, E. Grill (90). Tied by Black Star Cancel, and by Red "Paid All" pmk., New Hamburg pmk. on small piece, Fine and Attractive ...	22.50
741	12c Black, E. Grill (90). Deep Intense Shade, Bright Red New York Transit pmk., Fine ..... (Photo)	30.00
742	12c Black, E. Grill (90). Horiz. Pair, Blue Cancel, couple perfs reinforced, Very Fine, a Beautiful Pair ..... (Photo)	50.00+
743	12c Black, E. Grill (90). Horiz. Pair, Sharp Impression, slightly reinforced, Very Fine ..... (Photo)	50.00
744	15c Black, E. Grill (91). Well Centered, Light Cancel, negligible corner perf. crease, Extremely Fine appearance ..... (Photo)	57.50
745	15c Black, E. Grill (91). Bright Red Circle of Wedges Cancel, Very Fine ..... (Photo)	70.00

## "F." GRILL

### ONE CENT BLUE

746	1c Blue, F. Grill (92). Large Margins, Perfectly Centered, Extremely Fine ..... (Photo)	17.50
747	1c Blue, F. Grill (92). Green Cancel, Very Fine ..... (Photo)	42.50
748	1c Blue, F. Grill (92). Clear "Paid" Cancel, Very Fine ..... (Photo)	32.50
749	1c Blue, F. Grill (92). Fresh Color, one nibbed perf., Red Diamond Grid Cancel, Very Fine & Handsome Strike ..... (Photo)	25.00

### TWO CENT BLACK

750	2c Black, F. Grill (93). Huge margins, Well Centered, Neat Geometric Cancel, Extremely Fine ..... (Photo)	7.75
751	2c Black, F. Grill (93). Enormous Margins, Magnificent Centering, Extremely Fine, an Outstanding Gem ..... (Photo)	7.75
752	2c Black, F. Grill (93). Perfectly Centered, odd 4-Bar Grid Cancel, Extremely Fine ..... (Photo)	7.75
753	2c Black, F. Grill (93). "Jumbo margins, incl. Huge Imperf. Pane margin at R., Very Fine, Spectacular Copy ..... (Photo)	7.75
754	2c Black, F. Grill (93). Well Centered, Neat Red Grid Cancel, Extremely Fine ..... (Photo)	13.50
755	2c Black, F. Grill (93). Well Centered, Pretty Red Rosette Cancel, Extremely Fine ..... (Photo)	13.50
756	2c Black, F. Grill (93). Well Centered, Red Circle of "V"'s Cancel, Extremely Fine ..... (Photo)	13.50
757	2c Black, F. Grill (93). Well Centered, Pretty Blue Star Cancel, Extremely Fine ..... (Photo)	E. IV
758	2c Black, F. Grill (93). Bold Blue "A" Cancel, Pretty, Very Fine (Photo)	E. III
759	2c Black, F. Grill (93). Pretty Blue Hollow Star in Circle Cancel, Very Fine ..... (Photo)	E. III
760	2c Black, F. Grill (93). Sharp, Blue Target Cancel, Very Fine .... (Photo)	8.50
761	2c Black, F. Grill (93). Wide Str. edge at R., tied by Blue Geometric and by Matching "New York City" pmk. on small piece, Very Fine ..... (Photo)	E. II
762	2c Black, F. Grill (93). Perfectly Struck Blue "Cincinnati, O." pmk., Very Fine ..... (Photo)	8.50
763	2c Black, F. Grill (93). Small Circle of Wedges Cancel in Blue, Very Fine ..... (Photo)	E. III
764	2c Black, F. Grill (93). Bold Leaf Cancel, Very Fine ..... (Photo)	E. III
765	2c Black, F. Grill (93). Bold Five pointed Star Cancel, Very Fine (Photo)	E. III





744



745



746



747



748



749



750



751



752



753



754



755



756



757



758



759



760



762



763



765



766



768



767



769



770



771



772



773



774



775



776



777



779



780



781



782



783



766	2c Black, F. Grill (93). Neat Small 8-Bar Grid cancel., Pretty Strike, Very Fine ..... (Photo)	7.75
767	2c Black, F. Grill (93). Blue Circle of "V" 's Cancel, Fine ..... (Photo)	E. II
768	2c Black, F. Grill (93). Horiz. Pair, Bold Circle of Wedges Cancels, Beautiful Strikes, Very Fine and Handsome Pair ..... (Photo)	16.00

### 3c TO 90c GRILLS

769	3c Red, F. Grill (94). Perfectly Centered, Masonic Square & Compass with G Cancel, Extremely Fine ..... (Photo)	E. IV
770	5c Brown, F. Grill (95). Rich Shade, Very Fine ..... (Photo)	55.00
771	5c Brown, F. Grill (95). Beautiful Shade, Neat Cork Cancel, Very Fine ..... (Photo)	55.00
772	5c Brown, F. Grill (95). Gorgeous Deep Shade, tied by Black and Red Cancels on small piece, Very Fine ..... (Photo)	60.00
773	5c Brown, F. Grill (95). Part Imprint within perfs., Blue Cancel, Very Fine ..... (Photo)	58.00
774	10c Green, F. Grill (96). Fresh Color, Neat Circle of Wedges Cancel, Very Fine ..... (Photo)	13.00
775	10c Green, F. Grill (96). Red "New York, Paid" pmk., Very Fine (Photo)	19.00
776	10c Green, F. Grill (96). Marvelous Shade, Well Centered, Small 8-point Star Cancel, Pretty Strike, Extremely Fine ..... (Photo)	E. III
777	10c Green, F. Grill (96). Red "5" in Circle Cancel Very Fine .... (Photo)	E. IV
778	10c Green, F. Grill (96). Tied by 'N. York, Steamship" pmk. on small piece, Very Fine ..... (Photo)	E. III
779	10c Green, F. Grill (96). Beautiful Shade, Bold Leaf Cancel, Very Fine ..... (Photo)	E. III
780	10c Green, F. Grill (96). Light Violet Cancel, Very Fine ..... (Photo)	22.50
781	10c Green, F. Grill (96). Horiz. Strip of Three, Lightly Cancelled, small reinforcement, Very Fine ..... (Photo)	41.00+
782	12c Black, F. Grill (97). Perfectly Centered, Extremely Fine, a Beauty ..... (Photo)	15.00
783	12c Black, F. Grill (97). Red Cancel, Very Fine ..... (Photo)	20.00
784	12c Black, F. Grill (97). Well Centered, Large Margins, tied by Red Cancel, matching Baltimore pmk. on small piece, Extremely Fine (Photo)	20.00
785	12c Black, F. Grill (97). Clear Leaf Cancel, Gorgeous Strike, Very Fine example of a Very unusual cancel. .... (Photo)	E. III
786	12c Black, F. Grill (97). Exceptionally Fine Impression, nibbed perf. tips, Well Centered, Red Circle of Wedges Cancel, Very Fine & Handsome Strike ..... (Photo)	20.00
787	15c Black, F. Grill (98). Well Centered, Neat Grid Cancel, Extremely Fine ..... (Photo)	16.00
788	15c Black, F. Grill (98). Intense Color, Small Dotted Grid in Circle Cancel, Beautiful Strike, Very Fine ..... (Photo)	16.00
789	15c Black, F. Grill (98). Gorgeous Impression and Centering, Red Cancel, Extremely Fine ..... (Photo)	21.00
790	15c Black, F. Grill (98). Green Cancel, Very Fine ..... (Photo)	50.00
791	15c Black, F. Grill (98). Neat Blue Target and Red transit pmk., Very Fine, Pretty Stamp ..... (Photo)	21.00
792	15c Black, F. Grill (98). Deep Shade, Pretty Target Cancel, Neat Strike, Very Fine ..... (Photo)	16.00
793	15c Black, F. Grill (98). Neat Red Cancel, Very Fine ..... (Photo)	21.00
794	15c Black, F. Grill (98). Pretty Rosette Cancel, Very Fine ..... (Photo)	16.00
795	24c Gray Lilac, F. Grill (99). Bright Color, Bold Unusual Geometric Grid Cancel, Pretty Strike, Very Fine ..... (Photo)	90.00





784



785



786



787



788



789



790



791



792



793



794



795



796



797



798



799



800



801



802



803



804



805



806



807



808



809



810



811



812



813



814



815



816



817



818



819



820



821



796	<b>30c Orange, F. Grill (100).</b> Large Margins, Beautiful Shade, Neat Geometric Cancel, Extremely Fine ..... (Photo)	60.00
797	<b>30c Orange, F. Grill (100).</b> "Jumbo" Stamp, showing parts of two other stamps inside perfs., Neat Small Square of Squares Cancel, Extremely Fine, a Fantastic Stamp ..... (Photo)	60.00
798	<b>30c Orange, F. Grill (100).</b> Deep Shade, Clear Boston Paid Cancel, Very Fine, a Beautiful Stamp ..... (Photo)	60.00
799	<b>30c Orange, F. Grill (100).</b> Clear Numeral in Grid Cancel, from the Supplementary Mail Ty. F Duplex, Late Usage Very Fine ..... (Photo)	60.00
800	<b>30c Orange, F. Grill (100).</b> Dark Magenta Cancel, Fine ..... (Photo)	72.50
801	<b>30c Orange, F. Grill (100).</b> Perfs. barely touch at T., tied by Circle of Wedges Cancel, "St. Louis, Mo." pmk. on small piece, Very Fine Strikes ..... (Photo)	60.00
802	<b>30c Orange, F. Grill (100).</b> Rich Color, "New York, Steamship," perfs in at right, Scarce ..... (Photo)	E. IV
803	<b>90c Blue, F. Grill (101).</b> Large Margins, Well Centered, Gorgeous Color, Red Cancel, Extremely Fine, a Wonderful Gem, with P. F. Certificate ..... (Photo)	225.00
804	<b>90c Blue, F. Grill (101).</b> Brilliant Color, Well Centered, Red Cancellation, Very Fine, a Beautiful Stamp ..... (Photo)	225.00
805	<b>90c Blue, F. Grill (101).</b> Clear San Francisco Cogwheel Cancel, Very Fine ..... (Photo)	175.00
806	<b>90c Blue, F. Grill (101).</b> Deep Shade, Lightly Cancelled, Very Fine (Photo)	175.00

#### 1861 RE-ISSUE

807	<b>1c Blue, Re-Issue (102).</b> Used, Very Fine ..... (Photo)	95.00
808	<b>2c Black, Re-Issue (103).</b> Used, single nibbed perf. tip, otherwise Very Fine ..... (Photo)	450.00
809	<b>5c Light Brown, Re-Issue (105).</b> Used, Very Fine, with P. F. Certificate ..... (Photo)	450.00
810	<b>12c Black, Re-Issue (107).</b> Used, Very Fine, with P. F. Certificate (Photo)	450.00
811	<b>30c Brownish Orange, Re-Issue (110).</b> Used, Fine, Very Scarce .... (Photo)	650.00

#### 1869 PICTORIAL ISSUE

##### ONE CENT BUFF

812	<b>1c Buff (112).</b> Bold Geometric Rosette Cancel, Perfect Strike, Very Fine, a Beauty ..... (Photo)	20.00
813	<b>1c Buff (112).</b> Gigantic Margins at Sides, showing Full Straddle at L., Light Cancel, Extremely Fine, A Gem ..... (Photo)	20.00
814	<b>1c Buff (112).</b> Large Margins, Well Centered, Red Cancel, Extremely Fine ..... (Photo)	35.00
815	<b>1c Buff (112).</b> Bold Negative Masonic Square & Compass in Circle Cancel, Perfect Strike, Extremely Fine ..... (Photo)	E. VI
816	<b>1c Buff (112).</b> Clear Negative Star Cancel, Extremely Fine ..... (Photo)	E. V
817	<b>1c Buff (112).</b> Well Centered, Bright Blue Cancel, Very Fine .... (Photo)	21.00
818	<b>1c Buff (112).</b> Bold Green Grid Cancel, Beautiful Strike, Very Fine (Photo)	60.00
819	<b>1c Buff (112).</b> Blue "Leominster, Mass." Geometric Circle Cancel, Wonderful Strike, Very Fine ..... (Photo)	E. V
820	<b>1c Buff (112).</b> Black "Carrier" Cancel, Very Fine and Scarce ..... (Photo)	65.00
821	<b>1c Buff (112).</b> Small Star in Circle Cancel, Very Fine ..... (Photo)	E. IV
822	<b>1c Buff (112).</b> Neat Tiny Five pointed Star Cancel Very Fine, Pretty Strike ..... (Photo)	E. IV



823	1c Buff (112). Bright Ultramarine Cancel, Very Fine .....	(Photo)	25.00
824	1c Buff (112). Neatly Struck (South) Framingham pmk., Very Fine .....	(Photo)	23.50
825	1c Buff (112). Clear Concord pmk., Very Fine .....	(Photo)	23.50
826	1c Buff (112). Leominster, Ms. Geometric and pmk., struck over each other, Stunning Effect, Very Fine .....	(Photo)	E. IV
827	1c Buff (112). Large part of Str. Line "Paid All" Cancel, Very Fine .....	(Photo)	50.00
828	1c Buff (112). Red Target Cancel, Neat Strike, Very Fine .....	(Photo)	35.00
829	1c Buff (112). Clear "B" Cancel, Very Fine .....	(Photo)	E. IV
830	1c Buff (112). Neat Shield Cancel, Very Fine .....	(Photo)	E. V
831	1c Buff (112). Blue "Burlington, Apr. 28, 1870 M. O. B." pmk., Very Fine .....	(Photo)	E. V
832	1c Buff (112). Neatly Struck Blue "Cincinnati" pmk., Very Fine .....	(Photo)	24.50
833	1c Buff (112). Black Geometrics and Red "Boston Paid All" pmk., Very Fine .....	(Photo)	35.00
834	1c Buff (112). Huge Imperf. Margins T. & B., a Spectacular Stamp .....	(Photo)	20.00
835	1c Buff (112). Clear "East Randolph, Mass." pmk., Beautiful Strike, Very Fine .....	(Photo)	23.50
836	1c Buff (112). Nibbed perf., Bold "PD" Cancel, Very Fine Strike .....	(Photo)	E. IV
837	1c Buff (112). Fine Centering, Clear (Paid) "All" Cancel, Fine. ....	(Photo)	50.00
838	1c Buff (112). Centered to top, Bold "US" in Circle Cancel, Very Fine Strike .....	(Photo)	E. V
839	1c Buff (112). Large Margins, Rich Shade, tied by Blue Maltese Cross in Circle Cancel, "St. Catharine, Md." pmk. on small piece, Extremely Fine .....	(Photo)	21.00+
840	1c Buff (112). Gigantic Margins, tied by Bold Fancy Geometric on small piece, Extremely Fine, a Fantastic Stamp .....	(Photo)	20.00
841	1c Buff (112). Jumbo Margins, tied by Red New York 1869 pmk., Black "Paid," on small piece, nibbed perf., otherwise Extremely Fine .....	(Photo)	35.00
842	1c Buff (112). Horiz. Pair, "New York, Received" on one, neat "Rosette of Diamonds" on other, Very Fine .....	(Photo)	45.00+
843	1c Buff (112). Horiz. Strip of Three, Tied by Quartered Cork Cancels and by "Cambridgeport, Mass." pmk. on small piece, a Fine and Handsome Strip .....		65.00+

## TWO CENT BROWN

844	2c Brown (113). "Jumbo" Margins, Nicely Struck Circle of "V"s Cancel, Extremely Fine, a Pretty Stamp .....	(Photo)	8.50
845	2c Brown (113). Deep Rich Color, Bold Paid Cancel, Very Fine .....	(Photo)	18.00
846	2c Brown (113). Bright Green Cancel, Very Fine .....	(Photo)	45.00
847	2c Brown (113). "Jumbo" Margins, showing Full Straddle at R., part of other stamp at L. within perfs., Neat Hiogo, Japan Cancel, Extremely Fine, a Gorgeous Stamp .....	(Photo)	50.00+
848	2c Brown (113). Pretty Shade, Small Blue Geometric in Circle Cancel, Very Fine .....	(Photo)	9.00
849	2c Brown (113). Indistinct Hiogo, Japan Cancel, Very Fine ....	(Photo)	E. III
850	2c Brown (113). Bold "C" Cancel, tied by Weak "Carrier" pmk. on small piece, Very Fine .....		E. III
851	2c Brown (113). Horiz. Pair, slightly reinforced, "New Orleans, La." pmk. and Cork Cancels, Very Fine .....	(Photo)	18.00
852	2c Brown (113). Horiz. Pair, slightly reinforced, Pretty "Paid" in Frame Cancels, Fine .....	(Photo)	E. II
853	2c Brown (113). Horiz. Pair, slightly reinforced, Str. Line "Paid All" Cancel, Cpl. Strike, Fine .....		E. II

854	<b>2c Brown (113).</b> Two Shades, " <b>Paid Ail</b> " and Red " <b>Paid</b> " Cancell, one has short perf. both well centered .....	48.00
855	<b>2c Brown (113).</b> Two Shades, Red & Blue <b>Dot in Circle</b> Cancell, Similar Designs, used in Baltimore, Md. on Foreign Mail Fine-Very Fine .....	E. II
856	<b>2c Brown (113).</b> Two Shades, tied on separate pieces, one by Star in Box, other with 1c Bank Note, Fine-Very Fine .....	E. II

### THREE CENT ULTRAMARINE

857	<b>3c Ultramarine (114).</b> "Jumbo" margins, Well Centered, Extremely Fine, a Beauty, with neat, clear "West Albany, N. Y." cancel .....	1.85
858	<b>3c Ultramarine (114).</b> Clear Small <b>Rosette</b> Cancel in Blue, Beautiful Strike, Very Fine .....	E. II
859	<b>3c Ultramarine (114).</b> Pretty <b>Green</b> Cancel, Very Fine .....	22.00
860	<b>3c Ultramarine (114).</b> Well Centered, <b>Violet Cancel</b> , Three wide-spaced bars, Very Fine .....	E. II
861	<b>3c Ultramarine (114).</b> Heavily Overinked, Incredibly Deep Color, almost Purple, Fantastic Copy .....	E. IV
862	<b>3c Ultramarine (114).</b> Bold <b>Red Paid</b> Cancel, Very Fine Strike (Photo) .....	E. III
863	<b>3c Ultramarine (114).</b> Clear <b>Double Lined Maltese Cross</b> Cancel, Gorgeous Strike, Very Fine .....	E. III
864	<b>3c Ultramarine (114).</b> Pretty <b>Red Star in Circle</b> Cancel, Very Fine (Photo) .....	E. III
865	<b>3c Ultramarine (114).</b> Well Centered, Bold Blue <b>Boxed Cross in Circle</b> Cancel, Very Fine .....	E. II
866	<b>3c Ultramarine (114).</b> Bold " <b>10</b> " Cancel, Magnificent Strike, Very Fine (Photo) .....	E. II
867	<b>3c Ultramarine (114).</b> Tied by Clear " <b>Experiment Mills, Pa.</b> " pmk. in Red on small piece, Very Fine .....	E. II
868	<b>3c Ultramarine (114).</b> Clear <b>Masonic Square &amp; Compass</b> in Circle Cancel, Very Fine .....	E. III
869	<b>3c Ultramarine (114).</b> Well Centered, couple short perms., Clear Red <b>Masonic Square &amp; Compass in Circle</b> Cancel, Very Fine Strike (Photo) .....	E. IV
870	<b>3c Ultramarine (114).</b> Perfs in at top, Bold <b>Green Star</b> Cancel, Very Fine Strike .....	E. III
871	<b>3c Ultramarine (114).</b> Tied by Magnificent Strike of "Union Mills, Pa." <b>Kleagle Mask</b> Cancel on small piece, a Beauty .....	E. X
872	<b>3c Ultramarine (114).</b> Tied by "Union Mills, Pa." <b>Skull &amp; Crossbones, KKK</b> Cancel on small piece, Very Fine, Rare cancel .....	E. XI
873	<b>3c Ultramarine (114).</b> Tied by Bold <b>Negative "OK" in Circle</b> on small piece, Very Fine Strike .....	E. III
874	<b>3c Ultramarine (114).</b> Tied by Bold <b>Heart</b> Cancel on small piece, Very Fine .....	E. III
875	<b>3c Ultramarine (114).</b> Horiz. Pair, one has rounded corner, tied by <b>Green Cogwheel</b> Cancell, matching "Shelbyville, Tenn." pmk. on small piece, Fine Strikes, Very Attractive .....	E. II
876	<b>3c Ultramarine (114).</b> Two Shades, Red Target & Purple Negative Star in Circle Cancell, Very Fine .....	E. III
877	<b>3c Ultramarine (114).</b> Two Shades, <b>Triangle and Diamond</b> in Circle Cancell, Very Fine Strikes .....	E. II
878	<b>3c Ultramarine (114).</b> Three Pretty Shades, Blue, Black <b>Rosettes</b> , Eight pointed <b>Star in Star</b> Cancell, Very Fine, Choice lot .....	E. II
879	<b>3c Ultramarine (114).</b> Three Shades, Diff. <b>Star</b> Cancell, Very Fine Strikes .....	E. II
880	<b>3c Ultramarine (114).</b> Three Shades, <b>Paid, Paid in Box and Paid 3 in Circle</b> Cancell, Very Fine Strikes, Choice lot .....	E. II





822

823

824

825

826

827



828

829

830

831

832

833



834

835

836

839



837

838

840

841



842

844

845

846

848



847

851

852



849

857

858

859

860

861



## SIX CENT ULTRAMARINE

881	<b>6c Ultramarine (115).</b> "Jumbo" Margins, Extremely Fine, a Marvelous Gem ..... (Photo)	21.50
882	<b>6c Ultramarine (115).</b> Incredible Margins, incl. Half Arrow at L., Neat Grid Cancel, an Extremely Fine Stamp of Unexcelled Beauty (Photo)	21.50
883	<b>6c Ultramarine (115).</b> Well Centered, Pretty <b>Square of Wedges</b> Cancel, Extremely Fine ..... (Photo)	21.50+
884	<b>6c Ultramarine (115).</b> <b>Brilliant Red</b> Cancel, Exceptionally Fine (Photo)	30.00
885	<b>6c Ultramarine (115).</b> Neat <b>Grid of Squares</b> Cancel, Exceptionally Fine (Photo)	21.50
886	<b>6c Ultramarine (115).</b> Fresh Color, Bold "Leominster, Mass." <b>Geometric Cogwheel</b> Cancel, Very Fine ..... (Photo)	E. V
887	<b>6c Ultramarine (115).</b> Neat Tiny <b>Red Geometric</b> Cancel, Pretty and Very Fine ..... (Photo)	30.00
888	<b>6c Ultramarine (115).</b> Fresh Color, Small Blue Cancel, Very Fine, Pretty Stamp ..... (Photo)	23.00
889	<b>6c Ultramarine (115).</b> Fine Centering, Bold " <b>S</b> " in <b>Circle</b> Cancel, Very Fine Strike ..... (Photo)	E. III
890	<b>6c Ultramarine (115).</b> Pretty <b>Blue Target</b> Cancel, Beautiful Strike, Very Fine ..... (Photo)	23.00
891	<b>6c Ultramarine (115).</b> <b>Vivid Red</b> Cancel, Pretty Strike, Very Fine (Photo)	30.00
892	<b>6c Ultramarine (115).</b> Rich Color, Black and Purple Reg. Cancels, Very Fine ..... (Photo)	23.00
893	<b>6c Ultramarine (115).</b> Centered slightly to right, <b>Brilliant Red</b> Cancel, Very Fine ..... (Photo)	30.00
894	<b>6c Ultramarine (115).</b> Tiny corner crease, Neat <b>Grid of Diamonds</b> Cancel, Very Fine Strike ..... (Photo)	21.50
895	<b>6c Ultramarine (115).</b> Clear " <b>Paid</b> " in <b>Circle</b> Cancel, Fine ..... (Photo)	40.00
896	<b>6c Ultramarine (115).</b> Enormous Margins on three sides, showing Full Straddle at R., narrow at top, Fine and Handsome	21.50
897	<b>6c Ultramarine (115).</b> Vert. Pair, Bold Grid Cancels, Very Fine .... (Photo)	47.50

## TEN CENT YELLOW

898	<b>10c Yellow (116).</b> Enormous Margins, incl. Half Arrow at R., Neat Small Grid Cancel, Extremely Fine, a Wonderful Stamp ..... (Photo)	21.50
899	<b>10c Yellow (116).</b> Well Centered, <b>Segmented Maltese Cross</b> Cancel, Extremely Fine ..... (Photo)	21.50
900	<b>10c Yellow (116).</b> Exceptional Centering, Bold <b>Circle of Small "V"s</b> Cancel, Extremely Fine, a Beauty ..... (Photo)	E. V
901	<b>10c Yellow (116).</b> Short perf. at upper left, Beautiful Clear <b>Purple "Philad'a, Pa"</b> pmk., Gorgeous Strike, An incredible showpiece .... (Photo)	25.00
902	<b>10c Yellow (116).</b> Unusual <b>Red "New York"</b> pmk., Gorgeous Strike, with two asterisks, used on Foreign Mail, Very Fine ..... (Photo)	30.00+
903	<b>10c Yellow (116).</b> Fresh Color, <b>Purple "Paid All"</b> (as part of Phila'a F. M. pmk.), Extremely Fine ..... (Photo)	25.00+
904	<b>10c Yellow (116).</b> Beautiful Centering, Baltimore Foreign Mail <b>Red Dot in Circle</b> Cancel, Extremely Fine ..... (Photo)	30.00
905	<b>10c Yellow (116).</b> Rich Color, <b>Bright Red Cork</b> Cancel, Very Fine & Handsome ..... (Photo)	30.00
906	<b>10c Yellow (116).</b> Rich Color, Clear " <b>Steamship</b> " pmk., Very Fine (Photo)	40.00
907	<b>10c Yellow (116).</b> Clear " <b>Hiogo, Japan</b> " Cancel, Marvelous Strike, Very Fine, Fresh Color, Exceedingly choice ..... (Photo)	60.00
908	<b>10c Yellow (116).</b> Clear " <b>Yokohama, Japan</b> " pmk., Very Fine, Exceptional strike ..... (Photo)	60.00





862

863

864

865

866

868



871



869



870



881



882



883



884



885



886



872



887



888



889



890



873



891



892



893



894



874



894



895



898



897



899



900



901



902



903



904



905



906



907



908



909



910



909	<b>10c Yellow (116). New York Steamship pmk., Very Fine, Exceptional Strike</b> ..... (Photo)	40.00
910	<b>10c Yellow (116). Deep Shade, Bluish Solid Star Cancel, Very Fine</b> (Photo)	23.00
911	<b>10c Yellow (116). Well Centered, Clear Leaf Cancel, Very Fine</b> .... (Photo)	E. IV
912	<b>10c Yellow (116). Rich Color, Bit of Red "Bremen" transit and Bold "Paid 3" in Arc Cancel, Very Fine Strike, A Beautiful stamp</b> ..... (Photo)	E. VI
913	<b>10c Yellow (116). Deep Rich Color, Well Centered, nibbed perf., Large part of Bold "Paid" Cancel, Very Fine Strike</b> ..... (Photo)	40.00
914	<b>10c Yellow (116). Extraordinarily Rich Shade, Large Sunburst Cancel, Stunning Strike, Very Fine</b> ..... (Photo)	E. V
915	<b>10c Yellow (116). Red Transit and Pretty, Small Circle of Wedges Cancel, Lovely Strike, Very Fine</b> ..... (Photo)	E. IV
916	<b>10c Yellow (116). Beautiful Rare Magenta Negative Masonic Square &amp; Compass in Circle Cancel, Magnificent Strike, Outstanding</b> ..... (Photo)	E. VIII
917	<b>10c Yellow (116). Bright Color, Neat Red "New York" pmk., Very Fine, a Very Pretty Stamp</b> ..... (Photo)	30.00
918	<b>10c Yellow (116). Well Centered, Blue Cork Cancels, Blue town &amp; Red London transit pmks., Very Fine and Colorful</b> ..... (Photo)	23.00+
919	<b>10c Yellow (116). Deep Shade, Bold Eight pointed Star in Star Cancel, Very Fine</b> ..... (Photo)	E. IV
920	<b>10c Yellow (116). Neat Small Five pointed Star in Circle Cancel, Pretty Strike, Very Fine</b> ..... (Photo)	E. IV
921	<b>10c Yellow (116). Bold Negative Star in Circle Cancel, Very Fine</b> (Photo)	E. IV
922	<b>10c Yellow (116). Split Grill, Ultramarine Star Cancel, Very Fine</b> (Photo)	25.00+
923	<b>10c Yellow (116). Rich Color, Bold "10" in Circle, Stunning Strike, Very Fine</b> ..... (Photo)	E. V
924	<b>10c Yellow (116). Gigantic Margins, in spite of being reperfed at left, Blue Cancel, still an Outstanding Stamp</b> ..... (Photo)	23.00
925	<b>10c Yellow (116). Fine Centering, Red "New York, Paid All, Direct" pmks., Very Pretty and Scarce, seldom applied to the stamps</b> ..... (Photo)	30.00+
926	<b>10c Yellow (116). Light Blue Grid and Clear French 1873 transit pmk., Fine and Very Pretty</b> ..... (Photo)	E. IV
927	<b>10c Yellow (116). Fresh Color, Clear Cincinnati pmk. in Blue, Neatly Struck, Fine</b> ..... (Photo)	23.00

#### TWELVE CENT GREEN

928	<b>12c Green (117). Rich Shade, Perfectly Centered, Neat Target Cancel, Bold Strike, Extremely Fine, a Gem</b> ..... (Photo)	21.50
929	<b>12c Green (117). Well Centered, Fancy Blue Solid Star cancel, Extremely Fine</b> ..... (Photo)	24.00
930	<b>12c Green (117). Beautiful Centering, Fresh Color, Red Cancel, Extremely Fine</b> ..... (Photo)	40.00
931	<b>12c Green (117). Well Centered, Red Four Leaf Clover Cancel, Extremely Fine</b> ..... (Photo)	40.00
932	<b>12c Green (117). Magnificent Centering, Gorgeous Shade, Magenta Cancel, Extremely Fine</b> ..... (Photo)	25.00
933	<b>12c Green (117). Well Centered, Bold Star Cancel, Exceptionally Fine</b> ..... (Photo)	21.50
934	<b>12c Green (117). Well Centered, Pretty Red 4-Diamond Cancel, Very Fine</b> ..... (Photo)	40.00
935	<b>12c Green (117). Bright Green Cancel, Very Fine</b> ..... (Photo)	60.00
936	<b>12c Green (117). Rich Shade, Neat "Cross-Roads" Cancel, Very Fine</b> ..... (Photo)	21.50
937	<b>12c Green (117). Well Centered, Vivid Red Cancel, Very Fine</b> .... (Photo)	40.00
938	<b>12c Green (117). Magenta Cancel, centered bit to bottom, Very Fine</b> ..... (Photo)	25.00





911



912



913



914



915



916



917



918



919



920



921



922



923



924



925



926



927



928



929



930



931



932



933



934



935



936



937



938



939



940



941



942



943



944



945



947



948



949



950



951



952



953



954



955



956



957



958



959



939	<b>12c Green (117).</b> Pretty, Negative <b>Five pointed Star in Circle</b> Cancel, Very Fine ..... (Photo)	<b>E. IV</b>
940	<b>12c Green (117).</b> Bold Baltimore Foreign Mail <b>Red Dot in Circle</b> Cancel, Very Fine ..... (Photo)	40.00
941	<b>12c Green (117).</b> Bold <b>"FH"</b> Cancel, Large Block Letters, Very Fine ..... (Photo)	<b>E. V</b>
942	<b>12c Green (117).</b> Bold Negative <b>"A" in Circle</b> Cancel, Very Fine .. (Photo)	<b>E. IV</b>
943	<b>12c Green (117).</b> <b>Brilliant Red</b> Negative Small Star Cancel, Very Fine ..... (Photo)	40.00
944	<b>12c Green (117).</b> Huge Margins at Sides, showing Straddle at R., part of other stamp at L. within perfs., Black & Red Cancels, in spite of nibbed perf. a Beautiful Stamp ..... (Photo)	40.00
945	<b>12c Green (117).</b> Well Centered, <b>French Pkt. Anchor in Dotted Grid</b> Cancel, faint thin spot, Extremely Fine appearance, Ex-Waterhouse ... (Photo)	<b>E. IV</b>
946	<b>12c Green (117).</b> Well Centered, Blue Cork Cancel, natural internal paper wrinkle, Very Fine ..... (Photo)	24.00
947	<b>12c Green (117).</b> Nibbed perf., Clear <b>"New York, Registered"</b> pmk., Very Fine Strike ..... (Photo)	23.50+
948	<b>12c Green (117).</b> Reperfed at top, Well Centered, <b>Fancy Four Way Grid</b> Cancel, Very Fine Strike, Very Pretty ..... (Photo)	23.50

## FIFTEEN CENT BROWN & BLUE

### TYPES I & II

949	<b>15c Brown &amp; Blue, Ty. I (118).</b> Well Centered, Gorgeous Colors, Clear Target Cancel, Neat Centered Strike, Extremely Fine, a Marvelous Stamp ..... (Photo)	90.00
950	<b>15c Brown &amp; Blue, Ty. I (118).</b> Glorious Deep Colors, Well Centered, Bold Target Cancel, Extremely Fine ..... (Photo)	90.00
951	<b>15c Brown &amp; Blue, Ty. I (118).</b> Fantastic Colors, Sharp Impression, Light Cancel, Extremely Fine ..... (Photo)	90.00
952	<b>15c Brown &amp; Blue, Ty. I (118).</b> Magnificent Colors and Centering, Light <b>Brown Red</b> Cancel, Extremely Fine ..... (Photo)	110.00
953	<b>15c Brown &amp; Blue, Ty. I (118).</b> Pretty Color, Sharp Impression, Blue Cancel, Very Fine ..... (Photo)	95.00
954	<b>15c Brown &amp; Blue, Ty. I (118).</b> Fresh Colors, Neat Blue Target Cancel, Very Fine ..... (Photo)	95.00
955	<b>15c Brown &amp; Blue, Ty. I (118).</b> Fresh Colors, Nicely Struck <b>French Anchor in Dotted Grid</b> Cancel, Very Fine and Pretty ..... (Photo)	90.00+
956	<b>15c Brown &amp; Blue, Ty. I (118).</b> Sharp Impression, <b>Red</b> Cancel, Very Fine ..... (Photo)	110.00
957	<b>15c Brown &amp; Blue, Ty. I (118).</b> Gorgeous Colors, Well Centered, <b>Perfect Blue "Cincinnati, O."</b> pmk., Very Fine ..... (Photo)	95.00
958	<b>15c Brown &amp; Blue, Ty. I (118).</b> Pretty Colors, Neat Black <b>"New Orleans"</b> town pmk., Clear Strike, Very Fine ..... (Photo)	100.00
959	<b>15c Brown &amp; Blue, Ty. I (118).</b> Rich Colors, Neatly Cancelled, Very Fine ..... (Photo)	90.00
960	<b>15c Brown &amp; Blue, Ty. I (118).</b> Magnificent Centering, Fresh Colors, Neat Cork Cancel, tiny corner crease, Extremely Fine appearance ..... (Photo)	90.00
961	<b>15c Brown &amp; Blue, Ty. II (119).</b> Exceptional Centering, Fresh Colors, Light Grid Cancel, Extremely Fine, a Gem ..... (Photo)	27.00
962	<b>15c Brown &amp; Blue, Ty. II (119).</b> Perfectly Centered, Deep Colors, Pretty <b>Geometric</b> Cancel, Extremely Fine ..... (Photo)	27.00
963	<b>15c Brown &amp; Blue, Ty. II (119).</b> Well Centered, Strongly Shifted Center, Neat Target Cancel, Extremely Fine ..... (Photo)	27.00+



964	<b>15c Brown &amp; Blue, Ty. II (119).</b> Rich Colors, Bold <b>Blue Star in Circle</b> Cancel, Very Fine ..... (Photo) <b>E. VI</b>	
965	<b>15c Brown &amp; Blue, Ty. II (119).</b> Light <b>Red</b> Cancel, Very Fine ..... (Photo) 45.00	
966	<b>15c Brown &amp; Blue, Ty. II (119).</b> Deep Rich Colors, traces of <b>Red</b> Cancel, Very Fine ..... (Photo) 45.00	
967	<b>15c Brown &amp; Blue, Ty. II (119).</b> Gorgeous Colors, <b>Red</b> Cancel, Very Fine ..... (Photo) 45.00	
968	<b>15c Brown &amp; Blue, Ty. II (119).</b> Deep Rich Colors, <b>Blue</b> Cancel, Very Fine ..... (Photo) 30.00	
969	<b>15c Brown &amp; Blue, Ty. II (119).</b> Beautiful Color and Impression, <b>Bright Red</b> Cancel, Very Fine ..... (Photo) 45.00	
970	<b>15c Brown &amp; Blue, Ty. II (119).</b> Bold <b>Solid Star</b> Cancel, Very Fine (Photo) <b>E. V</b>	
971	<b>15c Brown &amp; Blue, Ty. II (119).</b> Deep Colors, <b>Blue town pmk.</b> , Very Fine ..... (Photo) 30.00	
972	<b>15c Brown &amp; Blue, Ty. II (119).</b> Gorgeous Deep Colors, <b>Blue</b> Cancels, Fresh and Fine ..... (Photo) 30.00	
973	<b>15c Brown &amp; Blue, Ty. II (119).</b> Bold <b>Five pointed Hollow Star</b> Cancel, Fine ..... (Photo) <b>E. III</b>	
974	<b>15c Brown &amp; Blue, Ty. II (119).</b> Clear, Perfect " <b>Honesdale, Pa.</b> " town pmk., Gorgeous Strike, Fine ..... (Photo) 30.00	
975	<b>15c Brown &amp; Blue, Ty. II (119).</b> <b>Bright Red</b> town pmk., Fine ..... (Photo) 45.00	
976	<b>15c Brown &amp; Blue, Ty. II (119).</b> <b>Horiz. Pair.</b> , Well Centered, Deep Colors, Light Cancels, few perfs. reinforced, Extremely Fine ..... (Photo) 60.00	

#### TWENTY FOUR CENT GREEN & VIOLET

977	<b>24c Green &amp; Violet (120).</b> Well Centered, Rich Colors, Neat Dotted Grid Cancel, Extremely Fine ..... (Photo) 110.00	
978	<b>24c Green &amp; Violet (120).</b> Fantastic Bright Colors, Well Centered, Light Circle of " <b>V</b> "s Cancel, Extremely Fine ..... (Photo) 110.00	
979	<b>24c Green &amp; Violet (120).</b> Exceptionally Well Centered, Brilliant Colors, Red " <b>New York, Paid All</b> " pmk., Extremely Fine, a Gem ..... (Photo) 150.00+	
980	<b>24c Green &amp; Violet (120).</b> Well Centered, Deep Colors, Large Circle of Wedges Cancel, Extremely Fine ..... (Photo) 110.00	
981	<b>24c Green &amp; Violet (120).</b> Nicely Centered, Neat Round Split <b>Cork</b> Cancel, Very Fine ..... (Photo) 110.00	
982	<b>24c Green &amp; Violet (120).</b> Beautiful Colors, Bold <b>Red Leaf</b> Cancel, Very Fine ..... (Photo) 140.00+	
983	<b>24c Green &amp; Violet (120).</b> Magnificent Color, <b>Red</b> Cancel, inconsequential corner perf. bend, Very Fine ..... (Photo) 140.00	
984	<b>24c Green &amp; Violet (120).</b> Deep Colors, <b>Red</b> Cancel, small thin spot in grill, Very Fine appearance ..... 140.00	
985	<b>24c Green &amp; Violet (120).</b> Rich Deep Colors, Small <b>Five pointed Hollow Star</b> Cancel, Pretty Strike, tiny corner crease, Very Fine appearance ..... (Photo) 110.00+	

#### THIRTY CENT BLUE & CARMINE

986	<b>30c Blue &amp; Carmine (121).</b> Beautiful Centering, Rich Colors, Light Cancel, Extremely Fine ..... (Photo) 60.00	
987	<b>30c Blue &amp; Carmine (121).</b> "Jumbo" Margins, Perfectly Centered, Magnificent Colors, Extremely Fine, a Wonderful Gem ..... (Photo) 60.00	
988	<b>30c Blue &amp; Carmine (121).</b> Brilliant Colors, <b>Bright Brown</b> Cancel, Extremely Fine, a Wonderful Stamp ..... (Photo) 65.00	

989	<b>30c Blue &amp; Carmine (121).</b> Magnificent Centering, Rich Colors, Clear French Anchor in Dotted Grid Cancel, Extremely Fine, Ex-Waterhouse, Gorgeous Exhibition piece ..... (Photo)	60.00+
990	<b>30c Blue &amp; Carmine (121).</b> Large Margins, tied by Black <b>Rosette</b> Cancel and by Red "New York, Paid 12" pmk. on small piece, Extremely Fine ..... (Photo)	60.00+
991	<b>30c Blue &amp; Carmine (121).</b> Brilliant Colors, Black Grid and Bright Red "New York Paid All, Br. Transit" pmk., Very Fine, a Beauty .. (Photo)	70.00+
992	<b>30c Blue &amp; Carmine (121).</b> Scarce Blue "Cincinnati, O." town pmk., and part of Grid Cancel, Very Fine ..... (Photo)	65.00
993	<b>30c Blue &amp; Carmine (121).</b> Well Centered, Lovely Colors, Bold <b>Rosette</b> Cancel, Very Fine ..... (Photo)	60.00
994	<b>30c Blue &amp; Carmine (121).</b> Nicely Centered, <b>Sunburst</b> Cancel, Very Fine & Striking ..... (Photo)	60.00+
995	<b>30c Blue &amp; Carmine (121).</b> Brilliant Colors, Bold Dotted Grid Cancel, Large Margins, Very Fine, An Incredible Stamp ..... (Photo)	60.00
996	<b>30c Blue &amp; Carmine (121).</b> Bold <b>Target</b> Cancel, Perfect Strike, Very Fine ..... (Photo)	60.00
997	<b>30c Blue &amp; Carmine (121).</b> Rich Colors, "N. York Steamship" Cancellation, centered slightly to left, Very Fine ..... (Photo)	100.00
998	<b>30c Blue &amp; Carmine (121).</b> Perfectly Centered, Rich Colors, <b>Red Rosette</b> Cancel, slightly nibbed perf., otherwise Extremely Fine ..... (Photo)	70.00
999	<b>30c Blue &amp; Carmine (121).</b> Large Margins, Bright Colors, Pretty <b>Negative 5-point Star</b> , small size Cancel, minute thin specks in grill, Extremely Fine appearance ..... (Photo)	60.00+
1000	<b>30c Blue &amp; Carmine (121).</b> Well Centered, Bold <b>Geometric</b> Cancel, negligible corner perf. bends, Very Fine appearance ..... (Photo)	60.00

#### NINETY CENT CARMINE & BLACK

1001	<b>90c Carmine &amp; Black (122).</b> Perfectly Centered, Fresh Colors, Light Cancel, Extremely Fine, a Gem ..... (Photo)	260.00
1002	<b>90c Carmine &amp; Black (122).</b> Lovely Colors, Large Margins, Lightly Cancelled, Extremely Fine, Ex-Newbury ..... (Photo)	260.00
1003	<b>90c Carmine &amp; Black (122).</b> Well Centered, Rich Colors, Red Cancel, Extremely Fine, Outstanding ..... (Photo)	325.00
1004	<b>90c Carmine &amp; Black (122).</b> Marvelous Centering, Rich Colors, <b>Unusual Grid</b> Cancel, Pretty Strike, one partly nibbed perf., otherwise Extremely Fine ..... (Photo)	260.00
1005	<b>90c Carmine &amp; Black (122).</b> Beautiful <b>Red Rosette</b> Cancel, Lovely Strike, Very Fine, Ex-Newbury ..... (Photo)	325.00
1006	<b>90c Carmine &amp; Black (122).</b> Well Centered, Large Margins, Fresh Colors, <b>Bright Red Grid</b> Cancel, few grill points broken through, Extremely Fine appearance, a Beautiful Stamp ..... (Photo)	325.00
1007	<b>90c Carmine &amp; Black (122).</b> Light Cancel, Lovely Colors, negligible corner perf. bend, Very Fine ..... (Photo)	260.00
1008	<b>90c Carmine &amp; Black (122).</b> Vivid Colors, negligible corner perf. bend, Extremely Fine appearance ..... (Photo)	260.00
1009	<b>90c Carmine &amp; Black (122).</b> Well Centered, Vivid Deep Colors, negligible thin speck in Grill, Extremely Fine appearance ..... (Photo)	260.00
1010	<b>90c Carmine &amp; Black (122).</b> Well Centered, Dark Blue <b>Square Dotted Grid</b> Cancel, minute corner perf. creases, Very Fine appearance (Photo)	300.00





960



961



962



963



964



965



966



967



968



969



970



971



972



973



974



975



976



977



978



979



980



981



982



983



984



985



986



987



988



989



990



991



992



993



994



995



996



997



# 1869 PICTORIAL RE-ISSUE

1011	1c Buff, Re-Issue (123). Registry Cancel, Very Fine .....	(Photo)	75.00
1012	1c Buff, Re-Issue (123). Blue Target Cancel, Very Fine .....	(Photo)	75.00
1013	1c Buff, Re-Issue (123). Red Cancel, centered bit to top, Very Fine .....	(Photo)	75.00
1014	1c Buff, Re-Issue (123). Registry Cancel, Very Fine .....	(Photo)	75.00
1015	1c Buff, Re-Issue (123). Neat "New York" pmk., Very Fine ....	(Photo)	75.00
1016	1c Buff, Re-Issue (123). Clear Star in Circle Cancel, Very Fine .....	(Photo)	75.00+
1017	1c Buff, Re-Issue (123). Purple Cancel, Very Fine .....	(Photo)	75.00
1018	1c Buff, Re-Issue (123). Blue Grid Cancel, Very Fine .....	(Photo)	75.00
1019	2c Brown, Re-Issue (124). Light "Paid" cancel, just readable, Very Fine .....	(Photo)	80.00+
1020	6c Blue, Re-Issue (126). Well Centered, Lightly Cancelled, Extremely Fine .....	(Photo)	165.00
1021	10c Yellow, Re-Issue (127). "Steamship" Cancellation, Clear Strike, Very Fine, Very rare .....	(Photo)	200.00+
1022	15c Brown & Blue, Re-Issue (129). Vivid Colors, Well Centered, Light Brown Registry oval Cancel, Extremely Fine .....	(Photo)	200.00+
1023	15c Brown & Blue, Re-Issue (129). Well Centered, Rich Colors, Light Registry Cancel, Extremely Fine .....	(Photo)	200.00
1024	24c Green & Violet, Re-Issue (130). Wonderful Centering, Vivid Colors, Light Registry Cancel, Extremely Fine .....	(Photo)	200.00
1025	24c Green & Violet, Re-Issue (130). Perfectly Centered, Brilliant Colors, Neat Registry Cancel, Extremely Fine, a Gorgeous Gem .....	(Photo)	300.00
1026	30c Blue & Carmine, Re-Issue (131). Well Centered, Brilliant Colors, Neat Registry Cancel, Extremely Fine, a Gorgeous Gem .....	(Photo)	300.00
1027	30c Blue & Carmine, Re-Issue (131). Brilliant Colors, Neat Registry Cancel, Very Fine .....	(Photo)	300.00
1028	90c Carmine & Black, Re-issue (132). Brilliant Colors, Well Centered, Light Quartered Cork cancel, Extremely Fine .....	(Photo)	600.00
1029	90c Carmine & Black, Re-Issue (132). Rich Colors, Light Cancel, Well Centered, Extremely Fine .....	(Photo)	600.00
1030	90c Carmine & Black, Re-Issue (132). Beautiful Light Colors, Neat Registry Cancel, Extremely Fine .....	(Photo)	600.00
1031	90c Carmine & Black, Re-Issue (132). Brilliant Colors, neat cancel, Fresh and Very Fine, with P. F. Certificate .....	(Photo)	600.00
1032	1c Buff, Re-Issue (133). Clear "Wheel of Fortune" Cancel, Very Fine & unusual .....	(Photo)	90.00+
1033	1c Buff, Re-Issue (133). Clear 3 Str. Lines "Oaktown, Indiana" pmk., Beautiful Strike, Very Fine and a wonderful example of a rare post-mark .....	(Photo)	90.00+
1034	1c Buff, Re-Issue (133). Used, tiny corner crease, Very Fine appearance .....	(Photo)	90.00

END OF SALE — THANK YOU

*LOTS ON VIEW FROM OCTOBER 5, 1972  
OFFICES OPEN SATURDAY BEFORE SALE  
AND ON COLUMBUS DAY, OCTOBER 9, 1972*





993



994



995



996



997



998



999



1000



1001



1002



1003



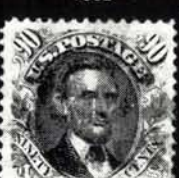
1004



1005



1006



1007



1008



1009



1010



1011



1012



1013



1014



1015



1016



1017



1018



1019



1020



1021



1022



1023



1024



1025



1026



1027



1028



1029



1030



1031



1032



1033



1034

*We Sell a Greater Dollar Value of  
United States Stamps & Covers Than  
Any Other Auction Firm in the World !*

This statement of fact is just as true today as it was when we first made it several years ago. You will find further proof in the exciting and magnificent auctions now in preparation for the coming season !

**WE SHALL BE SELLING THESE  
NOTEWORTHY PROPERTIES THIS FALL !**

- Specialized Proofs, Essays and "Specimens": a fabulous holding valued at more than \$100,000.00.
- An extremely valuable collection of 19th and 20th Century U. S. Singles, Blocks and Covers, valued at more than a third of a million dollars featuring such rarities as the 1861 "First Designs" complete, nearly every one of the extremely rare "Special Printings", Bluish Experimental Papers complete in Blocks, among many Rarities of equal importance.
- Confederate States: the award winning (nine gold medals) collection of Earl Weatherly, one of the leading students and authorities of this era of postal history.
- The lifetime collection and accumulation of Milo C. Reynolds of Burlington, Vermont, who recently passed away at the age of one hundred years !
- Plus . . . many other important and valuable properties involving both United States and Foreign stamps.

**ROBERT A. SIEGEL  
AUCTION GALLERIES, Inc.**

(Licensed and Bonded Auctioneer)

120 EAST 56th STREET

NEW YORK, N. Y. 10022

(Tel. 753-6421)



## **WESTERN EXPRESS**

A new definitive book by Mel Nathan is now nearing completion and will be ready for delivery in December. This well illustrated limited edition of this important work may be ordered now.

### **PRICE:**

**\$17.50 or De Luxe edition in a slip cover \$22.50**

**ROBERT A. SIEGEL  
AUCTION GALLERIES, Inc.**

## IS YOUR COLLECTION FOR SALE?

REALIZE IMMEDIATE CASH  
PLUS THE ADDED ADVANTAGE OF  
SELLING THROUGH OUR AUCTIONS

We will advance immediate cash up to 75% of our appraisal value, of what your collection should realize at auction. There is no interest charge.

Your collection will then be sold in one of our coming auction sales. All stamps are expertly and advantageously lotted in attractive, well illustrated catalogs. Lotting is meticulously planned under our personal supervision. Commission is 20% of the gross realization. There is no lotting fee or any other charges. Final settlement is made within five weeks after the sale. We have been continuously conducting stamp auctions in the United States for over forty-two years.

Valuable collections and stamp holdings are especially wanted, but we will accept properties valued from \$500 upwards. Send all stamps direct for appraisal. Auction advance will be remitted shortly after receipt. If not entirely pleased, stamps will be returned at our expense. If circumstances warrant due to bulk or value, we will travel anywhere to inspect important properties.

ROBERT A. SIEGEL  
AUCTION GALLERIES, Inc.

(Licensed and Bonded Auctioneer)

120 EAST 56th STREET  
NEW YORK, N. Y. 10022

(Tel. 753-6421)











# ROBERT A. SIEGEL AUCTION GALLERIES, Inc.

120 EAST 56TH STREET  
NEW YORK, N. Y. 10022

418TH SALE

## PRICES REALIZED

OCTOBER 10 & 11, 1972

UNITED STATES STAMPS  
1845-1869

GROSS REALIZATION \$162,705.00

1st Session October 10th					
1	525.00	40	290.00	82	105.00
2	120.00	41	300.00	83	85.00
3	105.00	42	1600.00	84	120.00
4	130.00	43	600.00	85	200.00
5	130.00	44	400.00	86	130.00
6	350.00	45	400.00	87	100.00
7	170.00	46	260.00	88	95.00
8	110.00	47	325.00	89	57.50
9	425.00	48	125.00	90	140.00
10	300.00	49	350.00	91	60.00
11	575.00	50	75.00	92	100.00
12	230.00	51	325.00	93	50.00
13	450.00	52	170.00	94	85.00
14	180.00	53	400.00	95	120.00
15	170.00	54	85.00	96	280.00
16	1600.00	55	230.00	97	150.00
17	675.00	56	55.00	98	52.50
18	210.00	57	45.00	99	80.00
19	260.00	58	80.00	100	110.00
20	850.00	59	85.00	101	85.00
21	180.00	60	190.00	102	80.00
22	450.00	61	95.00	103	125.00
23	1500.00	62	250.00	104	115.00
24	250.00	63	240.00	105	210.00
25	210.00	64	325.00	106	25.00
26	125.00	65	180.00	107	30.00
27	575.00	66	280.00	108	22.00
28	200.00	67	140.00	109	35.00
29	250.00	68	90.00	110	170.00
30	250.00	69	260.00	111	325.00
31	700.00	70	170.00	112	70.00
32	1100.00	71	62.50	113	80.00
33	350.00	72	80.00	114	42.50
34	1450.00	73	85.00	115	28.00
35	550.00	74	55.00	116	37.50
36	700.00	75	250.00	117	42.50
37	850.00	76	150.00	118	15.00
38	2300.00	77	210.00	119	110.00
39	375.00	78	180.00	120	105.00
		79	90.00	121	300.00
		80	100.00	122	95.00
		81	67.50	123	250.00
				124	260.00
				125	375.00
				126	100.00
				127	27.00
				128	37.50
				129	21.00
				130	26.00
				131	30.00
				132	375.00
				133	100.00
				134	52.50
				135	52.50
				136	52.50
				137	26.00
				138	26.00
				139	67.50
				140	80.00
				141	57.50
				142	150.00
				143	32.50
				144	35.00
				145	47.50
				146	40.00
				147	55.00
				148	200.00
				149	50.00
				150	65.00
				151	190.00
				152	85.00
				153	260.00
				154	50.00
				155	32.50
				156	150.00
				157	300.00
				158	30.00
				159	37.50
				160	32.50
				161	60.00
				162	50.00
				163	21.00
				164	22.00
				165	110.00
				166	52.50
				167	105.00
				168	35.00
				169	52.50
				170	75.00
				171	225.00
				172	550.00
				173	280.00
				174	325.00
				175	600.00
				176	300.00
				177	375.00
				178	1050.00
				179	375.00
				180	525.00
				181	375.00
				182	350.00
				183	375.00
				184	290.00
				185	160.00
				186	400.00
				187	105.00
				188	500.00
				189	625.00
				190	400.00
				191	325.00
				192	325.00
				193	110.00
				194	550.00
				195	135.00
				196	550.00
				197	55.00
				198	190.00
				199	80.00
				200	375.00
				201	170.00
				202	900.00
				203	625.00
				204	525.00
				205	140.00
				206	195.00
				207	200.00
				208	65.00
				209	160.00
				210	170.00
				211	250.00
				212	80.00
				213	55.00
				214	120.00
				215	52.50
				216	1600.00
				217	900.00
				218	600.00
				219	575.00
				220	600.00
				221	250.00
				222	145.00
				223	190.00
				224	105.00
				225	140.00
				226	25.00
				227	350.00
				228	180.00
				229	300.00
				230	220.00
				231	95.00
				232	85.00
				233	200.00
				234	42.50
				235	150.00
				236	260.00
				237	280.00
				238	425.00
				239	120.00
				240	120.00
				241	125.00
				242	220.00
				243	160.00
				244	170.00
				245	135.00
				246	210.00
				247	190.00
				248	250.00
				249	85.00

250 67.50  
251 230.00  
252 190.00  
253 160.00  
254 300.00  
255 145.00  
256 140.00  
257 200.00  
258 65.00  
259 72.50  
260 47.50  
261 45.00  
262 50.00  
263 50.00  
264 26.00  
265 26.00  
266 26.00  
267 26.00  
268 72.50  
269 115.00  
270 52.50  
271 11.00  
272 47.50  
273 105.00  
274 70.00  
275 32.50  
276 11.00  
277 12.00  
278 12.00  
279 37.50  
280 28.00  
281 42.50  
282 15.00  
283 47.50  
284 11.00  
285 35.00  
286 42.50  
287 50.00  
288 37.50  
289 26.00  
290 55.00  
291 18.00  
292 16.00  
293 17.00  
294 5.00  
295 42.50  
296 16.00  
297 26.00  
298 32.50  
299 160.00  
300 500.00  
301 150.00  
302 200.00  
303 425.00  
304 250.00  
305 260.00  
306 85.00  
307 250.00  
308 270.00  
309 190.00  
310 525.00  
311 650.00

312 500.00  
313 190.00  
314 575.00  
315 170.00  
316 170.00  
317 160.00  
318 85.00  
319 62.50  
320 35.00  
321 500.00  
322 625.00  
323 42.50  
324 160.00  
325 90.00  
326 140.00  
327 65.00  
328 42.50  
329 25.00  
330 140.00  
331 80.00  
332 85.00  
333 105.00  
334 100.00  
335 85.00  
336 200.00  
337 125.00  
338 130.00  
339 725.00  
340 105.00  
341 85.00  
342 62.50  
343 55.00  
344 75.00  
345 210.00  
346 52.50  
347 50.00  
348 42.50  
349 45.00  
350 400.00  
351 1200.00  
352 475.00  
353 325.00  
354 25.00  
355 37.50  
356 50.00  
357 57.50  
358 11.00  
359 28.00  
360 29.00  
361 26.00  
362 22.00  
363 57.50  
364 35.00  
365 50.00  
366 21.00  
367 52.50  
368 32.50  
369 57.50  
370 26.00  
371 550.00  
372 42.50  
373 17.00

374 30.00  
375 15.00  
376 26.00  
377 29.00  
378 190.00  
379 32.50  
380 17.00  
381 19.00  
382 60.00  
383 10.00  
384 20.00  
385 42.50  
386 32.50  
387 60.00  
388 100.00  
389 29.00  
390 24.00  
391 110.00  
392 52.50  
393 45.00  
394 37.50  
395 45.00  
396 95.00  
397 90.00  
398 260.00  
399 190.00  
400 200.00  
401 125.00  
402 190.00  
403 130.00  
404 90.00  
405 105.00  
406 75.00  
407 120.00  
408 40.00  
409 600.00  
410 62.50  
411 62.50  
412 400.00  
413 300.00  
414 300.00  
415 150.00  
416 170.00  
417 95.00  
418 240.00  
419 105.00  
420 100.00  
421 90.00  
422 115.00  
423 105.00  
424 80.00  
425 72.50  
426 67.50  
427 180.00  
428 600.00  
429 67.50  
430 115.00  
431 2100.00  
432 2100.00  
433 2200.00  
434 350.00  
435 250.00

436 170.00  
437 100.00  
438 270.00  
439 170.00  
440 160.00  
441 55.00  
442 40.00  
443 35.00  
444 95.00  
445 105.00  
446 24.00  
447 72.50  
448 45.00  
449 65.00  
450 42.50  
451 37.50  
452 37.50  
453 95.00  
454 90.00  
455 75.00  
456 67.50  
457 30.00  
458 200.00  
459 260.00  
460 180.00  
461 60.00  
462 375.00  
463 100.00  
464 85.00  
465 42.50  
466 32.50  
467 50.00  
468 26.00  
469 67.50  
470 21.00  
471 45.00  
472 27.00  
473 50.00  
474 42.50  
475 37.50  
476 30.00  
477 30.00  
478 24.00  
479 42.50  
480 325.00  
481 21.00  
482 130.00  
483 135.00  
484 110.00  
485 135.00  
486 135.00  
487 140.00  
488 150.00  
489 120.00  
490 450.00  
491 95.00  
492 85.00  
493 32.50  
494 30.00  
495 60.00  
496 45.00  
497 65.00

498 250.00  
499 55.00  
500 500.00  
501 105.00  
502 35.00  
503 42.50  
504 100.00  
505 125.00

2nd Session  
October 11th

506 75.00  
507 72.50  
508 32.50  
509 45.00  
510 72.50  
511 75.00  
512 42.50  
513 57.50  
514 37.50  
515 30.00  
516 45.00  
517 16.00  
518 37.50  
519 12.00  
520 67.50  
521 55.00  
522 50.00  
523 120.00  
524 70.00  
525 200.00  
526 190.00  
527 200.00  
528 40.00  
529 65.00  
530 80.00  
531 150.00  
532 90.00  
533 110.00  
534 75.00  
535 55.00  
536 30.00  
537 32.50  
538 45.00  
539 47.50  
540 125.00  
541 75.00  
542 22.00  
543 45.00  
544 100.00  
545 55.00  
546 37.50  
547 47.50  
548 800.00  
549 75.00  
550 55.00

551 160.00  
552 135.00  
553 150.00  
554 160.00  
555 75.00  
556 400.00  
557 100.00  
558 35.00  
559 75.00  
560 150.00  
561 35.00  
562 90.00  
563 40.00  
564 45.00  
565 35.00  
566 28.00  
567 30.00  
568 12.00  
569 22.00  
570 37.50  
571 210.00  
572 200.00  
573 150.00  
574 400.00  
575 125.00  
576 130.00  
577 500.00  
578 270.00  
579 105.00  
580 120.00  
581 105.00  
582 100.00  
583 250.00  
584 57.50  
585 52.50  
586 400.00  
587 290.00  
588 22.00  
589 80.00  
590 40.00  
591 62.50  
592 65.00  
593 21.00  
594 72.50  
595 180.00  
596 140.00  
597 30.00  
598 45.00  
599 300.00  
600 40.00  
601 250.00  
602 60.00  
603 60.00  
604 200.00  
605 260.00  
606 75.00  
607 70.00  
608 75.00  
609 210.00  
610 85.00  
611 37.50  
612 170.00

613 240.00  
614 42.50  
615 100.00  
616 140.00  
617 25.00  
618 40.00  
619 40.00  
620 95.00  
621 210.00  
622 23.00  
623 21.00  
624 200.00  
625 40.00  
626 52.50  
627 35.00  
628 170.00  
629 25.00  
630 23.00  
631 47.50  
632 60.00  
633 50.00  
634 18.00  
635 40.00  
636 40.00  
637 18.00  
638 55.00  
639 30.00  
640 60.00  
641 21.00  
642 60.00  
643 60.00  
644 80.00  
645 200.00  
646 190.00  
647 50.00  
648 75.00  
649 80.00  
650 90.00  
651 47.50  
652 170.00  
653 60.00  
654 35.00  
655 80.00  
656 110.00  
657 72.50  
658 21.00  
659 85.00  
660 150.00  
661 130.00  
662 140.00  
663 30.00  
664 20.00  
665 220.00  
666 42.50  
667 72.50  
668 80.00  
669 55.00  
670 50.00  
671 42.50  
672 60.00  
673 100.00  
674 60.00

675 70.00  
676 70.00  
677 60.00  
678 145.00  
679 190.00  
680 40.00  
681 40.00  
682 52.50  
683 125.00  
684 45.00  
685 75.00  
686 85.00  
687 25.00  
688 110.00  
689 42.50  
690 57.50  
691 40.00  
692 40.00  
693 75.00  
694 90.00  
695 60.00  
696 200.00  
697 525.00  
698 350.00  
699 210.00  
700 425.00  
701 160.00  
702 110.00  
703 160.00  
704 200.00  
705 200.00  
706 105.00  
707 115.00  
708 200.00  
709 105.00  
710 90.00  
711 400.00  
712 290.00  
713 47.50  
714 37.50  
715 52.50  
716 100.00  
717 85.00  
718 26.00  
719 50.00  
720 60.00  
721 22.00  
722 23.00  
723 90.00  
724 90.00  
725 28.00  
726 45.00  
727 60.00  
728 42.50  
729 35.00  
730 42.50  
731 52.50  
732 35.00  
733 50.00  
734 37.50  
735 125.00  
736 72.50

737 105.00  
738 120.00  
739 60.00  
740 20.00  
741 12.00  
742 160.00  
743 67.50  
744 72.50  
745 120.00  
746 67.50  
747 62.50  
748 47.50  
749 200.00  
750 57.50  
751 120.00  
752 55.00  
753 160.00  
754 65.00  
755 120.00  
756 85.00  
757 45.00  
758 32.50  
759 32.50  
760 37.50  
761 22.00  
762 80.00  
763 27.00  
764 29.00  
765 40.00  
766 30.00  
767 21.00  
768 55.00  
769 47.50  
770 110.00  
771 67.50  
772 130.00  
773 160.00  
774 20.00  
775 40.00  
776 57.50  
777 80.00  
778 15.00  
779 40.00  
780 35.00  
781 62.50  
782 90.00  
783 100.00  
784 75.00  
785 35.00  
786 40.00  
787 80.00  
788 40.00  
789 52.50  
790 90.00  
791 57.50  
792 35.00  
793 47.50  
794 40.00  
795 240.00  
796 240.00  
797 375.00  
798 190.00

799 85.00  
800 42.50  
801 80.00  
802 50.00  
803 600.00  
804 525.00  
805 300.00  
806 400.00  
807 125.00  
808 550.00  
809 700.00  
810 700.00  
811 800.00  
812 65.00  
813 190.00  
814 67.50  
815 42.50  
816 50.00  
817 32.50  
818 145.00  
819 37.50  
820 52.50  
821 40.00  
822 35.00  
823 45.00  
824 32.50  
825 37.50  
826 26.00  
827 40.00  
828 50.00  
829 26.00  
830 57.50  
831 50.00  
832 47.50  
833 62.50  
834 150.00  
835 52.50  
836 37.50  
837 35.00  
838 45.00  
839 120.00  
840 325.00  
841 150.00  
842 62.50  
843 110.00  
844 57.50  
845 26.00  
846 105.00  
847 325.00  
848 32.50  
849 57.50  
850 12.00  
851 52.50  
852 35.00  
853 32.50  
854 28.00  
855 21.00  
856 30.00  
857 32.50  
858 23.00  
859 32.50  
860 30.00



861 130.00  
862 25.00  
863 40.00  
864 26.00  
865 17.00  
866 60.00  
867 22.00  
868 30.00  
869 21.00  
870 21.00  
871 300.00  
872 500.00  
873 37.50  
874 32.50  
875 32.50  
876 26.00  
877 14.00  
878 18.00  
879 18.00  
880 27.00  
881 270.00  
882 160.00  
883 120.00  
884 55.00  
885 60.00  
886 65.00  
887 35.00  
888 40.00  
889 37.50  
890 52.50  
891 80.00  
892 55.00  
893 28.00  
894 22.50  
895 35.00

896 50.00  
897 52.50  
898 170.00  
899 60.00  
900 50.00  
901 140.00  
902 50.00  
903 95.00  
904 62.50  
905 57.50  
906 50.00  
907 90.00  
908 240.00  
909 52.50  
910 67.50  
911 27.00  
912 85.00  
913 35.00  
914 75.00  
915 42.50  
916 160.00  
917 90.00  
918 42.50  
919 42.50  
920 45.00  
921 21.00  
922 26.00  
923 85.00  
924 42.50  
925 18.00  
926 50.00  
927 32.50  
928 70.00  
929 85.00  
930 62.50

931 52.50  
932 105.00  
933 55.00  
934 45.00  
935 95.00  
936 45.00  
937 55.00  
938 30.00  
939 50.00  
940 35.00  
941 57.50  
942 40.00  
943 55.00  
944 60.00  
945 65.00  
946 35.00  
947 40.00  
948 18.00  
949 280.00  
950 170.00  
951 160.00  
952 210.00  
953 110.00  
954 140.00  
955 160.00  
956 130.00  
957 140.00  
958 125.00  
959 150.00  
960 90.00  
961 105.00  
962 80.00  
963 35.00  
964 105.00  
965 35.00

966 125.00  
967 80.00  
968 65.00  
969 50.00  
970 45.00  
971 45.00  
972 57.50  
973 28.00  
974 50.00  
975 35.00  
976 145.00  
977 260.00  
978 270.00  
979 475.00  
980 230.00  
981 105.00  
982 135.00  
983 130.00  
984 130.00  
985 130.00  
986 90.00  
987 375.00  
988 130.00  
989 260.00  
990 210.00  
991 115.00  
992 140.00  
993 47.50  
994 65.00  
995 145.00  
996 85.00  
997 80.00  
998 52.50  
999 80.00  
1000 70.00

1001 1400.00  
1002 700.00  
1003 1000.00  
1004 500.00  
1005 325.00  
1006 450.00  
1007 375.00  
1008 400.00  
1009 525.00  
1010 375.00  
1011 52.50  
1012 60.00  
1013 65.00  
1014 57.50  
1015 52.50  
1016 67.50  
1017 25.00  
1018 62.50  
1019 95.00  
1020 210.00  
1021 300.00  
1022 260.00  
1023 240.00  
1024 270.00  
1025 260.00  
1026 400.00  
1027 375.00  
1028 700.00  
1029 725.00  
1030 675.00  
1031 625.00  
1032 90.00  
1033 80.00  
1034 52.50