

419th SALE

# UNITED STATES PROOFS, ESSAYS & SPECIMENS

An Outstanding Collection  
Offered by order of the Owner



AT PUBLIC AUCTION

Wednesday, October 18th, 1972 at 1:30 P. M.

*Robert A. Siegel*

**AUCTION GALLERIES, INC.**

120 East 56th STREET  
NEW YORK CITY, N. Y. 10022  
Tel.: (212) 753-6421

## CONDITIONS OF SALE

1. The terms of sale are strictly cash on delivery to the highest bidder unless special arrangements have been made prior to the sale.
2. All bids are per lot as numbered in the catalogue unless otherwise announced by the auctioneer at the time of sale. The right is reserved to group two or more lots; to withdraw any lot or lots from the sale, or to act in behalf of the seller. The auctioneer shall regulate the bidding and in the event of a dispute between buyers his decision shall be final.
3. Any lot, the description of which is incorrect is returnable, but only within five days of receipt and in any case it must be received by the auctioneer within four weeks from the date of the auction. All disputed lots must be returned intact as received and the following lots may not be returned for any reason whatsoever: Lots containing ten or more stamps; Lots from buyers who have had the opportunity to examine them before the sale; Lots described as having defects or faults may not be returned because of faults. No illustrated lots may be returned because of centering, margins or other factors shown in the illustration.
4. Successful bidders, unless they are known to us or supply acceptable references are expected to make payment in full before the lots are delivered. Mail bidders will be notified of the amount of their purchases. We reserve the right in our sole and absolute discretion to demand cash payment at the time a lot is knocked down to any bidder who has not previously established credit with us or whose account is in arrears. In the event any buyer refuses to pay cash for any lot at the time it is knocked down to him, the auctioneer reserves the right to re-offer the lot immediately for sale to the highest bidder.
5. If the purchase price has not been paid within the time limit, nor lots taken up within seven days from date of sale they may be resold and any loss arising from such sale will be charged to the defaulter. Any account more than thirty days in arrears is subject to a late payment charge of 1½% per month so long as the account remains in arrears.
6. All lots are sold as genuine but should any lot be proved otherwise by written opinion of any competent, responsible authority acceptable to us, immediate refund of the full purchase price will be made, provided that such claim is made within 25 days from date of sale. If claim is not made within this period, no lots are returnable for any reason at any time. So long as we are notified within the 25 day period that an opinion is being sought the matter will remain open until such opinion is rendered. We will not be responsible for any charges incurred by the buyer for expertization fees and costs unless the opinion states the item is not genuine, in which case we will pay a maximum fee of \$10.00 for each such item.
7. Until paid in full, all lots remain the property of Robert A. Siegel Auction Galleries, Inc. in behalf of the seller.
8. All forwarding charges will be added to the purchase price. The mode of shipment shall be at our option unless we are given specific instructions.
9. Lots may be sent for inspection to buyers known to us upon written application. All such lots must be returned to us by registered mail, adequately insured and within 24 hours after receipt. The applicant assumes all responsibility and for insurance against all risks from time of receipt until they are actually received back by us, and is to pay all expenses of postage and insurance. No lots can be sent for inspection within ten days of the date of sale. Large lots and collections cannot be sent for inspection.
10. The placing of a bid shall constitute acceptance of the foregoing conditions of sale.

**ROBERT A. SIEGEL**

**SYLVESTER COLBY**, Licensed Auctioneers

## DESCRIPTIONS

**EXTREMELY FINE:** The finest, condition for noteworthy, outstanding copies.

**VERY FINE:** (V.F.) In prime condition such as to satisfy the requirements of particular collectors.

**FINE:** (F) Perforations or margins do not touch design on issues after 1890 but in some cases may just touch in earlier issues. If used, fairly light cancellation.

**VERY GOOD:** (V.G.) Generally nice appearance but margins or perforations may cut in slightly.

**GOOD:** Average off-centering or fairly attractive with slight defects.

**ORIGINAL GUM** is not to be expected on 19th century stamps unless so stated in the description.

**MINT:** With original gum and never hinged.

Scott 1972 Specialized Catalogue used for listing lots of U.S. & Possessions. Scott 1972 Standard Catalogue for others.



**OCTOBER 18th, 1972**

**ROBERT A. SIEGEL AUCTION GALLERIES, Inc.**  
120 East 56th Street  
New York, N. Y. 10022  
Tel.: 753-6421 (Area Code 212)

Please purchase for me at your auction to be held **October 18th, 1972**, the lots named below, the prices annexed being my limit on each lot. I agree to remit for purchases in accordance with the **Conditions of Sale** and return no lots later than three days after receipt.

REFERENCES PLEASE  
(if unknown to us)

**SIGNED**

New York State residents kindly include  
County in address.

County

[illegible]

## VALUATIONS

Upon request, estimate of value furnished on any lots in this auction.



## PROOFS AND ESSAYS

### NEW YORK POSTMASTER PROVISIONALS

1	New York, N. Y., 5c Black, Plate Proof on India (9X1P). Tiny translucent speck & small surface scratch, otherwise Very Fine .....	95.00
2	New York, N. Y., 5c Deep Blue, Small Die Trial Color Proof (9X1TC). Mounted on Card, Very Fine ..... (Photo)	115.00
3	New York, N. Y., 5c Scarlet, Small Die Trial Color Proof (9X1TC). Mounted on Card, Very Fine .....	115.00
4	New York, N. Y., 5c Deep Blue, Small Die Trial Color Proof (9X1TC). Thin spot, Very Fine Appearance ..... (Photo)	115.00
5	New York, N. Y., 5c Scarlet, Small Die Trial Color Proof (9X1TC). Small thin spot, Very Fine Appearance .....	115.00
6	New York, N. Y., 5c Dark Violet, Small Die Trial Color Proof (9X1TC). Small translucent spot, Very Fine Appearance .....	115.00
7	New York, N. Y., 5c Black, Large Die Proof on Bond, Scar on Neck, Dot in "P" of Post (9X1Pc). Original Condition of Die, with Portrait Medallion, very faint toned spots, shows mostly on back, otherwise Very Fine	165.00
8	New York, N. Y., 5c Green, Large Die Trial Color Proof on Bond, Scar on Neck, Dot in "P" of Post (9X1TC). Original Condition of Die, with Portrait Medallion, Very Fine .....	150.00
9	New York, N. Y., 5c Orange Vermilion, Large Die Trial Color Proof on Bond, Scar on Neck, Dot in "P" of Post (9X1TC). Original Condition of Die, with Portrait Medallion, Very Fine .....	150.00
10	New York, N. Y., 5c Sapphire, Large Die Trial Color Proof on Bond, Scar on Neck, Dot in "P" of Post (9X1TC). Original Condition of Die, with Portrait Medallion, Very Fine .....	150.00
11	New York, N. Y., 5c Sepia, Large Die Trial Color Proof on Bond, Scar on Neck, Dot in "P" of Post (9X1TC). Original Condition of Die, with Portrait Medallion, Very Fine .....	150.00

### 1847 ISSUE, PROOFS

12	5c Red Brown, Hybrid Plate Proof (1P). On Proof Paper on Card, thin spot in top margin of card, few faint toned specks, otherwise Very Fine ..... (Photo)	130.00
13	5c Red Brown, Large Die Proof on Yellowish Bond (1P). With Cross-hatching, Part of Previous Proof Imprint on Back, Very Fine ..... (Photo)	150.00
14	5c Red Brown, Large Die Proof on Pinkish Wove (1P). With Crosshatching, Very Fine ..... (Photo)	175.00
15	5c Scarlet Vermilion, Large Die Trial Color Proof on India (1TC). With Crosshatching, Very Fine ..... (Photo)	160.00

*LOTS ON VIEW FROM OCTOBER 12th, 1972*  
*OFFICES OPEN SATURDAY BEFORE SALE*



16	<b>5c Violet, Large Die Trial Color Proof on India (ITC).</b> With Crosshatching, few light toned specks, otherwise Very Fine .....	160.00
17	<b>5c Blue Green, Large Die Trial Color Proof on India (ITC).</b> With Cross-hatching, Very Fine .....	(Photo) 160.00
18	<b>5c Rose Lake, Large Die Trial Color Proof on India (ITC).</b> With Cross-hatching, Very Fine .....	(Photo) 160.00
19	<b>5c Blue, Large Die Trial Color Proof on India (ITC).</b> With Crosshatching, tiny toned speck, otherwise Very Fine .....	(Photo) 160.00
20	<b>5c Orange Yellow, Large Die Trial Color Proof on India (ITC).</b> With Crosshatching, faint wrinkle, otherwise Very Fine .....	160.00
21	<b>5c Blue Green, Large Die Trial Color Proof on India (ITC).</b> With Cross-hatching, few small thin spots in margin, Very Fine Appearance .....	160.00
22	<b>5c Black, Large Die Trial Color Proof on Bond (ITC).</b> With Crosshatching, Very Fine .....	(Photo) 120.00
23	<b>5c Green, Large Die Trial Color Proof on Bond (ITC).</b> With Cross-hatching, Very Fine .....	(Photo) 120.00
24	<b>5c Deep Blue, Large Die Trial Color Proof on Bond (ITC).</b> With Cross-hatching, Very Fine .....	(Photo) 120.00
25	<b>5c Deep Blue, Large Die Trial Color Proof on Bond (ITC).</b> With Cross-hatching, some light toning, otherwise Very Fine .....	(Photo) 120.00
26	<b>5c Dark Black Brown, Large Die Trial Color Proof on Thin Glazed Card (ITC).</b> Very Fine .....	(Photo) 150.00
27	<b>5c Deep Ultramarine, Large Die Trial Color Proof on Thin Glazed Card (ITC).</b> Tiny light toned specks on back only, Very Fine .....	(Photo) 150.00
28	<b>10c Deep Ultramarine, Large Die Trial Color Proof on Thin Glazed Card (2TC).</b> Tiny negligible toned specks on back only, Very Fine .....	(Photo) 150.00
29	<b>5c Scarlet Vermilion, Large Die Trial Color Proof on Thin Glazed Card (ITC).</b> Very Fine .....	(Photo) 150.00
30	<b>5c Black, Hybrid Plate Proof on India (ITC).</b> Mounted on Proof Paper, Die sunk on 2½"x3" Card, few light toned specks, otherwise Very Fine .....	85.00
31	<b>10c Black, Hybrid Plate Proof (2P).</b> On 2¾"x2⅞" Die Sunk Card, Very Fine .....	(Photo) 120.00
32	<b>10c Black, Hybrid Plate Proof (2P).</b> On Proof Paper on Card, Very Fine .....	(Photo) 120.00
33	<b>10c Black, Plate Proof on India (2P).</b> Major Double Transfer, "U. S., Post Office", Pos. 31R1, Card Mounted, small soiled spot on forehead, otherwise Very Fine, Scarce .....	(Photo) 120.00+
34	<b>10c Black, Large Die Proof on White Bond (2P).</b> With Crosshatching, Very Fine .....	(Photo) 200.00
35	<b>10c Black, Large Die Proof on Yellowish Bond (2P).</b> With Crosshatching, Very Fine .....	(Photo) 150.00
36	<b>10c Black, Large Die Proof on Pink Hard Wove (2P).</b> With Crosshatching, left margin slightly reduced, Very Fine, Unlisted .....	(Photo) —
37	<b>10c Deep Blue, Large Die Trial Color Proof on India (2TC).</b> With Cross-hatching, very faint toned specks, otherwise Very Fine .....	(Photo) 160.00
38	<b>10c Green, Large Die Trial Color Proof on India (2TC).</b> With Cross-hatching, few tiny light toned spots, none affecting design, otherwise Very Fine .....	(Photo) 160.00
39	<b>10c Orange Yellow, Large Die Trial Color Proof on India (2TC).</b> With Crosshatching, Very Fine .....	(Photo) 160.00
40	<b>10c Deep Blue, Large Die Trial Color Proof on India (2TC).</b> With Cross-hatching, Very Fine .....	(Photo) 160.00
41	<b>10c Rose Lake, Large Die Trial Color Proof on India (2TC).</b> With Cross-hatching, couple faint translucent specks in margin, otherwise Very Fine .....	(Photo) 160.00

42	<b>10c Violet, Large Die Trial Color Proof on India (2TC).</b> With Cross-hatching, few negligible toned specks, otherwise Very Fine ..... (Photo)	160.00
43	<b>10c Orange Vermilion, Large Die Trial Color Proof on India (2TC).</b> With Crosshatching, Very Fine ..... (Photo)	160.00
44	<b>10c Blue Green, Large Die Trial Color Proof on Bond (2TC).</b> With Cross-hatching, very faint toned spot, otherwise Very Fine ..... (Photo)	120.00
45	<b>10c Blue Green, Large Die Trial Color Proof on Bond (2TC).</b> With Cross-hatching, light toning, otherwise Very Fine ..... (Photo)	120.00
46	<b>10c Scarlet Vermilion, Large Die Trial Color Proof on Thin Glazed Card (2TC).</b> Tiny negligible toned specks on back only, Very Fine .... (Photo)	150.00

#### 1847 REPRODUCTIONS, PROOFS

47	<b>5c Red Brown, Reproduction, Small Die Proof (3P).</b> Very Fine, with P. F. Certificate ..... (Photo)	75.00
48	<b>5c Red Brown, 10c Black, Reproductions, Small Die Proofs (3P-4P).</b> On Gray Cards, Very Fine ..... (Photo Ex)	150.00
49	<b>5c Red Brown, 10c Black Reproductions, Small Die Proofs (3P-4P).</b> Cut in Stamp Size, Large Margins, Very Fine ..... (Photo Ex)	150.00
50	<b>5c Brown, 10c Black, Reproductions, Plate Proofs on Card (3P-4P).</b> Toning, mostly on back, otherwise Very Fine ..... (Photo Ex)	70.00
51	<b>5c Black, 10c Brown, 1847 Designs, Atlanta Trial Color Proofs (3TC-4TC).</b> 5c faint toning, 10c small crease, Very Fine Appearance ..... (Photo Ex)	160.00
52	<b>5c-10c Green, 1847 Designs, Atlanta Trial Color Proofs (3TC-4TC).</b> Very Fine ..... (Photo Ex)	150.00
53	<b>5c-10c Scarlet, 1847 Designs, Atlanta Trial Color Proofs (3TC-4TC).</b> Very Fine ..... (Photo Ex)	150.00
54	<b>5c-10c Blue, 1847 Designs, Atlanta Trial Color Proofs (3TC-4TC).</b> Very Fine ..... (Photo Ex)	150.00

#### 1851 ISSUE, ESSAYS

55	<b>3c Blue, Green, Die Essays on India, Bond (Brazer 33E-Gb, d).</b> Two Shades of Last, minute faults, Very Fine Appearance ..... (Photo Ex)	E. IV
56	<b>3c Black, Scarlet, Brown, Die Essays on Bond (Brazer 33E-Lb).</b> Fresh & Very Fine ..... (Photo Ex)	E. V
57	<b>Dark Green, Master Die #14, Essays on Proof Paper (Brazer 33E-Oe).</b> Two Vignettes of Washington, small thin spots, Very Fine Appearance ....	E. III
58	<b>3c Green, Brown, Large Die Essays on Bond (Brazer 33E-Hb).</b> Light toned spots, otherwise Very Fine, Scarce ..... (Photo Ex)	E. III
59	<b>3c Black, Scarlet, Brown, Die Essays on Bond, India (Brazer 33E-Mb, Na, Nb).</b> Two Shades of First, few tiny thins, Very Fine Appearance, Scarce ..... (Photo Ex)	E. VI

#### 1851 ISSUE, PROOFS

60	<b>3c Red, Plate Proof on India with Brushstroke Obliteration (11Pa).</b> B. Margin Single, Pos. 96R, faint toning on back otherwise Very Fine (Photo)	70.00
61	<b>3c Red, Plate Proof on India with Brush Stroke Obliteration (11Pa).</b> Block, some trivial toning, nearly all on back, otherwise Very Fine, interesting letter accompanies, describing the purchase of this piece ..... (Photo)	385.00
62	<b>10c Black, Large Die Trial Color Proof on Proof Paper (13TC).</b> Full Ty. I Impression with layout lines, showing the complete design as on the Reprint Plate, Listed on Wove Paper, Unpriced, Very Fine ..... (Photo)	E. XI



# 1857 ISSUE, ESSAYS

63	<b>Franklin Vignette, Violet Large Die Essay on Blue Card (Brazer 55E-Ab).</b> Tiny thin specks not affecting design, otherwise Very Fine, Scarce .....	E. II
64	<b>1c Black, Vignette, Large Die Essay on Buff Card (Brazer 55E-Ad Var).</b> Couple tiny thins in margin, otherwise Very Fine, Unlisted .....	E. II
65	<b>1c-24c 1857 Designs, Large Die Essays on Proof Paper (Betw. Brazer 55E-Ab//60E-Af).</b> 12, Diff. Values, Colors, States of the Dies, some small insignificant faults, otherwise Very Fine .....	E. VII
66	<b>Washington Vignette, Large Die Essays on Proof Paper (Brazer 56E-Aa).</b> Five Diff. Colors, thin spots clear of design, Very Fine Appearance ....	E. IV
67	<b>Washington Vignette, Large Die Essays on Colored Card (Brazer 56E-Ac).</b> Six Diff. Colors, Complete as Listed Very Fine, Scarce ..... (Photo Ex)	E. VII
68	<b>3c Violet Large Die Essay on Light Green Card, with Labels (Brazer 56E-Ag).</b> Thin spot clear of design, Very Fine Appearance, Scarce .....	E. II
69	<b>3c Washington, Large Die Essays on Proof Paper, with Labels (Brazer 56E-Af).</b> Six Diff. Colors, some faint thin specks in margins, otherwise Very Fine .....	E. V
70	<b>5c Jefferson, Large Die Essays on Proof Paper, Die I, II (Brazer 57E-Aj three, Ar two).</b> Five Diff. Colors, tiny pinhole in one, few faint thin specks in margins, otherwise Very Fine .....	E. IV
71	<b>Jefferson Vignette, Large Die Essays on Proof Paper (Brazer 57E-Ab).</b> Five Diff. Colors, few faint thin specks in margins, otherwise Very Fine .....	E. IV
72	<b>5c Jefferson, Large Die Essays on Proof Paper, Die I Framed (Brazer 57E-Ae).</b> Eight Diff. Colors, few faint thin spots in margins, otherwise Very Fine .....	E. VI
73	<b>Washington Vignette, Large Die Proofs on Proof Paper (Brazer 59E-Aa).</b> Fifteen Diff. Colors, most have heavy hinges or faint thin specks in margins, otherwise Very Fine, Scarce .....	E. VII
74	<b>12c Washington, Large Die Essays on Proof Paper, with Labels (Brazer 59E-Ad).</b> Four Diff. Colors, couple faint thins in margins, otherwise Very Fine .....	E. III
75	<b>12c Washington, Large Die Essays on Proof Paper, Incomplete Frame, Rosettes Blank (Brazer 59E-Af).</b> Nine Diff. Colors, small thin spots in margins, otherwise Very Fine .....	E. VII
76	<b>24c Washington Vignette, Large Die Essays on Colored Card (Brazer 60E-Ad).</b> Three Diff. Colors, couple tiny insignificant creases, otherwise Very Fine, Scarce .....	E. III
77	<b>24c Washington, Large Die Essays on Proof Paper, with Frames (Brazer 60E-Af).</b> Nine Diff. Colors, some small thin spots nearly all in margins, otherwise Very Fine .....	E. VI
78	<b>Washington Vignette, Large Die Essays on Proof Paper (62E-Aa).</b> Six Diff. Colors, few small thin spots, couple with light toning, otherwise Very Fine .....	E. IV
79	<b>Washington, Large Die Essays on Proof Paper, Blank Labels (Brazer 62E-Ac).</b> Ten Diff. Colors, one reduced & remounted, few insignificant thin spots in margins, otherwise Very Fine .....	E. VI
80	<b>Washington, Large Die Essay with Top Lettering on Wove (Brazer 62E-Ae).</b> Six Diff. Colors, few negligible thin spots in margins, otherwise Very Fine .....	E. V

# 1857 ISSUE, PROOFS

81	<b>10c-90c 1857 Issue, Plate Proofs on India (35P, 37P-39P).</b> 10c faults, 90c minor thin spot, others Very Fine .....	460.00
82	<b>30c Black, Trial Color Plate Proof on Wove (38TC).</b> Light creases, Very Fine Appearance ..... (Photo)	110.00



83	<b>30c Black, Trial Color Plate Proof on Wove (38TC).</b> Tiny nick in top margin, otherwise Very Fine .....	110.00
84	<b>1c-90c 1851-60 Designs, Atlanta Trial Color Proofs (40TC-47TC).</b> Complete Set, All Values & Colors, a few have tiny thins, cut close or faint toning, otherwise Very Fine .....	657.00
85	<b>1c-90c 1875 Reprints, Small Die Proofs (40P-47P).</b> On Gray Cards, Very Fine Set ..... (Photo Ex)	320.00
86	<b>1c-90c 1875 Reprints, Plate Proofs on Card (40P-47P).</b> Very Fine Set ....	89.50
87	<b>3c Scarlet, Panama Pacific Small Die Proof (41P).</b> Very Fine with P. F. Certificate ..... (Photo)	300.00
88	<b>5c Orange Brown, Reprint, Panama Pacific Small Die Proof (42P).</b> Small thin spots, Very Fine Appearance ..... (Photo)	300.00
89	<b>24c Blackish Violet, Reprint, Panama Pacific Small Die Proof (45P).</b> Faint thin spot in margin, otherwise Very Fine ..... (Photo)	300.00
90	<b>90c Deep Blue, Reprint, Panama Pacific Small Die Proof (47P).</b> Unusually Fresh, Very Fine ..... (Photo)	300.00

#### 1861-1867 ISSUES, ESSAYS

91	<b>1c Blue, Carmine, Bowlsby Essays, Imperf., Imperf. Between Stamp &amp; Coupon (Brazer 63E-Bf, Bi).</b> Three, o. g., two colors of latter, Fine-Very Fine ..... (Photo Ex)	E. V
92	<b>1c Blue, Bowlsby Essay, Perforated Between (Brazer 63E-Bh).</b> Horiz. Pair, o. g., Very Fine ..... (Photo)	E. IV
93	<b>1c Blue, Bowlsby Essays, Perforated Between Stamp &amp; Coupon (Brazer 63E-Bh).</b> Horiz. Pair, o. g., Fine-Very Fine .....	E. IV
94	<b>2c-5c Black, Green, Red, Blue, Wood-cut Essays on Wove, Combination Strips (Brazer 73-75E-Ca, Cc).</b> Some thin spots, Very Fine Appearance .....	E. VII
95	<b>3c Typographed, Plate Essays, Imperf., Perforated, Grilled (Betw. Brazer 85E-Af//85E-Bj).</b> 23, incl. one block & two pairs, some o. g., a few have tiny faults or perfs. touch, others Fine-Very Fine .....	E. VII
96	▣ <b>3c Typographed Plate Essays on White Wove, Imperforate (Brazer 83E-Af).</b> Blocks, Ten Diff. Shades, two o. g., Very Fine .....	E. VIII
97	▣ <b>3c Typographed Plate Essays on Green, on Gray Chemical Paper (Brazer 83E-Bf, Bk).</b> Imperf. Block of First, Two Perforated & Grilled Blocks of Latter, Diff. Shades, reinforced, one stamp defective, others Very Good-Very Fine .....	E. V
98	▣ <b>3c Typographed Plate Essay on White Wove, Perforated &amp; Grilled (Brazer 83E-Bj).</b> Blocks, 11 Diff. Shades, Fresh, Large Part o. g., one has bits of paper on back, perfs. touch on a few, others Fine-Very Fine .....	E. VIII
99	<b>3c Liberty, Large Die Essays, Imperforate (Brazer 85E-Gi).</b> Nine Diff. Colors, Fresh, o. g., one without imprint, some tiny negligible faults, Very Fine Appearance .....	E. VIII
100	<b>3c Liberty, Plate Essays (Brazer 85E-Gk, Go).</b> Fresh, o. g., Fine-Very Fine (Photo Ex)	E. V

#### 1861 "FIRST DESIGN", PROOFS

101	<b>5c Brown, First Design, Plate Proof on India (57P).</b> Vertical Margin Pair, trivial toning, mostly on back, otherwise Very Fine .....	90.00
102	<b>1c Blue, 5c Brown, First Designs, Plate Proofs on India (55P, 57P).</b> First is Shade similar to that of #102, the Re-Issue, few tiny thin specks, otherwise Very Fine .....	120.00
103	<b>1c Indigo, 3c Scarlet, First Designs, Plate Proofs on India (55P two, 56P three).</b> Distinct Shades, small faults or toning, Scarce Lot .....	300.00

104	<b>1c-90c First Designs, Plate Proofs on India (55P-62P).</b> Few tiny trivial faults, otherwise Very Fine Set ..... (Photo Ex) 630.00
105	<b>3c-30c First Designs, Small Die Proofs (56P-57P, 59P, 61P).</b> 12c tiny thin spot, 30c minor wrinkle, otherwise Very Fine, Complete Set as Issued (Photo Ex) 245.00
106	<b>10c Dark Green, First Design (58P).</b> Card Mounted, minute light toned speck, otherwise Very Fine ..... 65.00
107	<b>30c Black, First Design, Large Die Trial Color Proof (61TC).</b> Reduced to stamp size, thinned, Very Scarce ..... <b>E. III</b>
108	<b>90c Blue, First Design, Plate Proof on India (62P).</b> Small translucent speck, otherwise Very Fine ..... (Photo) 135.00

#### 1861 ISSUE, PROOFS

109	<b>1c Blue, Large Die Proof (63P).</b> Very Fine ..... (Photo) 180.00
110	<b>1c-90c 1861 Issue, Small Die Proofs (63P, 66P, 68P-69P, 71P-72P, 76P, 78P).</b> Complete Set as Issued, Very Fine ..... (Photo Ex) 320.00
111	<b>1c-90c 1861-66 Issues, Plate Proofs on Card (63P, 65P, 68P-74P, 76P-78P).</b> Complete Set as Issued, Very Fine ..... 106.50
112	▣ <b>1c 1861 Issue, Trial Color Plate Proofs, Imperforate (63TC).</b> Blocks, Five Diff. Colors, Fresh, one stamp has sealed tear, others Very Fine ..... 120.00+
113	▣ <b>1c 1861 Issue, Trial Color Plate Proofs, Experimental Starch Coated Paper (63TC Var.).</b> Blocks, Six Diff. Shades, Very Fine ..... <b>E. VII</b>
114	▣ <b>1c Deep Red Orange, Brown, Trial Color Plate Proofs, Imperf., Perforated (63TC).</b> Blocks, Very Good-Very Fine ..... 64.00
115	<b>5c Buff, Panama Pacific Small Die Proof (67P).</b> Very Fine, Scarce (Photo) 300.00
116	<b>10c Green, Large Die Proof (68P).</b> Card Mounted, Very Fine (Photo) 100.00
117	▣ <b>5c Brown, 30c Orange (71P, 76P).</b> Blocks, Very Fine ..... 75.00
118	<b>90c Blue, Large Die Proof (72P).</b> Card Mounted, Very Fine ..... 110.00
119	<b>90c Blue, Large Die Proof (72P).</b> Very Fine ..... (Photo) 110.00
120	▣ <b>90c Blue, Plate Proof on India (72P).</b> Block, tiny faults in top pair, others Very Fine ..... 65.00
121	▣ <b>90c Blue, Plate Proof on India (72P).</b> Small negligible thin spot in extreme margin, otherwise Very Fine, from the Re-Issue Plate ..... (Photo) 750.00
122	<b>2c Black, 3c Scarlet, 15c Black, Small Die Proofs (73P-74P, 77P).</b> Mounted on Gray Cards, Very Fine ..... (Photo Ex) 315.00
123	<b>2c Black, Plate Proof on India (73P).</b> Block, some light toning, otherwise Very Fine ..... (Photo) 125.00
124	<b>3c Scarlet, Small Die Proof (74P).</b> Few faint trivial toned specks, otherwise Very Fine ..... 75.00
125	▣ <b>3c Scarlet, Plate Proof on India (74P).</b> Block, Very Fine ..... (Photo) 125.00
126	▣ <b>3c Scarlet, Plate Proof on India (74P).</b> Block, Very Fine ..... 125.00
127	<b>15c Blue, Large Die Trial Color Proof (77TC).</b> Die Sunk on 5¾"x8¾" Card, light overall toning, otherwise Very Fine, Scarce ..... 300.00
128	<b>24c Lilac, Plate Proof on India (78P).</b> Top Margin Pair, Very Fine ..... 30.00
129	<b>15c Black, Large Die Proof on Light Buff Proof Paper (77P).</b> Die Sunk on 5¾"x9" Card, Very Fine ..... 325.00
130	<b>15c Black, Large Die Proof (77P).</b> Card Mounted, Very Fine ..... (Photo) 325.00
131	<b>15c Black, Large Die Proof (77P).</b> Very Fine ..... (Photo) 325.00

---

132	▣ <b>15c Black, Plate Proof on India (77P).</b> B. Imprint & Plate No. 41 Block of 50 (10x5), Card Mounted, Very Fine ..... (Photo) 900.00+
-----	---

---

133	<b>24c Lilac, Large Die Proof (78P).</b> Very Fine ..... (Photo) 110.00
134	<b>24c Lilac, Large Die Proof (78P).</b> Card Mounted, Very Fine ..... (Photo) 110.00



135	24c Lilac, Small Die Proof (78P). Very Fine .....	40.00
136	1c-90c 1861-66 Designs, Atlanta Trial Color Proofs (102TC-111TC). Complete Set, All Values & Colors except 90c Blue is Plate Proof on Card, a few insignificant faults, otherwise Very Fine .....	655.50

#### 1869 ISSUE, ESSAYS

137	1c Deep Orange Brown Plate Essay, Imperforate (Brazer 112E-Dc). Margin Block, Fresh, o. g., Very Fine .....	(Photo) E. IV
138	1c-5c Pictorials, Plate Essays on Stamp Paper, Imperf., Perforated & Grilled (Brazer 112E-Dd, 113E-De, 114E-Cf, 115aE-Fc). Fresh, o. g., two shades of 2c, 1c defective, couple other small faults, Fine-Very Fine Appearance .....	E. IV
139	2c Pictorial Plate Essays, Perforated & Grilled (Brazer 113E-De). Six Diff. Colors, Fresh, o. g., one has small faults, others Fine-Very Fine .....	E. V
140	3c Yellow, Plate Essays, Perforated & Grilled (Brazer 114E-Ch). Block, Fresh, o. g., centered to top .....	E. IV
141	3c Pictorial Plate Essays, Perforated & Grilled (Brazer 114E-Ch). Seven Diff. Colors, Fresh, o. g., Very Fine .....	E. VI
142	3c Pictorial Plate Essays, Perforated & Grilled (Brazer 114E-Ch). Six Diff. Colors, Fresh, o. g., perms. touch on two, others Very Fine .....	E. VI
143	3c Red Brown, Plate Essays, Perforated & Grilled (Brazer 114E-Ch). Block, Fresh, o. g., one has tiny thin specks, otherwise Fine .....	E. III
144	3c Yellow, Plate Essays, Perforated & Grilled (Brazer 114E-Ch). Corner Margin Block, Fresh, o. g., Fine .....	E. IV
145	5c Red Brown, Plate Essay, Imperforate (Brazer 115aE-Fc). Margin Block, Fresh, o. g., Very Fine .....	(Photo) E. V
146	12c Violet, Plate Essays, Perforated & Grilled (117E-Ce). Block, Fresh, o. g., Fine .....	E. IV
147	30c Pictorials, Plate Essays on White, Pale Gray, Salmon Red, Surface Tinted Paper (Brazer 121E-Ck). Very Fine .....	(Photo Ex) E. VI
148	30c Black, Plate Essay on Salmon Red Surface Tinted Paper, Imperforate (Brazer 121E-Ck). Corner Margin Block, Very Fine, Scarce .....	(Photo) E. VII
149	90c Violet, Plate Essay on Stamp Paper (Brazer 122E-Cc). Very Fine (Photo) .....	E. III
150	90c Dull Violet, Plate Essay on Stamp Paper (Brazer 122E-Cc). Faint toned spot, otherwise Very Fine .....	E. III
151	90c Pale Orange Red, Plate Essay on Stamp Paper (Brazer 122E-Cc). Very Fine .....	E. III
152	90c Violet, Plate Proof on Stamp Paper, Imperforate (Brazer 122E-Cc). Two Horiz. Pairs, Distinct Shades, very faint toned spots, otherwise Very Fine .....	E. VII
153	90c Light Red Brown & Black, Plate Essays, Imperforate (Brazer 122E-Cc). B. Margin Block of Six (2x3) with "National Bank Note Co. New York" Imprint, Very Fine .....	(Photo) E. V
154	90c Blue, Plate Essay Without Head (Brazer 122E-Cd). Margin Block, faint toned spots, otherwise Very Fine .....	E. VII

#### 1869 ISSUE, PROOFS

155	1c Buff, Large Die Proof (112P). Die Sunk on 5½"x6½" Card, Very Fine (Photo) .....	400.00
156	1c-90c 1869 Pictorials, Small Die Proofs (112P-122P, 129P). Complete Set incl. both 15c Ty. II & III, some toning or faults, mostly in margins, Scarce Set .....	(Photo Ex) 880.00



157	<b>2c Brown, Large Die Proof (113P).</b> Die Sunk on 5½"x6½" Card, Very Fine ..... (Photo) 400.00
158	<b>12c Green, Large Die Proof (117P).</b> Die Sunk on 2¾"x2½" Card, Very Fine ..... (Photo) 450.00
159	<b>15c-90c 1869 Pictorials, Plate Proofs on Card, Inverted Centers, Flags (120Pa-122Pa, 129Pa).</b> Very Fine, Only 100 of Each Printed ..... (Photo) 2,800.00
160	<b>30c Blue &amp; Carmine, Large Die Proof (121P).</b> Die Sunk on 6"x8¾" Card, few light toned specks, mostly on card, otherwise Very Fine, Scarce (Photo) 550.00
161	<b>1c-90c 1869 Designs, Atlanta Trial Color Proofs (123TC-132TC).</b> Complete Set, All Values & Colors, some have tiny thins, faint toned specks or heavy hinging, nevertheless Very Fine Appearing & Most Attractive (Photo Ex) 7,305.00

#### BANK NOTE ISSUES, ESSAYS

162	<b>1c-2c, 12c-24c, 30c-90c Combination Frame Die Essays on Proof Paper (Brazier 182E-Aa two, 188aE-Aa four, 191E-Aa two).</b> Diff. Colors, few faint thin spots in margins, otherwise Very Fine ..... E. VII
163	☐ <b>3c Washington Plate Essays on Proof Paper (Brazier 184E-Bd). Corner Margin Blocks,</b> Five Diff. Shades, few tiny thins, mostly in margins, otherwise Very Fine ..... E. III
164	☐ <b>3c Brown, Green, Plate Essays on Proof Paper, Imperforate (Brazier 184E-Bd).</b> Part sheets of 15 (5x3), each showing Plate Crack between pos. 11 & 12, couple insignificant faults, others Very Fine ..... E. III
165	<b>3c Washington Plate Essays on India, Stamp Paper (Brazier 184E-Hc, Hd).</b> First, Green Single, Scarlet Pair, Card Mounted, other Fresh, o. g., Brown & Orange Shades, couple tiny faults, others Very Fine, Scarce (Photo Ex) E. VI
166	☐ <b>3c Orange Plate Essays on Stamp Paper, Perforated (Brazier 184E-Id).</b> Corner Margin Block, Fresh, o. g., Very Fine, Scarce .... E. VI
167	<b>Garfield Vignette, Large Die Essay on India (205Ec).</b> With Imprint, Fresh, tiny insignificant thin speck, Extremely Fine & Very Scarce ..... (Photo) E. VII

#### BANK NOTE ISSUES, PROOFS

168	<b>1c Ultramarine, Large Die Proof (145P).</b> Die Sunk on 5¾"x7¾" Card, some light toning, mostly on card, otherwise Very Fine ..... 275.00
169	<b>1c Ultramarine, Large Die Proof (145P).</b> Card Mounted, Margins 4-5mm, Very Fine ..... (Photo) 275.00
170	<b>1c-90c 1870-73 Bank Notes, Small Die Proofs (145P, 157P-166P).</b> Three have faults, some light toning, otherwise Very Fine ..... 330.00
171	<b>3c Green, Large Die Proof (147P).</b> Die Sunk on 3"x3¾" Card, Very Fine (Photo) 175.00
172	<b>3c Green, Large Die Proof (147P).</b> Die Sunk on 2¾"x3" Card, Very Fine 175.00
173	<b>6c Carmine, Large Die Proof (148P).</b> Very Fine ..... (Photo) 175.00
174	<b>6c Carmine, Large Die Proof (148P).</b> Card Mounted, Margins 4-5mm, Very Fine ..... (Photo) 175.00
175	☐ <b>6c Carmine, Plate Proof on India (148P).</b> B. Imprint & Plate No. 26 Block of 50 (10x5), few light toned and translucent specks, otherwise Very Fine (Photo) 428.50+
176	<b>7c Vermilion, Large Die Proof (149P).</b> Die Sunk on 3½"x4½" Card, Very Fine ..... (Photo) 110.00

177	<b>7c Vermilion, Large Die Proof (149P).</b> Very Fine ..... (Photo)	110.00
178	田 <b>7c Vermilion, Plate Proof on India (149P).</b> T. Imprint & Plate No. 33 Blocks of 14, some trivial toned specks, mostly in margin, otherwise Very Fine ..... (Photo)	238.00
179	<b>10c Brown, Large Die Proof (150P).</b> Card Mounted, Margins 4-5mm, Very Fine ..... (Photo)	250.00
180	田 <b>10c Brown, Plate Proof on India (150P).</b> T. Imprint & Plate No. 18 Block of 30, tiny paper break in one, not affecting Plate No. Block, otherwise Very Fine ..... (Photo)	295.00+
181	<b>12c Violet, Large Die Proof (151P).</b> Die Sunk on 2¼"x2¾" Card, Very Fine ..... (Photo)	175.00
182	<b>12c Violet, Large Die Proof (151P).</b> Card Mounted, Margins 4-5mm, Very Fine ..... (Photo)	175.00
183	田 <b>12c Violet, Plate Proof on India (151P).</b> T. Imprint & Plate No. 24 Block of 30, few light toned specks, one stamp not in Plate Block damaged, two stamps with tiny thins, otherwise Very Fine ..... (Photo)	320.00+
184	<b>15c Orange, Large Die Proof (152P).</b> Die Sunk on 5½"x8½" Card, Very Fine ..... (Photo)	175.00
185	田 <b>15c Orange, Plate Proof on India (152P).</b> Half Sheet of 50, Card Mounted, Very Fine ..... (Photo)	390.00+
186	田 <b>15c Orange, Plate Proof on India (152P).</b> B. Imprint & Plate No. 20 Block of 20, few tiny toned specks, translucent specks, mostly in margin, otherwise Very Fine ..... (Photo)	315.00+
187	田 <b>24c Purple, Plate Proof on India (153P).</b> T. Imprint & Plate No. 21 Block of 50 (10x5), Card Mounted, few negligible toned specks, otherwise Very Fine ..... (Photo)	679.50+
188	<b>30c Black, Large Die Proof (154P).</b> Die Sunk 6"x7½" Card, tiny pinhole in margin, some very light toning, otherwise Very Fine ..... (Photo)	175.00
189	<b>30c Black, Large Die Proof (154P).</b> Die Sunk on 2⅝"x3" Card, few tiny toned specks, otherwise Very Fine ..... (Photo)	175.00
190	田 <b>30c Black, Plate Proof on India (154P).</b> B. Imprint & Plate No. 22 Block of 20, few toned specks & crease in margin, otherwise Very Fine .... (Photo)	400.00+
191	田 <b>30c Black, Plate Proof on India (154P).</b> Part Sheet of 46, Very Fine ..... (Photo)	420.00+
192	<b>1c Ultramarine, Large Die Proof (156P).</b> Die Sunk on 3¼"x3¼" Card, Very Fine, Scarce ..... (Photo)	400.00
193	<b>1c Ultramarine, Large Die Proof (156P).</b> Die Sunk on 3¼"x3¼" Card, few tiny toned specks clear of design, otherwise Very Fine, Scarce (Photo)	400.00
194	<b>1c-90c 1873 Bank Notes, Plate Proofs on India (156P-166P).</b> 7c faulty, few other tiny faults, Mostly Very Fine ..... (Photo)	168.50
195	田 <b>1c-30c 1873 Bank Notes, Plate Proofs on India (156P-158P, 160P, 162P-163P, 165P).</b> Margin Blocks, Card Mounted, Very Fine ..... (Photo Ex)	455.00
196	<b>1c-90c 1873 Bank Notes, Plate Proofs on Card (156P-166P).</b> Very Fine Set ..... (Photo)	116.25
197	<b>1c-90c 1873-75 Designs, Atlanta Trial Color Proofs (156TC-166TC, 179TC).</b> Complete Set, All Values & Colors, a few have tiny faults or faint toning, otherwise Very Fine ..... (Photo)	564.00
198	<b>1c Black, Atlanta Trial Color Proof (156TC).</b> Complete Sheet of 100, with Two Imprint & Plate No. Blocks, Fresh & Very Fine ..... (Photo)	1100.00+
199	<b>2c Brown, Large Die Proof (157P).</b> Die Sunk 3½"x3" Card, Very Fine ..... (Photo)	160.00
200	<b>3c Green, Large Die Proof (158P).</b> Die Sunk on 3¾"x3¼" Card, few toned specks clear of design, otherwise Very Fine ..... (Photo)	160.00
201	<b>3c Green, Large Die Proof (158P).</b> Die Sunk on 4½"x5" Card, Very Fine ..... (Photo)	160.00



202	3c Black, Trial Color Plate Proof on India (158TC). Complete Sheet of 100 with two Inscription & Plate No. Blocks, mounted on card, Fresh & Very Fine .....	537.50+
203	6c Pink, Large Die Proof (159P). Die Sunk on 4½"x5" Card, Very Fine (Photo) .....	200.00
204	6c Violet, Small Die Proof (159TC). Card Mounted, tiny negligible wrinkle, otherwise Very Fine, Unlisted Color .....	—
205	6c Black, Trial Color Plate Proof on India (159TC). B. Imprint & Plate No. 18, Block of 16, Mounted on card, couple light soiled specks in selvedge, Very Fine .....	136.00+
206	7c Orange Vermilion, Large Die Proof (160P). Die Sunk on 5¾"x7½" Card, Very Fine .....	160.00
207	10c Brown, Large Die Proof (161P). Die Sunk on 4½"x5" Card, Very Fine .....	160.00
208	10c Brown, Large Die Proof (161P). Die Sunk on 2¾"x3¼" Card, Very Fine .....	160.00
209	12c Blackish Violet, Large Die Proof (162P). Die Sunk on 5¼"x8½" Card, Very Fine .....	170.00
210	15c Yellow Orange, Large Die Proof (163P). Die Sunk on 5¼"x7¼" Card, Very Fine .....	160.00
211	24c Violet, Large Die Proof (164P). Die Sunk on 4½"x5" Card, Very Fine (Photo) .....	200.00
212	24c Violet, Large Die Proof (164P). Die Sunk on 3"x3½" Card, Very Fine (Photo) .....	200.00
213	30c Gray Black, Large Die Proof (165P). Die Sunk on 4¾"x5" Card, Very Fine .....	200.00
214	30c Gray Black, Large Die Proof (165P). Die Sunk on 3"x3½" Card, Very Fine .....	200.00
215	90c Rose Carmine, Large Die Proof (166P). Die Sunk on 4½"x5" Card, Very Fine .....	200.00
216	90c Rose Carmine, Large Die Proof (166P). Die Sunk on 3"x3½" Card, some light toning, otherwise Very Fine .....	200.00
217	2c Vermilion, Large Die Proof (178P). Die Sunk on 4"x4¼" Card, Very Fine .....	200.00
218	2c Vermilion, 5c Blue, Small Die Proofs (178P-179P). 2c Card Mounted, trivial toning, otherwise Very Fine .....	75.00
219	1c-90c 1875-88 Bank Notes, Plate Proofs on Card (178P-179P, 205P-211P, 213P-218P). Very Fine .....	61.25
220	5c Brown, Large Die Proof (205P). Die Sunk on 4½"x7" Card, Very Fine (Photo) .....	265.00
221	5c Brown, Large Die Proof (205P). With "Garfield U. S. 5c Stamp, American Bank Note Co. N. Y." Imprint, very light trivial toned specks, otherwise Very Fine .....	265.00
222	1c-10c 1881-83 Bank Notes, Small Die Proofs (205P-211P). Few tiny toned specks, mostly around the edges of margins, otherwise Very Fine .....	210.00
223	1c Blue, Large Die Proof (206P). Die Sunk on 5¾"x7½" Card, Very Fine (Photo) .....	275.00
224	2c Red Brown, Large Die Proof (210P). Die Sunk on 3"x3¾" Card, couple tiny toned specks clear of design, otherwise Very Fine .....	285.00
225	4c Green, Large Die Proof (211P). Die Sunk on 5¾"x8½" Card, Very Fine .....	285.00
226	1c Ultramarine, Large Die Proof (212P). Die Sunk on 4¼"x5¾" Card, Autographed by Geo. H. Seymour & Alfred Jones, possibly the Designer & Engraver, Very Fine .....	285.00
227	1c Ultramarine, Large Die Proof (212P). Very Fine .....	285.00
228	1c Ultramarine, Plate Proof on India (212P). Block, Card Mounted, trivial toned specks, otherwise Very Fine .....	185.00



229	<b>1c-90c 1887-88 Bank Notes, Small Die Proofs (212P-218P).</b> 30c & 90c have tiny faults in margin (pinhole, small tear), others Very Fine .....	220.00
230	<b>2c Green, Large Die Proof (213P).</b> Die Sunk on Card, few tiny toned specks far from design, Very Fine .....	285.00
231	<b>3c Vermilion, Large Die Proof (214P).</b> Die Sunk on 2¾"x3¼" Card, Very Fine, Showing the Special Imprint .....	285.00

#### 1890 ISSUE, PROOFS

232	<b>1c Ultramarine, Large Die Proof (219P).</b> Die Sunk on 3¼"x3¼" Card, Very Fine .....	85.00
-----	--	-------

233	<b>1c-90c 1890 Issue, Large Die Proofs (219P-219DP, 221P-229P).</b> Die Sunk on 5¾"x8½" Cards, All Values Represented, faint toned specks, otherwise Very Fine .....	(Photo Ex) 910.00
-----	--	-------------------

234	<b>1c-90c 1890 Issue, Small Die Proofs (219P, 220P-229P).</b> Complete Set as Issued, 30c has small thin, others Very Fine .....	(Photo Ex) 240.00
235	<b>5c Chocolate, Large Die Essay, Completed Die (Brazier 223E-Cd).</b> Mounted on 3"x4" Card, Very Fine, Very Scarce .....	(Photo) E. VII
236	<b>6c Sage Green, Trial Color Plate Proof on Wove (224TC).</b> Horiz. Pair, with o. g., Fresh & Very Fine .....	(Photo) 115.00
237	<b>6c Orange Red, Trial Color Plate Proof on Wove (224TC).</b> Horiz. Pair, with o. g., Fresh & Very Fine .....	(Photo) 115.00
238	<b>6c Red Brown, Trial Color Plate Proof on Wove (224TC).</b> Horiz. Pair, tiny light surface rubbings, otherwise Very Fine .....	115.00
239	<b>6c Violet Black, Trial Color Plate Proof on Wove (224TC).</b> Horiz. Pair, with o. g., Intense Shade, tiny thin specks, Very Fine Appearance .....	115.00
240	<b>6c Light Brownish Yellow, Trial Color Plate Proof on Wove (224TC).</b> Horiz. Pair., tiny surface rubbings & ink offset, otherwise Very Fine .....	115.00
241	<b>6c Red Orange, Trial Color Plate Proof on Wove (224TC).</b> Horiz. Pair, with o. g., Fresh & Very Fine .....	115.00
242	<b>6c Olive Green, Trial Color Plate Proof on Wove (224TC).</b> Horiz. Pair, with o. g., Fresh & Very Fine .....	115.00
243	<b>6c Dark Olive Green, Trial Color Plate Proof on Wove (224TC).</b> Horiz. Pair, with o. g., Fresh & Very Fine .....	115.00

#### COLUMBIAN ISSUE, PROOFS

244	<b>1c-\$5.00 Columbians, Large Die Proofs (230P-245P).</b> Die Sunk on 4½" x 5¾" Cards, Very Fine Set .....	(Photo Ex) 2,735.00
245	<b>1c-\$5.00 Columbians, Large Die Proofs (230P-245P).</b> Not die sunk but printed directly on 8½" x 5½" cards, 1c is normal large die re-mounted, some minor toning but none affecting designs, otherwise Very Fine .....	(Photo Ex) 1,100.00

246	<b>1c-\$5.00 Columbians, Small Die Proofs (230P-239P, 241P-245P).</b> 1c, 6c, 8c & 10c have small faults, others Very Fine .....	(Photo Ex) 820.00
247	<b>1c-\$5.00 Columbians, Plate Proofs on Card (230P-245P).</b> Very Fine Set .....	(Photo Ex) 291.50

248	<b>1c-\$5.00 Columbian, Plate Proofs on Card (230P-245P).</b> Blocks, Very Fine Set .....	(Photo Ex) 1,642.50
-----	---	---------------------

## 1894-1898 ISSUES, PROOFS

249	1c-\$5.00 1894 Issue, Large Die Proofs (247P, 250P, 253P-263P). Die Sunk on 5¾" x 7¾" Card, All Values Represented, 2c Triangle I, 3c Triangle II, toning throughout to greater or lesser degree, mostly on lower values, otherwise Very Fine ..... (Photo Ex)	568.50
250	1c-\$5.00 1894 Issue, Small Die Proofs (247P-263P). Complete Set as Issued, \$2.00 has small thin spot, otherwise Very Fine ..... (Photo Ex)	340.00
251	1c-\$5.00 1894 Issue, Panama-Pacific Small Die Proofs 247P, 253P-263P). Complete Set less 2c, few tiny negligible thin specks or translucencies, otherwise Very Fine, Scarce ..... (Photo Ex)	2,175.00
252	1c-2c, 6c, \$2.00-\$5.00 1894 Issue, Plate Proofs on Card (247P, 250P, 256P, 262P-263P). Blocks, Complete Set as Issued, Very Fine (Photo Ex)	550.00
253	2c Carmine, Ty. II, Large Die Proof (251P). Very Fine .....	62.50
254	\$1.00 Black, Ty. II, Large Die Proof (261AP). Card Mounted, some trivial wrinkling, otherwise Very Fine .....	72.50
255	1c, 5c, 10c Ty. II, 15c Ty. II 1898 Issue, Small Die Proofs (279P, 281P, 283P, 284P). Complete Set as Issued, Mounted on Gray Card, Very Fine (Photo Ex)	100.00
256	1c-15c 1898 Issue, Panama-Pacific Small Die Proofs (279P, 280P-284P). Very Fine, Scarce ..... (Photo Ex)	900.00

## TRANS-MISSISSIPPI ISSUE, ESSAYS AND PROOFS

257	1c-\$2.00 Trans-Mississippi, Large Die Bi-Colored Essays (Brazier 285E-E-293E-D). Complete Set Die Sunk on 6" x 3½" Cards, some light toning on cards only, Very Fine, Scarce ..... (Photo Ex)	E. XII
258	1c-\$2.00 Trans-Mississippi, Large Die Proofs (285P-293P). Die Sunk on 7½" x 5" Cards, some values with toned spots, only 8c is affected, otherwise Very Fine Set ..... (Photo Ex)	1,625.00
259	1c-\$2.00 Trans-Mississippi, Small Die Proofs (285P-293P). On Gray Cards, Very Fine Set ..... (Photo Ex)	745.00

## PAN-AMERICAN ISSUE, PROOFS

260	1c-10c Pan-American, Large Die Proofs (294P-299P). Die Sunk on 7⅞" x 5⅞" Cards, Very Fine Set ..... (Photo Ex)	600.00
261	1c-10c Pan-American, Small Die Proofs (294P-299P). Mounted on thin card, Very Fine Set ..... (Photo Ex)	330.00
262	1c-10c Pan-American, Panama-Pacific Small Die Proofs (294P-299P). Very Fine Set, Scarce ..... (Photo Ex)	1,500.00

*LOTS ON VIEW FROM OCTOBER 12th, 1972*  
*OFFICES OPEN SATURDAY BEFORE SALE*





2



4



12



13



14



15



17



18



19



22



23



24



25



27



26



28



29



34



32



35



33



36



31



37



38



39



40

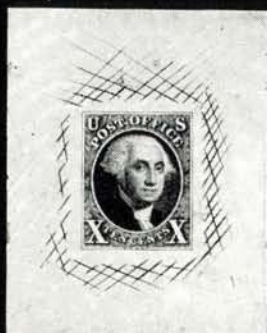


41





42



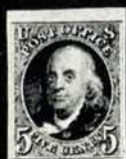
43



44



46



47



48 EX



49 EX



51 EX



52 EX



53 EX



54 EX



56 EX



59 EX



82



85 EX



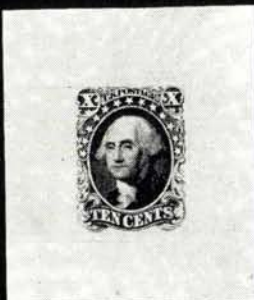
87



88



60



62



67 EX



91 EX



92



89



90



100 EX



104 EX



105 EX



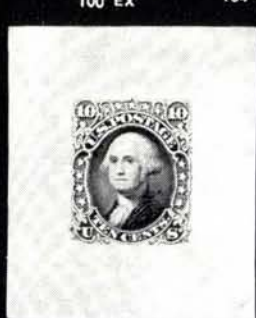
108 EX



110 EX



109



116



118



119





115



121



131



130



122 EX



147 EX



149



156 EX



165 EX



133



134



158



167



159



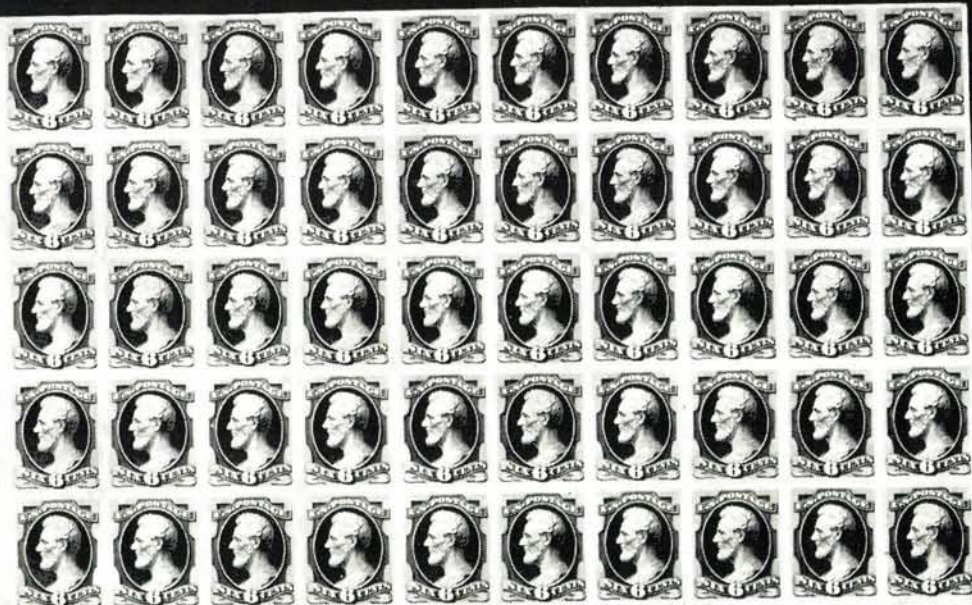
169



174

161 EX





NATIONAL BANK NOTE GREENBACK

No. 26

175

No. 27

NATIONAL BANK NOTE GREENBACK



187



No. 28

NATIONAL BANK NOTE GREENBACK

190





ENGRAVED BY THE STEADMAN AND SONS, CUTTERS, CITY OF NEW YORK.  
No. 41 Plate.

132



NATIONAL BANK NOTE, NEW YORK

No. 18

180



NATIONAL BANK NOTE, NEW YORK

No. 24

183





61



123



125



148



137



145



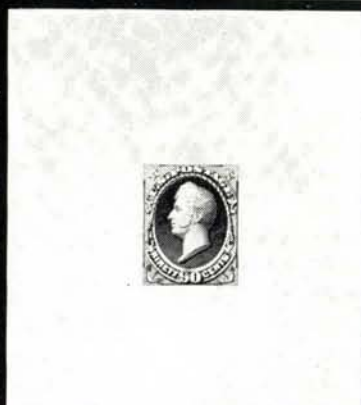
195 EX



153



199



216



227



178



224



230



221



228





184



223



211



160



220



203



209



157



201



206



155



171



173



176



177



181



179



182



204



189



192



193



208



212



214





25



233 EX



244 EX



245 EX



257 EX



260 EX



249 EX



258 EX



263 EX



265 EX



235



248 EX



252 EX



273 EX



268



280 EX



278



287



362357

289 EX



291



293



362074



361944



362068

281



277



Approved April 14, 1934.

285 EX

*Wm. H. H. H.*  
Postmaster General.

*Wm. H. H. H.*

Approved December 4, 1928.

288 EX

*Wm. H. H. H.*  
Postmaster General.



301



286 EX

299

300

303

296 EX

297





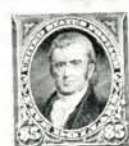
234 EX



236



237



249 EX



251 EX



246 EX



248 EX



255 EX



270 EX



261 EX



259 EX



256 EX



262 EX



264 EX



269 EX



274



290



271 EX



272 EX



318 EX



294



295



312



311



321 EX



314



315



324



325 EX



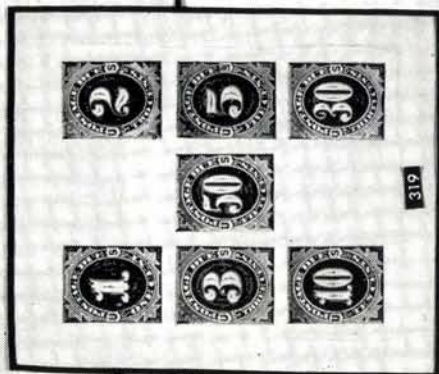
305



304



302



319

310



309



307



162826



343 EX

308



306





313



322 EX



351 EX



352 EX



353 EX



354 EX



355 EX



356 EX



357 EX



363 EX



372 EX



334



374 EX



376 EX



389 EX



391 EX



393 EX



394 EX



402 EX



403



404



405



406



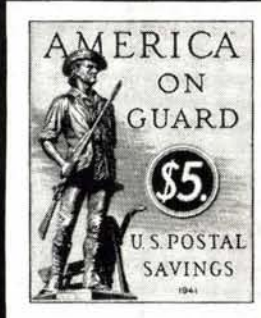
407 EX



409



411 EX



375 EX





ENGRAVED BY JAMES G. SMITH PHILADELPHIA

377



ENGRAVED BY JAMES G. SMITH PHILADELPHIA

379



UNITED STATES POSTAGE  
2 CENTS  
GEORGE WASHINGTON  
1799-1800



380



UNITED STATES INTERNAL REVENUE  
5,000

ENGRAVED BY JAMES G. SMITH PHILADELPHIA

382

381





383

384

385

366 EX

481

482

483

484





420 EX



421 EX



422 EX



423 EX



419 EX



424 EX



425 EX



430 EX



431 EX



432 EX



433 EX



434 EX



441



443



444



446 EX



447



448



449



450 EX



452 EX



453



454 EX



455



456



457



458



463



464



465



466



488 EX



459



462



467 EX



469 EX



476



477



478



479



480



487 EX

## 1902-1904 ISSUES, PROOFS

263	<b>1c-\$5.00 1902 Issue, Large Die Proofs (300P-313P).</b> Die Sunk on 5¾" x 7¾" Cards, Fresh & Very Fine Set ..... <b>(Photo Ex)</b> 4,550.00
264	<b>1c-\$5.00 1902 Issue, Small Die Proofs (300P-313P).</b> Several have faults, some trivial, otherwise Very Fine Set ..... <b>(Photo Ex)</b> 440.00
265	<b>1c-10c Louisiana Purchase, Large Die Proofs (323P-327P).</b> Die Sunk on 7¾" x 6" Cards, 5c has very light toned spot along part of extreme top edge, otherwise a Fresh & Very Fine Set, Scarce ..... <b>(Photo Ex)</b> 1,750.00
266	<b>2c Louisiana Purchase, Large Die Proof (324P).</b> Die Sunk on 6¾" x 5½" Card, few very faint toned spots, all well clear of design, otherwise Very Fine ..... 350.00
267	<b>3c Louisiana Purchase, Large Die Proof (325P).</b> Die Sunk on 6¾" x 5½" Card, few faint toned specks, only one barely affects extreme margin of proof, otherwise Very Fine ..... 350.00
268	<b>1c-5c Jamestown, Large Die Proofs (328P-330P).</b> With Identification Numbers, 1c has tiny water stain far from design, 5c has couple tiny negligible toned specks, one shows faintly on front well clear of design, otherwise a Very Fine & Scarce Set ..... <b>(Photo)</b> 1,275.00

## 1908 ISSUE, ESSAYS AND PROOFS

269	<b>12c Blue Green, Red, Black, Plate Essay, Imperforate (Brazier 338a-Ea, Ed).</b> First on Bluish White Wove, others on Yellow Wove, Very Fine, Scarce ..... <b>(Photo Ex)</b> <b>E. IX</b>
270	<b>1c-\$1.00 1908 Issue, Small Die Proofs (331P-342P).</b> Card Mounted, Very Fine Set ..... <b>(Photo Ex)</b> 2,400.00
271	<b>1c-15c 1908 Issue, Panama-Pacific Small Die Proofs (331P, 333P, 334P, 336P, 338P-340P).</b> Few negligible toned specks or tiny thin specks in margins, otherwise Very Fine, Scarce ..... <b>(Photo Ex)</b> 1,575.00
272	<b>2c Dark Carmine on Blue Green, Yellow Bond, Large Die Trial Color Proofs (332TC).</b> Very Fine, Unlisted ..... <b>(Photo Ex)</b> <b>E. VII</b>
273	<b>2c Brown, Lake, Black, Large Die Trial Color Proofs on India (332TC).</b> Mounted on Card, few very faint toned specks, otherwise Very Fine, Unlisted Colors ..... <b>(Photo Ex)</b> <b>E. IX</b>
274	<b>8c Green on Yellow Bond, Small Die Trial Color Proofs (337TC).</b> Few faint creases, Very Fine Appearance, Unlisted ..... <b>(Photo)</b> <b>E. VII</b>
275	<b>15c Ultramarine, Large Die Proof (340P).</b> Card Mounted, heavy vertical crease affecting design, Scarce ..... 250.00
276	<b>50c Violet, Large Die Proof (341P).</b> Card Mounted, heavy vertical crease affecting design, Scarce ..... 250.00



# 1909-1922 ISSUES, PROOFS

277	<b>2c Lincoln, Large Die Proof (367P).</b> Die Sunk on 5 $\frac{7}{8}$ " x 7 $\frac{7}{8}$ " Card, Very Fine ..... (Photo)	550.00
278	<b>2c Hudson-Fulton, Small Die Hybrid Proof (372P).</b> Mounted on 3 $\frac{1}{2}$ " x 4 $\frac{1}{4}$ " Thin Card, tiny, barely noticeable paper break in design, otherwise Very Fine, Scarce .....	450.00
279	<b>10c Brown Red, Panama-Pacific, Small Die Trial Color Proof (400TC).</b> Mounted on 3 $\frac{1}{8}$ " x 4 $\frac{3}{4}$ " piece of heavy bond, some light toning, otherwise Very Fine .....	300.00
280	<b>13c 1917 Issue, Large Die Trial Color Proofs (513TC).</b> Ten Diff. Shades, Die Sunk on 3 $\frac{1}{4}$ " x 3 $\frac{3}{4}$ " Cards, Very Fine ..... (Photo Ex)	1,150.00
281	<b>1c-5c Pilgrims, Large Die Proofs (548P-550P).</b> With Identification Numbers, Very Fine Set ..... (Photo)	1,350.00
282	<b>1c Pilgrim, Large Die Proof, Unfinished Design (548P Var.).</b> Die Sunk on 6 $\frac{1}{8}$ " x 4 $\frac{1}{4}$ " Card, Frame of Accepted Design without Numerals & "The Mayflower" Imprint, some negligible toning, otherwise Very Fine, Completed Large Die Cat. \$450.00, Rare .....	E. XI
283	<b>1<math>\frac{1}{2}</math>c Brown, Large Die Proof on India (553P).</b> Die Sunk on 6" x 8" Card, signed for Approval by Harry S. New, Postmaster General, Very Fine .....	175.00
284	<b>6c Orange, Large Die Proof on Wove (558P).</b> Die Sunk on 3 $\frac{7}{8}$ " x 4 $\frac{3}{8}$ " Card, Very Fine .....	175.00

## COMMEMORATIVE ISSUES, PROOFS

285	<b>1c-5c Huguenot-Walloon, Large Die Proofs on India (614P-616P).</b> Die Sunk on 8" x 6" Cards, signed for Approval by Harry S. New, Postmaster General, Very Fine Set ..... (Photo Ex)	900.00
286	<b>1c-5c Lexington-Concord, Large Die Proofs on India (617P-619P).</b> Die Sunk on 5 $\frac{1}{4}$ " x 4 $\frac{3}{8}$ " Cards, Very Fine Set ..... (Photo Ex)	900.00
287	<b>2c White Plains, Large Die Proof on Wove (629P).</b> With Identification Number, Very Fine ..... (Photo)	350.00
288	<b>2c, 5c Aeronautics, Large Die Proofs on Wove (649P-650P).</b> Die Sunk on 8" x 5 $\frac{3}{4}$ " Cards, signed for Approval by Harry S. New, Postmaster General, Very Fine Set ..... (Photo Ex)	800.00
289	<b>2c, 5c Aeronautics, Large Die Proofs on Wove (649P-650P).</b> With Identification Numbers, Very Fine Set ..... (Photo Ex)	800.00
290	<b>2c, 5c Aeronautics, Small Die Proofs (649P-650P).</b> Very Fine Set (Photo)	800.00
291	<b>2c Clark, Large Die Proof on Wove (651P).</b> With Identification Number, Very Fine & Scarce ..... (Photo)	375.00
292	<b>1<math>\frac{1}{2}</math>c Brown, Large Die Proof (684P).</b> Die Sunk on 6" x 7 $\frac{7}{8}$ " Card, Very Fine .....	275.00
293	<b>2c Yorktown, Large Die Proof on Wove (703P).</b> With Identification Number, Very Fine & Scarce ..... (Photo)	350.00
294	<b>3c, 5c Olympics, Small Die Proofs (718P-719P).</b> Very Fine Set .... (Photo)	800.00
295	<b>3c Wisconsin, Small Die Proof (739P).</b> Very Fine ..... (Photo)	325.00

296	3c Army, Large Die Proof (787P). Die Sunk on 7¾" x 5¾" Card, Very Fine ..... (Photo)	400.00
297	5c Army, Large Die Proof (789P). Die Sunk on 7¾" x 5½" Card, Very Fine ..... (Photo)	400.00
298	2c Navy, Large Die Proof, Unfinished Design (791P Car.). Die Sunk on 7¾" x 5¼" Card, Design Missing Warship & Background Shading, Very Fine, Completed Large Die Cat. \$400.00, Rare ..... E. XI	
299	5c Virginia Dare, Large Die Proof (796P). Die Sunk on 5½"x7¾" Card, Very Fine ..... (Photo)	400.00
300	½c Orange, Large Die Proof (803P). Die Sunk on 5¾" x 7½" Card, Very Fine ..... (Photo)	450.00
301	12c Bright Violet, Large Die Proof (817P). Die Sunk on 6" x 8" Card, Very Fine ..... (Photo)	400.00
302	16c Black, Large Die Proof (821P). Die Sunk on 6" x 8" Card, Very Fine ..... (Photo)	400.00
303	1c Defense, Large Die Proof (899P). Die Sunk on 5½" x 6¾" Card, Very Fine ..... (Photo)	500.00

#### AIRPOSTS, PROOFS

304	16c Green, Air Post, Large Die Proof (C2P). Die Sunk on 8" x 6" Card, Very Fine, Rare ..... (Photo)	1,500.00
305	8c Green, Air Post, Large Die Proof (C4P). Die Sunk on 8" x 6" Card, few toned spots on card only, Very Fine, Rare ..... (Photo)	1,100.00
306	16c Blue, Air Post, Large Die Proof (C5P). Die Sunk on 7¾"x6" Card, some light toned spots on card only, Very Fine, Rare ..... (Photo)	1,100.00
307	16c Green, Air Post, Large Die Trial Color Proof (C5TC). Die Sunk on 3½" x 4¾" Card, few trivial toned specks far from design, otherwise Very Fine, Rare ..... (Photo)	1,100.00
308	5c Violet, Air Post, Large Die Proof (C12P). Die Sunk on 8" x 6" Card, Very Fine, Rare ..... (Photo)	700.00
309	65c Graf Zeppelin, Large Die Proof on Wove (C13Pa). Very Fine, Rare ..... (Photo)	1,800.00
310	50c Chicago Zeppelin, Large Die Proof (C18P). With Identification Number, Very Fine, Rare ..... (Photo)	1,350.00
311	20c-50c Trans-Pacific Air Post, Small Die Proofs (C20P-C22P). Very Fine Set, Rare ..... (Photo)	2,100.00
312	6c Dark Blue & Carmine, Small Die Proof (C23P). Very Fine, Rare ..... (Photo)	700.00
313	6c-50c 1941 Air Post, Small Die Proofs (C25P-C31P). Very Fine Set, Extremely Rare ..... (Photo)	4,200.00
314	16c Blue, Air Post Special Delivery, Small Die Proof (CE1P). Very Fine, Rare ..... (Photo)	600.00
315	16c Red & Blue, Air Post Special Delivery, Small Die Proof (CE2P). Very Fine, Rare ..... (Photo)	600.00
316	10c 1885-1902 Special Delivery, Small Die Proofs (E1P-E4P, E6P). Light negligible toning on some, otherwise Very Fine ..... 195.00	
317	10c Blue, Special Delivery, Large Die Proof (E4P). Die Sunk on 7¾" x 5¾" Card, some toned spots, all but one on card, otherwise Very Fine .... 65.00	



## POSTAGE DUES, PROOFS

318	1c-50c 1879 Postage Due, Small Die Proofs (J1P-J7P). 3c & 50c have tiny thin spots, otherwise Very Fine Set ..... (Photo Ex)	105.00
319	1c-50c 1879 Postage Due, Hybrid Plate Proof Composite (J1P-J7P Var.). On 3¾" x 4¼" Die Sunk Card, Very Fine ..... (Photo)	E. VIII
320	1c-50c Postage Due, Atlanta Trial Color Proofs (J1TC-J7TC). Complete Set, All Values & Colors, couple tiny negligible faults, otherwise Very Fine	269.50
321	1c-50c 1891 Postage Due, Small Die Proofs (J22P-J28P). On Gray Cards, Very Fine Set ..... (Photo Ex)	105.00
322	1c-50c 1894 Postage Due, Large Die Proofs (J31P-P37P). Card Mounted, Very Fine Set ..... (Photo Ex)	140.00
323	1c-50c 1894 Postage Dues, Small Die Proofs (J31P-J37P). On thin gray card, some trivial light toning in extreme margins, otherwise Very Fine Set	105.00

---

324	1c-50c 1894 Postage Dues, Panama-Pacific Small Die Proofs (J31P-J37P). Very Fine Set, Scarce ..... (Photo Ex)	875.00
325	1c-25c Parcel Post Dues, Panama-Pacific Small Die Proofs (JQ1P-JQ5P). Couple tiny negligible translucencies, otherwise Very Fine Set, Scarce ..... (Photo Ex)	875.00

---

326	1c Franklin, 1c Eagle Carriers, Atlanta Trial Color Proofs (LO1TC-LO2TC). Complete Set, All Colors, couple tiny insignificant faults, otherwise Very Fine	126.00
-----	---	--------

## OFFICIALS, PROOFS

327	1c-\$20.00 Officials, Plate Proofs on India, Hybrid Large Die Proofs O1P-O93P). Mounted on 8½" x 5¾" Die Sunk Cards, some have faint insignificant toning, still a Very Fine Complete Set, Attractively Mounted	205.50
328	1c-\$20.00 Officials, Plate Proofs on India (O1P-O93P). Complete Set, Attractively Mounted, some have small faults or faint thins, otherwise Very Fine, Fresh	205.50
329	1c-\$20.00 Officials, Plate Proofs on Cards (O1P-O93P). Complete Sets of All Issues incl. two additional sets of War Dept. (distinct shades), one set lightly toned, otherwise Fresh & Very Fine, Attractively Mounted, Choice Lot	146.80
330	1c-30c Agriculture, Large Die Proofs (O1P-O9P). Die Sunk on 5¾" x 9" Cards, some faint toned specks, otherwise Very Fine Set, Attractively Mounted	148.50
331	1c-30c Agriculture, Small Die Proofs (O1P-O9P). Couple tiny faults, otherwise Very Fine Set	72.00
332	1c-10c Executive, Large Die Proofs (O10P-O14P). Die Sunk on 5¾" x 9" Cards, a few faint toned specks, otherwise Very Fine Set, Attractively Mounted	100.00
333	1c-10c Executive, Small Die Proofs (O10P-O14P). Small faults or light toning, otherwise Very Fine	50.00
334	10c Executive, Panama-Pacific Small Die Proof (O14P). Very Fine (Photo)	125.00
335	1c-90c Interior, Large Die Proofs (O15P-O24P). Die Sunk on 5¾" x 9" Cards, some very faint trivial toned specks, otherwise Very Fine Set, Attractively Mounted	165.00
336	1c-90c Interior, Small Die Proofs (O15P-O16P, O18P-O24P). No 3c Value, couple tiny faults, 10c sealed tear, others Very Fine	72.00

337	<b>1c-90c Justice, Large Die Proofs (O25P-O34P).</b> Die Sunk on 5¼" x 9" Cards, some very faint toned specks, otherwise Very Fine Set, Attractively Mounted .....	165.00
338	<b>1c-90c Justice, Small Die Proofs (O25P-O34P).</b> Complete Set, couple tiny faults, 24c corner clipped close, otherwise Very Fine .....	80.00
339	<b>1c-90c Navy, Large Die Proofs (O35P-O45P).</b> Die Sunk on 5¼" x 9" Cards, some faint trivial toned specks, otherwise Very Fine Set, Attractively Mounted .....	181.50
340	<b>1c-90c Navy, Small Die Proofs (O35P-O45P).</b> Complete Set, few small faults, otherwise Very Fine .....	88.00
341	<b>1c-90c Post Office, Large Die Proofs (O47P-O56P).</b> Die Sunk on 5¼" x 9" Cards, a minimum of faint toned specks, otherwise Very Fine Set, attractively Mounted .....	165.00
342	<b>1c-90c Post Office, Small Die Proofs (O47P-O56P).</b> Complete Set, couple tiny faults, otherwise Very Fine .....	80.00
343	<b>1c-\$20.00 State, Large Die Proofs (O57P-O71P).</b> Die Sunk on 5¼" x 9" Cards, some faint toning, otherwise Very Fine Set, Attractively Mounted .....	381.50
344	<b>1c-\$20.00 State, Small Die Proofs (O57P-O71P).</b> Complete Set, couple tiny negligible faults, 2c small sealed tear in margin, otherwise Very Fine .....	188.00
345	<b>1c-90c Treasury, Large Die Proofs (O72P-O82P).</b> Die Sunk on 5¼" x 9" Cards, some faint trivial toned specks, otherwise Very Fine Set, Attractively Mounted .....	181.50
346	<b>1c-90c Treasury, Small Die Proofs (O72P-O82P).</b> Complete Set, couple tiny faults, otherwise Very Fine .....	88.00
347	<b>1c-90c War, Large Die Proofs (O83-O93P).</b> Die Sunk on 5¼" x 9" Cards, some light minor toning, otherwise Very Fine Set, Attractively Mounted .....	181.50
348	<b>1c-90c War, Small Die Proofs (O83P-O93P).</b> Complete Set, few small faults, otherwise Very Fine .....	88.00
349	<b>"Goodalls" Departmental Small Die Proofs,</b> Virtually Complete Neatly Mounted Collection missing only 18 misc. 1c-90c values & the six \$2.00 State, majority have light toning, some very minor, otherwise a Very Fine & Seldom Offered Collection, Scarce .....	4,914.00
350	<b>1c-90c Officials, Atlanta Trial Color Proofs (O1TC-O67TC, O72TC-O93TC).</b> Complete Sets, All Values & Colors, except for Dollar Value States, Fresh, some have small faults, otherwise Very Fine .....	3,718.25
351	<b>\$2.00-\$20.00 State, Scarlet Frame, Black Center, Atlanta Trial Color Proofs (O68TC-O71TC).</b> Fresh, \$2.00 small thin spot, \$5.00 crease, others Very Fine .....	(Photo Ex) 1,000.00
352	<b>\$2.00-\$20.00 State, Blue Frame, Brown Center, Atlanta Trial Color Proofs (O68TC-O71TC).</b> Fresh, all but \$2.00 have small faults, some trivial, Very Fine Appearance .....	(Photo Ex) 1,000.00
353	<b>\$2.00-\$20.00 State, Blue Frame, Green Center, Atlanta Trial Color Proofs (O68TC-O71TC).</b> Fresh, small flaws, Very Fine Appearance .....	(Photo Ex) 1,000.00
354	<b>\$2.00-\$20.00 State, Brown Frame, Black Center, Atlanta Trial Color Proofs (O68TC-O71TC).</b> Fresh & Very Fine .....	(Photo Ex) 1,000.00
355	<b>\$2.00-\$20.00 State, Green Frame, Brown Center, Atlanta Trial Color Proofs (O68TC-O71TC).</b> Small thins, mostly trivial, Very Fine Appearance .....	(Photo Ex) 1,000.00
356	<b>\$2.00-\$20.00 State, Scarlet Frame, Blue Center, Atlanta Trial Color Proofs (O68TC-O71TC).</b> Fresh, all but \$10.00 have small thin spots, Very Fine Appearance .....	(Photo Ex) 1,000.00
357	<b>\$2.00-\$20.00 State, Brown Frame, Blue Center, Atlanta Trial Color Proofs (O68TC-O71TC).</b> Fresh, Very Fine .....	(Photo Ex) 1,000.00



358	<b>\$10.00 State, Brown Frame, Blue Center, Atlanta Trial Color Proof (O70TC).</b> Fresh, small thin spot, Very Fine Appearance .....	250.00
359	<b>\$10.00 State, Green Frame, Brown Center, Atlanta Trial Color Proof (O70TC).</b> Fresh, small thin spot, Very Fine Appearance .....	250.00

#### NEWSPAPER, PROOFS

360	<b>5c-25c 1865 Newspapers, Large Die Proofs (PR2P-PR4P).</b> Die Sunk on 5¾" x 8¼" Cards, these exist only as hybrids, few tiny toned specks well clear of design, otherwise Very Fine .....	210.00
361	<b>2c-\$60.00 1875 Newspapers, Large Die Proofs (PR9P-PR32P).</b> Die Sunk on 5¾" x 9¾" Cards, 60c has fault in margin of card, a few extremely faint toned specks, otherwise a Very Fine Set .....	240.00
362	<b>2c-\$60.00 1875 Newspapers, Small Die Proofs (PR9P-PR32P).</b> On Gray Cards, Very Fine Set .....	144.00
363	<b>2c-\$60.00 1875 Newspapers, Panama Pacific Small Die Proofs (PR9P-PR32P).</b> Some light toning, a few very faint minute thin specks, otherwise a Very Fine Set, ex Southgate ..... (Photo Ex) 2,400.00	
364	<b>2c-\$60.00 1875 Newspapers, Hybrid Plate Proofs (PR9P-PR17P, PR19P-PR32P).</b> Mounted on 5¾" x 8¼" Cards, a few have some faint negligible toning, otherwise Very Fine .....	42.75
365	<b>1c-\$60.00 1875-95 Newspapers, Plate Proofs on India, Card (PR9P-PR32P, PR57P-PR79P, PR81P).</b> Four Complete Sets Attractively Mounted, some have faults, card proofs are partially stuck to mounts, Very Fine Appearance .....	127.25
366	<b>2c-\$60.00 Newspapers, Atlanta Trial Color Proofs (PR9TC-PR32TC).</b> Blocks, Complete Set, All Values & Colors, each has small piece of tape on back affecting top pairs only, otherwise Very Fine ..... (Photo Ex) 2,016.00+	
367	<b>2c-\$60.00 1875 Newspaper, Trial Color Plate Proofs on India (PR9TC, PR16TC-PR27TC, PR29TC-PR32TC).</b> 79, All Diff. Values or Colors, a few are card mounted, some have tiny faults, others Very Fine .....	323.00
368	<b>2c-\$60.00 Newspapers, Atlanta Trial Color Proofs (PR9TC-PR32TC).</b> Complete Set, All Values & Colors, a few have thin spots or small faults, others Very Fine .....	504.00
369	<b>25c Carmine, 50c Carmine, \$36.00 Brown Rose, Panama-Pacific Small Die Proofs (PR30P, PR106P-PR107P).</b> First has tiny pinhole, others Very Fine .....	300.00
370	<b>1c-\$100.00 1895 Newspapers, Large Die Proofs (PR102P-PR113P).</b> Die Sunk on 6" x 8" Cards, some light toned spots, none affecting the designs, otherwise Very Fine Set .....	132.00
371	<b>1c-\$100.00 1895 Newspapers, Small Die Proofs (PR102P-PR113P).</b> On Gray Cards, \$10.00 & \$20.00 small margin faults, otherwise a Fresh & Very Fine Set .....	96.00
372	<b>1c-\$100.00 1895 Newspapers, Panama-Pacific Small Die Proofs (PR102P-PR113P).</b> Some light toning & a couple tiny thin specks, otherwise a Very Fine Set, ex Southgate, Scarce ..... (Photo Ex) 1,200.00	
373	<b>Newspapers, Proofs, Trial Colors, Specimens, 36, incl. First &amp; Second Issue, Card &amp; Wove, PR2 &amp; 5Sc, Third Issue Ty. B Ovppts., a little duplication, some have faults, toning or perms. clipped, others Very Fine .....</b>	250.00

## POSTAL SAVINGS, PARCEL POST, PROOFS

374	10c-\$1.00 1940 Postal Savings, Small Die Proofs (PS7P-PS10P). Listed but Unpriced, Very Fine Set ..... (Photo Ex) —
375	10c-\$5.00 1941 Postal Savings, Small Die Proofs (PS11P-PS15P). All Listed but only \$5.00 has Cat. Price (\$200.00), Very Fine Set (Photo Ex) E. XIV
376	1c-\$1.00 Parcel Post, Panama-Pacific Small Die Proofs (Q1P-Q12P). Complete Set except 25c is small die proof but not Panama-Pacific, Very Fine, Rare ..... (Photo Ex) 2,900.00

## REVENUE, PROOFS

377	□ \$2.00 Probate of Will, Orange Frame, Black on Greenish Center, Orange on Greenish, Black Center, Composite Large Die Trial Color Proof on Wove (R83TC). Block, top Pair as First, bottom Pair as Last, with Full Imprint, Fresh & Extremely Fine, a Marvelous Rarity, Possibly Unique, Unlisted ..... (Photo) —
378	□ \$20.00 Probate of Will, Plate Proof on Card (R99P). Block, Listed but Unpriced, Cat. \$130.00 as Pairs, Very Fine ..... —
379	□ \$50.00 U.S.I.R., Orange Frame, Black on Greenish Center, Large Die Trial Color Proof on Wove (R101TC). Block, with Full Imprint, Fresh & Extremely Fine, a Rarity of the First Order, Possibly Unique, Unlisted (Photo) —
380	1c-\$50.00 Second Issue, Proprietary Revenues, Green Frames, Black Centers, Composite Large Die Trial Color Proof on India (R103TC-R131TC, RB1TC-RB7TC). Mounted on 7¾" x 9¼" Card, each with small punch hole as often, Fresh & Extremely Fine, a Marvelous Show-piece, Possibly Unique ..... (Photo) —
381	\$200.00 Second Issue Revenue, Brown & Green Frame, Black Center, Large Die Trial Color Proof (R132TC). Mounted on 4¼" x 5½" Card, with Patent & Engravers' Imprints, two small punch holes above & below Vignette as often, Fresh & Extremely Fine, Scarce ..... (Photo) 600.00

## \$5,000.00 SECOND ISSUE

Prepared for use but never issued. Proofs exist in various combinations of color but since no \$5,000.00 stamp was issued, it cannot be determined which would have been the issued color and which would have been trial colors.

382	\$5,000.00 Second Issue, Green, Yellow & Black Frame, Black Center, Large Die Proof (R133AP). Mounted on 5½" x 7"¼ Card, with Patent & Engravers' Imprints, small punch hole as often, Fresh & Extremely Fine ..... (Photo) 1,750.00
383	\$5,000.00 Second Issue, Orange, Green & Black Frame, Black Center, Large Die Impression on Wove (R133A Var.). Fresh, Gorgeous Colors, small insignificant faults, Magnificent Appearance, a Beauty and Extremely Rare ..... (Photo) —
384	\$500.00 Second Issue Revenue, Green, Yellow & Black Frame, Black Center, Large Die Trial Color Proof on India (R133TC). Mounted on 5" x 6¾" Card, with Patent & Engravers' Imprints, two small punch holes above & below "500" as often, Fresh & Extremely Fine ..... (Photo) 600.00



385	<b>50c-\$5.00 Green &amp; Black, Proprietary, Large Die Composite Proof on Proof Paper (RB8P-RB10P).</b> Another 50c has been added in place of original, few small creases, couple tiny thin spots in margin, nevertheless Fresh & Very Fine, a Spectacular Showpiece, Possibly Unique, Unlisted (Photo)	
386	<b>Western Union Telegraph Co., Plate Proofs on India, Trial Color Proofs (Betw. 16T1P-16T7TC).</b> 30 Diff., Twelve are Pairs, some cards mounted, nearly all Very Fine	54.00
387	<b>Essay Miscellany, Eight Diff. Items, Mostly Very Fine</b>	<b>E. III</b>
388	<b>Proof &amp; Specimen Miscellany, 47 Items, Nearly All Diff. incl. Officials, Trial Colors, Newspapers, few tiny faults, Mostly Fine-Very Fine</b>	216.45

## SPECIMENS

389	<b>1c-90c 1861-66 Issue, "Specimen" Overprint (63SB-78SB).</b> Ten, Large Part o. g., ovpt. on 12c is very faint as often, few toned specks, otherwise Fine-Very Fine Set (Photo Ex)	132.00
390	<b>1c-3c 1861-67 Issue, "Specimen" Overprint (65SB, 73SB, 86SA).</b> 2c part o. g., Perfs. cut	55.00
391	<b>1c-90c 1861-66 Issue, "Specimen" Overprints (63SB-78SB).</b> Ten, Large Part o. g., ovpt. on 12c is very faint as usual, Very Good-Very Fine Set (Photo Ex)	132.00
392	<b>1c-90c 1861 Issue, "Specimen" Overprint (63SB-72SB).</b> Six, Horiz. Pairs, Fresh, o. g., Very Good-Very Fine	124.00+
393	<b>1c-90c 1861-66 Issue, Specimen Overprint (63SJ-78SJ).</b> Ten, Fresh, o. g., Very Good-Very Fine (Photo Ex)	190.00
394	<b>1c-90c 1861-66 Issue, Imperforate Printers Samples (63-78 Var.).</b> Mostly Large to Huge Margins, Fresh, part with tiny ms. "X", 2c corner wrinkle, 12c crease, 90c scissor cut, margins touched on one side of 5c & 30c, still a Fine & Scarce Set (Photo Ex)	—
395	<b>1c Blue, Specimen Overprint (63SJ).</b> Margin Block, Fresh, o. g., Very Good	60.00+
396	<b>3c Brown Red, Specimen Overprint (65SJ).</b> Block, Fresh, o. g., Fine	60.00+
397	<b>3c-90c 1861-66 Issue, Large Die Proofs Overprinted "Specimen" (64P, 68P, 71P-72P, 77P-78P).</b> Mounted on 5¾" x 7¾" Cards, each with Six Line Imprint "Specimen Postage Stamp, from the National Bank Note Company, No. 1 Wall Street, New York," 3c is Pigeon Blood Pink, some very trivial toning affecting only one proof, Very Fine, Very Scarce	<b>E. XII</b>
398	<b>2c-24c 1861-66 Issue, "Specimen" Overprint (73SB-78SB).</b> Four, Horiz. Pairs, Fresh o. g., 15c & 24c have straddle margins, Very Good-Very Fine	140.00+
399	<b>10c-90c 1861 Issue, "Specimen" Overprint (68SA-72SA).</b> Three, 10c part o. g., last two tiny faults, Fine Appearance	135.00
400	<b>2c Black, Specimen Overprint (73SJ).</b> Block, Fresh, o. g., Fine (Photo)	140.00+
401	<b>1c Blue, 3c Rose, 30c Orange, E, F Grills, "Specimen" Overprint (86SA, 94SA, 100SA).</b> Part o. g., Very Good	115.00
402	<b>2c Brown, "Specimen" Overprint (113SA).</b> Crease, centered to top left (Photo)	100.00
403	<b>10c Yellow, "Specimen" Overprint (116SA).</b> Light overall toning, otherwise Very Fine (Photo)	100.00
404	<b>12c Green, "Specimen" Overprint (117SA).</b> Fresh, Perfs. in at B. (Photo)	100.00
405	<b>15c Brown &amp; Blue, "Specimen" Overprint (119SA).</b> Fresh & Fine (Photo)	100.00
406	<b>30c Blue &amp; Carmine, "Specimen" Overprint (121SA).</b> Fresh, Centered to top (Photo)	100.00

407	1c-90c 1870-71 Bank Notes, "Specimen" Overprints (145SA-155SA). Some have small faults, 90c corner defect, Very Good-Very Fine Appearing Set, Scarce ..... (Photo Ex)	505.00
408	90c Carmine, "Specimen" Overprint (155SB). Fresh, part o. g., single nicked perf., otherwise Very Fine .....	90.00
409	7c Vermilion, "Specimen" Overprint (160SB). Fresh, o. g., Very Fine (Photo)	85.00
410	15c-90c 1879 Bank Notes, "Specimen" Overprint (189SD-191SD, 191SDa). Fresh, Fine-Very Fine .....	60.00
411	1c-90c 1889 Bank Note Special Printings, Specimen Overprint "Sample." (189SK-214SK). 13, Large Part o. g., 15c tiny thin specks, 4c Very Good, others Fine-Very Fine ..... (Photo Ex)	117.00
412	1c-90c 1889 Bank Note Special Printings, Specimen Overprint "Sample." (189SK-214SK). 13 Diff. Horiz. Pairs, Fresh, o. g., Attractively Mounted but stuck down, one 30c faulty, others Fine-Very Fine ..... (Photo Ex)	234.00
413	1c-90c 1889 Bank Notes, Special Printings, "Sample." Overprints (Betw. 189SK-214SK). 11 diff., incl. 10c without ovpt., Large Part o. g., few faults, some minor, otherwise Fine-Very Fine .....	105.00
414	1c-90c 1889 Bank Note Special Printings, Specimen Overprint "Sample A" (189SL-212SL). Ten, Fresh, o. g., few insignificant gum thin specks, otherwise Very Fine Set .....	90.00
415	1c-90c 1889 Bank Note Special Printings, Specimen Overprint "Sample A" (189SL-212SL). Ten Diff., Horiz. Pairs, Attractively Mounted but stuck down, 3c damaged, others Very Fine ..... (Photo Ex)	180.00
416	4c-90c 1889 Bank Notes, Specimen Overprints "Sample A" (191SM-211SM, 216SN two). Last both Red & Black ms., 4c s. e., 10c & one 5c small thins, others Fine-Very Fine .....	60.00
417	1c-90c 1889 Bank Notes, Special Printing, "Sample.", "Sample A" Overprints (Betw. 191SK-209SM). Seven Diff., Large Part o. g., Fine-Very Fine .....	63.00
418	1c-10c 1881-83 Bank Notes, "Specimen" Overprints (205SD-211SD). Fresh, Fine-Very Fine .....	105.00
419	1c-90c 1890 Issue, "Specimen" Overprint (219SE-229SE). Fresh, o. g., few tiny insignificant thin specks, otherwise Fine-Very Fine, Complete Set as Issued ..... (Photo Ex)	220.00
420	1c-\$5.00 Columbians, "Specimen" Overprint (230SE-245SE). Fresh, o. g., Rich Colors, 1c slight toning, 50c surface rubbing, couple tiny negligible thin specks, perfs. touch on 5c & 15c, others Fine- Very Fine, Scarce Set (Photo Ex)	2,260.00
421	1c-\$5.00 Columbians, "Specimen" Overprint (230SE-239SE, 242SE-245SE). Fresh, Mostly o. g., Overprinted Diagonally, 1c & \$4.00 Inverted, 1c & 10c thin spots, 5c s. e., others Fine-Very Fine, Scarce ..... (Photo Ex)	2,000.00
422	1c, 3c-6c, 10c, \$3.00 Columbians, "Specimen" Overprint (230SF, 232SF-235SF, 237SF, 243SF). Large Part o. g., All but 3c & 6c have faults (thin spots, soiling), overall Fine Appearing, Complete Set, Rare type Specimen (Photo Ex)	1,925.00
423	2c, 4c-5c Columbians, "Specimen" Overprint (231SH, 233SH-234SH). 4c & 5c o. g., all have small thin spots, Fine-Very Fine Appearance, Complete Set, Rare type Specimen ..... (Photo Ex)	825.00
424	2c-50c Columbians, "Specimen" Overprints (231SI-240SI). Mostly o. g., all have faults or are defective, Extremely Rare type Specimen, Complete set, Rare ..... (Photo Ex)	2,750.00
425	1c-\$5.00 1894 Issue, "Specimen" Overprints (264SE-278SE). Fresh, o. g., 6c & \$5.00 tiny thin speck, 15c creases, perfs. in on 8c, others Fine-Very Fine, Complete Set as Issued, Scarce ..... (Photo Ex)	500.00



426	<b>\$2.00 Dark Blue, \$5.00 Dark Green, "Specimen" Overprints (277SE-278SE).</b> Fresh, o. g., first tiny thin specks, last small thin spot, Fine-Very Fine Appearance .....	200.00
427	<b>1c-15c 1898 Issue, "Specimen" Overprints (279SE-282CSE, 284SE).</b> Fresh, Attractively Mounted but partially stuck down, 5c small perf. fault, others Very Good-Very Fine .....	175.00
428	<b>2c Red, Booklet Pane, "Specimen" Overprint (279BaSE).</b> O. g., tiny thin speck in one, centered to B. ....	60.00
429	<b>2c Red, Booklet Pane, "Specimen" Overprint (279BaSE).</b> Stuck down on card, Fine .....	60.00
430	<b>1c-\$2.00 Trans-Mississippi, "Specimen" Overprint (285SE-293SE).</b> Large Part o. g., most have small faults, Fine-Very Fine Appearing Set (Photo Ex) .....	755.00
431	<b>1c-10c Pan-American, "Specimen" Overprint (294SE-299SE).</b> Fresh, 1c perfs. in at T., others Fine-Very Fine, Complete Set ..... (Photo Ex)	300.00
432	<b>1c-\$5.00 1902 Issue, "Specimen" Overprint (300SE-313SE, 319SE).</b> 1c sealed tear, 3c, 4c, 6c & 8c minute faults, others Fine-Very Fine, Scarce (Photo Ex) .....	495.00
433	<b>1c-\$5.00 1902 Issue, "Specimen" Overprint (300SE-313SE).</b> Overprinted Diagonally, 1c, 8c & \$2.00 are imperf. half arrows, Fine-Very Fine Set, Scarce ..... (Photo Ex)	465.00
434	<b>1c-10c Louisiana Purchase, "Specimen" Overprint (323SE-327SE).</b> Without gum, 2c defective, 1c & 3c tiny thin spots, others Very Fine, Rare set (Photo Ex) .....	500.00
435	<b>10c Blue, "Specimen" Overprint (E1SD).</b> Fresh & Fine .....	45.00
436	<b>10c 1893-95 Special Delivery, "Specimen" Overprint (E3SE-E5SE).</b> Fresh, o. g., first and last have faults, E4 s. e., Very Fine Appearance .....	135.00
437	<b>10c Ultramarine, "Specimen" Overprint (E6SE two).</b> One with Diagonal Ovpt., one natural s. e., Fine-Very Fine .....	75.00
438	<b>1c-50c 1884 Postage Due, "Specimen" Overprints (J15SD-J21SD).</b> 2c small thin, 3c & 5c defective, others Fine-Very Fine .....	105.00
439	<b>1c-50c 1895 Postage Dues, "Specimen" Overprints (J38SE-J44SE).</b> Fresh, o. g., few minor thins, Very Fine Appearing Set .....	140.00
440	<b>1c-30c Agriculture, "Specimen" Overprint (O1SD-O9SD).</b> Fresh, 24c tiny thin speck, otherwise Fine-Very Fine Set .....	104.75
441	<b>1c Agriculture, "Specimen" Overprint, Small Dotted "i" (O1SDb).</b> Fresh, centered to B., still Fine ..... (Photo)	50.00
442	<b>1c Agriculture, "Specimen" Overprint, Intermediate Soft Paper (O1SD var.),</b> very faint thin speck, centered to top .....	—
443	<b>30c Agriculture, "Specimen" Overprint, Error (O9SDa).</b> Fresh, centered to R., still Fine, only 3 or 4 known ..... (Photo)	700.00
444	<b>1c Executive, "Specimen" Overprint, Small Dotted "i" (O10SDa).</b> Fresh, Large Margin at T., Very Fine ..... (Photo)	60.00
445	<b>1c Executive, "Specimen" Overprint, Small Dotted "i" (O10SDa).</b> Fresh, few blunted perfs. tips, otherwise Very Fine .....	60.00
446	<b>1c-90c Justice, "Specimen" Overprints (O25SD-O34SD).</b> Toned spots, show mostly on back, 3c thin spot, otherwise Fine-Very Fine Set (Photo Ex) .....	412.50
447	<b>1c Justice, "Specimen" Overprint, Error (O25SDa).</b> Fresh, Very Fine (Photo) .....	150.00
448	<b>1c Justice, "Specimen" Overprint, Error (O25SDa).</b> Fresh, tiny thin specks, Fine Appearance ..... (Photo)	150.00
449	<b>1c Justice, "Specimen" Overprint, Small Dotted "i" (O25SDb).</b> Very faint overall toning, otherwise Fine ..... (Photo)	60.00

450	1c-90c Interior, "Specimen" Overprint (O15SD-O24SD). Fresh, 90c has a few perfs. blunted by scissor separation as often, Fine-Very Fine Set (Photo Ex)	805.50
451	6c-90c Interior, "Specimen" Overprints (O18SD-O24SD). Fresh, some perfs. blunted by scissor separation as often, Fine-Very Fine	700.00
452	1c-90c Navy, "Specimen" Overprints (O35SD-O45SD). Fresh, some perfs. blunted by scissor separation as often, few values with insignificant thin spots, otherwise Fine-Very Fine Set (Photo Ex)	522.25
453	1c Navy, "Specimen" Overprint, Error (O35SDa). Fresh, Fine (Photo)	140.00
454	1c-90c Post Office, "Specimen" Overprints (O47SD-O56SD). Fresh, some values with perfs. blunted by scissor separation as often, 15c has tiny tear between two perfs., otherwise Fine-Very Fine Set (Photo Ex)	694.00
455	1c Post Office, "Specimen" Overprint, Inverted (O47SDb). Fresh, Very Fine (Photo)	120.00
456	1c Post Office, "Specimen" Overprint, Inverted (O47SDb). Faint toning mostly on back, otherwise Very Fine (Photo)	120.00
457	1c Post Office, "Specimen" Overprint, Error (O47SDa). Tiny toned specks, s. e. at L., centered to top (Photo)	150.00
458	15c Post Office, "Specimen" Overprint, Error (O53SDa). Fresh & Fine, Unique (Photo)	1,000.00
459	1c-90c State, "Specimen" Overprint (O57SD-O67SD). Fresh, perfs. touch on 15c, others Fine-Very Fine, Complete Set (Photo)	195.00
460	1c State, "Specimen" Overprint, Error (O57SDa). Fresh, minute faults, centered to top	100.00
461	1c State, "Specimen" Overprint, Small dotted "i" (O57SDb). On Ribbed Paper, light crease, Fine Appearance	50.00
462	2c State, "Specimen" Overprint, Error (O58SDa). Fresh & Fine (Photo)	160.00
463	\$2.00 State, "Specimen" Overprint (O68SD). Fresh, couple minute pin-point thin specks, Fine Appearance, Only 32 issued (Photo)	900.00
464	\$5.00 State, "Specimen" Overprint (O69SD). Light toning, otherwise Very Fine, Only 12 issued (Photo)	1,500.00
465	\$10.00 State, "Specimen" Overprint (O70SD). Fresh, small thin spot, one short perf., Fine Appearance, Only Eight Issued (Photo)	2,000.00
466	\$20.00 State, "Specimen" Overprint (O71SD). Very faint thin spot & some negligible toning, almost entirely on back, Fine Appearance, Only Seven Issued (Photo)	2,500.00
467	1c-90c Treasury, "Specimen" Overprint (O72SD-O82SD). Fresh, 12c tiny thin, 6c single short perf., 30c couple partly nibbed perfs., two values with perfs. blunted by scissor separation as often, others Fine-Very Fine, Complete Set (Photo)	854.75
468	12c Treasury, "Specimen" Overprint (O78SD). Faint overall toning, otherwise Fine	100.00
469	1c-90c War, "Specimen" Overprint (O83SD-O93SD). Fresh, couple tiny insignificant perf. tip flaws, 2c centered to T., others Fine-Very Fine, Complete Set (Photo Ex)	473.75
470	1c-10c Officials, "Specimen" Overprints (Betw. O10SD-O84SD). 19 Diff. incl. Executive Set, the three Soft Papers, few tiny faults, Mostly Fine-Very Fine	84.00
471	6c Black, 12c Rose, "Specimen" Overprint (PR12SA, PR16SA). Large Part o. g., first, one row perfs. trimmed, other tiny faults, Very Fine Appearance	110.00



472	1c-\$60.00 1875-85 Newspapers, "Specimen" Overprint (PR14SD, PR57SD-PR81SD). Some o. g., several with small faults or perfs. touch, others Fine-Very Fine .....	176.00
473	1c-\$60.00 1875-85 Newspapers, "Specimen" Overprint (PR14SD, PR57SD-PR81SD). Fresh, o. g., some have small faults, mostly thin spots, Fine-Very Fine Appearance .....	176.00
474	1c-\$60.00 Newspapers, "Specimen" Overprint (PR14SD, PR57SD-PR65SD, PR67SD-PR81SD). Mostly small faults, toning or s. e., Fine-Very Fine Appearance .....	169.00
475	1c-\$100.00 1895 Newspapers, "Specimen" Overprint (PR114SE-PR125SE). O. g., small faults or light toning, Fine-Very Fine Appearing Set .....	104.00
476	2c Bank Check, "Specimen" Overprint (R5SG). Very Fine .....	(Photo) 100.00
477	5c Agreement, "Specimen" Overprint (R23SH). Fresh, minute faults, Very Fine Appearance .....	(Photo) 100.00
478	10c Contract, "Specimen" Overprint (R34SH). Fresh, rounded corner perf., otherwise Fine .....	(Photo) 100.00
479	10c Foreign Exchange, Ultramarine, "Specimen" Overprint (R35eSH). Defective, Fine Centering .....	(Photo) 100.00
480	10c Inland Exchange, "Specimen" Overprint (R36SH). Faint handstamp cancel, light corner perf. tip crease, otherwise Fine .....	(Photo) 100.00
481	25c Insurance, "Specimen" Overprint (R46SH). Couple short perf. tips, faint toning, otherwise Fine .....	(Photo) 100.00
482	30c Inland Exchange, "Specimen" Overprint (R52SH). Faint Blue Handstamp Cancel, couple tiny thin specks, perfs. just in at right .....	(Photo) 100.00
483	40c Inland Exchange, "Specimen" Overprint (R53SH). Fresh, small thin spot, Fine appearance .....	(Photo) 100.00
484	\$1.00 Foreign Exchange, "Specimen" Overprint (R68SH). Fresh, couple partly nibbed perf. tips, otherwise Very Fine .....	(Photo) 100.00

#### UNIVERSAL POSTAL CONGRESS

485	1c-\$5.00 Universal Postal Congress Overprints (264SO-276SO, 277SO-278SO). Large Part o. g., 1c thin spots, few other tiny flaws or light perf. tip toning, otherwise Very Fine .....	750.00
486	10c Special Delivery, Universal Postal Congress Overprints (E5SO). O. g., tiny thin specks, Very Fine Appearance .....	60.00
487	1c-50c Postage Dues, Universal Postal Congress Overprint (J38SO-J44SO). Fresh, Large Part o. g., 2c faults, others Fine-Very Fine, Complete Set .....	(Photo Ex) 245.00
488	1c-\$100.00 Newspapers, Universal Postal Congress Overprints (PR114SO-PR125SO). Fresh, Large Part o. g., 2c small corner defect, few small gum thin spots, Fine-Very Fine Appearance, Complete Set .....	(Photo Ex) 240.00

#### POSSESSIONS, ESSAYS & SPECIMENS

489	✉ CUBA, 1893, 1c-10c Columbian Entires Surcharged "Cuba" & New Value, Essays (U348-U351 Var.). Five Diff., incl. Two Diff. 10c, some small toned specks, otherwise Very Fine & Scarce, Unlisted .....	E. VI
490	✉ — 1899, 1c-10c Columbian Entires, Double Surcharge "Cuba" & New Value (U348-U351 Var.). Four Diff., some light toning mostly around edges, otherwise Very Fine, Scarce .....	E. VI
491	GUAM, 1899, 1c-\$1.00 "Specimen" Overprints (1SE-12SE, E1SE). Fresh, o. g., 3c & \$1.00 defective, 5c crease, 8c & #E1 thin specks, 2c, 4c & 10c s. e., others Fine-Very Fine .....	585.00

492	<b>PORTO RICO, 1899, 1c-10c "Specimen" Overprint (210SE-214SE). 10c</b> str. edge with tiny sealed tear, others Very Good-Fine .....	87.50
493	<b>PHILIPPINES, 1899, 1c, 5c-10c Postage Dues, "Specimen" Overprints</b> (J1SE, J3SE-J4SE). Fresh, Large Part o. g., Very Good-Fine .....	37.50

END OF SALE — THANK YOU

*LOTS ON VIEW FROM OCTOBER 12th, 1972*

*OFFICES OPEN SATURDAY BEFORE SALE*

## ESTIMATES

Our sales offer many covers, cancellations, varieties and other items for which there is no catalogue value or where catalogue value does not reflect the actual value. In order to assist our clients, we are placing a fair net valuation on such lots as a guide to bidders. The chart below will be used. For example, E. IV means that our estimated net value on the lot is \$30.00 to \$40.00. Lots may actually realize more or less than our estimates, which are under no circumstances to be considered reserves but merely a guide to bidding.

E. I	up to \$10.00	E. IX	\$150.00 to \$200.00
E. II	\$10.00 to \$20.00	E. X	\$200.00 to \$250.00
E. III	\$20.00 to \$30.00	E. XI	\$250.00 to \$350.00
E. IV	\$30.00 to \$40.00	E. XII	\$350.00 to \$500.00
E. V	\$40.00 to \$50.00	E. XIII	\$500.00 to \$750.00
E. VI	\$50.00 to \$75.00	E. XIV	\$750.00 to \$1000.00
E. VII	\$75.00 to \$100.00	E. XV	\$1000.00 to \$2500.00
E. VIII	\$100.00 to \$150.00	E. XVI	over \$2500.00



# THE TWO OF US

## Robert A. Siegel, Inc.

*"The House of Classics"*

maintains one of the world's finest and most important stocks of United States Stamps of all issues as well as many choice Foreign "classics" and covers.

:-

Want Lists and Special Requirements will have our prompt and careful attention.

:-

We are consistent buyers of fine properties and are always interested in considering anything you may have to offer us.

## Robert A. Siegel

Auction Galleries, Inc.

Offers through Public Auction an unparalleled selection of the finest material the market affords. Through some 20 to 25 sales each year, serious, interested collectors and dealers are offered the opportunity to bid for a wealth of choice material placed in our hands for sale.

Lavishly illustrated catalogues are carefully prepared for each sale.

Annual subscription to all catalogues \$5.00; With Prices Realized, \$10.00.

No charge is made for catalogues picked up in person at our offices.

## ROBERT A. SIEGEL, Inc.

*"The House of Classics"*

:-

## ROBERT A. SIEGEL AUCTION GALLERIES, Inc.

120 East 56th Street (Eleventh Floor)

New York, N. Y. 10022

Phone (212) 753-6421

## IS YOUR COLLECTION FOR SALE?

REALIZE IMMEDIATE CASH  
PLUS THE ADDED ADVANTAGE OF  
SELLING THROUGH OUR AUCTIONS

We will advance immediate cash up to 75% of our appraisal value, of what your collection should realize at auction. There is no interest charge.

Your collection will then be sold in one of our coming auction sales. All stamps are expertly and advantageously lotted in attractive, well illustrated catalogs. Lotting is meticulously planned under our personal supervision. Commission is 20% of the gross realization. There is no lotting fee or any other charges. Final settlement is made within five weeks after the sale. We have been continuously conducting stamp auctions in the United States for over forty-two years.

Valuable collections and stamp holdings are especially wanted, but we will accept properties valued from \$500 upwards. Send all stamps direct for appraisal. Auction advance will be remitted shortly after receipt. If not entirely pleased, stamps will be returned at our expense. If circumstances warrant due to bulk or value, we will travel anywhere to inspect important properties.

ROBERT A. SIEGEL  
AUCTION GALLERIES, Inc.

(Licensed and Bonded Auctioneer)

120 EAST 56th STREET

NEW YORK, N. Y. 10022

(Tel. 753-6421)



# ROBERT A. SIEGEL AUCTION GALLERIES, Inc.

120 EAST 56TH STREET  
NEW YORK, N. Y. 10022

419TH SALE

## PRICES REALIZED

OCTOBER 18TH, 1972

### UNITED STATES

PROOFS, ESSAYS & SPECIMENS

GROSS REALIZATION \$149,285.50

1 32.50	44 105.00	87 300.00	131 210.00	174 125.00	217 125.00
2 72.50	45 105.00	88 140.00	132 700.00	175 200.00	218 35.00
3 72.50	46 140.00	89 210.00	133 85.00	176 85.00	219 55.00
4 40.00	47 50.00	90 210.00	134 72.50	177 85.00	220 160.00
5 40.00	48 130.00	91 57.50	135 42.50	178 180.00	221 160.00
6 40.00	49 65.00	92 42.50	136 500.00	179 145.00	222 115.00
7 80.00	50 70.00	93 42.50	137 50.00	180 200.00	223 170.00
8 135.00	51 70.00	94 65.00	138 60.00	181 135.00	224 230.00
9 100.00	52 130.00	95 130.00	139 62.50	182 115.00	225 170.00
10 100.00	53 130.00	96 190.00	140 52.50	183 170.00	226 220.00
11 100.00	54 120.00	97 52.50	141 50.00	184 115.00	227 160.00
12 115.00	55 47.50	98 125.00	142 57.50	185 210.00	228 125.00
13 180.00	56 85.00	99 135.00	143 25.00	186 250.00	229 100.00
14 210.00	57 21.00	100 42.50	144 35.00	187 475.00	230 230.00
15 170.00	58 42.50	101 70.00	145 50.00	188 55.00	231 190.00
16 200.00	59 115.00	102 75.00	146 35.00	189 115.00	232 85.00
17 160.00	60 52.50	103 145.00	147 50.00	190 300.00	233 475.00
18 160.00	61 260.00	104 475.00	148 150.00	191 270.00	234 150.00
19 160.00	62 230.00	105 190.00	149 40.00	192 250.00	235 130.00
20 200.00	63 20.00	106 52.50	150 35.00	193 210.00	
21 105.00	64 21.00	107 20.00	151 37.50	194 57.50	236
22 135.00	65 200.00	108 95.00	152 125.00	195 250.00	to 675.00
23 110.00	66 52.50	109 130.00	153 270.00	196 72.50	243)
24 110.00	67 100.00	110 260.00	154 220.00	197 250.00	
25 105.00	68 26.00	111 105.00	155 325.00	198 375.00	244 2000.00
26 230.00	69 35.00	112 70.00	156 425.00	199 130.00	245 600.00
27 180.00	70 85.00	113 75.00	157 375.00	200 85.00	246 600.00
28 135.00	71 52.50	114 25.00	158 400.00	201 130.00	247 375.00
29 160.00	72 115.00	115 700.00	159 2200.00	202 210.00	248 1500.00
30 72.50	73 130.00	116 60.00	160 425.00	203 135.00	249 375.00
31 115.00	74 47.50	117 75.00	161 4000.00	204 52.50	250 190.00
32 125.00	75 145.00	118 95.00	162 62.50	205 140.00	251 1350.00
33 200.00	76 47.50	119 90.00	163 60.00	206 115.00	252 425.00
34 240.00	77 115.00	120 26.00	164 22.00	207 105.00	253 65.00
35 150.00	78 57.50	121 600.00	165 67.50	208 105.00	254 52.50
36 125.00	79 120.00	122 300.00	166 67.50	209 105.00	255 72.50
37 135.00	80 67.50	123 100.00	167 60.00	210 105.00	256 500.00
38 135.00	81 220.00	124 40.00	168 135.00	211 125.00	257 500.00
39 160.00	82 120.00	125 90.00	169 125.00	212 125.00	258 1000.00
40 160.00	83 52.50	126 85.00	170 125.00	213 135.00	259 650.00
41 135.00	84 425.00	127 110.00	171 140.00	214 125.00	260 425.00
42 160.00	85 270.00	128 45.00	172 125.00	215 125.00	261 260.00
43 160.00	86 85.00	129 190.00	173 135.00	216 105.00	262 1300.00
		130 230.00			

263 3000.00  
 264 250.00  
 265 1100.00  
 266 160.00  
 267 170.00  
 268 725.00  
 269 150.00  
 270 1450.00  
 271 575.00  
 272 130.00  
 273 180.00  
 274 67.50  
 275 60.00  
 276 60.00  
 277 475.00  
 278 200.00  
 279 190.00  
 280 1100.00  
 281 1150.00  
 282 260.00  
 283 110.00  
 284 110.00  
 285 700.00  
 286 625.00  
 287 325.00  
 288 650.00  
 289 575.00  
 290 550.00  
 291 375.00  
 292 160.00  
 293 325.00  
 294 550.00  
 295 270.00  
 296 300.00  
 297 375.00  
 298 300.00  
 299 350.00  
 300 350.00  
 301 250.00  
 302 300.00  
 303 375.00  
 304 1500.00  
 305 700.00  
 306 700.00  
 307 900.00  
 308 650.00

309 1500.00  
 310 1150.00  
 311 1800.00  
 312 600.00  
 313 3250.00  
 314 650.00  
 315 650.00  
 316 105.00  
 317 42.50  
 318 52.50  
 319 220.00  
 320 200.00  
 321 85.00  
 322 130.00  
 323 47.50  
 324 600.00  
 325 525.00  
 326 85.00  
 327 150.00  
 328 145.00  
 329 125.00  
 330 130.00  
 331 55.00  
 332 75.00  
 333 30.00  
 334 52.50  
 335 125.00  
 336 30.00  
 337 115.00  
 338 52.50  
 339 100.00  
 340 40.00  
 341 100.00  
 342 32.50  
 343 200.00  
 344 100.00  
 345 100.00  
 346 42.50  
 347 100.00  
 348 40.00  
 349 3250.00  
 350)  
 to) 6500.00  
 357)

358 100.00  
 359 140.00  
 360 170.00  
 361 110.00  
 362 80.00  
 363 1150.00  
 364 55.00  
 365 67.50  
 366 1350.00  
 367 125.00  
 368 350.00  
 369 125.00  
 370 80.00  
 371 60.00  
 372 450.00  
 373 120.00  
 374 600.00  
 375 900.00  
 376 1500.00  
 377 650.00  
 378 170.00  
 379 850.00  
 380 1260.00  
 381 725.00  
 382 1650.00  
 383 1400.00  
 384 725.00  
 385 1550.00  
 386 45.00  
 387 25.00  
 388 100.00  
 389 150.00  
 390 35.00  
 391 105.00  
 392 55.00  
 393 260.00  
 394 600.00  
 395 40.00  
 396 50.00  
 397 1050.00  
 398 100.00  
 399 50.00  
 400 270.00  
 401 170.00  
 402 210.00  
 403 210.00

404 210.00  
 405 210.00  
 406 210.00  
 407 230.00  
 408 27.00  
 409 52.50  
 410 40.00  
 411 75.00  
 412 150.00  
 413 57.50  
 414 52.50  
 415 110.00  
 416 30.00  
 417 40.00  
 418 70.00  
 419 290.00  
 420 1900.00  
 421 1400.00  
 422 1150.00  
 423 625.00  
 424 1600.00  
 425 300.00  
 426 125.00  
 427 90.00  
 428 57.50  
 429 42.50  
 430 450.00  
 431 375.00  
 432 290.00  
 433 250.00  
 434 375.00  
 435 37.50  
 436 80.00  
 437 57.50  
 438 47.50  
 439 105.00  
 440 70.00  
 441 85.00  
 442 35.00  
 443 500.00  
 444 75.00  
 445 50.00  
 446 260.00  
 447 220.00  
 448 120.00  
 449 125.00

450 675.00  
 451 450.00  
 452 925.00  
 453 120.00  
 454 400.00  
 455 200.00  
 456 95.00  
 457 160.00  
 458 2100.00  
 459 145.00  
 460 67.50  
 461 115.00  
 462 140.00  
 463 550.00  
 464 1800.00  
 465 2000.00  
 466 2700.00  
 467 675.00  
 468 75.00  
 469 210.00  
 470 50.00  
 471 32.50  
 472 70.00  
 473 60.00  
 474 50.00  
 475 85.00  
 476)  
 to) 500.00  
 484)  
 485 475.00  
 486 100.00  
 487 260.00  
 488 170.00  
 489 130.00  
 490 130.00  
 491 525.00  
 492 52.50  
 493 32.50