



# UNITED STATES

*The Collection  
of a  
Country Gentleman*



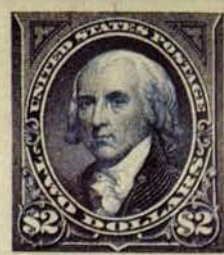
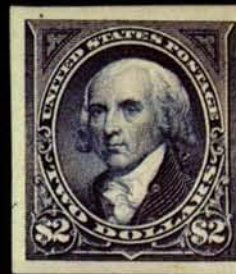
*Robert A. Siegel*

**AUCTION GALLERIES, INC.**

120 East 56th Street  
NEW YORK CITY, N. Y. 10022





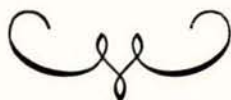


422nd SALE

# UNITED STATES STAMPS

The Collection of a Country Gentleman

Offered by Order of the Owner



AT PUBLIC AUCTION

In Three Sessions

Wednesday, November 29th, 1972

At 11:00 A.M. & 1:30 P.M.

Thursday, November 30th, 1972

At 1:30 P.M.

*Robert A. Siegel*

AUCTION GALLERIES, INC.

120 East 56th STREET

NEW YORK CITY, N.Y. 10022

Tel.: (212) 753-6421



## CONDITIONS OF SALE

1. The terms of sale are strictly cash on delivery to the highest bidder unless special arrangements have been made prior to the sale.
2. All bids are per lot as numbered in the catalogue unless otherwise announced by the auctioneer at the time of sale. The right is reserved to group two or more lots; to withdraw any lot or lots from the sale, or to act in behalf of the seller. The auctioneer shall regulate the bidding and in the event of any dispute his decision shall be final.
3. Any lot, the description of which is incorrect is returnable, but only within five days of receipt and in any case it must be received by the auctioneer within four weeks from the date of the auction. All disputed lots must be returned intact as received and the following lots may not be returned for any reason whatsoever: Lots containing ten or more stamps; Lots from buyers who have had the opportunity to examine them before the sale; Lots described as having defects or faults may not be returned because of faults. No illustrated lots may be returned because of centering, margins or other factors shown in the illustration.
4. Successful bidders, unless they are known to us or supply acceptable references are expected to make payment in full before the lots are delivered. Mail bidders will be notified of the amount of their purchases. We reserve the right in our sole and absolute discretion to demand cash payment at the time a lot is knocked down to any bidder who has not previously established credit with us or whose account is in arrears. In the event any buyer refuses to pay cash for any lot at the time it is knocked down to him, the auctioneer reserves the right to re-offer the lot immediately for sale to the highest bidder.
5. If the purchase price has not been paid within the time limit, nor lots taken up within seven days from date of sale they may be resold and any loss arising from such sale will be charged to the defaulter. Any account more than thirty days in arrears is subject to a late payment charge of 1½% per month so long as the account remains in arrears.
6. All lots are sold as genuine but should any lot be proved otherwise by written opinion of any competent, responsible authority acceptable to us, immediate refund of the full purchase price will be made, provided that such claim is made within 25 days from date of sale. If claim is not made within this period, no lots are returnable for any reason at any time. So long as we are notified within the 25 day period that an opinion is being sought the matter will remain open until such opinion is rendered. We will not be responsible for any charges incurred by the buyer for expertization fees and costs unless the opinion states the item is not genuine, in which case we will pay a maximum fee of \$10.00 for each such item.
7. Until paid in full, all lots remain the property of Robert A. Siegel Auction Galleries, Inc. in behalf of the seller.
8. All forwarding charges will be added to the purchase price. The mode of shipment shall be at our option unless we are given specific instructions.
9. Lots may be sent for inspection to buyers known to us upon written application. All such lots must be returned to us by registered mail, adequately insured and within 24 hours after receipt. The applicant assumes all responsibility and for insurance against all risks from time of receipt until they are actually received back by us, and is to pay all expenses of postage and insurance. No lots can be sent for inspection within ten days of the date of sale. Large lots and collections cannot be sent for inspection.
10. The placing of a bid shall constitute acceptance of the foregoing conditions of sale.

**ROBERT A. SIEGEL**

**SYLVESTER COLBY**, Licensed Auctioneers

## DESCRIPTIONS

**EXTREMELY FINE:** The finest, condition for noteworthy, outstanding copies.

**VERY FINE:** (V. F.) In prime condition such as to satisfy the requirements of particular collectors.

**FINE:** (F) Perforations or margins do not touch design on issues after 1890 but in some cases may just touch in earlier issues. If used, fairly light cancellation.

**VERY GOOD:** (V. G.) Generally nice appearance but margins or perforations may cut in slightly.

**GOOD:** Average off-centering or fairly attractive with slight defects.

**ORIGINAL GUM** is not to be expected on 19th century stamps unless so stated in the description.

**MINT:** With original gum and never hinged.

Scott 1972 Specialized Catalog/1973 Standard Catalog used for cataloguing lots of U. S. and Possessions and British Commonwealth. Scott 1972 Standard Catalog for others.











# FIRST SESSION

WEDNESDAY, NOVEMBER 29th, 1972 — 11:00 A. M.

## UNITED STATES

### STAMPLESS COVERS

- 1 ☒ **Fleetwood Academy, Va.** Two folded covers to Richmond, La., one ms. pmk., other in large **Brown circle, matching "Free"** Both franked "O. White, P. M.", the handstamp unlisted, Very Fine & Scarce ..... **E. V**
- 2 ☒ **Natchitoches, L.(ouisiana).** Large Brown (34mm) circle, partly double-lined, matching "Free" on 1828 folded letter to New Orleans, Bit aged, mostly on back, unlisted type, Fine & Scarce ..... **E. III**
- 3 ☒ **New Orleans, La. Drop, 1** Mostly clear strike on printed envelope of **Morse's Southern Telegraph Line** with list of charges & cities served, 1853 telegram enclosed, Very Fine ..... **E. V**
- 4 ☒ **N. Orleans, Opelousas & G. W. Railroad Co.** (Remele N10-SG) Clear circle in Greenish Blue on 1855 folded cover to New Orleans, minor cover faults, Fine & Rare ..... (Photo) **E. VIII**
- 5 ☒ **Steam, 5, Paid 3,** Matching small Red circles, Both on 1852 folded cover to Plaquemine, La., Very Fine ..... **E. III**
- 6 ☒ **Z. (achary) Taylor,** Autograph Free Frank, Red "Washington, D. C., Free" pmk. on neat cover to Louisiana, Very Fine & Fare ..... (Photo) **E. XII**

## BIDDING INTERVALS

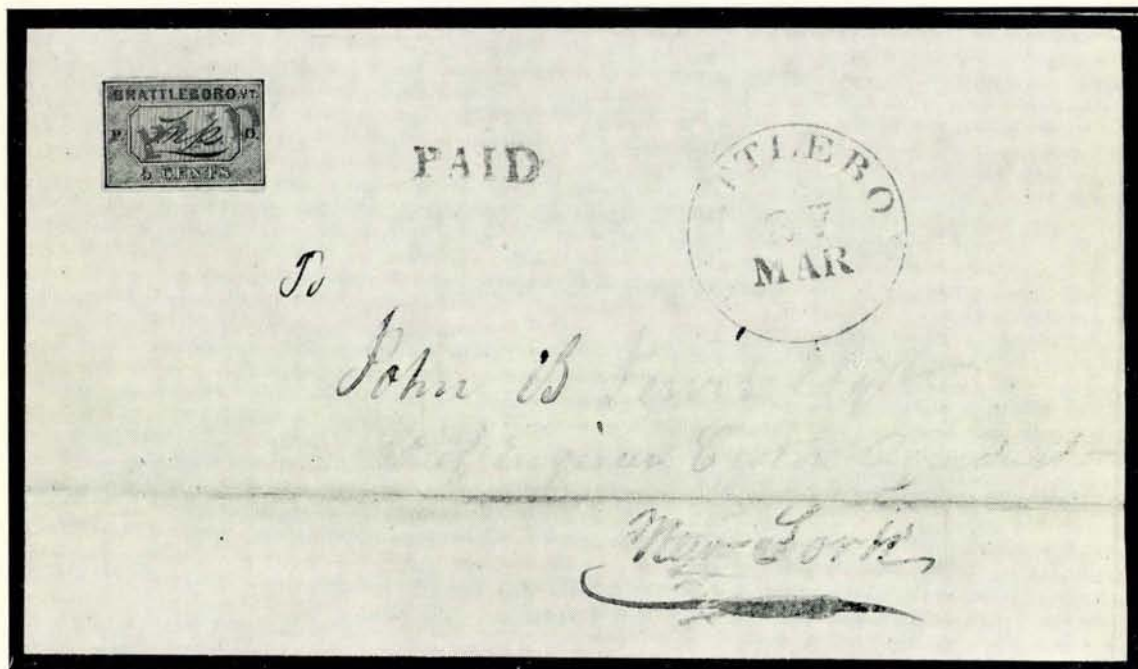
Bids are executed on a basis of the table of intervals or jumps listed below. Bids which do not conform to this table will be automatically reduced to the appropriate figure. For example a bid of \$15.25 will be entered as a bid of \$15.00.

UP TO	BID JUMPS
\$ 10.00 .....	\$ .50
30.00 .....	1.00
75.00 .....	2.50
150.00 .....	5.00
300.00 .....	10.00
750.00 .....	25.00
2,000.00 .....	50.00
3,000.00 .....	100.00
5,000.00 .....	200.00
10,000.00 .....	250.00
20,000.00 .....	500.00

**LOTS ON VIEW FROM MONDAY, NOV. 27th**



# POSTMASTERS' PROVISIONALS



- 7 ☒ **Brattleboro, Vt., 5c Black on Buff (5X1).** Margins nearly all around, line barely touched at right. Neat "Paid" cancel. in Red, repeated on the cover. Not tied, matching "Brattleboro, Vt." pmk. on 1847 folded cover to N. Y. City: address partly faded. A Handsome, Fine example of This Classic Rarity ..... (Photo) 4,750.00



- 8 **Millbury, Mass., 5c Black on Bluish (7X1).** Margins to just in at right, Brilliant Fresh Color of Impression, Light Red PA(id) Cancel, scissor cut at bottom, Fine appearing Example of this Rarity ..... (Photo) 15,000.00
- 9 R **New Haven, Ct., 5c Dull Blue on White, Reprint (8XU4R).** First Reprint of 1871, Signed "E. A. Mitchell" in Lilac Rose Ink., also notation "copy" in same color, minor soiling, otherwise Very Fine, Scarce, only 20 printed ..... (Photo) E. VIII

- 10 R **New Haven, Ct., 5c Red on White (8XU1R).** Second Reprint of 1872, unsigned, couple faint thin spots, otherwise Very Fine, Rare, only two on record ..... **E. VIII**
- 11 R **New Haven, Ct., 5c Red on White (8XU1R).** Second Reprint of 1872, for N. F. Seebeck unsigned, two tiny thin specks, in extreme margins, Very Fine ..... **E. VI**
- 12 R **New Haven, Ct., 5c Red on White, Reprint (8XU1R).** Third Reprint of 1874, signed in dark blue, Very Fine, Scarce, only 30 printed, and only nine on record ..... **(Photo) E. VIII**
- 13 R **New Haven, Ct., 5c Red on White, Reprint (8XU1R).** Third Reprint of 1874, signed in dark blue, light creases, otherwise Very Fine, Scarce, only 30 printed, nine on record ..... **(Photo) E. VII**
- 14 **New York, N. Y. 5c Black, Signed "R. H. M." (9X1b).** Pos. 5, Large Margins to just clear at L. neat ms. cancel, Fine and Rare ..... **(Photo) 900.00**
- 15 **New York, N. Y. 5c Black (9X1), Horiz. Strip of Three,** Pos. 36-38, Large Margins except small at U. R. corner tip, Neat Blue Ms. cancel, first with faint creases, scissors cut in margin between two, small age spot barely shows through, Very Fine appearance, Handsome & Rare Strip **(Photo) E. XIV**
- 16 **New York, N. Y., 5c Black (9X1).** Reconstructed Block ("L" Shaped Block & Single) Pos. 11, 12, 16, 17, Ample to Large Margins except barely touched in two places, each with neat Blue ms. cancel., Fine-Very Fine, A Gorgeous Showpiece ..... **(Photo) E. XIII**
- 17 **New York, N. Y. 5c Black (9X1) Horiz. Pair,** Pos. 9, 10, Large Margins all around, neat Red "Paid" in arc cancels on each stamp, Tied by Red "New York 10 cts" pmk. on small 1846 folded letter to Alabama, Extremely Fine, A marvelous pair and cover, Ex-Newbury ..... **(Photo) E. XIV**
- 18 **New York, N. Y., 5c Intense Black (9X1). Horiz. Pair,** Three extra large margins, clear at upper right, tied by Red ms. on 1846 folded letter to New Orleans, Filing crease in L. stamp, Very Fine appearance **(Photo) 350.00+**
- 19 R **New York, N. Y. 5c Black, Reprints (9X1R). Reconstructed Plate of Eight,** Pos. 2-9, lacking only one Pos. to be complete, some toning on a few, still Very Fine & Striking ..... **E. XII**
- 20 **Providence, R. I., 5c Black (10X1). Block,** Large Margins All Around including Full Right Sheet Margin, Fresh, o. g., handstamp guarantee, Very Fine ..... **(Photo) 325.00**
- 21 **Providence, R. I., 5c, 10c Black (10X2a). Complete Sheet of 12,** (Eleven 5c & one 10c), Wonderful State of Freshness, ms. inscription on back margins reads, "Guaranteed Original, J. B. Calder", light crease in margins between one row of 5c otherwise Very Fine ..... **(Photo) 1,300.00**

**LOTS ON VIEW FROM MONDAY, NOV. 27th**





9



12



13



15



28



41



42



14



51



53



55



49



50



62



63



64



66



67



68



72



73



74



75



23

24

27

- 22 **St. Louis, Mo., 5c Black on Greenish (11X1).** Large to Huge Margins all around, Tied on small piece by Bold Red "St. Louis, Mo." pmk., no pen cancel., Very Fine ..... (Photo) 1,400.00+
- 23 **St. Louis, Mo., 10c Black on Greenish (11X2).** Huge Margins all around, tied by neat Red "St. Louis, Mo." pmk., no pen cancel., on small piece, Extremely Fine, A Gorgeous "Exhibition Piece" ..... (Photo) 1,200.00+
- 24 **St. Louis, Mo., 10c Black on Gray Lilac (11X5).** Large to Huge Margins all around, neat Red "St. Louis, Mo." pmk., no pen cancel. ms. guarantee mark on back, Very Fine ..... (Photo) 1,300.00+

## A REMINDER

Mails are often slow. After nearly every auction we receive some 25 to 50 late bid sheets, many of which would have been successful. We can only repeat . . . **PLEASE MAIL YOUR BIDS EARLY !** Use Air Mail if you are in doubt as to being on time.

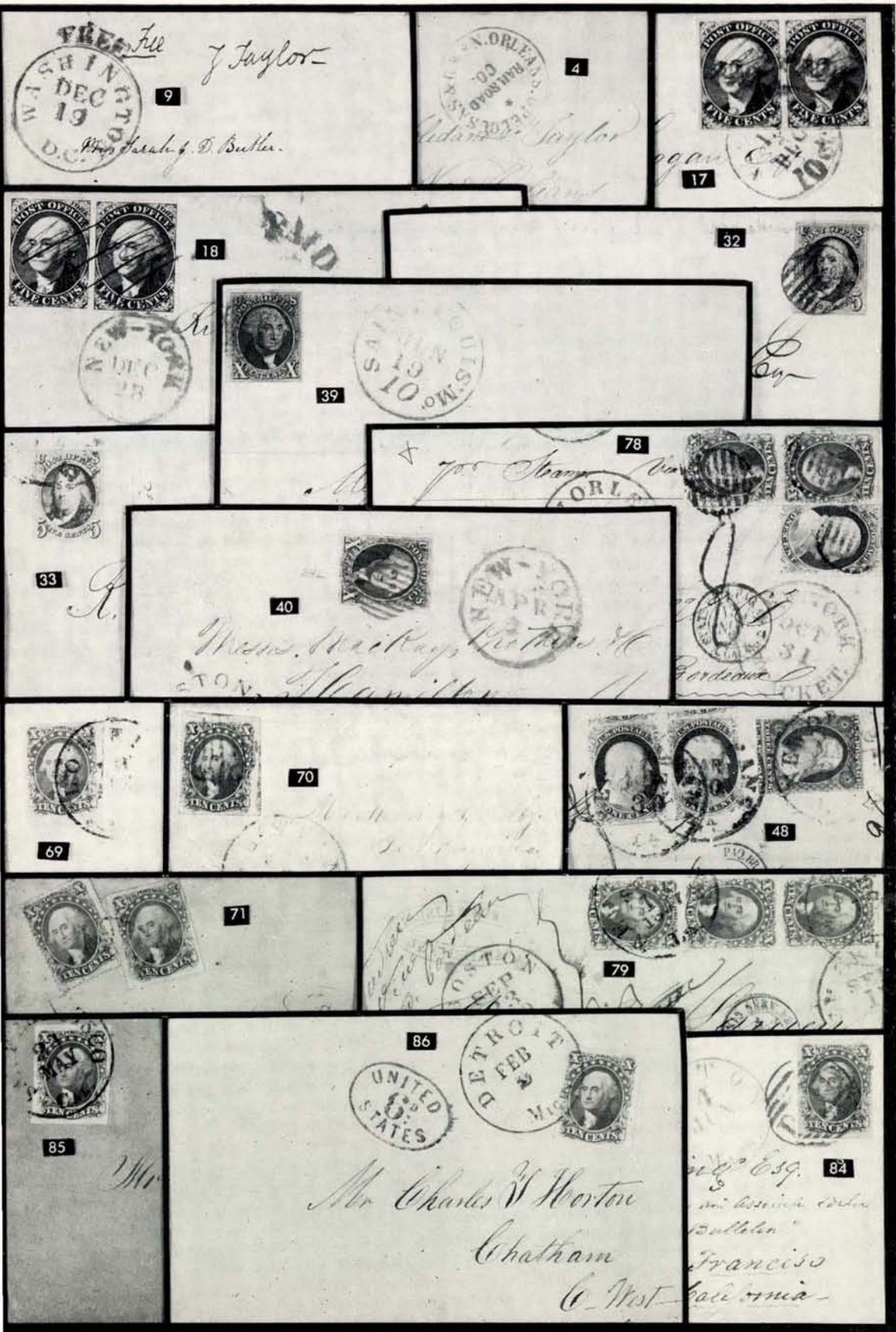




- 25 **St. Louis, Mo., 10c, 20c Black on Gray Lilac (11X5, 11X6).** Each with Large Margins all around, tied, slightly overlapping, by neat Red "St. Louis, Mo." pmk., matching "Paid" ms. "30" on Blue "Charnley & Whelan" 1846 folded letter to Philadelphia, Extremely Fine & Handsome. One of the Grandest St. Louis "Bear" covers in existence. A matchless Showpiece, Ex-Caspary ..... (Photo) 10,000.00+
- 26 **St. Louis, Mo., 5c Black on Bluish Pelure (11X7).** Large Margins nearly all around, Frame line partly cut at lower left; Tied on small piece by Red "St. Louis, Mo." pmk., no pen cancel., A Fine & Handsome example of this Very Rare Provisional ..... (Photo) 3,000.00+
- 27 **St. Louis, Mo., 10c Black on Bluish Pelure (11X8).** Large Margins all around, neat single line ms. cancel., Extremely Fine & Handsome. Without a doubt one of the finest existing examples of this Very Rare Provisional which we consider far scarcer than catalogue value indicates, with P. F. Certificate ..... (Photo) 3,000.00

#### 1847 ISSUE

- 28 ★ **5c Brown (1).** Large Margins All Around including Bottom Sheet Margin, Beautiful Rich Color, Marvelous Impression, light crease, Extremely Fine Appearance ..... (Photo) 450.00
- 29 **5c Dark Brown (1a).** Ample to Large Margins, Bold Red Grid Cancel., small thin spots, Very Fine Appearance ..... 70.00
- 30 **5c Red Brown (1).** Ample to Large Margins, Dot in "S" of US Variety, Blue Town Pmk., tiny tear in bottom margin just touching frame line, otherwise Very Fine ..... 80.00
- 31 **5c Dark Brown (1a).** Large Margins All Around, Deep Rich Color, the so-called "Walnut" Shade, Gorgeous Impression, Neat Black Grid, small horiz. cut, not completely breaking, Very Fine Appearance ..... 75.00







# 1851 ISSUE



43

44

43	1c Blue, Ty. I, Pos. 7R1E (5). Margins, except just touching at left, Light Cancel., a Fine Example of this Rarity ..... (Photo)	6,000.00
44	1c Blue, Ty. Ib (5b). Pos. 4R1E, Large Margins All Around including Top Sheet Margin, Rich Color, Light Town pmk., small thin spot, Very Fine Appearance ..... (Photo)	110.00
45	1c Blue, Ty. II (7). "The Big Double Transfer", Pos. 89R2, Large Margins except bit in at top, Deep Color, Light Cancel., trivial crease at top, Attractive Appearing example of a rare plate variety .....	32.50+
46	✉ 1c Blue, Ty. II (7). Large to Huge margins all around, tied by Mass. town pmk. on 1856 Printed Circular, Immaculate, Very Fine .....	37.50
47	✉ 1c Blue, Ty. II, Pl. 2 (7). Horiz. Pair, Large margins to barely touched; Tied by "New Orleans, La." on Printed Circular, with Blue handstamp, to Augsburg, Bavaria, Red 1856 French transit, tiny toned spot on R. stamp, Fine & Attractive .....	65.00
48	✉ 1c Blue, Ty. VI, Pl. 2 (7). Horiz. Pair, Huge margins T. & B. with parts of adjoining stamps, just touched at sides, tied with Very Fine 3c Red (11) paying 5c Inland Fee on neat 1856 folded cover, New Orleans to France, also tied by French 13 decime Due mark, Fresh & Very Fine cover (Photo)	E. VII
49	1c Blue, Ty. III (8). Pos. 65R4, Large to Huge Margins showing part of next stamp at bottom, Rich Color, Neat Grid Cancel., Extremely Fine, a Beauty ..... (Photo)	300.00
50	1c Blue, Ty. IIIa (8A). Large to Huge Margins showing bits of two other stamps, Wonderful Fresh Color, Very Light Pmk., Extremely Fine, ex-Caspary ..... (Photo)	150.00
51	★ 1c Blue, Ty. IV (9). Recut once at top, Pos. 91R1L, Large to Incredible Margins, including Bottom Left Corner Margin, Full Center Line & Big Part of Next Stamp at Right, Fresh, Rich Color, very faint crease, Extremely Fine Appearance, Handsome ..... (Photo)	77.50
52	★ 1c Blue, Ty. IV (9). Margins to bit cut in, Full o. g. ....	75.00
53	3c Copper Brown (10). Large Margins All Around including Part Bottom Left Corner Sheet Margin, Magnificent Color, Brilliant Green "Southington, Ct." pmk., Extremely Fine, ex Newbury ..... (Photo)	E. VI
54	★ 3c Rose Red (11). Margins Nearly All Around including Left Sheet Margin, except barely in at two spots, Fresh, part o. g., Fine .....	20.00
55	★ 3c Brownish Carmine (11). Horiz. Pair, Large Margins just touching at top, Wonderful Color, Fine & Handsome ..... (Photo)	47.50





76



77



81



83



88



89



93



107



114



99



104



109



110



120



97



111



121



125



120



56 ★	<b>3c Rose Red (11). Horiz. Strip of Three</b> , Clear to Large Margins, except just cutting in two places, Fresh, o. g., faint crease between stamps, otherwise Fine	75.00
57	<b>3c Red (11). Vertical Strip of Three, Complete Reconstruction of Cracked Plate</b> , Pos. 74, 84, 94L5L, Ample to Large Margins, except just touched at top of pos. 74, others Very Fine	150.00
58	<b>3c Red (11). Horiz. Strip of Four</b> , Large Margins All Around except a trifle in at two spots, <b>Bold N. Y. Ocean Mail</b> Cancels., insignificant crease between two stamps, a Pretty Strip	E. III
59	<b>3c Dull Red (11). Two Horiz. Pairs</b> , Large margins to just in, <b>Bold N. Y. Ocean Mail &amp; "New York, Ship"</b> Cancels., small discolored spot on one, Very Fine Strikes	E. IV
60 ☒	<b>3c Red (11). Tied by Lecompton, K. T.</b> Balloon type pmk., nearly complete strike on cover to Brooklyn, N. Y., Imprint of Executive Department, K. T. (Kansas Terr.) Docketed 1857, Very Fine	E. V
61 ☒	<b>3c Rose Red (11). Horiz. Pair</b> , Large margins to slightly in, Tied by clear "New-York, Ship" on cover to S. C., probable West Coast origin, Fine & Attractive	E. IV
62	<b>5c Dark Red Brown (12).</b> Ample to Huge Margins showing bit of next stamp at right, Beautiful Rich Color, neat town pmk., tiny insignificant corner crease in margin only, nevertheless Very Fine	(Photo) 150.00
63	<b>5c Red Brown (12).</b> Three Large Margins barely touched at bottom, Partial "N. Y. & Boston Stmb & R R.R.)" Cancel, Fine, Scarce	(Photo) 350.00
64	<b>5c Red Brown (12). Horiz. Pair</b> , Large Margins All Around <b>Bold "N. Y., 1858 &amp; Paid"</b> Town Pmk., light creases, Very Fine Appearance	(Photo) 450.00
65 ☒	<b>5c Red Brown (12). Block</b> , Ample to Large Margins, except barely touched at left side of bottom left stamp, neat ms. cancel, a Very Fine & Rare block, in fact, one of the rarest U. S. blocks	(Photo) 2,750.00
66	<b>10c Dark Green, Ty. I (13).</b> Large Margins All Around, Deep Rich Color, <b>N. Y. Ocean Mail</b> Cancel, tiny corner crease, Extremely Fine Appearance	(Photo) 225.00
67	<b>10c Green, Ty. I (13).</b> Huge Margins All Around, Clear Town Pmks., one in Red, small thin, Extremely Fine Appearance	(Photo) 225.00
68	<b>10c Green, Ty. I (13).</b> Large Margins to slightly in, Fresh Color, Neat Cancel, Fine	(Photo) 225.00
69 ☒	<b>10c Green, Ty. I (13).</b> Huge margins with bit of next R. stamp & part bottom sheet margin, Tied by "Lowell, Mass." pmk. on small, fresh cover to San Francisco, Cal., Extremely Fine	(Photo) 300.00
70 ☒	<b>10c Green, Ty. I (13).</b> Three huge margins, showing bottom guide dots & parts of adjoining stamps, T. & L., Ample margin at left, Light grid cancel, not tied, Red N. H. town pmk. on small embossed Lady's cover, lightly toned to San Francisco, Very Fine	(Photo) 300.00
71 ☒	<b>10c Green, Ty. I, Ty. III (13, 33).</b> Combination use of imperforate & perforated stamps, The imperforate is Type I, with huge margins, tiny scissors cut in top margin clear of design; The Type III perforated has nibbed corner perf. & L. perfs touch. Tied by light town pmk. to cover to Suisun City, Cal., Choice, rare cover	(Photo) 340.00
72 ★	<b>10c Green, Ty. II (14). Horiz. Pair</b> , Large Margins All Around except barely clear at right, Nearly Full o. g., few negligible gum toned specks, mostly on back, otherwise Very Fine	(Photo) 675.00
73	<b>10c Green, Ty. II (14).</b> Large to Huge Margins, Rich Color, <b>Bold Town Pmk.</b> , Extremely Fine	(Photo) 45.00
74	<b>10c Green, Ty. II (14).</b> Large to Huge Margins, <b>Bold Grid &amp; light Red Town Cancels</b> , Very Fine	(Photo) 45.00



- 75 **10c Green, Ty. II (14). Double Transfer**, Pos. 31L, Large to Huge Margins, Rich Color, N. Y. Ocean Mail Cancel, trivial corner crease, otherwise Extremely Fine & Handsome ..... (Photo) 70.00
- 76 **10c Green, Ty. II (14). Double Transfer**, Pos. 31L, Large to Huge Margins, Rich Color, very light town pmk., small corner crease, Extremely Fine Appearance ..... (Photo) 70.00
- 77 **10c Green, Ty. II (14). Horiz. Pair**, Large Margins all around, Light Cancel, Slight toning on back only, Very Fine ..... (Photo) 125.00
- 78 ☒ **10c Green, Ty. II, III (14, 15). Combination Vertical Pair**, Top stamp Type III used with 1c Blue, Ty. IV (9) paying the 21c Postal Treaty rate New Orleans to France, Red "New York, Am. Packet" French transits & 8 decimes Due mark, Large margins, Fresh cover, Very Fine & Handsome (Photo) **E. VIII**
- 79 ☒ **10c Green, Ty. II, III (14, 15). Combination Vertical Strip of Three**, Pos. 9-19-29L, the Top & Bottom stamps being the Ty. II, Large margins, tied by "New Orleans, La." on large part of 1857 folded cover to France, Red "Boston, 24" & French transit, Very Fine & Handsome ..... (Photo) 175.00+
- 80 ☒ **10c Green, Types II, III, IV (14, 15, 16). Horiz. Strips of Four & Five**, The strip of four are all Type II; The Strip of Five, a combination of Ty. III & IV, Pos. 61-65L1, last two the Ty. IV. The strip of four is cut in at Top, The strip of five with margins all around except the Ty. IV 65L, Tied by "San Francisco, Cal." on front only, Remarkable & rare piece ..... **E. XIII**
- 81 ★ **10c Green, Ty. III (15). Large to Huge Margins incl. Full Left Sheet Margin**, Large Part o. g., few tiny rust specks in margin, light gum wrinkles, otherwise Extremely Fine ..... (Photo) 275.00
- 82 **10c Dark Green, Ty. III (15). Ample to Large Margins, Town pmk. & Boxed "PD" in Red**, Rich Color, Fine ..... 45.00
- 83 **10c Green, Ty. III (15). Large Margins, Large Boston "Paid" & Part Red Town pmk.**, Very Fine ..... (Photo) 45.00
- 84 ☒ **10c Green, Ty. III (15). Large margins all around, tied by "Paid" in Grid**, Red "Boston, Mass." pmk. on fresh cover to San Francisco, Cal., ms. "Per Mail Steamer & Isthmus Rail Road", Extremely Fine ..... (Photo) 70.00
- 85 ☒ **10c Green, Ty. III (15). Enormous margins all around, Rich Color**, Tied by "San Francisco, Cal., 21 May" (1855) on neat cover to St. Louis, Mo., Extremely Fine, Early use ..... (Photo) 70.00
- 86 ☒ **10c Green, Ty. III (15). Clear to Huge margins, Nicely tied by "Detroit, Mich."** pmk. on neat cover to Canada, Bold Red Exchange marking in oval, with "6d" rate, Very Fine cover ..... (Photo) 70.00+
- 87 ☒ **10c Green, Ty. III (15). Large margins, tied by "New Orleans, La." pmk. on small 1857 cover to Cuba**, Bold Blue "NA, 1" ms. "pr. Steamship Black Warrior", Very Fine ..... (Photo) 70.00+
- 88 **10c Green, Ty. IV (16). Recut at Top**, Pos. 3R, Large Margins All Around, Pretty Color, light town pmk. & French "16" Due Mark, Very Fine (Photo) 325.00
- 89 **10c Dark Green, Ty. IV (16). Recut at top**, Pos. 65L, Large Margins All Around, Gorgeous Rich Color, very light town pmk., Very Fine (Photo) 325.00
- 90 **12c Black (17). Large Margins All Around, Bold 11-Bar Framed Grid**, Very Fine ..... 40.00
- 91 **12c Gray Black (17). Large Margins All Around, Grid Cancel, light corner crease**, Very Fine Appearance ..... 40.00
- 92 ☒ **12c Black (17). Horiz. Pair**, Large margins to slightly in, used in combination with 5c Red Brown (28) & pair 3c Red (26) paying 35c rate to Switzerland, 1858 use, tied by "Saint Joseph, Mo." in large Double circle, Back of cover mended, Fine, Rare combination of perf. & imperf. issues (Photo) **E. IX**





16



65



21



20



95



116



122



191



158



156










161



# 1857 ISSUE



93	1c Blue, Ty. I (18). Lovely Color, Bold Town pmk., Very Fine .... (Photo)	125.00
94	1c Blue, Ty. I (18). Well Centered, Faint almost Invisible Cancel, small sealed tear, light negligible toning, otherwise Very Fine .....	125.00
95	★田 1c Blue, Ty. I, II (18, 20). Horiz. Block of 36, Pos. 62-70, 72-80, 82-90, 92-100, Plate XII, with B. Sheet Margin, showing 23 of the Ty. I, se-tenant with 13 of the Ty. II, Fresh, o. g., few minor separations, Fine-Very Fine, a Magnificent Showpiece of the Greatest Rarity .....	(Photo) 7,175.00+
96	1c Blue, Ty. II (20). Well Centered, Rich Color, Bold Red Grid Cancel, small thin spot, Very Fine Appearance .....	42.50
97	1c Blue, Ty. II (20). Complete Reconstruction of Major Cracked Plate, Pos. 2, 12, 13, 23, 33R2, few minor flaws but all beautifully centered and of Very Fine appearance, Much scarcer on the perforated than earlier Imperfs, Beautiful Showpiece .....	(Photo) 550.00
98	⊠ 1c Blue, Ty. III, Ty. IIIa (21, 22). Three Horiz. Pairs & a single, used with 3c Red, Imperforate (11) making up the 10c rate, Jan. 1858, Sacramento City, Cal., to Boston, one pair is combination of Ty. III & IIIa, other 1c all IIIa, Few of which have perfs. trimmed & minor perf. flaws, the combination pair has a Very Fine Ty. III Rare usage .....	(Photo) 475.00+
99	1c Dark Blue, Ty. IV (23). Recut once at top, once at bottom, Rich Color, Bold Town Pmk., tiny thin spot, Very Fine Appearance, signed "Ashbrook" .....	(Photo) 70.00
100	★田 1c Blue, Ty. V (24). Block, Fresh, o. g., Fine .....	100.00
101	★田 1c Blue, Ty. V (24). Block, few small toned spots, otherwise Very Fine ..	100.00
102	田 3c Rose (25). Block of Six (2x3), on piece tied by "Charleston, S. C." pmks., centered well to top right, Scarce .....	213.00+
103	★田 3c Red (26). Block, Fresh, Full o. g., centered a bit to top, Very Fine ....	40.00
104	5c Brick Red (27). Marvelous Color, Neat Town pmk., light, negligible crease, otherwise Very Fine .....	(Photo) 125.00
105	5c Red Brown (28). Light Town pmk., Fine .....	75.00
106	5c Red Brown (28). Light town pmk., Deep Rich Shade, couple partly nibbed perfs., tiny toned speck, otherwise Fine .....	75.00
107	5c Brown, Ty. I (29). Vertical Strip of Three, tied to small piece by "New Orleans, La." pmks., centered a bit to bottom, Fine .....	(Photo) 190.00
108	⊠ 5c Brown, Ty. I (29). Beautifully centered, tied by "Somerset, Ky." pmk. on cover to Frankfort, Ky., apparent over-payment of 3c rate, without flap, Very Fine .....	(Photo) 75.00
109	★ 5c Orange Brown (30). Fresh, Part o. g., centered bit to right, Very Fine .....	(Photo) 100.00
110	5c Deep Orange Brown (30). Rich Color, Bold Dark Brownish Red Grid Cancel, perfs. touch at top, Very Fine .....	(Photo) 130.00
111	10c Green, Ty. I (31). Horiz. Pair, Double Vertical Perfs, Neat Town Pmks., Very Fine .....	(Photo) 325.00
112	⊠ 10c Green, Ty. II (32). Very Fine, Tied by Perfect, Bold "Fosters Bar, Cal." on fresh cover to New Hampshire, Handsome & Striking ....	(Photo) E. VI
113	⊠ 10c Green, Ty. II, III (32, 33). Combination Vertical Strip of Three, Top & Bottom stamps the Type II, Pos. 60-70-80L1 with perforated pane margin & Center Line, Beautifully centered, New Orleans to France on 1859 folded cover with Red N. Y. transit, faint filing bend in margin, Very Fine .....	(Photo) E. VIII
114	10c Green, Ty. III, IV (33-34). Vertical Combination Strip of Three, Pos. 34, 44, 54L, latter recut at bottom, Neat Town pmks, crease in top stamp not affecting combination pair, one side reperforated, Fine appearance (Photo)	326.50

- 115  **10c Green, Ty. III (33).** Nicely centered, tied by light Boston "Paid" on fresh cover to Canada, faint Red oval Exchange marking, Very Fine ..... 40.00
- 116  **10c Green, Ty. V (35). Block,** Large Part o. g., Fine-Very Fine (Photo) 200.00
- 117  **10c Green, Ty. V (35).** Well centered, Tied by Blue Grid, Partly Blurred Red "Milwaukee, Wis.", Double circle pmk. on 1861 cover to Canada, Two Blue "U. States" in framed arcs, Exchange marks, Very Fine ..... **E. IV**
- 118  **10c Green, Ty. V (35). Horiz. Pair,** Tied by "Philadelphia, Pa., Sep. 19, 1859" in octagon on cover to a U.S. Naval Officer at **Aspinwall, New Granada** (Panama) Tiny perf. fault, cover slightly reduced & without flap. Very scarce usage ..... **E. IV**
- 119  **10c Green, Ty. V (35). "Block" of Three,** Nicely centered, tied by "Skowhegan, Me." pmk., repeated on the cover to **Vienna, Austria**, N. York transit in Red, Blue "America, uber Bremen, Franco" Very Fine (Photo) **E. V**
- 120 ★ **12c Black, Pl. III (36b). Double Frame Line at Left,** Fine ..... (Photo) 60.00
- 121 ★ **12c Black, Pl. III (36b). Horiz. Pair,** Fresh, Left Stamp DoubleFrame Line at right, minute closed tear in one, otherwise Very Fine ..... (Photo) 115.00+
- 122 ★  **12c Intense Black, Pl. III (36b). Block,** Fresh o. g., perfs. just in at top, tiny thin speck in one, really negligible, Scarce Block ..... (Photo) 350.00
- 123  **12c Black, Pl. III (36b). Vertical Pair,** tied by part rimless "Pittsburgh, Pa. Feb. 28, 1862" duplex, an obvious error in the date logo as transit marks are clearly 1861. Neat Banker's Corner Card, used to Ireland, Very Fine, Ex-Knapp ..... (Photo) 55.00+



124

134

- 124 ★ **24c Gray, Imperforate (37c).** Large Margins, Irregularly cut U. L. Corner, Very Fine ..... (Photo) 600.00
- 125 **24c Gray (37).** Exceptionally Well Centered, Bold Red Grid, Extremely Fine ..... (Photo) 65.00
- 126 **24c Gray (37).** Well Centered, Neat Am. Pkt. Cancel in Red, Very Fine (Photo) 65.00
- 127 **24c Gray (37).** Bold Brownish Red Grid, Very Fine ..... (Photo) 65.00
- 128 **24c Gray (37).** Bold Red Grid, light crease, few nibbed perfs., otherwise Fine ..... 65.00
- 129  **24c Gray (37).** Remarkably well centered, tied by Brilliant Red Grid, matching "New-19-York" tall "19" on 1860 folded cover to Ireland, ms. "Pr. Persia," Extremely Fine ..... (Photo) 200.00+
- 130  **24c Gray (37).** Unusually well centered, Tied by Bold "Paid" in grid, Red "Boston, Br. Pkt." on back of 1860 folded letter to Dundee, Scotland, Large Red "19" Credit mark, Very Fine ..... (Photo) 200.00
- 131 ★ **30c Orange (38).** Fresh, Part o. g., Rich Color, single short perf., otherwise Extremely Fine ..... 120.00
- 132 ★ **30c Orange (38).** Fresh Bright Color, tiny thin spot, Very Fine Appearance (Photo) 120.00
- 133 ★ **30c Orange (38).** Fresh, Wonderful Color, single partly nibbed perf., otherwise Very Fine ..... 120.00



- 
- 134 ★ **30c Orange, Imperforate (38a).** Large Margins All Around, tiny bit of next stamp shows at bottom, Fresh, Rich Color, Extremely Fine, a Gorgeous Example of this Classic Rarity ..... (Photo) 1,100.00
- 
- 135 **30c Orange (38).** Well Centered, Neat Star Cancel, few perfs. slightly blunted by scissor separation, otherwise Very Fine ..... 70.00
- 136 ✉ **30c Orange (38).** Well centered for this, Tied by dark Red Grid, matching "New York, Br. Pkt." on back of 1860 folded letter to Melbourne, Australia, ms. "24" Credit mark, ms. "p. Africa, Via Marseilles," Very Fine (Photo) 250.00+
- 137 ✉ **30c Orange (38).** Tied by Bright Red thin bar grid, used with slightly overlapped 10c Green, Ty. V (35) to Intra, Piedmont (Italy), Indistinct N. Y. Packet pmk., nice series of French transits, Fine, Rare usage ..... (Photo) E. XI
- 138 ★ **90c Blue (39).** Fresh, Gorgeous Rich Color, Very Fine ..... (Photo) 400.00

### 1857 REPRINTS

- 139 ★ **1c Bright Blue, Reprint (40).** Light toning, short perf., otherwise Fine (Photo) 175.00
- 140 ★ **3c Scarlet, Reprint (41).** Brilliant Color, few perfs. barely blunted by scissor separation as often, minute tear between perfs., Very Fine Appearance (Photo) 900.00
- 141 ★ **5c Orange Brown, Reprint (42).** Fresh, Marvelous Rich Color, Large Margin at left, few perfs. partly blunted by scissor separation as often, Fine (Photo) 300.00
- 142 ★ **10c Blue Green, Reprint (43).** Pretty Color, few perfs partly blunted by scissor separation as often, Fine ..... (Photo) 600.00
- 143 ★ **12c Greenish Black, Reprint (44).** Well Centered, some perfs. slightly blunted by scissor separation as often, negligible toning, otherwise Very Fine ..... (Photo) 600.00
- 144 ★ **24c Blackish Violet, Reprint (45).** Very faint trivial toning, otherwise Very Fine ..... (Photo) 700.00
- 145 ★ **30c Yellow Orange, Reprint (46).** Centered to bottom, Fine for this (Photo) 1,000.00
- 146 ★ **90c Deep Blue, Reprint (47).** Rich Color, a single short perf. otherwise Fine (Photo) 1,300.00

### 1861 "FIRST DESIGNS"

- 
- 147 ★ **1c Indigo, "First Design" (55).** Incredible Deep Rich Color, Inconsequential toned specks on couple of perf. tips, tiny thin spot, otherwise Very Fine, a Great Rarity, only 15 copies believed to exist ..... (Photo) 12,000.00
- 148 ★ **3c Brown Rose, "First Design" (56).** Fresh, o. g., Rich Color, Very Fine (Photo) 225.00
- 149 ★ **3c Brown Rose, "First Design", Imperforate (56a).** Large Margins All Around, light crease, Extremely Fine Appearance ..... (Photo) 350.00
- 150 ★ **5c Brown, "First Design" (57).** Fresh, Magnificent Color, Well Centered, Extremely Fine, possibly the finest of the few known ..... (Photo) 7,000.00
- 151 **10c Dark Green, "First Design" (58).** Horiz. Pair, Beautiful Deep Color, Clear "San Francisco, Oct. 30, 1861" pmk. & Bold Red British Rate Marking, Fine-Very Fine, Handsome Pair (now listed as #62b) ..... (Photo) 450.00
- 152 ★ **12c Black, "First Design" (59).** Fresh, o. g., Intense Color, Well Centered, trivial crease, Extremely Fine Appearing Example of this Very Great Rarity, only about 10 copies believed to exist, ex-Casparly ..... (Photo) 25,000.00
-



152

153

154

155

- 153 ★ 24c Violet, "First Design" (60). Well Centered, Fresh, Gorgeous Color, W. H. C.(Colson) guarantee on back, Very Fine & Handsome, ex Worthington ..... (Photo) 2,000.00
- 154 ★ 30c Red Orange, "First Design" (61). Deep Rich Color, a Fine and Handsome Rarity ..... (Photo) 9,000.00
- 155 ★ 90c Dull Blue, "First Design" (62). Well Centered, Rich Color, Fresh, o. g., some short perfs. at top otherwise Very Fine, Exceedingly Rare (Photo) 11,000.00

### 1861 ISSUE

- 156 ★ 1c Blue (63). Strip of Three, with Most of Imprint & Plate No. 27, Part o. g., light toning, hinge reinforced, where separated, Well Centered (Photo) 87.50+
- 157 ★ 1c Blue (63). Block, Faults, mostly trivial, Well Centered, Attractive ..... 130.00
- 158 ★ 1c Blue (63). Block of Six (2x3), Fresh, o. g., Gorgeous Color, Well Centered & Extremely Fine ..... (Photo) 185.00
- 159 1c-24c 1861 Issue (63, 68-70, 73, 77) Used, Fine-Very Fine ..... 65.00
- 160 ☒ 3c Pigeon Blood Pink (64a) Tied with 3c Rose (65) by "Paid" & Red Boston pmk. on neat cover to Maine, Embossed Hotel corner card, Signed "Ashbrook," Ex-Brown, Gorgeous cover, Remarkable combination of the two colors, Very Fine & Possibly Unique Combination ..... (Photo) E. XIV
- 161 ★ 3c Rose (65). Bottom Imprint & Plate No. 32 Strip of Four, Fine-Very Fine ..... (Photo) 37.00+
- 162 ★ 3c Rose, Imperforate (65c). Vertical Strip of Three, Large Margins, Pretty Color, Very Fine ..... (Photo) 192.50+
- 163 ☒ 3c Rose (65). Perfs. touch, just tied by rosette, Clear "Balto & Norfolk Boat" in double circle on cover to Norfolk, Va. Fine example of this scarce Chesapeake Bay usage ..... E. IV
- 164 ☒ 3c Rose (65). Used in Mexico, with Mexico 25c Blue (109b) Each stamp well tied by "Franco en Monterrey" in Olive Green oval addressed to "Secretary of Mexico War Survivors", Washington, D. C., A Very Fine cover and Rare mixed franking ..... (Photo) E. XII





127



132



138



139



140



141



142



143



144



145



146



151



166



178



179



180



185



186



202



203



162



198



206



213



215



217



217 A



218



219



219 A



224



226



227



234



236





- 165 ★ 3c Lake (66). Bottom Imprint & Plate No. 34 Strip of Four, Gorgeous Color, Very Fine, Handsome and Rare Showpiece ..... (Photo) 2,400.00+
- 166 5c Buff (67). San Francisco Cogwheel Cancel, Fine ..... (Photo) 60.00
- 167 5c Olive Yellow (67h). Well Centered, Bright Red Grid, small thins, Extremely Fine Appearance ..... 65.00
- 168 5c Buff (67). Fresh Rich Color, Bold Grid, tiny corner crease, Fine Appearance ..... 60.00
- 169 ★ 10c Dark Green (68a). Deep Rich Color, two short perfs, otherwise Fine ..... 45.00
- 170 2c-30c 1861 Issue (68-70, 73, 75). Used, minute flaws, F.-V. F. appearance ..... 92.00
- 171 ☒ 10c Dark Green (68). Perfs. touch, tied by "New-York" pmk. with Danish West Indies 3c Rose (2). Large margins to trifle in; Bold target cancel & pmks. of both "Christiansted" & "St. Thomas" to Conn., Fine & Handsome, Very Rare & Desirable ..... (Photo) E. XI
- 172 ☒ 10c Green (68). Vertical Pair, Fine, Tied by Bold Targets, "Schenectady, N. Y." pmk. on small cover with partly printed address to Cairo, Egypt, Bold Red "5" in circle; Beautiful sequence of transits on the back. Fine, Scarce usage ..... (Photo) E. VII
- 173 ☒ 10c Green (68). Horiz. Strip of Three, Each with large open Star cancel, not tied, "Portland, Conn." pmk. in Red Brown, Red N. Y. & French transit on small cover to France; a few rubbed perfs at top, small tears in cover, Very attractive ..... E. III
- 174 ☒ 10c Green (68). Horiz. Strip of Four, used with 5c Brown (76) paying 45c rate on 1865 Tissue paper envelope to Aden, Arabia Stamps are Fine & tied by neat targets, Phila. & London transits, Red "1d" colonial charge, Very choice cover in rare usage ..... (Photo) E. VIII
- 175 ☒ 5c Brown, 10c Green (68, 76). Both Very Fine & tied by "New Orleans, La., Apr. 29, '64" duplex, Red N. Y. transit, neat folded cover to Bordeaux, France, Unusually fresh & attractive, Scarce war-time usage under Union occupation ..... (Photo) E. VI
- 176 ☒ 12c Black (69). Tied by target, with 3c Rose (65) on neat 1863 cover New Orleans, to Mulhouse, France, Red N. Y. "12" & Red French transit, stamps centered to one side, Pretty cover ..... E. III
- 177 ☒ 12c Black (69). Used with 1c Blue & two 3c Rose (63, 65) All paying 19c postage to Switzerland, Tied by Blue "Chicago, Ill., Sep. 5, '64" Thence via N. Y. Bremen Pkt. & Bremen via Frankfort to Switzerland; all stamps tied by Blue grids, centered to one side & the 1c with double vertical perfs. Choice cover, Rare rate ..... (Photo) E. VI
- 178 ★ 24c Red Lilac (70). Brilliant Color, Fresh, Very Fine ..... (Photo) 150.00





92



98



87



112



113



108

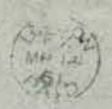
*Los Angeles*



119

PAID

130



123



137



136

*Mr. A. S. Kinsley*

164



174



184

*Miss M. A. Kinsley  
Providence  
Rhode Island*

171

*RAMSAY,*  
STATE OF NEW YORK, U. S. A.  
Egypt.

172

*Capitaine Esq.*

129



175

*and Mr. Lord  
Cumberland Port  
Maine*

160



- 179 ★ **24c Steel Blue (70b).** Well Centered, Fresh, single short perf., otherwise Very Fine & Handsome ..... (Photo) 1,000.00
- 180 **24c Steel Blue (70b).** Red Grid Cancel, Fine ..... (Photo) 52.50
- 181 **24c Steel Blue (70b).** Light Cancel, couple short perf. tips, otherwise Extremely Fine ..... 52.50
- 182 **24c Steel Blue (70b).** Well Centered, part Boston Paid Cancels, tiny thin specks, Very Fine Appearance ..... 52.50
- 183 **24c Steel Blue (70b).** Tied with 2c Black, F. Grill (93) by Red "New York, Paid" pmk. on small piece, 24c is Well Centered, Very Fine ..... 60.25
- 184 ☒ **24c Red Lilac (70).** Rich, Deep color, Tied by "Paid" in Box, Red "Boston, Am. Pkt., 3 Paid", Red London pmk. on cover to England, Very Fine stamp, cover creases pressed out, Very Fine, Ex-Seybold, Gibson (Photo) E. VI
- 185 **30c Orange (71).** Well Centered, Bold "Scallop Shell" cancel with Red "London, Paid", Very Fine, a Pretty Stamp ..... (Photo) E. III
- 186 **30c Orange (71).** Wide s. e., Scarce Heart-Shaped Grotesque Mask Cancel, centered to bottom left, Very Fine Strike ..... (Photo) E. V
- 187 ☒ **30c Orange (71).** Perfs cut in, tied by bold Red "Boston, Br. Pkt. 40" used with 5c Brown, 10c Green (68, 76) 10c with wide straddle margin, paying 45c rate to **Bombay, India**, Usual transit markings, Very attractive (Photo) E. VII
- 188 ☒ **30c Orange (71).** Tied with 5c Brown & 10c Green (68, 76) by circles of wedges on fresh cover to **Bombay, India**, All stamps centered to one side, nice range of transit pmks. Incl. Red "Boston, Am. Pkt., Paid" on back. Attractive cover ..... (Photo) E. VII
- 189 ☒ **30c Orange (71).** Well centered, tied with 5c Red Brown (75) & two 1c Blue (63) all paying 37c rate to **St. Petersburg, Russia** Mass. town pmk., N. Y. & Aachen, transits, via Prussian Closed Mail. The 5c is off center, both 1c damaged by fold over edge, Cover opened at sides, Beautiful appearing & Very Scarce Usage ..... (Photo) E. IX



- 190 ★ **90c Blue (72).** Bottom Imprint & Plate No. 18 Strip of Four, Rich Color, couple blunted perfs. on one, otherwise Fine, Very Handsome Showpiece (Photo) 1,100.00+
- 191 ★田 **90c Blue (72).** Block, Fresh, o. g., Rich Color, perfs. touch on left pair, an Attractive & Scarce Multiple, ex Worthington ..... (Photo) 1,500.00
- 
- 192 **90c Blue (72).** Well Centered, Rich Color, Bold Grid of Thick Bars, small filled thin, Extremely Fine Appearance ..... 50.00
- 193 **90c Pale Blue (72a).** Neat Blue Town pmk., few blunted perfs. at right, otherwise Fine ..... 50.00



194 ★	2c Black (73). Intense Color, light crease, Very Fine Appearance .....	32.50
195 ★	2c Black (73). Block of Ten (5x2), Fresh, o. g., few negligible nibbed perfs. nevertheless Fine & Attractive ..... (Photo)	435.00+
196 ★	2c Black, Imperforate, Experimental Paper (73 Var.). Block, Fresh, o. g., Very Fine, Rare ..... (Photo)	E. XIV
197	2c Black (73). Very Well Centered, Geometric Cancel, small corner crease, Extremely Fine Appearance .....	7.00
198	2c Black, Vert. Bisect (73b). Tied with a complete stamp by Bold Cross-Roads Cancel, (Man)chester Tenn. pmk. on small piece, Fine .... (Photo)	E. VIII
199	2c Black (73). Tied with two 10c Green (68) paying 22c rate New York to Callao, Peru, via Panama, with pmk. of British P. O. in Panama & Red "12" Credit, on one page of Jan. 1865 letter with interesting comment on the Civil War, Fine & Attractive ..... (Photo)	E. VII
200	2c Black (73). Marvelous centering, tied by targets with 3c Rose (65) & 10c Green (68) Fine, all paying 15c postage to France; Evidently overweight with "Short Paid" in box & two U. S. Transits, "New York, 24" in Black struck over "New York, Paid 3" & French 16 decimes Due mark, Choice cover, despite small tear, Interesting usage ..... (Photo)	E. VI
201	2c Black (73). Vertical Pair, tied with 24c Lilac (78) L. full Straddle margin, paying 28c rate, Washington, D. C., to Vienna, via N. Y. & Prussian Closed Mail, stamps centered to one side, Choice small cover, Very Scarce (Photo)	E. VI
202 ★	5c Red Brown (75). Fresh, Rich Color, perfs. touch at right ..... (Photo)	200.00
203	5c Red Brown (75). Fresh Color, Neat Boston Paid Cancel, Very Fine (Photo)	37.50
204 ★	5c Dark Brown (76). Bottom Imprint & Plate No. 17 Strip of Four, Marvelous Deep Shade, perfs. cut in at left, Attractive Piece ..... (Photo)	200.00+
205 ★	5c Dark Brown (76). Block with part Top Imprint, Fresh, Large part o. g., centered to left .....	300.00
206	5c Brown (76). Bold, Perfectly Struck "Blue Bird" Cancel, light overall toning, Splendid Strike ..... (Photo)	E. V
207	5c Brown (76). Vertical Strip of Three, each Struck by Large Bold "84" Rate Mark, couple insignificant flaws, still a Very Handsome Piece .....	E. VI
208	5c Brown (76). Vertical Pair & Single, tied by light cork cancel, "Norwalk, Con. Aug. 11, 1865" pmk. on small mourning envelope to France, Red N. Y. & French transits, Very Fine .....	40.00
209 ★	15c Black (77). Fresh, o. g., neatly closed tear, Fine Looking .....	125.00
210	15c Black (77). Nicely centered, tied by grid, Brilliant Magenta "Philadelphia, Pa. Paid 6", many transit marks on small cover to France, Very Fine & Handsome .....	E. IV
211	15c Intense Black (77). Horiz. Strip of Three, Wide R. Straddle margin with Center Line; L. stamp nicked in corner, paying 45c rate to Swatow, China, "Statham, N. H." pmks., Boston & London transits, each stamp with ms. "C", "Paid", Red Crayon "40" & "1" Credit & Delivery rates, Very Fine appearing despite small faults .....	E. V
212 ★	24c Lilac (78). Bottom Imprint Plate No. 6 Strip of Four, Fresh, Exceptional Centering, few faint toning spots, otherwise Very Fine ..... (Photo)	190.00+
213	24c Lilac (78). Full Straddle at L., small flaws, Bold Red open Heart Cancel, Fine Strike ..... (Photo)	E. IV
214	24c Lilac (78). Block, Bold Circles of Wedges Cancel in Red, tear in one, reperfed at right, Fine-Very Fine Appearance .....	120.00

#### END OF FIRST SESSION





195



196



205



204



212



222



231



221



242



239



257



265



267



283



308



332



336



356



360



*Via Marseille*  
*J. Anthonissen*  
*Hard Egypt*  
*Capt. Wm. Ward*  
*Bombay*

187

*Marseille*  
*Cast. Fort St. Remy*  
*Windsorpool*  
*Joseph Pierce*

189

*John Wilson*  
*Cylichofon*  
*H. Murgau*  
*Switzerland*

177

*Steamer*  
*Carl S. Redman*

199

*21*

201

*Long Edward*  
*of New York*

200

*W. England*

262

**United States Internal Revenue**  
 Collector's Office, 4th District, Indiana  
**OFFICE**  
*Collector.*

259

*PAID*

276

*PAID*

275

*PAID*

272

*ONE OF H. W. CARTER'S WHOLESALE TRUCKS, LEBANON, N. H.*

328

*PAID*

286

*PAID*

285

*H. W. Cartwright*  
*Chambers*  
*Switzerland*

339

*PAID*

341

## SECOND SESSION

WEDNESDAY, NOVEMBER 29th, 1972 — 1:30 P. M.

### 1867 GRILLED ISSUES

- 215 ★ **3c Rose, Grilled All Over (79).** Right Margin Single, Marvelously Fresh with Full o. g., few irregular perfs. as always, Fine ..... (Photo) 800.00



- 216 ★ **1c Blue C. Grill (82A) UNIQUE!** An Astounding Rarity, Fresh, several short perfs. at left, reperforated at top according to P. F. Certificate accompanying, also copy of Brookman letter, Sold as lot #332 in Worthington Sale in 1917, **The Rarest of all United States Stamps** ..... (Photo)
- 217 ★ **3c Rose, C. Grill (83).** Nearly Full o. g., centered slightly to top, Very Fine (Photo) 300.00
- 217A **3c Rose, C. Grill (83).** Very Well Centered, perfs. bent at top, otherwise Extremely Fine ..... (Photo) 60.00
- 218 ★ **3c Rose, D. Grill (85).** Large Part o. g., faint crease, Fresh, Fine Appearance ..... (Photo) 350.00
- 219 ★ **2c Black, Z. Grill (85B).** Couple blunted perf. tips, Perfs. in at R. (Photo) 350.00
- 219A **12c Black, Z. Grill (85E).** Strong grill, neat grid cancel. of tiny squares, Centered bit to bottom, Fine ..... (Photo) 125.00
- 220 **1c Light Blue, E. Grill (86).** Red "New York, Paid All" pmk., Fine .... 37.50
- 221 ★ **2c Black, E. Grill (87).** Bottom Imprint Plate No. 29 Strip of Four, slightly reinforced, Fine-Very Fine, a Rare & Handsome Strip ..... (Photo) 200.00+
- 222 ★ **2c Black, E. Grill (87).** Block, faint toning spot in one, bit reinforced, centered to right ..... (Photo) 400.00
- 223 ★ **3c Rose, E. Grill (88).** Block, Fresh, o. g., centered to right, one stamp has gum spot ..... 135.00
- 224 ★ **10c Green, E. Grill (89).** Fresh, Rich Color, perfs. barely touch at left, Fine (Photo) 175.00



225	12c, 15c Black, E. Grill (90-91) Used, tiny faults, F.-V. F. appearance ....	80.00
226 ★	15c Black, E. Grill (91). Fresh, o. g., centered a trifle to the left, Very Fine & Handsome ..... (Photo)	500.00
227 ★	1c Blue, F. Grill (92). Fresh, o. g., Very Fine ..... (Photo)	55.00
228 ★	1c Blue, F. Grill (92). Horiz. Pair, Unusually Bright Color, small perf. fault in one, other Fine .....	110.00
229	1c-15c F. Grills (92-93, 95-98). Used, tiny flaws, F.-V. F. appearance ....	124.50
230 ★	2c Black, F. Grill (93). Fresh, Nearly Full o. g., centered bit to right, Fine	27.50
231 ★	2c Black, F. Grill (93). Bottom Imprint Plate No. 53 Strip of Four, centered to left bottom, separated & rejoined in middle ..... (Photo)	120.00+
232 ★	2c Black, F. Grill (93). Block of Nine, centered to top & left, Fresh, Large part Brown o. g., some hinge reinforcements, Scarce Block .....	292.50
233 ★	3c Red, F. Grill (94). Block, Fresh and Fine .....	80.00
234 ★	3c Rose, F. Grill, Imperforate (94b). Horiz. Pair, with L. Sheet Margin, Very Fine ..... (Photo)	300.00
235	3c Red, F. Grill (94). Three, Very Well Centered, Numeral "5", Solid Star, Small Maltese Cross Cancels, Fine-Very Fine Strikes .....	E. II
236 ★	5c Brown, F. Grill (95). Rich Color, light crease, Very Fine Appearance ..... (Photo)	200.00
237 ★	10c Green, F. Grill (96). Fresh, Rich Color, perfs. barely touch at left, Fine ..... (Photo)	75.00
238 ★	12c Black, F. Grill (97). Fresh, o. g., Fine ..... (Photo)	85.00
239 ★	12c Black, F. Grill (97). Bottom Imprint Plate No. 16 Strip of Four, Fresh, part o. g., small reinforcements, a Very Fine and Rare Strip ..... (Photo)	340.00+
240	12c Black, F. Grill (97). Beautifully centered, tied by odd geometric, Red "Boston, Paid" pmk. on neat 1868 cover to Scotland, Very Fine .....	E. IV
241 ★	24c Gray, F. Grill (99). Fresh, Large Part o. g., few slightly nibbed perfs., otherwise Fine ..... (Photo)	250.00
242 ★	24c Gray Lilac, F. Grill (99). Block, Part o. g., tiny internal nick in one, some reinforcing, centered to left, Scarce Block ..... (Photo)	1,250.00



243 ★	90c Blue, F. Grill (101). Horiz. Strip of Four, Fresh, o. g., Brilliant, bit reinforced, faint bend, centered to left, still a Beautiful Showpiece of Great Rarity ..... (Photo)	2,500.00+
244	90c Blue, F. Grill (101). Deep Color, Rosette Cancel, small sealed tear, light creases, Fine Appearance .....	175.00

*LOTS ON VIEW FROM MONDAY, NOV. 27th*

## 1861 RE-ISSUES

245 ★	<b>1c Blue, Re-Issue (102).</b> Bright Color, Part o. g., rounded corner perf., otherwise Very Fine ..... (Photo)	150.00
246 ★	<b>2c Black, Re-Issue (103).</b> Part brownish o. g., light toning, otherwise Extremely Fine ..... (Photo)	750.00
247 ★	<b>3c Brown Red, Re-Issue (104).</b> Large Part brownish o. g., perfs. blunted at bottom from scissors separation, as often, Very Fine centering (Photo)	1,000.00
248 ★	<b>5c Light Brown, Re-Issue (105).</b> Fresh, single partly blunted perf., otherwise Extremely Fine ..... (Photo)	700.00
249 ★	<b>10c Green, Re-Issue (106).</b> Large Part brownish o. g., lightly toned, otherwise Extremely Fine ..... (Photo)	800.00
250 ★	<b>12c Black, Re-Issue (107).</b> Crackly brownish o. g., light toning small thin spot, single short perf., otherwise Fine ..... (Photo)	1,000.00
251 ★	<b>15c Black, Re-Issue (108).</b> Intense Color, couple perfs. insignificantly toned, nevertheless Very Fine ..... (Photo)	850.00
252 ★	<b>24c Deep Violet, Re-Issue (109).</b> Large Part brownish o. g., few perfs partly blunted by scissor separation as often, Very Fine ..... (Photo)	1,000.00
253 ★	<b>30c Brownish Orange, Re-Issue (110).</b> Fresh, few nibbed perfs. at left, otherwise Fine ..... (Photo)	1,500.00
254 ★	<b>90c Blue, Re-Issue (111).</b> Large Part brownish o. g., light natural gum wrinkles, otherwise Fine ..... (Photo)	1,750.00

## 1869 PICTORIAL ISSUE

255 ★	<b>1c Buff (112).</b> Trivial perf. tip toning, otherwise Fine ..... (Photo)	67.50
256 ★	<b>1c Buff, without Grill (112b).</b> Large Part o. g., Very Fine, signed E. Stern ..... (Photo)	325.00
257 ★田	<b>1c Buff (112). Block,</b> Fresh, o. g., Bright Color, faint bend in one, Very Fine ..... (Photo)	375.00
258	<b>1c-6c 1869 Pictorials (112-115).</b> 3c Red Target Cancel, couple tiny faults, Very Fine appearance ..... (Photo)	58.00
259 ☒	<b>1c Buff (112).</b> Bold Greenish Blue <b>Solid Star</b> cancel. & tied by edge of "Aurora" town pmk., Return card of U.S. Internal Revenue Office of Indiana, shows the state name which is not visible in the postmark, Tiny hole in cover, otherwise Very Fine ..... (Photo)	E. V
260 ★	<b>2c Brown (113).</b> Fresh, o. g., Extremely Fine ..... (Photo)	40.00
261 ★	<b>2c Brown, without Grill (113b).</b> Part, slightly toned o. g., Fine, signed E. Stern ..... (Photo)	250.00
262 ☒	<b>2c Brown (113). Vertical Pair,</b> Fine, Tied by "Windmill" type cancel., paying 4c open mail rate to France, via England, with appropriate Due & transit markings, Very Fine cover demonstrating this unusual and scarce rate ..... (Photo)	E. VII
263 ★	<b>3c Ultramarine (114).</b> Fresh, o. g., Very Fine ..... (Photo)	22.50
264 ★	<b>3c Ultramarine, without Grill (114a).</b> Fresh, Large Part o. g., few bits of black paper on back, Very Fine ..... (Photo)	250.00
265 ★田	<b>3c Ultramarine (114). Block,</b> o. g., light crease in bottom pair, some trivial toning on back, Extremely Fine Appearance ..... (Photo)	100.00
266 ★	<b>6c Ultramarine (115).</b> Fresh, Small Part o. g., tiny thin spot, Very Fine Appearance ..... (Photo)	125.00
267 ★田	<b>6c Ultramarine (115). Block,</b> Fresh, o. g., Well Centered, Marvelous Color, vertical crease in left pair, some minor perf. strengthening, otherwise a Very Fine & Handsome Block ..... (Photo)	700.00





237



238



241



245



246



247



248



249



250



251



252



253



254



256



260



261



263



264



266



269



274



277



278



279



280



281



284



287



288



289



290



291



292



296



297



299



300



301



302



303



304



305



306



307



313





268	✉	6c Ultramarine (115). Very well centered, tied by small cork cancel, "Franklin, Pa." pmk. on double weight cover to Phil'a. Insurance Co. ad. over entire back of cover, Very Fine	40.00
269	★	10c Yellow (116). Well Centered, Rich Color, minute surface rubbing, otherwise Very Fine (Photo)	135.00
270		10c Yellow (116). Well Centered, Bright Color, light cancel, Extremely Fine	22.50
271	✉	10c Yellow (116). Well Centered, Tied by neat "Circle of Wedges", light "Watertown, Mass." pmk. on 1870 cover to France, via Boston & England with British & French Due marks, Cover neatly mended extreme upper right, Very Fine, Ex-Knapp (Photo)	55.00+
272	✉	10c Yellow (116). Centered trifle to L. B., Tied by Perfect Bold "N. York Steamship" on 1870 folded cover to Halifax, N. S., Attractive cover (Photo)	E. IX
273		12c Green (117). Large Margins, Fresh Color, Neat Blue Cancel, tiny thin spot, Extremely Fine Appearance	24.00
274	★	12c Green (117). Horiz. Strip of Three, Fresh, Nearly Full o. g., Wonderful Rich Color, Very Fine & Handsome (Photo)	390.00
275	✉	12c Green (117). Wonderfully well centered, tied by light quartered cork cancel, light "Sheboygan, Wis." pmk. on neat cover to London, Very Fine, Ex-Knapp (Photo)	70.00
276	✉	12c Green (117). Affixed over a Vertical Pair 3c Ultramarine (114) on small cover to Canada, all tied together by tiny 4-bar grid, light "Watkins, N. Y." pmk., minor cover faults mended, stamps are Very Fine. A striking, eye-catching cover (Photo)	E. VII
277	★	15c Brown & Blue, Ty. I, without Grill (118a). Fresh, Nearly Full o. g., centered a trifle to right, Fine (Photo)	625.00
278	★	15c Brown & Blue, Ty. I, without Grill (118a). Fresh, Large Part o. g., Wonderful Colors, few trivial bits of black paper on back, faint bend in margin, otherwise Very Fine (Photo)	625.00
279		15c Brown & Blue, Ty. I (118). Well Centered, light cancel, Very Fine (Photo)	90.00
280	★	15c Brown & Blue, Ty. II (119). Fine (Photo)	150.00
281	★	15c Brown & Blue, Ty. II (119). Fresh, Wonderful Centering, light crease, Extremely Fine Appearance (Photo)	150.00
282	★	15c Brown & Blue, Ty. II (119). Small corner thin spot, couple partly nibbed perfs., otherwise Fine	150.00
283	★	15c Brown & Blue, Ty. II (119). R. Margin Block, Fresh, o. g., Marvelous Colors, centered trifle to left, Very Fine (Photo)	900.00
284		15c Brown & Blue, Ty. II (119). Large Margins, Target Cancel, Extremely Fine (Photo)	27.50
285	✉	15c Brown & Blue, Ty. II (119). Two singles, used with two 2c Brown (113) paying 34c rate on small 1870 cover to Lima, Peru, all tied by rosettes, Red "24" in crayon & Lima receiving pmk. on back, Fine & Handsome Showpiece (Photo)	E. XIII
286	✉	15c Brown & Blue, Ty. II (119). Used with 3c Ultramarine & 10c Yellow (114, 116) all paying 28c rate to Yviza, Balearic (Islands) Spain. All tied by Bold "Four-Leaf Clover" Red N. Y. & London transits, also "24" Credit Mark, Stamps centered bit to one side, Fine, Rare usage, Ex-Knapp (Photo)	E. XI
287	★	24c Green & Violet (120). Well Centered, Bright Colors, small thin spot, some perf. tip toning, otherwise Extremely Fine (Photo)	375.00
288	★	24c Green & Violet, without Grill (120a). Fresh, Large Part o. g., Lovely Colors, Very Fine (Photo)	1,000.00
289	★	24c Green & Violet, without Grill (120a). Fresh, Beautiful Colors, Large part o. g., ms. notation on back, Fine (Photo)	1,000.00



290	24c Green & Violet (120). Lightly cancelled, Very Fine .....	(Photo) 125.00
291 ★	30c Blue & Carmine, without Grill (121a). Fresh, Nearly Full o. g., Bright Colors, few trivial bits of black paper on back, Very Fine .....	(Photo) 750.00
292	30c Blue & Carmine (121). Large Margins, Perfectly Centered, Unusual Cancel, trifling corner perf. crease, otherwise Extremely Fine & Hand-some .....	(Photo) 60.00
293	30c Blue & Carmine (121). Well Centered, Neat Rosette cancel, Fine .....	60.00
294	30c Blue & Carmine (121). Large Negative "P" Cancel, couple blunted perfs., otherwise Fine .....	60.00




---

295	30c Blue & Carmine, Flags Inverted (121b). Wide margins, Wonderfully Well Centered, Brilliant Colors, neat geometric grid cancel. A marvelous example of this Very Great Rarity, probably the finest used copy in existence, with P. F. Certificate .....	(Photo) 20,000.00
-----	---	-------------------

---

296 ★	90c Carmine & Black (122). Centered well to bottom right, Scarce (Photo) 1,000.00
-------	---

---

297 ★	90c Carmine & Black, without Grill (122a). Fresh, Large Part o. g., Extremely Fine, a Beauty, Ex-Brigham .....	(Photo) 1,500.00
-------	--	------------------

---

### 1869 RE-ISSUE

298 ★	1c Buff, Re-Issue (123). Faint toning around perf. tips, otherwise Very Fine	115.00
299 ★	2c Brown, Re-Issue (124). Well Centered, Fresh, o. g., small tear at top, V. F. appearance .....	(Photo) 160.00
300 ★	3c Blue, Re-Issue (125). Fresh, part o. g., pinpoint thin speck, Fine appearance .....	(Photo) 850.00
301 ★	6c Blue, Re-Issue (126). Fresh, o. g., couple blunted perf. tips, small thin spot, Fine appearance .....	(Photo) 325.00
302 ★	10c Yellow, Re-Issue (127). Fresh, o. g., Centered bit to right, Fine (Photo) 375.00	
303 ★	12c Green, Re-Issue (128). Fresh, Large part o. g., Fine .....	(Photo) 425.00
304 ★	15c Brown & Blue, Re-Issue (129). Faint toning spots, small tear at bottom, Fine appearance .....	(Photo) 500.00
305 ★	24c Green & Violet, Re-Issue (130). Faint overall toning, centered bit to B. ....	(Photo) 400.00
306 ★	30c Blue & Carmine, Re-Issue (131). Beautiful Colors, Well Centered, nibbed perf. tip, faint toning specks on few perf. tips, otherwise Very Fine .....	(Photo) 600.00

307 ★	<b>90c Carmine &amp; Black, Re-Issue (132).</b> Centered to top, couple blunted perfs., barest trace of toning, Very Good ..... (Photo)	1,000.00
308 ★田	<b>1c Buff, Re-Issue (133). Block,</b> Fresh, Rich Color, two tiny pinholes in top pair, otherwise Fine ..... (Photo)	400.00

#### NATIONAL BANK NOTE CO. — GRILLED

309 ★	<b>1c Ultramarine, Grill (134).</b> Fresh, Part o. g., few trivial bits of black paper on back, centered to bottom right ..... (Photo)	125.00
310	<b>1c-3c 1870 Grills (134-136).</b> 1c Leaf, 2c Five Point Open Star cancel, Very Fine ..... (Photo)	23.15+
311 ★	<b>2c Red Brown, Grill (135).</b> Large Part o. g., Fresh Color, single short perf., otherwise Fine ..... (Photo)	75.00
312 ★	<b>3c Green, Grill (136).</b> Well Centered, tiny thin spot, Very Fine Appearance ..... (Photo)	50.00
313 ★	<b>3c Green, Grill, Imperforate (136b). Horiz. Pair,</b> Fresh, o. g., creases, Very Fine Appearance, Scarce ..... (Photo)	400.00
314 ★	<b>6c Carmine, Grill (137).</b> Fresh, Fine ..... (Photo)	275.00
315	<b>6c Carmine, Grill (137).</b> Well Centered, Unusual Thick Segmented Circle Cancel, negligible corner crease, Very Fine Appearance ..... (Photo)	50.00
316 ★	<b>7c Vermilion (138).</b> Fresh, o. g., perfs. clear at bottom, Fine ..... (Photo)	250.00
317	<b>7c Vermilion, Grill (138).</b> Well Centered, Bold <b>Blue Negative Five Point Star</b> in Circle Cancel, insignificant crease in top perfs., Splendid Strike ..... (Photo)	47.50+
318 ★	<b>10c Brown, Grill (139).</b> Part o. g., Deep Shade, tiny tear between two perfs., Very Fine Appearance ..... (Photo)	350.00
319	<b>10c Brown, Grill (139).</b> Neat Cancel, strong stitch watermark at top, Very Fine ..... (Photo)	90.00
320	<b>12c Dull Violet, Grill (140).</b> Faults, centered to top left ..... (Photo)	575.00
321 ★	<b>15c Orange, Grill (141).</b> Fresh, Part o. g., tiny tear between two perfs., Fine Appearance ..... (Photo)	325.00
322 ★	<b>30c Black, Grill (143).</b> Exceptionally Well Centered, a few short perfs., otherwise Extremely Fine ..... (Photo)	900.00

#### NATIONAL BANK NOTE CO. — WITHOUT GRILL

323 ★	<b>1c Ultramarine, 2c Red Brown (145-146).</b> 2c o. g., Fine-Very Fine ..... (Photo)	35.50
324 ★	<b>1c-3c 1870 Bank Notes (145-147).</b> Fresh, o. g., 2c tiny corner crease, otherwise Very Fine ..... (Photo)	45.00
325 ★	<b>2c Red Brown, Double Impression (146c).</b> Few small creases, centered to right, a Startling Printing Error, Unpriced ..... (Photo)	—
326 ★田	<b>3c Green (147). Block,</b> Fresh, o. g., Fine ..... (Photo)	50.00
327	<b>3c Green, Double Impression (147b).</b> Cork cancel, centered to top left, Presentable Example of this Rare & Striking Printing Error ..... (Photo)	750.00
328 ☒	<b>3c Green (147).</b> Tied by grid in circle, "Lebanon, N. H." pmk. on sensational corner-card cover, <b>Green Four-Horse Freight Team</b> over entire top half of the cover, Extremely Fine & Handsome ..... (Photo)	E. VI
329 ★	<b>6c Carmine (148).</b> Fresh, Well Centered, Very Fine ..... (Photo)	60.00
330 ★	<b>6c Carmine (148).</b> Single short perf., otherwise Fine ..... (Photo)	60.00
331 ★	<b>6c Carmine (148).</b> Faint overall toning, centered to top ..... (Photo)	60.00
332 ★田	<b>6c Carmine (148). Reconstructed Block with Part Imprint,</b> blunted perfs. on one, some light toning, mostly in selvage, Very well centered .... (Photo)	230.00
333 ★	<b>7c Vermilion (149).</b> Fresh, o. g., Fine ..... (Photo)	75.00
334 ★	<b>7c Vermilion (149).</b> Fresh, o. g., Fine ..... (Photo)	75.00
335 ★	<b>7c Vermilion (149).</b> Fresh, Large Part o. g., Deep Rich Color, slight thinning in top margin, small corner crease, Fine Appearance ..... (Photo)	75.00





314

315

316

317

318

319



321

322

325

327

329

333



334

342

343

344

350

358



361

366

369

370

371

372



374

375

376

377

399



448

456

459



408

480

481

482



336	★	7c Vermilion (149). Block, Fresh, Large Part o. g., Vivid Color, centered to top, Scarce	(Photo)	675.00
337		7c Vermilion (149). Bold N. Y. F. M. Star Ty. A20 in Red, Fine		21.50+
338	☒	7c Vermilion (149). Well centered, str. edge at L., used with 3c Green (147) each tied by neat target, "Sardis, O." pmk. on immaculate cover to Switzerland, Red "New York Paid All, via Eng. & Ost'd", Choice & Handsome	(Photo)	E. VI
339	☒	7c Vermilion (149). Fine, tied with 3c Green (147) & Vertical Pair 2c Red Brown (146) all tied by unusual "Valley, O." pmk. Large letters within small circle; small 1872 cover to Switzerland, Red "New York Paid All, via Eng. & Ost'd, the 3c has a str. edge, Very Choice & Handsome, Rare combination	(Photo)	E. VII
340	★	10c Brown (150). Fresh, Large Part o. g., light crease, perfs. touch at right		60.00
341	☒	10c Brown, 15c Orange (150, 152). Tied by two strikes of N. Y. F. M. "Circle of Hearts" (Ty. S-14) on 1874 cover to Barcelona, Spain, originating in Cuba & carried out of the mail to New York, small sealed tear in cover, Very Handsome, Ex-Knapp	(Photo)	E. VI
342	★	12c Violet (151). Fresh, Part o. g., Fine	(Photo)	120.00
343	★	12c Violet (151). Part o. g., Fine	(Photo)	120.00
344	★	12c Violet (151). Part o. g., perfs. clear at left, Fine	(Photo)	120.00
345	★	15c Bright Orange (152). Fresh, o. g., reperfed at top, Fine appearance		85.00
346		15c Bright Orange (152). Well Centered, Brilliant Color, Bold Grid of Thick Bars in Blue, Very Fine		13.50
347	★	24c Purple (153). Well Centered, pale shade, few nibbed perfs., tiny thin speck, Fine appearance		90.00
348		24c Purple, 30c Black (153-154). Large Bold Blue, Bright Red Cancels respectively, light creases, Fine Appearance		51.50
349	☒	24c Purple (153). Tied with 3c Green (158) by Blurry targets on 1876 tissue paper envelope to Cape of Good Hope, splendid sequence of transit marks, Very Fine	(Photo)	E. X
350	★	90c Carmine (155). Large Part o. g., light negligible toning, small corner thin, otherwise Very Fine	(Photo)	300.00
351		90c Carmine (155). Used, Fine		50.00

#### CONTINENTAL BANK NOTE CO.

352	★	1c Ultramarine (156). Block, Fresh, o. g., small hinge reinforcements, Fine		70.00
353	★	1c-3c 1873 Bank Notes (156-158). Fresh, o. g., 1c tiny thin speck, otherwise Extremely Fine		38.50
354	★	1c-3c 1873 Bank Notes (156-158). Fine		38.50
355	★	2c Brown (157). Two, Fresh, o. g., Distinct Shades, tiny thin speck, short perf., otherwise Fine-Very Fine, one with clear Secret Mark		38.00+
356	★	2c Brown (157). Block, Rich Color, Fresh, Fine-Very Fine, All show clear Secret Mark	(Photo)	95.00+
357	★	3c Dark Green (158b). Horiz. Block of Sixteen with B. Imprint, Fresh, Large part o. g., hinge reinforced, Fine-Very Fine		180.00+
358	★	6c Dull Pink (159). Wonderfully Well Centered, Fresh, o. g., Extremely Fine, a Lovely Copy	(Photo)	50.00
359	★	6c Dull Pink (159). Fresh, Part o. g., small faults, Fine Appearance		50.00
360	★	6c Dull Pink (159). Horiz. Block of Ten, light toning small reinforcements, otherwise Very Fine	(Photo)	605.00+
361	★	7c Vermilion (160). Fresh, Pretty Color, Well Centered, single short perf., otherwise Very Fine	(Photo)	90.00



362	★	7c Vermilion (160). Block, Fresh, o. g., Lovely Color, perfs. just in on bottom pair, Attractive ..... (Photo)	550.00
363	✉	7c Vermilion (160). Fine, Tied by Bold quartered cork & edge of Red "New York, Paid All, via Bremen", "Bellaire, O." pmk. on immaculate cover to Denmark, Gorgeous cover in Very scarce usage ..... (Photo)	E. VI
364	✉	7c Vermilion (160). Vertical Pair, Tied with 3c Green (158) paying 17c rate on 1875 Registered cover, Red Brown "New York, Registered" in circle on neat cover to Philadelphia, Very Fine, scarce usage ..... (Photo)	E. VIII
365	★	10c Brown (161). Fresh, Fine .....	50.00
366	★	10c Brown (161). Exceptionally Well Centered, light toning on some perfs., otherwise Very Fine ..... (Photo)	50.00
367	★	10c Brown (161). Fresh, faint thin spot, perfs. just touch at bottom .....	50.00
368	☐	10c Brown (161). Horiz. Block of Six, Cork cancel., small tear in one, others V. G.—Fine .....	44.50+
369	★	12c Blackish Violet (162). Fresh, Large Part o. g., Incredible Deep Shade, Very Well Centered, Extremely Fine ..... (Photo)	150.00
370	★	15c Orange, Vertical Ribbed Paper (163b). Brilliant Color, faint toning around perf. tips, otherwise Very Fine ..... (Photo)	140.00
371	★	30c Gray Black (165). Fresh, Large Part o. g., Fine ..... (Photo)	120.00
372	★	30c Gray Black (165). Fresh, traces of o. g., single partly nibbed perf., otherwise Fine ..... (Photo)	120.00
373	✉	30c Greenish Black (165a) Used with Horiz. Pair 12c Blackish Violet & single 2c Brown (157) all paying 56c rate Boston to Ahmednuggur, Western India, Splendid sequence of transit pmks. & Red Crayon rate marks, An Unusually Fine & Handsome "Bissell Correspondence" cover ..... (Photo)	E. IX
374	★	90c Rose Carmine (166). Part o. g., tiny toned specks, light crease, otherwise Very Fine ..... (Photo)	225.00
375	★	90c Rose Carmine (166). Fresh, o. g., single toned perf., otherwise Fine ..... (Photo)	225.00
376	★	90c Rose Carmine (166). Fresh, o. g., reperfed at left, Fine Appearance ..... (Photo)	225.00
377	★	2c Vermilion (178) Fresh, Part o. g., Very Fine ..... (Photo)	45.00
378	★	2c Vermilion (178). Block, Fresh, o. g., Vivid Color, pinhead thin speck in one, otherwise Fine ..... (Photo)	225.00
379	★	2c Vermilion (178). Horiz. Block of Eight, Fresh, o. g., Brilliant, small hinge reinforcements, Very Fine ..... (Photo)	450.00
380	★	2c Vermilion, Experimental Laid Paper (178 var.) Deep Brilliant Color, o. g., centered to top, Scarce .....	E. III
381	★	2c Vermilion, Grill (178C). Clear Grill, o. g., light toning spots on back, centered to top left, Scarce .....	150.00
382	★	5c Blue (179). Fresh, Very Good .....	40.00
383	★	5c Blue (179). Block, Part o. g., light trivial toning, light reinforcing, otherwise Fine—Very Fine ..... (Photo)	200.00



384 - 395

### 1875 SPECIAL PRINTINGS ON HARD PAPER

- |       |   |
|-------|---|
| 384 ★ | 1c Ultramarine, Special Printing (167). Brilliant Color, Scissor cut as always, Very Fine as these come ..... (Photo) 2,500.00  |
| 385 ★ | 2c Dark Brown, Special Printing (168). Rich Color, Perfs. virtually intact, centered to top, very faint thin spot, Fine Appearance ..... (Photo) 1,600.00   |
| 386 ★ | 3c Blue Green, Special Printing (169). Fresh, some perfs. trimmed as usual, an Attractive Example of one of the rarest & most elusive of all the Special Printings, with P. F. Certificate ..... (Photo) 3,750.00 |
| 387 ★ | 6c Dull Rose, Special Printing (170). Well Centered, some perfs trimmed as usual, Very Fine ..... (Photo) 3,250.00  |
| 388 ★ | 7c Reddish Vermilion, Special Printing (171). Fresh, Beautiful Color, perfs. virtually intact, Fine ..... (Photo) 1,300.00  |
| 389 ★ | 10c Pale Brown, Special Printing (172). Exceptionally Well Centered, Fresh, some perfs. trimmed as usual, Very Fine ..... (Photo) 2,500.00  |
| 390 ★ | 12c Dark Violet, Special Printing (173). Fresh, perfs. virtually intact, Fine ..... (Photo) 1,500.00  |
| 391 ★ | 15c Bright Orange, Special Printing (174). Gorgeous Color, some perfs. trimmed as usual, Very Fine ..... (Photo) 2,500.00   |



392 ★	<b>24c Dull Purple, Special Printing (175).</b> Fresh, some perfs. trimmed as usual, Fine ..... (Photo) 1,250.00
393 ★	<b>30c Greenish Black, Special Printing (176).</b> Very Well Centered, Perfs. intact three sides, Very Fine, Choice Example ..... (Photo) 2,750.00
394 ★	<b>90c Violet Carmine, Special Printing (177).</b> Fresh, Brilliant Color, some perfs. trimmed as usual, Very Fine ..... (Photo) 2,900.00
395 ★	<b>2c Carmine Vermilion, Special Printing (180).</b> Fresh, Perfs., intact, tiny pinhole on chin, otherwise Fine, with P. F. Certificate, Very Rare (Photo) 8,000.00

#### AMERICAN BANK NOTE CO.

396 ★	<b>1c-5c, 15c 1879 Bank Notes (182-185, 189).</b> Mostly o. g., Fresh, 1c & 15c tiny thin specks, otherwise Fine-Very Fine ..... 105.00
397 ★	<b>2c Vermilion (183). Block,</b> Fresh, o. g., crease in bottom pair, others Extremely Fine ..... 52.50
398	<b>2c Vermilion (183).</b> Six covers, one with strip of Three, another used with 1c ultramarine (182). All diff. Town, County & P. M. name postmarks, most with Fancy cancels. incl. Shield, Maltese Cross, Star, etc., Very choice lot ..... <b>E. V</b>
399 ★	<b>5c Blue (185). Horiz. Pair,</b> Fresh, o. g., tiny natural paper inclusion, Fine-Very Fine ..... (Photo) 72.00
400	<b>5c Blue (185).</b> Tied by "Boston, Spg'd & N. Y. R. P. O." (Towle-Meyer 80-E-1) on cover to Tokyo, Japan, with label in Japanese affixed, U. S. & Japan transit pmks., Fine ..... <b>E. IV</b>
401	<b>5c Blue (185).</b> Tied by "Portsmouth, N. H., Apr. 8, 1882" on cover to a Naval Officer on "U. S. S. Monocacy", Yokohama, Japan, U. S. & Japan transits on back, Very Fine ..... <b>E. III</b>
402 ★	<b>6c Pink (186).</b> Light perf. toning, otherwise Fine ..... 110.00
403 ★	<b>6c Pink (186).</b> Block, o. g., crease in top pair, others Very Fine .... (Photo) 450.00
404	<b>6c Pink (186).</b> Two singles tied by N. Y. Duplex on 1882 cover to Melbourne, Australia, forwarded to Sydney, N. S. W. charge paid by Victoria 2p Brown (142). Part of back flap torn, Fine, Scarce ..... (Photo) <b>E. IV</b>
405 ★	<b>10c Brown (187).</b> Small thin spot, Very Fine Appearance ..... 150.00
406 ★	<b>10c Brown (187).</b> Fresh, perfs. touch at left ..... 150.00
407	<b>10c Brown, Combination Pair (187-188).</b> Light cancel, centered to bottom, Scarce ..... 55.00
408 ★	<b>10c Brown (188).</b> Fresh, Part o. g., Very Fine ..... (Photo) 72.50
409 ★	<b>15c Red Orange (189). Top Imprint &amp; Plate No. 31 Strip of Six,</b> o. g., small hinge reinforcements, few toned specks, mostly on back, affect two stamps otherwise Fine, Scarce ..... 172.50+
410 ★	<b>15c Orange (189). Top Margin Block</b> with Part Imprint, o. g., few faint thin & toned specks, otherwise Fine-Very Fine ..... 120.00
411 ★	<b>30c Full Black (190).</b> Faint thin speck, Fine Appearance ..... 85.00
412	<b>30c Black (190).</b> Tied by "New York, 1887" pmk. with "14" in oval of bars on linen-lined cover to Paris, Couple of insignificant perf. flaws, otherwise Very Fine, Scarce ..... 26.50
413 ★	<b>90c Carmine (191).</b> Tiny faults, Attractive ..... 250.00
414 ★	<b>90c Carmine (191). Block,</b> Fresh, o. g., Well Centered, crease & thin in top pair, two short perfs., Very Fine Appearance & Scarce ..... (Photo) 1,100.00
415	<b>90c Carmine (191). Block,</b> Neat Reg. Cancels, single nibbed perf. on one, otherwise Fine ..... 190.00





362

378

379

383



403

414

434

446

461



466



505



469



506



479



510



511





416 - 428

### 1880 SPECIAL PRINTING ON SOFT PAPER

- 
- |       |   |                  |
|-------|---|------------------|
| 416 ★ | 1c Dark Ultramarine, Special Printing (192). Deep Rich Color, Fine, with P. F. Certificate .....  | (Photo) 3,750.00 |
| 417 ★ | 2c Black Brown, Special Printing (193). Marvelous Intense Color, tiny thin specks, Fine Appearance .....  | (Photo) 2,750.00 |
| 418 ★ | 3c Blue Green, Special Printing (194). Splendid color, Fine, W. H. C.(Colson) handstamp guarantee .....   | (Photo) 4,000.00 |
| 419 ★ | 6c Dull Rose, Special Printing (195). Well Centered, couple perfs. lightly toned, really insignificant, otherwise Extremely Fine, W. H. C.(Colson) handstamp guarantee .....                            | (Photo) 3,200.00 |
| 420 ★ | 7c Scarlet Vermilion, Special Printing (196). Brilliant Color, Well Centered, light trivial toning, otherwise Extremely Fine, W. H. C.(Colson) handstamp guarantee, signed E. Stern .....               | (Photo) 1,750.00 |
| 421 ★ | 10c Deep Brown, Special Printing (197). Rich Color, Well Centered, Very Fine, W. H. C.(Colson) handstamp guarantee .....  | (Photo) 3,250.00 |
| 422 ★ | 12c Blackish Violet, Special Printing (198). Exceptionally Well Centered, Intense Color, small thin spot, W. H. C.(Colson) handstamp guarantee (shows through on front), otherwise Extremely Fine ..... | (Photo) 2,500.00 |
-



423 ★	<b>15c Orange, Special Printing (199).</b> Well Centered, Fresh Bright Color, single perf. faintly toned, otherwise Extremely Fine, W. H. C. (Colson) handstamp guarantee ..... (Photo) 3,000.00
424 ★	<b>24c Dark Violet, Special Printing (200).</b> Well Centered, Marvelous Color, Extremely Fine, W. H. C. (Colson) handstamp guarantee ..... (Photo) 1,250.00
425 ★	<b>30c Greenish Black, Special Printing (201).</b> Well Centered, Intense Color, tiny speck of handstamp guarantee (W. H. C.) shows through on front, otherwise Extremely Fine ..... (Photo) 2,750.00
426 ★	<b>90c Dull Carmine, Special Printing (202).</b> Marvelous Color, Fine, W. H. C. (Colson) handstamp guarantee ..... (Photo) 3,000.00
427 ★	<b>2c Scarlet Vermilion, Special Printing (203).</b> Vivid Color, Well Centered, Extremely Fine, W. H. C. (Colson) handstamp guarantee. Gorgeous example of one of the rarest Special Printings ..... (Photo) 7,500.00
428 ★	<b>5c Deep Blue, Special Printing (204).</b> Deep Rich Color, faint almost imaginary toning, nevertheless a Fine Example of one of the Rarest of All Special Printings, W. H. C. (Colson) handstamp guarantee ..... (Photo) 10,000.00

### 1882-1888 ISSUES

429 ★	<b>1c-10c 1882-88 Bank Notes (205-215).</b> Fresh, some o. g., #208 crease, few other tiny faults, Very Good-Very Fine Appearance ..... 155.60
430 ★	<b>3c Blue Green (207). Corner Margin Block,</b> Fresh, o. g., Very Fine ..... 37.50
431 ★	<b>6c Rose (208).</b> Fresh, o. g., perfs. just touch at right ..... 60.00
432 ★	<b>6c Rose (208). Block,</b> Fresh, o. g., few negligible thin specks, reinforced Fine Appearance ..... 365.00
433 ★	<b>10c Brown (209). Horiz. Strip of Six,</b> with Half Arrow, Plate No. 548, "M" and part Imprint at T., Fresh, o. g., three stamps have small toning spots, otherwise Fine Strip ..... 75.00+
434 ★	<b>10c Brown (209). Block,</b> o. g., Wonderfully Well Centered, Extremely Fine ..... (Photo) 75.00
435 ★	<b>10c Brown (209). Horiz. Block of Ten</b> with B. Plate No. 551 and part Imprint, Deep Rich Color, Fresh, Large part o. g., small hinge reinforcements, one end stamp thin spot, others Fine ..... 175.00+
436 ★	<b>4c Blue Green (211). Block,</b> Fresh, o. g., Beautiful Deep Color, tiny thin spot in one, otherwise Fine Block ..... 90.00
437 ★	<b>3c Vermilion (214). Block,</b> Fresh, o. g., tiny reinforcements, Very Fine ..... 45.00
438 ★	<b>3c Vermilion (214). Top Margin Block of Eight (4x2)</b> with Full Imprint, Very Well Centered, Part o. g., one stamp is hinge reinforced, faint overall toning, otherwise Extremely Fine ..... 90.00
439 ★	<b>3c Vermilion, 4c Carmine (214-215). Blocks,</b> Fresh, Large part o. g., three stamps have crease or thin spot, others Fine-Very Fine ..... 112.50
440 ★	<b>4c Carmine, 15c Orange (189, 215).</b> Fresh, including margins from surrounding stamps, Very Fine ..... 39.50
441 ★	<b>4c Carmine (215). Top Margin Strip of Five</b> with Part Imprint & Plate No. 545, Well Centered, all adjacent stamps clipped leaving extra margin all around, one stamp hinge reinforced, Extremely Fine ..... 74.50
442 ★	<b>5c Indigo (216). Block,</b> Fresh, o. g., hinge reinforcement, small hinge thin in top pair, otherwise Fine-Very Fine ..... 67.50
443 ★	<b>30c Orange Brown (217).</b> Fresh, o. g., tiny gum thin, Fine Appearance ..... 50.00
444 ★	<b>30c Orange Brown (217). Horiz. Strip of Four,</b> Fresh, single short perf., otherwise Fine ..... 210.00
445 ★	<b>30c Orange Brown (217). Block</b> with Top Imprint, o. g., Rich Color, some small toned spots mostly on back, otherwise Fine ..... 240.00
446 ★	<b>90c Purple (218). Block,</b> Fresh, o. g., perfs. blunted on one, couple minor thin specks, hinge reinforced, Fine Appearance ..... (Photo) 675.00



## 1890 ISSUE

447	★	1c Blue (219). Top Imprint Plate No. 287 Block of Twelve, Fresh, o. g., hinge reinforced, Fine-Very Fine .....	120.00
448	★	1c Ultramarine, Imperforate (219c). Horiz. Pair, Large Part o. g., one has small thin spot, other Very Fine ..... (Photo)	100.00
449	★	1c-3c 1890 Issue (219-221). Blocks, Fresh, o. g., includes extra distinct shade of 1c, Very Good-Very Fine .....	118.00
450	★	2c Carmine (220). Bottom Imprint Plate No. 293, "E1" Block of Twelve, Fresh, o. g., small reinforcements, thin spot in one, couple negligible toning specks mostly in selvage, nearly all Very Fine .....	95.00
451	★	2c Carmine, Cap on Left "2", Cap on Both "2's" (220a, c). Block of Each, last has one with black spot, perfs. touch, other Fine .....	96.00+
452	★	2c Carmine, Imperforate (220d). Horiz. Strip of Six, with T. Plate No. 18, "D", part Imprint, o. g., faint toning, thin spot in one, otherwise Very Fine .....	36.00+
453	★	2c Lake, Imperforate (219De). Block, Fresh, Very Fine .....	50.00
454	★	2c Lake, Imperforate (219De). Block, Fresh, Very Fine .....	50.00
455	★	2c Lake, Imperforate (219De). Block, Fresh, Deep Color, Very Fine .....	50.00
456	★	5c Brown, Imperforate (223b). Horiz. Pair, Fresh, o. g., Very Fine (Photo)	130.00
457	★	6c Brown Red (224). Block, Fresh, o. g., a single toned perf., otherwise Fine-Very Fine .....	42.00
458	★	8c Lilac (225). Block, Fresh, o. g., perfs. touch on one, others Fine-Very Fine .....	36.50
459	★	10c Green, Imperforate (226a). Horiz. Pair, Large Part o. g., Very Fine (Photo)	160.00
460	★	15c Indigo (227). Block, traces of o. g., toning around perfs., one perf. short, Fine Centering .....	130.00
461	★	30c Black (228). Block with Part Imprint, Fresh, o. g., centered bit to top, Fine .....	175.00
462	★	90c Orange (229). Block, traces of o. g., few toned perf. tips, centered to bottom .....	285.00

## COLUMBIAN ISSUE

463	★	1c Columbian (230). Bottom Imprint "P" Plate No. 67 Block of Eight, Fresh, o. g., tiny hinge reinforcements, one stamp corner crease, otherwise Fine Block .....	250.00
464	★	1c, 2c Columbian (230-231). Blocks, Extra 2c Block of Broken Hat Variety, Fresh, Mint, one stamp corner crease, others Fine-Very Fine .....	61.00
465	★	2c Columbian, Imperforate (231b). Vertical Pair, small faults as always, Very Fine appearance, Rare ..... (Photo)	950.00
466	★	2c Columbian (231). Bottom Imprint, "QQ" Plate No. 170 Block of Eight, Fresh, o. g., tiny thin spot in one stamp, small hinge reinforcement, otherwise Very Fine ..... (Photo)	240.00
467	★	3c Columbian (232). Block of Nine with part Imprint at R., Fresh, Full o. g., minor separation, Very Fine .....	85.50+
468	★	4c Columbian (233). Block, Fresh, o. g., Very Fine .....	57.50
469	★	4c Columbian (233). Bottom Imprint "D" Plate No. 20 Block of Eight, Fresh, part o. g., slightly reinforced, centered to R., Fine ..... (Photo)	385.00





483



485



486



487



490



491



492



494



495



497



498



499



513



517



521



523



530



535



537



538



514



525



540



541



543



526



546



549



550







465

470

470 ★	4c Blue, Columbian Error (233a). Fresh, o. g., perfs. just touch at bottom, Fine & Rare	(Photo) 4,650.00
471 ★田	5c Columbian (234). Block, Fresh, o. g., Fine	65.00
472 ★田	6c Columbian (235). Block, Fresh, Large part o. g., few hinge reinforcements Fine-Very Fine	72.50
473 ★	8c Columbian (236). Bottom Imprint, "II" Plate No. 133 strip of Four, Fresh, o. g., margin bit reduced, small thin spot in one, otherwise Fine-Very Fine	110.00
474 ★田	8c Columbian (236). Block, Fresh, o. g., Fine	57.50
475 ★田	10c Columbian (237). Block, Fresh, o. g., Fine	100.00
476 ★田	10c Columbian (237a). Rejoined Block, Fresh, o. g., Very Fine in the Gray Black shade	100.00
477 ★	15c Columbian (238). Fresh and Very Fine	40.00
478 ★	15c, 50c Columbian (238, 240). First light crease, last pinpoint thin, Fine-Very Fine appearance	135.00
479 ★田	15c Columbian (238). Block of Six (3x2), o. g., some minor toning & perf. strengthening, otherwise Fine-Very Fine	(Photo) 280.00
480 ★	30c Columbian (239). Fresh, o. g., Fine	(Photo) 55.00
481 ★	\$1.00 Columbian (241). Fresh, o. g., Vivid Color, Very Fine	(Photo) 250.00
482 ★	\$1.00 Columbian (241). Fresh, Nearly Full o. g., Deep Color, tiny natural paper inclusion, Very Fine	(Photo) 250.00
483 ★	\$1.00 Columbian (241). Fresh, couple sealed tears, Fine Looking	(Photo) 250.00

*LOTS ON VIEW FROM MONDAY, NOV. 27th*



484



488



493



500

- 484 ★ 1902 \$1.00 Columbian (241). Block, Part o. g., Rich Color, two tiny hinge reinforcements, Very Well Centered, part o. g., Very Fine (Photo) 1,250.00
- 485 ★ \$2.00 Columbian (242). Fresh, o. g., Beautiful Color, shiny gum, Fine (Photo) 300.00
- 486 ★ \$2.00 Columbian (242). Fresh, o. g., tiny corner crease, reperf. at bottom, Very Fine Appearance (Photo) 300.00
- 487 ★ \$2.00 Columbian (242). Fresh, o. g., Rich Color, tiny thin spot, Very Fine Appearance (Photo) 300.00
- 488 ★ 1902 \$2.00 Columbian (242). Block, Fresh, o. g., Vivid Color, small corner thin on one, a few perfs touch, Scarce Block (Photo) 1,600.00
- 
- 489 ★ 1902 \$2.00 Columbian (242). Block of 25, bit reinforced and with three singles added to preserve symmetry of Block, Brilliantly Fresh, four stamps have faults, others Fine-Very Fine, a Remarkable Showpiece, The largest Block in Existence (Photo) 9,100.00
- 
- 490 ★ \$3.00 Columbian (243). Fresh, o. g., Well Centered, shiny gum, Extremely Fine (Photo) 450.00
- 491 ★ \$3.00 Columbian (243). Fresh, o. g., Lovely Color, centered bit to right, Very Fine (Photo) 450.00
- 492 ★ \$3.00 Columbian (243). Fresh, natural s. e. at top, minute pinhole, otherwise Very Fine (Photo) 450.00



AMERICAN BANK





493 ★ **\$3.00 Columbian (243). Block, Part o. g., Deep Color, faults, some trivial, Very Good-Fine Appearance** ..... (Photo) 3,600.00

494 ★ **\$4.00 Columbian (244). Fresh, o. g., Pale Rose Shade, tiny thin spots, Extremely Fine Appearance** ..... (Photo) 650.00

495 ★ **\$4.00 Columbian (244). Part o. g., Deep Color, some toned perfs., otherwise Very Fine** ..... (Photo) 650.00



496 ★ **\$4.00 Columbian (244). B. Imprint & Plate No. 107 Strip of Four, Exceptionally Well Centered, Fresh, o. g., Beautiful Rich Color, tiny hinge reinforcements, Extremely Fine, a Most Handsome & Rare Showpiece** (Photo) 5,800.00

497 ★ **\$5.00 Columbian (245). Fresh, o. g., Fine** ..... (Photo) 700.00

498 ★ **\$5.00 Columbian (245). Fresh, o. g., tiny thin spots, Very Fine Appearance** ..... (Photo) 700.00

499 ★ **\$5.00 Columbian (245). Part o. g., faint toning, otherwise Fine** .... (Photo) 700.00

500 ★ **\$5.00 Columbian (245). Vertical Sheet Corner Pair, Well Centered, Fresh, o. g., tiny hinge reinforcements, Extremely Fine, a Magnificent Pair** ..... (Photo) 1,400.00+

#### 1894 ISSUE — UNWATERMARKED

501 ★ **1c-50c 1894 Issue (246-250, 252-260). Nearly Full o. g., few tiny thin specks, 15c s. e., Fine-Very Fine Appearance** ..... 177.60

502 ★ **1c Ultramarine (246). Bottom Imprint Plate No. 33 Block of Six, Fresh, o. g., small thin spot in one, otherwise Fine** ..... 50.00

503 ★ **1c Blue (247). Top Imprint Plate No. 24 Block of Six, Fresh, o. g., light bends, Very Fine appearance** ..... 60.00

504 ★ **2c Pink, Ty. I (248). Left Imprint Plate No. 13 Block of Six, Fresh, Large part o. g., Fine** ..... 40.00

505 ★ **2c Carmine Lake, Ty. I (249). Top Imprint Plate No. 1 Block of Six, Fresh, o. g., tiny thin speck in one stamp otherwise Very Fine** ..... (Photo) 115.00

506 ★ **2c Carmine, Ty. II (251). Bottom Imprint Plate No. 126 Block of Six, Fresh, o. g., small thins in two stamps, margin small, otherwise F.-V. F. Block** ..... (Photo) 265.00

507 ★ **2c Carmine, Ty. III (252). Top Imprint Plate No. 152 Block of Six, Large part o. g., hinge reinforcements, Fine** ..... 125.00





512



55



518



520



522



527



531



532

314



545



551



555



558



604



1145



76

560



84

564



85

568

601



508	★田	3c Purple, 5c Chocolate (253, 255). Bottom Imprint Blocks, Fresh, o. g., small offset on 5c, Very Good-Very Fine	66.50
509	★	3c Purple, Imperforate (253a). Horiz. Pair, Fresh, o. g., light crease in one, other Very Fine	(Photo) 140.00
510	★田	3c Purple, Imperforate (253a). Block with L. Sheet Margin, Fresh, o. g., faintest toning spot on one, others Very Fine	(Photo) 300.00
511	★田	4c Dark Brown (254). Bottom Imprint Plate No. 92 Block of Six, small reinforcements, Fresh, o. g., tiny thin speck in one, otherwise Very Fine	(Photo) 150.00
512	★田	4c Dark Brown, Imperforate (254a). Block, Fresh, o. g., Very Fine	(Photo) 350.00
513	★	5c Chocolate, Imperforate (255b). Horiz. Pair, Fresh, o. g., V. F.	(Photo) 145.00
514	★	5c Chocolate, Imperf. Between (255c). Vertical Strip of Three, small toned spot in top margin, light crease in bottom stamp, others Fine, Scarce	(Photo) 750.00
515	★田	8c Violet Brown (257). B. Imprint Plate No. 58 Block of Six, Fresh, part o. g., negligible toning on two perf. tips, Fine-Very Fine	140.00
516	★田	10c Dark Green (258). Bottom Imprint Plate No. 55 Block of Six, Nearly full o. g., Fresh and Fine	(Photo) 240.00
517	★	10c Dark Green, Imperforate (258a). Horiz. Pair, Fresh, o. g., one stamp thinned, other Very Fine	(Photo) 150.00
518	★田	10c Dark Green, Imperforate (258a). Block, Fresh, light crease in bottom pair, otherwise Very Fine	(Photo) 325.00
519	★	15c Dark Blue (259). Top Imprint Plate No. 52 Strip of Three, faint hinge thin in one, Fresh, o. g., perfs touch at top	150.00
520	★田	50c Orange (260). Block, Fresh, Mint, Pretty Bright Color, horiz. perfs. bit weak, Fine	(Photo) 180.00
521	★	\$1.00 Black, Ty. I (261). Part o. g., tiny insignificant gum soak in couple perfs., otherwise Fine	(Photo) 135.00
522	★田	\$1.00 Black, Ty. I (261). Block, Fresh, o. g., hinge reinforced, tiny corner thin in one, others Fine	(Photo) 585.00
523	★	\$1.00 Black, Imperforate (261b). Horiz. Pair, Fresh, Part o. g., a few minute black specks adhere to gum, Very Fine	(Photo) 650.00
524	★	\$1.00 Black, Ty. II (261A). Fresh, o. g., reperfed at right, Fine Appearance	225.00
525	★	\$2.00 Bright Blue (262). Fresh, o. g., small thin spot, perfs. just clear at left	(Photo) 200.00
526	★	\$5.00 Dark Green (263). Part o. g., small faults, Very Fine Appearance	(Photo) 500.00
527	★	\$5.00 Dark Green (263). Bottom Imprint & Plate No. 85 Strip of Three, o. g., tiny thin speck in one, few perfs. insignificantly toned, closed tear in selvedge only, otherwise Fine	(Photo) 2,100.00

#### 1895-1898 ISSUES

528	★	1c-50c 1895 Issue (264-265, 267-275). Mostly o. g., some have small faults, Fine-Very Fine Appearance	113.95
529	★田	1c Blue (264). Top Imprint Plate No. 277 Block of Six, Fresh, Nearly Full o. g., tiny hinge reinforcement, Fine	24.00
530	★	1c Blue, Imperforate (264c). Horiz. Pair, Fresh, o. g., Very Fine	(Photo) 100.00
531	★田	1c Blue, Imperforate (264c). Block, Fresh, o. g., Very Fine	(Photo) 200.00
532	★田	1c Blue, Imperforate (264c). Block with R. Plate No. 314, Fresh, o. g., one stamp tiny thin specks, others Very Fine, minor toning in selvedge	(Photo) 200.00
533	★田	2c Carmine, Ty. I (265). Left Imprint Plate No. 115 Block of Six, small hinge reinforcements, tiny thin spots in two, otherwise part o. g., F.-V. F.	67.50
534	★田	2c Carmine, Ty. II, III Combination (266-267). Left Imprint & Plate No. 170 Block of 12 (4x3), Fresh, o. g., the right block of six is combination Ty. II & III, small thin spot in one, minor strengthening, otherwise Fine-Very Fine	155.00+



535	★	2c Carmine, Ty. III, Imperforate (267a). Horiz. Pair, Fresh, o. g., light crease in one, other Very Fine (Photo)	85.00
536	★	3c Purple (268). Bottom Imprint Plate No. 95 Block of Eight, Fresh, Large part o. g., V. G.-V. F.	105.00
537	★	3c Purple, Imperforate (268a). Horiz. Pair, Fresh, o. g., Very Fine (Photo)	150.00
538	★	3c Purple, Imperforate (268a). Horiz. Pair, Fresh, o. g., Very Fine (Photo)	150.00
539	★	4c Dark Brown (269). Top Imprint Plate No. 104 Block of Six, Fresh, Large part o. g., minute thin speck in one, otherwise Very Fine	110.00
540	★	4c Dark Brown, Imperforate (269a). Horiz. Pair, Fresh, o. g., V. F. (Photo)	150.00
541	★	4c Dark Brown, Imperforate (269a). Horiz. Pair, Fresh, part o. g., light fold in margin between stamps, Very Fine (Photo)	145.00
542	★	5c Chocolate (270). Top Imprint Plate No. 251 Block of Six, Fresh, o. g., minute thin speck in one perf. tip, negligible faint toning specks, otherwise Very Fine	100.00
543	★	5c Chestnut, Imperforate (270b). Horiz. Pair, tiny closed tear & translucent spot on one, other Very Fine (Photo)	150.00
544	★	5c Chocolate, Imperforate (270b). Horiz. Pair with T. Sheet margin, Fresh, Large part o. g., small thin spots, Very Fine Appearance	150.00
545	★	6c Dull Brown (271). Top Imprint Plate No. 184 Block of Six, Fresh, o. g., Fine-Very Fine (Photo)	145.00
546	★	6c Claret Brown, Imperforate (271b). Horiz. Pair, Fresh, heavy natural wrinkle in one, otherwise Very Fine (Photo)	150.00
547	★	6c Dull Brown, Imperforate (271b). Horiz. Pair, small part o. g., few toning spots, thin in one, V. F. appearance	150.00
548	★	8c Violet Brown (272). T. Imprint Plate No. 58 Block of Six, Fresh, o. g., Very Fine	90.00
549	★	8c Violet Brown, Imperforate (272b). Horiz. Pair, Fresh and V. F. (Photo)	180.00
550	★	8c Violet Brown, Imperforate (272b). Horiz. Pair, Fresh, tiny thin speck in one, other Very Fine (Photo)	180.00
551	★	10c Dark Green (273). Top Imprint Plate No. 302 Block of Six, Fresh, Large part o. g., Fine-Very Fine (Photo)	165.00
552	★	10c Dark Green, Imperforate (273a). Horiz. Pair, Fresh, most o. g., Very Fine (Photo)	150.00
553	★	10c Green, Imperforate (273a). Horiz. Pair, Fresh, o. g., small thin speck in one, other Very Fine	150.00
554	★	10c Dark Green, Imperforate (273a). Horiz. Pair, Fresh, Large part o. g., one has thin spot, other Very Fine	150.00
555	★	15c Dark Blue (274). Top Imprint Plate No. 52 Block of Six, Fresh, o. g., tiny gum wrinkle in one, otherwise Fine-Very Fine (Photo)	500.00
556	★	15c Indigo, Imperforate (274a). Horiz. Pair, Fresh, Part o. g., a few minute specks of black paper adhering to gum, Very Fine (Photo)	450.00
557	★	50c Red Orange, Imperforate (275b). Horiz. Pair, Fresh, Rich Color, Very Fine (Photo)	625.00
558	★	50c Orange (275). Bottom Imprint Plate No. 75 Block of Six, Fresh, o. g., Very Fine (Photo)	700.00
559	★	\$1.00 Black, Ty. I (276). Very Well Centered, Large Part o. g., faint thin speck, one short perf., otherwise Very Fine (Photo)	120.00
560	★	\$1.00 Black, Ty. I (276). Bottom Imprint & Plate No. 76 Strip of Three, Well Centered, Fresh, Large Part o. g., tiny perf. thin speck in one, otherwise Very Fine (Photo)	500.00
561	★	\$1.00 Black, Ty. II (276A). Fresh, Very Fine (Photo)	225.00
562	★	\$1.00 Black, Ty. I, Imperforate (276b). Horiz. Pair, Fresh, o. g., tiny thin spot, V. F. appearance (Photo)	650.00
563	★	\$2.00 Bright Blue (277). Fresh, o. g., tiny thin speck, Fine Appearance (Photo)	140.00
564	★	\$2.00 Dark Blue (277a). Bottom Imprint & Plate No. 84 Strip of Three, re-joined, Fine-Very Fine (Photo)	600.00

- 565 ★ **\$2.00 Bright Blue, Imperforate (277b). Horiz. Pair, Fresh, o. g., minute pinpoint hinge thin in one, otherwise Very Fine Pair** ..... (Photo) 850.00
- 566 ★ **\$2.00 Dark Blue, Imperforate (277b). Horiz. Pair, faint bend in one, otherwise Very Fine** ..... (Photo) 850.00
- 567 ★ **\$5.00 Dark Green (278). Large Part o. g., Rich Color, Fine** ..... (Photo) 325.00
- 
- 568 ★ **\$5.00 Dark Green (278). Top Imprint & Plate No. 85 Strip of Three, large part o. g., reinforced, few nibbed perfs. on one, centered to left, Attractive & Scarce** ..... (Photo) 1,400.00



569

570

- 569 ★ **\$5.00 Dark Green, Imperforate (278a). Horiz. Pair, Fresh, Large part o. g., Extremely Fine** ..... (Photo) 1,200.00
- 570 ★ **\$5.00 Dark Green, Imperforate (278a). Horiz. Pair, Large Part o. g., negligible corner crease in one, other Very Fine** ..... (Photo) 1,200.00
- 
- 571 ★ **1c-15c 1898 Issue (279-284). Fresh, o. g., 10c Ty. I small wrinkle, others Fine-Very Fine Complete Set** ..... 83.75
- 572 ★ 1c-6c 1898 Issue (279-282). Blocks, Fresh, o. g., 5c reinforced, Fine-Very Fine ..... 73.30
- 573 ★ 10c Brown, Ty. I (282c). Block, toning, mostly on back, Fine Centering ..... 110.00
- 574 ★ 10c Orange Brown, Ty. II (283). Block, Fresh, o. g., perfs. touch on right pair, others Fine ..... 80.00
- 575 ★ 15c Olive Green (284). Block, Fresh, o. g., Fine ..... 105.00

### TRANS-MISSISSIPPI ISSUE

- 576 ★ 1c-2c Trans-Mississippi (285-286). Blocks, Mint, Fine-Very Fine ..... 54.00
- 577 ★ 4c Trans-Mississippi (287). Block, Fresh, o. g., reinforced, Fine-Very Fine ..... 100.00
- 578 ★ 5c Trans-Mississippi (288). Block, Large Part o. g., few negligible perf. tonings, otherwise Fine-Very Fine ..... 95.00
- 579 ★ 8c Trans-Mississippi (289). Block, Fresh, o. g., light perf. strengthening, Fine ..... 120.00
- 580 ★ 10c Trans-Mississippi (290). Block, Fresh, o. g., Reperfed at left otherwise Fine-Very Fine ..... 175.00
- 581 ★ 50c Trans-Mississippi (291). Fresh, o. g., s. e. at left, Very Fine ..... 150.00





552

556

557

559



561

562

565

566



563

567

583

584

587



588

589

590

591



592

615

616

618

619

620



624



621

623

639



625

660



627

628

671

668





582

586

- 582 ★ 50c Trans-Mississippi (291). Block, Fresh, Nearly Full o. g., small re-inforcement, Well Centered, Very Fine ..... (Photo) 1,100.00
- 583 ★ \$1.00 Trans-Mississippi (292). Small thin spot, Very Fine Appearance ..... (Photo) 350.00
- 584 ★ \$1.00 Trans-Mississippi (292). Fresh, o. g., broken crease, Fine Looking ..... (Photo) 350.00
- 
- 585 ★ \$1.00 Trans-Mississippi (292). Bottom Imprint & Plate No. 606 Pair, Large Part o. g., few perfs. lightly strengthened, mostly in selvedge, centered bit to bottom, Attractive Piece ..... (Photo) 1,150.00
- 
- 586 ★ \$1.00 Trans-Mississippi (292). Block, Fresh, o. g., Fine ..... (Photo) 3,000.00
- 
- 587 \$1.00 Trans-Mississippi (292). Light Cancel., Fine ..... (Photo) 175.00
- 588 \$1.00 Trans-Mississippi (292). Light Cancel., centered to top, Fine (Photo) 175.00
- 589 ★ \$2.00 Trans-Mississippi (293). Fresh, o. g., Extremely Fine .... (Photo) 500.00
- 590 ★ \$2.00 Trans-Mississippi (293). Fresh, o. g., Excellent Color, Very Fine ..... (Photo) 500.00
- 591 ★ \$2.00 Trans-Mississippi (293). Fresh, o. g., Deep Shade, wide s. e., centered slightly to top, Fine ..... (Photo) 500.00
- 592 \$2.00 Trans-Mississippi (293). Light Cancel., Very Fine ..... (Photo) 225.00

#### 1901 PAN-AMERICAN ISSUE

- 593 ★ 1c-10c Pan-American (294-299). Couple toning specks on few perf. tips, 5c short perf., otherwise Fine-Very Fine Set ..... 102.50
- 594 ★ 1c-10c Pan-American (294-299). Toning specks or tiny flaws, F.-V.F. appearing set ..... 102.50





595

596

597

- 595 ★ 1c Pan-American, Inverted Center (294a). Well Centered, small part o. g., tiny corner perf. thin, Very Fine Appearance ..... (Photo) 3,500.00
- 596 ★ 2c Pan-American, Inverted Center (295a). Nicely Centered, Large Part o. g., few trivial specks of black paper adhere to back, tiny corner crease, Very Fine Appearance, with P. F. Certificate ..... (Photo) 18,000.00
- 597 ★ 4c Pan-American, Center Inverted (296a). Fresh, Large part o. g., Better than usual centering, Very Fine, with P. F. Certificate, Choice example this elusive error ..... (Photo) 6,000.00



- 598 ★ 4c Pan-American, Inverted Center (296a). Bottom Imprint & Plate No. 1145 Strip of Four, centered bit to bottom, three tiny thin specks, small closed tear in selvage, gum bit disturbed, an Attractive Showpiece of Utmost Rarity ..... (Photo) 30,000.00

- 599 ★ 1c-2c Pan-American (294-295). Blocks of Six, with Part Imprint & Plate No., light toned spot on one 2c, others Fine-Very Fine ..... 51.00
- 600 ★ 1c-8c Pan-American (294-298). Blocks, 8c no gum, 2c, 5c thin spots in three stamps, otherwise F.-V.F. lot ..... 287.50
- 601 ★ 4c Pan-American (296). Bottom Imprint & Plate No. 1145 Block of Six, few perfs. lightly strengthened, Very Fine ..... (Photo) 435.00
- 602 ★ 5c Pan-American (297). Top Imprint & Plate No. 1140 Block of Six, minor reinforcing, Very Fine ..... (Photo) 435.00
- 603 ★ 8c Pan-American (298). Block of Six with Part Imprint & Plate No., few perfs. lightly strengthened, Fine-Very Fine ..... 144.50
- 604 ★ 10c Pan-American (299). Block, Very Fine ..... (Photo) 150.00
- 605 ★ 10c Pan-American (299). Block, Well Centered, minute toning spots on gum, Extremely Fine appearance ..... 150.00

# 1902 ISSUE

606	★	1c-15c 1902 Issue (300-309). Fine-Very Fine .....	72.95
607	★	1c-15c 1902 Issue (300-309). Few small faults, 15c without gum, Fine-Very Fine Appearance .....	72.95
608	★	3c Violet (302). Bottom Imprint & Plate No. 2808 Block of Six, Mint, Fine-Very Fine .....	(Photo) 115.00
609	★	4c-13c 1902 Issue (303-304, 306, 308). Blocks, one 4c has small thin spot, others Fine-Very Fine .....	97.50
610	★	6c Claret (305). Top Imprint & Plate No. 1598 Block of Six, hinged lightly in selvage only, Very Fine .....	(Photo) 150.00
611	★	10c Red Brown (307). Right Imprint & Plate No. 2827 Block of Six, couple tiny natural paper specks, Very Fine .....	(Photo) 175.00
612	★	15c Olive Green (309). Block of Six with Part Imprint & Plate No., Fine-Very Fine .....	170.00
613	★	50c Orange (310). Well centered, reperf. at left otherwise Very Fine .....	70.00
614	★	50c Orange (310). Minute closed tear, Very Fine Appearance .....	70.00
615	★	\$1.00 Black (311). Regummed, otherwise Fine .....	(Photo) 125.00
616	★	\$1.00 Black (311). A Single, almost unnoticeable light toned speck on one perf., tip, otherwise Very Fine .....	(Photo) 125.00
617	★	\$1.00 Black (311). Block, single short perf., small ink spot in margin, Very Fine appearance .....	(Photo) 600.00
618	★	\$2.00 Dark Blue (312). Very Fine .....	(Photo) 200.00
619	★	\$2.00 Dark Blue (312). Rich Color, tiny natural paper speck, Fine .....	(Photo) 200.00
620	★	\$5.00 Dark Green (313). Lovely Color, light gum bend, Fine ....	(Photo) 375.00
621	★	\$5.00 Dark Green (313). Few short perfs. at bottom, otherwise Fine .....	(Photo) 375.00
622	★	1c-10c 1902-16 Issues, Coils, Imperforate (Betw. 314-497). 64, Mostly in Pairs, Nearly All Diff., few small faults, some trivial, Mostly Fine-Very Fine .....	234.00
623	★	5c Blue, Imperforate (315). Horiz. Pair, Fresh, Very Fine .....	(Photo) 320.00
624		5c Blue, Imperforate (315). Horiz. Pair, on piece tied by 1908 Magenta Town & Reg. Pmks., slight toning in margins, otherwise Very Fine, Scarce used, especially in year of issue .....	(Photo) 250.00
625	★	1c Blue Green, Coil (318). Horiz. Pair, slightly reinforced, Fine and Rare Pair, with APS Certificate .....	(Photo) 1,150.00
626	★	2c Carmine, Imperforate (320). Center Line Block, pin point thin speck, otherwise Very Fine .....	(Photo) 165.00
627	★	2c Scarlet, International Vending Machine Coil (320b) Horiz. Pair, Fine, with P. F. Certificate, listed in Scott, but Unpriced .....	(Photo) —
628	★	2c Carmine, Coil (322). Strip of Three, slight gum disturbance, otherwise Very Fine, a Beautiful and Very Rare Strip, with P. F. Certificate .....	(Photo) 1,875.00





585



602



611



608



610



617



626



640



658



659



635



675



677



701



661

662



702



717

## LOUISIANA PURCHASE ISSUE

629 ★ 1c-2c Louisiana Purchase (323-324). Blocks, Fine-Very Fine ..... 62.50




---

630 ★ 2c Louisiana Purchase, Imperf. Between (324a). Vertical Pair, perfs. just touch at left. This is one of the Rarest of All United States perforation errors in Existence ..... (Photo) 3,000.00

---

631 ★ 2c-5c Louisiana Purchase (324-326). Fine-Very Fine ..... 51.50  
 632 ★ 3c Louisiana Purchase (325). Left Margin Block, Very Fine ..... 85.00  
 633 ★ 5c Louisiana Purchase (326). Block, Very Fine ..... 105.00  
 634 ★ 10c Louisiana Purchase (327). Nearly Full o. g., Very Fine ..... 70.00  
 635 ★ 10c Louisiana Purchase (327). Block, small faults, Very Fine Appearance  
 (Photo) 285.00

END OF SECOND SESSION

*LOTS ON VIEW FROM MONDAY, NOV. 27th*



# THIRD SESSION

THURSDAY, NOVEMBER 30th, 1972 — 1:30 P. M.

## JAMESTOWN ISSUE

636	★	1c Jamestown (328). Top Imprint & Plate No. 3545 Block of Six, Fine	92.50
637	★	1c-2c Jamestown (328-329). Blocks, bit reinforced, V. G-V. F.	39.50
638	★	2c Jamestown (329). Top Imprint & Plate No. 3656 Block of Six, light crease in two, otherwise Fine-Very Fine	120.00
639	★	5c Jamestown (330). Very Fine	(Photo) 35.00
640	★	5c Jamestown (330). Block, Well Centered for this, Very Fine	(Photo) 145.00

## 1908 ISSUE

641	★	1c Green, 2c Carmine (331-332). Bottom Imprint & Plate No. Blocks of Six, Fine-Very Fine	30.00
642	★	1c-15c 1908 Issue (331-340). Fine-Very Fine	59.15
643	★	1c-5c 1908 Issue (331-335). Blocks, 2mm. spacings, Fine-Very Fine	76.90
644	★	1c-15c 1908 Issue (331-334, 337, 339-340). Blocks, perfs. touch on two 15c, others Fine-Very Fine	142.90
645	★	3c Violet (333). Left Imprint & Plate No. 4918 Block of Six, Very Good-Fine	60.00
646	★	4c Brown (334). Right Imprint & Plate No. 4933 Block of Six, Very Good-Fine	65.00
647	★	6c Orange (336). Block, Fine-Very Fine	37.50
648	★	6c Orange (336). Left Imprint & Plate No. 4936 Block of Six, perfs. close on few, Fine Block	100.00
649	★	6c Orange, 8c Olive Green (336-337). Blocks, Very Fine	59.00
650	★	8c Olive Green (337). Bottom Imprint & Plate No. 4919 Block of Six, Narrow bottom selvage, Fine	80.00
651	★	8c Olive Green (357). Bottom Imprint & Plate No. 4922 Block of Six, some perf. strengthening, small gum soak, Fine	80.00
652	★	10c Yellow (338). Block, Very Fine	44.00
653	★	13c Blue Green (339). Block, Very Fine	32.50
654	★	13c Blue Green (339). Top Imprint & Plate No. 4942 Block of Six, some light, insignificant strengthening on few perfs., otherwise Fine	100.00
655	★	15c Ultramarine (340). Block, faint bend in bottom pair, otherwise Very Fine	42.00
656	★	15c Ultramarine (340). Top Imprint & Plate No. 4949 Block of Six, perfs. strengthened in selvage, single short perf., otherwise Fine	120.00
657	★	50c Violet (341). Tiny natural paper speck, otherwise Very Fine	52.50
658	★	50c Violet (341). Bottom Imprint & Plate No. 4956 Strip of Three, Fine-Very Fine, Scarce	(Photo) 157.50+
659	★	50c Violet (341). Top Imprint & Plate No. 4956 Strip of Three, Fine	(Photo) 157.50+
660	★	\$1.00 Violet Brown (342). Fine	(Photo) 9250
661	★	\$1.00 Violet Brown (342). Block, Very Fine	(Photo) 400.00
662	★	\$1.00 Violet Brown (342). Block, Fine-Very Fine	(Photo) 400.00

663	★	1c-4c 1908 Issue, Imperforate (343, 345-346). Imprint & Plate No. Blocks of Six, few with small imperfections, otherwise Very Fine	113.50
664	★	3c-5c 1908 Issue, Imperforate (345-347). Horiz. Pairs, Very Fine	66.00
665	★	5c Blue, Imperforate (347). Block with Imprint, tiny insignificant corner crease, otherwise Very Fine, Mint	70.00
666	★	1c-5c 1908 Coils (348-355). Fine-Very Fine	108.00
667	★	1c-4c 1908 Coils (348-350, 352). Pairs, 4c Very Good, others Fine-Very Fine	76.00
668	★	5c Blue, Coil (351). Pair, Very Fine	(Photo) 60.00
669	★	4c Orange Brown, Coil (354). Pair, Very Fine	35.00
670	★	5c Blue, Coil (355). Pair, Fine	50.00
671	★	10c Yellow, Coil (356). Small faults, Very Fine Appearance	(Photo) 350.00
672	★	10c Yellow, Coil (356). Used Pair, faint creases, otherwise Fine	(Photo) 400.00

### BLUISH PAPERS

673	★	1c Green, 2c Carmine, Bluish (357-358). Single of first, pair of latter, pair has light toning, otherwise Fine	55.00
674	★	1c Green, Bluish (357). Block, 2mm spacing, couple small thin spots, otherwise Fine-Very Fine	77.50
675	★	1c Green, Bluish (357). Top Imprint & Plate No. 4890 Block of Six, couple natural gum wrinkles, Fine-Very Fine	(Photo) 275.00
676	★	2c Carmine, Bluish (358). Block, 2mm spacing, few perfs. strengthened, Fine-Very Fine	75.00
677	★	2c Carmine, Bluish (358). Bottom Imprint & Plate No. 4863 Block of Six, Fine-Very Fine	(Photo) 400.00
678	★	3c Deep Violet, Bluish (359). Well Centered, Very Fine	(Photo) 425.00
679	★	3c Deep Violet Bluish (359). Block, centered slightly to bottom left, Fine	(Photo) 1,850.00
680	★	3c Deep Violet, Bluish (359). Block, small insignificant offset on back, Few perfs. strengthened, Fine	(Photo) 1,850.00



681	★	4c Orange Brown, Bluish (360). Reperfed at right, otherwise Very Fine copy of this Rarity	(Photo) 6,000.00
-----	---	---	------------------





679

680

682



684



688



686

690

691



693



696



682	★	4c Orange Brown, Bluish (360). Block, Fresh, Centered bit to left, Fine, An Extremely Rare Block	(Photo)	28,000.00
683	★	5c Blue, Bluish (361). Reperfed at bottom, tiny gum soak in few perf. tips, Very Fine Appearance	(Photo)	1,550.00
684	★	5c Blue, Bluish (361). Top Margin Block, A Fresh and Fine Block of Great Rarity	(Photo)	7,000.00
685	★	6c Red Orange, Bluish (362). Well Centered, light perf. toning, reperfed at bottom, otherwise Very Fine	(Photo)	325.00
686	★	6c Red Orange, Bluish (362). Block, Well Centered, reperfed at bottom, otherwise Very Fine	(Photo)	1,500.00
687	★	8c Olive Green, Bluish (363). Fine copy of this Rarity	(Photo)	6,000.00
688	★	8c Olive Green, Bluish (363). Block, Fresh, perfs. barely in at bottom, a Handsome Block of the Utmost Rarity	(Photo)	28,000.00
689	★	10c Yellow, Bluish (364). Reperfed at top, otherwise Very Fine	(Photo)	365.00
690	★	10c Yellow, Bluish (364). Block, Fine-Very Fine	(Photo)	1,600.00
691	★	10c Yellow, Bluish (364). Block, Fine	(Photo)	1,600.00
692	★	13c Blue Green, Bluish (365). Sheet Margin Single, Very Well Centered, light purple handstamp guarantee, Extremely Fine	(Photo)	775.00
693	★	13c Blue Green, Bluish (365). Block, Very Fine & Scarce, especially in such choice condition	(Photo)	3,300.00
694		13c Blue Green, Bluish (365). Light cancel., Fine	(Photo)	275.00
695	★	15c Ultramarine, Bluish (366). Well Centered, barest trace of toning on couple perf. tips, otherwise Very Fine	(Photo)	300.00
696	★	15c Pale Ultramarine, Bluish (366). Block, couple perfs. lightly strengthened, Fine	(Photo)	1,300.00

### 1909 COMMEMORATIVE ISSUES

697	★	2c Lincoln, Imperforate (368). Block, 3mm spacing, Very Fine		48.00
698	★	2c 1909 Commems, Imperforate (368, 371, 373). Horiz. Pairs, Very Fine		74.00
699	★	2c Lincoln, Bluish (369). Fine		60.00
700	★	2c Lincoln, Bluish (369). Fine		60.00
701	★	2c Lincoln, Bluish (369). Left Imprint, Small Solid Star & Plate No. 4978 Block of Six, thin spot in one, otherwise Fine-Very Fine	(Photo)	800.00
702	★	2c Lincoln, Bluish (369). Left Imprint, Small Solid Star & Plate No. 4979 Block of Six, toned paper, Fine Centering, Scarce Plate No. Block	(Photo)	800.00
703	★	2c Alaska-Yukon (370). Bottom Imprint & Plate No. 5143 Block of Eight, plate no. slightly underinked, few perfs. lightly strengthened, Fine-Very Fine		106.00
704	★	2c Alaska-Yukon, Imperforate (371). Right Imprint & Plate No. 5250 Block of Six, Mint, Very Fine		85.00
705	★	2c Hudson-Fulton (372). Bottom Imprint & Plate No. 5391 Block of Six, Fine		85.00
706	★	2c Hudson-Fulton, Imperforate (373). Bottom Imprint & Plate No. 5395 Block of Six, tiny sealed tear in selvedge, otherwise Mint, Very Fine		85.00

### 1910 ISSUE

707	★	1c Green (374). Right Imprint, Star & Plate No. 5479 Block of Six, Fine-Very Fine		26.50
-----	---	---	--	-------



708	★	1c-5c 1910 Issue (374-375, 377-378). Blocks, 3mm spacings, Fine-Very Fine	41.75
709	★	1c-6c 1910 Issue (374-379). Blocks, Fine-Very Fine	86.75
710	★	4c-10c 1910 Issue (377-381). Fine-Very Fine	47.25
711	★	4c Brown (377). Top Imprint, Star & Plate No. 5577 Block of Six, Fine	45.00
712	★	5c Blue (378). Top Plate No. 6736 Block of Six, perfs. close at top on three, Fine Block	42.50
713	★	6c Red Orange (379). Top Imprint, Star & Plate No. 5203 Block of Six, centered to left	70.00
714	★	8c Olive Green (380). Block, 2mm spacing, Very Fine	75.00
715	★	10c Yellow (381). Block, 2mm spacing, Very Fine	60.00
716	★	10c Yellow (381). Right Imprint & Plate No. 4943 Block of Six, small corner defect on one, otherwise Very Fine	175.00
717	★	15c Ultramarine (382). Block, Very Fine (Photo)	140.00
718	★	15c Pale Ultramarine (382). Block, Very Fine (Photo)	140.00
719	★	1c Green, 2c Carmine, Coils (385-387). Pairs, Very Fine	42.00
720	★	2c Carmine, Coil (388). Pair, 3mm spacing, Very Fine (Photo)	165.00
721	★	1c-5c 1910 Coils (390-396). #390 & #396 are paste-ups, Fine-Very Fine Set	65.00
722	★	4c Brown, 5c Blue, Coils (395-396). Pairs, Fine-Very Fine	54.00

#### PANAMA-PACIFIC ISSUE

723	★	1c-5c Panama-Pacific (397-399). Very Fine	30.50
724	★	1c Panama-Pacific (397). Right Plate No. 6128 Block of Six, Fine	100.00
725	★	1c Panama-Pacific (397). Top Plate No. 6127 Block of Six, Plate No. underinked, perfs. close or barely touch at top, others Fine-Very Fine	100.00
726	★	2c Panama-Pacific (398). Bottom Plate No. 6311 Block of Six, right pair rejoined, Fine	120.00
727	★	5c Panama-Pacific (399). Right Plate No. 6138 Block of Six, Fine (Photo)	500.00
728	★	10c Panama-Pacific (400). Block, Fine-Very Fine	160.00
729	★	10c Orange, Panama-Pacific (400A). Very Fine (Photo)	72.50
730	★	10c Orange, Panama-Pacific (400A) Block, single nibbed perf., otherwise Very Fine (Photo)	300.00
731	★	1c-5c Panama-Pacific, Perf. 10 (401-403). Fine-Very Fine	90.00
732	★	1c Panama-Pacific, Perf. 10 (401). Bottom Plate No. 6549 Block of Six, few light toned specks, otherwise Fine	135.00
733	★	2c Panama-Pacific, Perf. 10 (402). Block, single partly nibbed perf., otherwise Very Fine, Mint	95.00
734	★	5c Panama-Pacific, Perf. 10 (403). Block, small thin spot, few tiny toned specks, mostly on back, otherwise Very Fine	250.00
735	★	10c Panama-Pacific, Perf. 10 (404). Block, some minor toning, mostly around perf. tips or on back, otherwise Fine-Very Fine (Photo)	1,200.00

#### 1912 ISSUES

736	★	1c-7c 1912 Issue (405-407). Blocks, Fine	75.50
737	★	7c Black (407). Bottom Plate No. 6903 Block of Six, perfs. barely touch or close on two, others Fine (Photo)	175.00
738	★	7c-30c 1912 Issue (407, 414-420). Nearly all Very Fine	95.25
739	★	8c Olive Green (414). Right Imprint, "A" & Plate No. 5721 Block of Six, Mint, centered to top left	80.00
740	★	8c-12c 1912 Issue (414-417). Blocks, Very Fine	103.50
741	★	9c Salmon Red (415). Bottom Plate No. 6905 Block of Six, few perfs. lightly strengthened, Fine-Very Fine	87.50
742	★	10c Orange Yellow, 12c Claret Brown (416, 418). Blocks, Fine-Very Fine	41.50
743	★	15c Gray (418). Top Margin Block, Very Fine	50.00





718



730



6138



735



745



727

6903



748



753



751



775



769



772



773



803



810



812



8015



817



837



847

814



744	★	15c Gray (418). Top Imprint, "A" & Plate No. 5771 Block of Six, tiny sealed tear in selvage, otherwise Very Fine	110.00
745	★	20c Ultramarine (419). Block, Very Fine	(Photo) 100.00
746	★	30c Orange Red (420). Block, Mint, Very Fine	75.00
747	★	30c Orange Red (420). Top Margin Block, Very Fine	75.00
748	★	50c Violet (421). Block, Fine	(Photo) 420.00
749	★	50c Violet (422). Tiny gum soak, otherwise Fine	50.00
750	★	50c Violet (422). Rounded corner perf., otherwise Fine	50.00
751	★	50c Violet (422). Block, Very Fine	(Photo) 220.00
752	★	\$1.00 Violet Brown (423). Very Fine	(Photo) 120.00
753	★	\$1.00 Violet Brown (423). Block, Fine-Very Fine	(Photo) 480.00+

#### 1914 ISSUE — WATERMARKED

754	★	1c-12c 1914 Issue (424-435). Fine-Very Fine, includes two shades of 12c	69.05
755	★	1c-6c 1914 Issue (424-429). Blocks, 5c Fine, others Very Fine	97.50
756	★	½c-10c 1914-32 Issues (Betw. 424-715). 22 Plate No. Blocks of Four, or Six, Very Good-Very Fine	214.05
757	★	3c Violet (426). Bottom Plate No. 6755 Block of Six, Fine-Very Fine	36.00
758	★	5c Blue (428). Top Plate No. 7016 Block of Six, Very Good	57.50
759	★	6c Red Orange (429). Top Imprint, Star & Plate No. 5419 Block of Six, perfs. just touch on one, Fine Block	65.00
760	★	6c Red Orange (429). Top Imprint, Star & Plate No. 5423 Block of Six, tiny thin speck, otherwise Fine-Very Fine	65.00
761	★	7c Black (430). Block, Very Well Centered, Large Margins, Very Fine	47.00
762	★	8c Olive Green (431). Block, single short corner perf., others Very Fine	35.00
763	★	9c Salmon Red (432). Block, Very Fine	38.50
764	★	10c Orange Yellow (433). Top Plate No. 7205 Block of Six, Fine	60.00
765	★	10c Orange Yellow, 11c Dark Green (433-434). Blocks, 10c with Plate No., Very Fine	43.50
766	★	11c Dark Green (434). Bottom Plate No. 7504 Block of Six, Fine-Very Fine	42.00
767	★	12c Claret Brown (435). Top Plate No. 6902 Block of Six, Fine-Very Fine	47.00
768	★	15c Gray, 20c Ultramarine (437-438). Fine-Very Fine	57.50
769	★	15c Gray (437). Block, Very Fine	(Photo) 105.00
770	★	20c Ultramarine (438). Block, few slightly nibbed perfs. on one, otherwise Very Fine	135.00
771	★	30c Orange Red (439). Very Fine	(Photo) 42.50
772	★	30c Orange Red (439). Block, with Plate No., Fine-Very Fine	(Photo) 180.00
773	★	30c Orange Red (439). Block, Fine	(Photo) 180.00
774	★	50c Violet (440). Tiny thin speck, Very Fine Appearance	(Photo) 150.00
775	★	50c Violet (440). Top Margin Block with Plate No., tiny dimple in one, Mint, Very Fine	(Photo) 625.00
776	★	1c-5c 1914 Coils (441-444, 446-447). Fine-Very Fine	54.00
777	★	1c-5c 1914 Coils (441-444, 447). Pairs, Fine-Very Fine	43.00
778	★	3c Violet, Coil (445). Just Clear at bottom	60.00
779	★	3c Violet, Coil (445). Pair, Very Fine	(Photo) 125.00
780	★	4c Brown, Coil (446). Pair, Very Fine	(Photo) 65.00
781		2c Red, Coil Ty. I (449). Used Joint Line Pair, top stamp corner crease, other Very Fine with natural dimple, Scarce Used	(Photo) 400.00
782	★	2c Red, Ty. I, Coil (453). Mint, Very Fine	35.00
783	★	2c Red, Ty. I Coil (453). Pair, Mint, Fine	70.00
784	★	2c Carmine, Ty. II Coil (454). Mint, Fine	40.00
785	★	2c Carmine, Ty. II Coil (454). Pair, Fine	80.00
786	★	2c Carmine, Imperforate Coil (459). Joint Line Pair, Mint, Very Fine	(Photo) 225.00
787	★	\$1.00 Violet Black (460). Very Fine	(Photo) 175.00





788

789

- 788 ★ 1916 \$1.00 Violet Black (460). Bottom Imprint, "A" & Plate No. 5782 Block of Six, Fine ..... (Photo) 1,500.00
- 789 ★ 1916 \$1.00 Violet Black (460). Top Imprint, "A" & Plate No. 5782 Block of Six, dried gum, Fine, Scarce Block ..... (Photo) 1,500.00

# 1916 ISSUE — UNWATERMARKED

- 790 ★ 2c Carmine, 4c Brown (463, 465). Blocks, includes extra 2c Plate No. Block of Six, Fine-Very Fine ..... 39.25
- 791 ★ 3c Violet (464). Block, Fine ..... 62.50
- 792 ★ 4c Orange Brown (465). Bottom Plate No. 7372 Block of Six, Fine-Very Fine ..... 72.50
- 793 ★ 4c-15c 1916 Issue (465-466, 468-469, 471-473, 475). Fine-Very Fine ... 115.00
- 794 ★ 5c Blue (466). Block, Very Fine ..... 50.00
- 795 ★ 5c Carmine, Error (467). Block of 12, Two Middle Stamps the Errors, all 2c stamps have thins, the Errors only faint thin specks, Fine Appearance ..... 425.00
- 796 ★ 5c Carmine, Error (467). Block of 20, Two Middle Stamps the Errors; The errors in mint block of twelve, Fine ..... 425.00
- 797 ★ 6c Red Orange, 7c Black (468-469). Blocks, V. G.-Fine ..... 122.50
- 798 ★ 7c Black (469). Block, Very Fine ..... 50.00
- 799 ★ 8c Olive Green (470). Bottom Margin Block, Fine ..... 50.00
- 800 ★ 8c Olive Green (470). Top Imprint, "A" & Plate No. 5725 Block of Six, curious printing flaw on one, Very Fine ..... 110.00
- 801 ★ 9c Salmon Red, 11c Dark Green (471, 473). Blocks, Fine-Very Fine ..... 62.50
- 802 ★ 9c Salmon Red (471). Left Plate No. 6905 Block of Six, Fine ..... 90.00
- 803 ★ 10c Orange Yellow (472). Block, Very Fine ..... (Photo) 110.00
- 804 ★ 10c Orange Yellow (472). Right Plate No. 7205 Block of Six, centered to left, Fine ..... 200.00
- 805 ★ 11c Dark Green (473). Bottom Plate No. 7499 Block of Six, Very Fine .... 75.00
- 806 ★ 12c Claret Brown (474). Block, Mint, Very Fine ..... 38.50
- 807 ★ 15c Gray (475). Block with Plate No., Very Fine ..... 110.00
- 808 ★ 20c Light Ultramarine (476). Block, Fine ..... 140.00
- 809 ★ 50c Light Violet (477). Fine ..... (Photo) 190.00



810	★	50c Light Violet (477). Block, tiny paper inclusion in one, Fine (Photo)	800.00
811	★	\$1.00 Violet Black (478). Very Fine	(Photo) 175.00
812	★	\$1.00 Violet Black (478). Block, Very Fine	(Photo) 700.00
813	★	\$2.00 Dark Blue (479). Very Fine	(Photo) 65.00
814	★	\$2.00 Dark Blue (479). Block with Plate No., Small gum disturbance on one, Very Fine	(Photo) 260.00
815	★	\$5.00 Light Green (480). Very Fine	55.00
816	★	\$5.00 Light Green (480). Tiny natural paper speck, Very Fine	55.00
817	★	\$5.00 Light Green (480). Block, Very Fine	(Photo) 230.00
818	★	1c-3c 1916 Imperforate (481-482, 484). Blocks, Plate No. Blocks of Six of 1c & 3c, Very Fine	41.35



819	★	5c Carmine Imperforate, Error (485). Block of Nine, Middle Stamp in Top Row the Error, one end stamp small marginal thin, the Error is Extremely Fine	(Photo) 3,250.00
820	★	2c Carmine, Coil Ty. II (491). Pair, Fine, Scarce	(Photo) 975.00

#### 1917-1920 ISSUES

821	★	1c-\$1.00 1917 Issue (498-499, 501-504, 506-510, 512-515, 517-518). Fine-Very Fine	55.30
822	★	1c-50c 1917 Issue (498-499, 502-504, 506-517). Blocks, Fine-Very Fine	202.40
823	★	2c Deep Rose, Ty. Ia (500). Fine	(Photo) 75.00
824	★	2c-50c 1917 Issue (499, 502, 503-504, 506-513, 515-517). Blocks, Fine-Very Fine	169.55



828

825

833

825 ★ 5c Blue, Horiz. Pair, Imperforate Between (504a). Very Fine Example of this Great Rarity, Only one other Pair believed known ..... (Photo) 1,000.00

826 ★ 5c Rose, Error (505). Top center stamp of Block of Six the error, Mint, Fine ..... 120.00

827 ★ 5c Rose, Error (505). Block of Nine, Middle Stamp the Error, one 2c thin spot, the Error Mint, perfs. just clear, Fine ..... 190.00

828 ★ 8c Olive Bistre, Vert. Pair, Imperforate Between (508b). Fine, Believed to be Unique, listed but Unpriced ..... (Photo) —

829 ★ 8c Olive Bistre (508). Top Imprint, "A" & Plate No. 5804 Block of Six, Mint, Fine-Very Fine ..... 31.00

830 ★ 11c Light Green, Perf. 10 at Top (511 Var.). Well Centered, Very Fine (Photo) 600.00

831 ★ 15c Gray (514). Right Plate No. 10179 Block of Six, Fine ..... 82.50

832 ★ 30c Orange Red (516). Bottom Plate No. 6927 Block of Six, small selvage slightly affecting plate no., stamps Very Fine ..... 57.50

833 ★ 50c Red Violet, Vert. Pair, Imperforate Between (517b). Very Fine, Believed to be Unique ..... (Photo) 1,000.00

834 ★ \$1.00 Violet Brown (518). Top Imprint, "A" & Plate No. 5782 Block of Six, Mint, Fine-Very Fine ..... 135.00

835 ★ 2c Carmine (519). Left Imprint & Plate No. 4848 Block of Six, Mint, centered to right Scarce ..... 325.00

836 ★ \$2.00 Orange Red & Black (523). Very Fine ..... (Photo) 125.00

837 ★ \$2.00 Orange Red & Black (523). Block, minute translucent speck in one perf. tip, otherwise Very Fine ..... (Photo) 525.00

838 ★ \$5.00 Green & Black (524). Franklin Vignette Shifted Left into frame, Very Fine & Unusual ..... (Photo) 55.00

839 ★ \$5.00 Green & Black (524). Center Line Block, small gum soak in corner of one, otherwise Fine ..... 250.00



840	★	1c-3c 1918 Offset (525-530). Blocks, first two Plate Blocks of Six, Fine-Very Fine .....	68.65
841	★	1c-3c 1918 Offset (525, 528, 528B-530, 536). Ten Blocks, including three plate no. blocks, shades, Very Good-Very Fine .....	78.35
842	★	1c-3c 1918 Offset, Imperforate (531-534A, 535). Blocks, Very Fine ....	192.50
843	★	1c Green, 2c Carmine, Ty. IV Offset, Imperforate (531-532). Blocks, 1c with top arrow, Very Fine .....	46.00
844	★	1c Green, 2c Carmine, Ty. Va, Offset Imperforate (531, 534). Plate No. Blocks of Six, Very Fine .....	60.00
845	★	1c Green, 2c Carmine, Ty. Va, Offset Imperforate (531, 534). Plate No. Blocks of Six, Very Fine .....	60.00
846	★	2c Carmine, Ty. Va, 3c Violet Offset, Imperforate (534, 535). Top Plate No. Blocks of Six, Very Fine .....	59.00
847	★	3c Violet, Offset, Imperforate, Double Impression (535a). Block, Very Fine (Photo) .....	200.00
848	★	1c-3c 1919 Rotary (538, 540-541). Blocks, Fine-Very Fine .....	47.75



849	★	2c Carmine Rose, Ty. II (539). Block, Fine-Very Fine, Handsome and Rare Block .....	(Photo) 3,000.00
850	★	3c Violet, Rotary (541). Plate No. 8483 Block of Six, Fine-Very Fine .....	103.50
851	★	3c Violet, Rotary (541). Plate No. 9146 Block of Six, Fine .....	103.50
852		1c Green, Perf. 11 Rotary (544). Light Machine Cancel, Very Fine (Photo) .....	675.00
853	★	1c Green, Rotary (545). Well Centered for this, few perfs. lightly strengthened, Very Fine .....	95.00
854	★	1c Green, Rotary (545). Star & Plate No. 13857 Block of Six, Plate No. Block of Four is Very Fine .....	247.00
855	★	2c Carmine Rose, Rotary (546). Block, centered to left .....	62.50
856	★	\$2.00 Carmine & Black (547). Very Fine .....	42.50
857	★	\$2.00 Carmine & Black (547). Block, some light insignificant perf. strengthening, otherwise Mint, Very Fine .....	170.00
858	★	2c-5c Pilgrims (549-550). Blocks, 5c has Plate No., crease in two, others Fine-Very Fine .....	78.50

# 1922-1926 ISSUES

859	★	1c-11c 1922 Issue (552-554, 559, 563). Plate No. Blocks of Six, Mint, Fine-Very Fine .....	43.75
860	★	3c-5c, 25c 1922 Issue (555-557, 568). Plate No. Blocks of Six, each block has one stamp with small fault, otherwise Very Good-Very Fine .....	165.00
861	★	6c Red Orange (558). Bottom Plate No. 16047 Block of Six, Plate No. in-completely inked, Fine-Very Fine .....	85.00
862	★	8c Olive Green (560). Left Plate No. 16451 Block of Six, Mint, Fine ....	130.00
863	★	9c Rose, 10c Orange (561-562). Plate No. Blocks of Six, Fine-Very Fine .....	71.00
864	★	12c Brown Violet, 14c Blue (564-565). Plate No. Blocks of Six, Mint, Fine-Very Fine .....	36.00
865	★	15c Gray (566). Top Plate No. 18928 Block of Six, Mint, Fine-Very Fine .....	42.50
866	★	20c Carmine Rose, Imperf. Between (567a). Horiz. Pair, Fine, Scarce Error (Photo) .....	500.00
867	★	20c Carmine Rose (567). Top Plate No. 14968 Block of Six, Very Fine ....	40.00
868	★	30c Olive Brown (569). Top Plate No. 17561 Block of Six, Mint, Fine-Very Fine .....	57.50
869	★	50c Lilac (570). Right Plate No. 15152 Block of Six, Mint, Fine .....	100.00
870	★	\$1.00 Violet Brown (571a). Top Plate No. 18682 Block of Six, Fine-Very Fine .....	80.00
871	★	\$1.00 Violet Black, \$2.00 Blue (571-572). Blocks, Fine .....	115.00
872	★	\$5.00 Carmine & Blue (573). Center Line Block, Mint, Very Fine (Photo) .....	170.00
873	★	1½c-10c 1923 Issue (582-591). Blocks, Fine-Very Fine .....	135.50



874

876

874	1c Green, Perf. 11, Rotary (594). Horiz. Pair, tied by "Madison Square Station, Oct. 4, 1924" Machine Cancel on Small Piece, perfs barely touch on right stamp, other is Fine, a Great Rarity, Only one other Pair Believed Known .....	(Photo) 2,500.00+
-----	---	-------------------

875	★	2c 1923-31 Commems. (Betw. 610-690). 11 Diff. Plate No. Blocks of Six, Very Good-Very Fine .....	163.00
-----	---	--	--------

876	2c Harding, Perf. 11, Rotary (613). Perfs. trimmed at bottom, small thin spot, Fine appearing Example of this Great Rarity .....	(Photo) 6,000.00
-----	--	------------------

877	★	1c-2c Huguenot-Walloon (614-615). Plate No. Blocks of Six, Mint, Fine-Very Fine .....	57.50
878		5c Huguenot-Walloon (616). Bottom Plate No. 15754 Block of Six, light cancel, one stamp small thins, few light negligible creases, otherwise Fine .....	65.00
879	★	5c Lexington-Concord (619). Top Plate No. 16807 Block of Six, Mint, Fine .....	90.00







- 880 ★ 2c Norse-American (620). Top Arrow & Double Plate No. Block of Eight, Fine-Very Fine ..... 110.00
- 881 ★ 5c Norse-American (621). Top Arrow & Double Plate No. Block of Eight, small natural selvage just touching plate no., Very Fine (Photo) 365.00
- 882 ★ 2c White Plains Souvenir Sheet (630). Mint, Fine-Very Fine ..... 125.00

#### 1926 ISSUES TO DATE

- 883 ★ 2c Carmine, Ty. II (634A). Mint, Very Fine ..... (Photo) 115.00
- 884 ★ 2c Carmine, Ty. II (634A). Block, Mint, Very Fine ..... (Photo) 460.00+

- 885 ★ 2c Carmine, Ty. II (634A). Block of Twenty with Full Horiz. Gutter in Middle, small toning spots, centered to right, Rare Block ..... (Photo) 3,600.00+

- 886 ★ 1c-10c Kans. Overprints (658-668). Blocks, 2c without gum, Very Good-Very Fine Set ..... 296.40
- 887 ★ 1c-10c Nebr. Overprints (669-679). Blocks, Nearly All Mint, one 8c has stain, others Fine-Very Fine ..... 309.45



888

889

- 888 ★ 2c Von Steuben, Imperforate (689a). Bottom Plate No. 20269 Block of Six, sealed tears in selvage affect two stamps slightly, otherwise Very Fine, A Gorgeous Showpiece, one of two known Plate Blocks ..... (Photo) 8,000.00
- 889 ★ 5c Kosciuszko, Imperf. Between Vertically (734a). Imperf. Arrow Margin Block, Fine, Rare Block, as position piece it is probably unique .... (Photo) 1,600.00
- 890 ★ 5c National Parks, Imperforate Vertically (744a). Block with top sheet Margin & Half Arrow, Very Fine, signed "Ward" ..... (Photo) 650.00
- 891 ★ 7c National Parks, Imperforate Vertically (746a). Horiz. Block of Six, small preprinting paper fold in one, a Very Fine and Rare Block, signed "Ward" (Photo) 1,200.00

- 892 ★ 4c Red Violet, Booklet Pane (1036a, var.). Freak Miscut produced by Fold-over, resulting in one Horiz. Pair, Imperforate Between, Very Fine, Spectacular and Extremely Rare ..... (Photo) —





872



884



4



881



885



907



891



890



892

919



921

923



925



893 ★	4c Seato, Imperf. Between (1151a). Vertical Strip of Three, Bottom Pair the Error, Very Fine	(Photo)	200.00
894 ★	4c Seato, Imperf. Between (1151a). Vertical Strip of Three, Bottom Pair the Error, Fine	(Photo)	200.00
895 ★	5c Dark Gray Blue, Coil, Imperforate (1229b). Mint Pair, Fine	(Photo)	450.00
896 ★	5c Dark Gray Blue, Coil, Imperforate (1229b). Mint Pair, light natural wrinkle, Very Fine Appearance	(Photo)	450.00
897 ★	5c Dark Gray Blue, Coil, Imperforate (1229b). Mint Strip of Four, Very Fine	(Photo)	900.00
898 ★	5c Florida Settlement, Yellow Color Omitted (1271a). Mint, Very Fine, Unpriced	(Photo)	—
899 ★	5c Florida Settlement, Yellow Color Omitted (1271a). Mint, Very Fine, Unpriced		—
900 ★	5c Blue, Coil, Imperforate (1304b). Strip of Three, Mint, Very Fine	(Photo)	562.50
901 ★	6c Gray Brown, Coil, Imperforate (1305a). Pair, Mint, Fine	(Photo)	125.00
902 ★田	5c Space Twins, Red Color Omitted (1332 Var.). Block of Nine, Middle Stamp Missing Red of U.S. Flag on Capsule, Mint, Very Fine, Unpriced		E. VI
903 ★	6c Hemisfair (1340). Converging Lines Shifted to East Coast of Florida causing Figure of Value to be in Margin, appears as Value Omitted, Very Fine, Startling Freak, normal included for comparison	(Photo)	E. VI
904 ★	6c Christmas, Light Yellow Color Omitted (1363 Var.). Very Fine, Unlisted, Normal included for comparison		E. VI

#### AIR POST STAMPS

905 ★	6c-24c 1918 Air Post (C1-C3). Very Fine Set		96.00
906 ★田	6c Orange, Air Post (C1). Center Line Block, Very Fine		105.00
907 ★田	16c Green, Air Post (C2). Center Line Block, Fine-Very Fine	(Photo)	165.00
908 ★田	24c Carmine Rose & Blue, Air Post (C3). Center Line Block, Fine-Very Fine		145.00
909 ★	8c-24c 1923 Air Post (C4-C6). Mint, Very Fine Set		80.00
910 ★田	8c Green, Air Post (C4). Block with Plate No., faint thin spot in one, others Fine-Very Fine		45.00
911 ★田	16c Dark Blue, Air Post (C5). Block with Plate No., Very Fine		125.00
912 ★田	24c Carmine, Air Post (C6). Block with Plate No., Fine		150.00
913 ★田	10c Lindbergh, Air Post (C10). Top Plate No. 19002 Block of Six, Mint, Fine		135.00
914 ★	65c-\$2.60 Graf Zeppelin (C13-C15). Fine-Very Fine Set	(Photo)	650.00
915 ★田	65c-\$2.60 Graf Zeppelin (C13-C15). Blocks, one \$1.30 tiny transparent speck, otherwise Very Fine Set	(Photo)	2,725.00
916 ★	50c Chicago Zeppelin (C18). Mint, Very Fine		50.00
917 ★田	50c Chicago Zeppelin (C18). Block, usual light gum wrinkles, Mint, Fine-Very Fine		210.00
918 ★	6c Ultramarine & Carmine, Air Post, Error of Color (C23c). Very Fine, signed Bruechig	(Photo)	75.00
919 ★田	6c Ultramarine & Carmine, Air Post, Error of Color (C23c). Block, light natural gum bends, Fine, signed Bruechig	(Photo)	300.00

#### SPECIAL DELIVERY ISSUES

920 ★	10c Blue, Special Delivery (E1). Fresh, Very Fine	(Photo)	42.50
921 ★田	10c Blue, Special Delivery (E1). Block, Fresh, o. g., tiny hinge reinforcements, Fine & Scarce	(Photo)	200.00
922 ★	10c 1888-1911 Special Delivery (E2-E3, E5-E8). Fresh, o. g., Fine-Very Fine		88.75
923 ★田	10c Blue, Special Delivery (E2). Block, Fresh, o. g., Fine	(Photo)	165.00



924	★	10c Orange, Special Delivery (E3). Block, Fresh, o. g., Extremely Fine	52.50
925	★	10c Blue, Special Delivery (E4). Block, Large Part o. g., light reinforcing, Fine-Very Fine	(Photo) 425.00
926	★	10c Blue, Special Delivery (E4). Block, Fresh, o. g., couple negligible thin specks, otherwise Fine-Very Fine	(Photo) 425.00
927	★	10c Blue, Ultramarine, Special Delivery (E5, E8). Blocks, one E5 minute internal nick, others Fine-Very Fine	90.00
928	★	10c Green, Special Delivery (E7). Block, Mint, Fine	37.50
929	★	10c Ultramarine, Special Delivery (E9). Fine	30.00
930	★	10c Ultramarine, Special Delivery (E9). Block, Fine	125.00
931	★	10c Ultramarine, Special Delivery (E10). Plate No. Single, Mint, Fine	(Photo) 55.00
932	★	10c Pale Ultramarine (E10). Block, Fine	230.00
933	★	10c Ultramarine, Registration (F1). Block, Mint, Fine-Very Fine	52.50



934 - 940

## POSTAGE DUE ISSUES

934	★	1c Deep Brown, Postage Due, Special Printing (J8). Small thin specks, Very Fine appearance	(Photo) 1,200.00
935	★	2c Deep Brown, Postage Due, Special Printing (J9). Str. edge at left, Fresh, tiny spot at top, Fine appearance	(Photo) 600.00
936	★	3c Deep Brown, Postage Due, Special Printing (J10). Fresh, faint thin spot, Fine appearance	(Photo) 600.00
937	★	5c Deep Brown, Postage Due, Special Printing (J11). Fresh, Very Fine	(Photo) 475.00
938	★	10c Deep Brown, Postage Due, Special Printing (J12). Small thin spot, V. F. appearance	(Photo) 475.00
939	★	30c Deep Brown, Postage Due, Special Printing (J13). Fresh, Fine	(Photo) 350.00
940	★	50c Deep Brown, Postage Due, Special Printing (J14). Fresh, Very Fine	(Photo) 350.00







## OFFICIAL STAMPS

Special attention is called to the exceptional number of blocks in this group. It has been many years since a group of this magnitude has reached the market and catalogue prices are hardly reflective of the rarity of many of these blocks. Furthermore, many are so rare that there is little choice in the matter of centering. One must take them as one finds them.

941 ★	1c-30c Agriculture (O1-O9). Small nick in 30c, others, some minor perf. tip toning or perfs. touch, Complete Set .....	112.15
942 ★	1c-6c Agriculture (O1-O4). Blocks, Fresh, o. g., Very Good-Very Fine .....	140.50
943 ★	10c Agriculture (O5). Block, Fresh, o. g., centered to left .....	110.00
944 ★	12c Agriculture (O6). Block, Fresh, o. g., centered to left ..... (Photo)	190.00
945 ★	15c Agriculture (O7). Block, Fresh, o. g., centered to bottom right .....	110.00
946 ★	24c Agriculture (O8). Block, Fresh, o. g., Fine-Very Fine .....	95.00
947 ★	30c Agriculture (O9). Block, Fresh, o. g., centered to top ..... (Photo)	120.00
948 ★	1c-10c Executive (O10-O14). Some minor toning, otherwise Fine-Very Fine Set .....	202.50
949 ★	2c Executive (O11). Horiz. Strip of Four, Fresh, Bright Color, right stamp partly rejoined, perfs. barely touch, Scarce Multiple .....	120.00+
950 ★	3c Executive (O12). Horiz. Strip of Three, Fresh, o. g., centered to right .....	105.00+
951 ★	6c Executive (O13). Horiz. Pair, Fresh, o. g., Fine ..... (Photo)	100.00+
952 ★	10c Executive (O14). Rejoined Block, Part o. g., perfs. close on two, others Fine .....	180.00+
953 ★	1c-90c Interior, Post Office (O15-O24, O47-O56). Mostly o. g., Fine-Very Fine Sets .....	67.70
954 ★	1c-90c Interior (O15-O24). Blocks, Fresh, o. g., one stamp on 30c and 90c have tiny flaws, perfs. touch on a few, others Fine-Very Fine, Complete Set .....	380.75
955 ★	1c-90c Justice (O25-O34). Perfs. close on 2c & 24c, some others have a few nibbed perfs., otherwise Fine-Very Fine Set .....	218.00
956 ★	1c-6c, 12c Justice (O25-O28, O30). Blocks, Fresh, o. g., few small faults, Fine Appearance .....	283.50
957 ★	10c Justice (O29). Block, Fresh, o. g., Bright Color, perfs. touch two, others Very Fine ..... (Photo)	120.00
958 ★	12c-24c Justice (O30-O32). Large Part o. g., Fine-Very Fine .....	66.25
959 ★	15c Justice (O31). Block, Fresh, o. g., centered to top left, Very Scarce, stated to be only block known ..... (Photo)	350.00
960 ★	30c Justice (O33). Corner Margin Block with Part Imprint, Nearly Full o. g., insignificant gum toning, almost entirely in selvedge, perfs. barely touch in one, others Fine, Scarce, only two blocks known ..... (Photo)	350.00
961 ★	90c Justice (O34). Nearly full o. g., Very Fine ..... (Photo)	72.50
962 ★	1c-90c Navy (O35-O45). Slight toning throughout, otherwise Fine-Very Fine Set .....	119.75
963 ★	1c-6c Navy (O35-O38). Blocks, All but 1c o. g., some light reinforcements, perfs. touch on two 3c, others Fine-Very Fine .....	80.00
964 ✉	3c Ultramarine Navy (O37). Fine, tied by "Washington, D. C., May 2, 1882" duplex with "2" in concentrics on neat cover to a Naval Officer, Fortress Monroe, Va., Exceptionally choice cover .....	20.00
965 ★	7c Navy (O39). Block, Fresh, o. g., Deep Shade, perfs. touch or just clear, still Fine ..... (Photo)	225.00
966 ★	10c-12c Navy (O40-O41). Blocks, Fresh, 10c o. g., light creases in two, one 12c small sealed internal tear, Fine Appearance .....	120.00
967 ★	15c Navy (O42). Block, perfs. bit close on two, Fine .....	80.00
968 ★	24c Navy (O43). Block, Fresh, o. g., some minor strengthening, perfs. touch on top pair, others Very Fine ..... (Photo)	165.00
969 ★	30c Navy (O44). Top Margin Block, Fresh, o. g., Fine-Very Fine (Photo)	115.00





926



1044



960



969



995



1006



944



959



971



980



998



947



965



977



989



1000



1013



957



968



978



986



1042



970	★	90c Navy (O45). Very Well Centered, Nearly Full o. g., tiny natural paper speck, Very Fine .....	32.50
971	★	90c Navy (O45). Block, Fresh, Nearly Full o. g., despite minute toned speck on one stamp. A Very Fine & Choice Block .....	(Photo) 325.00
972	★	1c-90c Post Office (O47-O56). Blocks, All but 1c o. g., few perfs. lightly strengthened, Fine-Very Fine Set .....	169.00
973	★	15c Post Office, Imperforate (O53 Var.). Horiz. Pair, Very Fine, Very, Rare .....	(Photo) —
974	★	1c-90c State (O57-O67). 6c small thin spot, some minor toning, otherwise Fine-Very Fine Set .....	122.50
975	★	3c-6c State (O59-O60). Blocks, Fresh, o. g., few reinforcements, Fine-Very Fine .....	55.00
976	✉	3c Green, State (O59). Tied by split cork cancel, Washington pmk. on cover to Louisiana. State Dep't. handstamp & ms. "U.S. Legation at Central America" Evidently by diplomatic pouch to Washington, then Forwarded, Fine & Scarce .....	(Photo) 45.00+
977	★	10c State (O62). Block, Fresh, o. g., Fine .....	(Photo) 135.00
978	★	12c State (O63). Block, Fresh, o. g., tiny reinforcements, Fine .....	(Photo) 135.00
979	★	15c State (O64). Block of Six (3X2), o. g., heavy broken crease affects three stamps, Fine Looking, Very Scarce in Multiples .....	211.50+
980	★	30c State (O66). Block, Fresh, o. g., Gorgeous Deep Shade, Very Fine & Very Rare, Believed to be the only Known Block, Listed but Unpriced .....	(Photo) —
981	★	\$2.00 State (O68). Trivial toning, otherwise Fine .....	(Photo) 90.00
982	★	\$2.00 State (O68). Fresh, couple nibbed perfs. at bottom, otherwise Fine .....	90.00
983	★	\$5.00 State (O69). Few perfs. just in at top, Scarce .....	(Photo) 625.00
984	★	\$10.00 State (O70). Light toning, mostly on back, otherwise Fine .....	(Photo) 400.00
985	★	\$20.00 State (O71). Light toning, otherwise Fine .....	(Photo) 350.00
986	□	\$20.00 State (O71). Sheet Margin Block, with Full Top Imprint & Part Bottom Imprint, cancelled by five neat ms. lines, tiny insignificant toned speck between two perfs., nevertheless Fine-Very Fine, a Spectacular Showpiece .....	(Photo) 900.00
987	★	1c-90c Treasury (O72-O82). Large Part o. g., Fine-Very Fine Set .....	52.90
988	★	1c-12c Treasury (O72-O78). Blocks, Fresh, o. g., two 6c have light crease, otherwise Fine-Very Fine, mostly Very Fine .....	115.50
989	★	24c Treasury (O80). Block, Fresh, o. g., perfs. in at top on two, others Fine, Scarce Block .....	(Photo) 250.00
990	★	90c Treasury (O82). Block, Fresh, perfs. in on bottom pair, Scarce Block .....	50.00
991	★	1c-90c War (O83-O93). Few partly blunted perfs., otherwise Fine-Very Fine Set .....	73.60
992	★	1c War (O83). Block, Fresh, Nearly Full o. g., couple tiny insignificant reinforcements, Very Fine .....	85.00
993	★	2c War (O84). Block, Fresh, Large Part o. g., Perfs. touch on two, others Fine .....	100.00
994	★	3c War (O85). Block, Fresh, o. g., centered to bottom left, Scarce .....	125.00
995	★	6c War (O86). Block, Fresh, o. g., couple tiny reinforcements, Fine .....	(Photo) 165.00
996	★	7c War (O87). Block, Fresh, o. g., Fine-Very Fine .....	35.00
997	★	7c-90c War (O87-O88, O90-O92). Blocks, Fresh, o. g., Fine-Very Fine .....	73.50
998	★	12c War (O89). Block, Fresh, o. g., couple tiny reinforcements, Very Fine .....	(Photo) 75.00
999	★	1c Agriculture, Soft Paper (O94). Fresh, Fine .....	(Photo) 300.00
1000	★	1c Agriculture, Soft Paper (O94). Block, Fresh, perfs. bit close or touch, Very Scarce, only Four Blocks Believed Known .....	(Photo) 1,500.00



1001	★	3c Agriculture, Soft Paper (O95). Block, Fresh, o. g., small thin spot under hinge, centered to bottom .....	120.00
1002	★	1c Interior, Soft Paper (O96). Block, Fresh, o. g., couple tiny reinforcements, Fine-Very Fine .....	80.00
1003	★	2c-12c Interior, Soft Paper (O97-O101). Blocks, Fresh, o. g., perfs. bit close on two 12c, others Fine-Very Fine .....	82.50
1004	★	15c Interior, Soft Paper (O102). Block, Fresh, o. g., perfs. touch on two, others Fine .....	95.00
1005	★	24c Interior, Soft Paper (O103). Fresh, o. g., Fine .....	(Photo) 225.00
1006	★	24c Interior, Soft Paper (O103). Bottom Imprint & Plate No. 104 Strip of Five, Fresh, o. g., centered to the left, still a Handsome & Attractive Rarity .....	(Photo) 1,125.00+



1007	★	24c Interior, Soft Paper (O103). Block, Fresh, o. g., Very Fine, Very Scarce, especially when so Well Centered .....	(Photo) 1,000.00
1008	★	3c Justice, Soft Paper (O106). Block, Fresh, o. g., couple minor reinforcements, Fine Block .....	55.00
1009	★	6c Justice, Soft Paper (O107). Block, Fresh, o. g., two small gum thin spots in top pair, others Fine .....	85.00
1010	★	3c-6c Treasury, Soft Paper (O109-O110). Blocks, Fresh, o. g., few tiny reinforcements, Fine-Very Fine .....	49.50
1011	★	10c Treasury, Soft Paper (O111). Block, Fresh, o. g., Fine .....	55.00
1012	★	30c Treasury, Soft Paper (O112). Fresh, Nearly Full o. g., tiny thin speck, Very Fine Appearance .....	(Photo) 120.00
1013	★	30c Treasury, Soft Paper (O112). Block, couple slightly nibbed perfs., Fine Appearance, Very Scarce .....	(Photo) 500.00
1014	★	90c Treasury, Soft Paper (O113). Fresh, trace of o. g., small thin spots, Fine Appearance .....	115.00
1015	★	1c-30c War, Soft Paper (O114-O120). Blocks, Fresh, o. g., some reinforcing, Fine-Very Fine Set .....	65.00
1016	★	2c-\$1.00 Postal Savings (O121-O123). Blocks, 3 mm spacings, Fine-Very Fine .....	117.50
1017	★	2c-\$1.00 Postal Savings (O121-O123). Blocks, 2 mm spacings, perfs. touch on two 50c, others Fine-Very Fine .....	122.50
1018	★	1c-\$1.00 Officials (Betw. O5-O126). 100, Nearly All Diff. including Blocks, Soft Papers, some have faults, Mostly Fine-Very Fine .....	508.00



## NEWSPAPER STAMPS

1019 ★	5c-25c 1865 Newspapers (PR1-PR3). Seven, includes both Shade & Paper Varieties of 10c & 25c, some negligible toning, otherwise Fine-Very Fine	116.50
1020 ★	5c-25c 1865-80 Newspapers (PR4-PR8). Eight, includes shades of PR5-PR7, few small faults, Very Good-Very Fine Appearance	122.50
1021 ★	2c-\$60.00 1875 Newspapers (PR9-PR32). Faults or toning, some trivial, Scarce Set	811.20
1022 ★	3c-12c 1875 Newspapers, Special Printing (PR34-PR36, PR38-PR40). Fine-Very Fine	93.00
1023 ★	36c Pale Rose, Newspaper, Special Printing (PR42). Very Fine .... (Photo)	57.50
1024 ★	48c Pale Rose, Newspaper, Special Printing (PR43). Fresh, perfs. in at top, Attractive	70.00
1025 ★	60c Pale Rose, Newspaper, Special Printing (PR44). Fresh, Top imperf. margin, perfs. in at left, Attractive	90.00
1026 ★	72c Pale Rose, Newspaper, Special Printing (PR45). Fresh, tiny thin spot, Fine Appearance	130.00 (Photo)
1027 ★	84c Pale Rose, Newspaper, Special Printing (PR46). Fresh, single short perf., otherwise Fine	140.00 (Photo)
1028 ★	96c Pale Rose, Newspaper, Special Printing (PR47). Fresh, couple partly nibbed perfs., otherwise Fine	160.00 (Photo)
1029 ★	\$1.92 Dark Brown, Newspaper, Special Printing (PR48). Fresh, Well Centered, Extremely Fine	600.00 (Photo)
1030 ★	4c-\$60.00 1879 Newspapers (PR59-PR64, PR67-PR68, PR71-PR74, PR76-PR79). Couple low values small thin spots, some toning on others, mostly on back, otherwise Fine-Very Fine	331.90
1031 ★	1c-96c 1885 Newspapers (PR81-PR89). Large Part o. g., 12c crease, some faint toning, most noticeable on 60c, otherwise Very Fine Set	91.25
1032 ★	6c Intense Black, Newspaper, Bureau Print (PR93). Wonderful Centering, Fresh, o. g., Exceptionally Fine, with A. P. S. Certificate	375.00 (Photo)
1033 ★	6c Intense Black, Newspaper, Bureau Print (PR93). Fresh, thin spot, Very Fine Appearance, with P. F. Certificate	375.00 (Photo)
1034 ★	\$100.00 Purple, Newspaper (PR113). Fresh, Fine	70.00 (Photo)
1035 ★	1c-\$100.00 Newspaper Miscellany, 41, Mostly Diff., Many have faults, Very Good-Very Fine Appearance	161.40

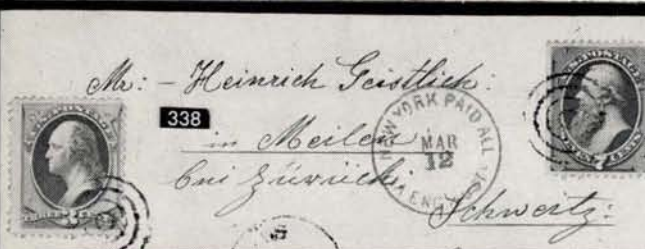
## PARCEL POST ISSUES

1036 ★	1c-\$1.00 Parcel Post (Q1-Q12). Fine-Very Fine Set	202.00 (Photo Ex)
1037 ★	1c-5c Parcel Post (Q1-Q5). Blocks, Fine-Very Fine	73.50
1038 ★	10c Parcel Post (Q6). Block, Very Fine	35.00
1039 ★	15c Parcel Post (Q7). Block, Mint, Fine	62.50
1040 ★	20c Parcel Post (Q8). Block, Very Fine	68.50
1041 ★	25c Parcel Post (Q9). Block, small thin spot in one, others Very Fine	42.50
1042 ★	50c Parcel Post (Q10). Block, Fine	240.00 (Photo)
1043 ★	75c Parcel Post (Q11). Block, Very Fine	45.00
1044 ★	\$1.00 Parcel Post (Q12). Block, Very Fine	340.00 (Photo)

## CARRIERS AND LOCALS

1045	(1c) Blue, Franklin Carrier (LO1). Ample to Large Margins, Bold Blue Grid & New Orleans, La. Pmk. in Red, on small piece of original cover signed "Geo. B. Sloane," Very Fine, Very Scarce, especially from New Orleans	350.00+ (Photo)
------	---	-----------------







- 1046 ★ **1c Eagle Carrier (LO2). Complete Sheet of 100**, Fresh, o. g., tiny sealed tear in imprint, not affecting stamps, one stamp has tiny hole, others Very Fine ..... 1,250.00+
- 1047 ☒ **1c Blue, Eagle Carrier (LO2)**. Large margins with almost four complete frame lines, tied together with 3c Red (11) by **Red Star & Blue** "Philadelphia, Pa." pmk. on tiny cover to Newburg, N. Y. Sealing wax stain in center, Very Fine ..... (Photo) 100.00+
- 1048 ☒ **1c Blue, Eagle Carrier (LO2)**. Large margins, tied together with 3c Red (11) Fine, by clear strike of "Washington, D.C." pmk. on cover to Baltimore, Md., minor docketing on face of cover, Very Fine, Very Scarce when tied together from Washington ..... (Photo) 100.00+
- 1049 ☒ **Boston, Mass, 1c Blue on Grayish (3LB2)**. Ample to mostly large margins, tied by Red "III" in fancy circle on 1853 local circular, Very Fine (Photo) 100.00
- 1050 **1c-3c 1842-57 Carrier (1LB8-1LB9, 5LB1, 6LB5)**. Tiny faults, Fine-Very Fine Appearance ..... 97.00
- 
- 1051 ☒ **Wells, Fargo & Co., Pony Express, 10c Brown (143L7)**. Large margins to trifle in two sides, Tied on 3c Pink on Buff Entire (U35). W. F. printed frank, by W. F. Blue oval "Virginia City, N. T." on cover to San Francisco, slight toning at extreme right, Fine ..... (Photo) 1,500.00
- 1052 ☒ **Wells, Fargo & Co., Pony Express, 25c Blue (143L8)**. Two singles, Large margins to barely touched, tied by Blue W. F. and "Virginia City, N. T.," U. S. postage paid by strip of three 3c Rose (65) tied by same cancel., The large cover has restored nicks and a stamp, probably another 25c Blue "Pony" has been removed, Very Rare ..... (Photo) 1,400.00+
- 1053 ★ **Wells, Fargo & Co. Pony Express, 25c Red (143L9). Complete Sheet of Forty**, divided into four panes of ten, with wide (6 mm) gutter between, Couple of vertical creases & minor toning involving about six, otherwise Very Fine, Very Scarce in complete sheet ..... 1,280.00+
- 1054 ☒ **Wells, Fargo & Co., Pony Express, 25c Red (143L9)**. Margins three sides, outer line shaved at right, Tied by W. F. Blue oval "Silver City, Utah" on 3c Pink on Buff Entire (U35) W. F. frank, to San Francisco, Cover slightly reduced at right, Attractive & Rare ..... (Photo) 1,750.00
- 

## CUBA

### PUERTO PRINCIPE ISSUES

- 1055 **1898, 1c-10c Puerto Principe Overprints (Betw. 176-205)**. 21 Used & Unused Stamps, incl. Inverted Opts., Types, Positions, some on piece, a few have small faults, mostly Very Good-Very Fine ..... 384.50
- 1056 **1898, 1c, 2c, 3c, 5c on 1m Orange Brown (176, 179B, 182). Horiz. Strip of Five**, showing **Trial Surcharges** of the Fourth Printing Se-tenant, F.-V. F., a Beautiful Strip of Great Rarity, probably Unique, Ex-Tows (Photo) **E. XII**
- 1057 **1898, 1c on 1m Orange Brown, Fourth Printing (177)**. The Five Positions, incl. Broken "1", Used, pos. 5 couple short perms., others F.-V. F., Ex-Tows ..... 30.00
- 1058 **1898, 1c on 1m Orange Brown, Double Overprint (177c). Horiz. Strip of Five**, showing the 5 positions, tied by Puerto Principe pmks. on large portion of cover, right stamp corner nick, others F.-V. F., a Magnificent Showpiece of the Utmost Rarity, possibly Unique, Ex-Worthington, listed but Unpriced ..... **E. IX**





1032



1033



1034



1036 EX



1045



1056



1062



1063



1064



1066



1070



1074



1072



1076



1077



1078



1081



1083



1082



1084



1085



1086



1088



1089



1087



1090



1091



1092



1093



1094



1096



1095



1097



1059	1898, 2c on 2m Orange Brown, First Printing, Ty. C, D (178-179). Horiz. Strip of Five, showing Misplaced Overprint, tied by Puerto Principe pmks. on portion of cover, Fine, Ex-Tows	E. IV
1060	1898, 3c on 1m Orange Brown, Fourth Printing (179D). Used, small faults, V. F. Centering	125.00
1061 ★	1898, 3c on 3m Orange Brown, First Printing (180-181). Reconstructed Setting of the Five Positions, F.-V. F., Ex-Tows	41.00+
1062	1898, 3c on 3m Orange Brown, First Printing, Inverted Overprint (181a). Tied on small piece, blunted perf. tips, still Very Fine (Photo)	100.00
1063 ★	1898, 5c on 1m Orange Brown, Second Printing (183). Fresh, small thin spot, Fine appearance (Photo)	400.00
1064	1898, 5c on 1m Orange Brown, Fourth Printing (183B). Used, small thin spot, Fine appearance, listed but unpriced (Photo)	—
1065	1898, 5c on 2m Orange Brown, Second Printing, Ty. G (184). Used, thin spot, V. F. appearance	50.00
1066 ★	1898, 5c on 2m Orange Brown, Second Printing, Ty. H (185). Fresh, perfs. touch at top, small thin spot, V. G. appearance (Photo)	475.00
1067	1898, 5c on 3m, 5m Orange Brown, Second Printing, Ty. G, H (186, 189). Used, thin spots, Fine appearance	80.00
1068	1898, 5c on 3m Orange Brown, Second Printing, Ty. H (187). Used, thinned, Fine appearance	100.00
1069	1898, 5c on 5m Orange Brown, First Printing, Ty. G, Inverted Overprint (188a). Tied on small piece, Fine	30.00
1070 ★	1898, 5c on ½m Blue Green, Second Printing, Ty. G, H (190-191). Horiz. Se-tenant Pair, Fresh, Large part o. g., one has corner crease, otherwise Fine Pair, Ex-Tows (Photo)	115.00+
1071	1898, 5c on ½m Blue Green, Second Printing, Ty. G, H (190-191). Four Used Copies, showing Pos. 1-4, one has small thin spot, others F.-V. F., Ex-Tows	45.00
1072	1898, 5c on ½m Blue Green, Second Printing, Ty. G, H (190-191). Horiz. Gutter Pair, tied on small piece, Fine and Rare, Ex-Green (Photo)	E. VII
1073	1898, 5c on ½m Blue Green, Second Printing, Ty. G, Pair, One without Overprint (190b). Tied on small piece, Fine, Ex-Tows	25.00
1074 ★	1898, 5c on ½m Blue Green, Second Printing, Ty. H (191). Fine (Photo)	75.00
1075	1898, 5c on ½m Blue Green, Fourth Printing, Ty. I (192). Used, Very Fine, Ex-Tows	30.00
1076	1898, 3c on 1c Black Violet, Third Printing, Ty. L, Inverted Overprint (197a). Tied on small piece, Very Fine, Ex-Tows (Photo)	60.00
1077	1898, 5c on 1c Black Violet, Third Printing, Ty. I, Vertical Overprint (198b). Pos. 5, tied on small piece, Very Fine, Ex-Tows (Photo)	200.00
1078	1898, 5c on 1c Black Violet, Third Printing, Ty. I, Vertical Overprint (198b). Pos. 4, tied on small piece, Very Fine, Ex-Tows (Photo)	200.00
1079 ★	1898, 10c on 1c Black Violet, Third Printing, Ty. M (200). Reconstructed Strip of Five, showing the Five positions, pos. 4 is the Broken "I" Variety, F.-V. F., a Beautiful Strip	38.50+
1080 ★	1898, 3c on 1m Blue Green, Fifth Printing, Ty. K (201). Negligible perf. tip toning, tiny thin speck, Fine appearance	50.00
1081	1898, 3c on 1m Blue Green, Fifth Printing, Ty. K, Inverted Overprint (201a). Tied on small piece, Very Good (Photo)	75.00
1082 ★	1898, 3c on 1m Blue Green, Fifth Printing, Ty. K, EENTS Error (201b). Small part o. g., ink writing on back, V. G. appearance (Photo)	150.00
1083	1898, 3c on 1m Blue Green, Fifth Printing, Ty. K, EENTS Error (201b). Tied on small piece, Very Good, Ex-Tows (Photo)	75.00
1084	1898, 3c on 1m Blue Green, Fifth Printing, Ty. L (202). Used, Fine (Photo)	100.00



1085	1898, 3c on 1m Blue Green, Fifth Printing, Ty. L Inverted Surcharge (202a). Tied on small piece, Fine, Ex-Tows ..... (Photo)	150.00
1086 ★	1898, 3c on 2m Blue Green, Fifth Printing, Ty. K, EENTS Error (203a). Fresh, Large part o. g., small thin spots, Fine appearance ..... (Photo)	250.00
1087	1898, 3c on 2m Blue Green, Fifth Printing, Ty. K, EENTS Error (203a). Tied on small piece, Fine ..... (Photo)	75.00
1088	1898, 3c on 2m Blue Green, Fifth Printing, Ty. L (204). Used, centered to left, Fine ..... (Photo)	125.00
1089 ★	1898, 3c on 3m Blue Green, Fifth Printing, Ty. K (205). Fresh, part o. g., tiny thin spot, V. G. appearance ..... (Photo)	275.00
1090 ★	1898, 3c on 3m Blue Green, Fifth Printing, Ty. K, EENTS Error (205b). Fresh, o. g., Very Good ..... (Photo)	325.00
1091	1898, 5c on 1c Blue Green, Fifth Printing, Ty. I (211). Tied on small piece, Fine, Rare, Ex-Tows ..... (Photo)	400.00
1092	1898, 5c on 2c Blue Green, Fifth Printing, Ty. I (213). Used, faint thinning, V. G. appearance ..... (Photo)	250.00
1093 ★	1898, 5c on 4m Blue Green, Fifth Printing, Ty. I (217). Part o. g., small faults, Rare Stamp ..... (Photo)	650.00
1094 ★	1898, 5c on 4m Blue Green, Fifth Printing, Ty. I, EENTS Error (217a.) Fresh, o. g., couple irregular perms., otherwise Fine, signed Gilbert, a Great Rarity, listed but unpriced ..... (Photo)	E. XIV
1095	1898, 5c on 8m Blue Green, Fifth Printing, Ty. I (219). Tied on small piece, Fine ..... (Photo)	300.00
1096	1898, 5c on 8m Blue Green, Fifth Printing, Ty. I, EENTS Error (219b). Used, thinned, V. G. appearance ..... (Photo)	350.00
1097	1898, 5c on 8m Blue Green, Fifth Printing, Ty. J (220). Used, Very Good, a Rare Stamp ..... (Photo)	600.00

END OF SALE — THANK YOU

*LOTS ON VIEW FROM MONDAY, NOV. 27th*



## IS YOUR COLLECTION FOR SALE?

REALIZE IMMEDIATE CASH  
PLUS THE ADDED ADVANTAGE OF  
SELLING THROUGH OUR AUCTIONS

We will advance immediate cash up to 75% of our appraisal value, of what your collection should realize at auction. There is no interest charge.

Your collection will then be sold in one of our coming auction sales. All stamps are expertly and advantageously lotted in attractive, well illustrated catalogs. Lotting is meticulously planned under our personal supervision. Commission is 20% of the gross realization. There is no lotting fee or any other charges. Final settlement is made within five weeks after the sale. We have been continuously conducting stamp auctions in the United States for over forty-two years.

Valuable collections and stamp holdings are especially wanted, but we will accept properties valued from \$500 upwards. Send all stamps direct for appraisal. Auction advance will be remitted shortly after receipt. If not entirely pleased, stamps will be returned at our expense. If circumstances warrant due to bulk or value, we will travel anywhere to inspect important properties.

ROBERT A. SIEGEL  
AUCTION GALLERIES, Inc.

(Licensed and Bonded Auctioneer)

120 EAST 56th STREET  
NEW YORK, N. Y. 10022

(Tel. 753-6421)









# ROBERT A. SIEGEL AUCTION GALLERIES, Inc.

120 EAST 56TH STREET  
NEW YORK, N. Y. 10022

422ND SALE

PRICES REALIZED

NOVEMBER 29TH, 30TH, 1972

UNITED STATES

GROSS REALIZATION \$542,000.00

1st Session November 29th					
1	27.00	41	180.00	83	52.50
2	20.00	42	190.00	84	150.00
3	32.50	43	5250.00	85	150.00
4	85.00	44	310.00	86	180.00
5	20.00	45	30.00	87	105.00
6	475.00	46	42.50	88	350.00
7	3400.00	47	87.50	89	500.00
8	8500.00	48	145.00	90	42.50
9	145.00	49	700.00	91	21.00
10	140.00	50	280.00	92	375.00
11	70.00	51	210.00	93	125.00
12	150.00	52	32.50	94	42.50
13	85.00	53	160.00	95	6500.00
14	550.00	54	16.00	96	40.00
15	700.00	55	62.50	97	1000.00
16	1050.00	56	28.00	98	425.00
17	1000.00	57	210.00	99	65.00
18	190.00	58	47.50	100	60.00
19	400.00	59	26.00	101	42.50
20	270.00	60	62.50	102	62.50
21	1100.00	61	35.00	103	25.00
22	1950.00	62	150.00	104	110.00
23	1950.00	63	170.00	105	25.00
24	1600.00	64	220.00	106	21.00
25	14,000.00	65	2400.00	107	80.00
26	2700.00	66	290.00	108	120.00
27	3500.00	67	190.00	109	75.00
28	475.00	68	115.00	110	95.00
29	42.50	69	325.00	111	160.00
30	42.50	70	210.00	112	125.00
31	70.00	71	170.00	113	180.00
32	200.00	72	475.00	114	135.00
33	135.00	73	80.00	115	72.50
34	425.00	74	70.00	116	110.00
35	425.00	75	80.00	117	52.50
36	375.00	76	47.50	118	67.50
37	525.00	77	115.00	119	130.00
38	375.00	78	500.00	120	32.50
39	800.00	79	350.00	121	52.50
40		80	675.00	122	210.00
		81	425.00	123	125.00
		82	30.00	124	350.00
				125	115.00
				126	80.00
				127	80.00
				128	21.00
				129	325.00
				130	180.00
				131	65.00
				132	62.50
				133	80.00
				134	1200.00
				135	47.50
				136	375.00
				137	375.00
				138	300.00
				139	110.00
				140	525.00
				141	200.00
				142	425.00
				143	375.00
				144	500.00
				145	425.00
				146	575.00
				147	7000.00
				148	200.00
				149	350.00
				150	6750.00
				151	400.00
				152	18,500.00
				153	1500.00
				154	4750.00
				155	6750.00
				156	115.00
				157	45.00
				158	325.00
				159	52.50
				160	1400.00
				161	140.00
				162	170.00
				163	50.00
				164	800.00
				165	3400.00
				166	37.50
				167	24.00
				168	25.00
				169	9.50
				170	47.50
				171	625.00
				172	220.00
				173	28.00
				174	625.00
				175	110.00
				176	32.50
				177	140.00
				178	250.00
				179	800.00
				180	40.00
				181	52.50
				182	1700.00
				183	55.00
				184	125.00
				185	40.00
				186	90.00
				187	190.00
				188	200.00
				189	270.00
				190	2200.00
				191	900.00
				192	16.00
				193	26.00
				194	21.00
				195	290.00
				196	900.00
				197	12.00
				198	210.00
				199	200.00
				200	140.00
				201	135.00
				202	60.00
				203	65.00
				204	280.00
				205	200.00
				206	85.00
				207	65.00
				208	105.00



209	26.00	262	160.00	325	500.00	387	2000.00	449	28.00
210	120.00	263	45.00	326	26.00	388	800.00	450	105.00
211	110.00	264	325.00	327	400.00	389	2100.00	451	28.00
212	725.00	265	100.00	328	145.00	390	1200.00	452	27.00
213	57.50	266	85.00	329	50.00	391	2000.00	453	37.50
214	50.00	267	550.00	330	20.00	392	800.00	454	32.50
		268	130.00	331	15.00	393	2000.00	455	37.50
		269	105.00	332	130.00	394	2000.00	456	110.00
		270	32.50	333	105.00	395	6750.00	457	25.00
		271	115.00	334	52.50	396	26.00	458	14.00
		272	210.00	335	18.00	397	19.00	459	150.00
		273	15.00	336	300.00	398	50.00	460	52.50
		274	500.00	337	6.50	399	40.00	461	65.00
		275	145.00	338	150.00	400	57.50	462	75.00
		276	220.00	339	180.00	401	40.00	463	135.00
		277	500.00	340	30.00	402	37.50	464	42.50
		278	350.00	341	140.00	403	270.00	465	850.00
		279	105.00	342	75.00	404	170.00	466	180.00
		280	95.00	343	70.00	405	55.00	467	90.00
		281	135.00	344	70.00	406	25.00	468	60.00
		282	35.00	345	24.00	407	40.00	469	220.00
		283	1100.00	346	17.00	408	150.00	470	2700.00
		284	42.50	347	12.00	409	105.00	471	23.00
		285	550.00	348	30.00	410	67.50	472	50.00
		286	500.00	349	425.00	411	21.00	473	100.00
		287	160.00	350	120.00	412	70.00	474	32.50
		288	1150.00	351	14.00	413	72.50	475	52.50
		289	1000.00	352	57.50	414	500.00	476	70.00
		290	85.00	353	47.50	415	90.00	477	47.50
		291	725.00	354	20.00	416	3400.00	478	95.00
		292	52.50	355	15.00	417	1500.00	479	145.00
		293	17.00	356	95.00	418	4000.00	480	40.00
		294	22,500.00	357	70.00	419	3200.00	481	425.00
		295	260.00	358	150.00	420	1550.00	482	210.00
		296	2300.00	359	19.00	421	3000.00	483	95.00
		297	42.50	360	475.00	422	1500.00	484	1450.00
		298	60.00	361	70.00	423	3200.00	485	260.00
		299	400.00	362	250.00	424	1200.00	486	160.00
		300	150.00	363	115.00	425	2500.00	487	160.00
		301	200.00	364	120.00	426	2500.00	488	725.00
		302	270.00	365	18.00	427	5000.00	489	6250.00
		303	150.00	366	42.50	428	5000.00	490	475.00
		304	210.00	367	11.00	429	60.00	491	375.00
		305	425.00	368	37.50	430	42.50	492	160.00
		306	325.00	369	325.00	431	30.00	493	1200.00
		307	135.00	370	120.00	432	60.00	494	280.00
		308	32.50	371	115.00	433	42.50	495	375.00
		309	15.00	372	42.50	434	110.00	496	7000.00
		310	55.00	373	350.00	435	115.00	497	550.00
		311	26.00	374	115.00	436	52.50	498	425.00
		312	270.00	375	125.00	437	27.00	499	350.00
		313	190.00	376	80.00	438	67.50	500	2900.00
		314	36.00	377	40.00	439	29.00	501	72.50
		315	170.00	378	130.00	440	32.50	502	37.50
		316	42.50	379	450.00	441	37.50	503	50.00
		317	170.00	380	17.00	442	29.00	504	35.00
		318	95.00	381	52.50	443	17.00	505	130.00
		319	55.00	382	10.00	444	65.00	506	160.00
		320	240.00	383	135.00	445	135.00	507	67.50
		321	625.00	384	2000.00	446	270.00	508	22.00
		322	26.00	385	1350.00	447	115.00	509	60.00
		323	32.00	386	3200.00	448	50.00	510	180.00
		324	42.50						

2nd Session  
November 29th

\* 293

511	110.00	572	47.50	633	50.00	687	4000.00	750	10.00
512	260.00	573	70.00	634	42.50	688	11,500.00	751	270.00
513	120.00	574	28.00	635	140.00	689	150.00	752	90.00
514	400.00	575	55.00			690	950.00	753	300.00
515	125.00	576	40.00			691	750.00	754	45.00
516	220.00	577	37.50			692	1000.00	755	50.00
517	52.50	578	32.50			693	2600.00	756	72.50
518	210.00	579	55.00	3rd Session		694	170.00	757	22.00
519	42.50	580	80.00	November 30th		695	135.00	758	15.00
520	115.00	581	52.50			696	650.00	759	35.00
521	72.50	582	500.00	636	80.00	697	35.00	760	32.50
522	200.00	583	180.00	637	11.00	698	67.50	761	37.50
523	500.00	584	70.00	638	65.00	699	26.00	762	27.00
524	85.00	585	625.00	639	35.00	700	30.00	763	34.00
525	42.50	586	2300.00	640	160.00	701	500.00	764	42.50
526	200.00	587	135.00	641	29.00	702	270.00	765	40.00
527	850.00	588	105.00	642	52.50	703	62.50	766	35.00
528	25.00	589	700.00	643	72.50	704	80.00	767	40.00
529	21.00	590	650.00	644	125.00	705	55.00	768	37.50
530	80.00	591	150.00	645	22.00	706	67.50	769	85.00
531	150.00	592	200.00	646	25.00	707	20.00	770	105.00
532	170.00	593	45.00	647	20.00	708	30.00	771	57.50
533	40.00	594	35.00	648	42.50	709	47.50	772	180.00
534	125.00	595	1750.00	649	47.50	710	37.50	773	90.00
535	42.50	596	8500.00	650	37.50	711	32.50	774	70.00
536	62.50	597	5000.00	651	32.50	712	20.00	775	575.00
537	120.00	598	17,500.00	652	55.00	713	27.00	776	32.50
538	130.00	599	26.00	653	35.00	714	85.00	777	40.00
539	62.50	600	105.00	654	70.00	715	95.00	778	35.00
540	120.00	601	550.00	655	26.00	716	100.00	779	145.00
541	100.00	602	500.00	656	72.50	717	170.00	780	55.00
542	95.00	603	105.00	657	35.00	718	125.00	781	280.00
543	57.50	604	110.00	658	125.00	721	45.00	782	42.50
544	62.50	605	120.00	659	120.00	722	47.50	783	60.00
545	260.00	606	52.50	660	65.00	723	29.00	784	35.00
546	67.50	607	24.00	661	375.00	724	57.50	785	95.00
547	62.50	608	115.00	662	300.00	725	40.00	786	375.00
548	150.00	609	45.00	663	62.50	726	45.00	787	170.00
549	160.00	610	150.00	664	47.50	727	450.00	788	1100.00
550	105.00	611	160.00	665	57.50	728	85.00	789	850.00
551	150.00	612	135.00	666	52.50	729	52.50	790	24.00
552	105.00	613	37.50	667	42.50	730	220.00	791	35.00
553	90.00	614	23.00	668	95.00	731	62.50	792	52.50
554	65.00	615	42.50	669	35.00	732	80.00	793	67.50
555	475.00	616	100.00	670	37.50	733	42.50	794	45.00
556	400.00	617	450.00	671	220.00	734	105.00	795	180.00
557	525.00	618	240.00	672	290.00	735	775.00	796	220.00
558	800.00	619	105.00	673	25.00	736	37.50	797	62.50
559	55.00	620	270.00	674	19.00	737	125.00	798	65.00
560	375.00	621	180.00	675	290.00	738	85.00	799	25.00
561	210.00	622	145.00	676	35.00	739	40.00	800	70.00
562	375.00	623	230.00	677	300.00	740	80.00	801	40.00
563	52.50	624	400.00	678	400.00	741	60.00	802	60.00
564	375.00	625	850.00	679	1000.00	742	32.50	803	50.00
565	500.00	626	125.00	680	950.00	743	35.00	804	125.00
566	525.00	627	375.00	681	3000.00	744	80.00	805	67.50
567	180.00	628	1700.00	682	16,500.00	745	85.00	806	37.50
568	625.00	629	28.00	683	850.00	746	62.50	807	110.00
569	1500.00	630	2100.00	684	4750.00	747	90.00	808	105.00
570	850.00	631	35.00	685	150.00	748	290.00	809	135.00
571	37.50	632	60.00	686	950.00	749	21.00	810	600.00



811 150.00  
812 550.00  
813 42.50  
814 150.00  
815 40.00  
816 32.50  
817 200.00  
818 30.00  
819 2000.00  
820 850.00  
821 42.50  
822 105.00  
823 57.50  
824 80.00  
825 1500.00  
826 80.00  
827 70.00  
828 1500.00  
829 27.00  
830 450.00  
831 62.50  
832 35.00  
833 2200.00  
834 85.00  
835 190.00  
836 130.00  
837 375.00  
838 45.00  
839 140.00  
840 50.00  
841 52.50  
842 110.00  
843 32.50  
844 62.50  
845 50.00  
846 60.00  
847 120.00  
848 35.00  
849 2000.00  
850 75.00  
851 62.50  
852 475.00  
853 85.00  
854 240.00  
855 15.00  
856 35.00  
857 140.00  
858 21.00  
859 40.00  
860 62.50  
861 67.50  
862 95.00  
863 60.00  
864 25.00  
865 35.00  
866 400.00  
867 42.50  
868 67.50

869 100.00  
870 57.50  
871 55.00  
872 160.00  
873 80.00  
874 2100.00  
875 52.50  
876 2500.00  
877 37.50  
878 30.00  
879 62.50  
880 62.50  
881 250.00  
882 85.00  
883 140.00  
884 425.00  
885 1400.00  
886 115.00  
887 145.00  
888 5250.00  
889 1500.00  
890 525.00  
891 725.00  
892 700.00  
893 160.00  
894 130.00  
895 500.00  
896 250.00  
897 675.00  
898 200.00  
899 200.00  
900 250.00  
901 75.00  
902 52.50  
903 80.00  
904 70.00  
905 90.00  
906 90.00  
907 115.00  
908 70.00  
909 55.00  
910 32.50  
911 125.00  
912 115.00  
913 55.00  
914 475.00  
915 1500.00  
916 35.00  
917 100.00  
918 47.50  
919 125.00  
920 47.50  
921 135.00  
922 67.50  
923 145.00  
924 110.00  
925 375.00  
926 240.00

927 50.00  
928 18.00  
929 26.00  
930 120.00  
931 45.00  
932 160.00  
933 50.00  
934 1050.00  
935 425.00  
936 525.00  
937 475.00  
938 350.00  
939 200.00  
940 475.00  
941 42.50  
942 70.00  
943 45.00  
944 72.50  
945 42.50  
946 80.00  
947 60.00  
948 125.00  
949 52.50  
950 40.00  
951 57.50  
952 65.00  
953 57.50  
954 160.00  
955 75.00  
956 120.00  
957 120.00  
958 47.50  
959 850.00  
960 550.00  
961 75.00  
962 45.00  
963 42.50  
964 70.00  
965 140.00  
966 55.00  
967 30.00  
968 67.50  
969 105.00  
970 20.00  
971 230.00  
972 80.00  
973 200.00  
974 100.00  
975 35.00  
976 110.00  
977 72.50  
978 80.00  
979 60.00  
980 550.00  
981 32.50  
982 35.00  
983 210.00  
984 210.00

985 180.00  
986 800.00  
987 52.50  
988 70.00  
989 110.00  
990 20.00  
991 62.50  
992 40.00  
993 40.00  
994 35.00  
995 62.50  
996 20.00  
997 40.00  
998 35.00  
999 180.00  
1000 750.00  
1001 30.00  
1002 50.00  
1003 37.50  
1004 32.50  
1005 140.00  
1006 475.00  
1007 800.00  
1008 20.00  
1009 18.00  
1010 20.00  
1011 20.00  
1012 65.00  
1013 260.00  
1014 25.00  
1015 25.00  
1016 85.00  
1017 70.00  
1018 115.00  
1019 42.50  
1020 35.00  
1021 200.00  
1022 50.00  
1023 60.00  
1024 45.00  
1025 57.50  
1026 120.00  
1027 125.00  
1028 150.00  
1029 575.00  
1030 65.00  
1031 32.50  
1032 450.00  
1033 240.00  
1034 55.00  
1035 37.50  
1036 105.00  
1037 25.00  
1038 24.00  
1039 40.00  
1040 70.00  
1041 15.00  
1042 115.00

1043 30.00  
1044 250.00  
1045 625.00  
1046 525.00  
1047 115.00  
1048 100.00  
1049 125.00  
1050 32.50  
1051 800.00  
1052 625.00  
1053 900.00  
1054 500.00  
1055 240.00  
1056 375.00  
1057 32.50  
1058 62.50  
1059 45.00  
1060 40.00  
1061 40.00  
1062 52.50  
1063 350.00  
1064 140.00  
1065 40.00  
1066 160.00  
1067 67.50  
1068 80.00  
1069 21.00  
1070 130.00  
1071 30.00  
1072 110.00  
1073 24.00  
1074 55.00  
1075 37.50  
1076 42.50  
1077 130.00  
1078 145.00  
1079 30.00  
1080 60.00  
1081 52.50  
1082 47.50  
1083 35.00  
1084 65.00  
1085 150.00  
1086 80.00  
1087 55.00  
1088 80.00  
1089 250.00  
1090 125.00  
1091 325.00  
1092 220.00  
1093 325.00  
1094 750.00  
1095 220.00  
1096 100.00  
1097 200.00