

PRIME UNITED STATES



Robert A. Siegel

AUCTION GALLERIES, INC.

120 East 56th Street
NEW YORK CITY, N. Y. 10022

CONDITIONS OF SALE

1. The terms of sale are strictly cash on delivery to the highest bidder unless special arrangements have been made prior to the sale.
2. All bids are per lot as numbered in the catalogue unless otherwise announced by the auctioneer at the time of sale. The right is reserved to group two or more lots; to withdraw any lot or lots from the sale, or to act in behalf of the seller. The auctioneer shall regulate the bidding and in the event of any dispute his decision shall be final.
3. Any lot, the description of which is incorrect is returnable, but only within five days of receipt and in any case it must be received by the auctioneer within four weeks from the date of the auction. All disputed lots must be returned intact as received and the following lots may not be returned for any reason whatsoever: Lots containing ten or more stamps; Lots from buyers who have had the opportunity to examine them before the sale; Lots described as having defects or faults may not be returned because of faults. No illustrated lots may be returned because of centering, margins or other factors shown in the illustration.
4. Successful bidders, unless they are known to us or supply acceptable references are expected to make payment in full before the lots are delivered. Mail bidders will be notified of the amount of their purchases. We reserve the right in our sole and absolute discretion to demand cash payment at the time a lot is knocked down to any bidder who has not previously established credit with us or whose account is in arrears. In the event any buyer refuses to pay cash for any lot at the time it is knocked down to him, the auctioneer reserves the right to re-offer the lot immediately for sale to the highest bidder.
5. If the purchase price has not been paid within the time limit, nor lots taken up within seven days from date of sale they may be resold and any loss arising from such sale will be charged to the defaulter. Any account more than thirty days in arrears is subject to a late payment charge of 1½% per month so long as the account remains in arrears.
6. All lots are sold as genuine but should any lot be proved otherwise by written opinion of any competent, responsible authority acceptable to us, immediate refund of the full purchase price will be made, provided that such claim is made within 25 days from date of sale. If claim is not made within this period, no lots are returnable for any reason at any time. So long as we are notified within the 25 day period that an opinion is being sought the matter will remain open until such opinion is rendered. We will not be responsible for any charges incurred by the buyer for expertization fees and costs unless the opinion states the item is not genuine, in which case we will pay a maximum fee of \$10.00 for each such item.
7. Until paid in full, all lots remain the property of Robert A. Siegel Auction Galleries, Inc. in behalf of the seller.
8. All forwarding charges will be added to the purchase price. The mode of shipment shall be at our option unless we are given specific instructions.
9. Lots may be sent for inspection to buyers known to us upon written application. All such lots must be returned to us by registered mail, adequately insured and within 24 hours after receipt. The applicant assumes all responsibility and for insurance against all risks from time of receipt until they are actually received back by us, and is to pay all expenses of postage and insurance. No lots can be sent for inspection within ten days of the date of sale. Large lots and collections cannot be sent for inspection.
10. The placing of a bid shall constitute acceptance of the foregoing conditions of sale.

ROBERT A. SIEGEL

SYLVESTER COLBY, Licensed Auctioneers

DESCRIPTIONS

EXTREMELY FINE: The finest, condition for noteworthy, outstanding copies.

VERY FINE: (V. F.) In prime condition such as to satisfy the requirements of particular collectors.

FINE: (F) Perforations or margins do not touch design on issues after 1890 but in some cases may just touch in earlier issues. If used, fairly light cancellation.

VERY GOOD: (V. G.) Generally nice appearance but margins or perforations may cut in slightly.

GOOD: Average off-centering or fairly attractive with slight defects.

ORIGINAL GUM is not to be expected on 19th century stamps unless so stated in the description.

MINT: With original gum and never hinged.

Scott 1972 Specialized Catalog/1973 Standard Catalog used for cataloguing lots of U. S. and Possessions and British Commonwealth. Scott 1972 Standard Catalog for others.

JANUARY 9th, 1973

ROBERT A. SIEGEL AUCTION GALLERIES, Inc.

120 East 56th Street

New York, N. Y. 10022

Tel.: 753-6421 (Area Code 212)

Please purchase for me at your auction to be held **January 9th, 1973**, the lots named below, the prices annexed being my limit on each lot, I agree to remit for purchases in accordance with the **Conditions of Sale** and return no lots later than three days after receipt.

REFERENCES PLEASE
(if unknown to us)

SIGNED

New York State residents kindly include
County in address.

County

[illegible]

VALUATIONS

Upon request, estimate of value furnished on any lots in this auction.

423rd SALE

**Selected
UNITED STATES
STAMPS**

A Collection with many pieces of
great beauty and rarity

Offered by Order of the Owner



AT PUBLIC AUCTION

Tuesday, January 9th, 1973 at 1:30 P. M.

Robert A. Siegel

AUCTION GALLERIES, INC.

120 East 56th STREET
NEW YORK CITY, N. Y. 10022
Tel.: (212) 753-6421

UNITED STATES

1847 ISSUE



- | | | |
|-----|--|-------------------|
| 1 ★ | 10c Black (2). Horizontal Pair, Large to Huge Margins, Wonderful Intense Color and Sharp Impression, Brilliant, Fresh o. g., creases, tiny thin spots in left stamp, Extremely Fine Appearance, a Rare & Handsome Pair | (Photo) 4,750.00 |
| 2 | 10c Black (2). Horizontal Pair, Large Margins All Around, Neat Bright Red Grids, Excellent color and impression, Extremely Fine, a Handsome Pair | (Photo) 650.00 |
| 3 P | 5c Red Brown, 10c Black, Reproductions, Plate Proofs on India (3P-4P). Blocks, each with Part Top Left Sheet Margin, light crease in 5c, couple small hinge thins, otherwise Very Fine | (Photo Ex) 565.00 |
| 4 ★ | 5c Red Brown, Reproduction (3). Margins All Around, Very Fine | (Photo) 235.00 |
| 5 ★ | 10c Black, Reproduction (4). Margins all around, small at R., Fine | (Photo) 325.00 |

1851 ISSUE

- | | | |
|-----|---|----------------|
| 6 ★ | 1c Blue, Ty. II (7). Large Margins All Around showing bits of two other stamps, Fresh, Pretty Color, small area of Dark Blue, the so called "Bruised Plate" Variety, Extremely Fine | (Photo) 125.00 |
| 7 | 1c Blue, Ty. III, IIIa (8, 8A). Horizontal Combination Strip of Three, Margins Nearly All Around, Large in Places, Left Stamp Ty. III, showing type clearly, Middle Stamp Ty. III, small break at bottom, Right stamp Ty. IIIa, Rich Color, Neat Town pmks., slight soiling almost entirely on back, otherwise Fine-Very Fine, Rare | (Photo) 840.00 |
| 8 ★ | 1c Dark Blue, Ty. IV (9a). Double Transfer, Pos. 86R1L, Margins All Around, Fresh, Part o. g., Very Fine | (Photo) 85.00 |
| 9 | 5c Red Brown (12). Horizontal Pair, Barely Touched to Margins, Large in Places, Bright Rich Color, faint almost invisible cancels, appears unused, tiny sealed tear & thin speck in margin, otherwise Fine-Very Fine, ex Neinken | (Photo) 450.00 |

LOTS ON VIEW FRIDAY, JANUARY 5th, 1973

and from MONDAY, JANUARY 8th, 1973



2



4



5



6



8



3. EX



7



9



10



11



12



13



14



19



20



21



22



23



24



25



26



29



30

- 10 ★ **10c Green, Ty. I (13).** Ample to Large Margins incl. Bottom Sheet Margin, Fresh, o. g., Rich Color, creased along edge of design at top, Extremely Fine Appearance (Photo) 1,750.00
- 11 **10c Green, Ty. II (14).** Huge to Enormous Margins incl. Parts of Next Stamps at Right & Left, Rich Color, Light Blue Town pmks., faint creases, Extremely Fine Appearance (Photo) 46.00
- 12 **10c Green, Ty. III (15).** Large Margins All Around, faint ms. cancel, appears unused, Very Fine (Photo) 45.00
- 13 **12c Black, Diagonal Half Used as 6c (17a).** Tied to small piece by Bold "Steam Ship" in two straight lines, Fine, Scarce (Photo) E. VII

1857 ISSUE

- 14 ★ **1c Blue, Ty. II (20).** Fresh, Gorgeous Color, Fine (Photo) 110.00
- 15 ★ **1c Blue, Ty. II (20).** Rich Color, Full o. g., few tiny toned specks, perfs. cut in at bottom & left 110.00



- 16 ★ **5c Brick Red (27).** Well Centered, Fresh, o. g., a few top perfs. not punched out, with P. F. Certificate which states . . . "genuine with slight staining," practically imaginary, nevertheless Extremely Fine, Exceedingly Rare Unused (Photo) 900.00
- 17 **5c Red Brown (28).** Very Lightly Cancelled, appears unused, Fine 75.00
- 18 **5c Red Brown (28).** Vertical Pair, Rich Color, Bold "New Orleans, La." pmk., small toned spot in top right margin of one, otherwise Fine 165.00
- 19 ★ **5c Brown, Ty. I (29).** Fresh, creases, centered to B. R., Fine Appearance (Photo) 175.00
- 20 ★ **5c Deep Orange Brown (30).** Fresh, o. g., Rich color, Very Fine (Photo) 100.00
- 21 ★ **5c Brown, Ty. II (30A).** Fresh, Part o. g., Deep Rich Color, Fine (Photo) 90.00
- 22 ★ **10c Green, Ty. V (35).** Fresh, o. g., Very Fine (Photo) 33.50
- 23 ★ **12c Black, Pl. III (36b).** Fresh, o. g., Very Fine (Photo) 52.50
- 24 ★ **24c Gray (37).** Fresh, Rich Color, Fine (Photo) 115.00
- 25 ★ **30c Orange (38).** Fresh, Bright Color, tiny toned speck, shows mostly on back, otherwise Very Fine (Photo) 120.00
- 26 ★ **90c Blue (39).** Well Centered, Repaired, Very Fine Looking (Photo) 400.00

1857 REPRINTS

- 27 P **1c-90c 1857 Reprints, Plate Proofs on Card (40P-47P).** 10c corner crease, otherwise Very Fine Set 89.50

1861 "FIRST DESIGNS"

- 28 P **1c Indigo, First Design, Plate Proof on India (55P).** Tiny thin spot, Very Fine Appearance 75.00
- 29 ★ **3c Brown Rose, First Design (56).** Fresh, o. g., Very Fine, Ex Neinken (Photo) 225.00

30 ★	3c Brown Rose, First Design (56). Fresh, o. g., Fine	(Photo)	225.00
31 ★	5c Brown, First Design (57). Deep Rich Color, fresh o. g., small part of lower right corner skillfully repaired, Very Fine & Attractive Looking Example of this Rarity, Ex Neinken with P. F. Certificate	(Photo)	7,000.00
32 ★	10c Dark Green, First Design (58). Well Centered, Fresh, o. g., Extremely Fine, a Gorgeous Stamp, with P. F. Certificate	(Photo)	1,400.00
33 ★	10c Dark Green, First Design (58). Fresh, o. g., Rich Color, Fine, a handsome example of this Rarity	(Photo)	1,400.00
34 P	12c Black, First Design, Plate Proof on India (59P). Very Fine ...	(Photo)	100.00
35 P	24c Violet, First Design, Plate Proof on India (60P). Rich Color, Very Fine		60.00
36 P	90c Blue, First Design, Plate Proof on India (62P). Minute thin speck, Very Fine Appearance		135.00

1861 ISSUE

37 ★	1c Pale Blue, 3c Rose (63, 65). Fresh, o. g., Very Fine		36.50
38 ★	3c Lake, Imperforate (66a). Vertical Pair, Huge Margins, Fresh, o. g., Extremely Fine & Rare	(Photo)	600.00
39 ★	5c Brown Yellow (67). Fresh, o. g., Deep Rich Color, corner perf. strengthened, tinst trace of red marking in top & bot. margins, Very Fine appearance, with P. F. Certificate, Ex Neinken	(Photo)	650.00
40 ★	10c Yellow Green (68). Wonderfully Well Centered, o. g., Pretty Color, Extremely Fine	(Photo)	35.00
41 ★	12c Black (69). Wonderfully Well Centered, Intense color, Very Fine	(Photo)	70.00
42 ★	24c Brown Lilac (70a). Beautifully Centered, large part o. g., few very minor toned specks, otherwise Extremely Fine	(Photo)	135.00
43 ★	30c Orange (71). Fresh, part o. g., Bright Color, Fine	(Photo)	90.00
44 ★	90c Blue (72). Perfs. cut in Top and Left		250.00
45 ★	2c Black (73). Exceptionally Well Centered, Extremely Fine	(Photo)	32.50
46 ★	5c Red Brown (75). Fresh, Rich Color, few partly nibbed perfs., otherwise Very Fine	(Photo)	200.00
47 ★	5c Brown (76). Fresh, Very Fine	(Photo)	50.00
48 ★	15c Black (77). Fresh, small part o. g., Well Centered, Very Fine ...	(Photo)	125.00
49 ★	24c Grayish Lilac (78a). Fresh, Very Fine, Ex Neinken	(Photo)	45.00

1867 GRILLED ISSUES

50 ★	3c Rose, C. Grill (83). Fresh, o. g., Incredible Centering, Extremely Fine, a Matchless Gem	(Photo)	300.00
51 ★	1c Blue, E. Grill (86). Top Margin Single, Fresh, Mint, Bright Color, centered to bottom		90.00
52 ★	10c Green, E. Grill (89). Fresh, o. g., Rich Color, few light wrinkles, otherwise Fine	(Photo)	165.00
53 ★	90c Blue, F. Grill (101). Fresh, o. g., Well Centered, Rich Color, Very Fine, Ex-Neinken with P. F. Certificate	(Photo)	575.00

1861 RE-ISSUES

54 ★	1c Blue, Re-Issue (102). Fresh, Bright Color, Very Fine	(Photo)	150.00
55 ★	2c Black, Re-Issue (103). Fresh, Intense Color, Very Fine	(Photo)	750.00
56 ★	3c Brown Red, Re-Issue (104). Gorgeous Rich Color, reperfed at top, Extremely Fine Appearance	(Photo)	1,000.00
57 ★	5c Brown, Re-Issue (105). Fresh, Magnificent Color & Impression, small light corner crease, Extremely Fine Appearance	(Photo)	700.00



31



32



33



34



39



40



41



42



38



43



45



46



47



48



49



50



52



53



54



55



56



57



58



59



60



61



62



65



66

58 ★	10c Green, Re-Issue (106). Fresh, Large Part o. g., Gorgeous Color, Very Fine (Photo)	800.00
59 ★	12c Black, Re-Issue (107). Fresh, Intense Color, o. g., Very Fine (Photo)	1,000.00
60 ★	30c Brownish Orange, Re-Issue (110). Fresh, Rich Color, Fine, ex Greenes (Photo)	1,500.00
61 ★	30c Brownish Orange, Re-Issue (110). Rich Color, Very Fine (Photo)	1,500.00
62 ★	90c Blue, Re-Issue (111). Fresh, nearly full o. g. Marvelous Rich Color, Extremely Fine (Photo)	1,750.00

1869 PICTORIAL ISSUE

63 E	1c-12c 1869 Pictorials, Plate Essays on Perforated, Gummed & Grilled Stamp Paper, Eleven, incl. 1c-3c, 5c, 10c & 12c values, three are imperf., all diff. colors, mostly Fine-Very Fine E. VII	
64 P	1c-90c 1869 Pictorials, Plate Proofs on Card (112P-117P, 120P-122P, 129P). Complete Set as Issued, Very Fine 121.75	
65 ★	1c Buff (112). Well Centered, Fresh, Part o. g., Extremely Fine (Photo)	67.50
66 ★	2c Dark Brown (113). Fresh, Deep Rich Shade, Very Fine (Photo)	40.00
67 ★	2c Brown (113). Enormous Margins Top & Bottom, Extremely Fine, an Incredible Stamp, with P. F. Certificate, realized \$550.00 in our May 1972 Sale (Photo)	40.00
68 ☒	2c Brown, Vertical Half Used for 1c (113d). Unsevered from a complete 2c Brown (113), well tied by neat segmented cork cancel, clear "New York" pmk. on 1870 folded bank letter to Leavenworth, Kansas, cover a bit stained, a Fine Example of this Rare Usage, with P. F. Certificate (Photo) E. XIII	
69 E	3c 1869 Pictorials, Plate Essays on Perforated, Gummed & Grilled Stamp Paper (Brazer 114E-Ch). Six diff. colors, Fine-Very Fine E. IV	
70 ★	3c Ultramarine (114). Fresh, Well Centered, Wide Margins at Sides, Extremely Fine (Photo)	22.50
71	3c Ultramarine, Vertical Two-Thirds Used as 2c (114c). Tied by Grid on small piece, Fine, Unpriced, Rare —	
72 ★	6c Ultramarine (114). Fresh, Nearly Full o. g., Extremely Fine, with P. F. Certificate (Photo)	125.00
73 ★	6c Ultramarine (115). Fresh, Well Centered, couple minute pinholes, otherwise Very Fine 125.00	
74 ★	10c Yellow (116). Bright Color, Fresh, o. g., tiny corner perf. crease, otherwise Very Fine (Photo)	135.00
75 ★	12c Green (117). Fresh, o. g., Very Fine (Photo)	125.00
76 ★	15c Brown & Blue, Ty. I (118). Nice Colors, Fine (Photo)	400.00
77 P	15c Brown & Blue, Ty. II, Plate Proof on India (119P). Top Imprint & Plate No. 31 Strip of Four, Very Fine (Photo)	120.00+
78 P	15c Brown & Blue, Ty. II, Plate Proof on India (119P). Bottom Imprint & Plate No. 23 Strip of Four, small natural paper inclusion in one, Very Fine (Photo)	120.00+
79 ★	15c Brown & Blue, Ty. II (119). Rich Colors, Very Fine (Photo)	150.00

LOTS ON VIEW FRIDAY, JANUARY 5th, 1973

and from MONDAY, JANUARY 8th, 1973



68



67



70



72



74



75



76

No. 31

NATIONAL BANK NOTE CO. NEW YORK



77



79



82

No. 23

NATIONAL BANK NOTE CO. NEW YORK



83



86



87



89



90



91



92



93



94



95



96



- 80 P 15c-90c 1869 Pictorials, Centers Inverted, Plate Proofs on Card (120Pa-122Pa, 129Pa). Very Fine Set (Photo) 2,800.00
- 81 E 24c 1869 Pictorial, Black Plate Essay on Orange Buff Tinted Paper (Brazier 120E-Cd). Very Fine E. III
- 82 ★ 24c Green & Violet (120). Fresh, Vivid Colors, Very Fine (Photo) 375.00
- 83 ★ 24c Green & Violet (120). Well Centered, Deep Colors, tiny spot of color at top left, otherwise Extremely Fine (Photo) 375.00



84

88

- 84 24c Green & Violet, Center Inverted (120b). Horizontal Pair, Wonderful Rich Colors, neat cork cancels, Very Fine, Exceedingly Rare, from the 1970 Rarity Sale (Photo) 10,000.00+
- 85 E 30c 1869 Burgoyne, Black, Die Essay on India (Brazier 121E-Ca). Cut to stamp size, otherwise Very Fine E. III
- 86 ★ 30c Blue & Carmine (121). Fresh, Virtually Full o. g., Huge Margins, Beautiful Colors, Extremely Fine, with P. F. Certificate (Photo) 425.00
- 87 ★ 30c Blue & Carmine (121). Well Centered, Very Fine (Photo) 425.00
- 88 30c Blue & Carmine, Flags Inverted (121b). Well Centered, light Rosette Cancel, creases, an Attractive & Very Fine Appearing Example of this Rarity (Photo) 20,000.00
- 89 E 90c 1869 Washington, Dull Violet & Black, Plate Essay on Imperforate Stamp Paper (Brazier 122E-Cc). Very Fine (Photo) E. IV
- 90 ★ 90c Carmine & Black (122). Magnificent Colors, Wide Margins, Well Centered, Extremely Fine, with P. F. Certificate (Photo) 1,000.00

1869 RE-ISSUE

- 91 ★ 1c Buff, Re-Issue (123). Fresh, Rich Color, Extremely Fine (Photo) 115.00
- 92 ★ 2c Brown, Re-Issue (124). Fresh, Mint, Marvelous Color & Impression, Extremely Fine, a Beauty (Photo) 160.00
- 93 ★ 2c Brown, Re-Issue (124). Fresh, o. g., Very Fine, ex Neinken (Photo) 160.00
- 94 ★ 3c Blue, Re-Issue (125). Fresh, Bright Color, few perfs. slightly blunted by scissor separation, Very Fine, with P. F. Certificate, ex Neinken (Photo) 850.00

95 ★	6c Blue, Re-Issue (126). Well Centered, Fresh, Bright Color, few perfs. at right blunted by scissor separation, Very Fine, ex Neinken (Photo)	325.00
96 ★	10c Yellow, Re-Issue (127). Fresh, Brilliant Color, Very Fine, ex Neinken (Photo)	375.00
97 ★	12c Green, Re-Issue (128). Deep Rich Color, Fine, ex Neinken (Photo)	425.00
98 ★	15c Brown & Blue, Re-Issue (129). Brilliant, Mint, Extremely Fine, a Magnificent Gem	500.00
99 ★	15c Brown & Blue, Re-Issue (129). Fresh, o. g., Brilliant Colors, Extremely Fine, with P. F. Certificate (Photo)	500.00
100 ★	15c Brown & Blue, Re-Issue, Imperforate Horizontally (129a). Deep Colors, Extremely Fine, Rare, ex Neinken (Photo)	800.00
101 ★	24c Green & Violet, Re-Issue (130). Fresh, o. g., Brilliant, Incredible Rich Colors, Extremely Fine, with P. F. Certificate	400.00
102 ★	24c Green & Violet, Re-Issue (130). Marvelous Colors, Separated by scissors at left, all perfs. intact, Very Fine, ex Neinken (Photo)	400.00
103 ★	30c Blue & Carmine, Re-Issue (131). Bright Fresh Colors, reperfed at left, otherwise Very Fine, ex Neinken (Photo)	600.00
104 ★	90c Carmine & Black, Re-Issue (132). Magnificent Deep Colors, Fresh, Part o. g., Very Fine, ex Neinken (Photo)	1000.00
105 ★	90c Carmine & Black, Re-Issue (132). Well Centered, Fresh, Part o. g., Beautiful Colors, bit of album page offset on back, couple partially nibbed perfs., otherwise Extremely Fine, with P. F. Certificate (Photo)	1000.00
106 ★	1c Buff, Re-Issue (133). Beautifully Centered, Fresh, o. g., Extremely Fine (Photo)	95.00

BANK NOTE ISSUES

107 ★	1c Ultramarine, Grill (134). Fresh, Very Fine (Photo)	125.00
108 ★	2c Red Brown, Grill (135). Fresh, Extremely Fine (Photo)	75.00
109 ★	6c Carmine, Grill (137). Fresh, Bright Color, trivial thin speck, Very Fine Appearance (Photo)	275.00
110 ★	7c Vermilion, Grill (138). Fresh, Brilliant Color, o. g., Strong Grill, Fine (Photo)	250.00
111 ★	10c Brown, Grill (139). Fresh, o. g., Rich Color, Clear Grill, Very Fine (Photo)	350.00
112 ★	15c Orange, Grill (141). Fresh, o. g., Bright Color, centered to bottom left, Fine (Photo)	325.00
113 P	1c-90c 1870 Bank Notes, Plate Proofs on India (145P, 148P-155P). Very Fine	57.25
114 ★	2c Red Brown, Brown, 3c Green (146, 157-158). Fresh, last two o. g., Extremely Fine	38.50
115	3c Green, Printed on Both Sides (147a). Almost Complete Head of Washington on Back, Clear Impression, Very Rare (Photo)	1000.00
116 ★	6c Dull Pink (159). Well Centered, Fresh, o. g., tiny bend, Very Fine (Photo)	50.00
117 ★	7c Vermilion (160). Fresh, Vivid Color, couple partly nibbed perfs., otherwise Very Fine (Photo)	90.00
118 ★	10c Brown (161). Fresh, Magnificent Color, Exceptionally Well Centered, Large Margins, tiny tear in margin, otherwise Extremely Fine	50.00
119 P	12c Blackish Violet, Plate Proof on India (162P). Block, Very Fine	55.00
120 ★	15c Orange (163). Fresh Bright Color, couple slightly nibbed perfs., otherwise Extremely Fine (Photo)	125.00
121 P	5c Brown, 90c Rose Carmine, Plate Proofs on Card (166P, 205P). Blocks, Very Fine	60.00
122 ★	90c Rose Carmine (166). Fresh, Part o. g., centered to R., Fine (Photo)	225.00



97



98



99



100



101



102



103



104



105



106



107



108



109



110



111



112



115



116



117



120



122



124



125



126



127



128



129



130



132



133

123 ★	1c-3c, 15c 1879 Bank Notes (182-184, 189). Fresh, All but 1c o. g., tiny gum soak on 15c, otherwise Fine-Very Fine	73.50
124 ★	5c Blue (185). Fresh, o. g., Well Centered, Large Margins, Extremely Fine (Photo)	35.00
125 ★	6c Brown Rose (186). Faint overall toning, otherwise Very Fine (Photo)	110.00
126 ★	10c Brown (187). Rich Color, Fresh, o. g., Extremely Fine (Photo)	150.00
127 ★	10c Brown (188). Large Margins, Fresh, Extremely Fine (Photo)	72.50
128 ★	30c Black (190). Fresh, Very Fine (Photo)	85.00
129 ★	90c Carmine (191). Rich Color, Fresh, o. g., Very Fine (Photo)	250.00
130 ★	5c Brown (205a). Fresh, o. g., Extremely Fine, a Gem (Photo)	22.50
131 ★	1c-10c 1881-88 Bank Notes (206, 209-215). Fresh, All but one o. g., couple faint bends, otherwise Very Fine	70.60
132 ★	6c Brown Rose (208a). Fresh, o. g., Very Fine (Photo)	50.00
133 ★	5c Indigo (216). Top Left Sheet Corner Single, Large Margins, Fresh, Nearly Full o. g., Rich Color, Very Fine (Photo)	13.00
134 ★	30c Orange Brown (217). Fresh, Well Centered, o. g., Extremely Fine (Photo)	50.00

1890-93 ISSUE

135 ★	1c-90c 1890 Bank Notes (219-229). Horiz. Pairs, Fresh, o. g., 1c-8c few small faults, most very trivial, 10c-90c only 30c has tiny thin speck in margin, Mostly Fine-Very Fine (Photo Ex)	450.00
136 ★	3c Purple, Imperforate (221a). Horiz. Pair, Fresh, o. g., Very Fine (Photo)	130.00
137 ★	6c Brown Red, Imperforate (224a). Horiz. Pair, Fresh, o. g., Lovely Color, Very Fine (Photo)	135.00

COLUMBIAN ISSUE

138 ★	1c-50c Columbians (230, 234-235, 237-240). Fresh, some o. g., 15c crease, 30c & 50c tiny thin spots, Very Good-Very Fine Appearance	252.50
139 ★	1c-8c Columbians (230-231, 233, 236). Fresh, o. g., Extremely Fine	32.25
140 ★	2c Columbian, Imperforate (231b). Horiz. Strip of Three, faults as always, Very Fine Appearance, Extremely Rare in a Strip (Photo)	1,425.00
141 ★	3c Columbian (232). Wonderfully Well Centered, Large "Jumbo" Margins, Fresh, o. g., Extremely Fine (Photo)	9.50



142 ★	4c Blue, Columbian Error of Color (233a). Fresh, o. g., Gorgeous Rich Color, Very Fine (Photo)	4,650.00
143 ★	\$1.00 Columbian (241). Fresh, thin, Fine Appearance (Photo)	250.00
144 ★	\$2.00 Columbian (242). Brilliant, o. g., reperfed at left, Very Fine Appearance (Photo)	300.00
145 ★	\$3.00 Columbian (243). Small thin spots & slight rubbing in top margin, otherwise Fine (Photo)	450.00



135 EX



136



137



134



140



141



143



144



145



150



146



147



152



151



157



153



154



155



149



158



160



162

- 146 ★ **\$4.00 Columbian (244).** Fresh, o. g., Beautiful Deep Lake Shade, Very Fine (Photo) 650.00
- 147 ★ **\$5.00 Columbian (245).** Fresh, o. g., reperfed at left, Fine Appearance (Photo) 700.00

1894-95 ISSUE

- 148 ★ **1c-50c 1894 Issue (246-250, 254, 256-258, 260).** Fresh, o. g., 6c & 50c small thin spots, others Very Fine 117.35
- 149 ★田 **2c Pink, Imperf. Horizontally (248a). Block,** Fresh, o. g., Well Centered, faint thin spot, rounded corner perf., otherwise Very Fine, Possibly Unique in Block (Photo) 1,500.00
- 150 ★田 **5c Chocolate, Imperf. Horizontally (255b). Bottom Left Margin Block of Six (2 x 3),** Fresh, light insignificant crease in margin of left vertical strip, otherwise Very Fine, a Marvelous Showpiece of Extreme Rarity, ex Lilly (Photo) 1,500.00+
- 151 ★田 **6c Dull Brown, Imperf. Horizontally (256a). Vertical Block of Six,** Fresh, o. g., perfs. close at right strip, others Fine, Very Rare, particularly in large multiples, ex Lilly (Photo) 1,275.00+
- 152 ★ **15c Dark Blue (259).** Large Margins, Fresh, o. g., Extremely Fine (Photo) 37.50
- 153 ★ **\$1.00 Black, Ty. I (261).** Fresh, o. g., Extremely Fine (Photo) 135.00
- 154 ★ **\$2.00 Dark Blue (262).** Fresh, o. g., Deep Rich Color, Very Fine (Photo) 200.00
- 155 ★ **\$5.00 Dark Green (263).** Fresh, o. g., Vivid Color, Very Fine (Photo) 500.00
- 156 ★ **1c-15c 1895 Issue (264, 267-274).** Fresh, Mostly o. g., 15c single short perf., others Very Fine 69.60
- 157 ★ **2c Carmine, Imperforate (267a). Left Imprint & Plate No. 319 Strip of Three,** Fresh, o. g., Very Fine (Photo) 127.50+
- 158 ★ **6c Dull Brown, Watermarked U.S.I.R. (271a). Horiz. Pair,** Fresh, o. g., str. edge at left, small sealed tear in other, Rare piece (Photo) 850.00



- 159 ★ **8c Violet Brown, Watermarked U.S.I.R. (272a). Top Imprint & Plate No. 58 Strip of Three,** Fresh, o. g., Exceptionally Well Centered, tiny insignificant corner crease in one, light crease in selvage, otherwise Extremely Fine, a Great Rarity, ex Lilly (Photo) 2,500.00

160 ★	50c Orange (275). Fresh, Rich Color, Extremely Fine	(Photo)	40.00
161 ★	\$1.00 Black, Ty. I (276). Fresh, Large Part o. g., Very Fine	(Photo)	120.00
162 ★	\$1.00 Black, Ty. II (276A). Margin single, Fresh, o. g., Very Fine	(Photo)	225.00
163 ★	\$2.00 Dark Blue (277a). Fresh, o. g., Rich Color, Extremely Fine	(Photo)	140.00
164 ★	\$5.00 Dark Green (278). Fresh, o. g., Gorgeous Color, Fine	(Photo)	325.00
165 ★	1c-15c 1898 Issue (279-282, 283). Fresh, o. g., Very Fine, Choice Lot		59.00

TRANS-MISSISSIPPI ISSUE

166 ★	1c-50c Trans-Mississippi (285-291). Fresh, Mostly o. g., 50c perfs. touch & small sealed tear, others V. G.-V. F.	281.00
-------	--	--------



167 ★	8c Trans-Mississippi, Imperf. Horizontally (289a). Top Margin Pair, Well Centered, Fresh, o. g., couple tiny insignificant thin specks, crease at top of selvage only, Extremely Fine Appearance, Very Rare	(Photo)	4,250.00
168 ★	\$1.00 Trans-Mississippi (292). Fresh, o. g., Fine	(Photo)	350.00
169 ★	\$2.00 Trans-Mississippi (293). Fresh, o. g., Wonderful Bright Color, Re-perfed at R. otherwise Extremely Fine	(Photo)	500.00

A REMINDER

Mails are often slow. After nearly every auction we receive some 25 to 50 late bid sheets, many of which would have been successful. We can only repeat . . . **PLEASE MAIL YOUR BIDS EARLY!** Use Air Mail if you are in doubt as to being on time.



161



163



164



168



169



175



176



177



178



184



185



179



189



190



192



194



195



198



199



ing & Printing, ©



5214

203



200



205



209



213



213



214



215



216



219



223



223



220



226



227



229

PAN-AMERICAN ISSUE

- 170 ★ 2c-10c Pan-American (295-299). 8c Very Good, others Fine-Very Fine 98.50



171

172

- 171 ★ 1c Pan-American, Center Inverted (294a). Fresh, Quite Well Centered, Very Fine Example of this Popular Rarity, with P. F. Certificate (Photo) 3,500.00
- 172 ★ 2c Pan-American, Center Inverted (295a). Nicely Centered, Very Fine, a Most Handsome Example of this Great Rarity, ex Greenes (Photo) 18,000.00

1902 ISSUE

- 173 ★ 5c-10c 1902 Issue (304-307). Extremely Fine 28.00
- 174 ★ 10c Red Brown (307a). Block, Extremely Fine 37.50
- 175 ★ 50c Orange (310). Extremely Fine (Photo) 70.00
- 176 ★ \$1.00 Black (311). Very Fine (Photo) 125.00
- 177 ★ \$2.00 Dark Blue (312). Very Fine (Photo) 200.00
- 178 ★ \$5.00 Dark Green (313). Well centered, gum disturbed, Very Fine appearance (Photo) 375.00
- 179 ★ 1c Blue Green, Sidewise Imperforate Coil (314S). Line Strip of Four, Very Fine, with A. P. S. Certificate, listed but Unpriced, a Very Rare Strip, ex Grunin (Photo) E. XIII



- 180 ★ 1c Blue Green, Vertical Coil (316). Pair, Fresh, Very Fine, with P. F. Certificate, listed but unpriced, a Magnificent Example of this Great Rarity, this same pair realized \$7,500.00 in a 1968 Auction and \$9,250.00 in 1971, ex Grunin (Photo) —
- 181 ★ 2c Carmine, Scarlet, Lake, Imperforate (320, 320a, 320b). Very Fine 28.50

1904-09 ISSUES

182 ★	1c-10c Louisiana Purchase (323-327). Tiny faults, Fine-Very Fine Appearing Set	130.00
183 ★	2c-15c 1908 Issue (332-336, 338-340). Very Fine	52.25
184 ★	50c Violet (341). Very Fine	(Photo) 52.50
185 ★	\$1.00 Violet Brown (342). Very Fine	(Photo) 92.50
186 ★	2c Carmine, Imperforate Coil, Double Transfer Design of 1c (344E). Top Small Star & Plate No. 5299 Vertical Strip of Seven, Middle Stamp the Error, Extremely Fine & Rare	474.00+
187 ★	1c-5c 1908 Coils (348-351). Pairs, Very Fine	118.00
188 ★	1c-5c 1908 Coils (352-355). Pairs, Very Fine	118.00
189 ★	10c Yellow, Coil (356). Fine	(Photo) 350.00
190 ★	10c Yellow, Coil (356). Pair, Fine, with P. F. Certificate	(Photo) 775.00

1909 BLUISH PAPERS

191 ★	1c Green, 2c Carmine, Bluish (357-358). Centered to right perfs. clear	37.50
192 ★	3c Deep Violet, Bluish (359). Perfs. just clear at right, Fine	(Photo) 425.00



193

197

193 ★	4c Orange Brown, Bluish (360). Top Plate No. Single, Well Centered, Mint, Extremely Fine, a Magnificent Example of this Rarity, ex Col. Green	(Photo) 6,000.00
194 ★	5c Blue, Bluish (361). Very Fine	(Photo) 1,550.00
195 ★	6c Red Orange, Bluish (362). Huge Margins, Extremely Fine, ex Grunin	(Photo) 325.00
196 ★	6c Red Orange, Bluish (362). Part Bottom Imprint Single, tiny natural paper inclusion, Fine	(Photo) 325.00
197 ★	8c Olive Green, Bluish (363). Wonderfully Well Centered, Extremely Fine, a Gorgeous Example of this Rarity	(Photo) 6,000.00
198 ★	10c Yellow, Bluish (364). Well Centered,, Extremely Fine	(Photo) 365.00
199 ★	13c Blue Green, Bluish (365). Well Centered, Extremely Fine	(Photo) 775.00
200 ★	15c Pale Ultramarine, Bluish (366). Tiny thin speck in one perf. tip, Fine Appearance	(Photo) 300.00
201 ★	2c Lincoln, Bluish (369). Very Fine	60.00

1910-1914 ISSUES

202 ★	1c-15c 1910 Issue (374-382). Complete Set of Top Plate No. Singles, Very Fine	87.05+
203 ★	8c Olive Green (380). Plate No. Single, Almost Perfectly Centered, Large "Jumbo" Margins, Extremely Fine	(Photo) 17.00
204 ★	2c Carmine, Coil (388). Huge Margins, Mint, Extremely Fine, ex Grunin	75.00
205 ★	2c Carmine, Coil (388). Pair, 3 mm spacing, Extremely Fine, ex Grunin (Photo)	165.00
206 ★	1c-5c 1910 Coils (390-396). Line Pairs, Very Fine Set	169.85
207 ★	1c-10c Panama-Pacific (397-400A). Fine Set	143.00
208 ★	1c-5c Panama-Pacific, Perf. 10 (401-403). Very Good	90.00
209 ★	10c Panama-Pacific, Perf. 10 (404). Couple trivial perf. nibbings at bottom, otherwise Very Fine	(Photo) 300.00
210 ★	7c-30c 1912 Issue (407, 414-420). Very Fine	91.00
211 ★	1c Green, 2c Carmine, Kansas City Roulette (408 Var-409 Var). Center Line Blocks, "Kansas City, Mo., Stamp Div." Backstamps, Very Fine, Scott Specialized Catalogue states that only one sheet of 400 was kept intact, which, if verified, makes these Center Line Blocks unique, ex Grunin	E. IX
212 ★	2c Carmine, Coil (413). Line Pair, Fine	27.50
213 ★	50c Violet (421). Very Fine	(Photo) 100.00
214 ★	50c Violet (422). Very Fine	(Photo) 50.00
215 ★	\$1.00 Violet Brown (423). Reperfed, Very Fine Appearance	(Photo) 120.00
216 ★	1c-15c 1914 Issue (424-427, 429-437). Perfs. touch on 7c, others Fine-Very Fine	85.30
217 ★	5c Blue (428). "Jumbo" Margins, Extremely Fine	(Photo) 4.25
218 ★	20c Ultramarine (438). Very Fine	32.50
219 ★	30c Orange Red (439). Very Fine	(Photo) 42.50
220 ★	50c Violet (440). Very Fine	(Photo) 150.00
221 ★	1c-2c, 5c 1914 Coils (443-444, 447). Line Pairs, Very Fine	50.50
222 ★	3c Violet, Coil (445). Paste-Up Single, Mint, Fine	60.00
223 ★	3c Violet, Coil (445). Line Pair, Very Fine	(Photo) 170.00
224 ★	4c Brown, Coil (446). Mint, Fine	32.50
225 ★	4c Brown, Coil (446). Pair, tiny thin speck in one, otherwise Fine	65.00
226 ★	2c Red, Coil Ty. I (453). Joint Line Pairs, Fine	(Photo) 75.00
227 ★	2c Carmine, Coil Ty. II (454). Pair, Mint, Very Fine	(Photo) 80.00
228 ★	3c Violet, Coil (456). Nearly Full o. g., Very Fine	47.50
229 ★	2c Carmine, Imperforate Coil (459). Mint, Fine	(Photo) 80.00
230 ★	2c Carmine, Imperforate Coil (459). Mint Pair, Very Fine	(Photo) 160.00

1915-1922 ISSUES

231 ★	\$1.00 Violet Black (460). Mint, Beautifully Centered, Very Fine (Photo)	175.00
232 ★	2c Pale Carmine Red (461). Extremely Fine	17.50
233 ★	1c-15c 1916 Issue (462-466, 468-475). Fine-Very Fine	152.50
234 ★	5c Carmine, Error (467). Block of 20, Two Middle Stamps the Errors, 2c stamps Fine-Very Fine, the Errors Mint, Very Fine, Unusually Well Centered	425.00
235 ★	20c Light Ultramarine (476). Very Fine	(Photo) 35.00
236 ★	50c Light Violet (477). Fine	(Photo) 190.00
237 ★	\$1.00 Violet Black (478). Very Fine	(Photo) 175.00
238 ★	\$2.00 Dark Blue (479). Plate No. Single, Mint, Very Fine	65.00
239 ★	\$5.00 Light Green (480). Mint, Very Fine	(Photo) 55.00



- 240 ★ 5c Carmine, Error, Imperforate (485). Mint Block of Nine, Middle Stamp the Error, Extremely Fine (Photo) 3,600.00
- 241 ★ 1c-10c 1916 Coils (486, 490, 492, 494-497). Joint Line Strips of Four, Fine-Very Fine 58.95



- 242 ★ 2c Carmine, Coil Ty. II (491). Joint Line Pair, Extremely Fine Example of this Rare Coil, with P. F. Certificate (Photo) 1,350.00
- 243 ★ 1c-\$1.00 1917 Issue (498-499, 501-502, 504, 506-518). Incl. extra shade of 12c, Fine-Very Fine 62.10
- 244 ★ 2c Deep Rose, Ty. Ia (500). Tiny natural gum wrinkle, Very Fine (Photo) 75.00
- 245 ★ 4c Brown, 8c Olive Bistre (503, 508). Well Centered, Large "Jumbo" Margins, Mint, Extremely Fine 4.55
- 246 ★ 5c Rose, Error (505). Horiz. Pair, Right Stamp the Error, Mint, Fine (Photo) 120.00
- 247 ★ 6c Red Orange, Perf. 10 at Top (506 Var). Vertical Pair with Plate No. top stamp the Error, few perfs. bit strengthened, Extremely Fine & Rare, Unpriced unused, this pair from Block in Grunin Sale (Photo) E. XIII
- 248 ★ 20c Ultramarine, Vertical Pair Imperf. Between (515b). Extremely Fine, with P. F. Certificate (Photo) 225.00

249 ★	\$1.00 Deep Brown (518b). Fine, Scarce Shade	90.00
250 ★	\$2.00 Orange Red & Black (523). Very Fine (Photo)	125.00
251 ★	\$5.00 Green & Black (524). Mint Plate No. Single, Very Fine	55.00
252 ★	1c-3c 1918 Offset, Imperforate (531-534, 535). Mint, Very Fine	45.75



- 253 ★ 2c Carmine, Offset Ty. VII (534B). Top Plate No. 12275 Block of Six, Very Fine, Extremely Rare Showpiece, Ex Wunderlich (Photo) 5,000.00
- 254 P 3c Victory, Large Die Proof (537P). Die Sunk on 8" x 6" Card, Very Fine, from the Roosevelt Collection, Rare (Photo) 600.00
- 255 ★ 2c Carmine, Ty. II, Rotary (539). Fine Rare, with P. F. Certificate (Photo) 675.00
- 256 ★ \$2.00 Carmine & Black (547). Very Fine (Photo) 42.50

1922 TO DATE



- 257 ★ 5c Deep Blue, Imperforate (557a). Bottom Plate No. 15568 Block of Six, usual negligible natural gum wrinkles, Large Margins, Very Fine, a Wonderful Exhibition Piece of Utmost Rarity, possibly Unique, Ex Grunin (Photo) E. XVI
- 258 ★ 2c Carmine, Ty. II (599A). Mint Pair, perfs. in at right 90.00



230



231



235



237



239



244



246



250



248



260



12557



262



264



247



255



256



261



265



268



263



- 259 **2c Harding, Perf. 11 Rotary (613).** With Top Sheet Margin, Far better than usual centering, a Very Fine Example of this Great Rarity, with P. F. Certificate, Ex Grunin (Photo) 6,000.00
- 260 ★ **1c Kans. Overprint, Overprint Omitted (658a).** Vertical Pair, Fine, ex Grunin (Photo) 225.00
- 261 ★ **9c Nebr. Overprint, Overprint Omitted (678a).** Vertical Strip of Three, Middle Stamp the Error, Extremely Fine, A Marvelous Rarity, ex Grunin (Photo) 310.00
- 262 ★田 **\$1.00 Purple & Black, Imperf. Horizontally (832a).** Block, with Mint, Very Fine Pair Imperf. Between, other has part of blind perf. row (Photo) 350.00+
- 263 ★ **4c McDowell, Imperf. Horizontally (1138a).** Vertical Strip of Three, centered to left as always, Mint, Unpriced, only Twelve Pairs or Strips Known (Photo) E. XV
- 264 ★ **5c Black, Coil, Imperforate (1303 Var) Strip of Three,** Blind Perfs. between one, other completely Imperf., Mint, Very Fine, Unlisted (Photo) E. XII
- 265 ★田 **6c Dark Blue, Red & Green, Imperf. Vertically (1338De).** Mint Block, small light spot of red ink on one, otherwise Very Fine, Unpriced (Photo) E. XI
- 266 ★ **8c Dark Blue, Red & Slate Green, Coil, Imperforate (1338Gh).** Strip of Six, Very Fine, Unpriced (Photo) E. XII
- 267 ★田 **6c Walt Disney, Ochre, "Walt Disney," "6c" Omitted (1355a).** Bottom Right Plate No. Block, Mint, Very Fine, Unpriced & Rare in Plate Block (Photo) 1,400.00+
- 268 ★ **6c Walt Disney, Imperf. Horizontally (1355b).** Pair, Very Fine (Photo) 500.00
- 269 ★ **6c Walt Disney, Blue Omitted (1355f).** Bottom Right Margin Strip of Four, Left Stamp Blue is Entirely Omitted, next stamp has Blue Missing on Part of Jacket & All of Globe, others Blue missing only in Globes, Mint, small ink marks on last two, otherwise Very Fine, Unpriced (Photo) E. XIII
- 270 ★田 **6c Walt Disney, Blue Omitted (1355f).** Top Left Plate No. Block, Mint, Very Fine, Unpriced & Rare (Photo) E. XV
- 271 ★田 **6c Walt Disney (1355).** Vertical Plate No. Block of Ten, Horiz. Perfs. Shifted Cutting Through Middle of Design, Double Row of Perfs. in Top Pair, Mint, Startling Freak E. V
- 272 ★田 **6c Walt Disney (1355).** Vertical Block of Ten, Perfs. Radically Shifted into Design, Top "Mail Early In The Day" Margin Stamps have no perforations, right vertical row has some black paper bits on back, others Mint, Spectacular Freak E. VI
- 273 ★ **6c Grandma Moses, Black & Prussian Blue, "Grandma Moses", "6c U. S. Postage" Omitted (1370b).** Mint, Very Fine (Photo) 350.00
- 274 ★ **6c Grandma Moses, Black & Prussian Blue, "Grandma Moses", "6c U. S. Postage" Omitted (1370b).** Mint, Very Fine (Photo) 350.00
- 275 ★ **8c Deep Claret, Coil, Imperforate (1402a).** Pair, Mint, Very Fine, Unpriced (Photo) E. VIII



266



267



281



282



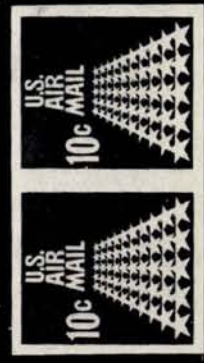
274



273



275



287

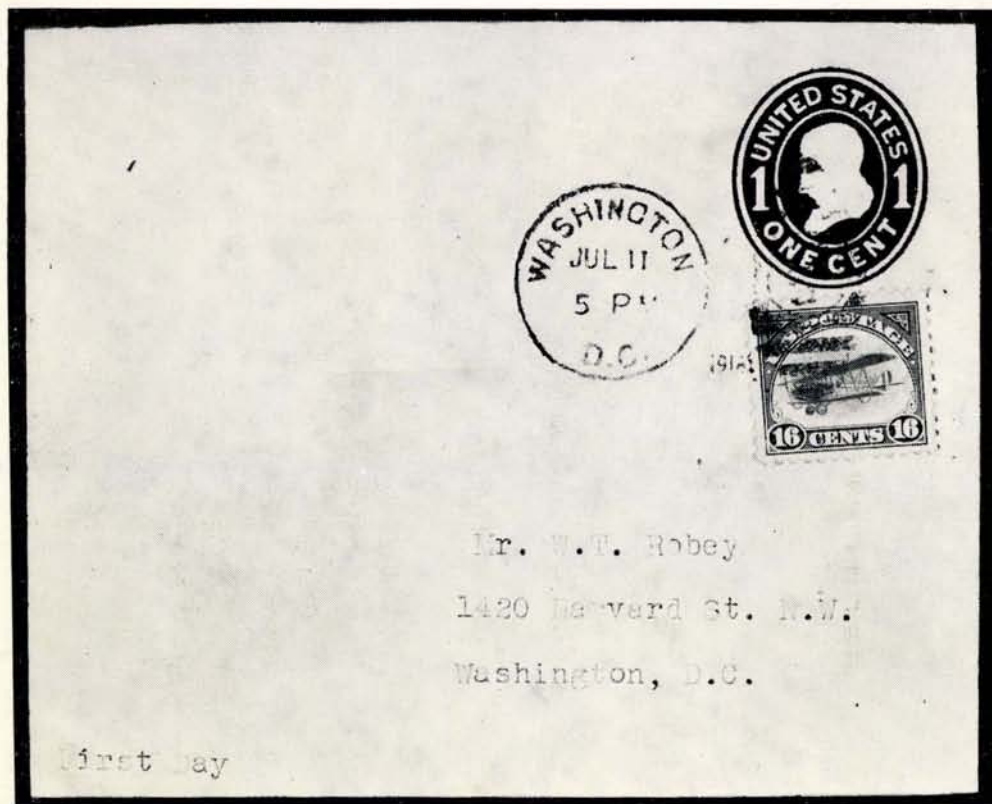


270

269

- 276 ★ 6c Christmas, Black Color Omitted (1414 Var.). T. R. Plate No. Block of 10, Black Plate No. & Color entirely missing on Left Block of Four, Mint, Very Fine, Unlisted & Rare, realized \$2,000.00 in our 1971 Rarity Sale —
- 277 ★ 6c Christmas (1414). T. R. Plate No. Block of 10, Black Color Shifted a trifle up & to the left, creating a Double Impression appearance, Unusual E. III

AIR POST STAMPS



- 278 ☒ 16c Green, Air Post (C2). Well Centered, tied to 1c Entire (U400) by "Washington, D. C., Jul. 11, 1918" duplex pmk., First Day of Issue, Very Fine, with letter of authenticity, Extremely Rare, Ex Goodkind (Photo) 2,500.00
- 279 ☒ 16c Green, Air Post (C2). Tied to cover by "Jul 15, 1918" Duplex Pmk. (First Flight), natural s. e. at right, addressed to "W. T. Robey", discoverer of the 24c Air Mail Invert, Very Fine (Photo) 135.00

LOTS ON VIEW FRIDAY, JANUARY 5th, 1973

and from MONDAY, JANUARY 8th, 1973



246



279

W. T. ROBEY



VIA AIR MAIL

284

Nassau Stamp Co.
c/o Postmaster,
Rock Springs, Wyoming.

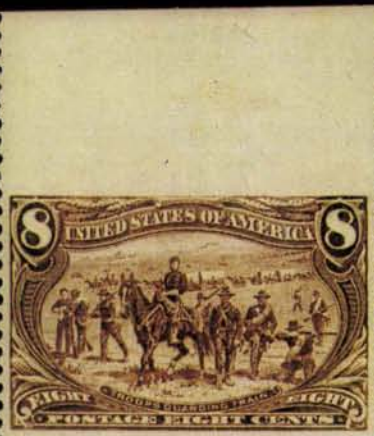


254



- 280 ★ **24c Carmine Rose & Blue, Air Post, Center Inverted (C3a).** Well Centered, Brilliant & Fresh, Extremely Fine, a Magnificent Example of this Most Popular U. S. Rarity, from the "Ambassador" Collection, & the 1971 Rarity Sale (Photo) 35,000.00
- 281 ★ **24c Carmine Rose & Blue, Air Post (C3 Var.). Grounded Plane Variety,** Extremely Fine, a Most Spectacular Deep "Grounding", ex Grunin (Photo) E. XI
- 282 ★ **24c Carmine Rose & Blue, Air Post (C3 Var.). Grounded Plane Variety,** s. e. at R., Very Fine, Sensational! an even deeper "Grounding" than preceding lot, ex Grunin (Photo) E. XI
- 283 ★ **24c Carmine Rose & Blue, Air Post (C3).** Six Diff. Misplaced Plane Varieties, one without gum, two barely touched, others Fine-Very Fine, a Most Interesting Lot, Plane to Left, Right, Top & Bottom, ex Grunin E. XII
- 284 ✉ **24c Carmine Rose & Blue, Air Post (C3).** Choice Example of Deeply "Grounded Plane" Variety, tied by N. Y. 1924 machine pmk., on neat flown cachet cover, Fine, Extremely Scarce on Cover, ex Grunin, Lehman (Photo) E. XII
- 285 ★ **8c-24c 1923 Air Post (C4-C6).** Well Centered, 16c tiny thin speck, otherwise Very Fine Set 90.00
- 286 ★ **6c Dark Blue & Carmine, Imperf. Vertically (C23b).** Error Pair in Horizontal Strip of Five, freak diagonal perforations through others, Mint, Very Fine, Extremely Rare (Photo) 4,250.00+
- 287 ★ **10c Carmine, Air Post Coil, Imperforate (C73a).** Pair, Mint, Very Fine, Unpriced (Photo) E. XIII
- 288 ★ **U. S. Balance of Collection, 263 Almost All Unused Stamps, Nearly all 20th Century, incl. Coil Singles & Pairs, Postage & Commems to 1926,** the few 19th include faulty #1 & #2, a few others have small faults, Majority Fine-Very Fine E. XI

END OF SALE — THANK YOU



ROBERT A. SIEGEL AUCTION GALLERIES, Inc.

120 EAST 56TH STREET
NEW YORK, N. Y. 10022

423RD SALE

PRICES REALIZED

JANUARY 9TH, 1973

PRIME UNITED STATES

GROSS REALIZATION \$225,981.00

1	4500.00	45	95.00	89	55.00	133	21.00	177	210.00
2	1250.00	46	75.00	90	1700.00	134	140.00	178	260.00
3	675.00	47	90.00	91	120.00	135	160.00	179	850.00
4	170.00	48	300.00	92	575.00	136	140.00	180	10,000.00
5	160.00	49	135.00	93	200.00	137	145.00	181	35.00
6	160.00	50	900.00	94	400.00	138	110.00	182	35.00
7	260.00	51	70.00	95	200.00	139	70.00	183	47.50
8	95.00	52	115.00	96	375.00	140	90.00	184	50.00
9	150.00	53	900.00	97	270.00	141	52.50	185	90.00
10	1200.00	54	105.00	98	1450.00	142	350.00	186	450.00
11	100.00	55	750.00	99	650.00	143	70.00	187	95.00
12	55.00	56	600.00	100	800.00	144	210.00	188	115.00
13	115.00	57	525.00	101	1000.00	145	130.00	189	280.00
14	115.00	58	500.00	102	250.00	146	450.00	190	475.00
15	21.00	59	1100.00	103	425.00	147	375.00	191	20.00
16	1250.00	60	1050.00	104	900.00	148	75.00	192	260.00
17	65.00	61	1000.00	105	525.00	149	1550.00	193	5250.00
18	105.00	62	2900.00	106	160.00	150	800.00	194	1350.00
19	115.00	63	100.00	107	170.00	151	800.00	195	750.00
20	150.00	64	140.00	108	120.00	152	150.00	196	150.00
21	67.50	65	100.00	109	150.00	153	500.00	197	4250.00
22	57.50	66	67.50	110	170.00	154	250.00	198	550.00
23	85.00	67	500.00	111	525.00	155	650.00	199	1150.00
24	80.00	68	900.00	112	240.00	156	57.50	200	130.00
25	90.00	69	42.50	113	42.50	157	260.00	201	55.00
26	120.00	70	62.50	114	52.50	158	425.00	202	145.00
27	90.00	71	20.00	115	525.00	159	2500.00	203	85.00
28	50.00	72	375.00	116	50.00	160	80.00	204	130.00
29	125.00	73	42.50	117	62.50	161	85.00	205	350.00
30	135.00	74	135.00	118	45.00	162	300.00	206	260.00
31	2200.00	75	220.00	119	42.50	163	240.00	207	85.00
32	2100.00	76	375.00	120	160.00	164	260.00	208	23.00
33	1050.00	77	375.00	121	47.50	165	110.00	209	130.00
34	80.00	78	375.00	122	170.00	166	75.00	210	70.00
35	45.00	79	200.00	123	45.00	167	5000.00	211	105.00
36	50.00	80	2500.00	124	100.00	168	300.00	212	26.00
37	45.00	81	47.50	125	85.00	169	350.00	213	125.00
38	625.00	82	425.00	126	230.00	170	45.00	214	47.50
39	210.00	83	280.00	127	125.00	171	2700.00	215	65.00
40	150.00	84	13,000.00	128	95.00	172	12,500.00	216	67.50
41	145.00	85	32.50	129	375.00	173	65.00	217	90.00
42	170.00	86	1150.00	130	110.00	174	47.50	218	42.50
43	80.00	87	375.00	131	52.50	175	90.00	219	95.00
44	42.50	88	12,000.00	132	100.00	176	115.00	220	180.00

221 120.00	235 52.50	249 70.00	263 750.00	277 16.00
222 40.00	236 120.00	250 130.00	264 280.00	278 3500.00
223 400.00	237 150.00	251 47.50	265 230.00	279 125.00
224 23.00	238 70.00	252 32.50	266 270.00	280 37,000.00
225 32.50	239 85.00	253 4500.00	267 675.00	281 350.00
226 130.00	240 3600.00	254 550.00	268 425.00	282 230.00
227 135.00	241 80.00	255 425.00	269 550.00	283 270.00
228 50.00	242 2700.00	256 47.50	270 1600.00	284 525.00
229 85.00	243 40.00	257 1900.00	271 125.00	285 70.00
230 270.00	244 90.00	258 47.50	272 120.00	286 5000.00
231 230.00	245 50.00	259 8000.00	273 250.00	287 425.00
232 26.00	246 85.00	260 115.00	274 200.00	288 500.00
233 115.00	247 425.00	261 525.00	275 100.00	
234 400.00	248 325.00	262 1000.00	276 1450.00	