

438th SALE

UNITED STATES STAMPS

Singles, Blocks, Complete Sheets

U.S. POSSESSIONS

GENERAL FOREIGN

Sold By Order Of Various Owners



AT PUBLIC AUCTION

Thursday & Friday

October 25th & 26th, 1973 at 1:00 P.M. Each Day

Robert A. Siegel

AUCTION GALLERIES, INC.

120 East 56th STREET

NEW YORK CITY, N.Y. 10022

Tel.: (212) 753-6421

CONDITIONS OF SALE

1. The terms of sale are strictly cash on delivery to the highest bidder unless special arrangements have been made prior to the sale.
2. All bids are per lot as numbered in the catalogue unless otherwise announced by the auctioneer at the time of sale. The right is reserved to group two or more lots; to withdraw any lot or lots from the sale, or to act in behalf of the seller. The auctioneer shall regulate the bidding and in the event of any dispute his decision shall be final.
3. Any lot, the description of which is incorrect is returnable, but only within five days of receipt and in any case it must be received by the auctioneer within four weeks from the date of the auction. All disputed lots must be returned intact as received and the following lots may not be returned for any reason whatsoever: Lots containing ten or more stamps; Lots from buyers who have had the opportunity to examine them before the sale; Lots described as having defects or faults may not be returned because of faults. No illustrated lots may be returned because of centering, margins or other factors shown in the illustrations.
4. Successful bidders, unless they are known to us or supply acceptable references are expected to make payment in full before the lots are delivered. Mail bidders will be notified of the amount of their purchases. All mail bidders who have established credit with us must make payment within three days after receipt. We reserve the right in our sole and absolute discretion to demand cash payment at the time a lot is knocked down to any bidder who has not previously established credit with us or whose account is in arrears. In the event any buyer refuses to pay cash for any lot at the time it is knocked down to him, the auctioneer reserves the right to re-offer the lot immediately for sale to the highest bidder.
5. If the purchase price has not been paid within the time limit, nor lots taken up within seven days from date of sale they must be resold and any loss arising from such sale will be charged to the defaulter. Any account more than thirty days in arrears is subject to a late payment charge of 1½% per month so long as the account remains in arrears. If the auctioneer, in his discretion, should institute any legal action to secure payment of a delinquent account the defaulting purchaser shall pay all legal expense incurred by the auctioneer and such charges will be added to the amount owed.
6. All lots are sold as genuine but should any lot be proved otherwise by written opinion of any competent, responsible authority acceptable to us, immediate refund of the full purchase price will be made, provided that such claim is made in writing within 14 days from date of sale. If claim is not made within this period, no lots are returnable for any reason at any time. So long as we are notified within the 14 day period that an opinion is being sought the matter will remain open until such opinion is rendered. We will not be responsible for any charges incurred by the buyer for expertization fees and costs unless the opinion states the item is not genuine, in which case we will pay actual costs up to a maximum of \$50.00.
7. Until paid in full, all lots remain the property of Robert A. Siegel Auction Galleries, Inc. in behalf of the seller.
8. All forwarding charges will be added to the purchase price. The mode of shipment shall be at our option unless we are given specific instructions.
9. Lots may be sent for inspection to buyers known to us upon written application. All such lots must be returned to us by registered mail, adequately insured and within 24 hours after receipt. The applicant assumes all responsibility and for insurance against all risks from time of receipt until they are actually received back by us, and is to pay all expenses of postage and insurance. No lots can be sent for inspection within ten days of the date of sale. Large lots and collections cannot be sent for inspection.
10. Agents are responsible for all purchases made in behalf of their clients unless other arrangements are made prior to the sale.
11. The placing of a bid shall constitute acceptance of the foregoing conditions of sale.

ROBERT A. SIEGEL, Licensed Auctioneer

DESCRIPTIONS

EXTREMELY FINE: The finest condition for noteworthy, outstanding copies.

VERY FINE: (V. F.) In prime condition such as to satisfy the requirements of particular collectors.

FINE: (F) Perforations or margins do not touch design on issues after 1890 but in some cases may just touch in earlier issues. If used, fairly light cancellation.

VERY GOOD: (V. G.) Generally nice appearance but margins or perforations may cut in slightly.

GOOD: Average off-centering or fairly attractive with slight defects.

ORIGINAL GUM is not to be expected on 19th century stamps unless so stated in the description.

MINT: With original gum and never hinged.

Scott 1973 Specialized Catalog used for cataloguing lots of U. S. & Possessions. Scott 1974 Standard Catalogue for others. Use of other catalogs noted in the descriptions.

OCTOBER 25th, 26th, 1973

ROBERT A. SIEGEL AUCTION GALLERIES, Inc.

New York, N. Y. 10022

Tel.: 753-6421 (Area Code 212)

Please purchase for me at your auction to be held **October 25th, 26th, 1973**, the lots named below, the prices annexed being my limit on each lot. I agree to remit for purchases in accordance with the **Conditions of Sale** and return no lots later than three days after receipt.

REFERENCES PLEASE
(if unknown to us)

SIGNED

New York State residents kindly include
County in address.

County

[illegible]

VALUATIONS

Upon request, estimate of value furnished on any lots in this auction.

FIRST SESSION

THURSDAY, OCTOBER 25th, 1973 — 1:00 P. M.

UNITED STATES

1847 ISSUE

- | | | |
|------|--|--------------|
| 1 ★ | 5c Brown (1). Three Large to Huge Margins, Ample at B., Part o. g., heavy vertical crease, broken at top & bottom, Fairly Attractive (Photo) | E. VI |
| 2 | 5c Red Brown (1). Margins All Around, Clear Orange Red Grid Cancel., Very Fine, Handsome (Photo) | 85.00 |
| 3 | 5c Dark Brown (1a). Margins All Around except trifle in one spot at B., Lovely Color, Beautiful Impression, light Blue Town pmk., Fine (Photo) | 85.00+ |
| 4 | 5c Grayish Brown (1). Margins all around, closed tear, Fine appearance | 85.00 |
| 5 | 5c Red Brown (1). Three large margins, barely in at B., tied on large piece, red "5" and Express Mail cancel, Fine | E. IV |
| 6 ☒ | 5c Red Brown (1). Large Margins all around tied with Red St. Louis, Mo. pmk. on cover to Hapton, Ill. Very Fine (Photo) | 100.00 |
| 7 ☒ | 5c Dark Brown (1). Large margins all around, Sheet margin at R. tied Ms. cancel, Red Lockport, N. Y. pmk. to Michigan, Extremely Fine (Photo) | E. VI |
| 8 ☒ | 5c Red Brown (1). Margins three sides, touches partly at left, tied bold blue Waffle Grid cancel, Cambridge, Mass. pmk. on cover to Hartford, Fine (Photo) | 100.00 |
| 9 ☒ | 5c Red Brown (1). Tiny corner fault, tied red grid, St. Louis, Mo. pmk. to Hampton, Ill. Attractive | E. V |
| 10 | 10c Black (2). Three large margins, barely in part of one side, crease, Red grid cancel, Fine appearance (Photo) | 300.00 |
| 11 | 10c Black (2). Three Margins, slightly in at B., faint ms. cancel, tiny repair, Fine Looking | 90.00 |
| 12 | 10c Black (2). Large Margins to clear at R., light manuscript cancels, skilfully repaired at lower right, Very Fine looking | 90.00 |
| 13 | 10c Black (2). Horiz. Pair, Three Large Margins, Ample at T., ms. "X" cancels, Very Fine (Photo) | E. XI |
| 14 ☒ | 10c Black (2). Margins all around, tied by bold blue grid, blue Montgomery, Ala. pmk. on cover to New Orleans, Very Fine (Photo) | 300.00 |
| 15 ☒ | 10c Black (2). Margins all around, tied red grid, red "Washington, D. C. 5 cts." pmk. small piece on back of cover missing, Very Fine (Photo) | 300.00 |

1851-1857 ISSUES

- | | | |
|------|---|--------|
| 16 ★ | 1c Blue, Ty. II (7). Pos. 24R2, Three Margins, least bit close at T., Fresh, Part o. g., Very Fine | 125.00 |
| 17 | 1c Blue, Ty. II (7). Margins All Around, faint ms. & odd Unframed Five Bar Grid cancels, Very Fine (Photo) | 25.00 |
| 18 | 1c Blue, Ty. IV (9). Three Large to Huge Margins showing bits of other stamps, partly in at B., Pretty Color, Bold Town pmk., Fine | 22.50 |

LOTS ON VIEW FROM OCTOBER 22nd

19	1c Blue, Ty. IV, 10c Green Ty. III (9, 15). Large Margins to slightly in, Town pmks., 10c trivial toning on back, otherwise Fine	72.50
20 ★	3c Orange Brown (10). Horiz. Pair, Nearly Four Margins, Large in Places showing bits of other stamps, tiny corner nick in one, small thin spots, still a Reasonably Attractive Example of this Very Scarce Unused Multiple	450.00
21	3c Dull Red, 10c Green (11, 15). Four of first with plate varieties, two on cover, some faults	E. II
22 ★	12c Black (17). Three Large Margins, barely touched to partly in at R., Fresh, small part o. g., Beautiful Impression, Fine & Most Attractive	375.00
23	12c Black (17). Margins all around, incl. Sheet Margin at T., Sharp Impression, Light Cancel, minute scissors cut in extreme BR corner, Very Fine appearance	(Photo) 45.00
24	12c Black (17). Vertical Pair, margins to cut in, Grid cancels, T. stamp creased, Fairly Attractive	100.00
25	1c Blue, Ty. IV (23). Neat pmk., single short corner perf., centered slightly to T.	85.00
26 ☒	1c Blue, Ty. V (24). Eighteen Covers, Variety of Rates, Towns, Good-Very Fine	306.00
27 ☒	5c Brown, 5c Red Brown (28-29). Two of latter tied, First has been added to cover where stamp was missing, one has clipped perfs., still Attractive	E. V
28	5c Indian Red (28A). Splendid Color, light Town pmk., centered trifle to L., Fine example of this Very Scarce Stamp	(Photo) 325.00
29	5c Brown, Ty. I, 10c Green Ty. II (29, 32). Both lightly cancelled, Very Good	82.50
30 ★	5c Orange Brown (30). Fresh Full o. g., centered tiny bit to R., still Very Fine	(Photo) 120.00
31 ★	12c Intense Black, Pl. III (36b). Incredible Color, Wide Side Margins, tiny insignificant corner perf. crease, Still Fine	57.50
32 ★	24c Gray (37). Perfs. clear of design all around, greenish gray changling color, otherwise Very Fine	125.00
33 ★	24c Gray (37). Small faults, Fine Centering	125.00
34	24c Gray Lilac (37). Boston Paid Grid Cancel, faint corner perf. crease, V. F. appearance	60.00
35	24c Gray Lilac (37). Tiny sealed tear, Fine appearance	60.00
36 ★	30c Orange (38). Gorgeous Bright Color, R. perfs. just touch, Fine & Handsome	135.00
37 ★	90c Blue (39). Well Centered, Bright & Fresh, tiny flaws, Very Fine Appearance	(Photo) 425.00
38	1c-15c 1857-69 Issues (24 five, 63, 69, 73, 113 twenty-six, 114 nine, 115, 119 two). Used, Good-Fine	385.25

1857 REPRINT

39 ★	1c Bright Blue, Reprint (40). Very Fine	(Photo) 175.00
40 ★	1c Bright Blue, Reprint (40). Pretty Color, perfs. slightly in at B.	(Photo) 175.00
41 ★	3c Scarlet, Reprint (41). Gorgeous Color & Impression, Fresh, Fine Example of this Rare Stamp, With P. F. Certificate	(Photo) 1,000.00
42 ★	3c Scarlet, Reprint (41). Magnificent Color, perfs. trimmed at T., partly at R. as often, otherwise Fine & Rare	(Photo) 1,000.00
43 ★	5c Orange Brown, Reprint (42). Fresh Color, perfs. slightly in at B., usual centering, few partly nibbed perfs. at T., otherwise Fine	(Photo) 335.00
44 ★	12c Greenish Black, Reprint (44). Gorgeous Color, Beautiful Impression, perfs. slightly in at B., usual centering, Fine	(Photo) 675.00

45 ★	24c Blackish Violet, Reprint (45). Well Centered, Gorgeous Color, tiny sealed tear, otherwise Very Fine, with P. F. Certificate (Photo)	750.00
46 ★	30c Yellow Orange, Reprint (46). Gorgeous Color, perfs. blunted by scissors on three sides but are intact, few perfs. at L. partly nibbed, still an Attractive Example of this Rare Stamp (Photo)	1,100.00

1861 ISSUE



47 ★	1c-3c 1861 Issue (63, 65, 73). Couple tiny faults, Fine-Very Fine Appearance (Photo)	71.50
48 ☒	3c Rose (65). Pair tied with Wash. D. C. pmk. on Patriotic cover showing Eagle & three Stanzas of Patriotic Song with notes & words, Scarce design, small closed tear in cover, Most unusual & Attractive (Photo)	E. VI
49 ★	3c Rose, Imperforate (65c). Horiz. Pair, brownish o. g., overall toning, otherwise Very Fine (Photo)	125.00
50 ☒	3c Rose (65). 610 Covers, mixed condition, Wide Variety of Towns, incl. a Scattering of Fancy Cancels (Photo)	E. IX
51 ☒	3c Rose, 3c Green, 15c Bright Orange (65, 152, 158). Rather heavy cancels on illustrated registered cover V. G., Unusual combination (Photo)	E. III
52 ★	5c Brown Yellow (67a). Well Centered, Part o. g., faulty with slight soiling, Still Reasonably Attractive, Quite Scarce Unused (Photo)	750.00
53	10c Green (68). 27 Used copies, Variety of Shades & Cancels, incl. Four in Red, Good-Very Fine (Photo)	175.50
54 ★	30c Orange (71). Pretty Shade, Remarkably Well Centered, single partly nibbed perf., otherwise Extremely Fine (Photo)	100.00
54A ★	30c Orange (71). Fresh & Bright, trace of o. g., all perfs. intact but least bit blunted by scissor separation, still Very Fine (Photo)	100.00
54B ★	90c Blue (72). Fresh, part o. g., Gorgeous Color, few perfs. partly blunted by scissor separation, otherwise Very Fine (Photo)	285.00
55 ★	90c Blue (72). Bright & Fresh, small part o. g., small flaws, perfs. just touch at R., Attractive (Photo)	285.00
56 ★	2c Black (73). Single & a pair, originally strip of three, Fresh, o. g., perfs. cut in (Photo)	102.50
57 ★	2c Black, 5c Brown, 2c Black, F. Grill (73, 76, 93). Last two Part o. g., faults, Fine-Very Fine Centering (Photo)	125.00
58	5c Red Brown, 24c Gray (75, 78). Each with Diff. Star cancel, small faults, Attractive (Photo)	50.00+
59 ★☐	24c Gray (78b). Block, Fresh, o. g., Pretty Shade, centered slightly to T. L., top pair creased, Bottom Pair Fine, Scarce Block (Photo)	295.00
60 ★	1c-15c 1863-95 Issues (Betw. 63-284). 27 Unused Stamps, 25 Diff., mostly o. g., nearly all have faults, Majority Appear Fine-Very Fine (Photo)	269.45

ENCASED POSTAGE STAMPS

61	"Ayer's Cathartic Pills", short arrow, 3c Rose (EP3), Very Fine (Photo)	65.00
62	"Ayer's Sarsaparilla" (medium) 1c Blue (EP4), tiny mica crack & trivial scuffing, otherwise Very Fine (Photo)	75.00
63	"Burnett's Cocaine Kalliston," 10c Green (EP7), mica slightly crazed in one spot, otherwise Very Fine (Photo)	100.00

1867 GRILLED ISSUE





64 ★	2c Black, Z. Grill (85B). Fresh, perfs. slightly in at R., Scarce, Particularly Unused (Photo)	300.00
65	5c Brown, F. Grill (95). Used, reperfed, Fine Appearance (Photo)	55.00

- 66  **10c Green Grill (96).** Two overlapping copies tied on 3c Pink (U58) Registered envelope, Penfield, Ga. pmk., small tear in cover, V.G. **E. II**
- 67  **12c Black Grill (97).** Stamp stained, from Phila. to London on printed envelope "Steamer Via Queenstown" **E. II**

1861 RE-ISSUE

- 68 ★ **1c Blue, Re-Issue (102).** Well Centered, Bright Color, part o.g., single partly nibbed perf., otherwise Very Fine **(Photo)** 150.00
-
- 69 ★ **3c Brown Red, Re-Issue (104).** Well Centered, Fresh, o.g., Deep Rich Color, trivial corner thin, Very Fine Appearance **(Photo)** 1,100.00
- 70 ★ **12c Black, Re-Issue (107).** Large Margins, Intense Color, o.g., Fine Impression, couple trivial thin specks, Extremely Fine Appearance, Exceptionally Handsome **(Photo)** 1,150.00
- 71 ★ **15c Black, Re-Issue (108).** Marvelous Intense Color, Fresh, o.g., reperfed at R., Very Fine Appearance, with P. F. Certificate **(Photo)** 950.00
- 72 ★ **24c Deep Violet, Re-Issue (109).** Well Centered, Large Part o.g., Magnificent Color, couple very trivial partial perf. nibbings, otherwise Very Fine, Most attractive **(Photo)** 1,150.00
- 73 ★ **24c Deep Violet, Re-Issue (109).** Rich Deep Color, Fresh, o.g., one slightly blunted perf. tip, otherwise a Fine Example of this Rare Stamp, with P. F. Certificate **(Photo)** 1,150.00
- 74 ★ **30c Brown Orange, Re-Issue (110).** Incredibly Rich Color, Beautiful Impression, Nearly Full o.g., minute black speck in "O" of Postage, nevertheless Very Fine, Handsome & Rare **(Photo)** 1,600.00
-

1869 PICTORIAL ISSUE

- 75 **1c-15c Pictorials (112-117, 119).** Used, Good-Fine 135.25
- 76 **1c-15c Pictorials (112-117, 119).** Used, Good-Fine 135.25
- 77 **1c-15c Pictorials (112-117, 119).** Used, Good-Fine 135.25
- 78 **1c-15c Pictorials (112-117, 119).** Used, Good-Fine 135.25
- 79 **1c-15c Pictorials (112-117, 119).** Used, Good-Fine 135.25
- 80 **1c-30c Pictorials (112-121).** Used, Good-Fine 410.25
- 81 ★ **2c Brown (113).** Fresh, Full o.g., reperfed, Very Fine Appearance 40.00
- 82  **2c Brown (113).** Two covers, shades, one tied from Piqua, Ohio, other blue grid which appears to be used as a precancel, Fine **E. II**
- 83 ★ **3c Ultramarine (114).** Very Fine 22.50
- 84 **3c Ultramarine (114).** 500, Mounted in Approval Book, some Interesting Cancells & Shades, Very Good-Very Fine 875.00
- 85  **3c Ultramarine (114).** 65 Covers & Two fronts, Variety of Towns, also Two 1c #112 Covers, Good-Very Fine **E. V**
- 86 ★ **6c Ultramarine (115).** Fresh, Part o.g., centered to B. R., perfs. clear, Fine 140.00
- 87 **6c Ultramarine, 12c Green (115, 117).** Light Cancells, Fine-Very Fine 50.00
- 88 ★ **10c Yellow (116).** Brilliant Color, Fresh & Very Fine, with P. F. Certificate **(Photo)** 150.00
- 89 ★ **12c Green (117).** Fresh, Lovely Color, minute thin speck, Very Fine Appearance **(Photo)** 135.00
- 90 ★ **12c Green (117).** Corner creases, light perf. toning, centered to B. L. 135.00
- 91  **12c Green (117).** Tied on Mourning cover to England, stamp centered to B. L. Very Good **E. III**
- 92  **12c Green (117).** Horiz. Pair centered to top, tied on cover to England, some small tears in cover, V.G. **E. III**

93 ★	15c Brown & Blue, Ty. I (118). Exceptionally Well Centered, small part o. g., minute barely visible closed tear in B. margin, otherwise Extremely Fine (Photo)	450.00
94 ★	15c Brown & Blue, Ty. I (118). Small part o. g., centered to B. R., some perfs. slightly in, with P. F. Certificate (Photo)	450.00
95 ★	15c Brown & Blue, Ty. II (119). Gorgeous Centering, two slightly nibbed perfs., nevertheless Very Fine, Handsome (Photo)	175.00
96 ★	24c Green & Violet (120). Vivid Colors, perfs. least bit in at L., with couple trivial perf. nibbings, still Attractive (Photo)	400.00
97 ★	30c Blue & Carmine (121). Well Centered, Fresh & Bright, Very Fine (Photo)	425.00

98 ★	90c Carmine & Black (122). Fresh Vivid Colors, perfs. least bit at L., still an Attractive Copy, Very Scarce Unused (Photo)	1,150.00
------	--	----------

1869 RE-ISSUE

99 ★	1c Buff, Re-Issue (123). Wonderfully Well Centered, Rich Color, minute paper translucency, otherwise Extremely Fine (Photo)	115.00
100 ★	2c Brown, Re-Issue (124). Gorgeous Deep Rich Color, Well Centered & Very Fine (Photo)	160.00
101 ★	6c Blue, Re-Issue (126). Couple partly blunted perfs. & tiny, very trivial toned speck, otherwise Fine (Photo)	350.00
102 ★	10c Yellow, Re-Issue (127). Brilliant Color, reperfed, Fine Appearance (Photo)	450.00

103 ★	12c Green, Re-Issue (128). Well Centered, Fresh, Deep Rich Color, Beautiful Impression, Very Fine (Photo)	500.00
104 ★	24c Green & Violet, Re-Issue (130). Fairly Well Centered, Large Part o. g., slight trivial toning, otherwise Very Fine, with P. F. Certificate (Photo)	475.00
105 ★	24c Green & Violet, Re-Issue (130). Nearly Full o. g., Lovely Colors, trivial toning, mostly on gum, otherwise Fine (Photo)	475.00
106 ★	30c Blue & Carmine, Re-Issue (131). Fresh, Large Part o. g., Bright Vivid Colors, Very Fine (Photo)	700.00
107 ★	90c Carmine & Black, Re-Issue (132). Fresh, Fine Example of this Rare Stamp, with P. F. Certificate (Photo)	1,100.00
108 ★	1c Buff, Re-Issue (133). Wonderfully Well Centered, Fresh, part o. g., Extremely Fine, with P. F. Certificate (Photo)	95.00

109 ★	1c Buff, Re-Issue (133). Fresh, o. g., single short perf., otherwise Very Fine	95.00
110 ★	1c Brown Orange, Re-Issue (133a). Fresh, tiny thin speck, Very Fine Appearance	90.00
111 ★田	1c Brown Orange, Re-Issue (133a). L. Margin Block of Eight, s. e. at B., Fresh Rich Color, Very Fine (Photo)	800.00

112 ★田	1c Brown Orange, Re-Issue (133a). Top Imprint & Plate No. 33 Block of Forty, Wonderfully Fresh, Rich Color & Well Centered, light trivial crease in margin of four stamps, three internal corner perf. roundings. The aforementioned flaws are so inconsequential when considering the Incalculable Rarity & Beauty of this Item. This is the First Time we have even offered a Re-Issue Imprint & Plate No. Block. Cat. Value as singles is \$3600.00, Probably A Unique Piece, An Outstanding Rarity & Magnificent Showpiece (Photo)	E. XVI
--------	---	--------

BANK NOTE ISSUES

113 ★	2c Red Brown, Grill (135). Fresh, o. g., perfs. just touch at Bot.	85.00
114 ★	3c Green, Grill (136). Tiny soiling specks, really trivial, otherwise Very Fine	55.00
115 ★	15c Orange, Grill (141). Fresh, Nearly Full o. g., tiny gum soak, perfs. just in at T.	365.00
116	90c Carmine, Grill (144). Clear Grill, Deep Shade, Pretty Cross Roads Cancel, Centered to left, Fine	185.00
117 ★	1c-24c 1870 Bank Notes (145, 147-148, 153). Fresh, 1c o. g., few small faults, Fairly Attractive Lot	189.50
118 ★	1c-5c 1870-88 Bank Notes (146-147, 156, 183, 205, 206 two, 207, 209-210, 212-215). Fresh, mostly o. g., some have small faults, Fine-Very Fine Appearance	153.00
119 ★	6c Carmine (148). Part o. g., trivial corner crease, Fine Appearance	60.00
120 ★	7c Vermilion (149). Gorgeous Shade, part o. g., perfs. barely touch to clear at R.	80.00
121	7c Vermilion, 90c Rose Carmine, Purple (149, 166, 218). #149 Red Target cancel, #166 Blue Cancel, Well Centered, small faults, other two Fine	114.00
122 ★	10c Brown (150). Full o. g., Fresh & Fine	65.00
123 ★	12c Dull Violet (151). Slight dry print, Centered to B. Fine	130.00
124 ★	24c Pale Purple (153). Well Centered, Very Fine	95.00
125 ★	30c Black (154). Fresh, Nearly Full o. g., light crease, perfs. slightly in at R.	250.00
126 ★	90c Carmine (155). Part o. g., Bright Fresh Color, trivial gum soaking in perf., otherwise Fine	300.00
127 ★	2c-6c 1873-75 Bank Notes (157-159, 179). Fresh, some o. g., couple trivial flaws, Very Good-Very Fine Appearance	131.50
128	7c Vermilion (160). Bright Color, very faint "Paid" cancel, Fine	30.00
<hr/>		
129 ★	7c Reddish Vermilion, Special Printing (171). Gorgeous Impression, Bright Color, All Perfs. Intact, tiny surface scuff in L. margin, still a Fine & Handsome Example of this Rarity, with P. F. Certificate	1,350.00
130 ★	12c Dark Violet, Special Printing (173). Well Centered, Fresh Color, perfs. trimmed at B. & partly at T. as often on these issues, Very Fine, with P. F. Certificate	1,500.00
131 ★	24c Dull Purple, Special Printing (175). Marvelous Centering, Beautiful Color, faint crease & tiny thin spot, Very Fine Appearance, with P. F. Certificate	1,350.00
<hr/>		
132 ★	2c Vermilion (178). Fresh, Nearly Full o. g., Incredibly Deep Shade, Fine	45.00
133 ★	2c Vermilion, 5c Blue, 15c Orange (183, 185, 190). Fresh, o. g., perfs. touch on 2c, other two tiny flaws Fine Appearance	72.50
134 ☒	2c, 3c, 6c Banknotes (183-184, 186). Pairs of first two on reduced large cover, Charlestown, N. H. pmks.	E. II
135 ★	3c Green, 5c Blue, 15c Orange (184-185, 189). Rich Colors, o. g., 5c perfs. least bit blunt, 15c couple lightly toned perfs., otherwise Very Fine	66.50
136 ★	10c Brown (188). Rich Color, thin spot, perfs. just touch at R.	72.50
137 ★	15c Red Orange (189). Bright & Fresh, Very Fine	25.00
138 ★	90c Carmine (191). Well Centered, Nearly Full o. g., gum soak & minute thin speck, otherwise Very Fine	275.00

LOTS ON VIEW FROM OCTOBER 22nd

139 ★	7c Scarlet Vermilion, Special Printing (196). Fresh, small thin, reperfed at L., Very Fine Appearance, Rare (Photo) 1,750.00
140 ★	15c Orange, Special Printing (199). Fresh Bright Color, Very Fine, H. F. C. (Colman) handstamp guarantee, with P. F. Certificate (Photo) 3,300.00
141 ★	30c Greenish Black, Special Printing (201). Fairly Well Centered, Beautiful Impression, Very Fine except for minute thin speck which the accompanying P. F. Certificate fails to mention, signed "E. Stern" (Photo) 3,000.00

142 ★	1c-10c 1881-88 Bank Notes (206-207, 209-211, 212-214, 216). Some o. g., faults, a few trivial, Nearly All Fine-Very Fine Appearing 90.00
143 ★	6c Rose (208). Fresh, o. g., trivial flaws, Fine Appearance 65.00
144 ★	3c Vermilion (214). Block, Fresh, Full o. g., perfs. very lightly strengthened, Fine 45.00
145 ★	30c Orange Brown (217). Exceptionally Well Centered, Very Fine (Photo) 55.00
146 ★	1c-90c 1890 Issue (219, 220-229). Fresh, o. g., 5c & 90c tiny thin specks, 10c tiny closed tear, otherwise Fine-Very Fine 246.50
147 ★	1c-30c 1890 Issue (219, 220-222, 225-226, 228). Fresh, o. g., small faults, Nearly All Fine-Very Fine Appearing 111.50
148 ★	4c-90c 1890 Issue (222-229). Fresh, o. g., small faults, Fine-Very Fine Appearance 229.00

COLUMBIAN ISSUE

149 ★	1c-10c Columbians (230-237). Mostly o. g., 3c & 4c trivial faults, others Fine-Very Fine 111.00
150 ★	1c-10c 1893-1919 Commems (Betw. 230-537). 17 Diff. incl. #330, 371, 373, 399-400, 402, nearly all have faults, Fine-Very Fine Appearance 210.25
151 ★	1c-30c Columbians (230-231, 233-237, 239). All but 4c o. g., faults, mostly trivial, Fine-Very Fine Appearance 164.50
152 ★	1c Columbian (230). L. Margin Block of Eight with Part Imprint, Wonderfully Well Centered, Fresh, o. g., Extremely Fine 44.00
153 ★	1c Columbian (230). Block of Twelve, Fresh, o. g., Incredibly Well Centered, tiny hinge reinforcement, small thin in one, others Extremely Fine 66.00
154 ★	1c Columbian (230). B. Imprint, "K" & Plate No. 55 Block of 25, Fresh, o. g., hinge rejoining, few small faults, otherwise Fine-Very Fine 383.50
155 ★	1c-8c Columbians (230-236). Used Blocks, Heavy hinge remnants, & paper on back of one, otherwise Mostly Fine-Very Fine, Scarce Lot 149.00
156 ★	2c Columbian (231). Three Horiz. Strips of Three, Fresh, o. g., two stamps have small thin spots, others Fine-Very Fine 45.00
157 ★	3c Columbian (232). Block, Fresh, o. g., trivial tiny corner perf. crease, others Fine-Very Fine 45.00
158 ★	3c Columbian (232). Block of 32 (4 x 8), Fresh, o. g., Well Centered Throughout, some minor separation, two stamps have small faults, others Fine-Very Fine 368.00+
159	3c Columbian (232). Used Blocks of Four and Six, V. G.-Fine 82.00
160 ★	5c Columbian (234). Block of 16 (4 x 4), Fresh, o. g., Exceptionally Well Centered for a Block this size, Fine-Very Fine, Mostly Very Fine 264.00+
161 ★	6c Columbian (235). Mint Block, Dull Purple Shade, Fine 72.50
162 ★	8c Columbian (236). Block, Fresh, o. g., Gorgeous Deep Rich Color, Very Fine 57.50
163 ★	8c Columbian (236). Block, Fresh, o. g., Gorgeous Deep Rich Color, Very Fine 57.50
164 ★	15c-30c Columbians (238-239). Fresh, 30c reperfed, Very Fine Appearance 112.50

165 ★	15c-30c Columbian (238-239). Well Centered, faults, Very Fine Appearance	112.50
166 ★	50c Columbian (240). Well Centered, small thin spot, Very Fine Appearance	100.00
167 ★	50c Columbian (240). Exceptionally Well Centered, Nearly Full o. g., thin spot, Very Fine Appearance	100.00
168 ★	50c Columbian (240). Fresh, o. g., minute negligible thin specks, Very Fine appearance	100.00
169	50c Columbian (240). Unusually Large Margins, Well Centered, Reg. cancel, few lightly creased perf. tips, otherwise Extremely Fine	45.00
170	50c Columbian (240). Well Centered, light oval cancel, Very Fine	45.00
171 ★	\$1.00 Columbian (241). Well Centered, tiny thin spot & trivial corner perf. crease, Very Fine Appearance (Photo)	285.00
172 ★	\$1.00 Columbian (241). Bright Color, reperfed at T., Fine Appearance (Photo)	285.00
173	\$1.00 Columbian (241). Thin spots, well centered, Very Fine appearance (Photo)	150.00
174 ★	\$2.00 Columbian (242). Marvelous Color, rounded corner, otherwise Fine (Photo)	335.00
175	\$2.00 Columbian (242). Reg. cancel, Fine (Photo)	140.00
176	\$2.00 Columbian (242). Fresh Color, Reg. cancel, Fine (Photo)	140.00
177 ★	\$3.00 Columbian (243). Well Centered, Fresh, o. g., Bright Color light natural paper wrinkle, nevertheless Very Fine (Photo)	500.00
178 ★	\$3.00 Columbian (243). Fresh, Rich Color, Fine (Photo)	500.00
179 ★	\$4.00 Columbian (244). Fresh, o. g., Deep Rich Shade, small thin spot, Very Fine Appearance (Photo)	725.00
180 ★	\$5.00 Columbian (245). Full o. g., Fresh & Fine (Photo)	775.00

1894-1898 ISSUES

181 ★	2c-50c 1894 Issue (248-260). All o. g., small faults, some trivial Generally Fine Appearing	236.50
182 ★	1c-10c 1894-98 Issues (246, 248, 252-253, 255, 264, 267, 269-272, 279-282-283). Fresh, o. g., 1c #246 "Jumbo" Margins, few tiny faults, Mostly Fine-Very Fine, includes extra shade 4c #280	110.35
183 ★	3c-10c 1894-95 Issues (257-258, 268, 271, 273). Fresh, o. g., Very Fine	58.75
184 ★	\$1.00 Black, Ty. I (261). Fresh, o. g., faults, perfs. close at T.	150.00
185 ★	\$2.00 Bright Blue (262). Fresh, o. g., faulty, Fine Looking	235.00
186 ★	\$5.00 Dark Green (263). Gorgeous Color, Fresh, o. g., small faults, perfs. least bit in at T., Scarce	625.00
187 ★	3c Purple (268). B. Imprint & Plate No. 1216 Block of Six, Fresh, o. g., Fine (Photo)	110.00
188 ★	3c Purple, 5c Blue, 6c Lake (268, 281-282). Imprint & Plate No. Strips of Three, Fresh, o. g., 3c Mint, others tiny thin spots, Fine-Very Fine Appearance	72.50
189 ★	4c-50c 1895 Issue (269, 271-272, 274-275). Fresh, o. g., small faults, V. G.-V. F. Appearance	105.25
190 ★	6c Dull Brown (271). T. Imprint & Plate No. 451 Strip of Three, Fresh, o. g., hinge reinforced, tiny gum thin speck in one, otherwise Fine-Very Fine	50.00+
191 ★	15c Dark Blue (274). Fresh, o. g., Well Centered & Very Fine	31.50
192 ★	50c Orange (275). Fresh, o. g., Fine	47.50
193 ★	\$1.00 Black, Ty. I (276). Well Centered, Fresh, o. g., tiny corner fault, otherwise Very Fine	130.00
194 ★	\$1.00 Black, Ty. I (276). Nearly Full o. g., small thin spots, Fine Appearance	130.00

195 ★	\$1.00 Black, Ty. I & II, Horizontal Combination Pair (276-276A). With Imprint Margin, Fresh, o. g., tiny blue spot on back of Ty. I stamp, otherwise Fine, Scarce (Photo)	425.00
196 ★	\$2.00 Dark Blue (277a). Nearly Full o. g., tiny thin speck in one perf., centered to T., Attractive (Photo)	185.00
197 ★	1c Green, 2c Red (279-279B). B. Imprint & Plate No. Blocks of Six, Fresh, o. g., Fine Plate Blocks (Photo)	50.00
198 ★	1c Green, 2c Red (279-279B). T. Imprint & Plate No. Blocks of Six, #'s 1410 & 1430 respectively, Fresh, o. g., one 1c tiny thin speck, 2c trivial tear in selvage, well clear of imprint & plate no., otherwise Fine-Very Fine (Photo)	50.00
199 ★	4c Deep Orange Brown (280). B. Imprint & Plate No. 1333 Block of Six, Fresh, o. g., Rich Color, few perfs. lightly strengthened, Fine (Photo)	100.00
200 ★	5c Blue (281). B. Imprint & Plate No. 1220 Block of Six, Fresh, o. g., Fine (Photo)	75.00
201 ★	6c Lake (282). R. Margin Block of Ten (5 x 2), Mint, Very Good-Fine (Photo)	71.00
202 ★	6c Lake (282). Margin Block of Twenty (10 x 2), Mint, Very Good (Photo)	142.50
203 ★	6c Lake (282). B. Imprint & Plate No. 923 Block of Twenty, Mint, some light perf. strengthening, V. G.-V. F. (Photo)	249.50
204 ★	10c Orange Brown, Ty. II (283). B. Imprint & Plate No. 1338 Block of Six, Fresh, o. g., light crease in selvage well clear of imprint & plate no., top row separated & neatly rejoined, Fine, Cat. \$350.00 as Plate Block (Photo)	140.00+
205 ★	15c Olive Green (284). B. Imprint & Plate No. 264 Block of Six, Fresh, o. g., couple minute gum thin specks, otherwise Very Good-Fine, Scarce Plate Block (Photo)	400.00

TRANS-MISSISSIPPI ISSUE

206 ★	1c-2c Trans-Mississippi (285-286). 1c Plate No. Single, Mint, Very Fine (Photo)	13.00
207 ★	1c-10c Trans-Mississippi (285-287, 290). Fresh, o. g., thin spots, Very Fine Appearance (Photo)	89.00
208 ★	4c-10c Trans-Mississippi (287, 289-290). 8c & 10c o. g., first two trivial faults, 10c reperfed at R., Fine-Very Fine Appearance (Photo)	111.00
209 ★	5c Trans-Mississippi (288). Mint, Very Fine (Photo)	26.00
210 ★	50c Trans-Mississippi (291). Fresh, o. g., Well Centered, two perfs. lightly creased, otherwise Very Fine (Photo)	175.00
211 ★	50c Trans-Mississippi (291). Well Centered, s. e. at R., Nearly Full o. g., thin spots & light crease (Photo)	175.00
212 ★	\$1.00 Trans-Mississippi (292). Wonderfully Well Centered, Fresh, small thin spot, Very Fine Appearance (Photo)	400.00
213 ★	\$2.00 Trans-Mississippi (293). Fresh, o. g., Unusually Well Centered with Large Margins, couple tiny gum thins, Very Fine Appearance (Photo)	600.00
214 ★	\$2.00 Trans-Mississippi (293). Fresh, o. g., perfs. touch to least bit in at B., Lovely Color, Attractive (Photo)	600.00

PAN-AMERICAN ISSUE

215 P	1c-10c Pan-Americans, Small Die Proofs (294P2-299P2). Complete Set, 4c & 5c trivial thin spots, otherwise Very Fine (Photo Ex)	330.00
216 ★	1c-10c Pan-American (294-299). Cpl. Set, 4c regummed, 10c reperfed at R., otherwise Fine-Very Fine (Photo)	130.00
217 ★	1c-10c Pan-American (294-297, 299). 10c Unusually Large Margins, all but 2c have faults, Fine-Very Fine Appearance (Photo)	100.00
218 ★	1c Pan-American, Center Inverted (294a). Fairly Well Centered, o. g., rounded corner & heavy, partly broken corner crease, Rare, with P. F. Certificate (Photo)	3,750.00

219	★	1c Pan-American (294). B. Imprint, Arrow and Double Plate No. Block of Ten, Mint, Fine-Very Fine (Photo)	165.00
220	★	1c Pan-American (294). B. R. Imperf. Half-Arrow Margin Block of Ten (2 x 5), Mint, tiny nick in one s. e. stamp, centered to T.	47.50
221	★	2c-10c Pan-Americans (295-297, 299). Mint Corner Margin Singles with Numeral Imprints, Fine-Very Fine, Handsome Lot	95.25
222	★	2c 1901-1909 Commems. (295, 370). Blocks, F.-V. F.	30.50
223	★	10c Pan-American (299). B. Arrow & Plate No. 1144 Block, minor hinge reinforcement, Fine-Very Fine (Photo)	175.00

1902 ISSUE

224	P	1c-\$5.00 1902 Issue, "Panama-Pacific" Small Die Proofs (300P2a-313P2a). Complete Set, normal toning throughout, \$2.00 insignificant thin spot, nevertheless Very Fine, An Exceedingly Rare Set (Photo Ex)	2,615.00
225	S	1c-\$5.00 1902 Issue, "Specimen" Overprints (300SE-313SE, 319SE). Complete Set, \$5.00 tiny thin spot, others Fine-Very Fine, Scarce	495.00
226	S	3c-\$1.00 1902 Issue, "Specimen" Overprint (302SE, 305SE, 307SE, 309SE-311SE). Without gum, 6c s. e., few trivial faults, Fine-Very Fine Appearance	165.00
227	★	1c-15c 1902 Issue (300-309). Nearly All Exceptionally Well Centered, hinge remnants, 6c & 15c small faults, otherwise a Very Fine Lot	87.70
228	★	1c-50c 1902 Issue (300-310). Faults, some trivial, Nearly All Fine-Very Fine Appearing	170.30
229	★	1c-\$1.00 1900-32 Issues (Betw. 300-723). 117 Unused Stamps, Nearly All Diff., incl. Coils, Plate Blocks, Mostly Fine-Very Fine	E. VIII
230	★	13c Purple Black (308). T. Imprint & Plate No. 1474 Block of Six, few trivial perf. separations, Fine-Very Fine (Photo)	140.00
231	★	50c Orange (310). Fine (Photo)	82.50
232	★	\$1.00 Black (311). Well Centered, crease & tiny thin spots, Very Fine Appearance	150.00
233	★	\$1.00 Black (311). Fresh, small crease, partly broken at B., centered slightly to R., Fine Appearance	150.00
234	★	\$2.00 Dark Blue (312). Unusually Well Centered, small thin, Very Fine Appearance (Photo)	235.00
235	★	\$5.00 Dark Green (313). Exceptionally Well Centered, Rich Color, couple tiny thin spots, Very Fine Appearance (Photo)	425.00
236	★	1c-2c 1903-06 Issues (314, 319f, 319a, 320). Blocks, the 2c Carmine is the scarce Die II, one 2c thin speck, 1c light creases, others F.-V. F.	54.50+
237	★	1c Blue Green, Imperforate (314). Block of 36 (6 x 6), Very Fine	234.00
238	★	1c Blue Green, Imperforate (314). Block of 30, incl. L. Imprint & Plate No. 3364 Block of Six, creases, mostly in margins, otherwise Very Fine	206.00
239	★	5c Blue, Coil (317). Fine, we have no reason to doubt the genuineness of this stamp, although the philatelic foundation will not render an opinion on a coil single (Photo)	725.00
240	★	2c Carmine, Imperforate (320). T. Imprint & Plate No. 3160 Block of Six, Mint, Very Fine	52.50

LOUISIANA PURCHASE — JAMESTOWN

241	★	1c-5c Louisiana Purchase (323-326). 2c couple blunted perfs., 5c reperfed at R., otherwise Fine-Very Fine	67.50
242	★	1c-10c Louisiana Purchase (323-324, 326-327). First three faults, 10c without gum & toned on back, Fine-Very Fine Appearance	117.50

243	★田	1c Louisiana Purchase (323). R. Arrow Block of Sixteen, one stamp tiny corner nick, others Fine-Very Fine	144.00
244	★田	1c Louisiana-Purchase (323). T. Imprint & Plate No. 2119 Block of Eight, Mint, Very Fine	136.00
245	★田	1c Louisiana Purchase (323). B. Imprint & Plate No. 2119 Block of Sixteen, one stamp in plate block tiny thin speck, otherwise Fine-Very Fine	208.00
246	★田	1c Louisiana Purchase (323). B. Imprint & Plate No. 2119 Block of Ten, Mint, perfs. touch on L. block, others incl. Plate Block Fine-Very Fine ..	154.00
247	★田	1c Louisiana Purchase (323). B. Imperf. Half-Arrow, Imprint & Plate No. No. 2120 Block of Ten, Mint, Fine-Very Fine	154.00
248	★田	1c Louisiana Purchase (323). B. Imperf. Half-Arrow, Imprint & Plate No. 2118 Block of Ten, Mint, Fine-Very Fine	154.00
249	★田	1c Louisiana Purchase (323). B. Imperf. Half-Arrow, Imprint & Plate No. 2119 Block of Ten, few perfs. in selvedge lightly strengthened, Stamps Mint, perfs. touch on two, others incl. Plate Block, Fine	154.00
250	★田	1c Louisiana Purchase (323). B. Imprint & Plate No. 2120 Block of Ten, Mint, Very Good-Fine	154.00
251	★田	1c Louisiana Purchase (323). B. Imperf. Half-Arrow, Imprint & Plate No. 2118 Block of Ten, Mint, Very Good	154.00
252	★田	1c Louisiana Purchase (323). B. Imprint & Plate No. 2114 Block of Ten, Mint, Very Good	154.00
253	★田	1c Louisiana Purchase (323). B. Imperf. Half-Arrow, Imprint & Plate No. 2119 Block of Ten, Mint, tiny natural paper inclusion, Very Good	154.00
254	★田	1c Louisiana-Purchase (323). T. Imprint & Plate No. 2120 Block of Ten, Mint, perfs. just in at top	154.00
255	★田	1c Louisiana Purchase (323). Block of Fifteen (3 x 5), one stamp tiny faults, others Very Good-Very Fine	135.00
256	★田	1c Louisiana Purchase (323). Block of Twenty (4 x 5), Very Good-Fine	180.00
257	★田	1c-5c Louisiana Purchase (323-326). Blocks, one 1c & two s.e 3c have light creases, others Very Good-Fine	270.00
258	★田	2c Louisiana Purchase (324). T. Imprint & Plate No. 2159 Block of Twelve, Mint, Fine-Very Fine	185.00
259	★	3c-10c Louisiana-Purchase (325-327). Without gum, 10c tiny flaws, otherwise Fine-Very Fine	123.50
260	★田	3c Louisiana-Purchase (325). Block, R. Margin Block, Fine-Very Fine	90.00
261	★田	3c Louisiana Purchase (325). Block, Fine-Very Fine	90.00
262	★田	3c Louisiana-Purchase (325). Mint R. Arrow Block, Fine	90.00+
263	★	10c Louisiana Purchase (327). Very Fine	(Photo) 72.50
264	★	10c Louisiana Purchase (327). Exceptionally Well Centered, tiny faint thin speck, Very Fine Appearance	72.50
265	★田	1c Jamestown (328) Partial T. Imprint & Plate No. 3545 Block of Six, Mint, Fine	30.00+
266	★田	1c-2c Jamestown (328-329). Blocks, Very Fine	42.00
267	★田	2c Jamestown (329). T. L. Imprint & Plate No. 3601 Block of Ten, Mint, Fine-Very Fine	(Photo) 155.00
268	★田	5c Jamestown (330). Partial Top Imprint & Plate No. 3558 Block of Six, Hinged in selvedge only, Stamps Mint, Perfs. barely in at top, Fine (Photo)	215.00+

1908 ISSUE

269	★	1c-15c 1908 Issue (331-340). Well Centered, 5c tiny thins, 13c single short perf., others Very Fine	65.75
270	★	1c-\$1.00 1908-21 Issues (Betw. 331-546). 27 Diff., some have faults, Nearly All Fine-Very Fine Appearance	138.20
271	★田	4c Brown (334). T. Imprint Star Plate No. 5212 Block of Six, Mint, negligible separation of two perf. tips, Very Fine	95.00

272	★田	13c Blue Green (339). T. Imprint & Plate No. 4945 Block of Six, Mint, Fine	120.00
273	★	50c Violet (341). Very Fine (Photo)	60.00
274	★	\$1.00 Violet Brown (342). Well Centered, expertly added perf., Very Fine Looking	100.00
275	★	\$1.00 Violet Brown (342). Tiny thin spot, Fine Appearance	100.00
276	★	\$1.00 Violet Brown (342). Perfs. just touch at top	100.00
277	★田	1c Green, Imperforate (343). T. & L. Imprint, Star & Plate No. 5024 Blocks of Six, Very Fine	33.00
278	★田	4c Orange Brown, Imperforate (346). T. Imprint & Plate No. 4935 Block of Six, Very Fine	75.00
279	★田	5c Blue, Imperforate (347). L. Imprint & Plate No. 4928 Block of Six, Very Fine	135.00
280	★田	5c Blue, Imperforate (347). T. Imprint & Plate No. 4930 Block of Six, Mint, Very Fine	135.00
281	★	5c Blue, Coil (355). Pair, right stamp faults, other Fine	70.00
282	★	5c Blue, Coil (355). Paste-Up Pair, tiny gum thin in one, otherwise Fine	70.00
283	★	10c Yellow Coil (356). Well centered, lightly soiled, no gum (Photo)	375.00
284	★	1c Green, 2c Carmine, Bluish (357-358). Fine	42.50
285	★	6c Red Orange, Bluish (362). Fine (Photo)	350.00
286	★	15c Pale Ultramarine, Bluish (366). Fine (Photo)	325.00

1909 COMMEMORATIVES

287	★田	2c Lincoln (367). Mint Block of Sixteen, 3mm spacing, Fine-Very Fine	48.00
288	★田	2c Lincoln (367). Two Mint Blocks of Eight, 2 & 3mm spacings, Fine-Very Fine	50.00
289	★田	2c Lincoln, Perf. & Imperf. (367-368). Mint Blocks, Very Fine	71.00
290	★	2c 1909 Commems, Imperforate (368, 371, 373). Singles of first two, pair of latter, Very Fine	67.00
291	★田	2c Lincoln (367). B. Imprint & Plate No. 4984 Block of Eight, Very Good	112.00
292	★田	2c Lincoln Imperforate (368). Block, Very Fine	58.00
293	★田	2c Lincoln Imperforate (368). Block, slight gum wrinkles otherwise V.F.	58.00
294	★田	2c Lincoln, Imperforate (368). T. R. Corner Block of Six, 3mm spacing, Mint, Very Fine	77.00
295	★田	2c Lincoln, Imperforate (368). T. Margin Block of Eight, 2mm spacing, Mint, Very Fine	116.00
296	★田	2c Lincoln, Imperforate (368). Mint Block of Sixteen (8 x 2), Very Fine	232.00
297	★	2c Lincoln, Bluish (369). Very Fine	70.00
298	★	2c Lincoln, Bluish (369). Part Imprint Margin Single, Very Fine (Photo)	70.00
299	★	2c Lincoln, Bluish (369). Without gum, single short perf., otherwise Fine	70.00
300	★田	2c Alaska-Yukon (370). B. Imprint & Plate No. 5173 Block of Fifteen (5 x 3), Mint, Fine-Very Fine	146.50
301	★田	2c Hudson-Fulton (372). B. Imprint & Plate No. 5392 Block of Six, minor re-inforcing, Fine	95.00
302	★田	2c Hudson-Fulton, Imperforate (373). L. Margin Block, Mint, Very Fine	70.00
303	★田	2c Hudson-Fulton, Imperforate (373). L. Margin Block, Mint, small wrinkle in one, others Very Fine	70.00
304	★田	2c Hudson-Fulton, Imperforate (373). Block, Mint, Very Fine	70.00
305	★田	2c Hudson-Fulton, Imperforate (373). Block, Mint, corner crease on one, others Very Fine	70.00
306	★田	2c Hudson-Fulton, Imperforate (373). R. Margin Block, Mint, Very Fine	70.00
307	★田	2c Hudson-Fulton, Imperforate (373). R. Margin Block, Mint, Very Fine	70.00
308	★田	2c Hudson-Fulton, Imperforate (373). R. Margin Block, Mint, small tear in one, others Very Fine	70.00

309	★田	2c Hudson-Fulton, Imperforate, Double Impression (373). T. L. Corner Margin Block, Strong Doubling Throughout, Mint, Very Fine & Most Unusual	70.00+
310	★田	2c Hudson-Fulton, Imperforate (373). B. L. Corner Block, Mint, Very Fine	70.00
311	★田	2c Hudson-Fulton, Imperforate (373). T. L. Corner Margin Block, Mint, Very Fine	70.00
312	★田	2c Hudson-Fulton, Imperforate (373). T. L. Corner Margin Block, Mint, Very Fine	70.00
313	★田	2c Hudson-Fulton, Imperforate (373). T. L. Corner Margin Block of Six, Mint, Very Fine	105.00
314	★田	2c Hudson-Fulton, Imperforate (373). T. L. Corner Margin Block of Six, Mint, one creased, others Very Fine	105.00
315	★田	2c Hudson-Fulton, Imperforate (373). T. Imprint & Plate No. 5394 Block of Six, Mint, Very Fine	110.00+
316	★田	2c Hudson-Fulton, Imperforate (373). L. Imprint & Plate No. 5394 Block of Six, Very Fine	110.00
317	★田	2c Hudson-Fulton, Imperforate (373). B. Imprint & Plate No. 5394 Block of Six, imprint & plate no. bit underinked, Very Fine	110.00+
318	★田	2c Hudson-Fulton, Imperforate (373). B. L. Corner Block of Eight, Mint, Very Fine	140.00
319	★田	2c Hudson-Fulton, Imperforate (373). B. L. Corner Block of Eight, Mint, Very Fine	140.00
320	★田	2c Hudson-Fulton, Imperforate (373). Center Line Block of Eight (2 x 4), Mint, Very Fine	145.00
321	★田	2c Hudson-Fulton, Imperforate (373). R. Arrow Block of Eight, Mint, Very Fine	140.00
322	★田	2c Hudson-Fulton, Imperforate (373). Block of Nine, Mint, Very Fine	157.50
323	★田	2c Hudson-Fulton, Imperforate (373). R. Arrow Block of Ten (5 x 2), Mint, Very Fine	175.00
324	★田	2c Hudson-Fulton, Imperforate (373). Block of Twelve, Mint, Very Fine	210.00
325	★田	2c Hudson-Fulton, Imperforate (373). B. Arrow Block of Sixteen (2 x 8), Mint, Very Fine	280.00
326	★田	2c Hudson-Fulton, Imperforate (373). B. Arrow Block of Sixteen (2 x 8), Mint, Very Fine	280.00
327	★	1c-15c 1910 Issue (374-382). Well Centered, several with Large Margins, 10c trivial tiny corner thin, otherwise a Very Fine & Exceptionally Choice Set	103.35
328	★	2c Carmine, Coil (388). Very Good	85.00
329	★	2c Carmine, Coil (388). Rejoined Pair, Very Good	170.00
330	★	1c Green, 2c Carmine, Coils (390-392). Pairs, Very Fine	39.00
331	★	1c-5c 1910 Coils (392-396). 3c tiny toned spot on gum only, Fine Lot	80.25
332	★	3c Deep Violet, Coil (394). Pair, Very Fine	40.00
333	★	4c Brown, Coil (395). Pair, Very Fine	40.00
334	★	5c Blue, Coil (396). Line Pair, Very Fine (Photo)	55.00+

PANAMA-PACIFIC ISSUE

335	★	1c-10c Panama-Pacific (397-400). 1c without gum, 10c perfs touch, others F.-V. F.	79.50
336	★	1c-5c Panama-Pacific (397-399, 401-402). 5c reperfed at B., Fine-Very Fine	56.00
337	★田	1c Panama-Pacific (397). B. Plate No. 6148 Block of Six, some hinge reinforcing & gum wrinkle, F.-V. F. Appearance	100.00
338	★田	1c Panama-Pacific (397). T. Plate No. 6548 Block of Nine, Mint, Fine-Very Fine	112.00

339	★田	1c Panama-Pacific (397). Plate No. 6548 Block of Nine, Mint, Fine-Very Fine	112.00
340	★田	1c Panama-Pacific (397). Plate No. 6550 Block of Nine, Mint Fine	112.00
341	★	10c Panama-Pacific (400). Very Fine	45.00
342	★	10c Panama-Pacific (400). Vertical Strip of Five, Mint, perfs. least bit in at L.	225.00
343	★田	10c Panama-Pacific (400). T. L. Corner Margin Block of Six, Mint, Fine-Very Fine	(Photo) 270.00
344	★田	10c Panama-Pacific (400). Mint Block of Eight (4 x 2), perfs. touch on L. pair, Block of Six Fine-Very Fine	360.00
345	★田	10c Panama-Pacific (400). Mint Block of Fourteen (2 x 7), centered slightly to R., Fine	(Photo) 630.00
<hr/>			
346	★田	10c Panama-Pacific (400). Mint Block of Fifteen, Exceptional Centering throughout, Very Fine, a Particularly Choice & Handsome Multiple	(Photo) 675.00
347	★田	10c Panama-Pacific (400). Block of 21 (3 x 7), Wonderfully Well Centered throughout, only two stamps lightly hinged, others Mint, Very Fine, Exceptional Block	(Photo) 945.00
348	★田	10c Panama-Pacific (400). Mint Block of 28 (4 x 7), Fine	(Photo) 1,260.00
349	★田	10c Panama-Pacific (400). T. Plate No. 6143 Block of Six, light strengthening in selvage, Stamp Mint, tiny natural paper inclusion, perfs. touch on L. pair, others well centered, Fine Plate Block	(Photo) 1,000.00
350	★田	10c Panama-Pacific (400). L. Plate No. 6143 Block of Six, Very Good-Fine	(Photo) 1,000.00
<hr/>			
351	★	10c Orange, Panama-Pacific (400A). Very Fine	(Photo) 77.50
352	★	10c Orange, Panama-Pacific (400A). Fine	(Photo) 77.50
353	★	10c Orange, Panama-Pacific (400A). Fine	77.50
354	★田	1c Panama-Pacific, Perf. 10(401). Bot. Plate No. 6549 Block of Six, minor toned spots affect two stamps otherwise Fine	140.00
355	★	5c Panama-Pacific, Perf. 10(403). Very Fine	(Photo) 65.00
356	★	10c Panama-Pacific, Perf. 10(404). Fine	(Photo) 325.00

1912-1920 ISSUE

357	★	7c-15c 1912 Issue (407, 414-418). 9c Huge Margins, 30c regummed, Fine-Very Fine Lot	77.50
358	★	8c-50c 1912 Issue (414-415, 418, 420, 422). Few small faults, Fine-Very Fine Appearance	102.00
359	★田	9c Salmon Red (415). T. Plate No. 6901 Block of Six, Mint, Fine-Very Fine	110.00
360	★	20c Ultramarine (419). Very Fine	27.50
361	★	50c Violet (421). Perfs. just clear at R., Fine	115.00
362	★	50c Violet (422). Fine	(Photo) 52.50
363	★	\$1.00 Violet Brown (423). Fine	(Photo) 125.00
364	★	\$1.00 Violet Brown (423). Perfs. trifle close at R., Fine	(Photo) 125.00
365	★	\$1.00 Violet Brown (423). Small thin spot, Fine appearance	125.00
366	★	1c-15c 1914 Issue (424-428, 430, 432-437). 15c slight gum disturbance, otherwise Very Fine	81.30
367	★田	1c-3c 1914 Issue (424-426). Plate No. Blocks of Six, minor separation of couple perfs, Mint, F.-V. F.	55.00
368	★	6c-20c 1914 Issue (429, 432, 434-438). Faults, Fine-Very Fine Appearance	91.25
369	★	6c Red Orange, 8c Olive Green (429, 431). "Jumbo" Margins & Well Centered, Extremely Fine	15.75
370	★	20c Ultramarine (438). Very Fine	36.50

371	★	30c Orange Red (439). Very Fine	(Photo)	50.00
372	★	3c Violet, Coil (445). Centered to R., perfs. clear		72.50
373	★	4c Brown, Coil (446). Fine		47.50
374	★	2c Red, Coil Ty. I (453). Very Fine	(Photo)	47.50
375	★	2c Red Coil, Ty. I (453). Very Good		47.50
376	★	2c Carmine, Coil, Ty. II (454). Mint Pair in at Bot. Very Good		110.00
377	★	3c Violet, Coil (456). Small B. margin, Fine		75.00
378	★	2c Carmine, Rotary, Imperforate Coil (459). Light crease, otherwise Fine, "Ward" handstamp		90.00
379	★	\$1.00 Violet Black (460). Thin, Fine Appearance		200.00
380	★	2c-12c 1916 Issue (463-466, 468-471, 473-474). Very Fine		110.85
381	★	5c-11c 1916 Issue (466, 468-469, 471-473). Couple small faults, Fine Appearance		90.00
382	★	5c Carmine, Error (467). Single Error in Block of Six, Mint, perfs. just touch at T		190.00
383	★	10c Orange Yellow (472). Very Fine		27.50
384	★	15c Gray (475). Very Fine		30.00
385	★	15c Gray (475) Block, Mint, Extremely Fine	(Photo)	120.00
386	★	20c Ultramarine (476). Very Fine		40.00
387	★	20c Ultramarine (476). Fine		40.00
388	★	50c Light Violet (477). Small thin spot, Fine Appearance		235.00
389	★	\$2.00 Dark Blue (479). Very Fine	(Photo)	70.00
390	★	\$2.00 Dark Blue (479). Very Fine	(Photo)	70.00
391	★	\$5.00 Light Green (480). Fine		57.50
392	★	1c-10c 1916 Coils (486-490, 493-497). Pairs, 3c #494 Joint Line, Fine-Very Fine		67.50
393	★	3c-30c 1917 Issue (501, 506, 509, 512, 514, 516) Blocks, Very Fine		91.20
394	★	3c-\$1.00 1917 Issue (502-504, 506-518). Very Fine		70.85
395	★	5c Rose, Error (505). Mint Block of Nine, Middle Stamp the Error, Very Fine	(Photo)	190.00
396	★	9c Salmon (509). T. Plate No. 12369 Block of Six, Mint, Fine		37.50
397	★	9c-12c 1917 Issue (509, 511-512). Blocks, Fine-Very Fine		28.00
398	★	2c-25c Postage, Airs, Registry (513, 568, 627, C12, F1). Blocks, two of #513, 627. F.-V.F.		149.60
399	★	15c Gray (514). L. Plate No. 10501 Block of Six, minor reinforcement in selvage, F.-V.F.		87.50
400	★	\$2.00 Orange Red & Black (523). Very Fine	(Photo)	145.00
401	★	\$2.00 Orange Red & Black (523). Fine		145.00
402	★	\$2.00 Orange Red & Black (523). Tiny trivial scuffed speck in T. L. corner, otherwise Very Fine		145.00
403	★	\$5.00 Green & Black (524). Very Fine		60.00
404	★	1c-3c Offset, Imperforate (531, 532, 534, 535). Plate No. Blocks of Six, 3c small surface scratch, others Very Fine		155.00
405	★	1c Green, 3c Violet, Offset Imperforates (531, 535). T. Plate No. Blocks of Six, Very Fine		57.50
406	★	2c Carmine, Offset Imperforate Ty. Va, Double Impression (534 Va).		
406	★	2c Carmine, Offset Imperforate Ty. Va, Double Impression (534 Var.) dots appear as solid lines, Very Fine, Listed as a Perforated Variety but Unlisted Imperforate, Very Scarce		
407	★	3c Victory (537). Bot. Plate No. 9415 Block of Six, Fine		90.00
408	★	\$2.00 Carmine & Black (547). Very Fine		50.00
409	★	\$2.00 Carmine & Black (547). Very Fine		50.00
410	★	\$2.00 Carmine & Black (547). Block with Plate No., Very Fine	(Photo)	200.00
411	★	\$2.00 Carmine & Black (547). Block, natural gum creases, Fine-Very Fine		200.00
412	★	\$2.00 Carmine & Black (547). Block, Very Good-Fine		200.00
413	★	\$2.00 Carmine & Black (547). Block, faint thin in T. pair, otherwise Fine		200.00

414	★	田	\$2.00 Carmine & Black (547). Block, tiny faint thin spot in one, others Very Good-Fine	200.00
415	★	田	\$2.00 Carmine & Black (547). Block with Plate No., Very Good	200.00
416	★	田	\$2.00 Carmine & Black (547). Arrow & Double Plate No. Block of Eight, staple holes in selvage & natural gum creases, Very Good-Fine, Scarce Plate No. Block (Photo)	575.00
417	★		1c-5c 1920-25 Commems (548-550, 614-619). Cpl. Sets, Fine-Very Fine	59.50
418	★	田	1c-5c Pilgrims (548-550). Complete Set in Blocks with Plate Nos. one 1c & one 5c have faults, others Very Fine	93.00
419	★	田	2c Pilgrim (549). T. Plate No. F12422 Block of Six, Mint, F.-V.F.	65.00
420	★	田	2c-7c 1920-29 Commems, Postage (549, 618, 662, 665). Blocks, few small faults & perfs. cut, mostly Fine-Very Fine	90.00
421	★	田	5c Pilgrim (550). Block with Plate No., Fine	68.00
422	★	田	5c Pilgrim (550). Vert. Block of Six with R. Sheet Margin, Mint, Fine-Very Fine	102.00+
423	★	田	5c Pilgrim (550). Two Blocks, each with Diff. Plate No., both T. pairs have small thin spots, others Fine-Very Fine	136.00

1922 ISSUE TO DATE

424	★		½c-\$5.00 1922 Issue (551-573). Cpl. Set, Very Fine	189.61
425	★	田	½c-7c 1922 Issue (551, 554, 557, 559). Plate No. Blocks of Six, Mint Fine-Very Fine Lot	70.00
426	★	田	3c Violet (555). B. Plate No. 14737 Block of Six, Very Fine	62.50
427	★	田	6c Red Orange (558) R. Plate No. 14169 Block of Six, small hinge thin, well centered, wrinkles in selvage	95.00
428	★	田	9c-10c 1922 Issue (561-562). Plate No. Blocks of Six, Narrow selvage but clear of numbers, Fine	87.50
429	★	田	10c Orange (562). Top Plate No. F16381 Block of Six, Mint, Very Fine	50.00
430	★	田	11c-14c 1922 Issue (563-565). Plate No. Blocks of Six, additional shade of 11c, Fine-Very Fine	57.50
431	★	田	15c-\$1.00 1922 Issue (566-571). Blocks, most with Plate Nos., some hinge remnants, Very Fine	161.00
432	★	田	20c-50c 1922 Issue (567-570). Blocks, Fine-Very Fine	108.00
433	★	田	25c Green (568). T. Plate No. 14062 Block of Six, Selvage bit reduced, Fine	50.00
434	★		50c-\$5.00 1922 Issue (570-573). Small faults, Fine-Very Fine Appearance	117.50
435	★	田	\$1.00 Violet Brown (571). T. Plate No. 18642 Block of Six, Few perfs. strengthened in selvage only, Fine	100.00
436	★	田	\$2.00 Deep Blue (572). Block with Plate No., Very Fine (Photo)	120.00
437	★	田	\$5.00 Carmine & Blue (547). Mint Block with Plate No., natural gum skip, Fine-Very Fine (Photo)	270.00
438	★		1c-10c 1923 Issue (581-591). Cpl. Set, Very Fine	43.00
439	★	田	1c-10c Rotary (581-591). Complete Set of Blocks, Very Fine	172.00
440	★		2c Carmine, Coil, Type II (599A) Pair, Mint, Fine	125.00
441	★		2c Carmine, Coil, Type II, (599A) Pair, Mint, Centered to B.	125.00
442	★	田	2c Harding, Rotary (612). T.L. Plate No. 14866 Block, Perfs. just touch on two still Fine for this	165.00
443	★	田	1c-5c Huguenot-Walloon (614-616). Blocks with Plate Nos., hinge remnants, Fine-Very Fine Set	77.00
444	★	田	1c-5c Huguenot-Walloon (614-616). Blocks with Plate Nos., couple trivial gum thins, otherwise Fine-Very Fine Set	77.00
445	★	田	5c Lexington-Concord (619). Block with Plate No., Very Fine	44.00

446	★	5c Lexington-Concord (619). T. Plate No. 16805 Block of Six, Very Fine	100.00
447	★	5c Lexington-Concord (619). L. Plate No. 16808 Block of Six, Mint, Fine	100.00
448	★	2c-5c Norse-American (620-621). Blocks, Mint, F.-V. F. set	54.00
449		2c Norse-American (620). Used Arrow & Double Plate No. Block of Eight, small trivial crease, otherwise Very Fine, Unpriced & Scarce	E. III
450	⊠	2c-5c Norse-American (620-621). Set on Washington, May 18, 1925 First Day Cover, Very Fine	30.00
451	⊠	2c-5c Norse-American (620-621). Set on Decorah, Iowa, May 18, 1925 First Day Cover, Very Fine	30.00
452	⊠	2c-5c Norse-American (620-621). Complete Set tied on First Day Cover by "Benson, Minn., May 18, 1925" Duplex pmks., Fine-Very Fine	30.00
453	★	5c Norse-American (621). Block, Fine-Very Fine	44.00
454	★	13c Harrison (622, 694). Plate No. Blocks of Four & Six, Very Fine	32.50
455	★	2c Sesquicentennial (627). T. Half Sheet of 25, incl. Plate No. 18638 Block, Mint, F.-V. F.	50.65
456	★	5c Ericsson (628). Horiz. Block of Eight, Very Fine	36.00
457	★	2c-3c 1926-1933 Commems. (629, 645, 654, 702, 703, 726). Plate No. Blocks of Six or Eight, majority Mint, Fine-Very Fine	67.85
458	★	2c White Plains Souvenir Sheet (630). Fine-Very Fine	150.00
459	★	2c White Plains Souvenir Sheet (630). Mint, Fine	150.00
460	★	2c White Plains Souvenir Sheet (630). Small thins in selvage, otherwise Very Good-Very Fine	150.00
461	★	2c Carmine, Ty. II (634A). Mint, Very Fine	115.00
462	★	2c Carmine, Ty. II (634A). Mint, Fine	115.00
463	★	2c Carmine, Ty. II (634A). Mint, Fine	115.00
464	★	2c Carmine, Ty. II (634A). Mint Horiz. Pair, Very Fine (Photo)	230.00
465	★	2c Carmine, Ty. II (634A). Mint Vertical Pair, Very Fine (Photo)	230.00
466	★	2c Carmine, Ty. II (634A). Mint Block, Very Fine (Photo)	460.00
467	★	1c-10c Kans.-Nebr. Overprints (658-679). Complete Sets in Blocks with Plate Nos., hinge remnants, One side of selvage missing, Very Good-Very Fine	612.10+
468	★	1c Kans., With and Without Overprint (658a). Block, yielding Two Vertical Pairs, gum soaked, tiny corner crease in one & centered to B. R., Rare Variety (Photo)	450.00
469	★	1c-6c Kans. Opts. (658-659, 663-664). Plate No. Blocks of Four, Last has selvage missing on one stamp otherwise Fine-Very Fine	150.50
470	★	1c-10c Nebr. Overprints (669-679). Complete Set of Blocks with Plate Number, hinge remnants, one 9c & one 10c small flaw, one side of selvage missing, others Very Good-Very Fine	315.70+
471	★	9c Nebr. Overprint (678). T. L. Plate No. 18742 Block, Selvage bit reduced otherwise Fine	100.00
472	★	11c-50c, Perf. 11 x 10½ (692-701). Plate No. Blocks of Four, 13c & 17c missing part selvage others Fine-Very Fine	184.75
473	★	11c-20c 1931 Issue (692-694, 696, 698). Plate No. Blocks, Very Fine	65.25
474	★	11c-20c 1931 Issue (692-694, 696, 698). Plate No. Blocks, 13c & 20c trivial flaws, otherwise Very Fine	65.25
475	★	12c-20c 1931 Issue (693-694, 698). Plate No. Blocks, one 13c trivial gum thin speck, otherwise Very Fine	37.25
476	★	13c Yellow Green, 20c Carmine Rose (694, 698). Plate No. Blocks, Very Fine	31.00
477	★	50c Lilac (701). B. R. Plate No. 20553 Block, Fine-Very Fine	50.00
478	★	½c-10c Bicentennials (704-715) Set of Blocks, V. G.-V. F.	60.36
479	★	½c-10c Bicentennials (704-715) Set of Blocks, V. G.-V. F.	60.36
480	★	1c-10c Parks (740-749) Three sets of Blocks, Fine-Very Fine	76.32
481	★	½c-30c Presidentials (803-821, 823, 825-826, 828-830). Mint Plate No. Blocks, Fine-Very Fine	64.95

482	★	3c Deep Violet, Horizontal Pair Imperf. Between (807b). Mint, Very Fine	(Photo)	300.00
483	★	\$1.00 Presidential (832) Mint Double Plate No. Block, Very Fine		20.00
484	★	\$1.00 Presidential Revenue Wmk. "U. S. I. R." (832b). Very Fine		40.00
485	★	\$1.00 Presidential Revenue Wmkd. U. S. I. R. (832b). Mint Block, Very Fine	(Photo)	175.00
486	★	\$1.00 Presidential Revenue Wmkd. U. S. I. R. (832b). Mint Centerline Block, Scarce, Very Fine	(Photo)	E. X
487	★	\$2.00-\$5.00 Presidentials (833-834). Mint, Very Fine		55.00
488	★	\$5.00 Presidential (834) Mint Double Plate No. Block, Very Fine	(Photo)	200.00
489	★	1c-10c Famous Americans (859-893) Complete Set of Blocks, V. F.		72.27
490	★	1c-10c Famous Americans (859-893) Complete Set of Plate No. Blocks, few with minor perf. separations, mostly F.-V. F.		294.40
491		1c-10c Famous Americans (859-893) Complete Set Used Blocks, V. F.		41.20
492	★	\$5.00 Black (1053). T. R. Plate No. 25367 Block of Six, Mint, Very Fine		160.00
493	★	8c Flag (1338F). Three Horiz. Pairs, each with Blind Perfs., two pairs show Very Faintly, Mint Very Fine		E. III
494	★	8c Flag, Horizontal Pair, Imperf. Between (1338Fj), Mint, Very Fine	(Photo)	300.00
495	★	6c Walt Disney, Ocher Color, "Walt Disney", "6c" etc. Missing (1355a). Mint Margin Single, Very Fine	(Photo)	350.00
496	★	6c Grandma Moses, Black & Prussian Blue Colors Omitted (1370b). Gum slightly disturbed, otherwise Very Fine	(Photo)	350.00
497	★	6c 1969 Christmas (1384). Mint Horiz. Pair, Left Stamp with nearly all of Red, Green & Yellow Background Colors missing, Very Fine, Scarce Freak		—
498	✉	6c 1969 Christmas, Red, Yellow & Green Background Colors Missing (1384 Var.) S. e. at T., on Cover tied by slogan machine cancel. A few minute specks of red & green show, hardly noticeable, Yellow Entirely Omitted, Very Scarce, Unlisted		—

AIR POST ISSUES

499	★	6c-24c 1918 Air Post (C1-C3). Very Fine Set		125.00
500	★	6c-24c 1918 Air Post (C1-C3). Blocks, 24c s. e. at B., few faint trivial hinge thins, otherwise Fine-Very Fine		500.00
501	★	16c Green, Air Post (C2). "T" Shaped Block of 44, incl. T. Arrow & Plate No. 8900 Block of Six, L. Arrow Block, only four s. e., mint, Plate Block & all but six others Fine-Very Fine		2,593.00+
502	★	5c-50c 1918-39 Air Post (Betw C3-C24). Sixteen Unused Stamps, Fourteen Diff., incl. #C3-C5, C18, nearly all have faults, some very trivial, Fine-Very Fine Appearance		186.40
503	★	8c-24c 1923 Air Post (C4-C6). 8c reperfed, 16c regummed, Very Fine Appearing Set		105.00
504	★	8c Dark Green Air Post (C4). Block, Mint, Very Fine		56.00
505	★	8c Dark Green, Air Post (C4). Block, Mint, Fine-Very Fine		56.00
506	★	8c Dark Green, Air Post (C4). Block with Plate No., Fine		56.00
507	★	16c Dark Blue, Air Post (C5). Mint, Fine		42.50
508	★	16c Dark Blue, Air Post (C5). Block with Plate No., Very Good		170.00
509	★	24c Carmine, Air Post (C6). Block, Fine		194.00
510	✉	10c Lindbergh, Air Post (C10). Two First Day Covers, St. Louis pmks., Fine-Very Fine		43.00
511	★	65c-\$2.60 Graf Zeppelin (C13-C15). Fine Set	(Photo)	740.00
512	★	65c-\$2.60 Graf Zeppelin (C13-C15). Complete Set, natural gum bends, \$1.30 small thin spot, otherwise Very Fine	(Photo)	740.00



1



2



3



10



13



17



23



28



30



37



39



40



41



42



43



44



45



46



49



52



54



64



68



69



70



71



72



73



74



88



89



93



94



95



96



97



98



99



100



101



102



112



111



1216

1338

187

204



264

205



1116

1168

219



1144

223



267



103



104



105



106



107



108



116



120



129



130



131



139



140



141



145



171



172



173



174



175



176



177



178



179



180



195



210



212



215 EX



218



213



214



224 EX

231

234

235



239

263

273

283

285

286



298

334

351

352



355

356

362

363

364

371



374

389

390

400

464



482



465



511



495



494



230



268



343



345



347



346



6143



6143

350



395



385



8177

410



8179

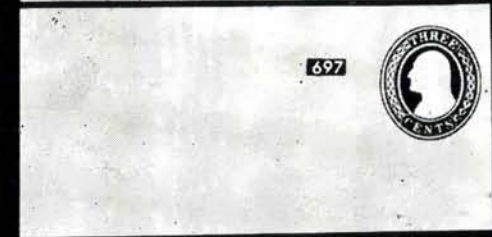
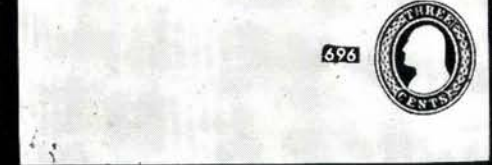
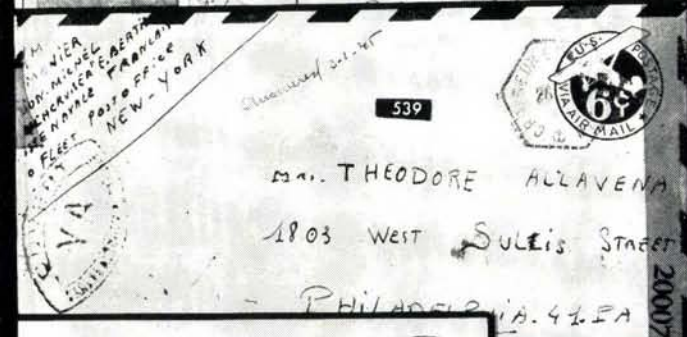
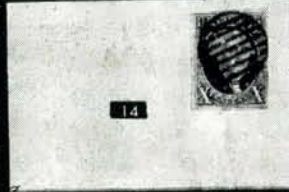
416

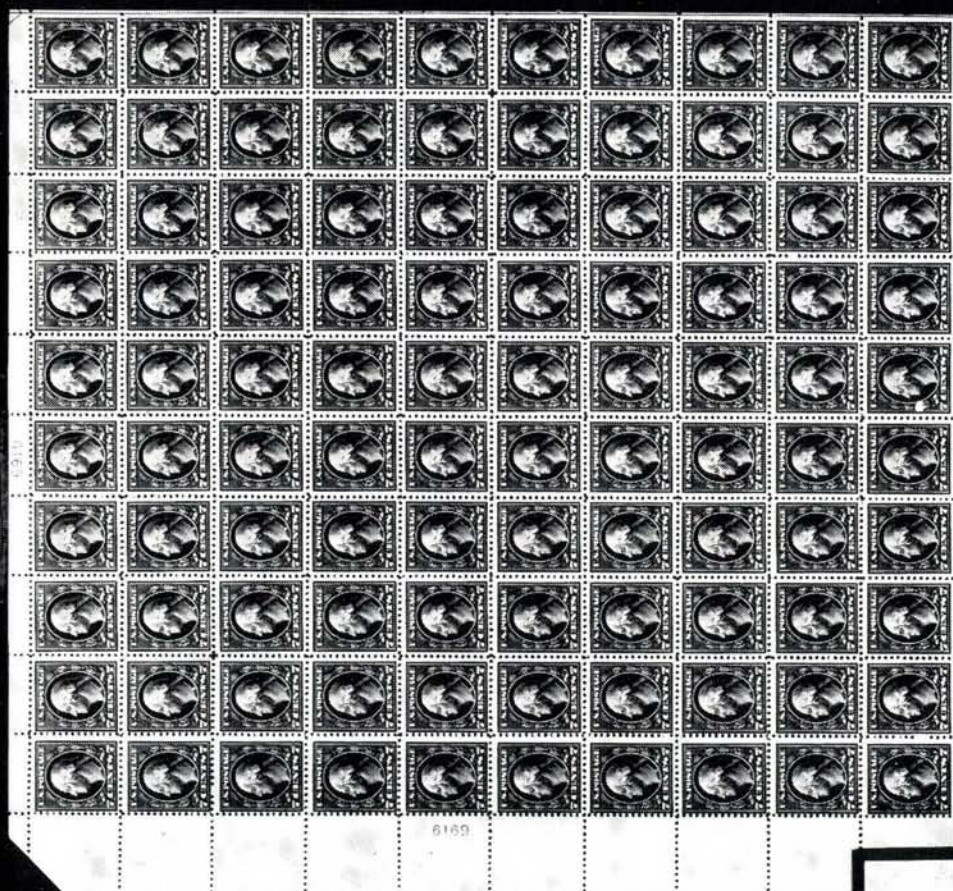


8177

436

14306





437



488



348



486



485



14268

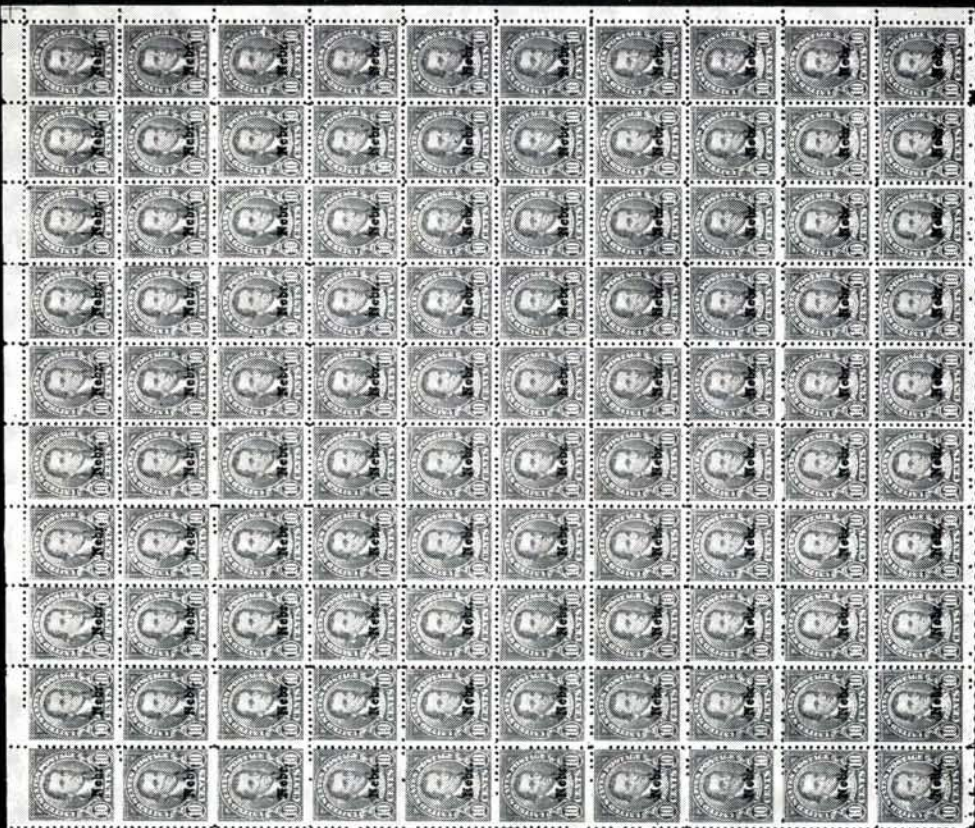


468



921





1927A

56

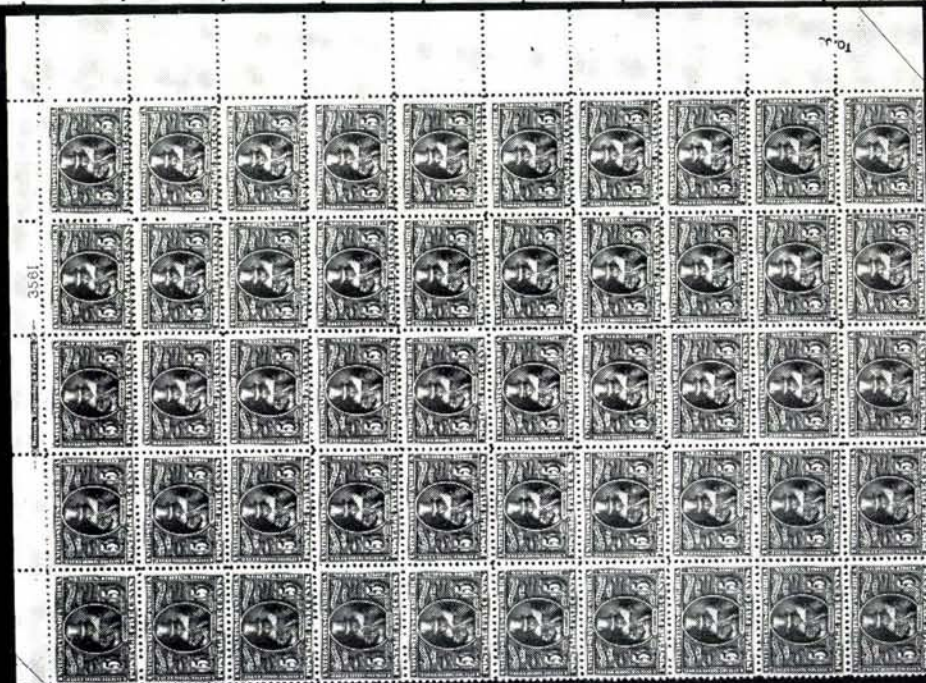
632EX



18192



675



558



512



513



496



710



711



714



709



174



724



828



830



832



834



835



836



839



840



841



844



845



850 EX



859



865



866



867



868



869



873



874



875



876



877



878



885



886



890



891



914



901



902



903



894



938



907



916



937



938



945 EX



950 EX



964 EX



1005



984



985 EX



986 EX



989



991



992



993



994



1007 EX



998



1002



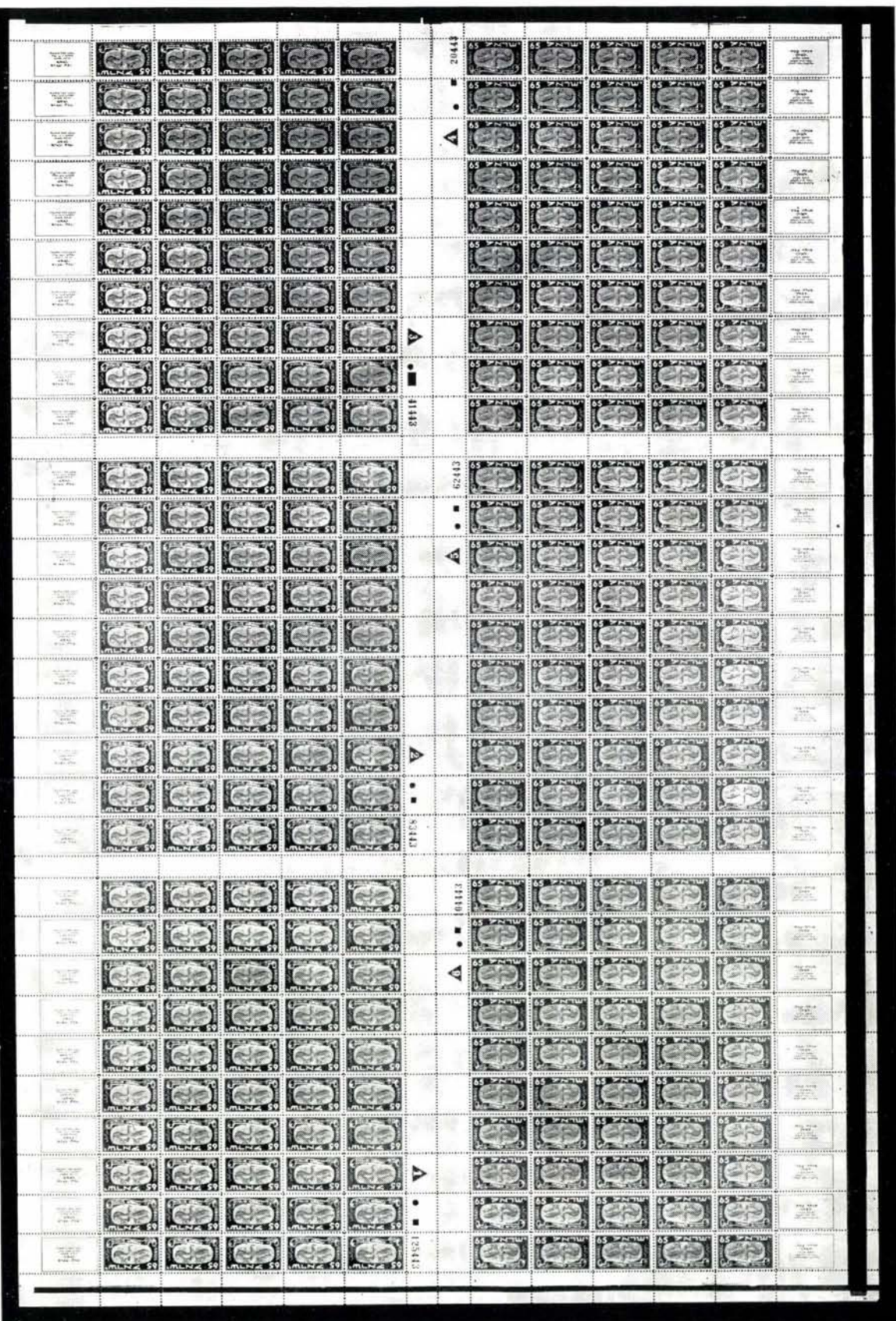
1003



1022



1027



513	★	65c-\$2.60 Graf Zeppelins (C13-C15). Complete Set, small faults, Fine-Very Fine Appearance	(Photo) 740.00
514	✉	65c-\$2.60 Graf Zeppelin (C13-C15). On separate First Day Covers, lightly canceled with Registry Oval only on front and Washington, Apr 19, 1930, Registry Pmk. on reverse of each Cover, Very Fine Set	(Photo) 1,025.00
515	★	50c Chicago Zeppelin (C18). Very Fine	50.00
516	★	50c Chicago Zeppelin (C18). Block with Plate No., Mint, Very Fine	210.00
517	★	50c Chicago Zeppelin (C18). Block, Fine-Very Fine	210.00
518	★	50c Chicago Zeppelin (C18). Block with Plate No., gum slightly disturbed, otherwise Very Fine	210.00
519	★	50c Chicago Zeppelin (C18). Block, Fine	210.00
520	★	50c Chicago Zeppelin (C18). Mint Block of Six with Plate No. at extreme left, Very Fine	310.00
521	✉	50c Chicago Zeppelin (C18). Tied on Cacheted "New York, Oct. 2, 1933" First Day Cover, slight crease from overlap, otherwise Fine	60.00
522	✉	50c Chicago Zeppelin (C18). Unusually Large Margins, tied Cacheted Flight Cover, Extremely Fine	40.00
523	✉	50c Chicago Zeppelin (C18). Tied on Cacheted Cover with Illustrated advertising Corner Card, Fine	40.00
524	✉	50c Chicago Zeppelin (C18). Tied on Cacheted Cover with Illustrated Advertising Corner Card, Fine	40.00
525	✉	50c Chicago Zeppelin (C18). Tied on Cacheted Cover with Illustrated Corner Card, Fine	40.00
526	★	6c Orange, Air Post (C19). B. R. Plate No. 21236 Block, Mint, small crease in selvedge, otherwise Fine-Very Fine	30.00
527	★	6c-25c Air Post (C19-C20). Plate No. Blocks of Six, First Mint, Fine-Very Fine	55.00
528	★	5c-30c 1938-61 Air Post (Betw C23-C63). 21 Diff. Mint Plate No. Blocks, Fine-Very Fine	55.15
529	★	30c Transatlantic Air Post (C24). B. Plate No. 22381 Block of Six, natural gum creases, Fine-Very Fine	150.00
530	★	6c-30c 1941 Air Post (C25-C30). Mint Plate No. Blocks, 20c trivial selvedge nick, Fine-Very Fine	47.50
531	★	50c Orange Air Post (C31) T. R. Plate No. 22778 Block, Mint, Very Fine	90.00
532	★	6c Carmine, Air Post (C39). Mint Block of Twelve, Very Pronounced Dry Print, Excellent Example of this Printing Variety	E. III
533	★	80c Hawaii, Air Post (C46). T. L. Plate No. 24593 Block, Mint, Very Fine	37.50
534	★	80c Hawaii, Air Post (C46). B. L. Plate No. 24593 Block, Mint, Very Fine	37.50
535	★	8c Alaska Purchase Air Post (C70), Plate No. Block of ten with wide paper folds on four stamps, Interesting freak	E. III
536	✉	6c Carmine, Air Post, "R. F." Handstamp Ty. b (CM2). Bold Strike, tied by French Naval Post cancel, Censor marks, on Cover to Phila., bit soiled with small tear at T., otherwise Very Fine	(Photo) 75.00
537	✉	6c Carmine, Airpost, "R. F." Handstamp Ty. c (CM3). On Small Cover, Bold Strike, tied by French Naval Post cancel, light purple censor marking, mailed aboard the Cruiser "Montcalm", to Phila., trivial soiling, otherwise Very Fine	(Photo) 110.00
538	✉	6c Carmine, Air Post, "R. F." Handstamp Ty. c (CM3). Bold Strike, bit overinked, on cover tied by French Naval Post cancel & Oval Censor mark, Sea Service handstamp, mailed aboard the Cruiser "Georges Leygues", to Phila., Very Fine	(Photo) 110.00

- 539 ☒ **6c Orange on White, Air Post Entire, "R. F." Handstamp Ty.a (UCM1).**
Clear Strike, Cruiser "Emile Bertin" Hexagonal pmk., American & French
Censor Seals & Marking, to Phila., tiny corner nick, still Very Fine,
Listed but Unpriced (Photo) **E. VIII**
- 540 ☒ **6c Orange on White, Air Post Entire, "R. F." Handstamp Ty. f (UCM4).**
Clear Strike, Cruiser "Georges Leygues" Hexagonal pmk., French Sea
Service & Censor Markings, to Phila., Very Fine (Photo) **125.00**
- 541 ☒ **6c Carmine, Air Post, 6c Orange on White, Air Post Entire, (C25, UC2).**
Three of First, four of latter, All Used by French Naval personnel during
W. W. II, Wide Variety of U.S. & French Postal & Censor Markings,
incl. "Poste Navale", Diff. Cruisers, "U.S. Navy", "Marine Nationale,
Censure" in Box, two types, also 2c Defense #900 with Cruiser "Mont-
calm" pmks., mailed on visit to Phila., Interesting Lot **E. V**

END OF FIRST SESSION

LOTS ON VIEW FROM OCTOBER 22nd

A REMINDER

Mails are often slow. After nearly every auction we receive some
25 to 50 late bid sheets, many of which would have been successful.
We can only repeat . . . **PLEASE MAIL YOUR BIDS EARLY !**
Use Air Mail if you are in doubt as to being on time.

SECOND SESSION

FRIDAY, OCTOBER 26th, 1973 — 1:00 P. M.

COMPLETE SHEETS AND LARGE PIECES

542 ★	1c Columbian (230). Bottom Imprint, "K" & Plate No. 51 Block of 40, Full o. g., hinge rejoined vertically between letter & imprint, few trivial gum toning specks, otherwise Very Good-Fine, cat. val. incl. Plate Block of Six only	347.00+
543 ★	1c Pan-American (294). B. Arrow Block of 40 (10 x 4), Mint, insignificant separation, Very Good-Fine	192.00
544 ★	1c Pan American (294). B. Imprint & Plate No. 1116 Block of 40 (4 x 10), Mint, Very Good	251.50
545 ★	1c Pan-American (294). Half Sheet of 50, incl. B. Arrow Imprint & Double Plate No. Block of Ten & Imprint & Plate No. Block of Six, heavily reinforced, some separation, few gum thins, F.-V. F. Appearance	416.50
546 ★	1c Green (300). Part Sheet of 84 incl. L. Imprint & Plate No. 1610 Block of Six, perfs. touch on a few, Nearly All Fine-Very Fine	154.50
547 ★	1c Green (300). Part Sheet of 81, no straight edges, incl. Two Imprint & Plate No. 4511 Blocks of Six, some very minor perf. separation, Fine-Very Fine	200.60
548 ★	1c Deep Green (300). B. Imprint & Plate No. 4504 Block of 45, Mint, Fine-Very Fine	105.70
549 ★	1c Blue Green, Imperforate (314). T. Imprint & Plate No. 3364 Block of 40 (10 x 4), creases affect about half others Very Fine	271.00
550 ★	2c Carmine (319). Sheet of 100, three pieces of corner selvedge missing, neat hinge reinforcing affects one plate no. block of six, one horiz. row lightly creased, others Very Good-Fine	153.70
551 ★	2c Scarlet (319c). Part Sheet of 94 without selvedge, perfs. touch on some, Nearly All Fine	117.50
552 ★	1c Louisiana Purchase (323). Cpl. Sheet of 50, Fine-Very Fine	578.00
553 ★	1c Louisiana Purchase (323). Complete Left Pane of 50, incl. T. & B. Imprint & Plate No. 2118 Blocks, lightly hinged in selvedge only, Very Good-Very Fine	578.00
554 ★	2c Louisiana Purchase (324). Complete Sheet of 50, some very light strengthening in selvedge, Unusually Well Centered, Nearly All Including Plate Blocks are Very Fine	565.00
555 ★	2c Louisiana Purchase (324). Complete Sheet of 50, very light strengthening in B. selvedge, perfs. touch on some, Mostly Fine-Very Fine	565.00
556 ★	1c Jamestown (328). Half Sheet of 50, incl. B. Imprint & Plate No. 3545 Block of Six, some light strengthening, usual centering, Mostly Fine-Very Fine	301.50
557 ★	1c-5c Jamestown (328-330). Cpl. Set in Sheets of 100, 2c without L. selvedge, Very Good-Very Fine, Perfs. in on most of 5c, Rare Set of Sheets (Photo) 6,319.00+	
558 ★	5c Jamestown (330). Half Sheet of 50, incl. T. Imprint & Plate No. 3561 Block of Six, Usual Centering, Very Good-Very Fine (Photo) 2,455.00	

559 ★	1c Green (331). Complete B.R. Pane of 100, incl. Two Imprint, Star & Plate No. 5491 Blocks of Six, minor separation in B. selvage, Fine-Very Fine	155.00
560 ★	1c Green (331). Complete B.R. Pane of 100, incl. Two Imprint, Star & Plate No. 5345 Blocks of Six, minor separation in B. selvage, Fine-Very Fine	155.00
561 ★	1c Green (331). Complete Sheet of 100, minor separation, Fine-Very Fine	155.00
562 ★	1c Green (331). Complete Sheet of 100, minor separation, Fine-Very Fine	155.00
563 ★田	3c Violet (333). B. Imprint & Plate No. 4918 Block of 40 (4 x 10), V. G.-V. F.	245.00
564 ★	2c Lincoln (367). Cpl. Sheet of 100, Fine-Very Fine	444.00
565 ★田	2c Lincoln, Imperforate (368). L. Margin Block of 40 (10 x 4), Mint, Very Fine	580.00
566 ★	2c Alaska-Yukon (370). Cpl. Sheet of 70, Fine-Very Fine	433.00
567 ★	2c Alaska-Yukon (370). Complete Sheet of 70, Fine-Very Fine	433.00
568 ★田	2c Alaska-Yukon (370). Part Sheet of 49, incl. L. Imprint & Plate No. 5173 Block of Six, Mint, Fine-Very Fine	265.00
569 ★	2c Hudson-Fulton (372). Cpl. Sheet of 70, Fine-Very Fine	393.00
570 ★田	1c Green (374). Block of 48, incl. R. & B. Imprint, Star & Plate No. 5605 Blocks of Six, Fine-Very Fine	103.60
571 ★	3c Violet (376). Complete T.L. Pane of 100, incl. Two Plate No. 6052 Blocks of Six, some minor separation not affecting Plate Blocks, Fine-Very Fine	362.60
572 ★	1c Green (405). Complete Sheet of 100, incl. Two Plate No. 6040 Blocks of Six, minor separation, one stamp not in plate block damaged, others Fine-Very Fine	129.50
<hr/>		
573 ★	7c Black (407). Complete Sheet of 100, Fine-Very Fine, Rare Sheet (Photo)	2,012.50
<hr/>		
574 ★	2c Rose Red, "Coil Stamps" Imprint (425). Cpl. Sheet of 100, perfs. touch on one row, others Fine-Very Fine, Scarce Sheet	77.20
575 ★	1c Green, Rotary Perf. 11X10 (538). Cpl. Sheet of 170, separated into three large blocks, V. G.-V. F.	357.00
576 ★	2c Carmine Rose, Rotary Ty. III, Perf. 11X10 (540). Cpl. Sheet of 170, partly separated, V. G.-V. F.	357.00
577 ★	1c Green, Rotary, Perf. 10X11 (542). Cpl. Sheet of 100, V. G.-F.	151.90
578 ★	1c Green (581). Cpl. Sheet of 100, minor separation, Fine-Very Fine	180.00
579 ★	2c Harding, Rotary (612). Cpl. Sheet of 100, Unusually Well Centered, Fine-Very Fine	741.00
580 ★	1c-5c Lexington-Concord (617-619). Cpl. Set in Sheets of 50, Fine-Very Fine	810.50
581 ★	5c Ericsson (628). Cpl. Sheet of 50, Very Fine	277.00
582 ★田	5c Ericsson (628). Part Mint Sheet of 36, incl. T. & L. Plate No. 18601 Blocks of Six, Fine-Very Fine	233.00
583 ★田	5c Ericsson (628). Part Mint Sheet of 36, incl. T. & L. Plate No. 18601 Blocks of Six, Fine-Very Fine	233.00
584 ★田	5c Ericsson (628). Part Mint Sheet of 36, incl. T. & L. Plate No. 18601 Blocks of Six, Fine-Very Fine	233.00
585 ★田	5c Ericsson (628). Part Mint Sheet of 36, incl. T. & L. Plate No. 18607 Blocks of Six, perfs. touch on three, others incl. Plate Blocks Fine-Very Fine	233.00
586 ★田	5c Ericsson (628). Part Sheet of 35, incl. T. & L. Plate No. 18595 Blocks of Six, one lightly strengthened, Very Good-Fine	228.50

587 ★	2c White Plains (629). Complete Sheet of 100, incl. Two Plate No. 18769 Blocks of Six, trivial natural crease, small selvage at L. affecting plate no., Fine-Very Fine	169.20
588 ★	2c White Plains (629). Cpl. Sheet of 100, Fine-Very Fine	169.20
589 ★	½c-8c 1926-59 Issues (Betw. 632-727, 803-813, 899-908, 1034-1041). 23 Diff. Cpl. Sheets of 100, Fine-Very Fine	285.44
590 ★	5c-8c 1926 Issue (637-640). Cpl. Sheets of 100, Fine-Very Fine	271.00
591 ★	2c Burgoyne (644). Cpl. Sheet of 50, two s. e. stamps faulty, others Very Fine	112.70
592 ★	2c Burgoyne (644). Cpl. Sheets of 50, Fine-Very Fine	112.70
593 ★	2c Burgoyne (644). Cpl. Sheet of 50, Fine-Very Fine	112.70
594 ★	2c Burgoyne (644). Complete Sheet of 50, incl. Two Plate No. 19069 Blocks of Six, Mint, Fine-Very Fine	112.70
595 ★	2c Burgoyne (644). Complete Sheet of 50, incl. Two Plate No. 19069 Blocks of Six, some minor separation, Fine-Very Fine	112.70
596 ★	2c Burgoyne (644). Complete Sheet of 50, incl. Two Plate No. 19069 Blocks of Six, Mint, few perfs. in B. selvage separated, Fine-Very Fine	112.70
597 ★	2c Burgoyne (644). Complete Sheet of 50, incl. Two Plate No. 19069 Blocks of Six, Fine	112.70
598 ★	2c Burgoyne (644). Complete Sheet of 50, incl. Two Plate No. 19069 Blocks of Six, few perfs. separated, one s. e. stamp creased, others Fine	112.70
599 ★	2c Valley Forge (645). Cpl. Sheet of 100, Fine-Very Fine	61.60
600 ★	2c Valley Forge (645). Cpl. Sheet of 100, Fine-Very Fine	61.60
601 ★	2c Valley Forge, Sullivan (645, 657). Cpl. Sheets of 100, V. G.-V. F.	107.40
602 ★	2c Molly Pitcher (646). Complete Mint Sheet of 100, F.-V. F.	84.80
603 ★	2c Molly Pitcher (646). Complete Mint Sheet of 100, perfs. touch on a few, Nearly All F.-V. F.	84.80
604 ★	2c Molly Pitcher (646). Sheet of 100, three rows V. G.-F., others incl. Plate Block Very Fine	84.80
605 ★	2c Molly Pitcher (646). Two Cpl. Sheets of 100, Very Good-Very Fine	169.60
606 ★	2c Molly Pitcher (646). Complete Mint Sheet of 100, V. G.-V. F.	84.80
607 ★	2c Molly Pitcher (646). Complete Mint Sheet of 100, V. G.-V. F.	84.80
608 ★	2c Molly Pitcher (646). Complete Mint Sheet of 100, V. G.-V. F.	84.80
609 ★	2c Molly Pitcher (646). Part Sheet of 96, incl. Plate No. Block, Fine-Very Fine	82.20
610 ★	2c, 5c Hawaii (647-648). Complete Set in Mint Sheets of 100, perfs. touch on some, Mostly Fine-Very Fine	1,117.00
611 ★	2c, 5c Hawaii (647-648). Complete Set in Mint Sheets of 100, perfs. touch on some, Mostly Fine-Very Fine	1,117.00
612 ★	2c Hawaii (647). Cpl. Sheet of 100, Nearly All Fine-Very Fine	295.00
613 ★	2c Hawaii (647). Cpl. Sheet of 100, Very Good-Very Fine	295.00
614 ★	2c Hawaii (647). Complete Mint Sheet of 100, light crease affects five stamps, others V. G.-V. F.	295.00
615 ★	2c Hawaii (647). Complete Mint Sheet of 100, V. G.-V. F.	295.00
616 ★	2c Hawaii (647). Complete Mint Sheet of 100, V. G.-V. F.	295.00
617 ★	2c-5c Aeronautics (649-650). Cpl. Set in Sheets of 50, Mostly Fine-Very Fine	208.40
618 ★	2c Aeronautics (649). Four Cpl. Sheets of 50, Very Good-Very Fine	173.60
619 ★	5c Aeronautics (650). Cpl. Sheet of 50, Fine-V. F.	165.00
620 ★	5c Aeronautics (650). Cpl. Sheet of 50, Fine-Very Fine	165.00
621 ★	5c Aeronautics (650). Cpl. Sheets of 50, Fine-Very Fine	165.00
622 ★	2c Clark (651). Five Complete Mint Sheets, Fine-Very Fine	120.50
623 ★	2c Clark (651). Five Complete Mint Sheets, Fine-Very Fine	120.50
624 ★	2c Clark (651). Five Complete Mint Sheets, Fine-Very Fine	120.50

625 ★	2c Clark (651). Five Complete Mint Sheets, Fine-Very Fine	120.50
626 ★	2c Clark (651). Four Cpl. Sheets of 50, Nearly All Fine-Very Fine	103.60
627 ★	2c Clark (651). Three Cpl. Sheets of 50, V. G.-V. F.	77.70
628 ★	2c Clark (651). Three Part Sheets of 40, no s. e., Nearly All Fine-Very Fine	64.20
629 ★	½c Olive Brown (653). Eleven Complete Sheets of 100, Very Fine	58.30
630 ★	½c Olive Brown (653). Ten Complete Mint Sheets of 100, Fine-Very Fine	52.00
631 ★	2c Edison (654). Cpl. Sheet of 100, Fine-Very Fine	79.00

632 ★	1c-10c Kans.-Nebr. Overprints (658-679). Cpl. Set in Sheets of 100, both 1c sheets separated, some selvedge missing, not affecting any Plate No. Blocks, mixed centering Very Good-Very Fine (Photo Ex)	15,939.90
-------	---	-----------

633 ★	2c Fallen Timbers (680). Cpl. Sheet of 100, Fine-Very Fine	91.80
634 ★	2c Ohio Canal (681). Complete Sheet of 100, signed in selvedge "Walter F. Brown" Postmaster General, Fine-Very Fine	63.80
635 ★	2c Ohio Canal (681). Two Cpl. Sheets of 100, slight wrinkling, Fine-Very Fine	127.60
636 ★	2c Ohio Canal, Red Cross (681, 702). Cpl. Sheet of 100 of first, part sheet of 83 of other, Fine-Very Fine	79.20
637 ★	2c Massachusetts Bay, Ohio Canal (681-682). Cpl. Sheets of 100, Fine- Very Fine	108.15
638 ★	2c Braddock's Field (688). Cpl. Sheet of 100, Fine-Very Fine	72.70
639 ★	2c Von Steuben, 3c Oglethorpe (689, 726). Sheets of 100, #689 without side selvedge, Fine-Very Fine	77.70
640 ★	2c Red Cross, Winter Games, 3c Webster (702, 716, 725). Cpl. Sheets of 100 of first two, part sheet of 80 of other, Fine-Very Fine	74.02
641 ★	1c-3c 1931-33 Commems (702-703, 716-718, 722, 728-729). Cpl. Sheets of 50, 100, Fine-Very Fine	151.06
642 ★	2c-3c 1931-38 Commems (702, 773, 836, 838). Cpl. Sheets, two of first, three of second, one each of last two, also two part sheets of #773 & plate no. pair of #314, Fine-Very Fine	100.95
643 ★	2c Yorktown (703). Four Cpl. Sheets of 50, Fine-Very Fine	60.80
644 ★	2c Yorktown (703). Cpl. Sheet of 50 with Plate Nos. 20484, 20602, Rarest of All Plate No. Combinations According to Durland, Fine-Very Fine	—

645 ★	½c-10c Bicentennial (704-715). Cpl. Set in Sheets of 100, perfs. touch on few lower values, Mostly Fine-Very Fine	1,454.31
-------	--	----------

646 ★	½c-1½c Bicentennials (704-706). Five Cpl. Sheets of 100 of first, two sheets each of other, Fine-Very Fine	104.42
647 ★	½c-7c Bicentennials (704-712). ½c-3c Cpl. Sheets of 100, 4c 80 of each, 5c-7c 100 of each in Plate No. Blocks of 50, Fine-Very Fine	489.76
648 ★	2c Parks, 7c Bicentennial (712, 741). Four Cpl. Sheets of First, one Cpl. Sheet of other, Fine-Very Fine	62.65
649 ★	3c Oglethorpe, N. W. Territory (726, 837). Cpl. Sheets of 100, Very Fine	64.10
650 ★	3c Byrd (733). Two Cpl. Sheets of 50, Fine-Very Fine	81.60
651 ★	3c Mothers Day, Flat Plate (738). Eleven Part Sheets of 36, each with B. Plate No. Block of Six, Mint, Fine-Very Fine	104.00
652 ★	1c-10c Parks (740-749). Cpl. Set in Sheets of 50, Very Fine	332.50
653 ★	1c-10c Parks (740-749). Cpl. Set in Sheets of 50, Fine-Very Fine	332.52
654 ★	3c California-Pacific Exposition (773). Ten Complete Mint Sheets of 50, Very Fine	58.50

655 ★	1c-10c Famous Americans (859-893). Cpl. Set in Sheets of 70, Very Fine	1,485.49
-------	--	----------

656 ★	5c Overrun Countries (909, 912-913, 915, 919-920). Two Complete Sheets of Each, few gum toning spots, Virtually All Very Fine	141.76
657 ★	5c Overrun Countries (911, 914-915, 919-920). Complete Sheets, two of #915,, six of #920, others one each, few minor toning spots, one stamp damaged, others Very Fine	116.68
658 ★	5c Overrun Countries (909-915, 917, 919-920). Complete Sheets, some minor gum toning, Nearly All Very Fine	110.26
659 ★	3c Palomar (966). Four Cpl. Sheets of 70, Very Fine	80.00
660 ★	3c Palomar (966). Four Cpl. Sheets of 70, Very Fine	80.00
661 ★	3c Palomar (966). Five Cpl. Sheets of 70, Very Fine	100.00
662 ★	\$1.00 Airlift (1341). Cpl. Sheet of 50, Very Fine	121.00
663 ★	10c Map, Air Post (C7). Complete T. R. Pane of 50, incl. Two Plate No. 18249 Blocks of Six, Fine-Very Fine	126.40+
664 ★	10c Map, Air Post (C7). Complete T. R. Pane of 50, incl. Two Plate 18247 Blocks of Six, Fine-Very Fine	126.40+
665 ★田	15c Map, Air Post (C8). Part Sheet of 36, incl. L. & B. Plate No. 18748 Blocks of Six, no straight edges, Fine-Very Fine	131.20
666 ★	20c Map, Air Post (C9). Complete B. L. Pane of 50, incl. Two Plate No. 18891 Blocks of Six, small natural selvage at L. slightly affects plate no., Fine-Very Fine	302.50+
667 ★田	20c Map Air Post (C9). Part Sheet of 36, no s. e.'s, incl. T. & L. Plate No. 18897 Blocks of Six, Very Fine	250.00
668 ★田	20c Map Air Post (C9). Part Sheet of 36, no s. e.'s, incl. T. & L. Plate No. 18899 Blocks of Six, Fine-Very Fine	250.00
669 ★	10c Lindbergh, Air Post (C10). Complete T. R. Pane of 50, incl. Two Plate No. 19001 Blocks of Six, small natural selvage at R. partly affects one plate no., Fine-Very Fine	424.50
670 ★	10c Lindbergh, Air Post (C10). Cpl. Sheet of 50, small natural selvage slightly affects one plate no., Fine-Very Fine	424.50
671 ★	8c Olive Bistre, Air Post (C17). Complete Sheet of 50, incl. T. L. Plate No. 21031 Block of Six, few perfs. separated not in plate block, Fine-Very Fine	69.00+
672 ★	25c Transpacific, Air Post (C20). Complete Sheet of 50, incl. Plate No. 21473 Block of Six, Very Fine	86.60
673 ★	25c Transpacific, Air Post (C20). Complete Sheet of 50, incl. Plate No. 21473 Block of Six, Fine-Very Fine	86.60
674 ★	25c Transpacific Air Post (C20). Cpl. Sheet of 50, Fine-Very Fine	86.60
675 ★	10c Green, Special Delivery (E7). Complete Sheet of 70, incl. Two Im-print & Plate No. 4920 Blocks of Six, only one stamp lightly hinged, others incl. Plate No. Block are Mint, Fine-Very Fine, A Very Scarce Sheet	(Photo) 887.50+
676 ★	1c Parcel Post (Q1). Complete Sheet of 45, incl. Two Plate No. 6331 Blocks of Six, Mint, Fine-Very Fine	113.70
677 ★	1c Parcel Post (Q1). Complete Sheet of 45, incl. Two Plate No. 6393 Blocks of Six, Mint, Fine-Very Fine	113.70
678 ★	1c Parcel Post (Q1). Complete Sheet of 45, incl. Two Plate No. 6332 Block of Six, Mint, Fine-Very Fine	113.70
679 ★	1c Parcel Post (Q1). Complete Sheet of 45, incl. Two Plate No. 6386 Blocks of Six, Mint, Fine-Very Fine	113.70
680 ★	1c Parcel Post (Q1). Cpl. Sheet of 45, Fine-Very Fine	113.70
681 ★	1c Parcel Post (Q1). Complete Sheet of 45, incl. Two Plate No. 6332 Blocks of Six, Mint, V. G.-F.	113.70
682 ★	1c Parcel Post (Q1). Cpl. Sheet of 45, V. G.-V. F.	113.70

683 ★	1c Parcel Post (Q1). Cpl. Sheet of 45, V. G.-F.	113.70
684 ★	2c Parcel Post (Q2). Cpl. Sheet of 45, V. G.-F.	114.55
685 ★	3c Parcel Post (Q3). Cpl. Sheet of 45, slight separation, Fine-Very	202.50
686 ★	3c Parcel Post (Q3). Cpl. Sheet of 45, some trivial separation, Fine-Very Fine	202.50
687 ★	3c Parcel Post (Q3). Cpl. Sheet of 45, some very trivial separation, V. G.-V. F.	202.50

SPECIAL DELIVERY — POSTAL STATIONERY

688 ★田	10c Green Special Delivery (E7). Block, Mint, Very Fine	37.50
689 ★田	10c Gray Violet Special Delivery (E12). L. Plate Plate No. 15231 Block of Six, Mint, Very Fine	72.50
690 ★田	13c-60c Special Delivery (E13, E16-E23). Plate No. Blocks of Four or Six, majority Mint, Very Fine	77.75
691 ★田	2c Offices in China, Local Surcharge (K17). Block of Eight (2 x 4), T. Margin Block of Six (2 x 3), both with R. s. e., Mint, perfs. close at L., Fine Lot	154.00
692 ★田	2c Offices in China, Local Surcharge (K17). T. L. Corner Margin Block of Nine, Mint, perfs. trifle in at L.	99.00
693 ★田	2c Offices in China, Local Surcharge (K17). T. Margin Block of 20, (2 x 10), Mint, s. e. at R., Fine-Very Fine	220.00
694 ★田	\$5.00 Sepia, Postal Savings (PS15). Mint Block, Fine	75.00
695 ★田	\$5.00 Sepia, Savings Stamp (S5). Mint Block, Very Fine (Photo)	48.00
696 田	3c Red on White, Die 1 (U1). Knife 1, Size 1, Unused, Very Fine, Thorpe #1, \$400.00 (Photo)	325.00
697 田	3c Red on White, Die 1 (U1). Knife 1, Size 1, Unused, Very Fine, Thorpe #1, \$400.00 (Photo)	325.00
698 田	11c Air Post Letter Sheet, Blue Only Partially Printed (UC35 var). Showing light Impression of Blue on Right Half Only, Unused, Unfolded, Very Fine	—
699 田	11c Air Post Letter Sheet, Blue Omitted (UC35b). Unused, Unfolded, Very Fine, Rare	500.00
700 田	11c Air Post Letter Sheet, Red Omitted (UC35a). Unused, Unfolded, Very Fine, Rare	300.00

OFFICIALS

701 ★	2c Post Office (O48). Complete Sheet of 100, incl. T. & B. Imprint & Plate No. 37 Margins, Fresh, o. g., some minor separation, few hinge reinforcements, Very Good-Fine	175.00+
702 ★田	2c Post Office (O48). Block of 40 (10 x 4), o. g., Fine-Very Fine	70.00
703 ★田	3c Post Office, 1c War Dept. (O49, O114). First, B. Imprint & Plate No. 41 Block of 20, other Block of 40 (10 x 4), o. g., hinge reinforced, Very Good-Very Fine	30.00+
704 ★	3c Interior, Soft Paper (O98). Complete Sheet of 100, incl. T. & B. Imprint No. 27 Margins, Full o. g., hinge reinforced, slightly toning, otherwise Very Good-Very Fine	62.50+
705 ★田	3c Treasury, Soft Paper (O109). T. Imprint & Plate No. 33 Block of Twenty, Fresh, o. g., hinge reinforced, one thin, few light creases, Fine Appearance, Scarce Plate Block	85.00+
706 ★	1c War, Soft Paper (O114). Complete Sheet of 100, incl. T. & B. Imprint & Plate No. 48 Margins, Fresh, Mint, some minor separation, Very Good-Very Fine	50.00+

- 707 ★ **2c War, Soft Paper (O115). Complete Sheet of 100, incl. T. & B. Im-**
print & Plate No. 35 Margins, three stamps replaced to preserve con-
tinuity, Fresh, o. g., minor separation & hinge reinforcing, s. e. two stamps
faulty, others, Fine-Very Fine 81.25+

SANITARY FAIR STAMPS

- 708 ★ **Albany, N. Y., 10c Rose (WV1). Margins All Around, trivial thin speck,**
nearly all in margin, Very Fine Appearance 40.00
- 709 ★ **Albany, N. Y., 10c Black (WV2). Margins All Around, except barely**
nicked in one corner, Nevertheless Very Fine (Photo) 175.00
- 710 ★ **Brooklyn, N. Y., 10c Green (WV7). Ample to Large Margins, small sur-**
face rubbings appear thin, otherwise Very Fine, Rare (Photo) 450.00
- 711 ★ **Brooklyn, N. Y., 10c Green (WV7). Ample to Large Margins, small thin at**
T., Very Fine Appearance, Rare (Photo) 450.00
- 712 ★ **Philadelphia, Pa., 10c, 20c, 30c "Eagle" (WV11-WV13). Complete Set,**
first two o. g., tiny faults, otherwise Fine-Very Fine 39.00
- 713 ★ **Philadelphia, Pa., 10c, 20c, 30c "Eagle" (WV11-WV13). Complete Set,**
Fresh, o. g., 20c tiny gum thin speck, otherwise Fine 39.00
- 714 ★ **Springfield, Mass., 10c Lilac (WV14). Margins All Around except touched**
at one spot, Part o. g., small toned area from old hinge, otherwise Fine
(Photo) 50.00
- 715 ★ **1c-25c 1940 Wester Union, Telegraph, Booklet Panes (16T99 three, 16T100,**
16T101 two, 16T102-16T103). Complete Unexploded \$2.50 Booklet,
One 5c Pane with Vertical Pair Imperf. Between (16T101a), V. G.-V. F.,
Scarce 49.00+

REVENUE STAMPS

- 716 **55c, \$1.10, \$2.20, \$3.30 Documentaries (R665, R668 R671, R674). Seventy-**
seven stamps on oil & gas lease document, mostly F.-V. F. interesting
piece 326.65
- 717 **55c, \$1.10, \$2.20 Documentaries (R665, R668, R671). Eighty-three stamps**
on parts of three documents, Mostly F.-V. F. 224.25
- 718 ★ **\$1.00-\$2.00 1934-58 Hunting Permits (RW1-RW13, RW22, RW24-RW25).**
RW1 part o. g., otherwise Fine-Very Fine 223.00
- 719 ★田 **\$1.00 Hunting Permit (RW12). T. Plate No. 157248 Block of Six, Mint,**
Fine-Very Fine 25.00
- 720 ★田 **\$1.00 1945-46 Hunting Permits (RW12-RW13). Mint Blocks with Plate**
Nos., Fine-Very Fine 30.00
- 721 ★田 **\$1.00 1946 Hunting Permit (RW13). T. Plate No. 158456 Block of Six,**
Mint, Fine-Very Fine 25.00
- 722 ★田 **\$1.00 1948 Hunting Permit (RW18). T. Plate No. 160101 Block of Six,**
Mint, usual natural gum bends, Very Fine 25.00
- 723 ★田 **\$3.00 1959 Hunting Permit (RW26). T. R. Plate No. 167120 Block, Mint,**
small natural wrinkle nearly all in selvedge, Very Fine 37.50
- 724 **3c Black, Geo. W. Laird Private Die Perfumery, Die Cut on Old Paper**
(RT15a). Usual trivial flaws, Attractive Example of this Rare Stamp
(Photo) 125.00
- 725 **Match & Medicine, Collection of 161 Virtually All Diff. Stamps, incl.**
Playing Cards & Perfumery, usual quality, although quite a number are
in Better Condition, Scarce Lot 249.00
- 726 **Match & Medicine, 25 Diff. Mounted on Auction Pages, Nearly All**
Scarcer Varieties, Better than Usual Quality Prevails Throughout, Choice
Lot 382.75

SOUVENIR CARD ERROR

727	Souvenir Card, IBRA 73, Complete Impression of 65c Graf Zeppelin, but Without Color, a Newly Discovered Error, Reportedly only two found, Rare	E. XV
-----	--	-------

U. S. WHOLESALE

728	1c-30c Pictorials, #112(5), #113(1), #115(3), #117(6), #119(2), #121(2), Used, faults or perfs. cut in, incl. 1c perforated proof	438.50
729	3c Ultramarine, #114(79), Used, Fair-Very Fine	137.25
730	3c Ultramarine, #114(100), Used, Fair-Very Fine	175.00
731	12c Green #117(8), Used, Mostly Fine-Very Fine	200.00
732 ★	1c Columbian, #230(12), Virtually All V. G.-F.	66.00
733	15c-50c Columbians, #238(8), #239(2), #240(3), nearly all have faults, many very trivial, perfs. in on one 30c, others Fine-Very Fine Appearing	355.00
734 ★	6c Lake #282(24), Mint, Very Good-Very Fine	168.00
735	1c, 5c Panama-Pacific #397(63), #399(33), #401(1), #403(3). V. G.-V. F.	203.80
736	7c-12c 1917 Issue #507(75), #508(100), #509(45), #512(50), V. G.-V. F.	126.50
737	3c Victory #537(106). Very Good-Fine	201.40
738	1c, 2c Pilgrim #548(60), #549(167). V. G.-V. F.	205.60
739	50c Lilac, #570(10,000), neatly bundled in packs of 500, Very Good-Very Fine	800.00
740	50c Lilac, #570(5000), neatly bundled in packs of 500, Very Good-Very Fine	400.00
741 ★	2c Harding, #610(148), All in Blocks or Pairs with Plate Numbers, Mostly Fine-Very Fine	51.80
742 ★	1c Huguenot-Walloon, #614(40), Mint, incl. Blocks, Fine-Very Fine	80.00
743 ★	1c-5c Huguenot-Walloon, #614(35), #615(6), #616(4), Mint, incl. s. e., V. G.-V. F.	144.50
744 ★	3c Byrd Souvenir Sheet, #735(5), Very Fine	50.00
745 ★	3c Mothers Day, Flat Plate, #738(360), All in Part Sheets of 36, without s. e.'s, incl. Ten Plate Blocks, Fine-Very Fine	93.00
746 ★	1c-10c Parks, #740(28), #741(28), #742(16), #743(52), #744(24), #745(4), #746(28), #747(32), #748(98), #749(28), All in Mint Blocks, incl. four 9c, one 10c plate no. blocks of six, Fine-Very Fine	247.23
747 ★	1c Park Souvenir Sheet, #751(10), Mint, Very Fine	80.00
748 ★	1c-10c Farleys, #756-#765, Three Cpl. Sets of Blocks, Very Fine	75.00
749 ★	1c-5c Famous Americans, Betw. #859-#889, 33 Mint Plate No. Blocks, 16 Diff., Fine-Very Fine	76.25
750 ★	5c, 10c Cipex Souvenir Sheet, #948(400), Mint, Very Fine	240.00
751 ★	5c, 10c Cipex Souvenir Sheet, #948(300), Mint, Very Fine	180.00
752 ★	5c, 10c Cipex Souvenir Sheet, #948(300), Mint, Very Fine	180.00
753 ★	3c, 8c Fipex Souvenir Sheet, #1075(50), Mint, Very Fine	175.00
754 ★	3c, 8c Fipex Souvenir Sheet, #1075(50), Mint, Very Fine	175.00
755 ★	3c, 8c Fipex Souvenir Sheet, #1075(66), Mint, Very Fine	231.00
756	1c-\$1.00 Parcel Posts #Q1(3), #Q2(13), #Q3(7), #Q4(2), #Q5(18), #Q6(5), #Q7(5), #Q8, #Q10-Q12. Three are Unused, some have faults, Mostly V. G.-V. F.	115.30
757 ★	2c-3c Parcel Post, #Q2(25), #Q3(25), All in Blocks, Mint, V. G.-V. F.	110.60
758 ★	2c Offices in China, Local Surcharge, #K17(10), Mint, all have s. e., Fine-Very Fine	110.00

LARGE & MISCELLANEOUS U. S. LOTS

759	U. S. Collection , 1847-1948, Collection of 1199 Used & Unused Stamps & 8 Souvenir Sheets, incl. #1, #12, Grills, Bank Notes to 90c, Columbians to 50c Louisiana-Purchase to 10c, 1902 Imperforates, 1922 Issue to \$5.00, White Plains Souvenir Sheet, Kans.-Nebr. Ovpts., Coils, Airposts, Revenues, Cut Squares, a number with small faults, Balance F.-V. F.	E. XIII
760 ★	U. S. Collection , 1851-1964, Collection of 755 Mostly Unused Stamps & 9 Souvenir Sheets, incl. Columbians to 15c Pan-American to 10c, Presidentials to \$5.00, also United Nations, incl. First Issue, some earlies have faults, Balance F.-V. F.	E. IX
761	U. S. Collection , 1851-1969, Collection of 964 Used & Unused Stamps & 10 Souvenir Sheets, incl. Columbians to 10c, Trans. Miss. to 10c, 1917-18 Issue to \$5.00, Coils, Commems., 50c Chicago Zeppelin, some have small faults, but Mostly F.-V. F.	E. IX
762	U. S. Miscellaneous , 1851-1922, Several hundred Used & Unused Stamps, some in wholesale quantities, Many Better items, such as #330, two #400, some have faults, Mostly F.-V. F.	E. VI
763	U. S. Collection , 1857-1959, Collection of 859 Used & Unused Stamps & 6 Souvenir Sheets, incl. Columbians to 15c, Trans.-Miss. and Pan-American to 10c, Airposts, Revenues, some have faults, Mostly F.-V. F.	E. VIII
764 ☒	Covers , Approx. 100, 1857-93 incl. Entires, Postal Cards, also about about 100 Cover Fronts mainly with 3c Bank Notes, Interesting Variety of Corner cards, mixed condition, Useful Lot	E. V
765 ★	U. S. Collection , 20th Century, 348 Unused Stamps, Mounted in Deluxe Hingless Album, incl. Postage, Commems., Coils, Air Post, Nearly All Fine-Very Fine	E. IX
766 ★	U. S. Collection , 1932-1965, Unused singles and plate no. blocks, mostly commems. in two Scott Albums, mostly F.-V. F.	527.86
767	U. S. Miscellany , Couple hundred used stamps, incl. Spec. Delivery, Dues, Parcel Post, Revenues, also about 30 Entires & Postal Cards, some better, Useful Lot	E. V
768 ☒	First Day Covers , 1932-73, 508 covers mostly with cachets, V. F. lot	E. V
769 ★☐	Postage, Commems. , couple hundred unused stamps, nearly all in Blocks & Plate No. Blocks, Many Better, incl. Farleys & Special Delivery, Fine-Very Fine	E. VI
769A ★	Commems., Air Post , 1923-47, Accumulation of Several Hundred Unused Stamps, Many in Blocks & Plate No. Blocks, Wide Variety of Issues, inc. 2c Harding Rotary Plate Block #612 with one stamp damaged, Generally Fine-Very Fine	E. VI
770 ★☐	Plate Blocks , 1935-56, Over 375, Many Diff., Some Better Issues, Mint, Fine-Very Fine, All Commems	E. VI
771 ★☐	Air Post , Couple Hundred Unused Stamps, All in Blocks or Plate No. Blocks, Fine-Very Fine	E. IV

CONFEDERATE STATES

772	1c-20c General Issues (1-8, 10-14) , 23 Used & Unused Stamps, one to four of each, incl. 10c Perforated #11d, poor quality, High Cat. Value	E. VI
773 ★	5c Light Blue, London Print (6). Complete Sheet of 100 , crackly o. g., few trivial faults, virutally all in selvage, otherwise Very Fine	275.00
774	10c TEN Blue (9) , Light cancel, Fine	(Photo) 90.00
775	10c TEN Blue (9) , Three large margins, in slightly at left, light Ms. cancel	90.00
776 ☒	10c Blue (11) , Large Margins with part Imprint at B., tied blue Columbia, S. C. on printed homemade cover, Very Fine & Handsome	E. III
777 ☒	10c Blue (11-12) , Eleven covers, all ms. cancels, most have faint Cobham, Va. Central R. R. pmks.	E. VI

U. S. POSSESSIONS

CANAL ZONE

778 ★	1904, 1c-10c Overprints (4-8). 2c Large Margins, Well Centered, tiny gum thin, others Fine-Very Fine	91.50
779	1915, 2c Orange Vermilion & Black, Ovpt. Ty. III (47). Light cancel, Very Fine	40.00
780 ★	1924, ½c-\$1.00 Overprints (70-81). Fine-Very Fine Set	113.40
781 ★	1925, ½c Olive Brown (70). 234 copies mostly in blocks, Mint, mostly F.-V. F.	46.00
782 ★	1924-25, ½c-1½c Overprints (70-72). Plate No. Blocks of Six, Mint, Three of each, F.-V. F.	43.50
783 ★	1924-25, ½c-1½c Overprints (70-72). Nine Mint Plate No. Blocks of Six, V. G.-V. F.	41.00
784 ★	1924, 1c Green (71). 144 copies, mostly blocks, Mint, V. G.-V. F.	43.20
785 ★	1925, 1½c Yellow Brown (72). 230 copies mostly in large blocks, Mint, Fine-V. F.	60.90
786 ★	1924, 5c Blue (74). Bot. Plate No. 16363 Block of Six, Mint, Very Fine	55.00
787 ★	1925, 14c Dark Blue (77). L. Plate No. 14513 Block of Six, Mint, Fine	67.50
788 ★	1925, 14c Dark Blue (77). Bot. Plate No. 14513 Block of Six, Mint, Fine	67.50
789 ★	1925, 14c Dark Blue (77). Bot. Plate No. 14512 Block of Six, Fine	67.50
790 ★	1925, 14c Dark Blue (77). R. Plate No. 14512 Block of Six, Mint, small perf. separation at top otherwise V. F.	67.50
791 ★	1925, 14c Dark Blue (77). Block of 21, F.-V. F.	97.50
792 ★	1925, 14c Dark Blue (77). Five Blocks of Four, Fine	95.00
793 ★	1924-25, 14c 30c, 50c Overprints (77, 79-80). Fourteen of first, pair of next, V. G.-V. F.	83.75
794 ★	1924-25, 14c Dark Blue, 30c Olive Brown (77, 79). Mint Block of Ten of each, F.-V. F.	109.00
795 ★	1924, 30c Dark Brown (79). Bot. Plate No. 14437 Block of Six, Mint, V. F.	75.00
796 ★	1924, 50c Lilac (80). Top Plate No. 14043 Block of Six, Mint, trifle toned in selvedge otherwise F.-V. F.	125.00
797 ★	1924, 50c Lilac (80). Block of Nine, Mint Very Fine	82.25
798 ★	1924, 50c Lilac (80). Mint Blocks of 15, Very Fine	138.25
799 ★	1925, 3c Violet (85). Four diff. Plate No. Blocks of Six, Mint, F.-V. F.	76.00
800 ★	1925, 3c Violet (85). 82 copies, mostly in blocks, Mint, Mainly F.-V. F.	82.00
801 ★	1925, 5c-\$1.00 Overprints (86-95). Some very light tropical gum, Fine-Very Fine	110.60
802 ★	1926, 5c Dark Blue (86). 71 copies, mostly blocks, Mint, Mainly F.-V. F.	67.50
803 ★	1926, 5c Blue (86). L. & B. Plate No. 16391 Blocks of Six, Mint, Fine	34.00
804 ★	1925-28, 10c, 17c, 20c Overprints (87, 91-92). Plate No. Blocks of Six, Mint, V. G.	129.50
805 ★	1925-28, 10c-\$1.00 Overprints (87, 90-93, 95) from one to nineteen of each, Mint, V. G.-V. F.	111.10
806 ★	1926, 12c Brown Violet (88). R. Plate No. 15352 Block of Six, Mint, Very Fine	60.00
807 ★	1925-28, 15c, 17c, 20c Overprints (90-92). Plate No. Blocks of Six, Mint, F.-V. F.	64.50
808 ★	1925-28, 15c-\$1.00 Overprints (90-93, 95). Mint Pairs, two with plate nos. V. F.	56.20
809 ★	1926, \$1.00 Violet Brown (95). Horiz. Strip of Four, Mint, V. F.	94.00
810 ★	1926, \$1.00 Violet Brown (95). Block, Mint, Very Fine	97.50
811 ★	1926, \$1.00 Violet Brown (95). Bot. Plate No. 14268 Block of Six, Mint, Very Fine (Photo)	275.00

812	★	1927, 2c Carmine (97). Block of 48, Mint, V. G.-V. F.	360.00
813	★	1927, 2c-10c Overprints (97-99). Set of Blocks, Mint, V. G.-V. F.	49.75
814	★	1927, 2c-10c Overprints (97-99). Fourteen to Sixteen of each mostly in blocks, V. G.-V. F.	188.00
815	★	1927-31, 2c Carmine, 5c Blue (97, 103). Plate No. Blocks of Four, Mint, V. G.-Fine	82.50
816	★	1927, 3c Violet (98). Mint Block of 76, F.-V. F.	95.00
817	★	1927-31, 1c Green (100). Plate No. Block of 80 and Block of Four, Mint, Fine-V. F.	37.00
818	★	1927-31, 5c Blue (103). Two Blocks of 4 and Block of Six, Mint, F.-V. F.	43.50
819	★	1939, 1c-\$1.00 Anniversary (120-135, C15-C20). Fine-Very Fine Sets	71.60
820		1915, 1c Olive Brown, Postage Due (J4). Cpl. Used Sheet of 100, Fine-Very Fine	125.00+
821		1915, 1c Olive Brown, Postage Due (J4). Cpl. Used Sheet of 100, Fine-Very Fine	125.00+
822		1904-71, Collection of 223 Mostly Unused Stamps, incl. Overprints, Pictorials, Commems, Air Post, Dues, Officials, Mostly Fine-Very Fine	304.28
823	★	CUBA, 1899, 10c on 10c Blue, Special Delivery (E1). Beautiful Centering, Fresh, o. g., Very Fine	32.50
824		DANISH WEST INDIES, 1896-1902, 4c, 5c, 8c (18, 19, 25) first single, pair & block, next single & two pairs used, latter unused, F.-V. F.	75.00
825	★	1902, 8c on 10c Blue & Brown (25). Horiz. Block of Eight, F.-V. F., Mint	50.00
826	★	GUAM, 1899, 1c-15c Overprints (1-8, 10). Fresh, o. g., 3c perfs. just touch, 8c & 15c particularly well centered, tiny thin spots, others Fine-Very Fine	168.50
827	★	1899, 50c Orange, Overprint (11). Fresh, dry gum, tiny gum thin, Fine Appearance	50.00
828	★	1899, \$1.00 Black, Ty. I, Overprint (12). Fresh, dry gum, Fine (Photo)	80.00
829	★	1899, 10c Blue, Special Delivery, Overprint (E1). Fresh, o. g., perfs. just clear at right	50.00

PHILIPPINES

830	★	1899, 50c Orange, Overprint (212). Horiz. Pair, Well Centered, tropical gum & slight oxidation, otherwise Very Fine (Photo)	140.00
831	★	1899-1901, 1c-50c Overprints (213-222). 1c & 2c without gum, others o. g., 6c, 8c & 50c tiny gum thin specks, others Fine-Very Fine	77.25
832	★	1901, \$1.00 Black, Ty. I, Overprint (223). Fresh, trivial thin spots, Fine Appearance (Photo)	125.00
833	★	1903-04, 1c-50c Overprints (226-236, 240). Better than usual centering, 4c without gum, some have small faults, others incl. 50c Fine-Very Fine	82.75
834	★	1901, \$1.00 Black, Ty. II, Overprint (223A). Fine, Very Scarce (Photo)	300.00
835	★	1901, \$2.00 Dark Blue, Overprint (224). Tiny thin speck, Fine Appearance (Photo)	125.00
836	★	1901, \$5.00 Dark Green, Overprint (225). Well Centered, trivial pinpoint thin speck, Very Fine Appearance (Photo)	250.00
837	★	1903, 13c Purple Black, Overprint (234). Block, Fine-Very Fine	29.00
838	★	1903, \$1.00 Black, Overprint (237). Exceptionally Well Centered, couple minute toned specks, otherwise Very Fine	90.00
839	★	1904, \$2.00 Dark Blue, Overprint (238). Single partly blunted perf., otherwise Very Fine (Photo)	200.00
840		1904, \$2.00 Dark Blue, Overprint (238). Exceptionally Well Centered, Large Even Margins, light cancel, few bent perfs., otherwise Extremely Fine (Photo)	155.00

841 ★	1904, \$5.00 Dark Green, Overprint (239). Unusually Well Centered, Fresh & Very Fine	(Photo) 300.00
842 ★	1906, 2c-10p Pictorials (241-254). Cpl. Set, some have bits of paper on back, 1p without gum, otherwise Fine-Very Fine	122.85
843 ★	1906-45, 2c-2p Pictorials, Commems., Air Post, Spec. Del., Dues, Officials (Betw. 244-493, C36-C62, E5-E7, J8-J15, O1-O44). Mounted Collection of 151 Unused Blocks of 4, 6 or 10, incl. some Varieties, Fine-Very Fine	490.00+
844 ★	1911, 4p Deep Blue (273). Fine & Very Scarce	(Photo) 175.00
845 ★	1911, 10p Deep Green (274). Very Fine	(Photo) 65.00
846 ★	1914, 2c-1p Pictorials (276-284). Cpl. Set, Fine-Very Fine	88.50
847 ★	1914, 10c Dark Blue, Perf. 10 (280). T. Imprint Plate No. 34792 Block of Ten, two blunted perf. tips in one, F.-V.F.	74.00+
848 ★	1917-26, 1p-10p Arms of Manila (300-302, 304). Very Fine	66.00
849 ★	1926, 2c-1p Legislative Palace (319-325). Cpl. Set in Blocks, Mint, Very Fine	82.25
850 ★	1925, 2c-10p Pictorials, Imperforate (340-353). Horiz. Pairs, some hinge remnants, Very Fine Set	(Photo Ex) 216.14
851 ★	1932, 2c-32c Views (354-360). Cpl. Set in Blocks, 2c without gum, Very Fine	78.00
852 ★	1935, 2c-5p Pictorials (383-396). Cpl. Set in Mint Blocks, Very Fine	83.27
852A ★	1935, 2c-50c Commonwealth Inauguration (397-401). 26 Mint Sets, All in Blocks, incl. One Set of Plate No. Blocks of Six, Fine-Very Fine	52.80+
852B ★	1933-36, 2c-36c Rizal, Overprints, Clipper Flight (402-404, C46-C53). 20 sets of first, Five sets #C46-C51, 57 sets of #C52-C53, Many in Blocks, Fine-Very Fine	71.25+
853 ★	1936-37, 2c-5p Pictorials (411-424). Cpl. Set in Mint Blocks, 1p-5p with Double Plate Nos., Very Fine	94.60
854 ★	1938-40, 2c-5p Small "Commonwealth" Ovpt. (433-446). Cpl. Set, Very Fine	40.64
855 ★	1938-40, 2c-5p Small "Commonwealth" Ovpt. (433-446). Cpl. Mint Set, Very Fine	40.64
856 ★	1938-40, 2c-5p Pictorials (433-446). Complete Set in Mint Blocks, 1p-5p with Double Plate Nos., Very Fine	169.97
857 ★	1939, 8c Violet, "Common-wealth" Error (436a). Single Error in Mint Block of Six, s.e. at L. as usual, Very Fine	25.00+
858 ★	1944, 2c-20c Pictorials, Officials, "Victory" Handstamps (465, 472, 481, 039-040). First two with tissue paper on back, #481 small gum thin, Scarce & Fine Appearing Set	75.00
859 ★	1944, 6c Dark Brown, "Victory" Handstamp (466). Light natural bend, Very Fine, Rare	(Photo) 500.00
860 ★	1944, 6c Yellow Green, "Yellow" Handstamp (467). Well Centered, tropical gum, trivial surface scuff, otherwise Very Fine, Scarce	75.00
861 ★	1944, 6c Carmine, "Victory" Handstamp (469). Perfs. just touch at R., still Fine & Scarce	60.00
862 ★	1944, 6c Dark Green, "Victory" Handstamp (471). Gum soaking perfs. just touch at B., still Attractive & Scarce	80.00
863 ★	1944, 10c Rose Carmine, "Victory" Handstamp (473). Fine & Scarce	52.50
864 ★	1944, 10c Rose Carmine, "Victory" Handstamp (474). Perfs. just clear to least bit in at B., Scarce	65.00
865 ★	1944, 12c Ultramarine, "Victory" Handstamp (475). Plate No. Single, light tropical gum, Fine, Scarce	(Photo) 125.00
866 ★	1944, 16c Dark Blue, "Victory" Handstamp (479). Fine & Very Scarce	(Photo) 200.00
867 ★	1944, 16c Dark Blue "Victory" Handstamp (480). Fine & Scarce	(Photo) 100.00
868 ★	1944, 30c Orange Red, "Victory" Handstamp (482). Fine & Scarce	(Photo) 100.00

869 ★	1944, 30c Orange Red, "Victory" Handstamp (483). Tissue paper interleaving adheres to back, Fine, Very Scarce (Photo)	150.00
870 ★	1945, 10p-20p Arms, Overprints (495-496). Very Fine Set	50.00
871 ★	1945, 10p-20p Arms, Overprints (495-496). Mint, Fine Set	50.00
872 ★	1926, 2c-30c "Madrid-Manila" Flight (C1-C6, C9-C12). Most have tissue paper on back, perfs. touch on a few, Mostly Fine	96.50
<hr/>		
873 ★	1926, 16c Sampson, "Madrid-Manila" Flight, Violet Overprint (C7). Tissue paper interleaving on back, trivial thin speck in margin, Fine Appearing Example of this Rarity, with P. F. Certificate (Photo)	600.00
874 ★	1926, 16c Sampson, "Madrid-Manila" Flight, Red Overprint (C8). Slightly in at left due to reperforation, still a Fresh & Attractive Example of this Rarity with P. F. Certificate (Photo)	600.00
875 ★	1926, 2p "Madrid-Manila" Flight (C13). Perfs. trifle close at R., still a fine Example of this Rare Stamp (Photo)	200.00
876 ★	1926, 4p "Madrid-Manila" Flight (C14). Trivial perf. tip toning, otherwise Fine, Rare (Photo)	300.00
877 ★	1926, 10p "Madrid-Manila" Flight (C15). Trivial gum soaking in some perf. tips, otherwise Fine, Rare (Photo)	550.00
<hr/>		
878 ★	1926, 1p "Madrid-Manila" Flight (C17). Very light tropical gum, Fine (Photo)	70.00
879 ★	1928, 2c-1p "L. O. F." Flight (C18-C28). Cpl. Set, perf. touch on 24c, others Fine-Very Fine	44.60
879A ★	1928, 2c-1p L. O. F. Flight (C18-C28). Cpl. Set in Pairs, Very Good-Very Fine	89.20
879B ★	1928, 2c-1p L. O. F. Flight (C18-C28). Cpl. Set in Pairs, Very Good-Very Fine	89.20
879C ★	1928, 2c-1p L. O. F. Flight (C18-C28). Cpl. Set in Strips of Three, Very Good-Very Fine	133.80
880 ★	1928-41, 2c-1p Air Post (C18-C62). Complete Sets, Nearly All Very Fine	80.58
881 ★	1928, 2c-1p "L. O. F." Flight (C18-C28). Cpl. Sets in Blocks, Mint, Fine-Very Fine	178.40
881A ★	1928, 2c-1p L. O. F. Flight (C18-C28). 84 Stamps, from two to eleven of each, incl. eight 26c, eleven 30c & ten 1p, Very Good-Very Fine	391.10
882 ★	2c-32c "Von Gronau" Flight (C29-C35). Cpt. Set in Blocks, Mint, Fine-Very Fine	53.40
882A ★	1936, 2c-16c Arnacal Flight (C54-C56). 100 Sets, Mostly in Blocks, fourteen of the 100 #C56 are the Green Shade, Very Good-Very Fine	62.80
883 ★	1901-45, 10c-20c Special Delivery (E1-E2, E3, E5-E7, E10). #E6 Part Imprint & Plate No. Pair, Nearly All Very Fine	54.35
884 ★	1916, 20c Deep Ultramarine, Special Delivery (E4). Small natural gum skip, Very Fine	40.00
885 ★	1944, 20c Dull Violet Special Delivery, "Victory" Handstamp (E8). Slight tropical toning, tissue paper interleaving on back, Fine & Very Scarce (Photo)	125.00
886 ★	1944, 20c Violet Special Delivery, "Victory" Handstamp (E9). Light tropical gum, Well Centered & Very Fine, Scarce (Photo)	75.00
887 ★	1899-1901, 1c-50c Postage Due Overprints (J1-J7). Tropical gum, some with paper interleaving on back, #J1-J6 small faults or perfs. touch, #J7 small corner faults. Scarce Lot	71.40
888 ★	1899-1901, 1c-50c Postage Due Overprints (J1-J6). 50c well centered, small thin, others V. G.-F.	41.40
889 ★	1944, 4c-20c Brown Red, Postage Due, "Victory" Handstamp (J16-J22). Cpl. Set, tropical gum & tissue interleaving on back, 12c small tear, otherwise Fine-Very Fine, Scarce	250.00

890 ★	1944, 2c Rose, Official, "Victory" Handstamp (O38). Light tropical gum, Very Fine	(Photo) 160.00
891 ★	1944, 10c Rose Carmine, Official, "Victory" Handstamp (O41). Light natural crease, Fine Appearance	(Photo) 200.00
892 ★	1899-1946, Collection of 443 Mostly Unused Stamps, incl. Overprints with Values to 50c, Pictorials to 10p, Commems, Air Post, Spec. Del., Dues, Officials, Japanese Occ., also a page of handstamp "O. B.s", etc., Cpl. Sets, minor duplication, Mostly Fine-Very Fine	444.00+
893 ★	1909-45, Collection of Several Hundred Unused Stamps, incl. Pictorials, Commems., Ovpts., Officials, Japanese Occ., also some Issues of the Revolution, some duplication, nearly all Fine-Very Fine	E. VIII
894 ★	PUERTO RICO, 1898, 5c Black, "Coamo" Provisional (201). Horiz. Pair, Pos. 8-9, Margins All Around, o. g., Very Fine	(Photo) 220.00
895	U. S. Possessions, 1898-1930, Collection of 43 Used & Unused Stamps, incl. Cuba, Guam, Puerto Rico, V. G.-V. F.	71.00

UNITED NATIONS

896 ★田	1951-57, 1c-\$1.00 First Issue, Air Post (1-11, C1-C5). Mint Inscription Blocks, #'s 1-5, C1 & C5 Blocks of Ten, Very Fine	140.10
897 ★	1955, 3c-8c Anniversary Souvenir Sheet (38). Mint, trivial flaw, otherwise Very Fine	135.00
898 ★	1951-1969, Collection of 227 unused stamps; 14 Souvenir Sheets, incl. Mint #38; 30 Postal Stationery items, incl. UC1; "UNTEA" overprints; incl. early regulars, Commems., Air Post, housed in a three-ring Minkus Album, Very Fine	E. IX
899 ★	1951-1971, Nearly complete mounted in White Ace Album, mostly F.-V. F.	145.20
900 田	1951-1964, Approx. 400 Aircraft Cachet First Day Covers, majority un-addressed, incl. pairs and blocks, Air Post & Postal Stationery, plus some off cover & miscellaneous	E. V

GENERAL FOREIGN

AUSTRIA

901 ★	1936, 10s Dolfuss (380). Mint, Very Fine	(Photo) 375.00
902 ★	1933, 50g WIPA (B110). Very Fine	(Photo) 150.00
903	1933, 50g WIPA, Granite Paper (B110a). Neat cancel, Very Fine (Photo)	250.00
904 ★	1946, 1s-5s Renner Souvenir Sheets (B185-B188). Very Fine Set	1,000.00
905 ★	1949, 40g-1.40s Children (B260-B263). Mint, Very Fine Set	32.00
906	1925-30, 2g-10s Air Post (C12-C31). Cpl. Used Set, few trivial wrinkles, otherwise Fine-Very Fine	70.35
907	1858, (1kr) Blue, Newspaper (P5). Three Large Margins, Ample to Large at B., Neat Cancel, trivial wrinkle, otherwise Very Fine, with A. P. S. Certificate	(Photo) 200.00
908 ★	1859, (1kr) Lilac, Newspaper (P6). Some Margins to slightly in, Fresh Color, regummed, with A. P. S. Certificate	275.00
909 ★	— Lombardy-Venetia, 1863, 5s Rose (17). Couple short perfs. still an Attractive Example of this Scarce Stamp with A. P. S. Certificate	350.00
910 ★	BRAZIL, 1932, 1000r-10,000r Revolutionary Issue (364-374). Complete Set, V. F. Mint	55.00

911	CANADA, 1897, \$5.00 Jubilee (65). Roller cancel, small faults, Fine Appearance 225.00
912 ★	— 1908, ½c–20c Quebec (96–103). Tiny paper remnants on back of some, otherwise V. F. set 141.25
913 ★	CHINA, 1882–83, 1c Green (4, 7). #7 with o. g., Fine–Very Fine 55.00
914	— 1883, 5c Yellow (6). Well Centered, Neat Cancel, tiny corner crease, few short perfs., otherwise Very Fine (Photo) 100.00
915 ★	— 1912, 1c–\$5.00 Sun Yat-Sen (178–189). Cpl. Set, 1c small tear (cat .25), \$5.00 natural paper fold, otherwise Fine–Very Fine 96.50
916 ★	— 1915, \$20.00 Yellow & Black (242). Couple tiny faint thin specks, Fine Appearance, Quite Scarce (Photo) 250.00
917 ★	— 1946, \$20.00 on 8c Deep Orange (698). Very Fine 30.00
918 ★	CAROLINE ISLANDS, 1900, 3pf–50pf First Issue (1–6). F.–V. F. set 80.00
919 ★	CYPRUS, 1960, 2m–£1 Republic (183–197). Complete Set, Very Fine 103.55
920 ★	CZECHOSLOVAKIA, 1919–20, 2k–1r Legion Post (4–14). Few tiny gum thins, otherwise Very Fine 120.50
921	— 1951, 3k Peace Congress (439). Mounted on small card, central design “Dove” by Picasso with “Picasso” Autograph, Very Fine (Photo) —
922 ☒	DENMARK, 1919, 2c on 5c Faroe Island Prov. (155). Used with 5ö Green (97), on cover, tied by town postmark, Very Fine (Photo) 90.00+

GERMANY

923 ☒	1872, 1kr Green two, 7kr Ultramarine (7, 11). Tied Gernsack pmks. on cover addressed to Clara Barton, London, Fine (Photo) 52.50+
924 ☒	1872, 2kr Orange, 7kr Ultramarine Pair (8, 10). Tied Carlruhe pmks. on cover addressed to Clara Barton, London, 2kr has perf. faults, Attractive 80.00+
925	1926–31, 5pf–50pf Semi-Postals (B15–B18, B38–B41). Complete sets, Very Fine 73.60
926	1924, 5pf–200pf Air Post (C20–C26). Complete Set, F.–V. F. 73.50
927 ☒	1930, 2m–4m South America Flight (C38–C39). Cpl. Set tied on Roundtrip Cacheted Flight Card, Very Fine, Sieger 57H (Photo) 167.50+
928	1931, 1m–4m Zeppelin Polar Flight, (C40–C42). Latter light crease otherwise Very Fine 295.00
929 ☒	1931, 4m Polar Flight (C42). Tied on Cacheted Flight Cover, Fine, Sieger 119C (Photo) 170.00+
930 ☒	1933, 1m–4m Chicago Flight (C43–C45). Cpl. Set on Cacheted Roundtrip Cover, Very Fine, Sieger 238D, E (DM 1,000) (Photo) 167.50+
931 ★	1943, Brown, Tunis Military Post (Michel #5a). Without gum, Fine Michel DM 75.00
932 ★	Berlin, 1949–51, 10pf–30pf Semipostal (9NB1–9NB7). Mint, Very Fine sets 120.75
933 ★☐	— 1954, 20pf Postillion (9NB12). Four Mint Blocks, Very Fine 88.00
934 ★	— 1949, 50pf & 4.50m Goethe Souvenir Sheet (10NB11). Very Fine 55.00
935	— Offices in China, 1906, 1d–2½d Overprints (54–56). Used, Very Fine 106.00
936 ★	— Offices in Morocco, 1900, 1p25c–3p75c Overprints (16–18). Fine–Very Fine 59.50
937 ★	— 1900, 25p on 5m Slate & Carmine, Ty. I (19). Very Fine (Photo) 150.00
938 ★	— 1900, 25p on 5m Slate & Carmine, Ty. II (19A). Very Fine (Photo) 90.00
939 ★	— 1905, 10c–6p25c Overprints (22–32). Cpl. Set except for the two lowest values, Fine–Very Fine 216.50
940 ★	— 1906, 3c–6p25c Overprints (33–44). Cpl. Set, Fine–Very Fine 182.45
941	GREECE, 1896, 20L–5d Olympics (121–127). Used, few very trivial flaws, otherwise Fine–Very Fine 206.40
942 ★	— 1896, 10d Olympics (128). Perfs. just touch at R., o. g., tiny flaws, Scarce 250.00

943 ★	— 1900-01, 5L-2d Olympic Surcharges (159-163). Nearly All have tiny thin spots, Very Good-Very Fine Appearing Set	270.00
944 ★	— 1906, 20L-1d Olympics (189-194). Some tiny faults, otherwise Fine-Very Fine	94.00
945 ★	— 1906, 2d-5d Olympics (195-197). 5d light gum bends, Fine-Very Fine (Photo Ex)	320.00
946 ★	HANOVER, 1863, 3pf Green (17). Margins All Around, faults, Fine Looking with A. P. S. Certificate	160.00

ISRAEL

947 ☒	1948, 3m Orange, Rouletted (1a). Used with Palestine 3m Yellow Green (64) & Israel Provisional 3m Green (Mosden #1, 2), each tied with Appropriate Last, Interim & First Day Cancells on Cacheted Cover, Very Fine & Unusual	(Photo)	—
948 ★	1948, 3m-50m First Coins (1-6). Mint Tab Singles, 5m trivial gum thin speck in tab margin, otherwise Fine-Very Fine		165.00
949 ★	1948, 3m-10m First Coins Rouletted (1a, 2b, 3b). Complete Sheets of 100 each, Mint, Very Fine		1,100.00+
950	1948, 3m-1000m First Coins (1-9). Complete Used Set, 250m tiny internal tear, otherwise Very Fine	(Photo Ex)	248.75
951 ☒	1948, 3m-1000m First Coins (1-9). Complete Set tied on Cacheted First Day Cover, Fine-Very Fine	(Photo)	248.75+
952 ★	1948, 3m-65m New Year (5709) (10-14). Mint Tab Singles, Very Fine Set		165.00
953 ★	1948, 3m-65m New Year (5709) (10-14). Complete Set in Sheets of 50, Mint, Perfs. touch on a few mostly Fine-Very Fine		2,650.00+
954 ★	1948, 3m-65m New Year (5709) (10-14). Complete Set in Unsevered Sheets of 300 with all the rare gutter and tab positions, Fine-Very Fine, Extremely Rare Set of Sheets	(Photo Ex)	Estimate Net Value 15,000.00
955 ★	1949-50, 20m Flag, 40p-80p Stags (15, 31-32). Mint with Short Tabs, Very Fine		E. V
956 ★	1949, 10m Tabul Souvenir Sheet (16). Mint, Very Fine		100.00
957 ★	1949, 3p-50p Second Coins (17-22). Complete Mint Sheets of 100, Fine-Very Fine		856.50+
958 ★	1949, 100p-250p Views (23-24). Mint with Short Tabs, Fine		E. III
959 ★	1950, 500p Negev (25). Mint Short Tab Single, Fine	(Photo)	E. VII
960 ★	1950, 500p Negev (25). Complete Sheet of 50, Mint, Very Fine		1,420.00+
961 ★	1950, 500p Negev (25). Complete Sheet of 50, Mint, Very Fine		1,420.00+
962 ★	1950, 500p Negev (25). Complete Sheet of 50, Mint, Very Fine		1,420.00+
963 ★	1949, 40p Well (27). Short Tab Single, Very Fine		E. III
964 ★	1949, 5p-35p New Year (5710) (28-30). Mint Set with Short Tabs, perfs. touch on #30, others Very Fine	(Photo Ex)	E. IX
965 ★	1949, 5p-35p New Year (5710) (28-30). Complete Set of Sheets of 50, Mint, Very Fine		2,495.00+
966 ★	1950, 20p-40p Independence Day (33-34). Mint Set with Short Tabs, first light gum bend, otherwise Fine-Very Fine		E. VIII

967 ★	1951-53, 5p-500p Commems., Pictorials, Air Post (45, 51-54, 65-69, 72-74, C7-C14). Mint, All with Full or Short Tabs, Very Fine Lot	40.55+
968 ★	1950-52, 5p-110p Commems, Pictorials (35-37, 44, 46-50, 62-64). Cpl. Mint Sets, All with Short Tabs, Fine-Very Fine	E. VII
969 ★	1951 15p-80p National Fund (48-50). Cpl. Mint Set, first two full tabs, latter short tab, Fine-Very Fine	E. IV
970 ★	1951, 15p-80p National Fund Anniversary (48-50). Complete Set in Sheets first two 100, latter 75 stamps, Mint, Very Fine	560.70+
971 ★	1952, 1000p Twelve Tribes (55). Mint Short Tab Single, Very Fine	E. VII
972	1965, £3 Carmine Rose (291). One hundred copies, many in blocks, Fine-Very Fine	225.00
973 ★	1950, 5p-250p First Air Post (C1-C6). Mint Set with Short Tabs, Very Fine	E. VII
974 ★	1950, 5p-250p First Air Post (C1-C6). Complete Set of Sheets of 50, Mint, Very Fine	2,565.00+
975 ★	1950, 5p-250p First Air Post (C1-C6). Complete Set of Sheets of 50, Mint, Very Fine	2,565.00+
976 ★	1953, 1000p Deep Blue Green, Air Post (C16). Mint Tab Single, Very Fine	90.00
977 ★	1953, 1000p Deep Blue Green, Air Post (C16). Complete Sheet of 25, Mint, Very Fine	545.00+
978 ★	1951, 5p-40p Officials (O1-O4). Complete Set of Sheets of 100 each, Mint, Very Fine	207.00+
979 ★	1949, 2p-50p Postage Dues (J6-J11). Complete Set of Sheets of 100 each, Mint, Very Fine	335.00+
980 ★	1949, 2p-50p Postage Due (J6-J11). Cpl. Set in Sheets of 100, one vert. strip of ten separated on 20p, Fine-Very Fine	335.00+
981	1953-56, Ten Cards in Original Envelopes, each with Commemorative Label and Diff. Autographs of the Men Pictured thereon, incl. David Ben-Gurion, A. Zisling, Rabbi Mumon, J. Greenbaum, M. Shapiro, P. Bernstein, P. Rosen, Rabbi Levin, M. Bentor, B. S. Shitreet, also 1966 autograph of President Zalman Shazar on Uruguay #C287, Very Fine, Unusual Group	—
982 ☒	ITALY, 1930, 7.70L Trans-Atlantic Squadron (C27). On Cacheted Flight Cover to Rio de Janeiro, autographed by Balbo and all other pilots, Very Fine	(Photo) 325.00+
983 ☐	— 1934, 2L-10L Rome-Buenos Aires Flight (C52-C55). Cpl. Set in Blocks, each mounted on small cards & signed by Francis Lombardi, the Pilot, also autographed picture of Lombardi, his crew & airplane, Very Fine	106.00+
984 ★	MARIANA IS., 1900, 5m Slate & Carmine (29). Very Fine ... (Photo)	60.00
985 ★	MARIENWERDER, 1920, 5pf-1m Overprints (24-31). Very Fine Set, #'s 24, 28, 30 signed "Richter"	(Photo Ex) 216.00
986 ★	MARSHALL IS., 1897, 3pf-50pf Overprints (1-6). Cpl. Set, Fresh, o. g., Very Fine	(Photo Ex) 370.00
987 ★	— 1899, 3pf-50pf Overprints (7-12). Fresh, o. g., Cpl. Set, 20pf. Fine, others Very Fine	61.75
988 ★	— 1900, 5m Slate & Carmine (25). Fine	57.50
989 ★	MEMEL, 1922, 3m on 60pf Violet & Ultramarine, Air Post (C18). Very Fine, Scarce	(Photo) 85.00
990 ★	— Lithuanian Occ., 1923, 2c-1L Overprints (N60-N69). Cpl. Set, few tiny gum thins, #N66-N67 are sound & Very Fine	133.25

MEXICO

991 ★	1864, ½r Brown (19). Clear to Large Margins, Fresh and Fine (Photo)	90.00
992 ★	1884, 5p Blue (163). Well Centered, Fresh, o. g., Very Fine (Photo)	65.00
993	1892, 10p Carmine (229). Str. edge at bottom, Rich Color, Light Cancel, Scarce Stamp (Photo)	300.00
994 ★	1895, 10p Deep Blue (256). Fresh, o. g., Brilliant, Exceptionally Fine (Photo)	90.00
995 ☒	1960, 10p-20p Elmhurst (809, C249). On two cacheted covers dated June 28, 1960, Very Fine	92.50+
996 ★	1933, 20c-1p Statistics Congress, Airposts (C51-C53). Very Fine set	45.25
997	NETHERLANDS, 1864, 15c Orange (6). Bold "Franco" cancel, Very Fine	37.50
998	— 1896, 5g Bronze Green & Red Brown (54). Well Centered, one slightly blunted perf tip, Very Fine (Photo)	110.00
999 ☒	NOVA SCOTIA, 1860, 5c Blue (10). Imprint Sheet margin, tied, to St. Marys, N. S. no flap, Attractive	E. II
1000 ☒	PANAMA, 1956, 2c-2b Pope Issue, Set of 12 values on 12 cacheted First Day Covers, V. F.	E. III
1001 ★	REUNION, 1949-51, 100fr -500fr "CFA" Overprints (C39-C41). Very Fine	103.00
1002	ROMAN STATES, 1852, 1s Rose (11). Margins All Around, thinned, with A. P. S. Certificate which states . . . "genuine . . . status of cancellation unknown." (Cat. \$750.00 Unused, \$1250.00 Used) (Photo)	—

1003 ★	RYUKYUS IS. 1952, 100y on 2y Rose Violet (17). Mint, Very Fine, with A. P. S. Certificate (Photo)	750.00
--------	---	--------

1004 ★	— 1950, 8y-16y First Air Post (C1-C3). Fine-Very Fine Set	85.00
--------	---	-------

SAAR

1005 ★	1920, 10m Yellow Green (29). Very Fine (Photo)	85.00
1006 ★	1926-29, 20c-10fr Semi-Postals (B1-B8, B16-B22). Fine-Very Fine Sets	85.15
1007 ★	1928, 40c-10fr Semi-Postals (B9-B15). Very Fine Set (Photo Ex)	301.00
1008 ★	1931, 40c-10fr Semi-Postals (B23-B29). Very Fine Set	60.25
1009 ★	1934, 40c-5fr Semi-Postals (B47-B60). Very Fine Sets	85.00
1010 ★	1948, 5fr-18fr Flood Relief Souvenir Sheet (B64a). Very Fine	125.00
1011 ★	1949-50, 8fr-50fr Semi-Postals (B67-B76). Very Fine Sets	76.25
1012 ★	1950-53, 8fr-50fr Semi-Postals (B77-B95). Very Fine Sets	64.90
1013 ★	1950, 200fr Council of Europe Air Post (C12). Very Fine	75.00
1014 ★	1948, 25fr Flood Relief Souvenir Sheet (CB1). Very Fine	100.00
1015	SARDINA, 1861, 3L Bronze (15). Used, A. P. S. Certificate states . . . "genuine in all respects", cut to design, still a Fairly Attractive Example of this Classic	650.00
1016 ★	SAN MARINO, 1949, 100L U. P. U. Sheet of 6 (304). Crackly gum as often, Very Fine	180.00
1017 ★	1950-51, 200L-300L U. P. U. Sheets of Six (C62a, C75). Back of selvage partly toned, stamps Mint & Very Fine	260.00
1018	SAXONY, 1851, 2ng Pale Blue (6). Large Margins All Around, Bold "Leipzig" pmk., Extremely Fine	25.00
1019	— 1856, 10ng Blue (14). Light crease, Fine appearance	120.00
1020	SCHLESWIG-HOLSTEIN, 1865, 4s Bistre (7). With A. P. S. Certificate which states . . . "genuine . . . postally used . . . repaired," Fairly Attractive Looking Example of this Rare Stamp	700.00
1021 ★	SYRIA, U. A. R. 1958, 100p Fifth Damascus Fair, Souvenir Sheet (C9). Mint, Very Fine	50.00

1022 ★	TOGO, 1900, 5m Slate & Carmine (19). Very Fine (Photo)	62.50
1023	TURKEY, 1863, 1pi Gray, 5pi Postage Due (7, J4). Fine-V.F.	34.50
1024	TUSCANY, 1852, 1q Black (1). Margins to partly in, Neat Cancel, tiny flaws, Fine Appearance, with A. P. S. Certificate	300.00
1025 ☒	— 1860, 40c Rose, 80c Pale Red Brown (21-22). Neatly tied by Firenze pmk. on cover addressed to Clara Barton, U.S.A., few tiny cover nicks, Attractive & Fine (Photo)	260.00+
1026 ★	VATICAN CITY, 1935, 75c Juridical Congress (44). Mint Margin Single, Very Good	100.00
1027	WURTEMBERG, 1852, 18kr Dull Violet (6). Used, Large Margins All Around, usual faults, Very Fine Appearance (Photo)	275.00

LOTS BY COUNTRY

1028	CANADA, 1851-1967, Collection of 508 Used & Unused Stamps, incl. Large, Small Queens, Edw. to 50c, Quebec Cpl., Admirals, Coils, Commems., also Newfoundland with Better Values, Cpl. sets, some have faults, but Mostly F.-V.F.	E. IX
1029	CANADA, 1870-1971, used and unused, Fair-V.F.	196.54
1030	CHINA, 1878-1961, Collection of Several Hundred Used & Unused Stamps, Wide Range of Issues, Good Showing of 1878-92 Issues, incl. Better Values, Complete Sets, Nearly All Fine-Very Fine	1,200.00+
1031	FRANCE, 1871-1971, used and unused, some faults, mostly V.G.-V.F.	527.96
1032 ★	FRENCH COLONIES, 1892-1964, Neat Three Volume Collection of 4905 Mostly Unused Stamps, Wide Range of Colonies & Issues, incl. Syria, Lebanon, some Monaco, Many Cpl. Sets, Mostly Fine-Very Fine	E. XII
1033	GERMANY, 1872-1950, Collection of Many Hundreds of Used & Unused Stamps and Souvenir Sheets, incl. Pictorials, Commems., Semi-postals, Airposts, Many Better sets, W. W. II Locals, Occupations, Danzig, in three Lindner Albums, Mostly F.-V.F.	E. IX
1034	GERMAN STATES, 1850-1923, Couple Hundred Used & Unused Stamps, incl. States between Hamburg-Wurtemberg, mixed quality as usual, High Catalog Value	E. X
1035	GERMANY & TERRITORIES, 1849-1970, Collection of 3987 Used & Unused Stamps, incl. Pictorials, Commems., Airposts, Semipostals, Berlin, French Zone, Good Showing of Germ. Dem. Republic, States, Occupations, Many Cpl. sets, Better Issues, a few have small faults, Mostly F.-V.F.	E. XII
1036	GERMAN OFFICES IN CHINA, MOROCCO, TURKEY, 1898-1906, Collection of 127 Used & Unused Stamps, incl. Many Values, Complete Set, a few have small faults, Balance Fine-Very Fine	811.70
1037 ★	GERMAN OCCUPATIONS, 1915-45, Collection of Over 600 Mostly Unused Stamps incl. Jugoslavia, Poland, Serbia, etc., Mostly Fine-Very Fine	E. VII
1038 ★	GERMAN DEMOCRATIC REPUBLIC, 1948-66, Collection of 1026 Mostly Unused Stamps, Wide Range of Issues, Better Values, Many Complete Sets, incl. Pictorials, Commems, Semi-Postals, Fine-Very Fine	343.74
1039 ★	GERMAN COLONIES, 1899-1916, Collection of 124 Mostly Unused Stamps, Kiauchau, Mariana Is., Marshall Is., Samoa, Togo, incl. Ovpts., Yachts, Several Better Values & a Number of Complete Sets, a few have small faults, Balance Fine-Very Fine	580.77
1040 ★	MEMEL, 1920-23, Collection of 250 Nearly All Unused Stamps, incl. Ovpts., Air Post, Lithuanian Occ., Nearly Complete Collection, Mostly Fine-Very Fine	495.50

1041 ★	RYUKYU ISLANDS , 1948-1972, Collection of 252 unused stamps & three Souvenir Sheets, nearly all in cpl. sets or issues, incl. Postage, Commems., Air Post, Special Delivery, neatly mounted on Scott Specialty Leaves, nearly all Very Fine	432.54
1042 ★	SAAR , 1920-59, Collection of 384 Mostly Unused Stamps, Wide Variety of Issues, Many Cpl. Sets, incl. Ovpts. with Values to 3m, 1921-34 Pictorials to 5m, 10fr Semi-Postals, Air Post, Dues, Nearly All Fine-Very Fine	591.78
1043	GENERAL FOREIGN , 1840-1911, Many Hundreds of Used & Unused Stamps in two International Albums, Many Better items, some have faults, Balance F.-V. F.	E. VIII
1044	NINETEENTH CENTURY , 1840-1900, Collection of Several Thousand Used & Unused Stamps in International Album, 1901 Edition, Wide Variety of Countries, Issues, Many Better Values, many Countries Well represented, some have faults, Balance F.-V. F., a Very Attractive lot	E. XIV
1045	WHOLE WORLD , 243 Used & Unused Early 19th. Century Stamps Mounted in Old "Lallier" Stamp Album. Mostly Europe, but does include some nice Canada, also some reference material. All pasted down, many faulty (perfs. clipped or partly clipped due to size of mounting squares), still Attractive. A Number Catalog \$50.00 & more, High Catalog Value	E. XIII

PHILATELIC LITERATURE

1046	The United States Postage Stamps of the 19th Century , Brookman, 1966, Three Volumes, Pristine	E. IV
1047	United States Postal Markings, 1857-1861 , Simpson, 1959; American Stampless Cover Catalog , Soft Cover, 1965, Sampson, Very Fine	E. VII
1048	John W. Hill & The Waterbury Cancellations , Maltatuck Historical Society, Cy13 of the 200 Copy First Edition, Spiral Bound, Very Fine	E. II
1049	History of the "Free- Franking" of Mail in the United States , Stern, 1936, Very Fine	E. IV

END OF SALE — THANK YOU

LOTS ON VIEW FROM OCTOBER 22nd

THE SKY IS THE LIMIT!

AN INVESTING CLIENT IS STILL EAGER AND ANXIOUS FOR US TO PURCHASE FOR HIM FINE STAMPS TO A MILLION DOLLARS AND MORE !

HIS INTEREST INCLUDES FOREIGN AS WELL AS UNITED STATES STAMPS.

PARTICULARLY DESIRED ARE RARITIES AND SPECIALIZED COLLECTIONS AND HE IS FULLY AWARE OF THE STRENGTH OF THE PRESENT MARKET.

OUR CHECK BOOK IS OPEN . . . READY FOR YOU !
WALK OUT THE DOOR WITH THE CASH.

ROBERT A. SIEGEL, Inc.

IS YOUR COLLECTION FOR SALE?

REALIZE IMMEDIATE CASH
PLUS THE ADDED ADVANTAGE OF
SELLING THROUGH OUR AUCTIONS

We will advance immediate cash up to 75% of our appraisal value, of what your collection should realize at auction. There is no interest charge.

Your collection will then be sold in one of our coming auction sales. All stamps are expertly and advantageously lotted in attractive, well illustrated catalogs. Lotting is meticulously planned under our personal supervision. Commission is 20% of the gross realization. There is no lotting fee or any other charges. Final settlement is made within five weeks after the sale. We have been continuously conducting stamp auctions in the United States for over forty-three years.

Valuable collections and stamp holdings are especially wanted, but we will accept properties valued from \$500 upwards. Send all stamps direct for appraisal. Auction advance will be remitted shortly after receipt. If not entirely pleased, stamps will be returned at our expense. If circumstances warrant due to bulk or value, we will travel anywhere to inspect important properties.

ROBERT A. SIEGEL
AUCTION GALLERIES, Inc.

(Licensed and Bonded Auctioneer)

120 EAST 56th STREET
NEW YORK, N. Y. 10022

(Tel. 753-6421)

ROBERT A. SIEGEL AUCTION GALLERIES, Inc.

120 EAST 56TH STREET
NEW YORK, N. Y. 10022

438TH SALE

PRICES REALIZED

OCTOBER 25TH & 26TH, 1973

UNITED STATES STAMPS

U.S. POSSESSIONS

GENERAL FOREIGN

GROSS REALIZATION \$166,572.50

October 25th					
1	67.50	41	750.00	81	29.00
2	95.00	42	400.00	82	22.00
3	40.00	43	220.00	83	30.00
4	27.00	44	325.00	84	115.00
5	55.00	45	375.00	85	75.00
6	100.00	46	375.00	86	40.00
7	80.00	47	21.00	87	35.00
8	115.00	48	50.00	88	210.00
9	40.00	49	80.00	89	120.00
10	95.00	50	150.00	90	15.00
11	50.00	51	35.00	91	35.00
12	105.00	52	170.00	92	40.00
13	240.00	53	52.50	93	160.00
14	350.00	54	80.00	94	130.00
15	360.00	54A	115.00	95	130.00
16	72.50	54B	170.00	96	250.00
17	25.00	55	52.50	97	525.00
18	19.00	56	19.00	98	525.00
19	18.00	57	26.00	99	90.00
20	200.00	58	10.00	100	190.00
21	9.00	59	70.00	101	250.00
22	250.00	60	55.00	102	105.00
23	24.00	61	52.50	103	400.00
24	20.00	62	70.00	104	400.00
25	35.00	63	70.00	105	240.00
26	20.00	64	75.00	106	725.00
27	35.00	65	14.00	107	725.00
28	250.00	66	19.00	108	140.00
29	21.00	67	21.00	109	47.50
30	190.00	68	145.00	110	21.00
31	57.50	69	625.00	111	525.00
32	42.50	70	60.00	112	5250.00
33	20.00	71	500.00	113	26.00
34	19.00	72	1100.00	114	16.00
35	14.00	73	550.00	115	130.00
36	70.00	74	900.00	116	115.00
37	150.00	75	35.00	117	45.00
38	60.00	76	27.00	118	42.50
39	120.00	77	29.00	119	15.00
40	57.50	78	37.50	120	21.00
		79	28.00	121	67.50
		80	125.00	122	42.50
				123	26.00
				124	100.00
				125	35.00
				126	170.00
				127	32.50
				128	15.00
				129	725.00
				130	550.00
				131	525.00
				132	40.00
				133	21.00
				134	6.50
				135	11.00
				136	10.00
				137	29.00
				138	250.00
				139	475.00
				140	2400.00
				141	1850.00
				142	27.00
				143	21.00
				144	12.00
				145	62.50
				146	95.00
				147	35.00
				148	70.00
				149	50.00
				150	52.50
				151	47.50
				152	60.00
				153	80.00
				154	160.00
				155	45.00
				156	29.00
				157	37.50
				158	260.00
				159	23.00
				160	300.00
				161	40.00
				162	90.00
				163	80.00
				164	67.50
				165	42.50
				166	40.00
				167	42.50
				168	60.00
				169	37.50
				170	25.00
				171	50.00
				172	100.00
				173	50.00
				174	85.00
				175	50.00
				176	65.00
				177	350.00
				178	300.00
				179	500.00
				180	650.00
				181	57.50
				182	62.50
				183	60.00
				184	28.00
				185	47.50
				186	125.00
				187	50.00
				188	20.00
				189	23.00
				190	18.00
				191	37.50
				192	45.00
				193	52.50
				194	57.50
				195	375.00
				196	57.50
				197	30.00
				198	21.00
				199	75.00
				200	70.00
				201	37.50
				202	52.50
				203	190.00
				204	140.00
				205	190.00
				206	20.00
				207	47.50
				208	57.50
				209	40.00
				210	170.00
				211	32.50
				212	300.00
				213	525.00
				214	260.00
				215	350.00
				216	72.50
				217	40.00
				218	525.00
				219	150.00
				220	10.00
				221	105.00
				222	17.00
				223	100.00
				224	1550.00
				225	350.00
				226	67.50
				227	65.00
				228	47.50
				229	115.00
				230	70.00
				231	50.00
				232	100.00
				233	32.50
				234	180.00
				235	350.00
				236	45.00
				237	190.00
				238	150.00
				239	350.00
				240	62.50
				241	37.50
				242	26.00
				243	90.00
				244	105.00
				245	85.00
				246	135.00
				247	90.00
				248	85.00

249 62.50	311 52.50	373 35.00	435 72.50	497 65.00	559 32.50	621 85.00	683 50.00	745 25.00	807 55.00	869 80.00	931 32.50
250 55.00	312 52.50	374 57.50	436 105.00	498 47.50	560 37.50	622 85.00	684 170.00	746 67.50	808 62.50	870 40.00	932 52.50
251 42.50	313 60.00	375 14.00	437 220.00	499 100.00	561 65.00	623 180.00	685 180.00	747 40.00	809 55.00	871 12.00	933 20.00
252 35.00	314 47.50	376 30.00	438 35.00	500 220.00	562 28.00	624 32.50	686 200.00	748 32.50	810 40.00	872 17.00	934 30.00
253 30.00	315 120.00	377 52.50	439 135.00	501 1950.00	563 30.00	625 240.00	687 220.00	749 62.50	811 25.00	873 50.00	935 18.00
254 32.50	316 95.00	378 62.50	440 120.00	502 57.50	564 80.00	626 27.00	688 240.00	750 13.00	812 32.50	874 22.00	936 57.50
255 47.50	317 85.00	379 32.50	441 75.00	503 57.50	565 85.00	627 29.00	689 25.00	751 85.00	813 50.00	875 20.00	937 90.00
256 50.00	318 105.00	380 125.00	442 100.00	504 42.50	566 125.00	628 47.50	690 40.00	752 57.50	814 150.00	876 17.00	938 30.00
257 105.00	319 105.00	381 40.00	443 40.00	505 45.00	567 85.00	629 40.00	691 40.00	753 42.50	815 12.00	877 50.00	939 19.00
258 180.00	320 115.00	382 130.00	444 37.50	506 30.00	568 130.00	630 42.50	692 12.00	754 25.00	816 75.00	878 57.50	940 30.00
259 32.50	321 105.00	383 27.00	445 25.00	507 26.00	569 65.00	631 90.00	693 1150.00	755 25.00	817 75.00	879 550.00	941 100.00
260 72.50	322 110.00	384 32.50	446 105.00	508 67.50	570 45.00	632 95.00	694 52.50	756 27.00	818 72.50	880 52.50	942 19.00
261 60.00	323 125.00	385 160.00	447 70.00	509 125.00	571 500.00	633 90.00	695 67.50	757 42.50	819 32.50	881 37.50	943 35.00
262 42.50	324 150.00	386 42.50	448 24.00	510 16.00	572 350.00	634 25.00	696 52.50	758 32.50	820 60.00	882 45.00	944 47.50
263 90.00	325 250.00	387 25.00	449 35.00	511 500.00	573 475.00	635 105.00	697 57.50	759 26.00	821 27.00	883 42.50	945 14.00
264 42.50	326 210.00	388 115.00	450 15.00	512 460.00	574 250.00	636 65.00	698 37.50	760 37.50	822 45.00	884 23.00	946 42.50
265 25.00	327 100.00	389 70.00	451 15.00	513 40.00	575 3500.00	637 75.00	699 35.00	761 42.50	823 45.00	885 115.00	947 105.00
266 55.00	328 50.00	390 72.50	452 13.00	514 500.00	576 1500.00	638 80.00	700 45.00	762 26.00	824 50.00	886 150.00	948 35.00
267 170.00	329 35.00	391 37.50	453 16.00	515 30.00	577 50.00	639 85.00	701 37.50	763 30.00	825 30.00	887 80.00	949 23.00
268 200.00	330 32.50	392 32.50	454 30.00	516 150.00	578 75.00	640 52.50	702 60.00	764 110.00	826 50.00	888 75.00	950 21.00
269 47.50	331 40.00	393 75.00	455 29.00	517 150.00	579 85.00	641 62.50	703 110.00	765 45.00	827 40.00	889 115.00	951 26.00
270 30.00	332 40.00	394 67.50	456 15.00	518 100.00	580 75.00	642 65.00	704 115.00	766 42.50	828 60.00	890 65.00	952 125.00
271 65.00	333 47.50	395 145.00	457 40.00	519 100.00	581 85.00	643 62.50	705 60.00	767 26.00	829 57.50	891 19.00	953 62.50
272 85.00	334 95.00	396 30.00	458 115.00	520 220.00	582 290.00	644 25.00	706 60.00	768 11.00	830 37.50	892 25.00	954 115.00
273 55.00	335 37.50	397 11.00	459 100.00	521 15.00	583 425.00	645 28.00	707 160.00	769 125.00	831 47.50	893 30.00	955 230.00
274 62.50	336 35.00	398 105.00	460 70.00	522 23.00	584 350.00	646 17.00	708 17.00	770 25.00	832 18.00	894 450.00	956 23.00
275 45.00	337 40.00	399 40.00	461 130.00	523 19.00	585 325.00	647 18.00	709 18.00	771 35.00	833 90.00	895 50.00	957 110.00
276 37.50	338 85.00	400 150.00	462 72.50	524 19.00	586 160.00	648 17.00	710 17.00	772 25.00	834 65.00	896 105.00	958 57.50
277 29.00	339 80.00	401 50.00	463 72.50	525 19.00	587 280.00	649 30.00	711 30.00	773 135.00	835 200.00	897 26.00	959 26.00
278 62.50	340 85.00	402 72.50	464 180.00	526 18.00	588 65.00	650 27.00	712 27.00	774 28.00	836 37.50	898 37.50	960 40.00
279 125.00	341 40.00	403 57.50	465 210.00	527 32.50	589 190.00	651 37.50	713 24.00	775 67.50	837 12.00	899 16.00	961 40.00
280 140.00	342 52.50	404 105.00	466 400.00	528 20.00	590 52.50	652 24.00	714 21.00	776 60.00	838 25.00	900 24.00	962 70.00
281 12.00	343 160.00	405 52.50	467 350.00	529 130.00	591 130.00	653 37.50	715 21.00	777 1100.00	839 37.50	901 21.00	963 45.00
282 14.00	344 200.00	406 65.00	468 105.00	530 20.00	592 85.00	654 18.00	716 50.00	778 250.00	840 40.00	902 30.00	964 90.00
283 220.00	345 300.00	407 42.50	469 67.50	531 60.00	593 135.00	655 37.50	717 170.00	779 170.00	841 125.00	903 26.00	965 80.00
284 30.00	346 650.00	408 42.50	470 120.00	532 10.00	594 180.00	656 27.00	718 160.00	780 220.00	842 32.50	904 65.00	966 750.00
285 260.00	347 1000.00	409 40.00	471 20.00	533 36.00	595 37.50	657 24.00	719 30.00	781 9.00	843 32.50	905 260.00	967 150.00
286 125.00	348 750.00	410 210.00	472 70.00	534 35.00	596 105.00	658 16.00	720 125.00	782 72.50	844 72.50	906 170.00	968 13.00
287 24.00	349 800.00	411 90.00	473 40.00	535 14.00	597 425.00	659 180.00	721 26.00	783 30.00	845 52.50	907 60.00	969 80.00
288 24.00	350 675.00	412 90.00	474 16.00	536 52.50	598 600.00	660 10.00	722 32.50	784 9.50	846 37.50	908 50.00	970 850.00
289 50.00	351 85.00	413 85.00	475 18.00	537 100.00	599 180.00	661 18.00	723 21.00	785 15.00	847 35.00	909 135.00	971 32.50
290 47.50	352 52.50	414 60.00	476 21.00	538 72.50	600 120.00	662 25.00	724 47.50	786 15.00	848 27.00	910 700.00	972 95.00
291 24.00	353 50.00	415 55.00	477 24.00	539 120.00	601 145.00	663 85.00	725 130.00	787 62.50	849 32.50	911 17.00	973 200.00
292 40.00	354 57.50	416 400.00	478 26.00	540 145.00	602 30.00	664 85.00	726 270.00				
293 32.50	355 75.00	417 25.00	479 20.00	541 62.50							
294 65.00	356 200.00	418 42.50	480 25.00								
295 85.00	357 60.00	419 52.50	481 25.00								
296 170.00	358 40.00	420 16.00	482 260.00								
297 50.00	359 90.00	421 28.00	483 16.00								
298 55.00	360 32.50	422 75.00	484 42.50								
299 26.00	361 50.00	423 50.00	485 140.00								
300 95.00	362 45.00	424 180.00	486 160.00								
301 52.50	363 5.00	425 52.50	487 40.00								
302 52.50	364 55.00	426 62.50	488 250.00								
303 50.00	365 30.00	427 55.00	489 25.00								
304 55.00	366 62.50	428 70.00	490 160.00								
305 47.50	367 14.00	429 90.00	491 16.00								
306 52.50	368 30.00	430 42.50	492 140.00								
307 52.50	369 32.50	431 110.00	493 11.00								
308 45.00	370 37.50	432 75.00	494 115.00								
309 120.00	371 62.50	433 32.50	495 170.00								
310 52.50	372 35.00	434 55.00	496 170.00								

966	65.00	983	32.50	1000	13.00	1017	80.00	1034	325.00
967	12.00	984	40.00	1001	40.00	1018	32.50	1035	475.00
968	65.00	985	85.00	1002	50.00	1019	23.00	1036	260.00
969	30.00	986	200.00	1003	525.00	1020	52.50	1037	100.00
970	400.00	987	32.50	1004	55.00	1021	15.00	1038	85.00
971	40.00	988	24.00	1005	34.00	1022	36.00	1039	180.00
972	32.50	989	35.00	1006	32.50	1023	8.50	1040	150.00
973	50.00	990	80.00	1007	180.00	1024	24.00	1041	170.00
974	1600.00	991	65.00	1008	25.00	1025	105.00	1042	160.00
975	1700.00	992	32.50	1009	34.00	1026	18.00	1043	145.00
976	60.00	993	105.00	1010	55.00	1027	42.50	1044	350.00
977	225.00	994	50.00	1011	30.00	1028	400.00	1045	525.00
978	125.00	995	45.00	1012	23.00	1029	65.00	1046	32.50
979	475.00	996	16.00	1013	26.00	1030	290.00	1047	67.50
980	475.00	997	14.00	1014	55.00	1031	80.00	1048	32.50
981	100.00	998	80.00	1015	37.50	1032	400.00	1049	35.00
982	180.00	999	16.00	1016	50.00	1033	220.00		