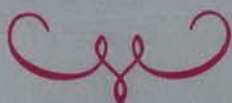


466th SALE

**A DISTINGUISHED COLLECTION
OF
UNITED STATES STAMPS**

Postage, Revenues, Possessions

Sold By Order Of The Owner



AT UNRESERVED PUBLIC AUCTION

**Thursday, February 20th, 1975
at 11:00 A.M. & 1:30 P.M.**

Robert A. Siegel

AUCTION GALLERIES, INC.

120 EAST 56th STREET

Tel.: (212) 753-6421

NEW YORK CITY, N.Y. 10022

CONDITIONS OF SALE

1. The terms of sale are strictly cash on delivery to the highest bidder unless special arrangements have been made prior to the sale.
2. All bids are per lot as numbered in the catalogue unless otherwise announced by the auctioneer at the time of sale. The right is reserved to group two or more lots; to withdraw any lot or lots from the sale, or to act in behalf of the seller. The auctioneer shall regulate the bidding and in the event of any dispute his decision shall be final.
3. Any lot, the description of which is incorrect is returnable, but only within five days of receipt. All disputed lots must be returned intact as received. **The following lots may not be returned for any reason whatsoever: Lots containing ten or more stamps; Lots from buyers who have had the opportunity to examine them before the sale; Lots described as having defects or faults may not be returned because of any faults. No illustrated lots may be returned because of centering, margins or other factors shown in the illustrations.**
4. Successful bidders, unless they are known to us or supply acceptable references are expected to make payment in full before the lots are delivered. Mail bidders will be notified of the amount of their purchases. All mail bidders who have established credit with us must make payment within three days after receipt. We reserve the right in our sole and absolute discretion to demand cash payment at the time a lot is knocked down to any bidder who has not previously established credit with us or whose account is in arrears. In the event any buyer refuses to pay cash for any lot at the time it is knocked down to him, the auctioneer reserves the right to re-offer the lot immediately for sale to the highest bidder.
5. If the purchase price has not been paid within the time limit, nor lots taken up within seven days from date of sale they must be resold and any loss arising from such sale will be charged to the defaulter. Any account more than thirty days in arrears is subject to a late payment charge of 1½% per month so long as the account remains in arrears. If the auctioneer, in his discretion, should institute any legal action to secure payment of a delinquent account the defaulting purchaser shall pay all legal expense incurred by the auctioneer and such charges will be added to the amount owed.
6. All lots are sold as genuine but should any lot be proved otherwise by written opinion of any competent, responsible authority acceptable to us, immediate refund of the full purchase price will be made, provided that such claim is made in writing within 14 days from date of sale. If claims is not made within this period, no lots are returnable for any reason at any time. So long as we are notified within the 14 day period that an opinion is being sought the matter will remain open until such opinion is rendered. We will not be responsible for any charges incurred by the buyer for expertization fees and costs unless the opinion states the item is not genuine, in which case we will pay actual costs up to a maximum of \$50.00.
7. Until paid for in full, all lots remain the property of Robert A. Siegel Auction Galleries, Inc. in behalf of the seller.
8. All forwarding charges will be added to the purchase price. The mode of shipment shall be at our option unless we are given specific instructions.
9. Lots may be sent for inspection to buyers known to us upon written application. All such lots must be returned to us by registered mail, adequately insured and within 24 hours after receipt. The applicant assumes all responsibility and for insurance against all risks from time of receipt until they are actually received back by us, and is to pay all expenses of postage and insurance. No lots can be sent for inspection within eight days from date of local viewing. Large lots and collections cannot be sent for inspection.
10. Agents are responsible for all purchases made in behalf of their clients unless other arrangements are made prior to the sale.
11. All lots in this sale are offered without reserve.
12. Our sales contain lots on which we have made prior cash advances and may contain lots belonging to consignors indebted to The Robert A. Siegel Auction Galleries, Inc. These are the only lots in which the Galleries have any proprietary interest.
13. The placing of a bid shall constitute acceptance of the foregoing conditions of sale.

ROBERT A. SIEGEL, Licensed Auctioneer

FEBRUARY 20th, 1975

ROBERT A. SIEGEL AUCTION GALLERIES, Inc.

120 East 56th Street

New York, N. Y. 10022

Tel.: 753-6421 (Area Code 212)

Please purchase for me at your auction to be held **February 20th, 1975** the lots listed below, the prices annexed being my limit on each lot. I agree to remit for purchases in accordance with the **Conditions of Sale** and return no lots later than three days after receipt.

REFERENCES PLEASE
(if unknown to us)

SIGNED

New York State residents kindly include
County in address.

County

BIDDING INTERVALS

BIDS	ADVANCE	BIDS	ADVANCE
Up to \$30.00	\$1.00	\$300.00 - \$725.00	\$25.00
\$32.50 - \$72.50	\$2.50	\$750.00 - \$2,000.00	\$50.00
\$75.00 - \$145.00	\$5.00	\$2,000.00 - \$3,000.00	\$100.00
\$150.00 - \$290.00	\$10.00	\$3,250.00 and up	\$250.00

Bids which do not conform to the above will be automatically reduced to the appropriate level.

[illegible]

VALUATIONS

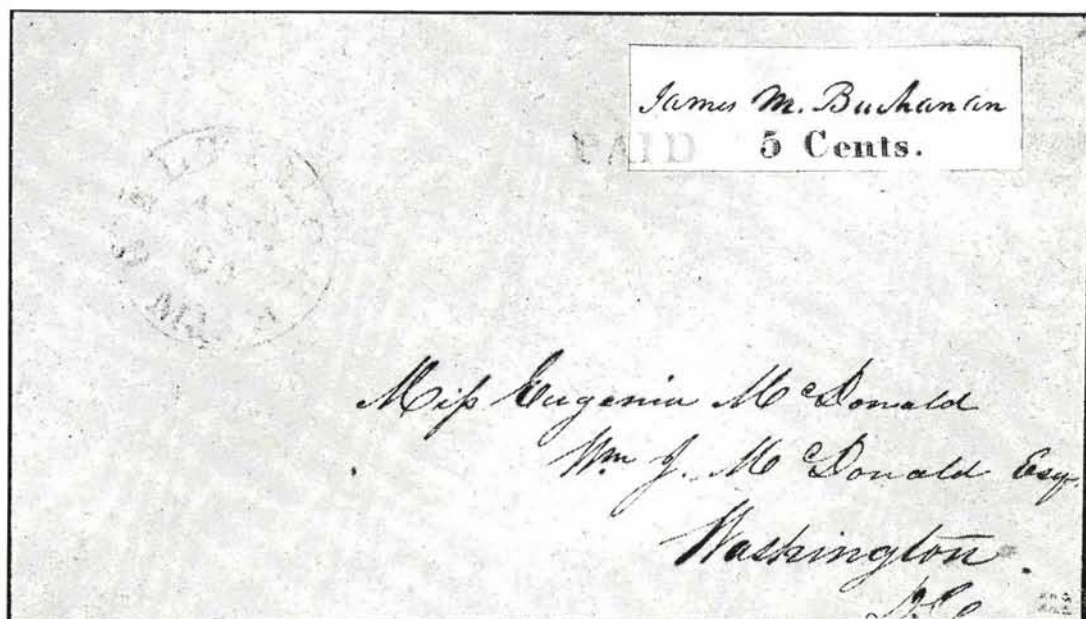
Upon request, estimate of value furnished on any lots in this auction.

FIRST SESSION

THURSDAY, FEBRUARY 20, 1975 — 11:00 A. M.

UNITED STATES

POSTMASTERS' PROVISIONALS



- 1 ☒ **Baltimore, Md., 5c Black on Bluish (3X3).** Nearly Full Frame Lines on three sides, part at top, tied on Wonderfully Fresh Cover by Blue "Paid", matching "Baltimore, Md." pmk., Very Fine, One of the finest Baltimore Provisional Covers in Existence with P. F. Certificate, "W.H.C." (Colson) handstamp guarantee 3,500.00
- 2 P **New York, N. Y., 5c Black, Small Die Proof on Bond (9X1P).** Very Fine (Photo) 150.00
- 3 ★ **New York, N. Y., 5c Black (9X1).** Ample to Large Margins, Fresh, couple tiny thin spots, inconsequential black ink speck in bottom margin, from address, Very Fine Appearance (Photo) 275.00
- 4 ★ **Providence, R. I., 10c Black (10X2).** Large Margins, Very Fine, with Behr Certificate (Photo) 375.00

LOTS ON VIEW, FEBRUARY 18th, 19th

1847 ISSUE



5

8

- 5 ★ **5c Brown (1).** Large Margins, Marvelous Rich Color, tiny insignificant corner crease, otherwise Very Fine, Handsome, Fresh Stamp 500.00
- 6 **5c Red Brown (1).** Ample to Large Margins, Fresh Color, Red Grid cancel, Very Fine (Photo) 135.00
- 7 **5c Orange Brown (1b).** Three Ample to Huge Margins, trifle in at left, tiny corner crease, Beautiful Rich Color, on piece, tied by Bold Blue Grid next to clear "Blood's Despatch" Double Circle, Very Attractive (Photo) 175.00+
- 8 ★ **10c Black (2).** Just clear to Large Margins, Fresh Color, Fine despite tiny insignificant tear entirely in top margin, with P.F. Certificate, Rare Unused 3,000.00
- 9 **10c Black (2).** Three Ample to Huge Margins, trifle in at top, Red Grid cancel, Attractive (Photo) 375.00
- 10 ★ **5c Red Brown, Reproduction (3).** Margins All Around, trivial flaws, Very Fine Appearance (Photo) 300.00
- 11 ★ **10c Black, Reproduction (4).** Large Margins, Fresh & Very Fine (Photo) 425.00

1851 ISSUE



12

21

25

- 12 **1c Blue, Ty. I, Position 7R1E (5).** Large Margins incl. Top Sheet Margin, barely touched at extreme bottom left, very faint cancel, light crease in sheet margin only, well clear of design, An Unusually Choice Example of this Much Sought After Rarity 7,000.00
- 13 **1c Blue, Ty. Ia (6).** Horiz. Pair, Pos. 91-92L4, Margins to least bit in, Beautiful Deep Shade, Town pmk., Rare & Extremely Desirable, with P. F. Certificate (Photo) 2,200.00



2



3



4



6



9



7



10



11



13



15



14



16



17



19



22



23



24



26



27



29



31



32



33



34



35



36



38



42



43

14	1c Deep Blue, Combination Ty. II, IIIa, Plate 1E (7, 8A). Horiz. Pair, Pcs. 77-78R1E, Margins All Around, Rich Shade of the Later Printing of Pl. 1E, Blue Jan (1852) Town pmk. The left stamp is a "Variable" Ty. II-IIIa According to Neinken's Book & shows a clear break at top, qualifying it to be Ty. IIIa, Very Fine, Rare Pair, Listed but Unpriced (Photo)	—
15	1c Blue, Ty. III (8). Large margins to barely touched, Town pmk., Shows type clearly, Fine & Scarce (Photo)	450.00
16 ★	1c Blue, Ty. IV (9). Recut at B., Pos. 4L1L, Large Margins All Around, minute corner crease entirely in T. R. margin, Otherwise Very Fine (Photo)	125.00
17 ★	1c Blue, Ty. IV (9). Ample to Large Margins, part o. g., tiny thin spot, Very Fine Appearance (Photo)	90.00
18 ★	3c Red (11). Four Large Margins, bits of next stamps at T. & B., part o. g., trifle oxidized & minute scissor cut entirely in T. L. margin, otherwise Extremely Fine	30.00
19	5c Red Brown (12). Large Margins, light Blue Town pmk., small expert repair at top, Very Fine Looking (Photo)	235.00
20	5c Red Brown (12). Three Large to Huge Margins incl. Part of Next Stamp at R., slightly in at left, "1857" Year Date cancel, tiny corner crease entirely in margin, Attractive	230.00
21 ★	10c Green, Ty. I (13). Pos. 100L, Clear to Huge Margins incl. part Bottom Right Corner Margins, Incredibly Fresh Deep Shade, Very Fine, Rare Unused, with P. F. Certificate (Photo)	1,850.00
22 ★	10c Green, Ty. II (14). Three Large Margins, narrow to barely touched R., tiny corner crease, Fine Appearance (Photo)	375.00
23 ★	10c Green, Ty. III (15). Ample to Large Margins All Around, Fresh, Rich Color, large part o. g., Very Fine (Photo)	375.00
24	10c Green, Ty. III (15). Horiz. Pair, Large Margins All Around, Beautiful Color, Bold "Dubuque, Iowa" pmks., faint thin & faint crease, tiny scissors cut between stamps just clear of design, Extremely Fine Appearance, Handsome Pair (Photo)	150.00
25 ★	10c Green, Ty. IV (16). Recut Top & Bottom, Pos. 64L, Clear to Large Margins All Around, with P. F. Certificate which states . . . "genuine with small stains and traces of gum", Fine, Fresh & Very Rare Unused (Photo)	3,000.00
26 ★	12c Black (17). Fresh, Margins All Around, minute turquoise ink specks at T. L., Otherwise Very Fine (Photo)	450.00

1857 ISSUE

27 ★	1c Blue, Ty. I (18). Fresh Color, centered trifle to left, Very Fine for this issue (Photo)	250.00
28	1c Blue, Ty. I (18). Clear Black Carrier cancel, light crease & small thin, otherwise Fine, Scarce	225.00
29	1c Blue, Ty. Ia (19). Town pmk., few short perfs., centered to left, Very Scarce (Photo)	500.00
30 ★	1c Blue, Ty. II (20). Well Centered, o. g., corner crease partly broken at one end, otherwise Very Fine	145.00

- 31 ★ **1c Blue, Ty. III (21).** Rich Color, tiny perf. flaws, trivial stain almost entirely on back, otherwise Very Fine, with P. F. Certificate (Photo) 750.00
- 32 **1c Dark Blue, Ty. III (21).** Well Centered, Town pmk., a single short perf., otherwise Very Fine (Photo) 260.00
- 33 ★ **1c Blue, Ty. IIIa (22).** Beautiful Deep Shade, Fresh & Fine (Photo) 165.00
- 34 ★ **1c Blue, Ty. IV (23).** Part o. g., some perfs. blunted by scissor separation, slight gum soaks on some perfs., otherwise Very Fine, with P. F. Certificate, Rare when so well centered (Photo) 700.00
- 35 **1c Blue, Ty. IV (23).** Recut Once at T., Twice at B., Clear Red Carrier cancel, Fine (Photo) 110.00
- 36 ★ **3c Rose, Ty. I (25).** Large Part o. g., few light gum creases, perfs. slightly in at left, better than usual centering, Extra Frame line R., Fine, Scarce unused (Photo) 150.00+



- 37 ★ **5c Brick Red (27).** Unusually Well Centered, o. g., slight stains, really negligible, otherwise Very Fine, with P. F. Certificate 1,300.00
- 38 **5c Brick Red (27).** 1859 y. d. cancel., reperfed at top, Fine Appearance (Photo) 200.00
- 39 ★ **5c Red Brown (28).** Fresh, Part o. g., separated from sheet by scissors partly blunting few perfs., otherwise Fine, with P. F. Certificate 600.00
- 40 **5c Red Brown (28).** Well Centered, Town pmk., faint inconsequential thin spot, Very Fine Appearance 85.00
- 41 ★ **5c Indian Red (28A).** Wonderfully Fresh Rich Color, Part o. g., reperfed at bottom, Very Fine Appearance, with P. F. Certificate, Rare Unused (Photo) 2,500.00
- 42 **5c Indian Red (28A).** Pair & Single, Beautiful Rich Color, tied on piece by "New Orleans, La." pmks. & Red New York Transit, Fine, with P. F. Certificate, Very Rare & Handsome (Photo) 1,125.00
- 43 ★ **5c Brown, Ty. I (29).** Fresh & Fine, with P. F. Certificate (Photo) 225.00
- 44 ★ **5c Orange Brown (30).** Fresh Bright Color, barely noticeable vertical crease, Very Fine appearance (Photo) 150.00
- 45 ★ **5c Deep Orange Brown (30).** Fresh, Beautiful Rich Color, Part o. g., slight album offset, couple light bends & reperfed, Fine Appearance 150.00



46

50

- 46 ★ **10c Green, Ty. I (31).** Marvelous Deep Shade, Nearly Full o. g., couple nibbed perfs., otherwise Fine, Rare Unused, with P. F. Certificate, Unusually Fresh 1,650.00
- 47 **10c Green, Ty. I (31).** Town pmk., few slightly blunted perfs., otherwise Fine (Photo) 150.00
- 48 ★ **10c Green, Ty. II (32).** Nearly Full o. g., couple blunted perfs., otherwise Fine, with photo-copy of P. F. Certificate picturing the vertical pair from which this stamp was taken (Photo) 325.00
- 49 ★ **10c Green, Ty. III (33).** Rich Color, Fine despite a minute, barely discernible toned speck noted on accompanying P. F. Certificate (Photo) 325.00
- 50 ★ **10c Green, Ty. IV (34). Recut at Top, Pos. 3R,** Rich Color, tiny part o. g., with P. F. Certificate which states "genuine with trace of stain," Very Fine despite the insignificant trace of stain, Very Rare Unused (Photo) 2,850.00
- 51 ★ **10c Green, Ty. V (35).** Fresh, o. g., Very Fine (Photo) 40.00
- 52 ★ **12c Black, Pl. I (36). Horiz. Strip of Three,** Fresh, o. g., couple short perfs., centered to bottom right, Scarce (Photo) 240.00
- 53 ★ **24c Gray (37).** Wonderfully Fresh, Nearly Full o. g., centered bare (rifle to top, Very Fine (Photo) 150.00
- 54 ★ **30c Orange (38).** Small closed tear, otherwise Very Fine (Photo) 160.00
- 55 **30c Orange (38).** Centered to left, single short perf., Clear Sept 1861 Year Date pmk., Attractive (Photo) 82.50
- 56 ★ **90c Blue (39).** Fresh, Large Part o. g., bottom perfs. just touch, Very Fine (Photo) 450.00
- 57 ★ **1c-30c, 1857-67 Issues (Betw. 24-94).** Eleven Unused Stamps, some o. g., few small faults or off-center, others Fine-Very Fine 478.50

LOTS ON VIEW, FEBRUARY 18th, 19th

1857 REPRINTS



58-65

- 58 ★ 1c Bright Blue, Reprint (40). Lovely Color, right perfs. normally blunted by scissors separation, single short perf., otherwise Very Fine (Photo) 200.00
- 59 ★ 3c Scarlet, Reprint (41). Marvelous Color, Unusually Large Top & Bottom Margins, right perfs. just touch, Very Fine, An outstanding example of this elusive Rarity (Photo) 1,200.00
- 60 ★ 5c Orange Brown, Reprint (42). Fresh & Fine (Photo) 365.00
- 61 ★ 10c Blue Green, Reprint (43). Incredibly Well Centered, Extremely Fine (Photo) 800.00
- 62 ★ 12c Greenish Black, Reprint (44). Fresh, Perfs. Well Clear of Design All Around, Extremely Fine, One of the Finest of this Very Scarce Stamp in Existence (Photo) 725.00
- 63 ★ 24c Blackish Violet, Reprint (45). Unusually Well Centered, Fresh & Bright, Very Fine (Photo) 825.00
- 64 ★ 30c Yellow Orange, Reprint (46). Very Fine & Rare Brilliant Color, A "Beauty" (Photo) 1,200.00
- 65 ★ 90c Deep Blue, Reprint (47). Well Centered, Unusually Large Margins, single partly nibbed perf., nevertheless Extremely Fine, A Fantastic Stamp (Photo) 1,700.00

1861 "FIRST DESIGNS"

- 66 ★ 3c Brown Rose, "First Design" (56). Well Centered, traces of o. g., barely discernible sealed tear, Very Fine Appearing example of this Scarce Stamp (Photo) 300.00
- 67 3c Brown Rose, "First Design" (56). Red Target cancel, a Trial obliteration as this stamp was never issued, single nibbed perf., otherwise Fine, Undoubtedly Very Scarce, with P. F. Certificate (Photo) E. VII



68

69

- 68 ★ **5c Brown, "First Design" (57).** Fresh, Bright & Very Fine, A Beautiful Rarity, with P. F. Certificate **(Photo)** 8,000.00
- 69 ★ **10c Dark Green, "First Design" (58).** Fresh, Rich Color, reperfed at B., Very Fine Appearance **(Photo)** 1,500.00

1861 ISSUE

- 70 ★ **3c Pink (64).** Few perfs. at top slightly blunted, still Fine, Very Scarce Unused, with P. F. Certificate **(Photo)** 875.00
- 71 **3c-30c 1861 Issue (65, 69-71, 75).** Two of first, All With Handsome Cancels, incl. "3", Blue Diamond Grid, Reds, Blue Floral Type, Blue Town, Fine Lot **E. VI**
- 72 ★ **3c Lake (66).** Fresh, o. g., much better than usual centering, Very Fine, with P. F. Certificate **(Photo)** 650.00
- 73 ★ **5c Buff (67).** Fresh, o. g., Marvelous Deep Rich Color, extremely faint specks of red in margin, top left corner perf. carefully restored, otherwise Very Fine, Beautiful Appearance, with P. F. Certificate **(Photo)** 850.00
- 74 **24c Steel Blue (70b).** Marvelous Color, Blue Town pmk., small tear at top, otherwise Fine 52.50
- 75 **24c Violet, "First Color" (70c).** Pretty Blue Unframed Grid cancel, small faults, Fine Appearance 175.00
- 76 ★ **90c Blue (72).** Wonderfully Well Centered, small part o. g., few nibbed perfs., otherwise Extremely Fine **(Photo)** 325.00
- 77 ★ **3c Scarlet (74).** Fresh, Part o. g., perfs. trifle in at right, reperfed at left, Bright Color, Rare **(Photo)** 1,500.00
- 78 ★ **5c Red Brown (75).** Fresh, Part o. g., few short perfs., otherwise Very Fine **(Photo)** 265.00
- 79 **24c Lilac (78).** Horiz. Pair, Neat Target cancels, Fine-Very Fine, Quite Attractive **(Photo)** 32.50

1867 GRILLED ISSUES

- 80 **3c Rose, Grilled All Over (79).** Small Bold Circle of Wedges cancel, couple tiny tears & few irregular perfs. as always, centered to top left, Fine example of this scarce stamp **(Photo)** 250.00



44



47



48



49



51



53



52



54



55



56



66



67



70



72



73



76



77



78



79



80



81



83



84



85



86



87



88



89



90



91



93



94



95



96



97



98



99



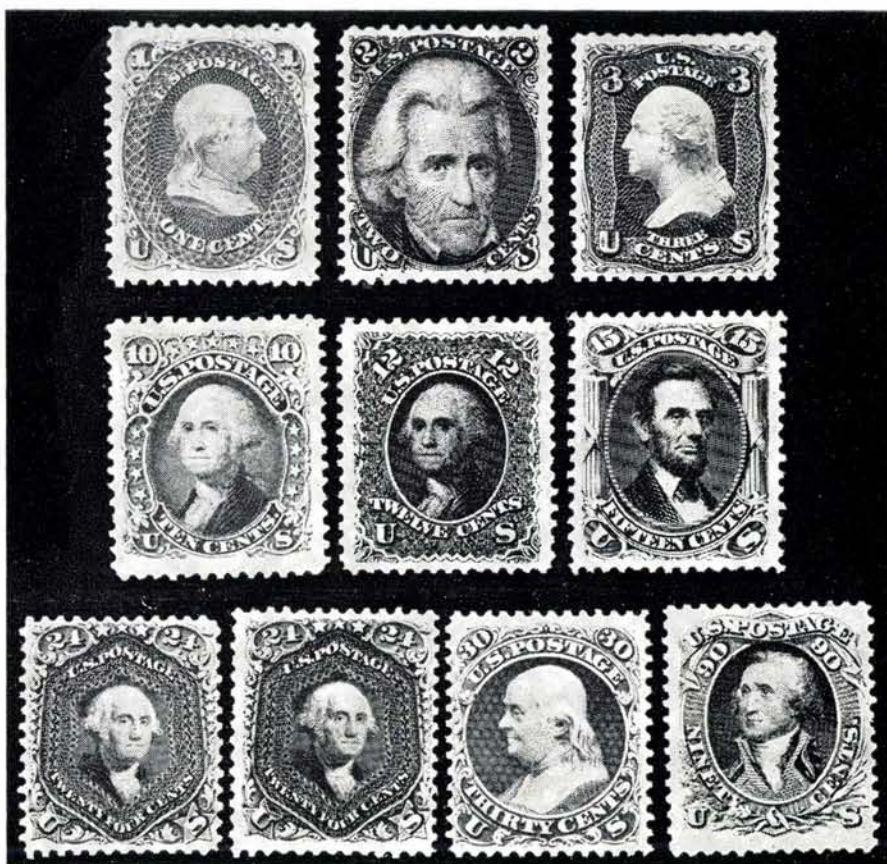
101



114

81 ★	3c Rose, C. Grill (83). Fresh, o. g., couple partly blunted perfs., almost negligible, otherwise Very Fine, with P. F. Certificate, Unusually Choice Condition for this stamp (Photo)	400.00
82	3c Rose, C., D. Grills (83, 85). Neat Cancels, #85 perf. flaws, otherwise Fine Lot, Scarce	145.00
83 ★	3c Rose, D. Grill (85). Small corner thin, Fine Appearance, Very Scarce Unused (Photo)	400.00
84 ★	2c Black, Z. Grill (85B). Unusually Well Centered, small part o. g., slight natural toning, nevertheless Very Fine, with P. F. Certificate (Photo)	300.00
85	2c Black, Z. Grill (85B). Bold Red Grid of Squares cancel, few perfs. partly blunted at top by scissors, still Fine (Photo)	80.00
86 ★	12c Black, Z. Grill (85E). Brilliantly Fresh, Full o. g., Intense Color, Very Fine, with P. F. Certificate (Photo)	500.00
87	12c Black, Z. Grill (85E). Geometric Grid cancel. left perfs. touch, Scarce Stamp (Photo)	125.00
88 ★	1c Blue, E. Grill (86). Brilliant o. g., Fresh Color, Fine (Photo)	140.00
89 ★	3c Rose, E. Grill (88). Fresh, o. g., Very Fine (Photo)	30.00
90 ★	10c Green, E. Grill (89). Beautiful Centering, Fresh Color, tiny faint thin spot, Extremely Fine Appearance (Photo)	275.00
91 ★	12c Black, E. Grill (90). Fine & Scarce (Photo)	300.00
92	12c, 15c Black, E. Grills (90, 91). Used, couple tiny perf. flaws, otherwise Fine	112.50
93 ★	15c Black, E. Grill (91). Bottom perfs. touch, Fine with P. F. Certificate, Very Scarce Unused (Photo)	725.00
94 ★	1c Blue, F. Grill (92). "Jumbo" Stamp, Enormous Side Margins, small corner creases T. R., Outstanding Appearance (Photo)	70.00
95 ★	2c Black, F. Grill (93). Fresh, o. g., nicely centered, Very Fine, as these come (Photo)	35.00
96	5c Brown, F. Grill (95). Bright Red cancel, Fine, Pretty Stamp (Photo)	65.00
97 ★	10c Green, F. Grill (96). Centered a bit to R., Fine & Fresh (Photo)	110.00
98 ★	15c Black, F. Grill (98). Very Well Centered, tiny perf. faults as often, otherwise Very Fine (Photo)	125.00
99 ★	24c Gray Lilac, F. Grill (99). Fresh, o. g., faint crease, otherwise Fine (Photo)	300.00
100	24c Gray Lilac, F. Grill (99). Bold Rosette cancel, tiny faults, perfs. slightly in T. & R. Yet Attractive	115.00
101 ★	90c Blue, F. Grill (101). Incredibly Fresh, Large Part o. g., naturally rounded corner perf., still Very Fine, A Beauty (Photo)	800.00

1861 RE-ISSUES



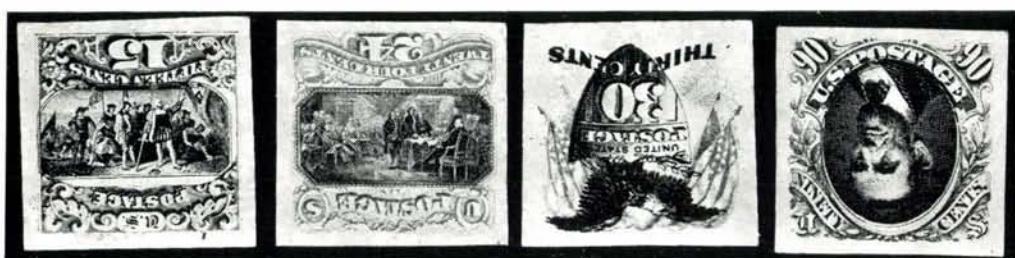
102-111

- 102 ★ 1c Blue, Re-Issue (102). Fresh, Part o. g., couple natural gum bends, Well Centered & Extremely Fine (Photo) 175.00
- 103 ★ 2c Black, Re-Issue (103). Fresh, Nearly Full o. g., Well Centered, tiny thin spot, Extremely Fine Appearance (Photo) 900.00
- 104 ★ 3c Brown Red, Re-Issue (104). Fresh, Part o. g., top perfs. partly blunted by scissor separation, reperfed. at bottom, Very Fine Appearance (Photo) 1,200.00
- 105 ★ 10c Green, Re-Issue (106). Well Centered, "Jumbo" Margins, Brilliant, Nearly Full o. g., Extremely Fine, A Marvelous "Gem" (Photo) 950.00
- 106 ★ 12c Black, Re-Issue (107). Large Even Margins, Fresh, o. g., Extremely Fine, Choice & Handsome Rarity (Photo) 1,250.00
- 107 ★ 15c Black, Re-Issue (108). Wonderfully Well Centered & Fresh, Sharp Impression, Extremely Fine, Rare (Photo) 1,100.00
- 108 ★ 24c Deep Violet, Re-Issue (109). Well Centered, Fresh Color, Very Fine & Rare, with P. F. Certificate (Photo) 1,300.00
- 109 ★ 24c Deep Violet, Re-Issue (109). Fresh, o. g., Very Fine, Rare & Handsome, minute crease in corner perf., with P. F. Certificate (Photo) 1,300.00

- 110 ★ 30c Brownish Orange, Re-Issue (110). Brilliant Color, left perfs. barely touch, Very Fine, with P. F. Certificate, Rare (Photo) 1,750.00
- 111 ★ 90c Blue, Re-Issue (111). Marvelous Deep Color, Large Part o. g., centered least bit to top, Extremely Fine Example of this Handsome Rarity (Photo) 2,000.00

1869 PICTORIAL ISSUE

- 112 P 1c-90c Pictorials, Large Die Hybrid Plate Proofs (112P-117P, 119P-122P). Complete Set on $7\frac{1}{4} \times 8\frac{7}{8}$ " Cards Bound in Special Book with Paper Interleavings, binding somewhat worn & spine separated, the Proofs Very Fine, Very Rare E. XIII



- 113 P 15c-90c Pictorials, Plate Proofs on Card, Centers Inverted (120Pa-122Pa, 129Pa). Tiny abrasions in margins of first three, just touching designs, A Very Fine Appearing Rare Set (Photo) 3,800.00
- 114 ★ 1c Buff (112). Very Fine (Photo) 75.00
- 115 1c-30c Pictorials (112-121). Used, incl. additional 1c & 3c, Several Attractive Cancels, Red & Blue Towns, "X", Eight Point Hollow Star, 6c s. e., most have faults, some tiny, Attractive Appearance 487.25
- 116 ★ 2c Brown (113). Fresh & Fine, Deep Shade 45.00
- 117 2c Brown (113). Perfs. trifle in at right, Mostly Clear "Hiogo, Japan" Double Circle pmk., Fine Strike, Scarce (Photo) 75.00
- 118 ★ 6c Ultramarine (115). Beautifully Centered, Extremely Fine (Photo) 175.00
- 119 ★ 10c Yellow (116). Rich Color, reperfed at right, Very Fine Appearance (Photo) 185.00
- 120 10c Yellow (116). Horiz. Pair, Bold Rosette & "New Orleans, La." cancels, Very Fine, Handsome Pair (Photo) 65.00
- 121 ★ 12c Green (117). Reperfed, Fine Appearance (Photo) 165.00

LOTS ON VIEW, FEBRUARY 18th, 19th



122-126

122 ★	15c Brown & Blue, Ty. I (118). Incredibly Well Centered, Fresh, Nearly Full o. g., Extremely Fine, A Marvelous "Gem"	500.00
123 ★	15c Brown & Blue, Ty. II (119). Deep Colors, Very Fine	200.00
124 ★	24c Green & Violet (120). Fresh, Part o. g., Fine	500.00
125 ★	30c Blue & Carmine (121). Rich Colors, Well Centered & Very Fine	500.00
126 ★	90c Carmine & Black (122). Brilliant Colors, Part o. g., Incredibly Well Centered, insignificant natural rounded corner perf., still Extremely Fine, A "Gem", with P. F. Certificate	1,500.00
127	90c Carmine & Black (122). Used, Fresh Colors, few negligible flaws, Fine Appearance, with Behr Certificate	(Photo) 350.00

1869 RE-ISSUES

128 ★	1c Buff, Re-Issue (123). Fresh, Part o. g., Very Fine	(Photo) 115.00
129 ★	2c Brown, Re-Issue (124). Fresh, o. g., Very Fine	(Photo) 175.00
130 ★	3c Blue, Re-Issue (125). Fresh, Part o. g., tiny thin spot, Very Fine Appearance	(Photo) 900.00



128-131, 133-138

- 131 ★ 6c Blue, Re-Issue (126). Nearly Full o. g., Gorgeous Color, Very Fine (Photo) 350.00
- 132 6c Blue, Re-Issue (126). Oval Reg. cancel, Well Centered, couple small thin spots, Very Fine Appearance (Photo) 200.00
- 133 ★ 10c Yellow, Re-Issue (127). Fresh, Large Part o. g., couple partly nibbed perfs., otherwise Very Fine (Photo) 525.00
- 134 ★ 12c Green, Re-Issue (128). Beautiful Color & Centering, Large Part o. g., a single short perf., otherwise Very Fine (Photo) 550.00
- 135 ★ 15c Brown & Blue, Re-Issue (129). Fresh, Part o. g., Well Centered, tiny inconsequential corner perf. creases, otherwise Very Fine (Photo) 625.00
- 136 ★ 24c Green & Violet, Re-Issue (130). Marvelous Colors, Large Part o. g., Well Centered, Extremely Fine, with P. F. Certificate (Photo) 525.00
- 137 ★ 30c Blue & Carmine, Re-Issue (131). Brilliant o. g., Very Fine, with P. F. Certificate 775.00
- 138 ★ 90c Carmine & Black, Re-Issue (132). Fresh & Bright, Large Part o. g., Very Fine despite a very minor corner perf. crease 1,300.00
- 139 ★ 1c Buff, Re-Issue (133). Fresh, o. g., Very Fine (Photo) 95.00

NATIONAL BANK NOTE CO. — GRILLED

140 ★	1c Ultramarine, Grill (134). Split Grill, Huge Margins, Fresh Color, couple partly nibbed perfs., otherwise Very Fine (Photo)	190.00
141 ★	3c Green, Grill (136). Well Centered, tiny part o. g., slight perf. tip soiling, otherwise Very Fine (Photo)	55.00
142 ★	6c Carmine, Grill (137). Fresh, Large Part o. g., couple partly blunted perfs., still Fine (Photo)	300.00
143	6c Carmine, Grill (137). Bright Color, Bold Blue Quartered Cork cancel, top perfs. touch, Fine (Photo)	60.00
144 ★	7c Vermilion, Grill (138). Very Fine, with P. F. Certificate (Photo)	275.00
145 ★	7c Vermilion, Grill (138). Beautiful Color, o. g., tiny gum soak specks in couple left perfs., otherwise Fine, with P. F. Certificate (Photo)	275.00
146	7c Vermilion, Grill (138). Light Target cancel, Very Fine (Photo)	50.00
147	10c Brown, Grill (139). NYFM Geometric cancel Ty. G4, light crease, perfs. just clear at bottom, Scarce (Photo)	100.00+
148	10c Brown, Grill (139). Unusual Negative Dots in circle cancel, perfs. in at T., tiny faults (Photo)	100.00



	149	152	152	155
149 ★	12c Dull Violet, Grill (140). Fresh, Large Part o. g., top perfs. clear to barely touch, Fine for this Marvelous Rarity with P. F. Certificate (Photo)			6,000.00
150 ★	15c Orange, Grill (141). Beautiful Centering, Bright Color, Part o. g., minute pinpoint thin speck in margin, Extremely Fine Appearance, with P. F. Certificate (Photo)			450.00
151	15c Orange, Grill (141). Circle of Wedges cancel, faint crease, Fine Appearance (Photo)			150.00
152	24c Purple, Grill (142). Well Centered, Neat Thick Bar Grid cancel, Unusually Clear Grill, creased, yet of Unusually Fine appearance, with P. F. Certificate (Photo)			5,250.00
153 ★	30c Black, Grill (143). Wonderfully Fresh & Fine, with P. F. Certificate, Rare (Photo)			1,150.00
154	30c Black, Grill (143). Used, Unusually Well Centered, reperfed, few tiny flaws, Very Fine Appearance (Photo)			250.00
155 ★	90c Carmine, Grill (144). Fresh Color, Part o. g., tiny corner perf. crease, bottom perfs. touch, Rare & Attractive, with P. F. Certificate (Photo)			1,850.00



117



118



119



120



121



127



132



139



140



142



144



145



146



147



150



151



154



157



160



161



163



164



165



166



168



169



170



171



172



173



174



187



188



189



191



192



205



207



208



213

NATIONAL BANK NOTE CO. — WITHOUT GRILL

156 ★	1c-3c 1870 Bank Notes (145-147). Fresh, first two part o. g., Fine-Very Fine	52.00
157 ★	6c Carmine (148). Very Fine (Photo)	60.00
158 ★	1c-10c 1870-73 Bank Notes (150, 156-158). 1c left perfs. touch, others Well Centered, 3c o. g., 10c tiny flaws, otherwise Very Fine	115.00
159	6c-24c Bank Notes (150, 153, 159, 160, 162, 163). Negligible faults, each with Diff. NYFM cancel, one in Red, Fine-Very Fine Strikes	E. IV
160 ★	12c Dull Violet (151). Negligible corner perf. crease, still Very Fine (Photo)	150.00
161 ★	24c Purple (153). Couple insignificant perf. creases, otherwise Very Fine (Photo)	115.00
162 ★	24c Purple (153). Reperfed, Fine Appearance	115.00
163 ★	90c Carmine (155). Beautiful Deep Shade, Large Part o. g., Exceptional Centering, Extremely Fine (Photo)	350.00

CONTINENTAL BANK NOTE CO.

164 ★	6c Dull Pink (159). Very Fine (Photo)	55.00
165 ★	7c Orange Vermilion (160). Brilliant Color, Very Fine (Photo)	100.00
166 ★	10c Brown (161). Fresh, o. g., Fine (Photo)	55.00
167 ★	12c Blackish Violet (162). Fresh, Rich Color, small faults, Fine Appearance	185.00
168 ★	15c Orange (163). Fresh & Bright, light trivial bend, otherwise Fine (Photo)	150.00
169 ★	15c Pale Orange (163). Fresh, Part o. g., single trivial corner perf. crease, still Fine (Photo)	150.00
170 ★	30c Greenish Black (165). Reperfed at left, Fine Appearance (Photo)	150.00
171 ★	90c Rose Carmine (166). Reperfed at left, Very Fine Appearance (Photo)	325.00
172 ★	2c Vermilion (178). Brilliant Color, Very Fine (Photo)	50.00
173 ★	2c Vermilion (178). Brilliant Color, Well Centered & Very Fine (Photo)	50.00
174 ★	5c Blue (179). Fresh, Rich Color, Fine (Photo)	47.50

1875 SPECIAL PRINTINGS, HARD PAPER

As nearly all of these Special Printings were cut from sheet with scissors, trimmed & blunted perforations are normal and are not to be considered as defects. The series offered here is of exceptional freshness and with a minimum of perf. trimming.

This series, and the Soft Paper Special Printings of 1880 are all from the T. Charlton Henry Collection.



175-185

- | | | |
|-------|---|----------|
| 175 ★ | 1c Ultramarine, Special Printing (167). Fresh Color, Centered, perfs. blunted by scissor separation, virtually intact, tiny inconsequential perf. nick, Unusually Fine Example of this Rarity, W. H. C. (Colson) handstamp guarantee | 3,000.00 |
| 176 ★ | 2c Dark Brown, Special Printing (168). Usual scissor separation, All Perfs. Intact, Rich Color, Fine & Handsome Rarity | 1,700.00 |
| 177 ★ | 3c Blue Green, Special Printing (169). Much Better than Usual Centering few perf. tips blunted by scissors, All perfs. Intact, very faint age toning, Exceptionally Fine Example of this Most Elusive Rarity | 4,250.00 |
| 178 ★ | 6c Dull Rose, Special Printing (170). Fresh Color, usual scissor separation, All Perfs. Virtually Intact, Very Fine Example of this Rarity | 3,750.00 |

- 179 ★ **7c Reddish Vermilion, Special Printing (171).** Brilliant Color, Large Even Margins, couple perfs. least bit blunt, Extremely Fine for this, A Beautiful Rarity 1,350.00
- 180 ★ **10c Pale Brown, Special Printing (172).** Fresh Color, unusually slight scissor separation, Perfs. Virtually Intact, reperfed at left, single short perf. at top, otherwise Fine, Very Rare, W. H. C. (Colson) handstamp guarantee 2,800.00
- 181 ★ **12c Dark Violet, Special Printing (173).** Fresh Deep Color, usual scissor separation, perfs. intact three sides, reperfed at bottom, Very Fine Appearance, Rare 1,500.00
- 182 ★ **15c Bright Orange, Special Printing (174).** Better Than Usual Centering, normal scissor separation, Perfs. Nearly Intact, Beautiful Rich Color, Very Fine, Very Rare 3,000.00
- 183 ★ **24c Dull Purple, Special Printing (175).** Splendid Color, Choice Centering, Extremely Fine, Rare 1,350.00
- 184 ★ **30c Greenish Black, Special Printing (176).** Fresh Color,, Less than usual scissor separation, Perfs. Virtually Intact, Fine, Very Rare 3,250.00
- 185 ★ **90c Violet Carmine, Special Printing (177).** Wider Than Usual Margins, scissor separated, Perfs. Nearly Intact, Very Fine, Very Rare, W. H. C. (Colson) handstamp guarantee 3,500.00

AMERICAN BANK NOTE CO.

- 186 ★ **1c-15c 1879 Bank Notes (182, 184-185, 189).** 1c Mint, small faults or reperfed, Fine-Very Fine Appearance 112.50
- 187 ★ **6c Pink (186).** Fresh, o. g., hinge remnant, Fine (Photo) 150.00
- 188 ★ **10c Brown (187).** Fresh, Rich Color, reperfed, otherwise Fine (Photo) 165.00
- 189 ★ **10c Brown (188).** Wonderful Centering, Fresh, Rich Color, Extremely Fine (Photo) 77.50
- 190 **10c Brown (188).** Centered to top right, Cash City, Kans. "Sea Shell" cancel, Bold mostly complete strike, Scarce, particularly on high values E. III
- 191 ★ **30c Full Black (190).** Fresh, o. g., centered slightly to left, Very Fine for this (Photo) 95.00
- 192 ★ **90c Carmine (191).** Part o. g., tiny thin spots, reperfed at left, Very Fine Appearance (Photo) 325.00

LOTS ON VIEW, FEBRUARY 18th, 19th

1880 SPECIAL PRINTINGS — SOFT PAPER

The series offered here is of exceptional brilliance and freshness. They are rarely seen in such consistently choice quality.



193-204

- 193 ★ 1c Dark Ultramarine, Special Printing (192). Fresh, Large Margins, tiny natural paper inclusion, reperfed at right, Extremely Fine Appearance, W.H.C. (Colson) handstamp guarantee, Very Rare 4,250.00
- 194 ★ 2c Black Brown, Special Printing (193). Magnificent Color, single nearly severed perf. at bottom, nevertheless Very Fine, Very Rare, W.H.C. (Colson) handstamp guarantee 2,750.00
- 195 ★ 3c Blue Green, Special Printing (194). Wonderfully Well Centered, small thin spot, Extremely Fine Appearing Example of this Exceedingly Rare Stamp 4,750.00
- 196 ★ 6c Dull Rose, Special Printing (195). Exceptionally Well Centered, Fresh Color, very minor light bend, still Extremely Fine, Choice Example of this Very Rare Stamp 3,750.00
- 197 ★ 7c Scarlet Vermilion, Special Printing (196). Large Margins, Deep Rich Color, Extremely Fine, Rare & Exceptionally Handsome, An incredible Stamp 1,750.00

198 ★	10c Deep Brown, Special Printing (197). Well Centered, Sharp Impression, Fresh & Bright, Very Fine, Very Rare, A "Gem"	3,750.00
199 ★	12c Blackish Purple, Special Printing (198). Extremely Fine, Very Rare & Very Handsome	2,750.00
200 ★	15c Orange, Special Printing (199). Magnificent Centering & Brilliant Color, Extremely Fine Example of this Very Rare Stamp	3,750.00
201 ★	24c Dark Violet, Special Printing (200). Excellent Centering, Lovely Color, faint trivial thin spot, Extremely Fine Appearance, Rare	1,250.00
202 ★	30c Greenish Black, Special Printing (201). Choice Centering, Magnificent Color & Freshness, Extremely Fine, Very Rare, A "Beauty"	3,500.00
203 ★	90c Dull Carmine, Special Printing (202). Fresh & Fine, Very Rare Stamp, W. H. C. (Colson) handstamp guarantee	3,500.00

AMERICAN BANK NOTE CO. — 1881-1890

204 ★	1c-10c 1881-83 Bank Notes (205-207, 209-211). Some o. g., couple small faults, others Fine-Very Fine	84.75
205	5c Brown (205). Small thin, V. F. Appearance, Bold "Yokohama, Japan" pmk., Gorgeous strike, Scarce & Handsome (Photo)	40.00
206 ★	6c Rose (208). Fresh, Large Part o. g., Well Centered, tiny thin speck, Very Fine Appearance	75.00
207	6c Brown Red (208a). Horiz. Pair, Purple "Registered, Schenectady, N. Y." in Large Serrate Oval cancel, Fine-Very Fine, Pretty Pair (Photo)	55.00
208 ★	2c Pale Red Brown, Special Printing (211B). Very Fine, with P. F. Certificate	275.00



209 ★	4c Deep Blue Green, Special Printing (211D). Fine Example of this Very Rare Stamp, with P. F. Certificate illustrating block from which this stamp was taken	(Photo) 8,500.00
210 ★	1c-5c 1887-88 Bank Notes (212-216). O. g., small thins except #214, Fine-Very Fine Appearance	71.75
211	2c Green, Imperforate (213). Horiz. Pair, Large Margins, Neat Oval Grid cancels, Very Fine, Very Scarce	(Photo) 325.00
212 ★	30c Orange Brown (217). Fresh & Bright, o. g., well centered, reperfed at T., otherwise Very Fine	72.50
213 ★	90c Purple (218). Fresh, o. g., tiny thin, mostly in margin, Fine Appearance	(Photo) 190.00



211



216 EX



221



235



224



225



226



227



228



229



230



231



232



233



236



237



238



239



240



242



243



244



245



252



254



255



256



257



247



248



260



261



262

- 214 ★ **1c-90c 1890 Issue (219-229).** Twelve Stamps, o. g., some small faults, Fine-Very Fine Appearing Set 329.50
- 215 ★ **2c Lake Imperforate, 2c Carmine, Cap on Left "2" (219De, 220a).** Horiz. Pair of First, Fine-Very Fine 41.50

COLUMBIAN ISSUE

- 216 P **1c-\$5.00 Columbians, Plate Proofs on Card (230P-245P).** Cpl. Set, \$1.00 trifle soiled, otherwise Very Fine **(Photo Ex)** 699.50
- 217 ★ **1c Columbian (230).** Brilliant o. g., Large Even Margins, Extremely Fine, A Gem 7.00
- 218 ★ **2c-15c Columbians (231-233, 237, 238).** Fresh, all o. g. but 3c, incl. two 2c, one the "Broken Hat" Variety, nearly all have faults, mostly trivial, F.-V. F. Appearance 143.75



- 219 ★ **4c Blue, Columbian Error of Color (233a).** Fresh, o. g., Fine, ex Ferrari, with A. P. S. Certificate, A Beautiful Rarity **(Photo)** 4,750.00
- 220 ★ **5c-8c Columbians (234-236).** Fresh, o. g., Very Fine Lot 5c Large Margins 61.00
- 221 ★ **30c Columbian (239).** Fresh, o. g., Large Margins, tiny faint thin speck, almost negligible, Very Fine Appearance **(Photo)** 80.00
- 222 P **50c Columbian, Plate Proof on Card (240P).** Very Fine 30.00
- 223 ★ **50c Columbian (240).** Tiny flaws, Very Fine Appearance 120.00
- 224 ★ **\$1.00 Columbian (241).** Fresh, Part o. g., Beautiful Color, Well Centered, tiny thin specks, Extremely Fine Appearance **(Photo)** 350.00
- 225 **\$1.00 Columbian (241).** Bright Color, N. Y. **Supplementary Mail Cancel** Ty. F, few creases, one ending in tiny tear, otherwise Fine, Scarce **(Photo)** 225.00
- 226 ★ **\$2.00 Columbian (242).** Wonderfully Fresh, o. g., natural paper inclusion specks, Well Centered & Extremely Fine **(Photo)** 385.00
- 227 **\$2.00 Columbian (242).** Used, small thin spot, Very Fine Appearance **(Photo)** 160.00
- 228 ★ **\$3.00 Columbian (243).** Fresh, o. g., Bright Shade, pin-point thin speck, Fine Appearance **(Photo)** 625.00
- 229 **\$3.00 Columbian (243).** Well Centered, Rich Color, Bold "Elmhurst, Ill." Town pmk., single partly blunted perf., really trivial, otherwise Very Fine, Handsome Stamp **(Photo)** 300.00
- 230 ★ **\$4.00 Columbian (244).** Fresh & Bright, small part o. g., pin-point thin speck, reperfed at top, Fine Appearance **(Photo)** 850.00

231	\$4.00 Columbian (244). Lovely Color, Neat Town pmks., minute, barely noticeable surface scuff speck, still Fine (Photo)	425.00
232 ★	\$5.00 Columbian (245). Fresh, Part o. g., Well Centered, single deep perf. at left, Very Fine (Photo)	900.00
233	\$5.00 Columbian (245). Neat Town pmk., Very Fine (Photo)	500.00

1894 ISSUE — UNWATERMARKED

234 ★	1c-15c 1894 Issue (246, 248-250, 252-257, 259). Fresh, o. g., few have faults, mostly trivial, Fine-Very Fine Appearance 156.50	
235 ★	2c Carmine, Ty. II (251). Mint, light natural gum bend, Very Fine (Photo)	45.00
236 ★	50c Orange (260). Fresh, o. g., Very Fine (Photo)	62.50
237 ★	\$1.00 Black, Ty. I (261). Slightly toned o. g., otherwise Fine (Photo)	185.00
238 ★	\$1.00 Black., Ty. II (261A). Fresh, crackly o. g., top perfs. slightly blunted, tiny thin speck in margin, Fine Appearance (Photo)	300.00
239 ★	\$2.00 Bright Blue (262). Fresh, o. g., natural gum wrinkles, tiny gum soak in left perfs., centered bit to left (Photo)	300.00
240	\$5.00 Dark Green (263). Reg. cancel, tiny tear & faint crease, otherwise Very Fine (Photo)	350.00

1895-98 ISSUES

241 ★	1c-15c 1895 Issue (264-274). Fresh, o. g., Fine-Very Fine Lot 107.65	
242 ★	50c Orange (275). Fresh & Very Fine (Photo)	57.50
243 ★	\$1.00 Black, Ty. I (276). Fresh, o. g., Fine (Photo)	150.00
244 ★	\$1.00 Black, Ty. II (276A). Part o. g., tiny corner perf. crease, otherwise Fine (Photo)	300.00
245 ★	\$2.00 Dark Blue (277a). Fresh, Large Part o. g., tiny thin spots, Very Fine Appearance (Photo)	225.00
246	\$2.00 Bright Blue, \$5.00 Dark Green (277-278). Used, \$200.00 closed tear, \$5.00 light creases & thin specks, F.-V. F. Appearance 190.00	
247 ★	\$5.00 Dark Green (278). Fresh, o. g., Very Fine, A Lovely Stamp (Photo)	425.00
248 ★	\$5.00 Dark Green (278). Fresh, o. g., Well Centered, single partly blunted perf., otherwise Very Fine (Photo)	425.00
249 ★	4c-10c 1898 Issue (280-282, 283). Fresh, o. g., Very Fine Lot 41.00	
250 ★	10c Brown, Ty. I, 15c Olive Green (282C, 284). Well Centered, Fresh, part o. g., Very Fine 62.50	

TRANS-MISSISSIPPI ISSUE

251 ★	1c-10c Trans-Mississippi (285, 286, 288-290). Fresh, o. g., 8c thin spot, reperfed, 10c reperfed, Fine-Very Fine Appearance 161.50	
252 ★	4c Trans-Mississippi (287). Fresh, o. g., Large Even Margins, tiny natural paper inclusion speck, Extremely Fine, A Beauty (Photo)	40.00

253 ★	50c Trans-Mississippi (291). Large Margins, Fresh, o. g., thin spot & small corner crease, Very Fine Appearance	225.00
254 ★	\$1.00 Trans-Mississippi (292). Wonderfully Well Centered, Fresh, Large Part o. g., light natural gum wrinkle, Extremely Fine (Photo)	500.00
255	\$1.00 Trans-Mississippi (292). Used, Strong Stitch Watermark, faint creases, tiny corner perf. thin, Fine Appearance (Photo)	200.00
256 ★	\$2.00 Trans-Mississippi (293). Fresh, Virtually Full o. g., Gorgeous Color, Fine & Choice (Photo)	725.00
257	\$2.00 Trans-Mississippi (293). Well Centered, neat cancel, trivial flaws, Very Fine Appearance (Photo)	285.00

END OF FIRST SESSION

DESCRIPTIONS

EXTREMELY FINE: The finest condition for noteworthy, outstanding copies.

VERY FINE: (V. F.) In prime condition such as to satisfy the requirements of particular collectors.

FINE: (F) Perforations or margins do not touch design on issues after 1890 but in some cases may just touch in earlier issues. If used, fairly light cancellation.

VERY GOOD: (V. G.) Generally nice appearance but margins or perforations may cut in slightly.

GOOD: Average off-centering or fairly attractive with slight defects.

ORIGINAL GUM is not to be expected on 19th century stamps unless so stated in the description.

MINT: With original gum and never hinged.

Scott 1975 Specialized Catalog used for cataloguing lots of U.S. & Possessions. Scott 1975 Standard Catalogue for others. Use of other catalogs noted in the descriptions.

SECOND SESSION

THURSDAY, FEBRUARY 20, 1975 — 1:30 P. M.

TWENTIETH CENTURY

PAN-AMERICAN ISSUE

- 258 ★ 1c-10c Pan-Americans (294-299). Cpl. Set, 5c regummed, 8c tiny ms. mark, otherwise Fine-Very Fine 168.00

1902 ISSUE

- 259 ★ 1c-15c 1902 Issue (300-309, 319, 319a). Very Fine Lot 113.35
 260 ★ 50c Orange (310). Nicked perf. T. otherwise Very Fine (Photo) 110.00
 261 ★ \$1.00 Black (311). Large Even Margins, couple partly blunted perfs., really trivial, otherwise Extremely Fine (Photo) 190.00
 262 ★ \$2.00 Dark Blue (312). Light gum bend, Fine (Photo) 275.00
 263 ★ \$5.00 Dark Green (313). Excellent Centering, few very trivial gum toning specks, still Very Fine (Photo) 525.00
 264 ★ 1c Blue Green, 2c Carmine, Lake, Imperforates (314, 320, 320a). Horiz. Pairs, Very Fine 91.00
 265 ★ 5c Blue, Imperforate (315). Horiz. Pair, Very Fine (Photo) 520.00

266



267

269

268

- 266 ★ 5c Blue, Coil (317). Pair, minute pin-point thin speck in margin of bottom stamp, otherwise Fine, Rare, signed E. Stern, with P. F. Certificate (Photo) 1,650.00

- 267 ★ **1c Blue Green, Coil (318). Pair**, minute pin-point thin speck in one, really insignificant, otherwise Fine-Very Fine, Rare, with P.F. Certificate (Photo) 1,350.00
- 268 ★ **1c Blue Green, Coil (318). Strip of Four**, paste-up in middle, guide line on left pair, considerable perf. strengthening, neatly done, Fine-Very Fine, Rare, with P.F. Certificate (Photo) 2,700.00+
- 269 ★ **2c Carmine, Coil (322). Pair**, tiny gum soak in one, otherwise Very Fine, Rare, with P.F. Certificate (Photo) 1,500.00

LOUISIANA PURCHASE — JAMESTOWN ISSUES

- 270 ★ **5c Louisiana Purchase (326). Very Fine** 37.50
- 271 ★ **10c Louisiana Purchase (327). Wonderfully Well Centered, Extremely Fine** (Photo) 87.50
- 272 ★ **1c-5c Jamestown (328-330). 1c & 2c reperfed, Very Fine Appearance, 5c Large Margins, faint thin speck in watermark, Extremely Fine Appearance** 54.00

1908 ISSUE

- 273 ★ **1c-15c 1908 Issue (331-340). 1c, 2c & 4c tiny thins, 8c natural dimple, otherwise Very Fine** 77.00
- 274 ★ **50c Violet (341). Reperfed at left, single partly nibbed perf., otherwise Very Fine** 72.50
- 275 ★ **\$1.00 Violet Brown (342). Very Fine** (Photo) 115.00
- 276 ★ **1c-5c 1908 Imperforates (343-347). Vertical Pairs with Horiz. Lines, couple natural gum wrinkles, Very Fine Set** 126.00
- 277 ★ **4c Orange Brown, Coil (350). Mint Paste-Up Pair, Fine-Very Fine** 70.00
- 278 ★ **5c Blue, Coil (351). Paste-Up Pair, natural gum wrinkle in one, Very Fine** (Photo) 100.00
- 279 ★ **10c Yellow, Coil (356). Pair, light natural gum bends, Fine-Very Fine with P.F. Certificate** (Photo) 975.00

1909 BLuish PAPER

- 280 ★ **1c-2c Bluish Papers (357-358). Well Centered, 2c tiny gum soak on back only, Very Fine** 52.50
- 281 ★ **3c Deep Violet, Bluish (359). Large Part o. g., Very Fine** (Photo) 475.00



- 282 ★ **4c Orange Brown, Bluish (360). Unusually Well Centered, Very Fine, with P.F. Certificate, A Handsome Rarity** (Photo) 6,500.00

283 ★	5c Blue, Bluish (361). Fine & Rare, with P.F. Certificate	(Photo) 1,750.00
284 ★	6c Red Orange, Bluish (362). Wonderfully Well Centered, trivial offset line on back, Very Fine, with P.F. Certificate	(Photo) 350.00
285 ★	8c Olive Green, Bluish (363). Exceptionally Well Centered, Very Fine, A Handsome example of this Rare stamp with P.F. Certificate ...	(Photo) 6,500.00
286 ★	10c Yellow, Bluish (364). Well Centered, tiny tear, otherwise Very Fine, with P.F. Certificate	(Photo) 400.00
287 ★	15c Pale Ultramarine, Bluish (366). Fine	(Photo) 325.00

1909 COMMEMORATIVE ISSUES

288 ★	2c 1909 Commems., Imperforate (368, 371, 373). Horiz. Pairs, Very Fine	135.00
289 ★	2c Lincoln, Bluish (369). Reperfed at right, short corner perf., otherwise Very Fine	87.50
290	2c Lincoln, Bluish (369). Small faults, Fine Appearance	55.00

1910 ISSUE

291 ★	1c-15c 1910 Issue (374-382). Cpl. Set, 8c tiny thin speck, otherwise Fine-Very Fine	120.95
292 ★	2c Carmine, Coil (388). Very Fine	(Photo) 90.00
293 ★	2c Carmine, Coil (388). Pair, 2mm Spacing, Fine	(Photo) 240.00
294 ★	1c Green, 2c Carmine, Coils (392, 393). Pairs, Fine-Very Fine	56.00
295 ★	1c-5c 1910 Coils (391, 392, 394-396). Fine-Very Fine	104.50
296 ★	3c Deep Violet, Coil (394). 3mm Spacing Pair, Fine-Very Fine	55.00
297 ★	4c Brown, Coil (395). 3mm Spacing Pair, Very Fine	55.00
298 ★	5c Blue, Coil (396). Pair, faint thin speck in one, otherwise Very Fine	55.00

PANAMA-PACIFIC ISSUE

299 ★	5c Panama-Pacific (399). Very Fine	(Photo) 30.00
300 ★	10c Panama-Pacific (400). Very Fine	(Photo) 52.50
301 ★	10c Orange, Panama-Pacific (400A). Very Fine	(Photo) 85.00
302 ★	1c-5c Panama-Pacific, Perf. 10 (400-403). 2c regummed & reperfed, 5c purple handstamp on back, Fine-Very Fine Appearance	105.25
303 ★	10c Panama-Pacific, Perf. 10 (404). Mint, Fine	(Photo) 400.00

1912 ISSUES

304 ★	7c-15c 1912 Issue (407, 414-416, 418). Several With Large Margins, 9c reperfed at left, otherwise Very Fine	61.00
305 ★	20c Ultramarine (419). Very Fine	32.50
306 ★	30c Orange Red (420). Very Fine	25.00
307 ★	50c Violet (422). Well Centered, Extremely Fine	(Photo) 60.00



263



265



271



275



279



281



284



286



278



287



292



293



299



307



300



301



303



308



309



312



313



314



315



321



323



325



319



324



326



327



328



334

308 ★	50c Violet (422). Very Fine	(Photo)	60.00
309 ★	\$1.00 Violet Brown (423). Tiny inconsequential corner perf. crease, otherwise Very Fine	(Photo)	145.00

1914 ISSUE — WATERMARKED

310 ★	1c-15c 1914 Issue (424-437). Few small faults, Mostly Fine-Very Fine		110.05
311 ★	20c Ultramarine (438). Fine		47.50
312 ★	30c Orange Red (439). Slight gum wrinkle, otherwise Very Fine	(Photo)	65.00
313 ★	50c Violet (440). Tiny thin spot, Very Fine Appearance	(Photo)	185.00
314 ★	3c Violet, Coil (445). Very Fine	(Photo)	85.00
315 ★	4c Brown, Coil (446). Pair, Very Fine	(Photo)	125.00
316 ★	4c Brown, 5c Blue, Coils (446-447). Fine		80.00
317 ★	5c Blue, Coil (447). Pair, Very Fine		47.50
318 ★	1c-5c 1914 Coils (448, 450, 452, 455, 457, 458). Pairs, one #450 tiny corner crease, otherwise Fine-Very Fine		74.00
319 ★	2c Red, Coil, Ty. I (449). Pair, Fine & Rare, with P. F. Certificate	(Photo)	1,200.00
320 ★	2c Red, Coil, Ty. I (453). Small part o. g., Very Fine		57.50
321 ★	2c Red, Coil, Ty. I (453). Pair, small hinge stain barely shows through on one, otherwise Very Fine	(Photo)	125.00
322 ★	2c Red, Coil, Ty. I (453). Pair, tiny thin speck in one perf., centered to top, margins clear		125.00
323 ★	2c Carmine, Coil, Ty. II (454). Mint, Very Fine	(Photo)	70.00
324 ★	3c Violet, Coil (456). Very Fine	(Photo)	95.00
325 ★	3c Violet, Coil (456). Pair, small hinge remnant, Very Fine	(Photo)	220.00
326 ★	2c Carmine, Imperforate Coil (459). Mint, Very Fine	(Photo)	135.00
327 ★	2c Carmine, Imperforate Coil (459). Pair, Very Fine	(Photo)	285.00
328 ★	\$1.00 Violet Black (460). Regummed, Very Fine	(Photo)	225.00
329 ★	2c Pale Carmine Red (461). Mint, Very Fine		20.00

1916 ISSUE — UNWATERMARKED

330 ★	1c-15c Issue (462, 463, 465, 466, 468-475). 10c small thin, 15c tiny negligible thin speck, otherwise Fine-Very Fine		178.00
331 ★	5c Carmine, Error (467). Block of Sixteen, Two Middle Stamps in the Left Block of Twelve the Errors, Fine-Very Fine	(Photo)	525.00

7942



7942

338



331



332



344

- 332 5c Carmine, Error (467). Block of Nine, Middle Stamp the Error, centered to top, lightly cancelled, Fine, Rare in a used block (Photo) E. VIII
- 333 ★ 20c Ultramarine (476). Fine 50.00
- 334 ★ 50c Light Violet (477). Single rounded corner perf., otherwise Fine (Photo) 275.00
- 335 ★ \$1.00 Violet Black (478). Tiny thin speck, Fine Appearance (Photo) 225.00
- 336 ★ \$2.00 Dark Blue (479). Thin, Very Fine Appearance 85.00

- 337 ★ \$5.00 Light Green (480). Fine 62.50
- 338 ★ 5c Carmine, Error, Imperforate (485). The Double Error in Mint Block of Seventy, includes Top & Left Plate No. 7942 Blocks of Six, Very Fine, A Spectacular Rarity (Photo on page 33) 8,740.00+
- 339 ★ 1c-10c 1916 Coils (486-490, 492-497). Pairs, nos. 488 & 492 Very Good, others Fine-Very Fine 89.25



340

348

- 340 ★ 2c Carmine Coil, Ty. II (491). Pair, Very Fine, Rare (Photo) 1,300.00
- 341 2c Carmine, Ty. II, Coil (491). Light cancel., Fine 75.00

1917-1929 ISSUES

- 342 ★ 1c-\$1.00 1917 Issue (498, 499, 501-504, 506-518). Also incl. #511a & #512a, 30c small thin spot, others virtually all Fine-Very Fine 90.95
- 343 ★ 2c Deep Rose, Ty. Ia (500). Couple natural "dimples", Fine & Scarce (Photo) 90.00
- 344 ★ 5c Rose, Error (505). Block of Twelve, Two Middle Stamps the Errors, one 2c small thin spot the Errors Mint & Very Fine (Photo) 375.00
- 345 ★ 1c-3c Offsets (525-530). Specialized Study of 198 Unused Stamps including Blocks, Plate No. Blocks, Double Impressions, Scarce Shades, Listed & Unlisted Varieties & Freaks, virtually all Fine-Very Fine, an exciting lot worthy of expansion **E. IX**
- 346 ★ 1c-3c Offset Imperforates (531, 532, 534, 534A, 535). Horiz. Pairs, one 1c surface abrasion, others Very Fine 76.50
- 347 ★ 2c Carmine, Offset, Imperforate Ty. V (533). Horiz. Pair, Mint, light natural bends, Very Fine (Photo) 180.00
- 348 ★ 2c Carmine, Offset, Imperforate Ty. VII (534B). Horiz. Pair, Very Fine, Rare (Photo) 1,500.00

LOTS ON VIEW, FEBRUARY 18th, 19th



349

350

354

- 349 ★ **2c Carmine Rose, Rotary, Ty. II (539).** Faint, minute surface line scuff, may be slightly dry print, otherwise Fine, Scarce, with P. F. Certificate (Photo) 675.00
- 350 **1c Green, Rotary (544).** Wonderfully Well Centered, Neat Wavy Line Machine cancel, two very insignificant corner perf. creases, otherwise Extremely Fine, Possibly the Most Beautiful Used Example of this Rarity in Existence, with P. F. Certificate (Photo) 750.00
- 351 ★ **1c-2c Rotaries (545-546).** Fine-Very Fine 55.00
- 352 ★ **1c Green, 2c Carmine, Rotaries (578-579, 595).** Fine-Very Fine 59.75
- 353 ★ **1c-10c 1923 Issue (581-591).** Very Fine Set 47.05
- 354 ★ **1c Green, Rotary (594).** Centered, top perfs. trimmed, thins & trivial crease all occurring by careless removal from the handful of post cards on which these stamps were found, Attractive Appearance, One of the Greatest of All Twentieth Century Rarities, with P. F. Certificate 5,000.00
- 355 ★ **2c Carmine, Ty. II Coil (599A).** Mint, Very Fine (Photo) 67.50
- 356 ★ **2c Carmine Ty. II, Coil (599A).** Mint Pair, Very Fine (Photo) 140.00
- 357 ★ **2c White Plains Souvenir Sheet (630).** Mint, natural gum wrinkles, Very Fine 185.00
- 358 ★ **2c Carmine, Ty. II (634A).** Mint, Very Fine (Photo) 145.00
- 359 ★ **1c-10c Kans.-Nebr. Overprints (658-666, 668-674, 676-679).** Nearly All Exceptionally Well Centered, Very Fine Lot 149.95
- 360 ★ **8c Flag, Coil, Imperf. (1338Gh).** Horiz. Pair, Mint, Very Fine (Photo) 85.00
- 361 ★ **8c Eisenhower, Coil, Imperf. (1402a).** Horiz. Pair, Mint, Very Fine 60.00
- 362 ★ **Vending Machine Perforations, 1906-23,** Collection of 105 Unused Stamps, Nearly All in Pairs or Strips, Many Better items, 1909 Com-mems, Virtually all Fine-Very Fine (Cat. \$500.00+) E. X

AIR POST — OFFICES IN CHINA

- 363 ✉ **65c-\$2.60 Graf Zeppelins (C13-C15).** Tied on Cacheted Flight Covers, 65c on Zeppelin Picture Post Card, \$1.30 light corner crease, otherwise Fine Set 605.00
- 364 ★ **Special Delivery 10c Blue, (E4).** Bright & Fresh, o. g., Well Centered, small insignificant faults, Very Fine Appearance (Photo) 135.00
- 365 ★ **Postage Due, 10c Brown (J5).** Fresh, Mint, Fine 65.00

366 ★	— 50c Red Brown (J21) . Bright & Fresh, o. g., Very Fine for this Scarce Stamp (Photo)	165.00
367 ★	1c-\$2.00 Offices in China (K1-K14, K16-K18) . Many trivial faults, mostly on lower values, #'s K4, K5 & K17 without gum, Fine-Very Fine Appearance	152.25

OFFICIAL STAMPS

368 ★	1c-10c Executive (O10-O12, O14) . 10c light thin, some o. g., others Fine	182.50
369 P	2c Deep Green, Navy, Trial Color Plate Proof on Wove Paper, Perforated (O36TC) . Centered to bottom right, Scarce (Photo)	125.00
370 ★	\$2.00 State (O68) . Fresh, Part o. g., few partly nibbed perms., right perms. touch (Photo)	100.00
371 ☆	\$5.00 State (O69) . Fresh, 12mm internal slit, otherwise Fine, Very Scarce (Photo)	850.00
372 ★	\$10.00 State (O70) . Fresh, tiny part o. g., right perms. barely touch, Fine (Photo)	500.00
373 ★	\$20.00 State (O71) . Fresh, Nearly Full o. g., Deep Colors, Very Fine (Photo)	450.00
374 ★	30c Treasury, Soft Paper (O112) . Fresh, o. g., thin perms. least bit in at right, Scarce	160.00
375 ★	Officials, 1873-1911 , Collection of 125 Unused Stamps, Better items, Cpl. Sets, Values to 90c, many o. g., some faults, Balance F.-V. F.	1,384.90
376	Officials, 1873-1911 , Collection of 107 Nearly All Used Stamps, Better items, value to \$2.00 (State Dept.), some small faults, Balance F.-V. F.	519.35

NEWSPAPER STAMPS

377 ★	5c-25c 1865 Newspapers (PR1-PR4) . 10c s. e., small faults, F.-V. F. Appearance	86.00
378	5c-25c 1865 Newspapers (PR1-PR4) . Three #PR3, Two PR4, a 10c & 25c cancelled, small faults	121.00+
379 ★	5c-25c 1875 Newspapers, Reprints (PR5-PR7) . Extra shades of 10c, 25c, one 10c small faults, others F.-V. F.	87.00
380 ★	2c-\$36.00 1875 Newspapers (PR9-PR27, PR30) . Some o. g., most have small faults, some trivial, Fine-Very Fine Appearance, Very Scarce Lot	541.75
381	2c-\$1.92 Newspapers, (PR9-PR11, PR13, PR14, PR16-PR21, PR23-P24) . 2c, 8c, 10c Unused, most with ms. cancel., 10c s. e., few small faults on lower values, others Fine	122.75
382 ★	2c-12c Newspaper Special Printings (PR33, PR34, PR36-PR40) . First Two on Ribbed Paper, 6c has some short perms., otherwise F.-V. F., Scarce Lot	150.50
383 ★	3c-\$48.00 1879 Newspapers (PR58-PR62, PR64-PR68, PR70, PR71, PR73-PR78) . Mostly o. g., faults, some minor, Fine-Very Fine Appearance, Very Scarce Lot	561.90
384 ★	84c Red, Newspaper (PR69) . Fresh, o. g., Fine	45.00



335



343



347



355



358



356



360



364



366



369



370



371



372



373



397



393



385



388



391



394



398



399



400



401



402

385 ★	\$12.00 Green, American Bank Note Company Special Printing, Privately Perforated (PR75 var.). Fresh, o. g., thin spot, Very Fine Appearance, Scarce (Photo) —
386 ★	\$60.00 Purple, Newspaper (PR79). Fresh, o. g., couple light corner creases, otherwise Fine 75.00
387 ★	1c-96c 1885 Newspapers (PR81, PR82, PR84-PR89). Nearly all o. g., faults, mostly thins, V. G.-Fine Appearance 123.25
388 ★	6c Intense Black, Newspaper (PR93). Brilliant o. g., Fresh & Fine, Very Scarce, Choice Stamp, with P. F. Certificate (Photo) 375.00
389	2c-\$50.00 1895 Newspapers (PR103-PR108, PR111, PR112). First five Unused, Mostly o. g., last three Used, faults, some trivial, mostly F.-V. F. Appearance, Scarce Lot 127.50
390 ★	1c-\$100.00 1895 Newspapers (PR114-PR125). 33 Stamps, from two to five of each, Nearly All o. g., incl. Shades, most have faults, some trivial, F.-V. F. Appearance 99.00
391 ★	\$5.00 Carmine, War Savings (WS5). Well Centered, trivial faint margin thin, Very Fine Appearance, Scarce (Photo) 100.00
392 ★	Savings Stamps, 1911-61, Collection of 31 Unused Stamps & Four Booklet Panes, Values to \$5.00, Nearly All F.-V. F. 156.15

REVENUE STAMPS

FIRST ISSUE — IMPERFORATE

393	1c Playing Cards, Imperforate (R2a). Large Margins, light ms. cancel, Very Fine (Photo) 200.00
394	1c Proprietary, Imperforate (R3a). Four Large Margins, Pretty Blue Handstamp cancel, Very Fine (Photo) 150.00
395	10c Power of Attorney, Imperforate (R37a). Three Large Margins, clear at top, Neat Handstamp cancel, Fine 67.50
396	70c Foreign Exchange, Imperforate (R65a). Amp'le to Large Margins, neat ms. cancel, Very Fine 55.00
397	\$1.60 Foreign Exchange, Imperforate (R79a). Large Margins, Fresh Color, light ms. cancel, Extremely Fine (Photo) 150.00
398	\$3.50 Inland Exchange, Imperforate (R84a). Margins all around, Deep Rich Color, neat ms cancel, Very Fine (Photo) 425.00
399	\$5.00 Proabate of Will, Imperforate (R92a). Ample to Large Margins, Neat Handstamp cancel., Very Fine (Photo) 62.50
400	\$10.00 Charter Party, Imperforate (R93a). Large Margins, light ms. cancel, Very Fine (Photo) 57.50
401	\$10.00 Mortgage, Imperforate (R95a). Large Margins, neat ms. cancel, Extremely Fine (Photo) 45.00
402	\$10.00 Probate of Will, Imperforate (R96a). Margins all around, Lovely Shade, light purple ms. cancel, Very Fine (Photo) 160.00
403	\$15.00 Mortgage, Imperforate (R97a). Margins all around, Deep Rich Color, neat ms. cancel, Very Fine (Photo) 150.00

404	\$25.00 Mortgage, Imperforate (R100a). Large Margins All Around, faint, almost imaginary crease, otherwise Extremely Fine, Beautiful Appearance (Photo)	150.00
405	2c-\$50.00 First Issue, Imperforate (Betw. R8a-R101a). 70 Stamps, Many with Huge Margins, Some Uncancelled, Nearly all Fine-Very Fine	449.71

FIRST ISSUE — PERFORATE & PART PERFORATED

406	\$20.00 Probate of Will (R99c). Beautiful Bright Color, neat ms. cancel, Fine & Handsome (Photo)	235.00
407	\$200.00 Green & Red, U. S. I. R. (R102c). Unusually Well Centered, neat ms. cancel., Extremely Fine (Photo)	120.00
408	1c-\$50.00 First Issue, Part Perf., Perforated (Betw. R5b-R69b, R1c-R101c). 232 Stamp, Better items, Few Multiples, many Unused & Handstamped cancels, some faults, a few questionable, mostly Fine-Very Fine	E. VIII

SECOND ISSUE — 1902 ISSUE

409	10c Blue & Black Second Issue, Center Inverted (R109a). Neat herringbone cancel, thin spot & short perf., left perfs. touch, Very Scarce (Photo)	300.00
410	50c Blue & Black Second Issue, Center Inverted (R115b). Ms. cancel, thin spots, perfs. just in at left, Scarce	125.00
411	\$20.00 Blue & Black, Second Issue (R129). Neat ms. cancel, Very Fine (Photo)	85.00
412	\$25.00 Blue & Black, Second Issue (R130). Neat ms. cancel, Very Fine (Photo)	85.00
413	\$50.00 Blue & Black, Second Issue (R131). Neat ms. cancel, Rich Colors, couple trivial faint thin specks, Very Fine Appearance	85.00
414 ★	\$5.00 Dark Blue, Documentary Surcharges (R159-R160). Fresh, o. g., #R159 tiny faint thin speck in margin, otherwise Very Fine	80.00
415	\$5.00 Dark Blue, Documentary Surcharges (R159-R160). Trivial flaws, F.-V. F. Appearance	62.50
416	\$500.00 Carmine Lake & Black Documentary (R180). Uncut, neat Blue Handstamp cancels, Very Fine (Photo)	225.00
417 ★	\$5.00 Green Documentary, Surcharge Omitted (R192a). Very Fine, Scarce	30.00
418	\$50.00 Green, Documentary (R194). Cut & handstamp cancels, Fine & Scarce (Photo)	100.00

DATED DOCUMENTARY ISSUES

419	\$500.00 Documentary, 1941 (R334). Uncut, Fine	90.00
420	\$1000.00 Documentary, 1941 (R335). Uncut, Very Fine	75.00
421	\$500.00 Documentary, 1942 (R359). Uncut, Very Fine (Photo)	90.00
422	\$1000.00 Documentary, 1942 (R360). Uncut, Very Fine	85.00



403



404



406



407



409



416



418



411



412



421



424



425



435



438



439



440



442



443



446



447



451



464



455

423	★	1c—\$20.00 1940–54 Documentaries (Betw. R288–R678). 210 Diff. , Virtually All o. g. & Fine–Very Fine, Scarce Lot	474.70
424		\$500.00 Documentary, 1943 (R384). Uncut, Very Fine (Photo)	90.00
425		\$1000.00 Documentary, 1943 (R385). Uncut, Very Fine (Photo)	90.00
426		\$1000.00 Documentary, 1945 (R435). Uncut, Very Fine	55.00
427		\$500.00 Documentary, 1946 (R459). Uncut, Bold Purple Straight Line "Cancelled" handstamp, Very Fine	60.00
428		\$1000.00 Documentary, 1946 (R460). Uncut, Very Fine	60.00
429		\$1000.00 Documentary, 1947 (R485). Uncut, Very Fine	60.00
430		\$500.00 Documentary, 1948 (R509). Uncut, Very Fine	60.00
431		\$500.00 Documentary, 1949 (R534). Uncut, faint creases, otherwise Very Fine	100.00
432		\$1000.00 Documentary, 1949 (R535). Uncut, Very Fine	75.00
433		\$500.00 Documentary, 1951 (R584). Uncut, light cancel, Very Fine	70.00
434		\$500.00 Documentary, 1952 (R615). Uncut, Fine	70.00
435		\$2,500.00 Documentary, 1952 (R617). Uncut, Very Fine (Photo)	100.00
436		\$1000.00 Documentary, 1953 (R650). Uncut, Very Fine	50.00
437		\$500.00 Documentary, 1954 (R683). Uncut, Very Fine	65.00
438		\$2500.00 Documentary, 1954 (R685). Uncut, light cancel, Fine (Photo)	90.00
439		\$10,000.00 Documentary, 1954 (R687). Handstamp & very faint cut cancel which does not break paper, Very Fine (Photo)	100.00
440		\$500.00 Documentary, 1953 (R689). Uncut, Very Fine (Photo)	90.00
441		\$500.00 Documentary, 1955 (R692). Uncut, Very Fine	60.00
442		\$2,500.00 Documentary, 1955 (R694). Uncut, Very Fine (Photo)	100.00
443		\$10,000.00 Documentary, 1955 (R696). Uncut, Very Fine (Photo)	225.00
444		\$500.00 Documentary, 1956 (R701). Uncut, Very Fine	62.50
445		\$1,000.00 Documentary, 1956 (R702). Uncut, Very Fine	50.00
446		\$5,000.00 Documentary, 1956 (R704). Uncut, Very Fine (Photo)	180.00
447		\$10,000.00 Documentary, 1956 (R705). Uncut, Very Fine (Photo)	200.00
448		\$1000.00 Documentary, 1957 (R711). Uncut, Very Fine	55.00
449	★	\$30.00–\$50.00 Documentaries, 1958 (R724–R725). With original gum, Very Fine, Very Scarce, Listed but Unpriced	—
450		\$30.00–\$1,000.00 Documentaries, 1958 (R724–R729). Uncut, light handstamp cancels, \$30.00 light creases, otherwise Very Fine	128.25
451		\$5,000.00 Documentary, 1958 (R731). Uncut, Very Fine (Photo)	160.00
452		\$10,000.00 Documentary, 1958 (R732). Uncut, light crease, otherwise Fine	165.00
453		Documentary, Revenues, 1871–1940, Collection of 306 Used & Unused Stamps, Many Better items, Second Issue to \$25.00, other values to \$1,000.00, many Unused & Uncut, some with faults, others F.–V. F.	E. IX

- 454 **Dated Documentaries, 1940-58, Collection of 314 Used Stamps, Values to \$1,000.00, 81 are \$30.00 or Higher Denominations, Nearly all Uncut & Mostly F.-V.F., An excellent nucleus, well suited for expansion ... E. XII**

PROPRIETARY ISSUES

- 455 **50c Green & Black on Violet (RB8a). Well Centered, Appears Unused, tiny corner perf. crease, otherwise Extremely Fine (Photo) 175.00**



- 456 **50c Green & Black on Violet (RB8a). Blue Handstamp cancel., light crease & tiny tear, left perfs. touch, Scarce (Photo) 175.00**

457	50c Green & Black on Green (RB8b). Blue Handstamp cancel., tiny negligible thin speck, perfs. trifle in at right, Scarce (Photo)	225.00
458 ★	\$5.00 Green & Black on Violet (RB10a). Fresh, Nearly Full o. g., Very Fine, Extremely Rare Unused, A "Gem" (Photo)	850.00+
459	\$5.00 Green & Black on Violet (RB10a). Well Centered, Appears Unused , couple creases, one a trifle heavy, otherwise Very Fine, Rare (Photo)	850.00
460	Proprietary, 1862-98, 64 Stamps selected for cancellations, Mostly Printed on Battleship Issue, some small faults, others F.-V. F., Attractive & Interesting Lot E. IV	
461	Proprietary, 1871-1919, Collection of 147 Used & Unused Stamps, all issues represented, some small faults or s. e. Better items, Mostly F.-V. F. E. VI	
462	25c Rose, "Narcotic" Handstamp (R213 var.). Unlisted Denomination of 1919 Narcotic Provisionals, perfs. in at L., Very Scarce —	

STOCK TRANSFER ISSUES

463	\$500.00 Stock Transfer, 1946 (RD230). Uncut, tiny staple holes, otherwise Very Fine 100.00	
464	\$5000.00 Stock Transfer, 1947 (RD259). Cut & handstamp cancels, Very Fine, Very Scarce (Photo)	275.00
465	\$10,000.00 Stock Transfer, 1947 (RD260). Cut & handstamp cancels, Very Fine 65.00	
466	\$10,000.00 Stock Transfer, 1948 (RD286). Cut & handstamp cancels, Very Fine 75.00	
467	\$500.00 Stock Transfer, 1949 (RD308). Neat Handstamp cancel, Very Fine 70.00	
468	\$10,000.00 Stock Transfer, 1949 (RD312). Light cut & handstamp cancels, Fine (Photo)	100.00
469	\$10,000.00 Stock Transfer, 1950 (RD338). Cut & handstamp cancels, Fine 90.00	
470	Stock Transfer, 1918-51, Collection of 393 Used & Unused Stamps, mostly Dated with Values to \$1,000.00, Many Better items, Uncut, Unused Higher Values, Nearly All F.-V. F. E. IX	

HUNTING PERMIT (DUCK STAMPS) ETC.

471 ★	\$1.00 1935 Hunting Permit (RW2). Very Fine (Photo)	90.00
472 ★	\$1.00 1935 Hunting Permit (RW2). Mint, Fine 90.00	
473 ★	\$1.00 1936-48 Hunting Permits (RW3-RW15). Several have trivial faults, otherwise Fine-Very Fine 163.75	
474 ★	\$2.00 1949-58 Hunting Permits (RW16-RW25). #'s RW17 & RW18 minor thin spots, otherwise Fine-Very Fine 111.00	
475 ★	\$3.00 1959-71 Hunting Permits (RW26-RW34, RW36-RW38). Fine-Very Fine 315.75	
476	\$1.00-\$3.00 1934-66 Hunting Permits (RW1-RW28, RW30-RW33). Used, Some with handstamp cancels, #RW8 s. e., others generally F.-V. F. 104.00	
477 ★	\$3.00-\$5.00 1968-72 Hunting Permits (RW35-RW39). Mint, Fine-Very Fine 66.75	

478	Consular Service Fee, Customs Fee, 1887-1925, 20c-\$10.00 (Betw. RK1-RK39, RL1-RL8). 52 Stamps, Nearly cpl. few small faults, others Fine-Very Fine	118.78
479	Revenues, 20th Century, Collection of Several Hundreds of Used & Unused Stamps, Many Wines, Playing Cards, also Future Delivery, Hunting Permits, Narcotics, Newspapers, etc., some faults, Mostly F.-V.F., An Exciting Lot	E. VIII
480	Telegraph Stamps, 1871-1945, Collection of 259 Used & Unused Stamps, few Better items, Sets, few faults, Generally Fine-Very Fine	E. IV
481	U. S. Postage Collection, 1851-1901, Collection of 205 Used Stamps, Many Better items, 1851 to 12c, 1857 to 24c, 1861 to 90c, Bank Notes to 90c, Columbians & Trans-Mississippi to 50c, Bureaus to \$1.00, Many interesting cancels, some small faults, Balance F.-V.F. Valuable lot	E. XIII

CONFEDERATE STATES

482	Baton Rouge, La., 5c Green & Carmine (11X2). Large Margins, Light town cancel, Very Fine	(Photo) 200.00
483	Knoxville, Tenn., 5c Carmine (47X2). Large Margins, ms. cancel; minute corner crease at T.R. well clear of design, Very Fine	(Photo) 450.00
484 ★	2c-20c General Issue (1-2, 4, 8, 11, 13). Most o. g., couple small faults, others Very Fine	105.00
485 ★	2c Green (3). Fresh Large Margins, o. g., insignificant thin speck, Very Fine Appearance	(Photo) 110.00
486 ★	10c Rose (5). Large to Huge Margins, Fresh Color, few light trivial bends, otherwise Very Fine	(Photo) 200.00
487 ★	10c Milky Blue, "T-E-N" (9a). Ample to Large Margins, Fresh, o. g., Pretty Shade, couple natural gum wrinkles, Very Fine	(Photo) 130.00
488 ★	1c Orange (14). Fresh, Sharp Impression, part o. g., Very Fine	30.00

U. S. POSSESSIONS

CANAL ZONE

489	1904, 5c Blue (2). Pretty Town Pmk., Fine	(Photo) 60.00
490	1904, 10c Yellow (3). Centered to T., small corner crease, Fine Appearance	95.00
491	1904, 1c-10c Overprints (4-8). Cpl. Set, few minor faults, F.-V.F. Appearance	117.50
492 ★	1904, 1c-2c Spaced "A L" (9-10, vars). L. Imprint Blocks, T. L. Stamps the varieties, Fine-Very Fine	45.00+
493 ★	1905, 8c on 50c "Canal" in Antique Type (20, 20a). Block, T. L. Stamp the variety, perfs. just in top pair, V.G.-Fine	70.50+
494 ★	1920 50c-1b Pictorials (58-59). Cpl. Set, first tiny thin speck, other corner crease, F.-V.F. Appearance	165.00
495	1924, 1c "Mt. Hope" Overprint (67). Well Centered, Light cancel, Very Fine & Scarce	(Photo) 75.00

496 ★	1924, ½c-\$1.00 Overprints (70-81). Cpl. Set, \$1.00 and few lower values small thins, others V. G.-V. F.	136.45
497 ★	1924, 1c-10c Postage Dues (J12-J14). Cpl. Set, 10c small thin, others Fine	100.00
498 ★	CANAL ZONE, 1906-65, Collection of 212 Unused Stamps, Many Better items, Cpl. Sets, Air Post, Officials, Dues etc., many with small faults or stuck down, Balance F.-V. F.	795.39
499	CANAL ZONE, 1904-65., Collection of 315 mostly Used Stamps, Better items, Cpl. Sets, Air Post, Dues, Officials, some small faults, Balance F.-V. F.	E. IX

CUBA

500	1898, 5c on 2m Orange Brown (184). Tied on Small piece, Fine, with P. F. Certificate	75.00
501	1898, 5c on 3m Blue Green (215). Tied on Small Piece, Centered to T., some toning at perf. tips, otherwise Fine, with P. F. Certificate (Photo)	100.00
502	1898, 5c on 4m Blue Green (217). Centered to T., small faults, with P. F. Certificate	150.00
503 ★	1899, 10c Brown, Ty. II (226A). O. g., negligible corner perf. crease, Very Fine for this Exceedingly Rare Stamp, signed "Bloch", with P. F. Certificate (Photo)	1,250.00
504	CUBA, GUAM, PUERTO RICO, 1899-1942, Collection of 81 Used & Unused Stamps, many Better items, Imprints, Special Deliveries, Invert, few faults, Mostly Fine-Very Fine	E. VII

GUAM

505	1899, 1c-\$1.00 Overprints (1-8, 10-12, E1). Most o. g., many small faults, Fine Appearance	466.00
506	1899, 6c Lake (6). Tied on small piece by "Agana, Guam" straight line cancel, Fine	40.00
507 ★	1899, 10c Brown Ty. II, Overprint (9). Fresh, o. g., light crease & tiny perf. thin, Fine Appearing Example of this Rarity	(Photo) 1,200.00
508 ★	1899, \$1.00 Black, Ty. II (13). Centered to R., tiny thin, Fine Appearance (Photo)	750.00
509 ★	1930, 2c-4c Guard Mail Overprints (M1-M2). 2c regummed, Fine Set (Photo)	300.00
510 ★	1930 4c Guard Mail Overprint (M2). Perfs, just clear at R., Scarce stamp	150.00
511 ★	1930, 1c-2c Guard Mail, Seal (M3-M4). Well Centered, usual rough perfs., 2c tiny natural toned specks, Very Fine Set	115.00

HAWAII

512 ★	1853, 13c Dark Red on Thick Wove (6). Margins All Around, Fresh & Bright, Very Fine	(Photo) 225.00
513 ★	1861, 5c Blue on Bluish (9). Margins to slightly in, small flaws, Fine Appearance	90.00

- 514 ★ 1868, 13c Dull Rose (11). Margins All Around incl. Part Left Sheet Margin, Fresh, o. g., Very Fine (Photo) 150.00



515

516

- 515 ★ 1859, 1c Light Blue on Bluish White (12). Pl. 2-A, Ty. IV, Pos. 8, Margins All Around, Fresh, faint thin speck & almost imaginary crease, both negligible, Very Fine Appearance, Rare 1,100.00
- 516 ★ 1864, 2c Dark Blue on Bluish (17). Pl. 5-B, Ty. II, Pos. 2, Huge Margins, Fresh, tiny filled thins, trivial corner crease, Extremely Fine Appearance, Rare 2,250.00
- 517 ★ 1864, 1c Black (19). Pl. 6-A, Ty. II, Pos. 2, Large to Huge Margins, Extremely Fine (Photo) 175.00
- 518 ★ 1864, 2c Black (20). Pl. 5-C, Ty. I, Pos. 1, Large to Huge Margins incl. T. L. Corner Margins, minute pink speck on back barely shows on face, still Extremely Fine (Photo) 200.00
- 519 ★ 1865, 5c Blue on Blue (21). Pl. 9-A, Ty. IV, Pos. 8, Extra Large Margins, Fresh & Bright, Extremely Fine (Photo) 185.00
- 520 1864, 5c Blue on Blue (21). Plate 9A, Type IX, Pos. 1, Large to Huge Margins except diagonally in at T. L., small faults, Fairly attractive 185.00
- 521 ★ 1856, 5c Blue on Blue (22). Pl. 12-A, Ty. VIII, Pos. 7 Four Extra Large Margins, Fresh & Bright, Extremely Fine (Photo) 135.00
- 522 ★ 1865, 5c Blue on Blue (22). Pl. 12-A, Ty. VIII, Pos. 7, Large Margins, pink handstamp on back barely shows through, otherwise Very Fine (Photo) 135.00
- 523 1861, 2c Pale Rose, Horiz. Laid (27), Huge Margins except slightly in at L., Red Grid cancel, Fine (Photo) 75.00
- 524 1863, 2c Pale Rose, Vert. Laid (28). Ample to Huge Margins, Neat Blue Blue Grid cancel, faint horiz. crease, Fine Appearance 75.00
- 525 ★ 1864, 1c-18c Portraits (30-31, 33-36, 52c). O. g., Fine-Very Fine 80.25
- 526 ★ 1883, 2c-25c Portraits (43, 46-47). Fresh, Very Well Centered, Large Margins, First two o. g., Very Fine 47.00
- 527 ★ 1883, 50c Red (48). Well Centered, Fresh, part o. g., Very Fine (Photo) 50.00
- 528 ★ 1883, \$1.00 Rose Red (49). Fresh & Bright, Fine 60.00
- 329 1886, 2c Orange Vermilion (50). Large to Huge Margins, target cancel, Very Fine (Unused cat. \$100.00) —
- 530 ★ 1c-25c Red Overprints (53-61, 63-64). Fresh, o. g., Well Centered, Fine-Extremely Fine 35.05



471



482



483



485



486



487



468



489



495



503



507



501



508



509



512



514



518



517



519



521



522



523



527



531



532



534



535



537



541



542



543



545



546



547



548



549



551



553



555



556



557



559



561



564 EX



565

531 ★	1893, 12c Red Lilac, Red Overprint (63). O. g., Very Fine	(Photo)	55.00
532	1893, 12c Red Lilac, Red Overprint (63). Well Centered, Light cancel., Extremely Fine	(Photo)	75.00
533 ★	2c-\$.100 Black Overprints (65-66, 67-68, 71-73). Fresh, nearly all o. g., mostly Very Fine		85.80
534 ★	1893, 12c Red Lilac, Black Overprint (69). Well Centered, o. g., Very Fine	(Photo)	100.00
535 ★	1893, 12c Red Lilac, Black Overprint (69). Well Centered, Large Margins, o. g., one perf. partly nibbed, still Very Fine	(Photo)	100.00
536	1893, 50c Red, No Period after Govt (72a). Light cancel, St. line Registered, Fine, Very Scarce (Unused cats. \$60.00)	(Photo)	—
537 ★	1896, 2c-25c Officials (O1-O6). Fresh, o. g., incl. two distinct shades of the 25c, 6c faint thin speck, otherwise Fine-Very Fine		59.50
538	1896, 2c-25c Officials (O1-O6). 5c tiny thin specks, otherwise Fine-Very Fine Set		51.00
539 ★	HAWAII, 1869-1899, Collection of 23 Unused Stamps, one Unused Block, one Specimen, Better items, Virtually all Fine-Very Fine		246.15
540	HAWAII, 1864-1899 Collection of 45 nearly all Used Stamps, Better items, cpl. sets, few small faults, mostly Fine-Very Fine		287.20

PHILIPPINES

541 ★	1901, \$.100 Black Ty. I (223). Well Centered, Fresh, regummed, Fine	(Photo)	135.00
542 ★	1901, \$.100 Black, Ty. II, Overprint (223A). Small corner crease, partly broken through, otherwise Fine	(Photo)	350.00
543	1901, \$.100 Black Ty. II, Overprint (223A). Neat Cancel, faint corner crease, Fine Appearance, Scarce	(Photo)	200.00
544 ★	1901, \$.200 Dark Blue, Overprint (224). Tiny faults,, Fine Appearance		150.00
545 ★	1901, \$.500 Dark Green, Overprint (225). Well Centered, tiny thin spot, Very Fine Appearance	(Photo)	275.00
546	1901, \$.500 Dark Green, Overprint (225). Neatly cancelled, Very Fine	(Photo)	175.00
547 ★	1903 \$.100 Black (237). Well Centered, part o. g., Very Fine	(Photo)	100.00
548 ★	1904, \$.200 Dark Blue (238). Tiny thin speck, Fine Appearance	(Photo)	235.00
549 ★	1904, \$.500 Dark Green (239). Couple short perfs. & rounded corner, otherwise Fine	(Photo)	350.00
550 ★	1906, 4c-4p, "OB" Overprints in Black (242, 245, 247, 248, 252, 253, 256 vars.). Couple minor perf. faults, #256 s.e. & perfs. in, others Well Centered, Scarce lot		E. VI
551 ★	1906, 10p Dark Green, Overprinted "OB" in Black (254 var). Well Centered, Very Fine, Scarce	(Photo)	E. V
552 ★	1925, 2c-10p Portraits, Imperforate (340-353). 2c, 16c small thins, 12c without gum, others F.-V.F.		113.07

553 ★	1944, 6c Dark Brown, "Victory" Handstamp (466). Well Centered, gum a bit disturbed from usual wax paper, much better than usual, Very Fine for this (Photo)	650.00
554 ★	1944, 6c Yellow Green, 30c Orange Red, "Victory" Handstamp (467, 482). Well Centered, without gum, small thins, Fine appearance (Photo)	175.00
555 ★	1944, 12c Bright Blue, "Victory" Handstamp (476). Well Centered, usual tropical gum & toning specks, Fine (Photo)	850.00
556	1944, 12c Purple, "Victory" Handstamp (477). Light Town Pmk., Very Fine (Photo)	80.00
557 ★	1944, 16c Dark Blue, "Victory" Handstamp (480). Usual tropical gum, Fine (Photo)	100.00
558 ★	1926, 2c-30c Madrid-Manila (C1-C6, C9-C12). 26c small thin, 30c tiny toned spots, others F.-V.F.	102.00
559 ★	1926, 4p Madrid-Manila (C14). Very Well Centered, s. e. guide line at L., perf. tips & gum a bit toned, otherwise Very Fine (Photo)	350.00
560 ★田	1907, 10c Ultramarine, Special Delivery Special Printing (E2A). Block, Well Centered, few negligible toning specks, in gum, nevertheless Very Fine, Very Rare	2,000.00
561 ★	2c Rose Official, "Victory" Handstamp (O38). Fairly Well Centered, usual tropical gum staining, otherwise Fine (Photo)	160.00
562 ★	PHILIPPINES, 1899-1945, Collection of 379 Unused Stamps, Many Better items, Overprints, Portraits to 10p, Pictorials, Commems., Victory to 20p, Handstamped Victories, Air Post, Japanese Occupation etc., some small faults, Mostly Fine-Very Fine	E. XI
563	PHILIPPINES, 1899-1946, Collection of 400 Used Stamps, Some Better items, Overprints to \$1.00, Portraits to 10p, Pictorials, Commem., Air Posts, Dues, Officials, Japanese Occupation, some small faults, Mostly F.-V.F.	E. X
564 ★	PUERTO RICO, 1901, 1c-\$50.00 Revenue Overprints (R1-R9). 1c Centered to B., others Mint, Fine-Very Fine Set, Rare (Photo Ex)	529.50
565 ★	RYUKYU ISLANDS, 1952, 100y on 2y Rose Violet (17). Well centered, minute negligible thin speck, Extremely Fine Appearance (Photo)	775.00

END OF SALE — THANK YON

LOTS ON VIEW, FEBRUARY 18th, 19th

IS YOUR COLLECTION FOR SALE?

REALIZE IMMEDIATE CASH
PLUS THE ADDED ADVANTAGE OF
SELLING THROUGH OUR AUCTIONS

We will advance immediate cash up to 75% of our appraised value. There is no interest charge.

Your collection is then sold in one of our auction sales. All stamps are expertly and advantageously lotted in attractive, well illustrated catalogs. Lotting is meticulously planned under our personal supervision. Commission is 20% of the gross realization. There is no lotting fee nor any other charges. Final settlement is made within five weeks after the sale. We have continuously conducted stamp auctions for over forty-five years.

Valuable collections and stamp holdings are especially wanted, but we will accept properties valued from \$500 upwards. Send all stamps directly for appraisal. Auction advance will be remitted shortly after receipt. If not entirely pleased, stamps will be returned at our expense. We will travel anywhere to inspect important properties.

ROBERT A. SIEGEL
AUCTION GALLERIES, Inc.

(Licensed and Bonded Auctioneer)

120 EAST 56th STREET

NEW YORK, N. Y. 10022

(Tel. 753-6421)

Robert A. Siegel

AUCTION GALLERIES, INC.

List of Prices Realized

466th SALE

February 20th, 1975

120 EAST 56 STREET, NEW YORK CITY, N.Y., 10022

(212) 753-6421

UNITED STATES STAMPS**A DISTINGUISHED COLLECTION**

1	3750	53	160	105	1450	157	80	217	35
2	115	54	60	106	1500	158	45	218	60
3	70	55	26	107	1600	159	37½	219	3400
4	325	56	400	108	700	160	135	220	80
5	425	57	130	109	700	161	95	221	57½
6	125	58	100	110	1150	162	45	222	35
7	100	59	725	111	1450	163	450	223	50
8	1900	60	190	112	650	164	70	224	240
9	150	61	1400	113	1850	165	145	225	170
10	145	62	1000	114	60	166	37½	226	425
11	400	63	625	115	125	167	60	227	62½
12	5750	64	900	116	37½	168	80	228	350
13	1550	65	1100	117	47½	169	110	229	300
14	575	66	85	118	260	170	72½	230	400
15	375	67	170	119	125	171	170	231	280
16	47½	68	5250	120	85	172	42½	232	1000
17	40	69	325	121	67½	173	72½	233	450
18	29	70	650	122	1150	174	42½	234	95
19	90	71	80	123	325	175	2300	235	52½
20	85	72	750	124	270	176	1150	236	105
21	1550	73	500	125	400	177	3500	237	130
22	125	74	10	126	2800	178	3750	238	140
23	325	75	32½	127	160	179	1550	239	90
24	62½	76	350	128	120	180	1300	240	67½
25	1300	77	700	129	170	181	500	241	85
26	280	78	70	130	400	182	2200	242	52½
27	230	79	37½	131	450	183	1650	243	130
28	65	80	150	132	160	184	1400	244	100
29	350	81	375	133	300	185	2800	245	100
30	45	82	50	134	400	186	45	246	45
31	375	83	200	135	400	187	85	247	650
32	280	84	350	136	800	188	85	248	425
33	180	85	62½	137	750	189	115	249	47½
34	250	86	1150	138	850	190	11	250	52½
35	105	87	60	139	110	191	115	251	55
36	52½	88	125	140	85	192	150	252	110
37	1000	89	75	141	50	193)		253	85
38	72½	90	180	142	125	1) -35,000		254	525
39	400	91	200	143	32½	203)		255	105
40	72½	92	27½	144	375	204	42½	256	650
41	2800	93	350	145	170	205	72½	257	150
42	900	94	115	146	65	206	25	258	90
43	220	95	110	147	52½	207	52½	259	135
44	60	96	60	148	32½	208	220	260	45
45	57½	97	95	149	1850	209	4750	261	210
46	1300	98	80	150	400	210	24	262	170
47	50	99	170	151	62½	211	350	263	350
48	180	100	30	152	2400	212	42½	264	65
49	150	101	700	153	725	213	105	265	375
50	2300	102	150	154	140	214	210	266	1200
51	62½	103	600	155	900	215	35	267	1000
52	75	104	575	156	40	216	575	268	2100

269	1550	337	55	405	240	473	70	541	70
270	47½	338	8000	406	180	474	72½	542	62½
271	125	339	72½	407	140	475	250	543	80
272	60	340	1550	408	190	476	62½	544	29
273	47½	341	42½	409	180	477	50	545	105
274	50	342	62½	410	45	478	67½	546	160
275	140	343	80	411	75	479	130	547	100
276	85	344	260	412	75	480	50	548	85
277	20	345	400	413	47½	481	800	549	180
278	32½	346	65	414	37½	482	180	550	22
279	1000	347	150	415	21	483	350	551	42½
280	37½	348	1250	416	135	484	50	552	50
281	325	349	450	417	15	485	75	553	270
282	4500	350	750	418	67½	486	180	554	32½
283	950	351	60	419	19	487	72½	555	350
284	475	352	55	420	40	488	37½	556	62½
285	5000	353	42½	421	55	489	45	557	60
286	270	354	2400	422	45	490	55	558	35
287	230	355	75	423	90	491	27	559	85
288	115	356	210	424	47½	492	47½	560	1400
289	29	357	180	425	37½	493	35	561	40
290	20	358	160	426	28	494	70	562	350
291	85	359	160	427	35	495	62½	563	240
292	95	360	50	428	30	496	35	564	325
293	350	361	25	429	30	497	23	565	425
294	47½	362	400	430	30	498	260	END OF SALE THANK YOU	
295	72½	363	375	431	42½	499	160		
296	42½	364	85	432	26	500	70	GROSS REALIZATION	
297	45	365	62½	433	25	501	115		
298	30	366	210	434	16	502	120	\$230,484.50	
299	30	367	80	435	26	503	950		
300	52½	368	70	436	35	504	90		
301	80	369	40	437	32½	505	130		
302	50	370	37½	438	42½	506	42½		
303	375	371	200	439	47½	507	450		
304	65	372	300	440	32½	508	325		
305	32½	373	425	441	21	509	170		
306	32½	374	25	442	37½	510	100		
307	100	375	550	443	130	511	90		
308	55	376	270	444	22	512	170		
309	125	377	35	445	30	513	32½		
310	75	378	35	446	90	514	140		
311	37½	379	37½	447	90	515	800		
312	45	380	270	448	27	516	2500		
313	85	381	32½	449	26	517	145		
314	75	382	115	450	37½	518	160		
315	150	383	210	451	55	519	210		
316	47½	384	42½	452	25	520	52½		
317	57½	385	57½	453	190	521	115		
318	52½	386	47½	454	210	522	67½		
319	950	387	42½	455	160	523	27		
320	47½	388	210	456	52½	524	26		
321	75	389	62½	457	105	525	47½		
322	42½	390	35	458	900	526	35		
323	72½	391	62½	459	575	527	52½		
324	95	392	85	460	42½	528	32½		
325	200	393	230	461	52½	529	20		
326	130	394	160	462	32½	530	28		
327	260	395	42½	463	29	531	37½		
328	135	396	52½	464	57½	532	60		
329	35	397	180	465	18	533	52½		
330	100	398	200	466	18	534	75		
331	375	399	60	467	45	535	72½		
332	150	400	90	468	26	536	55		
333	32½	401	47½	469	23	537	30		
334	115	402	145	470	160	538	30		
335	75	403	130	471	110	539	130		
336	37½	404	140	472	85	540	130		