

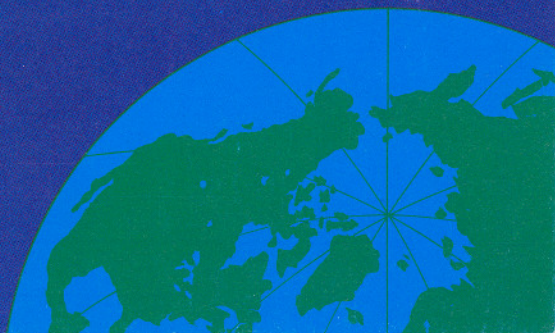


RARITIES OF THE WORLD



Robert A. Siegel

AUCTION GALLERIES, INC.



James M. Buchanan
5 Cents.



468th SALE

RARITIES OF THE WORLD

The Property of Various Owners
Including the Estate of F. Cabot Holbrook
Sold by Their Order



AT PUBLIC AUCTION

Tuesday, March 25th, 1975 at 7:00 P. M.

AT THE HOTEL PIERRE
COTILLION ROOM

Fifth Avenue at Sixty-First Street

Robert A. Siegel

AUCTION GALLERIES, INC.

120 EAST 56th STREET
NEW YORK CITY, N. Y. 10022
Tel.: (212) 753-6421

FOREWORD

Since we have established a precedent in having a foreword in each of our Rarity Sale catalogues we find ourselves with an auction of such magnificence that it literally defies description. There are no terms too extravagant to describe this auction.

Literally every lot offered is an exhibition piece of the sort that creates excitement wherever and whenever displayed publicly. We look upon it as the finest Rarity Sale it has been our privilege to present.

Here we have a George Washington Free Frank, an unused Baltimore Postmasters' Provisional considered unique, a complete reconstruction of the St. Louis "Bear" sheet, all on pelure paper. The 1847 Issue has what is considered the only authenticated 5c Red Orange, unused, as well as an unused Strip of Three of the 10c of our first issue. All of the rare types of the 1c 1851 are present to say nothing of astoundingly beautiful pieces of the other denominations such as the 3c bisect cover "via Nicaragua" and the 12c bisect with Express Mail cancellation. Through the 1857's are found many extraordinary singles and blocks. Outstanding is the 1c Blue, Type III "99R2" on cover, considered to be unique.

The 1861 "First Designs" offer an incomparable block of the 10c and an imperforate pair of the 90c among others. The regular 1861s are full of gorgeous, seldom seen items, each a "gem" in itself.

Crowning the many stupendous United States items is the complete offering of all of the rare Grilled Issues. There are the 5c and 30c Grilled all Over, a choice 3c B. Grill and the only 1c Z. Grill available to collectors since the only example is forever locked in the B. K. Miller Collection in the New York Public Library. To complete the issue are the extremely rare 10c and 15c Z. Grill, only two of the 15c have ever been found.

But it is best to view the catalogue. Everything is set out, fully and accurately described from the choice Special Printings to the Columbian sheets which are complete from 1c to 15c and topped by a matchless pane of fifty of the \$1.00 Salmon. There are all three Pan-American Inverted Centers, some gorgeous Blue Papers, the rare 5c Red, Double Error, Imperforate as well as other rare 20th Century errors, most noteworthy being the unique center line & arrow block of ten of the 2c Yorktown, part-perforated.

Air Posts offer the 1918 set in complete sheets and a handsome 24c 1918 with Center Inverted. There are full sheets of the 65c and \$2.60 Graf Zeppelin as well as sets in blocks and plate number blocks. But we could go on and on, and everything is here in the catalogue.

We must, however, make special note of rare United Nations errors including the 6c Air Post (#C1) Imperforate, which is offered in an inscription block of four. Only one sheet of fifty of this error has ever been found. There are choice pieces for Confederate and for Western enthusiasts and a few outstanding U.S. Possessions, with a Hawaiian 5c "Missionary" and some of the rarest Philippines "Victory" overprints. A small but choice section of Foreign rarities closes the sale in which Canada presents a number of magnificent and startling pieces.

Seating accommodations are limited and advance reservations are advisable. A note or call to our office will take care of it and an attractive memento of the sale will be given to each advance reservation. The usual light refreshments will be served following the auction. Lots displayed on screen throughout the auction.

ROBERT A. SIEGEL

468th SALE

MARCH 25th, 1975

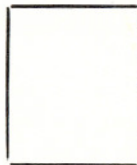
BID SHEET

ROBERT A. SIEGEL AUCTION GALLERIES, Inc.

120 East 56th Street

New York, N.Y. 10022

Tel.: 753-6421 (Area Code 212)



Please purchase for me at your auction to be held **March 25th, 1975** the lots listed below, the prices annexed being my limit on each lot. I agree to remit for purchases in accordance with the **Conditions of Sale** and return no lots later than three days after receipt.

REFERENCES PLEASE
(If unknown to us)

SIGNED

New York State residents kindly include
County in address.

County

BIDDING INTERVALS

BIDS	ADVANCE	BIDS	ADVANCE
Up to \$30.00	\$1.00	\$300.00 - \$725.00	\$25.00
\$32.50 - \$72.50	\$2.50	\$750.00 - \$2,000.00	\$50.00
\$75.00 - \$145.00	\$5.00	\$2,000.00 - \$3,000.00	\$100.00
\$150.00 - \$290.00	\$10.00	\$3,250.00 and up	\$250.00

Bids which do not conform to the above will be automatically reduced to the appropriate level.

Lot	Bid	Lot	Bid	Lot	Bid

VALUATIONS

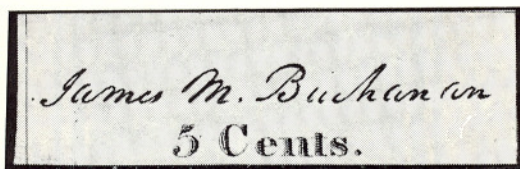
Upon request, estimate of value furnished on any lots in this auction.

UNITED STATES

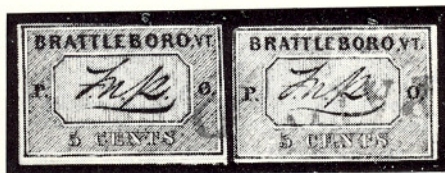
AUTOGRAPHS & FREE FRANKS

- 1 ☒ **G(eorge) Washington, Private**, Autographed Free Frank on folded cover, docketed "Gen'l. Washington, 2nd Dec. 1782" addressed to Gov. Clinton (of N. Y.) at Poughkeepsie. Minor age toning, small restoration at top. Beautiful example of Gen. Washington's Free Frank as General **E. XV**
- 2 **A. Lincoln** signature on small piece with "Let this man take the oath of Dec. 8, 1863, and be discharged. March 22, 1865", Very Fine **E. XII**
- 3 ☒ **Z.(achary) Taylor**, Autograph Free Frank, on neat envelope to Louisiana, Red "Washington, D. C., Free" pmk., Very Fine, one of the rarest Presidential Franks **E. XIII**

POSTMASTERS' PROVISIONALS





- 4 ★ **Baltimore, Md., 5c Black on Bluish (3X3)**. Nice Margins showing all or parts of Frame Lines, Extra Wide at Left, Fresh, Part o. g., Very Fine, Tremendously Rare Unused 14,000.00



- 5 **Brattleboro, Vt., 5c Black on Buff (5X1)**. Two Margins showing full dividing lines, large margins to trifle cut in upper right, Wonderfully Fresh, small part of Red "Paid" cancel, Fine & Very Rare, particularly in sound condition 4,000.00
- 6 **Brattleboro, Vt., 5c Black on Buff (5X1)**. Pos. 2, Margins Virtually All Around, Nearly Complete Frame at Right, Neat Red "Paid" cancel., thins, as often, Very Fine Appearing Example of this Rarity 4,000.00
- 7 **New York, N. Y., 5c Black (9X1)**. Horiz. Strip of Three, Pos. 36-38, Ample to Large Margins except tip of T. R. corner of right stamp barely touched, light Neat Blue ms. cancel., insignificant tiny scissor cut between stamps well clear of design, Very Fine, Beautiful Strip 1,200.00
- 8 P **Providence, R. I., 5c, 10c Brown Carmine, Trial Color Plate Proof on Card (10X1, 10X2)**. Complete Sheet of Twelve, Very Fine, Very Rare 1,250.00

LOTS ON VIEW MARCH 24th and 25th

From 10:00 A. M. to 3:00 P. M.

- 9  **St. Louis, Mo., 5c Black on Greenish (11X1).** Margins to just touched two points. Tied by Red "St. Louis" pmk., matching "Paid" & "Paid 5" on fresh folded letter to Gallatin, Mo. Fine, especially as it is without the usual ms. cancel., with P. F. Certificate 2,300.00
- 10  **St. Louis, Mo., 10c Black on Gray Lilac (11X5).** Ty. II, Pos. 4, Four Huge Margins, tied on Fresh 1846 Folded Cover by bold ms. cancel, Red "St. Louis, Mo." pmk., matching "Paid", heavy filing crease through stamp, still a Very Handsome "Bear" Cover, with APS Certificate 2,000.00



- 11 **St. Louis, Mo., 5c, 10c Black on Bluish, Pelure Paper (11X7, 11X8).** The Complete Plate Reconstruction, Three Singles of each type, Margins Virtually All Around, five with the usual ms. cancels., other Red "Paid", one on piece, few small faults, really inconsequential when considering the Extremely Rarity of this lot, A Spectacular Showpiece of Handsome Appearance 21,000.00

1847 ISSUE



- 12 ★ **5c Red Orange (1c).** Large Margins, Rich, Brilliant Color, faint horizontal crease & minute black speck on forehead, signed "Ashbrook", purple Schlesinger handstamp guarantee shows through tiny bit, Believed the Only Known Unused Example of this Rare Shade, Very Fine Appearance, ex Lilly 2,000.00



13

15

- 13 ★ **5c Brown (1). Horizontal Pair**, Large Margins All Around, Fantastic Deep Rich Color, Beautiful Fine Impression, Part o. g., insignificant natural paper wrinkle, Extremely Fine, A Magnificent Pair 1,500.00



- 14 ★ **10c Black (2). Vertical Strip of Three**, Large Even Margins All Around, Wonderfully Fresh, Part o. g., bottom stamp has tiny tear & bit of bottom left corner torn off, replaced with hinge, otherwise Extremely Fine, An Extraordinary Strip of the Highest Order of Rarity, with P. F. Certificate 10,000.00+
- 15 **10c Black (2). Horiz. Pair**, Pos. 79-80L, Ample to Large Margins, Pretty Blue Grid cancels., Very Fine, ex Gibson 900.00

Delivery of Lots at our Offices March 26th



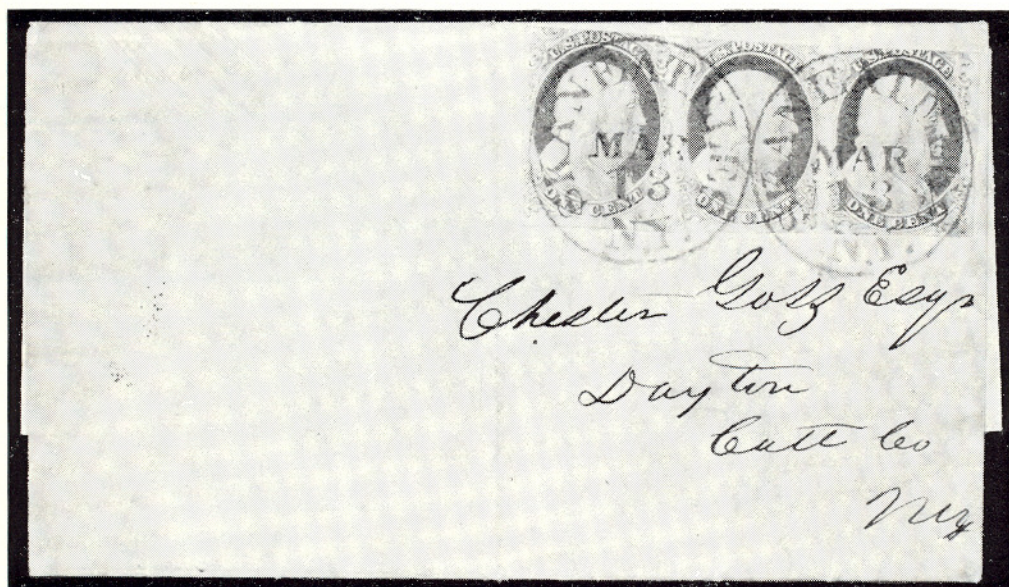
- 16 **10c Black (2).** Large to Enormous margins incl. R. Sheet margin, Tied by Bold Red "New York, 10 cts", repeated on the cover which originated Philadelphia with Blood's Despatch 1c Bronze on Black (15L13) defects, tied by used acid cancel. Bold "Philad'a Rail Road" in Red str. line to Wilton, N. H. forwarded to New Market. A Magnificent, Outstanding Rarity, Ex-Gibson, with P. F. Certificate **E. XVII**

- 17 P **5c Red Brown, 10c Black, Panama-Pacific Small Die Proofs (3P-4P).** Unusually Fresh, Very Fine Set **850.00**

- 18 ★ **5c Red Brown, 10c Black, Reproductions (3-4).** Fine Set **725.00**

LOTS ON VIEW MARCH 24th and 25th
From 10:00 A. M. to 3:00 P. M.

Delivery of Lots at our Offices March 26th



- 19 ☒ **1c Blue, Ty. I, Ib, Combination Strip of Three, Positions 5-7R1E (5, 5A).** Tied on March 13, 1852 Folded Letter by Bold Blue "Skaneateles, N. Y." pmks., Three Margins, top labels touched to partly cut in, few tiny creases & age toning spots. Signed "Ashbrook" who states that the types were "destroyed" by being "cut off" at top, which is not entirely true because this strip can easily be plated by the other characteristics. In any event, A Tremendously Rare Cover, Ranking High Among Nineteenth Century U. S. Rarities **E. XV**
- 20 **1c Blue, Ty. Ib (5A).** Two Singles, Originally a Horizontal Pair, Pos. 3-4R1E, Neatly rejoined with hinge. Ample to Huge Margins, Bold "Cincinnati, O." pmk., Pos. 3 Very Fine, Pos. 4 Huge Margins, Extremely Fine **300.00+**
- 21 ★ **1c Blue, Ty. Ic (6 var.). Curl in "C" of Cent, Position 97R4,** Margins Virtually All Around including Bottom Sheet Margin, Brilliant Deep Color, tiny stain specks, otherwise Very Fine, with APS Certificate. This Ashbrook Sub-Type is actually twice as Rare as Type Ia **E. XV**

BIDDING INTERVALS

BIDS	ADVANCE	BIDS	ADVANCE
Up to \$30.00	\$1.00	\$300.00 - \$725.00	\$25.00
\$32.50 - \$72.50	\$2.50	\$750.00 - \$2,000.00	\$50.00
\$75.00 - \$145.00	\$5.00	\$2,000.00 - \$3,000.00	\$100.00
\$150.00 - \$290.00	\$10.00	\$3,250.00 and up	\$250.00

Bids which do not conform to the above will be automatically reduced to the appropriate level.

His Excellency

Gov. Clayton

Private

St. Louis



Free. J. Taylor

3

New Boston, Mass.

Let this man take the oath of Dec 8, 1863, and be discharged.

2

March 22, 1865 Adinco



10

Mrs. David S. Brown

Philadelphia



9

St. Louis

Gallatin

Carroll County, Md.



25

Circular

John J. Hart

New York

Cal.



26



Novell

30

Joseph



27

Mr John Bayles



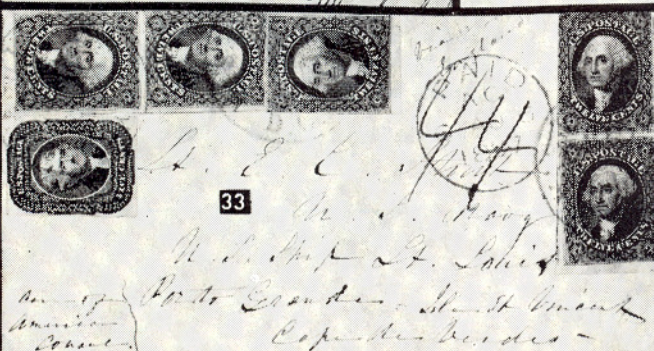
35

Mrs Deborah Rose

Sherrburne

Chenango Co

N. Y.



33

St. Louis

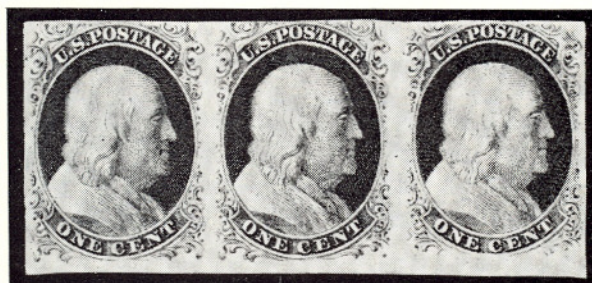
St. Louis

St. Louis

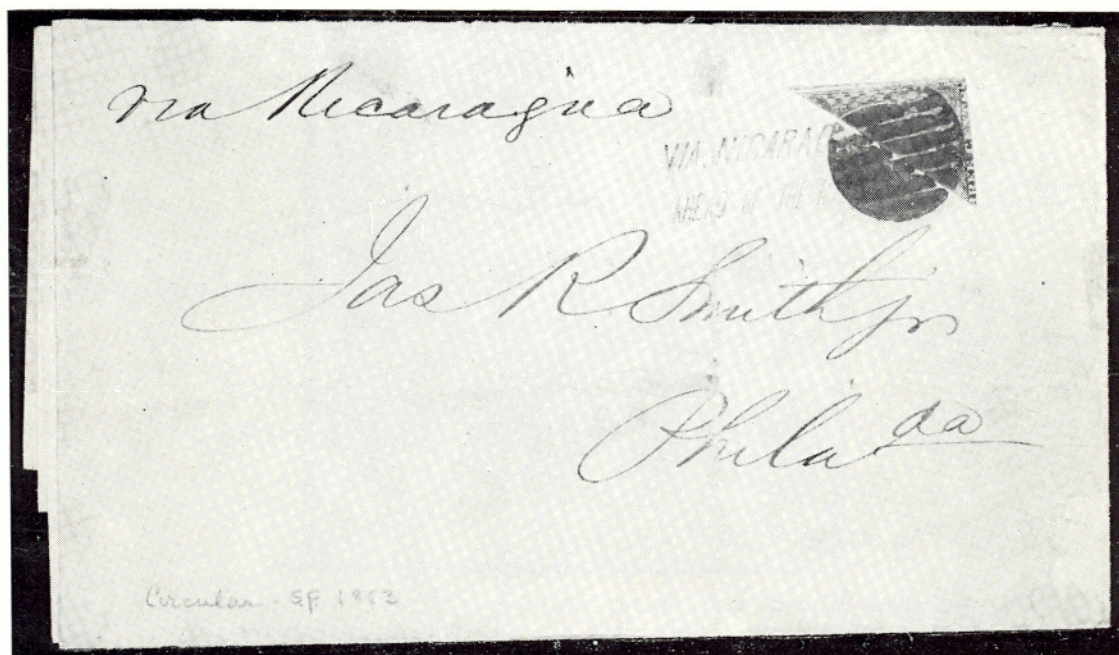
St. Louis



- 22 ★田 1c Blue, Ty. II (7). L. L. Sheet Corner Block of Six, Pos. 81-83, 91-93R2, Large Margins other Sides, Fresh, part o. g., Brilliant, Clear Showing of cracks under Pos. 92, Extremely Fine, a Gorgeous Gem, Ex-Newbury 1,175.00+



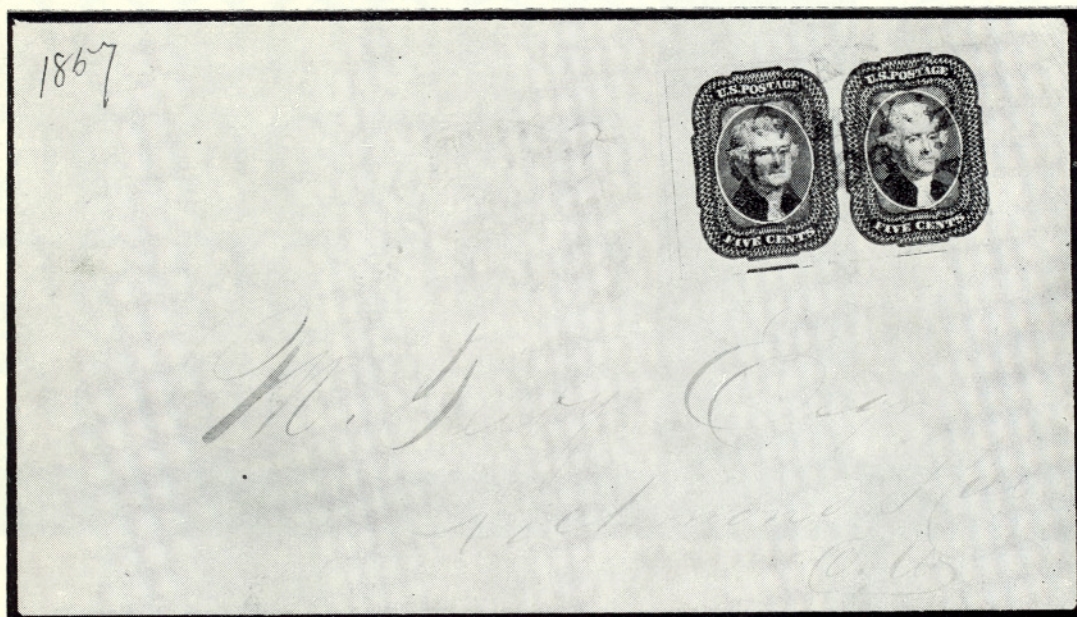
- 23 ★ 1c Blue, Combination Ty. II, III Horizontal Strip of Three, Positions 97-99R2(7, 8). Clear to Enormous Margins, Glorious Brilliant Color, Fresh, o. g., faint crease in pos. 97 and at right edge of pos. 98, the Ty. III Stamp is Extremely Fine, A Unique & Splendid Strip, Position 99R2 being the Finest Ty. III on any plate, ex Caspary, Lilly 3,825.00
- 24 1c Blue, Ty. II (7). Horizontal Pair, Positions 91-92L1E, Left Stamp Triple Transfer, One Inverted, Huge Margins All Around including Bottom Sheet Margin, Beautiful Color, Light Red Grid cancels., Extremely Fine, Very Handsome E. XII
- 25 ☒ 1c Blue, Ty. II, Pl. 1E (7). Large margins virtually all around with bits of adjoining stamps T. & B. Tied by Grid on **Baltimore, Md. July 1, 1851 Printed Circular, A First Day Cover**, to Ohio, Date repeated in docketing. Slight toning at R. from gum soak, otherwise Very Fine, A Great Rarity 3,000.00
- 26 ☒ 1c Dark Blue, Ty. III, Position 99R2 (8). Three Large Margins, clear to trifle in at top, Boldly tied on Circular Envelope by "Worcester, Mass." Town pmk., cover few tiny age specks, the stamp, despite a tiny margin crease, is Fine, Very Rare, signed Ashbrook 2,500.00



- 27 ☒ 1c Dark Blue, Ty. III (8). Pos. 70L4, Three Large Margins, barely touched at right, Marvelous Deep Shade, Neatly tied on May 1857 Wholesale Hardware Circular, by "New-York" pmk., Very Fine, Handsome & Rare 650.00
- 28 ★ ☐ 3c Red (11). R. Imprint Plate No. 4 Block of Eight, Clear to Huge Margins, Rich, Fresh Color, few light folds, mostly in margins between stamps, one broken through in margin, otherwise Very Fine, a Beautiful Block of Great Rarity E. XIII
- 29 ☒ 3c Red, Diagonal Bisect (11d). Tied by strong Bold Grid, & most of Blue "Via Nicaragua, Ahead of the Mails" two str. lines on 1853 San Francisco Prices Current; the bisect prepaying the 1c circular rate, to Phil'a. Bisect has small margins & is slightly oxidized, immaterial in a cover of such Extreme Rarity, (See Chase, Revised, p. 217) Ex-Chase E. XVI
- 30 ☒ 5c Red Brown (12). Rich color, Huge to Enormous margins, bit of next stamp at T. & Wide Bottom Sheet margin. Tied by Red Grid & Bold "New-York" pmk. with slug below date. Red N. Y., London & French transit pmks. on 1856 Prices Current & Letter originating New Orleans to France. Very unusual, Extremely Fine, Signed "Ashbrook" E. XV

A REMINDER

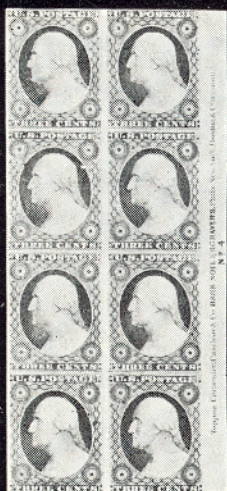
Mails are often slow. After nearly every auction we receive some 25 to 50 late bid sheets, many of which would have been successful. We can only repeat . . . PLEASE MAIL YOUR BIDS EARLY ! Use Air Mail if you are in doubt as to being on time.



- 31 ☒ **5c Dark Red Brown (12). Horiz. Pair**, Ample to Incredibly Huge margins incl. L. pane margin & center line; Tied by rimless "Buffalo, N. Y." to Canada, Faint Red exchange mark in arc, "Richmond Hill, C. W., May 28, 1857" on the back. A Glorious "Gem". Ex-Casparly E. XVI



- 32 ☒ **5c Red Brown (12). Vertical Strip of Three**, Fantastic margins all around incl. bit of next stamp at top & Full left pane margin with center line, Tied by neat "New Orleans, La." N. Y. & French transits on 1857 folded cover to France. Ex Consul Klep & with Ashbrook letter of authenticity. A Gorgeous Incomparable cover. Realized \$8165.00 in 1956 (See Brookman, Vol. 1, p. 155) E. XVII



28



41



45



51



52



46

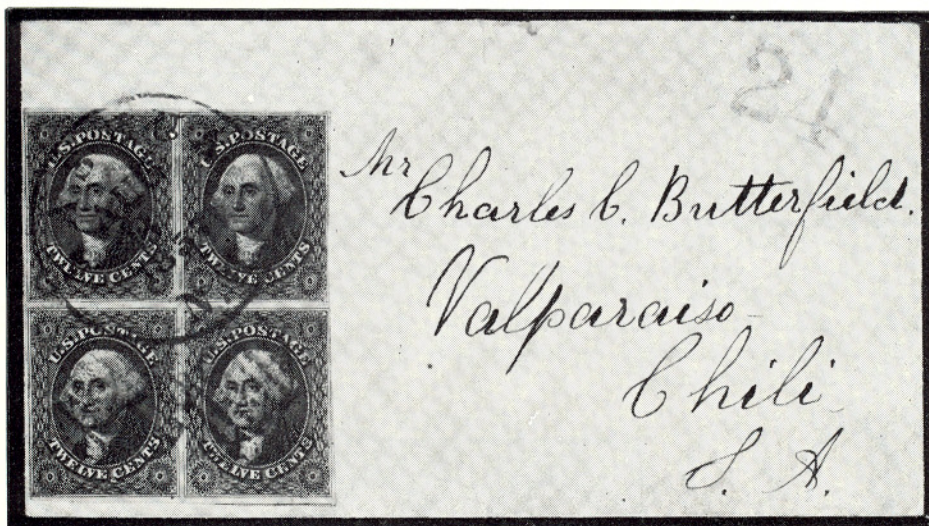


53



71

- 33 ☒ **5c Brown (12).** Used in combination with **Two Vertical Pairs & single 12c Black (17).** Paying 65c rate Washington, D. C. to **Cape Verde Is.** The 5c with ample to large margins & Very Fine. All the 12c have B. Sheet margin but are just touched one or more other sides. Part of flap & back torn; Attractive appearance and of utmost Rarity **E. XV**
- 34 ★ **10c Green, Ty. I (13).** "Curl" in Left "X", Pos. 99R, Large Margins, Deep Rich Color, faint horizontal bend at top, otherwise Extremely Fine, Rare **2,250.00**
- 35 ☒ **10c Green, Ty. I (13).** Horiz. Pair, Deep Rich Color, Large margins, Tied by Bold "San Francisco, Cal." on neat envelope to N. Y. State. Extremely Fine & Handsome **E. XV**



- 36 ☒ **12c Black (17).** Block, Margins virtually all around, frame just touched on T. R. stamp; Tied by Blue "Nashua, N. H. & matching grids on small cover to **Valparaiso, Chile**, Red "24" rate mark. Part of flap torn, An Incredible & Handsome cover of utmost rarity. Ex-Gibson **E. XVII**

DESCRIPTIONS

EXTREMELY FINE: The finest condition for noteworthy, outstanding copies.

VERY FINE: (V. F.) In prime condition such as to satisfy the requirements of particular collectors.

FINE: (F) Perforations or margins do not touch design on issues after 1890 but in some cases may just touch in earlier issues. If used, fairly light cancellation.

VERY GOOD: (V. G.) Generally nice appearance but margins or perforations may cut in slightly.


GOOD: Average off-centering or fairly attractive with slight defects.

ORIGINAL GUM is not to be expected on 19th century stamps unless so stated in the description.

MINT: With original gum and never hinged.


Scott 1975 Specialized Catalog used for cataloguing lots of U. S. & Possessions. Scott 1975 Standard Catalogue for others. Use of other catalogs noted in the descriptions.

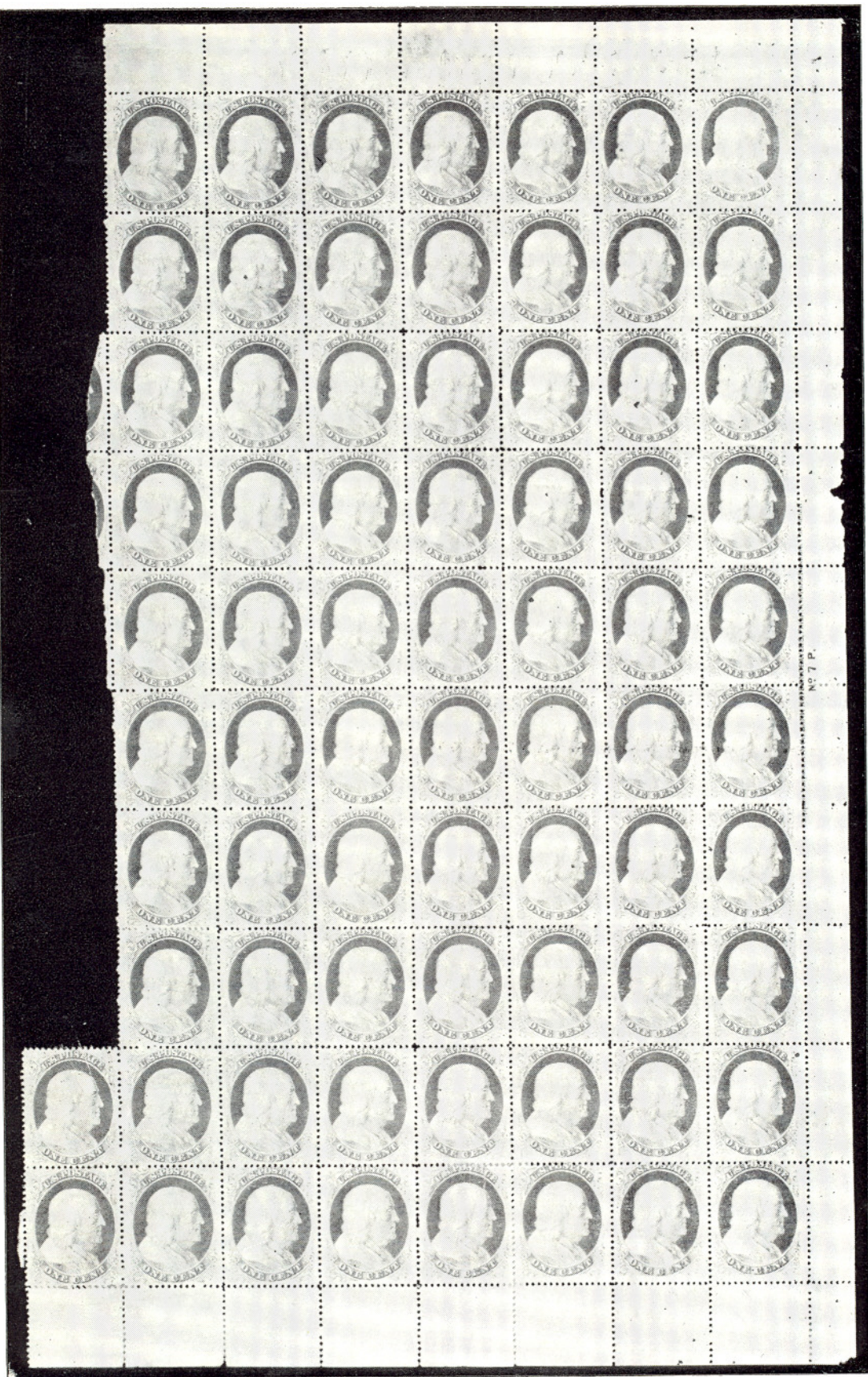


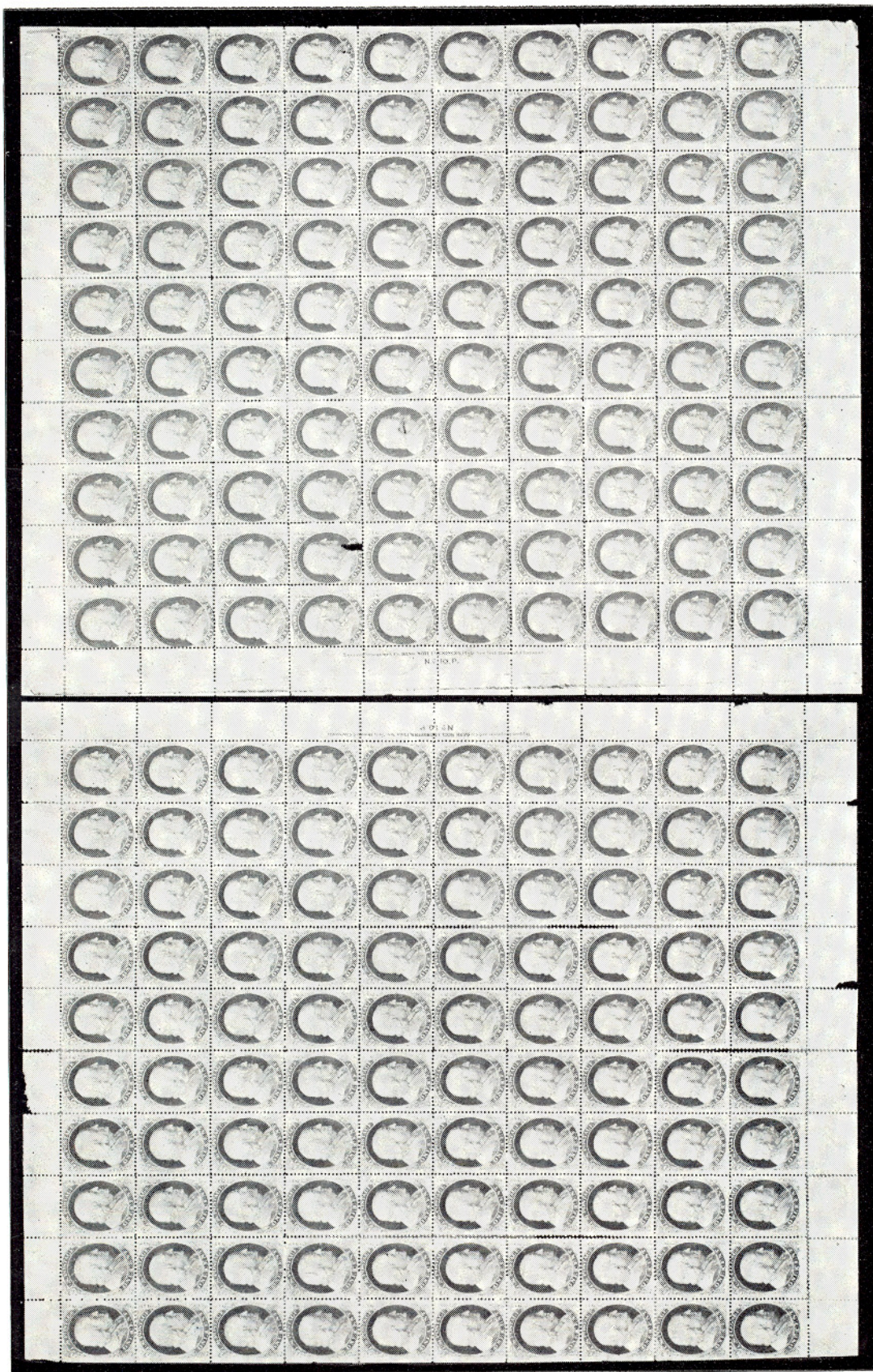
- 37  **12c Black, Diagonal Bisect (17a).** Used in combination with 3c Red (11). Tied together by Bold "U. S. Express Mail, N. York" on 1852 folded letter to Providence, R. I., (Letter mentions enclosure hence the 9c rate) The bisect has huge margins, the 3c is Fine. One of the most important 12c bisects in existence. An incomparably magnificent cover, in probably unique combination E. XVII

1857 ISSUE

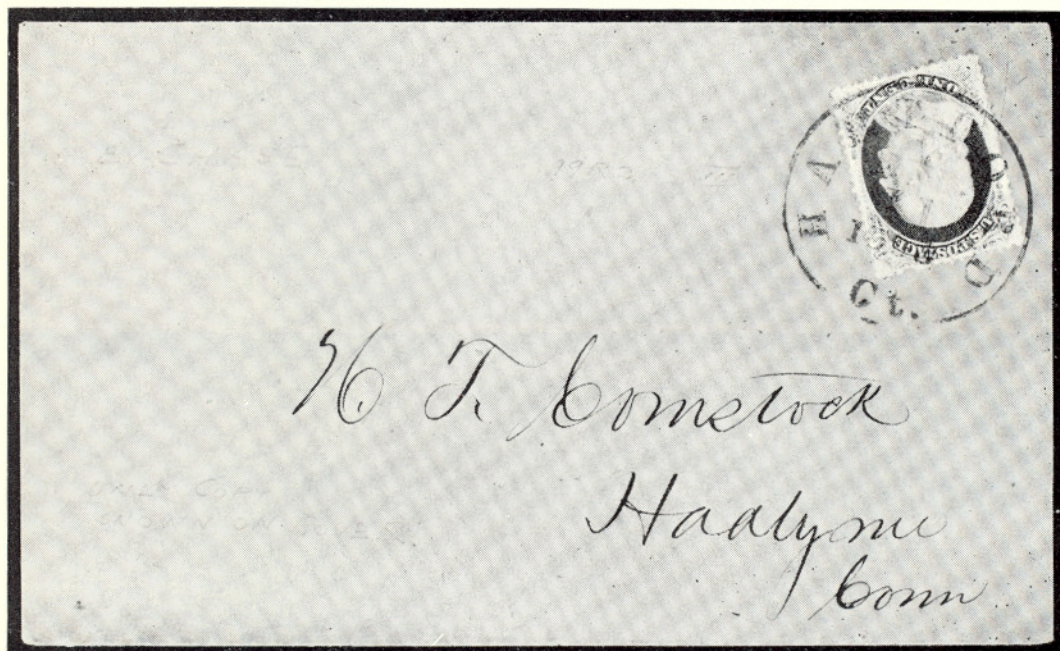


- 38 ★  **1c Blue, Vertical Combination Block of Six, Ty. III, IIIa (21, 22).** Pos. 34-35, 44-45, 54-55L4 (position 35L is Ty. IIIa, others Ty. III), Incredibly Fresh, Virtually Full o. g., Marvelous Centering, Very Fine Block, the Bottom Pair is Extremely Fine. Unquestionably One of the Finest Existing Blocks from Plate 4, A Gorgeous Rarity, ex Moody E. XVII





- 39 **1c Blue, Ty. III, Pos. 99R2 (21).** Lovely Deep Color, Town pmk., perfs trifle in at top, Fine, signed Ashbrook. A Perforated Example of this Position is Much Rarer than its Imperforate Counterpart and is, in our opinion, Grossly Undercataloged & Rarely Offered 2,000.00



- 40 **1c Blue, Ty. III, Pos. 99R2 (21).** Marvelous centering, virtually perfect; Tied by light "Hartford, Ct." on circular envelope, one short perf. otherwise Extremely Fine, negligible gum toning of a few perf. tips noted for the sake of accuracy, immaterial as Pos. 99R2 used alone on cover is believed to be unique. A Stupendous Rarity **E. XVII**
- 41 **1c Blue, Ty. III, IIIa Combination Block of Twenty-Eight (21, 22).** Pos. 31-37, 41-47, 51-57, 61-67R4 with Left Pane Margin, neat ms. cancels., mixed centering, considerable hinge reinforcing with few tiny flaws & some staining except bottom right stamp which has long internal tear & missing corner. These faults are mentioned only for the sake of accuracy as this is the Largest Known used Block from the Right Pane of Plate Four, A Fantastic Showpiece of Tremendous Rarity **E. XV**
- 42 **1c Blue, Ty. V (24). Part Sheet of 72,** R. Pane Pl. 7, Without gum & some minor reinforcement, six stamps thin, 12 are creased, two stamps of plate block affected. **Six positions show "Curl on Shoulder"**. Brilliant, Fresh, Better than usual centering & much finer than description would indicate 3,805.00
- 43 **1c Blue, Ty. V (24). Complete Sheet of 100,** R. Pane Plate 10, without gum, Very well centered throughout, about 25 show small surface scrapes, some separation & minor reinforcements, Plate Block is Fine-Very Fine. A Handsome & Attractive Sheet 3,345.00
- 44 **1c Blue, Ty. V (24). Complete Sheet of 100,** L. Pane, Pl. 10, Without gum. Mixed centering, most Fine-Very Fine. One stamp of Plate Block has a hole, about a dozen others have slight faults. Weak perfs. or separations neatly reinforced. Rare & Attractive Sheet 3,345.00

- 45 ★ 3c Rose, Ty. I (25). Block, Fresh, Mostly o. g., Bright Color, bit reinforced, Very Fine, a Rare and Beautiful Block 750.00
- 46 ★ 3c Red (26). R. Imprint Plate No. 28 Block of Eight, Fresh, Full o. g., Brilliant, sensibly reinforced in few places, a Very Fine and Beautiful Block 400.00
- 47 ☒ 5c Brick Red (27). Horiz. Strip of Three, Fairly well centered, cut from sheet at B. with extra wide margin. Few perfs. separated & insignificant toned specks. New Orleans-France, via N. Y. & American pkt. Choice & Handsome, signed "Ashbrook" 750.00+
- 48 5c Indian Red (28A). Vertical Strip of Three, Marvelous Deep Rich Color, Neat Town pmks., Fine-Very Fine, ex-Jessup. This is the strip first identified by Stanley B. Ashbrook as a Major Color Variety and from which the original Scott listing was made 1,250.00



- 49 ☒ 5c Indian Red (28A). Vertical Strip of Three, Gorgeous Color, Wonderfully Well Centered, separated from sheet by scissors entirely outside the perfs. showing bits of three adjoining stamps. New Orleans to France, June 1858, with Red N. Y. transit pmk. An Extraordinary "Gem", ex-Hill E. XVI
- 50 ☒ 5c Indian Red (28A). Horiz. Strip of Three, Brilliant Color, Unusually Well Centered, few perfs. blunted at B. of left pair, New Orleans, to Nantes, France, via N. Y. & American Pkt., Jan. 1859 prepaid. Fresh & Handsome 1,250.00+
- 51 5c Brown, Ty. I (29). Block, Unusual Turquoise Blue Town pmks., tiny hinge reinforcements, few nibbed perfs., otherwise Very Fine, Rare Block 1,250.00
- 52 ★ 5c Orange Brown (30). Block of 32, Positions 3-10, 13-20, 23-30, 33-40R2, incl. Top Right Sheet Margins with Bit of Imprint, Fresh, Full o. g., mixed centering, from trifle in to Very Fine, partly separated & rejoined, few slight faults, but as a whole an Outstanding Rarity and Marvelous Showpiece, ex-Caspary 5,800.00+
- 53 ★ 12c Intense Black, Plate III (36b). Block of Eighteen, Fresh, o. g., some hinge reinforcing, centered a bit to bottom left, Fine for this Rare Block 1,770.00+



- 54 ★ 24c Red Lilac (37b). Horizontal Block of Six, Fresh, traces of o. g., Fine-Very Fine, Largest Known Block, A Wonderful Exhibition Piece 5,000.00+



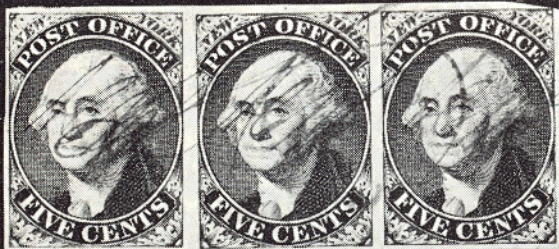
55

57

- 55 ★ 30c Orange (38). Block, Marvelous Deep Rich Color, Nearly Full o. g., tiny hinge reinforcements, Very Fine, A Gorgeous Rare Block, ex-Moody 1,350.00
- 56 ★ 30c Orange, Imperforate (38a). Rich Color, Very Fine, with P. F. Certificate 1,100.00
- 57 ★ 90c Blue (39). Block, Fresh, o. g., Wonderful Deep Rich Color, few perfs. lightly strengthened, tiny tear in bottom right stamp, otherwise Extremely Fine, A Beautiful Block, with P. F. Certificate 3,000.00

LOTS ON VIEW MARCH 24th and 25th

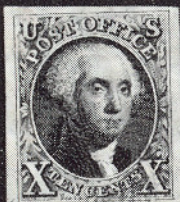
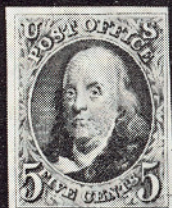
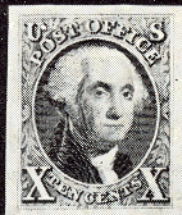
From 10:00 A. M. to 3:00 P. M.



7



17



18



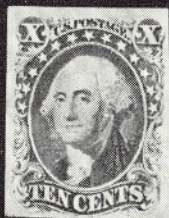
20



21



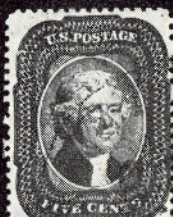
24



34



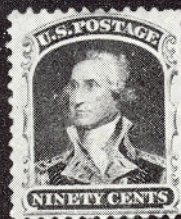
39



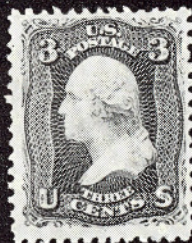
91



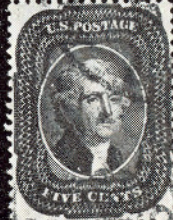
56



61



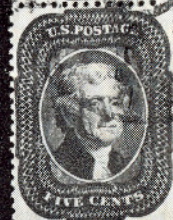
67



69



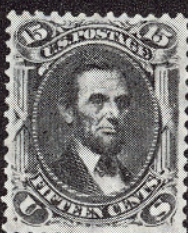
75



48



76



88



102



106



107



58

59

60

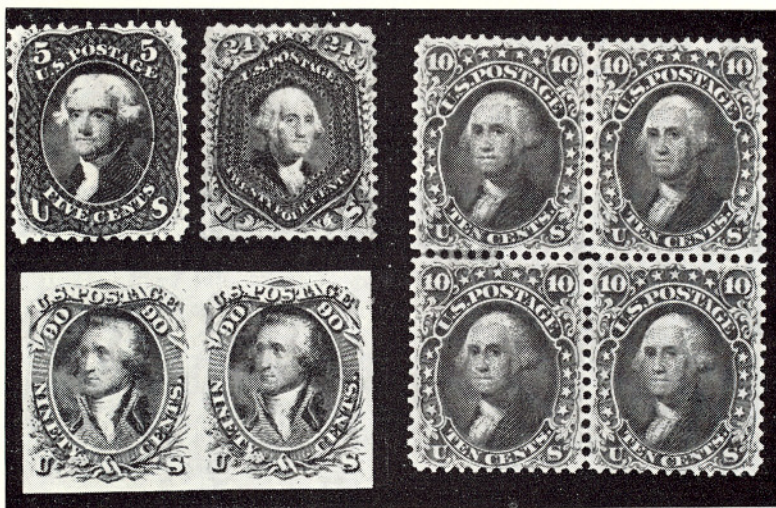
- 58 ★ **5c Orange Brown, Reprint (42). Horizontal Pair**, reperfed at right, otherwise Very Fine, Rare Pair 1,250.00
- 59 ★ **10c Blue Green, Reprint (43). Horizontal Pair**, Unusually Well Centered, Magnificent Deep Rich Color, Extremely Fine for this Issue, claimed to be the largest known multiple 2,750.00
- 60 ★ **12c Greenish Black, Reprint (44). Horizontal Pair**, Wonderfully Fresh, bottom perfs. trifle in, Very Fine for this Issue, claimed to be the largest known multiple 2,500.00
- 61 ★ **90c Deep Blue, Reprint (47). Gorgeous Color, Well Centered**, small corner crease, Very Fine Appearance 1,700.00

1861 ISSUE

- 62 ★田 **3c Brown Rose, "First Design" (56). Block**, Incredibly Well Centered, Fresh, o. g., sensibly reinforced with four tiny bits of hinge, one corner perf. broken off & neatly restored, otherwise Extremely Fine, Rare Block 1,300.00

63

65



66

64

- 63 ★ **5c Brown, "First Design" (57). Magnificent Color, Well Centered**, minute trace of toning in one perf. at left, still a Very Fine & Handsome Example of this Rare Stamp, with P. F. Certificate 8,000.00
- 64 ★田 **10c Dark Green, "First Design" (58). Block**, Nearly Full o. g., with P. F. Certificate which states . . . "genuine Scott 58, with some perforations separated, a light horizontal crease" (the separations have been lightly strengthened, the crease is actually a bend which does not break the paper), Very Fine, A Rare Block in Any Condition, Especially when so well centered 7,000.00

- 65 ★ **24c Dark Violet, "First Color" (60).** Magnificent Color, Large Part o. g., Well Centered, Very Fine, A Gorgeous & Rare Stamp, with P. F. Certificate 2,000.00
- 66 ★ **90c Dull Blue "First Design", Imperforate (62a).** Horizontal Pair, Large Margins, Beautiful Deep Rich Color, faint horiz. crease, otherwise Extremely Fine, Very Rare, with P. F. Certificate 3,000.00
- 67 ★ **3c Lake (66).** Fresh, Nearly Full o. g., Beautiful Deep Color, much better than usual centering, Very Fine, Handsome Stamp 650.00



- 68 ★ **3c Lake (66). B. Imprint Plate No. 34 Strip of Four,** Gorgeous Color, Fresh, a Sensational Showpiece of the Greatest Rarity 2,600.00+
- 69 ★ **3c Lake, Imperforate (66a). Horiz. Pair,** Large Margins All Around, Full o. g., Extremely Fine with P. F. Certificate 700.00
- 70 ☒ **5c Buff, 10c Green, 30c Orange (67, 68, 71).** Tied together & on the cover by neat Red Grids, N. Y. to Canary Is., via London, Nov. 1861, Better than usual centering, light filing crease in 10c, others Fine, A Gorgeous, Rare Showpiece **E. XIII**
- 71 ★ ☐ **12c Black (69). Vertical Block of Six,** with Part Right Sheet Margin, Fresh, o. g., disturbed on one, other five nearly full gum. Exceptional Centering, Particularly the right vertical strip, An Extremely Fine & Handsome Block 730.00

Delivery of Lots at our Offices March 26th



- 72 ★ 90c Blue (72). B. Imprint Plate No. 18 Strip of Four, Fresh, Rich Color, couple blunted perf. tips on one, others Fine, a Gorgeous Showpiece of Utmost Rarity 1,300.00+
- 73 ★ 2c Black (73). Bottom Imprint & Plate No. 31 Strip of Four, Fresh, Part o. g., Strong, Intense Shade, tiny hinge reinforcements, Very Fine, Rare E. XII
- 74 ★ 2c Black (73). Vertical Block of Six with Right Sheet Margin, Marvelous Centering, Fresh, o. g., tiny hinge reinforcements, Extremely Fine, Rare in such wonderful centering 280.00+
- 75 ★ 3c Scarlet (74). Brilliant Color, Large Part o. g., Fine & Rare, with P. F. Certificate 1,500.00
- 76 ★ 5c Red Brown (75). Marvelous Deep Rich Color, Nearly Full o. g., Very Fine & Handsome 265.00
- 77 ★ 24c Grayish Lilac (78a). Vertical Block of Six with Part Bottom Imprint & Plate No., Fresh, o. g., Marvelous Color & Centering, tiny hinge reinforcements, Extremely Fine, A Beautiful Block 420.00+

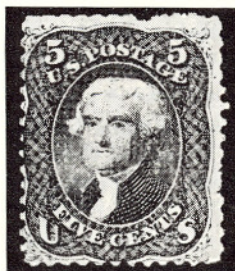
1867 GRILLED ISSUES



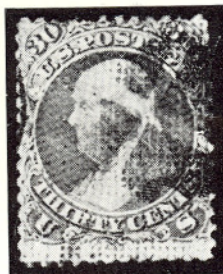
- 78 ★ 3c Rose, Grilled All Over (79). Block, Unusually Well Centered, a minimum of the characteristic short perfs., Very Fine, An Incredibly Marvelous Rare Block 5,500.00



- 79 ★ 3c Rose, Grilled All Over, Imperforate (79a). Bottom Imprint & Plate No. 52 Block of Eight, Fresh, Full o. g., Extremely Fine, Listed but Unpriced, with P. F. Certificate, (catalog value as two blocks is \$4,000.00) E. XVII



- 80 ★ 5c Brown, Grilled All Over (80). Fresh Deep Shade, with P. F. Certificate which states . . . "genuine with small defects". Of the six or seven examples of this stamp believed to exist, two are unused, both being of similar quality. The Rarest of All Unused U. S. Stamps in Existence, with P. F. Certificate, ex-Klein, Morgenthau 32,500.00



- 81 30c Orange, Grilled All Over (81). Bold Quartered Cork cancel., few irregular perfs. as usual, minor toned spot, nevertheless a Fine Example of this Outstanding Rarity, this being one of six believed to exist, with P. F. Certificate, ex Vermont. This is only the second time we have ever offered a 30c Grilled All Over in 45 Years of Conducting Philatelic Auctions. This is just about as fine as it exists 27,500.00



- 82 **3c Rose, B. Grill (82).** Light pmk. & Part of Red Boxed Transit, Fine and Extremely Rare, this is one of the four known stamps removed from the discovery cover. Illustrated and written up in Brookman Volume II, pp. 129, 130, with photo-copy of P.F. Certificate, second example ever to be offered at auction 27,500.00

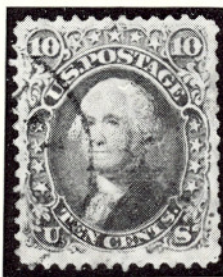


- 83 ★田 **2c Black, D. Grill (84).** Block, Beautifully Centered, Virtually Full o. g., Extremely Fine, A Very Rare Block, particularly in such wonderful condition 4,500.00



- 84 **1c Blue, Z. Grill (85A).** Wonderfully Well Centered with small part of second grill impression, Bold "Philadelphia, Pa." Town pmk. A Magnificent & Astounding Rarity, this is the only one available to collectors as the other known 1c Z. Grill is in the Miller collection in the New York Public Library; with P.F. Certificate, illustrated in Brookman Vol .II, Page 133, This is the Rarest United States Stamp 25,000.00

- 85 ★ 3c Rose, Z. Grill (85C). Left Margin Block, Fresh Color, Part o. g., perfs. touch to trifle in, typical centering, Very Rare Block 4,500.00



- 86 10c Green, Z. Grill (85D). Beautiful Centering, Deep Shade, Red & Blue pmks., Extremely Fine despite a couple very minor faults as this is the finest of the five known, one of which is in the Miller collection in the New York Library, with APS Certificate & Brookman endorsement, Photographed in Brookman Vol. II, Page 136, An Incredible Rarity 20,000.00



- 87 15c Black, Z. Grill (85F). Perfs. trifle in at right, Neat Geometric cancel., One of Two Known examples, A Priceless Rarity, with P. F. Certificate 22,500.00
- 88 ★ 15c Black, E. Grill (91). Incredibly Fresh, Nearly Full o. g., Well Centered & Very Fine, Choice Stamp 725.00
- 89 ✉ 2c Black, F. Grill, Bottom Horiz. Half used for 1c (93c). Well tied over the cut by slightly smudged concentrics. A neat "Morrow, O." Drop Letter, Fine, with P. F. Certificate, & Very Rare 500.00

ESTIMATES

Our sales offer many covers, cancellations, varieties and other items for which there is no catalogue value or where catalogue value does not reflect the actual value. In order to assist our clients, we are placing a fair net valuation on such lots as a guide to bidders. The chart below will be used. For example, E. IV means that our estimated net value on the lot is \$30.00 to \$40.00. Lots may actually realize more or less than our estimates, which are under no circumstances to be considered reserves but merely a guide to bidding.

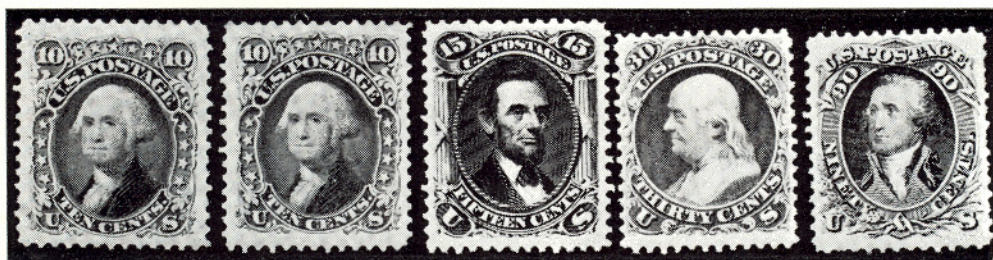
E. I	up to \$10.00	E. IX	\$150.00 to \$200.00
E. II	\$10.00 to \$20.00	E. X	\$200.00 to \$250.00
E. III	\$20.00 to \$30.00	E. XI	\$250.00 to \$350.00
E. IV	\$30.00 to \$40.00	E. XII	\$350.00 to \$500.00
E. V	\$40.00 to \$50.00	E. XIII	\$500.00 to \$750.00
E. VI	\$50.00 to \$75.00	E. XIV	\$750.00 to \$1000.00
E. VII	\$75.00 to \$100.00	E. XV	\$1000.00 to \$2000.00
E. VIII	\$100.00 to \$150.00	E. XVI	\$2000.00 to \$5000.00
E. XVII			over \$5000.00



- 90 ★ 15c Black, F. Grill (98). Bottom Imprint & Plate No. 41 Block of Eight, Wonderfully Well Centered, Nearly Full o.g., sensibly reinforced with tiny bits of hinge, some gum toned specks, a few of which show on face, nevertheless Extremely Fine & of Utmost Rarity, Unlisted as a Plate Block E. XVII

1861 RE-ISSUES

- 91 ★ 1c Blue, Re-Issue (102). Vertical Pair with Left Imprint Margin, Brilliant o.g., Well Centered, large hinge reinforcement, offset on back of top perfs. of upper stamp barely shows through, otherwise Very Fine, Rare Multiple with Imprint 350.00+



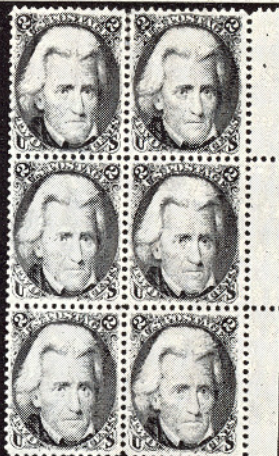
- 92 ★ 10c Green, Re-Issue (106). "Jumbo" Margins, Wonderfully Well Centered, Full o.g., very lightly hinged, Extremely Fine, A Spectacular Stamp, with P. F. Certificate 950.00
- 93 ★ 10c Green, Re-Issue (106). Fresh, Virtually Full o.g., Well Centered & Extremely Fine 950.00



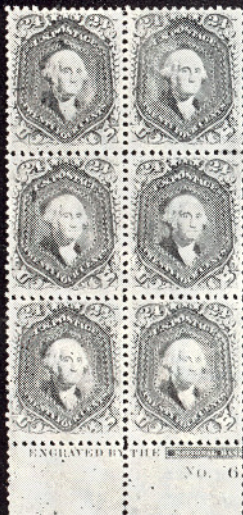
62



73



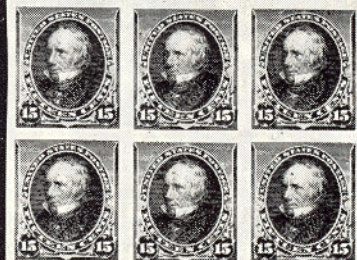
74



77



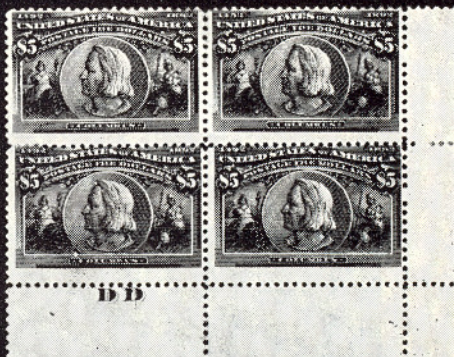
98



124



105



134



123



150

2953

- 94 ★ **15c Black, Re-Issue (108).** Beautiful Margins & Centering, Fresh, Virtually Full o. g., Extremely Fine, A Marvelous "Gem", with P. F. Certificate 1,100.00
- 95 ★ **30c Brownish Orange, Re-Issue (110).** Fresh, Nearly Full o. g., Well Centered, Wider Bottom Margin, Extremely Fine, A Beautiful Rarity, with P. F. Certificate 1,750.00
- 96 ★ **90c Blue, Re-Issue (111).** Well Centered, Beautiful Rich Color, Part o. g., some nibbed perfs., otherwise Extremely Fine 2,000.00

1869 PICTORIAL ISSUE


- 97 P **1c-90c 1869 Pictorials, Large Die Proofs (112P-122P).** Complete set; Bicolors exist only as hybrids, Very Fine 6,800.00
- 98 ★ **2c Brown (113).** Block of Twelve. Fresh, o. g., five stamps with faint natural pre-printing folds, which do not mar the beauty of this handsome block, Fine-Very Fine 685.00+




99 - 100

- 99 P **15c-90c Pictorial Plate Proofs on Card, Centers Inverted (120Pa-122Pa, 129Pa).** Complete Set, Very Fine & Rare 3,600.00
- 100 P **24c Green & Violet, Plate Proof on Card, Center Inverted (120Pa).** Bottom Imprint & Plate No. 24 Block of Eight, Very Fine, An Astounding Rarity 8,500.00



- 101  24c Green & Violet (120). Horiz. Pair, partly severed, Fine centering, used in combination with 12c Dull Violet (151) & Three 2c Brown (146) paying 66c rate (triple 22c rate) on fresh cover, Port Chester, N. Y. to Lima, Peru, via New York. Tied by small, neat split cork. A matchless "Gem"; one of the most magnificent 1869 combination covers in existence E. XVII
- 102 S 30c Blue & Carmine Without Grill, "Specimen" Overprint Ty. I (121S var.). Fresh, Nearly Full o. g., Very Fine Example of this Very Rare Unlisted Variety E. XIII



- 103 ★ 30c Blue & Carmine, Flags Inverted (121a). Well Centered, Fresh, Rich Colors, Very Fine Example of this Great Rarity, one of the finest of the very few known 37,500.00
- 104  30c Blue & Carmine (121). Bright Colors, Nicely centered, Tied by neat "Circle of Wedges" on large part of July 1870 cover, addressed to "Hon. B. Disraeli, M. P., Grosvenor Gate, London". Very Fine & Rare piece, with P. F. Certificate 2,250.00

- 105 P **90c Carmine & Black, India Paper Proof (122P). Bottom Imprint Plate**
No. 22 Block of Eight, Very Fine 1,200.00
- 106 ★ **30c Blue & Carmine, Re-Issue (131).** Fresh, small part o. g., Brilliant
 Colors, insignificant corner perf. creases, few nibbed perfs., otherwise Fine 775.00
- 107 ★ **90c Carmine & Black, Re-Issue (132).** Beautiful Centering, light pen
 guarantee marking on back, Extremely Fine 1,300.00
- 108 ★ **90c Carmine & Black, Re-Issue (132).** Fresh Colors, insignificant corner
 perf crease & tiny perf. thin speck, Very Fine Appearance 1,300.00

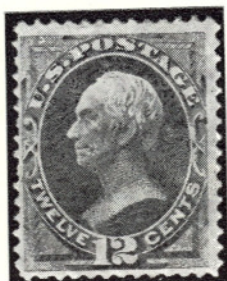


- 109 ★ **1c Buff, Re-Issue (133). Complete Sheet of Seventy, Fine-Very Fine, A**
 Beautiful and Fantastic Rarity, Possibly Unique E. XVII

LOTS ON VIEW MARCH 24th and 25th

From 10:00 A.M. to 3:00 P.M.

BANK NOTE ISSUES



- 110 ★ **12c Dull Violet, Grill (140).** Lightly toned, small corner perf. crease, otherwise Fine with P. F. Certificate 6,000.00



111

113

- 111 ★田 **24c Bright Purple (153).** Block, Lovely Color, Fresh, o. g., A Wonderful Showpiece, Extremely Fine, ex-Caspary, Lilly 2,500.00
- 112 ★ **30c Black (154).** Unusually Well Centered, Fresh, Part o. g., with P. F. Certificate that mentions "light soiled spot at right", an unjustifiable condemnation of a perfectly beautiful stamp, Extremely Fine 300.00
- 113 ★田 **90c Rose Carmine (166).** Block, Large Part o. g., Brilliant Color, Marvellous Centering, Extremely Fine, A Gem 1,750.00



114 - 121

- 114 ★ **2c Dark Brown, Special Printing (168).** Fresh Color, few perfs. blunted by scissor separation, virtually intact, Fine & Handsome Example of this Rarity, with P. F. Certificate 1,700.00
- 115 ★ **7c Reddish Vermilion, Special Printing (171).** Well Centered, Fresh & Bright, few perfs. blunted by scissor separation as often, some short at top, otherwise Very Fine, with P. F. Certificate 1,350.00
- 116 ★ **12c Dark Violet, Special Printing (173).** Beautiful Color, tiny corner thin, three short perfs., otherwise Very Fine, with P. F. Certificate 1,500.00
- 117 ★ **24c Dull Purple, Special Printing (175).** Wonderfully Well Centered, Fine Color, couple partly blunted perfs., otherwise Extremely Fine, W. H. C. (Colson) handstamp guarantee and A. P. S. Certificate 1,350.00
- 118 ★ **24c Dull Purple, Special Printing (175).** Fine with P. F. Certificate 1,350.00
- 119 ★ **2c Black Brown, Special Printing (193).** Fresh Beautiful Color, small thin spots, Very Fine Appearance, with P. F. Certificate, signed Stern, Handsome Rarity 2,750.00
- 120 ★ **7c Scarlet Vermilion, Special Printing (196).** Large Margins, Wonderfully Well Centered, Bright Vivid Color, Extremely Fine, A Matchless Example of this Rarity with P. F. Certificate 1,750.00
- 121 ★ **12c Blackish Purple, Special Printing (198).** Large Margins, Beautiful Centering, tiny natural paper inclusion speck, Fresh & Extremely Fine, with P. F. Certificate 2,750.00
- 122 ★ **2c Pale Red Brown, Special Printing, Horizontal Pair Imperf. Between (211Bc).** Well Centered, Fresh, o. g., single partly blunted perf., still Very Fine, Rare, signed E. Stern 1,000.00





AMERICAN BANKNOTE COMPANY.

AMERICAN BANKNOTE COMPANY.

No. 33

No. 33

AMERICAN BANKNOTE COMPANY.

AMERICAN BANKNOTE COMPANY.

1890 ISSUE

- 123 ★ 3c Purple, Imperforate (221a). Bottom Imprint & Plate No. 21 Block of Twelve, Fresh & Very Fine 1,050.00+
- 124 ★ 15c Indigo, Imperforate (227a). Block of Six, with Top Plate No. 22, bottom left stamp tiny thin specks, otherwise Very Fine, Handsome & Rare Block 900.00+
- 125 ★ 30c Black, Imperforate (228a). Horiz Pair, Very Fine 600.00
- 126 ★ 90c Orange, Imperforate (229a). Horiz. Pair, Fresh, crackly o. g., Extra Large Margins, Very Fine, Rare 1,000.00

COLUMBIAN ISSUE

- 127 P 1c-\$5.00 Columbian, Large Die Proofs (230P-245P). Complete Set, Printed directly on large (8½ x 5½") cards. The 1c has an insignificant pre-printing wrinkle, mentioned only for sake of accuracy. Very Fine & Fresh throughout 2,250.00
- 128 ★ 1c-10c Columbians (230-237). Complete Sheets of 100, Fresh, o. g., sensibly reinforced around edges with tiny bits of hinge, Ninety Percent are Mint, 1c-6c Virtually All Fine-Very Fine with A Number of Choice Singles, 8c and 10c mixed centering, Many Fine-Very Fine, An Exceptionally Rare Group of Sheets 23,333.00+
- 129 ★ 1c, 3c-15c Columbians (230, 232-238). Complete Panes of 50 each except 3c is block of 45 with complete Plate No. and Imprint Block, Fresh panes, o. g., centering varying from Very Good to Very Fine, Handsome Lot 14,855.00



- 130 ★ 4c Blue, Columbian Error of Color (233a). Fresh, o. g., Fine Example of this Ever-Popular Rarity, with P.F. Certificate 4,750.00
- 131 ★ 15c Columbian (238). Complete Sheet of 100, Fresh, o. g., some minor hinge reinforcing, almost entirely around edges, mixed centering, perfs. touch on some, Mostly Fine-Very Fine, Very Rare Sheet 8,130.00



- 132 ★ 1892 ★ \$1.00 Columbian (241). Bottom Imprint, "W" & Plate No. 93 Block of Eight, Brilliant o. g., sensibly reinforced with tiny bits of hinge, trivial thin speck in one stamp, two small thins in selvedge, otherwise Very Fine, A Rare & Handsome Showpiece 7,250.00
- 133 ★ \$1.00 Columbian (241). Complete Sheet of 50, Brilliant o. g., Marvelous Rich Fiery Color, sensibly hinge reinforced around edges with tiny bits of hinge, one natural paper inclusion on surface, another with faint insignificant thin speck, neither of these in the Plate No. Block of Eight, mixed centering, mostly Fine-Very Fine, including approximately Twelve Extremely Fine Stamps, the Imprint & Plate No. Block is Fine-Very Fine, A Wonderful & Outstanding Exhibition Piece (Photo Back Cover) 23,950.00+
- 134 ★ 1892 ★ \$5.00 Columbian (245). Bottom Right Corner Margin Block with "DD" Imprint, Fresh, o. g., perfs. tiny bit in on bottom pair, top pair Fine, with P. F. Certificate which states . . . "genuine with some perforations rejoined with cement" (which is actually negligible strengthening, not visible on face) Rare Block 6,500.00

1894-1898 ISSUES

- 135 ★ 1894 ★ 50c Orange (260). Block of Sixteen, Brilliant o. g., five stamps very lightly hinged, others Mint, Marvelous Centering, Extremely Fine Block 1,100.00
- 136 ★ \$1.00 Black, Imperforate (276b). Horiz. Pair, Large part o. g., Very Fine 850.00
- 137 ★ \$2.00 Dark Blue, Imperforate (277b). Horiz. Pair, Fresh, o. g., Very Fine, with P. F. Certificate 1,200.00
- 138 P 1c-\$2.00 Trans-Mississippi, Large Die Proofs (285P-293P). Unusually Fresh, Very Fine, A Beautiful & Choice Set 2,800.00
- 139 P 1c-\$2.00 Trans-Mississippi, Small Die Proofs (285P-293P). Very Fine, Rare Set 1,225.00
- 140 ★ 1894 ★ 8c Trans-Mississippi (289). Top Imprint & Plate No. 643 Block of Ten, Mint, Very Fine 1,150.00
- 141 ★ 1894 ★ 10c Trans-Mississippi (290). Top Imprint & Plate No. 604 Block of Ten, Exceptionally Well Centered, Brilliant Mint, tiny hinge in extreme top of selvedge only, Extremely Fine 1,400.00



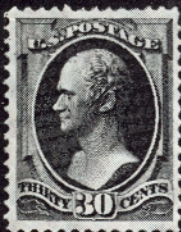
108



122



125



112



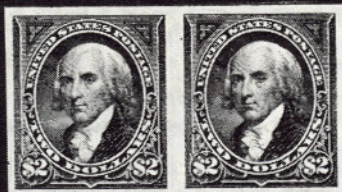
126



136



151



137



142 EX



139 EX



149



153 EX



171



184



166



167

PAN-AMERICAN ISSUE

142 P 1c-10c Pan-American, Small Die Proofs (294P-299P). Very Fine Set 660.00



143

144

145

146

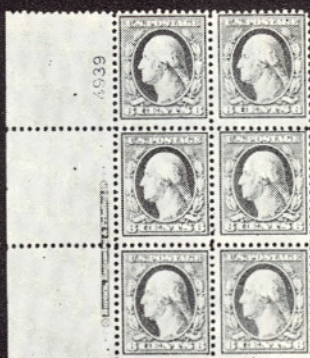
- 143 ★ 1c Pan-American, Center Inverted (294a). Unusually Fresh, o. g., tiny trivial thin spot, Very Fine, with P. F. Certificate 3,750.00
- 144 ★ 1c Pan-American, Center Inverted (294a). Nicely centered, part o. g., small thin, reperfed at top, Fine Appearing Example of this Rarity 3,750.00
- 145 ★ 2c Pan-American, Center Inverted (295a). Centered to one side, insignificant corner perf. crease & natural inclusion speck, Attractive Example of this Famous Twentieth Century Rarity, with P. F. Certificate 20,000.00
- 146 ★ 4c Pan-American, Center Inverted (296a). Fine centering, small part o. g., couple light creases, tiny tear, perf. flaws including bottom left corner perf. replaced, Quite Fine Looking Example of this Rarity 6,500.00
- 147 ★ 4c Pan-American (296). Top Imprint & Plate No. 1145 Block of Six, shiny o. g., A Fine & Rare Plate Block 750.00

1902-1904 ISSUES

- 148 ★ \$1.00 Black (311). Block, Unusually Large Margins, tiny thin spot in top left stamp, otherwise Extremely Fine 825.00
- 149 ★ \$5.00 Dark Green (313). Very Fine, A Beautiful Stamp 525.00
- 150 ★ 5c Blue, Imperforate (315). B. Imprint & Plate No. 2953 Block of Six, usual natural paper wrinkles, Very Fine 2,500.00
- 151 ★ 2c Carmine, "San Francisco" Roulette (319e var.). Vertical Strip of Three, Left Sheet Margin with Initials, Top Pair the Variety, centered to top right, Fine, Very Rare (see footnote in Scott) 600.00
- 152 ★ 2c Carmine, "San Francisco" Roulette (319e var.). Vertical Block of Ten, imperf. center line at right, Two Top Vertical Pairs the Varieties, some vertical perfs. lightly strengthened, both top stamps tiny perfs. flaws, centered to top, Very Rare Block (see footnote in Scott) 1,200.00
- 153 P 1c-10c Louisiana Purchase, Small Die Proofs (323P-327P). Complete Set, Very Fine 1,750.00



135



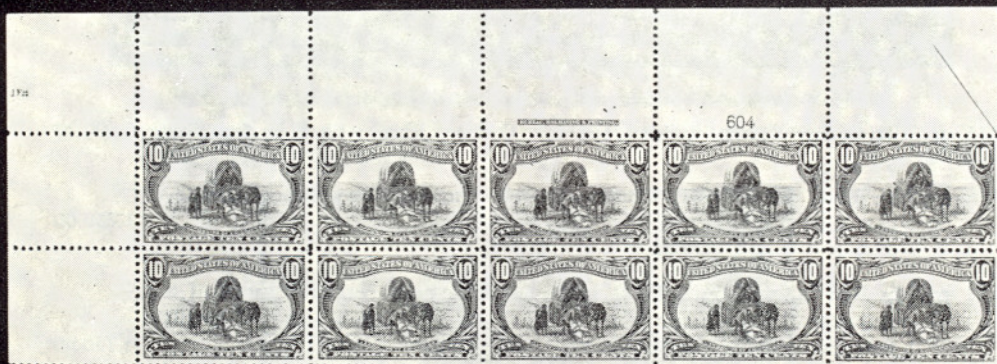
157



160



140



141



147



148



168



170



- 154 ★ 2c Louisiana Purchase, Vertical Pair Imperf. Horizontally (324a). Fresh, left perfs. touch to a trifle in as on nearly all existing examples of this variety, Very Rare 3,000.00

BLUISH PAPERS



- | | | | |
|--------|---|-----|----------|
| 155 | 156 ... | 158 | 159 |
| 155 ★ | 4c Orange Brown, Bluish (360). Fine & Very Rare, with P. F. Certificate | | 6,500.00 |
| 156 ★ | 5c Blue, Bluish (361). Unusually Well Centered, Very Fine Example of this Rare Stamp | | 1,750.00 |
| 157 ★田 | 6c Red Orange, Bluish (362). Left Imprint & Plate No. 4939 Block of Six, tiny tear & wrinkle in extreme edge of selvage, (easily removed by slight reduction) Fine, Very Rare | | 3,750.00 |
| 158 ★ | 8c Olive Green, Bluish (363). Fine & Very Rare, signed Sloane with P. F. Certificate | | 6,500.00 |
| 159 ★ | 13c Blue Green, Bluish (365). Wonderfully Well Centered, Fresh & Extremely Fine | | 850.00 |
| 160 ★田 | 2c Lincoln, Bluish (369). Right Imprint, Star & Plate No. 4976 Block of Six, top perfs. clear to trifle in, Rare Plate Block | | 1,250.00 |

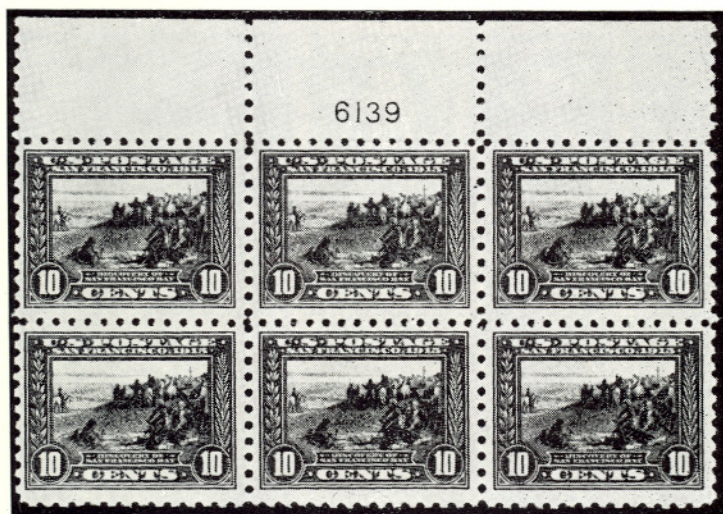
1910-1919 ISSUES



161

3c Deep Violet, "Orangeburg Coil" (389). Strip of Three, Fine-Very Fine, with P. F. Certificate stating . . . "genuine, with cancellation partially removed". This is the only Known Used Strip, Very lightly cancelled, Probably Unique, A Tremendous, Startling 20th. Century Rarity, Catalogue as singles \$4,950.00

E. XVII



162 ★ 10c Panama-Pacific, Perf. 10 (404). T. Plate No. 6139 Block of Six, Very Fine, Rare Plate Block

6,500.00



163 ★ 30c Orange Red, Unwatermarked (476A). Left Margin Block, Fine, with P. F. Certificate, Very Rare, Listed but Unpriced

E. XVII



164

2c Carmine Imperforate, Ty. Ia (482A). Light Wavy Line Machine cancel., Schermack Private Perf. Ty. III as always, centered slightly to left, showing full Schermack perfs. both sides, Very Fine for this Great Rarity, with P. F. Certificate 3,750.00

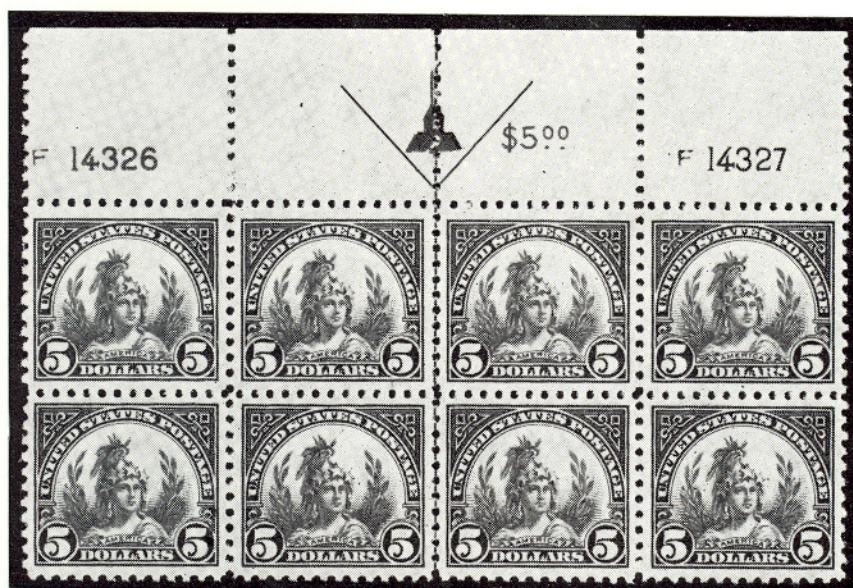


- 165 ★ 5c Carmine Error, Imperforate (485). Double Error in Mint Left Arrow Block of Thirty, Very Fine, Very Rare & Handsome 8,500.00+
- 166 ★ 2c Carmine Coil, Ty. II (491). Pair, Fine-Very Fine 1,300.00

- 167 ★ 2c Carmine Coil, Ty. II (491). Pair, Fine 1,300.00
- 168 ★ 11c Light Green, Perf. 10 at Bottom (511 var.). Block, Bottom Right Stamp the Error, Fine-Very Fine, Rare 600.00+
- 169 ★ \$5.00 Deep Green & Black (524). Arrow & Double Plate No. Block of Eight, light hinge mark in selvage only, stamps mint, usual tiny staple holes, Very Fine, Rare & Handsome Plate Block 1,100.00
- 170 ★ 2c Carmine, Offset, Imperforate Ty. V (533). Mint Center Line Block, light gum creases, otherwise Very Fine 450.00
- 171 ★ 2c Carmine Rose, Rotary Ty. II (539). Mint, centered least bit to top, Very Fine, with P. F. Certificate 675.00

1922 TO DATE

- 172 ★ 2c Carmine, Imperf. Vertically (554a). Right Plate No. 15749 Block of Nine, Mint, horizontal perfs. run diagonally but trimmed to normal block shape, trivial light crease affects three stamps, Possibly Unique as a Plate Block, A Spectacular Rarity E. XIII



- 173 ★ \$5.00 Carmine & Blue (573). Arrow & Double Plate No. Block of Eight, Mint, Well Centered, usual natural gum bends, Extremely Fine 2,000.00
- 174 P 1c-5c Lexington-Concord (617P-619P). Large Die Proofs Die Sunk on 8 x 5" Cards, Very Fine & Rare 1,200.00
- 174A P 5c Ericsson (628P). Large Die Proof on India, Die sunk on 8 x 6" card. Very Fine & Rare 450.00
- 175 ★ 2c Carmine, Ty. II (634A). Bottom Left Plate No. 19744 Block, Fine-Very Fine, Rare 900.00



152



169



182



172



191



177



175



192



185



189



176

180

- 176 ★ 2c Von Steuben, Imperforate (689a). Horiz. Pair with Left Sheet Margin, few gum wrinkles as nearly always, one a trifle heavy, nevertheless Very Fine, Rare Error 1,750.00
- 177 ★ 2c Yorktown, Imperforate Vertically (703c). The Unique Center Line & Right Arrow Block of Ten, small thin in selvedge only, far from design, Fine-Very Fine, A Spectacular & Handsome Rarity of which one sheet of 50 was ever found 8,000.00+
- 178 P 3c William Penn, Large Die Proof on India (724P). Die Sunk on 6 x 8" card, Very Fine 500.00
- 179 P 3c Daniel Webster Large Die Proof on India, (725P). Die sunk on 6 x 8" card, Very Fine, Rare 500.00
- 180 ★ 5c Kosciuszko, Imperf. Vertically (734a). Mint Block, Very Fine & Very Rare 2,000.00
- 181 ★ 1½c Presidential, Vertical Pair with Horiz. Gutter Between (805 var.). Cpl. Miscut Sheet of 100, Without Plate No., Part Stamps Top & Bottom with Complete Row of Ten Error Pairs, some minor reinforcing & separation not affecting the Gutter Pairs, Very Fine, Possibly Unique as Sheet 1,500.00+
- 182 ★ \$1.00 Presidential, Imperf. Horizontally (832a). Bottom Right Corner Block, Very Fine, Rare 800.00
- 183 ★ \$5.00 Presidential (834). Cpl. Sheet of 100, some selvedge creases & small separations not affecting the Double Plate No. Block, which is Very Fine, others 90% Very Fine 6,550.00
- 184 ★ 4c McDowell, Imperforate Horizontally (1138a). Mint Vertical Strip of Three, centered to left as are all known of these errors, Fine & Rare 1,350.00
- 185 ★ 5c Florida, Yellow Omitted (1271a). Top Margin Block, Mint, Very Fine, Rare Error E. XIV
- 185A ★ 1c Green Coil, Imperforate (1299b). Mint Strip of Four, Very Fine, Rare, Listed but Unpriced E. XIV
- 186 ★ 4c Black Coil, Imperforate (1303b). Mint Strip of Three, Fine & Rare, Listed but Unpriced E. XII



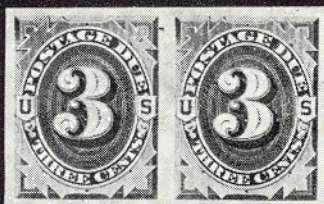
186



188



209



210 EX



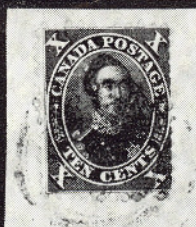
238



243 EX



249



255



187



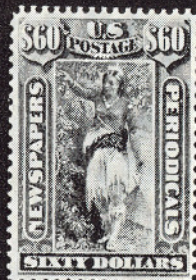
204



203



212



213



266



269



270



271



274



262 EX

שקל כסף מהשנה הרביעית
של המרד הראשון
הכתובת:
"שקל ישראל"
"הקדושה"
"שך"



- 187 ★ 6c Hemisfair, White Omitted, ("6c", Converging Lines) (1304a). Mint, Very Fine, Rare Error 750.00
- 188 ★ 6c Waterfowl Conservation, Vertical Pair Imperf. Between (1362a). Mint, Very Fine & Rare 600.00
- 189 ★ 8c Tom Sawyer, Yellow & Gray Colors Omitted (1470 var.). Mint Margin Block, Very Fine, Very Rare Unlisted Variety, Only one sheet of 50 known E. XV

AIR POST

- 190 ★ 6c-24c 1918 Air Post (C1-C3). Complete Sheets of 100, #C3 with the Rare Blue "Top" Only, sensibly hinge reinforced around edges, few negligible thin spots not affecting Plate No. Blocks, Virtually All Fine-Very Fine, Rare Set 20,245.00
- 191 ★ 6c Orange (C1). Arrow & Plate No. 9155 Block of Six, Exceptional Centering, Mint, Extremely Fine, Choice Plate Block 725.00
- 192 ★ 16c Green (C2). Arrow & Plate No. 8900 Block of Six, Fantastic, Beautiful Centering, Extremely Fine 1,100.00
- 193 ★ 24c Carmine Rose & Blue (C3). Arrow, Double "Top" & Double Plate No. Block of Twelve, Mint, tiny natural inclusion spot in one, Very Fine 1,350.00



- 194 ★ 24c Carmine Rose & Blue, Center Inverted (C3a). Fresh, o. g., Lovely Colors, Beautiful Centering, couple tiny negligible thin specks, otherwise Very Fine, Handsome Example of this most Famous & Popular of all Errors 40,000.00
- 195 ★ 16c Dark Blue (C5). Bottom Plate No. 14828 Block of Six, Mint, Very Fine 1,400.00
- 196 ★ 16c Dark Blue (C5). Block of Twenty, Mint, Fine-Very Fine 1,190.00
- 197 ★ 65c-\$2.60 Graf Zeppelin (C13-C15). Blocks, Mint, Very Fine set through-out 4,410.00
- 198 ★ 65c-\$2.60 Graf Zeppelin (C13-C15). Plate No. Blocks of Six, first two with natural gum bends & gum skips, the 65c few strengthened selvage perfs., \$1.30 with tiny closed tear in selvage well clear of plate no., Fine-Very Fine, the \$2.60 is Well Centered, Mint & Exceptionally Choice, Rare Set 10,300.00

20079



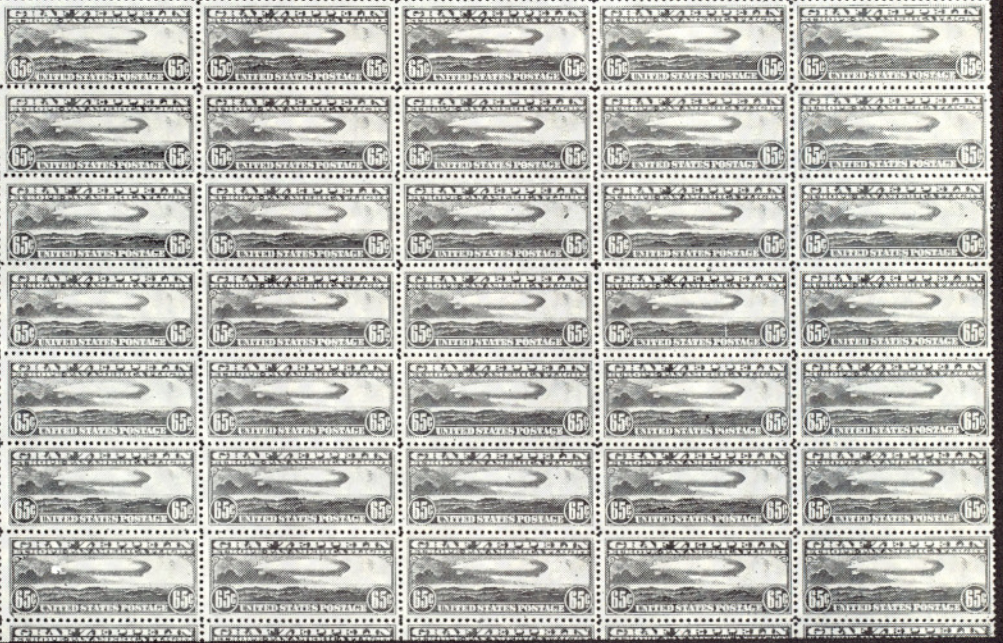
20085



20092

20080

20080



20090

20090



- 199 ★ **65c Graf Zeppelin (C13). Cpl. Sheet of 50**, small tear & slight perf. strengthening in top selvage well clear of Plate No., one stamp in bottom row tiny natural pre-print paper fold, Fine-Very Fine, Rare Sheet 10,390.00
- 200 ★ **\$2.60 Graf Zeppelin (C15). Cpl. Sheet of 50**, small separation in selvage of T. Plate No. Block, separation between sixth & seventh rows, Very Fine & Outstanding Sheet 31,750.00
- 201 ★田 **50c Chicago Zeppelin (C18). B. Plate No. 21178 Block of Twenty**, tiny tear in selvage far from Plate No., small natural gum skips, Mint, Very Fine Block 1,585.00
- 202 ★田 **50c Chicago Zeppelin (C18). T. Plate No. 21171 Block of Twenty**, usual natural gum bends, Mint, Very Fine 1,585.00
- 203 ★ **10c Carmine Coil, Imperforate (C73a). Mint Strip of Four**, Fine & Rare, Listed but Unpriced **E. XIV**

BIDDING INTERVALS

BIDS	ADVANCE	BIDS	ADVANCE
Up to \$30.00	\$1.00	\$300.00 - \$725.00	\$25.00
\$32.50 - \$72.50	\$2.50	\$750.00 - \$2,000.00	\$50.00
\$75.00 - \$145.00	\$5.00	\$2,000.00 - \$3,000.00	\$100.00
\$150.00 - \$290.00	\$10.00	\$3,250.00 and up	\$250.00

Bids which do not conform to the above will be automatically reduced to the appropriate level.

ESTIMATES

Our sales offer many covers, cancellations, varieties and other items for which there is no catalogue value or where catalogue value does not reflect the actual value. In order to assist our clients, we are placing a fair net valuation on such lots as a guide to bidders. The chart below will be used. For example, E. IV means that our estimated net value on the lot is \$30.00 to \$40.00. Lots may actually realize more or less than our estimates, which are under no circumstances to be considered reserves but merely a guide to bidding.

E. I	up to \$10.00	E. IX	\$150.00 to \$200.00
E. II	\$10.00 to \$20.00	E. X	\$200.00 to \$250.00
E. III	\$20.00 to \$30.00	E. XI	\$250.00 to \$350.00
E. IV	\$30.00 to \$40.00	E. XII	\$350.00 to \$500.00
E. V	\$40.00 to \$50.00	E. XIII	\$500.00 to \$750.00
E. VI	\$50.00 to \$75.00	E. XIV	\$750.00 to \$1000.00
E. VII	\$75.00 to \$100.00	E. XV	\$1000.00 to \$2000.00
E. VIII	\$100.00 to \$150.00	E. XVI	\$2000.00 to \$5000.00
E. XVII			over \$5000.00



127

97



138



174EX



8



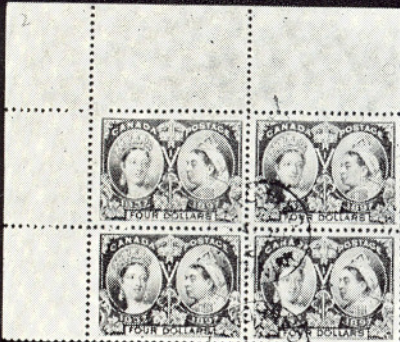
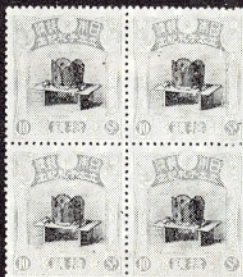
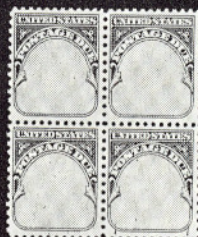
174A



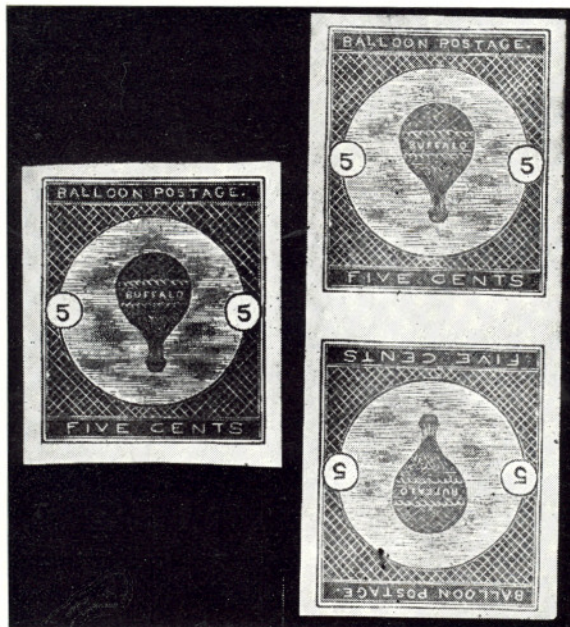
178



179



- 204 ★ 8c National Parks Centennial, Blue Color Omitted (C84 var.). Mint Margin Single, Very Fine, Rare Unlisted Variety, less than 50 copies known **E. XIV**
- 205 ★田 8c National Parks Centennial, Blue Color Omitted (C84 var.). Mint Top Left Plate No. 33459 Block, top left stamp light internal crease, otherwise Very Fine, Very Rare, this Plate Block is probably Unique, Unlisted **E. XVI**



206

207

- 206 ★ 5c Deep Blue, "Buffalo Balloon" (CL1). Huge Margins all around, Fresh, Mint, Extremely Fine Example of this Great Pioneer Rarity 2,000.00
- 207 ★ 5c Deep Blue, "Buffalo Balloon", Tete-Beche Pair (CL1a). Large Margins, Virtually Full o. g., one with tiny thin spots, other tiny black specks, otherwise Very Fine, Very Rare with P. F. Certificate 4,500.00

SPECIAL DELIVERIES — LOCALS

- 208 ★田 10c Violet Special Delivery, Horizontal Pair Imperforate Between (E15c). Top Left Plate No. 19282 Block of Sixteen (2 x 8), top & bottom pairs torn, other Six Error Pairs Mint & Very Fine, catalogued as six pairs only 600.00+
- 209 ★ 2c Deep Brown, Postage Due Special Printing (J9). Fresh, Nearly Full o. g., Gorgeous Centering, Extremely Fine, with P. F. Certificate 800.00
- 210 ★ 1c-50c Bright Claret, Postage Due, Imperforate (J22a-J28a). Mint Horizontal Pairs, few light natural gum wrinkles, one on the left 10c a tiny bit heavy, otherwise Extremely Fine, Rare Set 1,400.00
- 211 ★田 1c Postage Due, Value Omitted (J89b). Block, Mint, Very Fine 600.00+
- 212 S \$2.00 State, "Specimen" Overprint (O68SD). Fresh & Very Fine, A Much Undercataloged Rarity 1,100.00
- 213 ★ 1c-\$60.00 Newspapers, American Bank Note Company, Privately Perforated Special Printings (PR57 var-PR79 var, PR81 var). Cpl. Set, Brilliant o. g., An Extremely Rare & Beautiful Lot **E. XVI**

Be the first steamer for Liverpool.



Head name
V^e 50 L'Admirault
Ingomier
Nantes
To France



Paris
H. Garnier
47
NEW PAID 10 CENTS
JUL 1 1876

via England



James Wood Esq
70
Palmer
24
Grand Central



Stubb
89
Morrison



6
215
JUL 28
PAID

Pony Express Paid \$2.50
217
J.W. Smith Esq
Tuscola



104
B. L. Radi M.D.
Londonderry
PAID
JUL 26
10

216
Schuyler M.D. Esq
New York



218
Jno H. K.
218 Front
New York



219
Journal Office
Springfield
Illinois



- 214 ★ **1c Blue, Eagle Carrier (L02). Complete Sheet of 100**, o. g., two stamps damaged and six have thins including some in margins; balance Very Fine, Attractive Pane 1,250.00+
- 215 ☒ **D. O. Blood & Co., (3c) Red on Bluish (15L1)**. Fine Impression, cut octagonally (as nearly always) clear of design, on 1843 folded letter to Burlington (N. J.) ms. "6" rate, under 30 miles, Red "Philadelphia, Pa." pmk., Very Fine & Fresh, A Magnificent example of this important Rarity 1,500.00

WESTERN COVERS

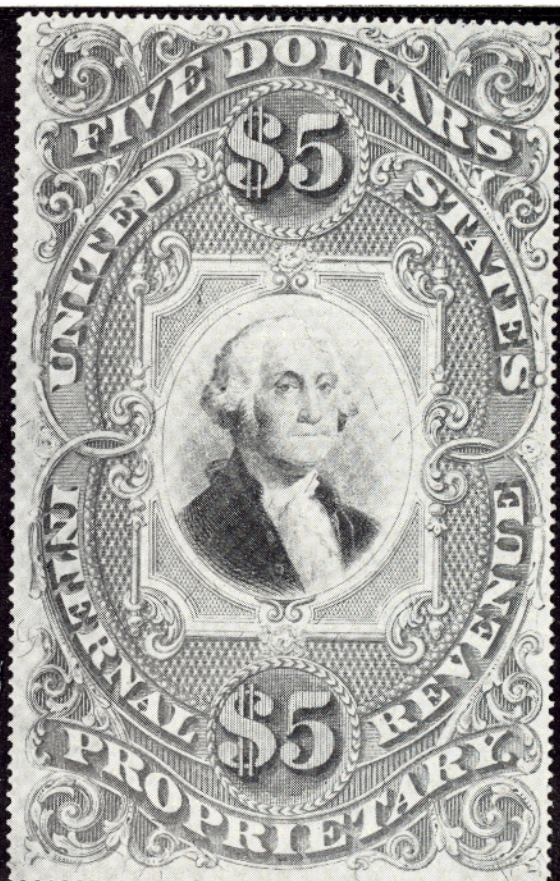
- 216 ☒ **Via Nicaragua, Ahead of the Mails**, Blue Truncate Octagon & Bold Two Line "Steam Ship" tie **12c Black, Diagonal Bisect (17a)** on small cover to New York, treated as unpaid with large "New York Ship, 7 cts". Endorsed "per Vanderbilt Line" & back has clear Blue oval "Supplied From J. W. Sullivan Newspaper Office" with local S. F. address. Cover has small faults & is toned, mostly on back. A dazzling Rarity, one of the Greatest Western covers known **E. XVII**
- 217 ☒ **Pony Express, Paid \$2.50**, Neat ms. endorsement across top of 10c Green on Buff, Star Die Entire (U33) to Illinois. Clear **Green "St Joseph, Mo. Apr. 26"**, A Rare cover under the \$2.50 rate in effect Aug. 1860 - Apr. 1861; one of the last covers carried at the \$2.50 rate. Trifle reduced extreme left, nevertheless Very Fine **E. XV**
- 218 ☒ **Wells, Fargo & Co. S. Fco.** Bold Blue Double Circle ties 10c Green, Ty. V (35) to Pink over-all illustrated official Wells, Fargo envelope to New York. Bold "Collect" in oval & light, legible **McIntire's Post, 3 Wall St.** for local delivery. Fresh,, Immaculate, one of the most beautiful & rare Wells, Fargo covers in existence **E. XV**
- 219 ☒ **Jones & Russell's Pikes Peak Express Co., Denver City**, Perfect Bold undated circle used as frank on 3c Red Entire (U10) to Illinois. Similar dated circle, Jul. 29, 1859 struck on back as cancel.; The envelope stamp with "Leavenworth City, K. T., Aug. 8, 1859" pmk. Very Fine, A Spectacular Rarity used in 2nd month of their short-lived existence **E. XV**
- 220 ☒ **Spargur's Honey Lake Express**, Bold Printed Frank, fancy border, on 3c Red Entire (U10) to Penn'a., ms. "Paid 7" added as surcharge to make 10c rate. Light legible "Quincy, Cal." pmk. over frank. One side flap missing, small sealed tear, immaterial as it is unique of record and of Very Fine appearance **E. XV**

REVENUE STAMPS

- 221 **\$1.00 Blue & Black, Inverted Center (R118a)**. Well Centered, Rich Colors, minor surface abrasion of a few perf. tips, otherwise a Very Fine Example of this Rarity 1,500.00
- 222 **\$200.00 Blue, Black & Red (R132)**. Rich Colors, Exceptionally Well Centered, Very Fine 1,250.00
- 223 **\$500.00 Black, Green & Red "Persian Rug", Second Issue Documentary (R133)**. Well Centered, Neat Violet ms. cancel, tiny paper transparency speck, light horizontal crease which is really inconsequential since nearly all large revenues were destroyed by document folding, A Richly Colorful & Handsome Rarity 3,250.00



223



225



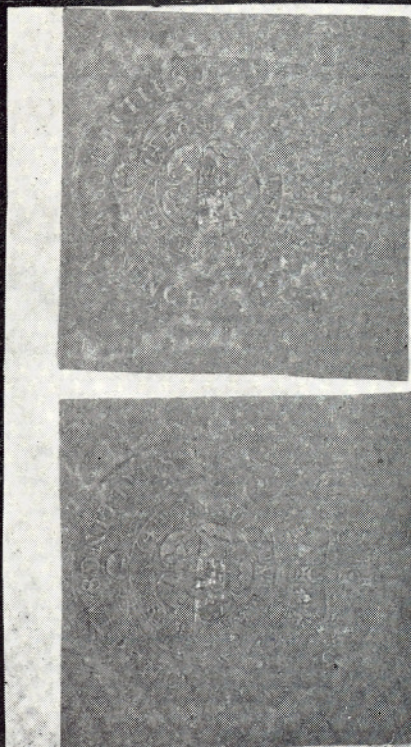
221



222



224



231


- 224 **1c Trans-Miss. L. H. Chapman Provisional (R158A).** Light Handstamped cancel, only 250 issued, an Outstanding Example of this Very Rare Provisional Revenue 650.00
- 225 ★ **\$5.00 Green & Black Proprietary on Green Paper (RB10b).** Fresh & Bright, Extremely Fine. This is the Only Known Unused Example of the two or three "green papers" that exist. The Crowning "Gem" of Any Revenue Collection in both Beauty & Extreme Rarity, A Fantastic Stamp in magnificent condition 4,000.00+
- 226 ★ **Colonial Revenue, 2/6 Blue (RM31).** Two, unused, affixed by metal strips to original parchment, control labels on back, Sharp Embossing, Very Fine —
- 227 **MATCH & MEDICINE COLLECTION,** 654 virtually all different, mounted, far above average condition, A very attractive collection with many scarce items 4,632.25

CONFEDERATE STATES

- 228 ☒ **Danville, Va., 5c Black on Dark Buff (21XU3).** Curved "Southern" type, used with 5c Blue, Rough Impression but London Print shade (6?) Margins to trifle in. Cover expertly repaired, Very Fine appearance. Confederate Stamp Alliance Certificate of authenticity verifies the provisional but states it did not do Postal duty. This is actually a moot question for there is not the slightest evidence this cover paid a 5c rate & it is entirely possible it paid a 10c rate, double weight before July 1, 1862, 10c rate thereafter. An incredible combination under any circumstances **E. XIV**
- 229 ☒ **Lynchburg, Va., 5c Blue (52X1).** Beautiful Dark Shade, Clear to Large Margins, prominent printing flaw next to numeral, tied by Lynchburg pmk., another Strike, on Neat Cover to Amherst C.H., Va., Very Fine and Rare 1,000.00

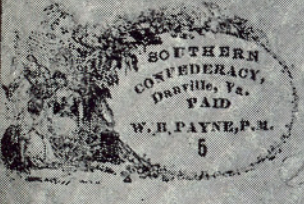




- 230 ★ **Macon, Ga., 5c Black on Yellow Laid Paper (53X7).** Large Margins, Fresh color, Extremely Fine, with P. F. Certificate; A newly discovered major variety of the highest order of Rarity and in the finest possible condition, Probably Unique **E. XVII**
- 231 ☒ **5c Blue (6). Block of Six & Horiz. Pair,** "Acton, Tex., March 4/65", ms. pmk. on Trans-Mississippi front only to Dalton, Ga. ms. "Via Shreveport, La." Extensive military address, a little worn at edges, yet reasonably good appearance. West to East Trans-Mississippi covers all of great rarity, especially from Texas, with Confed. Stamp Alliance Certificate **E. XIII**
- 232 ☒ **5c Blue, Local Print (7). Eight,** (Strip of Three, Two pairs & single), paying 40c Trans-Mississippi rate, uncanceled. Mar. 31, 1864 letter indicates it was to be transmitted by private blockade runner, ms. via Shreveport, La. From same correspondence as preceding lot with extensive military address to a Texas soldier. Fine, & of the highest degree of rarity. With Confed. Stamp Alliance Cert. **E. XIII**



Paid
220

 Mr. Horace Brinster
 Montrose



232


228

 Mr. William Anglin



233
 Mrs. Wood
 King River


229
 John Thompson



Atton Texas
 March 4/64
231
 Capt. J. A. Hornwall
 Dalton Ga
 Columbus Division
 Smith's Brigade
 Army of Tennessee


 Saint Nazaire
 Mr. Charles Caboy
261
 Bordeaux



273
 Henry H


268

 Mr. George Palmer Putnam,
 2 West 45th St.,
 New York, N. Y.
 Re-REGISTERED
 59385
 Arrived by air May 4, 1880
 From England
 REPUBLIQUE MEXICAINE
 U. S. P. U.
 Num 5495


lby
 7
 1880

- 233  **10c Light Blue, Frame Line (10). Pos. 30, Full (18mm) Sheet Margin at R., Cpl. Lines at L. & R. Wide Margins T. & B., tied by Mobile, Ala. double circle pmk. on cover to Bowling Green, Va., small tear at top of cover, a Wonderful Stamp, One of the Most Outstanding Frame Line Covers Known, Ex-Dietz** **E. XIV**
- 234  **10c Blue (11). Ample to large margins, tied by "Macon, Ga." double circle on War-Time Emergency envelope to Demopolis, Ala. The envelope is made from a complete cartridge wrapper of the Selma (Ala.) Arsenal, dated June 1864. It was carefully opened and refolded to enclose a very interesting letter of military significance in reference to Sherman's March to the Sea. It is headed "Camp near Lovejoy Station, Ga., Sept. 12, 1864. It is in a remarkably fine state of preservation, perfect except for a small erosion in one corner. This particular cover was extensively written-up in "The Confederate Philatelist" for Nov.-Dec. 1972 and is a rare, historic piece of major importance** **E. XIII**

U. S. POSSESSIONS

- 235 ★ **CANAL ZONE, 1921, 2c Carmine, Booklet Pane of Six (61f). Cpl. Booklet of Two Panes, Panes Very Fine, Rare** 700.00+
- 236 ★  **GUAM, 1899, 50c Orange, Overprint (11). B. Imprint & Plate No. 75 Block of Six, Fresh, dry gum, tiny insignificant sealed tear in selvage, nevertheless Fine-Very Fine, a Rare & Beautiful Block** 850.00



- 237 **HAWAII, 1851, 5c Blue, "Missionary" (2). Margins virtually all around. Bold Grid cancel., Expertly repaired as nearly always. A Fine appearing example of this classic Rarity, much better than generally seen. With Calves Certificate** 11,000.00
- 238 **PHILIPPINES, 1899, 5c Blue, Inverted Overprint (216a). Very light cancel., perfs. least bit in at left, typical centering for this Very Rare Stamp, with P. F. Certificate** 850.00
- 239 ★  **— 1944, 6c Brown Official, "Victory" Handstamp (O40A). Block with Left Sheet Margin, right perfs. clear to trifle in, single short corner perf., with P.F. Certificate stating . . . "genuine, stained and part o.g.", the staining is in reference to tropical toning which occurs on virtually all these Rare Stamps, Only Known Block** 8,000.00+



239

240

241

- 240 ★ — 1944, 20c Light Olive Green Official, "Victory" Handstamp (O43).
The Left Stamp of the Pair as Illustrated, typical tropical toning, Fine,
Very Rare, with P. F. Certificate 2,000.00
- 241 ★ — 1944, 20c Light Olive Green Official, "Victory" Handstamp (O43).
The Right Stamp of the Pair as Illustrated, similar to the preceding lot
except for inconsequential thinning in top perfs., otherwise Fine, Very
Rare 2,000.00

The two preceding lots will be sold as one lot providing the bid exceeds
the total realized for them individually.

- 242 ★ **PUERTO RICO, 1898, 5c Black, Coamo Provisional (201). Cpl. Sheet of
Ten, Margins all around, Fresh, Full o. g., Extremely Fine** 2,000.00
- 243 ★ — 1899, 5c-10c "Puerto Rico" Overprints, Special Printing (212-214 var.).
Fresh, Full o. g., left perfs. least bit in on 8c, others Fine, Rare, ex-
Green E. XIII

UNITED NATIONS

- 244 ★田 1960, 8c Fifth World Forestry Congress, Imperforate (82 var.). Mint Top
Margin Block, trivial wrinkle in margin of top right stamp, otherwise
Very Fine, Very Rare, Unlisted E. XIV
- 245 ★田 1961, 8c International Court of Justice, Imperforate (89 var.). Mint Top
Margin Block, few internal wrinkles slightly grazing the design on three,
really insignificant otherwise Very Fine, Very Rare, Unlisted E. XIV
- 246 ★ 1966, 11c UNICEF Anniversary, Imperforate (163a). Complete Sheet of
50, light wrinkles in right vertical row, still Very Fine, An Outstanding
United Nations Rarity E. XVII





UNITED NATIONS 聯合國
NATIONS UNIES
OBBEINENNE NATION
НАЦИОНАЛЬНЫЕ НАЦИИ
FIRST U.N.
ISSUE 1951



247

248

247 ★ 1951, 6c Henna Brown, First Air Post, Imperforate (C1 var.). Bottom Right Inscription Block of Four, Mint, slight bend in selvage only, Very Fine, Very Rare, Unlisted, Only one sheet of 50 known E. XVII

248 ★ 1964, 15c Multicolored Air Post, Gray Color Omitted (C11a). Mint Margin Single, Very Fine Example of this Rare Stamp, Only 50 Known, Listed but Unpriced E. XIII

GENERAL FOREIGN

- 249 ★ **ARGENTINA, 1864, 10c Green (9).** Margins all around, Huge at R., Rich Color, Clear Early Impression, Fresh, Full o. g., Brilliant, Very Fine and Rare 1,200.00



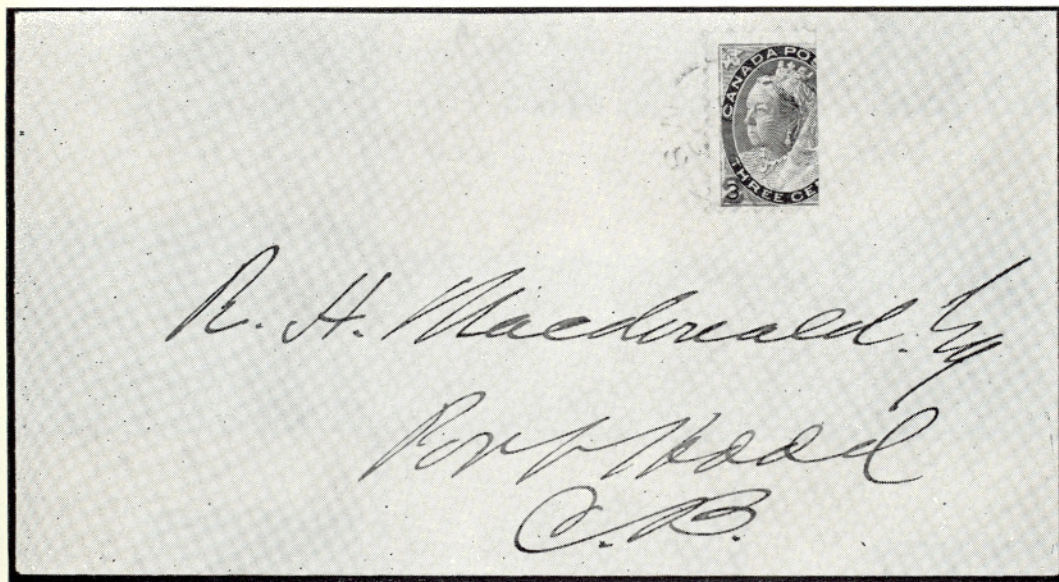
- 250 251
- 250 ★ — **1899, 5p Orange & Black, Inverted Center (140a).** Fresh, o. g., Very Fine 450.00
- 251 ★ — **1899, 10p Green & Black, Inverted Center (141a).** U. R. Sheet Corner Margins, Fresh, o. g., Brilliant, Very Fine and Rare 1,600.00

CANADA



- 252 253 254
- 252 ★ **1855, 10p Blue (7).** B. R. Sheet Corner, Huge Margins other Sides, Brilliant Color & Impression, Fresh, o. g., Extremely Fine, a Magnificent Showpiece, Ex-Amundsen, with "Royal" Certificate 1,750.00
- 253 ★ **1855, 10p Blue (7).** Margins all around, Fresh, Rich Color & Impression, faint, almost invisible thin speck, Very Fine appearance, Ex-Moody 1,750.00
- 254 ★ **1857, 7½p Green (9).** Full Imprint Pair, Wide T. Sheet Margin, Fresh, Nearly Full o. g., Rich Color & Impression, Brilliant, a Very Fine & Gorgeous Pair, notwithstanding few negligible imperfections in right stamp, Believed to be Unique, Ex-Amundsen, with "Royal" Certificate 3,500.00+
- 255 **1859, 10c Black Brown (16).** Gorgeous Color & Impression, tied by Target on small piece, centered bit to top right, minute Printing flaw on top of Head, Fine 500.00



- 256 ☐ 1897, \$4.00 Jubilee (64). Top Left Corner Margin Block, Well Centered, Vivid Color, Neat purple "Winnipeg, Canada" pmks., Extremely Fine, A Rare & Beautiful Block 1,000.00+
- 257 ☐ 1897, \$5.00 Jubilee (65). Right Margin Block, light purple "Winnipeg, Canada" pmks., Very Fine, Rare & Handsome 1,000.00+




- 258 ☐ 1899, "2(c)" on two-thirds of 3c Carmine (88c). Port Hood Provisional. Tied by neat "Port Hood, N.S." pmk. on small, neat cover, Extremely Fine, with P. F. Certificate, (has recently realized as high as \$4750.00 at auction) E. XVI
- 259 ★ ☐ 1928-29, 1c-\$1.00 George V Pictorials Imperforate Horiz. (149-159 var.). Blocks, Mint, Very Fine E. XV
- 260 ★ ☐ 1971, 6c Spring, Imperforate (535a). Block, Mint, Extremely Fine and Rare E. XV
- 261 ☐ ECUADOR, 1872, ½r Blue, 1r Rose (9, 11). Each tied by Red Dotted cancel. on cover. Guayaquil to France, through British P. O. at Guayaquil & via British Transit of Panama; 12 decimes due. Nick at top of cover, far from stamps or postal markings. A Very Rare Cover, with P. F. Certificate E. XIII

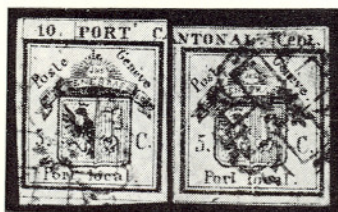
ISRAEL

- 262 ★ 1948, 250m-1000m First Coins (7-9). With Tabs, Mint, Fine-Very Fine 4,750.00
- 263 ★ ☐ 1948, 250m-1000m First Coins (7-9). Tab Blocks, Mint, 1000m three perfs. separated between stamps, Extremely Fine and Rare 10,790.00+
- 264 ★ ☐ 1948, 250m-1000m First Coins (7-9). Tab Blocks, Very Fine and Beautiful 10,790.00+
- 265 ★ ☐ 1948, 3m-1000m First Coins, Imperforate (1 var-9 var). B. L. Corner Tab Blocks, Mint, 250m tiny toning specks, 1000m light bends affect one tab, nevertheless an Extremely Fine set of the Greatest Rarity 11,365.00+
- 266 ★ 1948, 500m Red Brown, Horiz. Pair, Imperforate Between (8 var.). Mint, Very Fine and Very Rare E. XIV

- 267 ★  **JAPAN, 1916, 10s Ceremonial Cap (154). Block, Extremely Fine & Rare 1,000.00+**
- 268  **MEXICO, 1935, 20c Amelia Earhart (C74). Tied with additional franking by Mexico City pmk., in Combination with U.S. franking, tied by Newark pmk. on Registered May 8, 1935 Flight Cover, negligible tiny sealed tear in cover, a Very Fine and Rare Cover, only 40 flown, autographed by Amelia Earhart E. XVI**
- 269 ★ **NEWFOUNDLAND, 1919, 3c Hawker Trans-Atlantic Air Post (C1). Well Centered, light corner crease, otherwise a Very Fine Example of this rarity, several signatures (Photo) 7,000.00**
- 270 ★ **NOVA SCOTIA, 1853, 1p Red Brown (1). Margins All Around, Brilliant Fresh Color, Large Part o.g., Very Fine, A "Gem", with A. P. S. Certificate 350.00**
- 271 **ST. VINCENT, 1893, 5p on 6p Deep Lake, Double Overprint (59b). Lightly Cancelled, Rich Color, Nicely Centered, Very Fine, a Beautiful Stamp of the Greatest Rarity, only three believed known, with P. F. Certificate 1,500.00**



- 272 **SAXONY, 1850, 3pf Red (1). Large Margins all around, Rich Color, tied by Leipzig 1851 pmk. on small piece of wrapper, very light negligible wrinkles and minute abrasion, otherwise Extremely Fine, Rare and Beautiful 2,800.00**
- 273  **SERBIA, 1869, 40p Violet, Bisect (23a). B. Half tied on cover, used as 20p Very Fine, Handsome E. XII**
- 274 ★ **SWITZERLAND, Basel, 1845, 2½r Dove of Basel (3L1). Clear Margins, Rich Colors, Clear Embossing, tiny bit soiled and small faults, Fine appearing Example of this always Popular Rarity 4,000.00**



- 275 — **Geneva, 1843, 5c Black on Green, Vert. Half (2L1a). Left and Right Halves, forming together the "Double Geneva"; Margins all around, Red Geneva Rosette Cancels., right half has minute flaws, other is Very Fine, a Beautiful Example of these Rarities 6,500.00**

END OF SALE — THANK YOU

CONDITIONS OF SALE

1. The terms of sale are strictly cash on delivery to the highest bidder unless special arrangements have been made prior to the sale.
2. All bids are per lot as numbered in the catalogue unless otherwise announced by the auctioneer at the time of sale. The right is reserved to group two or more lots; to withdraw any lot or lots from the sale, or to act in behalf of the seller. The auctioneer shall regulate the bidding and in the event of any dispute his decision shall be final.
3. Any lot, the description of which is incorrect is returnable, but only within five days of receipt. All disputed lots must be returned intact as received. **The following lots may not be returned for any reason whatsoever: Lots containing ten or more stamps; Lots from buyers who have had the opportunity to examine them before the sale; Lots described as having defects or faults may not be returned because of any faults. No illustrated lots may be returned because of centering, margins or other factors shown in the illustrations.**
4. Successful bidders, unless they are known to us or supply acceptable references are expected to make payment in full before the lots are delivered. Mail bidders will be notified of the amount of their purchases. All mail bidders who have established credit with us must make payment within three days after receipt. We reserve the right in our sole and absolute discretion to demand cash payment at the time a lot is knocked down to any bidder who has not previously established credit with us or whose account is in arrears. In the event any buyer refuses to pay cash for any lot at the time it is knocked down to him, the auctioneer reserves the right to re-offer the lot immediately for sale to the highest bidder.
5. If the purchase price has not been paid within the time limit, nor lots taken up within seven days from date of sale they must be resold and any loss arising from such sale will be charged to the defaulter. Any account more than thirty days in arrears is subject to a late payment charge of 1½% per month so long as the account remains in arrears. If the auctioneer, in his discretion, should institute any legal action to secure payment of a delinquent account the defaulting purchaser shall pay all legal expense incurred by the auctioneer and such charges will be added to the amount owed.
6. All lots are sold as genuine but should any lot be proved otherwise by written opinion of any competent, responsible authority acceptable to us, immediate refund of the full purchase price will be made, provided that such claim is made in writing within 14 days from date of sale. If claims is not made within this period, no lots are returnable for any reason at any time. So long as we are notified within the 14 day period that an opinion is being sought the matter will remain open until such opinion is rendered. We will not be responsible for any charges incurred by the buyer for expertization fees and costs unless the opinion states the item is not genuine, in which case we will pay actual costs up to a maximum of \$50.00.
7. Until paid for in full, all lots remain the property of Robert A. Siegel Auction Galleries, Inc. in behalf of the seller.
8. All forwarding charges will be added to the purchase price. The mode of shipment shall be at our option unless we are given specific instructions.
9. Lots may be sent for inspection to buyers known to us upon written application. All such lots must be returned to us by registered mail, adequately insured and within 24 hours after receipt. The applicant assumes all responsibility and for insurance against all risks from time of receipt until they are actually received back by us, and is to pay all expenses of postage and insurance. No lots can be sent for inspection within eight days from date of local viewing. Large lots and collections cannot be sent for inspection.
10. Agents are responsible for all purchases made in behalf of their clients unless other arrangements are made prior to the sale.
11. In this sale there are some lots in which the Galleries have an interest other than that as agent for the owners. These may include lots on which cash advances have been made or lots where the seller may be indebted to the Galleries, giving the Galleries a direct or indirect interest in the sale of these lots. If any lot is sold against a minimum realization and this is not met, such sale may be effected at a reduced commission charge.
12. The placing of a bid shall constitute acceptance of the foregoing conditions of sale.

ROBERT A. SIEGEL, Licensed Auctioneer



AMERICAN BANK NOTE COMPANY.



W

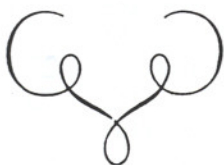
AMERICAN BANK NOTE COMPANY.

No. 93

468th SALE

List of Prices Realized

RARITIES OF THE WORLD



TUESDAY, MARCH 25, 1975

Total Realization \$1,014,185.00

Robert A. Siegel

AUCTION GALLERIES, INC.

120 EAST 56th STREET

NEW YORK CITY, N. Y. 10022

Tel.: (212) 753-6421

NEW YORK CITY, N. Y. 10022

Tel.: (212) 753-6421

Price	Lot #	Price	Lot #	Price	Lot #	Price	Lot #	Price
2,100.00	57	2,300.00	113	2,400.00	169	1,300.00	223	2,900.00
525.00	58	1,000.00	114	1,550.00	170	425.00	224	1,100.00
850.00	59	2,500.00	115	650.00	171	750.00	225	10,000.00
10,500.00	60	2,400.00	116	1,000.00	172	650.00	226	500.00
2,200.00	61	1,000.00	117	850.00	173	2,000.00	227	2,900.00
1,600.00	62	675.00	118	700.00	174	900.00	228	900.00
1,200.00	63	4,750.00	119	1,900.00	174A	350.00	229	1,500.00
850.00	64	2,600.00	120	2,800.00	175	600.00	230	3,750.00
1,450.00	65	2,500.00	121	3,500.00	176	1,100.00	231	525.00
600.00	66	1,850.00	122	900.00	177	5,250.00	232	400.00
14,000.00	67	1,000.00	123	1,350.00	178	400.00	233	1,250.00
5,500.00	68	3,500.00	124	950.00	179	400.00	234	1,000.00
3,250.00	69	1,300.00	125	675.00	180	1,550.00	235	825.00
13,500.00	70	900.00	126	1,200.00	181	750.00	236	800.00
1,400.00	71	1,300.00	127	2,000.00	182	700.00	237	6,250.00
5,000.00	72	2,700.00	128	22,000.00	183	6,000.00	238	1,400.00
1,050.00	73	950.00	129	9,500.00	184	800.00	239	2,400.00
550.00	74	1,400.00	130	3,250.00	185	650.00	240	725.00
3,250.00	75	1,650.00	131	7,500.00	185A	950.00	241	725.00
800.00	76	400.00	132	13,500.00	186	260.00	242	1,000.00
1,000.00	77	1,600.00	133	28,000.00	187	650.00	243	500.00
2,900.00	78	5,250.00	134	2,500.00	188	450.00	244	650.00
6,250.00	79	8,000.00	135	2,000.00	189	1,250.00	245	650.00
1,350.00	80	29,000.00	136	1,150.00	190	18,000.00	246	5,500.00
2,900.00	81	24,000.00	137	1,650.00	191	1,150.00	247	6,250.00
2,000.00	82	23,000.00	138	2,300.00	192	1,200.00	248	500.00
725.00	83	9,500.00	139	1,200.00	193	1,150.00	249	425.00
700.00	84	42,500.00	140	1,450.00	194	28,000.00	250	250.00
3,500.00	85	4,750.00	141	1,950.00	195	1,550.00	251	950.00
2,900.00	86	20,000.00	142	625.00	196	1,200.00	252	6,750.00
6,250.00	87	21,000.00	143	2,100.00	197	4,250.00	253	650.00
10,500.00	88	1,000.00	144	1,100.00	198	8,000.00	254	8,500.00
1,700.00	89	850.00	145	7,250.00	199	9,500.00	255	250.00
1,900.00	90	8,000.00	146	1,500.00	200	29,000.00	256	1,700.00
1,750.00	91	375.00	147	900.00	201	1,050.00	257	1,700.00
5,750.00	92	1,550.00	148	900.00	202	1,200.00	258	3,000.00
7,250.00	93	1,400.00	149	800.00	203	650.00	259	950.00
8,500.00	94	2,100.00	150	1,750.00	204	700.00	260	1,000.00
3,500.00	95	2,000.00	151	400.00	205	3,250.00	261	375.00
16,000.00	96	1,400.00	152	625.00	206	2,400.00	262	3,400.00
1,850.00	97	5,000.00	153	1,450.00	207	3,800.00	263	8,000.00
	98	850.00	154	1,700.00	208	500.00	264	5,750.00
1,000.00	99	3,750.00	155	4,500.00	209	1,100.00	265	13,000.00
	100	6,250.00	156	1,500.00	210	1,150.00	266	750.00
400.00	101	12,500.00	157	2,800.00	211	325.00	267	850.00
675.00	102	850.00	158	4,250.00	212	1,950.00	268	2,900.00
700.00	103	32,500.00	159	1,200.00	213	1,350.00	269	3,500.00
2,600.00	104	2,500.00	160	675.00	214	700.00	270	375.00
4,250.00	105	1,550.00	161	8,000.00	215	1,600.00	271	1,200.00
850.00	106	325.00	162	5,750.00	216	2,600.00	272	2,500.00
1,600.00	107	1,750.00	163	3,500.00	217	1,100.00	273	450.00
8,500.00	108	800.00	164	3,000.00	218	1,700.00	274	1,000.00
1,850.00	109	11,500.00	165	8,500.00	219	1,500.00	275	4,000.00
5,250.00	110	2,800.00	166	1,600.00	220	2,800.00		
2,500.00	111	3,750.00	167	850.00	221	1,400.00		
1,150.00	112	425.00	168	325.00	222	1,500.00		

Robert A. Siegel Auction Galleries, Inc.
Prices Realized for
Sale 468 March 25, 1975 1975 Rarities of the World

Lot#	Realized	Lot#	Realized	Lot#	Realized	Lot#	Realized	Lot#	Realized
1	2,100	37	7,250	75	1,650	111	3,750	147	900
2	525	38	8,500	76	400	112	425	148	900
3	850	39	3,500	77	1,600	113	2,400	149	800
4	10,500	40	6,000	78	5,250	114	1,550	150	1,750
5	2,200	41	1,850	79	8,000	115	650	151	400
6	1,600	43	1,000	80	29,000	116	1,000	152	625
7	1,200	45	400	81	24,000	117	850	153	1,450
8	850	46	675	82	23,000	118	700	154	1,700
9	1,450	47	700	83	9,500	119	1,900	155	4,500
10	600	48	2,600	84	42,500	120	2,800	156	1,500
11	14,000	49	4,250	85	4,750	121	3,500	157	2,800
12	5,500	50	850	86	20,000	122	900	159	1,200
13	3,250	51	1,600	87	21,000	123	1,350	160	675
14	13,500	52	8,500	88	1,000	124	950	161	8,000
15	1,400	53	1,850	89	850	125	675	162	5,750
16	5,000	54	5,250	90	8,000	126	1,200	163	3,500
17	1,050	55	2,500	91	375	127	2,000	164	3,000
18	550	56	1,150	92	1,550	128	22,000	165	8,500
19	3,250	57	2,300	93	1,400	129	9,500	166	1,600
20	800	58	1,000	94	2,100	130	3,250	167	850
21	1,000	59	2,500	95	2,000	131	7,500	168	325
22	2,900	60	2,400	96	1,400	132	13,500	169	1,300
23	6,250	61	1,000	97	5,000	133	28,000	170	425
24	1,350	62	675	98	850	134	2,500	171	750
25	2,900	63	4,750	99	3,750	135	2,000	172	650
26	2,000	64	2,600	100	6,250	136	1,150	173	2,000
27	725	65	2,500	101	12,500	137	1,650	174	900
28	700	66	1,850	102	850	138	2,300	174A	350
29	3,500	67	1,000	103	32,500	139	1,200	175	600
30	2,900	68	3,500	104	2,500	140	1,450	176	1,100
31	6,250	69	1,300	105	1,550	141	1,950	177	5,250
32	10,500	70	900	106	325	142	625	178	400
33	1,700	71	1,300	107	1,750	143	2,100	179	400
34	1,900	72	2,700	108	800	144	1,100	180	1,550
35	1,750	73	950	109	11,500	145	7,250	181	750
36	5,750	74	1,400	110	2,800	146	1,500	182	700

Robert A. Siegel Auction Galleries, Inc.
 Prices Realized for
 Sale 468 March 25, 1975 1975 Rarities of the World

Lot#	Realized	Lot#	Realized	Lot#	Realized
183	6,000	218	1,700	254	8,500
184	800	219	1,500	255	250
185	650	220	2,800	256	1,700
185A	950	221	1,400	257	1,700
186	260	222	1,500	258	3,000
187	650	223	2,900	259	9,500
188	450	224	1,100	260	10,000
189	1,250	225	10,000	261	3,750
190	18,000	226	500	262	3,400
191	1,150	227	2,900	263	8,000
192	1,200	228	900	264	5,750
193	1,150	229	1,500	265	13,000
194	28,000	230	3,750	266	750
195	1,550	231	525	267	850
196	1,200	232	400	268	900
197	4,250	233	250	269	3,500
198	8,000	234	1,000	270	375
199	9,500	235	825	271	1,200
200	29,000	236	800	272	2,500
201	1,050	237	6,250	273	450
202	1,200	238	1,400	274	1,000
203	650	239	2,400	275	4,000
204	700	240	725		
205	3,250	241	725		
206	2,400	242	1,000		
207	3,800	243	500		
208	500	244	650		
209	1,100	245	650		
210	1,150	246	5,500		
211	325	247	6,250		
212	1,950	248	500		
213	1,350	249	425		
214	700	250	250		
215	1,600	251	950		
216	2,600	252	6,750		
217	1,100	253	650		