



469th SALE

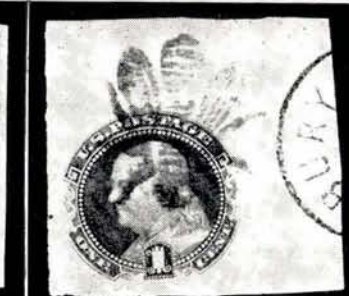
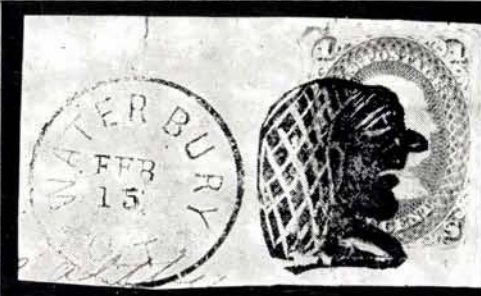
UNITED STATES 1861-1869

A Portion of the
Louis Grunin Collection

Sold By His Order
AT PUBLIC AUCTION
Tuesday, April 15th, 1975
at 1:00 P.M.

Robert A. Siegel
AUCTION GALLERIES, INC.

120 EAST 56th STREET
NEW YORK CITY, N.Y. 10022
Tel.: (212) 753-6421



CONDITIONS OF SALE

1. The terms of sale are strictly cash on delivery to the highest bidder unless special arrangements have been made prior to the sale.
2. All bids are per lot as numbered in the catalogue unless otherwise announced by the auctioneer at the time of sale. The right is reserved to group two or more lots; to withdraw any lot or lots from the sale, or to act in behalf of the seller. The auctioneer shall regulate the bidding and in the event of any dispute his decision shall be final.
3. Any lot, the description of which is incorrect is returnable, but only within five days of receipt. All disputed lots must be returned intact as received. **The following lots may not be returned for any reason whatsoever: Lots containing ten or more stamps; Lots from buyers who have had the opportunity to examine them before the sale; Lots described as having defects or faults may not be returned because of any faults. No illustrated lots may be returned because of centering, margins or other factors shown in the illustrations.**
4. Successful bidders, unless they are known to us or supply acceptable references are expected to make payment in full before the lots are delivered. Mail bidders will be notified of the amount of their purchases. All mail bidders who have established credit with us must make payment within three days after receipt. We reserve the right in our sole and absolute discretion to demand cash payment at the time a lot is knocked down to any bidder who has not previously established credit with us or whose account is in arrears. In the event any buyer refuses to pay cash for any lot at the time it is knocked down to him, the auctioneer reserves the right to re-offer the lot immediately for sale to the highest bidder.
5. If the purchase price has not been paid within the time limit, nor lots taken up within seven days from date of sale they must be resold and any loss arising from such sale will be charged to the defaulter. Any account more than thirty days in arrears is subject to a late payment charge of 1½% per month so long as the account remains in arrears. If the auctioneer, in his discretion, should institute any legal action to secure payment of a delinquent account the defaulting purchaser shall pay all legal expense incurred by the auctioneer and such charges will be added to the amount owed.
6. All lots are sold as genuine but should any lot be proved otherwise by written opinion of any competent, responsible authority acceptable to us, immediate refund of the full purchase price will be made, provided that such claim is made in writing within 14 days from date of sale. If claims is not made within this period, no lots are returnable for any reason at any time. So long as we are notified within the 14 day period that an opinion is being sought the matter will remain open until such opinion is rendered. We will not be responsible for any charges incurred by the buyer for expertization fees and costs unless the opinion states the item is not genuine, in which case we will pay actual costs up to a maximum of \$50.00.
7. Until paid for in full, all lots remain the property of Robert A. Siegel Auction Galleries, Inc. in behalf of the seller.
8. All forwarding charges will be added to the purchase price. The mode of shipment shall be at our option unless we are given specific instructions.
9. Lots may be sent for inspection to buyers known to us upon written application. All such lots must be returned to us by registered mail, adequately insured and within 24 hours after receipt. The applicant assumes all responsibility and for insurance against all risks from time of receipt until they are actually received back by us, and is to pay all expenses of postage and insurance. No lots can be sent for inspection within eight days from date of local viewing. Large lots and collections cannot be sent for inspection.
10. Agents are responsible for all purchases made in behalf of their clients unless other arrangements are made prior to the sale.
11. In this sale there are some lots in which the Galleries have an interest other than that as agent for the owners. These may include lots on which cash advances have been made or lots where the seller may be indebted to the Galleries, giving the Galleries a direct or indirect interest in the sale of these lots. If any lot is sold against a minimum realization and this is not met, such sale may be effected at a reduced commission charge.
12. The placing of a bid shall constitute acceptance of the foregoing conditions of sale.

ROBERT A. SIEGEL, Licensed Auctioneer

FOR TABLE OF DESCRIPTIONS SEE PAGE 42.

469th SALE

APRIL 15th, 1975

BID SHEET

ROBERT A. SIEGEL AUCTION GALLERIES, Inc.

120 East 56th Street

New York, N. Y. 10022

Tel.: 753-6421 (Area Code 212)

Please purchase for me at your auction to be held **April 15th, 1975** the lots listed below, the prices annexed being my limit on each lot. I agree to remit for purchases in accordance with the **Conditions of Sale** and return no lots later than three days after receipt.

REFERENCES PLEASE

(if unknown to us)

SIGNED

New York State residents kindly include
County in address.

County

BIDDING INTERVALS

BIDS	ADVANCE	BIDS	ADVANCE
Up to \$30.00	\$1.00	\$300.00 - \$725.00	\$25.00
\$32.50 - \$72.50	\$2.50	\$750.00 - \$2,000.00	\$50.00
\$75.00 - \$145.00	\$5.00	\$2,000.00 - \$3,000.00	\$100.00
\$150.00 - \$290.00	\$10.00	\$3,250.00 and up	\$250.00

Bids which do not conform to the above will be automatically reduced to the appropriate level.

Lot	Bid	Lot	Bid	Lot	Bid

VALUATIONS

Upon request, estimate of value furnished on any lots in this auction.

Tuesday, April 15th, 1975 — 1:00 P. M.

UNITED STATES

1861 ISSUES

"FIRST DESIGN"

- | | | |
|-----|--|------------------|
| 1 ★ | 10c Dark Green, "First Design" (58). Fresh Color, o. g., single partly nibbed perf., otherwise Very Fine | (Photo) 1,500.00 |
| 2 | 10c Dark Green, "First Design" (62A). Wonderful Fresh Color, very light Red Town pmk., Very Fine..... | (Photo) 235.00 |
| 3 | 10c Dark Green, "First Design" (62A). Deep Rich Color, Brownish Red Town pmk., Fine | (Photo) 235.00 |

ONE CENT BLUE

- | | | |
|-----|---|-----------------|
| 4 ★ | 1c Blue (63). Fresh, o. g., Well Centered & Extremely Fine | (Photo) 32.50 |
| 5 ★ | 1c Indigo (63b). Fresh, o. g., Very Fine | (Photo) 50.00 |
| 6 ★ | 1c Pale Blue (63). Fresh, o. g., reperfed, Very Fine Appearance | (Photo) 32.50 |
| 7 ★ | 1c Blue (63). Fresh, o. g., reperfed at right, Very Fine Appearance | (Photo) 32.50 |
| 8 | 1c Blue (63). Well Centered, Bold "New York, B. W., Leeds & Franklin" Patent cancel, Marvelous Strike, Extremely Fine & Rare | (Photo) E. VIII |
| 9 | 1c Blue (63). Well Centered, some short perfs., on small piece, tied by Old Woman with Hair in Snood, Perfect Bold Strike, "Waterbury Ct." pmk., As fine an Example of this Rare Cancel as could be desired, An absolutely fantastic Exhibition Piece | (Photo) E. X |
| 10 | 1c Blue (63). Choice Centering, Red Carrier cancel, Extremely Fine | 12.00 |
| 11 | 1c Blue (63). Nice Margins, Wonderfully Well Centered, Neat "Paid" in Circle cancel, Extremely Fine | (Photo) 9.00 |
| 12 | 1c Blue (63). Well Centered, Deep Rich Color, Bold Red New York Carrier cancel, Very Fine | (Photo) 12.00 |
| 13 | 1c Blue (63). Pretty "R" in Small Ornate Circle, Beautiful Strike of this Well Known "Rockville, Conn." cancel, Very Fine | (Photo) E. VI |
| 14 | 1c Blue (63). Large Margins, Fresh Color, Black "Philad'a, Pa., Post Office" Carrier cancel, Wonderful Strike | (Photo) 14.00 |
| 15 | 1c Blue (63). Extra Bold Five Point Solid Star cancel, Handsome, Choice Strike | (Photo) E. III |
| 16 | 1c Blue (63). Horizontal Strip of Three, each with Bold Fancy Star cancel, Straight Line "Shed's Corners" pmk. on small piece Very Fine, Spectacular; Brought \$200.00 in 1972 auction | (Photo) E. X |

LOTS ON VIEW: Friday, April 11, 1975 & Monday, April 14, 1975

& Day of Sale. — Office Closed Saturday Before Sale



1



2



3



4



5



6



7



8



10



12



13



14



9



16



15



17



23



24



25



26



28



33



34



35



36



37



38



39



40



41



42



43



44



- 17 **1c Blue (63). Horiz. Pair, Numeral "10" in Circle** cancels, Pretty Strikes, Handsome Pair **(Photo)** 45.00+
- 18 **1c Blue (63). Horizontal Strip of Three**, Well Centered, Boxed "Paid" & Red "Boston" cancels, Very Fine & Attractive **E. IV**
- 19 **1c Blue (63). Three Well Centered Singles**, Distinct Shades, Cancels incl. "Paid" in Rectangle, Blue Town, Very Fine 23.75+
- 20 **1c Blue (63). Four Wonderful Shades**, one **Red Carrier** cancel, thin speck, Fine Appearance, others Large Margins, Neat Cancels, tiny perf. flaws, otherwise Extremely Fine 34.00

THREE CENT PINK



21

22

- 21 ★ **3c Pink (64). Incredible Bright Rich Color**, Fresh, o. g., Large Margins, reperfed at right, Extremely Fine Appearance, Exceptionally Handsome 875.00
- 22 ★田 **3c Pink (64). Block**, Gorgeous Bright Color, Full o. g., centered bit to top, trifle reinforced, one stamp negligible faint crease, nevertheless Fine, Rare & Most Attractive, ex-Lilly 3,750.00
- 23 **3c Pink (64). Clear**, Well Struck **Numeral "3"** cancel, Vivid Color, Fine, Pretty Stamp **(Photo)** 100.00+
- 24 **3c Pink (64). Beautiful Centering**, Bright Color, Unusual **Olive "Shell"** cancel, couple partly nibbed perfs., otherwise Extremely Fine **(Photo)** 100.00+
- 25 ★田 **3c Rose Pink (64b). Block**, Characteristic brownish o. g., few faint toning specks, single short perf., otherwise Very Fine **(Photo)** 225.00

THREE CENT ROSE

- 26 ★ **3c Deep Rose Red (65). Fresh**, o. g., Extremely Fine **(Photo)** 10.00
- 27 ★ **3c Pale Brown Red (65). Fresh**, o. g., Very Fine 10.00
- 28 ★ **3c Rose, Imperforate (65c). Horiz. Pair**, Large Margins, Rich "Pinkish" Shade, trivial wrinkles in left stamp, otherwise Very Fine **(Photo)** 125.00



29

30

- 29 ★ 3c Rose, Imperf. Horizontally (65d). Vertical Pair, with Top Sheet Margin, Very Fine & Very Rare, with P. F. Certificate 850.00
- 30 ★ 3c Rose, Printed on Both Sides (65e). The Right Stamp from the Strip of Three as pictured in the Lilly Sale, Fresh, o. g., Extremely Fine, Very Rare, Unusual nearly complete reverse impression 1,100.00



- 31 ★ 3c Rose (65). Bottom Imprint & Plate No. 33 Block of Eight, Fresh, Full o. g., Very Fine, A Rare & Beautiful Plate Block, A Grand Exhibition Piece 400.00
- 32 3c Rose (65). Centered, Fresh Color, on piece, tied by Large Green Six Section Grid, Bold Strike, matching "Sharon, Vt." pmk., Very Fine, Very Handsome 35.00

33	3c Rose (65). Right perms. touch, Clear New York Union Soldier's Head cancel, Fine Strike, Scarce (Photo)	E. IX
34	3c Rose (65). Centered to top, Bold, Virtually Complete Waterbury, Conn. "Man with Pipe" cancel, Unusually Fine Strike, Rare, Recent auction realization \$325.00 (Photo)	E. XII
35	3c Rose (65). Left perms. touch, Fresh Color, Mostly Bold Waterbury, Conn. Man in Derby Hat cancel, Fine Strike, Rare (Photo)	E. XI
36	3c Rose (65). Couple short perms., trifle soiled, Exceptionally Bold Waterbury, Conn. Negative "AJ" & Small Skull & Crossbones on Tombstone (Andrew Johnson) cancel, A Magnificent Example of this Very Rare cancel, particularly when found on an ungrilled stamp (Photo)	E. XI
37	3c Rose (65). Centered, small corner fault, Brattleboro, Vt. "Uncle Sam" Thumbing Nose cancel, Sharp Bold Strike in Blue, Rare & Exceptionally Attractive (Photo)	E. XII
38	3c Rose (65). Well Centered, Complete Bold Waving Flag cancel, Marvelous Strike of this Very Scarce cancel (Photo)	E. IX
39	3c Rose Red (65). Centered to top right, Marvelous Color, on piece, tied by Waving Flag with "UNION" Below, Beautiful Full Strike, Rare (Photo)	E. IX
40	3c Rose (65). Centered to bottom left, Cancelled by Reverse Side Design of the then current 2c Coin, Very Scarce, Attractive (Photo)	E. VIII
41	3c Rose (65). Bold "US" in Shield cancel, Very Fine Strike, Scarce (Photo)	E. V
42	3c Rose (65). Beautiful Blue "Brattleboro, Vt." Masonic cancel, Ty. 7, Very Fine, Choice Strike, ex-Greenebaum (Photo)	E. V
43	3c Rose (65). Centered, Clear "Williston, Vt." Square & Compass in "G" Masonic cancel, tiny toned specks, otherwise Very Fine, ex-Greenebaum (Photo)	E. V
44	3c Rose (65). Two singles, on small piece, each tied Blue Brattleboro, Vt. Masonic cancel, Ty. 7, Full Bold Strikes, Extremely Handsome, ex-Greenebaum (Photo)	E. VII
45	3c Rose (65). Imperf. pane margin at left, tiny corner perf. crease, Clear Bold Masonic "All-Seeing Eye" cancel in Blue, one of the Best Known Examples of This Rare Cancel, ex-Knapp, Realized \$350 in 1972 auction (Photo)	E. XII
46	3c Rose (65). Centered to top right, Incredible Bold Complete "Deerfield, Mass." Deer in Circle cancel, As Choice a Strike as can be found, Rare (Photo)	E. X
47	3c Rose Red (65). Centered, Rich Color, Bold Corry, Pa. Eagle cancel, Very Fine, Scarce (Photo)	E. V
48	3c Rose (65). Unusually Well Centered, Clear Skull & Crossbones cancel, Very Fine & Very Scarce (Photo)	E. VI
49	3c Rose (65). Wonderfully Clear Devil & Pitchfork cancel, A Beauty, Very Scarce (Photo)	E. IX
50	3c Rose (65). Centered trifle to left, Extra Bold Devil & Pitchfork cancel, Extremely Fine Strike, Very Scarce (Photo)	E. VIII
51	3c Rose (65). Centered to top, Wonderfully Clear Wreath in Circle, tiny Shield over Quartered Cork in Center (Milford, Ind.), Gorgeous Strike, Rare (Photo)	E. V
52	3c Rose (65). Centered to top left, Clear "Boston, Mass." Crescent with Man in the Moon & Star cancel, Fine Strike, Very Scarce (Photo)	E. VII
53	3c Rose (65). Excellent Centering, Fresh Color, Large Fancy "R" cancel composed of Bars, Extremely Fine, Very Scarce (Photo)	E. V
54	3c Rose (65). Bold "N & W" Between Star & Two Bars cancel (Norwich & Worcester Railroad), Unusually Beautiful Strike, V.F. & Scarce (Photo)	E. VI
55	3c Rose (65). Blue Negative "67" in Square cancel, Very Fine, Scarce & Very Unusual (Photo)	E. VI

56	3c Rose (65). Centered to top left, Negative "PO" in Circle cancel, Exceptional Full Bold Strike, Very Scarce (Photo)	E. V
57	3c Rose (65). Fantastic Strike of "Mittineague, Mass." Negative "UNION" Around Fancy Star in Star in Blue Pentagon , Extremely Fine, Realized \$325.00 in our Oct 1972 sale (Photo)	E. XII
58	3c Rose (65). Centered bit to top right, Fresh Color, Wonderful Bold Fancy Stars & Dots in Pentagon cancel, (Putnam, Conn.) Extra Choice Strike, Very Scarce (Photo)	E. VI
59	3c Rose (65). Perfs. slightly in at right, Bold Negative "MY" in Heart cancel, Bold Full Strike, Rare (Photo)	E. VI
60	3c Rose (65). Fresh Color, Remarkably Bold small Negative "S" in Star Cancel, Choice Full Strike, Scarce (Photo)	E. III
61	3c Rose (65). Bold Star with Circle in Center cancel, Struck Twice, V. F. (Photo)	E. III
62	3c Rose (65). Centered, Bright Shade, short corner perf., Mostly clear Negative "STATE LINE" (Mass.) in Scroll , Negative Month Below, ms. day, Fine Strike, Very Scarce (Photo)	E. V
63	3c Rose (65). Perfs. slightly in at bottom, Clear "Fort Schuyler, N. Y., Aug 3, 1863" Small Circle pmk., Scarce & Attractive (Photo)	E. IV
64	3c Rose (65). Fresh Color, centered trifle to top, "Titusville" (Pa.) pmk. with "2d. ONE" Jul 19 in Center, Clear Strike, Rare Carrier Marking	E. III
65	3c Rose (65). Centered, Clear "BRANDON, VERMONT, FEB 17, 1863" pmk., Month & Day Same Line, Choice Strike, Very Scarce Type of Town Postmark (Photo)	E. III
66	3c Rose (65). R. perfs. touch, Bold Blue "Well's, Fargo & Co." Express cancel, Pretty Strike (Photo)	25.00
67	3c Rose, E. Grill (88). Slight corner crease, Clear "OK" cancel, Handsome	E. III
68	3c Rose (65, 94). Four Singles & a Horiz. Pair, each with Diff. Numeral cancel ("3", "5", "10") Virtually All Bold Strikes, Scarce Lot	E. IV
69	3c Rose (65). Six Diff. Star cancels, All Fancy Unusual Types, Very Fine Strikes, Scarce Group	E. IV
70	3c Rose (65). Five Singles & a Block, Shades, one a Beautiful Rose Pink, Cancels incl Blue "Balto Paid" , "Paid 3" , "Paid" in Rectangle, "Free" , Scarce & Handsome Strikes	E. V
71	3c Rose (65). Nine, Beautiful Shades incl. Rose Pink, Nearly All Well Centered, each with Diff. Geometric cancel. incl. Davenport, Iowa & Canastota, N. Y., Lovely Strikes, Scarce Lot	E. V
72	田 3c Rose (65). Block , few tiny perf. flaws, "Quaker Bottom, O." pmk., Large Caps in Center of Block, Mostly Bold Strike, Very Scarce, Unusual Town Name	E. IV
73	田 3c Rose (65). Block , Bold Bright Violet Quartered Cork cancels, right perfs. touch, Handsome Block	E. IV
74	田 3c Rose (65). Horizontal Block of Ten , on piece, well tied by Blue "Martinsburgh, W. Va." pmks., Remarkably Fine & Rare Block	E. VI
75	3c-24c 1861 Issues (65, 69-71, 76, 78). Each with San Francisco Cogwheel cancel, Very Handsome Lot	E. VII

LOTS ON VIEW: Friday, April 11, 1975 & Monday, April 14, 1975

& Day of Sale. — Office Closed Saturday Before Sale



45



46



47



48



49



50



51



52



53



54



55



56



57



58



59



60



61



62



63



65



66



78



79



80



81



82



83



84



86



85



87



88



89



90



91



94



97



101



101



FIVE CENT BUFF



76

77

- | | | |
|------|--|--------|
| 76 ★ | 5c Buff (67). Full Bottom Margin, Brilliant o. g., Very Fine, a Spectacular & Beautiful Rarity, with P. F. Certificate | 850.00 |
| 77 ★ | 5c Olive Yellow (67b). Wonderfully Fresh Color, Nearly Full o. g., trivial natural paper wrinkle, Very Fine, Rare & Handsome | 850.00 |
| 78 | 5c Buff (67). Exceptional Centering, Marvelous Rich Color, Fine Impression, Blue Town pmk., Extremely Fine, A Gem (Photo) | 77.50 |
| 79 | 5c Buff (67). Magnificent Centering, Bright Fresh Shade, Blue Town & Red "New Paid, York" pmks., Extremely Fine (Photo) | 77.50+ |
| 80 | 5c Buff (67). Unusually Well Centered with Margins Clear of Design All Around, Magnificent Color, Neat thin bar Grid cancels, Extremely Fine (Photo) | 75.00 |
| 81 | 5c Buff (67). Large Even Margins, Well Clear of Design All Sides, Marvelous Rich Color, 8-Bar Unframed Grid cancel, Bold Strike in Red, single, short perf., otherwise Extremely Fine, an Extraordinary Stamp (Photo) | 80.00 |
| 82 | 5c Buff (67). Marvelous Deep Shade, Bold San Francisco Cogwheel cancel, tiny corner perf. crease, otherwise Very Fine (Photo) | 75.00 |
| 83 | 5c Brown Yellow (67a). Excellent Centering, Bright Fresh Color, Light Red "Paid" in Circle cancel, faint corner crease & few nibbed perfs., otherwise Extremely Fine (Photo) | 90.00+ |

TEN CENT GREEN

- | | | |
|------|---|---------|
| 84 ★ | 10c Deep Yellow Green (68a). Extra Deep Rich Color, Full Brownish o. g., thin paper, Fine, Fresh Example of this scarce First Color (Photo) | 67.50 |
| 85 ★ | 10c Green (68). Well Centered, tiny toned specks, otherwise V. F. (Photo) | 40.00 |
| 86 ★ | 10c Dark Green (68a). Four Singles, hinge rejoined to form an original block of four, Fresh, o. g., Beautiful Rich Color, top left stamp tiny internal crease, otherwise Very Fine (Photo) | 220.00+ |
| 87 | 10c Yellow Green (68). Huge "Jumbo" Margins, light Town pmk., Exceptionally Fine (Photo) | 6.50 |
| 88 | 10c Green (68). Beautiful Deep Shade, Magnificent Centering, Generous Margins, Bold Red Grid, Extremely Fine (Photo) | 7.50 |
| 89 | 10c Green (68). Perfs. touch, Pretty Shade, on piece tied by Brilliant Scarlet "New, Paid, York" pmk., Bold Full Strike, Exceptionally Handsome (Photo) | E. IV |

90	10c Green (68). Bold New York Soldier's Head cancel, Very Fine, Scarce, Beautiful Strike, Very Scarce on the 10c; Brought \$500.00 when last sold at auction 1972 (Photo) —
91	10c Deep Blue Green (68). Extra Large Margins, Rich Color, light Orange Red Rosette cancel, Extremely Fine (Photo) 7.50
92	10c Dark Green (68a). Exceptional Centering, Marvelous Deep Shade, Bold Red Unframed Grid cancel, Extremely Fine 7.50
93	10c Blue Green (68) Bright Shade, Light Magenta cancel, V. F. Handsome 8.50
94	10c Blue Green (68). Extra Large Margins, Beautiful Deep Shade, part of Bold " N. York Steamship " cancel, Extremely Fine (Photo) 18.50
95	10c Blue Green (68). Lovely Color, Clear Anchor in Diamond of Dots French Packet cancel, Choice Strike, Scarce E. V
96	10c Green (68). Two Distinct Shades, Nicely Centered, Red "New, Paid, York" & Magenta Circle of Wedges cancels, Very Pretty Lot 16.00
97	10c Green (68). Horizontal Pair, Marvelous Centering, Fresh Color, each with Fancy Six Point Star in Circle cancel, Clear Strikes, faint creases, Extremely Fine Appearance (Photo) E. IV
98	10c Green (68). Horizontal Pair, Exceptionally Well Centered, Fresh Color, Pretty Red "New York" pmk., right stamp short corner imperf., otherwise Extremely Fine 13.50+
99	10c Green (68). Six, Beautiful Shades, Cancels incl. Towns, Grid, Star, Two Line "Steam Ship", Dark Green Shade with Marked Short Transfer in Top Right Corner, Most Have Large Margins, few tiny faults, Handsome & Scarce Lot E. IV
100	10c Green, 12c Black (68, 69). Wonderfully Fresh, Nice Margins, each with Bold Red "New York, Paid" pmk., Two Beautiful Stamps E. IV

TWELVE CENT BLACK

101 ★	12c Black (69). Extremely Fine (Photo) 85.00
102	12c Black (69). Excellent Centering, light cancels, Extremely Fine (Photo) 12.00
103	12c Black (69). Well Centered, Red Rimless Grid cancel, Bold Strike, Extremely Fine (Photo) 15.00
104	12c Black (69). Well Centered, Bold Negative Star of David in Circle cancel, Very Fine (Photo) 15.00+
105	12c Black (69). Huge Margins incl. Left Imperf. Pane Margin Showing Traces of Next Stamp, Lightly cancelled; negligible toning, mostly on back, otherwise Extremely Fine (Photo) 12.00
106	12c Black (69). Horizontal Pair, Neat " Paid " in Oval cancel on each tied by " Shelbyville, Mo. " pmk. on small piece, Fine, Very Attractive (Photo) 45.00
107	12c Black (69). Four, Cancels incl. Town, Large " Paid " in Grid, Red Grid, Well Centered, tiny flaws, Very Fine or Extremely Fine Appearance 51.00

TWENTY FOUR CENT

108 ★	24c Red Lilac (70). Marvelous Color, Nearly Full o. g., A Beautiful, Very Fine Stamp (Photo) 150.00
109 ★	24c Brown Lilac (70a). Fresh, o. g., Very Fine (Photo) 135.00
110 ★	24c Steel Blue (70b). Wonderful Fresh Color, Well Centered, Partly blunted perfs at bottom, Extremely Fine Appearance, Rare (Photo) 1,000.00
111	24c Brown Lilac (70a). Unusually Large Margins, Fresh Color, Pretty Blue Target cancel, Extremely Fine, A Beauty (Photo) 17.00
112	24c Red Lilac (70). Wonderfully Well Centered, Grid cancels, Extremely Fine (Photo) 16.00



102



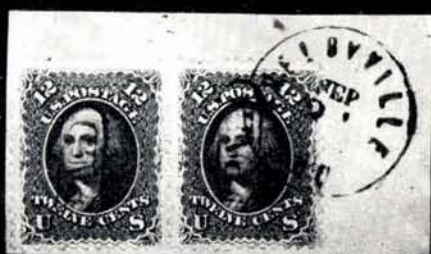
103



104



105



106



108



109



110



111



112



113



114



115



116



117



118



119



120



121



124



125



126



127



128



129



130



131



132



133



134



135



136



138



139

113	24c Red Lilac (70). Wonderful Rich Color, Neat Red Grid cancel & Red "London" Receiving mark, Extremely Fine (Photo) 20.00+
114	24c Red Lilac (70). Fresh Color, Neat Framed Grid cancel, V. F. (Photo) 16.00
115	24c Red Lilac (70). Well Centered, Fresh Color, Pretty Floral Rosette cancel & bit of Red Transit, Exceptionally Fine, Realized \$110.00 in 1972 auction (Photo) 16.00+
116	24c Red Lilac (70). Well Centered, Large Margins, incl. Left Straddle Margin showing Center Line & bit of next stamp, Negative Star of David cancel, Exceptionally Fine (Photo) 16.00+
117	24c Red Lilac (70). Fresh Color, Bold Mostly Clear Negative Four Leaf Floral Design cancel in Green , centered trifle to top right, Very Fine, Very Scarce (Photo) 110.00+
118	24c Brown Lilac (70a). Wonderfully Bold Curious Wheel cancel, Exceptional Strike (Photo) E. VII
119	24c Brown Lilac (70a). Extra Wide Left Straddle Margin showing Full Center Line & Part of Next Stamp, Beautiful Centering, light Target cancels, Extremely Fine, Outstanding (Photo) 16.00+
120	24c Brown Lilac (70a). Incredible "Jumbo" Margins, Well Centered, part of adjoining stamp attached at left, Fresh Color, Bold Quartered Cork cancel, Extremely Fine, An Extraordinary Stamp Brought \$95.00 in recent auction (Photo) 16.00+
121	24c Red Lilac (70). Well Centered, Exceptional Color, Pretty Red Thin Bar Grid cancel, faint trivial corner crease, otherwise Very Fine (Photo) 20.00
122	24c Red Lilac (70). Two, Deep Shades, San Francisco Cogwheel & Large "Paid" in Grid cancels, Well Centered, latter with Unusually Large Margins, minor faults, Very Fine & Extremely Fine Appearance Respectively E. IV
123	24c Red Lilac (70). Three Gorgeous Shades, Red Town, Red Grid & Blue Target cancels, very trivial flaws, Very Fine Appearance, A Lovely Lot 57.00
124	24c Steel Blue (70b). Extraordinary Centering, Beautiful Fresh Color, Red Grid cancel, Extremely Fine (Photo) 52.50+
125	24c Steel Blue (70b). Well Centered, Bright Shade, Unusual Interrupted Grid of Dashes cancel, Very Fine (Photo) 52.50
126	24c Steel Blue (70b). Marvelous Centering with Generous Margins, Lovely Shade, Neat Red Grid cancel, Extremely Fine (Photo) 52.50+
127	24c Steel Blue (70b). Wonderfully Well Centered, Fresh Color, Pretty Rimless Red Grid cancel, tiny trivial perf. creases, otherwise Extremely Fine (Photo) 52.50+
128	24c Steel Blue (70b). Beautiful Color, Strong, Bold Rimless Grid cancel in Deep Red , nibbed perfs. at bottom, otherwise Very Fine (Photo) 52.50+
129	24c Steel Blue (70b). Well Centered, Beautiful Fresh Color, Bold Red Rimless Grid cancels, minute tears at bottom, otherwise Extremely Fine (Photo) 52.50+
130	24c Steel Blue (70b). Clear San Francisco Cogwheel cancel, Fine, Attractive Stamp (Photo) 52.50
131 ★	24c Violet, "First Color" (70c). Fine, Rich color (Photo) 600.00
132	24c Violet, "First Color" (70c). Exceptional Centering, Fabulous Color, Sharp, Proof-Like Impression, light Grid & bit of Red transit pmk., Extremely Fine, An Exquisite "Gem" (Photo) 175.00
133	24c Violet, "First Color" (70c). Well Centered, Deep Rich Color, Bold Rimless Thick Bar Grid cancel in Blue , Exceptionally Fine & Handsome (Photo) 175.00
134	24c Violet, "First Color" (70c). Well Centered, Bold Blue "Cincinnati, O." Double Circle & Grid Duplex pmk. & Large Red "3" Transit Mark, few partly blunted perfs., otherwise Very Fine, Very Beautiful Stamp (Photo) 175.00+
135	24c Grayish Lilac, "First Color" (70d). Exceptional Centering, Pretty Shade, Neat Town & bit of Red Transit pmks., Extremely Fine (Photo) 150.00

- 136 **24c Violet, "First Color" (70c).** Well Centered, Fresh Bright Color, Neat Red Four Ring Target cancel, single short perf. otherwise V.F. **(Photo)** 175.00+
- 137 **24c Violet, "First Color" (70c).** Well Centered, Deep Rich Color, on part of cover, tied by Blue Grid, Blue "Louisville, Ky." pmk. & Large Bold Red "3", Extremely Fine & Handsome, sold in 1972 auction for \$270.00 **(Photo)** 175.00+
- 138 **24c Violet, "First Color" (70c).** Horizontal Pair, Splendid Centering, Vivid Fresh Color, Blue Town pmks., Extremely Fine, A Matchless Pair, Very Scarce **(Photo)** 350.00+
- 139 **24c Grayish Lilac (70d).** Large Margins, Beautiful Color, Neat Blue Quartered Cork cancel, Extremely Fine **(Photo)** 150.00
- 140 **24c Grayish Lilac (70d).** Deep Color, Beautifully Centered, Blue "Baltimore, Md, Sep. 20 (1861)" pmk., Very Fine **(Photo)** 150.00

THIRTY CENT ORANGE

- 141 ★ **30c Orange (71).** Remarkably Well Centered, Extremely Fine **(Photo)** 115.00



- 142 ★田 **30c Orange (71).** Block, Marvelous Bright Color, Virtually Full o. g., Extremely Fine, A Wonderful Showpiece 600.00
- 143 **30c Orange (71).** Exceptional Centering, Unusually Rich Color, Pretty Blue Town pmk., Extremely Fine **(Photo)** 18.00
- 144 **30c Orange (71).** Neat "Paid" in Circle cancel, Fine **(Photo)** 30.00
- 145 **30c Orange (71).** Centered, tiny thin spot, Lovely Deep Shade, Exceptionally Clear New York "Soldier's Head" cancel, Handsome, Rare when so well struck **(Photo)** E. IX
- 146 **30c Orange (71).** Neat Target & Red "N. YORK AM. PKT., 7 PAID" cancel, Scarce & Attractive **(Photo)** E. IV
- 147 **30c Orange (71).** Fresh Color, Clear 1864 Year Date Town pmk., Very Fine **(Photo)** 18.00
- 148 **30c Orange (71).** Bright Shade, tiny thin spot, Blue Straight Line Postmark, Scarce & Attractive **(Photo)** E. IV
- 149 **30c Orange (71).** Lovely Shade, Exceptionally Bold Negative Star of David in Circle cancel, Marvelous Strike, Very Fine, 1972 auction price \$95.00 **(Photo)** 17.50+
- 150 **30c Orange (71).** Beautiful Color, Perfectly Struck Red Circled Star cancel, Handsome & Choice, A Beauty, Brought \$95.00 at 1972 auction **(Photo)** 22.50+



140



141



143



144



145



146



147



148



149



150



151



152



153



154



158



155



161



162



163



168



164



165



166



167



168



169



172



173



174



170

151	30c Orange (71). Well Centered, Grayish paper, Clear Lynchburg, Va. "Man in Hat" cancel, Fine Example of this Rare Fancy Cancel, seldom seen on the 30c (Photo) E. VIII	
152	30c Orange (71). Centered trifle to right, Bold Open Star cancel, Very Fine & Scarce (Photo) E. IV	
153	30c Orange (71). Generous Margins, Exceptional Centering, Unusual Bold Geometric cancel of Two Opposing Hollow Curved Boxes , trivial tiny thin spot, Extremely Fine Appearance, Very Scarce (Photo) E. V	
154	30c Deep Orange (71). Marvelous Deep Shade, Bold Blue Rimless Grid cancel, Very Fine & Attractive (Photo) 18.00	
155	30c Orange (71). Blue Grid & Blue Target cancels, Very Fine, Pretty Strikes (Photo) 18.00	
156	30c Orange (71). Two, Grid & Target cancels, Fresh Colors, Fine 35.00	
157	30c Orange (71). Two, Blue Sunburst & Star Grid cancels, one has tiny pinhole, other thin, Beautiful Appearance, Very Scarce E. IV	
158	30c Orange (71). Horizontal Strip of Four , Fresh Color, Neat Interrupted Circles Target cancels, small flaws, Very Attractive, Scarce when so fresh (Photo) 80.00+	

NINETY CENT BLUE



159

160

159 ★	90c Blue (72). Brilliant Color, Fresh & Very Fine 325.00	
160 ★	90c Blue (72). Fantastic Centering, Fresh, Nearly Full o. g., Extremely Fine, An Ideal Example of this handsome stamp 325.00	
161	90c Blue (72). Brilliant Color & Impression, Large Even Margins, Clear Blue "Cincinnati, O." pmk., Extremely Fine, an Immaculate Beauty, ex-Newbury, brought \$400.00 in 1972 auction (Photo) 62.50	
162	90c Blue (72). Well Centered, Large Margins, Beautiful Pastel Shade, Bold Checkerboard Grid cancel, Extremely Fine, Outstanding (Photo) 60.00	
163	90c Blue (72). Lovely Margins & Centering, Fresh Color, Clear cancel of Three Hexagons , Extremely Fine, Scarce & Unusual (Photo) 67.50+	
164	90c Blue (72). Wonderful Centering, Deep Rich Color, Bold Grid cancel, Extremely Fine (Photo) 60.00	
165	90c Blue (72). Gorgeous Shade, Bright Red Grid cancel, Very Fine, A Particularly Beautiful Stamp, Brought \$250.00 at 1972 auction (Photo) 67.50+	
166	90c Blue (72). Reperfed at left, Very Fine Appearance (Photo) 60.00	
167	90c Blue (72). Large Even Margins, Beautiful Deep Shade, Bold Red Grid cancel, minute tear at top, otherwise Extremely Fine (Photo) 67.50	
168 ☐	90c Blue (72). Used Block , Well Centered, few light creases, tiny tear in one, otherwise Very Fine, Very Scarce (Photo) 500.00	

TWO CENT BLACK

169	★	2c Black (73). Exceptional Centering, Fresh, o. g., Extremely Fine, Choice (Photo)	37.50
170	★	2c Gray Black (73). Bottom Right Corner Margin Block of Eight with Part Imprint, Fresh, o. g., one stamp has faint negligible crease, still a Very Fine Block, A Spectacular Showpiece (Photo)	400.00
171	★	2c Black (73). Horizontal Block of Eight, Fresh, o. g., hinge reinforced, few irregular perfs., Very Fine (Photo)	400.00
172		2c Black (73). Perfectly Centered, Nice Margins, Bold "Scituate, Mass." pmk., Extremely Fine (Photo)	7.50
173		2c Black (73). Wonderfully Well Centered, Black New York Carrier cancel, Extremely Fine, Scarce (Photo)	22.50
174		2c Black (73). Wonderfully Well Centered, Beautiful Red "New York City" Carrier pmk., Extremely Fine, A Gem, which in 1972 realized \$260.00 at auction (Photo)	—
175		2c Black (73). Incredibly Well Centered, Part of "Well's, Fargo & Co." Blue Oval pmk., Clear Strike, Extremely Fine, Very Scarce (Photo)	120.00
176		2c Black (73). Exceptional Centering, Wonderfully Bold "New Orleans La." pmk., Large Caps, unusual type on the 2c, Extremely Fine (Photo)	E. IV
177		2c Black (73). Well Centered, Unusual Four Point Star Geometric cancel, Extremely Fine (Photo)	7.50+
178		2c Black (73). Beautiful Centering, Wonderfully Bold Geometric cancel, Extremely Fine (Photo)	7.50+
179		2c Black (73). Choice Centering, Marked "Dry Print", Bold Blue Star in Circle cancel, Extremely Fine (Photo)	E. V
180		2c Black (73). Well Centered, Intense Color, Bold Red Negative Star cancel, Dot in Center, Extremely Fine, Brought \$200.00 when sold in 1972 auction (Photo)	12.00+
181		2c Black (73). Excellent Centering, Neat Greenish Blue Target cancel, Extremely Fine (Photo)	7.75
182		2c Black (73). Well Centered, Bright Red Geometric cancel, Very Fine, ex-Mackey (Photo)	12.00+
183		2c Black (73). Beautiful Centering, Neat Brown cancel, Extremely Fine, Scarce (Photo)	8.00
184		2c Black (73). Huge Margins, Well Centered & Extremely Fine (Photo)	7.50+
185		2c Black (73). Wonderfully Well Centered, Even Margins, Neat Cancel, Extremely Fine (Photo)	7.50
186		2c Black (73). Large Margins, light cancel, Extremely Fine (Photo)	7.50
187		2c Black (73). Enormous Copy showing Full Right Straddle with part of next stamp at right, bit of next stamp at left, Large Top & Bottom Mar- gins, Neat Target cancel, Extremely Fine, A Wonderful & Utterly Fantastic Stamp; Realized \$290.00 in 1972 auction (Photo)	7.50+
188		2c Black (73). Well Centered, Large Part of Waterbury, Conn. "Clover Leaf" cancel, Very Fine, Very Scarce, Brought \$170.00 in 1972 auction (Photo)	—
189		2c Black (73). Large Margins incl. Left Straddle Margin showing Arrow & Bit of Next Stamp, Excellent Centering, Marked Short Transfer at Bottom, Unusual 3-Slugs over "Paid" in cancel, small thin, Attractive & Very Scarce (Photo)	E. V
190		2c Black (73). Centered, slight toning, Neat Negative "US" Monogram in Ultramarine, Fine Strike, Scarce cancel, ex-Mackey (Photo)	E. VII
191		2c Black (73). Well Centered, Barely Cancelled by Small Quartered Cork, single nibbed perf., otherwise Extremely Fine (Photo)	7.50
192		2c Black (73). Bright Bold Green cancel, Fine, Scarce (Photo)	85.00



171



175



176



177



178



179



180



181



182



183



184



185



186



187



188



189



190



191



192



193



194



195



196



197



198



199



200



201



202



203



203



204



205



206



207



208

193	2c Black (73). Large Even Margins, Extra Wide at Sides, Neat Target cancel, reperfed at right, Exceptionally Beautiful Appearance (Photo)	7.50
194	2c Black, Major Cracked Plate (73 var). Centered Well to Right with Portion of Adjoining Stamp, Shows Full Crack Across Margin , Small Star in Oval Cog cancel, Bold Strike in Red , Extraordinary Example of this Rare Variety, Listed but Unpriced, Illustrated in Brookman, Vol. II, Pg. 12, ex-Mackey, where it brought \$250.00 (Photo)	—
195	2c Black (73). Two, Blue Geometric cancels, Well Centered, tiny light creases, otherwise Very Fine	15.50
196	2c Black (73). Two, Blue Target & Blue Geometric cancels, minute flaws, Very Fine Appearance	15.50
197	2c Black (73). Two Diff. Red cancels, trivial perf. flaws, otherwise V. F.	24.00
198	2c Black (73). Two, first with Part Left Imprint Margin, Red Geometric cancel, other Red Hollow Center Star in Circle , Bold Strike, perfs. touch to trifle in, Pretty	E. V
199	2c Black (73). Three, Well Centered, Rosette, Blue Geometric & Blue "Paid" cancels, minor flaws, Very Fine Appearance	35.25+
200	2c Black (73). Horizontal Strip of Three , Neat Grid cancels, Fine (Photo)	23.50
201	☐ 2c Black (73). Block , Lightly cancelled, top pair has two restored perfs. & a faint crease, otherwise Very Fine, Very Scarce (Photo)	200.00

FIVE CENT RED BROWN

202	★ 5c Red Brown (75). Magnificent Rich Color, couple very faint internal beads, almost imaginary, otherwise Very Fine, ex-Ferrari (Photo)	265.00
203	★ 5c Red Brown (75). Large Margins, Part o. g., Excellent Centering, Stamp Divided into Two Distinct Shades by Improper Plate Inking, Right Half, Deep Red Brown, Left Half Normal Red Brown, tiny thin speck, Extremely Fine Appearance, Fascinating & Undoubtedly Rare Variety (Photo)	265.00+
204	★ 5c Red Brown (75). Marvelous Deep Rich Color, Nearly Full o. g., Choice Centering, light horiz. bend & tiny corner crease, otherwise Extremely Fine (Photo)	265.00
205	5c Dark Red Brown (75). Fantastic Centering & Color, Red Grid cancel, Extremely Fine (Photo)	47.50
206	5c Red Brown (75). Well Centered, Marvelous Color, Bold "Circle of V's" cancel, Very Fine (Photo)	42.50
207	5c Red Brown (75). Large Margins, Fresh Color, Large Bold Red Grid cancel, tiny trivial corner crease, otherwise Extremely Fine (Photo)	47.50
208	5c Dark Red Brown (75). Rich Color, Unusual 12 Bar Grid cancel, Very Fine 1972 auction price \$150.00 (Photo)	42.50
209	5c Chestnut (75 var). Rich Brilliant Color, Well Centered, neat Town pmk., slight faults, Very Fine Appearance, Very Rare, ex-Caspary (Photo)	E. V
210	5c Red Brown (75). Vertical Strip of Three , Marvelous Deep Rich Color, Exceptional Centering, Neat Red Grid cancels, trivial blunted perfs. on top stamp, nevertheless Extremely Fine, A Gorgeous Strip (Photo)	132.50+

FIVE CENT BROWN

211	5c Brown (76). Deep Shade, Small 22mm "New-York" pmk., Clear Strike, Very Fine (Photo)	12.00
212	5c Brown (76). Bright Red " Fulton Bank " Revenue Handstamp, Very Fine Beautiful Clear Strike, Recent auction realization \$80.00 (Photo)	E. VI
213	5c Brown (76). Huge Margins, incl Full Right Straddle, Neat Negative Star of David cancel, Very Fine (Photo)	12.00+

214	5c Brown (76). Exceptional Centering, Bright Shade, Pretty Blue & Red cancels, Very Fine (Photo)	13.00
215	5c Brown (76). Three Distinct Shades, each Beautifully Centered, one with Blue Town pmk., minute flaws, Extremely Fine Appearance (Photo)	37.00
216	5c Brown (76). Three Distinct Shades, Town pmks., one in Blue, Exceptional Centering, one a Virtual "Jumbo", minor flaws, Very Beautiful Lot (Photo)	37.00
217	5c Brown (76). Vertical Strip of Three, lightly cancelled, Exceptionally Fine, Remarkable Rich Color, 1972 auction price \$220.00 (Photo)	37.00+

FIFTEEN CENT BLACK

218 ★	15c Black (77). Extremely Fine (Photo)	150.00
219	15c Black (77). Well Centered, Deep Rich Impression Clear Negative Star of David in Circle cancel, Extremely Fine (Photo)	20.00+
220	15c Black (77). Well Centered, Neat Anchor in Diamond of Dots , French Packet cancel, Very Fine, Scarce (Photo)	20.00+
221	15c Black (77). Well Centered, Very Fine (Photo)	20.00
222	15c Black (77). Wonderfully Well Centered, Pretty Ultramarine cancel, couple perf. tips partly blunted, otherwise Extremely Fine (Photo)	27.50
223	15c Black (77). Huge Margins, Neat thin bar Grid cancel, well centered, neatly reperfed at left, Spectacular Appearance (Photo)	20.00
224	15c Black (77). Two, one Blue Target cancel, Choice Centering, minute flaws, Extremely Fine Appearance (Photo)	41.00

TWENTY FOUR CENT

225 ★	24c Grayish Lilac (78a). Fresh, o. g., light creases, otherwise Very Fine, Deep color (Photo)	55.00
226 ★	24c Gray (78b). Fresh, Part o. g., Excellent Centering, tiny negligible tear in top margin, otherwise. Extremely Fine (Photo)	55.00
227 ★田	24c Grayish Lilac (78). Block , Beautiful Fresh Color, Nearly Full o. g., Very Fine, A Scarce & Handsome Block (Photo)	300.00
228	24c Grayish Lilac (78a). Marvelous Color, Neat Grid cancel, Extremely Fine (Photo)	13.50
229	24c Dark Lilac (78). Exceptionally Well Centered, Beautiful Deep Rich Color, Bold Grid cancel, Extremely Fine, A Gem (Photo)	13.50
230	24c Dark Lilac (78). Choice Centering, Deep Shade close to the Very Scarce Blackish Violet, Neat, Clear Blue cancel, Extremely Fine (Photo)	14.00
231	24c Grayish Lilac (78a). Well Centered, Light Color, Fine Impression, Perfect Deep Red Split "Circle of Wedges" cancel, few perfs. least bit nibbed, still Extremely Fine, Handsome (Photo)	18.50
232	24c Gray (78). Tiny faults, Well Centered, Bold New York Soldier's Head cancel, Very Fine Strike, Scarce (Photo)	E. VIII
233	24c Gray (78b). Centered to bottom left, Perfect Bold New York Horse's Head cancel, Exceptional Strike (Photo)	E. VII
234	24c Lilac (78). Well Centered, Light Color, Neat Square Grid cancel, V. F. (Photo)	13.50
235	24c Grayish Lilac (78a). Wonderful Margins & Centering, Fresh Color, Bold "Spokes" cancel, trivial corner tear, otherwise Extremely Fine (Photo)	13.50
236	24c Lilac (78). Beautiful Margins incl. Left Straddle Margin Showing Center Line & Bit of Next Stamp, Fresh Color, Bold Red Star in Circle cancel, small faults, Extremely Fine Appearance, Very Pretty (Photo)	E. IV
237	24c Gray (78b). Unusually Large Margins, Wonderful Dark Color, Neat Four Ring Target cancel, light crease, otherwise Extremely Fine (Photo)	13.50



- 238 **24c Dark Lilac (78).** Top perfs. touch, Deep Shade close to the Very Scarce Blackish Violet, Bold **"PAID"** cancel, Fine 30.00
- 239 **24c Lilac (78).** Two, first Bold **Blue** "Baltimore, Md." Double Circle pmk., nicked perfs., otherwise Very Fine, other Huge Margins Bold **Red Star** in Circle cancel, reperfed center line, Extremely Fine Appearance 37.00+
- 240 **24c Lilac (78).** Horizontal Pair, Neat **"Hingham, Mass."** **"Bat"** cancel centered on each stamp, Beautiful Strikes, Extremely Fine, A Remarkable Pair, 1972 auction price \$200.00 (Photo) 32.50+
- 241 **24c Lilac (78).** Vertical Pair, Excellent Centering, Fresh Color, Neat Grid cancels, Extremely Fine (Photo) 32.50
- 242 **24c Lilac (78).** Three Lovely Shades, Cancels incl. Light Target, Four Point Star in Circle, Bold Dark Blue "Cincinnati, O." Town, few tiny perf. flaws, F.-V.F. Appearance 41.00
- 243  **24c Gray (78b).** Block, Lovely Color, Bold **Cross Roads** cancels, top stamp in left pair tiny pinhole, otherwise Very Fine, Right Pair Large Margins, Beautifully Centered & Extremely Fine, Very Scarce & Handsome Block (Photo) 150.00

1867 GRILLED ISSUES



- 244 **3c Rose, C. Grill (83).** Incredibly Well Centered, Fresh, o. g., Extremely Fine, with P. F. Certificate, Choice Example of this Very Scarce Stamp 400.00
- 245 **3c Rose, C. Grill, Points Down (83 var).** Fresh, o. g., single short perf., otherwise Fine, Listed Used Only, Unpriced unused, with P. F. Certificate, Very Rare **E. XIII**
- 246 **3c Rose, C. Grill, Imperforate (83a).** Horizontal Pair, Large Margins, Fresh, Virtually Full o. g., Extremely Fine & Rare, with P. F. Certificate 850.00
- 247 **3c Rose, C. Grill (83).** Blue R. P. O. pmk., Extremely Fine, Scarce (Photo) 80.00+
- 248 **3c Rose, C. Grill (83).** Fresh Color, Light Cancel, Extremely Fine, with P. F. Certificate (Photo) 75.00
- 249 **3c Rose, C. Grill (83).** Few minor perf. flaws, Bold Numeral **"1"** in Three Ring Target cancel, Very Scarce Marking on this stamp (Photo) 75.00+
- 250 **3c Rose, C. Grill (83).** Bold Rosette cancel, reperfed at right, Very Fine Appearance (Photo) 75.00
- 251 **3c Rose, D. Grill (85).** Fresh & Very Fine, Very Scarce Unused (Photo) 400.00
- 252 **3c Rose, D. Grill (85).** Unusually Well Centered, Fresh Color, Neat Four Ring Target cancel, couple partly nibbed perfs., really trivial, otherwise Extremely Fine (Photo) 70.00
- 253 **3c Rose, D. Grill (85).** Choice Centering, Unusual **"Sunburst"** cancel, Very Fine (Photo) 70.00
- 254 **3c Rose, D. Grill (85).** Horizontal Strip of Five, Cork cancels, perfs. trifle in at left, Rare as a multiple (Photo) 370.00+

255	2c Black, Z. Grill (85B). Exceptional Centering, Nearly Full o. g., few tiny perf. stains & trivial internal gum bends, otherwise Extremely Fine, Rare Unused, signed "Geo. B. Sloane" (Photo)	300.00
256	2c Black, Z. Grill (85B). Light Quartered Cork cancel, Extremely Fine (Photo)	65.00
257	2c Black, Z. Grill (85B). Extra Wide Margins, Neat Quartered Cork cancel, Extremely Fine, 1972 auction realization \$200.00 (Photo)	65.00
258	2c Black, Z. Grill (85B). Fresh Color, Bright Red cancel, tiny corner thin, Extremely Fine Appearance (Photo)	80.00
259	2c Black, Z. Grill (85B). Incredibly Well Centered, Red Circle of V's cancel, small faults, cancel bit strengthened, Very Handsome Appearance (Photo)	80.00
260	2c Black, Z. Grill (85B). Horizontal Pair, Much Better than usual centering, perfs well clear. Neat segmented cork cancel, Very Fine, Very Scarce (Photo)	150.00
261 ★	3c Rose, Z. Grill (85C). Beautiful Centering, Fresh, Virtually Full o. g., suggestion of tiny thin speck in grill, otherwise Extremely Fine, Hand-some Stamp, Rare Unused (Photo)	900.00
262	3c Rose, Z. Grill (85C). Fantastic Margins, Small Blue Square cancel, single nibbed perf. & very faint trivial thin speck, otherwise Extremely Fine, An Astounding Single, Extraordinary despite the tiny flaws (Photo)	210.00
263	3c Rose, Z. Grill (85C). Bold Rosette cancel, light toning, mostly on back, Fine Appearance (Photo)	200.00
264	12c Black, Z. Grill (85E). Well Centered, Light Blue cancel, Extremely Fine, Brought \$400.00 in 1972 auction (Photo)	125.00
265	12c Black, Z. Grill (85E). Better than usual centering, Bold Hollow Triangle cancel, Very Fine, Very Scarce (Photo)	125.00+

"E" GRILLS

266 ★	1c Blue, E. Grill (86). Fresh, Nearly Full o. g., Well Centered & V.F. (Photo)	140.00
267	1c Blue, E. Grill (86). Large Margins, Well Centered, Bold "OK" Between Bars cancel, Marvelous Strike, Extremely Fine & Scarce, Brought \$100.00 in 1972 auction (Photo)	40.00+
268	1c Blue, E. Grill (86). Nice Margins, Beautiful Bright Shade, Small Negative Star cancel, Clear Strike, Very Fine (Photo)	40.00+
269	1c Blue, E. Grill (86). Large Margins, Wide Natural s. e. at Left, Well Centered, Bold Chicago "KK(K)" cancel, Very Fine Strike, Very Scarce (Photo)	E. VII
270	1c Blue, E. Grill (86). "Jumbo" Margins, Beautiful Centering, Bold Blue "Circle of Wedges" cancel, trivial corner perf. creases, otherwise Extremely Fine (Photo)	42.50
271	1c Blue, E. Grill (86). Bold Blue "Circle of Wedges" cancel, couple perfs. least bit nibbed, otherwise Very Fine, Pretty Stamp (Photo)	42.50
272	1c Blue, E. Grill (86). Fresh Color, "Circle of V's" cancel., Brilliant Strike in Bright Red, Fine, Very Attractive (Photo)	55.00
273	1c Blue, E. Grill (86). Deep Rich Shade, Bold Solid Star cancel, minute flaws, Extremely Fine Appearance (Photo)	40.00+
274 ★	2c Black, E. Grill (87). Large Margins, Extra Wide at Top, Fresh, o. g., Extremely Fine, A Beautiful & Choice Single (Photo)	65.00
275	2c Black, E. Grill (87). Beautiful Centering, Neat Grid cancel, Extremely Fine (Photo)	14.00
276	2c Black, E. Grill (87). Marvelous Centering, Red "Scallop" Shell cancel, Perfect Bold Strike, Extremely Fine, A Sensational Beauty (Photo)	E. VIII



248



249



250



251



252



253



254



255



256



257



258



259



260



261



262



263



264



265



266



267



268



269



270



271



272



273



274



275



276



277



278



283

277	2c Black, E. Grill (87). Bold Star in Circle cancel, Choice Strike, Very Fine, 1972 auction price \$90.00 (Photo)	14.00+
278	2c Black, E. Grill (87). Large Margins, Well Centered, Bold Quartered Cork Cancel, faint negligible crease, otherwise Extremely Fine (Photo)	14.00
279	2c Black, E. Grill (87). Bold Blue Leaf cancel, Very Fine (Photo)	E. V
280	2c Black, E. Grill (87). Tiny perf. creases, otherwise Very Fine (Photo)	14.00
281	2c Black, E. Grill (87). Two, Blue Grid & Red Geometric cancels, Pretty Lot	34.50
282	★ 3c Rose, E. Grill (88). Fresh & Extremely Fine (Photo)	30.00
283	★ 3c Rose, E. Grill (88). Horizontal Block of Six, Brilliant Full o. g., few short perfs. on right pair, really trivial, otherwise F.-V.F., A Very Choice Block (Photo)	240.00+
284	3c Rose, E. Grill (88). Clear "Charlestown, N. H." Masonic cancel Ty. 6, Very Fine, ex-Greenebaum (Photo)	E. IV
285	3c Rose, E. Grill (94). Slight toning, nearly all on back, Complete Masonic "False Teeth" cancel, Very Fine Strike, Scarce (Photo)	E. IV
286	3c Rose, E. Grill (88). Perfs. in at right, Extra Bold Corry, Pa. Eagle cancel, Choice Strike, Scarce (Photo)	E. V
287	3c Rose, E. Grill (88). Centered to top right, Bold New York Roman Soldier's Head cancel, Excellent, Complete Strike, Scarce (Photo)	E. VII
288	3c Rose, E. Grill (88). Left perfs. touch, Full strike Waterbury, Conn. "Irishman" cancel, Rare (Photo)	E. X
289	3c Rose, E., F. Grills (88, 94). Three Well Centered Singles, each with Diff. "H" cancel, one in Blue, Bold Strikes, Scarce & Handsome Lot	E. III
290	3c Rose, E. Grill (88). Ten, Pretty Shades & Cancels, incl. Blues, Reds, Geometrics, Star, Nearly All Exceptional Margins & Centering, Very Handsome Lot	E. IV
291	★ 10c Blue Green, E. Grill (89). Large Even Margins, Beautiful Color, Nearly Full o. g., tiny thin speck in grill, really negligible; Extremely Fine Appearance (Photo)	275.00
292	10c Green, E. Grill (89). Large Even Margins, Lovely Shade, Sharp Bold "Circle of V's" cancel, Extremely Fine (Photo)	35.00
293	10c Green, E. Grill (89). Huge Margins incl. Right Imperf. Pane Margin, Rich Color, Bold "Circle of Wedges" cancel, minor flaws top margin, otherwise Extremely Fine (Photo)	35.00
294	10c Green, E. Grill (89). Vertical Pair, Large Margins incl. Full Left Straddle, Well Centered, Extremely Fine, A Magnificent Pair (Photo)	75.00
295	10c-15c E. Grills (89-91). Well Centered, Pretty cancels, 12c with Blue Propeller, trivial flaws, Very Fine Appearance	150.00
296	10c Green, 12c Black, E., F. Grills (89, 90, 96). Nice cancels, incl. Blue Merchant's Handstamp, Bold Leaf, 12c tiny faults, F.-V.F. Appearance	87.50



297

300

297	★ 12c Black, E. Grill (90). Horizontal Pair, Fresh, Virtually Full o. g., Very Fine, A Gorgeous, Brilliant Pair	650.00
-----	---	--------

298	12c Black, E. Grill (90). Large Margins, Intense Color, Bold Red Cork cancel, Extremely Fine (Photo)	37.50
299	12c Black, E. Grill (90). Large Margins, Choice Centering, Pretty Blue Target cancel, Extremely Fine (Photo)	37.50
300 ★	15c Black, E. Grill (91). Horizontal Pair , Fresh, Nearly Full o. g., left stamp single partly nibbed perf., Right Stamp Extremely Fine & as a single, probably as fine as can be obtained	1,600.00
301	15c Black, E. Grill (91). Excellent Centering, fairly light cancel, tiny inconsequential corner bend, otherwise Extremely Fine (Photo)	77.50
302	15c Black, E. Grill (91). Bright Red cancel, tiny thin speck in grill, Very Fine Appearance (Photo)	90.00
303	15c Black, E. Grill (91). Lovely Margins, Beautiful Centering, Red Grid of Squares cancel, skillfully filled thin & faint crease, An Exceptionally Gorgeous Looking Stamp (Photo)	90.00

"F" GRILLS

304 ★	1c Blue, F. Grill (92). Extra Large Margins, o. g. Very Fine (Photo)	70.00
305 ★	1c Blue, F. Grill (92). Block , Vivid Color, Large Part o. g., some short perfs. & centered bit to right, still an Attractive & Very Scarce Block (Photo)	350.00



306 ★	1c Pale Blue, F. Grill (92a). Horizontal Block of Six , Unbelievably Fresh, Virtually Full o. g., Wonderful Centering, A Gorgeous Block, the Right Block being Extremely Fine, Exceptional in All Respects	495.00+
307	1c Blue, F. Grill (92). Fresh Color, Excellent Centering, single partly nibbed perf., Beautiful Red Grid of Diamonds cancel, Very Fine & Handsome Strike on a Very Pretty Stamp. 1972 auction realization was \$200.00 (Photo)	25.00+
308	1c Blue, F. Grill (92). Well Centered, Neat Target cancel, tiny perf. creases, otherwise Very Fine (Photo)	17.50
309	1c Blue, F. Grill (92). Well Centered, Large Margins, Bright Color, light Blue "Circle of Wedges" cancel, few perfs. trifle blunt, still Extremely Fine (Photo)	18.50
310 ★	2c Black, F. Grill (93). Nearly Full o. g., Fresh & Extremely Fine (Photo)	35.00
311	2c Black, F. Grill (93). Well Centered, Bold Leaf cancel Exceptionally Fine (Photo)	E. IV
312	2c Black, F. Grill (93). Perfectly Struck Blue "Cincinnati, O." pmk., Very Fine; realized \$80.00 in 1972 auction (Photo)	8.50+



279 282 284 285 286 287



288 291 292 293 298 294



299 301 302 303 304 305



306 307 308 309 310



311 312 313 314



315 316 317 318



319 323 326 327 324

313	2c Black, F. Grill (93). Well Centered, Incredibly Bold Red "Circle of V's" cancel, Perfect Strike, Very Fine, Exceptionally Handsome (Photo)	13.50+
314	2c Black, F. Grill (93). Marvelous Centering, Blue Framed Grid cancel, Bold Sharp Strike, Extremely Fine (Photo)	8.50
315	2c Black, F. Grill (93). Wonderfully Well Centered, light cancel, Extremely Fine (Photo)	8.00
316	2c Black, F. Grill (93). Enormous Margins, incl. Right Imperf. Arrow, Fantastic Centering, very light Blue cancel, minute tear in bottom margin, otherwise Extremely Fine, A Real "Eye-Catcher" (Photo)	8.50
317	2c Black, F. Grill (93). "Jumbo" Margins incl. Huge Right Imperf. Pane Margin, Very Fine, Spectacular, Realized \$160.00 in 1972 (Photo)	8.00+
318	2c Black, F. Grill (93). Well Centered, Red "Circle of V's" cancel Extremely Fine (Photo)	13.50
319	2c Black, F. Grill (93). Huge Margins, Neat Blue Four Ring Target cancel, Extremely Fine (Photo)	8.50
320	2c Black, F. Grill (93). Odd Red Geometric cancel, Brilliant Bold Strike, Fine & Handsome (Photo)	13.50
321	2c Black, F. Grill (93). Wonderfully Well Centered, Neat Red cancel, tiny closed tear, otherwise Extremely Fine (Photo)	13.50
322	2c Black, F. Grill (93). Five, Exceptional Margins & Centering, Variety of Cancels, tiny flaws, Very Fine or Extremely Fine Appearance (Photo)	40.00
323 ★	3c Rose, F. Grill (94). Gorgeous Centering, Rich Color, Part o. g., Extremely Fine (Photo)	18.50
324 ★	3c Rose, F. Grill (94). Block, Incredibly Fresh, o. g., top left stamp short perfs. & trivial thin in grill, otherwise a Very Fine Block (Photo)	100.00



325 ★	3c Rose, F. Grill, Imperforate (94b). Horiz. Pair with Part Top Sheet Margin, Fresh, o. g., Very Fine, Very Scarce (Photo)	450.00
326	3c Rose, F. Grill (94). Wonderfully Well Centered, Large Even Margins Top & Bottom, Rich Color, Bold Cross cancel, Extremely Fine (Photo)	E. III
327	3c Rose, F. Grill (94). Beautiful Fresh Color, Bold Small Heart in Shield cancel, Very Fine, Scarce & Unusual (Photo)	E. III
328	3c Rose, F. Grill (94). Clear Animal's Head cancel, Very Fine (Photo)	E. V
329	3c Rose, F. Grill (94). Exceptional Centering & Color, Pretty Green cancel, tiny light corner crease, otherwise Extremely Fine (Photo)	25.00
330	3c Rose, F. Grill (94). Ten, Beautiful Cancels, incl. Rosettes, Stars, one in Circle of Spokes, "Birds Foot" Geometric, also Interesting Pre-Print Paper Fold, Very Handsome Lot (Photo)	E. III
331 ★	5c Brown, F. Grill (95). Brilliant o. g., Fresh Color, Very Fine, Particularly Choice (Photo)	250.00
332	5c Brown, F. Grill (95). Marvelous Centering, Rich Color, Bold Quartered Cork cancel, Extremely Fine (Photo)	55.00

333	5c Brown, F. Grill (95). Unusually Large Margins, Pretty Blue Target cancel, Extremely Fine (Photo)	58.00
334	5c Dark Brown, F. Grill (95a). Well Centered, Marvelous Deep Shade, Cork cancels & Dark Red "Hamburg" Transit , Extremely Fine, Beautiful (Photo)	67.50
335	5c Brown, F. Grill (95). Horizontal Pair , Marvelous Color, Light Red cancel, Very Fine (Photo)	120.00+
336 ★	10c Green, F. Grill (96). Fresh, Nearly Full o. g., Magnificent Color & Centering, Extremely Fine, A Gem (Photo)	110.00
337	10c Green, F. Grill (96). "Jumbo" Margins, Beautiful Centering, Fresh Color, Pretty Rosette cancel, Exceptionally Fine, A Gorgeous Stamp (Photo)	17.50
338	10c Blue Green, F. Grill (96). Lovely Color, Light cancels, minute flaws, Very Fine Appearance (Photo)	17.50
339 ★	12c Black, F. Grill (97). Large Margins, Well Centered, Fresh Part o. g., minute flaws, Extremely Fine Appearance (Photo)	120.00
340	12c Black, F. Grill (97). "Jumbo" Margins, Incredible Centering Intense Color, light cancel, Extremely Fine, A Marvelous Gem (Photo)	18.50
341	12c Black, F. Grill (97). "Jumbo" Margins, Lovely Centering, Light Blue Quartered Cork & Bit of Red Town cancels, Extremely Fine (Photo)	19.00
342	12c Black, F. Grill (97). Large Margins, Town & Rosette cancels, Extremely Fine (Photo)	18.50
343	12c Black, F. Grill (97). Bold Circle of Wedges cancel, Very Fine (Photo)	18.50
344 ★	15c Black, F. Grill (98). Bright & Fresh, Beautiful Centering with Extra Wide Bottom Margin, Part o. g., Extremely Fine, A Beauty (Photo)	125.00
345	15c Black, F. Grill (98). Marvelous Centering, Light Magenta Grid cancel, Extremely Fine, Exceptional (Photo)	25.00
346	15c Black, F. Grill (98). Blue Quartered Cork & bit of Red Transit cancels, Very Fine (Photo)	21.00
347	15c Black, F. Grill (98). Bright Bold Green cancel, Very Fine, Very Scarce (Photo)	100.00
348	15c Black, F. Grill, Thin Paper (98). Large Margins, Fresh, Bold Circle of V's cancel, Very Fine (Photo)	22.50



349 ★	24c Gray Lilac, F. Grill (99). Well Centered, Beautiful Color, Virtually Full o. g., Very Fine, Handsome & Choice Example of the Very Scarce Stamp (Photo)	300.00
350	24c Gray Lilac, F. Grill (99). Incredibly Well Centered, Fresh Rich Color, Large Bold Negative "K" cancel, Extremely Fine, A Beauty (Photo)	115.00+
351	24c Gray Lilac, F. Grill (99). Marvelous Color, Blue cancel, Very Fine (Photo)	120.00
352	24c Gray Lilac, F. Grill (99). Exceptional Centering, Fresh Color, Bold "Circle of Wedges" cancel, two trivial perf. creases, otherwise Extremely Fine (Photo)	115.00

353	24c Gray, F. Grill (99). Beautiful Color & Centering, Neat Four Ring Target cancel, tiny corner crease, otherwise Extremely Fine (Photo)	115.00
354 ★	30c Orange, F. Grill (100). Exceptionally Well Centered, Brilliant Rich Color, Extremely Fine	400.00
355	30c Orange, F. Grill (100). Centered, Neat "Circle of V's" cancel, V. F. (Photo)	72.50
356	30c Orange, F. Grill (100). Top perfs. barely touch, on piece, tied by Circle of Wedges cancel, matching "St. Louis, Mo." pmk., Very Attractive	72.50
357	30c Orange, F. Grill (100). "Hiogo, Japan" Double Circle pmk., Mostly Clear Full Strike, small corner crease, otherwise V. F., Very Scarce (Photo)	175.00
358	30c Orange, F. Grill (100). Perfs. trifle in at right, Rich Color, Bold "N. Y. Steamship" cancel, Slug Above Month, Choice Strike, Very Scarce (Photo)	E. VI
359	30c Orange, F. Grill (100). Fine, Bright Shade	72.50
360 ★	90c Blue, F. Grill (101). Well Centered, Deep Rich Color, Large Part o. g., Very Fine, Rare Unused, with P. F. Certificate	800.00
361	90c Blue, F. Grill (101). Large Margins, Well Centered, light cancel, minor perf. creases, otherwise Extremely Fine	200.00

1861 RE-ISSUES



362 - 371

362 ★	1c Blue, Re-Issue (102). Fresh, o. g., Extremely Fine, Choice & Handsome	175.00
363 ★	2c Black, Re-Issue (103). Very Fine, A Magnificent Example of this elusive rarity	900.00
364 ★	3c Brown Red, Re-Issue (104). Beautiful Rich Color, Well Centered, Nearly Full o. g., single short perf., otherwise Extremely Fine & Rare	1,200.00
365 ★	5c Brown, Re-Issue (105). Wonderfully Fresh, Virtually Full o. g., Extremely Fine, with P. F. Certificate	750.00
366 ★	10c Green, Re-Issue (106). Extremely Fine, Incredibly Handsome	950.00
367 ★	12c Black, Re-Issue (107). Very Fine, with P. F. Certificate	1,250.00
368 ★	15c Black, Re-Issue (108). Fresh, Large Part o. g., Fine	1,100.00

- 369 ★ **24c Deep Violet, Re-Issue (109).** Wonderfully Fresh, Marvelous Color & Centering, tiny nick in blind perfs. at top nevertheless Extremely Fine, A Beautiful Stamp 1,300.00
- 370 ★ **30c Brownish Orange, Re-Issue (110).** Fresh, Part o. g., tiny natural paper wrinkle, slightly nibbed corner perf., otherwise Very Fine 1,750.00
- 371 ★ **90c Blue, Re-Issue (111).** Large Margins, Splendid Color & Centering, Very Fine, A Rare & Beautiful Stamp 2,000.00

1869 PICTORIAL ISSUE

INVERTED CENTER PROOFS, IMPERFORATES



- 372 P **15c-90c Pictorial Plate Proofs on Card, Centers, Flags Inverted (120Pa-122Pa, 129Pa).** Fresh, Extremely Fine Set 3,600.00



- 373 ★ **1c-90c Pictorials, Without Grill, Imperforate (112b, 114a, 117, 118a, 121a, 122a varieties).** Large to Huge Margins, Mostly o. g., 12c & 90c each with minute corner crease well clear of design, Extremely Fine, This Unit, which May Be Unique, Realized \$5,250.00 in the Lilly Sale, P. F. Certificates accompany E. XVII

ONE CENT BUFF

- 374 ★ **1c Buff (112).** Fresh, Nearly Full o. g., Choice Centering, Extremely Fine (Photo) 75.00
- 375 ★田 **1c Buff (112). Block,** Incredibly Fresh, o. g., Very Fine, A Very Beautiful Block (Photo) 425.00



328



331



332



333



335



334



336



337



339



340



341



342



343



344



345



346



347



348



350



351



352



353



355



357



358



359



361



375



374



377



378



379



380



381

376

- 376 ★田 1c Buff, Without Grill (112b). Block, Large Part o.g., light crease in margin of right pair, centered to bottom left, still a Wonderful Showpiece of Extreme Rarity, Believed to be Unique, ex- Worthington (Photo) 1,300.00+
- 377 1c Buff (112). Clear "East Randolph, Mass." pmk., Perfect Strike, Very Fine & Spectacular (Photo) 26.50
- 378 1c Buff (112). Blue "Burlington, Apr. 28, 1870, M. O. B." pmk., Very Fine, Extremely Scarce & Attractive (Photo) 26.50+
- 379 1c Buff (112). Bold "Concord" pmk., Very Fine (Photo) 26.50
- 380 1c Buff (112). Neatly Struck (South) "Framingham" pmk., V. F. (Photo) 26.50
- 381 1c Buff (112). Gigantic Side Margins Showing Full Left Straddle, light Quartered Cork cancel, Extremely Fine, A Gem, 1972 auction price \$130.00 (Photo) 22.50



382

383

384

- 382 1c Buff (112). Well centered, Beautifully tied on small piece by The Large Bee, "Waterbury, Ct." with edge of pmk. on the piece. Very Fine, Very Rare, A Magnificent Exhibition Piece E. XII
- 383 1c Buff (112). Thin spot in grill, Wonderful Bold Waterbury, Conn. Shoe cancel, An Extraordinary Example of this Rare cancel E. X
- 384 1c Buff (112). Clear Waterbury, Conn. Skull & Crossbones cancel, Fine Strike, Rare E. X
- 385 1c Buff (112). Bold Negative Star cancel, Extremely Fine (Photo) 22.50
- 386 1c Buff (112). Bold Negative Masonic Square & Compass cancel Perfect Strike, Extremely Fine (Photo) E. V
- 387 1c Buff (112). Nice Margins, Large at Top Fresh Color, Neat Target cancel, Extremely Fine (Photo) 22.50
- 388 1c Buff (112). Well Centered, Rich Color, Bold Blue Target cancel, Extremely Fine (Photo) 23.50
- 389 1c Buff (112). Neat Tiny Five Point Star cancel, Very Fine, Bold Strike, stamp a Rich Deep shade (Photo) E. IV
- 390 1c Buff (112). Clear Shield cancel, Very Fine (Photo) E. VI
- 391 1c Buff (112). Single nibbed perf., Extraordinarily Bold Complete "PD" cancel, An Exceptional Strike, Scarce (Photo) E. V
- 392 1c Buff (112). Small Black Cross-Road & Red "Boston, Paid All" pmk., Very Fine & Attractive (Photo) E. V
- 393 1c Buff (112). Gigantic Margins, tied by Bold Fancy Geometric Design in shape of a Cross, on small piece, Very Fine, A Fantastic "eye-catcher", Realized \$325.00 when sold in 1972 auction (Photo) 22.50+
- 394 1c Buff (112). Large Margins, Rich Shade, on small piece, tied by Blue Maltese Cross in Circle cancel, matching "St. Catharine, Md." pmk., Extremely Fine & Attractive; 1972 auction price \$120.00 (Photo) 23.50+
- 395 1c Buff (112). Large Margins, Well Centered, Bright Red cancel, Extremely Fine (Photo) 35.00



385



386



387



388



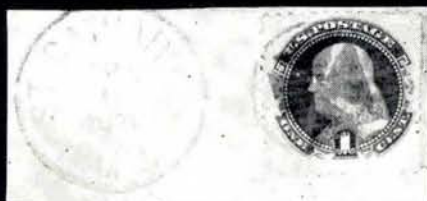
389



390



393



394



396



391



392



395



397



399



398



400



401



402



405



406



407



409



412



413



414



415



411

396	1c Buff (112). Huge Imperf. Margins Top & Bottom, A Spectacular Stamp, 1972 auction price \$150.00 (Photo) 22.50+
397	1c Buff (112). Unusually Large Margins, Nice Centering, Small Neat Circle of Wedges cancel, tiny insignificant corner perf. creases, otherwise Extremely Fine (Photo) 22.50
398	1c Buff (112). Fresh Color, Clear "Paid" cancel, tiny tears, otherwise Very Fine (Photo) 50.00
399	1c Buff (112). Horizontal Pair, "New York, Received" & Rosette of Diamonds cancels, Very Fine, Very Scarce (Photo) 50.00+
400	1c Buff (112). Horizontal Strip of Three, each with quite clear Ty. 5 Masonic cancel, Scarce & Handsome Piece, Fine, ex-Greenebaum (Photo) E. VII

TWO CENT BROWN

401 ★	2c Brown (113). Wonderfully, Well Centered with Enormous Top & Bottom Margins, A Spectacular Stamp, Extremely Fine, a similar example realized over \$500.00 in our May 1972 sale (Photo) 45.00
402 ★	2c Brown (113). Deep Shade, Extremely Fine (Photo) 45.00
403 ★田	2c Dark Brown (113). Block, Deep Rich Color, Full Brilliant o. g., tiny hinge reinforcements, Extremely Fine (Photo) 250.00
404 ★田	2c Yellow Brown (113). Block, Fresh o. g., Exceptional Centering, light margin crease in bottom pair, otherwise Extremely Fine (Photo) 250.00
405	2c Brown (113). Well Centered, Huge Top & Bottom Margins, Deep Shade, Sharp Impression, Pretty Blue Oval cancel, Extremely Fine, A Gorgeous Gem (Photo) 9.00
406	2c Brown (113). Beautiful Extra Large Margins, Wonderful Deep Rich Color, Neat Target cancel, Extremely Fine (Photo) 8.50
407	2c Brown (113). Well Centered, Beautiful Deep Shade, light creases, Partly Clear "Hiogo, Japan" Double Circle pmk., Very Fine Appearance, Scarce (Photo) 75.00
408	2c Brown (113). Rich Color, Baltimore Foreign Mail Red Dot in Circle cancel, Fine, Very Scarce on this Value E. IV
409	2c Yellow Brown (113). Horizontal Pair, left perfs. touch, Clear Straight Line "Paid All" cancel, Full Strike, Scarce & Attractive (Photo) E. V
410	2c Brown (113). Five Exceptionally Well Centered Singles with Choice Margins, Lovely Shades, Nice Cancels incl. Odd Grid, Halved Cork, tiny flaws, Marvelous Appearance 42.50
411	2c Brown (113). Extra Large Even Margins, Wide Natural Left Imperf. Pane Margin, on piece, used in combination with 1c Ultramarine, Grill (134), Deep Color, Unusually Wide Top Margin Showing Bit of Imprint, each tied by Greenish Blue "R. P. O." cancel, Extremely Fine, A Magnificent Piece (Photo) E. IV

THREE CENT ULTRAMARINE

412 ★	3c Ultramarine (114). Split Grill, Fresh, o. g., Very Fine (Photo) 30.00
413 ★田	3c Ultramarine (114). Right Arrow Block, Split Grill, Brilliant Full o. g., Well Centered & Extremely Fine (Photo) 130.00+
414 ★	3c Ultramarine, Without Grill (114a). Rich Fresh Color, Full o. g., right perfs. touch, Fine, Very Scarce, with P. F. Certificate (Photo) 275.00
415	3c Ultramarine (114). Heavily Overinked, Incredibly Deep Color, Practically Purple, Fantastic Stamp, last auction price \$130.00 (Photo) —

416	3c Ultramarine (114). Deep Shade, Huge Bottom Margin, on small piece, tied by Magnificently Struck " Union Mills, Pa. " Kleagle Mask , An Incredible Example of this Rare Ku Klux Klan cancel. 1972 auction realization \$300.00 (Photo) —
417	3c Ultramarine (114). On piece, tied by " Union Mills, Pa. " Skull & Crossbones , " KKK " cancel, A Wonderful Exceptional Strike on a Choice Stamp, Rare companion to preceding lot, realized \$500.00 in 1972 auction (Photo) —
418	3c Ultramarine (114). Wonderfully Well Centered, Bold Putnam, Ct. Star within a Star cancel, Extremely Fine, A Little Beauty (Photo) E. IV
419	3c Ultramarine (114). Lovely Bright Shade, Neat Green Cross Roads cancel, Very Fine (Photo) 45.00
420	3c Ultramarine (114). Large Margins, Clear Dark Green Solid Star cancel, faint diagonal crease, otherwise Extremely Fine (Photo) 45.00+
421	3c Ultramarine (114). Red Grid of Diamonds in Circle cancel, Very Fine, Pretty Strike (Photo) E. IV
422	3c Ultramarine (114). Large Margins, tiny insignificant corner crease, Bold Masonic Negative Square & Compass cancel, Scarce (Photo) E. IV
423	3c Ultramarine (114). On piece, Well tied by Masonic Negative Square & Compass , " Nashua, N. H. " pmk., Very Fine, Attractive Item (Photo) E. V
424	3c Ultramarine (114). Deep Rich Color, on piece, tied by Bold Negative "OK" in Circle cancel, Choice Strike, Scarce (Photo) E. IV
425	3c Ultramarine (114). Large Margins, Well Centered, on small piece, tied by Bold Solid Heart cancel, Very Fine (Photo) E. IV
426	3c Ultramarine (114). Well Centered, Bold Numeral "10" cancel, Magnificent Strike, Very Fine (Photo) 10.00+
427	3c Ultramarine (114). Horizontal Pair , on piece, tied by Dark Green Cogwheel , another Bold Strike on Left Stamp not tied, matching " Shelbyville, Tenn. " pmk., one stamp short corner perf., Very Scarce & Desirable (Photo) 90.00
428	☐ 3c Ultramarine (114). Block , Lovely Deep Shade, each with Unusual Geometric cancel resembling Bird's Feet , A Handsome Block despite some short perfs. on left pair (Photo) 60.00+
429	3c Ultramarine (114). Three Diff. Red cancels, Target , Grid & Odd Geometric , Handsome Fresh Lot, each a diff. shade of Red 24.00+
430	3c Ultramarine (114). Four Diff. Star cancels, one in Blue, Nicely Centered, Very Attractive Scarce Lot, Beautiful Strikes E. IV
431	3c Ultramarine (114). Six, Majority Excellently Centered, Two with Beautiful Large Margins, Choice Variety of Cancels, incl. Greenish Blue Town , Extra Bold " Floral ", Leominster, Mass. Circle of Links , " Paid ", Exceptional Lot E. V

LOTS ON VIEW: Friday, April 11, 1975 & Monday, April 14, 1975

& Day of Sale. — Office Closed Saturday Before Sale



416



417



418



419



420



421



422



427



423



428



424



425



426



432



434



435



436



437



438



439



440



441



442



443



444



445



446



447



448



449



450



451



452

SIX CENT ULTRAMARINE

432 ★ 6c Ultramarine (115). Fresh & Very Fine (Photo) 175.00



- 433 ★ 6c Ultramarine (115). Block of Sixteen, Unusually Well Centered for a Block this Size, Wonderful Deep Rich Color, Nearly Full o.g., slight offset on gum, tiny hinge reinforcements, Fine-Very Fine, A Sensational Block; Believed to be the largest Block Known & certainly one of the most outstanding 1869 blocks in existence. Realized \$9,000.00 in 1974 Rarity auction 4,000.00+
- 434 6c Ultramarine (115). Fantastic "Jumbo" Margins, Extremely Fine, a Marvelous & Extraordinary Gem. 1972 auction price \$270.00 (Photo) 27.50+
- 435 6c Ultramarine (115). Incredible Margins incl. Left Imperf. Half Arrow, Bit of Adjoining Stamp at Right, Bold Grid of Squares cancel, an Extremely Fine Stamp of Unexcelled Beauty; 1972 auction price \$160.00 (Photo) 27.50+
- 436 6c Ultramarine (115). Beautiful Bold Masonic "All Seeing Eye" cancel, tiny margin break, Very Fine Appearance, Exceptionally Handsome & Choice Example of this Rare cancel, ex-Greenebaum, Brought \$450.00 when sold at 1972 auction (Photo) —
- 437 6c Ultramarine (115). Well Centered, Pretty Square of Wedges within Square cancel, Extremely Fine, Most Unusual (Photo) 27.50+
- 438 6c Ultramarine (115). Neat Blue Target cancel, Beautiful Strike, V.F. (Photo) 27.50

439	6c Ultramarine (115). Rich Color, Black & Purple Reg. cancels, Very Fine, Scarce (Photo) 27.50+
440	6c Ultramarine (115). Beautiful Large Even Margins, Small Light Cross-roads cancel, very faint crease & single partly blunted perf., otherwise Extremely Fine (Photo) 27.50
441	6c Ultramarine (115). Vivid Red cancel, Pretty Strike, Very Fine (Photo) 35.00
442	6c Ultramarine (115). Exceptionally Bold Blue Rosette cancel, Fine & Very Attractive (Photo) 28.50+
443	6c Ultramarine (115). Vertical Pair, Well Centered with Huge Left Margin, Bold Grid cancels, Very Fine (Photo) 60.00
444	6c Ultramarine (115). Horizontal Strip of Three, Fresh Color, Bold Cork cancels, Fine & Scarce (Photo) 87.50

TEN CENT[®] YELLOW ORANGE

445 ★	10c Yellowish Orange (116). Brilliant Full o. g., Fine, Very Handsome Stamp (Photo) 185.00
446	10c Yellow (116). Brilliant Rich Color, single short perf., Beautiful Clear Purple "Philad'a, Pa." pmk., Gorgeous Strike, An Incredible Showpiece (Photo) 35.00+
447	10c Yellow (116). Small Bold Five Point Star in Circle cancel, Pretty Strike, Very Fine (Photo) E. V
448	10c Yellow (116). Small flaws, Bright Color, Unusually Clear "Hiogo, Japan" Double Circle pmk., Choice Strike, Scarce (Photo) 100.00
449	10c Yellowish Orange (116). Deep Shade, Wide Side Margins, top perfs. touch, Clear (N. Y.) "STEAM" (SHIP) cancel, Fine (Photo) 55.00
450	10c Yellow (116). Rich Color, Well Centered, Part of Red "Bremen" Boxed Transit, Bold "Paid 3" in Arc, Very Fine Strike, A Beautiful Stamp (Photo) 45.00+
451	10c Yellow (116). Rich Color, Bold Numeral "10" in Circle, Perfect Strike, Very Fine (Photo) E. VII
452	10c Yellow (116). Partly Broken corner perf., Perfect Bold Two Line "Paid, 21" cancel in Dark Red, A Beatuy, with P. F. Certificate (Photo) 45.00+
453	10c Yellow (116). Enormous Margins, incl. Right Imperf. Arrow, Neat Framed Grid cancel, Extremely Fine, A Wonderful Stamp Brought \$170.00 at 1972 auction (Photo) 30.00
454	10c Yellow Orange (116). Deep Shade, Red "New York Paid All Direct" cancel, tiny flaws, otherwise Very Fine, Clear Strike (Photo) E. IV
455	10c Yellow (116). Well Centered, Fresh Color, Black "New-York" pmk., tiny corner crease, Very Fine Appearance (Photo) 35.00
456	10c Yellowish Orange (116). Rich Color, Blue Oval Merchant's Handstamp, "Sep. 11, 1869" Date, Fine, Clear Strike, Scarce (Photo) E. V
457	10c Yellowish Orange (116). Rich Color, trivial tiny corner crease, Bold Leaf cancel, Scarce Type, Choice Strike (Photo) E. IV
458	10c Yellow (116). Well Centered, Rich Color, tiny rift, Bold Negative Star cancel, Handsome & Scarce (Photo) E. III

TWELVE CENT GREEN

459 ★	12c Green (117). Lovely Fresh Color, Well Centered, tiny trivial corner perf. crease, otherwise Very Fine (Photo) 165.00
-------	---



- 460 ★ 12c Green (117). Block of Nine, Brilliant o. g., Fine, An Attractive & Very Rare Showpiece, one of the few large blocks on record 1,795.00+
- 461 12c Green (117). Well Centered, Pretty 4-Diamond Star cancel in Red, Very Fine (Photo) 40.00
- 462 12c Green (117). Well Centered, Anchor in Diamond of Dots, French Packet cancel, faint thin spot, Extremely Fine Appearance, ex-Waterhouse (Photo) 27.50+
- 463 12c Green (117). Single nibbed perf., Clear "New York, Registered" pmk., Very Fine Strike (Photo) 27.50+
- 464 12c Green (117). Well Centered, Bold Star cancel, Exceptionally Fine (Photo) 27.50+
- 465 12c Green (117). Lovely Bold Ty. 5 Masonic cancel, faint crease & tiny thin speck, Very Fine Appearance, ex-Greenebaum (Photo) 27.50+
- 466 12c Green (117). Lovely Margins, Choice Centering, Small Square of Four Diamonds, Bold Strike in Red, Extremely Fine (Photo) 40.00
- 467 12c Green (117). Rich Scarlet Red Target cancel, Very Fine (Photo) 40.00
- 468 12c Green (117). Vivid Color, Bright Red Thin Bar Grid cancel, V. F. (Photo) 40.00
- 469 12c Green (117). Exceptionally Well Centered, Neat Red Quartered Cork cancel, tiny corner perf. crease, otherwise Extremely Fine (Photo) 40.00
- 470 12c Green (117). Large Margins, Unusual Shade, Light Blue Leaf cancel, Very Fine (Photo) 28.50
- 471 12c Green (117). Extra Large Margins, Choice Centering, Bold Rosette cancel, tiny thin spot, minute tear, Extremely Fine Appearance (Photo) 27.50
- 472 12c Green (117). Nice Even Margins, Bold Blue cancel, negligible internal crease, otherwise Extremely Fine (Photo) 28.50
- 473 12c Green (117). Fresh Color, Large Blue Irregular Star cancel (Phila. Pa.), Fine, Scarce E. IV
- 474 12c Green (117). Vertical Block of Six, Deep Rich Color, Four Extra Bold Red Leaf cancels, skillfully hinge reinforced, Fine & Rare, A Remarkable Showpiece (Photo) 410.00+
- 475 12c Green (117). Two Beautifully Centered Singles, one Large Margins, Blue Rosette & Thick Bar Grid cancels, minor thins, Extremely Fine Appearance 56.00



453



454



455



456



457



458



459



461



462



463



464



465



466



467



468



469



470



471



472



478



479



480



481



482



474



483



484



485



487



488



489



490



491



492



493



494



495



496



497



498



500



502



503

FIFTEEN CENT BROWN & BLUE, TYPE I



476

477

- | | | |
|-------|--|---------|
| 476 ★ | 15c Brown & Blue, Ty. I (118). Fresh, Part o. g., strong vignette shift to the right, Very Fine | 500.00 |
| 477 ★ | 15c Brown & Blue, Ty. I, Without Grill (118a). Deep Colors, Fresh, Large Part o. g., Fine & Rare, with P. F. Certificate | 850.00 |
| 478 | 15c Brown & Blue, Ty. I (118). Beautifully Centered, Larger than Usual Margins, Fresh Sharp Colors, Handsome Floral Rosette cancel, Extremely Fine (Photo) | 95.00 |
| 479 | 15c Brown & Blue, Ty. I (118). Gorgeous Colors, Well Centered, Perfect Blue "Cincinnati, O." pmk., Very Fine (Photo) | 100.00+ |
| 480 | 15c Brown & Blue, Ty. I (118). Pretty Colors, Sharp Impression, Blue cancel, Very Fine (Photo) | 100.00 |
| 481 | 15c Brown & Blue, Ty. I (118). Fresh Colors, Extra Clear Anchor in Diamond of Dots, French Packet cancel, V. F., Rare & Handsome (Photo) | E. IX |
| 482 | 15c Brown & Blue, Ty. I (118). Unusually Large Even Margins, fairly light Crossroads cancel, few partly nibbed perfs. at bottom, really trivial, otherwise Extremely Fine, Very Scarce with Margins of this size (Photo) | 95.00 |
| 483 | 15c Brown & Blue, Ty. I (118). Sharp Impression, light Red Rosette cancel, Very Fine (Photo) | 120.00 |
| 484 | 15c Brown & Blue, Ty. I (118). Bold Red cancel, Fine & Attractive (Photo) | 120.00 |

FIFTEEN CENT BROWN & BLUE, TYPE II

- | | | |
|-------|--|--------|
| 485 ★ | 15c Brown & Blue, Ty. II (119). Rich Colors, tiny insignificant corner perf. crease, otherwise Very Fine (Photo) | 200.00 |
|-------|--|--------|

DESCRIPTIONS

EXTREMELY FINE: The finest condition for noteworthy, outstanding copies.

VERY FINE: (V. F.) In prime condition such as to satisfy the requirements of particular collectors.

FINE: (F) Perforations or margins do not touch design on issues after 1890 but in some cases may just touch in earlier issues. If used, fairly light cancellation.

VERY GOOD: (V. G.) Generally nice appearance but margins or perforations may cut in slightly.

GOOD: Average off-centering or fairly attractive with slight defects.

ORIGINAL GUM is not to be expected on 19th century stamps unless so stated in the description.

MINT: With original gum and never hinged.

Scott 1975 Specialized Catalog used for cataloguing lots of U.S. & Possessions. Scott 1975 Standard Catalogue for others. Use of other catalogs noted in the descriptions.



- 486 ★田 15c Brown & Blue, Ty. II (119). Block of Nine, Beautifully Centered, Gorgeous Rich Colors, Large Part o. g., some perf. strengthening, bottom right stamp repaired, otherwise Very Fine, Illustrated in Brookman where it is called "one of the finest known blocks" 2,300.00+
- 487 15c Brown & Blue, Ty. II (119). Bright Rich Colors, Bold Red, Split Cork cancel, Very Fine, Pretty Stamp (Photo) 50.00
- 488 15c Brown & Blue, Ty. II (119). Deep Rich Colors, Blue cancel, V.F. (Photo) 37.50
- 489 15c Brown & Blue, Ty. II (119). Deep Rich Colors, traces of Red cancel, Very Fine (Photo) 50.00
- 490 15c Brown & Blue, Ty. II (119). Gorgeous Colors, Four Petal "Flower" cancel, Pretty Strike in Red, Very Fine (Photo) 50.00
- 491 15c Brown & Blue, Ty. II (119). Beautiful Color & Impression, Bright Red cancel, Very Fine (Photo) 50.00
- 492 15c Brown & Blue, Ty. II (119). Light Red cancel, Very Fine (Photo) 50.00
- 493 15c Brown & Blue, Ty. II (119). Perfect Bold "Honesdale, Pa." Town pmk., Gorgeous Strike, Fine (Photo) 42.50
- 494 15c Brown & Blue, Ty. II (119). Bright Red Town pmk., Fine ... (Photo) 50.00
- 495 15c Brown & Blue, Ty. II (119). Deep Colors, Remarkably Bold Dark Green Quartered Cork cancel, Very Scarce, Handsome Stamp (Photo) 135.00
- 496 15c Brown & Blue, Ty. II (119). Fantastic Centering, Rich Colors, Odd Thick Bar Grid Cancel, Bold Strike, trivial toned spot on back, otherwise Extremely Fine (Photo) 35.00
- 497 15c Dark Brown & Blue, Ty. II (119). Large Side Margins, Beautiful Centering, Deep Rich Colors, lightly cancelled, minute tear in top margin, otherwise Extremely Fine (Photo) 35.00
- 498 15c Brown & Blue, Ty. II (119). Choice Colors & Centering, Neat Red Thick Bar Grid cancel, single partly blunted perf., otherwise Extremely Fine (Photo) 50.00



- 499 **15c Brown & Blue, Ty. II, Center Inverted (119b).** Better Than Usual Centering, Bold Cork cancel, tiny trivial internal wrinkle, almost imaginary, still Very Fine, A Handsome Rarity, one of the best examples known 7,500.00

TWENTY-FOUR CENT GREEN & VIOLET

- 500 ★ **24c Green & Violet (120).** Wonderfully Fresh Colors, faint, almost imaginary thin speck, Very Fine Appearance (Photo) 500.00



- 501 ★田 **24c Green & Violet (120).** Block, Well Centered, Nearly Full o. g., perfs. considerably strengthened, light crease in top pair, few very trivial toned specks, otherwise Very Fine, Very Rare Block 5,250.00
- 502 **24c Green & Violet (120).** Large Margins, Extra Wide at Bottom, Neat Grid of Squares cancel, Extremely Fine, Exceptional (Photo) 150.00
- 503 **24c Green & Violet (120).** Fantastic Bright Colors, Well Centered, Light Circle of "V"s cancel, Extremely Fine (Photo) 150.00+
- 504 **24c Green & Violet (120).** Beautiful Color, Bold Red Leaf cancel, Very Fine & Handsome (Photo) 180.00+
- 505 **24c Green & Violet (120).** Fresh Colors, Pretty Red Leaf cancel, V. F. (Photo) 180.00+
- 506 **24c Green & Violet (120).** Magnificent Color, Red cancel, inconsequential corner perf. bend, Very Fine (Photo) 180.00
- 507 **24c Green & Violet (120).** Wonderful Fresh Colors, Bold Red cancel, two corner perfs. least bit blunt, still Very Fine (Photo) 180.00
- 508 **24c Green & Violet (120).** Well Centered, Neat Grid of Squares cancel, light diagonal crease, otherwise Very Fine (Photo) 150.00
- 509 **24c Green & Violet (120).** Deep Color, Red cancel, small thin spot in grill, Very Fine Appearance (Photo) 180.00



504

505

506

507

508

509



511

515

516

517

518

519



522



520

521

531

532



533

534

535

536

537

538



539

540

541

542

543

544



545

546

547

548



549

550

551

552



553

556

557



558



- 510 **24c Green & Violet, Center Inverted (120b).** Magnificent Centering with Wide Margins, Brilliant Colors, light Cork cancel, Extremely Fine, A Beautiful Gem, ex Moody, "Ambassador" Collection, As Fine as could be desired, Brought \$8,500.00 in our 1971 Rarity Sale 6,000.00+

THIRTY CENT BLUE & CARMINE

- 511 ★ **30c Blue & Carmine (121).** Fresh, o. g., reperfed at top, Fine Appearance
(Photo) 500.00



- 512 ★■ **30c Blue & Carmine (121).** Block, Magnificent Deep Rich Colors, Nearly Full o. g., slight natural pre-print paper crease in left pair, Fine, Extremely Rare Block, with P. F. Certificate 8,500.00
- 513 ★ **30c Blue & Carmine, Without Grill (121a).** Fresh, Large Part o. g., Marvelous Rich Color, Fine, A Handsome Rarity 1,000.00
- 514 ★■ **30c Blue & Carmine, Without Grill (121a).** Block, Excellent Deep Rich Colors, Nearly Full o. g., Fine-Very Fine, An Exceptionally Beautiful & Rare Block 4,500.00
- 515 **30c Blue & Carmine (121).** Beautiful Margins, Extra Large at Bottom, Lovely Colors, Light Quartered Cork cancel, Extremely Fine (Photo) 67.50
- 516 **30c Blue & Carmine (121).** Magnificent Centering, Rich Colors, Clear Anchor in Diamond of Dots, French Packet cancel, Extremely Fine, ex-Waterhouse, A Gorgeous Exhibition Piece (Photo) 67.50+
- 517 **30c Blue & Carmine (121).** "Jumbo" Margins, Perfectly Centered, Magnificent Colors, Bold Quartered Cork cancel, Extremely Fine, a Wonderful Gem, 1972 auction price \$375.00 (Photo) 67.50
- 518 **30c Blue & Carmine (121).** Wonderfully Well Centered, Fresh Colors, Brilliant Red cancel, Extremely Fine (Photo) 77.50

- 519 **30c Blue & Carmine (121).** Fresh Colors, Neat Rosette & Small Red Boxed "PD" cancels, Very Fine (Photo) 67.50
- 520 **30c Blue & Carmine (121)** Perfectly Centered, Rich Colors, **Red Rosette** cancel, slightly nibbed perfs., otherwise Extremely Fine (Photo) 77.50
- 521 **30c Blue & Carmine (121).** Used, Nice Even Margins, tiny thin spot in grill, Extremely Fine Appearance (Photo) 67.50
- 522 **30c Blue & Carmine (121).** On piece, tied by Large "X" & Red "New, Paid, York" cancels, Very Fine, Handsome (Photo) 67.50+



- 523 **30c Blue & Carmine, Flags Inverted (121b).** Beautiful Centering, Fresh Colors, Bold Segmented Cork cancel, two very trivial corner perf. creases, otherwise Extremely Fine, Unquestionably One of the Finest Existing Used Examples of this Great Rarity 22,500.00

NINETY CENT CARMINE & BLACK



524

525

- 524 ★ **90c Carmine & Black (122).** Unbelievably Well Centered, Wide Top & Bottom Margins, Fresh Colors, tiny natural inclusion speck, insignificant corner perf. crease, otherwise Extremely Fine, with P. F. Certificate, Exceptional Stamp 1,500.00
- 525 ★ **90c Carmine & Black, Without Grill (122a).** Wonderfully Fresh, Large Part o. g., separated from sheet by scissors, perfs. intact, Very Fine & Very Rare, with P. F. Certificate 2,000.00



526 - 530

- 526 **90c Carmine & Black (122).** Lovely Colors with Large Margins, Lightly cancelled, Extremely Fine, ex-Newbury, 1972 auction price \$700.00 350.00

527	90c Carmine & Black (122). Near Perfect Centering, Fresh Colors, Neat Rosette cancel, Extremely Fine 350.00
528	90c Carmine & Black (122). Well Centered, Rich Color, Bright Red cancel, Extremely Fine, Outstanding, Brought \$1,000.00 in 1972 auction 425.00
529	90c Carmine & Black (122). Lovely Margins, Rich Fresh Colors, Neat Red Grid of Bars cancel, Extremely Fine 425.00
530	90c Carmine & Black (122). Marvelous Centering, Rich Colors, Unusual Grid Cancel of Dashes & Dots , single partly nibbed perf., otherwise Extremely Fine, A Fantastic Gem, 1972 auction realization \$500.00 350.00
531	90c Carmine & Black (122). Well Centered, fairly light cancel, Rich Colors, tiny perf. crease, otherwise Very Fine (Photo) 350.00

1869 RE-ISSUES

532 ★	1c Buff, Re-Issue (123). Fresh, Large Part o. g., couple minor gum toning spots, otherwise Very Fine (Photo) 115.00
533	1c Buff, Re-Issue (123). Wonderfully Well Centered, Bold Blue cancel, Extremely Fine (Photo) 75.00
534	1c Buff, Re-Issue (123). Neat Target cancel, Very Fine (Photo) 75.00
535	1c Buff, Re-Issue (123). Deep Shade, Neat Blue Target cancel, reperfed at right, Very Fine Appearance (Photo) 75.00
536 ★	2c Brown, Re-Issue (124). Fresh & Fine (Photo) 175.00
537	2c Brown, Re-Issue (124). Large Even Margins, Beautiful Color & Impression, Dark Ultramarine cancel, Extremely Fine, A Lovely Stamp (Photo) 125.00
538	2c Brown, Re-Issue (124). Grid cancel, Very Fine (Photo) 125.00
539 ★	3c Blue, Re-Issue (125). Fresh & Very Fine (Photo) 900.00
540	3c Blue, Re-Issue (125). Beautiful Color, light Target cancel, Very Fine, Rare (Photo) 500.00
541 ★	6c Blue, Re-Issue (126). Fresh, Part o. g., Very Fine (Photo) 350.00
542	6c Blue, Re-Issue (126). Well Centered, corner crease & tiny thin speck, Odd Cancel, Extremely Fine Appearance (Photo) 200.00
543 ★	10c Yellow, Re-Issue (127). Fresh, Nearly Full o. g., reperfed Very Fine Appearance (Photo) 525.00
544	10c Yellow, Re-Issue (127). Light purple cancel, Very Fine (Photo) 275.00
545 ★	12c Green, Re-Issue (128). Excellent Color & Centering, Nearly Full o. g., Extremely Fine (Photo) 550.00
546	12c Green, Re-Issue (128). Used, small faults, Very Fine Appearance (Photo) 325.00
547 ★	15c Brown & Blue, Re-Issue (129). Fresh, Part o. g., couple tiny perf. creases, otherwise Very Fine (Photo) 625.00



554

555

548 ★	15c Brown & Blue, Re-Issue, Imperf. Horizontally (129a). Large Margins, Brilliant o. g., tiny scissor cut in bottom margin, otherwise Extremely Fine, Very Rare, ex Lilly	(Photo)	850.00
549	15c Brown & Blue, Re-Issue (129). Beautiful Large Margins, Fresh Colors, Neat Oval Reg. cancel, Extremely Fine	(Photo)	300.00
550 ★	24c Green & Violet, Re-Issue (130). Beautiful Fresh Colors, V. F.	(Photo)	525.00
551	24c Green & Violet, Re-Issue (130). Light cancel, Very Fine	(Photo)	225.00
552 ★	30c Blue & Carmine, Re-Issue (131). Brilliant Colors, Fresh, Nearly Full o. g., Very Fine	(Photo)	775.00
553	30c Blue & Carmine, Re-Issue (131). Vivid Colors, Neat Oval Grid cancel, reperfed, Very Fine Appearance	(Photo)	375.00
554 ★	90c Carmine & Black, Re-Issue (132) Fresh, Large Part o. g., Very Fine		1,300.00
555	90c Carmine & Black, Re-Issue (132). Used, Well Centered, minor corner wrinkles & some age toning, otherwise Very Fine, with P. F. Certificate		700.00
556	1c Buff, Re-Issue (133). Bold Town pmk., Very Fine	(Photo)	90.00
557	1c Brown Orange, Re-Issue (133a). Fresh Color, light Magenta cancel, small thin spot, Very Fine Appearance	(Photo)	85.00
558	1c Buff, Re-Issue (133). Vertical Pair with Bottom Sheet Margin, tied on large piece by Oval Grid cancels, "Hartford, Conn., Aug. 30, 1883" pmks., few irregular perfs., otherwise Very Fine, Very Scarce	(Photo)	180.00

END OF SALE — THANK YOU

BIDDING INTERVALS

BIDS	ADVANCE	BIDS	ADVANCE
Up to \$30.00	\$1.00	\$300.00 – \$725.00	\$25.00
\$32.50 – \$72.50	\$2.50	\$750.00 – \$2,000.00	\$50.00
\$75.00 – \$145.00	\$5.00	\$2,000.00 – \$3,000.00	\$100.00
\$150.00 – \$290.00	\$10.00	\$3,250.00 and up	\$250.00

Bids which do not conform to the above will be automatically reduced to the appropriate level.

A REMINDER

Mails are often slow. After nearly every auction we receive some 25 to 50 late bid sheets, many of which would have been successful. We can only repeat . . . PLEASE MAIL YOUR BIDS EARLY ! Use Air Mail if you are in doubt as to being on time.

IS YOUR COLLECTION FOR SALE?

REALIZE IMMEDIATE CASH
PLUS THE ADDED ADVANTAGE OF
SELLING THROUGH OUR AUCTIONS

We will advance immediate cash up to 75% of our appraised value. There is no interest charge.

Your collection is then sold in one of our auction sales. All stamps are expertly and advantageously lotted in attractive, well illustrated catalogs. Lotting is meticulously planned under our personal supervision. Commission is 20% of the gross realization. There is no lotting fee nor any other charges. Final settlement is made within five weeks after the sale. We have continuously conducted stamp auctions for over forty-five years.

Valuable collections and stamp holdings are especially wanted, but we will accept properties valued from \$500 upwards. Send all stamps directly for appraisal. Auction advance will be remitted shortly after receipt. If not entirely pleased, stamps will be returned at our expense. We will travel anywhere to inspect important properties.

ROBERT A. SIEGEL
AUCTION GALLERIES, Inc.

(Licensed and Bonded Auctioneer)

120 EAST 56th STREET
NEW YORK, N. Y. 10022
(Tel. 753-6421)

Robert A. Siegel

AUCTION GALLERIES, INC.

List of Prices Realized

469th SALE

April 15th, 1975

120 EAST 56 STREET, NEW YORK CITY, N.Y. 10022

(212) 753-6421

UNITED STATES 1861-1869

A Portion of the Louis Grunin Collection

1	500	50	180	99	85	148	37½	197	37½
2	250	51	80	100	70	149	105	198	55
3	160	52	72½	101	220	150	170	199	60
4	95	53	40	102	65	151	130	200	50
5	110	54	160	103	42½	152	29	201	180
6	52½	55	62½	104	85	153	80	202	450
7	30	56	42½	105	21	154	95	203	250
8	180	57	280	106	55	155	52½	204	325
9	725	58	85	107	37½	156	30	205	200
10	35	59	52½	108	525	157	35	206	105
11	40	60	60	109	375	158	85	207	72½
12	57½	61	22	110	475	159	450	208	115
13	125	62	40	111	105	160	950	209	270
14	80	63	50	112	57½	161	425	210	300
15	47½	64	29	113	95	162	170	211	65
16	230	65	55	114	29	163	325	212	130
17	90	66	42½	115	240	164	230	213	85
18	50	67	35	116	47½	165	525	214	37½
19	47½	68	62½	117	150	166	50	215	105
20	42½	69	67½	118	110	167	67½	216	130
21	750	70	65	119	45	168	450	217	200
22	2400	71	75	120	115	169	280	218	325
23	200	72	42½	121	30	170	1000	219	135
24	200	73	45	122	60	171	325	220	90
25	375	74	130	123	80	172	105	221	50
26	90	75	125	124	180	173	100	222	42½
27	37½	76	1100	125	130	174	375	223	52½
28	200	77	1050	126	190	175	160	224	57½
29	750	78	240	127	45	176	90	225	105
30	675	79	260	128	28	177	70	226	130
31	1150	80	210	129	47½	178	52½	227	525
32	75	81	210	130	85	179	62½	228	100
33	270	82	100	131	260	180	250	229	70
34	400	83	90	132	325	181	35	230	105
35	210	84	105	133	290	182	45	231	57½
36	400	85	67½	134	180	183	75	232	270
37	400	86	145	135	190	184	50	233	180
38	190	87	72½	136	80	185	50	234	100
39	230	88	72½	137	270	186	40	235	13
40	115	89	85	138	1000	187	450	236	35
41	60	90	425	139	170	188	230	237	50
42	40	91	45	140	170	189	180	238	32½
43	60	92	37½	141	450	190	67½	239	47½
44	105	93	26	142	1850	191	35	240	190
45	240	94	37½	143	135	192	95	241	90
46	375	95	52½	144	65	193	57½	242	85
47	60	96	42½	145	450	194	525	243	170
48	85	97	60	146	60	195	35	244	700
49	230	98	50	147	70	196	18	245	400

246	725	310	170	374	270	38	75	502	350
247	230	311	75	375	550	39	37½	503	375
248	220	312	110	376	650	40	30	504	190
249	85	313	145	377	65	41	145	505	180
250	45	314	80	378	75	41	67½	506	190
251	450	315	72½	379	42½	42	80	507	170
252	135	316	350	380	50	44	45	508	52½
253	100	317	105	381	110	445	200	509	55
254	145	318	80	382	800	446	220	510	13500
255	220	319	115	383	325	447	85	511	325
256	170	320	17	384	325	448	115	512	6500
257	210	321	11	385	95	449	42½	513	550
258	50	322	57½	386	47½	450	240	514	3750
259	52½	323	115	387	52½	451	95	515	270
260	210	324	90	388	60	452	220	516	300
261	800	325	525	389	47½	453	210	517	600
262	300	326	40	390	100	454	42½	518	290
263	160	327	18	391	105	455	50	519	210
264	475	328	67½	392	60	456	72½	520	75
265	180	329	17	393	325	457	35	521	52½
266	375	330	72½	394	115	458	42½	522	280
267	160	331	350	395	67½	459	200	523	16000
268	90	332	120	396	180	460	3500	524	1500
269	65	333	150	397	42½	461	57½	525	2000
270	110	334	120	398	40	462	42½	526	1200
271	62½	335	230	399	125	463	42½	527	800
272	40	336	500	400	190	464	42½	528	1350
273	32½	337	100	401	300	465	72½	529	950
274	180	338	15	402	105	466	72½	530	1000
275	57½	339	135	403	425	467	80	531	425
276	350	340	140	404	280	468	135	532	105
277	70	341	110	405	125	469	45	533	90
278	30	342	52½	406	40	470	75	534	85
279	45	343	29	407	110	471	47½	535	28
280	23	344	220	408	47½	472	42½	536	130
281	50	345	150	409	85	473	40	537	160
282	80	346	42½	410	80	474	850	538	90
283	180	347	85	411	70	475	50	539	1000
284	29	348	47½	412	120	476	475	540	3000
285	19	349	675	413	325	477	525	541	375
286	50	350	230	414	210	478	325	542	210
287	105	351	350	415	67½	479	260	543	325
288	200	352	210	416	475	480	130	544	375
289	22	353	180	417	500	481	150	545	725
290	95	354	750	418	140	482	110	546	280
291	325	355	200	419	62½	483	135	547	550
292	90	356	110	420	40	484	115	548	700
293	32½	357	220	421	75	485	400	549	350
294	115	358	55	422	72½	486	4500	550	270
295	95	359	55	423	65	487	270	551	250
296	35	360	850	424	62½	488	95	552	525
297	625	361	190	425	45	489	130	553	450
298	135	362	375	426	47½	490	75	554	900
299	170	363	950	427	150	491	67½	555	950
300	1200	364	575	428	85	492	67½	556	62½
301	115	365	700	429	52½	493	65	557	52½
302	47½	366	850	430	90	494	26	558	145
303	70	367	900	431	57½	495	280		
304	120	368	600	432	230	496	29	END OF SALE THANK YOU	
305	125	369	600	433	9500	497	47½		
306	1050	370	850	434	180	498	29	GROSS REALIZATION	
307	180	371	1750	435	180	499	4500		
308	35	372	3400	436	500	500	425	\$197,782.00	
309	35	373	8000	437	160	501	4000		