

ROBERT
A.
SIEGEL

478th SALE

UNITED STATES STAMPS
HAWAII

The Property of Various Owners

Sold By Their Order

AT UNRESERVED PUBLIC AUCTION

Wednesday, October 29th, 1975 at 1:00 P. M.

Thursday, October 30th, 1975 at 1:00 P. M.

AUCTION GALLERIES, Inc.

120 E. 56th, Street, New York, N. Y. 10022

CONDITIONS OF SALE

1. The terms of sale are strictly cash on delivery to the highest bidder unless special arrangements have been made prior to the sale.
2. All bids are per lot as numbered in the catalogue unless otherwise announced by the auctioneer at the time of sale. The right is reserved to group two or more lots; to withdraw any lot or lots from the sale, or to act in behalf of the seller. The auctioneer shall regulate the bidding and in the event of any dispute his decision shall be final.
3. Any lot, the description of which is incorrect is returnable, but only within five days of receipt. All disputed lots must be returned intact as received. **The following lots may not be returned for any reason whatsoever: Lots containing ten or more stamps; Lots from buyers who have had the opportunity to examine them before the sale; Lots described as having defects or faults may not be returned because of any faults. No illustrated lots may be returned because of centering, margins or other factors shown in the illustrations.**
4. Successful bidders, unless they are known to us or supply acceptable references are expected to make payment in full before the lots are delivered. Mail bidders will be notified of the amount of their purchases. All mail bidders who have established credit with us must make payment within three days after receipt. We reserve the right in our sole and absolute discretion to demand cash payment at the time a lot is knocked down to any bidder who has not previously established credit with us or whose account is in arrears. In the event any buyer refuses to pay cash for any lot at the time it is knocked down to him, the auctioneer reserves the right to re-offer the lot immediately for sale to the highest bidder.
5. If the purchase price has not been paid within the time limit, nor lots taken up within seven days from date of sale they must be resold and any loss arising from such sale will be charged to the defaulter. Any account more than thirty days in arrears is subject to a late payment charge of $1\frac{1}{2}\%$ per month so long as the account remains in arrears. It the auctioneer, in his discretion, should institute any legal action to secure payment of a delinquent account the defaulting purchaser shall pay all legal expense incurred by the auctioneer and such charges will be added to the amount owed.
6. All lots are sold as genuine but should any lot be proved otherwise by written opinion of any competent, responsible authority acceptable to us, immediate refund of the full purchase price will be made, provided that such claim is made in writing within 14 days from date of sale. If claim is not made within this period, no lots are returnable for any reason at any time. So long as we are notified within the 14 day period that an opinion is being sought the matter will remain open until such opinion is rendered. We will not be responsible for any charges incurred by the buyer for expertization fees and costs unless the opinion states the item is not genuine, in which case we will pay actual costs up to a maximum of \$50.00.
7. Until paid for in full, all lots remain the property of Robert A. Siegel Auction Galleries, Inc. in behalf of the seller.
8. All forwarding charges will be added to the purchase price. The mode of shipment shall be at our option unless we are given specific instructions.
9. Lots may be sent for inspection to buyers known to us upon written application. All such lots must be returned to us by registered mail, adequately insured and within 24 hours after receipt. The applicant assumes all responsibility and for insurance against all risks from time of receipt until they are actually received back by us, and is to pay all expenses of postage and insurance. No lots can be sent for inspection within eight days from date of local viewing. Large lots and collections cannot be sent for inspection.
10. Agents are responsible for all purchases made in behalf of their clients unless other arrangements are made prior to the sale.
11. The placing of a bid shall constitute acceptance of the foregoing condition of sale.

ROBERT A. SIEGEL, Licensed Auctioneer

478th SALE

OCTOBER 29, 30, 1975

BID SHEET

ROBERT A. SIEGEL AUCTION GALLERIES, Inc.

120 East 56th Street

New York, N. Y. 10022

Tel.: 753-6421 (Area Code 212)

Please purchase for me at your auction to be held **October 29th, 30th, 1975** the lots listed below, the prices annexed being my limit on each lot. I agree to remit for purchases in accordance with the **Conditions of Sale** and return no lots later than three days after receipt.

REFERENCES PLEASE

(If unknown to us)

SIGNED

New York State residents kindly include
County in address.

County

BIDDING INTERVALS

BIDS	ADVANCE	BIDS	ADVANCE
Up to \$30.00	\$1.00	\$300.00 - \$725.00	\$25.00
\$32.50 - \$72.50	\$2.50	\$750.00 - \$2,000.00	\$50.00
\$75.00 - \$145.00	\$5.00	\$2,000.00 - \$3,000.00	\$100.00
\$150.00 - \$290.00	\$10.00	\$3,250.00 and up	\$250.00

Bids which do not conform to the above will be automatically reduced to the appropriate level.

Lot	Bid	Lot	Bid	Lot	Bid

VALUATIONS

Upon request, estimate of value furnished on any lots in this auction.

FIRST SESSION

WEDNESDAY, OCTOBER 29th, 1975 — 1:00 P. M.


UNITED STATES

1847 ISSUE


- | | | |
|-----|--|---------|
| 1 ★ | 5c Brown (1). Rich color, Fine Impression, Large margins all around; Unusually fresh, Large part o. g., couple of very light gum wrinkles, characteristic of early gum which also has a tiny, natural gum inclusion speck, nevertheless Very Fine & Handsome (Photo) | 550.00 |
| 2 | 5c Light Brown (1). Beautiful shade, Sharp Impression, Large to Huge margins showing bits of next stamps T. & L., Blue town pmk., Extremely Fine & Handsome (Photo) | 150.00+ |
| 3 | 5c Brown Orange (1b). Rich Color, Fine Impression, Ample to Large margins all around. Wide pre-printing fold opened to its full 1 mm width. Very Fine, An Extraordinary & Very Scarce stamp (Photo) | 200.00+ |
| 4 | 5c Grayish Brown, Double Transfer of L. & B. Frames, Ty. "C" (1a). Margins all around, Shows variety clearly, slightly dry print at T., Red Grid cancel, Very Fine & Scarce (Photo) | 350.00+ |
| 5 | 5c Brown (1). Ample to Large Margins, Beautiful Deep Shade, Fine Impression, light Red Grid cancel, Very Fine (Photo) | 150.00 |
| 6 | 5c Orange Brown (1b). Brilliant color, Sharp Impression, Large margins, Red Grid cancel., minute corner crease, otherwise Extremely Fine (Photo) | 200.00 |
| 7 | 5c Orange Brown (1b). Rich color, Fine Impression, Margins all around incl. Full R. B. Corner Sheet Margins , Light Black Grid cancel., This position shows a clear "naked eye" scratch or crack in B. margin. Slight discoloration at extreme edges of sheet margin, faint creases, Very Fine appearance & a sensational position piece with an unlisted plate variety (Photo) | 200.00+ |
| 8 | 5c Brown (1). Gorgeous color & Impression, Wide R. B. Corner Sheet Margins , Full margin L., part of T. frame slightly cut into. Blue town cancel., A Beautiful Position piece, probably from the other pane than the corner piece showing the plate scratch (Lot No. 7). Couple of small discolorations in R. sheet margin mentioned only for sake of accuracy (Photo) | 150.00+ |
| 9 | 5c Red Brown (1). Ample to Huge Margins with L. sheet margin & bit of next T. stamp; on very thin, almost pelure paper, with slight pre-printing fold. Rather blurry Blue Grid cancel. & small bit of black cancel. Fine position piece (Photo) | 150.00+ |

LOTS ON VIEW FROM OCTOBER 24th

OFFICES OPEN SATURDAY BEFORE SALE

- 10 **5c Brown (1).** Rich color, Fine Impression, Three Huge margins incl. B. Sheet margin, part of T. frame line trifle cut into. Red Grid cancel., Fine (Photo) 150.00
- 11 **5c Brown (1). Horiz. Pair,** Marvelous color & Impression, Each stamp tied to small piece by perfect Bold strike of the 17-bar Grid in Circle, in Red. The well-known **Hudson River Mail cancel.** Three Huge Margins, least bit in at bottom; Still a Gorgeous, Sensational Exhibition Piece, with P. F. Certificate, said to be the only pair known with this cancel. (Photo) **E. XV**
- 12  **5c Red Brown (1).** Four Margins, mostly Large, Sharp Impression, Unusual Wide Pre-Print Paper Fold, tied on neat cover by Blue Town Pmk., scarce, Very Fine (Photo) 175.00+
-
- 13 **10c Black (2).** Large Even Margins, Wonderfully Fresh, Pretty Red Grid cancel., Extremely Fine (Photo) 425.00
- 14 **10c Black (2).** Major Short Transfer at Top. Large even margins, Red Grid cancel., Tiny offset from ink of address shows on back of one corner, Very Fine (Photo) 425.00+
-
- 15 **10c Black (2).** Intense color, Large to Huge margins with trace of next B. stamp. Faint ms. cancel., appears unused, Very Fine (Photo) 200.00
- 16 **10c Black (2).** Fine Impression, Large to Huge Margins incl. L. Sheet margin. Blue Numeral "10" cancel. (probably Baltimore). Couple of tiny thin specks in T. margin clear of design, otherwise Very Fine (Photo) 425.00+
- 17 **10c Black (2).** Rich color, Sharp Impression, Large margins incl. striking 15 mm T. Sheet margin. Red grid cancel, A Horiz. crease does not mar the beauty of this sensational stamp (Photo) 425.00+

1851 ISSUE

-
- 18 ★ **1c Dark Blue, Ty. II, Plate One Late (7).** Pos. 4R1L, just touched to Huge Margins, incl. Part T. Sheet Margin, Bit of Next Stamp at R., Fresh, o. g., light gum bend, otherwise Very Fine, Very Scarce (Photo) 500.00
- 19 ★  **1c Blue, Ty. II (7). Block of Five,** Pos. 59-60, 68-70R2, slightly in to Huge Margins incl. Right Sheet Margin with **Part Imprint**, Large Part o. g., tiny surface scuffs with some soiling, otherwise a Fine Block, Important Position Piece (Photo) 1,000.00+
-
- 20 **1c Blue, Ty. II (7).** Pos. 6R2, Ample to Huge Margins incl. Bits of two adjoining stamps, part top sheet margin, Grid cancel., Very Fine (Photo) 30.00
- 21 **1c Blue, Ty. II (7).** Touched to Huge Margins, incl. Bits of Next Stamps T. & B., Town pmk., Very Fine (Photo) 30.00
- 22 **1c Dark Blue, Ty. II (7).** Ample to Huge Margins, Magnificent Color, Blue Grid cancel., Very Fine, with APS Certificate (Photo) 30.00
- 23 **1c Blue, Ty. II, Pos. 4R1L (7 var.).** Clear to Large Margins, faint cancel., light corner crease, couple toned spots, Scarce Pos., Fine Appearance 100.00
- 24 **1c Blue, Ty. II, Cracked Plate, Pos. 12L2 (7).** Rich Color, Large to Clear margins, Fine (Photo) 100.00
- 25 **1c Blue, Ty. II (7).** Four, Shades, Margins all around to slightly cut in, couple small faults, Very Good-Very Fine Appearance 120.00
- 26 **1c Blue, Ty. II (7). Two Horiz. Strips of Three,** Margins a bit irregular, few small faults, Fairly Attractive Appearance 230.00
- 27 **1c Blue, Ty. II, 3c Red (7, 11). Horiz. Pair of First,** Tied on small piece by New Orleans Town Pmks., 3c Four margins, 1c Pair with margins to touching in places, Attractive, Fine Lot 72.00

28	1c Blue, Ty. II (7). Vertical Strip of Three , Ample to Huge Margins except tiny bit in on middle stamp, on piece tied by Red "Boston, Mass." & Small "Paid" in Grid, neatly struck on each, Sept. 20 (1851) date, middle stamp Fine, others Very Fine	115.00
29	1c Blue, Ty. II, Ty. IIIa (7, 8A). Horiz. Strip of Three , Large to Huge Margins except cut in at R. & irregular at B. on Rt. stamp, Left Pair Both Ty. II, ms. cancel., light creases, Left Pair Extremely Fine Appearance, Very Scarce Multiple	E. VII
30	☒ 1c Blue, Ty. II, Ty. IV (7, 9) . Margins to slightly in, Ty. II tied by Red N. Y. Carrier cancel., Ty. IV tied by Grid; also another 1c on cover tied by grid, cut too close at T. & B. to identify positively but may be Ty. IIIa, Pl. IV, Fairly attractive	E. V
31	1c Blue, Ty. IIIa (8A) . Deep Shade, Four Nice Margins, Town pmk., tiny scuff almost entirely in bottom margin, otherwise Very Fine, with APS Certificate	(Photo) 225.00
32	☒ 1c Blue, Ty. IIIa, Pl. IV (8a) . Three huge margins, just in at R. used with two damaged 1c singles, type not identifiable on 1857 folded letter. Fine cover	325.00
33	★ 1c Dark Blue, Ty. IV (9) . Pos. 10L1L (?), Gorgeous Color, Ample to Huge Margins, incl. T. Sheet Margin, Nearly Full o. g., Very Fine (Photo)	90.00
34	★ 1c Blue, Ty. IV (9) . Pos. 97R1L, Ample to Large Margins, Fresh, Part o. g., Very Fine	(Photo) 90.00
35	★ 1c Blue, Ty. IV (9) . Pos. 99L1L, Large to Huge Margins, tiny rust speck, faint crease, otherwise Extremely Fine	(Photo) 90.00
<hr/>		
36	★☐ 1c Blue, Ty. IV (9). Vertical Block of Six , Pos. 79-80, 89-90, 99-100R1L, Large Margins to trifle in two places, Fresh, Full o. g. Pos. 89 is the Very Scarce Broken Line at Bottom, "Type IIIa of Plate One Late" (see Neinken Page 129), this example is not completely broken at bottom, although very weak, Fine-Very Fine, A Beautiful Block	(Photo) 725.00+
37	★☐ 1c Dark Blue, Ty. IV (9). Vertical Block of Fourteen , Pos. 1-2, 11-12, 21-22, 31-32, 41-42, 51-52, 61-62R1L, Ample to Huge Margins incl. Top Sheet Margin, Part L. Pane Margin, Beautiful Deep Shade, Full o. g., tiny gum soak, two horiz. creases, one between pairs, other partly broken affecting two stamps, leaving two Very Fine Blocks of Six, Very Rare & Handsome	(Photo) 1,775.00+
<hr/>		
38	1c Blue, Ty. IV, Triple Transfer, One Inverted, Pos. 81L1L (9) . Huge to Clear margins, Part of next stamp at R., Very Fine	(Photo) 60.00
39	1c Dark Blue, Ty. IV (9) . Recut Once at B., Pos. 5R1L, Large to Huge Margins, incl. Bits of Two Adjoining Stamps, Part T. Sheet Margin, faint ms. cancel., Appears Unused, Extremely Fine	(Photo) 35.00
40	1c Blue, Ty. IV (9) . Four, tiny faults or cut in, one with sheet margin, one with Three Huge margins, V. G.-V. F. Appearing Lot	106.00+
41	E 3c Scarlet, Gavit Die Essay for 3c 1851 on India (Brazier 33E-Ca) . Reduced to stamp size as often, small thin specks, Very Fine Appearance, Scarce	(Photo) E. V
42	E 3c Scarlet (Mason 5), Die Essay for 3c 1851 on India (Brazier 33E-Gb) . 1 3/8" x 1 5/8", small thin spots, Very Fine Appearance, Scarce	E. III
43	3c Red (11) . Matched Set of the Four Diff. Corner Margin Singles, Various Shades, cancels. incl. Towns, Grid, one tiny ms., Virtually All Ample to Huge Margins, Fine-Very Fine Lot	E. IV
44	☒ 3c Red (11) . Three covers, stamps large margins to bit in, each tied by fancy Canton, Miss. cancel. Bold Negative "Paid 3" in circle, Negative 5-pt. Star & Fancy Star, Fine Lot	E. VI

45	✉	3c Red (11) Covers, 107, includes six pairs, few Orange Browns, a variety of town pmks. Mixed quality, Fair-Very Fine, Interesting Lot	295.00+
46		5c Red Brown (12). Clear to Large Margins, Fresh Color, Neat Town pmk., Very Fine, with P. F. Certificate	(Photo) 260.00
47		5c Red Brown (12). Large Margins to just touching at B., Deep Shade, small faint corner crease, Fine Appearance	260.00
48	✓	10c Green, Ty. I (13). Full Corner Sheet Margin with Center Line, Pos. 100L, Huge Margins all around, Extremely Fine	(Photo) 250.00+
49		10c Green, Ty. I (13). Ample to Large Margins, Town pmk., small faults, Very Fine Appearance	(Photo) 250.00
50	✓	10c Green, Ty. III (15). Large Margins, Rich Color, Town pmk., Extremely Fine	(Photo) 60.00
51		10c Green, Ty. III (15). Large Margins All Around, faint ms. cancel., Appears Unused, Very Fine	(Photo) 60.00
52	✉	10c Green, Ty. III (15). Three large margins, cut in at L., tied by "Cleveland, O." pmk. on cover to Calif., Fairly attractive	E. III
<hr/>			
53		10c Green, Ty. IV (16). Recut at Top, Pos. 74L, Ample to Large Margins, Red Grid cancel., small corner crease, otherwise Very Fine	(Photo) 450.00

1857 ISSUE

54		1c Blue, Ty. I (18). Wonderfully Well Centered, Pretty Color, light Grid cancel., single short perf. at top, otherwise Extremely Fine	(Photo) 140.00
<hr/>			
55	★	1c Blue, Ty. I, II (18, 20). Vertical Combination Strip of Three, B. Pair Ty. I, Virtually Full o. g., couple negligible toned spots, center stamp small thin, otherwise Fine-Very Fine, Very Scarce	(Photo) 695.00+
<hr/>			
56		1c Blue, Ty. 1c (19 var.). The sub variety of Ia, only eight positions on Plate 4, bold ms. "X" cancel., shows type clearly, centered to T., Rich Color, small closed tear, Fine Appearance, Scarce	E. V
57	★	1c Blue, Ty. II (20). Top Row, Pl. 12, Fresh, o. g., few blunted perf. tips otherwise Fine	(Photo) 145.00
58	★	1c Blue, Ty. II (20). Top Row, Pl. 2, Fresh Color, horiz. crease & reper. top, V. G. Appearance, Scarce	145.00
59		1c Blue, Ty. II (20). Rich Color, Town pmk., Very Fine	(Photo) 42.50
60		1c Blue, Ty. II, Double Transfer, Pos. 10R4 (20 var.). Rich Color, light cancel., Fine & Scarce	(Photo) 125.00
61		1c Blue, Ty. II, Pl. 12 (20 var.). Vert. Pair, Fresh, Well Centered, neat ms. cancels., Top stamp light corner crease, Very Fine Appearance	100.00
62		1c Blue, Ty. II, IIIa (20, 22). Blue & Black Grid cancels., each with single nibbed perf., otherwise Fine-Very Fine	92.50
63		1c Blue, Ty. III (21). Pl. 4, Blue Grid cancel, few short perfs., otherwise Fine	(Photo) 285.00
<hr/>			
64		1c Blue, Ty. III (21). Vertical Pair, Pos. 26, 36L4, Well Centered, Fresh Color, tiny filled thin in top stamp in addition to short perf. mentioned on accompanying APS Certificate (top stamp also), otherwise Very Fine, Rare	(Photo) 600.00
<hr/>			
65	★田	1c Blue, Ty. V (24). T. L. Corner Margin Block, Pos. 1-2, 11-12L9, Fresh, o. g., couple hinge reinforcements, Fine	135.00

66	★	1c Blue, Ty. V (24). B. Margin Block of Fifteen, Pos. 52-54, 62-64, 72-74, 82-84, 92-94L9, Fresh, o. g., few small hinge reinforcements, two stamps have perf. faults, nevertheless a Fine Block	470.00+
67		1c Blue, Ty. V (24). Well centered, Exceptionally Bold, Segmented Five Point Star cancel, Beautiful Strike, Very Fine	(Photo) E. V
68		1c Blue, Ty. V (24). Four, Two Top Row & Two Part Imprint Margin, cancels. incl. Red Carrier & Blue "Balto Paid," few small perf. flaws, otherwise Fine-Very Fine Lot	32.00+
69	★	3c Red (26). Block, Fresh, o. g., Very Fine	(Photo) 60.00
70	★	3c Red (26). Block with Part L. Imprint Margins & "4P.," slight toning, otherwise Very Fine, Rare	(Photo) 60.00+
71	★	3c Red (26). Block, Fresh, o. g., Very Fine	(Photo) 60.00
72	★	3c Red (26). Block, Fresh, o. g., Lovely Shade, Fine-Very Fine	60.00
73	★	3c Red (26). Block, Fresh, o. g., small hinge remnants, Fine	60.00
74	★	3c Red (26). Vertical Block of Eight, Fresh, o. g., Fine-Very Fine	(Photo) 120.00
75	★	3c Red (26). Horiz. Block of Eight, slight toning on back, otherwise Fine-Very Fine	120.00
76		5c Brick Red (27). Better than usual centering, Red "Paid" in Circle cancel. with additional indistinct black cancel., single blunted corner perf., otherwise Very Fine, with APS Certificate	(Photo) 235.00+
77		5c Deep Red Brown (28). Used, Lovely Color, tiny perf. flaws, otherwise Fine	85.00
78		5c Indian Red (28A). Marvelous Color, Town pmk., reperfed at top, not mentioned on accompanying APS Certificate, Fine Appearance	(Photo) 325.00
79		5c Brown, Ty. I (29). Odd Grid cancel, Fine	(Photo) 57.50
80		5c Brown, Ty. I, Ty. II (29, 30A). Latter faint cancel., thin spot, First reperfed at R., otherwise Fine Lot	95.00
81		5c Deep Orange Brown (30). Marvelous Color, Pretty Red Grid cancel., Fine & Very Attractive	(Photo) 250.00
82		5c Brown, Ty. II (30A). Red Grid cancel., Fine	42.50
83		10c Green, Ty. I (31). Large "Paid" in Grid cancel, few short perfs., otherwise Fine	(Photo) 150.00
84		10c Green, Ty. II, III, V (32, 33, 35). Used, latter with Red Town pmk., Well Centered, few really trivial nibbed perfs, otherwise Very Fine Lot	86.00
85	✉	10c Green, Ty. V (35). Horiz. Strip of Four & two singles tied by "San Francisco, Cal., Mar 1, 1861" on neat cover via Prussian Closed Mail to Germany. L. stamp of strip with part Imprint. Centered to R., Fine, Fresh cover	(Photo) E. VIII
86		12c Black (36). Four, incl. Horiz. Pair, few tiny flaws, Fine Appearance	95.00
87		12c Black, Pl. III (36b). Horiz. Pair, Red Grid cancel, Very Fine	(Photo) 55.00+
88		24c Gray (37). Choice Centering, Fresh Color, Bold Red Rimless Grid cancel., faint corner crease, otherwise Extremely Fine	(Photo) 70.00
89		12c, 30c, 90c 1857 Issue (36b, 38-39). Just Tied on small piece by Magenta Grid cancels, 90c tiny tear and couple pulled perfs., others Fine, Rare & Attractive Piece	(Photo) 1,312.50
90		24c Gray (37). Horiz. Pair, Tied on small piece, by Grid of Squares cancels., piece also shows Magenta & London receiving Pmks., L. stamp small piece out, Attractive Looking	160.00
91		24c Gray (37). Two, Grid Cancels., one in Red, small faults, otherwise Fine-Very Fine	135.00
92		30c Orange (38). Seven-Bar Framed Grid cancel., Very Fine	(Photo) 80.00
93	★	1c Bright Blue, Reprint (40). Fresh, Very Fine	(Photo) 200.00
94	★	1c Bright Blue, Reprint (40). Fresh, Fine	(Photo) 200.00

95 ★	3c Scarlet, Reprint (41). Better than usual Centering, All perfs. intact, Fine, Scarce, with P. F. Certificate	(Photo) 1,300.00
96 ★	10c Blue Green, Reprint (43). Fresh, Very Fine with P.F. Certificate	(Photo) 900.00
97 ★	12c Greenish Black, Reprint (44). Fresh, centered to B., Fine	(Photo) 725.00
98 ★	30c Yellow Orange, Reprint (46). Short perf. otherwise Fine	(Photo) 1,300.00
99 ★	90c Deep Blue, Reprint (47). Tips of two perfs. a trifle blunt, an Unusually Fine example of this Rare and Handsome Stamp, with P.F. Certificate	(Photo) 1,850.00

1861-67 ISSUES

100	10c Dark Green, "First Design" (62B). Beautiful Color, Bold Large "Paid" in Grid cancel., tiny internal break, otherwise Very Fine (Photo)	275.00
101	3c Rose (65). Well centered, Clear, Bold Eagle with Shield & Arrows (Corry, Pa.) Perfect Strike, Very Fine	(Photo) E. V
102 ☒	3c Rose (65). Well Centered, perf. flaws, tied by Town pmks. on Gray Violet Monitor-Merrimac Battle Scene Patriotic Cover, without flap, small cover faults, Scarce	(Photo) E. V
103 ☒	3c Rose (65). Couple short perfs., Well Centered vaguely tied on Red Monitor-Merrimac Battle Scene Patriotic Cover, "Crossing, Ind." pmk., few age toned spots, trifle reduced at extreme left, Scarce	E. V
104	24c Violet, "First Color" (70c). Beautiful Deep Shade, Bold Blue Grid cancel., small expert corner repair, Very Fine Looking	175.00
105 ★	15c Black (77). Sharp Impression, close at L., tiny toned spots, otherwise Fine, with P. F. Certificate	150.00
106	3c Rose, C. Grill (83). Clear Six Petal Floral Type cancel., Fine & Attractive	(Photo) 75.00
107	2c Black, Z Grill (85B). Used, much better than usual centering, Very Fine	(Photo) 75.00
108	12c Black, Z Grill (85E). Bold Target cancel, Very Fine, with A. P. S. Certificate	(Photo) 150.00
109	1c Blue, E. Grill (86). Well Centered, Fresh Color, Small Bold Cross-Roads cancel., Very Fine	(Photo) 40.00
110 ☒	15c Black, F. Grill (98). Perfs. cut in, Tied by French Transit, "San Francisco Cal." pmk. on 1869 folded letter to France, via N. Y. Bold "8" (decimes) due. Fine example of the usage	42.50
111	1c-15c E., F. Grills (87-90, 92-94, 96-98). Used, virtually all have faults, Fine-Very Fine Appearance	168.55
112	90c Blue, F. Grill (101). Well Centered, Bars cancel., Very Fine, with A.P.S. Certificate	(Photo) 225.00
113 ★	1c Blue Re-issue (102). Fresh o. g., Extremely Fine	(Photo) 200.00

1869 PICTORIAL ISSUE

114 P	1c-90c Pictorials, Plate Proofs on Card (112P-117P, 120P-122P, 129P). Cpl. Set as Issued, Very Fine	226.00
115	1c-30c Pictorials (112-117, 119, 121). Used, latter with Red cancel, each with Choice Centering, Couple with Large Margins, nearly all have small faults, Extremely Fine Appearing & Handsome Group	232.75
116 ★	2c Dark Brown (113). Horiz. Pair, Beautiful Color & Centering, Nearly Full o. g., one stamp light crease, otherwise an Extremely Fine Pair	(Photo) 100.00
117	2c Brown (113). Clear partial strike of "Waterbury" Large Bee cancel., Scarce, Very Fine	(Photo) E. VI

118	15c Brown & Blue, Ty. I (118). Exceptionally Well Centered, light Quartered Cork cancel., Very Fine (Photo)	95.00
119	24c Green & Violet (120). Light cancel, reperfed & with small closed tear, Very Fine Appearance	175.00
120	90c Carmine & Black (122). Well Centered, fairly light cancel., small faults, Very Fine Appearance (Photo)	400.00
121	10c Yellow, Re-Issue (127). Well Centered, neat "Reg" cancel., small closed tear, Very Fine Appearance	275.00

BANK NOTE ISSUES

122 P	15c Orange, Plate Proof on India (152P). T. Imprint & Plate No. 20 Block of Twelve, two with small thin spots, Very Fine Appearance	425.00
123	6c Carmine, 7c Vermilion, Grills (137-138). Lightly cancelled, Well Centered, small faults, Very Fine Appearance	110.00
124	10c Brown, Grill (139). Well Centered, Red & Black cancels, Deep Shade tiny tears, otherwise Very Fine	120.00
125	15c Orange, Grill (141). Wonderfully Well Centered, Rich Color, Neat Cross Roads cancel, Extremely Fine, with Photo Copy of P. F. Certificate (Photo)	175.00
126 ★	1c-10c 1870-73 Bank Notes (150, 156-158). 10c reperfed, otherwise a Fine Lot	120.00
127 ★	10c Brown (161). Fresh & Fine	55.00
128 ☒	12c Blackish Violet (162). Perfs. cut in, tied with 2c Brown (157) on 3c Green Envelope (U84) by NYFM "Circle of Hearts," Ty. S14. A front only to France, via N. Y. & U. S. Pkt. Attractive & Scarce	E. IV
129	90c Rose Carmine (166). Used, Fine (Photo)	60.00
130 ★	1c-10c 1875-87 Bank Notes (178, 184, 206-207, 209-210, 212-213). Fresh Colors, some tiny faults, Fine-Very Fine Appearance	123.50
131 ★	15c Red Orange (189). Block, Fresh, o. g., crease, one paper break, Very Fine Appearing Block	135.00
132 ☒	5c Brown, 10c Brown (205, 209). Tied by segmented cork cancel., "San Francisco, Cal." pmk. to London, forwarded to Cannes, France, Fwdg. charge paid by Gr. Britain 5p Indigo (85) overlapped on the 5c stamp. Corners of cover worn & rounded, otherwise Fine	E. IV
133	6c Rose (208). Nine, all well centered, Two Town cancels, one in oval, others Letters or Numerals in Bars; incl. one #208a, numeral cancel. from numbering machine, Fine, others Well Centered & Very Fine	145.00
134 ★	1c Ultramarine (212). Block of Nine, Fresh, o. g., bottom right stamp small thin, others Fine-Very Fine	125.00+
135 ★	3c-5c 1887-88 Bank Note (214-216). Fresh, o. g., Fine	53.50
136	90c Purple (218). Used, Fine	50.00
137 ★	1c-30c 1890 Issue (219, 220-228). Nearly All o. g., most have trivial faults, Fine-Very Fine Appearance	243.25

COLUMBIAN ISSUE

138 ★	1c-8c Columbians (230-232, 234-236). Fresh, o. g., few small faults, Fine-Very Fine Appearance	93.25
139 ★	1c-10c Columbians (230-237). Fresh, o. g., Fine-Very Fine Lot	155.75
140 ★	8c Columbian (236). Mint Block, Fresh, Fine	60.00
141 ★	15c Columbian (238). Fresh, o. g., light gum bends, Fine	62.50
142 ★	30c Columbian (239). Fresh, o. g., Fine	90.00
143 ★	30c Columbian (239). Fresh, Large Part o. g., Fine	90.00

144 ★	30c Columbian (239). Fresh, o.g., tiny thin and light stain at B. R. otherwise Very Fine	90.00
145	30c Columbian (239). T. Plate No. Single Extra Wide T. Margin, Large Solid Star in Circle cancel, Bold Strike, Very Fine, Handsome (Photo)	40.00+
146 ★	50c Columbian (240). Well Centered, Fresh, Nearly Full o.g., tiny natural paper translucency, Very Fine (Photo)	130.00
147 ★	50c Columbian (240). Fresh, Deep Color, tiny thin specks, Very Fine Appearance (Photo)	130.00
148 ★	50c Columbian (240). Fresh, o.g., wide natural s.e. at T., tiny thin specks, left perfs touch	130.00
149 ★	\$1.00 Columbian (241). Well Centered, corner crease & light soiling spots, otherwise Very Fine (Photo)	400.00
150 ★	\$1.00 Columbian (241). Fresh, small faults, Fine Appearance (Photo)	400.00
151	\$1.00 Columbian (241). Light cancel, Lovely Color & Centering, heavy strengthened vert. crease, Very Fine Appearance (Photo)	175.00
152 ★	\$2.00 Columbian (242). Fresh, Rich Color, o.g., Fine (Photo)	435.00
153 ★	\$2.00 Columbian (242). Fresh, Rich Color, small faults, Fine Appearance (Photo)	435.00
154	\$2.00 Columbian (242). Large Margins, Well Centered, Oily Oval Grid cancel, Very Fine (Photo)	165.00
155 ★	\$3.00 Columbian (243). Rich Color, Fresh, couple tiny thin specks, Very Fine Appearance (Photo)	675.00
156	\$3.00 Columbian (243). Used, Well Centered, Rich Color, tiny trivial pin-point thin speck, Very Fine Appearance (Photo)	325.00
<hr/>		
157 ★	\$4.00 Columbian (244). Marvelous Centering, Beautiful Color & Margins, Fresh, o.g., light horiz. gum bend, otherwise Extremely Fine, Outstandingly Beautiful (Photo)	950.00
158 ★	\$4.00 Columbian (244). Rich Color, Fresh, Fine (Photo)	950.00
159 ★	\$4.00 Columbian (244). Brilliant Color, o.g., thin spot at B. R. resulting in rounded corner, otherwise Fine (Photo)	950.00
160	\$4.00 Columbian (244). Pale shade, Choice Centering, light oval grid cancel, single partly nibbed perf tip, otherwise Very Fine (Photo)	450.00
161 ★	\$5.00 Columbian (245). Fine, o.g., with P. F. Certificate (Photo)	1,000.00
162 ★	\$5.00 Columbian (245). Fresh, o.g., Fine (Photo)	1,000.00
163 ★	\$5.00 Columbian (245). Perfs. clear at R., tiny corner perf. crease, Fine Appearance (Photo)	1,000.00
164 ★	\$5.00 Columbian (245). Perfs. close at T., barely noticeable toned specks on couple perf tips, otherwise Fine (Photo)	1,000.00
165	\$5.00 Columbian (245). Beautiful Centering, light cancel, tiny perf. creases & small covered surface scuff, otherwise Extremely Fine (Photo)	550.00
<hr/>		
166	Columbian Collateral, Eleven Diff. Tickets, including Special Days also employee's pass, all but last Fresh & Very Fine	E. IV

1894-98 ISSUES

167 ★	1c-15c 1894-98 Issues (246-250, 252-254, 257, 267-268, 270, 279-282, 283-284). Fresh, Virtually All o.g., nos. 280 & 284 small thin spots, otherwise Fine-Very Fine Lot	203.15
168 ★	2c Carmine, Ty. II (251). Plate No. Single, Fresh, o.g., Very Fine (Photo)	50.00
169 ★	3c Purple (253). T. Imprint & Plate No. 103 Strip of Three, selvage hinge reinforced, Stamps Mint, Fine	55.00
170 ★	3c Purple (253). B. Imprint & Plate No. 103 Strip of Three, o.g., Fine	55.00
171 ★	3c Purple (253). B. Imprint & Plate No. 91 Strip of Three, o.g., Fine	55.00

172 ★	5c Brown, Imperforate Horizontally (255c). Vertical Pair, Large Part o. g., Fresh, Fine & Scarce (Photo)	630.00
	Fine-Very Fine	70.00
173 ★	6c Dull Brown (271). T. Imprint & Plate No. 184 Strip of Three, o. g., Fine-Very Fine	70.00
174 ★	10c Dark Green (273). Imprint & Plate No. 63 Strip of Three, o. g., Fine	55.00
175 ★	15c Dark Blue (274). Block, Fresh, o. g., tiny thin speck in one, otherwise Very Fine Block, with P. F. Certificate	160.00
176	\$2.00 Bright Blue (277). Used, Very Fine (Photo)	95.00
177 ★	\$5.00 Dark Green (278). Regummed, Very Fine (Photo)	500.00
178 ★	\$5.00 Dark Green (278). Fresh, Rich Color, part o. g., T. perfs just touch	500.00
179	\$5.00 Dark Green (278). Used, Fine (Photo)	110.00
180 ★	1c Green (279). L. Imprint & Plate Nos. 493, 494, 495, 496 Blocks of Six, Mint, perfs. touch	120.00
181 ★	2c Red, Booklet Pane (279Be). Pos. E, rejoined, top pair creased ending in closed tear, Scarce	250.00

TRANS-MISSISSIPPI ISSUE

182 ★	2c Trans-Mississippi (286). Two B. Imprint & Plate No. Pairs, Diff Nos., o. g., Fine	45.00
183 ★	4c Trans-Mississippi (287). Fresh, o. g., Fine	45.00
184 ★	4c Trans-Mississippi (287). Deep Shade, o. g., Fine	45.00
185 ★	4c-10c Trans-Mississippi (287-290). 8c natural gum skip, others small thin spots, o. g., Fine-Very Fine Appearance	205.00
186 ★	5c Trans-Mississippi (288). Fresh, o. g., Very Fine	37.50
187 ★	5c-10c Trans-Mississippi (288-290). Fresh, o. g., 8c Centered to B., 5c, 10c, small faults with Fine centering	160.00
188 ★	8c Trans-Mississippi (289). Fresh, o. g., Fine	55.00
189 ★	10c Trans-Mississippi (290). Fresh, o. g., Fine	67.50
190 ★	10c Trans-Mississippi (290). Fresh, o. g., small hinge remnant, Fine	67.50
191 ★	50c Trans-Mississippi (291). Fresh, Well Centered, o. g., wide natural s. e. at L., faint natural gum wrinkle, otherwise Very Fine (Photo)	25.00
192 ★	\$1.00 Trans-Mississippi (292). Fresh o. g., Magnificent Color, Very Fine (Photo)	550.00
193 ★	\$1.00 Trans-Mississippi (292). Wonderfully Fresh, o. g., centered trifle to bottom left, Very Fine (Photo)	550.00
194 ★	\$1.00 Trans-Mississippi (292). Fresh, o. g., couple trivial surface scuffs, otherwise Fine (Photo)	550.00
195 ★	\$1.00 Trans-Mississippi (292). Fresh, tiny corner perf. crease, Fine Appearance (Photo)	550.00
196	\$2.00 Trans-Mississippi (293). Well Centered, Extra Wide Right Margin, light Oval Reg. cancel., few tiny creases, otherwise Very Fine (Photo)	285.00

PAN-AMERICAN ISSUE

197 ★	1c Pan-American (294). B. Imprint, Double Plate No. & Half Arrow Strip of Four, Fine	30.25+
198 ★	1c-10c Pan-American (294-299). 4c small thin spot, others Fine	178.00
199 ★	1c-10c Pan-Americans (294-299). Tiny perf. flaws or reperfed, Fine-Very Fine Appearance	178.00
200 ★	1c-5c 1901-20 Commems (294-295, 367, 370, 372, 397-398, 401, 548-550). Fine-Very Fine	74.00
201 ★	2c Pan-American (295). B. Imprint & Plate No. 1119 Block of Six, few perfs. strengthened, Very Fine	115.00

202	★	2c Pan-American (295). T. Imprint & Plate No. 1098 Block of Ten, Hinged in Selvage only, Stamps Mint, Fine	136.00
203	★	4c Pan-American (296). Very Fine	30.00
204	★	4c, 10c Pan-American (296, 299). 10c perfs. just touch, 4c gum slightly disturbed, otherwise Fine Lot	90.00
205	★	5c-10c Pan-Americans (297-299). First two regummed, 8c rounded corner perf., otherwise Fine-Very Fine	137.50

1902 ISSUE

206	★	1c Blue Green (300). 103 Imprint & Plate No. Strips of Three, all diff. nos., some separations, toning, without gum, otherwise Fine Lot	618.00
207	★	1c-15c 1902 Issue (300-304, 306-309). 5c & 10c regummed, 4c tiny thin spot, otherwise Fine-Very Fine Lot	114.85
208	★	\$2.00 Dark Blue (312). Rich Color, o. g., small filled thin spot, Fine Appearance	(Photo) 325.00
209		\$2.00 Dark Blue (312). Beautiful Centering, Oval Reg. cancel., Very Fine	(Photo) 60.00
209A	★	1c Blue Green, 2c Carmine Imperforates (314, 320). Blocks, 1c gum wrinkles, one 2c small thin spot, others Very Fine	105.00
210	★	5c Blue, Imperforate (315). Horiz. Pair, Very Fine	(Photo) 550.00
211	★	2c Scarlet, Imperforate (320b). T. Imprint & Plate No. 4245 Block of Six, Mint, light soiling, mostly on gum, otherwise Very Fine	90.00

LOUISIANA PURCHASE, JAMESTOWN ISSUES

212	★	1c-10c Louisiana Purchase (323-327). 5c tiny thin spot, others Fine	174.00
213	★	1c-10c Louisiana Purchase (323-327). Last three regummed, 3c light wrinkle, Fine Set	174.00
214	★	3c Louisiana Purchase (325). Block, faint natural gum bend, Very Fine	122.50
215	★	10c Louisiana Purchase (327). Minute tear between perfs., Fine Appearance	87.50
216	★	10c Louisiana Purchase (327). B. L. Imprint & Plate No. 2105 Block of ten, Unusually Well Centered, couple small separations reinforced with bits of hinge, Very Fine, Handsome Plate Block	(Photo) 1,850.00
217	★	5c Jamestown (330). Mint, Very Fine	(Photo) 40.00
218	★	5c Jamestown (330). Very Fine	(Photo) 40.00
219	★	5c Jamestown (330). Mint Block of Six with Part T. Imprint, negligible separation, perfs. touch to cut in	245.00

1908 ISSUE

220	★	1c-15c 1908 Issue (331-340). Fine-Very Fine	76.75
221	★	50c Violet (341). Part Imprint in B. selvage, perfs. just touch at B.	72.50
222	★	50c Violet (341). Faint thin in top margin, Fine Appearance	72.50
223	★	\$1.00 Violet Brown (342). Fine	(Photo) 115.00
224	★	1c-5c 1908 Imperforates (343-347). Very Fine Set	60.00
225	★	1c-5c 1908-09 Imperforates, U. S. Auto Vend Private Perfs. Ty. I (343E, 347E, 368E, 408E). Pairs, part o. g., 5c partly separated, Very Fine, Scarce	54.50
226	★	4c Orange Brown, 5c Blue, Imperforates (346-347). Very Fine	45.00
227	★	1c Green, 2c Carmine, Bluish (357-358). Fine-Very Fine	57.50

1909 COMMEMORATIVES

228	★	2c Lincoln (367). B. Imprint, Star & Plate No. 4978 Block of Six, Well Centered, some hinge reinforcement, otherwise Very Fine	110.00
229	★	2c 1909 Commems, Imperforate (368, 371, 373). Very Fine	77.50
230	★	2c 1909 Imperf. Commems, Schermack Vending Machine Perfs. Ty. III (368, 371, 373). First a Strip of Four, Both Spacings, latter two Pairs, Very Fine	83.50
231	★	2c Lincoln, Bluish (369). Reperfed at right, Very Fine Appearance (Photo)	90.00
232	★	2c Lincoln, Bluish (369). Light crease, otherwise Fine	90.00
233	★	2c Alaska-Yukon, Imperforate (371). Mint Horiz. Pair, Very Fine	55.00
234	★	2c Alaska-Yukon, Imperforate (371). Block, with T. Plate No. 5249, Very Fine	110.00+
235	★	2c Hudson-Fulton (372). T. Imprint & Plate No. 5391 Block of Eight, Fine-Very Fine	142.50

1910 ISSUE

236	★	3c-5c 1910 Coils (394-396). 3c light crease, otherwise Fine-Very Fine	85.50
237	★	3c Deep Violet, 5c Blue, Coils (394, 396). Fine-Very Fine	57.00

PANAMA-PACIFIC ISSUES

238	★	1c-5c Panama-Pacific (397-399, 402). Fine	69.50
239	★	5c Panama-Pacific, Perf. 10 (403). Couple natural gum creases, one small but a trifle heavy, otherwise Very Fine	75.00
240	★	5c Panama-Pacific, Perf. 10 (403). Fine	75.00

1914-16 ISSUES

241	★	8c-30c 1912 Issue (414-415, 417, 419-420). 8c trifle toned, otherwise Fine Lot	89.00
242	★	1c-20c 1914 Issue (424-438). Last two small faults, otherwise Fine Lot	165.30
243	★	1c Green, Booklet Pane (424d). Eight, Pos. D, All Diff. Plate Nos, Mint, Fine-Very Fine Lot	52.00
244		3c Violet, Coil (445). Used, Very Fine	37.50
245		2c Red Coil, Ty. I (449). Used, Very Fine	45.00
246	★	2c Carmine Imperforate Coil (459). Very Fine	150.00
247	★	1c-11c 1916 Issue (462-463, 465-466, 468-470, 472-473). 4c tiny thin spot, otherwise Fine Lot	132.45
248	★	2c Carmine, Rose (463, 482, 499). Each in Plate No. 7942 Block of Six, from the Error Plate, Fine-Very Fine	158.00+
249	★	5c Carmine, Error (467). Regummed, tiny perf. thin, Very Fine Appearance	250.00
250	★	5c Carmine, Error (467). Block of Twelve, Two Middle Stamps the Errors, B. R. 2c stamp damaged corner, Errors Mint, left perfs touch	525.00
251	★	15c Gray (475). Fine	42.50
252	★	20c Light Ultramarine (476). Very Fine	57.50

LOTS ON VIEW FROM OCTOBER 24th

OFFICES OPEN SATURDAY BEFORE SALE

1917-20 ISSUES

253 ★	1c-\$1.00 1917 Issue (498-499, 501-504, 506-518). 30c tiny thin, others Fine-Very Fine	95.15
254 ★	2c Rose (499). Matched Set of Plate No. 7942 Blocks of Six, from the Error Plate, Fine-Very Fine	52.00
255	2c Deep Rose, Ty. Ia (503). Used, Very Fine, with APS Certificate (Photo)	40.00
256 ★	5c Rose, Error (505). Disturbed o. g., Fine	175.00
257 ★	5c Rose, Error (505). Block of Nine, Center Stamp the Error, Fine	250.00
258	\$2.00 Orange Red & Black (523). Used, tiny wrinkle, otherwise Fine	60.00
259 ★	\$5.00 Deep Green & Black (524). Very Fine	82.50
260 ★	1c Offset, Imperf Between (525c). Block, perfs. touch at extreme L., usual "fingerprint" on back, Scarce	55.00
261	2c Offset, Ty. VII, Schermack Ty. 3 Private Perfs. (534B). Extra wide margins with perfs. showing both sides. Slightly thin, Very Fine Appearance	50.00
262	2c Offset, Ty. VII, Schermack Ty. 3 Private Perf. (534B). Complete perf. at R., no perf. L., Fine for this	50.00
<hr/>		
263	1c Green, Rotary, Perf. 11 (544). Light machine cancel, Centered trifle to R., Very Fine for this scarce & elusive stamp	850.00
<hr/>		
264 ★	1c Green, 2c Carmine Rose, Rotaries (545-546). Fine	65.00
265 ★	\$2.00 Carmine & Black (547). Light gum bend, Fine	67.50
266 ★	1c-5c 1920-25 Commems (548-550, 614-621). Cpl. Sets, V. G.-Fine	105.35
267 ★	1c-5c Pilgrims (548-550). Mint Blocks, Very Good Lot	112.00
268 ★	2c Pilgrim (549). R. Plate No. 12445 Block of Six, Mint, faint toned spot in selvage only, otherwise Fine-Very Fine	77.50
269 ★	2c Pilgrim (549). L. Plate No. 12445 Block of Six, Mint, perfs. touch at B.	77.50

1922 ISSUE

270 ★	½c-\$1.00 1922 Issue (551-571). Virtually all values to 30c have thins, Fine-Very Fine Appearance	116.51
271 ★	\$2.00 Deep Blue (572). Mint, Very Fine	40.00
272 ★	\$2.00 Deep Blue (572). Very Fine	40.00
273 ★	\$5.00 Carmine & Blue (573). Very Fine	85.00
274 ★	\$5.00 Carmine & Blue (573). Mint Block with Red Plate No., Very Fine (Photo)	320.00+
275 ★	1c-10c 1923 Issue (581-591). Very Fine Lot	51.75
276 ★	1c-10c 1923 Issue (581-591, 582a). Very Fine Set	53.50
277 ★	2c Carmine, Rotary (595). Star & Plate No. 14665 Block, perfs. barely in to just clear, Scarce	325.00
278 ★	2c Carmine Coil, Ty. II (599A). Mint Pair, Very Fine	145.00+

1923-1930 ISSUES

279 ★	2c Harding (610). Two Cpl. Sheets of 100, Diff. Plate Nos., negligible separation, Mostly Fine-Very Fine	115.60
280 ★	2c Harding, Rotary (612). T. L. Plate No. 4996 Block, Better than usual centering, Fine-Very Fine	200.00
281 ★	1c-5c 1924-25 Commems (614-621). #614 reperfed, others Very Fine, Cpl. Sets	72.35
282 ★	1c-5c Huguenot-Walloon (614-616). Mint Blocks, Very Fine	106.40+

283	★	1c-5c Huguenot-Walloon (614-616). Plate No. Blocks of Six, sheet margins reduced slightly, otherwise Fine-Very Fine Set	325.00
284	★	2c Lexington-Concord (618). L. Plate No. 16813 Block of Six, some perfs. strengthened, Very Fine	67.50
285	★	5c Lexington-Concord (619). Block, with L. Plate No., Fine Block	74.00+
286	★	5c Norse-American (621). R. Arrow Block, Very Fine	50.00
287	★	2c White Plains Souvenir Sheet (630). Mint, tiny tear in extreme top right selvedge, otherwise Very Fine	225.00
288		2c White Plains Souvenir Sheet (630). Washington, D. C., Oct 18, 1926 Pmks. (First Day), Well Centered, margin trifle reduced, otherwise Very Fine, Scarce	160.00+
289	★	7c Black, Vertical Pair, Imperf. Between (639a). Mint, Fine (Photo)	100.00
290	★	2c "Molly Pitcher" overprint Wide Spacing (646 var). Vert. Block of Ten, Two Pairs with Wide Spacing Variety, Errors Mint, Very Fine Block	59.20+
291	★	2c-5c Hawaii (647-648). Plate No. Blocks, selvedge creases, 2c small separations, Very Good Lot	275.00
292	★	2c Edison (654). Cpl. Sheet of 100, light creases & small separations in right selvedge, otherwise Fine-Very Fine	96.50
293	★	1c-10c Kans-Nebr. Overprints (658-679). Fine-Very Fine Sets	157.75
294	★	1c-10c Kans.-Nebr. Overprints (658-679). Cpl. Set, #668 small wrinkle, otherwise Fine-Very Fine	157.75
295	★	1c-10c Kans.-Nebr. Overprints (658-679). Cpl. Sets, 10c Nebr. regummed, Fine-Very Fine	157.75
<hr/>			
296	★	1c-10c Kans. (658-668). Complete Set of Plate No. Blocks, Fine-Very Fine	875.00
297	★	1c-10c Nebr. (669-679). Complete Set of Plate No. Blocks, Very Fine Set, Beautifully Centered (Photo Ex)	966.50
<hr/>			
298	✉	1c-10c "Kans." Overprints (658-668). Cpl. Set Tied on Two "Washington, D. C., May 1, 1929" First Day Covers, 7c closed tear, otherwise Very Fine (cat. 300.00 on one cover) (Photo Ex)	—
299	✉	2c Ohio River Canal (681). Seven Blocks, Each on Individual First Day cover, Oct. 19, 1929, all the Listed Local Cities, Very Fine	22.00+
300	★	1c, 3c Souvenir Sheets (731, 735, 750, 751). Very Fine	74.50
301	★	1c, 3c Souvenir Sheets (730, 731, 735, 750, 751). Very Fine	107.00
302	★	1c, 3c Souvenir Sheets (730, 731, 735, 750, 751). Last two usual natural gum bends, Very Fine	107.00
303	★	3c Wisconsin, Imperf. Vertically (739b). Horiz. Strip of Three, Pos. 8, 9, 10, Mint, few tiny natural gum skips, Very Fine, with P. F. Certificate (Photo)	337.50
304	★	1c, 3c Souvenir Sheets (735, 750, 751). Three of last, Very Fine	68.50
305	★	1c-10c National Parks (740-749). Cpl. Sheets of 50, 10c large natural gum skip, Fine-Very Fine Set	421.94
306	★	1c-10c Farley Parks (756-759, 761-765). Cpl. Set less 5c, each a Matched Set of Arrow Blocks, Very Fine	106.80

PRESIDENTIALS — TO DATE

307	★	1½c Presidential, Horiz. Pair Imperf. Between (805b). Fine, Scarce (Photo)	150.00
308	★	\$1.00 Presidential (832). T. R. Double Plate No. & Top etc. Block of Fourteen, few natural gum skips, Mint, Fine-Very Fine	87.50
309	★	\$1.00 Presidential, Wmkd. (832b). Very Fine (Photo)	60.00
310	★	\$1.00-\$5.00 Presidentials (832-834). Mint, Very Fine	80.50

311	★	田	\$2.00 Presidential (833). Double Plate No. Block, Mint, slightly reduced selvage, Fine-Very Fine	185.00
312	★		\$2.00-\$5.00 Presidentials (833-834). Mint, Very Fine	76.00
313	★		\$5.00 Presidential (834). Mint Margin Single, Very Fine	62.50
314	★		\$5.00 Presidential (834). Mint, tiny natural gum skip, Very Fine	62.50
315	★		\$5.00 Red Brown & Black Presidential Error of Color (834a). Mint, Very Fine, Signed "Geo. B. Sloane"	(Photo) 300.00
316	★		1c-10c Presidential Coils (837-851). Last five & 4½c Line Strips of Six, others Line Strips of Four, mixed centering, Nearly All Fine-Very Fine, Cpl. Set	200.55
317	★		1c-10c Presidential Coils (839-845, 847-851). Mint Line Pairs, Very Fine Lot	110.15
318	★		1½c Presidential Coil, (849). 92 Line Pairs, Mint mostly Fine-Very Fine	253.00
319	★		1c-3c National Defense, Imperf. Between (899b, 900a, 901a). Mint Horiz. Pairs, Fine-Very Fine	69.50
320	★	田	1c-3c National Defense, Imperf. Between (899b, 900a, 901a). Blocks, Each with one Error Pair, other Pair part perf., Fine-Very Fine	69.50+
321	★	田	5c Overrun Countries (909-921). Name Blocks, #909 tiny toned spots, others Mint, Very Fine	79.15
322	★	田	\$5.00 Block (1053). T. R. Plate No. 25367 Block, Mint, Very Fine (Photo)	275.00
323	★		4c Red Violet, Imperforate (1058a). Horiz. Pair, Fine	(Photo) 125.00
324	★		8c Simon Bolivar, Wreath missing Variety (1111 var.). Mint, Very Fine	E. III
325	★	田	8c Kossuth (1118). Mint Plate No. Blocks, 40, some diff. Nos. or Pos., Very Fine	120.00
326	★		4c SEATO, Imperf. Between (1151a). Mint, Vert. Strip of Three, B. Pair the Error, Very Fine	(Photo) 200.00
327	★		5c Florida, Yellow Omitted (1271a). Mint, Very Fine	—
328	★	田	11c ITU (1274). Cpl. Matched Set of Plate Nos. 28147-28143 Blocks, Mint, Very Fine	40.00
329	★	田	1¼c Gallatin (1279). Cpl. Matched Set of Plate No. 28931 Blocks, Mint, Very Fine	70.00
330	★		4c Black, Imperf. (1303b). Mint Horiz. Pair, Very Fine	(Photo) E. X
331	★		5c Blue, Imperforate (1304b). Mint Horiz. Pair, Very Fine	(Photo) 375.00
332	★		6c Gray Brown, Imperforate (1305a). Mint Horiz. Pair, Very Fine (Photo)	125.00
333	★		6c Gray Brown, Imperf. (1305a). Mint Line Pair, tape paste-up at extreme L., Very Fine	(Photo) 125.00+
334	★	田	5c Space Twins (1331-1332). Cpl. Matched Set of Plate No. 29312 Blocks, Mint, Very Fine	70.00
335	★		5c Space Twins (1331-1332). Cpl. Sheet of 50, Pos. 19 Missing Flag on Capsule Variety, Very Fine, Scarce	E. VI
336	★		5c Urban Planning, Partially Printed (1333 var.). Vert. Pair, B. Stamp has Bottom ¾ Blank, without gum, otherwise Very Fine Spectacular Freak	(Photo) E. V
337	★		8c White House Coil, Imperforate (1338Gb). Mint Pair, Very Fine	85.00
338	★		6c White House & Flag, Huck Press, Imperf. Between (1338De). Horiz. Pair, Mint, Very Fine	(Photo) 300.00
339	★		8c White House & Flag, Imperf. (1338Gh). Mint Line Pair, Very Fine	85.00+
340	★	田	\$1.00 Airlift (1341). Eight Mint Plate No. Blocks, Diff. Nos. or Positions, Very Fine	104.00
341	★	田	\$1.00 Airlift (1341). Eight Mint Plate No. Blocks, Nearly All Diff. Nos. or Positions, Very Fine	104.00
342	★		6c Walt Disney, Ocher Color Omitted, "Walt Disney," "6c" etc. (1355a). Mint, Very Fine	(Photo) 350.00
343	★		6c Walt Disney, Ocher Omitted, etc. (1355a). Mint, Very Fine	(Photo) 350.00
344	★		6c Walt Disney, Imperf. Horiz. (1355b). Vert. Pair, tiny thin speck in one, Very Fine Appearance	(Photo) 500.00

345	★	6c Christmas, ". . . As 6c Ch . ." Missing (1363 var). Block, Bottom Pair with Parts of Inscription Unprinted, Mint, Very Fine	E. V
346	★	6c Grandma Moses, Imperf. Between (1370a). Horiz. Strip of Four, Center Pair the Error, Mint, Very Fine	(Photo) 300.00+
347	★	6c Professional Baseball, Black Color Omitted, "1869-1969", "United States", "6c", "Professional Baseball" (1381a). Mint, Fine, Rare	(Photo) 500.00
348	★	8c Deep Claret Coil, Imperforate (1402a). Mint Pair, Very Fine	60.00
349	★	8c Deep Claret, Imperf. (1402a). Mint Line Pair, Very Fine	60.00+
350	★	8c Lyndon B. Johnson, Imperf. Vertically (1503a). Horiz. Pair, Mint, Very Fine	(Photo) E. X
351	★	10c Flags, Imperforate Coil (1519a). Mint Pair, Very Fine	45.00
352	★	10c Flags, Imperforate Coil (1519a). Mint Strip of 4, Very Fine	90.00
353	★	10c Blue, Imperforate Coil (1520b). Mint Pair, Very Fine	(Photo) 60.00
354	★	10c Blue, Imperforate Coil (1520b). Mint Strip of 4, Very Fine	120.00
355	★	10c Skylab, "US" Omitted (1529 var). A Newly Discovered Error with "US" Entirely Missing in Top Left Label, Mint, Very Fine. This lot & the next are two of the 26 singles believed to exist, Reportedly 22 were used for postage by a business concern, the remaining two destroyed after being damaged when the sheet was separated	(Photo) E. XI
356	★	A Similar Lot	(Photo) E. XI

AIR MAIL

357	★	6c-24c 1918 Air Post (C1-C3). First Two Mint, Fine-Very Fine	160.00
358	★	6c-24c 1918 Air Post (C1-C3). Last Two Mint, Fine Lot	160.00
359	★	6c-24c 1918 Air Post (C1-C3). Last with strongly downward, shifted Vignette, small thin spot, others Fine	160.00
360	★	6c-16c 1918-23 Air Post (C1, C4-C5). Well Centered, first has two corner perf. creases, otherwise Very Fine, others Mint, Very Fine	111.00
361	★	16c Green (C2). Very Fine	(Photo) 62.50
362	★	8c-24c 1923 Air Post (C4-C6). Fine Set	138.50
363	★	8c-24c 1923 Air Post (C4-C6). Cpl. Set, first two Mint, latter faint thin, otherwise Fine	138.50
364	★	8c-24c 1923 Air Post (C4-C6). Last Two tiny thin spots, Fine-Very Fine Appearance	138.50
365	★	8c-24c 1923 Air Post (C4-C6). Cpl. Set, right perfs, tiny bit in on 24c, V. G.-Fine	138.50
366	✉	8c-24c 1923 Air Post (C4-C6). Tied on Graf Zeppelin First Flight cover, Oct. 27, 1928, U. S.-Germany, Backstamped, with additional Franking (#C7-C9, C11(2), 646), #C4 s. e., Fine-Very Fine, Attractive Cover	49.00+
367	★	10c-15c Maps (C7-C8). Plate No. Blocks of Six, 15c with tiny natural gum skips, Fine-Very Fine	97.50
368	★	10c-15c Maps (C7-C8). Plate No. Blocks of Six, 15c some perfs touch, 10c tiny thin spot, Fine-Very Fine Appearance	97.50
369	★	10c Lindbergh (C10). B. R. Plate No. 19005 Block of Eight, natural gum skip, Mint, Very Fine	201.50
370	★	10c Lindbergh Booklet Pane (C10a). Cpl. Booklet of Two Panes, Pos. J, Fine	145.00+
371	✉	5c Beacon (C11). Blue Top & Double Plate No. Block of Six, Tied by Washington, D. C., July 25, 1928 Pmk. to Legal Size First Day Cover, Very Scarce, Very Fine	225.00
372	★	5c Violet (C12). T. Plate No. F19948 Block of Six, Mint, Fine-Very Fine	265.00
373	★	5c Violet (C12). R. Plate No. 19948 Block of Six, Very Fine	(Photo) 265.00

374 ★	65c-\$2.60 Graf Zeppelin (C13-C15). \$2.60 with hardly noticeable trace of stain on few perf. tips, otherwise Very Fine Set (Photo)	1,060.00
375 ★	65c-\$2.60 Graf Zeppelin (C13-C15). Cpl. Set, \$1.30 faults under regumming, others disturbed o. g., the \$2.60 with filled thinning, Very Fine Appearance (Photo)	1,060.00
376 ☒	65c-\$2.60 Graf Zeppelin (C13-C15). Cpl. Set on cacheted flight covers and card, Very Fine (Photo Ex)	605.00
377 ★	50c Chicago Zeppelin (C18). Mint, Very Fine	60.00
378 ★	50c Chicago Zeppelin (C18). Mint, Fine	60.00
379 ★	50c Chicago Zeppelin (C18). Fine	60.00
380 ★☐	50c Chicago Zeppelin (C18). Mint Block, with B. Plate No. 21171, few natural gum skips, Fine-Very Fine	250.00
381 ★☐	6c Orange (C19). Three Plate No. Blocks, Diff. Nos., one short perf., one small separation, other selvage shortened tiny bit, otherwise Fine-Very Fine	135.00
382 ★☐	25c Trans-Pacific (C20). B. Plate No. 21474 Block of Six, Mint, Very Fine	37.50
383 ★☐	20c Trans-Pacific (C21). T. Plate No. 21626 Block of Six, natural gum skip, Mint, Very Fine	120.00
384 ★☐	20c Trans-Pacific (C21). T. Plate No. 21626 Block of Six, natural narrow top selvage, centered to top, Mint, Fine	120.00
385 ★☐	50c Trans-Pacific (C22). B. Plate No. 21624 Block of Six, tiny natural gum skips, Mint, Very Fine	150.00
386 ★☐	50c Trans-Pacific (C22). T. Plate No. 21625 Block of Six, Very Fine	150.00
387 ★	6c Ultramarine & Carmine, Error of Color (C23c). Mint, Fine, signed "H. Bloch"	75.00
388 E	TWIN MOTORED TRANSPORT PLANE, Ferrottype Essay for 1941 Air Post (C25E). Slightly irregular 2¾x1¾" piece of acetate, Well Etched Design of Plane, Imprints Present but not quite as clear, A Very Rare Air Post Essay, Possibly Unique	—
389 ★☐	6c-50c 1941 Air Post (C25-C31). Cpl. Set of Plate No. ... Blocks, Very Fine	180.50
390 ★☐	50c Orange (C31). T. R. Plate No. 22778 Block, two tiny gum disturbances, Very Fine	120.00
391 ★☐	50c Orange (C31). B. L. Plate No. 22779 Block, tiny thin spot in one, Fine Appearance	120.00
392 ★☐	80c Hawaii (C46). B. L. Plate No. 24592 Block, Very Fine	50.00
393 ★☐	80c Hawaii (C46). T. L. Plate No. 24593 Block, Very Fine	50.00
394 ★☐	80c Hawaii (C46). B. L. Plate No. 24593 Block, Very Fine	50.00
395 ★	7c Carmine, Booklet Pane (C60a). Cpl. Booklet of Two Panes, Very Fine	45.00+
396 ★☐	15c Blair (C66). Cpl. Matched Set of Plate No. 27463 Blocks, Mint, Very Fine	50.00
397 ★☐	8c Alaska, 10c Air Mail Anniversary (C70, C74). Cpl. Matched Set of Each, Plate No. 29022 & 29678 Blocks, respectively, Mint, Fine-Very Fine	86.00
398 ★	10c Moon Landing, Rose Red Litho Color Omitted (Shoulder Patch) (C76a). Mint, Very Fine	75.00

BALBO FLIGHT COVER

399 ☒	July 23, Return Flight from U. S. to Italy by Balbo Air Squadron, New York to Rome (AAMC 1184f). Used with three \$1.00, one 50c & 10c Map Air Post (571, 570, C7) tied by New York, N. Y. Jul 23, 1933 Oval Grid Duplex pmks., Purple & Blue cachets, appropriate backstamps, Fine, with P. F. Certificate (Photo)	750.00
-------	---	--------

POSTAGE DUE, NEWSPAPER, PARCEL POST, WAR SAVINGS

400 ★	10c Postage Due, Special Printing (J12). Centered slightly to L., perfs. clear, gum thin at Top nibs a few perfs., Fine appearance, Very Scarce (Photo)	650.00
401 ★	1c Carmine Lake, Postage Due, Perf. 10 (J52). Complete Sheet of 100, few perfs. in, balance, incl. Plate Blocks, Fine-Very Fine	660.00+
402 ★	96c Pink, Newspaper (PR99). Fresh, Large part o. g., Unusually well centered, insignificant thins, as often, Very Fine Appearance (Photo)	425.00
403 ★	1c-\$1.00 Parcel Post (Q1-Q12). Cpl. Set, 20c thin spot, \$1.00 regummed & reperfed, couple other reperfs., Fine-Very Fine Appearance	242.25
404 ★	\$5.00 Deep Green War Savings (WS2-WS3). First creased, Latter tiny tear almost entirely in Margin, Fine-Very Fine Appearance (Photo Ex)	305.00

CARRIERS & LOCALS

405 ★	Charleston, S. C., Honour's City Post, 2c Black on Bluish, Period after "Cents." (4LB8a). Also raised period after "Post." Fresh o. g., Large Margins, Extremely Fine (Photo)	300.00+
406 ★	Cleveland, O., Bishop's City Post, Blue (10LB1). Large margins except B. frame barely touched, tiny nick at T., otherwise Fine, o. g., signed "Sloane," ex-Caspary (Photo)	300.00
407 ★	Cleveland, O., Bishop's City Post, 2c Black on Bluish (10LB2). Fresh, Margins to slightly cut into, Fine for this, signed "C.J.P." (Chas. J. Philips) (Photo)	350.00
408 ☒	Philadelphia, Pa., U.S.P.O. Despatch, 1c Blue on White (7LBU1 var.). Not listed on white. Wonderfully clear strike on 1851 local circular, Very Fine, Rates a premium over higher figure of price range (See Lot 409) (Photo)	E. X
409 ☒	Philadelphia, Pa., U.S.P.O. Despatch, 1c Red on Blue (7LBU3 var.). (Former listing) Fairly clear handstamp on Blue Entire, Local use. No longer listed with individual numbers so we give last numbers in cat. Footnote values them \$100.00 to \$200.00 per cover. Red on Blue not listed so would qualify for higher valuation	E. X
410 ☒	Philadelphia, Pa., 1c Red on White (7LBU9). Rather blurred handstamp, local use. (See notes on Lot 409). Would probably rate the lower part of price range	E. VIII
411 ★	Adams & Co., 25c Black on Pink Card (1L3). The so-called "Pcker Chip" stamp. Complete Sheet of 40, Very Fine	540.00+
412 ★	Adams & Co., 25c Black on Pink Card (1L3). The so-called "Poker Chip" stamp. Complete Sheet of 40, Vertical crease through five center stamps; slight oxidation in margin, otherwise Very Fine	540.00+
413 ★	Boyd's City Express, Crosby's City Post (20L15, 54L1). Cpl. Sheets of 100 & 25 respectively, o. g., some faults almost entirely in sheet margins, stamps nearly all Very Fine	150.00+
414 ☒	Brigg's Despatch, (2c) Gold on Pink (25Lb). Margins to barely touched, neat ms. cancel., not tied on 1848 folded letter; Local Philadelphia use with three overlapping Brigg's handstamps (now considered to be a post-mark). With article relating to its discovery & verification by Philip H. Ward. Choice cover, Unique of record, unpriced by Scott (Photo)	E. XV
415 ★☒	California Penny Post, 3c Blue (34L1A). Large margins, uncanceled on 10c Green Entire (U15) to Brooklyn, N. Y., Blue "Marysville, Cal." pmk. & large shaded star over embossed stamp. "Stamp Genuine, Geo. B. Sloane" on back. While there is no valid reason to doubt the use of this stamp on this cover we prefer to value it on the basis of the unused stamp, which is Very Rare (Photo)	600.00+

416 ★	California Penny Post, 5c Blue (34L4). Margins to barely in, small faults, as often, Fine appearance	(Photo) 250.00	
417 ☒	G. Carter's Despatch, (2c) Black on Blue (36L1 var.). Margins except frame touched L., neat ms. cancel., not tied, on large part of folded letter to Washington, D. C., Blue "Philad'a, 5 cts" pmk., Formerly listed as #36L3, now in a footnote. Fine & Very Rare	(Photo) E. XI	
418 ★	Crosby's Special Message Post, (2c) Carmine (Formerly listed as 54L1). Fresh o. g., small margins, barely touching, tiny tear, Fine appearance & Very Rare (No longer in cat., last listing \$500.00)	(Photo) —	
419 ★	Hackney & Bolte, (1c) Black on Red (153L1). Uncancelled, some paper on back, Very Fine	85.00	
420 ★	Hackney & Bolte (1c) Black on Red (153L1). Fresh, Large part o. g., tiny thin, Very Fine appearance	85.00	
421 ★☐	A. M. Hinckley's Express, 1c Red on Bluish (82L1). Block, Large margins, large part o. g., some thins, largely in margins, Fresh, Very Fine appearance, Very Scarce	(Photo) 600.00+	
422 ★	Hussey's Post, Rose (87L58). Complete Pane of 24, Brilliant, Fresh o. g., Wide margins, couple of small marginal tears, one just into one stamp. Believed to be the only cpl. pane known, Choice Rarity	132.00+	
423 ★	Penny Express Co., 5c Blue (114L2). Complete Pane of 32, Very Fine, Ex-Caspary	200.00+	
424 ★	Penny Express Co., 5c Red (114L3). Complete pane of 32, Very Fine, ex-Caspary	200.00+	
425 ☒	Priest's Despatch, (2c) Black on Yellow (121L6). Margins except trifle cut into at T., not cancelled, as usual, used with Fine 3c Red (11) on neat envelope to Washington, D. C., Fine & Scarce	(Photo) 150.00+	
426 R	Wells, Fargo & Co. \$1.00 Blue "Garter" (143L6R). The so-called "Re-print" with bar between "½ oz." & "\$1.00," Very Fine, a useful reference copy, now Scarce	E. III	

POSTAL STATIONERY, TELEGRAPHS

427 ☒	1c Green on Brown, Glazed, Wrapper (W427). Unused Entire, Very Fine	27.50	
428 ☒	1c Black, Full Face McKinley (UX17). Two neat N. Y. pmks., printed address, Oct. 1902 use. Very Fine & Scarce	(Photo) 350.00	
429 ★☐	Postal Telegraph Company, "1918" Handstamp (15T49). Block of Four with tissue paper interleaving adhering to gum, couple small faults, otherwise Very Fine, Unpriced & Very Scarce	(Photo) E. XIV	
430 ★	U. S. Telegraph-Cable-Radio Carriers, 1947 5c, 50c Panes of Nine (17T1, 17I3). Six Panes of Each, in partial Booklet, Very Fine	900.00	

REVENUE STAMPS

431 E	2c Liberty Bank Check Revenue Decalcomania Perforated, Lowenberg Patent, Five diff. colors, Very Fine Essays	E. V	
432 ☒	5c Typeset Provisional Revenue Stamp on Grayish Paper, on "Orphans' Court Document", District of Columbia, Feb. 14th, 1865, Very Fine, Unlisted	(Photo) —	
433	1c-\$50.00 First Issue, Imperforate, Part Perforate (Betw. R1a-R101a, R25b-R65b). Collection of 119 Stamps incl Pairs, Blocks, some with small margins or faults, Many Fine-Very Fine	E. VIII	
434	1c-\$25.00 First Issue (Betw. R1c-R100c). Collection of 330 Stamps incl Blocks, Varieties etc, some dupl., some with small faults, Most Fine-Very Fine	E. VIII	

435	10c Bill of Lading, Imperforate (R32a). Vert. Strip of Four, Large Margins to in at places, Scarce Strip	27.00+
436	40c Inland Exchange, Imperforate R53a). Large to Huge margins except close at B., bit of next stamp at T., Scarce	130.00
437	50c Lease, Imperforate (R57a). Block of Five, Large Margins All Around except close in one spot on "extra" stamp, tears & creases, rebacked, Very Fine Appearance, Rare Block	455.00
438	\$1.00 Conveyance, Lease, Mortgage Imperforate (R66a, R70a, R73a). Horiz. Pairs, Mostly Large Margins, Very Good-Very Fine	45.00
439	\$3.50 Inland Exchange, Imperforate (R87a). Large Margins except B. R. corner off, small faults, Scarce	235.00
440	\$5.00 Charter Party, Manifest, \$10.00 Conveyance, Imperforate (R88a, R90a, R94a). Large Margins, couple faint creases on first & last, Very Fine Appearance	62.50
441	\$15.00 Mortgage, \$50.00 U. S. I. R. (R97c, R101c). Fine	57.50
442	\$200.00 U. S. I. R., Imperforate (R102a). Margins to close in spots, Hand-stamped cancel, Fine	(Photo) 275.00
443	\$25.00 Blue & Black (R130). Small stain, tiny thin specks, otherwise Very Fine	85.00
444	★ 2c Orange & Black on Violet, Inverted Center (R135b). Uncancelled, perfs just in at L., Scarce	60.00+
445	★ 1c Green "IR." Overprint (R154). Four Diff. Matched Sets of four Imprint & Plate No. Strips of Three, Nos. 539, 541, 543, 548, Fresh, o. g., few hinge remnants, couple stamps tiny faults, others V. G.-V. F.	144.00
446	★ 2c Carmine, "I. R." Overprint (R155). 19 Imprint & Plate No. Strips of Three, Diff. Nos. o. g., V. G.-V. F.	161.50
447	\$500.00 Carmine Lake & Black (R180). Uncut, faint crease, Very Fine Appearance	(Photo) 225.00
448	\$500.00 Carmine Lake & Black (R180). Cut cancel, small faults, Very Fine Appearance	135.00
449	\$30.00 Vermilion, Handstamped "Series 1940" (R282). Uncut, Fine, Scarce	75.00
450	\$60.00, \$500.00 1945 Documentary (R432, R434). Uncut, Fine-Very Fine	115.00
451	\$1,000.00 1947, 1949 Documentary (R485, R535). Uncut, Fine-Very Fine	135.00
452	\$30.00-\$1,000.00 1948, \$50.00-\$100.00 1949 Documentary (R505-R509, R556-R558). \$50.00, \$500.00, \$1,000.00 1948's cut cancel, others Uncut, Fine-Very Fine	161.00
453	★ 40c-\$50.00 1952 Documentary (R595-R596, R600, R607-R609, R611-R612). Extra \$5.00, o. g. or issued without gum, All but one \$5.00 s. e., Fine-Very Fine Lot, Last Two Unpriced Unused	54.75+
454	▣ 5½c Battleship, Proprietary, Imperf. Horiz. (RB23a). Block, Used, light wrinkles, touching at R., Scarce, Not Priced Used, (as unused cat. \$80.00+)	—
455	\$10,000.00 1947 Stock Transfer (RD260). Stamped & Cut Cancels, Very Fine	65.00
456	\$10,000.00 1950 Stock Transfer (RD338). Cut Cancel, Very Fine	90.00
457	★ 1½c Green, Wine, Double Line Wmk. (RE19). Cpl. Sheet of 200, some with perfs in, others Fine, Very Scarce Stamp	3,500.00
458	★ Blue, Playing Card, Imperforate (RF11). Horiz. Pair, Very Fine	40.00
459	★ Blue, Playing Card, Imperforate (RF11). Horiz. Strip of Six, Very Fine	(Photo) 120.00
460	8c on 2c Blue, Playing Cards (RF15). Usual crease, Very Fine Appearance	(Photo) 225.00
461	8c on 2c Blue, Playing Cards, Double Surcharge (RF15a). Usual faint bend, Fine, Scarce	(Photo) 400.00

462	\$30.00 Silver Tax (RG19). Vert. Pair, Uncut, Very Fine	40.00
463	1c-\$20.00 Tobacco Sale Tax (RJ1-RJ11). Fine-Very Fine Set	33.00
464 ★	\$3.00-\$5.00 1968-74 Hunting Permits (RW35, RW36, RW39-RW41). Mint, Very Fine	68.00
465 ★	\$3.00 1969 Hunting Permit, Top Inscription Missing (RW36 var). Mint Plate No. Single, Misperfed, Omitting "U. S. Department of Interior", Very Fine	20.00+

LARGE AND MISCELLANEOUS LOTS

466	U. S. Collection, 1851-1951, Several Hundred Used & Unused Stamps, Many Better items, 1869 with values to 15c, Columbians to 50c, Pan-American, Louisiana Purchase cpt, 1933-34 Souvenir Sheets, Air Post, Hunting Permits etc, Mixed Quality, Many F.-V. F.	E. IX
467	U. S. Collection, 1851-1945, Collection of Many Hundreds of Used & Unused Stamps, Better items, From 1917 nearly cpt, Some Air Post etc, early issues with some faults, Balance Fine-Very Fine	E. VIII
468 ★	U. S. Collection, 1851-1939, Several Hundred mostly Unused Stamps, Better items, Bank Notes to 90c, Columbians to 30c, Trans-Mississippi to 50c, Pan-Americans, Louisiana, Jamestown, 1939 Imperfs, Panama-Pacific etc, All cpl., From 1922 Nearly cpl., 8c Kans., 10c Nebr., some small faults, Mostly Fine-Very Fine	E. XI
469	U. S. Collection, 1851-1972, Collection of Hundreds of Mostly Used Stamps, Mounted in Deluxe Scott National Hingeless Album, Wide Range of Issues, Better Items, incl. 1851-57 Issues with Values to 12c, 1861 to 90c, Bank Notes to 90c (two), Columbians to 50c, 1894-95 to \$1.00, Trans-Miss. to 50c, Early 20th Commems, Good showing of Franklin - Washington Heads & other regular issues, Air Post with C1, C3-C6, Special Delivery, Dues, Parcel Post Cpl., fifteen diff. Duck Stamps betw. 1934-60, etc., a considerable number have faults, but are of Attractive Appearance, balance Fine-Very Fine, Valuable Lot	E. XIII
470	U. S. Collection, 1857-1940, Many Hundreds of Used & Unused Stamps, Many Better items, Imperfs., Coil Pairs, Offices in China, Parcel Post, Dues, Air Post, few faults, Balance F.-V. F.	E. IX
471	U. S. Collection, 1857-1956, Several Hundred Nearly All Used Stamps, incl. Better items, Columbians to 15c, Trans-Mississippi to 10c, 1922 to \$5.00, Commems, Air Post etc, mostly Fine-Very Fine	E. VI
472 ★	U. S. Collection, 1861-1970, Many Hundreds of Mostly Unused Stamps, Some Cpl Sets, Parks, Farley Parks, Famous Americans, Some Air Post, Special Delivery, Nearly cpl from 1934, Mostly F.-V. F.	E. VI
473 ★	U. S. Miscellaneous, 1890-1968, 84 Mostly Unused Stamps & One Cover, Wide Range of Issues, Better items Incl. Plate No. Strips, Plate No. Blocks, Blue Booklet Vignette Sheet of Four, 5c, 10c, 15c Columbians, Used High Values, #C18 Flight cover, Some faults, others F.-V. F.	812.00
474 ★	U. S. Collection, 1901-74, Many Hundreds of Mostly Unused Stamps, Many Better Items, Washington-Franklin Coils, Parks, Farleys, Values to \$5.00, Air Post, Special Delivery, Cpl. Sets, Some Possessions with Hawaii, Canal Zone etc, Nearly All Fine-Very Fine	E. XI
475	U. S. Accumulation, 1932-74, Many Thousands of Used & Unused Stamps, Value is Predominantly Unused, incl. Commems, Regulars, Coils, Air Post, some Dues, Special Delivery, etc., Wide Variety, neatly arranged in Four Stock Books, mostly Fine-Very Fine	E. XIII
476 ★	U. S. Collection, Approx. 800 Unused Stamps, Virtually All 20th Century, Wide Range of Issues, incl. Regulars, Coils, Commems, Air Post, Special Delivery, etc., few questionable items, some better items have faults, Nearly All Fine-Very Fine, Attractive & Valuable Collection	E. XIII



1



2



3



4



5



6



7



8



9



10



11



12



13



14



15



16



17



18



19



20



21



22



23



24



25



26



27



28



29



30



31



32



33



34



35



36



37



38



39



40



41



42



43



44



45



46



47



48



49



50



51



52



53



54



55



56



57



58



59



60



61



62



63



64



65



66



67



68



69



70



71



37



19



69

70



74



36



71



2105

216



274



260



297 EX



322



373



421



429



64



63



67



76



78



79



81



83



87



88



89



92



93



94



95



96



97



98



99



100



101



106



107



108



109



112



113



116



117



118



120



125



129



145



146



147



149



150



151



152



153



154



155



156



157



158



159



160



161



162



163



164



165



176



177



179



191



172



192



193



194



195



196



208



209



210



223



217



218



231



246



252



255



256



259



263



278



289



303



307



309



323



330



331



332



326



315



333



338



342



336



6c U. S. Postage

6c U. S. Postage

6c U. S. Postage

6c U. S. Postage

346



347



355



356

343



344



350



353



361



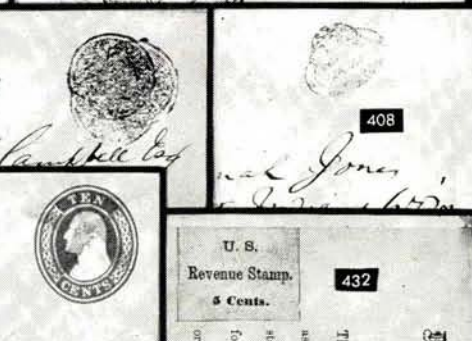
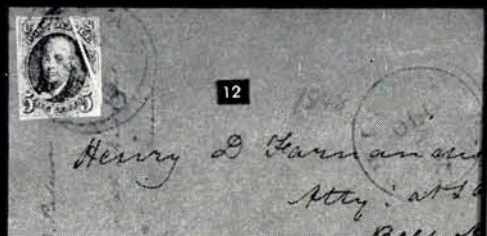
400



374



375





404 EX



402



405



418



406



407



416



447



442



460



461



488 EX



459



491 EX



600



611



612



613



616



615



617



618



620



623



625



626



628



629



630



633



636



637



638



640



641



644



645



646



658



665



666



667



669



670



672



673





651



652



653



654



655



676



822



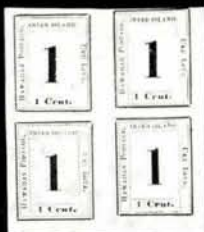
823



824



659



759



677



678



680



682



686



688



691



692



693



695



697



694



698



699



700



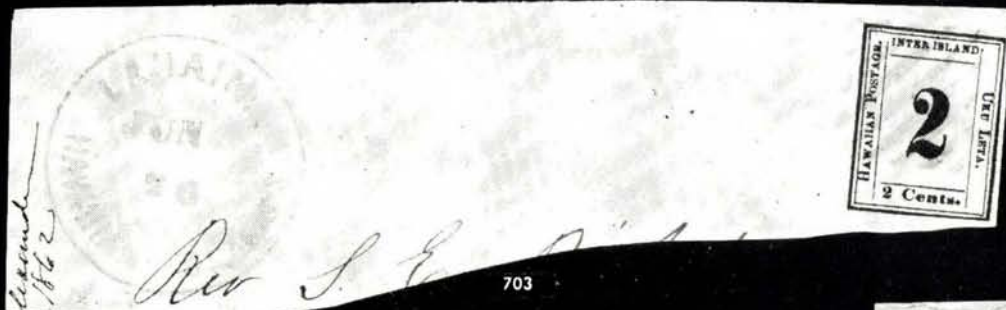
701



702



704



703



705



706



707



709



710



708



711



712



713



714



715



716



717



719



720



722



723



724



725



726



727



728



729



730



733



735



736



737



738



739



740



741



742



744



745



746



747



748



749



751



753



757



758



763



764



765



767



773



768



770



771



772



776



773



777



779



781



787



789



790



792



793



795



796



798



799



800



801



803



804



806



808



811



813



814



815



816



817



828 EX



835



836



848



853



857



858



862



865



868



872



873



877



878



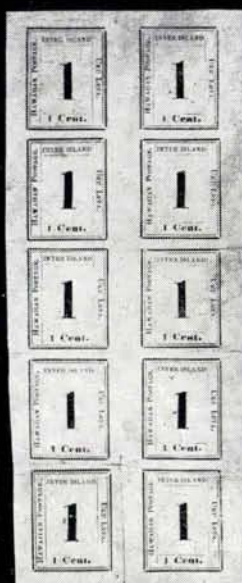
880



881



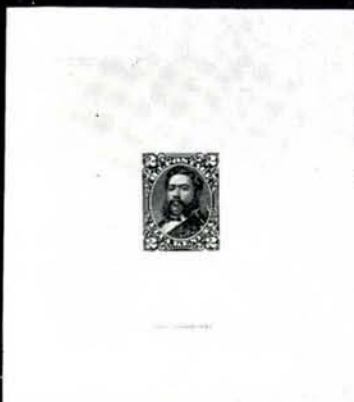
886



689



846



861



883



825



826



876



887



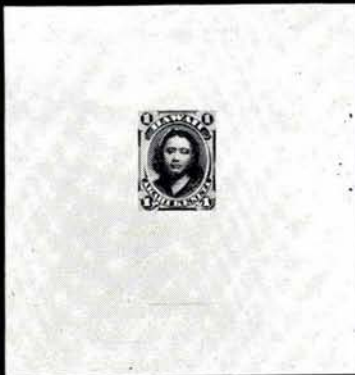
890



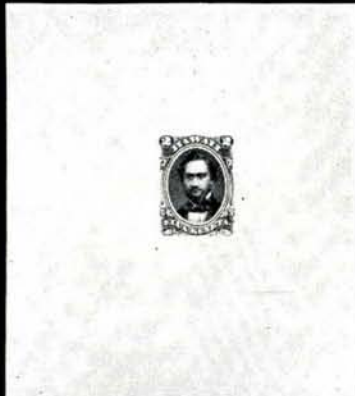
932



895



829



834



885



888



891



900



903



907



913



925



926



928



929



934



936



937



938



947



958



944



957



959



962



964



966



1048



1050



1051



1057



967



979



980



1005



968



943



950



961



972



902



948



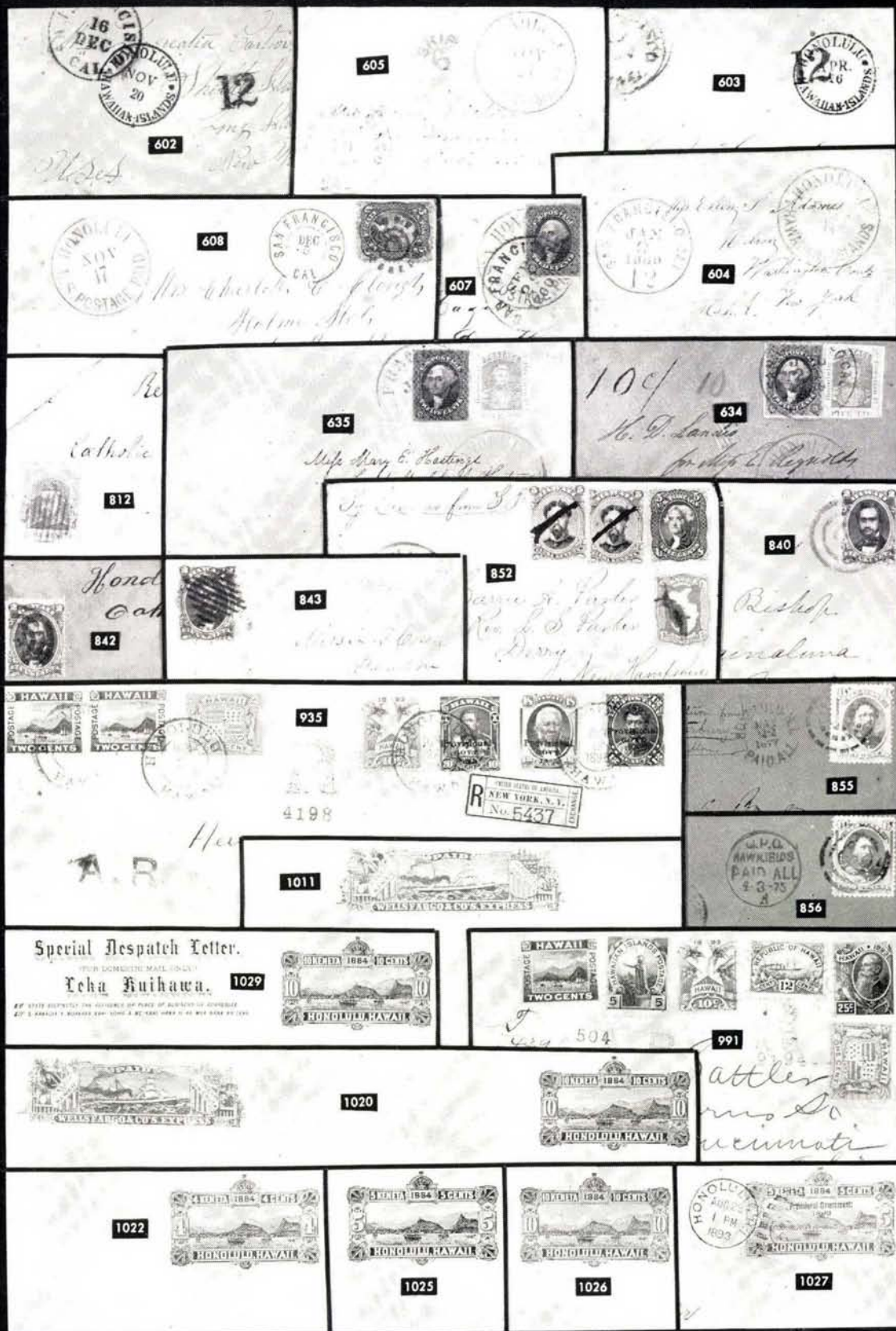
931



981



999



477	U. S. Accumulation , 19th & 20th Century, Many Thousands of Used & Unused Stamps, Blocks, Plate No. Blocks, Many Better items, Large Variety incl. Revenues, Cut Squares, Some Possessions & U. N. etc, many early issues with faults, Balance F.-V. F.	E. XII
478	U. S. Accumulation , Several Hundred Mostly Unused Stamps, Nearly All 20th Century, Wide Range of Issues, Better Items, some recent coil pairs in quantity, Air Post, etc., generally Fine-Very Fine, Useful Lot	E. XI
479	★ Plate Blocks , 147, Virtually All Postage, Comems, Air Post & Special Delivery of the last ten years, incl. few Better, few Mail Early & Zip, some duplication, Very Fine Lot	E. VII
480	★ 1c-3c 1932-40 Commemoratives (Betw. 728-897). Sixteen Cpl. Sheets , some duplication, few separations, Fine-Very Fine Lot	E. VIII
481	★ 3c-8c Commemoratives, 1935-62, 140 Cpl. Sheets of 50-100, 35 Diff. in quantities of from one to fifteen of each, Virtually All Very Fine	E. XI
482	U. S. Revenues, 1871-1951 , Collection of Many Hundreds of Used & Unused Stamps, Many Better items, Third Issue with values to \$10.00, Proprietary, Dated Documentary & Stock Transfers incl. Unused low values & uncut High Values, Wines, Narcotic, Silver Tax, Potato Tax cpl., many Blocks in most areas, some faults, Mostly Fine-Very Fine	E. XI
483	☒ Picture Post Cards , 106, each franked with 1c Jamestown (328). Wide variety of views & sentiments, no Exposition usages, Fine Lot	265.00

CONFEDERATES

484	☒ 10c Blue, Frame Line (10) . Complete Lines R. & B. showing them crossed in corner. Wide top margin, close but clear at left. Tied by Clear "Lynchburg, Va., July 23" in Violet, on neat Blue envelope to Charlottesville. Fine, Very Rare, Violet cancel unlisted	(Photo) 750.00+
485	☒ 20c Green (13) . Defective, uncanceled on Prisoner-of-War cover, endorsed "Prisoner of War" & sent "Care of Hon. R. T. Ould, Commissioner of Exchange, Richmond, Va.", "Old Point Comfort, Va." pmk., "Due 6" in circle on cover to Maine. Rare & Attractive, with P. F. Certificate	(Photo) 500.00+

U. S. POSSESSIONS

486	★ CANAL ZONE, 1904-06, 2c-10c (11-13). Blocks , Fine-Very Fine	48.00
487	★ — 1904, 8c on 50c Bistre Brown (14) . Block with Imprint, Fine	27.50+
488	★ — 1924, 5c-1p Ovpts. on Panama, Ty. A34 (follows #69 in Specialized Cat.) Cpl. set, 12c lightly toned, 1p minute thin speck, others Fine-Very Fine, Scarce	(Photo Ex) 280.00
489	DANISH WEST INDIES, 1855, 3c Dark Carmine (1) . Margins All Around, Fine	90.00
490	★ GUAM, 1930, 2c Green, 'Guam Guard Mail' (M1) . Fine	150.00
491	★ PHILIPPINES. Official Stamps, Printed Overprints . Beautiful Collection of 218 stamps, Values to \$5.00, 10 Pesos. Overprints of different types, many in colors, and a few errors. A few blocks are present. Beautifully mounted and written up and containing some important data, such as total numbers overprinted for various denominations; some as few as 20 were made and only 28 were made of the \$5.00 1902. Virtually all are unused o.g. and there is very little duplication. Such duplication is primarily shades or varieties. There are recognized in most catalogues as having official status and are listed in some foreign catalogues. Though unlisted by Scott, they form an extremely desirable collection with many individual stamps of considerable value	(Photo Ex) E. XV

UNITED NATIONS

492	✉ 1955, 3c-8c Anniversary Souvenir Sheet (38). Tied on Art Craft Cacheted addressed First Day Cover, Very Fine	67.50
493	✉ 1955, 3c-8c Anniversary Souvenir Sheet (38). Tied on Artmaster Cacheted Unaddressed First Day Cover, Very Fine	67.50

PHILATELIC LITERATURE

494	Acts Passed at the First Session, Sixteenth Congress (1820); First Session, Nineteenth Congress (1825). Two paper-bound volumes, "dog-eared" & aged, margins are sufficiently large to result in excellent volumes when privately bound	E. V
495	Acts of the General Assembly, Commonwealth of Virginia, 1839-1843, Five paper-bound volumes, "dog-eared" & aged, few pages missing, margins are sufficiently large to result in excellent volumes when privately bound	E. VI

END OF FIRST SESSION

DESCRIPTIONS

EXTREMELY FINE: The finest condition for noteworthy, outstanding copies.

VERY FINE: (V. F.) In prime condition such as to satisfy the requirements of particular collectors.

FINE: (F) Perforations or margins do not touch design on issues after 1890 but in some cases may just touch in earlier issues. If used, fairly light cancellation.

VERY GOOD: (V. G.) Generally nice appearance but margins or perforations may cut in slightly.

GOOD: Average off-centering or fairly attractive with slight defects.

ORIGINAL GUM is not to be expected on 19th century stamps unless so stated in the description.

MINT: With original gum and never hinged.

Scott 1975 Specialized Catalog used for cataloguing lots of U.S. & Possessions. Scott 1975 Standard Catalogue for others. Use of other catalogs noted in the descriptions.

SECOND SESSION


THURSDAY, OCTOBER 30th, 1975 — 1:00 P. M.

HAWAII MISSIONARY ISSUE

- | | |
|-----|--|
| 600 | 1851, 13c Blue, Missionary (3). Margins all around. Very Light ms. cancel which looks like a slight stain. Appears unused. A Magnificent Rarity, one of the few sound, unrepaired examples in existence, to say nothing of the fact it has full margins (Photo) 7,500.00 |
|-----|--|

STAMPLESS COVERS OR COVERS WITH U. S. STAMPS

- | | | |
|-----|--|---------|
| 601 | <input checked="" type="checkbox"/> Ewa, Nov. 16th 1840, heading on Folded Letter to NY, Red "New-York, Ship pmk., ms. "20" Rate, Missionary Letter with internal splits along folds, Scarce, Interesting contents | E. V |
| 602 | <input checked="" type="checkbox"/> Honolulu, Hawaiian Islands, Nov 20, Bold Brilliant Red Circle on envelope to Long Island, "San Francisco, Cal. 16 Dec." pmk, Bold "12", Very Fine & Handsome (Photo) | E. IX |
| 603 | <input checked="" type="checkbox"/> Honolulu, Hawaiian Islands, Apr. 26, Bold circle in Brilliant Red on 1852 folded letter to N. Y., "San Francisco, Cal. May 15" blurry pmk. Bold "12" (Ship Fee + 10c Unpaid rate) Small hole from spindle file, Still Very Fine & Attractive (Photo) | E. VIII |
| 604 | <input checked="" type="checkbox"/> Honolulu, Hawaiian Islands, Large (35mm) Red circle, Clear strike on Pink Embossed Lady's cover to N. Y. State. Bold "San Francisco, Cal., 12, Jan. 9, 1860". Least bit of aging, Very Fine & Handsome (Photo) | E. X |
| 605 | <input checked="" type="checkbox"/> Honolulu, Hawaiian Islands, Clear Red circle, Bold San Francisco, Cal. Dec. 19, 1860, "Ship 6" in arc, Small neat cover to S. F. Very Fine Private Ship Letter (Photo) | E. X |
| 606 | <input checked="" type="checkbox"/> Honolulu, U. S. Postage Paid, Aug. 25, Bold Red circle, matching "Paid 12" & "12c" in Red Crayon to Mass. "San Francisco, Cal. 6 Oct." pmk. dates this 1856 since Oct. 5, the regular sailing date was a Sunday. Small ink blot at B., a stamp has been removed from the cover, yet Very Attractive, Ex-Harris | E. VIII |
| 607 | <input checked="" type="checkbox"/> Honolulu, U. S. Postage Paid. Large Red circle. U. S. 12c Black (17) Large margins all around, light crease before use, applied over the Hawaii pmk. & tied by Bold "San Francisco, Cal., Sep. 28, 1860", ms. "pr Comet" on cover to N. Y. Stamp & most of postmark torn out of cover & neatly replaced. Fine appearance, Rare usage (Photo) | E. X |
| 608 | <input checked="" type="checkbox"/> Honolulu, U. S. Postage Paid, Large Red circle, U. S. 5c Brown (76) L. perfs. trimmed, tied by Bold Cog Wheel (the scarce small tooth type) "San Francisco, Cal." in Double circle. Minor toned spots on cover to Marthas Vineyard, Fine & Scarce (Photo) | E. IX |
| 609 | <input checked="" type="checkbox"/> King David Kalakana, Beautiful Embossed Gold & Silver Seal on back flap of unused envelope, Crown, Initials, Imprint, etc. slight erosion, toned spots. Rare | E. VI |

- 610  **Official Imprints**, Two Department of Foreign Affairs Entires, one Provisional Gov't. Service, other a Mourning Cover, "On Her Hawaiian Majesty's Service", first toned with small tear, other Very Fine, also incl. part of letter sheet with multicolored Hawaiian Flag in corner **E. IV**

FIRST ENGRAVED ISSUES

- | | | |
|-------|--|----------|
| 611 ★ | 1853, 5c Blue (5) . Pos. 19, Clear to Large Margins, Exceptionally Fresh, small part o. g., Very Fine, A Lovely Stamp (Photo) | 550.00 |
| 612 ★ | 1853, 5c Blue (5) . Narrow margins, clear all around. Fresh Color, thin, Fine Appearance (Photo) | 550.00 |
| 613 | 1853, 5c Blue (5) . Pos. 3, narrow margins, trifle cut in two places, Thick Bar Grid boldly struck twice, tiny thin spot, Scarce & Attractive (Photo) | 400.00 |
| 614 | 1853, 5c Blue (5) . Pos. 16, Touched to Large Margins, Red Hawaiian pmk., thinned with some staining at right, Scarce & Reasonably Attractive | 400.00 |
| 615 ★ | 1853, 13c Dark Red (6) . Clear to Huge Margins, incl. T. sheet Margin, Fresh Color, Full o. g., some surface scuff spots along right margin & at top left corner, otherwise Very Fine (Photo) | 225.00 |
| 616 ★ | 1853, 13c Dark Red (6) . Ample to Large Margins Shift Print Variety (M-H #6. 47, Distinct Doubling of "13", "United States" etc.), tiny gum soak appears as thin, Very Fine (Photo) | 225.00+ |
| 617 ★ | 1853, 13c Dark Red (6) . Ample to Large Margins except top left corner trifle diagonaled, Fresh Color, Part o. g., Fine (Photo) | 225.00 |
| 618 ★ | 1853, 13c Dark Red (6) . Margins Virtually All Around, Fresh Rich Color, some paper adheres to back, Fine (Photo) | 225.00 |
| 619 ★ | 1853, 13c Dark Red (6) . Ample to Large Margins, Rich Color, Shows Distinct Slipped Print , badly thinned, Very Fine Appearance | 250.00 |
| 620 ★ | 1853, 13c Dark Red (6) . Three Clear to Large Margins. clear to trifle in at bottom, Fresh, Part o. g., tiny negligible thin spot, Fine Appearance (Photo) | 225.00 |
| 621 ★ | 1853, 13c Dark Red (6) . Three Clear to Large Margins, partly in at right, thinned, Fine Appearance | 225.00 |
| 622 ★ | 1853, 13c Dark Red (6) . Margins to slightly in, slight soiling & small corner crease, otherwise Fine | 225.00 |
| 623 | 1853, 13c Dark Red (6) . Pos. 6, Margins Virtually All Around, Clear Grid cancel, tiny surface scuff, otherwise Fine (Photo) | 250.00 |
| 624 | 1853, 13c Dark Red (6) . Large Margins to slightly in, Fresh Color, part of "San Francisco" pmk., small faults, Fine Appearance | 250.00 |
| 625 | 1853, 13c Dark Red (6) . Three Clear to Ample Margins, clear to tiny bit in at top. Part of San Francisco Cog wheel cancel, Late Usage, Scarce, small faults, Fine Appearance (Photo) | 250.00 |
| 626 | 1853, 13c Dark Red (6) . Pos. 13. Large Margins to slightly in at bottom, San Francisco pmk., thin, Fine Appearance (Photo) | 250.00 |
| 627 | 1853, 13c Dark Red (6) . Clear margins to partly in, San Francisco pmk., thin, Fairly Attractive | 250.00 |
| 628 | 1853. 5c on 13c Dark Red, Manuscript Surcharge (7) . Clear to Large Margins, Beautiful Deep Shade, part of "San Francisco" pmk., small parts of ms. surcharge scraped away, otherwise Very Fine, with P. F. Certificate, Rare (Photo) | 2,250.00 |
| 629 ★ | 1857, 5c Blue (8) . Narrow margins, touched in places, Fine (Photo) | 200.00 |
| 630 ★ | 1857, 5c Blue (8) . Line Through "Honolulu", Pos. 2, Large Margins, Fresh Color, thins & small tears, Very Fine Looking, Very Scarce (Photo) | 600.00 |

631	1857, 5c Blue (8). Four Nice Margins, light Red "Honolulu" pmk., small closed scissor cut at top, two minute pinholes, otherwise Very Fine	200.00
632	1857, 5c Blue (8). Nearly Four Margins, partly in at bottom, part of "San Francisco" pmk., tiny tear at right, otherwise Fine	200.00
633	1857, 5c Blue (8). Three Ample to Extra Large Margins, slightly in at bottom, San Francisco pmk., light crease & tiny margin thin speck, Attractive Appearance	(Photo) 200.00
634	<hr/>	
634	✉ 5c Blue, White Paper, "Line through Honolulu" var. (8). Clear to Huge margins except slightly in at bottom. Tied with U.S. 12c Black (17) margins all around & Very Fine by Brilliant Red "San Francisco, Cal., July 20, 1859" Large Red "Honolulu, Hawaiian Islands" pmk., ms. "10c" crayon "10" to Phila. Gorgeous cover, Spectacular Exhibition Piece	(Photo) E. XVII
635	✉ 1857, 5c Blue Thin White Paper (8). Pos. 2, Line through "Honolulu" variety, tied together with United States 12c Black (17), Large margins to barely touched U.L. tied by "San Francisco, Cal." pmk. Red "Honolulu U.S. Postage Paid" on fresh cover to Mass. Very Fine & Handsome, Ex-Green, Signed "Ashbrook", An Exhibition Piece	(Photo) E. XVII
636	★ 1861, 5c Blue on Bluish (9). Large to Huge Margins, Extremely Fine (Photo)	90.00
637	★ 1861, 5c Blue on Bluish (9). Large Margins except touched top left corner, Fine	(Photo) 90.00
638	★ 1861, 5c Blue on Bluish (9). Line Through "Honolulu", Pos. 2, Ample to Large Margins, Nearly Full o.g., light corner bend. almost imaginary pinpoint thin speck, Very Fine Appearance	(Photo) 180.00
639	★ 1861, 5c Blue on Bluish (9). Line Through "Honolulu", Pos. 2, touched to ample margins, small repairs, Fine Looking	180.00
640	★ 1861, 5c Blue on Bluish (9). Ample to Large Margins, Fresh Color, couple small thin spots, Very Fine Appearance	(Photo) 90.00
641	★ 1861, 5c Blue on Bluish (9). Pos. 8, Clear to Large Margins, small thin spot, Very Fine Appearance	(Photo) 90.00
642	★ 1861, 5c Blue on Bluish (9). Large Even Margins, Fresh Color, small thins & tiny closed tear, Very Fine Appearance	90.00
643	★ 1861, 5c Blue on Bluish (9). Pos. 18, Clear to Ample Margins, small thin spots, Fine Appearance	90.00
644	1861, 5c Blue on Bluish (9). Clear to Huge Margins incl. Part Left Sheet Margin, Neat Grid cancel, small faults, Very Fine Appearance	(Photo) 90.00
645	1861, 5c Blue on Bluish (9). Pos. 13, Three Ample to Extra Large Margins, clear to tiny bit in at bottom, Neat Square Grid cancel, Fine	(Photo) 90.00
646	1861, 5c Blue on Bluish (9). Pos. 18, Margins to partly in. light Grid cancel, Fine	(Photo) 90.00
647	1861, 5c Blue on Bluish (9). Two, Pos. 1 & 15, Used, Large Margins to partly in, faults, Fine Appearance	180.00
648	1861, 5c Blue on Bluish (9). Three, Pos. 16, 17 & 20, touched to Large Margins, one rebaked, others heavy thin & crease, F.-V.F. Looking Lot	270.00
649	1861, 5c Blue on Bluish (9). Three Used Singles, one with partially removed ms. cancel, others Square Grid, Large Margins to cut in. few faults, Very Good-Fine Appearance	270.00
650	★田 1868, 5c Blue, Re-Issue (10). L. Margin Block, Pos. 1, 2, 5, 6, Pos. 2 Line Through "Honolulu", tropical toning, small faults, Scarce, with P. F. Certificate	92.50+
651	★ 1868, 5c Blue, Re-Issue (10). Cpl. Sheet of Twenty, Full o.g., some tropical toning as usual, Very Fine	(Photo) 382.50
652	★ 1868, 5c Blue Re-issue (10). Cpl. Sheet of Twenty, Fresh, o.g. couple of hinge thins in margins only, Stamps Very Fine	(Photo) 382.50

653 ★	1868, 5c Blue, Re-Issue (10). Cpl. Sheet of Twenty, Full o. g., minimal tropical toning, Very Fine (Photo)	382.50
654 ★	1868, 5c Blue, Re-Issue (10). Cpl. Sheet of Twenty, Unusually Fresh, o. g., only barest traces of usual tropical toning, light horiz. crease betw. third & fourth row just affecting bottoms of one row, otherwise Very Fine (Photo)	382.50
655 ★	1868, 5c Blue, Re-Issue (10). Cpl. Sheet of Twenty, Unusually Fresh o. g., slight stains in top & bottom margins with negligible thin spot, otherwise Very Fine (Photo)	382.50
656 ★	1868, 5c Blue (10). Eight Singles & Horiz. Pair, All Diff. Positions, Fresh, some o. g., few tiny thins, mostly Fine-Very Fine	125.00
657	1868-89, 2c-5c Kamehameha III, IV, Regular Issues, Reprints, Specimen (10, 10R, 29, 51, 51S). All o. g. but #29, no. 10 is Horiz. Pair, couple small faults, Very Fine Appearance	110.00
658 R	1889, 5c Blue, Reprint (10R). Pos. 20, Ample to Large Margins, Fresh, o. g., Very Fine (Photo)	35.00
659 R	1889, 5c Blue, Reprint (10R). L. Margin Block, Fresh, Nearly Full o. g., Large Margins, tiny toned speck, really negligible, Very Fine (Photo)	140.00+
660 R	1889, 5c Blue, Reprint (10R). Large Margins incl. Sheet Margin, light Target cancel, Extremely Fine, Unused cat. \$35.00	—
661 R	1889, 5c Blue, Reprint (10R). Two, one Unused, o. g., other with ring cancel, Clear to Large Margins, Fine, Unused Singles cat. \$35.00 each.	E. IV
662 S	1889, 5c Blue, 13c Orange Red, "Reprint" Overprints (10R-S-11R-S). First o. g., Clear to Large Margins. Fresh & Very Fine	55.00
663 S	1868, 5c Blue, 13c Dull Rose, "Specimen" Overprints (10S, 11Sa). Blocks, latter o. g., few small faults, Nice Margins, Scarce Lot	60.00+
664 S	1868, 5c Blue Re-Issue, "Specimen" Overprint (10S). Cpl. Sheet of Twenty, Part o. g., tropical toning, numerous surface scuffs, otherwise Very Fine	165.00+
665 ★	1868, 13c Dull Rose, Re-Issue (11). Ample to Large Margins, tiny thin spot, Very Fine Appearance (Photo)	150.00
666 ★	1868, 13c Dull Rose, Re-Issue (11). Large Margins, Unusual Deep Shade, small thin spot, Very Fine Appearance (Photo)	150.00
667 ★	1868, 13c Dull Rose, Re-Issue (11). Margins All Around, "Richter" hand-stamp guarantee with tiny specks of the ink showing on face, otherwise Very Fine (Photo)	150.00
668 ★	1868, 13c Dull Rose, Re-Issue (11). Light shade, closed tear, Fine Looking	150.00
669 ★	1868, 13c Dull Rose, Re-Issue (11). Large Margins, small thinning at top, Very Fine Appearance (Photo)	150.00
670 ★	1868, 13c Dull Rose, Re-Issue (11). Ample to Huge Margins, thin broken through in one tiny spot, otherwise Very Fine (Photo)	150.00
671 ★	1868, 13c Dull Rose, Re-Issue (11). Clear to Ample Margins. light ms. on back, thin spot, Fine Appearance	150.00
672 R	1889, 13c Orange Red, Reprint (11R). Horiz. Pair, Margins All Around, Fresh, o. g., Very Fine (Photo)	350.00
673 R	1889, 13c Orange Red, Reprint (11R). Horiz. Pair, Margins All Around, Fresh, o. g., tiny scissor cut between stamps, Very Fine (Photo)	350.00
674	1868, 13c Orange Red, Reprint (11R). Clear to Huge Margins incl. T. Sheet Margin, Cancelled. Fine (Unused cat. 175.00)	—
675 S	1868, 13c Dull Rose Re-Issue, "SPECIMEN" Overprints (11Sa, 11Sb). Blocks, First Mint, faint crease touching frame of bottom pair, otherwise Very Fine, other o. g., broken crease affects one stamp, negligible tropical toning, otherwise Fine-Very Fine	100.00+
676 S	1868, 13c Dull Rose Re-Issue, "SPECIMEN" Overprint (11Sa). Cpl. Sheet of Twenty, Mint, slight traces of tropical toning, otherwise V. F. (Photo)	150.00+

NUMERAL ISSUES

(Plating according to Westerberg)

677 ★	1859, 2c Light Blue on Bluish White (13). Margins except touched at bottom left corner, thin, Fine Appearance (Photo)	900.00
678	1859, 2c Light Blue on Bluish White (13). Pl. 3-A, Ty. I, Pos. 3, touched to Large Margins except left frame line partly halved, small ms. cancel & Red "Honolulu, Hawaiian Islands" pmk., thin with tiny hole, still Fairly Attractive, Scarce (Photo)	600.00
679 ★	1863, 1c Black on Grayish (15). Pl. 4-A, Ty. I, Pos. 1, margins, clear all around, small tropical toning spots, small thin, otherwise Fine (Photo)	135.00
680 ★	1863, 1c Black on Grayish (15). Pl. 4-A, Ty. II, Pos. 2, Large to Huge Margins, Part o. g., thinnings, Very Fine Appearance (Photo)	135.00
681 ★	1863, 1c Black on Grayish (15). Pl. 4-A, Ty. IV, Pos. 4, clear margins to just touched, faults, Fine Appearance (Photo)	135.00
682 ★	1863, 1c Black on Grayish (15). Pl. 4-A, Ty. V, Pos. 5, Four Large Margins, Clear Stitch Watermark, Fresh & Very Fine (Photo)	135.00
683 ★	1863, 1c Black on Grayish (15). Pl. 4-A, Ty. V, Pos. 5, small margins, virtually clear all around, faint creases & tiny thin spot, Fine Appearance (Photo)	135.00
684 ★	1863, 1c Black on Grayish (15). Pl. 4-A, Ty. VI, Pos. 6, Margins All Around, tiny negligible paper rift top left, otherwise Fine (Photo)	135.00
685 ★	1863, 1c Black on Grayish (15). Pl. 4-A, Ty. VII, Pos. 7, Margins All Around, tiny thin spots, Fine Appearance (Photo)	135.00
686 ★	1863, 1c Black on Grayish (15). Pl. 4-A, Ty. IX, Pos. 9, Margins All Around, thin spots, Fine Appearance (Photo)	135.00
687 ★	1863, 1c Black on Grayish (15). Pl. 4-A, Ty. IX, Pos. 9, Narrow margins, clear all around, thin, Fine Appearance (Photo)	135.00
688	1863, 1c Black on Grayish (15). Pl. 4-A, Ty. X, Pos. 10, Ample to Huge Margins, single ms. stroke cancel, Very Fine (Photo)	200.00
689 ★	1863, 1c Black on Grayish (15). Block of Nine with the tenth stamp re-joined, forming the Complete Reconstruction of Pl. 4-A, o. g., some creasing & minor tropical staining, Five Stamps Very Fine. Wonderful Show-piece, "W. H. C." (Colson) handstamp guarantees (Photo)	1,870.00+
690 ★	1863, 1c Black on Grayish (15). Pl. 4-B, Ty. II, Pos. 2, frame touched all around, tiny tears, otherwise Fine (Photo)	135.00
691 ★	1863, 1c Black on Grayish (15). Pl. 4-B, Ty. III, Pos. 3, Margins all around, Very Fine (Photo)	135.00
692 ★	1863, 1c Black on Grayish (15). Pl. 4-B, Ty. V, Pos. 5, Three Ample Margins, frame touched at bottom, Fresh & Fine (Photo)	135.00
693 ★	1863, 1c Black on Grayish (15). Pl. 4-B, Ty. VIII, Pos. 8, Four Good Margins, small thin spot, Very Fine Appearance (Photo)	135.00
694	1863, 2c Black on Grayish (16). Pl. 3-C, Ty. III, Pos. 1, margins to partly in, on piece, tied by Greenish Blue "Lahaina, Hawaiian - Islands" pmk., small gum soaks appear as thins, Attractive, Very Scarce Postmark (Photo)	225.00
695	1863, 2c Black on Grayish, "2" At Top of Rectangle (16a). Pl. 3-C, Ty. IX, Pos. 9, narrow margins, clear to touched, Unusual Oval Cancel, Wording Above & Below Ornament. thins & closed tears, yet an acceptable Example of this Rare Plate Position (Photo)	1,000.00
696 ★	1863, 2c Black on Grayish (16). Pl. 3-D, Ty. II, Pos. 2, Margins All Around, repaired, Fine Looking (Photo)	275.00

697 ★	1863, 2c Black on Grayish (16). Pl. 3-D, Ty. V, Pos. 5, Clear margins all around, Fresh, Large Part o. g., tiny thin spot, Fine Appearance ... (Photo)	275.00
698	1863, 2c Black on Grayish (16). Pl. 3-E, Ty. III, Pos. 1, margins touched to slightly in, ms. "X" cancel. thin spots, Fine Appearance ... (Photo)	225.00
699 ★	1863, 2c Black on Grayish (16). Pl. 3-F, Ty. V, Pos. 5, Mostly Large Margins, Fresh, Part o. g., small faults, Very Fine Appearance ... (Photo)	275.00
700	1863, 2c Black on Grayish (16). Pl. 3-F, Ty. VI, Pos. 6, Narrow to Extra Large Margins, Red Honolulu pmk., repaired, Fine Looking ... (Photo)	225.00
701 ★	1863, 2c Black on Grayish (16). Pl. 3-F, Ty. VII, Pos. 7, Ample to Extra Large Margins. tiny thin speck entirely in bottom margin, otherwise Very Fine ... (Photo)	275.00
702 ★	1863, 2c Black on Grayish (16). Pl. 3-G, Ty. I, Pos. III, Margins All Around, repaired, Very Fine Looking ... (Photo)	275.00
703	1863, 2c Black on Grayish (16). Pl. 3-G, Ty. II, Pos. 2, Margins to just touched, tied on large piece by Greenish Blue Square Grid, matching "Lahaina, Hawaiian - Islands" pmk at extreme left, Fine & Attractive, Very Scarce Postmark ... (Photo)	225.00
704	1863, 2c Black on Grayish (16). Pl. 3-G, Ty. IV, Pos. 4, Large Margins, ms. cancel. faint diagonal crease, really negligible, otherwise V. F. (Photo)	225.00
705 ★	1863, 2c Black on Grayish (16). Pl. 3-G, Ty. V, Pos. 5, Four Full Margins, Part o. g., light vertical crease, otherwise Very Fine ... (Photo)	275.00
706	1863, 2c Black on Grayish (16). Pl. 3-G, Ty. VII, Pos. 7, Large Margins, on Large Part of Folded Cover, tied by Fancy Red "Postage Paid" in Oval, partly readable strike, slight tropical toning, Very Fine ... (Photo)	225.00+
707	1863, 2c Black on Grayish (16). Pl. 3-G, Ty. VIII, Pos. 8, Ample to Large Margins. Bright Red Square Grid cancel, Fine ... (Photo)	225.00
708	1863, 2c Black on Grayish (16). Pl. 3-G, Ty. IX, Pos. 9, Three Ample to Huge Margins, incl. B. L. Corner Margin, irregular at top, touched at one tiny spot, on piece, ms. "X" cancel not tied, Fine ... (Photo)	225.00
709 ★	1864, 2c Black on Blue Gray (18). Pl. 5-A, Ty. III, Pos. 3, narrow margins, clear to barely touched, creases, one ending in tiny closed tear, otherwise Fine ... (Photo)	350.00
710 ★	1864, 2c Black on Blue Gray (18). Pl. 5-A, Ty. VII, Pos. 7, Margins clear all around, tiny closed tear at left, negligible toning speck, otherwise Fine ... (Photo)	350.00
711 ★	1864, 2c Black on Blue Gray (18). Pl. 5-A, Ty. X, Pos. X, Margins to partly in, couple tiny faint thin spots, Attractive Appearance ... (Photo)	350.00
712 ★	1864, 1c Black (19). Pl. 6-A, Ty. I, Pos. 1, Margins all around narrow at top, faint wrinkling, otherwise Fine ... (Photo)	175.00
713 ★	1864, 1c Black (19). Pl. 6-A, Ty. II, Pos. 2. Four Full Margins, tiny filled thins, Very Fine Appearance ... (Photo)	175.00
714 ★	1864, 1c Black (19). Pl. 6-A, Ty. III, Pos. 3, Three Ample Margins, top frame line clear to partly halved, couple tiny flaws, F. Appearance (Photo)	175.00
715 ★	1864, 1c Black (19). Pl. 6-A, Ty. IV, Pos. 4, Margins nearly all around, Fine ... (Photo)	175.00
716 ★	1864, 1c Black (19). Pl. 6-A, Ty. V, Pos. 5, Full Even Margins. very faint vertical crease, otherwise Very Fine ... (Photo)	175.00
717 ★	1864, 1c Black (19). Pl. 6-A, Ty. VI, Pos. 6, Large Margins, V. F. (Photo)	175.00
718 ★	1864, 1c Black (19). Pl. 6-A, Ty. VII, Pos. 7, Raised "I" in Inter, Clear Margins All Around, tiny repair top left corner, Fine Looking ...	175.00+
719 ★	1864, 1c Black (19). Pl. 6-A, Ty. VIII, Pos. 8. Ample to Large Margins, Part o. g., faint tropical toning specks, still Very Fine ... (Photo)	175.00
720 ★	1864, 1c Black (19). Pl. 6-A, Ty. X, Pos. 10, Huge Margins, Extremely Fine ... (Photo)	175.00
721 ★	1864, 2c Black (20). Pl. 5-C, Ty. I, Pos. 1, Ample to Large Margins, vertical crease & tiny filled in spots, Very Fine Appearance ...	225.00

722	1864, 2c Black (20). Pl. 5-C, Ty. I, Pos. 1, Ample Margins except top frame touched in one tiny spot. light stain, otherwise Fine (Photo)	225.00
723	1864, 2c Black (20). Pl. 5-C, Ty. I, Pos. 1, Large Margins, ms. "X" cancel, slight dry print, tiny thin speck, Very Fine Appearance (Photo)	350.00
724 ★	1864, 2c Black (20). Pl. 5-C, Ty. III, Pos. 3, margins all around insignificant corner crease, otherwise Very Fine (Photo)	225.00
725 ★	1864, 2c Black (20). Pl. 5-C, Ty. VI, Pos. 6, Three Large Margins, partly touched T. R., tiny corner crease, otherwise Fine (Photo)	225.00
726 ★	1864, 2c Black (20). Pl. 5-C, Ty. IX, Pos. 9, Good, Even margins all around, Very Fine (Photo)	225.00
727 ★	1864, 2c Black (20). Pl. 5-C, Ty. IX, Pos. 9, Clear to Ample Margins, tiny thin specks otherwise fine (Photo)	225.00
728 ★	1865, 5c Blue on Blue (21). Pl. 9-A, Ty. III, Pos. 7, Nice Margins, couple creases, otherwise Very Fine (Photo)	200.00
729	1865, 5c Blue on Blue (21). Pl. 9-A, Ty. III, Pos. 7, Ample to Large Margins, Large Bold Three Ring Target & small ms. cancels, light creases & small filled thin, Very Fine Appearance (Photo)	200.00
730 ★	1865, 5c Blue on Blue (21). Pl. 9-A, Ty. V, Pos. 5, Large Margins, tiny closed tear, otherwise Very Fine (Photo)	200.00
731	1865, 5c Blue on Blue (21). Pl. 9-A, Ty. V, Pos. 5, touched to cut in, town & target cancels, small thin & corner repairs, Useful for plating	200.00
732	1865, 5c Blue on Blue (21). Pl. 9-A, Ty. VI, Pos. 6, narrow margins, just clear all around, Neat Target cancel, small thin spot, Fine Appearance	200.00
733	1865, 5c Blue on Blue (21). Pl. 9-A, Ty. VII, Pos. 3, Ample Margins, Square Grid cancel, tiny nick at T. thinned, Fine Appearance (Photo)	200.00
734	1865, 5c Blue on Blue (21). Pl. 9-A, Ty. VIII, Pos. 4, Ample to Large Margins, Grid cancels, repaired, Fine Looking	200.00
735 ★	1865, 5c Blue on Blue (21). Pl. 9-A, Ty. IX, Pos. 1, clear margins, except frame line halved at bottom right, light crease, otherwise Fine (Photo)	200.00
736	1865, 5c Blue on Blue (21). Pl. 9-A, Ty. IX, Pos. 1, Full Margins, Blurry Square Grid cancel, tiny thin spot, Fine Appearance (Photo)	200.00
737	1865, 5c Blue on Blue (21). Pl. 9-A, Ty. X, Pos. 2, Ample to Large Margins Bold Square Grid cancel, creases & tiny thins, otherwise Fine (Photo)	200.00
738 ★	1865, 5c Blue on Blue (22). Pl. 12-A, Ty. I, Pos. 10, Three Large Margins, narrower at B. small light crease, otherwise Very Fine (Photo)	150.00
739 ★	1865, 5c Blue on Blue (22). Pl. 12-A, Ty. II, Pos. 6, Three Large Margins, tiny bit in at top, Fresh, Large Part o. g., Fine (Photo)	150.00
740 ★	1865, 5c Blue on Blue (22). Pl. 12-A, Ty. III, Pos. 8, Large Margins, Very Fine (Photo)	150.00
741 ★	1865, 5c Blue on Blue (22). Pl. 12-A, Ty. IV, Pos. 4, clear, narrow margins, Fresh & Fine (Photo)	150.00
742 ★	1865, 5c Blue on Blue (22). Pl. 12-A, Ty. V, Pos. 9, Large Margins, Extra Wide Two Sides, Extremely Fine (Photo)	150.00
743 ★	1865, 5c Blue on Blue (22). Pl. 12-A, Ty. VI, Pos. 2, narrow margins, clear all around, Fresh. Part o. g., light creases, otherwise Fine	150.00
744 ★	1865, 5c Blue on Blue (22). Pl. 12-A, Ty. VII, Pos. 3, Large Margins, Fresh, Large Part o. g., Very Fine (Photo)	150.00
745 ★	1865, 5c Blue on Blue (22). Pl. 12-A, Ty. VIII, Pos. 7, Large Margins, Very Fine (Photo)	150.00
746 ★	1865, 5c Blue on Blue (22). Pl. 12-A, Ty. IX, Pos. 1, Large Margins, Fresh, Part o. g., trivial crease in bottom margin well clear of design. Extremely Fine (Photo)	150.00
747 ★	1865, 5c Blue on Blue (22). Pl. 12-A, Ty. X, Pos. 5, Large to Extra Large Margins, Fresh, Large Part o. g., small thin spots, Very Fine Appearance (Photo)	150.00

748 ★	1865, 1c Black on Laid (23). Pl. 8-A, Ty. I, Pos. 2, Large Margins, Part o. g., bit of paper on back, Very Fine	(Photo)	85.00
749 ★	1865, 1c Black on Laid (23). Pl. 8-A, Ty. II, Pos. 1. Ample to Large Margins, Very Fine	(Photo)	85.00
750 ★	1865, 1c Black on Laid (23). Pl. 8-A, Ty. III, Pos. 4, Large Margins, small thin spots, Very Fine Appearance		85.00
751 ★	1865, 1c Black on Laid (23). Pl. 8-A, Ty. IV, Pos. 3, Large Margins, Very Fine, Schlesinger guarantee mark	(Photo)	85.00
752 ★	1865, 1c Black on Laid (23). Pl. 8-A, Ty. V, Pos. 6, Nice Margins. several pinholes & light crease, otherwise Very Fine		85.00
753 ★	1864, 1c Black on Laid (23). Pl. 8-A, Ty. V, Pos. 6, Large Even Margins, Part o. g., tiny thin spot, Extremely Fine Appearance	(Photo)	85.00
754 ★	1865, 1c Black on Laid (23). Pl. 8-A, Ty. VI, Pos. 5, Margins All Around, tiny thin spot, Fine Appearance		85.00
755 ★	1865, 1c Black on Laid (23). Pl. 8-A, Ty. VII, Pos. 8, Clear Margins, tiny paper rift, Fine Appearance		85.00
756 ★	1865, 1c Black on Laid (23). Pl. 8-A, Ty. VIII, Pos. 7, margins all around, Fine		85.00
757 ★	1865, 1c Black on Laid (23). Pl. 8-A, Ty. IX, Pos. 10, Large Margins, tiny faint tropical toning specks, otherwise Very Fine	(Photo)	85.00
758 ★	1865, 1c Black on Laid (23). Pl. 8-A, Ty. X, Pos. 9, Large to Huge Margins, small thin spot, Very Fine Appearance	(Photo)	85.00
759 ★田	1865, 1c Black on Laid, Gutter Block (23). Ty. VII & VIII, IX & X, Pos. 8, 7, 10, 9, the Type IX with Reset "Hawaiian Postage", vertical crease betw. stamps, horiz. crease just affecting tops of bottom pair, otherwise Fine-Very Fine, Very Scarce Block		(Photo) 500.00
760 ★	1865, 2c Black on Laid (24). Pl. 7A, Ty. I, Pos. 1, Margins All Around, Fresh & Fine		85.00
761 ★	1864, 2c Black on Laid (24). Pl. 7-A, Pos. 1, Ty. I, Three Large Margins, clear to tiny bit in at left		85.00
762 ★	1865, 2c Black on Laid (24). Pl. 7-A, Ty. 1, Pos. 1, Clear to Ample Margins, Fine		85.00
763 ★	1865, 2c Black on Laid (24). Pl. 7-A, Ty. II, Pos. 2, Large Margins, Very Fine	(Photo)	85.00
764 ★	1865, 2c Black on Laid (24). Pl. 7-A, Ty. II, Pos. 2, Margins All Around, Fine	(Photo)	85.00
765 ★	1865, 2c Black on Laid (24). Pl. 7-A, Ty. III, Pos. 3, Large Margins, Very Fine	(Photo)	85.00
766 ★	1865, 2c Black on Laid (24). Pl. 7-A, Ty. III, Pos. 3, Ample Margins, tiny thin spots, Fine Appearance		85.00
767 ★	1865, 2c Black on Laid, Missing "I" in INTER (24a). Pl. 7-A, Ty. III, Pos. 3, Margins to touched, vert. crease & corner thins Presentable Example of this Very Scarce Variety	(Photo)	500.00
768 ★	1865, 2c Black on Laid (24). Pl. 7-A, Ty. IV, Pos. 4, Large Margins, small thin spot, Very Fine Appearance	(Photo)	85.00
769 ★	1865, 2c Black on Laid (24). Pl. 7-A, Ty. IV, Pos. 4, Ample Margins, tiny thin speck, Fine Appearance		85.00
770 ★	1865, 2c Black on Laid (24). Pl. 7-A, Ty. V, Pos. 5, Large to Extra Large Margins, Very Fine	(Photo)	85.00
771 ★	1865, 2c Black on Laid (24). Pl. 7-A, Ty. V, Pos. 5, Large Margins, tiny thin spots, Very Fine Appearance	(Photo)	85.00
772 ★	1865, 2c Black on Laid (24). Pl. 7-A, Ty. VI, Pos. 6, Large to Huge Margins, tiny thin speck, Extremely Fine Appearance	(Photo)	85.00

773 ★	1865, 2c Black on Laid (24). Vertical Pair, Pl. 7-A, Ty. VI, VIII, Pos. 6, 8, Ample to Large Margins, Very Fine	(Photo) 170.00+
774 ★	1865, 2c Black on Laid (24). Pl. 7-A, Ty. VII, Pos. 7, clear margins except outer frame line halved one spot top right, Fine	85.00
775 ★	1865, 2c Black on Laid (24). Pl. 7-A, Ty. VII, Pos. 7, Ample Margins, tiny thin spots, Fine Appearance	85.00
776 ★	1865, 2c Black on Laid (24). Pl. 7-A, Pos. VIII, Ty. 8, Margins all around, Fine	(Photo) 85.00
777 ★	1865, 2c Black on Laid (24). Pl. 7-A, Ty. IX, Pos. 9, Ample Margins, Fine	(Photo) 85.00
778 ★	1865, 2c Black on Laid (24). Pl. 7-A, Ty. IX, Pos. 9, narrow margins, Clear all around, Fine	85.00
779 ★	1865, 2c Black on Laid (24). Pl. 7-A, Ty. IX, Pos. 9, Nice Margins, most of "S" & part of "P" Missing in "Postage", Very Fine	(Photo) 85.00+
780 ★	1865, 2c Black on Laid (24). Pl. 7-A, Ty. X, Pos. 10, Ample Margins, thinning at top, Fine Appearance	85.00
781 ★	1865, 1c Black on Laid (24). Pl. 7-A, Ty. X, Pos. 10, Margins all around, Fine	(Photo) 85.00
782 ★	1865, 1c Dark Blue (25). Pl. 11-A, Ty. I, Pos. 9, clear margins, tiny blue ink smear at top, otherwise Fine	120.00
783 ★	1865, 1c Dark Blue (25). Pl. 11-A, Ty. II, Pos. 10, clear margins, faint trivial tropical toning spots, otherwise Fine	120.00
784 ★	1865, 1c Dark Blue (25). Pl. 11-A, Ty. III, Pos. 7, clear margins to frame line partly halved, Fine	120.00
785 ★	1865, 1c Dark Blue (25). Pl. 11-A, Ty. IV, Pos. 8, clear margins to just touched, Fine	120.00
786 ★	1865, 1c Dark Blue (25). Pl. 11-A, Ty. V, Pos. 5, Ample Margins but thin with nick at top, Useful Plating Item	120.00
787 ★	1865, 1c Dark Blue (25). Pl. 11-A, Ty. VI, Pos. 6, Three Large Margins, narrow at T; light creases, otherwise Very Fine	(Photo) 120.00
788 ★	1865, 1c Dark Blue (25). Pl. 11-A, Ty. VII, Pos. 3, clear to touched margins, Fine	120.00
789 ★	1865, 1c Dark Blue (25). Pl. 11-A, Ty. VIII, Pos. 4, Large Margins, Fresh & Very Fine	(Photo) 120.00
790 ★	1865, 1c Dark Blue (25). Pl. 11-A, Ty. X, Pos. 2, Margins All Around, Fine	(Photo) 120.00
791 ★	1865, 1c Dark Blue (25). Pl. 11-A, Ty. X, Pos. 2, Ample to Large Margins, tiny tear, otherwise Very Fine	120.00
792 ★	1865, 2c Dark Blue (26). Pl. 10-A, Ty. I, Pos. 9, Ample to Large Margins, small corner thin, Very Fine Appearance	(Photo) 100.00
793 ★	1865, 2c Dark Blue (26). Pl. 10-A, Ty. II, Pos. 10, Margins all around, tiny trivial crease, otherwise Fine	(Photo) 100.00
794 ★	1865, 2c Dark Blue (26). Pl. 10-A, Ty. III, Pos. 7, clear margins, Fine	100.00
795 ★	1865, 2c Dark Blue (26). Pl. 10-A, Ty. IV, Pos. 8, Large Margins, tiny toned spot & negligible thin speck, otherwise Very Fine	(Photo) 100.00
796 ★	1865, 2c Dark Blue (26). Pl. 10-A, Ty. V, Pos. 5, Large Margins, tiny thin spot in bottom margin, otherwise Very Fine	(Photo) 100.00
797 ★	1865, 2c Dark Blue (26). Pl. 10-A, Ty. VI, Pos. 6, Full Margins, light horiz. crease, otherwise Fine	100.00
798 ★	1865, 2c Dark Blue (26). Pl. 10-A, Ty. VII, Pos. 3, Large Margins, thin spot, Very Fine Appearance	(Photo) 100.00

LOTS ON VIEW FROM OCTOBER 24th
OFFICES OPEN SATURDAY BEFORE SALE

799 ★	1865, 2c Dark Blue (26). Pl. 10-A, Ty. VIII, Pos. 4, Three Large Margins, narrow at top, Very Fine (Photo)	100.00
800 ★	1865, 2c Blue (26). Pl. 10-A, Ty. IX, Pos. 1, Large to Huge Margins, tiny negligible toned spot, otherwise Extremely Fine (Photo)	100.00
801 ★	1865, 2c Dark Blue (26). Pl. 10-A, Ty. IX, Pos. 1, Four Nice Margins, tiny thin spots, partly dry impression, Very Fine Appearance (Photo)	100.00
802 ★	1865, 2c Dark Blue (26). Pl. 10-A, Ty. X, Pos. 2, clear margins, fine	100.00

1861-63 ISSUES

803 ★	1863, 2c Pale Rose, Horizontally Laid (27). Ample to Huge Margins incl. Part Left Sheet Margin, Bit of Next Stamp at top, Fresh, o. g., bits of paper on back, A Beautiful Stamp despite a tiny nick at top right corner (Photo)	115.00
804 ★	1861, 2c Pale Rose, Horizontally Laid (27). Ample to Large Margins, horiz. crease & tiny pinhole, otherwise Very Fine (Photo)	115.00
805 ★	1861, 2c Pale Rose, Horizontally Laid (27). Clear to Large Margins, tiny tear, otherwise Very Fine	115.00
806 ★	1861, 2c Pale Rose, Horizontally Laid (27). Three Large to Clear Margins, tiny bit in at bottom, Fresh Color, light crease, Fine Appearance (Photo)	115.00
807 ★	1861, 2c Pale Rose, Horizontally Laid (27). Three Large Margins incl. B. Sheet Margin, touched at left, small corner fault, Fine Appearance	115.00
808	1863, 2c Pale Rose, Horizontally Laid (27). Large Margins incl. Part B. Sheet Margin, Neat Square Grid cancel, faint negligible crease, otherwise Extremely Fine (Photo)	75.00
809	1861, 2c Pale Rose, Horizontally Laid (27). Used & Unused Singles, Margins to cut in, faults, V. G.—Fine Appearance	190.00
810	1861, 2c Pale Rose, Horizontally Laid (27). Two Huge Margins to cut in, Red & Black Grid cancels, one has thin spots, Attractive	150.00
811 ★	1863, 2c Carmine Rose, Horizontally Laid (27a). Large Margins to cut in, Fresh Color, Part o. g., small closed tear at top, Presentable Example of this Very Scarce Stamp (Photo)	500.00
812 ☒	1861, 2c Red, Horiz. Laid Paper (27). Large Margins to trifle in, tied by Bold Red Grid on front only to Honolulu, T. L. cover corner restored, Very Scarce. Unusual use to the Catholic Mission (Photo)	E. IX
813	1861, 2c Pale Rose, Vertically Laid (28). Touched to Huge Margins, incl. Part L. Sheet Margin, Bits of Two other stamps, Neat Square Grid cancel, tiny crease, Very Attractive (Photo)	75.00
814 ★	1863, 2c Carmine Rose, Vertically Laid (28a). Three Full Margins, Close at B., Fresh & Fine (Photo)	90.00
815 ★	1861, 2c Carmine Rose, Vertically Laid (28a). Touched to Huge Margins, Fresh Color, light creases & small corner thin, Very Fine Appearance (Photo)	90.00
816 ★	1863, 2c Carmine Rose, Vertically Laid (28a). Ample to Large Margins, Fresh Color, small part o. g., "Sandwich" in ms. on back, faint crease, otherwise Very Fine (Photo)	90.00
817	1863, 2c Red, Vertically Laid (28a). Small margins to partly in, Square Grid cancel, tiny corner creases, Scarce (Photo)	100.00
818	1863, 2c Carmine Rose, Vertically Laid (28a). Touched to Ample Margins, Fresh Color, Large Bold Target cancel, few creases, Fine Appearance	100.00
819	1861, 2c Pale Rose, Carmine Rose, Vertically Laid (28, 28a). Large Margins to partly in, ms. cancels, first creased, otherwise Fine—Very Fine Lot	175.00
820	1861-63, 2c Pale Rose, Carmine Rose, Laid Papers (27, 28, 28a). Large Margins to cut in, first & last unused, #28 ms. cancel, faults, V. G.—Fine Appearance	305.00

821 ★	1869, 2c Red (29). Vertical Pair, Large Margins, tropical gum which has partly soaked into stamps, otherwise Very Fine	70.00
822 ★	1869, 2c Red (29). R. Margin Block, Fresh, o. g., Very Fine (Photo)	175.00
823 ★	1869, 2c Red (29). B. L. Corner Margin Block, Fresh, o. g., light gum bends, Very Fine, Choice Deep Shade (Photo)	175.00
824 ★	1869, 2c Red (29). Cpl. Sheet of Fifteen, o. g., with only minimal soaking, Deep Shade, Very Fine, Exceptional for this (Photo)	595.00+
825 ★	1869, 2c Red (29). Cpl. Sheet of Fifteen, o. g. soaked slightly into paper as usual, Very Fine for this (Photo)	595.00+
826 ★	1869, 2c Red (29). Cpl. Sheet of Fifteen, o. g. soaking slightly into paper as usual, Very Fine for this (Photo)	595.00+
827 S	1869-89, 2c Kamehameha IV Specimens (29S, 50S, 51S). Ample to Large Margins, last two o. g., #29S tiny corner crease, otherwise Very Fine	60.00

DEFINITIVE ISSUES

(All plate proofs are on India Paper unless otherwise described)

828 E	1861, 1c Dull Purple, 2c Blue, 3c Green, Kamehameha III Small Die Essays on Thin Card (M-H #501.7208, 502.7209, 503.7203). Large Margins, 2c small margin thin on back of card, couple negligible toned specks, Very Fine for these, Complete Values, Scarce (Photo Ex)	E. VIII
829 P	1871, 1c Purple, Large Die Proof (30P). Die Sunk on 6x3¾" Card, Fresh & Very Fine, Very Scarce (Photo)	275.00
830 P	1871, 1c Purple, Large Die Proof (30P). Badly damaged, primarily in margins, mounted on 5¾"x4½" Die Sunk Card, Very Scarce	275.00
831 ★	1871, 1c Purple (30). Two o. g. Blocks, Distinct Shades, Fine-Very Fine	40.00
832 ★	1864-71, 1c-18c Portraits (30-31, 33-34). Blocks, first three o. g., Fine-Very Fine, latter right perfs. touch	117.50
833 ★	1864-82, 1c-5c Portraits (30-31, 35, 37, 39). Blocks, All o. g. except no. 30 (tropical toning), one 5c corner crease, otherwise Fine-Very Fine Lot	106.00
834 P	1864, 2c Rosy Vermilion, Large Die Proof (31P). Die Sunk on 5¾"x4" Card, Wonderfully Fresh, Very Fine (Photo)	275.00
835 S	1864, 2c Rose Vermilion, "SPECIMEN" Overprint (31S). Faulty, Very Scarce Unlisted Variety (see M-H pg. 192) (Photo)	E. V
836 P	1864, 2c Rose Vermilion, Plate Proof (31P). Small hinge stain, shows on back only, otherwise Very Fine (Photo)	60.00
837 P	1864, 2c Rose Vermilion, Plate Proof (31P3). Card mounted, Very Fine	60.00
838 ★	1864-1882, 1c-18c Portraits (31, 33-35, 37). Blocks, 1c in Block of Six, #34 without gum & Very Good, others o. g., Fine-Very Fine	130.50
839 ★	1864-83, 1c-5c Portraits (31, 37, 39, 42). Blocks, o. g., some hinge remnants, #39 few negligible toning, specks, otherwise Fine-Very Fine	76.50
840	1864, 2c Vermilion (31). Tied by Target cancel, matching "Honolulu, Hawaiian Islands" pmk., on cover to Maui, Fine (Photo)	57.50
841	1864, 2c Rose Vermilion (31). Fresh Color, tied by Target on Inter Island Cover, "Honolulu, Hawaiian Islands" pmk., Fine	57.50
842	1864, 2c Rose Vermilion (31). Tied by Patent Target on Local Cover, three Vertical Rows of Chinese Characters at right, Red Chop handstamp, Fresh & Fine (Photo)	57.50
843	1864, 2c Rose Vermilion (31). Left perfs. touch, tiny stains, tied on small slightly reduced Inter Island cover by Square "Hilo" Grid, Scarce (Photo)	57.50
844	1864, 2c Vermilion (31). Centered to L., tied by Target, matching "Honolulu, Hawaiian Islands" pmk., on cover to Maui, Fine Cover	57.50
845	1864, 2c Rose Vermilion (31). Tied by extra bold Large Rimless Grid on Cover to Punaluu, "Hilo. P. O., Hawaiian-Islands" Balloon Type pmk., Fine	57.50
846 E	1866, Kamehameha V Large Die Vignette Essay in Black (32E). 2¾"x2¾", Very Fine (M-H #34.8402), Very Scarce (Photo)	E. IX

847 P	1866, 5c Blue, Plate Proof (32P). Tiny thin, Very Fine Appearance	60.00
848 S	1866, 5c Blue, "SPECIMEN" Overprint (32S). M-H #34.6, few trimmed perfs. at right, otherwise Fine, Very Scarce (Photo)	E. V
849 ★	1866, 5c Blue (32). Block, Rich Color, centered to top right, Fine	85.00
850 ★	1866, 5c Blue (32). Block, "Freak" Centering, perfs. cut in right & bottom, top perfs. trimmed, o. g., Unusual	85.00
851	1866, 5c Blue (32). Horiz. Strip of Four, tied on piece, Very Fine, Attractive & Scarce, with dotted circle cancel	32.00+
852	1864, 5c Blue (32). Two slightly overlapping singles, Bold single pen line cancel, used with U. S. 3c Rose, 5c Brown (65, 76) part of target cancel on 5c ms. cancel on 3c, Bold Large "Honolulu, U. S. Postage Paid", "San Francisco, Cal." double circle to Derry, N. H. note on back indicates "Wailuku" as P. O. of origin. Small faults on two stamps. Handsome & Attractive cover (Photo)	E. XII
853 P	1871, 6c Green, Plate Proof (33P). Fine	50.00
854 ★	1871, 6c Green (33). Block with Part Left Hawaiian Imprint, Large Part o. g., Fine-Very Fine	35.00
855	1871, 6c Green (33). Perfs bit in at right, on cover to U. S. tied by Interrupted Target, Red Rimless "Honolulu, H. I., Paid All, May 22, 1877" pmk., Magenta "San Francisco Steamship", neat docketing, Attractive & Very Rare pmk. (Photo)	50.00+
856	1871, 6c Green (33). Well Centered, tied by Interrupted Circle Patent Target, Red "G. P. O., Haw. Islds, Paid All" on April 1875 Cover to U. S., Magenta "San Francisco, Paid All", Very Fine (Photo)	50.00
857 P	1871, 18c Deep Rose, Plate Proof (34P). Card mounted, Very Fine (Photo)	50.00
858 P	1871, 18c Dull Rose, Plate Proof (34P). Fine (Photo)	50.00
859 ★	1871, 18c Dull Rose (34). Large Part o. g., Very Fine, Scarce	25.00
860 ★	1871, 18c Dull Rose (34). Horiz. Block of Ten, Rich Shade, bottom right stamp small surface scuff, others Fine-Very Fine	85.00
861 P	1875, 2c Brown, Large Die Proof (35P). Die Sunk on 5 7/8 "x4" Card, Very Fine, A Beauty (Photo)	275.00
862 P	1875, 2c Brown, Plate Proof (35P). Card mounted, Very Fine (Photo)	50.00
863 ★	1875-91, 1c-5c Portraits (35, 37, 39, 42-43, 52). Blocks, Fresh, o. g., Fine-Very Fine	90.50
864	1875-99, 1c-5c Portraits, Pictorial (Betw. 35-82). Eighteen stamps on nine covers, Three Inter-Island, others to U. S., Variety of Frankings, also U. S. #205 on cover to Hawaii, "Hawaiian Legation" Imprint, some faults, Fair-Fine Lot	E. VI
865 P	1875, 12c Black, Plate Proof (36P). Card mounted, Very Fine (Photo)	50.00
866 P	1875, 12c Black, Plate Proof (36P). Very Fine	50.00
867 P	1875, 12c Black, Plate Proof (36P). Card mounted, Fine	50.00
868 P	1882, 1c Blue, Plate Proof (37P). Very Fine (Photo)	50.00
869	1882, 5c Ultramarine (39). Vertical Pair, tied by "Honolulu, H. I., Jan. 4, 1893" Duplex pmks., on Large size cover to Sweden, addressed to "His Excellency, Count Charles De Lewenhaupt, His Majesty's Minister of Foreign Affairs", Very Fine (see Lot No. 1000)	20.00+
870	1882, 5c Ultramarine (39). Three covers to U. S., one with Horiz. Pair 10c Postage Due (J19) & Appropriate "U. S. Charge" handstamp, few minor faults, Attractive lot	60.00
871 ★	1882, 10c Black (40). Block, o. g., Fine	55.00
872 P	1882, 15c Red Brown, Plate Proof (41P). Very Fine (Photo)	50.00
873 P	1883, 1c Green, Plate Proof (42P). Very Fine (Photo)	35.00
874 ★	1883, 10c Vermilion (45). R. Imprint Margin Block, o. g., Fine-Very Fine	50.00
875 ★	1883, 12c Red Lilac (46). B. L. Corner Margin Block of Six, o. g., some tropical toning specks, hinge reinforced, perfs. tiny bit in at right	155.00+
876 ★	1883, 25c Dark Violet (47). Horiz. Block of Six, Fresh, o. g., Very Fine (Photo)	195.00+

877 P	1883, 50c Red Plate Proof (48P). Negligible stain from old hinge, otherwise Very Fine	(Photo)	50.00
878 ★	1883, 50c Red (48). Fresh, o. g., Fine	(Photo)	60.00
879 ★	1883, 50c Red (48). Horiz. Strip of Three, Fresh, o. g., bottom perfs. touch to just clear, Fine		180.00
880 ★	1883, \$1.00 Rose Red (49). Fresh, o. g., Well Centered, Very Fine	(Photo)	70.00
881 ★	1883, \$1.00 Rose Red (49). Fresh, o. g., Very Fine	(Photo)	70.00
882 ★	1883, \$1.00 Rose Red (49). Fresh, o. g., Fine		70.00
883 ★	1883, \$1.00 Rose Red (49). B. L. Corner Margin Block, Nearly Full o. g., few tiny toned specks, perfs. touch to tiny bit in, Very Scarce	(Photo)	325.00
884	1864-86, 1c-\$1.00 Portraits (31-36, 38, 39, 41-45, 47-49). Used, few small faults, Mostly Fine-Very Fine		173.30
885 ★	1886, 2c Orange Vermilion (50). Four Nice Margins, tiny soiling specks, otherwise Very Fine	(Photo)	100.00
886 S	1869, 2c Red, "Specimen" Overprint (50S). Horiz. Pair, o. g., Very Fine	(Photo)	60.00
<hr/>			
887 ★	1886, 2c Orange Vermilion, Reproduction (50). T. R. Corner Margin Block, "ABCo" Imprint, Fresh, o. g., Large Margins, Very Fine, Very Scarce	(Photo)	600.00
<hr/>			
888	1886, 2c Orange Vermilion, Reproduction (50). Three Ample to Large Margins, partly in at bottom, Target Cancels Fine, Scarce (cat. \$100.00 unused)	(Photo)	—
889	1886, 2c Orange Vermilion, Reproduction (50). Clear to Large Margins, Target cancels thin spot, partly breaks through, Very Fine Appearance (unused cat. \$100.00)		—
890	1886, 2c Orange Vermilion, Reproduction (50). Block with Fancy Target cancel, (Experimental?) Three Large Margins, clear to barely touched at left, bottom left stamp natural paper inclusion, Fine-Very Fine, (Unused Block Cat. \$600.00, Unpriced with cancel.)	(Photo)	—
891 P	1889, 2c Kamehameha IV, Black Lithograph Trial Color Plate Proof on Thin Card (51P)). Very Fine, Unlisted, Rare	(Photo)	E. VIII
892 ★	1889, 2c Carmine, Reprint (51). Horiz. Pair, Large Margins, Fresh, o. g., Very Fine		30.00
893 ★	1889, 2c Carmine, Reprint (51). Horiz. Pair, Large Margins o. g., Very Fine		30.00
894 ★	1889, 2c Carmine, Reprint (51). Six Singles, nearly all o. g., also two with Target cancels, Virtually All Very Fine (used not priced)		E. VII
895 ★	1889, 2c Carmine, Reprint (51). Cpl. Sheet of Fifteen, Fresh, o. g., creases in margins only, stamps Very Fine	(Photo)	255.00+
896 ★	1889, 2c Carmine, Reprint (51). Cpl. Sheet of Fifteen, creases, mostly in margins, tiny eroded hole in one, Very Fine Appearance	(Photo)	255.00+
897 S	1889, 2c Carmine, "REPRINT" Overprint (51S). B. R. Corner Margin Block, o. g., Very Fine		30.00+
898 S	1889, 2c Carmine, "REPRINT" Overprint (51S). Cpl. Sheet of Fifteen, Fresh, o. g., tiny thin in one, others Very Fine		112.50+
899 S	1889, 2c Carmine, "REPRINT" Overprint (51S). Cpl. Sheet of Fifteen, three stamps have thins, two negligible specks, otherwise Very Fine		112.50
900 P	1891, 2c Dull Violet, Plate Proof (52P). Very Fine	(Photo)	40.00
901 ★	1890, 5c Deep Indigo (52C). B. R. Corner Margin Pair, Fresh, o. g., centered to left, Fine		50.00

LOTS ON VIEW FROM OCTOBER 24th

OFFICES OPEN SATURDAY BEFORE SALE

902	★	1890, 5c Deep Indigo (52C). Horiz. Block of Six, Fresh, o. g., perfs. touch on left pair, Right Block Very Fine (Photo)	150.00+
903		1890, 5c Deep Indigo (52C). Large Margins, Fresh Color, Purple cancel, Extremely Fine (Photo)	27.50
904	★	1864-91, 1c-50c Portraits (30-37, 39-48, 52-52C). 130 Mostly Unused Stamps Neatly Arranged on Stock Sheets, incl. Singles, few Blocks, Shades, Perf. Varieties, etc., some have faults, Balance Fine-Very Fine	691.25
905	★	1864-89, 1c-25c Portraits (30-36, 38-47, 52C). Virtually All o. g., Fine-Very Fine Lot	226.00
906		1864-88, 1c-\$1.00 Portraits (30-37, 39-49, 52). Used, Virtually All Fine-Very Fine	193.55

PROVISIONAL GOVERNMENT

907	★	1893, 1c Purple, Double Red Ovpt. (53c). Ovpts. at T. & B., Fresh, o. g., Very Fine (Photo)	90.00
908	★	1893, 1c Purple, Double Red Ovpt. (53c). Shows specks of second ovpt., o. g., horiz. crease, right perfs. touch	90.00
909	★	1893, 1c Purple, Double Red Ovpt. (53c). Vertical Pair, partly severed & rejoined with hinge, well centered, large part o. g., Very Fine	180.00
910	★	1893, 1c-25c Red Ovpt. (53-59, 61, 62, 64). Blocks, #62 tropical gum, others Fresh, o. g., #64 perfs. touch to trifle in, others Fine-Very Fine	136.75
911	★	1893, 1c Blue, Double Ovpt. (54a). Weak but definite second ovpt., o. g., Very Fine	90.00
912	★	1893, 1c-12c Portrait Ovpts. (54-59, 62, 64). Blocks, o. g., 12c tropical gum, Fine-Very Fine Lot	73.50
913		1893, 1c Green, Double Ovpt. (55b). Fairly clear second ovpt., very light cancel, Fine (Photo)	70.00
914	★	1893, 1c Green, Double Ovpt. (55b). Faint second ovpt., o. g., Fine	90.00
915	★	1893, 1c Green, Double Ovpt. (55b). Faint second ovpt., some tropical toning, still Fine	90.00
916	★	1893, 1c Green, Red Overprint (55). Cpl. Sheet of 50, small toned spots on back only, otherwise Fine-Very Fine, also incl. 2c Rose (66). Fine-Very Fine Block of 40	73.80+
917	★	1893, 1c Green, 2c Dull Violet, Red Overprint (55, 57). Cpl. Sheet of 50, latter o. g., without bottom selvage, one stamp faulty, both have tropical toning, otherwise Fine-Very Fine	83.00+
918	★	1893, 1c-25c Provisional Govt. Overprints (55, 57, 61, 64, 66, 67). Blocks, o. g., hinge remnants or reinforcing, two #67's tiny flaws, otherwise Fine-Very Fine	95.00
919	★	1893, 2c Brown, Red Ovpt., No Period after "Govt" (56a). Fresh, o. g., Very Fine	42.50
920	★	1893, 2c Brown, Red Ovpt. (56). Mint Horiz. Block of Ten, wide natural s. e. at right, Extremely Fine	30.50+
921	★	1893, 2c Brown, Red Overprint (56). Cpl. Sheet of 50, Full o. g., few hinge reinforcements, couple light horiz. bends, Fine-Very Fine	152.50+
921A	★	1893, 2c Dull Violet, Red Overprint (57). Cpl. Sheet of 50, Fresh, o. g., Fine-Very Fine	40.00+
922	★	1893, 5c Indigo, Red Ovpt., No Period after "Govt" (58a). Fresh, o. g., Fine	50.00
923	★	1893, 5c Deep Indigo, Red Ovpt. (58). Horiz. Block of Ten, Part Imprints at Sides, small part o. g., Ovpt. Shifted to L. with Parts on Adjoining Stamps, perfs. strengthening, one small thin, otherwise Fine-Very Fine	32.00+
924	★	1893, 5c Deep Indigo, Red Overprint (58). Cpl. Sheet of 50, Full o. g., separated & hinge rejoined betw. fifth & sixth horiz. row, some other small separations, one stamp tiny pinhole, others Fine-Very Fine	160.00+

925 ★	1893, 5c Ultramarine, Inverted Ovpt. (59a). Without gum, short perf. otherwise Fine, Very Scarce	(Photo) 350.00
926 ★	1893, 5c Ultramarine, Double Overprint (59b). Faint second ovpt., o. g., small thin spot, Fine Appearance, Rare	(Photo) 450.00
927 ★	1893, 5c Ultramarine, Red Overprint (59). Cpl. Sheet of 50, Mint, small piece of corner selvage missing, Fine-Very Fine	140.00+
928 ★	1893, 6c Green, Double Red Ovpt. (60a). One ovpt. split between T. & B., L. sheet margin with bit of imprint, Fresh, o. g., Very Fine, Scarce	(Photo) 175.00
929 ★	1893, 6c Green, Double Ovpt. (60a). Bits of second ovpt. are fairly clear, Split Vertically, o. g., Fine	(Photo) 175.00
930 ★	1893, 6c Green, Red Ovpt. (60). Vertical Block of Six, Mint, Fine	34.00
931 ★	1893, 6c Green, Red Ovpt. (60). Block of Eight with full L. Imprint (In Hawaiian) Brilliant Mint, Very Fine & Scarce	(Photo) 50.00+
<hr/>		
932 ★	1893, 10c Black, Double Red Ovpt. (61a). Block, R. Sheet margin & part imprint, Fresh, o. g., Fine-Very Fine & Rare	(Photo) 1,000.00+
<hr/>		
933 ★	1893, 10c Black, Red Overprint (61). Cpl. Sheet of 50, Mint, tiny hole in one stamp, others Fine-Very Fine	210.00+
934 ★	1893, 12c Black, Double Red Ovpt. (62a). Wide, clear double, one ovpt. split with part at T. & other part at B., Fresh, o. g., Very Fine & Scarce	(Photo) 200.00
935 ☒	1893, 10c-18c Provisional Govt. Overprints (62, 68, 71). On Large Size Registered Cover to Austria, used in Combination with 1c Yellow (74) 10c Yellow Green (77) & Horiz. Pair 2c Brown (75), all tied by Pink "Honolulu, Hawaii, Jun 22, 1896" pmks., Fancy "R", #68 small nick at bottom, #62 slight bend, otherwise Fine Cover, Very Scarce	(Photo) E. IX
936 ★	1893, 12c Red Lilac, Red Ovpt. (63). Brilliant & Fresh, o. g., Extra wide margins, Beautifully centered, Extremely Fine	(Photo) 55.00
937 ★	1893, 12c Red Lilac, Red Overprint (63). Wonderfully Well Centered, Fresh, o. g., Extremely Fine	(Photo) 55.00
938 ★	1893, 12c Red Lilac, Red Ovpt. (63). Fresh, o. g., Ovpt. Shifted to R., Very Fine	(Photo) 55.00
939 ★	1893, 12c Red Lilac, Red Ovpt. (63). Fresh, o. g., Fine	55.00
940 ★	1893, 12c Red Lilac, Red Ovpt. (63). Large part o. g., Fresh & Fine	55.00
941 ★	1893, 12c Red Lilac, Red Overprint (63). Fresh, Part o. g., Centered to left, Fine	55.00
942 ★	1893, 12c Red Lilac, Red Ovpt. (63). Top perms. touch, Fine	55.00
943 ★	1893, 12c Red Lilac, Red Ovpt. (63). Block, Wonderfully Well Centered, virtually full o. g., Very Fine & Scarce	(Photo) 250.00
944	1893, 12c Red Lilac, Red Ovpt. (63). Well centered with three extra wide margins, neat target cancel, a single nibbed perf., otherwise Very Fine	(Photo) 75.00
945 ★	1893, 25c Dark Violet, Red Ovpt. (64). Horiz. Strip of Five with B. Imprint, Fresh, o. g., hinge reinforcements, Fine	47.50+
946 ★	1893, 25c Dark Violet Red Ovpt., Normal & Without Period (64, 64a). Block, Bottom Left Stamp the Variety, Fresh, o. g., couple short perms. on bottom right stamp, otherwise Fine Block	71.00+
947 ★	1893, 2c Rosy Vermilion, Black Ovpt. (65). Horiz. Pair, Divided Ovpt. showing Nearly Cpl. Date at Top, only traces at bottom, Fine, Scarce	(Photo) 34.00+
948 ★	1893, 2c Rosy Vermilion, Black Ovpt. (65). L. Margin Block with Hawaiian Imprint, Embossed PM Seal attached to same signed "Genuine, Jos. M. Oat, P. M. Gen'l", Fresh, o. g., Very Fine	(Photo) 70.00+
949 ★	1893, 2c Rosy Vermilion, Black Ovpt. (65). Block with Part Left Hawaiian Imprint, Fresh, o. g., Fine-Very Fine	70.00

950	★	1893, 2c Rosy Vermilion, Black Ovpt. Without Period After "GOVT" (65a). Block, B. L. Stamp the Variety, Fresh, o. g., Extremely Fine (Photo)	118.00+
951	★	1893, 2c Rosy Vermilion, Black Ovpt. (65). L. Margin Block of Six (3x2), "ABC" Imprint, two stamps negligible flaws, otherwise Very Fine	104.00
952	★	1893, 2c-15c Overprints (65, 65a, 66, 66b, 68, 68 var). Blocks of each, incl. "No Period after Govt", (two cent Blocks) and No "S" in "Provisional" (15c Block), Fine-Very Fine	127.40+
953	★	1893, 2c Rose, Black Overprint (66). Cpl. Mint Sheet of 50, Very Fine	40.50+
954	★	1893, 10c Vermilion, Black Overprint (67). Cpl. Sheet of 50, Mint, few negligible separations, light diagonal bend in two, Fine-Very Fine	335.00+
955	★	1893, 2c-10c Black Ovpt. (66, 67-68). Blocks, #68 Block of Six, others Blocks of Four, Fresh, o. g., one #68 tiny pinhole, otherwise Fine Lot	51.75
956	★	1893, 10c Vermilion, Black Ovpt. (67). Block of Fifteen (5x3), Fresh, o. g., tiny negligible pinhole in one, others Fine	97.00+
957	★	1893, 12c Red Lilac, Black Ovpt. (69). Fresh, o. g., Wide Bottom Margin, Very Fine (Photo)	110.00
958	★	1893, 12c Red Lilac, Black Ovpt. (69). B. L. Corner Margin Single, Extra Wide Bottom Margin, Fresh, o. g., Very Fine (Photo)	110.00
959	★	1893, 12c Red Lilac, Black Overprint (69). Well Centered, Deep Shade, single short corner perf., otherwise Very Fine (Photo)	110.00
960	★	1893, 12c Red Lilac, Black Ovpt. (69). Lovely Color, Fresh, o. g., Fine	110.00
<hr/>			
961	★	1893, 12c Red Lilac, Black Ovpt. (69). Block, tropical gum with some toning, otherwise Fine, Very Scarce Block (Photo)	500.00+
<hr/>			
962		1893, 12c Red Lilac, Black Ovpt. (69). Blue "KOLOA, KAUAI" Double Circle pmk., Very Fine, Very Pretty (Photo)	125.00
963		1893, 12c Red Lilac, Black Ovpt. (69). Used, slight tropical toning, nevertheless Very Fine	125.00
964	★	1893, 15c Red Brown, Double Ovpt. (70a). L. Margin Single, Strong Double Printed off register showing bits of four extra overprints, Very Fine, Very Scarce, Quite spectacular (Photo)	125.00
965	★	1893, 15c Red Brown, Black Ovpt. (70). R. Margin Block, Fresh, o. g., Very Fine	42.50
966	★	1893, 18c Dull Rose, Double Ovpt. (71a). Choice Wide Doubling, o. g., Fine & Scarce (Photo)	75.00
967	★	1893, 18c Dull Rose, Double Ovpt. (71a). Fairly Clear Double Divided Horizontally, Part o. g., Very Fine (Photo)	75.00
968	★	1893, 18c Dull Rose, Double Ovpt. (71a). Partly Clear Double, o. g., top perfs. touch, Fine	75.00
969	★	1893, 18c Dull Rose, Double Ovpt. (71a). Partly Clear Double, perfs. tiny bit in at top	75.00
970	★	1893, 18c Dull Rose, Black Ovpt. (71). Block, Fresh, o. g., Fine	42.50
971	★	1893, 18c Dull Rose, Black Ovpt. (71). Block, o. g., Fine	42.50
972	★	1893, 18c Dull Rose, Black Ovpt. (71). B. R. Corner Margin Block with Overprint on Bottom Selvedge, Indicating that this Block came from the sheet with "one stamp no overprint" variety, Fresh, Well Centered, minute margin tear in one, otherwise Very Fine, Unusual & Very Scarce (Photo)	E. X
973	★	1893, 18c Dull Rose, Black Ovpt. Without Period After "GOVT" (71c). T. L. Corner Margin Block of Six (2x3), Middle Left Stamp the Variety, Fresh, o. g., Fine	86.00+
974	★	1893, 18c Dull Rose, Black Ovpt. (71). Horiz. Block of Ten, English Imprint at Right, Hawaiian Imprint at Left, Fresh, Large Part o. g., Top Middle Stamp, Shows only bare vestiges of "9" in 1893, some perf. strengthening, Fine-Very Fine	167.00+

975 ★	1893, 50c Red, Black Ovpt. Without Period After "GOVT" (72b). Fresh, o. g., top perf. touch, single short perf., otherwise Fine	60.00
976 ★	1893, 50c Red, Black Ovpt. Without Period After "GOVT" (72b). Perfs. slightly in at top, Scarce	60.00
977 ★	1893, 50c Red, Black Ovpt. (72). Block, Nearly Full o. g., small hinge reinforcement, negligible tropical toning specks, Fine-Very Fine	80.00
978 ★	1893, \$1.00 Rose Red, Black Overprint (73). Fresh, o. g., Very Fine	37.50
979 ★	1893, \$1.00 Rose Red, Black Ovpt. Without Period After "GOVT" (73a). Fresh, Large Part o. g., Extremely Fine, Very Scarce	150.00
980 ★	1893, \$1.00 Rose Red, Black Ovpt. Without Period After "GOVT" (73a). Well Centered, single nibbed perf., otherwise Very Fine, Very Scarce (Photo)	150.00
981 ★	1893, \$1.00 Rose Red, Black Ovpt. (73). Block, Large Part o. g., couple hinge reinforcements, few tiny negligible specks of tropical toning, still Very Fine	185.00
982 ★	1871-93, 1c-\$1.00 Pictorials, Overprints (30, 33, 35-37, 39, 42-45, 51, 53, 54, 56, 58-61, 62, 64-66, 67, 68, 70-73). Nearly all o. g., few small faults, #73 oxidized, Virtually All Fine-Very Fine	212.80
983 ★	1893, 1c-\$1.00 Overprints (Betw. 53-73). 187 Nearly All Unused Stamps, Neatly Arranged on Stock Sheets, incl. Singles, Blocks of Four, Six, Ten, Many Varieties with Divided Overprints (Horiz. & Vert.), Missing Periods, Battered Letters, Offsets, etc., generally Fine-Very Fine, Scarce & Interesting Lot	555.30+
984	1893, 1c-\$1.00 Portraits Ovpts. (53-61, 62, 65-66, 67-68, 71-73). Used, perfs. tiny bit in on #73, few other small faults, Nearly All Fine-Very Fine	143.05
985 ★	1893, 2c-\$1.00 Portrait Ovpts. (56, 58, 61, 62, 64-66, 67-68, 70-73). All o. g. except #62 (slightly toned), Fine-Very Fine Lot	121.05

REPUBLIC OF HAWAII

986 P	1894, 1c Yellow, Plate Proof (74P). Tiny thin, Very Fine Appearance	45.00
987 ★	1894-99, 1c-12c Pictorials (74-78, 80-82). Blocks, incl. two shades of #75, Fresh, o. g., some have thins, mostly Fine	79.50
988 ★	1894-99, 1c-25c Pictorials (74-78, 81-82). Blocks, Fresh, o. g., two #78 light crease, others Fine-Very Fine	95.75
989 ★	1894, 1c Yellow (74). Cpl. Sheet of 50, Fresh, o. g., Very Fine	58.50
990 ★	1894, 1c Yellow (74). Part Sheets of 45 & 39, o. g., some of which has tropical toning spots, two stamps faulty, others Fine-Very Fine	99.10
991	1894, 1c-25c Pictorials (74-79). Cpl. Set tied on Mar. 1895 Reg. Cover to Ohio, all tied by Purple Targets, Pink Honolulu pmk., matching Fancy "R", Fine & Scarce	(Photo) E. VIII
992 ★	1894, 5c Rose Lake (76). Cpl. Sheet of 50. Fresh, o. g., negligible separation, Fine	123.50+
993	1894, 5c Rose Lake (76). Tied by "Honolulu, Aug. 17, 1898" Duplex pmk. on cover to Philippines, letter to Soldier enclosed with interesting descriptive details of Annexation Ceremonies, reactions of the natives, etc., Fine, Great Historical Item	12.50+
994	1894-99, 5c Rose Lake, Blue (76, 82). Two Covers, Honolulu pmks., first to Mass., other to Europe, Fine	30.00
995 ★	1894, 10c Yellow Green (77). Cpl. Sheet of 50, o. g., missing two tiny pieces of corner selvage, V. G.-Fine	147.50+
996	1894, 10c Yellow Green (77). Tied with 5c Rose Lake (76) on Registered Cover to Cal., Purple "Honolulu, Hawaii, Jul. 12, 1894" pmk., Fancy "R", Fine	30.00+
997 P	1894, 12c Blue, Plate Proof (78P). Faint staining from old hinge, otherwise Fine	45.00

998 P	1894, 25c Deep Blue, Plate Proof (79P). Minor soaked spot from old hinge, still Very Fine	45.00
999 ★	1894, 25c Deep Blue (79). B. Imprint Block of Eight, Fresh, o. g., small hinge reinforcement, Very Fine (Photo)	55.00+
1000 ☒	1894, 25c Deep Blue (79). On large size cover to Sweden, used in Combination with 5c Rose Lake (76), tied by "Honolulu, H. I., May 11, 1898" Duplex pmks., addressed to "His Excellency, Count L. Douglas, his Majesty's Minister of Foreign Affairs", sequence of transit marks, Purple Consulate Handstamp, couple trivial cover tears, otherwise Very Fine, Scarce	70.00+
1001 ★	1899, 1c Dark Green (80). Cpl. Sheet of 50, Mint, Very Fine Sheet	64.50+
1002 ★	1899, 2c Rose (81). Cpl. Sheet of 50, Mint, brownish o. g., Fine-Very Fine	55.00+
1003 ★	1899, 2c Rose (81). Cpl. Sheet of 50, Mint, brownish o. g., Very Fine Sheet	55.00+
1004	1894-99, 1c-25c Pictorials (74-82). 86 Used & Unused Stamps, incl. Shades, Cancels, Unused Blocks of nos. 76 & 77, Used Block of Six, no. 81, mixed quality, Good-Very Fine	172.00

OFFICIAL STAMPS

1005 P	1896, 10c Bright Rose Official, Plate Proof (O4P). Very Fine (Photo)	50.00
1006 ★	1896, 2c-25c Officials (O1-O6). Fresh, o. g., 2c Fine, others Very Fine, Choice set	53.00
1007 ★	1896, 2c-25c Officials (O1-O6). Cpl. Set, Fresh, o. g., 5c tiny thin speck, otherwise Fine-Very Fine	53.00
1008 ★	1896, 2c-25c Officials (O1-O6). Blocks, some hinge remnants, Fine-Very Fine Set, Scarce	240.00
1009	1896, 2c-25c Officials (O1-O6). Very Fine Used Set	51.00
1010	1896 2c-25c Officials (O1-O6). Used & Unused Sets, used with four Postally Used stamps, latter o. g., used 10c few trimmed perfs., few others have small faults, Fine-Very Fine Appearing Lot	104.00

POSTAL STATIONERY

1011 ☒	Wells, Fargo & Co., Pictorial Frank, Dark Brown on plain white envelope, Blue Inside, Very Fine & Scarce (Photo)	E. V
1012 ☒	Wells, Fargo & Co., Pictorial Frank, Brown on plain white envelope, Blue Inside, Very Fine & Scarce	E. V
1013 ☒	Wells, Fargo & Co's, Express, Two Brown Pictorial Franks on Unused Envelopes, one large size with Unused 10c Vermilion #45 affixed, tiny tear, otherwise Very Fine	E. V
1014 ☒	1884-93, 1c-10c Entires (U1-U5, U10-U14, UE1). Sixteen Unused Envelopes, incl. Diff. Sizes, Knives, etc., 1c UPSS #3a missing bit of flap, #UE1 trifle toned, otherwise Very Fine	99.70+
1015 ☒	1884-93, 1c-10c Entires (U1-U5, U10-U14, UE1). Unused, incl. Two Diff. nos. U1 & U2, last with some toning, otherwise Very Fine Lot	90.55
1016 ☒	A Similar Lot, less #U5.....	78.05
1017 ☒	1884-85, 1c-10c Entires (U1-U2, U4-U5, UE1). Unused, incl. extra 1c & 2c, Diff. Sizes, #U5 small thins on back, #UE1 two tiny eroded holes, otherwise Fine-Very Fine Lot	70.05
1018 ☒	1884-93, 1c-10c Entires (U1-U5, U10-U14, UE1). 45 Unused Covers, 21 of #U1, one #UE1, from two to eight each of others, mixed quality, Good-Very Fine	189.95
1019 ☒	1884, 2c Rose, Entire, Address Lines Printed on Face (U2b var.). Twenty Unused Entires, most with some soiling on edges, otherwise Very Fine, Scarce (UPSS 4a-\$75.00)	—

1020	⊠	1884, 10c Black, Entire (U5). Large Size with Brown Pictorial Well's Fargo Frank , Unused, Unusually Fresh, Very Fine & Scarce (Photo)	E. VI
1021		1884, 4c Red Cut Square, Blue Inside (U7). Unused, Very Fine	35.00
1022	⊠	1884, 4c Red Entire, Blue Inside (U7). Unused, Very Fine (Photo)	90.00
1023	⊠	1884, 4c Red Entire, Blue Inside (U7). Unused, Deep Color, Very Fine	90.00
1024	⊠	1884, 4c Red Entire, Blue Inside (U7). Unused, two small thinnings on back, otherwise Very Fine	90.00
1025	⊠	1884, 5c Blue Entire, Blue Inside (U8). Unused, Very Fine (Photo)	95.00
		(Photo)	95.00
1026	⊠	1884, 10c Black Entire, Blue Inside (U9). Unused, light horiz. bend, still Very Fine (Photo)	150.00
1027	⊠	1893, 5c Blue Entire, Red Ovpt. (U12). "Honolulu, H. I., Aug. 28, 1893" Duplex pmk., Earliest Known date & in all probability a First Day Cover , small thin on back, otherwise Very Fine, Undoubtedly Very Scarce (Photo)	E. V
1028		1893, 10c Black, Red Overprint, Blue Inside Cut Square (U14). Unused, Very Fine	30.00
1029	⊠	1885, 10c Black, Special Delivery Entire (UE1). Unused, Very Fine (Photo)	50.00
1030	⊠	1885, 10c Black, Special Delivery Entire (UE1). Unused, tiny tear in flap, Very Fine	50.00
1031	⊠	1882-97, 1c-3c Postal Cards (UX1, UX2a, UX4-UX9, UY4m, UY4r). Unused, incl. the Scarce #UX2a, Litho. Card, some minor tropical toning, nevertheless Very Fine	41.00+
1032	⊠	1882-97, 1c-3c Postal Cards, Paid Replys (UX1-UX3, UX5-UX9, UY1-UY4). Unused, few minor toned spots, #UY2 rounded corners, otherwise Very Fine	149.00
1033	⊠	1882-97, 1c-3c Postal Cards, Paid Replys (UX1-UX9, UY1-UY4). Unused, last four Unfolded, #UY2 rounded corners & small flaws, otherwise Very Fine	152.00
1034	⊠	1882-93, 1c-3c Postal Cards, Paid Replys (UX1-UX9, UY1-UY2). Unused, some tropical toning, #UY2 rounded corners, small faults, otherwise Very Fine Lot	103.50
1035	⊠	1882-93, 1c-3c Postal Cards, Paid Reply Cards (UX1-UX4, UX6-UX7, UY1, UY2, UY2m, UY2r, UY3m, UY3r). 42 Unused Items, mixed quality, Good-Very Fine	257.00
1036	⊠	1882, 3c Blue Green Postal Card (UX3). Ten Unused Cards, Very Fine Lot	75.00
1037	⊠	1883-89, 1c-2c Paid Reply Postal Cards (UY1-UY2, UY4). #UY2 rounded corners, #UY4 slight separation, otherwise Very Fine Lot	90.00
1038	⊠	1883-89, 1c-2c Paid Reply Postal Cards (UY1-UY2, UY4). Unused, #UY2 rounded corners, slight soiling, otherwise Very Fine Lot	90.00

RAILROAD STAMPS

1039		1894-98, 5c-\$1.00 Kahului Railroad Co. Parcel Stamps (M-H 151-158). All Used except #158, #157 natural top s. e., few faults, otherwise Very Fine, Scarce	E. V
1040	★田	1894, 6c, 18c Kahului Railroad Co. Parcel Stamps (M-H 152, 154). Margin Blocks, negligible bends, Fine-Very Fine	E. III
1041	★	1894, 6c, 18c Kahului Railroad Co. Parcel Stamps (M-H 152, 154). 35 of first, 200 of latter, many damaged, stuck together, balance Fine-Very Fine	E. VII

LOTS ON VIEW FROM OCTOBER 24th
OFFICES OPEN SATURDAY BEFORE SALE

REVENUE STAMPS

1042	1846, Colorless Embossed Handstamp (M-H 401). "Royal Stamp" Cut Square, some tropical toning, Scarce	E. III
1043	1850, "Royal Stamp" Handstamp (M-H 405, 405 var.). Three, first two 1" Circles, Crown & Imprint, Black on Thick Wove, Blue on Laid (shows broken circle), other 1¼" Circle on thin wove, Imprint Slightly Diff., Very Fine Lot, Scarce	E. VII
1044	1850, "Royal Stamp" Embossed Revenue (M-H 406). Green Glazed Seal, Serrated Edge, on part of original document, Very Fine, Scarce	E. IV
1045	ca 1877, Embossed Revenues (M-H 408, 412). Stamp Duty \$1.00, other Full Rigged Ship, two of each, cut square, Very Fine	E. IV
1046	1877-97, 20c-\$10.00 Revenues (R1-R5, R7-R8, R11). 92 Used & Unused Stamps, incl. Singles, Pairs, Strips, Blocks, Used on Part Documents, Shades, Nearly All Fine-Very Fine	337.02
1047	1877, 50c-\$10.00 Revenues (R2-R5). Used Blocks, 50c Block of Six, others Blocks of Four, few negligible faults, Attractive Appearing Scarce Lot	81.00+
1048	P 1877, \$10.00 Reddish Brown & Green Plate Proof on Card (R5P). Fresh & Very Fine, Unlisted	(Photo) E. V
1049	1877, \$10.00 Reddish Brown & Green (R5). Used. Horiz. Strip of Seven, Very Fine	49.00+
1050	P 1877, \$50.00 Slate Blue & Carmine, Plate Proof on India (R6P). Very Fine, Unlisted	(Photo) E. V
1051	1877, \$50.00 Slate Blue & Carmine (R6). Used, light vert. crease, otherwise Very Fine	(Photo) 100.00
1052	1877, \$50.00 Slate Blue & Carmine (R6). On piece used with Four \$10.00 Reddish Brown & Green (R5), "Stamp Duty & "PAID" cancels, two #R5 creased, the \$50.00 Very Fine, Handsome & Scarce	128.00
1053	★ 1894, 20c Red (R9). Mint Vertical Pair, Very Fine	70.00
1054	★ 1894, 20c Red (R9). T. Margin Block of Six, o. g., separations, neatly reinforced with tiny bits of hinge, one stamp partly toned, others Very Fine	210.00+
1055	1894, 20c Red, 25c Violet Brown (R9-R10). Used, Very Fine	80.00
1056	★ 1894, 25c Violet Brown (R10). O. g., light creases & tiny toned spot, otherwise Very Fine	45.00
1057	P 1897, \$1.00 Dark Blue, Revenue Plate Proof (R11P). Very Fine (Photo)	E. IV
1058	★ 1897, \$1.00 Dark Blue (R11). Mint Horiz. Block of Ten, Fine	30.00+
1059	★ 1901-13, 50c-\$50.00 Territorial Revenues (M-H 462-468). #463 Used, others Unused, also incl. #462 Used Vert. Strip of Four, Unused Block #466, Fine-Very Fine Lot	E. IV
1060	★ 1901-13, 50c-\$50.00 Territorial Revenues (M-H 462, 464-467). Blocks, Fine-Very Fine, Scarce Lot	E. VI
1061	★ 1901-13, \$1.00-\$50.00 Territorial Revenues (M-H 462, 464, 467). Blocks of Eight, 15 & 20 respectively, Fine-Very Fine	E. IV
1062	★ HAWAII, 1864-99, 104 Used & Unused Stamps, Fourteen Cut Squares, Many Diff., incl. #66 Blocks of Ten & 30, each with Missing Period Variety, #57 Block of Twenty, also five misc. Postal Cards & Entires, V. G.-V. F.	268.00+
1063	BALANCE OF HAWAII COLLECTION, Over 50 Items, incl. Early Imperforates, 21 Specimens, two Essays, Officials, "Royal Stamp" & Embossed Revenues, three #49 with Fiscal cancels, Playing Card Band Essay, three U. S. Wine Stamps with "Hawaii" Ovpts., \$2.00 & \$5.00 Bogus Issues, Sheet of 11c Air Post #C84 & other U. S. Hawaiian related material, Interesting & Valuable Lot	E. X

END OF SALE — THANK YOU

IS YOUR COLLECTION FOR SALE?

REALIZE IMMEDIATE CASH
PLUS THE ADDED ADVANTAGE OF
SELLING THROUGH OUR AUCTIONS

We will advance immediate cash up to 75% of our appraised value. There is no interest charge.

Your collection is then sold in one of our auction sales. All stamps are expertly and advantageously lotted in attractive, well illustrated catalogs. Lotting is meticulously planned under our personal supervision. Commission is 20% of the gross realization. There is no lotting fee nor any other charges. Final settlement is made within five weeks after the sale. We have continuously conducted stamp auctions for over forty-five years.

Valuable collections and stamp holdings are especially wanted, but we will accept properties valued from \$500 upwards. Send all stamps directly for appraisal. Auction advance will be remitted shortly after receipt. If not entirely pleased, stamps will be returned at our expense. We will travel anywhere to inspect important properties.

ROBERT A. SIEGEL
AUCTION GALLERIES, Inc.

(Licensed and Bonded Auctioneer)

120 EAST 56th STREET
NEW YORK, N. Y. 10022
(Tel. 753-6421)

276	47%	344	675	412	220	480	170	548	230
277	230	345	95	413	230	481	85	549	45
278	28	346	300	414	650	482	35	550	105
279	230	347	260	415	280	483	37%	551	170
280	500	348	135	416	1700	484	40	552	240
281	725	349	72%	417	90	485	40	553	37%
282	80	350	26	418	4250	486	400	554	105
283	105	351	52%	419	72%	487	425	555	47%
284	250	352	75	420	40	488	28	556	105
285	60	353	35	421	70	489	80	557	30
286	90	354	65	422	170	490	30	558	200
287	57%	355	35	423	170	491	80	559	900
288	100	356	110	424	135	492	37%	560	130
289	180	357	55	425	55	493	42%	561	52%
290	67%	358	40	426	110	494	37%	562	115
291	105	359	80	427	160	495	47%	563	80
292	72%	360	57%	428	55	496	210	564	575
293	100	361	57%	429	230	497	67%	565	55
294	42%	362	1150	430	80	498	260	566	130
295	125	363	85	431	180	499	210	567	67%
296	170	364	5750	432	42%	500	160	568	24
297	80	365	35	433	160	501	85	569	80
298	105	366	130	434	70	502	170	570	80
299	190	367	675	435	65	503	260	571	52%
300	115	368	52%	436	60	504	170	572	200
301	290	369	1800	437	125	505	500	573	40
302	65	370	90	438	200	506	105	574	55
303	57%	371	26	439	150	507	550	575	110
304	100	372	2100	440	270	508	325	576	140
305	150	373	425	441	190	509	425	577	67%
306	105	374	425	442	5500	510	140	578	190
307	180	375	45	443	70	511	85	579	70
308	280	376	230	444	280	512	70	580	280
309	260	377	210	445	140	513	130	581	90
310	350	378	50	446	95	514	115	582	62%
311	1150	379	28	447	200	515	270	583	180
312	1850	380	105	448	67%	516	50	584	260
313	110	381	95	449	1750	517	170	585	270
314	80	382	30	450	190	518	850	586	80
315	57%	383	200	451	5250	519	52%	587	280
316	52%	384	62%	452	5500	520	350	588	100
317	62%	385	135	453	170	521	57%	589	90
318	29	386	8000	454	90	522	525	590	52%
319	52%	387	72%	455	125	523	400	591	72%
320	67%	388	190	456	3500	524	140	592	170
321	140	389	800	457	50	525	230	593	62%
322	115	390	135	458	60	526	625	594	67%
323	170	391	80	459	75	527	475	595	95
324	425	392	190	460	52%	528	135	596	100
325	625	393	725	461	125	529	170	597	65
326	800	394	25	462	165	530	375	598	67%
327	1350	395	675	463	240	531	240	599	110
328	140	396	130	464	110	532	600	600	240
329	260	397	290	465	100	533	72%	601	100
330	240	398	28	466	110	534	55	602	57%
331	42%	399	27	467	100	535	650	603	95
332	57%	400	80	468	130	536	1550	604	145
333	72%	401	800	469	210	537	190	605	90
334	45	402	900	470	67%	538	1350	606	260
335	425	403	140	471	190	539	475	607	80
336	85	404	210	472	75	540	2700	608	650
337	180	405	60	473	125	541	80	609	80
338	37%	406	36	474	42%	542	210	END OF SALE THANK YOU	
339	575	407	57%	475	62%	543	40		
340	575	408	100	476	105	544	60	GROSS REALIZATION: \$221,546.00	
341	135	409	145	477	110	545	28		
342	110	410	725	478	7250	546	40		
343	37	411	115	479	8000	547	60		

HAWAII

FIRST SESSION Oct. 29, 1975		78	300	157	900	235	72%	314	47%	393	25
1	650	79	47%	158	375	236	47%	315	400	394	25
2	240	80	30	159	260	237	52%	316	90	395	17
3	300	81	125	160	325	238	30	317	75	396	21
4	675	82	28	161	900	239	47%	318	67%	397	35
5	190	83	67%	162	700	240	42%	319	40	398	40
6	150	84	75	163	350	241	42%	320	42%	399	230
7	525	85	450	164	350	242	72%	321	47%	400	300
8	375	86	52%	165	350	243	47%	322	170	401	250
9	230	87	90	166	37%	244	55	323	55	402	375
10	67%	88	65	167	105	245	57%	324	24	403	50
11	2300	89	475	168	75	246	170	325	32%	404	170
12	270	90	35	169	25	247	85	326	135	405	270
13	725	91	50	170	35	248	52%	327	105	406	260
14	400	92	115	171	37%	249	130	328	22	407	300
15	350	93	160	172	375	250	190	329	47%	408	210
16	425	94	105	173	47%	251	35	330	280	409	160
17	375	95	800	174	29	252	72%	331	190	410	115
18	210	96	800	175	145	253	85	332	52%	411	240
19	575	97	400	176	80	254	21	333	50	412	200
20	47%	98	475	177	270	255	62%	334	40	413	47%
21	30	99	1050	178	160	256	115	335	60	414	800
22	57%	100	62%	179	80	257	160	336	52%	415	575
23	62%	101	80	180	52%	258	30	337	57%	416	210
24	85	102	50	181	26	259	80	338	210	417	210
25	47%	103	52%	182	25	260	30	339	67%	418	105
26	70	104	60	183	32%	261	26	340	55	419	65
27	47%	105	57%	184	28	262	21	341	50	420	65
28	85	106	67%	185	50	263	800	342	125	421	270
29	85	107	125	186	47%	264	42%	343	120	422	160
30	60	108	190	187	42%	265	45	344	150	423	120
31	250	109	62%	188	37%	266	32%	345	26	424	75
32	37%	110	37%	189	45	267	35	346	130	425	47%
33	130	111	57%	190	35	268	27	347	375	426	20
34	72%	112	325	191	100	269	23	348	30	427	11
35	52%	113	325	192	725	270	42%	349	40	428	450
36	525	114	325	193	475	271	52%	350	240	429	280
37	1300	115	190	194	210	272	37%	351	25	430	250
38	72%	116	120	195	280	273	62%	352	42%	431	42%
39	65	117	57%	196	250	274	350	353	42%	432	210
40	57%	118	140	197	10	275	62%	354	50	433	160
41	45	119	45	198	60	276	57%	355	350	434	160
42	21	120	220	199	62%	277	110	356	350	435	8
43	30	121	90	200	60	278	190	357	125	436	80
44	95	122	230	201	67%	279	42%	358	105	437	50
45	180	123	35	202	125	280	85	359	62%	438	16
46	350	124	42%	203	37%	281	37%	360	72%	439	26
47	110	125	325	204	30	282	105	361	62%	440	32%
48	425	126	67%	205	47%	283	190	362	62%	441	35
49	115	127	32%	206	170	284	32%	363	67%	442	170
50	95	128	37%	207	90	285	45	364	52%	443	42%
51	62%	129	50	208	115	286	37%	365	45	444	57%
52	23	130	50	209	62%	287	160	366	37%	445	40
53	300	131	67%	209A	52%	288	180	367	47%	446	42%
54	115	132	47%	210	400	289	90	368	26	447	85
55	230	133	95	211	62%	290	45	369	150	448	47%
56	67%	134	110	212	95	291	105	370	125	449	42%
57	42%	135	37%	213	62%	292	37%	371	130	450	26
58	25	136	37%	214	90	293	115	372	145	451	26
59	85	137	115	215	32%	294	120	373	95	452	35
60	80	138	40	216	1350	295	125	374	850	453	32%
61	52%	139	125	217	100	296	950	375	550	454	35
62	42%	140	80	218	55	297	1400	376	450	455	35
63	140	141	37%	219	100	298	120	377	50	456	47%
64	350	142	47%	220	65	299	26	378	32%	457	700
65	160	143	40	221	25	300	40	379	28	458	18
66	400	144	45	222	47%	301	55	380	170	459	80
67	80	145	105	223	120	302	55	381	35	460	115
68	37%	146	125	224	47%	303	300	382	32%	461	250
69	40	147	62%	225	47%	304	35	383	90	462	12
70	45	148	42%	226	37%	305	190	384	47%	463	13
71	72%	149	180	227	50	306	75	385	120	464	45
72	40	150	160	228	45	307	105	386	135	465	35
73	40	151	52%	229	47%	308	47%	387	25	466	260
74	95	152	325	230	110	309	80	388	160	467	140
75	72%	153	180	231	80	310	72%	389	65	468	475
76	180	154	80	232	42%	311	90	390	55	469	1050
77	47%	155	325	233	42%	312	67%	391	37%	470	425
		156	190	234	67%	313	52%	392	25	471	95

472	95	665	95	757	35	849	80	940	35	1032	90
473	325	666	90	758	21	850	17	941	23	1033	115
474	350	667	70	759	475	851	50	942	26	1034	47%
475	625	668	42%	760	45	852	475	943	260	1035	67%
476	700	669	60	761	21	853	40	944	52%	1036	42%
477	450	670	32%	762	45	854	52%	945	32%	1037	22
478	210	671	37%	763	45	855	67%	946	52%	1038	40
479	100	672	325	764	52%	856	62%	947	52%	1039	325
480	85	673	260	765	60	857	40	948	65	1040	37%
481	260	674	75	766	21	858	42%	949	42%	1041	105
482	325	675	110	767	260	859	26	950	120	1042	37%
483	170	676	120	768	21	860	52%	951	62%	1043	95
484	1000	677	850	769	27	861	190	952	72%	1044	42%
485	170	678	500	770	55	862	50	953	45	1045	80
486	35	679	29	771	37%	863	80	954	210	1046	250
487	16	680	23	772	35	864	95	955	32%	1047	70
488	210	681	21	773	85	865	42%	956	50	1048	45
489	24	682	145	774	21	866	47%	957	70	1049	45
490	105	683	23	775	21	867	42%	958	62%	1050	72%
491	3250	684	75	776	45	868	65	959	60	1051	95
492	35	685	62%	777	45	869	45	960	65	1052	115
493	35	686	26	778	35	870	75	961	525	1053	62%
494	30	687	23	779	95	871	52%	962	115	1054	230
495	37%	688	WD	780	26	872	57%	963	50	1055	90
SECOND SESSION											
Oct. 30, 1975		689	850	781	45	873	55	964	170	1056	52%
600 10,000		690	26	782	32%	874	65	965	40	1057	55
601	35	691	72%	783	45	875	47%	966	65	1058	20
602	210	692	45	784	35	876	270	967	42%	1059	67%
603	160	693	90	785	35	877	65	968	28	1060	30
604	280	694	210	786	20	878	30	969	28	1061	57%
605	210	695	280	787	55	879	62%	970	27	1062	115
606	115	696	115	788	67%	880	90	971	26	1063	280
607	170	697	105	789	85	881	85	972	280	END OF SALE	
608	200	698	28	790	70	882	32%	973	80	THANK YOU	
609	28	699	140	791	47%	883	260	974	85	GROSS REALIZATION \$142,452.50	
610	27	700	100	792	32%	884	62%	975	42%		
611	725	701	140	793	45	885	57%	976	21	GROSS REALIZATION \$142,452.50	
612	325	702	37%	794	45	886	40	977	47%		
613	145	703	105	795	32%	887	375	978	42%	GROSS REALIZATION \$142,452.50	
614	120	704	120	796	57%	888	30	979	210		
615	85	705	180	797	42%	889	30	980	115	GROSS REALIZATION \$142,452.50	
616	140	706	220	798	37%	890	125	981	110		
617	90	707	300	799	47%	891	190	982	100	GROSS REALIZATION \$142,452.50	
618	115	708	105	800	52%	892	21	983	270		
619	24	709	125	801	37%	893	20	984	67%	GROSS REALIZATION \$142,452.50	
620	110	710	170	802	47%	894	42%	985	60		
621	37%	711	170	803	52%	895	180	986	30	GROSS REALIZATION \$142,452.50	
622	28	712	80	804	50	896	105	987	35		
623	85	713	75	805	37%	897	29	988	47%	GROSS REALIZATION \$142,452.50	
624	85	714	37%	806	32%	898	62%	989	45		
625	95	715	80	807	32%	899	47%	990	42%	GROSS REALIZATION \$142,452.50	
626	67%	716	85	808	55	900	62%	991	180		
627	70	717	110	809	22	901	16	992	95	GROSS REALIZATION \$142,452.50	
628	500	718	37%	810	26	902	100	993	35		
629	110	719	62%	811	80	903	42%	994	50	GROSS REALIZATION \$142,452.50	
630	200	720	210	812	350	904	260	995	75		
631	67%	721	80	813	32%	905	120	996	57%	GROSS REALIZATION \$142,452.50	
632	35	722	85	814	65	906	85	997	40		
633	80	723	110	815	29	907	160	998	42%	GROSS REALIZATION \$142,452.50	
634	6250	724	100	816	35	908	21	999	57%		
635	3250	725	85	817	28	909	100	1000	90	GROSS REALIZATION \$142,452.50	
636	115	726	170	818	26	910	105	1001	42%		
637	42%	727	75	819	42%	911	100	1002	47%	GROSS REALIZATION \$142,452.50	
638	140	728	105	820	40	912	57%	1003	55		
639	21	729	37%	821	45	913	65	1004	72%	GROSS REALIZATION \$142,452.50	
640	35	730	85	822	140	914	75	1005	47%		
641	32%	731	23	823	130	915	26	1006	37%	GROSS REALIZATION \$142,452.50	
642	16	732	26	824	375	916	52%	1007	32%		
643	20	733	24	825	400	917	37%	1008	160	GROSS REALIZATION \$142,452.50	
644	26	734	24	826	400	918	50	1009	35		
645	37%	735	37%	827	40	919	65	1010	47%	GROSS REALIZATION \$142,452.50	
646	37%	736	50	828	130	920	29	1011	60		
647	26	737	52%	829	170	921	110	1012	40	GROSS REALIZATION \$142,452.50	
648	26	738	52%	830	26	921A	52%	1013	35		
649	27	739	57%	831	20	922	75	1014	80	GROSS REALIZATION \$142,452.50	
650	28	740	115	832	40	923	32%	1015	80		
651	210	741	70	833	57%	924	125	1016	47%	GROSS REALIZATION \$142,452.50	
652	200	742	160	834	170	925	280	1017	42%		
653	200	743	37%	835	170	926	230	1018	70	GROSS REALIZATION \$142,452.50	
654	160	744	105	836	57%	927	130	1019	22		
655	150	745	100	837	47%	928	170	1020	85	GROSS REALIZATION \$142,452.50	
656	52%	746	90	838	55	929	170	1021	23		
657	52%	747	52%	839	35	930	29	1022	105	GROSS REALIZATION \$142,452.50	
658	40	748	55	840	37%	931	45	1023	90		
659	120	749	57%	841	28	932	675	1024	60	GROSS REALIZATION \$142,452.50	
660	42%	750	32%	842	37%	933	110	1025	95		
661	50	751	47%	843	37%	934	280	1026	160	GROSS REALIZATION \$142,452.50	
662	60	752	18	844	28	935	115	1027	90		
663	52%	753	50	845	28	936	80	1028	25	GROSS REALIZATION \$142,452.50	
664	65	754	32%	846	160	937	80	1029	37%		
		755	32%	847	32%	938	40	1030	32%	GROSS REALIZATION \$142,452.50	
		756	45	848	47%	939	35	1031	90		