



482nd SALE

UNITED STATES STAMPS

Principally the Collection of the late
Henry I. Bodenhimer, offered by order of
Mrs. Edward G. Robinson, daughter of
Henry I. Bodenhimer;
and other owners

AT UNRESERVED PUBLIC AUCTION

Tuesday and Wednesday
December 9th, 10th, 1975
at 1:00 P. M. Each Day

Robert A. Siegel
AUCTION GALLERIES, INC.

120 EAST 56th STREET
NEW YORK CITY, N. Y. 10022
Tel.: (212) 753-6421



CONDITIONS OF SALE

1. The terms of sale are strictly cash on delivery to the highest bidder unless special arrangements have been made prior to the sale.
2. All bids are per lot as numbered in the catalogue unless otherwise announced by the auctioneer at the time of sale. The right is reserved to group two or more lots; to withdraw any lot or lots from the sale, or to act in behalf of the seller. The auctioneer shall regulate the bidding and in the event of any dispute his decision shall be final.
3. Any lot, the description of which is incorrect is returnable, but only within five days of receipt. All disputed lots must be returned intact as received. **The following lots may not be returned for any reason whatsoever: Lots containing ten or more stamps; Lots from buyers who have had the opportunity to examine them before the sale; Lots described as having defects or faults may not be returned because of any faults. No illustrated lots may be returned because of centering, margins or other factors shown in the illustrations.**
4. Successful bidders, unless they are known to us or supply acceptable references are expected to make payment in full before the lots are delivered. Mail bidders will be notified of the amount of their purchases. All mail bidders who have established credit with us must make payment within three days after receipt. We reserve the right in our sole and absolute discretion to demand cash payment at the time a lot is knocked down to any bidder who has not previously established credit with us or whose account is in arrears. In the event any buyer refuses to pay cash for any lot at the time it is knocked down to him, the auctioneer reserves the right to re-offer the lot immediately for sale to the highest bidder.
5. If the purchase price has not been paid within the time limit, nor lots taken up within seven days from date of sale they must be resold and any loss arising from such sale will be charged to the defaulter. Any account more than thirty days in arrears is subject to a late payment charge of 1½% per month so long as the account remains in arrears. If the auctioneer, in his discretion, should institute any legal action to secure payment of a delinquent account the defaulting purchaser shall pay all legal expense incurred by the auctioneer and such charges will be added to the amount owed.
6. All lots are sold as genuine but should any lot be proved otherwise by written opinion of any competent, responsible authority acceptable to us, immediate refund of the full purchase price will be made, provided that such claim is made in writing within 14 days from date of sale. If claim is not made within this period, no lots are returnable for any reason at any time. So long as we are notified within the 14 day period that an opinion is being sought the matter will remain open until such opinion is rendered. We will not be responsible for any charges incurred by the buyer for expertization fees and costs unless the opinion states the item is not genuine, in which case we will pay actual costs up to a maximum of \$50.00.
7. Until paid for in full, all lots remain the property of Robert A. Siegel Auction Galleries, Inc. in behalf of the seller.
8. All forwarding charges will be added to the purchase price. The mode of shipment shall be at our option unless we are given specific instructions.
9. Lots may be sent for inspection to buyers known to us upon written application. All such lots must be returned to us by registered mail, adequately insured and within 24 hours after receipt. The applicant assumes all responsibility and for insurance against all risks from time of receipt until they are actually received back by us, and is to pay all expenses of postage and insurance. No lots can be sent for inspection within eight days from date of local viewing. Large lots and collections cannot be sent for inspection.
10. Agents are responsible for all purchases made in behalf of their clients unless other arrangements are made prior to the sale.
11. The placing of a bid shall constitute acceptance of the foregoing condition of sale.

ROBERT A. SIEGEL, Licensed Auctioneer

FOR TABLE OF DESCRIPTIONS SEE PAGE 41

DECEMBER 9, 10, 1975

ROBERT A. SIEGEL AUCTION GALLERIES, Inc.

120 East 56th Street

New York, N. Y. 10022

Tel.: 753-6421 (Area Code 212)

Please purchase for me at your auction to be held **December 9, 10, 1975** the lots listed below, the prices annexed being my limit on each lot. I agree to remit for purchases in accordance with the **Conditions of Sale** and return no lots later than three days after receipt.

REFERENCES PLEASE
(if unknown to us)

SIGNED

New York State residents kindly include
County in address.

County

BIDDING INTERVALS

BIDS	ADVANCE	BIDS	ADVANCE
Up to \$30.00	\$1.00	\$300.00 - \$725.00	\$25.00
\$32.50 - \$72.50	\$2.50	\$750.00 - \$2,000.00	\$50.00
\$75.00 - \$145.00	\$5.00	\$2,000.00 - \$3,000.00	\$100.00
\$150.00 - \$290.00	\$10.00	\$3,250.00 and up	\$250.00

Bids which do not conform to the above will be automatically reduced to the appropriate level.

[illegible]

VALUATIONS

Upon request, estimate of value furnished on any lots in this auction.

FIRST SESSION

TUESDAY, DECEMBER 9, 1975 — 1:00 P. M.

UNITED STATES

POSTMASTERS' PROVISIONALS

- | | | |
|-----|--|--------|
| 1 P | New York, N. Y., 5c Green, Trial Color Plate Proof on Bond (9X1TC).
Very Fine (Photo) | 120.00 |
| 2 ★ | Providence, R. I., 5c, 10c Black, Se-Tenant Pair (10X2a). Large Margins,
Part o. g., light crease between stamps, Very Fine (Photo) | 500.00 |

1847 ISSUE

- | | | |
|-----|---|--------|
| 3 P | 5c Blue Green, Large Die Trial Color Proof on India with Cross Hatching
(ITC). Very Fine (Photo) | 250.00 |
| 4 P | 5c Scarlet Vermilion, Large Die Trial Color Proof (ITC). 1"x1 $\frac{3}{8}$ ", with
Cross Hatching, Very Fine (Photo) | 215.00 |
| 5 P | 5c Black, Large Die Trial Color Die Proof on India (ITC). 1"x1 $\frac{3}{8}$ ",
with Cross Hatching, faint crease & tiny hinge soaks, otherwise Very Fine
(Photo) | 200.00 |
| 6 P | 5c Yellow Brown, Trial Color Plate Proof on Bond (ITC). Large Margins,
Very Fine, Unlisted Shade (Photo) | 150.00 |
| 7 | 5c Red Brown (1). Ample to Large Margins, Beautiful Impression, light
Red cancel, Very Fine (Photo) | 150.00 |
| 8 | 5c Light Brown (1). Ample to Huge Margins, Striking Shade, light Blue
Grid cancel, Very Fine (Photo) | 150.00 |
| 9 | 5c Brown (1). Large Margins, Deep Rich Color, Fine Impression, Neat
Red cancel, light horiz. crease, Very Fine Appearance (Photo) | 150.00 |
| 10 | 5c Grayish Brown (1a). Ample to Large Margins, faintly cancelled, Appears
Unused, two tiny tears at top, otherwise Very Fine | 60.00 |
-
- | | | |
|----|--|--------|
| 11 | 5c Brown (1). Horiz. Strip of Three, Ample to Huge Margins, Marvelous
Color, Beautiful Impression, Neat Red Square Grid cancels, Large "2"
Due Mark (British) vertical crease just affects right stamp, still a Very
Handsome Piece, the Middle Stamp being a Perfect "Gem" (Photo) | 750.00 |
|----|--|--------|
-
- | | | |
|------|--|---------|
| 12 ☒ | 5c Orange Brown (1b). Mostly Huge Margins incl. Part Top Left Corner
Sheet Margin, except tiny bit close in places, Fantastic Depth of Color, tied
on Apr. 27, 1851 Folded Cover by Bright Red Square Grid, matching
"New-York" pmk., An Exceedingly Handsome Cover (Photo) | 200.00+ |
|------|--|---------|

LOTS ON VIEW FROM DECEMBER 5th

OFFICES OPEN SATURDAY BEFORE SALE

13	5c Deep Red Brown (1). Vertical Pair , touched to Huge Margins, Rich Color, Fine Impression, Small Blue ms. "X" cancels, not tied on large part of July 1849 Folded Letter, matching ms. "Red Bank, N.J." pmk., faint vertical crease, almost unnoticeable in bottom stamp, otherwise Fine (Photo) E. IX	
14 P	10c Golden Brown, Large Die Trial Color Proof on India with Cross Hatching (2TC) . Very Fine (Photo) 200.00	
15 P	10c Orange Yellow, Large Die Trial Color Proof on India (2TC) . 1 3/4" x 2 1/8", Die Sunk on Card, with Cross Hatching, minor toned spots in extreme left margin, still Very Fine (Photo) 200.00	
16 P	10c Violet, Large Die Trial Color Proof on India (2TC) . 1 7/8" x 2 1/4", with Cross Hatching, Very Fine (Photo) 200.00	
17 P	10c Blue Green, Large Die Trial Color Proof on India (2TC) . Slight translucencies at extreme top, far from design, Very Fine, Unlisted (Photo) 200.00 +	
18 P	10c Deep Blue, Large Die Trial Color Proof on India (2TC) . 1 3/8" x 1 5/8", with Cross Hatching, Very Fine (Photo) 200.00	
19 P	10c Yellow Green, Small Die Trial Color Proof on India (2TC) . Reduced to stamp size, trivial wrinkling, Very Fine Appearance (Photo) 165.00	
20 P	10c Dark Brown, Large Die Trial Color Proof on India (2TC) . Reduced to stamp size, Very Fine (Photo) 200.00	
21 P	10c Orange Vermilion, Large Die Trial Color Proof on Thin Glazed Card (2TC) . 2 3/8" x 2 3/4", tiny thin spot in extreme corner margin, Very Fine (Photo) 200.00	
22 P	10c Black Brown, Large Die Trial Color Proof on Thin Glazed Card (2TC) . 2 1/2" x 2 15/16", Very Fine (Photo) 200.00	
23 P	10c Black, Large Die Proof on Thin Glazed Card (2P) . 2 9/16" x 2 15/16", tiny thins far from design, Very Fine (Photo) 200.00	
24	10c Black (2) . Large to Huge Margins, Wonderfully Fresh, Neat Red Grid cancel, Extremely Fine, Beautiful (Photo) 425.00	
25	10c Black (2) . Ample to Large Margins, Pos. 94L, lifted & reaffixed to front of folded letter to Liverpool , tied by Red Grid, matching "Charleston, S.C., 10" pmk., Full Black Color, vertical natural pre-print paper crease, Very Fine (Photo) 425.00 +	
26 ★	5c Red Brown, Reproduction (3) . Large Margins, Fresh & Extremely Fine (Photo) 300.00	
27 ★	5c Red Brown, Reproduction (3) . Clear to Large Margins, Very Fine (Photo) 300.00	
28 ★	10c Black, Reproduction (4) . Four Nice Margins, Fresh, light crease, Very Fine Appearance (Photo) 425.00	
29 ★	10c Black, Reproduction (4) . Nice Margins, closed tear & tiny thin spot, Very Fine Appearance (Photo) 425.00	

1851 ISSUE

30	1c Blue, Horizontal Combination Pair, Ty. Ib, II (5A, 7) . Pos. 2-3R1E, Margins All Around, Pretty Color, Grid cancels, Very Fine, Rare Unlisted Combination Pair (Photo) E. XII	
31 ★	1c Dark Blue, Ty. II(7) . Ample to Large Margins, Wonderful Rich Color, Fresh, o. g., Very Fine, ex-Lilly (Photo) 150.00	
32	1c Blue, Horizontal Combination Pair Ty. II, IIIa (7, 8A) . Pos. 51-52R1E, Clear to Huge Margins, Vivid Color, Neat Grid cancels, bit of additional Red pmk., left stamp tiny thin speck & faint corner crease, otherwise Very Fine, Handsome, Rare Unpriced Combination (Photo) E. XII	

33	1c Blue, Ty. II (7). Horiz. Strip of Three , Clear to Huge Margins, incl. Bits of Four Adjoining Stamps, Left Pane Margin, Beautiful Color, very faint ms. cancel, Appears Unused, A Lovely Strip (Photo) E. VIII	
34	1c Blue, Horizontal Combination Strip of Three, Ty. IV, II, IV (7, 9) . Pos. 3-5R1L, Clear to Large Margins, clear "New-York" pmks., right Ty. IV stamp minor corner crease, others Very Fine, Very Scarce Strip (Photo) 430.00+	
35	☒ 1c Blue, Ty. II (7) . Pl. 1E, Three Large Margins, Lovely Shade, tied on Fresh Nov. 1851 Folded Prices Current by Red "Boston, Paid", Small matching "1" at bottom of cover indicating circular rate, Fine, Very Attractive (Photo) 50.00	
36	1c Blue, Ty. III (8) . Large Margins, Unusual Light Shade, Town pmks., Extremely Fine (Photo) 450.00	
37	1c Blue, Ty. III (8) . Three Full Margins, touched at L., Light Town Pmk, Fresh, Rich Color, Very Attractive, Fine & Scarce (Photo) 450.00	
38	1c Blue, Ty. IIIa (8A) . Margins All Around, Pretty Shade, Town pmk., Very Fine, with P. F. Certificate (Photo) 225.00	
39	★ 1c Dark Blue, Ty. IV (9) . Major Double Transfer, Clear to Huge Margins, Rich Color, Very Fine (Photo) 95.00	
40	★ 1c Blue, Ty. IV (9). Triple Transfer, One Inverted, Pos. 91L1L , Gigantic Margins with Full Bottom Left Corner Margins , Large Portion of Next Stamp at Right, Vivid Color, almost invisible crease, Extremely Fine Appearance, A Wonderful Showpiece (Photo) 225.00+	
41	★ 1c Blue, Ty. IV (9) . Recut Twice at Bottom, Pos. 8R1L, Clear to Large Margins, tiny part o. g., Very Fine (Photo) 90.00	
42	★ 1c Blue, Ty. IV (9). Horiz. Pair , Pos. 24-25L1L, Left Stamp Large Double Transfer at Bottom, Ample to Huge Margins Showing Bits & Traces of Five Adjoining Stamps, Beautiful Color, Part o. g., right stamp faint vertical creases, otherwise Extremely Fine, Marvelous Appearance (Photo) 200.00	
43	1c Blue, Ty. IV (9) . Pos. 70L1L. Recut at T. & Twice at B., Margins All Around, showing R. pane margin & center line , Part of next stamp at Top, town pmk, Very Fine, Ex-Newbury (Photo) 26.50	
44	☒ 1c Dark Blue, Ty. IV (9) . Recut Twice at Bottom, Pos. 8R1L, Margins All Around, Wonderful Deep Shade, tied by Clear "Burlington, N. J." pmk. on Sept. 1854 Folded College Commencement Notice, Very Fine 35.00	
45	3c Copper Brown (10) . Barely touched to Huge Margins incl. R. Pane Margin, Beautiful Color, Light "Paid" in Grid cancel, tiny faint corner crease, Very Fine Appearance 27.50	
46	3c Orange Brown (10). Horiz. Pair , Margins All Around, Fresh Color, Neat "San Francisco, Cal." pmk., Very Fine (Photo) 45.00	
47	☒ 3c Orange Brown (10) . Touched to Huge Margins, tied by Magenta Small "Paid" in Grid, Red "Boston 3" pmk. on Fresh Folded Letter, Jul. 23, pmk. Fine Early Use with the Scarcer Small "Paid" Color E. IV	
48	★ 3c Brownish Carmine (11) . Large Margins, Fresh, Full o. g., Extremely Fine, ex-Stern (Photo) 30.00	
49	★ 3c Red (11) . Margins All Around, Fresh, o. g., Very Fine 30.00	
50	★ 3c Red (11). Horiz. Strip of Three , Huge Margins except just touched in top left corner, Full o. g., trifle oxidized, Extremely Fine, ex-Lilly (Photo) 110.00	
51	★ 3c Red (11). Block , Margins All Around incl. Left Sheet Margin, Fresh, Part o. g., Very Fine, ex-Caspary (Photo) 250.00	
52	☒ 1c Blue, Ty. V, 3c Red (11, 24) . Two Fresh Covers, first Beautifully tied by Perfect "Bethany, N. Y." Balloon Type pmk., other by Red "Providence, R. I.", Very Pretty Lot E. III	

53	5c Red Brown (12). Margins All Around, Light Town cancel, Very Fine (Photo) 260.00
54	5c Red Brown (12). Clear to Large Margins, Beautiful Shade, Bright Red Town pmk., tiny corner crease entirely in margin, otherwise Very Fine (Photo) 260.00
55	10c Deep Blue Green, Ty. I (13). "Curl" in Left "X", Pos. 99R, Large to Huge Margins, Choice Shade & Impression Showing traces of layout lines at left & bottom, Red Grid cancel, light crease, Extremely Fine Appearance (Photo) 300.00
56	10c Green, Ty. I (13). Margins All Around, Huge at L. & B., neat Black Grid cancel, Very Fine (Photo) 250.00
57	10c Green, Ty. I (13). Horiz. Pair, Clear to Huge Margins, Light Town pmks., Very Fine, Scarce (Photo) 600.00
58	10c Green, Ty. II (14). Large Margins, Quartered Cork cancel, Very Fine (Photo) 60.00
59	10c Green, Ty. II (14). Margins All Around, Fresh Color, Bold Red Grid cancel, tiny negligible wrinkle, Very Fine (Photo) 70.00
60	10c Green, Ty. II (14). Horiz. Strip of Three, Clear to Huge Margins incl. Bit of Next Stamp at Left, Top Sheet Margin , tied on piece by Bold "San Francisco, Cal." pmks., Very Fine, Handsome (Photo) 210.00+
61	✉ 10c Green, Ty. II (14). Three Large Margins, partly touched at left, tied on cover to Canada by "New-York" pmk., tiny bit of cover missing at top, still Fine 100.00
62	★ 10c Green, Ty. III (15). Huge Margins, Part o. g., Rich Color, Extremely Fine, A Beauty (Photo) 375.00
63	10c Green, Ty. III (15). Ample to Large Margins, Rich Color, Sharp Impression, tiny Red Grid, cancel, Extremely Fine (Photo) 70.00
64	10c Green, Ty. III (15). Ample to mostly large margins, neat grid cancel, Very Fine (Photo) 60.00
65	10c Green, Vertical Combination Pair, Ty. III, IV (15, 16). Pos. 66, 76L, latter Recut Bottom , Rich Color, Clear to Huge Margins, Grid cancels, Ty. III stamp Fine, the Recut Very Fine, signed Ashbrook, ex-Stern (Photo) 600.00
66	✉ 10c Green, Ty. III (15). Ample to Large Margins, tied on Fresh Cover to Ohio by Clear Blue Double Grid of Random Squares, Matching " Marysville, Cal., Paid By Stamps " with Inverted Month logo, cover trifle reduced at extreme left, Very Fine, Choice (Photo) E. VIII
67	✉ 10c Green, Ty. III (15). Four Large Margins, Rich Color, tied by Grid on cover to Canada, "Castleton, Vt." pmk., horiz. cover crease ending in small tear, minor tape stain, Stamp Very Fine 100.00
68	10c Green, Ty. IV (16). Recut at T. Pos. 74L, Large Margins All Around, faint ms. cancel, appears unused, Very Fine (Photo) 450.00
69	★ 12c Black (17). Ample to Large Margins, Fresh, Part o. g., Extremely Fine (Photo) 450.00
70	12c Black (17). Large Margins All Around except close at extreme T. L., Light Red Grid cancel, small faults, Very Fine Appearance 60.00

- 71 ☒ **12c Black (17).** Ample to Large Margins except tiny bit in one spot bottom left, on Dec. 1856 Folded Letter to N. C. tied by "Richmond, Va." Year Date pmk., small sealed cover tear, otherwise Fine, Very Rare Quadruple Rate Usage (Photo) 325.00

1857 ISSUE

- 72 ★ **1c Blue, Ty. I (18).** Fresh, Full o. g., slight gum creases, otherwise Extremely Fine (Photo) 250.00

- 73 ★ **1c Blue, Horizontal Combination Strip of Four, Ty. I, II (18, 20).** Second & Fourth Stamps Ty. I, Pos. 32-35L12, Fresh, Part o. g., Lovely Color, small hinge reinforcements, tiny speck of pink on one stamp, still a Very Fine Strip, Rare & Important Plating Item as Pos. 32 is no recorded as Ty. II in plating chart (Photo) 850.00+

- 74 **1c Blue, Ty. I (18).** Imperforate Center Line at R., repaired fault at B. R., otherwise Fine 140.00

- 75 **1c Blue, Ty. Ia (19),** Rich Color, Light town cancel, tiny corner crease & few irregular perfs., otherwise Very Fine, Unusually Well Centered (Photo) 600.00

- 76 ★ **1c Blue, Ty. II (20).** Rich Color, Nearly Full o. g., Very Fine (Photo) 145.00

- 77 ☒ **1c Blue, Ty. II (7).** Double Transfer, Pl. 2, Fresh Color, Wonderfully Well Centered, tied on Neat Cover by "New-York" 1857 Year Date pmk., Extremely Fine (Photo) 75.00

- 78 ☒ **1c Blue, Ty. II, IIIa (20, 22).** Single of first, **Top Row Pl. 4, Pos. 5R,** Horiz. Pair of Latter, Pos. 14-15R4, on cover, light Grid cancels, not tied, "Williamsburgh, N. Y." pmk., Fresh Color, small ink smear in extreme top right corner of cover, Ty. II stamp centered to top, two short perfs., Ty. IIIa Pair Very Fine, Scarce Cover, signed Ashbrook (Photo) E. VIII

- 79 ★ **1c Dark Blue, Vertical Combination Pair, Ty. III, IIIa (21-22).** Pos. 46, 56L4, Beautiful Rich Color, tiny part o. g., right perfs. touch, few minor perf. flaws, otherwise Fine, Rare Pair, listed but unpriced (Photo) 965.00+

- 80 **1c Blue, Ty. III (21).** Light Cancel, Extremely Fine (Photo) 285.00

- 81 **1c Blue, Ty. III (21).** Neat cancel, Rich Color, small faults, Very Fine Appearance 285.00

- 82 ☒ **1c Blue, Ty. III (21).** Pl. 4, F Relief, tied on Fresh Apr. 1858 Folded Insurance Premium Notice by "Manchester, N. H." pmk., Fresh Color, Fine, Scarce & Attractive Cover (Photo) 400.00

- 83 ★ **1c Blue, Ty. IIIa (22).** Pl. 11, Fresh, o. g., Fine (Photo) 165.00

- 84 ★ **1c Blue, Ty. IIIa (22).** Fresh, part o. g., Small Plate Bruise at Top Left, Fine 165.00

- 85 **1c Blue, Ty. IIIa (22).** Town pmk., Very Fine (Photo) 50.00

- 86 ☒ **1c Blue, Ty. IV (23).** Separated from sheet by scissors, few perfs. trimmed, tied on cover by Unusual **Thin Bar Framed Grid,** "Philadelphia, Pa." pmk., Scarce (Photo) 120.00

- 87 ★ **1c Blue, Ty. V (24).** T. Margin Single, Fresh, o. g., Wide Side Margins, Very Fine, Very Pretty Stamp 27.50

- 88 ★ **1c Blue, Ty. V (24).** B. Margin Single, Fresh, o. g., Fine 27.50

- 89 ★ ☒ **1c Blue, Ty. V (24).** T. Margin Block, Pos. 8-9, 18-19R9, Fresh, o. g., perfs. tiny bit in at top (Photo) 135.00

90	★	3c Rose, Ty. I (25). Rich Color, small part o. g., insignificant short corner perf., otherwise Fine	(Photo)	150.00
91	★	3c Red (26). Two Distinct Shades, Fresh, o. g., One with Double Frame Lines, Very Fine Lot		25.00
92	★	3c Red (26). Block, Fantastic Centering, Brilliant o. g., Extremely Fine	(Photo)	60.00
93	★	3c Red (26). Block, Fresh, o. g., Exceptionally Well Centered, Extremely Fine	(Photo)	60.00
94	⊠	3c Red (26). Well Centered, Deep Shade, tied by Bold "Seneca Falls, N. Y., Apr. 14, 1860" pmk. on Handsome Illustrated Hotel Corner Card Cover, Very Fine		E. III
95		5c Brick Red (27). Dated Town Cancel, Unusually Deep Shade, Very Fine	(Photo)	225.00
96		5c Brick Red (27). Town Cancel, small faults, Very Good Appearance		225.00
97	★	5c Red Brown (28). Fresh, Large Part o. g., Choice Color, perfs. tiny bit in, Fine Example of this Very Scarce Unused Stamp, ex-Moody	(Photo)	600.00
98		5c Indian Red (28A). Remarkable Centering, Deep Color, Neat Town pmk., trifling corner perf. crease, nevertheless Extremely Fine, Magnificent Example of this Very Scarce Stamp, ex-Moody	(Photo)	325.00
99		5c Brown, Ty. I, Ty. II (29, 30A). Tiny faults, Fine-V. F. Appearance		95.00
100	★	5c Deep Orange Brown (30). Incredibly Rich Color, Well Centered, Large Part o. g., Extremely Fine	(Photo)	185.00
101	★	5c Deep Orange Brown (30). Fresh, Gorgeous Color, Very Fine	(Photo)	185.00
102	★	5c Orange Brown (30). Horiz. Pair, Marvelous Color, Brilliant o. g., left stamp tiny tear at top, otherwise Fine, Handsome	(Photo)	370.00+
103	★	5c Brown, Ty. II (30A). Block with Part Left Sheet Margin, Rich Color, Fresh, o. g., Fine-Very Fine, Choice & Very Scarce	(Photo)	600.00
104		5c Brown, Ty. II (30A). Rich Color, Dark Red Grid cancel, Extremely Fine	(Photo)	37.50+
105		5c Brown, Ty. II (30A). Rich Color, Light Town pmk., side perfs, blunted by scissor separation, all intact, Very Fine		37.50
106	⊠	5c Brown, Ty. II (30A). Horiz. Pair, natural s. e. at left, Beautiful Rich Color, tied on Fresh Cover to Vt. by Clear "San Francisco, Cal." pmk., Very Fine, A Lovely Cover	(Photo)	E. VIII
107		10c Green, Ty. I (31). Neat ms. cancel, Very Fine	(Photo)	150.00
108	★	10c Green, Ty. II (32). Fresh, o. g., Very Fine & Handsome, ex-Moody	(Photo)	325.00
109		10c Green, Ty. II, Ty. III (32-33). Latter Red Grid cancel, tiny faults, Fine-Very Fine Appearance		70.00
110		10c Green, Ty. II, IV (32, 34). Horiz. Combination Pair, Left Stamp Recut at Top, Pos. 3R, Fresh Color, Neat Town pmk., tiny insignificant corner perf. crease, centered to bottom, Attractive, Very Scarce Pair	(Photo)	425.00
111	⊠	10c Green, Ty. II (32). Marvelous Color & Centering, Clearly tied on Cover to Canada by "Davenport, Ioa." pmk., Red "U. States" in Arc Exchange Mark, Attractive Cover Stamp Extremely Fine	(Photo)	60.00
112		10c Green, Ty. III (33). Choice Centering, Neat Town pmk., Very Fine	(Photo)	35.00
113		10c Green, Ty. IV (34). Recut at Top, Pos. 86L, Red Grid & Town cancel, Fine	(Photo)	325.00

114 ★	10c Green, Ty. V (35). Large Part o. g., few nibbed perfs., otherwise Very Fine	45.00
115 ★	10c Green, Ty. V (35). Horiz. Pair, Fresh, o. g., creases, Fine Appearance	90.00
116 ★	10c Green, Ty. V (35). Block, Fresh, o. g., Very Fine	(Photo) 250.00
117 ★	12c Black, Pl. III (36b). Fresh, o. g., Very Fine	(Photo) 65.00
118 ★	12c Black, Pl. III (36b). Horiz. Pair, Fresh, o. g., Fine-Very Fine	(Photo) 140.00
119 ★	24c Gray (37). Fresh, o. g., Well Centered, couple irregular perfs. at top, otherwise Extremely Fine	(Photo) 165.00
120 ★	24c Gray (37). Fresh, tiny faults, Very Fine Appearance	165.00
121 ★	24c Gray (37). Small faults, Fine Appearance	165.00
122 ☒	24c Gray (37). Tiny flaws, Boldly tied by Black Rimless Grid & Red "New, 19, York" pmks. on Cover to England, ms. "Per Arabia", 1861 Receiving Mark on Back, Very Attractive	(Photo) 300.00
123 ★	30c Orange (38). Fresh, o. g., Rich Color, Three Wide Margins, top perfs. barely touch, Very Fine for this	(Photo) 175.00
124 ★	30c Orange (38). Fresh, o. g., tiny natural inclusion speck, Very Fine	(Photo) 175.00
125 ★	90c Blue (39). Wonderfully Fresh, Beautiful Margins, Extremely Fine, Choice	(Photo) 450.00
126 ★	90c Blue (39). Fresh Color, perfs. tiny bit in at bottom, Fine	(Photo) 450.00
127 ★	90c Blue (39). Rich Color, part o. g., few perfs with gum soaks, otherwise Fine	(Photo) 450.00

1857 REPRINTS

128 ★	1c Bright Blue, Reprint (40). Choice Color & Centering, barely noticeable internal tear, Extremely Fine Appearance	(Photo) 200.00
129 ★	1c Bright Blue, Reprint (40). Fresh, Color, reperfed at right, Fine Appearance, ex-Caspary	(Photo) 200.00
130 ★	3c Scarlet, Reprint (41). Vivid Color, Incredibly Well Centered, Extremely Fine	(Photo) 1,300.00
131 ★	5c Orange Brown, Reprint (42). Outstanding Margins & Centering, Vivid Color, Exceptionally Fine, A Beauty, ex-Caspary	(Photo) 365.00
132 ★	5c Orange Brown, Reprint (42). Lovely Color, Well Centered, two tiny insignificant perf. creases, otherwise Very Fine	(Photo) 365.00
133 ★	10c Blue Green, Reprint (43). Gorgeous Color, reperfed at right, Extremely Fine Appearance	(Photo) 900.00
134 ★	10c Blue Green, Reprint (43). Well Centered, Rich Color, couple short perfs., otherwise Very Fine	(Photo) 900.00
135 ★	12c Greenish Black, Reprint (44). Unusually Well Centered, Fresh Color, couple slightly nibbed perfs., still Very Fine	(Photo) 725.00
136 ★	24c Blackish Violet, Reprint (45). Fresh Color, Part of Imprint Shows on Right Perfs., Fine	(Photo) 825.00
137 ★	24c Blackish Violet, Reprint (45). Beautiful Color, reperfed at left, Very Fine Appearance	(Photo) 825.00
138 ★	30c Yellow Orange, Reprint (46). Brilliant Color, tiny insignificant perf. crease, otherwise Very Fine	(Photo) 1,300.00
139 ★	30c Yellow Orange, Reprint (46). Vivid Color, few partly blunted perfs. otherwise Fine, Rare	(Photo) 1,300.00
140 ★	90c Deep Blue, Reprint (47). Wonderful Color, reperfed at left, Extremely Fine Appearance, Rare	(Photo) 1,850.00

LOTS ON VIEW FROM DECEMBER 5th
OFFICES OPEN SATURDAY BEFORE SALE

1861 ISSUE

141	★	3c Brown Rose, "First Design" (56). Unusually Well Centered, Lovely Color, Full o. g., trivial naturally rounded corner perf., nevertheless Extremely Fine	(Photo)	325.00
142	★	3c Brown Rose, "First Design" (56). Fresh & Bright, o. g., few very faint ink specks on face, otherwise Very Fine	(Photo)	325.00
143		10c Dark Green, "First Design" (62B). Rich Color, reperf at R., Fine Appearance	(Photo)	225.00
144	★	1c Blue, 3c Rose (63, 65). Fresh, part o. g., Extremely Fine Lot		42.50
145		3c Pink (64). Bright Pink Shade, light town cancel, perfs just touch at B., Fine	(Photo)	100.00
146	★	3c Rose (65). Block, Full o. g., Rich Color, Very Fine		50.00
147	★	3c Lake (66). B. Margin Single, Rich Color, Nearly Full o. g., bottom perfs. touch, Attractive Example of this Very Scarce Stamp	(Photo)	650.00
148	★	5c Brown Yellow (67a). Rich Color, Fresh, o. g., small natural "dry print" spot, few nibbed perfs. at left, otherwise Very Fine	(Photo)	875.00
149		5c Brown Yellow (67a). Fresh, Neat Town cancel, small faults, otherwise Very Fine		80.00
150	★	10c Green (68). Fresh, o. g., reperfed at left, Very Fine Appearance		55.00
151	✉	10c Green (68). Exceptionally Fine, Tied by "Milwaukee, Wis." & small grid on neat cover to Canada, Bold "Horseshoe" exchange mark (Mac Donald A-1), perfect strike. Very choice & Handsome	(Photo)	E. V
152	★	12c Black (69). Large Part o. g., Very Fine	(Photo)	95.00
153	✉	12c Black (69). Nicely centered, tied with 3c Rose (65) short perf. by Boston "Paid", Red "Boston, Paid 12", via British Packet & France. Very Pretty Fresh cover	(Photo)	E. V
154	★	24c Red Lilac (70). Rich Marvelous Color, Fresh, o. g., Very Fine, ex-Lilly	(Photo)	165.00
155	✉	24c Red Violet (70). Brilliant shade, (close to #70c). Unusually well centered, tied by light grid & edge of N. Y. Pkt. cancel on cover to England. Extensive 1864 docket on face; few blunted perfs. L., Very Fine Appearance		67.50
156		24c Violet, "First Color" (70c). Blue Target cancel, tiny corner crease, Fine Appearance	(Photo)	175.00
157	✉	24c Brown Lilac (70a). Rich Color, Tied by neat grid & edge of Red N. Y. 3, transit on cover to England. Small tear top left & part of flap torn, Fine & Attractive		67.50
158	★	30c Orange (71). Wonderful Shade, Fresh, o. g., Extremely Fine	(Photo)	130.00
159	✉	30c Orange (71). Fine, Beautifully tied by Bold Red Grid & edge of "New-Paid-York 12" on Sep. 12, 1861 folded letter to France, pre-paid. Early usage during first few weeks after issue. Choice & Handsome	(Photo)	125.00+
160	★	90c Blue (72). Fresh Color, reperfed at right, Extremely Fine Appearance	(Photo)	325.00
161	★	90c Blue (72). Beautifully Centered, horiz. crease & pinhole, Extremely Fine Appearance	(Photo)	325.00
162	★	2c Black (73). Fresh, o. g., Very Fine	(Photo)	37.50
163	✉	2c Black (73). Horiz. Pair, tied on Fresh slightly reduced cover by "New York" & Four Point Star cancels, Handsome Example of the 3c + 1c Carrier Rate		E. IV

164	3c Scarlet, Pen Strokes Obliteration (74). Marvelous Color, Large Part o. g., Fine, Handsome & Very Scarce (Photo)	400.00
165 ★	5c Red Brown (75). Wonderfully Well Centered, Fresh Rich Color, Exceptionally Fine (Photo)	285.00
166 ☒	5c Deep Red Brown (75). Right perms. touch, Rich Color, Well tied by Grids & "Newburyport, Ms., Feb. 24, 1865" pmk. on Fresh Cover to Calcutta, India, ms. "1/7" due mark, "Boston Br. Pkt.", "London" & Boxed "Calcutta Steam Letter" Backstamps, Attractive Cover, Rare Usage of a single 5c Red Brown, signed Ashbrook E. VIII	
167 ☒	5c Deep Red Brown (75). Perfs. touch as usual, Magnificent Shade, used with Very Fine 10c Green (68), tied on Cover to France by Neat Grids of Small Squares, Red Town pmk., Red NY & French Transits, Handsome Cover, Very Scarce, Ashbrook comment on back (Photo) E. VIII	
168 ★	5c Brown (76). Horiz. Pair, Brilliant Full o. g., Very Fine (Photo)	130.00
169 ★	15c Black (77). Rich Color, tiny part o. g., Very Fine (Photo)	150.00
170 ★	15c Black (77). Part R. Imprint Margin Single, Fresh Color, tiny thin spot, Very Fine Appearance (Photo)	150.00
171 ☒	15c Black (77). Unusually Well Centered, tied on cover to France by light Circle of Wedges, Red "Boston, Paid 6", Blue & Red French transits, Very Fine 65.00	
172 ★	24c Grayish Lilac (78). Well Centered, Fresh Color, couple tiny perf. creases, otherwise Very Fine (Photo)	55.00
173 ☒	24c Lilac (78). Tied on Small Cover to England by Grid & "Poughkeepsie, N. Y." pmk., Red "N. York Br. Pkt, Paid 19", Aug. 1863 Backstamp, Fine 40.00	

1867 GRILLED ISSUE

174	3c Rose, Grilled All Over (79). Fresh Color, centered to left, usual irregular perms., Bold Blue "Paid 3" in Circle cancel, Very Scarce (Photo)	275.00+
175 ★	3c Rose, C. Grill (83). Faint negligible corner creases, Fine Appearance, Very Scarce, ex-Lilly (Photo)	500.00
176	3c Rose, C. Grill (83). Centered to R., segmented Cork cancel, Very Good 75.00	
177	2c Black, D. Grill (84). Used, Very Fine, An Unusually Choice Example of this Very Scarce Stamp (Photo)	275.00
178	2c Black, D. Grill (84). Bold Quartered Cork cancel, single partly nibbed corner perf., still Fine, Very Scarce (Photo)	275.00
179	3c Rose, D. Grill (85). Extraordinary Centering, Small Quartered Cork cancels & Bit of Town pmk., Choice Margins, tiny negligible corner crease, otherwise Extremely Fine, A Beauty (Photo)	70.00
180	3c Rose, D. Grill (85). Attractive "Maltese Cross" cancel, light crease, Fine Appearance (Photo)	70.00
181	2c Black, Z. Grill (85B). Gorgeous Color, Beautiful Vivid Red cancel, An Extremely Fine "Gem", ex-Bingham (Photo)	80.00
182	2c Black, Z. Grill (85B). Lightly cancelled, Incredible Centering, Extremely Fine, Exceptional (Photo)	75.00
183	3c Rose, Z. Grill (85c). Unusually Well Centered, Fresh Color, Bright Blue cancel, slight corner crease, otherwise Very Fine, Very Scarce in this centering (Photo)	235.00
184	12c Black, Z. Grill (85E). Neat Target cancel, reperfed at right, Very Fine Appearance (Photo)	150.00
185 ★	1c Blue, E. Grill (86). Wonderful Color, Fresh, o. g., centered bit to top, Very Fine, ex-Lilly (Photo)	150.00

186 ★	2c Black, E. Grill (87). Fresh, o. g., Vivid Color, Very Fine, ex-Lilly (Photo)	70.00
187 ★	2c Black, E. Grill (87). Part o. g., Fine (Photo)	70.00
188 ★	3c Rose, E. Grill (88). Wonderful Centering & Color, Large Margins, couple partly nibbed perfs., really trivial otherwise Extremely Fine (Photo)	35.00
189 ★	3c Rose, E., F. Grills (88, 94). Fresh, Part o. g., Fine (Photo)	53.50
190 ★	10c Green, E. Grill (89). Lovely Rich Color, Fresh, o. g., Very Fine, from The Ambassador Collection (Photo)	275.00
191 ★	10c Green, E. Grill (89). Fresh, Part o. g., Fine (Photo)	275.00
192	12c Black, E. Grill (90). Huge Margins & Gorgeous Color, Pretty Blue cancel, An Extremely Fine "Gem", ex-Bingham (Photo)	37.50
193 ★	2c Black, F. Grill (93). Fresh, Large Part o. g., Wonderfully Well Cen- tered, Extremely Fine (Photo)	35.00
194 ★	2c Black, F. Grill (93). Very Fine (Photo)	35.00
195 ★	3c Red, F. Grill (94). Fresh & Very Fine (Photo)	18.50
196 ★	10c Green, F. Grill (96). Horiz. Pair, Vivid Color, Fresh Virtually Full o. g., Extremely Fine (Photo)	225.00
197 ★	12c Black, F. Grill (97). Fresh, Nearly Full o. g., Excellent Margins, Ex- tremely Fine (Photo)	130.00
198 ★	12c Black, F. Grill (97). Top perfs. touch, Fresh Color (Photo)	130.00
199 ★	15c Black, F. Grill (98). Single short perf., otherwise Very Fine (Photo)	135.00
200 ★	15c Black, F. Grill (98). Tiny negligible toned spot, otherwise Fine (Photo)	135.00
201	24c Gray Lilac, F. Grill (99). Quartered Cork cancel, Nice Color, Very Fine, ex-Bingham (Photo)	125.00
202	24c Gray Lilac, F. Grill (99). Used, small thin, Fine Appearance (Photo)	125.00
203 ★	30c Orange, F. Grill (100). Centered, Vivid Color, two perfs. trifle blunt, otherwise Extremely Fine, ex-Lilly (Photo)	400.00
204	30c Orange, F. Grill (100). Neat Magenta Leaf cancel, Fine & Attractive (Photo)	85.00

205 ★	90c Blue, F. Grill (101). Brilliant Color, Virtually Full o. g., Fresh & Fine, Choice Example of this Scarce Stamp, ex-Simon, with P. F. Certificate (Photo)	875.00
-------	--	--------

206	90c Blue, F. Grill (101). Used, Exceptional Centering, Rich Color, single short perf. & tiny corner thin, otherwise Extremely Fine (Photo)	225.00
-----	---	--------

1861 RE-ISSUE

207 ★	1c Blue, Re-Issue (102). Brilliant Color, Extremely Fine (Photo)	200.00
208 ★	1c Blue, Re-Issue (102). Very Fine (Photo)	200.00
209 ★	1c Blue, Re-Issue (102). Deep Shade, tiny closed tear at top, reperfed at left, Very Fine Appearance (Photo)	200.00
210 ★	2c Black, Re-Issue (103). Fresh Color, Part o. g., tiny thin speck & few short perfs., otherwise Very Fine (Photo)	1,000.00
211 ★	3c Brown Red, Re-Issue (104). Rich Color, reperfed at bottom, Very Fine Appearance (Photo)	1,350.00
212 ★	5c Brown, Re-Issue (105). Wonderfully Fresh, Full o. g., centered trifle to bottom, Very Fine (Photo)	800.00
213 ★	5c Brown, Re-Issue (105). Fresh, Large Part o. g., single nibbed perf., otherwise Very Fine (Photo)	800.00
214 ★	10c Green, Re-Issue (106). Fresh Color, Large Part o. g., Choice Margins, couple perfs. least bit blunted, otherwise Extremely Fine, Handsome (Photo)	1,000.00

215 ★	12c Black, Re-Issue (107). Full o. g., Beautiful Margins, barely noticeable speck of ink on surface, tiny nick in right margin, otherwise Extremely Fine, with P. F. Certificate (Photo) 1,350.00
216 ★	15c Black, Re-Issue (108). Fresh, slight thin in top right margin, Very Fine Appearance, with P. F. Certificate (Photo) 1,200.00
217 ★	15c Black, Re-Issue (108). Fresh, tiny perf. flaws, otherwise Very (Photo) 1,200.00
218 ★	30c Brownish Orange, Re-Issue (110). Rich Color, Part o. g., perfs. tiny bit in top & left, Rare Stamp (Photo) 1,900.00

1869 PICTORIAL ISSUE

219 ★	1c Buff (112). Vivid Color, Fresh, o. g., Very Fine (Photo) 75.00
220 ★	1c Buff (112). Fresh & Very Fine (Photo) 75.00
221 ★	1c Buff (112). Brilliant Mint Block, Fresh & Fine, A Very Choice Block, ex-Bingham (Photo) 425.00
222 ★	2c Brown (113). Fresh, o. g., Very Fine (Photo) 50.00
223 ★	2c Brown (113). Block, Gorgeous Color, Large Part o. g., Fine-Very Fine (Photo) 250.00
224 ★	3c Ultramarine (114). Fresh, o. g., Very Fine (Photo) 30.00
225 ★	3c Ultramarine (114). Block, Brilliant o. g., Fine-Very Fine, Very Pretty Block (Photo) 120.00
226 ★	6c Ultramarine (115). Wonderfully Fresh, Large Part o. g., Very Fine (Photo) 200.00
227 ★	6c Ultramarine (115). Brilliant o. g., Fine, Lovely Shade (Photo) 200.00
228 ★	10c Yellowish Orange (116). Fresh, Part o. g., Very Fine (Photo) 225.00
229 ★	10c Yellow (116). Fresh & Very Fine (Photo) 225.00
230 ★	10c Yellowish Orange (116). Marvelous Deep Shade, Nearly Full o. g., tiny thin speck, Very Fine Appearance (Photo) 225.00
231 ★	12c Green (117). Wonderfully Fresh, Nearly Full o. g., Very Fine & Choice (Photo) 185.00
232 ★	12c Green (117). Large Margins, Fresh Color, Very Fine (Photo) 185.00
233 ★	15c Brown & Blue, Ty. I (118). Rich Colors, Part o. g., Very Fine, Scarce, ex-Stern (Photo) 500.00
234	15c Brown & Blue, Ty. I (118). Fresh, Deep Shades, tiny corner crease, Extremely Fine Appearance (Photo) 95.00
235 ★	15c Brown & Blue, Ty. II (119). Wonderful Colors, Fresh, Part o. g., Very Fine, ex-Bingham (Photo) 225.00
236 ★	24c Green & Violet (120). Slight toning, at right, almost entirely on back, otherwise Fine (Photo) 525.00
237	30c Blue & Carmine (121). Block of Six (3x2), Cork cancels, few minor flaws but Remarkably Well Centered, A Very Handsome & Scarce Block (Photo) 465.00
238 ★	90c Carmine & Black (122). Fresh, Part o. g., Fine, Rare Unused (Photo) 1,650.00

1869 RE-ISSUE

239 ★	1c Buff, Re-Issue (123). Well Centered, Fresh, Part o. g., Very Fine (Photo) 125.00
240 ★	1c Buff, Re-Issue (123). Large Part o. g., Very Fine (Photo) 125.00
241 ★	1c Buff, Re-Issue (123). Light creases, some blunted perfs., Well Centered 125.00

242 ★	2c Brown, Re-Issue (124). Fresh, Large Part o. g., Very Fine	(Photo)	185.00
243 ★	2c Brown, Re-Issue (124). Fresh Color, tiny tear, otherwise Very Fine	(Photo)	185.00
244 ★	2c Brown, Re-Issue (124). Rich Color, tiny thin spots, Fine Appearance	(Photo)	185.00
245 ★	3c Blue, Re-Issue (125). Fresh, Large Part o. g., centered to bottom right, Fine & Rare	(Photo)	900.00
246 ★	6c Blue, Re-Issue (126). Fresh, o. g., Very Fine	(Photo)	350.00
247 ★	6c Blue, Re-Issue (126). Fresh, Large Part o. g., tiny thin speck, Fine Appearance	(Photo)	350.00
248 ★	10c Yellow, Re-Issue (127). Very Fine	(Photo)	550.00
249 ★	10c Yellow, Re-Issue (127). Fresh Color, reperfed, Very Fine Appearance	(Photo)	550.00
250 ★	12c Green, Re-Issue (128). Wonderfully Fresh Rich Color, Large Part o. g., Very Fine, A Lovely Stamp	(Photo)	550.00
251 ★	12c Green, Re-Issue (128). Bright & Fresh, Part o. g., Very Fine	(Photo)	550.00
252 ★	15c Brown & Blue, Re-Issue (129). Rich Colors, Very Fine	(Photo)	625.00
253 ★	15c Brown & Blue, Re-Issue (129). Fresh, Part o. g., Vivid Colors, single missing perf. at bottom, otherwise Very Fine	(Photo)	625.00
254 ★	24c Green & Violet, Re-Issue (130). Fresh, o. g., Extremely Fine	(Photo)	575.00
255 ★	24c Green & Violet, Re-Issue (130). Tiny negligible perf. creases, Fine	(Photo)	575.00
256 ★	30c Blue & Carmine, Re-Issue (131). Brilliant Colors, Fresh Full crackly o. g., Extremely Fine, Beautiful	(Photo)	825.00
257 ★	30c Blue & Carmine, Re-Issue (131). Very Fine	(Photo)	825.00
258 ★	90c Carmine & Black, Re-Issue (132). Fresh, Part o. g., centered trifle to left, Very Fine	(Photo)	1,450.00
259 ★	1c Buff, Re-Issue (133). Wonderfully Well Centered, o. g., Very Fine	(Photo)	95.00
260 ★	1c Buff, Re-Issue (133). Fresh, o. g., tiny thin spot, Very Fine Appearance		95.00

BANK NOTE ISSUES

NATIONAL BANK NOTE COMPANY — GRILLED

261 ★	1c Ultramarine, Grill (134). Beautiful Color & Impression, Large Part o. g., small gum soak in grill, otherwise Fine	(Photo)	175.00
262 ★	1c Ultramarine, Grill (134). Fresh & Bright, centered to L., Fine	(Photo)	175.00
263 ★	2c Red Brown, Grill (135). Brilliant Color, Fresh, o. g., Very Fine from The Ambassador Collection	(Photo)	90.00
264 ★	2c Red Brown, Grill (135). Fresh, Rich Color, Fine	(Photo)	90.00
265 ★	3c Green, Grill (136). Brilliant o. g., Very Fine	(Photo)	55.00
266 ★	3c Green, Grill (136). Fresh, Large margins except just touching at bottom		55.00
267 ★	6c Carmine, Grill (137). Fresh, Large Part o. g., centered trifle to bottom, Very Fine, from The Ambassador Collection, with P. F. Certificate	(Photo)	350.00
268	6c Carmine, 7c Vermilion, Grill (137-138). Attractive Blue cancels, small faults, Fine-Very Fine Appearance		115.00

269 ★	7c Vermilion, Grill (138). Brilliant Deep Shade, Fresh, o. g., Very Fine, from the Ambassador Collection	(Photo)	275.00
270	10c Brown, Grill (139). Odd Grid cancel, Wonderfully Well Centered, Extremely Fine	(Photo)	120.00
271 ★	15c Orange, Grill (141). Brilliant Color, Fresh, o. g., Extremely Fine, from The Ambassador Collection	(Photo)	500.00
272	15c Orange, Grill (141). Neat Quartered Cork Cancel, owner mark shows slightly on face, otherwise Fine	(Photo)	175.00
273 ★	30c Black, Grill (143). Fresh, o. g., few tiny negligible perf. flaws, otherwise Very Fine, with P. F. Certificate	(Photo)	1,250.00

NATIONAL BANK NOTE COMPANY — WITHOUT GRILL

274 ★	1c Ultramarine, 2c Red Brown (145-146). Fresh, o. g., Very Fine		38.50
275 ★	1c-3c 1870-73 Issues (145-147, 156-158). Fresh, some o. g., couple small faults, others Fine-Very Fine		107.00
276 ★	6c Carmine (148). Fresh Bright Color, Part o. g., Very Fine	(Photo)	60.00
277 ★	6c Carmine (148). Fresh, part o. g., Very Fine	(Photo)	60.00
278 ★	7c Vermilion (149). Fresh, large part o. g., Very Fine	(Photo)	90.00
279 ★	7c Vermilion (149). Fresh, Large Part o. g., Fine, Lovely Color	(Photo)	90.00
280 ★	10c Brown (150). Wonderfully Fresh, Nearly Full o. g., Wide Margins, Extremely Fine	(Photo)	65.00
281 ★	10c Brown (150). Fresh & Bright, Fine		65.00
282 ★	12c Dull Violet (151). Large Part o. g., Fresh & Fine	(Photo)	165.00
283	12c Violet (151). Used, Beautiful Color & Choice Centering, Extremely Fine	(Photo)	14.00
284 ★	15c Bright Orange (152). Lovely Color, Large Part o. g., Fine	(Photo)	140.00
285 ★	15c Orange (152). Fine	(Photo)	140.00
286 ★	24c Purple (153). Fresh, Gorgeous color, nearly full o. g., Extremely Fine	(Photo)	115.00
287 ★	24c Purple (153). Rich Color, Fresh, Part o. g., Very Fine	(Photo)	115.00
288 ★	24c Purple (153). Large Part o. g., Bright Shade, single nicked perf., otherwise Fine		115.00
289 ★	30c Full Black (154). Gorgeous Color, Part o. g., Very Fine, ex-Lilly	(Photo)	300.00
290 ★	30c Black (154). Fresh, Rich Color, Fine, with P. F. Certificate	(Photo)	300.00
291 ★	90c Carmine (155). Wonderful Brilliant Color, Fresh, o. g., Extremely Fine, ex-Lilly	(Photo)	350.00
292 ★	90c Carmine (155). Fresh & Bright, Fine	(Photo)	350.00

CONTINENTAL BANK NOTE COMPANY

293 ★	1c-10c 1870-88 Bank Notes (156-158, 182-184, 205-207, 209-211, 212-216). Fresh Colors, Choice Centering Throughout, Virtually All o. g., few minor flaws, otherwise Very Fine, Exceptional Appearance, incl. extra shade of #211		274.25
294 ★	3c Green, Continental Grill (158e). Fresh, o. g., Very Fine	(Photo)	65.00
295 ★	6c Dull Pink (159). Fresh, reperf at R., part o. g., Very Fine Appearance		55.00
296 ★	6c Dull Pink (159). Fresh, o. g., Fine	(Photo)	55.00
297 ★	7c Orange Vermilion (160). Marvelous Rich Color, Nearly Full o. g., reperfed, Very Fine Appearance	(Photo)	100.00

298 ★	7c Orange Vermilion (160). Fresh, reperfed, Very Fine Appearance (Photo)	100.00
299 ★	10c Brown (161). Fresh, Rich Color, Very Fine (Photo)	55.00
300 ★	10c Brown (161). Rich Color, reperfed at left, Extremely Fine Appearance	55.00
301 ★	12c Blackish Violet (162). Fresh, o. g., Fine (Photo)	185.00
302 ★	15c Yellow Orange (163). Lovely Color Fresh, Virtually Full o. g., Very Fine (Photo)	150.00
303 ★	30c Gray Black (165). Unusually Rich Color, Fresh, o. g., Very Fine, ex-Lilly (Photo)	150.00
304 ★	30c Gray Black (165). Fresh, reperfed, Very Fine Appearance (Photo)	150.00
305 ★	90c Rose Carmine (166). Fresh, o. g., Very Fine (Photo)	325.00
306 ★	90c Rose Carmine (166). Fresh, tiny corner perf crease, reperf at R., Very Fine Appearance (Photo)	325.00
307 ★	2c Vermilion (178). Fresh, o. g., Extremely Fine, ex-Stern (Photo)	57.50
308 ★	2c Vermilion (178). Fresh & Bright, part o. g., Fine (Photo)	57.50
<hr/>		
309 ★	2c Vermilion, Imperforate (178a). Horiz. Pair, Ample to Huge Margins, Full o. g. Extremely Fine, from The Ambassador Collection (Photo)	600.00
<hr/>		
310 ★	5c Blue (179). Fresh, o. g., "Jumbo" Margins, Choice Centering, Extremely Fine, A "Gem" (Photo)	47.50
311 ★	5c Blue (179). Fresh, Large Part o. g., Well Centered with Wide Left Margin, Extremely Fine (Photo)	47.50
312 ★	5c Blue (179). Fresh, o. g., Very Fine, ex-Stern (Photo)	47.50
313 ★	5c Blue (179). Fresh, Very Fine (Photo)	47.50

AMERICAN BANK NOTE CO.

314 ★	1c Ultramarine (182). Fresh, o. g., Fine	35.00
315 ★	2c-5c 1879-1888 Bank Notes (183, 213-216). Fresh, o. g., nos. 183 & 215 reperfed, #216 tiny closed tear, Very Fine Appearance	70.25
316 ★	5c Blue (185). Fresh, o. g., Fine	40.00
317 ★	6c Dull Pink (186). Fresh, Large Part o. g., reperfed at top, Very Fine Appearance (Photo)	150.00
318 ★	6c Pink (186). Fine (Photo)	150.00
319 ★	10c Brown (187). Fresh, Nearly Full o. g., negligible corner crease, Fine Appearance (Photo)	185.00
320 ★	10c Brown (188). Fresh, Well Centered, Very Fine (Photo)	77.50
321 ★	10c Brown (188). Fresh, o. g., tiny natural paper spot, Very Fine, ex-Lilly (Photo)	77.50
322 ★	15c Red Orange (189). Fresh & Bright, o. g., Extremely Fine (Photo)	30.00
323 ★	15c Red Orange (189). Fresh, Very Fine (Photo)	30.00
324 ★	15c Red Orange (189). Fresh, o. g., reperfed at right, Very Fine Appearance	30.00
325 ★	30c Full Black (190). Fresh, o. g., Extremely Fine (Photo)	95.00
326 ★	30c Full Black (190). Fresh, Fine (Photo)	95.00
327 ★	90c Carmine (191). Fresh, o. g., Extremely Fine (Photo)	325.00
328 ★	90c Carmine (191). Fresh, Rich Color, o. g., faint thin spot, Very Fine Appearance (Photo)	325.00
329 ★	5c Yellow Brown (205). Fresh, o. g., Very Fine (Photo)	25.00
330 ★	6c Rose (208). Fresh, Beautiful Color & Centering, o. g., tiny thin speck, Very Fine Appearance (Photo)	75.00
331 ★	6c Brown Red (208a). Well Centered, Fresh, o. g., tiny thin spot, Very Fine Appearance (Photo)	60.00
332 ★	6c Brown Red (208a). Fresh, o. g., reperfed, Very Fine Appearance (Photo)	60.00
333 ★	1c-4c 1883-87 Issue (210-211, 212-214). Fresh, o. g., Fine-Very Fine	53.50

334 ★	2c Pale Red Brown, Special Printing (211B). Mint, centered slightly to T., Very Fine	(Photo)	300.00
335 ★	2c Pale Red Brown, Special Printing (211B). Fresh, o. g., tiny thin spot, Fine Appearance	(Photo)	300.00
336 ★	4c Carmine, 5c Indigo (215-216). Fresh, o. g., Fine-Very Fine		42.50
337 ★	30c Orange Brown (217). Fresh, o. g., Extremely Fine	(Photo)	82.50
338 ★	30c Orange Brown (217). Fresh & Bright, o. g., Very Fine	(Photo)	82.50
339 ★	30c Orange Brown (217). Fresh, Part o. g., couple thin spots, Fine Appearance		82.50
340 ★	90c Purple (218). Fresh, o. g., Huge Margins, Extremely Fine	(Photo)	210.00
341 ★	90c Purple (218). Fresh, Large Part o. g., Very Fine	(Photo)	210.00
342 ★	90c Purple (218). Fresh, o. g., tiny natural paper speck, reperfed at right, Extremely Fine Appearance	(Photo)	210.00

1890 ISSUE

343 ★	1c-90c 1890 Issue (219-229). Cpl. Set, first two tiny flaws, 10c-90c reperfed, Virtually All Unusually Well Centered, Very Handsome Appearance Lot		384.75
344 ★	1c-30c 1890 Issue (219-223, 225-226, 228). Fresh, o. g., few small faults, Fine-Very Fine Appearance, the 6c Extremely Fine		209.75
345 ★	1c-10c 1890 Issue (219-226). Fresh, o. g., 2c & 10c small faults, 4c, 5c & 15c reperfed, others Very Fine		192.25
346 ★	1c Dull Blue, Imperforate (219c). Horiz. Pair, Fresh, o. g., Very Fine	(Photo)	125.00
347 ★	3c Purple, Imperforate (221a). Horiz. Pair, o. g., Fresh & Very Fine	(Photo)	175.00
348 ★	4c Dark Brown, Imperforate (222a). Horiz. Pair, Fresh, o. g., Very Fine	(Photo)	150.00
349 ★	4c Rose Brown, Imperforate (222a). Horiz. Pair, Fresh, o. g., faint thin spots, Very Fine Appearance	(Photo)	150.00
350 ★	5c Yellow Brown, Imperforate (223b). Horiz. Pair, o. g., Very Fine	(Photo)	150.00
351 ★	5c Dark Brown, Imperforate (223b). Horiz. Pair, Fresh, o. g., tiny thin spots, Very Fine Appearance	(Photo)	150.00
352 ★	6c Brown Red, Imperforate (224a). Horiz. Pair, Huge Margins, o. g., Extremely Fine	(Photo)	150.00
353 ★	8c Lilac, Imperforate (225a). Horiz. Pair, o. g., Extremely Fine	(Photo)	400.00
354 ★	10c Green, Imperforate (226a). Horiz. Pair, Fresh, o. g., Large Margins, Very Fine	(Photo)	200.00
355 ★	10c Green, Imperforate (226a). Mint Horiz. Strip of Three, Very Fine	(Photo)	300.00
356 ★	15c Indigo (227). Wonderfully Well Centered, Fresh, o. g., Beautiful Margins, Extremely Fine	(Photo)	50.00
357 ★	15c Indigo, Imperforate (227a). Vertical Pair, Mint, Very Fine	(Photo)	300.00
	toned spots in margins only, tiny thin specks, otherwise Very Fine	(Photo)	300.00
358	15c Indigo, Imperforate (227a). Vert. Pair, o. g., T. Sheet margin, tiny toned spots in margins only, tiny thin specks, otherwise Very Fine	(Photo)	200.00
359 ★	30c Black (228). Fresh, o. g., Fine		50.00
360 ★	30c Black (228). Black, Fresh, o. g., couple small hinge reinforcements, right perfs. touch to clear	(Photo)	270.00+
361 ★	30c Black, Imperforate (228a). Horiz. Pair, Mint, crease between stamps, Very Fine, Very Scarce	(Photo)	650.00
362 ★	30c Black, Imperforate (228a). Horiz. Pair, o. g., small thin spot virtually entirely in right stamp, Very Fine Appearance	(Photo)	650.00

363 ★	90c Orange (229). Fresh, o. g., centered trifle to top, Very Fine (Photo)	125.00
364 ★	90c Orange (229). Fresh, slightly disturbed o. g., Very Fine (Photo)	125.00
365 ★	90c Orange, Imperforate (229a). Horiz. Pair, Fresh, o. g., one stamp thin as often, Very Fine Appearance (Photo)	1,100.00

COLUMBIAN ISSUE

366 ★	1c-10c Columbians (230-232, 234, 236-237). Nearly All o. g., couple minor flaws, 3c & 5c with Beautiful Large Margins, Attractive Lot	108.25
367 ★	1c-15c Columbians (230-236, 238). Fresh, o. g. except 6c & 8c, few hinge remnants or small faults, Fine-Very Fine Appearance	178.25
368 ★	1c Columbian (230). T. Imprint, "00" & Plate No. 161 Strip of Four, Fresh, Full o. g., Huge Top & Bottom Margins, Extremely Fine	55.00
369 ★田	1c-2c Columbians (230-231). Blocks, Fresh, o. g., two 1c small thin spots, others Very Fine	57.50
370 ★田	3c Columbian (232). Block, Fresh, o. g., Well Centered, Extra Large Bottom & Left Margins, small thin spots in bottom pair, otherwise Extremely Fine	60.00
371 ★	4c Columbian (233). Mint, Extremely Fine (Photo)	22.50
372 ★田	4c Columbian (233). Brilliant Mint Block, Perfectly Centered, Extremely Fine (Photo)	90.00
373 ★田	4c Columbian (233). Block, Fresh, o. g., Fine	90.00
374 ★田	4c Columbian (233). Block, separations, one stamp small faults, others V. G.	90.00
375 ★田	5c Columbian (234). Block, Brilliant o. g., Beautiful Margins, Extremely Fine, the Bottom Right Stamp a Magnificent "Jumbo" (Photo)	100.00
376 ★	6c Columbian (235). Plate No. Single, Brilliant Mint (hinged in selvage only), Huge Top & Bottom Margins, single partly blunted perf., otherwise Extremely Fine, Spectacular (Photo)	25.00
377 ★田	6c Columbian (235). Block, Fresh, o. g., top right stamp tiny corner stain, otherwise Fine-Very Fine	100.00
378 ★田	8c Columbian (236). Mint Block, Very Fine	60.00
379 ★	10c Columbian (237). Fresh, o. g., Very Fine (Photo)	40.00
380 ★田	10c Columbian (237). Block, Fresh, o. g., one short perf. otherwise Extremely Fine	160.00
381 ★	15c-30c Columbians (238-239). 15c strengthened corner perf., 30c small corner repair, Very Fine Looking	152.50
382 ★田	15c Columbian (238). Block, Deep Rich Color, Fresh, o. g., Extremely Fine, Beautiful Block (Photo)	250.00
383 ★	30c Columbian (239). Fresh, o. g., light crease, small scuff, otherwise Very Fine	90.00
384 ★田	30c Columbian (239). Mint Block, Extremely Fine, Very Scarce in Such Beautiful Condition (Photo)	350.00
385 ★	50c Columbian (240). Fresh, o. g., tiny corner crease, Very Fine Appearance (Photo)	130.00
386 ★	50c Columbian (240). Single perf. added at top, otherwise Very Fine (Photo)	130.00
387 ★田	50c Columbian (240). Block, Intense Color, Well Centered, o. g., tiny bits of black paper on back of one, top right stamp couple short perfs, Bottom Pair Extremely Fine (Photo)	550.00
388 ★	\$1.00 Columbian (241). Fresh, Rich Color, o. g., Centered to R., perfs. close, tiny thin speck & natural paper inclusion speck, Fine Appearance (Photo)	400.00



3



14



15



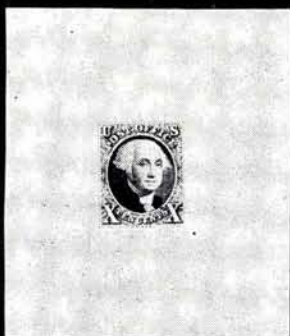
16



17



18



21



22



23



51



89



92



93



103



116



221



223



225



237



360



372





40



42



48



51



50



60



46



53



54



55



56



57



58



59



62



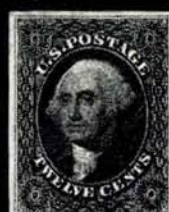
63



64



68



69



72



65



73



75



76



80

83

85

90

95



79



97



98



100



102



101



104



107



108



110



112



113



117



118



119



123



124



125



126



127



128



129



130



131



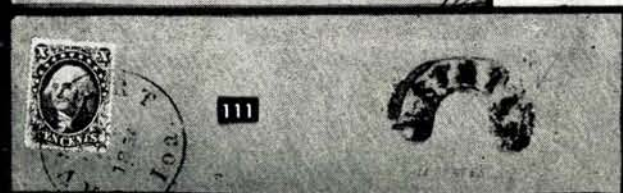
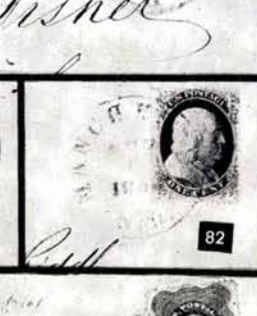
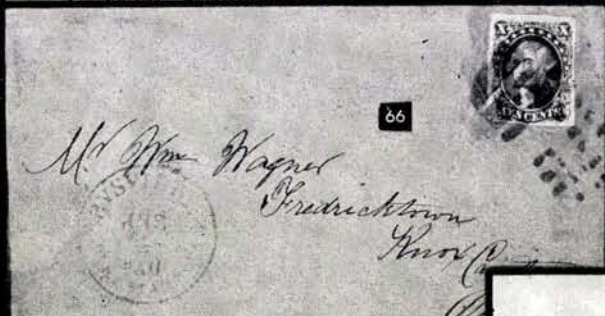
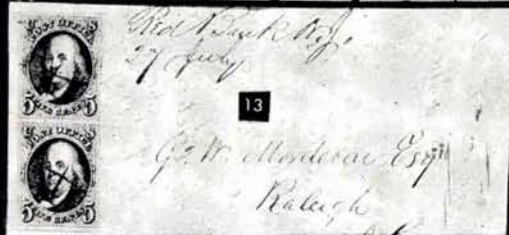
132



133



134





135



136



137



138



139



140



141



142



143



145



148



147



152



154



156



158



160



161



162



164



165



168



169



170



172



174



175



177



178



179



180



181



182



183



184



185



186



187



188



190



191



192



193



194



196



197



198



200



201



202



203



204



205



206



207



208



210



211



212



213



214



215



216



217



218



219



220



222



224



226



227



228



230



231



232



233



234



235



236



238



239



240



242



243



244



245



246



247



248



249



250



251



252



253



254



255



256



257



258



259



261



262



263



264



265



267



269



270



272



273



276



277



278



279



280



282



283



284



285



286



287



289



290



291



292



294



296



297



298



299



301



302



303



304



305



306



307



308



309



310



311



312



313



317



318



319



320



321



322



323



325



326



327



328



329



330



331



332



334



335



337



338



340



341



342



346



347



357



348



349



350



351



352



353



358



354



355



356



361



362



363



365



364



371



379



376



385



386



388



376



389



390



391



392



393



394



395



396



397



400



403



404



405



406



407



408



409



413



414



415



418



419



420



421



422



423



429



436



438



439



440



441



442



443



446



453



455



456



375



382



384



387



430



432



433



435



437



447



448



451



452



473



516



524



517



518



457



458



459



460



461



462



463



464



465



466



469



470



474



478



475



476



481



482



497



483



485



501



486



488





487



490



520



491



494



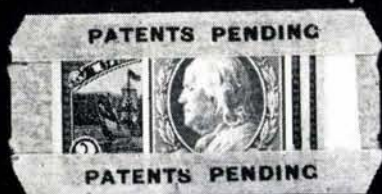
495



499



500



505



521



529



522



536



538



531



532



540



541



542



543



544



545



546



547



548



549



550



551



555



560



565



561



566



567



571



572



575



576



579



585



582



583



590



591



592

593



596



597



603



604



605



606



608



609



615



611



612



620



614



616

617

619

621



622



623



624



619



7718



633



629



634



636



638



639



640



10209



641



642



645



648



658



653



667



663



664



670



671



673



674



675



676



702



589



725

590



573



581



644



631



647



666



677



678



679



683



632



652



661



660



719



720



699



700



701



734



741



743



746



773



747



775



756



759



760



761



762



764



765



766



767



770



772



777



778



781



786



787



788



784EX



782



792



795



692



696



716



733



735



736



737



738

793



129201



742

796



744



131983



745



134318

798



799



800



825



828



826



827



823



824

389 ★	\$1.00 Columbian (241). Some slight "bleeding" of color, tiny tear at top, otherwise Fine (Photo)	400.00
390 ★	\$2.00 Columbian (242). Fresh, Large Part o. g., Wonderfully Well Centered, tiny thin spot, Extremely Fine Appearance (Photo)	435.00
391 ★	\$2.00 Columbian (242). Remarkably Fresh & Bright, o. g., Fine (Photo)	435.00
392 ★	\$3.00 Columbian (243). Gorgeous Color, Fine & Handsome (Photo)	675.00
393 ★	\$3.00 Columbian (243). Fresh, o. g., tiny thin speck, Fine Appearance (Photo)	675.00

394 ★	\$4.00 Columbian (244). Fresh Color, Lovely Margins, tiny thin spots & couple slightly short perms. at left, otherwise Extremely Fine (Photo)	950.00
-------	--	--------

395 ★	\$4.00 Columbian (244). Gorgeous color, o. g., thin, Fine Appearance (Photo)	950.00
-------	---	--------

396 ★	\$5.00 Columbian (245). Magnificent Centering & Freshness, o. g., Very Fine, A Beautiful Stamp (Photo)	1,000.00
-------	---	----------

397 ★	\$5.00 Columbian (245). Three Unusually Large Margins, tiny corner perf. crease & faint negligible corner crease at opposite corner, otherwise Very Fine, Exceptional Appearance (Photo)	1,000.00
-------	---	----------

1894 ISSUE — UNWATERMARKED

398 ★	1c-15c 1894 Issue (246, 253-259). Fresh, Nearly Full o. g., Fine-Very Fine Lot (Photo)	173.00
399 ★	1c-10c 1894 Issue (246-250, 252-258). Few Mint, others o. g., #248, #258 reperf., others Fine-Very Fine (Photo)	168.25
400 ★	2c Carmine, Ty. II (251). Plate No. Single, Fresh, o. g., Very Fine (Photo)	50.00
401 ★	2c Carmine, Ty. II (251). Fresh, o. g., Fine (Photo)	50.00
402 ★	6c, 15c-50c 1894 Issue (256, 259-260). 50c o. g. & small faults, others Fine-Very Fine (Photo)	147.50
403 ★	50c Orange (260). Fresh, o. g., Very Fine (Photo)	70.00
404 ★	\$1.00 Black, Ty. I (261). Fresh, o. g., Very Fine (Photo)	210.00
405 ★	\$1.00 Black, Ty. II (261A). Reperfed, Very Fine Appearance (Photo)	350.00
406 ★	\$1.00 Black, Ty. II (261A). Fresh, o. g., natural gum crease, small thin spots, Very Fine Appearance (Photo)	350.00
407 ★	\$2.00 Dark Blue (262a). Fresh, Large Part o. g., light gum bend, Fine (Photo)	385.00
408 ★	\$2.00 Bright Blue (262). Fresh, o. g., Two Extra Large Margins, small closed tear, Very Fine Appearance (Photo)	365.00
409 ★	\$5.00 Dark Green (263). Fresh, o. g., Centered to B., perms clear, thin spot, Fine appearance (Photo)	800.00

1895 ISSUE — WATERMARKED

410 ★	1c-10c 1895 Issue (264-270, 272-273). Fresh, Nearly All o. g., Very Fine Lot (Photo)	58.65
411 ★	1c-8c 1895 Issue (264-272). Extra #266-267 in Se-Tenant Pair, o. g., 3c tiny gum soak, pair small thin spot, others Very Fine (Photo)	85.15
412 ★	10c-50c 1895 Issue (273-275). Fresh, o. g., small faults or reperfed, Fine-Very Fine Appearance (Photo)	120.00
413 ★	15c Dark Blue (274). Choice Centering, "Jumbo" Margins, slightly rounded corner perf., otherwise Extremely Fine (Photo)	42.50

414 ★	50c Red Orange (275a). Fresh, Large Part o. g., Very Fine (Photo)	70.00
415 ★	\$1.00 Black, Ty. I (276). Fresh, o. g., Very Fine (Photo)	175.00
416 ★	\$1.00 Black, Ty. I (276). Fresh, Large Part o. g., tiny thin spots, Fine Appearance (Photo)	175.00
417 ★	\$1.00 Black, Ty. I (276). Reperfed, small faults under regunmming, Very Fine Appearance (Photo)	175.00
418 ★	\$1.00 Black, Ty. II (276A). Fresh, centered to R., perfs. clear, Fine (Photo)	350.00
419 ★	\$1.00 Black, Ty. II (276A). Fresh, Large Part o. g., left perfs. touch (Photo)	350.00
420 ★	\$2.00 Bright Blue (277). Fresh, o. g., Fine (Photo)	235.00
421 ★	\$2.00 Bright Blue (277). Couple faint creases & tiny thin spot, Fresh Color, Very Fine Appearance (Photo)	235.00

422 ★	\$5.00 Dark Green (278). Fresh, o. g., Very Fine, Choice & Handsome (Photo)	500.00
-------	--	--------

423 ★	\$5.00 Dark Green (278). Fresh, Part o. g., small corner thins, Very Fine Appearance (Photo)	500.00
-------	---	--------

1898 ISSUE

424 ★	1c-15c 1898 Issue (279, 280-282, 283-284). Most o. g., Well Centered, 15c reperfed at right, otherwise Very Fine Lot (Photo)	84.50
425 ★	1c-15c 1898 Issue (297-284). Fresh, o. g. #282c small thin spot, others Fine-Very Fine (Photo)	126.00
426 ★	2c Orange Red, Booklet Pane (279Be). Fresh & Fine (Photo)	250.00

TRANS-MISSISSIPPI ISSUE

427 ★	1c-8c Trans-Mississippi (285, 287-289). Wonderfully Fresh, o. g., 4c & 5c reperfed, otherwise Very Fine (Photo)	146.50
428 ★	1c-2c Trans-Mississippi (285-286). Blocks, Fresh, o. g., Extremely Fine, from the Ambassador Collection (Photo)	65.00
429 ★	4c Trans-Mississippi (287). Bright color, o. g., Extremely Fine (Photo)	45.00
430 ★	4c Trans-Mississippi (287). Block, Fresh, o. g., Very Fine (Photo)	180.00+
431 ★	5c, 10c Trans-Mississippi (288, 290). Fresh, o. g., each with tiny thin speck, Very Fine Appearance (Photo)	105.00
432 ★	5c Trans-Mississippi (288). Block, Choice Margins & Centering, Fresh, Full o. g., Extremely Fine (Photo)	150.00
433 ★	5c Trans-Mississippi (288). Block, Fresh, o. g., Wonderfully Well Centered, one stamp tiny thin, otherwise Extremely Fine (Photo)	150.00
434 ★	8c Trans-Mississippi (289). Fresh, Part o. g., Very Fine (Photo)	55.00
435 ★	8c Trans-Mississippi (289). Block, one stamp lightly hinged, others Mint, Very Fine (Photo)	220.00+
436 ★	10c Trans-Mississippi (290). Beautiful Margins & Centering, tiny thin speck, Extremely Fine Appearance (Photo)	67.50
437 ★	10c Trans-Mississippi (290). Mint Block, Very Fine (Photo)	270.00+
438 ★	50c Trans-Mississippi (291). Large Margins, slightly disturbed o. g., Extremely Fine (Photo)	250.00
439 ★	50c Trans-Mississippi (291). Fresh, o. g., tiny corner crease, couple partly blunted perfs., few specks of red on some perf. tips, barely noticeable, otherwise Fine (Photo)	250.00

440 ★	\$1.00 Trans-Mississippi (292). Fresh, o. g., Extremely Fine, A Beautiful Stamp	(Photo)	550.00
441 ★	\$1.00 Trans-Mississippi (292). Brilliant Mint, trivial creased corner perf., nevertheless Extremely Fine	(Photo)	550.00
442 ★	\$2.00 Trans-Mississippi (293). Brilliant Colors, Beautifully Centered, tiny rift in one perf., Mint, Very Fine Appearance	(Photo)	750.00
443 ★	\$2.00 Trans-Mississippi (293). Fresh, o. g., reperfed, Very Fine Appearance	(Photo)	750.00

END OF FIRST SESSION

LOTS ON VIEW FROM DECEMBER 5th OFFICES OPEN SATURDAY BEFORE SALE

DESCRIPTIONS

EXTREMELY FINE: The finest condition for noteworthy, outstanding copies.

VERY FINE: (V. F.) In prime condition such as to satisfy the requirements of particular collectors.

FINE: (F) Perforations or margins do not touch design on issues after 1890 but in some cases may just touch in earlier issues. If used, fairly light cancellation.

VERY GOOD: (V. G.) Generally nice appearance but margins or perforations may cut in slightly.

GOOD: Average off-centering or fairly attractive with slight defects.

ORIGINAL GUM is not to be expected on 19th century stamps unless so stated in the description.

MINT: With original gum and never hinged.

Scott 1976 Standard Catalogues Part I & II used for U. S. singles, British Commonwealth and "A" to "I" countries. Scott 1975 U. S. Specialized and Standard Cat. Part III for others. Use of other catalogues noted in description.

SECOND SESSION

WEDNESDAY, DECEMBER 10, 1975 — 1:00 P. M.

TWENTIETH CENTURY ISSUES

PAN-AMERICAN ISSUE

444 ★	1c-10c Pan-American (294-299). Cpl. Set, Plate No. Singles, 2c Double Plate No. Pair, some minor gum disturbances, Fine-Very Fine Set	183.25+
445 ★	4c Pan-American (296). Very Fine	30.00
446 ★	8c Pan-American (298). Mint, Very Fine	(Photo) 47.50
447 ★	8c Pan-American (298). Block, Fine-Very Fine	(Photo) 190.00
448 ★	10c Pan-American (299). Block, Very Fine	(Photo) 240.00

1902 ISSUE

449 ★	1c-13c 1902 Issue (300-306, 308). Very Fine Lot	62.35
450 ★	1c-15c 1902 Issue (300-309). Hinge remnants, last two small faults, others Fine-Very Fine	126.00
451 ★	1c Blue Green, Booklet Pane (300b). Fine-Very Fine	(Photo) 325.00
452 ★	2c Carmine, Booklet Pane (301c). Very Fine	(Photo) 325.00
453 ★	15c Olive Green (309). Extra Large Margins, Extremely Fine	(Photo) 47.50
454 ★	15c Olive Green (309). Plate No. Single, Three Large Margins, centered to top, perfs. clear	47.50
455 ★	50c Orange (310). Very Fine	(Photo) 135.00
456 ★	50c Orange (310). Excellent Centering, tiny internal wrinkle, rounded corner perf., otherwise Extremely Fine	(Photo) 135.00
457 ★	\$1.00 Black (311). Without gum, "Jumbo" Margins, Beautiful Centering, Extremely Fine Appearance, An Incredible Stamp	(Photo) 225.00
458 ★	\$1.00 Black (311). Fine	(Photo) 225.00
459 ★	\$2.00 Dark Blue (312). Centered trifle to bottom, Very Fine	(Photo) 325.00
460 ★	\$2.00 Dark Blue (312). Fine	(Photo) 325.00
461 ★	\$2.00 Dark Blue (312). Fine	(Photo) 325.00
462 ★	\$2.00 Dark Blue (312). Centered to bottom, perfs. clear	(Photo) 325.00
463 ★	\$2.00 Dark Blue (312). Centered to bottom, nearly all perfs. clear	(Photo) 325.00
464 ★	\$2.00 Dark Blue (312). Tiny thin spot, Fine Appearance	(Photo) 325.00
465 ★	\$5.00 Dark Green (313). Extremely Fine	(Photo) 600.00
466 ★	\$5.00 Dark Green (313). Rich Color, reperf. at R., Fine Appearance	(Photo) 600.00
467 ★	1c Blue Green, 2c Carmine (314, 320). Blocks, one 2c with small fault, otherwise Very Fine	105.00
468 ★	1c Blue Green, Imperforate (314). T. Imprint & Plate No. 3366 Block of Sixteen, Mint, Very Fine	274.00
469 ★	5c Blue, Imperforate (315). Horiz. Pair, Very Fine	(Photo) 550.00
470 ★	5c Blue, Imperforate (315). Horiz. Pair, light natural gum bend in one, Very Fine	(Photo) 550.00

471 ★	2c Scarlet, Booklet Pane (319gc). Very Fine	40.00
472 ★田	2c Lake, Imperforate (320a). Mint Block, with T. Plate No. tiny natural gum skips, Very Fine	82.50
473 ★田	2c Scarlet, Imperforate (320b). Center Line Block, Very Fine (Photo)	175.00

U. S. PRIVATE VENDING MACHINE COIL STAMPS

Arranged alphabetically by company.

THE BRINKERHOFF CO.

474 ★	2c Alaska-Yukon, Ty. I (371). Horiz. Pair, light gum disturbance, Very Fine (Photo)	125.00
475 ★	2c Hudson-Fulton, Ty. II (373). Mint Pair, Very Fine (Photo)	110.00
476 ★	2c Hudson-Fulton, Ty. II (373). Guide Line Pair, Mint, Very Fine & Scarce (Photo)	150.00
477 ★	BRINKERHOFF COMPANY, 1906-12, Collection of 107 Unused Stamps, All in Pairs or Strips, All Types represented, incl. Line Pairs, Paste-ups, 1909 Commems, Many Scarce Items, Virtually All Fine-Very Fine	1,210.00+

THE FARWELL CO.

478 ★	2c Carmine, Group I, Seven Holes (384). Pair, Very Fine & Scarce (Photo)	150.00
479 ★	2c Carmine, Group II, 2B3 (384). Mint Pair, Very Fine	80.00
480 ★	FARWELL COMPANY, 1911-12, Collection of 39 Unused Stamps, All in Pairs or Strips, Most Groups Represented, Line Pairs, Plate No. etc, Many Scarce Items, Virtually All Fine-Very Fine	201.25+

INTERNATIONAL VENDING MACHINE CO.

481 ★	2c Scarlet, International Vending Machine Co. (320b). Pair, centered far to Left as usual, Fresh, Very Scarce (Photo)	250.00
482 ★	3c Deep Violet, International Vending Machine Co. (345). Strip of Four, one stamp small thin spot, some slight reinforcing at extreme Left, Very Fine Appearance, Unpriced; Philatelic Foundation declines opinion, 1968 (Photo)	—

THE MAILOMETER CO.

483 ★	2c Scarlet, Mail-O-Meter Ty. II (320b). Pair, Very Fine (Photo)	85.00
484 ★	2c Hudson-Fulton, Mail-O-Meter Ty. II (373). Strip of Three, Very Fine	75.00
485 ★	2c Alaska-Yukon, Mail-O-Meter Ty. III (371). Pair, Very Fine (Photo)	90.00
486 ★	2c Alaska-Yukon, Mail-O-Meter Ty. IV (371). Pair, Very Fine (Photo)	125.00
487 ★	2c Hudson-Fulton, Mail-O-Meter Ty. IV (373). Pair, Very Fine (Photo)	135.00
488 ★	3c Violet, Ty. I, Mail-O-Meter Ty. IV (483). Paste-up Strip of Four, Two diff. shades, Very Fine & Very Scarce (Photo)	120.00
489 ★	MAIL-O-METER COMPANY, 1906-19, Collection of 169 Unused Stamps, Nearly all in Pairs or Strips, All Types represented, incl. Line Pairs, Paste-up, 1909 Commems, Spacing Varieties, Many Scarce Items, Fine-Very Fine Collection	1,604.50+

THE SCHERMACK CO.

490 ★	1c Blue Green, Schermack Ty. I, Seven Holes (314). Pair, Very Fine, Scarce (Photo)	150.00
491 ★	2c Lincoln, Schermack Ty. I, Six Holes (368). Pair, Very Fine (Photo)	85.00

492 ★	2c Lincoln, Schermack Ty. I (368). Center Line Block of Sixteen, some gum Wrinkling, few small faults, others Very Fine, cat. as Pairs & Guide Line Pairs, Very Scarce	330.00+
493 ★	2c Lake, Schermack Ty. II (320a). Guide Line Strip of Four, Guide line in center, Very Fine	77.50
494 ★	3c Deep Violet, Schermack Ty. III, 3mm Spacing (345). Strip of Four, Mint, Very Fine & Scarce (Photo)	300.00+
495 ★	1c Green, Schermack Ty. III (575). Pair, Very Fine (Photo)	100.00
496 ★	SCHERMACK COMPANY, 1906-23, Collection of 200 Unused Stamps & One Used Stamp, nearly all in Pairs or Strips, all types represented incl. 35 Types I & II, Line Pairs, Paste-ups, 1909 Commems, Spacing Varieties, Many Scarce Items, Nearly All Fine-Very Fine	1,246.85+

THE U.S. AUTOMATIC VENDING CO.

497 ★	5c Blue, U. S. Automatic Vending Co., Ty. I (315). Pair, Very Fine (Photo)	350.00
498 ★	2c Lincoln, U. S. Automatic Vending Co., Ty. I (368). Block of Eight, (2x4), with B. Star & Plate No. 4976, Very Fine & Scarce	80.00+
499 ★	5c Blue, U. S. Automatic Vending Co., Ty. II (315). Pair, Very Fine (Photo)	325.00
500 ★	5c Blue, U. S. Automatic Vending Co., Ty. III (315). Pair, Very Fine (Photo)	300.00
501	2c Carmine, Rotary Imperforate Coil, Ty. III (459). Used Single, Very Fine & One of the Great Twentieth Century Rarities, with P. F. Certificate (Photo)	E. XV

U. S. AUTO-VENDING "POCKETS"

502 ★	U. S. Automatic Vending Co. Pocket Ty. II (343, 344, Two). Very Fine	E. VI
503 ★	U. S. Automatic Vending Co. Pockets, Ty. II (343, 371, Two). 1c has Perfs Ty. I, Very Fine	E. VII
504 ★	U. S. Automatic Vending Co. Pocket, Ty. II (343, 372, Two). Contains folded Pair of Perforated Hudson-Fulton, Very Unusual	E. VI
505 ★	U. S. Automatic Vending Co. Pocket, Ty. II (343, 373, Two). Very Fine (Photo)	E. VII
506 ★	A Similar Lot	E. VII
507 ★	A Similar Lot	E. VII
508 ★	U. S. Automatic Vending Co. Pocket, Ty. II (373, Two). Contains folded Pair of #373, Ty. II perfs, pocket has tiny tear, otherwise Very Fine	E. VI
509 ★	U. S. AUTOMATIC VENDING COMPANY, Collection of 153 Unused Stamps all in Pairs or Strips, also Used Pair, All Types represented, Line Pairs, 1909 Commems, Many Scarce Items, Nearly All Fine-Very Fine	1,108.75+
510 ★	ATTLEBORO, MASS., Experimental Perfs (343, 345, 371). #343 Vert. Pair, Single & Used Single tied on piece by "Attleboro, Mass." in Double Oval, #345 Horiz. Pair, #371 single, Interesting Lot, Considered by many to be a True Private Vending Machine Co., Fine-Very Fine, All scarce	E. VIII

LOUISIANA PURCHASE ISSUE

511 ★	1c-10c Louisiana-Purchase (323-327). Cpl. Set, Top Three Values Unusually Well Centered, Very Fine	174.00
512 ★	1c-10c Louisiana Purchase (323-327). Cpl. Set, few perf. faults, others Fine-Very Fine	174.00

513 ★	1c-10c Louisiana Purchase (323, 325-327). Last three regummed, 10c with crease, V. G.-V. F. Appearance	165.00
514 ★	1c Louisiana Purchase (323). B. Imprint & Plate No. 2129 Block, Choice Centering, small internal selvedge tear, otherwise Extremely Fine	125.00
515 ★	2c Louisiana Purchase (324). T. Imprint & Plate No. 2128 Block, Very Fine	135.00
516 ★	3c Louisiana Purchase (325). B. Imprint & Plate No. 2104 Block, Very Fine Plate Block	(Photo) 325.00

517 ★	5c Louisiana Purchase (326). T. R. Imprint & Plate No. 2100 Block of Eight, few lightly strengthened perfs., Fine-Very Fine	(Photo) 600.00
-------	---	----------------

518 ★	10c Louisiana Purchase (327). Block, Fine-Very Fine	(Photo) 350.00
-------	---	----------------

JAMESTOWN ISSUE

519 ★	1c-5c Jamestown (328-330). Very Fine Set, Unusually well centered	53.25
520 ★	5c Jamestown (330). Mint, Very Fine	(Photo) 40.00
521 ★	5c Jamestown (330). Mint, Very Fine	(Photo) 40.00
522 ★	5c Jamestown (330). Mint Plate No. Single, centered trifle to right, Very Fine	(Photo) 40.00
523 ★	5c Jamestown (330). Reperfed at bottom, Extremely Fine Appearance	40.00
524 ★	5c Jamestown (330). Block, Well Centered, Very Fine Block	(Photo) 165.00

1908 ISSUE

525 ★	1c Green, 2c Carmine (331-332). "Jumbo" Margins, Extremely Fine	2.25
526 ★	1c Green, Booklet Pane (331a). Fine	65.00
527 ★	2c Carmine, Booklet Pane (332a). Fine-Very Fine	65.00
528 ★	3c-15c 1908 Issue (333-340). Couple reperfed, others Fine-Very Fine	74.50
529 ★	50c Violet (341). Very Fine	(Photo) 72.50
530 ★	50c Violet (341). Gum slightly disturbed, Fine	72.50
531 ★	\$1.00 Violet Brown (342). Very Fine	(Photo) 115.00
532 ★	\$1.00 Violet Brown (342). Tiny thin spot, Fine Appearance	(Photo) 115.00
533 ★	1c-5c 1908 Imperforates (343-347). Horiz. Pairs, hinge remnants, 5c small gum soak, otherwise Very Fine Set	120.00+
534 ★	2c-5c 1908 Imperforates (344-347). Very Fine	57.25
535 ★	1c-2c 1908 Coils (348-349, 352-353). Pairs, Fine-Very Fine	93.00
536 ★	4c Orange Brown (350). Line Pair, Very Fine	(Photo) 175.00
537 ★	5c Blue Coil, Major Cracked Plate (351 var.). Part o. g., Large Stellate Crack Shows Clearly Across Bottom Right Corner & in Margins, perfs. are questionable & this stamp is offered only on the basis of the plate crack which is Very Scarce	—
538 ★	5c Blue, Coil (351). Pair, Very Fine	(Photo) 100.00
539 ★	4c Orange Brown, Coil (354). Line Pair, Fine	125.00
540 ★	5c Blue, Coil (355). Pair, Mint, Very Fine	(Photo) 90.00+

541 ★	10c Yellow, Coil (356). Pair, Guide Line at L., Fine, with P. F. Certificate, Very Scarce	(Photo) 975.00
-------	---	----------------

BLUISH PAPERS

542 ★	1c Green, Bluish (357). Extremely Fine	(Photo) 30.00
543 ★	2c Carmine, Bluish (358). Very Fine	(Photo) 27.50
544 ★	3c Deep Violet, Bluish (359). Natural paper inclusion speck, regummed, Fine	(Photo) 500.00

545 ★	4c Orange Brown, Bluish (360). Fresh, Fine Example of this Standard Rarity, with P. F. Certificate	(Photo) 6,500.00
546 ★	5c Blue, Bluish (361). Fine, Very Scarce	(Photo) 1,750.00
547 ★	6c Red Orange, Bluish (362). Fine	(Photo) 350.00
548 ★	10c Yellow, Bluish (364). Tiny natural inclusion spot, Fine	(Photo) 425.00
549 ★	13c Blue Green, Bluish (365). Negligible gum disturbance, Very Fine & Scarce	(Photo) 950.00
550 ★	15c Pale Ultramarine, Bluish (366). Fine	(Photo) 350.00
551 ★	15c Pale Ultramarine, Bluish (366). Trifling gum disturbance, Fine	(Photo) 350.00

1909 COMMEMORATIVES

552 ★	2c 1909 Commems, Imperforate (368, 371, 373). Very Fine	77.50
553 ★	2c 1909 Commems, Imperforate (368, 371, 373). Pairs, Alaska-Yukon Vertical, Very Fine	155.00
554 ★	2c Lincoln, Bluish (369). Mint, reperfed top & left, Very Fine Appearance	90.00
555 ★	2c Lincoln, Bluish (369). Fine	(Photo) 90.00

1910 ISSUE

556 ★	1c-10c 1910 Issue (374-381). 6c trifle oxidized, otherwise Fine-Very Fine Lot	76.95
557 ★	1c-15c 1910 Issue (374-376, 378-382). 3c & 6c tiny thins, 8c short corner perf., 10c reperfed at top, Very Fine Appearing Lot	121.70
558 ★	1c Green, Booklet Pane (374a). Mint, Fine-Very Fine	65.00
559 ★	2c Carmine, Booklet Pane (375a). Very Fine	65.00
560 ★	4c Brown (377). "Jumbo" Margins, Extremely Fine	(Photo) 5.25
561 ★	15c Pale Ultramarine (382). Very Fine	(Photo) 50.00
562 ★	1c-5c 1910 Coils (390-396). Very Fine Set	129.00
563 ★	1c-5c 1910 Coils (390-396). 5c is Paste-up, Fine-Very Fine	132.00
564 ★	2c Carmine, Coil (391). Line Pair, Very Fine	70.00
565 ★	2c Carmine, Coil (393). Line Pair, Extremely Fine	(Photo) 75.00
566 ★	3c Deep Violet, Coil (394). Line Pair, Very Fine	(Photo) 130.00
567 ★	4c Brown, Coil (395). Line Pair, Fine	(Photo) 130.00
568 ★	5c Blue, Coil (396). Pair, Fine-Very Fine	57.00

PANAMA-PACIFIC ISSUE

569 ★	1c-10c Panama-Pacific (397-398, 400A-402). #400A with light corner crease, #401 small thin, #402 reperfed, Very Fine Appearing Lot	138.25
570 ★	1c-2c Panama-Pacific (397-398). Blocks, 2c tiny separation, Very Fine	46.00
571 ★	5c Panama-Pacific (399). "Jumbo" Margins, Brilliant Mint, Extremely Fine, A "Gem"	(Photo) 30.00
572 ★	5c Panama-Pacific (399). Very Fine	(Photo) 30.00
573 ★	5c Panama-Pacific (399). Block, Beautiful Margins, Extremely Fine, Choice Block	(Photo) 125.00
574 ★	5c Panama-Pacific (399). Block, reperfed at bottom & right, Very Fine Appearance	125.00
575 ★	10c Panama-Pacific (400). Mint, Extra Large Margins, Extremely Fine	(Photo) 57.50
576 ★	10c Panama-Pacific (400). Very Fine	(Photo) 57.50

577 ★	10c Orange, Panama-Pacific (400A). Well Centered, regummed, Very Fine	90.00
578 ★	2c Panama-Pacific, Perf. 10 (402). Very Fine	28.50
579 ★	5c Panama-Pacific, Perf. 10 (403). Mint, tiny trivial corner perf. crease, otherwise Extremely Fine (Photo)	75.00
580 ★	5c Panama-Pacific, Perf. 10 (403). Couple partly nibbed perfs., otherwise Very Fine	75.00
581 ★田	5c Panama-Pacific, Perf. 10 (403). Block, Beautifully Centered, a single partly nibbed perf., otherwise Very Fine (Photo)	300.00
582 ★	10c Panama-Pacific, Perf. 10 (404). Very Fine (Photo)	450.00
583 ★	10c Panama-Pacific, Perf. 10 (404). Regummed & reperfed, Extremely Fine Appearance (Photo)	450.00

1912 ISSUE

584 ★	1c Green, 2c Carmine, Booklet Panes (405b, 406a). First few perfs strengthened, Fine Lot	55.00
585 ★	7c Black (407). Beautiful Margins, Extremely Fine (Photo)	22.50
586 ★田	1c-2c "Kansas City Roulette" (408-409 vars). Blocks, affidavit accompanies also another 2c Block with "Private Perfs", Very Fine Lot E. IV	
587 ★	1c-2c 1912 Coils (410-413). Pairs, Fine-Very Fine	55.00
588 ★	8c-30c 1912 Issue (414-415, 417-418, 420). Very Fine Lot	66.50
589 ★	8c-30c 1912 Issue (414-418, 420). 10c & 12c tiny faults, others Fine-Very Fine	75.25
590 ★	20c Ultramarine (419). Mint, Very Fine (Photo)	37.50
591 ★	20c Ultramarine (419). Very Fine (Photo)	37.50
592 ★	50c Violet (421). Very Fine (Photo)	135.00
593 ★	50c Violet (421). Faint corner crease, otherwise Fine (Photo)	135.00
594 ★	50c Violet (422). Reperf. at R., Very Fine Appearance	65.00
595 ★	50c Violet (422). Light natural gum crease, Fine	65.00
596 ★	\$1.00 Violet Brown (423). Beautiful Centering, Extremely Fine (Photo)	150.00
597 ★	\$1.00 Violet Brown (423). Natural inclusion spot shows in bottom frame, otherwise Very Fine (Photo)	150.00

1914 ISSUE — WATERMARKED

598 ★	1c-15c 1914 Issue (424-437). Some mint, Fine-Very Fine	115.30
599 ★	1c-20c 1914 Issue (424-435, 438). Couple reperfs., otherwise Fine-Very Fine	131.30
600 ★	1c Green, 2c Carmine, "Coil Stamps" Imprint (424-425). Plate No. Blocks of Ten, Fine-Very Fine	90.00
601 ★	15c Gray (437). Plate No. Single, Very Fine	30.00
602 ★	20c Ultramarine (438). Fine	50.00
603 ★	30c Orange Red (439). Mint, Very Fine (Photo)	70.00
604 ★	30c Orange Red (439). Fine (Photo)	70.00
605 ★	50c Violet (440). Very Fine (Photo)	200.00
606 ★	50c Violet (440). Regummed with tiny thin spot, Very Fine Appearance (Photo)	200.00
607 ★	1c-2c 1914 Coils (441-443). Line Pairs, Very Fine	49.50
608 ★	2c Carmine, Coil (444). Line Pair, Very Fine (Photo)	52.50
609 ★	3c Violet, Coil (445). Pair, Fine-Very Fine (Photo)	185.00
610 ★	4c Brown, Coil (446). Fine	57.50
611 ★	4c Brown, Coil (446). Line Pair, Very Fine (Photo)	265.00
612 ★	5c Blue, Coil (447). Line Pair, Very Fine (Photo)	95.00
613 ★	1c-5c 1914 Coils (448, 450, 452, 455-457). Mint Pairs, Fine-Very Fine	74.00

614 ★	2c Red, Ty. I, Coil (449). Pair, Very light perf. strengthening Fine, Rare (Photo) 1,200.00	
615 ★	2c Carmine, Ty. I, Coil (453). Very Fine	(Photo) 62.50
616 ★	2c Red, Ty. I, Coil (453). Mint Pair, handstamp guarantees, Very Fine (Photo) 125.00+	
617 ★	2c Carmine, Ty. II, Coil (454). Mint Pair, Very Fine	(Photo) 150.00
618 ★	3c Violet, Ty. I, Coil (456). Fine	110.00
619 ★	3c Violet, Ty. I, Coil (456). Mint Pair, Extremely Fine	(Photo) 220.00+
620 ★	2c Carmine, Rotary Imperforate Coil (459). Very Fine, "Ward" handstamp guarantee	(Photo) 150.00
621 ★	2c Carmine, Rotary Imperforate Coil (459). Mint, tiny "dry print" spot, Very Fine	(Photo) 150.00
622 ★	2c Carmine, Rotary Imperforate Coil (459). Mint Pair, Extremely Fine (Photo) 300.00	
623 ★	\$1.00 Violet Black (460). Very Fine	(Photo) 265.00
624 ★	\$1.00 Violet Black (460). Fine	(Photo) 265.00
625 ★	2c Pale Carmine Red (461). Mint, Very Fine	22.50

1916 ISSUE — UNWATERMARKED

626 ★	1c-15c 1916 Issue (462-466, 468-470, 475). 4c light creases, others Fine- Very Fine	155.90
627 ★	1c-12c 1916 Issue (462-466, 468, 470-474). Few small faults, others Fine-Very Fine	154.90
628 ★	2c Carmine, Booklet Pane (463a). Mint, Fine-Very Fine	40.00
629 ★	5c Carmine, Error (467). Few bottom perfs. tiny bit nibbed otherwise Fine (Photo) 250.00	
630 ★	5c Carmine, Error (467). Horiz. Strip of Three, Middle Stamp the Error which is Mint & Very Fine	(Photo) 250.00
631 ★田	5c Carmine, Error (467). Block of Nine, Middle Stamp the Error which is Mint & Fine	(Photo) 325.00
632 ★田	5c Carmine, Error (467). Block of Twelve, Two Middle Stamps the Errors, one 2c stamp short corner, the Errors, Mint, Exceptionally Well Centered & Very Fine, Choice	(Photo) 525.00
633 ★	7c Black (469). Plate No. Single, "Jumbo" Margins, Mint, Extremely Fine (Photo) 20.00	
634 ★	10c Orange Yellow (472). Mint, Very Fine	(Photo) 32.50
635 ★	15c Gray (475). Fine	42.50
636 ★	20c Light Ultramarine (476). Very Fine	(Photo) 57.50
637 ★	20c Light Ultramarine (476). Fine	57.50
638 ★	50c Light Violet (477). Very Fine & Scarce	(Photo) 325.00
639 ★	50c Light Violet (477). Reperfed at right, Very Fine Appearance	(Photo) 325.00
640 ★	\$1.00 Violet Black (478). Tiny natural paper inclusion, Very Fine	(Photo) 250.00
641 ★	\$1.00 Violet Black (478). Reperfed at left, Very Fine Appearance	(Photo) 250.00
642 ★	\$2.00 Dark Blue (479). Very Fine	(Photo) 90.00
643 ★	\$2.00 Dark Blue (479). Few partly blunted perfs. at top, otherwise Very Fine	90.00
644 ★田	\$2.00 Dark Blue (479). T. Margin Block, Mint, Very Fine	(Photo) 360.00
645 ★	\$5.00 Light Green (480). Very Fine	(Photo) 67.50
646 ★	\$5.00 Light Green (480). Reperfed at right, Very Fine Appearance	67.50
647 ★田	\$5.00 Light Green (480). Block, very slight gum disturbance, Fine-Very Fine	(Photo) 270.00

648 ★	2c Carmine, Ty. II, Coil (491). Pair, Very Fine, with P. F. Certificate, Rare, especially in such choice condition	(Photo) 1,300.00
-------	--	------------------

1917-20 ISSUES

649 ★	1c-\$1.00 1917 Issue (498-499, 501-504, 506-518). Fine-Very Fine, Virtually all the latter	95.15
650 ★	1c-\$1.00 1917 Issue (498-499, 501-504, 506-518). 6c small faults, some hinge remnants, otherwise Very Fine Set	95.15

651 ★	1c A. E. F. Booklet Pane of 30 (498f). Pos. W6, some hinge remnants, Very Fine for this Scarce Booklet Pane	325.00
652 ★	2c A. E. F. Booklet Pane of 30 (499f). Pos. W4 or W10, Mint, light natural gum bends, clear to just in at T, An Excellent Example of this Rarest of all Booklet Panes, with P. F. Certificate	(Photo) 3,000.00

653 ★	2c Deep Rose, Ty. Ia (500). B. Plate No. Single, Very Fine	(Photo) 95.00
654 ★	2c Deep Rose, Ty. Ia (500). Reperfed at bottom, Fine Appearance	95.00
655 ★	2c Deep Rose, Ty. Ia (500). Horiz. Pair, Mint, reperfed at bottom, Fine Appearance	190.00
656 ★	3c Violet, Ty. I, Booklet Pane (501b). Pos. D, Plate No. 8096, natural paper speck, Fine	50.00
657 ★	3c Violet, Ty. I, Ty. II, Booklet Panes (501b, 502b). Fine Lot	55.00
658 ★	5c Rose, Error (505). Fine	(Photo) 175.00
659 ★	5c Rose, Error (505). Horiz. Strip of Three, Middle Stamp the Error, tiny faint thin speck, bottom perfs. touch	175.00
660 ★	5c Rose, Error (505). Block of Nine, Middle Stamp the Error, Choice Centering, Very Fine	(Photo) 250.00
661 ★	5c Rose, Error (505). Block of Twelve, Two Middle Stamps the Errors, Mint, Fine	(Photo) 375.00
662 ★	\$2.00 Orange Red & Black (523). Fine	(Photo) 210.00
663 ★	\$2.00 Orange Red & Black (523). Tiny thin spot, Very Fine Appearance	(Photo) 210.00
664 ★	\$5.00 Deep Green & Black (524). Very Fine	(Photo) 82.50
665 ★	\$5.00 Deep Green & Black (524). Mint, wide natural s. e. at bottom, Very Fine	82.50
666 ★	\$5.00 Green & Black (524). Mint Block, Beautiful Centering, Extremely Fine	(Photo) 330.00
667 ★	1c-3c Offset, Imperforates (531-532, 534-534A, 535). Horiz. Pairs, 2c Ty. VI Fine-Very Fine, others Very Fine	86.50
668 ★	1c-3c Offset, Imperforates (531, 534, 535). Blocks, Very Fine	59.00+
669 ★	2c Carmine, Ty. IV, Offset, Imperforate (532). Block, Very Fine	60.00+
670 ★	2c Carmine, Offset, Imperforate Ty. V (533). Mint, Very Fine	(Photo) 100.00
671 ★	2c Carmine, Offset, Imperforate, Ty. V (533). Mint, natural gum bend, Very Fine	(Photo) 100.00
672 ★	2c Carmine, Ty. VI, Offset, Imperforate (534A). Mint, Block, Very Fine	54.00+

673 ★	2c Carmine, Offset, Ty. VII Imperforate (534B). L. Plate No. 12288 Single, tiny thin spot, Very Fine Appearance	(Photo) 800.00+
-------	---	-----------------

674 ★	1c Green, Rotary (545). Extremely Fine, Exceptional	(Photo) 40.00
675 ★	\$2.00 Carmine & Black (547). Very Fine	(Photo) 67.50
676 ★	\$2.00 Carmine & Black (547). Fine	(Photo) 67.50
677 ★	\$2.00 Carmine & Black (547). R. Arrow Block, Very Fine	(Photo) 270.00+

678	★	★	\$2.00 Carmine & Black (547). Mint Center Line Block, Fine (Photo)	275.00+
679	★	★	\$2.00 Carmine & Black (547). Mint Block of Six with Plate No., Very Fine (Photo)	405.00

1920-25 ISSUES

680	★		1c-5c 1920-25 Commems. (548-550, 614-621). Cpl. Sets, #619 few blunted perfs., otherwise Very Fine Lot	105.35
681	★		½c-\$5.00 1922 Issue (551-573). Cpl. Set, 10c small tear, others Fine-Very Fine	241.51
682	★		\$5.00 Carmine & Blue (573). Very Fine	85.00
683	★	★	\$5.00 Carmine & Blue (573). Center Line Block, light natural wrinkle in one, pinpoint thin speck, otherwise Very Fine (Photo)	350.00
684	★		1c-2c 1923 Rotaries (578-579, 595). Very Fine for these ...	66.50
685	★		1c-10c 1923 Issue (581-591). Cpl. Set, 9c partly blunted perf., otherwise Fine-Very Fine	51.75
686	★		2c Carmine, Booklet Pane (583a). Small Bit of Plate No. L. L., Fine-Very Fine	27.50+
687	★		1c-10c 1923 Coils (597-599, 600-606). Mint Line Pairs, Fine-Very Fine	63.85
688	★		2c Carmine, Coil, Ty. II (599A). Mint Pair, perfs just touch at extreme R., Fine Pair	145.00+
689	★		2c Carmine Coil, Ty. I, II (599- 599A). Combination Line Strip of Four, Left Pair Ty. II, Mint, Fine, Very Scarce (Photo)	472.70+
690	★		2c Carmine, Coil, Combination Strip of Four, Ty. I, Ty. II (599-599A). Mint, R. Pair Ty. II, end Ty. II stamp perfs. just touch, the rare Combination Line Pair Fine-Very Fine (Photo)	472.70+
691	★	★	2c Harding, Imperforate (611). Center Line Block, Mint, Very Fine	65.00
692	★	★	2c Norse-American (620). Arrow & Double Plate No. Block of Eight, hinged in selvage only, Stamps Mint, Very Fine Plate Block (Photo)	165.00
693	★	★	2c Norse-American (620). Arrow & Double Plate No. Block of Eight, Fine-Very Fine	165.00
694	★	★	5c Norse-American (621). Mint Block, Very Fine	60.00
695	★	★	5c Norse-American (621). B. Arrow Block, Mint, Very Fine	60.00
696	★	★	5c Norse-American (621). Arrow & Double Plate No. Block of Eight, Beautiful Centering, few perfs. lightly strengthened, Very Fine, Choice & Handsome Plate Block	550.00

1926-36 ISSUES

697	★		2c White Plains Souvenir Sheet (630). Mint, Very Fine	225.00
698	★		2c White Plains Souvenir Sheet (630). Fine-Very Fine	225.00
699	★		2c Carmine, Ty. II (634A). Mint, Extremely Fine, A Wonderfully Choice Example of this Very Scarce Stamp (Photo)	175.00
700	★		2c Carmine, Ty. II (634A). Plate No. Single, Incredibly Well Centered, tiny natural gripper crease, gum missing on two perfs, otherwise Extremely fine (Photo)	175.00
701	★		2c Carmine, Ty. II (634A). Plate No. Single, Mint, Fine (Photo)	175.00+
702	★		7c Black, Vertical Pair, Imperf. Between (639a). With L. Sheet Margin, Well Centered, traces of o. g., faint corner thin, Very Fine Appearance (Photo)	100.00
703	★		1c-10c Kans.-Nebr. Overprints (658-679). Cpl. Sets, #679 natural perf. "dimple", Virtually All Very Fine	157.75

704	★	1c-10c Kans., Nebr., Overprints (658-679). Mint, Fine-Very Fine Sets	157.75
705	★田	1c-10c Kans. Overprints (658-668). Blocks, Choice Centering Throughout, Very Fine, A Beautiful Set	306.00
706	★田	1c-10c Kans. Overprints (658-668). Mint Blocks, Fine-Very Fine	306.00
707	★田	1c-10c Nebr. Overprints (669-679). Blocks, All Mint except 10c top pair hinged, Fine-Very Fine	331.05
708	★	1c, 3c Souvenir Sheets (730, 731, 735, 750, 751). #731 tiny corner crease, #735 tiny thin spot, otherwise Very Fine	107.00
709	★田	1c-10c Farley Parks (756-765). Center Line Blocks, Very Fine	75.00

PRESIDENTIALS — TO DATE

710	★	½c-\$5.00 Presidentials (803-834). Cpl. Mint Set, Fine-Very Fine	100.34
711	★田	½c-\$1.00 Presidentials (803-832). Plate No. Blocks, \$1.00 hinge reinforced, Others Mint, Fine-Very Fine	169.10
712	★田	½c-30c Presidentials (803-830). Each Value in a Cpl. Matched Set of Four Plate No. Blocks, Fine-Very Fine	406.40
713	☒	½c-\$5.00 Presidentials (803-834). Cpl. Set, cacheted First Day Covers, mostly in Pairs, Fine-Very Fine	108.00+
714	★	\$1.00 Presidential, Watermarked "USIR" (832b). Mint, Very Fine	60.00
715	★	\$1.00 Presidential, Watermarked "USIR" (832b). Fine	60.00
716	★田	\$1.00 Presidential, Watermarked "USIR" (832b). Mint Block, two partly nibbed perfs., otherwise Very Fine (Photo)	240.00
717	★田	\$2.00 Presidential (833). Arrow & Double Plate No. Block, small natural gum skip, Mint, Fine-Very Fine	185.00
718	★	\$5.00 Presidential (834). Mint, light natural gum bend, Very Fine	62.50
719	★田	\$5.00 Presidential (834). Arrow & Double Plate No. Block, Very Fine (Photo)	450.00
720	★田	\$5.00 Presidential (834). Arrow & Double Plate No. Block, Mint, Very Fine (Photo)	450.00
721	★	1c-10c Presidential Coils (839-851). Mint Line Pairs, Fine-Very Fine	116.65
722	★	1c-10c Famous Americans (859-893). Cpl. Set in Sheets of 70, Fine-Very Fine	1,900.73

723	★田	½c-\$5.00 1954 Issue (1030-1059A). Cpl. Set, Used & Unused Singles, Plate Blocks, Coil Pairs & Line Pairs, Booklet Panes, Artcraft First Day Covers, also incl. some Late Issues, in addition Plate No. Blocks of #E20, E21, FA1, Virtually All Mint, Fine-Very Fine	E. XI
724	★田	\$5.00 Black (1053). T. R. Plate No. 25367 Block, Mint, small selvage separation, bottom pair light crease, otherwise Very Fine	275.00
725	★	4c Seato, Vertical Pair Imperf. Between (1151a). In Mint Strip of Three, Very Fine (Photo)	200.00
726	★	6c Historic Flags (1345-1354). Twelve Cpl. Mint Sheets of 50, Very Fine	390.00
727	★田	6c Beautification, Botanical Congress (1365-1368, 1376-1379). Cpl. Sheet of 50 of first, Three Plate No. & Inscription Blocks of Twenty of latter, Very Fine	157.00

AIR POST ISSUES

728	★	6c-24c 1918-21 Air Post (C1, C3, C4). #C1 reperfed at right, otherwise Fine-Very Fine	113.50
729	★	6c-24c 1918 Air Post (C1-C3). 6c thin spot, others Fine-Very Fine	160.00
730	★田	6c Orange (C1). L. Arrow Block, tiny natural gum skip, small hinge reinforcement, Very Fine	165.00

731	★	6c Orange (C1). T. Arrow Block, natural gum crease, trifle heavy, otherwise Very Fine	165.00
732	★	6c Orange (C1). Center Line Block, crackly o. g., light paper wrinkles, tiny natural paper inclusions, Fine-Very Fine	175.00
733	★	6c Orange (C1). Arrow & Plate No. 9155 Block of Six, some selvage perfs. lightly strengthened, Fine-Very Fine	(Photo) 725.00
734	★	16c Green (C2). Extra Large Margins, Very Fine	(Photo) 62.50
735	★	16c Green (C2). T. Arrow Block, Very Fine	(Photo) 265.00
736	★	16c Green (C2). Center Line Block, Very Fine	(Photo) 275.00
737	★	16c Green (C2). Center Line Block, Very Fine	(Photo) 275.00
738	★	24c Carmine Rose & Blue (C3). Blue "Top" & Plate No. 8493 Block, Very Fine	(Photo) 300.00
739	★	8c-16c 1923 Air Post (C4-C5). Fine-Very Fine	73.50
740	★	8c Deep Green (C4). Block, Very Fine	65.00
741	★	16c Dark Blue (C5). Extremely Fine	(Photo) 57.50
742	★	16c Dark Blue (C5). Mint Block, Perfect Centering with Huge Top & Bottom Margins, Extremely Fine, A Fantastic Block	(Photo) 240.00
743	★	24c Carmine (C6). Mint, Very Fine	(Photo) 65.00
744	★	24c Carmine (C6). Mint Block, Extremely Fine	(Photo) 270.00
745	★	10c Lindbergh, Booklet Pane (C10a). Very Fine	(Photo) 72.50
746	★	65c-\$2.60 Graf Zeppelin (C13-C15). Fine-Very Fine Set	(Photo) 1,060.00
747	★	65c-\$2.60 Graf Zeppelin (C13-C15). Cpl. Set, \$1.30 tiny thin spot under regumming, otherwise Very Fine	(Photo) 1,060.00
748	✉	65c Graf Zeppelin (C13). Tied on 1c Postal Card by Lakehurst, May 30, 1930 Pmk., add'l postage, all cachets, Friedrichshafen (Bodensee) Pmk., card has corner crease, Stamp Fine	120.00+
749	★	50c Chicago Zeppelin (C18). Very Fine	60.00
750	★	50c Chicago Zeppelin (C18). Mint, Fine	60.00
751	★	50c Chicago Zeppelin (C18). Fine	60.00
752	★	50c Chicago Zeppelin (C18). Block, Very Fine	250.00
753	★	50c Chicago Zeppelin (C18). Block with T. Plate No., hinged in selvage only, Stamps Mint, Very Fine	250.00
754	★	50c Chicago Zeppelin (C18). Mint Block with B. Plate No., natural gum creases & tiny gum skips, Very Fine	250.00
755	★	50c Chicago Zeppelin (C18). B. Plate No. 21171 Block of Six, four stamps thinned, small tape stain in left margin, otherwise Fine-Very Fine	725.00
756	★	6c Ultramarine & Carmine, Error of Color (C23c). Very Fine, "Bruechig" handstamp guarantee	(Photo) 75.00
757	★	50c Orange (C31). T. L. Plate No. 22778 Block, Mint, small natural gripper tear in selvage, Very Fine	120.00
758	★	80c Hawaii (C46). B. L. Plate No. 24593 Block, Mint, Very Fine	50.00

SPECIAL DELIVERY — OFFICIAL STAMPS

759	★	10c Blue, Special Delivery (E1). Disturbed o. g. slightly soaked in some perf. tips, otherwise Very Fine	(Photo) 67.50
760	★	10c Blue, Special Delivery (E1). Fresh, part o. g., tiny thin speck, Very Fine Appearance	(Photo) 67.50
761	★	10c Blue, Special Delivery (E2). Fresh, Full o. g., Very Fine	(Photo) 62.50
762	★	10c Blue, Special Delivery (E2). Fresh, o. g., Well Centered, Large Margins, very tiny tear in top margin, otherwise Extremely Fine	(Photo) 62.50

763 ★	10c Blue, Special Delivery (E2). Fresh, o. g., reperfed at top, tiny scuff, Extremely Fine Appearance	62.50
764 ★	10c Orange, Special Delivery (E3). Fresh, o. g., Choice Centering, Extremely Fine	(Photo) 27.50
765 ★	10c Orange, Special Delivery (E3). Fresh, o. g., Very Fine	(Photo) 27.50
766 ★	10c Blue, Special Delivery (E4). Wonderfully Fresh, o. g., Beautiful Centering, Extremely Fine	(Photo) 150.00
767 ★	10c Blue, Special Delivery (E4). Fine	(Photo) 150.00
768 ★	10c Blue, Ultramarine, Special Deliveries (E5, E8). Fresh, o. g., Very Fine	36.00
769 ★	10c-20c 1908-57 Special Deliveries (E7-E9, E11-E21). Two Shades of #E9, one reperfed, other without gum & wide natural s.e., #E11 thin, otherwise F.-V. F. Lot	143.20
770 ★	10c Ultramarine, Special Delivery (E9). Mint, Very Fine	(Photo) 47.50
771 ★	10c Ultramarine, Special Delivery (E9). Natural paper wrinkle, Very Fine	47.50
772 ★	10c Pale Ultramarine, Special Delivery (E10). Mint, Very Fine	(Photo) 85.00
773 ★	10c Registration (F1). Mint, Very Fine	(Photo) 30.00
774 ★	10c Registration (F1). Block, Fine-Very Fine	130.00
775 ★	1c Rose, 1916 Postage Due (J59). Small thin spots, Fine Appearance, Scarce	(Photo) 185.00
776 ★	2c-\$2.00 Offices in China (K1-K18). Hinge Remnants, Fine-Very Fine Set	268.25
777 ★	10c Executive (O14). Fresh, Fine	(Photo) 60.00
778 ★	24c Justice (O32). Fresh & Bright, o. g., Fine	(Photo) 65.00

CARRIERS' STAMPS

779 ★	Baltimore, Md., 1c Black, Red (1LB8a, 1LB8b, Two, 1LB9). Two "Short Rays" var, One "Sent", most o. g., Fine Lot	90.00
780 ★	Boston, Mass. 1c Blue, Pelure (3LB1). On small piece, Fine	85.00
781 ★	Charleston, S. C., Steinmeyer's City Post, 2c on Pink (4LB20). Horiz. Pair, Sheet margin at L., o. g., red stain almost entirely on back, otherwise Very Fine, signed "G. B. Sloane"	(Photo) 90.00+
782 ★	New York, N. C., City Dispatch Post, 3c on Dark Blue, Ribbed Paper (6LB6 var). Large Margins, faint negligible creases, Extremely Fine Appearance, Scarce, Unpriced	(Photo) —
783 ★	New York, N. Y., U. S. Mail, 1c on Yellow, Buff (6LB10, Two, 6LB11). One of first with fault on piece, others Fine	100.00

PARCEL POST — SOUVENIR CARDS

784 ★	1c-\$1.00 Parcel Post (Q1, Q3-Q12). Beautiful Centering Throughout, Very Fine, Choice Lot	(Photo Ex) 241.10
785 ★	1c-75c Parcel Post (Q1-Q9, Q11). 3c tiny thin spot, 75c regummed, others Fine-Very Fine	84.75
786 ★	2c Parcel Post (Q2). Huge "Jumbo" Margins, Extremely Fine, A Fantastic Stamp	(Photo) 1.15
787 ★	50c Parcel Post (Q10). Very Fine	(Photo) 57.50
788 ★	\$1.00 Parcel Post (Q12). Very Fine	(Photo) 90.00
789 ★	1c-25c Parcel Post Dues (JQ1-JQ5). Fine-Very Fine Set	75.00
790 ★	\$5.00 Carmine, War Savings (WS5). Regummed, Very Fine	100.00
791	SIPEX 1966, Bureau Souvenir Card (3). Very Fine	100.00

LOTS ON VIEW FROM DECEMBER 5th
OFFICES OPEN SATURDAY BEFORE SALE

HUNTING PERMIT (DUCK) STAMPS

792 ★	\$1.00 Blue, 1934 (RW1). Mint, Very Fine	(Photo)	47.50
793 ★田	\$1.00 Blue, 1934 (RW1). B. R. Corner Plate No. 129201 Block of Six, Mint, Fine-Very Fine	(Photo)	600.00
794	\$1.00, \$2.00, \$3.00 Hunting Permits, 1931-70 (RW1-RW37). Cpl. used set, Fine-Very Fine		127.60
795 ★	\$1.00 Rose Lake, 1935 (RW2). Mint, Very Fine	(Photo)	130.00
796 ★田	\$1.00 Rose Lake, 1935 (RW2). L. B. Corner Plate No. 131983, Block of Six, Mint, Very Fine & Scarce	(Photo)	1,250.00
797 ★	\$1.00 Hunting Permit, 1936-48 Complete (RW3-RW15). Fine-Very Fine, Mostly Mint		170.25
798 ★田	\$1.00 Brown Black, 1936 (RW3). R. B. Corner Plate No. 134318 Block of Six, Mint, Very Fine	(Photo)	375.00
799 ★田	\$1.00 Light Green, 1937 (RW4). T. R. Corner Plate No. F136267 Block of Six, Mint, natural gum bends, Fine-Very Fine	(Photo)	250.00
800 ★田	\$1.00 Light Violet, 1938 (RW5). T. R. Corner Plate No. 138602 Block of Six, Mint, Very Fine	(Photo)	275.00
801 ★田	\$1.00 Chocolate, 1939 (RW6). T. L. Corner Plate No. 141428 Block of Six, Mint, pre-printing paper folds, small hinge reinforcement in selvage only, otherwise Very Fine		150.00
802 ★田	\$1.00 Sepia, 1940 (RW7). L. B. Corner Plate No. 143776 Block of Six, Mint, Very Fine		150.00
803 ★田	\$1.00 Brown Carmine, 1941 (RW8). R. B. Corner Plate No. 146282, Block of Six, Mint, tiny natural dimple in one, Very Fine		110.00
804 ★田	\$1.00 Violet Brown, 1942 (RW9). Top Plate No. 149599 Block of Six, Mint, Fine-Very Fine		110.00
805 ★田	\$1.00 Deep Rose, 1943, (RW10). T. R. Corner Pl. No. F152857 Block of Six, Mint, few perfs. separated in T. selvage, usual minor natural gum bends, otherwise Very Fine		90.00
806 ★田	\$1.00 Red Orange, 1944 (RW11). T. L. Corner Plate No. 155590 Block of Six, Mint, natural gum skip on one pair, Very Fine		80.00
807 ★田	\$1.00 Black, 1945 (RW12). T. R. Corner Plate No. F157249 Block of Six, Mint, Very Fine		65.00
808 ★田	\$1.00 Red Brown, 1946 (RW13). T. R. Corner Plate No. 158457 Block of Six, Mint, Very Fine		65.00
809 ★田	\$1.00 Black, 1947 (RW14). T. L. Corner Plate No. 159462 Block of Six, Mint, Very Fine		65.00
810 ★田	\$1.00 Bright Blue, 1948 (RW15). T. L. Corner Plate No. 160101, Block of Six, Mint, Very Fine		65.00
811 ★	\$2.00 Hunting Permit, 1949-58 Complete (RW16-RW25). Nearly all Mint, Fine-Very Fine		111.00
812 ★田	\$2.00 Bright Green, 1949 (RW16). T. L. Corner Plate No. 160791, Block of Six, Mint, Fine-Very Fine		85.00
813 ★田	\$2.00 Violet, 1950 (RW17). T. L. Corner Plate No. 161534, Block of Six, Mint, natural gum skip, Very Fine		85.00
814 ★田	\$2.00 Gray Black, 1951 (RW18). T. L. Corner Plate No. 162128, Block of Six, Mint, Very Fine		90.00
815 ★田	\$2.00 Deep Ultramarine, 1952 (RW19). L. B. Corner Plate No. 162602, Block of Six, Mint, Very Fine		85.00

816	★	田	\$2.00 Dark Rose Brown, 1953 (RW20). L. B. Corner Plate No. 163623, Block of Six, Mint, slight natural pre-printing gum crease, nevertheless, Very Fine	85.00
817	★	田	\$2.00 Black, 1954 (RW21). T. L. Corner Plate No. 164744, Block of Six, Mint, Very Fine	100.00
818	★	田	\$2.00 Dark Blue, 1955 (RW22). T. L. Corner Plate No. 165283, Block of Six, Mint, Very Fine	80.00
819	★	田	\$2.00 Black, 1956 (RW23). T. R. Corner Plate No. 165827, Block of Six, Mint, Very Fine	80.00
820	★	田	\$2.00 Emerald, 1957 (RW24). R. B. Corner Plate No. 166257, Block of Six, Mint, Very Fine	75.00
821	★	田	\$2.00 Black, 1958 (RW25). T. L. Corner, Plate No. 166753, Block of Six, Mint, Very Fine	75.00
822	★		\$3.00 Hunting Permit, 1959-71 Complete (RW26-RW38). Nearly all Mint, Fine-Very Fine	333.75
823	★	田	\$3.00 Multicolor, 1959 (RW26). T. L. Corner Plate No. 167109, Block of Four, Mint, Fine-Very Fine	(Photo) 185.00
824	★	田	\$3.00 Multicolor, 1960 (RW27). L. B. Corner Plate No. 167503, Block of Four, Mint, Very Fine	(Photo) 185.00
825	★	田	\$3.00 Multicolor, 1961 (RW28). R. B. Corner Plate No. 167768, Block of Four, Mint, Very Fine	(Photo) 185.00
826	★	田	\$3.00 Multicolored, 1962 (RW29). L. B. Corner Plate No. 168073, Block of Four, Mint, Very Fine	(Photo) 300.00
827	★	田	\$3.00 Multicolored, 1963 (RW30). R. B. Corner Plate No. 168273, Block of Four, Mint, Fine-Very Fine	(Photo) 300.00
828	★	田	\$3.00 Multicolored, 1964 (RW31). T. L. Corner Plate No. 168629, Block of Six, Mint, Two tiny natural paper inclusions, Very Fine	(Photo) 450.00
829	★	田	\$3.00 Multicolored, 1965 (RW32). R. B. Corner Plate No. 168791, Block of Four, Mint, Very Fine	150.00
830	★	田	\$3.00 Multicolored, 1966 (RW33). R. B. Corner Plate No. 169063, Block of Four, Mint, Tiny spot & disturbance in gum, Fine-Very Fine	150.00
831	★	田	\$3.00 Multicolor, 1967 (RW34). T. L. Corner Plate No. 169487 Block of Four, Mint, Very Fine	185.00
832	★	田	\$3.00 Multicolor, 1968 (RW35). L. B. Corner Plate No. 170443, Block of Four, Mint, Fine	120.00
833	★	田	\$3.00 Multicolored, 1969 (RW36). T. L. Corner Plate No. 170765, Block of Four, Mint, staple holes in T. selvage, Very Fine	140.00
834	★	田	\$3.00 Multicolored, 1970 (RW37). T. L. Corner Plate No. 171165, Block of Four, Mint, Very Fine	70.00
835	★	田	\$3.00 Multicolored, 1971 (RW38). R. B. Plate No. 171586 Block of Four, Mint, Very Fine	57.50
836	★	田	\$5.00 Multicolored, 1972 (RW39). T. R. Corner Plate No. 171864, Block of Four, Mint, Very Fine	55.00
837	★	田	\$5.00 Multicolored, 1973 (RW40). T. L. Corner Plate No. 172181, Block of Four, Mint, Very Fine	55.00

UNITED NATIONS

838	★		United Nations, 1951-64, Complete for these dates, Incl. Mint Singles & Inscription Blocks, Cpl. on Cacheted, Unaddressed Airtcraft First Day Covers, #38 Mint & First Day Cover, Extras such as 1½c Pre-cancel, Postal Stationery, Unused & First Day Covers, A Beautiful collection mounted in Two Scott Specialty Albums & Stock Book	E. XIV
839	★		1955, 3c-8c Anniversary Souvenir Sheet (38). Very Fine	210.00

LARGE LOTS & COLLECTIONS

840 ★	UNITED STATES, 1851-1963 , Collection of Many Hundreds of Mostly Unused Stamps, 19th Century mostly used, Many Better 1857 with values to 12c, 1861 to 24c, Grills, 1869 to 30c, Bank Notes to 90c, Imperfs, Coils, Coil Pairs, Commems, 1922 to \$2.00, From 1923 Nearly cpl., Air Post, Special Delivery, Dues almost cpl, Officials with values to Six 90c, Carriers, Confederate States incl. T-E-N, 2c Green, 10c Rose etc, some faults, 20th Century Nearly all Fine-Very Fine, Unused, a very Extensive and Desirable collection in a Deluxe Album	E. XV
841 ★	U. S. Twentieth Century, 1901-54 , Couple Hundred Virtually All Diff. Unused Stamps Neatly Arranged on Stock Sheets, incl. Regular, Commems, Coils, Air Post, Many Better Items, Cpl. Sets, nos. 308, 328, 621 Blocks, few nineteenth, some misc. used & unused, a number of the more important items have small faults, Balance Fine-Very Fine, Very Attractive Appearance	E. XII
842 ★	1c-6c Booklet Panes, 1914-49 , Collection of Twenty Unused incl. Air Post, some with Plate Nos. or Part Plate nos, Fine-Very Fine	115.00
843	U. S. Accumulation, 19th & 20th Century , Some Better 19th Century Covers incl. 1c 1851-57, Early Exposition Covers & Cards, First Day & First Flight Covers, Plate Blocks, Presidentials cpl used Blocks etc, few Foreign etc. Interesting & Worthwhile Lot	E. IX

ALBUM BINDERS & STOCK BOOKS

844	Scott Specialty Album Binders, Size 3 , Seven, with Slip Cases, Used	—
845	Scott Specialty Album Binders, 12 , used	—
846	A Similar Lot	—
847	A Similar Lot	—
848	A Similar Lot	—
849	Elbe "Ambassador" Album Binders, Three , used, Bound in Blue, with Slip Cases	—
850	A Similar Lot, Bound in Red	—
851	A Similar Lot, One Bound in Green, Two, in Red	—
852	Elbe "American" Album Binders, Five , used, Bound in Green w/Black Spine & Corners, Three w/Slip Cases	—
853	Elbe "Governor" Album Binders, Three , used, Bound in Green w/Black Spine & Corners	—
854	A Similar Lot, one binder with about 15 album pages	—
855	Elbe Expansion Stock Books, Two , with 40 pages each, Like New (Retail \$72.00)	—
856	A Similar Lot	—
857	The "Crown" Stamp Album Binder, Four Springback Binders , used, Bound in Red, remarkably fresh	—
858	Stock Books, One dozen 1" Cap. Black Vinyl 3-ring Binders , each containing approximately 15 twelve pocket "see thru" 8½x11 in. stock sheets, Very Fine Lot	—

END OF SALE — THANK YOU



Season's Greetings

AND BEST WISHES FOR THE

New Year

From the Staff of

ROBERT A. SIEGEL
AUCTION GALLERIES, Inc.

IS YOUR COLLECTION FOR SALE?

REALIZE IMMEDIATE CASH
PLUS THE ADDED ADVANTAGE OF
SELLING THROUGH OUR AUCTIONS

We will advance immediate cash up to 75% of our appraised value. There is no interest charge.

Your collection is then sold in one of our auction sales. All stamps are expertly and advantageously lotted in attractive, well illustrated catalogs. Lotting is meticulously planned under our personal supervision. Commission is 20% of the gross realization. There is no lotting fee nor any other charges. Final settlement is made within five weeks after the sale. We have continuously conducted stamp auctions for over forty-five years.

Valuable collections and stamp holdings are especially wanted, but we will accept properties valued from \$500 upwards. Send all stamps directly for appraisal. Auction advance will be remitted shortly after receipt. If not entirely pleased, stamps will be returned at our expense. We will travel anywhere to inspect important properties.

ROBERT A. SIEGEL
AUCTION GALLERIES, Inc.

(Licensed and Bonded Auctioneer)

120 EAST 56th STREET
NEW YORK, N. Y. 10022

(Tel. 753-6421)

Robert A. Siegel
AUCTION GALLERIES, INC.

List of Prices Realized

482nd SALE

December 9th, 10th, 1975

120 EAST 56 STREET, NEW YORK CITY, N.Y. 10022

(212) 753-6421

UNITED STATES STAMPS

FIRST SESSION Dec. 9, 1975	68	475	137	450	206	280	275	57½	344	140
1	85	750	138	800	207	170	276	115	345	120
2	375	30	139	525	208	150	277	100	346	140
3	280	71	140	900	209	52½	278	130	347	160
4	210	72	141	190	210	450	279	65	348	110
5	210	73	142	180	211	475	280	400	349	100
6	180	74	143	90	212	575	281	105	350	170
7	250	75	144	105	213	700	282	140	351	80
8	230	76	145	80	214	725	283	50	352	220
9	115	77	146	110	215	500	284	85	353	650
10	90	78	147	375	216	600	285	105	354	200
11	1000	79	148	625	217	475	286	525	355	270
12	375	80	149	67½	218	600	287	190	356	190
13	375	81	150	45	219	220	288	85	357	210
14	240	82	151	180	220	130	289	300	358	130
15	210	83	152	180	221	450	290	375	359	52½
16	260	84	153	140	222	160	291	750	360	130
17	240	85	154	300	223	400	292	260	361	450
18	240	86	155	105	224	100	293	325	362	375
19	115	87	156	145	225	280	294	120	363	125
20	135	88	157	42½	336	375	295	42½	364	145
21	325	89	158	525	227	300	296	37½	365	625
22	270	90	159	270	228	290	297	105	366	115
23	850	91	160	250	229	280	298	52½	367	135
24	625	92	161	160	230	260	299	100	368	80
25	475	93	162	120	231	400	300	55	369	52½
26	290	94	163	52½	232	240	301	145	370	45
27	325	95	164	550	233	850	302	325	371	52½
28	150	96	165	400	234	145	303	170	372	220
29	525	97	166	400	235	500	304	120	373	72½
30	300	98	167	260	236	240	305	375	374	27
31	350	99	168	350	237	650	306	160	375	260
32	220	100	169	160	238	1100	307	135	376	67½
33	450	101	170	150	239	125	308	35	377	80
34	85	102	171	95	240	170	309	625	378	120
35	575	103	172	67½	241	37½	310	250	379	42½
36	350	104	173	52½	242	190	311	85	380	180
37	350	105	174	140	243	55	312	125	381	85
38	125	106	175	350	244	50	313	70	382	375
39	450	107	176	30	245	475	314	42½	383	50
40	115	108	177	500	246	500	315	47½	384	800
41	230	109	178	110	247	125	316	22	385	90
42	170	110	179	190	248	625	317	80	386	80
43	52½	111	180	47½	249	270	318	90	387	550
44	26	112	181	350	250	675	319	135	388	150
45	80	113	182	180	251	475	320	90	389	135
46	52½	114	183	260	252	550	321	130	390	240
47	105	115	184	120	253	325	322	200	391	270
48	55	116	185	240	254	800	323	42½	392	475
49	200	117	186	130	255	325	324	21	393	290
50	425	118	187	90	256	1250	325	230	394	450
51	40	119	188	60	257	950	326	80	395	375
52	400	120	189	37½	258	1250	327	625	396	1450
53	260	121	190	300	259	160	328	325	397	625
54	260	122	191	230	260	52½	329	85	398	230
55	230	123	192	160	261	110	330	75	399	160
56	625	124	193	190	262	70	331	55	400	62½
57	75	125	194	62½	263	115	332	42½	401	37½
58	110	126	195	42½	264	62½	333	52½	402	52½
59	475	127	196	500	265	115	334	210	403	110
60	45	128	197	375	266	45	335	160	404	240
61	900	129	198	60	267	350	336	26	405	170
62	160	130	199	37½	268	55	337	180	406	180
63	67½	131	200	115	269	400	338	130	407	230
64	725	132	201	130	270	325	339	29	408	115
65	230	133	202	72½	271	950	340	600	409	190
66	90	134	203	475	272	130	341	290	410	70
67		135	204	90	273	1000	342	180	411	70
		136	205	950	274	80	343	325	412	57½

the
emit
ater

1. Th
ar
2. Al
au
wi
sh
3. Ar
of
m;
Lo
de
ill
in
4. Su
ex
be
cre
in
do
is
kn
for
5. If
sev
wi
sul
in
pa
inc
6. Al
of
ful
14
foi
an
Wt
an
act
7. Ur
Inc
8. Al
shi
9. Lo
suc
ho
all
pa
eig
ins
10. Ag
arr
11. Th

413	110	493	80	577	62½	661	325	745	55	829	80
414	90	494	325	578	40	662	170	746	900	830	52½
415	190	495	80	579	110	663	135	747	800	831	130
416	90	496	850	580	20	664	80	748	80	832	50
417	90	497	300	581	400	665	60	749	37½	833	52½
418	180	498	145	582	600	666	400	750	37½	834	30
419	160	499	300	583	350	667	80	751	32½	835	23
420	230	500	270	584	37½	668	47½	752	170	836	23
421	80	501	800	585	47½	669	42½	753	200	837	23
422	600	502	60	586	57½	670	135	754	145	838	525
423	270	503	45	587	42½	671	W/D	755	170	839	95
424	90	504	40	588	90	672	55	756	65	840	2300
425	67½	505	80	589	45	673	575	757	65	841	675
426	130	506	80	590	85	674	105	758	37½	842	52½
427	120	507	80	591	42½	675	80	759	30	843	260
428	90	508	80	592	190	676	65	760	55	844	15
429	95	509	725	593	115	677	400	761	120	845	18
430	260	510	135	594	47½	678	250	762	52½	846	18
431	67½	511	190	595	40	679	500	763	22	847	18
432	375	512	75	596	220	680	67½	764	67½	848	18
433	260	513	47½	597	100	681	180	765	42½	849	28
434	42½	514	110	598	95	682	67½	766	325	850	28
435	425	515	140	599	110	683	350	767	150	851	28
436	80	516	375	600	85	684	72½	768	52½	852	26
437	500	517	550	601	45	685	35	769	80	853	15
438	325	518	260	602	37½	686	47½	770	80	854	15
439	140	519	85	603	160	687	45	771	30	855	37½
440	625	520	95	604	40	688	110	772	110	856	32½
441	1100	521	95	605	210	689	350	773	57½	857	10
442	1000	522	95	606	115	690	400	774	120	858	30
443	350	523	45	607	60	691	52½	775	55	END OF SALE THANK YOU	
SECOND SESSION Dec. 10, 1975		524	260	608	80	692	180	776	200		
		525	17	609	170	693	135	777	37½	GROSS REALIZATION \$195,170.50	
444	180	526	52½	610	47½	694	52½	778	32½		
445	35	527	50	611	375	695	47½	779	75		
446	80	528	57½	612	180	696	450	780	62½		
447	145	529	100	613	105	697	240	781	80		
448	325	530	40	614	1350	698	170	782	260		
449	95	531	160	615	60	699	300	783	52½		
450	67½	532	62½	616	145	700	200	784	325		
451	325	533	47½	617	170	701	160	785	55		
452	300	534	47½	618	85	702	45	786	50		
453	125	535	72½	619	325	703	145	787	80		
454	28	536	280	620	135	704	180	788	90		
455	180	537	23	621	135	705	400	789	55		
456	110	538	90	622	375	706	325	790	45		
457	350	539	115	623	325	707	290	791	25		
458	150	540	95	624	200	708	47½	792	55		
459	200	541	1150	625	35	709	57½	793	650		
460	200	542	45	626	150	710	75	794	100		
461	230	543	45	627	85	711	75	795	125		
462	145	544	375	628	47½	712	145	796	1550		
463	160	545	4750	629	115	713	42½	797	130		
464	130	546	1150	630	375	714	45	798	450		
465	950	547	270	631	350	715	27	799	300		
466	325	548	250	632	600	716	150	800	350		
467	52½	549	800	633	65	717	95	801	52½		
468	325	550	200	634	67½	718	45	802	145		
469	425	551	160	635	32½	719	280	803	100		
470	350	552	45	636	95	720	290	804	120		
471	62½	553	95	637	35	721	62½	805	72½		
472	80	554	45	638	425	722	1000	806	37½		
473	160	555	40	639	230	723	200	807	67½		
474	67½	556	60	640	180	724	170	808	40		
475	100	557	90	641	170	725	140	809	40		
476	190	558	67½	642	105	726	250	810	42½		
477	850	559	85	643	40	727	120	811	90		
478	140	560	16	644	525	728	62½	812	40		
479	95	561	72½	645	80	729	85	813	40		
480	200	562	110	646	45	730	80	814	50		
481	95	563	52½	647	220	731	90	815	45		
482	105	564	65	648	1750	732	50	816	42½		
483	95	565	115	649	72½	733	350	817	55		
484	67½	566	140	650	62½	734	50	818	45		
485	115	567	85	651	290	735	280	819	45		
486	105	568	50	652	2200	736	290	820	55		
487	130	569	95	653	145	737	260	821	52½		
488	115	570	62½	654	47½	738	280	822	280		
489	1050	571	160	655	100	739	42½	823	67½		
490	170	572	42½	656	35	740	62½	824	100		
491	115	573	260	657	40	741	62½	825	72½		
492	180	574	90	658	105	742	280	826	200		
		575	105	659	62½	743	80	827	130		
		576	65	660	350	744	400	828	600		