

497th SALE

**UNITED STATES
AND
CONFEDERATE STATES**

AT PUBLIC AUCTION

Sold By Order of Various Owners

AT

**“APS-MEMPHEX '76”
HYATT REGENCY HOTEL
TENNESSEE A & B ROOMS
MEMPHIS, TENNESSEE**

SATURDAY, SEPTEMBER 11th, 1976 — 2:30 P.M.

AUCTION GALLERIES, INC.

120 E. 56th Street, New York, N.Y. 10022

ROBERT
A.
SIEGEL

CONDITIONS OF SALE

1. The terms of sale are strictly cash on delivery to the highest bidder unless special arrangements have been made prior to the sale.
2. All bids are per lot as numbered in the catalogue unless otherwise announced by the auctioneer at the time of sale. The right is reserved to group two or more lots; to withdraw any lot or lots from the sale, or to act in behalf of the seller. The auctioneer shall regulate the bidding and in the event of any dispute his decision shall be final.
3. Any lot, the description of which is incorrect is returnable, but only within five days of receipt. All disputed lots must be returned intact as received. **The following lots may not be returned for any reason whatsoever: Lots containing ten or more stamps; Lots from buyers who have had the opportunity to examine them before the sale; Lots described as having defects or faults may not be returned because of any faults. No illustrated lots may be returned because of centering, margins or other factors shown in the illustrations.**
4. Successful bidders, unless they are known to us or supply acceptable references are expected to make payment in full before the lots are delivered. Mail bidders will be notified of the amount of their purchases. All mail bidders who have established credit with us must make payment within three days after receipt. We reserve the right in our sole and absolute discretion to demand cash payment at the time a lot is knocked down to any bidder who has not previously established credit with us or whose account is in arrears. In the event any buyer refuses to pay cash for any lot at the time it is knocked down to him, the auctioneer reserves the right to re-offer the lot immediately for sale to the highest bidder.
5. If the purchase price has not been paid within the time limit, nor lots taken up within seven days from date of sale they must be resold and any loss arising from such sale will be charged to the defaulter. Any account more than thirty days in arrears is subject to a late payment charge of 1½% per month so long as the account remains in arrears. If the auctioneer, in his discretion, should institute any legal action to secure payment of a delinquent account the defaulting purchaser shall pay all legal expense incurred by the auctioneer and such charges will be added to the amount owed.
6. All lots are sold as genuine but should any lot be proved otherwise by written opinion of any competent, responsible authority acceptable to us, immediate refund of the full purchase price will be made, provided that such claim is made in writing within 14 days from date of sale. If claim is not made within this period, no lots are returnable for any reason at any time. So long as we are notified within the 14 day period that an opinion is being sought the matter will remain open until such opinion is rendered. We will not be responsible for any charges incurred by the buyer for expertization fees and costs unless the opinion states the item is not genuine, in which case we will pay actual costs up to a maximum of \$50.00.
7. Until paid for in full, all lots remain the property of Robert A. Siegel Auction Galleries, Inc. in behalf of the seller.
8. All forwarding charges will be added to the purchase price. The mode of shipment shall be at our option unless we are given specific instructions.
9. Lots may be sent for inspection to buyers known to us upon written application. All such lots must be returned to us by registered mail, adequately insured and within 24 hours after receipt. The applicant assumes all responsibility and for insurance against all risks from time of receipt until they are actually received back by us, and is to pay all expenses of postage and insurance. No lots can be sent for inspection within eight days from date of local viewing. Large lots and collections cannot be sent for inspection.
10. Agents are responsible for all purchases made in behalf of their clients unless other arrangements are made prior to the sale.
11. The placing of a bid shall constitute acceptance of the foregoing conditions of sale.

ROBERT A. SIEGEL,
MALCOLM SIEGEL, Licensed Auctioneers

FOR TABLE OF DESCRIPTIONS SEE PAGE 40

SEPTEMBER 11, 1976

ROBERT A. SIEGEL AUCTION GALLERIES, Inc.
120 East 56th Street
New York, N. Y. 10022
Tel.: 753-6421 (Area Code 212)

Please purchase for me at your auction to be held **September 11th, 1976** the lots listed below, the prices annexed being my limit on each lot. I agree to remit for purchase in accordance with the **Conditions of Sale** and return no lots later than three days after receipt.

REFERENCES PLEASE
(if unknown to us)

SIGNED

New York State residents kindly include
County in address.

County

BIDS	ADVANCE	BIDS	ADVANCE
Up to \$30.00	\$1.00	\$300.00 - \$725.00	\$25.00
\$32.50 - \$72.50	2.50	\$750.00 - \$2,000.00	\$50.00
\$75.00 - \$145.00	5.00	\$2,000.00 - \$3,000.00	\$100.00
\$150.00 - \$290.00	\$10.00	\$3,250.00 and up	\$250.00

Bids which do not conform to the above will be automatically reduced to the appropriate level.

[illegible]

Upon request, estimate of value furnished on any lots in this auction.

PUBLIC AUCTION SALE

SATURDAY, SEPTEMBER 11th, 1976 — 2:30 P.M.

UNITED STATES

STAMPLESS COVERS

- | | | | |
|---|---|------------------------------------------------------------------------------------------------------------------------------|--------------|
| 1 | ✠ | Chicago, Ill. Brilliant red pmks., two pretty covers, one "10" in cog oval, other fancy "3" in circle, Very Fine..... | E.III |
|---|---|------------------------------------------------------------------------------------------------------------------------------|--------------|

POSTMASTERS' PROVISIONALS

- | | | | |
|---|---|----------------------------------------------------------------------------------------------------------------------------------------|--------|
| 2 | | New York, N.Y., 5c Black (9X1). Large Margins All around, pen cancel, Very Fine(Photo) | 150.00 |
| 3 | | New York, N.Y., 5c Black, Without Signature (9X1d). Ample to Large margins, light pen cancel, Fine, Very Attractive.....(Photo) | 300.00 |
| 4 | ★ | Providence, R.I., 5c Gray Black (10X1). Horiz. Pair, Margins all around incl. sheet margin at Right, Very Fine(Photo) | 185.00 |
| 5 | R | Providence, R.I., 5c Gray Black, Reprint (10X1R). Sheet margin at Left, Very Fine | 35.00 |
| 6 | ★ | Providence, R.I., 10c Gray Black (10X2). Small margins all around, small thin spot, Fine Appearance(Photo) | 475.00 |

1847 ISSUE

- | | | | |
|----|--|-------------------------------------------------------------------------------------------------------------------------------------------------------------------------------------------------------------|---------|
| 7 | | 5c Red Brown (1). Large to Enormous margins, showing bits of next stamps at top & bottom, clear impression, red grid cancel, Very Fine(Photo) | 185.00 |
| 8 | | 5c Red Brown (1). Margins all around, neat Blue Rimless Grid, tiny scissors cut at bottom which just touches frame line, otherwise Very Fine(Photo) | 185.00+ |
| 9 | | 5c Brown (1). Margins to just touching at bottom, light black cancel, Fine(Photo) | 185.00+ |
| 10 | | 5c Orange Brown (1b). Ample to Large margins, except just in at bottom left, Excellent Color & Impression, Bold Blue "5" Cancel perfectly struck in center of stamp, Very Handsome, Scarce ..(Photo) | 250.00 |
| 11 | | 5c Red Brown (1). Huge margins to barely touched at T.R., incl. Sheet margin at Left, small faults, Neat Blue Grids, Very Attractive (Photo) | 185.00 |
| 12 | | 5c Red Brown (1). Margins except just in at bottom, Red grid cancel, diagonal paper fold, ink spot on face, Attractive Stamp..... | 185.00 |
| 13 | | 5c Brown (1). Margins to slightly in at bottom, Light Red Grid cancel, small faults, Attractive appearance..... | 185.00 |
| 14 | | 5c Red Brown(1). Large Margins All Around, Rich Color, "Proof-like" Impression, ms. "X" cancel, Extremely Fine(Photo) | 85.00 |
| 15 | | 5c Grayish Brown (1). Ample to Large Margins, Unusual Shade, Good | |

Lots on view at our New York offices September 7th and September 8th.

Lots on view at Memphis at our booth at The Hyatt Regency Hotel from September 9th until sale time.

Bids should be sent to our New York offices as usual. Last minute bids can be telephoned to us at The Hyatt Regency Hotel, Memphis.

	Impression, pen cancel removed, appears Unused, Very Fine (Photo)	85.00
16	✉ 5c Red Brown (1). Large Margins All Around, tied by Red Square Grid, matching "New-York" pmk. on cover, negligible cover aging, otherwise Very Fine..... (Photo)	200.00+
17	✉ 5c Red Brown (1). Small faults, pen cancel, not tied on manila envelope; Clear Blue "Washington Railroad" pmk. (Remele W1-a), matching crude "5", Scarce & Attractive..... (Photo)	E.VII
18	10c Black (2). Short Transfer at Top, Large to Enormous Margins Three Sides, just Touching at right; Blue town pmks., Fine & Attractive..... (Photo)	525.00
19	10c Black (2). Clear to Huge Margins, Sharp Impression, Red Grid	
20	10c Black (2). Horiz. Strip of Three, Margins except close on right of end stamp, crease between two stamps leaving Very Fine Pair, light blue single line ms. cancel. Rare Piece (Photo)	2,750.00
21	✉ 10c Black, Major Double Transfer Ty. D (2 var). Extra Large Margins; Excellent Example of the Double Transfer Showing Doubling in both "X"s, Some Letters of "POST OFFICE" & Parts of Right Frame Line; Beautifully tied on Nov. 22, 1847 Folded Letter by Dark Blue framed "PAID", matching "Philada, Pa., 10cts." pmk., ironed out filing crease through left side of stamp, minute margin tear, otherwise Extremely Fine, Rare & Attractive Cover (Photo)	550.00+
22	★ 5c Red Brown, Reproduction (3). Margins All Around, faint toning, otherwise Very Fine (Photo)	400.00
23	★ 10c Black, Reproduction (4). Margins All Around, Very Fine (Photo)	525.00
24	★ 10c Black, Reproduction (4). Margins All Around, small thin & light creases, Very Fine Appearance (Photo)	525.00

1851 ISSUE

25	1c Blue, Ty. Ia (6), Curl on Shoulder, Pos. 97L4, Large Margins except just in at top, Part Sheet Margin at Bottom; faint cancel, appears unused; Very Attractive Example of this Rare & Desirable Stamp..... (Photo)	1,150.00+
26	★ 1c Blue, Ty. II (7). Large Margins Virtually All Around, Rich Color, Very Fine (Photo)	185.00
27	★ 1c Blue, Ty. II (7). Margins to just touching at bottom, Rich Dark Shade, some negligible toning, otherwise Fine..... (Photo)	185.00
28	1c Blue, Ty. II (7). Pos. 28R1E; Margins All Around, Light cancel, Very Fine (Photo)	37.50
29	1c Blue, Ty. II (7). Double Transfer, Pos. 2R1E, Large Margins except ornaments just touched at left, Rich Color, neat grid cancel, Fine	47.50
30	1c Blue, Ty. II (7). Double Transfer, One Inverted, Pos. 71L1E, Margins to just in at bottom, Light Blue cancel, Fine & Scarce.. (Photo)	130.00
31	1c Deep Blue, Ty. II, Plate 3 (7). Large to Huge Margins, showing bits of next stamp on three Sides, Rich Plate 3 Shade, light town pmk., vertical crease entirely in right margin, otherwise Very Fine.. (Photo)	110.00
32	1c Blue, Ty. II, Plate 1 Late (7). The Only Position Not Recut, Pos. 4R1L, Large Margins to just touching at left, Very Light cancel; tiny corner creases clear of design, otherwise Fine, Scarce (Photo)	120.00
33	1c Blue, Ty. II, Plate 1 Late (7). The Only Position Not Recut, Pos. 4R1L, Large Margins to slightly in, town pmks., Scarce.....	120.00
34	1c Blue, Ty. II (7). Three singles, Pos. 12, 13, 23 L2, Partial Reconstruction of the Big Plate 2 Flaw ; Margins to just in, Very light town pmks., pos. 23 tiny tear at top, Very Attractive & Scarce	E.VIII
35	1c Blue, Ty. II (7). Vertical Pair, Pos. 24, 34 R2, Large Margins, neat grid cancels, Very Fine, Choice Pair	75.00

36	1c Blue, Ty. II (7). Horiz Pair , Pos. 4, 5 R2; Margins Virtually All Around, town pmk., right stamp small closed tear, Very Fine Appearance.....	75.00+
37	1c Blue, Ty. II, Ty. IV (7, 9). Horiz. Combination Pair , Pos. 3, 4R1L; Pos. 4 The Only Position Not Recut, Large Margins to barely in at bottom; town pmk. & bit of red cancel, Fine, Scarce (Photo)	400.00
38	1c Blue, Ty. II, Plate 1 Early (7). Horiz. Strip of Three, Pos. 91, 92, 93 L1E, Left Stamp Triple Transfer, One Inverted ; Margins Almost All Around, light grid cancels, few light creases, Very Scarce Strip-..... (Photo)	210.00
39 ∞	1c Blue, Ty. II, Plate 1E (7) . Large Margins All Around, shows bit of next stamp at bottom, neatly tied by "LEXINGTON, KY" pmk. on 1852 Printed Circular; small cover faults, stamp is Very Fine.....	50.00
40 ∞	1c Blue, Ty. II (7). Horiz Pair , Pos. 81, 82 R1E; Margins almost All Around, incl. part Pane Margin at left; Incredible Rich Shade from improperly wiped plate, tied by bold "New York" two-bar pmk. on Jan 8, 1852 Printed Circular; Very Choice Cover (Photo)	75.00
41	1c Blue, Ty. III (8) . Pos 54L4, Huge Margins to just in at right, shows part of next stamp at left, Very Light Cancel, one of the Best Examples of Type III, showing Wide Breaks top & bottom, signed Ashbrook-..... (Photo)	500.00
42	1c Blue, Ty. IIIa (8A) . Margins All Around, light Town pmk., tiny corner crease, Very Fine Appearance (Photo)	275.00
43 ★	1c Blue, Ty. IV (9). Recut Twice at Top & Bottom, Pos. 52L1L , Margins virtually All Around, Almost Full o.g., slightly dry print, two trivial corner creases well clear of design, Very Fine, Scarce Stamp-..... (Photo)	200.00
44	1c Blue, Ty. IV (9) . Pos. 63L1L, Margins All Around, Rich Color, Very Fine	30.00
45	1c Blue, Ty. IV (9) . Large to Huge Margins, showing bits of adjoining stamps Three Sides, Boston "PAID" cancel; Tiny scissors cut in Very Fine	30.00
46	1c Blue, Ty. IV (9). Recut Once at Bottom, Double Transfer , Pos. 6R1L, Margins All Around, Town pmk., Very Fine (Photo)	35.00
47	1c Blue, Ty. IV (9). Recut Once at Bottom, Double Transfer , Pos. 1R1L, Large Margins Three Sides, incl. Part Top Sheet Margin, barely touched at one point at left, Rich Color, light cancel, Very Fine	35.00
48	1c Blue, Ty. IV (9) . Pos. 3R1L, Recut Twice at Bottom, Double Transfer, Large to Huge Margins, blue grid cancel, trivial surface scuff, otherwise Very Fine	32.50+
49	1c Blue, Ty. IV (9) . Pos. 1L1L, Recut twice at Bottom; Large to Huge Margins Almost All Around, incl. part top left Sheet Corner Margin, just touched at bottom right, light Red Carrier cancel, slightly dry print; Very Attractive	35.00
50	1c Blue, Ty. IV (9). Cracked Plate , Pos. 60L1L, Margins to barely touched, light blue town pmk., Very Fine (Photo)	70.00
51 ★	1c Blue, Ty. IV (9). Major Double Transfer , Pos. 97L1L, Margins All Around, o.g., light even toning, otherwise Very Fine, Handsome-..... (Photo)	110.00
52 ★	1c Blue, Ty. IV (9). Triple Transfer, One Inverted , Pos. 81L1L, Large Margins to slightly in, shows bits of next stamps at top & right, tiny pinhole, Scarce Unused	225.00
53	1c Blue, Ty. IV (9) . Eight Diff. Plated Positions, All with three or four Margins, incl. diff. Recut Varieties & Pos. 60R1L Cracked Plate ; also, incl. 1c Blue, Ty. II(7); few small faults, Balance Very Good-Very Fine, Above Average Plating Quality	317.50+

54	1c Blue, Ty. IV (9). Horiz. Pair , Pos. 48, 49 R1L, Margins Almost All Around, incl. bits of next stamps at bottom, just in at left, town pmks., Fine Pair (Photo)	70.00
55	1c Blue, Ty. IV (9). Horiz. Pair , Pos. 5, 6 L1L, Recut Once at Bottom, Right Stamp Double Transfer; Margins Almost All Around, incl. part Sheet Margin at Top, Rich Color, town pmk.; Very Attractive (Photo)	70.00
56	1c Blue, Ty. IV (9). Horiz. Pair , Pos. 71, 72 L1L, former Double Transfer, Once Inverted ; Large Margins to just in at bottom, town pmks., Scarce..... (Photo)	90.00
57 ☒	1c Blue, Ty. IV (9). Cracked Plate, Pos. 41R1L , Large Margins to in at left, grid cancel, not tied on local cover; cracks show clearly, Scarce, Attractive	70.00
58 ☒	1c Blue, Ty. IV (9). Horiz. Strip of Three , Pos. 72-74R1L; Large to Huge Margins except just in at right, tied by "Providence, R.I." pmks. on small folded letter; Choice & Attractive, Left Pair is Extremely Fine (Photo)	110.00+
59	1c-12c 1851-57 Issues (9 two, 20, 24-26, 33, 35 two, 36) . Ten Mostly Used Stamps, incl. No. 9 (two different triple recuts), Nos. 24, 26, 36 (reperfed). Unused, couple with minor faults, otherwise Fine Lot	313.00
60 ★	3c Red (11). Horiz. Strip of Three , Margins to slightly in, Full o.g., slight soiling & light vertical creases, attractive	125.00
61	3c Red, Claret (11, 11a) . Two singles, Pos. 84L5L, 94L5L, Major Cracked Plate Positions , former on small piece; margins to just in, Scarce & Attractive	100.00
62	3c Red (11). Sheet corner Positions; Pos. 1, 2R6 (pair), 10L1L, 91R1L, 100 L1 ; Each showing Guide Line, each Huge Margins to just touched	E.VI
63 ☒	3c Red (11) . Large Margins except barely touched at one point, neatly tied by clear green "Lancaster, Pa." pmk. on folded cover, Very Fine..	E.IV
64 ☒	3c Red (11) . Tied by "Millersville, Pa." pmk., ms. cancel on 1857 cover with Beautiful Blue Illustrated Corner Card of the Lancaster County Normal Institute; enclosure from a student is on Matching Illustr. Letterhead Stationery in Brown; Very Fine	E.IV
65 ☒	3c Red (11) . Large Margins Almost All Around, clear Intertwining Star cancel, not tied on small cover, "Chicopee, Mass." pmk., negligible cover stains, Very Fine	E.III
66 ☒	3c Red (11) . Margins Almost All Around clear "Hastings, M.T." pmk. on cover, Fine	E.IV
67 ☒	3c Red (11) . Margins Almost All Around, tied by "Peacham, Vt." pmk. on Freemont Campaign Cover , minor cover repairs at edges, Fine & Scarce	E.III
68 ☒	3c Red (11). Horiz. Pair , Pos. 91, 92L1L, Right Stamp Line Through "Three Cents" & Rosettes Double , tied by "Sacramento City, Cal." pmk. on small Embossed Lady's Cover; left stamp just in at bottom, Pos. 92 Very Fine Scarce	E.V
69	5c Red Brown (12) . Margins All Around except barely touching at top, light town pmk., tiny tear, Fine Appearance (Photo)	350.00
70	10c Dark Green, Ty. I (13) . Ample to Large Margins, Rich Color, neat town pmk., Fine (Photo)	275.00
71	10c Green, Ty. II (14) . Large to Huge Margins, showing bits of the next stamps at Top & Right, Neat Town pmk., Attractive, Extremely Fine (Photo)	85.00
72	10c Green, Ty. II (14) . Clear to Enormous Margins, Vivid Color, town pmk. Fine	85.00
73	10c Green, Ty. II, III (14, 15) . Clear to Large Margins, town pmks.; Fine	170.00

74	10c Green, Ty. IV (16). Recut at top , Pos. 65L1, Large Margins All Around, shows bits of next stamp at right, town pmk.; tiny thin speck in bottom margin, Extremely Fine Appearance (Photo)	525.00
75	12c Black (17). Large Margins All Around, Light Grid Cancel, Very Fine (Photo)	75.00
76	12c Black (17). Margins to just touching at B., Bold Red Town pmk., Attractive, Fine (Photo)	75.00+
77	12c Black (17). Margins to barely in at bottom, Neat Blue Town pmk. Fine, with SPA Certificate	75.00+
78	12c Black (17). Ample to Huge Margins, Grid of Squares, tiny corner crease, Fine Appearance	75.00
79	12c Black (17). Horiz. Pair, Large Margins to just Touching at one point, shows bits of adjoining stamps at top & left, slightly dry print at bottom; grid cancels, light horiz. crease, Very Fine Appearance	150.00
80	12c Black (17). Horiz. Pair. Margins to just in at bottom, Neat Town pmk., slight thin, Fine Appearance	150.00+
81	12 Black (17). Single, Huge Margins, showing bits of Three Adjoining Stamps, tied by light "New-York" pmk. repeated on Registered large size linen cover to N.C.; negligible cover flaws & toning, the 12c used Alone on cover is Very Scarce	375.00

1857 ISSUE

82	★田 1c Blue Types I and II (18, 20). Block of Nine with five Type I and four Type II, one stamp has thins, Fine & Scarce Piece (Photo)	2,040.00+
83	1c Blue, Ty. I (18). Town pmk., Very Fine, signed "Ashbrook" (Photo)	150.00
84	1c Blue, Ty. I (18). Fresh Color, Neat, Target Cancel, tiny margin tear, otherwise Fine	150.00
85	1c Blue, Ty. I (18). Horiz. Pair, Well-Centered, unusual blue grid cancels; light creases & tiny nick, Very Fine Appearance (Photo)	325.00
86	1c Blue, Ty. Ic (19 var). Curl on Shoulder; Pos. 81R4, Light Cancel, corner crease, Fine Appearance, Attractive Example of this Scarce Sub-Type (Photo)	E.VIII
87	1c Blue, Ty. II (20). The Big Plate 2 Flaw; Pos. 2L2; Late State of the Flaw; light town pmk., few tiny faults, Attractive, Very Scarce Perforated	125.00
88	1c Blue, Ty. II, IIIa (20, 22), Former from Plate 11; two of latter, one Plate 4, other Plate 11; No.20 & one No.22 tiny trivial tears, other perf. toning, Very Fine Appearance, Scarce	177.50
89	1c Blue, Ty. IIIa, Plate 11 (22). Light town pmk., Well-Centered, Imperf. Straddle Margin with Center Line at right; tiny tear in imperf. margin far from stamps, still Very Fine, Very Scarce (this position not listed in Neinken) (Photo)	65.00
90	1c Blue, Ty. IIIa, Plate 4 (22). Well-Centered, tied by town pmk. on small piece, short perf., otherwise Very Fine	65.00
91	1c Blue, Ty. IV (23). Well-Centered, tied by Blue town pmk. on small piece; negligible gum stain, otherwise Fine	85.00
92	★ 1c Blue, Ty. V (24). Horiz. Strip of Three, Fresh, Full o.g., Bright Color, Very Fine	100.00
93	★田 1c Blue, Ty. V (24). Block, Pos. 28, 29, 38, 39L10; Fresh, o.g., Well-Centered, bottom pair faint crease, otherwise Very Fine Block (Photo)	150.00
94	★田 1c Blue, Ty. V (24). Horiz. Block of Eight, Pos. 36-39, 46-49L10; Remarkably Well-Centered, Full o.g., few tiny surface scuffs & pinpoint thin specks, Very Fine Appearance	300.00
95	★ 1c-12c 1857 Issue (24, 35, 36b). Fresh, First & Last o.g., 1c tiny corner perf. crease, Fine Appearance; 10c Deep Rich Color, perfs. cut at right, 12c Fine	160.00

96	1c Blue, Ty. V (24). Pos. 41L7; centered to top, showing Part Imprint & Plate "No. 7" within left perfs; town pmk; Very Scarce, usually pos. 51 shows Plate No.	E.IV
97	1c Blue, Ty. V (24). Nine diff. Plate Varieties, incl. Pos. 97R7 Curl on Shoulder , 52R8 Curl in Hair (two), 41R8 Curl over "E" of "Cent" , 16L8 "Half Moon" on Shoulder , 8R8 Double Transfer , etc.; two on cover, pos. 97R7 in Pair, Fine Lot.....	E.VI
98	1c Blue, Ty. V (24). Seventeen copies, include Reds, Blues, Pair, Fine Lot.....	136.00+
99	1c-12c 1857 Issue (24, 30A, 33, 35, 36). Used, No.30A Neat Blue Town pmk., reperfed; No. 35 Bold Red Grid Cancel, couple short perfs.; No.36 partly clipped perfs., otherwise, Fine Lot.....	142.00
100	3c Rose, Ty. I (25). Major Cracked Plate, Pos. 48R7; neatly tied on piece, crack shows clearly, Fine.....	75.00
101 ★田	3c Red (26). Bottom margin Block, Stamps Mint, right perfs. barely touch, Fine.....	60.00+
102 ★田	3c Red (26). Block, full o.g., centered top, pulled perf. & few slightly short, Attractive	60.00+
103	5c Brick Red (27). Rich Color, Neat Town pmk., many short perfs., tiny margin tear, otherwise Very Fine	(Photo) 275.00
104	5c Brick Red (27). Town pmk., single pulled perf., otherwise Very Fine Attractive	(Photo) 275.00
105	5c Brick Red (27). Town pmk., reperfed at left, Very Good Appearance	275.00
106	5c Indian Red (28A). Rich Color; pulled perf., reperfed at left, Fine Appearance.....	(Photo) 425.00
107	5c Indian Red (28A). Rich Color & Impression, Neat Town pmk., straight edge at bottom, perfs. just cut design at top, Scarce..	(Photo) 425.00
108 ★	5c Orange Brown, Ty. II (30). Very Well-Centered, Part o.g., Very Fine	(Photo) 225.00
109 ★	5c Brown, Ty. II (30A). Extremely Fresh & Well-Centered, Full o.g., Dark Rich Color, Choice, Extremely Fine.....	(Photo) 135.00
110 ★	5c Brown, Ty. II (30A). Fresh, Part o.g., Rich Color, perfs. barely cut at bottom, Attractive, Fine.....	(Photo) 135.00
111	5c Brown, Ty. II (30A). Unusually Well-Centered, Rich Color, Red Grid Cancel, single barely nibbed perf., still Very Fine.....	45.00
112	10c Green, Ty. I (31). Slight perf. toning & tiny creases, Fine Appearance.....	(Photo) 175.00
113	10c Dark Green, Ty. IV (34). Recut at Bottom, Pos. 55L, Very Light cancel, reperfed at Top & perf. added at bottom, Very Fine Appearance.....	(Photo) 400.00
114 ★	10c Green, Ty. V (35). Horiz. Pair with R. Imperf. Pane Margin, Fresh, Part o.g., Rich Color, Very Fine	(Photo) 110.00
115	10c Dark Green, Yellowish Green, Ty. V (35). Two Beautiful Shades, Choice Centering, Red Grid, Town cancels; latter is Pos. 52L2, Curl in "E" of Cents; Very Fine.....	40.00
116	12c, 15 Black (36b, 77). First Unused, o.g. small thins, Latter Used, Attractive, Very Good-Fine Appearing Lot.....	96.50
117	24c Gray Lilac (37). Well-Centered, very light ms. cancel, Attractive & Very Fine	(Photo) 85.00
118	24c Gray Lilac (37). Fresh Color, Neat Boston "Paid" Grid Cancel, Fine	85.00
119 ★	24c Red Lilac, Imperforate (37c). Large Margins to just touched at top, tiny pinpoint thin speck, negligible soiling and stain; Very Attractive Appearing Example of this Difficult Stamp, with P.F. Certificate.....	(Photo) 650.00
120 ★	30c Orange (38). Fresh, o.g., perfs. tiny bit in at left.....	225.00
121	30c Orange (38). Rich Color, Large Boston "Paid" Grid Cancel, Fine	(Photo) 95.00

122	30c Orange (38). Rich Color, red grid cancel, reperfed at right, Very Fine Appearance	100.00
123 ★	90c Blue (39). Rich Color, Part o.g., centered to bottom, single short perf., otherwise Fine.....(Photo)	500.00

1857 REPRINTS

124 ★	1c Bright Blue, Reprint (40). Wondefrfully Well-Centered, single nibbed perf., otherwise Extremely Fine.....(Photo)	225.00
125 ★	3c Scarlet, Reprint (41). Vivid Color, perfs. bit in at bottom; Fine.....(Photo)	1,400.00
126 ★	5c Orange Brown, Reprint (42). Fresh, couple short perfs. & negligible perf. creases, otherwise Fine.....(Photo)	375.00
127 ★	12c Greenish Black, Reprint (44). Fresh, Fine	775.00
128 ★	30c Yellow Orange, Reprint (46). Bright color, few slightly nibbed perfs., otherwise Fine	1,300.00
129 ★	90c Deep Blue, Reprint (47). Fresh, Centered to Bottom Right, Fine, Scarce	2,000.00

1861 FIRST DESIGNS

130 ★	3c Brown Rose, "First Design" (56). Fresh, Rich Shade, Full o.g., tiny corner perf. crease, still Fine, Scarce.....(Photo)	350.00
130A ★	3c Brown Rose, "First Design" (56). Fresh, o.g., tiny thin, Very Fine Appearance, with P.F. Certificate	350.00
131 ★	10c Dark Green, "First Design" (58). Fresh, o.g., Well-Centered; faint thin speck, Very Fine Appearing example of this Rare Stamp, with P.F. Certificate	1,750.00

1861 ISSUE

132 ★	1c-24c 1861 Issue (63, 65, 78). Fresh, First Two o.g., 3c light corner crease, 24c single pulled perf., otherwise Fine appearance	117.50
133 ★	1c-10c 1861 Issue (63, 63b, 68, 73). Fresh, couple o.g., Very Good-Fine Lot.....	172.50
134	1c-90c 1861 Issue (63, 67, 69-73, 77, 78). Fresh, 12c & 90c light creases, others Very Good-Very Fine	276.75
135	3c Pink (64). Well-Centered, Rich Color, odd cork cancel; reperfed at bottom, Very Fine Appearance	100.00
136 ☒	3c Pink (64). Well-Centered, tied by "Detroit Mich. Nov. 27" pmk. on small cover with Patriotic Design on back; slight staining, otherwise Very Fine, with P.F. Certificate	275.00
137 P田	3c Pale Rose, Decalcomania Proofs, Lowenberg Patent (Brazer 65P5a, 65P5b). Blocks, latter perforated, creased, & some flaking; former couple light creases & rounded corner clear of design, Scarce	E.V
138 P	2c Black, 3c Rose, Decalcomania Proofs, Lowenberg Patent (Brazer 65P5, 73P5). Bottom Margin Single of Each; 2c with Guide Arrow & part of next stamp at right, small faults; 3c Very Fine	E.IV
139 ★	3c Rose (65). Fresh, Very Well-Centered, Full o.g., Very Fine (Photo)	12.50
140 ☒	3c Rose (65). Natural s.e. left, tied by blue grid, matching "Sandusky, O." on 1864 cover with "Prisoner's Letter Examined-CHR-Johnsons Island, O" mostly clear oval; some cover aging, Scarce....	E.IV
141 ★	3c Lake (66). Fresh, o.g., centered to top right, Very Good, Scarce.....(Photo)	700.00

142	田	5c Brown, Decalcomania Proof, Lowenberg Patent (Brazier 67P5). Block, Large Margins All Around, Minimum of flaws, Very Fine for this Fragile Item	E.VII
143		5c Buff (67). Well-Centered, Rich Color, Bold Red Rimless Grid Cancel, Attractive, Fine(Photo)	95.00
144		5c-90c 1861 Issue (67, 69, 72, 75, 77, 78). Used, Two of Last Two, One 15c, Light Blue Cancel, One 24c "Paid" cancel, most with trivial faults, Fine appearing Lot	312.50
145		5c 1861 Issue (67, 75, 76, 76a). Well-Centered, No. 75 Red Cancel, No. 76a cancel removed, appears Unused; Trivial flaws, Handsome Group	186.50+
146		5c-15c 1861 Issue (67, 75-77). Two of First & Last, one No. 67 s.e. at left; No. 75 Bold Red Grid Cancel, reperfed; No. 76 Strip of Three, reperfed; couple trivial faults, otherwise Fine Lot.....	339.50
147	★	12c Black (69). Fresh, Large Part o.g., centered to Right, Fine (Photo)	110.00
148		1c-30c 1861-79 Issues (Betw. 69-185). 29 Virtually All Used Stamps, incl. two No. 72, No. 94 with Fancy "Clover" Cancel, Nos. 116 & 117, Few Bank Notes with N.Y.F.M. Cancels, etc., Mixed Condition, Good-Fine	E.VIII
149		24c Steel Blue (70b). Well-Centered, grid cancel, few foreign fibers, paper on back only, otherwise Extremely Fine, with Royal Certificate.....(Photo)	52.50
150		24c Dark Violet (70c). Rich Color, light target cancels; light crease, Very Fine Appearance.....(Photo)	225.00
151	★	30c Orange (71). Fresh, centered to left, Very Good.....	150.00
152		90c Blue (72). Extra Large Margins, Neat Rosette Cancel, negligible perf. creases, Extremely Fine Appearance	67.50
153	★	2c Black (73). Very Fine(Photo)	45.00
154	☒	2c Black (73). Nicely Centered, tied by grid of squares on neat cover, Albany N.Y., "Carrier 8 A.M." pmk., Fine, A Pretty Cover	E.III
155		2c Black (73, 87, 93). 65 Stamps, Neatly Arranged on Stock Pages, Wide Variety of Cancels, some better, mixed quality, Useful Lot for the Specialist	581.50
156	★	5c Brown (76). Two Diff. Shades, First Part o.g. & slightly rounded corner, Latter small thin, otherwise Very Good-Fine	135.00
157	★	15c Black (77). Fresh, couple short perfs., otherwise Fine(Photo)	175.00

1861-66 RE-ISSUE

158	★	1c Blue, Re-Issue (102). Fresh, Large Margins, Extremely Fine (Photo)	225.00
159	★	2c Black, Re-Issue (103). Fresh, Wonderfully Well-Centered, Extremely Fine, Very Rare Thus(Photo)	1,150.00
160	★	10c Green, Re-Issue (106). Fresh, part o.g., centered to top, slight perf. staining, Very Good Example of this Rare Stamp, with P.F. Certificate.....(Photo)	1,000.00
161	★	12c Black, Re-Issue (107). Fresh, part o.g., single toned perf., otherwise Fine, Rare, with P.F. Certificate.....(Photo)	1,450.00
162	★	15c Black, Re-Issue (108). Fresh, Well-Centered, o.g., tiny thin spot, Very Fine Appearance, Rare, with P.F. Certificate.....(Photo)	1,300.00
163	★	30c Brownish Orange, Re-issue (110). Fresh, o.g., Very Fine, with P.F. Certificate	2,000.00
164	☒	Magnus Patriotic, Beautiful Multicolor The Union Rose, Unused, with original enclosure, Very Fine, Very Scarce	E.IV
165	☒	Lincoln-Davis Prize Fight, complete Set of Five Rounds, Very Fine	E.VI

1867 GRILLED ISSUES

166 ★	3c Rose, Grilled All Over (79). Soiled, o.g., Fine Centering for this, with P.F. Certificate(Photo)	1,000.00
167 ☒	3c Rose, Grilled All Over (79). Usual ragged perfs., tied by blue quartered cork cancel, matching "Memphis, Tenn." pmk. on buff grocers corner card cover; stamp has repaired corner, Attractive & Scarce(Photo)	450.00
168	3c Rose, C Grill (83). Grid cancel, few tiny perf. creases, otherwise Fine, Scarce(Photo)	100.00
169 ☒	3c Rose, C. Grill (83). Well-Centered, tiny corner crease, Unusual Cancel resembling Man's Head, not tied on orange cover, "Columbus Ga." pmk.; small cover stains, Scarce	140.00
170	2c Black, D Grill (84). Perfs. in at left, light diagonal crease, Attractive Example of this Scarce Stamp(Photo)	275.00
171	3c Rose, D Grill (85). Well-Centered, odd Cog-wheel cancel, couple barely nibbed perfs., still Very Fine, Unusual this Nice(Photo)	80.00
172	12c Black, Z. Grill (85E). Neat Target cancel, Very Fine(Photo)	150.00
173 ★	1c Blue, E. Grill (86). Top Margin & Part Impt. Single, Rich Color, Full o.g., purple handstamp on back (on sheet margin only) barely shows through, left perfs. just in, Very Attractive.....(Photo)	200.00
174 ☒	12c Black, E Grill (90). Right perfs. touch, tied by Circle of Wedges & Red London Transit on cover to New Brunswick; apparently 2c overpayment caused Postal Clerk to incorrectly assume England as destination; Fine & Unusual	70.00
175	15c Black, E. Grill (91). Fresh, tiny corner perf. crease, otherwise Very Fine(Photo)	100.00
176 ★	1c Blue, F. Grill (92). Fresh, o.g., Pale Shade, Fine	90.00
177 ☒	1c Blue, F. Grill (92). Horiz. Strip of Three; Very Well-Centered, tied by Diamond Grid cancels on cover, "Norwalk, Conn." pmk., tiny perf. flaws at top, otherwise Very Fine.....	67.50+
178 ★	5c Brown (95). Unusually Well-Centered, Rich Color, Full o.g., slight toning, otherwise Very Fine.....(Photo)	325.00
179	12c Black, F. Grill (97). Horiz. Strip of Five, geometric cross-roads cancel; right stamp rejoined, left stamp sealed tear, center strip Very Fine, Scarce in Multiple this Large.....(Photo)	E. VIII
180 ★	15c Black, F. Grill (98). Wonderfully Well-Centered, two tiny thin specks in grill, Extremely Fine Appearance(Photo)	175.00
181	24c Gray Lilac (99). Red Leaf cancel, few barely nibbed perfs., otherwise Fine, Handsome(Photo)	175.00
182	90c Blue, F. Grill (101). Rich Color, Leaf cancel; tiny corner perf. crease, otherwise Fine, Scarce.....(Photo)	275.00

1869 ISSUE

183 ★	1c-3c 1869 Pictorials (112-114). Fresh, First with o.g., couple tiny flaws, Very Good Appearance	185.00
184	1c-15c 1869 Pictorials (112, 114-119). Fresh, four with small corner creases, Fine-Very Fine Appearance	272.50
185 ★	2c Brown (113). Fresh, Deep Color, with A.P.S. Certificate which states "genuine, some o.g., thinned" We have removed the alleged o.g. & have found the stamp to be completely sound, A.P.S. Certificate not withstanding, Very Fine	57.50
186 ★	2c Dark Brown (113). Fresh & Fine.....	57.50
187	2c Yellow Brown, Vertical Half Used as 1c (113d). Just tied by ms "X" cancel on small portion of Tax Notice, as most of these are; Fine, Scarce, with Eugene Klein Letter of Authenticity	E. VII

188	⊠	2c Brown (113). Tied by fancy Star of Diamonds, "New York City Station E" pmk. on cover, small cover nick at top left, Fine & Very Attractive	E.III
189	⊠	3c Ultramarine (114). Horiz. Block of Eight, natural s.e. at right, cork cancels, few faults, Fine Looking, Scarce	120.00+
190		3c Ultramarine, (114), 84, incl. one Unused, some with faults, Balance Very Good-Fine.....	245.00
191		3c Ultramarine, Vertical Two-Thirds Used as 2c (114c). Barely tied by grid on small portion of Tax Notice, as most of these are, Fine, Rare, with photostat of Eugene Klein Letter of Authenticity	E.VII
192	⊠	3c Ultramarine (114). "Jumbo" Margins Three Sides, showing bits of next stamp at top & right, wide imperf. straddle Margin at left, just in at bottom, negative star cancel, not tied, on small fresh cover, "Chillicothe, O." pmk.; Incredible Stamp	E.III
193	⊠	3c Ultramarine (114). Tied on cover, Denver Col. (Terr.) pmk. on 1870 cover to "Trinidad Col. Ter.", with original enclosure, Fine.....	E.III
194	⊠	6c Ultramarine (115). Horiz. Strip of Three, right perfs. just in right pair, tied by bold Quartered Cork cancels, "Peoria, Ill." pmk. on large size buff cover, 6 x 3c Rate; negligible perf. toning & few cover wrinkles from bulky enclosure, otherwise Fine, Scarce	E.VI
195		24c Green & Violet (120). Tiny perf. tear, otherwise Very Fine (Photo)	225.00
196		30c Blue & Carmine (121). Well-Centered, negligible toning specks on back, Very Fine	85.00
197		90c Carmine & Black (122). Well-Centered, small flaws, Very Fine Appearance, Very Attractive	(Photo) 425.00
197A		90c Carmine & Black (122). Rich Colors, Red Grid Cancel, perfs. just in at right, with P.F. Certificate which states "genuine with small thin spot in the grill", Attractive Appearance	425.00

1869 RE-ISSUES

198		1c Buff, Re-Issue (123). Duplex pmk., couple barely nibbed perfs., otherwise Very Fine	85.00
199	★	2c Brown, Re-Issue (124). Fresh, o.g., horiz. crease, Very Fine Appearance	(Photo) 200.00
200	★	6c Blue, Re-Issue (126). Well-Centered, tiny faults, Very Fine Appearance	(Photo) 375.00
201	★	10c Yellow, Re-Issue (127). Fresh, Very Fine.....	(Photo) 625.00
202	★	15c Brown & Blue, Re-Issue (129). Fresh, Fine	(Photo) 675.00
203	★	90c Carmine & Black Re-Issue (132). Fresh, Reperfed at Bottom, otherwise Very Fine	(Photo) 1,600.00
204	★	1c Buff, Re-Issue (133). Fresh, o.g., Fine	(Photo) 120.00

BANK NOTE ISSUES

205	★	10c Brown, Grill (139). Fresh, faint corner crease, Very Fine Appearance, Scarce	(Photo) 550.00
206		15c Orange, Grill (141). Circle of Wedges cancel, small thin spot & few blunted perfs. at top, Fine Appearance.....	(Photo) 225.00
207		30c Black, Grill (143). Light cancel, trivial corner perf. crease, top perfs. touch, Scarce, with P.F. Certificate	(Photo) 375.00
208	★	1c-10c 1870-73 Bank Notes (145-147, 156-159, 161). Fresh, Several o.g., Very Good, Fine	266.00
209		1c-24c Bank Notes (145-153). Fresh, incl. extra 6c, 10c; 15c & 24c small corner creases, others Very Fine	101.85
210	★	12c Dull Violet (151). Fresh, small faults, Fine Appearance	190.00

211 ★	24c Purple (153). Fresh, Rich Color, Fine..... (Photo)	135.00
212 ★	24c Purple (153). Fresh, couple partly nibbed perfs., otherwise Fine	135.00
213 ★	24c Purple (153). Perfs. just cut at left, some light toning	135.00
214	90c Carmine (155). Very Fine	62.50
215	1c-90c Bank Notes (156-166). Incl. extra 2c, 30c; 1c-3c Unused, 6c & one 30c tiny corner creases, others Fine-Very Fine.....	233.00
216 ★	1c-10c Bank Notes (158, 159, 179, 183, 205, 205a, 209, 212, 216). All o.g. except Nos. 209 & 216, most have tiny faults, Very Good-Fine Appearance.....	270.00
217 ☞	3c Green (158). One pulled perf.; quartered cork cancel, not tied on Unusual Advertising Cover of Robt. E. Lee Livery Stables with large Illustration of Gen. Lee, partly clear New Orleans pmk., small piece of flap missing, Fine, Scarce & Most Attractive..... (Photo)	E.IV
218 ★	7c Orange Vermilion (160). Fresh, Bright Color, Fine	125.00
219 ★	12c Blackish Violet (162). Fresh, Rich Dark Color, single pulled perf. & tiny margin tear	235.00
220	90c Rose Carmine (166). Rich Color, Neat Town pmk., couple tiny corner perf. creases, Fine Appearance.....	67.50
<hr/>		
221 ★	12c Dark Violet, Special Printing (173). Fresh, Fine, Scarce.....	1,500.00
222 ★	24c Dull Purple Special Printing (175). Fresh, Fine, with P.F. Certificate	1,350.00
<hr/>		
223 ★	2c Vermilion, 5c Blue (178, 179). First with light crease, Fine	125.00
224 ★	2c Vermilion, 5c Blue (178, 179). Fresh, First o.g., Very Good-Fine.	125.00
225 ★	2c-30c 1879 Bank Notes (183, 189, 190). Fresh, Last o.g., crease & tiny thin, otherwise Fine Lot.....	175.00
226 ★	2c-30c 1879 Bank Notes (183, 189, 190). Fresh, Last o.g., crease & tiny thin, otherwise Very Good-Fine	175.00
227 ★	30c Full Black (190). Fresh, Part o.g., faint crease, Very Fine appearance	125.00
<hr/>		
228 ★	7c Scarlet Vermilion, Special Printing (196), Fine, Scarce, with P.F. Certificate	1,750.00
229 ★	24c Dark Violet, Special Printing (200). Fresh, Fine, Scarce (Photo)	1,250.00
230 ★	30c Greenish Black, Special Printing (201). Fresh, Centered to Bottom, Fine, Scarce	4,000.00
<hr/>		
231 ★	1c-10c Bank Notes (205-208, 210-216). Fresh, o.g., couple tiny thins, otherwise Fine-Very Fine.....	201.25
232 ★	6c Brown Red (208a). Rich Color, Full o.g., Fine..... (Photo)	70.00
233 ★	2c Pale Red Brown, Special Printing (211B). Fresh, Full o.g., Very Fine	325.00
234 ★	30c Orange Brown (217). Fresh, o.g., Well-Centered, Very Fine..... (Photo)	110.00
235	90c Purple (218). Well-Centered, Rich Color, Light Cancel, Very Fine	57.50

1890 ISSUE

236 ★	1c-15c 1890 Issue (219-223, 225-227). Fresh, Most o.g., few tiny faults, others Very Good-Very Fine.....	216.00
237 ★	4c Dark Brown, Imperforate (222a). Vertical Pair, shiny o.g. from mount, scissors cut in top margin only, otherwise Very Fine	150.00
238 ★	6c Brown Red (224). Large Margins, Fresh, o.g., Extremely Fine	19.00
239 ★	30c Black (228). Fresh, o.g., Very Fine	125.00
240 ★	90c Orange (229). Rich Color, Fresh, o.g., inclusion speck at bottom, otherwise Fine	150.00

COLUMBIAN ISSUE

241 ★	1c-10c Columbians (230, 232-237). Fresh, o.g., few minor faults, 10c s.e. at top, others Fine-Very Fine	183.25
242 E	4c Columbian, Blue Green Large Die Essay on Thin White Card (Brazier 233E-Bb). Reduced to 42½ x 38½ mm., Very Fine & Rare (Photo)	E.X
243 ★	5c Columbian (234). Top Plate No. 10 Single, Rich Color, Fresh, o.g., Very Fine	32.50
244 ★	15c Columbian (238). Rich Color, Fresh, o.g., Fine.....	75.00
245 ★	30c, 50c Columbians (239, 240). Fresh, o.g., small thins, Fine Appearance.....	265.00
246 ★	\$1.00 Columbian (241). Rich Color, Fresh, o.g., faint thin speck, Very Fine Appearance (Photo)	450.00
247 ★	\$2.00 Columbian (242). Fresh, o.g., couple tiny perf. creases, otherwise Very Fine..... (Photo)	475.00
248 ★	\$3.00 Columbian (243). Unusually Well-Centered, o.g., Very Fine-..... (Photo)	800.00
249 ★	\$4.00 Columbian (244). Rich Color, o.g., couple tiny specks on face, otherwise Very Fine (Photo)	1,150.00
250 ★	\$5.00 Columbian (245). Fresh, o.g., Very Fine (Photo)	1,250.00
251 ★	\$5.00 Columbian (245). Fresh, Mint, Fine (Photo)	1,250.00

1894 ISSUE

252 ★	2c Carmine, Ty. 4I (251). T. Imprint & Plate No. 133 Strip of Three, Mint, Very Good-Fine	250.00
253 ★	2c-15c 1894 Issue (252, 254-259). Fresh, o.g., couple tiny faults, others Very Good-Fine.....	226.00
254 ★	2c Carmine, Ty. III (252). T. Imprint & Plate No. 148 Strip of Three, Mint, Fine.....	100.00
255 ★	5c Chocolate (255). Plate No. & Imprint Strips of Three, Five Diff. Nos. or Pos., Fresh, o.g., Nearly All have faults, Very Good-Fine Centering	287.50
256 ★	50c Orange (260). Bright Color, o.g., light gum bend, otherwise Very Fine	85.00
257 ★	50c Orange (260). Fresh, Full o.g., tiny thin, Very Fine Appearance..	85.00
258 ★	\$1.00 Black (261, 261A). Imprint Plate No. Strip of Three, (one Type II and two Type I), Fine-Very Fine (Photo)	1,500.00
259 ★	\$1.00 Black, Ty. II (261A). Large Margins, Fresh, o.g., light horiz. crease, Extremely Fine Appearance (Photo)	450.00
260 ★	\$5.00 Dark Green (263). Fresh, Well-Centered, reperfed at bottom, Very Fine Appearance..... (Photo)	1,000.00
261	\$5.00 Dark Green (263). Used, reperfed at right, Very Fine Appearance..... (Photo)	425.00

1895-98 ISSUES

262 ★	2c Carmine, Ty. I (265). T. Imprint & Plate No. 112 Strip of Three, Mint, Very Fine	35.00
263 ★	2c Carmine, Ty. II (266). R. Imprint & Plate No. 132 Strip of Three, Mint, Fine	45.00
264 ★	\$1.00 Black (276). Fresh, tiny corner perf. crease, Very Fine Appearance..... (Photo)	200.00

265 ★田	5c Dark Blue (281). B. Imprint & Plate No. 1199 Block of Six , Full o.g., partly reinforced & light crease entirely in selvage, otherwise Fine.....	135.00
266 ★	10c Brown, Ty. I, Ty. II, Yellow Brown, Ty. II (282C, 283, 283b). Fresh, o.g., tiny inclusion speck in last, Fine-Very Fine Lot	110.00

TRANS-MISSISSIPPI ISSUE

267 ★	5c-10c Trans-Mississippi (288-290). Fresh, o.g., 10c tiny thin spot, others Fine	177.50
268 ★	50c Trans-Mississippi (291). Fresh, o.g., tiny perf. crease, otherwise Fine	(Photo) 285.00
269 ★	50c Trans-Mississippi (291). Imprint Plate No. Pair, Fine	(Photo) 725.00
270 ★	\$1.00 Trans-Mississippi (292). Fresh, o.g., small thin spot, Fine Appearance	(Photo) 650.00
271 ★田	\$1.00 Trans-Mississippi (292). Block , Fine	(Photo) 3,750.00
272 ★	\$2.00 Trans-Mississippi (293). Fresh, o.g., single barely nibbed perf., otherwise Very Fine	(Photo) 875.00

PAN-AMERICAN ISSUE

273 ★	1c Green & Black, Inverted Center (294a). Thin spot, part o.g. Fine Appearance	(Photo) 4,000.00
274 ★	4c Deep Red Brown & Black, Inverted Center (296a). Closed tear, centered to Bottom, Attractive Appearance	(Photo) 7,250.00
275 ★	8c Pan-American (298). Wide Margins, Extremely Fine	50.00
276 ★	10c Pan-American (299). hinge remnant, Very Fine	67.50

1902-1903 ISSUES

277 ★田	1c Blue Green (300). Mint T. Imprint & Plate No. 2032 Block of Six , Very Fine	67.50
278 ★	1c-15c 1902 Issue (300-309). Well-Centered, three with small thins, others Very Fine	152.00
279 ★	50c Orange (310). Very Fine	(Photo) 165.00
280 ★	\$1.00 Black (311). Fresh, tiny corner perf. crease, otherwise Fine	(Photo) 275.00
281 ★	\$2.00 Blue (312). Well-Centered, tiny black paper specks on back, otherwise Very Fine	(Photo) 375.00
282 ★田	\$5.00 Dark Green (313) Block , Fine-Very Fine	(Photo) 3,000.00
283	\$5.00 Green (313). Used, small corner crease, Very Fine Appearance	(Photo) 250.00
284 ★田	1c Green, Imperforate (314). Center Line Block, Very Fine	120.00
285 ★	1c Blue Green, 2c Carmine, Imperforates (314, 320). Horiz. Pairs, latter tiny corner thin, Very Fine Appearance	57.00
286 ★	Private Vending Machine Coils , Five items, incl. Brinkerhoff, Ty. I (409) & U.S. Automatic Vending, Ty. II (314, 320), Ty. II (320b, 368); Fine-Very Fine	126.00
287 ★田	1c Green, 2c Carmine, Imperforates (314, 320). Blocks, two 1c small thins, otherwise Very Fine	114.00
288 ★	5c Blue, Imperforate (315). Horiz. Pair, tiny natural inclusion speck, Very Fine	(Photo) 550.00

289 ★	5c Blue, Imperforate (315). Horiz. Pair, Large Margins, Very Fine-(Photo)	550.00
290 ★田	5c Blue, Imperforate (315). Block, tiny natural inclusion spot in margin, Very Fine(Photo)	1,200.00
291 ★	1c Blue Green, Coil (318). Pair, barely touches at left, with P.F. Certificate, Scarce(Photo)	1,600.00
292 ★田	2c Carmine (319). B. Imprint & Plate No. 2256 Block of Six, Mint, some minor reinforcing, Very Fine	55.00
293 ★	2c Carmine, Lake, Scarlet, Imperforates (320, 320a, 320b). Horiz. Pairs, also B. Impt. & Plate No. 4704 Strip of Three of No. 320a; tear in bottom selvage of strip, otherwise Very Fine Group.....	150.00
294 ★田	2c Carmine, Imperforate (320). Mint, R. Imprint & Plate No. 4243 Block of Six, Very Fine.....	100.00
295 ★田	2c Scarlet, Imperforate (320b). Center Line Block of 16, Very Fine	375.00
296 ★	3c, 5c Louisiana Purchase (325, 326). Very Fine	70.00
297 ★	10c Louisiana Purchase (327). Well-Centered, Very Fine(Photo)	100.00
298 ★田	1c Jamestown (328). B. Imprint & Plate No. 3799 Block of Eight, some sensible hinge reinforcement, Very Good-Fine	139.00

1908 ISSUE

299 ★	2c Carmine, Booklet Pane (332a). Mint, Fine-Very Fine	75.00
300 ★	50c Violet (341). Fresh, Well-Centered, tiny pinhole, Very Fine Appearance.....	85.00
301 ★	\$1.00 Violet Brown (342). Very Fine(Photo)	140.00
302 ★	1c-5c 1908 Imperforates (343-347). Very Fine Set	77.25
303 ★田	1c Green, 2c Carmine, Imperforates (343, 344). Center Line Blocks, small inclusion speck in one 1c, otherwise Very Fine	50.00
304 ★	3c-5c 1908 Imperforates (345-347). Very Fine	69.00
305 ★	3c, 4c 1909 Imperforates (345, 346). Bottom Arrow Pairs, also incl. vertical pair of 3c, Very Fine	81.00
306 ★田	4c Orange Brown, Imperforate (346). Block, Very Fine	92.50
307 ★田	4c Orange Brown, Imperforate (346). Block, Very Fine	92.50
308 ★田	4c Orange Brown, Imperforate (346). Center Line Block, Very Fine	130.00
309 ★田	5c Blue, Imperforate (347). Center Line Block, tiny thin specks, Very Fine Appearance	225.00+
310 ★田	5c Blue, Imperforate (347). B. Imprint & Plate No. 4929 Block of Six, small natural selvage barely affects plate no., Very Fine.....	350.00
311 ★	1c-10c 1908-16 Coils (Betw. 348-497). 37 Stamps, Mostly Diff., Generally Fine-Very Fine	E.VI
312 ★	2c Carmine, 5c Blue, Coils (349, 351, 353, 355). All but First Mint, Fine-Very Fine	143.50
313 ★	1c Green, 2c Carmine Coils (349, 386, 390, 410, 411, 441-443). Line Pairs, except Pair of No. 442, first with some separation, Fine-Very Fine	206.75
314 ★	5c Blue, Coil (351). Fine	55.00
315 ★	5c Blue, Coil (351). Mint Plate No. 4929 Paste-Up Pair, Fine Pair	110.00+
316 ★	5c Blue, Coil (351). Pair, centered left, just clear of design	110.00+
317 ★	5c Blue, Coil (351). Paste-up Strip of Four, perfs. well clear to barely clear, Fine-very fine	220.00+
318 ★	5c Blue, Coil (351). Paste-Up Strip of Four, Fine-Very Fine.....	220.00+
319 ★	5c Blue, Coil (351). Mint Paste-Up Strip of Four, Fine	220.00+
320 ★	5c Blue, Coil (351). Line Strip of Four, perfs. weak through line pair, Very Fine(Photo)	375.00
321 ★	4c, 5c Coils (351, 354). Two Paste-Up Pairs, no. 351 Mint, Fine....	185.00
322 ★	4c, 5c Coils (351, 354). Two Paste-Up Pairs, no. 351 with Plate No., Fine-Very Fine	185.00



2



3



4



6



7



8



9



10



11



14



15



18



19



20



22



23



24



25



26



27



28



30



31



32



33



34



35



36



37



38



39



40



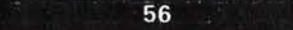
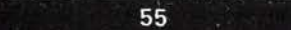
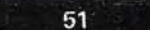
41



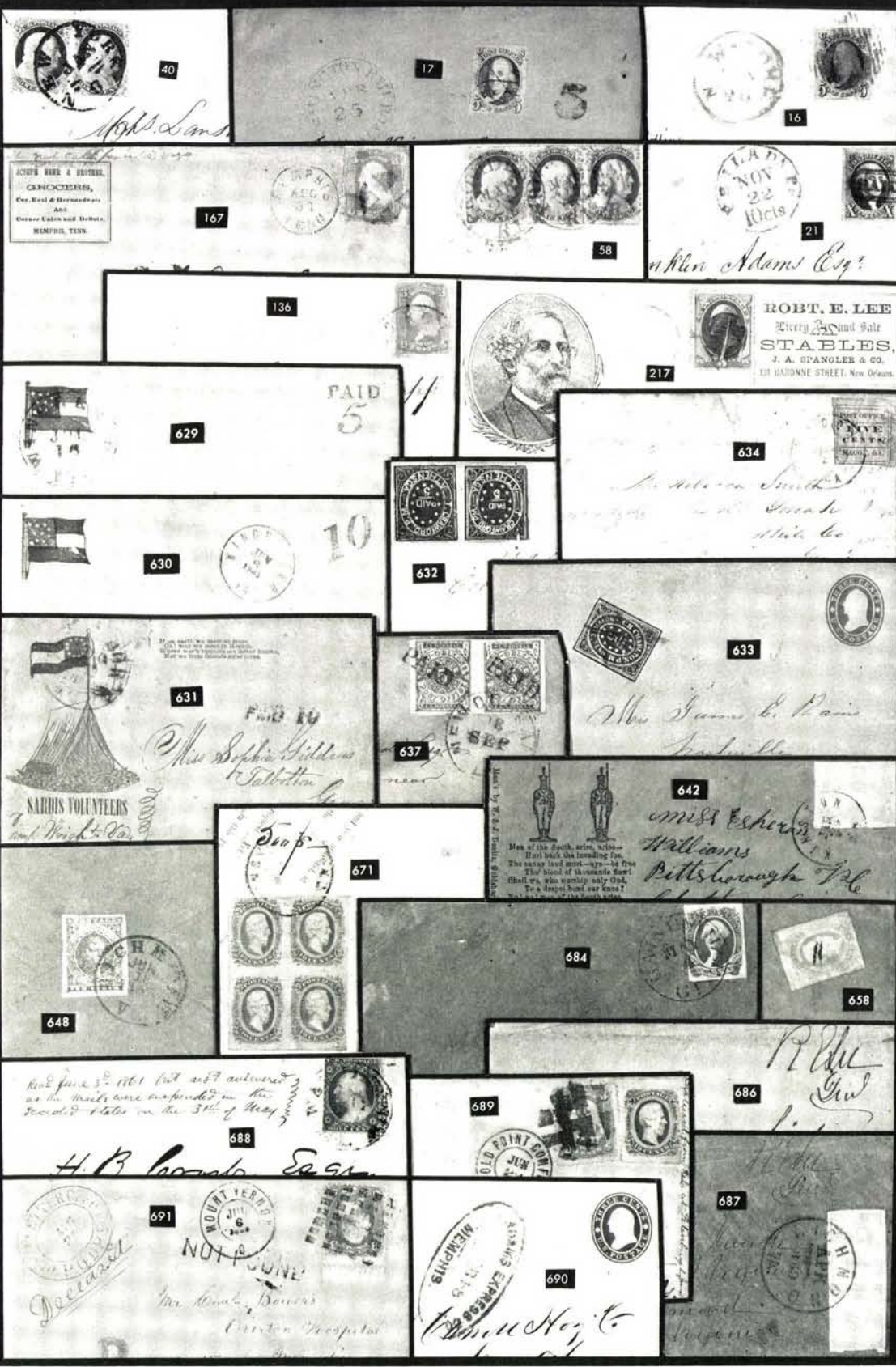
42



43



47



40

17

16

167

58

21

136

217

629

634

630

632

631

633

637

642

671

684

658

648

688

689

686

691

690

687



69



70



71



74



75



76



83



85



86



89



103



104



106



107



108



109



110



112



113



114



117



119



121



123



124



125



126



127



128



129



130



131



139



141



143



147



149



150



153



157



82



93



271



282



437



290



326



453



518



528



546



556



561



557



595



562



597



615



Washington Reviewing His Ragged Army at Valley Forge
From a Painting by William J. Trego



552A



158



159



160



161



162



163



166



168



170



173



174



172



175



179



178



180



181



182



195



196



197



199



200



201



202



203



204



205



206



207



211



214



218



222



227



228



229



230



232



233



234



235



239



246



247



248



249



242



250



251



268



603



260

Bureau, Engraving & Printing

76



261



264



270



272



273



274



279



280



281



283



297



288



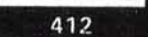
289



291



301



325

328

329

330

331

332

333

338

349

356

357

362

364

320

372

367

368

370

383

374

384

393

399

396

401

402

406

411

412

413

414

413



421



422



423



424



429



432



436



448



449



450



459



471



519



566



569



570



571



567



572



584



587



590



680



608



618



619



645



657

323	4c Orange Brown, 5c Blue, Coils (351, 354). Used Pairs, cancel breaks through a bit on First, otherwise Fine, Latter perfs. just cut....	110.00
324 ★	4c Orange Brown, Coil (354). Very Fine	37.50
325 ★	5c Blue, Coil (355). Pair, Very Fine.....(Photo)	110.00

BLUISH PAPERS

326 ★田	1c Green, Bluish (357). Block, Very Fine.....(Photo)	140.00
327 ★田	2c Carmine, Bluish (358). Block, Fine	120.00
328 ★	3c Deep Violet, Bluish (359). Light natural gum bend, Fine (Photo)	550.00
329 ★	4c Orange Brown, Bluish Paper (360). Fresh, Fine, Rare, with P.F. Certificate(Photo)	7,000.00
330 ★	6c Red Orange, Bluish (362). Very Fine.....(Photo)	400.00
331 ★	10c Yellow, Bluish (364). Fine, with "W.H.C." (olson) handstamp on back(Photo)	450.00
332	13c Blue Green, BLuish (365). Light "Saginaw, Mich." pmk., Fine-(Photo)	450.00
333 ★	15c Pale Ultramarine, Bluish (366). Very Fine(Photo)	375.00

1909 COMMEMORATIVES

334 ★	1c-5c 1909-28 Commems (Betw 367-648). Twelve Diff. Plate No. Singles, incl. #371, 373, 399, 401, 550, 616, Nearly All Fine-Very Fine.....	187.05
335 ★田	2c Lincoln, Hudson-Fulton (367, 372). Blocks, incl. Two of No. 372, one stamp No. 367 gum crease, otherwise Fine Lot	58.00
336 ★田	2c Lincoln, Imperforate (368). Block, Very Fine	90.00
337 ★田	2c Lincoln, Imperforate (368). B. Margin Block with Star & Plate No., small light gum bend and hinge remnants, otherwise Very Fine	90.00
338 ★	2c Lincoln, Bluish (369). Very Fine(Photo)	100.00
339 ★田	2c Alaska-Yukon, Imperforate (371). Center Line Block, Very Fine	135.00
340 ★田	2c Hudson-Fulton, Imperforate (373). Block, faint pinpoint thin speck, otherwise Very Fine	130.00+
341 ★田	2c Hudson-Fulton, Imperforate (373). Center Line Block, Very Fine	150.00
342 ★田	2c Hudson-Fulton, Imperforate (373). Center Line Block of 16 (4 x 4), Very Fine	540.00+

1910 ISSUE

343 ★	1c-15c 1910 Issue (374-382). Fine-Very Fine Set.....	145.50
344 ★	2c Carmine, Booklet Pane (375a). With Plate No. 5456, Mint, Very Good-Very Fine.....	70.00+
345 ★田	5c-12c 1910-17 Issue (378, 416, 429, 511, 512), Two Blocks of No. 378, Block of Six of No. 429, few light creases, Nearly All Fine-Very Fine.....	163.60
346 ★	2c Carmine, Coil (386). Line Pair, Fine	47.50
347 ★田	1c Green, 2c Carmine, Imperforate (383, 384). Center Line Blocks, Very Fine	80.00
348 ★	1c Green, Coil (387). Mint Line Strip of Four, just touching to slightly in at top	120.00+
349	3c Deep Violet, Orangeburg Coil (389). Usual wavy-line machine cancel, small closed tear, Fine Appearing Example of this Rare Stamp-(Photo)	1,850.00

350 ★	1c-5c 1910 Coils (390-396). Most Mint, 4c perfs. just touch, Others Very Fine	117.75
351 ★	1c-5c 1910 Coils (390-393, 395, 396). Pairs, No. 390 Line Pair, Fine-Very Fine	220.00
352 ★	1c Green, Coil (392). Line Pair, Very Fine	57.50
353 ★	1c-5c 1910 Coils (392-396). First Three Mint, 4c tiny thin speck, Fine-Very Fine	124.00
354 ★	2c Carmine, Coil (393). Mint Line Pair, Very Fine.....	85.00
355 ★	3c Deep Violet, Coil (394). Pair, Fine.....	60.00+
356 ★	3c Deep Violet, Coil (394). Line Pair, Fine(Photo)	160.00
357 ★	3c Deep Violet, Coil (394). Line Pair, Fine(Photo)	160.00
358 ★	3c Deep Violet, Coil (394). Line Strip of Four, one has tiny corner crease, Fine-Very Fine	220.00
359 ★	3c Deep Violet, 5c Blue Coils (394, 396). Pairs, First tiny thin speck, Fine Appearance, Latter Mint, Fine	125.00
360 ★	3c Deep Violet, 5c Blue Coils (394, 396). Mint Pairs attached to paper starting strips, Very Good-Fine.....	125.00
361 ★	3c Deep Violet, 5c Blue (394, 396). Mint Paste-up Strips of Four, perfs. just clear to slightly in	250.00
362 ★	4c Brown, Coil (395). Mint Line Pair, Very Fine.....(Photo)	175.00
363 ★	4c Brown, Coil (395). Mint Line Pair, natural perf. "dimple", perfs. just touch at right	175.00
364 ★	5c Blue, Coil (396). Mint Line Pair, Fine-Very Fine(Photo)	175.00

PANAMA-PACIFIC ISSUE

365 ★田	1c Panama-Pacific (397). R. Plate No. 6131 Block of Six, Mint, Fine-Very Fine	110.00
366 ★	1c-10c Panama-Pacific (397-400). Fresh, 10c regummed, otherwise Fine-Very Fine	107.00
367 ★	10c Orange, Panama-Pacific (400A). Bottom Margin Single, Very Fine(Photo)	100.00
368 ★	5c Panama-Pacific, Perf. 10 (403). Very Fine(Photo)	85.00
369 ★	5c Panama-Pacific, Perf. 10 (403). T. Plate No. Single, small portion of bottom perfs. barely touch design	85.00
370 ★	10c Panama-Pacific, Perf. 10 (404). Very Fine(Photo)	500.00

1912-1914 ISSUES

371 ★	8c-30c 1912 Issue (414-420). Fresh, 30c tiny thin spot, others Fine-Very Fine	129.00
372 ★	50c Violet (421). Very Fine.....(Photo)	165.00
373 ★	50c Violet (422). Well-Centered, faint toning, otherwise Very Fine ..	80.00
374 ★	\$1.00 Violet Brown (423). Fresh, couple faint tiny thin specks, Very Fine Appearance(Photo)	175.00
375 ★田	2c Rose Red (425). "Coil Stamps" & Plate No. Block of Ten, couple partly nibbed perfs. at bottom, otherwise Fine-Very Fine	50.00
376 ☒	2c Rose Red (425). Tied on Cover by "Philadelphia, Pa., Apr. 5, 1915" Machine pmk., Light Blue "DISINFECTED" handstamp with punch holes, Cover slightly reduced at left upon opening, Patient's Letter enclosed, Fine	E.IV
377 ★	15c Gray (437). Well-Centered, Very Fine	35.00
378 ★	20c Ultramarine (438). Very Fine	60.00
379 ★	30c Orange Red (439). Single nibbed perf., otherwise Fine.....	75.00
380 ★	50c Violet (440). Fresh, short perf. at top, perf. added bottom, otherwise Very Fine	235.00

381 ★	1c-5c 1914 Coils (441-444, 446, 447). Fine-Very Fine	126.50
382 ★	3c Violet, Coil (445). Fine	100.00
383 ★	3c Violet, Coil (445). Pair, Fine-Very Fine.....(Photo)	200.00
384 ★	4c Brown, Coil (446). Pair, Well-Centered, Very Fine.....(Photo)	140.00
385 ★	4c Brown, Coil (446). Line Pair, Centered to top, Fine.....	325.00
386 ★	5c Blue, Coil (447). Pair, Very Fine	50.00
387 ★	5c Blue, Coil (447). Mint Line Pair, Fine	100.00
388 ★	5c Blue, Coil (447). Mint Line Strip of Four, Fine-Very Fine.....	150.00
389 ★	5c Blue, Coil (447). Mint Line Strip of Four, Fine-Very Fine.....	150.00
390 ★	1c Green, 2c Carmine, Ty. III Coils (448, 450, 452). Line Pairs, Very Good-Fine	76.50
391 ★	1c Green, 2c Carmine, Coils (448, 450, 452, 455). Line Pairs, All but last Mint, Fine-Very Fine	121.50
392 ★	1c Green, 2c Carmine, Coils (448, 450, 452, 455). Mint Line Pairs, No. 450 Fine, Others Fine-Very Fine	121.50
393 ★	1c Green, 2c Carmine, Coils (448, 450, 452, 455). Line Pairs, No. 452 couple partly nibbed perfs., No. 455 tiny thin speck, otherwise Fine-Very Fine	121.50
394 ★	1c-5c 1914 Coils (452, 455, 457, 458). Pairs, 1c is Line Pair, Fine-Very Fine	74.50
395 ★	2c Red, Coil (453). Pair, Fine.....	140.00
396 ★	2c Carmine Coil, Ty. II (454). Very Fine.....(Photo)	85.00
397 ★	2c Carmine Coil, Ty. II (454). Mint, Fine	85.00
398 ★	2c Carmine Coil, Ty. II (454). Pair, Very Fine.....(Photo)	170.00
399 ★	2c Carmine Coil, Ty. II (454). Mint Line Pair, Fine.....(Photo)	400.00
400 ★	3c Violet, Coil (456). Mint, couple slightly nibbed perfs., otherwise Fine.....	120.00
401 ★	3c Violet, Coil (456). Pair, Fine	240.00
402 ★	3c Violet, Coil (456). Pair, Fine	240.00
403 ★	4c Brown, Coil (457). Mint Line Pair, Fine	85.00
404 ★	4c Brown, Coil (457). Mint Line Pair, Fine	85.00
405 ★	4c Brown, Coil (457). Mint Line Pair, perfs. close at left	85.00
406 ★	5c Blue, Coil (458). Mint Line Pair, Very Fine.....(Photo)	85.00
407 ★	5c Blue, Coil (458). Mint Line Pair, Fine-Very Fine	85.00
408 ★	5c Blue, Coil (458). Line Pair, Fine	85.00
409 ★	5c Blue, Coil (458). Mint Line Strip of Four, Fine	110.00
410 ★	5c Blue, Coil (458). Mint Line Strip of Four, Fine	110.00
411 ★	2c Carmine Rotary, Imperforate Coil (459). Very Fine	165.00
412 ★	2c Carmine Rotary, Imperforate Coil (459). Very Fine	165.00
413 ★	2c Carmine, Imperforate (459). Pair, Very Fine	335.00
414 ★	\$1.00 Violet Black (460). Well-Centered, tiny thin spot, Very Fine Appearance	300.00
415 ★	2c Pale Carmine Red (461). Mint, Very Fine	25.00
416 ★	2c Pale Carmine Red, Carmine (461, 519). Fine-Very Fine.....	60.00

1916-1920 ISSUES

417 ★	1c-20c 1916 Issue (462-465, 468-470, 472, 474-476). Fresh, 12c & 20c tiny thin spots, others Fine-Very Fine	273.75
418 ★田	2c Carmine, Rose (463, 499). Each in Plate No. 7942 Block of Six, from the Error Plate, Fine-Very Fine	38.00
419 ★	5c Carmine, Error (467). Horiz. Pair, Left Stamp the Error; Error stamp Mint, Very Fine	285.00
420 ★田	8c Olive Green (470). Block with Plate No. & Part Imprint, Fine	76.00+
421 ★	50c Light Violet (477). Marvelous Centering, Extremely Fine (Photo)	375.00
422 ★	\$1.00 Violet Black (478). Unusually Well-Centered, Very Fine (Photo)	275.00
423 ★	\$2.00 Dark Blue (479). Fine.....(Photo)	110.00
424 ★	\$5.00 Light Green (480). Very Fine	80.00

425 ★田	1c-3c 1916 Imperforates (481, 482, 483, 484). Center Line Blocks, Very Fine	113.50+
426 ★田	3c Violet, Ty. I Imperforate (483). Center Line Block, Very Fine	52.50
427 ★	1c-10c 1916 Coils (486, 489, 490, 492, 494, 496, 497). Pairs, Mostly Mint, Virtually All Fine-Very Fine	57.10
428 ★	2c Carmine Coil, Ty. II (487). Line Pair, Fine	67.50
429 ★	2c Carmine Coil, Ty. II (491). Line Pair, right perfs. touch, Fine, Rare	2,750.00 (Photo)
430 ★	3c Violet Coil, Ty. II (494). Mint Line Pair, Fine	60.00
431 ★	1c-\$1.00 1917 Issue (498, 499, 501-504, 506-510, 514-518). Plate No. Singles, Fine-Very Fine	104.45
432 ★	2c Deep Rose, Ty. Ia (500). Very Fine	120.00 (Photo)
433 ★田	3c Light Violet, Ty. I, 4c Brown (501, 503). Plate No. Blocks of Six, Fine-Very Fine	85.00
434 ★	3c Dark Violet, Ty. II, Double Impression (502d). Natural s.e. at bottom, Fine, Scarce Variety	100.00
435 ★田	5c Blue, 6c Red Orange (504, 506). Plate No. Blocks of Six, Former Very Fine, Latter Fine-Very Fine	67.50
436 ★	5c Rose, Error (505). Very Fine	200.00 (Photo)
437 ★	5c Rose, Error (505). Block of Six, Top Center Stamp the Error; Error stamp Mint, Very Fine	200.00 (Photo)
438 ★田	5c Rose, Error (505) in Block of 6, Block hinged, Error mint, perfs. just clear, Fine	200.00+
439 ★田	5c Rose, Error (505). Mint Block of Twelve, Center Stamp in Left Block of Nine the Error, left perfs. touch, Scarce	275.00
440 ★田	8c Olive Bistre (508). B. Plate No. 7740 Block of Six, Very Fine	60.00
441 ★田	9c Salmon Red (509). R. Plate No. 12570 Block of Six, Mint, single pulled perf. in selvage, otherwise Fine-Very Fine	82.50
442 ★田	9c Salmon Red (509). B. Plate No. 6930 Block of Six, Mint, couple very tiny natural gum skips, Very Good-Fine	82.50
443 ★田	10c Orange Yellow (510). T. Plate No. 7358 Block of Six, Very Fine	55.00
444 ★	11c Green & Dark Green (511, 511a). Plate No. Blocks of Six, First Mint, Fine-Very Fine	75.00
445 ★田	11c-13c 1917 Issue (511-513). Plate No. Blocks of Six, First some minor reinforcement, otherwise Fine	120.00
446 ★田	30c Orange Red, 50c Red Violet (516, 517). Blocks, First Mint, Latter with Plate No., Fine-Very Fine	108.00+
447 ★田	\$1.00 Violet Black (518a). Mint Block, with Plate No., Fine	77.50
448 ★	\$2.00 Orange Red & Black (523). Light natural gum bend & single slightly nibbed perf. at bottom, otherwise Very Fine	250.00 (Photo)
449 ★	\$5.00 Deep Green & Black (524). Very Fine	100.00 (Photo)
450 ★	2c Carmine, Offset Imperforate, Ty. V (533). Very Fine (Photo)	125.00
451 ★田	2c Carmine, Offset, Ty. V, Va (527, 528). Mint T. Plate No. Blocks of Six, tiny natural inclusion speck on first, Fine-Very Fine	60.00
452 ☒	3c Purple Offset, Ty. IV (530). Perfs. touch bottom, tied on back of Multicolor Flag Patriotic Cover by "Eau Clair Wis. Jul 13 1918" Machine pmk., Two Days Earlier than Listed First Day of Use, letter is datelined July 12, 1918; Very Fine, probably Unique, with AFDCS Certificate	E.XI
453 ★田	2c Carmine, Offset Imperforate, Ty. V (533). Center Line Block, Very Fine	550.00+ (Photo)
454 ★田	2c Carmine, Offset Imperforate, Ty. Va (534). Mint R. Plate No. 11425 Block of Six, single tiny natural inclusion speck, Very Fine	52.50
455 ★田	2c Carmine, Offset Imperforate, Ty. VI (534A). Center Line Block, Very Fine	120.00

456 ★田	1c-3c 1919-20 Rotaries (538, 540-542). Blocks, Well-Centered, Choice, Very Fine	95.00
457 ★田	1c Green, Rotary (545). "S30" & Plate No. 11764 Block, perfs. barely in on T. pair, Fine for this rare block	325.00
458 ★	1c Green, 2c Carmine Rose Ty. III (545, 546). Fresh, 1c bottom perfs. touch, 2c Very Fine	80.00
459 ★	\$2.00 Lake & Black (547). Very Fine(Photo)	82.50
460 ★田	2c Pilgrim (549). B. Plate No. 12432 Block of Six, Fine	77.50
461 ★田	5c Pilgrim (550). Block, just touches at Right	120.00

1922-1925 ISSUES

462 ★田	1½c-14c 1922 Issue (553, 559, 563, 565). Plate No. Blocks of Six, Fine-Very Fine	82.50
463 ★	3c-30c 1922 Issue (555, 557, 559-561, 563-565, 568, 569). Fine-Very Fine	59.20
464 ★田	4c Yellow Brown, 30c Olive Brown (556, 569). Blocks, Latter with Plate No., Very Fine	65.00
465 ★田	5c Dark Blue (557). L. Plate No. 14068 Block of Six, Fine-Very Fine	80.00
466 ★田	9c Rose (561). Mint T. Plate No. 15259 Block of Six, Very Fine ..	65.00
467 ★田	11c-14c 1922 Issue (563-565). Mint Plate No. Blocks of Six, Fine-Very Fine	68.50
468 ★田	15c Gray (566). B. Plate No. 14071 Block of Six, Fine-Very Fine ..	72.50
469 ★田	20c Carmine Rose (567). B. Plate No. Block of Six, light natural gum bend affects two stamps, Fine	87.50
470 ★田	25c Green (568). Mint B. Plate No. 14065 Block of Six, Fine-Very Fine	85.00
471 ★	\$5.00 Carmine Lake & Dark Blue (573). Very Fine(Photo)	115.00
472 ★田	1c Deep Green, 2c Carmine (577, 579 two). Plate No. Blocks of Six, Former Mint, Two Diff. Nos. of Latter, Choice, Very Fine	73.00
473 ★田	1c-2c Imperforates (575-577). Set of Blocks of 16 each, Mint, Very Fine	80.00
474 ★	1c Green, 2c Carmine (578, 579, 595). Fine-Very Fine	80.50
475 ★	1c-10c 1923 Issue (581-591). Fine-Very Fine Set	64.75
476 ★田	1c-10c 1923 Rotaries (581-591). Plate No. Blocks, Cpl. Set, Most Mint, Fine-Very Fine	578.50
477 ★	4c-10c 1923 Issue (585-587, 589-591). Very Fine	44.25
478 ★田	4c-9c, 1923 Issue (585, 589, 590), Mint Blocks, Fine-Very Fine ..	78.00
479 ★	2c Carmine Rotary (595). Mint, Very Fine	47.50
480 ★	1c-10c 1923 Coils (597-599, 600-606). Line Pairs, Fine-Very Fine ..	75.80
481 ★	1c-10c 1923 Coils (597-599, 600-606). Line Pairs, Fine-Very Fine ..	75.80
482 ★	1c-10c Regular & Air Post Coils (597-606, 839-851, 1054-1059, C37, C41, C52, C61, C65). Pairs, Almost All Line Pairs, Virtually All Mint & Fine-Very Fine	285.23
483 ★田	2c Harding, Imperforate (611). Mint T. Plate No. 15025 Block of Ten, Very Fine	120.00
484 ★田	1c Huguenot-Walloon (614). Mint L. Plate No. 15758 Block of Six, Extremely Well-Centered, Very Fine	40.00
485 ★田	2c Huguenot-Walloon, 1c, 2c Lexington-Concord (615, 617, 618). Mint Plate Blocks of Six, Very Good-Fine	167.50
486 ★田	5c Huguenot-Walloon (616). Mint T. Plate No. 15754 Block of Six, Fine-Very Fine	265.00
487 ★田	2c, 5c Norse-Americans (620, 621). Blocks, Fine-Very Fine	73.00
488 ★田	5c Norse-American (621), Three Blocks, Two Mint, Fine-Very Fine ..	210.00

1926-1934 ISSUES

489 ★田	13c Green (622). Mint T. Plate No. 19120 Block of Six, Very Fine	42.50
490 ★田	2c 1926-30 Commems. (627, 629, 643-646, 651, 654, 655, 657, 680, 682, 683, 688, 689). Plate No. Blocks of Six, Mostly Mint, Mixed Centering, Fine-Very Fine	505.50
491 ★田	5c Ericsson (628). Mint B. Plate No. 18608 Block of Six, Fine ..	82.50
492 ★	2c White Plains Souvenir Sheet (630). Mint, Very Fine	265.00
493 ★	2c White Plains Souvenir Sheet (630). Fine-Very Fine	265.00
494 ★	2c White Plains Souvenir Sheet, Dot Over "S" of States (630 var). Mint, Fine-Very Fine	265.00+
495 ★	2c White Plains Souvenir Sheet (630), Mint, slight selvage separation, Fine-Very Fine	265.00
496 ★	2c White Plains Souvenir Sheet (630). Mint, couple light natural gum creases, Fine Sheet	265.00
497 ★	2c White Plains Souvenir Sheet (630). Mint, small light natural wrinkle, perfs. just clear on several, Fine Sheet	265.00
498 ★	1½c Yellow Brown, Rotary Imperforate, #631 (48), in Two Blocks of 24 (4 x 6), incl. Plate No. Block, Mint, Very Fine	85.90
499 ★田	½c-50c 1926-31 Issues (632-634, 635-642, 653, 692-701). Plate No. Blocks, Mostly Mint, Cpl. Sets, Very Good-Very Fine	451.25
500 ★田	2c Hawaii (647). B.R. Plate No. 19054 Block, Fine-Very Fine	110.00
501 ★田	5c Hawaii (648). B.R. Plate No. 18908 Block, Mint, close at Left	225.00
502 ★田	2c, 5c Aeronautics (649, 650). Mint Plate No. Blocks of Six, Fine-Very Fine	68.00
503 ★	2c Edison, Coil (656). Mint Line Strip of Four, Very Fine	80.00
504 ★	1c-10c Kans., Nebr. Ovpts (658-669). Fine-Very Fine Sets	198.60
505 ★田	1c-2c Kans. Ovpts. (658-660). Mint Plate No. Blocks, Two Diff. Nos. of Latter, Mixed Centering, Very Good-Fine	79.50
506 ★田	1c-10c Kans. Ovpts. (658-668). Plate No. Blocks, Cpl. Set, Virtually All Mint, Mixed Centering, Very Good-Very Fine	1,063.50
507 ★田	1c-10c Kans. Ovpts. (658-660, 663-665, 667, 668). Mint Blocks, Very Good-Fine	191.80
508 ★田	3c-10c Kans.-Nebr. Ovpts. (661, 663, 668, 673, 674, 677). Mint Blocks, Fine-Very Fine	195.00
509 ★	8c Kans. Ovpt. (666). Mint, Very Fine	32.50
510 ★田	1c-8c Nebr. Ovpts. (669-671, 673, 674, 677). Mint Blocks, Fine-Very Fine	166.60
511 ★田	1c-4c Nebr. Ovpts. (669, 670 two, 671 two, 673). Plate No. Blocks, Diff. Nos., Virtually All Mint, Very Good-Fine	167.50
512 ★田	3c Nebr. Ovpt. (672). Mint T.R. Plate No. 18803 Block, Fine-Very Fine	77.50
513 ★田	5c Nebr. Ovpt. (674). Mint T.R. Plate No. 18907 Block, Very Fine	75.00
514 ★田	6c Nebr. Ovpt. (675). Mint T.R. Plate No. 18037 Block, Very Good	145.00
515 ★田	7c Nebr. Ovpt. (676). Mint T.R. Plate No. 18736 Block, Fine ..	90.00
516 ★田	8c Nebr. Ovpt. (677). T.R. Plate No. 18192 Block, Fine-Very Fine..	145.00
517 ★田	9c Nebr. Ovpt. (678). T.L. Plate NO. 18744 Block, Fine-Very Fine	165.00
518 ★田	10c Nebr. Ovpt. (679). T.R. Plate No. 19235 Block, Fine-Very Fine (Photo)	350.00
519 ★	2c Von Steuben, Imperforate (689a). Horiz. Pair, Very Fine, Scarce (Photo)	1,750.00
520 ★田	25c Green, 30c Brown (699, 700). Mint Plate No. Blocks, perfs. touch & small selvage thin in 30c, 25c Very Fine	82.50
521 ★田	1c-9c Bicentennials (705, 707-712, 714). Plate No. Blocks, Couple Mint, Very Good-Fine Lot	157.25

522 ★田	6c Bicentennial (711). B.L. Plate No. 20570 Block, Fine-Very Fine	65.00
523 ★田	8c Bicentennial (713). Mint T.L. Plate No. 20565 Block, Fine-Very Fine	65.00
524 ★田	4c-10c Parks (743, 746, 748, 749). Mint Plate No. Blocks of Six, Fine-Very Fine	77.00
525 ★田	1c-16c Farleys (756-765, 771). Center Line Blocks, Very Fine	115.00
526 ★田	16c Farley Air Post Special Delivery (771). Center Line Block, Very Fine	40.00

PRESIDENTIAL ISSUE—TO DATE

527 ★田	½c-\$2.00 Presidentials (803-833). Mint Blocks, Very Fine	179.12
528 ★田	1½c Bistre Brown, Imperforate Vertically (805b). Mint Block, usual break in selvage of top right stamp from the faulty perforating pins, Very Fine(Photo)	300.00
529 ★田	\$1.00 Presidential (832). Mint Double No. Plate Blocks, Three Diff. Nos., One with Arrow, Very Fine	97.50
530 ★田	\$1.00 Presidential (832). Mint Double Plate No. Blocks, Four Diff. Nos., some light natural gum creases, Very Fine	130.00
531 ★田	\$1.00 Presidential (832). Matched Corner Blocks of Six, Mint, few light natural gum skips or bends, Fine-Very Fine	132.00
532 ★	\$1.00-\$5.00 Presidential (832c, 833, 834). Mint, Very Fine	98.00
533 ★田	\$2.00 Presidential (833). Mint Center Line Block, Very Fine	70.00+
534 ★田	\$2.00 Presidential (833). Mint Center Line Block, Very Fine	70.00+
535 ★田	\$2.00 Presidential (833). Mint Center Line Block, light natural gum skip, Very Fine	70.00+
536 ★田	\$2.00 Presidential (833). Mint Center Line Block, couple light gum wrinkles, Very Fine	70.00+
537 ★田	\$2.00 Presidential (833). Mint Arrow & Double Plate No. Block, Very Fine	185.00
538 ★田	\$2.00 Presidential (833). Mint Arrow & Double Plate No. Block, Very Fine	185.00
539 ★田	\$2.00 Presidential (833). Mint Arrow & Double Plate No. Block, some light natural gum wrinkles, otherwise Very Fine	185.00+
540 ★田	\$2.00 Presidential (833). Mint Center Line & B. Arrow Blocks, Very Fine	140.00+
541 ★田	\$2.00 Presidential (833). Mint Center Line, B. & R. Arrow Blocks, Very Fine	210.00
542 ★田	\$2.00 Presidential (833). Mint Center Line Block & B.L. Corner Block of Six, First some offset on back, Latter diagonal wrinkle affects one stamp, small tear entirely in margin, Very Fine	175.00+
543 ★田	\$2.00, \$5.00 Presidentials (833, 834). Mint Center Line Blocks, Very Fine	370.00+
544 ★田	\$2.00, \$5.00 Presidentials (833, 834). Mint Center Line Blocks, Very Fine	370.00+
545 ★	\$5.00 Presidential (834). Mint, light natural gum bends, Very Fine	75.00
546 ★田	\$5.00 Presidential (834). Double Arrow & Plate No. Block, Mint, Very Fine(Photo)	475.00
547 ★田	\$5.00 Presidential (834). Double Arrow & Plate No. Block, Mint, couple light gum creases, Very Fine	475.00
548 ★田	\$5.00 Presidential (834). Double Arrow & Plate No. Block, Mint, minor gum creases, Very Fine	475.00
549 ★	1c-10c Presidential Coils (839-851). Mint Line Pairs, Fine-Very Fine Set	123.15
550 ★	1c Defense, Vertical Pair Imperf. Between (899a). Few blind perfs. & light crease between stamps as almost always; well-centered, Very Fine (Vert. Pair completely imperf. between cat. \$325.00)	—
551 ★田	5c Overrun Countries (909-921). Mint Name Blocks, Very Fine Set	83.50
552 ★	10c Blue, Imperforate Coil (1520b). Mint Pair, Very Fine	60.00

- 552A ★ **31c Bicentennial Souvenir Sheet, Imperforate, Without Value & "USA" (1689 var), Newly Discovered Error**, Mint, Very Fine, Only a Very Few Known & which will probably rank high among the greatest 20th. Century Errors. Unquestionably the Rarest U.S. Souvenir Sheet Error in Existence(Photo)

AIR POST STAMPS

553 ★田	6c Orange Airpost (C1) . Block, Fine-Very Fine	190.00
554 ★	6c-24c 1918 Air Post (C1-C3) . First tiny thin speck, Last Plate No. Single, hinged in selvage only, but with tiny surface scuff, otherwise Fine Set	185.00
555 ★	6c-24c 1918 Air Post (C1-C3) . Fresh, small faults, Fine Appearance	185.00
556 ★田	16c Green (C2) . Block, hinge remnants, Very Fine(Photo)	290.00+
557 ★田	16c Green (C2) . T. Arrow Block, Very Fine(Photo)	290.00+
558 ★田	16c Green (C2) . L. Arrow Block, Mint, Fine.....	290.00+
559 田	16c Green (C2) . Two Blocks, one precancelled "Federalburg Md.", other with oval pmk., light paper fold in two, otherwise Fine	190.00
560 田	16c Green (C2) . Tied on Cover by "July 15, 1918, Air Mail Service, Wash., N.Y., Phila." First Flight pmk., New York-Philadelphia Flight; corner card neatly cut out, pencil docketing, some cover toning, Fine	250.00
561 ★田	24c Carmine Rose & Blue Airpost (C3) . Block, Fine-Very Fine(Photo)	270.00
562 ★田	24c Carmine Rose & Blue (C3) . Arrow, Double "Top" & Plate No. Block of Twelve, couple small thins in selvage, hinged in selvage only, otherwise Fine-Very Fine(Photo)	1,600.00
563 ★田	8c Dark Green (C4) . Block, Fine-Very Fine	74.00+
564 ★	8c Dark Green, 16c Dark Blue (C4, C5) . Very Fine	86.00
565 ★	8c-24c 1923 Air Post (C4-C6) . Last tiny thin & light corner bend, otherwise Fine Set	161.00
566 ★	16c Dark Blue (C5) . Mint, Very Fine(Photo)	67.50
567 ★	24c Carmine (C6) . Mint, Unusually Well-Centered, Very Fine.....(Photo)	75.00
568 ★	10c Lindberg, Booklet Pane (C10a) . Cpl. Unexploded Booklet (two panes), Both Pos. L, Fine-Very Fine	160.00
569 ★	65c Graf Zeppelin (C13) . Very Fine(Photo)	225.00
570 ★	65c-\$2.60 Graf Zeppelins (C13-C15) . First & Last Mint, Very Fine Set(Photo)	1,300.00
571 ★	65c-\$2.60 Graf Zeppelins (C13-C15) . Cpl. Set, regummed over tiny thins, Fine-Very Fine Appearance(Photo)	1,300.00
572 ★	\$2.60 Graf Zeppelin (C15) . Very Fine.....(Photo)	650.00
573 ★	50c Chicago Zeppelin (C18) . Very Fine	65.00
574 ★	50c Chicago Zeppelin (C18) . tiny natural translucent speck, otherwise Very Fine.....	65.00
575 ★	50c Chicago Zeppelin (C18) . Mint, Fine	65.00
576 ★	50c Chicago Zeppelin (C18) . Mint Horiz. Pair, right stamp gum wrinkle & tiny thin speck, other Very Fine.....	130.00
577 ★田	50c Chicago Zeppelin (C18) . Mint Block, Very Fine	265.00+
578 ★田	50c Chicago Zeppelin (C18) . Mint Block, Fine-Very Fine.....	265.00+
579 ★田	50c Chicago Zeppelin (C18) . B. Margin Block with Plate No., Centered to top, Fine	265.00
580 ★田	6c-50c 1941 Air Post (C25-C31) . Mint Plate No. Blocks, Cpl. Set, Very Fine.....	180.50
581 ★田	7c Blue, Carmine, Air Post (C51, C60) . Four Matched Sets of Four Plate No. Blocks of Each, Nos. 26385, 26386, 26444, 26445 for Each Issue, Mint, Very Fine	42.40

582	⊠	10c Blue, Special Delivery (E1). Fine, tied on 2c Brown Entire (U277), "K.C. & Denver R.P.O." pmk., docketing by Carrier on front, tiny cover tear right, otherwise Fine	30.00
-----	---	---------------------------------------------------------------------------------------------------------------------------------------------------------------------------------------	-------

OFFICIALS

583	★	1c-30c Agriculture (O1-O9). Cpl. Set, Most o.g., few trivial faults, Virtually All Very Fine or Very Fine Appearance	163.00
584	★	1c Executive (O10). Fresh, part o.g., Fine	65.00
585	★	2c, 3c Executive (O11, O12). Fresh, few tiny perf. creases, otherwise Fine-Very Fine	80.00
586	★	6c Executive (O13). Almost Full o.g., few tiny perf. flaws, Very Fine appearance	72.50
587	★	10c Executive (O14). Very Fine	67.50
588	★	1c Justice (O25). Fresh, o.g., Very Fine	30.00
589		90c Justice, State (O34, O67). Fresh, light Purple cancels, No. 67 reperfed at left, otherwise Very Fine Pair	107.50
590	P	2c Green on Wove, Perforated, Navy Dept. Trial Color Proof (O36TC). Centered to top left, Fine, Very Scarce	150.00
591	★	6c-30c State (O60-O66). Fresh, Almost All o.g., couple tiny thin specks, otherwise Very Fine	104.25
592	★	\$2.00 State (O68). Fresh, o.g., tiny internal tear, otherwise Very Fine	125.00
593		1c-90c Officials (Betw. O15-O119). 65 Diff., 34 Unused; incl. Interior & Treasury Sets Complete, 3c-30c Justice, O39 & O45 used, O86 & O96 Unused, etc.; Mostly Fine-Very Fine	388.05

PARCEL POST

594	★	1c-25c Parcel Post (Q1-Q9). Blocks, Fine-Very Fine	382.80
595	★	50c Parcel Post (Q10). Block, Fine-Very Fine	250.00
596	★	75c Parcel Post (Q11). Block, tiny thin speck in one, others Very Fine	55.00
597	★	\$1.00 Parcel Post (Q12). Block, Very Fine	400.00
598	★	1c-5c Parcel Post Dues (JQ1-JQ3). Blocks, Some offset on back of 1c, Fine	105.00

POSTAL STATIONERY

599	⊠	3c Red Entire (U10), Topeka, K.T. pmk. bold strike, very Interesting enclosure dated May 11, 1856 describes the countryside & complains about the "Bogus Legislature of Missouri" trying to force its laws on the "peace ful inhabitants of the teretory" (!), Very fine, Scarce	E.IV
600	⊠	2c Vermilion on Blue, Die 5 (U146). Size 4½, Knife 49, Wmk. 5, Unused, Very Fine, Thorp #479, \$55.00	60.00
601	★	1c Green on Glazed Brown, Wrapper (W427). Huge Full Corner Cut Square, Extremely Fine	25.00
602	⊠	2c + 1c Carmine Rose, Postal Card (UX47). "One Cent Additional Paid" Surcharge, Unused, Very Fine, Scarce	50.00

REVENUES

603		2c Blue Bank Check, Certificate (R5b, R5c, R7a). Major Double Transfers, No. R7a just in at left, others Fine, Scarce Group	26.50
604		\$1.60 Foreign Exchange, Imperforate (R79a). Large Margins to just in, internal tear, still Attractive Example of this Scarce Stamp	200.00
605		\$20.00 Probate of Will (R99c). Extra row of perfs. at top, perfs. in at sides, narrow stamp probably due to freak perforations	300.00

606	\$1.30, \$1.90, \$3.50 Blue & Black (R119, R122, R126). First two Handstamp cancels, \$1.30 three extra horiz. rows of perfs., Fine-Very Fine	122.50
607	1c-\$20.00 Tobacco Sales Tax (RJ1-RJ11). Cpl. set, Fine-Very Fine	33.00

LOCALS AND CARRIERS

608 ★	New York, N.Y., U.S. City Despatch Post, 3c Black on Grayish (6LB1). Large Margins, tiny thin speck, Extremely Fine Appearance-.....(Photo)	125.00
609 ☒	Philadelphia, Pa. 1c Gold Black (7LB11). Margins All Around, uncanceled on small cover; minor cover soiling; Very Fine, Very Scarce	E.IV
610 ☒	American Letter Mail Co., 5c Black (5L1). Horiz. Pair, Large Margins All around, pen cancels "tie" by embossing through stamps, on folded cover to Philadelphia, small ink smear on left stamp, Very Fine, Rare (Pair on cover not priced in Scott)	E.VII
611 ☒	Bigelow's Express Label, Magenta (formerly No. 13L1a). Large Margins to barely touched at one point, uncanceled on large size cover, ms. "Rail Road Service Bigelows Exprs."; cover creases far from "stamp", without flap, Very Fine, Very Scarce, with P.F. Certificate (identifying as 13L1a, as previously listed in Scott catalog)	E.VIII
612 ☒	Blood & Co., Bloods Penny Post, 1c Bronze, Blue, Black (15L13-15L15, 15L18). on separate covers, first three with U.S. No 11; Last with U.S. No. 26, 15L13, 15L15 tied by pmks.; all with Blood's pmks. & Philadelphia pmks.; also incl. 1c Gold on Black (15L12), tiny tear, uncanceled on cover, Scarce Lot	E.VI
613	Bouton's Dispatch, 2c Black (18L2). Large Margins, tied on small piece by Red "PAID Bouton"; Very Fine	50.00
614 ☒	G. Carter's Dispatch 2c Black (36L1). Margins to just in, ms. "X" cancel "ties" through stamp, blue "Philada. Pa." pmk. on 1849 folded letter; slight toning, Rare cover	175.00
615 ★田	Wells, Fargo & Co. Pony Express, 10c Brown (143L7). Block, Large Margins incl. Right Pane Margin, Very Fine	150.00
616	Carriers & Locals, Collection of Eight Stamps & Eight Covers, Better Items incl. Nos. LO6, 1LB6, 143L7 (used); also incl. No. 1LB7 (stain) on cover with 3c Red (25); few small faults, Balance Very Good-Very Fine	E.VIII

SANITARY FAIR STAMPS

617 ★	10c Rose, Albany Sanitary Fair (WV1). Fine.....	40.00
618 ★	10c Black, Albany Sanitary Fair (WV2). Fine	175.00
619 ★	10c Green, Brooklyn Sanitary Fair (WV7). Thin Spot, Very Fine Appearance	(Photo) 450.00
620 ★	10c-30c Philadelphia Sanitary Fair (WV11-13) Fine-Very Fine	39.00
621 ★	10c Lilac, Springfield Mass. Santiary Fair (WV14). Large margins except touches top left corner	75.00

LARGE AND MISCELLANEOUS LOTS

622 ☒	Covers, 1851-1861, Collection of 40, mostly Nos. 11, 65; Numerous Better Items incl. Express Mail No. 10, Railroad pmks., Fancy Town pmks., Patriotics, etc.; also incl. two 2c Entires with Advertising Collars, Mostly Very Good-Very Fine, Rewarding Lot	E.VIII
623 ☒	19th Century Covers, 26, incl. stampless, Confederate, four Great Britain 1p Red (3); etc., Most better items small faults, Useful Lot	E.IV

624 ★	Collection, 1851-1962, Several Hundred diff. Mostly Unused Stamps, Wide Range of Issues, Numerous Better Items, incl. Nos. 28, 38, 100, 137, 138, 261, 277 etc.; also incl. Air Post, Special Delivery, Dues, Parcel Post, etc.; few better items small faults, Balance Virtually All Fine-Very Fine	E.XIV
625 ★田	Blocks & Plate No. Blocks, 1902-32, 23 Diff., Few Better Items, but faulty, Balance Fine-Very Fine	E.VIII
626 ★	Booklet Panes, 1912-62, 21 Diff. Booklet Panes, Virtually All Regular Postage, Some Better Items incl. 405b, 502b, 501b, 583a, 720b, etc.; Mostly Mint, Very Good-Very Fine	214.75
627 ★	Collection, 1932-64, Collection of a Couple Hundred Unused Stamps, incl. Regulars, Commems, Souvenir Sheets & Air Post, Also incl. some Used (not counted), Generally Fine-Very Fine	E.VIII

CONFEDERATE STATES HANDSTAMP PAIDS

628 ☒	Richmond, Va., Aug. 28, 1861, mostly clear pmk., matching "PAID 5 cts" (Dietz Ty. III) on cover to Cobham Depot, Va., Fine.....	E.III
629 ☒	Winchester, Va. Clear circle, "Paid 5" on multicolor Patriotic Cover, 10-Star Flag, (D., B37) to Virginia, Very Fine.....(Photo)	E.X
630 ☒	Winchester, Va., Jun. 6, 1861. Double circle, Bold "10" on multicolor Patriotic Cover, 10-Star Flag (D., B37) to Virginia. Bare trace of toning, Very Fine	E.XI
631 ☒	Tudor Hall, Va., Aug 20 1861 partly clear pmk., matching "Paid 10" on Multicolor Patriotic Cover, Tent, 11-Star Flag, "SARDIS VOLUNTEERS" Impt. Below. Four-Line Verse Top Center (D. Ty. F-D-Ii), ms. "Camp Wright Va.", somewhat worn & small tear at top, otherwise Fine, Very Scarce.....(Photo)	E.VIII

POSTMASTERS' PROVISIONALS

632 ☒	Athens, Ga. 5c Purple (5X1). Horiz. Pair, margins added, just tied on cover, partial "Athens, Ga." pmk., Very Fine Looking, ex-Meroni	900.00
633 ☒	Knoxville, Tenn. 5c Brick Red (47X1). Margins to slightly in, neatly tied by light ms. "X" cancel on 3c Red Star Die Entire (U27), negligible mended tears on back flap, Very Fine, Rare, "W.H.C." (olson) handstamp, with A.P.S. Certificate.....(Photo)	1,000.00
634 ☒	Macon, Ga. 5c Black on Light Blue Green (53X1). Margins to slightly in, neatly tied by Macon, Ga. pmk. on folded letter headed "Geo. Academy for the Blind, Macon April 13th 1862", small cover tears, top right corner frame lines scuffed & penciled in, Fine Appearance, Rare, signed Dietz.....(Photo)	1,000.00
635 ★	Memphis, 2c Blue (56X1). Fine	20.00
636	Nashville, Tenn., 5c Carmine (61X2). Ample to Huge Margins, tiny corner crease, tied by blue "Nashville, Ten." pmk. on piece which has been rejoined to original cover, Scarce & Attractive.....	125.00+
637 ☒	New Orleans, La., 5c Brown on Blue (62X4). Horiz. Pair, Very Fine, tied by "PAID" struck twice, matching "New Orleans La." pmk. on crude cover; tiny cover faults & without flap, Very Attractive & Scarce.....(Photo)	200.00

GENERAL ISSUES

638		5c Light Green (1a). Horiz. Pair, Margins All Around, Savannah pmk., Very Fine	45.00
639	⊠	5c Olive Green, Stone A or B (1c). Ample to Large margins, tiny tear at bottom, tied by "Richmond Va Oct. 22 1861" pmk., Early Use on homemade cover; few minor cover faults, Scarce	50.00
640	⊠	5c Green (1). Horiz. Pair, Margins Almost All Around, tied by "Prattville, Ala." pmk. on cover made from Sheet Music, stamps slight gum stains, otherwise Fine & Attractive	65.00
641		10c Blue (2). Huge Margins All Around, tied on small piece by neat "AUGUSTA, GA" pmk., Extremely Fine	25.00
642	⊠	10c Pale Milky Blue, St. Y (2a). Large, even margins, Extremely Fine, Tied by "Kinston, N.C." on Patriotic Cover, Two Soldiers with Muskets, & verse (D.-F-B-1) Brown war-time envelope. Small back mends. Very Fine & Striking (Photo)	E.XI
643		10c Greenish Blue (2a). Huge Margins to barely touched, tied on large part front by Blue Town pmk., light horiz. crease from filing fold, some minor toning, otherwise Very Fine	40.00+
644	★	2c Green (3). Large Margins All Around; tiny corner crease, light stain at top, otherwise Very Fine	135.00
645		10c Dark Blue, Hoyer Printing (4b). Horiz Pair, Large Margins All Around, showing portion of next stamp at right, town pmks., left stamp small thin & tiny closed tear at bottom, Extremely Fine Appearance (Photo)	200.00
646	⊠	10c Blue, Light Blue (4, 4a). Three, Paterson printing, tied by Town pmk. on separate covers, one in Blue; small cover faults, stamps with Ample to Huge Margins, Fine-Very Fine, Attractive Group	120.00
647	⊠	5c, 10c 1862-63 Issues (4, 11, 12). Eight stamps on Six Covers, incl. Five Turned Covers (two stampless inside, one stamp removed); Better Items incl. Nos. 11 & 12 on turned cover, "Renwick, Ga." & "Petersburg, Va." pmks., & No. 12 tied by target (Military), re-used with No. 12 tied by "Staunton, Va." pmk.; Mixed Condition, Good-Fine	E.VII
648	⊠	10c Rose (5). Margins All Around, tied by "Richmond, Va." pmk. on back of buff cover; stamp has small toned spot at top, otherwise Very Fine, Very Attractive (Photo)	225.00
649	★田	5c Light Blue (6). Block of 40, o.g., Very Fine	130.00
650	★	5c Light Blue (6). Cpl Sheet of 200, Full o.g., folded & practically severed between panes, Shows Several Plate Varieties, Very Fine, Rare	650.00
651	田	5c Light Blue (6). Block, Margins, All Around, incl. part Sheet Margin at top, tied by Target cancels on small piece, Very Fine....	70.00
652	★田	5c Blue, Local Print on De La Rue Paper (7 var). Block of 20 (2X10), Fresh o.g., Margins to barely touched at top right, some light creases mostly betw. stamps, some minor toning as usual, Very Fine Appearance	105.00
653	★	5c Blue, Local Print (7) Cpl. B.L. Pane of 100, Fresh, Full o.g.; few negligible flaws in selvage, really inconsequential, Very Fine, Scarce	525.00
654	⊠	5c, 10c Blue (7, 12). Seven stamps on Five covers, incl. Pairs of 5c on two covers, one 10c with T.L. Sheet Corner Margins; two 5c small faults, others Fine-Very Fine, Attractive	85.00
655	⊠	2c Brown Red (8). Margins to just touched at bottom, tied by "Richmond Va Oct 5 1863" pmk. on large size Turned Cover, inside franked "QM Genls Office Official Business"; few cover faults, Scarce & Attractive	200.00
656	⊠	10c Blue, "T-E-N" (9). Large Margins All Around, ms. "X" cancel, not tied on homemade buff cover, military address; negligible toning, otherwise Very Fine, Scarce	200.00

657 ★	10c Blue, Frame Line (10). Three Complete Frame Lines with Criss-Cross Lines at Bottom, Large Margin at Top, Extremely Fine(Photo)	900.00
658 ☒	10c Blue, "Frame Line" (10). Neat Ms. cancel, shows two complete framelines and part of third, slight gum stains in margins, to Cuthbert, Ga. Fine(Photo)	E.XI
659 ★田	10c Blue (11). "Archer & Daly" Impt. & Plate "No. 2" Block of 12, "Archer & Daly" part Impt. & Plate "No. 2" Block of Eight, o.g., few faults, Fine-Very Fine Appearance, Scarce.....	55.00+
660 ★田	10c Blue (11). "Keatinge & Ball" Impt. & Plate "No. 1" Block of 14, "Archer" Impt. & Plate "No. 1" Block of 12, o.g., former few small thins, latter rejoined first vertical pair (affects Plate No.), Very Fine Appearance, Scarce	71.00+
661 ★田	10c Blue (11). "Keatinge & Ball" Impt. & Plate "No. 1" Block of 20, Large Margins, almost Full o.g., few trivial flaws, Very Fine Appearance, Scarce	E.V
662 ★田	10c Blue (11). Left & Right Pane "Archer & Daly" Impt. & Plate "No. 2" Blocks of 20, Fresh, Large Part o.g., one with couple trivial flaws, otherwise Very Fine, Scarce	110.00+
663 ★	10c Blue (11). Sheet of 100, o.g., "Keatinge & Ball" Imprint, Plate No. 1, creased in margin between fifth & sixth horiz. rows, couple tears & light creases in plate no. selvage, otherwise a Very Fine Sheet	275.00+
664 ★	10c Blue (11). Cpl Sheet of 200, Full o.g., "Archer" Impt. & Plate No. 1; folded between panes & between 5th & 6th horiz. rows completely in margin, few toned specks from gum, tiny hole in bottom selvage, Very Fine & Scarce (Contains Ten Gutter Pairs, Unpriced in Scott)	550.00+
665 ★	10c Greenish Blue (11c). Complete Uncut Sheet of 200, Full o.g., "Archer" Imprint, Plate No. 1, creased in Vertical Gutter, some stamps affected by other folding creases, Nearly All Very Fine, Very Scarce	550.00+
666	10c Blue (11). Large Margins All Around, tied by clear "Va. C.R.R. Cobham" pmk. on small piece, negligible toning in margin only, Very Fine, Scarce Confederate R.R. Marking	60.00
667 ★田	10c Greenish Blue (11c) Horiz. Block of 40 (20 x 2) with Left & Right "Archer" Impt. & Plate "No. 1" & Vertical Gutter Between; Margins All Around, Fresh, o.g., reinforced gutter crease, selvage faults affect one Plate No., otherwise Very Fine, Very Scarce	110.00+
668 ★	10c Greenish Blue (11c). Right Pane of 100, "No. 1" only, Fresh, Full Brownish o.g., folded betw. fifth & sixth rows horizontally & vertically, barely touching one stamp, otherwise Very Fine, Scarce	275.00+
669 ★	10c Blue (11, 12). "Archer" Impt. & Plate "No. 1" Strip of Seven, "Archer & Daly" Impt. & Plate "No. 2" Strip of Six, Block with Plate "No. 2" without Impt., of No. 11; Block with Plate "No. 3" without Impt. & used Plate "No. 3" single of No. 12; one stamp in second strip faulty, others Very Fine, Scarce Lot.....	E.V
670 ☒	10c Greenish Blue (11c). tied on cover to Surgeon of "C.S. Gunboat Palmetto State", Turned and used with 10c Greenish Blue (12c), both stamps Large Margins, slight aging, Very Attractive	E.IV
671 ☒	10c Blue (11). Block, Large Margins All Around, Neatly tied by partly clear "Watkinsville, Ga." pmk. on large size printed form Home Made Blue Cover, quadruple rate to Monticello, Ga.; small cover tear at Top; Very Fine, Very Rare, with pencil notation on back. "Only Block on Cover that I Ever Saw, (signed) E.S. Knapp", with P.F. Certificate(Photo)	E.XII

672 ★	10c Blue (12). Cpl. Sheet of 200 , Full o.g., "Archer" Impt. & Plate No. 3; folded between panes, light gum crease one vertical row of right pane, otherwise, Very Fine, Scarce	690.00+
673 ★田	10c Blue (12). Vertical Block of 16 with Gutter Between . Ample to Large Margins, folded along gutter, few trivial age specks; also 10c Greenish Blue (11c) . Rejoined Vertical Block of 16 with Gutter Between, Margin All Around, Scarce Blocks.....	E.V
674 ★田	10c Blue (12). Horiz. Block of 14 (7 x 2) . "Keatinge & Ball" Impt. & Plate "No. 3.", Vertical Gutter betw. Sixth & Seventh Stamp, Margins All Around, Almost Full o.g., slight aging, Gutter Pairs Uncreased, Very Fine, Scarce	59.50+
675 ★田	10c Blue (12). Horiz. Block of 14 (7 x 2) , Vertical Gutter betw. second & third Rows, Margins Almost All Around, Full "Keatinge & Ball" Impt.; few tiny faults incl. pinhole in gutter, otherwise Very Fine	59.50+
676 ★田	10c Blue (12). Horiz. Block of 40 (20 x 2) with Left & Right "Keatinge & Ball" Impt. & Plate "No. 3." & Vertical Gutter Between , Margins All Around, slight separation in gutter where folded, few tiny selvedge tears & creases barely affecting Impt., Very Fine Appearance	137.00+
677 ★田	10c Blue (12). Left & Right Pane "Archer" Impt. & Plate "No. 3." Blocks of 12 , Margins All Around, part o.g., few small faults, incl. Plate No. Pair of one rejoined, Very Fine Appearance	72.00+
678 ★田	10c Blue (12). Two Impt. & Plate "No. 4." Blocks of 12 , with & without "Keatinge & Ball" in Impt., Margins All Around, o.g., few creases & slight aging, Very Fine Appearance	72.00+
679 ★	10c Greenish Blue (12c). Right Pane of 100 , "No. 4" only, Fresh, full o.g., folded betw. fifth & sixth vertical rows, betw. three horiz. rows affecting few stamps; couple small faults, overall condition Very Fine, Scarce.....	300.00+
680 ★	10c Blue, Perforated (12e). Part Impt. & Plate "No. 4." Strip of Three , Well-Centered, o.g., minor gum creases & tiny pinhole in one stamp, otherwise Very Fine, Scarce(Photo)	75.00+
681 ★田	20c Green (13) . Blocks of 4 and 6, one creased, other thin, Very Fine Appearance.....	77.00
682 ★田	20c Green (13). Block of Eight (4 x 2) with Vertical Gutter in Center , Large Margins, Fresh o.g., small corner repair not affecting Gutter Block, otherwise Very Fine.....	66.00
683 ★	20c Green (13). Complete Right Pane of 100 , Full o.g., incl. "20" Double Transfer Pos. 35, Three "Cents" Double Transfers, few wrinkles, some slight age toning spots, still a Remarkably Fine & Very Scarce Sheet, Lot #469 from the Roosevelt Collection.....	775.00+
684 ∞	20c Dark Green (13b) . Large Margins three sides, just clear at left, tied by "Gainesville Ga." pmk. on homemade cover; without flap, Fine & Scarce(Photo)	275.00
685 ∞	20c Green (13) . Margins All Around, "tied" by oily pen cancel which has soaked through stamp into homemade cover; some aging, Scarce	275.00

R.E. LEE FIELD LETTERS, ADAMS EXPRESS, ETC.

686	R.E. Lee, Genl , Frank on front only to a Captain at Richmond, Va., wrinkles & small tear just affect signature, otherwise Fine..(Photo)	E.XII
687 ∞	R.E. Lee Genl , Frank on buff cover with Vertical Pair of 5c Blue (6) , tied by "Richmond, Va. Apr 1863" pmk., to "Col. S. Bassett French A.d.C. Gov. of Virginia, Richmond", light cover creases slightly affect signature, still Very Fine, Rare(Photo)	E.XIII

688	✉	Washington, Ark., May 23 pmk. tied 3c Red (26) natural s.e. left on 1861 Cover to Conn., Confederate Usage docketing on front "recd June 3d 1861 but not answered as the mails were suspended in the Seceded States on the 31st of May", interesting Political letter enclosed; Fine, Rare from Arkansas(Photo)	E.X
689	✉	3c Rose (65). Tied by Bold Doubly Struck Crossroads, "Old Point Comfort, Va." Double Circle pmk. on Captured Homemade Confederate Cover , CSA 10c Blue (12) "tied" by writer's notation "Captured from Rebs at Petersburg, June.", Fine, Interesting & Very Scarce Cover(Photo)	E.VIII
690	✉	Adams Express Co. Memphis., Clear Red Oval (50 x 27 mm) on 3c Red Star Die Entire (U26) ms. "Express" to "Carroll Hoy Co. New Orleans", small cover repair at top left, otherwise Very Fine, Rare, ex-Knapp, Antrim, with P.F. Certificate(Photo)	E.IX
691	✉	Dead Letter Office P.O.DPt., Blue Double Oval, 3c Rose (65) tied by Square Grid of Squares, "Mt. Vernon, O." pmk. addressed to a wounded soldier at Overton Hospital, Memphis, Tenn.; "NOT FOUND" handstamp & "Deceased" in ms., with original letter from his mother, Very Fine, ex-Matz(Photo)	E.XII

CONFEDERATE COLLATERAL

692		Jefferson Davis, signature on Feb. 23, 1865 Appropriation Request to the Secretary of the Treasury, requesting \$9700.00 to J.P. Benjamin, Secretary of State, for "Necessities & Exigencies" in the form of "£2000. Exchange on England"; top left corner rounded, Still Very Fine	E.VII
693	✉	Confederate Patriotics, Collection of 43 Virtually All Diff., incl. Flags, Soldiers, Jeff. Davis, & Nine Diff. "One of the Rebels", also incl. few Union Caricatures, Very Fine Lot.....	E.IX
694		Confederate Patriotic Letter Sheet, Pictorial Design of Jeff. Davis, etc., datelined "Iuka Springs, July 11th 61"; Interesting Soldier's Letter mentions General Beauregard, etc. "...I would not wish to return untill that peace is obtained upon our own terms."; Very Fine & Scarce	E.V
695		Confederate Collateral, a Spectacular Series of Four Documents: 1, Resolution, Dated Sept. 10th, 1862 to "His Excellency Jeffn Davis...Resolved that the President inform the House...the number & kind of equipment issued to troops in the field & the kind of arms manufactured per month..."; 2, Report dated Jan. 7, 1863, signed "Col. Gorgas", Chief of Ordnance to James A. Seddon, Secretary of War, listing Arms & Equipment as of Dec., 1862; 3, Covering Letter, dated Jan. 14, 1863 to Davis, enclosing the Report, signed "James A. Seddon"; 4, Letter headed "for Secret Session, Richmond, Va. Feb. 4, 1863, To The House of Representatives. I herewith transmit a communication from the Secretary of War, forwarding the report of the Chief of Ordnance in partial response to your Resolution of the 10th of September 1862. (signed) Jefferson Davis". Very Fine, A Remarkable & Rare Confederate Collateral Item.....	E.XI

U.S. POSSESSIONS

696	★	CUBA, 1899, 10c Special Delivery, Ovpt. (E1). Fresh, o.g., natural s.e. at right, Very Fine.....	50.00
-----	---	---------------------------------------------------------------------------------------------------------	-------

697 ★	DANISH WEST INDIES, 1855, 3c Dark Carmine, Brown Gum (1). Margins all around, Huge at T., Fresh, o.g., tiny surface scuff, Very Fine Appearance	90.00
698 ★	— 1855, 2s Blue (3). Large to Huge Margins, showing part of next stamp, Fresh, Very Fine (Photo)	65.00
698 ∞	HAWAII, 1864, 2c Vermilion (31). Centered to B.R., tied by Bold Target, matching "Honolulu, Hawaiian Islands" pmk., on cover to Maine, rounded corners at L., Fine Cover	57.50

END OF SALE-THANK YOU

DESCRIPTIONS

EXTREMELY FINE: The finest condition for noteworthy, outstanding copies.

VERY FINE: (V. F.) In prime condition such as to satisfy the requirements of particular collectors.

FINE: (F) Perforations or margins do not touch design on issues after 1890 but in some cases may just touch in earlier issues. If used, fairly light cancellation.

VERY GOOD: (V. G.) Generally nice appearance but margins or perforations may cut in slightly.

GOOD: Average off-centering or fairly attractive with slight defects.

ORIGINAL GUM is not to be expected on 19th century stamps unless so stated in the description.

MINT: With original gum and never hinged.

Scott 1976 Specialized Catalog & Scott 1977 Part I Catalogue used for cataloguing lots in this sale.

Lots on view at our New York offices September 7th and September 8th.

Lots on view at Memphis at our booth at The Hyatt Regency Hotel from September 9th until sale time.

Bids should be sent to our New York offices as usual. Last minute bids can be telephoned to us at The Hyatt Regency Hotel, Memphis.

MEMPHIS

During the “APS-MEMPHIS ’76” we will have a booth where lots for our auction will be shown.

While here we will be pleased to purchase for outright cash or accept for future auctions any worthwhile Philatelic properties.

IS YOUR COLLECTION FOR SALE?

REALIZE IMMEDIATE CASH
PLUS THE ADDED ADVANTAGE OF
SELLING THROUGH OUR AUCTIONS

We will advance immediate cash up to 75% of our appraised value, There is no interest charge.

Your collection is then sold in one of our auction sales. All stamps are expertly and advantageously lotted in attractive, well illustrated catalogs. Lotting is meticulously planned under our personal supervision. Commission is 20% of the gross realization. There is no lotting fee nor any other charges. Final settlement is made within five weeks after the sale. We have continuously conducted stamp auctions for over forty-four years.

Valuable collections and stamp holdings are especially wanted, but we will accept properties valued from \$500 upwards. Send all stamps directly for appraisal. Auction advance will be remitted shortly after receipt. If not entirely pleased, stamps will be returned at our expense. We will travel anywhere to inspect important properties.

ROBERT A. SIEGEL
AUCTION GALLERIES, Inc.

(Licensed and Bonded Auctioneer)

120 EAST 56th STREET
NEW YORK, N. Y. 10022

(Tel. 753-6421)

Robert A. Siegel
AUCTION GALLERIES, INC.

120 EAST 56 STREET, NEW YORK CITY, N.Y., 10022

List of Prices Realized

497th SALE

SEPTEMBER 11th, 1976

(212) 753-6421

UNITED STATES

CONFEDERATE STATES

1	18	52	62½	102	30	152	70	202	450	253	42½
2	130	53	135	103	47½	153	72½	203	775	254	75
3	130	54	57½	104	105	154	20	204	100	255	37½
4	150	55	57½	105	67½	155	145	205	450	256	45
5	30	56	29	106	180	156	24	206	80	257	30
6	115	57	32½	107	140	157	70	207	260	258	1250
7	280	58	135	108	260	158	350	208	52½	259	325
8	130	59	80	109	W/D	159	2600	209	52½	260	375
9	105	60	30	110	55	160	350	210	37½	261	160
10	130	61	26	111	37½	161	700	211	85	262	40
11	105	62	95	112	75	162	750	212	47½	263	23
12	57½	63	30	113	170	163	3500	213	21	264	80
13	57½	64	30	114	52½	164	52½	214	67½	265	95
14	140	65	15	115	42½	165	70	215	125	266	80
15	230	66	37½	116	18	166	350	216	60	267	52½
16	130	67	40	117	105	167	80	217	57½	268	125
17	95	68	37½	118	55	168	70	218	65	269	550
18	300	69	150	119	230	169	70	219	42½	270	240
19	290	70	250	120	90	170	120	220	22	271	2500
20	1450	71	240	121	62½	171	115	221	1050	272	750
21	650	72	105	122	40	172	210	222	1000	273	1800
22	260	73	125	123	170	173	160	223	27	274	1050
23	525	74	425	124	120	174	47½	224	35	275	75
24	270	75	115	125	650	175	80	225	40	276	45
25	750	76	50	126	170	176	47½	226	40	277	110
26	145	77	40	127	600	177	100	227	40	278	90
27	85	78	37½	128	625	178	450	228	1200	279	240
28	47½	79	62½	129	950	179	210	229	950	280	180
29	37½	80	45	130	160	180	180	230	2100	281	240
30	95	81	125	130A	170	181	130	231	65	282	2600
31	75	82	1250	131	650	182	170	232	80	283	90
32	40	83	160	132	25	183	47½	233	350	284	85
33	35	84	47½	133	52½	184	120	234	210	285	29
34	65	85	95	134	120	185	52½	235	80	286	110
35	95	86	180	135	50	186	40	236	52½	287	40
36	35	87	52½	136	105	187	160	237	52½	288	350
37	220	88	57½	137	26	188	47½	238	52½	289	475
38	210	89	62½	138	47½	189	27	239	210	290	950
39	35	90	40	139	57½	190	57½	240	80	291	1000
40	115	91	105	140	37½	191	160	241	65	292	32½
41	475	92	135	141	230	192	35	242	325	293	115
42	200	93	135	142	85	193	25	243	50	294	95
43	80	94	210	143	100	194	35	244	40	295	220
44	42½	95	50	144	65	195	75	245	75	296	85
45	32½	96	30	145	70	196	65	246	280	297	190
46	45	97	100	146	55	197	350	247	450	298	42½
47	30	98	85	147	65	197A	210	248	1000	299	80
48	35	99	37½	148	115	198	67½	249	725	300	27
49	40	100	52½	149	115	199	95	250	1800	301	160
50	65	101	37½	150	140	200	230	251	1450	302	67½
51	50			151	62½	201	625	252	105	303	21

"APS-MEMPHEX '76"

304	60	373	47½	442	55	511	80	579	150	648	130
305	40	374	90	443	65	512	95	580	100	649	80
306	50	375	42½	444	75	513	170	581	16	650	325
307	60	376	25	445	57½	514	90	582	28	651	52½
308	80	377	57½	446	100	515	70	583	110	652	85
309	62½	378	72½	447	65	516	130	584	37½	653	350
310	210	379	57½	448	130	517	170	585	26	654	110
311	95	380	100	449	75	518	425	586	23	655	130
312	52½	381	47½	450	85	519	1350	587	85	656	95
313	130	382	70	451	45	520	25	588	27	657	1150
314	30	383	160	452	160	521	42½	589	115	658	200
315	55	384	150	453	500	522	37½	590	55	659	35
316	30	385	230	454	40	523	52½	591	50	660	25
317	105	386	62½	455	80	524	40	592	47½	661	37½
318	120	387	80	456	75	525	67½	593	160	662	62½
319	70	388	145	457	190	526	24	594	240	663	135
320	350	389	145	458	28	527	105	595	325	664	350
321	37½	390	42½	459	125	528	125	596	52½	665	325
322	110	391	62½	460	42½	529	47½	597	450	666	45
323	26	392	72½	461	25	530	67½	598	85	667	47½
324	42½	393	47½	462	80	531	47½	599	42½	668	200
325	160	394	30	463	45	532	80	600	40	669	72½
326	190	395	67½	464	65	533	47½	601	26	670	52½
327	85	396	95	465	80	534	47½	602	42½	671	600
328	350	397	32½	466	90	535	47½	603	32½	672	375
329	4000	398	120	467	67½	536	47½	604	65	673	30
330	475	399	350	468	115	537	110	605	70	674	70
331	300	400	52½	469	75	538	125	606	65	675	26
332	325	401	170	470	135	539	100	607	21	676	50
333	400	402	170	471	95	540	95	608	105	677	35
334	110	403	75	472	52½	541	140	609	40	678	90
335	21	404	67½	473	67½	542	72½	610	42½	679	230
336	55	405	45	474	67½	543	260	611	52½	680	115
337	42½	406	140	475	47½	544	270	612	85	681	20
338	115	407	95	476	675	545	50	613	72½	682	23
339	75	408	67½	477	27	546	325	614	80	683	675
340	75	409	80	478	80	547	280	615	140	684	230
341	90	410	75	479	75	548	290	616	90	685	90
342	350	411	145	480	47½	549	45	617	45	686	525
343	140	412	135	481	50	550	35	618	145	687	2050
344	37½	413	300	482	145	551	40	619	290	688	325
345	120	414	150	483	125	552	35	620	35	689	135
346	37½	415	30	484	62½	552A	2100	621	80	690	325
347	60	416	52½	485	80	553	110	622	170	691	575
348	67½	417	220	486	300	554	90	623	55	692	140
349	575	418	35	487	52½	555	62½	624	1700	693	120
350	70	419	290	488	125	556	150	635	140	694	75
351	90	420	37½	489	50	557	220	626	90	695	475
352	60	421	625	490	290	558	170	627	140	696	24
353	45	422	180	491	50	559	60	628	17	697	32½
354	110	423	90	492	230	560	95	629	525	698	32½
355	32½	424	100	493	145	561	200	630	350		
356	105	425	70	494	200	562	950	631	375		
357	115	426	35	495	170	563	47½	632	260		
358	105	427	32½	496	145	564	60	633	575		
359	42½	428	37½	497	130	565	57½	634	475		
360	35	429	2100	498	50	566	57½	635	26		
361	62½	430	30	499	260	567	110	636	65		
362	180	431	75	500	95	568	95	637	170		
363	67½	432	150	501	130	569	180	638	45		
364	140	433	62½	502	35	570	1150	639	30		
365	85	434	27	503	72½	571	700	640	65		
366	62½	435	75	504	145	572	550	641	32½		
367	145	436	210	505	50	573	42½	642	475		
368	72½	437	230	506	750	574	30	643	18		
369	50	438	130	507	75	575	40	644	42½		
370	500	439	130	508	150	576	67½	645	52½		
371	80	440	67½	509	42½	577	200	646	80		
372	170	441	42½	510	105	578	170	647	85		

END OF SALE
THANK YOU

GROSS
REALIZATION
\$136,072.00

497th SA
SEPTEMBER

ROBERT A
120 East 56th
New York, N
Tel.: 753-642

Please pu
below, the pr
accordance w

REF
(10

New York S

B
Up
\$32.5
\$75.0
\$150.0
Bids
the a

Lot

U