

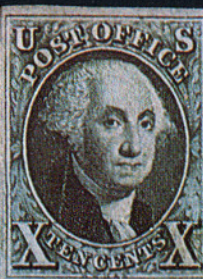


RARITIES OF THE WORLD

ROBERT A. SIEGEL
AUCTION GALLERIES, INC.



James M. Buchanan
10 Cents.



510th SALE

RARITIES OF THE WORLD

THE PROPERTY OF VARIOUS OWNERS
SOLD BY THEIR ORDER

AT PUBLIC AUCTION

WEDNESDAY, MARCH 23rd, 1977
at 7:30 P.M.

AT THE HOTEL PIERRE
COTILLION ROOM
Fifth Avenue and Sixty-First Street

Robert A. Siegel

AUCTION GALLERIES, INC.

120 EAST 56th STREET
NEW YORK CITY, N.Y. 10022
Tel.: (212) 753-6421

CONDITIONS OF SALE

1. The terms of sale are strictly cash on delivery to the highest bidder unless special arrangements have been made prior to the sale.
2. All bids are per lot as numbered in the catalogue unless otherwise announced by the auctioneer at the time of sale. The right is reserved to group two or more lots; to withdraw any lot or lots from the sale, or to act in behalf of the seller. The auctioneer shall regulate the bidding and in the event of any dispute his decision shall be final.
3. Any lot, the description of which is incorrect is returnable, but only within five days of receipt. All disputed lots must be returned intact as received. **The following lots may not be returned for any reason whatsoever: Lots containing ten or more stamps; Lots from buyers who have had the opportunity to examine them before the sale; Lots described as having defects or faults may not be returned because of any faults. No illustrated lots may be returned because of centering, margins or other factors shown in the illustrations.**
4. Successful bidders, unless they are known to us or supply acceptable references are expected to make payment in full before the lots are delivered. Mail bidders will be notified of the amount of their purchases. All mail bidders who have established credit with us must make payment within three days after receipt. We reserve the right in our sole and absolute discretion to demand cash payment at the time a lot is knocked down to any bidder who has not previously established credit with us or whose account is in arrears. In the event any buyer refuses to pay cash for any lot at the time it is knocked down to him, the auctioneer reserves the right to re-offer the lot immediately for sale to the highest bidder.
5. If the purchase price has not been paid within the time limit, nor lots taken up within seven days from date of sale they must be resold and any loss arising from such sale will be charged to the defaulter. Any account more than thirty days in arrears is subject to a late payment charge of 1½% per month so long as the account remains in arrears. If the auctioneer, in his discretion, should institute any legal action to secure payment of a delinquent account the defaulting purchaser shall pay all legal expense incurred by the auctioneer and such charges will be added to the amount owed.
6. All lots are sold as genuine but should any lot be proved otherwise by written opinion of any competent, responsible authority acceptable to us, immediate refund of the full purchase price will be made, provided that such claim is made in writing within 14 days from date of sale. If claim is not made within this period, no lots are returnable for any reason at any time. So long as we are notified within the 14 day period that an opinion is being sought the matter will remain open until such opinion is rendered. We will not be responsible for any charges incurred by the buyer for expertization fees and costs unless the opinion states the item is not genuine, in which case we will pay actual costs up to a maximum of \$50.00.
7. Until paid for in full, all lots remain the property of Robert A. Siegel Auction Galleries, Inc. in behalf of the seller.
8. All forwarding charges will be added to the purchase price. The mode of shipment shall be at our option unless we are given specific instructions.
9. Lots may be sent for inspection to buyers known to us upon written application. All such lots must be returned to us by registered mail, adequately insured and within 24 hours after receipt. The applicant assumes all responsibility and for insurance against all risks from time of receipt until they are actually received back by us, and is to pay all expenses of postage and insurance. No lots can be sent for inspection within eight days from date of local viewing. Large lots and collections cannot be sent for inspection.
10. Agents are responsible for all purchases made in behalf of their clients unless other arrangements are made prior to the sale.
11. The placing of a bid shall constitute acceptance of the foregoing conditions of sale.

ROBERT A. SIEGEL,
MALCOLM SIEGEL, Licensed Auctioneers

FOR TABLE OF DESCRIPTIONS SEE PAGE 43

MARCH 23rd, 1977

ROBERT A. SIEGEL AUCTION GALLERIES, Inc.

120 East 56th Street

New York, N.Y. 10022

Tel.: 753-6421 (Area Code 212)

SIGNED

.....

.....

County

[illegible]

Upon request, estimate of value furnished on any lots in this auction.

FOREWORD

For almost a year we have been screening candidates for our annual Rarity Sale. The 276 lots offered here we feel truly qualify as philatelic rarities. In my 47 years as an auctioneer I have probably seen more rare stamps than any other auctioneer in the field today, yet it still gives me a thrill to present some of the "gems" which you will find described in this catalog.

For the past two years each of our Rarity Sales have realized over a million dollars, an unprecedented figure for any single session sale. The material we present this year is such that we again anticipate topping the million dollar mark. Last year, the Bicentennial, the Rarity Sale featured both historic pieces connected with our nation's birth, and stamps specially printed for sale during its Centennial celebration. This year, the 50th Anniversary of the historic Lindbergh Solo Transatlantic Flight we are pleased to offer one of the two existing covers which accompanied him on his epoch-making flight. However, we are not overlooking earlier documents of historic importance. You will see in the first five lots, items of museum caliber, highlighted by a two-page Benjamin Franklin holograph letter. We could fill many pages with adjectives describing the magnificence of the superlative rarities, both of the United States and Foreign, which you will find in this Sale, but we prefer that you get the details from the catalog itself where each lot is meticulously described and all are illustrated.

In keeping with our custom, lots will be displayed in full color on a screen as they come up for sale. Light refreshments will be served following the auction. As seating is limited advance reservations are advisable. A note or call to our office will take care of it.

Robert A. Siegel

UNITED STATES

IMPORTANT HISTORICAL AUTOGRAPHS

- 1 **B. Franklin**, Signed two page Holograph Letter written entirely in Franklin's hand, Headed "Philad. Aug. 10, 1775", Remarkable Historical Contents, Apparently written to General Schuyler regarding movement of munitions, . . . "Accordingly I this Day dispatch a Waggon with 2400 lb wt. which actually empties our Magazine" . . . "We find on Enquiry that there is an extream scarcity of Lead here; and our Committee recollecting that a superfluous Quantity was taken at Ticonderoga, request you would spare us what you can of it," Wonderful State of Preservation, A Fabulous Document of Extreme Historical Importance & Rarity, with Hamilton certification **E.XVII**
- 2 **G Washington**, Autograph Signature on one & one-third page holograph Letter to Brig. General Morgan, all in Washington's hand, Headed "Philadelphia 12 December 1781", Contents refer to Prisoners, Deserters, . . . "What you mention respecting those soldiers of ours, who, after returning from Captivity, have never joined their Corps, and those who while prisoners enlist with the enemy and then desert, deserves attention. If the terms for which they were enlisted have not expired, they are certainly liable to be called into service, and you will be pleased to look upon yourself as authoriser to apprehend all such as cannot make it appear that their times have expired," Excellent Condition with only a small mend not involving written area, A Beautiful & Rare Letter, with Hamilton certification..... **E.XVI**
- 3 **John Hancock**, Autograph Signature as President of the Continental Congress on single page holograph letter headed "In Congress July 13th 1775", contents refer to election of General Philip Schuyler, Major Joseph Hawley, Mr. Turbot Francis, Mr. Oliver Woolcott & Mr. Volkert P. Donn as Commissioners of Indian Affairs for the Northern Department; all in Hancock's hand, Very Fine, A Choice Historical Piece, with Hamilton certification **E.XV**
- 4 ☐ **A Lincoln**, Autograph Free Frank as President on small neat cover addressed in Lincoln's hand to Olympia, Washington Territory, "Washington, D.C." Double Circle pmk., April 1863 Letter Enclosed, written on Executive Mansion Stationery by a Mr. A. G. Henry, a man apparently much in the favor of Mr. Lincoln. Mentions being with General Hooker, Mr. & Mrs. Lincoln, War Sentiments, etc., couple small cover tears & small crease through "l" of Lincoln, still a Handsome & Rare Free Frank Cover (transcript of letter accompanies) **E.XV**

LOTS ON VIEW

Tuesday, March 22nd, 10:00 A.M.-3:00 P.M.
Wednesday, March 23rd, 10:00 A.M.-3:00 P.M.

We find on Enquiry that there is an ex-
 trem Scarcity of Lead here; and our com-
 mittee Recollecting that a superfluous Quan-
 tity was taken at Ticonderoga, request
 you would spare us what you can of it.

With great & sincere Esteem, I have
 the Honour to be

Sir

Your most obedient
 humble Servant

1
 R. Franklin

it to please to look upon
 to apprehend all such a

near that their times have

on a perfect recovery of
 am with solemn

Yr. fir

your most obedt. & affec. Servt

2
 G. Washington



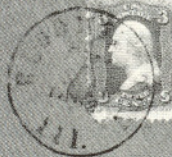
4

Albion

Alfred R. Bledsoe
 Olympia

at
 Congress July 13. 1775

5



Submission to the Sec.
 of War
 Jan 7. 1783
 Albany

Hon. David Davis
 Asst. U.S. Supreme Judge
 Washington

ing Gentlemen elected Commissioners
 Affairs for the Northern Departm.

Philip Schuyler, Major Joseph
 Furber, Francis, W. Oliver
 W. Volker P. Down

12

James M. Buchanan

PAID

Miss Susan Julia Mayer
 care of Gen. Geo. M. Mevin
 U.S. Marshal
 Philadelphia
 C. W.

By order of Congress
 John Hancock President
 3

- 5 ☒ **A. Lincoln**, Autograph on Dec. 31, 1862 Cover Addressed to "Hon. David Davis, Assistant U.S. Supreme Judge, Washington, D.C.", cover & enclosed letter (request for military commission) turned over to Mr. Lincoln & subsequently docketed in his hand, "Submitted to the Sec. of War, A. Lincoln, Jan. 7, 1863," 3c Rose (65) tied by "Bloomington, Ill." pmk., Very Fine, Rare & Choice Historic Piece, ex-Gibson, old Lincoln photo accompanies **E.XIV**

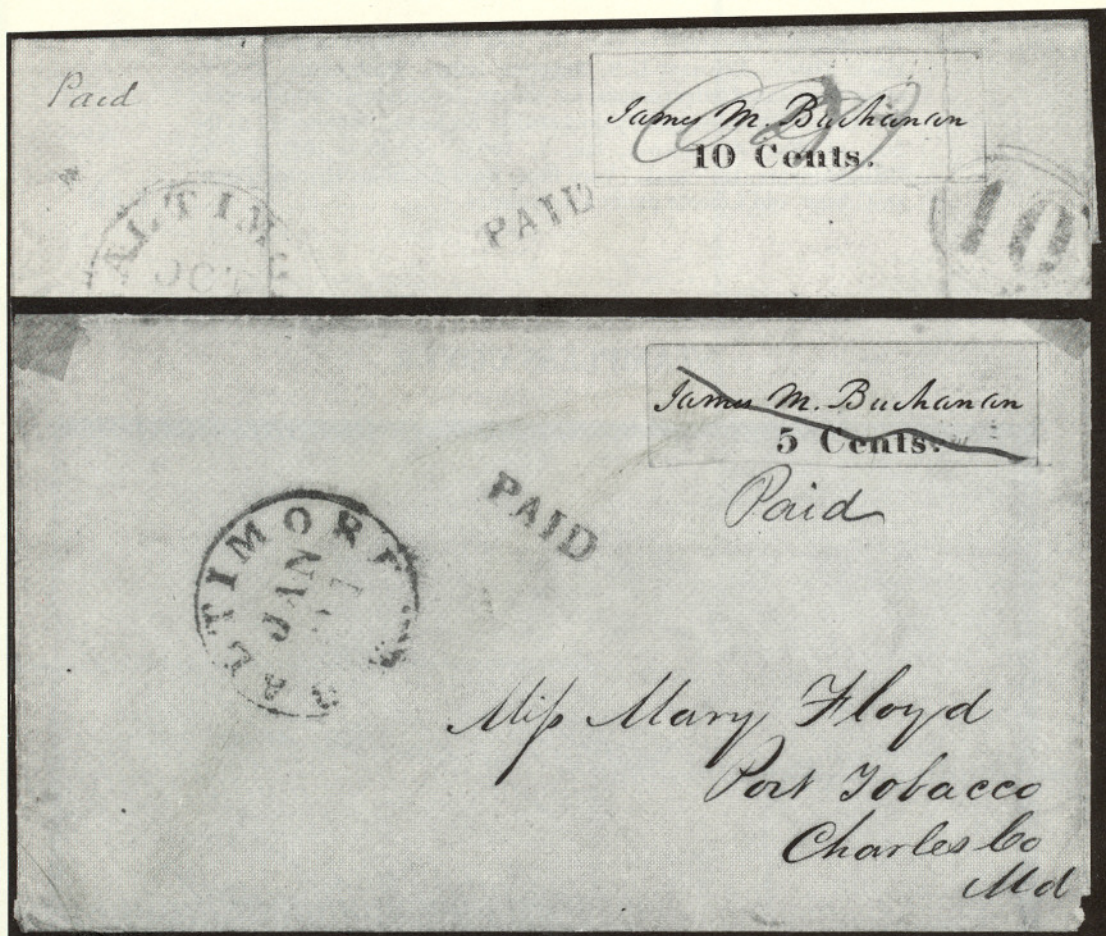
STAMPLESS COVER



- 6 ☒ **Philadelphia, Pa.**, Clear Strike in **Blue**, matching **Full Rigged Ship in Octagon** & "Ship" on Fresh 1839 Folded Cover to New York, insignificant filing fold through design, nevertheless Extremely Fine, A Gorgeous & Rare Stampless Cover, Only two known in Blue **E.XV**

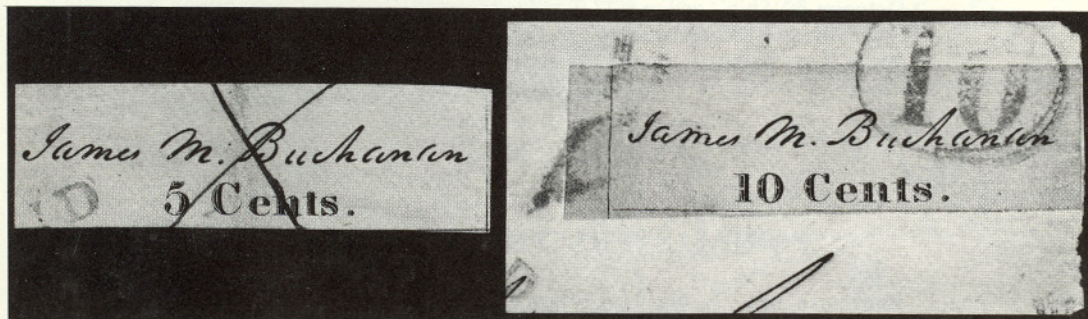
POSTMASTERS' PROVISIONALS

- 7 ☒ **Baltimore, Md.**, 5c **Black on White (3X1)**. Large Margins to slightly in, Shows Complete Frame Lines Top & Right, Part Frame at Bottom, neat ms. cancel, not tied, Blue "Baltimore, Md." pmk., Matching "Paid" on cover to Port Tobacco, Md., cover corners trifle worn, Rare & Desirable **3,750.00**



7, 8 ABOVE

- 8 ☒ **Baltimore, Md., 10c Black on White (3X2).** Four Nice Margins Showing All or Parts of the Four Frame Lines, ironed out filing crease, light ms. cancel & tied by Bold Blue "10" in Oval, matching "Paid" & Baltimore, Md. pmk. on Oct. 1846 Folded Cover to Kentucky, part of address neatly eradicated, A Fabulously Rare & Desirable Cover despite the filing crease..... 35,000.00



9

11

- 9 **Baltimore, Md., 5c Black on Bluish (3X3).** Adequate Margins showing approximately one & one quarter frame lines, neat ms. "X" & part of Blue "Paid" pmks., couple light creases, otherwise Fine..... 3,000.00

- 10 ☒ **Baltimore, Md., 5c Black on Bluish (3X3).** Nice Margins Showing Nearly Four Frame Lines, ms. cancels, not tied on cover from the Mary Floyd correspondence, Blue "Baltimore, Md." pmk., matching "Paid", ms. "Paid 5", cover bit aged, small sealing wax stain, Stamp Very Fine, Rare..... 3,750.00
- 11 **Baltimore, Md., 10c Black on Bluish (3X4).** Nice Margins showing parts & bits of three frame lines, tied on piece by Blue "10" in Oval, skillfully repaired at left, Very Fine Looking, A Tremendous Rarity, only two known, the other on cover..... 35,000.00
- 12 ☒ **Baltimore, Md., 5c Blue Entire (3XU1).** Clear Strikes of "James M. Buchanan", "PAID" & "5" in Oval, Blue "Baltimore, Md." pmk., addressed in care of General Geo. M. Keim, U.S. Marshall, Philadelphia, Pa., slight sealing wax stain in center of cover as on all the provisional covers from the famous Julia Mayer Correspondence, Very Fine, Rare 3,000.00

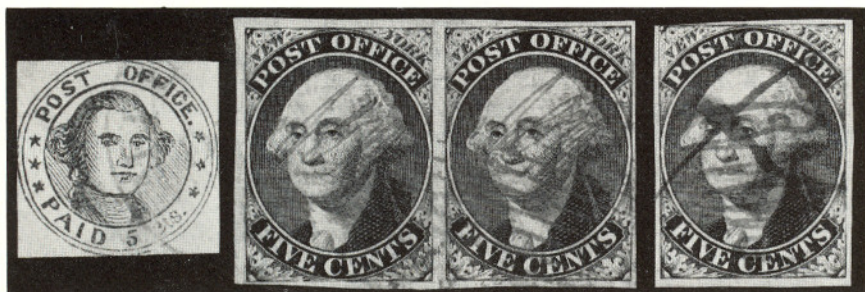


13



14

- 13 ★ **Brattleboro, Vt., 5c Buff (5X1).** The "Mystery" Position No. 11, Large Margins, Choice Impression, trivial tiny faults, Extremely Fine Appearance, **Only Known Unused Example**, A Handsome Rarity, ex-Lilly..... 12,000.00
- 14 **Brattleboro, Vt., 5c Buff (5X1).** The Lapham-Colson Complete Reconstruction of the Ten Plate Positions. Position 1; tiny Red ms. cancel, margins all around except touches bottom right, Fine; Position 2; margins all around, tiny Red ms. cancel, Very Fine; Position 3; margins all around, very large at top, tiny Red ms. cancel, Very Fine; Position 4; close on all sides, **Blue Numeral "5" Cancel** (unlisted); Position 5; Red ms. cancel, two thinnings, three large to huge margins, close at left; Position 6; margins all around, **Red "P(aid)" cancel**, exceptionally fine; Position 7; margins all around, very large at bottom, Red ms. cancel, exceptionally fine; Position 8; margins all around with **Unique Full Bottom Imprint**, Red ms. cancel, exceptionally fine; Position 9; margins all around, very large at bottom, exceptionally fine; Position 10; margins all around, Red ms. cancel, tiny thinning, A Fabulous and Unique Offering, from our 1966 Rarity Sale 40,000.00+



15

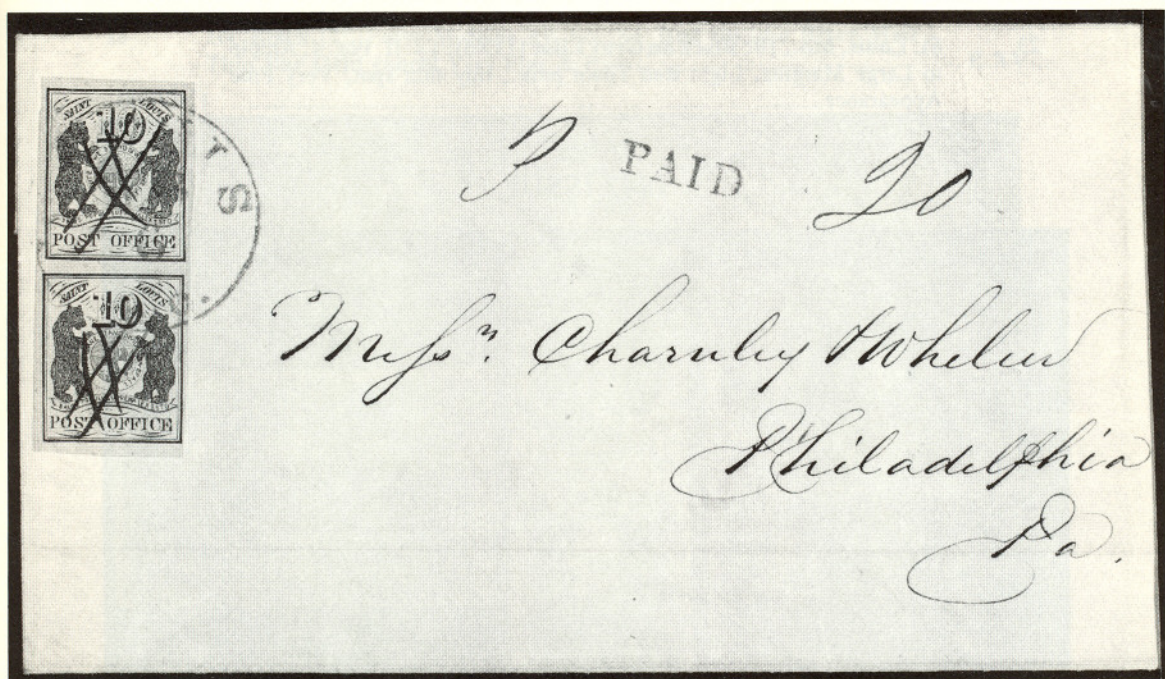
16

17

- 15 **Millbury, Mass., 5c Black on Bluish (7X1).** Margins clear to touched three sides, slightly in at top, Light Red Town pmk., thin spots & crease, still a Very Attractive Example of this Major Provisional Rarity 17,500.00
- 16 **New York, N.Y., 5c Black on Blue Paper (9X1a). Horiz. Pair,** Ample to Large Margins, Pos. 37, 38, Bright Red Grid cancels, faint crease & tiny corner thin, otherwise Very Fine, a Beautiful Appearing Rarity, with P. F. Certificate 1,500.00
- 17 **New York, N.Y., 5c Black, Signed "R.H.M." (9X1b),** Large Margins All Around except top left corner barely touched, neat ms. "X" cancel, tiny corner crease, Very Fine Appearance, Rare 1,000.00
- 18 ★ **Providence, R.I., 5c, 10c Gray Black, Complete Sheet of 12 (10X1, 10X2).** Bottom left 5c stamp light negligible creases, otherwise Very Fine, Rare 1,850.00
- 19 ★ **Providence, R.I., 5c, 10c Gray Black (10X1, 10X2). Complete Sheet of Twelve,** Nearly Full o.g., few light creases, otherwise Very Fine.. 1,850.00
- 20 ☒ **Providence, R.I., 5c Gray Black (10X1).** Pos. 5, Ample to Large Margins, Neat ms. "check mark" cancel not tied (as nearly always), Red "Providence, R.I." matching "Paid" & "5" on Fresh Nov. 1846 Folded Letter, Very Fine, Rare & Handsome 900.00

RESERVATIONS

Because of limited seating it is advisable to make advance reservations for this sale. It can be done by letter or telephone call to our office.



- 21 **St. Louis, Mo., 10c Black on Greenish (11X2). Vertical Pair, Pos. 4, 6, Large to Huge Margins except trifle narrow margin one tiny spot bottom right, Wonderfully Fresh, neat ms. cancels, tied by Red "St. Louis, Mo." pmk., matching "Paid" on Fresh Feb. 4, 1846 Folded Letter, Very Fine, Rare & Remarkably Choice 5,000.00**



- 22 **St. Louis, Mo., 5c, 10c Black on Gray Lilac "L" Shaped Combination Block of Four (11X4, 11X5). Pos. 2, 4-6, Bottom Pair Se-Tenant 5c + 10c Pair, Ample to Large Margins, usual quill pen ms. cancels, Very Fine, A Marvelous & Extremely Rare Showpiece 16,500.00+**

- 23 **St. Louis, Mo., 10c Black on Gray Lilac (11X5).** Ty. II, Pos. 4, Ample to Large Margins, Light Red Town pmk., tiny thin spot, Very Fine Appearance..... 1,400.00

1847 ISSUE

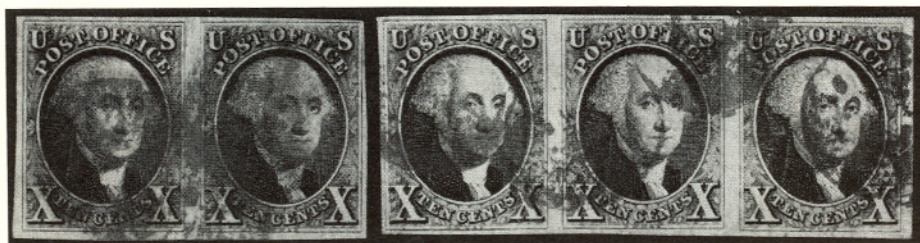


- 24 ★田 **5c Red Brown (1). Block,** Three Nice Margins, just clear to tiny bit in at bottom, Fresh Color, Large Part Crackly o.g., bottom right stamp small thin, tiny bit broken through, small nick & thin between bottom pair, top right stamp small closed scissors cut, light creasings. There is about one-sixth of an Unused 10c '47 adhering face up, on the back of the top left stamp! Despite the faults, this piece is of Respectable Appearance & Rare..... 9,000.00
- 25 **5c Red Brown (1). Vertical Pair,** Large to Huge Margins Showing Bits of Two Adjoining Stamps, Lovely Color, each with Neat Red Grid cancel, Extremely Fine, A Wonderful Pair, with P.F. Certificate..... 425.00
- 26 **5c Dark Brown (1a). Horiz. Pair,** Ample to Large Margins, showing bit of Next Stamp at left, Marvelous Color, Very Sharp Impression, tied by light **Black** grids on small piece, Very Fine, Handsome Pair..... 425.00+



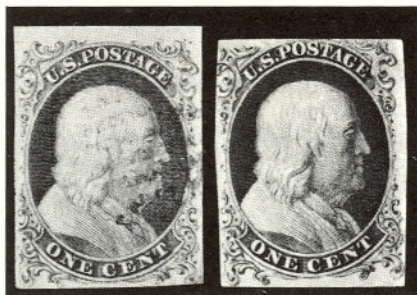
- 27 ★ **10c Black (2). Horiz. Strip of Three,** Ample to Large Margins except tiny bit in two places, vertical creases between stamps virtually clear of all designs (probably done in preparation for separation), small closed tear middle stamp, otherwise Fine-Very Fine, Tremendously Rare.. 15,000.00+

- 28 **10c Black (2).** Large Margins All Around, **Red Hudson River Mail Thin Bar Grid cancel** Very Fine & Rare E.XV



- 29 **10c Black (2).** Horiz. Pair, Clear to Large Margins, Bright Red grid cancels, Very Fine, Handsome 1,350.00
- 30 **10c Black (2).** Horiz. Strip of Three, Pos. 41-43R, Left Stamp Major Double Transfer Ty. D, Ample to Huge Margins, Fresh, Nice Impression, Bright Orange Red Cork cancels, Extremely Fine, Exceptionally Beautiful & Rare 3,250.00+
- 31 ✉ **10c Black (2).** Used from Canada, Large Margins, incl. bit of Next Stamp at top, Marvelous Impression, faint vertical filing crease, tied by two strikes of Red "10" in circle, Matching "Paid" & "Montreal L.C. SP 9 1850" double circle pmk. on folded cover to New York, Red Canadian ms. "4½", there is a reinforced filing crease at the center of the cover & couple small closed cover tears, still an Outstanding Example of this Very Rare Usage E.XVI
- 32 ✉ **10c Black (2).** Ample to Large Margins, used with **Boyd's City Express, 2c Green (20L7)**, large Margins All Around, tied together & on cover by Red Square grids, matching New York pmk., 1851 folded letter to Ill., Very Fine & Rare, ex-Knapp E.XV
- 33 P田 **5c Red Brown, 10c Black, Reproduction Plate Proofs on Card (3P-4P).** Blocks, Very Fine Set 750.00

1851 ISSUE



- 34 **1c Blue, Ty. I, Position 7R1E (5).** Ample to Large Margins incl. Top Sheet Margin except tiny bit of bottom right ornament missing, Light Blue Grid cancel, negligible crease entirely in sheet margin, tiny cut almost clear of design at bottom right corner, otherwise Very Fine, one of the Most Attractive Known Examples of this Rare Stamp, with P.F. Certificate 8,750.00

- 35 ★ **1c Dark Blue, Ty. Ia (6).** Pos. 94L4, Margins All Around except tiny bit in at top left, Wonderful Deep Shade, Nearly Full o.g., Fine, A Handsome Rarity..... 4,000.00
- 36 ★田 **1c Blue, Ty. II (7). Block,** Pos. 3-4, 13-14 R2, Margins All Around incl. Part Sheet Margin at Top, Almost Full brownish o.g., Very Fine, Rare This Nice..... 1,000.00



37

38

39

- 37 ★ **1c Blue, Horiz. Combination Pair, Ty. II & IV, Pos. 4-5R1L (7, 9).** Clear to Gigantic Margins Showing other Stamps at Bottom & Right, Full Top Sheet Margin, minor scissors cut between stamps & trivial bend in sheet margin, Extremely Fine, signed Ashbrook, ex-Lilly, Unpriced, Unused, A Great Rarity, with P.F. Certificate..... E.XV
- 38 **1c Blue, Ty. III, Position 99R2 (8).** Large to Huge Margins incl. Bit of Next Stamp at top, Part Bottom Sheet Margin, Beautiful Deep Rich Color, Bold Blue Town pmk., faint negligible corner bend, nevertheless Extremely Fine, Unquestionably One of the Finest Known Used Examples of this Rare Position..... 1,600.00
- 39 **1c Blue, Ty. III (8).** Pos. 65R4, Large to Huge Margins showing bit of Next Stamp at bottom, Rich Color, neat Grid cancel, Extremely Fine, a Beauty..... 500.00
- 40 ✉ **3c Red, Perf. 12½ (11 var). The "Chicago" Perf.,** Unusually Well-Centered, Neatly tied by "Chicago, Ill., Jan. 23, 1857" pmk. on buff cover with Large Blue **Illustrated Corner Card** of a Chicago Bakery; Very Fine and Rare Cover with Dr. C. Chase certification on back..... E.XV

41



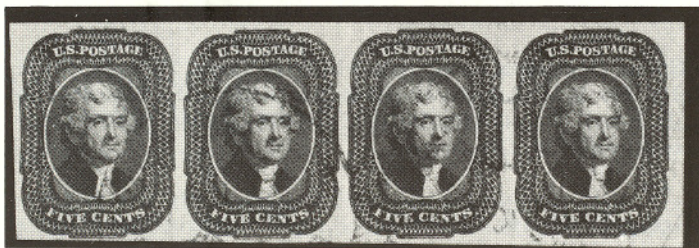
43



42



- 41 **5c Red Brown (12).** Pane Margin & Center Line at Left, Ample To Large Margins other sides, Rich Color, Bold Town pmk., Very Fine, Choice, ex-Caspary..... 350.00
- 42 **5c Red Brown (12).** Vertical Pair, Large to Huge Margins showing Bits of Three Adjoining Stamps, Rich Color, light Town pmks., Extremely Fine, A Magnificent Pair..... 775.00
- 43 **5c Red Brown (12).** Horiz. Pair, Large Margins All Around, Rich Color, light "New-York" pmk., Extremely Fine 775.00



44

- 44 **5c Red Brown (12).** Horiz. Strip of Four, Large to Huge Margins, Wonderful Color, light Town pmks., barely noticeable faint creases, tiny tear in bottom margin of second stamp clear of design, nevertheless a Magnificent & Rare Showpiece.....

E.XVI



45

46

- 45 ★ **10c Green, Ty. I (13).** Margins All Around, Lovely Fresh Color, Very Fine & Very Rare, with P.F. Certificate 2,250.00

- 46 **10c Green, Ty. I (13). Horiz. Strip of Three**, Pos. 98-100R, Large to Huge Margins, Rich Color, each with Neat Grid cancel, Pos. 99 "Curl" in Left "X", Pos. 100 Double Transfer at Bottom, Very Fine, A Beautiful, Rare Strip..... 925.00+
- 47 ✉ **10c Green, Ty. I (13). Margins All Around**, Pos. 100R, with Double Transfer, Tied on cover to Canada, transit marks on back, Very Fine **E.XIV**
- 48 ✉ **10c Green, Ty. I (13). Horiz. Pair**, Pos. 98, 99L, Large Margins All Around, tiny scissors cut at top between stamps, well clear of designs, tied by light "Guilford Conn" pmk. on neat buff cover to San Francisco, Very Fine, a Beautiful & Rare Cover 825.00



- 49 ★ **10c Green, Horizontal Combination Strip of Three, Types II, IV, II (14, 16)**. Pos. 2-4R, Large to Huge Margins, Rich Color, Virtually Full o.g., Extremely Fine, A Magnificent Classic Piece of the Highest Order of Rarity, with P.F. Certificate..... 4,325.00+
- 50 **10c Green, Ty. IV (16). Recut at Top**, Pos. 74L, Large to Huge Margins All Around, incl. bits of Next Stamp at Left, light Town pmk., faint toning specks on back only, otherwise Extremely Fine, Beautiful Stamp 525.00

1857 ISSUE

- 51 ★田 **1c Blue, Combination Block, Ty. I, II (18,20)**. Bottom Pair Ty. I, Rich Color, Fresh, o.g., Fine-Very Fine, Handsome & Rare Block 1,300.00
- 52 ✉ **1c Blue, Ty. Ia (19). Horiz. Pair**, Pos. 92-93L4, centered to top showing Virtually Full Scrolls at Bottom, Marvelous Shade, tied on cover by Clear Thin Bar Framed Grids, "Philadelphia, Pa." pmk., Dec. 1857 enclosure, cover flap and back have few closed tears, Stamps Fine, Rare Drop Letter/Carrier Use, signed Ashbrook, A Wonderful Show-piece **E.XV**



- 53 **1c Blue, Ty. III, Pos. 99R2 (21).** Wonderful Rich Color, light Blue Town pmk., Very Fine, Unquestionably One of the Finest Known Examples of this Rare Position, Much Scarcer than its imperforate counterpart 2,000.00
- 54 ★ **1c Blue, Ty. III, Ty. IIIa, Vertical Combination Pair (21, 22).** Pos. 72, 82 L4, Top Stamp Ty. IIIa, Bottom Stamp Ty. III, Fresh, Rich Color, couple faint creases, Ty. IIIa tiny toning specks on back, otherwise Fine & Rare, Unpriced Unused, with P.F. Certificate1,225.00+
- 55 **1c Blue, Ty. III, IIIa (21, 22). Horiz. Combination Strip of Five, Types III, IIIa, IIIa, III, III,** Pos. 66-70L4, with R. Perforated Pane Margin & Center Line, tied by "Lake Providence, La." pmks. on small piece, left stamp couple trivial flaws, otherwise Fine-Very Fine, Rare Strip, ex-Chase, Emerson1,300.00+
- 56 ★ **5c Brick Red (27).** Nearly Full o.g., tiny thin spot, creased & tiny soiling specks, Very Rare Unused, Fine Centering 2,000.00
- 57 ★ **5c Red Brown (28). Vertical Pair,** Fresh, Magnificent Color, Almost Full o.g., single nibbed perf., otherwise Very Fine, Handsome and Rare, ex-Gibson 1,650.00
- 58 田 **5c Red Brown (28). Block,** Rich Color, Centered slightly to bottom, Single Bold "Fort Smith Ark." pmk., perfect strike, couple perfs. neatly strengthened, A matchless Block of Utmost Rarity1,500.00+
- 59 ∞ **5c Indian Red (28A).** Remarkably Well-Centered, Gorgeous Rich Color, tied by New Orleans, La. pmk. & by Red "New-York Br. Pkt." on 1858 folded cover to **Barcelona, Spain,** Bold "4 Rs" due marking, transit & receiving pmks. on back, Very Fine, signed "Ashbrook", who notes "Singles of This Stamp on Cover are Very Rare" **E.XV**
- 60 ★ **5c Brown, Ty. I (29). Horiz. Strip of Four,** Rich Color, right stamp corner perf. nick, otherwise Fine-Very Fine, Rare Multiple1,300.00+

James P. B. Thompson
5 Cents.

10

Par



20

PAID

5

Miss Maria

Thomas J. Caggeshall Esq.
'Parker Mills'



31

Joseph F. Lloyd
General
Americana Post



47



40



Mr. J. S. Brown
Boston
Mass



48

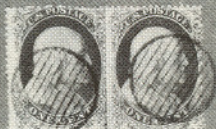
R. Wheaton Esq.
San Francisco



32

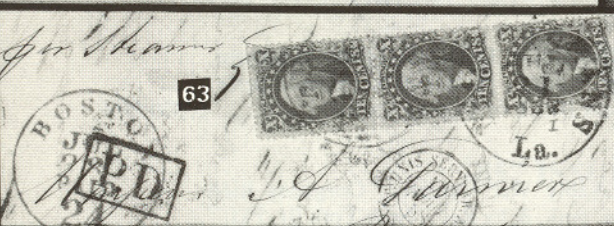


Mr. John A. Kennedy



52

James Shaw Esq.
Inquirer of prob.
Arch. & of b.
opposite the Theatre
Philadelphia



63

BOSTON
J. S. Brown
Mass



65



Miss Ch. J. Everett
Orange Co.
N. H.

59



4
Pedro
Barcelona
Spain



33



36



51



54



57



50



56



55



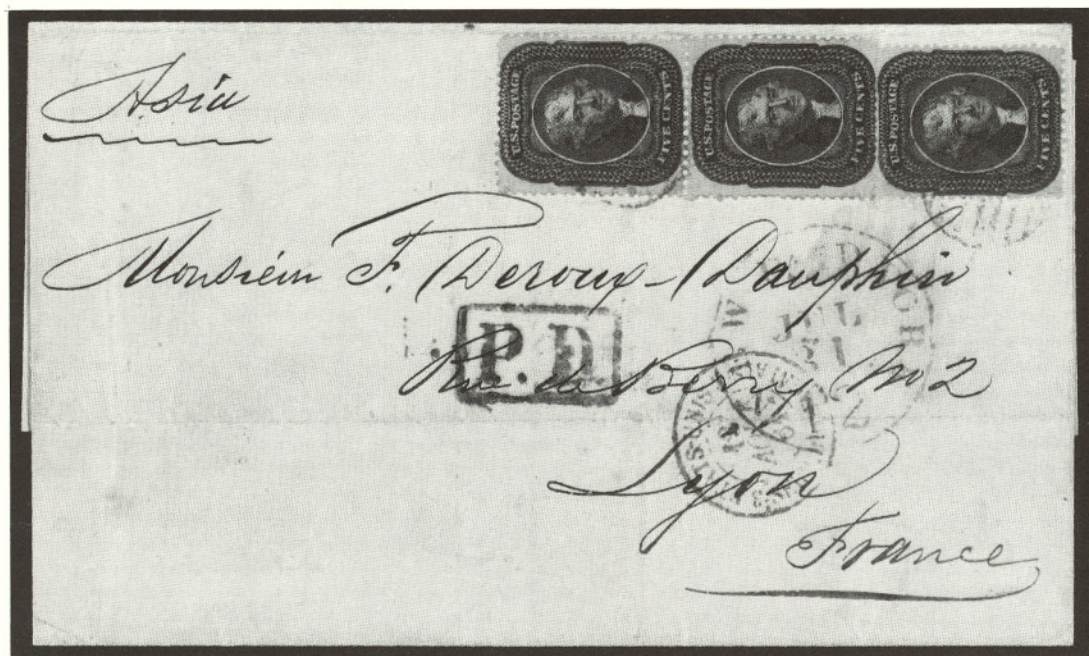
60



62



64



- 61 ☒ **5c Orange Brown (30).** Three Singles, Marvelous Color, Neatly tied on Fresh Jul. 1861 Folded Cover to France, Clear Matching "New Paid York 12", Red French Transits, Very Fine, with P.F. Certificate, a Matchless Rarity **E.XVI**
- 62 ★ **10c Green, Ty. I (31).** Fresh, Full o.g., single short perf. & light crease, otherwise Fine, Rare..... 1,750.00
- 63 ☒ **10c Green, Vertical Combination Strip of Three, Types II, III, I (31-33).** Tied by "New Orleans, La." pmks. on 1858 Folded Letter to France, Red "Boston Paid 24", French Transits, Blue Oval Merchants Cachet, "Boston Br. Pkt." Backstamp, Ty. I stamp single nibbed perf., otherwise Fine, Very Rare Cover, this combination listed off-cover only & unpriced **E.XIII**
- 64 **10c Green, Ty. III, IV (33, 34). Vertical Combination Strip of Three, Types III, IV, IV, Pos. 44, 54, 64L, Pos. 54L Recut at Bottom, Pos. 64L Recut Top & Bottom;** Well-Centered, light town pmks., top stamp tiny corner crease, otherwise Very Fine, Rare & Handsome Showpiece 990.00+
- 65 ☒ **10c Green, Ty. V (35).** Tied by partial "San Francisco Cal." pmk. on 1861 cover with Blue **Four-Horse Stagecoach** with "Overland/via Los Angeles/U.S. Mail." & "The Star of the Union-California." Patriotic Caption below, Very Fine & Handsome cover **E.XIV**
- 66 ★ **24c Gray Lilac, Imperforate (37c).** Large to Huge Margins incl B. Sheet Margin, Lovely Color, light horiz. crease in bottom margin far from stamp, Extremely Fine 650.00
- 67 ★ **30c Orange, Imperforate (38a).** Clear to Ample Margins, Very Fine & Rare, with A.P.S. & P.F. Certificates..... 1,350.00

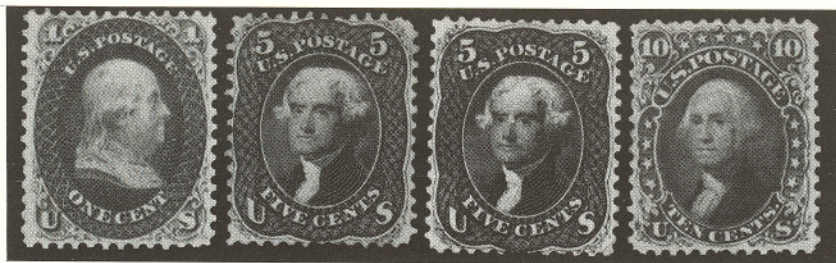


- 68 ★ **90c Blue, Imperforate (39a).** Large to Huge Margins, Fresh, Rich Color, Extremely Fine, Certainly One of the Finest Existing Examples of this Rare Imperforate, with P.F. Certificate..... 2,000.00



- 69 ★ **3c Scarlet, Reprint (41).** Choice Centering, Gorgeous Color, Extremely Fine..... 1,400.00
- 70 ★ **12c Greenish Black, Reprint (44).** Very Fine 825.00
- 71 ★ **30c Yellow Orange, Reprint (46).** Vivid Color, Unusually Well-Centered, Very Fine, A Choice Rarity 1,300.00
- 72 ★ **90c Deep Blue, Reprint (47).** Well-Centered, few barely nibbed perms., otherwise Extremely Fine, Handsome Example of this Rare Stamp 2,000.00

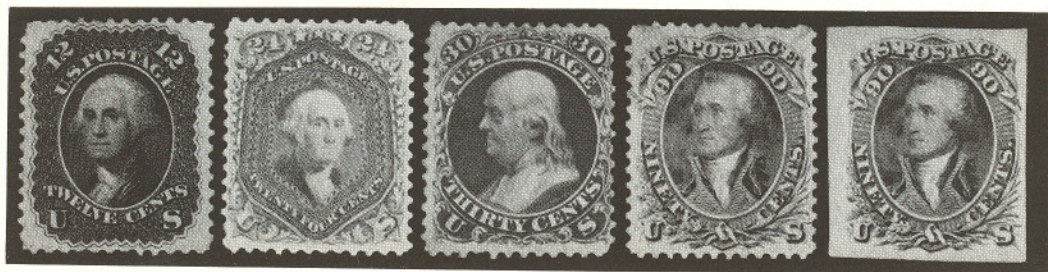
1861 FIRST DESIGNS



- 73 ★ **1c Indigo, "First Design" (55).** Well-Centered, o.g., Marvelous Rich Color, Very Fine, Possibly the Finest of the Few Existing Examples Known, with P.F. Certificate 12,500.00
- 74 ★ **3c Brown Rose, "First Design" (56). Horiz. Pair,** Fresh, o.g., Very Fine 725.00
- 74A ★ **3c Brown Rose, "First Design" (56). Block,** Fresh, o.g., Very Fine 1,550.00



- 75 ★ 3c Brown Rose, "First Design" (56). B. Imprint & Plate No. 2 Block of Eight, Unusual Scarlet Shade, slightly oxidized, Very Fine, Very Rare, only two Plate Blocks Known 7,500.00
- 76 ★ 5c Brown, "First Design" (57). Fresh, Rich Color, Fine & Very Rare 8,500.00
- 77 ★ 5c Brown, "First Design" (57). Fresh, o.g., Marvelous Color, three partly nibbed perfs., minor corner perf. crease, otherwise Very Fine, Rare, with P.F. Certificate 8,500.00
- 78 ★ 10c Dark Green, "First Design" (58). Marvelous Color, Part o.g., Extremely Fine, A Beautiful Rarity 1,850.00



- 79 79 ★ 12c Black, "First Design" (59). Exceptionally Well-Centered, Large Part o.g., Very Fine, A Fantastic Rarity, only about ten examples known in any condition, with P.F. Certificate 27,500.00

- 80 ★ **24c Violet, "First Color" (60).** Well-Centered, Fresh Color, Large Part o.g., Extremely Fine, with P.F. Certificate 2,300.00
- 81 ★ **30c Red Orange, "First Color" (61).** Traces of o.g., Marvelous Color, light crease, otherwise Fine, Very Rare, with P.F. Certificate 11,000.00
- 82 ★ **90c Dull Blue, "First Design" (62).** Fresh, Part o.g., few short perfs. at top, otherwise Very Fine, Extremely Rare, with P.F. Certificate.... 14,500.00
- 83 ★ **90c Dull Blue, "First Design", Imperforate (62a).** Large Margins, Rich Color, light ironed out crease at bottom, otherwise Extremely Fine, with P.F. Certificate..... 1,750.00

1861 ISSUE, 1867 GRILLS

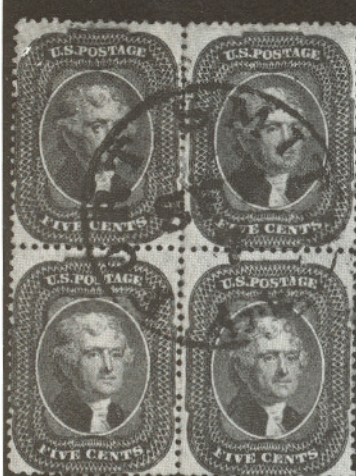
- 84 ★ **3c Lake (66).** Wonderful Rich Color, Fresh, o.g., Very Fine, Very Scarce 750.00



85

86

- 85 **5c Dark Brown, Grilled All Over (80a).** Perfs. touch, Neat Target cancels, faint horiz. crease & single nibbed perf., still a Remarkable Example of this 19th Century Rarity, Only about Four Used Known, light "S.S. & C. Co." guarantee, with American Philatelic Association Certificate signed by Luff & Klemann..... 35,000.00
- 86 **30c Orange, Grilled All Over (81).** Perfs. just in top & right, Bold Crossroads cancel, small nick at right, yet a Very Acceptable Example of this Extremely Rare Stamp, with P.F. Certificate..... 30,000.00
- 87 ★田 **2c Black, D. Grill (84). Block,** Fresh, Three Stamps Full o.g., other Almost Full o.g., bottom pair minor gum toning, bottom left stamp small corner crease, perfs. in at top, Very Rare, only Two or Three Blocks Believed to Exist 4,500.00
- 88 ★田 **10c Green, F. Grill (96). Top Imprint Margin Block,** Magnificent Color & Choice Centering, Extremely Fine 850.00
- 89 ★田 **12c Black, F. Grill (97). Block,** Wonderfully Fresh, Exceptionally Well-Centered, Extremely Fine..... 1,100.00



58



74A



87



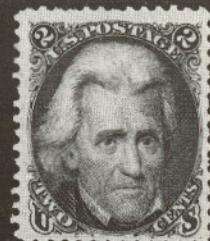
74



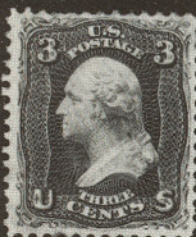
84



91



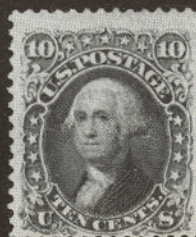
92



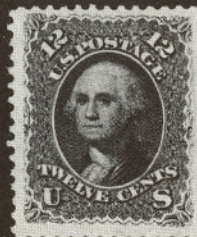
93



94



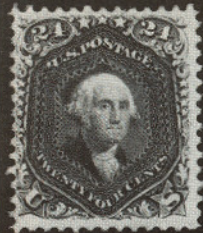
95



96



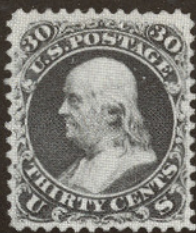
97



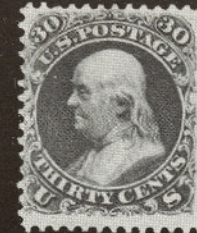
98



99



100



101



102



108



109



111



161



124



165



179A



AMERICAN BANK NOTE COMPANY.

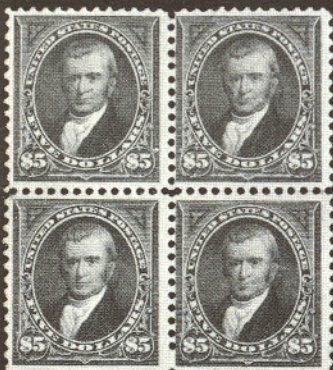
160



170



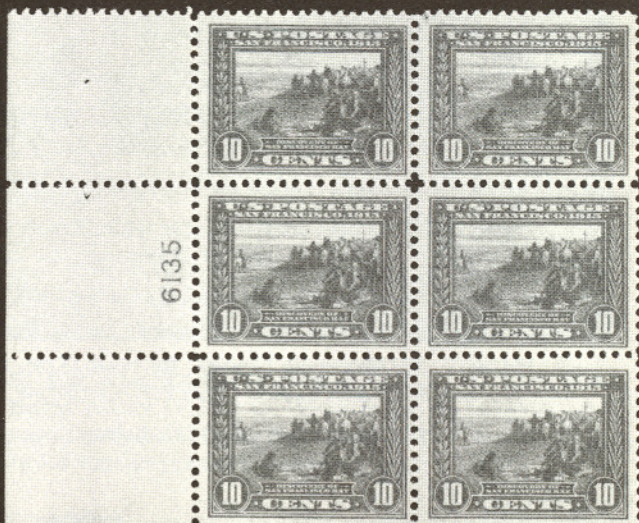
190



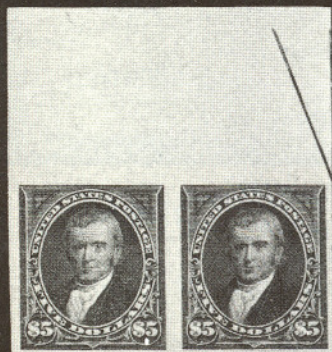
167



180



6135



168

188



88

89

90

- 90 ★ 田 **24c Gray Lilac, F. Grill (99).** Block, Lovely Rich Color, Much Better than Usual Centering, top right stamp single nibbed perf., otherwise Very Fine, Very Rare..... 2,350.00

1861 RE-ISSUES

- 91 ★ **2c Black, Re-Issue (103).** Wonderfully Fresh, Brilliant o.g., Extremely Fine..... 1,150.00
- 92 ★ **2c Black, Re-Issue (103).** Wonderfully Fresh, Nearly Full o.g., some nibbed perfs., otherwise Very Fine, Rare..... 1,150.00
- 93 ★ **3c Brown Red, Re-Issue (104).** Rich Color, Large Part o.g., few short perfs., otherwise Very Fine, Rare..... 1,500.00
- 94 ★ **5c Brown, Re-Issue (105).** Fresh, Large Part o.g., Fine, Rare..... 850.00
- 95 ★ **10c Green, Re-Issue (106).** Fresh, small part o.g., Fine..... 1,100.00
- 96 ★ **12c Black, Re-Issue (107).** Fresh, o.g., Lovely Margins, Very Fine 1,450.00
- 97 ★ **15c Black, Re-Issue (108).** Fresh, tiny part o.g., Fine & Rare, with P.F. Certificate..... 1,300.00
- 98 ★ **24c Deep Violet, Re-Issue (109).** Fresh, Part o.g., Fine & Rare..... 1,500.00
- 99 ★ **24c Deep Violet, Re-Issue (109).** Beautiful Color, couple barely nibbed perfs., otherwise Fine, Rare..... 1,500.00
- 100 ★ **30c Brownish Orange, Re-Issue (110).** Well-Centered, Fresh, o.g., Extremely Fine..... 2,000.00
- 101 ★ **30c Brownish Orange, Re-Issue (110).** Fresh, Large Part o.g., Fine, Rare & Attractive, with P.F. Certificate..... 2,000.00
- 102 ★ **90c Blue, Re-Issue (111).** Brilliant o.g., Gorgeous Color, reperfed at right, Extremely Fine Appearance..... 2,300.00

1869 PICTORIAL ISSUE

- 103 ☒ **3c Ultramarine (114). Horiz. Pair**, natural left s.e., Used in Combination with **Canada 3c Rose (37a) Horiz. Pair**, tied together & onto small Cover to England by Bold Rosettes & Red Town pmk. (unreadable name but probably New York), Red "London Paid" Transit, cover opened three sides, one Canadian stamp defective, No. 114 pair few barely noticeable perf. faults caused by placement at top edge of cover, nevertheless Attractive & an Extremely Rare Usage

E.XIV

- 104 ☒ **10c Yellow (116). Rich Color, Wonderfully Well-Centered**, Used with Fine Horiz. Pair **2c Red Brown (146)** on Oct. 1871 Folded Cover from **Yokohama, Japan to Lyons, France**. Stamps tied by Bold Cork & Red "London Paid", "Yokohama Japan" pmk., Red "PD" & "New Paid York 6", ms. "Open Mail Via England", other appropriate French Transits, A Lovely Rarity & Unquestionably a Welcome Addition to any Fine Postal History Collection, ex-Gibson

E.XV



- 105 ★田 **15c Brown & Blue, Ty. II (119). B.R. Sheet Corner Imprint & Plate No. 23 Block of Twenty**, Bright Colors, Full o.g., some hinge reinforcement, couple light creases, centered to right, Magnificent & Rare Showpiece, Plate No. Block listed but Unpriced in Scott

E.XVII

via San Francisco

123

Herrn Herrbeck Exped.

und Dr. J. H. M. Gunning & Co.

Tacoma

per

AUG 9 CAL.

Open mail

114

ALGERIA

Constantine

103

PAID

Mr. Achille Voghe
28 Middleton Square
London, E. C.

NEW YORK
DEC
5

BOSTON
DEC 7
A.A.

BOSTON
DEC 15

106

Herrn Dr. Christoff Ege
Dramatic
via Christiania
Norway.
E. C. Ege

U.S. POSTAGE
PAID
WASHINGTON
D.C.
FIVE CENTS

S

The image displays four \$50 banknotes from the American Bank Note Company. The first two notes on the left show the front of a design featuring a tropical scene with palm trees and people. The next two notes on the right show the back of a similar design. The notes are arranged in a row, with the first and third notes being identical, and the second and fourth notes being identical. The text 'AMERICAN BANK NOTE COMPANY' is visible at the bottom of the first and third notes.

If not delivered within 10 days postmaster will please notify
ALEXANDER HAMILTON INSTITUTE

Via Friedrichshafen and
GRAF ZEPPELIN to Lakehurst

Mr. GRAF ZEPPELIN, care
Postmaster, Lakehurst, N. J.



MESSAGE

Via Friedrichshafen
And Graf Zeppelin
To Sevilla Spain

A vintage postage stamp with a dark, textured background. At the top, the words "GRAND EXPRESS" are written in a bold, serif font. Below this, "OUR MAIL" is written in a smaller font. In the center, there is a faint illustration of a steam locomotive. Below the locomotive, the words "TO" and "STREET AND" are visible. At the bottom left, there is a circular postmark with the number "65c". At the bottom right, there is a circular postmark with the number "55c". The entire stamp is framed by a decorative border.

Par Avion
By Air Mail

AIR MAIL
POST CARD

MAIL 216

Ambruster,
Avenue,
ns. N. Y.

Baquera, Kusche
& Martin S. A.
Sevilla, Spain.

This Post Card approved by the
U. S. Post Office Dept. for AIR MAIL USE ONLY

- 106 ☒ **15c Brown & Blue, Ty. II (119).** Fine, tied by Small Cork & "Mobile, Ala." Town pmk. on Cover to **Norway**, Unusual Red New York Transit, "New York, Oct. 5" Only, "5" Larger Size, Red "fco 2", closed cover tear, stain at left, otherwise Fine, Rare Usage **E.XIV**



107

110

- 107 **15c Brown & Blue, Center Inverted (119b).** Beautiful Rich Colors, Small Solid Star cancel, Fine, A Lovely Rarity 7,500.00
- 108 ★ **24c Green & Violet (120).** Fresh Colors, Part o.g., Well-Centered & Extremely Fine 650.00
- 109 ★ **24c Green & Violet, Without Grill (120a).** Magnificent Rich Colors, Almost Full o.g., centered slightly to top, Fine & Rare, with P.F. Certificate 1,350.00
- 110 **24c Green & Violet, Center Inverted (120b).** Light Rosette cancel, single nibbed perf., really inconsequential, Very Fine, Unusually Choice for this Classic Rarity, with P.F. Certificate 6,500.00
- 111 ★ **30c Blue & Carmine (121).** Deep Rich Colors, Major Part o.g., Exceptionally Fine, A Marvelous "Gem" 625.00



112

113

- 112 **30c Blue & Carmine, Flags Inverted (121b).** Remarkably Well-Centered, Rich Colors, segmented cork cancel, tiny corner perf. crease, otherwise Extremely Fine, Magnificent Example of this Much-Coveted Classic United States Rarity, with P.F. Certificate 25,000.00
- 113 **30c Blue & Carmine, Flags Inverted (121b).** Beautiful Centering, light Quartered Cork cancel, couple small tears, otherwise Extremely Fine, An Outstanding Appearing Major Rarity, with P.F. Certificate 25,000.00
- 114 **30c Blue & Carmine (121).** Tied by Leaf & "New Paid York 6", both in Red on Nov 1870 cover front to **Algeria**, ms. "Via England", French & British Transits, Fine, Probably Unique Use of the 30c **E.XV**



115

116

- 115 ★ **90c Carmine & Black (122).** Rich Colors, Part o.g., Nicely Centered with extra-wide bottom margin, Fine & Rare 2,100.00
- 116 ★ **90c Carmine & Black, Without Grill (122a).** Almost Full o.g., Well-Centered, Beautiful Colors, Very Fine, Magnificent Stamp 3,250.00

1869 RE-ISSUES



117

118

119

120

- 117 ★ **3c Blue, Re-Issue (125).** Fresh, Full o.g., Very Fine 1,000.00
- 118 ★ **15c Brown & Blue, Re-Issue (129).** Fresh, Large Part o.g., Rich Colors, Very Fine 675.00
- 119 ★ **15c Brown & Blue, Re-Issue (129).** Beautiful Margins & Centering, Rich Colors, Nearly Full o.g., single slightly rounded corner perf., truly insignificant, Extremely Fine 675.00
- 120 ★ **90c Carmine & Black, Re-Issue (132).** Fresh, Part o.g., Fine 1,600.00

BANK NOTE ISSUES



121

122

- 121 **12c Dull Violet, Grill (140).** Used, Three Large Margins, Very Fine, Handsome Example of this Rare Stamp, with P.F. Certificate 825.00

- 122 **24c Purple, Grill (142).** Exceptionally Well-Centered, Bold Circle of Wedges cancel, Extremely Fine, signed "S.A." (Anderson), "J.W.S." (Scott), with Brookman & Usticke letters of Authenticity, Molesworth Certificate..... 6,000.00

- 123 ☒ **10c Brown (150).** Four Singles, used with two 2c Red Brown (146) mixed centering, tied by Circle of Wedges on Neat Cover from **Ningpo, China to Tacna, Peru, "U.S. Postal Agency, Shanghai"** pmk., two 10c also tied by "San Francisco, Cal." Transit; Magenta "12" & neat Blue crayon "49", Ningpo Merchants Cachet on flap, small piece of cover back missing, Very Rare Usage, A Wonderful Bank Note Showpiece **E.XIV**

- 124 ★田 **12c Dull Violet (151).** Block, Wonderfully Well-Centered, Extremely Fine, Handsome Showpiece..... 1,500.00

- 125 ★田 **90c Carmine (155).** Vertical Block of 12 (3x4), Wonderful Color, Beautiful Proof-like Impression, perfs. tiny bit in at bottom, Very Attractive & Immensely Rare7,650.00+



- 125A ★田 **6c Brown Rose (159).** Top Imprint & Plate No. 305 Block of Twelve, Wonderfully Fresh, light hinge in selvage only, stamps Mint, Top Row Very Fine or Better, bottom row perfs. at top close to tiny bit in, A Fine & Extremely Rare Plate Block (**Unique in this Shade**, one other plate block known in dull pink & of much lesser quality) **E.XVII**

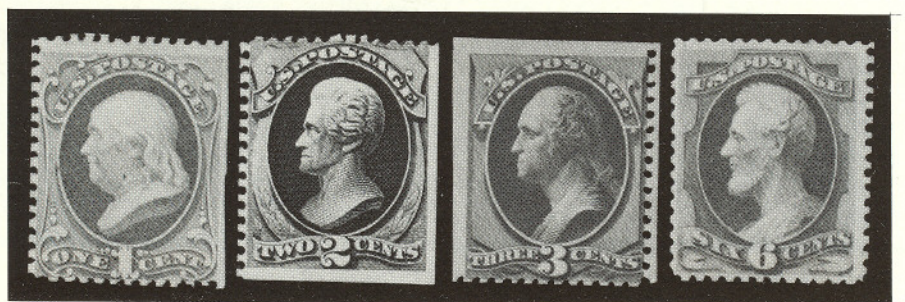


- 125B ★ 10c Brown (161). Top Imprint & Plate No. 23 Block of Twelve, Beautiful Rich Color, tiny hinge bits in extreme top selvedge only, stamps Mint, three stamps have minor surface disturbances, nevertheless Fine, **Only Two Plate Blocks Known**, other is a bottom position, Extremely Rare

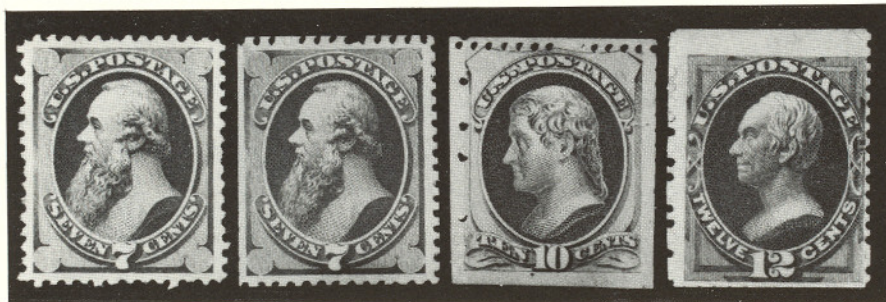
E.XVII

CONTINENTAL BANK NOTE CO.

SPECIAL PRINTINGS



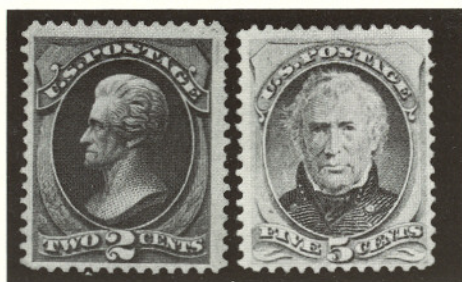
- | | 126 | 127 | 128 | 129 |
|-------|---|-----|-----|----------|
| 126 ★ | 1c Ultramarine, Special Printing (167). Fresh Color, right perfs. trimmed, Fine Example of this Rare Stamp, with P.F. Certificate | | | |
| | | | | 3,500.00 |
| 127 ★ | 2c Dark Brown, Special Printing (168). Bottom & right s.e., perfs. tiny bit in at top, Fine Example of this Rare Stamp, with P.F. Certificate | | | |
| | | | | 1,800.00 |
| 128 ★ | 3c Blue Green, Special Printing (169). Perfs. trimmed top & left, touched other two sides, Fine, Very Rare, with P.F. Certificate..... | | | |
| | | | | 4,750.00 |
| 129 ★ | 6c Dull Rose, Special Printing (170). Fresh & Fine, A Choice Rarity, with P.F. & A.P.S. Certificates | | | |
| | | | | 4,500.00 |



- 130 ★ **7c Reddish Vermilion, Special Printing (171).** Large Even Margins, Pretty Color, Extremely Fine, with P.F. Certificate 1,350.00
- 131 ★ **7c Reddish Vermilion, Special Printing (171).** Left perms. trimmed, Very Fine, with P.F. Certificate 1,350.00
- 132 ★ **10c Pale Brown, Special Printing (172).** Perfs. trimmed two sides, perms. tiny bit in other two sides but with parts of margins from two adjoining stamps, Fine, Rare, with P.F. Certificate 3,500.00
- 133 ★ **12c Dark Violet, Special Printing (173).** Bottom perms. trimmed, Huge Imperf. Margin at Top, Fine & Rare, with P.F. Certificate 1,750.00



- 134 ★ **15c Bright Orange, Special Printing (174).** Fresh Color, perms. virtually intact, single short perf. at top, otherwise Fine, Very Rare, with P.F. Certificate 3,750.00
- 135 ★ **24c Dull Purple, Special Printing (175).** Large Margins, Wonderfully Well-Centered, Strong Color, Extremely Fine, Incredible Example of this Rare Stamp, with P.F. Certificate 1,350.00
- 136 ★ **24c Dull Purple, Special Printing (175).** Perfs. trimmed two sides, Fine & Rare, with P.F. Certificate 1,350.00
- 137 ★ **30c Greenish Black, Special Printing (176).** Right perms. trimmed, perms. intact other sides, Very Fine, Choice & Very Rare, with P.F. Certificate 4,000.00
- 138 ★ **90c Violet Carmine, Special Printing (177).** Lovely Rich Color, all perms. intact, Fine & Handsome Rarity, with P.F. Certificate 4,250.00



139

140

- 139 ★ **2c Carmine Vermilion, Special Printing (180).** Magnificent Rich Color, Very Fine, the Fourth Rarest of the 28 Bank Note Special Printings, with P.F. Certificate..... 10,000.00
- 140 ★ **5c Bright Blue, Special Printing (181).** Fresh, one of the Finest of the few known, The Rarest of all Bank Note Special Printings, "W.H.C." (Colson) handstamp guarantee, with P.F. Certificate 16,500.00
- 141 ★ **90c Carmine, Imperforate (191b). Horiz. Pair,** Nice Margins, Nearly Full o.g., Very Fine & Rare, with P.F. Certificate 2,250.00

AMERICAN BANK NOTE CO.

SPECIAL PRINTINGS



141

142

143

144

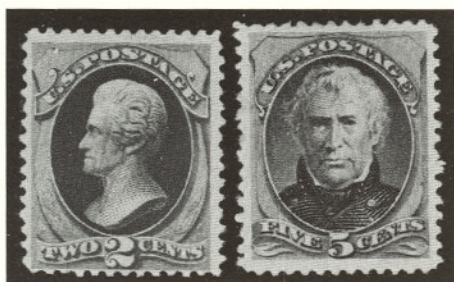
- 142 ★ **1c Dark Ultramarine, Special Printing (192).** Fresh, small thin spots, Very Fine Appearance, Handsome Example of this Rarity, with APS Certificate..... 5,000.00
- 143 ★ **2c Black Brown, Special Printing (193).** Well-Centered, horiz. creases & thin spot, Very Fine Appearance, with P.F. Certificate 3,250.00
- 144 ★ **3c Blue Green, Special Printing (194).** Fresh, Very Fine, Very Rare, one of the most elusive of all special printings, with P.F. Certificate 6,500.00



- | | | | | |
|-------|---|-----|-----|-----------|
| 145 | 146 | 147 | 148 | 149 |
| 145 ★ | 3c Blue Green, Special Printing (194). Incredible Large Even Margins, Beautiful Color, couple tiny thin spots, Extremely Fine Appearing Example of this Very Rare Special Printing, with A.P.S. & P.F. Certificate..... | | | 6,500.00 |
| 146 ★ | 6c Dull Rose, Special Printing (195). Corner thin, Fine Appearance, Very Rare, with P.F. Certificate..... | | | 4,750.00 |
| 147 ★ | 7c Scarlet Vermilion, Special Printing (196). Large Margins, Wonderfully Well-Centered, Bright Vivid Color, Extremely Fine, A Matchless Example of this Rarity, with P.F. Certificate..... | | | 1,750.00 |
| 148 ★ | 10c Deep Brown, Special Printing (197). Double Transfer, shows Clearly in "U.S. Postage" & "Ten Cents"; Rich Deep Color, Well-Centered, Extremely Fine, Incredibly Rare, Unlisted, with W.H.C. (Colson) handstamp guarantee & P.F. Certificate | | | 4,500.00+ |
| 149 ★ | 12c Blackish Purple, Special Printing (198). Fresh & Very Fine, A Lovely Example of this Rare Stamp..... | | | 3,250.00 |



- | | | | | |
|-------|---|-----|-----|----------|
| 150 | 151 | 152 | 153 | 154 |
| 150 ★ | 15c Orange, Special Printing (199). Rich Color, Very Fine & Very Rare, with P.F. Certificate | | | 4,500.00 |
| 151 ★ | 24c Dark Violet, Special Printing (200). Fresh Color, single short perf., otherwise Very Fine..... | | | 1,500.00 |
| 152 ★ | 30c Greenish Black, Special Printing (201). Well-Centered, Unusually Large Margins, tiny thin spot, Extremely Fine Appearing Example of this Rare Special Printing, signed "S.A." (Spencer Anderson), with P.F. Certificate..... | | | 4,000.00 |
| 153 ★ | 30c Greenish Black, Special Printing (201). Well-Centered, s.e. at right, Fresh Color, tiny pinpoint thin speck, Extremely Fine Appearance, Handsome Rarity, with P.F. Certificate | | | 4,000.00 |
| 154 ★ | 90c Dull Carmine, Special Printing (202). Rich Color, slight thin, Fine Appearance, Very Rare, with P.F. Certificate..... | | | 4,000.00 |

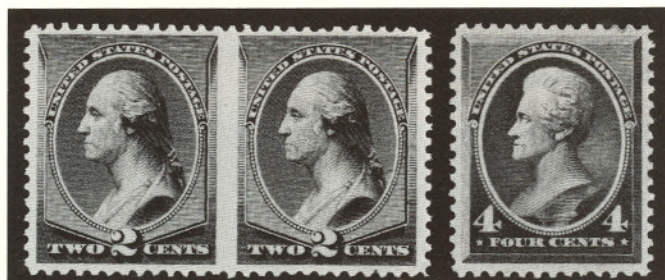


155

156

- 155 ★ **2c Scarlet Vermilion, Special Printing (203).** Rich Vivid Color, Fine, the Fifth Rarest of the 28 Bank Note Special Printings, with P.F. Certificate..... 9,500.00
- 156 ★ **5c Deep Blue, Special Printing (204).** Remarkably Well-Centered, Magnificent Rich Color, light thin spot, Extremely Fine Appearance, the Second Rarest of the 28 Bank Note Special Printings, with P.F. Certificate..... 13,500.00
- 157 ✉ **10c Brown (209).** "Freak" centering, tied by Large Grid of Squares on Aug. 1888 Cover from **Samoa** to Rhode Island. Interisland Postage Paid by Samoa 6p Maroon (17b) tied by "Apia, Samoa" Violet Blue Double Circle, Magenta "San Francisco, Paid All" Backstamp. Original Letter Enclosed, headed "U.S.S. Adams, At sea. . .", Interesting contents, Rare & Desirable Combination Cover

E.XIV



158

159

- 158 ★ **2c Pale Red Brown, Special Printing, Horizontal Pair Imperf. Between (211Bc).** Fresh, o.g., Very Fine, "HFC" (Colman) handstamp guarantee, Rare 1,500.00
- 159 ★ **4c Deep Blue Green, Special Printing (211D).** Extremely Fine, A Phenomenal Example of this Exceedingly Rare Stamp, with P.F. Certificate..... 9,000.00
- 160 ★ **8c Lilac, Imperforate (225a).** Horiz. Pair with B. Imprint, Fresh, Full o.g., Very Scarce, Very Fine 600.00

COLUMBIAN ISSUE

- 161 ★ **4c Blue, Columbian Error of Color (233a).** Part o.g., couple tiny thin spots & tiny perf. stain, perfs. least bit in at bottom, Very Good Appearing Example of this Popular Rarity 4,750.00
- 162 ★田 **8c Columbian (236). B. Imprint, "II" & Plate No. 129 Block of Eight,** Full crackly o.g., small closed selvedge tear far from imprint, one stamp internal tear, otherwise Fine-Very Fine 750.00

- 163 ★田 **15c Columbian (238). Bottom Imprint & Plate No. 58 Block of Six,** Wonderfully Fresh, o.g., lightly hinged, Fine & Handsome 1,600.00
- 164 田 **50c Columbian (240). Bottom Imprint, "S" & Plate No. 77 Strip of Four on Cover,** Neat Oval Grids & Maine pmk., tied in bottom selvedge by bits of address, Well-Centered & Very Fine, Rare & Unusual Cover **E.XIV**
- 165 田 **\$1.00 Columbian (241). Block,** cancelled by Small Oval "Los Angeles, Calif." Perfectly Struck in Center, Well-Centered & Very Fine, a Magnificent Block 1,000.00



- 166 ★田 **\$4.00 Columbian (244). Block,** Outstanding Color, Fresh, o.g., Very Fine & Handsome Block, A Gorgeous Rarity..... 7,250.00

1894 ISSUE

- 167 ★田 **\$5.00 Dark Green (263). Block,** Fresh, Nearly Full o.g., some horiz. perfs. lightly strengthened, left perfs. close to just touch on right pair, Fine & Very Rare Block 4,500.00
- 168 ★ **\$5.00 Dark Green, Imperforate (278a). Horiz. Pair,** Large Margins incl. Full Top Sheet Margin & Left Half Arrow, Fresh, o.g., couple light natural wrinkles in left stamp, Extremely Fine, Rare 2,250.00

RESERVATIONS

Because of limited seating it is advisable to make advance reservations for this sale. It can be done by letter or telephone call to our office.

TRANS-MISSISSIPPI ISSUE



169

171

- 169 ★ **8c Trans-Mississippi, Vertical Pair, Imperforate Horizontally (289a).** Fresh, o.g., tiny thin spot in watermark of top stamp, otherwise Very Fine, Very Rare Error..... 5,000.00
- 170 ★ **\$1.00 Trans-Mississippi (292). T. Imprint & Plate No. 606 Pair,** disturbed o.g., Fine 1,850.00
- 171 ★田 **\$1.00 Trans-Mississippi (292). Block, Fresh, Large Part o.g., some** perf. separations neatly reinforced with bits of hinge, Fine-Very Fine, Handsome Block 4,000.00



- 172 ★田 **\$2.00 Trans-Mississippi (293). Block, Brilliant o.g., Unusually** Well-Centered, small hinge reinforcements, Very Fine, A Very Choice & Rare Block..... 5,750.00

PAN-AMERICAN ISSUE, CENTERS INVERTED



- | | | | |
|-------|--|-----|-----------|
| 173 | 174 | 175 | 176 |
| 173 ★ | 1c Pan-American, Center Inverted (294a). Large Part o.g., couple nibbed perfs. at left, otherwise Very Fine, with P.F. Certificate | | 4,500.00 |
| 174 ★ | 1c Pan-American, Center Inverted (294a). Fresh, o.g., Well-Centered, tiny spot of blue ink on back barely shows on front, otherwise Very Fine | | 4,500.00 |
| 175 ★ | 2c Pan-American, Center Inverted (295a). Remarkably Well-Centered, tiny part o.g., ironed out horiz. crease & slight soiling, otherwise Very Fine, A Very Acceptable Example of this Fabulous 20th Century Rarity, signed Geo. B. Sloane | | 22,500.00 |
| 176 S | 4c Pan-American, Center Inverted, "Specimen" Overprint (296b). Much Better than Usual Centering, Fresh & Fine, Choice Rarity, with P.F. Certificate | | 3,500.00 |

1902 ISSUE



- | | | |
|--------|--|-----------|
| 177 | 178 | |
| 177 ★田 | \$5.00 Dark Green (313). Block, Rich Color, gum somewhat disturbed, light perf. strengthening, bottom right stamp tiny tear, otherwise Very Fine, Rare Block | 3,250.00 |
| 178 ★田 | \$5.00 Dark Green (313). T. Imprint & Plate No. 1620 Block of Six, Part o.g., some perf. strengthening, Fine-Very Fine, Extremely Rare, A Marvelous 20th Century Plate Block | 17,500.00 |



- 179 ★ **1c Blue Green, Coil (316). Line Pair**, separated & rejoined, bottom stamp tiny corner perf. crease, otherwise Fine, One of the Greatest 20th Century Rarities, with P.F. Certificate (normal line pair catalogs \$22,500.00)
- 179A ★ **5c Blue, Coil (317). Strip of Three**, top stamp small hinge remnant, Very Fine & Rare, signed J.M. Bartels, with P.F. Certificate 3,150.00
- 180 ★ **1c Blue Green, Coil (318). Strip of Three**, lightly hinged, Very Fine, A Wonderful & Rare Strip, signed Geo. B. Sloane, with P.F. Certificate 2,475.00

BLUISH PAPERS



- 181 ★ 3c Deep Violet, Bluish (359). R. Margin Block with Plate No. 4927, minor perf. strengthening, offset on gum, Very Fine, Rare Block 2,500.00
- 182 ★ 4c Orange Brown, Bluish (360). Fine & Attractive Example of this Standard 20th Century Rarity, with P.F. Certificate 7,500.00
- 183 ★ 4c Orange Brown, Bluish (360). Block, slight gum stains on few interior perfs., mentioned only for the sake of accuracy, Still Very Fine, A Choice Block of one of the Greatest Twentieth Century Rarities, ex-Grunin, with P.F. Certificate..... 32,500.00
- 184 ★ 6c Red Orange, Bluish (362). Block, minor hinge reinforcement, Fine-Very Fine 1,800.00



- 182 185 186 187
- 185 ★ **8c Olive Green, Bluish (363).** Fresh, perfs. barely in at bottom, Rare, with P.F. Certificate 7,500.00
- 186 ★ **13c Blue Green, Bluish (365).** Very Fine & Choice, with P.F. Certificate **(Photo)** 1,150.00
- 187 ★ **13c Blue Green, Bluish (365).** Fine & Very Scarce, with P.F. Certificate..... 1,150.00

PANAMA-PACIFIC — OFFSET ISSUES

- 188 ★田 **10c Panama-Pacific (400). L. Plate No. 6135 Block of Six,** Fine-Very Fine 1,750.00
- 189 ★田 **10c Panama-Pacific (400). B. Plate No. 6139 Block of Six,** perfs. barely touch one row, others Fine 1,750.00
- 190 ★ **2c Red Coil, Ty. I (449). Pair,** Very Well-Centered, top stamp tiny bit disturbed o.g. from old hinge removal, Very Fine, Choice & Rare Pair.. 1,400.00
- 191 ☒ **2c Carmine Imperforate, Ty. Ia, Schermack Private Vending Machine Perfs. Ty.III (482A).** "New York N.Y." Precancel, on large size gray cover to Denver, Col.; the Schermack perfs. are into design at right, Fine & Very Rare, with P.F. Certificate 4,750.00

DESCRIPTIONS

EXTREMELY FINE: The finest condition for noteworthy, outstanding copies.

VERY FINE: (V. F.) In prime condition such as to satisfy the requirements of particular collectors.

FINE: (F) Perforations or margins do not touch design on issues after 1890 but in some cases may just touch in earlier issues. If used, fairly light cancellation.

VERY GOOD: (V. G.) Generally nice appearance but margins or perforations may cut in slightly.

GOOD: Average off-centering or fairly attractive with slight defects.

ORIGINAL GUM is not to be expected on 19th century stamps unless so stated in the description.

MINT: With original gum and never hinged.

Unless otherwise noted the Scott 1977 Specialized Catalog has been used for cataloging lots of the United States and the Scott 1977 Standard Catalog Volumes I-IV for all others.



125



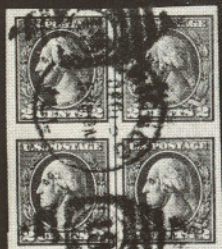
6139

189



12275

195



196



19745

199



162



163



29481

29482

202



37365

210



192



193

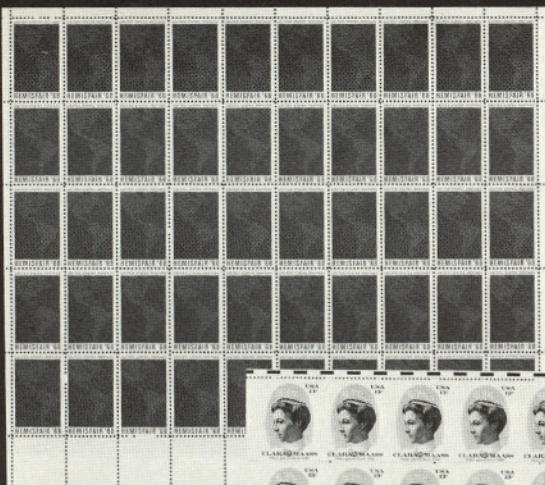
- 192 ★田 **5c Carmine Imperforate, Error (485). Block of Nine, Middle Stamp the Error**, Error Mint, Very Fine, A Lovely Showpiece(Photo) 6,000.00

- 193 ★田 **5c Carmine Imperforate, Error (485). Block of Twelve, Middle Pair the Errors**, Extra Wide Margins Showing Bits of 14 Adjoining Stamps, Mint, Extremely Fine, Spectacular Rarity..... 10,000.00

- 194 ★ **1c Green, A.E.F. Booklet Pane of 30 (498f). Complete Unexploded Booklet of Ten Panes**, Pos. W6, Guide Line at Left & Bottom, Unusually Well-Centered, Very Few perfs. touch, Almost All Very Fine, A Tremendous Rarity as a Complete Booklet..Cat. as single panes 3,500.00

- 195 ★田 **2c Carmine, Offset Imperforate, Ty. VII (534B). R. Plate No. 12775 Block of Six**. Fresh & Extremely Fine, a Lovely Example of this Great Rarity, with P.F. Certificate 8,250.00

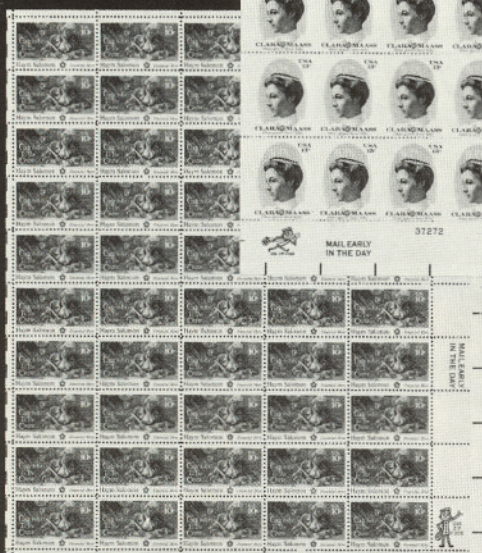
- 196 田 **2c Carmine, Offset Imperforate, Ty. VII (534B). Block**, Large Margins, Bold "Chicago, Ill." Duplex pmks., Very Fine, Very Rare, with P.F. Certificate 1,200.00



204



207



208

211



209



228

1921 ISSUES TO DATE



197

198

- 197 **1c Green, Rotary (544).** Light Wavy Line Machine cancel, Very Fine, Choice Example of this Rare & Elusive 20th Century Stamp, with P.F. Certificate..... 900.00
- 198 **2c Harding Rotary, Perf. 11 (613).** Light Machine cancel, Fine, A Very Rare & Elusive 20th Century Rarity, with P.F. Certificate 7,000.00
- 199 ★田 **2c Carmine, Ty. II (634A). B.L. Plate No. 19745 Block,** Incredibly Well-Centered, Mint, separated from sheet by scissors, slightly blunting right perfs. on top right stamp, still Extremely Fine & Unquestionably One of the Choicest Existing Examples of this Rare Plate Block 1,100.00



200

201

- 200 ★ **2c Von Steuben, Imperforate (689a). Horiz. Pair** with L. Sheet Margin, negligible gum skips & usual natural gum crease, Extremely Fine Pair of this 20th Century Rarity, with P.F. Certificate of Block from which this Pair was taken 1,750.00
- 201 ★ **4c San Martin, Horizontal Pair, Imperf. Between (1125a).** Mint, creased between stamps as virtually always, Very Fine, One of the Rarest of All 20th Century Errors, Listed but Unpriced E.XV
- 202 ★田 **6c Gray Brown (1284). Block of 20** showing Four Pairs with Full Gutter Between, and two different Plate Nos.; A Remarkable and probably Unique Error, Very Fine E.XIV
- 203 ★田 **8c Flag, Imperforate Between (1338Fj). Top Triple Plate No. and Double "Mail Early, Use Zip Code" Block of 20** with Three Imperforate Between Blocks, balance have traces of blind perfs., Mint, Very Fine 1,050.00+
- 204 ★ **6c Hemisfair, White Converging Lines, "6c" & Plate No. Omitted (1340a).** Complete Sheet of 50, Mint, Very Fine, Undoubtedly One of the Rarest of all Modern Day Errors 37,500.00+

STATE OF ILLINOIS
SPRINGFIELD

From Gen. Charles A. Lindbergh

Paris, France



Registered

POSTAGE
TEN CENTS
OR FRACTION THEREOF
TO ANY CITY IN THE UNITED
STATES

Mr. G. J. Brandewide,
6966 Mardel Ave.,
St. Louis, Mo.

This letter was carried
by Capt. Charles A. Lind-
bergh in his monoplane, Ortel's
Contest, New York to Paris and
called by him at Paris, France

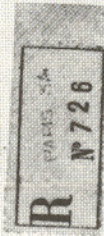


C. A. Lindbergh

AMERICAN EMBASSY
2, AVENUE D'ENNA
TEL. PASSY 95-15

*Replied Lindbergh
Charles A. Lindbergh*

AMERICAN EMBASSY
PARIS



Recommandée.

Mr. G. J. Brandewide,
6966 Mardel Avenue,
St. Louis, Missouri,
(Etats-Unis d'Amérique).

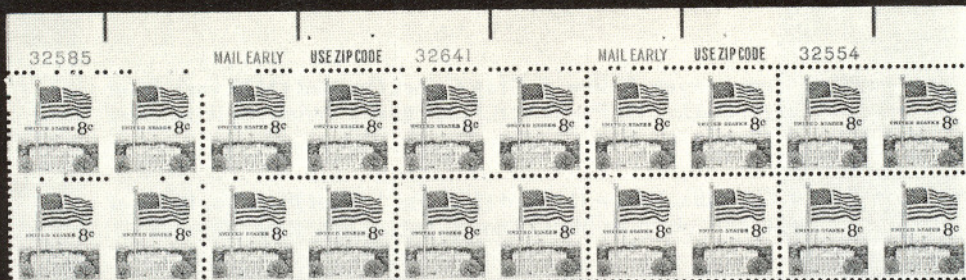
50563

Parcel

- 205 ★田 **8c Tom Sawyer, Yellow & Gray Colors Omitted (1470 var). Mint Margin Block**, Very Fine & Very Rare Unlisted Variety, Only one sheet of 50 known..... E.XV
- 206 ★田 **10c Zip Code, Yellow Omitted (1511 var.), Mint Plate No. Block of Eight**, only two plate blocks known, Exceedingly Rare, Very Fine.... E.XV
- 207 ★ **10c Kentucky Derby Centennial, Dark Blue "Horse Racing" etc. Omitted (1528 var). Complete Sheet of 50**, Mint, Very Fine, A Spectacular Error of the Highest Order of Rarity (normal sheet included for comparison) E.XVII
- 208 ★ **10c Hyam Salomon, Color Error (1561 var). Complete Sheet of 50**, Several Colors missing, making a startling error, Mint, Very Fine, Rare E.XVII
- 209 ★ **13c Multicolor Eagle & Shield, Imperforate (1596a). Complete Mint Sheet of 100**, Very Fine, An Exciting New Error, Listed but Unpriced E.XVI
- 210 ★田 **13c Benjamin Franklin, Light Blue Color Omitted (1690 var). Mint B.R. Plate No. 37365 Block**, Very Fine & Rare, reportedly only two or three such plate blocks exist E.XIV
- 211 ★ **13c Clara Maass, Imperforate Vertically (1699 var). Cpl. Sheet of 40**, Yielding 20 Error Pairs, Mint, Very Fine, Newly Discovered Error E.XVI

LINDBERGH SPIRIT OF ST. LOUIS TRANS-ATLANTIC FLIGHT COVER

- 212 ☒ **Charles A. Lindbergh "Spirit of St. Louis" Solo Trans-Atlantic Flight, One of Two Covers** flown aboard Capt. Lindbergh's World Famous New York to Paris Flight May 20-21, 1927. Large size "State of Illinois" Multicolor "Aerial Mail" Envelope, addressed to Mr. G.J. Brandeweide in St. Louis, Mo., typewritten inscription reads "This letter was carried by Capt. Charles A. Lindbergh in his monoplane, Orteig Contest, New York to Paris and mailed by him at Paris, France", signed "C.A. Lindbergh", Lindbergh, Paris, France return address. Cover returned to Mr. Brandeweide in another large size envelope sent registered from Paris postmarked the 28th of May, 1927 franked with 4fr French postage. It is recorded that Capt. Lindbergh stated before departing for Paris that "I'm taking one letter for Postmaster Conkling of Springfield—I couldn't say no to him—and one letter for my friend Gregory Brandeweide, who worked with me laying out the mail route. That's all—except for the messages of introduction." Accompanying the cover is a personally signed note, "Regards Charles A. Lindbergh" on American Embassy, Paris, stationery, a photo-copy of the check used to pay for the Spirit of St. Louis & other fascinating material related to this history-making event. Unquestionably the Greatest Flight Cover in the World. We sincerely hope that the buyer, whether an institution or a private individual, will display this item for the public to see during 1977, the fiftieth anniversary of this epoch-making flight —



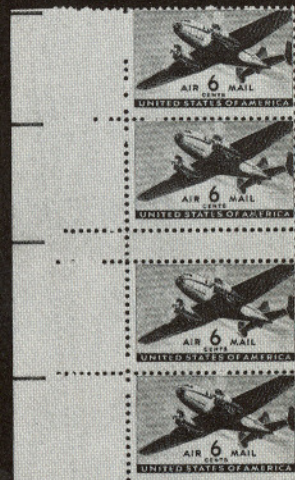
203



205



213



218



206



215



217



227



226X



225

AIR POST ISSUES

- 213 ★田 16c Green (C2). Arrow & Plate No. 8900 Block of Eight, Very Fine.. 1,755.00



- 214 ★ 24c Carmine Rose & Blue, Center Inverted (C3a). Well-Centered, tiny natural paper inclusion speck, tiny faint thin spot, Extremely Fine Appearance, Handsome Example of this Most Famous & Extraordinarily Rare 20th Century Stamp..... 45,000.00
- 215 ★田 16c Dark Blue (C5). B. Plate No. 14829 Block of Six, Very Fine.... 2,250.00
- 216 匣 65c-\$2.60 Graf Zeppelins (C13-C15). Set of three Cacheted First Day Covers dated April 19, 1930, Very Fine..... 1,300.00
- 217 ★田 50c Chicago Zeppelin (C18). Top Plate No. 21171 Block of Six, Mint, usual natural gum bends, Very Fine..... 875.00
- 218 ★ 6c Carmine, Full Horiz. Gutter Between (C25 var). Vertical Strip of Four, Gutter Between Pairs, Mint, bottom pair natural crease, otherwise Fine, Extremely Rare, Unlisted in Scott & Possibly Unique, with P.F. Certificate..... E.XIV
- 219 ★ 11c National Parks Centennial, Blue Color Omitted (C84 var). Mint, Very Fine, Rare Unlisted Variety, less than 50 known E.XIV
- 220 ★田 10c Blue, Special Delivery (E4). Block, Brilliant o.g., lightly hinged, Well-Centered & Very Fine, the top Right Stamp a "Gem" 825.00



- 221 ★田 \$1.00 Parcel Post (Q12). T. Plate No. 6262 Block of Six, Fine-Very Fine, Rare 2,400.00

- 222 ☒ **D.O. Blood & Co., Philadelphia, Pa., (1c) Black (15L8).** Three Margins, trifle in at right, tied by Blue "Philada., Pa., 5 cts." pmk. on **Folded Multicolor Comic Valentine**, Man Seated by Fireplace, Cupid, etc., 12 Line Poem Below, few tiny tears at some folds, yet a Very Handsome & Exceptionally Rare Valentine Cover..... **E.XIV**



- 223 ☒ **Floyd's Penny Post, (1c) Brown (68L2).** Three Large Margins, clear to touched at top, tied by "Floyd's Penny Post" & Sunburst, used with Well-Centered **3c Red (26)**, rounded corner, tied by Blue "Chicago, Ills." Double Circle on **Lincoln Campaign Cover**, Split-Rail Fence Two Sides, Beardless Portrait & River Scene in Frames, cover bit worn at some edges & has tiny mends, still a Magnificent Cover of Immense Rarity **E.XV**
- 224 **15c Dark Blue, Magenta "I.R." Overprint (R158). Horiz. Pair,** natural s.e. at left, ms. Michigan Mutual Life Insurance Co. cancel, small thins, Very Fine Appearance, Excessively Rare, Possibly the Only Multiple in Existence, with A.P.S. Certificate..... **1,500.00+**
- 225 ★ **\$30.00 1951 Documentary, Imperforate (R580a). Complete Vertical Strip of Four** (full "sheet" size), without gum as issued, Very Fine; catalogues \$1,000.00 as Used Pairs, Unpriced Unused, A Major Modern Revenue Rarity, Unique..... **E.XIV**
- 226 ★田 **1c-\$20.00 Stock Transfers, Imperforate & Without "Series" Overprint (RD67 var-RD 85 var). Blocks,** without gum, Very Fine, Rare Unlisted Set, mentioned in footnote on page 460 of U.S. Specialized **E.XVI**
- 227 ★田 **\$1.44 Series 1941 Wine, Denomination Omitted (RE 147 var). Block of Six (3X2),** Completely Omitted on Three, three letters of denomination show on fourth. Caused by fold-over, missing denominations appear on back, Very Fine, A Spectacular Modern Revenue Rarity, Unique **E.XV**

- 228 ★田 ½ Barrel (75c) 1917 Provisional Beer Stamp, Overprint Inverted. (Vanderhoof 138C var). Half Sheet of 20 (5X4) with Plate No. 58999 at left, lightly folded almost entirely between stamps, One of the Most Spectacular Beer Stamp Errors Known to Exist, A Magnificent Showpiece, Unique and First Time Offered

E.XVII

GENERAL FOREIGN



229

230

231

- 229 ★ **BRITISH COLUMBIA & VANCOUVER IS., 1860, 2½p Dull Rose (1).** Large Margins, Fresh & Very Fine, signed "Bloch", with Friedl Certificate..... 1,350.00
- 230 **BRITISH COLUMBIA & VANCOUVER IS., 1865, 5c Rose (3).** Four Nice Margins, Fresh Color, Bold Blue "35" in Oval Grid cancel, Very Fine, A Lovely Rarity 2,100.00
- 231 **BRITISH COLUMBIA & VANCOUVER IS., 1865, 5c Rose (3).** Large Margins to just touched, neat Blue "35" in grid cancel, Fine & Very Rare..... 2,100.00
- 232 ✉ **BRITISH GUIANA, 1850, 4c Lemon Yellow, "Cotton Reel" (2a).** Cut to shape & tied on Jan. 1851 Folded Letter by "Demarara" pmk., separations along internal folds, tiny eroded spot, otherwise Fine, Very Rare, with BPA, PF & Diena Certificates..... 1,750.00+
- 233 ✉ **BRITISH GUIANA, 1882, 1c Black on Lilac Rose, "C" of Cent Omitted (103 var).** In Horiz. Pair with Normal No. 104 tied by "Juschen de Vrienden" pmk. on Dec. 1883 Cover to Georgetown, small mends at top, stamps Fine, Unique, signed Bloch, ex-Col. Lagerloof (a cover from same correspondence accompanes franked with normal 103, 104 pair).....

E.XV

CANADA



234

237

- 234 ★ **1851, 3p Red (1).** Fresh, Ample to Large Margins, Lovely Color, light horiz. crease, Very Fine Appearance, An Exceptional Example of this Canadian Rarity, ex-Dale, with B.P.A. Certificate 5,000.00



219



224



252



220



257



241



243X



254



260



267



251



261



264X



270X



273

- 235 ☒ **1851, 3p Red (1). Vertical Pair**, Clear to Huge Margins except tiny bit in at top right, tiny margin scuff top stamp, tied by Seven Ring Target on Nov. 1852 Folded Cover to Kingston, Bottom Stamp Curious Printing Variety Somewhat Resembling a Double Impression, small internal split along filing fold, Rare & Attractive Cover..... 750.00+
- 236 ☒ **1851, 6p Grayish Purple (2).** Large Margins, Marvelous Rich Color, tied by Target, Red Montreal pmk., matching "Canada" in Framed Arc, Red "Paid" on Fresh Folded Letter from the Famous Kennedy Correspondence to New York, stamp has scissors cut barely into outer frame line, otherwise Extremely Fine, A Beautiful Cover..... 350.00+
- 237 ★ **1855, 10p Blue (7).** Large Margins, Wonderful Rich Color, faint crease at bottom barely into design, otherwise Extremely Fine, Magnificent Appearance & Rare..... 2,500.00



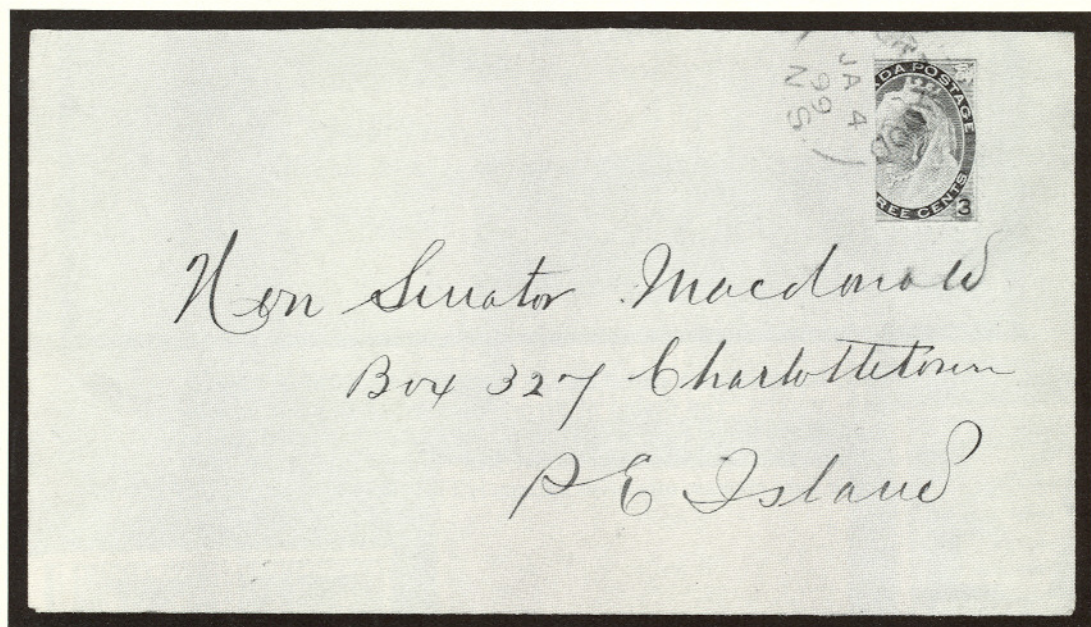
- 238 **1857, 1/2p Rose (8). Vertical Pair & Vertical Strip of Three**, Large to Huge Margins, **Top Stamp of Strip Shows Bit of Imprint**, tied by Numeral "37" in Four Ring Targets on Printed Circular Front to **Norway**, Blue Oval Merchants Cachet, Red "London Paid, Au 30, 56", couple light creases, otherwise Extremely Fine, Rare Usage..... 1,000.00+



239

240

- 239 ★田 1897, \$3.00 Jubilee (63). Block, Lovely Rich Color, Very Fine, Handsome & Rare 2,200.00+
- 240 ★田 1897, \$4.00 Jubilee (64). Block, Fresh & Bright, Very Fine, A Wonderful Canadian Rarity 2,200.00+
- 241 田 1897, \$4.00 Jubilee (64). Block, Well-Centered, light shade, Neat Purple Town pmks., top left stamp faint internal crease, otherwise Extremely Fine, Handsome & Rare 1,400.00+



- 242 匣 1899 "2(c)" on two-thirds of 3c Carmine, "Port Hood Provisional" (88C). Tied by neat "Port Hood N.S. JA 4 99" pmk. on small neat cover, Very Fine, with Royal Certificate, which states "... apparently genuine but used a day before the usually accepted date." In our opinion, Undoubtedly Genuine & Exceedingly Rare E.XVI
- 243 ★ 1935, 1c-\$1.00 Geo. V, Pictorials, Imperforate (217c-227a). Pairs, Cpl. Set, Very Fine 1,340.00



244

245



246

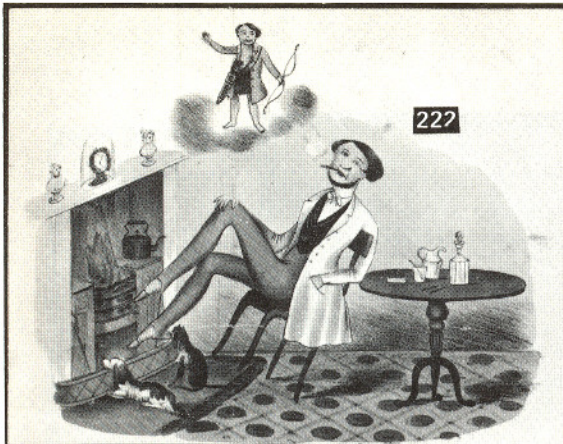
247

- 244 ★ 1969, 6c Christmas, Black Inscriptions & Frame Line Omitted (503a). Mint, Very Fine & Rare..... 1,250.00
- 245 ★ 1971, 6c Maple Leaves Multicolor, Imperforate (535a), Mint Horiz. Pair, Very Fine..... 700.00
- 246 ★ 1971, 7c Maple Leaves Multicolor, Gray Inscriptions & Value Omitted (537a). Mint Bottom Margin Single, Very Fine & Rare..... 1,750.00
- 247 ★ 1973, 15c Mounted Police, Imperforate (614 var). Vertical Pair, Mint, Very Fine, Rare Unlisted Variety E.XV

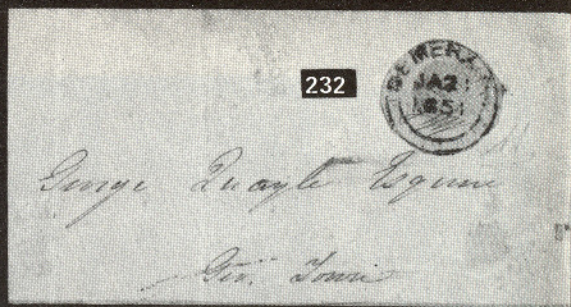


248

- CAPE OF GOOD HOPE, 1861, 1p Blue, "Wood Block" Error of Color (7b). Two Large to Huge Margins, ample to tiny bit in at bottom, Nice Color, Grid cancel, negligible paper wrinkle (called "paper crease" on accompanying BPA Certificate), otherwise Fine, A Great Classic Rarity 10,000.00



227



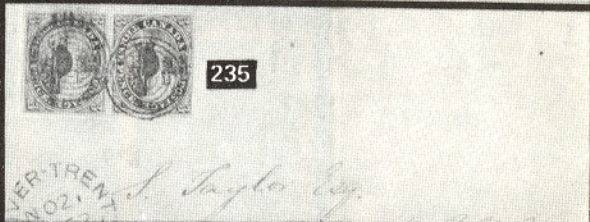
232



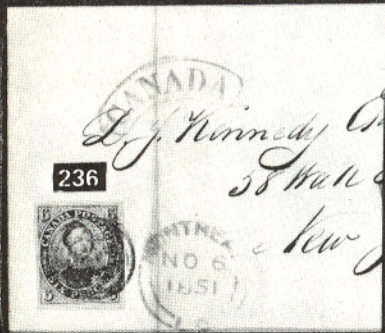
233



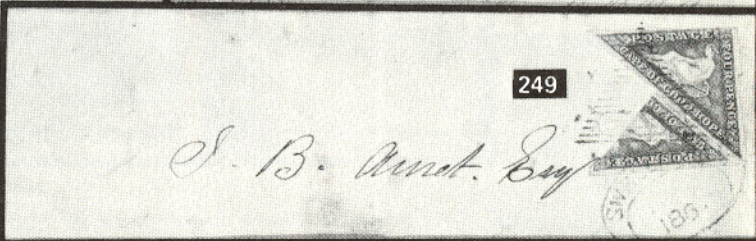
I suppose
you have
not yet
received
my
letter
of the
10th
inst.
I am
very
sorry
that
it
has
not
yet
reached
you.
I am
very
truly
yours
S. W. W.



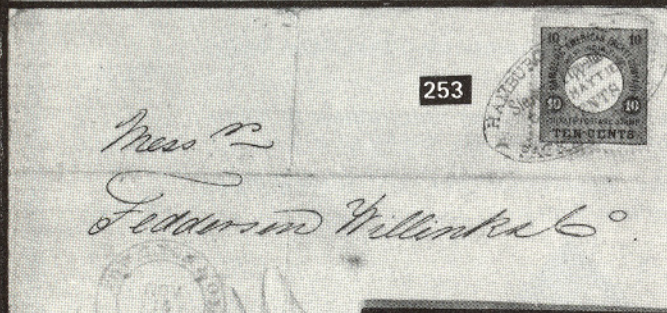
235



236



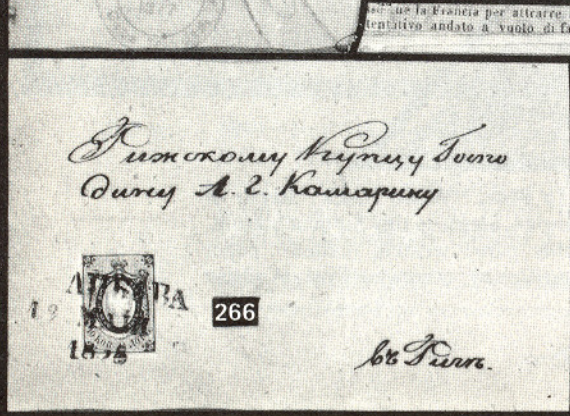
249



253



250



266

272

Sabato

XXVIII Num. 72

L'OMNIBUS

En taglio di 16 colonne, contenente: - Politica - Affari generali - Scienze - Letteratura seria ed umoristica - Arti - Commercio - Invenzioni - Scienze - Uti. Costumi - Novelle - Varie - Album - Teatri - Moda - Tutto.

Per Napoli - Costa - Un foglio solo Gr. 5

Un trimestre anticipato (23 fogli) D. 1.50

Un semestre 3.00

Un anno 7.50

Per le provincie inclusa la spesa postale

Un trimestre anticipato 2.00

Un semestre 4.00

Un anno 8.00

Per l'Estero - Italia - Un semestre ante. (23 fogli) 4.50

Un anno 9.00

Fori Italia - Un anno 15.00

- 249 ☒ **CAPE OF GOOD HOPE, 1863, 4p Dark Blue, Left Half Used as 2p (13 var).** Large Margins, used with normal 4p (13), nearly full margins, tied by Triangle Grid & "Swellendam" Oval pmk. on Folded Cover to Victoria West, small tear & tiny bit of outer sheet missing both far from stamps, Fine & Very Rare **E.XIII**
- 250 ☒ **FINLAND, 1856, 10k Rose (2).** Large to Huge Margins, ms. dash & Neat Boxed "WIBORG, 1857" pmk., tied by ms. "2" on Folded Prices Current, Blue Oval Merchants Cachet, Stamp Extremely Fine, A Lovely Classic Piece **E.XIII**
- 251 ☐ **GREAT BRITAIN, 1840, 1p Black (1). Block,** Large Margins All Around, Dark Red Maltese Cross Cancels, bit generously applied, top left stamp small corner crease, otherwise Extremely Fine **£600.00**
.....Gibbons Victoria Specialized
- 252 **GUATEMALA, 1937, 25c Blue Green, Quetzal Bird Omitted (C61a).** Light Purple pmk., Very Fine, A Tremendous Air Post Rarity, Only Five Known, with P.F. Certificate **1,750.00**
- 253 ☒ **HAMBURG-AMERICAN PACKET COMPANY, 1875, 10c Black, Blue Green & Yellow (Michel 1).** Tied by Packet Company Oval on 1877 Folded Cover from **Cap Haitien (Haiti)** to St. Thomas, Danish West Indies, "St. Thomas" Backstamp, some separations mended along folds, still a Handsome & Rare CoverMichel DM **2,000.00**
- 254 ★ **LIBERIA, 1941, 50c on 20c Magenta, Liberia-US Flight Surcharge (C23).** Very Fine & Exceedingly Rare, ex-Lichtenstein, with P.F. Certificate..... **2,000.00**



- 255 **MAURITIUS, 1848, 1p Bright Orange on Bluish, Early Impression (5).** Large to Huge Margins, Rich Color, Clear "2" in Two Ring Target cancel, slight thin in bottom margin clear of design, otherwise Extremely Fine, A Beautiful & Rare Stamp, with BPA Certificate **2,250.00**
- 256 **MAURITIUS, 1848, 2p Blue on Bluish Gray, Early Impression (6).** Large to Huge Margins, Lovely Color, Neat Large Grid cancel, Extremely Fine & Rare, with Royal Certificate **2,000.00**
- 257 **MAURITIUS, 1848, 2p Blue, "Penoe" Error, Late Intermediate Impression, Vertical Strip of Three (6b, 6c).** Pos. 1, 4, 7, Ample to Large Margins, Fresh Color, Strong Diagonal Lines on Bottom Pair, Both showing Traces of Vertical Lines, Top Stamp Diagonal Lines Nearly Complete, few "white patches", Numeral "1" Target cancels, Very Fine, A Rare & Beautiful Classic Piece **1,050.00+**
- 258 **MAURITIUS, 1859, 2p Blue on Bluish, Intermediate Impression (14B). Horiz. Pair,** Huge Margins, tied on piece by Oval Grid cancels, Extremely Fine, with Royal Certificate (Gibbons No. 28) **1,050.00+**



- 259 ★ **NETHERLANDS, 1894, 5c Orange, Error of Color (41b).** Fresh, o.g., hinge remnant, small thin spot in top right corner, Very Fine Appearance, Netherlands's Rarest Stamp 9,000.00
- 260 ★田 **NEW ZEALAND, 1936, 30sh Dark Brown, Postal-Fiscal (AR61). R.** Margin Block, top pair lightly hinged, Very Fine 500.00+
- 261 ★田 **NEW ZEALAND, 1937, 35sh Yellow, Postal-Fiscal (AR62). L.** Margin Block, top pair lightly hinged, Very Fine, Rare Block 4,000.00+

NEWFOUNDLAND



262

263

265

- 262 ★ **1861, 1p Reddish Brown (16).** Nice Even Margins, Rich Color, Fresh, Almost Full o.g., Extremely Fine, with B.P.A. certificate 1,750.00
- 263 ★田 **1929, 3c on 6c Gray Black, Black Surcharge, Ty II (160c). Block,** Bottom Pair Mint, Very Fine, Very Rare, only 50 Issued, signed "Bloch", with P.F. Certificate 1,900.00+
- 264 P **1933, 1c-32c Sir Humphrey Gilbert, Black Large Die Trial Color Proofs (212TC-225TC).** Cpl. Set, 67 x 57mm or larger, Very Fine, Rare..... E.XV
- 265 ★ **1930, 50c on 30c "Columbia" Air Post (C5).** Fresh, natural rounded corner perf., Fine & Rare, signed "Sanabria", with P.F. Certificate 2,750.00
- 266 ㊟ **RUSSIA, 1857, 10k Brown & Blue (1).** Ample to Large Margins, Rich Colors, tied by Three Line (AIBAVA?) pmk. on Fresh 1858 Folded Cover, Very Fine, Handsome E.XIII
- 267 ★ **RUSSIA, 1935, 1r on 10k San Francisco Flight, Inverted Overprint (C68a).** Very Fine, Very Rare Error, with Friedl Certificate (Realized \$1,500.00 in the Adler Sale)..... 900.00



- 268 **RUSSIA, SINKIANG, 1899, 1k-7k First Issue (1, 2 two, 3-5). Tied by Urumchi (Sinkiang) Imperial Russian Consulate P.O. pmks., Seven Perfect Strikes, on the Famous & Unique June 22, 1906 Registered cover to Moudon (Switzerland); Six Russian stamps on back, tied by Chuguchak pmks., Sergiopol transit & Moudon receiving pmk., Very Fine, Outstanding Showpiece (Brought \$5,250.00 in the Adler Sale) E.XVII**



- 269 ★ **RYUKYU ISLANDS, 1952, 100y on 2y Rose Violet (17). Right Margin Block, Mint, Very Fine & Rare..... 3,600.00+**

- 270 ★ **SAN MARINO, 1943, 25c-20L Air Post, Without Overprint (C26 var-C33 var).** Complete Set, Very Fine & Very Rare 3,000.00



- 271 ☒ **SARDINIA, 1851, 5c Black, 40c Rose (1, 3). Horiz. Pair of 5c,** Clear to Large Margins except partly in two sides on right stamp, 40c Clear to Large Margins, curious albino embossing marks, tied by Grid of Diamonds, "Chambery" pmk. on March 1853 Folded Letter to Grenoble, normal sequence of transits, Fine, A Fabulous & Rare Foreign Classic Cover, "Champion" handstamp guarantee, with Fiecchi Certificate (cat. value of stamps \$1,750.00+ off cover) E.XVI
- 272 ☒ **TWO SICILIES, 1860, ½t Coat of Arms (8).** Large Margins All Around, Fresh Color, tied by "Annalato" Boxed pmk. on Newspaper, Extremely Fine & Rare, A Beautiful Classic Piece, with P.F. Certificate 3,500.00+
- 273 ★ **ZANZIBAR, 1908, 100r Blue & Black (118).** Very Fine 1,250.00

END OF SALE — THANK YOU

NOTES

IS YOUR COLLECTION FOR SALE?

**REALIZE IMMEDIATE CASH
PLUS THE ADDED ADVANTAGE OF
SELLING THROUGH OUR AUCTIONS**

We will advance immediate cash up to 75% of our appraised value.
There is no interest charge.

Your collection is then sold in one of our auction sales. All stamps are expertly and advantageously lotted in attractive, well illustrated catalogs. Lotting is meticulously planned under our personal supervision. Commission is 20% of the gross realization. There is **no lotting fee** nor any other charges. Final settlement is made within five weeks after the sale. We have continuously conducted stamp auctions for over forty-seven years.

Valuable collections and stamp holdings are especially wanted, but we will accept properties valued from \$500 upwards. Send all stamps directly for appraisal. Auction advance will be remitted shortly after receipt. If not entirely pleased, stamps will be returned at our expense. We will travel anywhere to inspect important properties.

**ROBERT A. SIEGEL
AUCTION GALLERIES, Inc.**

(Licensed and Bonded Auctioneer)

**120 EAST 56th STREET
NEW YORK, N.Y. 10022**

(Tel. 753-6421)





List of Prices Realized

RARITIES OF THE WORLD

WEDNESDAY, MARCH 23, 1977

Gross Realization \$1,119,675.00

Robert A. Siegel
AUCTIONS

120 EAST 56th STREET

NEW YORK, N.Y. 10022

Tel.: (212) 753-6421

Price	Lot #	Price	Lot #	Price	Lot #	Price	Lot #	Price
WD	28	1,550.00	54	725.00	79	25,000.00	105	12,000.00
WD	29	2,700.00	55	2,000.00	80	2,300.00	106	1,500.00
WD	30	6,500.00	56	550.00	81	5,250.00	107	6,000.00
2,100.00	31	9,000.00	57	2,100.00	82	6,250.00	108	1,550.00
1,150.00	32	4,500.00	58	1,950.00	83	1,100.00	109	900.00
4,250.00	33	1,250.00	59	2,100.00	84	1,000.00	110	7,500.00
2,800.00	34	13,000.00	60	950.00	85	28,000.00	111	1,250.00
19,000.00	35	4,250.00	61	4,250.00	86	16,000.00	112	23,000.00
1,350.00	36	1,700.00	62	1,150.00	87	1,950.00	113	17,000.00
1,650.00	37	1,900.00	63	900.00	88	1,650.00	114	2,500.00
14,500.00	38	2,700.00	64	1,600.00	89	1,750.00	115	1,750.00
1,550.00	39	1,500.00	65	1,100.00	90	2,000.00	116	4,000.00
85,000.00	40	1,500.00	66	950.00	91	2,400.00	117	1,250.00
7,500.00	41	1,550.00	67	1,400.00	92	950.00	118	500.00
800.00	42	2,700.00	68	3,250.00	93	900.00	119	1,050.00
1,000.00	43	2,300.00	69	1,850.00	94	600.00	120	1,200.00
1,350.00	44	5,750.00	70	850.00	95	700.00	121	1,700.00
1,450.00	45	3,500.00	71	1,650.00	96	1,550.00	122	7,000.00
1,650.00	46	1,550.00	72	1,900.00	97	900.00	123	2,100.00
7,000.00	47	800.00	73	15,000.00	98	1,000.00	124	1,900.00
19,000.00	48	1,900.00	74	575.00	99	1,050.00	125	3,250.00
1,050.00	49	6,250.00	74A	1,700.00	100	1,850.00	125A	5,500.00
4,000.00	50	1,200.00	75	9,500.00	101	1,450.00	125B	5,500.00
1,650.00	51	900.00	76	4,750.00	102	1,400.00	126	2,300.00
1,000.00	52	2,800.00	77	4,750.00	103	1,600.00	127	1,250.00
9,500.00	53	7,500.00	78	2,000.00	104	4,500.00	128	3,250.00

Lot #	Price	Lot #	Price	Lot #	Price	Lot #	Price	Lot #	Price
129	4,000.00	159	12,000.00	188	1,450.00	218	850.00	248	8,500
130	1,350.00	160	1,250.00	189	950.00	219	750.00	249	1,650
131	1,100.00	161	2,100.00	190	1,350.00	220	1,550.00	250	1,100
132	2,300.00	162	525.00	191	2,600.00	221	4,000.00	251	1,850
133	1,250.00	163	1,950.00	192	5,250.00	222	600.00	252	1,300
134	2,000.00	164	1,250.00	193	9,500.00	223	3,750.00	253	850
135	1,150.00	165	1,700.00	194	3,000.00	224	4,000.00	254	850
136	750.00	166	8,500.00	195	6,250.00	225	900.00	255	2,400
137	2,800.00	167	2,300.00	196	1,100.00	226	4,250.00	256	2,800
138	4,000.00	168	2,400.00	197	1,300.00	227	1,650.00	257	1,850
139	15,000.00	169	4,250.00	198	6,500.00	228	3,000.00	258	1,550
140	24,000.00	170	1,050.00	199	1,000.00	229	1,900.00	259	3,500
141	2,200.00	171	3,000.00	200	1,550.00	230	4,250.00	260	475
142	2,500.00	172	8,000.00	201	1,600.00	231	1,000.00	261	3,750
143	1,650.00	173	2,900.00	202	650.00	232	1,850.00	262	1,250
144	10,000.00	174	3,250.00	203	450.00	233	850.00	263	1,600
145	5,500.00	175	12,000.00	204	11,500.00	234	2,600.00	264	1,150
146	2,500.00	176	3,000.00	205	800.00	235	950.00	265	1,900
147	2,500.00	177	2,100.00	206	850.00	236	575.00	266	850
148	4,250.00	178	22,000.00	207	6,750.00	237	2,100.00	267	1,450
149	2,500.00	179	7,000.00	208	4,250.00	238	1,450.00	268	4,250
150	5,500.00	179A	2,700.00	209	2,900.00	239	3,250.00	269	3,000
151	1,200.00	180	2,100.00	210	675.00	240	3,250.00	270	950
152	2,000.00	181	2,500.00	211	2,600.00	241	1,250.00	271	2,200
153	1,750.00	182	4,000.00	212	35,000.00	242	3,250.00	272	3,250
154	2,400.00	183	17,500.00	213	1,800.00	243	1,350.00	273	600
155	13,000.00	184	1,500.00	214	35,000.00	244	1,000.00		
156	13,500.00	185	3,000.00	215	2,900.00	245	500.00		
157	1,050.00	186	1,400.00	216	1,800.00	246	1,300.00		
158	1,900.00	187	750.00	217	675.00	247	850.00		

Robert A. Siegel Auction Galleries, Inc.
 Prices Realized for
 Sale 510 March 23, 1977 1977 Rarities of the World

Lot#	Realized	Lot#	Realized	Lot#	Realized	Lot#	Realized	Lot#	Realized
4	2,100	41	1,550	75	9,500	111	1,250	145	5,500
5	1,150	42	2,700	76	4,750	112	23,000	146	2,500
6	4,250	43	2,300	77	4,750	113	17,000	147	2,500
7	2,800	44	5,750	78	2,000	114	2,500	148	4,250
8	19,000	45	3,500	79	25,000	115	1,750	149	2,500
9	1,350	46	1,550	80	2,300	116	4,000	150	5,500
10	1,650	47	800	81	5,250	117	1,250	151	1,200
11	14,500	48	1,900	82	6,250	118	500	152	2,000
12	1,550	49	6,250	83	1,100	119	1,050	153	1,750
14	85,000	50	1,200	84	1,000	120	1,200	154	2,400
15	7,500	51	900	85	28,000	121	1,700	155	13,000
16	800	52	2,800	86	16,000	122	7,000	156	13,500
17	1,000	53	7,500	87	1,950	123	2,100	157	1,050
18	1,350	54	725	88	1,650	124	1,900	158	1,900
19	1,450	55	2,000	89	1,750	125	3,250	159	12,000
20	1,650	56	550	90	2,000	125A	5,500	160	1,250
21	7,000	57	2,100	91	2,400	125B	5,500	161	2,100
22	19,000	58	1,950	92	950	126	2,300	162	525
23	1,050	59	2,100	93	900	127	1,250	163	1,950
24	4,000	60	950	94	600	128	3,250	164	1,250
25	1,650	61	4,250	95	700	129	4,000	165	1,700
26	1,000	62	1,150	96	1,550	130	1,350	166	8,500
27	9,500	63	900	97	900	131	1,100	167	2,300
28	1,550	64	1,600	98	1,000	132	2,300	168	2,400
29	2,700	65	1,100	99	1,050	133	1,250	169	4,250
30	6,500	66	950	100	1,850	134	2,000	170	1,050
31	9,000	67	1,400	101	1,450	135	1,150	171	3,000
32	4,500	67	1,400	102	1,400	136	750	172	8,000
33	1,250	68	3,250	103	1,600	137	2,800	173	2,900
34	13,000	69	1,850	104	4,500	138	4,000	174	3,250
35	4,250	70	850	105	12,000	139	15,000	175	12,000
36	1,700	71	1,650	106	1,500	140	24,000	176	3,000
37	1,900	72	1,900	107	6,000	141	2,200	177	2,100
38	2,700	73	15,000	108	1,550	142	2,500	178	22,000
39	1,500	74	575	109	900	143	1,650	179	7,000
40	1,500	74A	1,700	110	7,500	144	10,000	179A	2,700

Robert A. Siegel Auction Galleries, Inc.
 Prices Realized for
 Sale 510 March 23, 1977 1977 Rarities of the World

Lot#	Realized	Lot#	Realized	Lot#	Realized
180	2,100	216	1,800	252	1,300
181	2,500	217	675	253	850
182	4,000	218	850	254	850
183	17,500	219	750	255	2,400
184	1,500	220	1,550	256	2,800
185	3,000	221	4,000	257	1,850
186	1,400	222	600	258	1,550
187	750	223	3,750	259	3,500
188	1,450	224	4,000	260	475
189	950	225	900	261	3,750
190	1,350	226	4,250	262	1,250
191	2,600	227	1,650	263	1,600
192	5,250	228	3,000	264	1,150
193	9,500	229	1,900	265	1,900
194	3,000	230	4,250	266	850
195	6,250	231	1,000	267	1,450
196	1,100	232	1,850	268	4,250
197	1,300	233	850	269	3,000
198	6,500	234	2,600	270	950
199	1,000	235	950	271	2,200
200	1,550	236	575	272	3,250
201	1,600	237	2,100	273	600
202	650	238	1,450		
203	450	239	3,250		
204	11,500	240	3,250		
205	800	241	1,250		
206	850	242	3,250		
207	6,750	243	1,350		
208	4,250	244	1,000		
209	2,900	245	500		
210	675	246	1,300		
211	2,600	247	850		
212	35,000	248	8,500		
213	1,800	249	1,650		
214	35,000	250	1,100		
215	2,900	251	1,850		