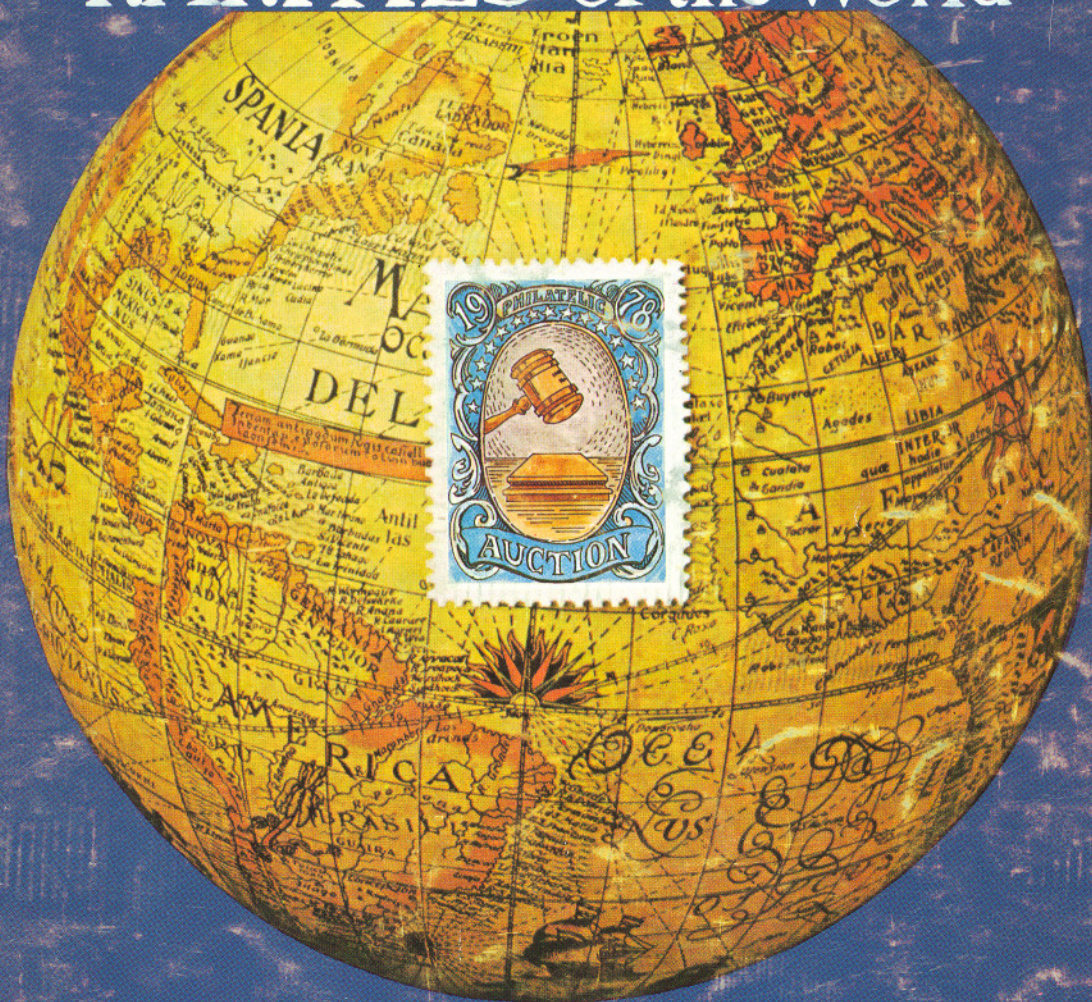


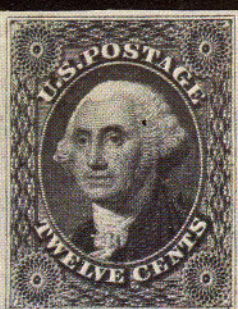
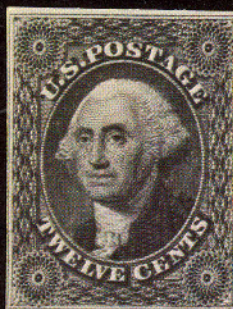
528

RARITIES of the World



Robert A. Siegel

AUCTION GALLERIES, INC.



528th SALE

RARITIES OF THE WORLD

THE PROPERTY OF VARIOUS OWNERS
SOLD BY THEIR ORDER

AT PUBLIC AUCTION

TUESDAY, APRIL 11th, 1978

at 7:00 P.M.

AT THE HOTEL PIERRE
COTILLION ROOM

FIFTH AVENUE AND SIXTY-FIRST STREET
NEW YORK, N.Y.

**ROBERT A. SIEGEL
AUCTION GALLERIES, INC.**

120 EAST 56th STREET
TEL.: (212) 753-6421

NEW YORK, N.Y. 10022
ESTABLISHED 48 YEARS

FOREWORD

Our 1978 Auction Sale of Rarities of the World marks our 15th Annual Rarity Sale. Looking back with nostalgia at the catalogs of the previous 14 years, I see listed so many of the world's great philatelic treasures that it staggers the imagination. Included is the most valuable stamp ever sold, the famed British Guiana "one cent Magenta" of 1856, which realized \$280,000 in 1970.

We are proud that this year's offering by America's Premier Auction House continues our tradition of the World's most Important Annual Sale. The 1978 Rarity Sales measures up fully to the beauty of the sales of the past. The 325 Lots being offered here should realize over a million dollars, the fourth consecutive year that this sale has surpassed the million dollar mark.

It has been our custom in the past to call special attention to a few of the most noteworthy Lots in the sale. However, there are so many outstanding items in this year's sale that listing them would simply be a repetition of the catalog listings.

As previously, Lots will be reproduced on a screen as they come up for sale, and light refreshments will be served following the auction. As seating is limited, advance reservations are advisable. A note or call to our office will take care of it.

Robert A. Siegel

APRIL 11, 1978

ROBERT A. SIEGEL AUCTION GALLERIES, Inc.

120 East 56th Street

New York, N.Y. 10022

Tel.: 753-6421 (Area Code 212)

Please purchase for me at your auction to be held **April 11, 1978** lots listed below, the prices annexed being my limit on each lot. I agree to remit for purchases in accordance with the **Conditions of Sale** and return no lots later than three days after receipt.

REFERENCES PLEASE
(if unknown to us)

SIGNED

New York State residents kindly include
County in address.

County

BIDDING INTERVALS			
BIDS	ADVANCE	BIDS	ADVANCE
Up to \$30.00	\$1.00	\$300.00 - \$725.00	\$25.00
\$32.50 - \$67.50	\$2.50	\$750.00 - \$1,950.00	\$50.00
\$70.00 - \$145.00	\$5.00	\$2,000 - \$3,000.00	\$100.00
\$150.00 - \$290.00	\$10.00	\$3,250.00 and up	\$250.00

Bids which do not conform to the above will be automatically reduced to the appropriate level.

[illegible]

VALUATIONS

Upon request estimate of value furnished on any lots in this auction.

PUBLIC AUCTION

TUESDAY, APRIL 11th, 1978 — 7:00 P.M.

UNITED STATES AUTOGRAPHS & STAMPLESS COVERS

G. Washington, Signed letter to Major Gen. McDougall headed Rocky hill Oct. 15, 1783, states "Tho I have been averse to Officers going to New York on every pretext I was always ready to grant my permission when real business required their presence", three tears at fold of lettersheet, slight stain, Bold Signature

E.XV




1A ☒ **A. Lincoln**, Autograph Free Frank on Neat Mourning Cover postmarked "Washington D.C. May 17 1862", address believed to have been done in Mrs. Lincoln's hand & thought to have contained an acknowledgment of condolence sent on the death of Lincoln's son Willie (Feb. 20, 1862), tiny closed cover tear, still Extremely Fine, An Outstanding Free Frank Cover, ex-Stern

E.XVI

LOTS ON VIEW

At our office Monday, April 10, 1978, 10:00 A.M. - 3:00 P.M.;
Tuesday, April 11, 1978, 10:00 A.M. - 3:00 P.M.

- 2 **Abraham Lincoln**, Signature on 20x15" Document appointing Walter D. McIndoe "Superintendent of Indian Affairs for the Territory of Utah", dated Aug. 2, 1861, also signed by Caleb B. Smith, Sec. of Interior. Folds barely affect signatures, Still Very Fine, Handsome & Rare Document **E.XIV**
- 3 **The Impeachment Trial of President Andrew Johnson**, Autograph Book containing Signatures of 205 Members of Congress present at the Trial, incl. James G. Blaine, R. B. Hayes, Generals Crook & Butler, etc., each with very short pencilled biography; also incl. Bound Supplement to the Congressional Globe of 1868 containing the Entire Proceedings, a Carte de Visite of Johnson, and gallery Ticket of March 24, 1868 for the "Impeachment of the President", a Fascinating & Rare Documentation of the Impeachment Proceedings **E.XV**
- 4  **New Orleans La., Pre-Territorial Cover**, Official Two Page Letter to General Rochambeau, Captain General of the Isle of Dominica (Dominican Republic), Beautiful Engraved Illustrated Letterhead, Allegorical Female Figure, Sailing Ship, Produce, Rooster, etc., "Republique Francaise" Imprint. Letter Headed "Nouvelle-Orleans, le 7 Vendemre. An 12 (1803) Le Préfet Colonial de la Louisiane", Boldly signed "Laussat", small internal piece missing due to opening, no postal markings but has official handstamp across back flap, Wonderfully Fresh & Rare, A Great Historical Cover **E.XIII**

POSTMASTERS' PROVISIONALS



- 5 **Baltimore, Md., 5c Black on White (3X1)**. Two Full Frame Lines, slightly lightened ms. cancel & bit of Blue "Baltimore Md." pmk., vertical crease, otherwise Fine, Attractive Postmaster Rarity, with P.F. Certificate..... **3,000.00**

au Général en chef

4

Doctrinbeau, Capitaine General de
the S. Domingo

au Cap Français

32

12

55

69

89

87

90

88

14





- 6 ☒ **Baltimore, Md., 5c Black on Bluish (3X3).** Three Complete Frame Lines, neat ms. cancels, just tied by Blue "Paid", two matching strikes of "Baltimore Md." pmk. on Fresh Apr. 1846 Folded Letter to Virginia, Very Fine, Choice Provisional Cover 3,750.00
- 7 ☒ **Baltimore, Md., 5c Black on Bluish (3X3).** Bit irregularly cut showing major parts of all frame lines, ms. cancels, not tied, Blue "Baltimore Md." pmk., matching "Paid" & Large "5" in Oval on Folded Cover to North Bay, N.Y., distance over 300 miles & duly marked "due 5" to collect from addressee, stamp has tiny indentations in top right corner, cover has some staining from slightly smeared address, yet an Acceptable Example of this Rarity, Colson handstamp guarantees 3,750.00
- 8 **Millbury, Mass. 5c Black on Bluish (7X1).** Design touched at T. & B., crease and thins, Red town pmk. Fine Appearing, Very Rare 17,500.00
- 9 **New York, N.Y., 5c Black, Complete Plate Reconstruction of the 40 Positions (9X1).** All Singles, Four Unsigned, Two Unused, Five with Red Town, Paid or Grid only, Six with combination ms. & Red cancels, Nearly All Have Four Margins, one repaired, some others have creases or other faults, Majority Fine or Better, Impressive Exhibition Group 9,525.00+
- 10 ★ **New York, N.Y., 5c Black (9X1). Horizontal Pair, Pos. 7 & 8, Former Major Double Transfer at Top, Clear to Large Margins, very faint toning at top, otherwise Very Fine** E.XIV

- 11 **New York, N.Y., 5c Black (9X1). Horizontal Pair**, Pos. 39 & 40, Huge Margins, neat blue ms. & Red Town pmks., tiny tear in margin above left stamp, otherwise Extremely Fine, Right Stamp Outstanding, ex-Moody, Dick 500.00
- 12 ☒ **New York, N.Y., 5c Black (9X1)**. Pos. 40, Huge Margins including Bottom Right Sheet Corner, tied by Blue ms. & Red "New-York 5 cts." on "Recorded" Folded Cover (as indicated by Large Blue "R") to Philadelphia, vertical cover scuff barely affects address, An Outstanding Stamp, Rare & Unusual Usage, signed Ashbrook E.XV
- 13 ☒ **New York, N.Y., 5c Black (9X1)**. Pos. 38, Large Margins, tied by light "New-York 5 Paid" pmk. on Folded Cover to London, forwarded to Trieste, various transit marks both front & back, ms. "p Cambria via Boston", Rare Usage, Extremely Fine, ex-Newbury E.XV
- 14 ★ **Providence, R.I., 5c, 10c Gray Black, Complete Sheet of 12 (10X1, 10X2)**. Some minor wrinkling, two creases, one entirely in selvedge far from stamps, other just across corner of 10c, otherwise Very Fine 2,000.00



- 15 **St. Louis, Mo., 5c Black on Greenish, Plate I Reconstruction (11X1, 11X2)**. Comprised of Unused 5c Vertical Pair - Pos. 1, 3; 10c Vertical Pair, lightened ms. cancel; Single 5c-Pos. 5, lightened ms. cancel; Single 10c-Pos. 6, Red Town pmk.; 5c pair margins all around, thin, small closed tear & tiny margin nick, 10c pair clear to large margins, Very Fine, 5c single ample to large margins, Very Fine, 10c single four nice margins, tiny closed tear, otherwise Very Fine, An Important Classic Exhibition Showing 14,250.00+



11



29



33



52



62



63



71



72



64



76



77



78



79



80



81



126



127



124



128



221



138



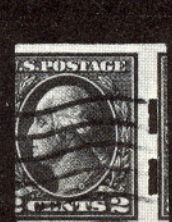
149



150



190



220

- 16 ★ **St. Louis, Mo., 10c Black on Greenish (11X2).** Pos. 4, Clear to Large Margins except barely clear one tiny spot at top, 6mm tear at bottom, otherwise Fine 3,000.00
- 17 **St. Louis, Mo., 5c-20c Black on Gray Lilac "Bears", Complete Plate II Reconstruction (11X4-11X6).** Comprised of Two single 20c (Pos. 1, 3), Vertical Pair 10c (Pos. 2, 4), 5c & 10c Se-tenant Pair (Pos. 5, 6). 20c-Pos. 1, Clear to Large Margins, two stroke ms. cancel, Fine; 20c-Pos 3, Three Ample to Large Margins, just in at left, light ms. cancel; 10c Vertical Pair-Pos. 2, 4, Ample to Large Margins, light Red Town pmk., Very Fine; 5c & 10c Se-Tenant Pair-Pos. 5, 6, Large Margins, Neat Red Town pmk., 5c very faint corner crease, otherwise Extremely Fine. (5c & 10c Se-Tenant listed in "L" shaped block of three only with almost \$5,000.00 premium over 10c pair & 5c single), A Fabulous Exhibition Unit of Exceptional Quality..... 24,150.00+
- 18 **St. Louis, Mo., 5c, 10c Black on Bluish Pelure, Plate III Reconstruction (11X7, 11X8).** Touched to ample margins except tiny bit in on 5c Pos. 3, each with customary ms. cancel, 10c Pos. 4 faint crease, otherwise a Fine Plating, Extremely Rare 22,500.00

1847 ISSUE



- 19 ★ **5c Red Brown (1).** Large to Huge Margins incl. Right Sheet Margin, Vibrant Fresh Color, Extremely Fine, An Amazingly Beautiful Stamp, with P.F. Certificate 850.00
- 20 ★ **5c Dark Brown (1a).** Huge Margins including Bottom Right Sheet Corner, Wonderful Deep Rich Color, Lovely Impression, Fresh, Full o.g., A Magnificent Stamp despite slight staining & usual minor gum wrinkles, Probably Unique as an Unused Sheet Corner Single, ex-Newbury, with P.F. Certificate..... **E.XVII**
- 21 ★ **5c Brown (1). Horizontal Pair,** Large Margins, Splendid Color & Impression, Fresh, Full Crackly o.g., tiny blue speck in bottom left margin, tiny almost unnoticeable scuff on one, otherwise Extremely Fine, A Marvelous Pair, ex-Caspary, Lilly 2,500.00



- 22 **5c Brown (1).** Large to Huge Margins including Right Sheet Margin & Bit of Next Stamp at Bottom, Deep Rich Color, Fine Impression, Pretty Red Square Grid cancel, Extremely Fine 275.00
- 23 **5c Brown (1). Horizontal Pair,** Ample to Large Margins, Rich Color, Nice Impression, left stamp barely noticeable closed tear, on piece, tied by Straight Line "Steam" cancel, Rare & Very Handsome **E.XIII**
- 24 **5c Red Brown (1). Vertical Block of Six,** Margins All Around, Fresh mended tear, couple light creases, Very Fine Appearance, Very Rare..... 11,625.00+



- 25 **10c Black (2).** Huge Margins including Bottom Left Sheet Corner Margin, tiny bit of next stamp at top, Red Grid cancel, Extremely Fine, Incredibly Beautiful 700.00

- 26 **10c Black (2).** Large to Enormous Margins including Top Right Sheet Corner Margins, light **Blue** "Philada Pa. 10 cts" pmk., light, barely perceptible vertical bend, nevertheless Extremely Fine, A Spectacular Showpiece 725.00
- 27 **10c Black (2).** Large to Huge Margins incl. Right Sheet Margin, Bit of Next Stamp at Bottom, Vivid Red Louisville, Ky Town pmk., Extremely Fine 700.00
- 28 **10c Black (2).** Huge Margins including Part Right Sheet Margin, Bit of Next Stamp at Bottom, Red Grid cancel, some trivial toning, shows mostly on back, otherwise Extremely Fine 700.00
- 29 **10c Black (2).** Large Margins, tied on Orange Buff piece by Two Bold Framed Grids in Red, **Originally a Cover Used to Europe** as evidenced by part Red French Transit & matching Boxed "P.D.", Extremely Fine, Exceptionally Handsome & Rare 700.00+
- 30 **10c Black (2).** **Vertical Pair**, Large Margins, Neat Red Grid cancels, bottom stamp tiny thin spot & pinhole, otherwise Extremely Fine 1,600.00
- 31 **10c Black (2).** **Horiz. Strip of Three**, Pos. 18-20L, Ample to Huge Margins incl. R. Pane Margin, except slightly in bottom right stamp, Beautiful Red "Paid" in Arc cancels (New York), tiny tears along crease at top, small scissors cut left stamp, still a Very Attractive & Rare Strip 4,000.00+
- 32 ✉ **10c Black (2).** Ample to Large Margins, tied by Blue Grid, matching "Little Rock Ark." pmk. on Neat 1850 Folded Cover to Cincinnati, Ohio, light cover filing crease, Very Fine, Probably the Finest of the Three '47 Covers Known from Arkansas **E.XVI**
- 33 ★ **5c Red Brown, 10c Black, Reproductions (3, 4).** Ample to Large Margins, Very Fine Set 1,250.00



- 34 ★田 **5c Red Brown, 10c Black, Reproductions (3, 4).** Blocks of Six, Large Margins all around, Extremely Fine, Magnificent Showpiece of Great Rarity 11,350.00+

1851 ISSUE



- 35 **1c Blue, Ty. I, Position 7R1E (5).** Three Large Margins incl. Top Sheet Margin, ample to barely in on top right scroll, Town pmk., Exceptionally Fine Example of this Famous Classic Rarity, signed Ashbrook 10,000.00
- 36 **1c Blue, Ty. Ib (5A).** Pos. 6R1E, Clear to Huge Margins incl. Top Sheet Margin, Traces of the Famous "Ty. I, 7R1E" at Right, Rich Color, Light Blue Town pmks, Extremely Fine, A "Gem", ex-Newbury..... 950.00
- 37 **1c Blue, Ty. Ia (6).** Large Even Margins, Wonderful Rich Color, Neat Town pmk., Extremely Fine, with P.F. Certificate 1,350.00



- 38 ★田 **1c Blue, Ty. II, Plate 1E (7). Block,** Pos. 81, 82, 91, 92R1E, Large Margins, Rich Color, minute tear entirely in margin of top right stamp, small barely noticeable closed tear in bottom left stamp, otherwise Extremely Fine, A Fabulously Rare Showpiece, Reputedly Only Three or Four Blocks are Known from this Plate E.XVI
- 39 ★田 **1c Dark Blue, Ty. II, Plate III (7). Block,** Pos. 39, 40, 49, 50R3, Margins All Around except just touched at bottom on bottom right stamp, Gorgeous Color, Major Part o.g., two line offset on back presumably from a ledger page, several faint creases, otherwise Very Fine, Incredibly Rare, Only Three Blocks Known, ex-West E.XVI
- 40 田 **1c Blue, Ty. II (7). Block,** Pos. 11, 12, 21, 22R2, Ample to Huge Margins Showing Part L. Pane Margin, Bits of Two Adjoining Stamps at Right, partly in at top of top left stamp, "Chicasawatchee Geo." pmk., couple very light insignificant creases, otherwise Very Fine, Handsome, Extraordinarily Rare Small Town Usage 500.00
- 41 ★ **1c Dark Blue, Ty. III (8).** Ample to Huge Margins, Fresh, o.g., Very Fine, A Rare & Handsome Stamp 1,500.00



- 42 ★ **5c Red Brown (12).** Large to Huge Margins incl. Bits of Adjoining Stamps at Sides, Marvelous Rich Color, Extremely Fine, An Absolute "Gem", with P.F. Certificate 2,650.00
- 43 **5c Red Brown (12).** Large to Huge Margins including Part Left Sheet Margin, Bits of Two Adjoining Stamps at Right & Bottom, Lovely Rich Color, light Town pmk., Extremely Fine, A Gorgeous Stamp..... 400.00
- 44 **5c Red Brown (12).** Large to Huge Margins including Left Sheet Margin, Bold Grid cancel, bit of lightly struck Red Town pmk., Extremely Fine 400.00
- 45 **5c Red Brown (12). Horizontal Pair,** Large Margins, Lovely Deep Shade, Rimless "Buffalo N.Y." Town pmk., tiny insignificant wrinkles in bottom margin between stamps, still Extremely Fine & Choice..... 900.00
- 46 **5c Red Brown (12). Vertical Pair,** Large to Huge Margins incl. Left Pane Margin Showing Full Center Line, Bits of Adjoining Stamps at Top & Bottom, Wonderful Rich Color, Neat 1857 Town pmk., Extremely Fine, Extraordinary..... 900.00



- 47 ★ **10c Green, Ty. I (13).** Clear to Enormous Margins, Wonderful Rich Color, Major Part o.g., Extremely Fine, A Marvelous Example of this Rarity, from the Ambassador Collection with P.F. Certificate 2,750.00
- 48 ★ **10c Green, Ty. I (13).** Large Margins, Bright Color, faint crease & tiny tear almost entirely in margin, otherwise Extremely Fine, Very Rare, with P.F. Certificate 2,750.00



49

- 49 **10c Green, Horizontal Combination Strip of Six, Ty. II, IV (14, 16).** Pos. 73-78L, Second & Fourth Positions Recut Top, Bottom Respectively, tied on piece by Neat "New Orleans, La." Balloon Type pmks., Huge Margins, Rich Color, Extremely Fine, One of the Most Magnificent 10c '51 Showpieces in Existence, ex-Caspary **E.XVI**
- 50 ★ **10c Green, Ty. IV (16). Recut at Top, Pos. 74L, Margins All Around,** Incredible Deep Rich Color, Part o.g., trivial tiny corner wrinkle well clear of design, Extremely Fine, A Gorgeous Example of this Rarity, from the Ambassador Collection, with P.F. Certificate **3,750.00**
- 51 ★ **12c Black (17). Horizontal Pair, Ample to Huge Margins, Wonder-** fully Fresh, Large Part o.g., Very Fine Pair, The Right Stamp a Matchless "Gem", with P.F. Certificate **1,500.00**
- 52 **12c Black (17). Horizontal Pair, Huge Margins incl. Part Top Sheet** Margin & Bits of Four Adjoining Stamps, Red Town & Grid cancels, small, barely noticeable scissors cut clear of frame line at bottom left, nevertheless Extremely Fine, A Phenomenal Pair **200.00**

1857 ISSUE

- 53 ★田 **1c Blue, Combination Block, Ty. I, II (18, 20).** Pos. 64-65, 74-75L12, Top Left & Bottom Right Stamps Ty. I, Pristine Color & o.g., Fine, An Exceptionally Beautiful Block lacking the usual "Mottling", ex-Stern **1,400.00**
- 54 ★ **1c Blue, Vertical Combination Strip of Three, Ty. III, Ic, Ia (19, 19** var, 21). Pos. 73, 83, 93L4, With Bottom Sheet Margin, Lovely Rich Color, Top stamp (Ty. III) creased, center stamp (Ty. Ic) light crease, selvedge reinforced, Very Attractive Appearing Strip, Several Combination Pairs Listed but Unpriced, Ty. Ia & Ic Pair Unlisted, A Great Classic Rarity, with P.F. Certificate **E.XVI**
- 55 ㊟ **1c Blue, Ty. Ic (19 var).** Well-Centered, few nibbed perfs., Rich Color, Neatly tied by "Boston Mass." pmk. on Jan 1858 Folded Stockholder's Meeting Announcement, A Lovely Example of this Rare Sub-Type, with interesting Ashbrook typewritten note **E.XIII**
- 56 ★田 **1c Blue, Combination Block, Ty. II, IIIa (20, 22).** Plate 11, Top Pair Ty. II, Bottom Pair Ty. IIIa, Fresh, o.g., Rich Color with a Beautiful Impression, Very Fine, Rare & Handsome, Not priced as Block **E.XV**



53



54



56



58



59

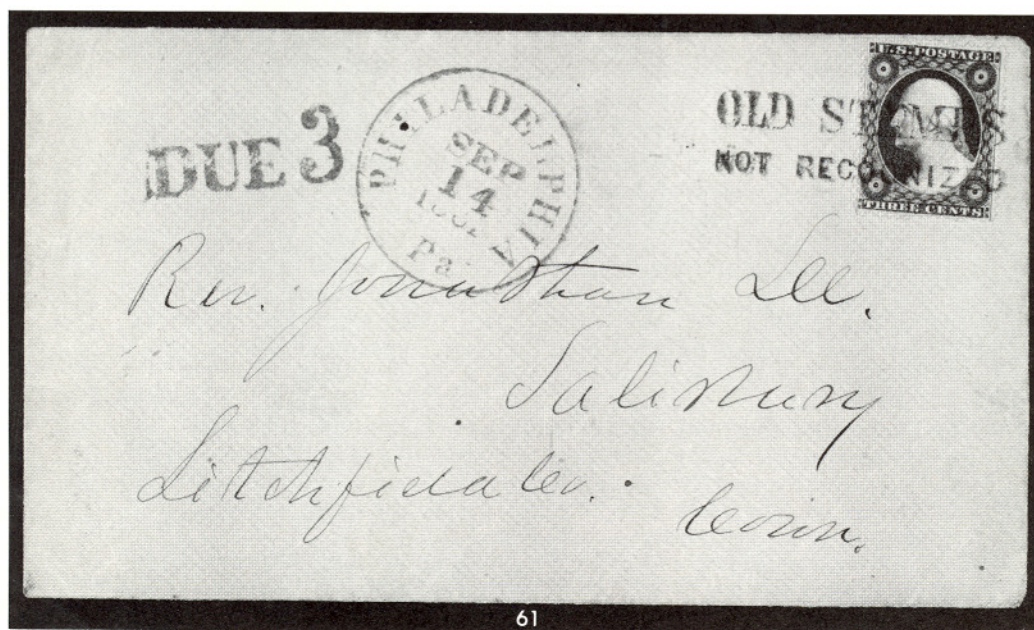


57



60

- 57 ★ 田 **1c Blue, Combination Block of Eight, Types II, III, IIIa, Plate 4 (20, 21, 22).** Pos. 4-7, 14-17L4, Full Top Sheet Margin, Fresh, o.g., Marvelous Rich Color, some perf. reinforcement, Pos. 16 minor stain & trifle heavy crease, otherwise Fine. Top Row Plate Four Stamps (Full Design at Top) are Essentially as Rare as the Ty. Ia Stamps, (Full Design at Bottom, Bottom Row) & are in our opinion grossly undervalued. This is the **Largest Known Multiple of Plate Four Ty. II Stamps with the Exception of the Famous Complete Pane**, Unquestionably One of the Greatest 1c 1857 Showpieces in Existence **E.XVI**
- 58 ★ 田 **1c Blue, Combination Block, Ty. III, IIIa (21, 22).** Top Pair Ty. III, Bottom Pair Ty. IIIa, Glorious Vivid Color Fresh, o.g., top pair creased, Bottom Pair one Extremely Fine other corner crease, cataloged as two pairs, combination block unpriced, Rare **3,600.00+**
- 59 ★ 田 **1c Blue, Ty. IIIa, Plate 11 (22). Block,** Fresh, o.g., tiny insignificant hinge reinforcements, Fine & Extremely Rare, **Approximately Six Blocks Known** **1,600.00**
- 60 ★ 田 **1c Blue, Ty. V (24). Left Imprint & Plate No. "10.P" Block of Eight,** Fresh, Large Part o.g., Rich Color, small tear & crease in selvage well clear of imprint & plate no., Fine-Very Fine, Rare & Handsome **1,200.00**



- 61 ✉ **"Old Stamps Not Recognized",** Bold Two Line Handstamp Beautifully ties **3c Red (26)** on Fresh Yellow Cover to Connecticut, Clear "Philadelphia Pa Sep 14 1861" pmk., matching Bold "Due 3", Extremely Fine, Probably the Finest 3c Demonitized Cover in Existence **E.XVI**
- 62 ★ **5c Brick Red (27).** Lovely Color, Nearly Full o.g., left perfs. barely touch, Very Fine Example of this Exceedingly Rare Unused Stamp.... **2,500.00**
- 63 **5c Indian Red (28A).** Well-Centered, Gorgeous Color, Black & Red Town pmk., Very Fine, A Very Pretty Stamp **475.00**
- 64 ★ **5c Brown, Ty. I (29). Horiz. Strip of Four,** Brilliant o.g. Unusually Fresh Brilliant Color, Well Centered for this Issue, An Immaculate & Very Rare Strip, ex-Caspary **1,550.00+**



- 65 ★ **10c Green, Ty. I (31).** Centered, Vivid Color, Large Part o.g., Extremely Fine, ex-Simon, with P.F. Certificate..... 2,000.00
- 66 ★ **10c Green, Ty. I (31).** Neatly rejoined horizontal pair with Full Bottom Sheet Margin, Fresh Color, Very Fine, Lovely Rarity (catalogued as two singles)4,000.00+
- 67 ★ **10c Dark Green, Ty. IV (34). Recut at Bottom, Pos. 55L,** Magnificent Rich Color, Fresh, o.g., Extremely Fine, A Wonderful Rare Stamp, from the Ambassador Collection, with P.F. Certificate .. 4,500.00
- 68 ★田 **12c Intense Black, Plate III (36b). Horizontal Block of 24,** Fresh, o.g., some reinforced separations, top right pair minor creases, tiny inked in scuff on pos. 22, otherwise Fine-Very Fine, A Marvelous Exhibition Item, ex-Caspary (lot 763, identified as plate 1)3,400.00+
- 69 匣 **12c Black, Pl. III (36b). Wide Straddle, Used with 3c Red (26) on Fresh** Folded Cover to Paris, both tied by Red Grid, **Red "New Paid York 3 Dec 3" (1859)** pmk., Bold Boxed "P.D." & Clear **Dec 19 1859** French Transit, **Earliest Known Use of the Plate III Stamp**, Predates Old Listing by Approx. Six Months, Fine, A Fabulous Rarity, with P.F. Certificate & Neinken Letter **E.XIV**
- 70 ★田 **24c Gray Lilac (37). Block of 20 (4x5),** Fresh, o.g., Wonderful Color, tiny sensible hinge reinforcements, ms. notations on back of top right pair barely show through, fourth row trace of crease, one of which has tiny thin, otherwise Fine-Very Fine, A Very Rare & Remarkable Showpiece, ex-Caspary 6,500.00+
- 71 ★ **24c Gray, Imperforate (37c).** Nice Margins incl. Left Sheet Margin showing tiny ms. "E.F." initials, Very Fine, with P.F. Certificate.... 650.00
- 72 ★ **30c Orange, Imperforate (38).** Large Margins, Extremely Fine, "W.H.C." (Colson) handstamp guarantee 1,350.00
- 73 ★田 **30c Orange (38). Horizontal Block of Six,** Fresh, Large Part o.g., Vivid Color, Fine, Attractive & Very Rare 2,650.00+
- 74 ★田 **30c Orange (38). Horizontal Block of Eight,** Brilliant o.g., Marvelous Color, tiny hinge reinforcements, tiny thin spot in one, small oily translucency in top right stamp, otherwise Fine-Very Fine, An Important Classic Rarity (top block from the Caspary Block of 16) 4,000.00+
- 75 ★田 **90c Blue (39). Block,** Remarkably Well-Centered, Almost Full o.g., slight gum staining, tiny thin specks affect three stamps, otherwise Very Fine, Very Rare Block 4,500.00
- 76 **90c Blue (39). Clear "Philadelphia Pa. Feb 1 1861"** Octagon pmk., Very Fine, Very Rare, Illustrated in Brookman Vol. 1, Page 264, 1861 Year Date Listed but Unpriced 1,500.00+



68



70



73



74



75



82



92

1857 REPRINTS

- | | | |
|------|---------------------------------------------------------------------------------------------------------------------------|----------|
| 77 ★ | 3c Scarlet, Reprint (41). Brilliant Color, Fine & Rare, with P.F. Certificate..... | 1,400.00 |
| 78 ★ | 10c Blue Green, Reprint (43). Lovely Rich Color, side perfs. blunted from scissors separation as usual, Fine | 1,150.00 |
| 79 ★ | 30c Yellow Orange, Reprint (46). Well-centered, Reperfed at right, otherwise Very Fine, with P.F. Certificate..... | 1,300.00 |
| 80 ★ | 90c Deep Blue, Reprint (47). Wonderful Rich Color, Very Fine, ex-Caspary | 2,200.00 |
| 81 ★ | 90c Deep Blue, Reprint (47). Centered to bottom, Fine | 2,200.00 |

1861 FIRST DESIGNS

- | | | |
|-------|-------------------------------------------------------------------------|----------|
| 82 ★田 | 3c Brown Rose (56). Block, Full o.g., Deep Shade, Very Fine..... | 1,550.00 |
|-------|-------------------------------------------------------------------------|----------|



- | | | |
|------|-----------------------------------------------------------------------------------------------------------------------------------------------------------------------------------------------------------------------|-----------|
| 83 ★ | 5c Brown (57). Remarkably Well-Centered, two very lightly toned perfs. at left mentioned as "traces of stain" on accompanying P.F. Certificate, still a Gorgeous Stamp & Quite Possibly the Finest Known | 9,000.00 |
| 84 ★ | 10c Dark Green (58). o.g., Fine | 2,000.00 |
| 85 ★ | 30c Red Orange (61). Deep rich color, Fine, Rare | 12,500.00 |
| 86 ★ | 90c Dull Blue (62). Well centered, small closed tear and small thin spot at top, Very Fine Appearance, Rare, with P.F. Certificate | 15,000.00 |

1861 ISSUE

- | | | |
|------|--------------------------------------------------------------------------------------------------------------------------------------------------------------------------------------------------------------------------------------------------------------------------------------------------------------------------------------------------------------------------------------|--------|
| 87 田 | 1c-10c 1861 Issue (63, 65, 68, 73, 76). Pair of 3c, singles of others, 2c margin crease from overlap, others trivial faults, each with Bold Negative Star of David cancel, tied by by Red "N. York Br. Pkt. Paid 19", Dark Red "New-Haven Ct." Double Circle pmk. on Sep. 1865 Cover to England, A Fantastic Colorful & Rare Combination of Five different stamps..... | E.XIV |
| 88 田 | 3c Rose (65). Perfectly tied by Bold " West Meriden Conn. " pmk. & Devil & Pitchfork on Fresh Orange Buff Cover, Large Photographer's Corner Card in Ornate Frame, stamp has irregular s.e. at right (done before use) which in no way detracts from the Rarity & Beauty of this cover, ex-Newbury | E.XIII |
| 89 田 | 3c Rose (65). Two short perfs., tied on small cover by Clear Hockanum Fox , matching "Hockanum Con" pmk., minor cover stains, otherwise a Very Fine example of this Rare cancel, only two known on cover, ex-Knapp | E.XV |
| 90 田 | 3c Rose (65). Left perfs. touch, tied by Perfect Bold Union Soldier's Head cancel, " Waterbury Con Feb 3 '66 " pmk., cover slightly reduced at left, A Fabulous Example of this Rare & Handsome Waterbury, from a new find | E.XVI |



95



96



99



102



140



142



136



141



169



162



163



167



164

- 91 ☒ **3c Rose (65).** Few tiny age toning specks, affixed over an Uncancelled 3c Red (26), tied by Target, matching "Hartford Ct. Sep 16 1861" pmk. on yellow cover with Blue Illustr. Corner Card showing **Hot Air Balloon**, "H.M. Spencer Aeronaut./Winsted Conn", few trivial cover tears just affect design, otherwise Very Fine, An Extremely Rare Postal History Cover, Possibly Unique **E.XIV**
- 92 ★田 **3c Lake (66). Block,** Fresh, o.g., Beautiful Rich Color, tiny sensible hinge reinforcement, Unusually Well-Centered, single nibbed perf., still Very Fine, Very Rare in such Choice Condition 4,000.00
- 93 ☒ **24c Brown Lilac, 30c Orange (70a, 71).** Used with wide s.e. 3c Rose (65) & neatly tied by Grids on Fresh Folded Cover to **Shanghai, China**, Red New York & London Transits, ms. "36" & Red "1", Hong Kong Transit on back, A Magnificent 1862 "Augustine Heard" cover, ex-Krug, signed Ashbrook..... **E.XIII**
- 94 ☒ **30c Orange (71).** Well-Centered, Lovely Color, Perfectly tied by "Portland Me." pmk. in combination with Very Fine **5c Brown (76)** on cover to **St. Petersburg, Russia**, 5c Bold Circle of Wedges Cancel, barely tied by Red "N. York Br. Pkt. Paid", Blue "Aachen Franco" Box, Magenta ms. "17", Very Fine, Unquestionably One of the Most Beautiful 1861 Covers Used to Russia in Existence **E.XV**
- 95 ★田 **90c Blue (72). Block,** Fresh, o.g., Lovely Rich Color, perfs. touch on left pair, minor hinge reinforcement, An Attractive & Rare Block, ex-Worthington, with P.F. Certificate..... 3,000.00
- 96 ★田 **5c Brown (76). Block,** Glorious Vivid Color, Fresh, Full o.g., Very Fine, A Marvelous Block, ex-Caspary, Lilly 550.00
- 97 ☒ **5c Brown (76).** Horiz. Pair & Single, average centering, small faults, tied by Grids on **Lavender Over-All Monitor & Merrimac Battle Scene Patriotic to Germany**, Red "N York 12 Brem Pk. Paid", Blue Three Line "America/Uber Bremen/Franco", ms. due marks, minor cover aging, Very Handsome & Rare **E.XV**

1867 GRILL ISSUES



- 98 ★ **3c Rose, Grilled All Over (79).** Incredibly Fresh, Nearly Full o.g., some short perfs. as usual, Very Fine for this, with P.F. Certificate.. 1,000.00
- 99 田 **3c Rose, Grilled All Over Plate Essay on Perforated & Gummed Stamp Paper (Brazer 79E-Cg). Bottom Imprint & Plate No. 52 Block of Twelve,** Fresh, Virtually Full o.g., right pair (not in plate block) natural paper crease, mixed centering, Fine, Exceptionally Rare & Attractive Essay Multiple, with P.F. Certificate **E.XIII**
- 100 ★ **3c Rose, Z. Grill (85C).** Centered, Rich Color, o.g., natural vertical pre-print fold in left margin, Extremely Fine, A Beautiful & Rare Stamp, with P.F. Certificate, from the Ambassador Collection 1,250.00

Wife Recd May 18/30

94



93

Mr. Frank Brown
Care Winans Brothers
St. Petersburg
Russia

Suggesting Clearwater
Shanghai



91



132

L. C. ...
Harrison

97



AMERICA
OFFICIAL MAIL
FRANCO

From Conrad Craft
Genterskirchen
Rough of ...
Gaffner

134

Sarah E. Bradford



133

231



AIR MAIL

ZEPPELIN MAIL

AIR MAIL

ZEPPELIN MAIL



Registered

994475

Mr. Ernest Scharrenberg
23 Roosevelt Terrace
Irvington, N. J.



260



38071

Mr. Ernest Scharrenberg

AIR MAIL

101 ★	12c Black, Z. Grill (85E). Exceptionally Well Centered, Nearly Full o.g., Extremely Fine, A Marvelous Example of this Very Scarce Stamp	700.00
102 ★田	15c Black, E. Grill (91). Left Margin Block, Fresh, Virtually Full o.g., one stamp tiny thin, otherwise Fine, Attractive & Very Rare Block, ex-Lilly	5,500.00
103 ★	24c Gray Lilac, F. Grill (99). Fresh, Large Part o.g., Remarkable Centering, Extremely Fine, a "Gem"	475.00

1861 RE-ISSUE

104 ★	2c Black, Re-Issue (103). Fresh, Part o.g., hinge remnants, Very Fine	1,250.00
105 ★	3c Brown Red, Re-Issue (104). Fresh, Virtually Full o.g., L. perfs. blunted by scissors separation, Very Fine	1,500.00
106 ★	5c Brown, Re-Issue (105). Tiny part o.g., Very Fine	850.00
107 ★	10c Green, Re-Issue (106). Fresh, Part o.g., Beautiful Margins, Extremely Fine, with P.F. Certificate	1,200.00
108 ★	10c Green, Re-Issue (106). Fresh, Nearly Full o.g., Very Fine	1,200.00
109 ★	12c Black, Re-Issue (107). Fresh, Part o.g., Beautiful Margins, Extremely Fine	1,500.00
110 ★	15c Black, Re-Issue (108). Fresh & Very Fine, with P.F. Certificate	1,500.00
111 ★	24c Deep Violet, Re-Issue (109). Fresh, Part o.g., Very Fine	1,750.00
112 ★	24c Deep Violet, Re-Issue (109). Fresh, Part o.g., Very Fine, with P.F. Certificate.....	1,750.00
113 ★	30c Brownish Orange, Re-Issue (110). Fresh, Large Part o.g., hinge remnant, couple perfs. tiny bit nibbed, still Fine, Rare	2,250.00
114 ★	90c Blue, Re-Issue (111). Beautiful Deep Color, Extremely Fine	2,650.00
115 ★	90c Blue, Re-Issue (111). Fresh, Nearly Full o.g., Very Fine, A Lovely Stamp	2,650.00

1869 PICTORIAL ISSUE

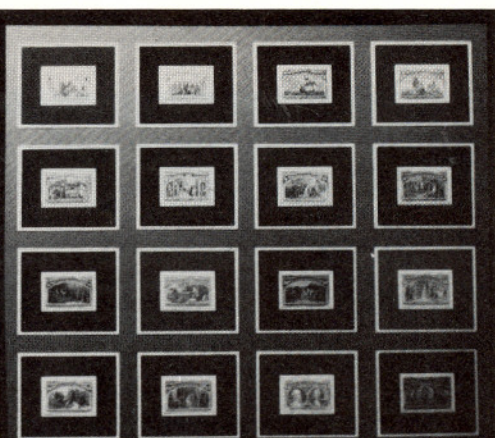
116 P	1c-90c Pictorials, Plate Proofs on Card (112P-117P, 120P-122P, 129P). Complete Set as Issued, privately mounted and framed. Each proof is hinged and surrounded by a mat of matching color, and the work is framed in a graceful white gold molding. The covering is a special Plexiglass (as used by the Library of Congress) which protects the colors from fading. The proofs are of outstanding brilliance, and the craftsmanship and materials used throughout are of museum quality. Overall Size is 28x26 inches. A Most Unusual and Beautiful Acquisition for the Den or Boardroom	E.XV
-------	---------------------------------------------------------------------------------------------------------------------------------------------------------------------------------------------------------------------------------------------------------------------------------------------------------------------------------------------------------------------------------------------------------------------------------------------------------------------------------------------------------------------------------------------------------------------------------------------------------	------

RESERVATIONS

Because of limited seating it is advisable to make reservations for this sale. It can be done by letter or telephone call to our office.



116



157



156X



173X



174X



217



239X



240X



- 117 ★ **2c Brown (113).** Fresh, o.g., Beautiful Centering, Huge "Jumbo" Margins, Extremely Fine, A Matchless "Gem" 70.00



- 118 ★田 **10c Yellowish Orange (116).** Right Margin Block, Incredibly Fresh with Magnificent Color, Nearly Full o.g., Choice Centering, a Great Rarity in Such Beautiful Condition, Extremely Fine 2,000.00
- 119 ★田 **15c Brown & Blue, Ty. II (119).** Right Margin Block, Wonderfully Fresh Colors, Virtually Full o.g., the bottom pair being Mint, tiny hinge reinforcements, faint natural gum bend, Fine-Very Fine, A Beautiful Showpiece 1,650.00
- 120 **24c Green & Violet, Center Inverted (120b).** Black cork and part of Red Transit cancels, perfs. just in at bottom, A Fine Example of this Rare Stamp..... 7,000.00
- 121 ★ **30c Blue & Carmine (121).** Very Fine..... 725.00
- 122 ★ **90c Carmine & Black (122).** Incredibly Fresh, Virtually Full o.g., Nice Margins Extra Large Top & Left, Very Fine, A Rare Beauty 2,400.00
- 123 ★ **90c Carmine & Black (122).** Fresh, Large Part o.g., Vibrant Color, tiny insignificant thin in grill, Very Fine Appearance, Particularly Handsome & Rare..... 2,400.00
- 124 **90c Carmine & Black (122).** Horiz. Strip of Three, left perfs. touch to tiny bit in, Cork Cancels, Fresh Colors, insignificant perf. strengthening, few tiny trivial flaws, Attractive, All 90c 1869 Multiples are Very Rare, Particularly Strips & Blocks 1,775.00+

1869 RE-ISSUE



- 125 ★ **1c-90c Pictorials, Re-Issues (123-133).** Complete Set, 3c & 10c without gum, others tiny part to virtually full o.g., 3c, 6c, 15c-90c & 1c soft paper show effects of trivial toning, only 6c really noticeable, others show only on back, almost too trivial to mention, Virtually All Well-Centered & of Very Fine Appearance, An Unusual Opportunity to Obtain this Rare & Popular Set..... 7,685.00
- 126 ★ **3c Blue, Re-Issue (125).** Fresh, Large Part o.g., centered trifle to right, Very Fine 1,350.00
- 127 ★ **90c Carmine & Black, Re-Issue (132).** Fresh, Large Part o.g., Extremely Fine 1,750.00
- 128 **90c Carmine & Black, Re-Issue (132).** Neat Dotted Grid cancel, Rich Colors, bottom perfs. touch, Attractive, Much Rarer Used than Unused, with P.F. Certificate 1,300.00

DESCRIPTIONS

EXTREMELY FINE: The finest condition for noteworthy outstanding stamps.

VERY FINE: In prime condition such as to satisfy the requirements of particular collectors.

FINE: Perforations or margins do not touch design on issues after 1890, but in some cases may just touch in earlier issues. If used, fairly light cancellation.

VERY GOOD: Generally nice appearance, but margins or perforations may cut in slightly.

GOOD: Average off-centering, or fairly attractive with slight defects.

ORIGINAL GUM is not to be expected on 19th Century stamps unless so stated in the description.

MINT: With original gum and never hinged.

Unless otherwise noted the Scott 1978 Specialized Catalog has been used for cataloging lots of the United States. The Scott 1978 Standard Catalog Volumes 1-4, Yvert et Tellier Timbres de France, and Stanley Gibbons 1978 British Commonwealth Stamp Catalogue have been used for cataloging all others.

BANK NOTE ISSUES



- 129 ★ **12c Dull Violet, Grill (140). Vertical Pair**, Fresh, Unusually Rich Color, Full o.g., B. Stamp Mint, few grill points show on B. stamp, none on T. stamp (as often with High Denomination Bank Note Grills), tiny toned spot on back of perf. tip of T. stamp only, mentioned for sake of accuracy, Very Fine Bank Note Rarity, **Only Known Pair**, with P.F. Certificate..... 16,000.00
- 130 **12c Dull Violet, Grill (140)**. Well-Centered, Circle of Wedges cancel, few trivial perf. creases, otherwise Very Fine, with P.F. Certificate .. 900.00
- 131 **24c Purple, Grill (142)**. Unusually Strong Grill, perfs. just touch at bottom, Fine Example of this Classic Bank Note Rarity, with P.F. & Royal Certificates 6,500.00
- 132 ☒ **2c Red Brown, Horizontal Bisect (146a var)**. Negligible gum soaks visible on few perf. tips, tied across cut by Blue Targets, matching "West Williamsfield O." pmk. on yellow drop cover, slightly reduced at left, Fine, Unique, ex-Gibson, Mentioned in Brookman Vol. II, p. 214, Horizontal Bisect Unlisted in Scott..... **E.XIII**
- 133 ☒ **2c Red Brown, Double Impression (146c)**. Doubling Shows Clearly, Well-Centered, tear at T., Blue Quartered Cork cancel, not tied, matching "Providence R.I." pmk., on cover, Very Attractive & Extremely Rare, Unlisted Used or on Cover in Scott **E.XIII**
- 134 ☒ **6c Carmine, Double Impression (148b)**. Very Pronounced Doubling about 1mm High, Especially Noticeable at B., few short perfs. at R., tied by very bold Quartered Cork cancel, "Stonington Ct Feb 20" pmk. on small mourning cover to Torquay, England, Red N.Y. Transit, "Torquay" backstamp, Fine & Rare, By Far The Finer of the Two Known Examples, the other one of which brought \$675.00 in our 518th Sale, mentioned in Brookman, Vol. II, p. 224..... **E.XIV**
- 135 P **1c-3c 1873 Bank Notes, Black Trial Color Plate Proofs on India (156TC-158TC). Complete Sheets of 100**, Card Mounted, 1c & 3c with Top & Bottom Imprint & Plate No. Margins, 2c with Plate No. only; 1c & 3c selvedge reduced affecting three plate nos., 2c light crease in top plate no. margin, otherwise Very Fine, Catalogued as Blocks since Plate Blocks are Unlisted, Rare Group 4,250.00+
- 136 ★田 **15c Orange (163). L. Margin Block of Fourteen**, Vivid Color, Fresh, o.g., Twelve Mint (T. pair hinged), two stamps short perfs. at R., otherwise Fine, A Handsome & Remarkable Block, ex-Lilly 3,150.00+



- 137 ★ **1c-90c Continental Bank Note Company Special Printings (167-177). Complete Set!** Each with Top or Bottom Sheet Margin, 1c-15c show "No.", Part Imprint or Part Plate No., **All Perfs. Intact** (remarkable, as nearly all Special Printings normally have perfs. trimmed to a greater or lesser degree), 2c & 10c some short perfs., 15c corner replaced, otherwise Fine-Very Fine, the 24c is Probably the Finest in Existence, A Most Unusual & Very Rare Offering 34,250.00
- 138 ★ **24c Dull Purple, Special Printing (175).** Well-Centered, Huge Left Margin, faint diagonal crease, otherwise Very Fine 1,350.00



- 139 ★ **2c Carmine Vermilion, Special Printing (180).** Single nearly severed perf. & tiny pinhole, otherwise Fine, Fourth Rarest of All Special Printings, with P.F. Certificate 11,500.00
- 140 ★田 **6c Pink (186). Block,** Fresh, o.g., Fine 1,000.00
- 141 ★田 **10c Brown (188). Horiz. Block of Six,** Marvelously Well-Centered, Fresh, Full o.g., B. row Mint, Secret Marks faint to virtually missing, An Extremely Fine & Beautiful Soft Paper Bank Note Block 865.00
- 142 ★田 **15c Red Orange (189). Block of 12 (4x3) with Left Sheet Margin,** Brilliant Mint, Vivid Color, Extremely Fine & Exceptionally Beautiful 660.00+



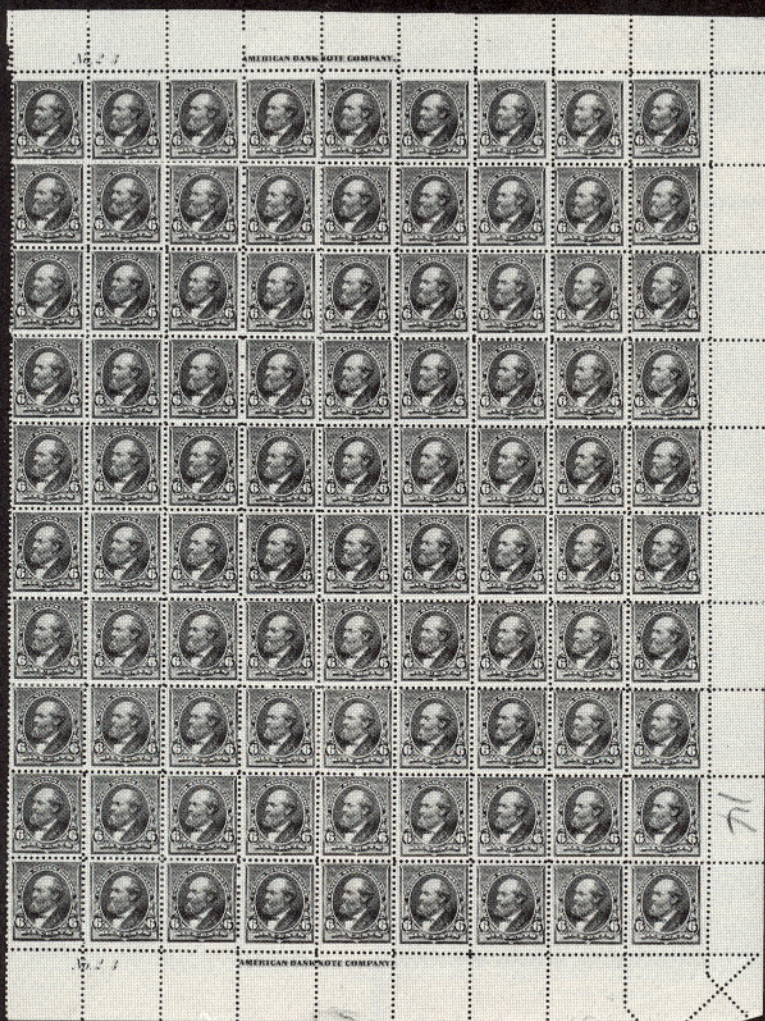
- 143 ★田 **90c Carmine (191). Horizontal Block of 12**, Fabulous Centering, Fresh, Rich Color, Virtually Full o.g., some minor perf. strengthening, slight wrinkling, thin spots & tiny margin tear affect five, otherwise Extremely Fine, An Absolutely Gorgeous Showpiece.....7,050.00+
- 144 ★ **2c Black Brown, Special Printing (193)**. Wonderfully Well-Centered, Rich Color, thin spots, Extremely Fine Appearance 3,500.00
- 145 ★ **7c Scarlet Vermilion, Special Printing (196)**. Vivid Color, Fine, with P.F. Certificate 1,750.00
- 146 ★ **15c Orange, Special Printing (199)**. Rich Color, thin spots, Fine Appearance, with P.F. Certificate 4,500.00
- 147 ★ **24c Dark Violet, Special Printing (200)**. Rich Color, faint crease & tiny thin spot, Fine Appearance, with P.F. Certificate 1,500.00
- 148 ★ **30c Greenish Black, Special Printing (201)**. Fresh Color, thin spot, bottom perfs. touch, Fine Appearing Example of this Rare Stamp, with P.F. & A.P.S. Certificates 4,000.00
- 149 **3c Blue Green, Double Impression (207 var)**. Used, Extra-wide T. Margin with "No." & trace of Plate No., Very Pronounced Doubling of Entire Design 2½mm High & 1mm to L., shows Especially Well in T. Margin, Fine, Probably Unique, Unlisted in Scott **E.XIII**
- 150 **10c Brown, Double Impression (209c). Horiz. Pair**, Clear Doubling, Oval "New York" cancel, L. stamp natural pre-printing crease, slight separation & hinge reinforcement, T. perfs. barely touch, Fine & Rare, Probably Largest Known Multiple, with P.F. Certificate **E.XIII**
- 151 ★田 **2c Pale Red Brown, Special Printing, Part Sheet of 66 (11x6) with Right Two Rows Imperforate Between Vertically (211B, 211Bc)**. Yields 12 Blocks, Six Singles & Six Variety Pairs, with Bottom Left Sheet Corner Imprint Margin, affixed on 10½x8" piece of paper, punch holes in left selvage (for storage in book) some slight "telescoping" of perforations, bottom left five stamps minor wrinkling, some gum staining in bottom sheet margin, Virtually All, including the Imperf. Between Pairs are Fine-Very Fine. This Block was submitted to the U.S. government by the American Bank Note Company as an example of printing done on a steam powered press. A Newly Discovered Rarity, Largest Block Known of this Stamp, Unique! 29,100.00+
- 152 ★ **3c Vermilion (214). Complete Sheet of 100**, considerable separation, affects Plate No. Blocks, few stuck down on mounted card, fresh, VG-VF centering..... 2,918.00



AMERICAN BANK NOTE COMPANY.

84

151



AMERICAN BANK NOTE COMPANY.

71

AMERICAN BANK NOTE COMPANY.

155



- 153 ★ 田 **90c Purple (218). Block**, Fresh, o.g., two tiny hinge reinforcements, two minute pinpoint thin specks, otherwise Fine-Very Fine, Attractive 1,500.00
- 154 ★ **90c Purple, Imperforate (218a). Vertical Pair**, Large to Huge Margins, faintly toned, T. stamp thin (as are virtually all Bank Note Imperforates), o/w Very Fine, One of the Rarest of All Bank Note Imperforates, Unpriced in Scott, with P.F. Certificate E.XV
- 155 ★ **6c Brown Red (224). Part Sheet of 90**, sheet less straight edges, few reinforcements, some separations in top plate block, VG-VF 3,108.00

COLUMBIAN ISSUE

- 156 P **1c-\$5.00 Columbians, Large Die Proofs (230P-245P)**. Die Sunk on $7\frac{1}{4} \times 5\frac{3}{4}$ " Cards, Very Fine, A Fresh & Magnificent Set 8,650.00
- 157 P **1c-\$5.00 Columbians, Plate Proofs on Card (230P-245P)**. Mounted in a similar manner to Lot No. 116, in a solid Walnut frame with a gold leaf facing. The proofs are Fresh & Extremely Fine Examples of this popular issue. Overall Size is $29\frac{3}{4} \times 29\frac{1}{4}$ inches. A Truly Handsome Showpiece E.XVI
- 158 P **1c-30c Columbians, Plate Proofs on Card, India (230P-239P)**. Fifty of each, 1c Block of 36 & "L" Shaped Block of 14, 4c is Block of 50 on India, other Values are Right Panes of 50, each with **Top & Bottom Plate No. Blocks of Eight** (3c on India), all but 6c have from one half to three horiz. or vert. rows creased, some lightly, generally not affecting plate blocks, two 2c have tears, one in bottom plate block, 30c negligible staining, An Exciting & Impressive Showing despite any faults 36,650.00
- 159 ★ **1c-5c Columbians (230-234). Complete Sheets of 100**, Fresh, o.g., sensibly reinforced around edges with tiny bits of hinge, Virtually All 1c-4c Fine-Very Fine including a Number of Choice Singles, Ninety Percent Mint, 5c mixed centering, mostly Fine, couple 1c & 2c small faults, An Exceptional Group of Rare Sheets 18,364.00

No. 104

AMERICAN BANK NOTE COMPANY.

Z

No. 129

AMERICAN BANK NOTE COMPANY.

I I



No. 39

AMERICAN BANK NOTE COMPANY.

N



No. 39

AMERICAN BANK NOTE COMPANY.

N

No. 99

AMERICAN BANK NOTE COMPANY.



No. 99

AMERICAN BANK NOTE COMPANY.

Y

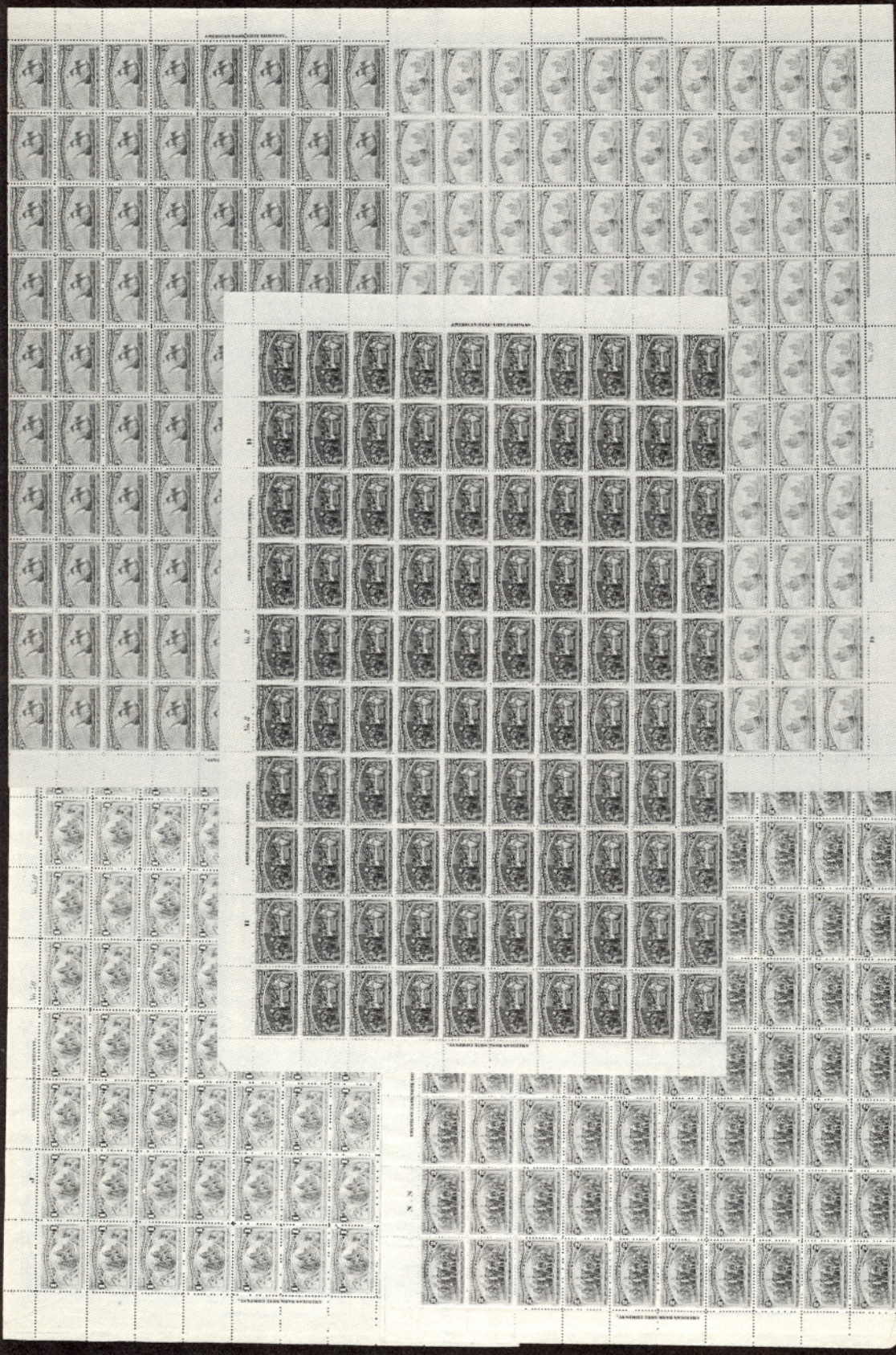


No. 38

AMERICAN BANK NOTE COMPANY.

M







- 160 ★ **2c Columbian, Imperforate (231b). Vertical Pair**, Large Margins, some wrinkles, repaired tears (all existing pairs of this error are faulty to a lesser or greater degree), Extremely Fine Appearance, Rare 950.00
- 161 ★ **4c Blue Columbian Error of Color (233a)**. Wonderfully Well-Centered, Nearly Full o.g., Extremely Fine, An Exceptional Example of this Popular Color Error, with P.F. Certificate 4,750.00
- 162 ★田 **30c Columbian (239). Mint Block**, Rich Color, Fabulous Centering, Extremely Fine, A Magnificent Block 575.00
- 163 ★田 **\$1.00 Columbian (241). Block**, Fresh, Rich Vibrant Color, Nearly Full o.g., some light negligible perf. strengthening, Very Fine 2,500.00
- 164 P田 **\$2.00-\$5.00 Columbians, Plate Proofs on Card (242P-245P). Blocks**, two each of \$3.00 & \$4.00 creased, otherwise Very Fine, Handsome Group..... 4,050.00
- 165 P田 **\$2.00-\$5.00 Columbians, Plate Proofs on Card (242P-245P). Top Right Imprint, Double Letter & Plate No. Blocks of Ten**, two \$3.00 creased, one lightly, other small tear, two \$4.00 lightly creased, toning on back only, \$5.00 small hole in selvedge not affecting plate block, also light selvedge crease barely affecting one end stamp not in plate block, otherwise Very Fine, Fabulous Appearance 13,110.00
- 166 P田 **\$2.00-\$5.00 Columbians, Plate Proofs on Card (242P-245P). Right Imprint Blocks of 18 (3x6)**, two horiz. rows of \$2.00 creased, one light, other bit heavy, one horiz. row of \$3.00-\$5.00 creased, last two very light, others Very Fine, Beautiful Exhibition Lot 17,730.00
- 167 ★田 **\$3.00 Columbian (243). Block**, Fresh, o.g., single nibbed perf., centered to right, perfs. clear to barely touch, with P.F. Certificate which states "some perforations rejoined", Rare & Attractive..... 5,200.00
- 168 ★ **\$5.00 Columbian (245)**. Gorgeous "Jumbo" Margins, without gum, Extremely Fine, with P.F. Certificate 1,450.00

No. 105 AMERICAN BANK NOTE COMPANY.

No. 107 AMERICAN BANK NOTE COMPANY.

C C



No. 106 AMERICAN BANK NOTE COMPANY.

No. 108 AMERICAN BANK NOTE COMPANY.

D D



165



AMERICAN BANK NOTE COMPANY.



AMERICAN BANK NOTE COMPANY.

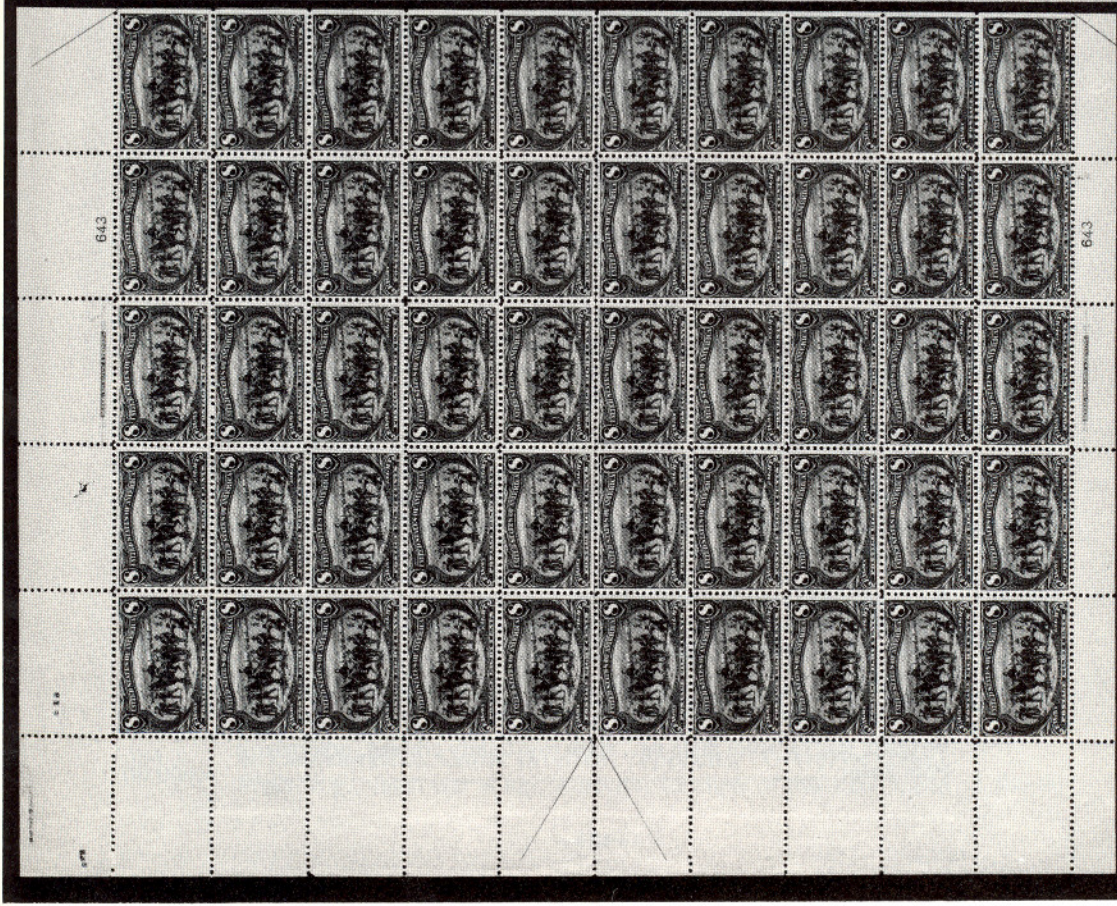
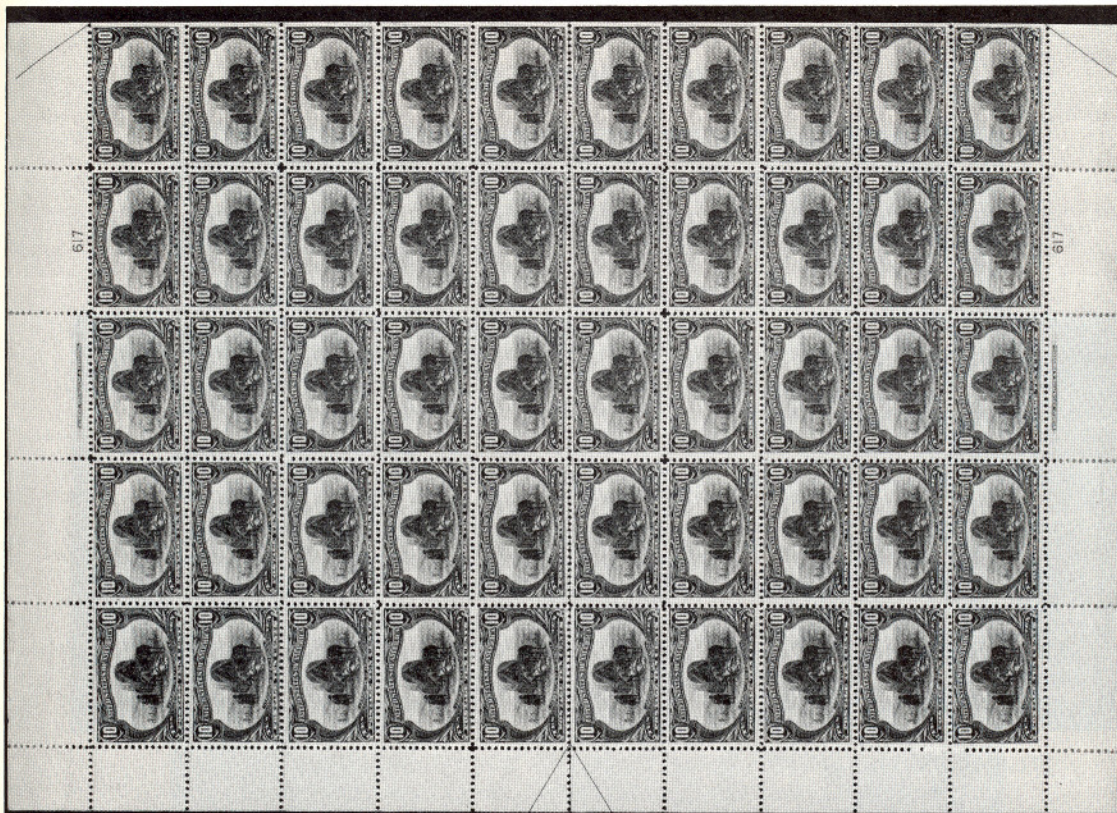


AMERICAN BANK NOTE COMPANY.



AMERICAN BANK NOTE COMPANY.

166



1894-1895 ISSUES

- 169 ★田 **\$2.00 Bright Blue (262). Block**, Fresh, o.g., small hinge reinforcement, right pair perfs. touch to tiny bit in, bottom left stamp small thin, Fine Appearance, Top Left Stamp Very Fine 2,400.00
- 170 ★ **\$5.00 Dark Green (263)**. Fresh, Nearly Full o.g., Nice Margins & Centering, Extremely Fine 1,250.00

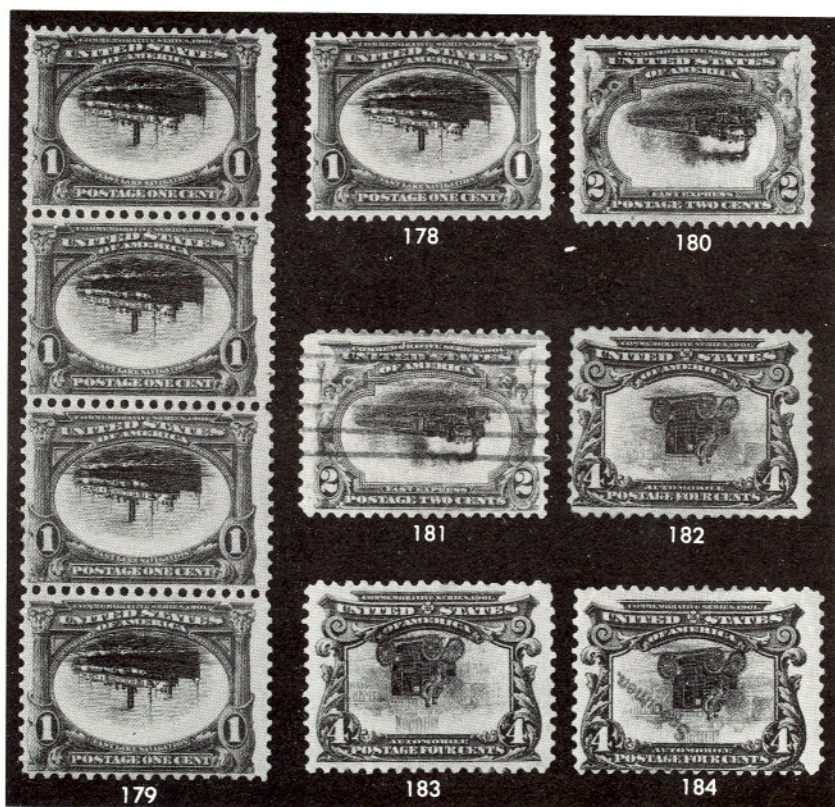


- 171 ★田 **50c Orange (275). Block**, Wonderfully Well-Centered, Fresh, o.g., Rich Color, tiny hinge reinforcement, minute thin speck in one, otherwise Extremely Fine 400.00
- 172 ★ **\$1.00 Black, Ty. I (276). Top Imprint Plate No. Strip of Three**, Very Fine 1,200.00

TRANS-MISSISSIPPI ISSUE

- 173 E **1c-\$2.00 Trans-Mississippi, Large Die Bi-Color Essays (Brazier 285E-E—293E-D)**. Complete Set, 1c, 5c, 8c & \$2.00 are hybrids, all Die Sunk on 8x6" cards, **\$2.00 Frame in Brown, Unlisted Color**, 1c faint toning band on surface, otherwise Fresh & Very Fine, Rare **E.XV**
- 174 P **1c-\$2.00 Trans-Mississippi, Large Die Proofs (285P-290P, 292P, 293P)**. Die Sunk on 7½x6¼" cards, complete set less 50c value, Wonderfully Fresh & Very Fine, Rare 4,500.00
- 175 ★ **1c, 2c Trans-Mississippi (285, 286). Complete Sheets of 50**. 1c Mint, few separations, negligible in plate no. selvage, perfs. touch on a few, Virtually All Fine-Very Fine. 2c all Mint but four, some separation & rejoining in bottom plate no. block, Very Good-Very Fine, Top Plate No. Block of Six Well-Centered 2,018.00
- 176 ★ **8c Trans-Mississippi (289). Complete Sheet of 50**, Mint, few tiny negligible selvage separations, Fine-Very Fine, Top Plate No. Block of Six Remarkably Beautiful 6,015.00
- 177 ★ **10c Trans-Mississippi (290). Complete Sheet of 50**, Stamps Mint, hinge reinforced separations in top & bottom plate no. selvage, tiny selvage tear far from plate no., sixth row lightly creased, otherwise a Fine Sheet 6,600.00

PAN-AMERICAN ISSUE



- 178 ★ **1c Pan-American, Center Inverted (294a).** Fine & Attractive Example of this Popular 20th Century Rarity 4,500.00
- 179 ★ **1c Pan-American, Center Inverted (294a).** Vertical Strip of Four, traces of o.g., bottom stamp small thins, otherwise Very Fine, Probably Unique in this Configuration, with P.F. Certificate..... 18,000.00+
- 180 ★ **2c Pan-American, Center Inverted (295a).** Magnificent Centering, without gum, small thin spot & minute pinhole, Extremely Fine Appearance..... 24,000.00
- 181 **2c Pan-American, Center Inverted (295a).** Remarkably Well-Centered, Neat Machine cancel, pressed out vertical crease ending in small closed tear, expertly reperfed., Very Fine Appearance, Enormously Rare, Less than Five Used Examples Known, with P.F. Certificate..... 7,500.00
- 182 ★ **4c Pan-American, Center Inverted (296a).** Large Part o.g., tiny closed tear at bottom, otherwise Very Fine, with P.F. Certificate 7,500.00
- 183 ★ **4c Pan-American, Center Inverted (296a).** Beautiful Margins & Centering, Fresh, disturbed o.g., small faults, otherwise Extremely Fine, One of the Most Beautiful Appearing Examples of this Rarity in Existence 7,500.00
- 184 S **4c Pan-American, Center Inverted, "Specimen" Overprint (296b).** Fresh, o.g., small tear at top, Attractive Example of this Rare Stamp 3,500.00

- 185 ★田 **5c Pan-American (297). Bottom Imprint & Double Plate No. Block of Six**, Rich Colors, light negligible perf. strengthening, Fine-Very Fine 1,445.00+
- 186 ★田 **8c Pan-American (298). Top Right Imprint & Plate No. 1150 Block of Eight**, Mint, Wonderfully Well-Centered, Extremely Fine, Perfection 2,480.00
- 187 ★田 **8c Pan-American (298). Block of Sixteen**, Remarkable Centering, hinge reinforcements, Extremely Fine 1,080.00

1902 ISSUE

- 188 ★田 **\$1.00 Black (311). Block**, hinge remnants, bottom right stamp tiny thin spots, otherwise Fine 1,350.00
- 189 ★田 **\$2.00 Dark Blue (312). Block**, hinge remnants, small reinforcement between right pair, Fine 1,900.00
- 190 ★ **\$5.00 Dark Green (313). Extra Wide Margins**, Extremely Fine, A Lovely Stamp 850.00
- 191 ★田 **5c Blue, Imperforate (315). Block**, Top Pair lightly hinged, Bottom Pair Mint, Extremely Fine 1,250.00
- 192 ★田 **5c Blue Imperforate (315). Block of 81 Incl. Two Imprint Plate No. Blocks of Six**, Mint, Extremely Fine, Magnificent Show-piece **Photo on back cover** 33,000.00



- 193 ★ **1c Blue Green, Coil (316). Strip of Three**, Very Fine & Extremely Rare 18,750.00
- 194 ★ **5c Blue, Coil (317). Pair**, Fresh, small hinge remnants, Fine & Rare, with P.F. Certificate 2,250.00



185



188



189



186



198



187



191



218



199



200



219



224

- 195 ★ **2c Carmine, Coil (321). Pair**, Part o.g., some perfs. rejoined, bottom stamp tiny bit in at top, Top Stamp Extremely Fine, Excessively Rare, signed G.B. Sloane, with P.F. Certificate 22,500.00
- 196 ★ **2c Carmine, Coil (322). Pair**, gum trifle disturbed from hinge removal, Very Fine & Rare with P.F. Certificate..... 2,250.00

LOUISIANA PURCHASE, JAMESTOWN



- 197 P **1c-10c Louisiana Purchase, Small Die Proofs (323P-327P)**. On small gray cards from the Roosevelt Album, Very Fine, Handsome & Rare Set 2,500.00
- 198 ★田 **3c Louisiana Purchase (325). Mint Top Imprint & Plate No. 2101 Block**, Very Fine 400.00
- 199 ★田 **10c Louisiana Purchase (327). Mint Horizontal Block of Six**, Fine-Very Fine 705.00
- 200 ★田 **10c Louisiana Purchase (327). B. Imprint & Pl. No. 2108 Block**, Barest Trace of Hinging, Fine & Very Attractive 1,600.00



- 201 P **1c-5c Jamestown, Small Die Proofs on Proof Paper (328P-330P)**. Characteristic paper irregularities, 1c small thin spot, 5c light crease, Very Fine Appearing Rare Set 1,875.00



- 202 ★ 10c Yellow, Coil (356). Pair, Fine 1,450.00
 203 ★ 10c Yellow, Coil (356). Line Pair, gum bit disturbed from hinge removal, natural gum creases, Fine & Rare 3,250.00

BLUISH PAPERS

- 204 ★田 1c Green, 2c Carmine, Bluish (357, 358). Blocks, 2c gum disturbed, Very Fine; 1c Mint, Beautiful Margins & Centering, Extremely Fine 360.00
 205 ★田 2c Carmine, Bluish (358). Mint R. Imprint Plate No. Block of Six, Fine 575.00
 206 ★田 3c Deep Violet, Bluish (359). Block, with P.F. Certificate which states "genuine, with a tiny stain around two perforations," really inconsequential, Fine & Rare 2,800.00



- 207 ★ 4c Orange Brown, Bluish (360). Lightly hinged, Fine & Choice Rarity, with P.F. Certificate 8,000.00
 208 ★田 4c Orange Brown, Bluish (360). Block, Exceptionally Well-Centered, gum on top pair trifle disturbed from hinge removal, Extremely Fine, A Magnificent Block, ex-Lilly, with P.F. Certificate 33,500.00
 209 ★ 5c Blue, Bluish (361). Disturbed o.g., from hinge removal, Fine & Rare 1,900.00
 210 ★田 5c Blue, Bluish (361). Top Left Corner Margin Block, tiny sensible hinge reinforcements, Very Fine 8,000.00
 211 ★田 6c Red Orange, Bluish (362). Block, Exceptionally Well-Centered, tiny insignificant hinge reinforcements, Extremely Fine 1,950.00
 212 ★ 8c Olive Green, Bluish (363). Top Imprint & Plate No. 4922 Strip of Three, tiny hinge reinforcement bits, insignificant thin spot in selvage far above imprint, Fine & Extremely Rare, Only One other Such Strip Known, No Plate Blocks Exist 24,000.00+



205



206



208



211



213



210



214



215

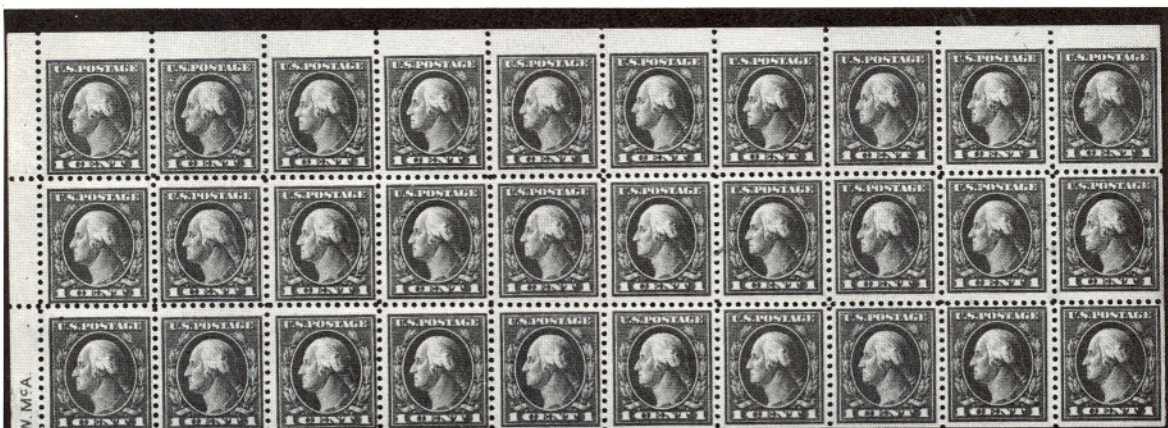


216

213 ★田	10c Yellow, Bluish (364). Block, Very Fine, signed Economist	2,250.00
214 ★田	13c Blue Green, Bluish (365). Block, Lovely Centering, purple "C.A.S." handstamp as often, Extremely Fine, Rare & Beautiful, with P.F. Certificate	5,250.00
215 ★田	15c Pale Ultramarine, Bluish (366). Block, Fine & Attractive.....	1,750.00
216 ★田	2c Lincoln, Bluish (369). Bottom Left Corner Margin Block, top pair hinge remnant, Bottom Pair Mint, Extremely Fine	510.00
217 P	2c Alaska-Yukon, Large Die Proof (370P). Die Sunk on 8x6" Card, Very Fine, Rare.....	825.00

1912-1920 ISSUES

218 ★田	5c Panama-Pacific, Perf. 10 (403). Block, top pair minor hinge remnant, Bottom Pair Mint, Extremely Fine.....	390.00
219 ★田	10c Panama-Pacific, Perf. 10 (404). Block, with Right Plate No., Well-Centered, Two Mint, other two barely hinged, Extremely Fine..	2,750.00
220	2c Carmine Ty. Ia, Shermack Vending Machine Perforation (482A). Neat Wavy Line Machine cancel, severed from the roll considerably off center as often, small thin spot, still a Desirable Example of this Rare Stamp, with P.F. Certificate	4,500.00
221 ★	2c Carmine Coil, Ty. II (491). Pair, Fine & Rare, with P.F. Certificate	1,600.00
222 ★	1c Green, 2c Rose, A.E.F. Booklet Panes of 30 (498f, 499f). Complete Set, 2c Position W4, including a Set of 2c Booklet Covers (some staining), four 1c affected by light toning, one faint thin, 2c has five stamps with thins, virtually all faint, otherwise Fine-Very Fine	4,375.00+
223 ★	2c Rose, A.E.F. Booklet Pane of 30 (499f). Without tab, slightly disturbed o.g. on two, one with suggestion of tiny thin spot, otherwise Fine, catalogs \$4,000.00 as complete pane, Very Rare	—
224 ★田	2c Deep Rose, Ty. Ia (500). Top Plate No. 10209 Block of Six, couple hinge reinforcements, Fine & Rare	1,100.00
225 ★	\$2.00 Orange Red & Black (523). Lovely Margins, Extremely Fine	300.00
226 ★田	\$2.00 Orange Red & Black (523). Mint Center Line Block, tiny natural inclusion spot in one, Extremely Fine	1,400.00
227 ★田	\$2.00 Orange Red & Black (523). Left Arrow Block, Fine	1,350.00
228 ★田	\$2.00 Orange Red & Black (523). Arrow & Double Plate No. Block of 12, Fresh Colors, small natural gum skips on two, couple light natural wrinkles & bends, selvage bit narrow but clear of plate nos., tiny staple holes in selvage, folded between vertical perfs. but still intact, Fine-Very Fine Appearance, There Are Probably No More Than Ten No. 523 Plate Blocks in Existence	7,200.00
229 ★田	\$5.00 Deep Green & Black (524). Mint Horizontal Block of Eight with Arrow & Black Plate No., Very Fine	1,065.00
230 ★田	\$5.00 Green & Black (524). Top Double Plate No. Arrow Block of Eight, Very Fine.....	2,350.00
231 ☒	1c Green (544). Vertical Strip of Four with Bottom Sheet Margin, on large size cover tied by "San Francisco Calif. Mar 19 1924" Duplex Machine pmk., cover bit toned, somewhat irregular at top, top stamp minor wrinkles, otherwise Fine, Largest Known Multiple of this Rare Stamp either on or off-cover.	4,500.00+
232 ★田	\$2.00 Carmine & Black (547). Center Line Block, Bottom Pair Mint, two trifle heavy natural wrinkles, otherwise Fine-VeryFine.....	500.00
233 P	1c-5c Pilgrims, Large Die Proofs (548P-550P). Complete Set, 2c light margin bend far below design, Very Fine, Rare	3,000.00



300
2 CENT POSTAGE STAMPS
\$6.



222



223



228



226



227



232



229

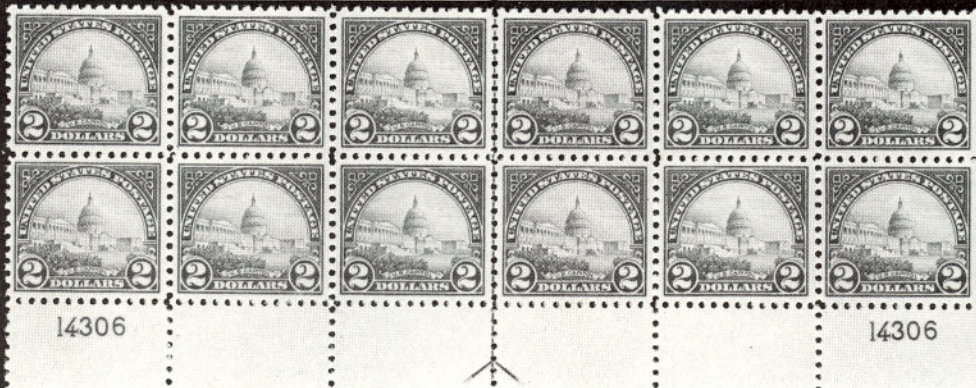


230



233



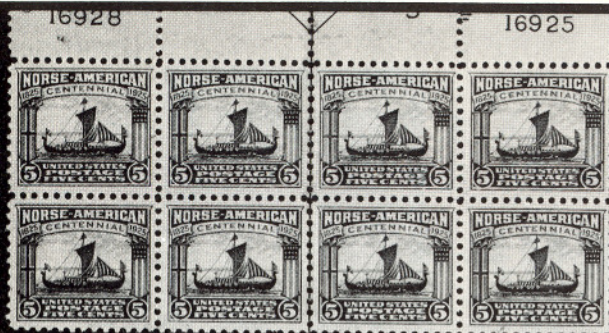


234

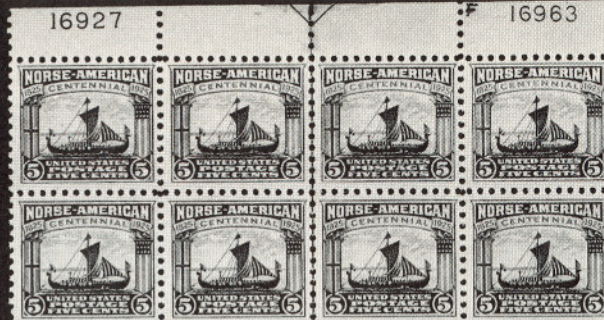


243





241



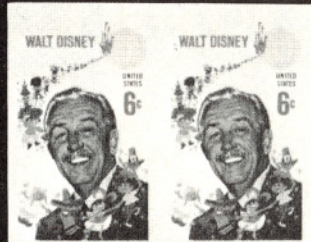
242



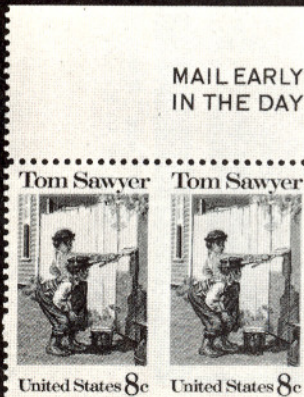
251



245



244



247



246



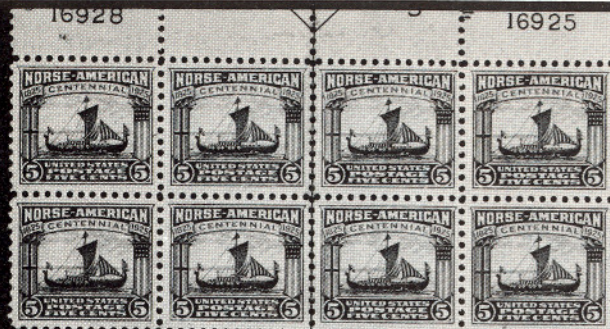
248



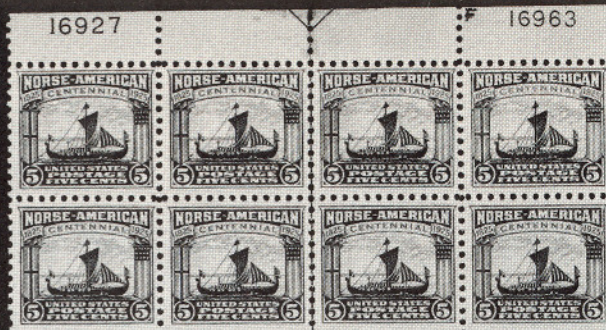
249



250



241



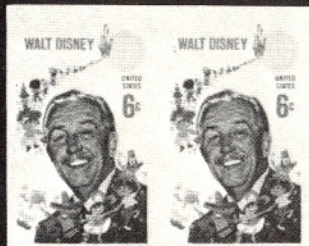
242



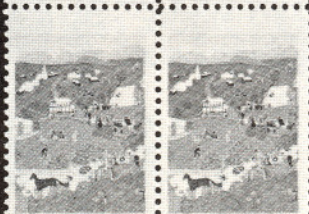
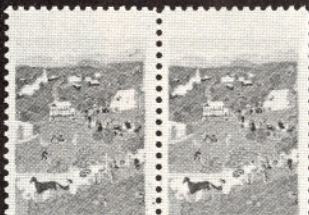
251



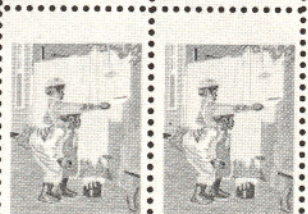
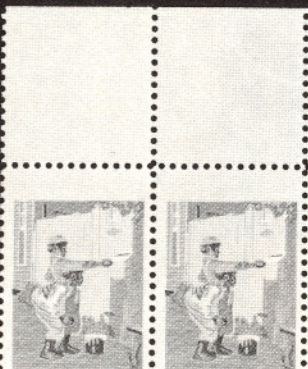
245



244



246



248



249



250



247

1922 TO DATE

234 ★田	\$1.00 Violet Black, \$2.00 Deep Blue (571, 572). Horizontal Blocks of Twelve with Bottom Arrow & Two Plate Nos., \$1.00 & nine \$2.00 Mint, Very Fine	1,017.50
235 ★田	\$5.00 Carmine & Blue (573). Mint Horizontal Block of Eight, Remarkably Rich Colors, Fine-Very Fine	1,150.00
236 ★田	\$5.00 Carmine Lake & Dark Blue (573a). Arrow & Double Plate No. Block of 12, 11 stamps Mint (including plate block which is Very Fine), one stamp in end pair bit of black paper on back & natural wrinkle, Fine-Very Fine	4,060.00



237	2c Harding, Rorary, Perf. 11 (613). Unbelievably Well-Centered, vertical pencil line cancel, Extremely Fine, Probably the Best Centered Example of this 20th Century Rarity in Existence, with P.F. Certificate	7,500.00
238 P	1c-5c Huguenot-Walloon, Large Die Proofs on Wove (614P-616P). Complete Set, light creases in margins far below designs, Very Fine	1,650.00
239 P	1c-5c Lexington-Concord, Large Die Essay, Proofs (617P, 618E, 619P). India Paper, Die Sunk on 6x8" Cards, 1c & 5c Completed Proofs, 2c Virtually Complete Design except tiny spaces between letters of "Birth Of Liberty" not cut out, Very Fine, Rare.....	E.XVI
240 P	2c, 5c Norse-Americans, Small Die Proofs (620P, 621P). On 6x8" Die Sunk Cards, autographed or initialed by P.O. Officials, Very Fine Set	1,350.00
241 ★田	5c Norse-American (621). Arrow & Double Plate No. Block of Eight, Wonderfully Well-Centered, Extremely Fine, Choice	800.00
242 ★田	5c Norse-American (621). Arrow & Double Plate No. Block of Eight, Stamps Mint, light negligible selvage perf. strengthening, Very Fine	800.00
243 ★田	2c Carmine, Type II (634A). Mint Plate No. Block, Very Fine	1,250.00
244 ★	6c Walt Disney, Imperforate (1355c). Mint Horizontal Pair, Very Fine, Rare	1,250.00
245 ★	6c Waterfowl Conservation, Vertical Pair Imperf. Between (1362a). Mint, Very Fine, Reputedly Only 15 Pairs Known	600.00
246 ★田	6c Grandma Moses, Black "6c U.S. Postage" & Prussian Blue "Grandma Moses" Omitted (1370b). Mint Block, Very Fine.....	1,400.00
247 ★	8c Tom Sawyer, Horizontal Pair Imperf. Between (1470a). Mint, with Top "Mail Early In The Day" Margin, Very Fine & Very Rare, Reputedly Only Seven Pairs Known, Listed but Unpriced	E.XIV
248 ★田	8c Tom Sawyer, Red & Black "Tom Sawyer", "United States 8c", etc. Omitted (1470b). Mint "Zip Code" Block (determined by albino impression), Very Fine, Probably Unique Position Piece	1,200.00+
249 ★田	8c Tom Sawyer, Yellow & Gray Colors Omitted (1470 var). Mint "Zip Code" Block, Very Fine & Very Rare Unlisted Variety, Only One Sheet of 50 Known, Unique Position Block	E.XV

- 250 ★田 **8c Emily Dickinson, Black & Olive, "Emily Dickinson", "U.S. 8c", "American Poet", etc. Omitted (1436a). Mint "Zip Code" Block** (determined by albino impression) Very Fine, Probably Unique Position Piece 1,300.00+
- 251 ★田 **10c Zip Code, Yellow Color Omitted (1511 var). Mint Corner Block** with "Use Zip Codes" in Margin, Very Fine **E.XIII**
- 252 ★ **13c Eagle & Shield Imperforate (1596a). Complete Mint Sheet of 100** incl. The Unpriced Plate No. Block of 20, Very Fine, A Valuable Contemporary Error 12,500.00+

AIR POST ISSUES

- 253 ★田 **16c Green (C2). Arrow & Plate No. 8900 Block of Six, Deep Rich** Shade, Exceptionally Well-Centered, Extremely Fine..... 1,600.00
- 254 ★田 **24c Carmine Rose & Blue (C3). Mint Top Margin Block of 12 with** Two Plate Nos., Arrow & Double "Top", Very Fine..... 2,250.00



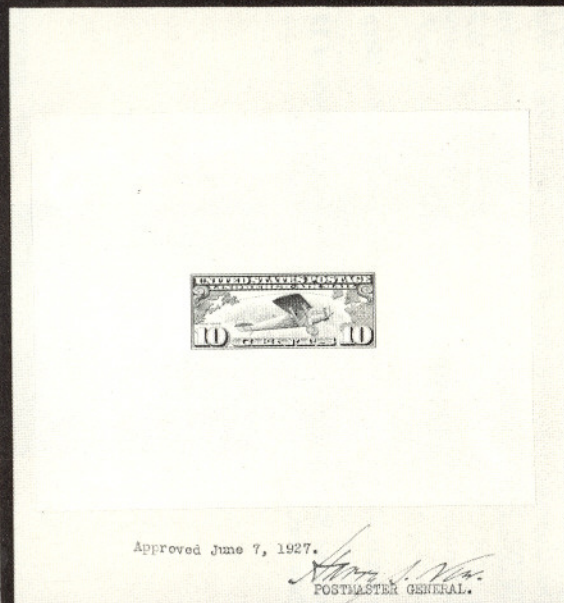
- 255 ★ **24c Carmine Rose & Blue, Center Inverted (C3a). Fresh, Full** Original Gum, barest trace of light hinging, Well-Centered & Extremely Fine, A Tremendous Rarity 50,000.00
- 256 P **10c Lindbergh, Large Die Proof (C10P). Die Sunk on 8x6" Card,** Very Fine, Rare..... 1,900.00
- 257 P **65c Graf Zeppelin, Large Die Proof (C13P). 5½x4½",** tiny hinging translucencies & light crease far from design, Very Fine, Very Rare.. 4,000.00
- 258 ★田 **65c Graf Zeppelin (C13). Top Plate No. 20077 Block of Six, Very** Fine 2,750.00
- 259 ★田 **65c-\$2.60 Graf Zeppelins (C13-C15). Bottom Plate No. Blocks of** Six, 65c top left stamp tiny thin, top right stamp thin & nibbed perf; \$1.30 top left stamp thin & short perf., \$2.60 natural gum creases, light perf. strengthening between left pair, otherwise a Fine-Very Fine Set 17,250.00
- 260 ☒ **65c-\$2.60 Graf Zeppelins (C13-C15). Complete Set Neatly tied by** Double Ovals on Matching Cacheted **First Day Covers**, Purple "Washington, D.C. Reg. Sec. 19 Apr 1930" pmks. on back, Fine-Very Fine 1,975.00



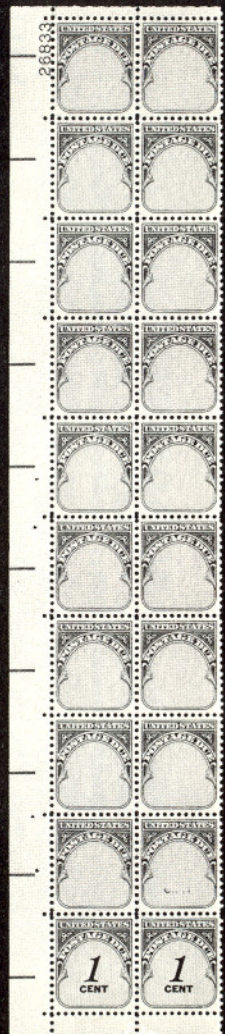
- 261 P **20c-50c Trans-Pacific, Small Die Proofs (C20P-C22P). Very Fine,** Rare & Beautiful Set 4,500.00



252



256



263

F 20077



258



20078



20087



20095

SPECIAL DELIVERY-LOCALS

- 262 ★田 **10c Ultramarine, Special Delivery (E9). Top Plate No. 5863 Block of Six**, Beautifully Centered, End Pairs Mint, Very Fine 2,250.00
- 263 ★田 **1c Carmine Rose Postage Due, "1 Cent" Omitted (J89a). Mint Plate No. Block of 20**, includes two pairs with and without "1 Cent" (J89b), another single with only partial "1 Cent", all others with value omitted, Extremely Fine2,700.00+
- 264 S **\$2.00 State "Specimen" Ovpt. (O68SD). Fresh, Centered to R. as usual, Perfs. barely touch at R., Only 32 Issued, Rare.....** 1,350.00
- 265 ★ **1c-\$60.00 Newspapers, American Bank Note Company Privately Perforated Special Printings (PR57 var-PR79 var, PR81 var). Horiz. Pairs**, incl. 9c Pair on Soft Paper (Complete Set as Listed in Luff), couple insignificant separations, two lower values minor thin spots, otherwise Fine-Very Fine, A Beautiful & Unique Set (no other set known in pairs) **E.XVI**
- 266 ★ **Eagle Carrier 1c Blue (LO2). Sheet of 100**, o.g., bits of paper hinging on each of four corners touching only one stamp, Very Fine piece ..1,625.00+
- 267 ★ **(1c) Franklin Carrier Reprint (LO3). Half Sheet of 50** with part of imprint, thirteen have creases and one thin, Handsome and Very Fine Appearance1,025.00+
- 268 ㊟ **City Despatch Post, New York, N.Y. 3c Black on Grayish (40L1). The First Adhesive Stamp Used in the U.S.**, Large Margins, tied by Red "City Despatch Post N.Y. Feb 24 (1842) 10'Clock" on Folded Letter to the President of the New York Bank for Savings. Contents refer to a proposition to deliver notices for the bank & also to place a pick-up box in the bank, signed by **Alexander M. Greig**, commonly believed to be to owner of the Post (Henry T. Windsor, British merchant residing in the U.S. was actual owner). The City Despatch Post was in operation less than five months before it was sold to the U.S. Government (U.S. City Despatch Post), who operated it for a little over four years. Interesting circular accompanies listing 72 stations using the service, mailing information, etc., some cover soiling, neatly hinge reinforced separations at fold, Stamp Very Fine, A Great Postal History Item, both Historically & Philatelically **E.XIV**

WESTERN EXPRESS COVERS

- 269 ㊟ **Jones & Russells Pike's Peak Express Co. Denver City Mar 22 1860**, Mostly Bold Handstamp on Fresh Orange Cover to Ill., ms. "**PP and Leavenworth Express**", franked with **3c Red (26)** tied by "Leavenworth City KT Mar 30 1860" pmk., couple minor cover nicks, otherwise Very Fine, Handsome & Rare Western Cover **E.XIV**
- 270 ㊟ **Hinckley & Co.'s/Express Mail/Fast Run./Via Denver./Paid Through**. Five Line Printed Frank in Fancy Scroll on 3c Star Die Entire (U27) to New Hampshire, "Hinckley & Co.'s Express Mar 18 1861" & Green Double Circles "Saint Joseph Mo" Handstamps, Three Line Express Co. Return Card at Bottom Left, Fine & Rare, Miner's Letter accompanies, ex-Emerson, Knapp **E.XIII**



253



254



257



285



286



262



294



288



289



296



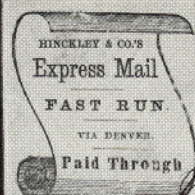
268

Philip Hone

Res.

New York Pa

43 St



270

K. 109.

CARE OF
HINCKLEY & CO'S EX.,

Saint Joseph, Missouri

Judge, Ambrose Cossett
Claremont
New Hampshire.

272

En Franchise
Département
Canton de
Madame
Ballis àMonnaie
Pouhatan Hotel

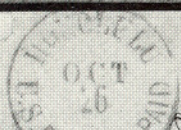
282

Via Panama.

273

Mrs. John F. Stanton
Mrs. John F. Stanton

269

Mrs. Nicholas Barnard
Mrs. Laura Cook

292

A.
VARNA

301

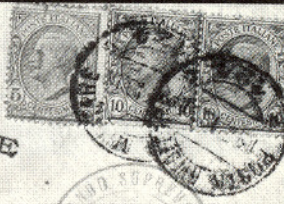
Milano



323

LIVORNO

315

AVIAZIONE
VERNMajor General B. J. VALDES
Hq. P.A. Advance Echelon
A.P.O. 501.

293EX

Lieutenant (j.g.) Basil W. Cooney
175th Infantry



- 271 **Wells, Fargo & Co., \$2.00 Green (143L4).** Three Large Margins, clear at bottom, tied by San Francisco Blue **"Running Pony"** Oval & used with **10c Green (68)** on 10c Yellow Green on Buff Entire (U41), Double Weight Cover to Salem, Mass., Red Printed Frank, both U.S. stamps tied by "Atchison, Kan." Double Circle, ms. "Pr Pony Express Paid", couple small cover tears at bottom, A Sensational Rarity & grossly under-cataloged, One of Only Three \$2.00 Green Pony Covers on record, ex-Barkhausen **E.XVII**
- 272 **Whiting & Co's Express, Quincy. Paid,** Perfectly Struck Double Circle on March 1859 Cover to France. Red "Marysville Cal." pmk. of Origin. Carried by Whiting's to San Francisco where pmkd. in Red "San Francisco 30 Paid Mar 21 1859" for Pacific Ocean Mail via the Nicaragua Route. Red "New Paid York 12", French Transits, cover slightly worn, still a Handsome & Desirable Postal History Rarity (It is believed that this is the latest known use of the Whiting marking) with P.F. Certificate **E.XV**
- 273 **"Via Panama" illustrated Steamboat cover, 10c green (35)** tied with San Francisco pmk. on cover to New York, Fine and Handsome **E.XIV**

REVENUE ISSUES

- 274 **6c Proprietary (R31c).** Exceptionally Rich Color, Neat Three Line 1871 Handstamp cancel (not the customary Osgood), filled thin, otherwise Very Fine, Vastly Superior Quality for this Rare Revenue **1,250.00**
- 275 **\$1.30 Foreign Exchange, Imperforate (R77a).** Large to Huge Margins including Bottom Sheet Margin, Exceptional Color, Attractive 20mm 1863 Handstamp cancel, Extremely Fine, Incomparable..... **800.00**
- 276 **\$1.90 Foreign Exchange, Imperforate (R80a).** Large to Huge Margins, Beautiful Pastel Shade, Clear "D.S. & Co. 1863" Handstamp cancel, Extremely Fine, About as Choice as could possibly exist..... **700.00**



264



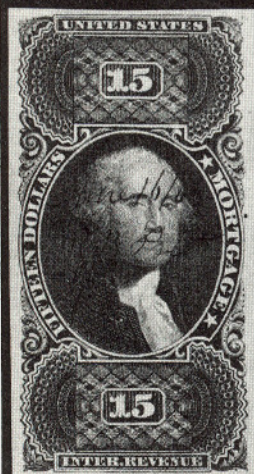
265EX



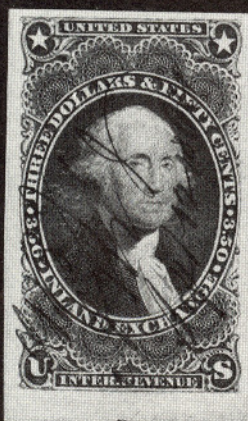
275



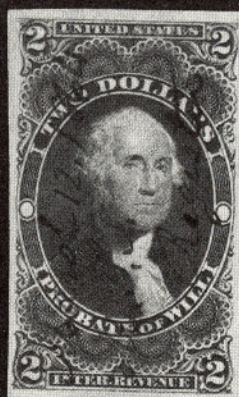
276



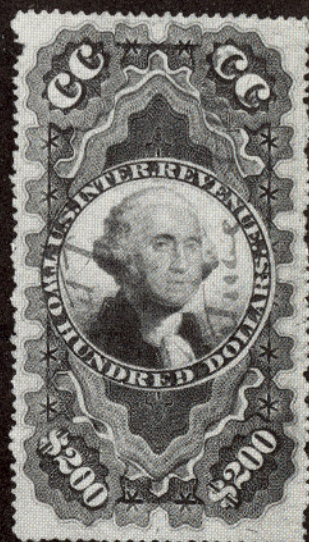
279



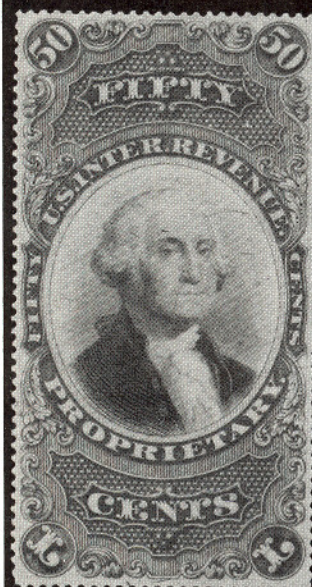
278



277



280



281



225



274



287



283



295



291



277	\$2.00 Probate of Will, Imperforate (R83a). Large Margins, Rich Color, Three Line 1864 ms. cancel, light crease at top ending in tiny tear, otherwise Extremely Fine	425.00
278	\$3.50 Inland Exchange, Imperforate (R87a). Huge Margins including Bottom Sheet Margin, Lovely Deep Color, neat ms. cancel, Extremely Fine, A True Showpiece	325.00
279	\$15.00 Mortgage, Imperforate (R97a). Large Margins, Intense Color, small ms cancel, Extremely Fine	200.00
280	\$200.00 Blue, Black & Red, Second Issue (R132). Well-Centered, light ms. cancel, some light wrinkles, still Very Fine, Rare, One of the Most Handsome of all U.S. Revenues	1,650.00
281 ★	50c Green & Black Proprietary (RB8a). Unused, o.g., Extremely Fine (Cat. \$275 used)	E.XIII

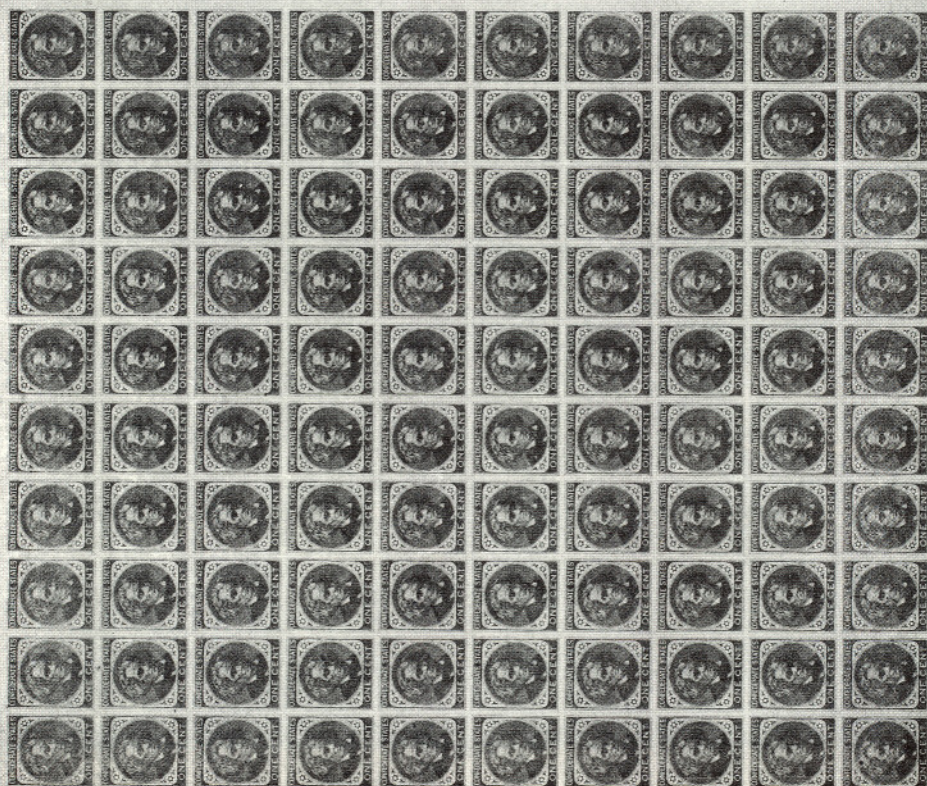
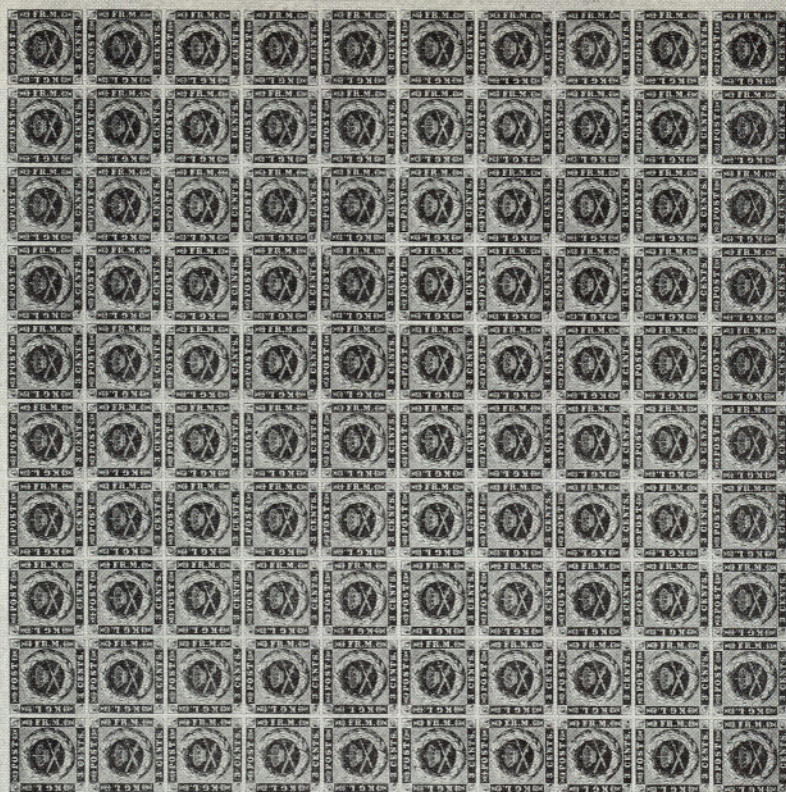
CONFEDERATE STATES

282 ☒	Fredericksburg, Va., 5c Blue on Bluish (26X1). Horiz. Pair, Large Margins to tiny bit in at right, small nicks & minor gum soaks at top, tied by "Fredericksburg Va Paid" pmks. on Cover to Richmond, Va., right stamp has long closed tear due to careless opening, still an Attractive & Rare Confederate Postmaster Cover	2,000.00
283	10c Blue, Frame Line(10). Large Margins Showing Two Full Frame Lines, bit of a third at Right, Lovely Pastel Color, Double Circle Town pmk., Extremely Fine	550.00
284 ★	1c Orange (14). Complete Mint Sheet of 100, Fresh Color, some slight wrinkling throughout, most noticeable in top left corner, Very Fine & Rare Sheet	4,625.00+

U.S. POSSESSIONS

CANAL ZONE

285 ★田	1924, \$1.00 Violet Brown, Overprint Ty. A (81). Top Plate No. 14268 Block of Six, insignificant hinge remnants, light selvage crease well above plate no., Fine-Very Fine, Very Rare	1,000.00
286 ★田	1928, 50c Lilac, Overprint Ty. B (94). Left Plate No. 14043 Block of Six, Very Fine, Very Rare	900.00
287 ★	1962, 4c Thatcher Bridge, Silver (Bridge) Omitted (157a). Mint, Extremely Fine	3,500.00
288 ★田	1924, 10c Deep Claret Postage Due Overprint Ty.A (514). Top Imprint, Star & Plate No. 5540 Block of Six, Mint, Gorgeous Centering, Extremely Fine	550.00
289 ★田	1925, 10c Carmine Rose Postage Due, Double Overprint (J20c). Right Plate No. 18725 Block of Six, perfs. close to tiny bit in as usual, Believed to be Unique, Unlisted	900.00+
290 ★	DANISH WEST INDIES, 1866, 3c Rose (2). Complete Sheet of 100, Full o.g., Virtually All Mint, few negligible gum bends & wrinkles as to be expected, negligible gum translucency in one stamp, Extremely Fine, A Fabulous U.S. Possessions Showpiece	5,625.00+
291 ★	GUAM, 1930, 2c Green Errors (M7a, M7b) "Graud" and "Mial", Mint, Fine-Very Fine	500.00
292 ☒	HAWAII, 1857, 5c Blue, Line Through "Honolulu", Pos. 2 (8 var). Clear to Large Margins, tiny tear, Used in Combination with U.S. 12c Black (17), Three Large to Huge Margins including Right Sheet Margin & bit of next stamp at Left, ample to barely in at top, both tied on Cover to N.Y. by "San Francisco Cal Nov 14 1855" pmk., Red "Honolulu U.S. Postage Paid", cover has considerable skillfull restoration & despite some slight staining & evident mended tears is of Attractive Appearance, Very Rare, signed Ashbrook, Hawaiian Variety Unpriced Used	4,000.00



- 293 ☒ **PHILIPPINES, 1944, 2c-1p "VICTORY" Handstamps (464 two, 465, 467, 469, 471, 472, 474-477, 479, 481, 483, 484, C63, E9).** Two large size covers, Nos. 467, 469, 475, 476, 483, 484, C63 on one cover tied by Dec. 16 (1944) Leyte pmks. to a Lt. in the 6th. Naval Construction Battalion, others tied by Nov. 8 (1944) Leyte pmks. to Wash. D.C., Five Line Handstamp "First Day Cover/First Commonwealth Stamps/Sold In Reopened Post Offices/In the Liberated Philippines/November 8, 1944", nearly all show some evidence of tropical staining, mostly in margins, the Extremely Rare 1p has some short perfs. at right, small cover tape stains on former, An Enormously Rare Pair of Covers, former Kessler guarantee, latter with Friedl Certificate, copy of 1946 letter from the Assistant Director of Posts in Manila giving how, why, when & where these stamps were made, former cover with return address of Major General Valdes (who authorized the issue).....5,600.00+
- 294 ★ 田 ———, **1907, 10c Ultramarine, Special Delivery Special Printing (E2A). Block,** each stamp shows "Damaged Transfer Below "N" of Cents (as on U.S. No. E6), tiny separation, slight suggestion of tropical toning, still Fine, Rare.....2,850.00+
- 295 ★ ———, **1944, 6c Dark Brown Official, "Victory" Handstamp (O40A).** Well-Centered, tropical o.g., thin spots & minor perf. crease, Very Fine Appearance, Very Rare.....3,000.00
- 296 ★ 田 ———, **1944, 10c Rose Carmine Official, "Victory" Handstamp (O41). L. Margin Block,** Well-Centered, tropical o.g., minute margin thin speck in one, otherwise Very Fine.....1,000.00
- 297 ★ ———, **1944, 20c Light Olive Green Official, "Victory" Handstamp (O43).** Well-Centered, wide natural s.e. at L., tropical o.g. as always, Very Fine, Very Rare.....3,000.00

GENERAL FOREIGN

- 298 ★ **AUSTRIA, 1936, 10s Dollfuss (380).** Extremely Fine.....800.00
- 299 ★ ———, **1946, 1s-5s Renner Souvenir Sheets (B185-B188).** Cpl. Mint Set, Very Fine.....2,300.00
- 300 ★ ———, **1946, 1s-5s Renner Souvenir Sheets (B185-B188).** Complete Mint Set, Very Fine.....2,300.00
- 301 ☒ **BULGARIA, 1882, 5s Rose & Pale Rose, Error of Color (13a).** Small corner crease, tied by "Varna" pmk. on 1887 Reg. Cover to Constantinople, additional franking on back (Nos. 13, 15, 18) also tied by "Varna" pmks., some cover creases & tears, Very Rare.....E.XV

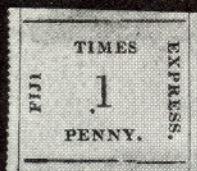
CANADA



- 302 ★ **1855, 10p Blue (7).** Margins all around, tiny thin spot, Very Fine Appearance.....2,750.00



297



308



309



311



324

SALON INTERNATIONAL DE L'AVIATION ET DE LA NAVIGATION DE MARSEILLE

25 JUIN -- 25 JUILLET 1927



Atelier de Fabrication des Timbres-Poste :: Paris

310



298



312



317



304



322



316

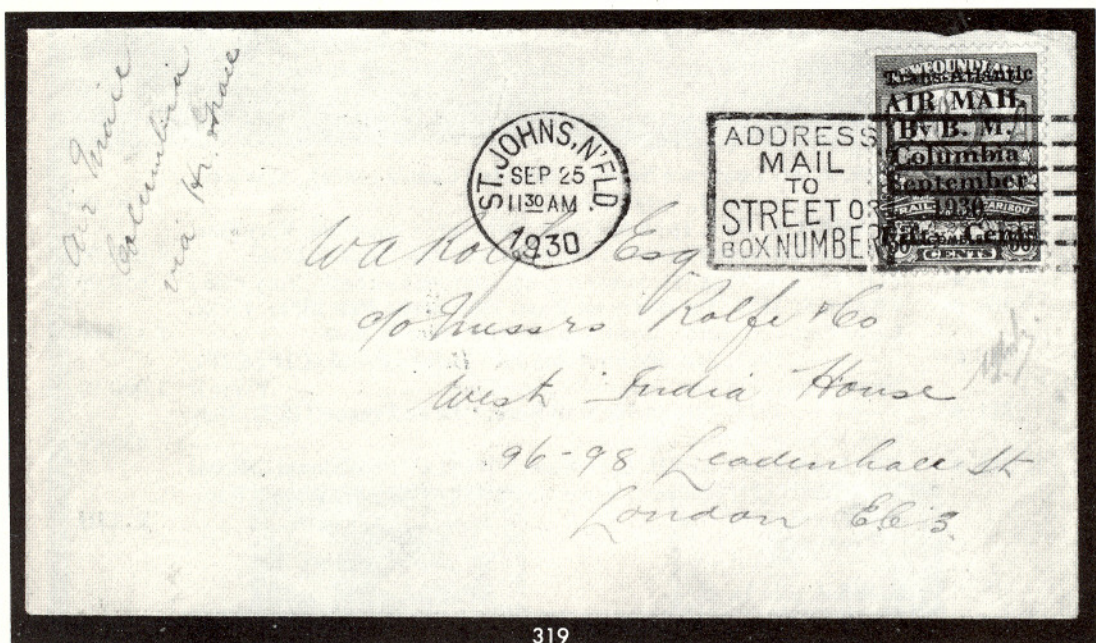


320 EX

- 303 ★ **1903, 2c Carmine Edward Imperforate (90a). Pane of 100 with Imprint Plate No., Small thin in selvedge only, Mint Very Fine** 1,125.00+
- 304 ★田 **1924, 3c Carmine, Coil Block (130a). Top pair hinge remnant, Bottom Pair Mint, Very Fine** 500.00
- 305 ★ **1959, 5c St. Lawrence Seaway, Inverted Center (387a). Mint Left Margin Single, Very Fine** 3,500.00
- 306 **1959, 5c St. Lawrence Seaway, Inverted Center (387a). Neat wavy line machine cancel, Very Fine** 3,250.00
- 307 **DOMINICA, 1886, 1p on 6p Green (14) Lightly cancelled, Very Fine, B.P.A. Certificate (S.G. No. 18, £5000)** 6,000.00
- 308 ★ **FIJI, 1871, 1p Pink (6). Minor tropical gum stain on back, Very Fine..** 650.00
- 309 ★ **FRANCE, 1873, 10c Bistre on Rose, Tête Bêche Pair (55a). Fresh, Large Part o.g., perfs. slightly in one side, Fine & Rare** 1,150.00
- 310 P ———, **1927, 2fr, 5fr First Air Post Deluxe Proof (C1P, C2P). 5½x4", tiny thin spot, otherwise Very Fine**.....Yvert fr 3,000.00
- 311 ★ ———, **1928, 10fr on 90c Dull Rose, "Ile de France" (C3). Very Fine, three guarantee signatures** 850.00
- 312 ★ **GERMAN EAST AFRICA, 1r Rose, "WUGA" Provisional (Michel V). Without gum as issued, minor flaws, Very Fine Appearance, Rare, with Friedl Certificate** **E.XIII**

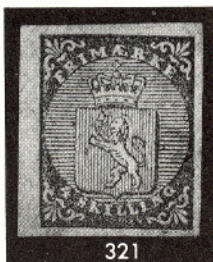


- 313 ★ **GREAT BRITAIN, 1935, 2½p Silver Jubilee Prussian Blue Color Error (229a). Very Fine** 1,750.00
- 314 **INDIA, 1852, ½a Red, Scinde District Post (A3). Lightly cancelled, P.F. Certificate states . . . "on paper, cut round . . . genuine, with slight cracks", as usual, Very Fine Example of this Great Rarity, ex-Haverbeck, (S.G. 3, £2250)** 3,750.00
- 315 ✉ **ITALY, 1919 Vienna-Padua-Prague Flight Semi-Official (Sanabria S1). Rounded corner perfs., tied by Bold Purple Two Line "Campo d'Aviazione/Aspern" struck again below on Military Mission Triplane Flight Cover, postage paid by Italy 5c (94) & two 10c (95), Purple "Comando Supremo" & matching Straight Line Censor Marks, 5c stamp creased, some cover wear, Rare & Attractive, Unlisted on Cover in Sanabria, with A.P.S. Certificate** **E.XIII**
- 316 ★ ———, **1954, 1000L Ultramarine, Parcel Post (Q76). Mint, Fine** 750.00
- 317 ★ **LONG ISLAND, (Aegean Sea), 1916, ½p on 20pa Green & Buff (Gibbons 1). Very Fine, Extremely Rare (only 25 issued)Gibbons** £650
- 318 ★ **NEWFOUNDLAND, 1919, 3c "Hawker" Trans-Atlantic Air Post (C1). Well-Centered, light corner crease, otherwise a Very Fine Example of this Rarity, several guarantees** 8,500.00



319

- 319 ☐ ———, 1927, 50c on 36c Columbia Airmail (C5). Tied on flown cover, Very Fine, with Friedl Certificate 3,000.00+
- 320 ★ ———, 1933, 5c-75c Airmail Imperforate (C13a-C17a). Complete Set in Horiz. Pairs, Very Fine 1,000.00



321

- 321 ★ NORWAY, 1855, 4s Blue (1). Ample to Large Margins, Very Fine, with Dena, Estoppey (Swiss), Moldenhauer (Norway) & Friedl Certificates 3,000.00
- 322 ★ NYASALAND PROTECTORATE, 1914, £10 Ultramarine & Dull Violet, (24). Very Fine (S.G. £1100) 1,650.00
- 323 ☐ ROMAGNA, 1859, 3b Dark Green, 5b Gray Violet (4, 6). Both with Clear to Large Margins All Around except 3b B. frame line barely touched, tied by Diamond Grid, Str. Line "Ravenna/6 Ottobre" pmk. on 1859 folded cover to Milan, part of address crossed out, Very Fine & Rare, signed Bloch, E. Dena & Friedl E.XIV
- 324 SPAIN, 1854, 1r Pale Blue (33). Small margins all around, Repaired, Fine Appearance, Rare, with Friedl Certificate 7,000.00

END OF SALE — THANK YOU

CONDITIONS OF SALE

1. The terms of sale are strictly cash on delivery to the highest bidder unless special arrangements have been made prior to the sale.
2. All bids are per lot as numbered in the catalogue unless otherwise announced by the auctioneer at the time of sale. The right is reserved to group two or more lots; to withdraw any lot or lots from the sale, or to act in behalf of the seller. The auctioneer shall regulate the bidding and in the event of any dispute his decision shall be final.
3. Any lot, the description of which is incorrect is returnable, but only within five days of receipt. All disputed lots must be returned intact as received. **The following lots may not be returned for any reason whatsoever: Lots containing ten or more stamps; Lots from buyers who have had the opportunity to examine them before the sale; Lots described as having defects or faults may not be returned because of any faults. No illustrated lots may be returned because of centering, margins or other factors shown in the illustrations.**
4. Successful bidders, unless they are known to us or supply acceptable references are expected to make payment in full before the lots are delivered. Mail bidders will be notified of the amount of their purchases. All mail bidders who have established credit with us must make payment within three days after receipt. We reserve the right in our sole and absolute discretion to demand cash payment at the time a lot is knocked down to any bidder who has not previously established credit with us or whose account is in arrears. In the event any buyer refuses to pay cash for any lot at the time it is knocked down to him, the auctioneer reserves the right to re-offer the lot immediately for sale to the highest bidder.
5. If the purchase price has not been paid within the time limit, nor lots taken up within seven days from date of sale they must be resold and any loss arising from such sale will be charged to the defaulter. Any account more than thirty days in arrears is subject to a late payment charge of 1½% per month so long as the account remains in arrears. If the auctioneer, in his discretion, should institute any legal action to secure payment of a delinquent account the defaulting purchaser shall pay all legal expense incurred by the auctioneer and such charges will be added to the amount owed.
6. All lots are sold as genuine but should any lot be proved otherwise by written opinion of any competent, responsible authority acceptable to us, immediate refund of the full purchase price will be made, provided that such claim is made in writing within 14 days from date of sale. If claim is not made within this period, no lots are returnable for any reason at any time. So long as we are notified within the 14 day period that an opinion is being sought the matter will remain open until such opinion is rendered. We will not be responsible for any charges incurred by the buyer for expertization fees and costs unless the opinion states the item is not genuine, in which case we will pay actual costs up to a maximum of \$50.00.
7. Until paid for in full, all lots remain the property of Robert A. Siegel Auction Galleries, Inc. in behalf of the seller.
8. All forwarding charges will be added to the purchase price. The mode of shipment shall be at our option unless we are given specific instructions.
9. Lots may be sent for inspection to buyers known to us upon written application. All such lots must be returned to us by registered mail, adequately insured and within 24 hours after receipt. The applicant assumes all responsibility and for insurance against all risks from time of receipt until they are actually received back by us, and is to pay all expenses of postage and insurance. **No lots can be sent for inspection within eight days from date of local viewing. Large lots and collections cannot be sent for inspection.**
10. Agents are responsible for all purchases made in behalf of their clients unless other arrangements are made prior to the sale.
11. The placing of a bid shall constitute acceptance of the foregoing conditions of sale.

ROBERT A. SIEGEL
MALCOLM SIEGEL, Licensed Auctioneers

FOR TABLE OF DESCRIPTIONS SEE PAGE 29

\$8,121,196.00



1977 AUCTION REALIZATION

THE RECORD SPEAKS FOR ITSELF!
WHETHER BUYING OR SELLING,
DEAL WITH THE WORLD LEADER.
YEAR AFTER YEAR AMERICA'S
PREMIER AUCTION HOUSE

AS WE ENTER OUR 48th YEAR OF SERVICE TO PHILATELY,
WE WISH TO EXPRESS APPRECIATION TO OUR THOUSANDS
OF BUYERS AND CONSIGNORS

Robert A. Siegel
AUCTIONS

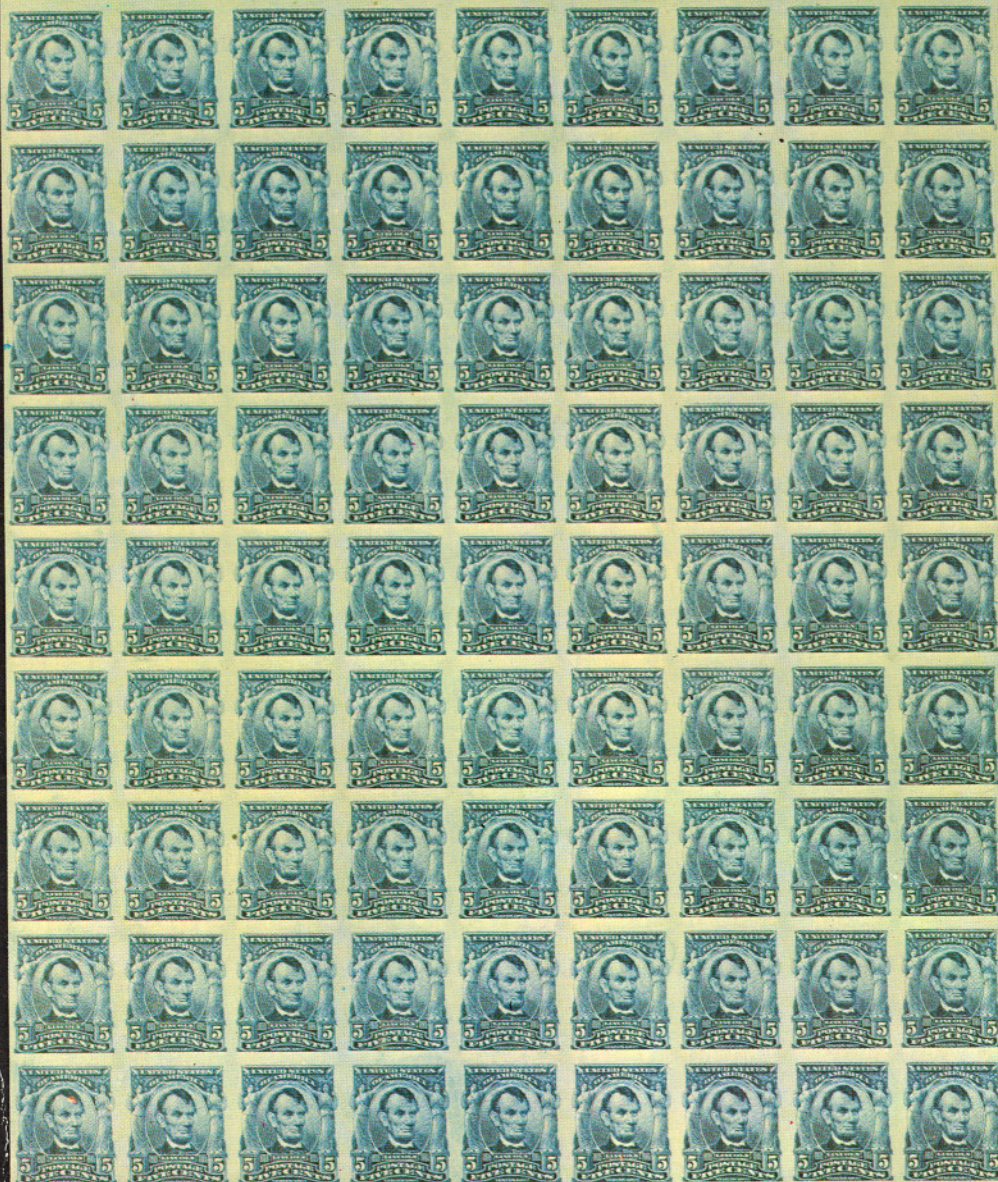
120 EAST 56th STREET

NEW YORK, N.Y. 10022



— G. Brown, Engraving & Printing —

4075



— G. Brown, Engraving & Printing —

4075

Robert A. Siegel Auction Galleries, Inc.
Prices Realized for
Sale 528 April 11, 1978 1978 Rarities of the World

Lot#	Realized	Lot#	Realized	Lot#	Realized	Lot#	Realized	Lot#	Realized
1	1,150	36	2,700	73	3,750	109	2,300	145	1,400
1A	4,250	37	4,750	74	5,250	110	1,900	146	1,800
2	750	38	4,500	75	4,000	111	1,800	147	1,000
3	1,050	39	5,750	76	6,250	112	2,000	148	1,800
4	850	40	1,500	77	900	113	1,450	149	450
5	2,100	41	4,250	78	1,050	114	3,000	150	400
6	4,500	42	6,250	79	900	115	3,250	151	16,000
7	1,250	43	1,500	80	1,800	116	1,850	152	1,800
8	6,500	44	1,450	81	1,350	117	725	153	1,750
9	8,000	45	2,300	82	1,900	118	5,500	154	2,200
10	900	46	4,750	83	9,000	119	4,000	155	2,300
11	1,650	47	5,250	84	1,250	120	5,500	156	11,500
12	2,700	48	1,500	85	7,500	121	1,000	157	3,500
13	2,600	49	8,000	86	5,000	122	4,250	158	35,000
14	1,850	50	6,000	87	2,400	123	2,200	159	26,000
15	15,500	51	5,250	88	1,100	124	1,550	160	1,000
16	2,000	52	1,750	89	2,000	125	5,750	161	9,000
17	25,000	53	1,750	90	3,000	126	1,250	162	3,500
18	22,000	55	950	91	1,450	127	3,750	163	3,250
19	4,250	56	1,800	92	5,500	128	1,550	164	3,500
20	6,500	57	5,250	93	1,300	129	9,000	165	16,000
21	6,000	58	2,700	94	2,900	130	1,700	166	17,500
22	1,050	59	1,600	95	2,400	131	3,750	167	3,750
23	950	60	2,100	96	1,350	132	600	168	4,000
24	5,000	61	12,000	97	900	133	1,300	169	1,350
25	3,000	62	4,000	98	3,250	134	1,650	170	3,000
26	1,350	63	1,150	99	1,200	135	3,500	171	625
27	2,800	64	3,250	100	2,100	136	2,200	172	2,000
28	1,450	65	5,250	101	2,800	137	32,500	173	3,750
29	2,500	66	6,000	102	3,750	138	600	174	3,750
30	1,750	67	8,000	103	2,500	139	7,500	175	3,250
31	2,100	68	6,750	104	1,050	140	700	176	11,500
32	6,250	69	1,350	105	1,550	141	2,900	177	5,500
33	1,950	70	16,500	106	950	142	2,300	178	5,250
34	19,000	71	850	107	2,300	143	8,500	179	19,000
35	10,000	72	1,850	108	1,650	144	1,750	180	10,500

Robert A. Siegel Auction Galleries, Inc.
 Prices Realized for
 Sale 528 April 11, 1978 1978 Rarities of the World

Lot#	Realized	Lot#	Realized	Lot#	Realized	Lot#	Realized
181	6,750	218	1,050	254	2,700	290	4,250
182	4,250	219	4,000	255	72,500	291	850
183	5,250	220	1,250	256	3,250	292	8,000
184	1,850	221	1,650	257	3,750	293	4,500
185	2,000	222	3,500	258	3,500	294	1,950
186	5,250	223	1,150	259	13,000	295	675
187	1,450	224	625	260	2,900	296	475
188	600	225	650	261	5,250	297	650
189	1,100	226	2,500	262	3,250	298	850
190	1,850	227	1,550	263	2,600	299	2,000
191	1,550	228	9,000	264	1,300	300	2,100
192	35,000	229	2,000	265	1,700	301	1,000
193	15,500	230	4,750	266	1,750	302	1,050
194	2,100	231	4,000	267	1,350	303	1,700
195	17,000	232	650	268	3,250	304	500
196	2,500	233	2,600	269	625	305	6,000
197	3,500	234	1,650	270	1,000	306	4,750
198	850	235	1,650	271	28,000	307	5,250
199	1,150	236	5,250	272	1,450	308	500
200	1,300	237	12,500	273	2,300	309	575
201	1,650	238	1,350	274	1,400	310	450
203	3,000	239	1,800	275	1,750	311	675
204	525	240	1,700	276	1,650	312	425
205	600	241	1,150	277	525	313	2,800
206	1,800	242	900	278	1,100	314	2,100
207	8,000	243	1,250	279	600	315	650
208	32,500	244	700	280	3,250	316	800
209	1,650	245	700	281	1,000	317	1,650
210	10,500	246	625	282	675	318	6,250
211	4,750	247	950	283	950	319	4,500
212	18,000	248	700	284	4,000	320	1,400
213	2,600	249	850	285	1,350	321	2,600
214	5,000	250	700	286	1,600	322	1,700
215	1,350	251	450	287	5,250	323	850
216	850	252	2,300	288	1,400	324	725
217	850	253	2,600	289	1,400		