

529th SALE

SPECIALIZED
1869 PICTORIAL ISSUE



The Property of Mrs. Margaret E. Wunch
and one other owner

Sold by Their Order

AT UNRESERVED PUBLIC AUCTION

Friday, May 12th, 1978 at 1:00 P.M.

AUCTION GALLERIES, Inc.

120 E. 56th Street, New York, N.Y. 10022

ROBERT
A.
SIEGEL

CONDITIONS OF SALE

1. The terms of sale are strictly cash on delivery to the highest bidder unless special arrangements have been made prior to the sale.
2. All bids are per lot as numbered in the catalogue unless otherwise announced by the auctioneer at the time of sale. The right is reserved to group two or more lots; to withdraw any lot or lots from the sale, or to act in behalf of the seller. The auctioneer shall regulate the bidding and in the event of any dispute his decision shall be final.
3. Any lot, the description of which is incorrect is returnable, but only within five days of receipt. All disputed lots must be returned intact as received. **The following lots may not be returned for any reason whatsoever: Lots containing ten or more stamps; Lots from buyers who have had the opportunity to examine them before the sale; Lots described as having defects or faults may not be returned because of any faults. No illustrated lots may be returned because of centering, margins or other factors shown in the illustrations.**
4. Successful bidders, unless they are known to us or supply acceptable references are expected to make payment in full before the lots are delivered. Mail bidders will be notified of the amount of their purchases. All mail bidders who have established credit with us must make payment within three days after receipt. We reserve the right in our sole and absolute discretion to demand cash payment at the time a lot is knocked down to any bidder who has not previously established credit with us or whose account is in arrears. In the event any buyer refuses to pay cash for any lot at the time it is knocked down to him, the auctioneer reserves the right to re-offer the lot immediately for sale to the highest bidder.
5. If the purchase price has not been paid within the time limit, nor lots taken up within seven days from date of sale they must be resold and any loss arising from such sale will be charged to the defaulter. Any account more than thirty days in arrears is subject to a late payment charge of 1½% per month so long as the account remains in arrears. If the auctioneer, in his discretion, should institute any legal action to secure payment of a delinquent account the defaulting purchaser shall pay all legal expense incurred by the auctioneer and such charges will be added to the amount owed.
6. All lots are sold as genuine but should any lot be proved otherwise by written opinion of any competent, responsible authority acceptable to us, immediate refund of the full purchase price will be made, provided that such claim is made in writing within 14 days from date of sale. If claim is not made within this period, no lots are returnable for any reason at any time. So long as we are notified within the 14 day period that an opinion is being sought the matter will remain open until such opinion is rendered. We will not be responsible for any charges incurred by the buyer for expertization fees and costs unless the opinion states the item is not genuine, in which case we will pay actual costs up to a maximum of \$50.00.
7. Until paid for in full, all lots remain the property of Robert A. Siegel Auction Galleries, Inc. in behalf of the seller.
8. All forwarding charges will be added to the purchase price. The mode of shipment shall be at our option unless we are given specific instructions.
9. Lots may be sent for inspection to buyers known to us upon written application. All such lots must be returned to us by registered mail, adequately insured and within 24 hours after receipt. The applicant assumes all responsibility and for insurance against all risks from time of receipt until they are actually received back by us, and is to pay all expenses of postage and insurance. **No lots can be sent for inspection within eight days from date of local viewing. Large lots and collections cannot be sent for inspection.**
10. Agents are responsible for all purchases made in behalf of their clients unless other arrangements are made prior to the sale.
11. The placing of a bid shall constitute acceptance of the foregoing conditions of sale.

ROBERT A. SIEGEL
MALCOLM SIEGEL, Licensed Auctioneers

FOR TABLE OF DESCRIPTIONS SEE INSIDE BACK COVER

Robert A. Siegel

AUCTION GALLERIES, INC.

List of Prices Realized

525th SALE

March 7th, 8th, 1978

120 EAST 56 STREET, NEW YORK CITY, N.Y., 10022

(212) 753-6421

GENERAL FOREIGN

FIRST	43	85	89	55	134	500	179	45	224	115	
SESSION	44	67½	90	52½	135	80	180	40	225	75	
March 7, 78	45	75	91	240	136	65	181	40	226	57½	
1	115	46	67½	92	150	137	52½	182	50	227	90
2	42½	47	52½	93	150	138	425	183	145	228	250
3	160	48	85	94	130	139	80	184	55	229	62½
4	135	49	60	95	80	140	65	185	900	230	110
5	115	50	26	96	62½	141	120	186	220	231	22
6	55	51	29	97	45	142	75	187	47½	232	95
7	130	52	110	98	120	143	80	188	140	233	95
8	190	53	140	99	50	144	65	189	42½	234	120
9	110	54	325	100	525	145	80	190	45	235	65
10	85	55	120	101	525	146	45	191	35	236	100
11	100	56	40	102	525	147	60	192	75	237	57½
12	52½	57	75	103	40	148	30	193	85	238	170
13	55	58	40	104	100	149	62½	194	70	239	70
14	160	59	62½	105	105	150	120	195	75	240	110
15	90	60	90	106	135	151	100	196	85	241	57½
16	60	61	40	107	105	152	57½	197	25	242	52½
17	90	62	67½	108	270	153	45	198	26	243	65
18	190	63	62½	109	350	154	80	199	28	244	67½
19	125	64	42½	110	325	155	70	200	115	245	67½
20	115	65	23	111	325	156	37½	201	52½	246	67½
21	45	66	125	112	450	157	57½	202	140	247	60
22	70	67	85	113	425	158	50	203	85	248	85
23	90	68	32½	114	450	159	35	204	35	249	105
24	52½	69	90	115	475	160	200	205	80	250	525
25	145	70	85	116	375	161	65	206	250	251	190
26	45	71)		117	55	162	52½	207	50	252	200
27	80	to)	-240	118	60	163	150	208	100	253	115
28	325	74)		119	35	164	125	209	50	254	115
29	325	75	30	120	375	165	95	210	60	255	210
30	290	76	37½	121	375	166	30	211	52½	256	62½
31	45	77	180	122	475	167	110	212	35	257	250
32	325	78	42½	123	375	168	75	213	55	258	220
33	325	79	21	124	525	169	80	214	80	259	40
34	90	80	42½	125	60	170	100	215	62½	260	50
35	85	81	90	126	67½	171	100	216	260	261	21
36	65	82	67½	127	525	172	42½	217	170	262	100
37	200	83	57½	128	550	173	52½	218	50	263	95
38	180	84	47½	129	550	174	42½	219	47½	264	52½
39	180	85	1300	130	525	175	45	220	240	265	80
40	170	86	47½	131	525	176	42½	221	130	266	125
41	180	87	67½	132	500	177	32½	222	60	267	57½
42	115	88	57½	133	450	178	45	223	62½	268	105

269	67½	328	85	387	190	446	85	505	37½	564	140
270	180	329	270	388	47½	447	110	506	65	565	95
271	29	330	52½	389	80	448	105	507	42½	566	80
272	30	331	20	390	60	449	105	508	80	567	57½
273	27	332	32½	391	55	450	105	509	170	568	80
274	42½	333	95	392	120	451	62½	510	105	569	80
275	32½	334	95	393	115	452	80	511	95	570	75
276	30	335	110	394	120	453	180	512	80	571	35
277	160	336	55	395	400	454	150	513	57½	572	30
278	62½	337	90	396	75	455	425	514	40	573	20
279	105	338	95	397	62½	456	130	515	280	574	67½
280	90	339	190	398	75	457	85	516	170	575	20
281	170	340	325	399	75	458	290	517	80	576	47½
282	170	341	40	400	52½	459	260	518	42½	577	105
283	62½	342	80	401	47½	460	260	519	300	578	42½
284	57½	343	37½	402	67½	461	210	520	67½	579	40
285	24	344	90	403	75	462	145	521	62½	580	50
286	150	345	260	404	42½	463	160	522	130	581	80
287	150	346	90	405	42½	464	400	523	80	582	67½
288	120	347	325	406	42½	465	425	524	29	583	55
289	47½	348	105	407	75	466	425	525	90	584	37½
290	67½	349	105	408	52½	467	425	526	23	585	35
291	67½	350	75	409	65	468	290	527	300	586	120
292	47½	351	75	410	42½	469	52½	528	40	587	90
293	65	352	32½	411	85	470	240	529	32½	588	40
294	52½	353	50	412	55	471	145	530	40	589	30
295	37½	354	50	413	50	472	180	531	750	590	35
296	22	355	67½	414	27	473	300	532	300	591	32½
297	60	356	75	415	50	474	250	533	550	592	24
298	145	357	32½	416	26	475	375	534	170	593	220
299	230	358	32½	417	80	476	425	535	375	594	90
300	80	359	52½	418	90	477	425	536	160	595	32½
301	75	360	42½	419	90	478	280	537	85	596	160
302	130	361	42½	420	62½	479	375	538	55	597	90
303	190	362	90	421	65	480	26	539	100	598	32½
304	160	363	42½	422	62½	481	210	540	85	599	50
305	270	364	42½	423	50	482	260	541	32½	600	40
306	29	365	85	424	105	483	150	542	80	601	32½
307	45	366	37½	425	30	484	180	543	57½	602	25
308	220	367	45	426	50	485	190	544	325	603	85
309	40	368	125	427	52½	486	180	545	575	604	50
310	65	369	100	428	100	487	160	546	32½	605	30
311	42½	370	90	429	900	488	400	547	WD	606	170
312	90	371	130	430	160	489	67½	548	30	607	21
313	220	372	160	431	160	490	160	549	260	608	42½
314	45	373	30	432	160	491	67½	550	45	609	55
315	40	374	130	433	120	492	105	551	22	610	50
316	52½	375	90	434	145	493	80	552	75	611	26
317	42½	376	67½	435	200	494	170	553	75	612	16
318	50	377	550	436	200	495	52½	554	65	613	13
319	1050	378	40	437	160	496	37½	555	140	614	62½
320	125	379	425	438	180	497	70	556	57½	615	52½
321	37½	380	40	439	250	498	125	557	37½	616	21
322	30	381	60	440	240	499	135	558	47½	617	28
323	47½	382	70	441	475	500	400	559	35	618	37½
324	115	383	62½	442	500	501	55	560	32½	619	52½
325	135	384	80	443	575	502	90	561	47½	620	52½
326	70	385	170	444	500	503	240	562	240	621	25
327	120	386	57½	445	525	504	75	563	135	622	60

623	28	679	105	738	1150	797	135	856	105	915	85
624	70	680	30	739	57½	798	55	857	105	916	60
625	52½	681	47½	740	29	799	22	858	95	917	62½
626	42½	682	52½	741	200	800	42½	859	65	918	100
627	70	683	52½	742	105	801	40	860	95	919	90
628	29	684	62½	743	105	802	130	861	120	920	67½
629	42½	685	67½	744	21	803	52½	862	65	921	62½
630	110	686	42½	745	62½	804	45	863	28	922	67½
631	32½	687	32½	746	675	805	15	864	150	923	67½
632	85	688	21	747	50	806	40	865	42½	924	60
633	47½	689	45	748	90	807	105	866	210	925	67½
634	130	690	47½	749	30	808	57½	867	60	926	105
635	40	691	26	750	42½	809	45	868	60	927	55
636	135	692	24	751	37½	810	32½	869	115	928	95
637	32½	693	130	752	1450	811	32½	870	57½	929	65
638	170	694	900	753	70	812	47½	871	42½	930	80
639	110	695	1700	754	120	813	160	872	32½	931	42½
640	85	696	47½	755	450	814	20	873	52½	932	40
641	65	697	47½	756	130	815	80	874	240	933	75
642	180	698	47½	757	110	816	45	875	160	934	105
643	100	699	525	758	230	817	32½	876	135	935	37½
644	95	700	525	759	500	818	62½	877	105	936	55
645	28	701	525	760	210	819	325	878	67½	937	47½
646	140	702	525	761	650	820	37½	879	32½	938	30
647	55	703	525	762	90	821	37½	880	75	939	55
648	105	704	675	763	115	822	52½	881	65	940	125
649	28	705	675	764	130	823	28	882	52½	941	75
650	35	706	675	765	100	824	52½	883	67½	942	30
651	27	707	650	766	210	825	28	884	WD	943	67½
652	135	708	42½	767	80	826	55	885	42½	944	55
653	45	709	45	768	95	827	47½	886	725	945	45
654	57½	710	40	769	25	828	19	887	55	946	1100
655	375	711	85	770	65	829	120	888	280	947	110
656	32½	712	67½	771	90	830	62½	889	160	948	25
657	32½	713	70	772	42½	831	62½	890	110	949	21
658	40	714	70	773	45	832	60	891	250	950	30
SECOND		715	250	774	52½	833	55	892	37½	951	60
SESSION		716	40	775	52½	834	57½	893	200	952	100
March 8, 78		717	57½	776	50	835	40	894	220	953	70
659	110	718	25	777	23	836	47½	895	160	954	62½
660	80	719	52½	778	125	837	90	896	120	955	67½
661	65	720	52½	779	26	838	60	897	120	956	55
662	40	721	32½	780	67½	839	32½	898	105	957	47½
663	27	722	85	781	15	840	WD	899	115	958	47½
664	25	723	67½	782	15	841	47½	900	110	959	47½
665	45	724	80	783	42½	842	40	901	105	960	280
666	85	725	35	784	75	843	95	902	35	961	110
667	80	726	62½	785	42½	844	130	903	35	962	230
668	67½	727	60	786	80	845	105	904	47½	962A	160
669	57½	728	62½	787	40	846	80	905	95	962B	180
670	105	729	47½	788	42½	847	75	906	75	962C	70
671	130	730	35	789	80	848	32½	907	75	962D	550
672	95	731	70	790	60	849	25	908	42½	962E	26
673	135	732	28	791	42½	850	40	909	80	962F	95
674	52½	733	180	792	45	851	95	910	50	962G	525
675	85	734	28	793	45	852	26	911	90	962H	30
676	47½	735	90	794	40	853	20	912	28	962I	75
677	40	736	67½	795	37½	854	85	913	52½	962J	50
678	75	737	375	796	42½	855	42½	914	290	962K	90

962L	47½	1021	42½	1080	190	1139	850	1198	130	1257	260
963	32½	1022	42½	1081	28	1140	45	1199	160	1258	675
964	475	1023	37½	1082	85	1141	30	1200	140	1259	15
965	24	1024	160	1083	85	1142	55	1201	180	1260	2500
966	90	1025	27	1084	62½	1143	62½	1202	55	1261	170
967	145	1026	50	1085	120	1144	120	1203	550	1262	170
968	50	1027	23	1086	130	1145	20	1204	550	1263	160
969	57½	1028	18	1087	105	1146	57½	1205	62½	1264	375
970	37½	1029	19	1088	70	1147	30	1206	21	1265	90
971	42½	1030	25	1089	62½	1148	60	1207	300	1266	57½
972	57½	1031	90	1090	100	1149	40	1208	260	1267	67½
973	145	1032	40	1091	35	1150	67½	1209	65	1268	30
974	42½	1033	350	1092	42½	1151	70	1210	160	1269	1450
975	120	1034	75	1093	85	1152	28	1211	130	1270	145
976	47½	1035	50	1094	47½	1153	55	1212	67½	1271	45
977	40	1036	21	1095	140	1154	70	1213	32½	1272	180
978	55	1037	42½	1096	80	1155	17	1214	130	1273	65
979	57½	1038	135	1097	47½	1156	21	1215	105	1274	42½
980	135	1039	47½	1098	42½	1157	47½	1216	62½	1275	47½
981	100	1040	50	1099	70	1158	62½	1217	52½	1276	45
982	47½	1041	80	1100	37½	1159	75	1218	50	1277	1050
983	45	1042	42½	1101	90	1160	32½	1219	50	1278	95
984	105	1043	42½	1102	32½	1161	50	1220	37½	1279	62½
985	105	1044	35	1103	37½	1162	62½	1221	45	1280	26
986	100	1045	35	1104	27	1163	50	1222	35	1281	3750
987	115	1046	65	1105	28	1164	35	1223	85	1282	180
988	105	1047	23	1106	67½	1165	130	1224	50	1283	280
989	57½	1048	37½	1107	140	1166	80	1225	160	1284	300
990	230	1049	65	1108	85	1167	105	1226	26	1285	130
991	230	1050	90	1109	80	1168	19	1227	260	1286	75
992	120	1051	35	1110	160	1169	62½	1228	260	1287	42½
993	950	1052	20	1111	145	1170	65	1229	62½	1288	425
994	145	1053	105	1112	52½	1171	45	1230	375	1289	55
995	160	1054	95	1113	28	1172	37½	1231	50	1290	500
996	160	1055	400	1114	145	1173	450	1232	67½	1291	125
997	52½	1056	40	1115	32½	1174	425	1233	80	1292	30
998	150	1057	47½	1116	125	1175	37½	1234	140	1293	850
999	95	1058	67½	1117	125	1176	130	1235	135	1294	3500
1000	42½	1059	100	1118	145	1177	57½	1236	37½	1295	350
1001	85	1060	60	1119	62½	1178	40	1237	85	1296	625
1002	30	1061	52½	1120	160	1179	37½	1238	47½	1297	500
1003	80	1062	85	1121	135	1180	65	1239	140	1298	240
1004	16	1063	95	1122	190	1181	37½	1240	475	1299	5750
1005	50	1064	100	1123	145	1182	37½	1241	260	1300	32½
1006	95	1065	47½	1124	400	1183	29	1242	525	1301	60
1007	67½	1066	170	1125	28	1184	45	1243	32½	1302	270
1008	115	1067	55	1126	105	1185	45	1244	85	1303	350
1009	60	1068	160	1127	80	1186	22	1245	230	1304	47½
1010	115	1069	28	1128	50	1187	100	1246	105	1305	5250
1011	42½	1070	30	1129	85	1188	85	1247	145	1306	2100
1012	50	1071	24	1130	40	1189	32½	1248	300	1307	105
1013	40	1072	32½	1131	42½	1190	25	1249	475	1308	325
1014	32½	1073	52½	1132	70	1191	110	1250	65	1309	425
1015	40	1074	52½	1133	70	1192	47½	1251	170	1310	115
1016	11	1075	135	1134	45	1193	260	1252	60	GROSS REALIZATION: \$188,166.00	
1017	160	1076	24	1135	18	1194	95	1253	80		
1018	35	1077	57½	1136	2100	1195	62½	1254	210		
1019	45	1078	42½	1137	1150	1196	42½	1255	75		
1020	19	1079	75	1138	350	1197	250	1256	180		

FOREWORD

Margaret L. Wunsch has put together the bulk of the 1869 holding which is being offered in this catalogue. In a field dominated by men, Mrs. Wunsch has demonstrated that excellence in Philately is not exclusively a male monopoly. Her collection of the 1869 Pictorial Issue has won award after award — with a steady stream of seven gold, a grand award and a champion of champions. To even the novice collector of U.S. 19th Century the name of Margaret Wunsch is automatically associated with the 1869 issue. In addition to having published many articles on her specialty she is presently First President of the recently founded U.S. Pictorial Research associates. She shares her hobby with her husband Dr. Charles L. Wunsch, who is a noted Philatelist in his own right.

It is a great pleasure to acknowledge at this time Philately's debt to Margaret and to salute her for her other selfless services to education, church and medical adjuncts.

ROBERT A. SIEGEL

PUBLIC AUCTION

FRIDAY, MAY 12, 1978 — 1:00 P.M.

All lots with "(W)" at end of description are the property of Mrs. Wunsch. Lots without this symbol are the property of another owner.

1869 PICTORIAL ISSUE

ESSAYS

1 E	1c Plate Essays, Grilled, Gummed & Perf. (Brazer 112 E-De). Three, Orange, Red Brown & the Scarce Buff Issued Color, first natural s.e. at B., last spots of original gum on surface, F-VF (W)	E.VI
2 E	1c Plate Essays, Grilled, Gummed & Perf. (Brazer 112E-De). Seven Diff. Colors incl. the Scarce Buff Shade, two have creases, buff shade some gum soaking, o/w F-VF (W).....	E.VIII
3 E	1c Plate Essays, Grilled, Gummed & Perf. (Brazer 112E-De). Seven, Six Diff. Colors, duplicate color small thin, others VG-F (W)	E.VIII
4 E	1c Buff, 3c Pale Rose, Plate Essays on Gummed Stamp Paper (Brazer 112G-Dc, 114E-Cf). VF (W)	E.IV
5 E	1c-12c Plate Essays, Gummed, Perf., Grilled & Ungrilled (Brazer 112E-Dd, 112E-De two, 113E-De two, 114E-Ch, 117E-Ce). Most have faults, nearly all F-VF Appearance	E.VI
6 E	2c Plate Essays, Grilled, Gummed & Perf. (Brazer 113E-De). Five Diff. Colors, Two o.g., one long sealed tear, o/w Fine Lot (W)	E.VI
7 E	2c Plate Essays, Grilled, Gummed & Perf. (Brazer 113E-De). Six Diff. Colors incl. Brown , F-VF (W).....	E.VII
8 E	2c Plate Essays, Grilled, Gummed & Perf. (Brazer 113E-De). Seven Diff. Colors, one without gum, perfs. touch on two, Fine Lot (W)	E.VII
9 E	2c, 12c Plate Essays, Grilled & Perf. (Brazer 113E-De, 117E-Ce). 2c in Blue, two 12c, Dull Violet & Green, latter o.g., F-VF (W).....	E.VI
10 E	3c Blue, Yellow Plate Essays, Grilled, Gummed & Perf. (Brazer 114E-Ch). Fine (W).....	E.IV
11 E	3c Plate Essays, Grilled, Gummed & Perf. (Brazer 114E-Ch). Four Diff. Colors, one tiny tear, o/w F-VF (W).....	E.VI
12 E	3c Plate Essays, Grilled, Gummed & Perf. (Brazer 114E-Ch). Seven Diff. Colors, couple tiny faults, o/w F-VF (W).....	E.VIII
13 E田	3c Dull Violet Plate Essay, Gummed, Grilled & Perf. (Brazer 114E-Ch). Block, Fresh, nearly Full o.g., minor separation, B. perfs. touch (W).....	E.VII
14 E田	3c Deep Yellow Ochre Plate Essay, Grilled, Gummed & Perf. (Brazer 114E-Ch). B. Margin Block, perfs. close to touch.....	E.VI
15 E田	3c Deep Yellow Ochre Plate Essay, Grilled, Gummed & Perf. (Brazer 114E-Ch). Block, perfs. close to touch	E.VI
16 E	3c Brown Rose, 5c Buff Plate Essays on Gummed Stamp Paper, Imperf. (Brazer 114E-Cf, 115aE-Fc), VF	E.V

**LOTS ON VIEW: Wednesday, May 10th; Thursday, May 11th;
also on Friday, May 12th until 12:30 P.M.**

17 E	5c Buff Plate Essay on Gummed Stamp Paper, Imperf. (115aE-Fc). Extra Large Margins, VF	E.IV
18 E	5c Buff, Dull Red Brown, Plate Essays on Gummed Stamp Paper (Brazer 115aE-Fc). VF (W)	E.VI
19 E	5c Dull Red-Brown, Deep Red-Violet, Plate Essays on Gummed Stamp Paper (Brazer 115aE-Fc). VF (W)	E.VI
20 E田	5c Dull Red-Brown Plate Essay on Gummed Stamp Paper (Brazer 115aE-Fc). Block, B. pair light gum bend, VF (W)(Photo)	E.VIII
21 E	5c Orange Plate Essay, Gummed & Perf. (Brazer 115aE-Fd). L. Margin Single, Fine & Scarce (W)(Photo)	E.VII
22 E	10c Ultramarine, Plate Essay on Gummed Stamp Paper (Brazer 116E-Dj). Horiz. Pair, VF (W)(Photo)	E.VII
23 E	12c Plate Essays, Grilled, Gummed & Perf. (Brazer 117E-Ce). Five Diff. Colors incl. Green, couple nibbed perfs., VG-F (W)	E.VI
24 E	12c Plate Essays, Grilled, Gummed & Perf. (Brazer 117E-Ce). Seven Diff. Colors incl. Green, perfs. touch to trifle in on three, others F-VF (W)	E.VIII
25 E	12c Green Plate Essay, Grilled, Gummed & Perf. (Brazer 117E-Ce). Horiz. Pair, R. stamp part o.g. & minor gum soak, o/w Fine (W)	E.IV
26 E田	12c Dull Violet Plate Essay, Gummed, Grilled & Perf. (Brazer 117E-Ce). Block, T. Pair Fine, B. Pair, Mint, VF (W)(Photo)	E.VII
27 E	24c Black on Dull Yellowish, Plate Essay (Brazer 120E-Ce). VF (W)	E.VII
28 E	30c Burgoyne, Die Essay on India (Brazer 121E-Ca). Reduced to stamp size, Large Margins, VF(Photo)	E.VII
29 E	30c Black on Brown Violet, "Burgoyne" Plate Essay (Brazer 121E-Ck). VF (W)	E.VII
30 E	30c Black on Yellow, "Burgoyne" Plate Essay (Brazer 121E-Ck). VF (W)	E.VII
31 E	90c Blue & Black, Washington Plate Essay on Stamp Paper (Brazer 122E-Cc). VF (W)	E.VII
32 E	90c Pale Orange-Red, Washington Plate Essay on Stamp Paper (Brazer 122E-Cc). VF (W)(Photo)	E.VII
33 E	90c Dull Violet, Washington Plate Essay on Stamp Paper (Brazer 122E-Cc). VF (W)	E.VII
34 E	90c Dark Navy-Blue Frame Only Plate Essay on Stamp Paper (Brazer 122E-Cd). Couple small natural translucencies, VF (W)(Photo)	E.VI
35 E	90c Frame Only Plate Essay on Stamp Paper (122E-Cd). Four, Three Diff. Colors, small thins or translucencies, F-VF Appearance (W)	E.VIII

PROOFS

36 P	1c-90c Pictorial Small Die Proofs (112P-117P, 119P-122P, 129P). Cpl. Set as Listed, mounted on Gray Cards from the Roosevelt Album, Extremely Fine Set (W)	(Photo Ex) 2,350.00
37 P田	1c Buff, Plate Proof on India (112P). Block, VF	(Photo) 225.00
38 P田	1c Buff, Plate Proof on India (112P). Block, Fresh Color, T. pair faults, almost entirely in margins, B. Pair VF	225.00
39 P	1c, 10c, 24c Pictorials, Plate Proofs on India (112P, 116P, 120P). Faulty, 10c rebacked, Reasonably Attractive Lot	207.50
40 P	1c-90c Pictorials, Plate Proofs on India (112P-117P, 119P-122P, 129P). Cpl. Set as Issued, 10c faint minor thin, others VF, Lovely Fresh Set	(Photo Ex) 995.00
41 P	1c-90c Pictorial Plate Proofs on India (112P-117P, 119P-122P, 129P). Cpl. Set as Listed, Large Margins, few faint thinnings or minor translucencies, 24c couple small ink specks, o/w VF Set (W) (Photo Ex)	995.00

42 P	1c-90c Pictorial Plate Proofs on India (112P-117P, 120P-122P, 129P). Bright Colors, most faulty & rebacked, 10c VG Appearance, 15c Fine Appearance, otherwise VF Appearing (W).....(Photo Ex)	870.00
43 P田	1c-90c Pictorial Plate Proofs on India (112P-117P, 119P-122P, 129P). Blocks, Cpl. Set as Listed, one 3c tiny cut, two No. 119P creased, few negligible thin specks, o/w VF, Rare Set (W)(Photo Ex)	4,965.00
44 P	1c-90c Pictorials, Plate Proofs on Card (112P-117P, 120P-122P, 129P). Cpl. Set as Issued, VF.....(Photo Ex)	530.00
45 P	1c-90c Pictorials, Plate Proofs on Card (112P-117P, 120P-122P, 129P). Cpl. Set as Listed, couple low values minor toning on back only, 1c tiny thin, o/w VF Set (W)(Photo Ex)	530.00
46 P田	2c Brown, Plate Proof on India (113P). Block, Extremely Fine(Photo)	150.00
47 P田	2c Brown, Plate Proof on India (113P). B. Imprint & Pl. No. 28 Block of Ten, imprint trifle "dry-print", center stamp B. row thin into selvedge, o/w Extremely Fine, Rare.....(Photo)	1,000.00
48 P田	3c Ultramarine, Plate Proof on India (114P). Block, VF(Photo)	150.00
49 P	6c Ultramarine, Hybrid Large Die Proof (115P). India Mounted & Die Sunk on 5¼x8½" Card, couple negligible natural paper flaws affect design, Still Extremely Fine, Large Die Proof cats. \$1,100.00 (W)....	—
50 P田	6c Ultramarine, Plate Proof on India (115p). Block, scissors cut between B. pair, VF (cat. as four singles)	140.00+
51 P	6c-15c Pictorials, Plate Proofs on Card (115P-117P, 129P). 10c small surface scuff, o/w F-VF.....	125.00
52 P	10c Yellow, Hybrid Large Die Proof (116). India Mounted & Die Sunk on 5¼x8½" Card, Extremely Fine, Large Die Proof cats. \$1,100.00 (W)	—
53 P田	10c Yellow, Plate Proof on India (116P). Block, small thin & faint crease in one, o/w VF.....(Photo)	210.00
54 P田	12c Green, Plate Proof on India (117P). Block, couple minor wrinkles, VF(Photo)	180.00
55 P田	24c Green & Violet, Plate Proof on India (120P). Block, Large Margins, Nice Vignette Shift to R., few tiny "thins", characteristic of India paper, o/w VF, A Lovely Block	600.00
56 P	30c Blue & Carmine, Hybrid Large Die Proof (121P). India Mounted & Die Sunk on 5¼x8½" Card, Extremely Fine, Large Die Proof cats. \$1,100.00 (W).....	—
57 P	30c Blue & Carmine, Plate Proof on India (121P). Small thin spot, VF Appearance.....	130.00
58 P田	30c Blue & Carmine, Plate Proof on India (121P). Block, some tiny faint toning specks, mostly in margins, o/w VF.....(Photo)	625.00
59 P	90c Carmine & Black, Plate Proof on India (122P). Small margins, Vignette Shift to R., few minor black marks in vignette, o/w Fine	200.00

ONE CENT BUFF

60 ★	1c Buff (112). Fresh, Rich Color, natural paper inclusion, Extra Large Margins T. & B., reperfed at L., Extremely Fine Appearance (W)(Photo)	115.00
61 ★	1c Buff (112). Part o.g., partly reperfed at L., VF Appearance (W)(Photo)	115.00
62 ★	1c Buff (112). Part o.g., short perfs., light crease & minor soiling, o/w VF	115.00
63 ★	1c Buff (112). Fresh, Part o.g., centered to B. showing traces of Plate No. at B., Vert. Pre-Print Paper Fold at L., Very Scarce & Unusual (W)(Photo)	E.VII
64 ★	1c Buff, Double Grill (112 var). Large Part o.g., tiny toned spot T.L., reperfed at R., two perfs. being blunted at B., o/w VF, Scarce (W)(Photo)	275.00

65 ★	1c Buff (112). Rich Color, "Freak" Centering showing R. Arrow & bit of next stamp at B. inside perfs., light backstamp barely shows through, Scarce & Interesting (W)(Photo)	115.00
66 ★	1c Buff (112). Horiz. Pair with R. Arrow Margin, R. stamp natural printing fold, Fine & Fresh (W)(Photo)	240.00
67	1c Buff (112). Huge Margins, Neat Circle of Wedges cancel, faint toning, o/w Extremely Fine (W)(Photo)	32.50
68	1c Buff (112). Bold Blue Carrier pmk., minor faults, VF Appearance (W)(Photo)	70.00
69	1c Buff (112). Bold Leominster, Mass. Circle of Links cancel, faults, Fine Appearance, Lovely Strike (W)(Photo)	E.III
70	1c Buff (112). Negligible corner crease, Well-Centered, Circle of Wedges & Virtually Complete Feb. 7, 1870 French "Calais" Transit pmks., Very Unusual & Striking (W)(Photo)	E.V
71	1c Buff (112). Light corner crease, Bold "Flower" cancel, Choice Clear Strike, Scarce (W)(Photo)	E.V
72	1c Buff (112). Small faults, perfs. just in at R., Green Quartered cork cancel, Scarce (W)	125.00
73	1c Buff (112). Closed tear, Exceptionally Clear Bold Negative Masonic Square & Compass cancel, Remarkable Strike, Very Scarce (W)(Photo)	E.VI
74	1c Buff (112). Horiz. crease, Red Rosette cancel, Enormous Margins Showing Bits of Other Stamps at Sides (natural imperf. straddle at R.), An Astonishing Single (W)(Photo)	42.50
75	1c Buff (112). Perfs. bit in at T., couple minor creases, Bold Shield cancel, Exceptional Strike, Scarce (W)(Photo)	E.VII
76	1c Buff (112). Well-Centered, Bold Geometric cancel, VF (W)(Photo)	32.50
77	1c Buff (112). Well-Centered, Bold "2" in Oval Grid cancel, VF (W)(Photo)	32.50
78	1c Buff (112). Pre-print Paper Crease, light cancel, tiny tear, VF Appearance (W)	E.IV
79	1c Buff (112). Two, each with Imperf. R. Margin & T. Arrow, one with Straddle Margin, small faults, Fine Appearance (W)	65.00
80	1c Buff, Brown Orange, Dark Brown Orange (112, 112a). Used, couple minor faults, o/w F-VF (W)	97.50
81	1c Buff (112). Six Plate & Printing vars incl. Layout Lines, Plate Scratch, Rust Spot & Pre-print paper crease, some small faults, o/w F-VF Lot (W)	E.IX
82	1c Buff (112). Five Diff. Better Cancels incl. Doughnut, "W", "2" Negative Cross & Red "New York Paid All Direct", F-VF Strikes (W)	E.VIII
83	1c Buff (112). Fine, Cancels incl. Town pmk., Blue Target & Blue Revenue pmk., one very dry print, VG-F Lot (W)	171.00+
84	1c Buff (112). Used Horiz. Pair, Fine	70.00
85 田	1c Brown Orange (112a). Horiz. Block of Twelve (6x2), natural s.e. at R., Well-Centered, neat Circles of Wedges cancels, skillfully reinforced, few negligible perf. flaws, one pair faint crease, o/w VF, Rare Block (W).....(Photo)	750.00+
86	1c-6c Pictorials (112-115). Each with Red cancel, faults, mostly trivial, VG-F Appearance, Scarce	132.50
87	1c-15c Pictorials (112-117, 119). All with Blue cancels, 1c Blue Town, few faults, mostly Fine Lot	265.00
88	1c-30c Pictorials (112-114, 116, 117, 119, 121). Used, virtually all have faults, some trivial, nearly all Appear Fine	296.25
89	1c Buff (112). Tied by Blue Segmented Cork, matching "Lexington Ky." pmk. on 3½x4½" portion of 1870 Internal Revenue Personal Tax Form, VF, Most Unusual & Scarce (W)	E.IV
90 ㊞	1c Buff (112). Neatly tied by Grid on Beautiful Red & Green Insurance Co. Folded Financial Report, 1869 Usage, Very Fine, A Lovely Item (W)(Photo)	E.VI

91	✉	1c Buff (112). Tied by Circle of Wedges on Fresh Yellow Unsealed Circular Cover Used Locally in NY City, Handsome "Corn Exchange Insurance Company" Corner Card, printed again on inside, VF (W)(Photo)	85.00
92	✉	1c Buff (112). Tied by Cork on Folded " Medical And Surgical Reporter ", Issue of Aug. 21, 1869 printed on Salmon paper & used locally in Philadelphia, Fine, Handsome & unusual Usage of the 1c (W)	E.V
93	✉	1c Buff (112). Just tied by Bold Circle of Alternating "V"s & Lines, "Canandaigua N.Y." pmk. on locally used cover, Fine, Pretty Cancel (W)(Photo)	85.00
94	✉	1c Buff (112). Minor faults, tied by small "Greenwich Conn." double Circle pmk. on fresh cover, VF Appearance (W)	85.00
95	✉	1c Buff (112). Tied by Targets on Small Cover, Blue Mar. 5, 1870 Merchant's Double Circle Handstamp, some cover soiling, o/w Fine	85.00
96	✉	1c Buff (112). Geometric cancel, not tied, matching "Boon Ville N.Y." pmk. on drop cover, reduced at L., o/w Fine (W)	85.00
97	✉	1c Buff (112). Tied by Odd Geometric on Orange "United States Internal Revenue" Imprint Cover Used in Utah Territory , Two Strikes of Straight Line "Unclaimed" , Rimless "Salt Lake City Utah" Backstamp, mended cover tear at L., still Very Handsome, Scarce (W)(Photo)	E.VII
98	✉	1c Buff (112). Perfs. tiny bit in at T., natural pre-print crease, Bold Two-Slit Cork cancel, not tied, "Springfield Ill." pmk. on Overall "Wheeler & Wilson's" (Sewing Machine) Factory Illustrated Cover, Overprinted "Arthur Farran & Co" (new agents), Choice Appearance (W)(Photo)	E.VII
99	✉	1c Buff (112). Minor wrinkle, tied by Bold Large Blue "B" & matching "Belvidere Ill." pmk. on cover, minor cover repair at R., VF Strike (W)(Photo)	E.V
100	✉	1c Buff (112). Rich Color, Perfectly tied by Straight Line "1870" on Neat Locally Used Cover, "Watkins N.Y." pmk., Choice & Very Scarce (W)(Photo)	E.VIII
101	✉	1c Buff (112). Unusual White "Blobs" on either side of Numeral "1" (Similar to No. 219 "Candleflame" var), small corner crease, single short perf., cork cancel, tied by "Northampton Ms." pmk. on cover, Scarce Variety (W)	E.VI
102	✉	1c Buff (112). Two overlapped singles, tied by Quartered Cork & "Chicago Ill." pmk. on Unsealed Locally Used Cover, May 1870 Invitation Accompanies, Fine & Attractive(Photo)	E.VII
103	✉	1c Buff (112). Horiz. Pair, just tied between perfs. by Cork cancel on Fresh Orange Buff Unsealed Circular Cover to Maine, "Mankato Minn." pmk., Fine (W).....(Photo)	E.VII
104	✉	1c Buff (112). Horiz. Strip of Three, Huge R. Imperf. Straddle Margin Showing Arrow & Bit of Next Stamp, tied by "Ottumwa Ioa." Town pmks. on Internal Revenue Official Business Cover, slightly reduced at L., VF (W)(Photo)	E.VII
105	✉	1c Buff (112). Horiz. Strip of Three, tied by Grids, "New York" pmk. on Cover to Mich., Blue Oval Handstamp Return Card, cover bit reduced two sides, Fine (W)	E.VII
106	✉	1c Buff (112). Horiz. Pair & Single, perfs. tiny bit in, tied by Bold "Post Trevorton Pa" pmk., Unusual Type without Date Logo on Yellow Cover, pmk. struck again at T.R. along with Straight Line "Aug. 30 71", Very Attractive & Scarce (W)(Photo)	E.VIII

All lots with "(W)" at end of description are the property of Mrs. Wunsch.
Lots without this symbol are the property of another owner.

107 ☒	1c Buff (112). Horiz. Strip of Three , minor perf. flaws, tied by Cork, "Sacramento Cal." pmk. on Small Cover to NY State, Attractive (W)(Photo)	E.VII
108 ☒	1c Buff (112) . Used with 2c Black, F. Grill (93) tied together & onto Small Cover by Targets, "Henniker N.H." pmk., Neat 1869 Docketing, 2c short corner perf., o/w Fine (W).....(Photo)	E.VII
109 ☒	1c Buff, 2c Brown (112, 113) . Slightly overlapped, 1c light corner crease, tied by Brilliant Red Cork cancels, matching "Greenwich N.Y." pmk. on Fresh reduced cover, Very Pretty & Colorful (W)(Photo)	E.VIII
110 ☒	1c Buff, 3c Ultramarine (112, 114). Horiz. Pairs , defective, tied by Quartered Grids, "New Orleans" pmk. on March 1870 cover to France, Red "New-York", "GB 40c", French Transit & "15" decimes due mark, London backstamp, Handsome example of the Very Scarce Double 4c Rate Paid Only to England (W)(Photo)	E.VIII
111 ☒	1c Buff (112) . Used with Vert. Pair & Single 3c Green (147) , perfs. touch to trifle in, one 3c tiny tear, tied by Targets on slightly reduced cover to Prussia, "Grand Tower Ill." pmk., Red "Bremen Franco", Red Chicago Transit on Back, Attractive & Most Unusual Method of Prepaying the 10c Rate to Germany (W).....	E.VI

TWO CENT BROWN

112 ★	2c Dark Brown (113) . Well-Centered, Fresh, Large Part o.g., VF (W)(Photo)	70.00
113 ★	2c Brown (113) . T. Pl. No. 6 Single, Part o.g., Three Huge Margins, L. perfs. touch, single short perf., Scarce (W)(Photo)	70.00
114 ★	2c Brown (113) . Deep Shade, perfs. tiny bit in at R.	70.00
115 ★	2c Brown (113) . Perfs. trifle in at T., Deep Rich Color, 1½mm Pre-Print Paper Crease, Very Scarce Variety (W).....(Photo)	E.V
116 ★	2c Brown, Split Grill (113 var) . Fresh, Full o.g., perfs. touch to trifle in	85.00
117 ★	2c Brown (113). Horiz. Pair , Fresh, o.g., single short perf. at R., L. stamp tiny thin speck, o/w Fine (W)	145.00
118 ★田	2c Brown (113). Block of 20 (4x5) , Fresh, o.g., some minor hinge reinforcement, three have faults (short corner perf., tiny thin & faulty corner) others VG-F, Rare Block(Photo)	1,690.00+
119	2c Brown (113) . Huge "Jumbo" Margins, light Cork cancel, reperfed at R., Extremely Fine Appearance, An Incredible Stamp (W) (Photo)	13.00
120	2c Brown (113) . Minor flaws, Blue Three Leaf Clover cancel, Fine Strike, Very Scarce (W).....(Photo)	E.IV
121	2c Brown (113) . Beautifully Centered, Neat Blue Grid of Small Diamonds cancel, Extremely Fine.....(Photo)	14.00
122	2c Brown (113) . Faint bend, tiny filled thin, " Hiogo Japan " Double Circle pmk., Much Clearer than usual, Very Scarce (W).....(Photo)	120.00
123	2c Brown (113) . Tiny faults, perfs. touch, Clear Jack-O-Lantern cancel, Scarce (W)(Photo)	E.VI
124	2c Brown (113) . Faint crease, R. perfs. touch, light Target cancels & Red "N. York Paid All Br. Transit" pmk., Very Difficult Cancel to find on this Stamp.....	20.00+
125	2c Brown (113) . Four Arrow Pos., Three Diff., one Unused, VG Lot (W)	E.V
126	2c Brown (113) . Six, Two with Part Impt., Split Grill, L. Arrow, Dry Print & Printing Ink Smear, minor faults, VG-F Appearance, Interesting Lot (W)	E.VI
127	2c Brown (113) . Six Diff. Shades incl. all four Scott Listed Shades, few minor faults, o/w F-VF Lot (W).....	78.00

128	2c Brown (113). Seven Diff. Fancy cancels incl. Red, Blue Target, "X", Geometrics, etc., minor faults, F-VF Strikes (W)	E.V
129	2c Brown (113). Seven Diff. Fancy Cancels incl. Star, Negative Star, Blue "Paid", Magenta "San Francisco" Attractive Group (W).....	E.VI
130	2c Brown (113). Eight Diff. Cork cancels, G-F Lot (W)	E.V
131	2c Brown (113). Twelve Diff. minor Plate & Printing vars incl. Re-engraving, Plate Scratch, Rust Spots, etc., Interesting Lot for the Specialist (W)	E.VII
132	2c Brown (113). Twelve Plate & Printing vars incl. Plate Scratches, Rust Spot, Improper Wiping, Pre-print paper creases, Split Grill, etc., one Unused, some small faults, Excellent Specialist's Lot (W)	E.VII
133	2c Brown (113). Two Horiz. Pairs rejoined to original block configuration, Quartered Cork cancels, small tear in one, o/w Fine (cat. as two pairs).....	55.00+
134	2c-15c Pictorials (113-117, 119). 16 Items, incl. two each 6c, 10c & 15c, three 12c, Good Showing of Cancels & Varieties, incl. "3", "Paid", "Paid All", Star, Leominster Mass. Links, "N-York Steamship," Blue, Red, Magenta, Split Grills & a fascinating 3c with Huge Imperf. Side Margins, for the most part quality below average, yet an Interesting & Desirable Lot	E.VIII
135	2c Brown (113). Well-Centered, tied by Target, Perfect Bold Matching "Plymouth N.H." pmk. on lovely Pink Ad cover showing Four-Horse Merchant's Wagon , Beautiful Matching Illustr. Enclosure, minor cover docketing, tiny cover tear, Still Extremely Fine (W)(Photo)	E.VI
136	2c Brown (113). Well-Centered, tied by Odd Cork, "Boston Mass." pmk. on Oil Dealer's Circular Rate Corner Card Cover, Extra Large Blue & Red Rectangle Listing Types of Oil Available incl. "Sea Elephant Oil", "Sperm Oil", etc., some pencil docketing erasures, VF, Fascinating (W)	(Photo) E.VI
137	2c Pale Brown (113). Perf. faults at L., tied by Cork cancel & "Boston Mass." pmk. on cover with Embossed Corner Card, VF Cover (W) ..	E.IV
138	2c Brown (113). Wide Even Margins, couple trifle toned perf. tips, tied by Target, "Station C Philada." Carrier pmk. on fresh cover, VF (W) ..	E.IV
139	2c Brown (113). Tied by Cork & by mostly clear Phila. "Carrier" pmk. on very fresh Corner Card cover, VF (W)	E.IV
140	2c Brown (113). Well-Centered, light Cork cancel, not tied Phila. Pa. "Carrier" pmk. on locally used cover, Attractive Coal Depot Corner Card with Small Illus. of Leaping Stag, very light tape stain over small cover tear, o/w VF, ex-Gibson (W).....	40.00
141	2c Brown (113). Light cancel, tied by "Washington D.C. Local" pmk. on Locally Used Cover, Military Address, Fine (W)	E.IV
142	2c Brown (113). Rich Color, Grid cancel, not tied, "Boston Mass." pmk. on Locally Used Cover, Fine (W)	40.00
143	2c Brown (113). Rich Color, tied by Cork & "New York City P.O. Received" Date/Time pmk. on May 1869 Printed Folded Business Announcement, Remarkably Fresh & Fine (W)	40.00
144	2c Brown (113). Perfs. in at T., tied by Circle of Wedges on "Bootleg" Circular from Cape of Good Hope, Blue Double Circle "Green & Siebert New York Apr 16 1869" Merchant's handstamp, Fine & Scarce (Earliest Known Use March 27, 1869) (W)	E.IV
145	2c Brown (113). Perfs. in at T., tied by Cork & Philadelphia "Carrier", pmk. on cover, Fine (W)	E.III
146	2c Brown (113). Quartered Cork cancel, not tied, light "Boston Mass." pmk. on Beautifully Illustrated Glue Factory Circular Rate Cover to Conn., Fine & Handsome (W)	(Photo) 40.00
147	2c Brown (113). Tied by Target, unreadable pmk. on Fresh Yellow Cover, Handsome Hosier's Corner Card (Crest & Imprint), Neat Jun. 1870 docketing, Printed List of 76 Products on Reverse, Fine (W)	40.00

148	2c Brown (113). Tied by Bold Quartered Cork on Circular Rate Cover to Pa., Handsome Life Insurance Illustrated Corner Card, Nov 1869, Printed Enclosure Soliciting Insurance Agents, few tiny toning spots, o/w Fine, ex-Gibson (W).....	40.00	
149	2c Brown (113). Perfs. in, Cork cancel, tied by "Boston Mass." pmk. on Circular Rate Cover to Conn., Cabinet Organ Manufacturer's Corner card, Attractive (W)	40.00	
150	2c Brown (113). Well-Centered, minor corner crease, Extra Bold Cork cancel, "Houlton Me." pmk. on Small Rectangular 1870 Cover to Woodstock, New Brunswick, Two Line "Paid 2", Rare & Handsome (Special 2c "Ferriage" or "Line Office" Rate for Border Towns per agreement between U.S. & Canadian P.M.G.'s, similar cover in Brookman) (W)		E.X
151	2c Brown (113). Perfs. bit in, Well tied by Quartered Cork & "Boston Mass." pmk. on Circular Rate Cover to Ohio, Unusual Salt Fish Co. Corner Card, Illustration of Fish in "C", "Desiccated Codfish", etc., Quite Attractive (W).....	40.00	
152	2c Brown (113). Just tied by Grid of Squares on Circular Rate Cover to N.H., Lovely Illustrated Steam Engine at L., R. perfs. trifle blunted by slight cover reduction, still a Choice Illus. Cover (W)	40.00	
153	2c Brown (113). Tied by Small Quartered Cork, Unusual "May 31 1PM" Elongated Octagon pmk., on Printed Address Cover to Phila., Pa., Fascinating Corner Imprint in Tiny Letters, The Supt. Of The R.F. And Potomac R.R. says of Sabbath desecration, "It demoralizes the men, and makes them reckless, and so is the Cause of many Accidents", Very Scarce, ex-Gibson (W)	40.00	
154	2c Brown (113). Two covers, one with Blue Phila. "Carrier" pmk., other with "Washington D.C. Local" pmk., Fine (W)		E.VI
155	2c Brown (113). Two covers, one Unsealed Used from Vt. to California, other Used Locally in Providence, R.I., former tear & tiny stamp faults, latter minor soiling, o/w Fine	80.00	
156	2c Brown (113). Five Diff. Corner Card Covers, VG-F (W)		E.VII
157	2c Brown (113). Nine covers, Diff. Town pmks. or Circular usages, VG-F Lot (W)		E.VIII
158	2c Brown (113). Two Singles on Cover, vaguely tied by Star in Circle cancel, "Claverack N.Y." pmk., Verona NY Forwarding pmk. to Clinton, N.Y., light toning band, o/w Fine (W)		E.V
159	2c Brown (113). Horiz. Pair, just tied by Crude Five Point Star on Apr 1870 Treaty Rate Cover to France, Red "New-York" "GB 40c" Oval, French Transit & "5" due mark, minor smearing of address, o/w VF (W)		E.VII
160	2c Brown (113). Horiz. Pair, Cork cancels, not tied, "New York City Received" pmk. on Cover to Mass., Elaborate Furniture Dealer's Corner Card, Fine & Very Handsome (W)		E.VII
161	2c Brown (113). Horiz. Pair, Split Grill Var., on cover tied by Small Cork & "Boston Mass." Date/Time pmks., cover bit reduced three sides & reclosed, Fine Appearance (W)		E.V
162	2c Brown (113). Horiz. Strip of Three, tied by Grids, "New York" Date/Time pmk. on Double Rate Cover to N.J., Book Publisher's Corner Card, Book Illustration, R. stamp small faults & closed cover tear, Scarce (W).....		E.VI
163	2c Brown (113). Vert. Strip of Three, perfs. bit in at T., tied by Grids of Squares & Red "New York U.S. (?) " pmk. on Small Neat 1870 Cover to Ireland, Attractive & Scarce (W)		E.VI
164	2c Brown (113). Dark Shade, used with 1c Blue E. Grill (86), perfs. in at R., stamps cancelled but not tied, light "Tolland Ct." pmk. on Fresh Corner Card Cover, 1c slightly overlaps cover, Scarce Combination (W)		E.VI

165	⊠	2c Brown (113). Used with 1c Blue, F. Grill (92) , 1c gum stains in grill, tied by Diamond in Circle cancels on cover, Scarce (W).....	E.VI
166	⊠	2c Brown, 3c Ultramarine (113, 114). Four 2c, one with R. Arrow at T., one defective, used with 10c Green, F. Grill (96), Matching Crossroads cancels, one 2c tied by ms. "Reg No. 52" on large size 1869 cover, "Eureka Cal." pmk. to Shasta, cover somewhat reduced, corner mend, Still Attractive & Scarce (W)	E.V
167	⊠	2c Brown (113). Used with Wide s.e. 6c Carmine (148) on 3c Green on Amber Entire (U83) Making Up 3c & 8c Registry Fee to Wisc, tied by Two ms. lines, ms. 1874 Town pmk., original letter accompanies, mentions \$30 enclosure, Fine & Scarce (W)	E.V
168	⊠	2c Pale Brown (113). Tied by N.Y. City Delivery pmk. over which has been placed 3c Green (158), s.e. at L., tied by Cork & N.Y. pmk. on small Forwarded cover, Fine & Unusual, ex-Gibson (W).....(Photo)	E.III
169	⊠	2c Brown, Left Diagonal Half Used as 1c (113c). Tied by Bold ms. "X" on March 26, 1870 Internal Revenue Tax Form from Luray, Va. , folds strengthened at sides with clear tape. Fine & Extremely Rare, reportedly the only known 2c Bisect on entire tax notice from Luray, earliest known use from Luray & the only known diagonal bisect from Luray, listed but unpriced	E.XI

THREE CENT ULTRAMARINE

170	★	3c Ultramarine (114). Lovely Extra Large Margins, Part o.g., light crease, o/w Extremely Fine (W)	(Photo) 45.00
171	★	3c Ultramarine (114). Bright Color, VF	(Photo) 45.00
172	★田	3c Ultramarine (114). Block, Large Part o.g. (toned), single partly nibbed perf., o/w Fine (W)	(Photo) 225.00
173	★田	3c Ultramarine (114). Block with L. Arrow at B., Large Part o.g., minor reinforcement, one stamp tiny perf. tear, small thin in one, couple faint toning specks, R. perfs. clear to touch (W).....	225.00
174	田	3c Ultramarine (114). Block with Guide Arrow betw. L. Pair, light "Danville Va." pmks., faults, Fine Appearance (W).....	75.00
176		3c Ultramarine (114). Few blunted perfs., "24" in Circle cancel, Very Scarce, Most Unusual (W).....	E.V

FANCY CANCELLATIONS

176		3c Ultramarine (114). Few blunted perfs., "24" in Circle cancel, Very Scarce, Most Unusual (W)	E.V
177		3c Ultramarine (114). Nibbed perf., Clear Waterbury, Conn. Large Bee cancel, A Lovely Strike, Rare (W)	(Photo) E.VIII
178		3c Ultramarine (114). Beautiful Centering, minute margin tear, Large Bee cancel, probably Adrian, Mich., Rare (W)	(Photo) E.VII
179		3c Ultramarine (114). Minor toning, "freak" centering, Extra Bold Rockford Ill. Bluebird cancel, Rare (W).....	(Photo) E.VI
180		3c Ultramarine (114). Freak centering, tiny tear, tied on small piece by Large Intricate "C.L. Fritz" Monogram, VF Strike, Most Unusual (W)	(Photo) E.VII
181		3c Ultramarine (114). Bold "Insufficiently Paid" in Oval cancel, small faults, VF & Scarce Strike (W)	(Photo) E.VI
182		3c Ultramarine (114). Bold Masonic Negative Square & Compass cancel, light creases, VF strike (W).....	(Photo) E. IV
183		3c Ultramarine (114). On piece, Negative Six Point Star cancel, not tied, Large Negative "SAM F LOW" Postmaster's Name pmk., Crude Letters carved from cork, Rare (W)	(Photo) E.VIII

184	3c Ultramarine (114). Horiz. Pair , perfs. slightly in at L., Split Grill Variety , each with Fancy Veined Leaf cancel, F-VF Strikes, Scarce (W)(Photo)	E.V
185	3c Ultramarine (114) . Five Diff. Cross Fancy cancels incl. Large & Small Maltese Crosses, "X", etc., VF Strikes (W)	E.V
186	3c Ultramarine (114) . Six Diff. Star cancels, 4-point, Solid, Hollow & Negative 5-point, 6-point & 8-point, F-VF Strikes (W)	E.IV
187	3c Ultramarine (114) . Seven Diff. Star cancels, incl. Six-point, Blue, etc., F-VF Strikes (W).....	E.V
188	3c Ultramarine (114) . Five, each with Part T. or B. Impt., cancels incl. Star, Negative Star & Red Cork, mostly small faults, Scarce Group (W)..	E.V

COLORED CANCELLATIONS

189	3c Ultramarine (114) . T. perfs. touch, Bold Green Circle of Wedges cancel, VF Strike (W).....(Photo)	65.00
190	3c Pale Ultramarine (114) . Bright Green Target cancel, single pulled perf., o/w Fine (W).....(Photo)	65.00
191	3c Ultramarine (114) . Large Margins, Well-Centered, Green Quartered Cork cancel, small thin spots, Extremely Fine Appearance (W)	65.00
192	3c Ultramarine (114) . Green Cork cancel, minor faults, Fine Appearance (W).....	65.00
193	3c Ultramarine (114) . Light Green Cork cancel, small faults, scarce (W)	65.00
194	3c Ultramarine (114) . Ten Diff. Blue cancels incl. "Paid" & Negative Masonic Square & Compass, VG-F Lot (W)	E.IV
195	3c Ultramarine (114) . Four Diff. Bright Red cancels incl. Red "New York" pmk., also one Brown cancel, VG-F Lot (W).....	63.00
196	3c Ultramarine (114) . Four Diff. Bright Red cancels incl. Sunburst, also one Magenta cancel, VG-F Lot (W)	46.50
197	3c Ultramarine (114) . Four Diff. Red cancels, also one Brown, G-F, Scarce Lot (W)	48.00
198	3c Ultramarine (114) . Nine Diff. Colored Cancels incl. Blue Star, Pinwheel, "10" & Clover, also Lilac, Magenta & Red, VG-F Lot (W)	E.VI

THREE CENT, VARIETIES

199 ★	3c Ultramarine, Without Grill (114a) . Fresh, Nearly Full o.g., insignificant corner perf. crease, VF (W)(Photo)	325.00
200 ★	3c Ultramarine, Without Grill (114a) . T. Sheet Margin Single with Imperf. Half Arrow at R., Large Part Brownish o.g., sheet margin rejoined, faint bend, perfs. in at T., Scarce (W)(Photo)	325.00
201 ★田	3c Ultramarine (114) . Horiz. Block of Six , Arrow at R., T.L. pair faulty, some perf. strengthening, B. Center Stamp Triangle Over "O" Variety, Double Row of Perfs. at B. , partly blunted on B. center stamp, Very Interesting Specialist Piece (W)(Photo)	317.50+
202 ★田	3c Ultramarine, Split Grill (114 var) . T.R. Sheet Corner Block of 32 with R. Arrow (4x8), Most Full o.g., some Mint, two stamps internal crease, two others faulty, o/w Fine, A Handsome 3c Showpiece (cat. \$1,825.00 as Ordinary Blocks) (W)(Photo)	E.XVI
203	3c Ultramarine Bisect, Vert. ⅔ Used as 2c (114c) . Uncancelled, on small portion of Luray, Va. Tax Notice , VF, Rare (W)(Photo)	—

All lots with "(W)" at end of description are the property of Mrs. Wunsch.
Lots without this symbol are the property of another owner.

204	3c Ultramarine Bisect, Vert. 1/3 Used as 1c (114b). Unsevered Horiz. Pair of Bisects just tied by Rimless Grid on small portion of Luray, Va. Tax Notice, VF & Rare (W)(Photo)	E.VIII
205	A Similar Lot (W)(Photo)	E.VIII
206	3c Ultramarine (114). Cracked Plate horizontally above "Postage", Geometric Cancel well clear of Crack, Fine & Rare (W)(Photo)	E.VI
207	3c Ultramarine (114). Cracked Plate horizontally through "States, Quartered. Cork cancel well clear of Crack, R. perfs. touch, Scarce (W)	E.VI
208	3c Ultramarine, Triangle over "O" of "Postage" (114 var). Split Cork cancel, Fine & Scarce (W)	E.V
209	3c Ultramarine, Triangle over "O" of "Postage" (114 var). Neat Rimless Grid cancel, Split Grill , single short perf., o/w Fine, Scarce (W)	E.V
210	3c Ultramarine, Triangle over "O" of "Postage" (114 var). Ms. cancel, small faults, Fine Appearance, Very Scarce Unlisted Variety (W)	E.III
211	3c Ultramarine, Triangle over "O" of "Postage" (114 var). Two, tied on piece by Bold Apron cancels (Masonic?) & "St. Louis Mo." pmks., Fine & Scarce (W)	E.VI
212	3c Ultramarine (114). Two, showing Part of Plate No. 12 inside perfs. at T. & B., faulty but Quite Scarce, also incl. No. 114 showing 30% of Plate No. 8 or 9 at B., tied by Rosette & "White Plains N.Y." pmk. on cover, Fine (W).....	E.VI
213	3c Ultramarine (114). Used, Large to Enormous Margins incl. L. Imperf. Arrow, An "Eye Catcher" (W)(Photo)	E.V
214	3c Ultramarine (114). Tiny crease, Cork cancel, Three Huge Margins incl. R. Imperf. Arrow, 3mm of Next Stamp at L., Remarkable (W)(Photo)	E.V
215	3c Ultramarine (114). Eight Diff. Arrow Positions, Two Imperf. Straddles Showing Adjoining Stamps, Scarce Lot (W).....	E.VI
216	3c Ultramarine (114). Cpl. Matched Set of All Eight Arrow Positions , also incl. Horiz. Pair with T. Arrow at R., Vert. Strip of Three with R. Arrow betw. T. Pair, G-F, Scarce Lot (W)	E.VI
217	3c Ultramarine (114). Ten, each with Guide Arrow , Eight Diff. Plates or Positions, mixed quality, G-F Lot (W).....	E.IV
218	3c Ultramarine (114). Nine, each with Pre-print Paper Crease , one on cover, Two Quite Wide, minor faults, Scarce Lot (W).....	E.VII
219	3c Ultramarine (114). Color Chart made up of 16 Used Stamps, All Diff. Shades, Virtually All VF (W).....	E.VI

THREE CENT, USED ON COVER

220	3c Ultramarine (114). Huge Imperf. Straddle Margin at L. showing nearly 3mm of Next Stamp, tied by Target & N.H. pmk. on cover, small cover mend at T., o/w VF, Spectacular (W)	E.V
221	3c Ultramarine (114). Small faint corner crease, tied by light " Congress Washington D.C. " pmk., another Bold Strike at L. on small cover, Fine & Scarce (W)	E.III
222	3c Ultramarine (114). Centered to L., tied by Blue Rosette, Bold Blue "Dispatched Philad'a Pa." pmk. on small cover, VF, Scarce This Well-Struck in Blue (W)	E.IV
223	3c Ultramarine (114). Off center, tied by Rosette, N.Y. pmk. on " Bootleg " cover from Turkey , Blue Oval handstamps "American Missions, Constantinople, Turkey." & "American Board of Foreign Missions Bible House New-York", cover stain, Very Unusual (W) ..	E.V
224	3c Ultramarine (114). Tied by Mostly Clear "Dispatched Philadelphia" pmk. on Dec. 1869 cover to U.S.S. Miantonomah, N.Y. Navy Yard, Fine (W)	E.IV



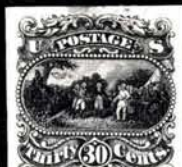
21



22



27



28



29



30



31



32



33



34



40EX



36 EX



41EX



42EX



44EX



45 EX



60



61



63



64



65



66



67



68



69



70



71



73



74



75



76



77



112



113



115



119



120





108



109



110



MING, Esq.,
EL HARGE
Rue Scribe
PARIS, FRANCE

135



150



146

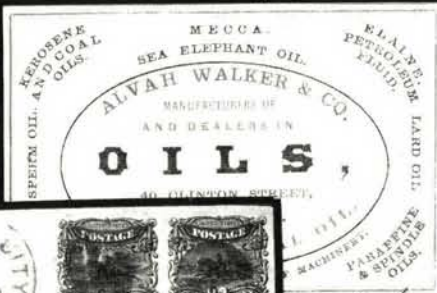
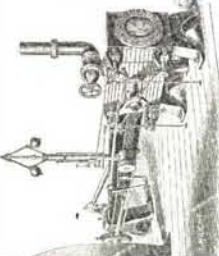


WM. A. HARRIS, Builder of
CORLISS STEAM ENGINES,
PROVIDENCE, R. I.

152



A. Hilbert



136



160



Y Keeg
Warren mass

THE SUPPLY OF
FIRE & T. AND
PITONAC. R. 2
cases of Babcock in-
struction. 14. 10
monitors the north
and south side
resting, and so is
the cause of many
accidents.

153

MR. ALEXANDER WHILLDIN,

20 South Front Street,

Philadelphia, Pa.

159



G. Spradell Esq
Paris France



121



122



123



170



171



177



178



179



180



181



184



183



200



203



204



205



182



189



190



199



206



213



214



346



347



348



349



352



353



354



357



358



359



362



364



366



367



370



372



20



26



37



43EX



46



47



48



53



54



55



58



85



118



172



589



201



529



202



162

L. S. FULLER,
Life and Fire Insurance
AGENT,
Tolland, Conn.



164



163

Richard Opens

Box 711

168

L. Mead
44 Madison Ave.
Ithaca N.Y.



24.

UNITED STATES INTERNAL REVENUE.
ANNUAL TAXES, MARCH, 1870.

To Samuel Miller
of Leroy, in
the 6th Division 6th District,
and State of Virginia



169

TAKE NOTICE

That, in pursuance of the acts of Congress, you are required to make out a Return according to the forms within, and deliver the same to me, at my office, WITHIN TEN DAYS FROM THE DATE HEREOF, or an addition of FIFTY PER CENTUM will be made to the proper tax.

No Return will be accepted, unless made out in detail, that is, with the proper entry opposite each item of the Return, and the whole subscribed and sworn to.

The form and manner for declaring that a person is not possessed of a taxable income, under the proviso of Section 118, of the Act of June 30, 1864, amended by the Act of March 2, 1867, is prescribed by the Commissioner of Internal Revenue to be the within Return, properly filled up, subscribed and sworn to, as above indicated.

225



233

From
AMERICAN EMIGRANT
COMPANY.



234

page 16. Warner
HENRY DÜHRSSSEN, 1/2
Agent American Emigrant Company,
37 STRUEN.
COPENHAGEN.
DENMARK.

226

B. D. G. Nord-
Coopers town



Mrs. Thos & Miss Mary Workman
Clifton
Cumberland
England

237



235

William L. Vane Esq.
Brown & Bailey & Co.
London
England

239



June 10. 1869.



238

Dear Esq
Sarpula House
Vestberg
near Rindal

244



Norris W. Chandler Esq
Dubee

247



W. H. Perry



The Peoples' Man for 1869.

reform
more of
Feb 1869



245

Fitzgate, M. D.

252



W. H. Perry



251



259

W. H. Perry

PAID
Wells, Fargo & Co.
OVER OUR CALIFORNIA AND COAST ROUTES



268

See?
8/9/70
Handwritten address and signature.



264

Phillips

Per Pacific Mail



J. C. A. Wingate

265



U.S. Consul,

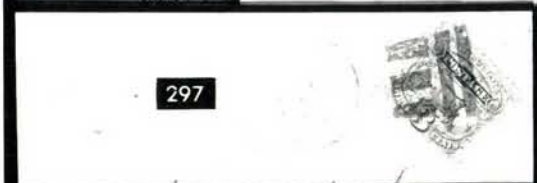
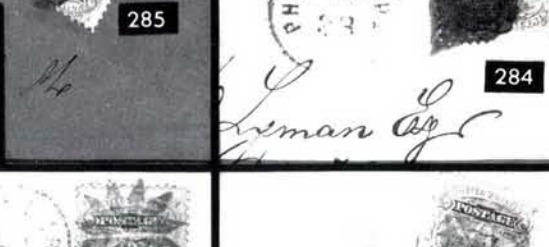
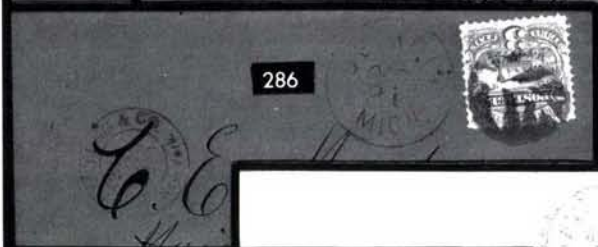
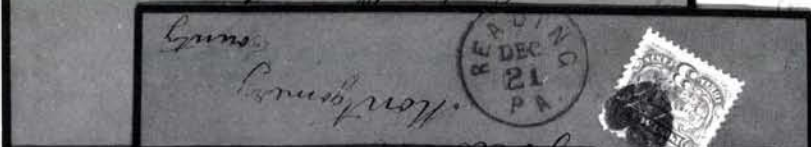
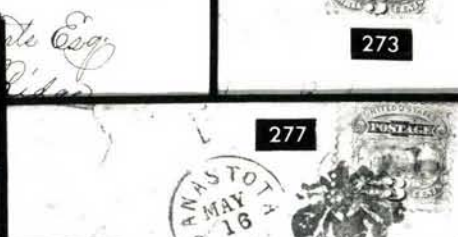
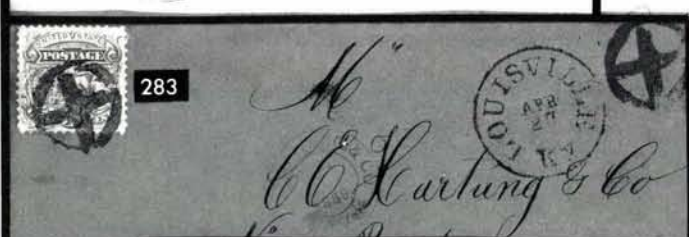
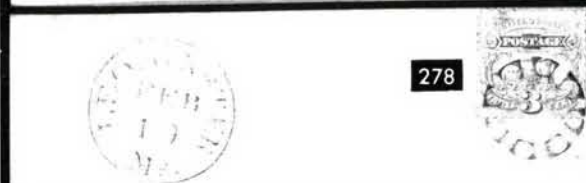
Swatow,

China

261



Mrs. Julia Ann Buell.
Walesville
N. Y.



299
7. D. Ely Esq
105 Stone Road St. (Rm. 5)

307




Miss, Emma, Bureau

300







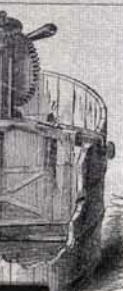

Rev. George Washburn
Constantinople
No. 100 Union Turkey


328



John E. Goff
 Foster & Buss,
 201 E. 1st St., St. Louis, Mo.

TEEPLE'S
 P. M. - Please return if not within Ten Days.
 326

 NEW
 Graph Gallery,
 E. O. TEEPLE,
 Wooster, Ohio.
J. H. Rockwell
Elmira


341

Miss Lizzie W. Tobey
Care of Rev. T. Tobey

FROM
National Bee-Hive Company,
 ST. CHARLES, Kane County, Illinois.
 M. M. BALDWIN, Secretary and Manager.

 This cut represents a Machine for extracting honey from the comb. The operation does not require the comb, after being emptied, is returned to the owner to be refilled.
 No. 1 - One quarter, and will empty 500 to 1000 lbs. per day. Price, \$15.
 No. 2 - One acre covering, but will empty 250 to 500 lbs. honey per day - 1 row, \$12.
J. S. Reitz
Vienna
Massachusetts
 313


JONES & CLARK, Sole Agents for the RAMSDALL NORWAY OATS, 20 Liberty Street, New York.

 324
Chas. Strabough Esq.

378


Wm. C. H. Wilson

377




3/20/71

376

Wm. C. H. Wilson

329

 J. E. A. Gibbs,
STEELE'S TAVERN,
 Wiltcox & Gibbs Sewing Machine Co.,
 628 Broadway, New York.
 V.A.

379


A. T. Stewart.
New York, City
N.Y.



374



390



391



392



393



394



395



396



397



398



399



403



421



422



423



424



425



427



429



430



431



432



433



434



435



436



438



439



453



454



455



456



457



458



459



460



461



462



463



464

386

388
C. H. Wilson

P. R. Haymaster Jared Lindy
 it. S. Steamer Sminds
 Askinmae

Forward Mails
via England.

389

Each of these is a copy of the original
of the same, and is a copy of the same.

P. Steamer

A circular postmark from Baltimore, MD, dated FEB 22. The text "BALTIMORE" is curved along the top, "MD" is at the bottom, and "FEB 22" is in the center.

407

Chas. Lasfornell Tremend 1861
Santiago de Cuba

Mail

408

Chas Thorel & Co
Yokohama

410

Land
Seminole
409

409

411

Cardicola &
Gordon & Co.

MEYER & WILCOX
MONTREAL

NEW YORK, N.Y.
DIRECT TV
Jama

Chant

Hamel Sons & Co

Havana

[Signature]

G. balcanicus

Yours

James Fort Trenchard &


 Copy
 Airtel

um 1.14

cant. P. C. Humphrey.

Royal Artillery.

one. C. 100. 1. 1000.

John Westphalen

417



23



416

Nov 17 & Dec 1840

Der 3^{te} Juni angegeben
mit geradem Besuche

419

y of Mexico

MAY 13



418

441

Misses Lower & Co
Blaydon Burn
Blaydon on Tyne
England
Newcastle on Tyne

420



Rev. L. BISSELL,

AHMEDNUGGUR.

INDIA.



Willcox & Gibbs Sewing Machine Co.

442

Willcox & Gibbs S. M. Co.,

135 Regent St.,

LONDON,



440

H. Wilson

R. G. Hatfield, Architect.

No. 31 Pine Street, NEW YORK

*To the care of
Messrs. Baring, Brothers
and Co. Ltd.*



443

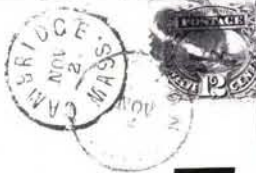
*Emma J. Hatfield
London*

*Edwell
Grace P.O.
Buckland
New Zealand*



445

Telegraph Nov. 16, 1869



444



446



Sept 25-



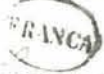
447

*Genl C. M. Norton
St. Charles, France*



448

Mr. Harry Norton



PREPAID



450

*Thomas P. Rickards Esq
of J. M. Tucker & Co.
Paris
France*



449

*Mr John W. Whittemore
Lancaster*

Mass

*Reg
Nov 99*

R. H. WINGERT,
Justice of the Peace,
Agent for the North American and
Franklin Fire Insurance Companies,
NEWPORT, PERCY CO., PA.
Return if not called for in 10 days.

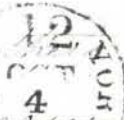


451

Samuel Skiller Esq



452



For Mr. ...

467



Mr. ...



468

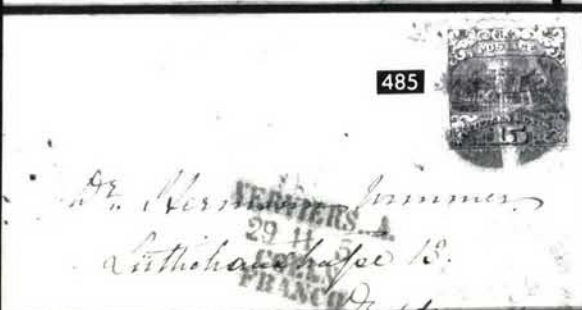


484



469

William ...



485

Mr. ...



486

Mr. ...



487



Mr. ...



488

*J. J. Butterfield
Mc Will
Clinton Co
Iowa*



465



466



470



471



472



473



474



475



476



477



478



479



480



481



495



496



497



498



499



500



501



502



503



504



505



506



507



508



509



514



515



516



517



518



519



520



521



493



494



510



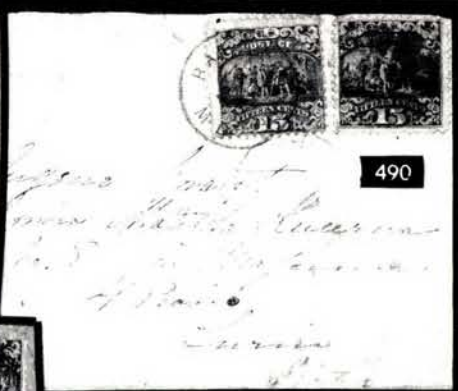
511



530



489



490



492



491



512



513



550



531



532

RICHARD SMITH, Esq.,



559



560



561



562



563



564



565



566



567



568



569



570



571



572



573



574



575



576



577



578



579



580



581



582



583



584



585



586



587



588

225	⊠	3c Ultramarine (114). Perfs. in at T., tied by Circle of Squares, N.Y. pmk on cover with Large Blue Oval "Forwarded by G.A. Fuller, Narragansett S.S. Co. Pier 28 N.R." (W).....(Photo)	E.VI
226	⊠	3c Ultramarine (114). Tied by Cork, "Utica N.Y." pmk. on Leed's Patent Envelope , T.L. corner repaired, o/w VF, Very Scarce, with P.F. Certificate (W).....(Photo)	E.VIII
227	⊠	3c Ultramarine (114). Two, tied on fancy Lady's covers, F-VF (W)	E.III
228	⊠	3c Ultramarine (114). Two covers, each with Albany, N.Y. "Carrier" pmk., Fine (W).....	E.III
229	⊠	3c Ultramarine (114). 13 Covers, Variety of Towns, mixed quality, generally Fine Lot.....	E.V
230	⊠	3c Ultramarine (114). Horiz. Pair , R. stamp corner crease, tied by Grids & "Homer N.Y." pmk. on small 1870 Mourning cover to England, Red N.Y. Transit, "London" receiving pmk., Fine (W)	E.III
231	⊠	3c Ultramarine (114). Three Horiz. Pairs on diff covers, one with additional single, F-VF Lot (W).....	E.III
232	⊠	3c Ultramarine (114). Four Covers bearing Holiday pmks., Jan 1 (New Years), Feb. 12 (Lincoln's B'day), Feb. 22 (Washington's B'day), Dec. 25 (Christmas), mostly clear strikes, Unusual Lot (W).....	E.V
233	⊠	3c Ultramarine (114). Two Pairs & a Single tied by "San Francisco Cal" & Odd Hollow Centered cancels on Apr 1870 cover to Switzerland, Red New York Transit, cover & stamps minor toning, tiny tear, Very Scarce Franking (W)(Photo)	E.VI
234	⊠	3c Ultramarine (114). Horiz. Strip of Three & Single , tied by Propeller cancels, partial "Hartford Conn." pmk. on cover to Denmark, Printed Address (Dührssen corresp.), normal sequence of Transits, Copenhagen receiving pmk. on back, minor irregularity at L. from opening, Very Scarce (W)(Photo)	E.VII
235	⊠	3c Ultramarine (114). Horiz. Pair & Two Singles , Beautifully tied by "Newport R.I.", Small Quartered Cork & Red "London Paid" on Jul 1869 Cover to England, Red "New York Paid All", stamps have negligible margin toning specks, o/w VF (W)(Photo)	E.V
236	⊠	3c Ultramarine (114). Horiz. Strip of Three & Single , negligible perf tip toning, tied by Squares & by Violet "Phila. Paid All" pmk. on neat Aug. 1869 cover to England, Red "London Paid", VF & Handsome Cover (W)(Photo)	E.V
237	⊠	3c Ultramarine (114). Two Vert. Pairs & Single , one stamp filing crease, tied by Large Blue Double Circle "Pacific Union Ex. Co. Los Angeles" pmk. struck again at B.L. & on back of Cover to England, Handsome & Rare, with P.F. Certificate (W).....(Photo)	E.VIII
238	⊠	3c Ultramarine (114). Block , perfs. in at T. & L., tied by Corks, "Buffalo N.Y." pmk. on June 1869 cover to England, Merchant's Printed Corner Card, Red "New York Paid All", "Kendal" & "Sedbergh" backstamps, Fine & Very Scarce (W)(Photo)	E.VII
239	⊠	3c Ultramarine (114). Block of Five , two stamps s.e. at L., tied by Large Circles of Wedges, Red "Boston Paid 12" & French Transit on back of small June 1869 cover to France, Paris receiving pmk. on front, small cover faults & bit reduced three sides, Very Scarce (W) (Photo)	E.VII
240	⊠	3c Ultramarine (114). Horiz. Strip of Five , couple tiny faults, tied by fancy Leaf-like Geometric cancels, "Brooklyn Ct." pmk. on large size cover, bit irregular at R., o/w Fine, Scarce (W)	E.IV
241	⊠	A Similar Lot (W)	E.IV
242	⊠	3c Ultramarine (114). Vert. Strip of Five & Single , couple negligible flaws, Single Shows bit of Pl. No. 12 at B., all tied by Corks, "Staunton Va." pmk. on large size Sextuple-rate cover to Seguin, Texas, minor wear from contents, o/w Fine, Unusual (W)	E.III
243	⊠	3c Ultramarine (114). Horiz. Strip of Six , few trivial flaws, tied by Corks & "Ogdensburg N.Y." pmks. on large size 6c Pink Entire (U62) , paying 8x3c Rate to Plattsburgh, N.Y., couple small minor stains, o/w Fine, Very Unusual (W)	E.IV

CAMPAIGN, PATRIOTIC, WESTERN & TERRITORIAL COVERS

- 244 ☒ **3c Ultramarine (114).** Tied by Targets, "Lunenburg Vt." pmk. on **Grant Campaign Cover**, Wreathed Portrait & Imprint T.L. Corner, rest of cover printed in Fine Gray Lines, stamp has addition blue green "Paid" cancel, cover stains at B. partly affecting design, o/w Fine, illustrated merchant's billhead accompanies (W)(Photo) E.V
- 245 ☒ **3c Ultramarine (114).** Single nibbed perf., Circle of Wedges cancel, not tied, "Claremont N.H." pmk. on **Seymour Campaign** cover, Striking Portrait, "The Peoples' Man for 1869" Imprint, Bold June 1869 Docketing, closed cover tear, Attractive & Very Scarce (Seymour & Blair unsuccessfully ran against Grant & Colfax in 1868 election) (W)(Photo) E.VII
- 246 ☒ **3c Ultramarine (114).** Tied by Greenish Blue Grid, matching town pmk. on **Multicolor Civil War Patriotic**, Flag Constitution & Handshake, repaired at far L., Fine Appearance (W)..... E.VI
- 247 ☒ **3c Ultramarine (114).** Tied by Cork, "Central City Colo." **Territorial** pmk. on small cover with Fancy Pink Dove with Scrolls for address, closed cover tears at T., Attractive & Scarce (W)(Photo) E.VI
- 248 ☒ **3c Ultramarine (114).** Neatly tied by Cork & "Helena Montano" **Territorial** pmk. on April 1870 cover, neat docketing at L., couple ink stains at B.L. corner, o/w Fine (W) E.VI
- 249 ☒ **3c Ultramarine (114).** Tied by Target, matching light "Pueblo C. Ty." **Colorado Territorial** pmk. on Merchants' Corner Card cover to Trinidad, Col., minor staining at B.R., o/w Fine, Scarce & Attractive (W) E.V
- 250 ☒ **3c Ultramarine (114).** Tied by Cork, "Salt Lake City Utah" **Territorial** pmk. on June 1870 cover to Montana Terr, neat docketing at L., stamp damaged at T. from opening, small cover mend at R, o/w Fine (W) E.V
- 251 ☒ **3c Ultramarine (114).** Tied by Target, matching "Sitka Alaska T" pmk. on Aug. 1870 cover to New Hampshire, cover from same corresp. accompanies (from San Francisco), VF, Handsome & Rare Alaska Territorial (W)(Photo) E.XIII
- 252 ☒ **3c Ultramarine (114).** Tied by Crossroads & by Blue Oval "Wells, Fargo & Co. Express San Bernardino", struck again on cover to Placerville, "San Francisco Cal." pmk., another W.F. & Co. San Bernardino on back, Fine (W).....(Photo) E.VII
- 253 ☒ **3c Ultramarine (114).** Centered to T.L., cork cancel, not tied, matching "Leavenworth Kas." pmk. on cover to "28 mile Station Benton road/care of Wells Fargo & Co./Montana Territory", on back is Large Blue Double Circle "Wells, Fargo & Co. Fort Benton Montana", cover opened to show both sides, couple negligible faults, o/w Fine, Very Unusual (W)..... E.VI
- 254 ☒ **3c Ultramarine (114).** **Vert. Strip of Three**, tied by Corks & "Elmira N.Y." pmk. on cover to "Gen. B.H. Grierson. Fort Sill. Indian Territory", Fine & Interesting (W) E.IV
- 255 ☒ **3c, 6c Ultramarine (114, 115).** Tied by Corks, "Pittsburgh Pa." pmk. on large size Insurance Co. Corner Card cover, slightly reduced at R., o/w Fine, Attractive (W) E.VII

RAILROAD & STEAMSHIP COVERS

- 256 ☒ **3c Ultramarine (114).** Tied by Quartered Cork & "Atlanta & Chatta. R.P.O." pmk. (Towle-Meyer 357-F-1) on large size cover, Fine, Unlisted this Early (W) E.III
- 257 ☒ **3c Ultramarine (114).** Tied by Cogwheel, "Elgin & State Line R.R." pmk. (Towle-Meyer 692-B-1) on neat cover, small cover corner repair, o/w VF (W) E.IV

258	☒	3c Ultramarine (114). Tied by Bold Negative Star & “N.Y. Central R.P.O.” pmk. (Towle-Meyer 114-I-2) on cover, Fine (W)	E.IV
259	☒	3c Ultramarine (114). Centered to B.L., tied by Bold Target, Matching “Potomac Postal Cars” pmk. (Towle—Meyer UT-4) on neat buff July 1869 cover to N. Y., VF (W)(Photo)	E.VI
260	☒	3c Ultramarine (114). Centered to T.R. showing L. Arrow at B., tied by Quartered Cork, Virtually Cpl. Bold “Quincy & St. Jo. R.P.O.” pmk. (Towle-Meyer 810-E-1) on neat buff cover to Mich., VF (W) ..	E.IV
261	☒	3c Ultramarine (114). Tied by Segmented Cork, Perfect Bold “Utica & B.R. R.R.” pmk. (Utica & Black River R.R., Towle-Meyer 104-A-1) on fresh salmon cover, tiny mend at B., o/w VF (W)(Photo)	E.V
262	☒	3c Ultramarine (114). Horiz. Pair, tied by Partial “Worcester & Nashua R.R. Ms.” pmks. (Towle-Meyer 21-A1), Virtually Cpl. Strike at L. of cover to “U.S.S. Dacotah . . . San Francisco”, Fine, Scarce (W)	E.IV
263	☒	3c Ultramarine (114). Tied by Quartered Cork, “Baltimore Md.” pmk. on small cover, Bold Str. Line “Steamboat” & matching “Due 1” in Circle, closed cover tear, o/w Fine, Scarce (W).....	E.IV

MIXED FRANKING

264	☒	3c Ultramarine (114). Fine, used with 2c Black (73) & 10c Green F. Grill (96) on Quintuple Rate Domestic Cover to Conn. tied by Unusual Cancel of Lines & Dots, “Brooklyn Ct.” pmk., 2c & 10c some negligible gum soaking, more apparent on 10c, Attractive & Most Unusual Combination (W)(Photo)	E.VI
265	☒	3c Ultramarine (114). Two, one partly cut away, Used in Combination with Vert. Pair 2c Black, F. Grill (93), perfs. trimmed at T., tied by Dark Blue Grids, matching “Bristol N.H.” pmk. on neat June 1869 cover to China, Red “San Francisco Paid All”, Hong Kong & Swatow backstamps, Scarce & Attractive, ex-Allen, Illustr. in Lane, p. 41 (W)(Photo)	E.VII
266	☒	3c Ultramarine (114). Used with 15c Black, F. Grill (98) , tied by Corks, “Lisbon Mich.” pmk. on small Registered cover, 15c couple small tears, o/w Fine Cover (W)	E.VI
267	☒	3c Ultramarine (114). Tied by Cork, “Baltimore Md.” pmk. on 3c Pink Entire (U58) to New Orleans with Mostly Clear Str. Line “Steamboat”, Blue ms. “Due 6”, Fine cover from the Carroll, Hoy Correspondence (W).....	E.IV
268	☒	3c Ultramarine (114). Tied on 3c Pink Entire (U58) , by Circle of Wedges, Wells, Fargo & Co. Printed Frank to England, Cover Originated in British Columbia & is Franked with s.e. 5c on 3p Bright Red (9) tied by Blue Oval Grid “35”, Blue Two Line “For Great Britain/and Ireland”, Blue Oval “Wells, Fargo & Co. Victoria”, Red New York & London Transits, Jul 1870 Usage, lightly toned rectangular area where evidently a forwarding label was removed to show Express Co. Oval & Transits, tiny cover tear, quite Rare (Prior to 1871 all Br. Columbia Mail went through U.S. The P.O. at Victoria kept U.S. Postage on hand for the convenience of its patrons) (W)(Photo)	E.XIII
269	☒	3c Ultramarine (114). Wide natural s.e. at L., tied by Circle of Wedges & “New York” pmk. on Forwarding Label affixed to cover with Vert. Pair of North German Confederation 2gr Ultramarine (5) , one stamp minor damage before use, tied by “Dresden 13 Jan 70” pmks. & Red N.Y. Credit pmk., Fine & Very Unusual Cover (W).....(Photo)	E.VI

FANCY & UNUSUAL CANCELLATIONS

270	⊠	3c Ultramarine (114). Tied by Bold Negative "70" , Double Circle "New Berne N.C." pmk. on small neat cover, Fine (W)	E.V
271	⊠	3c Ultramarine (114). Bold "1869" in Circle cancel, not tied, Struck again on small cover, "Nashotah Wis." pmk., VF (W)..... (Photo)	E.VIII
272	⊠	3c Ultramarine (114). Tied by Large "A" & "Atlanta Ga." pmk. on buff cover, Fine (W)	E.V
273	⊠	3c Ultramarine (114). Negligible perf. toning, Large Bold Blue "B" cancel, tied by matching "Belvidere Ill." pmk. on small neat cover, VF Strike (W)..... (Photo)	E.V
274	⊠	3c Ultramarine (114). Negligible perf. tip toning, Large Bold "D" cancel, not tied, matching "Decatur Ill." pmk. on small cover, trivial cover mend at B.R. corner, VF Strike (W)	E.V
275	⊠	3c Ultramarine (114). Tied by Bold "G" & "Odin Ill." pmk. on cover with Illustr. Ad for Lumber Dealer, matching enclosure, Fine & Attractive (W).....	E.III
276	⊠	3c Ultramarine (114). Natural s.e. at R., Perfect Bold Blue "W" cancel, not tied, matching "Woodstock Ill." pmk. on Immaculate small cover, Extremely Fine Strike, A Beauty (W) (Photo)	E.VI
277	⊠	3c Ultramarine (114). Tied by Large Bold Bee , matching "Canastota N.Y." pmk. on small cover, cover torn almost in half, stamp & cover age spots, VF Strike, Rare (W)..... (Photo)	E.VII
278	⊠	3c Ultramarine (114). Couple negligible faults, neatly tied by Bold Circle of Links , matching "Leominster Ms." pmk. on small cover, VF Strike (W)..... (Photo)	E.IV
279	⊠	3c Ultramarine (114). Narrow s.e. at R., tied by Bold Circle of Links , Bold matching "Leominster Ms." pmk. on cover with Illustr. Ad for Piano Co., several cover mends at T, o/w VF (W)	E.III
280	⊠	3c Ultramarine (114). Wide s.e.'s at T. & L., tied by Blue Circle of Links , matching "Leominster Ms." pmk. on tiny cover, VF Strike, Very Scarce in Blue (W)	E.V
281	⊠	3c Ultramarine (114). Tied by Large Three Leaf Clover , "Quincy Ill." pmk. on neat cover, trifle reduced at R., Fine (W)	E.IV
282	⊠	3c Ultramarine (114). Vert. Pair, tiny flaws, tied by Four-leaf Clover cancels, "Quincy Ill." pmk. on large size cover, Attractive (W)	E.III
283	⊠	3c Ultramarine (114). Tied by Bold Blue Cross in Circle , struck again in T.R. corner on Fresh Yellow Cover, matching "Louisville Ky. Apr 27" pmk., 1869 merchant's receiving handstamp, therefore used 30 days after earliest date listed in Scott, VF, Scarce (W)..... (Photo)	E.VII
284	⊠	3c Ultramarine (114). Tied by Perfect Bold Heart, "Philad'a Pa." pmk. on fresh cover, VF (W)	E.VI
285	⊠	3c Ultramarine (114). Tied by Bold Heart , "Reading Pa." pmk. on orange cover, VF (W)..... (Photo)	E.V
286	⊠	3c Ultramarine (114). Tied by Bold Negative Leaf , "Detroit Mich." pmk. on orange cover to N.Y., VF (W)	E.IV
287	⊠	3c Ultramarine (114). Tied by Incredibly Bold Leaf & "Louisville Ky." pmk. on neat cover with Milliner's Fancy Corner Card, VF (W)	E.III
288	⊠	3c Ultramarine (114). Bold Leaf cancel, not tied, matching "Harrisburg Pa." pmk. on cover with Printed Ad for "Singer's Sewing Machines", bit reduced at L., o/w VF (W)	E.III
289	⊠	3c Ultramarine (114). Two, Well-Centered, Rich Color, tied by Bold Leaf cancels, "Detroit Mich." pmk. on Paper Dealer's Ad cover, VF (W)	E.III

**LOTS ON VIEW: Wednesday, May 10th; Thursday, May 11th;
also on Friday, May 12 until 12:30 P.M.**

290	⊗	3c Ultramarine (114). Well-Centered, tied by Masonic Negative Square & Compass , "Nashua N.H." pmk. on cover, another Bold Cpl. Strike below stamp, negligible cover tear, o/w VF (W)(Photo)	E.VI
291	⊗	3c Ultramarine (114). Centered to T.R., tied by Two Strikes of Masonic Negative Square & Compass , Ct. Town pmk. on cover, Fine (W)	E.V
292	⊗	3c Ultramarine (114). Tied by Bold Negative "OK", "Ballston N.Y." pmk. on orange cover, reduced at L., o/w Fine (W)	E.V
293	⊗	3c Ultramarine (114). Tied by Large 12-Point Rosette , matching "Waterbury Ct." pmk. Fine & Handsome (W)(Photo)	E.VI
294	⊗	3c Ultramarine (114). B. perfs. bit in, tied by 7-Point Rosette , matching "Waterbury Ct." pmk. on cover, Fine (W)	E.V
295	⊗	3c Ultramarine (114). Unimportant nibbed perf., tied by Shoe-Fly ("Shoo Fly") cancel, "Evansville Ind." pmk. on cover to Pa., Exceptionally Clear Strike, Rare, ex-Knapp (W)(Photo)	E.XI
296	⊗	3c Ultramarine (114). Centered to T.R., light filing bend, Perfectly tied by Bold Large Hollow Star , matching Bold "West Hampton Mass Aug 22 1870" pmk. on fresh cover, VF Strike (W)(Photo)	E.V
297	⊗	3c Ultramarine (114). "Jumbo" Margins, tied by unusual Square Shield , "Lansing Mich." pmk. on small neat cover, Extremely Fine (W)(Photo)	E.VII
298	⊗	3c Ultramarine (114). Wide Margins, Tied by Open Star in Circle & "Norridgewock Me." pmk. on cover with Large Illustr. Ad for Piano , slightly reduced at R., o/w VF (W)	E.III
299	⊗	3c Ultramarine (114). Tied by Negative "Paid" in Fancy Shield, matching "Dedham Mass." pmk. on small cover, Fine & Scarce (W)(Photo)	E.VI
300	⊗	3c Ultramarine (114). Horiz. Pair & Two Singles, Pair natural s.e. at R., one single margin tear, tied by Negative Stars, "Middleborough Mass." pmk. on cover to Constantinople, Turkey , Red N.Y. & German Transits, "Nord-deutsche Post" backstamp, one stamp missing, tape stain from cover mend at L., o/w Fine, Very Scarce (W)(Photo)	E.VI
301	⊗	3c Ultramarine (114). Nicely tied by Large Bold Intertwined "US", "Rutland Vt." pmk. on cover, tiny cover corner mend, minor age specks, VF Strike (W)	E.V
302	⊗	3c Ultramarine (114). Three Covers, one with Magenta cancel, others with Red pmks. & Cancels incl. Beautiful "Chambersburgh Pa." & Target, VG-F Lot (W)	E.IV
303	⊗	3c Ultramarine (114). Six Diff Star cancels, Fine Lot (W).....	E.V
304	⊗	3c Ultramarine (114). Seven Diff. Floral & Rosette cancels, VG-VF & Scarce Lot (W)	E.VII
305	⊗	3c Ultramarine (114). Seven Covers, each with Diff. P.O. Auxiliary Markings incl. "Missent" (Two Types), "Forwarded", "Advertised", "Dead Letter Office" & "Not Found", Fine & Scarce Lot (W)	E.VIII
306	⊗	3c Ultramarine (114). Eight covers, each with Diff. Geometric or Fancy cancel, F-VF Lot (W).....	E.V

ADVERTISING & ILLUSTRATED CORNER CARDS

307	⊗	3c Ultramarine (114). Wide s.e. at L., tied by Target, "Plymouth Mass." pmk. on Cover to Vt. with Red Illustrated Pilgrim's Landing Corner Card , Ornate Frame, "1620" Below, stamp & cover slight toning, still an Exciting & Rare Cover, Probably the First U.S. "Cacheted Anniversary" Cover Ever Used (1620-1870) (W) (Photo)	E.X
308	⊗	3c Ultramarine (114). Natural s.e. at L., Cork cancel, tied by "Rochester N.Y." pmk. on cover with Large Purple Illustr. Ad of "Bookseller", Publisher of Fruit Plates, Nurserymen's Requisites , "showing Group of Fruit, couple trivial cover faults, still Handsome & Unusual (W).....	E.IV

309	⊗	3c Ultramarine (114). Beautiful Deep Rich Shade, negligible margin toning, tied by "Baltimore Md." Duplex pmk. on cover with Illustr. Ad for " Vesta Burner " showing Vesta Oil Lamp, addressed to "U.S. Naval Station/League Island/Penna." VF Cover (W).....	E.III
310	⊗	3c Ultramarine (114). Toned, Quartered Cork cancel, tied by "Lexington Va." pmk. on cover with Large Litho. of Washington College (now Washington & Lee), some cover soiling & small closed tear, o/w Fine, Attractive & Scarce (W).....	E.III
311	⊗	3c Ultramarine (114). B. perfs. touch, tied by Cork, "Philad'a Pa" pmk. on large size cover with Multicolor Ad for "La Coterie Carnival", addr. to "Gen'l Belknap/Secretary of War", Fine & Interesting (W).....	E.III
312	⊗	3c Ultramarine (114). Tied by Greenish Blue Target , matching "Cincinnati O" pmk. on cover with Illustr. Corner Card of "Burnet-House" Hotel, Fine (W).....	E.III
313	⊗	3c Ultramarine (114). Tied by Target, "Saint Charles Ill" pmk. on buff cover with Large Illustr. Ad for Honey Extractor of "National Bee-Hive Company", trivial cover stain at B.R., o/w VF, Very Scarce (W).....	E.IV
314	⊗	3c Ultramarine (114). Tied by Target, "Winamac Ind." pmk. on cover with Large Fancy Pink Return Card of Pulaski County (Ind.) Clerk, small tear at T., still VF, Handsome (W).....	E.III
315	⊗	3c Ultramarine (114). Tied by Blue Cork, Matching "Philad'a Pa" pmk. on yellow cover with Illustr. Ad for Fruit Jar , VF Cover (W).....	E.III
316	⊗	3c Ultramarine (114). Tied by N.Y. Duplex pmk. on cover with Gray Overall Ad for French Window Glass Importers , VF Cover (W).....	E.III
317	⊗	3c Ultramarine (114). Tied by Cork, "Baltimore, Md." pmk. on orange cover with Red Litho. of Wholesale Grocers , Fine, Unused (W).....	E.III
318	⊗	3c Ultramarine (114). Wide Margins, damaged before use, tied by Cork cancel, "Springfield O." pmk. on cover with Large Illustr. Ad for Hotel " Lagonda House ", couple tiny cover faults & light soiling o/w Fine (W).....	E.III
319	⊗	3c Ultramarine (114). Vert. Pair, natural s.e. at L., tied by "Dayton O." Duplex pmks. on cover with Illustr. Ad for Globe Iron Works showing their "American Turbine Water Wheel", back has Red Overall Litho of the Factories, slightly reduced at R., o/w Fine, Handsome (W).....	E.III
320	⊗	3c Ultramarine (114). Perfs. in at T., tied by Geometric cancel, "Detroit Mich." pmk. on cover with Illustr. Ad for Continental Life Ins. Co., showing Revolutionary War Soldier , negligible cover flaws, still Fine (W).....	E.III
321	⊗	3c Ultramarine (114). Wide Margins incl. natural s.e. at R., tied by Quartered cork, "Pottsville Pa." pmk. on cover with Illustr. Ad for " The Miners' Journal " Showing Miner leaving Mine, Overall Ads on back, slightly reduced at R. just into design, o/w VF, Scarce (W).....	E.III
322	⊗	3c Ultramarine (114). Tied by Cork, "Baltimore Md." pmk. on Yellow cover with Green Illustr. Ad for Reaper & Mower , Fine & Attractive (W).....	E.III
323	⊗	3c Ultramarine (114). Tied by Cork & "Salem N.C." pmk. on cover with Illustr. Ad for Mower & Reaper , couple minor mends at T., o/w VF (W).....	E.III
324	⊗	3c Ultramarine (114). Tied by N.Y. Duplex pmk. on cover with Large Illustr. Ad for " Ramsdell Norway Oats " showing Gentleman holding Two Sheaves of Oats, with enclosure, Attractive (W).....	E.IV
325	⊗	3c Ultramarine (114). Tied by Quartered Cork & "Baltimore Md." pmk. on Cover with Red Ad Corner Card for Oyster & Fruit Packers , Printed letterhead & B. & O.R.R. Waybill enclosed, VF (W).....	E.III

326	⊗	3c Ultramarine (114). Tied by Target, "Wooster O." pmk. on cover with Illustr. Ad for "Teeples New Photograph Gallery", VF (W)(Photo)	E.IV
327	⊗	3c Ultramarine (114). Creased before use, tied by Shield-like Cork, "New-York" pmk. on cover with Illustr. Ad for Meerscham Pipes , minor cover mends at T., o/w Fine (W)	E.III
328	⊗	3c Ultramarine (114). Tiny corner nick, tied by Corry, Pa Sunburst on cover with Illustr. Ad for Real Estate Agents showing Ugly "gingerbread" House, VF Cover (W)(Photo)	E.IV
329	⊗	3c Ultramarine (114). Tied by Circle of V's, N.Y. pmk. on cover with Large Illustr. Ad for Willcox & Gibbs Sewing Machine , small stain on back, still VF (W)(Photo)	E.V
330	⊗	3c Ultramarine (114). Natural s.e. at L., tied by N.Y. Duplex pmk. on cover with Large Illustr. Ad for Willcox & Gibbs Sewing Machine , Fine (W)	E.III
331	⊗	3c Ultramarine (114). Natural s.e. at L., minor perf. toning at T.R., Cork cancel, not tied, matching "Richmond Va." pmk. on Yellow cover with Illustr. Ad for Sewing Machine , Fine & Attractive (W)	E.III
332	⊗	3c Ultramarine (114). Tied by Large Rosette, N.Y. pmk. on yellow cover with Illustr. Ad for Stove , VF (W)	E.III
333	⊗	3c Ultramarine (114). Circle of Wedges cancel, not tied, matching Large Double Circle pmk. on cover with Large Red Printed & Illustr. Templars Corner Card, Fine (W)	E.IV
334	⊗	3c Ultramarine (114). Tied by "New-York" duplex pmk. on cover with Overall Gray Illustr. Ad for Whale Oil Dealer showing Catchers harpooning Whale, Ship in Background, VF & Choice (W)	E.IV
335	⊗	3c Ultramarine (114). Wide Margins, couple insignificant corner creases, tied by N.Y. Duplex pmk. on fresh cover with Illustr. Ads for Clothes Wringer & Clothes Washer , Overall Ads on back, VF (W)	E.III
336	⊗	3c Ultramarine (114). R. perfs. trifle trimmed, tied by cork-portion of N.Y. pmk. on cover with Overall Brown Orange Illustr. Ad for "Home" Washing Machine showing Woman with Machine, VF Cover (W)	E.III
337	⊗	3c Ultramarine (114). Tied by Grid, "Lebanon N.H." pmk. on cover with Large Brown Illustr. Ad for Wood-Working Machinery , Operating Instructions enclosed for "Blind Mortising Machine", VF (W)....	E.III
338	⊗	3c Ultramarine (114). Nine Diff. Hotel Corner Cards, Six Illustr., Fine & Attractive Lot (W)	E.VII
339	⊗	3c Ultramarine (114). 13 Diff. Illustr. Advertising covers, Fine (W)	E.VII

VARIETIES ON COVER

340	⊗	3c Ultramarine (114). Two, Double Transfers , one Part B. Impt., tied by Perfect Bold Rosettes on large size buff cover with Circular Illustr. "Merchants Union Express Company" Corner Card, Fine & Unusual (W)	E.III
341	⊗	3c Ultramarine, Cracked Plate (114 var). Perfs. trifle in at T., Neat Quartered Cork cancel, not tied, Red Double Circle "Charlestown Mass Apr 28 70" pmk. on Small Fresh Cover to N.H. This is the so-called "Flutter Crack", being a Double Crack Through & Beyond "TH" of Three. Also a Very Marked Doubling at B.L. Caused by the Resounding of the Loose Part of the Plate, Extremely Rare Variety of Which this is One of the Finest Known, Mrs. Wunch notes only Four Covers known as of Jan. 1978 (W)(Photo)	E.XI
342	⊗	3c Ultramarine, Cracked Plate (114 var). Double Crack through "Three", One Branch extending to Front W heels of Locomotive (the so-called "Flutter Crack"), perfs. in at T, cork cancel, not tied, matching "Durham N.H." pmk. on cover to Mass., Rare (W)	E.X

343	✉	3c Ultramarine, Triangle over "O" of "Postage" (114 var). Boldly tied by Quartered Cork & "Buffalo N.Y." pmk. on fresh cover, Fine & Scarce (W).....	E.IV
344	✉	3c Ultramarine, Triangle over "O" of "Postage" (114 var). Tied by Cork & "Hornellsville N.Y." pmk. on fresh cover, Fine & Scarce (W).....	E.IV
345		3c Ultramarine (114). Specialized Collection of over 300 Stamps & Covers, a Study of Plate, Paper, Printing & Perforating Varieties incl. Plate Scratches, Double Transfers, Re-engraving, Guide Lines, Guide Dots, Impts. & Arrows, Pre-printing paper creases, Freak perfs., Straddle Margins, Rust Spots, Inking vars, Grill vars inc. Split & Double Grills, etc., Extensively Annotated & with Many Photographic Enlargments of Specific Varieties, A Magnificent Collection formed over Many Years, Probably Impossible to Duplicate yet with Room for Expansion to a Prize-Winning Exhibit (W)	E.XV

SIX CENT ULTRAMARINE

346	★	6c Ultramarine (115). Part o.g., two tears in L. margin, o/w VF ..(Photo)	300.00
347	★	6c Ultramarine (115). Unusually Fresh, Part o.g., tiny closed perf. tear, o/w Fine (W).....(Photo)	300.00
348		6c Ultramarine (115), Huge "Jumbo" margins, Grid cancel, Extremely Fine (W)	45.00
349		6c Ultramarine (115). Wide Even Margins, Unusual Red Cork cancel, VF (W)	60.00
350		6c Ultramarine (115). Bold Red Quartered Cork cancel, Fine (W) ..	60.00
351		6c Ultramarine (115). Cork cancel & Portion of Red cancel. Fine (W)	45.00
352		6c Ultramarine (115). Well-Centered. Exceptional Deep Rich Shade, cork cancel, minor faults, Extremely Fine Appearance (W)....(Photo)	45.00
353		6c Ultramarine (115). Huge T. Margin showing small part of Pl. No. 14, Neat Target cancel, couple tiny tears, Scarce (W)	45.00+
354		6c Ultramarine (115). Clear Flying Bird cancel, small faults, VF Strike (W).....(Photo)	E.VI
355		6c Ultramarine (115). Centered to T.R. Circle of Wedges in Circle cancel, small thin spot, Fine Strike (W)	45.00+
356		6c Ultramarine (115). Centered to T.L., Bold Blue Split Diamond in Circle cancel, small faults, Unusual Cancel (W).....	45.00+
357		6c Ultramarine (115). Wide Margins, Bold Bright Green Cork cancel, trivial faults, VF Appearance, Very Scarce (W).....(Photo)	200.00
358		6c Ultramarine (115). Huge "Jumbo" Margins, Grid of Squares cancel, small thin spot, Extremely Fine Appearance (W).....(Photo)	45.00
359		6c Ultramarine (115). Bold Hiogo Japan cancel, minor faults, Scarce (W)	150.00
360		6c Ultramarine (115). Light Magenta "Philada Paid All" pmk., perfs. just touch at T. & R. (W)	75.00
361		6c Ultramarine (115). Slightly dry print, Str. Line Gold "John L. Pinkham" Printed Revenue Cancel & ms. cancels, Fine & Very Unusual (W)	E.V
362		6c Ultramarine (115). Well-Centered, Bold Large Star, cancel, VF (W)	45.00+
363		6c Ultramarine (115). Bold Hollow Star and Circle cancel, tiny tear, o/w VF (W)	45.00+
364		6c Ultramarine (115). Centered to T., Bold Hollow Six-Point Star Masonic cancel, Fine (W)	45.00+
365		6c Ultramarine, Double Grill (115 var). Target cancel & bit of Red Town pmk., small faults, perfs. touch, Very Scarce.....	150.00
366		6c Ultramarine, Split Grill (115 var). Wild Horiz. Row of perfs. through "Postage", light cancel, Unusual "Freak" (W)	50.00+

367 ★	6c Ultramarine (115). Perfs. in at L., The so-called " Mole on Forehead Variety ", probably caused by an engraving slip or rust spot on plate, Mrs. Wunsch believes this example to be Unique (W) (Photo)	E.IX
368	6c Ultramarine (115). Double Transfer , very light Grid cancel, couple slightly nibbed perfs., o/w Fine, Scarce (W)	60.00
369	6c Ultramarine (115). Double Transfer , Cork cancel, small faults, Fine Appearance (W)	60.00
370	6c Ultramarine (115). Cork cancel, Strong Vert. Pre-Print Paper Crease , Fine (W) (Photo)	E.V
371	6c Ultramarine (115). Two Extra-large Margins, reperfed at R., Pre-Print Paper Crease , Unusual Bold Geometric cancel, Fine Appearance (W)	E.V
372	6c Ultramarine (115). Spectacular Double Vert. Perfs. at L. from 3mm to over 5mm into design, light Geometric cancel, couple faint tiny corner creases, VF Appearance (W) (Photo)	45.00+
373	6c Ultramarine (115). Two, each Wide Natural s.e. at L. showing Part T. Arrow , cork cancels, one "Jumbo" Margins, small thin, other shows bit of Next Stamp at R., tiny corner crease, VF Appearing Pair (W)	100.00
374	6c Ultramarine, Split Grill (115 var). Horiz. Pair , couple tiny faults, L. stamp small repair at T., Quartered Cork cancels, VF Appearance (W) (Photo)	100.00
375	6c-12c Pictorials (115-117). Minor faults, each with Extraordinarily Bold cancel (Quartered Cork, Four Ring Target & Four Bar Grid respectively), Marvelous Appearance	137.50
376 ☒	6c Ultramarine (115). Tied by Target, "Ruby Mich." pmk. on Jul. 1870 Cover to Canada, bit reduced at L., Fine (W) (Photo)	175.00
377 ☒	6c Ultramarine (115). Tiny flaws, tied by Target on Neat Cover to Canada, "Oak Park Ill" pmk., neat ms. "3/21/71" docketing, cover bit reduced at R., Very Pretty (W) (Photo)	175.00
378 ☒	6c Ultramarine (115). Natural s.e. at R., 7mm closed tear at L., Extra Bold Blue Quartered Cork cancel tied by matching "Savannah Ga." pmk., Red NY Transit on June 1870 Folded Letter to England, Attractive (W) (Photo)	175.00
379 ☒	6c Ultramarine (115). Centered to R., minor crease, tied by Unusual Six Point Star , "Bloomington Ill." pmk. on Fresh Yellow Double Rate Domestic Cover to NY City, Bold ms. "Personal" at L., bits of 2c (113) show under stamp at T. & B., Unusual & Quite Attractive (W) .. (Photo)	175.00
380 ☒	6c Ultramarine (115). Short perf., tied by Target, "Wheatland Ioa." pmk. on Orange Cover to Canada, Attractive (W)	175.00
381 ☒	6c Ultramarine (115). Beautiful Margins, Nicely Centered, minor bend at T. from slight overlap, tied by indistinct cancel, "Evansville Ind." pmk. in Small Neat Jan 1870 Cover to England, Red NY & London Transits, Bold Oval " United States Despatch Agent B.F. Stevens London " also in Red, Handsome & Scarce (W) (Photo)	E.X
382 ☒	6c Ultramarine (115). Perfs. in at B., tied by Target, Conn. Town pmk. on Cover to Prince Edward Island , Unusual Address, "Goose River Lot 42 P E Island", two small cover tears & bit aged, Scarce	175.00
383 ☒	6c Ultramarine (115). Well-Centered, bit faded, ironed filing crease ending in tear, tied by Cork on Jul 1870 Folded Cover to England, Red "Boston Paid" pmk., Reasonably Attractive (W)	175.00

All lots with "(W)" at end of description are the property of Mrs. Wunsch.
 Lots without this symbol are the property of another owner.

384	☒	6c Ultramarine (115). Well-Centered, bit faded, tied by Cork, "Arcata Cal"? pmk. on Cover to England, Red NY Transit, Reasonably Attractive (W).....	175.00
385	☒	6c Ultramarine (115). Perfs. in two sides, on large size Double Rate Cover to Ky. tied by Star & "St. Louis Mo." pmk., Stock & Bond Brokers Corner Card, Feb. 1872 Docketing at L., VG, Scarce (W)....	E.VI
386	☒	6c Ultramarine (115). Perfs. bit in at R., tied by Segmented Cork, Mass. Town pmk. on May 1870 Tissue Paper Cover to England, Red "Boston Paid" & London Transits, Bold Red Oval "United States Dispatch Agent B.F. Stevens London" cover faults at sides, Attractive, Apparently Forwarded to Bahia Brazil as evidenced by ms. docketing at T.L. (W).....	(Photo) E.X
387	☒	6c Ultramarine (115). Two Singles, one s.e. at R., tied by Maltese Cross cancels, "Great Falls N.H." pmk. on May 1871 Double Rate Cover to England, Printed Address from the Haines Correspondence, Red NY & London Transits, Clean Red Oval "United States Dispatch Agent B.F. Stevens London" , cover bit reduced at L., Fine, Scarce (W).....	(Photo) E.XI
388	☒	6c Ultramarine (115). Two Singles, perfs. touch, L. stamp partly defective R. margin, tied by Blue cancels, "Savannah Ga." pmk. on May 1870 Double Rate Folded Cover to England, Red NY Transit, Scarce (W).....	(Photo) E.IX
389	☒	6c Ultramarine (115). Two Singles used with 3c(114) on Feb 1870 Cover to Greece tied by Quartered Corks, "East Saginaw Mich." pmk., Red "London Paid" & "12" British Credit, ms. "Closed Mail Via England", cover slightly reduced at R., Fine, Apparently 3c Short Paid as Rate to Greece CMVE was 18c until Oct. 1871 (W).....	(Photo) E.XII

TEN CENT YELLOW

390	★	10c Yellowish Orange (116). Beautiful Rich Color, tiny thin speck, Fine Appearance.....	(Photo) 325.00
391		10c Yellow (116). Bold Red Dot in Circle cancel (Balt. For'n Mail), crease, Fine, Scarce (W).....	(Photo) 65.00+
392		10c Yellowish Orange (116). Bold " Hiogo Japan " pmk., small sealed tear, Fine Appearance (W).....	(Photo) 165.00
393		10c Yellowish Orange (116). Light Yokohama, Japan pmk., couple small faults, VF Appearance, Scarce (W).....	(Photo) 165.00
394		10c Yellowish Orange (116). Bold Maltese Cross , cancel, tiny blue ink speck on one perf. tip, small faults, VF Strike (W).....	(Photo) 47.50+
395		10c Yellowish Orange (116). Bold Blue Pinwheel cancel, faults, Fine Appearance.....	(Photo) 45.00+
396		10c Yellow (116). Bold " Pleasant Branch " pmk., small faults, Fine Appearance, Scarce (W).....	(Photo) 65.00
397		10c Yellowish Orange (116). Bold " (Mt.) Pleasant, Utah " Territorial pmk., small faults, VF Appearance, Scarce (W).....	(Photo) 65.00+
398		10c Yellow (116). Huge Even Margins, Shield cancel, faults, Extremely Fine Appearance (W).....	(Photo) E.VI
399		10c Yellowish Orange (116). Neat "(N. York) Steamship" cancel, couple negligible faults, Fine Appearance (W).....	(Photo) 80.00
400		10c Yellow (116). Well-Centered, Large Bold " X " cancel, couple negligible faults, VF Appearance (W).....	47.50
401		10c Yellow (116). Two, one with Unusual " Paid " cancel struck twice in diff. colors, other Beautifully Centered but faulty, Red Boxed "P.D." French Transit cancel, Scarce Lot.....	E.V
402		10c Yellow (116). Two, small faults, first with Solid Star cancel, other Choice Centering, Blue Grid , each with Part of Red Transit pmk., Colorful & Scarce Lot.....	E.V

403	10c Yellow (116). Horiz. Pair, Unusual Color, Grid of Squares cancels, light creases & couple nibbed perfs., o/w Fine(Photo)	100.00
404	10c Yellowish Orange, 12c Green (116, 117). Perfs. touch, Rich Colors, Bright Red cancels, Pretty Lot(Photo)	125.00
405	10c Yellow (116). Wide Even Margins, tied by "N" on rebacked cover front to England, VF (W)(Photo)	E.VI
406	10c Yellow (116). Single nibbed perf., tied by Bold Geometric cancel, N.Y. pmk. on small cover to U.S.S. Seminole, Aspinwall, (Panama) VF Cover (W)(Photo)	200.00
407	10c Yellow Orange (116). Huge Margins, natural s.e. at R., Small Red Quartered Cork cancel, tied by Matching "Baltimore Md." pmk. on largely Cpl. folded cover to Cuba , Large Bold "NA1" in Oval, some closed cover tears at edges (tape stains from mending), Still Attractive (W)(Photo)	200.00
408	10c Yellow (116). Well-Centered, tiny wrinkle at B., insignificant perf. tip toning, cork cancel, not tied, Magenta San Francisco Paid All on Jan. 1870 folded cover to Japan , ms. "p Pacific Mail", VF (W)(Photo)	200.00
409	10c Yellow (116). Wide Margins, tied by Circle of Wedges & N.Y. pmk. on small cover to U.S.S. Seminole Aspinwall, (Panama) , tiny negligible cover corner fault, o/w VF (W)(Photo)	200.00
410	10c Yellow (116). Wide Even Margins tied by odd type Grid & "Bridgeport Ct." pmk. on small cover to U.S.S. Seminole Aspinwall, (Panama) , couple tiny cover corner mends, o/w VF (W).....(Photo)	200.00
411	10c Yellow (116). Some negligible perf. tip toning, tied by Quartered Cork, "New Orleans La." pmk. on neat June 1870 folded letter to France, normal sequence of transits, Fine (W)(Photo)	200.00
412	10c Yellow (116). Tied by Bold Rosette, Bold Red "New York Paid All Direct" on Feb. 1870 folded cover to Germany, Brownish Red Oval "Meyn & Wulff Montreal" Merchants handstamp, "Nurnberg Bahnh" backstamp, Fine, Handsome & Scarce Cover (W)(Photo)	200.00
413	10c Yellow (116). Well-Centered, tied by Bold Red Cork, matching Baltimore Md. pmk. on Nov. 1869 folded cover to Cuba , blurry "NA1" in Oval, ms. docketing at T.L., minor cover aging, o/w VF (W)(Photo)	200.00
414	10c Yellow (116). Tied by Cork, "Boston, Mass." pmk. on Jan 1870 cover to a Sergeant in " Royal Artillery. Hong Kong. China ", Magenta San Francisco Paid All, "Hong Kong" backstamp, minor cover corner repair, o/w Fine, Scarce & Attractive (W).....(Photo)	200.00
415	10c Yellowish Orange (116). Tied by Bold Red Dot in Circle, matching "Baltimore Md." pmk. on Aug. 1869 folded cover to Cuba , Large Bold "NA1" in Oval, minor cover erosion from acid ink, without B. flap, couple negligible cover faults, o/w Fine, Very Attractive (W)(Photo)	200.00
416	10c Yellow (116). Tiny corner nick, tied by odd Grid, matching "Paterson N.J." pmk. on cover to Brazil , "Rio de Janeiro" backstamp, negligible cover soiling, o/w Fine, Scarce (W)(Photo)	200.00
417	10c Yellow (116). Wide Margins, reperfed at L., tied by Bold Rosette, faint Town pmk. on May 1869 cover to Germany Red NY Transit & Boxed "Hamburg . . . Franco", couple light cover stains, still Very Attractive (W)(Photo)	200.00
418	10c Yellow (116). Light crease, tied by Cork, N.Y. pmk. on May 1870 folded cover to Mexico , Large "4" Mexican due mark, some cover creases, one reinforced, Attractive (W)(Photo)	200.00
419	10c Yellow (116). Horiz. Pair, Beautifully Centered, couple minor faults, tied by Bold Quartered Corks & "Peoria Ill." pmk. on May 1870 cover to Germany, Transits incl. Red "Chicago Paid All Direct", small cover mend at R., Attractive (W)(Photo)	E.X

- 420 ☒ **10c Yellow, 12c Green (116,117).** 12c Wide Even Margins, tiny pre-print crease at B.L., both tied by Rosettes, light Red N.Y. pmk. on 1870 "Rev. Bissell" cover to **India**, Red London Paid & Large Bold "Id", crayon "18" credit, "Sea Post office" & Red "Ahmednuggur" backstamps, Very Fine, Handsome & Very Scarce, ex-Gibson (W)(Photo) **E.XIII**

TWELVE CENT GREEN

- 421 ★ **12c Green (117).** Wide Even Margins, single short perf., o/w Extremely Fine (W)(Photo) 275.00
- 422 ★ **12c Green (117).** Fine & Attractive(Photo) 275.00
- 423 **12c Green (117).** "Jumbo" Margins, Pre-Print paper crease, small quartered cork cancel, Extremely Fine (W)(Photo) 50.00+
- 424 **12c Green, Split Grill (117 var.).** Deep Rich Shade, Cork cancel, Fine (W)(Photo) 50.00
- 425 **12c Green (117).** Beautiful Deep Shade, Target cancel, Fine (W)(Photo) 45.00
- 426 **12c Green (117).** Used, Fine (W) 45.00
- 427 **12c Green (117).** Bold **Masonic Six-Point Hollow Star** cancel, couple tiny natural inclusion specks, Fine (W)(Photo) 45.00+
- 428 **12c Green (117).** Bold **Blue Shield** cancel, tiny thin, light toning, o/w Fine, Scarce Cancel (W) 45.00+
- 429 **12c Green (117).** Wide Margins, Perfect Bold **Segmented Star** cancel, small thins, Extremely Fine Appearance (W)(Photo) 45.00+
- 430 **12c Green (117).** Wide Margins, Target cancel, tiny thin in Grill, Extremely Fine Appearance (W)(Photo) 45.00
- 431 **12c Green (117).** Huge "Jumbo" Margins, Bold Cork cancel, tiny thin spot, Extremely Fine Appearance (W)(Photo) 45.00
- 432 **12c Green (117).** Huge "Jumbo" Margins, **Red Leaf** cancel, L. perfs. barely trimmed, reperfed at R., Extremely Fine Appearance (W)(Photo) 60.00
- 433 **12c Green (117).** Well-Centered, Bold **Red Crossroads** cancel, couple small faint corner creases, VF Appearance, Pretty (W)(Photo) 60.00+
- 434 **12c Green (117).** Wide Margins, **Four Red Diamonds** cancel, tiny faults, VF Appearance (W)(Photo) 60.00+
- 435 **12c Green (117).** Clear **Hiogo Japan** cancel & bit of Red Transit, small thin, VF Appearance (W)(Photo) 165.00
- 436 **12c Green, Double Grill (117 var.).** Neat Rosette cancel, T. perfs. touch, Scarce (W)(Photo) 150.00
- 437 **12c Green, Double Grill (117 var.).** Light cancel, L. perfs. touch, Very Scarce 150.00
- 438 **12c Green (117).** Natural s.e. & B. arrow at L., Cork cancel, tiny faults, Handsome Appearance (W)(Photo) 45.00
- 439 **12c Green (117).** Perfect Bold **Rosette** Cancel & bit of Red pmk., minor faults, VF Strike (W)(Photo) 45.00+
- 440 ☒ **12c Green (117).** Perfs. touch, tied by **Blue Cork**, matching "Savannah Ga." pmk. on Nov. 1869 Folded Letter to England, Red N.Y. & Liverpool Transits, ms. "Per Cuba from N.Y.", light tape stain over small cover tear at T., o/w Fine (W)(Photo) 200.00
- 441 ☒ **12c Green (117).** Small faults, tied by Quartered Cork & Str. Line "Insufficiently Paid", Red N.Y. pmk. on Oct. 1869 Mourning cover to England, English Backstamps, Attractive (W)(Photo) 200.00
- 442 ☒ **12c Green (117).** Centered to T., single short perf., on Handsome **Illustrated Sewing Machine Cover** to England, Printed Address, Red NY & London Transits, Jul 1869 Usage, two minor cover tears, one under stamp, Exceptionally Handsome (W)(Photo) 200.00

443	⊠	12c Green (117). Single short perf., tied by Rosette on May 19, 1869 Cover to England, Red NY & British Transits, Handsome Architect's Corner Card, Neat "To the care of . . ." endorsement, few minor closed cover tears, Attractive Early Usage (W)(Photo)	200.00
444	⊠	12c Green (117). Perfs. bit in at R., Halved Cork Cancel, "Cambridge Mass." pmk., tied by Red "Boston Paid", Red "London Paid" on Nov 1869 Cover to England, Clear Red "B. F. Stevens Dispatch Agent" Double Oval for Forwarding to Villefranche, France, Very Pretty & Scarce Cover (W).....(Photo)	200.00+
445	⊠	12c Green (117). Perfs. close, negligible perf. toning, tied by Blue Target , matching " National City Cal. " pmk. on 1877 Cover to New Zealand , A Very Scarce Cover on Three Counts: Postmark of Origin, Destination & Late Usage of the Stamp (W).....(Photo)	200.00
446	⊠	12c Green (117). Horiz. Pair , Cork cancels, "tied" by small ink spot, "Goshen N.Y." pmk. on large size Eight Times Domestic Rate Cover, reduced at sides, neatly mended tear at B., Very Scarce (W) (Photo)	300.00
447	⊠	12c Green (117). Well-Centered Horiz. Pair , used with average horiz. pair 3c Ultramarine (114) tied by Ovals of Wedges, on Sept. 1869 Cover to France, "New York" Backstamp, Straight Line "Insufficiently Paid," Blue French Transit, ms. due mark, light Blue pencil 3/27 indicating Triple Rate therefore Short Paid 15c, Very Handsome & Rare, ex-Seybold (W).....(Photo)	E.XII
448	⊠	12c Green (117). Two Singles, used with Horiz. Pair 2c Red Brown (146) tied by Quartered Cork, "Fall River Mass." pmk. on Nov. 1870 Cover to Fayal Azores , Red NY & London Transits, "Franca" Oval, ms. "By Bark Tredonic", stamps have small faults, mostly caused by careless placement at cover edge, two long closed cover tears, Rare Combination & Destination (W)(Photo)	E.XII
449	⊠	12c Green (117). Used with 3c (114) , Each perfs. in one side, used with average 3c Red, F. Grill (94), tied by corks, "South Boston Station" pmk. on small Registered cover, minor stain at B. of cover, Scarce Usage (W)(Photo)	E.X
450	⊠	12c Green (117). Split Grill Var., Beautiful Margins & Centering, tiny faults T. margin, on 3c Entire (U58) to France tied by Cork & ms. "16" due mark, NY & French Transits, Blue Two Line "Insufficiently Prepaid", Bank Return Card, Very Attractive, full postage collected from addressee as French Treaty did not recognize partial prepayment (W)(Photo)	E.XI
451	⊠	12c Green (117). Well-Centered, used with 6c Ultramarine (115) on 3c+15c Domestic Registered Cover, tied by Cork "Newport Pa." pmk. on Attractive "Justice of the Peace" Corner card cover, VF, Very Scarce Combination (W)(Photo)	E.XI
452	⊠	12c Green (117). Negligible perf. nibbing, used with 10c Brown (150) tiny margin tears, tied on Small Mourning Cover to Peru by Large Circles of Wedges, Red "New 12 York," Attractive Rare Usage (W)(Photo)	E.XI

FIFTEEN CENT, TYPE I

453	★	15c Brown & Blue, Ty. I (118). Choice Colors, VF(Photo)	725.00
454		15c Brown & Blue, Ty. I (118). Huge "Jumbo" Margins, New Orleans pmk., Extremely Fine, A Beauty (W)(Photo)	160.00
455		15c Brown & Blue, Ty. I (118). Used, Large Even Margins, Rich Colors, insignificant corner perf. crease, Extremely Fine (W)(Photo)	130.00
456		15c Brown & Blue Ty. I (118). Rich Colors, Cork cancel, Extra Wide B. Margin, VF (W).....(Photo)	130.00
457		15c Brown & Blue, Ty. I (118). Wide Margins, Cork cancel, VF (W)(Photo)	130.00

458	15c Brown & Blue, Ty. I (118). Cork cancel, also parts of Red N.Y. & Blue French Transits, VF (W).....(Photo)	130.00
459	15c Brown & Blue, Ty. I (118). Well-Centered, Small Four Square cancels, light corner crease, few toning spots show almost entirely on back, o/w Extremely Fine(Photo)	130.00
460	15c Brown & Blue, Ty. I (118). Circle of Wedges cancel, Fine (Photo)	130.00
461	15c Brown & Blue, Ty. I (118). Bright Colors, Bold Red Target cancel, Fine (W)(Photo)	165.00
462	15c Brown & Blue, Ty. I (118). Wide Margins, Circle of Wedges cancel & tiny ms. cancels, tiny corner creases, Extremely Fine Appearance (W)(Photo)	130.00
463	15c Brown & Blue, Ty. I (118). Town pmk., two trivial perf. toning specks, o/w Fine (W)(Photo)	160.00
464	15c Brown & Blue, Ty. I (118). Well-Centered, odd Cork cancel, reperfed, VF Appearance (W)(Photo)	130.00
465	15c Brown & Blue, Ty. I, Double Grill (118 var.). Six Section Grid cancel, Well-Centered, Large Margins, Nice Upward Vignette Shift, couple trivial perf. nibbings, o/w Extremely Fine, Very Scarce (W)(Photo)	350.00
466	15c Brown & Blue, Ty. I (118). Bold Circle of Wedges cancel, R. perfs. just in (W).....(Photo)	135.00
467 ☒	15c Brown & Blue, Ty. I (118). Tied by Quartered Cork & ms. "8" French Due mark on May 1870 Cover to France, Red "New York" & Blue "Cherbourg" Transits, "New Orleans La." pmk., stamp has removed ms. "X" cancel, Attractive & Very Scarce Overpayment (W)(Photo)	700.00
468 ☒	15c Brown & Blue, Ty. I (118). Perfs. just in two sides, light cancel, tied by "Washington D.C." pmk. on Dec 1869 Cover to France, Black New 18 York pmk., Straight Line "Insufficiently Paid", Blue French Transit, ms. "16" Due Mark (Double Rate thus Short Paid 15c), Very Scarce (W)(Photo)	700.00
469 ☒	15c Brown & Blue, Ty. I (118). R. perfs. close, tied by Half Circle of Wedges on 3c Entire (U58) making up Single Domestic Reg. Rate to Fort Scott, Kansas, "New Orleans La." pmk., "Registered" Rectangle, slightly reduced at L., docketed June 1869 on back, Very Scarce, signed Ashbrook (W)(Photo)	700.00

FIFTEEN CENT, TYPE II

470 ★	15c Dark Brown & Blue, Ty. II (119a). Fresh, perfs. bit in at B., Wide Side Margins(Photo)	325.00
471 ★田	15c Brown & Blue, Ty. II (119). Block with R. Sheet Margin Showing Brown & Blue "T" Shaped Registration Marks, Brilliant o.g., Two Mint, T. pair light crease, B. perfs. touch to trifle in, Rare Position Piece (W)(Photo)	1,650.00
472	15c Brown & Blue, Ty. II (119). Used, Choice Centering, Extremely Fine (W)(Photo)	55.00
473	15c Brown & Blue, Ty. II (119). Used, Nice Margins, Extremely Fine (W)(Photo)	55.00
474	15c Dark Brown & Blue (119a). Well-Centered, light cancel, VF (W)(Photo)	55.00

All lots with "(W)" at end of description are the property of Mrs. Wunsch.
Lots without this symbol are the property of another owner.

475	15c Brown & Blue, Ty. II (119). Wide Margins, light Greenish Blue Target cancel, VF (W).....(Photo)	57.50
476	15c Brown & Blue, Ty. II (119). Rich Colors, Neat Red cancel, VF(Photo)	70.00
477	15c Dark Brown & Blue, Ty. II (119a). Blue Oval NY Merchant's Handstamp cancel, 1870 Revenue Use , Fine & Very Scarce (W)(Photo)	E.VI
478	15c Dark Brown & Blue, Ty. II (119a). Vignette Shifted Dramatically Upward 2½mm, bold Cork "blob" cancel, Fine & Striking (W) (Photo)	E.VII
479	15c Brown & Blue, Ty. II (119). Wide Margins, Bold Cork cancel, tiny thin, Extremely Fine Appearance (W)(Photo)	55.00
480	15c Brown & Blue, Ty. II (119). Distinct Stellate Crack in L. Margin, light cancel, couple tiny faults, Fine Appearance, Unlisted (W)(Photo)	—
481	15c Brown & Blue, Ty. II (119). T. perfs. touch, Unusual Cancel of Two Negative Letters in Narrow Rectangle , Bold Strike, Very Scarce (W)(Photo)	E.VI
482	15c Brown & Blue, Ty. II (119). Two, used, each Strong Pre-Print Paper Crease , one Vignette Only, other Frame Only, Fine, Fascinating Pair (W)	E.VII
483	15c Brown & Blue, Ty. II (119). Two Diff. Shades, one neat ms. cancel, Fine, other light Cork, reperfed at B., VF Appearance (W)....	110.00
484 ☒	15c Brown & Blue, Ty. II (119). Perfs. touch, Boldly tied by Quartered Corks, "Buffalo N.Y. Jan 3" pmk., Red "New York Paid All Br. Transit", "GB 40c" Oval, Calais Transit, ms. "5" decimes due, Small 1870 Cover to France, Very attractive. 11c Overpayment on The Third Day of the 4c Treaty Rate Paid Only to England (W)(Photo)	400.00+
485 ☒	15c Brown & Blue, Ty. II (119). Tied by Quartered Cork on Small Cover to Saxony, Red N.Y. Transit, Red "Verviers. A./29 11 5/ Coeln/Franco", stamp has minor corner crease, o/w Fine (W) ..(Photo)	400.00
486 ☒	15c Dark Brown & Blue, Ty. II (119a). Perfs. tiny bit in at L., Beautiful Deep Colors, Well tied by Bold Circle of Wedges, Red "New York Paid All Br. Transit" on Oct. 1869 Folded Cover to Holland, addressee's name scratched out in ms. causing some cover erosion, still Very Attractive.....(Photo)	400.00
487 ☒	15c Brown & Blue, Ty. II (119). Horiz. Pair, perfs. in, Vignette Shifted into R. Margin, used with Two 2c Black, F. Grills (93) , one with colored-in surface scuffs, tied by Targets, "Pownal Me Feb 26" pmk. on Cover to Peru , Red "New York" pmk. Red "12" Br. Credit, 12c Overpayment, as 34c Rate Changed to 22c Jan. 1, 1870 Attractive & Rare Cover (W)(Photo)	E.XIII
488 ☒	15c Brown & Blue, Ty. II (119). Fine, used with average 3c Ultramarine (114) , tied by Cork cancels on Domestic Reg. cover to Iowa, "Pittsburgh Pa." pmk., slight cover toning T. & B., o/w Fine Cover (W)(Photo)	400.00+
489 ☒	15c Brown & Blue, Ty. II (119). Centered well to L., perfs. in, Vignette Shifted to L., shows bit of Vignette Only of Next Stamp inside R. perfs. , used with 3c Ultramarine (114), Split Cork cancels, 15c tied, "East Bloomfield N.Y" pmk. on 1870 Registered cover, slightly irregular at R., o/w Fine, Fascinating "Freak" (W) ..(Photo)	400.00
490 ☒	15c Brown & Blue, Ty. II (119). Two Singles, Distinct Shades, one vaguely tied by Rosette, other by "Baltimore Md." & Red N.Y. Transit on Double Rate Cover to Italy, cover bit worn, Very Scarce, signed Ashbrook (W)(Photo)	E.XIII
491 ☒	15c Brown & Blue, Ty. II (119). Two Singles, perfs. trifle in on one, other Fine, tied by Odd Geometric Cork on Neat Cover to Switzerland, Red "New York Paid All Br. Transit", Blue pencil "3", Very Attractive & Scarce (W).....(Photo)	E.XIII

492	✉	15c Dark Brown & Blue, Ty. II (119a). Two Singles, T. perfs. touch, Well tied by Targets, "Havilah Cal" pmk. on Apr 1870 Double Rate Cover to Germany, Red N.Y. & German Transits, Very Attractive, Used three months prior to reduction in rates to 10c (W).....(Photo)	E.XIII
493		15c Brown & Blue, Inverted Center (119b). Light Quartered Cork cancel filled thins, B.L. corner repaired, Very Fine Appearing Example of this Major Rarity (W)(Photo)	8,000.00
494		15c Brown & Blue, Ty. II, Double Center, One Inverted (119c). Rich Colors, very light cancel, Full Impression of Inverted Vignette, "Right Side Up" Vignette is a part light impression printed diagonally in R. margin, traces of a third vignette in L. margin, stamp has a single barely nibbed perf. yet a Fine Example of this Fascinating & Extremely Rare Classic Error, Only Two or three Such Examples Exist, The "Discovery Copy" being offered in our 1971 Rarity Sale, listed but unpriced in unused condition only(Photo)	8,000.00+

TWENTY-FOUR CENT GREEN & VIOLET

495	★	24c Green & Violet (120). Remarkably Rich Colors, natural pre-print paper crease at L., Fine & Choice(Photo)	750.00
496		24c Green & Violet (120). Neat Rosette cancel, Fine (W)(Photo)	250.00
497		24c Green & Violet (120). Lightly cancelled, Fine (W)(Photo)	250.00
498		24c Green & Violet (120). "Jumbo" Margins, Rich Deep Colors, Very Light cancel, couple tiny filled thins, Extremely Fine Appearance (W)(Photo)	250.00
499		24c Green & Violet (120). Very Well-Centered, Unusual Pinwheel-type Cork cancel, faint creases, Extremely Fine Appearance (W)(Photo)	250.00
500		24c Green & Violet (120). Well-Centered, Unusual Red Cork cancel, minor faults, VF Appearance, Handsome (W)(Photo)	300.00
501		24c Green & Violet (120). Well-Centered, Bold Dark Red Cork cancel, filled thin spot, VF Appearance, A Beauty (W).....(Photo)	300.00
502		24c Green & Violet (120). Well-Centered, Rich Colors, light Unframed Grid cancel, single slightly nibbed perf., o/w VF (W)(Photo)	250.00
503		24c Green & Violet (120). Large Star & Red Foreign Transit pmks., minor wrinkle, reperfed at L., VF Appearance.....(Photo)	250.00+
504		24c Green & Violet (120). Fresh Colors, Large Solid Star cancel, small faults, Fine Appearance (W)(Photo)	250.00+
505		24c Green & Violet (120). Neatly cancelled, tiny repaired tear at L., Fine Appearance(Photo)	250.00
506		24c Green & Violet (120). Rich Colors, perfs. in T. & L., Red cancel, Scarce(Photo)	300.00
507		24c Green & Violet (120). Tiny corner perf. crease, T. perfs. touch, Brilliant Red Cork cancel, Attractive (W).....(Photo)	300.00
508		24c Green & Violet, Split Grill (120 var). Light Cork cancel, couple tiny faults, Fine Appearance (W)(Photo)	275.00
509		24c Green & Violet, Double Grill (120 var). Rich Colors, Neat Rosette cancel, small corner thin, VF Appearance, Very Rare(Photo)	600.00
510		24c Green & Violet, Center Inverted (120b). Used, single nibbed perf. at B., perfs. tiny bit in at L., Very Respectable Example of this Classic Rarity.....(Photo)	7,000.00
511		24c Green & Violet, Center Inverted (120b). Used, Remarkably Well-Centered, large filled thin, several tiny pinholes, Extremely Fine Appearance, Very Rare (W)(Photo)	7,000.00

512	24c Green & Violet (120). R. perfs. slightly in, ironed out filing crease, used with Two 3c Ultramarine (114), one s.e. at L., all tied by Cork cancels, "New Orleans" pmk. on Nov. 1869 double rate folded cover to France, Red "New Paid York 12" & Boxed "P.D.", Blue French Transit, 24c lifted & reaffixed, A Handsome & Rare Showpiece, signed Ashbrook, with P.F. Certificate (W)(Photo)	3,000.00
513	24c Green & Violet (120). Rich Colors, margin nick, used with Two defective 3c Green (147), all tied by Cork cancels on largely cpl. 1870 Registered heavy cloth cover from N.Y. to Albany, Ga., "New York Registered" pmk., opened & reduced three sides, much of outer layer of paper "nibbled" away, Rare (W).....(Photo)	E.XIII

THIRTY CENT BLUE & CARMINE

514	★ 30c Blue & Carmine (121). Rich Vibrant Colors, centered to T.R., Fine, Unusually Fresh.....(Photo)	725.00
515	30c Blue & Carmine (121). Huge "Jumbo" Margins, Bold Cork cancel, Extremely Fine (W).....(Photo)	100.00
516	30c Blue & Dark Carmine (121). Well-Centered, Rich Colors, Circle of Wedges cancels, bit of album offset on back, Extremely Fine (W)(Photo)	100.00
517	30c Blue & Carmine (121). Vivid Colors, Attractive Small Circle of Wedges cancel, Fine (W)(Photo)	100.00
518	30c Blue & Carmine (121). Well-Centered, neat Circle of Wedges cancel, single toned perf. tip, o/w VF (W)(Photo)	100.00
519	30c Blue & Carmine (121). Beautiful Vivid Colors, Circle of Thin Wedges cancel & bit of Red Transit, faint corner crease, o/w Fine, Very Pretty Appearance(Photo)	100.00
520	30c Blue & Carmine (121). Wide Margins, Rich Colors, Cork cancel, faint tiny corner crease, Extremely Fine Appearance (W).....(Photo)	100.00
521	30c Blue & Carmine (121). Fresh Colors, Clear "(PAID ALL)" pmk., horiz. crease, Fine Appearance, Very Scarce(Photo)	160.00
522	30c Blue & Carmine (121). Couple creases & short perf., Red cancel, Attractive(Photo)	135.00
523	30c Blue & Carmine (121). Well-Centered, Remarkably Bold Shield cancel, tiny thin spot, Extremely Fine Appearance, Rare (W) (Photo)	E.IX
524	30c Blue & Carmine (121). Rich Colors, Well-Centered, Cork cancel, minor thins, Extremely Fine Appearance (W).....(Photo)	100.00
525	30c Blue & Carmine (121). Light Cork cancel, tiny faults, VF Appearance (W).....(Photo)	100.00
526	30c Blue & Carmine (121). Wide Margins especially at T. which shows Engraver's Blue Guide Dot, Red cancel, faint thins, VF Appearance, Unusual (W).....(Photo)	135.00
527	30c Blue & Carmine (121). Well-Centered, "Socked on the Nose" "Boston Mass" Town pmk., thins & couple tiny holes in grill, Attractive & Scarce (W).....(Photo)	125.00
528	30c Blue & Carmine (121). Nice Colors, Bold Rosette cancel, perfs. tiny bit in at L., Attractive (W)(Photo)	100.00
529	田 30c Blue & Carmine (121). Horiz. Block of Six, Exceptional Centering, Cork cancels, some wrinkles as nearly always, Remarkably Attractive & Rare Block (W)(Photo)	720.00+
530	30c Blue & Carmine, Flags Inverted (121b). Attractive Circle of Wedges cancel, Exceptional Margins & Centering, Bright Colors, five perfs. at R. blunted by scissors, tiny tear at L., nevertheless a Most Attractive Example of this Extremely Rare Stamp (W).....(Photo)	25,000.00

531	30c Blue & Carmine, Split Grill (121 var.). Used with 3c Green (147), tied by Geometric cancels, N.Y. pmk. on large size Blue cover front, paying 11x3c Domestic Rate to Philadelphia, pasted to original enclosure to resemble folded letter, Fine & Rare, Signed Ashbrook (30c on full cover catalogs \$3,250.00) (W).....(Photo)	E.XII
532 ∞	30c Blue & Carmine (121). R. perfs. touch, small internal tear in B. margin, Used with Horiz. Pair 5c Blue (179), all tied by Bold Quartered Corks, light "Erie Pa." pmk. on large size Registered 1882 cover to England, U.S. & English Reg. markings front & back, Attractive & Rare Cover (W).....(Photo)	3,250.00

NINETY CENT CARMINE & BLACK

533 ★	90c Carmine Rose & Black (122). Fresh, Part o.g., perfs. trifle in at L., Rare.....(Photo)	2,400.00
534	90c Carmine Rose & Black (122). Lightly cancelled, Fine (W) (Photo)	525.00
535	90c Carmine & Black (122). Huge T. Margin, "Lancaster Pa." Town pmk., Fine (W).....(Photo)	600.00
536	90c Carmine & Black (122). Bright Colors, perfs. touch at R., trifle in at T., very light Red cancel, Attractive & Scarce.....(Photo)	600.00
537	90c Carmine & Black (122). Rich Colors, Beautifully Centered, Neat Circle of Wedges cancel, couple tiny filled thins, Extremely Fine Appearance (W).....(Photo)	525.00
538	90c Carmine & Black (122). Used, Nice Margins, Almost Perfectly Centered, Unusually Rich Colors, tiny margin tear at R., o/w Extremely Fine (W).....(Photo)	525.00
539	90c Carmine Rose & Black (122). Minor flaws, tiny ms. cancel at B., VF Appearance (W).....(Photo)	525.00
540	90c Carmine Rose & Black (122). Blue Grid cancel, thin spot & tiny margin nick, o/w Fine (W).....(Photo)	550.00
541	90c Carmine & Black (122). Used, small corner crease, reperfed at L., VG Appearance.....	525.00
542	90c Carmine & Black (122). Tied on Piece by "N. York Steamship" cancel, Very Attractive & Exceedingly Rare, only one cover known.....(Photo)	E.XV

RE-ISSUES

543 ★	1c Buff, Re-Issue (123). Major Part o.g., VF (W).....(Photo)	165.00
544 ★	1c Buff, Re-Issue (123). Fresh, Part o.g., vert. bend, couple unpunched perfs. at L., VF (W).....(Photo)	165.00
545 ★	1c Buff, Re-Issue (123). Wide Even Margins, faint small thin in T. margin, Extremely Fine Appearance (W).....(Photo)	165.00
546 ★	1c Buff, Re-Issue (123). Well-Centered, couple trimmed perfs., thin spot, VF Appearance (W).....	165.00
547	1c Buff, Re-Issue (123). Bold Blue Cork cancel, Fine (W) ..(Photo)	95.00+
548	1c Buff, Re-Issue (123). Neat Grid of Squares cancel, single slightly nibbed perf., o/w Fine, with A.P.S. Certificate (W).....(Photo)	95.00
549	1c Buff, Re-Issue (123). Wonderfully Well-Centered, Small Quartered Cork cancel, faults, VF Appearance.....	95.00
550 ∞	1c Buff, Re-Issue (123). Wonderfully Well-Centered, tied by Negative "K", Boston Mass. pmk. on Great Britain Mulready Envelope Reproduction Cover, Stamp Dealer's Return Card, Extremely Fine, Rare & Beautiful (W).....(Photo)	E.XI
551 ★	2c Brown, Re-Issue (124). VF.....(Photo)	225.00

552 ★	2c Brown, Re-Issue (124). Fresh, Large Part o.g., minor album offset on back, side perfs. blunted by scissors separation, all intact, Fine (W)(Photo)	225.00
553 ★	2c Brown, Re-Issue (124). Fresh, Large Part o.g., Fine (W) (Photo)	225.00
554 ★	2c Brown, Re-Issue (124). Fresh, o.g., Fine (W).....(Photo)	225.00
555 ★	2c Brown, Re-Issue (124). Fresh Color, small Purple handstamp on back shows through in margin, few perfs. trifle trimmed, o/w VF (W)(Photo)	225.00
556 ★	2c Brown, Re-Issue (124). Rich Color, tiny margin tear & corner perf. crease, Fine Appearance.....(Photo)	225.00
557	2c Brown, Re-issue (124), Neat Oval Registry cancel, Fine (W) (Photo)	135.00
558 ★	3c Blue, Re-Issue (125). Single insignificant perf. nibbing, still Fine, Rare Stamp(Photo)	1,350.00
559 ★	3c Blue, Re-Issue (125). Fresh, Small Part o.g., few perfs. at T. lightly creased, mentioned only for the sake of accuracy, o/w Fine, Handsome Example of this Rare Stamp, with A.P.S. Certificate (W)(Photo)	1,350.00
560 ★	6c Blue, Re-Issue (126). Fresh Color, tiny, barely noticeable surface scuffs, o/w VF.....(Photo)	450.00
561 ★	6c Blue, Re-Issue (126). Fresh, Part o.g., small toned area at T. virtually all on back, reperfed at R., VF Appearance (W)(Photo)	450.00
562	6c Blue, Re-Issue (126). Well-Centered, Oval Registry cancel, small faults, VF Appearance (W)(Photo)	275.00
563 ★	10c Yellow, Re-Issue (127). Well-Centered, Large Part o.g., slightly short corner perf., o/w VF, Handsome (W)(Photo)	650.00
564 ★	10c Yellow, Re-Issue (127). Choice Color, Large Part o.g., single barely nibbed perf., o/w Fine(Photo)	650.00
565 ★	10c Yellow, Re-Issue (127). Part o.g., reperfed, light crease & short perf., o/w Fine.....(Photo)	650.00
566	10c Yellow, Re-Issue (127). Heavy Oval Registry cancel, Fine (W)(Photo)	450.00
567	10c Yellow, Re-Issue (127). Oval Registry cancel, repaired, VF Appearance (W).....(Photo)	450.00
568 ★	12c Green, Re-Issue (128). Wide Margins, Part o.g., couple slightly nibbed perfs. at L., o/w VF (W).....(Photo)	675.00
569 ★	12c Green, Re-Issue (128). Beautiful Rich Color, faint crease, reperfed, VF Appearance.....(Photo)	675.00
570	12c Green, Re-Issue (128). Oval Registry cancel, small natural margin wrinkle, reperfed, VF Appearance (W)(Photo)	500.00
571 ★	15c Brown & Blue, Re-Issue (129). Vivid Colors, Fine(Photo)	700.00
572 ★	15c Brown & Blue, Re-Issue (129). Well-Centered, Rich Colors, Part o.g., slightly rounded corner perf., reperfed at R., o/w VF, signed Colson (W).....(Photo)	700.00
573 ★	15c Brown & Blue, Re-Issue, Imperf. Horizontally (129a). Negligible toning spot on back, does not show through, o/w VF, Rare (Photo)	1,000.00
574	15c Brown & Blue, Re-Issue (129). Wide Margins, Oval Registry cancel, few perfs. slightly trimmed, T.R. corner perf. strengthened, o/w VF (W)(Photo)	325.00
575	15c Brown & Blue, Re-Issue (129). Bright Colors, Bold Oval Registry cancel, faint creases, VF Appearance (W)(Photo)	325.00
576 ★	24c Green & Violet, Re-Issue (130). Fresh & Fine(Photo)	675.00
577 ★	24c Green & Violet, Re-Issue (130). Fresh, Deep Rich Colors, small Part o.g., tiny perf. tear, o/w Fine (W).....(Photo)	675.00

All lots with "(W)" at end of description are the property of Mrs. Wunsch.
Lots without this symbol are the property of another owner.

578	24c Green & Violet, Re-Issue (130). Rich Colors, lightly cancelled, couple faint tiny thin specks, VF Appearance (W).....(Photo)	300.00
579 ★	30c Blue & Carmine, Re-Issue (131). Wide Margins, Fresh, Rich Colors, Large Part o.g., small blue mark on back, VF & Choice (W).....(Photo)	925.00
580	30c Blue & Carmine, Re-Issue (131). Rich Color, Neat Oval Registration, reperfed at L., VF Appearance.....(Photo)	450.00
581	30c Blue & Carmine, Re-Issue (131). Wide Even Margins, Rich Colors, Oval Registry cancel, couple minor flaws, Extremely Fine Appearance (W).....(Photo)	450.00
582 ★	90c Carmine & Black, Re-Issue (132). Wide Margins, Fresh, Rich Colors, small faint thins in T. margin, Extremely Fine Appearance, A Beautiful & Rare Stamp (W).....(Photo)	1,750.00
583 ★	90c Carmine & Black, Re-Issue (132). Fresh, Part o.g., Tiny Plate Flaw Causing Break in Crisscrossed Vignette Background to Right of Portrait, couple partly nibbed perfs, at B., o/w Fine, Rare....(Photo)	1,750.00
584	90c Carmine & Black, Re-Issue (132). Used, Well-Centered, Rich Colors, tiny margin tear, o/w Extremely Fine, Rare (W).....(Photo)	1,300.00
585	90c Carmine & Black, Re-Issue (132). Light cancel, reperfed at L., small faults, VF Appearance, Rare (W).....(Photo)	1,300.00
586 ★	1c Buff, Re-Issue (133). VF.....(Photo)	120.00
587 ★	1c Buff, Re-Issue (133). Fresh, Large Part o.g., negligible faults, VF Appearance (W).....(Photo)	100.00
588 ★	1c Brown Orange, Re-Issue (133a). Well-Centered, faint small thin, VF Appearance (W).....(Photo)	100.00
589 ★	1c Buff, Re-Issue (133). Block, Fresh, o.g., Choice Centering, two minor black spots on back of T.R. stamp, Extremely Fine (W)(Photo)	550.00
590	1c Brown Orange, Re-Issue (133a). Wide Even Margins, light Target cancel, few short perfs, & tiny thin, o/w Extremely Fine (W).....	90.00

END OF SALE — THANK YOU

DESCRIPTIONS

EXTREMELY FINE: The finest condition for noteworthy, outstanding stamps.

VERY FINE: (V.F.) In prime condition such as to satisfy the requirements of particular collectors.

FINE: (F.) Perforations or margins do not touch design on issues after 1890 but in some cases may just touch in earlier issues. If used, fairly light cancellation.

VERY GOOD: (V.G.) Generally nice appearance but margins or perforations may cut in slightly.

GOOD: (G.) Average off-centering or fairly attractive with slight defects.

ORIGINAL GUM is not to be expected on 19th century stamps unless so stated in the description.

MINT: With original gum and never hinged.

Unless otherwise noted the Scott 1978 United States Specialized Catalogue and Brazer Essays for U.S. Adhesive Postage Stamps have been used for cataloging lots in this sale.

IS YOUR COLLECTION FOR SALE?

REALIZE IMMEDIATE CASH

PLUS THE ADDED ADVANTAGE OF

SELLING THROUGH OUR AUCTIONS

We will advance immediate cash up to 75% of our appraised value.
There is no interest charge.

Your collection is then sold in one of our auction sales. All stamps are expertly and advantageously lotted in attractive, well illustrated catalogs. Lotting is meticulously planned under our personal supervision. Commission is 20% of the gross realization. There is **no lotting fee** nor any other charges. Final settlement is made within five weeks after the sale. We have continuously conducted stamp auctions for over forty-seven years.

Valuable collections and stamp holdings are especially wanted, but we will accept properties valued from \$500 upwards. Send all stamps directly for appraisal. Auction advance will be remitted shortly after receipt. If not entirely pleased, stamps will be returned at our expense. We will travel anywhere to inspect important properties.

ROBERT A. SIEGEL
AUCTION GALLERIES, Inc.

(Licensed and Bonded Auctioneer)

120 EAST 56th STREET

NEW YORK, N.Y. 10022

(Tel. 753-6421)

**SPECIALIZED
1869 PICTORIAL ISSUE**

1	90	54	170	107	110	160	200	213	52½
2	150	55	700	108	260	161	42½	214	62½
3	90	56	800	109	575	162	160	215	95
4	42½	57	37½	110	450	163	250	216	105
5	85	58	600	111	170	164	75	217	57½
6	80	59	65	112	250	165	52½	218	55
7	160	60	200	113	125	166	47½	219	145
8	135	61	60	114	20	167	190	220	37½
9	85	62	37½	115	100	168	135	221	52½
10	47½	63	75	116	52½	169	725	222	45
11	90	64	140	117	100	170	160	223	90
12	180	65	57½	118	1050	171	125	224	21
13	100	66	125	119	105	172	85	225	52½
14	80	67	65	120	65	173	85	226	375
15	80	68	75	121	120	174	40	227	35
16	75	69	32½	122	67½	175	42½	228	16
17	30	70	110	123	80	176	67½	229	62½
18	75	71	120	124	35	177	325	230	42½
19	67½	72	75	125	40	178	95	231	60
20	105	73	80	126	52½	179	70	232	45
21	100	74	115	127	115	180	100	233	280
22	115	75	160	128	55	181	130	234	500
23	57½	76	62½	129	85	182	42½	235	190
24	180	77	100	130	32½	183	170	236	190
25	47½	78	26	131	75	184	80	237	1250
26	115	79	26	132	75	185	70	238	400
27	120	80	85	133	28	186	52½	239	250
28	110	81	210	134	110	187	67½	240	24
29	90	82	190	135	170	188	45	241	21
30	80	83	105	136	300	189	85	242	23
31	115	84	55	137	20	190	65	243	25
32	135	85	1250	138	47½	191	67½	244	80
33	115	86	40	139	60	192	62½	245	130
34	90	87	80	140	45	193	60	246	110
35	170	88	52½	141	70	194	80	247	47½
36	5250	89	105	142	20	195	47½	248	80
37	290	90	450	143	50	196	65	249	50
38	52½	91	135	144	130	197	40	250	45
39	95	92	130	145	27	198	145	251	2500
40	2100	93	75	146	115	199	300	252	120
41	1100	94	52½	147	23	200	100	253	220
42	210	95	26	148	67½	201	300	254	67½
43	6250	96	57½	149	21	202	2300	255	50
44	1150	97	250	150	700	203	120	256	42½
45	1000	98	85	151	45	204	290	257	57½
46	210	99	47½	152	145	205	300	258	67½
47	750	100	500	153	160	206	135	259	130
48	220	101	35	154	110	207	57½	260	95
49	450	102	160	155	20	208	52½	261	115
50	240	103	190	156	120	209	67½	262	110
51	105	104	240	157	160	210	22	263	110
52	475	105	90	158	85	211	42½	264	375
53	200	106	115	159	400	212	105	265	425

266	130	334	135	402	62½	470	160	538	425
267	170	335	24	403	42½	471	950	539	525
268	1550	336	26	404	40	472	250	540	280
269	1100	337	27	405	47½	473	170	541	210
270	62½	338	110	406	260	474	190	542	3250
271	135	339	130	407	135	475	160	543	250
272	30	340	19	408	550	476	135	544	170
273	52½	341	425	409	180	477	125	545	105
274	42½	342	375	410	350	478	115	546	35
275	67½	343	28	411	325	479	32½	547	145
276	260	344	27	412	425	480	47½	548	200
277	325	345	2900	413	280	481	105	549	24
278	52½	346	160	414	550	482	140	550	850
279	85	347	180	415	750	483	95	551	500
280	50	348	200	416	280	484	600	552	160
281	20	349	160	417	135	485	350	553	145
282	21	350	42½	418	140	486	210	554	200
283	210	351	32½	419	270	487	1350	555	230
284	85	352	57½	420	3250	488	325	556	70
285	45	353	21	421	400	489	100	557	210
286	57½	354	90	422	325	490	550	558	1050
287	65	355	17	423	160	491	1000	559	1100
288	17	356	22	424	55	492	1300	560	230
289	62½	357	200	425	70	493	3000	561	300
290	47½	358	42½	426	42½	494	13,500	562	325
291	37½	359	145	427	57½	495	425	563	425
292	50	360	37½	428	42½	496	210	564	350
293	100	361	80	429	135	497	180	565	200
294	57½	362	85	430	47½	498	230	566	400
295	800	363	32½	431	21	499	210	567	210
296	80	364	45	432	32½	500	230	568	725
297	135	365	70	433	110	501	140	569	475
298	42½	366	65	434	65	502	290	570	500
299	170	367	135	435	170	503	100	571	400
300	250	368	21	436	95	504	62½	572	450
301	135	369	21	437	75	505	75	573	525
302	80	370	50	438	25	506	130	574	300
303	75	371	37½	439	40	507	90	575	300
304	110	372	40	440	75	508	200	576	475
305	220	373	65	441	350	509	475	577	425
306	95	374	67½	442	290	510	3250	578	260
307	550	375	52½	443	270	511	2800	579	950
308	57½	376	230	444	230	512	7500	580	350
309	40	377	190	445	1250	513	425	581	425
310	18	378	52½	446	115	514	625	582	1600
311	21	379	150	447	1000	515	325	583	950
312	18	380	70	448	850	516	140	584	1650
313	95	381	325	449	260	517	170	585	950
314	25	382	24	450	525	518	180	586	170
315	29	383	37½	451	700	519	125	587	62½
316	26	384	130	452	850	520	190	588	52½
317	18	385	40	453	950	521	230	589	800
318	18	386	140	454	475	522	75	590	140
319	28	387	625	455	350	523	300	END OF SALE THANK YOU	
320	37½	388	125	456	210	524	75		
321	47½	389	675	457	300	525	95	GROSS REALIZATION: \$197,586.50	
322	29	390	240	458	270	526	62½		
323	35	391	115	459	190	527	105		
324	70	392	55	460	135	528	80		
325	45	393	75	461	230	529	1400	15,500	
326	62½	394	47½	462	130	530	2200		
327	27	395	32½	463	125	531	4000	1300	
328	220	396	35	464	62½	532	600		
329	145	397	90	465	230	533	1000	350	
330	42½	398	80	466	45	534	675		
331	23	399	27	467	575	535		675	
332	28	400	25	468	475	536			
333	65	401	95	469	1100	537			