

CARNEGIE

PART I

Robert A. Siegel

AUCTION GALLERIES, INC.

120 EAST 56th STREET
NEW YORK CITY, N.Y. 10022

CONDITIONS OF SALE

1. The terms of sale are strictly cash on delivery to the highest bidder unless special arrangements have been made prior to the sale. The fact that an item is placed on extension (submitted to an expertising committee for certification) does not relieve the successful bidder from this condition of sale.
2. All bids are per lot as numbered in the catalogue unless otherwise announced by the auctioneer at the time of sale. The right is reserved to group two or more lots; to withdraw any lot or lots from the sale, or to act in behalf of the seller. The auctioneer shall regulate the bidding and in the event of any dispute his decision shall be final.
3. Any lot, the description of which is incorrect is returnable, but only within five days of receipt. All disputed lots must be returned intact as received. **The following lots may not be returned for any reason whatsoever: Lots containing ten or more stamps; Lots from buyers who have had the opportunity to examine them before the sale; Lots described as having defects or faults may not be returned because of any faults. No illustrated lots may be returned because of centering, margins or other factors shown in the illustrations.**
4. Successful bidders, unless they are known to us or supply acceptable references are expected to make payment in full before the lots are delivered. Mail bidders will be notified of the amounts of their purchases. All mail bidders who have established credit with us must make payment within three days after receipt. We reserve the right in our sole and absolute discretion to demand cash payment at the time a lot is knocked down to any bidder who has not previously established credit with us or whose account is in arrears. In the event any buyer refuses to pay cash for any lot at the time it is knocked down to him, the auctioneer reserves the right to re-offer the lot immediately for sale to the highest bidder.
5. If the purchase price has not been paid within the time limit, nor lots taken up within seven days from date of sale they must be resold and any loss arising from such sale will be charged to the defaulter. Any account more than thirty days in arrears is subject to a late payment charge of 1½% per month so long as the account remains in arrears. If the auctioneer, in his discretion, should institute any legal action to secure payment of a delinquent account the defaulting purchaser shall pay all legal expense incurred by the auctioneer and such charges will be added to the amount owed.
6. All lots are sold as genuine but should any lot be proved otherwise by written opinion of any competent, responsible authority acceptable to us, immediate refund of the full purchase price will be made, provided that such claim is made in writing within 14 days from date of sale. If claim is not made within this period, no lots are returnable for any reason at any time. So long as we are notified within the 14 day period that an opinion is being sought the matter will remain open until such opinion is rendered. We will not be responsible for any charges incurred by the buyer for expertization fees and costs unless the opinion states the item is not genuine, in which case we will pay actual costs up to a maximum of \$50.00. In the event an item is proved "not as described" it is returnable for full refund, and the buyer will be paid interest (at the prevailing Treasury Bill Rate) for the time his funds have been on deposit with us during the extension period.
7. Until paid for in full, all lots remain the property of Robert A. Siegel Auction Galleries, Inc. in behalf of the seller.
8. All forwarding charges will be added to the purchase price. The mode of shipment shall be at our option unless we are given specific instructions.
9. Lots may be sent for inspection to buyers known to us upon written application. All such lots must be returned to us by registered mail, adequately insured and within 24 hours after receipt. The applicant assumes all responsibility and will provide insurance against all risks from time of receipt. The applicant assumes all responsibility and will provide insurance against all risks from time of receipt until they are actually received back by us, and is to pay all expenses of postage and insurance. **No lots can be sent for inspection within ten days from date of local viewing. Large lots and collections cannot be sent for inspection.**
10. Agents are responsible for all purchases made in behalf of their clients unless other arrangements are made prior to the sale.
11. The placing of a bid shall constitute acceptance of the foregoing conditions of sale.

ROBERT A. SIEGEL

MALCOLM SIEGEL, Licensed Auctioneers

FOR TABLE OF DESCRIPTIONS SEE PAGE 75

Upon request estimate of value furnished on any lots in this auction.

580th SALE

**The Carnegie Museum of Natural History
Collection of**

**BRITISH NORTH AMERICAN
and
CAPE OF GOOD HOPE
POSTAL HISTORY COVERS**

Sold by the Order of
THE CARNEGIE INSTITUTE OF NATURAL HISTORY
AT UNRESERVED PUBLIC AUCTION

WEDNESDAY, MAY 20th, 1981 at 1:00 P.M.

Robert A. Siegel
AUCTION GALLERIES, INC.

**120 EAST 56th STREET
TEL.: (212) 753-6421**

**NEW YORK, N.Y. 10022
ESTABLISHED 51 YEARS**

COMING IMPORTANT AUCTIONS

1869 Pictorials Collection

United States 19th and 20th Century

**19th Century United States
and Postal History**

**General Foreign featuring
Rare Zeppelin Covers**

LOTS ON VIEW
Tuesday, May 19th and Day of Sale until 12:30 P.M.

PUBLIC AUCTION

WEDNESDAY, MAY 20, 1981 — 1:00 P.M.

BRITISH NORTH AMERICA POSTAL HISTORY

CANADA

STAMPLESS COVERS

- 1 ☒ **Stamless Covers, 1835-64, Collection of 46, Lovely Range of Markings, incl. Dunnville, Montreal & Quebec Double Circles, "Too Late," "Steamboat," "City Despatch Post" (U.S.), U.S. Hotel Forwarder, Oval "Ship Letter Quebec," Legislative Free Franks, Many Cross-Border usages, also four New Brunswick & two Nova Scotia Stampless, F-VF & Choice Lot (Photo Ex) E.XII**

1851 PENCE ISSUE

- 2 ☒ **1851, 3p Red (1). Large Margins to barely touching at B.L., tiny corner crease (almost entirely in margin), just tied by Bold target on 1851 Folded Cover to Kingston, matching Bold Belleville U.C. Jul 30 1851 pmk., Red partial Kingston backstamp, Fine & Very Attractive (Photo) 550.00 +**
- 3 ☒ **1851, 6p Grayish Purple (2). Ample to Large Margins, tied by Target on 1852 Folded Letter (Kennedy Correspondence) to New York, Orange Red Montreal L.C. pmk. & matching Framed "Canada" Arced Exchange Marking, Bold Red "PAID", VF, Lovely Cover (Photo) 700.00 +**
- 4 ☒ **1851, 6p Grayish Purple (2). Ample to Large Margins, Bold Target, tied by Orange Red "Montreal L.C. Dec 1851" pmk. on Folded Letter (Kennedy Correspondence) to New York, matching Framed "Canada" Arced Exchange Marking, Red "PAID," VF, Very Handsome. (Photo) 700.00 +**
- 5 ☒ **1851, 6p Grayish Purple (2). Large Margins to barely in at B., tied by Target on 1853 Folded Cover, Bold Orange Red Montreal L.C. pmk., Kingston & Belleville Backstamps, Fine & Scarce (Photo) 700.00 +**
- 6 ☒ **1851, 6p Grayish Purple (2). Enormous Side Margins, T. & B. Margins expertly added, barely "tied" by bold Target on 1852 Folded Letter to New York (Kennedy Correspondence), Orange Red "Montreal L.C." pmk. & matching Framed "Canada" Arced Exchange marking, Red "PAID," Fantastic Appearing Stamp & Cover..... E.X**

Due to the tremendous demand on our phones and staff, Prices Realized will not be available by telephone until 24 hours after the sale.

1852 PENCE ISSUE

- | | | |
|------|---|----------|
| 7 ☒ | 1852, 3p Red (4). Huge Margins All Around, Intense Color, on 1857 Folded Letter tied by Blue Target, indistinct Blue Town pmk., Handsome Cover, Stamp Extremely Fine & Choice..... (Photo) | 165.00 + |
| 8 ☒ | 1852, 3p Red (4). Ample to Large Margins, tiny portion of Impt. at B.R., Beautifully tied by "21" in target on Folded Cover, Red "Montreal L.C. MY 20 1852" pmk. & matching Framed "Canada" Arced Exchange Marking, "10" in Circle, VF & Attractive (Photo) | 165.00 + |
| 9 ☒ | 1852, 3p Red (4). Large to Huge Margins, tied by Grid on neat 1858 Mourning Cover to Hamilton, Toronto pmk., Hamilton Backstamp, tiny cover tear at T., from same Correspondence as 6p Greenish Gray Bisect (Lot 26), Handsome Cover (Photo) | 165.00 + |
| 10 ☒ | 1852, 3p Red (4). Huge Margins to just touching at B.L. corner, tied by partial target on Cover, " More-to-Pay " & Large "3" handstamps, partial Toronto pmk., cover flap missing, few minor cover edge faults, Attractive & Scarce (Photo) | 165.00 + |
| 11 ☒ | 1852, 3p Red (4). Huge Margins to slightly in, incl. Spectacular B. Sheet Margin, margins bit irregular at sides, tied by Red "City-of-Ottawa U.C. Paid Jy 8 1856" pmk. on Ladies Embossed Envelope, Target Cancel, couple tiny cover edge tears, Fine & Unusual. (Photo) | 165.00 + |
| 12 ☒ | 1852, 3p Red (4). Huge Margins All Around, tied by target on 1853 Cover, partial Red Town pmk., " Money-Letter " handstamp, ms. "Money" & "Paid" markings, Receiving backstamps, some cover edge aging (partly affecting stamp), Scarce..... (Photo) | 165.00 + |
| 13 ☒ | 1852, 3p Red (4). Large to Huge Margins incl. tiny portion of adjoining stamp at L., barely noticeable surface cut, tied on 1857 Folded Cover by "19" in Target, matching Double Circle "London Canada Jun 15 1857" pmk., Extremely Fine Appearance (Photo) | 165.00 + |
| 14 ☒ | 1852, 3p Red (4). Huge Margins to just in at B.R., Rich Color, tied by Blue Targets on Small 1857 Yellow Cover, matching Double Circle " Montreal-Quebec Grand Trunk Railway No. 6 " pmk., Fine & Handsome (Photo) | 165.00 + |
| 15 ☒ | 1852, 3p Red (4). Ample to Large Margins, tied by Bold Target on Yellow Buff 1857 Cover, Bold " Registered " handstamp, "Merrickville U.C." pmk., Bold City of Ottawa. C.W. backstamp, cover filing fold & cover corner erosion, Handsome & Very Scarce..... (Photo) | 165.00 + |
| 16 ☒ | 1852, 3p Red (4). Large to Huge Margins incl. part T. Sheet Margin, Bold Target cancel on cover to St. Johns C.E., Red Stanstead L.C. Nov 10 1852 pmk., Small sealed cover tear, minor cover staining at B., o/w Fine (Photo) | 165.00 + |
| 17 ☒ | 1852, 3p Red (4). Ample to Large Margins, lightly tied by target cancel on 1857 Folded Cover, London Canada pmk., Orange Red St. Catherine U.C. backstamp, some slight surface rubbing, o/w Fine | 165.00 + |
| 18 ☒ | 1852, 3p Red (4). Vert. Pair, Large to Huge Margins, Target Cancels, Orange Red "Montreal L.C." pmk. & matching Framed "Canada" Arced Exchange Marking & Red "PAID" on 1852 Folded Letter, VF & Choice..... (Photo) | 330.00 + |
| 19 ☒ | 1852, 3p Red (4). Horiz. Pair, Large to Huge Margins, Target cancels, tied by "Suspension Bridge NY" pmk. on Ladies small Embossed Envelope, Hamilton U.C. 1855 pmk., Red two Line "Canada Paid 10 cts." Exchange Marking, some tiny cover corner edge wear, VF..... (Photo) | 330.00 + |

- 20 ☒ **1852, 3p Red (4). Horiz. Pair**, Enormous Margins except L. stamp barely touched at one point, tied by targets on 1853 Folded Cover to New York, tiny scissors cut barely into T. of L. stamp, London U.C. 1853 pmk., faint Red Two Line "Canada Paid 10 cts." Exchange Marking, Blue partial "Suspension Bridge NY" pmk., some minor cover aging & file fold, R. Stamp Extremely Fine, Scarce **(Photo)** 330.00+
- 21 ☒ **1852, 3p Red, Ribbed Paper (4c)**. Ample to Huge Margins, tied by partial Grid on small 1856 Mourning Cover, matching partial Toronto C.W. pmk., VF, Handsome..... **(Photo)** 275.00+
- 22 ☒ **1852, 3p Red, Ribbed Paper (4c)**. Clear to Large Margins, barely tied by Grid on Small Cover, matching Toronto pmk., Fine **(Photo)** 275.00+
- 23 ☒ **1852, 3p Red, Ribbed Paper (4c)**. Margins to slightly in, on 1858 Reg. cover tied by partial Georgetown U.C. pmk., Str. Line "Registered," some cover wear & some toning, o/w Fine, Scarce..... **(Photo)** 275.00+
- 24 ☒ **1855, 6p Slate Gray (5)**. Large to Huge Margins, Tiny surface rubs, tied by Target on 1857 Cover to Pennsylvania, partial Hamilton C.W. Year Date pmk., Red Two line "Canada Paid 10 cts." Exchange Marking, Handsome Cover..... **(Photo)** 600.00+
- 25 ☒ **1855, 6p Slate Gray (5)**. Margins to barely in, at left, tied by Grid on 1859 Cover to New York, "Great Western Railway of Canada" Impt. at B.L., Hamilton pmk., Red Two Line "Canada Paid 10 cts." Exchange Marking, Handsome Cover..... **(Photo)** 600.00+
- 26 ☒ **1852, 6p Greenish Gray, Diagonal Half Used as 3p (5c)**. Margins to slightly in at T.L., tiny sealed tear at B., clearly tied by Square Grid on small 1859 Cover to Hamilton, Toronto pmk., Hamilton backstamp, Listed But Unpriced in Scott, with P.F. Certificate & other supporting Documentation, Extremely Rare Cover, £12,000 in Gibbons.. **(Photo)** **E.XVI**

1855-1857 PENCE ISSUES

- 27 ☒ **1855, 10p Blue (7)**. Large to Huge Margins, tied by target on Yellow Buff 1855 Cover to England, Red "Pkt. Letter Paid London" Tombstone marking, Hamilton U.C. pmk., some minor edge wrinkling at top of cover, Extremely Fine stamp, Handsome Cover **(Photo)** 675.00+
- 28 ☒ **1855, 10p Blue (7)**. Large Margins Three sides, touched to tiny bit in at R., tied by Grid on small 1859 Cover to England, Red "London Paid" Transit marking & "Legislative Assembly Canada" in Shield with Royal Crown Franking handstamp, ms. per "R.M. Steamer via Liverpool," Small Bold "Reading MR9" Backstamp, Rare & Pretty Cover..... **(Photo)** 675.00
- 29 ☒ **1855, 10p Blue (7)**. Huge Margins Three sides to partly touching at T., tied by Target on Yellow 1858 Cover to England, Bold Hamilton U.C. pmk., Red London Paid Receiving marking, magenta ms. "No. 76" at L. Fine and Attractive, Scarce..... **(Photo)** 675.00+
- 30 ☒ **1857, ½p Rose (8)**. Large to Huge Margins incl. small portion of adjoining stamp at B.R., Intense Color, partially tied by part grid on 1858 Small Size Cover, Ingersole C.W. Backstamp, VF**(Photo)** 350.00+
- 31 ☒ **1857, ½p Rose (8)**. Large Margins, Nice Color, tied by Target on portion of 1858 Edition of "The Globe" Newspaper, (some light staining at T. not affecting stamp), Very Interesting, Stamp Very Fine **(Photo)** 350.00+
- 32 **1857, ½p Rose (8)**. Huge Margins to Ample at T., bit irregular to slightly in at L. & B., Boldly tied by "21" in Target on small portion of 1857 Canadian Newspaper, Banbury pmk., Interesting..... **(Photo)** 350.00+

- 33 ☒ **1857, ½p Rose (8).** Large to Huge Margins except barely in at B.R., some very light toning at B., neatly tied by Diamond Grid on 1858 folded Printed Circular to Ottawa, "Ottawa-City" Backstamp, Fine, Scarce (Photo) 350.00 +
- 34 ☒ **1857, 7½p Green (9).** Huge Margins except just clear at B.L., tied by Grid on Buff 1857 cover to England, faint Toronto C.W. pmk. & Red London Paid Transit marking, ms. "By Canadian Steamer-Paid" at T., some minor cover edge wear, Handsome & Rare (Photo) 1,500.00 +
- 35 ☒ **1857, 7½p Green (9).** Large Margins two sides, close or barely in on others, tied by Diamond Grid on 1859 Folded Cover to England, Toronto U.C. pmk. & Red "Paid Liverpool Col-Packet 15 JU 59 3A" marking ms. "By Quebec Steamers," some cover edge nicks at T., Handsome & Rare (Photo) 1,500.00 +

1858-1859 PERFORATED PENCE ISSUE

- 36 ☒ **1858, ½p Rose (11).** Fine, couple faint toning spots, tied by light Target on Yellow Buff Cover to Milton U.C., Clear Prescott U.C. pmk., cover slightly reduced at L., Very Handsome (Photo) 650.00 +
- 37 ☒ **1858, ½p Rose (11).** T. perfs. slightly in, tied by "21" in Targets on Yellow Buff Cover to Port Perry C.W., Blue partial "Whitby U.C." Backstamp, Scarce, Fine (Photo) 650.00 +
- 38 ☒ **1858, 3p Red (12).** Perfs. slightly in at B. & R., tied by Target on small neat Blue 1859 Cover, indistinct Town pmk., Quebec Backstamp, Fine Cover (Photo) 350.00 +
- 39 ☒ **1858, 3p Red (12).** Beautiful Color, perfs. barely in at L., neatly tied by Square Grid on 1859 Folded letter to Port Perry, Bold Blue "Whitby C.W." Backstamp, Fine, Handsome Cover (Photo) 350.00 +
- 40 ☒ **1858, 3p Red (12).** Beautiful Color, perfs. barely in at L. & B., tied by Target on neat Mourning Cover to Gananoque U.C., Cornwall U.C. pmk., ms. "Paid," Appropriate Backstamps, light cover filing fold & small cover tear, Fine Stamp, Attractive (Photo) 350.00 +
- 41 ☒ **1858, 3p Red (12).** Tied by "18" in Target on 1859 Folded Letter, ms. "Paid," Red Kingston U.C. pmk., few nibbed perfs., o/w Very Fine (Photo) 350.00 +
- 42 ☒ **1858, 3p Red (12).** Vert. Pair, R. perfs. close to barely in, neatly tied by Square Grids on 1859 Folded Letter to New York, Toronto U.C. pmk. & Red "PAID," couple light filing folds, Fine & Striking Cover (Photo) 700.00 +
- 43 ☒ **1859, 6p Gray Violet (13a).** Perfs. touching at R., tied by numeral in Target on Yellow Buff 1859 Cover to Phila. Pa., bold Montreal L.C. pmk., cover file fold & small surface scuff in address, o/w Very Handsome & Rare (Photo) 2,500.00 +

1859 ISSUE

- 44 ☒ **1859, 1c Rose (14).** Four Covers, one tied by Blue "Paid," one a Folded Circular, another on tiny Ladies Embossed Cover, Fine Lot.... 100.00 +
- 45 ☒ **1859, 1c Rose (14).** Three Items, incl. 1865 Printed Folded "Return of Convictions" Listing names of Defendants, Nature of Charge, Sentencing, etc.; Folded "Votes And Procedures of The House of Commons" (1867); Large Part of Front Page of "The Globe" Newspaper (1862), VF & Interesting Lot..... E.VII
- 46 ☒ **1859, 1c Rose (14).** Block, couple very minor faults, neatly tied by Brockville pmks. on 1864 large size Wrapper to Hickton, ms. "Printed Papers," Prescott U.C. Backstamp, few filing folds, Scarce.. (Photo) E.X

47	⊠	1859, 1c Rose (14). Horiz. Strip of Five , tied by Grids on 1863 Cover to Port Hope. C.W., Montreal pmk., portion of flap missing, light Port Hope Backstamp, Very Handsome..... (Photo)	125.00 +
48	⊠	1859, 1c Rose (14). Five, perfs. close to slightly in, tied by Grids on 1868 Yellow Cover to London Ont., St. Catherines pmk., London Backstamp, cover file fold (not affecting stamps), Handsome (Photo)	125.00 +
49	⊠	1859, 1c-12½c First Cents Issue (14, 15, 17, 18). Each on separate cover, 1c Unsealed Circular, Neat Corner Card, 5c to Nova Scotia, 10c tied by Blue Grid to U.S., 12½c to Isle of Man, generally Fine Lot....	125.00 +
50	⊠	1859, 1c-12½c First Cents Issue (14, 15, 17, 18). Each of separate cover, 1c on Unsealed "Trade Circular" Cover, 5c with "Great Western Railway" Impt., 10c tied by Blue Target to U.S., 12½c to Scotland (reduced at T. & corners diagonal at B.), VG-F Lot	125.00 +
51	⊠	1859, 5c Vermilion (15). Perfs. slightly in at L., lightly tied by Grid on 1862 "Canada Life Assurance" Golden Yellow Advertising Cover to St. John N.B., Hamilton pmk., filing fold, Back flap missing, o/w Fine & Handsome	E.V
52	⊠	1859, 5c Vermilion (15). Four Covers, incl. Single to New Carlisle; Two 10c Rates to U.S.; Large Size (1871) Cover with Vert. Pair (one rounded corner) with Red Str. Line "Registered 6," Fine Lot	62.50 +
53	⊠	1859, 5c Vermilion (15). Horiz. Strip of Three , Well-centered, tied by targets on 1861 Cover, Phillipsburg C.E. pmk., cover slightly reduced at L., couple small cover faults, o/w Fine & Attractive	37.50 +
54	⊠	1859, 5c Vermilion (15). Vert. Strip of Four , few small faults, used with 1c Rose (No. 14), tied by targets on 1863 Mourning Cover to New Zealand , two stamps missing, Hawkesbury C.W. pmk., Red London Paid Transit marking, Nelson New Zealand receiving marking, some cover faults (mostly on Back), Despite Condition, Rare Cover	75.00 +
55	⊠	1857, 10c Red Lilac (17). Beautiful color, perfs. close at R., Beautifully tied by Grid & Ottawa C.W. pmk. on neat cover to Alfred Maine, Embossed Crown Lands & Crown on Flap, couple small sealed cover edge tears, Very Attractive	(Photo) 55.00 +
56	⊠	1857, 10c Red Lilac (17). R. perfs. barely in, some slight perf. toning, lightly tied by target on neat cover to U.S., part town pmk. & partial Framed "CANADA" Arced Exchange Marking, Attractive	55.00 +
57	⊠	1857, 10c Violet (17a). T perfs. just in, tied by Target on Fresh 1865 Mourning Cover to Boston, Hawkesbury C.W. pmk., Montreal Backstamp, An Extremely Handsome Cover..... (Photo)	50.00 +
58	⊠	1859, 10c Violet (17a). Perfs. slightly in at L., tied by target on Small 1861 Cover to New York, Bold Woodbridge U.C. pmk., some very slight cover edge toning at T., o/w Handsome & Neat Cover	50.00 +
59	⊠	1857, 10c Violet (17a). Perfs. close at L., couple small perf. faults, neatly tied by Target on 1864 Buff Cover to New York, light Town pmk., ms. "due 20" & docketing, Kingston Backstamp, cover slightly reduced at L., Handsome & Unusual.....	50.00 +
60	⊠	1857, 10c Violet (17a). Part Impt. at L., perfs. touch at R., neatly tied by Grid on Yellow 1866 Cover to New York, Montreal C.E. pmk., Fine, Attractive & Scarce.....	50.00 +
61	⊠	1857, 10c Brown (17b). T. perfs. slightly in, neatly tied by Diamond Grid on 1862 Orange Buff Cover to Lockport N.Y., partly indistinct St. Catherines U.C. pmk., Fine, Attractive	50.00 +
62	⊠	1857, 10c Brown (17b). Perfs. in at T. & L., tiny perf. toning spots, neatly tied by Grid on 1863 Cover to New Orleans, La., Cobourg C.W. pmk., some cover edge wear.....	50.00 +
63	⊠	1859-64, 2c Rose, 10c Brown (17b, 20). Tied by Hamilton C.W. Grid Duplex on large size 1868 Reg. Cover to "Waterloo Blair P.O.", reduced at L., few small nicks & tears at B., o/w, Fine, Very Scarce	(Photo) 205.00 +

63A	⊠	1859, 10c Violet (17a). Tied by Large Grid on 1866 Cover to San Francisco Cal., Forwarded to Coose Bay Oregon, Forwarding Postage Paid by Horiz. Strip of Three U.S. 1c Blue (63) , Target cancels, tied by San Francisco pmk., cover trifle aged, Very Scarce.....(Photo)	E.X
64	⊠	1859, 10c Red Lilac, Diagonal Half Used as 5c (17d). Very clearly tied by Target on 1860 Buff cover to Hatley Canada, Lennoxville C.E. pmk., ms. "Paid," Cover tear & some slight wear & light toning (not affecting Stamp), still a Very Desirable & Reasonably attractive Example of this Rare Bisect..... (Photo)	2,100.00
65	⊠	1859, 12½c Yellow Green (18). Tied by Grid on 1863 folded Cover to Scotland, Toronto C.W. pmk., Four Line "Glasgow Packet PAID" Marking, ms. "Per Canadian Mail," Very Beautiful Cover... (Photo)	42.50 +
66	⊠	1859, 12½c Yellow Green (18). Well-centered, tied by light Target on Cover to England, Collingwood Harbor pmk., ms. "Paid," Liverpool Backstamp, small cover tear at T., Fine.....	42.50 +
67	⊠	1859, 12½c Bluish Green (18). T. perfs. touch, tied by Grid & Quebec pmk. on 1865 Folded Letter to Scotland, ms. "p Canadian Packet," Four line "Glasgow Packet PAID" receiving marking, Very Handsome.	42.50 +
68	⊠	1859, 12½c Yellow Green (18). L. perfs. barely in, tied by Target & Red "London Paid" pmk. on small cover to London England, Woodstock pmk., Hamilton Backstamp, couple minor spindle holes in Cover, Handsome	42.50 +
69	⊠	1859, 12½c Green (18). Well-centered, tied by Square Grid, Toronto pmk. on Beautiful 1862 Folded Cover to Scotland, "Glasgow Packet Col. Paid," VF & Choice	42.50 +
70	⊠	1859, 12½c Yellow Green (18). Well-centered, couple perf. tips slight toning, neatly tied by Grid on neat 1864 folded cover to Ottawa, Montreal pmk., ms. Docketing at L., Fine & Very Handsome	42.50 +
71	⊠	1859, 12½c Yellow Green (18). Perfs. close to slightly in at L. & T., tied by "18" in Target on 1861 small size Mourning Cover to England, Kingston pmk., ms. "By Packet via Portland," Winchester Backstamp, Scarce	42.50 +
72	⊠	1859, 12½c Green (18). Tied by London C.W. Grid Duplex on Small Neat 1862 Cover to England, Fine & Choice	42.50 +
73	⊠	1859, 12½c Bluish Green (18). Beautiful Color, lightly tied by Grid on 1867 folded Cover to Scotland, Toronto pmk., Bold Four Line. "Glasgow Packet Paid." Transit marking, ms. "Per Canadian Mail," Attractive.....	42.50 +
74	⊠	1859, 12½c Yellow Green (18.) Target Cancel, on small 1864 Cover to England, Reddish Brown Fronthill pmk., Hamilton & New Castle Backstamps, tiny cover tear, slightly reduced at R., Scarce Cover	42.50 +
75	⊠	1859, 12½c Bluish Green (18). Horiz. Pair (small tear in one), used with 5c Vermilion No. 15, Beautiful Color, tied by "37" in Grids on Large Size Yellow Buff Cover, Quebec C.E. pmk. couple cover file folds, small tear at L., Very Scarce	97.50 +
76	⊠	1859, 12½c Green (18). Two Singles, tied by Targets, Quebec L.C. 1867 pmk on large part of folded Cover to Newfoundland, one stamp missing, Very Attractive	85.00 +
77	⊠	1859, 12½c Yellow Green (18). Horiz. Strip of Three, Minor flaws, Square Grid Cancels on 1866 Cover to England, Toronto pmk., Red London Paid pmk., Cover faults, Scarce Usage	127.50 +
78	⊠	1859, 12½c Blue Green (18a). Two Horiz. Pairs, tied by Grids & "London C.W." pmks. on large size wrapper to Toronto, minor edge faults, Fine & Very Scarce	170.00 +
79	⊠	1859, 17c Blue (19). Perfs. touch at R., neatly tied by Grid on Neat 1863 Yellow Cover to England, Hamilton C.W. pmk., Red "London Paid" pmk., some minor cover soiling, Very Attractive	75.00 +

80	⊠	1859, 17c Blue (19). Perfs. in at T., tied by Grid & Montreal C.E. pmk. on 1862 Cover to England, Printed "On Her Majesty's Service." at T. (crossed out by ms.), Embossed Royal Arms on Flap, Red London Backstamp, Very Interesting Cover.....	75.00 +
81	⊠	1859, 17c Blue (19). B. perfs. just touch, neatly tied by Square Grid on small cover to England, faint Town pmk., ms. "Per Cunard Line Prepaid", Fine	75.00 +
82	⊠	1859, 17c Blue (19). Beautiful Color, negligible perf. tip toning, tied by Grid on 1865 folded Cover to Scotland; Toronto C.W. pmk., ms. "P. Cunard Packet", Glasgow Backstamp, Fine & Attractive.....	75.00 +
83	⊠	1859, 17c Blue (19). Vert. Pair, perfs. close to slightly is at T. & R., tied by Grids on 1862 folded Cover to Scotland , Toronto C.W. pmk., Red "REGISTERED" & matching "PAID 6d" markings, Royal Crown & curved "Registered" marking, ms. "Cunard Mail Steamer via Boston, Glasgow Backstamp, A Striking & Interesting Cover	
	(Photo)	150.00 +
84	⊠	1859, 17c Blue (19). Horiz Pair, perfs close to slightly in at L., Beautiful Color, tied by Diamond Grids on Small 1866 Cover to England, Toronto pmk., London Backstamp, Fine & Handsome.....	
	(Photo)	150.00 +

1864 ISSUE

85	⊠	1864, 2c Rose (20). B. perfs. slightly in, tied by small Quebec pmk. on Printed Circular with with Partly Printed Address to Napierville L.C., Printed "(FREE)" at T.R. corner, circular pertains to 111th Chapter of Consolidated Statutes for Lower-Canada (written in both English & French), Very Striking, Rare.....	(Photo) 150.00 +
86	⊠	1864, 2c Rose (20). T. Sheet Margin with Part Impt. Single, R. perfs. barely in, neatly tied by Eight Bar Grids on Small Newspaper Wrapper to Markham U.C., Handsome & Rare	(Photo) 150.00 +
87	⊠	1864, 2c Rose (20). Well-centered, minor perf. tip toning, used with 1c Rose (No. 14), tied by Grids on 1868 Cover to Nova Scotia, part Montreal pmk., Halifax Backstamp, light cover fold, Scarce .	(Photo) 175.00 +
88	⊠	1864, 2c Rose (20). Two, Used with 1c Rose (14) on 1867 Yellow Cover to Lanark C.W., tied by Montreal Grid Duplex pmks., Beautiful Overall Merchants Ad in Blue on back, trifle reduced at R., couple minor nicks, Pretty Cover. Very Scarce.....	(Photo) 325.00 +
89	⊠	1864, 2c Rose (20). Fine, Used with 5c Vermilion (15) , perfs. in at B. tied by Grids on Reg. 1866 Cover to Ottawa, "Grand Trunk Railway" Impt. B.L., 5c some slight gum toning, Fine, Very Scarce	(Photo) 162.50 +
90	⊠	1864, 2c Rose (20). Faulty R. margin, Used with 1c, 5c & 12c 1859 Issue (Nos. 14, 15, 18) on 1866 Reg. Cover to Ireland, Cork cancels, tied by Str. Line "Registered, "Stratford C.W." pmk., Rare & Colorful Franking.....	(Photo) 180.00 +

LARGE QUEENS, 1868-1876 ISSUE

91	⊠	1868, ½c Black (21). Three Horiz. Pairs (One pair creased), Well-centered, some slight perf. toning, tied by cork cancels on 1885 Cover to Buffalo, Simcoe pmk. Hamilton & Buffalo Backstamps, some slight cover edge toning at T., Handsome Appearance.....	(Photo) 180.00 +
92	⊠	1868, ½c Black, 1c Yellow Orange (21, 23). ½c Horiz. strip of Four, perfs. slightly in at T., tied by targets on 1870 Cover to Drummondville. P.Q., St. Gregorie C.E. pmk., Attractive, Unusual Usage.....	(Photo) 155.00 +

93	1868, ½c Black (21). Horiz. Pair, used with 2c Green (No. 36), tiny toning specks on 2c on cover to Buffalo N.Y., Cork Cancels, Simcoe pmk., Brantford Backstamp, slight toning at T. edge, o/w Fine, Scarce..	60.00 +
94	1868, 1c Brown Red (22). Deep Shade, Well-centered, tied by Grid on 1869 folded Printed List of Prices current to Cape Bald, VF.....	45.00 +
95	1868, 1c Brown Red (22). Neatly tied by London. C.W. pmk. on 1868 Orange Buff Cover to Quebec, Target Cancel, "Circular from Edward Adams & Co." Impt. at T.L., A most attractive & Beautiful Cover (Photo)	45.00 +
96	1868, 1c Brown Red (22). Slightly nibbed perf. on folded Printed Prices Current to London Ont., Printed "Weekly Produce Circular, per S.S. Moravian." on Front, couple small cover faults, o/w Fine, Scarce..	45.00 +
97	1868, 1c Brown Red (22). Horiz. Strip of Three, few small perf. faults, tied by Grids on 1869 Small size Cover, Powerscourt, C.E. pmk., Montreal & Hemmingford Backstamps, some cover foxing, o/w Fine & Handsome.	135.00 +
98	1868, 1c Brown Red, 2c Green (22,24). Beautiful Colors, neatly tied by Oval Grids on 1868 Yellow Buff Cover to Newport, neat Newport N.S. pmk., few light cover creases, o/w Fine, Very Early Usage in Province of Nova Scotia (Photo)	E.X.
99	1868, 1c-6c Large Queens (22, 25, 27). Each on Separate Cover, 6c bit reduced at R., 1c single short perf., o/w F-VF	95.00
100	1868, 1c Yellow Orange (23). Well-centered, tied by "7" in target on 1869 Printed List of Prices Current, to N.B., light town pmk., VF & Very Handsome (Photo)	55.00 +
101	1868, 1c Yellow Orange (23). Bright Color, couple nibbed perfs., tied by Hamilton pmk. on 1869 Folded Cover to Toronto, "Deaf, Dumb & Blind" handstamp, Scarce & Interesting	55.00 +
102	1868, 1c Yellow Orange (23). Bright Color, tied by "1" in target on folded list of Prices Current, Fine, Scarce	55.00 +
103	1868, 1c Yellow Orange (23). Fresh, tied by light "2" in target on folded Printed Bank Notice to St. Marys Ontario, Handsome	55.00 +
104	1868, 1c Yellow Orange (23). Single & Horiz. Pair tied by "Montreal C.E." Grid Duplexes on (fresh) 1870 Cover to Ingersoll, couple minor cover tears, VF..... (Photo)	165.00 +
105	1868, 1c Yellow Orange, 2c Green (23, 24). Tied by Toronto Ont. pmks. on fresh 1870 Cover to Port Hope, Red Embossed "Provincial Lunatic Asylum" Seal on flap, VF..... (Photo)	87.50 +
106	1868, 2c Green (24). Well-centered, couple tiny faults, tied by St. Johns N.B. pmk. on 1871 Printed List of Prices Current to Trinidad W.I., Magenta "James Domville Cold Brook Iron Works" backstamp, ms. "Via Halifax & Bermuda," Trivial cover toning, Very Scarce & Most Unusual	E.VI
107	1868, 2c Green (24). Horiz. Strip of Three, some perf. tip toning, tied by Ensville pmks. on 1871 small cover to Marshville Ont., Red Marshville backstamp, Attractive	97.50
108	1868, 2c Green Bisect, Diagonal Half Used as 1c (24c). Fresh, neatly tied by segmented cork on 1870 Cover to Brooklyn N.Y., Port Williams Station N.S. pmk., good portion of back of cover missing, ms. docketing, some cover faults, still a Desirable & Rare Cover with P.F. Certificate (Photo)	1,500.00
109	1868, 2c Green (24). Creased, used with 1c Orange (No. 35a), tied by unusual geometric cancels on 1870 cover to Clinton Ohio, neat "Metropolitan Permanent Building Society" Corner Card Across T., Toronto pmk., Clinton Backstamp, Docketing at L., Interesting Cover.. (Photo)	E.VII
110	1868, 2c Green (24). Perfs. slightly in at T., Used with 1c Yellow (No. 35), tied by Grids on neat 1870 Cover to Scarboro Ont., Galt C.W. pmk. Fine and Handsome Cover (Photo)	E.VI

111	⊗	1868, 2c Green (24). Beautiful Color, Used with 3c Copper Red (No. 37b), tied by Grids on Neat 1870 Cover to Port Hope Ontario, "Registered" marking, Montreal pmk., Port Hope Backstamp. Very Handsome, VF.....	(Photo) 62.50 +
112	⊗	1868, 2c Green (24). Used with 3c Dull Red (37) on 1871 Reg. Cover to Picton tied by Target, "Truro N.S." pmk., "Stellarton N.S." backstamp, Red Two Line "Registered Letter No" & "30" in ms., B.R. cover corner diagonal, o/w Fine.....	E.V
113	⊗	1868, 2c Green, 3c Red (24, 25). 3c closed tear, 2c tiny margin toning specks, tied by Oval Grid, Rimless "W.O. Hopewell Corner N.B." pmk. on 1869 Cover to "Roxburgh Way Office Alma. Albert N.B.," "W.O. Solmon-River N.B." backstamp, Rare & Attractive	45.00 +
114	⊗	1868, 2c-6c Large Queens (24, 25, 27). Horiz. Pair of 6c, small faults, Grid cancels, on 1868 Cover to Woods Point, Victoria, Australia , P.O. Salisbury N.B." pmk., Red London Transit & Red pencil "8", Boxed "Unclaimed At Wood's Point," 2c additionally tied by Rimless "Wood's Point Victoria," one stamp missing at T.R., still a Rare Cover	(Photo) 120.00 +
115	⊗	1868-701, 2c-12½c Large & Small Queens (24, 28, 37). Singles of 2c & 12½c, Horiz. Block of 12 of 3c, on large piece tied by Targets & "St. Christopher L.C." pmk., some faults, still Rare & Attractive	(Photo) E.IX
116	⊗	1868, 3c Red (25). Beautifully Centered, lightly tied by Oval Grid on neat 1868 Iron Foundry Impt. Cover to New Brunswick, P.O. Moncton N.B. pmk., Fresh & Choice, VF.....	(Photo) E.V
117	⊗	1868, 3c Red (25). Horiz. Pair, Well-Centered, Beautiful Color, minute margin tear in one, tied by partial town pmk. on neat 1869 cover to New York, Very Handsome	E.V
118	⊗	1868, 3c Red (25). Six Covers, Four Single Usages & Two Pairs, Variety of Cancels, F-VF Lot.....	100.00 +
119	⊗	1868, 5c Olive Green (26). Well-centered, lightly tied on 1876 Small Cover to England, slight cover edge toning (partly affecting couple perf. tips), light town pmk., partial Backstamp, cover edge wrinkle at B., Very Scarce	(Photo) E.X
120	⊗	1875, 5c Olive Green (26). Horiz. Pair, Well-centered, tied by Grids on 1877 small cover to Italy , light town pmks., Red London Paid Transit marking, Hamilton, St. Johns Ont. & San Remo Backstamps, cover slightly reduced at R., Very Handsome & Unusual.....	(Photo) E.XII
121	⊗	1868, 6c Dark Brown (27). Tied by Large Grid, Riceburg 1869 pmk. on Orange Buff Cover to Ct., VF.....	37.50 +
122	⊗	1868, 6c Dark Brown (27). Perfs. tiny bit in at T., Deep Color, tied by Target, Waterford C.W. pmk. on 1869 Cover, Gray Dove & Ribbon Address Area , Pretty Cover.....	(Photo) 37.50 +
123	⊗	1868, 6c Dark Brown (27). Target cancel, Neat "Richmond Hill C.W." 1870 pmk. on Small Neat Mourning Cover to New York State, Fine	37.50 +
124	⊗	1868, 6c Dark Brown (27). Gorgeous Color, tied by Ottawa C.W. (Apr. 30, 1868) Grid Duplex on Fresh Cover to N.Y., Red "House of Commons" Crown Shield Handstamp, Fine & Choice.....	37.50 +
125	⊗	1868, 6c Dark Brown (27). Horiz. Pair & Single, tied by Targets, St. Catharines West pmk. on 1871 reduced & refolded large size cover to Mich., one or two stamps are missing, small faults, Very Attractive Piece.....	112.50 +
126	⊗	1868, 6c Dark Brown, Yellow Brown (27, 27a). Four Covers, Single Reg. Usage to Toronto (1871); Single to Maine; Single to England (1871); Two Singles to Oregon (July 1868), mixed quality, G-F Lot ..	75.00 +
127	⊗	1868, 12½c Blue (28). Tied by Grid on 1868 Cover to England, Red Fonthill C.W. pmk., numerous Backstamps, cover slightly reduced at L., Very Attractive, VF.....	(Photo) E.IX

128	⊠	1868, 12½c Blue (28). Tied by Halifax pmk. on small 1869 cover to Wales, Swansea & Mumbles Backstamps, trifle reduced at B. from opening, Fine (Photo)	E.IX
129	⊠	1868, 12½c Blue (28). Trivial perf. tip toning, tied by Oval Grid on small 1869 cover to Ireland, Halifax pmk. Hamilton Backstamp, some light cover soiling, o/w Fine (Photo)	E.VIII
130	⊠	1868, 12½c Blue (28). Beautiful Color, tied by Toronto pmk. on small 1870 Cover to Newfoundland, Newfoundland & Montreal Backstamps, ms. Docketing at L., Fine & Handsome Cover (Photo)	E.VIII
131	⊠	1868, 12½c Blue (28). Tied by Target on 1869 Cover to Scotland, some cover soiling, cover refolded two sides to improve appearance, Scarce (Photo)	E.VIII
132	⊠	1868, 12½c Blue (28). Deep Color, L. perfs. just touch neatly tied by Oval Grid on small 1869 cover to England, Halifax pmk. Red Paid Liverpool Br. Packet marking, ms. "Per Inman P. U.S.S. Etna" slightly reduced at sides, partly reduced at T., couple edge nicks, Scarce	E.VII
133	⊠	1868, 12½c Blue (28). Tied by Target on large size Orange Buff cover, "St. Joseph Que" 1873 pmk., cover reduced at L. & partly folded under L. & B., VF	E.VII
134	⊠	1868, 12½c Blue (28). On Reg. cover front (Used with 5c Slate Green No. 38) tied by Cork, "Habaskaville Que" pmk., VF	E.VII
135	⊠	1868, 12½c Blue (28). Two Singles, lightly tied by Town pmk. on 1869 Cover Front to England, Red London Paid pmk., ms. "per Canadian Steamer," Handsome & Fine (Photo)	E.VIII
136	⊠	1868, 15c Red Lilac (29b). R. perfs. touch, tied by Grid & London Ont. pmk. on small 1869 Cover to England, Hamilton & Ramsgate Backstamp, via "New York," couple tiny edge nicks & slightly rounded corner, Handsome, Scarce (Photo)	E.XI
137	⊠	1868, 3c Bright Red on Laid Paper (33). Few nibbed perfs., tied by Target, 1868 Town pmk., on Small Mourning Cover to Ingersoll, Attractive & Very Scarce (Photo)	273.00+

SMALL QUEENS, 1870-1889

138	⊠	1882, ½c Black (34). Couple tiny perf. faults, tied by Grid on Cover to New Brunswick, some cover staining and small edge tear, Rare as single	E.VI
139	⊠	1882, ½c Black (34). Two Horiz. Pairs on 1c Blue Victoria Entire, tied by Brantford Ont. 1896 pmks., small cover tear at B., Fine.....	E.V
140	⊠	1882, ½c Black (34). Block, on 1c Blue Victoria Entire tied by Toronto 1896 pmks. to New York, Fine (Photo)	E.VI
141	⊠	1882, ½c Black (34). Three Singles & Strip of Three on 2c Green Blue Victoria Entire to England tied by Toronto 1896 pmks., Dead Letter Office Backstamps, Fine	E.VI
142	⊠	1882, ½c Black (34). Vert. Block of Six, tied by Halifax pmks. & Grids on Small 1888 Cover to Nova Scotia, small edge nick at T., Fine ..	E.V
143	⊠	1882, ½c Black (34). Vert. Block of Ten (2x5), tied by Steven St. Hamilton pmks. on cover to England, Stamp Dealer Corner Card at T.L. & Ad on flap, faint edge soiling at L., Scarce & Very Interesting Cover (Photo)	E.VII
144	⊠	1882, ½c Black (34). Horiz. Pair, Used with 1c Yellow (35) on 1c Blue Victoria Entire tied by London Ont. 1894 pmks, hinge remnant at B., Fine.....	E.V
145	⊠	1882, ½c Black (34). Two, used with 1c Yellow (35) & Two 2c Green (36) on 1c Blue Victoria Entire to Germany, tied by Montreal Grid Duplex pmks., 1887 Usage, U.S. 1c Gray Blue (206) on back tied by Glauchau receiving pmk., Fine	E.VII

146 ∞	1882, ½c Black (34). Two Strips of Three, Used with 3c Vermilion (41), tied by Montreal Grid Duplex pmks. on cover to New York, Printed Address, Fine..... (Photo)	E.VI
147 ∞	1870-88, ½c-6c Small Queens (34-37, 39, 41). 19 Covers, Nice Range of Shades, Usages, etc., incl. Illustr., Two Railroads, Used with Later Victoria Values, Reg., "Ship 6 Cents," also Single & Strip of Five No. 37 on cover front, Single, Strip of Six No. 37 & No. F1 on cover front, questionable ½c Black Imperf. (34a) on wrapper, generally Fine Lot..	E.XI
148 ∞	1870, 1c Yellow Bisect, Diagonal Half Used as ½c (35a). Fresh, Beautifully tied by Multiple Strikes of "Middleton Annapolis N.S." pmk. on clean unsealed circular Cover addressed Locally, few small cover tears, o/w VF & Most Attractive, Rare, Listed but Unpriced in Scott, Priced £2500 in Gibbons..... (Photo)	—
149 ∞	1870-72, 1c Yellow, 2c Green (35, 36). Well-centered, tied by Grids & London Canada pmks. on Beautiful Green overall Illustrated Advertising cover showing two Hunters in Boat, Dominion Gun Works Corner Card at T.L., A Most Attractive & Unusual Cover..... (Photo)	E.VIII
150 ∞	1870-72, 1c Yellow, 2c Green (35, 36). Neatly tied by Circles of Wedges on Small Neat Mourning Cover with Crisscross Black Border, "Galt Ont" pmk., VF, A Beautiful & Choice Cover, with 1875 letter on Mourning Stationery..... (Photo)	E.VI
151 ∞	1870-72, 1c-6c Small Queens (35, 37, 39). Used with 5c Green Registration (F2) on 1888 Reg. Cover to Austria, all tied by "R" in Oval, Fine & Very Attractive..... (Photo)	E.VII
152 ∞	1873, 3c Orange Red (37c). Two, each tied on separate overall or Large Part Illustr. Ad. Cover, one stamp tied by Purple Grid , Very Handsome Pair of Covers.....	E.V
153 ∞	1872-76, 5c Slate Green, 6c Yellow Brown (38, 39). Two Covers, former tied by Cork, "Woodburn Ont" pmk. to Scotland, "Glasgow Packet Paid Jy 31 1877" handstamp, latter lightly tied on Fresh 1872 Yellow Cover to Conn., F-VF.....	E.V
154 ∞	1877, 10c Dull Rose Lilac (40). Horiz. Strip of Five few tiny faults, used with 1c Yellow (No. 35, faulty) tied by cork cancels on Legal Size Cover, Victoria B.C. pmk., small cover faults, Extremely Scarce & Unusual Usage.....	175.00 +
155 ∞	1877, 10c Dull Rose Lilac (40). Tied by Bold Grid on Cover Forwarded to South America, Charlottetown & Rio De Janeiro pmks., "Non Reclame nao Reclamado" Label, Boxed "14" Handstamp, numerous Backstamps, Slight Edge wear, Very Interesting & Most unusual Cover..... (Photo)	E.VII
156 ∞	1872-88, 3c Dull Red, Vermilion (37, 41). Five Covers, Variety of Cancels, incl. "Way Letter" in Circle, Maltese Cross, Ashdown Ont. Fancy "A", "House Of Assembly," also front with "Too-Late" Str. Line, Fine Lot.....	E.VIII
157 ∞	1888, 6c Red Brown (43). Used with 2c Green (36) on 1895 Reg. Singer Sewing Machine Co. Ad Cover tied by "Halifax N.S. Canada" pmks., Large Multicolor Sewing Machine Adhesive Label on back, trifle reduced at L., VF.....	E.V
158 ∞	1893, 8c Gray (44). Two Distinct Shades, each tied on Separate Reg. Cover, one tied by "Battleford Sash." pmk. (Couple closed cover tears), Fine Lot.....	E.IV
159 ∞	1888, 10c Brown Rose (45). tied by Ottawa pmk. on 1893 Cover to France, Purple "Senate Canada De 20 93" Crown Circle, matching handstamp signature, couple small cover tears & nick at T., o/w VF..	E.VI

1897-1926 ISSUES

160	∞	1897, ½c Jubilee (50). Used with Nos. 66 & 67, tied on Cover to Ill., some gum toning, o/w Fine	90.00 +
161	∞	1897-98, ½c Black (66, 74). Five Covers, No. 66 (Two Singles with No. 68, Block of Four, Block of Six); No. 74 (Two Strips of Four); the cover with Block of Six has filing crease, o/w F-VF	E.VI
162	∞	1897, 6c Brown (71). Used with 2c Purple (76) on Bright Yellow 1898 Reg. Cover to N.Y., tied by "Chatham Ont." pmk, Printed Ad, Fresh & Fine, Very Scarce	E.IX
163	∞	1897-1902, 7c Olive Yellow, 8c Orange (72, 81, 82). Five Covers, Two each Nos. 72 & 82, All Reg. Usages, Nos. 72's used from New Brunswick & Nova Scotia, also incl. No. 92 on Reg. Cover, Generally F-VF Lot	E.IX
164	∞	1898, 10c Brown Violet (73). Beautiful Color tied by Bold "R" in Oval on Yellow Reg. Cover To New York, Chatham pmk. "Wall Paper & Window Blinds" Dealer Corner Card at T. & B., Chatham & Hamilton Backstamps; Fine, Attractive Cover	E.VIII
165	∞	1898, 6c Brown (80). Well-centered, tied by Square Toronto pmk. on 1898 Cover to new York, tiny edge tear, Handsome	E.VII
166	∞	1924, 2c Green, Imperf. (137). Horiz. Block of Six, Used with Single 1c Yellow Imperf. (136) tied by "Halifax Canada" pmks. on 1933 Reg. Cover to California, VF	385.00 +
167	∞	1924, 3c Carmine, Imperf. (138). Block, used with Single 1c Yellow Imperf. (136) , tied by "Halifax Canada" pmks. on 1931 Reg. Cover to California, VF	165.00 +
168	∞	1924, 3c Carmine, Imperf. (138). Block, Used with average 1c Green coil (131) , tied by "Halifax Canada" pmks. on 1931 Reg. cover, light cover filing crease, 3c Block VF	116.00 +
169	∞	1926, 2c on 3c Carmine (139). Horiz. Strip of Five, natural s.e. R. & B., Used with VF 2c Green Imperf. (137) , tied by Halifax N.S. pmk. on 1927 Reg. Cover, F-VF	380.00 +
170	∞	1926, 2c on 3c Carmine (139). Horiz. Block of Six, tied by "Halifax Canada" pmks. on Reg. 1937 locally used cover, F-VF	390.00 +
171	∞	1926, 2c on 3c Carmine (139, 140). Used with Nos. 147 & C1, tied by Montreal Canada Oct. 1, 1928 pmks. on Reg. Montreal-Albany Cacheted First Flight Cover, cover tear & crease at B., stamps Fine	105.00 +
172	∞	1926, 2c on 3c Carmine (140). Horiz. Block of Six tied by "Sackville N.B." pmk. on 1927 Reg. Cover to Halifax N.S., Fine	165.00 +
173	∞	1875, 2c Orange, Vermilion, Shades, 5c Dark Green, Registration (F1, F2). 12 Covers, Three of Last, all with various 1c, 3c, 5c or 6c Small Queen Frankings, Nice Range of Shades, Cancels, etc., generally Fine, Scarce & Interesting Lot	E.IX
174	∞	"Money Package./Forwarded By/American Express/Company./From Hamilton, C.W." , Black & Orange Label on Cover to Buffalo N.Y., ms. "pr Express", Larger Black & Orange Label on Back "... British and American Express Company, From Whitby, C.W." , Fine, Quite Scarce	E.VI

BRITISH COLUMBIA & VANCOUVER ISLAND

175	∞	1860, 2½p Dull Rose (2). Couple minor perf. creases, tied by Blue Oval "Post Office Paid Victoria Vancouver Island." pmk. on Cover to New Westminster, trivial cover edge faults at T., o/w Fine ...	E.XIII
176	∞	1860, 2½p Dull Rose (2). Few short perfs. at T., tied by New Westminster "1" in Grid on Locally Used Cover, small toned spot in address area from wax seal, Very Scarce	E.XII

W. H. Murray
1 EX

2
BELLVILLE
JUL 30
1851
U.C.

3 PAID
D. J. Kennedy Esq
115 Wall Street
New York
MONTREAL
JY 9
1852
U.C.

4
D. J. Kennedy Esq
115 Wall St
New York
CANADA
PAID
U.C.

5
P. Macindoe Esq
Agent
Bank of Montreal
Belleville N.Y.
MONTREAL
MR 24
1853
U.C.

6
D. J. Kennedy Esq
New York
CANADA
PAID
U.C.

7
Carr & Esq
CANADA
PAID
U.C.

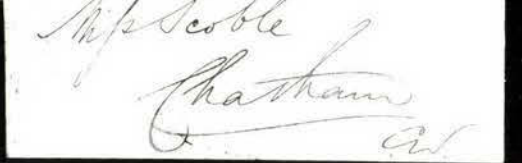
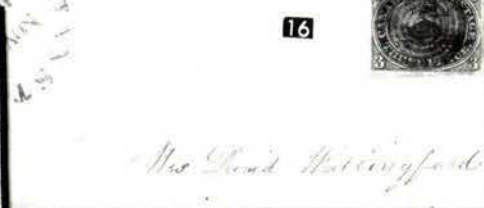
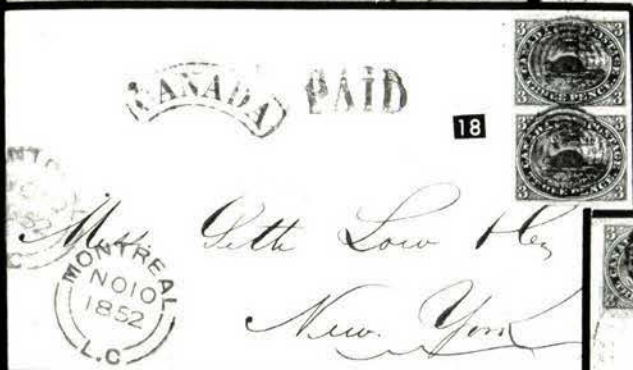
8
Mrs Scoble
Chatham
CANADA
PAID
U.C.

9
H. B. Esq
Hamilton
CANADA
PAID
U.C.

11
PAID
JY 9
1852
U.C.

12
Money
Paid
CANADA
PAID
U.C.

13
To the Manager
Bank of Montreal
Toronto
CANADA
PAID
U.C.






 H. S. ¹⁰ 1874
 1874
 1874



Dr. H. Stearns
Nash. Vermont



Volume of the
Lidmarsh House
Reading
Books
Influence

DePue &
Minn



29

Mr. George
 Mr. George
 Mr. George

London
England



27

End

Mr. Abraham
Loring
Solomon
Parrington
Hear
Cull

Mr. Geo. Conworth
Paris - Post Office
Canada West
Sept. 27-8-57-
TRATED
[THE RIGHT OF TRADE]
LONDON, MAY, JULY 18, 1857.
sound at Agra, and proceeded to Delhi. Against
unsatisfactory fact, it would be well to have some very strong

Mr. John Fleming
Glasgow
[Stamp: CANADA POSTAGE 10 CENTS]

Mr. James Laiclaw
Bookeller
Milton
[Stamp: CANADA POSTAGE 10 CENTS]

Mr. J. Laiclaw
Bookeller
Milton
[Stamp: CANADA POSTAGE 10 CENTS]

By Canadian Steamer
Mr. Elias Esq
Baker's
St. John's
Nfld
[Stamp: CANADA POSTAGE 10 CENTS]

Mr. J. Laiclaw
Bookeller
Milton
[Stamp: CANADA POSTAGE 10 CENTS]

By Canadian Steamer - Paid
Mr. M. A. Liddle
Police Office
West India Docks
London England
[Stamp: CANADA POSTAGE 10 CENTS]

Mr. J. Laiclaw
Bookeller
Milton
[Stamp: CANADA POSTAGE 10 CENTS]

Pa'd

41



*Mrs. Cass Bell
Bellville*

39



*Henry McMichael
Port Perry.*

Pa'd

40



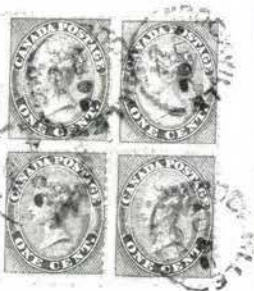
*Wm. Macdonald
Hon. J. Macdonald
Quebec.*

38



*Try
my Try to
Lumber Co*

46



42



*Prof. Geo. Montgomerie
P. M. & Baldwin
Agent
New York*

43



*W. J. the Elroy Co
Whiston
611 Walnut St
Ph.adelphia
Pa*

55



*haw.
Alfred Mc.
U. S.*



47

D. McLeod Esq

AGENT FOR THE
LIFE ASSOCIATION OF SCOTLAND.



57

*Knight
Mackline st.
Boston United States*



48

D. McLeod Esq



63

*Ed
29th*

aid

64



*Mrs S. L. Bacon
Hutley*



63A

*Empire City
Coos Bay
Oregon*



Per Canadian Mail



65

*To The Manager of the
Bank of Scotland
Glasgow
Scotland*



75

fortune

Per Canadian Mail

69



*To The Manager of the
Bank of Scotland
Glasgow
Scotland*

GLASGOW PACKET
OCT 12 1862

78



Canada Mail Steamer 823
via Boston
 To the Manager of the
 Bank of Scotland
 Agents



MAILED
 63
 79
W. Aldridge Esq
111 Elm Square

84
 (Faint handwritten text)



(FREE.)
 85
 THE CIRCUIT COURT.



86
Mr William
Ma



via Portland
 87
J. Lynch Esq
Banishke



478
 89
 REGISTERED
 2178
J. P. Jaffer Esq
from hands dept
Off
 Grand Trunk Railway



88
 MONTREAL
 67
 C.E.



91
Geo H. Ball
983 Smith St.
Puffalo
N.Y.



92
Rev M. Marchand Pater
Cure
adieu Linc
 90
Mrs S. J. Edge
Post Office Sandymount
Dublin
Ireland





98

John M Macdonald

C. B. Birtle



100

CIRCULAR
FROM
EDWARD ADAMS & Co.

95

Repur Lee



104

V. A. Rumsey Esq.



105

Chas. Holm Esq.

25.00
55.00
30.00
145.00
25.00
165.00
37.16 1/2
30.00

James R

Metropolitan Permanent Building Society.

SHARES...\$50 EACH. LOANS GRANTED ON CITY OR FARM PROPERTY.
INTEREST ALLOWED ON DEPOSITS.

JAMES FRASER, Secretary and Treasurer, -5 King St. West, Toronto.



294
REGISTERED



109



111

D. Chisolm Esq.
Barrister &c
Port Hope
Ontario

110



Mr. J. H. H. H.

114



WINDSOR
AU 2
VICTORIA
UNCLAIMED AT
WINDSOR POINT
SALISBURY
OCT 8
1883

Mr. John P. H. H.
Good Point
Victoria
Australia

ON IRON FOUNDRY.

Ploughs, Mill Machinery, Steam
Ships' Castings, &c.

RD, - - - Moncton, N



116

Alex Rogers
Hopwell Hill

120



*M. James Hayne
Rusion Anglaise
San Remo
Italy*

119



*John Brooks
St. John's
New Brunswick
Canada*

115



129



122



131

Port Askaip, Island of Islay

127



130



128



140



*Mr. Julius Thies
Chicago*

136

New York

Mr. Hales Wilkes

137



Miss R. R. R.

143



135



*George D. Gibb, Bart
M.D.
11 Bryanston Street
Portman Square
London*

146

WILLIAM P. BROWN,

P. O. Box 3640,

NEW YORK CITY.

5-31-40
AFTER TEN DAYS OPENED TO
Dominion Gun Works
W. A. BROCK,
374 Richmond St., - - LONDON.

149

Merwin, Hillbut & Co
26 West - 23rd St
Off. Highway - Halifax
New

148

HENRY HECHLER,
184 ARGYLE ST.,
HALIFAX, N.S.

150

Miss Maggie Hamilton
Halifax

Nielsenburg

151

G. W. SULMAN, THE BEEHIVE
Printer and Letter

G. W. SULMAN, THE BEEHIVE

155

NON RÉCLAME
não reclamado



Mrs Taylor
C/o Capt S. G. S.
C. Bantick

164

162

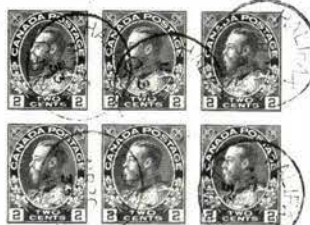
Webster, Smith Co., Ltd.
CHINA, GLASS AND POTTERY



169

Mr. Edmund A. Smith,

166



Halifax, N. S.

No. 465

170

Mr. E. A. Smith,
#198 Robie St.,
Halifax, N. S.



167



175

Hon H. P. Grease

Hans Westmeester



176

Willy Dyke
Camp.

177

Miss E. W.



178

Thamesham Esq.
Managers
N.Y.

179

PAID
DIETZ & NELSONS
BRITISH COLUMBIA &
VICTORIA
EXPRESS1887
Alfred Gill
Victoria
B.C.

183

Allaudaine Esq.
Victoria B.C.

180

PAID
BARNARD'S
BRITISH COLUMBIA
EXPRESS

181

Grease



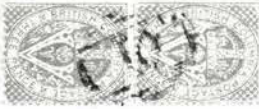
184

Dec 1890

Miss Georgie M. Hobbs
North Weymouth
Mass

182

H. Grease
Westmeester



Wm. A. Morgan
Box 100



191

185



Wm. A. Morgan
No. 303. Montgomery Street

187



VICTORIA AND BRITISH COLUMBIA.

186

M. Louis Braverman
Broth



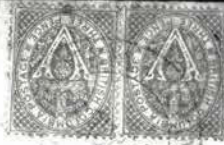
188

190



Wm. Barnett
Devon Great Cornels
Devon

189



Donald Cingwall
Wolady Mills

193



G. Lutro esq



192

San Francisco
1000

garnery Street,
Hotel Building,
San Francisco.



199



Ms. Elias J. Gomez

195



me for 899.



194



196



8287
34
WESTMINSTER
0.5-0
222
Sham Lure 3h

197



H. Nathan Esq
Victoria

198



206

Mr

"Via New York"

210

Mr Stokes

Messrs Amory & Faversham



212



Red O

Mr. S.
Esq. Father

PAID



OVER OUR CALIFORNIA AND COAST ROUTES.

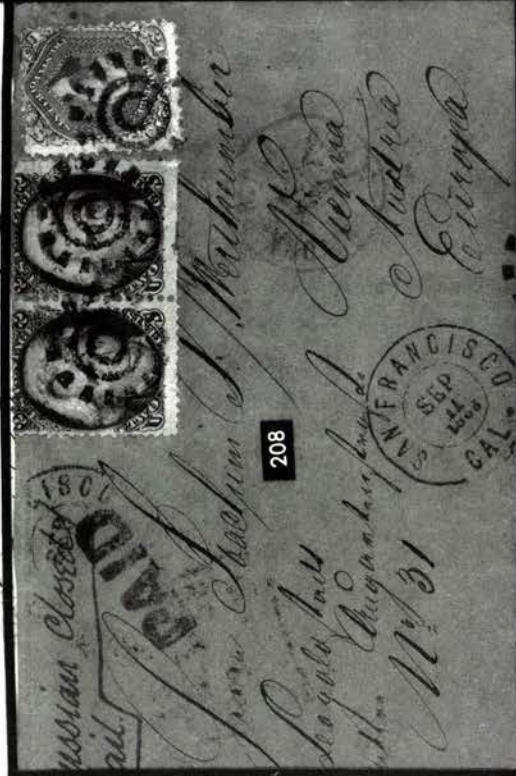
211

M^{re} Scalmanini & Frapolli

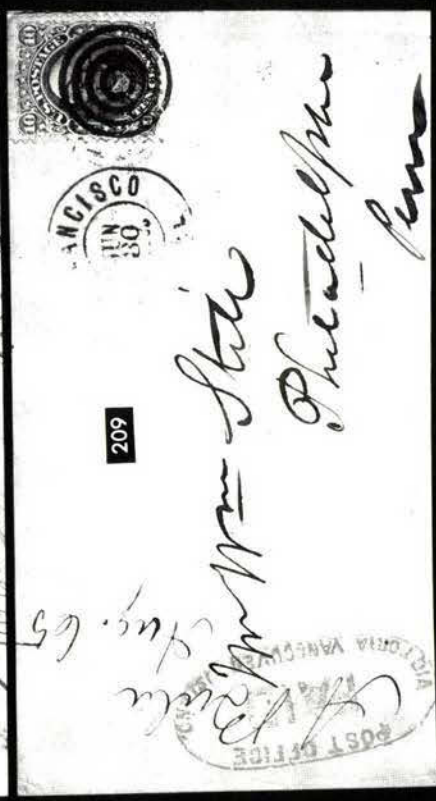
Front Street
424

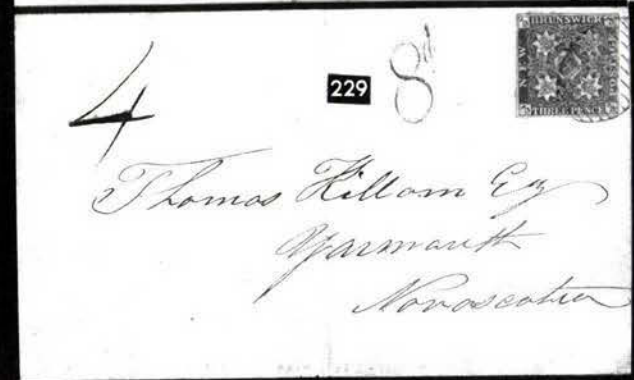
San Francisco





If not delivered in days return







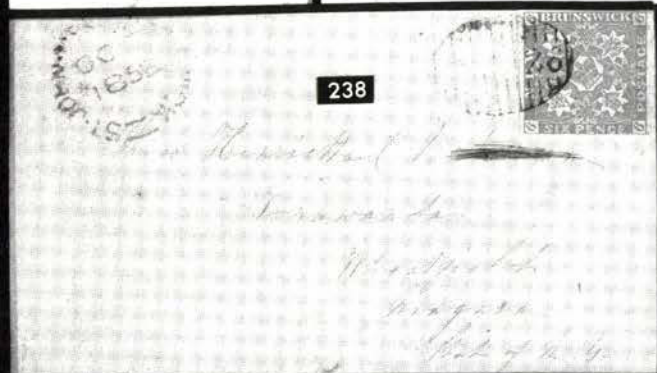
232



233

*Mr J. A. Sewell.**Aug 22*

235



238

*Mr. J. A. Sewell
New York
Westchester
County
N. Y.**To Mr. Robin
Bend
St. Louis*

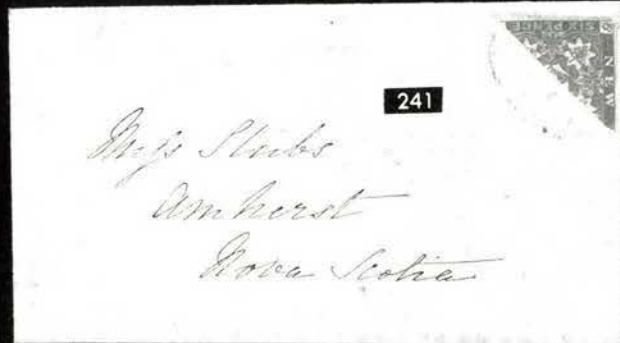
234

*Smith
Great Staunton Street*

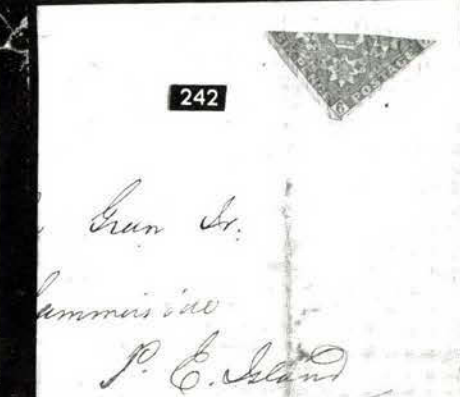
239

*Capt J. Southard
Richmond
Main*

237

*Main Elms &
Merchants*

241

*Mrs. Shibo
Amherst
Nova Scotia*

242

*Gran St.
Amherst
P. E. Island*



236

Mary Letters

John Woolmley



240

Wylde Esq.

Roman



243

16th April

By Williams & Walker per R.R.

Miss Smith

11. Great St. Andrew Street

Hyde Park

London

W



264

Wylde

Benjamin Charlton

Central School

Hamilton C. West



244

W. L. Smith & Co.

INTERNATIONAL CONTRACT

248



245 FROM



JARDINE & CO.

House FOR
to the Montgomery
Weston etc

252



Mr Boyd

247



Messrs J & W Boyd

253



251



James Brewster Esq

REGISTERED LETTER. No. 1

For

Mr. James MacLean

255

St Andrews N.B.



257



W. Boyd

258



259



260



261



William Burne Esq
8 Hill Street
Glasgow
Scotland

263



of Boyd. Esq.
Dublin.
of the Life Assurance Office.



265

NEWFOUNDLAND
JAN 1 1860
ST. JOHN'S

H. H. Gibbons

BOSTON
DEC 16 5

269



NEWFOUNDLAND
JAN 1 1860
ST. JOHN'S

H. H. Gibbons

*Tucker
Baltimore
H. H. Gibbons*

267

Mail Box 114



266

BOSTON
MAY 4 1860

*Miss R. R. H. In
Birmingham
Baltimore*

CAK BONE
APR 23 1860

NEWFOUNDLAND
JAN 1 1860
ST. JOHN'S

NEWFOUNDLAND
JAN 1 1860
ST. JOHN'S

268

for postage per letter

Miss R. R. H. In

Baltimore

5

114



271

27



270

W. Donald



273

Mr Candius Watts.



272

town



275

2-2635 1025
J. P. Couson 1896
80 T. L. L. L. L.



277

Cole Brookings



279

(13)

Rev. Geo. M. Johnson

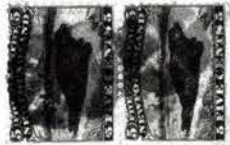


W^m Richard M. Lerthy



281

Wm. H. Salomon



278

Smith



280

MORE TO SAY

R R Hodgeson Esq
 Charlotte Town
 P E Island



282

Left 8 Torrance
P.O. Box 4510
New York



283

*J. A. Verkrigen, Esq.
Hamburg St.*



284

*Providence
Miss Villa Maria
Montreal*



286

*England
D. H. H. and
Hartman & Co.*



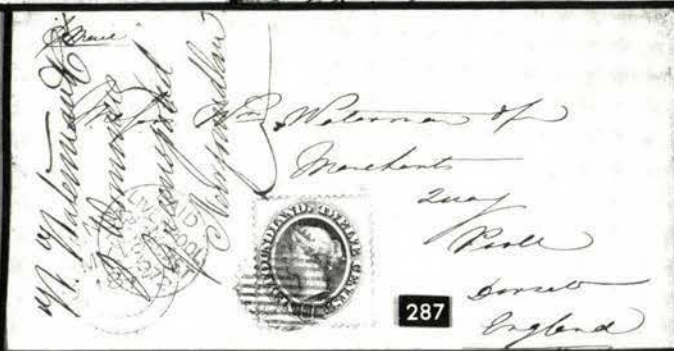
285

Hartman & Co.



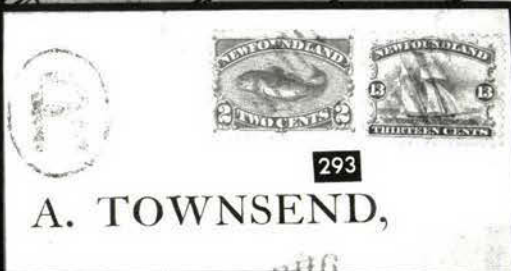
288

*Mr. Hartman & Co.
Quay
Poole*



287

*W. Hartman & Co.
Quay
Poole
England*



293

A. TOWNSEND,



291

St. John's



290

*Alb. Brass
Hubertant 86
Griefeld
Germany
LONDON*



292

*many
Europe*

295

297

294

296

310

303

314

306

333

334

322

319

Mr Claudius
Secretary
Society
H

9989
[Signature]

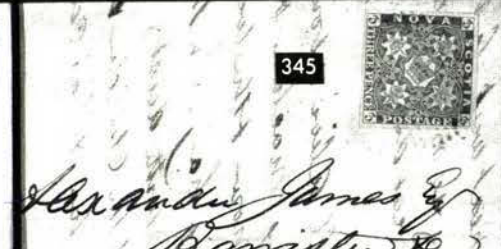
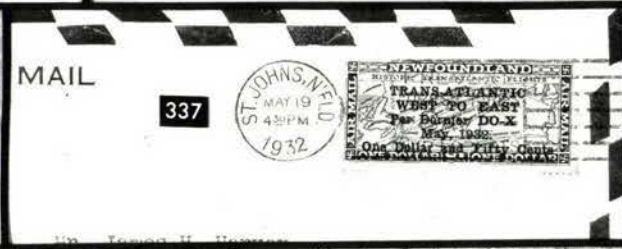
Miss Tong
5 Claremont Park
Buckham Mass

Mr Henry Heller
26/7
REGISTERED
Nov 15

Winter
20 Dec
Rose 11-12
New York

Monsieur Ed Droz
Neuchâtel
Suisse
Switzerland

8827
Henry Heller
Berne
Switzerland

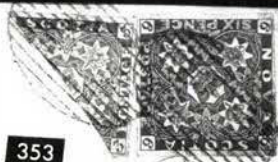


354



Sheldon Lewis
 Brig Minuchata
 Care of Messrs Edmiston & Mitchell
 Glasgow Scotland

353



son Esquire
 &c &c
 Place
 Scotland

Registered



355

Stamped
 Capt. Grant

358

June 29th

Miss Henrietta Hope
 Abington
 near Derby
 England



360

Messrs James & Layton
 Solicitors
 Guildhall Yard
 London

356



Mr L Smith Esq
 Attorney &c
 Amherst N.S.



361

Mrs A
 Care of Mr B

359



Ginnel Strong Esq
 Halifax
 Paid & Regd 3

362



J. W. Collins Esq
the Collins Company
Rt. Hon. Secy

365



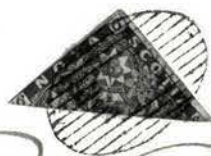
Jackson
School Trustees

363



Mrs Hamilton
S. L. Hamilton Esq
Halifax

364



Esq
Halifax

366



John R Bartlett Esq
Providence

367



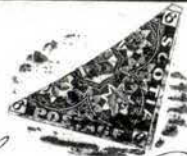
369



Miss Smith
St. John's Lodge
near Lylesburg
Bucks.



368



Foster Esq
N.H.

Z. S. HALL,
BOOKSELLER & STATIONER,
155 HOLLIS STREET,
HALIFAX, N. S.

PRINTED CIRCULAR.

370



John MacKenzie Esq

372



John MacKenzie Esq
Scotch Village

374



Miss Annie McKenzie
Garlock
Trenton

373



Timothy Ruggles Esq

376



Mr Isaac C. Olsson

375



William D. Linds Esq
Strathroy
Canada

378 EX



H. P. Argood Esq

Essex, Vermont
H. John, New Brunswick

379



Esq W. J. J. J.
15 Broad

Mass

380



Canada

381



PAID
M. J. J. J.
France

382



Miss Ellen Butler
Essex, Vermont
United States of
America

At 11 your letter has just arrived & I have
as you see I have sent this answer it has no
time to write much for I suppose will want it
sent in a hurry - Z. S. Hall

383



W. T. Trapnell Esq



384

W. W. H. Hoyt



386



E. W. Sargent Esq

385



E. Gorchy
18 Hanson St.

389



A. W. McDonald Esq
Hingham



387

W. L. E.

392



Mrs. Brett
Mile End Cottage
Horton - Bushel

391



390

Wm. J. H. H.

398



D. H.

397



Pro. R. W. H. Chase A. B.

396



400



D. Thomas Egan

401



Mr. John F. Robertson
Ch. Town
P. E. S.

399



402



Wm. J. H. H.
Ch. Town
P. E. S.

431

405

404

403

407

406

408

Howard Island

409

brocar

415

410

417

Arbaine

416

419

Jesse Hoyt Coy

Acadia Mines

418

422

420

William McDonald

Little Glass

421

B. Shaw

South St

Alfred

428



425



George Wightman Esq
Montague Bridge

423



424



Mary Scott

429



1216
DISTERED

On Her Majesty's Service.

433



James Robertson Esq
15 Lexington St
East

Edward Maloney
St Andrews.

435

From No 2161 P^{te} Barbara Ryan and
2nd 13th 1/2 by the Rules

439



20 March
St Peter Water
Grave Kinch

440

441



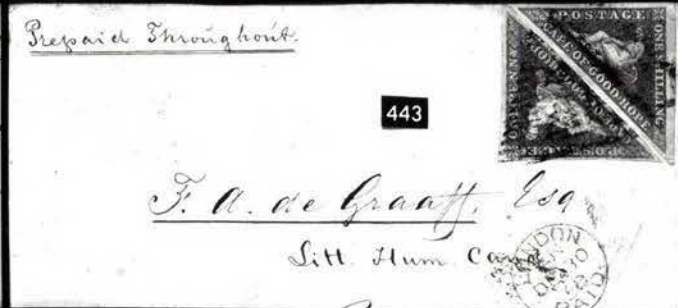
442

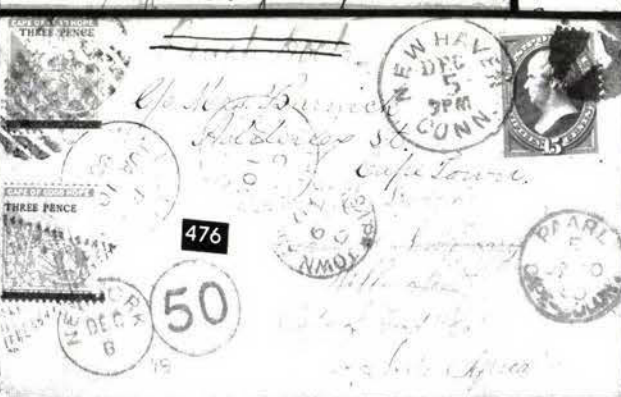
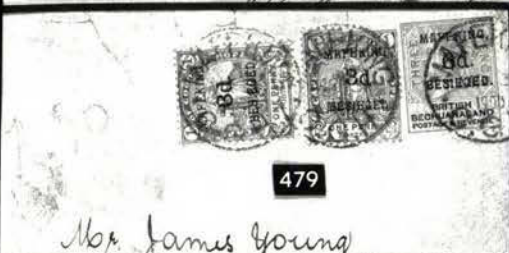
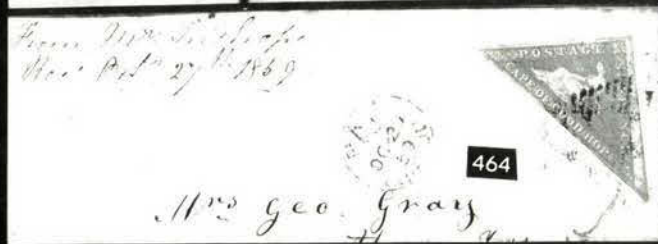
Mr O'Connor
Ballyhooley Rectory
County of Cork
Ireland

Mr M. & N. N. N.
Middling



Post Prepaid Throughout





177	⊠	1860, 2½p Dull Rose (2). Tied by New Westminster "1" in Oval Grid on Neat Locally Used Cover, minor cover tear, o/w Fine..... (Photo)	E.XI
178	⊠	1860, 2½ Dull Rose (2). Horiz. Pair, trifle pale shade, tied by Blue Oval "Post Office Paid Victoria Vancouver Island." on slightly soiled & trifle reduced Cover, Very Scarce..... (Photo)	E.XIII
179	⊠	1860, 2½p Dull Rose (2). Three Singles, one lightly creased before use, tied by Blue "Dietz & Nelsons * B.C. & V." Double Circle on Cover to Victoria, Dietz & Nelson's Franks, Bold Blue Fancy "Post Office * Victoria V.I. *" Oval, cover bit reduced at R., small mend, minor soiling, Very Rare Cover..... (Photo)	E.XI
180	⊠	1865, 2½c Rose (2). Small faults incl. 4mm closed tear, Bright Color, tied by Blue "Bernard's Express" Double Circle, Black & Orange "Bernard's/Cariboo Express/Paid." Label, Bernard's "Victoria And New Westminster" Printed Frank, pasted-up on Stampless Cover to Victoria, Blue Oval "Paid" handstamp, ms. "opened by Greenbaum by Mistake," stampless part small faults, Express Frank Cover Choice Condition, Very Rare & Fascinating Cover, Lengthy Explanation of Rate accompanies..... (Photo)	E.XVI
181	⊠	1865, 5c Rose (5). Wing margin single, single nibbed perf., tied by Bold Str. Line "Paid" on Small Cover, "113/2" in T.L. corner, Very Attractive..... (Photo)	E.XII
182	⊠	1865, 5c Rose (5). Couple nibbed perms., tied by light Red St. Line "Paid" pmk. on Cover to new Westminster, small cover corner tear, Scarce..... (Photo)	E.X
183	⊠	1865, 5c Rose (5). Tied by Blue "New Westminster Post Office British Columbia" Double Oval, Blue "General Post Office British Columbia 17 Aug 1867" Backstamp, cover bit reduced at L., couple minor perf. creases, o/w Fine, Attractive..... (Photo)	E.XII
184	⊠	1865, 3p Blue (7). Margin fault at L., tied by Blue "Post Office Victoria V.I." Oval on Cover to Mass., pencil "Dec 1870", cover bit aged, Scarce..... (Photo)	E.IX
185	⊠	1865, 3p Blue (7). Wing margin single, couple tiny flaws, tied by Blue "Wells Fargo . . . Victoria" Oval on Cover to San Francisco, "Wells, Fargo & Co." Printed Frank with "Victoria And British Columbia" Impt. Below, Handsome..... (Photo)	E.X
186	⊠	1865, 3p Blue (7). Tied by Blue "Wells, Fargo & Co. Express Victoria V.I." Oval on Fresh Yellow Cover to San Francisco, "Wells, Fargo & Co." Printed Frank with "Victoria And British Columbia. "Impt. Below, small cover corner repair B.R., o/w Fine..... (Photo)	E.X
187	⊠	1865, 3p Blue (7). Vert. Pair, tied by New Westminster "1" in Oval Grid on Cover to Fort Yale, some creases & tiny tears at B., o/w Fine..... (Photo)	E.IX
188	⊠	1865, 3p Blue (7). Horiz. Pair, some nibbed perms., Bold "Paid" in Oval cancel (not tied), "8" in Oval Grid cancel on Cover to Richfield B.C., small cover edge mend at T., Scarce..... (Photo)	E.IX
189	⊠	1865, 3p Blue (7). Two Singles, tied by "Bernard's British . . . Express" Double Circle on Cover to Utsalady Mille Wash. Territory, corner of cover bearing stamps has been torn off & rejoined, Very Scarce, incl. original 1869 semi-literate letter headed "16 Mile house"..... (Photo)	E.VIII
190	⊠	1865, 3p Blue (7). Horiz. Strip of Four, on 1868 cover front to England, tied by Blue "Post Office Paid Victoria Vancouver Island" Ovals, "Victoria B.C." pmk., stamps evidently separated horizontally along straight edge (perms. missing at B.), Handsome Piece... (Photo)	260.00+
191	⊠	1865, 3p Blue (7). Vert. Strip of Eight, average centering, tied by "01" Oval Grids, "New Westminster B.C." pmk. on large size Blue Cover to Victoria, some cover docketing, bit reduced at L. & couple minor tears, Very Rare, Quite Possibly the Largest Known Multiple of this Stamp on Cover..... (Photo)	E.XIV

192	⊗	1865-69, 3p Blue, 25c on 3p Orange (7, 11). Tied by "10" in Oval Grid & Blue "New Westminster B.C." pmk. on 1871 Cover to San Francisco, Cal. " Olympia W. Ty. " backstamp transit, some slight smearing in address & some light cover soiling, o/w Fine, Rare (Photo)	E.XIII
193	⊗	1867, 2c on 3p Brown (8). Horiz. Strip of Three, wing margin at R., tied by Blue "35" Oval Grid, matching "Victoria B.C." Jul 1870 pmk. on Cover to San Francisco, small piece off cover B.R. corner, o/w Fine, Very Scarce..... (Photo)	E.XIII
194	⊗	1869, 5c on 3p Bright Red (9). Tied by "35" Grid on Bright Yellow locally used cover, Blue "Victoria B.C." 1871 pmk., couple minor Cover tears at T., o/w VF, Scarce..... (Photo)	E.XI
195	⊗	1869, 5c on 3p Bright Red (9). Rounded corner, tied by "Victoria B.C." 1870 pmk. on locally used cover, tiny cover tear at T., Scarce..... (Photo)	E.XI
196	⊗	1869, 5c on 3p Bright Red (9). Tied by Str. Line "Paid" on Cover to Victoria, "New Westminster B.C." 1870 pmk., some neat arithmetic docketing, couple tiny cover tears at T., o/w VF..... (Photo)	E.XI
197	⊗	1869, 5c on 3p Bright Red (9). Wing margin single, couple trivial creases, tied by Large Blue "Post Office Victoria V.I." Fancy Oval, cover tear partly along T. from opening, Attractive & Scarce. (Photo)	E.X
198	⊗	1869, 25c on 3p Orange (11). Wing margin single, small margin fault at L., tied by Numeral Grid on large size Cover to Victorial B.C., Blue "New Westminster B.C." Sep 1871 Double Oval, Used Two Months After Confederation, Very Scarce Cover..... (Photo)	E.XI
199	⊗	1869, 25c on 3p Orange (11). Horiz. Pair, Bold Blue "35" Grid cancel on Cover Front to "Caribo B.C.," "Victoria B.C." 1869 pmk., VF..... (Photo)	190.00 +
200	⊗	"British Columbia Express Co." Red Impt. on large size 1885 money envelope, overall Ad on Back, "D. & N. Westm. Office" Wax Seals (Dietz & Nelson), couple tears from opening, Scarce.....	E.V

UNITED STATES & BRITISH COLUMBIA COMBINATION FRANKINGS

201	⊗	1860, 2½p Dull Rose (2), tiny flaws, tied by Red "1" by Oval Grid on Cover to Maine, Matching Red "Paid" in Oval, Used with U.S. 10c Green (68), Cogwheel cancel, "San Francisco Cal. Sep 11, 1862" Double Circle, Red pencil "10," minor cover flaws, Rare.... (Photo)	E.XVI
202	⊗	1865, 5c Rose (5). Tied by Blue Oval "Post Office Victoria V.I." on U.S. 10c Green Entire (U4O) to England, Additionally Franked with U.S. 2c Black (73) some perfs. trimmed, tied by Floral Rosette, " Wells, Fargo & Co. " Printed Frank, Blue Oval "Wells, Fargo & Co. Victoria" Backstamp, Red U.S. & British Transits, couple cover filing creases & some cover wear, Very Rare..... (Photo)	E.XVI
203	⊗	1865, 5c Rose, 10c Blue (5, 6). Horiz. Pair of 10c, average centering, 5c short corner perf., "10" in Oval Grid cancels, tied by "San Francisco Cal." Double Circle, Used with U.S. 10c Green (68), wide natural s.e., tied by Target on Cover to Campo Seco, Cal., Blue Br. Columbia backstamp, stamps additionally "tied" by pencil "Recd June 16th 1867," cover bit reduced at L. (also tiny tear & corner nick), Very Rare Cover..... (Photo)	E.XVI
204	⊗	1865, 3p Blue (7). Three Singles, small faults, Numeral Grid cancels, Large "Paid" handstamp, Used With U.S. 24c Lilac (78) tied by "San Francisco Cal. Nov 27 1855" Double Circle & faint Red N.Y. Packet Mark on Cover to England, "General Post Office British Columbia" Double Circle Backstamp, cover "extended" at T. to improve appearance, Very Rare, ex-Ackerman, Knapp..... (Photo)	E.XVI

- 205 ∞ **1867, 2c on 3p Brown (8). Single & Horiz. Skip of Three, ms. "X"** cancel on each, creases along T. from overlap, **Used with U.S. 10c Green F. Grill (96)**, tiny nick at L., Grid of Squares cancel on Cover to Mass., "San Francisco Cal." pmk., one or two stamps cut off cover at T.R. A Rare Cover nonetheless **E.XII**
- 206 ∞ **1869, 5c on 3p Bright Red (9). Tied Together With U.S. 3c Green (147)** by town pmk. & **Blue Two Line "For Great Britain/and Ireland"** on 3c Green Wells Fargo & Co. Printed Frank Entire to England, Bold Blue "Wells, Fargo & Co. Express Victoria V.I." Oval & Red "Chicago Am. Pkt. Paid" backstamps, Oct. 1870 Usage, small cover mends at T., Rare & Handsome Cover **(Photo) E.XIII**
- 207 ∞ **1869, 5c on 3p Bright Red (9). Couple nibbed perfs., tied by Blue "35"** Grid on 1870 Cover to Scotland in **Combination with Horiz. Pair U.S. 3c Ultramarine (114)** tied by Grids, **"Port Townsend WT"** pmk., Red "Paid Liverpool U.S. Packet," couple very trivial cover flaws, A Beautiful & Extremely Rare Cover in All Respects, ex-Knapp **(Photo) E.XVI**

UNITED STATES STAMPS USED FROM BRITISH COLUMBIA

- 208 ∞ **"General Post Office British Columbia 2 Sep 1865"**, Clear Double Circle Backstamp on 1865 Cover to **Austria, U.S. Horiz. Pair 2c Black (73) & Single 24c Lilac (78)** tied by Cogwheels, "San Francisco Cal." pmk., Bold "Paid" (Br. Col.), Red N. York Pkt. Transit, stamps creased from overlapping on cover, Important Cover Rarity... **(Photo) E.XVI**
- 209 ∞ **"Post Office Victoria Vancouver Island Paid,"** Bold Blue Oval on Aug. 1865 Cover to Penn., **U.S. 10c Green (68)**, couple creases, tied by Target, San Francisco Cal. pmk., VF appearance..... **(Photo) E.XIV**
- 210 ∞ **"Post Office Victoria Vancouver Island Paid,"** Clear Blue Oval on 1865 rebacked cover front to England, **U.S. 24c Lilac (78)**, tied by Cogwheel, "San Francisco Cal." pmk., Red "New York Am. Pkt. 3", VF..... **(Photo) E.XVI**
- 211 ∞ **"Post Office Victoria V.I."**, Perfectly Struck Blue Oval with Arms in Center on **U.S. 3c Pink Entire (U35)** to San Francisco cancelled by Blue "Wells, Fargo & Co. Victoria" Oval, Printed Express Co. Frank, VF..... **(Photo) E.X**
- 212 ∞ **"Post Office Victoria V.I."**, Mostly Bold Black Oval on **U.S. 3c Pink Entire (U35)** to San Francisco, cancelled by Blue, "Wells, Fargo & Co. Victoria" Oval, Printed Express Co. Frank, tiny bit reduced at R., Fine **(Photo) E.IX**
- 213 ∞ **"Post Office Victoria V.I."**, Bold Blue Oval with Arms in Center on **U.S. 3c Pink Entire (U34)** to Oregon, cancelled by Blue "Wells, Fargo & Co. Victoria" Oval, Printed Express Co. Frank, Fine..... **(Photo) E.IX**
- 214 ∞ **"Post Office Victoria V.I."**, Mostly Clear Oval with Arms in Center on **U.S. 3c Red Entire (U10)** cancelled by Blue "Wells, Fargo & Co. Victoria" Oval, Printed Express Co. Frank, Fine..... **(Photo) E.IX**
- 215 ∞ **"Post Office Victoria V.I."**, Blue Oval with Arms in Center on **U.S. 10c Green Entire (U40)** cancelled by **Blue "Wells, Fargo & Co. Victoria"** Oval, Printed Express Co. Frank, neat 1869 docketing at L., cover bit reduced at R., VF **(Photo) E.IX**
- 216 ∞ **"Victoria Paid V.I."**, Three Blue Lines on **U.S. 10c Yellow Green Entire (U17)** to England, Additionally franked with **Vert. Pair 10c Green Ty. V (35)** tied by Grid, Red "New 19 York", **Red Wells, Fargo & Co. Printed Frank**, 1860 Usage, some toning & cover quite worn, Rare **(Photo) E.XII**

- 217 ∞ **"Victoria Paid V.I."**, Three Blue Lines on U.S. **10c Green Entire (U33)** to Mass., **"New-York"** Target Duplex cancel, **Red "Wells, Fargo & Co." Printed Frank**, trifle reduced at L., small cover edge flaws, Attractive & Rare (Photo) **E.XII**
- 218 ∞ **Victoria Express Covers**, Two U.S. 3c Entires, one with Blue Wells, Fargo Oval & Blue **"Post Office Victoria"** Oval (adhesive stamps missing), other faint **Barnard's Express Double Circle** & faint Blue Nevada, Cal., Wells, Fargo Oval, **"Collect"** Ovals, both with Express Co. Printed Franks, Very Scarce Lot..... **E.VIII**

CANADIAN AND UNITED STATES COMBINATION FRANKINGS, USED FROM BRITISH COLUMBIA

- 219 ∞ **"Barnard's Cariboo Express,"** Bold Oval ties **Canada 3c Dull Red (37)** on U.S. 3c Green Entire to **"Cariboo B.C."**, **"Collect"** Oval, ms. **"Coll. 10c"** changed to **"50c"**, notation in Chinese calligraphy at R., cover tear & corner nick at L., o/w VF, Rare (Photo) **E.XII**
- 220 ∞ **"Wells, Fargo & Co. Express Victoria V.I."**, slightly doubled Blue Oval on U.S. 6c Entire (U86) to England, **Canada 6c Yellow Brown (39)**, tear at T., tied by partly readable Blue Two Line **"For Great Britain And Ireland"**, Red New York & London Transits, Printed Express Co. Frank, small cover nick at T., Very Rare (Photo) **E.XII**
- 221 ∞ **"Wells, Fargo & Co. Victoria"**, Blue Oval ties **Canada 3c Vermilion (41)** on Printed Frank Cover, **"Victoria, Vancouver Island"** Impt. Below, to New York, U.S. **Postage Paid by 3c Green (158)** tied by **Grid, "San Francisco Cal."** pmk., Victoria B.C. Ship Chandler's cachet on back, VF, Scarce & Handsome..... (Photo) **E.XII**
- 222 ∞ **"Wells, Fargo & Co. Victoria"**, Nearly complete Blue Oval ties **Canada 1c Yellow Imperf. (35b) & 3c Vermilion (41)** on Printed Express Co. Frank Cover, **"Victoria, Vancouver Island"** Impt. Below, to England, U.S. **Postage Paid by 6c Brown Rose (159)**, Quartered Cork cancel, **"San Francisco Cal."** pmk. which also ties Canadian Stamps, 1880 Red London transit, Fine & Rare Cover (Photo) **E.XIII**

CANADIAN STAMPS USED FROM BRITISH COLUMBIA

- 223 ∞ **"Wells, Fargo & Co. Victoria"**, partly blurred Purple Oval ties **Canada 3c Vermilion (41)** on Cover to San Francisco, Printed Express Co. Frank with **"Victoria, Vancouver Island"** Impt. Below, Reddish Pink Victoria, B.C. Ship Chandelers cachet on back, VF (Photo) **E.X**
- 224 ∞ **"Wells, Fargo & Co. Victoria"**, Blue Oval, Five Strikes on Express Co. Frank Cover, **"Victoria, Vancouver Island"** Impt. Below, Used as Paste-Up, Two of the Ovals tie **Single & Strip of Three Canada 6c Yellow Brown (39)**, single small faults, slight soiling, Attractive & Rare..... (Photo) **E.XII**
- 225 ∞ **"Wells, Fargo & Co. Victoria"**, partially struck Purple Oval on Fresh 1885 Cover to San Francisco, Blue Printed Express Co. Frank with **"Victoria, Vancouver Island."** Impt. Below, purple pencil **"6"**, Blue **"Wells Fargo & Co. San Francisco"** Receiving Backstamp, VF (Photo) **E.X**

NEW BRUNSWICK

1851 ISSUE

226	✉	1851, 3p Red (1). Large Margins, Fresh Color, couple scissors cuts in margins well clear of design, tied by Oval Grid on 1856 Folded Cover, three backstamps, VF..... (Photo)	300.00 +
227	✉	1851, 3p Dark Red (1a). Ample to Large Margins, tied by Large Grid on 1857 Folded Cover, VF..... (Photo)	300.00 +
228	✉	1851, 3p Dark Red (1a). Ample to Large Margins except barely touched one tiny spot, tied by Large Grid on 1855 Folded Cover, ms. "4" & Str. Line "More-To-Pay", five backstamps, Fine & Choice..... (Photo)	300.00 +
229	✉	1851, 3p Red (1). Ample to Large Margins, minor faults, Neatly tied by Oval Grid on 1855 Folded Cover, ms. "4" & handstamped "8d", VF Appearance..... (Photo)	300.00 +
230	✉	1851, 3p Dark Red (1a). Large Margins except close to barely touched, partly at B., Rich Color, tied by Oval Grid on Small 1865 Cover, Fine..... (Photo)	300.00 +
231	✉	1851, 3p Dark Red (1a). Three Margins, clear to touched other side, Deep Color, tied by Large Grid on 1856 Folded Cover, Red, Blue & Black backstamp, Fine..... (Photo)	300.00 +
232	✉	1851, 3p Dark Red (1a). Two Singles (originally a Horiz. Pair), one has before-use crease, Clear to Large Margins, Remarkably Rich Color, tied by Oval Grids on Jan. 1852 Folded Letter to New York, two Diff. Red "Paid" handstamp, ms. rate mark, etc., Very Handsome Cover from the Kennedy Correspondence..... (Photo)	600.00 +
233	✉	1851, 3p Red (1). Horiz. Pair, partly torn betw. stamps, few other small faults, Ample to Huge Margins, on July 1856 Cover to Boston, tied by "28" Oval Grids, Red Rimless "Paid 10 Cents" , Very Fine Appearance..... (Photo)	600.00 +
234	✉	1851, 3p Red, Bottom Half Used as 1½p (1b). Used with Two Normal 3p Singles on 1859 Cover to London, tied by "1" Oval Grids, Red "London Paid", cover docketing at L., some stamp faults, still a Quite Attractive Rare Cover..... (Photo)	3,350.00 +
235	✉	1851, 3p Red, 6p Olive Yellow (1, 2). Clear to Large Margins, tied by Blue Oval Grids, "Bend-Of-Petitcodiac N-S Se 20 1853" pmk. on Folded Cover to Halifax, some minor aging specks on cover & in stamp margins, o/w VF..... (Photo)	900.00 +
236	✉	1851, 1sh Dull Violet (4). Ample to Large Margins, small scissors cut in B. margin barely touching design, Used with Large Margined Extremely Fine 6p Orange Yellow (2a). Beautifully tied by Blue Grids on 1852 "Money Letter" to Bathurst, negligible cover soiling, A Wonderful & Handsome New Brunswick Cover Rarity, with P.F. Certificate..... (Photo)	E.XVII
237	✉	1851, 6p Olive Yellow (2). Ample to Large Margins, tied by Two Blue Oval Grids, matching "Chatham NB" backstamp on 1854 Folded Letter to Boston, VF..... (Photo)	600.00 +
238	✉	1851, 6p Olive Yellow (2). Three Clear to Large Margins, clear to trifle in other side, Fresh Color, tied by "26" Oval Grid, "Shediac N.B." backstamp on Small Neat 1858 Cover to N.Y. State, Fine, Pretty Cover..... (Photo)	600.00 +
239	✉	1851, 6p Olive Yellow (2). Ample to Huge Margins, small trivial filing crease at T. of stamp, neatly tied by Blue Oval Grid on 1857 Folded Letter to Maine, oxidized Red "Paid 10 Cents" Cross Border Mark, Very Fine Appearance..... (Photo)	600.00 +

240	⊠	1851, 6p Olive Yellow, Top Half Used as 3p (2b). Large Margins, Well-tied by "1" Oval Grid on 1860 Cover to Port Rowan Canada West, minor water stain in address area, Fine & Rare, with original contents (Photo)	2,750.00
241	⊠	1851, 6p Olive Yellow, Left Half Used as 3p (2b). Ample to Large Margins, couple tiny nicks, tied by Oval Grid on Small 1860 Mourning Cover to Nova Scotia, Exceptionally Handsome, Rare Cover, signed Jarrett..... (Photo)	2,750.00
242	⊠	1851, 6p Olive Yellow, Bottom Half Used as 3p (2b). Ample to Large Margins, minor filing crease, tied by "8" Blue Oval Grid, "Chatham NB" backstamp on 1858 Folded Letter to Prince Edward Island, Red "Summerside P.E. Island" backstamp, slight soiling along filing folds, o/w Fine, Rare (Photo)	2,750.00
243	⊠	1851, 6p Olive Yellow, One-Quarter Used as 1½p (2c). Negligible crease, Used with Large Margined Normal 6p (2), tied by Oval Grid on 1860 Cover to London England, Red "Paid London", etc., some tiny cover edge faults & minor creases, nevertheless a Handsome Example of this Great New Brunswick Postal History Rarity, with P.F. Certificate..... (Photo)	20,000.00

1860-1863 ISSUES

244	⊠	1860, 1c Red Lilac (6). Pair & Three Singles, tied by Oval Grids on 1863 Cover to Amherst, one stamp lightly creased & trivial cover toning specks, o/w Fine, Scarce..... (Photo)	E.VIII
245	⊠	1860, 1c Brown Violet (6a). R. perfs trimmed due to scissors separation, tied by Oval Grid on Illustrated Jardine & Co. Folded "List Of Field And Garden Seeds", small edge faults, Handsome & Very Scarce (Photo)	E.VII
246	⊠	1860, 1c Red Lilac, Brown Violet (6, 6a). Two Folded Printed Circulars, tied by "St. Johns" pmks., minor docketing on former, also incl. No. 6a on partial cover, Fine Lot (Photo)	E.VI
247	⊠	1860, 1c Brown Violet (6a). Vert. Strip of Four (trivial margin crease in one), Used with 10c Vermilion (9), tied by Oval Grids on 1863 Folded Letter to St. Johns, Red pencil "4", Fine & Rare Cover, ex-Seybold (Photo)	E.XI
248	⊠	1863, 2c Orange (7), Horiz. Pair, Used with 1c Red Lilac (6) on Neat 1868 Cover to St. Johns, tied by Oval Grids, "International Contract Company (Limited)" Impt. at T., VF, Lovely Rare Cover (Photo)	E.IX
249	⊠	1863, 2c Orange (7). Tied by Oval Grid on Fresh Cover Used Locally in Carleton-St. Johns, VF, Scarce, signed Jarrett (Photo)	E.VII
250	⊠	1863, 2c Orange (7). Two Singles, tied by Oval Grid on Small 1866 Cover, slight cover soiling, o/w VF, Very Scarce (Photo)	E.VII
251	⊠	1863, 2c Orange (7). Pair & Strip of Three, Rich Color, tied by Oval Grids on Oct. 30, 1863 Cover to Harvey, couple minor cover spots, o/w VF, Very Scarce (Photo)	E.VIII
252	⊠	1863, 2c Orange, 10c Vermilion (7, 9). Horiz. Pair of 2c (right stamp couple tears), tied by Oval Grids on 1864 Folded Cover to St. Johns (lacks R. side flap), Red pencil "4", Very Attractive & Rare Franking (Photo)	E.IX
253	⊠	1863, 2c Orange, 10c Vermilion (7, 9). Two of former (one minor fault), tied by Bold Oval Grids on 1866 Folded Cover to Newfoundland, Red pencil "4", Choice Appearance, Rare Franking (Photo)	E.IX
254	⊠	1860, 5c Green, 10c Vermilion (8, 9). Eight Covers, 5c incl. Four Singles, Pair & Strip of Three, 10c incl. Two Single Usage to U.S., one a Mourning Cover, generally Fine Lot..... (Photo)	E.IX

255	⊗	1860, 10c Vermilion (9). Tied by Oval Grids on Green Folded Cover which originally contained a Registered Letter, Printed "Registered Letter . . . To the Postmaster," etc., Printed Instructions to PM inside, Rimless Red "W.O. Beaver Harbor N.B." backstamp of origin, VF & Choice, Rare Cover (Photo)	E.VIII
256	⊗	1860, 10c Vermilion (9). Small faults, tied by Oval Grid on 1867 Cover, " Have Your Letter Addressed To Your Street And Number " & " Advertised " handstamps, some cover soiling & light toning, Scarce Markings	E.VI
257	⊗	1860, 10c Vermilion, Right Diagonal Half Used as 5c (9a). Used with Normal 10c, (both bisect & stamp some perfs. trimmed before use), tied by "8" Oval Grid on Sep. 1860 Folded Letter to St. Johns, Fine, Rare, signed Jarrett. (Photo)	475.00 +
258	⊗	1860, 10c Vermilion, Right Diagonal Half Used as 5c (9a). Tied by Oval Grids on June 4, 1860 Folded Letter to Amherst, Fine, Very Scarce (Photo)	475.00
259	⊗	1860, 10c Vermilion, Right Diagonal Half Used as 5c (9a). Tied by Oval Grid on Oct. 1860 Cover, few cover toning specks & small closed tear, o/w VF, Very Scarce, signed Jarrett. (Photo)	475.00
260	⊗	1860, 10c Vermilion, Right Diagonal Half Used as 5c (9a). Tied by Large Rimless Grid on 1860 Cover to Richibucto, some cover soiling, o/w VF, Very Scarce (Photo)	475.00
261	⊗	1860, 12½c Blue (10). Tied by Oval Grid on Fresh 1867 Cover to Scotland, couple minor cover tears & negligible address smear, o/w VF (Photo)	E.VII
262	⊗	1860, 12½c Blue (10). Three Covers to England, stamps tied by Oval Grids, one (L. perfs. trimmed due to scissors separation) on Mourning Envelope, covers bit worn, also incl. single on cover front to England with Large Red Script Str. Line "New Brunswick Paid" & Blue Double Circle London Sailors' Home Cachet, Rare Lot	E.VIII
263	⊗	1860, 12½c Blue (10). Single & Horiz. Strip of Three tied by Oval Grids on large size 1862 Cover to England, some cover faults, o/w Fine, Very Scarce Franking (Photo)	E.IX
264	⊗	1860, 17c Black (11). Two Singles, some barely noticeable scuff specks, tied by Bold Oval Grid & Str. Line "Money Letter" on 1863 Cover to Canada West, Blue pencil "Register", large ms. "X" & other docketing, Extremely Rare Cover, Royal Certificate (Photo)	E.XV

NEWFOUNDLAND

1857-1862 PENCE ISSUES

265	⊗	1857, 3p Green (3). Ample to Large Margins, trivial margin toning speck, tied by Oval Grid on 1863 Cover to Harbor Grace, Rimless "St. Johns Newfoundland-Paid" pmk., some minor cover scuffing, Rare Cover (Photo)	E.XII
266	⊗	1857, 6½p Scarlet Vermilion (7). Large Margins, Grid cancel, on 1860 Folded Cover to Baltimore, Md., Red Rimless Circle "St. Johns Newfoundland-Paid" & "Carbonear" pmks., Block "Boston Br. Pkt. 5'", usual cover filing, creases, Rare & VF, same corresp. as following two lots (Photo)	E.XVI
267	⊗	1857, 8p Scarlet Vermilion, Right Vertical Half Used as 4p (8a). Clear to Huge Margins, Well-tied by Oval Grid on Folded Cover to Baltimore, Md., Black Boston Br. Pkt. 5'', minor filing creases, Fine & Rare (Photo)	3,500.00

- 268 ∞ **1860, 4p Orange (12).** Clear to Huge Margins, Grid cancel, tied by Bold "5" in Circle on 1860 Folded Cover to Baltimore, Md., Red Rimless "St. Johns Newfoundland-Paid" & Black "New-York Br. Pkt." pmks., Fine (Photo) **E.XV**
- 269 ∞ **1861, 4p Rose (18).** Three Large Margins, clear at B., tied by Grid on 1862 Folded Letter to Boston, Red Rimless "St. Johns Newfoundland-Paid", Black "Boston 5" pmks., slight cover edge faults..... (Photo) **E.XI**
- 270 ∞ **1861, 6½p Rose (21).** Large Margins, tied by light cork, unreadable town pmk. on Small 1866 Cover to Toronto, minor cover bends, VF (Photo) **E.XI**

1865-1896 ISSUES

- 271 ∞ **1865, 2c Green (24).** Used with **1c Brown Lilac (32A)**, tied by Cork on 1871 Cover to Harbor Grace, Brown Rimless "St. Johns Newfoundland-Paid" pmk., Fine (Photo) **E.VIII**
- 272 ∞ **1865, 2c Green (24).** Vert. Pair, Used with **Horiz. Pair 1c Brown Lilac (32A)**, tied by Cork, Brown Rimless "St. Johns Newfoundland-Paid" pmk. on Cover to Prince Edward Is., Fine & Handsome... (Photo) **E.IX**
- 273 ∞ **1865, 2c Green (24).** Two Singles affixed "Tête Bêche" on Cover to Harbor Grace, Cork cancels, Clear "More-To-Pay 4" handstamp, Fine (Photo) **E.VIII**
- 274 ∞ **1865, 2c Green (24).** Trace of Impt. at T., tied by Odd Grid, St. Johns pmk. on Cover to Cape Briton, Fine **E.V**
- 275 ∞ **1865, 2c Green on White (24a).** Used with Nos. 37, 41, 42 & 51 on 1896 Reg. Cover to Montreal, tied by "Registered St. Johns Nfld" Ovals, Fine, A Lovely Cover (Photo) **E.IX**
- 276 ∞ **1865, 2c Green on White (24a).** Two Singles, each showing tiny part of Impt., one small faults, Used with **Two 3c Blue (34)** on 1877 Cover to England tied by Large Grids, Handsome & Rare Franking. (Photo) **E.IX**
- 277 ∞ **1865, 5c Brown (25).** Perfs. in, tied by Quartered Cork, Trinity & Twillingate 1867 pmks. on Cover to Trinity, slight cover faults & small address smear, Rare (Photo) **E.XI**
- 278 ∞ **1865, 5c Brown (25).** Vert. Pair, tied by Quartered Cork on Cover to Queen's College St. Johns, "Carbonear", pmk., cover tear at T., o/w Fine, Rare (Photo) **E.XII**
- 279 ∞ **1868, 5c Black (26).** Tied by Large Grid on Small 1870 Cover to Carbonear, part of flap missing & minor soiling, o/w (Photo) **E.XI**
- 280 ∞ **1868, 5c Black (26).** Vert. Pair, tied by Cork on 1870 Cover to Prince Edward Is., Clear "More-To-Pay 4" handstamp, long sealed cover tear, o/w Fine (Photo) **E.XI**
- 281 ∞ **1865-68, 5c Black (26).** Horiz. Pair, perfs. in, Used with **2c Green (24)** small faults, on 1870 Cover to England, tied by Ten Bar Grids, Red "Paid Liverpool Br. Packet," neat magenta ms. docketing, small sealing wax stain in address area, Rare Cover (Photo) **E.XII**
- 282 ∞ **1865, 10c Black (27).** Tied by St. Johns pmk. on legal size 1879 Cover to New York, filing crease at L., minor cover edge faults, o/w Fine (Photo) **E.VIII**
- 283 ∞ **1865, 10c-13c Pictorials (27, 28a, 30).** Each Neatly tied by Large Grid on 1892 Reg. Cover to Germany, St. Johns & London "Registered" Ovals, Large "R" handstamp, 12c Shows Bit of Impt. at L., each stamp with tiny "K" handstamp in B.R. corner, Fine & Rare (Photo) **E.X**
- 284 ∞ **1865, 10c Black (27a).** Used with **5c Pale Blue (53)** on 1884 Reg. Cover to Montreal tied by Cork, Large "R" handstamp, Fine, Pretty Cover (Photo) **E.XI**
- 285 ∞ **1865, 12c Pale Red Brown (28).** Couple short perfs, tied by Quartered Cork on 1870 Cover to England, Red "Paid Liverpool Br. Packet" Transit, neat magenta ms. docketing at L., Fresh & Attractive... (Photo) **E.XI**

286	✉	1865, 12c Pale Red Brown (28). Horiz. Pair , few nibbed perfs., tied by Grid on 1870 Cover to England, "Greenspond" pmk, Red Liverpool Transit, neat magenta ms. docketing at L., Very Scarce (Photo)	E.XII
287	✉	1865, 12c Pale Red Brown on White (28a) . Fresh Color, tied by Grid on 1872 Cover to England, Red Liverpool Transit, magenta ms. docketing at L., VF (Photo)	E.VIII
288	✉	1868, 12c Pale Red Brown on White (28a) . Tied by Quartered Cork on 1871 (Buff) Cover to England, neat magenta ms. docketing at L., minor cover flaws, o/w Fine (Photo)	E.VIII
289	✉	1894, 12c Brown (29) . Used with ½c Black (58) & 1c Green Entire India on 1895 Reg. Cover to England Forwarded to England, forwarding postage paid by G.B. 2½p Victoria Jubilee Issue, stamps tied by Grids & "Registered London," backstamps incl. "Glasgow & Carlisle Sorting Tender," cover opened three sides, VF & Interesting	E.VII
290	✉	1894, 12c Brown (29) . Used with 3c Slate (60) on 1897 Reg. Cover to Germany tied by Large Grids, St. Johns pmk., 3c also tied by Red Oval "Registered London," Bold "R" in Oval, VF..... (Photo)	E.VIII
291	✉	1894, 12c Brown (29). Horiz. Pair, Used with Horiz. Pair ½c Black (58) , tied by Grids on large size 1897 Reg. Cover to New York, heavy filing creases at extreme L., o/w VF..... (Photo)	E.VII
292	✉	1865, 13c Orange (30) . On 3c Lilac Victoria Entire to Germany, tied by Grid & "Registered London" pmk; Fine & Handsome..... (Photo)	E.IX
293	✉	1865, 13c Orange (30) . Well-Centered, Used with 2c Yellow Green (46) , Grid cancels on 1887 Reg. Cover to Ohio, Printed Address, small closed cover tear at R., o/w VF..... (Photo)	E.X
294	✉	1865, 24c Blue (31). Horiz. Pair, Used with Extremely Fine 5c Dark Blue (54) on 1896 Reg. Cover to Germany, tied by St. Johns Roller cancel, "Registered London" Oval, slight staining in address & partial deletion, o/w Fine, Rare (Photo)	E.X
295	✉	1870-73, 1c-6c Portraits (32A, 34, 35). Vert. Pair of 1c , mixed centering, tied by Grids on 1875 Reg. Cover to Prince Edward Is., some slight cover & stamp margin toning, Scarce Franking..... (Photo)	E.VIII
296	✉	1870, 3c Vermilion (33) . Beautifully Centered, Fresh Color, tied by Quartered Cork in Circle on Fresh 1871 Cover to Harbor Grace, light Red St. Johns pmk., VF, Very Scarce..... (Photo)	E.X
297	✉	1870, 3c Vermilion (33). Used with 3c Blue (34) on Aug. 1874 Buff Cover to England, tied by Cork & St. Johns pmks., Red Liverpool Transit, neat docketing, VF (Photo)	E.X
298	✉	1874, 3c Blue (34) . Horiz. Pair, Rich Color, tied by Quartered Cork on 1875 Buff Cover to England, Red Liverpool Transit, neat docketing, Fine	E.V
299	✉	1870-94, 3c, 6c Victoria (34-36) . Appropriately tied on separate covers, 3c slight toning, o/w Fine Lot.....	E.VII
300	✉	1870, 6c Dull Rose (35) . Two 1875 Covers to England, Stamps tied by Grids, "Fogo" pmks., Fine Lot	E.VII
301	✉	1870-94, 6c Dull Rose, Carmine Lake (35, 36) . Three Covers, incl. Single No. 35 to England (1873), Pair No. 35 (1895 Reg. Use to New York), No. 36 (1896 Reg. Use to St. Johns), F-VF.....	E.VII
302	✉	1870-94, 6c Dull Rose, Carmine Lake (35, 36) . Three Covers, incl. No. 35 with No. 46, 1889 Reg. Use to Maine; Two No. 35 with Nos. 44 & 48, 1894 Reg. Use to France; No. 36 with Pair No. 44 & Single No. 48, 1895 Double Rate to U.S.; first two small faults, last trifle reduced, Scarce Lot.....	E.VII
303	✉	1879, 2c Green, Roulette (38) . Well-centered, Impt. Margin at R., Used with 3c Blue (34) tied by Grids on Neat 1883 Cover to Boston, 2c additionally tied by "Boston Paid," VF..... (Photo)	E.VIII
304	✉	1887, 3c Blue (39) . Two Covers, Single & Horiz. Pair, former tied by Grid, latter by Black & Red Town, Fine Lot.....	E.VI

305	✉	1876, 5c Blue, Roulette (40). Tied by Trinity pmk. on 1878 Mourning Cover to England, Red "Paid Liverpool Pocket," VF Handsome E.VI
306	✉	1876, 5c Blue, Roulette (40). Vert. Pair , tied by Odd Grids on 1880 Cover to New York, VF (Photo) E.VI
307	✉	1880, 1c Violet Brown, Gray Brown (41, 42). Two Covers, former Two Singles Used with 3c Blue (49) to New York (1887), latter Horiz. Pair Used with 3c Umber Brown (51) to Nova Scotia (1889), part of flap missing on former, Fine Lot E.VI
308	✉	1880-97, 1c, 2c Pictorials (41, 43-46, 48). Seven Stamps on Four Covers, incl. Nos. 44 & 48; 45 & 46 with No. 63 & Pair No. 82; No. 43 with No. 62; Nos. 41 & 45 with Nos. 61, 75 & 79; 2c No. 46 margin nick, o/w F-VF E.VIII
309	✉	1880-87, 1c Gray Brown, Deep Green (42-44). Two Covers, former Single & Two Pairs , 1889 Usage to New York; latter Horiz. Strip of Five tied by Grids, 1890 Usage to Nova Scotia, F-VF E.VIII
310	✉	1896, 1c Brown (43). Horiz. Strip of Three , Rich Color, tied by Cork on Dec. 1896 Cover to St. Johns, tiny toning speck, trifle reduced at B., o/w VF, Scarce (Photo) E.VII
311	✉	1887, 1c Deep Green (44). Nine Stamps on Four Covers, one wrapper & one Postal Card, Additional Frankings incl. No. 51(2), 58(4), wrapper has small faults, one 3c rounded corner, o/w F-VF E.VIII
312	✉	1880-87, 1c-5c Pictorials (44, 48, 49, 51, 53). Each on Separate Cover, No. 49 with Mourning Border, F-VF E.VII
313	✉	1880-87, 2c Yellow Green, Red Orange (46, 48). One of former Used with Nos. 58 & 78 (1898 Usage to Nova Scotia), four of latter on four Covers in Combination with other Issues incl. Three No. 75, Pair No. 58, etc., also, single on cover front with Pair No. 56, generally F-VF E.IX
314	✉	1887, 2c Red Orange (48). Two, Used with Nos. 44 & 54 on Reg. 5c Gray Blue Victoria Entire to Switzerland, tied by Large Grids, 1893 Newfoundland & London Reg. Ovals, Fine, Colorful Cover.. (Photo) E.VIII
315	✉	1887, 2c Red Orange (48). Single & Pair Used with No. 44 on 1893 Reg. 3c Lilac Victoria Entire to Switzerland, tied by Large Grids, Newfoundland & London Reg. Ovals, Fine E.VII
316	✉	1887-94, 5c Dark Blue, Bright Blue (54, 55). Four Covers, former incl. Single to Mass.; Three Singles to Nova Scotia; latter incl. Horiz. Pair Reg. to U.S., Singles & No. 60 Reg. to Nova Scotia, slight toning on two, o/w F-VF E.VI
317	✉	1894, ½c Black (58). Tied by Grid on Small Neat Wrapper to Halifax, VF E.V
318	✉	1894, ½c Black (58). Horiz. Block of Six , tied by Grids on Small Fresh 1898 Cover, "Exploits Newf'd" pmk., Railroad Transit back-stamp, Fine E.V
319	✉	1887, 10c Black (59). Tied by Oval Grid & "Registered St. Johns N.F.L.D." Oval on 5c Gray Blue Victoria Entire to Switzerland, Red London 1893 Reg. Transits, Fine & Scarce (Photo) E.VII
320	✉	1887, 10c Black (59). Used with 1c Deep Green (44) on 1894 Reg. Cover tied by Grids to Toronto, "On Postal Service" Impt. at T., closed cover opening along T., Attractive & Unusual Franking E.V
321	✉	1887, 10c Black (59). Perfs. in at B., tied by Oval Grid on 1895 Reg. Cover to New York, Scarce & Attractive E.V
322	✉	1887, 10c Black (59). Used with Horiz. Pair 1c Deep Green (44) & 3c Umber Brown (51) tied by Grids on 1893 Reg. Cover to Switzerland , Red "Registered London" Transit, Fine, Lovely Cover..... (Photo) E.VIII
323	✉	1887, 10c Black (59). Used with 5c Bright Blue (55) on 1897 large size Reg. Cover to New Jersey tied by Large Grids, "On Postal Service" Impt. at T., some slight cover toning spots, o/w VF E.V

1911-1928 ISSUES

324	⊠	1890-1901, ½c-5c Portraits (60, 75, 78-85). 34 Stamps on 15 Covers, generally Fine Lot	E.VII
325	⊠	1897,1c-60c Cabot (61-68, 70, 71, 74). 27 Stamps on 18 Covers, Variety of Rates, Nearly All Used 1897-1900, Some Used with Frankings From Other Issues incl. Two No. 75, generally Fine Lot	139.00 +
326	⊠	1911, 9c, 12c, 15c Guy Engraved (100, 102, 103). Tied on separate 1918 & 1919 Reg. Covers to U.S., same corresp., minor cover soiling, o/w VF	E.IX
327	⊠	1911, 6c-15c Royal Family (109-112, 114). Tied on Five Reg. Covers (6c with 2c No. 105), few wrinkles, o/w Fine	123.50 +
328	⊠	1919, 1c-36c Caribou (115-123, 125, 126). 76 Stamps on 35 Covers, mostly Reg. Usages, also "Air-Post Fogo" & "Air Post St. Anthony" 1921 Flight Covers, generally Fine Lot	E.VIII
329	⊠	1923, 1c-15c Views (131-142). On Separate Covers tied by St. John's Jul 9, 1923 First Day pmks., F-VF	50.00 +
330	⊠	1923-24, 1c-24c Views (131-138, 140, 141, 143, 144). 48 Stamps on 19 Covers, Mostly Reg. Usages, incl. Extra 9c, F-VF Lot	120.00 +
331	⊠	1928-32, 1c-3c Pictorials (Betw. 145-159, 183-198). 22 Diff. First Day Covers , first set lacks only 8c, 9c, 14c & 28c, F-VF	E.VI
332	⊠	1928-41, 1c-50c Pictorials, Air Post (Betw. 145-C7). 39 Stamps on 24 Covers, incl. Nos. 127 (Block), 158, 160, 222, C6(Pair), C7(three), generally Fine	E.VIII

AIRPOST ISSUES

333	⊠	1921, 35c Air Post Ovpt. (C3). Tied by "St. Johns Nfld Nov. 26, 1921" Machine pmk. on Cover to Halifax, Halifax Feb. 4 backstamp, VF	(Photo) 165.00 +
334	⊠	1921, 35c Air Post Ovpt., Period After "1921"(C3a). Tied by "St. Johns Nfld Nov 26, 1921" Machine pmk. on Cover to Halifax, ms. "First Air Mail N.F. to Canada" T.L. corner, Halifax Feb. 4 backstamp, VF	(Photo) 165.00 +
335	⊠	1921, 35c Air Post Ovpt., Period After "1921"(C3a). Tied by "St. Johns Nfld Nov 21 1921" Machine pmk. on Cover to Montreal, ms. "Per First Air Post to Halifax NS" T.L.corner, Halifax Feb. 4 backstamp, VF	(Photo) 165.00 +
336	⊠	1921, 35c Air Post Ovpt., Period After "1921" (C3a). Tied by "St. Johns Nfld Nov. 21 1921 Machine pmk. on Cover to Toronto, Halifax Feb. 4 backstamp, slight cover soiling, o/w VF	(Photo) 165.00 +
337	⊠	1932, \$1.50 DO-X Flight (C12). Tied by May 19, 1932 Pre-First Day pmk. on Cover to England, VF	(Photo) 450.00 +
338	⊠	1933, 10c, 30c Air Post Views (C14, C15). Horiz. Pair of former tied by Jul. 11, 1933 pmks. on Cacheted Flight Cover, VF	76.00 +
339	⊠	1933, 10c-60c Air Post Views (C14-C16). Two Cacheted Flight Covers, one with 10c & pair of 30c, other 10c & 60c, stamps tied by Jul. 11, 1933 pmks., VF	139.50 +
340	⊠	Official Stampless Covers, Two, 1897, 1919, former with St. Johns pmk. & "Paid All" in Circle, latter Boxed "G.P.O. St. John's Newfoundland" & St. John's pmk., ms. "Paid," Fine & Scarce Lot .	E.VIII

NOVA SCOTIA

1851-1853 ISSUES

- 341 ☒ **1853, 1p Red Brown (1). Horiz. Strip of Three**, Clear to Huge Margins, vaguely tied by Oval Grids on Tiny 4x2½" Cover to Bay of Arts, VF, Lovely Cover..... (Photo) 975.00 +
- 342 ☒ **1853, 1p Red Brown (1). Horiz. Strip of Three**, Clear to Large Margins, tied by Oval Grids on 1856 Folded Letter to Annapolis, VF & Choice (Photo) 975.00 +
- 343 ☒ **1851-53, 1p Red Brown, 3p Blue (1,2)**. Two of former, large margins to trifle in, 3p VF, tied by Oval Grids & Large "Br. Packet Boston." on 1855 Cover to Toronto C.W., other markings incl. "10," "6" & Oval "United States." handstamps, ms. "p Steamship Asia via Boston," A Fine & Choice First Issue Cover Rarity (Photo) 750.00 +
- 344 ☒ **1851-53, 1p Red Brown, 6p Dark Green (1,5)**. Horiz. Pair of 1p, Three Clear to Large Margins, tiny bit in at R., 6p Clear to Large Margins, Rich Colors, tied together by Oval Grids on 1859 Cover to Harbor Grace, **Newfoundland**, few small cover faults, o/w Fine, Rare .. 750.00 +
- 345 ☒ **1851, 3p Blue (2)**. Large Margins, Rich Color, lightly tied by Oval Grid on 1855 Folded Letter, Extremely Fine..... (Photo) 100.00 +
- 346 ☒ **1851, 3p Blue (2)**. Large Margins, Lovely Color, Neatly tied by Oval Grid on 1854 Cover to "Montague Bridge PE Island," stamp has tiny insignificant corner margin crease, o/w Extremely Fine 100.00 +
- 347 ☒ **1851, 3p Blue (2)**. Large Margins, tied by Oval Grid on Fresh 1859 Fawn Colored Cover to Amherst, some minor extraneous ink marks in address area, VF..... (Photo) 100.00 +
- 348 ☒ **1851, 3p Blue (2)**. Large Margins, tied by Neat Oval Grid on 1859 Embossed Lady's Cover to Annapolis, neatly docketed at R., tiny cover toning spot, o/w VF..... 100.00 +
- 349 ☒ **1851, 3p Blue (2)**. Three Large Margins, trifle in other side, tied by Oval Grid on 1858 Cover to Cape Breton, **Large Fancy Circular Corner Card of "The Nova Scotia Electric Telegraph Company"** some cover edge wear & small cover corner nick, still Attractive (Photo) 100.00 +
- 350 ☒ **1851, 3p Blue (2). Pair**, Three Clear to Huge Margins, clear to trifle in other side, Oval Grid cancel, not tied, on Small 1858 Cover to Mass., Red pencil "6" & Red "Paid 10" handstamp, Fine..... (Photo) 200.00 +
- 351 ☒ **1851, 3p Blue (2). Three Singles**, Clear to Large Margins, tied by Oval Grids on 1857 Folded Cover, tiny spindle filing hole, Fine & Attractive (Photo) 300.00 +
- 352 ☒ **1851, 3p Blue, Right Half Used as 1½p (2a)**. Huge Margin one side, trifle in on other, **Used with VF Large Margined 6p Yellow Green (4)** on Small 1857 Cover to Scotland tied by Oval Grid & Red "Pkt Letter Paid Liverpool" Tombstone Transit, some small cover edge faults, still a Very Handsome & Rare Cover..... (Photo) 1,850.00 +
- 353 ☒ **1851, 3p Blue, Right Half Used as 1½p (2a)**. Large Margins, **Used with Very Fine Four Margined 6p Dark Green (5)** on 1860 Cover to Scotland, tied by Oval Grids, couple cover filing creases, o/w VF, Rare (Photo) 2,150.00 +
- 354 ☒ **1851, 3p Blue, Right Half Used as 1½p (2a)**. Large Margins, Used with Two F-VF Singles of No. 2, **Two Distinct Shades**, tied by Oval Grids on 1858 Folded Cover to Scotland, Bold Red "Pkt. Letter Paid Liverpool" Tombstone Transit, trivial cover toning spot, Fine, Rare .. (Photo) 1,700.00 +

355	✉	1851, 3p Blue, 6p Yellow Green (2, 4). Large Margins, Bright Colors, tied by Oval Grids on 1855 Folded "Registered" Letter to Clare, two tiny pinholes in cover, VF..... (Photo)	450.00
356	✉	1851, 3p Dark Blue (3). Ample to Large Margins, Beautiful Color, tied by Oval Grid on 1857 Cover to Amherst, very negligible cover soiling, o/w VF..... (Photo)	100.00 +
357	✉	1851, 3p Dark Blue (3). Large Margins, Choice Color, tied by Oval Grid on Tiny (4x2½") Fresh 1853 Cover to Bridgetown, neatly docketed at L., stamp has tiny corner crease, o/w VF & Choice.....	100.00 +
358	✉	1851, 3p Dark Blue (3). Horiz. Pair, margins to slightly in, Remarkably Intense Color, tied by Oval Grids on 1855 Tissue Paper Cover to England, Red "Pkt. Letter Paid Liverpool" Tombstone Transit, "5" handstamp, cover lacks R. side flap & has closed tear at L., Attractive..... (Photo)	200.00 +
359	✉	1851, 3p Dark Blue, 6p Dark Green (3,5). Both Large Margins & Rich Colors, just tied by Oval Grids on Fresh 1858 Folded Letter (without T. fold) to Halifax, ms. "Paid & Regd.", 3p has tiny trivial corner crease, o/w VF..... (Photo)	750.00 +
360	✉	1851, 3p Dark Blue, Bottom Half Used as 1½p (3a). In "Strip" of Three with Normal Pair, Large Margins to slightly in, tied by Oval Grids & Red "London Paid" on 1858 Folded Mourning. Cover to England, small closed cover tear at B., Fine, Very Rare in "Strip" Form..... (Photo)	1,700.00 +
361	✉	1851, 6p Yellow Green (4). Clear to Large Margins, Rich Color, tied by Oval Grid on Neat 1855 Cover to Mass., Blue "New-Brunswick" Part Rimless Double Circle, Red "Paid 10 Cents", Fine & Choice..... (Photo)	350.00 +
362	✉	1851, 6p Yellow Green (4). Clear to Large Margins, Fresh Color, Neatly tied by Oval Grid on 1854 Folded Letter to "Collins Ville Ct", ms. "10", some negligible cover soiling, o/w VF..... (Photo)	350.00 +
363	✉	1851, 6p Yellow Green, Right Half Used as 3p (4a). Large Margins, tied by Oval Grid on 1857 Cover to Halifax, slight cover toning & minor cover tear, o/w VF..... (Photo)	1,800.00
364	✉	1851, 6p Yellow Green, Top Half Used as 3p (4a). Clear to Large Margins, Perfectly tied by Oval Grid on 1858 Folded Letter, minor aging along filing fold, o/w VF, Rare, signed Jarrett..... (Photo)	1,800.00
365	✉	1851, 6p Yellow Green, Right Half Used as 3p (4a). Large to Huge Margins, Used with average 6p Yellow Green (4) on 1860 Cover to Truro, tied by Oval Grids, cover wear & nick at T., Rare..... (Photo)	2,150.00
366	✉	1851, 6p Dark Green (5). Clear to Large Margins, Choice color, tied by Oval Grid on Fresh 1859 Folded letter to Rhode Island, two Strikes of Red "Paid 10," Fine & Choice, signed Jarrett, Fresh..... (Photo)	650.00 +
367	✉	1851, 6p Dark Green, Bottom Half Used as 3p (5a). Large Margins, tied by Oval Grids on 1860 Cover, some very negligible cover soiling, VF, Rare cover..... (Photo)	3,000.00
368	✉	1851, 6p Dark Green, Right Half Used as 3p (5a). Nice Margins, well-tied by oval Grid on 1860 Cover to Annapolis, neat docketing at L., light cover toning bands, town name in address eradicated, o/w VF, Rare..... (Photo)	3,000.00
369	✉	1851, 1sh Dull Violet (7). Three Ample to Large Margins, Used with VF 3p Blue (2) on 1853 Cover to England, tied by Oval Grids, Red "Pkt. Letter Paid Liverpool" Tombstone Transit, ms. rate mark, trifle heavy cover filing crease, nevertheless a Spectacular Cover Rarity..... (Photo)	2,600.00 +
370	✉	1860, 1c Black (8). Tied by Grid on 1865 Cover (lacks side flap), Stationer's Corner Card & "Printed Circular" Impt., Fine.... (Photo)	E.VII
371	✉	1860, 1c Black (8). Part Impt. margin Single, tied by Oval Grid on 1867 Folded Prices Current, tiny spindle hole, Fine.....	E.VII

372	⊠	1860, 1c Black (8). Horiz. Pair , tied by Oval Grids on 1866 Cover to "Scotch Village Newport," VF..... (Photo)	E.VIII
373	⊠	1860, 1c Black (8). Horiz. Pair , L. stamp some short perfs., tied by Oval Grids on Very Fresh 1868 Blue Cover to Bridgetown, Very Handsome..... (Photo)	E.VIII
374	⊠	1860, 1c Black (8). Used with Horiz. Pair 2c Lilac (9) on tiny 1866 Cover to Garlock tied by Oval Grids, negligible cover toning o/w VF..... (Photo)	E.VIII
375	⊠	1860, 1c Black (8). Single & Vert. Strip of Four , single with closed tear, few trivial flaws on strip, tied by Oval Grids on 1861 Cover to Canada West, Rare & Attractive Franking..... (Photo)	E.IX
376	⊠	1860, 2c Lilac (9). Single & Two Pairs , tied by Oval Grids on 1864 Cover to Maine, Red "Paid 10," few very negligible faults, o/w Fine, Very Handsome & Scarce..... (Photo)	E.VII
377	⊠	1860, 2c-10c Victoria (9, 10, 12). Ten Covers , 2c incl. Five Singles usages (Mourning Cover, on "Royal Gazette Extra" May 18, 1864 Issue, etc.), 5c incl. Mourning Cover, Pair Used to Vt., 10c incl. Two Single Usages to U.S., mostly Fine Lot, Very Scarce Group.....	E.XI
378	⊠	1860, 5c Blue, 10c Vermilion (10, 12). Two 15c Rate Combination Covers (1862 to New Brunswick, 1867 Reg. to Annapolis), 10c on latter some faults, o/w Fine Lot..... (Photo Ex)	E.VIII
379	⊠	1860, 8½c Green (11). Beautifully tied by Oval Grid on Fresh 1862 Orange Buff Cover to N.Y. City, "Boston Ba. Pkt. 5," ms. "Steamer," VF, Lovely Cover, signed Doane..... (Photo)	E.XI
380	⊠	1860, 8½c Green (11). On 1861 Cover to N.Y. City tied by Oval Grid & "Boston Br. Pkt. 5 Cts." Balloon Type pmk., ms. "p Canada," Fine & Choice, signed Doane..... (Photo)	E.XI
381	⊠	1860, 8½c Green (11). Vert. Pair , tied by Oval Grids on 1865 cover front (with back flap) to France, Red London Paid & French Transits, ms. "7," Rare & Attractive..... (Photo)	E.XII
382	⊠	1860, 8½c Green (11). Negligible corner crease, Used with 2c Lilac (9) lightly tied by Oval Grid on Small 1866 Cover to Vermont, additional sender's message at T. of cover, Rare & Very Attractive..... (Photo)	E.X
383	⊠	1860, 8½c Green (11). Used with 5c Blue (10) on 1865 Cover to Harbor Grace, tied by Oval Grids, small cover faults, Fine, Rare Combination..... (Photo)	E.XI
384	⊠	1860, 10c Vermilion (12). Used with Two 5c Blue (10) on Cover to "Telegraph Office Pictou NS," Red Crown "Registered," Fine, Pretty Cover..... (Photo)	E.VIII
385	⊠	1860, 10c Vermilion (12). Tied by Oval Grid on Fresh Orange Buff Cover to Boston, VF & Choice..... (Photo)	E.VI
386	⊠	1860, 10c Vermilion (12). Pair , tied by Oval Grids on 1862 Cover to N.Y., Bold "10" & "Boston Br. Pkt.," couple cover tears o/w VF..... (Photo)	E.VII
387	⊠	1860, 10c Vermilion (12). Two Horiz. Pairs , one stamp filing crease, tied by Oval Grids & Red Crown "Registered" on large size cover, slight cover wear, o/w Fine, Scarce..... (Photo)	E.VIII
388	⊠	1860, 10c Vermilion (12). Pair, Strip of Three & Strip of Four , two stamps faulty, tied by Grids on 1867 Registered Folded Cover, cover faults, Rare Franking.....	E.IX
389	⊠	1860, 10c Vermilion, Top Half Used as 5c (12b). Beautifully tied by Bold Oval Grid on 1867 Cover to Sherbrooke St. Mary, VF, Rare, signed Jarrett..... (Photo)	650.00
390	⊠	1860, 10c Vermilion, Right Diagonal Half Used as 5c (12b). Tied by Oval Grid on 1861 Cover to County Richmond, minor cover soilings, o/w Fine, Rare..... (Photo)	650.00
391	⊠	1860, 12½c Black (13). Tied by Oval Grid on 1861 Folded Letter to England, several backstamps, Fine..... (Photo)	E.VIII

392	⊠	1860, 12½c Black (13). Tied by Oval Grid on Small 1861 Cover to England, appropriate backstamps, slight cover soiling, o/w VF. (Photo)	E.VIII
393	⊠	1860, 12½c Black (13). Well-centered, small faults, tied by Oval Grid on 1861 Cover to Newfoundland, small cover faults, Scarce.....	E.VI
394	⊠	1860, 12½c Black (13). Two Singles, small faults, one Grid cancel, other ms. removed on 1862 Cover to Ceylon , Red London Paid Transit, "NS" Oval Backstamp, some cover soiling, still attractive. Usage of these stamps, on an otherwise genuine cover cannot be guaranteed.....	—
395	⊠	1860, 12½c Black (13). Two Singles, slight perf. toning, tiny margin tear in one, tied by Oval Grids on Neat 1861 Cover to England, Very Attractive.....	E.X
396	⊠	1860, 12½c Black (13). Horiz. Pair, lightly tied by Grids on Blue 1867 Cover to Scotland, ms. "p RMS China," tiny insignificant cover tear, Fine, ex-Seybold..... (Photo)	E.X

PRINCE EDWARD ISLAND

1861 ISSUE

397	⊠	1861, 2p Dull Rose (1). Couple corner creases T.R., tied by Grid on Jul. 1862 Folded Cover, Attractive..... (Photo)	125.00 +
398	⊠	1861, 2p Dull Rose (1). Tied by Grid on Orange Buff Cover to Vernon River, 1862 backstamps, slight cover wear, Fine..... (Photo)	125.00 +
399	⊠	1861, 2p Dull Rose (1). Neat ms. "X" cancel, tied by Oval Grid on Small 4½x2" cover to "Ch Town," small piece out of cover T.R., o/w Fine..... (Photo)	125.00 +
400	⊠	1861, 2p Dull Rose (1). Tied by Grid on 1862 Cover to Vernon River, Summerside P.E.I. backstamp, some cover aging specks, o/w Fine..... (Photo)	125.00 +
401	⊠	1861, 2p Deep Rose (1a). Small faults, tied by "Tignich P.E.I. Paid" pmk. on cover front, Very Scarce Postmark..... (Photo)	125.00 +
402	⊠	1861, 2p Dull Rose (1). Horiz. Pair, R. stamp corner diagonal, on cover, tied by Grids, Two P.E.I. backstamps, Scarce..... (Photo)	250.00 +
403	⊠	1861, 3p Blue (2). Tied by Red Grid & March 1862 P.E.I. pmk. on Small Cover to Nova Scotia, Numerous Backstamps, trifle reduced at L., few minor cover toning specks, o/w Fine..... (Photo)	250.00 +
404	⊠	1861, 3p Blue (2). Two Singles, faults, minor on one, tied by Grids on Sept. (1861?) Cover to New York, cover faults at T., possibly stamp missing, Rare..... (Photo)	500.00 +
405	⊠	1861, 6p Yellow Green (3). Couple nibbed perfs. & minor toning, Used with average 2p Rose (5) , tied by Grid cancels on 1864 Registered Cover, to Charlottetown, small closed cover tear, Rare..... (Photo)	350.00 +

1862-1868 ISSUES

406	⊠	1862, 1p Yellow Orange (4). Vert. Pair, T. stamp small faults, tied by Grids, P.E.I. pmk. on 1868 Cover to Grand River, minor cover wear or aging, Scarce..... (Photo)	E.VIII
407	⊠	1862, 1p Yellow Orange (4). Horiz. Strip of Three, L. stamp small closed tear, light Grid cancels on 1867 Cover to Nova Scotia, several backstamps, some aging spots, Very Scarce..... (Photo)	E.VIII
408	⊠	1862, 1p Brown Orange (4a). Tied by Grid, Rimless "Prince Edward Island" pmk. on Cover to North River, minor cover tear, Fine... (Photo)	E.VII
409	⊠	1862, 1p Brown Orange (4a). Minor corner crease, tied by Numeral Grid on Fresh 1866 Folded Circular, VF Appearance..... (Photo)	E.VII

410	⊠	1862, 1p Yellow Orange, 2p Rose (4, 5). Tied by Oval Grids & Charlottetown pmks. on 1870 Cover to Montreal, Fine Cover (Photo)	E.VIII
411	⊠	1862, 2p Rose (5). Filing crease, tied by P.E.I. pmks. on 1867 Turned Folded Cover , First Used 2p Rose (5) tied by P.E.I. pmk., " More To Pay " Handstamp, minor aging, Scarce Usage.....	E.V
412	⊠	1862, 2p Rose (5). Collection of 37 Covers, Variety of Shades, Cancels, Perfs., Multiples, etc., quality mixed but generally Fine, Useful Specialist Lot.....	E.XII
413	⊠	1862, 2p Rose, Diagonal Half Used as 1p (5e). Faded on 1869 Circular Cover to Georgetown, tied by Grid, apparently originally treated at the letter rate as evidenced by Due Mark which was obliterated by Grids, cover bit aged, Rare, with Original Temperance Convention Circular..	E.VIII
414	⊠	1862, 3p Blue (6). Eight Stamps on Six Covers, incl. Three Single Usages, Two Pairs (one to Mass., other Mourning Cover), Single with 2p No. 5, mixed quality, generally Fine Lot	E.VIII
415	⊠	1862, 6p Yellow Green (7). Used with 3p Blue (6) on 1866 Cover to England tied by Numeral Grids, P.E.I. & London backstamps, ms. "Via Halifax," minor cover toning along T., o/w Fine, Very Scarce	E.IX
416	⊠	1862, 6p Yellow Green (7). Nicely Centered, tied by Grid on Neat Yellow Cover to California , P.E.I. backstamp, neat 1870 docketing at L., VF, Scarce	E.IX
417	⊠	1862, 6p Yellow Green (7). Horiz. Strip of Three, ms. "X" cancels, tied by Grids & " Angl. Amb. Calais 29 Juil 66 " double Circle on Cover to France, Red "London Paid" & Red Oval "PD" Transits, Variety of backstamps, one stamp appears to be missing, still a Handsome & Rare Cover	E.XI
418	⊠	1862, 6p Blue Green, Diagonal Half Used as 3p (7c). Corner perf. crease, tied by Oval Grid, "Charlottetown" backstamp on Locally Used Cover, cover filing creases, cover tear on back, Very Rare, Unpriced in both Scott & Gibbons.....	E.XV
419	⊠	1862, 9p Violet (8). Negligible corner crease, tied by Grid of Squares, "Charlottetown P.E.I." pmk. on Fresh 1871 Reg. Cover to Nova Scotia, Rare & Handsome	E.XII
420	⊠	1862, 9p Violet, Diagonal Half Used as 4½p (8c). Well-tied by "Summerside P.E.I. 1866" pmks. & Blue ms. "X" on Tiny Gray Cover to Cape Breton, bold Blue ms. "4½" rate, Lovely Rare Cover, (Uncataloged).....	900.00
421	⊠	1868, 4p Black (9). Tied by Grid, Clear "Charlotte-Town P.E.I." pmk. on Fresh 1870 Cover to Maine, Fine Choice.....	E.VIII
422	⊠	1868, 4p Black (9). Grid cancel (not tied), P.E.I. pmk. on Small Cover to Mass., Str. Line "Not called for.", Fine.....	E.VIII
423	⊠	1868, 4p Black (9). Horiz. Pair, R. stamp small faults, tied by Oval Grids, "Charlotte-Town P.E.I." backstamp on Cover to "Sheep River Lot 13", slight age toning spots, Rare, ex-Seybold	E.VIII
424	⊠	1868, 4p Black, Diagonal Half Used as 2p (9c). Well-tied by Grid, "Charlotte-Town P.E.I." pmk. on 1870, Fine & Rare	600.00

1872 ISSUE

425	⊠	1872, 1c Brown Orange (11). Single & Horiz. Pair, tied by "Charlotte-Town P.E.I." pmks. on Cover to Montague Bridge, VF (Photo)	E.IX
426	⊠	1872, 1c Brown Orange (11). Four Singles, on cover to Truro Nova Scotia, tied by Bold Grids, Bold "Summerside P.E. Island "pmk., irregularly opened at L. affecting stamp dealer's corner card, Very Scarce	E.VII

427	⊗	1872, 1c-3c Victoria (11-13). Two Covers, one with 1c & 3c, Dotted Grid cancels, Charlotte-Town P.E.I. pmk. to Nova Scotia, other 1c & 2c Star cancels, Blue "Lot 56 P.E.I." Feb. 1872 pmk. to "Charlotte-town," both covers aged, latter more so than former, Rare lot.....	E.VII
428	⊗	1872, 2c Ultramarine (12). Two Singles affixed Tête-Bêche on Cover to New Brunswick, ms. Cancels. tied by Odd Geometrics, Variety of Backstamps, Fine.....	(Photo) E.IX
429	⊗	1872, 2c Ultramarine (12). Used with 1c Brown Orange (11) , tied by Geometric on (1873) Cover to "Ch. Town", "Summerside P.E. Island" pmk. neatly docketed at L., Fine & Rare.....	(Photo) E.IX
430	⊗	1872, 3c Rose (13). Six Stamps on five Covers, one with Printer & Bookseller Return Card, mixed quality, mostly Fine Lot.....	E.VIII
431	⊗	1872, 3c Rose, 4c Green (13, 14). Bold ms. "X" cancels, "Charlotte-Town P.E.I." backstamp on Fresh 1873 Blue Cover to Georgetown, Fine & Attractive.....	E.VI
432	⊗	1872, 4c Green (14). Tied by Oval Grid, "Summerside P.E. Island" pmk. on Cover to Nova Scotia, ms. "More to pay 5", some cover aging, nick at T., o/w Fine.....	E.V
433	⊗	1872, 6c Black (15). Tied by Diamond Cork on 1873 Cover to Boston, Mass., "Charlotte-Town P.E.I." pmk., "On Her Majesty's Service." & "Executive Council, Prince Edward Island." Impts., Fine & Most Attractive.....	(Photo) E.VIII
434	⊗	1872, 6c Black (15). Tied by Target cancel, "Dope River P.E.I." pmk. on 1873 Cover to Minnesota "Forwarded" to Chicago, slight cover edge wear or aging, Scarce.....	E.VII
435	⊗	1872, 12c Violet (16). Well-centered, tied by Grid on Reg. Cover to Canada West, Str. Line "Registered", slight aging, cover considerably reduced at L., One of the Rarest Prince Edward Island Issue Covers.....	(Photo) E.XII

CAPE OF GOOD HOPE COVERS

STAMPLESS COVERS

436	⊗	"Post Office Simons Town, "Bold pmk., Crown in Center on 1831 Folded Letter, "General Post Office Cape Town Ja 22 1831" Crown circle Receiving pmk., ms. "3" rate, slight toning B.L. corner, o/w VF.....	—
437	⊗	"General Post Office Cape of Good Hope", Clear Crown Oval on 1837 Folded Letter to England, ms. Rate, Red Boxed "India Letter Covers" Backstamp, couple cover flaws at T., o/w Fine.....	—
438	⊗	"General Post Office Cape of Good Hope", Mostly Clear Crown Oval on 1842 Folded Letter to Scotland, ms. "8" rate & "H.M.S. Hyacinth", various backstamps, written by Governor George Napier, interesting contents relating to the appointment of relatives to high government positions, minor edge flaws, Fine.....	—

1853 ISSUE, BLUISH PAPER

439	⊗	1853, 1p Red on Bluish (1). Huge Margins to trifle in, tied by triangular Grid on large size 1855 Folded Letter to Ireland, Special Soldier's Rate , from a private in the 60th Royal Rifles, large "2" handstamp, Lt. Colonel's Verifying signature, normal sequence of backstamps, minor cover corner toning, Fine, Rare Rate.....	(Photo) 225.00 +
-----	---	--	------------------

- 440 ☒ **1853, 1p. Red on Bluish (1).** Four Singles **Affixed in Each Corner** of 1861 Cover to "Graaf Renette", huge margins to slightly in, tied by Triangular Grids, Red Oval "Cape Town" backstamp, Fine & Exceptionally Attractive (Photo) 900.00 +
- 441 ☒ **1853, 1p Red on Bluish (1).** "Block" of Four, three Clear to Large Margins, clear to slightly in at R., tied by Triangular Grids on 1855 Folded Cover to "Middelburg," "Port Elizabeth" Oval backstamp, F-VF..... (Photo) 900.00 +
- 442 ☒ **1853, 1p Red on Deeply Blued Paper (1a).** Two Singles Margins All Around, Used with average **4p Blue (4)** on 1858 Cover to Ireland, tied by Triangular Grids, light red pencil "No 2" in circle, Fine . (Photo) 492.50 +
- 443 ☒ **1853-58, 1p Red on Bluish, 1sh Yellow Green (1,6).** Former Margins All Around, latter Large Margins, tied by Triangular Grids on 1858, Cover to **Holland**, Red London Paid, ms. "Prepaid Throughout," etc., backstamps incl. "Cape Pocket Devonport", VF..... (Photo) 435.00 +
- 444 ☒ **1853, 4p Blue on Bluish (2).** Ample to Large Margins, Neatly tied by Grid on 1854 Folded Letter, Red "George" Oval pmk., VF. (Photo) 115.00 +

1855-1858 ISSUE, WHITE PAPER

- 445 ☒ **1857, 1p Rose (3).** "Block" of Four, Margins All Around, Mostly Large to Huge, Fresh Color, tied by Triangular Grids on Folded Prices Current, Red "Port Elizabeth" Oval backstamp, F-VF..... (Photo) 700.00 +
- 446 ☒ **1857, 1p Dull Red (3a).** "Block" of Four, Large Margins to touched except tiny bit in on one stamp, tied by Triangular Grids on Folded Cover to Cape Town, Fine (Photo) 900.00 +
- 447 ☒ **1855-57, 1p Rose, 4p Blue (3, 4).** Pair of Former, Ample to Huge Margins, 4p margins virtually all around, tied by Grids, "Paid Devonport Cape-Packet 28 Nov 62" pmk. on Cover to England, Red pencil "5," Red "Cape Town" Oval backstamp, Fine (Photo) 392.50 +
- 448 ☒ **1857-58, 1p Rose, 6p Lilac (3, 5).** Clear to Two Huge Margins, tied by Triangular Grids on 1860 Cover to France, Red "London Paid" & "PD" Circle, minor soiling, o/w VF (Photo) 385.00 +
- 449 ☒ **1857-58, 1p Rose, 1sh Yellow Green (3, 6).** Pair of Former, Large Margins, 1sh Large Margins to slightly in, tied by Triangular Grids on 1860 Cover to **Germany**, "London Paid" & "P" in Oval Red Transits, Black "Calvinia" Oval & Two Diff. Red "Cape Town" backstamps, Handsome Cover..... (Photo) 560.00 +
- 450 ☒ **1855, 4p Blue (4).** Margins All Around, tied by Grid on 1855 Folded Cover, Red Grahamstown Oval Backstamp, VF..... 42.50 +
- 451 ☒ **1855, 4p Blue (4).** Ample to Large Margins, Rich Color, tied by Grid on Fresh 1853 Folded Cover to Cape Town, Red Uttenhage & Cape Town backstamps, VF, Choice 42.50 +
- 452 ☒ **1855, 4p Blue (4).** Large Margins, Dark Shade, tied by Triangular Grid on 1856 Folded Cover to "Middleburg," cover lacks L. side flap & part of B. flap, VF 42.50 +
- 453 ☒ **1855, 4p Blue (4).** Ample to Huge Margins, tied by Triangular Grid on 1857 Folded Cover, Red Oval Backstamps, VF..... 42.50 +
- 454 ☒ **1855, 4p Blue (4).** Clear to Large Margins, Rich Color, tied by Grid on Folded Cover to Cradock, Fine..... 42.50 +
- 455 ☒ **1855, 4p Blue (4).** Clear to Huge Margins, tied by Grid on 1857 Folded Cover, Burghers-Dorp & Cradock backstamp, minor scissors cut in stamp, o/w Fine 42.50 +
- 456 ☒ **1855, 4p Blue (4).** Margins All Around, tied by Triangular Grid & Used on Forwarding Postage on 1857 Folded Letter from **France**, Original Franking, **France 80c Lake (19)**, tied by Grids of Dots & Red British "Paid" in Circle, large magenta ms. "1", some cover edge wear & couple small closed tears, Attractive & Rare (Photo) E.XII

- 457 ☒ **1855, 4p Blue (4).** Two folded half covers, Two Distinct Shades, Same Corresp., tied by Triangular Grids, one Margin All Around, VF, other two Huge Margins, ample to touched other sides, Red "Graaff-Reinett" 1863 pmks., Attractive Lot..... 85.00 +
- 458 ☒ **1855, 4p Blue (4).** Two Singles, one Margins All Around & VF, other Two Huge Margins, Huge to tiny bit in other side, tied by Triangular Grids on Small July 1855 Cover to England, cover slightly reduced at sides, Very Attractive..... (Photo) 85.00 +
- 459 ☒ **1855, 4p Blue (4).** Pair, Large Margins, Boldly tied by Triangular Grid on large part of 1861 folded cover to Port Elizabeth, Extremely Fine (Photo) 85.00 +
- 460 ☒ **1855, 4p Blue (4).** Pair, Three Ample to Huge Margins, close but clear other side, tied by Triangular Grid on Small 1855 Folded Cover to England, magenta ms. "Too Late", "8" rate mark, variety of backstamps, F-VF (Photo) 85.00 +
- 461 ☒ **1855, 4p Blue (4).** Pair, Large Margins, Fresh Color, minor margin tear clear of design, tied by Triangular Grid on 1856 Cover to England, ms. "8" rate mark, normal sequence of backstamps, tiny part of address deleted, VF (Photo) 85.00 +
- 462 ☒ **1855, 4p Blue (4).** Strip of Three, Large Margins, tiny tear, tied by Red pencil & Red "London Paid" on 1863 Cover to England, ms. "Per R.M.S. Briton", backstamp, incl. Brown "Houw-Hock" Oval, minor soiling, Very Attractive (Photo) 127.50 +
- 463 ☒ **1855, 4p Blue (4).** "Block" of Four, Margins Virtually All Around, Mostly Large, tied by Triangular Grids on 1856 large size Folded Letter to Port Elizabeth, cover folded under at L. to improve appearance, light filing crease in one, o/w F-VF, Scarce (Photo) 170.00 +
- 464 ☒ **1858, 6p Lilac (5).** Ample to Huge Margins, minor margin scissors cut, tied by Triangular Grid on 1859 Cover to England, Red "Paid London" & pencil "5", Grahams Town & Cape Town backstamp, some age toning specks, o/w VF..... (Photo) 210.00 +
- 465 ☒ **1858, 1sh Dark Yellow Green (6).** Ample to Large Margins, Lovely Color, tied by Triangular Grid on Feb. 1859 Reg. Cover to England, "London Paid" & Crown "Registered" in Red, red pencil numbers, cover bit worn, folded under three sides to improve appearance, Scarce & Attractive..... (Photo) 210.00 +

1861 ISSUE, WOOD BLOCKS

- 466 ☒ **1861, 1p Red, "Wood Block" (7).** Pair, Huge Margins to just touched one side, long scissors cut betw. stamps. Used with 4p Blue (4) tied by Bold Triangular Grids, on 1861 Folded Cover to Natal, some hinge reinforced cover tears, stamps have light filing creases, Fine Appearance, Rare (Photo) 5,000.00 +
- 467 ☒ **1861, 4p Blue, "Wood Block" (9).** Ample to Huge Margins, Fresh Color, tied by Grid on 1861 Folded Letter to Grahamstown, Red "Cape Town" backstamp, partly broken horiz. filing crease, Stamp VF, Rare (Photo) 4,000.00 +
- 468 ☒ **1861, 4p Blue, "Wood Block" (9).** Large Margins, natural pre-printing crease, tied by Large Triangular Grid on 1861 Folded Cover to Port Elizabeth, Red "Grahamstown" & "Port Elizabeth" Oval backstamps, VF, Rare (Photo) 4,000.00 +
- 469 ☒ **1861, 4p Blue, "Wood Block" (9).** Two Large to Huge Margins, close but clear at B., tied by Triangular Grid on 1861 Folded Cover to "Grahams Town", Red Port Elizabeth backstamp, Fine (Photo) 4,000.00 +

- 470 \approx **1861, 4p Dark Blue, "Wood Block" (9a).** Clear to Mostly Large Margins, except touched one spot at B., Lovely Color, White Dot Between "G" & "E" of Postage Variety, tied by Large Grid on July 1861 Folded Cover to Port Elizabeth, Red Oval backstamp, Fine, Rare (Photo) 4,000.00 +

1863-1864 ISSUE

- 471 \approx **1863, 4p Dark Blue (13). Pair,** Large Margins, Oval Grid cancel, Cape Town pmk. on 1865 Cover to **France**, Red "London Paid", light staining along part of B. half of cover, o/w VF (Photo) 100.00 +
- 472 \approx **1863, 1sh Emerald (15).** Two Large Margins, clear to trifle in at B., Fresh Color, tied by Triangular Grid on 1864 Cover to Cradock, various Red Oval Backstamp, Fine (Photo) 550.00 +

1864-1900 ISSUES

- 473 \approx **1864-65, 1p-1sh "Hope" (16-20).** 17 Stamps on 13 cover fronts or part covers, incl. 1p(6), 4p(8), 6p, 1sh, 4p on 6p, Variety of pmks., 1sh used to Ireland, others domestic usage, generally F-VF 105.00 +
- 474 \approx **1865, 4p Blue (17). Horiz. Strip of Five,** Used with Single 1p Rose (16), **Used in Combination with Orange River Colony No. 8a & Transvaal No. 17** on large part of 1871 cover front to U.S., tied by Target on Grids, "Rusyenburg Zuid Afrika" & "Cape Town Cape-Colony" pmks., "London Paid" Transit, some small faults, Very Rare Piece E.IX
- 475 \approx **1865-85, ½p-1sh "Hope," (17, 19, 24, 32-34, 37, 43).** 16 Stamps on Six Covers, All Used Abroad, Nice Range of Markings, No. 43 in Two Strips of Three, tied by 1889 Kimberley pmks., **Stamp in Color of 5sh 1896 Issue (Brown Orange),** Interesting & Attractive Lot E.VII
- 476 \approx **1879, 3p on 4p Blue (29).** Two Singles, one minor scuff on **Twice Forwarded** 1880 Cover from U.S., One tied by Oval Grid, other by Triangular Grid, **U.S. Postage Paid by 15c Orange (163),** short perf., tied by Odd Cork & "New Haven Conn." pmk., Variety of Postmarks & Transits, incl. Red "New York 50", "Wellington", "Paarl", Cape Town", "French-Hoek" Oval (backstamp), Attractive & Scarce (Photo) E.XI
- 477 \approx **1884, 6p Violet (49).** Tied by Cape Town Cape Colony 1885 pmk. on Neat Cover to England, **Used With 5sh Violet Revenue** (same pmk.), VF, Choice & Most Unusual (Photo) E.IV
- 478 \approx **1900, 3p on 1p Rose (164), Horiz. Pair,** tied by Apr. 11, 1900 Mafeking pmk. on Cover to England, stamps couple minor faults, cover trifle worn, Scarce (Photo) 100.00 +
- 479 \approx **1900, 3p, 6p Surcharges (164, 171).** Tied by "Mafeking C.G.H." pmks. on large part of cover front, Stamps Fine (Photo) 200.00

480	<p>Balance of Cape of Good Hope Covers, 33 Items, incl. 14 "Hope" Issues (Two Surcharged), 11 of which used 1900-02 Period with Various Censor's Handstamps & Seals, Military Covers from Boer War with & without British Franking with "Field Post Office British Army S. Africa" pmk., Mailing Tag from the "Canadian Contingent" for a package of "Ostrich feathers", Censored Dutch Cover to Prisoner at Dead Wood Camp St. Helena, "Censor Prisoner of War" handstamp, Three Covers to Diyatalawa Camp, Ceylon, Natal or Ceylon Frankings, Purple Oval Censors Handstamps, Seven Transvaal Covers, Edw. VII, "V.R.I. & "E.R.I." Frankings, Variety of Censors, Two Prisoner's Uses, One Orange River Colony Censored Cover, etc., An Exciting & Very Desirable Specialist Lot.....</p>	E.XII
-----	--	-------

END OF SALE — THANK YOU

DESCRIPTIONS

EXTREMELY FINE: The finest condition for noteworthy, outstanding stamps.

VERY FINE: (VF) In prime condition such as to satisfy the requirements of particular collectors.

FINE: (F) Perforations or margins do not touch design on issues after 1890 but in some cases may just touch in earlier issues. If used, fairly light cancellation.

VERY GOOD: (VG) Generally nice appearance but margins or perforations may cut in slightly.

GOOD: (G) Average off-centering or fairly attractive with slight defects.

ORIGINAL GUM is not to be expected on stamps prior to 1890 unless so stated in the description.

MINT: With original gum and never hinged.

Unless otherwise noted the 1981 Scott Standard Postage Stamp Catalogue, Volume 1 has been used for cataloguing lots in this sale.

United States Cancellations 1845-1869

Produced by Hubert C. Skinner and Amos Eno, the work has no basis for comparison in the annals of philatelic publishing! Contained in its 362 pages are drawings of 4,030 postal markings (actual count!) and illustrations of 149 covers.

There is nothing like it known in philatelic literature — there is no other single book that will be of so much assistance in helping you with your collection of such material . . . and definitely no other way to obtain such a wealth of information at so little cost.

Order now!

Regular edition \$25

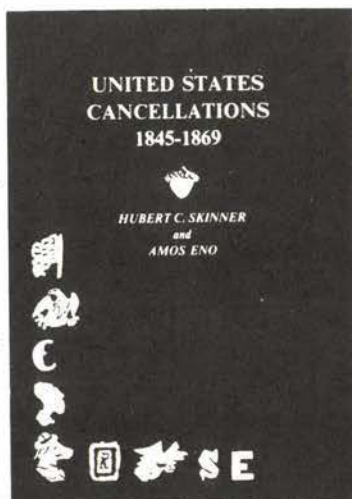
Deluxe edition, bound in leather with gilt edging, etc. \$50

READY FOR IMMEDIATE DELIVERY

Robert A. Siegel

AUCTION GALLERIES, INC.

120 EAST 56th STREET
NEW YORK CITY, N.Y. 10022



IS YOUR COLLECTION FOR SALE?

**AMERICA'S PREMIER AUCTION HOUSE
OFFERS**

**GUARANTEED AUCTION REALIZATION
BACKED WITH 100% CASH ADVANCE**

For the first time an auction house will guarantee the minimum net you will receive from sale at auction and immediately advance this sum to you at no interest charge. *The only charge to you is a 10% commission on what your collection realizes at auction.* The buyer also pays a 10% buyers premium.

Minimum collection consignment \$5,000. (We will advance a lower percentage of estimated realization on smaller collections or miscellaneous consignments.)

When you sell your collection at auction you should and can have **immediate cash.**

Enjoy both the advantage of immediate cash based on current market value, and any accrual in value that occurs in a fast moving market by sale time.

Sell your collection through the auction house first in prestige, first in dollar volume. Our auctions realized nearly \$18 million in 1980.

FREE APPRAISALS — CALL OR WRITE

**ROBERT A. SIEGEL
AUCTION GALLERIES, INC.**

**120 E. 56th Street
New York, N.Y. 10022**

**Tel.: (212) 753-6421
Established 51 years**



The Carnegie Museum of Natural History Collection of
BRITISH NORTH AMERICAN
and

**CAPE OF GOOD HOPE
POSTAL HISTORY COVERS**

INDIVIDUAL REALIZATIONS ARE HAMMER PRICES. GROSS REALIZATION
INCLUDES 10% BUYERS PREMIUM.

1	1550	40	850	78	375	117	100	156	260
2	425	41	950	79	350	118	250	157	120
3	3500	42	2600	80	450	119	250	158	100
4	2500	43	3000	81	260	120	1200	159	1000
5	650	44	625	82	475	121	90	160	67½
6	260	45	325	83	2600	122	230	161	80
7	1150	46	1150	84	1200	123	90	162	210
8	450	47	725	85	2600	124	375	163	210
9	375	48	450	86	1050	125	37½	164	2200
10	280	49	425	87	2500	126	210	165	3000
11	290	50	220	88	1500	127	350	166	170
12	260	51	145	89	1650	128	180	167	105
13	350	52	160	90	1550	129	190	168	57½
14	800	53	170	91	250	130	625	169	75
15	375	54	260	92	450	131	115	170	170
16	115	55	200	93	120	132	85	171	47½
17	270	56	125	94	95	133	75	172	85
18	2000	57	240	95	220	134	170	173	500
19	1200	58	160	96	52½	135	145	174	625
20	400	59	210	97	120	136	1100	175	625
21	1100	60	180	98	220	137	240	176	475
22	375	61	130	99	220	138	120	177	425
23	170	62	42½	100	180	139	65	178	625
24	900	63	1600	101	160	140	140	179	575
25	475	63A	1100	102	140	141	130	180	1500
26	8500	64	3000	103	95	142	160	181	500
27	4500	65	270	104	350	143	270	182	280
28	2100	66	150	105	280	144	42½	183	1150
29	2600	67	170	106	1100	145	350	184	160
30	600	68	130	107	115	146	105	185	675
31	1400	69	220	108	1700	147	700	186	1200
32	625	70	400	109	180	148	1350	187	625
33	425	71	190	110	200	149	475	188	260
34	3750	72	300	111	450	150	220	189	130
35	2200	73	210	112	150	151	240	190	170
36	1400	74	85	113	190	152	85	191	4000
37	1350	75	675	114	325	153	220	192	3000
38	550	76	900	115	575	154	475	193	1150
39	1200	77	675	116	115	155	1400	194	900

195	230	255	450	315	200	375	425	435	450
196	375	256	145	316	140	376	500	436	40
197	625	257	450	317	290	377	450	437	40
198	160	258	350	318	95	378	475	438	40
199	575	259	325	319	210	379	1900	439	525
200	145	260	230	320	350	380	1400	440	1000
201	3250	261	200	321	95	381	1150	441	750
202	1200	262	260	322	375	382	575	442	700
203	4250	263	625	323	85	383	1650	443	3000
204	1100	264	6000	324	425	384	850	444	210
205	250	265	1150	325	650	385	130	445	2700
206	2800	266	5000	326	240	386	170	446	800
207	10,500	267	2400	327	400	387	150	447	900
208	2500	268	2600	328	850	388	550	448	1400
209	900	269	425	329	375	389	575	449	950
210	600	270	300	330	575	390	375	450	85
211	425	271	375	331	375	391	450	451	130
212	135	272	1550	332	325	392	210	452	75
213	230	273	700	333	160	393	210	453	67½
214	240	274	525	334	160	394	190	454	60
215	220	275	1150	335	160	395	300	455	42½
216	625	276	1400	336	105	396	325	456	700
217	1200	277	350	337	400	397	105	457	30
218	220	278	1100	338	105	398	180	458	105
219	900	279	675	339	90	399	57½	459	300
220	350	280	1350	340	115	400	95	460	120
221	675	281	1400	341	3750	401	160	461	230
222	1600	282	160	342	4500	402	270	462	210
223	375	283	575	343	2600	403	375	463	450
224	500	284	900	344	2200	404	95	464	140
225	525	285	240	345	290	405	600	465	650
226	750	286	260	346	260	406	135	466	8500
227	525	287	270	347	240	407	85	467	4750
228	400	288	130	348	525	408	105	468	2600
229	250	289	375	349	350	409	115	469	2300
230	160	290	350	350	180	410	280	470	1750
231	160	291	135	351	1000	411	42½	471	550
232	525	292	650	352	2100	412	500	472	900
233	230	293	270	353	4250	413	150	473	110
234	525	294	375	354	2300	414	180	474	230
235	2600	295	1200	355	2600	415	575	475	300
236	11,000	296	600	356	210	416	425	476	2200
237	1050	297	1050	357	220	417	210	477	52½
238	450	298	160	358	100	418	475	478	375
239	400	299	160	359	850	419	350	479	200
240	1900	300	270	360	1850	420	2600	480	1050
241	1000	301	220	361	1050	421	160	END OF SALE	
242	400	302	250	362	850	422	170	THANK YOU	
243	8500	303	600	363	2800	423	200	GROSS REALIZATION: \$424,198.50	
244	350	304	170	364	1900	424	675		
245	270	305	90	365	600	425	180		
246	200	306	200	366	2100	426	70		
247	550	307	115	367	3250	427	180		
248	675	308	190	368	2300	428	280		
249	425	309	170	369	9500	429	280		
250	160	310	120	370	60	430	115		
251	850	311	375	371	80	431	125		
252	625	312	160	372	240	432	90		
253	550	313	300	373	190	433	170		
254	350	314	325	374	230	434	100		