

595th SALE



SWEPEX – 82

AUCTION

Houston, Texas

UNITED STATES STAMPS
CONFEDERATE AND TEXAS POSTAL HISTORY

SOLD BY ORDER OF THE OWNERS
AT UNRESERVED PUBLIC AUCTION

WESTIN GALLERIA HOTEL
West Alabama Room

Saturday, March 27, 1982 — 7:00 P.M.

AUCTION GALLERIES, INC.
160 E. 56th STREET, NEW YORK, N.Y. 10022

R
O
B
E
R
T

A.

S
I
E
G
E
L

CONDITIONS OF SALE

1. The terms of sale are strictly cash on delivery to the highest bidder unless special arrangements have been made prior to the sale. The fact that an item is placed on extension (submitted to an expertising committee for certification) does not relieve the successful bidder from this condition of sale.
2. All bids are per lot as numbered in the catalogue unless otherwise announced by the auctioneer at the time of sale. The right is reserved to group two or more lots; to withdraw any lot or lots from the sale, or to act in behalf of the seller. The auctioneer shall regulate the bidding and in the event of any dispute his decision shall be final.
3. Any lot, the description of which is incorrect is returnable, but only within five days of receipt. All disputed lots must be returned intact as received. **The following lots may not be returned for any reason whatsoever: Lots containing ten or more stamps; Lots from buyers who have had the opportunity to examine them before the sale; Lots described as having defects or faults may not be returned because of any faults. No illustrated lots may be returned because of centering, margins or other factors shown in the illustrations.**
4. Successful bidders, unless they are known to us or supply acceptable references are expected to make payment in full before the lots are delivered. Mail bidders will be notified of the amounts of their purchases. All mail bidders who have established credit with us must make payment within three days after receipt. We reserve the right in our sole and absolute discretion to demand cash payment at the time a lot is knocked down to any bidder who has not previously established credit with us or whose account is in arrears. In the event any buyer refuses to pay cash for any lot at the time it is knocked down to him, the auctioneer reserves the right to re-offer the lot immediately for sale to the highest bidder.
5. If the purchase price has not been paid within the time limit, nor lots taken up within seven days from date of sale they must be resold and any loss arising from such sale will be charged to the defaulter. Any account more than thirty days in arrears is subject to a late payment charge of 1½% per month so long as the account remains in arrears. If the auctioneer, in his discretion, should institute any legal action to secure payment of a delinquent account the defaulting purchaser shall pay all legal expense incurred by the auctioneer and such charges will be added to the amount owed.
6. All lots are sold as genuine but should any lot be proved otherwise by written opinion of any competent, responsible authority acceptable to us, immediate refund of the full purchase price will be made, provided that such claim is made in writing within 14 days from date of sale. If claim is not made within this period, no lots are returnable for any reason at any time. So long as we are notified within the 14 day period that an opinion is being sought the matter will remain open until such opinion is rendered. We will not be responsible for any charges incurred by the buyer for expertization fees and costs unless the opinion states the item is not genuine, in which case we will pay actual costs up to a maximum of \$50.00. In the event an item is proved "not as described" it is returnable for full refund, and the buyer will be paid interest (at the prevailing Treasury Bill Rate) for the time his funds have been on deposit with us during the extension period.
7. Until paid for in full, all lots remain the property of Robert A. Siegel Auction Galleries, Inc. in behalf of the seller.
8. All forwarding charges will be added to the purchase price. The mode of shipment shall be at our option unless we are given specific instructions.
9. Lots may be sent for inspection to buyers known to us upon written application. All such lots must be returned to us by registered mail, adequately insured and within 24 hours after receipt. The applicant assumes all responsibility and will provide insurance against all risks from time of receipt until they are actually received back by us, and is to pay all expenses of postage and insurance. **No lots can be sent for inspection within ten days from date of local viewing. Large lots and collections cannot be sent for inspection.**
10. Agents are responsible for all purchases made in behalf of their clients unless other arrangements are made prior to the sale.
11. The placing of a bid shall constitute acceptance of the foregoing conditions of sale.

ROBERT A. SIEGEL

MALCOLM SIEGEL, Licensed Auctioneers

FOR TABLE OF DESCRIPTIONS SEE PAGE 4

Upon request estimate of value furnished on any lots in this auction.

NEW YORK CITY VIEWING:

At our offices Monday, March 22nd; Tuesday, March 23rd.

LOTS ON VIEW IN HOUSTON:

Exhibition Hall — Fourth Level, Westin Galleria Hotel,
Friday, March 26th; Saturday, March 27th until 5:00 P.M.

Bid sheets should be sent to our New York offices. Bids can be telephoned to our New York offices until 5:00 P.M. on March 27th.

We are pleased to again have the opportunity to present the auction for the ASDA Southwest Chapter Annual Spring Bourse-Show.

THANK YOU FOR YOUR PARTICIPATION.

DESCRIPTIONS

EXTREMELY FINE: The finest condition for noteworthy, outstanding stamps.

VERY FINE: (VF) In prime condition such as to satisfy the requirements of particular collectors.

FINE: (F) Perforations or margins do not touch design on issues after 1890 but in some cases may just touch in earlier issues. If used, fairly light cancellation.

VERY GOOD: (VG) Generally nice appearance but margins or perforations may cut in slightly.

GOOD: (G) Average off-centering or fairly attractive with slight defects.

ORIGINAL GUM is not to be expected on stamps prior to 1890 unless so stated in the description.

MINT: With original gum and never hinged.

Unless otherwise noted the Scott 1982 United States Specialized Catalogue, the American Stampless Cover Catalogue, Dietz Confederate States Handbook, Kleins United States Waterway Packet Marks, Remele U.S. Railroad Postmarks, Towle-Meyer Railroad Postmarks of the United States, and Walcott Civil War Patriotic Cover Catalogue have been used for cataloguing lots in this sale.

Due to the tremendous demand on our phones and staff, Prices Realized will not be available by telephone until 24 hours after the Sale.

PUBLIC AUCTION

SATURDAY, MARCH 27th, 1982 — 7:00 P.M.

UNITED STATES

POSTMASTERS' PROVISIONALS

1 R	New Haven, Ct., 5c Dull Blue on White, 1932 Reprint (8XU4-R). 42x45mm, VF, also incl. New Haven Historical Society Booklet & Reproduction Cover, Only 130 Produced (Photo)	E.VI
2 ★	New York, N.Y., 5c Black (9X1). Ample to Large Margins, trace of ms. offset on back, Fine (Photo)	700.00
3 ★	Providence, R.I., 5c Gray Black (10X1). Large to Huge Margins, couple faint toning spots, o/w VF (Photo)	200.00
4	St. Louis, Mo., 10c Gray Lilac (11X5). Ty. III, Pos. 6, Margins to slightly into T. frame line, ms. cancel, large skillfully sealed tear, Fine Appearing Example of this Scarce Stamp (Photo)	1,750.00

1847 ISSUE

5	5c Brown (1). Large to Huge Margins, Blue cancel, Extremely Fine (Photo)	925.00
6	5c Red Brown (1). Ample to Large Margins, Red Grid Cancel, Fresh, Rich Deep Color, VF, Choice (Photo)	900.00
7	5c Red Brown (1). Ample to Large Margins, Black Grid cancel, VF (Photo)	935.00
8	5c Pale Brown (1). Ample Margins except touching to just clear at T. & B., Choice Color, Red Grid Cancel, Fine (Photo)	900.00
9 ☒	5c Red Brown (1). Ample to Large Margins, Deep Rich Color, tied on Fresh Neat Envelope by Red Grid, Matching Oswego, N. York pmk, VF (Photo)	1,100.00

LOTS ON VIEW

NEW YORK CITY VIEWING: At our offices Monday, March 22nd; Tuesday,
March 23rd.

LOTS ON VIEW IN HOUSTON: Exhibition Hall — Fourth Level, Westin
Galleria Hotel, Friday, March 26th; Saturday, March 27th until 5:00 P.M.

10	5c Red Brown (1). Ample to Large Margins, Tied by Red Grid cancels on Envelope to Washington, D.C., Blue "Philada Pa" pmk., VF..... (Photo)	1,100.00
11	5c Dark Brown (1a). Clear to Large Margins incl. small portion of adjoining stamp at T., Marvelous Color & Impression, lightly tied by Red New York pmks. on 1848 Folded Letter, Fine & Handsome (Photo)	1,100.00
12	5c Red Brown (1). Ample Margins, Tied by Black Grid cancel on Cover to Kittery, Me., Red "Boston 5 cts" pmk., owner's handstamp on flap, few minor toning specks, o/w Fine..... (Photo)	1,135.00
13	10c Black (2). Clear to Large Margins except touched at L., Red grid, Fine (Photo)	2,850.00
14	10c Black (2). Ample to Large Margins except just into outer frame line at B.R., Blue cancel, Fresh & Fine (Photo)	2,900.00
15	10c Black (2). Margins Ample to just clear except barely in at B., Red Grid Cancel, Very Handsome..... (Photo)	2,850.00
16	10c Black (2). Large to Huge Margins, tied by Blue Grid, matching "Phila Pa Jul 22 10" pmk. on 1850 Folded Letter From Toppan, Carpenter, Casilear & Co., ms. "Paid" at T.R., VF, A Lovely Cover (Photo)	3,250.00
17	★ 5c Red Brown, Reproduction (3). Ample to Large Margins, minute natural "oily" translucent speck, VF (Photo)	2,250.00
18	P 5c Red Brown, 10c Black, Reproduction, Plate Proofs on Card (3P4, 4P4). Fine Set..... (Photo Ex)	600.00
19	P 10c Blue, Reproduction, Plate Proof on Card (4P4). Three Ample to Large Margins, touched to barely in at R., Scarce (Photo)	300.00
20	★ 10c Black, Reproduction (4). Ample to Large Margins, tiny thins & minor corner crease, VF Appearance..... (Photo)	2,850.00

1851 ISSUE

21	1c-12c 1851-57 Issue (7, 20, 22, 30A, 32, 35, 36b). Nos. 30A, 35 & 36b Unused (No. 35 o.g., No. 36b part o.g.), others used, faults, G-F Lot E.IX	
22	1c Blue, Ty. III (8). Three Clear to Huge Margins, Large to slightly in at L., Deep Rich Shade, light Town pmk., Scarce (Photo)	1,150.00
23	1c Blue, Ty. III, IIIa (8, 8A). Horiz. Combination Pair, Margins to slightly in, R. Stamp Ty. III, Grid cancels, Dark Shade, tiny crease at T., trivial thin speck on Ty. III stamp, o/w Fine..... (Photo)	1,675.00 +
24	1c Blue, Ty. IIIa (8A). Margins to cut in at B., Deep Rich Shade, light Town pmk., tiny corner crease, Scarce..... (Photo)	525.00
25	5c Red Brown (12). Large Margins to just touching, Rich Color, neat Red grid cancel, Very Attractive..... (Photo)	1,150.00
26	5c Red Brown (12). Vert. Strip of Three, T. stamp Large to Huge Margins, B. Pair Ample Margins to just touching, New Orleans, La. pmks., F.-V.F., with P.F. Certificate..... (Photo)	4,000.00
27	10c Green, Ty. I (13). Ample to Large Margins, Town pmk., VF, with P.F. Certificate..... (Photo)	625.00
28	10c Green, Ty. I (13). Double Transfer at B., Pos. 100R1, Three Clear to Large Margins, Clear to touched at R., Town pmk., Fine..... (Photo)	675.00

29	10c Green, Ty. II (14). Large to Huge Margins, Grid Cancel & portion of French Transit Marking, faint corner crease (well clear of design), Extremely Fine Appearance (Photo)	250.00
30	10c Green, Ty. II, III (14, 15). Clear to Large Margins, former with Part Sheet Margin at B., Town pmks. & tiny faint corner crease, latter faint crease, VF Appearance	510.00
31	10c Green, Ty. II, III (14, 15). Ample to Generally Large Margins, former Town pmk., latter Town & ms. pmks., tiny negligible creases, VF Appearance, Handsome.....	390.00
32	10c Green, Ty. III (15). Ample to Large Margins, Bold Town pmk., tiny corner crease (well clear of design), VF Appearance (Photo)	260.00

33 ★	10c Green Ty. IV (16). Pos. 74L1, Ample Margins to just clear, Fine, Very Rare Unused, with P.F. Certificate (Photo)	9,000.00
------	--	----------

34	10c Green, Ty. IV (16). Pos. 65L1, Huge Margins at B. showing portion of adjoining stamp, Ample to barely in on other sides, Deep Color, "Paid" in Grid Cancel, Handsome..... (Photo)	1,450.00
35	10c Green, Ty. IV (16). Two Large Margins, others touched to cut in, Town pmk., some toning spots all on back, Scarce	1,350.00

1857 ISSUE

36	1c Blue, Ty. I (18). Well-centered, grid cancel, a few nibbed perfs., o/w VF	325.00
----	---	--------

37	1c Blue, Ty. Ia (19). Black N.Y. Carrier cancel (incorrectly identified as "U.S. Express Mail" Cancel on Accompanying P.F. Certificate), L. perfs just in, An Attractive Example of this Rare & Desirable Type	1,850.00 +
----	---	------------

38 ★	1c Blue, Ty. II (20). Light crease, VF Appearance..... (Photo)	400.00
39	1c Blue, Ty. III (21). Fresh, Rich Color, Light Blue Grid cancel, Centered to L., Fine	875.00
40 ★	3c Dull Red (26). Well-Centered, Fresh, o.g., VF..... (Photo)	50.00
41	5c Brick Red, Red Brown, Brown (27, 28, 29). Used, No. 27 Red pmk., No. 29 "PAID" cancel, each with slight faults, Fine Appearance	E.IX
42	5c Brown, Ty. I (29). Town pmk., faint crease, Fine Appearance.....	175.00
43	10c Green, Ty. I, II, III (31-33). Used, No. 31 slight dry print, Fine Lot	705.00
44 ★	12c Black, Pl. III (36b). Fresh, o.g. (bit disturbed from previous mounts), perfs. just in at T. & L., Fine	300.00
45 ★	24c Gray Lilac (37). O.g., h.r., couple tiny thin spots, B. perfs. just in, Fine Appearance	650.00
46 ★	30c Orange (38). Fresh, o.g., heavy h.r., couple small faults, VF Appearance, A Beautiful Example	775.00
47	30c Orange (38). Blue Grid cancel, Fresh & Fine	295.00
48	90c Blue (39). Fresh, few tiny Thin spots, Fine Appearance.. (Photo)	1,450.00
49	90c Blue (39). Fresh, thins, reperfed at R., perfs. just in at B., VG Appearance..... (Photo)	1,450.00
50 ★	1c Bright Blue, Reprint (40). Fresh, short perfs at L., Fine Centering ..	500.00

51 P	1c-90c 1857 Reprint Plate Proofs on Card (40P4-47P4). Cpl. Set, F-VF..... (Photo Ex)	1,055.00
------	--	----------

52 ★	5c Orange Brown, Reprint (42). Fresh, few slightly nibbed perfs., T. perfs barely in, o/w Fine..... (Photo)	900.00
------	---	--------

53 ★	12c Greenish Black, Reprint (44). Fresh, Fine & Rare.. (Photo)	2,350.00
54 ★	24c Blackish Violet, Reprint (45). Fresh, Well-centered, VF & Choice, with P.F. Certificate (Photo)	2,750.00
55 ★	90c Deep Blue, Reprint (47). Huge Margins at T., couple nibbed perfs., B. perfs. barely in, Rare..... (Photo)	4,000.00

1861-1867 ISSUES

56 ★	3c Brown Rose, "First Design" (56). O.g., h.r., trifle oxidized, single short perf., o/w Fine..... (Photo)	650.00
------	---	--------

57 ★	24c Violet, "First Design" (60). Fresh, Well-centered, traces of o.g., VF, Choice, with P.F. Certificate (Photo)	4,750.00
58 ★	24c Dark Violet, "First Design" (60). Large Part o.g., small tear, short perf. & light crease, centered to R., Fine Appearance - (Photo)	4,750.00

59 P	90c Blue, "First Design", Plate Proof on India (62P3). Fresh, R. Margin just touches, Fine..... (Photo)	600.00
60	10c Dark Green, "First Design" (62B). Boxed "Paid" cancel, couple short perfs., o/w VF (Photo)	500.00
61 P	1c Blue, Large Die Proof on India, Hollow Block Letter "Specimen" Ovpt. (63P1 var). 42x46 mm, small sealed tear at B. (well clear of design), VF Appearance, Very Scarce E.VIII	
62 ☒	1c Blue (63). Beautifully Centered, creased corner perf., Tied on Neat Cover to N.Y. City by Red Circular "New York City Paid 1 Ct" Carrier Marking, VF..... E.VI	
63 P	1c-90c 1861-66 Issue, Plate Proofs on Card (63P4, 65P4, 68P4, 69P4, 71P4-73aP4, 76P4-78P4). All Values Represented, faint toning spot on back, o/w Virtually All VF (Photo Ex)	1,260.00
64 ★	3c Rose (65). Mint, Fresh, Lovely Color, Well-centered, VF, Choice.	42.50
65 ★田	3c Rose (65). Mint Block, Well-centered, VF & Choice..... (Photo)	185.00
66 ★	3c Rose, Imperf. (65c). Horiz. Pair, o.g., some overall toning from gum, o/w VF, Rare..... (Photo)	450.00

67 ★	3c Lake (66). Fresh, o.g., h.r., Fine, Rare (Photo)	1,350.00
------	--	----------

68	5c Brown Yellow (67a). Well-centered, neat framed "PAID" cancel, VF & Choice (Photo)	325.00
69 P	12c Black, Large Die Proof on India (69P1). Reduced to Stamp Size, light corner crease, VF Appearance, with P.F. Certificate (Photo)	1,200.00
70 P	12c Black, Large Die Proof on India, Red Hollow Block Letter "Specimen" Ovpt. (69P1 var). 39x45 mm, couple small margin tears (well clear of ovpt. & design), VF Appearance, Very Scarce.. (Photo) E.VIII	
71 P	12c Black, Plate Proof on India (69P3). VF..... (Photo)	160.00
72	24c Grayish Lilac (70d). Grid Cancel, small slight thin spot, VF Appearance..... (Photo)	250.00
73 P	90c Blue, Large Die Proof on India (72P1). 41x48 mm, couple slight thin spots (well clear of design), VF Appearance (Photo)	750.00
74 P	90c Blue, Plate Proof on Card, 90c Brown, "Atlanta" Plate Proof on Card (72P4, 111TC). Fresh, slight toning on back of latter, o/w VF .	210.00
75 ★	90c Blue (72). Fresh, o.g., VF but for faint bend (Photo)	950.00
76 ★	90c Blue (72). Fresh, R. perfs barely in, VG.....	950.00
77 P	2c Black, Die II, Plate Proof on Card (73aP4). VF.....	200.00
78 P	2c Gray Black, Trial Color Plate Proof on India (73TC3). Slight thin spot (typical for these trial colors), Fine Appearance, Scarce	350.00

79	★田	2c Black (73). Block , Fresh, o.g., one with tiny natural inclusion, F-VF.....(Photo)	525.00
80		3c Rose, D. Grill (85). Grid Cancel , tiny margin tear & couple nibbed perfs. (as often), o/w Fine.....(Photo)	250.00
81		2c-12c 1867 Grills (85E, 89, 90, 93). Last Unused , others Used, faults, o/w VG-F Lot.....	E.VII

82	★	5c Brown, F. Grill (95). Fresh, Beautifully Centered , o.g., Extremely Fine, Incredible Stamp.....(Photo)	750.00
83	★田	24c Gray Lilac, F. Grill (99). L. Sheet Margin Block , rejoined Vert. Pairs, Part o.g., Additional Grill Impressions in Selvedge, small faults, R. perfs. in, Rare.....(Photo)	4,400.00
84	★	90c Blue, F. Grill (101). Fresh, Well-centered , VF but for couple tiny faint thin spots & couple nibbed perfs., with P.F. Certificate.....(Photo)	2,850.00
85		90c Blue, F. Grill (101). Horiz. Pair , Beautiful Rich Color, neat Cross Roads Cancels, Fine, Very Scarce.....(Photo)	1,500.00
86	田	90c Blue, F. Grill (101). Block , Rich Color, Cork Cancels, B.L. stamp light crease & few short perfs, B.R. stamp small thin spot, T. Pair VF, Rare & Handsome Block.....(Photo)	4,000.00
87	★	30c Brownish Orange, Re-Issue (110). Marvelous Color , Part o.g., few minute ink specks on surface, o/w Extremely Fine(Photo)	3,850.00

1869 PICTORIAL ISSUE

88	★田	1c Buff (112). Block , Fresh, Well-centered, VF.....(Photo)	1,000.00
89		6c Ultramarine (115). Well-centered , neat Geometric cancel, VF & Choice.....(Photo)	85.00
90	★	12c Green (117). Fresh, Rich Color , Fine.....(Photo)	750.00
91	★	15c Brown & Blue, Ty. I (118). Wonderful Centering , very slight soiling in margin, tiny corner perf. crease, o/w Extremely Fine ..(Photo)	1,750.00
92	★	15c Brown & Blue, Ty. I (118). Fresh, Wide Margins , VF & Choice.....(Photo)	1,750.00
93	★	15c Brown & Blue, Ty. I (118). Fresh, Well-centered , VF but for small sealed tear.....(Photo)	1,750.00
94		15c Brown & Blue, Ty. I (118). Lightly cancelled , tiny corner perf. crease, o/w VF, Choice.....(Photo)	235.00
95	★	15c Brown & Blue, Ty. II (119). Fresh, small part o.g. , Fine but minor thins.....(Photo)	850.00
96	★	24c Green & Violet (120). Fresh, Large Part o.g. , h.r., Fine & Choice.....(Photo)	2,500.00
97	★	24c Green & Violet (120). Rich Color , couple small tears, Fine Appearance, Scarce.....(Photo)	2,500.00
98		24c Green & Violet (120). Grid of squares cancel , faults, o/w Fine...	E.VI
99	★	30c Blue & Carmine (121). Part o.g. , Fine but for couple barely nibbed perfs.(Photo)	2,250.00
100	★	30c Blue & Carmine (121). Perfs. close at L. & B. , tiny 1mm margin tear, Fine Appearance.....(Photo)	2,250.00
101		30c Blue & Carmine (121). Geometric cancel , VF.....(Photo)	250.00

102 ★	90c Carmine & Black (122). Fresh, Part o.g., Fine & Choice(Photo)	6,750.00
103 ★	90c Carmine & Black (122). Fresh, Fine but for tiny corner crease.....(Photo)	6,750.00
104 ★	90c Carmine & Black (122). Fresh, Brilliant Rich Color, perfs. in at R., Rare.....(Photo)	6,750.00
105 ★	1c Buff, Re-Issue (123). Small thin spot, VF Appearance	(Photo) 325.00
106 ★	2c Brown, Re-Issue (124). Fresh, Fine	(Photo) 375.00
107 ★	2c Brown, Re-Issue (124). Fresh, tiny margin tear, Fine Appearance.(Photo)	375.00
108 ★	3c Blue, Re-Issue (125). Fresh, Lovely Color, perfs. just in at R., Rare, with P.F. Certificate	(Photo) 2,750.00
109 ★	6c Blue, Re-Issue (126). Traces of o.g., perfs. just in at R., small thin spot, couple minor toning spots, Scarce.....(Photo)	825.00
110 ★	12c Green, Re-Issue (128). Fresh, Deep Rich Color, Well-centered, single nibbed perf., minor T.L. corner creases, VF Appearance, with P.F. Certificate.....(Photo)	1,450.00
111 ★	12c Green, Re-Issue (128). Fresh, Fine, with P.F. Certificate..(Photo)	1,450.00
112 ★	15c Brown & Blue, Re-Issue (129). Fresh, trace of o.g., Wide Margins, tiny negligible corner perf. creases, o/w VF	(Photo) 1,300.00
113 ★	24c Green & Violet, Re-Issue (130). Fresh, faint corner crease, Fine Appearance.....(Photo)	1,250.00
114 ★	24c Green & Violet, Re-Issue (130). Fresh, tiny thin spot, Fine Appearance, Rare.....(Photo)	1,250.00
115 ★	30c Blue & Carmine, Re-Issue (131). Fresh, Full o.g., single barely nibbed perf., o/w Fine.....(Photo)	1,650.00
116 ★	90c Carmine & Black, Re-Issue (132). Fresh, o.g., insignifi- cant faint corner perf. crease, o/w Fine.....(Photo)	5,000.00
117 ★	90c Carmine & Black, Re-Issue (132). Deep Rich Color, light corner crease, Fine Appearance	(Photo) 5,000.00
118 ★	1c Buff, Re-Issue (133). Minor corner crease, o/w Fine.....	200.00
119 ★	1c Brown Orange, Re-Issue (133a). Block, Fresh, one with small natural inclusion, Fine.....(Photo)	800.00

BANK NOTE ISSUE

120	6c-90c Bank Note Grills (137, 138, 141, 144). Used (No. 141 ms. cancel), each with small fault, Fine Appearance	E.X
121 ★	30c Black, Grill (143). Fresh, VF but for light crease, with P.F. Certificate	(Photo) 3,750.00
122	30c Black, Grill (143). Used, Beautiful Margins & Centering, Ex- tremely Fine & Choice	(Photo) 800.00
123	30c Black, Grill (143). Used, perfs. just in at B., couple short perfs., Scarce	800.00
124 ★	1c-15c 1873-87 Bank Notes (Betw. 156-213). 16 Diff. Stamps, All Appear Unused, incl. Nos. 157, 161, 178, 182, 186, 187, 189 & 205, a few with o.g., most with faults, G-F Lot	E.XI

125 ★	10c Brown (161). Nice Margins, slightly disturbed o.g., Fresh & Fine (Photo) 165.00
126 ★田	15c Red Orange (189). Block, Fresh, Well-centered, glazed o.g. from mount, B.R. stamp couple tiny pinholes, o/w VF..... (Photo) 650.00
127 P	2c-10c 1882-87 Bank Note, Plate Proofs on Card (205P4, 209P4, 213P4, 214P4). No. 209P4 Fine, others VF 345.80
128 ★	2c Green (213). Corner Margin Single, Enormous Margins, regummed, Extremely Fine, Incredible Stamp 20.00
129 ★	3c Vermilion (214). Mint, Fresh, Brilliant Color, Large Even Margins, Extremely Fine "Gem" (Photo) 42.50
130 ★	30c Orange Brown (217). Mint, Rich Color, Fresh & VF.... (Photo) 375.00
131 ★	30c Orange Brown (217). Well-centered, Fresh, o.g., small thin spot, VF Appearance..... 375.00

132 ★	90c Purple (218). Beautifully Centered, o.g., h.r., Extremely Fine (Photo) 725.00
-------	---

133 田	90c Purple (218). Block, lightly cancelled, F-VF, Handsome .. (Photo) 575.00
134 ★	8c Lilac (225). Mint B. Margin Single, Fresh, Lovely Color, Perfectly Centered, Extremely Fine "Gem" 45.00
135 ★	15c Indigo (227). Mint, Fresh, VF, Choice..... (Photo) 175.00

COLUMBIAN ISSUE

136 P	1c-\$5.00 Columbian Plate Proofs on Card (230P4-245P4). Cpl. Set, small or slight faults (virtually all on back), o/w F-VF (Photo Ex) 5,220.00
-------	---

137 ★	1c, 3c Columbians (230, 232). Mint, Fresh, VF 100.00
-------	---

138	1c-\$5.00 Columbians (230-245). Cpl. Set, Used, faults, Gener- ally F-VF Appearance (Photo Ex) E.XIII
-----	---

139 ★	3c Columbian (232). Mint, VF 70.00
140 ★田	3c Columbian (232). Block, B. Pair Mint, T. pair, h.r., Fresh, Beautiful Centered, Extremely Fine "Gem" (Photo) 290.00
141 ★田	4c Columbian (233). Mint Block, Fresh, Lovely Color, Beautifully Centered, Extremely Fine "Gem" (Photo) 410.00
142 ★	30c Columbian (239). Mint, couple tiny natural inclusion specks, Fresh & Fine..... (Photo) 400.00
143 ★	30c Columbian (239). Horiz. Pair, without gum, a few unpunched perfs., F-VF..... (Photo) 800.00
144 ★田	30c Columbian (239). Block, Fresh, h.r., B. pair faults, o/w F-VF (Photo) 1,700.00
145 ★田	50c Columbian (240). Block, h.r., one stamp with small thin spot, few very faintly toned perfs., o/w Fine (Photo) 2,200.00
146	50c Columbian (240). Used, VF (Photo) 125.00

147 ★	\$1.00 Columbian (241). Nicely Centered, Deep Rich Color, Fresh, minor h.r., Fine..... (Photo) 1,500.00
-------	---

148 ★	\$1.00 Columbian (241). Fresh, small h.r. & thin spot, Fine Appear- ance..... (Photo) 1,500.00
149	\$1.00, \$2.00 Columbians (241, 242). Used, Well-centered, Rich Color, each with small thin spot, VF Appearance..... 1,075.00
150 ★	\$2.00 Columbian (242). Well-centered, regummed, tiny corner perf. crease, VF Appearance (Photo) 1,650.00

151 ★	\$2.00 Columbian (242). Regummed, Fine..... (Photo)	1,650.00
152 ★	\$2.00 Columbian (242). Fresh, regummed, light toning on back, o/w Fine..... (Photo)	1,650.00
153 ★	\$3.00 Columbian (243). Fresh, Rich Color, Nicely Centered, minor thin spot, VF Appearance..... (Photo)	3,200.00
154 ★	\$3.00 Columbian (243). Well-centered, regummed over couple tiny thin spots, VF Appearance..... (Photo)	3,200.00
155 ★	\$3.00 Columbian (243). Fresh, Rich Color, without gum, light crease, o/w VF..... (Photo)	3,200.00
156 ★	\$3.00 Columbian (243). Fresh, h.r., few small thin spots, Fine Appearance..... (Photo)	3,200.00
157 ★	\$3.00 Columbian (243). Without gum, faint thin spot, Fine Appearance..... (Photo)	3,200.00
158	\$3.00 Columbian (243). Neat Oval cancel, Well-centered, small repaired tear, VF Appearance, Scarce..... (Photo)	1,000.00

159 ★	\$4.00 Columbian (244). Fresh, without gum, Wide Margin at R., VF..... (Photo)	4,250.00
160 ★	\$4.00 Columbian (244). Fresh, regummed, centered to B., Fine, with P.F. certificate..... (Photo)	4,250.00

161 ★	\$4.00 Columbian (244). Fresh, Rich Color, couple trivial thin spots, Fine Appearance..... (Photo)	4,250.00
162	\$4.00 Columbian (244). Reg. cancel, small thin spot, Fine Appearance..... (Photo)	1,400.00

163 ★	\$5.00 Columbian (245). Perfs. close at B., without gum, Fine..... (Photo)	4,500.00
-------	---	----------

164 ★	\$5.00 Columbian (245). Regummed over couple small thin spots, Fine Appearance, Scarce..... (Photo)	4,500.00
165 ★	\$5.00 Columbian(245). Fresh, regummed over small faults, Fine Appearance..... (Photo)	4,500.00
166	\$5.00 Columbian (245). Town pmk., Wide Margins Three Sides, Fine, Handsome..... (Photo)	1,550.00
167	\$5.00 Columbian (245). Used, reperf. at T., small thin spot, Fine Appearance, Scarce..... (Photo)	1,550.00

1894-1898 ISSUES

168 ★	\$1.00 Black Ty. II (261A). Fresh, Mint, Fine, with P.F. Certificate..... (Photo)	1,850.00
-------	--	----------

169 ★	\$2.00 Bright Blue (262). R. Sheet Margin Single, Three Huge Margins, Fresh, natural s.e. at T., natural gum wrinkles, R. perfs. close..... (Photo)	2,400.00
-------	--	----------

170	\$2.00 Bright Blue (262). Used, faults, VF Appearance.....	525.00
-----	---	--------

171 ★	\$5.00 Dark Green (263). Fresh, disturbed o.g., small thin spot, Fine Appearance, Rare..... (Photo)	3,750.00
-------	--	----------

172 ★	5c Chocolate (270). T. Impt. & Pl. No. 190 Strip of Three, Stamps Mint, VF.....	125.00
173 ★	6c Dull Brown, 8c Violet Brown (271, 272). Mint, No. 272 T. Margin Part Impt. Single, Fresh, Well-centered, VF.....	100.00

174 ★	\$1.00 Black, Ty. II (276A). H.r., Fine..... (Photo)	1,500.00
175 ★	\$2.00 Bright Blue (277). Mint, Fresh, Well-centered, Extremely Fine, Choice, with P.F. Certificate..... (Photo)	975.00
176 ★	\$2.00 Bright Blue (277). Fresh, small h.r., VF (Photo)	975.00

177 ★	\$2.00 Bright Blue (277). Fresh, small thin spot, large part o.g., Fine Appearance..... (Photo)	975.00
-------	--	--------

178 ★	\$5.00 Dark Green (278). Rich Color, disturbed o.g., VF, Choice, with P.F. Certificate (Photo)	2,100.00
-------	---	----------

179 ★	1c-6c 1898 Issue (279, 280-282). Fresh, F-VF Lot	120.00
180 ★	5c Dark Blue (281). Mint, Rich Color, Fresh, Beautifully Centered, Extremely Fine "Gem".....	35.00

TRANS-MISSISSIPPI ISSUE

181 ★	1c Trans-Miss. (285). Mint B. Impt. & Pl. No. 590 Pair, VF.....	90.00
182 ★	4c Trans-Miss. (287). Mint, Fresh, Well-centered, couple tiny natural inclusion specks, Extremely Fine, Choice (Photo)	185.00
183 ★	4c Trans-Miss. (287). Fresh, minor gum disturbances from mount, Fine (Photo)	185.00
184 ★	4c Trans-Miss. (287). Mint B. Impt. & Pl. No. 634 Pair, Rich Color, Fresh, F-VF..... (Photo)	500.00
185 ★	5c Trans-Miss. (288). Mint, Rich Color, light gum bend, Fresh, VF (Photo)	150.00
186 ★	8c Trans-Miss. (289). Mint, Fresh, Rich Color, VF..... (Photo)	210.00
187 ★	8c Trans-Miss. (289). Mint B. Margin Impt. Single, Fresh, light bend, VF.....	210.00
188 ★	10c Trans-Miss. (290). Fine (Photo)	225.00

189 ★	10c Trans-Miss. (290). Mint L. Arrow Block, Fresh, Beautifully Centered, light natural bend affects two, Extremely Fine (Photo)	975.00
-------	--	--------

190 ★	50c Trans-Miss. (291). Regummed, B. perfs. touch, VG.....	900.00
-------	--	--------

191 ★	50c Trans-Miss. (291). T. Impt. & Pl. No. 603 Pair, Fresh, one with tiny thin spot, Fine Appearance..... (Photo)	2,500.00
-------	---	----------

192 ★	\$1.00 Trans-Miss. (292). Well-centered, Fresh, small thin spot, without gum, VF Appearance (Photo)	2,250.00
-------	--	----------

193 ★	\$1.00 Trans-Miss. (292). Disturbed o.g. from hinge removal, Fine, Very Handsome..... (Photo)	2,250.00
-------	--	----------

194 ★	\$1.00 Trans-Miss. (292). Without gum, small thin spot, Fine Appearance..... (Photo)	2,250.00
-------	---	----------

195	\$1.00 Trans-Miss. (292). Lightly cancelled, thin spot, VF Appearance (Photo)	600.00
-----	--	--------

196 ★	\$2.00 Trans-Miss. (293). Well-centered, Fresh, Large Part o.g., VF..... (Photo)	3,500.00
197 ★	\$2.00 Trans-Miss. (293). Fresh, minor gum disturbance from hinge removal, Fine..... (Photo)	3,500.00

198	\$2.00 Trans-Miss. (293). Used (trifle heavy cancel), couple small thin spots, T. perfs. just touch	825.00
-----	--	--------

PAN-AMERICAN - LOUISIANA PURCHASE ISSUES

199 ★	1c-10c Pan-Ams. (294-299). 1c & 5c h.r., 2c & 4c small fault, o/w F-VF Set.....	810.00
200 ★	1c-10c Pan-Ams. (294-299). Cpl. Set, 2c small thin spot, VG-F.....	810.00
201 ★	1c Pan-Am., Center Inverted (294a). Regummed over expertly sealed tear, VF Appearance, Handsome Example of this Popular 20th Century Error (Photo)	11,000.00
202 ★田	4c Pan-Am. (296). Mint Block, Fresh, Nicely Centered, two with minor natural gum crease, VF (Photo)	550.00
203 ★田	5c Pan-Am. (297). B.R. Impt. & Pl. No. 1140 Block of Eight, Five Mint, Well-centered, VF (Photo)	3,670.00 +
204 ★	8c Pan-Am. (298). Mint L. Margin Single, VF..... (Photo)	200.00
205 ★田	10c Pan-Am. (299). Block, h.r., B. Pair Mint, one with couple very light paper wrinkles, VF..... (Photo)	1,200.00
206 ★	2c-50c 1902 Issue (301, 304-310). 2c, 6c Mint, several with h.r., 2c, 15c perfs. touch on one side, 50c short corner perf., o/w F-VF Lot....	1,142.50
207 ★	10c Pale Red Brown (307). Mint, reperfed at R., Extremely Fine Appearance.....	80.00
208 ★	15c Olive Green (309). Mint, Large Margins, Extremely Fine, Choice (Photo)	200.00
209 ★	\$1.00 Black (311). Beautiful Centering, Wide Margins, Extremely Fine..... (Photo)	1,050.00
210 ★	\$1.00 Black (311). Fresh, without gum, few paper wrinkles, Fine Appearance..... (Photo)	1,050.00
211 ★	\$2.00 Dark Blue (312). Fresh, couple minor perf. creases, o/w VF (Photo)	1,350.00
212	\$2.00 Dark Blue (312). Used, Fine.....	175.00
213 ★	\$5.00 Dark Green (313). Fresh, Extremely Fine, Lovely Rare Stamp..... (Photo)	3,000.00
214 ★	\$5.00 Dark Green (313). Trifle heavy h.r., small faults, perfs. slightly in at B.....	3,000.00
215	\$5.00 Dark Green (313). Trifle heavy reg. cancel, Fine.....	625.00
216 ★田	5c Blue, Imperf. (315). Block, Very lightly hinged, B. Pair Mint, VF..... (Photo)	3,650.00
217 ★	1c Blue Green, Coil (318). Pair, Fresh, h.r., some separation, small purple handstamps on back (do not show through), Fine, with A.P.S. Certificate (Photo)	3,500.00
218 ★田	2c Carmine, Imperf. (320). Mint Block, Extremely Fine.....	130.00
219 ★	2c Carmine, Coil (322). Pair, Fresh, h.r., Fine, with A.P.S. Certificate (Photo)	4,250.00
220 ★田	1c La. Purchase (323). Mint T.L. Imperf. Half Arrow, Impt. & Pl. No. 2119 Block of Eight, F-VF.....	465.00
221 ★	1c-10c La. Purchase. (323-327). Cpl. Set, 1c Mint, 5c without gum, most with small or tiny fault, Fine Appearance.....	592.50

222 ★	5c La. Purchase (326). Mint, Well-centered, Extremely Fine, Choice (Photo)	130.00
223 ★	10c La. Purchase (327). Mint L. Margin Single, VF (Photo)	300.00

1908 ISSUE

224 ★	1c-15c 1908 Issue (331-340). 4c, 15c Mint, three with h.r., 2c (cat. \$7.50) ink notation on back (does not show through), F-VF	348.00
225 ★	4c Orange Brown, Brown (334, 377). Mint, Large Even Margins, Extremely Fine "Gems"	47.50
226 ★	8c Olive Green (337). Mint, Large Margins, VF	32.50
227 ★	50c Violet (341). Fine	(Photo) 325.00
228 ★	\$1.00 Violet Brown (342). Mint, VF, Choice	(Photo) 475.00
229 ★	\$1.00 Violet Brown (342). Disturbed o.g. from hinge removal, Fine (Photo)	475.00
230 ★	1c-5c 1908 Imperfs. (343-347). VF Set	196.00
231 ★田	1c-5c 1908 Imperfs. (343-347). Blocks, some with h.r., some stamps mint, one 3c with sealed tear, o/w VF Set	784.00

232 ★田	5c Blue, Imperf. (347). Mint Impt. & Pl. No. 4931 Block of Six, VF	(Photo) 900.00
--------	--	----------------

233 ★	5c Blue, Coil (351). Mint Line Pair, VF, with P.F. Certificate Showing Strip of Four From Which This Pair Was Taken (Photo)	800.00
-------	--	--------

234 ★	10c Yellow, Coil (356). Pair, Gorgeous Centering, Extremely Fine except one with tiny thin speck	(Photo) 2,850.00
235 ★	10c Yellow, Coil (356). Pair, VF, Rare	(Photo) 2,850.00

BLUISH PAPERS

236 ★田	1c Green, Bluish (357). Block, B. Pair Mint, Nicely Centered, one with minor natural gum crease, VF	(Photo) 425.00
237 ★	1c Green, 2c Carmine, Bluish (357, 358). Former Mint, perfs. close at B., Fine Lot	195.00
238 ★田	2c Carmine, Bluish (358). Block, Three Mint, Well-centered, one with slightly disturbed o.g., VF, Choice, with P.F. Certificate (Photo)	450.00
239 ★	3c Deep Violet, Bluish (359). Perfs. Just touch at L., Scarce ... (Photo)	1,400.00
240 ★	6c Red Orange, Bluish (362). Disturbed o.g. from hinge removal, R. perfs. in, Scarce	875.00

241 ★	10c Yellow, Bluish (364). Exceptionally Well-centered, slightly disturbed o.g., Extremely Fine	(Photo) 900.00
242 ★	13c Blue Green, Bluish (365). Beautifully Centered, h.r., VF, Choice, with P.F. Certificate	(Photo) 2,000.00
243 ★	15c Pale Ultramarine, Bluish (366). Fresh, minor h.r., VF (Photo)	850.00
244 ★	15c Pale Ultramarine, Bluish (366). VF, with P.F. Certificate (Photo)	850.00

1909 COMMEMORATIVES — PANAMA-PACIFIC ISSUE

245 ★田	2c Lincoln, Imperf. (368). T. Impt., Small Solid Star & Pl. No. 4984 Block of Eight, Fresh, small h.r., Impt. & Pl. No. slight natural "dry" print, VF	550.00
246 ★	2c 1909 Imperf. Commems (368, 373). Horiz. Pairs, one of Latter Mint, Extremely Fine	320.00

247 ★	2c Lincoln, Bluish (369). Mint, Extremely Fine "Gem" (Photo)	325.00
248 ★	2c Alaska-Yukon, Imperf. (371). Mint R. Margin Horiz. Pair, Extremely Fine (Photo)	150.00
249 ★	2c Alaska-Yukon, Imperf. (371). Mint R. Margin Horiz. Pair, Extremely Fine	150.00
250 ★田	2c Alaska-Yukon, Imperf. (371). Mint Block, Huge Margins, Extremely Fine, Choice.....	300.00
251 ★田	2c Alaska-Yukon, Imperf. (371). Block, h.r., one Mint, trifle heavy natural wrinkles, o/w VF.....	300.00
252 ★田	2c Alaska-Yukon, Imperf. (371). Cpl. Matched Set of Arrow & Center Line Blocks, H.r., natural paper wrinkles, couple with small slight thin spots, o/w VF Set.....	1,565.00
253 ★田	2c Alaska-Yukon, Imperf. (371). R. Impt. & Pl. No. 5249 Block of Six, Two Mint, B. pair with slight paper adherence on gum, VF	625.00
254 ★田	2c Hudson-Fulton, Imperf. (373). Mint Center Line Block, few small natural gum skips, VF.....	450.00
255 ★	8c Olive Green (380). Mint, Large Margins, VF..... (Photo)	115.00
256 ★	1c Green, Coil (385). Mint Line Pair, VF..... (Photo)	200.00
257 ★	1c Green, Coil (385). Line Strip of Four, Fine.....	250.00
258	3c Deep Violet, "Orangeburg" Coil (389). Used, Fine Example of This Rarity (Photo)	3,750.00
259 ★	1c Green 1910-14 Coils (392, 443). Line Pairs, Extremely Fine	205.00
260 ★	3c Deep Violet, Coil (394). Pair, VF..... (Photo)	130.00
261 ★田	1c Pan-Pacific (397). Mint T. Pl. No. 6148 Block of Six, one with couple minor natural gum skips, VF, Choice	250.00
262 ★	1c-5c Pan-Pacific (397-399). Mint, Beautifully Centered, Extremely Fine, Choice	(Photo Ex) 162.50
263 ★田	2c Pan-Pacific (398). Mint T. Margin Block, F-VF.....	102.50
264 ★田	5c Pan-Pacific (399). Block, Nice Margins, Three Mint, One Barely Hinged, VF, Choice..... (Photo)	465.00
265 ★	5c Pan-Pacific, Perf. 10 (403). Mint, VF..... (Photo)	275.00
266 ★	5c Pan-Pacific, Perf. 10 (403). Reperfed, Fine Appearance.....	275.00

267 ★田	5c Pan-Pacific, Perf. 10 (403). Block, One Mint, two h.r., Beautifully Centered, light natural bends, Extremely Fine	(Photo) 1,150.00
268 ★	10c Pan-Pacific, Perf. 10 (404). Slight gum disturbance from hinge removal, Beautifully centered, Extremely Fine ... (Photo)	1,850.00

269 ★	10c Pan-Pacific, Perf. 10 (404). Small h.r., single barely nibbed perf., o/w Fine	(Photo) 1,850.00
-------	---	------------------

270 ★田	10c Pan-Pacific, Perf. 10 (404). Block with T. Pl. No. 6135, B. Pair Mint, selvedge sensibly hinge reinforced, Fine	(Photo) 7,750.00
--------	---	------------------

1912-1920 ISSUES

271 ★田	2c Carmine (406). Mint T. Pl. No. 6895 Block of Six, Pl. No. trifle underinked, Beautifully Centered, Extremely Fine.....	140.00
272 ★	9c Salmon Red (415). Mint, Large Margins, Extremely Fine, Choice	(Photo) 45.00
273 ★	20c Ultramarine (419). Mint, Rich Color, VF..... (Photo)	175.00
274 ★	30c Orange Red (420). Mint, Brilliant Rich Color, Well-centered, Extremely Fine, with P.F. Certificate..... (Photo)	135.00
275 ★	30c Orange Red (420). Never Hinged, couple small natural gum skips, Brilliant Color, VF..... (Photo)	135.00



1



2



4



5



6



3



7



8



13



14



15



17



18EX



19



20



22



23



24



26



25



27



28



29



32



33



34



35



36



37



38



39



40



45



46



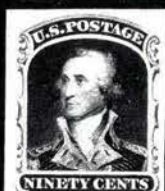
47



48



49



51 EX



52



53



54



55



56



57



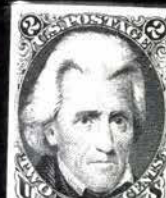
58



59



60



63 EX



66



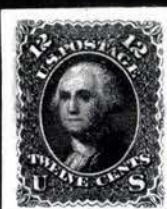
67



68



70



69



71



72



75



80



82



84



87



73



85



89



90



91



92



93



94



95



96



97



99



100



101



102



103



104



105



106



107



108



109



110



111



112



113



114



115



116



117



121



122



125



129



130



132



135



136 EX



138 EX



143



142



146



147



148



150



151



152



153



154



155



156



157



158



159



160



161



162



163



164



165



166



167



168



169



171



174



175



176



177



178



182



183



185



186



188



184

634



191



192



193



194



195



196



197



201



204



208



209



210



211



213



222



217



219



223



227



228



229



234



233



235



239



241



242





243



244



247



248



255



258



260



262 EX



256



265



268



269



272



290 EX



273



274



275



276



277



278



280



282



284



285



292



293



295



296



301



302



304



305



306



307



308



309



310



313



315



316



317



335



351



318



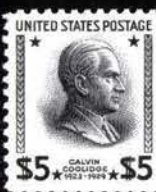
319



333



366



368 EX



379



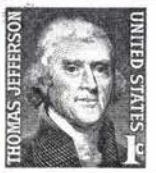
380



388



382



383



393



394



401



402



403



407



408



413



414



415



417



418



419



420



421



424



425



426



428



432



429



438



439



440



447



448



455



443



446

5863
450

456



449



451

7643
452

457



462EX

463EX



595



483



536



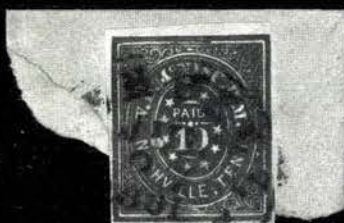
485



486



569



573



574



599



600



601



611



65



79



83



86



88



119



126



133



140



141



202



144



145



205



189



236



232

6931



203



216



270



311



321



453



320



334



238



264



267



328



281



303



352



332



298



354EX



359



367



361



374



384



375



376



377



385



389



390



391



396



395



404



397



409



433



480



406



434



484



131980

488



11

John



9

Mrs. H. H. H. H. H.

Private

Home
William M. Meredith
Washington
D.C.

10



16

G. Swan Esq
President

12

Miss Augusta



Magnolia Gardens Charleston, S. C.

HANG-COLORED

POS

via Friedrichshafen

AND GRAF ZEPPELIN

LO LAKHUR

MONROE

U.S. AIR MAIL

JUN 1 1306M 1920

FLIGHT

CHARLESTON, S.C.



CHARLESTON, S.C.

UNIVERSAL POSTAL UNION

Union postale Universelle

416

UNITED STATES - AMERICA

(Etats-Unis - Amérique)

EUROPE

U.S. AIR MAIL

U.S. AIR MAIL

U.S. AIR MAIL

U.S. AIR MAIL

U.S. AIR MAIL

U.S. AIR MAIL

U.S. AIR MAIL

U.S. AIR MAIL

U.S. AIR MAIL

U.S. AIR MAIL

U.S. AIR MAIL

U.S. AIR MAIL

U.S. AIR MAIL

U.S. AIR MAIL

U.S. AIR MAIL

U.S. AIR MAIL

U.S. AIR MAIL

U.S. AIR MAIL

U.S. AIR MAIL

U.S. AIR MAIL

U.S. AIR MAIL

U.S. AIR MAIL

U.S. AIR MAIL

U.S. AIR MAIL

U.S. AIR MAIL

U.S. AIR MAIL

U.S. AIR MAIL

U.S. AIR MAIL

U.S. AIR MAIL

U.S. AIR MAIL

U.S. AIR MAIL

U.S. AIR MAIL

U.S. AIR MAIL

U.S. AIR MAIL

U.S. AIR MAIL

ADAMS' EXPRESS COMPANY,

From *Guadalupe*, Texas.

511



THREE CENT

423



THREE CENT

THREE CENT

THREE CENT

THREE CENT

THREE CENT

THREE CENT

THREE CENT

THREE CENT

THREE CENT

THREE CENT

THREE CENT

THREE CENT

THREE CENT

THREE CENT

THREE CENT

THREE CENT

THREE CENT

THREE CENT

THREE CENT

THREE CENT

THREE CENT

THREE CENT

THREE CENT

THREE CENT

THREE CENT



515

PAID 5

Miss Walter R. Poller

521

Herman Gieseler
care of E. W. Gieseler & Co.
Rocky
Harris County
Texas

519

PAID 10c

Gen. R. A. McNeil
Comd'g Dept of Texas
San Antonio
Texas

516

The John C. Scott
Capt. Dickies Horn (1st)
Colonel Regt.
Sabine Pass
Jefferson Co. Texas

PAID

James G. Esq. R. J. C.



525

Miss. Hattie R. Polley
Luther

PAID 40

522

iam
mis, GROWLEY
FEB 13
TEX



531

Gay Esq
H. H. Hinton

PAID

528



Spent I Smith, Esq

H. P. B.

532



X. S. Campbell

Mr. Elliott
please look at this
and give me an
S. M. L.
for 25.00



534



PAID 5

533



Esq.
Ray

PAID 10

537



Col. W. S. Blair



539

John Y. Rockwood

M. C. Blair

PAID

540

James H. Blair



543



36

P. Hart Blair & Co
PAID Montgomery
Tex.

544

Ruskin, Esq
Campstead
Texas



545

Capt. G. B. Lane

Rev. H. L. Republic of Texas
Feb. 21 1861



548

Allen Conington Esq
Washington
D.C.

Sam. H. Blair
Capt. G. B. Lane
Fort Masso
Via Frederick

Mr. Blair with others
Unrecd

Box 70

551



Joseph H. Polley Esq
Sutherland Springs

550



Wm. Mary B. Polley
Sutherland Springs
Missouri Co

553

Paid 5

F. Moreau

Brampfel

ASS

558

PAID

To the Clerk of the County Court
of Brampfel

559



D. E. Portland Esq
Luanan
Cathoun

PAID 5

560

PAID 5



564



W. G. Theurer Mrs Porter Perry

565

566



Mrs L. M. Dugan

567



Mrs. Anna T. Perry
Sutherland Springs
Missouri Co



568



Elizabeth Somers
Riceville
Sutherland Springs Co
Mo



570

Thos M

571

*Mrs Geo. A. Truchess
Care Geo. A. Truchess Esq*

572

*Prof. H. H. H.
W. B. Beck Esq*

575

*Doct Allen Young**Charge to Box 176*

577

Miss Maggie Wickles

576

*Jemison Esq.
Sterling*

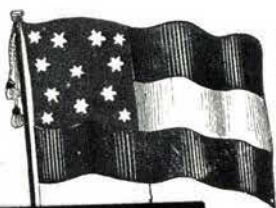
579

*County Clerk of**San**Recd
Sept 3 1864*

578

P. Otterhouse Esq

580

Joseph H

582

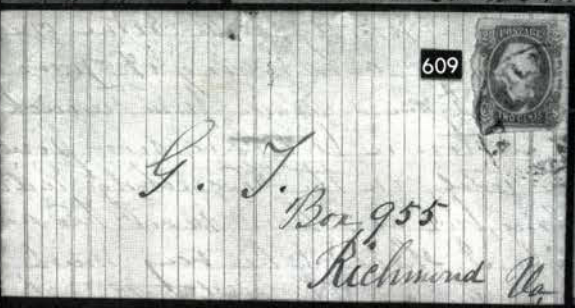
Under this flag and DAVIS' command,
We battle to be free!
And till the foe doth leave our land,
With firm resolve each one will stand,
To strike to death for Dixie!
And each Southern swears with uplift hand,
No foe shall conquer Dixie!

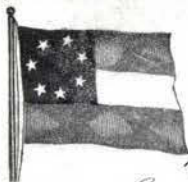
*B. F. Little Esq
Little's Mills
North Carolina*

584

*O. C. Salmon
Bayou Chicot
St Landry
La*

Dr. To Taxes for
+
adoption and 50 cents on each copy.
Across at 1 per cent.
J. C. ARMON, S. R. D.
St. Louis, Mo.
616





INCHES
MAY
25
Ben

583



612

Confederate States of
 America
 John Christian
 Williams
 Surgeon
 W. L. Graham Co. 15th S. Corp.

your daughter
Geo. Buckley

619



I Mrs William Graham
 Camp Ridge T.
 Ch. S. I.

623



Mr William Thayer
Mattoys Depot
Aurora, Ill.



620

Am. D. P. M. Bond
Am. D. P. M. Bond



625



Encls
Esqr
County Court House
Wm

626

PAID 5

Rev L J Purdy

630



624



TEAM-SHIP

627

Wm Hargt Armstrong
Fairfield district
Washburn P.O.

628

Martha A. Higgins
Prince Edward County
Virginia



629



Emma D. Thomas
Dixie P.O.
Fleetsville Co
Virginia

276 ★	30c Orange Red (439). Large Margins, Rich Color, Extremely Fine	
 (Photo)	325.00
277 ★	50c Violet (440). Disturbed o.g. from hinge removal, small thin spot, Fine Appearance	(Photo) 825.00
278 ★	2c Carmine Imperf. Coil (459). Mint Pair, Extremely Fine	
 (Photo)	1,150.00
279 ★	1c-15c 1916 Issue (462-466, 468-475). 11c natural gum skip, F-VF Lot.	888.00
280 ★	5c Carmine, Error (467). Reperfed, VF Appearance	(Photo) 975.00
281 ★田	5c Carmine, Error (467). Mint Horiz. Block of Six, T. Middle Stamp the Error, Fine.	(Photo) 975.00 +
282 ★	\$2.00 Dark Blue (479). Extremely Fine	(Photo) 675.00
283 ★	\$2.00 Dark Blue (479). H.r., few short perfs., o/w Fine	675.00
284 ★	\$5.00 Light Green (480). Mint, Well-centered, Extremely Fine, Choice	(Photo) 575.00
285 ★	\$5.00 Light Green (480). Fresh h.r., natural bend, VF	(Photo) 575.00
286 ★田	3c Violet Imperf., Ty. I (483). Center Line Block, Three Mint, Huge Margins Showing Portions of Adjacent Stamps on Three Sides, Extremely Fine, Choice	105.00
287 ★田	3c Violet Ty. II, Imperf. (484). Cpl. Matched Set of Arrow Blocks & Center Line Block, R. Arrow Block is Ty. I, Two Arrow Blocks Mint, VF Set	324.00
288 ★田	3c Violet Ty. II, Imperf. (484). B. Pl. No. 8371 Block of Six, glazed o.g. from mount, minor natural paper wrinkle, Extremely Fine	175.00
289 ★	1c-10c 1917 Coils (490, 492-497). Mint Pairs, F-VF Lot	220.25
290 ★	1c-\$1.00 1917 Issue (498, 499, 501-504, 506-518). Mint, \$1.00 T. Pl. No. Single, All Well-centered, Large Even Margins, Extremely Fine, Choice "Set"	(Photo Ex) 639.50
291 ★	1c-\$1.00 1917 Issue (498, 499, 510-504, 506-518). Few with h.r., 10c (cat. \$24.00) small thin spot, o/w F-VF "Set", Most VF	639.50
292 ★	2c Deep Rose, Ty. Ia (500). Fresh, Well-centered, slightly disturbed o.g. from hinge removal, VF	(Photo) 300.00
293	2c Deep Rose, Ty. Ia (500). Used, VF	(Photo) 120.00
294 ★	4c-13c 1917 Issue (503, 504, 506-509, 511-513). Fresh, 4c, 6c & 9c Mint, Fine	146.50
295 ★	5c Rose, Error (505). Trifle disturbed o.g. from hinge removal, perfs. close at T. & L.	(Photo) 650.00
296 ★	5c Rose, Error (505). Mint, couple short perfs., centered to T.L., perfs. clear	(Photo) 650.00
297 ★田	5c Rose, Error (505). Mint Horiz. Block of Six, T. Middle Stamp the Error, centered to T.L., perfs. clear	650.00
298 ★田	5c Rose Error (505). Block of Twelve (3x4), Middle Pair the Errors, Both Mint (one with small perf. "dimple"), Very Well-centered, VF	(Photo) 1,550.00
299 ★	30c-\$1.00 1917 Issue (516-518). F-VF	300.00
300 ★	50c Red Violet, \$1.00 Violet Brown (517, 518). Well-centered, former couple tiny "dry print" specks, VF	235.00
301 ★	2c Carmine (519). Mint, VF	(Photo) 200.00
302 ★	2c Carmine (519). Mint, Fine	(Photo) 200.00
303 ★田	2c Carmine (519). L. Margin Block, Three Mint, very slight printing offset on back of other, F-VF, Scarce Block, with P.F. Certificate	(Photo) 825.00
304 ★	\$2.00 Orange Red & Black (523). Choice Margins & Centering, Extremely Fine	(Photo) 1,850.00
305 ★	\$2.00 Orange Red & Black (523). Well-centered, VF	(Photo) 1,850.00

306 ★	\$2.00 Orange Red & Black (523). Small thin spot, VF Appearance..... (Photo)	1,850.00
307 ★	\$2.00 Orange Red & Black (523). Mint, Nice Margins, Fine..... (Photo)	1,850.00
308 ★	\$5.00 Green & Black (524). Mint, Extremely Fine..... (Photo)	725.00
309 ★	\$5.00 Green & Black (524). Extremely Fine..... (Photo)	725.00
310 ★	\$5.00 Deep Green & Black (524). H.r., negligible natural gum wrinkle, VF..... (Photo)	725.00
311 ★田	\$5.00 Deep Green & Black (524). Mint Block, Extremely Fine..... (Photo)	2,950.00

312 ★田	1c Green Offset, Imperf. (531). Cpl. Matched Set of Arrow Blocks & Center Line Block of 16, Couple with h.r., two Arrow Blocks & Center Line Block of Four Mint, VF Set.....	397.00
313 ★	2c Carmine Offset Imperf. Ty. V (533). Mint T. Margin Single, Huge Margins, Extremely Fine, Choice..... (Photo)	325.00
314 ★田	2c Carmine Offset, Imperf. Ty. Va (534). Cpl. Matched Set of Mint Arrow Blocks, VF Set.....	250.00
314A ★田	2c Carmine Offset, Imperf. Ty. VI (534A). Cpl. Matched Set of Arrow & Center Line Blocks, Some with h.r., three stamps with small slight thin spot, VF Appearing Set.....	965.00

315 ★	2c Carmine Offset Imperf., Ty. VII (534B). Large to Huge Margins, light natural wrinkle & trivial minute scuff speck, o/w Extremely Fine..... (Photo)	1,900.00
316	1c Green (544). Precancelled "Saint Louis Missouri", perfs. just in at R., Rare, with P.F. Certificate..... (Photo)	1,500.00

317 ★	1c Green, Rotary (545). Mint Pl. No. 13873 & Star Single, Fine..... (Photo)	165.00
318 ★	\$2.00 Carmine & Black (547). Mint, Large Margins, tiny natural wrinkle, VF..... (Photo)	625.00
319 ★	\$2.00 Carmine & Black (547). Lightly hinged, VF..... (Photo)	625.00

320 ★田	\$2.00 Carmine & Black (547). Mint Block, Fresh, VF. (Photo)	2,600.00
321 ★田	\$2.00 Carmine & Black (547). T. Arrow & Double Pl. No. Block of Eight, few separations in selvedge sensibly hinge reinforced, F-VF, Rare Pl. No. Block..... (Photo)	14,000.00

322 ★田	1c-5c Pilgrims (548-550). Mint Pl. No. Blocks of Six, 1c natural narrow T. selvedge (just touching Pl. No.) & few small natural paper wrinkles, F-VF Set.....	1,220.00
323 ★	2c, 5c Pilgrim (549, 550). Mint, VF.....	90.00

1922 ISSUE TO DATE

324 ★田	3c Violet (555). Mint T. Pl. No. F17924 Block of Six, VF.....	300.00
325 ★田	7c Black, 12c Brown Violet (559, 564). Mint T. Pl. No. Blocks of Six, 7c VF, 12c Extremely Fine.....	205.00
326 ★田	25c Yellow Green (568). Mint T. Pl. No. 17442 Block of Six, VF...	350.00
327 ★田	30c Olive Brown (569). Mint Block, Beautifully Centered, Extremely Fine.....	170.00
328 ★田	\$1.00 Violet Black (571). Mint T. Arrow Block, VF..... (Photo)	350.00
329 ★田	\$1.00 Violet Brown (571). Mint B. Pl. No. 18642 Block of Six, usual natural gum creases, minor selvedge crease well below pl. no., o/w VF..	825.00
330 ★	\$1.00-\$5.00 1922 Issue (571-573). \$1.00 Mint, \$2.00 light crease, \$5.00 few perf. tip gum soaks, o/w Fine Lot.....	885.00
331 ★	\$2.00 Deep Blue (572). Regummed, VF.....	250.00

332	★田	\$2.00 Deep Blue (572). Block, T. Pair Mint, few slight natural paper wrinkles, F-VF	(Photo) 1,000.00
333	★	\$5.00 Carmine & Blue (573). Well-centered, VF, Choice....	(Photo) 550.00
334	★田	\$5.00 Carmine & Blue (573). Center Line Block, B. Pair Mint, VF, Choice	(Photo) 2,350.00
335	★	2c Carmine Coil, Ty. II (599A). Mint Pair, VF	(Photo) 340.00
336	★田	2c Harding, Imperf. (611). Cpl. Matched Set of Arrow Blocks, few stamps Mint, one block with natural paper wrinkle, VF Set	330.00
337	★田	2c Harding Imperf. (611). B. Pl. No. 15019 Block of Six, VF	210.00
338	★田	2c Harding Rotary (612). T.L. Pl. No. 14867 Block, Much Better than Usual Centering, without gum, slight thin spots, F-VF Appearance.	450.00
339	★田	1c-5c Huguenot-Walloons (614-616). Blocks, F-VF Set	356.00
340	★田	5c Huguenot-Walloon (616). B. Pl. No. 15755 Block of Six, VF	675.00
341	★	1c Lexington-Concord (617). Cpl. Mint Sheet of 50, light natural gum skips, some separations through B. Pl. No. Block, natural narrow selvage at B. into Pl. No. (B. Pl. No. Block cat. as singles), some faint toning along edges & some gum toning, o/w F-VF	454.00
342	★田	1c, 2c Lexington-Concord (617, 618). Mint T. Pl. No. Blocks of Six, Fine	245.00
343	★田	1c-5c Lexington-Concord (617-619). Blocks, 2c Mint & two with bend, 5c h.r. & B. Pair Mint, F-VF	338.00
344	★田	5c Lexington-Concord (619). Mint T. Pl. No. 16805 Block of Six, slightly reduced selvage, F-VF	575.00
345	★田	2c Norse-American (620). Arrow & Double Pl. No. Block of Eight, Six Mint, F-VF	450.00
346	★田	2c Norse Americans (620). Arrow & Double Pl. No. Block of Eight, arrow selvage folded under (as often), some perf. strengthening, o/w VF	450.00
347	★田	17c Block (623). Mint L. Pl. No. 18025 Block of Six, two with minor natural gum skips, Well-centered, VF	275.00
348	★	2c White Plains Souv. Sheet (630). Mint, Well-centered, VF	750.00
349	★	2c White Plains Souv. Sheet (630). Mint, perfs. close to touch on some, others Fine	750.00
350	★田	1½c Yellow Brown Rotary, Imperf. (631). Cpl. Mint Matched Set of Pl. No. 18413 Blocks, Two with minor margin corner flaw, o/w VF Set.	360.00
351	★	2c Carmine, Ty. II (634A). Mint, Well-centered, Extremely Fine	(Photo) 425.00
352	★田	5c Hawaii (648). B.R. Pl. No. 18908 Block, L. perfs. close, three stamps disturbed o.g., o/w Fine	(Photo) 550.00
353	★	1c-10c Kans.-Nebr. Ovpts. (658-679). Cpl. Sets, few Mint, few with h.r., some with small fault, VG-VF Lot	590.00
354	★田	1c-10c Kansas Overprints (658-668). Pl. No. Blocks, All Mint but 9c, some with pencil notations in selvage, minor margin crease in 5c; 8c & 10c tiny perf. flaws, otherwise F-VF Set	(Photo Ex) 3,225.00
355	∞	8c, 9c Kans. Ovpt. (666, 667). Tied on cover by Washington D.C. May 1 1929 First Day pmk., VF	E. VII
356	★	11c-50c 1931 Issue (692-701). Four Mint, 17c (cat. \$7.00) minor corner crease, F-VF Set	200.75
357	★田	15c Gray (696). Mint Block of 15 (3x5), VF	225.00
358	★	50c Lilac (701). Mint Vert. Strip of Three, VF	285.00
359	★田	50c Lilac (701). Mint Block, VF	(Photo) 380.00
360	★田	50c Lilac (701). Mint Vert. Block of Six & Single, VG-F	665.00

361 ★田	50c Red Lilac (701). Mint T.L. Pl. No. 20553 Block , natural gripper crease in selvage, VF (Photo)	500.00
362 ★田	50c Lilac (701). Mint B.R. Pl. No. 20553 Block , natural gripper marks in selvage, F-VF	500.00
363 ★田	½c-10c Bicentennials (704-715). Cpl. Set of Pl. No. Blocks , some with h.r., many stamps Mint, perfs. close to slightly in on a few, others incl. 10c F-VF.....	592.25
364 ★田	10c Bicentennial (715). Mint T.L. Pl. No. 20643 Block , F-VF	200.00
365 ★田	1c-10c Farley Parks (756-765). Pl. No. Blocks , One 7c small natural inclusion, VF Set	489.50
366 ★	1½c Presidential, Horiz. Pair Imperf. Betw. (805b). VF ... (Photo)	200.00

367 ★田	\$1.00 Presidential, Wmk. "USIR" (832b). Block , trifle shiny o.g. from mount, Fine, with P.F. Certificate..... (Photo)	1,500.00
--------	--	----------

368 ★	\$1.00-\$5.00 Presidentials (832-834). VF (Photo Ex)	303.00
369 ★	\$1.00-\$5.00 Presidentials (832-834). \$1.00 & \$5.00 Mint (latter few tiny gum skips), Fine	303.00
370 ★田	\$2.00 Presidential (833). Mint L. "Arrow" Block , VF	240.00
371 ★田	\$2.00 Presidential (833). Mint Double Arrow & Double Pl. No. Block (F22120, 22122F) , VF	325.00
372 ★田	\$2.00 Presidential (833). Mint Double Arrow & Double Pl. No. Block, (F22121, 22122F) , VF.....	325.00
373 ★	\$5.00 Presidential (834). T. Margin Pair with Arrow & Double Pl. No., selvage h.r., stamps Mint. VF	450.00

374 ★田	\$5.00 Carmine & Black (834). Mint Center Line Block , VF (Photo)	950.00
375 ★田	\$5.00 Presidential (834). Mint Double Arrow & Double Pl. No. Block (F22167, 22168F) , VF..... (Photo)	1,100.00
376 ★田	\$5.00 Presidential (834). Mint Double Arrow & Double Pl. No. Block (F22166, 22168F) , VF..... (Photo)	1,100.00
377 ★田	\$5.00 Presidential (834). Double Pl. No. Block (F22166, 22169F) , natural gum skips T. pair & in selvage, tiny separation, VF..... (Photo)	1,100.00

378 ★	1c-3c Defense, Horiz. Pairs, Imperf. Between (899b, 900a, 901a). Two with h.r., VF Set.....	110.00
379 ★	\$5.00 Hamilton (1053). Mint, VF (Photo)	150.00
380 ★	\$5.00 Hamilton (1053). Mint, VF (Photo)	150.00
381 ★	\$5.00 Hamilton (1053). Fine.....	150.00
382 ★	4c Lincoln, Coil, Imperf. (1058a). Mint Pair, VF (Photo)	150.00
383 ★	1c Jefferson, Coil, Imperf. (1299b). Mint Pair, VF (Photo)	150.00

AIR POST ISSUES

384 ★田	6c Orange (C1). Block , Three Mint, one with small natural internal paper wrinkle, VF..... (Photo)	925.00
--------	---	--------

385 ★田	6c Orange (C1). Arrow & Pl. No. 9155 Block of Six , Fresh, Well-centered, h.r., two Mint, trifle heavy natural gum creases, o/w VF..... (Photo)	2,250.00
--------	--	----------

386 ★	6c Orange, 16c Green (C1, C2). Former Mint, F-VF	500.00
387 ★	6c Orange, 24c Carmine Rose & Blue (C1, C3). Mint, perfs. close on one side, Fine	500.00
388 ★	16c Green (C2). Mint, Extremely Fine. (Photo)	275.00
389 ★田	16c Green (C2). Block with Pl. No., barely hinged, minor natural gum skips, Fine..... (Photo)	1,125.00

390 ★田	16c Green (C2). L. Arrow Block, one with trifle heavy h.r. & tiny natural inclusion, two Mint, VF..... (Photo)	1,150.00
391 ★田	16c Green (C2). Center Line Block, slightly disturbed o.g. from hinge removal, one with small inclusion, separation in B. Horiz. Pair, F-VF..... (Photo)	1,200.00
392 ★	8c Dark Green, 16c Green, Dark Blue (C2, C4, C5). Small h.r., No. C2 T. perfs. just clear, others F-VF.....	625.00
393 ★	24c Carmine Rose & Blue (C3). Immense Even Margins, trifle heavy h.r., Extremely Fine..... (Photo)	275.00
394 ★	24c Carmine Rose & Blue, "Grounded Plane" (C3 var). Mint, perfs. just in at T., natural gum crease, Scarce, signed Sanabria (Photo)	E.IX
395 ★田	24c Carmine Rose & Blue (C3). L. Arrow Block, Three Mint, separation in selvedge, VF..... (Photo)	1,125.00
396 ★田	8c Dark Green (C4). Mint Block, VF..... (Photo)	310.00
397 ★田	8c Dark Green (C4). Mint T. Pl. No. 14825 Block of Six. Fresh, one with small perf. "dimple", F-VF..... (Photo)	1,200.00
398 ★田	8c Dark Green (C4). R. Pl. No. 14825 Block of Six, two lightly hinged, others Mint, perfs. touch at R. on three, others VF.....	1,200.00
399 ★田	8c Dark Green, 16c Dark Blue (C4, C5). Blocks, most stamps Mint, perfs. close, Fine Lot.....	1,435.00
400 ★	8c Dark Green, 24c Carmine (C4, C6). 24c minor h.r., F-VF.....	425.00
401 ★	16c Dark Blue (C5). Mint, single nibbed perf., o/w VF..... (Photo)	275.00
402 ★	16c Dark Blue (C5). Mint, Fine..... (Photo)	275.00
403 ★	16c Dark Blue (C5). Mint, Fine..... (Photo)	275.00
404 ★田	16c Dark Blue (C5). Mint Block, VF..... (Photo)	1,125.00
405 ★田	16c Dark Blue (C5). L. Margin Block with Pl. No., Three Mint, VG...	1,125.00

406 ★田	16c Dark Blue (C5). T. Pl. No. 14829 Block of Six, narrow selvedge (well clear of Pl. No.), Five Mint, F-VF..... (Photo)	6,250.00
--------	--	----------

407 ★	24c Carmine (C6). Mint, VF..... (Photo)	350.00
408 ★	24c Carmine (C6). Mint, Fine..... (Photo)	350.00
409 ★田	24c Carmine (C6). Block, B. Pair Mint, VF..... (Photo)	1,450.00
410 ★田	20c Map (C9). Mint R. Pl.No. 18890 Block of Six, B. pair couple light bends, F-VF.....	325.00
411 ★田	10c Lindbergh (C10). Mint T. Pl. No. F18998 Block of Six, trivial selvedge corner crease, Fine.....	325.00
412 ★田	5c Violet (C12). Mint L. Pl. No. 19941 Block of Six, Well-centered, minor separation, VF.....	400.00
413 ★	65c Graf Zeppelin (C13). Mint, VF..... (Photo)	800.00
414 ★	65c Graf Zeppelin (C13). Well-centered, slightly disturbed o.g. from hinge removal, VF..... (Photo)	800.00
415 ★	65c Graf Zeppelin (C13). Barely hinged, natural bend, Fine (Photo)	800.00
416 ☞	65c Graf Zeppelin (C13). Tied on 2c Postal Card, Magenta & Red Zeppelin Cachets, Appropriate Markings, couple negligible card wrinkles, minor corner crease, o/w Fine..... (Photo)	700.00

417 ★	65c-\$2.60 Graf Zeppelins (C13-C15). Beautifully Centered, \$2.60 lightly hinged, others Mint, 65c light bend, \$1.30 barely nibbed perfs., o/w VF Set..... (Photo)	5,500.00
418 ★	65c-\$2.60 Graf Zeppelins (C13-C15). \$2.60 Mint (single slightly nibbed perf.), \$1.30 faint minor corner crease, o/w F-VF Set..... (Photo)	5,500.00
419 ★	\$1.30 Graf Zeppelin (C14). Mint, tiny natural gum skip, VF..... (Photo)	1,850.00
420 ★	\$1.30 Graf Zeppelin (C14). VF..... (Photo)	1,850.00
421 ★	\$1.30 Graf Zeppelin (C14). Trifle heavy h.r., small paper adherence, Fine..... (Photo)	1,850.00

- 422 ☒ **\$1.30 Graf Zeppelin (C14).** Tied on Picture Post Card to South Carolina, Magenta & Red Zeppelin Cachets, Appropriate markings, couple card pinholes well clear of stamp & markings, slight stamp & card toning, o/w VF..... (Photo) 1,200.00
- 423 ☒ **\$1.30 Graf Zeppelin (C14).** Tied on 1c Postal Card by N.Y. pmk., Magenta First Europe Pan-American Round Flight Zeppelin Cachet, Appropriate Markings, slight toning, rounded corner B.L., o/w VF..... (Photo) 1,200.00

- | | | |
|-------|---|----------|
| 424 ★ | \$2.60 Graf Zeppelin (C15). Mint, Well-centered, tiny natural gum skip & inclusion speck, VF..... (Photo) | 2,850.00 |
| 425 ★ | \$2.60 Graf Zeppelin (C15). Well-centered, negligible corner margin crease, o/w VF..... (Photo) | 2,850.00 |
| 426 ★ | \$2.60 Graf Zeppelin (C15). Well-centered, small thin spot, VF Appearance..... (Photo) | 2,850.00 |
| 427 ☒ | \$2.60 Graf Zeppelin (C15). Tied on Legal Size Cover to Illinois by N.Y. pmk., Magenta First Europe Pan-America Round Flight & Red South American Flight 1930 Zeppelin Cachets, Appropriate Markings, cover trifle reduced at L. & R., o/w VF..... | 1,750.00 |

- 428 ★ **50c Chicago Zeppelin (C18).** Mint, VF..... (Photo) 250.00
- 429 ★ **50c Chicago Zeppelin (C18).** VF..... (Photo) 250.00
- 430 ★ **50c Chicago Zeppelin (C18).** T. Margin Single, barely hinged, VF... 250.00
- 431 ★ **50c Chicago Zeppelin (C18).** Mint, light crease, o/w VF..... 250.00
- 432 ★ **50c Chicago Zeppelin (C18).** Mint Horiz. Pair, VF..... (Photo) 500.00
- 433 ★田 **50c Chicago Zeppelin (C18).** Block with B. Pl. No., VF.... (Photo) 1,000.00
- 434 ★田 **50c Chicago Zeppelin (C18).** Mint T. Margin Block of Six (3x2) with Pl. No., single with couple perf. tip stains, o/w F-VF..... (Photo) 1,500.00
- 435 ☒ **50c Chicago Zeppelin (C18).** Block, Tied on Cover to N.Y. by N.Y. City Oct. 4, 1933 pmk., Magenta & Red Zeppelin Cachets, Appropriate Markings, Fine 650.00
- 436 ☒ **50c Chicago Zeppelin (C18).** Block, Tied on Cover to New Jersey by N.Y. City Oct. 4, 1933 pmk., Magenta & Red Zeppelin Cachets, Appropriate Markings, trivial edge tear & few minor cover toning spots, two stamps minor faults, o/w Fine..... 650.00
- 437 ★田 **30c Trans-Atlantic (C24).** Mint T. Pl. No. 22383 Block of Six, some gum skips, VF..... 375.00

SPECIAL DELIVERY ISSUES

- 438 ★ **10c Blue (E2).** Never hinged, slightly disturbed o.g., Huge Even Margins, Extremely Fine, Choice "Gem", with P.F. Certificate (Photo) 300.00
- 439 ★ **10c Blue (E2).** Fresh, Rich Color, o.g., lightly hinged, VF, Choice (Photo) 300.00
- 440 ★ **10c Blue (E2).** O.g., h.r., Three Large Even Margins, Fine.. (Photo) 300.00
- 441 ★ **10c Blue (E5).** T. Impt. & Pl. No. 257 Strip of Three, barely hinged, Fresh, couple selvage separations (one trivial), R. stamp tiny thin specks, o/w F-VF..... 750.00
- 442 ★ **10c Ultramarine (E6).** T. Pl. No. Single, Stamp Mint, Fresh, Rich Color, VF 100.00
- 443 ★ **10c Violet Blue (E8b).** T. Impt. Single, Barely Hinged, Rich Brilliant Color, Beautiful Centering, Extremely Fine "Gem"..... (Photo) 100.00
- 444 ★ **10c Ultramarine (E8).** H.r., Fine..... 100.00
- 445 ★ **10c Ultramarine (E8, E11).** Pl. No. Singles, Former Top Frame Line Missing, Latter Mint, Beautifully Centered, Rich Colors, VF 133.50

446 ★	10c Ultramarine (E9). Mint B. Margin Single, Well-centered, Extremely Fine, Choice..... (Photo)	235.00
447 ★	10c Ultramarine (E9). Beautifully Centered, Lovely Color, Extremely Fine..... (Photo)	235.00
448 ★	10c Ultramarine (E9). Lightly hinged, Well-centered, VF, Choice..... (Photo)	235.00
449 ★	10c Ultramarine (E9). Gorgeous Color, VF..... (Photo)	235.00
450 ★	10c Pale Ultramarine (E10). Mint B. Pl. No. Single, Jumbo Margins, VF..... (Photo)	400.00
451 ★	10c Blue (E10). Very Fine..... (Photo)	400.00
452 ★	10c Ultramarine (E11). Mint B. Pl. No. Single, Huge Even Margins, Fresh, Extremely Fine "Gem"..... (Photo)	23.50

REGISTRATION - PARCEL POST ISSUES

453 ★田	10c Registration (F1). B. Impt., "A" & Pl. No. 5723 Block of Six, Three Mint, three selvage perfs. hinge rejoined, F-VF, Handsome & Rare Block..... (Photo)	2,100.00
454 ★	30c Brown (J6). B. Margin Impt. Single, o.g., few trivial gum toning specks, o/w VF.....	120.00
455 ★	10c Deep Brown, Special Printing (J12). Part o.g., small translucent spot, corner bit rounded, o/w Fine, Rare.... (Photo)	1,250.00
456 ★	30c Deep Brown, Special Printing (J13). Fresh, small thin spot, Fine appearance, Rare..... (Photo)	1,250.00
457 ★	50c Deep Brown, Special Printing (J14). Virtually Full o.g., tiny trivial gum soak in couple perfs., L. perfs. touch, Rare..... (Photo)	1,250.00
458 ★	1c-10c Bright Claret (J22-J24, J26). Mint, Fresh, F-VF, Choice.....	74.00
459 ★	10c Deep Claret (J35, J49). Latter T. Margin Impt. Single, Both Mint, F-VF Lot.....	80.00
460 ★	2c Rose, 30c Deep Claret (J60, J66). Mint, F-VF Lot.....	95.00
461 ★	½c-\$5.00 1930-56 Postage Dues (J78-J87). Mint Horiz. Pairs, F-VF..	222.50
462 ★	2c-\$2.00 Offices in China (K1-K16). H.r., 12c trifle oxidized, \$1.00 small thin spot, o/w F-VF Set..... (Photo Ex)	2,085.00
463 ★	2c-\$2.00 Offices in China (K1-K16). 30c Mint, others h.r. or slightly disturbed o.g. from hinge removal or tropical gum, 60c single short perf., \$2.00 tiny tear at B., o/w F-VF Set (Photo Ex)	2,085.00
464 ★	1c-\$2.00 Officials (Betw. O1-O126). 91 Virtually All Diff. Stamps, 75 Unused, also incl. One Cut Square, Better Unused Items incl. Nos. O2-O9, O14, O21, O22, O28-O30, O32, O34-O40, O47-O67, O76-O93, Used Highlights incl. Nos. O33 & O68; High Catalogue Value, few with slight defect, o/w General-F-VF, Attractive Lot.....	E.XIII
465 ★	24c, 90c Justice (O32, O34). Fresh, former o.g., Wide Even Margins, natural internal wrinkle & couple nibbed perfs., o/w VF; latter large part o.g., L. perfs. touch.....	560.00
466 P	2c Navy, Deep Green Trial Color Plate Proof on Wove, Perforated (O36TC). Fresh, tiny margin repair, Fine Appearance.....	325.00
467 ★	90c Navy (O45). Fresh, o.g., trivial corner perf. crease, o/w Fine.....	235.00
468 ★	2c-10c 1873-1911 Officials (O49, O88, O121, O126). No. O121 Block, All Mint, VF, Choice.....	62.00

469 ★	7c State (O61). Wide "Jumbo" Margins, Fresh, o.g., Extremely Fine..	42.50
470 ★	90c State (O67). Fresh, o.g., Well-centered, VF & Choice.....	250.00
471 ★	24c Interior, Soft Paper (O103). Fresh, Well-centered, VF, Rare.....	1,000.00
472 ★	\$5.00 Deep Green (WS2). Mint, natural s.e. at L. & B., VF.....	90.00
473 ★	\$60.00 Violet (PR32). Large Part o.g., small faults, o/w Fine.....	600.00
474 ★	60c Pale Rose, Special Printing (PR44). Fine.....	400.00
475 ★	1c-\$1.00 Parcel Post (Q1-Q12). Few h.r., 20c small thin spot & adherence, o/w F-VF Set.....	1,257.50
476 ★	1c-\$1.00 Parcel Post (Q1-Q12). H.r., 3c, 4c (cat. \$41.00) small thin spot, \$1.00 regummed, o/w F-VF Set.....	1,257.50
477 ★	4c, 15c Parcel Post (Q4, Q7). Mint, Well-centered, Extremely Fine..	100.00
478 ★	5c-75c Parcel Post (Q5, Q6, Q11). Mint, 10c Pl. No. Single, 75c Fine, Other VF.....	157.50
479 ★	20c Parcel Post (Q8). B. Pl. No. Single, Stamp Mint, Beautifully Centered, Extremely Fine, Choice.....	165.00
480 ★田	20c Parcel Post (Q8). Mint Block, Beautifully Centered, Extremely Fine "Gem"..... (Photo)	675.00
481	4c Playing Card Ovpt. for Virgin Islands, (RFV2). Ten, 9 on piece, creased as virtually always, F-VF.....	350.00
482	Private Die Proprietary Revenues, 1862-83, 34 Diff. incl. No. RS66, extremely mixed condition (cat. \$260.00).....	—

HUNTING PERMITS

483 ★	\$1.00 1934 Hunting Permit (RW1). H.r., Fine..... (Photo)	275.00
484 ★田	\$1.00 1934 Hunting Permit (RW1). Mint Block, VF. (Photo)	1,150.00
485 ★	\$1.00 1935 Hunting Permit (RW2). Mint, VF..... (Photo)	375.00
486 ★	\$1.00 1935 Hunting Permit (RW2). VF..... (Photo)	375.00
487 ★	\$1.00 1935 Hunting Permit (RW2). Fine.....	375.00
488 ★田	\$1.00 1935 Hunting Permit (RW2). Mint B. Margin Block with Pl. No., minor selvage separation, VF..... (Photo)	1,550.00
489 ★	\$1.00 1936 Hunting Permit (RW3). VF.....	210.00
490 ★	\$1.00 1937 Hunting Permit (RW4). Mint. T. Pl. No. Single, VF.....	135.00
491 ★	\$1.00 1937-38 Hunting Permits (RW4, RW5). VF Lot.....	270.00
492 ★	\$1.00 1937-48 Hunting Permits (RW4, RW7-RW15). No. RW12 natural gum skips, Generally F-VF Lot.....	640.00
493 ★	\$1.00 1939-48 Hunting Permits (RW6, RW9, RW13-RW15). Last Two With Pl. No., F-VF Lot.....	285.00
494 ★	\$1.00-\$3.00 1946-60 Hunting Permits (RW13-RW17, RW21, RW25-RW27). Mint, All But Three with Pl. No., VF Lot.....	405.00
495 ★	\$1.00-\$3.00 1948-60 Hunting Permits (RW15, RW25, RW27). Mint Pl. No. Singles, VF.....	150.00
496 ★	\$2.00 1949-58 Hunting Permits (RW16-RW25). All Mint but three, virtually all Pl. No. Singles, F-VF, Most VF.....	465.00
497 ★	\$2.00 1949-58 Hunting Permits (RW16-RW25). No. RW25 Mint, Three Pl. No. Singles, h.r., VF Lot.....	465.00
498 ★	\$2.00-\$5.00 1956-73 Hunting Permits (RW23-RW26, RW39, RW40). Mint, VF Lot.....	255.00
499 ★	\$2.00-\$7.50 1957-79 Hunting Permits (RW24, RW35-RW40, RW42, RW44-RW46). Mint, virtually all Pl. No. Singles, F-VF, Most VF.....	305.00

500 ★	\$2.00-\$3.00 1958-69 Hunting Permits (RW25, RW35, RW36). Mint, VF.....	155.00
501 ★	\$3.00 1959-61 Hunting Permits (RW26, RW28). Mint Pl. No. Singles, VF Lot.....	155.00
502 ★	\$3.00 1959-62 Hunting Permits (RW26, RW29). Mint, VF.....	175.00
503 ★	\$3.00 1962-64 Hunting Permits (RW29-RW31). Mint Pl. No. Singles, VF Lot.....	320.00

504 ★田	\$3.00 1965 Hunting Permit (RW32). Mint B.R. Pl. No. 168791 Block of 10 (5x2), one with tiny ink mark (not affecting Pl. No. Block, o/w VF.....	1,020.00
--------	---	----------

505 ★	\$3.00 1965-67 Hunting Permits (RW32-RW34). Mint Pl. No. Singles VF Lot.....	285.00
-------	--	--------

506 ★田	\$3.00 1966 Hunting Permit (RW33). Mint T.R. Pl. No. 169063 Block of 10 (5x2), VF.....	1,045.00
507 ★田	\$3.00 1967 Hunting Permit (RW34). Mint Block of 10 (5x2), VF.....	950.00

508 ★田	\$3.00 1968 Hunting Permit (RW35). Mint B.R. Pl. No. 170436 Block of Eight (4x2), F-VF.....	470.00
509 ★田	\$3.00 1969 Hunting Permit (RW36). Mint Block of 10 (5x2), VF...	500.00
510 ★	Boyd's City Express, 1c, 2c, Green Ty. IX (20L14, 20L15). Cpl. Sheets of 100, o.g., slight offset on back, some with partial "dry" print, surface scuffs or small fault, o/w Fine Lot, Very Scarce.....	875.00+

TEXAS COVERS

511 ∞	Brenham, Tex. pmk. on 3c Pink Entire (U58), printed corner card "Adams' Express Company, From Brenham, Texas" reduced slightly at L., Fine..... (Photo)	E.VIII
512 ∞	Galveston, Texas in red oval, light but readable strike, ms. "Paid 40", 1846 Republic of Texas Usage on folded cover to Washington County, Texas, Fine.....	E.VII
513 ∞	"Newton Texas April 22, 1860" ms. pmk. on 6c Red on Buff Entire (U12), slight edge wear, o/w VF.....	E.VII
514 ∞	Palestine, Tex. Clear Olive Green pmk. ties 3c Dull Red (11) on folded cover, Fine.....	E.VI

CONFEDERATE STATES

TEXAS HANDSTAMP "PAIDS"

515 ∞	"Alleton Tex" double circle pmk. & matching "Paid 5" on small cover, Very Scarce pmk., VF, A Lovely Cover..... (Photo)	E.VIII
516 ∞	"Anderson Tex. Nov. 10" pmk., matching bold "Paid" on homemade Cover (Shipping Document) slightly reduced at R., Fine, Military Address..... (Photo)	E.VI
517 ∞	"Austin Tex" mostly clear Double Circle pmk. & matching "Paid" on 1861 Buff Cover to North Carolina, ms. "10" rate, neat docketing at L., without flap, Fine, Scarce pmk.....	E.VI

518	☒	"Bastrop Texas Jul 3" partly clear pmk. on 1862 Folded Letter, matching "Paid" & "10", trivial cover stains, Very Scarce	E.VI
519	☒	"Belleville Tex Sep 5" Black pmk. & matching Bold "PAID" ms. "10 cts" on 1862 Folded Letter, VF, Military Address, Listed in Brown Only	(Photo) E.VII
520	☒	"Belton Tex. Jun 24" mostly Bold pmk., Bold "Paid 10" on Buff Cover to La., some cover edge staining & edge wear, Handsome strikes	E.V
521	☒	"Brenham Tex Jul 26" pmk., matching Arced "Paid 5" on Orange Buff Cover, VF	(Photo) E.VII
522	☒	"Brownsville Tex Feb 13 1861" pmk. & matching "Paid 10" on Yellow Cover, slightly reduced at L., Choice Independent Statehood Usage	(Photo) E.VII
523	☒	"Columbus Tex Nov 30" pmk. & matching oval boxed "Paid" & "10" on buff homemade cover, Fine	E.VI
524	☒	"Comfort Texs May 1863" Bold pmk. & matching Bold Arced "Paid 10" on Folded Letter, sealed cover tear through pmk., Choice Strikes ...	E.VI
525	☒	"Eagle Pass Tex Apr." pmk. & matching "10" on Gray Cover backflap replaced, VF, Unlisted.....	(Photo) E.IX
526	☒	"Eagle Pass Tex Mar 11" partly clear pmk., ms. "Paid 10" inscribed over "Due 10" on Buff Cover, Military return address, ms. on inside of cover "Envelopes must be scarce with you I will send you some when I get a chance", Very Scarce Marking, Unlisted.....	E.VIII
527	☒	"Fairfield Tex Dec 6" ms. pmk. & ms. "Paid 10" on Buff Cover, ms. "Chg Box 28", A VF & Exceptionally Choice Cover.....	E.VI
528	☒	"Fredericksburg Tex Aug 25" mostly clear pmk., matching "Paid" & "5" on Fresh Yellow Cover, VF Cover	(Photo) E.VIII
529	☒	"Galveston Tex" , Double Circle pmk. with matching "Paid" & "10", light strikes on Blue 1864 Cover, Fine	E.VI
530	☒	"Galveston Tex" Double Circle pmk. Buff Cover, Bold "5", return address of "Samuel B. Pier Private, Lone Star Rifles, Galveston Texas" at L., 1862 Usage, Handsome & Interesting Cover	E.VI
531	☒	"Goliad Tex" Rimless pmk., Red "5" in Circle on 1861 Cover, some light water staining at B., very nice strike of this desirable pmk., Unlisted, with original enclosure.....	(Photo) E.VIII
532	☒	"Goliad Tex" Rimless pmk. & matching "5" in circle on 1862 Folded Letter, sharp strikes, ms. docketing at L., VF Cover, Unlisted..	(Photo) E.IX
533	☒	"Goliad Tex Jun 11" Bold pmk. & matching oval boxed "Paid" on Yellow Cover, small portion of cover missing at T.L. corner, o/w VF, Unlisted.....	(Photo) E.VIII
534	☒	"Hallettsville Tex May 27" mostly clear pmk. & matching "Paid" in circle on Homemade Cover, few small cover faults, o/w Fine, Scarce	(Photo) E.VI
535	☒	"Hempstead Tex May 13" Blue pmk. (two strikes) & matching Arced "Paid 5" (hollow "5"), some cover staining, o/w VF.....	E.VI
536		"Hempstead Tex Paid Five/Paid 10" Revalued Red Handstamp, Black "Hempstead Tex Sep 30" pmk. applied over Provisional Handstamp, on 39x43mm "cut square", VF, This Item provided The Original Listing in Dietz	(Photo) E.VI
537	☒	"Independence Tex Apr 26" pmk., matching Bold "Paid" & "10" on forwarded Orange Cover, ms. "Ford"(?) "Forwarded", Label on back "Forwarded by Arthur H. Edey, Agent, Fifth Reg't Texas Volunteers" , some slight cover edge wrinkles, Fine & Unusual Cover	(Photo) E.VIII
538		"Indianola Tex" Double Circle pmk., matching "5" & "Paid" on cover front, faults (not affecting markings), Desirable pmk.	E.IV
539	☒	"Jasper Tex" pmk., Rimless "Paid CTS" & ms. "5" on Yellow Cover, Fine, Very Scarce marking.....	(Photo) E.VII

540	✉	"Lancaster Tex" partly clear pmk. & matching "Paid" in oval box on Orange Cover, incl. original contents, Fine, Unlisted..... (Photo)	E.VIII
541	✉	"Leon Springs May 28 1861" ms. pmk. on orange 1861 Cover, ms. docketing at L., & ms. "free M.A. P.M." , incl. original Enclosure, couple small cover tears at T., o/w VF, Very Scarce pmk.....	E.VI
542	✉	"Lockhart Texas 81 Aug" (Reversed Digits) Beautiful Bold Blue pmk. & matching "5" in circle on large size Buff 1862 Cover, couple small edge nicks at R., o/w VF, Exceptionally Choice Cover.....	E.VII
543	✉	"Marlin Tex" pmk. & matching "5" in circle on small 1861 Cover, incl. original enclosure, Fine..... (Photo)	E.VIII
544	✉	"Millican Paid." Rimless pmk. on Buff Cover, slight filing fold, A VF & Choice Texas Cover (Photo)	E.IX
545	✉	"Owensville Tex Sep 8" pmk. & matching "PAID" on Yellow Cover, some light toning or water staining, o/w VF, Desirable pmk., Unlisted (Photo)	E.VII
546	✉	"Port Lavaca Tex. Jul 19 1861" pmk., Bold "Paid 5" on Cover, tiny edge flaws, filing fold at T., o/w VF	E.VI
547	✉	"Prairie Plains Texas Aug 24/64" ms. pmk. & matching "Paid 10" on Aug. 1864 Buff Cover, VF, Scarce	E.V
548	✉	"Rose Hill Republic of Texas, Feb. 21, 1861," ms. pmk. on 3c Red on Buff Star Die Entrie (U27) to N.C., bold "1861" cancels "stamp" , small cover edge tears, o/w VF, Dietz stated that this was the only cover known to him which included "Republic of Texas" as part of the pmk., Very Rare Independent Statehood Usage, Unique..... (Photo)	E.XI
549	✉	"San Antonio Nov 4" , Green pmk. & Red "Paid 5" in circle on orange 1861 Cover to Fort Mason, Military Address, neat docketing at L., A Fine Texas Cover..... (Photo)	E.VIII
550	✉	"San Antonio Tex Sep 26 1864" mostly Bold pmk. & matching "10" on Folded Letter, Indian Nation related contents, VF Cover .. (Photo)	E.VII
551	✉	"San Antonio Tex Paid May 19" pmk., Red "Paid 5" in Circle on Fresh Orange Cover, VF..... (Photo)	E.VII
552	✉	"San Antonio Tex Apr. 21" , Clear pmk., Bold "Paid 10" Provisional Handstamp on Buff Cover, Obvious Evidence of a Postage Stamp having been affixed over the "Paid 10" handstamp & notation that an 1867 stamp had been removed, thus used after the Civil War, part of flap missing, Fine, A Very Unusual & Intriguing Cover	E.VI
553	✉	"San Marcos Tex" pmk. & ms. "Paid 5" on 1862 Folded Letter, makes mention of Confederate Money, VF, Unlisted (Photo)	E.VIII
554	✉	"San Marcos Sep 11" ms. pmk. & matching "Paid 10" on 1862 Folded Letter, VF, Choice Cover	E.VII
555	✉	"Searsville Texas Oct 17" ms. pmk. & matching "Paid 5" on Buff Cover, cover slightly reduced at L., VF.....	E.VI
556	✉	"Springfield Tex Sept. 12" pmk. & matching "Paid 5" on court house cover, usual ms. docketing associated with this type of cover, Very Scarce pmk., Sept. 1861 Usage	E.VII
557	✉	"Stonewall Tex Nov 14" pmk. & ms. "Paid 10" on Cover to Goliad, some very slight cover aging, still VF	E.VI
558	✉	"Texana Tex May 31" Balloon Type pmk. & matching "Paid" on Homemade Cover (Printed Form), slightly reduced at R., Fine . (Photo)	E.VIII
559	✉	"Victoria Tex. Sep 27" Brownish Red partly clear pmk., matching "Paid" & "5" on 1861 Folded Letter, Scarce pmk., Attractive (Photo)	E.VIII
560	✉	"Victoria Tex. Apr 24" partly clear Red pmk., matching "Paid" & "5" on Bright Yellow Cover, Fine (Photo)	E.VIII

- 561 ☒ **"Victoria Tex Feb 8"**, Red pmk., matching "Paid 10" on Feb. 1862 folded Court House cover, ms. docketing, VF..... **E.VII**
- 562 ☒ **"PAID"** in circle & ms. "5", no pmk. of origin, on Buff Cover to Sutherland Springs Texas, VF, An Unusual Cover **E.V**
- 563 ☒ **Texas Stampless "Pays"**, Five Covers, pmks. incl. "Fort Clark" Rimless "Goliad", San Antonio "Paid 10", "Fairfield" & "Castroville", all covers defective, Scarce Markings..... **E.VIII**

POSTMASTERS' PROVISIONALS

- 564 ☒ **Athens, Ga., 5c Purple (5X1)**. Large to Huge Margins, light Grid cancel, not tied as often, Athens Ga. Paid cancel, on Dec 1861 Folded Letter (lacks left side flap), Extremely Fine, ex-Caspary **(Photo)** 1,150.00
- 565 ☒ **Baton Rouge, La., 5c Green & Carmine (11X2)**. Three Large to Huge Margins incl. T. Sheet Margin, clear to touched at B., tied by "Baton Rouge La. Sep 26, 1861" pmk. on Folded Letter to New Orleans, VF..... **(Photo)** 1,100.00
- 566 ☒ **Baton Rouge, La., 5c Green & Carmine (Crisscross Border) (11X3)**. Margins All Around, some gum staining, tied by Baton Rouge pmk. on Orange Buff Cover to New Orleans, without flap & some cover filing creases, Fine Provisional Rarity, ex-Caspary **(Photo)** 3,500.00

- 567 ☒ **Dalton Ga., 5c Black Handstamp Provisional (20XU1)**. Partial strike, "Dalton Ga. Apr 16 1862" pmk. on Remarkably Fresh Home-made Cover, reduced at R., Fine, with CSA Certificate..... **(Photo)** 425.00

- 568 ☒ **Lynchburg, Va., 5c Blue (52X1)**. Margins All Around except barely in at T.R., lightly tied by Lynchburg, Va. pmk. on trifle reduced cover, minor soiling, Fine & Rare Cover **(Photo)** 2,500.00
- 569 ☒ **Macon, Ga., 5c Black on Yellow Laid Paper (53X6)**. Margins All Around, tied on piece by Macon, Ga. Double Circle, VF, ex-Caspary **(Photo)** 3,250.00
- 570 ☒ **Nashville, Tenn., 5c Carmine (61X2)**. Margins All Around, Rich Color, tied by Blue Nashville Ten. pmk., reduced at B., lacks R. & B. flap, Stamp VF..... **(Photo)** 950.00
- 571 ☒ **Nashville, Tenn., 5c Brick Red (61X3)**. Horiz. Pair, margins to slightly in, tied by Blue Nashville Ten. pmk. on Cover to Mobile Ala., L. stamp closed tear, o/w Fine, Rare **(Photo)** 2,250.00
- 572 ☒ **Nashville, Tenn., 5c Olive Gray (61X4)**. Ample to Huge Margins, couple small tears, tied by Blue Nashville Ten. pmk., matching "Paid" on Small Cover, without Flap, tear on back, Very Attractive Appearance, Rare Shade..... **(Photo)** 950.00
- 573 **Nashville, Tenn., 10c Green (61X6)**. Three Ample to Huge Margins, clear to touched at R, tied on piece by Blue Nashville pmk., Fine & Rare ex-Caspary **(Photo)** 2,500.00

- 574 ★ **New Orleans, La. 2c Red (62X2)**. Margins All Around, VF **(Photo)** 80.00
- 575 ☒ **Raleigh N. C. 5c Red Handstamp Provisional (68XU1)**. Light, partial strike, matching "Paid", Blue "Raleigh N. C. Jul 30 1861" Double Circle, reduced at T. & part of flap missing, Fine..... **(Photo)** 225.00

TEXAS POSTMASTERS' PROVISIONALS

576	✉	Austin Tex Paid 10 Handstamp Provisional (9XU1). Bold Strike (partly off cover), Mostly clear "Austin Tex Sep 6 1862" Double Circle pmk. on Fresh Orange Buff Envelope, Flap repaired & cover expertly "silked, Extremely Fine Appearance (Photo)	1,000.00
577	✉	Galveston Tex. 10 Paid. Handstamp Provisional (98XU3). Partly clear strike with partial Double Circle "Galveston" pmk. on Brown Homemade cover, internal cover tear, ms. "Charge to Box 176" Very Scarce	725.00
578	✉	Houston Txs. Paid 5 Red Handstamp Provisional (40XU1). With "Houston Tex Aug 26 1861" pmk. on Buff Cover, VF Strike, Hand-some Cover Extremely Scarce	450.00
579	✉	Houston Tex Paid 10 Red Handstamp Provisional (40XU2). "Houston Tex Nov 16" pmk. on Buff Cover, ms. docketing at L., Fine, Pretty Cover, Extremely Scarce	550.00
580	✉	San Antonio Tex Paid 5 Handstamp Provisional (76XU2 var). San Antonio Oct. 4 pmk, portion of cover corner repaired, Extremely Scarce Provisional, Scott & Dietz List only 10c Type which catalogs...	850.00

PATRIOTIC COVERS

(U.S. USED IN THE CONFEDERACY, HANDSTAMP PAIDS)

581	✉	Monterey Va. Aug 3, mostly clear pmk., ms. "paid 10" Rate, on Multicolor Tent & Flag Patriotic Cover (Dietz Ty. F-D-1, Impt. 5), Rare, minor aging, VF	E.XIII
582	✉	Wilmington N.C. Paid 5, partly clear pmk. on Multicolor 12 Star Flag Patriotic Cover (Dietz Ty. B-77, Verse 15), flap tear & trivial edge wear, Fine, Rare	E.XIII
583	✉	Winchester Va. May 26 1861, Double Circle pmk., U.S. 3c Red (26), small faults, Grid cancel, on Seven Star Flag Multicolor Patriotic Cover (Dietz Ty. B-4), Stamp tied by unusual docketing "Stars & Bars Virginia Confederate States of Stars & Bars", Rare & Unusual	E.XIII
584	✉	Tangipahoe La. mostly clear pmk., matching "Paid 5" on Canon & Flag Multicolor Patriotic (Dietz Ty. E-A-2, Impt. 16), part of flap torn away, VF	E.XIV
585	✉	Yazoo City Miss. Mostly clear pmk. ties U.S. 3c Red (26) on Jefferson Davis Patriotic Cover (Dietz Ty. G-A-4), Carroll Hoy Corresp., tiny mended cover tear, VF, Handsome, ex-Emerson, Chase, signed Ashbrook, Choice Usage of U.S. Stamp in the Confederacy	E.XIV

GENERAL ISSUES

586	✉	5c Green, St. 1 (1). Large Margins tied by "Richmond Va Apr 12 1862" Town pmk. on Fresh Cover, tiny bit reduced at R., minor gum stain in B. margin of stamp, o/w Extremely Fine	110.00
587	✉	5c Green, St. 1 (1). Margins All Around, Bright Color, Tied by Charleston S.C. Double Circle on Cover to Sumter S.C., couple light trivial cover stain spots, o/w VF	110.00

588	✉	5c Olive Green, St. 1 (1). Margins All Around, tied by Orange Red "Smithfield Va." pmk. on Buff Cover returned to Smithfield, ms. "Garysville Jan'y 4 Paid 5" Forwarding pmk. Fine & Scarce..... (Photo)	190.00
589	✉	5c Olive Green St. A (1). Horiz. Pair, Ample Margins, tied by Tudor Hall Va. pmk. on Yellow Cover to Georgia, Slightly reduced at L., VF..... (Photo)	200.00
590	★	1c-20c General Issues (Betw. 1-14). 55 stamps, 10 Diff. (incl. Shades), four Used, incl. Multiples, also incl. No. 62X2, Mixed Quality, G-VF.....	E.XI
591	★	1c-20c General Issues (1-4, 6, 8-11, 11c, 13, 14). Nos. 1, 2, 9, 10 Used, Most Unused Part or Full o.g., High Catalogue Value, Mixed Quality, G-VF.....	E.XII
592	✉	5c Green, Blue (1 two, 4). Clear to Large Margins, each used on separate covers, latter tied by Town pmk., both of former ms. cancels (not tied), VG-F Lot.....	E.VII
593	✉	2c Green, 10c Blue, Rose (2, 3, 5). 10c Blue Ample to large margins (T.R. corner folded over & then tied by Town Pmk.) on cover; 2c Green, Margins to cut in, on cover (not cancelled); 10c Rose, small margins to cut in, tied by Town pmk. on large piece, VG-F Lot.....	E.XI
594	✉	5c, 10c Blue (2, 4). Two Covers, 5c Tied by "Columbus Miss" pmk., 10c tied by "Mobile Ala." Double Circle, 5c minor wrinkle, flap tear & cover refolded, o/w Fine Lot.....	240.00
595		5c Light Milky Blue, St. 3 (4b). Vert. Pair, clear to Large Margins Vivid Color, tied by Blue grids on small piece, F-VF ex-Weatherly..... (Photo)	200.00
596	✉	5c Blue, St. 2 (4). Ample to Large Margins except just clear at T., tied by Richmond Va., pmk. on Buff Cover, backflap tear, VF... (Photo)	125.00
597	✉	5c Blue, St. 2 (4). Ample Margins, tied by Greensborough N.C. pmks. on Buff Cover, cover tear from opening, Fine.....	125.00
598	✉	5c Blue St. 2 (4). Vert. Pair, Margins All Around, Mostly Large, tied by Va. Town pmk. on Cover to Craines Creek P.O., N. C., T. Stamp corner fault, o/w VF..... (Photo)	265.00
599	★	10c Rose (5). Large Margins, Fresh, o.g., h.r., few trivial surface scuffs, o/w Extremely Fine..... (Photo)	675.00
600	★	10c Rose (5). Margins All Around, Fresh, Bright Color, VF, ex-Caspary (Lot 515)..... (Photo)	675.00
601		10c Dull Rose (5). Huge Margins, partial "(Abing)don(Va.)" Town pmk., some light negligible toning, o/w Extremely Fine..... (Photo)	450.00
602	✉	10c Brown Rose (5). Large to Huge Margins, tied by "Richmond Va. Jul 15 1862" pmk. on Cover to Ga., VF, Scarce Shade..... (Photo)	650.00
603	✉	10c Rose (5). Ample to Large Margins except just touching at L., tied by Winchester Va. pmk. on Cover, pencil address, some slight cover toning, Fine..... (Photo)	650.00
604	✉	10c Rose (5). Ample to Large Margins, tied by partial "Gordonsville Va. Aug 3, 1862" pmk. on cover to Ala., some cover toning spots (affecting stamp), o/w Fine, Scarce..... (Photo)	650.00
605	✉	10c Deep Rose (5). Ample to Large Margins, to tiny bit in, small faults, Rich Color, tied by Richmond Va. pmk. on Fresh Orange Buff Cover to Ga., part of flap missing, Attractive..... (Photo)	E.VIII
606	✉	5c Blue, Shades (6 two, 7 two). Horiz. Pairs, Margins to cut in, each tied by Town pmks. on separate covers (Two Turned covers, other stamps removed), G-F Lot.....	E.V
607	✉	5c Blue Local Print on De La Rue Paper (7 var). Horiz. Pair, on cover, Margins All Around, tied by Bold Unframed Grid (Richmond Va.?) to Louisville Va., closed flap tear, VF, Scarce..... (Photo)	E.VIII

608	✉	5c Blue (7). Horiz. Pair, R. Stamp "Pop-Eye" Variety , L. stamp corner missing, R. stamp filing crease, tied by Fredericksburg pmk. on Homemade Wallpaper Cover to a Mrs. Forbes C/O Mr. Forbes at the "Nitre and Mining Bureau Richmond Va.," Scarce (Photo)	250.00
609	✉	2c Brown Red (8) . Clear to Ample Margins except just touched at B.L., tied by Richmond pmk. on 1864 local folded letter, written on back of portion of Printed Regimental Status Report , Drop Letter Usage, Fine (Photo)	600.00
610	✉	10c Blue "T-E-N" (9) . Huge Margins, diagonal Imm pre-printing paper fold opened when affixed, tied by Wilmington (N.C) pmk. on cover, without part flap, minor cover edge faults, VF, Scarce & Unusual, ex-Weatherly (Photo)	600.00
611		10c Blue, Frame Line (10) . Three Virtually Complete Frame Lines, Large Margin other Side, tied on piece by Mobile Ala. Double Circle, VF, Choice (Photo)	1,250.00
612	✉	10c Blue, Frame Line (10) . Three Large Margins showing full T. & B. frame lines & bit of frame line at L., Clear to barely in at R., tiny margin tear, tied by partial Milledgeville, Ga. pmk. on cover, cover reduced at L., irregularly opened & repaired at R. (affecting portion of pmk.), some cover erosion spots mostly at B., Rare, with C.S.A. Certificate (Photo)	1,750.00
613	★田	10c Blue (11). Three Blocks , Distinctive Shades, one o.g., VF, Attractive Specialist Lot.....	130.00
614	★田	10c Greenish Blue (11c). Block of 18 (9x2) , o.g., few natural wrinkles, VF.....	194.00 +
615	✉	10c Blue (11) . Ample to Large Margins, tied by Blue "Charlotte C.H. Va. Aug. 13" pmk. on Buff Cover, additional strike at L., VF.....	E.V.
616	✉	10c Blue (11) . Large Margins, tied by Harrisonburg Va. pmk. on Tiny Cover Made From A Printed Tax Form , bit irregular at T., VF & Attractive (Printed) (Photo)	E.VI
617	✉	10c Light Greenish Blue (11) . Margins All Around, minute tear, tied by partly readable Eagle Pass Tex. pmk. on Fresh Yellow Buff Cover to San Antonio, cover tiny bit "extended" at R. to improve appearance, Very Scarce (Eagle Pass was one of the Texas-Mexico Border Points where mail "running the Union Blockade" was forwarded into the Confederacy across the Rio Grande)	E.VII
618	✉	10c Blue, Shades (11 five, 12) . Large Margins to cut in, each used on separate cover, Military Grids or ms. Town cancels (not tied), Two "Way" covers, G-F Lot, Scarce.....	E.VII
619	✉	10c Blue (12) . Margins All Around, small faults, tied by "Bristol V. & T.R.R." pmk. on Neat Pinkish Color Cover to Camp Ridge P.O., S. C., Military Return Address, Very Fine, Very Scarce (Photo)	187.50
620	✉	10c Blue (12) . Large to Huge Margins tied by Charleston pmk. on oval printed corner card cover (stamp overlaps) to Columbia S.C., Turned Cover , other usage 10c Blue (11) , Ample to Huge Margins, tied by indistinct Blue pmk., Scarce, ex-Cohen (Photo)	E.VI
621	★田	20c Green (13). Mint Block , T.R. Stamp (Pos. 24) Double Transfer, VF, Choice Block	170.00
622	★田	20c Green (13). Block of 16 , Ample to Huge Margins, few small thin spots. o/w F-VF Multiple	540.00 +
623	✉	20c Green (13) . Clear to Huge Margins except tiny bit into design at B.L., tied by Richmond, Va. pmk. on Cover to Mattoax Depot Va., negligible cover staining, o/w Fine, with C.S.A. Certificate .. (Photo)	600.00
624	✉	20c Green (13) . Three Clear to Large Margins, Ample to in at L., tied by Military Target on cover to Richmond, small cover scuff & without flap, Scarce, with P.F. Certificate (Photo)	600.00

- 625 ☒ **20c Green (13).** Huge Margins three sides, in at T., tied by Town pmk. on Folded Letter, some slight cover erosion at T.R., Attractive Cover (Photo) 600.00
- 626 ☒ **"Greensborough N.C. Sep. 10",** Blue pmk. & matching "Paid" & "5" on Buff Cover, docketing at L., VF, A Lovely Cover, ex-Emerson (Photo) E.VI

BLOCKADE COVER

- | | | |
|-------|---|------|
| 627 ☒ | Charleston S.C. Jan. 19 186(?) , pmk., matching Large Oval "(S)team-Ship" , pencil "12" rate on Small Mourning Envelope , without flap, reduced at T.&L., slight toning, Rare Historical Cover (Photo) | E.XV |
|-------|---|------|

PRISONERS COVERS

- 628 ☒ **Approved/J.A. Patterson/Capt. & Provost Marshal, /Point Lookout, Md.** (Dietz Ty. I), Large Oval on Cover to "Prince Edward Co. House Virginia," U.S. 3c Rose (65), cut in at R., tied by Target, Point Lookout Md. pmk., Richmond Va. & "Due 10" Confederate pmks., Rare Prisoner's Cover (Photo) E.XII
- 629 ☒ **Prisoner's Letter/Aug. 17, 1864/Examined.** (Dietz Ty. IIb), mostly clear strike in Elongated Octagon on Cover to Dixie P.O., Va., faint Point Lookout Md. pmk., Bold Richmond Va. & "10", ms. "By Flag Truce", U.S. 3c Rose (65) has been cut from cover & replaced with another stamp. Scarce Prisoner's Cover (Photo) E.XII
- 630 ☒ **R.I. Barracks./Examined/Prisoner's Letter** (Dietz Ty.II), lightly struck Blue Oval, 3c Rose (65) tied by Rock Island Ill. Double Circle on Fresh Orange Buff Cover to Tenn., Fine, Ex-Judd (Photo) E.VIII

LARGE AND MISCELLANEOUS LOTS

- 631 ☒ **CIVIL WAR PATRIOTIC COVERS**, Approx. 90 Unused Items, Apparently All Diff., Wide Variety of Types & Subjects incl. Females, Satirical, Flags etc., Some multicolor, Generally VF Lot..... E.VIII
- 632 ★ **POSTAGE, COMMEMS & AIRPOST, 1893-1938**, 29 Mostly Diff. Unused Stamps incl. Nos. 236, 237, 240, 368, 550, 616, 619, 834, etc., mostly F-VF Lot E.XI
- 633 ★ **POSTAGE, COMMEMS & AIRPOST, 1901-34**, 39 Virtually All Diff. Unused Stamps, Better Items incl. Nos. 296, 368, 369, 400, etc., mostly F-VF Lot E.X
- 634 ★田 **PLATE NO. BLOCKS, 1923-52**, 14 Items, Six Diff., Nos. 543, 559, 833, 1052, C46, CE1 nine, some with faults, G-F Lot E.X

END OF SALE — THANK YOU

We shall be in Dallas and Houston

March 24th-27th.

Our staff will be available to discuss with you
the disposal of your philatelic properties.

Please write or phone for an appointment.

ARE YOUR STAMPS FOR SALE?

AMERICA'S PREMIER AUCTION HOUSE

OFFERS

**GUARANTEED AUCTION REALIZATION
BACKED WITH MAXIMUM
CASH ADVANCE**

At no charge our auction house will guarantee the minimum net you will receive from sale at auction and immediately advance interest-free cash to you. *The only charge to you is a 10% commission on what your collection realizes at auction.* The buyer also pays a 10% buyers premium.

Minimum collection consignment \$1,000.

When you sell your collection at auction you should and can have **immediate cash**. Enjoy instant cash which can earn immediate interest for you at today's high interest rates.

Sell your collection through the auction house first in prestige, first in dollar volume. Our auctions realized \$16,654,883 in 1981.

FREE APPRAISALS — CALL OR WRITE

**ROBERT A. SIEGEL
AUCTION GALLERIES, INC.**

160 E. 56th Street
New York, N.Y. 10022

Tel.: (212) 753-6421
Established 52 years

UNITED STATES STAMPS
CONFEDERATE AND TEXAS POSTAL HISTORY

INDIVIDUAL REALIZATIONS ARE HAMMER PRICES. GROSS REALIZATION
INCLUDES 10% BUYERS PREMIUM.

1	90	46	350	91	1050	136	2200	181	95	226	50
2	270	47	120	92	1250	137	130	182	210	227	85
3	90	48	300	93	525	138	725	183	80	228	800
4	600	49	180	94	135	139	90	184	425	229	150
5	725	50	160	95	350	140	260	185	150	230	130
6	625	51	450	96	1600	141	625	186	260	231	300
7	400	52	350	97	W/D	142	85	187	190	232	600
8	170	53	1750	98	67½	143	145	188	100	233	675
9	450	54	2800	99	700	144	325	189	1900	234	1700
10	350	55	1750	100	W/D	145	550	190	105	235	2200
11	375	56	210	101	290	146	150	191	1050	236	375
12	270	57	3500	102	3250	147	475	192	300	237	60
13	525	58	800	103	2700	148	220	193	450	238	475
14	450	59	100	104	700	149	260	194	280	239	500
15	475	60	180	105	95	150	240	195	115	240	280
16	2300	61	190	106	290	151	400	196	1300	241	800
17	850	62	60	107	80	152	200	197	800	242	1450
18	240	63	550	108	400	153	450	198	120	243	200
19	90	64	125	109	145	154	400	199	W/D	244	800
20	525	65	350	110	675	155	400	200	105	245	260
21	230	66	210	111	325	156	325	201	3000	246	110
22	260	67	625	112	650	157	425	202	425	247	375
23	575	68	1150	113	600	158	260	203	2600	248	120
24	100	69	220	114	550	159	700	204	170	249	100
25	200	70	210	115	950	160	700	205	550	250	200
26	3250	71	47½	116	2600	161	500	206	160	251	105
27	700	72	105	117	2300	162	280	207	40	252	575
28	180	73	90	118	60	163	850	208	525	253	230
29	240	74	60	119	450	164	550	209	800	254	210
30	145	75	575	120	230	165	425	210	125	255	220
31	200	76	100	121	1450	166	1100	211	525	256	140
32	130	77	80	122	1300	167	325	212	105	257	105
33	5500	78	75	123	145	168	500	213	2600	258	2100
34	375	79	650	124	160	169	425	214	350	259	260
35	210	80	75	125	230	170	210	215	140	260	100
36	80	81	115	126	190	171	500	216	1750	261	190
37	725	82	2300	127	105	172	180	217	1950	262	210
38	190	83	600	128	37½	173	180	218	90	263	130
39	300	84	850	129	125	174	300	219	2900	264	500
40	105	85	1400	130	600	175	1700	220	210	265	375
41	260	86	2100	131	80	176	700	221	W/D	266	50
42	40	87	2000	132	900	177	180	222	375	267	350
43	140	88	750	133	400	178	1000	223	350	268	850
44	52½	89	125	134	125	179	37½	224	110	269	300
45	130	90	375	135	325	180	90	225	135	270	2750

271	140			394	280	457	425	520	90	583	750
272	100	333	250	395	475	458	47½	521	150	584	1200
273	180	334	1050	396	180	459	70	522	200	585	1950
274	210	335	350	397	550	460	55	523	95	586	80
275	180	336	160	398	280	461	57½	524	105	587	80
276	425	337	115	399	260	462	450	525	250	588	115
277	150	338	95	400	105	463	375	526	200	589	110
278	900	339	135	401	135	464	800	527	140	590	180
279	325			402	100	465	140	528	200	591	260
280	200	340	425	403	90	466	75	529	57½	592	140
281	350	341	75	404	650	467	90	530	90	593	160
282	425	342	85	405	170	468	105	531	350	594	105
283	100	343	120	406	2000	469	105	532	350	595	210
284	550	344	170	407	200	470	210	533	140	596	80
285	325	345	180	408	100	471	850	534	80	597	47½
286	80	346	W/D	409	675	472	52½	535	300	598	62½
287	180	347	115	410	105	473	105	536	150	599	425
288	100	348	425	411	90	474	135	537	800	600	600
289	130	349	190	412	170	475	375	538	40	601	375
290	850	350	115	413	425	476	250	539	210	602	400
291	180	351	600	414	260	477	220	540	140	603	105
292	170	352	115	415	300	478	62½	541	210	604	115
293	125	353	130	416	230	479	280	542	105	605	115
294	40	354	1050	417	2200	480	1300	543	140	606	105
295	105	355	70	418	1650	481	90	544	300	607	50
296	80	356	52½	419	750	482	110	545	110	608	115
297	170	357	120	420	600	483	85	546	280	609	475
298	725	358	125	421	350	484	950	547	170	610	475
299	75	359	180	422	280	485	475	548	900	611	1200
300	120	360	120	423	220	486	150	549	240	612	650
301	400	361	240	424	1300	487	115	550	200	613	65
302	190	362	220	425	900	488	1400	551	250	614	70
303	725	363	170	426	900	489	80	552	75	615	45
304	1400	364	100	427	450	490	130	553	160	616	70
305	1150	365	250	428	145	491	110	554	170	617	75
306	300	366	135	429	105	492	190	555	145	618	80
307	1050	367	1150	430	100	492	85	556	90	619	110
308	500	368	150	431	95	494	220	557	170	620	160
309	350	369	135	432	280	495	105	558	170	621	105
310	170	370	110	433	450	496	260	559	160	622	200
311	1400	371	110	434	500	497	145	560	160	623	160
312	220	372	120	435	220	498	170	561	140	624	125
313	260	373	210	436	140	499	190	562	50	625	105
314	170	374	400	437	190	500	100	563	160	626	95
314A	325	375	375	438	425	501	95	564	1700	627	950
315	500	376	375	439	250	502	105	565	1800	628	230
316	575	377	290	440	100	503	210	566	1700	629	180
317	75	378	90	441	325	504	425	567	180	630	70
318	425	379	90	442	115	505	180	568	1400	631	190
319	260	380	90	443	230	506	525	569	2200	632	525
320	1400	381	55	444	37½	507	500	570	550	633	325
321	6750	382	125	445	180	508	210	571	1100	634	130
322	475	383	80	446	325	509	260	572	675	END OF SALE THANK YOU	
323	105	384	375	447	230	510	375	573	1850		
324	290	385	1050	448	170	511	80	574	75	GROSS REALIZATION: \$309,245.75	
325	210	386	125	449	260	512	105	575	130		
326	260	387	95	450	375	513	75	576	525		
327	160	388	260	451	210	514	80	577	450		
328	270	389	425	452	85	515	250	578	750		
329	375	390	400	453	850	516	200	579	500		
330	180	391	400	454	67½	517	75	580	675		
331	80	392	135	455	425	518	100	581	800		
332	500	393	90	456	575	519	290	582	1150		