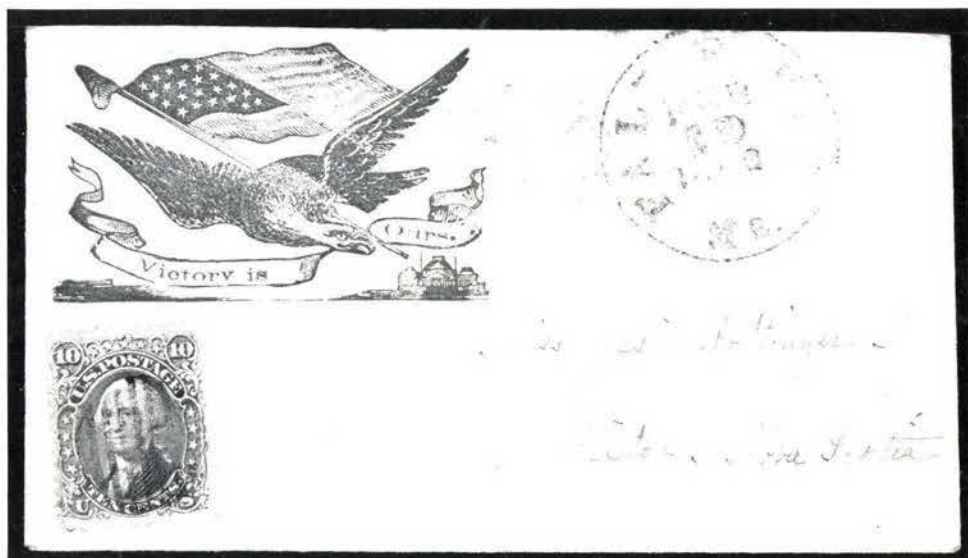


598th SALE

UNITED STATES POSTAL HISTORY

INCLUDING
SPECIALIZED VALENTINE COLLECTION



THE PROPERTY OF VARIOUS OWNERS

SOLD BY THEIR ORDER
AT UNRESERVED PUBLIC AUCTION

WEDNESDAY, JUNE 23rd, 1982 at 10:30 A.M.

AUCTION GALLERIES, INC.
160 E. 56th STREET, NEW YORK, N.Y. 10022

ROBERT A. SIEGEL

CONDITIONS OF SALE

1. The terms of sale are strictly cash on delivery to the highest bidder unless special arrangements have been made prior to the sale. The fact that an item is placed on extension (submitted to an expertising committee for certification) does not relieve the successful bidder from this condition of sale.
2. All bids are per lot as numbered in the catalogue unless otherwise announced by the auctioneer at the time of sale. The right is reserved to group two or more lots; to withdraw any lot or lots from the sale, or to act in behalf of the seller. The auctioneer shall regulate the bidding and in the event of any dispute his decision shall be final.
3. Any lot, the description of which is incorrect is returnable, but only within five days of receipt. All disputed lots must be returned intact as received. **The following lots may not be returned for any reason whatsoever: Lots containing ten or more stamps; Lots from buyers who have had the opportunity to examine them before the sale; Lots described as having defects or faults may not be returned because of any faults. No illustrated lots may be returned because of centering, margins or other factors shown in the illustrations.**
4. Successful bidders, unless they are known to us or supply acceptable references are expected to make payment in full before the lots are delivered. Mail bidders will be notified of the amounts of their purchases. All mail bidders who have established credit with us must make payment within three days after receipt. We reserve the right in our sole and absolute discretion to demand cash payment at the time a lot is knocked down to any bidder who has not previously established credit with us or whose account is in arrears. In the event any buyer refuses to pay cash for any lot at the time it is knocked down to him, the auctioneer reserves the right to re-offer the lot immediately for sale to the highest bidder.
5. If the purchase price has not been paid within the time limit, nor lots taken up within seven days from date of sale they must be resold and any loss arising from such sale will be charged to the defaulter. Any account more than thirty days in arrears is subject to a late payment charge of 1½% per month so long as the account remains in arrears. If the auctioneer, in his discretion, should institute any legal action to secure payment of a delinquent account the defaulting purchaser shall pay all legal expense incurred by the auctioneer and such charges will be added to the amount owed.
6. All lots are sold as genuine but should any lot be proved otherwise by written opinion of any competent, responsible authority acceptable to us, immediate refund of the full purchase price will be made, provided that such claim is made in writing within 14 days from date of sale. If claim is not made within this period, no lots are returnable for any reason at any time. So long as we are notified within the 14 day period that an opinion is being sought the matter will remain open until such opinion is rendered. We will not be responsible for any charges incurred by the buyer for expertization fees and costs unless the opinion states the item is not genuine, in which case we will pay actual costs up to a maximum of \$50.00. In the event an item is proved "not as described" it is returnable for full refund, and the buyer will be paid interest (at the prevailing Treasury Bill Rate) for the time his funds have been on deposit with us during the extension period.
7. Until paid for in full, all lots remain the property of Robert A. Siegel Auction Galleries, Inc. in behalf of the seller.
8. All forwarding charges will be added to the purchase price. The mode of shipment shall be at our option unless we are given specific instructions.
9. Lots may be sent for inspection to buyers known to us upon written application. All such lots must be returned to us by registered mail, adequately insured and within 24 hours after receipt. The applicant assumes all responsibility and will provide insurance against all risks from time of receipt until they are actually received back by us, and is to pay all expenses of postage and insurance. **No lots can be sent for inspection within ten days from date of local viewing. Large lots and collections cannot be sent for inspection.**
10. Agents are responsible for all purchases made in behalf of their clients unless other arrangements are made prior to the sale.
11. The placing of a bid shall constitute acceptance of the foregoing conditions of sale.

ROBERT A. SIEGEL

MALCOLM SIEGEL, Licensed Auctioneers

FOR TABLE OF DESCRIPTIONS SEE PAGE 36

Upon request estimate of value furnished on any lots in this auction.

LOTS ON VIEW


Monday, June 21st; Tuesday, June 22nd;
and Day of Sale until 30 minutes before Sale Time

PUBLIC AUCTION

JUNE 23, 1982 at 10:30 A.M.

UNITED STATES POSTAL HISTORY

VALENTINE COVER COLLECTION

- 1  **Valentine Cover Collection**, 19th Century, Nearly 400 Items incl. 178 Covers with Postal Markings, a few envelopes that were hand carried and 207 Valentines (formal & handwritten), housed in One Elbe "President and Three Godden Oversize Albums (also some unmounted), An Incredible Array of Valentine Types including Heart-Shaped, Embossed, Mirrored, with Cameo Center, Humorous, Handwritten, Handdrawn, Lock of Hair (several), Fancy Die Cuts, Homemade, "Lovers Endless Knot", "Map of Matrimony", "Bank of Love", Receipt for "100 Kisses", About Half of the Envelopes were carried through the mails & include 1c, 2c, 3c, 6, 10c & 20c paid handstamps, Adhesives include Nos. 7 or 9 (Six), 11 (12), **23**, 24 (3), 63 (four), 73 (two), 112, 113 (two), Of Significant Importance are the **Carriers & Locals**, Handstamps incl. the following Companies — Eagle City Post, Boyds (three), Broadway City Express, Boutons, Cummings Express (shows old Railroad Train), Dupey & Schenck, Hanford's Pony Express, New York Penny Post, Stait's Despatch, Stone's City Post, Towle's City Post, U.S. City Despatch Post, Adhesives include Nos. LO2, 4LB8, 6LB5, 8L1, 15L5, 15L14 (five on one cover), 28L3, 136L8 (two on one cover), few other Bloods & Boyds, Exceptional Quality Throughout, An Eye-Catching Collection of Exhibition Stature, Appealing Not Only to the Philatelist but also to the Lover of 19th Century Memorabilia
.....(**Photo Ex**) Estimated Net 20,000.00-30,000.00

Due to the tremendous demand on our phones and staff, Prices Realized will not be available by telephone until 24 hours after the Sale.

AUTOGRAPHS & FREE FRANKS

- | | | | |
|---|---|---|--------|
| 2 | ✉ | James Madison , Autograph Free Frank on Folded Cover to the House of Representatives, ms. "Orange CH Va Mar 16" pmk., some file fold separations neatly rejoined (not affecting Autograph), some slight cover toning, o/w VF.....(Photo) | E.XII |
| 3 | ✉ | James Buchanan Autograph Free Frank as President on Cover to Philadelphia, "Washington Cy D.C. Free Nov 8 1857" pmk., some trivial cover edge toning, Handsome & Very Scarce(Photo) | E.X |
| 4 | ✉ | M. Fillmore Autograph Free Frank on Cover, "Buffalo N.Y. May 30" pmk. & matching "FREE" handstamp, small piece out at T.L. affecting pmk., sealed cover tear at R., partly affecting autograph, Scarce .. | E.V |
| 5 | ✉ | J. A. Garfield MC , Autograph Free Frank on Legal Size Yellow Cover to New York, "Washington D.C. Free Aug 12" pmk., couple light cover file folds, o/w VF..... | E.VIII |
- | | | | |
|---|---|--|--------|
| 6 | ✉ | Th. Jefferson Autograph Free Frank on Folded Cover to Monticello, "Washington City Jan 2" pmk. & matching "FREE" handstamp, small portion of top of cover added (not affecting signature & not detracting from the overall Appearance), expertly "silked" on back, Lovely Free Frank(Photo) | E.XIII |
|---|---|--|--------|
- | | | | |
|---|---|---|-------|
| 7 | ✉ | Lyndon B. Johnson & Lady Bird Johnson Autographs on Cacheted First Day Cover of 5c Kennedy (No. 1246), also incl. " Harry Truman 1:20.60" Autograph on (No. 1132) Plate No. Block, some faults (not affecting Autograph), o/w VF, Scarce Lot..... | E.VII |
|---|---|---|-------|

STAMPLESS COVERS

(INCLUDING TRANS-ATLANTICS)

- | | | | |
|----|---|---|--------|
| 8 | ✉ | Balt - May 29, N York April *1 , Str. Line pmks. on 1794 & 1797 (respectively) Folded Letters, latter ms. " Sh 19 " rate, letter headed " St. John New Brunswick ", former trifle aged, Fine..... | E.VI |
| 9 | ✉ | "Boston 6 Cts" , Red pmk., Matching "PAID", Pencil "6", on Buff Cover to N.H., Original Enclosure Printed Circular Dated April 20, 1855 Regarding Change in Postage Laws Requiring Prepayment on Inland Correspondence, incl. Six Unused Hand Addressed No. U9 Entires for the Convenience of the Sender , VF, Interesting Historical Item..... | E.VIII |
| 10 | ✉ | Leavenworth Kans , partly readable pmk., Extra Bold Shield cancel on 1867 Cover to Ala., cover reduced at L. (also tiny nick), Exceptional Strike, Scarce..... | E.IV |
| 11 | ✉ | Niag. A./Mr, 12. , Brown Str. Line pmk., ms. "25" rate on 1806 Folded Cover, minor cover toning spot, VF.....(Photo) | E.VI |
| 12 | ✉ | "Niagara/Sep 20" , Brown Red Str. Line pmk., ms. "25" rate on 1804 Folded Cover, Fine.....(Photo) | E.VI |
| 13 | ✉ | Phila 5 Paid , Red Octagon on Dec. 1849 Cover to Paris, Blue Philada Pa. pmk., Orange "Colonies & c Act. 13" Box (partial strike), etc., VF, Lovely Scarce Cover | E.V |
| 14 | ✉ | Portland Me. Am. Pkt. 24 Apr 4 1861 , Clear pmk. on Fresh Folded Cover to Portland from England, VF & Choice | E.V |
| 15 | ✉ | Comical Illustrated Envelope , ca. 1853, Overall Printed Illustr. of the "Jardin Public" Showing People in the Park "Having Accidents," etc., trace of Blue pmk. at B.L. (stamp missing), addressed to New Haven, Ct., couple minor toning spots, Nevertheless A Spectacular Cover(Photo) | E.VI |

16	✉	Mexican War Collateral , Folded 15x10¼" Lithographed Print of the Attack of Genls. Quitman & Shields on The Castle of Chapultepec & Surrounding Area, Exciting War Action Scene, "New Orleans, La." pmk. & matching "20", ms. "Mexico", to a Colonel in South Carolina, some overall toning specks, Very Rare	E.VIII
17	✉	Stampless Covers , 29 Items, incl. "Clifton N. Falls House," Oval, New York Clam Shell, Couple Wash D.C. Free Franks, "Derby Ct." Oval, "Baltimore R.R." Str. Line, Four Diff. Niagara Falls, "New York Post Office Advertised" Oval, etc., generally F-VF	E.IX
18	✉	Stampless Covers to Canada , Eight, Nice Variety of Pmks. & Cross Border Marks, one Cover Overall Seedsman & Florist Advert., Fine Lot	E.VII
19	✉	Stampless Ship Covers , 26 Items, incl. ms. "6", "6" in Circle & "6" in Octagon (Blue, Red & Black), Blue "Steam-Boat" in Scroll, "Steamship 10" & "20", Str. Line "Steam Boat", Various "Ship" Handstamps, etc., mostly F-VF Lot	E.IX
20	✉	Trans-Atlantic Stampless Covers , 20, Nice Variety of Markings, incl. Depreciated Currency, also incl. Three From Canada to U.S., one from England to New Brunswick, F-VF Lot	E.XI

1847 ISSUE

20A	✉	5c Dark Brown (1a) . Large to Huge Margins, tied by Red Grid & Matching Boston pmk. on 1848 Folded Cover, VF..... (Photo)	1,100.00
21	✉	5c Pale Brown (1) . Three Large Margins, touched at T., tied by Red Grid, matching Richmond, Va. pmk. on Folded Cover (Jacks B. & R. flaps), slight toning, o/w Fine	E.XI
22	✉	5c Red Brown (1) . Three Ample to Large Margins, clear to tiny bit in at T., small faults, tied by Blue "Philada Pa. 5 cts." pmk. on Small Envelope to N.J., back of cover separated & rejoined, bit reduced at T., Fine Appearance	E.XI
23	✉	5c Red Brown (1) . Large Margins to barely in, large sealed tear, used on folded cover (lacking B. flap), small ms. "X" & Blue numeral "5" cancel (not tied), Blue Chestertown, Md. pmk., Scarce	450.00+ (Photo)
24	✉	5c Dark Brown (1a) . Three Large to Huge Margins, in at R., Rich Color, Fine Impression, tied by Black "Lancaster Pa." pmk. on Mar. 1850 Folded Letter, minor toning, VG	E.X
25	✉	5c Red Brown (1). Horiz. Pair , Ample to Huge margins except just touching at B.R. & T.L., Tied by Red "10" cancel on Folded Letter to Mass., ms. "X" cancel on each, Blue Baltimore, Md. pmk., Orange Red forwarding pmks., Fine	900.00+ (Photo)
26	✉	5c Brown (1). Horiz. Pair , Three Clear Margins, Huge at R. showing bit of next stamp, Rich color, Sharp Clear Impression, tied by Bold Blue "Troy N.Y. May 9" pmk. on 1849 folded letter to Buffalo, light toned spot (slightly eroded) along cover filing fold, o/w Fine.....	2,350.00 (Photo)
27	✉	5c Red Brown (1). Horiz. Pair , Margins Virtually All Around, crease & small tear betw. stamps, Red Grid Cancel, matching "Greenport N.Y." pmk. on Sept. 1850 Envelope to Canada, tied by ms. "4½" Due Mark, few small faults & some toning, mostly at L. cover edge. Scarce.. ..	E.XII (Photo)
28	✉	5c Brown (1). Horiz. Pair , margins to touched except three corners curiously diagonaled before use, tied by Red Square Grids & "New-York" pmk. on Aug. 1848 Envelope to Canada, ms. "4½" due & "Paid to the Lines", part of flap missing, Scarce	E.X

- 29 ☒ **10c Black (2).** Ample to Large Margins except partly touched at B., tiny tear, tied by Red Square Grid, "New-York" pmk. on Folded Cover (without side flaps) to **Kingston, Canada**, ms. "3" (Feriage Charge?), Fine Appearance..... (Photo) 3,250.00
- 30 ☒ **10c Black (2).** Three Large Margins, slightly in at T., tied by Red Square Grid on Nov. 1848 Folded Cover to Canada, Red "New-York" & "Queenston U.C." pmks., ms. "4½" due, Handsome. (Photo) 3,250.00

1851 Issue

- 31 ☒ **1c Blue, Ty. II (7). Horiz. Strip of Three**, Rich Color, Large margins to touched, tied by Blue Charlottesville, Va. pmks. on Cover to Rockingham Co., Va., Fresh, Fine, Handsome..... (Photo) 292.50 +
- 32 ☒ **1c Dark Blue, Ty. II (7).** Ample to Large Margins, Intense Color Typical of Pl. 3, used with average **3c Red (11) Strip of Three** tied by Wisc. Town pmks. on Cover to Canada, 1c also tied by Red Oval "United States 6d," 1c Stamp, VF, Scarce..... (Photo) E.VIII
- 33 ☒ **1c Blue, Ty. II, IV (7, 9).** Ten Stamps on five covers & a front, margins to cut in, couple minor faults, G-F..... E.VIII
- 34 ☒ **1c Blue, Ty. IV (9). Horiz. Strip of Three**, Ample to Large Margins except R. stamp just in at T. R., Fresh, Rich Color, on Small Cover tied by Holliston Ms. pmk., F-VF, Handsome..... (Photo) 265.00
- 35 ☒ **1c Blue, 3c Red (9, 11).** Two 1854 Covers to Canada (Strips of Three of 3c & Single 1c), tied by New-York pmks., one 3c filing crease, o/w F-VF..... E.VIII
- 36 ☒ **3c Orange Brown (10).** One-third "Fragment" on **Cover From Canada to Pennsylvania** tied by Bold Black "10" in Circle (Unpaid), ms. "6", Red "Canada" in Framed Arc, "Montreal Au 9 1851" pmk. also in Red, small part of left flap missing, Handsome Example of Unrecognized Use of U.S. Postage From Canada, Rare..... (Photo) E.VIII
- 37 ☒ **3c Orange Brown (10).** Three Covers, Two Average to Fine with Red Cancels, other Double Transfer, VF, tied by Portland Me. pmk., Attractive Lot..... E.VII
- 38 ☒ **3c Red (11).** Average, on cover tied by Elaborate Geometric cancel in Blue, Matching Gaysville, Vt. pmk., cover translucencies from previous mounts on back, Rare & Desirable Fancy Cancel..... (Photo) E.VII
- 39 ☒ **3c Dull Red (11).** Average, tied by Blue Tenn. pmk. on **Buff Temperance Cover**, "National Temperance Envelope / what Ardent Spirits has done / in ten years in the U.S. / . . . Hon. Edward Everett" Impt. at L., Very Scarce & Desirable Cover..... (Photo) E.VII
- 40 ☒ **3c Red (11).** Four Shield Shape Hotel Corner Card Covers, Two Diff., small ink smear in address of one, Fine Lot..... E.VI
- 41 ☒ **10c Green, Ty. I (13).** Large to Huge Margins, incl. Part Sheet Margin at R., Remarkably Dark Shade, tied by light New Bedford, Mass., pmk. on Sep. 1857 Cover to Nova Scotia, Red "U States" in Arc, stamp has tiny cover margin crease clear of design, o/w Extremely Fine..... (Photo) 1,000.00
- 42 ☒ **10c Green, Ty. I (13).** Margins to tiny bit in, tied by New-York pmk. on 1856 Cover to Canada, Red Two Line "United States Paid 6d", cover trifle reduced at R., Fine..... (Photo) E.X
- 43 ☒ **10c Green, Ty. II (14).** Large to Huge Margins, tied by "Fall River Ms." pmk. on Small Cover to **Nova Scotia**, Red "U States" in Arc, few tiny cover toning spots, stamp has small fault at T. (barely noticeable), o/w Extremely Fine..... (Photo) E.VIII

44	⊠	10c Green, Ty. II (14). Three Large Margins, close to just touching at T., minor corner crease, Tied by Blue "Conway N.H. Apr. 2" & Matching "FREE" Handstamps on Cover to California, minor cover edge split & wear, small cover stain not affecting stamp, still Fine	
	 (Photo)	E.VIII
45	⊠	10c Green, Ty. II (14). Clear to Large Margins, Tied by Blue Baltimore, Md. pmk. on Buff Cover to San Francisco, Fine	E.VIII
46	⊠	10c Green, Ty. II (14). Horiz. Pair, Huge Margins, "Milton Ind. Jan 11" pmk. on 1857 cover to Germany , Red "New York Am Pkt." & French transits, ornate "Merchant Tailor" Corner Card, various back-stamps, blue ms. at T. of cover, VF	(Photo) 550.00 +
47	⊠	10c Green, Ty. II, III (14, 15 two). Three Covers to Canada or Nova Scotia, margins to cut in, Stamps tied by Town pmks. (one in Ultramarine), Diff. Red Cross Border Marks, Scarce	E.VIII
48	⊠	10c Green, Ty. III (15). Three Large Margins, Large to just touching at T., Fresh, Tied by Burlington, Vt., pmk. on 1855 Cover to Canada, Red Framed "U. States" in Arc, cover bit reduced at B., Fine	E.VIII
49	⊠	10c Green, Ty. III (15). Three Huge Margins, Clear at B., Rich Color tied by "Fall River Ms." pmk. on Small Embossed Ladies Cover to Nova Scotia, Red Oval "United States" Cross Border Mark, couple trivial cover flaws, Fine	(Photo) E.VIII
50	⊠	10c Green, Ty. III (15). Ample to Large Margins, Rich Color, tied by "New-York" pmk. on July 1856 Cover to Canada, Two Line "United States/Paid 6" in Red, neat docketing, Fine	E.VIII
51	⊠	10c Green, Ty. IV (16). Recut T. & B., Clear to Large Margins except barely touched partly at T., Stamp has been lifted (reattached to right of pmks.), on cover to Nova Scotia, Fine	(Photo) E.XII
52	⊠	12c Black (17). Ample to Large Margins except just clear at T. (ms. cancel removed), light crease, used with 3c Dull Red (11) , tied by Large Paid in Grid on 1857 cover to France, Red "Boston Jun 17 Paid 12" pmk. & usual series of transits, VF cover	(Photo) E.XI
52A	⊠	12c Black (17). Ample to Large Margins except slightly in at T., Used with 3c Dull Red (11), Both tied by Boston pmks. on Legal Size Cover, Appropriate Docketing at L., Fine	E.VIII
53	⊠	12c Black (17). Horiz. Pair, Intense Color, Margins to slightly in at R., tied by Blue Town pmk. on Orange 1856 Cover to England, matching "PAID" handstamp, Red "19" & London Receiving Marking, Fine	(Photo) 575.00
54	⊠	12c Black (17). Horiz. Pair, margins to slightly in, small corner crease, Used with average 1c Blue (9) & 3c Red (11) tied by Town pmks. on Cover to Italy, Red "New-York Br. Pkt." backstamp, etc., slight cover water stains, Scarce	(Photo) E.X
55	⊠	12c Black (17). Ample Margins to just touching at T.L., Used with Horiz. Strip of Three No. 11 on 3c Nesbitt Entire , All Tied by "Washington D.C. Nov. 19 Free" pmks., on 1854 Cover to Wales, Red Tombstone "Paid in American Liverpool 26 No 54", "19" Due Marking, Unusual Combination	(Photo) 255.00 +
56	⊠	3c Red on White, Entire (U9). Black Grid, "6D" & "X" in Circles & "Utica N.Y." pmks. to Canada, Light Red "U States" in Arc Above Shield, internal reinforcements, Very Scarce Usage	(Photo) E.VI

1857 ISSUE

57	⊠	1c Blue, Ty. II (20). Pos. 25R2?, tied by "Boston Paid" pmk. on Folded Prices Current, Fine	(Photo) 165.00
58	⊠	1c Blue, Ty. V (24). Tied by Blue "Balto Paid" Double Circle on Folded Illustrated Broadside Type Circular for "Japan Millet" to Canada , Bold "1" Handstamp, VF, Scarce & Unusual	(Photo) E.VII

59	1c Blue, Ty. V (24). Tied by Town pmk. on Illustr. Astor Hotel Drop Letter Cover, VF.....	E.V
60	1c Blue, Ty. V (24). Horiz. Strip of Three with R. Sheet Margin, tied by Blackish Blue "Richland (?) Wis." Balloon Type pmks. on Lincoln/Hamlin Campaign Cover , flap embossed "Hon. Abraham Lincoln of Ill. / For President. / Hon. Hannibal Hamlin of Me. / For V. Pres.", opened to show campaign slogans and stamps, Fine & Scarce... (Photo)	E.VIII
61	1c Blue, Ty. V (24). Eight Covers, incl. Six Single Usages, 1c + 3c Rate & 1c + Three 3c to Calif., few faults or toning, generally Fine.	E.VIII
62	1c Blue, Ty. V, 3c Red (24, 26). Three of latter, Rich Colors, tied by Lake City, M.T. Balloon Type pmks. on Fresh 1858 Cover to Canada, Bold Red "United States 6d." Oval, stamps trifle off-center, still VF & Choice Cover..... (Photo)	E.VIII
63	3c Rose (25). Block , few minor perf. flaws, Tied by Chicago May 28 pmks. on Cover to Illinois, cover faults, Very Scarce.....	E.VIII
63A	5c Brick Red (27). Used with 1c Blue Ty. V (24) & 12c Black (36), some perf. tip toning, 1c small nick, tied by Target Cancels on Legal size 1861 Cover which has been reduced at L., New York pmk., 12c shows very wide Imperf. Straddle Pane Margin at L., Cover bit irregular at T., Very Scarce Combination..... (Photo)	E.X
64	10c Green, Ty. I (31). Sheet or Pane Margin at L., tiny margin tear, L. perfs. touch, Rich Color, tied by "Fulton N.Y." pmk., Two Line "United States/Paid 6d." in Red, on Aug. 1859 Cover to Canada, Attractive..... (Photo)	E.IX
65	10c Green, Ty. I (31). Huge R. Sheet Margin, Bright Color, tied by light Fall River Ms. pmk., Red "U States" in Arc Above "C" on Small Cover to Nova Scotia, minor faults, Fine Appearance..... (Photo)	E.VIII
66	10c Green, Ty. II (32). Perfs. scissors separated three sides, few trifle blunt at B., tied by Blue Andover, Mass. pmk. on Cover to Cal., "ADV" Handstamp, Fine..... (Photo)	E.VI
67	10c Green, Ty. II, III (32, 33). Ten Covers, Nine to Canada, Variety of Towns & Cross Border Marks, mixed quality, G-F.....	E.X
68	10c Green, Ty. V (35). Rich Color, tied by Str. Line "U. States" Cross Border Mark on March 1861 Cover to Canada, "Island Pond Vt." pmk., Fine & Handsome..... (Photo)	75.00 +
69	10c Green, Ty. V (35). Tied by " N. York Steamship " pmk. on Cover to Vt., Fine..... (Photo)	110.00
70	10c Green, Ty. V (35). Huge L. Part Impt. Margin , tied by "Fall River Ms. Aug. 1860" pmk. on Small Embossed Ladies Cover to Nova Scotia, Red "United States" Oval, trivial toning at L., o/w Fine..... (Photo)	E.VI
71	10c Green, Ty. V (35). Nine Covers to Canada or Nova Scotia, Variety of Towns, Cross Border Marks, etc., nearly all F-VF.....	E.X
72	12c Black (36). Perfs. trifle in, tied by New-York pmk. on 1858 Cover to Nova Scotia, Red "U States" in Arc Above "C", Fine Cover, Very Scarce..... (Photo)	400.00
73	24c Gray Lilac (37). Tied by Red Grid on 1861 Cover to England, matching "New-York Am. Pkt. 3 Mar 2" pmk., Red "London Paid", some docketing at L., small cover tear & "oily" corner cover edge stain, Scarce Cover..... (Photo)	E.XII
73A	30c Orange (38). Few nibbed perfs., used with 3c Dull Red (26) & 12c Black (36), 30c & 3c both tied by New York Six Bar Grid Duplex on Legal Size Cover, Docketing at L., Almost Fine, Attractive Cover... (Photo)	E.XII

CUPID'S BANKING CO.

Cupid's Banking Company.

89.765

89.765

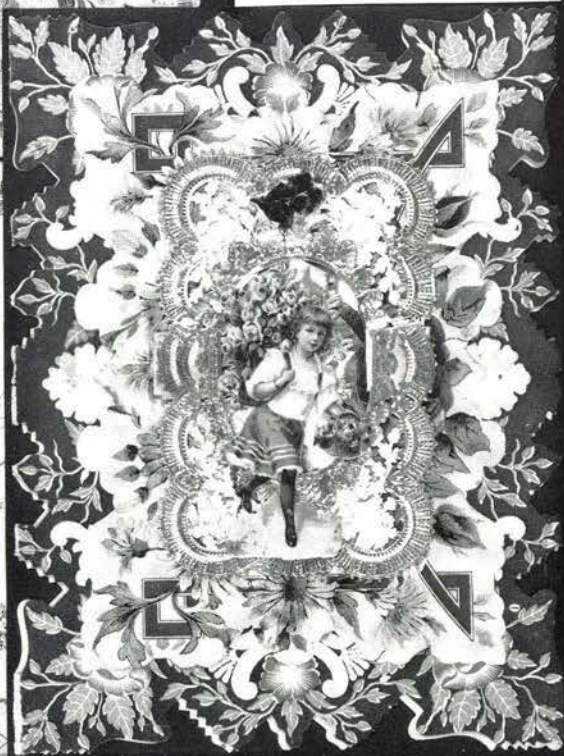
I Promise to pay you on Demand the
entire LOVE of the Applicant who sends this
19 Feb 14th Temple of Hymen 14th Feb 19

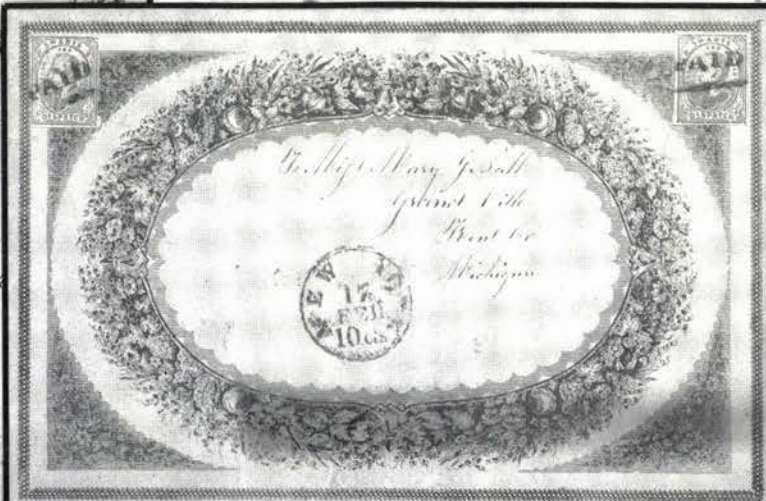
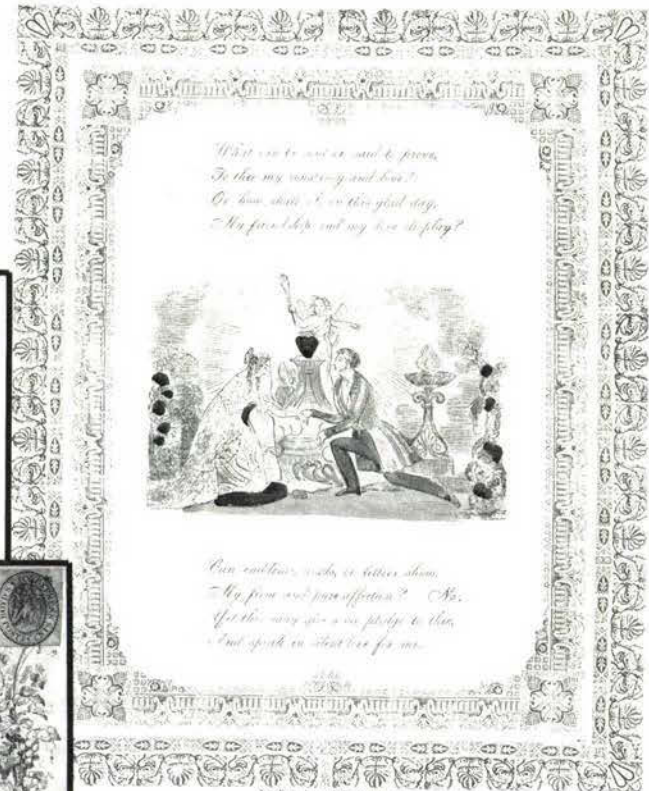
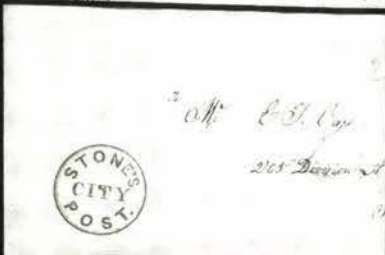
For the Cupid's Banking Company
Cupid.

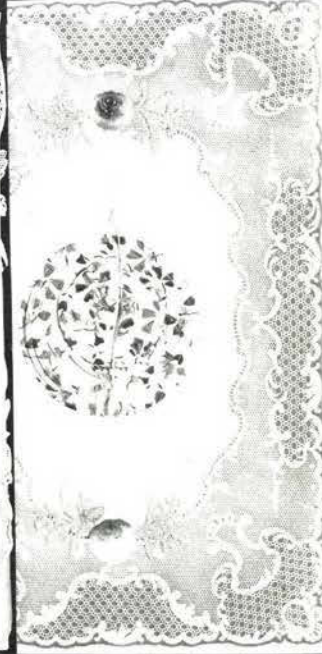
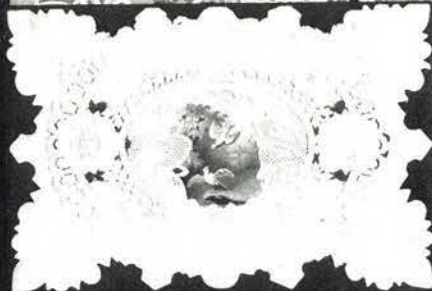
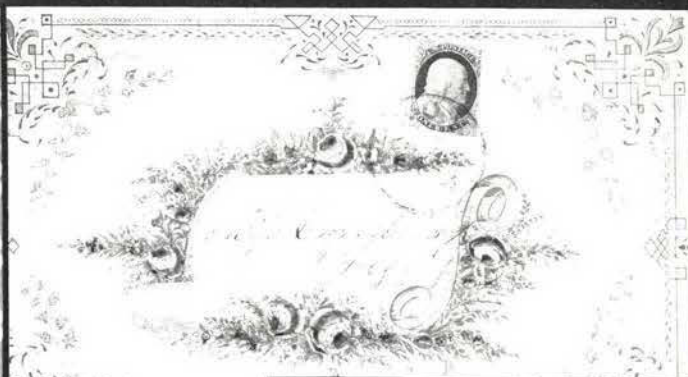
Kisses.



Mrs. M. E. Evers
187 Chestnut St.







Mr. Jefferson 6
 WASHINGTON
 JAN 2
 Mr. James Oldham
 Monticello

Orange Hill 3
 Free James Madison
 General Stephen Van Rensselaer 2

WAG. A. 11
 MR. 12
 25
 Paper from London

3
 John R. Smith
 John L. Smith Esq.

NY 12
 12
 Oliver Stone Esquire



Miss Sophia C. Smith
 Burlington
 New-Lysey- 22

21
 East Egypt

20A
 23

24
 25
 26
 27
 28
 29
 30
 31
 32
 33
 34
 35
 36
 37
 38
 39
 40
 41
 42
 43
 44
 45
 46
 47
 48
 49
 50
 51
 52
 53
 54
 55
 56
 57
 58
 59
 60
 61
 62
 63
 64
 65
 66
 67
 68
 69
 70
 71
 72
 73
 74
 75
 76
 77
 78
 79
 80
 81
 82
 83
 84
 85
 86
 87
 88
 89
 90
 91
 92
 93
 94
 95
 96
 97
 98
 99
 100

26
 Dear Richard R
 Buffalo

27
 28
 29
 30
 31
 32
 33
 34
 35
 36
 37
 38
 39
 40
 41
 42
 43
 44
 45
 46
 47
 48
 49
 50
 51
 52
 53
 54
 55
 56
 57
 58
 59
 60
 61
 62
 63
 64
 65
 66
 67
 68
 69
 70
 71
 72
 73
 74
 75
 76
 77
 78
 79
 80
 81
 82
 83
 84
 85
 86
 87
 88
 89
 90
 91
 92
 93
 94
 95
 96
 97
 98
 99
 100

29
 3
 J. A. Harper Esq. Care
 Kingston
 Canada West

30
 "Hail to the Line"
 Thomas C. Merrill Esq.
 St. Catharines
 Canada West



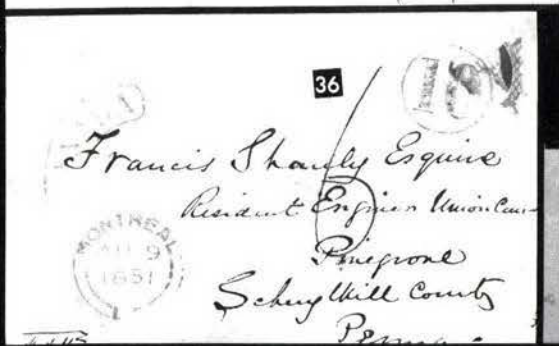
32



31



34



36



38



39



41



43



44



42



49



51



52



46



54



53

England

J. P. Cox Esq
33 Rensselaer
London



55

Dear

Mr. Lizzie Linn
N. S. King and
Worcester



58



W. Stevenson
Guelph

56



*James
all Beloit
my lawyer's part office
Canada West*

57



60



Mary A. Cor
Nichols

62



64



Wm. House
Catharines
Sunderland, Mass.

63A



65



Miss Anna D. Minger

CD₂

1871
 1872
 1873
 1874
 1875
 1876
 1877
 1878
 1879
 1880
 1881
 1882
 1883
 1884
 1885
 1886
 1887
 1888
 1889
 1890
 1891
 1892
 1893
 1894
 1895
 1896
 1897
 1898
 1899
 1900
 1901
 1902
 1903
 1904
 1905
 1906
 1907
 1908
 1909
 1910
 1911
 1912
 1913
 1914
 1915
 1916
 1917
 1918
 1919
 1920
 1921
 1922
 1923
 1924
 1925
 1926
 1927
 1928
 1929
 1930
 1931
 1932
 1933
 1934
 1935
 1936
 1937
 1938
 1939
 1940
 1941
 1942
 1943
 1944
 1945
 1946
 1947
 1948
 1949
 1950
 1951
 1952
 1953
 1954
 1955
 1956
 1957
 1958
 1959
 1960
 1961
 1962
 1963
 1964
 1965
 1966
 1967
 1968
 1969
 1970
 1971
 1972
 1973
 1974
 1975
 1976
 1977
 1978
 1979
 1980
 1981
 1982
 1983
 1984
 1985
 1986
 1987
 1988
 1989
 1990
 1991
 1992
 1993
 1994
 1995
 1996
 1997
 1998
 1999
 2000
 2001
 2002
 2003
 2004
 2005
 2006
 2007
 2008
 2009
 2010
 2011
 2012
 2013
 2014
 2015
 2016
 2017
 2018
 2019
 2020
 2021
 2022
 2023
 2024
 2025
 2026
 2027
 2028
 2029
 2030
 2031
 2032
 2033
 2034
 2035
 2036
 2037
 2038
 2039
 2040
 2041
 2042
 2043
 2044
 2045
 2046
 2047
 2048
 2049
 2050
 2051
 2052
 2053
 2054
 2055
 2056
 2057
 2058
 2059
 2060
 2061
 2062
 2063
 2064
 2065
 2066
 2067
 2068
 2069
 2070
 2071
 2072
 2073
 2074
 2075
 2076
 2077
 2078
 2079
 2080
 2081
 2082
 2083
 2084
 2085
 2086
 2087
 2088
 2089
 2090
 2091
 2092
 2093
 2094
 2095
 2096
 2097
 2098
 2099
 2100
 2101
 2102
 2103
 2104
 2105
 2106
 2107
 2108
 2109
 2110
 2111
 2112
 2113
 2114
 2115
 2116
 2117
 2118
 2119
 2120
 2121
 2122
 2123
 2124
 2125
 2126
 2127
 2128
 2129
 2130
 2131
 2132
 2133
 2134
 2135
 2136
 2137
 2138
 2139
 2140
 2141
 2142
 2143
 2144
 2145
 2146
 2147
 2148
 2149
 2150
 2151
 2152
 2153
 2154
 2155
 2156
 2157
 2158
 2159
 2160
 2161
 2162
 2163
 2164
 2165
 2166
 2167
 2168
 2169
 2170
 2171
 2172
 2173
 2174
 2175
 2176
 2177
 2178
 2179
 2180
 2181
 2182
 2183
 2184
 2185
 2186
 2187
 2188
 2189
 2190
 2191
 2192
 2193
 2194
 2195
 2196
 2197
 2198
 2199
 2200
 2201
 2202
 2203
 2204
 2205
 2206
 2207
 2208
 2209
 2210
 2211
 2212
 2213
 2214
 2215
 2216
 2217
 2218
 2219
 2220
 2221
 2222
 2223
 2224
 2225
 2226
 2227
 2228
 2229
 2230
 2231
 2232
 2233
 2234
 2235
 2236
 2237
 2238
 2239
 2240
 2241
 2242
 2243
 2244
 2245
 2246
 2247
 2248
 2249
 2250
 2251
 2252
 2253
 2254
 2255
 2256
 2257
 2258
 2259
 2260
 2261
 2262
 2263
 2264
 2265
 2266
 2267
 2268
 2269
 2270
 2271
 2272
 2273
 2274
 2275
 2276
 2277
 2278
 2279
 2280
 2281
 2282
 2283
 2284
 2285
 2286
 2287
 2288
 2289
 2290
 2291
 2292
 2293
 2294
 2295
 2296
 2297
 2298
 2299
 2300
 2301
 2302
 2303
 2304
 2305
 2306
 2307
 2308
 2309
 2310
 2311
 2312
 2313
 2314
 2315
 2316
 2317
 2318
 2319
 2320
 2321
 2322
 2323
 2324
 2325

66

70

Miss Jessie Pottinger
Sutton, 5



69

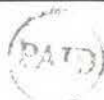
Adrian M. Smith

72

Miss C. A. Hale
in Nov. - 1860
1st Lawrence Hall
New York
Care of

Susan Porter
Annapolis
Nova Scotia





74



73A

*the Clerk of the County Court for
outstanding Cases in the State of Virginia*



78

75

CEE 10

Mr. Henry Withers.



73



*Mr. Lumsden
10 High Park Terrace*

95



4/25

81



Mr. Lumsden

79



*La Patrie
Paris France*

100



*Ramsay, J. Esq.
The Firm of Mackenzie, W & L
- Dundee -
- Scotland -*

96



*Miss Ellen Farrell
No. 5, Elk Street
Albany, N. Y.*

99



101

*Miss Ellen Farrell
Washington City*

102



*France.
Madame A. Lepoint
maison - La Fayette
Chine et oise.*



110



*Mr. Rev. Th. Allou
Missi Apostolique
Avenue de Paris n° 62
Versailles
France*

97



C. B. BIGLOW,
MANUFACTURER OF
LANGSTROTH'S MOVABLE COMB BEE-HIVE,
AND DEALER IN
ITALIAN QUEEN BEES.
Perkinsville, Vt.

Send for Circular.




121

Mr. William Ellis
Massachusetts



111



113

122

Mass
Benjamin F. Jones
Wells
To






119



Mass
Augustine F. Jones
Wells
32


123

Dr. Graefe
London

125

Honorable E. W. Mac



127





130

Maj. L. Downing




132

133

John Schuller
10. Fillmore Place




134

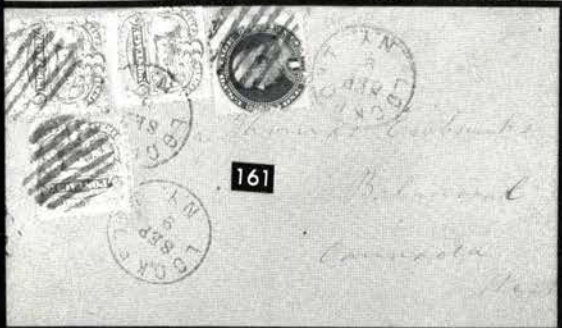
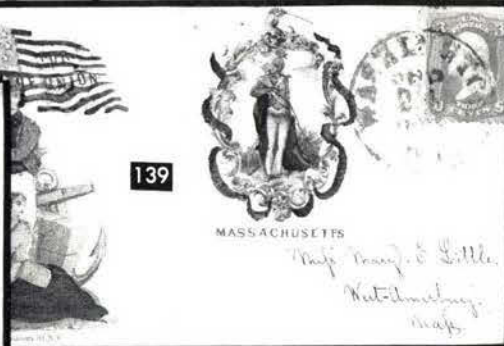
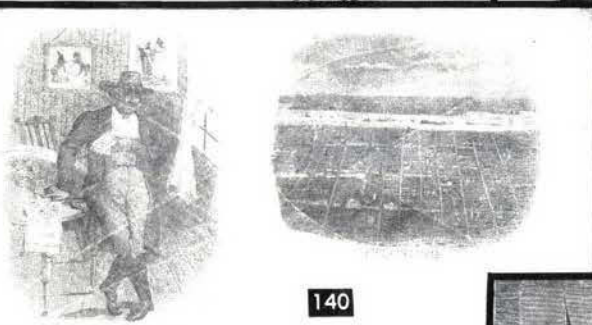
Mrs. Mary C. Little
N. Amesbury
Mass




136

Henry H. Downing
Newport
R.I.





168



166



170

Mr. E. E. ...



169

*Mr. Wilhelm Hecker
of St. Anton fidele
Maine, Germany*



172

*per Steamer
New York*



176

IF NOT CALLED FOR IN TEN DAYS, RETURN TO

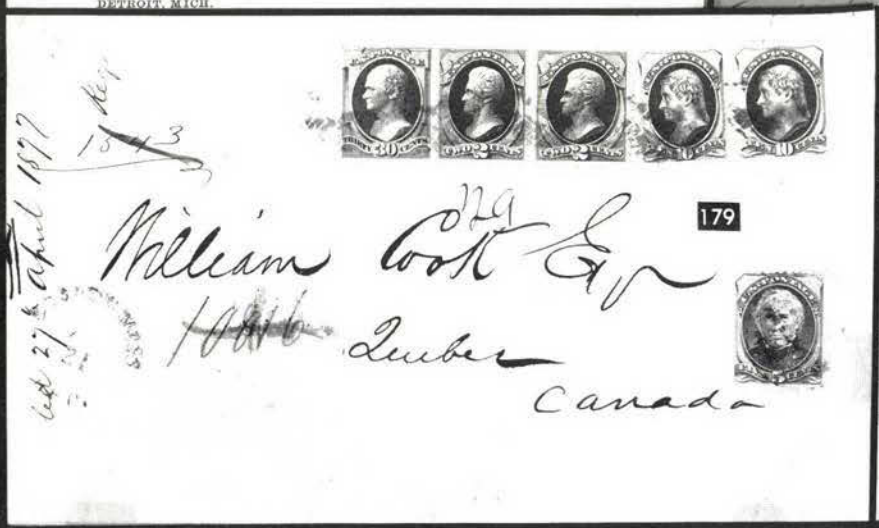


THE COMBINATION GAS MACHINE CO.
DETROIT, MICH.

181



*A. F. W. Ball Esq
Galt
Ontario*



179

Ad 27 April 1897

*William Cook Esq
Lumber
Canada*



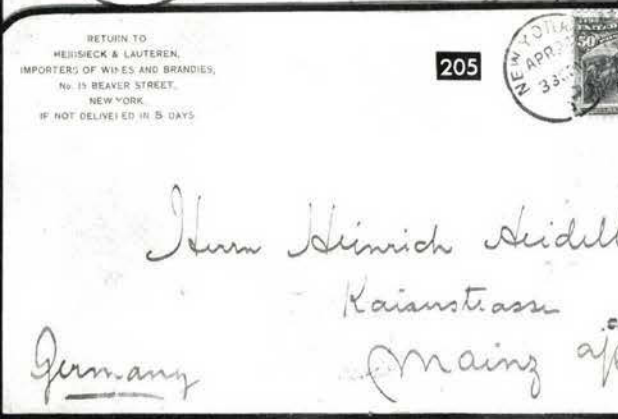
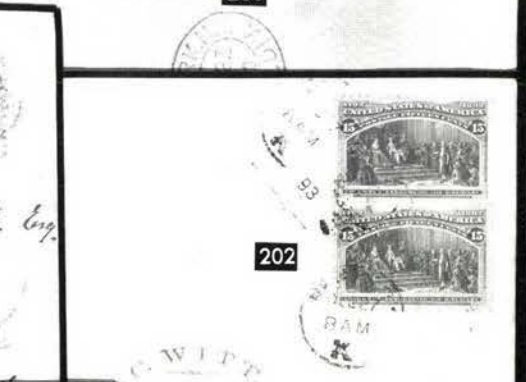
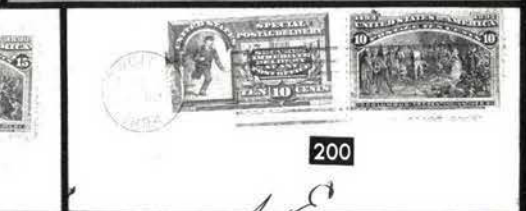
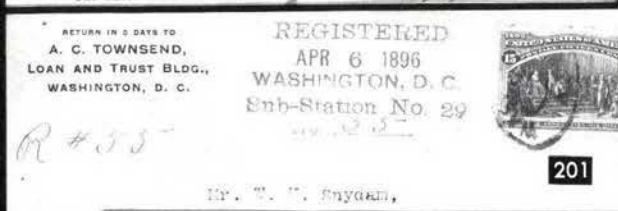
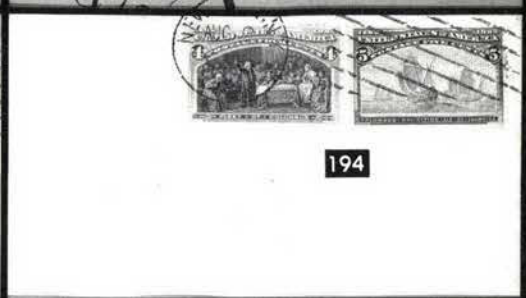
175

*Allen Esq
Canada*

79



183



DELLGARTEN & CO.,
New York.

Per Steamer "

UMBERIA
" VIA ENGLAND.

REGISTERED.

No.

208



207

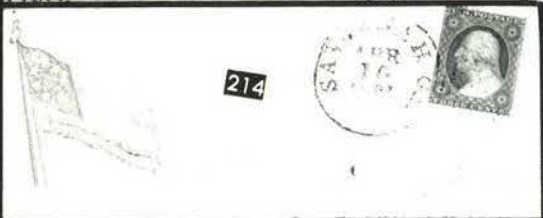
Collected
3331 California

der Neustadt,

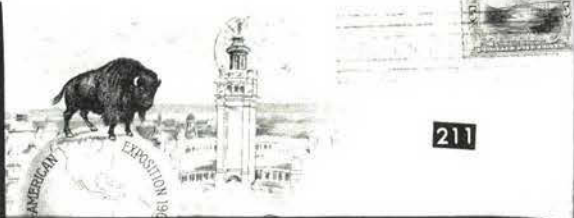
210



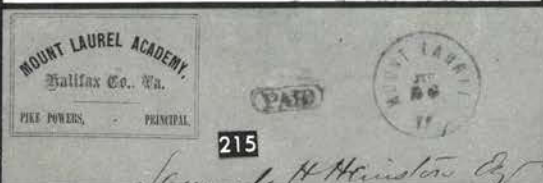
Dr C B Plouffe
Huey Lynn



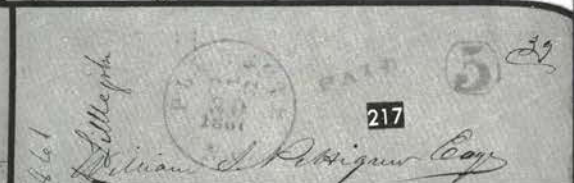
214



211



215



217



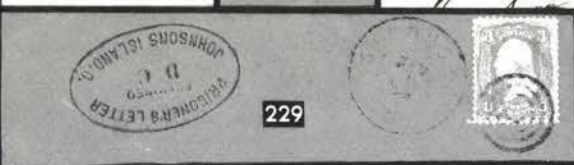
216



218



219



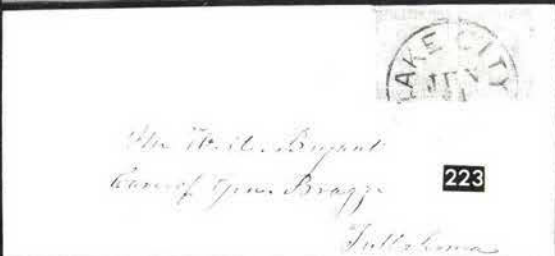
229



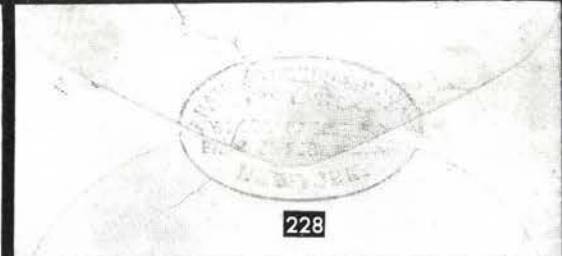
222



227



223



228

1861 ISSUE

- | | | | |
|----|---|--|--------|
| 74 | ✉ | <p>10c green, "First Design" (62B). Short corner perf., tied by Grid cancel on Small Dec. 1861 Cover to Nova Scotia, Red Providence R.I. pmk., Red "Paid" in Circle & partial "U States" in Arc Over "C", trivial water stains at L. & B., o/w Fine, Very Scarce..... (Photo)</p> | 750.00 |
| 75 | ✉ | <p>10c Dark Green, "First Design" (62B). Small nick at R., tied by "San Francisco Cal Oct 30 1861" pmk., Bold "Due 10" Handstamp on Cover to New York, One of the Earliest Known Usages of this stamp from the West Coast, An Important Cover for the 1861 Issue Specialist (Photo)</p> | 750.00 |
| 76 | ✉ | <p>1c Blue, 3c Rose, Red (63, 65, 86, 88). Three 10c Rate Covers to Canada or Nova Scotia, Two are No. 63 + 65 (3), other No. 86 + 88 (3), Diff. U.S. Towns & Cross Border Marks, one No. 65 small corner repair, o/w F-VF, Attractive Lot</p> | E.VII |
| 77 | ✉ | <p>1c Blue, 3c Rose (63, 65). Six 1c, 26 3c on 28 Covers & one front, Number of Fancy Cancels incl. Norwich Conn. Double Triangle, Several New Haven Conn. Stars of David, Nashville Tenn. Leaf, New York Cross, Ridgefield Conn. "R", etc., mixed quality, generally Fine Lot, Scarce</p> | E.VIII |
| 78 | ✉ | <p>3c Rose (65). Perfs. in at T., tied on cover by Shield & Crossed Swords in Circle & New York pmk., cover faults not affecting stamp or markings, Beautiful & Rare Fancy Cancel</p> | E.VII |
| 79 | ✉ | <p>3c Rose (65). Tiny tears, tied by Extra Bold Double Anchor cancel, "Putnam Con" pmk., also "Norwich Ct." pmk. (Forwarding), Choice Example of this Scarce 1861 Fancy Cancel, with contents..... (Photo)</p> | E.VI |
| 80 | ✉ | <p>3c Rose (65). tied by Bold Blue "Face" Cancel on Orange cover, matching Newark, N.J. pmk., VF, Handsome</p> | E.VII |
| 81 | ✉ | <p>3c Rose (65). T. perfs. just touch, Bold Green Five Point Star & Matching "Sharon Vt. Mar 15" pmk. on neat cover, VF..... (Photo)</p> | E.VIII |
| 82 | ✉ | <p>3c Rose (65 two). On Abraham Lincoln & Stephen A. Douglas Campaign Covers, Each Bearing Portrait Cachet, Former with Autograph Facsimile, stamp natural s.e. at L., cover bleaching affects stamp, Tied by Paid in Grid & Red Boston Double Circle pmk., Latter ms. Wavy Lines cancel, Douglas cover reduced bit at R., removing half of perfs., Cachets VF, Interesting Lot</p> | E.VIII |
| 83 | ✉ | <p>3c Rose, Red (65, 94). Five Covers, Four of former, Diff. Illustr. Corner Cards or Overall Ads or Imprints, No. 94 with "B. To Rouses Point R.P.O." pmk., two stamps faults, o/w F-VF Lot</p> | E.VI |
| 84 | ✉ | <p>3c Rose, Red (65, 94). Two Short Paid Covers to Canada, No. 65 tied by New York Duplex, Black "U.S. 10cts" Oval, Handsome "Bowl of Fruit" Corner Card; No. 94 in place of original stamp, Large Black "10" & "U.S. 10cts" Oval, Pa. Town pmk., Nurserymen Corner Card, Attractive Lot</p> | E.V |
| 85 | ✉ | <p>10c Green (68). Vert. Pair, tied by "N. York Steamship" pmks. on Small 1866 Cover from Cuba to Vermont, Small Double Circle back-stamps "... Ship Broker Matanzas", VF, Scarce</p> | E.VI |
| 86 | ✉ | <p>10c Dark Green (68a). Three Singles (slightly overlapped), perfs. in at T., Cork cancels Tie Two on Folded Cover to France, San Francisco, Cal. pmk., normal sequence of transits, Fine</p> | E.V |
| 87 | ✉ | <p>10c Green (68). Two Covers, one with Horiz. Pair Used with 1c Blue tied by Fancy Quartered Cork to Italy, Red NY & French Transits, other natural s.e., Used with 5c Brown (76) tied by Grid, last minor cover toning, o/w Fine</p> | E.VI |
| 88 | ✉ | <p>10c Green (68). Three Covers, Diff. Foreign Usages, incl. Red "Belfast Me" pmk. to Acapulco, Mexico; Philada. Pa. to Cuba; Ultramarine Town to Canada; Fine Lot</p> | E.VI |

89	✉	10c Green (68). Three 15c Rate Covers, Two are 10c & 5c Brown (76) to France, one with Embossed "Colgate & Co." Corner Card; other 10c Freak Centering, Used with Equally off-center 3c Rose (65) & Fine 2c Black (73) to Germany, minor faults, Scarce Lot	E.VII
90	✉	10c Green (68). Eight Covers to Canada , Five with Advertising or Return Cards, other Three with Diff. Cross Border Markings, generally Fine Lot.....	E.VIII
91	✉	10c Green (68). 20 Stamps on 19 Covers to Canada , mixed quality, generally F-VF	E.X
92	✉	10c Yellow Green, 5c Brown (68, 76). Grid cancel & Red Calais Transit ties stamps, New Orleans La. pmk. on Folded Letter to France, letter split along folds & partly rejoined, Attractive	E.VI
93	✉	12c Black (69). Three Covers, one tied by Star cancel, Red "Paterson N.J." & N.Y. pmks.; Used to Canada (Mass. Town pmks.); Vert. Pair to England, Red N.Y. & London Transits, first some slight address smearing, last piece of flap missing, small cover mends at T., o/w Fine Lot	E.VII
94	✉	12c Black (69). Used with 3c Rose (65), both with some minor perf. tip toning, tied by Cogwheel cancels on 1863 Cover to France, San Francisco pmk., Red N.Y. & Calais Transits, Fresh & Attractive Cover ..	E.VI
95	✉	24c Red Lilac (70). Choice Rich Color, Nicely Centered, tied by Red Grid & Red "N. York Br. Pkt. Paid 19" on Small Apr. 1862 Cover to England, Fine.....	175.00
96	✉	24c Steel Blue (70b). Cover file fold through stamp, tied by Beautiful Bold "PAID" in Grid, on 1861 Folded Letter to Scotland, Red "Boston Br. Pkt Oct 30" pmk., Very Early Usage of a 24c Steel Blue, Most Attractive	850.00
97	✉	30c Orange (71). Wonderful Rich Color, tied by partial New Orleans, La. pmk., Red N.Y. & Havre Transits on Feb. 1867 Cover to France, Fine	E.VIII
98	✉	2c Black (73). Beautifully Centered, tied by Cork & light New Haven pmk. on Small Neat Drop Letter Cover, VF	E.IV
99	✉	2c Black (73). Tied by Red "New York City Aug 1" pmk., Attractive Bold Matching Negative Star cancel on Small Local Cover, VF & Handsome	E.VII
100	✉	2c Black (73). Tied by grid on fresh manila wrapper to France , Red ms. "30c" French postage due marking, Fine, Scarce	E.IX
101	✉	2c Black (73). Large Margins, Beautifully Centered, Extremely Fine, Used with VF 3c Rose (65) tied by Bold Circle of Wedges, New York pmk. on Fresh 5 1/4 x 2 1/4" Mourning Cover, Rare Rate & A Fantastic Black Jack Stamp.....	E.VIII
102	✉	2c Black (73). Horiz. Pair, Average, ms. cancels (not tied) on Buff 1865 Cover to Washington D.C., Bold " Forest Grove Oregon Mar 20 " pmk., docketing at L., Cover slightly reduced at R., Scarce Black Jack "Western" Usage.....	E.VIII
103	✉	2c Black (73). Five Combination Use Covers, incl. Three 2c + 1c; 2c + 5c Brown (76) on 3c Pink Entire to Canada; 2c + 3c Rose (65) + 10c Green (68) tied by ms. town pmk., Scarce 15c West Coast Rate to Canada ; also incl. Three No. 93 (ms. cancels removed) on cover to Canada; mixed quality, G-F.....	E.VIII
104	✉	2c Black (73). 11 Covers, Three With Corner Cards, VG-F Lot.....	E.VIII
105	✉	2c Black (73, 87, 93). 11 Stamps on Nine Covers, incl. Overall Illustr. Great American Tea Co., Two Folded Bankruptcy Circulars, Illustr. Corner Card of Fairbanks, Brown & Co. (Later Fairbanks, Morse), mixed quality, G-F	E.IX
106	✉	5c Red Brown (75). Few blunt perfs. at T., Used with 10c Green (68) on large size 1863 cover to France, tied by Target & Town pmk., Red "New Paid York 36," bit reduced at R., evidently lacks some postage, Scarce	E.VI

107	✉	5c Deep Red Brown (75). Two Singles tied by Lyons, Iowa pmk. on 1866 Cover to Canada, small faults & couple cover stains, Scarce Cover	E.VIII
108	✉	5c Brown (76). Wide natural s.e. at L., tied by Circle of Wedges & New York pmk. on Mar. 1864 Cover to Nova Scotia, Clear " 13½c " in Circle , Boston Br. Pkt. backstamp, neat docketing T.L. concerning contents, Fine & Scarce	E.VI
109	✉	5c Brown (76). Three Pairs on Three Covers to Canada, Towns incl. "West Eau Claire, Wis.", perfs. close to touch, Scarce & Attractive Lot	E.VIII
110	✉	15c Black (77). Three Extra Large Margins, natural s.e. at R., tied by Circle of Wedges, Red NY & French Transits on Fresh Yellow Cover to France, couple minor cover tears at T., VF, Exceptional Stamp (Photo)	225.00
111	✉	15c Black (77). Perfs. in at T. & R., Tied by Grid, Blue Calais pmk. & Red Boxed "PD" on Small Cover to Paris, Purple "Philadelphia Paid 6" pmk., cover trifle reduced at T., Fine	E.VII
112	✉	15c Black, 24c Lilac (77, 78). Two Covers, 15c forwarded from France to Austria, minor nick at T.; 24c used to Ireland, lacks L. side flap, o/w Fine Lot	E.VII
113	✉	24c Grayish Lilac (78a). Large Margins, Beautifully tied by Circle of Wedges & Red "Boston Br. Pkt. 19 Paid" on Apr. 1866 Mourning Cover to England, minor paper clip rust spots on cover o/w VF, Stamp Exceptional, with original letter	250.00
114	✉	24c Dark Lilac (78). Tied by Segmented Cork Cancel on 1863 Cover To England, Brooklyn NY pmk., Red New York Br. Pkt. cancel & Red London Paid, Fine	250.00
115	✉	24c Lilac (78). R. perfs. in, tied by cork cancel and by Red "N. York Br. Pkt Paid 19 May 31" pmk. on neat cover to England, Red London Paid, couple tiny cover pin holes, Handsome	250.00
116	✉	24c Lilac (78). Average, tied by Star in Circle in 1864 Cover to England, Red "N. York Br Pkt." pmk. & London Paid, small cover tear & edge wrinkles (partly affecting stamp), Attractive	250.00
117	✉	24c Grayish Lilac (78a). Tied by Target on 1866 Forwarded Cover to Lucerne, Usual series of transit markings incl. Red "PD" in Oval, ms. magenta "5" marking, trivial toning, Fine & Attractive	E.VII
118	✉	24c Lilac (78). Small sealed tear, R. perfs. just in, tied by Narrow Spaced Grid on 1866 Tissue Paper Cover to England, Red New York 19 & Liverpool Packet Marking, cover slightly reduced at L., Attractive	E.V
119	✉	24c Dark Lilac (78). Horiz. Pair , tiny margin tear in one, Used with 5c Brown (76), small tear, tied by Circle of Wedges & Red London Paid on Dec. 1863 Folded Letter to China, Red "Boston Am. Pkt. Paid," Very Attractive & Rare	E.XI
120	✉	24c Lilac (78). Four Covers, Diff. Shades, Variety of Markings, mixed quality, G-F	E.VIII
121	✉	1c Blue, E. Grill (86). Few nibbed perfs., Tied by Grid, Springfield, Vt pmk., on Neat Local Cover with Illustrated Bee Dealer Return Card, Handsome Cover	E.VIII
122	✉	1c Blue, 2c Black, E. Grills (86, 87). Perfs. touch, each Beautifully tied by Bold Rosette cancel, New York pmks. on Cover to Vt., 2c few nibbed perfs. & toning specks, still quite striking	E.VII
123	✉	3c Rose, E. Grill (88). R. perfs. just touch, tied on cover by bold Negative "Face" cancel, Cleveland Ohio pmk., Choice Fancy Cancel	E.VIII
124	✉	12c Black, E. Grill (90). Perfs. just in at R., tied by fancy triangle cancel on 1868 Yellow cover to England, Red "Paterson N.J. Jul 11" pmk., Red N.Y. and Liverpool transits, Attractive	E.VI
125	✉	15c Black, E. Grill, (91). L. perfs. touch, tied by Cogwheel & cancelling ink "fingerprint" on June 1868 Folded Cover to France, Red N.Y. & French Transits, Scarce, Neat Cover	500.00

126	1c Blue, 2c Black, E. Grills (92, 93). 1c Well-centered, 2c perfs. trifle in, tied by Cork & Ill. Town pmks. on Fresh Orange Buff Cover to Maine, Very Pretty Cover	142.50
127	3c Red, F. Grill (94). Couple negligibly nibbed perfs., Extra Bold Deep Green Five Leaf Shamrock Cancel, matching "Sharon Vt. Jan 25" pmk. on neat cover, VF Strike (Photo)	E.VIII
128	10c Green, 24c Gray Lilac, F. Grills (96, 99). Small faults, perfs. in on latter, tied by quartered cork & Boston, Mass. pmk. on small cover to Chile, Red "24" rate marking, light red Peru merchants oval handstamp, cover partly nicked at T. due to irregular opening, Scarce	E.X
129	15c Black, F. Grill (98). Tied by Cork, Red Boston 12 pmk. & Blue Cherbourg Transit on Fresh 1869 Cover to France, part of flaps missing, Fine	175.00

PATRIOTIC COVERS

130	1c Blue, Ty. I (18). T. perfs. just in, barely tied by Town pmk. on Multicolor Design Patriotic Cover Showing Soldier with Sword & Waving Flag (Walcott 2021), Fine, Handson (Photo)	900.00
131	1c Blue, Ty. V (24 four). Incl. Vert. Strip of Three with ms. cancel, Used on Two Multicolored Patriotic Covers, Maine & R.I. pmks., cover with single has repaired front tear affecting cachet & back tear, cover with strip bit reduced at R., also incl. No. 26 Tied on VF Patriotic Cover by Iowa pmk. & Script "a" marking, Interesting Lot... ..	E.VII
132	3c Dull Red (26). Perfs. in R., tied by "Chester, N.H. pmk. on Cartoon Patriotic Cover, Design Shows U.S. Dog "Scott" Daring Rebel Dog "Jeff" to Take Flank of Meat Marked "Washington", VF... .. (Photo)	E.VI
133	3c Dull Red (26). Few perf. faults, Tied by Blue Baltimore, Md. June 13, 1861 pmk. on Patriotic Cover to Williamsburg, N.Y., Cachet Captioned "Away Down South in Dixie," shows slaves accompanying cotton shipment, Fine, Very Rare Design..... (Photo)	E.VIII
134	3c Red (26). "Paid", Red Boston, Mass., pmk., on Multicolored Berlin & Jones Patriotic Cover, Young North & Smith (as children) Sword Fighting, "As It Is", Angel Looking Over Sleeping Children with Decapitated Negro Doll at Foot of Bed "As It Will Be," trivial edge flaws at L., minor toning, still Attractive, Rare Design. (Photo)	E.VIII
135	3c Dull Red (26). Five multicolored Patriotic Covers, Variety of Origins, Markings, Destinations & Cachets, Mixed Quality, G-F.....	E.VI
136	3c Rose (65). Perfs. in, some perf. tip toning, minor crease, Tied by Washington, D.C. Nov. 8 pmk. on Multicolored Magnus Patriotic Cover, Wisconsin Seal & Eagle & Shield with "For The Union" caption, closed cover tear affects latter design, Attractive (Photo)	E.VIII
137	3c Rose (65). Faulty, tied by Washington D.C. pmk. on Multicolor Patriotic Cover with President Lincoln & his Eight Cabinet Members, very ornate, cover lacks backflap, some cover soiling & edge wear, Scarce Patriotic..... (Photo)	E.VII
138	3c Rose (65). Tied by Washington D.C. pmk. on Cover with Blue Female Figure & Smithsonian Institute Building, Magnus Type, Fine, Attractive, Scarce Design..... (Photo)	E.VIII
139	3c Rose (65). R. perfs. trimmed from cover reduction, tied by Washington, D.C. pmk. on Multicolored Magnus Patriotic Cover, Massachusetts Seal & Nautical, Commercial & Flag Motif, Attractive.. (Photo)	E.VII
140	3c Rose (65). VF, Tied by Washington, D.C. pmk. on back of Bronze Magnus Patriotic Cover, "Birds-Eye View of Philada. & Father Reading Soldier Son's Letter with Subtle Ad Extolling Virtues of Investment in Government Bonds "Better Than Gold", Rare. (Photo)	E.IX

- 141 ☒ **3c Rose (65).** Tied by Alexandria, Va. pmk. on back of Red & Black All Over Design **Patriotic Cover** Picturing "The Soldier's Dream of Home"-Union Soldier in Zouave Garb Asleep on Battlefield & Juxtaposed Scene of Home & Family, Fine & Unusual **(Photo)** **E.VII**
- 142 ☒ **3c Rose (65).** Tied by Bold Evansville Ind. pmk. on overall design Red, White & Blue **Patriotic Cover** Illustrating Revolutionary War & Civil War Soldiers, "The Union Forever" Inscription at T., Unusually Handsome (Walcott 1616), VF **(Photo)** **E.VI**
- 143 **3c Rose (65).** Faulty, on front only, Philadelphia Feb 1862 pmk., Overall Hand-drawn Patriotic Design Showing Heavily Armed Soldier Pulling Cannon & "U.S.M." (Mail) Cart with Commentary concerning delivery "in spite of all the Seceshers from J. Davis **Esquire** ". . ." etc., also inc. 3c Red (26) on complete cover, same corresp. Showing Two Men in Colonial Garb Holding Up Address "Banner" & Having Humorous Conversation Regarding Same, Scarce & Unusual Lot..... **(Photo)** **E.VIII**
- 144 ☒ **10c Green (68).** Grid cancel, not tied, "Fall River Ms. Feb. 19 1862" pmk. on **Blue Patriotic Cover to Nova Scotia** (Eagle, Flag, Banner), Red "U States" in Arc Over "C", Fine & Scarce **(Photo on Front Cover)** **E.VII**
- 145 ☒ **"Soldier's Letter. / 1st Regiment, / Wisconsin Volunteers. / G. Bingham / Major."**, Printed Rectangle (signature ms.), matching Printed Flag on Cover to Hingham, Wisc., Blue "Due 3" handstamp, VF, Unusual **(Photo)** **E.VI**
- 146 ☒ **Patriotic Covers,** Two, Blue "Uncle Sam Cutting Down the Secession Tree . . ." & Black "New Zouave Drill, Choke Secession" (Hanging) "Cartoon" cachets, Former Franked with 3c Dull Red No. 26 (repaired tear), Philadelphia June 24, 1861 pmk. on Cover to Conn., repaired cover fault, Latter Franked with 3c Rose No. 65, Target cancel, Groveland, Mass Sep. 1 pmk., on Cover to Mass., Latter VF, Unusual & Interesting Lot **E.VII**
- 147 ☒ **Patriotic Covers,** Seven Items, each franked with 3c Rose (65) & tied by Town pmks., most Multicolor, Designs incl. Battle Scene, Eagle & Shield, State Arms, Female Figure & Soldiers, Generally Fine Lot **E.IX**
- 148 ☒ **Patriotic Covers,** Nine covers, Eight with **3c Red (26)**, other **1c Blue (24) + 3c Red (26) Combination**, Diff. Designs, All But One Multicolor, few stamps faulty, Virtually All Covers F-VF, Scarce Lot..... **E.VIII**
- 149 ☒ **Patriotic Covers,** 15, Nine Multicolored, incl. Three Overall Designs & Two with 75% Design Coverage, Variety of Cachets, Markings, & Destinations, also incl. **"Due 3" Soldier's Cover**, Mixed Quality G-F, Interesting Lot..... **E.IX**
- 150 ☒ **Patriotic Covers,** 31 Used Covers, All Diff. Designs, Virtually All Multicolor, one with Three 1c Blue (63), others 3c Rose (65), Variety of pmks. incl. Blue Bank Division, two are marked "Ex-Wolcott", typical mixed condition, although generally above average, G-F **E.X**
- 151 ☒ **Patriotic Covers,** 16 Diff. Unused Multicolor Entireties Picturing Gen. McClellan (Magnus) & 15 Diff. Picturing McClellan & Diff. Staff Members, backs partly cut away & some paper remnants on back, o/w F-VF..... **E.V**
- 152 ☒ **Patriotic Covers,** 20 Diff. Unused Multicolor **Kimmel** Patriotics, also incl. 10 in Black (7 Duplicate Multicolor Designs), Designs incl. Allegorical, Flags, Shields, etc. Mostly F-VF Lot..... **E.VIII**
- 153 ☒ **Patriotic Covers,** 150, Virtually All Diff. Unused, incl. Nine Magnus, Battle Scenes, Soldiers, Flags, Colorless Embossed Fremont Campaign, many multicolor, virtually all VF, Very Interesting & Useful Lot **E.X**

154	✉	Patriotic Covers , 477 Unused (46 are fronts only), Virtually All Diff. incl. Allegorical, Satirical CSA, Magnus, etc., a good percentage multicolor; wide range of types & designs, some better Confederates, most with adhesive on back from mounting O/w F-VF Lot	E.XIII
155	✉	Patriotic Covers , Four Volume Collection of Approx. 950 Unused, Mostly Diff. incl. Same Design in Diff. Colors, Large No. of Magnus incl. Some Hand Printed, Metallic Inks, Fancy Overall Designs, 14 Berlin Jones, arranged by printers, wide variety of subjects inc. Allegorical, Satirical, CSA, Flags, Overall Designs & Mags, Ships, Harbors, Towns, Buildings, Views, Battle Scenes, Camp Sites & Scenes, State Seals, Statesmen, Soldiers, Lincoln, Generals, Flags & Confederate Patriotics, A Very Handsome Collection, F-VF	E.XV

156	✉	Soldier's Letter, Sanitary Commission Covers , Interesting Group of 19 Items incl. Two Diff. Christian Comm. (one without stamp) & one Sanitary Comm. Corner Cards, Five Patriotics (Three "Free" Franks, One Blue "Banks Division" Due 3, One "Due 3" to Canada), 11 unpaid, Part Paid or Prepaid Soldier's Letter Covers, condition varies as usual, Scarce Lot	E.VIII
-----	---	---	--------

1869 PICTORIAL ISSUE

157	✉	1c Buff (112), Horiz. Pair , tied by Target & Both N.Y. Double Circle on Unsealed Circular Cover, Fine, Attractive	115.00 +
158	✉	1c Buff, 2c Brown (112,113) . One of former, three of latter, each tied on separate small cover, mixed centering, mostly Fine Lot	E.VII
159	✉	1c-3c Pictorial (112-114) . Two Covers, one with three average 1c, cover faults & reduced at L., other with 1c & 2c tied by Town pmk., cover forwarded, 3c tied by cork cancel (1c & 3c faulty), some cover faults	E.VII
160	✉	1c-3c Pictorials (112-114) . 15 stamps on ten Covers, incl. 1c + 2c, Pair 2c, Four Single 3c (one Overall Ad), three 6c Rates to Canada, mixed quality, generally Fine	E.VII
161	✉	1c Buff, 3c Ultramarine (112,114) . Three of latter (scissors separated, perfs. trimmed on one), tied by Grids & Lockport N.Y. pmks. on Sept. 1869 Cover to Canada, bit reduced at R., Very Pretty Cover. (Photo)	E.VIII
162	✉	2c Brown (113) . Rounded corner perf., Grid cancel (not tied) on Overall Brown "Alfred A. Childs & Co. Gallery of Art." Cover Showing Building, Horsedrawn Carriage at L., couple minor cover nicks at T., still quite handsome	E.V
163	✉	2c Brown (113) . Pair & Single, tied by Quartered Cork & "Milwaukee Wis." pmk. on Oct. 1869 Cover to Canada, Hotel Impt. on Back, small faults, Scarce	E.VI
164	✉	3c Ultramarine (114) . Natural s.e. at L., minor corner crease, on cover tied by Green Circle of Wedges cancel, matching Owego N.Y. pmk., cover trifle reduced at R., Attractive	E.V
165	✉	6c Ultramarine (115) . Tied by Blue Target, matching Woodville N.Y. pmk., on Feb. 1870 Cover to Canada, Fancy Dove, Scroll & Quill Address Area, few cover edge scuffs, o/w Fine	E.IX
166	✉	6c Ultramarine (115) . Tied by Blue Target, matching "Cincinnati O" pmk. on Dec. 1870 cover to Canada, some trivial perf. toning, light cover toning spot, O/w Fine	E.VIII
167	✉	6c Ultramarine (115) . Small cork cancel (not tied), matching Boston, Mass. pmk. on 1869 buff cover to Canada, slightly reduced at R., lacking portion of side flap, minor cover edge tears, Attractive	E.VII

168	⊗	6c Ultramarine (115). Horiz. Strip of Four , B. perfs. touch to barely in, two with tiny tear in T. Margin, Quartered Cork Cancels (not tied), Buffalo N.Y. pmk. on Cover to Ontario Canada , Appropriate Backstamps, slightly reduced at R., Extremely Scarce Usage, ex-Gibson..... (Photo)	E.XIV
169	⊗	10c Yellowish Orange (116) . Well-centered, Large Margins, Grid cancel (not tied) on 1870 cover to Germany, Atlanta, Ill pmk., Red Boxed Hamburg, Transit, VF, Attractive, Exceptional Stamp. (Photo)	400.00
170	⊗	10c Yellowish Orange (116) . Tiny trivial cover margin crease, tied by Extra Bold Quartered Cork cancel, Chicago, Ill. pmk. on small neat, cover to Prince Edward Island , Fine, Scarce Usage..... (Photo)	400.00
171	⊗	12c Green (117) . Slightly rounded corner & some perf. toning, tied by Quartered Cork Cancel & "Insufficiently Paid" Straight Line on neat Mourning cover to England, Red New York pmk., Appropriate Handstamps, Desirable, Rare Cover, with P.F. Certificate..... (Photo)	400.00
172	⊗	15c Brown & Blue, Ty. II (119) . Perfs. in at T., close at R., few perf. tips toned, Tied by Quartered cork & New Orleans, La pmk. on 1870 Folded Cover to Italy, Red, New York, Paid All Br. Transit", tiny piece missing from back, Attractive Cover..... (Photo)	E.X
173	⊗	15c Brown & Blue, Ty. II (119) . Used with 3c Ultramarine (114) on Reg. cover to Va., tied by ms. penstrokes, Oxford, N.C. pmk., School Embossed Corner Card, cover toning spots affect 3c, cover slightly reduced at L., Scarce.....	E.VI
174	⊗	15c Brown & Blue, Ty. II (119) . Perfs. slightly in at B., used with average 3c Green, Grill (136) on yellow cover to Ind., ms. "X" cancels (not tied), Scarce.....	E.VI

BANK NOTES ISSUES

175	⊗	12c Violet (151) . Tied by Blue Cleveland O. Target Duplex on 1872 Cover to Canada, Fine..... (Photo)	E.VIII
176	⊗	15c Bright Orange (152) . Used with 3c Dark Green (147), Cork cancels, West Millbury, Ms. pmk. on Reg. Cover to Boston, Rimless "Boston Mass. Reg.", tiny cover tear at B., Fine..... (Photo)	E.VII
177		3c Green (158) . Natural s.e. at R., perfs in at B., tied by Bold "Sunface" cancel on Mourning cover front, matching Saint Louis Mo. pmk., Scarce Cancel.....	E.IV
178	⊗	7c Vermilion, 15c Yellow Orange (160, 163) . Tied on slightly reduced Reg. "Court house" cover to St. Louis, "Eagle Pass Tex." pmk., Cleak of Court Maverick Co Tex. Oval Handstamp Return Card, Fine & Very Scarce.....	E.VIII
179	⊗	30c Gray Black (165) . Light bend, Used with Pairs of Nos. 161 & 178, single No. 179 on large size Apr. 1877 Reg. cover to Canada, tied by Corks, Boston Mass. Reg. pmk., cover reduced at sides, some closed cover tears, Very Scarce Cover..... (Photo)	650.00 +
180	⊗	30c Gray Black (165) . Perfs. touch, light filing crease, Used with Vert. Pair 6c Brown Rose (159), one stamp faulty & 10c Brown (161) tied by Odd Rosette on large size June 1877 Reg. cover to Canada, reduced at sides (only a trifle at R.), Very Scarce Cover.....	650.00 +
181	⊗	3c Green (184) . L. Margin Single tied by Detroit Mich. 1879 pmk. on Hand Painted "Combination Gas Machine Co." Illustr. Ad Cover Showing "Cut Away" View of Gas Lit Home Interior & Gas Machine Apparatus in Basement, VF, A Lovely Ad Cover..... (Photo)	E.VI
182	⊗	15c Red Orange (189) . Tied by New Haven Conn. Duplex pmk. on 1888 Cover to Cape of Good Hope , Fresh & Fine.....	75.00

183	✉	30c Black (228). Tied by Double Oval on 1892 Reg. Cover to Australia , trivial cover wrinkles, Fine, Scarce Usage (Photo)	250.00
184		Bank Notes , 1870-73, Four Items, incl. No. 152 on Reg. Cover to Canada (lacks one stamp); No. 149 on front to Germany; Two No. 162 on separate cover fronts to Spain, each tied by NYFM cancel, Pretty U.S. & Spanish pmks. in Red, G-F Lot.....	E.VI
185	✉	Bank Note Illustrated Advertising Covers , 1873-83, Ten Diff., Better Types, incl. De Veaux College, Cultivators, Grapes, Niagara Falls "Cataract House" Hotel (Two Diff.), Caricature of Negro, etc., generally Fine	E.VII
186	✉	Bank Note Covers , 85 Covers, Wide Range of Issues, Usages, Few Fancy Cancels, etc., generally F-VF.....	E.XI

COLUMBIAN ISSUE - EARLY TWENTIETH CENTURY

187	✉	1c, 2c Columbians (230, 231). 25 Covers, Many with Illustr. Ads. or Corner Cards, Few Foreign Usages, Wrappers, etc., VG-VF	E.VII
188	✉	3c Columbian (232). Tied by World's Fair Station Machine pmk. on Souvenir "Columbian Day" Cover (Columbian Half Dollars Imprint, South American 2c Embossed Entire, etc.), Fine	300.00
189	✉	3c Columbian (232). Ten Covers, mostly Foreign Usages with other Frankings, VG-F.....	E.VIII
190	✉	3c-10c Columbians (232-237). 18 Covers (Three of each value), Most Fine	E.IX
191	✉	3c-10c Columbians (232-237). 18 Covers (Three of each value), Most Fine	E.IX
192	✉	3c, 6c, 8c Columbians (232, 235, 236). Eight 3c, two 8c, Used with 15c Indigo (274) & Pair 1c Green (279) tied on Apr. 1898 Reg. Wrapper to England, some faults, mostly trivial, still Attractive, Scarce.....	145.00 +
193	✉	4c Columbian, Diagonal Half Used as 2c (233 var). Tied by partial Bayonne N.J. 1897 Duplex pmk. on locally used cover, minor cover faults, Scarce	E.VI
194	✉	4c, 5c Columbians (233, 234). "Bi-Color" Singles (Interchanged Centers) on Neat Cover tied by New York Machine pmks., Fine, Unusual	E.VII
195	✉	4c-10c Columbians (233, 234, 236, 237). 32 Covers, three 8c, Nine or 11 each of others, Nice Variety of Usages, Many with additional franking, mixed quality, generally Fine	E.XI
196	✉	5c Columbian (235). Eight Stamps on Seven Covers, All Foreign Usages but one, incl. Used with 3c on 10c Entire, Used to Norway, Used to Switzerland with 50c Swiss Postage Due, Illustr. Corner Card, etc., Fine Lot, Scarce.....	E.VII
197	✉	6c Columbian (235). Some slight toning, tied by "World's Fair Station Oct 12 1893" pmk. on Cover with Illustration of Arms of Connecticut at L., A Lovely Cover..... (Photo)	425.00
198	✉	6c Columbian (235). Six stamps on Three Reg. Covers, incl. 6c & 8c on 4c Entire (U327) to Belgium, 6c(2) on 4c Entire (U256), 6c(3) on 10c Columbian Entire (U351) to England, also incl. 6c on part home-made wrapper to Germany, Fine Lot.....	197.50
199	✉	8c Columbian (236). On Reg. 2c Entire (U364) to New Whatcom Wash., 8c & 2c with Kicking Mule cancel, Port Townscard Wash. Reg. Handstamp, Fine	E.VII
200	✉	10c Columbian, 10c Orange Special Delivery (237, E3). Tied by Detroit Mich Jan. 16, 1894 Machine pmk. on Cover to Germany, small cover tear at L., Fine, Scarce..... (Photo)	E.VII
201	✉	15c Columbian (238). Well-Centered, tied by Double Oval on 1896 Reg. Cover to Cal., some slight toning, o/w VF..... (Photo)	200.00

- 202 ☒ **15c Columbian (238). Vert. Pair**, tied by New York Dec. 1893 Grid Duplex pmks. on "C. Witt" Cover, B. stamp tiny margin tear, o/w VF..
..... (Photo) 255.00 +
- 203 ☒ **30c Columbian (239). Used with 15c (natural s.e.) & 8c Columbians** on large size Oct. 1893 Nine Times Rate Reg. Cover to Germany, couple cover filing creases, Fine, Very Attractive Non-Philatelic Usage.....
..... (Photo) 437.50 +
- 204 ☒ **30c Columbian (239). Tiny scuff**, tied by Washington, D.C. Double Oval on Sept. 1894 Reg. Cover to England, minor cover flaws, Scarce Cover..... (Photo) 375.00
- 205 ☒ **50c Columbian (240). Tied by New York Apr 24 1893 Grid Duplex pmk.** on Cover to Germany, Liquor Dealer's Corner Card, cover filing crease & small edge faults, o/w Fine..... (Photo) 600.00

- 206 ☒ **\$1.00 Columbian (241). Perfs. touch**, faint stain in T. margin, tied by "Detroit Mich. Transit Jan 22 94" pmk. on cover to Canada, Windsor backstamp, faint cover stain at T., o/w Fine, Scarce (Photo) 1,900.00
- 207 ☒ **\$1.00 Columbian (241). Used with 4c, 6c-10c & 50c Columbians** on 2c Columbian Entire tied by St. Louis Mo. 1894 pmks., few small faults or tiny margin toning specks, Rare Cover
..... (Photo) 2,050.00 +
- 208 ☒ **\$1.00 Columbian (241). Used with 30c Columbian (239), 3c Purple (253) & 10c Brown (283)**, natural s.e. at R., on large size 1902 Reg. Cover to Germany, couple small tape marks at T. & B., bit reduced at R., cover folded in half vertically, Scarce Non-Philatelic Use..... (Photo) 1,980.00 +

- 209 ☒ **Columbian Exposition Postal Cards, 20, Eight Used, 11 Diff. Designs**, Four of the Used with **Expo Cancells**, one tying Additional 1c (230) Franking, nearly all reduced at sides, couple with creases, etc., o/w Fine Lot **E.VI**
- 210 ☒ **50c Orange (275). Tied by Double Oval on Apr. 1898 Reg. Cover** to England, minor cover filing crease, small part of flap missing, o/w Fine, Scarce..... (Photo) 150.00
- 211 ☒ **5c Pan-Am. (297). Slightly rounded corner**, tied by "Buffalo NY Aug 23 1901 Pan American Station" Expo pmk. on Beautiful Illustration in Green of Buffalo standing on top of Globe; Expo Scene in Background, cover slightly reduced at L. Attractive Cover (Photo) 325.00
- 212 ☒ **Spanish American War Covers, Eight Items, incl. Two Overall Flags**, Merchants' Flag Corner Card, Tiny Flag "Sticker" on Jun. 1898 Cover "Held For Postage" to Canada, Printed Flag Corner Card on 1899 Cover From Jamaica (2½p No. 26) to Germany, Three Philippines No. 213 on 2c Entire No. U8 to England, Two Unused Patriotics, mixed quality, Scarce Lot **E.VII**
- 213 ☒ **U.S. Postal Agency Shanghai, 1900, Two covers & one front**, covers with single Nos. 270 & 281 (indistinct pmk.), three No. 288 (faults) tied on large part cover front, Scarce **E.VII**

CONFEDERATE STATES

- 214 ☒ **3c Dull Red (26). Natural s.e. at L.**, tied by "Savannah Geo. Apr. 10 1861" pmk. (Confederate Usage), on **Multicolor Seven Star Confederate Waving Flag** (Dietz Ty B-9 var.) Patriotic Cover, small cover tear at T. & some cover edge wear. Scarce Confederate usage of a U.S. stamp (Photo) **E.X**
- 215 ☒ **Mount Laurel, Va & matching framed "Paid" handstamp** on orange cover, "Mount Laurel Academy" Corner Card, VF..... (Photo) **E.VIII**

216	☒	"Pine Bluff Ark. May 12, 1862" Clear Double Circle pmk., matching "5 Due" on cover to White Sulphur Springs, Ark., VF, scarce. (Photo)	E.VII
217	☒	"Plymouth N.C. Dec. 20, 1861" Mostly Clear Red pmk., matching str. line "Paid" & "5" in circle on neat buff cover to Raleigh, trivial cover nick at T.R., Fine (Photo)	E.VIII
218	☒	Abingdon, Va., 5c Black Handstamp Provisional (2XU2). Clear Strike, matching "Abingdon, Va. 1861 Oct 15" pmk, on orange cover, light ms. docketing & ms. notations on cover, Scarce (Photo)	650.00
219	☒	5c Olive Green, Stone 1 (1c). Horiz. Pair, Clear to Large Margins, couple creases, tied by Tudor Hall, Va. pmks. on cover to S.C., slightly reduced at sides & cover mends (most on back), o/w Fine (Photo)	240.00
220	☒	5c, 10c General Issues (1, 7, 11, 12). 14 Covers, incl. Pair & Single No. 1, Four pairs No. 7, also Used Patriotic with stamps missing, mixed quality, G-F.....	E.IX
221	☒	5c Green, 10c Blue (1, 11). Clear to Huge Margins, tied by Town pmks. on separate covers to Va., latter Red pmk., former faint toning, o/w Fine Lot.....	E.VI
222	☒	10c Blue, Paterson (2). Large to Huge Margins, ms. cancel (not tied), "Baldwin Fla. March 17" ms. pmk. on cover to Tenn., VF, Rare Origin (Photo)	165.00
223	☒	5c Blue, Local Print (7). Horiz. Pair, Ample to Large Margins, tied by Lake City, Fla. pmk. on neat Cover to Tenn., VF (Photo)	200.00 +
224	☒	5c Cobalt Blue (7). Horiz. Pair, Ample Margins to just touching, one with slight surface rub, tied by Town pmk. on Buff covers, Extremely Scarce & Desirable Shade.....	E.VII
225	☒	10c Milky Blue, "T-E-N" (9a). Ample Margins to just touching, ms. cancel, edge toning, "Hookertown N.C. May 15" ms. pmk. on 1863 Folded Letter, Cover File Fold affecting stamp, Three Page Letter makes mention in detail of the People of Greenville N.C. incl. war attitudes, charging CSA soldiers for water & then doubling the price, Fascinating Reading, An Important CSA Historical Item.....	E.VIII
226	☒	10c Blue, Private Roulette (12 var). Large Margin three sides, just touching at T., some edge toning, tied on cover by neat Military target cancel, Very Scarce.....	E.V
227	☒	20c Green (13). Margins All Around, some faults incl. surface rubbing, tied by "Richmond Va. Sep. 28" pmk. on cover, minor cover stains, ms. notations on back, Scarce (Photo)	600.00
228	☒	"Adams Express Company/Great Eastern/Western & Southern/Express Forwarders/New-York" Blue partly clear handstamp on backflap of U.S. 3c Red Star Die Entire (U27), "Paid 10" in circle handstamp, cover tear on back (partly affecting handstamp), Desirable, "Thru The Lines" Express Co. Handstamp, with CSA Certificate..... (Photo)	E.XI
229	☒	"Prisoner's Letter/Johnsons Island, O./Examined/DC" oval handstamp on Orange Cover franked with 3c Rose (65), partly clear Sandusky Ohio pmk. & target cancel, cover slightly reduced at L., VF, Choice Strike of the Prison Censor's Handstamp..... (Photo)	E.VIII
230	☒	Confederate States, Two Covers, frankings incl. 10c Blue (2) on forwarded Cover & severed Horiz. Pair No. 4 showing Gutter & small portion of adjoining stamp at R., small faults, Handsome & Very Scarce Lot.....	E.IX
231	☒	Confederate Covers, Three Items incl. Charleston S.C. "10" Stampless Homemade Cover, 5c Blue (No. 4) tied by Town pmk. on Reduced Cover & 10c Blue (12) ms. Cancel, tied by "Catawaba Station N.C. Jan" pmk. on Reduced Cover, Very Scarce Offering.....	E.VI

BACK-OF-THE-BOOK, LARGE AND MISCELLANEOUS LOTS

232	✉	Baltimore, Md., 1c Red (1LB9). Short Rays, Pos. 2, Three Large Margins, Ample at R., pencil cancel partly erased, on Envelope No. U9 , Latter pmkd. "Baltimore, Md. Jul 6", minor cover soiling, tiny cover stains at T.L., o/w VF.....	E.V
233	✉	Boyd's City Express, 2c Bluish Green, Ty. III (20L3). Portions of Frameline Three Sides, Large Margin at R., on local 1845 Folded Letter (reduced at B.), Red "FREE" cancel, Matching Oval "Boyd's City May 29 . . . Express Post" pmk., Fresh & Attractive	125.00
234	✉	Boyd's City Express, 1c Blue Gray, Ty. X (20L18). Ample to Large Margins, tied by small oval Cancel & New York 1862 pmk. on cover used with 3c Rose (65), 3c Rose has been reaffixed, Attractive	E.V
235	✉	Eastern Express Companies, Three Covers, incl. Livingston & Fargo Label (1849); "Livingston Fargo & Co." Printed Frank on 3c Nesbitt Entire; "Pomeroy & Cos. Express" Orange Label Featuring Old Train on 1844 Folded Cover, minor faults or aging, still an Attractive & Scarce Lot.....	E.VI
236	✉	EXRPESS CO. FRANKS, Four Covers with Printed Franks of Alta Express Co. or Truman & Cos., Two of each, one Alta repaired, two with ms. cancels, Mixed Quality, Very Scarce Lot.....	E.VI
237	✉	Independent Mail Service, 12 Covers, incl. Three Hale Stampless, One American Letter Mail Stampless, Boyd's, Blood's Adhesives, etc., mixed quality, Most F-VF	E.VII
238	✉	6c Justice (O28). Faded, perf. tip toning, tied by quartered cork, indistinct Washington, D.C. pmk. on large cover to W. Va., "Office of the Solicitor of the Treasury" Impt., some cover staining entirely on back, Scarce	500.00
239	✉	Revenues Used As Postage, 7 covers, 19th & 20th Century, Also incl. one Reference Item, Fine Lot.....	E.VI
240	✉	COVERS, 1851-61, Four, Comprising No. 10 two, No. 11, No. 646, Ample Margins to just in one or two sides, Each on a separate Cover or Folded Letter, Variety of Markings & Destinations, couple with minor cover stain, o/w generally F-VF.....	E.VI
241	✉	COVERS, 19th. & 20th., Approx. 50 Items, incl. Nos. 287, 288, 299, late usage of Columbians, Unused Patriotics, Early Special Delivery, etc., mixed quality, Interesting & Unusual Lot	E.XI
242	✉	POSSESSIONS & TERRITORIES, 1899-1951, Two Covers & Three Post Cards incl. 5c Dark Blue (281) Military Station No. 1, Philippine Islands pmk. on cover to Japan; two Post Cards with Guam pmks., another Post Card with Nome Alaska 1905 pmk., Fine Lot	E.VI
243	✉	SARATOGA SPRINGS COVERS, 1834-97, 50, Comprising 12 Stampless, Four Entires, Five Multicolored Illustrated Hotel Post Cards & Five Corresponding Covers with Hotel Corner Cards (incl. One Illustrated), & 24 Franked Covers, Variety of Markings, F-VF.....	E.VII

END OF SALE — THANK YOU

DESCRIPTIONS

EXTREMELY FINE: The finest condition for noteworthy, outstanding stamps.

VERY FINE: (VF) In prime condition such as to satisfy the requirements of particular collectors.

FINE: (F) Perforations or margins do not touch design on issues after 1890 but in some cases may just touch in earlier issues. If used, fairly light cancellation.

VERY GOOD: (VG) Generally nice appearance but margins or perforations may cut in slightly.

GOOD: (G) Average off-centering or fairly attractive with slight defects.

ORIGINAL GUM is not to be expected on stamps prior to 1890 unless so stated in the description.

MINT: With original gum and never hinged.

Unless otherwise noted the Scott 1982 United States Specialized Catalogue, the American Stampless Cover Catalogue, Dietz Confederate States Handbook, Klein United States Waterway Packet Marks, Remele U.S. Railroad Postmarks, Towle-Meyer Railroad Postmarks of the United States, and Walcott Civil War Patriotic Cover Catalogue have been used for cataloguing lots in this sale.

**IT'S A WELL-KNOWN FACT:
AMERICA'S PREMIER AUCTION HOUSE
OFFERS
IMMEDIATE AND MAXIMUM
CASH ADVANCES**

IF YOUR STAMPS ARE FOR SALE

At no charge our auction house will immediately advance interest-free cash to you. *The only charge to you is a 10% commission on what your collection realizes at auction.* The buyer also pays a 10% buyers premium.

Advances available on request on collection consignments valued in excess of \$2,500.

**IT'S A WELL-KNOWN FACT:
AMERICA'S PREMIER AUCTION HOUSE
IS FIRST IN PRESTIGE AND
FIRST IN DOLLAR VOLUME.**

OUR AUCTIONS REALIZED \$16,654,883 IN 1981.

CALL OR WRITE

**ROBERT A. SIEGEL
AUCTION GALLERIES, INC.**

160 E. 56th Street
New York, N.Y. 10022

Tel.: (212) 753-6421
Established 52 years

