

604th SALE

UNITED STATES POSTAL HISTORY

including Important Sections of
WESTERNS AND WESTERN EXPRESS, MICHIGAN TERRITORIALS,
PACKET BOATS, "OLD STAMPS NOT RECOGNIZED"



THE PROPERTY OF VARIOUS OWNERS

SOLD AT THEIR ORDER

AT UNRESERVED PUBLIC AUCTION

THURSDAY, OCTOBER 21st, 1982 at 1:00 P.M.

AUCTION GALLERIES, INC.
160 E. 56th STREET, NEW YORK, N.Y. 10022

CONDITIONS OF SALE

1. The terms of sale are strictly cash on delivery to the highest bidder unless special arrangements have been made prior to the sale. The fact that an item is placed on extension (submitted to an expertising committee for certification) does not relieve the successful bidder from this condition of sale.
2. All bids are per lot as numbered in the catalogue unless otherwise announced by the auctioneer at the time of sale. The right is reserved to group two or more lots; to withdraw any lot or lots from the sale, or to act in behalf of the seller. The auctioneer shall regulate the bidding and in the event of any dispute his decision shall be final.
3. Any lot, the description of which is incorrect is returnable, but only within five days of receipt. All disputed lots must be returned intact as received. **The following lots may not be returned for any reason whatsoever: Lots containing ten or more stamps; Lots from buyers who have had the opportunity to examine them before the sale; Lots described as having defects or faults may not be returned because of any faults. No illustrated lots may be returned because of centering, margins or other factors shown in the illustrations.**
4. Successful bidders, unless they are known to us or supply acceptable references are expected to make payment in full before the lots are delivered. Mail bidders will be notified of the amounts of their purchases. All mail bidders who have established credit with us must make payment within three days after receipt. We reserve the right in our sole and absolute discretion to demand cash payment at the time a lot is knocked down to any bidder who has not previously established credit with us or whose account is in arrears. In the event any buyer refuses to pay cash for any lot at the time it is knocked down to him, the auctioneer reserves the right to re-offer the lot immediately for sale to the highest bidder.
5. If the purchase price has not been paid within the time limit, nor lots taken up within seven days from date of sale they must be resold and any loss arising from such sale will be charged to the defaulter. Any account more than thirty days in arrears is subject to a late payment charge of 1½% per month so long as the account remains in arrears. If the auctioneer, in his discretion, should institute any legal action to secure payment of a delinquent account the defaulting purchaser shall pay all legal expense incurred by the auctioneer and such charges will be added to the amount owed.
6. All lots are sold as genuine but should any lot be proved otherwise by written opinion of any competent, responsible authority acceptable to us, immediate refund of the full purchase price will be made, provided that such claim is made in writing within 14 days from date of sale. If claim is not made within this period, no lots are returnable for any reason at any time. So long as we are notified within the 14 day period that an opinion is being sought the matter will remain open until such opinion is rendered. We will not be responsible for any charges incurred by the buyer for expertization fees and costs unless the opinion states the item is not genuine, in which case we will pay actual costs up to a maximum of \$50.00. In the event an item is proved "not as described" it is returnable for full refund, and the buyer will be paid interest (at the prevailing Treasury Bill Rate) for the time his funds have been on deposit with us during the extension period.
7. Until paid for in full, all lots remain the property of Robert A. Siegel Auction Galleries, Inc. in behalf of the seller.
8. All forwarding charges will be added to the purchase price. The mode of shipment shall be at our option unless we are given specific instructions.
9. Lots may be sent for inspection to buyers known to us upon written application. All such lots must be returned to us by registered mail, adequately insured and within 24 hours after receipt. The applicant assumes all responsibility and will provide insurance against all risks from time of receipt until they are actually received back by us, and is to pay all expenses of postage and insurance. **No lots can be sent for inspection within ten days from date of local viewing. Large lots and collections cannot be sent for inspection.**
10. Agents are responsible for all purchases made in behalf of their clients unless other arrangements are made prior to the sale.
11. The placing of a bid shall constitute acceptance of the foregoing conditions of sale.

ROBERT A. SIEGEL

MALCOLM SIEGEL, Licensed Auctioneers

FOR TABLE OF DESCRIPTIONS SEE INSIDE BACK COVER

Extension Lots must be paid for on receipt. In the event of an unsatisfactory certificate, payment will be refunded with interest at Treasury Bill rate.

604th SALE

October 21, 1982

BID SHEET

ROBERT A. SIEGEL AUCTION GALLERIES, Inc.
160 East 56th Street
New York, N.Y. 10022
Tel.: 753-6421 (Area Code 212)

Please purchase for me at your auction to be held **October 21, 1982**, the lots listed below, the prices annexed being my limit on each lot. I agree to remit for purchases in accordance with the **Conditions of Sale** and return no lots later than three days after receipt. **I understand that a 10% buyers commission will be added to my successful bids.**

REFERENCES PLEASE
(if unknown to us)

SIGNED

New York State residents kindly include
County in address.

County

BIDDING INTERVALS

BIDS	ADVANCE	BIDS	ADVANCE
Up to \$30.00	\$1.00	\$300.00 - \$725.00	\$25.00
\$32.50 - \$70.00	\$2.50	\$750.00 - \$1,950.00	\$50.00
\$70.00 - \$145.00	\$5.00	\$2,000 - \$3,000.00	\$100.00
\$150.00 - \$290.00	\$10.00	\$3,250.00 and up	\$250.00

Bids which do not conform to the above will be automatically reduced to the appropriate level.

THE AMOUNT OF YOUR BID DOES NOT INCLUDE THE 10% BUYERS PREMIUM WHICH WILL BE ADDED TO THE HAMMER PRICE.

[illegible]

VALUATIONS

Upon request estimate of value furnished on any lots in this auction.

LOTS ON VIEW

Tuesday, October 19th; Wednesday, October 20th; and Day of Sale
until 30 minutes before sale time

PUBLIC AUCTION

THURSDAY, OCTOBER 21, 1982 — 1:00 P.M.

FREE FRANKS AND AUTOGRAPHS

- | | | |
|-----|--|--------|
| 1 | Robert Anderson, Major USA , Autograph signature on part of Letter, dated Ft. Sumter, S.C., March 13, 1861 (Anderson was Commander of Forts in Charleston Harbor & sustained the bombardment of Ft. Sumter, Apr 12-14, 1861), VF, Scarce | E.VIII |
| 2 ☒ | "Jas. Monroe" Autograph "Free" Frank as Secretary of State on 1813 Folded Cover, "Washn City May 4" pmk. & matching "(FR)EE" handstamp, ms. "Dept. of State", Fine, Attractive & Desirable (Photo) | E.X |
| 3 | Wm. Walker (American Filibuster - Soldier of Fortune), Autograph Signature on May 30, 1856 letter written at Granada (Nicaragua) shortly after his overthrow of the Nicaraguan Gov't. & before his self declaration as President of that country, Fine & Rare | E.X |
- | | | |
|-----|--|------|
| 4 ☒ | "G. Washington" Autograph Military "Free" Franks on 1782 Folded Cover, the cover was apparently hand carried, cover has been expertly "silked", Handsome & Extremely Desirable
<div style="text-align: right;">.....(Photo)</div> | E.XV |
|-----|--|------|

STAMPLESS COVERS

- | | | |
|-----|---|-------|
| 5 ☒ | Apalachicola, Florida , 1846-53, two stampless folded letters & Two Printed Prices Current, Three Red & one Blue Pmk., rates incl. "2", "5" & "10", one cover slight toning, one cover forwarded to Jacksonville, Generally F-VF | E.VI |
| 6 ☒ | "Balt · OC · 11" Straight line Pmk., ms. "12½" rate marking on 1795 Folded Letter to Philadelphia, VF & Choice (Photo) | E.V |
| 7 ☒ | "Balt · Sep 24" Bold Straight line Pmk., ms. "12½" rate marking on 1797 Folded Letter to Phila., VF & Choice | E.V |
| 8 ☒ | "Boston" Green Straight Line 25½x3½mm pmk. (ca. 1783) on Folded Letter, matching "14SE" Franklin Marking, small cover stain at T., Fine Strike, Unlisted Color in ASCC (Photo) | E.X |
| 9 ☒ | "Boston" 30½x5mm. Straight Line Brown & Black Pmk. & matching "31/OC" Franklin Marking, ms. "10" Rate Marking on 1785 Folded Letter to New York, Fine | E.VII |

Due to the tremendous demand on our phones and staff, Prices Realized will not be available by telephone until 24 hours after the sale.

10	"Boston" Bold Straight line Pmk., matching "Paid" & "OC 11" Franklin Marking on 1792 Folded Letter to the Inspector of the Port of Marblehead, ms. "6" rate marking, VF & Choice (Photo)	E.V
11 ☒	"Boston" , Beautiful Bold Straight line Pmk. Matching Franklin Marking, ms. "10" Rate Marking on July 4, 1800 Folded Letter to Portsmouth, VF, Interesting Cover.....	E.IV
12	"Boston Ms. May 1" , Red pmk. on 1825 Folded Letter, ms. "18¾" Rate Marking, First Day of Use of the 18¾ Cent Zone Rate , Fine & Very Desirable (Photo)	E.IX
13 ☒	"Buffalo N.Y. March 15, 1815" ms. Pmk. & matching "25½" rate marking on War Rate Folded Letter; also incl. three folded covers from 1814 showing "17", "34" & "\$1.02" rate marking, each with ms. N.Y. Pmk., Fine Lot	E.VII
14 ☒	Campbells Mills/Windham Co./Con. , mostly clear, partly doubled strike on Small Cover, "Paid" Handstamp, unrated, Fine..... (Photo)	E.VIII
15 ☒	"Channingville NY D Cy" , Mostly Bold Red pmk. & Matching "5" on 1847. Folded Letter to New York City, VF..... (Photo)	E.VI
16 ☒	"Cooperstown" , Moon-Shaped Semi-Circle Pmk., mostly clear strike, ms. Date & "Paid 10" on 1820 Folded Letter, Fine & Unusual Pmk. Type (Photo)	E.VII
17 ☒	"Fleetwood Academy Va Jul" Brownish Red Pmk., ms. Date on 1851 folded Letter, matching "Paid 3" handstamp, some docketing, VF, Listed in ASCC as Ms. Pmk. only (Photo)	E.VI
18 ☒	"Forwarded From the Baptist Miss. Rooms/Boston" Red Mostly Bold Oval Handstamp on Back of 1845 Folded Multi Page Letter originating in Corfu to Rhode Island, VF.....	E.VI
19 ☒	"Kingston N.Y." Stencil Cancel, ms. date & "10" Rate Marking on 1829 Folded Cover to Albany, VF, A Lovely Cover..... (Photo)	E.V
20 ☒	"Lexington Kentucky December 1" Oval Italic Letter Pmk. on 1817 Folded Letter to New York, ms. "50" rate Marking, A Lovely Cover (Photo)	E.V
21 ☒	"Middletown Point/Monmouth Co./NJ/Oct" Pmk. on 1848 Folded Letter, matching "V" rate marking ms. date, VF & Desirable.. (Photo)	E.VIII
22 ☒	"Middletown Point/Monmouth Co./N.J./Jan" pmk. & matching "V" on 1848 Folded Letter, ms. "15" Date, some trivial cover edge toning, VF & Scarce Pmk. (Photo)	E.VIII
23 ☒	"New Orleans La." Dec 7 & 12 Blue pmks. on separate 1836 Folded Letter, matching "Paid" handstamps, ms. "1.50" & ".75" Rate Markings, ms. "Express Mail" Routing Instructions, Handsome Pair of Covers showing a First Month Usage of these New Orleans Pmks., on Eastern Pony Express Covers	E.V
24 ☒	New York , Red Brown Colonial pmk. on Remarkably Fresh 1760 Folded Cover to London, VF, Choice Colonial Trans-Atlantic Cover (Photo)	E.XI
25 ☒	New York Apr 12 , Red Oval on 1802 Incoming Trans-Atlantic Cover from England to R.I., Cover Folded in Shape of Envelope , ms. "1¼oz" & "87" rate, VF & Most Unusual..... (Photo)	E.VIII
26 ☒	"Paid" Handstamp & ms. "15" Rate Marking on 1793 Folded Letter to Maryland Datelined "Rapahanack Forge (Va.)" , VF & Choice (Photo)	E.VII
27 ☒	"PAID" Red Arced Handstamped on 1855 small size cover from London to NY, Orange "Paid 1855 26 JY 26 BU" , Dark Green "L JY27 A" (Afternoon), Magenta "21 Cents" & Red ms. 1sh markings ms "per Baltic" , A Very Interesting cover showing Five Diff. Color Markings.....	E.IV
28 ☒	"PHILA/DELPHIA" , Red Type A straight line pmk. on back of 1771 folded letter to Salem, Brown "27 IY" Maroon Franklin Marking, ms. "4" Rate Marking, VF (Photo)	E.IX

- 29 ☒ **"Phonography"** Blue Overall Design by Pitman & Prosser, "Swedesboro NJ" & Matching "Paid 3" on Cover to Newark, negligible toning, A Lovely Cover E.V
- 30 ☒ **"Pilatka Flor Dec 1"** Pmk. on 1846 Folded Letter to the Secretary of War, Washington, D.C., Letter makes mention of organizing Troops in Florida, ms. "10" rate marking, couple toning Bands, Interesting cover, Believed to be the Latest Known Use of this Pmk. E.V
- 31 ☒ **"Pleasant Grove Md./Allegany Co/3 Mar"** pmk. with attached "5" above on Buff Cover to Ill., VF & Very Scarce..... (Photo) E.IX
- 32 ☒ **"Richmond Octr 1"** Straight line Pmk. on 1787 Folded Letter to Philadelphia, ms. rate markings, latter makes mention of the 1787 Convention which resulted in the U.S. Constitution, Earlier use than listed, Handsome (Photo) E.VIII
- 33 ☒ **"Schoharie Court House. N.Y. May 27"**, Beautiful Bold Red Rimless Pmk. on 1822 Folded Letter, matching "(PAID)", ms. "18½" Rate Marking, VF (Photo) E.VIII
- 34 ☒ **"Taunton. Ms. Apr 22"** Bold Straight Line Pmk., ms. "6" on 1829 Single Zone Rate Folded Letter to Rhode Island, VF & Desirable..... (Photo) E.VI
- 35 ☒ **TRANS ATLANTIC PATENT ENVELOPE**, 1851, Two **Patent Seven-Hole Circular Die Cuts** on back, "Coventry Ja 2 1851" pmk. on cover to N.Y., Red "5 Cents" & "Br. Packet Paid 24", Oxford N.Y. receiving pmk., matching str. line "Paid" & "5" in Circle, VF..... (Photo) E.VI
- 36 ☒ **FLORIDA STATEHOOD STAMPLESS COVERS**, 23 Covers, folded Covers & Folded Letters, two Part Covers & Two Cover Fronts only, variety of pmks. incl. Tallahassee, Jacksonville, Pensacola, St. Augustine, Ocala, Milton & Mariana, also incl couple ms. pmks. & 1823 from Washington, Ga. to Florida, Mixed Quality, VG-F..... E.XI
- 37 ☒ **Stampless Covers**, Accumulation of 164 Stampless Covers & a couple Misc. items, majority of the items are from Southern Towns (strength in Georgia & Virginia, mostly circle Pmks, although there are a few other types to be found, some better, Generally F-VF, Excellent Foundation for a Stampless Cover Collection..... E.XIV
- 38 ☒ **Stampless Covers**, 1830's-50's, 34 Items, incl. mostly handstamp pmks., incl. "New York" Clamshell, "New Orleans" & Red Double Circle Bold "Cherry-Valley N.Y.", interesting variety of rates incl. 3, 5, 6, 12½, 18¾, 25 & 50, incl. one Trans-Atlantic Cover with Four Diff. Color markings, VG-VF Lot..... E.VII

FLORIDA TERRITORIAL COVERS

- 39 ☒ **"Apalachicola F. Ty."**, Red & Black Pmks. on 1836 & 1838 Folded Letter, ms. "25" rate markings, F-VF Pair of covers E.VII
- 40 ☒ **"Apalachicola, F. Ty."**, Mostly Clear Pmks., Two Diff. (one Black & Two Red) on Three Folded Covers (1838, 1840 & 1844), rates incl ms. "18¾" & "25" & Red "25" handstamp, Fine & Handsome Lot E.VII
- 41 ☒ **"Pensa F. Dec 27"**, Bold Pmk. & matching "Free" handstamp on 1830 Folded Letter to N.Y., VF (Photo) E.VII
- 42 ☒ **Pensacola, Florida**, 1834 & 1841, Two Diff. Pmks. each on separate Folded Letter, ms. "10" or "18¾" rate markings, some separations on former, o/w Fine Lot..... E.VI
- 43 ☒ **"St. Augustine Fl. T. May 4"**, Mostly Clear & Bold Pmk. on 1841 Folded Letter to Vermont, ms. "25" Rate Marking, VF..... (Photo) E.VI

44	✉	"St. Augustine Fl. T." , Red & Black Pmks. each on separate 1843 or 1844 folded Cover or letter, "Paid" or "Free" handstamps, former with ms. "50" rate marking & some slight cover staining, o/w VF....	E.VI
45	✉	"St. Augustine" , Three Diff. Pmks. incl. oval & Circle (one Black & one Red of latter), mostly clear or mostly bold strikes, ms. "10" or "25" rate markings, some cover faults, Scarce offering	E.VI
46	✉	"St. Joseph Fl. T. Jan 1" , Partly clear Pmk on 1840 Folded Letter to Boston, ms. "25" rate marking, some slight toning, Fine & Handsome .	E.VI
47	✉	"Tallahassee Flo Apr 3 1837" , Oval Pmk., mostly bold strike, ms. "25" rate marking, VF	E.VII
48	✉	"Tallahassee Flo. Dec 10, 1840" , Mostly Clear oval pmk. on printed Bank Notice, ms. "6" rate marking, VF, Handsome	E.VII
49	✉	Tallahassee Flor. , Black oval pmk. & Red Pmk. on 1835 & 1843 Folded Cover & Folded Letter, former with matching "Paid" handstamp & ms "50" rate marking, latter with "25" rate marking, F-VF Lot	E.VII
50	✉	Tallahassee FL , 1839 & 1843, Black oval pmk. & Red Pmk., each on separate folded letter, ms. "25" rate markings, former with some slight toning, Fine Lot.....	E.VII
51	✉	Tallahassee, Florida , 1833-39, Four Oval Pmks., Three Diff. Types, Black & red, Rates incl. 6, 25 & 10, on folded Covers or folded letters, VG-VF Lot, Scarce offering	E.IX
52	✉	Florida , 1832-41, Four folded letters or covers, Pmks. incl. three Tallahassee & one St. Augustine, Most are legal size covers, one is a turned cover with Mobile Ala. Pmk., various rates, most with extensive Docketing, A Most Unusual & Interesting Offering	E.VI

MICHIGAN STAMPLESS COVERS

53	✉	"Adrian Mic. T Dec 12" , Mostly Bold pmk. on 1836 Folded Letter to New York, ms. Post Master Free Frank, VF.....	E.V
54	✉	"Ann Arbor/23 Augt." ms. pmk. and "Paid 25" on 1832 Folded Letter to Mass, VF	E.VIII
55	✉	"Ann Arbor/28 Feb" , ms. pmk. & "Free" on 1833 Folded Letter to New York, slight soiling along file fold, VF.....	E.VIII
56	✉	"Auburn M.T./Jan 29" , ms. pmk. & "25" Rate Marking on 1833 Folded Letter to New York City, docketing at T., Very Desirable pmk. ..	E.V
57	✉	Bay Settlement, Mic. Ter., Nov 10 , ms. pmk. & "25" rate marking on 1828 Folded Letter to N.Y., VF, Became "Erie" in 1835, ex-Schmalzriedt	E.VII
58	✉	"Bloomfield M./Jan 31" , ms. pmk. & "25" rate marking on 1837 Folded Letter to New York City, VF, Reported to be the Latest Known Date.....	E.V
59	✉	"Brownstone/Nov 4th MT" , ms. pmk. & "25" rate marking on 1834 Folded Letter to New York City, Letter Datelined "Smooth Rock in Brownstown", VF.....	E.VI
60	✉	"China MT/Nov 23 1935" , ms. pmk. on Yellow Folded Letter to Maine, Free Frank of Postmaster who wrote the Letter, Contents mention Land & Politics, VF, Earliest Known Usage.....	E.VI
61	✉	"Clinton Mic Jan 5" , Red Mostly Clear & Bold pmk. & matching "FREE" Handstamp on 1836 Folded Letter to New York City, ms. Post Master Free Frank, VF, Believed to be the Earliest Known Date	E.V
62	✉	"Comstock M.T./August 30" , ms. pmk. & "25" rate marking on 1832 Folded Letter to New York, VF.....	E.VII
63	✉	Detroit Mic. T. , Red oval pmk. & matching "PAID", ms. "Paid 27", on June 1824 Folded Letter to London , Handsome and Very Scarce Usage to a Foreign Country	E.V

- 64 ☒ **Detroit Mic. T.**, Red partly Clear Double Oval pmk. and matching "SHIP" Handstamp on Sept. 1825 Folded Letter to Phila., ms. "27" (25c Postage + 2c Ship Fee) Rate Marking, Rare..... E.V
- 65 ☒ **"Detroit Michigan Jan 7"**, Red pmk., & matching Arced "PAID", ms. "75" rate marking on 1835 Folded Cover to Mass, VF..... E.IV
- 66 ☒ **"Detroit Michigan May 29"**, mostly Clear & Bold Red pmk., matching arced "PAID", on 1835 Folded Letter to **France**, ms. "25" rate marking, Red Bold "C.T.F." and other Appropriate French Transit Markings, A Handsome & Extremely Scarce Usage of a Territorial to A Foreign Country..... E.V
- 67 ☒ **Detroit, Michigan**, mostly clear Red pmk. on 1836 Folded Letter to **England**, Boxed "Portsmouth/Ship Letter", ms. "25" rate marking, Fine, Extremely Scarce Territorial to a Foreign Country E.IV
- 68 ☒ **Detroit Mic. T.**, Red & Black Oval pmks., former double oval, each on separate Folded Letter, former with "FREE" handstamp from Veteran from War of 1812, latter with "25" Rate Marking, one with toning, o/w Fine Lot..... E.IV
- 69 ☒ **Detroit Michigan**, 1833-35, Five Folded Covers or Letters, each with identical pmks., but diff. Rates incl. Free, 10, 18 $\frac{3}{4}$, 25 & 50, F-VF, Scarce Lot..... E.VI
- 70 ☒ **Detroit Mic., T.**, Oval pmks., Red & Black, former double oval, latter Boxed Date, on 1823 & 1830 Folded Letter Respectively, former with matching "FREE" handstamp, latter with "18 $\frac{3}{4}$ " rate marking, Fine Lot E.V
- 71 ☒ **Detroit Mic., T.**, Oval pmks., partly clear, Red & Black, former double oval & matching "Free" handstamp, latter with ms. "25" rate marking, each on 1823 or 1831 Folded Letter, Black pmk. latest recorded Date, Fine E.IV

- | | | |
|------|---|------|
| 72 ☒ | "Dubuques Mines Mic. T. Aug. 10" , ms. "18 $\frac{3}{4}$ " rate marking on 1836 Folded Letter to St. Louis, Very Fine & Choice, Rare (Photo) | E.XV |
|------|---|------|

- 73 ☒ **"Farmington M.T./May 1st"**, Red ms. pmk. and "25" Rate Marking on 1834 Folded Letter to New York, VF, Latest Recorded Date for this pmk. E.V

- | | | |
|------|--|------|
| 74 ☒ | "Fort-Winnebago M.T." , ms. "Nov. 24" date and Post Master Free Frank on 1833 Folded Letter to Fort Niagara NY, A Handsome Example of this pmk. of which only Four Covers are Known to Exist..... (Photo) | E.XV |
| 75 ☒ | "Fort-Winnebago M.T." , pmk., ms. "Dec 24" date & "Free" on 1834 Yellow Folded Letter to Washington, D.C., VF, One of Only Four Covers Known, Believed to be the Latest Known..... | E.XV |

- 76 ☒ **"French Town MT/July 12"**, ms. pmk. and "25" Rate Marking on 1822 Folded Letter to Kentucky, small splits along edge and file fold, Fine for this..... E.VI
- 77 ☒ **"Geloster MT/Apr 15th"**, ms. pmk. and "25" Rate Marking on 1834 Folded Letter to Vermont, Fine E.IV
- 78 ☒ **"Geloster, MT/Mar 31st"**, ms. pmk. & "25" rate marking on 1835 Folded Letter To Vermont, small internal cover tear & sealed edge tear at R., some slight cover foxing, o/w VF, Reported to be the Latest Known Usage..... E.VII
- 79 ☒ **"Geloster MT/Aug 22"**, ms. pmk. & "free" on 1836 Folded Letter to Ct., VF..... E.V
- 80 ☒ **"Grass Lake, Mich/Dec 10"**, ms. pmk. and "6 $\frac{1}{4}$ " Rate Marking on 1833 Folded Letter, cover edge wear and erosion, A Reasonably Attractive Example of the Earliest Recorded Date of this pmk..... E.IV

81	☒	"Green Bay MT/21 Sept. 1831" , ms. pmk. & "25" Rate Marking on 1831 Folded Missionary Letter to Phila., VF (Photo)	E.VIII
82	☒	"Green Bay MT./March 28" , ms. pmk. & "12½" rate marking on 1836 Folded Letter, Docketing at L., VF, Rare. (Photo)	E.XIII
83	☒	"Green Bay M.T." , Slant Serif U/L Case pmk., ms. "July 4" date & "Free", ms. "On Public Service" on 1836 Folded Letter to U.S. Army Q.M.G., Washington D.C., headed "Fort Howard", Fine & Rare..... (Photo)	E.XIV
84	☒	"Kedzies Grove/MT July 9" , ms. pmk. & Post Master Free Frank on 1835 Folded Letter fo New York, VF	E.V
85	☒	"Marshall Mic. T. Feb 9" , Red Brown pmk., ms. "25" Rate Marking on Folded Cover to New York, Fine	E.V
86	☒	"Marshall Mic. T. Apr 14" Red Brown pmk. on 1837 Folded Letter to Mess., ms. "50" rate marking, docketing at L., VF	E.V
87	☒	"Mc Iomanee, M. Ty./March 16—1835" , neat ms. pmk. & "25" rate marking on Folded Letter to Phila., Letter makes mention of Indian Schools and how the introduction of liquor to the Indians has hindered Missionary Work, couple Trivial ink smears, VF, A Late Usage.....	E.VIII
88	☒	"Milwaukie/12 Nov" , ms. pmk. on 1835 Folded Letter To Green Bay, matching "12½" rate marking, minor toning along file fold, o/w VF, Reported to be the Earliest Known Date, Very Scarce..... (Photo)	E.XI
89	☒	Milwaukee, M.T., Mount Vernon, M.T., Wm. A Burt P.M. , Both ms. pmks. on June, 1836 Folded Letter to Cincinnati, Ohio, VF, Rare and Unusual with Two Early Territorial pmks. on the same Cover	E.IX
90	☒	"Monroe MT/Aug 24," ms. pmk. on 1833 Folded Letter addressed to the Secretary of State of Conn., ms. "Paid 25", VF	E.VI
91	☒	"Mottville MT"/Feb'y 5 1835" , ms. pmk. and "25" rate marking on 1835 Folded Letter to New York, VF.....	E.V
92	☒	Mount Vernon Mic Ter./Free Wm. A. Burt PM" , ms. Free Frank on Nov 1835 Folded Letter to Ohio, Red "City of Washington" pmk. & matching "FREE" handstamp, VF.....	E.V
93	☒	"Navarino M.T./Mrch 31st" , Red ms. pmk., ms. "Paid 25" on 1834 Folded Letter datelined Fort Howard, VF, Latest Known Date, Very Scarce	E.XII
94	☒	"Niles M.T./July 27" , ms. pmk. and "25" Rate Marking on 1834 Folded Letter to Washington D.C., VF.....	E.V
95	☒	Niles Mic T. , Red and Black pmks., each on separate Folded Letter To New York, ms. "25" Rate Marking, Red pmk. Bold but not clear, characteristic "oily" ink, F-VF	E.V
96	☒	"Platteville MT/March 24th" , ms. pmk. and Post Master Free Frank on 1827 Folded Letter to Chicago, some cover staining, A desirable pmk. Unlisted in ASCC..... (Photo)	E.VII
97	☒	"Pontiac M.T./2 Aug 1828" ms. pmk. & Post Master Free Frank on neat Folded Letter to New York, Docketing across Address, VF (Photo)	E.VII
98	☒	"Prairie du Chien MT/Jany 19th" , ms. pmk. on 1828 Folded Letter to St. Louis, ms. "25" rate marking, VF, Scarce	E.X
99	☒	"Prairie du Chien/Aug 20 —" , ms. pmk. "on Public Service" and "Free" on 1831 Folded Letter to the Assistant Post Master, Washington, D.C., VF	E.X
100	☒	"Prairie du Chien M.T./Apr. 14" , ms. pmk. & "Free" on 1833 Folded Letter to the Adj. General U.S. Army Washington D.C., VF	E.X
101	☒	"Prairie Du Chien, M.T./Aug 21" , ms. pmk., "Paid" and "37½" Rate Marking on Folded Cover to Mineral Point, M.T., some light toning at L., o/w VF.....	E.VI

102	✉	"Romeo M.T./Oct 1st, 1831" , ms. pmk. and Post Master Free Frank on Folded Letter to New York, VF.....	E.V
103	✉	"Romeo M.T./Apr 7th 1832" , ms. pmk. and Post Master Free Frank on Folded Letter to New York, docketing at T., VF.....	E.V
104	✉	"Romeo, M. Ty./August 31th 1833" , ms. pmk. and "25" Rate Marking on Folded Letter to New York, VF.....	E.V
105	✉	"Royal Oak Mic T/May 10 1830" , ms. pmk. on Folded Letter to New York, "25" rate marking, minor docketing at T., VF, Earliest Known Date for this Pmk.....	E.V
106	✉	"St. Clair MT/April 25" , ms. pmk. and "25" Rate Marking on 1836 Folded Letter to New York, VF, the Lastest Date Known of this Pmk. ...	E.V
107	✉	"Sault Ste Marie/Mar 3" ms. pmk. and "25" rate marking on 1832 Folded Letter to Mass., VF, The Earliest Recorded Date.....	E.V
108	✉	"Sault Ste Marie/17 Jan'y 1834" , ms. pmk. on Folded Letter to Mackinae, Ms. "12½" Rate Marking, some toning, o/w VF, Latest Recorded Date for this pmk.	E.IV
109	✉	"Sheboyagon Nov 29th 1835" , ms. Date Line on a folded Letter to Navarino, Green Bay, no Postal Markings, ms. "by Mail Carrier," VF.	E.V
110	✉	Tecumseh Mic. T , Two Red pmks. each on separate Folded Letter To N.Y., 25c on 50c Rates, F-VF.....	E.VII
111	✉	"West Farmington MT/April 24" , ms. pmk. & "25" Rate Marking, "30" rate marking crossed out, on 1834 Folded Letter to New York, Fine, Latest Known Date of The Two Known Covers.....	E.V
112	✉	"White Pigeon/MT July 29" , ms. pmk. on 1833 Folded Letter, ms. Free Frank of Post Master, A Handsome Example of this Desirable Pmk..... (Photo)	E.VIII
113	✉	"White Pigeon/MT June 2nd," ms. pmk. on 1833 Folded Letter to Detroit, matching "12½" rate marking, few trivial ink smears, VF...	E.VI
114	✉	"White Pigeon M.T./Mar 4th" ms. pmk. on 1835 Folded Letter to New York, ms. "Paid 25", VF.....	E.VII
115	✉	"Ypsilanti M.T./10 Nov 1829" , ms. pmk. & matching "25" rate marking on Folded Letter to New York City, some slight cover edge wear, o/w VF, Believed to be the Earliest Known Date..... (Photo)	E.VII
116	✉	Ypsilanti Mic. T , Bold pmk. on May 1834 Folded Letter to NY., ms. "25" rate marking, small cover tear at B., o/w VF..... (Photo)	E.VI
117	✉	Manuscript Town Pmks. , 1830-36, Four Folded Letters, Diff. Pmks. comprising Ypsilanti, Troy, Tecumseh & Dexter, each with "25" rate marking, Generally F-VF, Scarce Lot.....	E.VII
118	✉	Stampless Covers , 1830's, Ten Folded Covers or Letters, mostly diff. handstamp pmks., incl. Detroit, Mackinac, Monroe, Niles, Pontiac, & Ypsilanti, various rates, incl. one forwarded Cover, Generally Fine Lot.	E.XI
119		Michigan Philatelic Library , Six Volumes, Four Booklets & One Folder, incl. "Post Offices of Michigan", "Michigan Place Names," "Michigan Postal Markings," "Voices from the Wilderness," "The Detroit Philatelist" (Bound) 1892-94, "The Michigan Philatist" 1877, 1885 & 1892, & "The Bay Philatelist", Useful Lot, Generally F-VF.	E.VIII
120		Michigan Post Offices , Privately Bound, some cover edge wear, contents VF, Fewer than Five Known.....	—

TERRITORIAL COVERS

121	✉	Dakota Territorial Covers , Eight Diff., each franked with 2c Bank Notes (210 or 213), Five with Printed Corner Cards, (one Fancy) Two Illustr. Corner Cards for Cataract House (Hotel), slightly reduced into design & Hamilton-Corliss Engines, Four Diff. Towns & one R.P.O., VG-VF Lot.....	E.VII
-----	---	--	-------

- 122 ☒ **"Fort Adams M.T. 21 Sept"** ms. Pmk. on 1803 Folded Letter to Philadelphia, matching "25" Rate Marking, ms. "Public Service Josiah Taylor Lieut, assistant Military Agent", docketing at R., VF & Choice, Rare Marking (Photo) **E.XII**
- 123 ☒ **Fort Gibson Ark**, Bold, slightly blurred strike, ms. "10" rate on July 1847 Folded Letter to N.Y. City, Fine & Scarce..... (Photo) **E.IX**
- 124 ☒ **"Gold Hill, N.T. Feb 25 1863"** Bold Blue Double Circle pmk. on large Embossed Valentine Envelope to Ct. franked with **5c Red Brown (75)** R. perfs. touch, Cogwheel cancel, Ornate Multicolor Valentine enclosure, T.R. cover corner replaced (second stamp missing), Scarce (Photo) **E.XII**
- 125 ☒ **"Nebraska City N.T. Aug 15"** Blue Pmk. ties Average 3c Dull Red (11) on Yellow Cover to Vermont, Cover Backflap tears and small sealed tear on front, Handsome..... **E.V**
- 126 ☒ **"Wyandott Kt Apr. 22"** Partly Clear & Bold Pmk. ties 3c Dull Red (26) on forwarded Cover from Wyandotte to Leavenworth, Original Postage Paid by 3c Dull Red (26), T. perfs. trimmed, tied by Exter NH Pmk., Very Scarce Cover..... **E.V**

WESTERN COVERS

- 127 ☒ **Alpha Cal**, mostly clear pmk. ties Large to Huge Margined **10c Green, Ty. II (14)** on Neat Cover to Phila., Pa., stamp has cut mark in B. margin well-clear of design, o/w VF..... (Photo) **E.VIII**
- 128 ☒ **Angel Island, Cal.**, 24mm Double Circle on 3c Green Entire (U164) to Maine, letter enclosed from Cavalry Soldier giving his new address as "Camp Bowie A.T.", cover bit reduced at L., Fine..... (Photo) **E.V**
- 129 ☒ **Auburn Cal Mar 19 1861** Double Circle ties 10c Green Ty. V (35), Pos. 4R2, Dark Shade on cover to VT, Fine & Attractive **E.IV**
- 130 ☒ **Boston & Albany R.R.**, Red pmk., matching "5" on Cover to **Sacramento City, Cal.**, pencil "40" rate, couple minor cover tears, Fine **E.V**
- 131 ☒ **Boston Mass.**, Red pmk., matching "40" on Dec. 1849 Folded Letter to San Francisco For Forwarding to **Honolulu**, Fine **E.V**
- 132 ☒ **California Penny Post Co.**, 7c **Black on Buff Entire (34LU11)**. Addressed to Adams & Co San Francisco, B. Sheet Margin 3c Red (11), small ms. cancel, not tied, some light cover soiling, o/w VF, Scarce (Photo) **E.VIII**
- 133 ☒ **Due 7**, Clear Str. Line Handstamp on Neat Gray Cover to "Grizzley Flatt" Cal., 3c Red (26) tied by Ill. Town pmk., ms. "Overland rout.", Fine, Scarce..... **E.V**
- 134 ☒ **Due 7 & Purser**, Two Bold Str. Line Handstamps on 3c Pink Entire (U59) to San Jose, "San Francisco Cal. Jan 12 1866" pmk., cover bit reduced at L., some very trivial cover stain spots, Fine, Scarce (Photo) **E.VII**
- 135 ☒ **"Gibsonville Cal."** Mostly clear Pmk. and matching "PAID" handstamp on **Registered** Cover to Maine, franked with 10c Green Ty. V (35), T. perfs. just touch, ms. cancel, ms. "Regis No. 4 5cts" at T., cover repair at B.L., cover bit reduced at R., o/w Fine & Quite Scarce ... **E.VII**
- 136 ☒ **"Jack Ass Mail"**, Small Cover To Fort Yuma Col. Franked with **1c Blue, Ty. IV (9) & Strip of Three 3c Red (11)** tied by Grids, "West Point N.Y." pmk., ms. **"Via San Diego"** (Carried on the San Antonio to San Diego Line - Aug. 1857-Aug. 1861), Fine & Rare (Photo) **E.XII**
- 137 ☒ **"Kit Carson Colo"**, **Rosita Colorado**, latter Boxed Purple pmk., each on separate Cover franked with 3c Bank Note, one cover with Ornate Overall Advertisement on Reverse (cover trifle reduced at L., other with small margin tears), VF Strikes, Scarce Offering **E.VI**

- 138 ☒ **La Porte Cal Apr 1859**, Two Blue pmks., one ties Beautifully Centered 10c Green, Ty. III (33) on Cover to Mass., cover trifle reduced at R., few trivial age toning specks, o/w VF (Photo) E.VI
- 139 ☒ **"Murphy's Cal. Nov. 19"** mostly clear pmk. ties **10c Green, Ty. II (14)**, Clear to Huge Margins showing bit of next stamp, on buff cover to Pa., trivial cover edge wear, o/w VF (Photo) E.X
- 140 ☒ **New Orleans La.**, partial Red pmk., **"Red Steam" & Large Red "40"** on Cover to San Francisco, minor cover wear, Fine, Scarce Usage E.V
- 141 ☒ **Overland**, Clear Str. Line pmk. on **10c Green Entire (U16)** to Mich., **"Red Dog Cal."** pmk., ms. "Overland Mail," VF (Photo) E.VIII
- 142 ☒ **"(Pan. &) San. Fran. S.S. Oct 22"** (Panama & San Francisco Steamship) partly clear Red pmk., on small linen lined cover to Phil., ms. "10", Fine, Very Scarce (Photo) E.X

- 143 ☒ **"Pony In"**, Clear Sans-Serif Str. Line on Cover to Santa Clara, Cal. (another strike on back), **3c Red (25)**, tied by "San Francisco Cal." pmk., trivial cover aging & small part of flap missing, Fine, Reputedly Unique, a Great Western Rarity (Routing—San Francisco to Alviso by boat, Alviso to Santa Clara by Pony) (Photo) E.XIII

- 144 ☒ **Poverty Bar Cal.**, Clear pmk. on 10c Green Entire (U16) to N.Y. City, **10c Green (68) Carefully Affixed Over Embossed 10c** & tied by Grid of Dots effectively making this **An Old Stamps Not Recognized Cover**, VF, A Lovely & Rare Cover (Photo) E.IX
- 145 ☒ **"St Louis Cal Aug 30"** Blue Pmk. on 1856 Brown Cover to England, Magenta ms. **"Paid 29"** rate marking, Red **"America Liverpool"** Receiving marking & **"19"** rate marking, backflap tear resulting in small tear at T., slight cover edge wear, A Handsome Example of the 29c Rate (Photo) E.VII
- 146 ☒ **Sacramento 40**, Bold pmk. (Sans-serif Letters), on Fresh Aug 1850 Folded Letter to Mo., VF, Choice Cover (Photo) E.VII
- 147 ☒ **"Sacramento Cal 26 Apr 40"** Mostly Bold thin **"40"** Pmk. on Buff Cover to New York, some slight cover edge wear, Handsome Strike (Photo) E.VI
- 148 ☒ **"San Francisco Cal"** Partly Bold pmk., matching **"SHIP"** & **"3"** on Brown Cover to **Honolulu Sandwich Is.**, ms. "via San Francisco" Routing Instruction, cover tears, still A Presentable Example E.VI
- 149 ☒ **"San Francisco Cal. 21 Aug"** Bold Pmk. & Matching **"1"** on 1852 Folded Printed Tax Assessment Notice, some slight bleaching along file folds, o/w VF (Photo) E.VI
- 150 ☒ **"San Francisco Cal. Oct. 15"** Orange Mostly Clear & Bold Pmk. & matching **"40"** Rate Marking on Folded Cover to New York, VF E.VI
- 151 ☒ **San Francisco Cal Apr. 5 1860** pmk. ties 10c Green, Ty. V (35), on **Oriental Hotel Illustr. Advertising Cover**, ms. "per Steamer 'Golden Age'", Trivial cover stain, Fine (Photo) E.VI
- 152 ☒ **San Francisco Cal Jul 22** pmk. ties 10c Green, Ty. V (35) on Merchant's Adv. Cover with Beige Background of Links, to Boston, ms. "per Overland Mail", VF E.VI
- 153 ☒ **Steamer Gipsy**, Red Oval on Cover to **San Francisco Cal**, Red **"New Orleans, La"** pmk., **Red Oval "Way 11 Cents"**, (**"11" changed to "41" in ms.**), pencil **"27"**, without flap, back nearly separated, Fine Appearance, Very Rare Packet/Transcontinental Usage (Photo) E.IX
- 154 ☒ **"Steam Manzanillo"**, Two Fancy Ovals (one partial, Other Very Clear) on Cover to Conn., San Francisco Cal. pmk. & **"3"** rate, bit reduced at L., few trivial toning specks, **Only Two Known**, Fine & Extremely Rare (Manzanillo was the Port of Call for Guadalajara) (Photo) E.X

WESTERN EXPRESS CO. COVERS

- | | | | |
|-----|----|--|----------|
| 155 | ★田 | Adams & Co's. Express, 25c Black (1L2). Horiz. Block of Eight, Fresh, o.g., some minor creasing, VF Appearance (Photo) | 400.00 + |
| 156 | ⊠ | Adams & Cos./Express/* Mormon Island * , Mostly Bold Readable Double Oval on Cover to San Francisco Forwarded to Mormon Island, Black "Boston 10cts" pmk., ms. "Pd 5" over "15" below, additional ms. "Mur Bos \$1.25", minor overall age toning, Fine (Photo) | E.VIII |
| 157 | ⊠ | American Express." Black on Yellow Illustrated Printed Label affixed over Pacific Express Pony Rider Printed Frank on 3c Entire (U9) to San Francisco, Red "Watsonville" Str. Line Pmk., cover tears on back & minor wear, Fine, Rare & Very Unusual (Photo) | E.XI |
| 158 | ⊠ | "Office Berford & Co.'s California Express" . . . etc., Printed Label on 1852 Folded Cover to San Francisco, Gives Methods & Rates For Service, Red "Paid" in Oval, Fine, Rare Express Co. Cover..... (Photo) | E.IX |
- | | | | |
|-----|---|--|--------|
| 159 | ⊠ | The Central Overland California & Pikes Peak Express Company Denver City K.T., Oval pmk. Choice Strike, Green "St. Joseph Mo." pmk. on 3c Star Die/Entire to Iowa, Additional Strike of the Oval on back, tiny bit reduced at L., VF. (Photo) | E.XIII |
|-----|---|--|--------|
- | | | | |
|-----|---|--|-------|
| 160 | ⊠ | The Central Overland, Californi/& Pikes Peak/Express Company/ St. Joseph, Mo., partly readable Green Oval ties Black on Pink "CO.C. & P.P. Express" Label on Lincoln Campaign Cover (Beardless Portrait) to Central City, "Marshallton Ioa." pmk., express label has some faults, cover bit reduced at R. & some aging, still a Very Desirable & Rare Usage..... (Photo) | E.X |
| 161 | ⊠ | The Central Overland Californi/& Pikes Peak/Express Company/ Denver City K.T., Clear Oval (Additional Clear Strike on back) on 3c Star Die Entire to Pa., " Hinckley & Co's Express Mail Fast Run. Via Denver. Paid Through " Scroll Type Printed Corner Card Frank, ms. "via N.Y. City", trivial toning spot, o/w VF..... (Photo) | E.XII |
| 162 | ⊠ | Chase's Express/Yreka/Deadwood &/Indian Creek./Paid, Embossed Corner Card Frank on Cover Addressed to Yreka, no other postal, express co. or rate markings, part of flap missing, VF | E.VII |
| 163 | ⊠ | Devils Gate Express/Paid 25, Two Line (partly doubled) handstamp, on 3c Pink Entire (U35) to "Timbuctoo" Yuba Co. Cal., "Carson City Nev" pmk., tiny cover tear, o/w VF..... | E.XI |
| 164 | ⊠ | Forwarded By/Dodge & Cos./Express., Red Oval on Buff Cover to St. Louis Mo. Carried to New York & Deposited in the mail for St. Louis as Evidenced by Red "New-York 10cts" pmk., VF, Rare & Unusual, with original letter containing references to life in San Francisco & how it will someday "be the New York or London of the Pacific" (Photo) | E.XI |
| 165 | ⊠ | Greenhood & Newbauer/Express/Weaverville, Cal., Bold Double Oval on 3c Entire (U9) to San Francisco, Printed Frank with the "Newbaner" Misspelling, VF, Rare..... (Photo) | E.VII |
| 166 | ⊠ | Hinkley & Co.'s/Express Mail/Fast Run/Via Denver. Paid Through, Printed Frank in Scroll Frame on 3c Red Entire (U10) to "Golden City J.T." (Jefferson Territory-Unofficial Territory Oct. 24, 1859-Feb. 28, 1861 comprised of Kans., Neb. Utah, N. Mex. & Colorado.), Philadelphia Nov. 19, 1860 pmk., VF..... (Photo) | E.XII |
| 167 | ⊠ | Hunter & Co's Express, Blue Oval on Small Cover to Sacramento City Cal., Bold Blue Troy N.Y. pmk., ms. "40" rate, Red "Advd", without flap, VF, Scarce..... (Photo) | E.IX |

- 168 ☒ **Jones & Russell's Pike's Peak Express Co.** Denver City Dec 22 1859; Bold pmk. on Neat Cover to Leavenworth City K.T., ms. "Due 3", without flap, VF, Rare (Photo) E.XIV

- 169 ☒ **Lamping & Cos. Express Downieville**, partly bold readable oval on 3c Pink Entire (U58) to San Francisco, Printed Co. Frank Vertically at L., Blue Wells, Fargo Marysville Oval, VF, Scarce Express Co.. (Photo) E.VII
- 170 ☒ **Langton's/Downieville/Pioneer Express**, Large Blue Oval, Bold Strike, on 3c Pink Entire (U35) to San Francisco, Printed Co. Frank, Blue "Wells, Fargo & Co. Marysville" Double Oval, VF E.V
- 171 ☒ **"Forwarded/via/Nicaragua/from/Noisy Carriers Publishing Hall/San Francisco"** Green Boxed Handstamp on 6c Green on Buff entire (U14), Bold New York pmk. few small cover edge faults at T., Attractive (Photo) E.X

- 172 ☒ **Noisy Carrier's/Mail/San Francisco.**, Clear 45x32mm Oval on Cover to Ct., 10c Green, Ty. I (13), Ample to Huge Margins, VF, tied by San Francisco Cal. pmk., closed cover corner tear at T.L. barely affects rim of oval, o/w VF, Choice Stamp which catalogs \$1,000.00 on a normal cover (Photo) E.XIII

- 173 ☒ **"From Noisy Carrier's/Mail./77 Long Wharf "S.F. Cal."**, Beautiful Strike in Fancy Blue Box on Fresh Buff Cover to Phila., Pa., Horiz. Pair 3c Red (11), average, one light filing crease, tied by San Francisco, Cal. pmk., Choice Appearance (Photo) E.XII
- 174 ☒ **Forwarded by Reynolds & Co. Express**, mostly Bold 25x15mm Oval on Buff Cover to San Francisco, "New-York 40", pmk., VF, Scarce E.X
- 175 ☒ **F. Rumrill & Co's/Express/Downieville**, Double Oval (small part smeared) on Fresh Buff Cover to Ct., Blue "Marysville Cal 10" pmk., Fine (Photo) E.IX
- 176 ☒ **Stmr. Sierra Nevada/Via Nicaragua/Advance Of The Mails**, lightly struck partly readable Blue Oval on Neat Buff Cover to Maine, F-VF Horiz. Pair 3c Red (11) tied by "New-York Ship" pmk., ms. "I send a paper", Fine Scarce (Photo) E.X
- 177 ☒ **From Todds. Express—Office Sonora**, Five Lines in Blue Vert. Elongated Octagon on Pristine Buff Cover to San Francisco, Extremely Fine, Rare (Photo) E.XI
- 178 ☒ **Forwarded By/Todd's/Express/San Francisco**, Clear Black Oval, matching **"Not Paid" in Octagon** on 1852 Folded Letter to **"Tuttle-town near Sonora"**, neatly closed tear, some edge toning & erosion (nicely "silked"), Scarce (Photo) E.VIII
- 179 ☒ **Via Nicaragua/Ahead of The Mails**. Mostly Bold Readable Strike in Red Truncate Octagon on Cover to a Mr. Hubbard aboard the "Steamer 'Winfield Scott' San Juan del Sur" or in care of Babcock & Co. San Francisco, ms. "pr Northern Light.", pencil "due 25c" rate, without flap, minor cover repair, Attractive & Very Rare, Believed to be the Only Example of this Marking on a Cover Going East to West .. (Photo) E.IX
- 180 ☒ **"Wells, Fargo & Co./Express/Marysville"** Mostly Bold Blue Handstamp & matching Bold "FREE" in oval Handstamp on Buff Cover to Sacramento, **Uncancelled** 3c Dull Red (11) with L Sheet Margin, ms. "care Wells Fargos & Cos Express Please Deliver" Routing Instructions, VF, Interesting Cover (Photo) E.VII
- 181 ☒ **Wells, Fargo & Co. Napa Valley Route**, Blue Oval on 3c Pink Entire (U59), Printed Frank, neat 1868 docketing at L., Fine E.V
- 182 ☒ **Wells, Fargo & Co's/Express/Oakwood, Cal.**, Bold Purple Oval (ca. 1887) on 2c Green Entire, Printed Express Co. Frank, Fine, Scarce, Oakwood was an Express Office, Never a Post Office (Photo) E.IV

- 183 ☒ **Wells, Fargo & Co. Sac. Messenger**, Blue Oval on 3c Pink Entire (U59) to Carson City, Nev., Printed Frank, Whitney & Co. Forwarding Merchants Return Card Vert. at L., VF, with original enclosure..... **E.V**
- 184 ☒ **"Wells, Fargo & Cos./Express/Jul 31, 1886/Tombstone Az"** Red oval pmk. on 2c Brown Entire (U277), Wells, Fargo Printed Frank at T., Cover trifle reduced at L., VF..... **E.IX**
- 185 ☒ **Express Co. Printed Franks**, Six Covers, incl. Wells, Fargo & Co. & Freeman & Co., Diff. Handstamps, Very Mixed Quality; Also incl. Violet "Wells Fargo Express" Handstamp on 2c Entire, G-F. Lot..... **E.VI**

TEXAS FORWARDERS

- 186 ☒ **"Wm. Bryan/New Orleans/Agent of the Texian Post Office"** Double oval Mostly Clear Handstamp on Back of June 1840 Folded Letter, Green "Washington City DC" Pmk. & matching "Free" handstamp, ms. "Free" & Autograph Signature, Black "SHIP" Marking, Fine Cover..... (Photo) **E.VIII**
- 187 ☒ **"Wm. Bryan/New Orleans/Agent for the Texian Post Office"** Double Oval partial clear Handstamp on Back of Folded Cover, Red "Salisbury N.C." pmk. & "Paid", ms. "Ship 12½" & "25", Fine. **E.VII**
- 188 ☒ **"Wm. Bryan/New Orleans/Agent of the Texian Post Office"** Mostly Clear & Bold Double Oval Handstamp on Back of 1842 Folded Letter to Texas, ms. "56" Rate Marking some slight cover edge wear & slight foxing, Desirable Marking..... **E.VI**

STEAM & PACKET BOAT COVERS

- 189 ☒ **"Regular Wednesday & Saturday/Packet/Advance/Capt. S.W. Abels/for Demapolis/Bladon, and/Cullums Springs."** (Klein 3) Blue Fancy Oval Handstamp on 1859 Two Page Folded Printed Prices Current franked with uncanceled 1c Blue, ty. V (24) natural s.e. at L. VF Packet marking..... (Photo) **E.X**
- 190 ☒ **"Steam Boat Belle Creole"** (Klein 32), Red Double Oval Handstamp, characteristic "oily" ink, Red New Orleans La. Pmk. & matching "Steam 10" in double circle on March 1851 Folded Letter, ms. "per S. Boat Princess No. 3" Routing Instructions, VF..... (Photo) **E.VII**
- 191 **"Packet/Belle Sulphur/A. Carlile Mas./R.C. Hutchison Clk"** (Klein 35) Red Double Oval mostly Bold and Clear Handstamp on Cover Front, franked with Average 3c Dull Red (11) Tied by "STEAM", matching New Orleans La. pmk., Negligible corner toning at T., A Lovely strike..... (Photo) **E.VII**
- 192 ☒ **Packet Boats B.L. Hodge No. 2 & St. Nicholas** (Klein 40, 531) Handstamps on 3c Pink Entire (U58, U59), former mostly clear strike, some cover soiling, VG-VF..... **E.V**
- 193 ☒ **"Sea Shore Line/Steamer/Camelia"** (Klein 57) Mostly Bold Oval Handstamp on 3c Pink on Buff Entire (U59), cover Bit reduced at R., Stamp uncanceled, Beautiful Strike..... (Photo) **E.VIII**
- 194 ☒ **"Rail Road Line/New Orleans & St. Louis/Passenger Packet/CHAMPION/E.B. Moore, Captain/Duvall W. Young, clerk"** Boxed Printed corner card on Cover to OHIO franked with Horiz. strip of three 1c Blue Ty. V (24), perfs. trimmed at T., tied by Bold "Saint Louis Mo Jun 2 1859" pmks., Portion of T.L. corner of Cover (affecting corner card) has been replaced and skillfully & Beautifully Drawn in, some slight perf. toning on stamps, A Lovely Example despite the condition of this Handsome Packet Corner Card, Unlisted in Klein..... (Photo) **E.IX**

195	⊗	"Charmer Dew Drop" Mostly clear oval Handstamp on 3c Red on Buff Entire (U10), (used on Yazoo & Miss. Rivers, Dew Drop connected with Charmer), from the Carroll Hoy Corres., couple usual small spindle holes, Rare Steam Boat Marking (less than ten known)	E.VIII
196	⊗	Packet Boat's Cherokee & St. Nicholas (Klein 75, 531) Handstamps on 3c Red & 3c Pink Entire (U10 & U58 Respectively), former couple cover tears & slight edge wear, ms. pmk. & cancel, latter stamp uncanceled, couple usual small spindle holes, scarce offering.....	E.V
197	⊗	"Steamer Cleveland" 44mm. double Circle Handstamp (Partly Clear) on Yellow Cover franked with 3c Rose (65), Detroit Pmk., Very Scarce	(Photo) E.VIII
198	⊗	"Red River Packet/Countess/Geo. T. Wilson. Master" (Klein 102) Beautiful Bold Red Handstamp on Cover franked with uncanceled 3c Dull Red (26), ms. "Countess", small portion of T.L. corner replaced, minor toning, Cover slightly reduced at R., A Very Choice Strike	(Photo) E.IX
199	⊗	"From Steamer/D.R. Carroll" (Klein 132), Blue Mostly Bold Oval Handstamp ties Average 3c Dull Red (26), additional ms. cancel, on Yellow Cover, portion of T.L. corner of cover replaced, Beautiful strike, From the Carroll Hoy Correspondence.....	(Photo) E.VII
200	⊗	"Steamer/Dollie Webb/Capt. J.R. Davis" (Klein 124) Red Double Oval Handstamp (mostly clear strike) on Orange Cover franked with 3c Dull Red (26) tied by New Orleans pmk., "By St. Boat Dollie Webb" ms. routing instructions, usual small spindle holes (one affecting stamp), Fine & Handsome	(Photo) E.VIII
201	⊗	"DUKE" Blue Straight Line Handstamp ties Average 3c Dull Red (26) on Cover to Port Gibson Miss., Town Pmk., some cover foxing, Extremely Rare Marking, only three known.....	(Photo) E.X
202	⊗	"Red River/Packet/Eleanor" (Klein 146) Blue Double Oval Handstamp on Buff Cover franked with Average 3c Dull Red (26), ms. cancel, VF.....	(Photo) E.VIII
203	⊗	"Regular Saturday/Packet/Independent Str/Emma No. 2/For Montgomery/W.B. Gunnison, Master Clerk" Blue Seven Line Partly Clear Handstamp on 3c Pink on white Entire (U58) to Ala, ms. "via Gamistown" Routing Instruction, Lower Left corner skillfully restored, stamp uncanceled, handstamp unlisted in Klein.....	E.V
204	⊗	"HOMER" (Klein 245), Red Straight Line Handstamp, Bald Strike on 1848 Folded Letter, ms. docketing at T., VF, A Lovely Example of this Teche Bayou Marking	(Photo) E.VIII
205	⊗	"Regular Packet/Homer" (Klein 246) Beautiful Boldly Struck Half-circle Handstamp on Yellow Orange Cover franked with Average 3c Dull Red (26), ms. cancel, usual tiny spindle holes, An Exceptionally Choice Strike of this Red River Marking.....	(Photo) E.VIII
206	⊗	"From Steamer/H.M. Wright/J.D. Clark/Master" (Klein 242) Red Double Oval Partly Clear Handstamp on Buff Cover franked with Average 3c Dull Red (11) tied by Beautiful Bold "WAY" cancel, Red "New Orleans La." pmk. Very Scarce Marking.....	E.VII
207	⊗	Str Lady Elgin , (Klein 299) Mostly clear and Bold Double Circle Handstamp with Inscription on Buff Cover franked with Uncanceled Fine 3c Dull Red (11), two additional strikes on back of Cover, cover flap closed tear, ms. "By Steamer Lady Elgin" Routing Instruction, Lovely example of this desirable Packet Boat Marking.....	(Photo) E.XII
208	⊗	"Magenta" (Klein 327A) Red Printed Corner Card on cover franked with Average 3c Rose (65) tied by Grid, Cover opened irregularly at T. (repaired to enhance appearance), lacks portions of back flaps, Handsome Appearance despite repair at T., Ex-Knapp	(Photo) E.IX

209	☒	"From/St Bt MONROE" Red Double Oval Handstamp on 1851 Folded Letter from Troy Miss. to New Orleans from the Buchannon Carroll Correspondence, VF..... (Photo)	E.VII
210	☒	"Steamer/Morning Light/Capt. Wm. Dillon. (Klein 366b), Blue Green Bold handstamp on 3c Red on Buff Star Die Entire (U27), backflap sealed tear, usual small spindle holes, from the Carroll Hoy Correspondence, VF & Choice, Rare (Photo)	E.XII
211	☒	"U.S. Mail/Packet/Natchez" (Klein 380), Black Mostly Clear oval handstamp on 1859 Printed Folded Prices Current, franked with 3c Dull Red (26), perfs trimmed at T. & R., tied by partial "U.S. Mail Saturday Evening Packet/Str. Natchez/Route 8165" Pmk., Hand-some cover.....	E.VII
212	☒	Packet Boat's National & St. Nicholas (Klein 385, 531), mostly Bold Handstamps on 3c Pink Entire (U58, U59), former couple usual spindle holes, latter some cover soiling, Attractive.....	E.V
213	☒	"Steamer New World/A.P. Hyatt/Master/J.W. Martin Clerk" (Klein 399A), Bold Blue handstamp on Buff cover, franked with 3c Dull Red (11) Pos. 29R3 tied by "STEAM" , VF (Photo)	E.VIII
214	☒	Steamer's Ophelia & Rapides (Klein 407, 459a) Partly clear hand-stamps, former on stampless folded cover, latter on uncanceled 3c Red on Buff Entire (U10), Scarce Lot.....	E.VII
215	☒	"New Orleans/Alexandria & Natchitaches/Packet/P. Daman" Red Partly Clear Oval Handstamp on Folded Cover franked by Average 3c Dull Red (11) tied by "WAY" Cancel, Red partial New Orleans pmk., from the Buchannon Carroll Correspondence, Desirable Steamboat Marking.....	E.VII
216	☒	"From/Regular Freight/and/Passenger/Steamer/Paul Jones" (Klein 422a), Black Mostly clear Shield Type Handstamp on Buff Cover franked with Average 3c Dull Red (26), ms. cancel, usual spindle holes, Scarce (Photo)	E.VII
217	☒	"Steamer/P.F. Kimball" Red Double Oval Handstamp on 3c Red on Buff Entire (U10), ms. "Valuable," from the Buchannon Carroll Correspondence, couple tiny spindle holes as usual, VF & Desirable, Scarce (Photo)	E.IX
218	☒	"Steamer Rapides" Handstamp (Used on Mississippi River) on 3c Red on Buff Entire (U10), couple light filing folds, cover lacks back flap, VF..... (Photo)	E.VII
219	☒	"Route 7309" Blue Green Double Oval Handstamp Ties 3c Rose (25) on 1857 Folded Printed Prices Current, Additional Uncancelled 3c Rose (25) at L. (Cat \$600), Both stamps Average, Unusual Cover.....	E.VI
220	☒	Steamer Rubicon (Klein 493) Green & Bister Overall Design on Cover, "Memphis Tenn." Partly clear Pmk., Cover opened at sides incl. original enclosure datelines "on the Mississippi Near Belmont April 18-69" , Letter makes mention of Steamer Rubicon and a storm, slight cover stain at T.L., Handsome and Desirable (Photo)	E.VII
221	☒	"Steamboat St. James" (Klein 527), Orange Red Double Oval Hand-some ties Average 3c orange Brown (10) on 1852 Folded Cover, Red New Orleans La. Pmk. & Matching "WAY/1" , VF Strike ... (Photo)	E.VIII
222	☒	"Steamboat/Southern Belle" (Klein 514a) Red Triple Oval Hand-stamp on Folded Cover to Bayou Sara, franked with two 3c Dull Red (11) tied by ms. Cancel, Bold "Fort Adams MI" pmk., ms. date, Handsome Cover..... (Photo)	E.VIII
223	☒	"Ouachita Packet/Sovereign/Len. Moore Master" (Klein 517) Bold Double Oval Handstamp on Buff Cover franked by 3c Claret (11a) tied by ms. cancel, New Orleans La. Pmk., sealed cover tears at T, partly affecting handstamp, usual spindle holes, A Handsome Example of this Ouachita River Marking..... (Photo)	E.VIII

- 224 ☒ **"SWAN"** Red Double Oval Handstamps (three strikes, one clear), on 1852 illustrated Bill of Lading from the Steamboat "Swan" to New Orleans, Desirale Steamboat Marking (Klein 540) **E.V**
- 225 ☒ **Steamer Vicksburg** Blue Green Overall Design of Steamer & Imprint on Cover, without Postage or Postmark, Cover reduced at R., Very Attractive, Unlisted in Klein **(Photo)** **E.VII**
- 226 ☒ **Victoria** (Klein 574), Mauve Octagon in Circle Corner Card on Cover, franked with average 3c Dull Red (26), natural s.e. at R., ms. cancel, docketing at L. & slight cover edge staining, o/w VF **(Photo)** **E.VIII**
- 227 ☒ **"Packet Boat/Viola/Capt. Wm. H. Maxwell"**, Printed Corner Card on Orange Cover franked with Average 3c Dull Red (11) tied by Blue Grid Cancel, lacks portion of back flap, original contents, VF. Unlisted in Klein **(Photo)** **E.IX**
- 228 ☒ **Packet Boat's**, Four Diff. Items incl. Red "New Orleans 10" pmk. & matching "STEAM" on 1850 folded letter, Red New Orleans pmk. & Matching "Steam 5" on 1851 folded letter, St. Nicholas handstamp (Klein 531) on 3c Pink Entire (U59) & Blue "Route 7309" & "U.S. Mail Packet Natchez" on large Part of Cover franked with Average 3c Rose (25), Generally F-VF, Very useful Lot **E.V**
- 229 ☒ **Packet Boat Markings**, Two Diff. Markings, Blue Double Oval "Rapides" (Klein 462) & Fancy Framed "St. Nicholas" (Klein 531), each on separate 3c Pink Entires (U58 or U59), from the Carroll Hoy Correspondence, usual spindle holes, latter ex-Barkhausen, VF **E.V**
- 230 ☒ **Packet Boat Markings**, Two Diff. Markings, Blue Double Oval "Rapides" (Klein 462) & Fancy Framed "St. Nicholas" (Klein 531), each on separate 3c Pink Entire (U58 or U 59) from the Carroll Hoy Correspondence, usual spindle holes, F-VF **E.V**

RAILROAD COVERS

- 231 ☒ **"Albany & Rutland R.R. Feb. 16"**, (Rem. A3-b) mostly clear pmk. ties average 3c Dull Red (11) on Buff Cover, Fine, Rare & Desirable. **E.VII**
- 232 ☒ **"Canal Rail Road"** (Rem. C1), Partly clear Pmk. ties 3c Rose (65) on Yellow Cover to New York, Cover Reduced at L., Rare Railroad Marking, Scarce **E.VII**
- 233 ☒ **"Louisa-R. Road Va Jun 24"** (Rem. L8) Mostly Bold Blue Pmk. on 1851 Folded Cover, matching, 5 cts. "Handstamps, some slight staining in T. corners, portion of Back flap missing, o/w VF, Very Rare **(Photo)** **E. VII**
- 234 ☒ **"New York & Phila. R.R. Feb 4"** (Rem. N15-a), Mostly clear pmk. on Buff Cover franked with Swarts 1c Red (136L9), matching "5" Rate Marking, some cover wrinkled & couple light file fold, Reasonably attractive Example of this Scarce Usage **E.VI**
- 235 ☒ **"Rail Road"** (Rem. R4-g), Red Rimless Handstamp & Matching "Steam/Boat" on 1843 Folded Cover to Albany, magenta ms. "10" Rate Marking, couple spindle markings, VF & Extremely Rare, Ex-Wyer **(Photo)** **E.VII**
- 236 ☒ **Rail Road Pmks.**, 1850's, Four Diff. Pmks. incl. Blue "Pennsylvania R.R." (Rem. P2-a), **"Concord & Montreal R.R."** (Rem. C25-a), **"Virgia & Tenn R.R."** (Rem. V4-a) & Block **"N.Y. & Boston St. MP R.R.R."** (Rem. N11-c), frankings incl. one stampless, two Nos. 11 & one No. 26, Mostly clear strikes, few small cover faults, Very Scarce offering **E.VII**

NEW YORK POSTMASTER'S PROVISIONAL

- 237 ☒ **New York, N.Y., 5c Black (9X1).** Ample to Large Margins, barely tied by Red Arced "PAID" on 1846 Buff Cover to Philadelphia, matching New York 5 cts. pmk., docketing at L., VF **(Photo)** 500.00

1847 ISSUE

- | | | |
|-------|---|----------|
| 238 ☒ | 5c Brown (1). Large to Huge Margins, Fresh Color, Red Criss-Cross "Paid" cancels, matching " N. Haven & Springfield R.R. " pmk. on Dec. 1849 Folded Letter, usual cover filing crease, Extremely Fine, Rare, with P.F. Certificate (Photo) | E.XV |
| 239 ☒ | 5c Brown (1). Large Margins All Around showing bit of next stamp at T., Rich Color & Sharp Impression, tied by Red Square grid, matching N.Y. pmk. on Buff envelope to Conn., ms. "Paid", minor cover stains, o/w Extremely Fine (Photo) | 1,100.00 |
| 240 ☒ | 5c Brown (1). Margins All Around, Large at Sides, Beautifully tied by Red "Burlington Vt. 5" pmk. on Neat Folded Letter, VF, Lovely Cover, with P.F. Certificate (Photo) | 1,100.00 |
| 241 ☒ | 5c Red Brown (1). Ample to Large Margins, Fresh Color, tied by Two strikes of Red "10", Blue Baltimore Md. pmk. on Oct. 1850 (Folded) Cover, VF, Colorful Cover, with P.F. Certificate ..
..... (Photo) | E.XV |
| 242 ☒ | 5c Brown (1). Large Margins, tied by Large Red Fancy "5"s & Str. Line "Paid" on Oct. 1849 Folded Letter, matching "Salem Mass." pmk., minor cover filing crease, VF, with P.F. Certificate..... (Photo) | E.XV |
| 243 ☒ | 5c Dark Brown (1). Large Margins, Gorgeous Deep Rich Shade & Sharp Impression, tied by "Philada Pa May 19" pmk. on fresh 1848 Printed folded letter (two partial & another strike of pmk. on cover) to N.Y., VF & Choice (Photo) | 1,125.00 |
| 244 ☒ | 5c Brown (1). Ample to Huge Margins showing small portion of next stamp at B. (tiny extraneous scissors cut in B. margin clear of design), tied by Blue "Philada Pa 5 Jul 25" pmk. on fresh 1849 folded letter to Pa., VF & Choice (Photo) | 1,125.00 |
| 245 ☒ | 5c Red Brown, Double Transfer Ty. A (1 var). Clear to Huge Margins incl. R. Sheet Margin, on Cover to New Jersey tied by Two Strikes of Red "5" in Circle, "New York" & Str. Line "Steam Boat" also in Red, Fine & Handsome, with P.F. Certificate, ex-Dick, Matthies, Rohloff..... (Photo) | E.XV |
| 246 ☒ | 5c Brown (1). Clean to Large Margins on Neat Roseboom Corresp. Cover, tied by Red Herringbone Grid & "Binghamton N.Y." pmk., Fine & Very Rare, with P.F. Certificate (Photo) | E.XVII |
| 247 ☒ | 5c Brown (1). Large Margins to just touched at B., tied by Red Binghamton N.Y. Herringbone cancel , matching Town pmk. on 1849 folded letter to N.Y., stamp lifted & replaced, light staining & vert. file fold through stamp, Scarce, with P.F. Certificate (Photo) | E.XV |
| 248 ☒ | 5c Brown (11). Ample to Huge Margins inc. Part Sheet Margin at R., tiny natural pre-print crease, Blue Grid cancel, matching " Mineral Point Wis. T. " pmk. on Aug. 1850 Folded Letter, Fine, Rare Usage (Post territorial) with P.F. Certificate .. (Photo) | E.XV |

- 249 ☒ **5c Dark Brown (1a).** Ample to Large Margins, Gorgeous Deep Rich Shade & Sharp Impression, tied by ms. cancel on 1848 folded cover to Buffalo, Red "Lockport Feb. 13" pmk., **Cover Turned & Returned to Sender at Lockport**, Blue "Buffalo N.Y. Feb. 14" Double Oval pmk., ms. "5" rate marking, VF & Handsome, Extremely Scarce Usage, with P.F. Certificate (Photo) **E.XII**
- 250 ☒ **5c Brown (1).** Ample to Large Margins, Deep Rich Shade & Sharp Clear Impression, Blue ms. "X" cancel (not tied) on 1848 folded letter to Boston, Red "U.S. Express Mail N.Y. N. York Apr 6" pmk., **"Penny post will deliver this early"** in ms. at T.L., stamp light corner creases, o/w VF **E.X**
- 251 ☒ **5c Red Brown (1).** Large Margins All Around, tied by Red cork cancel, faint partly legible "Hanover N.H. Jul 1" pmk. on small neat **Mourning Envelope** to Boston, stamp has tiny bleaching spot in R. margin, o/w VF, Rare, ex-J. Waldo Sampson (Photo) 1,100.00
- 252 ☒ **5c Brown (1).** Clear to Large Margins, Rich Color, tied by **Blue "5" in Circle**; matching "Philadelphia Pa Oct 5" pmk. & second strike of "5" in Circle on fresh 1848 folded letter to Pa., a small portion of address written across B.R. corner of stamp has been lightened, o/w VF. (Photo) 1,150.00
- 253 ☒ **5c Red Brown (1).** Ample to Large Margins, tied by **Blue** cork cancel, matching "Plymouth N.H. Jan 30" pmk. on small neat Embossed Ladies Envelope to Bristol N.H., with original 1851 contents, minor cover soiling, stamp light corner crease, o/w VF..... (Photo) 1,125.00
- 254 ☒ **5c Brown (1).** Large to Huge Margins, couple small corner creases, tied by Red Square Grid, matching New York pmk. on 1848 Folded Letter, VF Appearance..... (Photo) 1,000.00
- 255 ☒ **5c Brown (1).** Ample to Large Margins, except just clear to touching at T., tied by Red Grid on Small Size Cover, matching New York pmk., Fine (Photo) 1,000.00
- 256 ☒ **5c Red Brown (1).** Three Ample to Large Margins, just clear to touched at B., tied by Red grids on exceptionally fresh Buff envelope to Bridgewater, Mass., matching Boston pmk., **Embossed Oval Corner Card of "United States Hotel, Boston"** at T., Fine & Handsome, with P.F. Certificate (Photo) 1,100.00
- 257 ☒ **5c Red Brown (1).** Clear to Ample Margins, tied by **Grayish Green** grid, matching "Oxford NY. Mar 11" pmk. on large size homemade envelope to Oswego, N.Y., with original 1851 legal document & letter, Fine, Reported to be the Only Known Example from this Town in This Color, with P.F. Certificate... (Photo) **E.XV**

258 ☒ **5c Red Brown (1).** Large Margins to slightly in at B., tied by Red Square grid, matching indistinct N.Y. pmk. on folded cover to Md., **Red "Swarts, Post Office, Chatham Square" Oval handstamp**, ms. "Due 5", Scarce, with P.F. Certificate (Photo) **E.XIII**
- 259 ☒ **5c Red Brown (1).** Large Margins to touched at B., tied by **Blue "12" in Circle**, matching "Philada Pa 5 Feb 5" pmk. on folded cover to Ct., **Boxed "Columbia House Philadelphia" Hotel handstamp** on back, Chase speculates on back that the "12" in Circle was a Postage Due marking applied in Error, stamp tiny margin tear, o/w Fine, Rare (Photo) 1,150.00
- 260 ☒ **5c Red Brown (1).** Two Large to Huge Margins, others Clear to just touching, tied by Red "U.S. Express Mail N.Y. May 11" pmk. (additional ms. "X" cancel lightened) on 1850 folded cover to Mass., stamp trivial toning spot at extreme T.L., o/w Fine (Photo) 1,100.00
- 261 ☒ **5c Brown (1).** Large Margin at R. & B., Ample To just clear other Two sides, tied by Blue Grid, matching "Utica N.Y." Double oval pmk. on Buff Cover, some slight cover foxing, o/w Fine (Photo) 1,000.00

- 262 ☒ **5c Red Brown (1).** Ample to Huge Margins three sides, bit irregular at T., tied by trifle heavy Blue Grid & matching Partly clear Mobile Ala pmk. on 1849 Folded Letter to Rockford, Ala. **E.XI**
- 263 ☒ **5c Red Brown (1).** Large to Huge Margins incl. L. part Sheet Margin (except partly in at B.L.), tied by Red Square Grid on cover, some cover edge wrinkles & small sealed tear at T., with original Enclosure, Reasonably Attractive. 1,000.00
- 264 ☒ **5c Brown (1).** Large Margins to just clear three sides, slightly in at T., lightened ms. cancel, tied by Red Grid, matching Boston 5cts pmk. on 1847 Folded Letter to Maine, Reasonably Attractive **E.X**

- 265 ☒ **5c Red Brown (1).** Large to Huge Margins, tied by Red Square Grid, Matching "New-York Feb 20" pmk. on Blue Gray Cover to Maryland, Used with slightly faulty Messenkope's Union Square Post Office 1c Green (106L1), tied by ms. Cancel, cover fold, Fine, Handsome & Rare **(Photo)** **E.XV**
- 266 ☒ **5c Dark Brown (1a).** Margins All Around, filing crease, Beautiful Color & Impression, on Fresh Oct. 1847 Folded Letter to Md., tied by Bold Blue Framed "Paid", light Philadelphia pmk., Used with D.O. Blood & Co. Local (15L9), not tied, Quite Handsome & Scarce, with P.F. Certificate **(Photo)** **E.XIII**
- 267 ☒ **5c Brown (1). Horiz. Pair,** Ample to Large Margins except touched at T.R., tied by Red "20" in Circles, matching N.Y. pmk. on 1849 folded letter to Ill., 2c Swarts City Dispatch Post Local (136L13) at B.L. and not tied, minor bleaching spot in B.L. corner of L. stamp, o/w VF, Signed Ashbrook, with P.F. Certificate, Rare **(Photo)** **E.XV**
- 268 ☒ **5c Red Brown (1). Two Singles,** Clear to Large Margins, tied by Blue grids, matching indistinct "Philada Pa 10 Feb 20" pmk. on fresh 1851 folded letter to Ohio, Fine & Very Handsome. **(Photo)** 2,050.00
- 269 ☒ **5c Red Brown (1). Two Horiz. Pairs,** Clear to Huge Margins, tied by Red Square grids, matching N.Y. pmk. on Buff envelope to Ohio, ms. docketing across L. stamp, L. stamp small corner crease, R. Pair light crease, Attractive & Rare Double Rate Cover **(Photo)** **E.XV**
- 270 ☒ **10c Black (2).** Pos. 76L, Large to Huge Margins, tied by partly clear Blue "10" in Oval on 1848 Folded Cover, matching "Baltimore Md. Dec 30" pmk., stamp VF, Attractive. **(Photo)** 3,250.00 +
- 271 ☒ **10c Black (2).** Pos. 64L, Margins All Around, **Red 10** Cancel (struck twice) on June 1850 Folded Letter, Blue Baltimore Md. pmk., some insignificant cover toning, VF, signed Ashbrook, with P.F. Certificate **(Photo)** 3,250.00 +
- 272 ☒ **10c Black (2).** Margins All Around, lightly tied by Red Grid, matching "Charleston S.C. 10" pmk. on cover front to **England**, ms. "1/-" due mark, VF, with P.F. Certificate **(Photo)** 2,850.00 +
- 273 ☒ **10c Black (2).** Margins All Around, tied by Blue Grid on Oct. 1850 matching "Troy N.Y. 5cts" plus additional ms. "+5" (indicating 10c paid), Fine & Handsome, with Royal Certificate .. **(Photo)** 3,250.00 +
- 274 ☒ **10c Black (2).** Three Nice Margins, ample to trifle close at B., tied by Greenish Blue Grid, matching "Frankfort Ky." pmk. on July 1850 Folded Letter, Fine & Rare, ex-Emerson, with P.F. Certificate (This Cover is written up in Ashbrook's "Special Service". He calls the postmarks "Green") **(Photo)** 3,250.00 +
- 275 ☒ **10c Black (2).** Ample to Large Margins, Red grid cancel (not tied), matching "Catskill N.Y. Due 10" pmk. & matching "10" on 1849 folded letter to Ohio, some cover bleaching spots, stamp tiny sealed tear, o/w Fine **(Photo)** 3,250.00



2

Dept. of State

Jas Monroe

BALD. OC. II

6

122

Mr. A. D. Smith



12

Mr. Reuben Towers

Waterville

Oneida County

single

948

State of New York

Lieut. Col. Reid

4

Commanding a

E. W. Hampton Albany



8

The honorable Mr. Holt



BOSTON

10

Newham

Samuel R. Gery Esq.

PAID



16

Paid 10

Jonas Holland

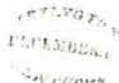


17

Mrs. Anne J. S.



22



20

James



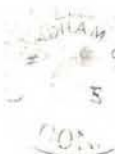
15

Mr. Wendel

9 1/2 John Street

New York

PAID



14

No. 101 N. York

J. W. Smith

Conn.



21

Samuel M. Wing Esq.
Treasurer
Tunton
N.Y.

19

Silas Wright

Comptroller

Albany

24

NE. CDK

The Rev. Mr. Waring
Mr. Birds Bookseller in An
Mary Lane near St Paul
London

1490 16 April 87
M. J. Brown & Co.



25

Providence
R.I.



28

26

paid 15

31



Johnson Esq.
Fredericktown
Maryland

32

Mc 4
M. B. my
Torrasson

linck. Esq.
New Haven
Conn.

UNTON N. H. APR 22

34

6

Jacob Babbitt Esquire.



33

Duncan P. Campbell



41

FREE

18
1847
Long 28.00

35

Union, Broome
New York

Am. Union
23 Aug

54

Price Paid 25

Am. Union
27 Feb

55

Editor of the Home Missionary

43



W. C. Chubb & Co.
St. Albans
Vermont



47

Mr. Wm. Thomas Seavell
Alexandria
D. C.

Cornstock, N.Y.
August 30,

62

Mr A. G.

Nov 18th Big Settlement New Jer
H. W. Comstock Secretary
of the Home Missionary Society

57

25



72

Mr William Comstock
St Louis



74

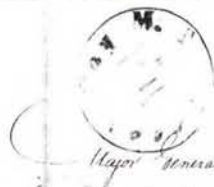
A. Goodell Esq.
Free

Mr John T. Tracy
Salem N.H.

Iron Bridge N.Y.
21 Sept 1831.

81

25



83

On Public Service

Major General Thomas V. Joseph

28. 1836

82

Missouri
12 Nov

88

12

Platteville N.Y.
March 24th

96

free

Missouri N.Y.
Dec 2

89

Prairie du Chien N.Y.
Jan 19th

98

25

Prairie du Chien
July 20 - On public service
free
Col. Ch. B. Gardner

99

White Pigeon
N.Y. July 29
Free A. Allen
P.O. White Pigeon

112

Ypsilanti N.Y.
10 Nov 1839

115

Rev. Absalom D.
Cor. Sec. of N. M.
New York

Prairie du Chien N.Y.
April 4

100

Col. V. Smith
Capt. Genl. W. B. Army
Washington City
D.C.

97

Pontrevel
2 July 1828



116

Genesee County

May

Fort Adams, N.S. }
21 Sept

Public Service 25
Joseph Taylor Lect.
to assist and encourage agents

William Linwood Eugene
Military agent
Philadelphia

123

10

122

124

Miss Mary
(Care Mrs. Lucinda P. Fisher) Mead

Philadelphica
Penzance

127

THE PENNY POST CO.

PENNY-POSTAGE PAID, 7.

Adams Rec

132

DUE7

Mrs. M. J. Lewis,
San Jose.

San Jose,
Calif.

138

134

FURSER

136

St B. Du Barry
2nd Regt. Art
Fort Gump
San Diego Cal

141

Overland mail

June 24

Spick

142



Miss Florence B King
Care of
Charles Fico Esq
15 Washington Square
Philadelphia

139



144



Mr Henry Meyer
No 160. South Cor of Dover St
New York

143



G. S. Phillips
Santa Clara
Cal
PONY D

145



Recd 29
Wm B Bunting
East Rudham
Norfolk

146



Feb 11



147

Wm B Bunting

149



Joseph C. Tolson Esq

153



Judge A. A. Lyons
San Francisco
California

151



ORIENTAL HOTEL,
CORNER OF BUSH AND BATTERY STS.
SAN FRANCISCO, CAL.
S. ALSTROM,
PROPRIETOR

San Steamer Golden Age

M. J. Malmgren
Stockholm
N. S.

3



Mrs Laura R. Mahony
Niatic
New London County
Conn

154



155

156

ADAMS & CO.
EXPRESS
MORNING AND

PAID

22 MAY 2 10 AM

Mr. Matthew Thompson
Norman Island
Mar Bar

AMERICAN EXPRESS.

PAID

157

THREE CENTS

159

OVERLAND CALIFORNIA
EXPRESS COMPANY
AUG 30
DENVER CITY

PAID

16

THREE CENTS

Mrs. C. Kuckolls

Office Herford & Co's California Express,
2 Sanson, Astor House, NEW YORK.
One Day & Twenty Days, SAN FRANCISCO.
Brought by Herford & Co's Express.

158

PAID

L. Griffiths, Morgan, Esq.

160

PAID

THREE CENTS

Mr. W. T. Reynolds

Central Co.

164

PAID

20 APR 1893

Mr. W. T. Reynolds

165

PAID

Greenwood & Newbraun

NORTHERN EXPRESS

THREE CENTS

167

PAID

THREE CENTS

John Hume, Esq.
Sacramento City
California

168

PAID

THREE CENTS

Mr. W. B. Haddell

169

PAID

THREE CENTS

Mr. A. Daneri

166

PAID

THREE CENTS

Mr. L. S. Dugg

Golden City, N. Y.

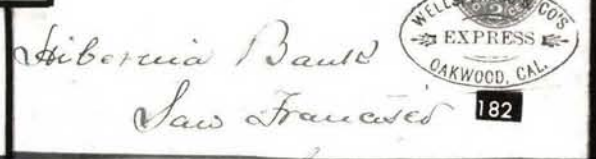
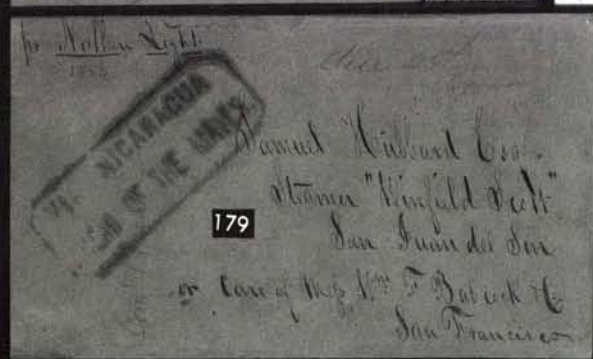
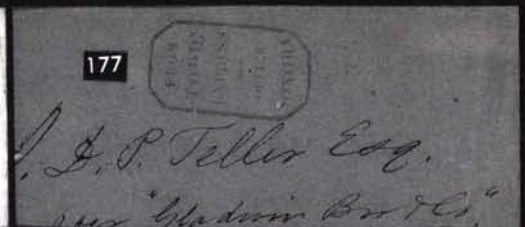
171

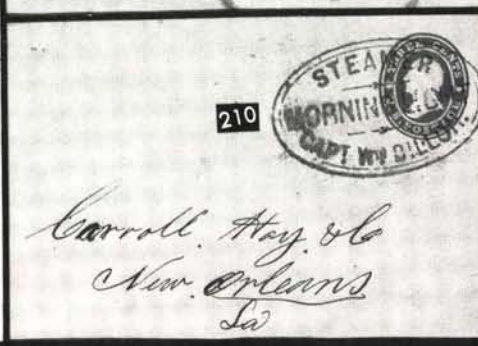
PAID

THREE CENTS

Mrs. E. S. Milford

185 Patchogue
Long Island
N. Y.





205
REGULAR PACKET
HONOR
M. Carroll Hoyt & Co.
New Orleans La.

216
M. Carroll Hoyt & Co.
New Orleans La.

217
Valuable
M. Carroll Hoyt & Co.
New Orleans La.

213
M. Edwin Young
New Orleans
La.

220
W. H. BLAKE, Master.
ALF. GRISSOM, Clerk.
ST. LOUIS & VICKSBURG U. S. MAIL LINE
STEAMER
RUBICON.
M. Carroll Hoyt & Co.
New Orleans La.

218
M. Carroll Hoyt & Co.
New Orleans La.

222
FORT ADAMS
Dec 23
M. Carroll Hoyt & Co.
New Orleans La.

221
M. Carroll Hoyt & Co.
New Orleans La.

223
QUACHITA PACKET
SOVEREIGN.
LEN. MOORE MASTER
M. Carroll Hoyt & Co.
New Orleans La.

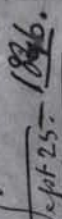
227
PACKET BOAT
VIOLA.
CAPT. WM. H. MAXWELL
M. Carroll Hoyt & Co.
New Orleans La.

225
M. Carroll Hoyt & Co.
123. Cordillera
New Orleans La.

226
VICTORIA
Col John L. Manning
Donaldsonville
La.



Dr. A. S. Grinn



237




238

ALCOTT ALLEN ESQ
TRUST SAVINGS BANK
NEW YORK

1864



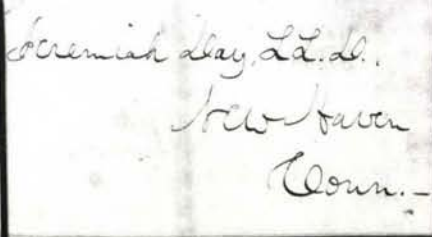
238



240



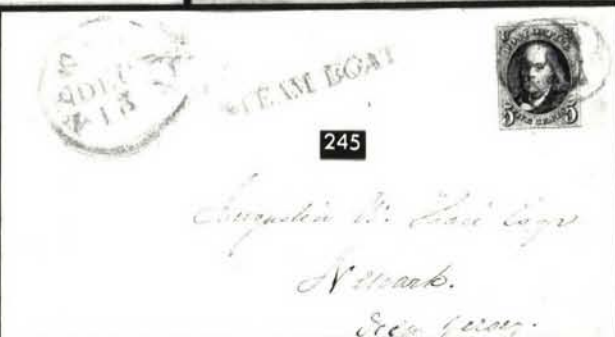
242



Jeremiah Day, Ld. L.
New Haven
Conn.



James M. Knight
Buffalo & P.
Union



245



Augustin N. Lohr Esq
Newark.
New Jersey.



246

Miss
Care

247

C. J. Havens Esq.
Counsellor &
Sec. S. C.

248



251



252

To Josiah W. F. Smith
Care
PaidS. Moulton
Esq. & Sampson
Washington St
Boston

253

Miss Mary, Queen.
(Care of Mr. Queen, Esq.)
Bright

249

I have 18
County
also

256



254

Miss Maria M. Brown
Care. Rev. Robert
New R

255

Miss Maria M. Brown
Care of
The Rev. Robt. Dutton
New Rochelle
Westchester Co.



258



Dw
R. N. Mansell Esq
Post Office
Chatham Square



259

Andrew Bear
4 1/2 1/2



261



260



266



268

J. G. S.

265



269

Respectfully Your
Attention

Dear of
Laurel
C. C. Chas



267



Rooney A Drake
Jubilee College
Provia County
Illinois



paid 18/10/18

J. Langton Esq.
Bank of
Liverpool



272

270



James G. King and Sons.



274

Samuel Thompson & Co.

New York.

9



paid

271



273

+5



Allen Hendrickson & Co.

New York



277



278

Mr R. H. Carr

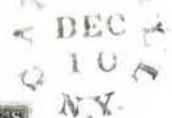


276

Rutson Mann & Co.



John W. A.



275



279

Messrs Joy & Porter
Detroit
Mich





285

Miss Isabella B. Hanger



289

Mr. Wm. H. Hanger



296



282



287



Miss Isabella B. Hanger



Miss Isabella B. Hanger

4



291



295

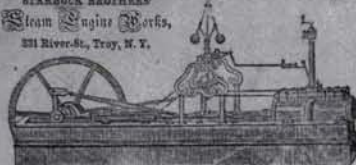
Miss Isabella B. Hanger



298



STARBUCK BROTHERS
Steam Engine Works,
231 River St., Troy, N. Y.



299



311

Mr. E. H. Hanger

313

*Mr. H. J. Caruth Esq.
Quartsburg,
Mariposa Co*



310

*Mr. Mitchell Esq.
New York*



315



454



314

*Mr. J. C. Esq. Esq. Esq.
No. 70. Second Street
Philadelphia*

316



Hon John A. Parker
New Bedford
Mass



317

ing Co
Boston

318

Keith
Bridgewater
Mass



321

Miss Thomas
Care Laurens Sampson

322



Isabel E.

320



324

Mr. A.



325

Mr. A.
Ship City, North Lake
San Francisco

330



335

Miss England

Mr. Dr. Frederic



333



Miss Cornelia Stewart

337



Madame Hubland, rue Rich
à Münster
France



336



338

Is. Dr. Josey

San Sebastian

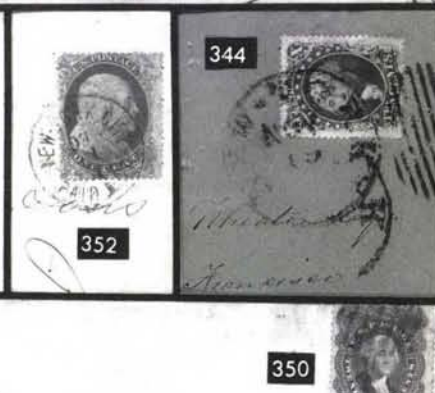
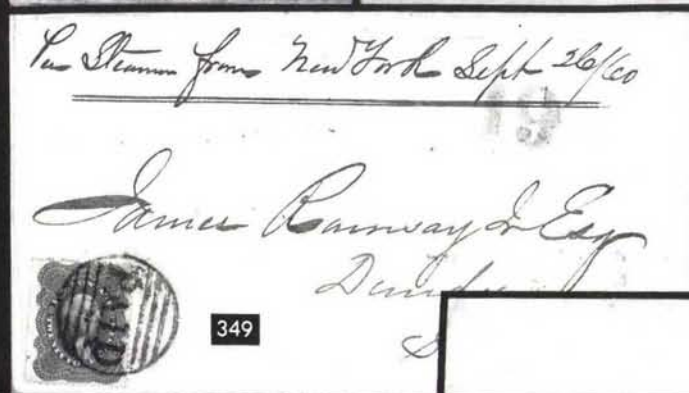
Spain



339



Honolulu
N.H.





356

JEFF DAVIS' WAR HORSE.

"President Davis" was better passed through this city last night on his way to Richmond, Va. Accompanying the animal was the President's saddle, on the back of which is a company of soldiers. The rider should be, his name is (Augusta) (the Constitutionalist, May 20th). When Davis shall ride through the city, his name will be spoken and read. And if he is not North in it, he will be. His journey, his story to the 15th.



*S. J. Babb
Cincinnati
Ohio*



358



*Wm. L. S. Briggs
Stamford, Conn.*



359



*Lester W. H. Hays
Navy Yard*



361



Wm. L. S. Briggs



362



*Wm. L. S. Briggs
Care of W. Davis, Baltimore*

at Letter was deposited in the Indianapolis Post-
office. Under the rule it would have been
in the Indianapolis Office. The Young Men's
Association have paid the postage. It is
for the letter, please send it to me in my
study room in your care.



360

*Wm. L. S. Briggs
Care of W. Davis*



365



Wm. L. S. Briggs



363



*James M. Farlan
Elliot Place Brooklyn City
New York*



JOHN McDONALD CRUISES
PROPRIETOR

367

*Franklin T. Lee
Newport-
Delaware*



368



*Wm. L. S. Briggs
Cambridgeport
Mass.*



371

*Old stamp not
recognized.*

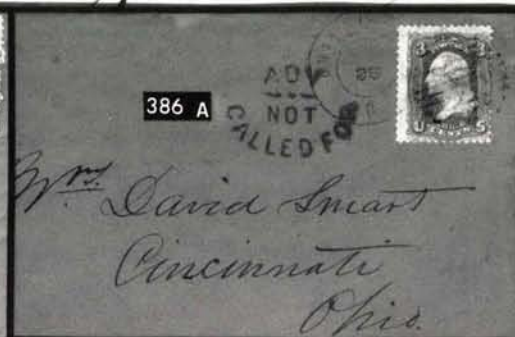
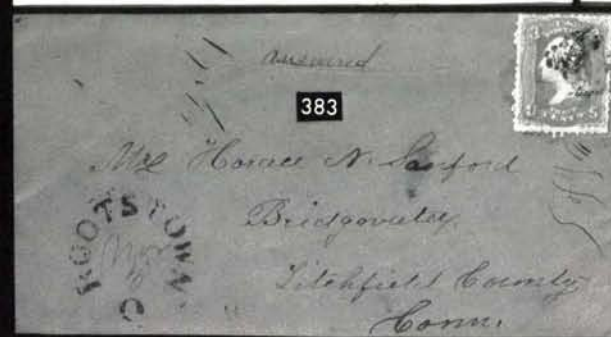
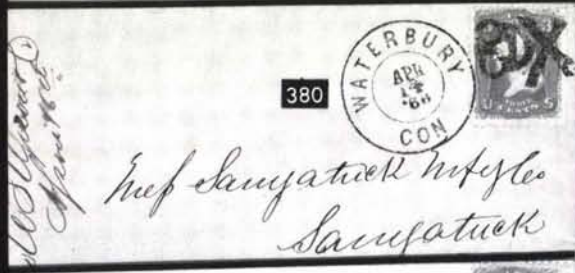
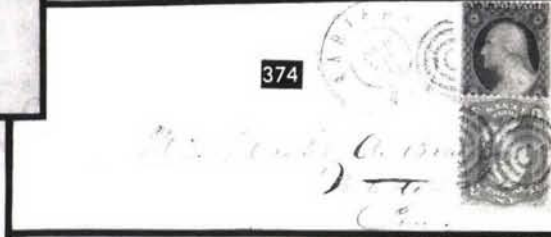
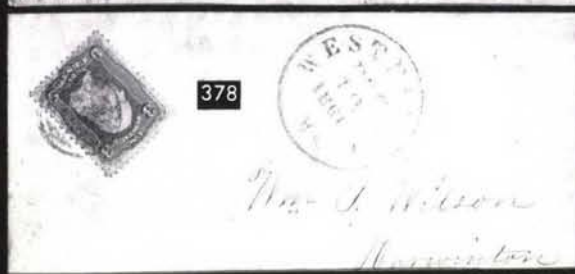


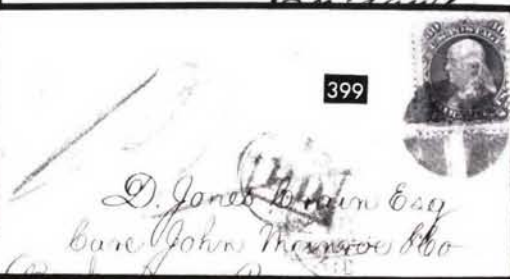
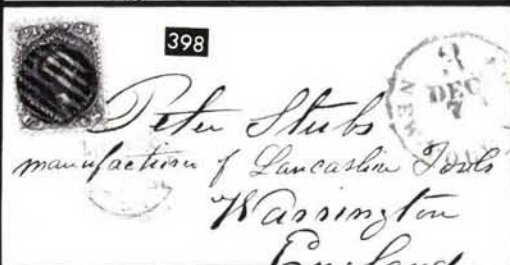
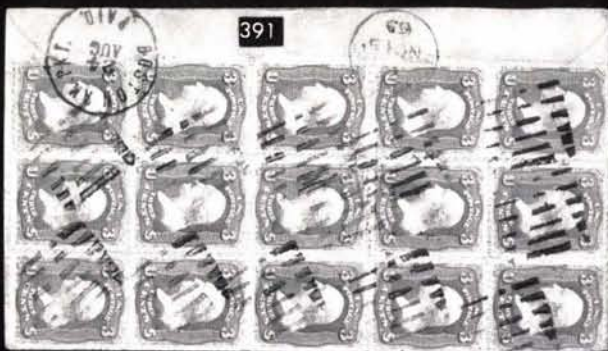
Wm. L. S. Briggs

*Rockford
Illinois*



370







413



Mrs. Virginia. Delmage
Claremont
N H

417



Miss Mary
Care John Mount
PAID
JAN 20
1872

418

From the New York Herald Office
LA PATRIE,
12 Rue de Croissant,
Paris, FRANCE.



419



423



Thomas M. Loomis Esq.
Collector
on the Island

422



Miss John D. ...
No 20
Sordle

423 A



Miss Cora S. Walker.
Bellows Falls.

424



Per "Mombach"
Mrs Masford Tremar



425

H. B. Shaw
11 Fred Ave
330

427



Miss A. J. Martin
John P. Jones
Alumna Creek P.O.
Bastrop Co Texas

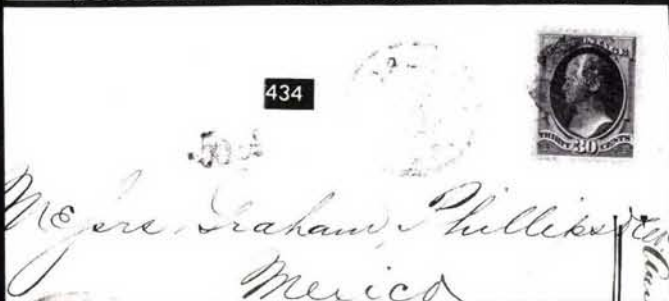
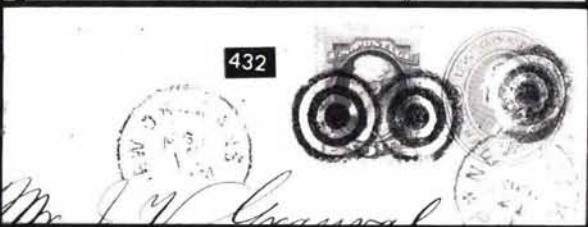


428

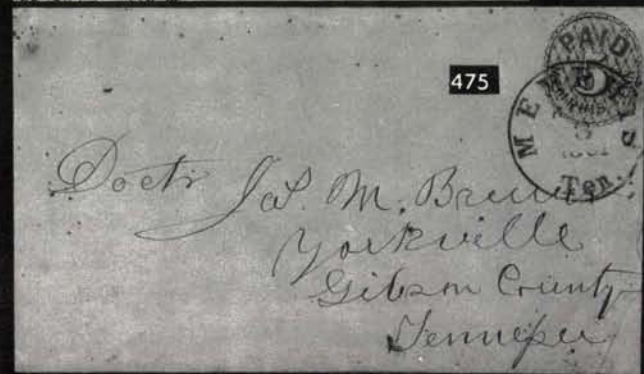
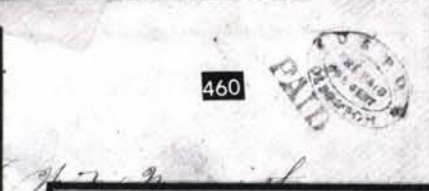
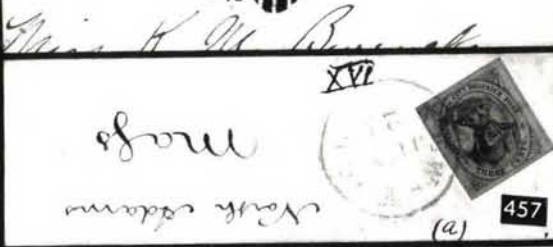


424 A

Mrs. Joseph H. ...
Castleton



449
C. F. ROTHF
 WHOLESALE AND RETAIL DE
 United States and Foreign Postage Stamps,





276 ☒ **10c Black (2).** Large to Huge Margins except just in at T.R., tied by Red Grid & Matching "Savannah Ga. 10 Jan 31" Pmk. on 1850 Folded Letter to New Orleans, A Lovely Cover... **(Photo)** 3,250.00

277 ☒ **10c Black (2).** Large to Huge Margins, T. Margin skillfully added, tied by Blue "Troy N.Y. Oct 20" pmk. on Forwarded 1848 folded Cover to Canada, Red "Montreal" Backstamp, Very Attractive **(Photo)** 3,250.00 +

278 ☒ **10c Black (2).** Ample to Very Large Margins except slightly in at T.L., ms. cancel, Red partial Washington DC pmk. on 1850 Folded Letter to Ct., Attractive **(Photo)** 1,350.00 +

279 ☒ **10c Black (2). Horiz. Pair,** clear to huge margins showing bits of next stamps at T., tied by Red Square grid matching "New York Feb. 7" pmk. on 1848 folded letter to Detroit, cover file fold causing partial break betw. stamps but clear of designs, o/w VF, Scarce & Handsome **(Photo)** 7,500.00

1851 ISSUE

- 280 ☒ **1c Blue, Ty. II (7).** Ample to Large Margins except just touching at L., tied by Beautiful Bold "Boston Paid 4 Oct" pmk. on 1856 Folded Printed Prices Current, VF 100.00
- 281 ☒ **1c Blue Ty. II, Ty. IV, (7 five, 9).** Margins to slightly in, incl. Horiz. strip of three of No. 7, others each on separate cover, cancels incl. New York 1ct, ms. & Red Carrier, Mixed Quality, Attractive & Scarce Lot ... **E.VI**
- 282 ☒ **1c Blue Ty. II, 3c Dull Red (7, 11). Horiz. Strip of Three** of latter, tied by Maine pmk. & Grid Cancels on Folded Cover to **New Brunswick Canada**, Fine **(Photo)** **E.VII**
- 283 ☒ **1c Blue Ty. II, 3c Dull Red (7, 11).** Average, Horiz. **Strip of Three** of latter, tied by Rock Island Ill. 1857 pmk. on orange cover to Canada West, Red Exchange Office Marking & Appropriate Backstamps, Fine .. **E.VI**
- 284 ☒ **1c Blue, Ty. II, 3c Dull Red (7, 11).** Three covers incl. 1c on Printed Circular, 3c Tied by U.S. Express Mail N.Y. and Vert. Pair tied by San Francisco pmk. on cover to Maine, F-VF Lot **E.IV**
- 285 ☒ **1c Blue Ty. III, IIIa (8, 8A). Vert. Combination Strip of Three,** Pos. 20, 30, 40L4, Middle Stamp Ty. III, Large to Huge Margins (incl. 4mm of Pane Margin at R.) except touched to barely in T. stamp, some staining affects all three, T. & B. stamps small margin tears (clear of design on B. stamp), tied by "Salem O. Sep 4" pmks. on Buff cover to Ind., Blue Embossed "Eating Saloon" Corner Card, cover slightly irregular at T.L. partly into Cover Card, Rare, with P.F. Certificate, Combination Pair Listed but Unpriced in Scott (Single Stamps cat. \$2,300.00) **(Photo)** **E.XI**
- 286 ☒ **1c Blue, Ty. IV (9).** Ample to Large Margins, tied by "PAID" in Grid on neat Buff Local Cover. Red partly clear. Boston pmk., VF **E.VI**
- 287 ☒ **1c Blue, Ty. IV (9). Double Transfer,** Pos. 100L1L, Large to Huge Margins except just touching at L., tied by Bold Blue "Meriden N.H. Feb. 26" pmk. on Local Small Size Cover, ms. "I" rate marking on stamp, An Exceptionally Attractive Cover **(Photo)** **E.VI**
- 288 ☒ **1c Blue, Ty. IV (9).** Pos. 24L1L, Ample to Large Margins except just touching at T., tied by Dark Red Grids on 1853 Printed Church Notice to Chicago, Most Unusual & Interesting, VF **E.VI**
- 289 ☒ **1c Blue, Ty IV (9). Vert. Strip of Three,** Large to Huge Margins except ample at B.R., tied by PAID in Grid & Red Boston 3cts. pmk. on 1855 Folded Cover to Portland, VF, ex-Steven Brown **(Photo)** **E.X**

290	⊠	1c Blue, Ty IV, 3c Dull Red (9, 11). Horiz. Pair of latter, tied by Fond du Lac Wis pmks. on 3c Red on Buff Entire (U10) to St. Catherine. Canada West, Red "United States 6d" Oval Exchange Office Marking & Matching "PAID", Cover trifle Reduced at L., Handsome Cover ..	E.VI
291	⊠	1c Blue Ty. IV, 3c Dull Red (9, 11). Horiz. Pair & Single of latter, Ample margins to just touched, Grid Cancels, Partly tied by Red New Orleans La. Pmk. on. 1855 Folded Letter to Mexico (Datelined Bordeaux), "Veracruz", & "4" Rate Marking, Handsome & Very Interesting Cover.....	(Photo) E.XII
292	⊠	1c Blue Ty. IV, 3c Dull Red (9, 11). Three singles of latter, tied by Grids & Red Boston pmk. on neat Cover to California, some very slight staining (mostly on back), Fine.....	E.VI
293	⊠	1c Blue Ty. IV, 3c Dull Red (9, 11). Horiz. Pair & Single of latter (originally a strip of three), margins to slightly in, tied by Rimless Buffalo, NY pmks. on 1857 Folded Cover to Richmond Hill, Canada West, stamps with light bend, partial Exchange Office marking, in Red, Fine	E.VI
294	⊠	3c Orange Brown (10). Seven, margins to slightly in or just touching, each on separate cover or Folded Letter, Variety of Pmks. (mostly Blue), Generally Fine, Handsome Lot	E.VIII
295	⊠	3c Dull Red (11). Pos. 99L3, tied by Green York Pa pmk. on Buff Cover, VF.....	(Photo) E.VII
296	⊠	3c Dull Red (11). Tied by Beautiful Worcester Mass. Negative Eight Point Star , matching Town pmk. on 1854 Folded Letter, VF (Photo)	E.VII
297	⊠	3c Dull Red (11). Average, tied by Green Lancaster Pa. pmk. on Lovely Cover, VF Strike.....	E.VI
298	⊠	3c Dull Red (11). Pos. 82L3, Average, tied by Five Point Negative Canton Mi. Star , Matching Town Pmk. on Buff Cover, Buchannon Carroll Correspondence, Beautiful Strike of this Popular Cancel	(Photo) E.VI
299	⊠	3c Dull Red (11). Four Margins, tied by Troy N.Y. pmk. on Buff Cover with Illustrated Corner Card of Steam Engine , Lovely & Desirable Cover	(Photo) E.VI
300	⊠	3c Dull Red (11). Average, Blue Grid & Matching Unusual "Campello Mass June 5" Double Oval pmk. on Orange Cover, couple small ink spots, Fine.....	E.VI
301	⊠	3c Dull Red (11). Ample to Large Margins except just touching at B.R., tied by Beautiful Bold "Jacksonville Flor. Jan 9" pmk., matching "5" on Buff Cover to Mass, ms. "Due", small Cover stain at T.R., Cover reduced at sides, Exceptionally Choice Strike of a Florida pmk. ...	E.V
302	⊠	3c Dull Red (11). Average, tied by New York Pmk. on small size cover which was forwarded Twice , Green Raleigh, N.C., Pmk., ms "Fowd .03/For'd .03/.06" due marking, Very Interesting Cover	E.VI
303	⊠	3c Dull Red (11). Large Margins to just clear, tied by Bold " New York Jul 14 1853 " pmk. (1853 N.Y. date stamp in use only 16 days) on Cover to Virginia, docketing at L., some slight toning, Desirable pmk. ...	E.V
304	⊠	3c Dull Red (11). Average, ms. cancel, on Forwarded Cover to New York forwarding Postage Paid by 3c Dull Red (26) , tied by N.Y. & Michigan Pmks., Interesting Cover Showing Use of Both Imperf. & Perforate Issues	E.IV
305	⊠	3c Dull Red (11). Two Covers (Vert. Strip of Four, Vert. Block of Six), Large Margins incl. sheet margin to somewhat in, Strip of Four tied by Grids on Legal Size Cover (reduced at L.), Red New Orleans Pmk., Block of Six tied by ms. Cancels on Legal Size Registered Cover to California, Iowa Town pmk., cover file folds (some affecting stamps), Extremely Scarce Lot	E.VIII

306	⊗	3c Dull Red (11, 26). Five of former, one of latter, each tied on separate cover by neat straight line. "Fort Defiance N.C." Pmk. (each with different Year Date 1851-55, 1857-58); also incl. 3c Red on Buff Entire (U10) with same ms. Pmk. & 1856 Year Date, some cover faults, VG-F Lot	EXII
307	⊗	3c Dull Red, 3c Rose (11, 65). Each tied by New York Pmk. on separate Orange Cover, former with Blue. "Harding Express" corner card, latter with "Adams Express Co" corner card, F-VF Lot	E.VI
308	⊗	3c Dull Red (11). Three, each on separate cover, one with sheet margin center line, cancels incl. small Red Oval Town pmk. Bucksport, Maine "PAID" in Shield & Ipswich Mass "PAID 3" in Ribbon , Fine Lot	E.VII
309	⊗	3c Dull Red, Shades (11). 19 Stamps & One Pair, each on separate Cover or folded cover, margins to slightly in or just touching, each cover with Southern Town Pmk., Generally F-VF Lot.....	E.VII
310	⊗	10c Green, Ty. I (13). Ample to Large Margins except just clear to touching at R. & B., tied by Bold San Francisco pmk. on 1855 Folded Cover to New York, Scarce	1,000.00
311	⊗	10c Green, Ty. II (14). Ample to Huge Margins, Rich Color, Neatly tied by "Stockton Cal. Feb. 19 1857" pmk. on Cover to Maine, without flap, trivial cover toning specks, small ink line, VF, ex-Knapp. (Photo)	350.00
312	⊗	10c Green, Ty. III (15). Three, Margins to slightly in, each tied by Town pmk. on separate cover (East to West or West to East Coast Travel), Scarce Lot.....	E.IX
313	⊗	10c Green, Ty. IV (16). Pos. 3R1. Recut at T., Ample to Huge Margins, Fresh Color, tied by partial Clinton, N.Y. pmk. on Small neat Cover to Quartsburg, Cal., VF..... (Photo)	2,250.00
314	⊗	12c Black (17). Ample to Large Margins, Used with 3c Dull Red (11) Horiz. Strip of Three , Town pmks., on legal size cover (neatly folded to resemble small size cover), Attractive Example of the Seven Times Rate	E.VIII
315	⊗	12c Black (17). Horiz. Pair. Large to Huge Margins including part R. Sheet Margin except to just clear at L., tied by Grids on neat 1854 Cover to England, Red "New 19 York Mar 8" & America Liverpool markings, Blue Manchester Backstamp, VF	575.00
316	⊗	12c Black, Diagonal Half Used as 6c (17a). Ample to Large Margins, light crease, tied by "New-York 7 cts" pmk. on Aug 1853 Folded Letter to Mass., Red "Via Nicaragua/Ahead Of the Mails" Rectangle , VF Appearance, Rare & Handsome	E.XVI
317	⊗	12c Black, Diagonal Half Used as 6c (17a). Tied by San Francisco pmk. on Sept. 1, 1853 Folded Letter to Boston, small cover tear & nick, stamp has light filing crease, o/w Fine, Rare	E.XV

1857 ISSUE

318	⊗	1c Blue, Ty. I (18). Couple tiny faint toning spots, tied by indistinct Town pmk. on cover to Mass., tiny insignificant cover stain at B., Fine	450.00
319	⊗	1c Blue, Ty. II, IIIa (20, 22). Perfs. close to slightly in, each used with 3c Dull Red (26) tied by Town pmks. on separate Cover, Scarce	415.00

- 320 ☒ **1c Dark Blue, Ty. III (21).** F. Relief, Pl. 4, Well-Centered, trivial flaws at L. caused by tiny overlap, tied by Hartford Conn. 1859 pmk. on Unsealed Circular Envelope, VF & Choice Appearance, with P.F. Certificate **(Photo)** 1,250.00

- 321 ☒ **1c Blue, Ty. III, IIIa (21, 22).** Three Singles Arranged as Strip of Three, Two Ty IIIa, one Ty. III (Plate 4) tied by New-York pmks., partial **"Boyd's City Express Post" Oval**, Ty. III single short perf., o/w VF, Ashbrook Identifications. **(Photo)**.....**E.XIII**

- 322 ☒ **1c Blue, Ty. IIIa (22).** Tied by "Hartford Ct 1858" pmk. on Yellow Cover to Ohio, Docketing at L., Fine..... **(Photo)** 250.00
- 323 ☒ **1c Blue, Ty. IIIa (22).** R. perfs. just touch, some "dry" print specks, tied by Town Pmk. on Cover to Vt., some water staining at B. & slight cover toning, incl. original Lithograph "Ms. Style" Letter, Scarce.... 250.00
- 324 ☒ **1c Blue, Ty. IIIa (22).** Perfs. slightly in at T., Used with Average 3c Dull Red (26), tied by Grids, Red Boston Pmk on neat small size cover showing Carrier Service, Fine Cover..... **(Photo)** 250.00
- 325 ☒ **1c Blue, Ty. IIIa (22).** Vert. Strip of Three, Pl. XI, Well-Centered, T. stamp small faults, tied by Green "St. Joseph Mo. pmk." & Grids on Tiny Cover to Va., tiny bit reduced at R., few trivial cover toning specks, Rare & Unusual..... **(Photo)** **E.XII**
- 326 ☒ **1c Blue, Ty. IIIa, V (22, 24).** Eight of latter, each tied on separate cover or folded cover, incl. one used as carrier with 3c Dull Red (26) VG-F Lot **E.VIII**
- 327 ☒ **1c Blue, Ty. IV (23).** Pos. 67L1L, T. Perfs. just in, tied by Brooklyn NY pmk. on Orange Yellow Cover, Scarce 350.00
- 328 ☒ **1c Blue, Ty. IV (23).** B. perfs. in, light crease, tied by New York pmk. on 1858 Printed Prices Current 350.00
- 329 ☒ **1c Blue, Ty. IV (23).** Horiz. Strip of Three, T. & R. perfs. just in, natural s.e. at L., tied by Town pmks. on Small Size Cover to New Jersey, ms. "Quite a display of beauty" below stamps, some cover toning & soiling, lacks backflap, Very Scarce 750.00 +

- 330 ☒ **3c Rose, Ty. I (25).** Tied by "Philadelphia Pa Feb 28" (1857) pmk. on small ladies envelope, **A First Day Cover According to Ashbrook** who states in accompanying letter "this must have come from an early experimental sheet . . . the pages appear more like the imperforate paper . . . note the bottom perfs. - didn't punch out etc. . . . indicating perhaps early attempts. If so, and the pencil memo ["Feb. 28, 1857"] was made by the recipient then I think you have what is actually a first day cover." traces of light magenta extraneous docketing & slight cover soiling, Rare **(Photo)** **E.XV**

- 331 ☒ **3c Dull Red (26).** Natural s.e. at R. tied by "PAID" Grids, Red Boston Jan 19 1860 Pmk. on **Bootleg Cover from Lebanon**, Red Forwarders Handstamp on Back, An Unusual & Desirable Cover **E.IV**
- 332 ☒ **3c Dull Red (26).** Average, tied by Mostly Clear Octagonal **"Milton Ohio"** pmk. on small size cover..... **E.V**
- 333 ☒ **3c Dull Red (26),** Average, Beautifully tied by **Canton, Miss. Lyre** Cancel, Matching Town pmk. on 1860 Cover to New York, Handsome & Desirable **(Photo)** **E.VII**
- 334 ☒ **3c Dull Red (26).** 25, Each on separate Cover, mostly selected Bold or Unusual Postal Markings, Very Interesting Lot, Generally F-VF..... **E.VII**

- 335 ☒ **5c Brick Red (27).** B. perfs blunted from scissors separation, tied by New Orleans La. pmk. on 1859 Folded Letter to **Spain**, Red "New York Br. Pkt" & Blue "8Rs" Rate Marking, "Via England" Route Instructions, London & Barcelona backstamp, Very Scarce, Handsome Cover (Photo) 1,350.00

- 336 ☒ **5c Brick Red (27). Vert. Strip of three,** Scissors separated (most perfs intact), B. stamp damaged, tied by Town pmk. on 1859 Small Size Cover to France, Appropriate Series of Transit Markings, Rare Cover (Photo) 3,100.00 +
- 337 ☒ **5c Red Brown (28). Vert. Pair & Single,** Near Indian Red Shade, single with couple short perfs., tied by "New Orleans La. Jan 3 1858" pmk. (**T. Stamp of Pair Uncancelled**), on Small Cover to France, normal sequence of Transits, Spectacular Rare Cover, ex-Waterhouse, Walter Hubbard, with P.F. Certificate (Photo) **E.XIII**

- 338 ☒ **5c Brown, Ty. I (29).** Rich color, T. perfs. scissors trimmed, tied by Neat "New Orleans La." pmk. on Nov. 1860 Folded Letter to **Spain**, Red "New York Br. Pkt", Dark Blue "8R"s, Very Attractive & Scarce (Photo) 275.00
- 339 ☒ **10c Green, Ty. II (32).** B. perfs. just in, negligible toning (mostly on cover), tied by Oswego NY pmk. on neat cover forwarded from **Oregon Territory to Honolulu Is.**, An Intriguing cover (Photo) **E.VIII**
- 340 ☒ **10c Green, Ty. II, III (32, 33). Horiz. Pair** of Former, Single of Latter, Average, ms. cancel, some slight toning. Red Washington DC pmk. on Buff Cover to **Germany**, Red Boxed "Aachen Franco" & "7" Marking, Boston Br. Pkt. Backstamp, some cover edgewear, cover slightly reduced at L., Scarce (Photo) **E.VII**

- 341 ☒ **10c Green, Ty. II, III (32, 33). Pair** of Former (natural s.e. at L.), **Horiz. Strip of Four** of latter, tied by "New Orleans La. Feb 16 1858" pmks. on Hargous Corresp. Folded Cover to Mexico, Bold "8" handstamp, VF, Rare & Spectacular 10c '57 (Photo) **E.XIV**

- 342 ☒ **10c Green, Ty. III (33).** R. perfs just touch, tied by **Washington Florida** Pmk. on Cover to California, ms. "via New Orleans Routing Instructions, Rounded Cover Corner at T.R., Fine **E.VII**
- 343 ☒ **10c Green, Ty. III (33).** Two, used with 1c Blue Ty. V (24), Partly Scissors separated (All Perfs. intact), Tied by Town pmks. on legal size cover, Partly Printed Address, reduced, Interesting Cover, L. side flap missing **E.VII**
- 344 ☒ **10c Green, Ty. V (35).** Tied by New York Pmks & Grids on Cover to California, ms. "**per Overland Mail via St. Louis**" Routing Instructions, VF, Interesting Cover (Photo) **E.VIII**
- 345 ☒ **10c Green, Ty. V (35).** Perfs. trimmed at L. & B., tied by Bold Red New York pmk. on Yellow Cover to **Cuba**, oval "NA1" Handstamp, ms. "per Steamer Santiago de Cuba", Havana Backstamps, Beautiful Cover **E.VII**
- 346 ☒ **10c Green, Ty. V (35).** Three Singles, some perf. tip toning, tied by Red Grids & French Transit on 1861 Folded Letter to France, Red "New Paid York 24 Feb 27" pmk., Usual series of Transits, few small bleaching spots, Reasonably Attractive **E.VI**
- 347 ☒ **10c Green, Ty. V (35).** Three, each on separate cover, one with natural s.e. & Guide Line, one cover with overall advertising design (sealed tear), Destinations include Canada & West to East Coast Travel, Interesting Group **E.VII**

- 348 ☒ **10c Green, Ty. V, 12c Black (35, 36).** Tied by Grids on 1860 cover front to **Holstein** (Germany), Red "N. York Brem. Pkt. Paid Mar 15 1860" Pmk. & "19" Rate Marking, Bold Straight Line "Franco", ms. "per New York," some slight edge erosion, Scarce **E.V**

- 349 ☒ **24c Gray Lilac (37).** Beautifully tied by "PAID" in Grid on Sep. 1860 Folded Letter to Scotland, Red "19" Credit Marking, ms. Routing Instructions, Boston Br. Pkt. & Dundee Back-stamps, Fine **(Photo)** 1,250.00

- 350 ☒ **24c Gray Lilac (37).** Barely tied by Red Grid, Matching "New 19 York Apr 30" pmk. & Red London Paid Receiving Marking on 1861 Cover to England, some trivial cover edge soiling, Very Scarce **(Photo)** 1,250.00

- 351 ☒ **30c Orange (38).** Barely tied by Red Grid on Orange Cover to **Stuttgart Germany**, Partly Clear Red New York 7 Paid pmk. & Boxed "Aachen/Franco" marking, ms. "via Liverpool by Prussian Closed Mail" routing instruction, sealed cover backflap tear, VF..... **(Photo)** 2,500.00

DEMONETIZATION OF THE 1857 ISSUE

A SPECIALIZED COLLECTION OF PRE-DEMONETIZATION, ACCEPTED USE OF MIXED ISSUES, "OLD STAMPS NOT RECOGNIZED" AND EARLY USAGES OF THE 3c 1861 ISSUE (INCLUDING FIRST DAY COVER.)

- 352 ☒ **1c Blue, Ty. I (18).** Tied by Red "New-York City Paid/Ct." pmk. on Dec. 1861 Folded Sugar Circular with **Sugar Refinery Illustration at T.**, Fine Accepted Use of Old 1c Stamp, Written-Up & Illustr. in Ashbrook Special Service..... **(Photo)** 450.00+

- 353 ☒ **1c Blue, Ty. V (24).** Used with **3c Rose Pink (64b) & Horiz. Pair 10c Dark Green (68a)**, Red Grid cancels, matching "New 19 York Sep 17 (1861)" pmk. on Cover to England, cover bit reduced at R., Fine, Handsome Mixed Issues Cover (Feb. 22, 1862 believed to be Earliest "Old Stamp" Date for N.Y. City), ex-Matthies..... **(Photo)** **E.XIII**

- 354 ☒ **3c Red (26).** Tied by "Washington D.C. Aug 30 1861" pmk. On Multicolor Patriotic Cover (Soldier, Cannon, Tent, etc., "Scheffer Print." Below), Fine..... 90.00

- 355 ☒ **3c Red (26).** Small faults, on Multicolor "Fate Of Traitors" Patriotic Cover (Hanging of Jeff Davis), Target cancel (not tied), Backstamped "New-York May 9" & **Str. Line "Held For Postage"**, **3c Rose (65)** tied by "New-York May 16" Target Duplex, the letter (no longer present) was reputedly datelined May 8, 1862, couple tiny cover faults, Very Scarce, see Chronicle No. 79 **(Photo)** **E.VIII**

- 356 ☒ **3c Pink (64).** Gorgeous Deep Rich Color, tiny margin overlap, on "**Jeff Davis' War Horse**" **Satirical Type Patriotic Cover** just tied by "Kanawha C.H. Va." pmk. (now Charleston W. Va.) to Columbus Ohio, **Additionally Franked with 3c Red (26)**, Oct. 16, 1861 Usage, minor faults, Fine, An "Old Stamps" or Double Rate Mixed Issues Usage, A Rare Cover in Either Case **(Photo)** 850.00+

357	3c Rose Pink (64b). Rich Color, Bold Interrupted Grid cancel (not tied), "Philadelphia Aug 19 1861" Octagonal pmk., Used as Forwarding Postage on Cover to Harrisburg Pa., Franking of Origin 3c Red (26), Huge Imperf. Straddle Margin, small nick, tied by Grid, Pittsburgh pmk., Fine. This cover is A First Day Use of the New Design 3c 1861 Issue Stamp Per The Philadelphia Postmaster's Local Advertisement of Aug. 19, 1861. A Great 1861 Issue Rarity, with P.F. Certificate..... (Photo)	E.XVI
358	3c Rose (65). Tied by Interrupted Grid, "Philadelphia Pa Aug 20 1861" pmk., A Second Day of Use on Forwarded Cover to Ill., Forwarding Postage Paid by 3c Red (26), Blue Grid cancel, matching "Alton Ill." pmk., cover somewhat reduced at L., Fine, Rare & Unusual, written-up in Chronicle Nos. 46 & 79..... (Photo)	E.XII
359	3c Rose (65). Perfs. touch to trifle in, tied by Grid, "Portland Me 20 Aug 1861" pmk. (Second Day of Use — Earliest Recorded Use From Portland), Used as Forwarding Postage on Cover to Kittery Me., 3c Red (26) Franking of Origin tied by "Haverhill Ms. Aug 18 1861" pmk., bit reduced at R., Fine..... (Photo)	E.XIII
360	3c Rose (65). Tied by Blue Quartered Cork, partial matching Indianapolis pmk. on YMCA "Etiquette" Label, Uncancelled 3c Red (26) Affixed to R. of Stamp & Label Not Recognized For Postage, Fine & Rare, ex-Krug, Illustrated in Baker Postal History of Indiana, pg. 779..... (Photo)	E.IX
361	3c Rose (65). Light Grid cancel (not tied), "Wareham Mass. Sep. 23 (1861)" pmk., Used as Forwarding Postage on 10c Green Nesbitt Entire (U16), postmarked "Shasta Cal Aug 20 1861", small expertly repaired cover nick at R., o/w VF..... (Photo)	E.VIII
362	3c Rose (65). Tied by Blue Louisville Ky Target Duplex on Demonitized 3c Star Die Entire to Va., Fine, Scarce..... (Photo)	E.VIII
363	3c Rose (65). Tied by Washington D.C. pmk. on 3c Red Nesbitt Entire, 1861 Stamp Affixed to L. of Embossed Stamp Which Has Been "Demonitized" by a Series of Neat ms. lines, VF, Unusual.. (Photo)	E.VIII
364	3c Rose (65). Perfs. touch, tied by Brown Brownsburgh Va. pmk. on 3c Red Nesbitt Entire (1861 Stamp Covers Demonitized Embossed Stamp), Probably 1866 Usage, cover bit reduced at L., Fine.....	E.VII
365	"Due 6 cts.", Two Straight Line Handstamps, one ties 3c Red (26) on Small Cover to Mass. from Newbern N.C., ms. "Ex J.M.H." Civil War Censor's Mark, Stamp Additionally tied by Dead Letter Office Double Oval, Pencil Docketing on back indicating Mar. 29, 1863 attempted usage. As the 3c stamp was not valid, the cover was duly rated due 6c (per the Act of Mar. 3, 1863) to be collected on delivery of an unpaid letter, Fine & Rare, ex-Matz, signed Ashbrook..... (Photo)	E.XI
366	"Due 3/old stamp not recognized" ms. endorsement ties 3c Red (26) on Jan. 31, 1862 cover, stamp also tied by Millersburg, Pa. pmk., docketing at L., small cover faults, Scarce.....	E.VII
367	"I see by an advertisement that the/government have issued a new (kind ? type ?)/of postage stamp & redeeming the old (ones for a ?)/certain number of days after which they (will be?)/worthless, so if you have any had better switch," ms. notation on inside of flap of Illustr. Merchants' Cover, 3c Red (26), tied by Pittsburgh Pa. Aug. 21, Accepted Usage During the Local Six Day Exchange Period, Interesting Cover..... (Photo)	E.VI
368	"Old Stamp," ms. "cancel" on 3c Red (26) on Cover to Mass., "Washington D.C. May 22 1862" Double Circle pmks., Stamp Tied By Matching "Due 3", Fresh & fine, Very Scarce..... (Photo)	E.VII

- 369 ☒ **"Old stamp"**, in ms., matching "Due 3" on Small Cover to Exeter N.H., 3c Red (26) tied by Littleton N.H. pmk., stamp faulty at B.R., stamp has additional ms. "X" cancel applied same time as "Due 3" & "old stamp", Scarce Neat Cover **E.VI**

- | | | |
|-----|---|-------------|
| 370 | "Old Stamps Not Recognized" , Complete Bold Two Line Handstamp Cancel reconstructed on 1c Blue, Ty. V (24) tiny thin speck, perfs slightly in at B. & Two Singles of 3c Red (26) , one with tiny pinhole, VF Strike, Rare Cancel, Choice Showpiece with P.F. Certificates (Photo) | E.XV |
|-----|---|-------------|

- 371 ☒ **"Old stamp not/recognized"**, Two Line ms. endorsement on Cover to Rockford, Ill., **Uncancelled 3c Red (26)** in T.R. corner, "La Salle Ill Sep 19" pmk., **"Held For Postage" Oval, 3c Rose (65)**, small faults, tied by Circle of Spokes, "La Salle Ill Oct. 8" pmk., cover repair T.L. affects "Held For Postage" (partly drawn in), Quite Rare Nonetheless, ex-Chase, West..... **(Photo)** **E.IX**

DEMONETIZATION AT HARTFORD, CT.

- 372 ☒ **3c Red (26)**. Target cancel (not tied), "Hartford Ct Jun 18 1861" pmk. on "Dis Chile's Contraban" Patriotic Cover, minor cover stain, o/w Fine **(Photo)** **90.00**
- 373 ☒ **1c Blue, Ty. V (24)**. Used with **Vert. Pair 1c Blue (63)** tied by Targets & "Hartford Ct Aug 22 1861" pmk. on Neat Cover to Suffield, Ct., Fine, Striking Mixed Issues Cover..... **(Photo)** **E.XI**
- 374 ☒ **3c Rose (65)**. Tiny margin nick, On Small Cover Affixed Over An **Uncancelled 3c Red (26)** & tied by Targets, "Hartford Ct Sep 20 1861" pmk., No. 65 moved down to reveal Unused No. 26, Rare Cover. **(Photo)** **E.X**
- 375 ☒ **3c Rose (65)**. Huge Imperf. Straddle Margin, tied by Target, "Hartford Ct Sep 30 1861" pmk. on Overall Gray Connecticut Fire Insurance Co. Illustrated Cover with **Red & Blue "USA" Patriotic Overprint**, Fine.. **E.V**

1861 ISSUE

- 376 ☒ **1c Blue (63)**. **Vert. Pair** & Two Singles, Two Diff. Shades, tied by New York 1863 Pmks. & Cross Roads Cancels on small size cover, docketing at L., An Interesting Cover showing the 1c stamp used to Pay the 1c Carrier Fee & 3c Postage **E.VI**
- 377 ☒ **1c Blue, 3c Rose (63, 65)**. Two Covers, one franked with two 3c & one 1c, Scarce "Brooklyn NY" pmk., other cover franked with three 3c & two 1c (10c + 1c carrier) used to **Canada**, Cover slightly reduced at T.R., Very Scarce Pair of Covers..... **E.VI**
- 378 ☒ **3c Pink (64)**. Some negligible perf. toning, tied by Target, matching "Westfield ms. Dec 13 1861" pmk. on Neat Cover, Cover slightly reduced at R., Handsome & Very Scarce **(Photo)** **350.00**
- 379 ☒ **3c Pink (64)**. Natural s.e. at R., Red Grid Cancel, tied by **Green** Woonsocket RI pmk on Buff Cover, somewhat rounded cover corner at T.L., Very Scarce, with P.F. Certificate..... **(Photo)** **350.00**

- | | | |
|-------|---|-------------|
| 380 ☒ | 3c Rose (65) , Tied by Bold Skull & Crossbones cancel (Skinner, Eno PH-S6) & matching bold "Waterbury Con Apr 14 '66" pmk. on cover, VF & Handsome (Photo) | E.XV |
|-------|---|-------------|

- 381 ☒ **3c Rose (65)**. Perfs. barely in at B., tied by **Bold Devil & Pitchfork** cancel, matching "West Meriden Conn. Aug 10" pmk. on fresh cover, VF & Unusually Choice Cover **(Photo)** **E.X**

- 382 ☒ **3c Rose (65).** Beautiful Bold **Blue Bluebird** cancel (Skinner, Eno PA-B18), matching "Rockford Ill Dec 9" pmk. on small neat cover to Stamford, with original contents, VF, Exceptionally Handsome, **Latest Recorded Usage**, with P.F. Certificate..... (Photo) **E.IX**
- 382A ☒ **3c Rose (65).** Tied by Bold Blue Mittineague Mass. Negative "Union" & Star in Pentagon Cancel (Skimmer-Eno #ST-C15) matching Town pmk. on Yellow Cover to Wisconsin, Cover locks Backflap and is slightly reduced at T., Handsome Cancel (Photo) **E.VIII**
- 383 ☒ **3c Rose (65).** Light crease, Fancy partly clear (as almost always) **Woman's Head ("Liberty")** facing right (Skinner, Eno PH-F60), clear "Rootstown, O" pmk. on buff cover to Ct., minor ms. docketing, Fine, Scarce..... (Photo) **E.VIII**
- 383A ☒ **3c Rose (65).** Centered to L., tied by Bold Blue Brattleboro Vt. Negative **Masonic Square & Compass** on neat Cover to Washington D.C., matching Bold Town Pmk., Cover slightly reduced at R., an Exceptional Choice Cover..... (Photo) **E.VIII**
- 384 ☒ **3c Rose (65).** Average, Bold Blue **Dot in Star** Cancel (not tied) on small size Cover, matching "**Jersey Shore Pa**" Pmk., V.F. Strikes, Neat Cover **E.V**
- 385 ☒ **3c Rose (65).** Tied by Albany NY **Patent Cancel** & Matching Town pmk. on 1863 Painted Proclamation by **Horatio Seymour**, Governor of N.Y. (opposed the Emancipation Proclamation), Autograph Signature of Horatio Seymour & N.Y. State Seal, Some minor cover toning at R., Most Interesting & Very Unusual..... **E.VI**
- 386 ☒ **3c Rose (65).** Average, natural s.e. at L., tied by Unusual Grid Cancel on small size Cover, matching "Rockville C.T." pmk., "A. Holden" handstamps (three strikes), L. back side flap partially missing, Unusual & Interesting Cover **E.VI**
- 386A ☒ **3c Rose (65).** Centered to R., tied by Grid & Town pmk. on Orange Cover, Bold Red, Rimless "**Adv/Not/Called For**" Handstamp, minor cover tear at L., An Exceptionally Choice Strikes of This Desirable Marking..... (Photo) **E.VI**
- 387 ☒ **3c Rose (65).** B. perfs just touch, tied by small size Geometric Clover type Cancel, matching "Rockville Ct" pmk. on Cover, Very Handsome . **E.V**
- 388 ☒ **3c Rose (65).** Average, some slight toning, tied by Blue Boxed "**Chattanooga Tenn**" straight line Town Pmk. on Cover to Ohio, Cover bit reduced at L., ms. "(Box 80)", Very Scarce & Desirable pmk. (Photo) **E.V**
- 389 ☒ **3c Rose (65).** Average, Target cancel, barely tied by "New York 1862" Pmk. on overall Printed Design for the Manhattan Oil Co. showing **A Whale being harpooned**, sealed cover tear at T., portion of cover backflap missing, Attractive & Very Scarce Design **E.V**
- 390 ☒ **3c Rose (65).** Average, Beautifully tied by Blue "Chicago Supplementary Mail" (Ty. C) pmk. on Cover to N.H., Cover slightly reduced at L. & some trivial toning, Desirable Postal Marking..... **E.V**
- 391 ☒ **3c Rose (65).** **Vert. Block of Ten & Strip of Five** on back of 1865 Cover to **Swatow China**, tied by Red "Boston Am. Pkt. Paid" & "Hong Kong" Transits, other stamps cancelled by Fancy Grids, Front of Cover bears Red Boston & London Transits, "Bristol N.H." pmk. & Red "1d" local delivery charge, ms. "(Stamps on the other side Paid P.M.)," one damaged before use, some other small faults due to placement at cover edge, A Very Rare & Handsome 3c 1861 Usage... (Photo) **E.XII**
- 392 ☒ **10c Green (68).** **Horiz. Pair**, each with single pulled perf., S.F. Cogwheel Cancel, matching "San Francisco Cal Apr 3 1862" pmk. on Cover to Mass., "via Panama" Routing Instruction, docketing at L., Handsome & Very Scarce **E.V**

- 393 ☒ **10c Green (68).** Nine, each on separate cover or folded Letter, most are West to East Coast Travel with San Francisco pmk., Mixed Quality, VG-F Lot **E.VI**
- 394 ☒ **10c Green (68).** 23, Each on separate Cover or folded letter to **Canada**, Range of Pmks., Mixed Quality, VG-F, Scarce Lot..... **E.IX**
- 395 ☒ **10c Green (68, 96).** Pair of Former, Two singles of latter on Two Covers to **Hawaii**, one No. 96 with some perf. toning, Scarce Lot..... **E.VIII**
- 396 ☒ **12c Black (69).** Three, each with s.e. at R., used with three 3c Rose (65), tied by Blue Cincinnati O Duplex pmks. on Large Size Orange Cover to Germany, Appropriate Transit Marks, couple file folds (not affecting stamps), A Fine & handsome Triple Weight Cover..... **E.VIII**
- 397 ☒ **24c Red Lilac (70).** L. perfs. just touch, some slight perf. tip toning, tied by Grid, matching Bold Lawrence Ms. pmk. on Blue Cover to England, Red "Paid/24", "N. York Br. Pk't Paid 19" & London Receiving markings, cover lacking one side flap, Handsome.. (Photo) 175.00

- | | | |
|-------|--|--------|
| 398 ☒ | 24c Steel Blue (70b). Well-Centered, Gorgeous Intense Deep Rich Shade, tied by Red British transit on very fresh 1861 folded letter to England, grid cancel, Red "New-York Am. Pkt. 3 Dec 7" pmk., VF & Exceptionally Handsome Cover..... (Photo) | 850.00 |
|-------|--|--------|

- 399 ☒ **30c Orange (71).** Average, tied by Bold Red Quartered Cork Cancel, matching partial "New York Paid All", on Cover to France, Appropriate French Transits, **Red Boxed "Supplementary/Mail" Ty. A hand-stamp**, partial strike, Pretty Cover (Photo) **E.IX**
- 400 ☒ **30c Orange (71).** Average, tied by Charleston S.C. pmk., Red "N. York Am Pkt. 14 Paid" & Blue Boxed "Aachen/Franco" Transit Markings on 1866 Cover to **Austria**, Wien Backstamp, some slight cover soiling, Very Scarce..... (Photo) **E.VIII**
- 401 ☒ **2c Black (73).** Lightly tied on Yellow Cover to White Cloud Kas., St. Joseph Mo. pmk., "From Great Western Gift Association, Saint Joseph, Missouri." Impt. at T., VF, Unusual Cover (Photo) **E.VII**
- 402 ☒ **2c Black (73).** Average, used with Average 3c Rose (65) & 10c Green (68) All tied by Grid on small size Cover to **Germany**, Red N. York Brem. Pkt. Paid Marking, Interesting & Unusual Combination Cover (Photo) **E.VII**
- 403 ☒ **2c Black, 3c Rose (65, 73).** Two of each, one 2c natural s.e., Geometric cancels & NY Pmks. on 1864 Cover to **Canada**, Very Scarce Combination Usage..... **E.VI**
- 404 ☒ **5c Red Brown (75).** Horiz. Pair & Single, ms. Cancels, on 1862 to Germany, Blue Goshen Ind Pmk. & Red "N. York Paid Hamb. Pkt. 10" Postal Markings, Appropriate Series of Backstamps, Desirable Cover **E.VIII**
- 405 ☒ **15c Black (77).** Fantastic Centering, single short perf., tied by Cogwheel, San Francisco pmk. on 1867 Cover to **New Brunswick**, Handsome, Scarce Rate (Photo) **E.VII**
- 406 ☒ **15c Black (77).** Wide Margins Three sides, B. perfs just touch, tied by Target & New York Pmk on Cover to France, New York & Blue French Transits, ms. "Per Steamer from New York", couple back flap tears, A Colorful Cover **E.VI**
- 407 ☒ **24c Lilac (78).** Grid Cancel, Tied by Red Partly Clear "Phila Br. Pkt. 19" on 1866 Cover to London, Red London PAID Receiving marking, lacking portion of back side flap, Fine **E.V**
- 408 ☒ **24c Gray (78b).** Average, tied by Red Quartered Cork Cancel, matching "New York Paid All" & Boxed "Supplementary Mail" Marking on 1868 Folded Cover to England, Red Liverpool U.S. Packet Marking, Attractive Cover **E.V**

PATRIOTIC COVERS

- | | | | |
|-----|---|--|--------|
| 409 | ⊠ | 3c Dull Red (26). Tied by bright Green Seven Bar Grid in Circle, matching Green Town pmk. on Multicolor Patriotic Cover with Design of Soldier with Sword Drawn on 34 Star Flag (Walcott 2035), light cover file fold & Reduced at R., Attractive & Very Scarce | E.VI |
| 410 | ⊠ | 10c Green, Ty. V (35). Perfs. trifle in at B., tied by Lincoln Ill., Double Circle on Multicolor "Long may it wave." Flag Patriotic Cover to Grizzley Flats, Cal., small ink spot, minor cover creasing, Scarce, touching father to son letter enclosed (Photo) | E.VIII |
| 411 | ⊠ | 1c Blue (63). Negligible perf. toning, tied by Beautiful Bold "New London Ct. Aug 27 1861" pmk. on Buff Patriotic Cover, Multicolor design of Soldier with Flag, Rifle & Plow at L. (Walcott 2056), Cover Backflap tear, VF & Choice, Very Scarce Second Week Usage (Photo) | E.VIII |
| 412 | ⊠ | 1c Blue (63). Vert. Strip of Three , tied by Town pmks. on multicolor overall Patriotic Design of Waving Flags, Shield, etc. Cover, Fine & Very Handsome (Walcott 2858) (Photo) | E.VII |
| 413 | ⊠ | 3c Rose (65). R. corner perfs. folded under, tied by Alexandria Va. pmk. on Multicolor Magnus Patriotic Cover depicting Female Figure & Flag (similar to Walcott 2120), Entire Star Spangled Banner on Reverse, incl. Matching Letter Sheet with Multicolor Penn. Seal & Female Figure, Attractive & Scarce (Photo) | E.VII |
| 414 | ⊠ | Civil War Patriotic Covers , 12 Covers, Each with Diff. Design & franked with Average 3c Rose (65), Variety of Pmks., Mixed Quality, Useful Lot | E.VIII |
| 415 | ⊠ | Civil War Patriotic Covers , Nine Covers, one Cover Front Only & one letter sheet headed "Washington Arsenal June 15th 1864", All Covers with Diff. Patriotic Designs, Three Covers & Front franked by Average 3c Dull Red (26), Three Stampless Patriotic Covers with Postal Markings & Two Used but without Postal Markings, Very Mixed Quality, Useful Lot | E.VI |

1867 GRILL ISSUES

- | | | | |
|-----|---|---|----------|
| 416 | ⊠ | 2c Black, E. Grill (87). Tied by Quartered Cork & Boston Mass Pmk. on Unsealed Cover to Nova Scotia , incl. original Circular Enclosure, VF | E.V |
| 417 | ⊠ | 15c Black, E. Grill (91). Two, tied by Segmented corks & Blue & Red French Transit Markings, Red "New Paid York 12" pmk. on small neat cover to France, Attractive & Rare (Photo) | 800.00 + |
| 418 | ⊠ | 2c Black, F. Grill (93). Tied by Grid on New York Herald Newspaper Wrapper to France, French Rate Marking, Fine & Very Desirable (Photo) | E.VI |
| 419 | ⊠ | 10c Yellow Green, F. Grill (96). T. perfs. just clear, some paper wrinkles, Tied by Dedham Mass. Paid in Shield , matching Jul 4 pmk. & Red Boston Paid All Direct marking, Red Boxed Hamburg Franco Marking on Cover to Germany, Attractive (Photo) | E.VI |

1869 PICTORIAL ISSUE

- | | | | |
|-----|---|--|-------|
| 420 | ⊠ | 1c Buff (112). R. perfs. just in tied by Grid & Peabody Mass Jan 5 pmk. on Local Mourning Cover, A Lovely Cover | E.VI |
| 421 | ⊠ | 1c Buff (112). B. perfs. just in, Quartered Cork Cancel, used to pay additional postage on Cover franked with 2c Brown (146) tied by Williamsburgh NY pmk. & Cork Cancel, "(He)ld for Postage" hand-stamp, Cover bit irregular at L., Very Unusual, ex-Gibson | E.VII |

- 422 ☒ **2c Brown (113). Vert. Pair**, tied by Cork Cancel & French Transit Marking on 1870 Folded Letter to France, Red New York Pmk., Blue Merchants handstamp, usual series of transit Markings, ms. "Via England" Routing Instructions, A Lovely Example of a Cover Traveling by British Open Mail..... **(Photo)** **E.X**
- 423 ☒ **3c Ultramarine (114)**. Few short perfs., Gorgeous Bold **Beer Mug** cancel, matching "Suffield, Con Jan 6" pmk. on cover, some faint really negligible cover stains, VF & Exceptionally Handsome **(Photo)** **E.IX**
- 423A ☒ **3c Ultramarine (114)**. Tied by Bold Charlestown N.H. **Masonic Square & Compass in Circle** Cancel on neat Cover to Vermont, Matching Town pmk., Extremely Fine Cover..... **(Photo)** **E.IX**
- 424 ☒ **6c Ultramarine (115)**. Small corner perf. fault, tied by Odd Cork, San Francisco Col. pmk. on Cover to Canada, tiny red ms. "1870", cover has numerous surface indentations, one or two break through slightly, Fairly Attractive..... **(Photo)** **E.VIII**
- 424A ☒ **3c Ultramarine (114)**. Natural s.e. at L., Beautiful Bold **Waterbury Ct. Mortar & Pestle** (not tied) on Cover to Vermont, matching Waterbury town pmk., An Exceptionally Choice Strike of this Rare Cancel (Rohloff Ty. O-6), with P.F. Certificate..... **(Photo)** **E.XVI**
- 425 ☒ **10c Yellow (116)**. Well-centered, really negligible perf. tip creases at R. (from filing fold), tied by circle of Wedges cancel, matching "New York Oct 14" pmk. on 1869 folded cover to **Cuba**, ms. "per Morrocastle", small merchants handstamp, VF **(Photo)** **E.XI**
- 426 ☒ **15c Brown & Blue, Ty. II (119)**. R. perfs. just touch, tied by Grid on Small Size Cover to **Naples, Italy**, portion address crossed out, Red New York Paid All Transit pmk., Milano & Napoli backstamps, Attractive & Scarce, signed Diena..... **(Photo)** **E.XI**
- 427 ☒ **15c Brown & Blue, Ty. II (119)**. T. perfs. just touch, used with 3c Bank Note on Reg. Small Size Yellow Cover, Target cancels (not tied), Springfield N.Y. town pmk., Attractive & Scarce, with P.F. Certificate **(Photo)** **E.XI**
- 428 ☒ **15c Brown & Blue, Ty. II (119)**. B. perfs. barely in, single pulled perf., some minor toning, tied by Grid Cancel on 3c Green on Cream Reg. 1873 Entire (U84) To Texas, Madison Ga. pmk., Cover slightly reduced at R., Late Usage of the 1869 Issue..... **(Photo)** **E.X**

BANK NOTE ISSUES

- 429 ☒ **6c Carmine, Grill (137)**. Some slight perf. toning, tied by Cork Cancel on July 1, 1870 Cover to England, Purple "Phila, Paid All" & Red "London Paid" Markings, couple cover staple holes at T.L., Handsome & Very Scarce **(Photo)** 450.00
- 430 ☒ **2c Red Brown (146). Horiz Pair**, perfs. close to touch at T. & R., Tied by Quartered Circle Cancels, matching Charleston S.C. pmk. on portion of 1872 Folded Prices Current to **Holland**, additionally tied by Greenish Black **Str. Line** "PAID ALL", some minor cover bleaching spots, Handsome & Very Desirable, ex-Walter Hubbard **E.VII**

- 431 ☒ **24c Purple (153)**. T. perfs. just in, few pulled perfs., used with Horiz. Pair 10c Brown (151), tied by Grids on Yellow Cover to **India**, "Boston Paid" & Red "London Paid", Usual Transit & Rate Markings, ms. "via Southampton" Route Marking, small sealed Cover tear, from the Bissel Correspondence, A Handsome Example of A Desirable Cover, ex-Krug..... **(Photo)** 1,600.00

- 432 ☒ **6c Brown Rose (159).** Tied by Bold Target Cancels on 3c Green on Cream (U83) Entire to France, Colorless Embossed Corner Card, Red "New York Paid" & Black "New Orlean" Pmk., usual French Transits, Very Scarce **9c Rate** to France..... (Photo) **E.VI**
- 433 ☒ **10c Brown (161).** Tied by **Fouled Anchor Cancel** (NYFM Ty C.2), matching New York Pmk., Bold Purple "City of Merida" Handstamp on 1875 Folded Cover to Vera Cruz, VF..... (Photo) **E.VII**
- 434 ☒ **30c Gray Black (165).** Tied by Light Quartered Cork Cancel on 1875 folded letter to **Mexico**, Cover originated in New York and was carried outside the mails to New Orleans, "New Orleans La" Pmk., Mexican "50cs" and N.Y. Forwarders marking on Face, New Orleans forwarders marking "and Veracruz Backstamps, Handsome Cover, Extremely Fine, ex-Newbury (Photo) 650.00
- 435 ☒ **15c Red Orange (189).** Natural s.e. at L., tied by trifle heavy New Haven Conn. Duplex Pmk. on 1884 Small size Cover to **Cape of Good Hope South Africa**, Appropriate Backstamps, couple small cover tears, Very Handsome **E.V**
- 436 ☒ **15c Orange (189a).** B. Perfs. just touch, couple small faults, tied by Quartered Cork Cancel, Matching New Haven Ct. Pmk., on 1881 Cover to Cape of Good Hope South Africa, Appropriate Transit Markings incl. Twin Circle Red "New York 50", Cover Slightly Reduced at L., Most Attractive **E.V**
- 437 ☒ **1c Ultramarine, 2c Red Brown (206, 210).** Two Singles of latter, Target cancels on 1886 Cover to **Finland**, "Sandy Utah" Territorial Pmk., Bold "ANK" marking, A Fine & Scarce Cover..... **E.VI**
- 438 ☒ **6c Rose (208).** Horiz. Pair, L. perfs. just touch, quartered cork cancel, used on 2c Red (U227) Entire to Kansas, Registration Markings on Back, Cover reduced at L., Very Scarce Cover **E.VI**
- 438A ☒ **2c Red Brown (210).** Some slight toning, tied by Ann Arbor Mich Harry Nichols Negative "H" in Star on cover, matching. Town pmk., Bold "DUE 2" handstamp & Vert. Pair 1c Pale Red Brown (J15), Cover slightly reduced at R., Unusual Cancel (Photo) **E.VI**
- 439 ☒ **4c Blue Green (211).** Horiz. Strip of Three, couple nibbed perfs., Tied by **Ultramarine** Grids on Reg Cover, matching Renovo Pa Pmk., Fine **E.V**
- 440 ☒ **4c Blue Green (211).** Horiz. Strip of Three, natural s.e. at L., some slight perf. toning, tied by "New York D" Ovals on Reg. 1887 Cover, Scott Stamps & Coin Corner Card **E.V**
- 441 ☒ **4c Blue Green (211).** Two, Average used with two 2c Red Brown (210), on Reg Cover to Georgia, Cork Cancels, Purple "Columbia S.C. Registered Apr. 23 1887" pmk. & matching "Registered No." Handstamp, Attractive..... **E.V**
- 442 ☒ **3c Vermilion (214).** Tied by "Middletown Conn" pmk. on 1888 2c Green (U311) Entire Used to **Prussia**, VF..... (Photo) **E.VII**
- 443 ☒ **4c Carmine (215).** Used with 10c Brown (209) on Reg. Cover with Illustrated Biscuit Manufacturer Corner Card at L., Williamsport Pa Pmk. & Grids, Appropriate Registry Markings, small sealed cover backflap tear, VF (Photo) **E.V**
- 444 ☒ **4c Carmine (215).** T. Impt. Horiz. Pair, Tied by Boxed "New York NY/Wall St. Sta." handstamp on Reg. 10c Brown on Oriental Buff Entire (U191), Usual series of Transit markings, Handsome Cover..... **E.V**
- 445 ☒ **4c Carmine (215).** Horiz. Pair, used with 2c Green (213) tied by Grids on Cover to England, Dobbs Ferry NY Pmk., usual series of transit markings, Fine **E.V**

COLUMBIAN ISSUE

446	⊗	2c Columbian (231). Average, tied by "Worlds Fair Station Jun 21 1893" Pmk. on Cover with "Board of Worlds Fair Manager Penn. State Building" Corner Card, Cover Trifle reduced at L., Fine..... (Photo)	100.00
447	⊗	5c Columbian (234). Neatly tied by "Worlds Fair Station Oct 21 1893" pmk. on 1c Columbian Entire (U348), ms. "Manhattan Day", Attractive, Fine (Photo)	400.00
448	⊗	15c Columbian (238). L. perfs. just touch, some faint perf. toning at B., tied by New York Reg. Double oval pmks. on Reg. Cover to England, Usual Transit Markings, Fine..... (Photo)	200.00
449	⊗	15c Columbian (238). Vert. Impt. Pair, tied by "New Oxford Pa" Pmk. & Grids on Blue Cover, VF..... (Photo)	E.XI
450	⊗	Columbian Exposition Postals Cards, Series No. 1, the Cpl. Set of 12 Unused Cards, VF & Scarce	E.VII
451	⊗	15c Dark Blue (259). Tied by trifle heavy New York Duplex Pmk. on 1895 1c Columbian Entire (U348), Unusual Usage of this stamp (Photo)	120.00

TWENTIETH CENTURY COVERS

452	⊗	"Paris Exposition 1900" "United States Postal Station Paris Exposition 1900" Duplex Waving Flag Machine Cancel Ties 5c, 10c, 30c & 40c French Sage Issue, each on separate Cover, 10c on Color Post Card Showing The Navigation Building, couple corner creases, Very Hand-some & Scarce (Photo Ex)	E.IX
453	⊗	1c Jamestown (328). Tied by Norfolk Va Nov 1 1907 Expo Station Pmk. on Multicolor Post Card Illustrating Pa., Va., Md., Mi. & Oh. State Buildings, Fine & Scarce	100.00
454	⊗	1c Green, Bluish (357). Tied by "Washington D.C. May 8 1909" Pmk. on Multicolor Post Card Illustrating the Main Post Office in Washington, D.C., Fine & Very Scarce.....	150.00
455	⊗	2c, 5c Norse-American (620, 621). Cpl. Set Tied on One Cover by Washington, D.C., First Day pmk., VF.....	125.00

SPECIAL DELIVERY FIRST DAY

456	⊗	10c Blue (E1). Used with 2c Red Brown (210), perfs. touch on both, tied by "Charleston S.C. Oct 1 85" First Day duplex pmks. on small local cover, cover corner nick at T.R. & light overall soiling, o/w Fine, Rare, Only Six or Seven First Day Covers Known..... (Photo)	8,000.00
-----	---	--	----------

CARRIERS & LOCALS

457	⊗	U.S. City Despatch Post, 3c Dark Blue (6LB5). Large to Huge Margins, tied by Red New York pmk. on Cover to Mass., Red Roman Numeral "XVI" & "a" notations (not affecting stamp), o/w VF, with P.F. Certificate..... (Photo)	300.00
-----	---	--	--------

458	⊗	U.S. Mail, 1c Yellow (6LB10). Ample to Large Margins, lightly tied by Red "PAID" on Blue Local Cover, Green Embossed Manufacturers Return Address on backflap, Fine..... (Photo)	300.00	
459	⊗	U.S. Mail, 1c Yellow (6LB10). Ample to Large Margins except just touching at B. & L., pencil cancel (not tied), on 1851 Folded Cover to Canada , Red New York 10cts pmk. & matching Arced "PAID", ms. "Paid 10cts", Appropriate Transit Markings, Handsome & Very Scarce Usage.....		E.VII
460	⊗	Philadelphia, Pa., 1c Red Handstamp (7LB18 var). Clear Strike, Red "Paid" on Blue Cover, slight stain T.L. corner, Fine, with P.F. Certificate		E.X
461	⊗	American Letter Mail Co., 5c Black (5L1). Ample to Large Margins, tied by Red Dotted Star on Feb 1844 Folded Letter, VF & Handsome.	85.00	
462	⊗	Bloods Penny Post, (1c) Black (15L18). Large to Huge Margins except ample at B., tied by "1" in Oval Frame, Bloods pmk. on Small size Cover, small cover tear at T., VF	75.00	
463	⊗	Boyd's City Express, 2c Green, Ty. V (20L7). Large to Huge Margins, tied by Red New York 5cts pmk. on Small Mourning Cover, matching Arced "PAID", ms. "Paid 10", VF.....	75.00	
464	⊗	City Dispatch, 1c Black (41L1). Ample Margins, tied by Black Circle on neat small size Cover, Fine	450.00	
465	⊗	Eagle City Post, Philadelphia, (2c) Black (61L2). Defective, Used on 1849 R.R. Meeting Notice, Red "Eagle City Post . . . Paid Adams' Express" etc. Double Circle, Very Scarce, Undercatalogued, with P.F. Certificate		E.VI
466	⊗	Hale and Co., (6c) Light Blue (75L1). Large to Huge Margins except just touching at R., tied by Red partly clear ornamental framed Box Cancel on 1845 Folded Letter to R.I., Fine, ex-Emerson	150.00	
467	⊗	Metropolitan Errand and Carrier Express Co., 1c Red Orange (107L1). Large to Huge Margins, tied by partial Boxed "PAID" on Local Cover, Fine	175.00	

468	⊗	One Cent Dispatch, Wash., D.C., 1c Violet (112L1). Trivial toning spot, tied by "City Despatch" & ms. docketing on 1856 Cover to California, 10c Green Ty. III (15) , average, tiny tear, tied by "Washington D.C." pmk., "Rare & Handsome", with photocopy of P.F. Certificate		E.XIII
-----	---	---	--	---------------

469	⊗	One Cent Despatch, Baltimore, 1c Red (112L2). "Tied" by filing crease, faint pencil cancel on Buff Cover, Very Scarce, with P.F. Certificate		E.VIII
470	⊗	Swarts, 1c Red (136L9). Large to Huge Margins, tied by Grid, used in Combination with 3c Red (11) tied by New York pmk. on Buff Cover to Phila., neat 1855 Docketing, VF, ex-Haas (realized \$675.00) (Photo)	175.00	
471	⊗	Swarts, 1c Red (136L9). Large Margins, tied by Grid, Used in combination with 3c Dull Red (11) tied by New York pmk. on Buff Cover to Maine, Fine	175.00	
472	⊗	Swarts City Dispatch Post, 1c Red (136L9). Ample to Large Margins, couple corner creases (clear of design), tied by "Swarts/Post Office/Chatham Square" - Oval pmk. on Buff Local Cover, matching "PAID/Swarts" handstamp, Fine	175.00	
473	⊗	Boyd's City Express, 2c Yellow Green, Green, Ty. II, V (20L2, 20L7). Former with Red "FREE" Cancel, Matching Boxed Boyds City Express Post pmk. on folded Letter, latter with Grid Cancel, tied by ms. markings on 1851 Folded Letter, Boyds City Express Post Oval pmk. & Red New York 5cts pmk., Fine Lot.....	225.00	

CONFEDERATE STATES

PROVISIONALS

474	✉	Memphis, Tenn., 5c Red (56X2). Horiz. Pair, Large Margins to cut in at T. on R. stamp, L. stamp minor tear, tied by "Memphis Ten. Dec. 7 1861" pmk. on fresh cover to Jonesborough, E. Tenn., flap restored, small sealed cover edge tears & nicks, Fine, Very Scarce, ex-Matz (Photo)	1,200.00
475	✉	Memphis, Tenn., 5c Red on Amber Entire (56XU2). Memphis Ten. pmk. to Yorkville, Tenn., few tiny aging specks, couple small pieces neatly added at R. to improve appearance of irregular edge, o/w VF, Rare, ex-Matz (Photo)	1,850.00
476	✉	New Orleans, La., 2c Red (62X2). Horiz. Pair, Large to Huge Margins, Exceptionally Fresh, R. stamp trifle heavy crease, o/w Extremely Fine.....	175.00
477	✉	New Orleans, La., 5c Brown (62X3). First Printing, Three Huge Margins, Ample to just clear at B., tied by Bold "New Orleans La. 17 Aug" pmk. on unusually fresh cover to Pensacola, Fla., VF & Handsome (Photo)	175.00
478	✉	Selma, Ala., 5c Black Entire (77XU1). Bold Strike on Grocer Corner Card Cover to Marion, Ala., matching "Selma Ala Jul 27" pmk., small cover erosion & abrasion spots, minor cover stains, cover opened three sides & re-sealed, with original contents, Rare, ex-Walcott, Emerson & Brooks..... (Photo)	1,350.00

HANDSTAMP PAIDS

479	✉	"Adams Run S.C." & "Graham Turn Out S.C." Pmks., each with matching "Paid" handstamp on Separate Cover, latter with matching "10" Rate Marking, F-VF, Handsome Lot.....	E.VII
480	✉	"Caldwell Tex Oct 6" Bold Pmk. & ms. "Paid 10" on 1863 Folded Letter addressed to "Chaplain 14th Regiment Texas Volunteers", Letter makes some mention of the Civil War, VF..... (Photo)	E.VII
481	✉	Cuthbert Ga., Clear pmk., matching "Paid 5" on Orange Cover to Griffin Ga., VF..... (Photo)	E.VI
482	✉	"Executive Office, Shreveport, La." & "Official Business." Im- prints on Gray Cover to Natchitoches, "Shreveport La. Apr. 6 1865" pmk. & "Paid", without flap, few tiny erosion holes, o/w VF, Very Late CSA Cover, Shreveport being one of the last towns held by the Confederacy..... (Photo)	E.VII
483	✉	"Head Quarters, Military District of Georgia." Printed Impt. at T.R., "Charge Box B" below, Printed "Official Business" at T.L. on large cover to Maj. at "Ways Station, S.A. & G.R.R." (Savannah, Albany & Gulf R.R.), Savannah, Ga. pmk., matching "Paid 60" str. line, VF, Scarce.....	E.VIII
484	✉	Indian-Spring Ga. Mar 17 1862, Bold pmk., "Paid" in Arc Above "5" on Cover to Savannah, Military Address, minor mend at T., VF, Scarce Fancy Type Handstamp	E.VII
485	✉	Indian Spring Ga., Clear Strike, Sans-serif Letters, ms. date logo, on Feb. 1862 Folded Letter, written by a woman to a Col. Bailey requesting return of her husbands body should he "fall in battle, (which God forbid he should)" etc., ms. "Paid 5" & "Paid five cents", repaired at R., o/w VF.....	E.VI
486	✉	New Iberia La, mostly clear pmk., partial "Paid" & "10" on Sept 1861 Cover to New Orleans, flap tear & opened at sides, Fine, Scarce ...	E.VI

487	✉	"Rusk Texas. Sep 29" Pmk. (Two Strikes) & matched Arced "PAID 10" , ms. "Paid 10" on 1862. Folded Letter, VF (Photo)	E.VII
488	✉	Staunton Va. , Clear pmk. & "Paid 10" on Fresh large size Homemade Cover to a Capt. Bacon at Lexington, Va., ms. "O.B." & "Chge 107" , VF	E.V
489	✉	11 Star Red White & Blue Flag , (Dietz Ty. B-57) Design on Stampless Cover to Miss., ms. "Vernon La. July 28" pmk., Cover bit reduced at R., Fine & Scarce	E.VIII
490	✉	7 Star Red, White & Blue Patriotic Flag Design (Dietz Ty B-1) on Cover to Virginia, ms. "E. E. Jefferson Sept 9, 1861" & "Recd 10" , some slight edge toning, Fine & Scarce Confederate Patriotic Cover carried outside of The Mail, with Confederate Stamp Alliance Certificate..... (Photo)	E.VIII
491	✉	Stampless Covers , Three Diff., Pmks. incl. "Thomasville Ga." , "Charleston S.C." & "Salisbury N.C." , each with matching "10" rate marking or "Paid" handstamp, mostly clear strikes	E.V

GENERAL ISSUES

492	✉	5c Bright Green St. 1 (1). Horiz. Pair , Margins to barely in, tied by Bold "Ashland Va Apr. 19" pmk. on Patriotic cover to Decatur, Ga., Eleven Star Waving Flag with CSA Impt. & Verse (Dietz 65a), light cover stains & minor cover edge wear, Scarce..... (Photo)	650.00 +
493	✉	5c Blue, 10c Blue (2, 4) . Four Covers, incl. Four No. 4 on Three Covers, Variety of pmks., Mixed Quality, Good-Fine	E.VI
493A	✉	5c Dark Blue, St. 2 (4a). Pos. 39 , Margins Virtually All Around, tied by Blue "Columbia S.C. June 2" pmk. on cover, Fine	125.00
494	✉	10c Rose (5) . Clear to Large Margins, heavy partly broken crease, tied by "Richmond Va May 24 1862" pmk. on Patriotic cover, Mounted Dragon with Sword with Verse 7 (Dietz F-A-1), cover mends, cover opened, & re-sealed, without flap, Rare..... (Photo)	2,250.00
495	✉	5c Light Blue, 5c Blue (6, 7) . Seven stamps incl. two Pairs on four covers, one cover with single, two singles on Mourning Cover, one Pair on Homemade Cover, Variety of Pmks., F-VF	E.VII
496	✉	5c Blue, Local Print, De La Rue Paper (7). Horiz. Pair , Ample to Large Margins, tied by "Griffin Ga." on Buff Cover Addressed to Dr. Bagby, VF	E.VI
497	✉	5c Blue (7). Vert. Pair , Ample Margins to just touching, tied by Macon Georgia Pmk. on Turned Cover , second usage franked with Horiz. Pair No. 7 tied by Bold "Atlanta Geo." Pmk., Cover has been opened at sides to show both usages, A Very Handsome Cover	E.V

497A	✉	2c Pale Brown Red (8). "Block of Five" , Block of Four & large portion of "fifth" stamp on back of Forwarded Cover to a Military Address, horiz. crease & some small scissors cuts betw. stamps (a portion of the "fifth" stamp cut away with a portion of back of cover), tied by grid cancels (believed to be Chapel Hill, N.C.); cover then forwarded, 10c Blue (11) affixed & tied by Okolona Miss. pmk., cover bit aged & slightly reduced at R., Very Rare, Signed Dietz, Believed to be ex-Knapp, with P.F. Certificate	(Photo) E.XIV
------	---	--	----------------------

498	✉	10c Blue, "T-E-N" (9) . Ample to Very Large Margins except just touch at top, ms. cancel, tied by ink smears on Yellow Cover with Blue "Louisa C.H. Va Sep 10" pmk. some cover faults, Still a Desirable & Very Scarce Cover	E.VIII
499	✉	10c Blue (11) . Ample to Large Margins except just touching at T., tied by Red "Greensborough N.C." Pmk. on neat Buff Cover, ms. "Box 78" , VF, A Pretty Cover	E.V

500	⊠	10c Blue (11). Ample to Huge Margins, tied by faint Town Pmk. on Folded Cover made from Printed Legal Circular , Fine & Scarce.....	E.IV
501	⊠	10c Blue (11). Ample Margins to just touching, tied by ms. cancel, ms. "Blackville So. C. April 5/65" Pmk., on cover made from a Baptismal Certificate , Cover has been opened to reveal the Certificate, Late Usage of a Confederate Stamp, Fine	E.IV
502	⊠	10c Blue (11). Ample to Large Margins, bit irregular, some gum staining in Margins, tied by "Richmond Va May 9" Pmk. on Blue Green Overall Design Advertising Cover for Wholesale Grocers, Hand-some	E.V
503	⊠	10c Blue (11). Large Margins, ms. Cancel (not tied) on Homemade Cover to Carthage Texas , Henderson Texas Pmk., some slight cover staining, Very Scarce	E.V
504	⊠	10c Greenish Blue (11c). Large to Huge Margins, tied by Bold "Goodson" (Va.) Str. Line pmk. on light blue cover to Ga., Milledgeville Ga. receiving pmk., forwarded to Marietta, with photocopy of original contents headed Headquarters Artillery Corps, near Blountsville, East Tenn, Nov. 23, 1863, some cover edge wear, o/w VF, Scarce	E.VIII
505	⊠	10c Blue (11, 12 two). Ample to Large Margins, each tied on separate Cover or folded letter, Cancels incl. "Charleston S.C." Double & Single Circle Pmks. & Red Grid, some edge toning from gum on one, F-VF, Scarce Lot	E.V
506	⊠	10c Greenish Blue (12c). Large Margins, tied by Savannah Geo. pmk. on May 1864 Wallpaper Cover, docketing at T.L., VF	300.00
507	⊠	20c Green (13). Large to Huge Margins, tied by Richmond Va. pmk. on neat small size cover, VF & Exceptionally Choice	600.00
508	⊠	Confederate Covers , Eight Items, incl. Two Stampless (each with "DUE 10" handstamps), franking incl. No. 6 Pair tied by Bold Hardeeville S.C. 1862 Pmk., Four No. 11 each on separate Covers. Variety of Color & Pmks. & No. 12 tied by Dateless Washington Geo. Pmk. (Portion of Cover replaced) Virtually All Fine, Excellent Specialist Lot	E.VII
509	⊠	Confederate Covers , 1862-64, Eight Covers franked with 10 Stamps incl. Nos 6, 7, 11 & 12, Single No. 6 on Cover, Variety of pmks. & cancels incl. ms., Mixed Quality, G-F	E.VI
510	⊠	Confederate Covers , Six Covers (Three Stampless), frankings incl. 10c Blue (11), Pmks. incl. "Savannah Geo", "Staunton Va", "Fayetteville N.C." & "Yorkville S.C.", one No. 11 on Turned Cover with No. 2, mostly poor quality	E.V
511	⊠	Union & Confederate Military Postmarks. Two Covers, one franked with 3c Rose (65) tied by Blue "Banks Division" Field Pmk. on Yellow Cover, sealed Cover Tear, other franked with 10c Blue (11) tied by Army of N. Virginia Field Cancel Target, F-VF	E.IV

CONFEDERATE EXPRESS ETC.

512	⊠	"Adams Express Company/Great Eastern/Western & Southern/Express Forwarders./"New York" , Clear Blue Oval on 3c Red on Buff Star Die Entire (U27), Augusta Ga. pmk., VF, Very Scarce	E.XI
513	⊠	"Charlotte N.C. Feb 4 (1861)" Blue Partly clear pmk., matching Grid on U.S. 3c Red on Buff Star Die Entire, some backflap tears, Very Scarce & Desirable First Day of Confederacy Usage	E.VIII

- 514 ☒ **“Confederate States of America/Post Office Department/Official Business/Chief of the Contract Bureau”** Impt. on 3c Red on Buff Star Die Entire, “H. St. Geo. Offutt” Autograph Free Frank, “Richmond Va 1863” Pmk. & matching “Free” Handstamp, filing fold at L., o/w VF, ex-George Turner..... (Photo) **E.IX**
- 515 ☒ **“Montgomery Ala Apr 18 1861”** Clear pmk. ties **U.S. 3c Red (26)** on large cover to Savannah, Ga., “Confederate States of America,/War Department,/Adjutant General’s Office,/Official Business.” Printed Imprint at T.R., some cover soiling, VF..... **E.VII**
- 516 ☒ **3c Dull Red (26).** Average, light Target Cancel (not tied) “Garrettsville O” Pmk. on neat Cover to Leeburg Va, Cover Back flap has been opened to reveal ms. notation “I trouble you Dr. Sam to Mail this letter supposing its the most certain way of reaching its destination” inside the backflap, An Interesting Cover showing an Apparent attempt to mail A Letter Across the Lines..... **E.VI**

CANAL ZONE

- 517 ☒ **1904, 1c-10c Ovpts. (4-8).** The Cpl. Set Tied by Purple Cancel on Blue Cover, matching “Canal Zone Ancon” pmk., 1c & 2c natural s.e., horiz. cover file fold, Handsome & Extremely Scarce Cover . (Photo) **E.XI**

HAWAII

- 518 ☒ **“* Honolulu * U.S. Postage Paid Dec 9”** Beautiful Bold Red Pmk. on 1852 Buff Cover to N.H., Blue Mostly Clear “San Francisco Cal” & “PAID” Markings, docketing at L., some Cover edge separations & lacking back flap, An Exceptionally Choice Strike of this scarce Pmk. (Photo) **E.IX**
- 519 ☒ ***Honolulu*Hawaiian Islands,** Red pmk., **Large Str. Line “Ship 12”** & San Francisco pmk. on Apr. 1856 Cover to U.S., Letter enclosed headed Maui, writer informs of the death of addressee’s brother, refolded at T. & flap strengthened, o/w Fine..... (Photo) **E.XII**
- 520 ☒ **2c Rose Vermilion (31).** L. perfs. barely in, tied by Square Grid, matching Bold “Honolulu Hawaiian-Islands Dec 19” Pmk. on 1864 Cover to Maui, docketing at L., minor cover foxing at R., two corner trivial rounding, Scarce Cover..... 85.00
- 521 ☒ **Inter-Island Steam Boat Co. Packet Boats,** Early 20th, Six Covers, Three Diff. Boats, incl. “Kinau”, “W.G. Hall”, & “Mikahala”, Handsome & Scarce Lot **E.VIII**

LARGE & MISCELLANEOUS COVER LOTS

- 522 ☒ **TEXAS COVERS,** 1840’s-70’s, 17 Items, stampless incl. “Port Lavaca”, “Houston”, “Lagrange”, ms. “Lynchburg” & “San Antonio”, frankings incl. 1c, 2c, 3c & 5c Bank Notes & 3c 1869, also incl. 3c 1876 Centennial Envelope & Wm Bryant Forwarders handstamp, partial strike on back of 1841 folded Cover, Mixed Quality, G-F Lot . **E.VIII**
- 523 ☒ **COVERS,** 1851-57 Issue, 26 Covers & Folded Covers, frankings incl. Nos. 10, 11, 15, 24 & 26, Variety of pmks. incl. N.Y. Express Mail (three), inverted Date, Rail Road, “3” etc, also incl Patriotic Cover, Mixed Quality, Generally Fine Lot..... **E.X**

524	ADVERTISING CORNER CARDS , 1850's-60's, Six Covers, frankings incl. Nos 11 (four) & 26 (two), Advertisements incl. Bridge Builders, Lard Oil, Pianos & Art, Variety of pmks., mixed quality, Very Useful & Scarce Lot	E.VI
525	✉ FLORIDA STATEHOOD COVERS , 1850's-60's, Five Covers on folded letter, frankings incl. Nos. 11, 26 & 65, one No. 11 natural pre-printing paper creases, Town pmks. incl. Pilatka, Apalachicola, Jacksonville & ms. Hibernia, VG-F Lot	E.VI
526	✉ COVERS , 1861-99, 24 Covers and one folded Printed Prices Current, frankings incl Nos. 63, 65, 68, 73 & 113, Also incl some Bank Notes, Variety of pmks. & Destinations incl. Canada, also incl. R.R. Cancel, Patriotics & Advertising Covers	E.VIII
527	✉ COVERS , 1880's-90's, 26 Diff. selected for Variety of pmks., incl Unusual shapes, County Names, Postmaster Names, Dakota, Florida etc., each with contemporary franking, most unusual offering, F-VF ..	E.VIII
528	✉ FLORIDA COVERS , 19th, Ten Covers, incl. couple with corner card, Apparently All Diff. Pmks., Generally F-VF Lot	E.V
529	✉ "New Orleans La. Ex Sta Feb 23" Expo. Pmk. on 2c Brown on Amber Entire (U278), Washington DC Backstamp, VF	E.V
530	✉ R.P.O. & R.R. Agent Pmks. , Late 19th & Early 20th Century, 61 Pmks., Apparently All Diff., each on separate Cover, Post Card or Postal Card, Wide Range of Rail Roads Represented from Across the Country, Generally F-VF	E.VII
531	✉ COVERS , 19th & 20th, 44 Items incl. Mostly Covers & a couple fronts only, frankings incl. 1c 1857, 3c 1869's, some Postal Stationery & Air Post incl. 1924 Trans Polar Flight Expedition Postal Card, pmks. incl. "Shanghai China" & "Siberia"; also incl. F1 Used to Rome Italy, VG-VF Lot	E.VIII
532	✉ ALASKA TERRITORIAL PMKS. , 1900's-1920's, 61 Items, incl Covers & Post Cards, Variety of Towns & Destinations, Mixed Quality, VG-VF Lot	E.IX
533	✉ EXPOSITIONS 1904 Worlds Fair & 1907 Jamestown, 15 Diff. Items incl. Post Cards (Used & Unused), Covers & Expo Station Cancells, F-VF	E.V
534	✉ FIRST DAY COVERS , 1946-49, 49 Diff. Commems, each with Postmaster General Corner Card & Containing a Letter Signed by the P.M.G.; also incl. White House Envelope with Letter signed by President Eisenhower, Generally F-VF, Interesting Lot	E.VII
535	✉ AIR POST COVERS , 1918-60's, 80 Covers, wide variety of frankings incl. C1-C6, C10 & C21, incl. First Flights etc. including some cacheted, Three First Day Covers (C10, C23, C24), Wide Variety of Pmks., Some Covers Autographed by Pilots, Virtually All F-VF, Interesting Specialist Lot	E.X
536	✉ INTERIOR DEPT., Penalty & Corner Card Covers , 1875-1913, 20, Most Diff., Some with Contents which incl. Civil War Veteran's Letters, Affidavits, etc., Mixed Quality, Interesting Lot	E.VII
537	✉ FUMIGATED COVER , 1843, "Marseille 25 Mar 1843" pmk. on folded Letter to Genoa, Straight line "Via Di Nizza" handstamp, neat fumigation slits, "Purifiée à Marseille." straight line backstamp etc., VF	E.VI
538	✉ GUN ADVERTISING COVERS , 1920's-1946, three identical Multi-color Designs for "Winchester", Illustration depicts Homesteader approaching Cabin as Bear is leaving, Frankings incl. Colombia, Panama & Afghanistan, F-VF, Scarce Offering	E.VII

END OF SALE — THANK YOU

**ALMOST EVERY DAY ONE OF OUR
AGENTS IS IN THE FIELD APPRAISING,
BUYING, OR GIVING INTEREST FREE CASH
ADVANCES ON STAMPS FOR AUCTION
CONSIGNMENT.**

***HAVE YOU A PHILATELIC PROPERTY
FOR SALE?***

**Our Staff will be available at
Our Booth at
SEPAD '82, PHILADELPHIA, OCTOBER 8-10;
ESPAMER '82, SAN JUAN, PUERTO RICO, OCTOBER 12-17
or
CALL OR WRITE**

**ROBERT A. SIEGEL
AUCTION GALLERIES, INC.**

**160 EAST 56th STREET
TEL.: (212) 753-6421**

**NEW YORK CITY, N.Y. 10022
ESTABLISHED 52 YEARS**

DESCRIPTIONS

EXTREMELY FINE: The finest condition for noteworthy, outstanding stamps.

VERY FINE: (VF) In prime condition such as to satisfy the requirements of particular collectors.

FINE: (F) Perforations or margins do not touch design on issues after 1890 but in some cases may just touch in earlier issues. If used, fairly light cancellation.

VERY GOOD: (VG) Generally nice appearance but margins or perforations may cut in slightly.

GOOD: (G) Average off-centering or fairly attractive with slight defects.

ORIGINAL GUM is not to be expected on stamps prior to 1890 unless so stated in the description.

MINT: With original gum and never hinged.

Unless otherwise noted the Scott 1982 United States Specialized Catalogue, the American Stampless Cover Catalogue, Dietz Confederate States Handbook, Klein United States Waterway Packet Marks, Remele U.S. Railroad Postmarks, Towle-Meyer Railroad Postmarks of the United States, and Walcott Civil War Patriotic Cover Catalogue have been used for cataloguing lots in this sale.

IF YOUR STAMPS ARE FOR SALE

**AMERICA'S PREMIER AUCTION HOUSE
OFFERS**

**IMMEDIATE AND MAXIMUM
CASH ADVANCES**

At no charge our auction house will immediately advance interest-free cash to you. *The only charge to you is a 10% commission on what your collection realizes at auction.* The buyer also pays a 10% buyers premium.

Advances available on request on collection consignments valued in excess of \$2,500.

**AMERICA'S PREMIER AUCTION HOUSE
FIRST IN PRESTIGE
FIRST IN DOLLAR VOLUME**

OUR AUCTIONS REALIZED \$16,654,883 IN 1981.

CALL OR WRITE

**ROBERT A. SIEGEL
AUCTION GALLERIES, INC.**

160 E. 56th Street
New York, N.Y. 10022

Tel.: (212) 753-6421
Established 52 years

UNITED STATES POSTAL HISTORY

INDIVIDUAL REALIZATIONS ARE HAMMER PRICES. GROSS REALIZATION
INCLUDES 10% BUYERS PREMIUM.

1	145	47	105	93	260	139	140	185	90
2	200	48	50	94	52½	140	70	186	170
3	325	49	57½	95	32½	141	210	187	70
4	900	50	52½	96	170	142	375	188	140
5	55	51	105	97	80	143	400	189	180
6	26	52	60	98	240	144	280	190	85
7	40	53	57½	99	120	145	60	191	60
8	75	54	55	100	120	146	115	192	40
9	50	55	40	101	57½	147	40	193	140
10	35	56	55	102	57½	148	55	194	85
11	40	57	150	103	47½	149	32½	195	75
12	180	58	52½	104	45	150	30	196	75
13	80	59	85	105	105	151	190	197	260
14	85	60	90	106	62½	152	57½	198	170
15	57½	61	52½	107	75	153	110	199	100
16	42½	62	80	108	67½	154	425	200	105
17	90	63	67½	109	90	155	200	201	75
18	67½	64	325	110	35	156	170	202	115
19	28	65	30	111	62½	157	160	203	37½
20	30	66	80	112	130	158	350	204	120
21	100	67	62½	113	67½	159	725	205	190
22	70	68	28	114	95	160	375	206	50
23	80	69	90	115	80	161	525	207	425
24	325	70	40	116	65	162	65	208	85
25	105	71	32½	117	115	163	260	209	100
26	65	72	1750	118	180	164	525	210	600
27	47½	73	67½	119	180	165	115	211	95
28	230	74	900	120	52½	166	375	212	52½
29	62½	75	900	121	100	167	270	213	230
30	45	76	90	122	675	168	950	214	42½
31	180	77	40	123	120	169	80	215	67½
32	160	78	35	124	260	170	67½	216	67½
33	110	79	45	125	35	171	400	217	160
34	67½	80	42½	126	37½	172	675	218	80
35	80	81	220	127	160	173	350	219	35
36	350	82	260	128	75	174	230	220	100
37	1150	83	300	129	32½	175	230	221	180
38	80	84	95	130	26	176	140	222	170
39	55	85	50	131	47½	177	350	223	135
40	52½	86	47½	132	160	178	160	224	42½
41	100	87	180	133	47½	179	425	225	85
42	35	88	160	134	105	180	125	226	145
43	85	89	210	135	85	181	70	227	130
44	50	90	67½	136	725	182	67½	228	35
45	45	91	90	137	90	183	67½	229	42½
46	47½	92	110	138	105	184	170	230	40

231	55	297	45	361	65	422	280	483	375
232	75	298	55	362	50	423	375	484	95
233	37½	299	90	363	65	423A	170	485	70
234	35	300	24	364	45	424	65	486	52½
235	35	301	24	365	500	424A	2600	487	135
236	90	302	20	366	145	425	210	488	32½
237	280	303	47½	367	90	426	140	489	190
238	1650	304	45	368	125	427	250	490	110
239	625	305	145	369	80	428	135	491	85
240	1800	306	250	370	575	429	210	492	625
241	1950	307	30	371	160	430	75	493	80
242	1350	308	90	372	42½	431	425	493A	42½
243	1050	309	85	373	575	432	290	494	600
244	850	310	150	374	100	433	260	495	160
245	1500	311	210	375	55	434	575	496	125
246	4000	312	130	376	85	435	35	497	70
247	1050	313	1550	377	62½	436	30	497A	525
248	1100	314	105	378	130	437	80	498	105
249	900	315	475	379	375	438	55	499	100
250	260	316	2100	380	1900	438A	65	500	28
251	375	317	850	381	675	439	52½	501	52½
252	280	318	90	382	300	440	52½	502	140
253	270	319	42½	382A	180	441	52½	503	80
254	190	320	325	383	110	442	170	504	160
255	230	321	525	383A	180	443	105	505	70
256	475	322	42½	384	18	444	115	506	250
257	2100	323	28	385	22	445	67½	507	1150
258	325	324	32½	386	24	446	65	508	200
259	400	325	625	386A	85	447	85	509	150
260	350	326	60	387	22	448	70	510	57½
261	130	327	40	388	65	449	280	511	18
262	150	328	40	389	40	450	120	512	800
263	150	329	W/D	390	52½	451	210	513	160
264	150	330	800	391	500	452	125	514	375
265	850	331	52½	392	42½	453	30	515	270
266	650	332	47½	393	90	454	50	516	57½
267	1500	333	75	394	200	455	45	517	210
268	800	334	130	395	60	456	2300	518	115
269	2000	335	850	396	105	457	180	519	425
270	3250	336	450	397	37½	458	105	520	40
271	3500	337	1100	398	675	459	70	521	125
272	2400	338	350	399	270	460	120	522	220
273	2500	339	125	400	210	461	80	523	260
274	2100	340	95	401	70	462	55	524	75
275	1000	341	1650	402	160	463	26	525	80
276	1050	342	57½	403	75	464	160	526	180
277	725	343	35	404	110	465	90	527	220
278	425	344	90	405	280	466	67½	528	32½
279	5000	345	90	406	37½	467	110	529	30
280	90	346	55	407	62½	468	325	530	160
281	67½	347	90	408	130	469	120	531	135
282	80	348	22	409	65	470	125	532	260
283	55	349	375	410	90	471	90	533	45
284	37½	350	350	411	160	472	60	534	115
285	500	351	850	412	140	473	47½	535	350
286	50	352	160	413	100	474	750	536	125
287	52½	353	1000	414	190	475	1400	537	50
288	40	354	25	415	100	476	160	538	70
289	260	355	240	416	85	477	210	END OF SALE THANK YOU •	
290	67½	356	475	417	425	478	675		
291	450	357	1350	418	180	479	100	GROSS REALIZATION: \$164,740.40	
292	60	358	130	419	250	480	140		
293	40	359	250	420	85	481	85		
294	55	360	450	421	230	482	350		
295	45								
296	90								