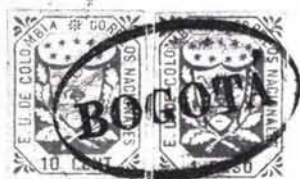


640th SALE

# THE GORDON N. JOHN COLLECTION OF CLASSIC COLOMBIA

WEDNESDAY, NOVEMBER 14, 1984  
AT 3:30 P.M.



*Gres*

*Cerda Hermann*

*Valparaiso*

SOLD BY ORDER OF THE OWNER  
AT PUBLIC AUCTION

*Robert A. Siegel*

**AUCTION GALLERIES, INC.**

160 EAST 56th STREET  
NEW YORK, N.Y. 10022

Tel.: (212) 753-6421  
Established 54 years

## CONDITIONS OF SALE

1. The terms of sale are strictly cash on delivery to the highest bidder unless special arrangements have been made prior to the sale. The fact that an item is placed on extension (submitted to an expertising committee for certification) does not relieve the successful bidder from this condition of sale.
2. All bids are per lot as numbered in the catalogue unless otherwise announced by the auctioneer at the time of sale. The right is reserved to group two or more lots; to withdraw any lot or lots from the sale, or to act in behalf of the seller. The auctioneer shall regulate the bidding and in the event of any dispute his decision shall be final.
3. Any lot, the description of which is incorrect is returnable, but only within five days of receipt. All disputed lots must be returned intact as received. **The following lots may not be returned for any reason whatsoever: Lots containing ten or more stamps; Lots from buyers who have had the opportunity to examine them before the sale; Lots described as having defects or faults may not be returned because of any faults. No illustrated lots may be returned because of centering, margins or other factors shown in the illustrations.**
4. Successful bidders, unless they are known to us or supply acceptable references are expected to make payment in full before the lots are delivered. Mail bidders will be notified of the amounts of their purchases. All mail bidders who have established credit with us must make payment within three days after receipt. We reserve the right in our sole and absolute discretion to demand cash payment at the time a lot is knocked down to any bidder who has not previously established credit with us or whose account is in arrears. In the event any buyer refuses to pay cash for any lot at the time it is knocked down to him, the auctioneer reserves the right to re-offer the lot immediately for sale to the highest bidder.
5. If the purchase price has not been paid within the time limit, nor lots taken up within seven days from date of sale they must be resold and any loss arising from such sale will be charged to the defaulter. Any account more than thirty days in arrears is subject to a late payment charge of 1½% per month so long as the account remains in arrears. If the auctioneer, in his discretion, should institute any legal action to secure payment of a delinquent account the defaulting purchaser shall pay all legal expense incurred by the auctioneer and such charges will be added to the amount owed.
6. All lots are sold as genuine but should any lot be proved otherwise by written opinion of any competent, responsible authority acceptable to us, immediate refund of the full purchase price will be made, provided that such claim is made in writing within 14 days from date of sale. If claim is not made within this period, no lots are returnable for any reason at any time. So long as we are notified within the 14 day period that an opinion is being sought the matter will remain open until such opinion is rendered. We will not be responsible for any charges incurred by the buyer for expertization fees and costs unless the opinion states the item is not genuine, in which case we will pay actual costs up to a maximum of \$50.00. In the event an item is proved "not as described" it is returnable for full refund, and the buyer will be paid interest (at the prevailing Treasury Bill Rate) for the time his funds have been on deposit with us during the extension period.
7. Until paid for in full, all lots remain the property of Robert A. Siegel Auction Galleries, Inc. in behalf of the seller.
8. All forwarding charges will be added to the purchase price. The mode of shipment shall be at our option unless we are given specific instructions.
9. Lots may be sent for inspection to buyers known to us upon written application. All such lots must be returned to us by registered mail, adequately insured and within 24 hours after receipt. The applicant assumes all responsibility and will provide insurance against all risks from time of receipt until they are actually received back by us, and is to pay all expenses of postage and insurance. **No lots can be sent for inspection within ten days from date of local viewing. Large lots and collections cannot be sent for inspection.**
10. Agents are responsible for all purchases made in behalf of their clients unless other arrangements are made prior to the sale.
11. The placing of a bid shall constitute acceptance of the foregoing conditions of sale.

ROBERT A. SIEGEL

MALCOLM SIEGEL, Licensed Auctioneers

*Robert A. Siegel*  
AUCTION GALLERIES, INC.

List of Prices Realized

640th SALE

NOVEMBER 14, 1984

160 EAST 56 STREET, NEW YORK CITY, N.Y., 10022

(212) 753-6421

## THE GORDON N. JOHN COLLECTION OF CLASSIC COLOMBIA

INDIVIDUAL REALIZATIONS ARE HAMMER PRICES. GROSS REALIZATION  
INCLUDES 10% BUYERS PREMIUM.

1	625	54	75	107	190	163	12,500	219	290
2	475	55	70	108	190	164	1000	220	250
3	375	56	90	109	115	165	1250	221	75
4	400	57	115	110	125	166	950	222	75
5	425	58	57½	111	200	167	450	223	180
6	240	59	60	112	450	168	270	224	62½
7	210	60	65	113	52½	169	675	225	260
8	200	61	85	114	3750	170	47½	226	60
9	210	62	90	115	210	171	110	227	70
10	210	63	85	116	170	172	240	228	200
11	145	64	67½	117	150	173	1250	229	160
12	85	65	85	118	32½	174	2900	230	425
13	85	66	45	119	50	175	170	231	8500
14	75	67	62½	120	62½	176	125	232	190
15	80	68	55	121	65	177	100	233	400
16	475	69	60	122	85	178	1050	234	115
17	4500	70	50	123	55	179	115	235	160
18	130	71	35	124	42½	180	900	236	850
19	150	72	170	125	42½	181	3000	237	700
20	60	73	425	126	1850	182	1600	238	270
21	260	74	1900	127	7000	183	2700	239	400
22	1250	75	7750	128	90	184	6250	240	675
23	29,000	76	220	129	160	185	525	241	325
24	55	77	60	130	4750	186	425	242	2100
				131	3750	187	25,000	243	725
				132	240	188	850		





28	32½	81	375	136	190	191	700	247	300
29	2200	82	210	137	150	192	1250	248	4250
30	100	83	210	138	60	193	1450	249	840
31	160	84	425	139	100	194	6000	250	1550
32	575	85	1550	140	1050	195	725	251	1050
33	65	86	100	141	3500	196	325	252	350
34	70	87	125	142	10,500	197	220	253	525
35	115	88	95	143	160	198	2600	254	50
36	50	89	75	144	160	199	400	255	57½
37	42½	90	180	145	115	200	1550	256	40
38	42½	91	85	146	4750	201	4750	257	40
39	230	92	110	147	135	202	625	258	1250
40	60	93	65	148	62½	203	105	259	625
41	90	94	75	149	60	204	60	260	500
42	85	95	50	150	65	205	325	261	400
43	475	96	67½	151	190	206	625	262	450
44	375	97	52½	152	1550	207	135	263	1250
45	325	98	52½	153	6500	208	5250		
46	375	99	475	154	400	209	2300		
47	650	100	250	155	375	210	105		
48	7750	101	13,000	156	325	211	2600		
49	600	102	575	157	325	212	30		
50	425	103	140	158	115	213	850		
51	100	104	575	159	90	214	2100		
52	70	105	1000	160	170	215	625		
53	67½	106	1050	161	280	216	6250		
				162	2600	217	110		
						218	5750		

END OF SALE  
THANK YOU

GROSS  
REALIZATION:  
\$320,856.25



**THE AMOUNT OF YOUR BID DOES NOT INCLUDE THE 10% BUYERS PREMIUM WHICH WILL BE ADDED TO THE HAMMER PRICE.**





## FOREWORD

Our galleries are proud to offer the Gordon N. John collection of postage stamps and covers of the United States of New Granada and the United States of Colombia. It is unquestionably the finest collection ever formed of these classic imperforate issues which since the early days of philately have been noted for their rarity, interest, and importance.

The John collection contains almost all the major pieces from the two largest collections ever formed: that of Saul Newbury of Chicago and that of F.G. Larsen of Colombia. In addition there are numerous items from the Caspary, Burrus, and Wickersham collections.

Particular attention is directed to the multiples which are in most cases the largest ones known and to the many extremely rare covers. Space does not permit an enumeration of the remarkable items which are described in this catalogue. However, even a casual inspection will convince the reader of their extraordinary nature and provenance.

Classic imperforate sales of this magnitude seldom occur and when they do, they present unique opportunities to acquire material which is otherwise unobtainable. I am honored to have the opportunity of presenting this collection to the philatelic world.

**Robert A. Siegel**



## LOTS ON VIEW

**Monday, November 12th and Tuesday, November 13th,  
from 9:30 A.M. until 5:30 P.M. and on  
Day of Sale from 9:30 A.M. until 3:00 P.M.**

## PUBLIC AUCTION

**WEDNESDAY, NOVEMBER 14, 1984 at 3:30 P.M.**

## THE GORDON N. JOHN COLLECTION OF CLASSIC COLOMBIA

### UNITED STATES OF NEW GRANADA

1 ★	1861, 2½c Black (13). Large Margins, o.g., Fresh, Extremely Fine .. ..... (Photo)	850.00
2 ★	1861, 2½c Black (13). Large Even Margins, Large Part o.g., Fresh, small owner's handstamp on back (does not show through), Extreme- ly Fine..... (Photo)	850.00
3 ★	1861, 2½c Black (13). Large Even Margins, o.g., Fresh, light crease, o/w VF..... (Photo)	850.00
4 ★	1861, 2½c Black (13). Ample to Large Margins, o.g., h.r., Fresh & Fine..... (Photo)	850.00
5 ★	1861, 2½c Black (13). Ample to Huge Margins, h.r., natural gum creases, Fresh & Fine..... (Photo)	850.00
6	1861, 2½c Black (13). Large to Enormous Margins, Light cancel, Fresh, Extremely Fine, Choice ..... (Photo)	525.00
7	1861, 2½c Black (13). Large Even Margins, Bogota Oval pmk., VF. ..... (Photo)	525.00
8	1861, 2½c Black (13). Large Even Margins, Bogota Oval pmk., VF.	525.00
9	1861, 2½c Black (13). Ample to Huge Margins, Bogota Oval pmk., Fresh, VF..... (Photo)	525.00
10	1861, 2½c Black (13). Ample to Huge Margins, Bogota Oval pmk., Fresh, handstamp guarantee on back, VF, with R.P.S. Certificate ..... ..... (Photo)	525.00
11	1861, 2½c Black (13). Large Even Margins, Handstamped Bogota Oval pmk., Fresh, trivial corner margin crease far from design, still VF, Signed Friedemann..... (Photo)	525.00
12	1861, 2½c Black (13). Large Even Margins, Bogota Oval pmk., small thin spot, VF Appearance..... (Photo)	525.00
13	1861, 2½c Black (13). Large Margins, Bogota Oval pmk., trivial corner margin crease, o/w VF, Signed Lublin..... (Photo)	525.00
14	1861, 2½c Black (13). Ample Even Margins, Bogota Oval pmk., Fresh, small thin spot, VF Appearance, Scarce ..... (Photo)	525.00

- 15     **1861, 2½c Black (13).** Ample to Huge Margins, **Red** cancel, small thin spot, Fine Appearance, Scarce..... **(Photo)**     525.00
- 16     **1861, 2½c Black (13).** **Horiz. Pair,** Ample to Large Margins except close T.R. stamp & B.L. of L. stamp, Bogota Oval pmk., Fresh & Fine, ex-Newbury ..... **(Photo)** 1,050.00 +



- 17     **1861, 2½c Black (13).** **Horiz. Strip of Three,** Large Margins, Blue Town pmks., Fresh, traces of ms. offset (barely shows on face), VF, Rare & Handsome Multiple, ex-Newbury, Signed A. Diena, Bühler ..... **(Photo)**     **E.XVI**
- 18 ★     **1861, 5c Yellow (14).** Ample to Large Margins, part o.g., Fresh & Fine ..... **(Photo)**     200.00
- 19 ★     **1861, 5c Yellow (14).** Ample to even Margins, part o.g., couple trivial natural inclusion specks, Fresh & Fine ..... **(Photo)**     200.00
- 20 ★     **1861, 5c Yellow (14).** Ample Margins, part o.g., tiny natural inclusion speck, Fresh & Fine ..... **(Photo)**     200.00
- 21 ★     **1861, 5c Yellow, Plate Flaw (14 var).** Pos. 9, Ample Margins, Fresh & Fine, Rare..... **(Photo)**     **E.XII**

- 22 ★     **1861, 5c Yellow, Normal & Plate Flaw (14, 14 var).** **Horiz. Combination Pair,** Pos. 8, 9, R. Stamp the Var, Large Margins, o.g., Fresh, VF, Choice & Rare..... **(Photo)**     **E.XIV**

#### DESCRIPTIONS

**EXTREMELY FINE:** The finest condition for noteworthy, outstanding stamps.

**VERY FINE: (VF)** In prime condition such as to satisfy the requirements of particular collectors.

**FINE: (F)** Perforations or margins do not touch design on issues after 1890 but in some cases may just touch in earlier issues. If used, fairly light cancellation.

**VERY GOOD: (VG)** Generally nice appearance but margins or perforations may cut in slightly.

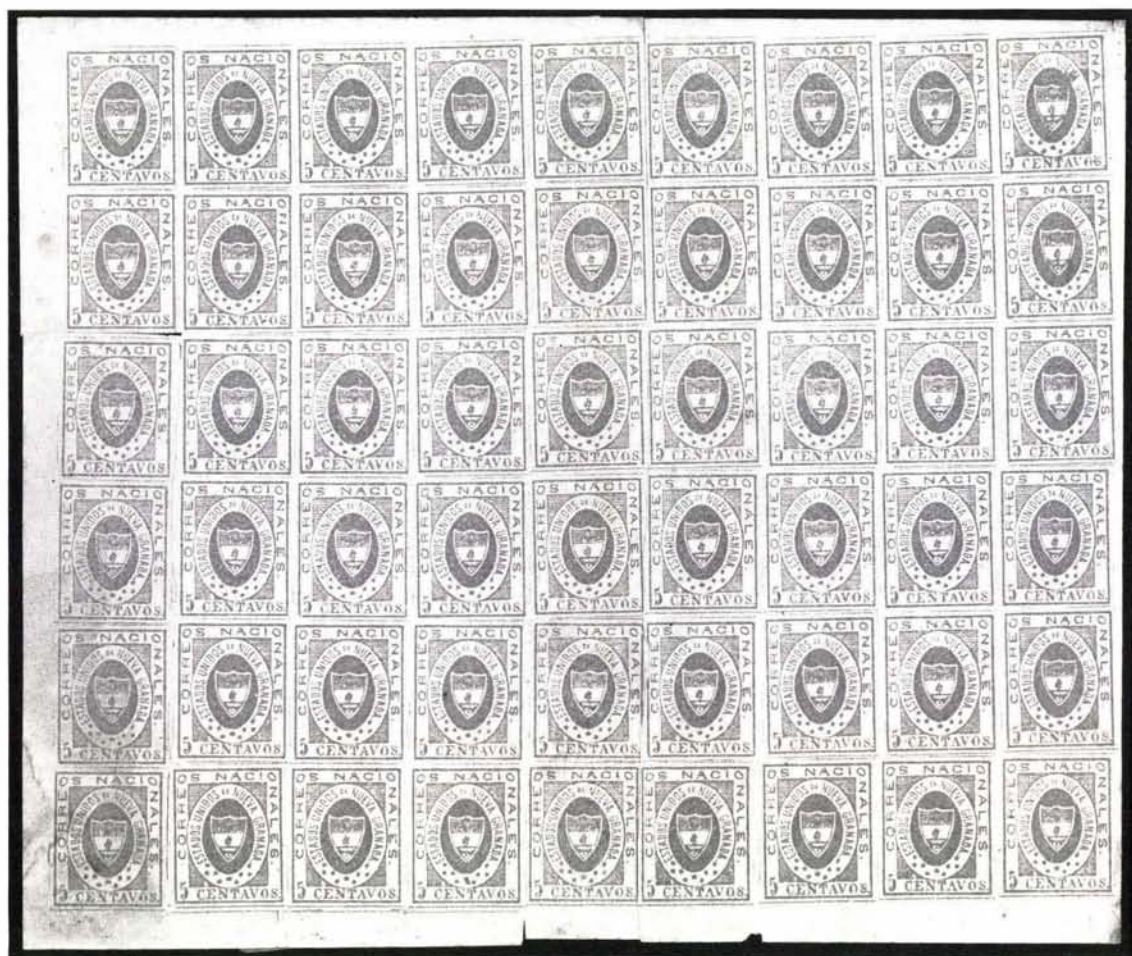
**GOOD: (G)** Average off-centering or fairly attractive with slight defects.

**ORIGINAL GUM** is not to be expected on stamps prior to 1890 unless so stated in the description.

**MINT:** With original gum and never hinged.

Unless otherwise noted the 1984 Scott Volume 2 has been used for cataloguing lots in this sale.





- 23 ★ **1861, 5c Yellow (14). Reconstruction of The Cpl. Sheet of 54, incl. Two Blocks of 24, Vert. Strip of Four & Vert. Pair, Large Margins, Considerable o.g., Fresh, few faulty as is naturally to be expected in a piece of this size, o/w VF, Unique & Incredible Showpiece. The Two Blocks of 24 Are the Largest Recorded Multiples of the United States of New Granada. One of the Most Important Pieces in Colombian Philately, ex-Larsen..... (Photo)**

**E.XIX**

- |    |   |        |
|----|---|--------|
| 24 | <b>1861, 5c Yellow (14). Large Margins, Blue Oval Honda pmk., Fresh, VF..... (Photo)</b>  | 125.00 |
| 25 | <b>1861, 5c Yellow (14). Large Margins, Blue Triple "O" cancels, Fresh, VF..... (Photo)</b>   | 125.00 |
| 26 | <b>1861, 5c Yellow (14). Ample Margins, Bogota Oval pmk., Fresh, VF..... (Photo)</b>  | 125.00 |
| 27 | <b>1861, 5c Yellow (14). Ample to Large Margins, Bold Bogota Oval pmk., Fresh, light crease, o/w VF, Signed Friedemann..... (Photo)</b> | 125.00 |
| 28 | <b>1861, 5c Yellow (14). Ample Margins to close at T.R. &amp; B.R., Blue Cartagena Oval pmk., Fine..... (Photo)</b>                     | 125.00 |





- 29 ☒ **1861, 5c Yellow (14). Horiz. Pair**, Ample to Large Margins, R. Stamp affected by filing crease, on 1863 Folded Letter from Espinal to Bogotá, Each Stamp with "O" cancel (not tied), some cover soiling & age stains, Rare, **There Are Only Ten Recorded Covers of the United States of New Granada**, ex-Larsen ..... (Photo) **E.XV**

- 30 ★ **1861, 5c Buff (14a)**. Large Margins, o.g., Fresh, VF, Choice ..... (Photo) 200.00
- 31 ★ **1861, 5c Buff (14a)**. T. Margin Single, Ample to Large Margins, o.g., Fresh, VF ..... (Photo) 200.00
- 32 ★ **1861, 5c Buff (14a)**. Horiz. Pair, Huge to Enormous Margins incl. B. Sheet Margin, o.g., Fresh, trivial natural inclusion specks, L. stamp small thin spot, o/w Extremely Fine ..... (Photo) 400.00 +
- 33 **1861, 5c Buff (14a)**. Large Even Margins, Bogotá Oval pmk., Fresh, Extremely Fine, Choice ..... (Photo) 125.00
- 34 **1861, 5c Buff (14a)**. Large Margins, Red "O" cancel, Fresh, Extremely Fine ..... (Photo) 125.00
- 35 **1861, 5c Buff (14a)**. Ample Even Margins, Rich Color, Purificación Oval pmk., Fresh, VF ..... (Photo) 125.00
- 36 **1861, 5c Buff (14a)**. Ample to Large Margins, Red "O" cancel, Fresh, VF ..... (Photo) 125.00
- 37 **1861, 5c Buff (14a)**. Ample to Huge Margins, Red "O" cancel, Fresh, VF ..... (Photo) 125.00
- 38 **1861, 5c Buff (14a)**. Ample Even Margins, Red "O" cancel, Fresh, VF, Signed ..... (Photo) 125.00
- 39 **1861, 5c Buff (14a)**. Three Large Margins, Ample at L., Carnicerías Double Oval pmk., VF ..... (Photo) 125.00
- 40 **1861, 5c Buff (14a)**. Ample to Large Margins, Red "O" cancel, VF ..... (Photo) 125.00
- 41 **1861, 5c Buff (14a)**. Ample to Large Margins, ms. Ambalema pmk., VF ..... (Photo) 125.00
- 42 **1861, 5c Buff (14a)**. Two, One Ample to Huge Margins, One Huge Margins to touched at T., on Piece, Bold Blue Green "Honda Franca" Oval pmk., F-VF ..... (Photo) 250.00
- 43 **1861, 5c Buff (14a)**. Horiz. Pair, Ample to Huge Margins, Socorro Franca Oval pmk., Fresh, VF ..... (Photo) 250.00 +

- 44 **1861, 5c Buff (14a). Horiz. Pair**, Ample to Huge Margins, Neat Purificacion Franca Oval pmk., Fresh, F-VF ..... (Photo) 250.00 +
- 45 **1861, 5c Buff (14a). Horiz. Pair**, Ample to Large Margins, ms. Bucaramanga, pmk., 3mm tear in margin between stamps (well clear of stamps), each with couple minor toning spots, one stamp trivial corner crease, VF Appearance ..... (Photo) 250.00 +
- 46 **1861, 5c Buff (14a). Horiz. Pair**, Ample to Large Margins except close at B., ms. "Ambalema 29 Nove" pmk., 5mm scissors cut in margin between stamps (well clear of designs), Fresh & Fine (Photo) 250.00 +
- 47 **1861, 5c Buff (14a). Two Horiz. Pairs**, Ample to Large Margins, on piece tied by ms. Ambalema pmk., Fresh, VF-Extremely Fine, ex-Burrus ..... (Photo) **E.XII**



- 48 ✉ **1861, 5c Buff, 10c Blue (14a, 16)**, Ample to Large Margins, on Folded Cover to Ambalema (not tied), Bogota Oval pmk., ms. "Año de 1861", Fresh, VF, Rare, One of the Most Beautiful Covers of the United States of New Granada, ex-Newbury, Burrus ..... (Photo) **E.XVII**

- 49 ★ **1861, 10c Blue (16)**. Ample to Large Margins, Fresh, VF.... (Photo) 600.00
- 50 ★ **1861, 10c Blue (16)**. Ample to Large Margins, o.g., h.r., trivial natural internal wrinkle, Fresh & Fine..... (Photo) 600.00
- 51 **1861, 10c Blue (16)**. Huge Margins, "O" cancel, Fresh, Extremely Fine "Gem"..... (Photo) 200.00
- 52 **1861, 10c Light Blue (16)**. Large Margins, Blue "O" cancel, hinge translucency, Fresh, VF..... (Photo) 200.00
- 53 **1861, 10c Blue (16)**. Margins All Around, Bogota Oval pmk., VF.... (Photo) 200.00
- 54 **1861, 10c Blue (16)**. Ample to Large Margins, Bogota Oval pmk., VF..... (Photo) 200.00
- 55 **1861, 10c Blue (16)**. Ample to Large Margins, Bold "O" cancel, VF, Signed Grobe (barely shows through)..... (Photo) 200.00
- 56 **1861, 10c Blue (16)**. Ample Even Margins, Bogota Oval pmk., VF... (Photo) 200.00

57	<b>1861, 10 Blue (16).</b> Ample to Large Margins, light Red Barranquilla Oval pmk., VF..... (Photo)	200.00
58	<b>1861, 10c Light Blue (16).</b> Ample to Large Margins, Bogota Oval pmk., negligible corner margin crease (not affecting design), VF ..... (Photo)	200.00
59	<b>1861, 10c Blue (16).</b> Large to Huge Margins, light Bogota Oval pmk., minor natural internal wrinkle, VF..... (Photo)	200.00
60	<b>1861, 10c Blue (16).</b> Ample to Huge Margins, Red "O" cancel, tiny removed inclusion spot, VF, Signed Friedemann ..... (Photo)	200.00
61	<b>1861, 10c Light Blue (16).</b> Margins All Around, Bogota Oval pmk., VF..... (Photo)	200.00
62	<b>1861, 10c Dark Blue (16).</b> Ample to Large Margins, Dark Shade, Bogota Oval pmk., VF..... (Photo)	200.00
63	<b>1861, 10c Blue (16).</b> Ample to Large Margins, light Honda Oval pmk., VF..... (Photo)	200.00
64	<b>1861, 10c Blue (16).</b> Ample to Large Margins, Blue "O" cancels, VF..... (Photo)	200.00
65	<b>1861, 10c Blue (16).</b> Large Margins, ms. Ambalema cancel, Fresh, tiny margin tear clear of design, VF ..... (Photo)	200.00
66	<b>1861, 10c Blue (16).</b> Large to Huge Margins, "O" cancel, light stain on back, o/w VF..... (Photo)	200.00
67	<b>1861, 10c Blue (16).</b> Clear to Large Margins, <b>Blue Green</b> Honda Oval pmk., Fresh & Fine..... (Photo)	200.00
68	<b>1861, 10c Blue (16).</b> Three Large Margins, Ample to close at R., Blue Honda Oval pmk., Fresh & Fine..... (Photo)	200.00
69	<b>1861, 10c Light Blue (16).</b> Ample to Large Margins, Bogota Oval pmk., Fresh & Fine..... (Photo)	200.00
70	<b>1861, 10c Blue (16).</b> Three Large Margins, close but well clear at B., "O" cancel, Fine ..... (Photo)	200.00
71	<b>1861, 10c Blue (16).</b> Clear to Large Margins, Red "O" cancel, negligible corner margin crease, o/w Fine..... (Photo)	200.00
72	<b>1861, 10c Blue (16).</b> Three, Diff Shades, Ample to Large Margins, Handstamped Town cancels, Fresh, each with fault, F-VF Appearance.....	600.00
73	<b>1861, 10c Blue (16).</b> Three, Ample to Large Margins, ms. Ambalema pmks., on piece, F-VF ..... (Photo)	600.00



74

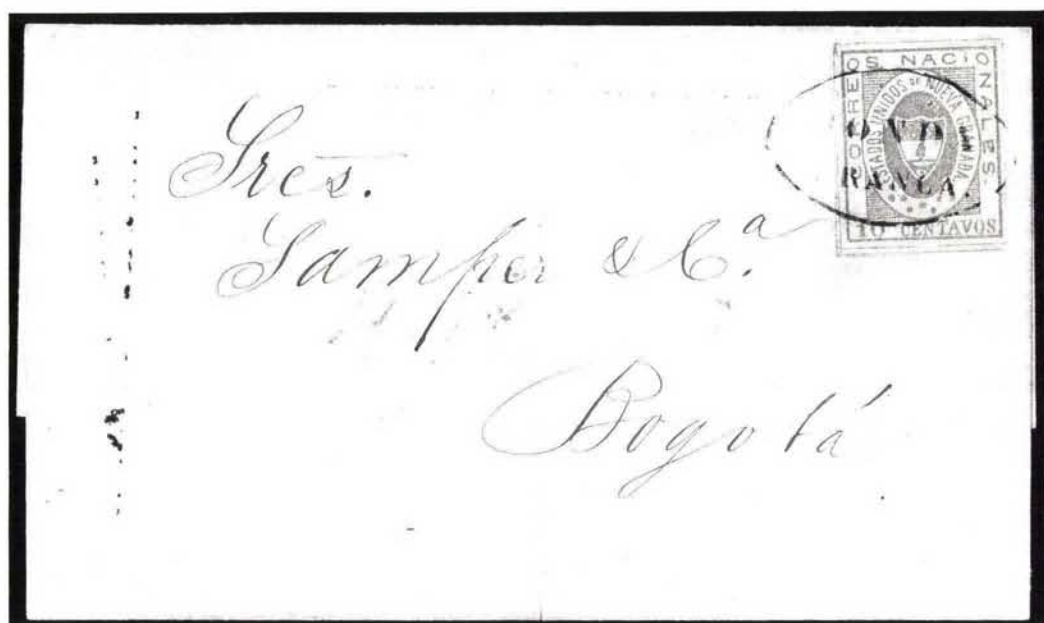


85

- |    |  |             |
|----|--|-------------|
| 74 | <b>1861, 10c Blue (16). Horiz. Strip of Three,</b> Ample to Enormous Margins, blue, Blue "O" cancels, on Piece, Fresh, VF, <b>Largest Recorded Multiple, ex-Wickersham</b> ..... (Photo) | <b>E.XV</b> |
|----|--|-------------|

**NOTE: A 10% Buyers Commission will be added to all successful bids.**





75  $\infty$  **1861, 10c Blue (16).** Large to Huge Margins, tied by "Honda Franca" Oval on 1862 Folded Cover to Bogota, VF, Rare, **Only Two Single 10c Covers Known**, the other with ms. town pmk., ex-Casparry..... (Photo) **E.XVII**

- 76 **1861, 10c Blue, 20c Red (16, 17).** Former Ample to Large Margins, Latter Three Large Margins, Ample to close at L., on piece tied by **Blue Green** Honda Oval, 20c negligible corner margin crease clear of design, Fresh, F-VF, Rare ..... (Photo) 400.00
- 77 **1861, 10c Blue, 20c Red (16, 17).** Ample to Large Margins, "O" cancels, former Red, Latter Blue, Fresh, each with fault, F-VF Appearance ..... 400.00
- 78 **1861, 10c Blue, 20c Red (16, 17).** Ample to Large Margins, each with Bogota Oval pmk., Fresh, slight fault, F-VF Appearance ..... 400.00
- 79 **1861, 10c Blue, 20c Red (16, 17).** Two 20c (Diff. Shades), Ample to Large Margins, Handstamped cancels, 10c Red "O", 20c Bogota & Blue Cartagena, Fresh, each slight fault, F-VF Appearance ..... 600.00
- 80 ★ **1861, 20c Red (17).** Large Even Margins, Large Part o.g., h.r., Fresh, Extremely Fine ..... (Photo) 400.00
- 81 ★ **1861, 20c Red (17).** Ample to Large Margins, Fresh, Rich Color, VF, with R.P.S. Certificate ..... (Photo) 400.00
- 82 ★ **1861, 20c Red (17).** Ample to Huge Margins, o.g., VF ..... (Photo) 400.00
- 83 ★ **1861, 20c Red (17).** Ample Even Margins, Part o.g., h.r., Fresh, VF ..... (Photo) 400.00
- 84 ★ **1861, 20c Red, Plate Flaw (17 var).** Pos. 6, Ample to Large Margins, o.g., Rich Color, Fresh, minute natural inclusion speck, VF, Rare ..... (Photo) 400.00 +

85 **1861, 20c Red, Retouched "2" (17 var).** Pos. 40, Showing Traces of Original Die (2½), Ample Margins, Handstamped Green Oval cancel, Fresh, VF, Very Rare, with R.P.S. Certificate, ex-Newbury ..... (Photo) **E.XVI**

86	<b>1861, 20c Red (17).</b> Ample to Large Margins, Neat Bogota Oval pmk., VF.....	<b>(Photo)</b> 200.00
87	<b>1861, 20c Red (17).</b> Large Margins, Blue Honda Oval Pmk., VF .....	<b>(Photo)</b> 200.00
88	<b>1861, 20c Red (17).</b> Large Margins, Oval Town pmk., Deep Rich Color, VF .....	<b>(Photo)</b> 200.00
89	<b>1861, 20c Red (17).</b> Large Margins, light Honda Oval pmk., VF.....	200.00
90	<b>1861, 20c Red (17).</b> Ample to Large Margins, Beautiful Dark Shade, Blue Cartagena Oval pmk., VF, Signed Brun .....	<b>(Photo)</b> 200.00
91	<b>1861, 20c Red (17).</b> Ample to Large Margins, light Blue Honda Oval pmk., VF, Signed Brun .....	<b>(Photo)</b> 200.00
92	<b>1861, 20c Red (17).</b> Ample to Large Margins, Blue Medellin Oval pmk., VF .....	<b>(Photo)</b> 200.00
93	<b>1861, 20c Red (17).</b> Ample to Large Margins, "O" cancel, Fresh, VF.....	<b>(Photo)</b> 200.00
94	<b>1861, 20c Red (17).</b> Ample to Large Margins except just touching at B.R., Blue Santamarta Oval pmk., Fine .....	<b>(Photo)</b> 200.00
95	<b>1861, 20c Red (17).</b> Clear to Large Margins, Blue Cartagena Oval pmk., Fine .....	<b>(Photo)</b> 200.00
96	<b>1861, 20c Red (17).</b> Ample to Large Margins except close at T.L., trifle irregular at L. & B., ms. Pamplona pmk., Fine .....	<b>(Photo)</b> 200.00
97	<b>1861, 20c Red (17).</b> Ample Margins, Blue Cartagena Oval pmk., Fresh & Fine, Signed Brun.....	<b>(Photo)</b> 200.00
98	<b>1861, 20c Red (17).</b> Clear to Large Margins, Bogota Oval pmk., Fine, Signed Friedemann .....	<b>(Photo)</b> 200.00
99	<b>1861, 20c Red (17).</b> Horiz. Pair, Ample to Huge Margins, "Honda Franca" Oval pmk., Fresh, one with light natural internal wrinkle, VF, Handsome Multiple .....	<b>(Photo)</b> 400.00 +
100	<b>1861, 20c Red (17).</b> Horiz. Pair, Large Margins, light cancels, Fresh, Imm scissors cut in center of margin between stamps, VF .....	<b>(Photo)</b> 400.00 +

## ESTIMATES

Our sales offer many covers, cancellations, varieties and other items for which there is no catalogue value or where catalogue value does not reflect the actual value. In order to assist our clients, we are placing a fair net valuation on such lots as a guide to bidders. The chart below will be used. For example, E. IV means that our estimated net value on the lot is \$30.00 to \$40.00. Lots may actually realize more or less than our estimates, which are under no circumstances to be considered reserves but merely a guide to bidding.

E. III	\$20.00 to \$30.00	E. XII	\$350.00 to \$500.00
E. IV	\$30.00 to \$40.00	E. XIII	\$500.00 to \$750.00
E. V	\$40.00 to \$50.00	E. XIV	\$750.00 to \$1000.00
E. VI	\$50.00 to \$75.00	E. XV	\$1000.00 to \$2000.00
E. VII	\$75.00 to \$100.00	E. XVI	\$2000.00 to \$5000.00
E. VIII	\$100.00 to \$150.00	E. XVII	\$5000.00 to \$10,000.00
E. IX	\$150.00 to \$200.00	E. XVIII	\$10,000.00 to \$20,000.00
E. X	\$200.00 to \$250.00	E. XIX	over \$20,000.00
E. XI	\$250.00 to \$350.00		





101 ☒ **1861, 20c Red (17).** Ample to Large Margins except close at B., Used with 5c Buff No. 14a tied by Blue "12R." Rate Marking, Bogota Oval pmk., on Folded Letter to **Madrid**, Madrid Receiver, some seam splitting, **The Only Recorded Cover Bearing the 20c, ex-Newbury** ..... (Photo) **E.XVII**

102 ★	<b>1861, 1p Pink (18).</b> Large Margins, o.g., Fresh, VF, Choice (Photo)	750.00
103 ★	<b>1861, 1p Pink (18).</b> Ample to Large Margins, Large Part o.g., Fresh, small thin spot, VF Appearance..... (Photo)	750.00
104 ★	<b>1861, 1p Pink (18).</b> Ample to Large Margins, Deep Rich Color, o.g., h.r., Fresh & Fine..... (Photo)	750.00
105 ★	<b>1861, 1p Pink, No Period after "Granada" (18 var).</b> Large Even Margins, Fresh, o.g., h.r., light crease, o/w VF, Scarce ..... (Photo)	750.00 +
106 ★	<b>1861, 1p Pink, Part of "2" From Erased "2½" at Left (18 var).</b> Ample to Large Margins, o.g., couple minute thin specks, Fine Appearance, Rare.....	750.00 +
107	<b>1861, 1p Pink (18).</b> Ample to Large Margins, Palmira Oval pmk., VF..... (Photo)	425.00
108	<b>1861, 1p Pink (18).</b> Ample to Large Margins, Bogota Oval pmk., minor corner crease, o/w VF..... (Photo)	425.00
109	<b>1861, 1p Pink (18).</b> Ample to Large Margins, Santa Marta pmks., fresh, small thin spot, VF Appearance, Scarce, Signed Friedemann ... (Photo)	425.00
110	<b>1861, 1p Pink (18).</b> Ample to Large Margins, ms. Ambalema pmk., Fresh, light crease, o/w VF ..... (Photo)	425.00
111	<b>1861, 1p Pink (18).</b> Ample to Large Margins except just touching at one point of T.R., Blue Veles Oval pmk., negligible corner crease, o/w Fine, Rare ..... (Photo)	425.00
112	<b>1861, 1p Pink (18).</b> Ample to Large Margins, Blue Veles Double Oval pmk., light crease (visible only in fluid), o/w Fine..... (Photo)	425.00
113	<b>1861, 1p Pink (18).</b> Ample to Large Margins, ms. Date cancel, minor faults, Fine Appearance, Scarce ..... (Photo)	425.00

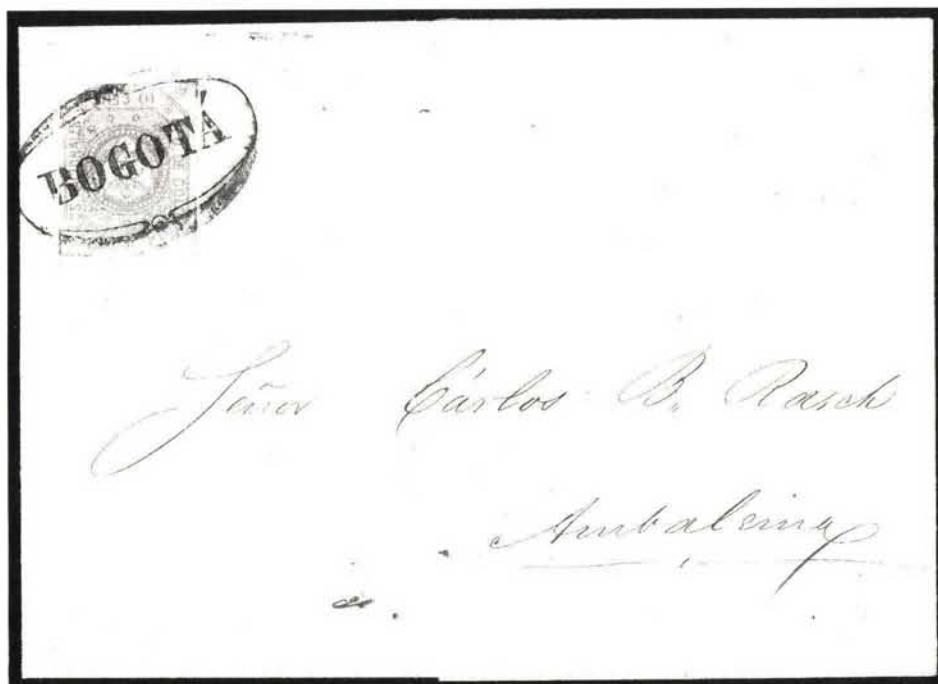




- |     |  |                       |
|-----|--|-----------------------|
| 121 | <b>1862, 10c Blue (19).</b> Grayish Shade, Ample to Large Margins, Red Town pmk., VF.....  | <b>(Photo)</b> 125.00 |
| 122 | <b>1862, 10c Blue (19).</b> Grayish Shade, Ample to Large Margins, Bogota pmk., Fine .....   | <b>(Photo)</b> 125.00 |
| 123 | <b>1862, 10c Blue (19).</b> Grayish Shade, Three Large Margins, close at L., Red "O" cancel, Fresh & Fine .....                    | <b>(Photo)</b> 125.00 |
| 124 | <b>1862, 10c Blue (19).</b> Three Ample to Large Margins, close at B., Red "O" cancel. Fresh & Fine .....                          | <b>(Photo)</b> 125.00 |
| 125 | <b>1862, 10c Blue (19).</b> Two, Diff. Shades, Ample to Immense Margins, Each with Bogota pmk., slight faults, VF Appearance ..... | 250.00                |



- |     |  |                     |
|-----|--|---------------------|
| 126 | <b>1862, 10c Blue (19).</b> L. Margin Horiz. Strip of Four, Large to Enormous Margins All Around except close but clear at R. of R. stamp, Red "O" cancels, VF, <b>Largest Known Multiple</b> , Rare & Handsome, ex-Caspary..... | <b>(Photo)</b> E.XV |
|-----|--|---------------------|



- |     |  |                      |
|-----|--|----------------------|
| 127 | ✉ <b>1862, 10c Blue, Grayish Shade (19).</b> Large to Immense Margins, tied by Bogota Oval on 1862 Folded Cover to Ambalema, cover filing fold affects stamp, o/w VF, <b>Only recorded Single Usage of the 10c</b> , Great Cover Rarity, ex-Newbury, Burrus..... | <b>(Photo)</b> E.XVI |
|-----|--|----------------------|

128	<b>1862, 10c-1p Arms (19, 21, 22).</b> Ample to Large Margins, Hand-stamped Town cancels, except 50c Tied on Piece by ms. Popayan cancel, Fresh, each with slight fault, F-VF Appearance.....	560.00
129	<b>1862, 10c-1p Arms (19, 21, 22).</b> Ample to Large Margins, Hand-stamped Town cancels (incl. Red "Colon" Tying 50c on Piece), each with slight fault, F-VF Appearance.....	560.00

130 ★	<b>1862, 20c Red (20).</b> Ample to Large Margins, Rich Color, VF, Rare.....	(Photo) 1,600.00
131 ★	<b>1862, 20c Red (20).</b> Ample Margins,, o.g., h.r., Fresh & Fine, Rare .....	(Photo) 1,600.00

132	<b>1862, 20c Red (20).</b> Large Margins, Bogota Oval pmk., Rich Color, Fresh, VF, Choice, Signed A. Diena & Others.....	(Photo) 600.00
133	<b>1862, 20c Red (20).</b> Large Margins, Bogota Oval pmk., VF. (Photo)	600.00
134	<b>1862, 20c Red (20).</b> Ample to Large Margins, on piece tied by Bogota Oval pmk., VF, Signed .....	(Photo) 600.00
135	<b>1862, 20c Red (20).</b> Ample to Immense Margins, Bogota Oval pmk., VF, Signed Brun.....	(Photo) 600.00
136	<b>1862, 20c Red (20).</b> Ample to Large Margins, Bogota Oval pmk., VF.....	(Photo) 600.00
137	<b>1862, 20c Red (20).</b> Ample to Large Margins, Bogota pmk., Fine ....	(Photo) 600.00
138	<b>1862, 20c Red (20).</b> Three Ample to Huge Margins, adequate to touching at R., Bogota Oval pmk., tiny pinhole, Fine Appearance.....	(Photo) 600.00
139	<b>1862, 20c Red (20).</b> Three Large Margins, close at B., barely cancelled, negligible corner margin crease, o/w Fine .....	(Photo) 600.00

**Due to the tremendous demand on our phones and staff, Prices Realized will not be available by telephone until 24 hours after the sale.**

#### DESCRIPTIONS

**EXTREMELY FINE:** The finest condition for noteworthy, outstanding stamps.

**VERY FINE: (VF)** In prime condition such as to satisfy the requirements of particular collectors.

**FINE: (F)** Perforations or margins do not touch design on issues after 1890 but in some cases may just touch in earlier issues. If used, fairly light cancellation.

**VERY GOOD: (VG)** Generally nice appearance but margins or perforations may cut in slightly.

**GOOD: (G)** Average off-centering or fairly attractive with slight defects.

**ORIGINAL GUM is not to be expected on stamps prior to 1890 unless so stated in the description.**

**MINT:** With original gum and never hinged.

Unless otherwise noted the 1984 Scott Volume 2 has been used for cataloguing lots in this sale.



140



141



146

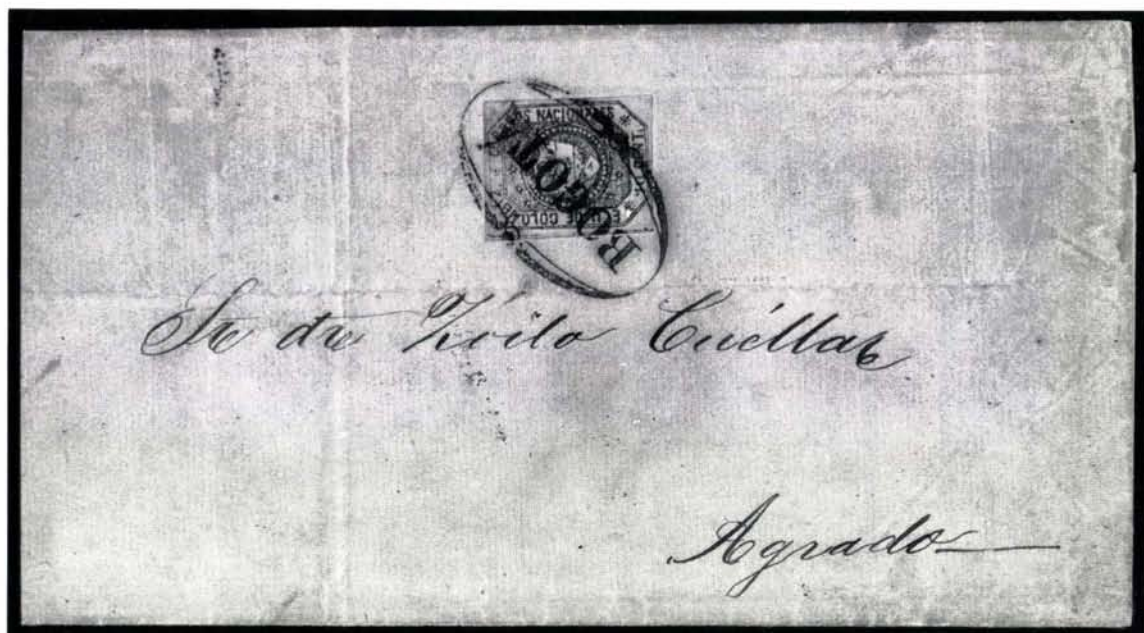
- 140      **1862, 20c Red (20). Horiz. Pair, Large Margins All Around, Tied on Piece by Bogota Oval, Fresh, Extremely Fine, Rare, ex-Caspary ..... (Photo) E.XV**
- 141      **1862, 20c Red (20). Vert. Strip of Three, Ample to Huge Margins, Bogota Oval pmks., VF, Rare & Handsome, Largest Known Multiple, Signed Brun, ex-Newbury, Burrus .. (Photo) E.XVI**

#### BIDDING INTERVALS

BIDS	ADVANCE	BIDS	ADVANCE
Up to \$30.00	\$1.00	\$2,000.00 - \$3,000.00	\$100.00
\$32.50 - \$70.00	\$2.50	\$3,250.00 - \$7,250.00	\$250.00
\$70.00 - \$145.00	\$5.00	\$7,500.00 - \$14,500.00	\$500.00
\$150.00 - \$290.00	\$10.00	\$15,000.00 - \$29,000.00	\$1,000.00
\$300.00 - \$725.00	\$25.00	\$30,000.00 - \$75,000.00	\$2,500.00
\$750.00 - \$1,950.00	\$50.00		

Bids which do not conform to the above will be automatically reduced to the appropriate level.





- 142 ☒ **1862, 20c Red (20).** Ample to Large Margins, Tied by Bogota Oval on Folded Letter to Agrado, back somewhat shortened. **The Finer of The Two Recorded Covers Bearing the 20c, ex-Newbury, Burrus** ..... (Photo) **E.XVII**

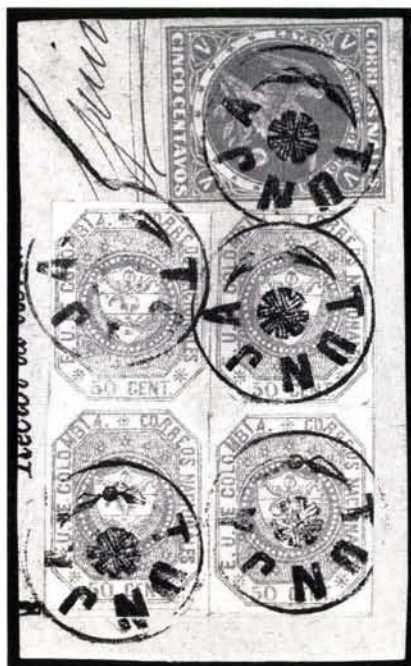
- 143 ★ **1862, 50c Green (21).** Large Margins, Fresh, Rich Color, Large Part o.g., small adherence, Extremely Fine ..... (Photo) 200.00  
 144 ★ **1862, 50c Green (21).** Ample to Huge Margins, VF, Signed Senf..... (Photo) 200.00  
 145 ★ **1862, 50c Green (21).** Three, Diff. Shades, Ample to Huge Margins, two with full to part o.g., Fresh, each with slight crease, F-VF Appearance..... 600.00

- 146 ★田 **1862, 50c Green (21).** Irregular Block of 12, Ample to Large Margins, Fresh, o.g., some creases & other defects, VF Appearance, **Largest Recorded Multiple of the 1862 Issue & the Only Unused Block, A Most Important Colombian Piece, ex-Newbury, Burrus** ..... (Photo) **E.XVI**

- 147 **1862, 50c Green (21).**B.R. Corner Single, Large to Immense Margins, Blue Town pmks., Extremely Fine, Choice, Signed ..... (Photo) 160.00  
 148 **1862, 50c Green (21).** Ample to Huge Margins, Bold Bogota Oval pmk., VF ..... (Photo) 160.00  
 149 **1862, 50c Green (21).** Large Margins, Bogota Oval pmk., VF..... (Photo) 160.00

**Extension Lots must be paid for on receipt. In the event of an unsatisfactory certificate, payment will be refunded with interest at Treasury Bill rate.**

- 150      **1862, 50c Green (21).** Ample to Large Margins, Blue Town pmk.,  
Fresh, VF..... (Photo)      160.00
- 151      **1862, 50c Green (21).** Ample to Large Margins, Cartago Oval pmk.,  
Fresh & Fine..... (Photo)      160.00



- 152      **1862, 50c Green (21). Block,** Large Even Margins, on piece  
with No. 73, tied by Tunja cancels, 4mm scissors cut in mar-  
gin between T. pair, VF, Rare & Handsome Showpiece. **The**  
**Finer of the Two Recorded Used Blocks** ..... (Photo)      **E.XV**

## ESTIMATES

Our sales offer many covers, cancellations, varieties and other items for which there is no catalogue value or where catalogue value does not reflect the actual value. In order to assist our clients, we are placing a fair net valuation on such lots as a guide to bidders. The chart below will be used. For example, E. IV means that our estimated net value on the lot is \$30.00 to \$40.00. Lots may actually realize more or less than our estimates, which are under no circumstances to be considered reserves but merely a guide to bidding.

E. III	\$20.00 to \$30.00	E. XII	\$350.00 to \$500.00
E. IV	\$30.00 to \$40.00	E. XIII	\$500.00 to \$750.00
E. V	\$40.00 to \$50.00	E. XIV	\$750.00 to \$1000.00
E. VI	\$50.00 to \$75.00	E. XV	\$1000.00 to \$2000.00
E. VII	\$75.00 to \$100.00	E. XVI	\$2000.00 to \$5000.00
E. VIII	\$100.00 to \$150.00	E. XVII	\$5000.00 to \$10,000.00
E. IX	\$150.00 to \$200.00	E. XVIII	\$10,000.00 to \$20,000.00
E. X	\$200.00 to \$250.00	E. XIX	over \$20,000.00
E. XI	\$250.00 to \$350.00		





- 153      **1862, 50c Green (21).** Ample to Large Margins, Used with No. 19, Tied by Bogota Ovals on Reg. Cover Front to Popayan, Reg. Red Handstamped & ms. "Certificacion á Bogotá Salio en 23 de Set de 1863" & "O" Markings, Rare & Handsome. There Is One Other Front Bearing a Single 50c. This Is the Only Example of Two Denominations Used Together... (Photo) E.XVI

- 154 ★      **1862, 1p Red Lilac (22).** Large to Huge Margins, Extremely Fine .... (Photo) 475.00
- 155 ★      **1862, 1p Red Lilac (22).** Large Margins, o.g., h.r., Extremely fine... (Photo) 475.00
- 156 ★      **1862, 1p Red Lilac (22).** Ample to Large Margins, o.g., h.r., Fresh, light natural wrinkle (visible only in fluid), Fine ..... (Photo) 475.00
- 157      **1862, 1p Red Lilac (22).** Large Margins, ms. Town cancel, Rich Color, Fresh, VF, Choice..... (Photo) 275.00
- 158      **1862, 1p Red Lilac (22).** Large to Immense Margins, incl. Sheet Margin at L., Blue Town pmk., light crease, o/w VF ..... (Photo) 275.00
- 159      **1862, 1p Red Lilac (22).** Three Large Margins, Ample at L., Bold Bogota pmk., Fine ..... (Photo) 275.00
- 160      **1862, 1p Red Lilac (22).** Pale Shade, Ample to Large Margins, Bogota pmk., couple tiny orange spots in T. margin clear of design, Fine ..... (Photo) 275.00
- 161      **1862, 1p Red Lilac (22).** B.R. Corner Margin Single, Ample to Immense Margins, on piece tied with Horiz. Pair No. F1 (light crease affects both) by Bold Handstamped Cali & Bar cancels, Fine... (Photo) 375.00





1



2



3



4



5



6



7



9



10



11



12



13



14



15



16



18



19



20



21



22



24



25



26



27



28



30



32



31



33



34



35



36



37



38



39



40



41



42





43



44



45



46



47



49



50



51



52



53



54



55



56



57



58



59



60



61



62



63



64



65



66



67



68



69



73



70



71



76



80



81





82



83



84



86



87



88



90



91



92



93



94



95



96



97



98



99



102



100



103



104



105



106



107



108



109



110



111



112



113



115



116



117



118



119



121



122



123



124



130



131



132





133



134



135



136



137



138



139



143



144



147



148



149



150



151



154



155



156



157



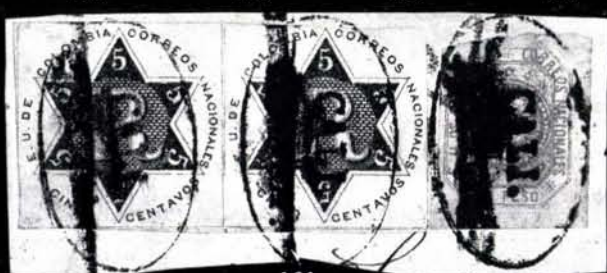
158



159



160



161



164



165



166



167



168



170



171



176



177



172



179





178



191



186



197



212



180



190



210



219



199



217



213



220



221



222



185



195



196



193



192







215



223



224



225



226



227



228



229



254



234



230



244 EX



252



235





211



249



255



251



232



256



253



Francia

188



Al Sr.

Dr. Felix Kiano

Bogotá

173



Via Cartagena i San Thomas

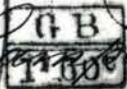
Sr. Dr.

Eugenio H. H. H.

de Jorac,  
Antioquia

Paris

205



189



236

Señor

Antonio M.ª Angel

Bogotá

207



206



J. J. J.



238

Al Sr.

Luis Manuel Espino

Certificación: Bogotá

Recebo 18 de febrero

José M.ª Sánchez

Cantamartes

237



Rasch & Co.

Ambaloma



240



239



241



245



243



*Certificacion a Bogota  
Salida en 18 de marzo de 1865.*



247



*Senores Danonville & Wessela*

246



*M. Jacquemon, Canton  
arrondissement de*

260



259



261



*Monsieur Henri Jacq  
Canton de Concelin arrond  
ment de Grenoble  
Suisse.*

262



*Monsieur  
Auguste Schmitt  
1. Rue de Charles a Batignolles  
Paris.*



162



163

- |       |   |            |
|-------|---|------------|
| 162 ★ | <b>1862, 1p Red Lilac, Bluish (23).</b> Ample to Large Margins, o.g., h.r., Fresh, Extremely Fine, Choice Example of This Rarity, ex-Burrus ..... (Photo)   | 3,500.00   |
| 163 ★ | <b>1862, 1p Red Lilac, Bluish (23).</b> B.L. Corner Vert. Pair, Large to Immense Margins, Large Part o.g. (crackly), B. Stamp Mint n.h., other h.r., one with minute natural inclusion, other with small toning spot, o/w Extremely Fine, <b>Only Known Multiple</b> , One of the "Gems" of Colombian Philately. .... (Photo) | 7,000.00 + |
| 164   | <b>1862, 1p Red Lilac, Bluish (23).</b> Immense Margins, light ms. cancel, Extremely Fine "Gem" ..... (Photo)   | 1,500.00   |
| 165   | <b>1862, 1p Red Lilac, Bluish (23).</b> Large to Immense Margins, incl. Sheet Margin at L., "Purificacion Franca." Oval pmk., Extremely Fine, Incredible "Gem", ex-Caspary ..... (Photo)  | 1,500.00   |
| 166   | <b>1862, 1p Red Lilac, Bluish (23).</b> Ample to Large Margins, Bogota pmk., VF ..... (Photo)   | 1,500.00   |
| 167   | <b>1862, 1p Red Lilac, Bluish (23).</b> Three Ample Margins, Ample to close at B., Bogota pmk., Fine ..... (Photo)  | 1,500.00   |

- 168 **1862, 1p Red Lilac, Bluish (23).** Ample Margins (trifle irregular at T. & R.), Bold Bogota Oval pmk., trivial corner margin crease, o/w Fine ..... (Photo) 1,500.00

## 1863 ISSUE

- 169 **1863, 5c-50c Arms (24-28).** Specialized Collection of 53 Stamps, eight Unused, Contains Shade & Cancel Studies, Several of the cancels are from Obscure Towns & are Rare, of the 45 Used Stamps 43 are Handstamped, Collection contains Two Pairs & Couple Items on Piece, Fresh, Most with Ample to Large Margins, Generally F-VF, Worthwhile Specialist Lot of Superior Quality ..... 2,130.00
- 170 **1863, 10c Blue (25).** B.L. Corner Horiz. Strip of Four, Large to Enormous Margins except R. stamp ample at R., Bogota pmks., on Piece, light crease affects two, o/w VF, Handsome Multiple . (Photo) 80.00 +



- 171 **1863, 10c Blue (25). B. Margin Horiz. Strip of Six, Ample to Immense Margins (except L. stamp touched at L.), ms. town cancels, three faulty, o/w F-VF, Rare & Handsome..... (Photo)** 120.00 +
- 172 **1863, 10c Blue, Normal, also with Period after "10" (25, 25a). T. Sheet Margin Horiz. Strip of Six Containing three No. 25a (Pos. 2, 4, 6), Large to Enormous Margins, on piece, ms. Date cancel, Fresh, Extremely Fine, "Gem"..... (Photo)** 135.00 +

- 173 ☒ **1863, 10c Blue (25). R. Margin Single, Large to Enormous Margins, Tied by Bogota Oval on Folded Cover to Ambalema, some slight cover erosion along folds, Rare & Attractive..... (Photo)** E.XIV



- 174 ☒ **1863, 10c Blue, 20c Red (25, 26). Large Margins to in at T., Tied by Handstamped "Cali Franca" in Oval cancels, ms. Cali cancel as well, on Large Portion of Reg. Folded Cover to Rionegro, Fine, Rare, Only Recorded Usage of Two Denominations of the Issue of 1863..... (Photo)** E.XV

- 175 **1863, 10c Blue, Normal & with Period after "10" (25, 25a). 17 & 10 Respectively, Ample to Huge Margins, Used, 24 with Hand-stamped Town cancels, Shade & cancel Study, Nice Variety, also incl. Pair No. 26 & Single No. 29 with ms. Town cancel, All but few F-VF, Interesting Specialist Lot.....** 782.50
- 176 ★ **1863, 20c Red (26). Three Large Margins, Ample at R., o.g., h.r., VF..... (Photo)** 150.00
- 177 ★ **1863, 20c Red (26). Ample Margins, o.g., h.r., Fine..... (Photo)** 150.00
- 178 ★田 **1863, 20c Red (26). Block, Large to Enormous Margins incl. Sheet Margin at L., o.g., Fresh, Extremely Fine, Rare & Choice... (Photo)** 600.00 +
- 179 ★ **1863, 20c Red, Star after "Cent" (26a). Ample to Large Margins, Rich Color, Fresh, small thin spot, VF Appearance..... (Photo)** 175.00



180

**1863, 20c Red (26). Horiz. Strip of Three, Ample to Huge Margins except R. stamp close at B., on Piece tied by Blue "Medellin Franca" Oval, VF, One of Two Recorded Strips...**  
 ..... (Photo)

E.XIV



181



182



183

181

**1863, 50c Red, Error, Transfer of 50c in Stone of 20c, Ty. I (26b).** Ample to Immense Margins, Blue town pmk., Fresh, Rich Color, VF, Signed Brun, Choice Example of This Rarity..  
 ..... (Photo)

4,500.00

182

**1863, 50c Red, Error, Transfer of 50c in Stone of 20c, Ty. I (26b).** Ample to Large Margins, ms. cancel, small scuff in T. Margin, o/w VF, Very Desirable Example of This Rarity .....

4,500.00

183

**1863, 50c Red, Error, Transfer of 50c in Stone of 20c, Ty. II (26b).** Large to Huge Margins, Bogota pmk., Fresh, VF Choice, Signed Brun..... (Photo)

4,500.00



184 ☒

**1863, 20c Red (26).** Ample to Large Margins, Tied by Bogota Oval on Folded Cover to Ambalema, VF, **One of the Two Recorded Covers Bearing the 20c, ex-Wickersham ...** (Photo)

E.XVI

185 ★ **1863, 10c Blue on Bluish, Normal & with Period after "10" (28, 28a). Horiz. Se-tenant Pair, Ample to Large Margins, o.g., h.r., Fresh, VF..... (Photo) 315.00 +**

186 ★ **1863, 10c Blue on Bluish, Normal & with Period after "10" (28, 28a). Horiz. Se-tenant Pair, Ample to Immense Margins, large part o.g., h.r., each with small thin spot, VF Appearance ..... (Photo) 315.00 +**

187 ★田 **1863, 10c Blue on Bluish, Normal & Without Period after "10", 7x7 Plus B. Row of Four Printed Sideways, Large to Huge Margins, o.g., Many Mint n.h., few with h.r., some defects to be expected but of an insignificant nature for a Magnificent Multiple of this Highest Order of Rarity, The Largest Recorded Multiple of the Issue of 1863, One of the Outstanding Pieces of Colombian Philately, ex-Newbury, Wickersham... (Photo On Following Page) E.XIX**

188 ㊞ **1863, 10c Blue on Bluish (28). Ample to Large Margins, Tied by ms. Popayan cancel on 1863 Folded Letter to Bogota, couple cover bleaching spots & adherences far from stamp & markings, VF, Rare, ex-Newbury ..... (Photo) E.XII**

189 ㊞ **1863, 10c Blue on Bluish (28). Ample to Huge Margins, Tied by Handstamped Bogota in Oval cancel on Folded Letter to London, Cartagena 1862 Backstamp, Red London 1862 Receiver, cover filing fold affects stamp, o/w VF, Rare ..... (Photo) E.XI**

190 ★ **1863, 50c Green, Ty. I (Large "50") (29). Ample to Large Margins, Fresh, VF ..... (Photo) 165.00**

191 ★田 **1863, 50c Green, Ty. I, Ty. II (29, 29 var). Block, L. Stamps Ty. II, Others Ty. I, Ample to Large Margins except just in at T. of T. Pair, o.g., h.r., Fresh, natural gum crease affects L. pair, F-VF, Rare Block ..... (Photo) 660.00 +**

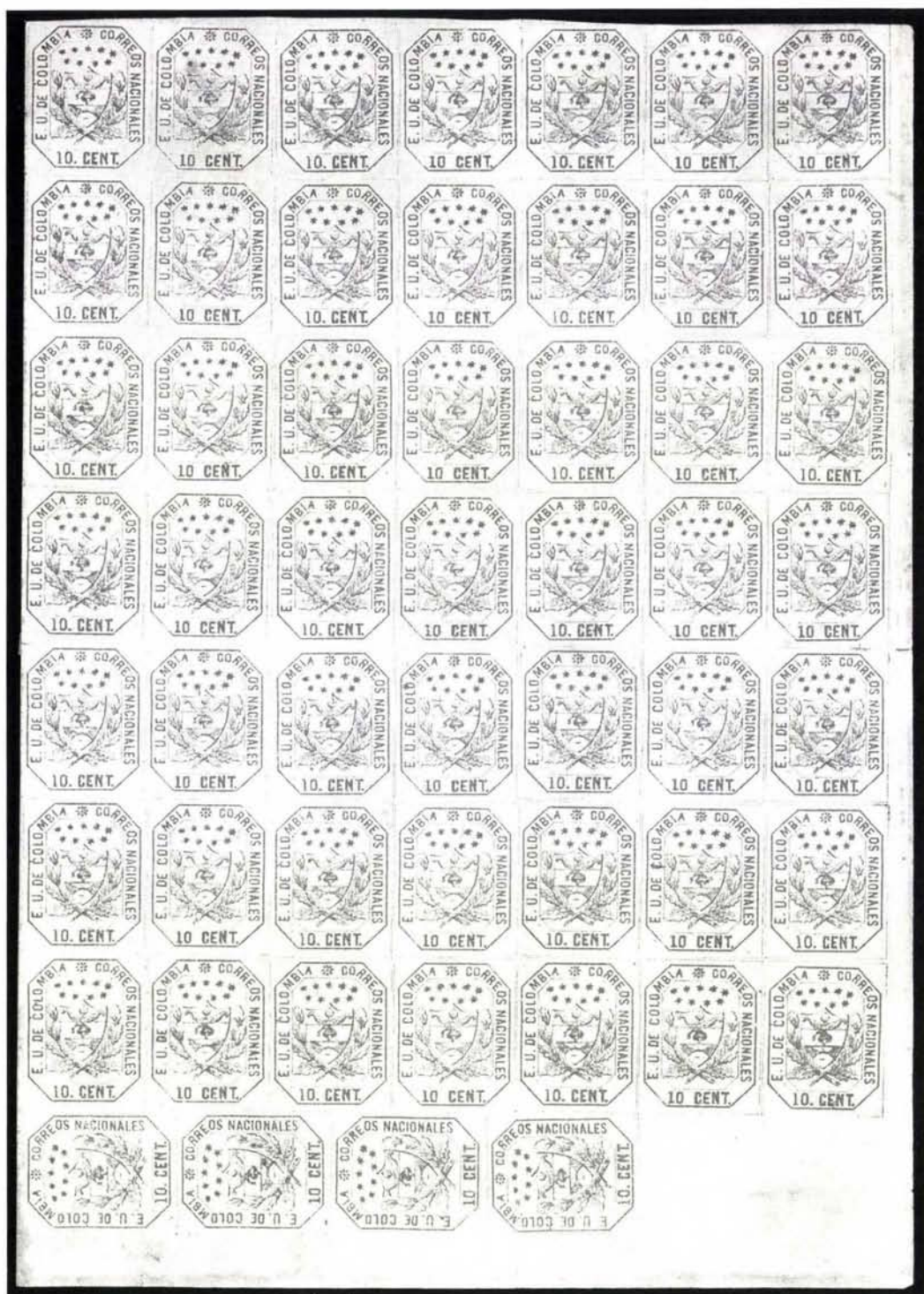
192 ★ **1863, 50c Green, Ty. I, II (29, 29 var). Vert. Strip of Four Containing Two Setenant Pairs, Ample to Large Margins, o.g., Fresh, each with small thin spot, F-VF Appearance, Only Recorded Vert. Se-tenant Pairs, Unique Multiple ..... (Photo) E.XIV**

193 ★田 **1863, 10c Green, Ty. I, II (29, 29 var). Block of Six (3X2), Pos. 1, 3, 4, 6 are Ty. I, Ample to Large Margins, o.g., h.r., Fresh, light crease affects two, one with small thin spot, o/w F-VF, Rare Block... (Photo) 990.00 +**

**NOTE: A 10% Buyers Commission will be added to all successful bids.**

**Due to the tremendous demand on our phones and staff, Prices Realized will not be available by telephone until 24 hours after the sale.**





Lot 187





- 194 ☒ **1863, 50c Green on Bluish, Ty. II (29 var).** Large Margins, Used with 20c Scarlet No. 32, Tied by ms. Natagaima on 1865 Reg. Folded Letter to Bogota, Fine, Rare, **Only Recorded Cover Bearing the 50c & the Only Recorded Combination of the 1863 & 1864 Issues**..... (Photo) E.XVI

## 1864 ISSUE

- 195 ★ **1864, 5c Orange, Vert. Pair, One Sideways (30 var).** T.L. Corner Example, Ample to Huge Margins, Fresh, F-VF, Rare & Handsome ..... (Photo) E.XIII
- 196 ★ **1864, 5c Orange, Vert. Pair, One Sideways (30 var).** T.R. Corner Example, Large Margins, Large Part o.g., h.r., creases, one with small thin spot, VF Appearance, Rare ..... (Photo) E.XII
- 197 ★ **1864, 5c Orange, Tête Bêche Pair (30a).** Ample to Large Margins, F-VF, Handsome, Sighed Bühler ..... (Photo) 350.00

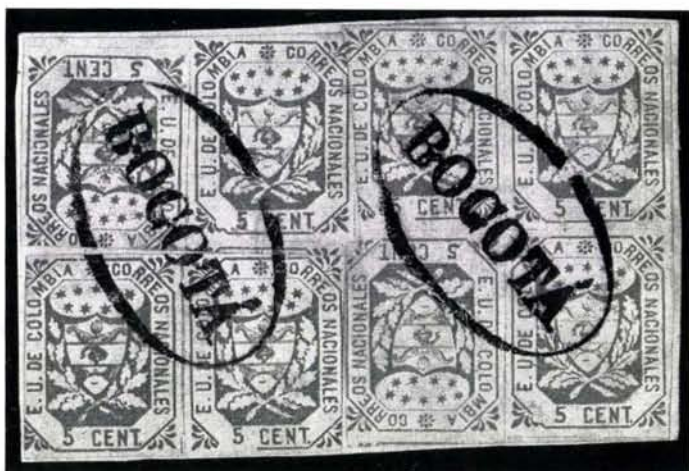
### BIDDING INTERVALS

BIDS	ADVANCE	BIDS	ADVANCE
Up to \$30.00	\$1.00	\$300.00 - \$725.00	\$25.00
\$32.50 - \$70.00	\$2.50	\$750.00 - \$1,950.00	\$50.00
\$70.00 - \$145.00	\$5.00	\$2,000.00 - \$3,000.00	\$100.00
\$150.00 - \$290.00	\$10.00	\$3,250.00 - \$7,500.00	\$250.00

Bids which do not conform to the above will be automatically reduced to the appropriate level.



198



200

- 198 ★ 1864, 5c Orange, Tête Bêche Pair, also Pair with One Printed Sideways (30a, 30 var). In Block of Five, B. Horiz. Pair Tête Bêche, T. Stamp Printed Sideways, Ample to Large Margins except T.R. stamps touched at R., Fresh, F-VF, Only Recorded Combination Block, Incredible Showpiece, ex-Ferrari, Newbury ..... (Photo) E.XVI

- 199 1864, 5c Orange, Tête Bêche Pair (30a). Large Margins, Palmira Oval pmk., VF, Scarce..... (Photo) 240.00

- 200 1864, 5c Orange, Tête Bêche Pair (30a). Two, One in Block with Normal Pair, Ample to Immense Margins except one stamp bit in at T., Tied on piece with Pair of Normals by Bogota Ovals, Fresh, F-VF, Unique & Incredible Showpiece, ex-Burrus ..... (Photo) E.XV

## DESCRIPTIONS

**EXTREMELY FINE:** The finest condition for noteworthy, outstanding stamps.

**VERY FINE: (VF)** In prime condition such as to satisfy the requirements of particular collectors.

**FINE: (F)** Perforations or margins do not touch design on issues after 1890 but in some cases may just touch in earlier issues. If used, fairly light cancellation.

**VERY GOOD: (VG)** Generally nice appearance but margins or perforations may cut in slightly.

**GOOD: (G)** Average off-centering or fairly attractive with slight defects.

**ORIGINAL GUM** is not to be expected on stamps prior to 1890 unless so stated in the description.

**MINT:** With original gum and never hinged.

Unless otherwise noted the 1984 Scott Volume 2 has been used for cataloguing lots in this sale.





*Señores Lafaurie Rasch & Co.*

*Ambalema*

- 201 ☒ **1864, 5c Orange (30).** Two, Ample to Large Margins except R. stamp just touched at T., each with crease (one trivial) from cover filing fold, Tied by Bogota Oval on 1865 Folded Cover to Ambalema, Rare & Attractive, **One of Two Recorded Covers Bearing the 5c** ..... (Photo) **E.XVI**

## 1864 ISSUE

- 202 ★ **1864, 5c-50c Arms (30-33).** Specialized Collection of 61 Stamps, 21 Unused; of the 40 Used Stamps 35 Have Handstamped cancels, Contains Shade and Cancel Studies, One Pair, Couple Items on Pieces (incl. a Mixed Issue Franking), Several of the cancels are from Obscure Towns and Rare, Many Three & Four Margin Stamps, while a few defective are to be expected, Most are Fresh & F-VF, Lovely & Superior Quality Specialist Lot ..... **1,830.00**
- 203 **1864, 5c-50c Arms (30, 31, 32, 33).** 1, 12, 4 & 1, respectively, 5c & one 10c Unused, Ample to Huge Margins; 15 stamps with Handstamped Town cancels, Shade & cancel Study, Nice Variety, also incl. Used No. 19, few faulty, Most F-VF, Useful Specialist Lot ..... **571.50**
- 204 ★ **1864, 5c-50c Arms (30, 31, 33).** Ample to Large Margins, Fresh, 10c, 50c Part to Full o.g., latter h.r., F-VF Lot ..... **180.00**
- 205 **1864, 10c Blue (31).** Large Margins, Tied by Bogota Oval on 1864 Cover Front to **Paris**, ms. "Via Cartagena y San Thomas", Boxed "GB/1 F 60c", & ms. "8" Rate Markings, French Transit, filing fold slightly affects stamp, Scarce & Attractive ..... (Photo) **E.XII**

- 206 ☒ **1864, 10c Blue (31).** Large to Huge Margins, Tied by ms. Circuta cancel on 1864 Folded Cover to Maracaibo, Venezuela, slight age toning, Fine & Scarce ..... (Photo) **E.XII**

- 207 ☒ **1864, 10c Blue (31).** Ample to Large Margins (incl. small B. margin scissors cut well clear of design), ms. Piedras cancel, on Folded Cover (not tied) to Bogota, addressee's name obliterated, VF (Photo) **E.IX**



- 208 ☒ **1864, 10c Blue, 20c Scarlet (31, 32).** Large to Huge Margins, Tied by Bogota Oval on 1864 Folded Reg. Cover to Buga, Red "O" Handstamps, VF, Rare & Handsome, **One of Two Recorded Combination Covers**, ex-Newbury ..... (Photo) **E.XVI**

**Extension Lots must be paid for on receipt. In the event of an unsatisfactory certificate, payment will be refunded with interest at Treasury Bill rate.**





- 209 ☒ **1864, 10c Blue, 20c Scarlet (31, 32).** Ample to Large Margins, Tied by Bogota Oval cancel on Folded Cover to Ambalema, some small cover defects, Rare & Handsome, **One of the Two Recorded Combination Covers, ex-Wickersham .....** (Photo) **E.XV**

- 210 ★ **1864, 20c Scarlet (32).** T.R. Corner Single, Large to Enormous Margins, crackly o.g., h.r., Fresh, Extremely Fine "Gem" .. (Photo) 75.00 +

- 211 ★田 **1864, 20c Scarlet (32).** B.R. Corner Block of 12 (3x4), Ample to Enormous Margins, Fresh, some faults, Virtually All VF Appearance, **Largest Recorded Multiple of the 20c ...** (Photo) **E.XV**

- 212 **1864, 20c Scarlet (32).** Horiz. Pair, Ample to Large Margins, Bogota Oval cancel, Fresh, F-VF ..... (Photo) 75.00 +

- 213 **1864, 20c Scarlet (32).** L. Margin Horiz. Strip of Three, Large to Immense Margins, Bold Green Pie-Cuesta Oval pmk., on Piece, Extremely Fine "Gem", signed A. Dena ..... (Photo) **E.XIV**

**NOTE: A 10% Buyers Commission will be added to all successful bids.**



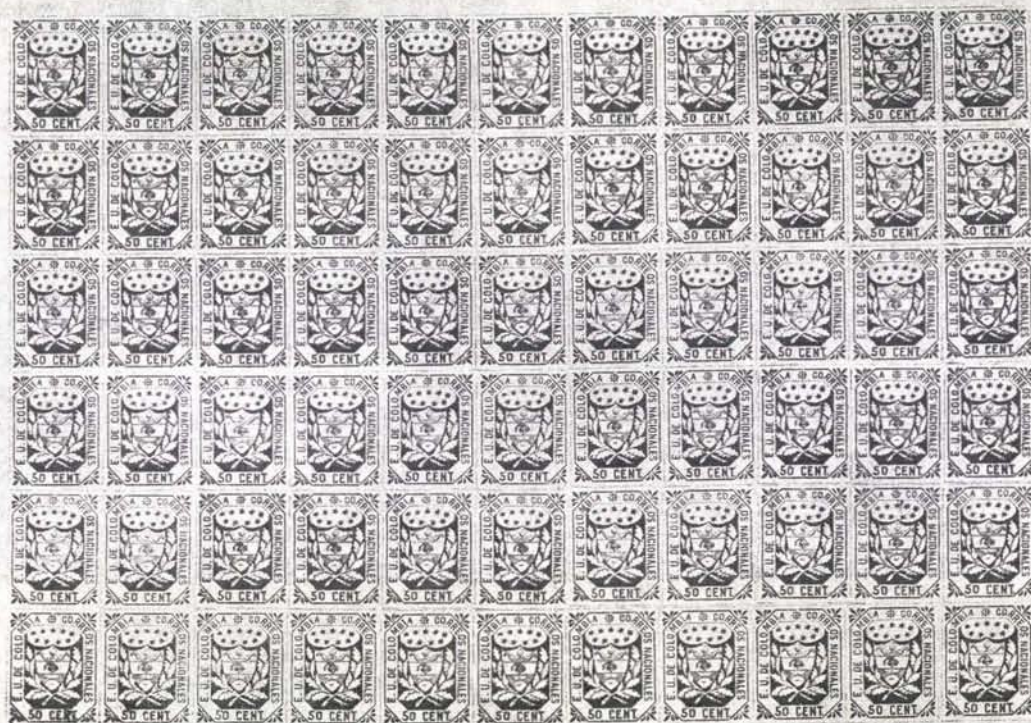
- 214 ☒ **1864, 20c Scarlet (32).** Large to Huge Margins, Tied by Bogota Oval on 1866 Folded Cover to Ambalema, slight seam splitting & minor tear, Rare & Attractive ..... (Photo) **E.XV**

- 215 ★田 **1864, 50c Green (33).** R. Margin Block of Six (3x2), Large to Huge Margins Five Stamps, T.L. Stamp ample to Large Margins, o.g., h.r., Fresh, light crease in T. margin of T.R. pair, F-VF, Handsome Multiple ..... (Photo) 450.00 +

**Extension Lots must be paid for on receipt. In the event of an unsatisfactory certificate, payment will be refunded with interest at Treasury Bill rate.**

**Due to the tremendous demand on our phones and staff, Prices Realized will not be available by telephone until 24 hours after the sale.**





- 216 ★ **1864, 50c Green (33). Cpl. Sheet of 66, o.g. Most Mint n.h.,**  
 Fresh, few with h.r. & natural gum skip, folded along margin  
 between two rows, filing folds affect 12 stamps, o/w VF, In-  
 credible Showpiece, **Only Recorded Cpl. sheet..... (Photo)** **E.XVI**

- 217 **1864, 50c Green, 1p Red Violet (33, 34). Ample to Large Margins,**  
 Tied on Piece by Red "O" cancels, VF, Colorful ..... **(Photo)** **212.50**

#### BIDDING INTERVALS

BIDS	ADVANCE	BIDS	ADVANCE
Up to \$30.00	\$1.00	\$300.00 - \$725.00	\$25.00
\$32.50 - \$70.00	\$2.50	\$750.00 - \$1,950.00	\$50.00
\$70.00 - \$145.00	\$5.00	\$2,000.00 - \$3,000.00	\$100.00
\$150.00 - \$290.00	\$10.00	\$3,250.00 - \$7,500.00	\$250.00

Bids which do not conform to the above will be automatically reduced to the appropriate level.



218 ✉ **1864-65 50c Green (38).** Used with 10c No. 33, Large Margins to touching at B. of 10c, Tied by **Red Two Line Bogotá Reg.** pmk. on Reg. Cover to Cali, Red "O"s, Red Official Coat of Arms Reg. Backstamps, Fine, Rare & Handsome Cover. **Only Recorded Cover Bearing the 50c** ..... (Photo) **E.XVI**

- |       |  |        |
|-------|--|--------|
| 219 ★ | <b>1864, 1p Red Violet (34).</b> Large Margins, o.g., Fresh, Rich Color, Extremely Fine, Choice ..... (Photo)  | 325.00 |
| 220 ★ | <b>1864, 1p Red Violet (34).</b> Large Margins, crackly o.g., VF. (Photo)  | 325.00 |
| 221 ★ | <b>1864, 1p Red Violet (34).</b> Ample to Large Margins, Virtually Full o.g., Fresh, Rich Color, natural inclusion speck, minor crease, o/w Fine ..... (Photo) | 325.00 |
| 222   | <b>1864, 1p Red Violet (34).</b> Ample to Large Margins, Town pmk, VF. .... (Photo)  | 175.00 |
| 223   | <b>1864, 1p Red Violet (34).</b> Large Margins, Str. Line Ybague pmk, VF. .... (Photo)   | 175.00 |
| 224   | <b>1864, 1p Red Violet (34).</b> Ample to Large Margins, Blue Cartagena pmk, Fine ..... (Photo)  | 175.00 |
| 225   | <b>1864, 1p Red Violet (34).</b> Three Large Margins, Ample at R., Ambalema Double Oval, pmk, Fresh, VF. .... (Photo)  | 175.00 |
| 226   | <b>1864, 1p Red Violet (34).</b> Three Large Margins, ample at R., ms, cancel, VF. .... (Photo)  | 175.00 |
| 227   | <b>1864, 1p Red Violet (34).</b> Ample to Large Margins, ms. town cancel, VF. .... (Photo)   | 175.00 |
| 228   | <b>1864, 1p Red Violet (34).</b> Ample to Large Margins, ms. Velez cancel, Fine ..... (Photo)  | 175.00 |
| 229   | <b>1864, 1p Red Violet (34).</b> Ample to Large Margins, ms. Espinal cancel, light natural wrinkle, Fine ..... (Photo)   | 175.00 |



**1864, 1p Red Violet (34). Horiz. Pair, Large to Huge Margins, Velez Oval pmk, Extremely Fine, Rare ..... (Photo) 350.00+**



- 231 ☒ **1864, 1p Red Violet (34). Large Margins, Used With 10c Blue (31), Tied by Bogota Oval pmk on Folded Cover to Valparaiso, VF, Rare, Only Recorded Cover Bearing the one peso. One of the Greatest Covers in Colombian Philately, ex-Newbury, Burrus ..... (Photo) E.XVII**

## 1865 ISSUE

- 232 田 **1865, 1c Rose (35). Block of Nine, Ample to Huge Margins except just touching on one side of each of two stamps, Blue Medellin pmks, Fresh, light creases affect five stamps, o/w F-VF, Rare & Handsome Multiple ..... (Photo) E.XI**
- 233 **1865-66, 1c-10p Arms (betw. 35-52). Specialized Collection of 33 Used Stamps, 13 Diff., from One to Five of Each, incl. Shade & Cancel Studies, Some cancels from obscure Towns & Rare, 25 Stamps with Handstamped cancels, Fresh, Most Have Ample to Large Margins, while few faulty are to be expected, Most are F-VF, Worthwhile Specialist Lot ..... 1,118.50**
- 234 **1865-66, 2½c-50c Arms (36, 41, 46). Large Margins to touching on one side, Tied by Handstamped Bogota cancels on Piece, filing fold affects stamps, o/w F-VF, Rare Mixed Issue Franking ..... (Photo) E.IX**
- 235 **1865-70, 2½c-10c Arms (36, 45, 54b). Vert. Pair No. 54b, Huge Margins to in one side No. 36, on piece, ms. Tunja cancel, F-VF, Rare & Attractive Mixed Issue Franking ..... (Photo) E.XI**



- 236 ☒ **1865, 5c Yellow (37). Vert. Pair, Each Large Margins to trifle in on one side, Tied by Blue "Medellin Franca" Oval on 1866 Folded Cover to Bogota, Fresh, portion of backflap missing, Fine, Rare & Attractive Cover, ex-Newbury ..... (Photo)** E.XIV
- 237 ☒ **1865, 5c Yellow, 10c Violet (37, 38). Bright Colors, Margins All Around, Tied by Handstamped Bogota Oval on 1866 Folded Cover to Ambalema, VF, Choice ex-Newbury ..... (Photo)** E.XIV

- 238 ☒ **1865, 10c Violet (38). Three large to enormous margins, ample to close at B. Tied by Bogota Oval on 1865 Reg. Folded Cover to Santamarta, Appropriate Red Reg. Markings, portion of backflap missing, couple small tears in front, Rare & Attractive ..... (Photo)** E.XII

- 239 ☒ **1865, 10c Violet (38). Ample to Large Margins except touching at T.L., Tied by Bogota Oval on 1865 Folded letter to Santander, VF, Rare ..... (Photo)** E.XIII
- 240 ☒ **1865, 10c Violet (38). T. Margin Single, Ample to Immense Margins, Tied by "Palmira Franca" Oval on 1865 Folded Letter to Bogota, VF, ex-Newbury ..... (Photo)** E.XIII
- 241 ☒ **1865, 10c Violet (38). Ample to Large Margins except diagonal & touching at T.L. corner, Tied by Town pmk on Cover to France, via Ste. Marthe, Ste. Marthe Aug. 4, 1866 pmk, ms "90" Rate Marking Appropriate Series of Backstamps, without flap, Fine, Rare ..... (Photo)** E.XIII



- 242 ☒ **1865, 5c Black, 10c Violet (38, F1, F2). Ample to Large Margins, No. 38 Tied by Bogota Oval, Nos. F1, F2 canceled by Red "O"s, on Reg. Folded Cover to Neiva, Rare & of Spectacular Appearance, ex-Newbury ..... (Photo)** E.XV

- 243 ☒ **1865, 10c Violet, 20c Blue (38, 39 two).** 10c couple edge toning spots, 20c faulty, Tied by Bogota Ovals on 1865 Reg. Cover to Panama, Red Reg. Markings & "O" Handstamps, couple cover filing folds & small bleach spots, Rare & Attractive..... (Photo) **E.XIV**

- 244 **1865, 10c Violet, 20c Blue, R. Diagonal Half of Each Used as 5c, 10c Respectively (38 var, 39 var).** Large Margins Tied by hand-stamped Santa Marta in Oval cancels (former with No. 38) on Two Pieces Fresh, VF, Rare, ex-Newbury ..... (Photo Ex) **E.XI**

- 245 ☒ **1865, 20c Blue (39).** Three Large to Huge Margins, ample at T., Tied by Bogota Oval on 1865 Folded Cover to Ambalema Fine & Scarce ..... (Photo) **E.XIII**

- 246 ☒ **1865, 20c Blue (39).** Ample to Large margins except diagonal T.L. corner well clear of design, crease at B.L., Tied by Bogota Oval on Double Rate Folded Cover via the Consular Office in Ste. Marthe to France, Ste. Marthe May 3, 1866 pmk., Appropriate Series of Backstamps, cover open three sides, negligible cover faults, Rare & Desirable ..... (Photo) **E.XIII**

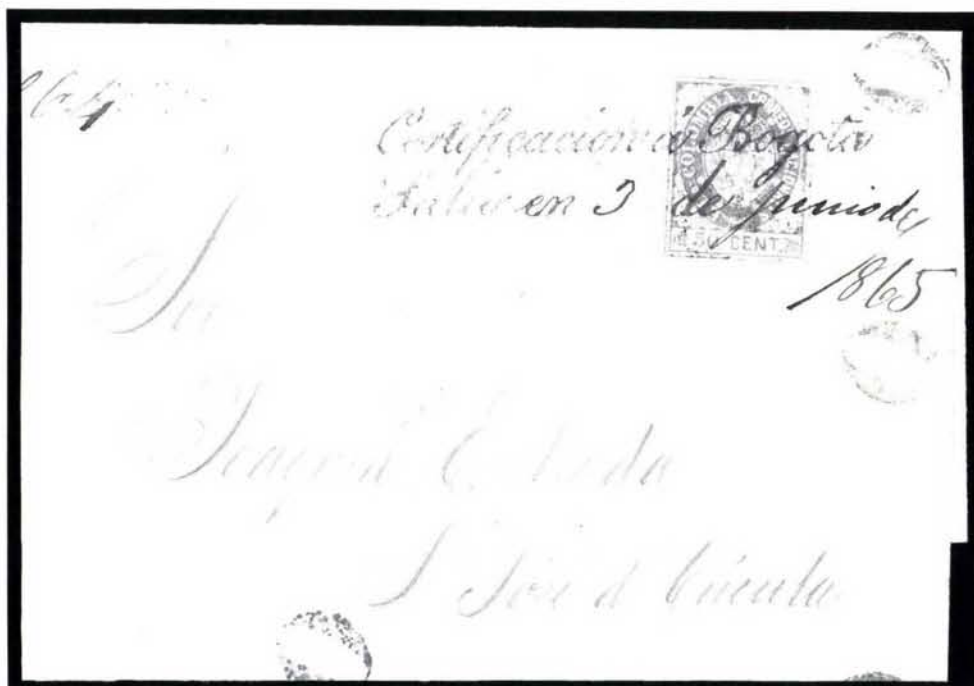
- 247 **1865, 20c Blue, R. Diagonal Half Used as 10c (39 var).** Tied by Handstamped "Ocaña Franca" Oval on Cover Front to Barranquilla, Fine, Very Rare & Attractive, ex-Newbury ..... (Photo) **E.XII**



- 248 ☒ **1865, 20c-1p Arms (39, 41, 42).** Mostly Ample to Large Margins tied by Blue "Medellin Franca" Ovals on Wrapper to Rionegro, Rare & Attractive, **Only Recorded Usage of the 1 Peso**, ex-Wickersham..... (Photo) **E.XVI**

**NOTE: A 10% Buyers Commission will be added to all successful bids.**

- 249 田 **1865, 50c Green (40), Partial Reconstruction of Sheet, 34 Stamps, Comprising Block of 20 (10x2), Horiz. Strip of 10 & Block of 4, Ample to Large Margins (except two), Purple ms. Magangué cancels, some creases & faults, inevitable in a lot of this size, o/w F-VF, Rare & Handsome ..... (Photo)** E.XIV



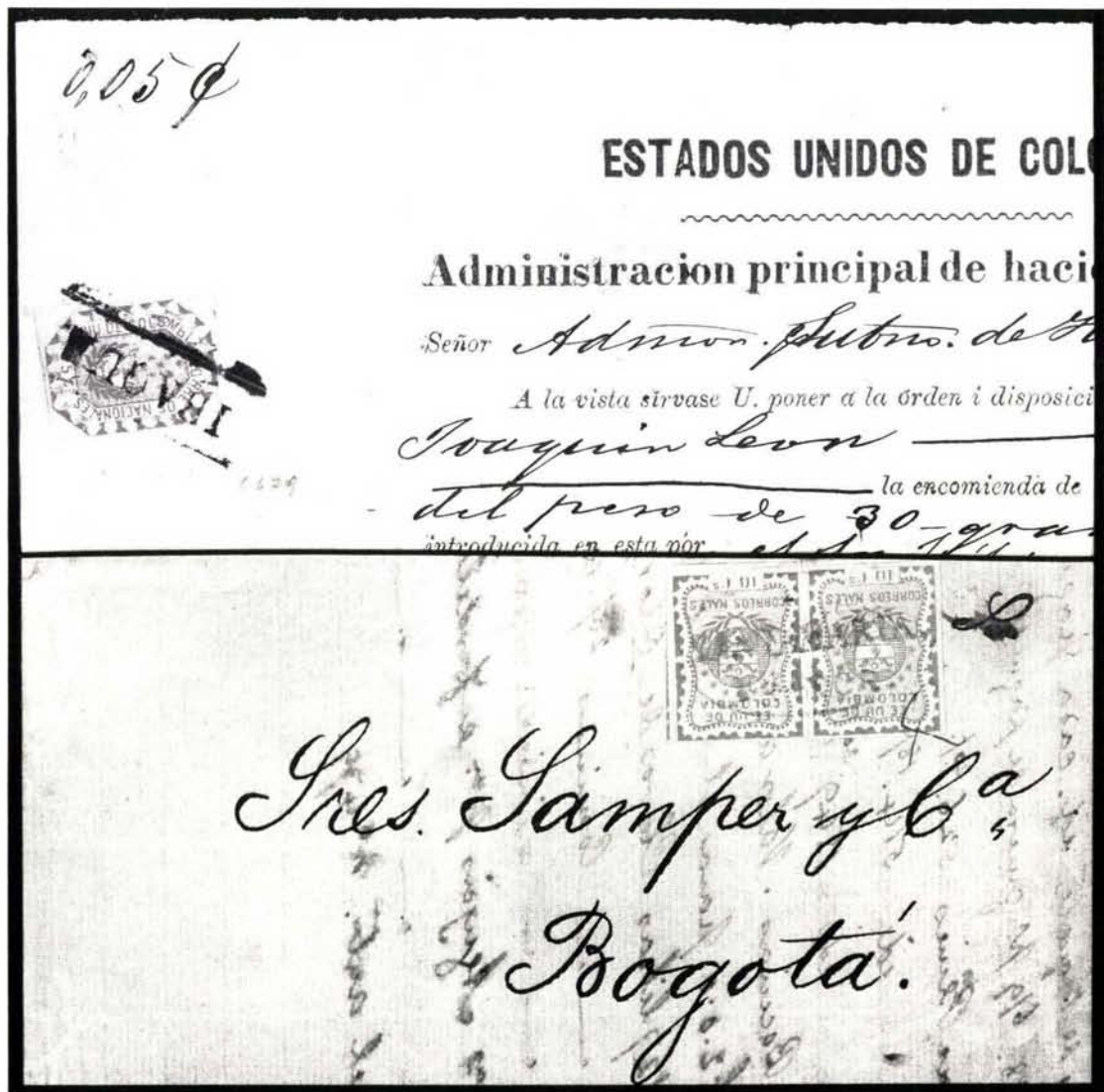
- 250 田 **1865, 50c Green (40), Large Even Margins, Tied by Red "Certificacion a Bogota Salio en 3 de Junio de 1865" cancel (date in ms.) on Folded Cover to San Jose de Circuta, Red "O"s, Red Registration Seal Backstamps, Fresh, L. flap missing, VF, Rare & Attractive Cover, One of the Two Recorded Cover Bearing the 50c Large Figures ..... (Photo)** E.XV
- 251 ★田 **1865, 50 Green, Small Figures (41). B. Margin Block of 24 (4x6), Large Margins, o.g., Many Mint n.h., some creases & faults, VF Appearance, Handsome Multiple of Great Rarity, ex-Wickersham ..... (Photo)** E.XIV

- 252 **1865-68, 5c-50c Arms (41, 45, 47, 54b). Ample to Huge Margins, on piece tied by Pasta pmks, F-VF, Rare Mixed Issue Franking ..... (Photo)** E.XI
- 253 ★ **1865, 1p Vermilion (42). Horiz. Strip of Four, Large Margins to touching on one side, o.g., h.r., Fresh, Rich Color, one with light crease, o/w F-VF, Handsome Multiple ..... (Photo)** 400.00 +
- 254 **1865, 1p Vermilion (42). Horiz. Strip of Four, Ample to Large Margins, Blue "Medellin Franca" Oval pmks, Fresh, Rich Color, one with light crease, another with pinhole, o/w F-VF, Attractive Multiple ..... (Photo)** 60.00 +
- 255 田 **1865, 1p Vermilion (42). Block, Ample to Large Margins, Blue "Medellin Franca" in Oval pmks., Fresh, Rich Color, VF, Handsome Multiple ..... (Photo)** 60.00 +



- 256 田 **1865, 1p Rose Red (42a). Block**, just touching to Large Margins, Blue "Medellin Franca" Oval pmks, Fresh, Rich Color, Imm scissors cut in margin between two stamps, T.R. stamp small thin spot, o/w F-VF, Scarce..... (Photo) 60.00 +
- 257 田 **1865, 1p Rose Red (42a). Block**, Ample to Large Margins, Blue "Medellin Franca" Oval pmks, Fresh, three with crease and/or thin spot, o/w F-VF Scarce..... 60.00 +

# 1866 ISSUE



258  
263

258

**1866, 5c Orange (45). Pinhole & small internal tear**, Tied by Handstamped Str. Line Ibaque cancel on 1870 Payment Document, slight age discoloration & filing folds, Rare ..... (Photo)

E.XV

259	✉	<b>1866, 10c Lilac (46).</b> Ample to Large Margins, Tied by Honda Oval on 1868 Folded Cover to Bogota, VF, Scarce, ex-Newbury..... <b>(Photo)</b>	<b>E.XIII</b>
260	✉	<b>1866, 10c Lilac (46).</b> Three Ample to Large Margins, just in at T., negligible corner crease, Tied by Green "Cartagena Franca." Oval on Fresh 1868 Folded Cover to Ambalema, "1" in Blue Rate Marking, lacks T. flap, VF. Scarce ex-Wickersham.. ..... <b>(Photo)</b>	<b>E.XIII</b>
261	✉	<b>1866, 10c Lilac (46).</b> Ample to Immense Margins, Tied by Town pmk. & ms. "10" due Marking on 1868 Cover to <b>France</b> , via Ste. Marthe, Paris a Mairseilles & Paris Backstamps, without flap, cover edge tears, Rare..... <b>(Photo)</b>	<b>E.XIII</b>
262	✉	<b>1866, 10c Lilac (46).</b> Ample to Large Margins, Tied by Hand-stamped Bogota cancel on 1867 Cover to Paris, French Transit, Paris Backstamps, ms. "10" Rate Marking, tape stain (not affecting stamp or markings), Rare..... <b>(Photo)</b>	<b>E.XIII</b>
263	✉	<b>1866, 10c Lilac (46). Horiz. Pair,</b> Ample to Huge Margins tied by Blue "Santa Marta Franca" Oval & ms. Numeral on Folded Invoice to Bogota, bit of cover missing (not affecting Stamps or Markings), Very Rare, ex-Newbury ..... <b>(Photo On Previous Page)</b>	<b>E.XV</b>

END OF SALE — THANK YOU

# **IS YOUR COLLECTION FOR SALE?**

**AMERICA'S PREMIER AUCTION HOUSE  
OFFERS**

**IMMEDIATE AND MAXIMUM  
CASH ADVANCES**

At no charge our auction house will immediately advance interest-free cash to you. *The only charge to you is a 10% commission on what your collection realizes at auction.* The buyer also pays a 10% buyers premium.

Advances available on request on collection consignments valued in excess of \$2,500.

**AMERICA'S PREMIER AUCTION HOUSE  
FIRST IN PRESTIGE  
FIRST IN DOLLAR VOLUME**

**OUR AUCTIONS REALIZED \$12,024,432 IN 1983**

**CALL OR WRITE**

**ROBERT A. SIEGEL  
AUCTION GALLERIES, INC.**

160 E. 56th Street  
New York, N.Y. 10022

Tel.: (212) 753-6421  
Established 54 years





ano de 1861

Sres Castellanos i C<sup>as</sup>  
Ambalema



12 R

Abd. G<sup>o</sup> Viente Petrona  
Firma y Sello  
Impreso

Madrid

## THE GORDON N. JOHN COLLECTION OF CLASSIC COLOMBIA

INDIVIDUAL REALIZATIONS ARE HAMMER PRICES. GROSS REALIZATION  
INCLUDES 10% BUYERS PREMIUM.

1	625	54	75	107	190	163	12,500	219	290
2	475	55	70	108	190	164	1000	220	250
3	375	56	90	109	115	165	1250	221	75
4	400	57	115	110	125	166	950	222	75
5	425	58	57½	111	200	167	450	223	180
6	240	59	60	112	450	168	270	224	62½
7	210	60	65	113	52½	169	675	225	260
8	200	61	85	114	3750	170	47½	226	60
9	210	62	90	115	210	171	110	227	70
10	210	63	85	116	170	172	240	228	200
11	145	64	67½	117	150	173	1250	229	160
12	85	65	85	118	32½	174	2900	230	425
13	85	66	45	119	50	175	170	231	8500
14	75	67	62½	120	62½	176	125	232	190
15	80	68	55	121	65	177	100	233	400
16	475	69	60	122	85	178	1050	234	115
17	4500	70	50	123	55	179	115	235	160
18	130	71	35	124	42½	180	900	236	850
19	150	72	170	125	42½	181	3000	237	700
20	60	73	425	126	1850	182	1600	238	270
21	260	74	1900	127	7000	183	2700	239	400
22	1250	75	7750	128	90	184	6250	240	675
23	29,000	76	220	129	160	185	525	241	325
24	55	77	60	130	4750	186	425	242	2100
25	57½	78	57½	131	3750	187	25,000	243	725
26	45	79	80	132	240	188	850	244	180
27	35	80	350	133	220	189	230	245	575
28	32½	81	375	134	260	190	140	246	475
29	2200	82	210	135	210	191	700	247	300
30	100	83	210	136	190	192	1250	248	4250
31	160	84	425	137	150	193	1450	249	840
32	575	85	1550	138	60	194	6000	250	1550
33	65	86	100	139	100	195	725	251	1050
34	70	87	125	140	1050	196	325	252	350
35	115	88	95	141	3500	197	220	253	525
36	50	89	75	142	10,500	198	2600	254	50
37	42½	90	180	143	160	199	400	255	57½
38	42½	91	85	144	160	200	1550	256	40
39	230	92	110	145	115	201	4750	257	40
40	60	93	65	146	4750	202	625	258	1250
41	90	94	75	147	135	203	105	259	625
42	85	95	50	148	62½	204	60	260	500
43	475	96	67½	149	60	205	325	261	400
44	375	97	52½	150	65	206	625	262	450
45	325	98	52½	151	190	207	135	263	1250
46	375	99	475	152	1550	208	5250	END OF SALE THANK YOU	
47	650	100	250	153	6500	209	2300		
48	7750	101	13,000	154	400	210	105		
49	600	102	575	155	375	211	2600	GROSS REALIZATION: \$320,856.25	
50	425	103	140	156	325	212	30		
51	100	104	575	157	325	213	850		
52	70	105	1000	158	115	214	2100		
53	67½	106	1050	159	90	215	625		
				160	170	216	6250		
				161	280	217	110		
				162	2600	218	5750		