

by the Steam Packet *Hibernia* from
Boston via Halifax 1st April

James M. Buckanon
10 Cents.

PAID

10

B. Webster Esq. f.
Theatre Royal
Haymarket
London

Wm Parsons Esq
Huntsville

James M. Buchanan

10

F A I D

Ms. Isabella N. Nisbet
Care of John C. Robinson Esq

1872

10

Mrs Mary C Simpson
Newburgport

10

1. 7. Tyler & Rutherglen

BELL & COMPANY
INCORPORATED
MANUFACTURING CHEMISTS
ORANGEBURG, NEW YORK
U. S. A.

ORANGEBURG N.Y.
SEP 20
5 PM
1911

George Rivington

USA
PA 10 ID
UNITED STATES

Fridge
Lemuel
Ua

No 111 Mr. John D. Pitts
Co. D. 4. Regiment Ala. Inf.
42 Sente F. Near Richmond.
Virginia.

THE ISLEHAM COLLECTION
OF
UNITED STATES STAMPS

100

A large, stylized red number '5' on a parchment background. The number is written in a thick, blocky script with a slight curve at the top and a small loop at the bottom. The parchment is aged and yellowed, with some staining and a rough texture. The number is the central focus of the page.

Nathan Parkins
Parkins's Mills
near Winchester
Va
To Edw. S. Leadbeater

A circular red ink postmark from KAN, dated JUN 25, 1964. The text "KAN" is at the top, "JUN 25" is in the center, and "1964" is at the bottom. There are some handwritten marks and a checkmark to the right of the stamp.

AMERIPEX
• • • '86 • • •

OFFICIAL AMERIPEX PUBLIC AUCTION

Robert A. Siegel
AUCTION GALLERIES, INC.

160 EAST 56th STREET
NEW YORK CITY, NY 10022

662nd SALE

THE ISLEHAM COLLECTION OF UNITED STATES

19TH AND 20TH CENTURY STAMPS

Featuring

Fabulous Postmasters' Provisional Rarities, Rare "August" Issues,
Five of the Six Major 1867 Issue Grill Rarities,
Complete Special Printings, The Seven Postage and
Air Mail Inverts, Rare Revenues including Virtually Complete
Inverted Medallions and Important Confederate States

SOLD BY ORDER OF THE OWNER

AT PUBLIC AUCTION

SUNDAY, MAY 25, 1986 at 7:00 P.M.

IN THE "UNITED A/B" ROOM OF THE HYATT REGENCY O'HARE HOTEL

LOTS ON VIEW

NEW YORK

Lots will be shown at our New York offices on Monday, May 19 between the hours of 9:30 A.M. and 2:30 P.M.

CHICAGO

Lots will be shown at our Super Booth "B" on Thursday, May 22 through Saturday, May 24 between the hours of 10:00 A.M. and 6:00 P.M. each day. On Sunday, May 25 lots will be shown at the Hyatt Regency O'Hare Hotel in the "Eastern B" Room between the hours of 10:00 A.M. and 5:00 P.M.

ESTIMATES

Our sales offer many covers, cancellations, varieties and other items for which there is no catalogue value or where catalogue value does not reflect the actual value. In order to assist our clients, we are placing a fair net valuation on such lots as a guide to our bidders. The chart below will be used. For example, E. IV means that our estimated net value on the lot is \$30.00 to \$40.00. Lots may actually realize more or less than our estimates, which are under no circumstances to be considered reserves but merely a guide to bidding.

E. II	\$10.00 to \$20.00	E. XI	\$250.00 to \$350.00
E. III	\$20.00 to \$30.00	E. XII	\$350.00 to \$500.00
E. IV	\$30.00 to \$40.00	E. XIII	\$500.00 to \$750.00
E. V	\$40.00 to \$50.00	E. XIV	\$750.00 to \$1000.00
E. VI	\$50.00 to \$75.00	E. XV	\$1000.00 to \$2000.00
E. VII	\$75.00 to \$100.00	E. XVI	\$2000.00 to \$5000.00
E. VIII	\$100.00 to \$150.00	E. XVII	\$5000.00 to \$10,000.00
E. IX	\$150.00 to \$200.00	E. XVIII	\$10,000.00 to \$20,000.00
E. X	\$200.00 to \$250.00	E. XIX	over \$20,000.00

Robert A. Siegel
AUCTION GALLERIES, INC.

**160 E. 56th Street
New York, N.Y. 10022**

Tel.: (212) 753-6421
Established 56 years

CONDITIONS OF SALE

1. On all lots sold a commission of 10% on the hammer price is payable by the buyer.
2. The terms of sale are strictly cash on delivery to the highest bidder unless special arrangements have been made prior to the sale. The fact that an item is placed on extension (submitted to an expertising committee for certification) does not relieve the successful bidder from this condition of sale.
3. All bids are per lot as numbered in the catalogue unless otherwise announced by the auctioneer at the time of sale. The right is reserved to group two or more lots; to withdraw any lot or lots from the sale, or to act on behalf of the seller. The Galleries will bid on behalf of clients, but will not be responsible for any errors in the execution of bidding instructions. The auctioneer shall regulate the bidding and in the event of any dispute his decision shall be final.
4. Any lot, the description of which is incorrect, is returnable, but only within 14 days of receipt. All disputed lots must be returned intact as received. **The following lots may not be returned for any reason whatsoever: Lots containing ten or more stamps; Lots from buyers who have had the opportunity to examine them before the sale; Lots described as having defects or faults may not be returned because of any faults. No illustrated lots may be returned because of centering, margins or other factors shown in the illustrations.**
5. Successful bidders, unless they are known to us or supply acceptable references are expected to make payment in full before the lots are delivered. Mail bidders will be notified of the amounts of their purchases. All mail bidders who have established credit with us must make payment within three days after receipt. We reserve the right in our sole and absolute discretion to demand cash payment at the time a lot is knocked down to any bidder who has not previously established credit with us or whose account is in arrears. In the event any buyer refuses to pay cash for any lot at the time it is knocked down to him, the auctioneer reserves the right to re-offer the lot immediately for sale to the highest bidder. Sales tax will be added to purchases where applicable.
6. If the purchase price has not been paid within the time limit, nor lots taken up within seven days from date of sale they must be resold and any loss arising from such sale will be charged to the defaulter. Any account more than thirty days in arrears is subject to a late payment charge of 1½% per month so long as the account remains in arrears. If the auctioneer, in his discretion, should institute any action to secure payment of a delinquent account the defaulting purchaser shall pay all expenses incurred by the auctioneer and such charges will be added to the amount owed.
7. All lots are sold as genuine but should any lot be proved otherwise by written opinion of any competent, responsible authority acceptable to us, immediate refund of the full purchase price will be made, provided that such claim is made in writing within 14 days from date of sale. If claim is not made within this period, no lots are returnable for any reason at any time. So long as we are notified within the 14 day period that an opinion is being sought and **the material is submitted to an acceptable authority within that period** the matter will remain open until such opinion is rendered. **We will not be responsible for any charges incurred by the buyer for expertization fees and costs unless the opinion states the item is not genuine, in which case we will pay actual costs up to a maximum of \$50.00.** In the event an item is proved "not as described" it is returnable for full refund, and the buyer will be paid interest (at the prevailing Treasury Bill Rate) for the time his funds have been on deposit with us during the extension period.
8. Until paid for in full, all lots remain the property of Robert A. Siegel Auction Galleries, Inc. on behalf of the seller.
9. All forwarding charges will be added to the purchase price. The mode of shipment shall be at our option unless we are given specific instructions.
10. Lots may be sent for inspection to buyers known to us upon written application. All such lots must be returned to us by registered mail, adequately insured and within 24 hours after receipt. The applicant assumes all responsibility and will provide insurance against all risks from time of receipt until they are actually received back by us, and is to pay all expenses of postage and insurance. **No lots can be sent for inspection within ten days from date of local viewing. Large lots and collections cannot be sent for inspection.**
11. Agents are responsible for all purchases made on behalf of their clients unless other arrangements are made prior to the sale.
12. The placing of a bid shall constitute acceptance of the foregoing conditions of sale.

ROBERT A. SIEGEL
MALCOLM SIEGEL
WALTER J. MADER, Licensed Auctioneers

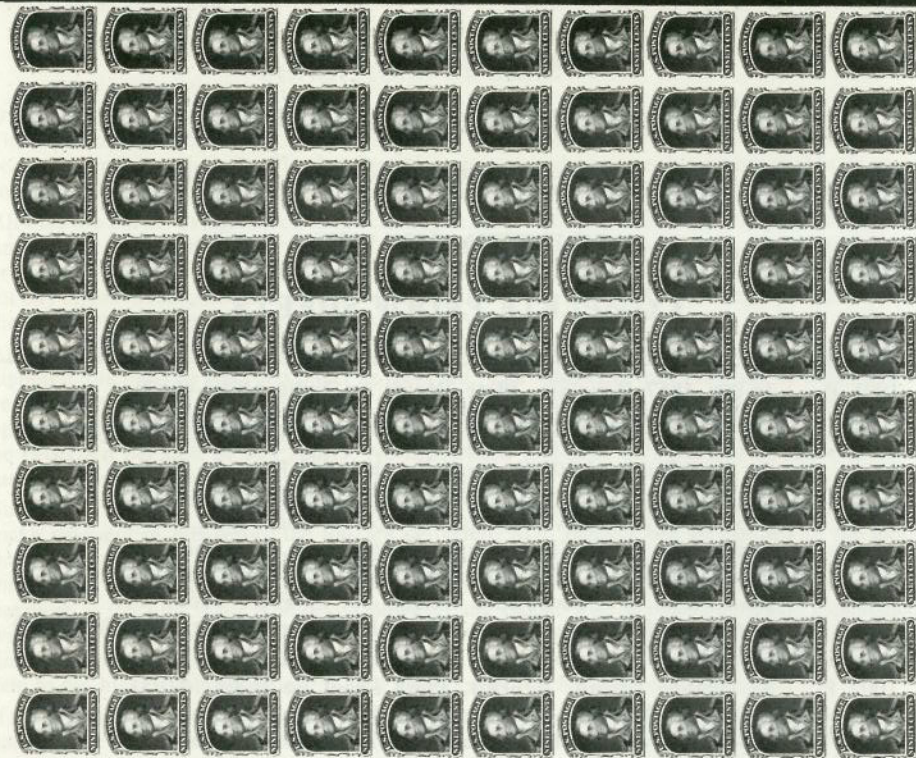
PUBLIC AUCTION

SUNDAY, MAY 25, 1986 at 7:00 P.M.

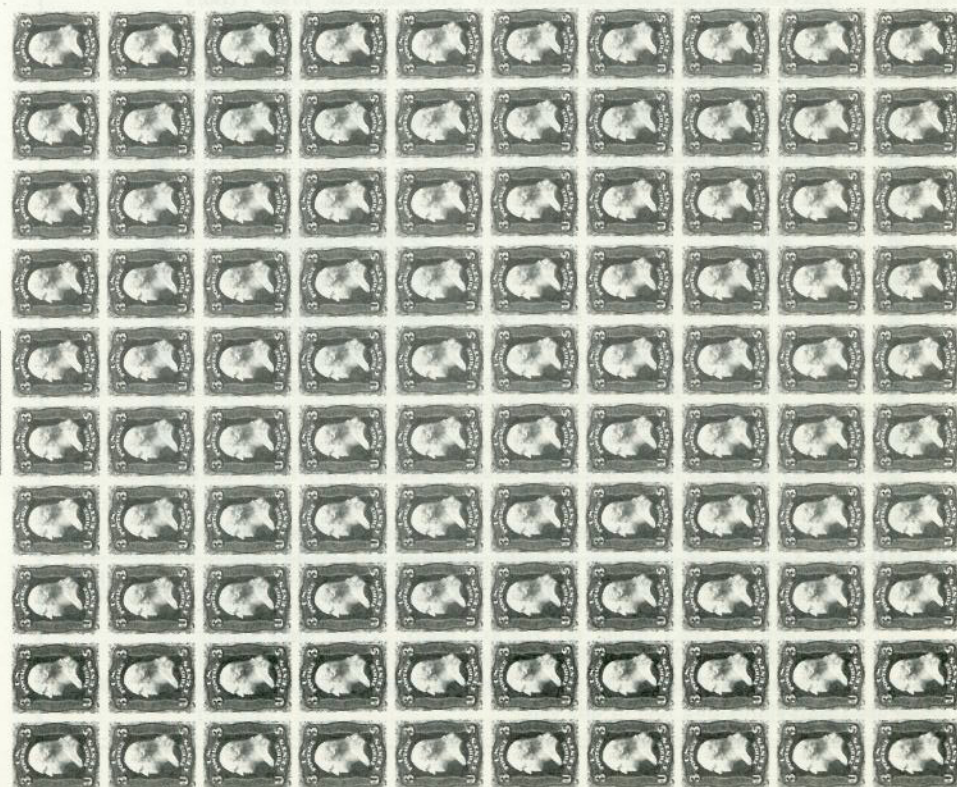
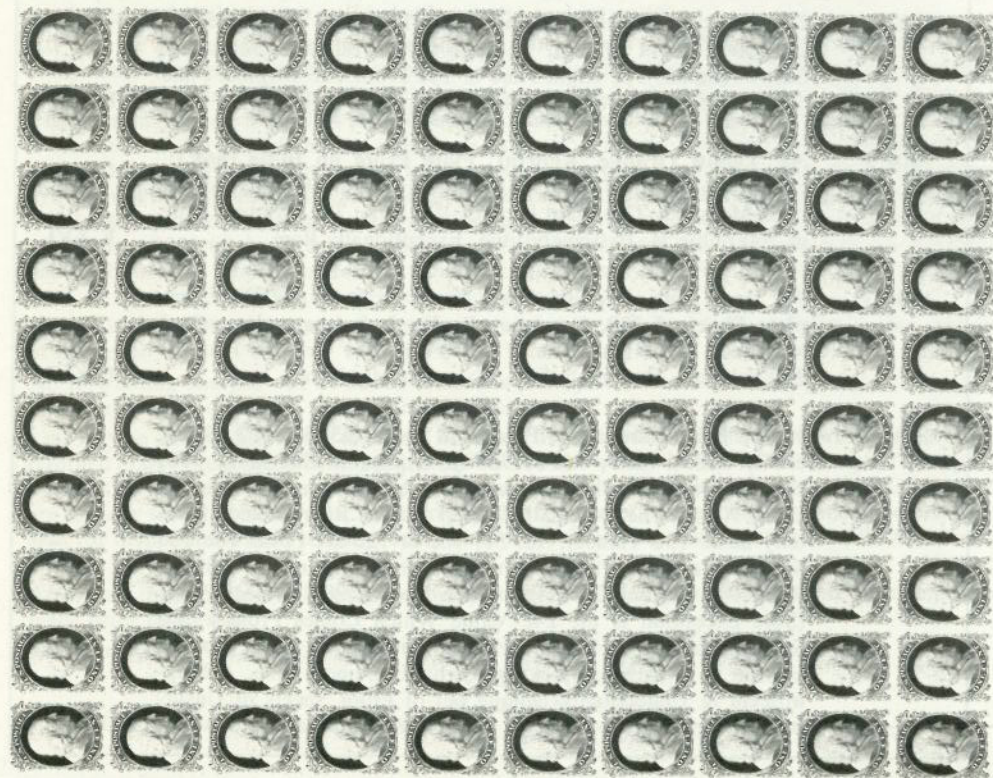
UNITED STATES

COMPLETE PROOF SHEETS

- | | | |
|--------|---|-------|
| 1001 P | 1c-90c 1857 Reprints, Plate Proofs on India (40P3-47P3). Complete Sheets of 100, Extraordinarily Fresh & Immaculate, All Mounted on Original Card, the 1c, 3c, 10c & 12c are From the New Plates of 100 Prepared For the 1857 Reprints, While the 5c, 24c, 30c & 90c are From the Original Plates of 200 Subjects & All Show Portions or Traces of The Center Lines, additionally the 5c Shows the Complete First Line of the Toppan, Carpenter & Co. Imprint at Right, Extremely Fine, A Magnificent & Undoubtedly Unique Set of Proof Sheets of Unsurpassed Rarity..... (Photo Ex) Estimated Net Value 30,000.00 | |
| 1002 P | 5c Orange Brown, Reprint, Plate Proof on India (42P3). Complete Sheet of 100, Exceptionally Fresh & Immaculate, Card Mounted, The Left Pane of 100 From The Original Plate of 200 Subjects Showing Trace of Left Imprint, Extremely Fine, Exceptionally Rare..... | E.XVI |
| 1003 P | 24c Blackish Violet, Reprint, Plate Proof on India (45P3). Complete Sheet of 100, Exceptionally Fresh & Immaculate, Card Mounted, The Right Pane of 100 From The Original Plate of 200 Subjects, Extremely Fine, Exceptionally Rare..... | E.XVI |
| 1004 P | 30c Yellow Orange, Reprint, Plate Proof on India (46P3). Complete Sheet of 100, Exceptionally Fresh & Immaculate, Card Mounted, The Right Pane of 100 From The Original Plate of 200 Subjects, Extremely Fine, Exceptionally Rare..... | E.XVI |
| 1005 P | 90c Deep Blue, Reprint, Plate Proof on India (47P3). Complete Sheet of 100, Exceptionally Fresh & Immaculate, Card Mounted, The Right Pane of 100 From The Original Plate of 200 Subjects, Extremely Fine, Exceptionally Rare | E.XVI |
| 1006 P | 1c-90c 1861 Issue, Plate Proofs on India (63P3, 65P3, 68P3, 69P3, 71P3, 72P3, 76P3, 78P3). Complete Sheets of 100, Extraordinarily Fresh & Immaculate, All Mounted on Original Card, All of The Originally Issued Values Represented (lacks only 2c & 15c Values), 1c, 5c, 10c & 12c are From The 100 Subject Re-Issue Plates with Additional Imprints at Left & Right Not Present On Most of The Normal 200 Subject Plates (Sole Exception is the 24c Value Which Comes From a 200 Subject Plate, Yet Has Imprints at Sides), All Have Bottom Imprint & Plate No. Blocks of Eight, Extremely Fine, A Magnificent & Undoubtedly Unique Set of Proof Sheets of Unsurpassed Rarity (Photo Ex) Estimated Net Value 25,000.00 | |



1001 EX



1006 EX

ENGRAVED BY THE CITY OF NEW YORK.

No. 18

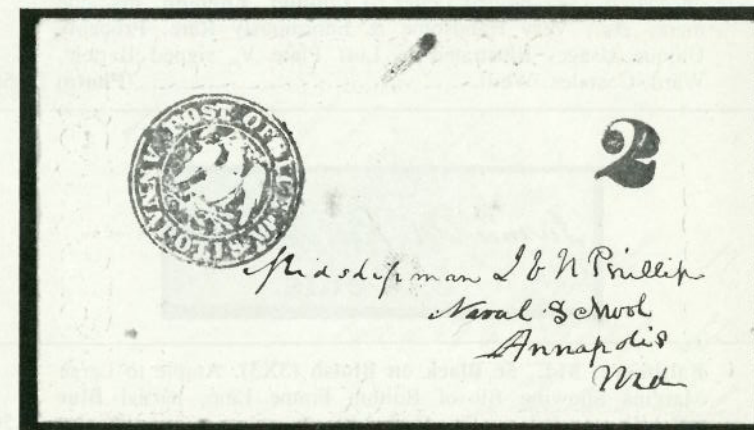
ENGRAVED BY THE CITY OF NEW YORK.

No. 14

POSTMASTERS' PROVISIONALS



- 1012 ☐ Alexandria, Va., 5c Black on Buff, Type II (1X1a). Cut to shape as always, affixed with red wax wafer on Aug. 1846. Folded Letter to Winchester Va., Red Alexandria pmk., matching "Paid" & Boxed "5", negligible cover aging spots mentioned only for the sake of accuracy, An Exquisite Provisional Cover Rarity, with P.F. Certificate..... (Photo) 30,000.00



- 1013 ☐ Annapolis, Md., 2c Blue Handstamp (2XU1 var). Beautiful Bold Annapolis Postmaster Handstamp, Matching "2" Handstamp Rate Mark, Used Locally on small Lady's Embossed Envelope Addressed to a Midshipman at the Naval School (Annapolis), Very Fine & Exceptionally Handsome, with P.F. Certificate..... (Photo) 1,500.00

- 1007 P 3c Rose, Plate Proof on India (65P3). Complete Sheet of 100, Exceptionally Fresh & Immaculate, Card Mounted, The Left Pane of 100 From The Original Plate of 200 Subjects Which Includes Bottom Imprint & Plate No. 44 Block of Eight & Top Imprint Block, Extremely Fine, Exceptionally Rare E.XVII
- 1008 P 30c Orange, Plate Proof on India (71P3). Complete Sheet of 100, Exceptionally Fresh & Immaculate, Card Mounted, The Left Pane of 100 From The Original Plate of 200 Subjects Which Includes Bottom Imprint & Plate No. 7 Block of Eight, extensive natural ink smears in bottom selvedge barely clear of Imprint & Plate No. Block (can be trimmed away leaving a small but clear margin below Imprint & Plate No.), Extremely Fine, Exceptionally Rare..... E.XVI
- 1009 P 90c Blue, Plate Proof on India (72P3). Complete Sheet of 100, Exceptionally Fresh & Immaculate, Card Mounted, The Right Pane of 100 From The Original Plate of 200 Subjects Which Includes Bottom Imprint & Plate No. 18 Block of Eight, Extremely Fine, Exceptionally Rare..... E.XVI
- 1010 P 24c Lilac, Plate Proof on India (78P3). Complete Sheet of 100, Exceptionally Fresh & Immaculate, Card Mounted, The Right Pane of 100 From The Original Plate of 200 Subjects Which Includes Bottom Imprint & Plate No. 6 Block of Eight, Top & Right Imprint Blocks, Extremely Fine, Exceptionally Rare..... E.XVI
- 1011 P PROOFS, 1875-93, Collection of 210 Different Plate Proofs on Card, in a Stockbook, Most in Complete Sets Highlights include Nos. 3P4, 4P4, 40P4-47P4, 1861-66 Issue, 1869 Pictorials, Various Bank Notes to 90c, 1890 Issue, Columbians, Special Deliveries, LO1P4, LO2P4, J22P4-J28P4, Newspapers, Complete Officials includes \$2.00 to \$20.00 State, Very High Catalogue Value, Mixed Quality, Good-Very Fine E.XVI

DESCRIPTIONS

EXTREMELY FINE: The finest condition for noteworthy, outstanding stamps.

VERY FINE: (VF) In prime condition such as to satisfy the requirements of particular collectors.

FINE: (F) Perforations or margins do not touch design on issues after 1890 but in some cases may just touch in earlier issues. If used, fairly light cancellation.

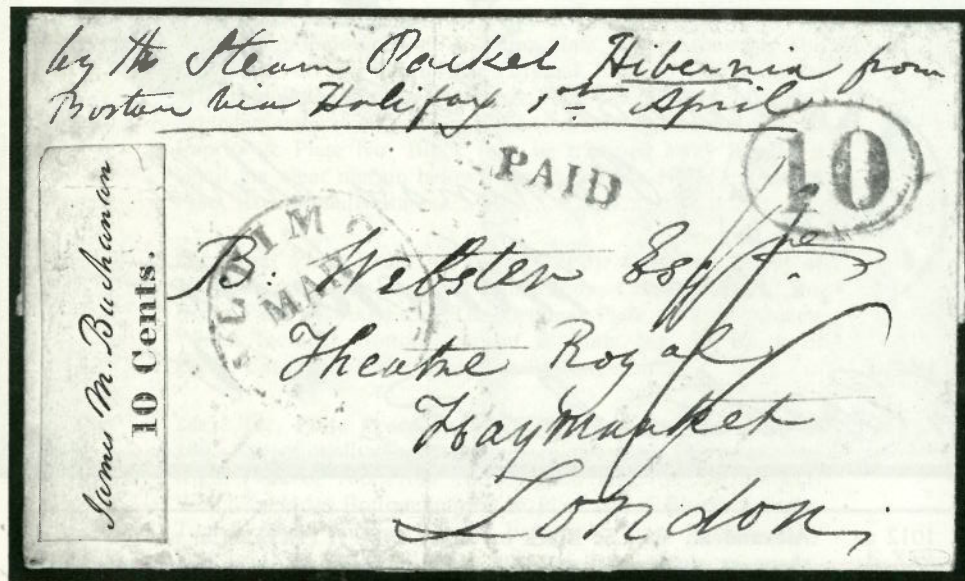
VERY GOOD: (VG) Generally nice appearance but margins or perforations may cut in slightly.

GOOD: (G) Average off-centering or fairly attractive with slight defects.

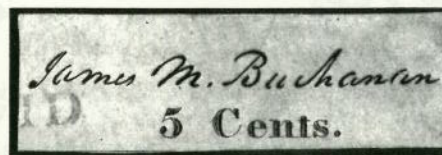
ORIGINAL GUM is not to be expected on stamps prior to 1890 unless so stated in the description.

MINT: With original gum and never hinged.

Unless otherwise noted the 1986 Scott United States Specialized Catalogue has been used for cataloguing lots in this sale.



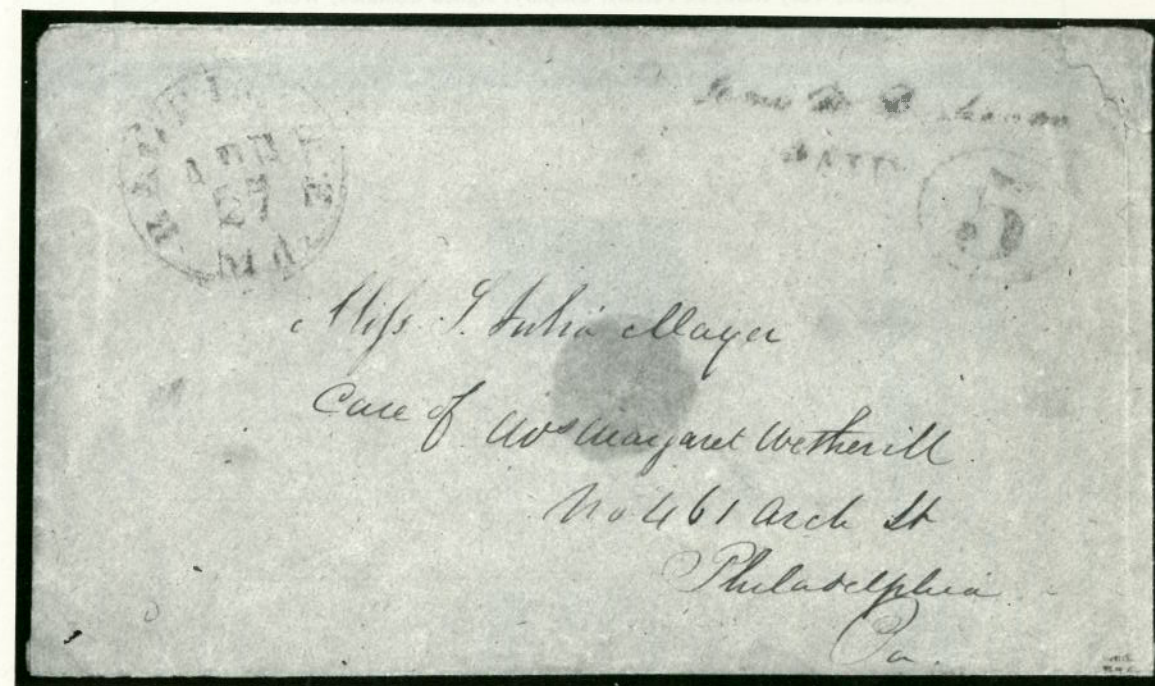
- 1014 ☒ **Baltimore, Md., 10c Black on White (3X2).** Parts of Dividing Lines on Three Sides, filing crease & small tear at right, Blue Baltimore, Md. pmk., matching "Paid" & "10" in Oval on March 1847 Folded Letter to **London, England**, ms. due mark, etc., Very Handsome & Enormously Rare, Probably Unique Usage, Illustrated in Luff Plate V, signed Bartels, Ward, Costales, Weill..... (Photo) 27,500.00



- 1015 **Baltimore, Md., 5c Black on Bluish (3X3).** Ample to Large Margins Showing Bit of Bottom Frame Line, partial Blue "Paid" cancel, Very Fine & Scarce..... (Photo) 3,500.00



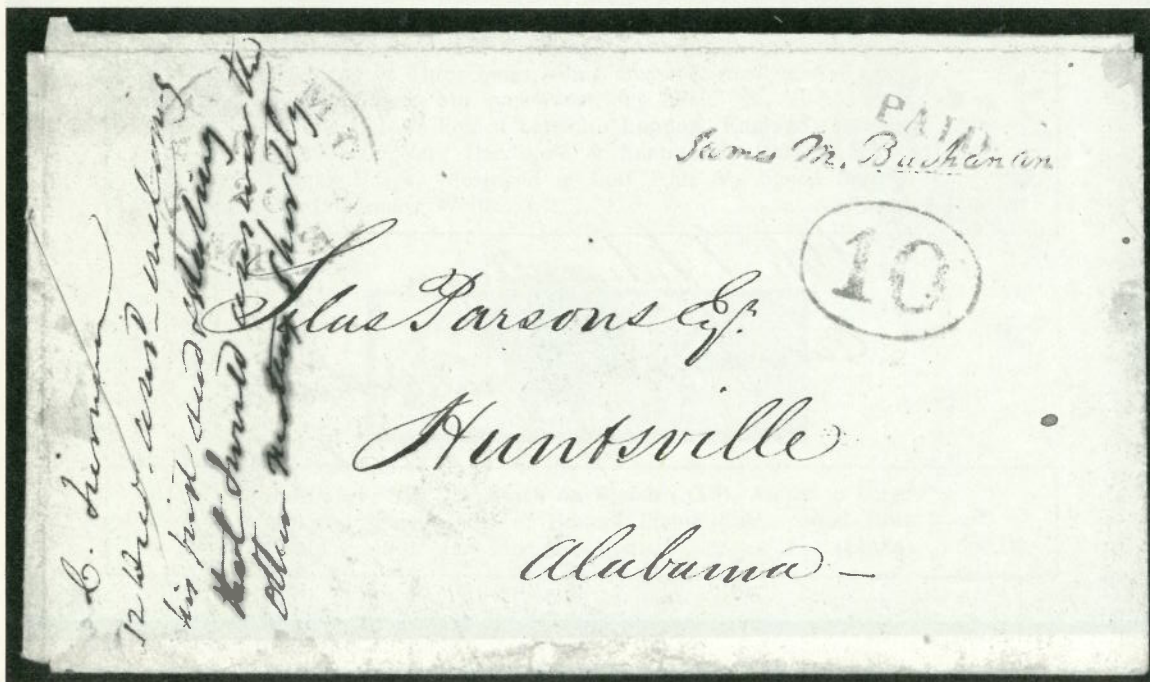
- 1016 ☒ **Baltimore, Md., 5c Blue on Buff, Blue Signature (3XU1).** Choice Strikes, Used to Phila., Pa., Remarkably Fresh except for sealing wax stain, Very Fine, Rare, signed Costales, Weill. (Photo) 3,000.00



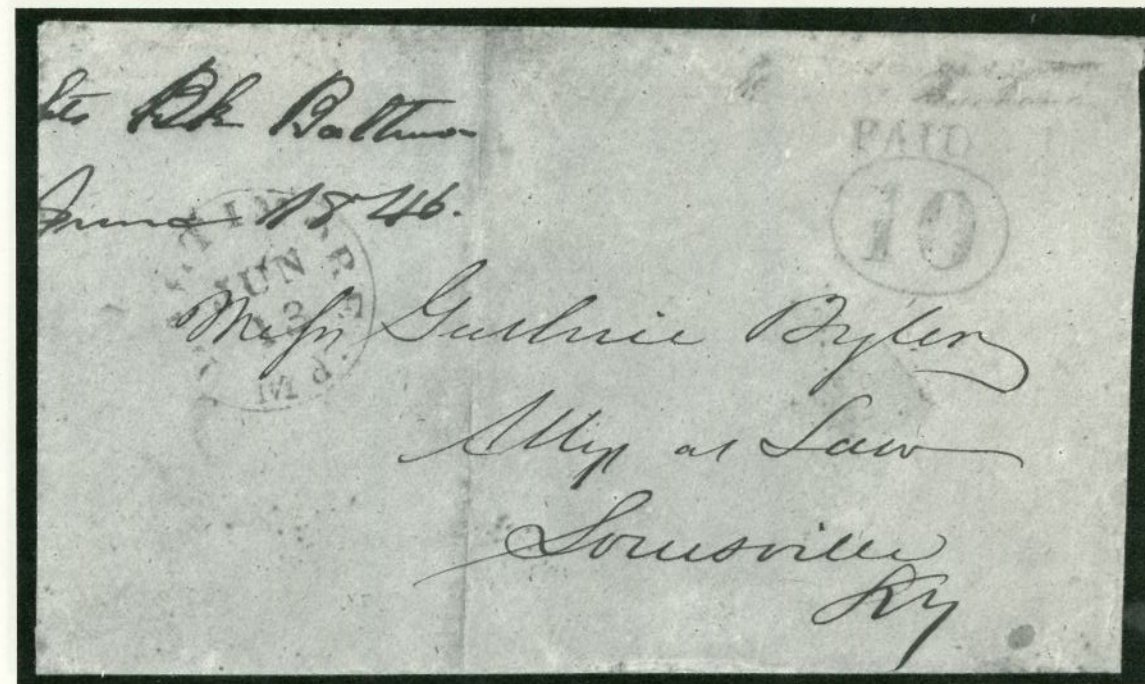
- 1017 ☒ **Baltimore, Md., 5c Red on Manila, Red Signature (3XU2).** Light mostly clear strikes, Blue Town pmk. to Phila., light sealing wax stain in center of cover, small cover corner mend at top right, A Very Rare Provisional from the Mayer Correspondence, ex-Worthington, signed Colson (no example in Caspary)..... (Photo) 3,500.00



1018 ☒ Baltimore, Md., 5c + 5c Blue & Red on Manila, Red Signature, Without Blue "Paid" (3XU2 var). Mostly clear strikes, Used to Reading, Pa., Exceptionally Fresh, Fine & Choice, Very Rare, ex-Ferrari, Caspary, signed Costales, Weill (Photo) 3,500.00



1019 ☒ Baltimore, Md., 10c Blue on White, Black Signature (3XU3). Blue "Paid", "10" in Oval & Town pmk. to Huntsville, Ala., ms. docketing at left, partly over pmk., Very Fine, with 1845 enclosure, Very Rare..... (Photo) 9,000.00



1020 ☒ Baltimore, Md., 10c Red on Manila, Red Signature (3XU4). Blue Town pmk., Used to Ky., cover opened & neatly refolded to improve appearance, file fold, Fine & Very Rare, Possibly Only Two Known, with P.F. Certificate (Photo) 10,000.00



1021 Brattleboro, Vt., 5c Black on Buff (5X1). Margins All Around except Clear to slightly in at right, faint Red "Paid" cancel, thinned, Scarce..... (Photo) 5,000.00

BIDDING INTERVALS			
BIDS	ADVANCE	BIDS	ADVANCE
Up to \$30.00	\$1.00	\$2,000.00 - \$3,000.00	\$100.00
\$32.50 - \$70.00	\$2.50	\$3,250.00 - \$7,250.00	\$250.00
\$70.00 - \$145.00	\$5.00	\$7,500.00 - \$14,500.00	\$500.00
\$150.00 - \$290.00	\$10.00	\$15,000.00 - \$29,000.00	\$1,000.00
\$300.00 - \$725.00	\$25.00	\$30,000.00 - \$75,000.00	\$2,500.00
\$750.00 - \$1,950.00	\$50.00		

Bids which do not conform to the above will be automatically reduced to the appropriate level.

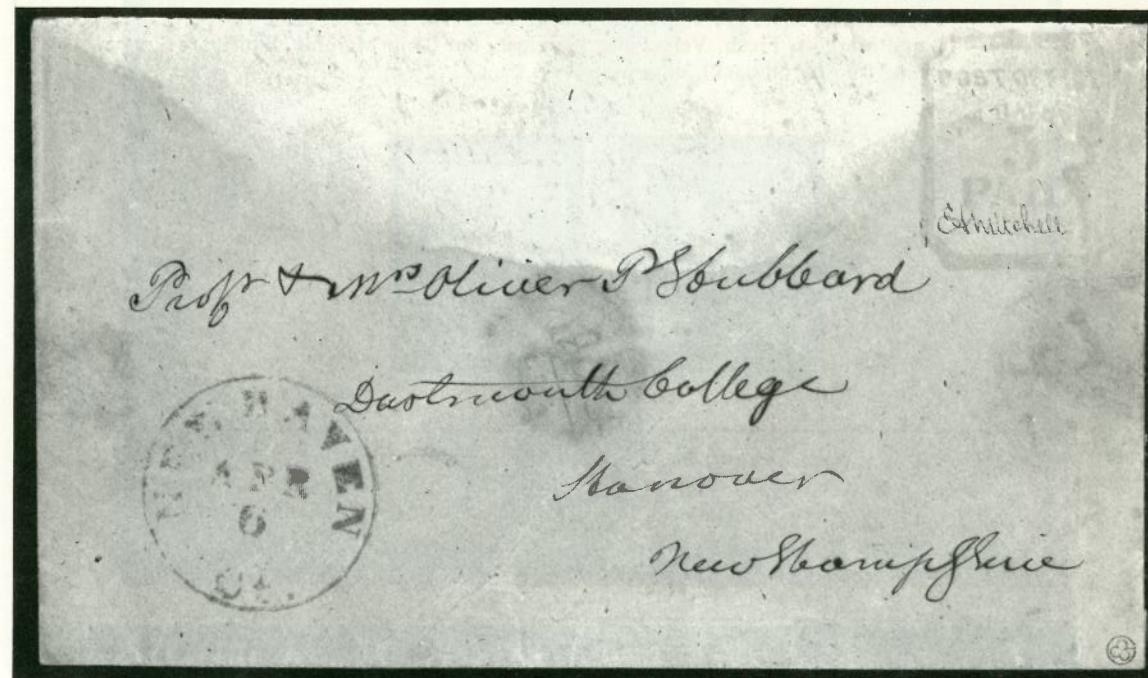


- 1022 **Millbury, Mass., 5c Black on Bluish (7X1).** Margins to slightly in, on piece tied by red line, Red "Millbury Ms." pmk., pressed-out crease, otherwise Fine, Very Rare, signed Colson..... (Photo) 17,500.00

ESTIMATES

Our sales offer many covers, cancellations, varieties and other items for which there is no catalogue value or where catalogue value does not reflect the actual value. In order to assist our clients, we are placing a fair net valuation on such lots as a guide to our bidders. The chart below will be used. For example, E. IV means that our estimated net value on the lot is \$30.00 to \$40.00. Lots may actually realize more or less than our estimates, which are under no circumstances to be considered reserves but merely a guide to bidding.

E. II	\$10.00 to \$20.00	E. XI	\$250.00 to \$350.00
E. III	\$20.00 to \$30.00	E. XII	\$350.00 to \$500.00
E. IV	\$30.00 to \$40.00	E. XIII	\$500.00 to \$750.00
E. V	\$40.00 to \$50.00	E. XIV	\$750.00 to \$1000.00
E. VI	\$50.00 to \$75.00	E. XV	\$1000.00 to \$2000.00
E. VII	\$75.00 to \$100.00	E. XVI	\$2000.00 to \$5000.00
E. VIII	\$100.00 to \$150.00	E. XVII	\$5000.00 to \$10,000.00
E. IX	\$150.00 to \$200.00	E. XVIII	\$10,000.00 to \$20,000.00
E. X	\$200.00 to \$250.00	E. XIX	over \$20,000.00



- 1023 **New Haven, Conn., 5c Dull Blue on Buff (8XU3).** Blue Mitchell signature, characteristic faded impression, Red New Haven Ct. pmk., addressed to a Professor at Dartmouth College in N.H. **This is One of Two Known 8XU3's**, the other, we understand, also has a faded impression & according to an accompanying 1962 note from Eugene Costales, the "1 other copy" is "badly damaged and nobody knows where it is", ex-Ferrari, Hind & Caspary, with P.F. Certificate, An Enormous Rarity..... (Photo) 22,500.00

- 1024 **New York, N.Y., 5c Black (9X1).** Three Large to Huge Margins including Part Bottom Sheet Margin, Ample to Barely Clear at Right, ms. cancel, tiny corner crease at extreme bottom left well clear of design, otherwise Very Fine (Photo) 325.00



- 1025 **New York, N.Y., 5c Black on Blue Paper (9X1a).** Clear to Large Margins, Bold Red Square Gid cancel, Very Fine..... (Photo) 1,850.00

- 1026 ★ **Providence, R.I., 5c, 10c Gray Black (10X1, 10X2).** 5c Ample to Large Margins, Fresh, Very Fine; 10c close, but Clear Margins, faint toning (mostly on back), otherwise Fine

E.X

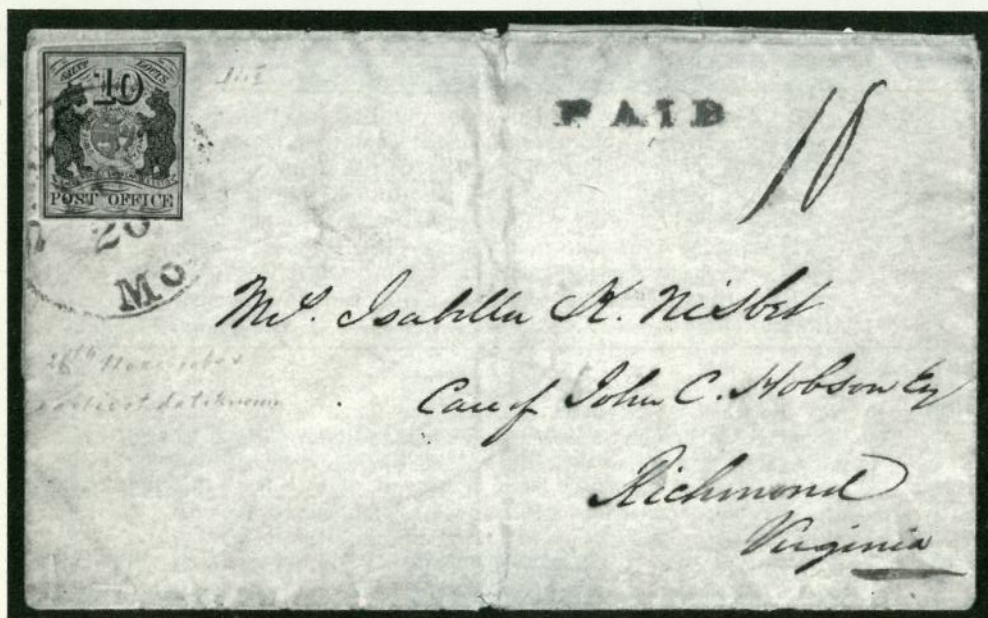


1027

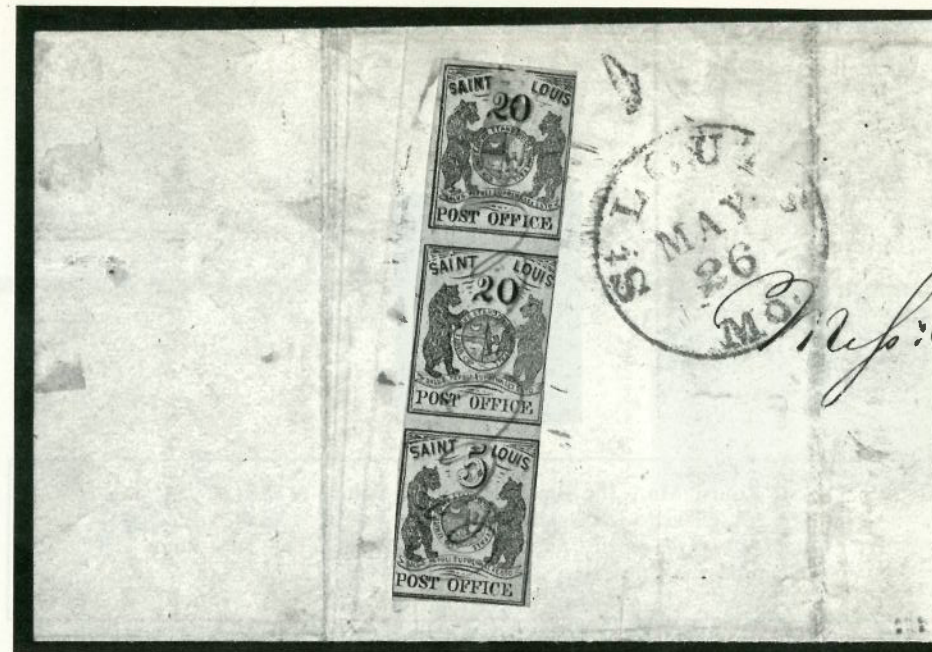


1029

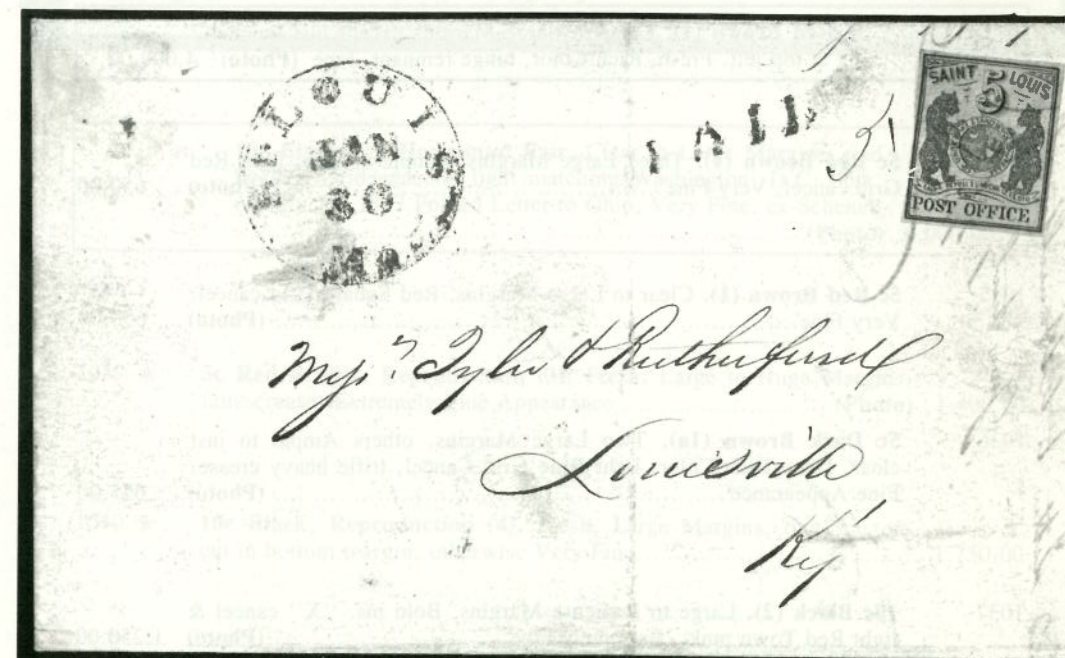
- 1027 **St. Louis, Mo., 5c Black on Greenish (11X1).** Ty. I, Pos. 1, Large to Huge Margins, Red Town pmk., light creases, Extremely Fine Appearance, Signed Colson, Scott Stamp & Coin. (Photo) 2,350.00



- 1028 ☒ **St. Louis, Mo., 10c Black on Greenish (11X2).** Ty. I, Pos. 2, Large Margins to touched, tied by Red St. Louis, Mo. pmk., matching Straight Line "Paid", ms. "10" rate on 1845 Folded Cover to Va., slight aging, Fine, Rare..... (Photo) 3,000.00
- 1029 ★ **St. Louis, Mo., 10c Black on Gray Lilac (11X5).** Ty. II, Pos. 4, Fresh, Large Margins, Very Fine, Signed Colson, Listed But Unpriced Unused (Catalogs 1750.00 Used) (Photo) —



- 1030 **St. Louis, Mo., 5c, 20c Black on Gray Lilac, Vertical Setenant Strip of Three, 20c + 20c + 5c (11X6 var).** Margins to trifle in, ms. cancels, on large part of folded cover, Red St. Louis, Mo. pmk., Fine, Unique (Photo) 40,000.00



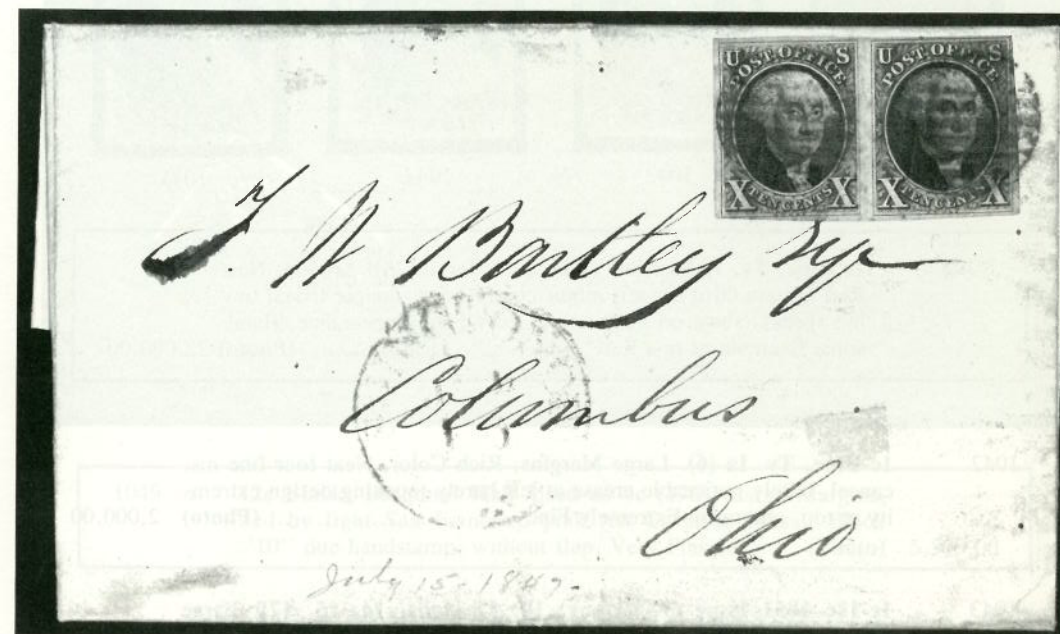
- 1031 ☒ **St. Louis, Mo., 5c Black on Bluish Pelure (11X7).** Ty. III, Pos. 5, Margins All Around, on Folded Cover to Ky., lightened ms. cancel, Red St. Louis, Mo. pmk., matching "Paid", usual filing fold, Fine, signed Colson, Costales, Weill. (Photo) 6,500.00



- 1032 **St. Louis, Mo., 10c Black on Bluish Pelure (11X8).** Ty. 1, Pos. 2, Clear to Large Margins, ms. pen stroke cancel, sealed tear & small repair, Fine Appearing Example of This Rare Stamp..... (Photo) 5,000.00

1847 ISSUE

- 1033 ★ **5c Red Brown (1).** Clear to Large Margins except just touching at top left, Fresh, Rich Color, hinge remnant, Fine (Photo) 4,000.00
- 1034 **5c Red Brown (1).** Three Large Margins, Ample at Top, light Red Grid cancel, Very Fine (Photo) 650.00
- 1035 **5c Red Brown (1).** Clear to Large Margins, Red Square Grid cancel, Very Fine..... (Photo) 650.00
- 1036 **5c Dark Brown (1a).** Two Large Margins, others Ample to just clear, Deep Rich Color, light **Blue** Grid Cancel, trifle heavy crease, Fine Appearance (Photo) 675.00
- 1037 **10c Black (2).** Large to Immense Margins, Bold ms. "X" cancel & light Red Town pmk., Extremely Fine (Photo) 1,250.00



- 1038 ✉ **10c Black (2). Horizontal Pair,** Clear to Large Margins, tied by Red Grid cancels, light matching Washington, D.C. pmk. on July 15, 1847 Folded Letter to Ohio, Very Fine, ex-Schenck (Photo) 6,000.00
- 1039 ★ **5c Red Brown, Reproduction (3).** Fresh, Large to Huge Margins, faint crease, Extremely Fine Appearance (Photo) 1,400.00
- 1040 ★ **10c Black, Reproduction (4).** Fresh, Large Margins, tiny scissors cut in bottom margin, otherwise Very Fine..... 1,750.00

1851 ISSUE



1041



1042



1044



1045

- 1041 **1c Blue, Ty. I, Position 7R1E (5).** Margins All Around, Neat Red Square Grid cancel, minor corner bend, couple trivial toning specks (show on back only), Very Fine Appearance, Handsome Example of this Rare Type..... (Photo) 22,000.00

- 1042 **1c Blue, Ty. Ia (6).** Large Margins, Rich Color, Neat four line ms. cancel, barely noticeable crease at left barely touching design extremity at top, otherwise Extremely Fine (Photo) 2,000.00

- 1043 **1c-12c 1851 Issue (7, 9 four, 10, 11 eight, 14, 15, 17).** Large Margins to slightly in, most Town pmks. or Grid cancels (No. 15 ms. cancel), some with small faults, otherwise Very Good-Very Fine E.X

- 1044 **1c Blue, Ty. III (8).** Huge Break at Bottom, Ample to Large Margins, Very Fine..... (Photo) 1,350.00

- 1045 **1c Blue, Ty. IIIa (8A).** Margins Virtually All Around, Mostly Large, Deep Rich Color, Neat Red Grid cancel, Shows Wide Break at Top, tiny break at bottom (Nearly Qualifies for Ty. III), Fresh & Fine (Photo) 625.00

- 1046 **5c Red Brown (12).** Large Margins to barely in, light Town pmk., small corner crease, Scarce..... (Photo) 1,350.00

- 1047 **10c Green, Ty. I (13).** Margins to just touching, Deep Rich Color, Town pmk., small faults, Fine Appearance (Photo) 700.00

- 1048 **10c Green, Ty. IV (16).** Recut at Top, Pos. 86L1, Large to Immense Margins Showing Bit of Next Stamp at Top, neat ms. cancel, creases, Extremely Fine Appearance (Photo) 700.00



- 1049 **10c Black, Diagonal Half Used as 6c (17a).** Large Margins, tied by light San Francisco pmk. on Cover to Mass., Black "10" due handstamp, without flap, Very Fine (Photo) 5,500.00

1857 ISSUE

- 1050 **1c-30c 1857 Issue (18, 20, 22-27, 29, 30A, 32-35, 37, 38).** Used, including extra Nos. 24, 26, 30A (two), 33 & 35 (two), Most with Town or Grid cancels (No. 27 with ms. cancel), nearly all with faults, otherwise Very Good-Very Fine E.XIII

- 1051 ★ **1c Blue, Ty. II (20).** Plate 2, Fresh, o.g., Gorgeous Deep Rich Color, small faults, centered to top right, perfs. touch to slightly in... 425.00

- 1052 E **3c Orange, Washington Die Essay on India, Second Printing (Brazer 33E-Db).** 27x38 mm, Fresh, tiny faint thin, Very Fine Appearance E.VI

- 1053 **5c Indian Red (28A).** New Orleans pmk., Fine (Photo) 1,300.00

- 1054 ★ **5c Orange Brown (30).** Fresh, Very Fine..... (Photo) 750.00

- 1055 **10c Green, Ty. I (31).** Well-centered, partial Town pmk., Very Fine (Photo) 525.00

- 1056 ★ **12c Black, Plate III, 24c Gray Lilac (36b, 37).** Small faults, Very Good Appearance..... E.VII



1057



1059



1061

1057 ★ **24c Gray Lilac, Imperforate (37c).** Ample to Large Margins, light creases, Very Fine Appearance (Photo) 1,150.00

1058 P **30c Black, Trial Color Plate Proof on Wove (38TC).** Fresh, light crease, Very Fine Appearance (Photo) 600.00

1059 ★ **30c Orange, Imperforate (38a).** Three Large Margins, Clear to tiny bit in at top, Deep Rich Color, Fine, signed Sloane (Photo) 2,500.00

1060 ★ **90c Blue (39).** Part o.g., hinge remnant, Fresh & Fine (Photo) 1,450.00

1061 ★ **90c Blue, Imperforate (39a).** Large Margins, Extremely Fine.. (Photo) 3,500.00

1857 REPRINTS

1062 ★ **1c Bright Blue, Reprint (40).** Fresh, Very Fine (Photo) 550.00

1063 ★ **3c Scarlet, Reprint (41).** Fresh, Well-centered, scissors separated (as usual) at sides blunting a few perfs. at right, Very Fine (Photo) 2,850.00

1064 ★ **5c Orange Brown, Reprint (42).** Fresh, Well-centered, Very Fine & Choice..... (Photo) 950.00

1065 ★ **10c Blue Green, Reprint (43).** Fresh, Extremely Fine (Photo) 2,250.00

1066 ★ **12c Greenish Black, Reprint (44).** Fresh, centered to bottom right, perfs. touch (Photo) 2,600.00

1067 ★ **24c Blackish Violet, Reprint (45).** Fresh, Fine (Photo) 2,850.00

1068 ★ **30c Yellow Orange, Reprint (46).** Fresh, scissors separated (as usual) at top & bottom blunting top perfs., otherwise Very Fine (Photo) 2,850.00

1069 ★ **90c Deep Blue, Reprint (47).** Fresh, Immense Margins at Top, Fine, Scarce..... (Photo) 4,250.00

1861 "FIRST DESIGNS", "FIRST COLORS"



1070



1072



1073

1070 ★ **1c Indigo, "First Design" (55).** Fresh, o.g., Beautiful Intense Color, Fine & Choice, Certainly One of the Finest Examples of this Major Rarity, signed Colson, et al (Photo) 16,500.00

1071 ★ **3c Brown Rose, "First Design" (56).** Large Part o.g., hinge remnant, reperfed at right, otherwise Fine..... (Photo) 700.00



1074



1075



1076

1072 ★ **5c Brown, "First Design" (57).** Fresh, Deep Rich Color, few very trivial perf. creases, centered trifle to left, Very Fine for the issue, Far Better Quality Than Usually Encountered, Very Rare, signed Colson..... (Photo) 12,000.00

1073 ★ **12c Black, "First Design" (59).** Choice Centering, some perf. faults (short, nibbed or creased), tiny tear at top, otherwise Extremely Fine Appearance, Important Rarity, Probably Fewer Than Ten Known (Photo) 35,000.00

1074 ★ **30c Red Orange, "First Color" (61).** Beautiful Rich "August" Color, part o.g., pinhead thin, other small faults including short perfs. & perf. tears, Well-centered, A Desirable Rarity despite condition..... (Photo) 16,000.00

1075 ★ **90c Dull Blue, "First Design" (62).** Fresh, Well-centered, Extremely Fine, Choice Example of this Rarity (Photo) 20,000.00

1076 ★ **90c Dull Blue, "First Design", Imperforate (62a).** Ample to Large Margins, Fresh & Very Fine (Photo) 2,750.00

- 1077 **10c Dark Green, "First Design" (62B).** Tied by Target on small piece, Very Fine (Photo) 450.00

1861 ISSUE

- 1078 **1c Blue, Printed On Both Sides (63e).** Used, Parts of Two Full Impressions on back, several tiny pinholes do not detract from the appearance of this Extremely Rare Variety, with P.F. Certificate (Photo) 2,500.00
- 1079 ★ **1c-10c 1861 Issue (63, 65, 68, 76).** Fresh, First Three o.g., small faults, otherwise Fine..... E.VII
- 1080 **1c-90c 1861 Issue (63, 65 two, 67-69, 70 two, 71, 72, 73 two, 75-77, 78 three).** Used, also includes Nos. 70b & 70c, Most with Town, Grid or Target cancels (No. 77 with Red ms. cancel), nearly all with faults, otherwise Very Good-Fine Lot..... E.XI
- 1081 **3c Pink (64).** Grid cancel, Very Fine..... (Photo) 250.00
- 1082 **3c Pigeon Blood Pink (64a).** Well-centered, Beautiful Color, Bold Town pmk., minor corner margin crease, otherwise Extremely Fine... (Photo) 1,200.00
- 1083 ★ **3c Lake (66).** Fresh, o.g., h.r., perfs. trifle in (Photo) 1,500.00
- 1084 ★ **3c Lake, Imperforate (66a). Horizontal Pair,** Fresh, o.g., heavy hinge remnant, left stamp small corner margin crease, otherwise Extremely Fine (Photo) 1,750.00
- 1085 ★ **3c Scarlet (74).** Fresh, o.g., light rub, perfs. touch, Rare, signed Costales (Photo) 4,000.00



- 1086 ☐ **24c Greenish Gray, Printed On Both Sides (78d).** On 1867 Cover to Germany tied by Large Blue "DPO", Brownish Red "Summerfield Ala." pmk., Red "N. York 12 Brem Pkt. Paid", Blue Three Line "America Über Bremen Franco", stamp lifted from cover, reperfed & hinged back in place. The discovery of this variety on cover may have been made when the stamp was removed to reperf. a straight edge at left & if this was the case, we are sure the "improver" was more than pleasantly surprised. Unique on Cover, Only Known Used, Unpriced..... (Photo) E.XVI

- 1087 **Fancy Cancellations, Nine Different, includes Waterbury Four Hearts, Boston Hollow Heart, "OK" on No. 65's, No. 94 tied on Cover by Cleveland O. Mask, No. 71 with Bold Shield (Leavenworth, Kans.?), 3c Green with Intricate Three Leaf Clover & 3c Cover with Ellenville, N.Y. "E" in Wreath, 2c No. 146 Mask, 2c No. 210 Kicking Mule, generally Fine-Very Fine, Virtually All Choice Strikes, Scarce Lot E.XI**
- 1088 **5c Brown on Buff, Postage Currency, Imperforate (PC5). Complete Sheet of 25,** some creases, folds or wrinkles, still an Attractive Showpiece 437.50 +

1867 GRILL ISSUES

- 1089 **3c Rose, Grilled All Over (79).** Circle of Wedges cancels, small margin tear & usual short or nibbed perfs., otherwise Fine..... 425.00



1090

1091

1092

- 1090 **5c Dark Brown, Grilled All Over (80a).** Bold Quartered Cork cancel, usual perf. faults associated with the all over grill, small margin improvement at bottom right (two perf. holes "added"), An Outstanding Rarity, ex-Hind, Probably Only Four or Five Known (Photo) 37,500.00
- 1091 **30c Orange, Grilled All Over (81).** Bold Crossroads cancel, Rich Color, perf. faults, small tears & minor margin nick, Average Condition for this Great Rarity, ex-Hind, Probably Only Five Known..... (Photo) 32,500.00
- 1092 **3c Rose, B. Grill (82).** The Left-Hand stamp from the Discovery Strip of Four Found on Cover about 18 years ago, Town pmk., single insignificant short perf. at left, Fine & About as Choice an Example of this Enormous Rarity as Can Exist, We Doubt Whether Any 3c B. Grills have been offered at auction in over ten years (Photo) 35,000.00

- 1093 **3c Rose, C. Grill (83).** Used, single nibbed perf., still Very Fine..... (Photo) 350.00
- 1094 **2c Black, Z. Grill, 3c Rose, D. Grill (85, 85B).** Used, latter some short perfs., otherwise Very Good-Fine Lot..... E.VIII
- 1095 **2c Black, Z. Grill (85B).** Used, handstamped notation on back (does not show through), Very Fine (Photo) 300.00



1097

1099

- 1096 ★ **3c Rose, Z. Grill (85C).** O.g., hinge remnant, Fresh & Fine ... (Photo) 2,750.00
- 1097 **10c Green, Z. Grill (85D).** Boxed "Paid" cancel, few small faults including rounded corner perf., otherwise Very Fine Appearance, Extremely Rare, **Only Five Are Believed to Exist**, with P.F. Certificate (Photo) 23,500.00

- 1098 **12c Black, Z. Grill (85E).** Horizontal Pair, Used, left stamp single nibbed perf., otherwise Very Fine; Right Stamp Very Fine ... (Photo) 1,000.00

- 1099 **15c Black, Z. Grill (85F).** Well-centered, lightened ms. & small part of French Packet Octagon cancels, couple nibbed perfs., otherwise Extremely Fine, **The Best of Only Two Recorded Examples**, An Extraordinarily Rare Stamp, with P.F. Certificate (Photo) 35,000.00

- 1100 **1c-30c Grills (87, 88 two, 89-91, 92 two, 94-101).** Includes extra No. 96, No. 98 Blue cancel, No. 100 Leaf cancel, virtually all with faults, otherwise Very Good-Fine..... E.XI

- 1101 ★ **2c Black, F. Grill (93).** Fresh, o.g., Fine 110.00

- 1102 **90c Blue, F. Grill (101).** Used, couple irregular perfs., typical of this issue, Very Fine (Photo) 900.00

1861 RE-ISSUE

- 1103 ★ **1c Blue, Re-Issue (102).** Fresh, trivial nibbed perf., otherwise Very Fine (Photo) 475.00

- 1104 ★ **2c Black, Re-Issue (103).** Fresh, Full o.g. (slightly toned), Fine (Photo) 2,500.00

- 1105 ★ **3c Brown Red, Re-Issue (104).** Fresh, single short perf., otherwise Very Fine..... (Photo) 3,250.00

- 1106 ★ **5c Brown, Re-Issue (105).** Fresh, Full o.g., hinge remnant, couple tiny thins, Fine Appearance..... (Photo) 1,700.00

- 1107 ★ **10c Green, Re-Issue (106).** Fresh, Fine..... (Photo) 2,100.00
- 1108 ★ **12c Black, Re-Issue (107).** Fresh, Fine..... (Photo) 3,000.00
- 1109 ★ **15c Black, Re-Issue (108).** Fresh, Well-centered, Large Part o.g., Very Fine..... (Photo) 3,000.00
- 1110 ★ **24c Deep Violet, Re-Issue (109).** Fresh, o.g., tiny trivial corner perf. crease, otherwise Very Fine..... (Photo) 4,000.00
- 1111 ★ **30c Brownish Orange, Re-Issue (110).** Fresh, reperfed at right, otherwise Fine..... (Photo) 4,500.00
- 1112 ★ **90c Blue, Re-Issue (111).** Fresh, Part o.g., hinge remnant, single short perf., otherwise Fine..... (Photo) 5,750.00

1869 PICTORIAL ISSUE

- 1113 ★ **1c-3c Pictorials (112-114).** 1c small faults, otherwise Fine Lot..... 520.00
- 1114 ★ **2c Brown, Without Grill, Original Gum (113b).** Hinge remnant, Fresh & Fine..... (Photo) 600.00
- 1115 **3c Ultramarine (114).** Three Different Fancy Cancels, includes **Waterbury Ct. Pumpkin**, Two Different **Masks** (One a "Kleagle" KKK Type 1), Very Fine Strikes, Rare Lot..... (Photo Ex) ★ E.XI
- 1116 ☒ **3c Ultramarine (114).** Average, on Cover to N.C., Beautifully tied by **Evansville, Ind. Shoe Over Fly** ("Shoo Fly") cancel, Perfect Strike, Very Scarce..... (Photo) E.XII
- 1117 ★ **6c Ultramarine (115).** Beautifully Centered, couple natural translucencies (show in fluid only), Extremely Fine..... (Photo) 775.00
- 1118 ★ **10c Yellow (116).** Fresh, barest trace of o.g., single partly nibbed perf., still Very Fine..... (Photo) 850.00
- 1119 ★ **12c Green (117).** Huge Top & Right Margins, Fresh, Small Part o.g., Fine & Choice..... (Photo) 750.00
- 1120 ★ **15c Brown & Blue, Ty. I (118).** Fresh, bottom perfs. touch to barely in..... (Photo) E.XI
- 1121 **15c Brown & Blue, Ty. II, 24c Green & Violet (119, 120).** Used, 15c **Red** cancel, former negligible corner crease, latter few faulty perfs., otherwise Fine-Very Fine Appearance..... E.VII



1122



1123



1125



1126

- 1122 **15c Brown & Blue, Ty. II, Center Inverted (119b).** Lightly cancelled, Rich Colors, couple tiny margin flaws, slightly rounded corner at top right, left perfs. touch, Very Rare..... (Photo) 17,000.00
- 1123 **24c Green & Violet, Center Inverted (120a).** Used, Fresh Colors, centered to left, perfs. tiny bit in, Fine Example of This Rarity..... (Photo) 16,500.00
- 1124 ★ **30c Blue & Carmine (121).** Fresh, couple trivial corner perf. creases, otherwise Fine..... (Photo) 2,250.00
- 1125 **30c Blue & Carmine, Flags Inverted (121b).** Neat Rosette cancel, tiny margin tear, single nibbed perf. & couple light creases, otherwise Fine Appearance, Very Presentable Example of this Classic Rarity..... (Photo) 45,000.00
- 1126 ★ **90c Carmine & Black (122).** Exceptionally Fresh, Full o.g., hinge remnant, Very Fine, Exceptionally Choice..... (Photo) 7,500.00

1869 PICTORIAL RE-ISSUE

- 1127 ★ **1c Buff, Re-Issue (123).** Fresh, Full o.g., Fine..... (Photo) 325.00
- 1128 ★ **2c Brown, Re-Issue (124).** Fresh, Fine..... (Photo) 375.00
- 1129 ★ **3c Blue, Re-Issue (125).** Fresh, Full o.g., hinge remnant, single short perf. & reperfed at bottom, otherwise Very Fine..... (Photo) 3,000.00
- 1130 ★ **6c Blue, Re-Issue (126).** Fresh, o.g., couple small corner creases & rounded corner perf., otherwise Fine..... (Photo) 850.00
- 1131 ★ **10c Yellow, Re-Issue (127).** Fresh, Well-centered, Full o.g., hinge remnant & some album offset on back, small corner crease, otherwise Very Fine..... (Photo) 1,400.00
- 1132 ★ **12c Green, Re-Issue (128).** Fresh, Full o.g., reperfed at right, otherwise Fine..... (Photo) 1,500.00

1133 ★ **15c Brown & Blue, Re-Issue (129).** Fresh, Well-centered, hinge remnant, Extremely Fine..... (Photo) 1,300.00

1134 ★ **24c Green & Violet, Re-Issue (130).** Fresh, perfs. scissors separated at top & left, Very Fine..... (Photo) 1,250.00

1135 ★ **30c Blue & Carmine, Re-Issue (131).** Fresh, Large Part o.g., some short perfs., otherwise Fine..... (Photo) 1,750.00

1136 ★ **90c Carmine & Black, Re-Issue (132).** Fresh, Beautiful Margins & Centering, Extremely Fine & Choice..... (Photo) 5,500.00

1137 ★ **1c Buff, Re-Issue (133).** Fresh, Well-centered, Full o.g., Extremely Fine..... (Photo) 200.00

BANK NOTE ISSUES

1138 **1c-90c 1870-88 Bank Notes (Betw. 134-218).** 54 Used & Unused Stamps, Virtually All Different, very mixed quality, but does include some Very Attractive Stamps, Good-Very Fine..... **E.XII**

1139 **7c-30c Bank Note Grills (138, 139, 141, 143).** Used, reperfed and/or small faults, otherwise Very Good-Fine..... **E.XI**

1140 **12c Dull Violet, Grill (140).** Cork cancel, Wide Right Margin, a few nibbed perfs., otherwise Fine, Scarce, Signed Bartels..... (Photo) 1,500.00



1141



1142

1141 **24c Purple, Grill (142).** Well-centered, single neat ms. pen stroke cancel, Very Fine, Very Attractive Example of This Very Rare Stamp, with P.F. Certificate..... (Photo) 10,500.00

1142 **10c Brown, Horizontal Pair Imperforate Between (161d).** Bold Cork cancels, left stamp small corner crease, otherwise Fine, An Extraordinarily Rare 19th Century Error, **Reportedly Only Two Pairs Known** (Listed but Unpriced)..... (Photo) **E.XV**

1143 ★ **90c Carmine (191).** Trivial corner perf. crease, otherwise Fine..... (Photo) 1,000.00

CONTINENTAL BANK NOTE COMPANY SPECIAL PRINTINGS

The Stamps in the following 13 Lots at time of issue were customarily separated by scissors and virtually always show blunt or trimmed perforations, as such they are not considered faulty by knowledgeable collectors.



1144



1145



1146



1147



1148

1144 ★ **1c Ultramarine, Special Printing (167).** Fresh, Well-centered, Very Fine..... (Photo) 6,000.00

1145 ★ **2c Dark Brown, Special Printing (168).** Fresh, perfs. slightly in at top..... (Photo) 3,250.00

1146 ★ **3c Blue Green, Special Printing (169).** Fresh, All Perfs. Intact, centered to bottom right, perfs. touch to slightly in, signed Spencer Anderson, W.H. Colson..... (Photo) 9,000.00

1147 ★ **6c Dull Rose, Special Printing (170).** Fresh, All Perfs. Intact, Fine, signed E. Stern..... (Photo) 7,500.00

1148 ★ **7c Reddish Vermilion, Special Printing (171).** Fresh, Fine, signed Kelleher..... (Photo) 1,850.00

ESTIMATES

Our sales offer many covers, cancellations, varieties and other items for which there is no catalogue value or where catalogue value does not reflect the actual value. In order to assist our clients, we are placing a fair net valuation on such lots as a guide to our bidders. The chart below will be used. For example, E. IV means that our estimated net value on the lot is \$30.00 to \$40.00. Lots may actually realize more or less than our estimates, which are under no circumstances to be considered reserves but merely a guide to bidding.

E. II	\$10.00 to \$20.00	E. XI	\$250.00 to \$350.00
E. III	\$20.00 to \$30.00	E. XII	\$350.00 to \$500.00
E. IV	\$30.00 to \$40.00	E. XIII	\$500.00 to \$750.00
E. V	\$40.00 to \$50.00	E. XIV	\$750.00 to \$1000.00
E. VI	\$50.00 to \$75.00	E. XV	\$1000.00 to \$2000.00
E. VII	\$75.00 to \$100.00	E. XVI	\$2000.00 to \$5000.00
E. VIII	\$100.00 to \$150.00	E. XVII	\$5000.00 to \$10,000.00
E. IX	\$150.00 to \$200.00	E. XVIII	\$10,000.00 to \$20,000.00
E. X	\$200.00 to \$250.00	E. XIX	over \$20,000.00



1149 1150 1151 1152 1153

- 1149 ★ 10c Pale Brown, Special Printing (172). Fresh, Fine . (Photo) 6,500.00
- 1150 ★ 12c Dark Violet, Special Printing (173). Fresh, Fine, signed E. Stern (Photo) 2,500.00
- 1151 ★ 15c Bright Orange, Special Printing (174). Fresh, Huge Top Margin Showing Portion of Imprint, Fine..... (Photo) 7,000.00
- 1152 ★ 24c Dull Purple, Special Printing (175). Fresh, All Perfs. Intact, light crease & couple tiny faint thins, Fine Appearance. (Photo) 1,750.00
- 1153 ★ 30c Greenish Black, Special Printing (176). Fresh, Well-centered, Extremely Fine..... (Photo) 6,500.00



1154 1155 1156

- 1154 ★ 90c Violet Carmine, Special Printing (177). Fresh, Very Fine (Photo) 6,500.00
- 1155 ★ 2c Carmine Vermilion, Special Printing (180). Fresh, Fine, Very Rare (Photo) 17,000.00
- 1156 ★ 5c Bright Blue, Special Printing (181). Fresh, All Perfs. Intact, tiny trivial corner thin, Fine Appearance, Extremely Rare Stamp, signed Scott Stamp & Coin, Spencer Anderson (Photo) 32,500.00





1083



1084



1085



1093



1095



1096



1098



1102



1103



1104



1105



1106



1107



1108



1109



1110



1111



1112



1114



1115 EX



1117



1118



1119



1120



1124



1127



1128



1129



1130



1131



1132



1133



1134



1135



1136



1177



1178



1137



1140



1179



1180



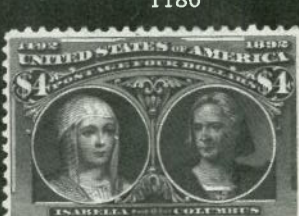
1143



1174



1181



1182



1184



1187



1190



1191



1188



1192



1198



1202



1199



1200



1211



1213



1216



1218



1219



1220



1222



1224



1229



1234



1235 EX



1242



1243



1246



1247



1248



1249 EX



1254



1256



1257



1265



1269



1271



1277



1278



1283 EX



1284



1289



1290



1285



1286



1287



1288



1294



1295



1298



1299



1303



1302



1304



1305



1340



1300



1328



1329



1330



1331



1341



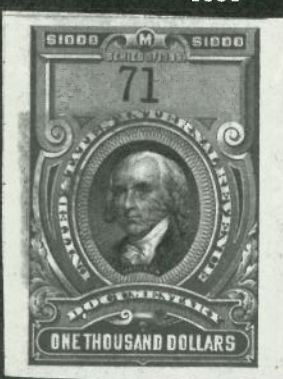
1352



1347



1348



1351



1360



1363



1364



1368



1386



1372 EX



1379



1380



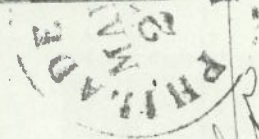
1385 EX



1116



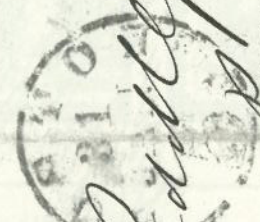
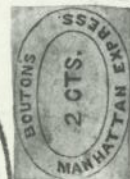
1365



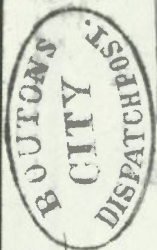
Paid

Debe & Brothers
New York

1369

Adelphi
President
Ad

1367



Paid

C. Furpoint Esq
27 Wall Street
New YorkPAID
BOUTON.only known
Autograph copy in coll.



1370

*Wm. Williams
Madison*



1381

*Dr. J. J. J. J.
Christiansville
Mechanicsburg, Va.*



1371

*Mr. J. J. J. J.
New York, N.Y.*



1373

*Wells Fargo & Co.
OVER OUR CALIFORNIA AND COAST ROUTE
E. J. Pringle Esq.
at New York
San Francisco
New York, N.Y.*

AMERICAN BANK NOTE COMPANY
SPECIAL PRINTINGS

1157



1158



1159



1160

- 1157 ★ 1c Dark Ultramarine, Special Printing (192). Fresh, couple tiny faint thins, Very Fine Appearance (Photo) 8,500.00
- 1158 ★ 2c Black Brown, Special Printing (193). Fresh, Well-centered, Extremely Fine..... (Photo) 5,000.00
- 1159 ★ 3c Blue Green, Special Printing (194). Fresh, right perfs. touch, Fine (Photo) 12,500.00
- 1160 ★ 6c Dull Rose, Special Printing (195). Fresh, single short perf. at top, otherwise Fine..... (Photo) 8,750.00



1161



1162



1163



1164

- 1161 ★ 7c Scarlet Vermillion, Special Printing (196). Fresh, Fine, Signed Colson (Photo) 2,000.00
- 1162 ★ 10c Deep Brown, Special Printing (197). Fresh, Well-centered, Extremely Fine..... (Photo) 8,000.00
- 1163 ★ 12c Blackish Purple, Special Printing (198). Fresh, centered to top left, perfs. touch..... (Photo) 4,000.00
- 1164 ★ 15c Orange, Special Printing (199). Fresh, single short perf., right perfs. touch (Photo) 7,500.00



1165

1166

1167

1168

- 1165 ★ **24c Dark Violet, Special Printing (200).** Fresh, Fine. (Photo) 2,500.00
- 1166 ★ **30c Greenish Black, Special Printing (201).** Fresh, wide straight edge at right, tiny natural inclusion, Very Fine, signed Colson..... (Photo) 6,500.00
- 1167 ★ **90c Dull Carmine, Special Printing (202).** Fresh, small thin spot, Fine Appearance..... (Photo) 6,500.00
- 1168 ★ **2c Scarlet Vermilion, Special Printing (203).** Fresh, bottom perfs. touch, Very Rare (Photo) 16,000.00



1169

1170

1171

1172

- 1169 ★ **5c Deep Blue, Special Printing (204).** Fresh, single short perf., otherwise Fine, Extremely Rare (Photo) 28,500.00
- 1170 ★ **5c Gray Brown, Special Printing (205C).** Fresh, Fine, Very Rare..... (Photo) 16,500.00
- 1171 ★ **2c Pale Red Brown, Special Printing (211B).** Top Margin Single with Portion of "Steamer American Bank Note Co." Imprint, Fresh, Full o.g., Extremely Fine (Photo) 700.00
- 1172 ★ **4c Deep Blue Green, Special Printing (211D).** Fresh, Very Fine, Extremely Rare, signed Scott Stamp & Coin, E. Stern (Photo) 13,000.00

- 1173 ★ **1c-90c 1890 Issue (219-229).** Complete Set including extra 5c Shade & 2c Cap on Left "2" variety, many without gum, most with faults, otherwise Very Good-Fine..... **E.VIII**
- 1174 ★ **90c Orange (229).** Disturbed o.g., Fresh & Fine..... (Photo) 325.00

COLUMBIAN ISSUE



- 1175 ★ **4c Blue, Columbian Error of Color (233a).** Fresh, The Preferred Deep Rich Error Shade, hinge remnant, tiny trivial thin speck, Very Fine Appearing Example of This Rare Stamp..... (Photo) 6,500.00

- 1176 ★ **30c, 50c Columbians (239, 240).** 30c small natural inclusion, Fine-Very Fine..... 610.00
- 1177 ★ **\$1.00 Columbian (241).** Tiny gum creases, Fine..... (Photo) **E.VIII**
- 1178 ★ **\$2.00 Columbian (242).** Paper remnants & margin thins, Very Fine Appearance..... (Photo) **E.IX**

- 1179 ★ **\$3.00 Columbian (243).** Fresh, Rich Color, hinge remnants, Very Fine..... (Photo) 2,300.00

- 1180 ★ **\$3.00 Columbian (243).** Small faults, Very Fine Appearance (Photo) **E.XI**

- 1181 ★ **\$4.00 Columbian (244).** Minor hinge remnant, Fresh, centered trifle to top, Very Fine (Photo) 3,250.00

- 1182 ★ **\$4.00 Columbian (244).** Couple thin spots, Fine Appearance (Photo) **E.XI**
- 1183 ★ **\$5.00 Columbian (245).** Part o.g., toning specks & nibbed perf., otherwise Fine..... **E.XI**

1894-1898 ISSUES

- 1184 ★ **\$5.00 Dark Green (263).** Tiny thin spot, Fine Appearance... (Photo) **E.XII**
- 1185 ★ **1c-\$2.00 1894 Issue (246-262).** Unused, several without gum, virtually all with faults, otherwise Very Good-Fine **E.XIII**

- 1186 ★ **1c-\$2.00 1895-98 Issues (264-277, 279-284).** Unused except Nos. 266, 270, 276, 276A & 277 Used, nearly all with faults, otherwise Very Good-Very Fine..... **E.X**

- 1187 **8c Violet Brown, Watermarked "USIR" (272a).** Used, Very Fine... (Photo) **110.00**

- 1188 ★ **\$5.00 Dark Green (278).** Tiny margin thin, otherwise Fine.. (Photo) **E.XI**

TRANS-MISSISSIPPI ISSUE

- 1189 ★ **2c-10c Trans-Mississippi (286-288, 290).** 4c trifle oxidized, 10c hinge remnant and light bend, otherwise Fine-Very Fine Lot **470.00**

- 1190 ★ **50c Trans-Mississippi (291).** Natural straight edge at left, hinge remnant, natural gum crease, Fine Appearance..... (Photo) **725.00**

- 1191 ★ **\$1.00 Trans-Mississippi (292).** Slightly disturbed o.g., small thin spot, Very Fine Appearance..... (Photo) **E.XI**

- 1192 ★ **\$2.00 Trans-Mississippi (293).** Heavy hinge remnants, bottom perfs. just in..... (Photo) **E.XII**

PAN-AMERICAN ISSUE

- 1193 ★ **1c-10c Pan-Americans (294-299).** Some with hinge remnants, Fine-Very Fine Set..... **650.00**



1194



1195



1196

- 1194 **1c Pan-American, Center Inverted (294a).** Small face-free cancels, Very Fine, Choice..... (Photo) **3,500.00**

- 1195 ★ **2c Pan-American, Center Inverted (295a).** Remarkably Well-centered, Fresh, slight gum disturbance from hinging, single nibbed perf. at bottom, otherwise Extremely Fine, Really Exceptional Condition for this Rarity despite the perf. nibbing, "S S&CCO." handstamp guarantee (Photo) **45,000.00**

- 1196 ★ **4c Pan-American, Center Inverted (296a).** Fresh, Exceptionally Well-centered, slightly disturbed o.g., Extremely Fine, Rare..... (Photo) **13,000.00**

1902-1904 ISSUES

- 1197 ★ **1c-50c 1902 Issue (300-305, 307, 309, 310).** Several with hinge remnant, also includes Horizontal Pairs of Nos. 314 & 320, Fine-Very Fine..... **1,002.50**

- 1198 ★ **\$1.00 Black (311).** Hinge remnant, negligible corner crease, otherwise Fine (Photo) **800.00**

- 1199 ★ **\$2.00 Dark Blue (312).** Hinge remnant, small thin spot, Very Fine Appearance..... (Photo) **1,050.00**

- 1200 ★ **\$5.00 Dark Green (313).** Disturbed o.g. from hinge removal, small thin spot, Fine Appearance (Photo) **2,750.00**



1201



1203



1204



1205

- 1201 ★ **4c Brown, Imperforate, Schermack Private Vending Machine Perfs. Ty. III (314A).** Fresh, barest trace of hinging, tiny natural inclusion, Fine, with Nassau Stamp Co. Letter of Authenticity..... (Photo) **17,500.00**

- 1202 ★ **5c Blue, Imperforate (315).** Horizontal Pair, left stamp light toning, otherwise Very Fine..... (Photo) **1,150.00**

- 1203 ★ **5c Blue, Coil (317).** Pair, Fresh, hinge remnant, Fine-Very Fine, signed Mekeels (Photo) **4,500.00**

- 1204 ★ **1c Blue Green, Coil (318).** Pair, Fresh, Fine-Very Fine, signed Scott Stamp & Coin..... (Photo) **3,500.00**

- 1205 ★ **2c Carmine, Coil (322).** Pair, Fresh, one with hinge remnant, Fine, signed Scott Stamp & Coin, E. Stern (Photo) **4,750.00**

Extension Lots must be paid for on receipt. In the event of an unsatisfactory certificate, payment will be refunded with interest at Treasury Bill rate.

- 1206 ★ **1c-5c 1904-07 Commemoratives (325, 326, 328-330).** Fine-Very Fine 367.50

1908 ISSUE

- 1207 ★ **1c-\$1.00 1908 Issue & Imperforates (331-347).** Also includes Horizontal Pairs Nos. 343-347, some with hinge remnants, No. 341 light crease, otherwise Fine-Very Fine Sets 1,394.00

- 1208 ★ **2c Carmine, Endwise Imperforate Coil With Foreign Transfer of 1c on Pos. 37 (344E var).** Strip of 11 with Star & Plate No. 5299 at Top, Fourth Stamp From Top the Variety, Variety Mint, Fine-Very Fine, Rare 1,525.00

- 1209 ★ **1c-5c 1908 Coils (348-351).** Line Pairs, Three Stamps Mint, others hinge remnant, Fine E.XII

- 1210 ★ **1c-5c 1908 Coils (352-355).** Pairs, hinge remnants, Fine 770.00

- 1211 ★ **10c Yellow, Coil (356).** Pair, Fresh, Magnificently Centered, minor hinge remnant, Extremely Fine, Rare, signed Scott Stamp & Coin (Photo) 3,000.00

BLUISH PAPERS

- 1212 ★ **1c Green, 2c Carmine, Bluish (357, 358).** Fresh, Fine, latter signed Scott Stamp & Coin 210.00



1214



1215



1216

- 1213 ★ **3c Deep Violet, Bluish (359).** Fresh, Fine, signed Scott Stamp & Coin, E. Stern (Photo) 1,550.00
- 1214 ★ **4c Orange Brown, Bluish (360).** Fresh, Exceptionally Well-centered, tiny natural inclusion, small handstamp on back, Very Fine, Rare (Photo) 14,000.00
- 1215 ★ **5c Blue, Bluish (361).** Fresh, barest trace of hinging, Fine, signed Scott Stamp & Coin, E. Stern (Photo) 3,500.00
- 1216 ★ **6c Red Orange, Bluish (362).** Fresh, hinge remnant, Very Fine (Photo) 1,000.00
- 1217 ★ **8c Olive Green, Bluish (363).** Fresh, Exceptionally Well-centered, hinge remnant, small handstamp on back, Very Fine & Choice (Photo) 14,000.00

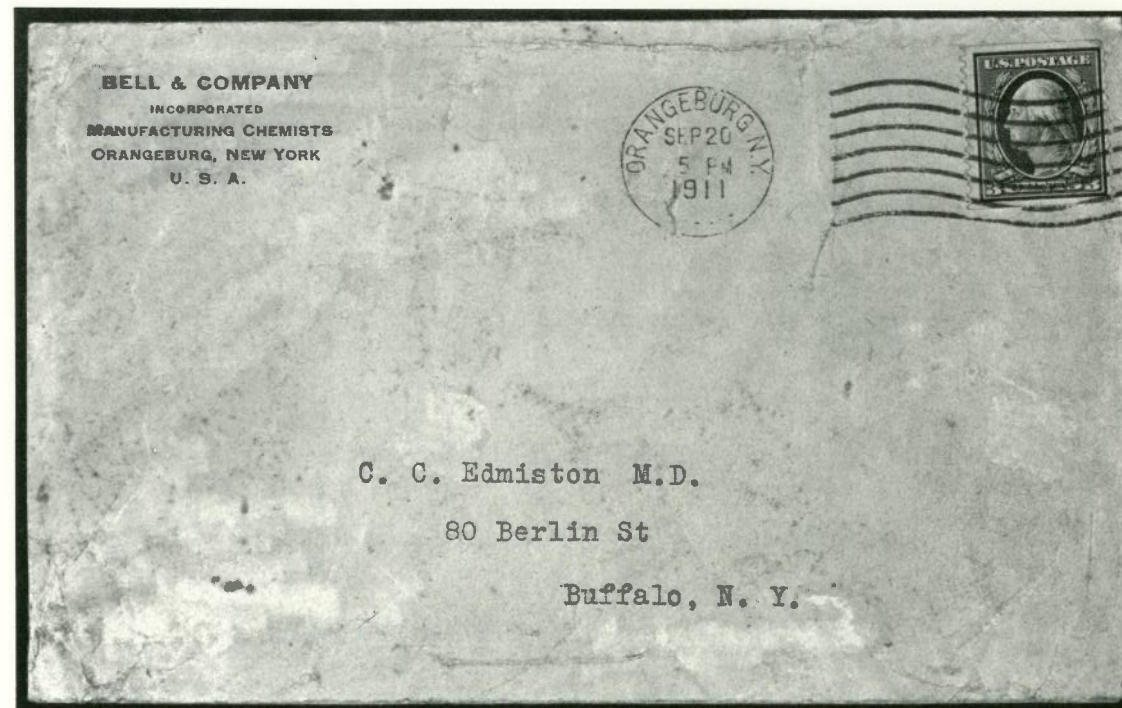
- 1218 ★ **10c Yellow, Bluish (364).** Fresh, small hinge remnant, Fine, signed Scott Stamp & Coin (Photo) 1,050.00
- 1219 ★ **13c Blue Green, Bluish (365).** Fresh, creased in right margin, Fine Appearance, signed Scott Stamp & Coin, E. Stern (Photo) 2,100.00
- 1220 ★ **15c Pale Ultramarine, Bluish (366).** Fresh, hinge remnant, Fine (Photo) 950.00

- 1221 ★ **2c 1909 Commemoratives & Imperforate Commemoratives (367, 368, 370-373).** Horizontal Pairs of Imperforates, Fine-Very Fine 315.50

- 1222 ★ **2c Lincoln, Bluish (369).** Fresh, Lightly Hinged, Fine (Photo) 275.00

- 1223 ★ **1c-15c 1910 Issue (374-381).** Fresh, 8c hinge remnant, others Lightly Hinged, Fine 342.00

- 1224 ★ **2c Carmine, Coil (388).** Pair, Fresh, Well-centered, Lightly Hinged, Very Fine & Choice, signed Scott Stamp & Coin (Photo) 1,600.00



- 1225 ✉ **3c Deep Violet, "Orangeburg" Coil (389).** Tied by "Orangeburg N.Y. Sep 20 1911" Wavy Line Machine cancel on Bell & Co. Corner Card Clasp Envelope to Buffalo, N.Y., some cover creases, wrinkles & edge wear (from contents), otherwise Very Fine, with American Board of Experts & P.F. Certificates (Photo) 8,000.00

- 1226 ★ **1c-3c 1910-13 Coils (390, 392-394). Pairs, Fresh, Lightly Hinged, Fine-Very Fine** 255.00
- 1227 ★ **4c Brown, 5c Blue, Coils (395, 396). Line Pairs, hinge remnants, one 4c tiny thin, otherwise Fine-Very Fine** 600.00
- 1228 ★ **1c-10c Panama-Pacifcs (400A, 401-403). Fine** 552.50
- 1229 ★ **10c Panama-Pacific, Perforated 10 (404). Fine** (Photo) 1,400.00

1909-1912 ISSUES

- 1230 ★ **7c-50c 1912 Issue (407, 414-420, 422). Few with minor hinge remnant, 10c small black paper adherence on back, Fine-Very Fine** 877.50
- 1231 ★ **1c Green, 2c Carmine, Coils (410-413). Pairs, last two Line Pairs, No. 412 hinge remnants, Fine-Very Fine** 295.00
- 1232 ★ **50c Violet, \$1.00 Violet Brown (422, 423). Former hinge remnant, right perfs. close, Fine** 825.00

1914-1916 ISSUES

- 1233 ★ **1c-30c 1914 Issue (424-439). Some with hinge remnants, Fine Lot....** 995.25
- 1234 **1c Green, Perforated 12x10 (424a). Horizontal Pair, Wavy Line Machine cancel, left stamp small corner crease, perfs. slightly in at left, with P.F. Certificate** (Photo) 500.00 +
- 1235 **1c Green, 2c Rose Red, Perforated 10x12 & 12x10 respectively (424b, 425d). Used (former Dayton, Ohio, precancel), 2c perfs. in at right, 1c Very Fine** (Photo Ex) 375.00



- 1236 ★ **50c Violet (440). Very Fine** (Photo) 800.00
- 1237 ★ **3c Violet, Coil (445). Pair, minor hinge remnant, Fine** (Photo) 475.00
- 1238 ★ **4c Brown, Coil (446). Line Pair, Very Fine** (Photo) 650.00
- 1239 ★ **2c Red Coil, Ty. I (449). Pair, Fresh, Lightly Hinged, Fine-Very Fine, signed Scott Stamp & Coin** (Photo) 3,250.00
- 1240 ★ **2c Carmine Rose, Red Coils, Ty. I & II (453, 454). Pairs, Latter Lightly Hinged, former hinge remnant, minor thins, otherwise Very Good-Fine** 470.00
- 1241 ★ **2c Carmine, Imperforate Coil (459). Pair, Fresh, Very Fine** (Photo) 950.00
- 1242 ★ **\$1.00 Violet Black (460). Fine** (Photo) 975.00
- 1243 ★ **2c Pale Carmine Red (461). Fresh, Well-centered, Extremely Fine...** (Photo) 100.00
- 1244 ★ **1c-15c 1916 Issue (462-466, 468-475). Fresh, hinge remnants, 7c, 8c, 12c & 15c reperfed, otherwise Very Good-Very Fine** E.VIII
- 1245 ★ **5c Carmine, Error (467). Horizontal Strip of Three, Middle Stamp The Error, hinge remnant, perfs. touch at right** E.VIII
- 1246 ★ **20c Ultramarine (476). Fresh, Well-centered, Very Fine** (Photo) 250.00
- 1247 ★ **50c Light Violet (477). Hinge remnant, single perf. thin, otherwise Fine** (Photo) 1,400.00
- 1248 ★ **\$1.00 Violet Black (478). Hinge remnant, Fine** (Photo) 950.00
- 1249 ★ **\$2.00 Dark Blue, \$5.00 Light Green (479, 480). Hinge remnant, Very Fine Lot** (Photo Ex) 900.00



- 1250 2c Deep Rose, Imperforate, Ty. Ia, Schermack Private Perforation Ty. III (482A). Tied by "Milwaukee Wisc. Feb 17, 1920" Wavy Line Machine cancel on Window Corner Card Envelope, Fine, Rare, with P.F. Certificate..... (Photo) 9,000.00



- 1251 5c Carmine, Error, Imperforate (485). Block of Nine, Bottom Middle Stamp The Error, hinge remnant, three 2c creased, Error Mint & Extremely Fine..... (Photo) 13,000.00



- 1252 2c Carmine Coil, Ty. II (491). Pair, Fresh, hinge remnant, Fine, Scarce, signed Scott Stamp & Coin..... (Photo) 3,100.00

1917 ISSUE - PRESIDENTIAL ISSUE

- 1253 1c-\$1.00 1917 Issue (498, 499, 501-504, 506-518). Fresh, some hinge remnants, others Lightly Hinged, 20c Mint, Fine-Very Fine 509.50
- 1254 2c Deep Rose, Ty. Ia (500). Wide Margins, Very Fine (Photo) 275.00
- 1255 5c Rose, Error (505). Block of Nine, Middle Stamp the Error, Error & Six 2c Mint, perfs. trifle in at left..... E.VIII
- 1256 2c Carmine (519). Fresh, Lightly Hinged, Very Fine..... (Photo) 250.00
- 1257 \$2.00 Orange Red & Black (523). Wide Even Margins, Extremely Fine (Photo) 1,200.00
- 1258 \$2.00 Carmine & Black, \$5.00 Deep Green & Black (524, 547). Each with thin spot, Fine-Very Fine Appearance E.VIII
- 1259 1c-3c Offset Imperforates (531-534A, 535). Horizontal Pairs, hinge remnants, Extremely Fine..... 695.00



1260



1261



1262

- 1260 2c Carmine, Offset Imperforate Ty. VII (534B). Horizontal Pair with Half Arrow & Right Sheet Margin, Fresh, Lightly Hinged, Extremely Fine, with P.F. Certificate (Photo) 3,100.00
- 1261 2c Carmine Rose, Rotary Ty. II (539). Fresh, Lightly Hinged, Very Fine, with P.F. Certificate of Block From Which This Was Taken..... (Photo) 2,350.00
- 1262 1c Green, Rotary (544). Partial San Francisco, Cal. pmk., very faint pressed out crease, Very Fine Appearance, with P.F. Certificate which states "genuine"..... (Photo) 1,500.00

- 1263 1c Green, 2c Carmine Rose, Rotaries (545, 546). Former small thin spot, otherwise Fine Lot 230.00
- 1264 1/2c-\$2.00 1922 Issue (551-572). Fresh, hinge remnants, 20c tiny thin, otherwise Fine-Very Fine 638.65
- 1265 \$5.00 Carmine & Blue (573). Fresh, Fine..... (Photo) 400.00
- 1266 1c Green, 2c Carmine, Rotaries (578, 579, 595). Small hinge remnants, Fine-Very Fine..... 332.50



1267



1268



1270

- 1267 **1c Green, Rotary (594).** Wavy Line Machine cancel, centered to bottom right, perfs. close or touching, Fine, Signed George B. Sloane, with P.F. Certificate..... (Photo) 1,850.00
- 1268 **1c Green, Rotary (596).** Usual "Kansas City, Mo." Bureau Precancel, centered to bottom left, perfs. close or just touching, Fine, signed Costales, with P.F. Certificate, A Great Rarity, **Less Than Six Known** (Photo) 13,500.00

- 1269 ★ **2c Carmine Coil, Ty. II (599A).** Pair, some offset on back, right perfs. touch (Photo) 290.00

- 1270 **2c Harding, Rotary, Perforated 11 (613).** Tied on small piece by Slogan pmk., Fine Example of this Twentieth Century Rarity, with P.F. Certificate (Photo) 13,500.00

- 1271 ★ **2c Carmine, Ty. II (634A).** Never hinged Plate Number Single, few thin or short perfs., otherwise Fine..... (Photo) 325.00

- 1272 ★ **1c-10c Kansas-Nebraska Overprints (658-679).** Complete Sets, Fresh, hinge remnants, Fine-Very Fine..... 508.50

- 1273 ★ **\$5.00 Presidential (834).** Center Line Block, Bottom Pair Mint, Very Fine..... 600.00



- 1274 ★ **\$5.00 Red Brown & Black, Presidential Error of Color (834a).** Double Arrow & Double Plate No. Block (F22167, 22169F), Exceptionally Well-centered, Stamps Mint, Extremely Fine, with Photos of Letter to George B. Sloan from A.W. Hall, Director of the Bureau of Engraving & Printing, Authenticating the Color Error (Plate No. Block not listed, cataloged as four singles)..... (Photo) E.XVI

AIR POST - POSTAGE DUE ISSUES

- 1275 ★ **6c-24c 1918-23 Air Post (C1-C6).** Hinge remnants, No. C2 light corner crease, otherwise Fine-Very Fine Sets..... 885.00



- 1276 ★ **24c Carmine Rose & Blue, Center Inverted (C3a).** Disturbed o.g., hinge remnant, natural inclusion in "S" of U.S., re-perfed at top, Fine Appearing Example of This Celebrated Twentieth Century Rarity..... (Photo) 110,000.00
- 1277 ★ **65c-\$2.60 Graf Zeppelins (C13-C15).** Complete Set, Lightly Hinged, Fine-Very Fine..... (Photo) 2,500.00

- 1278 ★ **10c Blue (E4).** Fresh, small thin spot, single nibbed perf., otherwise Fine Appearance **(Photo)** 725.00
- 1279 ★ **10c Blue (E1, E2, E5).** Fresh, o.g., hinge remnants, Nos. E1 & E5 wide natural straight edges, No. E2 small corner creases, otherwise Very Fine..... 635.00
- 1280 ★ **10c-20c 1902-25 Special Deliveries (E6-E8, E11-E14).** Fresh, couple with hinge remnants, No. E7 tiny thin, otherwise Fine-Very Fine . 303.00
- 1281 ★ **10c Ultramarine, Pale Ultramarine (E9, E10).** One with minor hinge remnant, Fine-Very Fine..... 500.00
- 1282 ★ **POSTAGE DUES, 1879-95, 42 Mostly Unused Stamps, Mostly Different, Virtually All Unused have o.g., mixed quality, G-VF** **E.X**

OFFICIAL - NEWSPAPER ISSUES

- 1283 ★ **1c, 6c Executive (O10, O13).** Fresh, o.g., Fine..... **(Photo Ex)** 500.00
- 1284 ★ **24c State (O65).** Fresh, o.g., hinge remnant, Very Fine **(Photo)** 150.00
- 1285 ★ **\$2.00 State (O68).** Fresh, Fine **(Photo)** 500.00

- | | | |
|--------|---|----------|
| 1286 ★ | \$5.00 State (O69). Fresh, Gorgeous Deep Rich Colors, Full o.g., hinge remnant, tiny trivial margin tear, Fine Appearance.. | |
| | (Photo) | 4,000.00 |
| 1287 ★ | \$10.00 State (O70). Large Part o.g., hinge remnants, single slightly toned perf., otherwise Fine | |
| | (Photo) | 2,500.00 |
| 1288 ★ | \$20.00 State (O71). Fresh, Large Part o.g., hinge remnant, scissors separated blunting some perfs., bottom perfs. touch to slightly in..... | |
| | (Photo) | 2,150.00 |

- 1289 ★ **1c Agriculture, Soft Paper (O94).** Fresh, Without Gum as Issued, couple nibbed perfs., centered to bottom right, perfs. close or just touch, Scarce **(Photo)** 1,350.00
- 1290 ★ **24c Interior, Soft Paper (O103).** Fresh, o.g., hinge remnants, couple nibbed perfs., otherwise Fine, Scarce..... **(Photo)** 1,100.00

- | | | |
|--------|--|--------------|
| 1291 ★ | Officials, 1873-79, Collection of 120 Nearly All Different, Nearly All Unused Stamps, Vast Majority of Unused Have Part to Full o.g., condition varies, but does include Many Fine-Very Fine Items, Worthwhile Lot..... | E.XIV |
|--------|--|--------------|

- 1292 ★ **5c-25c 1865-75 Newspapers (PR1-PR7).** Fresh, No. PR2 on Pelure Paper, most with small faults, otherwise Fine-Very Fine 522.50
- 1293 ★ **\$9.00-\$36.00 1879 Newspapers (PR74-PR77).** Fresh, o.g. or Large Part o.g., hinge remnants, \$12.00 couple nibbed perfs., \$24.00 & \$36.00 couple tiny thins, otherwise Fine-Very Fine..... **E.VII**
- 1294 ★ **\$48.00 Yellow Brown (PR78).** Fresh, o.g., hinge remnant, Very Fine **(Photo)** 250.00

- 1295 ★ **\$60.00 Purple (PR79).** Fresh, o.g., hinge remnant, tiny corner crease, otherwise Extremely Fine **(Photo)** 275.00
- 1296 ★ **1c-50c 1895 Newspapers (PR102-PR107).** Fresh, o.g., hinge remnants, 1c & 10c small thins (tiny on former), otherwise Fine Lot 366.00
- 1297 **\$2.00-\$10.00 1895 Newspapers (PR108-PR110).** Used, first with Negative "B" in Circle cancel, Fine-Very Fine 330.00
- 1298 ★ **\$20.00 Slate (PR111).** Fresh, small faults, Very Fine Appearance..... **(Photo)** 600.00
- 1299 **\$50.00 Dull Rose (PR112).** Negative "B" in Circle cancel, Fine **(Photo)** 275.00
- 1300 ★ **\$100.00 Purple (PR113).** Fresh, o.g., small faults, Fine Appearance. **(Photo)** 700.00
- 1301 ★ **Newspapers, 1875-94, 36 Nearly All Different, Nearly All Unused (some o.g.), includes Better Items, mixed quality, Good-Very Fine ...** **E.X**

REVENUE ISSUES

- 1302 **1c Playing Cards (R2c).** Bold "SH & Co./Nov./1863." Script Style Printed cancel, Fine **(Photo)** 100.00
- 1303 **1c Proprietary, Imperforate (R3a).** Large to Huge Margins, neat ms. cancel, small faults, Extremely Fine Appearance..... **(Photo)** 500.00
- 1304 **2c Bank Check, Green Paper (R6e).** Uncancelled, affixed to Stonington Line Printed Receipt (June 4, 1866 Usage), centered to top left, perfs. just touch **(Photo)** 325.00 +
- 1305 **2c USIR, Green Paper (R15e).** Ms. "X" cancel, Fine **(Photo)** 350.00



1306



1307

- | | | |
|------|---|----------|
| 1306 | 3c Playing Cards, Imperforate (R17a). Three Immense Margins, Large at Right, Neat ms. cancel, somewhat natural dry print, Extremely Fine Example of This Classic Revenue Rarity (Photo) | 5,000.00 |
| 1307 | 6c Proprietary (R31c). Excellent Color, Bold "Charles Os-good Sep 1/1871" Handstamp cancels, single short perf. & tiny margin tear, perfs. in at left, Very Scarce Stamp .. (Photo) | 2,500.00 |



1308



1309



1310



1311

- 1308 **\$1.30 Foreign Exchange, Imperforate (R77a).** Large to Immense Margins, Rich Color, Neat "24/4/63" ms. cancel, faint thin spot & couple pinholes, Extremely Fine Appearance (Photo) 1,750.00
- 1309 **\$1.60 Foreign Exchange, Imperforate (R79a).** Three Large to Huge Margins, Ample at Top, Neat Handstamp cancels, trifle heavy crease, Very Fine Appearance (Photo) 600.00
- 1310 **\$1.90 Foreign Exchange, Imperforate (R80a).** Clear to Large Margins, Red Handstamp cancel, Fine, Scarce (Photo) 1,500.00
- 1311 **\$2.00 Probate of Will, Imperforate (R83a).** Clear to Large Margins, neat ms. cancel, Fine (Photo) 2,000.00



1312



1313



1314



1315

- 1312 **\$2.50 Inland Exchange, Imperforate (R84a).** Large to Huge Margins, neat ms. cancel, minor surface scuff, otherwise Very Fine (Photo) 850.00
- 1313 **\$3.50 Inland Exchange, Imperforate (R87a).** Ample to Huge Margins except just touched at bottom right, Gorgeous Deep Rich Shade & Sharp Clear Impression, neat ms. cancel, trifle heavy thin, still Very Fine Appearance (Photo) 800.00
- 1314 **\$10.00 Probate of Will, Imperforate (R96a).** Ample to Large Margins, neat ms. cancel, faults, Very Fine Appearance (Photo) 750.00
- 1315 **\$15.00 Mortgage, Imperforate (R97a).** Ample to Large Margins, Deep Rich Shade, neat ms. cancel, Very Fine & Choice (Photo) 850.00



1316



1317



1319



- 1316 **\$20.00 Probate of Will, Imperforate (R99a).** Three Large Margins, Ample to Large at Bottom, neat ms. cancel, two faint creases each ending in tiny tear, Very Fine Appearance (Photo) 850.00
- 1317 **\$20.00 Probate of Will (R99c).** Neat ms. cancel, faults including numerous pinholes & small reinforced crease, Very Fine Appearance (Photo) 800.00
- 1318 **\$200.00 Green & Red, USIR, Imperforate (R102a).** Clear to Large Margins except just barely in at bottom right, light creases & small violet ms. mark, Scarce (Photo) 1,000.00
- 1319 **\$200.00 Green & Red, USIR (R102c).** Bright Colors, neat ms. cancel, perfs. scissors separated very slightly blunting a couple, light crease, Fine Appearance (Photo) 550.00

- 1320 **First Issue Imperforate Revenues, 1862-71,** Collection of 57 Different Used Stamps (doubtful items not counted), Better Items include Nos. R1a, R19a, R32a, R33a, R51a, R61a, R64a, R71a, R74a-R76a, R81a, R85a, R86a, R88a-R95a, R100a (tiny repair) & R101a, usual "old-time" very mixed quality, but includes some nice stamps, Good-Very Fine **E.XIII**

- 1321 **First Issue Perforated Revenues, 1862-71,** Collection of 91 Different Used Stamps, also includes Four Part Perforates (R1b, R44b, R63b & R65b), Better Items include Nos. R17c, R21c, R51c, R74c, R77c-80c, R90c, R97c, R100c & R101c, usual "old-time" mixed quality, Good-Fine Lot **E.X**



1322



1324



1323



1325



1326



1327

1322 **1c Blue & Black, Center Inverted (R103a).** Appears Unused, centered to bottom left, perfs. barely in at left, Scarce (Photo) 1,300.00

1323 **2c Blue & Black, Center Inverted (R104a).** Neat ms. cancel, minor faint thin, Fine Appearance, Scarce..... (Photo) 4,500.00

1324 **5c Blue & Black, Center Inverted (R107a).** Overall roller pinhole cancels, Fine..... (Photo) 1,850.00

1325 **10c Blue & Black, Center Inverted (R109a).** Embossed cancel, centered to top right, perfs. touch at top..... (Photo) 1,650.00

1326 **20c Blue & Black, Center Inverted (R111a).** Herringbone cut cancel, light crease, Fine Appearance, Rare (Photo) 7,500.00

1327 **25c Blue & Black, Center Inverted (R112a).** Neat ms. cancel, small thin spot, Fine Appearing Example of This Rare Revenue Invert (Photo) 9,500.00

1328 **25c Blue & Black, Sewing Machine Perforations (R112b).** Appears Unused, tiny natural translucent speck, Very Fine..... (Photo) 90.00

1329 **25c Blue & Black, Perforated 8 (R112c).** Tied by ms. cancel & filing fold on Philadelphia Trust Safe Deposit & Insurance Co. Stock Certificate (June 1, 1872 Usage), some natural gum spillage on stamp, otherwise Very Fine (Photo) 250.00

1330 **50c Blue & Black, Sewing Machine Perforations (R115a).** Appears Unused, Very Fine (Photo) 80.00

1331 **50c Blue & Black, Center Inverted (R115b).** Skillfully filled triangular punch cancel, neat ms. cancel, light crease, Very Fine Appearance (Photo) 200.00



1332



1333



1334

1332 **70c Blue & Black, Center Inverted (R117a).** Neat ms. cancel, single tiny pinhole, Fine Appearance, Scarce (Photo) 3,000.00

1333 **\$1.00 Blue & Black, Center Inverted (R118a).** Skillfully filled triangular punch cancel, neat ms. cancel, single light crease, Very Fine Appearance..... (Photo) 1,000.00

1334 **\$5.00 Blue & Black, Center Inverted (R127a).** Neat ms. cancel, top perfs. blunted by scissors separation, minor corner crease, otherwise Fine, Scarce..... (Photo) 2,150.00

1335 **\$20.00 Blue & Black (R129).** Neat ms. cancel, perfs. slightly in at bottom..... (Photo) 300.00

1336 **\$50.00 Blue & Black (R131).** Neat ms. cancel, "Willcox Chameleon Pa(per)" Imprint at right within the stamp's perforations, small thin, Fine Appearance (Photo) 325.00

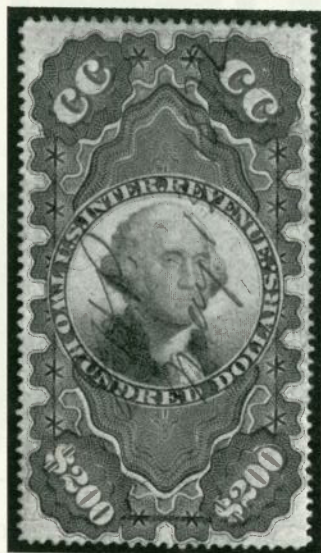
LOTS ON VIEW

NEW YORK

Lots will be shown at our New York offices on Monday, May 19 between the hours of 9:30 A.M. and 2:30 P.M.

CHICAGO

Lots will be shown at our Super Booth "B" on Thursday, May 22 through Saturday, May 24 between the hours of 10:00 A.M. and 6:00 P.M. each day. On Sunday, May 25 lots will be shown at the Hyatt Regency O'Hare Hotel in the "Eastern B" Room between the hours of 10:00 A.M. and 5:00 P.M.



1337



1338

- 1337 **\$200.00 Blue, Black & Red, "Small Persian Rug" (R132).** Well-centered, Rich Colors, neat ms. cancel, small thins & small margin tear, Very Fine Appearing Example of This Classic Revenue Rarity (Photo) 5,250.00
- 1338 **\$500.00 Black, Green & Red, "Large Persian Rug" (R133).** Well-centered, Rich Colors, neat ms. & circular cut cancels, couple light creases, Very Fine Appearing Example of This Classic Revenue Rarity (Photo) 15,000.00
- 1339 **Second Issue Revenues, 1871, 27 Different Stamps** including Nos. R106, R108, R113, R116, R119, R121, R122 (repaired), R126, R128 & R130, some with cut cancels, nearly all with faults, otherwise Very Good-Fine **E.X.**
- 1340 **2c Orange & Black, Center Inverted (R135b).** Appears Unused, couple pinholes, left perfs. touch (Photo) 250.00
- 1341 **2c Orange & Black, Center Inverted (R135b).** Appears Unused, very faint corner crease, left perfs. touch (Photo) 250.00



1342



1343



1344



1345



1346

- 1342 **5c Orange & Black, Center Inverted (R137a).** Neat ms. cancel, thin spot & light crease, perfs. slightly in at T., Scarce (Photo) 3,500.00
- 1343 **15c Brown & Black, Center Inverted (R139a).** Neat ms. Cancel, minor faint thin, Fine Appearance, Very Rare, One of the Best Centered of the Seven Known (Photo) 8,000.00
- 1344 **30c Orange & Black, Center Inverted (R140a).** Blue Double Circle Handstamp cancel, minor faint thin, Fine Appearance, Scarce (Photo) 1,350.00
- 1345 **\$1.00 Green & Black, Center Inverted (R144a).** Neat ms. cancel, couple short perfs., otherwise Very Fine, Rare. (Photo) 7,000.00
- 1346 **\$2.50 Claret & Black, Center Inverted (R146a).** Exceptionally Well-centered, neat ms. Cancel, couple creases, Extremely Fine Appearance, Enormously Rare Stamp (Photo) 15,000.00
- 1347 **\$20.00 Orange & Black (R150).** Neat ms. Cancel, small light corner crease, Fine Appearance (Photo) 375.00
- 1348 **\$20.00 Vermilion & Black, Error of Color (R150a).** Neat ms. cancel, centered to bottom right, perfs. touch (Photo) 500.00



1349



1350

- 1349 **8c Violet Brown, Magenta "I.R." Provisional Overprint (R156).** Usual Michigan Mutual Life Insurance Co. July 12, 1898 ms. cancel, perfs. touch at bottom, Fine, Scarce. (Photo) 2,000.00

- 1350 **10c Dark Green, Magenta "I.R." Provisional Overprint (R157).** "M L 7/22" ms. Cancel, Very Fine, Scarce... (Photo) 2,250.00

- 1351 **\$1,000.00 Green & Black (R181).** Large to Immense Margins, Magenta Handstamp cancel (uncut), small faint corner crease, Extremely Fine Appearance (Photo) 300.00

- 1352 **\$50.00 Gray (R189).** Ms. cancel (uncut), small natural wrinkle, Fine (Photo) 300.00



1353



1354



1355



1356

- 1353 **1c Green & Black on Violet Paper, Center Inverted (RB1ad).** Handstamp Cancel, faint crease, Fine Appearance, Rare (Photo) 2,500.00

- 1354 **2c Green & Black on Green Paper, Center Inverted (RB2bc).** Appears Unused, top portion of vignette partly faded from attempt to remove Red crayon cancel, otherwise Fine, Rare, Only Eight or Nine Known (Photo) 9,500.00

- 1355 **3c Green & Black on Violet Paper, Center Inverted (RB3ad).** Blue Double Oval Handstamp cancels, couple light creases, few short or nibbed perfs., otherwise Fine, Extremely Rare, **Only Six Known**, three of which are defective or repaired, all are of similar centering (Photo) 15,000.00

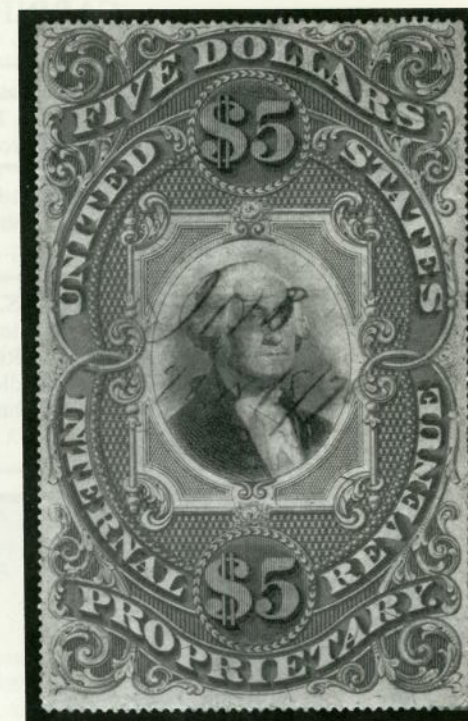
- 1356 **4c Green & Black on Violet Paper, Center Inverted (RB4ac).** Neat ms. Cancel, small corner repair, Fine Appearing Example of this Extremely Rare Revenue Invert, **Only Four Known**, two of which are extensively repaired ... (Photo) 16,500.00



1357



1358



1359

- 1357 **50c Green & Black on Green Paper (RB8b).** Blue "Starkey Palen" Handstamp Cancel, single short perf., otherwise Fine & Attractive (Photo) 800.00

- 1358 **\$1.00 Green & Black on Violet Paper (RB9a).** Violet Handstamp cancel, single short perf. & tiny pinhole, otherwise Fine (Photo) 1,200.00

- 1359 **\$5.00 Green & Black on Violet Paper (RB10a).** Neat ms. cancel, minor thin & rounded corner perf., otherwise Very Fine Example of This Classic Revenue Rarity (Photo) 2,500.00

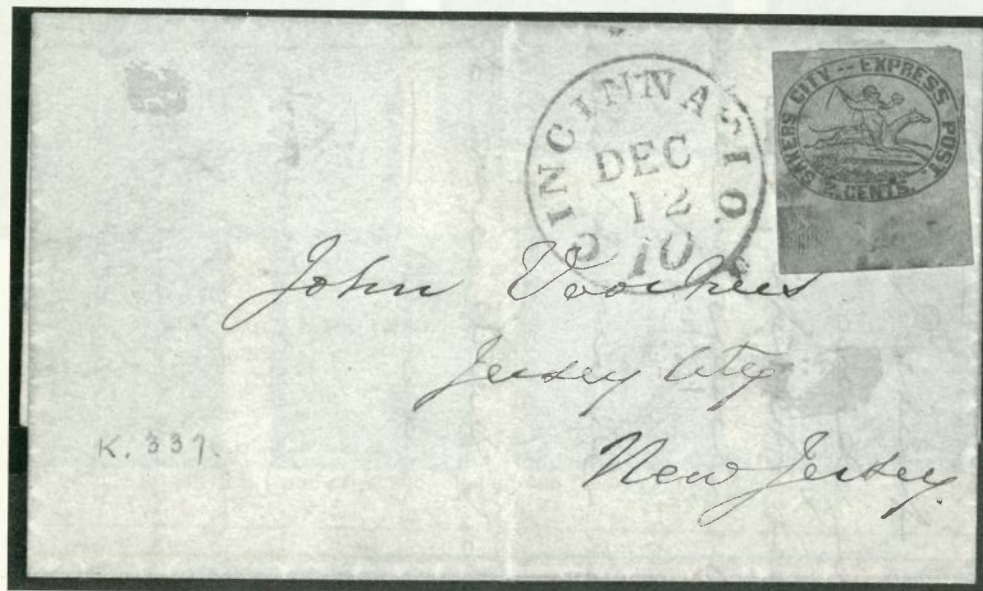
- 1360 **5c Black, Rouletted (RB16c).** Appears Unused, Fresh, very faint minor thin, Fine Appearance, Scarce (Photo) 700.00

- 1361 **Proprietary Revenues, 1871-98, 42 Used & Unused Stamps, 38 Different,** Better Items include Nos. RB5a two, RB6b, RB16b, RB19b, RB11c-RB13c, RB15c, RB17c, RB18c, nearly all with faults, otherwise Very Good-Fine **E.VIII**

- 1362 **Revenues, 1871-1900, Collection of 55 Different Used & Unused Stamps,** Better Items include Nos. R142, R149, R159, R160 & R180 (uncut), usual very mixed condition, Good-Very Fine **E.VIII**

CARRIERS AND LOCALS

- 1363 (1c) Dull Blue on Rose, Franklin Carrier (LO1). Ample to Large Margins, Blue Town pmk., small corner crease, Very Fine Appearance, Scarce..... (Photo) 2,500.00
- 1364 ★ New York, N.Y., U.S. City Despatch Post, 3c Black on Light Blue (6LB3). Three Immense Margins, Ample at Bottom, Extremely Fine..... (Photo) 300.00
- 1365 ☒ Philadelphia, Pa. U.S.P.O., 1c Black (7LB13). Ample Margins to just barely into left frame line, Red Star Cancel (not tied), Used With 3c Red (11), tied by Blue "Philadelphia Pa. Mar 27" pmk. on Folded Cover to N.Y. (Beebe Correspondence), Fine, Listed But Unpriced Used with 3c Red (11)..... (Photo) 1,000.00 +



- 1366 ☒ Baker's City Express Post, Cincinnati, Ohio, 2c Black on Pink (6L1). Large to Huge Margins including 9mm of Bottom Sheet Margin, small margin tear, Used on 1849 Folded Letter to N.J., Red "Cincinnati O. 10 Dec 12" pmk., Very Fine, ex-Schenck, Knapp, with Needham note of Authenticity. Reportedly the Finest Known of Only Three Examples, Not Listed on Cover (Catalogs \$750.00 Unused)..... (Photo) 750.00 +
- 1367 ☒ Boutons Manhattan Express, New York, N.Y., 2c Black on Pink (17L1). Square Cut, Margins All Around, on 1847 Locally Used Folded Letter, Red "Boutons City Dispatch Post." Oval Handstamp & Bold Red "Paid/Bouton" Straight Line Handstamp, some cover age toning spots, otherwise Very Fine, Reportedly This is the Only Known Square Cut Example on Cover, Not Priced on Cover (Off Cover Unused Square Cut Examples Catalog \$350.00)..... (Photo) 350.00 +

- 1368 City Despatch Post, New York, N.Y., 2c Black on Grayish, Manuscript "C" Between "Two" & "CENTS" (40L5c). Huge to Immense Margins, "Paid" Handstamp cancel, small corner crease, Extremely Fine Appearance..... (Photo) 200.00

- 1369 ☒ Hills Post, Boston, Mass., 1c Black on Rose (81L1). Margins to barely in at top, Used on 1850 Folded Letter to Providence, R.I., light Red "Boston 5 31 Jan" pmk., Fine, Not Listed Used on Cover (Catalogs \$750.00 Unused)..... (Photo) 750.00 +

- 1370 ☒ Metropolitan Post Office, New York, N.Y., (2c) Red (108L1). Die Cut as Issued, "tied" by pencil ms. on Lady's Embossed Envelope to Petersham, Mass., Red "New York Paid 3 cts Jan 2" pmk., small sealed cover tear, otherwise Very Fine, ex-Worthington, Not Listed on Cover (Catalogs \$350.00 Unused)..... (Photo) 350.00 +

- 1371 ☒ Metropolitan P.O. Express, New York, N.Y., 1c Blue (108L5). Die Cut as Issued, Used with 3c Red (11) on 3c Red on Buff Entire (U10), Used Locally, "New-York Nov 8" pmks., cover edge faults at sides, Scarce..... (Photo) 200.00

- 1372 ★ Wells, Fargo & Co., 10c-\$4.00 "Ponies", Newspapers (143L1, 143L3-143L5, 143L7-143L9, 143LP3-143LP5, 143LP8-143LP10). All Unused (couple o.g.) except No. 143L1 Used, several with faults, o/w VG-VF..... (Photo Ex) E.IX

- 1373 ☒ Wells, Fargo & Co., 25c Red "Pony" (143L9). Margins to slightly in at left, tied by Blue "Wells Fargo & Co. Virginia City N.T." Oval cancel on 3c Pink on Buff Entire (U35) to San Francisco, Wells, Fargo & Co. Printed Frank, diagonally reduced at right clear of embossed stamp, otherwise Fine, ex-Schenck..... (Photo) 4,000.00

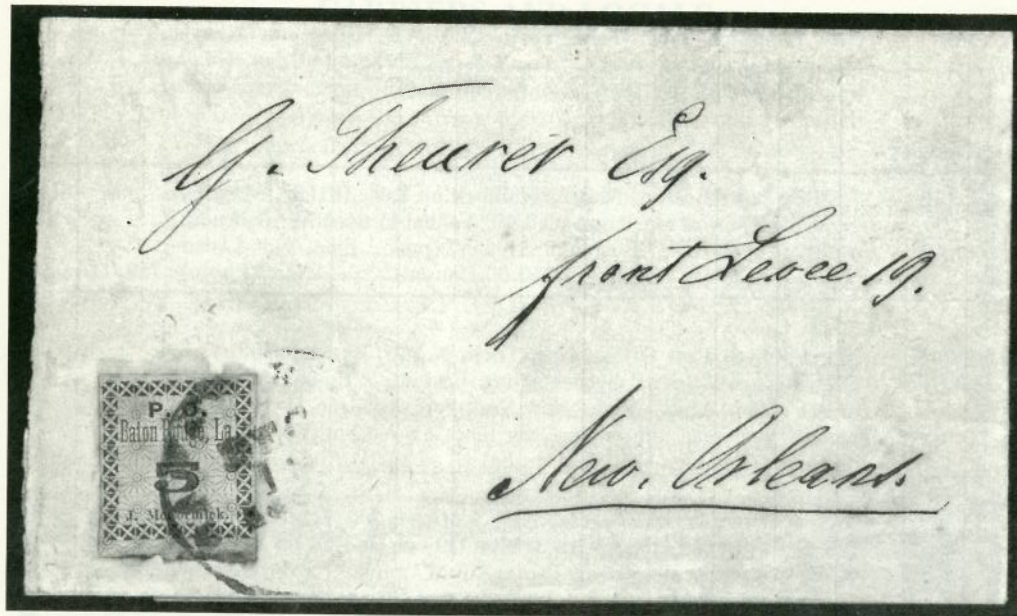
- 1374 TELEGRAPH STAMPS, Collection of 124 Virtually All Different Used & Unused Stamps, no issues past 1900, Complete less the very rare No. 7T2, 7T3 & a couple others, Better Items include Nos. 5T1, 5T2, 5T4-5T8, 6T1-6T3, 7T1, 10T1, etc., A Fine-Very Fine & Desirable Collection..... 2,118.00

- 1375 BALANCE OF COLLECTION, 1861-1944, Approximately 475 Nearly All Different Used & Unused Stamps including Postage, Commemoratives & Some Back-of-the-Book, Better Unused Items include Nos. 113, 237 two, 238, 283, 284, 287, 289, 327, 399, 400, 832-834, C18 & E3, Used Nos. 67 & 121, extremely mixed condition, G-VF..... E.XIV

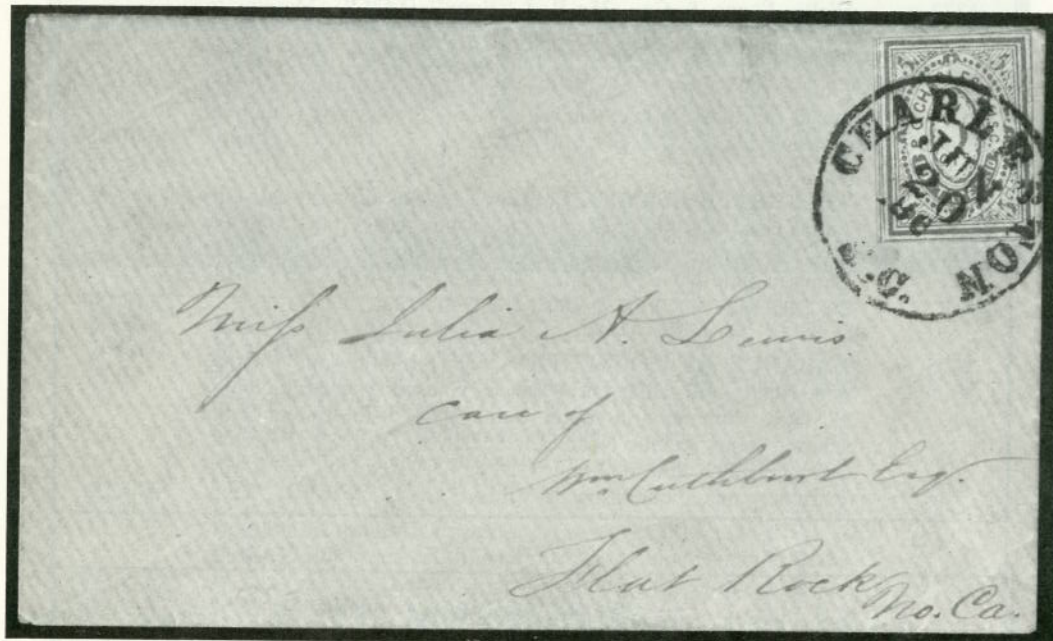
TELEPHONE BIDS

Bidders wishing to submit bids by telephone may either call our New York office at (212) 753-6421 (until Friday, May 23) or call our Super Booth directly at (312) 692-2921.

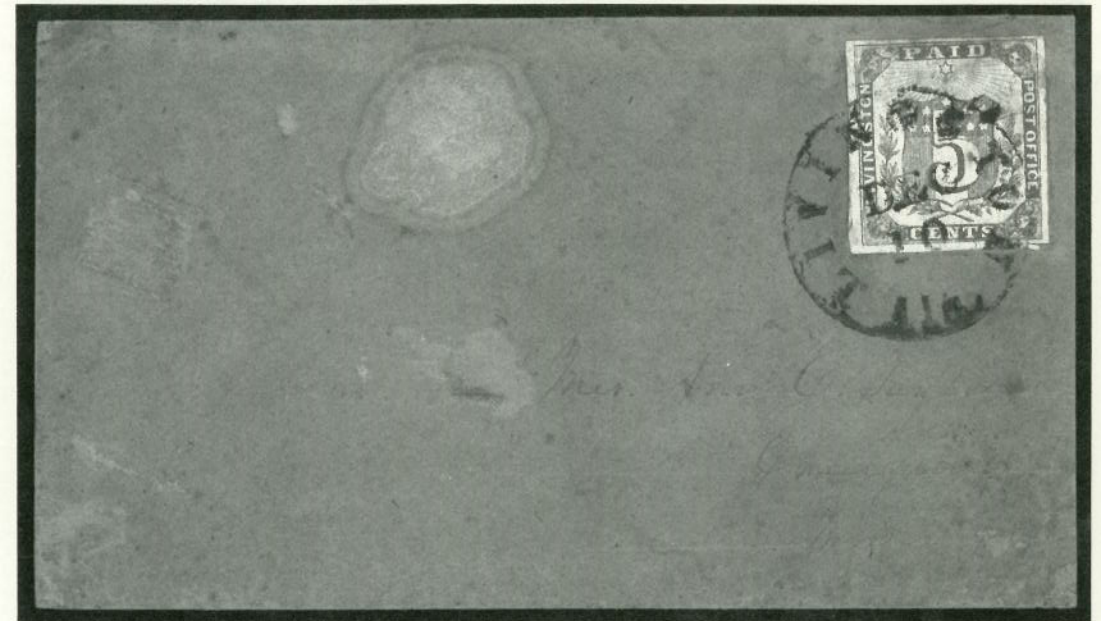
CONFEDERATE STATES



- 1376 **Baton Rouge, La., 5c Green & Carmine (11X2).** Margins All Around, on Dec. 1861 Folded Letter to New Orleans tied by partial Baton Rouge pmk., minor aging, Very Fine. (Photo) 2,000.00



- 1377 **Charleston, S.C., 5c Blue (16X1).** Margins All Around Showing Nearly Complete Outer Frame Lines, tied by Clear Charleston S.C. pmk. on Fresh Gray Blue Cover to Flat Rock, N.C., minor piece of flap missing, Extremely Fine..... (Photo) 1,350.00



- 1378 **Livingston, Ala., 5c Blue (51X1).** Margins All Around, negligible flaws, tied by Livingston Ala. pmk. on Cover to Miss., water spot at top center of cover, A Beautiful Provisional Cover Rarity nonetheless, ex-Duveen, Walcott, Emerson, Brooks & Weatherly (Photo) 35,000.00

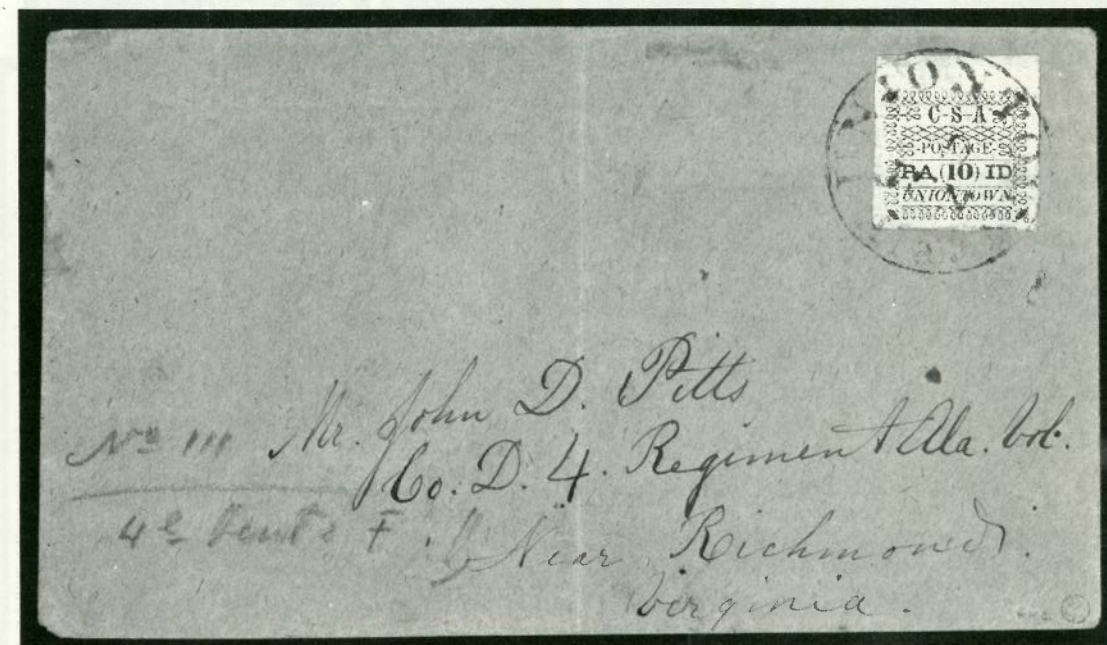
- 1379 **Nashville, Tenn., 10c Green (61X6).** Huge Margins to partly into bottom frameline, Rich Color, barely cancelled in Blue, Fine (Photo) 3,250.00

- 1380 **New Orleans, La., 2c Red (62X2).** Margins All Around, Fresh Color, Town pmk., Fine..... (Photo) 850.00

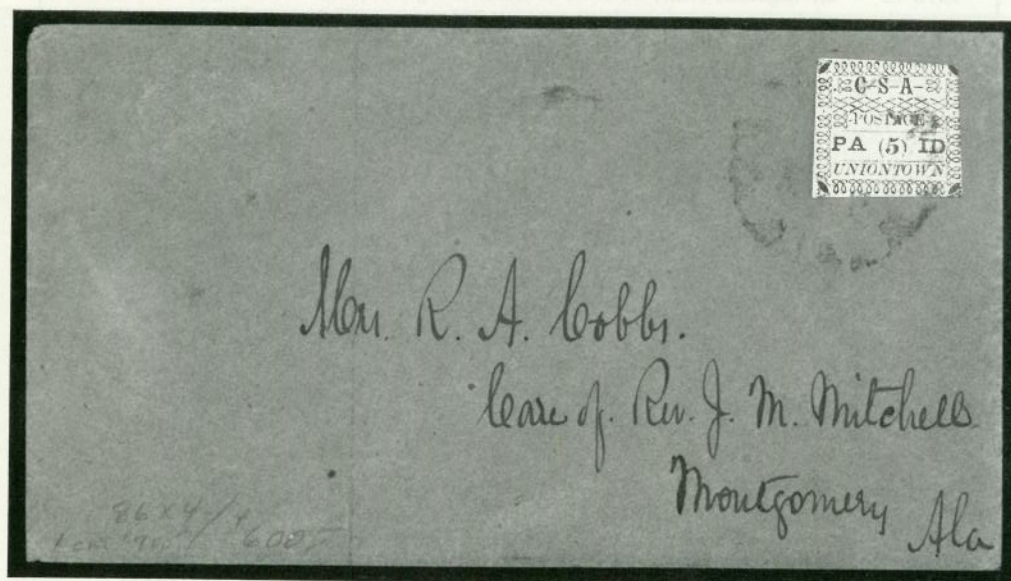
- 1381 **Petersburg, Va., 5c Red (65X1).** Margins All Around, Fresh Color, on Nov. 1861 Folded Letter tied by Blue Town pmk., Very Fine, Handsome Cover..... (Photo) 1,200.00



1382 ☐ **Pittsylvania Court House, Va., 5c Red on Laid (66X2).** Octagonally cut to shape with more than adequate margins all around, tied by Bold Town pmk. on Neat Feb. 1862 Folded Letter, Very Fine, Choice Important Provisional Cover Rarity (Photo) 7,500.00



1384 ☐ **Uniontown, Ala., 10c Red on Gray Blue (86X5).** Large Margins including Top Sheet Margin, Fresh Colors, neatly tied by Uniontown, Ala. pmk. on Remarkably Fresh Homemade Cover to Va., minor cover file fold, Extraordinarily Fine Quality for this Rarity, ex-Ferrari, signed W.H.C. (Colson) (Photo) 20,000.00



1383 ☐ **Uniontown, Ala., 5c Green on White (86X4).** Margins Virtually All Around, lightly tied by Town pmk. on Remarkably Fresh Buff Cover to Montgomery, Cobbs correspondence, Very Fine, Choice (Photo) 5,000.00

GENERAL ISSUES

- 1385 ★ **1c-20c General Issues (1-9, 11-14).** 26 Mostly Unused Stamps, includes Shades, Varieties, Couple Postmasters' Provisionals, etc., mixed quality, G-VF (Photo Ex) E.XII
- 1386 **10c Rose (5).** Ample to Huge Margins, on piece tied by Atlanta Ga. pmk., Very Fine (Photo) 625.00



1387

1388

1389

1390

- 1387 ★ 10c Blue, "T-E-N" (9). Horizontal Pair, Ample to Huge Margins, including Top Sheet Margin, Bright Color, Full o.g., Interesting Variety Showing **Misaligned Transfer** (Right Stamp Approximately 1½mm Lower Than Left Stamp), negligible aging specks & light crease, otherwise Very Fine (Photo) 1,850.00
- 1388 ★ 10c Blue, Frame Line (10). Margins All Around Showing Parts to Virtually Complete Lines on All Sides, tiny crease & slight toning, otherwise Very Fine..... (Photo) 3,500.00
- 1389 10c Blue, Frame Line (10). Margins All Around, Double Frame Line at Left, Single Frame Line at Bottom, Part at Right, Brownish Town pmk., Very Fine, Rare Variety, Only A Very Few Known..... (Photo) 1,750.00+
- 1390 10c Milky Blue, Frame Line (10a). Horizontal Pair, Large Margins Showing Full Frame Lines at Sides, Mobile Ala. Jul. 5, 1863 Double Circle cancels, Extremely Fine..... (Photo) 5,550.00+

DESCRIPTIONS

EXTREMELY FINE: The finest condition for noteworthy, outstanding stamps.

VERY FINE: (VF) In prime condition such as to satisfy the requirements of particular collectors.

FINE: (F) Perforations or margins do not touch design on issues after 1890 but in some cases may just touch in earlier issues. If used, fairly light cancellation.

VERY GOOD: (VG) Generally nice appearance but margins or perforations may cut in slightly.

GOOD: (G) Average off-centering or fairly attractive with slight defects.

ORIGINAL GUM is not to be expected on stamps prior to 1890 unless so stated in the description.

MINT: With original gum and never hinged.

Unless otherwise noted the 1986 Scott United States Specialized Catalogue Volume II has been used for cataloguing lots in this sale.

APOLLO 15 LUNAR MISSION COVER

The following lot (not part of the "Isleham" Collection) has been donated by former United States Astronaut James B. Irwin with the proceeds to be divided equally between Ameripex '86 and the High Flight Foundation.



- 1391 ☐ Apollo 15 Lunar Mission Flight Cover, July 26-Aug. 7, 1971, Contemporary U.S. Postage tied by "Kennedy Space Center Fl Jul 26 AM 1971" (Launch) & U.S.S. Okinawa Aug 7 1971 AM (Recovery) pmks., Autographed by Scott, Worden & Irwin, printed Multicolor Apollo 15 Cachet, handstamp indicating that this cover is #63 of 400 carried to the lunar surface in L.M. Falcon, Very Fine, Terrific Space Cover, With Sworn Affidavit Specifically Covering This Item & Signed by the Three Astronauts..... (Photo) E.XVI

END OF SALE—THANK YOU

PRICES REALIZED FOR SALE 662---May 25, 1986

The Isleham Collection of United States Stamps

Robert A. Siegel Auction Galleries, Inc.
60 East 56th Street, 4th Floor, New York, NY 10022
Tel (212) 753-6421 Fax (212) 753-6429

Lot#	Realized	Lot#	Realized	Lot#	Realized	Lot#	Realized	Lot#	Realized	Lot#	Realized	Lot#	Realized
1001	42,500	1043	280	1085	1,450	1127	120	1169	17,000	1211	2,700	1253	150
1002	2,600	1044	800	1086	3,500	1128	150	1170	15,000	1212	75	1254	200
1003	4,750	1045	1,100	1087	375	1129	650	1171	850	1213	450	1255	160
1004	3,000	1046	190	1088	325	1130	140	1172	10,500	1214	11,000	1256	160
1005	4,500	1047	160	1089	375	1131	425	1173	125	1215	1,450	1257	525
1006	35,000	1048	475	1090	37,500	1132	350	1174	105	1216	500	1258	160
1007	3,000	1049	1,250	1091	9,500	1133	725	1175	4,000	1217	13,500	1259	180
1008	1,400	1050	600	1092	47,500	1134	425	1176	150	1218	375	1260	2,300
1009	3,500	1051	67	1093	260	1135	325	1177	260	1219	500	1261	1,700
1010	2,800	1052	35	1094	115	1136	3,000	1178	100	1220	300	1262	1,100
1011	2,800	1053	700	1095	600	1137	250	1179	950	1221	100	1263	115
1012	70,000	1054	375	1096	2,900	1138	350	1180	325	1222	105	1264	130
1013	6,500	1055	725	1097	21,000	1139	230	1181	950	1223	100	1265	110
1014	30,000	1056	65	1098	1,100	1140	525	1182	375	1224	2,100	1266	95
1015	2,600	1057	475	1099	100,000	1141	6,500	1183	350	1225	6,500	1267	1,700
1016	3,250	1058	125	1100	400	1142	2,200	1184	425	1226	70	1268	15,000
1017	1,300	1059	725	1101	62	1143	210	1185	500	1227	100	1269	52
1018	2,600	1060	400	1102	425	1144	3,000	1186	200	1228	120	1270	11,500
1019	13,000	1061	3,500	1103	200	1145	1,200	1187	300	1229	260	1271	62
1020	6,000	1062	350	1104	950	1146	4,250	1188	325	1230	200	1272	200
1021	2,700	1063	800	1105	950	1147	4,750	1189	115	1231	270	1273	270
1022	8,500	1064	375	1106	450	1148	1,300	1190	100	1232	115	1274	4,250
1023	14,500	1065	1,300	1107	950	1149	3,750	1191	450	1233	210	1275	220
1024	100	1066	700	1108	1,050	1150	1,800	1192	260	1234	270	1276	55,000
1025	1,300	1067	725	1109	2,000	1151	4,750	1193	120	1235	190	1277	1,200
1026	270	1068	850	1110	1,700	1152	675	1194	5,000	1236	350	1278	85
1027	2,700	1069	1,300	1111	1,100	1153	4,000	1195	16,000	1237	90	1279	85
1028	2,700	1070	13,500	1112	1,200	1154	4,500	1196	15,500	1238	525	1280	65
1029	4,000	1071	250	1113	100	1155	11,000	1197	270	1239	2,900	1281	105
1030	22,000	1072	5,500	1114	260	1156	16,500	1198	150	1240	67	1282	220
1031	2,600	1073	12,000	1115	550	1157	5,500	1199	230	1241	350	1283	180
1032	1,500	1074	6,500	1116	850	1158	6,250	1200	375	1242	280	1284	160
1033	900	1075	13,000	1117	625	1159	9,000	1201	13,500	1243	75	1285	230
1034	300	1076	1,650	1118	250	1160	5,250	1202	375	1244	140	1286	900
1035	250	1077	300	1119	260	1161	1,600	1203	3,750	1245	125	1287	500
1036	155	1078	2,400	1120	160	1162	12,000	1204	5,250	1246	140	1288	400
1037	900	1079	100	1121	105	1163	1,900	1205	5,000	1247	220	1289	325
1038	2,000	1080	280	1122	4,500	1164	3,750	1206	85	1248	220	1290	300
1039	375	1081	425	1123	6,250	1165	1,750	1207	350	1249	375	1291	725
1040	400	1082	1,900	1124	350	1166	4,750	1208	1,600	1250	16,500	1292	130
1041	6,500	1083	375	1125	12,500	1167	2,700	1209	450	1251	6,500	1293	190
1042	1,700	1084	750	1126	4,000	1168	6,750	1210	140	1252	2,600	1294	240
												1335	62
												1336	100

PRICES REALIZED FOR SALE 662---May 25, 1986

The Isleham Collection of United States Stamps

Robert A. Siegel Auction Galleries, Inc.
60 East 56th Street, 4th Floor, New York, NY 10022
Tel (212) 753-6421 Fax (212) 753-6429

Lot#	Realized	Lot#	Realized
1337	1,700	1379	625
1338	5,500	1380	325
1339	170	1381	1,250
1340	60	1382	10,500
1341	105	1383	2,700
1342	700	1384	37,500
1343	5,500	1385	325
1344	425	1386	190
1345	4,000	1387	450
1346	8,000	1388	750
1347	130	1389	550
1348	200	1390	1,300
1349	1,300	1391	1,500
1350	2,400		
1351	170		
1352	120		
1353	550		
1354	1,650		
1355	5,750		
1356	5,000		
1357	325		
1358	425		
1359	750		
1360	280		
1361	130		
1362	115		
1363	1,300		
1364	105		
1365	425		
1366	3,250		
1367	700		
1368	150		
1369	2,100		
1370	800		
1371	350		
1372	170		
1373	1,550		
1374	1,550		
1375	1,100		
1376	1,250		
1377	1,000		
1378	21,000		