

666th SALE

# THE STANLEY G. COHEN COLLECTION OF CLASSIC UNITED STATES

1847 ISSUE AND 1851 ISSUE  
MULTIPLES ON AND OFF COVER



AT PUBLIC AUCTION  
JUNE 19, 1986 AT 10:30 A.M.

*Robert A. Siegel*

AUCTION GALLERIES, INC.

160 EAST 56th STREET  
NEW YORK CITY, NY 10022

## CONDITIONS OF SALE

1. On all lots sold a commission of 10% on the hammer price is payable by the buyer.
2. The terms of sale are strictly cash on delivery to the highest bidder unless special arrangements have been made prior to the sale. The fact that an item is placed on extension (submitted to an expertising committee for certification) does not relieve the successful bidder from this condition of sale.
3. All bids are per lot as numbered in the catalogue unless otherwise announced by the auctioneer at the time of sale. The right is reserved to group two or more lots; to withdraw any lot or lots from the sale, or to act on behalf of the seller. The Galleries will bid on behalf of clients, but will not be responsible for any errors in the execution of bidding instructions. The auctioneer shall regulate the bidding and in the event of any dispute his decision shall be final.
4. Any lot, the description of which is incorrect, is returnable, but only within 14 days of receipt. All disputed lots must be returned intact as received. **The following lots may not be returned for any reason whatsoever: Lots containing ten or more stamps; Lots from buyers who have had the opportunity to examine them before the sale; Lots described as having defects or faults may not be returned because of any faults. No illustrated lots may be returned because of centering, margins or other factors shown in the illustrations.**
5. Successful bidders, unless they are known to us or supply acceptable references are expected to make payment in full before the lots are delivered. Mail bidders will be notified of the amounts of their purchases. All mail bidders who have established credit with us must make payment within three days after receipt. We reserve the right in our sole and absolute discretion to demand cash payment at the time a lot is knocked down to any bidder who has not previously established credit with us or whose account is in arrears. In the event any buyer refuses to pay cash for any lot at the time it is knocked down to him, the auctioneer reserves the right to re-offer the lot immediately for sale to the highest bidder. Sales tax will be added to purchases where applicable.
6. If the purchase price has not been paid within the time limit, nor lots taken up within seven days from date of sale they must be resold and any loss arising from such sale will be charged to the defaulter. Any account more than thirty days in arrears is subject to a late payment charge of 1½% per month so long as the account remains in arrears. If the auctioneer, in his discretion, should institute any action to secure payment of a delinquent account the defaulting purchaser shall pay all expenses incurred by the auctioneer and such charges will be added to the amount owed.
7. All lots are sold as genuine but should any lot be proved otherwise by written opinion of any competent, responsible authority acceptable to us, immediate refund of the full purchase price will be made, provided that such claim is made in writing within 14 days from date of sale. If claim is not made within this period, no lots are returnable for any reason at any time. So long as we are notified within the 14 day period that an opinion is being sought and **the material is submitted to an acceptable authority within that period** the matter will remain open until such opinion is rendered. **We will not be responsible for any charges incurred by the buyer for expertization fees and costs unless the opinion states the item is not genuine, in which case we will pay actual costs up to a maximum of \$50.00.** In the event an item is proved "not as described" it is returnable for full refund, and the buyer will be paid interest (at the prevailing Treasury Bill Rate) for the time his funds have been on deposit with us during the extension period.
8. Until paid for in full, all lots remain the property of Robert A. Siegel Auction Galleries, Inc. on behalf of the seller.
9. All forwarding charges will be added to the purchase price. The mode of shipment shall be at our option unless we are given specific instructions.
10. Lots may be sent for inspection to buyers known to us upon written application. All such lots must be returned to us by registered mail, adequately insured and within 24 hours after receipt. The applicant assumes all responsibility and will provide insurance against all risks from time of receipt until they are actually received back by us, and is to pay all expenses of postage and insurance. **No lots can be sent for inspection within ten days from date of local viewing. Large lots and collections cannot be sent for inspection.**
11. Agents are responsible for all purchases made on behalf of their clients unless other arrangements are made prior to the sale.
12. The placing of a bid shall constitute acceptance of the foregoing conditions of sale.

ROBERT A. SIEGEL  
MALCOLM SIEGEL  
WALTER J. MADER, Licensed Auctioneers



*Robert A. Siegel*

AUCTION GALLERIES, INC.

List of Prices Realized

666th SALE

JUNE 19, 1986

160 EAST 56 STREET, NEW YORK CITY, N.Y., 10022

(212) 753-6421

**THE STANLEY G. COHEN  
COLLECTION OF  
CLASSIC UNITED STATES**

**1847 ISSUE AND 1851 ISSUE  
MULTIPLES ON AND OFF COVER**

INDIVIDUAL REALIZATIONS ARE HAMMER PRICES. GROSS REALIZATION  
INCLUDES 10% BUYERS PREMIUM.

1	2000	35	270	69	375	103	475
2	850	36	270	70	26	104	500
3	800	37	115	71	57½	105	425
4	525	38	90	72	85	106	450
5	1000	39	160	73	47½	107	525
6	650	40	1100	74	325	108	525
7	725	41	140	75	240	109	1600
8	4000	42	100	76	230	110	700
9	4000	43	125	77	6250	111	1700
10	4000	44	475	78	170	112	1900
11	2000	45	270	79	110	113	5500
12	3250	46	160	80	115	114	3250
13	11,000	47	400	81	475	115	6250
14	3500	48	450	82	425	116	600
15	325	49	240	83	110	117	1050
16	250	50	220	84	190	118	375
17	200	51	350	85	100	119	3250
18	220	52	135	86	2200	120	850
19	105	53	135	87	2000	121	500
20	170	54	120	88	2400	122	500
21	375	55	140	89	1700	123	525
22	125	56	140	90	1700	124	650
23	475	57	120	91	1300	125	325
24	5500	58	400	92	1550	126	900
25	2700	59	210	93	2900	127	950
26	1550	60	220	94	575	128	290
27	800	61	190	95	475	129	260
28	725	62	80	96	575	END OF SALE THANK YOU	
29	290	63	105	97	550		
30	575	64	170	98	375		
31	290	65	105	99	500		
32	180	66	80	100	2700	GROSS REALIZATION: \$141,285.10	
33	200	67	65	101	850		
34	210	68	70	102	950		



**THE AMOUNT OF YOUR BID DOES NOT INCLUDE THE 10% BUYERS PREMIUM WHICH WILL BE ADDED TO THE HAMMER PRICE.**



## LOTS ON VIEW

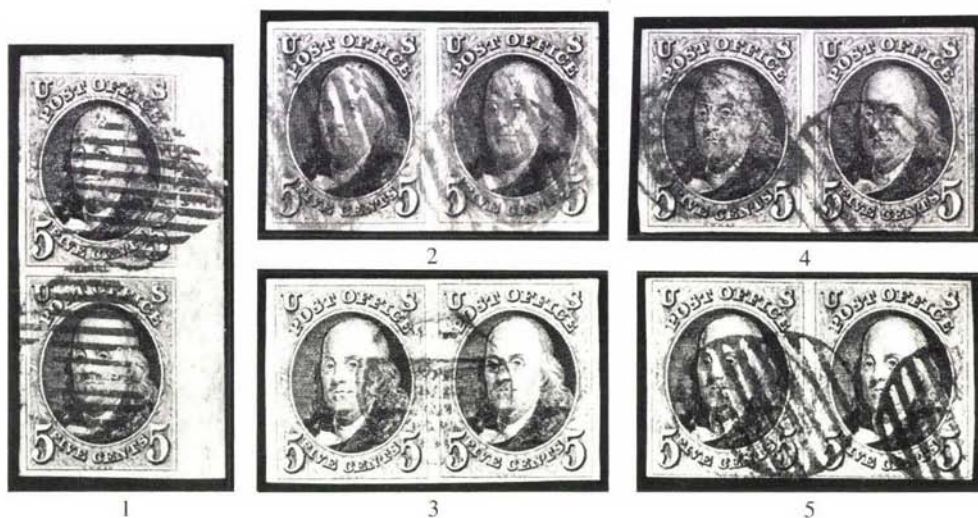
Monday, June 16, Tuesday, June 17, 9:30 A.M. until 5:00 P.M.  
Wednesday, June 18, 9:30 A.M. until 12:30 P.M.

## PUBLIC AUCTION

THURSDAY, JUNE 19, 1986 AT 10:30 A.M.



### CLASSIC UNITED STATES MULTIPLES

#### 1847 ISSUE



- |   |   |          |
|---|---|----------|
| 1 | <b>5c Red Brown (1). Vertical Pair</b> , Large to Enormous Margins including Top Right Sheet Corner, Fresh Color, Red Square Grid cancels, trivial corner margin crease at extreme top right far from design, Extremely Fine..... | 1,500.00 |
| 2 | <b>5c Brown (1). Horizontal Pair</b> , Beautiful Large Margins, Lovely Shade, Fine Impression, Neat Red Grid cancels, Extremely Fine.....   | 1,500.00 |
| 3 | <b>5c Red Brown (1). Horizontal Pair</b> , Large to Huge Margins, Bright Color, Neat Centrally Struck <b>Blue</b> Grid cancel, right stamp minute pinhole, otherwise Extremely Fine .....   | 1,550.00 |
| 4 | <b>5c Red Brown (1). Horizontal Pair</b> , Ample to Large Margins, Rich Color, Neat Red Grid cancels, owner's handstamp on back, left stamp minute pinhole, otherwise Very Fine .....   | 1,500.00 |
| 5 | <b>5c Red Brown (1). Horizontal Pair</b> , Clear to Large Margins, Rich Color, Bold <b>Dark Blue</b> Grid cancels, Fine-Very Fine.....  | 1,550.00 |



- 6  **5c Brown (1). Vertical Pair**, Ample to Huge Margins, Choice Deep Shade, Sharp Impression, tied by Red Grid cancels on Folded Letter, matching "Savannah Ga. 10" pmk., couple tiny scissors cuts in margins, top stamp light crease, otherwise Extremely Fine..... 1,750.00
- 7  **5c Brown (1). Horizontal Pair**, Ample to Huge Margins, Choice Color & Impression, tied by Blue Grid cancel on Dec. 1848 Folded Cover, matching "Louisville Ky. 10" pmk., usual cover file fold, Very Fine..... 1,750.00



8



9

- 8 **10c Black (2). Vertical Pair**, Large to Huge Margins, Red Square Grid cancels, Extremely Fine..... 4,500.00
- 9 **10c Black (2). Horizontal Pair**, Three Large to Huge Margins, Ample to Large at Top, Intense Color, **Orange Red** Grid cancels, left stamp small spot of ms., Very Fine, Right Stamp Extremely Fine, with P.F. Certificate, ex-Sweet..... 4,500.00

## ESTIMATES

Our sales offer many covers, cancellations, varieties and other items for which there is no catalogue value or where catalogue value does not reflect the actual value. In order to assist our clients, we are placing a fair net valuation on such lots as a guide to our bidders. The chart below will be used. For example, E. IV means that our estimated net value on the lot is \$30.00 to \$40.00. Lots may actually realize more or less than our estimates, which are under no circumstances to be considered reserves but merely a guide to bidding.

E. II	\$10.00 to \$20.00	E. XI	\$250.00 to \$350.00
E. III	\$20.00 to \$30.00	E. XII	\$350.00 to \$500.00
E. IV	\$30.00 to \$40.00	E. XIII	\$500.00 to \$750.00
E. V	\$40.00 to \$50.00	E. XIV	\$750.00 to \$1000.00
E. VI	\$50.00 to \$75.00	E. XV	\$1000.00 to \$2000.00
E. VII	\$75.00 to \$100.00	E. XVI	\$2000.00 to \$5000.00
E. VIII	\$100.00 to \$150.00	E. XVII	\$5000.00 to \$10,000.00
E. IX	\$150.00 to \$200.00	E. XVIII	\$10,000.00 to \$20,000.00
E. X	\$200.00 to \$250.00	E. XIX	over \$20,000.00



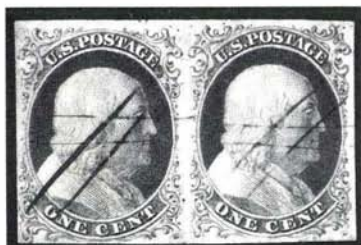


- 10 **10c Black (2). Vertical Pair**, Ample to Large Margins, tied by Red Square Grid cancels & curious ms. Oct. 1850 Folded Cover to **Canada**, Red "New-York" & "Montreal" pmks., ms. rate mark, Very Fine, signed Ashbrook.....6,000.00 +



- 11 **10c Black (2). Horizontal Pair**, Ample to Extra Large Margins, natural dry print, tiny margin flaws, **Blue** Crisscross Grid cancels (not tied), matching "Louisville Ky." pmk. on 1850 Cover to **England**, Red "19" & "America Liverpool", with P.F. Certificate which mentions a missing stamp, Rare & Attractive nonetheless .....6,000.00 +

## 1851 ISSUE



12



14

- 12     **1c Blue, Ty. 1b (5A). Horizontal Pair**, Pos. 8, 9R1E, Margins All Around, Deep Rich Color, ms. cancel, Very Fine, signed Ashbrook, with P.F. Certificate .....2,650.00 +



- 13     **1c Blue, Ty. 1b (5A). Horizontal Pair**, Pos. 3, 4R1E, Margins All Around, Sheet Margin at Top, Beautiful Color, Perfectly tied by **Blue** "Apalachicola Fla Paid 3", pmk. on Fresh Apr. 1852 Folded Circular, Extremely Fine, A Beautiful Rare Cover, ex-Emerson, with P.F. Certificate ..... 6,750.00 +
- 14     **1c Blue, Ty. 1a (6). Horizontal Pair**, Pos. 94, 95R4, Huge Margins to trifle in, tiny margin nick at bottom, Rich Color, Town pmks., Fresh & Fine, Very Rare, with P.F. Certificate ..... 10,500.00
- 15     **1c Blue, Ty. II (7). Vertical Pair**, Pos. 6, 16L2, Large to Huge Margins, Magnificent Deep Shade, Town pmk., Extremely Fine ..... 185.00
- 16     **1c Blue, Ty. II (7). Vertical Pair**, Large to Huge Margins, Rich Color, Large "Paid" in Grid cancel, Extremely Fine..... 185.00

- 17 **1c Blue, Ty. II (7). Horizontal Pair**, Pos. 12, 13L1E, Large to Huge Margins, Fresh Color, Large "Paid" in Grid cancels, owner's handstamp on back barely shows through on left stamp, Extremely Fine ..... 185.00
- 18 **1c Blue, Ty. II (7). Horizontal Pair**, Pos. 18, 19L2, Huge Margins, Wonderful Deep Shade, Bold Town pmk., light rub in margin between stamps (barely touches bits of design at right of left stamp) otherwise Extremely Fine, Right Stamp A Fabulous "Gem" ..... 185.00
- 19 **1c Blue, Ty. II (7). Horizontal Pair**, Pos. 7, 8R2, Large to Huge Margins, Rich Color, light Grid cancels, left stamp minor corner crease, otherwise Extremely Fine ..... 185.00
- 20 **1c Blue, Ty. II (7). Horizontal Pair**, Margins Virtually All Around, Rich Color, "Savannah \* Geo \*\*\* pmk., owner's handstamp on back barely shows through on left stamp, Very Fine..... 185.00
- 21 **1c Blue, Ty. II, Plate 3 (7). Horizontal Pair**, Pos. 42, 43L3, Large to Huge Margins, Natural "Plate Wash", odd Cork cancels, Very Fine, ex-Cipolla..... 700.00
- 22 **1c Blue, Ty. II (7). Horizontal Strip of Three**, Ample to Huge Margins, Beautiful Intense Color, each with neat Blue three line ms. cancel, matching "North Greenfield N.Y." pmk. on Cover to Ohio, Very Fine..... 120.00 +
- 23 **1c Blue, Ty. II, IV (7, 9). Horizontal Strip of Three**, Pos. 2-4R1L, Margins All Around, Huge at Bottom & Left, **Right Stamp Only Position on Plate One Late That is Not Recut**, neat ms. squiggle cancels, Red "Wakefield R.I." pmk. on Neat Yellow Cover to N.Y., without flap, Pos. 4 tiny barely noticeable tear in bottom margin, otherwise Extremely Fine, signed Ashbrook ..... E.XII

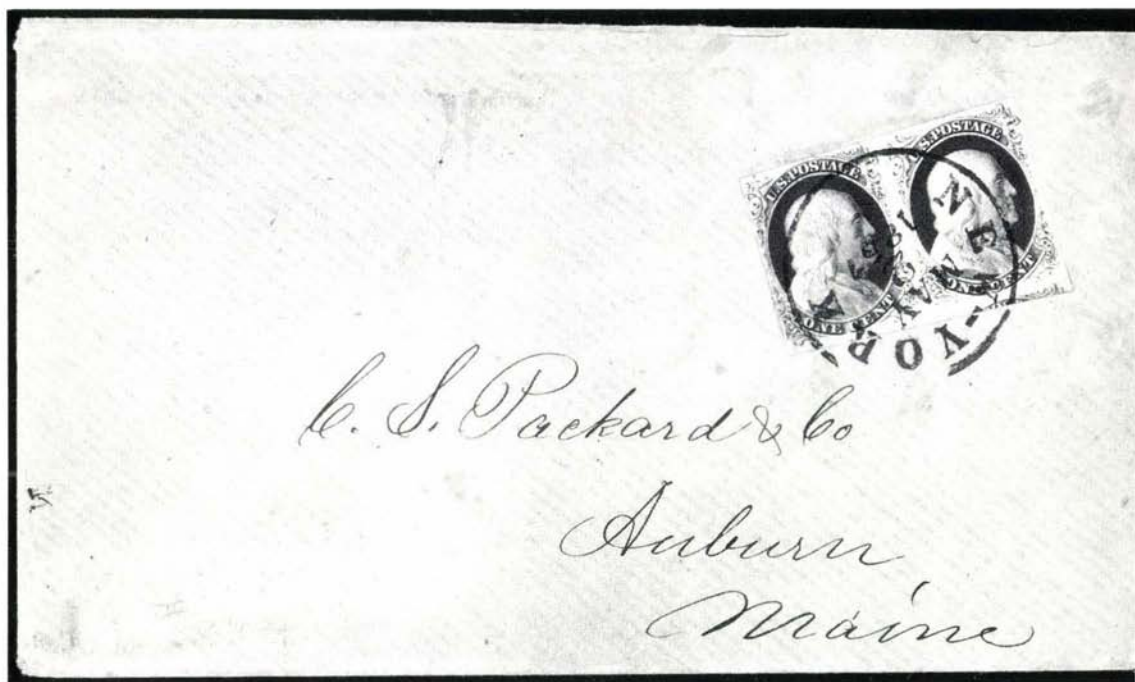


- 24 **1c Blue, Ty. III (8). Horizontal Pair**, Pos. 69, 70L4, Large to Huge Margins including Right Sheet Margin, Deep Rich Color, Town pmk., Extremely Fine, Left Stamp a Fabulous "Gem", ex-Emerson, with two P.F. Certificates ..... 2,800.00

#### VALUATIONS

Upon request estimate of value furnished on any lots in this auction.

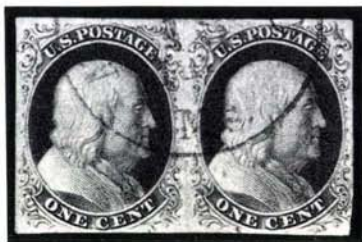




- 25  $\infty$  **1c Blue, Ty. III (8). Horizontal Pair**, Pos. 69, 70L4, Margins Virtually All Around, Mostly Large to Huge, tied by "New York May 2 1857" pmk. on Unsealed Circular Rate Cover to Me., left stamp Fine, Right Stamp Extremely Fine, ex-Krug, signed Ashbrook 3,100.00 +



26



27

- 26 **1c Blue, Ty. IIIa (8A). Horizontal Pair**, Pl. 4, Clear to Immense Margins (except just barely touched at right) Showing Bits of Two Other Stamps, Gorgeous Deep Rich Shade, Town pmk., Very Fine, Scarce, with P.F. Certificate..... 1,200.00
- 27 **1c Blue, Ty. IIIa (8A). Horizontal Pair**, Pos. 24, 25L4, Clear to Large Margins, Rich Color, Light Town pmk., R. stamp small corner crease, otherwise Very Fine, with P.F. Certificate which states "genuine" ..... 1,200.00

28	<b>1c Blue, Ty. IIIa (8A). Horizontal Combination Strip of Three,</b> Pos. 74-76L1E, Middle Stamp Ty. IIIa, Others Ty. II (Right Stamp weak Top Line), Ample to Huge Margins Showing Bit of Next Stamp at Top Right, tied by N.Y. pmks. on Cover to President of Yale College, New Haven, Ct., ms. docketing, without flap, left stamp small scissors cut into design & tiny scuff at bottom, otherwise Very Fine .....	<b>E.XIV</b>
29	<b>1c Blue, Ty. IV (9 var). Horizontal Pair,</b> Pos. 97, 98R1L, <b>Both Major Double Transfers,</b> Immense Margins Showing Bits of Three Other Stamps & 3mm of Bottom Sheet Margin, Gorgeous Deep Rich Color, Large Boston "Paid" in Grid cancels, Extremely Fine "Gem" .....	160.00 +
30	<b>1c Blue, Ty. IV (9). Horizontal Pair,</b> Pos. 91, 92L1L, <b>Pos. 91L1L Triple Transfer, One Inverted,</b> Immense Margins All Around Showing Portions of Next Stamps at Top & 2mm of Bottom Sheet Margin, Town pmk., Extremely Fine "Gem" .....	200.00 +
31	<b>1c Blue, Ty. IV (9). Horizontal Pair,</b> Pos. 2, 3L1L, Large to Immense Margins Showing Bit of Next Stamp at Right & 3mm of Top Sheet Margin, <b>Blue Cincinnati pmks.,</b> Extremely Fine & Choice, ex-Newbury .....	165.00
32	<b>1c Blue, Ty. IV (9). Vertical Pair,</b> Pos. 87, 97L1L, <b>Bottom Stamp Major Double Transfer,</b> Immense Margins Showing Bits of Three Other Stamps & 5mm of Bottom Sheet Margin, ms. cancels & Town pmk., Bottom stamp light natural wrinkle, Extremely Fine .....	160.00
33	<b>1c Blue, Ty. IV (9). Horizontal Pair,</b> Large to Immense Margins Showing Bits of Next Stamps at Top & Bottom except just clear at bottom left & bottom right, Gorgeous Deep Rich Color, Town pmk., Extremely Fine .....	160.00
34	<b>1c Blue, Ty. IV (9). Horizontal Pair,</b> Pos. 5, 6L1L, Large to Huge Margins including Portion of Top Sheet Margin, Town pmk., Extremely Fine .....	160.00
35	<b>1c Blue, Ty. IV (9). Horizontal Pair,</b> Pos. 66, 67R1L, Both Recut Once at Top Only, Huge Margins Showing Bits of Four Other Stamps, Rich Color, faint Town pmks., Extremely Fine .....	160.00
36	<b>1c Blue, Ty. IV (9). Vertical Pair,</b> Pos. 51, 61L1L, Former Recut Twice at Bottom, <b>Latter Double Transfer,</b> Large to Immense Margins Showing Bits of Two Other Stamps & 5mm of Left Sheet Margin <b>With Nearly Full Imprint,</b> Philadelphia, Pa. pmk., Top stamp tiny natural inclusion, Bottom stamp light creases, otherwise Extremely Fine, ex-Newbury .....	160.00
37	<b>1c Blue, Ty. IV (9). Vertical Pair,</b> Pos. 50, 60L1L, Bottom Stamp Shows Trace of Crystallization Cracks, Immense Margins Showing Portion of Next Stamp at Bottom, Bit of Next Stamp at Top & 3mm of Pane Margin at Right, Gorgeous Deep Rich Color, Neat Town pmk., Top stamp tiny tear & light corner crease, otherwise Extremely Fine .....	160.00
38	<b>1c Blue, Ty. IV (9). Horizontal Pair,</b> Pos. 2, 3L1L, Immense Margins Showing Bits of Three Other Stamps & 3mm of Top Sheet Margin, ms. cancels, faint crease, Extremely Fine Appearance .....	160.00

39	<b>1c Blue, Ty. IV (9). Horizontal Pair</b> , Large to Immense Margins Showing Portions of Next Stamps at Top, New York pmk., very faint scoring line at bottom, otherwise Extremely Fine.....	160.00
40	<b>1c Blue, Ty. IV (9). Four Vertical Pairs Comprising Complete Matched Set of Pane Corner Margin Pairs Each with Complete Center Line &amp; Terminal Dots</b> , Large to Immense Margins, Three Show Bits of Other Stamps (One Shows Portion of Stamp From Next Pane), Rich Colors, Town pmks. (One in Blue), Pos. 90, 100L1L & Pos. 1R1L <b>Double Transfers</b> , three with light creases, otherwise Extremely Fine, Owner States it Took Ten Years to Assemble This Set, two ex-Newbury .....	640.00 +
41	<b>1c Blue, Ty. IV (9). Horizontal Pair</b> , Pos. 24, 25L1L, <b>Both Double Transfers</b> , Pos. 24L1L Major Double Transfer, Clear to Large Margins, Gorgeous Deep Rich Color, Grid cancels, Very Fine.....	160.00 +
42	<b>1c Blue, Ty. IV (9). Horizontal Pair</b> , Pos. 47, 48L1L, Recut Once at Top, Once at Top & Once at Bottom respectively, Large to Huge Margins Showing Bits of Next Stamps at Top, Town pmks., somewhat dry print, Very Fine.....	160.00
43	<b>1c Blue, Ty. IV (9). Horizontal Pair</b> , Large Margins, Gorgeous Deep Rich Shade, light Town pmk., left stamp tiny margin tear, otherwise Very Fine.....	160.00
44	<b>1c Blue, Ty. IV (9). Horizontal Strip of Three</b> , Pos. 88-90L1L, Pos. 88 & 90L1L <b>Double Transfers</b> , Large to Immense Margins Showing Bits of Two Other Stamps, Complete Pane Margin at Right with Center Line & Bit of Next Stamp From Right Pane, Gorgeous Deep Rich Color, Town pmks., Extremely Fine & Choice .....	265.00
45	<b>1c Blue, Ty. IV (9). Horizontal Strip of Three</b> , Pos. 42-44L1L, Pos. 44L1L <b>Double Transfer</b> , Ample to Immense Margins Showing Bits of Next Stamps at Top & Bottom (except partly touched at Right), Gorgeous Deep Rich Color, Iowa City pmks., light crease at top left clear of design, otherwise Very Fine-Extremely Fine.....	265.00
46	<b>1c Blue, Ty. IV (9). Vertical Strip of Three</b> , Pos. 26, 36, 46R1L, Ample to Large Margins Showing Bits of Two Other Stamps, Town pmks., Bottom stamp light corner creases, otherwise Very Fine-Extremely Fine .....	265.00
47 ☞	<b>1c Blue, Ty. IV (9). Horizontal Pair</b> , Large to Immense Margins Showing Bits or Portions of Four Other Stamps, tied by "New Orleans Sep 16" pmk. on 1855 Folded <b>Printed Circular to Austria</b> , Red Calais transit, ms. "3" due mark, Austrian Straight Line Backstamp, Extremely Fine.....	E.XII
48 ☞	<b>1c Blue, Ty. IV (9). Vertical Pair</b> , Pos. 67, 77L1L, Former <b>Double Transfer</b> Latter Recut Twice at Top, Once at Bottom, Clear to Large Margins, bottom stamp minor corner crease, tied by Grid cancels on Buff <b>Newspaper Wrapper</b> to Mass., ms. "2 Papers", Very Fine, <b>only known 1c 1851 pair on wrapper</b> , ex-Cipolla .....	E.XII



- 49 ☒ **1c Blue, Ty. IV (9). Vertical Pair**, Pos. 69, 79L1L, **Former Recut Once at Top, Twice at Bottom, Latter Recut Twice at Top & Bottom**, Ample to Large Margins Showing Bit of Next Stamp at Top, Deep Rich Color, tied by N.Y. pmk. on 1857 Folded Printed Circular, some cover bleaching spots, otherwise Very Fine ..... 220.00 +
- 50 ☒ **1c Blue, Ty. IV (9). Vertical Strip of Three**, Pos. 10, 20, 30L1L, Large to Immense Margins Showing 2mm of Pane Margin at Right, scissors cut along bottom margin partly into design, Rich Color, tied by N.Y. pmks. on Buff Envelope to Me., some cover edge wear (neatly refolded at bottom to improve appearance), otherwise Very Fine ..... 265.00 +
- 51 ☒ **1c Blue, Ty. IV, 3c Claret (9, 11a). Latter Horizontal Pair**, Large to Huge Margins, tied by light Washington D.C. pmks. on **3c Red on Buff Entire (U10)** to Cal., without flap, 1c faint pre-use crease, otherwise Extremely Fine ..... **E.X**
- 52 **3c Orange Brown (10). Horizontal Pair**, Pos. 61, 62R2E, Large to Huge Margins incl. 2mm of Pane Margin at Left, Rich Color, Neat S.F. pmk., right stamp small corner crease, otherwise Extremely Fine ..... 105.00
- 53 **3c Orange Brown (10). Horizontal Pair**, Pos. 4, 5L1L, Clear to Large Margins Showing Bit of Next Stamp at Left except just touched at top left, Gorgeous Deep Rich Color, Grid cancels, Very Fine ..... 105.00
- 54 **3c Orange Brown (10). Horizontal Pair**, Pos. 11, 12R5E, Clear to Immense Margins including 4mm of Pane Margin at Left with Complete Center Line (barely touched at bottom left of left stamp), Gorgeous Rich Color, Neat S.F. pmk., right stamp tiny corner crease, otherwise Very Fine, ex-Newbury ..... 105.00
- 55 **3c Copper Brown (10). Horizontal Pair**, 67, 68L2E, Large Margins to touching at left, Gorgeous Rich Shade, Bold N.Y. pmk., left stamp tiny trivial corner crease, otherwise Fine-Very Fine ..... 120.00 +
- 56 ☒ **3c Orange Brown (10). Horizontal Pair**, Margins All Around, tied by Blackish Red Grid cancels, Baltimore, Md. pmk. on Fresh Nov. 1851 Folded Letter to Md., Very Fine, ex-Emerson ..... 125.00 +
- 57 ☒ **3c Copper Brown (10). Vertical Pair**, top stamp, small tear at top, otherwise Fine; Bottom Stamp Extremely Fine, Deep Rich Color, tied by San Francisco Cal. pmk. on Neat Blue Cover ..... 135.00 +
- 58 ★ **3c Red (11). Horizontal Pair**, Large to Immense Margins Showing Bits of Three Other Stamps, Fresh, Full o.g., left stamp faint corner crease, otherwise Extremely Fine, ex-Lilly ..... 270.00
- 59 ★田 **3c Red (11). Horizontal Block of Six**, Pos. 8-10, 18-20L2L, Two Immense Margins (bits of Top Right Sheet Corner Margin), others Clear to barely in, three with light crease (one with couple faint toning spots on back), otherwise Fine-Very Fine ..... 945.00

60	<b>3c Brownish Carmine (11). Horizontal Pair</b> , Immense Margins Showing Bits of Three Other Stamps & Portion of Bottom Right Sheet Margins, Gorgeous Deep Rich Shade, Chicago, Ill. pmks., tiny scissors cut between stamps, Extremely Fine & Choice .....	15.00
61	<b>3c Red (11). Horizontal Pair</b> , Large to Immense Margins Showing Bits of Two Other Stamps & 2mm of Top Sheet Margin, Rich Color, N.Y. pmk., Extremely Fine & Choice, ex-Grunin.....	15.00
62	<b>3c Red (11). Horizontal Pair</b> , Large to Huge Margins Showing Bits of Next Stamps at Top & Right, Rich Color, Town pmk., Extremely Fine & Choice.....	15.00
63	<b>3c Red (11). Vertical Pair</b> , Pos. 82, 92R4, Large Margins Showing Bits of Two Other Stamps, Grid cancels (Top stamp bit of ms. from address), Extremely Fine, ex-West .....	15.00
64	<b>3c Red (11). Horizontal Pair</b> , Pos. 19, 20L3, Large to Huge Margins Showing Bits of Four Other Stamps, Small Circle of V's cancels, Extremely Fine .....	15.00
65	<b>3c Red (11). Bottom Right Corner Margin Vertical Pair</b> , Clear to Immense Margins Showing 7mm of Sheet Margins (except just touched at bottom left of bottom stamp), Bold "Fort Covington N.Y. Jul 4" pmk., bottom stamp tiny toning speck, otherwise Extremely Fine .....	15.00
66	<b>3c Red (11). Horizontal Pair</b> , Huge to Immense Margins Showing Bits of Two Other Stamps & 4mm of Top Sheet Margin, Neat Blue Charleston S.C. pmks., small margin scuff above left stamp barely clear of design, otherwise Extremely Fine .....	15.00
67	<b>3c Claret (11). Horizontal Pair</b> , Large to Huge Margins Showing Bit of Next Stamp at Right, <b>Blue</b> Town pmks., left stamp faint toning on back only, otherwise Extremely Fine .....	20.00 +
68	<b>3c Red (11). Horizontal Pair</b> , Large to Huge Margins Showing Bit of Next Stamp at Left, Rich Color, Neat Town pmk., Very Fine .....	15.00
69	<b>3c Red (11). Horizontal Pair</b> , Pos. 93, 94L51, Pos. 94 <b>Major Cracked Plate</b> , Clear to Huge Margins Showing Bits of Two Other Stamps, Rich Color, Town pmk., Very Fine, ex-Newbury .....	67.00 +
70	<b>3c Red (11). Horizontal Pair</b> , Pos. 33, 34R1L, Three Large Margins Showing Bits of Next Stamps at Sides, Clear to barely in at top, Rich Color, Bold Lexington pmk., Very Fine .....	—
71	<b>3c Dark Brownish Carmine (11). Horizontal Pair</b> , Ample to Large Margins Showing Bits of Three Other Stamps, Deep Rich Color, Bold "New-York Ship Apr 25" pmk., tiny negligible corner crease at top left, otherwise Very Fine .....	15.00
72	<b>3c Red (11). Horizontal Pair</b> , Margins to just barely in, Mostly Readable <b>Blue</b> "(S)tamps" Straight Line Handstamp Cancel (Large Sans-Serif Capital Letters), <b>Most Likely Part of "Old Stamps/Not Recognized" Cancel</b> , small faults, Fine Strike, Scarce.....	—





15



16



17



18



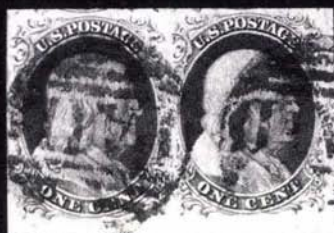
20



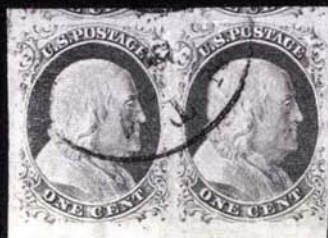
19



21



29



30



31



33



34



32



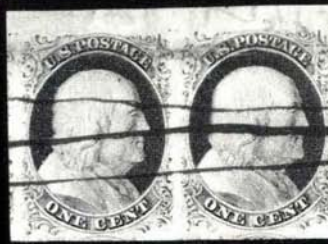
36



37



35



38





39



46



41



40



42



44



43



45



52



53



54





55



58



59



63



65



60



61



62



68



66



67



64



69



70



71



73



75



76



74



76



72



108





6

Mr Est Welling

Philadelphia



7

Hine.

atly at Law



22

North Greenfield N.Y.  
Feb 25th

Mr Daniel S Sperry Esq

South Keestland

Please Forward



23

admiral Esq



49

Messrs N Jy H Coleman  
Dehuyter  
Madison

28

Rev. Theodor D. Wobsey  
President of Yale College  
New Haven  
Conn

Dec 17

50

Mrs. E. L. Spear  
Grand

48

Wall Esq  
Bear Hill  
West

SL

51

Mrs. A. A. F. Rick  
Eureka Humboldt  
County  
Calif

47

Samuel Kirk  
Telakisch  
Vorarlberg Austria





56

J. G. M. H. R.



57

Machining Co.



79

George W. Morton  
August

78

Henry



80

JUL  
2  
18

81

Daniel L. Winsor Esq.  
NICARAGUA  
July

82



M. A. Dwyer &amp; Co.



Paul

83

Miss Isabella Thompson  
Cape May, CT  
New Jersey

85



Walnut Street.



Nicaragua Route

101

Messrs. Flint, Peabody & Co.  
San Francisco.

84

Per steamer 'April' via Astoria



Monsieur

103

Pascal Labusquiere  
Mauvignat  
FranceMessrs. John Paulmier & Co.  
Corner of Jackson & Front Streets -

110

San Francisco  
California

"Poste Restante"

del on 11-5  
re on 23

126

Charles Perkins Esq<sup>r</sup>  
London

"In Balis" }

"Poste Restante"



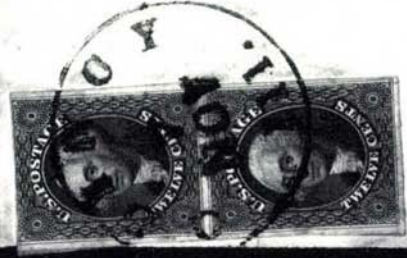
127



129

Charles Perkins Esq<sup>r</sup>  
Stw 14. 24th  
London

England -  
St 295 }



Mrs Dobson  
Buckingham  
near Aylesbury

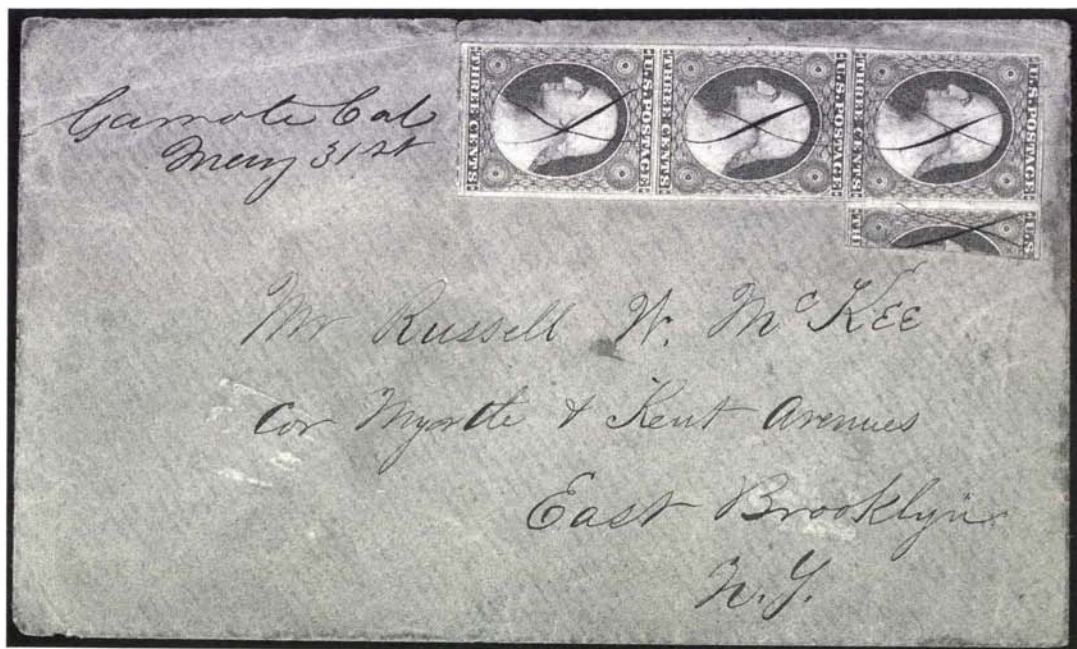
Yorkshire  
England

128

19



- 73     **3c Red (11). Horizontal Strip of Three**, Clear to Huge Margins Showing Bits of Next Three Stamps at Bottom, Town pmks., Very Fine ..... 30.00
- 74     **3c Red (11). Horizontal Strip of Five**, Pos. 85-89L4, shows the 2 & 3 mm spacing, Clear to Immense Margins Showing Bits of Next Stamps at Top & Left, Rich Color, N.Y. pmks. & trace of Red Transit, plating done with indelible violet pencil (does not show on face), Right stamp tiny margin tear, otherwise Very Fine-Extremely Fine, ex-Newbury ..... 45.00 +
- 75     **3c Red (11). Vertical Strip of Five**, Pos. 10, 20, 30, 40, 50L6, Ample to Immense Margins Showing Bit of Next Stamp at Bottom & Portion of Pane Margin at Right, Buffalo, N.Y. pmks. (pmk. breaks paper on bottom two stamps), otherwise Fine-Extremely Fine ..... 45.00 +
- 76     **3c Red (11). Block**, Pos. 83, 84, 93, 94L2L, Clear to Large Margins, Cairo Ill. pmks., left pair natural pre-printing paper wrinkle, Very Fine ..... 300.00



- 77     **3c Red, Vertical One-Third Used as 1c (11 var)**. Attached to Normal Vertical Strip of Three, each (including "Trisect") cancelled by Neat ms. "X", matching "Garrote Cal May 31st" pmk. on Neat Cover to New York, negligible corner crease, Very Fine, with P.F. Certificate, Unquestionably the Finest of the Four Known Examples of this Extremely Rare Usage ..... E.XVI
- 78     **3c Red (11). Horizontal Pair**, Pos. 47, 48L3, Large to Huge Margins, barely tied by Large "Paid" in Grid cancel, Red "Boston 6 cts" pmk. on Fresh 1854 Buff Cover to Cal., Extremely Fine, with P.F. Certificate ..... E.VIII



- 79 ☞ **3c Red (11). Vertical Pair**, Margins All Around including Huge 21mm Sheet Margin at Bottom, tied by "Canaan Me." pmk., on 1856 Folded Letter, bottom stamp faint pre-use crease, otherwise Extremely Fine, ex-Moody ..... **E.VIII**
- 80 ☞ **3c Red (11). Horizontal Pair**, Margins All Around, Red Grid cancels, tied by matching "Lancaster Pa." pmk. on Remarkably Fresh July 1853 Folded Letter, Very Fine ..... **E.VII**
- 81 ☞ **3c Red (11). Horizontal Pair**, Margins Virtually All Around, tied by "New-York Ship" Ocean Mail pmk. on Buff Cover, Mostly Clear Dark Blue "Stmr. Sierra Nevada Via Nicaragua Ahead Of The Mails." Oval Handstamp, trivial cover tear, Fine & Rare, with P.F. Certificate ..... **E.XIV**
- 82 ☞ **3c Red (11). Average Horizontal Pair**, tied by Framed "Due Way 1c" & Grid cancel, another strike at right on Dec. 1851 Folded Circular to New York, Fresh, Attractive & Scarce ..... **E.XII**
- 83 ☞ **3c Red (11). Single & Vertical Strip of Three**, Huge Margins to slightly in, tied by New York pmks., Brown Oval Hotel Return Card on Flap (part of flap missing), two stamps Fine, Bottom Sheet Margin Pair Extremely Fine ..... **E.VII**
- 84 ☞ **3c Red (11). Horizontal Strip of Four**, Mostly Large to Enormous Margins (Shows Considerable Portions of Adjoining Stamps at Top & Part Sheet Margin at Right), tied by New York pmks., on large size 1854 Folded Letter left strip of three small faults, Right Stamp Extremely Fine, Striking Cover..... **E.VII**
- 85 ☞ **3c Red (11). Horizontal Strip of Four**, Pos. 1-4L4, Margins All Around, tied by Grid cancels on large size cover, "Natchez Mi." pmk., Very Fine ..... **E.IX**



- 86 **5c Red Brown.(12). Horizontal Pair**, Large to Huge Margins, Rich Color, light "New Orleans Sep 13" pmk., minute scissors cut in margin of right stamp, Extremely Fine, with P.F. Certificate, ex-Emerson..... 2,850.00



- 87      **5c Red Brown (12). Vertical Pair**, Three Large to Huge Margins Showing Bit of Next Stamp at Top, Clear to Large at Left, Rich Color, light New Orleans pmks., Bottom Stamp Very Fine, Top Stamp Extremely Fine Gem, with P.F. Certificate for Vertical Strip of Three From Which This Pair Was Taken..... 2,850.00



- 88      **5c Red Brown (12). Horizontal Pair**, Clear to Large Margins except touches projections at bottom, tied by "Buffalo N.Y. Apr. 22" pmk. on 1857 Buff Cover to **Canada**, light Red "Ud States" in Arc, "Paid 6d" below, Brantford U.C. backstamp & "B.&L.H.R.R.C. (Buffalo & Lake Huron Railroad) Apr 22 1857" Large Circular backstamp, addressee's name partly erased, otherwise Fine, with P.F. Certificate ..... 2,850.00 +



89

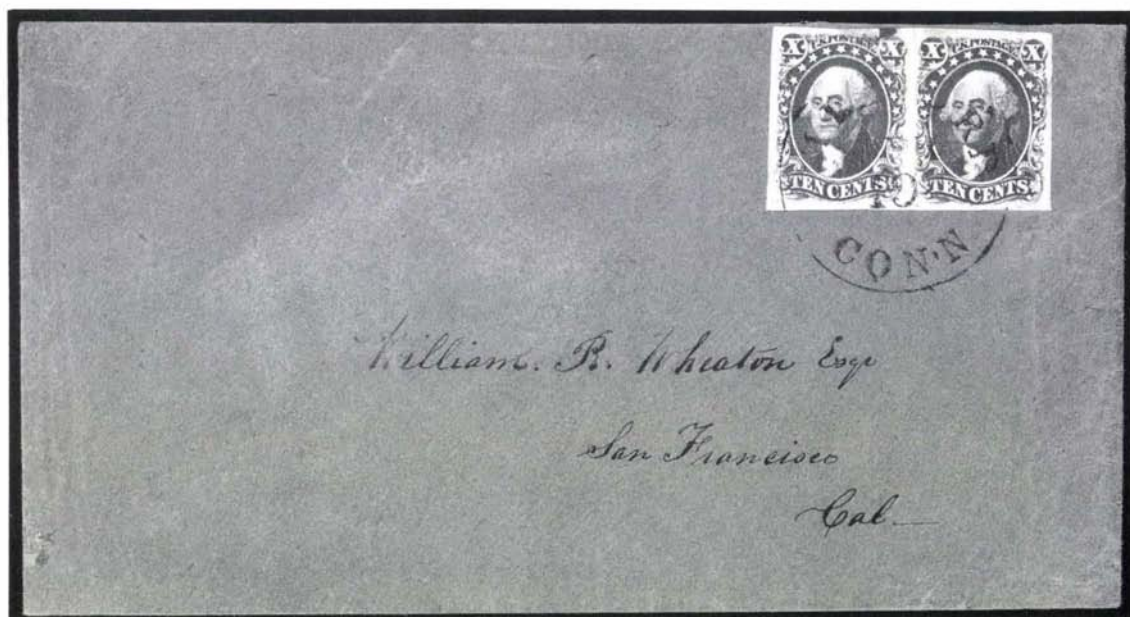


90



91

- 89     **10c Green, Ty. I (13). Horizontal Pair, Pos. 99, 100R1, "Curl" in Left "X" & Double Transfer Varieties** Respectively, Huge Margins All Around, New Orleans pmks. (right stamp bit of Red cancel as well), Stitch Watermark, trifle dry print, Extremely Fine "Gem" with P.F. Certificates, ex-Neinken .....1,550.00 +
- 90     **10c Green, Ty. I (13). Horizontal Pair, Pos. 95, 96R1, Large to Huge Margins Showing Full Scrolls, Rich Color, Neat San Francisco pmk., Extremely Fine & Choice, with P.F. Certificate**..... 1,550.00
- 91     **10c Green, Ty. I (13). Horizontal Pair, Ample to Huge Margins Showing Full Scrolls, Grid cancels, left stamp owner's tiny Red handstamp on back (does not show through), Very Fine; Right Stamp Extremely Fine "Gem", with P.F. Certificate** ..... 1,550.00

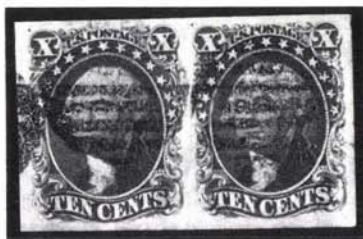


- 92     **10c Green, Ty. I (13). Horizontal Pair, Pos. 98, 99L1, Huge Margins, tiny scissors cut at top entirely between stamps, Rich Color, tied by Neat "Milford Conn. Apr 19" pmk. on Fresh Buff Cover to S.F. Cal., minor cover edge wrinkles, Pair Extremely Fine & Choice, with P.F. Certificate** .....1,700.00 +





93



94



97



95



98



96



99

- |    |  |          |
|----|--|----------|
| 93 | <b>10c Green, Ty. I, III (13, 15). Vertical Combination Pair, Pos. 90, 100R1, Latter Double Transfer Variety, Three Huge Margins, Large to Huge at Right, Rich Color, Neat partial Town pmk., Extremely Fine &amp; Choice, Rare Combination Pair, ex-Jacobs, Listed in Scott but Unpriced.</b> | 985.00 + |
| 94 | <b>10c Green, Ty. II (14). Horizontal Pair, Huge to Immense Margins All Around, Rich Color, Grid cancels, Extremely Fine "Gem", with P.F. Certificate.</b>   | 600.00   |
| 95 | <b>10c Green, Ty. II (14). Horizontal Pair, Huge Margins, "New Orleans La. June 14" pmks., left stamp owner's tiny Red handstamp on back (does not show through), right stamp tiny "dry print" speck, Extremely Fine &amp; Choice, with P.F. Certificate</b>                                   | 600.00   |
| 96 | <b>10c Green, Ty. II (14). Horizontal Pair, Large to Huge Margins, Rich Color, "New-York Apr 21" pmk., Extremely Fine &amp; Choice....</b>   | 600.00   |
| 97 | <b>10c Green, Ty. II (14). Horizontal Pair, Large to Huge Margins, Rich Color, light Town pmks., Extremely Fine, with P.F. Certificate, ex-Garrett.</b>  | 600.00   |
| 98 | <b>10c Green, Ty. II (14). Horizontal Pair, Large to Huge Margins, Rich Color, "New Orleans Mar 8" pmk., Very Fine &amp; Choice</b>  | 600.00   |
| 99 | <b>10c Green, Ty. II (14). Horizontal Pair, Large Margins, Rich Color, partial Town pmk., Right Stamp bit of Blue transit, left stamp owner's tiny Red handstamp on back (does not show through), Very Fine</b>  | 600.00   |



- 100 ☒ **10c Green, Ty. II (14). Horizontal Pair, Large to Immense Margins, Used with 1c Blue, Ty. IV (9), Large to Immense Margins Showing Bits of Two Other Stamps, on Fresh 1857 3c Red on Buff Entire (U10) to England, Blue Grid cancels, matching "Skaneateles N.Y. Feb 16" pmk., Red "19" Handstamp Rate Mark & Red Liverpool Receiving pmk., Manchester backstamp, Extremely Fine, Exceptionally Handsome Cover.....** 700.00 +
- 101 ☒ **10c Green, Ty. II (14). Horizontal Pair, Huge Margins, Rich Color, tied by light "Paid" in Grid cancels, Red "Boston Mass May 10" pmk. on Fresh Folded Cover to S.F., Cal., ms. "Nicaragua Route", Extremely Fine, illustrated in Brookman, Volume I.....** 625.00 +

#### DESCRIPTIONS

**EXTREMELY FINE:** The finest condition for noteworthy, outstanding stamps.

**VERY FINE: (VF)** In prime condition such as to satisfy the requirements of particular collectors.

**FINE: (F)** Perforations or margins do not touch design on issues after 1890 but in some cases may just touch in earlier issues. If used, fairly light cancellation.

**VERY GOOD: (VG)** Generally nice appearance but margins or perforations may cut in slightly.

**GOOD: (G)** Average off-centering or fairly attractive with slight defects.

**ORIGINAL GUM** is not to be expected on stamps prior to 1890 unless so stated in the description.

**MINT:** With original gum and never hinged.

Unless otherwise noted the 1986 Scott United States Specialized Catalogue has been used for cataloguing lots in this sale.





102



104



106



105





107

- 102     **10c Green, Ty. II, III (14, 15). Vertical Combination Pair**, Top Stamp Ty. II, Huge to Immense Margins including Full Pane Margin at Left Showing Bits of Center Line, Rich Color, Bold "3" Handstamp Rate Mark cancels (struck twice on bottom stamp), couple tiny trivial corner creases at extreme top right (clear of design), Still Extremely Fine & Choice, ex-Newbury ..... 600.00
- 103     **10c Green, Ty. II, III (14, 15). Vertical Strip of Three**, Two Ample to Large Margins, Ample to trifle in other sides, Deep Shade, tied by New Orleans La. pmks. on 1857 Cover to France Incorrectly Credited at N.Y. (Struck Over with Grid) & re-rated "New Paid York 12", Fine ..... 1,000.00 +
- 104     **10c Green, Ty. III (15). Horizontal Pair**, Three Large to Huge Margins, Ample at Right, Gorgeous Deep Rich Color, **Blue** Cincinnati pmks., right stamp tiny pinhole, otherwise Very Fine, Left Stamp Extremely Fine "Gem" ..... 620.00
- 105     **10c Green, Ty. III (15). Horizontal Pair**, Large to Huge Margins, Yellowish Green Shade, Clear New Orleans pmk., Extremely Fine .... 600.00
- 106     **10c Green, Ty. III (15). Horizontal Pair**, Huge to Immense Margins, Rich Color, Neat "Washington City D.C. Sep 4 1857" pmk., right stamp tiny trivial margin tear at bottom (just clear of design), otherwise Extremely Fine ..... 600.00
- 107     **10c Green, Ty. III (15). Horizontal Pair**, Large to Huge Margins, Deep Rich Color, Bold Orient N.Y. Double Circle pmk., 1859 usage, Very Fine, with P.F. Certificate ..... 600.00
- 108     **10c Green, Ty. III (15). Horizontal Strip of Three**, Pos. 64-66R, Ample to Huge Margins, Town pmks., Very Fine-Extremely Fine ..... 885.00 +





- 109  **10c Green, Ty. III (15). Horizontal Strip of Three**, Large Margins, Rich Color, tied by "Warsaw Ill 21 Mar" pmks. on Fresh Buff Cover to Germany, Red "N.York 7 Br. Pkt Paid Apr 1" pmk., Red Boxed "Aachen 14/4 Franco" Handstamp, ms. "Per Prussian Closed Mail via New York", Very Fine, with Jakubeck & Bühler Certificates ..... 1,000.00 +

- 110  **10c Green, Ty. III (15). Horizontal Strip of Four**, Ample to Huge Margins, tied by "New York Jul 21 1858" pmks. on Folded Letter to S.F., Red "Forwarded by/John Durand & Co./New-York" Oval Handstamps on front & back & ms. "Per Steamer Ariel via Aspinwall", left stamp light bend, second stamp from right with cover filing crease & small faults, otherwise Very Fine, Scarce ..... 1,285.00 +

BIDDING INTERVALS			
BIDS	ADVANCE	BIDS	ADVANCE
\$750 - \$1,950	\$50.00		
\$2,000 - \$2,900	\$100.00	\$75,000 - \$145,000	\$5,000
\$3,000 - \$7,250	\$250.00	\$150,000 - \$290,000	\$10,000
\$7,500 - \$14,500	\$500.00	\$300,000 and up	\$25,000
\$15,000 - \$29,000	\$1,000		
Bids which do not conform to the above will be automatically reduced to the appropriate level.			



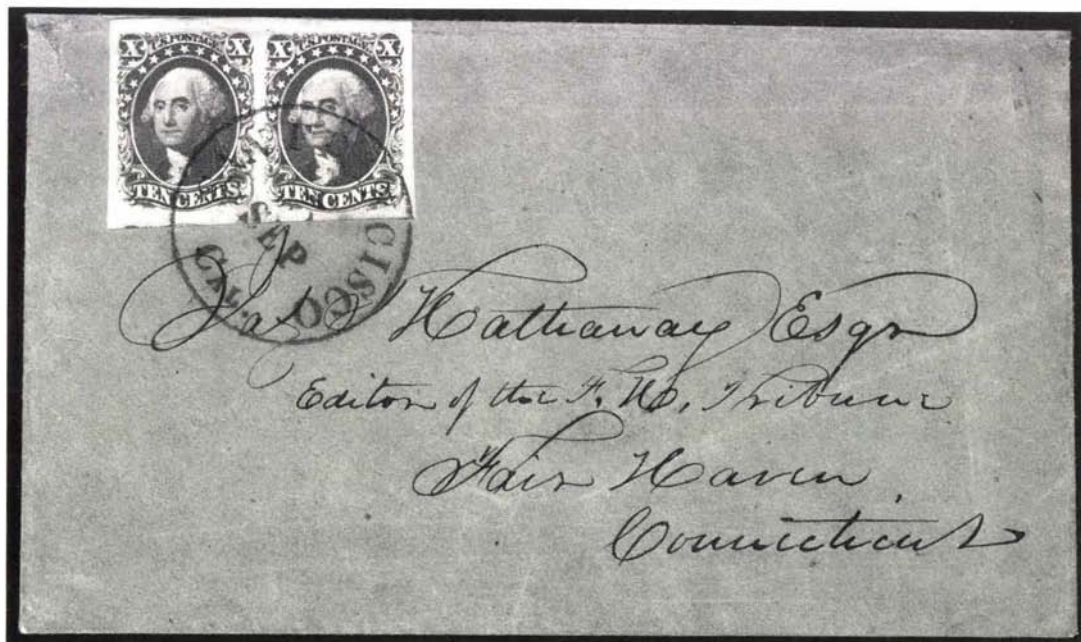
111



112

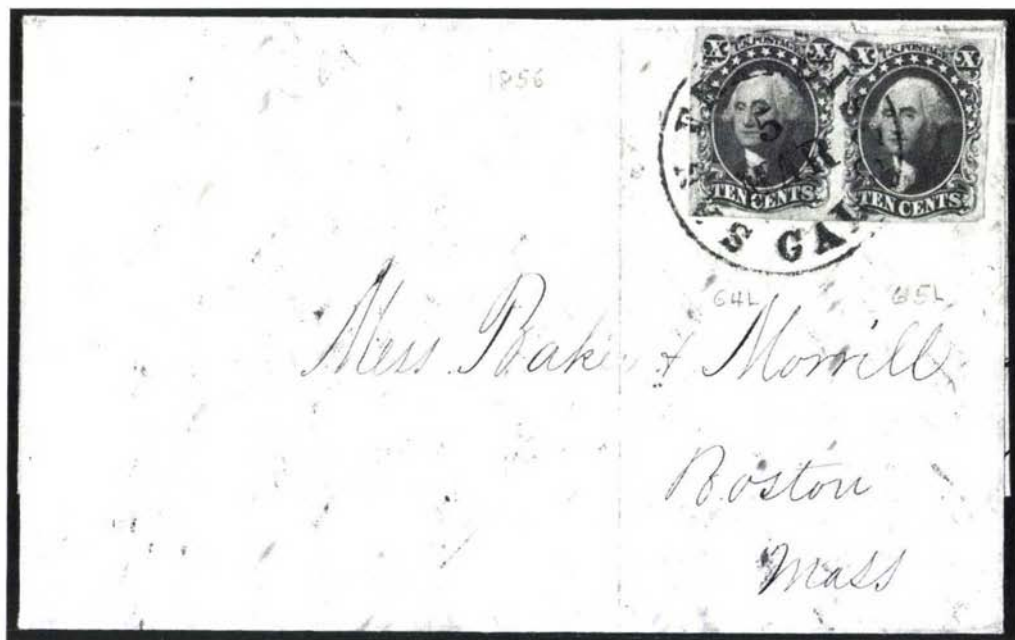
- 111 **10c Green, Ty. IV (16). Horizontal Pair, Pos. 54, 55L, Both Recut at Bottom Clear to Huge Margins, Rich Color, Town pmk., right stamp tiny corner crease, left stamp trivial internal paper break from cancel, Very Fine-Extremely Fine Appearance, with P.F. Certificate which does not mention flaws** ..... 3,350.00

- 112 **10c Green, Ty. IV (16). Horizontal Combination Strip of Three, Pos. 63L-65L, Ty. III, IV & IV respectively, Pos. 64 Recut at Top & Bottom, Pos. 65 Recut at Top, Large to Huge Margins Showing Bits of Three Other Stamps, Ample to Clear at Left, ms. cancel removed, left stamp (Ty. III) small margin tear, small natural paper wrinkle in right margin, Right Pair (Both Ty. IV) Extremely Fine, with P.F. Certificate which simply states "used", ex-Lilly** ..... 3,635.00 +




- 113 **10c Green, Ty. IV (16). Horizontal Pair, Pos. 54, 55L, Both Recut at Bottom, Huge to Immense Margins Showing Bit of Next Stamp at Bottom Left (Pos. 64L, another Ty. IV Stamp), Gorgeous Deep Rich Color, tied by S.F., Cal. pmk. on Fresh Buff Cover to Ct., Red Embossed "Importers" Return Card on flap, Pair with faint bend in top margin & small corner crease at top left, otherwise Extremely Fine, Rare & Handsome** ..... 3,700.00 +





- 114 ☒ **10c Green, Ty. IV (16). Horizontal Pair**, Pos. 64, 65L, Recut at Top & Bottom and Top respectively, Large Margins, Deep Rich Color, tied by S.F., Cal. pmk. on 1856 Folded Letter to Boston, Pair with crease in right margin prior to use (well clear of design), otherwise Very Fine, Rare, illustrated in Brookman, Volume I..... 3,700.00 +



- 115  **10c Green, Ty. IV (16). Vertical Combination Strip of Four, Pos. 45, 55, 65, 75L, Middle Pair Ty. IV, Large Margins except clear to tiny bit in at right on Pos. 55, Used With Vertical Pair 1c Blue, Ty. II (7), Pos. 60, 70L2, tied by Four Bar Grid cancels, "Norwich Ct. Jul 16 1856" pmk., Red "New-York Am. Pkt.", Straight Line "U.S. Pkt.", etc., on Fresh Double Rate 1856 Folded Cover to Germany, Fine-Very Fine, Handsome & Very Rare, ex-Caspary, Baker** ..... 4,185.00 +





116



118



117



120



119

- |     |  |        |
|-----|--|--------|
| 116 | <b>12c Black (17). Horizontal Pair</b> , Pos. 79, 80L, Large to Immense Margins Showing Bit of Next Stamp at Bottom Left & 2mm of Pane Margin at Right Town pmks., Extremely Fine.....   | 525.00 |
| 117 | <b>12c Black (17). Horizontal Pair</b> , Large to Immense Margins Showing Bits of Three Other Stamps, light Town pmk. & "19" in Circle Handstamp Rate Mark, Extremely Fine & Choice, with P.F. Certificate.....                | 525.00 |
| 118 | <b>12c Black (17). Horizontal Pair</b> , Pos. 99, 100L, Clear to Immense Margins including Portion of Bottom Sheet Margin & Full Pane Margin at Right with Complete Center Line, Grid cancels, Extremely Fine, ex-Emerson..... | 525.00 |
| 119 | <b>12c Black (17). Vertical Pair</b> , Large to Huge Margins including Sheet Margin at Right, tied on piece by Red Grid cancel & Blue "America Paid", Extremely Fine .....   | 525.00 |
| 120 | <b>12c Intense Black (17). Horizontal Pair</b> , Large to Huge Margins, Black & Red pmks., Extremely Fine, A Beautiful Pair, ex-Emerson, with P.F. Certificate .....   | 525.00 |

**Extension Lots must be paid for on receipt. In the event of an unsatisfactory certificate, payment will be refunded with interest at Treasury Bill rate.**



121



124



123



125



122

- |       |  |        |
|-------|--|--------|
| 121   | <b>12c Black (17). Horizontal Pair</b> , Ample to Large Margins, Intense Black Shade, Town pmks., Very Fine.....   | 525.00 |
| 122   | <b>12c Black (17). Vertical Pair</b> , Ample to Large Margins Showing Bit of Next Stamp at Bottom, Grid cancels (bottom stamp bit of ms. from address), Very Fine & Choice, with P.F. Certificate.....   | 525.00 |
| 123   | <b>12c Black (17). Horizontal Pair</b> , Clear to Immense Margins Showing Portions of Next Stamp at Bottom, Intense Black Shade, <b>Blue</b> Leesburg pmk., Left Stamp Red "19" Handstamp Rate Mark, right stamp pinhole, otherwise Very Fine, with P.F. Certificate .....   | 535.00 |
| 124   | <b>12c Black (17). Horizontal Pair</b> , Ample to Large Margins, <b>Blue</b> Town pmk., left stamp small toning spot, otherwise Very Fine .....  | 535.00 |
| 125   | <b>12c Black (17). Horizontal Pair</b> , Clear to Large Margins, light Town pmk., Fine-Very Fine, with P.F. Certificate .....  | 525.00 |
| 126 ☞ | <b>12c Black (17). Horizontal Pair</b> , Ample to Huge Margins including Bit of Next Stamp at Left tied by Red Grid cancels on Cover to England, faint Red British Receiving pmk., Very Fine.....  | 625.00 |
| 127 ☞ | <b>12c Black (17). Horizontal Pair</b> , Clear to Large Margins, Intense Black Shade, Brilliant Red Grid cancels, matching "New 3 York May 24" pmk. on 1856 Folded Letter to London, Forwarded to Paris, British & French transits, minor cover erosions (to right of stamps), otherwise Very Fine, with P.F. Certificate, ex-Krug ..... | 625.00 |



- 128 ☒ **12c Black (17). Vertical Pair**, Three Ample to Large Margins Showing Bits of Next Stamps at Left, barely in at top, tied by "Quincy Ill 7 Nov" pmk. on 1852 **Mourning Cover** to England, Red "Paid in/America/Liverpool/30 NO 52" Tombstone Receiving pmk. & Red "19" Rate Handstamp, Scarce & Attractive ..... 625.00
- 129 ☒ **12c Black (17). Horizontal Pair**, Three Ample to Large Margins, slightly in at right, tied by Grid cancels on 1856 Cover to England, Red "New 19 York Oct 28" pmk. Red Tombstone Receiving pmk., minor cover scuff & some sealed back tears, Scarce ..... 625.00

END OF SALE — THANK YOU

# **IS YOUR COLLECTION FOR SALE?**

## **AMERICA'S PREMIER AUCTION HOUSE OFFERS IMMEDIATE AND MAXIMUM CASH ADVANCES**

At no charge our auction house will immediately advance interest-free cash to you. *The only charge to you is a 10% commission on what your collection realizes at auction.* The buyer also pays a 10% buyers premium.

Advances available on request on collection consignments valued in excess of \$2,500.

## **AMERICA'S PREMIER AUCTION HOUSE FIRST IN PRESTIGE FIRST IN DOLLAR VOLUME**

**OUR AUCTIONS REALIZED \$11,032,724.50 IN 1985**

**CALL OR WRITE**

**ROBERT A. SIEGEL  
AUCTION GALLERIES, INC.**

**160 E. 56th Street  
New York, N.Y. 10022**

**Tel.: (212) 753-6421  
Established 56 years**





*Robert A. Siegel*  
AUCTION GALLERIES, INC.

List of Prices Realized

666th SALE

JUNE 19, 1986

160 EAST 56 STREET, NEW YORK CITY, N.Y., 10022

(212) 753-6421

# THE STANLEY G. COHEN COLLECTION OF CLASSIC UNITED STATES

1847 ISSUE AND 1851 ISSUE  
MULTIPLES ON AND OFF COVER

INDIVIDUAL REALIZATIONS ARE HAMMER PRICES. GROSS REALIZATION  
INCLUDES 10% BUYERS PREMIUM.

1	2000	35	270	69	375	103	475
2	850	36	270	70	26	104	500
3	800	37	115	71	57½	105	425
4	525	38	90	72	85	106	450
5	1000	39	160	73	47½	107	525
6	650	40	1100	74	325	108	525
7	725	41	140	75	240	109	1600
8	4000	42	100	76	230	110	700
9	4000	43	125	77	6250	111	1700
10	4000	44	475	78	170	112	1900
11	2000	45	270	79	110	113	5500
12	3250	46	160	80	115	114	3250
13	11,000	47	400	81	475	115	6250
14	3500	48	450	82	425	116	600
15	325	49	240	83	110	117	1050
16	250	50	220	84	190	118	375
17	200	51	350	85	100	119	3250
18	220	52	135	86	2200	120	850
19	105	53	135	87	2000	121	500
20	170	54	120	88	2400	122	500
21	375	55	140	89	1700	123	525
22	125	56	140	90	1700	124	650
23	475	57	120	91	1300	125	325
24	5500	58	400	92	1550	126	900
25	2700	59	210	93	2900	127	950
26	1550	60	220	94	575	128	290
27	800	61	190	95	475	129	260
28	725	62	80	96	575	END OF SALE THANK YOU  GROSS REALIZATION: \$141,285.10	
29	290	63	105	97	550		
30	575	64	170	98	375		
31	290	65	105	99	500		
32	180	66	80	100	2700		
33	200	67	65	101	850		
34	210	68	70	102	950		