

681st SALE

CLASSIC UNITED STATES STAMPS AND COVERS

A PORTION OF THE PHILIP G. RUST COLLECTION

JUNE 25, 1987

Robert A. Siegel

AUCTION GALLERIES, INC.

160 EAST 56th STREET
NEW YORK CITY, NY 10022

CONDITIONS OF SALE

1. On all lots sold a commission of 10% on the hammer price is payable by the buyer.
2. The terms of sale are strictly cash on delivery to the highest bidder unless special arrangements have been made prior to the sale. The fact that an item is placed on extension (submitted to an expertising committee for certification) does not relieve the successful bidder from this condition of sale.
3. All bids are per lot as numbered in the catalogue unless otherwise announced by the auctioneer at the time of sale. The right is reserved to group two or more lots; to withdraw any lot or lots from the sale, or to act on behalf of the seller. The Galleries will bid on behalf of clients, but will not be responsible for any errors in the execution of bidding instructions. The auctioneer shall regulate the bidding and in the event of any dispute his decision shall be final.
4. Any lot, the description of which is incorrect, is returnable, but only within 14 days of receipt. All disputed lots must be returned intact as received. **The following lots may not be returned for any reason whatsoever: Lots containing ten or more stamps; Lots from buyers who have had the opportunity to examine them before the sale; Lots described as having defects or faults may not be returned because of any faults. No illustrated lots may be returned because of centering, margins or other factors shown in the illustrations.**
5. Successful bidders, unless they are known to us or supply acceptable references are expected to make payment in full before the lots are delivered. Mail bidders will be notified of the amounts of their purchases. All mail bidders who have established credit with us must make payment within three days after receipt. We reserve the right in our sole and absolute discretion to demand cash payment at the time a lot is knocked down to any bidder who has not previously established credit with us or whose account is in arrears. In the event any buyer refuses to pay cash for any lot at the time it is knocked down to him, the auctioneer reserves the right to re-offer the lot immediately for sale to the highest bidder. Sales tax will be added to purchases where applicable.
6. If the purchase price has not been paid within the time limit, nor lots taken up within seven days from date of sale they must be resold and any loss arising from such sale will be charged to the defaulter. Any account more than thirty days in arrears is subject to a late payment charge of 1½% per month so long as the account remains in arrears. If the auctioneer, in his discretion, should institute any action to secure payment of a delinquent account the defaulting purchaser shall pay all expenses incurred by the auctioneer and such charges will be added to the amount owed.
7. All lots are sold as genuine but should any lot be proved otherwise by written opinion of any competent, responsible authority acceptable to us, immediate refund of the full purchase price will be made, provided that such claim is made in writing within 14 days from date of sale. If claim is not made within this period, no lots are returnable for any reason at any time. So long as we are notified within the 14 day period that an opinion is being sought and **the material is submitted to an acceptable authority within that period** the matter will remain open until such opinion is rendered. **We will not be responsible for any charges incurred by the buyer for expertization fees and costs unless the opinion states the item is not genuine, in which case we will pay actual costs up to a maximum of \$50.00.** In the event an item is proved "not as described" it is returnable for full refund, and the buyer will be paid interest (at the prevailing Treasury Bill Rate) for the time his funds have been on deposit with us during the extension period.
8. Until paid for in full, all lots remain the property of Robert A. Siegel Auction Galleries, Inc. on behalf of the seller.
9. All forwarding charges will be added to the purchase price. The mode of shipment shall be at our option unless we are given specific instructions.
10. Lots may be sent for inspection to buyers known to us upon written application. All such lots must be returned to us by registered mail, adequately insured and within 24 hours after receipt. The applicant assumes all responsibility and will provide insurance against all risks from time of receipt until they are actually received back by us, and is to pay all expenses of postage and insurance. **No lots can be sent for inspection within ten days from date of local viewing. Large lots and collections cannot be sent for inspection.**
11. Agents are responsible for all purchases made on behalf of their clients unless other arrangements are made prior to the sale.
12. The placing of a bid shall constitute acceptance of the foregoing conditions of sale.

ROBERT A. SIEGEL
MALCOLM SIEGEL
WALTER J. MADER, Licensed Auctioneers

FOR TABLE OF DESCRIPTIONS SEE PAGE 22

681st SALE

CLASSIC UNITED STATES STAMPS AND COVERS

A PORTION OF THE PHILIP G. RUST COLLECTION

INCLUDING

WESTERN COVERS, POSTMASTERS' PROVISIONAL COVERS,
1847 ISSUE PROOFS, 1847-1890 ISSUE STAMPS
AND COVERS, HAWAIIAN POSTAL HISTORY

SOLD BY ORDER OF THE EXECUTOR
AT UNRESERVED PUBLIC AUCTION

We are proud to offer this second portion of exceptional material from the Rust Collection. The initial offering consisted of many of the rare covers and stamps which appeared in our 1987 "Rarities of the World" Auction. The next sale in a continuing series of Rust auctions will be held in 1988.

Lots 1 - 251 THURSDAY, JUNE 25, 1987 at 10:30 A.M.
 252 - 595 THURSDAY, JUNE 25, 1987 at 1:00 P.M.

**ROBERT A. SIEGEL
AUCTION GALLERIES, INC.**

160 E. 56th Street
New York, N.Y. 10022

Tel. (212) 753-6421
Established 57 Years

LOTS ON VIEW

Lots on view Tuesday, June 23rd and Wednesday, June 24th from 9:30 A.M. until 5:00 P.M. each day.

FIRST SESSION

THURSDAY, JUNE 25, 1987 at 10:30 A.M.

CLASSIC UNITED STATES STAMPS AND POSTAL HISTORY

WESTERN COVERS

- | | | | |
|---|---|---|---------|
| 1 | ☒ | California Town pmks. , Eight Diff. on 10c Nesbitt Entires (U15-U17) , six are No. U16, Towns incl. Campo Seco, Downieville, Grass Valley, Mariposa, Marysville "Paid By Stamps" & Blue Star, Nevada City, Todds Valley & Yankee Jims, some small faults, generally Fine Lot..... | 530.00+ |
| 2 | ☒ | Campo Seco Cal. Aug 13 , Blue pmk., faulty 3c Rose (65) tied by matching Blue Grid on Illustr. Six Horse Stage Coach Cover , cover toning, repaired at L., also incl. Similar Illustr. Cover (Four Horse Stage) , San Francisco Cal. pmk., without stamps, Scarce Lot | E.XI |

- | | | | |
|---|---|---|----------------|
| 3 | ☒ | Forwarded Via Nicaragua From Noisy Carriers Publishing Hall San Francisco , Choice Strike in Fancy Blue Frame, additional Blue Oval "Stmr. Sierra Nevada Via Nicaragua Advance Of The Mails" (very light strike), Vert. Pair 3c Red (11) tied by "New-York" pmk. on Orange Cover to Me., Fine, Very Scarce | (Photo) E.XIII |
| 4 | ☒ | Forwarded Via Nicaragua From Noisy Carriers Publishing Hall San Francisco , Clear Strike in Fancy Green Frame on Buff Cover to Mass., Horiz. Pair 3c Red (11) tied by "New-York" pmk., Merchant's handstamp on back, Fine & Rare..... | (Photo) E.XIII |
| 5 | ☒ | From Noisy Carrier's Mail 77 Long Wharf S.F. Cal. , Bold Blue Fancy Rectangle on Cover to Me., Average 3c Red (11) Horiz. Pair tied by "San Francisco Cal." pmk., some slight cover stains & minor flaws, still Attractive | (Photo) E.XIII |
| 6 | ☒ | From Noisy Carrier's Mail 77 Long Wharf S.F. Cal. in Fancy Rectangle on Cover to Me., 3c Red (11) Horiz. Pair , tied by "Sacramento City Cal." pmk., ms. "Due 4", trivial cover corner faults, Fine | (Photo) E.XIII |

- | | | | |
|---|---|---|---------------|
| 7 | ☒ | Oregon City Orgn. Mar 24 , Clear pmk. on 10c Green on Buff Entire (U16), ms. "X" cancel to N.Y. State, age toned & minor corner nicks, Scarce..... | (Photo) E.VII |
|---|---|---|---------------|

- 8 ☒ **"Overland Mail, Via Los Angeles." Impt. Above "Choo-choo" Illustr. Corner Card Cover to Mass. tied by "San Francisco Cal Sep 26 1859" pmk., small tape stained tear at T.L., repaired erosion in address (partly readdressed), Scarce (Photo) E.XII**
- 9 ☒ **Pacific Express Co. Nevada Jan 15, Blue Oval on 3c Red on Buff Entire (U10), Printed Express Rider Frank, bit reduced at L., Fine (Photo) E.VIII**



- 10 ☒ **Santa Fe N.M. Sep 1, Clear Balloon Type pmk. on 1856 Cover to France, 1c Blue, Ty. IV (9) & 10c Green Ty. II (14) Horiz. Pair, VG-F, tied by Grids & Red New York Transit, various foreign transits slight toning, still a Very Attractive & Rare New Mexico Territorial Cover (Photo) E.XVI**
- 11 ☒ **Sonora. California, Jan 26, 1852, mostly Clear Blue Two Line pmk. on Folded Letter to Me., Two Singles of 3c Orange Brown (10), margins nearly all around, tied by matching Blue Grids of Tiny Rectangles, Fine, Very Pretty Rare Cover, ex-Caspary (Photo) E.XI**
- 12 ☒ **Steam Ship, In Two Lines, Bold Strike on 6c Green on Buff Entire (U14) to Mass., "3 o'Clock Dec 11 Delivery" in Fancy Red Frame on back, Fine, Scarce (Photo) 110.00+ E.VI**
- 13 ☒ **Sutter Creek Cal Feb 25, Double Circle, ms. date on 10c Green on Buff Entire (U41), ms. cancel to Mass., reduced at L., Fine, Scarce. E.VI**
- 14 ☒ **Via Nicaragua Ahead of The Mails, Clear Strike in Red Rectangle on slightly oversize cover to Mass., 3c Red (11) Horiz. Pair, tied by "New-York Ship" pmk., Fine, with enclosure (Photo) E.XII**
- 15 **"Via Panama". Impt. Above Sidewheel Steamer Illustr. on re-backed cover front to Nova Scotia, 3c Red (26) & 12c Black, Pl. III (36b) tied by "San Francisco Cal" 1860 pmk., light Red Cross Border handstamp, faint toning, small tear at L., still Attractive, Rare (Photo) E.XII**
- 16 ☒ **Volcano Cal July 3, Clear pmk. on 10c Green on Buff Entire (U18) to Mass., without flap, Fine, ex-Marcus White E.VI**

RAILROAD AND PACKET COVERS





See Lots 225-233, 286 & 423 For Additional Railroad Covers

- | | | | |
|----|---|---|--------|
| 17 | ✉ | Mic. Central R.R. Mic. Aug 8 , Bold Dark Blue pmk., T.L. Sheet Margin (in at B.) 3c Orange Brown (10) vaguely tied by Bold matching Grid on Buff Cover, ms. "Mr P O Please forward by 'Dexter Mail'," Striking Cover (Photo) | E.VII |
| 18 | ✉ | Packet Empress , Mostly Clear Oval Handstamp on Buchannon Carroll Correspondence Cover with Embossed Merchant's Corner Card, Franked with 3c Dull Red (11) , Fine | E.V |
| 19 | ✉ | Mad Riv. & Lak. Erie R.R. Aug 11 , Clear Blue pmk., pencil date, 3c Orange Brown (10) , minor corner crease, Blue "Free" cancel (not tied), on 1851 Folded Cover, Rare, ex-Moody (Photo) | E.VIII |
| 20 | ✉ | From Natchitoches Packet * D.R. Carroll * Bold Blue Oval, uncanceled 3c Red (26) corner stain, on Carroll Hoy Corresp. Cover, Attractive (Photo) | E.VII |
| 21 | ✉ | New Orleans, Alexandria & Natchitoches Packet P. Dalmau , Fancy Oval, Clear Strike on Buchannon Carroll Corresp. Cover, 3c Red (11) , Grid cancel, Bold "Way 1" , minor toning, Fine, Scarce & Handsome (Photo) | E.IX |
| 22 | ✉ | "By Steamer Rapides" , Inscription on Side of Finely Detailed Packet Boat Illustration , Perfect Bold Strike on Small Embossed Ladies Cover from the Buchannon Carroll Corresp., Fine Uncanceled 3c Red (11) , no other postal markings, some cover toning spots, o/w VF, An Exquisite Example of this Very Rare Packet Mark, Chase notes on back..... (Photo) | E.XI |
| 23 | | "By Steamer Rapides," Inscription on Side of Extra Bold slightly blurred strike of Finely Detailed Packet Boat Illustration on Buchannon Carroll Corresp. cover front, uncanceled No. 11, some staining, Rare..... (Photo) | E.VII |
| 24 | ✉ | From Steamer M. Relf , Red Oval ties ms. canceled 3c Red (26) on Carroll Hoy Corresp. Cover, few letters in steamer oval trifle strengthened, repaired cover tear, Scarce, ex-West..... | E.IV |
| 25 | ✉ | Snapp & Hite, New Orleans, La. , Clear, Red Oval Handstamp on Buchannon Carroll Correspondence Cover to New Orleans, franked with 3c Dull Red (11) ms. cancel, Fine..... | E.VI |
| 26 | ✉ | Steamer S.S. Prentiss , Mostly Clear Red Oval Handstamp on 1858 Buchannon Carroll Correspondence Folded Letter to New Orleans, franked with 3c Red (26) cancelled by Grid, Fine | E.V |

POSTMASTERS' PROVISIONALS

- | | | | |
|----|---|--|----------|
| 27 | ✉ | New York, N.Y., 5c Black (9X1) . Margins All Around, magenta ms. cancel, Tied by Small Red "New-York" pmk. Without "5 cts." , Red "Paid" in Arc, on Folded Cover to Geneva, N.Y., magenta ms. "Due 5" , VF, Very Scarce..... (Photo) | 450.00 + |
| 28 | ✉ | New York, N.Y. 5c Black (9X1) . Ample to Extra Large Margins, tied by Red "Paid" in Arc, "New York 5 cts." pmk. on slightly toned Buff Cover, Fine..... (Photo) | 450.00 |


- | | | | |
|----|---|---|----------|
| 29 | ✉ | New York, N.Y., 5c Black (9X1) . Ample to Huge Margins, tied by Orange French Transit on Nov. 1845 Folded Circular to France , Red "New-York 5 cts." , "Paid" & "Colonies. . . ." Box, ms. due mark, VF..... (Photo) | 1,500.00 |
|----|---|---|----------|

- 30  **New York, N.Y., 5c Black (9X1).** Margins All Around, tied by Red "New-York 5 Paid" pmk. on Apr. 1846 Folded Letter to **France**, Orange & Red French Transits, ms. due marks, VF (Photo) 1,500.00
- 31  **New York, N.Y., 5c Black (9X1).** Pos. 2, Major Double Transfer, Ample to Large Margins, tied by Red "Paid" in Arc, "New York 5 Paid" on Aug. 1845 Folded Letter to **France**, Orange & Red French Transits, ms. due mark, minor cover crease, VF, Handsome (Photo) 1,500.00 +
- 32  **New York, N.Y., 5c Black (9X1).** Three Huge Margins, Ample at T., Couple minor wrinkles, tied by Red "New-York 5 Paid" pmk. on Dec. 31, 1845 Folded Letter to **England**, "1/-" due mark, Fine & Handsome, with P.F. Certificate (Photo) 1,500.00
- 33  **New York, N.Y., 5c Black (9X1).** Pos. 12, Huge Margins to partly touched at B., Red "Paid" cancel, just tied by Orange French Transit, Red "New-York 5 Paid", etc. on Aug. 1845 Folded Cover to **France**, Fine, Very Attractive (Photo) 1,500.00



PAID

Miss Charley Whelan
Philadelphia
R.

- 34  **St. Louis, Mo., 10c Black on Greenish (11X2).** Ty. III, Pos. 6, Large Margins, tied by Red "St. Louis Mo." pmk., Red "Paid" on Charnley Whelan Folded Letter, Extremely Fine (Photo) 3,000.00



35

36

- | | | |
|----|---|------------------|
| 35 | <p>St. Louis, Mo., 10c Black on Greenish (11X2). Ty. II, Pos. 4, Huge Margins to frameline shaved at B., Beautifully tied by Red "St. Louis Mo." pmk., Red "Paid", on Charnley Whelan Corresp. Folded Letter, Fine, Very Handsome (Photo)</p> | 3,000.00 |
| 36 | <p>St. Louis, Mo., 10c Black on Greenish (11X2). Ty. III, Pos. 6, Clear to Large Margins, lightly tied by partial Red "St. Louis Mo." pmk., Red "Paid", on Jan. 1846 Charnley Whelan Corresp. Folded Letter, Fine</p> | (Photo) 3,000.00 |

Due to the tremendous demand on our phones and staff, Prices
Realized will not be available by telephone until 24 hours after the sale.

1847 ISSUE

PROOFS

37 P	5c Red Brown, Large Die Proof on India (IP1). Die Sunk on 5 7/8x8 3/4" Card, Printed Through Mask to eliminate Crosshatching (Albino Impression of Crosshatching visible), overall toning spots, o/w VF.....	E.X
38 P	5c Red Brown, Large Die Proof on India (IP1). Die Sunk on 5 7/8x8 3/4" Card, Shows Cpl. Crosshatching Around Die, overall toning, o/w VF.....	E.X
39 P	5c Red Brown, Large Die Proof on Laid Bond (IP1a var). 26x32mm Showing Crosshatching, Fresh, VF..... (Photo)	E.XI
40 P	5c Red Brown, Large Die Proof on Laid Bond (IP1a var). 36x29mm Showing Crosshatching, Fresh, light crease, Extremely Fine Appearance..... (Photo)	E.X
41 P	5c Deep Blue, Large Die Trial Color Proof on Bond (ITC1). 29x33mm Showing Crosshatching, VF..... (Photo)	800.00
42 P	5c Dull Blue Green, Large Die Trial Color Proof on India (ITC1). 31x37mm Showing Crosshatching, very faint residual mounting stain on back (does not show on face), o/w VF..... (Photo)	E.X
43 P	5c Orange Vermilion, Large Die Trial Color Proof on Bond (ITC1). 30x36mm Showing Crosshatching, very faint residual mounting stain on back (does not show on face), o/w VF..... (Photo)	E.X
44 P	5c Black, Large Die Trial Color Proof on Bond (ITC1). 30x35mm Showing Crosshatching, residual mounting stain on back (shows through lightly on face), o/w VF..... (Photo)	E.X
45 P	5c Dark Brown, Large Die Trial Color Proof on Bond (ITC1). 31x35mm Showing Crosshatching, very faint residual mounting stain on back (does not show on face), o/w VF..... (Photo)	E.X
46 P	5c Dull Blue, Large Die Trial Color Proof on India (ITC1). 35x41mm Showing Crosshatching, faint thin & few minor faint toning specks (virtually all on back), VF Appearance..... (Photo)	E.X
47 P	5c Dull Green, Large Die Trial Color Proof on India (ITC1). 24x30mm Showing Crosshatching, small faults, o/w Fine..... (Photo)	E.VIII
48 P	5c Yellowish Brown, Large Die Trial Color Proof on Thick Wove (ITC1). Reduced to stamp size, Fresh, small internal tear, VF Appearance..... (Photo)	E.VIII

49 P	5c Black, Trial Color Plate Proof on India (ITC3). Horiz. Strip of Four, Pos. 4-7, card mounted, Fresh, light card bend, o/w VF..... (Photo)	E.XIII
50 P田	5c Black, Trial Color Plate Proof on India (ITC3). T.R. Corner Margin Block of Six (2x3), card mounted, some with faint toning spots, o/w VF, Scarce, ex-Hackett..... (Photo)	E.XV
51 P田	5c Black, Trial Color Plate Proof on India (ITC3). Horiz. Block of Eight, card mounted, some light toning spots, six faulty, Scarce, ex-Hackett..... (Photo)	E.XV

52 P	5c Orange, Trial Color Plate Proof on India, Diagonal "Specimen" Ovpt. (ITC3S). Horiz. Pair & Single, Fresh, faults, o/w F-VF.....	E.IX
53 P田	5c Orange, Trial Color Plate Proof on India, Diagonal "Specimen" Ovpt. (ITC3S). Block, small faults, VF Appearance . (Photo)	E.XI

54 P田	5c Orange, Trial Color Plate Proof on India, Diagonal "Specimen" Ovpt. (ITC3S). Horiz. Block of Six, Fresh, T. proofs with tears, o/w F-VF..... (Photo)	E.XIII
-------	--	--------

55 P田	5c Orange, Trial Color Proof on India, Diagonal "Specimen" Ovpt. (1TC3S). Horiz. Block of Six, Fresh, two with faults, o/w VG-VF	(Photo)	E.XIII
56 P田	5c Black, Trial Color Plate Proof on India, Diagonal Red "Specimen" Ovpt. (1TC3S). Block of 30 (6x5), 35L//80L, Second Vert. Row from Right Dot in "S" of US variety, Huge Margins to slightly in, most have faults or defects, still An Important 1847 Issue Proof Multiple (The "Emerson Block", Largest Known)	(Photo)	E.XVI

57 P	5c Brown, 10c Black, Plate Proofs on India (1P3, 2P3). Fresh, former hinge thin, latter rebacked over small thin, Fine Appearance...		E.IX
58 P	5c Black, 10c Orange, Deep Brown, Trial Color Plate Proofs on India (1TC3, 2TC3). 5c faint toning spots, both 10c card mounted, all with small faults, o/w F-VF.....		E.X
59 P	5c, 10c Brown, Trial Color Plate Proofs on India, Diagonal "Specimen" Ovpts. (1TC3S, 2TC3S). 5c card mounted, VF, 10c faint negligible toning spots, o/w VF		E.X
60 P	10c Black, Large Die Proof on India (2P1). Die Sunk on 5/8x8 3/4" Card, Printed Through Mask to eliminate Crosshatching (Albino Impression of Crosshatching visible), some light soiling or toning, o/w VF.....		E.X
61 P	10c Black, Large Die Proof on India (2P1). Die Sunk on 5/8x8 3/8" Card, Shows Cpl. Crosshatching Around Die, some toning spots, o/w VF.....		E.X
62 P	10c Black, Large Die Proof on Bond (2P1a). 36x39mm Showing Crosshatching, VF.....	(Photo)	800.00
63 P	10c Black, Large Die Proof on White Bond (2P1a). 31x42mm Showing Crosshatching, very faint residual mounting stain on back (does not show on face), o/w VF	(Photo)	E.X
64 P	10c Black, Large Die Proof on Laid Bond (2P1a var). 26x31mm Showing Crosshatching, VF.....	(Photo)	800.00
65 P	10c Black, Plate Proof on India, Diagonal "Specimen" Ovpt. (2P3S). Two Vert. Pairs, Pos. 13, 23L & 73, 83L, card mounted, some faint toning spots, three faulty, o/w VF		E.XII

66 P田	10c Black, Plate Proof on India, Diagonal "Specimen" Ovpt. (2P3S). Block, ovpt. lightened, faults, o/w VG-F.....	(Photo)	E.XIII
-------	---	----------------	---------------

67 P	10c Black, Brown, Orange, Plate Proofs on India, Diagonal "Specimen" Ovpt. (2P3S, 2TC3S). Last two are Trial Colors, first rebacked, last two card mounted (both with card thins), o/w F-VF.....	(Photo Ex)	E.XII
68 P	10c Deep Blue, Large Die Trial Color Proof on Bond (2TC1). 32x44mm Showing Crosshatching, VF	(Photo)	800.00
69 P	10c Scarlet, Large Die Trial Color Proof on Bond (2TC1). 31x35mm Showing Crosshatching, VF	(Photo)	800.00
70 P	10c Orange Vermilion, Large Die Trial Color Proof on Bond (2TC1). 31x43mm Showing Crosshatching, very faint residual mounting stain on back (does not show on face), o/w VF	(Photo)	E.X
71 P	10c Dark Brown, Large Die Trial Color Proof on Bond (2TC1). 31x38mm Showing Crosshatching, residual mounting stain on back (does not show on face), o/w VF	(Photo)	E.X
72 P	10c Deep Blue, Large Die Trial Color Proof on Bond (2TC1). 31x41mm Showing Crosshatching, residual mounting stain on back (shows through very faintly on face), o/w VF	(Photo)	E.X

- 73 P **10c Dull Blue Green, Large Die Trial Color Proof (2TC1).** 31x34mm Showing Crosshatching, residual mounting stains on back (shows through lightly on face), o/w VF..... **E.X**

- | | | |
|------|--|---------------|
| 74 P | 10c Orange, Trial Color Plate Proof on India (2TC3). B. Margin Horiz. Pair, card mounted, Fresh, F-VF..... (Photo) | E.XIII |
| 75 P | 10c Orange, Trial Color Plate Proof on India (2TC3). Horiz. Strip of Four, Pos. 23-26R, card mounted, R. Proof faulty, another small card thin, o/w Fine, ex-Hackett... (Photo) | E.XIV |
| 76 P | 10c Deep Orange, Trial Color Plate Proof on India (2TC3). Vert. Block of Six (2x3), card mounted, Fresh, VF, Scarce, ex-Hackett..... (Photo) | E.XV |

- 77 P **10c Deep Brown, Trial Color Plate Proof on India, Diagonal "Specimen" Ovpt. (2TC3S). Vert. Pair,** card mounted, Fresh, faint card thins, o/w VF.....(Photo) **E.XI**

STAMPS AND COVERS

FIVE CENT RED BROWN, SHADES



78



79



80



81

- | | | |
|------|---|----------|
| 78 ★ | 5c Brown (1). Ample to Huge Margins incl. T.L. Sheet Corner, Wonderful Rich Color, Sharp Impression, Fresh, part o.g., small spot of brown gum on back, o/w Extremely Fine, Beautiful Stamp, ex-West.....(Photo) | 4,000.00 |
| 79 ★ | 5c Dark Brown (1a). Ample to Large Margins, o.g., h.r., Rich Color, Sharp Impression, VF, Attractive Example.(Photo) | 4,000.00 |
| 80 ★ | 5c Brown (1). Ample Margins, Part o.g., Choice Color & Impression, slight offset & gum toning specks on back, o/w VF, Very Handsome Stamp.....(Photo) | 4,000.00 |
| 81 ★ | 5c Dark Brown (1a). Margins All Around, Rich Color, Fine Impression, Large Part o.g., some toning (virtually all on gummed side), o/w VF.....(Photo) | 4,000.00 |

- 82 **5c Brown (1).** Large Margins incl. Part Sheet Margin at L., Attractive Shade, tied by Red Grid cancel on small piece (from which it has been lifted & reaffixed by hinge), matching Red "PAID" marking, Extremely Fine.....(Photo) 650.00
- 83 **5c Brown (1).** Ample to Large Margins, Red Square Grid Cancel, Beautiful Color & Impression, Extremely Fine.....(Photo) 650.00
- 84 **5c Brown, Double Transfer Ty. A (1 var).** Ample to Large Margins Showing Part of Next Stamp at T., Red Grid cancel, Rich Color, Fine Impression, VF.....(Photo) 800.00
- 85 **5c Red Brown (1).** Large Margins, Beautiful Color (Near Orange Brown shade), Red Square Grid cancel, VF, Lovely Stamp....(Photo) 650.00
- 86 **5c Orange Brown (1b).** Ample Margins, Red Grid cancel, Lovely Color, VF.....(Photo) 750.00

87	5c Dark Grayish Brown (1a). Ample to Large Margins, Blue Grid cancel, Sharp Impression, VF(Photo)	650.00
88	5c Dark Brown (1a). Ample to Huge Margins, Blue Grid Cancel, tiny natural paper inclusion, VF, with P.F. Certificate(Photo)	675.00
89	5c Red Brown (1). Clear to Large Margins Showing Part of Next Stamp at L., Blue Grid cancel, VF.....(Photo)	675.00
90	5c Dark Grayish Brown (1a). Clear to Ample Margins, Red Numeral "5" cancel, Strong Impression, VF(Photo)	700.00
91	5c Dark Brown (1a). Ample to Large Margins, Red Grid of Tiny Diamonds cancel, Fine Impression, VF(Photo)	650.00
92	5c Dark Brown (1a). Ample to Large Margins, Red Numeral "5" cancel, Rich Color, Clear Impression, VF(Photo)	700.00
93	5c Brown (1). Ample to Large Margins, Red Grid cancel, Rich Color, Clear Impression, VF.....(Photo)	650.00
94	5c Blackish Brown (1a). Margins All Around, Mostly Large, Blue Grid cancels, slight toning on reverse, o/w VF.....(Photo)	675.00
95	5c Brown (1). Clear to Ample Margins, Red St. Johnsbury, Vt. "Scarab" cancel, Excellent Strike, Fine(Photo)	E.XV
96	5c Red Brown (1). Clear to Ample Margins, tied by Blue Mobile, Ala. "Way 6" in Circle cancel on small piece, Fine & Attractive(Photo)	900.00
97	5c Brown (1). Three Ample to Large Margins, just into at B., Clear Double Strike of Nova Scotia Oval Grid , small corner repair, Rare Cancel, Possibly Unique on This Stamp, Nova Scotia Grid Unlisted(Photo)	E.XIII
98	5c Brown (1). Clear to Large Margins, Red Numeral "5" in Circle cancel, small faults, o/w Fine.....(Photo)	E.VIII
99	5c Brown (1). Horiz. Pair, Ample to Large Margins, Red Grid cancels, L. stamp natural wrinkles, VF, Attractive.....(Photo)	1,500.00
100	5c Red Brown (1). Vert. Pair, Clear to Large Margins, Red Square Grid cancels, Intense Rich Color, B. Stamp two tiny natural inclusions, F-VF, Ex-Caspary.....(Photo)	1,500.00
101	5c Brown, Vert. Pair, Bottom Stamp Double Transfer Ty. A (1, 1 var). Pos. 70, 80R, Clear to Large Margins, Black Grid cancels, T. stamp tiny transparency, F-VF(Photo)	1,570.00 +
102	5c Brown Orange, Horiz. Pair, L. Stamp Double Transfer Ty. C. (1b, 1b var). Clear ot Ample Margins, Blue Town pmk., R. Stamp faint crease, o/w VF, Ty. C. Double Transfer Very Rare, Possibly Unique in Pair.....(Photo)	2,450.00 +
103	5c Dark Brown (1a). Horiz. Pair, Pos. 99, 100L, Ample to Huge Margins, Blue Town pmks., Rich Color, Clear Impression, light crease, o/w VF, ex-Ackerman.....(Photo)	1,550.00
104	5c Red Brown (1). Horiz. Pair, Clear to Ample Margins, Blue Grid cancels, minor toning in margin, one stamp light crease, o/w F-VF.....(Photo)	1,550.00
105	5c Brown (1). Horiz. Pair, Margins Nearly All Around (just into frame line at B.R.), Sheet Margin at B., Blue Town pmks., Fine, ex-Ackerman.....(Photo)	1,550.00
106	5c Brown (1). Horiz. Pair, Clear to Ample Margins, Blue Phila., Pa. "2" in Circle cancels, light wrinkle, o/w Fine, ex-Ackerman.....(Photo)	1,600.00
107	5c Brown (1). Horiz. Strip of Four, Margins to just into frame line, Red Grid cancels, one stamp light crease, o/w VG-F, Scarce(Photo)	3,650.00 +

- 108 ☒ **5c Red Brown (1).** Large Margins, Beautiful Dark Oxidized Shade, Clear Impression, tied by Red Grid, matching New York pmk., on 1848 Folded Cover, trivial discoloration in margin only, o/w Extremely Fine, signed Ashbrook(Photo) 850.00

- | | | |
|-------|---|--------------|
| 109 ☒ | 5c Red Brown (1). Large Even Margins, Sharp Impression, tied by Bold Red Herringbone cancel, matching Binghamton, N.Y. pmk., on Neat Roseboom Correspondence Cover, VF & Choice, signed Ashbrook(Photo) | E.XVI |
|-------|---|--------------|

- 110 ☒ **5c Orange Brown (16).** Ample to Large Margins Showing Bit of Stamp at T., Wonderful Color & Impression, tied by **Blue** Boxed "PAID" cancel, matching Philadelphia pmk., on Dec. 13 1847 Folded Cover, VF.....(Photo) 1,000.00 +
- 111 ☒ **5c Brown (1).** Ample to Huge Margins, margin scissors cut well clear of design, tied by **Large Red "6" in Circle**, "New-York" pmk., on Neat Folded Cover, ms. "Due" & **Red "5"** handstamp, VF, Rare Cancel Used From N.Y. City, ex-Caspary.....(Photo) 850.00
- 112 ☒ **5c Red Brown (1).** Ample Margins, Choice Color & Impression, tied by Red Grid cancel, matching New York pmk., on Tiny Neat Envelope, VF.....(Photo) 850.00
- 113 ☒ **5c Brown (1).** Ample to Huge Margins tied by **Two Strikes of Red Numeral "5" cancel**, Matching Elmira, N.Y. pmk., on 1849 Turned Folded Cover (Other Use Red Bath, N.Y., Matching "5"), VF.....(Photo) 900.00 +
- 114 ☒ **5c Brown (1).** Ample to Large Margins, Choice Color & Impression, tied by **Blue** Grid cancel, matching Baltimore, Md. pmk., on 1848 Beebe Correspondence Cover, VF, signed Ashbrook (Photo) 875.00
- 115 ☒ **5c Brown, Dot in "S" of US (1 var).** Ample to Large Margins, Choice Color & Impression, tied by Red Grid, matching New York pmk. on 1849 Folded Cover, VF (Photo) 850.00 +
- 116 ☒ **5c Red Brown (1).** Ample to Huge Margins Showing Bits of Three Other Stamps, tied by Red Grid cancel, matching Richmond, Va., pmk. on 1850 Folded Letter, tiny nick in B. Margin, VF (Photo) 850.00
- 117 ☒ **5c Red Brown (1).** Ample to Large Margins, Rich Color, Clear Impression, tied by **Blue** Grid cancels, matching Baltimore, Md. pmk. on 1847 Folded Cover, VF (Photo) 875.00
- 118 ☒ **5c Dark Brown (1a).** Ample to Large Margins, Beautiful Color & Impression, **Blackish Blue Grid of Small Dots cancel** (not tied), light Red "Easthampton Mass." pmk. on Folded Cover, VF, Scarce 1847 Fancy Cancel (Photo) 850.00
- 119 ☒ **5c Red Brown (1).** Ample to Large Margins, tied by Rare Red N.Y. **Round Grid** cancel, matching New York pmk., on 1849 Cover, Company Label "Prints Only" on flap, VF, Rare..... (Photo) 850.00
- 120 ☒ **5c Red Brown (1).** Ample to Large Margins, tied by Red New York pmk., indistinct Red New York **Hotel** marking on Folded Cover (lacks B. flap), VF (Photo) 850.00
- 121 ☒ **5c Dark Brown (1a).** Ample to Large Margins, Clear Impression, tied by Red Grid cancel, matching light Brunswick, Me., pmk., on cover, VF, signed Ashbrook (Photo) 850.00
- 122 ☒ **5c Dark Brown (1a).** Ample to Large Margins, Clear Impression, faded Blue Grid (not tied), matching light Cleveland, O. pmk., on Folded Cover, VF, signed Ashbrook..... (Photo) 875.00
- 123 ☒ **5c Red Brown (1).** Ample Margins, tied by **Black** Grid cancel, Red "Boston 10 cts." (10c Pmk. Used in Error & Corrected by Overstamping with Large Black "5"), on neat envelope, VF, Unusual (Photo) 885.00

124	☒	5c Red Brown (1). Ample Margins, tied by Black Grid cancel & Red Boston pmk., Red Str. Line " PAID " marking, on Folded Cover, VF..... (Photo)	885.00
125	☒	5c Brown (1). Ample to Large Margins, Attractive Color & Impression, tied by Bold Blue Troy, N.Y. pmk. on March 1849 Folded Letter, trivial toning, along one file fold, o/w VF, signed Ashbrook... (Photo)	875.00
126	☒	5c Red Brown (1). Ample to Large Margins (Clear at T.R.), Choice Color & Impression, tied by Red grid, matching New Haven, Ct. pmk., on Buff Cover, trivial stain, virtually all in margin, o/w VF (Photo)	850.00
127	☒	5c Red Brown (1). Ample to Large Margins, tied by Red Grid, Matching Richmond, Va. pmk., on 1850 Folded Cover, trivial bleaching speck on stamp (mostly in margin), o/w VF (Photo)	850.00
128	☒	5c Red Brown (1). Ample to Huge Margins, Part Sheet Margin at R., tied by Red grids, matching Mobile, Ala. pmk., on 1850 Folded Letter to New Orleans, trivial scuff on stamp, o/w VF (Photo)	850.00
129	☒	5c Orange Brown (1b). Ample Margins, Rich Color, tied by Blue Philadelphia pmk. on 1851 Folded Cover, light corner creases, o/w VF, signed Ashbrook (Photo)	850.00
130	☒	5c Red Brown (1). Ample to Large Margins, Rich Color, Choice Impression, Two Strikes of Red Numeral "5" cancel (not tied), matching Bold East Bennington, Vt. pmk., on fresh 1848 Folded Cover, trivial age bleaching speck in margin only, o/w VF, ex-Caspary (Photo)	900.00
131	☒	5c Brown (1). Margins All Around, tied by Red grids, matching New Haven, Ct. pmk., on 1849 Folded cover, small discoloration spot on stamp, o/w VF (Photo)	850.00
132	☒	5c Red Brown (1). Ample to Large Margins, tied by Red grid, matching Syracuse, N.Y. pmk., on 1848 Folded Cover, file fold affects stamp, o/w VF (Photo)	E.IX
133	☒	5c Red Brown (1). Ample to Large Margins, tied by Blue Numeral "5" , matching "Philada Pa. 5 cts" on Folded Cover, Blood's 1c Black on Bronze Local at T.R., Fine (Photo)	900.00
134	☒	5c Red Brown (1). Ample to Large Margins, Nice Color & Impression, just tied by Orange Red Grid cancel, Matching Middlebury, Vt. pmk., on 1859 Folded Letter, Fine (Photo)	850.00
135	☒	5c Dark Brown (1a). Clear to Large Margins Showing Part of Stamp at B. Choice Color & Impression, tied by Several Strikes of indistinct Blue Str. Line " PAID ," matching Poughkeepsie, N.Y. pmk., on 1848 Folded Cover, Fine, ex-Sampson (Photo)	875.00
136	☒	5c Red Brown (1). Ample to Large Margins, Showing Bit of Stamp at B., tied by Red Grid & matching Boston pmk. on 1849 Folded Cover, Fine (Photo)	850.00
137	☒	5c Dark Brown (1a). Clear to Ample Margins, Exceptional Rich Color, Sharp Impression, tied by Blue Str. Line "PAID" cancel, matching "Warren, O." pmk., on Folded Cover, Fine, signed Ashbrook (Photo)	900.00 +
138	☒	5c Red Brown (1). Clear to Large Margins (bit irregular at R.), just tied by Red Grid cancel, matching Numeral "5" & Providence, R.I., pmk., on 1848 Folded Cover, Fine (Photo)	850.00
139	☒	5c Brown (1). Clear to Ample Margins, tied by Red Grid cancel, Blue Baltimore, Md. pmk., on buff cover, Fine (Photo)	850.00
140	☒	5c Orange Brown (1b). Margins Nearly All Around (just touching at B.R.), Choice Color & Impression, Blue Grid cancel (not tied), matching Troy, N.Y. pmk., on 1851 Folded Letter, Fine..... (Photo)	975.00

- 141 ☒ **5c Red Brown (1).** Margins to just touching, tied by **Blue** Target, matching "Middle Bury Vt." Pmk. on Small Ladies Cover to Wisc. With Embossed "**Jenny Lind**" Portrait Corner Card, either lacks one 5c stamp or accepted as prepaid for distance over 300 miles, Fine. (Photo) 875.00
- 142 ☒ **5c Red Brown (1).** Large Margins to slightly into frame line, tied by **Black** Grid cancel, matching Boston Mar 5 & Boston Mar 6 pmks. (the latter in Red), on neat envelope, Fine, signed Ashbrook. (Photo) 885.00
- 143 ☒ **5c Dark Brown (1a).** Ample to Huge Margins, tiny scissors cut, Rich Color, Clear Impression, tied on Mar. 1848 Folded Cover by **Three Strikes of Black "5" in Rectangle**, light partial "Alexandria Va." pmk., some cover toning, o/w Fine, Very Scarce..... (Photo) 900.00 +
- 144 ☒ **5c Red Brown (1).** Clear to Large Margins Showing Part of Stamp at T. (partially severed), tied by **Blue** Baltimore, Md. pmk. on neat envelope (minor wear), Forwarded to Washington, **Red Ornate Numeral "5" & Double Circle Sandy Spring, Md. Quaker Date pmk.**, minor toning, o/w Fine & Attractive, ex-Sampson (Photo) 875.00
- 145 ☒ **5c Brown, Double Transfer, Ty. B. (1 var).** Ample Margins, tied by **Blue** Milwaukee, Wis. pmk. on 1849 Folded Cover, slight cover soiling, o/w Fine.....(Photo) 875.00
- 146 ☒ **5c Red Brown (1).** Clear to Large Margins Showing Part of Next Stamp at B., tied by Red Grid cancel & New Haven, Ct. pmk. on 1851 Folded Letter, small fault L. margin, o/w Fine..... (Photo) 850.00
- 147 ☒ **5c Brown (1).** Margins All Around, tiny tear at R., tied by **Green** Grids, matching "Bridgeport Ct. Dec. 3" pmk. & "Paid" on 1849 Folded Cover, couple minor ms. spots on cover, still Attractive & Very Rare (Photo) 1,600.00
- 148 ☒ **5c Brown (1).** Three Ample to Large Margins, Ample to touched at L., minute tear, tied by Red N.Y. Square Grid on Cover to Mass., Boyd's 2c Black on Green Local at T.L., Grid cancel, not tied, some cover toning, tear at B., VG, signed Ashbrook (Photo) E.XI
- 149 ☒ **5c Red Brown (1).** Clear to Large Margins, tied by Red Grid cancels, **Blue** Baltimore, Md. pmk., on Folded Cover, tiny hole in stamp, o/w Fine, signed Ashbrook E.VIII
- 150 ☒ **5c Brown (1).** Margins Virtually All Around (close but clear at T.L.), tied by Red grid & Boston pmk. on 1849 Folded Cover to Maine, small discoloration stains, o/w Fine E.IX
- 151 ☒ **5c Red Brown (1). Two,** Clear to Large Margins, Rich Color, Nice Impression, tied by Red grids, matching New York pmk., on 1847 Folded Cover to Louisville, Ky., VF, ex-Caspary (Photo) 1,500.00
- 152 ☒ **5c Dark Brown (1a). Two,** Ample to Large Margins, somewhat overlapping tied by Red cancels, matching Calais, Me. pmk., on partial 1849 Folded Cover, VF (Photo) 1,300.00
- 153 ☒ **5c Red Brown (1). Two,** Clear to Large Margins, Fine Color & Impression, slightly overlapping, tied by Red Grid cancels & Red Cincinnati pmk. on 1847 Folded Cover to N.Y., F-VF..... (Photo) 1,500.00
- 154 ☒ **5c Brown Orange (1b). Two,** Margins Virtually All Around (R. Stamp close but clear at L.), slightly overlapping, Rich Color, by Dark **Blue** grids (not tied), matching Cambridge, Mass. pmk., on neat envelope to South Carolina, Fine. (Photo) 2,550.00
- 155 ☒ **5c Brown (1). Two** Singles, Ample to Large Margins, tiny tear in one, tied by Blackish Red Grids, Black "Hudson O." pmk. on Small Ladies Envelope (Lyre & Floral Embossed Corner), minor toning, Scarce (Photo) 1,600.00
- 156 ☒ **5c Pale Brown (1). Horiz. Pair,** Ample to Large Margins, Unusual Shade, tied by Red Grid cancels, matching New York pmk., on 1849 Cover to Lafayette, Ind., VF (Photo) 1,750.00

- 157 ∞ **5c Dark Brown (1a). Vert. Pair**, Ample to Extra Large Margins, Rich Color, Fine Impression, tied by Bold Red Grids, matching "Calais Me." pmk. on large part of Dec. 1849 Folded Cover, Stamps VF, matching stampless cover accompanies..... (Photo) 1,500.00 +
- 158 ∞ **5c Dark Brown (1). Vert. Pair**, Ample to Large Margins, Attractive Shade, Clear Impression, tied by Red Grid cancels, matching "Appalachicola FTy." pmk. (mostly readable), slight cover toning, o/w VF, Rare..... (Photo) 1,750.00
- 159 ∞ **5c Red Brown (1). Horiz. Pair**, Clear to Large Margins Showing Part of Stamp at L., Fine Color & Impression, tied by Blue Philadelphia pmk. on 1849 Folded Letter, F-VF..... (Photo) 1,800.00
- 160 ∞ **5c Red Brown (1). Horiz. Pair**, Clear to Large Margins, tied by Red Grid cancels, matching Eastport, Me. pmk., on 1850 Folded Letter to Machias, Me., file fold just into design of L. stamp, o/w F-VF..... (Photo) **E.XI**

- 161 ∞ **5c Brown (1). Two Horiz. Pairs**, Clear to Large Margins, light filing creases, Rich Color, Sharp Impressions, tied by Red "St. Louis Mo." pmks. on Apr. 1849 Folded Cover, Handsome Appearance, Rare..... (Photo) 3,250.00 +
- 162 ∞ **5c Brown, 10c Black (1, 2). Three Huge Margins to tiny bit in, Each With Huge Pane Margin Showing Trace of Adjoining Stamp From L. Pane**, 5c tied by Black Grid & "Bridgeport, Ct." pmk. (stamp partly lifted to unfold margin), 10c Round Red Grid cancel, "tied" by filing crease, New-York pmk., on envelope & folded letter respectively, slight toning, Rare Pair of Covers..... (Photo) **E.XV**

TEN CENT BLACK



163



164



165



166



167

- 163 **10c Black (2). Pos. 8R, Large to Huge Margins, Red Grid cancel, Extremely Fine "Gem"**..... (Photo) 2,000.00
- 164 **10c Black (2). Large Margins, Red Mobile "Paint" grid cancel, Extremely Fine**..... (Photo) 2,000.00
- 165 **10c Black (2). Pos. 76L, Large to Immense Margins Showing Portions of Three Other Stamps, Red Grid cancel, Extremely Fine**..... (Photo) 2,000.00
- 166 **10c Black, Double Transfer Ty. D (2 var). Large to Huge Margins, Part Sheet Margin at L., Red cancel, Extremely Fine**..... (Photo) 2,500.00
- 167 **10c Black (2). Pos. 63R, Large to Huge Margins, Showing bits of other stamps at B. & T., Red Grid Cancel, Extremely Fine**..... (Photo) 2,000.00



168



169



170



171



172

- | | | |
|-----|--|----------|
| 168 | 10c Black, Double Transfer Ty. D (2 var). Large to Huge Margins Showing Part of Next Stamp at B., Red Grid cancel, Extremely Fine..... (Photo) | 2,500.00 |
| 169 | 10c Black (2). Pos. 37R, Large Even Margins, Blue Cancel Extremely Fine..... (Photo) | 2,050.00 |
| 170 | 10c Black, Double Transfer Ty. C (2 var). Pos. 2R, Large Margins, Blue Town pmk., Extremely Fine..... (Photo) | 2,550.00 |
| 171 | 10c Black (2). Pos. 6L, Large Margins, tied by Red Town pmk. on small piece, Extremely Fine..... (Photo) | 2,000.00 |
| 172 | 10c Black (2). Pos. 6R, Large Margins, Showing Part of Next Stamp at B., Red Grid cancel, Extremely Fine..... (Photo) | 2,000.00 |

- | | | |
|-----|---|----------|
| 173 | 10c Black (2). Ample to Enormous Margins, incl. R. Sheet Margin, Neat Red Grid cancel, small faults, Extremely Fine Appearance..... (Photo) | 2,000.00 |
| 174 | 10c Black (2). Pos. 50L, Large Margins, Red Grid Cancel, faint crease, o/w Extremely Fine..... (Photo) | 2,000.00 |
| 175 | 10c Black (2). Pos. 2L, Large to Huge Margins, Sheet Margin at T., Red St. Louis pmk., light crease, o/w Extremely Fine, also incl. 1849 cover to N.Y. from which it was removed..... (Photo) | 2,000.00 |

- | | | |
|-----|--|----------|
| 176 | 10c Black (2). Pos. 69L, Ample to Large Margins Showing Part of Next Stamp at T., Red Square Grid Cancel, VF (Photo) | 2,000.00 |
| 177 | 10c Black (2). Ample to Huge Margins, Showing Portion of Next Stamp at T., Red Grid Cancel, VF..... (Photo) | 2,000.00 |
| 178 | 10c Black (2). Pos 1L, Large Margins, Blue Cancel, VF..... (Photo) | 2,000.00 |
| 179 | 10c Black (2). Pos. 4L, Ample to Large Margins, Clear Red Town pmk., Vf..... (Photo) | 2,000.00 |
| 180 | 10c Black, Double Transfer Ty. A (2 var). Pos. 1R, Ample to Large Margins, Blue cancel, tiny translucency, VF.. (Photo) | 2,550.00 |
| 181 | 10c Black (2). Ample to Large Margins, double struck Red Town pmk., VF..... (Photo) | 2,000.00 |

- | | | |
|-----|--|----------|
| 182 | 10c Black (2). Pos. 94R, Clear to Ample Margins, Red "19" Credit Marking, small thin, o/w VF..... (Photo) | 2,100.00 |
| 183 | 10c Black, "Stickpin" Variety (2 var). Pos. 52L, Ample to Large Margins Showing Bit of Next Stamp at T., Blue Grid cancel, negligible toning (shows almost entirely on back), o/w VF, Scarce Variety .. (Photo) | 2,550.00 |
| 184 | 10c Black (2). Pos. 57R, Large Margins, Red Grid cancel, faint crease, o/w VF, also incl. cover from which it was removed. (Photo) | 2,000.00 |
| 185 | 10c Black (2). Pos. 88L, Ample to Large Margins, Green Cancel, Fine & Rare..... (Photo) | 3,000.00 |

186	10c Black (2). Pos. 69R, Ample to Large Margins, Blue Town & Red Grid Cancels, Fine (Photo) 2,050.00
187	10c Black (2). Pos. 91L, Clear to Large Margins, Montreal Canada, Red Numeral "10" in Circle cancel, some faint toning, o/w Fine (Photo) 2,100.00

188	10c Black (2). Margins All Around (close but clear partly at L.), Strong "Kiss Print" (Appears As Double Impression), Red Numeral "10" cancel, small faults, nonetheless Attractive, Very Scarce Variety (Photo) E.XIII
189	10c Black (2). Horiz. Pair, Pos. 84, 85L, Ample to Large Margins, Red Grid cancels, L. stamp trivial wrinkle, VF, R. stamp Extremely Fine, also incl. cover from which this pair was removed (Photo) 4,500.00
190	10c Black (2). Vert. Pair, Pos. 46, 56R, Ample to Large Margins, Red Grid cancels, VF, Scarce (Photo) 4,500.00
191	10c Black (2). Vert. Pair, Pos. 58, 68R, B. Stamp Line through "F" of "Office" var., Ample to Large Margins Showing Portion of Next Stamp at T., Red Grid cancels, VF ... (Photo) 4,500.00
192	10c Black (2). Horiz. Pair, Pos. 85, 86L, Large Margins, Light Red Grid Cancels, one stamp light corner crease, o/w VF (Photo) 4,500.00
193	10c Black (2). Horiz. Strip of Three, Ample to Huge Margins, Red Grid Cancels, F-VF, Rare & Attractive Multiple (Photo) 10,500.00
194	10c Black (2). Horiz. Strip of Three, Pos. 68-70R, L. Pos. Line Through "F" of "Office", Three Clear to Large Margins, Huge Sheet Margin at R., Red Grid cancels, very faint toning, o/w F-VF (Photo) E.XVI
195	10c Black (2). Large Margins Showing Bit of Stamp at L., tied by Two Strikes of Blue Numeral "10" in Circle , matching Philadelphia pmk., on 1849 Folded Letter to Ill., contents refer to Journey by Rail Road & Canal Boat, light overall aging, o/w Extremely Fine (Photo) 2,400.00
196	10c Black (2). Large to Huge Margins, just tied by Blue Grid , matching "Nashville Te." pmk. on June 1848 Folded Cover to Phila., Pa., Large Blue "R" (Recorded), stamp has a few trivial margin soiling specks, o/w Extremely Fine (Photo) 2,400.00 +
197	10c Black (2). Clear to Large Margins, tied by Bold Red Grid cancel, matching Detroit, Mich. pmk., on Folded Cover, VF, ex-Caspary (Photo) 2,350.00
198	10c Black (2). Ample to Huge Margins, tied by Red Grid, matching "New-York" pmk., on Aug. 1849 Folded Letter to Me., Clear Red Oval "Kenyons Letter Office New York" , VF (Photo) 2,350.00 +
199	10c Black (2). Ample to Large Margins, tied by Black Criss Cross Grid cancel, matching Brunswick, Me. pmk., on Folded Cover to N.Y., minor flap repair, VF, Handsome, signed Ashbrook (Photo) 2,450.00
200	10c Black (2). Pos. 51L, Ample Margins, tied by Red St. Louis, Mo., pmk. on Turner Correspondence cover, VF, signed Ashbrook (Photo) 2,350.00
201	10c Black (2). Pos. 64L, Ample to Large Margins Showing Bit of Stamp at T., tied by Red Grid cancel, matching St. Louis, Mo. pmk., on cover to Va., trivial faults in T. margin far from design, VF (Photo) 2,350.00

- 202 ☒ **10c Black (2).** Pos. 66L, Ample to Large Margins, cancelled (not tied) by Clear Strike of **Red Scarab** cancel, matching St. Johnsbury, Vt. pmk., on 1849 Folded Cover, also incl. Stampless Cover from same correspondence, VF Strike, with P.F. Certificate (Photo) **E.XVI**
- 203 ☒ **10c Black (2).** Pos. 11L, Ample to Large Margins, tied by **Unusual Red Grid of Pairs of Thin Lines Not Touching Outer Circle**, matching Cheraw, S.C. pmk., on 1851 Cover, VF, Rare 1847 Fancy Cancel (Photo) 2,350.00
- 204 ☒ **10c Black (2).** Pos. 29R, Large Margins, tied by Red Grid cancel, matching partially distinct Hopkinsville, Ky. pmk., on slightly toned Folded Cover, VF Stamp (Photo) 2,350.00
- 205 ☒ **10c Black (2).** Ample to Huge Margins Showing Part of Stamp at T., tied by Red Grid cancel & Cincinnati pmk. on cover (minor cover repair far from stamp & pmk.), Stamp VF (Photo) 2,350.00
- 206 ☒ **10c Black (2).** Pos. 46R, Ample to Large Margins, tied by ms. cancel, **Black Str. Line "PAID"**, Slanting Numeral **"10"** & **Lake Champlain S.B.** pmk., on 1850 Kennedy Correspondence Cover, stamp has small tear at B., o/w VF, Very Rare ... (Photo) **E.XV**

- 207 ☒ **10c Black (2).** Pos. 78L, Ample to Large Margins, tied by Red Grid, matching **"U.S. Express Mail"** & Large **"10"** on Ludlow Beebee Corresp. Folded Cover, ms. "unpaid 10 cts", hole in one flap from wax seal removal, trivial cover toning spot at T., o/w VF..... (Photo) 2,350.00
- 208 ☒ **10c Black (2).** Pos. 32L, Ample to Extra Large Margins, tiny bend, tied by **Large Blue "10"**, matching **"Geneva N.Y."** pmk. on Feb. 1850 Folded Cover, small cover stain at extreme R. edge, o/w VF (Photo) 2,500.00

- 209 ☒ **10c Black (2).** Clear to Ample Margins, **Green Grid** cancel (not tied), light matching **"Tallahassee, Flor."** pmk., on 1848 cover to Mass., flap repaired, Fine & Quite Rare..... (Photo) **E.XV**

- 210 ☒ **10c Black (2).** Clear to Large Margins, tied by Red St. Louis, Mo. pmk. on 1850 Whelen Corresp. Cover, Fine..... (Photo) 2,350.00
- 211 ☒ **10c Black (2).** Clear to Ample Margins, Bold Red **"X"** cancel (not tied), matching Red Lafayette, Ind., pmk. on Folded Cover, slight staining from stamp adhesive, o/w Fine, Rare 1847 Issue Fancy Cancel (Photo) 2,350.00 +
- 212 ☒ **10c Black (2).** Clear to Ample Margins, tied by Clear **Blue** Montgomery, Ala. pmk. on 1850 Folded Letter, trivial age stains just outside stamp, o/w Fine, Attractive, ex-Caspary (Photo) 2,400.00
- 213 ☒ **10c Black (2).** Margins to just touching, tied by **Blue** Grid cancel, matching partially distinct Hopkinsville, Ky. pmk., on 1850 Folded Cover, stamp minor toning at B., o/w Fine, ex-Caspary (Photo) 2,400.00
- 214 ☒ **10c Black (2).** Pos. 81R, Margins to slightly in, Sheet Margin at L., tied by ms. cancel, ms. **"Olive Grove Ga."** pmk. on 1851 Cover to Mass., interesting code on flap, Scarce, stamps on this cover & following lot were originally a Vert. Pair..... (Photo) 1,250.00
- 215 ☒ **10c Black (2).** Pos. 91R, Margins to slightly in, Sheet Margin at L., not tied by ms. cancel, ms. **"Olive Grove Ga."** pmk. on cover to Mass., Scarce..... (Photo) 1,250.00

216	10c Black (2). Pos. 96R, Huge Margins to slightly in, tied by Three Red Grids, matching "Roswell Ga." pmk. on Nov. 1850 Folded Letter, minor cover tear, Very Scarce Usage..... (Photo)	E.XV
217	10c Black (2). Clear to Large Margins, tied by Red Grid of Dots, matching "10" & Pontiac, Mich. pmk., on Buff Cover to Mass., stamp faulty, Rare Cancel..... (Photo)	E.XIII
218	10c Black (2). Horiz. Pair, Large to Huge Margins, tied by Red Grid cancel, matching "U.S. Express Mail Boston Mass." pmk. & "20" in ms., on Beebe Correspondence Cover, Extremely Fine..... (Photo)	6,000.00 +
219	10c Black (2). Horiz. Pair, Pos. 52, 53R, Ample to Large Margins, tied by Red Grid cancels, matching U.S. Express Mail Boston Mass. pmk., on Beebe Corresp. Cover, trifling cover stain far from stamps or markings, VF & Rare, signed Ashbrook..... (Photo)	6,000.00
220	10c Black (2). Horiz. Pair, Margins All Around, trifle close at B. of R. stamp, tied by Red Saint Louis, Mo. pmks., on 1851 Whelen Correspondence Cover, F-VF..... (Photo)	6,000.00
221	10c Black (2). Horiz. Pair, Pos. 46, 47R, Clear to Large Margins, tied by Red "Paint" Grid pmks., matching Mobile, Ala. pmk., on 1851 Folded Cover, light file fold between stamps, o/w F-VF, Striking Cover..... (Photo)	6,000.00
222	10c Black (2). Horiz. Pair, Pos. 57, 58R, Clear to Ample Margins, tied by Four pen strokes, Red Washington City, D.C. pmk., on Cover, 7mm. scissors cut between stamps, Fine..... (Photo)	E.XV
223	10c Black (2). Vert. Pair, Pos. 70, 80R, Clear to Ample Margins, tied by Red Grid cancels, matching Numeral "20" in Circle & Boston pmk., on 1847 Folded Letter, light cover stains, o/w Fine..... (Photo)	6,000.00
224	10c Black (2). Horiz. Strip of Three, Pos. 63-65L, Huge Margins to slightly in, scissors cuts at B. betw. stamps, tied by Red Grids, matching "U.S. Express Mail Boston" pmk. on Ludlow Beebe Corresp. Cover, piece out of back from wax seal removal, small cover stain at T., stamps removed & hinged back in place, Very Scarce..... (Photo)	E.XVI

1847 ISSUE RAILROAD COVERS

225	5c Red Brown (1). Large to Huge Margins, Fresh Color, Fine Impression, Perfectly tied by Bluish Green "Richmond & Ptrsbg. R.R." pmk., on July 1850 Folded Letter, some very insignificant cover toning, still Extremely Fine, Ward called this cover "Possibly the finest 1847 5c Railroad cover", signed Ashbrook..... (Photo)	1,050.00
226	5c Red Brown (1). Ample to Large Margins, Rich Color, Clear Impression, tied by Blue Grid cancel, matching Bold Northern R.R. pmk., on 1848 Folded Cover, VF, with P.F. Certificate..... (Photo)	875.00
227	5c Red Brown (1). Clear to Large Margins, Rich Color, Sharp Impression, tied by Blue Grid cancel, matching Norwich & Worcester R.R. pmk., on large part of folded cover, Fine, signed Ashbrook..... (Photo)	875.00

- 228 ☒ **5c Brown (1).** Ample to Large Margins, just tied by **Blue** Grid cancel, matching **Boston & Maine R.R.**, pmk., on 1849 Folded Letter (minor staining not affecting stamp or pmk.), Fine (Photo) **E.X**
- 229 ☒ **5c Brown (1).** Three Ample Margins, Clear at R., tied by Red Numeral "5" in Circle cancel, matching **Str. Line "Baltimore R.R."** marking, on 1848 Folded Cover, Fine (Photo) 900.00
- 230 ☒ **5c Red Brown (1).** Margins to just touching, tied by **Blue** Grid cancel, Matching **Eastern R.R.** pmk., on Folded Cover, Fine For This (Photo) 875.00

- 231 ☒ **5c Brown (1).** Two Singles, Ample to Large Margins, tied by Red Grids, "New-York" pmk. on Envelope to N.Y., **Red Str. Line Philada. Railroad, Blood's 1c Black on Bronze Local** at T.R., light overall cover toning, one stamp tiny faults, o/w VF (Photo) **E.XIV**
- 232 ☒ **10c Black (2).** Pos. 66L, Three Ample to Large Margins, just clear at L., **Blue "Paid"** cancel (not tied), light **Blue "Albany & Buffalo R.R."** & Red **"From Western Hotel Buffalo" Octagon**, on Sept. 1848 Folded Cover, minor ms. smearing, Fine, ex-Wiltsee, Krug (Photo) 2,700.00
- 233 ☒ **10c Black (2).** Ample to Large Margins Three Sides, Clear at T., tied by Red Grid, matching **"Philadelphia Railroad" Str. Line** on Feb. 1848 Folded Letter from Philada. to Boston Forwarded to N.Y. City, Both the R.R. Str. Line & the stamp have been "cancelled" by ms. & Red "Boston 5 cts" added for forwarding, lengthy contents (father to son) regarding the Slavery Issue, some slight aging & internal separation (some reinforced), o/w Fine, Scarce (Photo) **E.XIV**

1847 ISSUE USED TO CANADA

- 234 ☒ **5c Dark Brown (1a). Vert. Pair,** Ample to Huge Margins, Beautiful Color, Fine Impression, tied by repeated strikes of Blue "Philada Pa. 10 cts" & Red "Montreal L.C. Au 30 1848" on Folded Cover to **Canada**, ms. "9" due mark, negligible toning, o/w Extremely Fine, Very Attractive (Photo) 1,750.00 +

- 235 ☒ **10c Black (2).** Pos. 12L, Three Large to Huge Margins, Ample to Clear at T., tied by Blue "Troy N.Y." pmk. on Aug. 1850 Folded Letter to **Canada**, ms. "4½" due mark, VF (Photo) 2,400.00

- 236 ☒ **10c Black (2).** Pos. 72R, Ample to Large Margins, tied by Red Square Grid cancel, matching New-York pmk., on Aug. 16, 1848 Cover to **Canada**, light cover stains far from stamps, o/w VF (Photo) 2,350.00
- 237 ☒ **10c Black (2).** Clear to Large Margins, **Red Wide Bar Grid** cancel (not tied), matching **"Hudson Riv. Mail N.Y."** pmk. on Oct. 1849 Folded Letter to **Canada**, ms. "4½" due mark, minor filing spindle hole, Fine (Photo) 2,350.00 +

- 238 ☒ **10c Black (2).** Large Margins to just touching Showing Part of Stamp at T., tied by Red Square Grid cancel, matching New York pmk., Red Queenston transit, on 1848 Folded Cover to **Canada**, Hamilton backstamp, stain along file fold barely affects pmk., o/w Fine, Rare (Photo) **E.XIV**
- 239 ☒ **10c Black (2).** Margins to just in, tied by Red Grid cancel & New York pmk. on 1849 Folded Cover to **Canada**, tiny nick just into T. frame line, Scarce (Photo) **E.XIV**
- 240 ☒ **10c Black (2).** Large Margins to touched, minor pressed out filing crease, tied by Red Wavy Line Grid, matching partial "Hudson Riv. Mail N.Y." pmk. on Aug. 1849 Folded Letter to **Canada**, ms. "4½" due mark, some cover toning (virtually all at L.), Rare Cover, signed Ashbrook (Photo) 2,350.00 +
- 241 ☒ **10c Black (2).** Pos. 70L, Clear to Huge Margins, some rubbing at R., tied by ms. cancel on May 1849 Folded Cover to **Canada**, Clear Red "Hudson Riv. Mail N.Y." & "10", ms. "4½" due mark & "paid to the Lines", some cover bleaching (nearly all along T.), Rare (Photo) **E.XIV**
- 242 ☒ **10c Black (2).** Two Singles, Ample to Large Margins except just touching frame line on one, tied by Red Grid cancels, matching New-York pmk., on Dec. 7, 1850 cover to **Canada**, F-VF, Scarce (Photo) 4,350.00

DESCRIPTIONS

EXTREMELY FINE: The finest condition for noteworthy, outstanding stamps.

VERY FINE: In prime condition such as to satisfy the requirements of particular collectors.

FINE: Perforations or margins do not touch design on issues after 1890 but in some cases may just touch in earlier issues. If used, fairly light cancellation.

VERY GOOD: Generally nice appearance but margins or perforations may cut in slightly.

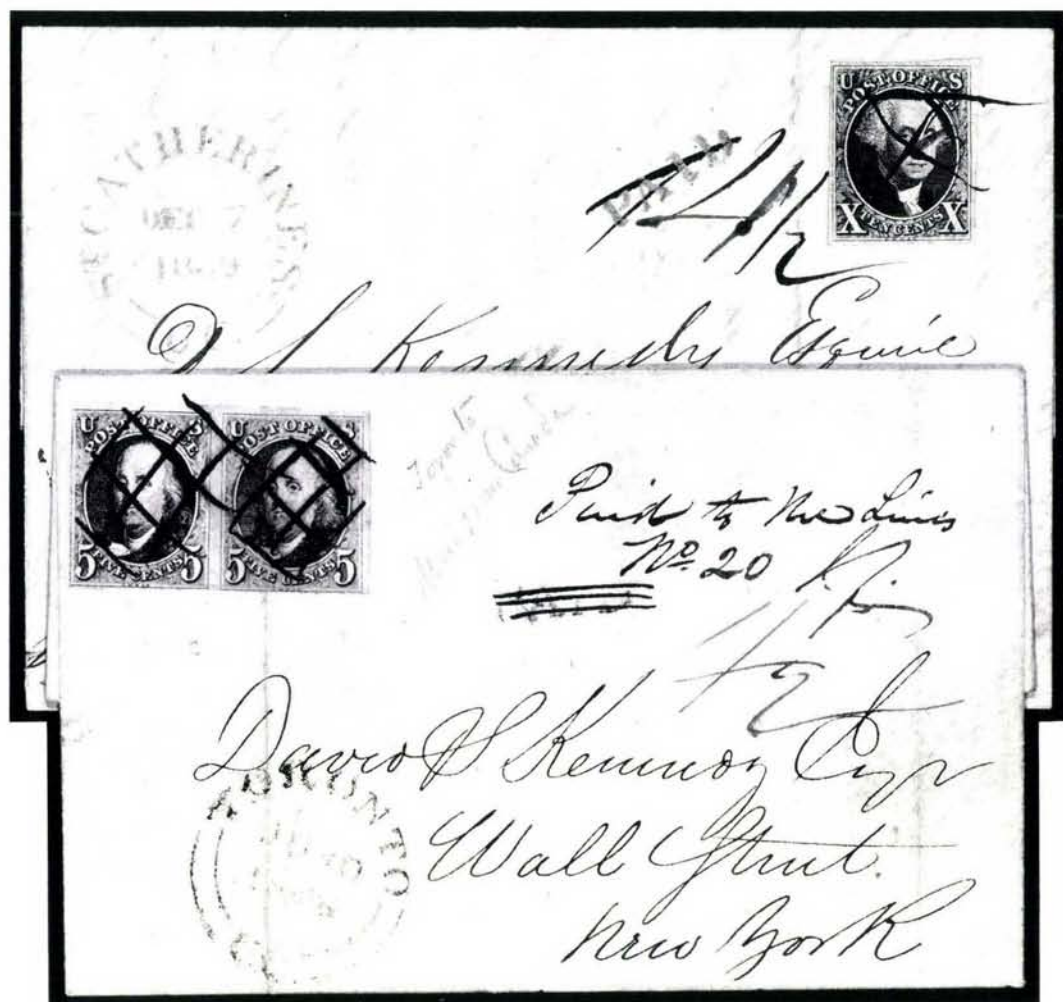
GOOD: Average off-centering or fairly attractive with slight defects.

ORIGINAL GUM is not to be expected on stamps prior to 1890 unless so stated in the description.

MINT: With original gum and never hinged.

Unless otherwise noted the 1987 Scott United States Specialized Catalogue, Ashbrook Ten Cent Stamp of 1855-1857, Meyer, Harris Hawaii Its Stamps and Postal History and Neinken The One Cent Stamp of 1851 to 1861 have been used for cataloguing lots in this sale.

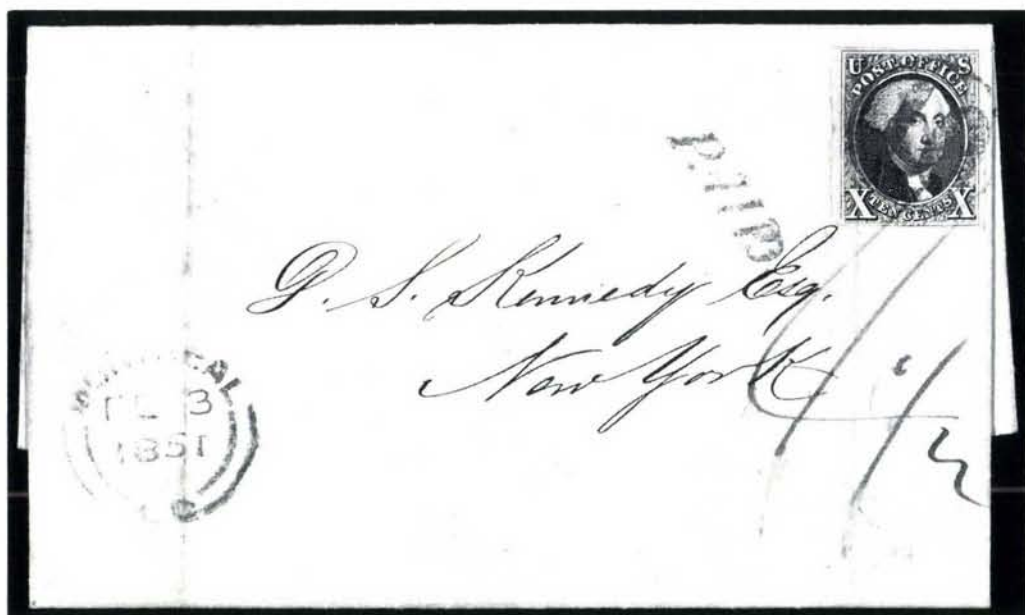
1847 ISSUE USED FROM CANADA



244

243

- 243 ≡ **5c Dark Brown (1a). Horiz. Pair**, Large Margins to trifle in, R. stamp light filing crease, Rich Color, Fine Impression, tied by Crisscross ms. on June 1848 Folded Kennedy Corresp. Folded Letter **From Canada**, "Toronto U.C. Ju 10 1848" pmk., ms. "Paid to the Lines" & "4½" Canadian Rate, Attractive & Extremely Rare (Photo) **E.XVI**
- 244 ≡ **10c Black (2)**. Margins All Around, tied by ms. on Dec. 1849 Kennedy Corresp. Folded Letter **From Canada** to N.Y., Red "St. Catherines U.C." pmk., matching "Paid" deleted by by ms., "4½" ms. Canadian due mark, VF, Rare (Photo) **E.XVI**



- 245 ☒ **10c Black (2)**. Ample to Huge Margins except tiny bit in partly at B., pressed out filing crease, tied by Red "10" in Circle & ms. "4½" Canadian Due Mark, on Feb. 1851 Kennedy Corresp. Folded Letter **From Canada** to N.Y., Red "Montreal L.C." & "Paid", Rare & Attractive (Photo) **E.XVII**

1847 ISSUE USED ABROAD

- 246 ☒ **5c Brown (1)**. Horiz. Pair, Ample to Extra Large Margins, tied by Red "Franklin La. May 29" pmk. on 1851 Folded Letter to **France**, Red Calais & "Colonies etc Art. 13" Box, ms.due mark, VF, ex-Gibson (Photo) **E.XV**
- 247 ☒ **5c Red Brown (1)**. Ample to Large Margins, minor bends, tied by **Blue** "Philada Pa. 5 cts." pmk. on Apr. 1850 Folded Cover to **Holland**, ms. rate marks, light overall age toning, o/w VF, Very Scarce, ex-West, signed Perry (Photo) **E.XV**
- 248 ☒ **10c Black (2)**. Ample to Large Margins, tied by **Black** Grid, "New Orleans La. Jun 10" pmk. of 1848 Folded Letter to **England**, ms. due mark, minor cover wrinkles, VF..... (Photo) **E.XVI**
- 249 ☒ **10c Black (2)**. Pos. 82R, Ample to Large Margins, tied by ms. "#", ms. "Naples Ill 24 Sept" pmk. on 1849 Folded Letter to **Germany**, Red "Colonies etc Art. 13" Box, tiny cover erosion speck, minor toning, o/w VF, Rare (Photo) **E.XVI**
- 250 ☒ **10c Black (2)**. Pos. 26L, Clear to Extra Large Margins, tied by Blue Framed "Paid" cancels, matching "Philada Pa. 10 cts" pmk. on Oct. 1847 Folded Cover to **London**, ms. due mark, faint overall cover toning, o/w Fine (Photo) **E.XVI**
- 251 ☒ **10c Black (2)**. Pos. 9R, Ample to Huge Margins incl. Part T. Sheet Margin, tied by **Orange** Grid, matching partial "Norfolk Va." pmk. on Aug. 1847 Folded Letter to **Scotland**, ms. due mark, Blue "Dundee" & Fancy "Too Late" backstamps, some cover aging & small faults, o/w Fine, Rare..... (Photo) **E.XV**

END OF FIRST SESSION

SECOND SESSION

THURSDAY, JUNE 25, 1987 at 1:00 P.M.

1851 ISSUE

ONE CENT BLUE

252	⊗	1c Blue, Ty. Ia(6). Clear to Huge margins, tied by faint New Orleans, La. pmk. on Circular Rate Cover (with enclosure) to Miss., overall cover toning, Stamp VF..... (Photo)	6,500.00
253	⊗	1c Blue, Ty. II(7). Double Transfer, Pos. 22 R1E, Margins Virtually All Around, tied by "New-York" pmk. on May 1852 Folded Circular, VF, Pos. 22R1E is The Second Best Double Transfer On Plate One Early, signed Ashbrook (Photo)	100.00 +
254	⊗	1c Blue, Ty. II(7). Double Transfer, Pos. 1R1E, Large to Huge Margins incl. T.L. Sheet Corner , light crease, tied by "Providence R.I." pmk. on Jan. 1852 Folded Circular, Magnificent Appearing Stamp, signed Ashbrook (Photo)	100.00
255	⊗	1c Blue, Ty. II(7). Pos. 2L4, Ample to Huge Margins Virtually All Around, Deep Rich Color, Beautifully tied by Bold "New Ipswich N.H." pmk. on Yellow Circular Rate Cover, minor cover tear, VF, Rare, Top Row Ty. II Stamps From Plate 4 Are As Rare As Ty. Ia Stamps From The Bottom Row of Plate 4 (Photo)	100.00 +
256	⊗	1c Blue, Ty. II(7). Double Transfer, Pos. 89R2, Margins Virtually All Around, Rich Color, tied by "New-York" pmk. on Handwritten Folded Circular "Bootlegged" from Cadize Spain to Me., minor cover toning spot, VF, Pos. 89R2 Is The Largest Double Transfer On Plate Two (Photo)	100.00 +
257	⊗	1c Blue, Ty. II(7). Major Plate Crack , Pos. 2L2, Three Large Margins, tiny bit in at B., Beautiful Deep Color, Used with Single & Horiz. Pair 3c Red (11) , Grid cancels, "Plattsburgh N.Y." pmk. on 1856 Cover to Canada, some back tears, Fine, Scarce..... (Photo)	200.00 +
258	⊗	1c Blue, Ty. II(7). Three Singles , Margins Virtually All Around, Ample to Huge on Center & R. Stamps, Red Grid of Dashes Cancel , matching "Newark Valley N.Y." pmk. on Tiny Ladies Cover (with enclosure), Center Stamp With "Mottling" Characteristic of Pl.3 , slight cover soiling, Stamps F-VF..... (Photo)	270.00 +
259	⊗	1c Blue, Ty. II(7). Vert. Pair , Three Large to Huge Margins, bit in at T., tied by "New Orleans La." pmk. on May 1856 Circular Rate Folded Cover to England, Fancy Blue "Liverpool" (Letters Composed by Dots, etc.), Large "2" handstamp, Attractive & Scarce, B. Stamp Extremely Fine (Photo)	185.00 +

- 260 ☞ **1c Blue, Ty. II(7). Horiz. Pair**, Pos. 85, 86R1E, margins to trifle in Scarce Dark Shade, tied by "New (Wide Space) York" pmk. with Large Slug in Center, on Jan. 1, 1852 Folded Circular, slight toning, Scarce 2c Circular Rate (In Use for 15 months), Illustrated in Ashbrook Vol. 2, pg. 75, signed Ashbrook & Fortgang..... **E.VIII**
- 261 ☞ **1c Blue, Ty. II(7). Vert. Strip of Three**, Pos. 30, 40, 50R2, Large to Enormous Margins Showing "NGRAVERS, Phila. New York, Boston & Cincinnati" Impt. at R., neatly tied by "Granville N.Y." pmks. on Cover to Va., with 1856 enclosure, Extremely Fine, Rare & Spectacular Cover(Photo) **E.XV**
- 262 ☞ **1c Blue, Ty. II(7). Horiz. Strip of Three**, Pos. 43-45R1E, Ample to Large Margins, Grid cancels, Red "Newport N.H." pmk. on Neat Ladies Envelope to Mass., VF(Photo) 285.00 +
- 263 ☞ **1c Blue, Ty. II(7). Vert. Strip of Three**, Pos. 76, 86, 96L1E, Margins Virtually All Around, neatly pressed out crease, tied by Grids of Fine Lines, Barre, Vt. pmk. on Neat Buff Cover, VF Appearance, signed Ashbrook(Photo) 285.00 +
- 264 ☞ **1c Blue, Ty. II(7). Horiz. Strip of Three**, Pos. 62-64L1E, Margins to slightly in, Beautiful Color, tied by Grids, Red "New Orleans La." pmk. on Folded Cover (without side flaps) to Me., Fine(Photo) 285.00 +
- 265 ☞ **1c Blue, Ty. II, IIIa(7, 8A). Horiz. Combination Strip of Three**, Ty. II, IIIa, IIIa/II, Pos. 54-56R1E, Three Ample to Extra Large Margins, Ample to bit in at T., Fresh Color, L. stamp couple tiny scuffs, tied by "Pittsfield Mass." pmks. on Buff Cover, Attractive ... (Photo) **E.XI**
- 266 ☞ **1c Blue, Ty. II(7). Two Covers**, one Blue Cancel (Circular Rate), other L. Sheet Margins Single tied by Odd Grid (Drop Letter Rate), F-VF..... **E.VII**
- 267 ☞ **1c Blue, Ty. II, IIIa, IV, 3c Red (7, 8A, 9, 11). One, one, two & Horiz. Pair respectively**, on Cover to San Francisco, **Stamps Canceled by Large ms. "P-A-I-D-10-cts"**, faint Red Brighton Mass. pmk., some small faults & toning, still a Striking & Unusual Cover... (Photo) **E.XII**
- 268 ☞ **1c Blue, Ty. II, IV (7, 9 three)**. Clear to Huge Margins except barely in on one of latter, No. 7 Pos. 48R2 Major Double Transfer, one No. 9 Shows Cpl. Center Line at R. Grid cancels or Town pmks., couple with minor flaws, o/w VF Lot..... **E.VII**
- 269 ☞ **1c Blue, Ty. II, 3c Orange Brown (7, 10)**. Two Covers, former tied by **Greenish Blue** "Taunton Ms." pmk., latter tied by **Blue** Grid, matching "Shepherdstown Va." pmk., VF 175.00 +
- 270 ☞ **1c Blue, Ty. II, 3c Red (7, 11)**. Average **Horiz. Pair of 1c** (Pl.1E), tied by Grids & Red French Transit on Aug. 1852 Folded Letter to France, Red "New Orleans La." pmk. & **Two Line "British Packet"**, ms. due mark, slight aging, Scarce..... **E.VII**
- 271 ☞ **1c Blue, Ty. IIa(8A). Pl.4, "C"** Relief, Ample to Large Margins, Dark Shade, Shows Large Break at T., Faint Break at B. (Nearly Ty. III), tied by "Ann Arbor Mich. May 30, 1858" pmk. on Neat "Western Union Telegram" Impt. Cover, VF.....(Photo) 750.00

VALUATIONS

Upon request estimate of value furnished on any lots in this auction.

- 272 **1c Blue, Ty. IV(9).** Pos. 87R1L, Large to Huge Margins Showing Bits of Next Stamps at B. & L., Town pmk., Extremely Fine..... (Photo) 75.00
- 273 **1c Blue, Ty. IV(9).** Two, Pos. 15R1L, 43L1L, Clear to Huge Margins, former Grid cancel, latter Town pmk., VF..... 150.00
- 274 **1c Blue, Ty. IV(9). T. Margin Horiz. Pair.,** Pos. 7, 8L1L, Clear to Huge Margins incl. 2mm of T. Sheet Margin, Grid cancels & Bit of Orange transit, L. stamp small corner crease, R. stamp trivial pin-hole, Extremely Fine Appearance..... E.VI
- 275 **1c Blue, Ty. IV(9). Two Horiz. Pairs,** Pos. 27, 28R1L & 41, 42L1L, Clear to Huge Margins, former Town pmk., latter Blue Grid cancels, latter light crease, o/w VF..... E.VIII

- | | | |
|-----|--|-------|
| 276 | 1c Blue, Ty. IV(9). Complete Plate Reconstruction of the Left & Right Panes of Plate One Late (200 positions), incl. 44 duplicated positons, 21 pairs, 41 strips of three & two strips of four, Sheet or Pane Margins incl. Three Part Impt. (one Shows Pl. "1"), 53 have ms. cancels, a few appear unused, Far Better Than Typical Plating Quality, A Number VF or Better Noted, ex-Ashbrook..... | E.XVI |
|-----|--|-------|

- 277 ☒ **1c Blue, Ty. IV(9). Odd-cut Multiple Consisting of Complete Stamp, Two Nearly Complete Stamps & Small Parts of Two Other Stamps,** tied by Lowell Mass. pmk. on Cover (with enclosure) to Boston, Sept. 1857 usage, complete stamp tiny margin nick, cover bit reduced at T., Rare & Unusual, signed Ashbrook..... (Photo) E.IX
- 278 ☒ **1c Blue, Ty. IV, 3c Red (9, 11).** Margins Virtually All Around, Rich Colors, tied by Grids on Jan 1853 Folded Letter From Mobile, Ala., Red "New Orleans La." pmk., ms. "Way", minor hinged reinforced cover tear at T., F-VF, Very Scarce Cover Showing The 1c Way Fee Paid By Stamp..... E.VII
- 279 ☒ **1c Blue, Ty. IV, 3c Red (9, 11).** 1c Double Transfer, **3c Horiz. Strip of Three,** Pos. 31-33L2L, tied by "Cazenovia N.Y." pmks. on Buff Cover to Canada, Bold "Rouse's Point N.Y.", light Red "St. Johns" & "U. States" in Framed Arc Over Shield pmk., Fine, Scarce & Handsome..... (Photo) E.IX
- 280 ☒ **1c Blue, 3c Claret (9, 11a).** Latter Average Horiz. Strip of Three, 1c VF, Beautifully tied by "Fredonia N.Y. Jan. 29 1857" pmks. on Cover to Little York Cal., slight cover edge repair, o/w Very Attractive..... E.VII
- 281 ☒ **1c Blue, Ty. IV, 3c Red (9, 11). Horiz. Pair of Former,** Margins Virtually All Around, Red Grid Cancels, matching "New-York Br. Pkt." pmk. on June 1856 Folded Cover to France, ms. due mark, slight cover toning, o/w Fine..... (Photo) E.IX
- 282 ☒ **1c Blue, Ty. IV, 3c Red (9, 11). Horiz. Pair of Former,** Both Recut Once at T., Twice at B., tied by "New Orleans La." pmks. on July 1856 Folded Cover to France, Red "New-York Br. Pkt.", etc., Fine, signed Ashbrook..... (Photo) E.IX
- 283 ☒ **1c Blue, Ty. IV, 3c Red (9, 11). Vert. Pair of Former,** Large Margins, Rich Color, tied by Grids & Red "New-York Br. Pkt." pmk. on Apr. 1855 Folded Cover to France, Red New Orleans & French Transits, ms. due mark, cover toning, 1c Pair VF..... E.VIII
- 284 **1c-12c 1851 Issue (9, 11, 17).** 1c L. Sheet Margin Vert. Pair, Pos. 51, 61R1L, Two 3c (one with T. Sheet Margin), Single 12c, All Neatly tied on cover front by Blue "Charleston S.C. 3 Paid" pmks. to Genl. James Gadsen (Famous for the Gadsen Purchase of 1853) in Mexico, Boxed "Vera Cruz Junio 4" & "6", Fine & Very Handsome, ex-Caspary..... (Photo) E.XI

THREE CENT ORANGE BROWN, RED, SHADES

285	田	3c Orange Brown (10). R. Margin Block , Mostly Clear to Huge Margins, Rich Color, San Francisco, pmk. & Grid cancels, B.L. stamp faulty, B.R. stamp small corner crease, F-VF Appearance, Blocks are Rare (Photo)	E.XII
286	田	3c Dark Orange Brown (10) , Choice Color on Oct. 2, 1851 Folded Letter, tied by Red "Boston & Albany R.R." pmk., Fine & Handsome (Photo)	E.VIII
287	田	3c Orange Brown (10) , Pos. 3L1E, Margins All Around, tied by Magenta Small Boston "Paid" in Grid, Jul. 23 pmk. on Folded Letter, Fine, Rare, The Small Magenta "Paid" Was In Use For A Very Short Time (Photo)	80.00 +
288	田	3c Orange Brown (10) , Pos. 91R1E, Ample to Huge Margins incl. B.L. Corner Showing Center Line, light ms. cancel, tied by Red Grids, Red "New London Conn. Jul 14 (1851)" pmk. on Buff Cover With Red Str. Line Handstamp "From S.A. Weaver & Co. New London Ct./Circular" ("Circular" covered by stamp), some cover faults, Stamp VF, Early Usage (Photo)	E.VIII
289	田	3c Orange Brown (10) , Margins to touching, Rich Color, tied by bright Green Roswell, Ga. pmk. on 1852 Folded Cover, light file fold affects Stamp, VF Strike (Photo)	E.VIII
290	田	3c Orange Brown (10). Four Singles , Pos. 66, 67, 76, 78R2E, Margins Virtually All Around, one with small corner crease, Red & Black Grid cancels, faint Red "Grand Gulf Mi. Aug 18" pmk. on Buchannon Carroll Corresp. Folded Cover, Very Attractive, Scarce (Photo)	E.IX
291	田	3c Deep Orange Brown (10) , Vert. Pair, Pos. 87, 97R5E, Bold Grid cancels, "New-York" pmk. With Low Date Slug (For Ocean Mail) on Sep. 1851 Cover to Cal., Extremely Fine (Photo)	E.VIII
292	田	3c Orange Brown (10) , Two Covers, Pos. 7 & 56R5E, former Red Branford Ct. pmk., latter Blue North Danvers Ms. pmk., F-VF	E.V
293	田	3c Orange Brown (10) , Five Single Rate Covers, incl. Small Boston "Paid" on Embossed Ladies Cover, Red "Sandersville Ga." Blue "Milwaukie Wis.", Greenish Blue "New London Ct." & "U.S. Express Mail N. York", Virtually All Four Full Margins, Ladies cover small tear, F-VF Lot	E.VIII
294	P	3c Red, Plate Proof on India with Brushstroke Obliteration (11Pa) , Horiz. Pair, Margins to barely touching, L. Proof faulty (seated tear & thin spot), o/w F-VF, Scarce (Photo)	E.X

295	★田	3c Red (11). T. Margin Block of 15 (5x3) , Three Large to Huge Margins incl. 5mm of T. Sheet Margin & Pane Margin at L. Showing Small Portion of Center Line, touched to barely in at B., Fresh, Full o.g., Seven Stamps Mint, two light vert. creases generally betw. stamps, o/w F-VF, Scarce Block (Photo)	2,290.00 +
296	田	3c Red (11) , Average, Bold Scarab cancel (not tied), Bold "Saint Johnsbury Vt." pmk. on July 1853 Folded Letter to Derby Line, "Paid" handstamp, lined out in ms., Beautiful & Extremely Rare Cover, with P.F. Certificate (Photo)	E.XV

Extension Lots must be paid for on receipt. In the event of an unsatisfactory certificate, payment will be refunded with interest at Treasury Bill rate.



40



42



43



39



41



46



62



44



45



63



68



69



71



70



72



47



48



64



49



77



66



75



67 EX



74



82



83



84



85



86



87



88



89



90



91



92



93



94



95



96



99



102



103



104



100



101



105



106



97



98



107



173



175



174



176



177



178



179



180



181



182



183



184



185



186



187



188



189



190



191



192



193



194



195



196



197



198



199



200



201



202



203



204



285



272



302



303



304



305



306



307



313



314



315



316



317



318



319



320



322



323



325



327



324



321



326



328



330



354



355



331



349



350



356



352



357



329



363



364



358



359



360



361



362



388



389



365



366



367



369



417



368



516



481



490



509



498



50



53



51



76



56



54



55



295



17



WAY 1

21



Mrs Mary E. Mason Buchanan Carroll Esq

*Mr Po
Please forward
to "Extra Unit"*



22



Buchanan Carroll & Co

Esq Esq

20



23



Buchannon, Carroll

PAID
Mr. Sylvanus Crover
Esq
Shenandoah County.
N.Y.

28



27

PAID
Dear



Mr Leupp
Geneva
N.Y.



In Britannia



California via St. Louis
Mr. Esplanade
Lyon

30



Robt & Co

29

St. Louis

33



In Britannia
Messieurs
Robt & Co
Lyon
France

31



Capt. T. B. Cropper
Ship, New York
Liverpool

32



109



Miss Sarah Robinson

108

Miss C. H. Taylor
Rt.

111



Aue

Mrs Elizabeth H. H. H.

Plattsburgh

New York

110



William C.

Baltimore

N. Y.

112



Ship from N. York



114



113



H. Prather &

115



G. Carpenter Esq. App. Clerk

116



H. C. H. H.

118



H. H. H. H.

117



H. H. H. H.

121



Lyman Marion Esq.

New York

122



W. A. Davis Esq.

119

J. Johnson Esq.
Enfield
Conn

paid

120

Miss Martha Nichols
(Young Ladies Institute)
Plattsburgh
Mass.

124

PAID

Nash White & Co.



123



*Mrs. Susan G. Macdonald
Care of Gen. Macdonald
Bushy L.I.*

126



Rebecca Gibbons

125



*Saml C Bigelow & Co.
Care of Messrs C & T H Russell & Bigelow*

128



127



Prof. Henry A. Washington

129



130



132



131



133



Richard S. Wood Esq.

134



W. A. Hoard Esq.

135



*Jonathan Thom Esq.
New York.*

136



*Wm Baily & Mason
Providence R.I.*

1300



137



Thomas M. Howe Esq. Bay



138



Edward C. Parker Esq. New



139

Miss Emma C. Bay



140



141

Miss Abby C. Briggs.
Portsmouth, N.H.

142

To Miss Susan Andrews & Child,
Care of Gen. Macdonald.

144

James
Miss Mary A.
Mrs. Mary A. R. Brown
Lancaster, Springfield

143



Rev. R. R. Meade



146

Miss E. S. Wheeler



145

Hm. Crossman & Co.



147

PAID
NEW YORK JUNE 28 1845

151



Miss Cornelia H. Br.



148

James H. Baylies Esq.
Cambridge
Massachusetts
1306

152

Smith & Boynton
Merchants



154

J. M. Logan Esq
Aiken



153



Wm B. H. H. H.
CINCINNATI



156

Mr Daniel



155



Miss Mary A. Clark



158

Miss Ellen A. Fickett
279 Third Street
New York



157



Wm B. H. H. H.
Merchants

159



J. Purdy Esq.

160



161



162

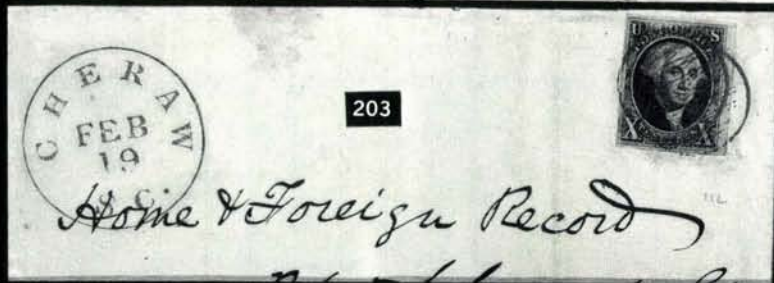
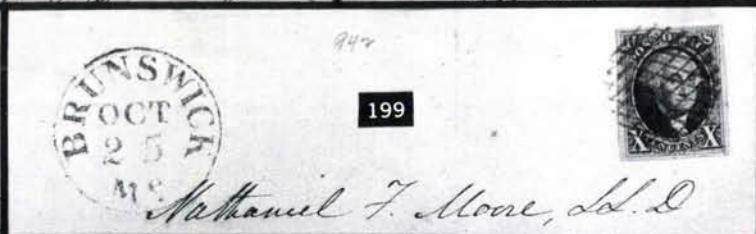
Eliza



162

G. W. Rathbone Esq
Care of State St Ind
Evansville
Ind







206

PAID 10



208



205



Mrs. Ross



209

unpaid 10cts

207

10



210



211

Paid

F. W. Porter Esq.
Gen. Secy. Am. S. S. Union

213



212

Sunday Feb 19 1877
No. 25
Mrs. R. H. Swift.

215



214



Mrs. R. H. Swift.



217

Bia. L.
Fall

216

Childs, Lathrop & Nint
Savannah Ga

219



20

218



Public & Co

220



221



223



Mass.



222



Miss Jane A. Smith

224



*Partell & Co
Boston*

226



225



227



*Mr David Clark
Hartford
Conn*

229



BALTIMORE

*City of New York
State of New York*

228



C. H. Wenzel & Co.

230

paid 10

John R. White Esq
Office of the Delaware Coal Company
Philadelphia
Pa

231



Doctor Chr. Fr. G.

233

Noboru W. Dallas
Union Mining,
Pastor
New York City

232

Eugene Chayer
S. Hall

235

New York Andrew Torrance Esq
Toronto

234



Mr E. D. L...

236

Unpaid
Mrs Vincent Radford
Toronto

238

Ford appts
Toronto

237

Mr J. S. Austin
Toronto
Co.

239

Mr J. S. Austin
Custom House
Toronto
Canada

"paid to the Lines"

241

Thomas R. Merritt Esq.

St Catharines



240

John J. Farness &
Montreal



242

Wm. J. Simpson Esq.
Brownsville
Savilington



246

St. Thomas



Wm. J. Farness &
Montreal



247

per Steamer via New York 24th June



248

Wm. J. Farness &
Montreal

1st British Mail Steamer via New York



Wm. J. Farness &
Montreal



249



Wm. J. Farness &
Montreal



250

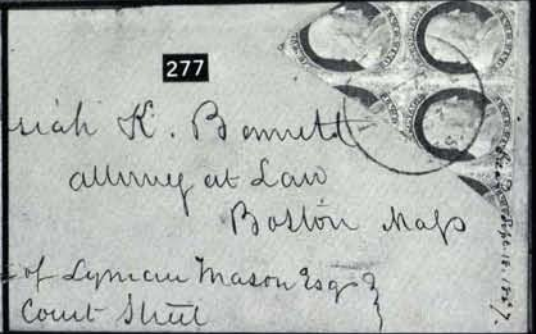
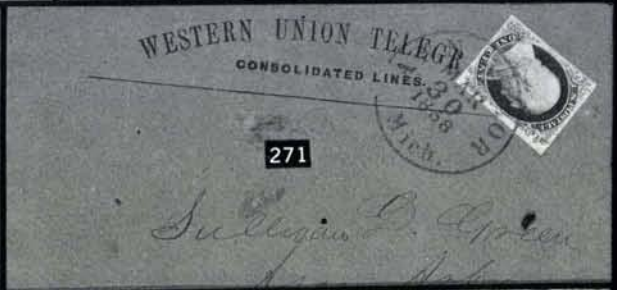
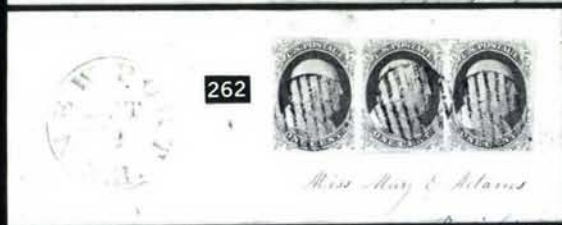
Wm. J. Farness &
Montreal



251

Wm. J. Farness &
Montreal







279

*Rev. J. A. ...*

282



281

*per Niagara**Mons. J. Garnier*

284

*His Excellency
Genl James Gadsden
U.S. Minister**Ex-CELESTIAL*

286

*Michael Shephard Esq**paid**Mr W. A. ...
Lan*

287

From S. A. WEAVER & Co New-London Ct.

288

L. Brockway

290

Wm. Buchanan, Carroll Co

289

*Wm. Baxter Esq*

296

Dirly Line*J. Reid Raymond Esq
San Francisco
Calif*

291

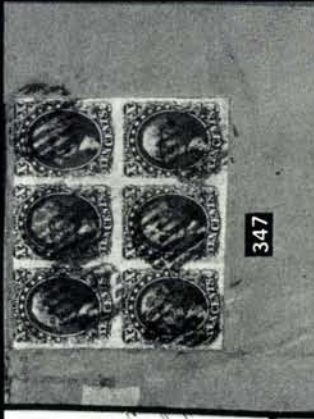
1883

my of and





372



347



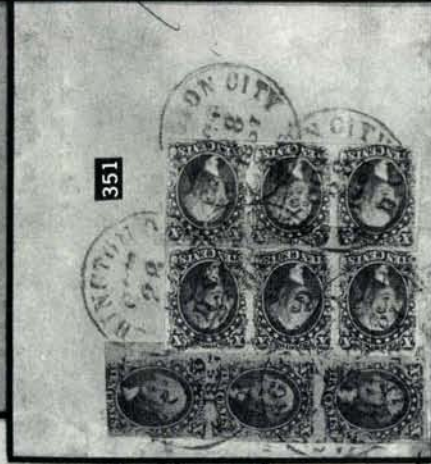
382



377



376



351



381



373



371



379



374



353



370



380



378

385



390



386



393



392



391



395



Per Steamer to Liverpool
Wm. C. Perkins
London

394

Poste Restante
 DMD
 150014
 1853

Charles Perkins Esq.



396



Joshua Swain Esq.
New York

397

via Panama
15 July 53



401



400



402



Miss Susan W. Cole
Thomaston

403



Mrs. C. B. Perkins
New York

404

SHORT PAID



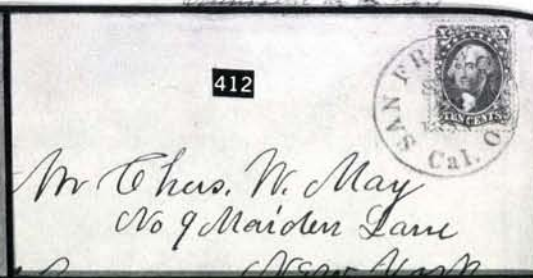
to Africa
Hosanna N. Cooper
France

405

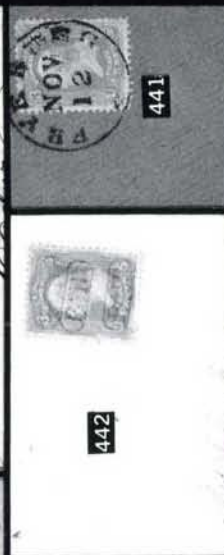
P.D.

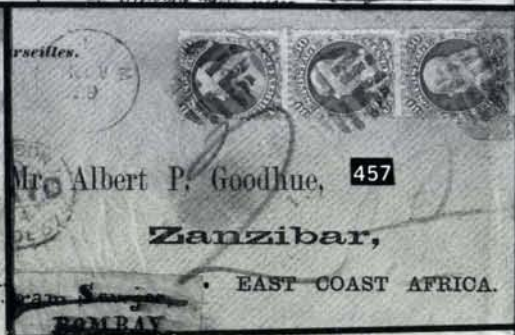
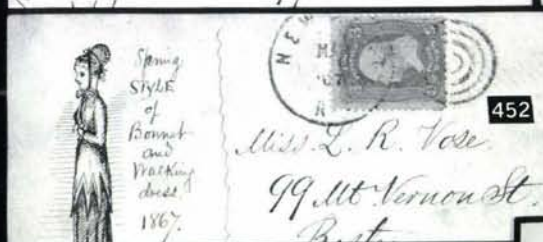


Cognac
France

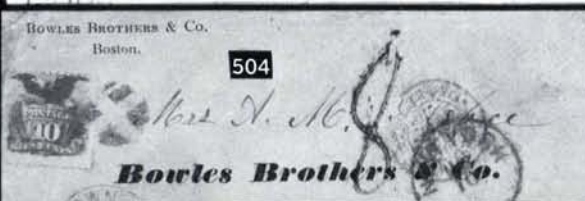
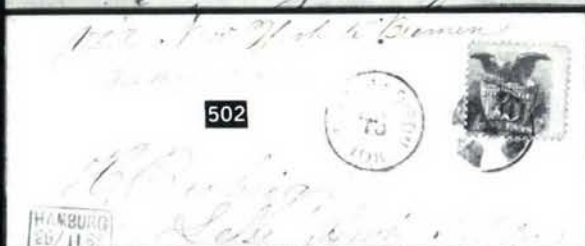
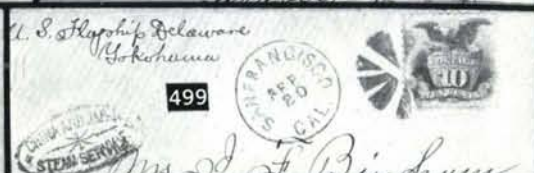
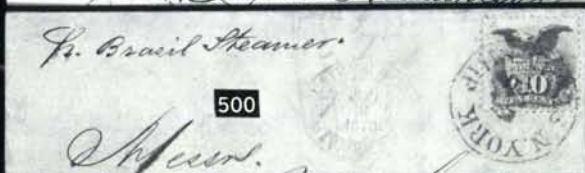
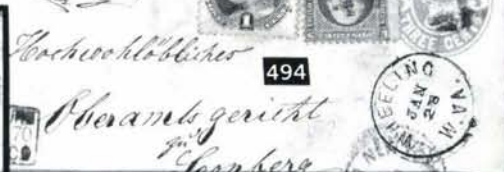












512

BREMEN
10/3 70.
FRANCO

"China"

511



510



Maxwell, W.



513

514



to Franklin
S. Stearns
St. Louis, Mo.
England

517



515

521

Recommandi.

3804



for
Mansville, N.H.

522



520



523



Midshipman W. S. Benson
U. S. Flag Ship Hartford

524



525



Clerk of Court of Cassin Hall
Huntington County
Huntington
Indiana

529



Samuel Mitchell
Cross Street 11
Leipzig Germany

533



Robert L. Mather, A.M.



530



531

John Volkmar, Esq.

per. Messrs. J. Christian Winter, Frankfurt

Frankfurt am Main, 11. April 1860

REGISTERED



H. B. Shaw

No. 15, South Street

Alford

534



532

H. H. Foster, W. K. K.

Hamburg, 11. April 1860

Frankfurt am Main



535

Rev. Lemuel Bissell, D.D.



537

150



12

H. B. Shaw



536

Rev. L. BISSELL,

AHMEDNUGGUR,



539

via Brindisi

Rev. Lemuel Bissell, D.D.



AHMEDNUGGUR.



538



M. E. Landman
General Secretary
Washington
Baptist Convention

541

Lemuel Bissell, D.D.

AHMEDNUGGUR.



PAID
LONDON
JUL 12

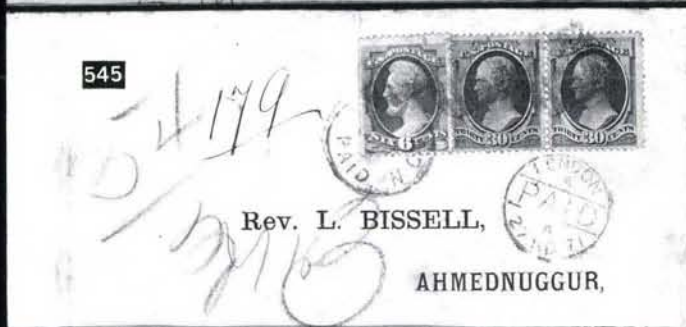
Western India

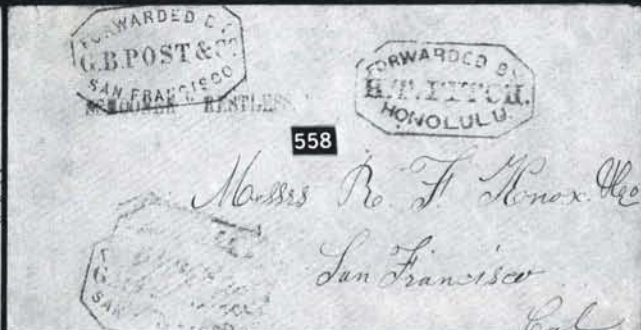
540

Rev. Lemuel Bissell,

AHMEDNUGGUR.







575

Messrs Swift & Allen
New Bedford
Mass M.S.

578

S. H. Lathrop Esq
Osawego
State of New York

581

12

Mrs. Albert E. S. Amidon
Westford
Mass

579

SHIP

Swift & Allen
New Bedford M.S.

582

M. Ellis Esq
New Bedford

583

Messrs. Swift & Allen
Care of John Mason Esq.

585

John Mason Esq
Boston

584

Rev. H. Halsey
East Wilson

586

Mr. Samuel S. Butler
Northfield

587

Miss Clara M. Fowler
Care of C. C. Fowler
Northfield

588

Rev. Charles M. Tupper
Ballowell
Maine

589

Rebecca Thomas
Waltham
Rev. Wm. Brewster
Waltham



297 ≈

3c Red (11). Horiz. Blocks of Six & Eight, one row of each light filing crease, each stamp with Neat Grid cancel, tied by Red New Orleans & New York pmks., also tied by Calais transit on 1855 Double 21c Rate Folded Cover to France, folded under slightly at L. to improve appearance, internal hinge reinforcement along folds, Spectacular Franking, signed Ashbrook

(Photo)

E.XVI

ESTIMATES

Our sales offer many covers, cancellations, varieties and other items for which there is no catalogue value or where catalogue value does not reflect the actual value. In order to assist our clients, we are placing a fair net valuation on such lots as a guide to our bidders. The chart below will be used. For example, E. IV means that our estimated net value on the lot is \$30.00 to \$40.00. Lots may actually realize more or less than our estimates, which are under no circumstances to be considered reserves but merely a guide to bidding.

E. II	\$10.00 to \$20.00	E. XI	\$250.00 to \$350.00
E. III	\$20.00 to \$30.00	E. XII	\$350.00 to \$500.00
E. IV	\$30.00 to \$40.00	E. XIII	\$500.00 to \$750.00
E. V	\$40.00 to \$50.00	E. XIV	\$750.00 to \$1000.00
E. VI	\$50.00 to \$75.00	E. XV	\$1000.00 to \$2000.00
E. VII	\$75.00 to \$100.00	E. XVI	\$2000.00 to \$5000.00
E. VIII	\$100.00 to \$150.00	E. XVII	\$5000.00 to \$10,000.00
E. IX	\$150.00 to \$200.00	E. XVIII	\$10,000.00 to \$20,000.00
E. X	\$200.00 to \$250.00	E. XIX	over \$20,000.00

FIVE CENT RED BROWN



298

299

- 298 = 5c Red Brown (12). Clear to Large Margins, tied by "New Orleans La." pmk. on Dec. 1856 Folded Letter to France, Red "New-York Br. Pkt.", Boxed "G.B. 1F60c", etc., VF, ex-Dr. Chase (sold for \$240.00 on 5/22/25), signed Ashbrook (Photo) 3,000.00
- 299 = 5c Red Brown (12). Ample to Huge Margins, VF, Used With Horiz. Strip of Four 10c Green, Ty. II (32), tied by "Troy N.Y. Paid" & Red "40" British Credit on Dec. 1857 Folded Letter to "Songor Hindustan Asia", Bold "Boston Br. Pkt." & Red "Bombay" backstamps, Rare Combination & Usage..... (Photo) E.XVI



300 ☐

5c Red Brown (12). Four Singles, Three Fine, Other Large to Huge Margins & Extremely Fine, Used With Average **1c Blue, Ty. II (7)**, lightly tied by New Orleans La. pmks. & Red N.Y. & French Transits on Dec. 1856 Folded Cover to France, Handsome & Valuable Cover (Photo)

E.XVII

TEN CENT GREEN



301 ★

10c Green, Ty. I (13). Pos. 91R, Ample to Immense Margins incl. Full Pane Center Line Margin at L., Rich Color, Sharp Impression, light corner crease far from design, o/w Extremely Fine, Rare (Photo) 8,500.00

- | | | |
|-----|--|----------|
| 302 | 10c Green, Ty. I (13). Ample to Huge Margins Showing Bit of Stamp at T., Rich Color, tiny crease, o/w Extremely Fine (Photo) | 700.00 |
| 303 | 10c Green, Ty. I (13). Pos. 93L, Clear to Huge Margins incl. Sheet Margin at B., town pmk., small thin, o/w VF..... (Photo) | 700.00 |
| 304 | 10c Green, Ty. I (13). Clear to Large Margins, Town pmk., Intense Color, Fine..... (Photo) | 700.00 |
| 305 | 10c Green, Ty. I (13). Horiz. Pair, Pos. 94, 95L, Ample to Huge Margins incl. Bits of Two Stamps at T., Intense Color, F-VF (Photo) | 1,550.00 |

306	10c Green, Ty. I (13). Horiz. Pair , Pos. 92, 93R, Grid of Blue Squares cancel, part of Red Boxed Transit markings, one stamp faint crease, o/w VF, Handsome..... (Photo)	1,600.00
307	10c Green, Ty. I (13). Horiz. Pair , Pos. 94, 95R, Large to Huge Margins, Town pmks., Rich Color, Nice Impression, faint creases, o/w VF..... (Photo)	1,550.00
308	10c Green, Ty. I (13) , Ample to Large Margins, tied by Trenton, N.J. pmk. incl. "Feb" in ms. on 1856 Cover to "(Dolores Mission) San Francisco. Cal.", VF..... (Photo)	1,000.00
309	10c Green, Ty. I (13) , Pos. 98L, Ample to Large Margins, Rich Color, tied by "Kenosha Wis." pmk. on Oct. 1857 Folded Cover to Canada , Red Oval "United States 6 D", address trifle light, VF..... (Photo)	1,000.00
310	10c Green, Ty. I (13) , Ample to Large Margins, tied by San Francisco, Cal. pmk. on 1857 Folded Cover to Philadelphia, VF. (Photo)	1,000.00
311	10c Green, Ty. I (13) , Clear to Large Margins Showing Part of Stamp at R., Rich Color, tied by San Francisco Cal. pmk. on cover to Delaware, VF..... (Photo)	1,000.00
312	10c Green, Ty. I (13) , Margins to just touching, Lovely Color, tied by New York Ocean Mail pmk. on Fresh Folded Letter to San Francisco, Fine..... (Photo)	1,000.00
313	10c Green, Ty. II (14) , Pos. 14R, Beautiful Large Margins, N.Y. Ocean Mail Cancel , Extremely Fine..... (Photo)	275.00 +
314	10c Green, Ty. II (14) , Pos. 51L, Large to Huge Margins, Red Grid cancel, Extremely Fine..... (Photo)	300.00
315	10c Green, Ty. II (14) , Pos. 75R, Ample to Huge Margins Showing Bits of Stamps at T. & B., Town pmk., Rich Color, VF..... (Photo)	275.00
316	10c Green, Ty. II (14) , Pos. 38R, Ample to Large Margins, Blue pmks., Nice Color, VF..... (Photo)	275.00
317	10c Green, Ty. II (14) , Pos. 13R, Ample to Large Margins, " PAID 3 " in Circle cancel, Rich Color, VF..... (Photo)	300.00
318	10c Green, Ty. II (14) , Large Margins Showing Bit of Stamp at T., Town pmk., trivial toning in L. margin, o/w VF..... (Photo)	275.00
319	10c Green, Ty. II (14) , Pos. 11L, Large Margins, Red Grid cancel, light crease, o/w VF..... (Photo)	300.00
320	10c Green, Ty. II (14) , Pos. 39L, Ample to Large Margins, Red & Black cancels, small cut just into design, o/w VF..... (Photo)	300.00
321	10c Green, Ty. II (14). Sheet Margin Single Showing Part Impt. , Pos. 60R, Ample to Immense Margins except slightly in at B., light Town pmk., 10c 1851's Showing Part Impt. are Very Rare... (Photo)	275.00
322	10c Green, Ty. II (14). Horiz. Pair , Ample to Large Margins, 1857 Town pmk., VF..... (Photo)	600.00
323	10c Green, Ty. II (14). Horiz. Pair , Pos. 79, 80R, Clear to Huge Margins Showing Bit of Pos. 70, Town pmks., L. stamp slight margin stain at T., o/w Fine, R. Stamp Huge Margins & Extremely Fine..... (Photo)	600.00
324	10c Green, Ty. II (14). Horiz. Pair , Pos. 85, 86R, Ample to Large Margins, Red Grid cancels, very faint toning, VF..... (Photo)	650.00
325	10c Green, Ty. II (14). Horiz. Pair , Pos. 11, 12R, Large to Huge Margins Showing Part Sheet Margin at L., small stains, o/w VF..... (Photo)	600.00
326	10c Green, Ty. II (14). Horiz. Pair , Pos. 33, 34R, Large to Huge Margins Showing Part of Stamp at L., Ga. town pmk., L. Stamp minor pen marks from address, R. Stamp tiny thin, o/w VF.. (Photo)	600.00
327	10c Green, Ty. II (14). Horiz. Pair , Pos. 31, 32R, Clear to Huge Margins incl. Pane Straddle Margin Showing Center Line & Trace of Pos. 40L , Grid cancels & bit of Red transit marking, tiny thin & light crease, VF Appearance..... (Photo)	600.00

328	10c Green, Ty. II (14). Horiz. Pair , Pos. 6, 7R, Margins to just in, Shieldsborough, Miss. pmk., light corner crease, VF Appearance.....	(Photo)	600.00
329	10c Green, Ty. II (14). Horiz. Pair , Pos. 72, 73L, Clear to Large Margins, Black & Red pmks., F-VF.....	(Photo)	600.00
330	10c Green, Ty. II (14). Horiz. Strip of Three , Pos. 33-35L, Large to Immense Margins Showing Part of Next Stamp at R., Town pmks., Extremely Fine Strip.....	(Photo)	875.00 +
331	10c Green, Ty. II (14). Horiz. Strip of Three , Pos. 14-16L, Clear to Large Margins, Town pmks., Rich Color, F-VF.....	(Photo)	875.00 +
332	10c Green, Ty. II (14). Large Margins , tied by "Avon N.Y." pmk. on July 1857 Buff Cover to Canada , Neat Hotel Corner Card, Extremely Fine.....	(Photo)	350.00
333	10c Green, Ty. II (14). Ample to Huge Margins incl. Part Sheet Margin at T. , tied by San Francisco pmk. on cover to Vt., VF.....	(Photo)	350.00
334	10c Green, Ty. II (14). Ample to Large Margins , Bold Circle of Wedges cancel (not tied), Red Eastport, Me. pmk., on cover to Stockton, Cal., VF.....	(Photo)	350.00
335	10c Green, Ty. II (14). Ample to Large Margins , tied by New York Ocean Mail pmk. on cover to Columbia, Cal., VF.....	(Photo)	350.00 +
336	10c Green, Ty. II (14). Ample to Large Margins , tied by San Francisco, Cal. pmk. on cover to Ct., VF.....	(Photo)	350.00
337	10c Green, Ty. II (14). Ample to Large Margins , tied by Blue "Baltimore Md." pmk. on Cover to Va., embossed Engineer's Corner Card, "July 20 1857", slight cover toning, Stamp VF, Unusual Usage, Probably a 1c Overpayment of a Triple 3c Rate.....	(Photo)	350.00 +
338	10c Green, Ty. II (14). Pos. 80R , Clear to Large Margins, tied by Clear New York Ocean Mail pmk. on July 21, 1854 cover to the U.S. Mint, San Francisco, Cal., trivial cover corner nicks, o/w VF ...	(Photo)	350.00
339	10c Green, Ty. II (14). Ample to Large Margins , Rich Color, tied by Bold New Sharon, Me. pmk. on cover to Columbia, Cal., slight cover toning, o/w VF.....	(Photo)	350.00
340	10c Green, Ty. II (14). Clear to Huge Margins , incl. Pane Center Line at R., tied by San Francisco Cal. pmk. on 3c Nesbitt Entire to Me., Fine & Attractive, Unnecessary Use of the 3c Entire	(Photo)	350.00
341	10c Green, Ty. II (14). Pos. 71L1 , Clear to Huge Margins, incl. Parts of Stamps at T. & B., Intense Color, tied by Paid cancel, matching Red Boston, Mass. pmk., on cover to San Francisco, Fine ..	(Photo)	350.00
342	10c Green, Ty. II (14). Ample to Large Margins , tied by Augusta, Me. pmk. on cover to Columbia, Cal., trivial corner creases outside design, o/w Fine.....	(Photo)	350.00
343	10c Green, Ty. II (14). Huge Margins to slightly in , Used Over 3c Dull Red (11) , tied by South Dartmouth, Mass. pmk. on neat cover to San Francisco, Rare & Unusual.....	(Photo)	350.00 +
344	10c Green, Ty. II (14). Two Singles , Pos. 72R, 34L, Margins All Around except just in on former, tied by Grid cancel & Ellsworth, Me. pmk. on 1857 cover to San Francisco, latter stamp light stains virtually all in margin, o/w Fine.....	(Photo)	E.X
345	10c Green, Ty. II (14). Horiz. Pair , Ample to Large Margins, Rich Color, tied by Roxbury, Mass. pmk. on cover to San Francisco, ms. "Per Mail Steamer & Panama Rail Road," F-VF.....	(Photo)	600.00 +
346	10c Green, Ty. II (14). Horiz. Strip of Three , Ample to Huge Margins, tied by "New Orleans La." pmks. on Cover to Germany, Red "N. York 7 Br. Pkt Paid" & Boxed "Aachen 20/5 Franco", both in Red, VF.....	(Photo)	950.00 +

347	10c Green, Ty. II (14). Horiz. Block of Six, Pos. 3-5, 13-15L, slightly in at T., Ample to Large Margins other sides, tied by Grids on large size cover to Germany, Red "N. York 14 Am. Pkt. Paid", "Consul General" Oval handstamp, etc., cover faults, Stamps despite some wrinkles are F-VF, Rare Cover..... (Photo)	E.XV
348	10c Green, Ty. II, III (14, 15). Pos. 8R & 61L respectively, Ample to Huge Margins, Red & Purplish Black Grid cancels, former light toning, latter faint creases, o/w VF.....	E.VIII
349	10c Green, Ty. II, III (14, 15). Vert. Combination Pair, Pos. 51, 61R, Ample to Huge Margins Showing Partial Sheet Margin at L. & Bit of Stamp at B., B. stamp trivial thin, o/w Extremely Fine (Photo)	600.00
350	10c Green, Ty. II, III (14, 15). Reconstructed Block, consisting of "L" shaped block of three & single, Pos. 58, 59, 68, 69R, T. pair Ty. II, Ample to Large Margins, Black & Red cancels, trivial corner margin toning speck (shows on back only), o/w F-VF..... (Photo)	1,170.00
351	10c Green, Ty. II, III (14, 15). Three Strips of Three (All Ty. II except one), Huge Margins to trifle in, on large size cover to the "Minister to the Argentine Republic Buenos Ayres" tied by "Washington City D.C. Oct 28 1857" pmks., "W. Medill" Free Frank & Treasury Dept. Impt., Red London & N.Y. Transits, ms. "48" credit, slight toning, some faults to be expected, Very Rare Franking..... (Photo)	1,760.00 +
352	10c Green, Ty. II, IV (14 two, 16). Horiz. Combination Strip of Three, Pos. 72-74L, Ample to Large Margins, two Town pmks., Ty. IV stamp minor creases, o/w VF, Scarce..... (Photo)	E.XIII
353	10c Green, Ty. II, IV, (14, 16). Horiz. Combination Strip of Three, Pos. 75-77L, Ty. II, IV, II, Ample to Large Margins, tied by Philadelphia Pa. pmks. on Neat Cover to Germany, Red "N. York 7 Am. Pkt. Paid" pmk. & Red "Aachen 24/5 Franco" Box, VF & Choice, ex-Gibson..... (Photo)	2,525.00 +
354	10c Green, Ty. III (15). Pos. 63L, Large to Huge Margins Showing Part of Next Stamp at R., town pmk., Rich Color, Extremely Fine "Gem"..... (Photo)	285.00
355	10c Green, Ty. III (15). Pos. 26R, Immense Margins Showing Parts of Stamps at R. & B., grid cancel, Extremely Fine "Gem".... (Photo)	285.00
356	10c Green, Ty. III (15). Pos. 70R, Large to Huge Margins, Town pmk., trivial corner margin wrinkling, o/w Extremely Fine (Photo)	285.00
357	10c Green, Ty. III (15). Pos. 50R, Large Margins, Part Sheet Margin & Part Impt. at R., town pmks., small pinhole, o/w Extremely Fine..... (Photo)	285.00
358	10c Green, Ty. III (15). Pos. 43R, Ample to Large Margins Showing Bit of Stamp at B., Red Grid cancels, VF..... (Photo)	310.00
359	10c Green, Ty. III (15). Pos. 87R, Large Margins, Red Grid cancel, Choice Color & Impression, VF..... (Photo)	310.00
360	10c Green, Ty. III (15). Pos. 43L, Ample to Large Margins, Town pmk., VF..... (Photo)	285.00
361	10c Green, Ty. III (15). Pos. 61R, Ample to Huge Margins, Part Sheet Margin at L., Town pmk., light corner crease outside design, o/w VF..... (Photo)	285.00
362	10c Green, Ty. III (15). Pos. 44L, Ample to Large Margins, Grid cancel, Fine..... (Photo)	285.00
363	10c Green, Ty. III (15). Horiz. Pair, Pos. 89, 90R, Large Even Margins, grid cancels, Extremely Fine..... (Photo)	600.00

364	10c Green, Ty. III (15). Horiz. Pair, Pos. 84, 85L, R. Stamp Curl on Forehead var., Clear to Large Margins, Town pmk., VF..(Photo)	635.00+
365	10c Green, Ty. III (15). Horiz. Pair, Pos. 48, 49R, Ample to Large Margins, Town pmks., one stamp light creases, o/w VF.....(Photo)	600.00
366	10c Green, Ty. III (15). Horiz. Pair, Pos. 29, 30L, Ample to Huge Margins incl. Full Pane Margin at R. Showing Complete Center Line, grid cancels, L. stamp small thin, o/w VF.....(Photo)	600.00
367	10c Green, Ty. III (15). Horiz. Pair, Pos. 27, 28R, Large to Huge Margins, grid cancels & part of red transit marking, one stamp light stain (mostly on reverse), o/w VF.....(Photo)	600.00
368	10c Green, Ty. III (15). Horiz. Pair, Pos. 24, 25L, Ample to Large Margins, Red & Black pmks., small inclusion in margin, slight toning mostly on reverse, o/w VF.....(Photo)	600.00
369	10c Green, Ty. III (15). Horiz. Strip of Three, Pos. 45-47R, Ample Margins, town pmks., one stamp tiny faults barely affecting design, o/w VF, Attractive.....(Photo)	885.00+
370	⊗ 10c Green, Ty. III (15). Large to Huge Margins, tied by Peru, Ind. pmk., Red Str. Line "PAID" & Red "UNITED STATES 6d." in Oval markings, on 1857 cover to Canada, Extremely Fine....(Photo)	400.00
371	⊗ 10c Green, Ty. III (15). Pos. 2LI, Ample to Huge Margins, tied by San Francisco, Cal. pmk. on cover to Mass., lacks part of flap, Extremely fine.....(Photo)	400.00
372	⊗ 10c Green, Ty. III (15). Ample to Large Margins, tied by San Francisco pmk. on neat cover to Washington, D.C., VF & Choice Denver Corresp. Cover.....(Photo)	400.00
373	⊗ 10c Green, Ty. III (15). Ample to Huge Margins incl. Bit of Stamp at R., tied by San Francisco, Cal. pmk. on 1857 cover to St. Louis, flap faults, VF.....(Photo)	400.00
374	⊗ 10c Green, Ty. III (15). Clear to Huge Margins incl. partial Pane Center Line at R., tied by San Francisco pmk. on cover to New York, VF.....(Photo)	400.00
375	10c Green, Ty. III (15). Ample to Large Margins incl. part Sheet at R., Deep Color, tied by indistinct Pa. town pmk. on cover front to San Francisco, VF.....	285.00
376	⊗ 10c Green, Ty. III (15). Ample to Large Margins, Rich Color, tied by San Francisco Cal. pmk. on cover to New Hampshire, trivial cover toning specks, o/w VF.....(Photo)	400.00
377	⊗ 10c Green, Ty. III (15). Ample to Large Margins, tied by San Francisco, Cal. pmk. on 1856 Folded Letter to Boston, natural pre-print fold in R. margin, faint toning, o/w VF.....(Photo)	400.00
378	⊗ 10c Green, Ty. III (15). Ample to Large Margins, incl. Pane Center Line at R., tied by Clear San Francisco Cal. pmk. on cover to Washington, D.C., tiny piece out of stamp, o/w VF, signed Ashbrook.....(Photo)	400.00
379	⊗ 10c Green, Ty. III (15). Ample to Large Margins (trifle irregular at L.), tied by partially distinct Milford, Ct. pmk. on neat cover to San Francisco, light age stains, most affecting cover only, o/w VF(Photo)	400.00
380	⊗ 10c Green, Ty. III (15). Ample to Large Margins, tied by Paid cancel, matching Red Boston, Mass. pmk., on cover to Noisy Carriers Bookstore, San Francisco, small toning spot, o/w VF.....(Photo)	400.00
381	⊗ 10c Green, Ty. III (15). Clear to Ample Margins, Grid cancel, just tied by South Norwalk, Ct. pmk. on small cover to Garden Valley, Cal., negligible toning, Fine.....(Photo)	400.00
382	⊗ 10c Green, Ty. III (15). Pos. 67L, Clear to Large Margins, tied by Lewiston, Me. pmk. on cover to Yankee Jim's, Cal., ms. notation "Due 10 cts", few age spots on cover not affecting stamp, o/w fine.....(Photo)	400.00

- 383 ☒ **10c Green, Ty. III (15).** Margins Virtually All Around, Rich Shade, tied by Gardiner, Me. pmk. on cover to San Francisco, light crease just touching design, Reasonably Attractive..... 400.00
- 384 ☒ **10c Green, Ty. III (15).** Margins to just touching, tied by San Francisco Cal. pmk. on 1856 Folded Letter to Philadelphia which mentions that "the murder of Richardson in one of our public streets has caused the reorganization of the vigilance committee," some cover bleaching, light file fold affects stamp, o/w Fine 400.00
- 385 ☒ **10c Green, Ty. III (15).** Margins to just touching, Used with **1c Blue Ty. IV (9) & 3c Red (11)**, tied by San Francisco Cal. pmks. on March 20, 1856 **6c Nesbitt Entire (U14)** to Mass., Fine, A Beautiful Four Color Franking(Photo) 600.00 +
- 386 ☒ **10c Green, Ty. III 915).** Horiz. Pair, Clear to Large Margins, Rich Color, Sharp Impression, tied by New Orleans pmk., Numeral "3" marking, on 1857 Folded Cover to **Mexico**, VF(Photo) 600.00 +



- 387 ★ **10c Green, Ty. IV (16). Recut T. & B.,** Pos. 64L, Ample to Extra Large Margins, Fresh, Rich Color, minute crease in extreme B.R. corner margin, o/w VF, Very Rare Unused, with P.F. Certificate.....(Photo) 10,500.00
- 388 **10c Green, Ty. IV (16).** Pos. 76L, Large Even Margins, Blue & Black cancels, Extremely Fine, Beautiful Stamp(Photo) 1,500.00

- 389 **10c Green, Ty. IV (16).** Pos. 55L, Ample to Large Margins, Town pmk., faint crease, o/w VF.....(Photo) 1,450.00

- 390 ☒ **10c Green, Ty. IV (16).** Recut at T., Pos. 74L, Large to Huge Margins, Rich Color, Neatly tied by San Francisco Cal. pmk. on Cover to Del., light cover waterstain at L. & B., Stamp Extremely Fine(Photo) 2,250.00
- 391 ☒ **10c Green, Ty. IV (16).** Pos. 74L, Ample to Large Margins, Rich Color, tied by Bath, N.Y. pmk. on 1855 Folded Letter to San Francisco, VF & Choice.....(Photo) 2,250.00

- 392 ☒ **10c Green, Ty. IV (16).** Pos. 55L, Ample to Large Margins, tied by San Francisco, Cal. pmk. on cover to South Carolina, light overall toning slightly affecting stamp, small cover nick at B., o/w Fine.....(Photo) 2,250.00

BIDDING INTERVALS

BIDS	ADVANCE	BIDS	ADVANCE
Up to \$30.00	\$1.00	\$2,000.00 - \$3,000.00	\$100.00
\$32.50 - \$70.00	\$2.50	\$3,250.00 - \$7,250.00	\$250.00
\$70.00 - \$145.00	\$5.00	\$7,500.00 - \$14,500.00	\$500.00
\$150.00 - \$290.00	\$10.00	\$15,000.00 - \$29,000.00	\$1,000.00
\$300.00 - \$725.00	\$25.00	\$30,000.00 - \$75,000.00	\$2,500.00
\$750.00 - \$1,950.00	\$50.00		

Bids which do not conform to the above will be automatically reduced to the appropriate level.

- 393 ☒ **10c Green, Ty. IV (16).** Pos. 64L, Clear to Ample Margins, tied by "PAID" in Circle, **Red** Providence, R.I. pmk. on Sept. 4, 1853 cover to Placerville, Cal., sealed cover tear (slightly affecting pmk.), o/w Fine(Photo) 2,250.00

TWELVE CENT BLACK

- 394 ☒ **12c Black (17). Horiz. Pair,** Large Margins, tied by Grid cancels on 1856 Cover to England, Red NY pmk., Red Receiving pmk., stamps lifted & replaced, slight cover stain as a result, o/w VF(Photo) 625.00
- 395 ☒ **12c Black (17). Horiz. Pair,** Clear to Huge Margins, lightly tied by Town pmks. on Dec. 1852 Folded Cover to Scotland, Bold Red "3" & "America Liverpool Paid", tiny cover tear & small cover bleaching spot, Stamps F-VF(Photo) 625.00
- 396 ☒ **12c Black (17). Horiz. Pair,** Margins Virtually All Around, tied by Red Grids, matching "New 3 York" pmk., Red British "Paid" on Apr. 1857 Cover to England, small flap nick, Fine (Photo) 625.00

- | | | |
|-------|---|------|
| 397 ☒ | 12c Black, Diagonal Half Used as 6c (17a). Tied by "San Francisco Cal Paid 6" pmk. on Folded Cover, ms. "via Panama 15 July 53", VF, Rare(Photo) | E.XV |
|-------|---|------|

1857 ISSUE

- 398 ☒ **1c Blue, Ty. II (20).** Pl. 11 or 12, Well-centered, Unusually Wide Side Margins incl. Imperf. Pane Center Line at L., Grid cancel (not tied), Red "New Haven Ct Jul 1 1861" Double Circle on Drop Letter Cover with Embossed Lumber Dealer's Corner Card, VF E.VII
- 399 ☒ **1c Blue, Ty. II (20).** Tied by "U.S.P.O. Dispatch *Phila*" Octagon on Carrier Cover, slight toning, o/w Fine..... E.VII
- 400 ☒ **1c Blue, Ty. II (20). Horiz. Strip of Three,** Pos. 41-43L2, end stamps some short perfs. at T., Rich Color, tied by "Ellicotts Mills Md." pmks., on Orange Buff Cover, slight address smear, still Attractive(Photo) E.VIII
- 401 ☒ **1c Blue, Ty. IIIa, 3c Red (22, 26). 3c Horiz. Pair,** 1c minor flaws at T. due to placement of cover edge, tied by "New-York MR 28 61" ("61" Sideways) & Grid Duplex cancel, Fine, Rare.....(Photo) E.VII
- 402 ☒ **1c Blue, Ty. V (24). Ten Singles,** slightly overlapped, tied by San Francisco Cal. 1858 pmks. on Cover to Me. with **Overall Illustr. Hotel Ad** on back, some light toning, one stamp tiny tear, Rare Franking(Photo) E.IX
- 403 ☒ **5c Brick Red (27).** Single short perf., **Used With 10c Green, Ty. V (35),** each tied by **Red "Paid" in Circle,** matching "Providence R.I. Dec. 28 1860" pmk., Red "New Paid York 6", on Neat Cover to France, small piece out of flap, Very Pretty, Scarce Cover, signed Ashbrook(Photo) E.XII

- | | |
|-------|---|
| 404 ☒ | 5c Brick Red, 10c Green, Ty. II, III (27, 32, 33). Tied by Red Grids on June 1859 Folded Cover to France, Red Boxed "Short Paid" (5c deficiency for the 30c double rate), Black "New 6 York" Debit, ms. "16" due, slight aging, o/w VF, Very Scarce(Photo) 1,950.00 + |
| 405 ☒ | 5c Indian Red (28A). Perfs. tiny bit in at T., Marvelous color, Used With Nicely Centered 10c Green, Ty. II (32) tied by "New Orleans La." & Red "New York Paid York 6" pmk. on Jan. 1859 Folded Cover to France, Fine, Very Attractive(Photo) E.XV |

- 406 ☒ **5c Brown, Ty. I (29).** Average, tied by "New Orleans La. Jul 6 1859" pmk. on Folded Letter to Spain via England, Bold "4.Rs." handstamp, slight toning, Scarce Very Early Usage (This Cover was the Earliest Known Usage in 1955), signed Ashbrook(Photo) 325.00
- 407 ☒ **5c Brown, Ty. I (29). Horiz. Strip of Three,** tied by "New Orleans La. Sep 15 1859", Red "Boston Paid 3" on Folded Letter to France, slight toning, o/w Fine(Photo) E.X
- 408 ☒ **5c Brown, Ty. I (29). Horiz. Strip of Four,** Nicely Centered, used with natural s.e. **1c Blue, Ty. V (24),** tied by Neat "Dallas Tex." pmks. on reduced court house cover, Fine, Very Scarce(Photo) E.XI
- 409 ☒ **5c Brown, Ty. II (30A). Two Singles,** tied by Black "Boston Br. Pkt." pmk. on June 1860 Folded Cover to **India,** ms. "3/2" due mark, "Calcutta/Steam Letter" back stamp, slight toning, o/w Fine(Photo) E.X
- 410 ☒ **5c Brown, Ty. II (30A). Vert. Strip of Three,** Unusually Well-centered, Rich Color, tied by Grids, Red "New Paid York 12" & Red French Transits on Feb. 1861 Cover to France, slight cover toning, Stamps VF & Choice(Photo) 610.00 +
- 411 ☒ **10c Green, Ty. I, "Curl" in L. "X" var (31 var).** Pos. 99R, tied by Paid cancel & Red Boston, Mass. pmk. on cover to San Francisco, ms. "Per Mail Steamer and Isthmus Rail Road", Fine.....(Photo) 600.00 +
- 412 ☒ **10c Green, Ty. II (32).** Beautifully Centered, Rich Color, tied by "San Francisco Cal." pmk. on Neat cover to N.Y., ms. "Overland", VF, Stamp Extremely Fine.....(Photo) 225.00
- 413 ☒ **10c Green, Ty. II (32).** Large Margins, Well-centered, tied by 1858 San Francisco pmk. on Cover to Boston, slight cover toning, Stamp VF & Choice 225.00
- 414 ☐ **10c Green, Ty. II, III (32, 33). Combination Block of Five,** Pos. 59, 60, 68-70R, T. Pair Ty. II, "fifth" stamp diagonal corner, Dark Shade, on large size rebaked cover front tied by "San Francisco Cal." 1858 pmks., slight toning, o/w Block of Four F-VF.....(Photo) E.XIII
- 415 ☒ **10c Green, Ty. II, III (32, 33). Former Horiz. Pair,** R. stamp small piece out, tied by San Francisco, Cal. pmks. on 1858 cover to Mass., cover faults, Scarce Triple Rate 540.00 +
- 416 ☒ **10c Green, Ty. II, III (32, 33).** Three Covers to Cal., Two of former, some small faults, mostly minor, o/w F-VF E.VIII
- 417 **10c Green, Ty. III, IV (33, 34). Horiz. Combination Strip of Four,** Pos. 63-66L, Middle Pair Ty. IV (recut T. & B. & T., respectively), **Red Grid** cancels, light toning & offset, few small faults mostly affecting Ty. III Stamps, Scarce & Attractive(Photo) E.XV

418 ☒ **10c Green, Ty. V (35). Bold "L.B" in Fancy Octagon cancel** (not tied), "West Hartford Ct." pmk., on slightly reduced Orange Cover to Cal., Beautiful Example of this Rare Fancy Cancel.....(Photo) E.XIII
- 419 ☒ **10c Green, Ty. V (35). Horiz. Strip of Three,** Used With **3c Red (26),** tied by Grids & Red "Aachen Franco" Box on July 1860 Cover to **Sweden,** "Rockford Ill." pmk., Nice Sequence of Transits, negligible cover corner toning, Fine, Very Scarce, signed Ashbrook .. (Photo) E.X
- 420 ☒ **10c Green, Ty. V (35). Horiz. Strip of Three,** natural s.e. at R., tiny pre-use nick, Used with **3c Red (26)** tied by Large "Paid" in Grids on Jan. 1861 Folded Cover to **Cape of Good Hope,** L. 10c also tied by Red "1d" local delivery charge handstamp, Nice Range of Transits, Attractive Scarce Cover(Photo) E.XI

- 421 ☞ **10c Green, Ty. V (35). Horiz. Strip of Six**, tied by Roller Cancel & "Edgarton Ms." pmk. on Sept. 1860 Cover to **Calcutta, India**, Red British "40" Credit, ms. "1" local delivery charge, sender originally intended French Mail (60c-½ oz.) but went British Mail Via Marseilles, thus overpaid 15c, Fine & Rare (Photo) **E.XII**
- 422 ☞ **10c Green, Ty. V (35). Pair, Two Strips of Three & Block of Six**, Three with Imperf. Center Line, average centering, **Used With Vert. Pair 1c Blue, Ty. V (24)** on 10 x 4¼" Cloth lined Cover to N.Y. City, tied by "San Francisco Cal." pmks., ms. "Via 'Panama'," slight aging & couple minor tape stains, Most 10c Stamps are Plated, Very Rare Franking (Photo) **E.XII**
- 423 ☞ **12c Black (36). Two**, tied by **Blue "Eastern R.R." pmks.** on 1858 Cover to England, Red "19" & "America Liverpool", "Boston Br. Pkt." backstamp, light toning, Scarce (Photo) **E.IX**
- 424 ☞ **12c Black, Pl. III (36b). Horiz. Strip of Four**, perfs. trifle in at T., on 1860 Cover to England tied by Phila. Pa. Octagons, Red "38" Credit pmk., without flap, some soiling, minor cover tear, still Attractive, Very Scarce (Photo) 450.00 +
- 425 ☞ **24c Gray (37a). Scissors separated blunting some perfs.** at L., Rich Color, tied by New Orleans La. 15 Feb (1861) **Confederate Statehood** pmk. on Small Neat Cover to **Scotland**, Red "Boston Pkt. 3", Four Line "Glasgow Packet/Paid/Mr 7/1861", Fine, Rare, with enclosure (war related contents) (Photo) 1,100.00
- 426 ☞ **24c Gray (37a). Tied by Grid** on Aug 20, 1861 Cover to England, Red "New 19 York" ("19" deleted by Red Grid) & Black "N. York Br. Pkt. 10" added, **Red Boxed "Short Paid,"** ms. due "2/-", Treated as Entirely Unpaid, minor soiling, Fine (Photo) 1,100.00
- 427 ☞ **24c Gray (37a). Horiz. Pair**, natural s.e. at L., tied by **Red Grids** & Red "New 19 York", Re-rated "N. York Am. Pkt 38" in Red, on Aug. 1860 Folded Cover to Ireland, slight cover bleaching at B., o/w Fine, ex-Gibson, Krug, signed Ashbrook (Photo) 1,300.00 +

- 428 ☞ **30c Orange (38). Rich Color**, tied by Grid, "New Orleans La. Oct 23 1860" & Red "Boston Paid 24" pmks. on Fresh Blue Folded Cover to France, Fine (Photo) **E.XIV**
- 429 ☞ **30c Orange (38). Tied by "New Orleans La. Nov 20 1860" & Red "Boston Paid 24" pmks.** on Folded Cover to France, "8" due mark, some cover faults, o/w Fine (Photo) **E.XIII**

- 430 ☞ **30c Orange (38). Tied by "Sacramento City Cal." pmk.** on May 1861 Cover to France, Red "New Paid York 6" Overstruck by Red "New Paid York 12", various French Transits, some cover faults & soiling, o/w Fine (Photo) **E.XII**

- 431 ☞ **30c Orange (38). Tied by Grid**, Red "N. York 24 Brem. Pkt. Paid", Blue Three Line "America Uber Bremen Franco", on Feb. 1861 Folded Cover to **Germany**, slight erosion in address & docketing, stamp appears to have been reperfed although not mentioned on accompanying P.F. Certificate, Scarce ... (Photo) **E.XIII**
- 432 ☞ **30c Orange (38). Used With 3c Red (26)** tied by Red Grids, on Dec. 1860 Folded Letter to **Argentina**, Red N.Y. & London pmks., negligible toning along file fold, Fine, Very Rare Usage (Photo) **E.XV**
- 433 ☞ **30c Orange (38). Horiz. Pair, Used With Two 3c Red (26)** tied by Large "Paid" in Grid cancels on May 1861 Double Rate Folded Cover to **Cape of Good Hope**, some back faults, Fine, Very Scarce, ex-Knapp (Photo) 2,535.00

1861 ISSUE

434	10c Dark Green, "First Design", 5c Brown Yellow (62B, 67a). 10c Well-centered, minor flaws T.R. corner, 5c Fine, tied by Grids & Red "N. York Br. Pkt." on Oct. 1861 Folded Letter to Spain, Bold Blue "12 Rs.", Rare, Beautiful Appearance (Photo)	E.XII
435	1c Blue (63). Vert. Pair, tied by Town pmk. on Cover to New Brunswick, Black "U. States" in Arc, Red pencil "2", small cover mend & tiny toning specks, Rare Usage	E.VI
436	1c Blue (63). Block, small faults, tied by Framed "Paid" cancels & Red "Boston Mass." pmk. on 3c + 1c Carrier Fee Cover to N.H., slight soiling, Very Scarce, ex-Emerson, signed Ashbrook.... (Photo)	E.VIII
437	1c Blue (63). Three Covers, Vert. Strip of Three, Horiz. Strip of Three & 6c Rate comprised of Singles & Pairs, Fine Lot.....	E.VIII
438	1c Blue (63). 1c, 2c & 3c Rate Covers, incl. Single tied by Red N.Y. Carrier, Single on 1c Blue Star Die Entire (U19) & Strip of Three tied by Red Boston pmk. & Framed "Paid" cancels, carrier cover slight toning, o/w F-VF	E.VI
439	1c-3c 1861 Issue (63-65, 73). 22 Stamps on 12 Covers & a Patriotic front, one 1c is Green "Meriden N.H.", 3c incl. 5x3c Rate to France (Payen Corresp.), 1c + 3c Rates, Patriotics, No. 64 (removed & replaced), 2c incl. Vert. Pair & 3x2c Rate, mixed quality, generally Fine Lot	E.IX
440	3c Pink (64). Beautifully centered, Fresh Color, tied by "Washington D.C. Sep 18 1861" pmk., on Overall "Vermont", "The Loyal States," etc. Patriotic Cover, VF..... (Photo)	650.00
441	3c Pink (64). Tied by Bold Town pmk. on Neat Orange Cover, flap faults, small mended tear at T., o/w VF, signed Ashbrook.... (Photo)	E.VIII
442	3c Pink (64). Small Blue Framed "Paid" cancels (not tied), matching "Hopkinton N.H." pmk. with "5" in Center Over Date, without flap, Fine	E.XI
443	3c Pink (64). Rich Color, some toning, on Small slightly reduced Cover tied by "Cambridge Ms. Oct 28 1861" Double Circle, Scarce.	E.VII
444	3c Rose Pink (64b). Used as Forwarding Postage on Small Fresh Mourning Cover From England tied by "Cambridge Ms. Aug 29 1861" pmk., Great Britain 1sh Green (28) tied by Temby pmk. & Red "N. York Am. Pkt Jul 29 Paid 24" ("Jul" in error), VF, Scarce	E.VIII
445	3c Rose Pink (64b). Horiz. Strip of Three, Beautifully Centered, R. stamp minor faults, Used With 1c Blue (63), Grids of Tiny Rectangles cancels, tied by "Philadelphia Pa. Sep 2, 1861" pmk. on Cover to Canada, tiny cover nick at L., Very Pretty Cover, Rare Early Use.....	E.VII
446	3c Rose (65). Well-Centered, Beautifully tied by "Paid" in Circle, Red "Chambersburg Pa Jul 9 1862" Double Circle on Wonderfully Fresh Orange "Wyman the Ventriloquist" Patriotic Cover (Female Nude Entwined By The "Secession" Serpent, "Dixie!" Impt. Below), Extremely Fine, Perfection	40.00
447	3c Rose (65). Natural s.e., tied by Framed "Paid", Red Boston pmk. on Major General John C. Fremont Patriotic Cover (Fremont Portrait, Soldiers & Cavalry Fighting Indians, etc.), Cover Originally Addressed to Dr. Henry Angell in Austria, label placed over address & readdressed to Portland, Me., VF, Rare & Unusual Patriotic	E.VII
448	3c Rose (65). Tied by Town pmk. on Cover to Wash. D.C. Forwarded to Ohio, (Blue "Due 3 cts"), Overall Illustr. On Back of the "Top Of Mt. Washington" (N.H.) Showing People on Horseback, Buildings, etc., Matching Illustr. Notepaper accompanies, VF, Scarce	E.V

449	3c Rose (65). Target cancel, "North Springfield Vt." pmk. on Illustr. Cover Showing Three Merino Sheep, minor toning specks, o/w VF, Eyecatching (Photo)	E.V
450	3c Rose (65). Vaguely tied by Grid, "Andover Ms." pmk., on back of cover), Pen & Ink Illustr. of Heavyset Old Man Wading in Ocean With Woman & Child, negligible toning, Very Pretty..... (Photo)	E.VIII
451	3c Rose (65). On back of Cover tied by Grid, "Andover Ms." pmk., Front of Cover With Overall Pen & Ink Illustr. of Black Man Standing Next to Huge Trunk, Cart, Caption, etc., cover opened three sides & bit reduced on back & at R., Eyecatching (Photo)	E.VIII
452	3c Rose (65). Four Hand Illustrated Covers (same Corresp.), Mass. & R.I. pmks., some minor toning, Rare & Desirable Lot (Photo)	E.XIII
453	3c Rose (65). Three Diff. Commodore Dupont Patriotic Covers, Two with Portraits Only, other tiny Portrait & "Port Royal" Naval Scene Flanked by Sailor & "King Neptune," some toning, etc., Scarce Lot.....	E.VIII
454	5c Buff (67). Rich Color, Used With natural s.e. 10c Green (68), small tear, tied by Red Grids, matching "New-Paid York 12", on Nov. 1861 Folded Letter to France, Red French Transits, faint cover toning, still a Pretty Cover (Photo)	727.50
455	10c Green (68). Two 21c Rate Covers, each with 1c Blue (63) & two 10c, to Italy & Holland, few faults, Attractive Lot.....	E.VII
456	29c Grayish Lilac, "First Color" (70d). Tied by "Albany N.Y." pmk. on May 1862 Cover to England, Red "Boston Br. Pkt. 19 Paid", etc., Fine, Scarce, signed Ashbrook..... (Photo)	E.XI
457	30c Orange (71). Vert. Strip of Three, Tied by Geometric Grid, "Salem Mass." pmk. on Goodhue Corresp. Double Rate Cover to Zanzibar, Africa, Red "London Paid," large Red pencil "2", etc., bit reduced at R., Rare..... (Photo)	650.00 +
458	30c Orange, 15c Black (71, 77). 15c natural s.e., 30c Well-centered, light Grid cancels (not tied), "Salem Mass." pmk. on Oct. 1866 Goodhue Corresp. Cover to Zanzibar, Africa, Red "London Paid," "Mauritius" backstamp, "Dr. Brooks, Seychelles Isles." Forwarding Label, etc., Fine, Rare, ex-Krug, signed Ashbrook..... (Photo)	E.XV
459	30c Orange, 24c Lilac (71, 78). Used with 3c Rose (65), tied by Large Four Point Stars on May 1863 Folded Letter to Shanghai, China, Red N.Y. & London Paid pmks., Magenta ms. "52" Credit, Red pencil "1" local delivery charge, minor toning along file fold, still a Scarce & Attractive Augustine Heard Cover..... (Photo)	E.XII
460	2c Black (73). Tied by Large Richmond, Va. Green Cork (no town pmk.) on Aug. 1866 Folded Circular, slight toning, o/w Fine.....	E.VIII
461	2c Black (73). On Aug. 1866 Folded Circular tied by Green "Richmond Va." pmk., slight toning, o/w Fine.....	E.VIII
462	2c Black (73). Partly affixed over G.B.1p Red & tied by Blue "Savannah Ga." & Grid as Forwarding Postage on Nov. 1866 Folded Market Report from England, Fine & Unusual.....	E.VI
463	2c Black, 5c Brown (73, 76). Used With Two 3c Rose (65) & 15c Inland Exchange First Issue Revenue (R40c) tied by Large Grids & Framed "Short Paid" on cover to Italy, Black "New 9 York" debit, Red French Transits, slight toning, Rare Cover..... (Photo)	E.X
464	5c Red Brown (75). Two slightly overlapped singles, Rich Color, tied by Red Grids, matching "N. York Br. Pkt. Paid" pmk. on Jul. 1862 Folded Cover to Holland, ms. due marks, Fine, Scare . (Photo)	E.XI

- 465 ☒ **5c Deep Red Brown (75).** Three Singles, tied by Dark Blue Targets, Red "New Paid York 12" on Nov. 1862 cover to France, without flap, Fine, signed Ward (Photo) **E.XII**
- 466 ☒ **5c Brown (76). Horiz. Strip of Three, Huge Imperf. Straddle Margin Showing 2½mm of Stamp From L. Pane,** tied by "New Orleans La." pmks. on Feb. 1865 Cover to France, Red "New Paid York 12", tiny toning speck at T. cover edge, Fine (Photo) **E.VIII**
- 467 ☒ **5c Brown, 15c Black (76, 77).** Three Covers, incl. 5c & 10c Green (68) to France, Pair of 5c to Canada, 15c to France, Variety of Markings, Fine Lot..... **E.VIII**

- | | |
|-------|---|
| 468 ☒ | 5c Brown, 24c Gray (76, 78b). Two of latter, tied by Circles of Wedges, Red "N. York Am. Pkt. Paid", "London Paid" & "32", on Nov. 1865 Augustine Heard Corresp. Folded Prices Current to Shanghai, China , Fine, Very Scarce..... (Photo) E.XIII |
| 469 ☒ | 5c Brown, 24c Grayish Lilac (76, 78a). Two 24c, one natural s.e., tied by Corks, Red "N. York Br. Pkt. Paid", "London Paid," on Dec. 1864 Augustine Heard Corresp. Folded Letter to Shanghai, China , magenta ms. "48" credit, Red "1d" handstamp local delivery charge, cover file fold, Fine, Scarce .. (Photo) E.XIII |

- 470 ☒ **15c Black (77). Horiz. Pair,** tied by Rosettes & Red "New Paid York 24" on Small Neat March 1867 Cover to France, Fine, Very Pretty **E.VII**
- 471 ☒ **15c Black (77, 98).** Three Covers to France, one of latter, All **Forwarded**, Two Outside of France (Belguim & Italy), **Each With Additional French Postage** to Pay Forwarding Fee, pmks. incl. Purple "Philadelphia 6", mixed quality, Scarce Lot..... **E.X**

1867 GRILL ISSUE

- 472 ☒ **2c Black, 10c Green, E. Grills (87, 89). Pair of 2c, Horiz. Strip of Three of 10c,** Target cancels (not tied), Mass. Town pmk. on Sept 1868 Cover to **Peru**, Red "24" credit, "Panama" Br. Transit, one 10c small corner nick, slight toning, Very Scarce Cover..... (Photo) 735.00 +
- 473 ☒ **10c Green, E. Grill (89).** "Freak" centering, Used With **Well-centered 2c Black (73) & Two average 3c Rose E. Grills (88)**, Cork cancels, "Rockland Me." pmk. on Oct. 1868 Cover to **Martinique**, Bold Red "8", "St. Thomas" backstamp transit, Rare & Attractive Cover (Photo) 289.00 +
- 474 ☒ **15c Black, E. Grill (91).** Tied by Mass. Town pmk., Red "New Paid York 6" & "New York Paid All" on Small Cover to France, toning spots, Scarce..... **E.VII**
- 475 ☒ **1c Blue, F. Grill (92).** Pale shade, Used With **2c Red Brown (113)**, tied by Targets, Brandon Vt. & Batavia pmks. on Forwarded Cover, Fine, Scarce Combination, ex-Gibson **E.VI**
- 476 ☒ **1c-15c F. Grills (92, 93, 96-98).** Five Covers, 1c Drop Letter Rate, 2c Pair, 10c Two Singles to Switzerland, 12c Single to England, 15c Reg. Cover **Used with 3c Green (147)**, 10c Stamps Exceptional, others mixed quality, G-F **E.IX**
- 477 ☒ **5c Brown, F. Grill (95). Horiz. Strip of Three,** natural s.e. at R., tied by Gray Blue Corks, matching "Flemington N.J." pmk. on 8¼x4" Orange Buff Cover, couple flap tears, Fine Scarce Usage..... **E.X**
- 478 ☒ **12c, 15c Black, F. Grills (97, 98).** Tied on separate 1869 Cover, to England & France respectively, some minor perf. faults, 15c slight toning, o/w VF..... **E.IX**

- 479 ☞ **15c Black, 24c Gray Lilac, F. Grills (98, 99).** 15c Fine, 24c Well-centered & VF, Used With average **3c Red, F. Grill (94)**, tied by Grids of Squares & Red "New Paid York 36" on Nov. 1868 Double Rate Folded Cover to **Italy**, Red French Transits, Italian backstamps, 24c lifted to check grill & hinged back in place, tiny cover tear & slight aging, Rare cover, ex-Gibson, signed Brookman (Photo) **E.XII**
- 480 ☞ **30c Orange, F. Grill (100).** Nicely centered, single short perf. & minor toning, tied by Bold Segmented Grid cancel, Red "New York Paid All Br. Transit", on Sept. 1869 Folded Cover to **Italy** slight aging, Very Scarce, signed Ashbrook..... (Photo) **E.XII**

1869 PICTORIAL ISSUE

- 481 **1c Buff (112).** Fine, Bold Watkins, N.Y. **Shield** cancel, Choice Strike, Scarce..... (Photo) 60.00 +
- 482 ☞ **1c Buff (112). Horiz. Strip of three,** L. perfs. touch, tied by Grids & "Lebanon N.H. Nov. 6, 1869" pmk. on cover to Laconia, Scarce (Photo) **E.VII**
- 483 ☞ **1c Buff, 2c Red Brown (112, 113).** Tied by Target & "Philada. Station H. 2nd. (Delivery)" pmk. on Neat Sept. 1869 cover, Fine..... (Photo) **E.VII**
- 484 ☞ **2c Red Brown (113). Vert. Pair,** single short perf., Used With natural s.e. **Horiz. Pair 3c Green (147)**, some gum soaks, tied by Quartered Cork cancels, "New Orleans La." pmk. on July 1870 Folded Letter to France, Bold Red "6", N.Y., London & Various French Transits, minor toning, Scarce (Photo) **E.VIII**
- 485 ☞ **3c Ultramarine (114).** Tied by Red Targed, matching "Chambersburgh Pa." pmk. on Oct. 1869 Yellow Cover With **Illustr. of Man & Large Cow, etc.**, small cover tear, Fine, Very Pretty, ex-Caspary. (Photo) **E.VIII**
- 486 ☞ **3c Ultramarine (114).** Tied by Grid, N.Y. pmk. on Overall "The New-York Times" **Illustr. Cover**, VF **E.IV**
- 487 **3c Ultramarine (114).** Two Singles, tied by Circles of Wedges & Red Town on Buff cover front to England, **Overall Magenta pin Illustr. of Three Men** (Two With Stamps as "Sandwich Boards,") a Real "Eyecatcher" (Photo) **E.VII**
- 488 ☞ **3c Ultramarine (114).** Two Covers, one with **Thomaston Me. Shield** cancel, other with **Guilford Ct. Cross in Heart** cancel as forwarding pmk. (another 3c tied by Newburgh N.Y. Cork), former bit reduced at R., latter small cover tears at B., Scarce Lot..... **E.VII**
- 489 ☞ **3c Ultramarine (114).** 24 Covers 11 from Maine, 13 from New Hampshire, Virtually All diff. Towns, few better cancels, mixed quality, generally Fine Lot **E.VII**
- 490 **6c Ultramarine (116).** Choice Margins, **Red** cancel, VF..... (Photo) 120.00
- 491 ☞ **6c Ultramarine (115). Red "M"** cancel, single short perf., o/w Fine, Scarce..... 120.00 +
- 492 ☞ **6c Ultramarine (115).** "Freak" centering, Most of "U Postage S" Label at B., small tear, tied by **Solid Five Points Star**, Lansing Mich." pmk. on Pink Cover, bit reduced at L., Unusual..... **E.VII**
- 493 ☞ **6c Ultramarine (115).** Used With **3c Ultramarine (114)**, tied by Blue Corks, matching "York Pa." pmk. on reduced oversize & slightly refolded cover, Scare..... **E.VI**
- 494 ☞ **6c Ultramarine (115).** Used With Well-centered **1c Buff (112) on 3c Pink Entire (U58)**, Grid cancels, "Wheeling W. Va." pmk. to Germany, Red N.Y. & Hamburg Transit, Attractive (Photo) **E.VIII**

- 495 \boxtimes **6c Ultramarine (115)**. Minor perf. toning, on **3c Pink Entire (U58)** tied by Bold Grid, "Charlottesville Va." pmk., without flap, minor cover edge tears, o/w Fine..... **E.VII**
- 496 \boxtimes **6c Ultramarine, 12c Green (115, 117)**. Used with 3c Ultramarine (114), all average, Cork cancels, not tied, on Reg. Cover, Clear Str. Line "Registered" handstamp, bit reduced at L., Rare & Attractive Combination **(Photo) E.XI**
- 497 \boxtimes **10c Yellow (116)**. Three, cancels incl. Blue Target & Blue Segmented Cork, also incl. No.112 with Fancy Geometric cancel, last with pinhole, one 10c tiny faults, o/w Fine **E.VII**
- 498 **10c Yellow (116)**. Horiz. Pair, on piece, tied by San Francisco Cal. pmk., each stamp with Unusual Oriental "Chop" Handstamp, Fine, Rare **(Photo) 200.00+**

- | | |
|-----------------|--|
| 499 \boxtimes | 10c Yellow (116) . Well-centered, small corner crease tied by Circle of Wedges, San Francisco Cal. pmk. on Cover to Ct. from "U.S. Flagship Delaware Yokohama" (ms. at T.L.), Magenta "China and Japan Steam Service" Oval, tiny cover flaws, Fine, Very Scarce, signed Ashbrook..... (Photo) E.XIII |
|-----------------|--|

- 500 \boxtimes **10c Yellowish Orange (116)**. Tied by "N. York Steamship" pmk. on June 1870 Folded Cover From Mayaguez Puerto Rico to Phila., Pa., Large Blue Phillips & Co. St. Thomas D.W.I. Forwarder's Backstamp, ms. "pr Brasil Steamer," Fine, ex-Knapp..... **(Photo) E.XII**
- 501 \boxtimes **10c Yellow (116)**. Tied by Odd Cork on May 1870 Folded Letter from New Orleans to France Red N.Y. & Blue French Transits, ms. "8" due, Fine..... **(Photo) E.IX**
- 502 \boxtimes **10c Yellowish Orange (116)**. Perfs. touch, tied by Unusual "Fan-blade" Cork cancel, "Fort Madison Ioa." pmk. on Nov. 1869 cover to Germany, Small Red Boxed "Hamburg 29/11 69 Franco", Attractive, Scarce Fancy Cancel **(Photo) E.IX**
- 503 \boxtimes **10c Yellow (116)**. Tied by Fancy Grid Within Cog, "Castroville Tex." pmk. on Sep. 1872 cover to France, Red "New Paid York 6", "London Paid", "PD" in oval, & other transits, opened three sides, minor faults, still Attractive, Very Scarce, ex-Krug signed Ashbrook, with P.F. Certificate **(Photo) E.XII**
- 504 \boxtimes **10c Yellowish Orange (116)**. Perfs. trifle in at T., tied by Small Quartered Cork cancel, "Watertown Mass.", Red N.Y. & Blue French Transits, ms. "8" due on Blue Cover to France, Neat Printed Address, Pretty Cover. **(Photo) E.IX**
- 505 \boxtimes **10c Yellowish Orange (116)**. Used With **2c Red Brown (113) & 3c Ultramarine (114)**, VG-F, tied by Crossroads on Aug. 1869 Folded Cover to Italy, Red "New York Paid All Br. Transit," Very Attractive..... **(Photo) E.XI**
- 506 \boxtimes **10c Yellow (116)**. Two, one soiled, tied by Odd Five Arm Corks, "New Orleans La." pmk. on Apr. 1870 Folded Cover to France, Red N.Y. pmk., Blue French Transit, ms. "16" due, etc., Scarce, signed Ashbrook **(Photo) E.X**
- 507 \boxtimes **10c Yellow (116)**. Horiz. Pair, L. stamp minor bend, vaguely tied by Small Quartered Cork, Bold "Greencastle Pa." pmk. on Cover to Germany, Red N.Y. & Hamburg Transits, bit reduced at R., VF..... **(Photo) E.XII**
- 508 \boxtimes **10c Yellow (116)**. Horiz. Pair & Single, Beautifully Centered, tied by Quartered Cork cancels, "San Francisco Cal." pmk. on Orange Jul. 1870 Cover to France, Red N.Y. & French Transits, ms. due mark, couple small faults, o/w Extremely Fine..... **(Photo) 525.00+**
- 509 **12c Green (117)**. Two Singles on piece tied by Rosette cancels, Fine **(Photo) 180.00**

- 510 ☒ **12c Green (117)**. Well-centered, Small Circle of Wedges cancel, tied by "Evansville Ind." pmk. & Red New York Transit on Small neat Dec. 1869 Cover to England, Clear **Red "B.F. Stevens" Double Oval Forwarder's Handstamp**, VF..... (Photo) 325.00
- 511 ☒ **12c Green (117)**. Tied by **Blue** Quartered Cork & Savannah Ga. pmk. on Oct. 1869 Folded Cover to England, Red N.Y. & Liverpool Transits, trivial toning, o/w Fine, ex-Gibson..... (Photo) E.IX
- 512 ☒ **12c Green (117)**. Used With **2c Red Brown (113)**, tied by Bold Circles of Wedges & Red "Boston Paid All Direct" on Feb. 1870 Cover to **Italy**, Red Boxed "Bremen/10/3 70./Franco", some age toning, o/w Fine (Photo) E.XI
- 513 ☒ **12c Green (117)**. **Vert. Pair**, tied by Grids & Portland, Me. pmk. on Manila Paper Cover, cover refolded to reduce size (unfolded, the cover reveals a Handsome "Aetna Life Insurance Co." Corner Card), reduced at R., Fine, Scarce, Probably Once Contained an Insurance Policy..... (Photo) E.IX

514 ☒	12c Green, 15c Brown & Blue, Ty. II (117, 119) . Used With 3c Ultramarine (114) , tied by Quartered Corks & "Washington D.C." pmk. on Oct. 1869 Double Rate Cover to France, Red "New Paid York 24", etc., Fine, Rare Combination, signed Ashbrook (Photo)	E.XIV
-------	--	-------

- 515 ☒ **15c Brown & Blue, Ty. II (119)**. Perfs. touch, tied by Cork & "Batavia N.Y." pmk. on reduced & refolded oversize **Turned Cover**, other use "Belmont N.Y." (no stamp), Scarce..... (Photo) E.XI
- 516 **24c Green & Violet (120)**. **Horiz. Pair**, Used on piece with Well-centered **Horiz. Pair 10c Green, F. Grill (96)**, Quartered Square cancels, some minor toning (most evident on 10c), o/w Fine Piece (Photo) 1,160.00
- 517 ☒ **24c Green & Violet (120)**. R. perfs. touch, tied by Small Quartered Cork & "Santa Fe N. Mex." pmk. on large size reduced **Territorial** Cover to Fort Garland, Col., Outstanding Usage, Extremely Rare, with P.F. Certificate (Photo) E.XI
- 518 **30c Blue & Carmine (121)**. Grid cancel, couple trivial corner perf. creases, o/w VF..... 225.00

1870-1890 BANK NOTE ISSUES

- 519 ☒ **3c Green, Grill (136)**. **Two** Singles, one natural s.e., other tiny tear, Used with **Two 6c Carmine (148)**, one small faults, Target cancels, "Staffordville Conn" pmk. on Reg. Cover to Me., Scarce E.V
- 520 ☒ **6c Carmine, Grill (137)**. **Two** Average singles, Strong Grills, tied by Circles of Wedges, Red Boston & London Paid pmks., on 1873 Cover to England, Scarce & Attractive..... (Photo) E.XI
- 521 ☒ **7c Vermilion, Grill (138)**. **Two** Singles, T. perfs. close to tiny bit in, tied by Circles of Wedges, "Philada Pa. Registered" pmk. on June 1873 Cover to Germany, Red Bremen Transits, Pretty Cover, Scarce (Photo) E.X
- 522 ☒ **7c Vermilion, Grill (138)**. **Three** slightly overlapped singles, Used With **3c Green (147)** tied by Quartered Corks & New Orleans La. pmks. on Jan 1874 Folded Letter to France, Red "New-6 York" & "London Paid", Fine, signed Ashbrook (Photo) E.XI
- 523 ☒ **7c Vermilion, Grill (138)**. **Two**, tiny flaws, Used With **Two Average 3c Green (158)** tied by Corks, "Annapolis Md." pmk. on 1878 Cover to **Brazil**, flap & corner tear repair, Attractive, Scarce, Late Usage of the Grilled Bank Note Issue (Photo) E.X

524	10c Brown, Grill, 24c Purple (139, 153). Horiz. Pair of former, tied by Circles of Wedges & Red London Paid on Dec. 1872 Rev. Bissell Corresp. Double Rate Cover to India , 10c pair has been lifted to confirm grill & hinged back in place, Fine & Rare..... (Photo)	E.XV
525	15c Orange, Grill (141). Horiz. Pair, Average centering. Used with 3c Green (147) on slightly reduced court house cover tied by Unusual "Phone Dial" cancel, New York pmk., neat May 1871 docketing, cover folded under at L. & slightly at B. to improve appearance, stamps light creases, still Attractive, Very Scarce (Photo)	E.XIII
526	3c Green (147). Tied by Two Line "DONT USM", "Bridgeport Ct." pmk. on Neat Bank Corner Card Cover, VF.....	E.VI
527	3c-7c 1870 Bank Notes (147-149). Five Covers, 3c Usages incl. Single on Circular to Mexico, Single on "Bootleg" Cover From Mexico, Pair to England, 6c Pair to England, 7c Single to Germany, some slight toning, o/w Fine Lot	E.VIII
528	6c Carmine (148). Tied by "R" & "Bangor Me." pmk. on Cover to Hawaii , B.L. cover corner bit diagonal, o/w Fine	E.VI
529	7c Vermilion (149). Well-centered, tied by Solid Star & Red "New York Paid All Br. Transit," on Cover to Germany, Pittsburgh, Pa. pmk., VF	(Photo) 110.00 +
530	7c Vermilion (149). Horiz. Pair, tiny flaws, tied by Large "W" cancels on Cover to Germany, "Jackson Mich." pmk., Very Attractive..... (Photo)	E.IX
531	7c Vermilion (149). Vert. Pair, Well-centered, on Double 7c Rate Reg. Cover to Germany tied by Newark N.J. Scallop Shells, U.S. & German Registry Handstamps, etc., slight soiling, o/w VF.... (Photo)	160.00 +
532	7c Vermilion (149). Horiz. Pair, light Target cancels, tied by "Rondout N.Y." Double Circle on Neat 1872 Yellow Cover to Germany, Red N.Y. & Hamburg Transits, Fine	(Photo) 160.00
533	10c Brown (150). Used With France 25c Blue Horiz. Pair (58) on Small Apr. 1872 Cover to U.S., each with Star of Dots cancels (10c vaguely tied), Black "N.Y. Steamship 10", Blue Boxed "P.P.", Fine, Very Rare & Unusual Cover, ex-Gibson..... (Photo)	E.XV
534	12c Violet (151). On 3c Green Entire (U82), Target cancels, "Hopewell Academy Mo." pmk., Reg. Use to Me., VF.... (Photo)	E.VIII
535	12c Violet (151). Used With 10c Brown (150), tied by Corks, Red Boston & London Paid on Aug 1872 Rev. Bissell Corresp. Cover to India , Red "1d" local delivery charge handstamp, without flap & light toning, Single Rate Bissell Covers are Scarce	(Photo) E.VIII
536	12c Violet, 30c Black (151, 154). Used with natural s.e. 2c Red Brown (146) tied by Circles of Wedges & "Boston Paid" pmk. on Sept. 1871 Double Rate Rev. Bissell Corresp. Cover to India , minor cover tear, Fine, Very Scarce..... (Photo)	755.00 +
537	15c Deep Orange (152). Used With 3c Green (147). Target cancels, "Ashton Ill." pmk. in Circle of Dashes on Fresh Yellow Reg. Cover, Fine..... (Photo)	225.00
538	24c Purple (153). Beautifully Centered, Used With 3c Green (147) on Landfear Corresp. Tissue Paper Cover to Cape of Good Hope tied by Odd Corks, "New Haven Ct." pmk., Red "New 1.10 York", etc., T.L. cover corner repaired, o/w VF.... (Photo)	E.XIV

539	24c Purple (153). Used With 2c Brown (157) & Horiz. Strip of Three 10c Brown (161) tied by Corks on Aug. 1874 Double Rate Rev. Bissell Cover to India, Red Boston & London Paid, etc., Fine (Photo)	E.XIV
540	24c Purple, 30c Black (153, 154). Two 30c singles (slightly overlapped), Cork cancels, tied by Red "Boston Paid" on Jan. 1875 Triple Rate Rev. Bissell Corresp. Cover to India, Red London Paid, Red "3d" local delivery charge, Fine, Very Scarce (Photo)	E.XV
541	24c Purple, 30c Black (153, 154). Trivial perf. toning, Used With 2c Red Brown (146) tied by Bold Corks & Red Boston pmk. on June 1875 Double Rate Rev. Bissell Corresp. Cover to India, Bold Red "2d" handstamp local delivery charge, minor cover toning specks, still Attractive, Scarce, signed Ashbrook (Photo)	E.XV
542	24c Purple, 30c Black (153, 154). 24c Large Margins & Well-centered, Used with Average 2c Brown (157) on Double Rate Rev. Bissell Corresp. Cover to India, tied by Cork, Red Boston, London & Large "2" pmks., mended flap tear, Fine, Scarce (Photo)	E.XV
543	24c Purple, 30c Black (153, 154). Used With 2c Brown (157) tied by Corks on May 1875 Double Rate Rev. Bissell Corresp. Cover to India, Red Boston & London Paid, etc., some cover wrinkling & toning, Scarce, ex-Gibson, signed Ashbrook (Photo)	E.XIV
544	30c Black (154). Horiz. Pair, Used With 6c Carmine (148) on Triple Rate Sept. 1871 Rev. Bissell Corresp. Cover to India, tied by Cork & "Boston Paid" pmk., Red London Paid, Red pencil credit marks, slight cover toning & staining, Scarce (Photo)	785.00 +
545	30c Black (154). Horiz. Pair, Used With natural s.e. 6c Carmine (148) tied by Cork cancels & Brown Red "Boston Paid" pmk., on Triple Rate Rev. Bissell Corresp. Cover to India, Red "London Paid" & rate markings, usual backstamps, minor cover edge faults & faint toning, Very Scarce, ex-Gibson (Photo)	796.00 +
546	3c Green (158). Purple Target cancel, tied by matching "Hancock N.H. Jul 20 1878" Double Circle on Attractive "Poultry and Pigeons." Corner Card Cover, VF.....	E.IV
547	3c Green (158). Two Singles tied by Targets on Ad Cover for Mass. Arms Co. "Manufacturers of Maynard Rifles, etc.", Illustr. of Target & Bullet Grouping, VF.....	E.VI
548	7c Vermilion (160). Nicely Centered, tied by Cork on Orange Cover to Germany, small light cover stain at B.R., Fine (Photo)	E.VIII
549	7c Vermilion (160). Used With 2c Brown (157), tied by Quartered Corks & faint New Orleans pmk. on Dec. 1874 Cover to France, Red & Blue Transits, small part of flap missing & bit reduced, Fine, Scarce Rate..... (Photo)	E.VIII
550	7c Orange Vermilion (160). Horiz. Pair, Well-centered, tied by Cork, San Francisco & Red N.Y. pmks. on Dec 1874 Cover to Germany, slight soiling, o/w VF..... (Photo)	355.00
551	10c Brown, 15c Orange (161, 163). Three Covers, incl. 10c With 2c Brown (157) to Germany, 10c With 5c Blue (179) & 15c to Cape of Good Hope (Landfear corresp.), also incl. 7c No. 149 on slightly toned Cover to Germany, 15c small faults, Scarce Lot.....	E.VIII

- 552 **12c Blackish Violet, 30c Gray Black (162, 165). Horiz. Pair of 30c (natural s.e. at R.). Used With 3c Green & 6c Brown Rose (158, 159) tied by Circles of Wedges on Triple Rate Rev. Bissell Corresp. Cover to India, Red "Boston Paid" & "London Paid" pmks., ms. "via Brindisi", the cover may be missing a 3c stamp, slight cover wrinkles, still Very Attractive (Photo) E.XII**
- 553 **30c Gray Black (165). Tied by N.Y. Grid Duplex on 1877 Folded Letter to Mexico, "35c" handstamp, ms. "Str. City of Havana", cover file fold, Fine (Photo) 650.00**
- 554 **3c Green (184). Tied by N.Y. Grid Duplex on Overall Illustr. Multi Color "Steam Job Printer" Cover, tiny bit reduced at R., VF..... E.V**
- 555 **2c Red Brown (210). Tied by Cork on Overall Livestock & Produce Illustr. Ad Cover, minor address smear, Fine (Photo) E.V**

- 556 **3c Purple, 10c Green (221, 226). Tied by Double Ovals, Used In Combination With Samoa ½p Brown Violet (9b) & 2½p Rose Horiz. Pair (14b) tied by Apia Samoa Double Circles & Red & Magenta London & San Francisco Reg. handstamps, Range of backstamps, Fine (Photo) E.XV**
- 557 **3c Purple, 10c Green (221, 226). 10c natural s.e., tied by Double Ovals, Used In Combination With Samoa ½p Brown Violet (9b) & 5p Vermilion (23) tied by Apia Samoa Double Circle & Magenta 1894 Str. Line San Francisco Reg. handstamp to England, Range of Transits, VF..... (Photo) E.XV**

HAWAII

STAMPLESS COVERS

- 558 **Forwarded By H. T. Fitch. Honolulu in Blue Octagon & Matching Str. Line "Schooner 'Restless'." on Cover to S.F., Clear "Forwarded By G.B. Post & Co. San Francisco" Octagon, for local domestic forwarding, without flap, VF, Very Scarce (Photo) E.XIII**
- 559 **Forwarded By Makee Anthon & Co. Sandwich Islands, Bold Red Oval on Dec. 1849 Folded Whaler's Letter to Mass., partial Orange "San Francisco 40" pmk., ms. "Via panama," VF, Scarce (Photo) E.XI**
- 560 **Forwarded By Makee Anthon & Co. Sandwich Islands, Clear Red Oval on back of Cover to N.Y., light Red "San Francisco 40" pmk., neat "Apr. 8th/50" docketing, Fine, Scarce E.VIII**
- 561 **"Honolulu April 4th. 1845", Dateline on Folded Letter to Boston, Red "New-York Ship Aug 29 12" pmk. on Front, "Franquedo Vera-Cruz" Transit backstamp, negligible toning, Fine, Interesting Contents (Written betw. Apr. 4 & May 19) E.IX**
- 562 **"Honolulu May 4 1838", Heading on brief Folded Business Letter to Boston Via Mexico & New Orleans, Red "New Orleans La. Nov 15" pmk. & "Ship," ms. "52" rate, ms. "Recd & forwd by Parrott Scarborough & Co Mazatlan Sept 16/38" & "Va Cr (Vera Cruz) 13th. Octbr 38 Rd & forwd by y o svt P A Stolz" on back, VF, Rare (Photo) E.XI**
- 563 **"Honolulu April 8th 1845", Heading on Folded Letter to Boston sent Via Mexico, partial "New Orleans La. Jan 1(3?) pmk., "Ship" & ms. "12" rate, backstamped "Franquedo Vera-Cruz", Fine..... E.IX**
- 564 **"Honolulu July 1st 1849," Heading on letter enclosed in Neat Buff Cover to N.Y., "San Francisco Cal. Sep 1" pmk., ms. "Ship 42" rate, trivial cover edge flaws, VF..... (Photo) E.X**



- | | | |
|-----|---|--------|
| 565 | <p>☒ Honolulu, Hawaiian Is. May 8, 1851. Bold Str. Line pmk. on Folded Letter to N.H., "San Francisco Cal." pmk., Red pencil "42" rate, minor aging spots, o/w VF, Rare, not listed in the Meyer-Harris survey (Photo)</p> | E.XVII |
| 566 | <p>☒ * Honolulu * Hawaiian Islands Nov 2, Bold Red pmk., Clear Red Oval "Forwarded By Thomas Spencer Honolulu" on Buff Cover to Martha's Vineyard, Mass., "San Francisco Cal." pmk. & Black "12", slight cover creases, VF, Very Scarce (Photo)</p> | E.XIII |
| 567 | <p>☒ * Honolulu * Hawaiian Islands Jun 5, Bold Red pmk. on Cover to S.F., "San Francisco Cal. 24 Jun" pmk. & "Ship 6" Clamshell, pencil "Due .25", without flap, tiny nick & tear at T., o/w VF..... (Photo)</p> | E.X |
| 568 | <p>☒ "Honolulu Oahu September 19 1842", Heading on Folded Letter to N.Y., light Blue "New Orleans La. Dec 22" pmk. & "Ship," ms. "27" rate, Clear "Forwarded By Wm. Scarborough & Co. Mazatlan" Double Oval, partly redable Mexican P.O. backstamp, Fine, Very Scarce (Photo)</p> | E.XI |
| 569 | <p>☒ * Honolulu * U.S. Postage Paid Sep 11, Bold Red pmk. on Buff Cover to N.Y.C., partial "San Francisco Cal." pmk., Bold matching "Paid" & "8" in Circle, cover file fold, VF, Numeral "8" in Red is Rare, ex-Knapp (Photo)</p> | E.XI |
| 570 | <p>☒ * Honolulu * U.S. Postage Paid Nov 3, partly bold pmk., Red "Paid 12" in Oval ("12" in red pencil) on Small Cover to Ct., "San Francisco Cal." pmk., Black Str. Line "Paid 12", part of "Honolulu" strengthened by red pencil, o/w VF..... (Photo)</p> | E.X |
| 571 | <p>☒ * Honolulu * U.S. Postage Paid Aug 30, Clear Red pmk. on Buff Cover to Hinsdale Depot Mass. Forwarded to Andover, partly readable, Rimless "Paid 8 Ship", San Francisco Cal. & Hinsdale Depot Mass. pmks., ms. "ford" & "5" handstamp, Fine..... (Photo)</p> | E.XI |
| 572 | <p>☒ * Honolulu * U.S. Postage Paid Jly 9, Bold Red pmk., on Cover to Mass., "San Francisco Cal." pmk., light "8" in Circle & "Paid", Red Mass. Forwarding pmk. & "Paid", etc., cover soiling & toning, Scarce..... (Photo)</p> | E.IX |

- 573 ☒ * **Honolulu** * U.S. Postage Paid Aug 30, Clear Red pmk. on Buff Cover to Blanford Mass. Forwarded to Andover, mostly clear **Rimless "Paid & Ship"**, San Francisco Cal., Orange "Blanford Mass." & matching "Paid 3" Circle, some light cover soiling, o/w Fine (Photo) E.X
- 574 ☒ "**Lahaina Oct 14th 1830**", Heading on lengthy Missionary folded letter to Pa., Red "Boston Ms Apr. 15" pmk., matching "**Ship**", ms. "20¼" rate, slight toning, some splitting along folds, Fine, Interesting Letter Sent By Whaling Ship E.X
- 575 ☒ "**Lahaina Nov 1 1849**", Heading on Whaler's Folded Letter to Mass., Clear "**San Francisco Cal Nov 27**" pmk. & **Boxed "40"** rate, minor piece out of back, Fine, Interesting Contents regarding whaling activities & of the difficulties in securing crewmen .. (Photo) E.XI
- 576 ☒ "**Oahu April 24th 1838**", Heading on Folded Letter to Boston, Red "New-York Nov 7" & matching "**Ship**", **Two Line "Franco En/Guamas"** Indicating **Transit via Mexico**, ms. ".25 paid" & "39½", couple small cover faults, Very Scarce E.X
- 577 ☒ "**Sand. Isld Hawaii Kailua June 25th, 1840**" Heading on Folded Missionary Letter to N.Y., Red "New-York Ship Feb 5" pmk., ms. "20½" rate, minor cover tear & slight toning, o/w Fine, Scarce E.VIII
- 578 ☒ **San Francisco Cal Jun 1**, partial Red pmk. & light matching "**Ship 6**" Clamshell (Very Rare in Red) rerated "42" in ms. on flapless cover to N.Y. State, Fine, Rare (Photo) E.X
- 579 ☒ "**Woahoo (Oahu) October the 26th 1846**", Dateline on Folded Letter to Mass., Blue "12" in Circle, matching "Ship" on Front, "**Franqueado Vera-Cruz**" **Transit backstamp**, Fine, Interesting Whaling Contents (Photo) E.X
- 580 ☒ **Stampless Covers From Hawaii**, Two "Bootleg" covers, one to Boston with Black "San Francisco Cal." & "10," other on 1848 Folded Letter to R.I. with Red "Norfolk Va. 10" pmk., Fine Lot E.VIII

COVERS WITH HAWAIIAN STAMPS ONLY

- 581 ☒ **1853, 5c Blue (5)**. Ample to Large Margins, Large Grid cancel (not tied) on Buff Cover to Ct., Red "*** Honolulu * Hawaiian Islands**" & "San Francisco Cal." pmks., Bold "Ship" & "12." without flap & hole on back from wax seal removal, cover toning, Very Scarce, Illstr. in Meyer-Harris, pg. 38, ex-Krug, with Friedl Certificate & original enclosure (Photo) E.XIII
- 582 ☒ **1853, 13c Dark Red (6)**. Large Margins, scissors cut clear of design at L., bold ms. "X" cancel (not tied) on Folded Cover to Mass., Clear Red "**Honolulu U.S. Postage Paid**", "San Francisco Cal." pmk. & **Large Rimless "Paid & Ship"**, minor cover tear & some slight toning, Very Scarce, ex-Seybold, Krug, with Friedl Certificate (Photo) E.XIV
- 583 ☒ **1857, 5c Blue (8)**. Margins All Around, Uncancelled, on May 1860 Cover to Mass., Bold Red "Honolulu Hawaiian Islands," "San Francisco Cal" pmks. & "Ship", "12", negligible toning, o/w VF (Photo) E.XIII

COVERS WITH UNITED STATES STAMPS ONLY

- | | | | |
|-----|---|--|-------|
| 584 | ☞ | 3c Red (11). Horiz. Strip of Four , Large Margins to slightly in, tied on Cover to N.Y. by "San Francisco Cal." pmks., Red "Honolulu * U.S. Postage Paid" , tiny inconsequential cover nick, Fine, Rare Usage of the 3c 1851 (Photo) | E.XV |
| 585 | ☞ | 12c Black (17). Horiz. Pair , Average, R. stamp light crease, tied by "San Francisco Cal." pmk. on Yellow Buff Cover to Moscow, N.Y., "Forwarded By G. B. Post & Co. San Francisco" in Octagon on back, Rare Quadruple 6c Rate Cover, Attractive, with very lengthy 11½ page letter, excellent contents, discusses the Hawaiian natives in great detail, cost of living, etc. (Photo) | E.XIV |
| 586 | ☞ | 1c Blue, Ty. V, 10c Green, Ty. V (24, 35). Average Horiz. Pair of 1c (some perfs. scissors trimmed at T.), tied by "San Francisco Cal Dec 21 1860" pmks. on Buff Cover to Mass., Red "Honolulu U.S. Postage Paid" , tiny cover corner nick, Very Attractive, ex-Stephen Brown (Photo) | E.XIV |
| 587 | ☞ | 1c Blue, Ty. V, 10c Green, V (24, 35). Vert. Pair of 1c (small tears) tied by "San Francisco Cal" 1860 pmk. on Cover to Mass., Red "Honolulu U.S. Postage Paid" , minor cover faults, Scarce, signed Ashbrook..... (Photo) | E.XIV |
| 588 | ☞ | 5c Brown (76). Well-centered , minor pre-use margin scuff, on Cover to Me. tied by Cogwheel, "San Francisco Cal." Double Circle pmk., Red "Honolulu U.S. Postage Paid" , small ms. "1867", Fine..... (Photo) | E.XIV |
| 589 | ☞ | 5c Brown (76). Narrow natural s.e. , Average, Cogwheel cancel, not tied, on Buff Cover to Ct., "San Francisco Cal" Double Circle pmk., Bold Red "Honolulu U.S. Postage Paid" , Scarce & Attractive, with enclosure (Photo) | E.XIV |

Due to the tremendous demand on our phones and staff, Prices Realized will not be available by telephone until 24 hours after the sale.

HAWAIIAN AND UNITED STATES COMBINATION FRANKINGS



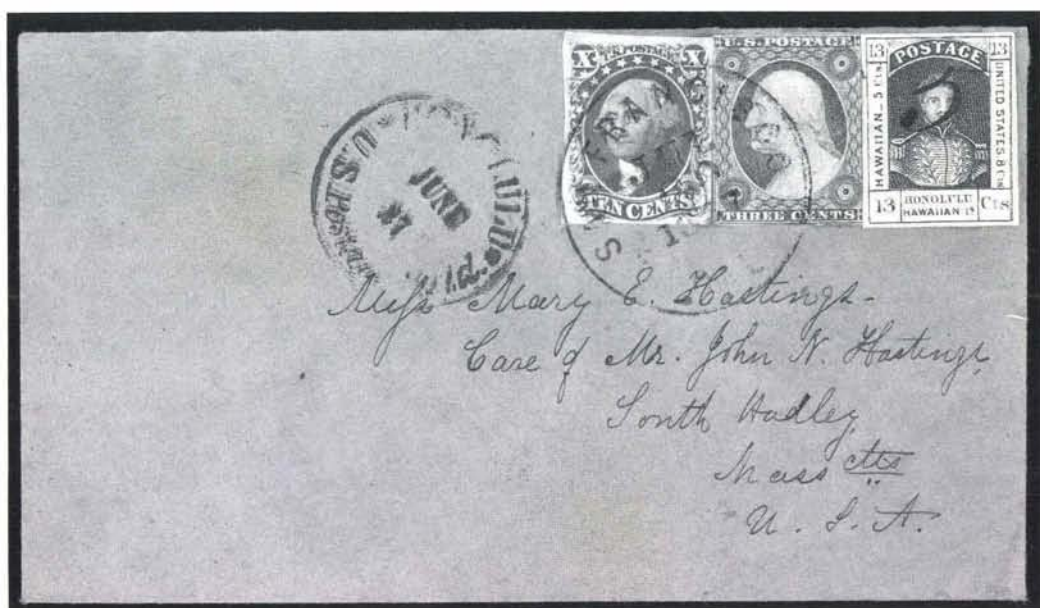
- 590 1853, 5c Blue (5). Three Ample to Large Margins, bit in at B., Used With Average U.S. 12c Black (17), both tied by "San Francisco Cal." pmk. on Buff Cover to Miss., Neat Red "Honolulu * U.S. Postage Paid", docketing at L., light overall toning, still a Very Handsome Rare Cover, ex-Admiral Harris, Richey, signed Ashbrook & Illustr. on Pg. 260, Vol. 2 of his 1c Book..... (Photo) 12,000.00



- 591 = 1853, 13c Dark Red (6). Three Large to Huge Margins, Ample to touched at B., Tied By Red "Honolulu * U.S. Postage Paid" & Used With Average U.S. 12c Black (17) tied by "San Francisco Cal." pmk. on 1855 Folded Letter From Hilo to N.Y., "Sag Harbor N.Y. pmk. & ms. "Forwarded 3" for forwarding to Southampton, Fine & Rare, ex-Seybold. (Photo) 7,500.00



- 592 = 1857, 5c on 13c Dark Red, Manuscript Provisional (7). Used with U.S. 12c Black (17), both margins to tiny bit in & tied by "San Francisco Cal Jul 20 1857" pmk. on Cover to Mass., Red "Honolulu * U.S. Postage Paid", Fine, Rare & Beautiful, This is Cover #7 in the Meyer-Harris listing (Photo) 15,000.00



- 593 = 1857, 5c on 13c Dark Red, Manuscript Provisional (7). Beautiful Large Margins, Uncancelled, Used with U.S. 3c Red (11) & 10c Green, Ty. II (14) tied by "San Francisco Cal. Jul 20 1857" pmk., a 1c overpayment of the 12c rate on Neat Buff Cover to Mass., Red *** Honolulu * U.S. Postage Paid", A Marvelous Hawaiian Cover, ex-Caspary, signed Ashbrook, similar to Meyer-Harris Cover #7..... (Photo) E.XVIII

ESTIMATES

Our sales offer many covers, cancellations, varieties and other items for which there is no catalogue value or where catalogue value does not reflect the actual value. In order to assist our clients, we are placing a fair net valuation on such lots as a guide to our bidders. The chart below will be used. For example, E. IV means that our estimated net value on the lot is \$30.00 to \$40.00. Lots may actually realize more or less than our estimates, which are under no circumstances to be considered reserves but merely a guide to bidding.

E. II	\$10.00 to \$20.00	E. XI	\$250.00 to \$350.00
E. III	\$20.00 to \$30.00	E. XII	\$350.00 to \$500.00
E. IV	\$30.00 to \$40.00	E. XIII	\$500.00 to \$750.00
E. V	\$40.00 to \$50.00	E. XIV	\$750.00 to \$1000.00
E. VI	\$50.00 to \$75.00	E. XV	\$1000.00 to \$2000.00
E. VII	\$75.00 to \$100.00	E. XVI	\$2000.00 to \$5000.00
E. VIII	\$100.00 to \$150.00	E. XVII	\$5000.00 to \$10,000.00
E. IX	\$150.00 to \$200.00	E. XVIII	\$10,000.00 to \$20,000.00
E. X	\$200.00 to \$250.00	E. XIX	over \$20,000.00



595

594

- | | | |
|-----|---|----------|
| 594 | <p>1861, 5c Blue on Bluish (9). Margins All Around, vaguely tied by Honolulu Square Grid, Used with Average U.S. 5c Brown (76). Bold Target cancel (not tied). "San Francisco Cal." Double Circle pmk. on Cover to Mass., Red "Honolulu U.S. Postage Paid", bit reduced at L., Rare & Handsome, signed Ashbrook (Photo)</p> | E.XV |
| 595 | <p>1857, 5c Blue, Line Through "Honolulu" (8 var). Ample to Large Margins, tiny scissors cut, Used with Average U.S. 12c Black (17) on Buff Cover to Vt., Hawaiian 5c tied by light Red "Honolulu U.S. Postage Paid", both stamps tied by S.F. pmk., couple flap tears, Rare & Attractive, signed Ashbrook ... (Photo)</p> | 5,000.00 |

END OF SALE — THANK YOU

IS YOUR COLLECTION FOR SALE?

AMERICA'S PREMIER AUCTION HOUSE OFFERS IMMEDIATE AND MAXIMUM CASH ADVANCES

At no charge our auction house will immediately advance interest-free cash to you. *The only charge to you is a 10% commission on what your collection realizes at auction.* The buyer also pays a 10% buyers premium.

Advances available on request on collection consignments valued in excess of \$2,500.

**AMERICA'S PREMIER AUCTION HOUSE
FIRST IN PRESTIGE
FIRST IN DOLLAR VOLUME**

OUR AUCTIONS REALIZED OVER \$11,100,000. IN 1986

CALL OR WRITE

**ROBERT A. SIEGEL
AUCTION GALLERIES, INC.**

160 E. 56th Street
New York, N.Y. 10022

Tel.: (212) 753-6421
Established 57 years

Robert A. Siegel
AUCTION GALLERIES, INC.

List of Prices Realized
681st SALE

160 EAST 56 STREET, NEW YORK CITY, N.Y., 10022

JUNE 25, 1987

(212) 753-6421

CLASSIC UNITED STATES STAMPS AND COVERS A PORTION OF THE PHILIP G. RUST COLLECTION

INDIVIDUAL REALIZATIONS ARE HAMMER PRICES,
GROSS REALIZATION INCLUDES 10% BUYERS' PREMIUM

1	210	61	800	121	2900	181	1400	241	725	301	6500
2	260	62	575	122	675	182	1300	242	3000	302	475
3	950	63	425	123	675	183	2500	243	4500	303	260
4	725	64	425	124	600	184	1400	244	4500	304	600
5	350	65	650	125	675	185	2500	245	5750	305	1300
6	525	66	725	126	400	186	1100	246	4000	306	1150
7	85	67	575	127	425	187	1350	247	4000	307	1050
8	260	68	425	128	600	188	1000	248	6250	308	900
9	170	69	400	129	450	189	3000	249	4250	309	800
10	10,500	70	425	130	2200	190	2700	250	2900	310	625
11	575	71	425	131	325	191	4750	251	2800	311	600
12	110	72	475	132	300	192	2400	252	5250	312	500
13	170	73	350	133	575	193	4000	253	80	313	375
14	250	74	525	134	600	194	4750	254	180	314	325
15	900	75	950	135	425	195	1700	255	400	315	325
16	50	76	2700	136	375	196	1700	256	105	316	260
17	180	77	500	137	1100	197	2100	257	625	317	375
18	57½	78	5250	138	375	198	2200	258	375	318	125
19	125	79	4250	139	300	199	3750	259	220	319	140
20	115	80	2200	140	550	200	1700	260	375	320	80
21	190	81	1500	141	850	201	1550	261	3500	321	170
22	2100	82	550	142	400	202	3750	262	350	322	750
23	160	83	1000	143	1550	203	2600	263	105	323	725
24	37½	84	1000	144	650	204	1600	264	100	324	450
25	52½	85	850	145	400	205	1450	265	425	325	450
26	42½	86	550	146	375	206	2100	266	65	326	290
27	600	87	625	147	1600	207	1600	267	425	327	375
28	650	88	375	148	400	208	1500	268	75	328	210
29	1400	89	675	149	300	209	2200	269	105	329	425
30	1650	90	700	150	260	210	1100	270	200	330	2600
31	3250	91	1650	151	1650	211	2500	271	700	331	600
32	3250	92	725	152	800	212	2000	272	150	332	475
33	1300	93	525	153	1050	213	1400	273	85	333	250
34	7000	94	725	154	1250	214	625	274	105	334	230
35	3750	95	1350	155	950	215	625	275	125	335	325
36	4250	96	1250	156	2600	216	950	276	8500	336	190
37	425	97	1250	157	2000	217	650	277	290	337	160
38	625	98	250	158	1550	218	5500	278	105	338	375
39	350	99	1250	159	800	219	5500	279	400	339	220
40	350	100	2200	160	700	220	4500	280	95	340	425
41	350	101	1350	161	1350	221	3000	281	260	341	230
42	350	102	2400	162	2100	222	1250	282	230	342	115
43	350	103	1200	163	2600	223	2600	283	180	343	210
44	400	104	900	164	2200	224	3750	284	475	344	220
45	375	105	1050	165	2600	225	5000	285	700	345	650
46	400	106	850	166	2600	226	2000	286	170	346	950
47	210	107	1550	167	2000	227	525	287	230	347	1200
48	200	108	950	168	2400	228	375	288	140	348	180
49	1100	109	6750	169	2200	229	475	289	95	349	1550
50	2700	110	1300	170	3000	230	350	290	350	350	450
51	2500	111	2600	171	1800	231	900	291	300	351	525
52	575	112	675	172	1700	232	1050	292	52½	352	1500
53	725	113	1550	173	900	233	850	293	190	353	4500
54	1150	114	850	174	1600	234	3500	294	350	354	525
55	1000	115	900	175	1500	235	1750	295	1650	355	350
56	6500	116	500	176	1400	236	1850	296	1100	356	450
57	325	117	700	177	1400	237	1900	297	3500	357	120
58	450	118	3250	178	1550	238	1150	298	2300	358	250
59	325	119	575	179	1300	239	725	299	11,000	359	220
60	800	120	750	180	1400	240	1800	300	32,500	360	210

361	150	440	750	519	180	GROSS REALIZATION: \$834,874.70		
362	100	441	650	520	180			
363	500	442	300	521	375			
364	575	443	170	522	325			
365	260	444	350	523	300			
366	375	445	160	524	1700			
367	550	446	650	525	675			
368	375	447	350	526	80			
369	625	448	105	527	230			
370	675	449	110	528	80			
371	325	450	210	529	130			
372	375	451	325	530	190			
373	375	452	900	531	210			
374	260	453	250	532	140			
375	160	454	450	533	1550			
376	210	455	500	534	230			
377	180	456	1000	535	160			
378	210	457	1500	536	475			
379	115	458	2300	537	170			
380	190	459	700	538	1150			
381	115	460	550	539	1450			
382	140	461	450	540	1550			
383	75	462	650	541	1600			
384	140	463	1650	542	1550			
385	625	464	400	543	850			
386	550	465	475	544	800			
387	9500	466	1000	545	750			
388	1550	467	240	546	22			
389	1250	468	725	547	50			
390	2000	469	675	548	55			
391	1750	470	200	549	120			
392	800	471	1100	550	120			
393	1100	472	400	551	190			
394	525	473	5000	552	625			
395	625	474	170	553	200			
396	300	475	280	554	135			
397	3250	476	400	555	95			
398	220	477	260	556	1500			
399	90	478	290	557	1500			
400	150	479	1600	558	1650			
401	220	480	525	559	2800			
402	270	481	210	560	650			
403	525	482	180	561	1150			
404	1300	483	200	562	1550			
405	1500	484	950	563	1300			
406	325	485	575	564	400			
407	525	486	85	565	7500			
408	1150	487	400	566	3500			
409	270	488	80	567	450			
410	1150	489	220	568	550			
411	375	490	325	569	400			
412	350	491	575	570	625			
413	230	492	95	571	350			
414	1150	493	55	572	210			
415	250	494	500	573	375			
416	230	495	70	574	115			
417	800	496	500	575	190			
418	475	497	180	576	1250			
419	1400	498	110	577	210			
420	1300	499	2100	578	450			
421	2200	500	1200	579	1400			
422	325	501	190	580	170			
423	240	502	160	581	3250			
424	525	503	850	582	800			
425	450	504	210	583	725			
426	525	505	900	584	2200			
427	750	506	160	585	900			
428	725	507	425	586	2200			
429	525	508	900	587	1550			
430	450	509	75	588	1050			
431	450	510	425	589	550			
432	1900	511	140	590	3750			
433	3750	512	750	591	11,000			
434	2000	513	375	592	11,500			
435	210	514	2900	593	47,500			
436	400	515	210	594	2600			
437	750	516	475	595	3750			
438	220	517	6250	END OF SALE				
439	475	518	80	THANK YOU				