

THE CLIFFORD C. COLE, JR.

COLLECTION OF

UNITED STATES STAMPS AND COVERS



NOVEMBER 22, 1988

Robert A. Siegel
(AUCTION GALLERIES, INC.)

160 EAST 56th STREET
NEW YORK CITY, NY 10022

CONDITIONS OF SALE

1. On all lots sold a commission of 10% on the hammer price is payable by the buyer.
2. The terms of sale are strictly cash on delivery to the highest bidder unless special arrangements have been made prior to the sale. The fact that an item is placed on extension (submitted to an expertising committee for certification) does not relieve the successful bidder from this condition of sale.
3. All bids are per lot as numbered in the catalogue unless otherwise announced by the auctioneer at the time of sale. The right is reserved to group two or more lots; to withdraw any lot or lots from the sale, or to act on behalf of the seller. The Galleries will bid on behalf of clients, but will not be responsible for any errors in the execution of bidding instructions. The auctioneer shall regulate the bidding and in the event of any dispute his decision shall be final.
4. Any lot, the description of which is incorrect, is returnable, but only within 14 days of receipt. All disputed lots must be returned intact as received. **The following lots may not be returned for any reason whatsoever: Lots containing ten or more stamps; Lots from buyers who have had the opportunity to examine them before the sale; Lots described as having defects or faults may not be returned because of any faults. No illustrated lots may be returned because of centering, margins or other factors shown in the illustrations.**
5. Successful bidders, unless they are known to us or supply acceptable references are expected to make payment in full before the lots are delivered. Mail bidders will be notified of the amounts of their purchases. All mail bidders who have established credit with us must make payment within three days after receipt. We reserve the right in our sole and absolute discretion to demand cash payment at the time a lot is knocked down to any bidder who has not previously established credit with us or whose account is in arrears. In the event any buyer refuses to pay cash for any lot at the time it is knocked down to him, the auctioneer reserves the right to re-offer the lot immediately for sale to the highest bidder. Sales tax will be added to purchases where applicable.
6. If the purchase price has not been paid within the time limit, nor lots taken up within seven days from date of sale they must be resold and any loss arising from such sale will be charged to the defaulter. Any account more than thirty days in arrears is subject to a late payment charge of 1½% per month so long as the account remains in arrears. If the auctioneer, in his discretion, should institute any action to secure payment of a delinquent account the defaulting purchaser shall pay all expenses incurred by the auctioneer and such charges will be added to the amount owed.
7. All lots are sold as genuine but should any lot be proved otherwise by written opinion of any competent, responsible authority acceptable to us, immediate refund of the full purchase price will be made, provided that such claim is made in writing within 14 days from date of sale. If claim is not made within this period, no lots are returnable for any reason at any time. So long as we are notified within the 14 day period that an opinion is being sought and **the material is submitted to an acceptable authority within that period** the matter will remain open until such opinion is rendered. **We will not be responsible for any charges incurred by the buyer for expertization fees and costs unless the opinion states the item is not genuine, in which case we will pay actual costs up to a maximum of \$50.00.** In the event an item is proved "not as described" it is returnable for full refund, and the buyer will be paid interest (at the prevailing Treasury Bill Rate) for the time his funds have been on deposit with us during the extension period.
8. Until paid for in full, all lots remain the property of Robert A. Siegel Auction Galleries, Inc. on behalf of the seller.
9. Some consignors have been advanced monies against the sale of their properties.
10. All forwarding charges will be added to the purchase price. The mode of shipment shall be at our option unless we are given specific instructions.
11. Lots may be sent for inspection to buyers known to us upon written application. All such lots must be returned to us by registered mail, adequately insured and within 24 hours after receipt. The applicant assumes all responsibility and will provide insurance against all risks from time of receipt until they are actually received back by us, and is to pay all expenses of postage and insurance. **No lots can be sent for inspection within ten days from date of local viewing. Large lots and collections cannot be sent for inspection.**
12. Agents are responsible for all purchases made on behalf of their clients unless other arrangements are made prior to the sale.
13. The placing of a bid shall constitute acceptance of the foregoing conditions of sale.

ROBERT A. SIEGEL
WALTER J. MADER
STEPHEN G. EDELSTEIN
BRIAN M. BLECKWENN, Licensed Auctioneers

N.Y.C. Auction License No. 371761, 797537

Upon request estimate of value furnished on any lots in this auction.

701st SALE

UNITED STATES STAMPS AND COVERS

A PORTION OF THE COLLECTION
OF CLIFFORD C. COLE, JR.

FEATURING

AN EXCEPTIONAL VARIETY OF CLASSIC ADVERTISING,
PATRIOTIC, RAILROAD AND FANCY CANCELLATION COVERS,
IMPORTANT RARITIES INCLUDING A NO. 5A PAIR, UNUSED
NOS. 122, 140, 144 DOUBLE GRILL, 174, 192, 2c PAN-AMERICAN
INVERT. NO. 295a, 449 PAIR, 534B PAIR.

SOLD BY ORDER OF THE OWNER
AT UNRESERVED PUBLIC AUCTION

LOTS 1 - 231 TUESDAY, NOVEMBER 22, 1988 at 10:30 A.M.
232 - 741 TUESDAY, NOVEMBER 22, 1988 at 1:00 P.M.

IMPORTANT NOTICE TO BUYERS

LOT VALUES, OTHER THAN THOSE FROM SPECIALIZED
CATALOGUES, ARE FROM SCOTTS 1988 SPECIALIZED
CATALOGUE OF UNITED STATES STAMPS.

Robert A. Siegel

AUCTION GALLERIES, INC.

160 EAST 56th STREET
NEW YORK CITY, NY 10022

– CONSIGN NOW –

- **United States, Autographs, Postal History, Confederate States, U.S. Possessions, British Commonwealth and General Foreign for our 1989 “Rarities of the World” Sale.**
- **Anything of merit — Stamps, Covers, Collections, Dealer’s Stocks and Accumulations for our other 1989 Auctions.**

WORLD STAMP EXPO '89

NOVEMBER 17 - DECEMBER 3, 1989

We have been selected as an official auctioneer for two important sales to be held during this International Philatelic Event in Washington, D.C. on Saturday, November 18 and Saturday, December 2, 1989.

It is not too early to consider and discuss consignment of your collection or individual rarities for sale through our Galleries during one of the most important philatelic exhibitions of the decade.

**MINIMUM MARKET VALUE FOR
CONSIGNMENT \$1000.00**

**INTEREST FREE CASH ADVANCES AVAILABLE
ON CONSIGNMENTS WITH A MARKET VALUE
EXCEEDING \$2500.00**

LOTS ON VIEW

Lots on view Monday, November 21st from 9:30 A.M. until 5:00 P.M.
THERE WILL BE NO VIEWING ON TUESDAY, NOVEMBER 22nd.

FIRST SESSION

TUESDAY, NOVEMBER 22, 1988 at 10:30 A.M.

THE CLIFFORD C. COLE, JR. COLLECTION OF UNITED STATES STAMPS AND COVERS

STAMPLESS COVERS, NEW YORK POSTMASTER

VIRTUALLY ALL THE COVERS OFFERED IN THIS SALE ARE EX-JUDD

- | | | | |
|------|---|--|--------|
| 1001 | ☐ | Alligator Fla June 15 , Clear Strike, Matching "Paid 3" on Neat Buff Cover, Very Fine, Very Scarce, ex-Judd..... | E.VI |
| 1002 | ☐ | Georgia Stampless Covers , Eight Diff., incl. Speir's Turn Out, Marshallville (Green), Chickasawhatchee, Savannah Ga. Grocer's Embossed Cover Card With "Steamship 10" pmk., also incl. Chun-nuggee, Ala. 1853 Stampless, Virtually All Fine-Very Fine..... | E.VIII |
| 1003 | ☐ | Stampless Covers , Eight Diff., incl. Hale's "Collect/6 Cents" Box, Blue Eastern R.R., Cambridge Mass. "2" (Petite Ladie's Cover), Philada., Pa. "2", Aberdeen Miss. Fancy Red "5" & Star in Star , Fine-Very Fine | E.VI |
| 1004 | | New York, N.Y., 5c Black (9X1) . Three Large Margins, slightly in at R., Square Red Grid cancel, couple minor toning spots on back (barely shows on face), o/w Very Good..... | 375.00 |

Due to the tremendous demand on our phones and staff, Prices Realized will not be available by telephone until 24 hours after the sale.

- 1005 **New York, N.Y., 5c Black, Signed "RHM" (9X1b).** Ample to Huge Margins Showing Bit of Next Stamp at B., ms. cancel, trifle heavy crease (partly broken), o/w Very Fine, Scarce, with A.P.S. Certificate (Photo) 2,250.00

1847 ISSUE

- 1006 **5c Red Brown, Major Double Transfer Ty. B (1 var).** Ample to Huge Margins, light Red Grid cancel, Extremely Fine (Photo) 850.00
- 1007 **5c Red Brown (1).** Large to Huge Margins, Red Grid cancel, light crease & tiny filled thin, Extremely Fine Appearance (Photo) 700.00
- 1008 **5c Red Brown (1).** Clear to Huge Margins incl. L. Sheet Margin, **Red Orange** Grid cancel, Very Fine, with P.F. Certificate (Photo) 700.00
- 1009 **5c Red Brown (1).** Ample to Huge Margins, Sharp Clear Impression, Red Grid cancel, Very Fine (Photo) 700.00
- 1010 **5c Dark Brown (1a).** Clear to Huge Margins, Red Grid cancel, faint bend, o/w Very Fine, with P.F. Certificate (Photo) 700.00
- 1011 **5c Red Brown, Dot in "S" of U.S. (1 var).** Ample to Large Margins, Red Grid cancel, light toning in B.R. corner, o/w Very Fine, with P.F. Certificate (Photo) 850.00
- 1012 **5c Brown (1).** Ample to Large Margins, Red Square Grid cancel, small corner crease & trivial toning spot, o/w Very Fine (Photo) 700.00
- 1013 **5c Brown (1).** Ample to Huge Margins, Red Grid cancel, faint corner crease, Very Fine Appearance (Photo) 700.00
- 1014 **5c Red Brown (1).** Ample to Large Margins, Unusual Bright Red Crisscross Grid cancel, minute pinhole, o/w Very Fine (Photo) 700.00
- 1015 **5c Brown (1).** Ample Margins, Rich Color & Sharp Clear Impression, Red Town pmk., couple tiny thins, Very Fine Appearance..... (Photo) 700.00
- 1016 **5c Red Brown (1).** Ample to Large Margins, Gorgeous Color, Fine Impression, tied by **Red "V" in Circle**, matching "Keene N.H." pmk. on Apr. 1848 Folded letter, stamp has slight wrinkling, o/w Extremely Fine (Photo) 850.00
- 1017 **5c Red Brown (1).** Large Margins incl. Sheet Margin at T., tied by **Magenta** Hartford, Ct. pmk. on Blue folded letter to Birmingham, Conn. with matching **"Pointing Hand" & Str. Line "PAID"**, stamp has tiny surface indentations from cancelling ink, Very Fine & Scarce (Photo) 1,000.00 +
- 1018 **5c Brown (1).** Clear to Huge Margins, tied by **Red Four Ring Target**, matching Hanover N.H. pmk. on Folded Cover to Yale College, some neat docketing at L., o/w Fine, Very Scarce Cancel..... (Photo) 850.00
- 1019 **10c Black (2).** Large to Huge Margins, Red Grid cancel, tiny corner crease, Extremely Fine Appearance..... (Photo) 2,000.00
- 1020 **10c Black, "Stick Pin" Variety (2 var).** Ample to Huge Margins, Red Numeral **"10"** Cancel, couple small corner creases, Extremely Fine Appearance (Photo) 2,500.00 +
- 1021 **10 Black (2).** Ample to Huge Margins Showing Bit of Next Stamp at T., light **Blue** Grid cancel, tiny thin speck & some light toning (mostly on back), o/w Extremely Fine (Photo) 2,050.00
- 1022 **10c Black (2).** Ample to Huge Margins, Red Grid cancel, light creases, Very Fine Appearance (Photo) 2,000.00
- 1023 **10c Black (2).** Large Margins, Red **"Ship"** cancel, tiny corner margin crease, Very Fine Appearance, with P.F. Certificate (Photo) 2,000.00 +

1024	⊗	10 Black (2). Margins All Around, tied by Red Square Grid, matching New-York pmk., Red Str. Line "Baltimore R.R.," on Buff Envelope to Boston, Very Fine..... (Photo)	2,350.00
1025	⊗	10c Black (2). Large Margins, tied by Red NY Square Grid on folded cover to Quincy, Florida with matching Clear "New York" pmk., stamp was lifted & replaced on this cover, Very Fine, with P.F. Certificate..... (Photo)	2,350.00
1026	⊗	10c Black (2). Three Large to Huge Margins, Ample to trifle close at B., Red Grid cancel (not tied), Augusta Ga. pmk., on Oct. 1850 Folded Letter to Mass., some toning along file fold, stamp Nearly Very Fine, with Royal Certificate (Photo)	2,350.00
1027	★	10c Black, Reproduction (4). Large to Huge Margins, Fresh, Extremely Fine & Choice (Photo)	1,700.00

1851 ISSUE

1028		1c Blue, Ty. Ib (5A). Horiz. Pair, Pos. 5, 6R1E, Three Large to Huge Margins Showing Bits of Next Stamps at B., touched to just barely in at T., Blue Town pmk., both stamps with partial natural pre-print crease, R. Stamp small corner crease, o/w Fine, Extremely Scarce..... (Photo)	8,500.00 +
1029	⊗	1c Blue, Horiz. Combination Strip of Three, Ty. Ib, II (5A, 7). Pos. 1R1E-3R1E, last Ty. Ib, Huge Margins to just in at B.L., Ty Ib just touching at R., tiny tear & trivial scuff specks at B., tied by Black & Blue Town cancels on cover to Va.; cover reduced at L (clear of stamps) & minor edge wear, o/w Fine, Scarce Usage, with P.F. Certificate (Photo)	4,685.00 +
1030		1c Blue, Ty. Ia (6). Margins to barely into ornament extremities on two sides, Deep Rich Color, Grid cancel, tiny surface scuff, o/w Very Fine (Photo)	5,500.00
1031		1c Blue, Ty. II (7). Three Ample to Huge Margins, slightly in at L., tied by Green Ga. Town pmk. on small piece, Scarce	310.00
1032	⊗	1c Blue, Ty. II (7). Pl. II, Ample to Large Margins, Lovely Color, tied by Blue Balt. pmk. on Folded Circular, Very Fine, Choice	100.00
1033	⊗	1c Blue, Ty. II, Pl. 3 (7). Margins All Around, Typical Overall Plate Wash, tied by light Savannah Ga. pmk. on Folded Prices Current, Very Fine, Scarce..... (Photo)	300.00 +
1034	⊗	1c Blue, Ty. II (7). Pl. II, Margins Virtually All Around, Beautiful Color, Boldly tied by "St. Francisville La. Jun 30 1857" pmk. on Buff Unsealed Circular Envelope, flap faults, Fine & Attractive.....	100.00
1035	⊗	1c Blue, Ty. IV (9). Three Singles, Pos. 2, 5, 8R1L, Margins Virtually All Around, Mostly Large to Huge, tied by Cork, Red Boston pmk. on Cover to Vt., trivial cover edge flaws at B., Very Fine (Photo)	245.00 +
1036	⊗	1c Blue, Ty. II, 3c Red (7, 11). Margins to tiny bit in, tied by Grid & Phila., Pa. pmk. on Orange Buff Cover With Fancy Embossed Hotel Corner Card in Dark Blue, Fine, Attractive 3c + 1c Carrier Usage..... (Photo)	E.VIII
1037		1c Blue, Ty. III (8). Three Ample Margins, Huge at B. showing bit of adjoining stamp, Beautiful Deep Color, Grid Cancel, Very Fine, with P.F. Certificate..... (Photo)	1,450.00
1038		1c Blue, Ty. IIIa (8A). Ample to Large Margins, Town pmk., Very Fine	(Photo) 575.00

1039	1c Blue, Ty. 1c (8A var). E. Relief, Shows Virtually Full Plumes at B., Clear to Large Margins, Gorgeous Deep Rich Color, Town pmk., small surface scrape at B., o/w Very Fine, with P.F. Certificate which states this is a Ty. IIIa..... (Photo)	575.00 +
1040 ★	1c Blue, Ty. IV (9). Clear to Large Margins, Fresh, o.g., Very Fine .. (Photo)	300.00
1041 ☒	1c Blue, Ty. IV (9). Pos. 61R1L, Large to Huge Margins, tied by Red N.Y. Carrier cancel on Drop Letter Cover, Blue Embossed "Erastus W. Smith Engineer" etc. Corner Card With Ship in Center , Extremely Fine, ex-Judd..... (Photo)	E.IX
1042 ☒	1c Blue, Ty. IV (9). Margins All Around, tied by Savannah Ga. pmk. on Folded Prices Current, Very Fine.....	95.00
1043 ☒	1c Blue, Ty. IV (9). Ample to Large Margins, tied by "Savannah * Geo" pmk. on Folded Prices Current, Very Fine, ex-Judd.....	95.00
1044 ☒	1c Blue, Ty. IV (9). Ample to Huge Margins, tied by Red Providence R.I. pmk. on Folded Circular, Very Fine, ex-Judd.....	95.00
1045 ☒	1c Dark Blue, Ty. IV (9). Margins All Around, tied by Fredericksburg Va. pmk., on Orange Drop Letter Cover, tiny cover tear, Very Fine, Chase notes on back.....	95.00
1046 ☒	1c Blue, Ty. IV (9). Ample to Large Margins, tied by Dark Blue Phila. Pa. pmk. on Folded Circular With Building Illustr. Letterhead , stamp minor toning, o/w Very Fine, Chase notes on back.....	95.00
1047 ☒	1c Blue, Ty. IV (9). Three Singles, Margins to slightly in, Attractive Shade (Not Dark Blue as Usual), tied by Bold "Paid" in Grid cancels & Red Boston Mass. pmk. on Orange Buff cover With Colorless Embossed "Globe Locomotive Works Inc. Mch 28, 1854" Corner Card , Fine, Unusual, Chase notes on back.....	245.00 +
1048	1c-10c 1851 Issue (9, 11, 14). Used except No. 11 Unused, o.g., Clear to Large Margins, each small crease or creases, o/w Very Fine, No. 14 with P.F. Certificate.....	480.00
1049	3c Orange Brown (10). Fourteen, Huge Margins to slightly in, cancels incl. Four in Red, Three in Blue & Small Boston Paid in Grid, one Pos. 91R1E Showing Nearly Cpl. Center Line & Full Pane Margins at L. & B., few with small faults, o/w Fine-Very Fine Lot.....	E.VIII
1050	3c Orange Brown (10). Horiz. Pair, Pos. 9, 10R2E, Three Huge Margins, Clear to barely in at R., Partly Clear " Louisville & Cincinnati Mail Line " Steamboat pmk. , Simpson #18 (bit of ms. in addition), Fine-Very Fine.....	95.00 +
1051 ☒	3c Orange Brown (10). Margins All Around, tied by Clear Small Paid in Grid, Red "Boston 3 Cts" & "Paid" on Remarkably Fresh Orange Cover With Fancy Blue Furniture Manufacturer's Corner Card , Very Fine, A Beauty..... (Photo)	E.VII
1052 ☒	3c Orange Brown (10). Ample to Large Margins, tied by Blue "Troy & Whitehall R.R. Oct 31" pmk. (Rem. T4-b) on Cover to Vt., slight cover toning, o/w Very Fine, Scarce.....	E.VII
1053 ☒	3c Orange Brown (10). Three Ample Margins, touched to barely in at B., tied by Blue Andover, Mass. pmk. on Forwarded Cover, Orange "Killingly Ct Ja 6" Truncate Octagon pmk. , ms. "missent", Fine, Scarce & Colorful.....	E.VI
1054 ☒	3c Orange Brown (10). Huge Margins to barely touched at T., tied by New York Four Slug pmk. on Fresh Buff Cover, Fine.....	E.VI
1055 ☒	3c Orange Brown (10). Average, Rich Color, Bold Fancy Blue Pinwheel cancel (not tied), matching " A & St. L. & A. & Kenbk. R.R. " pmk. (Rem. A6-a), Blue "Paid," on Aug. 23, 1851 Folded Letter, negligible cover toning spots, Very Handsome.....	E.VII

1056	⊠	3c Orange Brown (10). Average, Deep Rich Color, tied by Small Red Paid in Grid , matching "Boston 3 22 Jul" pmk. on Neat Folded Cover, Scarce, Small Paid Used for only two or three weeks in July 1851	70.00 +
1057	⊠	3c Orange Brown (10). Margins to touched, Rich Color, Bold "5" cancel (not tied), Baltimore Md. pmk. & light Str. Line " Steamboat " on Cover to Va., Attractive & Very Scarce	E.VII
1058	⊠	3c Orange Brown (10). Three Margins, touched at T., Clear Blue "Way 6" in Circle pmk. (not tied) on Folded Bill of Lading From Richmond With Illustr. of Horse-pulled Canal Boat , bit aged yet Attractive, Scarce	E.VII
1059	⊠	3c Orange Brown (10). Three Small Boston "Paid" in Grid Covers, Diff. Shades, Used Jul. 23, Aug 15 & Sept. 12 1851, last some cover toning spots, o/w Fine Lot	E.VII
1060	⊠	3c Orange Brown (10). Ten Covers, Variety of Shades, Plate Varieties, Several Scarce cancels, Fine-Very Fine Lot	E.XII
1061	⊠	3c Orange Brown (10). One Volume Collection of 44 Covers, (A very few are No. 11's), Cancels incl. "Way 1", "Way 5," "Packet New Latona," Variety of Towns, Couple July 1851 Dates, etc., Generally Fine-Very Fine	E.XII
1062	⊠	3c Orange Brown, Red (10, 11). Two of each (one No. 11 is pair) on Separate Ornate Corner Card Covers , incl. Green National Hotel, Fine-Very Fine	E.VIII
1063	★	3c Dull Red (11). Horiz. Pair, Clear to Huge Margins, Fresh, Choice Shade, Large Part o.g., L. stamp tiny thin spot, o/w Fine-Very Fine, with P.F. Certificate	270.00
1064		3c Red (11). Eighteen, Large Margins to slightly in, All with Railroad cancels , several listed as Rare or Very Rare in Remele, four reportedly ex-Chase, Fine-Very Fine Strikes	486.00 +
1065	⊠	3c Red (11). Beautifully tied by Canton Mi. Fancy Woodcut Odd Fellows Links , Exceptionally Fine & Choice	(Photo) E.VIII
1066	⊠	3c Red (11). Tied by Chicago Ills. pmk on Remarkably Fresh Cover With Fancy Brown Embossed Real Estate Broker's Corner Card Featuring Railroad Train , Exceptionally Fine, Choice	(Photo) E.VII
1067	⊠	3c Red (11). Tied by Phila., Pa. pmk. on Overall Illustr. Map of the Routes of the Pennsylvania Railroad , Exceptionally Choice	(Photo) E.VIII
1068	⊠	3c Red (11). Rich Color, tied by Blue "Woodstock Vt." pmk. on Greenish Gray Cover With Beautiful " Vt. & Boston Telegraph Line " Oval Corner Card Showing Postrider, Train, Ships, etc., small part of flap missing, Very Fine, Scarce	(Photo) E.VIII
1069	⊠	3c Red (11). "Paid" cancel (not tied), "Pittsburgh Pa. 5" pmk. on Buff Cover With Fancy Commission Merchant's Corner Card in Blue Showing Ship & Freight Car, Very Fine	E.V
1070	⊠	3c Red (11). Tied by Mostly Bold " Prov & Stonington R.R. Dec 12 " pmk. (Rem P15) on Buff Cover, tiny cover corner mend, Very Fine	E.VI
1071	⊠	3c Red (11). Tied by Blue Sandusky O. pmk. on Buff Cover With Blue Oval Embossed Corner Card Featuring Sailing Vessel , Very Fine	(Photo) E.VII
1072	⊠	3c Red (11). Ample to Huge Margins, tied by partial Marietta Ga. pmk. on Small Cover to Mobile With Green Oval "Georgia Military Institute" & Common Corner Card , Very Fine	E.VII
1073	⊠	3c Red (11). Tied by ms. cancel, Clear " E.T. & G R.R. " pmk. (Rem. E1-b) on Cover to Madisonville, Very Fine, Very Rare, with contents	E.VII

1074	3c Red (11). Tied by Blue "Phila & Color R.R. Dec 15" pmk. (Rem. P8-a) on Small Cover to N.Y. City, Very Fine, Very Rare, Judd notes on back "... one other cover known"	E.X
1075	3c Red (11). Seven Bar Grid cancel (not tied), Clear Bold Red "Augusta & Atlanta R.R. Apr. 20" pmk. (Rem. A7-b), on Fresh Buff Cover, Very Fine, Very Scarce.....	E.VI
1076	3c Red (11). Tied by Clear "Co. & Dn. Air Line R.R." pmk. (Rem. C9) on 1855 Folded Letter, Very Fine, Rare.....	E.VII
1077	3c Red (11). Average, tied by Troy, N.Y. pmk. on Fresh Buff Cover With Blue Oval Corner Card of the "Old Line Troy Tow Boats" Showing Tow Boat in Center, flap faults, Very Fine Cover.....	E.V
1078	3c Red (11). Tied by Northampton, Ms. pmk. on Buff Cover With Blue Oval "Thompson & Co's Express. American & Foreign" & Ship in Center at T. Center, without flap & couple pressed out cover creases, o/w Very Fine, Scarce..... (Photo)	E.VII
1079	3c Red (11). Beautifully tied by Clear Blue "Nashv. & Chata. R.R. Ten." pmk. (Rem. pg. 99, no illustr. or number), on slightly soiled Buff Cover, minor cover edge tear & flap faults, o/w Very Fine, Extremely Rare, Possibly Unique.....	E.VIII
1080	3c Red (11). Ample to Large Margins, tied by Oxford Ga. pmk. on Petite Ladies Cover With Green Emory College Embossed Corner Card, negligible toning, o/w Very Fine, Scarce	E.VII
1081	3c Red (11). Tied by Macon Ga. pmk. on Elaborate Blue Embossed Corner Card Showing Leaping Stag, Game Birds, Fish & Turtle, small mended cover edge tears & flap mend, o/w Very Fine, Very Handsome	E.VI
1082	3c Red (11). Tied by Mobile Ala. pmk. on Cover to Me., Blue Shield Grocers & Ship Chandlers' Corner Card, mended flap & cover tear, o/w Very Fine	E.VI
1083	3c Red (11). Fine, tied by Orange Red Grid, matching "Lou. & Cin. S.B. Mail Line 6 May" pmk. on Folded Letter, couple file-folds, some light staining, o/w Very Fine Cover, Rare	E.VII
1084	3c Brownish Carmine (11). Tied by Str. Line "Steam" & bit of "5" on May 1852 Folded Letter, negligible toning along filefold, Fine	E.V
1085	3c Red (11). Tied by Grid, Blue Plaestow N.H. pmk. on Illustr. Ad. Cover Soliciting Insurance Agents, Blue Flags, Rifles, etc., flap faults, Fine, Scarce.....	E.VI
1086	3c Red (11). Average, tied by Blue Beloit, Wis. pmk. on Cover to N.Y., Red Str. Line Advertised, Large Double Oval "P.O. Department Dead Letter Office", small cover tear, Fine, Scarce.....	E.VI
1087	3c Red (11). Tied by Negative "Otto N.Y." pmk. on Small Cover, faint toning, o/w Fine, Very Scarce.....	E.VI
1088	3c Red (11). R. Sheet Margin, Fine, tied by Large Paid in Grid & Red "Boston 3 cts" on Cover With Outline of Human Head With Information About Books on Human Culture, Rare Type, Hand-some	E.VII
1089	3c Red (11). Very Fine, from the "Three Rows" of Pl. 3, tied by "Milwaukee, Wis." pmk. on Buff Cover With Corner Card of Finely Executed Grouping of Books, one opened showing Address & List of Material & Services, slightly aged, One of the Most Beautiful 3c '51 Ad Covers we have seen..... (Photo)	E.VII
1090	3c Red (11). Average, tied by New York pmk. (Year Date Inverted) on Pink Cover to Iowa With Illustr. Publisher's Ad Featuring Female Leaning on Globe, Striking, Lovely Cover..... (Photo)	E.VI

1091	3c Red (11). Average, tied by Large "Paid" in Grid, Red Boston "3 cts" pmk. on Cover to Maine With Red Woodcut Illustr. of Railroad Train With "Kasson's Despatch" on Sides of Two Freight Cars, Red "And B & W.S. Line" handstamp below, Extraordinarily Unusual & Very Rare (Photo)	E.VIII
1092	3c Red (11). Average, tied by Blue Dover N.H. pmk. on 1854 Cover to France , Black "Boston Am. Pkt. Jul 7" & "Boston Br. Pkt. Jul 11" backstamps, French Due Mark to collect full postage (partial prepayment not accepted), Attractive & Very Scarce	E.VI
1093	3c Red (11). Fine, Str. Line "Paid" cancel (not tied) on Buff Cover With Illustr. "Northern Cross Rail Road. Quincy, Illinois" Corner Card Featuring Train, Striking & Unusual (Photo)	E.VIII
1094	3c Red (11). Average, tied by Blue "Apalachicola, Fla. Paid 3" pmk., on 1854 Folded Cover to Macon, Ga., "Milledgeville, Ga." & Str. Line "Paid 3 cts" Forwarding pmks., light filefold, Very Attractive	E.VI
1095	3c Brownish Carmine (11). Two Singles, Rich Color, tied by "Cincinnati, O." pmk. & Black "6D" on Fresh Cover to Canada With Attractive Blue Embossed Wine Dealer's Corner Card , ms. "10", Red Canadian pmks., Very Pretty Cover.....	E.VI
1096	3c Red (11). Tied by N.Y. pmk. on Cover to Pa., With Beautiful Large Dark Blue Oval Embossed Lumber Dealer's Corner Card Framed in Vine, Three Masted Sailing Ship in Center , Rare, Very Handsome despite some cover aging (Photo)	E.VII
1097	3c Red (11). Fine, Bright Color, From the "Three Rows of Pl. III, tied by Grid, "Abington, Mas." pmk. on Overall Phonography Cover , Scarce & Exceptional.....	E.VII
1098	3c Red (11). Average, tied by Detroit, Mich. pmk. on Fresh Light Buff Cover With Green Shield-like Embossed Corner Card Featuring Sailing Ship , Very Pretty Cover..... (Photo)	E.VII
1099	3c Red (11). Average, tied by Pittsburgh, Pa. pmk. on Cover to Ohio, Fancy Large Blue Embossed Corner Card For Dealer in "Fish, Bacon, Pearls, etc." With Large Fish in Center, "Independence, Ky. Forwarding pmk., Very Handsome..... (Photo)	E.VI
1100	3c Red (11). Tied by Blue "Virga. & Tenn. R.R." pmk. (Rem. V4-a) on Orange Cover With Green Oval Embossed "Virginia & Tennessee Rail Road, Petersburg, Va." Corner Card , light cover creases & wrinkles, Very Attractive.....	E.VI
1101	3c Red (11). Tied by St. Louis pmk. on Overall Illustr. "Virginia Hotel" Cover , three small mended cover tears, mounting stains on back, still quite Attractive, Very Scarce (Photo)	E.VII
1102	3c Red (11). Scissors cut, Black Grid cancel & tied by Blue Balt. Md. pmk. on Buff Cover With Fancy Green Embossed "Adams & Co's Express Office . . ." Corner Card , Scarce & Attractive.....	E.VI
1103	3c Brownish Carmine (11). Average, Rich Color, Neatly tied by New Haven, Conn. pmk. on Illustr. "Western Land Agency. Bounty Land" , etc. Cover, Handsome & Exceptionally Fresh (Photo)	E.VII
1104	3c Red (11). Average, tied by "Rogersville, Ten." pmk. on Buff Cover With Fancy Green "Odd Fellows Female Collegiate Institute. Rogersville, Tennessee" Oval Corner Card , Rare & Attractive	E.VII
1105	3c Red (11). Average L. Sheet Margin Single tied by Grid, light Red Brandon, Mi. pmk. on Overall Illustr. Temperance Cover , Attractive & Very Scarce..... (Photo)	E.VIII
1106	3c Red (11). Fine, tied by Lockport, N.Y. pmk. on Brown Orange Cover With Beautiful Merchant's Gargling Oil Illustr. Corner Card in Dark Blue , lacks part of flap, Very Scarce.....	E.VII

1107	⊗	3c Red (11). Average, tied by Blue "5" in Circle, matching " Alby & Buffalo R.R. 7 Feb. " pmk. (Rem. A2-c) on Small Neat Cover, Very Pretty.....	E.VII
1108	⊗	3c Red (11). Average, Blue Cork cancel (not tied), matching " Putnam, Con. " Balloon Type pmk. on Fremont Campaign Cover , slight cover toning, still Attractive, Scarce..... (Photo)	E.VII
1109	⊗	3c Dark Brownish Carmine (11). Average, tied by Town pmk. on Cover With Fancy Blue Embossed Merchant's Corner Card Featuring Train Illustr. , Very Handsome..... (Photo)	E.VII
1110	⊗	3c Red (11). T.R. Sheet Corner Single (trifle in at B.), on Buff Cover tied by Clear Green " Marion, Va. " pmk., piece out of flap, Striking Cover.....	E.VI
1111	⊗	3c Red (11). Two, one tied by Bold Worcester, Mass. " Pillow " Fancy Cancel, other cancelled by Green Str. Line "Paid" , Red Weston, Mass. pmk. on Forwarded Cover to Cambridge, negligible toning & small cover tear, still a Very Striking & Unusual Cover, Scarce..... (Photo)	E.VII
1112	⊗	3c Red (11). Average, tied by Bold " Aurora Extenn. R.R. Aug. 28 " pmk. (Rem. A8) on repaired readdressed cover, Very Rare, H. Toasperm note on back " Only one known on cover (one off), Nov. 19, 1927 "..... (Photo)	E.VIII
1113	⊗	3c Red (11). Margins All Around, tied by Bold " Ind. Central R.R. " pmk. (Rem. I2) on Yellow Cover, slight cover edge toning & minor wear, Very Rare.....	E.VII
1114	⊗	3c Red (11). Two Covers, each with Diff. Fancy Illustr. Embossed Piano Manufacturer's Corner Card , one in Yellow Green , other in Blue, Very Fine.....	E.VII
1115	⊗	3c Red (11). Two Covers, Black & Red Str. Line "Steam Boat" pmks., Stamps tied by Town pmks., Very Fine.....	E.VI
1116	⊗	3c Red (11). Two Covers From " Chatham 4 Corners N.Y. ", one tied by Black Town pmk., other by Dark Blue Grid , Fine-Very Fine.	E.VI
1117	⊗	3c Red (11). Two Covers, one an Embossed Ladies Cover tied by " New London N.H., Dec. 25 " Double Oval (another Bold Strike at L.), other on Light Green Cover tied by Red Oval "Tyre, N.Y." pmk., trivial toning, o/w Fine-Very Fine, Scarce.....	E.VII
1118	⊗	3c Red (11). Two Covers, tied by Green Lancaster, Pa. & Roswell, Ga. pmks., latter Exceptionally Bold (slight cover soiling), o/w Fine-Very Fine.....	E.VI
1119	⊗	3c Red (11). Two Registered Covers, one with Single tied by Blue " Hamilton, Ohio " pmk., Bold Blue " R " & ms. " 12 ", other with Two Singles tied by Grids & Red Str. Line "Registered" , Red New Orleans, La. pmk., Fine Lot, Scarce.....	E.VI
1120	⊗	3c Red (11). Two Diff. Illustr. Corner Card Covers, one is Carriage Manufacturer in Green , other Hearse Manufacturer in Blue, Fine, Scarce.....	E.VII
1121	⊗	3c Red (11). Two Covers, one tied by Str. Line "Steam" , Red New Orleans pmk., other tied by Detroit, Mich. pmk. With Fancy "Steam Boat" in Scroll Handstamp , Fine Lot.....	E.VII
1122	⊗	3c Red (11). Two Covers, one tied by Worcester, Ms. Solid Star , other by Fancy Star , Red Dedham, Ms. pmk. (Small Ladies Cover), minor toning, o/w Fine.....	E.VI
1123	⊗	3c Red (11). Two Average stamps on Very Fine Covers, each with Very Fancy Boots, Shoes, etc. Embossed Corner Cards in Blue , Handsome Lot.....	E.VI
1124	⊗	3c Red (11). Three Diff. College Covers , one is " Water Cure and Hydropathic Medical College " With Attractive Illustration & extensive propaganda front & back, Fine Lot.....	E.VIII

1125	⊠	3c Red (11). Four Diff. Ornate Illustr. Embossed Corner Card Covers , two in Red, One in Green, Fine-Very Fine	E.VII
1126	⊠	3c Red (11). Four Diff. Ornate Embossed Corner Cards in Blue, incl. Publisher, Plumber & Hides & Leather, Fine-Very Fine	E.VII
1127	⊠	3c Red (11). Four Covers, Fancy "Paid" cancels, incl. Blue Glendale, Mass. "Paid" in Rectangle of Tiny Squares & "Paid" in Star (on one cover), Brattleborough, Vt. "Paid 3" in Lined Circle, Dedham, Mass. "Paid" in Partially Crisscross Grid & North Cohasset, Mass. Small Red "Paid" in Grid, Fine-Very Fine Lot, Very Scarce ...	E.VII
1128	⊠	3c Red (11). Five Diff. Academy, Institute or Seminary Covers , Three Illustr. (One in Gold , mended tears, virtually all on back), others Fine-Very Fine	E.VIII
1129	⊠	3c Red (11). Six Diff. Ornate Embossed Corner Cards in Blue , Variety of Businesses, Fine-Very Fine	E.VIII
1130	⊠	3c Red (11). 19 Hotel Covers , Virtually All With Fancy Printed Corner Cards , several Illustr. incl. a Beautiful "Catskill Mountain House", Generally Fine-Very Fine, Very Pretty Lot	E.XI
1131	⊠	3c Red (11). Collection of 33 Diff. Corner Card Covers , Mostly Fancy Types (Some Illustr.), Virtually All Fine-Very Fine, Scarce Lot	E.X
1132	⊠	3c Red (11). One Volume Collection of 65 Covers, incl. Territorials (Minn. & "Tahlequa, Ark." [Cherokee Indian Terr.]), Auxillary Markings such as "Steam", "Steam Boat", "Way", etc., Fancy Towns, Railroads, Colored Cancels incl. Green, etc., Generally Fine-Very Fine	E.XI
1133	⊠	3c Red (11). One Volume Collection of 126 Covers, incl. Auxillary Markings, Odd Towns, Balloon Type pmk., Fancys, Mourning, Pairs, Paid 3, Pairs, Numeral 3's & 5's, etc., Generally F-VF	E.XI
1134	⊠	3c Red (11). Collection of 153 Covers, incl. Seven or Eight No. 10's, Part Impt. , Pairs, Sheet Margins, Shades, At Least Four Green Towns , Plate Varieties, Railroad Illustr., etc., Generally Fine-Very Fine	E.XIII
1135	⊠	3c Red (11, 26). Eighty & 68 respectively, A Neatly Mounted Cancellation Collection , No. 11 incl. Wells, Fargo, Fancy Negative Red "Paid" Within "3" , Blue "5", "Way", Oval Town, Green Towns , etc., No. 26 incl. Pairs, Towns, Grids, etc., Virtually All Fine-Very Fine	E.XI
1136		5c Red Brown (12). Large to Huge Margins, Town pmk., minor corner creases at extreme B.R., still Extremely Fine	(Photo) 1,300.00
1137		5c Red Brown (12). Huge Margins, Town pmk., faint toning, light crease, o/w Extremely Fine	(Photo) 1,300.00
1138		5c Red Brown (12). Clear to Huge Margins, Deep Rich Color, Neat Red Grid cancels, small light corner crease, Very Fine Appearance, with P.F. Certificate which states "it is genuine"	(Photo) 1,350.00
1139		5c Red Brown (12). Clear to Large Margins, Town pmk., tiny ironed-out corner crease & some toning spots on back (do not show on face), o/w Very Fine, with P.F. Certificate	(Photo) 1,300.00
1140		5c Red Brown (12). Clear to Large Margins, lightened Red Grid cancel (appears Unused), small corner thin, o/w Very Fine	(Photo) 1,300.00
1141		10c Green, Ty. I (13). Large to Huge Margins, Bold Five Point Star cancel , small margin scuff at L. barely touches design, o/w Extremely Fine	(Photo) 700.00
1142		10c Green, Ty. I (13). Large to Huge Margins, lightly cancelled, Very Fine	(Photo) 700.00
1143		10c Green, Ty. I (13). Ample to Large Margins, light Town pmk., small faults incl. faint toning spot, o/w Very Fine	(Photo) 700.00

1144 ☒ **10c Green, Ty. I (13).** Margins All Around, tied by light **Red** "Valejo Cal." Balloon Type pmk. on Buff Cover to N.J., small mended cover corner repair, o/w Fine, Very Scarce..... (Photo) **E.XI**

1145 ★	10c Green, Ty. II (14). Large to Huge Margins, Full o.g., minor toning spot (barely visible) at T.L., o/w Very Fine, Still A Magnificent Stamp, ex-Gibson, with P.F. Certificate (Photo)	1,700.00
--------	---	----------

1146 **10c Green, Ty. II (14).** Huge Margins, Bold Str. Line "Paid" cancel, minor corner crease, Extremely Fine Appearance..... (Photo) 300.00

1147 **10c Green, Ty. II (14).** Ample to Large Margins, Town pmk., Very Fine..... (Photo) 275.00

1148 **10c Green, Ty. II (14).** Clear to Large Margins, Rich Color, Bold Red "10" cancel, small corner crease, Very Fine Appearance, with P.F. Certificate..... (Photo) 350.00

1149 ☒ **10c Green, Ty. II (14).** Large to Huge Margins, tied by "Weld Maine" pmk. on Petite Embossed Ladies Cover to Illinoistown, Cal., negligible toning, o/w Extremely Fine..... (Photo) 350.00

1150 ☒ **10c Green, Ty. II (14).** Margins All Around, Bright Color, Neatly tied by partly readable "Grass Valley, Cal." pmk. on Exceptionally Fresh Cover, Very Fine..... (Photo) 350.00

1151 ☒ **10c Green, Ty. II (14).** Margins All Around, Rich Color, tied by "Paid 3" in Circle on Buff Cover to Cal., "Annisquam Mass." pmk., Very Fine..... (Photo) 350.00

1152 ☒ **10c Green, Ty. II (14).** Margins All Around, Rich Color, Red Dots cancel (not tied), Magenta ms. "Campbelltown, N.Y." pmk. on Cover to Canada, light readable "Ud. States" in Arced Frame Over "Paid 6d" in Red, slight toning, o/w Very Fine..... 350.00

1153 ☒ **10c Green, Ty. II (14).** Large to Huge Margins, expertly pressed-out crease, Extremely Fine Appearance, tied by Large Blue Grid, matching partly readable "Marysville Cal. Paid By Stamps" pmk. on Buff Cover, Scarce..... 350.00

1154 **10c Green, Ty. II, III (14, 15).** Large to Huge Margins, former Blue Town pmk., latter Grid cancel, small faults, Extremely Fine Appearance..... 570.00

1155 **10c Green, Ty. III (15).** Ample to Huge Margins, Fresh, Town pmk., Very Fine..... (Photo) 285.00

1156 ☒ **10c Green, Ty. III (15).** Large to Huge Margins, tied by "Painesville O." pmk. on Buff Cover to Cal., back toning & part of flap missing, stamp has small scissors cut, o/w Extremely Fine..... (Photo) 350.00

1157 ☒ **10c Dark Green, Ty. III (15).** Large Margins, tied by New York Ocean Mail pmk. on Cover to Cal., small cover mend & tear at T. edge, without flap, Stamp Very Fine & Choice..... (Photo) 400.00

1158 ☒ **10c Green, Ty. III (15).** Ample to Large Margins, tied by Bold "Yreka Cal. Oct 15 1856" pmk. on Cover to Ky., slight cover & stamp toning, o/w Very Fine..... 400.00

1159	10c Green, Ty. IV (16). Pos. 65L, Ample to Large Margins, Town pmks., Very Fine & Choice..... (Photo)	1,500.00
------	--	----------

1160 **10c Green, Ty. IV (16).** Recut at T. & B., Pos. 64L, Three Large to Huge Margins, Clear at B., Blue Town pmk. & bit of Blue transit, couple trivial corner creases, Very Fine Appearance..... (Photo) 1,700.00

1161 **10c Green, Ty. IV (16).** Pos. 3R, Ample to Huge Margins, Town pmk., Rich Color, light creases, Very Fine Appearance..... (Photo) 1,500.00

1162 **10c Green, Ty. IV (16).** Pos. 54L, Ample to Large Margins, barest trace of cancel (appears Unused), crease & faint thin spot, o/w Very Fine..... (Photo) 1,550.00

1163	12c Black (17). Ample to Large Margins, Red Grid cancel, "faint horiz. crease at R." which in our opinion is more accurately a bend, o/w Very Fine, with P.F. Certificate.....	270.00
1164 ☒	12c Black (17). Large to Huge Margins, tied by New Orleans pmk. on Fresh Orange Buff Courthouse Cover, without flap & bit reduced, o/w Very Fine, Rare Domestic Quadruple Rate Cover..... (Photo)	1,300.00
1165 ☒	12c Black (17). Ample to Huge Margins, Very Fine, used with average 3c Red (11) tied by Red Grids, matching Lancaster Pa. pmk. on Blue Folded Cover (lacks R. side flap) to Phila., ms. "R" & "No. 70" , Attractive, Very Scarce Early Registration Use (Photo)	1,000.00
1166 ☒	12c Black (17). Vert. Pair , Margins All Around, Mostly Large to Huge, scissors cut between stamps (clear of design), on Pale Pink May 1857 Cover to England tied by Blue "Columbia S.C." pmks., Red "19" Credit & Red "Y Paid 1 Ju 1 1857", another Bold Strike of the Columbia pmk. to L., cover filefold, Very Fine, Colorful (Photo)	625.00

1857 ISSUE

1167	1c Blue, Ty. I, IIIa, IV (18, 22, 23). Used, Well-centered, Nos. 18 & 23 reperfed, No. 22 trivial toning speck & few nibbed perfs., o/w Very Fine.....	925.00
1168	1c Blue, Ty. Ia (19). Pos. 95L4, Town Pmk., Lightly cancelled, part of one perf. added & reperfed at L., o/w Fine, Scarce (Photo)	2,400.00
1169 ★	1c Blue, Ty. II (20). Pl. 11 or 12, Nice Margins, Exceptionally Well-centered, Fresh, Large Part o.g., light horiz. crease, Extremely Fine Appearance, with P.F. Certificate..... (Photo)	425.00
1170 ☒	1c Blue, Ty. II (20). Pl. XI or XII, tied by Red N.Y. Carrier On Locally Used Cover, minor cover edge tear, Very Fine	175.00
1171	1c Blue, Ty. III (21). "C" Relief, Plate 4, Rich Color, Neat Town pmk., tiny margin tear, Very Fine Appearance, with P.F. Certificate (Photo)	1,250.00
1172	1c Blue, Ty. III (21). Well-centered, Grid cancel, light crease, reperfed at B., o/w Very Fine..... (Photo)	1,250.00
1173 ★	1c Blue, Ty. IIIa (22). "B" Relief, Pl. 11, Fresh, o.g., reperfed at R., o/w Very Fine, with P.F. Certificate..... (Photo)	750.00
1174 ☒	1c Blue, Ty. V (24). Tied by Philada., Pa. Octagon pmk. on Remarkably Fresh Yellow Cover With Large Blue "Tea Warehouse" Illustr. at L., Very Fine, Immaculate.....	E.VI
1175 ☒	1c Blue, Ty. V (24). Average, tied by Augusta, Ga. pmk. on Locally Used Orange Buff Cover With Neat Illustr. Carriage Dealer's Corner Card , Very Pretty Cover.....	E.VI
1176 ☒	1c Blue, Ty. V (24). Horiz. Strip of Three , tied by Norwich Ct. pmks. on Buff Cover With Fancy Brown Illustr. Furniture Dealer's Embossed Corner Card , light cover filing crease, Very Fine, Chase notes on back (Photo)	E.VII
1177 ☒	1c Blue, Ty. V (24). Beautifully Centered Vert. Strip of Three , couple trivial flaws, tied by Phila. Pa. Octagons on Neat Cover With Very Fancy Blue Commission Merchant's Corner Card , Exceptionally Handsome..... (Photo)	E.VII
1178 ☒	1c Blue, Ty. V (24). Horiz. Strip of Three , tied by Grids & "Troy, N.Y." pmk. on Fresh Cover With Illustr. Steam Engine Corner Card , Very Handsome (Photo)	E.VII
1179 ☒	1c Blue, Ty. V (24). Eleven Stamps on Eight Covers, Single Usages incl. Star Cancel, Red Carrier, Blue "Paid" in Circle (Small Embossed Valentine Cover), Multiples incl. Vert. Pair & Horiz. Strip of Three , Fine-Very Fine Lot	E.IX

1180	1c-30c 1857 Issue (24, 26, 35, 38). All Used except No. 26 Unused, o.g., No. 35 Red Supplementary Mail Cancel (Ty. A), No. 24 "1858" Year Date Town pmk., No. 38 N.Y. Ocean Mail cancel, Nos. 24 & 38 small faults, o/w Very Fine-Extremely Fine, Nos. 26 & 38 with P.F. Certificate	471.00
1181 ★	3c Rose, Ty. I, "Gash on Shoulder" (25 var). Fresh, o.g., single pulled perf., o/w Fine, with P.F. Certificate which states "tiny tear" .. (Photo)	675.00
1182 ★	3c Rose, Ty. I (25). Fresh, o.g., few blunted perms. from scissors at L., small corner crease at B.R., o/w Fine, with P.F. Certificate	650.00
1183 ☒	3c Red, Ty. I (25). Tied by "N. O. J. & Great No. R.R." pmk. (Rem. N9-i, on Carroll Hoy Corresp. Cover, trivial soiling & tiny cover tear, o/w Very Fine, Very Rare	E.VII
1184 ☒	3c Red, Ty. I (25). Collection of 23 Covers, incl. Railroad, Few Ad Covers, etc., Generally Fine-Very Fine	E.X
1185 ☒	3c Red (26). Grid cancel (not tied), "New London Ct. Feb 7 1861" pmk. On Spectacular "New-London Horse Rail Co." Illustr. Ad Cover , Features Female "Liberty", Shield, Factory, Ships, etc., Exceptionally Fine, Unusual & Scarce "Patriotic" Cover	E.VII
1186 ☒	3c Red (26). Tied by Grid, Springfield, Mass. pmk. on "Thompson & Co's Express" Blue Oval Corner Card Showing Flying "Mercury" Messenger, Train Crossing Trestle, etc., Exceptionally Fine, Scarce	E.VII
1187 ☒	3c Red (26). Tied by Blue "Buckeystown Md." Balloon Type pmk. on Lilac Patriotic Cover Showing Female "Liberty" Offering Drink to Soldier From a Barrel of "Spirit of '76", "The Spirit of '76 And '61" Impt. Below, Very Fine, Rare Design	E.VI
1188 ☒	3c Red (26). Tied by Bold "Ijamsville B. & O. R.R. Jan 18 1860" Oval (Rem. B2S-a) on Orange Cover, Very Fine, Rare, with enclosure	E.VI
1189 ☒	3c Red (26). Tied by Blue Boxed "Collect" on No. U10 Wells, Fargo Frank Entire, without flap, mended cover tear, o/w Very Fine...	E.VI
1190 ☒	3c Red (26). Tied by Beautiful Strike of Canton Miss. Lyre Fancy Cancel on Fresh Carroll Hoy Corresp. Orange Buff Cover, Choice Scarce Cover	E.IX
1191 ☒	3c Red (26). Tied by Bold "New-York" pmk. on Exceptionally Beautiful Illustr. Tobacco Ad Cover in Blue Showing Three Gentlemen Indulging in Snuff, Chewing Tobacco & Cigar, bit reduced at L., A "Beauty", Judd notes on back refer to men as "Snuff, Puff & Chew"	E.VII
1192 ☒	3c Red (26). Small Bold Framed "Paid" cancel (not tied), "Brunswick Me. Jul 2 1861" Double Circle pmk. on Female "Liberty & Flag" Patriotic Cover, Fine	E.V
1193 ☒	3c Red (26). Tied by "Killingly Ct." pmk. in Truncate Octagon on Fresh Buff Cover, Fine & Scarce	E.VI
1194 ☒	3c Red (26). On Cover tied by Bluish Black Chicopee Mass. Inter-twined Star of David , neat 1859 docketing at L., Fine	E.V
1195 ☒	3c Red (26). Tied by Blue Grid of Squares, matching "Lou. & Fran. & Lex. & Fran. R.R. Spring Station" pmk. (Rem. L105-f) on Cover to Cincinnati, light cover soiling & filefold, Clear Strike of this Extremely Rare Station Marking (Illustr. in Remele is less than half complete)	E.VIII
1196 ☒	3c Red (26). Tied by Extra Bold Framed Negative "PO" , Oxford N.Y. pmk. on Cover Showing Crude Illustr. of "Oxford Academy And Boarding Halls." , some light toning, Rare Cover	E.VII

1197	⊗	3c Red (26). Average, tied by Blue Grid, "Elmira N.Y. Jun 29 1861" pmk. on Red, White & Blue Patriotic Cover , Shows Scene of Jeff Davis Negotiating With "Pirates" For Bounty Money For Live & Dead Northerners, slight soiling & wear, Rare Design	E.V
1198	⊗	3c Red (26). Tied by Grid, "Buffalo N.Y. Jun 25 1861" pmk. on Unusual Patriotic Cover Showing Ox-drawn Wagonload of People With "Evacuation of Harper's Ferry" Impt. Below, B.R. corner mend, some light stains & wrinkles, Rare Design	E.VI
1199	⊗	3c Red (26). Five Hotel Covers , Four Corner Cards (Two Illustr.) & One Green Overall Ad, last tied by Unusual Five Bar Square Grid , Fine-Very Fine, Attractive Lot	E.VIII
1200	⊗	3c Red (26). Five Illustr. Ad or Corner Card Covers , incl. Gray Overall Foreign Missions, Grist Mill (Shows Factory & Windmill in Green), Beautiful "Round Hill Water Cure" Showing Sanitarium & Grounds, couple with trivial toning, still a Fine-Very Fine Lot, Scarce	E.VIII
1201	⊗	3c Red (26). Five "College" Covers, Each With Handsome Illustr. Corner Card, incl. Military & Religious, Beautiful Scarce Lot	E.VIII
1202	⊗	3c Red (26). Eleven Diff. Manufacturers Corner Card Covers , Variety of Topics, Virtually All Illustr., One With Finely Executed Engraving of a Steam Engine , Very Fine Lot	E.IX
1203	⊗	3c Red (26). One Volume Collection of 179 Covers, incl. Red Towns, Balloon pmks., Auxillary Markings, Fancys, "Way", "Steam", Numerals ("3", "5", "10" & "24"), Corner Cards, Illustr., Odd Towns, " Field P.M. ", etc., Generally F-VF	E.XII
1204		5c Brick Red (27). Town pmk., reperfed at L. & some nibbed perms., o/w Very Fine	(Photo) 1,000.00
1205		5c Red Brown (28). Lovely Shade, Town pmk., Very Fine ..	(Photo) 275.00
1206		5c Bright Red Brown, Brown (28b, 29). Town pmks., Former Rich Color approaching Indian Red Shade, small faults, o/w Very Fine	500.00
1207		5c Indian Red (28A). Rich Color, Town pmk., reperfed at R., o/w Fine	(Photo) 1,500.00
1208	★	5c Brown, Ty. I (29). Fresh, o.g., small faults, Very Fine Appearance	(Photo) 750.00
1209	★	5c Orange Brown (30). Well-centered, Rich Color, reperfed, o/w Extremely Fine	(Photo) 750.00
1210	★	5c Brown, Ty. II (30A). Deep Shade, small thin & reperfed at T., o/w Very Fine, with P.F. Certificate	450.00
1211	★	5c Brown, Ty. II (30A). Fresh, o.g., h.r., tiny thin & reperfed at R., o/w Very Fine, with P.F. Certificate	450.00
1212		5c Brown, Ty. II (30A). Extraordinarily Well-centered, Red Grid cancel, Extremely Fine	(Photo) 195.00
1213		10c Green, Ty. I (31). Beautifully Centered, Town pmk., single short perf. & tiny corner crease, o/w Extremely Fine	(Photo) 525.00
1214		10c Green, Ty. II (32). Town Pmk., Fine	175.00
1215	⊗	10c Green, Ty. II (32). Dark Shade, tied by Blue Baltimore, Md. pmk. on Cover to Cal., blue pencil "1715," small cover toning spot at B., o/w Very Fine	225.00
1216	⊗	10c Green, Ty. III (33). Tied by Dark Blue Cincinnati, O. pmk. on Orange Cover to Cal., blue pencil "1715", Fine	250.00
1217		10c Green, Ty. IV (34). Pos. 64L, Recut at T. & B., Town pmk., tiny tear at B., Very Fine Appearance, with P.F. Certificate .	(Photo) 1,650.00
1218		10c Green, Ty. IV (34). Pos. 65L, Recut at T., Deep Rich Shade, Town pmk., small corner crease & couple tiny tears, Fine Appearance, with P.F. Certificate	(Photo) 1,550.00
1219		10c Green, Ty. IV (34). Pos. 55L, Recut at B., Grid cancel, perms. slightly in at R., Scarce	(Photo) 1,550.00

1220 ★	10c Green, Ty. V (35). Well-centered, Fresh, o.g., minor h.r., Extremely Fine, ex-Earl of Crawford (Photo)	175.00
1221 ★	10c Green, Ty. V (35). Horiz. Pair, Fresh, Full o.g., h.r., small scuff at L. of L. stamp, o/w Very Fine (Photo)	360.00
1222 ☒	10c Green, Ty. V (35). Trivial perf. flaws & tiny tear at T., Well-centered, tied by Red Grid, Bold "San Jose Cal." pmk. on Red White & Blue Cannon & Flag Patriotic Cover to Vt., trifle reduced at L., Very Handsome, Scarce (Photo)	E.IX
1223 ☒	10c Green, Ty. V (35). Tied by Grid, West Point N.Y. 1860 pmk., on Cover to Cal., Very Fine.....	85.00
1224 ★	12c Black, Pl. III, 24c Gray Lilac (36b, 37). Fresh, Part o.g., former tiny thin, latter "whiting" on front margins to cover toning, o/w Extremely Fine, with P.F. Certificates (latter States "regummed over extensive repairing" with which we disagree)	850.00
1225 ★	24c Gray Lilac (37). Well-centered, part disturbed o.g. (some perf. tip gum soaks & tiny thin, o/w Extremely Fine (Photo)	600.00
1226 ★	24c Gray Lilac (37). Fresh, o.g., reperfed at L., o/w Very Fine..... (Photo)	600.00
1227 ★	30c Orange (38). Fresh, o.g., h.r., single short perf., o/w Very Fine.. (Photo)	750.00
1228 ★	90c Blue (39). Well-centered, trivial perf. nibbing, bleached to remove toning, o/w Extremely Fine, with P.F. Certificate..... (Photo)	1,450.00
1229 ★	90c Blue (39). Fresh, Large Part o.g., small thin, Very Fine Appearance..... (Photo)	1,450.00
1230 ★	90c Blue (39). Fresh, Fine, with P.F. Certificate..... (Photo)	1,450.00
1231 ★	90c Blue (39). Rich Color, reperfed at R. & tiny thin, Fine Appearance..... (Photo)	1,450.00

END OF FIRST SESSION

DESCRIPTIONS

EXTREMELY FINE: The finest condition for noteworthy, outstanding stamps.

VERY FINE: In prime condition such as to satisfy the requirements of particular collectors.

FINE: Perforations or margins do not touch design on issues after 1890 but in some cases may just touch in earlier issues. If used, fairly light cancellation.

VERY GOOD: Generally nice appearance but margins or perforations may cut in slightly.

GOOD: Average off-centering or fairly attractive with slight defects.

ORIGINAL GUM is not to be expected on stamps prior to 1890 unless so stated in the description.

MINT: With original gum and never hinged.

Unless otherwise noted the 1988 Scott United States Specialized Catalogue has been used for cataloguing lots in this sale.

SECOND SESSION

TUESDAY, NOVEMBER 22, 1988 at 1:00 P.M.

1861 ISSUE

1232 P	1c-90c "First Designs", Plate Proofs on India (55P3-62P3). Cpl. Set, Large Margins to slightly in on 1c & 5c, all with faults (as usual), 1c faulty, Scarce	2,325.00
1233 ★	3c Brown Rose, "First Design" (56). Fresh, o.g., h.r., trivial perf. thin, o/w Fine	700.00
1234	10c Dark Green, "First Design" (62B). Better than Usual Margins & Centering, Rich Color, Red Town pmk., small faults, Extremely Fine Appearance	500.00
1235	10c Dark Green, "First Design" (62B). Rich color, faint Red cancel, small faults, o/w Very Fine.....	500.00
1236 ★	1c Blue (63). Fresh, Part o.g., tiny natural inclusion, Very Fine, with P.F. Certificate	110.00
1237 ☒	1c Blue (63). Tied by Athens, Ga. Floral Rosette on Homemade Drop Letter Cover Made of Coarse Grayish Paper Typical of that used in the South during the Civil War, Exceptionally Fine, Scarce ...	E.V
1238 ☒	1c Blue (63). Average, tied by Bridgeport Ct. Fancy Heart Duplex cancel, Another Bold Strike to L. of stamp, Rare & Handsome.....	E.VIII
1239 ☒	1c Blue (63). Natural s.e. at L., Used With 2c Bank Check First Issue Revenue (R5c) tied by Circle of Wedges, Norwich Ct. pmk. on Small Cover to Rockville, bit reduced at L., minor toning, Rare Unlawful Use of Revenue Stamp as Postage	E.VI
1240 ☒	1c Blue (63). Two Covers, one with natural s.e. Horiz. Strip of Three tied by " Alberton Howard Co. Md. " pmks., Rare Early County Postmark, Very Fine; other Three Singles, Each A Diff. Shade , tied by Targets on Small Cover, few tiny toning specks, o/w Fine, Scarce Lot	E.VI
1241 ☒	1c Blue (63). Three Covers, incl. Pair (Circular Rate), Used With No. 65 on Green Oval Chair Dealer's Corner Card Cover, Used on 3c Entire (U35), Fine-Very Fine	E.VI
1242 ☒	1c Blue (63). Eight Drop Letter or Circular Rate Covers, Cancels incl. Red N.Y. Carrier & Phila. U.S. Penny Mail, one with small closed cover tear, Fine-Very Fine Lot	E.VIII
1243 ☒	3c Pink (64). Tied by Readable Evesboro, N.J. Double Circle pmk. on Gray State of New Jersey cover with Coat of Arms, slightly reduced at R., stamp sealed tear at T., o/w Very Fine, ex-Judd.....	350.00
1244 ☒	3c Pink (64). Single nibbed perfs., T. perfs. touch, Choice Shade, tied by Grid, "Philadelphia Pa. Sep 12 (1861)" pmk. on Orange Buff Cover to R.I., tiny tear, bit irregularly reduced at R., Scarce.....	E.VI

1245	⊠	3c Pink (64). Vert. Pair, Fine, Used With 1c Blue, Ty. I (18) & 3c Red (26), both small faults (3c B. perfs. trimmed), tied by Fancy Five Point Stars on Orange Buff Cover to N.Y. State, "Downieville Cal." pmk. (cover repaired T.L. corner with most of pmk. drawn in), Very Rare Mixed Issues Cover (Photo)	E.XI
1246	⊠	3c Rose Pink (64b). Tied by G.B.D. & Date (Genl. Banks Division) on Red, White & Blue Ellsworth Patriotic Cover, bit reduced at R., Fine (Photo)	E.VII
1247	⊠	3c Rose Pink (64b). Well tied by Alexandria Va. pmk. on Red, White & Blue Patriotic Cover (Eagle, Shield, "The Union, The Constitution," etc.), bit reduced at R., Fine	E.V
1248	⊠	3c Rose Pink (64b). Near Pink Shade, Clear Axehead cancel (not tied as usual), light Collinsville Ct. pmk. on slightly soiled trifle reduced cover, Scarce	E.VII
1249	⊠	3c Rose Pink (64b). Trivial flaws, Bold "Paid 6" cancel (not tied), "Amherst Ms Nov 29 1861" Double Circle Pmk. on Neat Cover, Scarce	E.V
1250	⊠	3c Rose Pink (64b). Small faults, tied by Framed "Paid" & Red Boston, Mass. pmk. on "The Massachusetts Pine" Patriotic Cover, Attractive, Scarce Design	E.VI
1251	E	3c Dark Carmine on White Paper, Experimental Proof (Brazier 65TC-Aa). Horiz. Pair, Fresh, o.g., lightly hinged, one with tiny natural inclusion, Extremely Fine, with P.F. Certificate	E.VII
1252		3c Rose (65). Bold Waterbury Ct. Padlock cancel, reperfed at T., o/w Extremely Fine, with P.F. Certificate (Photo)	E.VIII
1253		3c Rose (65). Fine, Bold "Eagle over U.S." Albany, N.Y. Fancy cancel (Skinner-Eno PT-E12), Very Fine Strike (Photo)	E.VII
1254		3c Rose (65). Couple short perfs., Bold "Eagle" Fancy cancel, Very Fine Strike (Photo)	E.VI
1255		3c Rose (65). Two, each with Bold Masonic Square & Compass cancels (one Negative), one with thin, Very Fine Strikes	E.VI
1256		3c Rose (65). Six Diff. Shield cancels, Very Fine Strikes	E.VIII
1257		3c Rose (65). Mounted Cancellation Collection, Approx. 150 Stamps, incl. Used Block, "5", "X", "6", Paid's, OK's, Fancy Stars, "Steam/Ship," "US", "VA" in Circle, Shield, Tiny Masonic "T" in Target, Putnam Ct. Fouled Anchor, Tiny Blue Heart, Geometrics, etc., also No. 73(4), 75, 78, 63(3) & 2c & 3c 1867 Grills (26 Items), also couple proofs, Generally Fine-Very Fine, Very Attractive	E.XII
1258	⊠	3c Rose (65). Tied by Mar. 22, 1866 Waterbury Ct. Shield cancel on Fresh Orange Buff Cover, without flap, Very Fine (Photo)	E.VIII
1259	⊠	3c Rose (65). Grid cancel, just tied by Small "Phila Pa." pmk. on Cover With Str. Line "U.S. Ship," Very Fine	E.V
1260	⊠	3c Rose (65). Tied by Grid of Tiny Blue Rectangles, matching Blue Oval "Sykesville B. & O. R.R. Co. Apr 19 1864" on Small trifle reduced Cover, Very Fine	E.V
1261	E	3c Rose (65). Tied by "Paris Pa." in Rounded Edge Rectangle, ms. date, on Cover to W. Va., bit reduced at L., Very Fine, Rare	E.VI
1262	⊠	3c Rose (65). Wide natural s.e. at L., tied by Beautiful Bold "King-essing Pa" Str. Line in Center of Eagle & Ornate Frame on Buff Cover, Very Fine, Rare, soldier's letter accompanies (Photo)	E.VIII
1263	⊠	3c Rose (65). Tied by Circle of Wedges & Rochester, N.Y. pmk. on Yellow Cover With Merchant's Corner Card Showing Old Railroad Train, Overall Illustr. Ad for Carriage Spring on back, Very Fine	E.VI
1264	⊠	3c Rose (65). Tied by Unusual Two Bar Grid, "Columbia Cal. Jan 31, 1865" pmk. on Cover to N.Y. State, trifle reduced at L., Very Fine	E.VII

1265	⊗	3c Rose (65). Tied by Town pmk. on Overall Red, White & Blue Patriotic Cover of Crossed Flags, Eagle & Shield With Center Blank to Accommodate Address, flap & small edge faults, o/w Very Fine	E.VI
1266	⊗	3c Rose (65). Tied by West Meriden Ct. Devil & Pitchfork cancel on Cover to a Rev. at Milltown Ct., Fine & Rare (Photo)	E.IX
1267	⊗	3c Rose (65). Beautifully tied by Amherst, Mass. Sep. 10, 1863 Tulip cancel on Neat Cover, Fine, Rare	E.VI
1268	⊗	3c Rose (65). Bold Blue Heart Cancel with Small Diamond Grids in Center (not tied), matching "Urbana Md" pmk. on Orange Cover (bit reduced T. & R.), Fine, Very Scarce	E.VI
1269	⊗	3c Rose (65). Tied by Target, " Miamiville P.O. Camp Dennison O. Mar 22 1864 " pmk. on Orange Yellow Cover, Fine.....	E.V
1270	⊗	3c Rose (65). Tied by Tenn. Town pmk. on Red, White & Blue Patriotic Cover Showing Battle Scene, Canteen Girl Giving Refreshment to Wounded Zoave Soldier, trivial edge flaws, Fine & Scarce.....	E.VI
1271	⊗	3c Rose (65). Tied by Bold Zanesville O. Globe pmk. on Light Yellow Cover, bit reduced at R. (few tiny nicks), o/w Fine, Spectacular Strike of this Rare Fancy Cancel..... (Photo)	E.VII
1272	⊗	3c Rose (65). Minor crease, tied by Blue Cincinnati O. pmk. on Overall Multicolor Patriotic Cover (Oval of State Seals of the 13 Original States, Eagle, Flags, etc.), Very Handsome	E.V
1273	⊗	3c Rose (65). Tied by Blue Target, matching Martinsburg, W. Va. 1864 pmk. on Cover With Lilac & Black U.S. Signal Corps Insignia Corner Card Cover, Very Pretty, Scarce.....	E.V
1274	⊗	3c Rose (65). Slight staining, Bold Blue Negative Crucifix cancel (not tied), matching Montgomery Ala., pmk. on Bright Yellow Cover, Neat Grocer's Corner Card, flap mend, Rare, Judd notes on back "A rare Ku Klux Klan item" (Photo)	E.VII
1275	⊗	3c Rose (65). Tied by Cork, Baltimore, Md. pmk. on Bright Orange Cover With Reptile & "Old Secesh." Patriotic Corner Card , tiny cover tear, Scarce & Unusual	E.VI
1276	⊗	3c Rose (65). Tied by Grid, Albany, N.Y. pmk. on Satirical Patriotic Cover Showing Dancing Black Man in Minstrel Outfit, "I'm glad I'm not in Dixie! Hooray! Hooray!" Impt below, "Due 3" for forwarding postage, slight aging, A Rare Design From the Wyman the Ventriloquist Corresp.	E.VII
1277	⊗	3c Rose (65). Average Grid of Tiny Dots cancel, tied by Small St. Louis Mo. pmk. on Satirical Patriotic Cover Showing Jeff Davis (?) Speaking To Two Jackasses, "Man - Asses - Gap" Impt. Below, slight aging, Rare Design (Photo)	E.VIII
1278	⊗	3c Rose (65). Tied by Cork, "St. Louis Mo." pmk. & Str. Line "Steam 2" Another Full Strike at L. on slightly reduced Cover to Vt., stamp also tied by Large Blue Oval "Department of The Interior Pension Office Jul 15 1879," Scarce & Unusual	E.VI
1279	⊗	3c Rose (65). Just tied by " Post Office Business " Double Circle on Fresh, slightly reduced, Orange Cover, N.H. Town pmk., Rare	E.V
1280	⊗	3c Rose (65). Small faults, tied by Green Target , matching "Vincennes Ind" Double Circle pmk. on Small Cover To Ky., Scarce.....	E.V
1281	⊗	3c Rose (65). Three Covers, All tied by Str. Line Town pmks., incl. "Denison, Iowa," "West Northfield Mass" & Blue "Chattanooga Tenn" (Union Army Cancel), Fine-Very Fine Lot, Very Scarce.....	E.VIII
1282	⊗	3c Rose (65). Three Illustr. Ad Covers , incl. Buckeye Mower, Sailing Ship & Early Fire Engine (Red), last tiny edge faults, Hand-some Lot.....	E.VIII
1283	⊗	3c Rose (65). Four Covers, " 5 ", " 10 ", " 15 " & " 24 " Numeral Cancels (last in Blue), the "15" cover with couple mended cover corner tears, o/w Fine-Very Fine	E.VII

1284	✉	3c Rose (65). Four Illustr. "College" Covers, three Illustrate The Edifices, other Overall Orange V.M.I. Type, Generally Fine-Very Fine	E.VII
1285	✉	3c Rose (65). Four Covers, All With Same "D. Pomroy" Heat Regulator Illustration (One in Red) but Otherwise Different, one stamp tied by Bold Holliston Mass. Negative "H", one by Blue "Paid 3", another by Brown Town, Very Attractive Lot	E.VIII
1286	✉	3c Rose (65). Five Diff. Fancy Shield Covers (One With Mourning Border), Four Are Exceptionally Bold Strikes, Beautiful & Very Scarce Lot	E.IX
1287	✉	3c Rose (65). One Volume Collection of 63 Covers, incl. Illustr. & Ad Covers, Stars, Green Town, Paid 3, Quaker Date, Shield (U.S. Nickel), Telegraph Cos., etc., also some Grills, a Pink (No. 64) & some Rose Pinks (No. 64b), Generally Fine-Very Fine, Attractive Lot.	E.XII
1288	✉	3c Rose (65). One Volume Collection of 110 Covers, incl. Clover, Geometrics, Fancys, Patent, Heart, Leafs, Letters, Range of Towns, etc., Generally Fine-Very Fine	E.X
1289	✉	3c Rose (65). One Volume Collection of 122 Covers, incl. Albany Patent, Blue Chicago Supplementary, Odd Town Names, Railroads, Balloon Types, Pairs (Some Fancy), Numerals, Auxillary Markings such as "Dead Letter Office," "Advertised," "Unclaimed," "Mis-sent" etc., Generally Fine-Very Fine, Useful Lot.....	E.X
1290	★	3c Lake (66). Fresh o.g., Much Better Than Usual Centering, reperfed at L., o/w Very Fine, with P.F. Certificate (Photo)	1,650.00
1291	★	3c Lake (66). Fresh, o.g., Fine, Scarce Stamp (Photo)	1,650.00
1292	★	5c Buff (67). Beautiful Color, Well-centered, tiny repaired tear at T.R., o/w Very Fine (Photo)	4,000.00
1293		5c Buff (67). Town pmk., small corner crease & couple nibbed perfs., o/w Very Fine	375.00
1294	★	10c Dark Green (68a). Well-centered, Large Margins, Deep Rich Color, Part o.g., h.r., Extremely Fine (Photo)	265.00
1295	✉	10c Green (68). Two Covers (One "August" Shade), one Cal. to N.Y., other to Canada, Red Box "U.S. Paid 10" & Neat "Oil Vitriol Works" Corner Card, former couple stains, o/w Fine-Very Fine	E.V
1296		2c-12c 1861 Issue (68 two, 69, 73 two). Used, One No. 68 Negative "OK" cancel, other No. 68 Blue cancel, One No. 73 Red cancel, virtually all small faults, o/w Very Fine-Extremely Fine, Most with P.F. Certificates.....	163.50
1297	★	2c-24c 1861 Issue (68a, 73 four, 77, 78a). Fresh, majority small faults, o/w Fine-Very Fine, Three Diff. with P.F. Certificates	E.XI
1298	★	12c Black, 30c Orange (69, 71). Well-centered, former small thin, latter reperfed at R., o/w Very Fine	900.00
1299	★	90c Blue (72). Fresh, Well-centered, o.g., reperfed at L., o/w Very Fine, with P.F. Certificate (Photo)	1,200.00
1300	★	90c Blue (72). Well-centered, Fresh, thin spot & small corner repair, o/w Very Fine, Scarce (Photo)	1,200.00
1301	✉	2c Black (73). Well-centered, tied by New Haven, Ct. pmk. & Negative Star of David on Drop Letter Cover With Attractive Ad at L. for Transportation Tickets & Insurance, incl. "Western Railway, California", Extremely Fine	E.VI
1302	✉	2c Black (73). Beautifully Centered, tied by Philada Pa. "Post Office" pmk. on Pink Overall Piano Dealer's Ad Drop Letter Cover , Extremely Fine	E.VI



1005



1006



1007



1008



1009



1010



1011



1012



1013



1014



1015



1019



1020



1021



1022



1023



1027



1030



1028



1037



1038



1039



1040



1063



1136



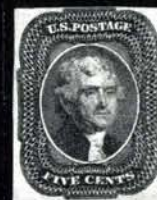
1137



1138



1139



1140



1141



1142



1143



1145



1146



1147



1148



1155



1159



1160



1161



1162



1168



1169



1171



1172



1173



1181



1182



1204



1205



1207



1208



1209



1212



1213



1217



1218



1219



1220



1221



1225



1226



1227



1228



1229



1230



1231



1233



1234



1236



1252



1253



1254



1290



1291



1292



1294



1299



1300



1310



1311



1313



1314 EX



1318



1320



1321



1322



1326 EX



1327



1328



1329



1333



1335



1336



1339



1340



1341



1342



1343



1344



1345



1346



1347 EX



1350 EX



1351 EX



1352 EX



1368



1369



1370



1371



1372



1373



1374



1375



1376



1377



1378



1379



1380



1381



1382



1383



1384



1385



1386



1387



1389



1390



1391



1392



1395



1396



1397



1398



1399



1400



1401



1406 EX



1410



1411



1412



1413



1416



1418



1422 EX



1424



1425



1426



1428



1429



1430



1431



1432



1433



1435



1439 EX



1441



1442



1443



1444 EX



1445



1446



1447



1448



1454



1460



1461



1466 EX



1468 EX



1470 EX



1472



1474



1475



1476



1477



1478



1479



1480



1481



1482



1483



1484



1485



1486



1487



1488



1491



1495



1496



1497



1498



1499



1500



1501



1502



1503



1504



1505



1506



1510





1511



1512



1513



1514



1515



1516



1518



1519



1523 EX



1524



1525



1526



1527



1528



1529



1530



1531



1532 EX



1536



1539



1540



1541



1542



1543



1544



1545



1546



1547



1548



1550



1551 EX



1552



1554



1556



1557



1558



1559



1560



1563



1565



1567 EX



1570



1572



1573



1574



1575



1576



1577



1578



1580



1581



1582



1583



1587



1588



1589



1591



1584



1593



1592



1594



1596



1597



1595



1598



1599 EX



1602



1603



1604



1605



1606



1607



1610



1612 EX



1611



1613



1614



1623



1624

F10208



1626



1635



1627



1628



1615



1630



1631 EX



1632 EX



1636



1642



1643



1644 EX



1645 EX



1650



1651



1658



1662 EX



1664



1667



1668



1674



1675



1669



1679



1681



1683 EX



1684 EX



1685 EX



1660



1692



1698



1701



1702



1686



1687 EX



1694



1695



1705



1706



1703



1708



1709



1707



1711



1712



1720



1722



1726



1727



1718



1659



1537



1616



1619



1652 EX



1600

1017

ESTD
J. L. Lewis Esq
(3)



Miss Mary J Smith
Care of Hon Wm Hale

1016

1024

BALTIMORE MD
Miss Jane Smith -
Care Second Bartlett



RECEIVED
OCT 11
New York City

Mr. J. D. Woolsey Esq.
New York City



1018

1025

P. H. White Esq



Mr. W. H. Mason

1026

Open P. O.



Mr. S. Hutchins & Co.
Providence

1033

1051



Mr. C. Crosby Esq



Augustus F. Farness
Wells River

1035



Mr. R. A. P.
Columbia
Wayne



1036



Thos Rosser Esq
28 Platt St.
New York



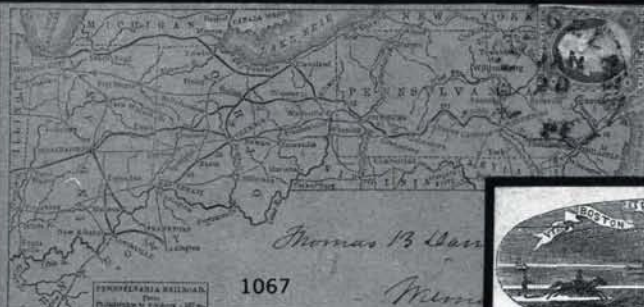
1041



1066

*Miss Crane & Wesson**W. Buchanan Carroll St*

1065



1067

*Thomas B. Lane**Mem*

1071



1078

*Edward E. Baker,
Atty at Law,
Cornwall, Pa.*

1068



1089

*Prof. H. Stige Mathis
Madison Georgia*

1080



1091

*Mr. J. H. Ingersoll
Danville**Maine*

1081

*W. D. Graham Esq
Americus, Ga.*

1093

*W. J. C. Evans
Macon*

1090

*W. J. Crosby
Garnaville
Clayton Co Iowa*



1098

W. D. L. & Co.

1096

W. D. L. & Co.

1101

*W. D. L. & Co.**Northwell Shaw, Esq.,
Boston*

1103

*W. D. L. & Co.*

1099



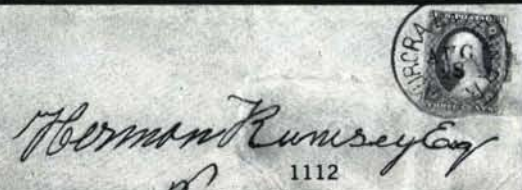
1105



1109

*Mrs. C. Cornstock* 1108

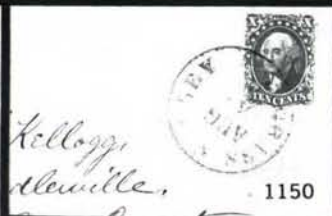
1111

*Herman Runsey Esq.* 1112

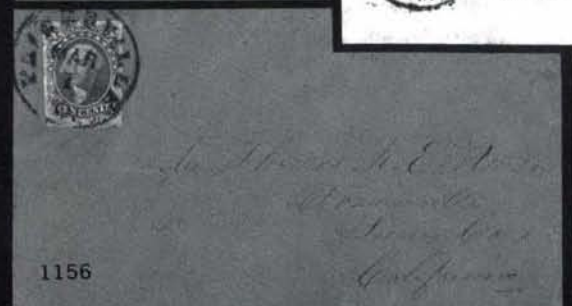
1144



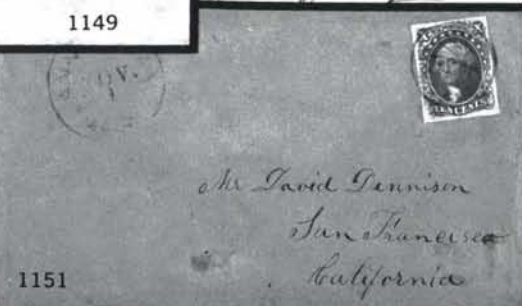
1149



1150



1156



1151

*Mr. David Garrison
San Francisco
California*

1157

Wm. C. O. Peterson

1164

of the Hon. District Court



1165

Wm Noel Sainsbury Esq
29 Cambridge
London

1166



Elizabeth Buckingham
Clinton

1176



J. B. Fos
Mail he
Cen to

1177



1178

First Premium and Diploma awarded at the Connecticut State Fair, in October, 1859.

Wm Jackson Esq
New-London, Conn.

1185



1183

Wm Jackson Esq
New-London, Conn.

1186



1190



THOS. HOYT & CO., 23 & 25 PRINCE ST., N. Y.

Wm A. B. Sam
Manorville
L. E.

1191



John Stattenius Esq
Cincinnati
Ohio

1195



1222



1196

Miss Nancy B...

1238

*N S Worden Esq*

1239



State of New York

*Dr. A. Munsee*

1243

*J. H. Moore*

1245

*Mrs Geo. I Spaulding*
Brookline

1246

*Mr. J. H. Moore*

1258



1266

*Nov 20/60**Rev L. Stowe**Milton**Mill Post-Market**Mrs. Edward Thatcher*
Wilmington Del
Newport Pike gate 21

1262

GAY & HARDIE,
Wholesale & Retail Grocers,
97 Commerce Street,
Montgomery, Alabama.

1271

*Letter of Board of Comm. Mass*

1274

Wm. L. Hardie

1315

Bringing up the ...
London
*England**J. G. White, engr. Publ. Rev. and Banknote Co., N. Y.*

MAN-ASSES-GAP

1277

*John. Gene*
Warren
Greenball Co
Ohio



1304



1325

STEVENS HOUSE,
17, 19, 21, 23, 25, & 27 BROADWAY,
NEW YORK.
GEO. K. CHASE & CO. PROPRIETORS.

1332

J. F. B.

1333



1330



1358

Dr. Francis S. Colley,
at home



1348



1359

Rev. B. Olcott Esq
2nd Courant



1355



1404



1440



1509

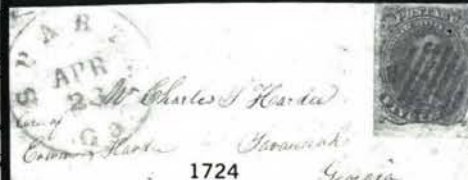
Baby Department,
BUREAU OF MEDICINE AND SURGERY.



1689

Medical Inspector
Edward S.
Navy
D.

1690



1724



1717

1303	⊗	2c Black (73). Well-centered, tied by Grid of Squares on Circular Rate Cover With Fancy Green Illustr. Corner Card Showing Burring Machine, Overall Illustr. in Blue on back of another Burring Machine & Rollers, slight staining & small flap repair, o/w Very Fine, Scarce.....	E.VII
1304	⊗	2c Black (73). Average, tied by Grid on Cover With Fancy Blue Oval "Camden & Amboy R. Road Company" Corner Card With Old Train in Center , without flap, Scarce & Attractive (Photo)	E.VII
1305	⊗	2c Black (73). Average, tied by Large Circle of Wedges on Yellow Circular Rate Cover With Ad For "Patent Autoperipatetikos," Male & Female Figures etc., Unusual.....	E.VII
1306	⊗	2c Black (73). Three Covers, One tied by Black N.Y. Carrier, Very Fine.....	E.VIII
1307	★	2c, 15c Black (73, 77). Fresh, Former o.g., reperfed, o/w Fine-Very Fine.....	550.00
1308	⊗	2c Black (73, 87, 93). Nine Covers (five, two & two respectively), incl. Brown & Red Brown N.Y. City pmks., "Silver Plated Coffin & Casket Trimmings" Corner Card, etc. Very Good - Very Fine.....	E.VIII
1309	⊗	2c Black (73, 93). Three Covers, two of latter, Stamps Well-centered, few trivial faults, o/w Very Fine-Extremely Fine.....	E.VIII
1310	⊗	3c Scarlet (74), Part o.g., h.r., repaired (small piece added), Fine Centering, Rare Stamp..... (Photo)	4,500.00
1311	★	5c Red Brown (75). Fresh, Vivid Color, few trivial perf. creases, o/w Very Fine..... (Photo)	1,200.00
1312		5c Red Brown (75). Partly clear Blue "Wells Fargo & Co." pmk. (bit of ms.) trivial corner crease, o/w Fine, Very Scarce.....	510.00
1313	★	5c Brown (76). Beautifully Centered, Bright Color, Part o.g., tiny tear & small corner crease, Extremely Fine Appearance, with P.F. Certificate..... (Photo)	300.00
1314		15c Black, 24c Lilac (77, 78). Former Green Quartered Cork cancel, corner repair, latter Blue Bird Fancy cancel, faults, Very Fine Strikes, Rare Especially on Higher Denominations..... (Photo Ex)	E.IX
1315	⊗	24c Gray (78b). Remarkably Well-centered, tied by Circle of Wedges & Red "London Paid" on Small 1866 Cover to England, Red "N. York Br. Pkt. Paid 19", Very Fine..... (Photo)	E.VIII
1316	⊗	24c Lilac (78). Average, Used With Horiz. Pair 3c Rose (65), faults, tied by Crossroads, Red N.Y. & Blue French Transits on 1868 Folded Cover from New Orleans to France, Attractive.....	E.VIII
1317	★	24c Lilac, Grayish Lilac (78, 78a). Fresh Colors, Nice Margins, former faint toning on back only, latter reperfed at L., o/w Very Fine, latter with P.F. Certificate.....	530.00

1867 GRILL ISSUES

1318		3c Rose, Grilled All Over (79). Unusually Fresh, o.g., reperfed at L., some irregular perfs as always, o/w Fine, with P.F. Certificate..... (Photo)	650.00
1319		3c Rose, C. Grill, 2c Black, Z. Grill (83, 85B). Former Town pmk., latter Blue cancel, light creases, Very Fine Appearance.....	735.00
1320		3c Rose, D. Grill (85). Rosette cancel, Very Fine, with P.F. Certificate..... (Photo)	425.00
1321	★	3c Rose, Z. Grill (85c). Part o.g., small thin spot, o/w Fine, Rare, with P.F. Certificate..... (Photo)	3,500.00

1322 ★	3c Rose, Z. Grill (85c). Fresh, centered to B., perfs. slightly in, Large Part o.g., single nibbed perf., o/w Fine, with P.F. Certificate (Photo)	3,500.00
1323	1c-15c E. Grills (86, 90, 91). Used, faults (small on first two), o/w Fine-Very Fine	885.00
1324	1c-15c E., F. Grills (86, 93 three, 96, 97 two, 98). Used, Cancels on No. 93 incl. Blue Circle of V's & Red Carrier , No. 98 Framed "Paid" cancel, virtually all small faults, o/w Fine-Extremely Fine, most with P.F. Certificates	822.50
1325 ☒	2c Black, E. Grill (87). Used With 1c Blue (156) , tied by Negative "3" in Circle & Boston Mass. pmk. on Neat Fresh Cover, Very Fine, Scarce Mixed Issues Cover, Late Use of the Black Jack, with 1878 enclosure (Photo)	E.VII
1326 ★	2c Black, 3c Rose, E., F. Grills (87, 88 var, 93). Fresh, 3c Thin paper var, first Very Fine, others small faults, o/w Extremely Fine (Photo Ex)	680.00
1327 ★	10c Green, E. Grill (89). Brilliant o.g., h.r., Beautiful Large Margins, Rich Color, tiny thin spot, Extremely Fine Appearance with P.F. Certificate (Photo)	1,200.00
1328 ★	10c Green, E. Grill (89). Fresh, Two Huge Margins, T. Perfs. touch, tiny crease, o/w Fine (Photo)	1,200.00
1329 ★	15c Black, E. Grill (91). Fresh, o.g., some improved perfs. at R., & couple tiny trivial purple ink specks, o/w Fine, Rare, with P.F. Certificate (Photo)	3,000.00
1330 ☒	2c Black, F. Grill (93). Boldly tied by so-called "Turtle Back" Oval of "V" 's on Remarkably Fresh Orange Circular Rate Cover, Very Fine, with enclosure (Photo)	E.VII
1331 ★	2c Black, 3c Red, F. Grills (93 two, 94). Fresh, one 2c & 3c Part o.g., small faults, o/w Very Fine-Extremely Fine, with P.F. Certificates	325.00
1332 ☒	3c Red, F. Grill (94). Tied by New York pmk. & Heart With Tiny Shield in Center on Yellow Hotel Corner Card Cover, Fine, Very Scarce (Photo)	E.VIII
1333 ★	5c Brown, F. Grill (95). Wonderfully Well-centered, slightly soiled, o/w Extremely Fine, with P.F. Certificate (Photo)	850.00
1334 ★	5c Brown, F. Grill (95). Blue Target cancel, tiny corner crease, o/w Very Fine, with P.F. Certificate	230.00
1335 ★	10c Green, F. Grill (96). Extra Large Margins, Pretty Shade, small thin spot, Very Fine Appearance, with P.F. Certificate (Photo)	650.00
1336 ★	10c Green (96). Horiz. Pair , Vivid Color, o.g., Very Fine, with P.F. Certificate (Photo)	1,350.00
1337	10c-30c F. Grills (96, 97, 99, 100). Used, small faults, o/w Very Fine	1,075.00
1338 ☒	12c Black, F. Grill (97). Beautiful Margins & Centering, Red Brown "New York Paid All" transit mark on 1868 cover to London, small crease at B.L. of stamp, small part of back flap replaced, o/w Very Fine	200.00
1339 ★	15c Black, F. Grill (98). Fresh, pressed out diagonal crease, Extremely Fine Appearance (Photo)	675.00
1340 ★	24c Gray Lilac, F. Grill (99). Fresh, Extraordinarily Well-centered, Large Part o.g. (slightly disturbed from hinge removal), reperfed at L., couple partly nibbed perfs, o/w Extremely Fine, with P.F. Certificate (Photo)	1,250.00
1341	24c Gray Lilac, F. Grill (99). Rich Color, Rosette Cancel, small faults, o/w Fine	450.00
1342	30c Orange, F. Grill (100). Bold Str. Line "Paid" cancel, tiny pinhole, reperfed at L, o/w Fine (Photo)	400.00

1343 ★	90c Blue, F. Grill (101). Fresh, Two Huge Margins, small natural inclusion, reperfed at R., o/w Very Fine.....	(Photo) 4,000.00
--------	---	-------------------------

1344	90c Blue, F. Grill (101). Used, Large Margins, Well-centered, tiny thin spot, Extremely Fine Appearance, with P.F. Certificate ..	(Photo) 950.00
------	--	-----------------------

1861 RE-ISSUES

1345 ★	15c Black, Re-Issue (108). Few perfs. slightly blunted by scissors separation, tiny margin tear at B., o/w Very Fine	(Photo) 3,000.00
1346 ★	30c Brownish Orange, Re-Issue (110). Rich Color, Well-centered, small natural inclusion, reperfed at L., o/w Very Fine	(Photo) 4,500.00

1869 PICTORIAL ISSUE

1347 P	2c-30c Pictorials, Plate Proofs on India, Card (113P3, 113P4, 116P3, 116P4, 120P4, 121P3, 121P4). Also incl. No. 40P4, some with faults, o/w Very Fine Lot.....	(Photo Ex) 1,155.00
1348 ☒	1c Buff, 2c Brown (112, 113). Both Well-centered, tied by Targets, Holly Springs pmks. on Neat Cover, Very Fine, Very Scarce .	(Photo) E.IX
1349 ★	1c-3c Pictorials (112-114). Fresh, 2c o.g., reperfed, o/w Fine-Very Fine	520.00
1350	1c-24 Pictorials (112, 115, 118-120). Used, 10c Blue cancel, 24c Red cancel, small faults, Very Fine Appearance, All but 6c with P.F. Certificates	(Photo Ex) 1,145.00
1351	1c-24c Pictorials (112, 115, 116, 118, 120). Used, Well-centered, 10c Leaf cancel, 24c small repaired tear, others small faults, o/w Very Fine-Extremely Fine, 6c & 24c with P.F. Certificates.....	(Photo Ex) 945.00
1352	1c-24c Pictorials (112, 115, 118 two, 120). Used, 1c & 6c Red cancels, Most Well-centered with Large Margins, 24c small repair, others small faults, o/w Very Fine-Extremely Fine, All with P.F. Certificates except one No. 118	(Photo Ex) 1,147.50
1353 ☒	2c Brown, Vertical Half Used as 1c (113c). Used With normal 2c (slightly overlaps cut edge) & tied by Bold Rimless Grid, Charlottesville, Va. pmk. on Orange Cover to Lynchburg, normal 2c small tear, cover expertly repaired along T., Very Rare, Unpriced, with enclosure.....	(Photo) E.VII
1354 ☒	2c Brown (113). Two Covers, One tied by Maltese Cross in Circle , other by Blue "Carrier" , former trivial cover toning & tiny tear, o/w Very Fine	E.VII
1355 ☒	3c Ultramarine (114). Tied by Cork, Clear "From Jonesboro Ill. C.R.R." pmk. on Remarkably Fresh Orange Cover, Very Fine, Rare	(Photo) E.VI
1356 ☒	3c Ultramarine (114). Bold Large Blue "B" cancel (not tied), matching "Belvidere Ill." pmk. on Neat Narrow Rectangular Cover, Very Fine.....	E.VI
1357 ☒	3c Ultramarine (114). Tied by Bold Solid Star cancel, Chambersburgh, Pa. pmks. on Fancy "Franklin Repository" Corner Card Cover With Framed Ben Franklin Portrait, bit reduced at R. & slight toning, o/w Very Fine.....	E.V

1358	✉	3c Ultramarine (114). Rich Color, tied by Small Leaf cancel, Macon, Ga., pmk., on Gray Overall Seymour-Blair Campaign Cover , Fine, Scarce, with Enclosure..... (Photo)	E.VIII
1359	✉	3c Ultramarine (114). Tied by Cork & New York pmk. on Fancy Illustr. "Hearth & Home" Cover , negligible toning, Fine.. (Photo)	E.VI
1360	✉	3c Ultramarine (114). Tied by Odd-shaped Green Circle , matching partial Murfreesborough, Tenn. pmk. on Cover to Clarksville, Tex., trivial toning, Fine, Scarce	E.VII
1361	✉	3c Ultramarine (114). Tied by Lynchburg Va. Skull & Crossbones cancel (top of skull missing) on Neat Stationer's Corner Card Cover, bit reduced at R., Fine	E.VI
1362	✉	3c Ultramarine (114). Tied by Two Strikes of Tiny Negative Masonic Trowels , Pittston, Pa. pmk. on Neat Orange Cover, repaired flap tear & minor filing spindle hole, o/w Fine, Rare.....	E.VI
1363	✉	3c Ultramarine (114). Average, tied by Blue Shield , matching Gale-na, Ill. pmk. on Fresh Orange Cover, neat docketing at L., Scarce & Attractive	E.VI
1364	✉	3c Ultramarine (114). Extra Large Margins, trivial corner perf. crease, tied by " 30" in Circle , "Oconomowoc Wis" pmk., on reduced cover to Nashota, Rare, Judd notes on back "Unique".....	E.VII
1365	✉	3c Ultramarine (114). Two Covers, each With Fancy Printed Address Areas, one with Dove & Ribbon in Gray, other Three Silver Frames With Red "M", latter tied by Venice Centre, N.Y. Str. Line "Paid", former tied by Small Blue Quartered Corks, Pretty Lot	E.VI
1366	✉	3c Ultramarine (114). Collection of 26 Covers, incl. "Dutch Flat Cal.", Negative "EC", Illustr., Corner Cards, Magenta, Stars, Pair, Strip of Three, "S" in Circle, Heart, Magenta, Red, etc., Generally Fine-Very Fine	E.X
1367	★	3c Ultramarine, 1c Buff, Re-Issue (114 two, 133). Most Part o.g., No. 133 h.r., each small fault, o/w Fine-Very Fine, two with P.F. Certificate	470.00
1368	★	6c Ultramarine (115). Rich Vivid Color, o.g., h.r., reperfed at L., o/w Very Fine	775.00
1369	★	6c Ultramarine (115). Fresh, o.g., minor perf. tip creases, staining removed at T.R., o/w Very Fine, with P.F. Certificate which states "regummed" which in our opinion is incorrect	775.00
1370	★	6c Ultramarine (115). Fresh, Large Part o.g., reperfed at L., o/w Fine, with P.F. Certificate.....	775.00
1371	★	10c Yellow (116). Fresh, Ample to Huge Margins, tiny thin speck, Very Fine Appearance	850.00
1372		10c Yellow (116). Eight Point Star cancel, Extremely Fine .. (Photo)	95.00 +
1373	★	12c Green (117). Fresh, Rich Color, o.g., h.r., reperfed at L. & faint crease, o/w Very Fine	750.00
1374	★	12c Green (117). Choice Margins, Nicely Centered, somewhat disturbed o.g., negligible toning, reperfed at L., o/w Very Fine, with P.F. Certificate.....	750.00
1375	★	15c Brown & Blue, Ty. I (118). Fresh Colors, Part o.g., reperfed at R., o/w Fine, Scarce, with P.F. Certificate	1,750.00
1376	★	15c Brown & Blue, Ty. II (119). Well-centered, tiny repaired tear, ironed out crease, o/w Extremely Fine, with P.F. Certificate .. (Photo)	850.00
1377	★	15c Brown & Blue, Ty. II (119). Fresh, Very Fine.....	850.00
1378	★	24c Green & Violet (120). Partly disturbed o.g., Fresh, Rich Colors, reperfed at L., o/w Very Fine, Rare, with P.F. Certificate	2,500.00
1379	★	30c Blue & Carmine (121). Wonderfully Fresh, Wide Margins, o.g., reperfed at L., o/w Extremely Fine	2,250.00
1380	★	30c Blue & Carmine (121). Fresh, Two Large Margins, Very Fine... .. (Photo)	2,250.00

1381 ★	90c Carmine & Black (122). Fresh, Part o.g. (some disturbance from hinge removal), reperfed at R., o/w Very Fine, Scarce(Photo) 7,000.00	
1382	90c Carmine & Black (122). Used, Well-centered, minute margin tear, Extremely Fine Appearance, with P.F. Certificate.....(Photo) 1,200.00	
1383	90c Carmine & Black (122). Used, small tear, Very Fine Appearance, with P.F. Certificate.....(Photo) 1,200.00	
1384	90c Carmine & Black (122). Red cancel, tiny corner margin crease, Fine Appearance, with P.F. Certificate(Photo) 1,400.00	
1385 ★	3c Blue, Re-Issue (125). Fresh, Full o.g., Well-centered, reperfed at L., o/w Very Fine, Remarkable Quality for this Rare stamp despite the listed flaws, with P.F. Certificate(Photo) 2,750.00	
1386 ★	6c Blue, Re-Issue (126). Fresh, o.g., Choice Margins & Centering, side perfs. slightly blunted from scissors separation, some touched up surface scrapes, o/w Extremely Fine, with P.F. Certificate(Photo) 850.00	
1387 ★	15c Brown & Blue, Re-Issue (129). Fresh, disturbed o.g. from hinge removal, Fine(Photo) 1,300.00	

BANK NOTE ISSUES

1388	1c-3c Bank Note Grills (134-136). Seven 2c, 31 3c, variety of Cancels, incl. 2c & 3c Strips of Three & 3c Strip of Four, Mostly Fine-Very Fine..... E.VIII	
1389 ★	3c Green, Grill (136). Fresh, Nearly Full o.g., Very Fine(Photo) 265.00	
1390 ★	3c Green, Split Grill (136 var). Fresh, Part o.g., h.r., Nice Margins, tiny corner margin crease, Very Fine Appearance, with P.F. Certificate(Photo) 285.00	
1391 ★	6c Carmine, Grill (137). Fresh, redistributed o.g., couple light bends, Fine, with P.F. Certificate.....(Photo) 1,500.00	
1392 ★	6c Carmine, Grill (137). Part o.g., slightly stained, o/w Fine, with P.F. Certificate(Photo) 1,500.00	
1393	6c Carmine, 10c Brown, Grills (137 two, 139). Used, one of former with single perf. added, others minor corner creases, o/w Very Fine, one of former & latter with P.F. Certificates..... 900.00	
1394	6c Carmine, 15c Orange, Grills (137, 141). Used, former N.Y.F.M. cancel, reperfed at L., o/w Very Fine, latter small faults incl. tiny scuff, o/w Fine..... 925.00	
1395 ★	10c Brown, Grill (139). Beautifully Centered, Vivid Color, Extremely Fine.....(Photo) 1,350.00	
1396 ★	10c Brown, Grill (139). Well-centered, lightly soiled, pressed out crease, o/w Very Fine, with two P.F. Certificates.....(Photo) 1,350.00	

1397 ★	12c Dull Violet, Grill (140). Unused, perfs. slightly in at B., tiny thin, small corner creases & reperfed at L., Rare Stamp, with P.F. Certificate which notes only "a small thin spot"(Photo) 12,000.00	
--------	--	--

1398	12c Dull Violet, Grill (140). Circle of Wedges cancel, light crease, Very Fine Appearance, with P.F. Certificate(Photo) 1,500.00	
------	---	--

1399 ★	90c Carmine, Double Grill (144 var). Fresh, small thin spot, o/w Very Fine, Rare, with P.F. Certificate, Double Grill Listed but Unpriced Used, Not Listed Unused(Photo) 5,500.00 +	
--------	--	--

1400	90c Carmine, Grill (144). Quartered Cork cancel, reperfed at R., o/w Very Fine(Photo) 700.00	
------	---	--

1401 ★	1c Ultramarine (145). Vert. Pair , Fresh, o.g., tiny paper inclusion in B. stamp, Very Fine, with P.F. Certificate(Photo)	310.00
1402 ★	1c-12c 1870 Bank Notes (145-148, 151) . Fresh, 1c, 3c & 12c Part o.g., small faults, o/w Very Fine.....	1,015.00
1403	1c-10c 1870-82 Bank Notes (145-148, 156-159, 178, 179, 182-186, 205-207, 209) . Attractively Mounted Cancellation Collection , Approx. 1250 Stamps, incl. Nos. 145(10), 146(38), 148(12), 157(16), 159(34), 178(44), 179(13), 185(21), 186(24), 205(13), Cancels incl. NYFM's, Geometrics, Colors, Stars, Numerals, Leafs, Crosses, Open Book, Letters, "EAH", "72", "75" & "76" Yeardates, "24", Monograms, etc., Fine-Very Fine Lot, Very Attractive.....	E.XII
1404 ☒	15c Bright Orange (147) . Fresh Color, Fine, Used With 3c Green (147) , minor tear, tied by Targets, " Winnebago Agency Min. " pmk. on Orange Reg. Cover to Wash., D.C., addressed "Bid for Winnebago Indian trust Lands," etc., Very Scarce Usage.....(Photo)	E.VII
1405 ★	6c Carmine (148) . Fresh, disturbed o.g., Very Fine, with P.F. Certificate stating reperfed at B. with which we dispute.....	200.00
1406	6c Carmine, Dull Pink, Pink (148 three, 159 two, 186) . Cancels incl. Two Shields, Negative Intertwined Star of David, "Paid", Negative 3 in Fancy Frame, N.Y.F.M. Ty. A9, Very Fine Strikes(Photo Ex)	E.VII
1407	7c Vermilion (149) . Three, Used, Well-centered, one with small corner crease, o/w Very Fine, each with P.F. Certificate.....	150.00
1408 ☒	10c Brown (150). Two Singles & Horiz. Pair Used with 2c Red Brown (146) tied by Odd Grids on Aug. 1872 Folded Cover to France, also incl. No. 179 Pair on Cover to France, some toning, etc., Scarce Lot	E.VI
1409	7c-90c 1870-73 Bank Notes (151, 153 two, 155 two, 160) . Four with N.Y.F.M. Cancels (Both Nos. 153 Red) except No. 155 Unusual Double Circle cancel, small faults, o/w Fine-Extremely Fine Lot, each with P.F. Certificate.....	650.00
1410 ★	15c Bright Orange (152) . Fresh, Huge T. & B. Margins, o.g., h.r., reperfed at B., o/w Very Fine.....(Photo)	475.00
1411 ★	24c Purple (153) . Exceptional Margins & Centering, Gorgeous Deep Rich Color, partially redistributed o.g., couple tiny corner perf. creases, o/w Extremely Fine, with P.F. Certificate(Photo)	550.00
1412 ★	24c Purple (153) . Slightly toned, reperfed at R., o/w Fine, with P.F. Certificate(Photo)	550.00
1413 ★	24c Purple (153) . Fresh, reperfed at R., o/w Fine, with P.F. Certificate.....(Photo)	550.00
1414 ★	24c Purple (153) . Part o.g., lightly stained, o/w Fine, with P.F. Certificate	550.00
1415	24c Purple (153) . Five with Diff. NYFM cancels (A19, A20, G5 in Red, G6 & G18), small or minor faults, Very Fine Strikes, Four with P.F. Certificates.....	400.00
1416	24c Purple (153). Horiz. Pair , Bold Circle of V's cancel, R. stamp slight creases, o/w Very Fine, with P.F. Certificate(Photo)	185.00
1417	24c-90c 1870-71 Bank Notes (153-155) . Used, Well-centered, 24c partial Red NYFM cancel, 24c tiny thin, 90c small faults, o/w Very Fine-Extremely Fine.....	362.50
1418 ★	30c Black (154) . Fresh, o.g., minor h.r., reperfed at R. & B., o/w Fine, with P.F. Certificate.....(Photo)	900.00
1419 ★	2c-10c 1873 Bank Notes (157 two, 158, 159, 161 two) . Fresh, All o.g. or Part o.g. except one of last, small faults, o/w Fine-Very Fine, one 2c, 3c & one 10c with P.F. Certificates	910.00

1420	⊗	2c Red Brown, 3c Green (158, 184, 210). On Separate Covers With Str. Line Town pmks., incl. Purple "Louisburg, Kan. Dec. 25, '80", "Franklin Conn May 17 1875" & "Purple" Trenton, Hitchcock Co./Nebraska, "May 17 1885/G.G. Burton P.M.", Fancy Purple Sawtooth Oval W. Va backstamp, Fine Lot, Scarce.....	E.VI
1421		7c Vermilion, 15c Yellow Orange (160, 163 four). Used, former with NYFM cancel, latter Diff. Positive or Negative Letter cancels, small faults, Very Fine Strikes, former & two of latter with P.F. Certificates	295.00
1422	★	10c Brown, 12c Blackish Violet (161, 162). Fresh, disturbed o.g., latter Well-centered, reperfed, o/w Very Fine-Extremely Fine, former with P.F. Certificate	(Photo Ex) 750.00
1423	⊗	10c Brown (161, 209). Seven Covers, two of former, Six are Used with 2c or 3c Stamps (Reg. Rates), three of which are to Same Addressee (Diff. Addresses) All Mailed Same Day, Contents Refer to Real Estate Transaction (one with return receipt card), another with County pmk., the single No. 161 Used to France from Calif., Generally Fine Lot	E.VI
1424	★	12c Blackish Violet (162). Fresh, o.g., Deep Rich Vivid Color, h.r., trivial natural dry print specks, Very Fine.....	(Photo) 550.00
1425	★	15c Yellow Orange (163). Huge T. & B. Margins, Fresh, Very Fine..	(Photo) 525.00
1426	★	15c Yellow Orange (163). Fresh, disturbed o.g., Huge B. Margin, reperfed at R., o/w Very Fine, with P.F. Certificate.....	(Photo) 525.00
1427	★	30c Gray Black (165). Well-centered, Fresh, o.g., Extremely Fine	600.00
1428	★	30c Gray Black (165). Fresh, Large Part o.g., light crease, Very Fine Appearance, with P.F. Certificate	(Photo) 600.00
1429	★	30c Gray Black (165). Fresh, trivial corner perf. crease, o/w Fine	(Photo) 600.00
1430	★	90c Carmine (166). Exceptionally Fresh, o.g., Very Fine & Choice, with P.F. Certificate.....	(Photo) 1,250.00
1431	★	90c Rose Carmine (166). Fresh, Vivid Color, o.g., h.r., Very Fine & Choice	(Photo) 1,250.00
1432	★	90c Rose Carmine (166). Fresh, Very Fine, with P.F. Certificate	(Photo) 1,250.00
1433	★	90c Rose Carmine (166). Fresh, o.g., Three Huge Margins, tiny perf. faults, Very Fine, with P.F. Certificate.....	(Photo) 1,250.00
1434		90c Rose Carmine (166). Cork cancel, Wide Margins, light crease, Extremely Fine Appearance, with P.F. Certificate	185.00
1435	★	15c Bright Orange, Special Printing (174), Rich Color, trivial corner crease, o/w Very Fine, Rare, with P.F. Certificate.....	(Photo) 7,750.00
1436	★	1c-30c 1875-79 Bank Notes (178, 179, 182, 186, 189, 190). Fresh, o.g. or Part o.g., small faults, o/w Fine-Very Fine, 6c, 15c & 30c with P.F. Certificates	1,450.00
1437	★	1c-15c 1875-88 Bank Notes (178, 182, 189, 205, 208, 215, 216). Fresh, All o.g. or Part o.g. except No. 205, most with small faults, o/w Fine-Extremely Fine, Nos. 178 & 182 with P.F. Certificates	980.00
1438	★	1c Dark Ultramarine (182). T. Margin Horiz. Pair with Part Impt., Fresh, o.g., slightly toned, o/w Fine, with P.F. Certificate	225.00
1439	★	1c-15c 1879 Bank Notes (182 two, 185, 186, 189). Fresh, o.g., Well-centered, one 1c Fine, others small faults, o/w Fine-Extremely Fine, both 1c with P.F. Certificates	(Photo Ex) 970.00
1440	⊗	3c Green (184). Tied by Blue Six Line "Union Pacific/Railroad/Sep/15/1881/Granger Wyo." pmk. on slightly reduced Cover to Vt., Very Scarce Territorial Cover.....	(Photo) E.VI

1441 ★	10c Brown, Double Transfer at T. (187 var). Disturbed o.g., h.r., slight soiling & light corner crease, o/w Fine, Double Transfer Listed but Unpriced Unused..... (Photo)	700.00 +
1442 ★	30c Full Black (190). Fresh, o.g., minor offset on back, tiny pin-hole, o/w Very Fine..... (Photo)	475.00
1443	30c Full Black (190). Immense "Jumbo" Margins, Duplex pmks., Extremely Fine "Gem", with P.F. Certificate..... (Photo)	30.00
1444	30c, 90c 1879-88 Bank Notes (190, 191 two, 218). Used, No. 190 Horiz. Pair, small faults, one No. 191 Red Town pmk., Fine Appearance, others Very Fine-Extremely Fine Appearance, All but one No. 191 with P.F. Certificates..... (Photo Ex)	527.50
1445 ★	90c Carmine (191). Fresh, o.g., rounded corner & reperfed at L., o/w Very Fine..... (Photo)	1,000.00
1446 ★	90c Carmine (191). Fresh, regummed to strengthen a crease, o/w Fine, with P.F. Certificate..... (Photo)	1,000.00

1447 ★	1c Dark Ultramarine, Special Printing (192). Well-centered, Magnificent Margins, small light thinning, Extremely Fine Appearance, Beautiful Rare Stamp, signed Stern, with two P.F. Certificates..... (Photo)	9,000.00
1448 ★	12c Blackish Purple, Special Printing (198). Fresh, Deep Rich Color, Beautifully Centered, Extremely Fine..... (Photo)	4,000.00

1449 ☒	5c Brown (205). On 1885 Cover to England With G.B. 1p Lilac (89) Used as Forwarding Postage, each well tied, bit reduced at L., Fine.....	E.VI
1450	6c Rose, Brown Red (208, 208a). Used Single of Each & Two Horiz. Pairs of former, Well-centered, No. 208 single & R. stamp of one pair small thins, o/w Very Fine-Extremely Fine, all but No. 208a with P.F. Certificates.....	290.00
1451 ★	6c-30c 1881-88 Bank Notes (208a, 216, 217). Fresh, o.g. or disturbed o.g., Well-centered, 6c with natural translucent paper inclusion, others reperfed, o/w Very Fine, with P.F. Certificates.....	615.00
1452 ☒	2c Red Brown (210). Vert. Pair, Purplish Black Shield cancels, matching 1887 "Summit Mountain N.Y." pmk. on Cover With Unusual Pink Hotel Corner Card, bit reduced at R., couple minor cover tears, Scarce & Attractive.....	E.VI
1453	1c-5c 1883-98 Issues (Betw. 210-279B). Attractively Mounted Cancellation Collection, Approx. 800 Stamps, incl. Nos. 211(11), 214(15), 215(16) & 216(12), incl. Numerals, Letters, Stars, etc., Generally Fine-Very Fine.....	E.XI
1454 ★	4c Blue Green (211). Fresh, o.g., Nice Margins, Rich Color, Very Fine..... (Photo)	130.00
1455 ☒	4c Blue Green, Carmine (211, 215). Three Covers, incl. No. 211, natural s.e. Horiz. Strip of Three on Reg. Cover, No. 215 With No. 212 on Pink Overall Ad Cover to Germany, & No. 215 Horiz. Pair Used With two No. 220, Attractive Brown Newspaper Corner Card, Generally Fine Lot, Scarce.....	E.VII
1456 ☒	1c Ultramarine (212). Used on 1c Light Blue, Entire (U114) With "HP" Monogram pmks., 1888 "Holland Patent N.Y. Recd." pmk. to Mass., Fine & Very Scarce.....	E.V
1457 ☒	1c Ultramarine, 2c Green (212, 213). Collection of 32 Corner Card & Illustr. Covers, Wide Variety of Subjects, One With Profile Portrait of Lincoln ("Lincoln Baking Powder"), One With Overall Four Leaf Clovers in Green, Fine-Very Fine Lot, Attractive.....	E.VIII
1458 ☒	2c Green (213). Six Covers, incl. one with Maltese Cross cancel & tied by Miller's Mills N.Y. County/P.M. pmk., Purple Star, Mo. P.M. pmk., & Unusual 1890 Rimless Boston Mass. Machine pmk., Generally Fine-Very Fine.....	E.V

1459	⊗	5c Indigo (216). Tied by Grid, Clear partial "U.S. Postal (Agency) Shanghai 17 Oct. 90" Purple Double Oval on Cover to Vt., Peking, Tientsin & Shanghai backstamps, bit of cover edge neatly repaired at R., Scarce	E.VI
1460	★	30c Orange Brown (217). Full o.g., minute margin toning speck, o/w Very Fine	(Photo) 300.00
1461	★	90c Purple (218). Fresh, Very Fine	(Photo) 675.00
1462		90c Purple (218). Horiz. Strip of Three, Oval Reg. cancels, small thin in center stamp, o/w Fine	400.00
1463	⊗	1c Bank Note Covers, 1870-81, Collection of 27, incl. No. 206 Block, No. 134 with No. 146, No. 134 Split Grill, Etiquette Label, Corner Cards & Illustr. Ads, No. 182 tied by Large "1", etc., Fine-Very Fine Lot.....	E.VII
1464	⊗	1c-6c 1870-83 Bank Note Covers, Collection of 36 Covers, incl. Corner Cards & Illustr. Ads, Fancy Cancels, "National Mil. Home O." pmk., etc., Nearly All Fine-Very Fine.....	E.VIII
1465	⊗	3c Green, Bank Notes, One Volume Collection of 122 Covers, incl. Pumpkin Head, Checkerboard, Hearts, "US" Monogram, "Way", Shields (incl. Waterbury, Ct.), Letters, Numerals, Counties, Railroads, Illustr. (incl. Colleges & Hotels), etc., Virtually All Fine-Very Fine, Beautiful Lot.....	E.XIII

1890 ISSUE

1466	★	1c-90c 1890 Issue (219-227, 229). Fresh, also incl. Nos. 220a & 220c, Nos. 219D, 220c, 226 & 229 small faults, o/w Very Fine-Extremely Fine, Nos. 220c & 227 with P.F. Certificates ..	(Photo Ex) 978.50
1467	⊗	1c-10c 1890-1902 Issues (Betw. 219-302). Collection of 33 Covers, incl. Corner Cards, Illustr. Ads, "Quinebaug, Conn." 1892 pmk. in Belt Frame Advertising Collar , 6c & 8c Columbians, No. 267 With Egyptian Postage Dues, Sp. Am. War, etc., Generally F-VF.....	E.VIII
1468	★	15c-90c, Issue (227-229). Fresh, Well-centered, lightly hinged, each reperfed, o/w 15c Very Fine, 30c & 90c Extremely Fine ..	(Photo Ex) 660.00
1469	★	90c Orange (229). Two, Fresh, one with tiny thins, other faint crease, Very Fine Appearance, each with P.F. Certificate.....	650.00

COLUMBIAN ISSUE

1470	P	1c-\$5.00 Columbians, Plate Proofs on Card (230P4-245P4). Cpl. Set, h.r., dollar values slightly faded, \$2.00 with pinhole, o/w Fine-Very Fine.....	(Photo Ex) 3,140.00
1471	★	1c-50c Columbians (230-236, 239, 240). Fresh, Most Well-centered, 2c Broken Hat var, 1c, 4c, 6c, 30c & 50c small faults, o/w Fine-Extremely Fine	1,037.50
1472	★	10c Columbian (237). Beautifully Centered, Fresh, Extremely Fine "Gem"	(Photo) 120.00
1473	★	10c Columbian (237). Fresh, lightly hinged, Very Fine.....	120.00
1474	★	15c Columbian (238). Beautifully Centered, Fresh, Rich Color, small h.r., Extremely Fine.....	(Photo) 200.00
1475	★	30c Columbian (239). Beautifully Centered, Fresh, lightly hinged, Extremely Fine & Choice	(Photo) 275.00
1476	★	50c Columbian (240). Fresh, disturbed o.g. from hinge removal, Very Fine.....	(Photo) 350.00
1477	★	\$1.00 Columbian (241). Fresh, Rich Color, without gum, Very Fine..	(Photo) 1,150.00

1478 ★	\$1.00 Columbian (241). Fresh, h.r., reperfed at B., o/w Very Fine.....(Photo)	1,150.00
1479 ★	\$2.00 Columbian (242). Fresh, Exceptionally Well-centered, small faults, o/w Extremely Fine.....(Photo)	1,250.00
1480 ★	\$2.00 Columbian (242). Well-centered, Fresh, disturbed o.g., Very Fine, with P.F. Certificate.....(Photo)	1,250.00
1481 ★	\$3.00 Columbian (243). Well-centered, disturbed o.g., covered pin-hole, h.r., o/w Very Fine.....(Photo)	2,600.00
1482 ★	\$3.00 Columbian (243). Fresh, h.r., small faults, o/w Very Fine.....(Photo)	2,600.00
1483 ★	\$3.00 Columbian (243a). Olive Green Shade, barest trace of hinging, Fine, with P.F. Certificate.....(Photo)	2,600.00
1484 ★	\$4.00 Columbian (244). Well-centered, fresh, disturbed o.g. from mount, Very Fine, with P.F. Certificate.....(Photo)	3,400.00
1485 ★	\$4.00 Columbian (244). Fresh, Well-centered, regummed, Very Fine, with P.F. Certificate.....(Photo)	3,400.00
1486 ★	\$4.00 Columbian (244). Fresh, disturbed o.g. from hinge removal, couple trivial perf. creases, o/w Fine.....(Photo)	3,400.00
1487 ★	\$5.00 Columbian (245). Nicely Centered, disturbed o.g., tiny paper remnants, Very Fine.....(Photo)	3,600.00
1488 ★	\$5.00 Columbian (245). Disturbed o.g., really tiny scuff speck, o/w Very Fine, with P.F. Certificate which states "it is genuine with disturbed o.g.".....(Photo)	3,600.00

1894-1898 ISSUES

1489	1c-10c 1894-95 Issues (246-250, 252, 269, 271-273). Fresh, No. 269 B. Impt. & Pl. No. Strip of Three, Well-centered, Nos. 249, 250, 252 reperfed, No. 273 faint crease, o/w Very Fine, 4c-10c with P.F. Certificates.....	661.00
1490 ★	1c-10c 1894 Issue (246-248, 250-253, 255-258). Fresh, Nos. 246, 251, 253, 256 & 258 small faults, o/w Fine-Very Fine.....	956.00
1491 ★	2c Carmine, Ty. II (251). Fresh, Very Fine.....(Photo)	165.00
1492 ★	3c-15c 1894 Issue (253-255, 258, 259). Fresh, Well-centered, last tiny thin, others reperfed, o/w Very Fine.....	675.00
1493 ★	6c-15c 1894 Issue (256, 257, 259). Fresh, 6c minor h.r., Fine-Very Fine Lot.....	500.00
1494 ☒	15c Dark Blue (259). On 5c Blue Entire (U330) tied by Magenta New York Supplementary Mail Double Oval on Cover to Austria, American Express Co. Corner Card, ms. "Supplementary at Dock", some cover toning, o/w Very Fine, Scarce.....	120.00 +
1495 ★	50c Orange (260). Well-centered, Fresh, small h.r., Very Fine.....(Photo)	325.00
1496 ★	\$1.00 Black, Ty. I (261). Fresh, reperfed at L., o/w Very Fine.....(Photo)	850.00
1497 ★	\$1.00 Black, Ty. I (261). Fresh, Nicely Centered, reperfed at R., o/w Very Fine, with photocopy of P.F. Certificate.....(Photo)	850.00
1498 ★	\$1.00 Black, Ty. I (261). Fresh, Well-centered, regummed, Very Fine, with P.F. Certificate.....(Photo)	850.00
1499 ★	\$1.00 Black, Ty. II (261A). Well-centered, regummed, reperfed at B., o/w Extremely Fine.....(Photo)	1,850.00
1500 ★	\$1.00 Black, Ty. II (261A). Fresh, reperfed at L., o/w Very Fine.....(Photo)	1,850.00

1501 ★	\$2.00 Bright Blue (262). Fresh, light crease, couple faintly toned perfs. at T.L., o/w Very Fine, with P.F. Certificate(Photo)	2,100.00
1502 ★	\$2.00 Bright Blue (262). Fresh, reperfed at T., o/w Very Fine.....(Photo)	2,100.00
1503 ★	\$2.00 Bright Blue (262). Fresh, small faults, o/w Very Fine ..(Photo)	2,100.00
1504 ★	\$2.00 Bright Blue (262). Reperfed at L., tiny stain & some gum toning, o/w Very Fine(Photo)	2,100.00
1505 ★	\$5.00 Dark Green (263). Fresh, disturbed o.g., single added perf. at B.R., o/w Very Fine(Photo)	3,250.00
1506 ★	\$5.00 Dark Green (263). Fresh, without gum, reperfed at L., o/w Very Fine.....(Photo)	3,250.00
1507 ★	1c-50c 1895 Issue (264-275). Fresh, two 15c (one regummed), some with faults (incl. 15c-50c), o/w Fine-Very Fine, last with P.F. Certificate.....	887.00
1508 ☒	1c Blue, (264, 279). Each tied on Attractive Advertising Collar Cover, latter in Green & Brown Red With Blue Return Card, also incl. No. 264 on Red Lawnmower Ad Cover With Odd Spiked Rectangular Area For Stamp, first No. 264 cover slight toning, o/w Very Fine E.VII	
1509 ☒	2c Carmine, Ty. III (267). Tied by 1898 Covington Ky. Grid Duplex on Steamer "Golden Rule" Blue & Red Illustr. Corner Card Cover, Fine(Photo) E.VI	
1510 ★	5c Chocolate, Imperf. (270b). Horiz. Pair, Fresh, minor h.r., one with tiny thin, o/w Very Fine, with P.F. Certificate(Photo)	350.00
1511 ★	6c Dull Brown, Watermarked "USIR" (271a). Fresh, Shows Full "R", disturbed o.g. from hinge removal, tiny thin & reperfed at T., o/w Fine, Rare.....(Photo)	1,850.00
1512 ★	8c Violet Brown, Imperf. (272b). Horiz. Pair, Fresh, minor h.r., small filled-in thin, o/w Very Fine, with P.F. Certificate.....(Photo)	550.00
1513 ★	50c Orange (275). Fresh, Well-centered, lightly hinged, tiny natural inclusion, Extremely Fine & Choice.....(Photo)	235.00
1514 ★	\$1.00 Black, Ty. I (276). Large Part o.g. (some perf. tip gum soaks), light crease along L. perfs., o/w Fine(Photo)	550.00
1515 ★	\$1.00 Black, Ty. II (276A). Fresh, small faults, o/w Fine(Photo)	1,200.00
1516 ★	\$2.00 Bright Blue (277). Fresh, Very Fine.....(Photo)	900.00
1517	\$2.00 Bright Blue, \$5.00 Dark Green (277, 278). Oval Reg. cancels, each with small fault, Very Fine Appearance, latter with P.F. Certificate 715.00	

1518 ★	\$2.00 Bright Blue, Imperf. (277b). Horiz. Pair, Fresh, tiny thin, o/w Very Fine, Rare, with P.F. Certificate.....(Photo)	3,500.00
1519 ★	\$5.00 Dark Green (278). Beautifully Centered, Fresh, slightly disturbed o.g. from hinge removal, Extremely Fine, with P.F. Certificate(Photo)	2,000.00

1520 ☒	2c Red, Pan-Am. (279B, 295). Two Beautiful Multicolor Covers, former "Stock Food" Featuring Horse, Cow & Pig, Latter Buffalo, Globe & View of Expo. Grounds, Cordials & Wine Dealer's Corner Card, May 3, 1901 pmk., Very Fine..... E.VI	
1521 ★	10c, 15c 1898 Issue (282-283). Fine-Very Fine 380.00	

TRANS-MISSISSIPPI ISSUE

1522 ★	5c, 8c Trans-Mississippi (288, 289). Former Extremely Fine, latter h.r., Very Fine 290.00	
--------	---	--

1523 ★	10c, 50c Trans-Mississippi (290, 291). Exceptionally Well-centered, former tiny perf. flaw, latter reperfed at R., o/w Very Fine, latter with P.F. Certificate (Photo Ex)	910.00
1524 ★	50c Trans-Mississippi (291). Large Margins, Well-centered, disturbed o.g. form hinge removal, tiny faint thin, Extremely Fine Appearance (Photo)	725.00
1525 ★	\$1.00 Trans-Mississippi (292). Fresh, Beautifully Centered, reperfed at R., o/w Extremely Fine (Photo)	1,850.00
1526 ★	\$1.00 Trans-Miss. (292). Fresh, regummed, reperfed at L., couple trivial corner perf. creases, o/w Very Fine (Photo)	1,850.00
1527 ★	\$1.00 Trans-Mississippi (292). Fresh, couple light gum bends, h.r., small thin spot, o/w Fine, with P.F. Certificate (Photo)	1,850.00
1528 ★	\$2.00 Trans-Mississippi (293). Fresh, Very Fine, Choice (Photo)	2,850.00
1529 ★	\$2.00 Trans-Mississippi (293). Fresh, small thin spot, Very Fine Appearance, with P.F. Certificate (Photo)	2,850.00
1530 ★	\$2.00 Trans-Mississippi (293). Fresh, h.r., reperfed at L., o/w Very Fine (Photo)	2,850.00
1531 ★	\$2.00 Trans-Mississippi (293). Fresh, h.r., tiny scuff speck, o/w Very Fine (Photo)	2,850.00

PAN-AMERICAN ISSUE

1532 ★	1c-10c Pan-Americans (294-299). Fresh, 2c Mint, Very Fine Set (Photo Ex)	650.00
1533 ★	1c-10c Pan-Americans (294-299). Fine-Very Fine Set (Photo)	650.00
1534 ★	1c-10c Pan-Americans (294-299). Fresh, 4c & 5c h.r., Fine-Very Fine Set (Photo)	650.00
1535 ★	1c-10c Pan-Americans (294-299). Fresh, few lightly hinged, 10c tiny corner perf. crease, o/w Fine-Very Fine Set (Photo)	650.00
1536 ★	2c Pan-American, Center Inverted (295a). Fresh, Gorgeous Margins & Centering, reperfed at R., o/w Extremely Fine, with P.F. Certificate. This Stamp was Offered in the Morgenthau Sale of April 1943 showing a Huge R. Margin which was slightly diagonal & subsequently very skillfully reperfed at L. to improve the stamp's symmetrical appearance, Still One of the Finest Known Examples of This Exceptionally Rare Invert (Photo)	45,000.00
1537 ★	10c Pan-American (299). Rejoined Block (Two Vert. Pairs hinge rejoined) Exceptional Margins & Centering, R. Pair with bend, o/w Extremely Fine (Photo)	900.00

1902 ISSUE

1538 ★	1c-15c 1902 Issue (300-309). Fresh, 1c, 2c, 6c-10c small faults (most reperfed), o/w Very Fine (Photo)	497.50
1539 ★	50c Orange (310). Fresh, Very Fine (Photo)	450.00
1540 ★	\$1.00 Black (311). Beautifully Centered, reperfed at L., o/w Extremely Fine, with P.F. Certificate (Photo)	800.00
1541 ★	\$1.00 Black (311). Fresh, small natural inclusion, reperfed at R., o/w Very Fine (Photo)	800.00
1542 ★	\$2.00 Dark Blue (312). Beautifully Centered, small thin, some perf. tip toning at T., o/w Extremely Fine (Photo)	1,050.00

1543 ★ **\$2.00 Dark Blue (312).** Fresh, Very Fine (Photo) 1,050.00

1544 ★	\$5.00 Dark Green (313). Fresh, Very Fine, with P.F. Certificate..... (Photo)	2,750.00
1545 ★	\$5.00 Dark Green (313). Fresh, Very Fine, with A.P.S. Certificate..... (Photo)	2,750.00
1546 ★	\$5.00 Dark Green (313). Fresh, natural perf. dimples, Very Fine (Photo)	2,750.00

1547 ★ **5c Blue, Imperf. (315). Horiz. Pair,** Fresh, Extremely Fine . (Photo) 1,100.00

1548 ★ **5c Blue, Imperf. (315). Horiz. Pair,** Very Fine (Photo) 1,100.00

LOUISIANA PURCHASE — 1908 ISSUE

1549 ★ **1c-10c Louisiana Purchase (323-327).** 3c gum toning spots, 5c tiny thin at R., o/w Very Fine Set..... 457.50

1550 ★ **10c Louisiana Purchase (327).** Fresh, Well-centered, lightly hinged, Extremely Fine (Photo) 200.00

1551 ★ **1c-5c Jamestown (328-330).** Last Wide Even Margins, Very Fine & Choice Set..... (Photo Ex) 172.50

1552 ★ **\$1.00 Violet Brown (342).** Reperfed at R., o/w Very Fine, with P.F. Certificate (Photo) 450.00

1553 ★ **5c Blue, Coil (351, 355). Pairs,** one of former Mint (small natural paper wrinkle), Fine-Very Fine..... 590.00

1554 ★	10c Yellow, Coil (356). Pair, Fresh, minor perf. strengthening, some gum disturbance from hinge removal, Extremely Fine, Rare (Photo)	3,250.00
--------	--	----------

BLUISH PAPER ISSUE

1555 ★ **1c Green, Bluish (357).** Two, Exceptionally Well-centered, reperfed, o/w Extremely Fine, one with P.F. Certificate 220.00

1556 ★ **2c Carmine, Bluish (358).** Beautiful Margins & Centering, Extremely Fine & Choice, with P.F. Certificate (Photo) 100.00

1557 ★	3c Deep Violet, Bluish (359). Fresh, Very Fine..... (Photo)	1,650.00
--------	--	----------

1558 ★ **6c Red Orange, Bluish (362).** Minor perf. gum soaks, o/w Very Fine (Photo) 1,000.00

1559 ★ **6c Red Orange, Bluish (362).** Fresh, reperfed at B., o/w Fine..... (Photo) 1,000.00

1560 ★ **10c Yellow, Bluish (364).** Well-centered, gum disturbance from hinge removal, reperfed at R., o/w Very Fine (Photo) 1,050.00

1909-1914 ISSUES

1561 ★ **2c Lincoln, Bluish (369).** Two, Well-centered, both reperfed at R., o/w Extremely Fine, with P.F. Certificates..... 550.00

1562 ★ **2c Lincoln, Bluish (369).** Two, both reperfed, o/w Fine-Very Fine ... 550.00

1563 ★ **2c Lincoln, Bluish (369). Horiz. Pair,** Exceptionally Well-centered, R. stamp barest trace of faint toning, o/w Extremely Fine..... (Photo) 550.00

1564 ★ **1c Green, 2c Carmine, Coils (385, 390, 393, 410, 412, 413). Line Pairs** except first pair, Very Fine 460.00

1565 ★ **2c Carmine, Coil, 3mm Spacing (388). Pair**, disturbed o.g. from hinge removal, small separation, Fine, Scarce (Photo) 1,650.00

1566 ★ **1c-5c 1910 Coils (391, 392, 394-396). Pairs**, Very Fine.. (Photo Ex) 440.00

1567 ★ **1c-10c Panama-Pacifics (397-403). Fresh**, all reperfed except No. 397, o/w Very Fine-Extremely Fine (Photo Ex) 835.00

1568 ★ **10c Panama-Pacific (400). H.r.**, Very Fine..... 160.00

1569 ★ **1c-5c Panama-Pacifics, Perf. 10 (401-403). Well-centered**, 1c & 2c lightly hinged, 5c h.r., Very Fine-Extremely Fine 307.50

1570 ★ **10c Panama-Pacific, Perf. 10 (404). Reperfed at T.**, o/w Very Fine, with P.F. Certificate (Photo) 1,400.00

1571 ★ **8c-15c 1912 Issue (414-418). Well-centered**, Very Fine-Extremely Fine 245.00

1572 ★ **20c Ultramarine (419). Well-centered**, h.r., very natural perf. "dimple", Very Fine (Photo) 175.00

1573 ★ **30c Orange Red (420). Well-centered**, h.r., Extremely Fine.. (Photo) 120.00

1574 ★ **50c Violet (421). Fresh**, tiny corner perf. crease, o/w Very Fine (Photo) 500.00

1575 ★ **50c Violet (421). Well-centered**, small toned spot at T., o/w Very Fine, with P.F. Certificate (Photo) 500.00

1576 ★ **50c Violet (422). Fresh**, Exceptionally Well-centered, reperfed at T., o/w Extremely Fine..... (Photo) 250.00

1577 ★ **\$1.00 Violet Brown (423). Magnificent Margins & Centering**, disturbed o.g., tiny natural printing ink smear, Extremely Fine... (Photo) 575.00

1578 ★ **\$1.00 Violet Brown (423). Fresh**, Very Fine (Photo) 575.00

1579 ★ **1c-12c 1914 Issue (424-435). Well-centered**, several reperfed, o/w Very Fine-Extremely Fine 393.75

1580 ★ **15c Gray (437). Beautifully Centered**, tiny natural inclusion specks, Extremely Fine (Photo) 115.00

1581 ★ **30c Orange Red (439). Beautifully Centered**, Extremely Fine..... (Photo) 275.00

1582 ★ **50c Violet (440). Beautifully Centered**, slight gum disturbance from hinge removal, Very Fine (Photo) 800.00

1583 ★ **3c Violet, Coil (445). Line Pair**, Well-centered, Very Fine, Scarce (Photo) 1,100.00

1584 ★ **4c Brown, Coil (446). Pair**, h.r., Very Fine..... (Photo) 300.00

1585 ★ **5c Blue, Coil (447). Line Pair**, lightly hinged, Fine 225.00

1586 ★ **1c-5c 1914-16 Coils (448, 450, 454, 455, 457, 458). Pairs**, No. 454 Mint, natural gum inclusion specks, Fine-Very Fine..... 436.00

1587 ★ **2c Red, Ty. I, Coil (449). Fresh**, minor h.r., perfs barely in at T. (Photo) 1,600.00

1588 ★ **2c Red, Type I, Coil (449). Pair**, Remarkably Well-centered, light pencil markings on back, Very Fine, signed "E. Stern", with P.F. Certificate (Photo) 3,500.00

1589 ★ **2c Red, Ty. I, Coil (449). Used**, some slight toning (nearly all on back), o/w Very Fine (Photo) 160.00

1590 ★ **2c Carmine Rose, Ty. I, Coil (453). Pair**, Fine..... 250.00

1591 ★ **3c Violet, Coil (456). Very Fine** (Photo) 300.00

1592 ★ **3c Violet, Coil (456). Mint Pair**, Well-centered, Very Fine .. (Photo) 650.00

1593 ★ **2c Carmine, Imperf. Coil (459). Lightly hinged**, Very Fine . (Photo) 450.00

1594 ★ **2c Carmine, Imperf. Coil (459). Pair**, Extremely Fine, signed Ward (Photo) 950.00

1595 ★ **2c Carmine, Imperf. Coil (459). Pair**, Extremely Fine..... (Photo) 950.00

1596 ★ **2c Carmine, Imperf. Coil (459). Strip of Four**. Two Mint, others h.r., one with tiny thin, o/w Very Fine (Photo) 1,900.00

1597 ★	\$1.00 Violet Black (460). Fresh, Very Fine, with P.F. Certificate which mentions "foreign matter adhering to face" which has been completely removed & is no longer a factor (Photo)	975.00
1598 ★	\$1.00 Violet Black (460). Disturbed o.g., reperfed, o/w Very Fine (Photo)	975.00

1916-1920 ISSUES

1599 ★	1c-15c 1916 Issue (462-466, 468-475). Well-centered, several reperfed, o/w Very Fine-Extremely Fine (Photo Ex)	914.75
--------	---	--------

1600 ★田	5c Carmine, Error (467). Block of Twelve, Two Middle Stamps The Errors, Errors Mint, natural gum bend affects one Error, Fine-Very Fine (Photo)	1,750.00
1601 ★田	5c Carmine, Error (467). Mint Block of Twelve, Two Middle Stamps The Errors, one 2c stamp, natural perf. "dimple", L.perfs. just clear, Fine	1,750.00

1602 ★	20c Light Ultramarine (476). Very Fine..... (Photo)	250.00
--------	--	--------

1603 ★	50c Light Violet (477). Barest trace of hinging, Extremely Fine & Choice..... (Photo)	1,400.00
1604 ★	50c Light Violet (477). Fresh, Gorgeous Margins & Centering, slightly disturbed o.g. from hinge removal, Extremely Fine & Choice, with P.F. Certificate	1,400.00

1605 ★	\$1.00 Violet Black (478). Reperfed, Very Fine Appearance.. (Photo)	950.00
1606 ★	\$2.00 Dark Blue (479). Slight gum disturbance from hinge removal, Extremely Fine (Photo)	500.00
1607 ★	\$5.00 Light Green (480). Small h.r., Very Fine (Photo)	400.00
1608 ★	1c-10c 1916-22 Imperfs., Coils (481-484, 486-490, 492-497). Some Mint, Very Fine.....	143.50
1609 ★	1c-10c, 1916-22 Coils (486-490, 492-497). Nos. 487, 496 Line Pairs, Others Pairs, 10c Mint, Very Fine	358.50
1610 ★	2c Carmine, Ty. II Coil (491). Tiny natural inclusion speck, Very Fine, Scarce..... (Photo)	1,450.00
1611 ★	2c Carmine, Ty. II Coil (491). Pair, L. Stamp single added perf., o/w Very Fine, R. Stamp Very Fine (Photo)	3,100.00
1612 ★	1c-\$1.00 1917 Issue (498, 499, 501-504, 506-518). Beautifully Centered, Very Fine-Extremely Fine "Set"..... (Photo Ex)	523.05
1613 ★	2c Deep Rose, Ty. Ia (500). Mint, Extremely Fine..... (Photo)	275.00
1614 ★	2c Deep Rose, Ty. Ia (500). Lightly hinged, Very Fine, with P.F. Certificate (Photo)	275.00
1615 ★	2c Deep Rose, Ty. Ia (500). T. Pl. No. Single, couple natural perf. dimples, Very Fine..... (Photo)	275.00
1616 ★田	2c Deep Rose, Ty. Ia (500). T. Margin Block, barest trace of hinging, Very Fine-Extremely Fine..... (Photo)	1,150.00
1617	2c Deep Rose, Ty. Ia (500). Two, Used, Diff. Shades, one reperfed at L., o/w Fine	260.00
1618 ★	3c Light Violet, Ty. I, Dark Violet Ty. II, Booklet Panes (501b, 502b). Latter with Pl. No., Fine-Very Fine.....	145.00
1619 ★田	5c Rose, Error (505). Block of Nine, Middle Stamp The Error, Fine-Very Fine, Error Mint & Very Fine (Photo)	750.00
1620 ★田	5c Rose, Error (505). Block of Twelve, Two Middle Stamps The Errors, h.r., one Error Mint (tiny natural inclusion), Fine.....	1,300.00

1621 ★田	5c Rose, Error (505). Mint Block of Twelve, Two Middle Stamps The Errors , one error tiny inclusion (not visible on face), Fine.....	1,300.00
1622 ★田	5c Rose, Error (505). Mint Block of Twelve, Two Middle Stamps the Errors , L. perfs. close to touch	1,300.00
1623 ★	\$2.00 Orange Red & Black (523) . Tiny gum bend, owners' tiny handstamp on back, Very Fine	(Photo) 1,100.00
1624 ★	\$5.00 Deep Green & Black (524) . Very Fine.....	(Photo) 450.00
1625 ★	1c-3c Offsets (525-528, 528A, 528B, 529, 530-534, 534A, 535) . Nos. 527 & 528B natural gum skips, Very Fine	520.45

1626 ★	2c Carmine, Offset Imperf. Ty. VII (534B). L. Margin Horiz. Pair . R. Stamp Mint, L. Stamp barest trace of hinging, usual tiny natural inclusions, Extremely Fine, Rare, with P.F. Certificate	(Photo) 3,100.00
--------	---	------------------

1627	2c Carmine, Offset Imperf. Ty. VII, Schermack Private Perfs. Ty. III (534B var) . Used, Very Fine.....	(Photo) 140.00
------	---	----------------

1628	1c Green, Rotary (544) . Used, Remarkably Well-centered, Extra Wide Margin at R., trivial corner perf. crease, o/w Extremely Fine, Scarce, Sloane handstamp guarantee	(Photo) 1,500.00
------	--	------------------

1629 ★	1c Green, 2c Carmine Rose, Rotaries (545, 546) . 2c tiny natural inclusion speck, Very Fine Set	235.00
1630 ★	\$2.00 Carmine & Black (547) . Slightly disturbed o.g. from hinge removal, Very Fine.....	(Photo) 400.00

1922 ISSUE TO DATE

1631	½c-\$5.00 1922 Issue (551-573) . Fresh, Nearly All Wide Even Margins, 5c, 7c, 8c & 20c reperfed, o/w Very Fine-Extremely Fine Set... ..	(Photo Ex) 1,030.15
1632 ★	\$1.00-\$5.00 1922 Issue (571-573) . \$1.00 & \$5.00 Mint (tiny natural gum skips), Very Fine-Extremely Fine	(Photo Ex) 595.00
1633 ★	1c-10c 1923 Issue (581-591) . Five Mint incl. 10c, Fine-Very Fine Set.....	204.00
1634 ★	1c-50c 1923-31 Issue (581-591, 692-701) . Cpl. Sets, latter set Mint, Very Fine.....	331.50
1635 ★	2c Carmine, Rotary (595) . Well-centered, h.r., Extremely Fine.....	(Photo) 200.00
1636 ★	2c Carmine Coil, Ty. II (599A) . Mint Pair, VF & Choice..	(Photo) 290.00
1637 ★	2c Carmine Coil, Ty. II (599A) . Pair, Fine.....	290.00
1638 ★	1c-5c 1924-25 Commems (614-621) . Six, Four & Five Sets respectively, Many Mint, couple h.r., couple reperfed, o/w Fine-Extremely Fine, Most Very Fine.....	699.50
1639 ★	2c White Plains Souv. Sheet (630) . Fine-Very Fine	500.00
1640 ★	2c White Plains Souv. Sheet (630) . Lightly folded along one vert. row of perfs., Fine-Very Fine	500.00
1641 ★	2c White Plains Souv. Sheet, Dot Over "S" (630 var) . H.r., small separation, small selvege faults & one stamp tiny thins (not affecting Plate No. Blocks), o/w Fine-Very Fine.....	525.00
1642 ★	2c Carmine, Ty. II (634A) . Very Fine.....	(Photo) 350.00

1643 ★	2c Carmine, Ty. II (634A). Very Fine..... (Photo)	350.00
1644 ★	1c-10c Kansas-Nebraska Ovpts. (658-679). Exceptionally Well-centered, Nearly All lightly hinged, Very Fine & Choice Sets..... (Photo Ex)	531.50
1645 ★	1c-10c Kansas-Nebraska Ovpts. (658-679). Many Mint, Fine-Very Fine Sets, Most Very Fine..... (Photo Ex)	531.50
1646 ★	1c-10c Kansas-Nebraska Ovpts. (658, 659, 661-668, 670-679). No. 664 regummed, Nos. 673, 675 & 677 small faults; also incl. Used Sets less No. 661, some with faults, o/w Very Good-Very Fine Lot...	802.65
1647 ★田	3c Farley Byrd (753). Two Center Line Blocks, also incl. T. & B. Arrow Blocks, Very Fine	340.00
1648 ★	½c-\$5.00 Presidentials, Presidential Coils (803-834, 839-847). Line Pairs of latter, also incl. Mint Pl. No. Block of No. 832c, Fine; others lightly hinged & Very Fine	412.48
1649 ★	½c-\$5.00 Presidentials, Presidential Coils (803-834, 839-851). Line Pairs of latter, also incl. Mint Pl. No. Block of No. 832c, others lightly hinged & Very Fine	437.48
1650 ★	\$1.00 Presidential, Wmkd. USIR (832b). Mint, VF..... (Photo)	350.00
1651 ★	\$1.00 Presidential, Wmkd. USIR (832b). Lightly hinged, tiny handstamp on back, VF..... (Photo)	350.00
1652 ★田	\$1.00-\$5.00 Presidentials (832-834). Mint Center Line Blocks, Very Fine & Choice Set..... (Photo Ex)	720.00
1653 ★	\$2.00, \$5.00 Presidentials, Hamilton (833, 834, 1053). Last two Mint, Very Fine.....	257.50
1654 ★	\$2.00, \$5.00 Presidentials, Hamilton (833, 834, 1053). Last two Mint, Very Fine.....	257.50
1655 ★	\$5.00 Presidential, Hamilton (834, 1053 two). First Mint, others lightly hinged, Very Fine	325.00
1656 ★田	\$5.00 Presidential (834). Double Pl. No. Block, natural paper wrinkles & slightly disturbed o.g., Fine-Very Fine	625.00
1657 ★田	\$5.00 Presidential (834). Mint Double Pl. No. Block, Fine.....	625.00
1658 ★	\$5.00 Red Brown & Black, Error of Color (834a). Mint, single perf. tip added, o/w Very Fine, Scarce..... (Photo)	850.00
1659 ★田	\$5.00 Hamilton (1053). Mint B.L. Pl. No. 25367 Block, Fine..... (Photo)	500.00
1660 ★	15c John Paul Jones, Perf. 12 (1789b). Mint, Very Fine, signed "(Pos.) 24, J.W.S."..... (Photo)	E.XIII

AIR POST ISSUES

1661 ∞	6c-24c 1918 Air Post (C1-C3). On Separate Covers, No. C1 With Additional Franking on 1930 Cacheted C.A.M. 34 Cover, other two on Interior Dept. Penalty Envelopes, Jul 22 & Jun 10, 1918 Usages respectively, some slight toning, o/w Fine Lot	215.00
1662 ★	6c-24c 1918-23 Air Post (C1-C6). Cpl. Sets, Nos. C3 & C6 h.r., last tiny natural inclusion; No. C3 Fine, others Very Fine (Photo Ex)	845.00
1663	6c-24c 1918-23 Air Post (C1-C3, C5, C6). Used, five of No. C1, one No. C1 light wrinkles, No. C3 small faults, o/w Fine-Very Fine..	432.50

1664 ★	24c Carmine Rose & Blue (C3). Wide Even Margins, barest trace of hinging, Extremely Fine "Gem" (Photo)	160.00
1665	24c Carmine Rose & Blue (C3). Tied by Purple May 15, 1918 "First Trip" pmk. on War Dept. Penalty Envelope (front only, back accompanies), curious typewritten address, small faults, Scarce	E.VII
1666 ★	8c-24c 1923 Air Post (C4-C6). Mint, 16c small corner perf. crease, o/w Very Fine-Extremely Fine Set.....	405.00
1667 ★	16c Dark Blue (C5). Mint, Beautiful Margins & Centering, Extremely Fine & Choice (Photo)	160.00
1668 ★	24c Carmine (C6). Mint, Well-centered, Extremely Fine (Photo)	200.00
1669 ★	65c-\$2.60 Graf Zeppelins (C13-C15). Cpl. Set, 65c with natural inclusion & natural perf. "dimple", Very Fine (Photo)	3,050.00

SPECIAL DELIVERY, POSTAGE DUE ISSUES

1670 ★	10c 1885-1914 Special Deliveries (E1-E4, E9). Fresh, o.g., some h.r., small faults, o/w Fine-Very Fine	1,650.00
1671 ★	10c 1895-1916 Special Deliveries (E5-E10). Fresh, No. E5 tiny thin, No. E9 couple partly nibbed perfs., No. E10 small natural inclusion, o/w Very Fine	875.00
1672 ★	10c 1911-17 Special Deliveries (E8b, E9 two, E11). Beautifully Centered, one No. E9 reperfed at B., other with perf. flaws, No. 11 "Pink back" var., Extremely Fine, three with P.F. Certificates	280.00
1673 ★	1c-30c Red Brown (J15 four, J16 seven, J18 two, J17, J20 two). Virtually All Fresh, o.g. (some h.r.), Variety of Shades, 10c traces of cancel, a few with small faults, o/w Fine-Very Fine Lot	964.50
1674 ★	30c Deep Claret (J27). Fresh, lightly hinged, Very Fine (Photo)	225.00
1675 ★	30c Bright Claret (J27). Fresh, Very Fine (Photo)	225.00
1676 ★	2c Deep Vermilion (J30). Fresh, Well-centered, o.g., tiny thin spot, o/w Very Fine, with P.F. Certificate.....	225.00
1677 ★	1c-10c 1894 Postage Dues (J31-J35). Fresh, 3c tiny black inclusion on reverse, 10c trivial thin, Very Fine Lot	262.50
1678 ★	1c-30c 1894 Postage Dues (J31-J36). Fresh, couple h.r., 3c tiny thin, 5c horiz. crease, 30c tiny closed tear at T., o/w Fine-Very Fine.	447.50
1679 ★	50c Deep Claret (J37). Fresh, Large Margins, lightly hinged, Very Fine (Photo)	450.00
1680 ★	30c Deep Claret (J43). Fresh, some natural perf. "dimples", trivial thin spot, o/w Very Fine, with P.F. Certificate.....	250.00
1681 ★	50c Carmine Lake (J58). Vivid Color, o.g., perfs. just clear at R., Fine, Rare, with P.F. Certificate..... (Photo)	5,000.00
1682 ☐	Postage Due Covers, Five, incl. Nos. J3(2), J15, J16 & J22, Three With Additional Franking, Fine-Very Fine, Scarce.....	E.VIII

OFFICES IN CHINA, OFFICIALS

1683 ★	2c-\$2.00 Offices in China (K1-K16). Cpl. Set, Most Well-centered & lightly hinged (incl. \$1.00 & \$2.00), 2c reperfed, 18c natural perf. "dimple", o/w Very Fine (Photo Ex)	1,775.00
--------	--	----------

1684 ★	2c-\$2.00 Offices in China (K1-K16). Nos. K4 & K8 Mint, No. K16 light crease, o/w F-VF Set..... (Photo Ex)	1,775.00
1685 ★	2c-\$2.00 Offices in China (K1-K18). No. K16 Mint (tiny natural gum skips & light wrinkles), few h.r., Generally Very Fine Set..... (Photo Ex)	1,945.00
1686 ★	\$2.00 Offices in China (K16). Three Huge Margins, VF, with P.F. Certificate (Photo)	425.00
1687 ★	1c-30c Agriculture, "Specimen" Ovpts. (O1SD-O9SD). Fresh, also incl. Extra 1c On Intermediate Paper, few trivial nibbed perms., o/w Fine-Very Fine Set..... (Photo Ex)	526.00
1688 ★	12c, 15c Agriculture, 2c, 6c Executive (O6, O7, O11, O13). First Used Star in Circle cancel, others Unused, Fresh, o.g., small faults, o/w Very Fine-Extremely Fine, last two with P.F. Certificates.....	595.00
1689 ☒	3c Executive (O12). Tied by Two Wide Bars, Washington D.C. pmk. on "Executive Mansion" Corner Card Cover, bit reduced at R. & tiny Cover corner mend, some very trivial toning, Very Scarce (Photo)	700.00
1690 ☒	3c Navy (O37). Tied by Wash., D.C. pmk. & Circle of Wedges on "Navy Department/Bureau of Medicine And Surgery." Corner Card Cover, without flap, couple small edge faults at T., o/w Fine, Scarce (Photo)	E.VIII
1691 ★	1c-24c State (O57-O62, O64, O65). Fresh, o.g., except 2c (traces of o.g.), 1c, 2c, 6c, 15c & 24c small faults, o/w Fine-Very Fine.....	525.00
1692 ★	\$20.00 State (O71). Fresh, o.g., light crease, o/w Fine, with P.F. Certificate (Photo)	2,250.00
1693 ★	1c-90c Treasury (O72-O79, O81, O82). Fresh, o.g. (some lightly hinged), 90c tiny thin, o/w Fine-Very Fine.....	340.50
1694 ★	24c Interior, Soft Paper (O103). Fresh, o.g., h.r., reperfed at R., o/w Fine, Scarce, with P.F. Certificate..... (Photo)	1,100.00
1695 ★	30c Treasury, Soft Paper (O112). Fresh, o.g., h.r., small thin spot, reperfed at L., o/w Very Fine, Scarce, with P.F. Certificate.. (Photo)	700.00
1696 ☒	Officials Covers, Three, incl. Nos. O49, O86 & O115, Fine-Very Fine.....	E.VII

NEWSPAPERS — BALANCE OF COLLECTION

1697 ★	\$1.92 Dark Brown (PR24). Rich Color, o.g. (small adherence). Trivial perf. tear at B., o/w Fine.....	160.00
1698 ★	\$36.00 Brown Rose (PR32). Rich Color, o.g., Very Fine.... (Photo)	600.00
1699 ★	12c, 24c Pink (PR95, PR96). Fresh, o.g., h.r., minor faults, o/w Fine-Very Fine	725.00
1700 ★	1c-\$5.00 1895 Newspapers (PR102-PR109). Fresh, \$2.00 without gum, most with faults, o/w Fine-Very Fine	981.00
1701 ★	\$10.00 Green (PR110). Faint traces of purple ink on face, o/w Extremely Fine	(Photo) 300.00
1702 ★	\$20.00 Slate (PR111). Beautiful Margins & Centering, regummed, h.r., Extremely Fine	(Photo) 600.00
1703 ★	\$20.00 Slate (PR111). Large Margins, without gum, owner's tiny handstamp on back (does not show through), small filled thin, o/w Very Fine..... (Photo)	600.00

1704 ★	1c-75c Parcel Post (Q1-Q9, Q11). Wonderfully Well-centered, No. Q9 slightly dry print, Very Fine-Extremely Fine.....	473.50
1705 ★	50c Parcel Post (Q10). Choice Margins & Centering, Extremely Fine..... (Photo)	210.00
1706 ★	\$1.00 Parcel Post (Q12). Nice Margins, Extremely Fine..... (Photo)	400.00
1707 ★	\$1.00 Parcel Post (Q12). Well-centered, reperfed at L., o/w Very Fine..... (Photo)	400.00
1708	2c Red on Blue, Two Links, Cut Square (U245). Unused Full Corner, 44x44mm, Extremely Fine..... (Photo)	225.00
1709	2c Red on Fawn, Two Links, Cut Square (U246). Unused Full Corner, 43x44mm, Extremely Fine..... (Photo)	200.00
1710	2c Carmine on White, Die 1, Cut Square (U285 var). Unused, 44x43mm, Extremely Fine (UPSS-No. 786)..... (Photo)	E.XII
1711	15c Red on Cream, Cut Square (UO66). Unused, 34x38mm, Very Fine, Scarce..... (Photo)	525.00
1712	\$50.00 Violet (R223). Well-centered, faintly cancelled (uncut), small faults, o/w Very Fine, with P.F. Certificate..... (Photo)	550.00
1713 ★	\$3.00 1959-63 Hunting Permits (RW26-RW30). Lightly hinged, first with small bend, o/w Very Fine.....	365.00
1714 ∞	COVERS, 19th. & Early 20th., 56 Items, incl. Illustr. Ads, Sp. Am. War Patriotic, Civil War Patriotic, Several Stampless, 30 3c 1851-57 Issues, 1888 Gettysburgh Dak., No. 73 Pair, No. 301 tied on Post Card by Oval "Mail Delayed/Train Late", Generally Fine-Very Fine, Scarce & Interesting Lot.....	E.XI
1715 ∞	EARLY TWENTIETH CENTURY COVERS, Collection of 55, incl. 1908 Christmas Seal (WX3) tied on Post Card, No. 320a Sherman Ty. III With Yellow & Red "Libby's" Corner Card, No. 443 Line Pair, Many Unusual Southern Towns (1918-20), Fine-Very Fine Lot.....	E.VIII

1716 ★	BALANCE OF COLLECTION, 1851-1980's, Approx. 500 Virtually All Unused Stamps, Better Used incl. Nos. 10 (cover), 19, 28, 38, 119, 155, 214(5), etc., Better Unused incl. No. 24 (Pair) Bank Notes, 232, 233, 237, 275, 284, 288, 325-327, 330, 357, Wash./Franklins, 634A, 701(5), Better Coil Singles & Pairs, C18, F1(3), JQ5, etc., mixed quality yet a High Amount Fine-Very Fine.....	12,000.00 +
--------	--	-------------

CONFEDERATE STATES

1717 ∞	Livingston, Ala., 5c Blue (51X1). Margins All Around incl. T.R. Sheet Corner Margins, tied on Cover by Livingston, Ala. pmk., stamp & cover have some repairs (cover cleaned & repaired), still a Very Respectable Appearing C.S.A. Provisional Rarity on Cover (Approximately Six Known)..... (Photo)	E.XVI
--------	---	-------

1718 ★	10c Blue, Paterson (2). Horiz. Pair, Large to Huge Margins, Rich Color, Virtually Full o.g., gum toning spot on R. Stamp barely shows through, o/w Extremely Fine, L. Stamp a "Gem" (Photo)	575.00
1719	10c Blue, Paterson, 10c Dark Blue, Hoyer (2, 2a). Latter Vert. Pair tied on small piece (T. stamp corner repair), B. stamp Extra Large Margins & Extremely Fine; former Large Margins, light Town pmk., tiny faint thin, o/w Extremely Fine.....	750.00
1720 ★	2c Green (3). Large Margins, Wonderful Deep Rich Color, Nice Impression, Fresh, Virtually Full o.g., Extremely Fine (Photo)	500.00

1721 ★	5c Blue, Dark Blue, St. 2 (4, 4a). Fresh, o.g., former h.r., latter adherence from another 5c stamp, Ample to Huge Margins, Very Fine-Extremely Fine	225.00
1722	5c Dark Blue, Pos. 14, St. 2 (4a). Ample to Large Margins, Fresh Color, Neat Red Grid cancel, Very Fine, Choice (Photo)	190.00
1723	5c Blue, Shades, St. 2 (4). Five, Pos. 10, 15, 31, 32 & 40, Shades Range from Light Blue to Dark Blue, Ample to Huge Margins, Town & Grid cancels (one in Blue), some light toning on backs of some, one small thin, o/w Fine-Extremely Fine.....	600.00
1724 ∞	5c Light Blue, St. 2 (4). Three Large to Huge Margins, incl. Part B. Sheet Margin, T. margin tiny bit reduced, Red unframed Grid Cancel (not tied), matching "Sparta Ga." pmk. on Small Cover to Savannah, slight toning, o/w Very Fine..... (Photo)	300.00
1725 ∞	5c Blue (6, 7). Horiz. Pairs on Three Covers, one of former & tied by Morgan, Ga. pmk. on Small Pinkish Buff Cover to Open Pond, Ala., No. 7's tied by Town pmk., One Stamp "Scratched Plate" variety, Very Fine Lot.....	275.00
1726 ★	10c Gray Blue, "T-E-N" (9b). Huge Margins, couple tiny translucencies, faint negligible toning, o/w Extremely Fine, Fantastic Appearance (Photo)	700.00
1727 ★	10c Blue, "T-E-N" (9). Ample to Huge Margins, Fresh, o.g., h.r., small thin, Very Fine Appearance, with C.S.A. Certificate ... (Photo)	700.00
1728 ★田	1c Orange (14). Block, Ample to Huge Margins, small scissors cut between T. pair clear of design, couple of faint creases in B. stamps, o/w Very Fine	600.00
1729 ∞	The Sadler Correspondence, Six Covers, Five are "Due 10" (All Diff., one ms.), other 5c Blue (4) tied by Blue Town pmk., Four With Contents (one regarding brother killed in battle), one written 16 days before the end of the war, mixed quality, Scarce & Interesting Lot	E.VIII

LITERATURE

1730	Pat Paragraphs, Elliot Perry, 1931-58, 51 Diff. Booklets, Fine-Very Fine	E.VIII
1731	The Postal Service of the Confederate States of America, Dietz 1929, Autographed, slightly stained & negligible spine faults, o/w Fine	E.VIII
1732	The Postage Stamps of the United States, Luff, 1938, light toning inside endpapers, o/w Very Fine.....	E.VI
1733	Specialized U.S. Literature, 12 Books (11 Diff.), Better incl. The United States Five Cents Stamps of 1856-1861 by Hill, The United States Ten Cent Stamp of 1855-1857 by Ashbrook, The Types & Plates of the U.S. One Cent 1851-1857 by Ashbrook, The United States Ten Cent Stamp of 1855-1857 by Ashbrook, etc., Fine-Very Fine Lot.....	E.VIII
1734	A Special Service, Ashbrook, 1951-57, incl. Photos, Very Fine	E.XIII
1735	The 3c Stamp of the United States 1851-57 Issue, Chase, 1929, Very Fine.....	E.IV
1736	The United States Commemorative Stamps of the Twentieth Century, Johl, 1947, 2 Vols, Very Fine	E.VI
1737	The United States Commemorative Stamps of the Twentieth Century, Johl, 1947, 2 Vols., signed, minor cover faults & light ms. stains along T. of one vol., also incl. The United States Postage Stamps of the Twentieth Century Vol. 1, 1937, VF Lot	E.VI

1738	The United States One Cent Stamp of 1851 to 1861 , Neinken, 1972, minor dust jacket faults, o/w Very Fine.....	E.VIII
1739	The United States Postage Stamps of the 19th Century , Vols. I-III, Brookman, 1966, Very Fine	E.VIII
1740	United States Waterway Packetmarks 1832-1899 , Klein, 1940, signed by the author, light toning inside endpapers, o/w Very Fine....	E.VI
1741	Starter Library , More than 100 items, incl. Album Weeds 1-8, Wells, Fargo & Co. Handstamps & Franks by Berthold, 19th Century United States Fancy Cancellations by Herst-Zareski, many issues of the Confederate Philatelist, etc., Fine-Very Fine.....	E.VIII

END OF SALE — THANK YOU

IMPORTANT NOTICE TO BUYERS

LOT VALUES, OTHER THAN THOSE FROM SPECIALIZED CATALOGUES, ARE FROM SCOTTS 1988 SPECIALIZED CATALOGUE OF UNITED STATES STAMPS.

IS YOUR COLLECTION FOR SALE?

**AMERICA'S PREMIER AUCTION HOUSE
OFFERS**

**IMMEDIATE AND MAXIMUM
CASH ADVANCES**

At no charge our auction house will immediately advance interest-free cash to you. *The only charge to you is a 10% commission on what your collection realizes at auction.* The buyer also pays a 10% buyers premium.

Advances available on request on collection consignments valued in excess of \$2,500.

**AMERICA'S PREMIER AUCTION HOUSE
FIRST IN PRESTIGE
FIRST IN DOLLAR VOLUME**

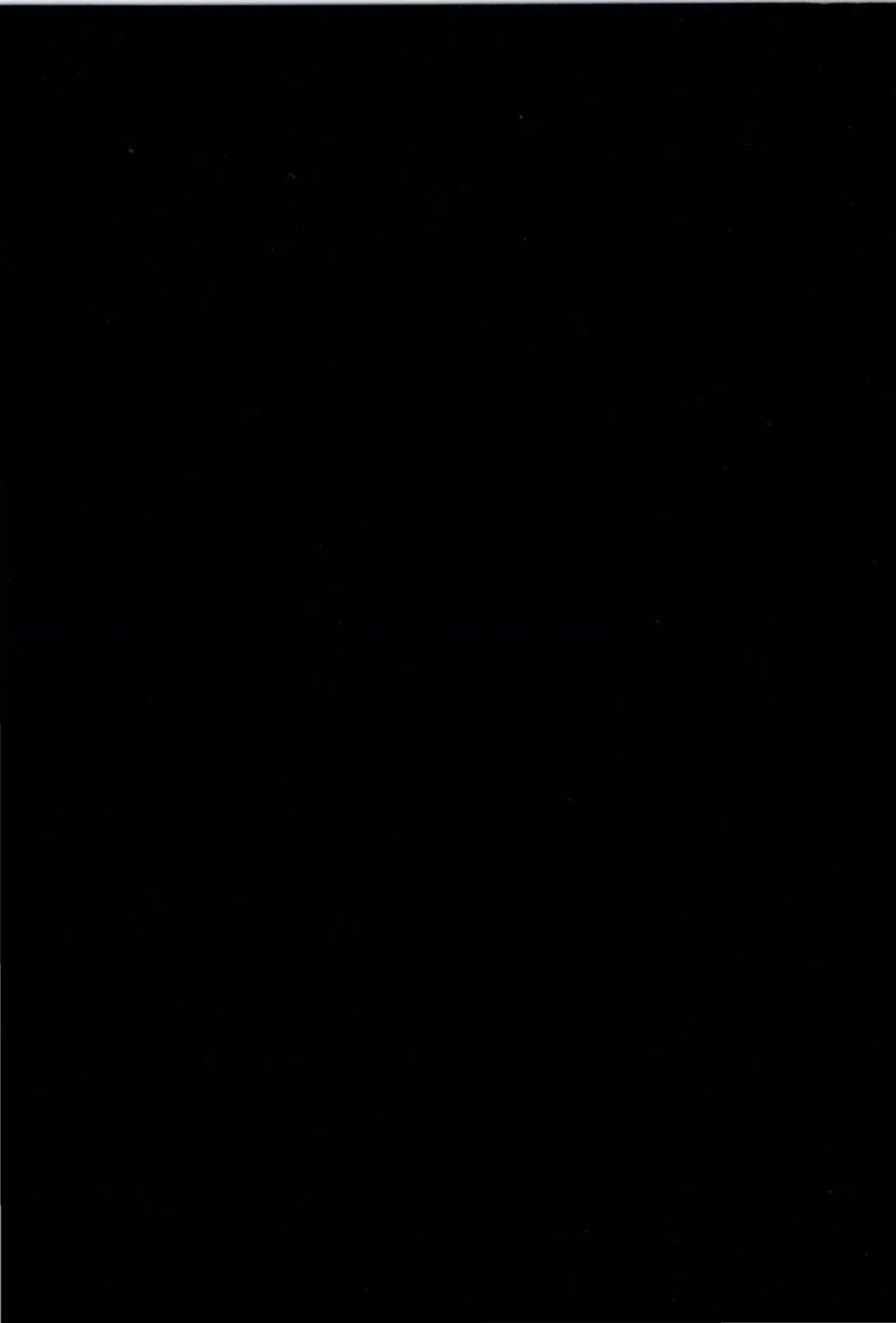
OUR AUCTIONS REALIZED OVER \$12,200,000.00 IN 1987

CALL OR WRITE

**ROBERT A. SIEGEL
AUCTION GALLERIES, INC.**

160 E. 56th Street
New York, N.Y. 10022

Tel.: (212) 753-6421
Established 58 years



160 EAST 56 STREET, NEW YORK CITY, N.Y., 10022

(212) 753-6421

UNITED STATES STAMPS AND COVERS

INDIVIDUAL REALIZATIONS ARE HAMMER PRICES. GROSS REALIZATION
INCLUDES 10% BUYERS PREMIUM.

1001	140	1060	230	1119	170	1178	190	1237	160	1296	210
1002	325	1061	625	1120	290	1179	260	1238	240	1297	475
1003	160	1062	270	1121	52½	1180	150	1239	160	1298	160
1004	95	1063	280	1122	90	1181	105	1240	130	1299	425
1005	400	1064	210	1123	160	1182	130	1241	80	1300	270
1006	1000	1065	250	1124	230	1183	150	1242	220	1301	150
1007	260	1066	210	1125	550	1184	210	1243	260	1302	170
1008	500	1067	200	1126	900	1185	120	1244	52½	1303	180
1009	350	1068	425	1127	240	1186	120	1245	450	1304	130
1010	280	1069	75	1128	725	1187	140	1246	115	1305	130
1011	270	1070	42½	1129	800	1188	130	1247	32½	1306	100
1012	325	1071	125	1130	425	1189	95	1248	95	1307	325
1013	260	1072	260	1131	1850	1190	150	1249	210	1308	190
1014	400	1073	65	1132	800	1191	210	1250	75	1309	120
1015	180	1074	150	1133	750	1192	32½	1251	80	1310	525
1016	600	1075	190	1134	725	1193	30	1252	140	1311	375
1017	375	1076	100	1135	550	1194	100	1253	220	1312	100
1018	1000	1077	125	1136	475	1195	130	1254	115	1313	200
1019	900	1078	95	1137	525	1196	200	1255	52½	1314	210
1020	700	1079	170	1138	900	1197	70	1256	105	1315	150
1021	800	1080	300	1139	325	1198	130	1257	700	1316	160
1022	525	1081	190	1140	625	1199	325	1258	220	1317	375
1023	750	1082	52½	1141	270	1200	325	1259	45	1318	525
1024	1150	1083	100	1142	575	1201	1350	1260	45	1319	250
1025	900	1084	26	1143	180	1202	600	1261	60	1320	475
1026	725	1085	80	1144	220	1203	1750	1262	950	1321	1250
1027	900	1086	105	1145	1450	1204	300	1263	115	1322	1000
1028	3750	1087	270	1146	140	1205	375	1264	90	1323	130
1029	2100	1088	115	1147	130	1206	260	1265	70	1324	220
1030	3500	1089	180	1148	350	1207	425	1266	300	1325	190
1031	190	1090	115	1149	170	1208	150	1267	250	1326	525
1032	100	1091	260	1150	160	1209	280	1268	190	1327	1450
1033	325	1092	115	1151	240	1210	130	1269	22	1328	125
1034	70	1093	135	1152	250	1211	140	1270	52½	1329	900
1035	60	1094	52½	1153	135	1212	280	1271	250	1330	105
1036	210	1095	200	1154	170	1213	300	1272	160	1331	210
1037	1600	1096	100	1155	115	1214	52½	1273	52½	1332	160
1038	450	1097	100	1156	115	1215	75	1274	230	1333	600
1039	260	1098	160	1157	115	1216	65	1275	26	1334	325
1040	400	1099	290	1158	125	1217	500	1276	135	1335	525
1041	400	1100	115	1159	1050	1218	400	1277	400	1336	575
1042	85	1101	115	1160	900	1219	350	1278	125	1337	450
1043	90	1102	75	1161	725	1220	220	1279	75	1338	65
1044	90	1103	95	1162	600	1221	350	1280	37½	1339	375
1045	60	1104	125	1163	125	1222	240	1281	150	1340	850
1046	55	1105	180	1164	240	1223	65	1282	200	1341	95
1047	130	1106	160	1165	325	1224	375	1283	85	1342	140
1048	280	1107	100	1166	675	1225	180	1284	125	1343	675
1049	280	1108	140	1167	300	1226	170	1285	160	1344	300
1050	52½	1109	130	1168	525	1227	160	1286	375	1345	1000
1051	170	1110	230	1169	375	1228	500	1287	850	1346	1650
1052	80	1111	260	1170	90	1229	850	1288	1400	1347	290
1053	105	1112	115	1171	375	1230	475	1289	1450	1348	160
1054	32½	1113	160	1172	375	1231	325	1290	850	1349	120
1055	160	1114	230	1173	375	1232	550	1291	675	1350	575
1056	70	1115	42½	1174	115	1233	375	1292	725	1351	280
1057	115	*1116	30	1175	150	1234	105	1293	65	1352	325
1058	150	1117	52½	1176	170	1235	105	1294	500	1353	375
1059	50	1118	135	1177	230	1236	160	1295	85	1354	65

1355	90	1432	375	1509	180	1586	150	1663	150	1740	65
1356	105	1433	650	1510	160	1587	450	1664	75	1741	130
1357	65	1434	85	1511	725	1588	2700	1665	160	END OF SALE THANK YOU	
1358	625	1435	5250	1512	240	1589	180	1666	240		
1359	105	1436	450	1513	240	1590	70	1667	200	GROSS REALIZATION:	
1360	105	1437	475	1514	210	1591	210	1668	160		
1361	45	1438	70	1515	250	1592	525	1669	1550		
1362	140	1439	400	1516	525	1593	190	1670	260		
1363	90	1440	375	1517	190	1594	500	1671	230		
1364	115	1441	170	1518	1800	1595	500	1672	180		
1365	52½	1442	200	1519	1000	1596	800	1673	450		
1366	625	1443	120	1520	105	1597	575	1674	190		
1367	220	1444	325	1521	280	1598	300	1675	150		
1368	220	1445	200	1522	210	1599	400	1676	85		
1369	400	1446	180	1523	230	1600	850	1677	270		
1370	325	1447	7250	1524	400	1601	450	1678	115		
1371	375	1448	8000	1525	550	1602	95	1679	325		
1372	290	1449	80	1526	325	1603	900	1680	90		
1373	135	1450	400	1527	325	1604	725	1681	1800		
1374	400	1451	95	1528	2100	1605	260	1682	115		
1375	800	1452	60	1529	800	1606	325	1683	850		
1376	325	1453	180	1530	450	1607	125	1684	600		
1377	525	1454	210	1531	1150	1608	85	1685	800		
1378	1150	1455	160	1532	425	1609	140	1686	160		
1379	1400	1456	37½	1533	220	1610	900	1687	260		
1380	1600	1457	500	1534	210	1611	1600	1688	190		
1381	3250	1458	90	1535	170	1612	425	1689	675		
1382	1450	1459	190	1536	26,000	1613	450	1690	160		
1383	525	1460	290	1537	350	1614	280	1691	125		
1384	800	1461	260	1538	300	1615	170	1692	500		
1385	1350	1462	100	1539	180	1616	800	1693	220		
1386	675	1463	400	1540	400	1617	75	1694	325		
1387	600	1464	425	1541	200	1618	60	1695	90		
1388	105	1465	1450	1542	325	1619	450	1696	85		
1389	260	1466	525	1543	525	1620	425	1697	52½		
1390	400	1467	475	1544	1050	1621	450	1698	550		
1391	400	1468	450	1545	1050	1622	325	1699	425		
1392	350	1469	150	1546	850	1623	350	1700	300		
1393	400	1470	700	1547	525	1624	135	1701	350		
1394	210	1471	250	1548	525	1625	375	1702	475		
1395	1600	1472	220	1549	110	1626	2300	1703	100		
1396	300	1473	110	1550	210	1627	120	1704	260		
1397	2100	1474	210	1551	135	1628	1450	1705	180		
1398	800	1475	220	1552	180	1629	170	1706	220		
1399	1800	1476	150	1553	375	1630	125	1707	115		
1400	180	1477	375	1554	2100	1631	350	1708	240		
1401	425	1478	300	1555	150	1632	220	1709	210		
1402	190	1479	260	1556	170	1633	80	1710	475		
1403	1050	1480	600	1557	1050	1634	135	1711	375		
1404	50	1481	550	1558	475	1635	90	1712	240		
1405	80	1482	450	1559	230	1636	300	1713	190		
1406	120	1483	625	1560	375	1637	120	1714	350		
1407	160	1484	1900	1561	135	1638	150	1715	190		
1408	95	1485	1000	1562	115	1639	200	1716	3250		
1409	250	1486	725	1563	230	1640	200	1717	5250		
1410	350	1487	1550	1564	400	1641	140	1718	210		
1411	525	1488	1250	1565	900	1642	270	1719	160		
1412	135	1489	230	1566	425	1643	240	1720	350		
1413	120	1490	210	1567	250	1644	240	1721	42½		
1414	95	1491	210	1568	60	1645	240	1722	250		
1415	150	1492	160	1569	200	1646	150	1723	130		
1416	135	1493	125	1570	350	1647	135	1724	240		
1417	120	1494	190	1571	240	1648	75	1725	115		
1418	200	1495	300	1572	110	1649	120	1726	190		
1419	220	1496	210	1573	70	1650	350	1727	120		
1420	95	1497	170	1574	140	1651	160	1728	105		
1421	120	1498	300	1575	300	1652	300	1729	325		
1422	350	1499	450	1576	115	1653	95	1730	40		
1423	90	1500	425	1577	200	1654	90	1731	140		
1424	700	1501	475	1578	290	1655	95	1732	57½		
1425	400	1502	425	1579	250	1656	140	1733	190		
1426	140	1503	625	1580	95	1657	140	1734	375		
1427	1050	1504	200	1581	190	1658	575	1735	24		
1428	150	1505	425	1582	375	1659	180	1736	52½		
1429	100	1506	375	1583	750	1660	2000	1737	65		
1430	1650	1507	325	1584	190	1661	240	1738	105		
1431	850	1508	135	1585	75	1662	230	1739	160		