

705th SALE

# GUAM

AN AWARD WINNING COLLECTION

THE FINEST EVER FORMED



SOLD BY ORDER OF THE OWNER  
AT UNRESERVED PUBLIC AUCTION

TUESDAY, JANUARY 31, 1989 AT 1:00 P.M.

*Robert A. Siegel*

**AUCTION GALLERIES, INC.**

160 EAST 56th STREET  
NEW YORK CITY, NY 10022

## CONDITIONS OF SALE

1. On all lots sold a commission of 10% on the hammer price is payable by the buyer.
2. The terms of sale are strictly cash on delivery to the highest bidder unless special arrangements have been made prior to the sale. The fact that an item is placed on extension (submitted to an expertising committee for certification) does not relieve the successful bidder from this condition of sale.
3. All bids are per lot as numbered in the catalogue unless otherwise announced by the auctioneer at the time of sale. The right is reserved to group two or more lots; to withdraw any lot or lots from the sale, or to act on behalf of the seller. The Galleries will bid on behalf of clients, but will not be responsible for any errors in the execution of bidding instructions. The auctioneer shall regulate the bidding and in the event of any dispute his decision shall be final.
4. Any lot, the description of which is incorrect, is returnable, but only within 14 days of receipt. All disputed lots must be returned intact as received. **The following lots may not be returned for any reason whatsoever: Lots containing ten or more stamps; Lots from buyers who have had the opportunity to examine them before the sale; Lots described as having defects or faults may not be returned because of any faults. No illustrated lots may be returned because of centering, margins or other factors shown in the illustrations.**
5. Successful bidders, unless they are known to us or supply acceptable references are expected to make payment in full before the lots are delivered. Mail bidders will be notified of the amounts of their purchases. All mail bidders who have established credit with us must make payment within three days after receipt. We reserve the right in our sole and absolute discretion to demand cash payment at the time a lot is knocked down to any bidder who has not previously established credit with us or whose account is in arrears. In the event any buyer refuses to pay cash for any lot at the time it is knocked down to him, the auctioneer reserves the right to re-offer the lot immediately for sale to the highest bidder. Sales tax will be added to purchases where applicable.
6. If the purchase price has not been paid within the time limit, nor lots taken up within seven days from date of sale they must be resold and any loss arising from such sale will be charged to the defaulter. Any account more than thirty days in arrears is subject to a late payment charge of 1½% per month so long as the account remains in arrears. If the auctioneer, in his discretion, should institute any action to secure payment of a delinquent account the defaulting purchaser shall pay all expenses incurred by the auctioneer and such charges will be added to the amount owed.
7. All lots are sold as genuine but should any lot be proved otherwise by written opinion of any competent, responsible authority acceptable to us, immediate refund of the full purchase price will be made, provided that such claim is made in writing within 14 days from date of sale. If claim is not made within this period, no lots are returnable for any reason at any time. So long as we are notified within the 14 day period that an opinion is being sought and **the material is submitted to an acceptable authority within that period** the matter will remain open until such opinion is rendered. **All "Extension" lots will be considered cleared and satisfactory to the buyer if we are not notified to the contrary within six months from date of sale. We will not be responsible for any charges incurred by the buyer for expertization fees and costs unless the opinion states the item is not genuine, in which case we will pay actual costs up to a maximum of \$50.00.** In the event an item is proved "not as described" it is returnable for full refund, and the buyer will be paid interest (at the prevailing Treasury Bill Rate) for the time his funds have been on deposit with us during the extension period.
8. Until paid for in full, all lots remain the property of Robert A. Siegel Auction Galleries, Inc. on behalf of the seller.
9. Some consignors have been advanced monies against the sale of their properties.
10. All forwarding charges will be added to the purchase price. The mode of shipment shall be at our option unless we are given specific instructions.
11. Lots may be sent for inspection to buyers known to us upon written application. All such lots must be returned to us by registered mail, adequately insured and within 24 hours after receipt. The applicant assumes all responsibility and will provide insurance against all risks from time of receipt until they are actually received back by us, and is to pay all expenses of postage and insurance. **No lots can be sent for inspection within ten days from date of local viewing. Large lots and collections cannot be sent for inspection.**
12. Agents are responsible for all purchases made on behalf of their clients unless other arrangements are made prior to the sale.
13. The placing of a bid shall constitute acceptance of the foregoing conditions of sale.

ROBERT A. SIEGEL  
WALTER J. MADER  
STEPHEN G. EDELSTEIN  
BRIAN M. BLECKWENN, Licensed Auctioneers

N.Y.C. Auction License No. 371761, 797537

FOR TABLE OF DESCRIPTIONS SEE PAGE 32







## LOTS ON VIEW

Lots on view Monday, January 30th, from 9:30 A.M. until 5:00 P.M. and on Day of Sale until 30 minutes before sale time.

## PUBLIC AUCTION

TUESDAY, JANUARY 31, 1989 At 1:00 P.M.

## GUAM

- |   |   |   |                              |
|---|---|---|------------------------------|
| 1 | ☒ | <b>Guam Forerunner</b> , 1886, Philippine Is. 2½c Ultramarine (1st redrawing) & 25c Dark Brown on Cover From Agana Guam to Manila cancelled by Boxed "Certif.", "Marianas 26 Jul 86" pmk., VF, Rare, Written-up in Vol. XLV of The U.S. Specialist pg. 498..... | <b>(Photo)</b> <b>E.XIII</b> |
|---|---|---|------------------------------|

## 1899 ISSUE

- |   |    |  |          |
|---|----|--|----------|
| 2 | S  | <b>1c-\$1.00 Ovpts., "Specimen" Ovpts. (1S-8S, 10S-12S).</b> Fresh, 4c, 6c & 10c natural s.e.'s, All o.g. but last, some h.r., 2c, 6c, 8c & \$1.00 small faults, 3c faulty, o/w VG-F "Set" (All Values except Special Delivery Represented), Only 950 Sets Prepared (Sound Sets are almost non-existent) <b>(Photo Ex)</b> | 3,000.00 |
| 3 | S  | <b>1c-\$1.00, Ovpts., "Specimen" Ovpts. (1S-8S, 10S-12S, E1S).</b> Cpl. "Set" (All Values Represented), Fresh, All o.g. but 2c, h.r.; 4c, 5c, 6c & E1 small faults, o/w F-VF, Only 950 Sets Prepared (Sound Sets are almost non-existent) <b>(Photo Ex)</b>  | 3,500.00 |
| 4 | ★田 | <b>1c Green (1). B. Impt. &amp; Pl. No. 832 Block of Six</b> , Fresh, usual tropical o.g., F-VF.....   | 450.00   |
| 5 |    | <b>1c Green (1). Five Pairs</b> on piece (first printing as evidenced by glue used to affix stamps), tied by Odd Corks, Str. Line "San Luis D'Apra, Guam" & "Feb 10 1900" pmks., four with edge damage, o/w Fine, Scarce.....  | 350.00   |
| 6 | ☒  | <b>1c Green (1).</b> Two Singles, tied by "San Luis D'Apra Guam." pmk. (Murphy Ty. 1.26) & "Aug 2 1900" datestamp on Cover to U.S., stamps minor perf. toning, o/w VF, Very Scarce, Illustr. & Described in Vol. LIV of <b>The Collectors Club Philatelist</b> , pg. 283.....  | 235.00+  |

**Due to the tremendous demand on our phones and staff, Prices Realized will not be available by telephone until 24 hours after the sale.**

- 7 ★田 **1c Green, 2c Carmine, Rose Carmine (1, 2, 2a). Blocks**, Fresh, No. 2 Mint, others usual tropical o.g., 1c perfs. scissors separated, Fine Lot..... 365.00
- 8 ★田 **1c Deep Green, 2c Carmine, Rose Carmine (1, 2, 2a). B. Impt. & Pl. No. Blocks of Six**, last without gum, others usual tropical o.g., two 1c slight soiling, one No. 2a faint thin, o/w VG-F Lot ..... 1,250.00
- 9 田 **1c Deep Green, 2c Carmine (1, 2). Two Used Blocks of Each**, one of latter thins, o/w VG-F Lot..... 800.00
- 10 **1c Green, 2c Carmine (1, 2). Tied on piece by Violet Blue Oval of Dots & Star & "Marianas" pmk.** (Captured Spanish cancelling devices), Fine, Very Scarce ..... **(Photo) E.VIII**
- 11 ∞ **1c Green, 2c Rose Carmine (1, 2a). Two of latter, tied by Odd Corks & Bold Str. Line "San Luis D'Apra, Guam Feb 8 1900"** pmks. on Civilian Rate Cover to U.S., few tiny scuffs typical on first printing stamps which were damaged in shipment to Guam, Fine. This cancel was applied aboard the U.S.S. Yosemite in Apra Harbor ..... **(Photo) 270.00**
- 12 ∞ **1c Green, 2c Carmine (1, 2). Horiz. Pair** of latter, 1c natural s.e. at R., tied by Violet Blue "Agana, Guam." Str. Line Pmks. (**Tilde Over "N"**), on Apr. 10, 1900 Civilian Rate Cover to U.S., "2" & "16" in Circle at B.L., Fine..... **(Photo) 270.00 +**
- 13 ∞ **1c-3c Ovpts. (1-3). Used on U.S. 4c Green on White Entire (U256), 1901 Reg. Use to U.S., tied by Purple Str. Line "Agana, Guam" pmks., Purple "Mil. Sta. No. 1. Manila P.I." & S.F. back-stamp transits, cover file fold & minor toning, o/w Fine..... (Photo) 470.00 +**
- 14 ★ **1c-50c Ovpts. (1-8, 10, 11a, 2a). Fresh, some h.r., 6c Mint; 3c tiny thin, o/w F-VF, Vast Majority VF ..... (Photo Ex) 1,057.50**

- |      |  |
|------|--|
| 15 ∞ | <b>1c-\$1.00 Ovpts. (1-8, 10-12, E1). Complete "Set"</b> (All Values Represented), tied on Dec. 24, 1900 Reg. Cover to Saipan (German Marianas) by Purple Str. Line "Agana, Guam" pmks., "Saipan Marianen 1/1 01" backstamp, all nicely centered (except 2c, 5c & 6c), A Fabulous Rare Cover, with P.F. Certificate ..... <b>(Photo) E.XVI</b> |
|------|--|

- 16 **1c-15c Ovpts. (1-8, 10, E1, 2a). Used, Nos. 2, 2a & 7 tiny faults, o/w F-VF ..... (Photo Ex) 1,290.00**
- 17 ∞ **1c-10c Ovpts. (1, 2, 4-8). 8c natural s.e. at L., 1c some gum staining outside of margins from glue used to affix stamp, tied by Purple Str. Line Agana Guam pmks. on Feb. 6, 1901 Reg. Cover to Germany, three vert. cover file folds (clear of stamps), Fine, Very Scarce .... (Photo) 875.00 +**
- 18 ★ **1c-5c Ovpts. (1, 2 two, 2a, 5). Impt. & Pl. No. Strips of Three**, Fresh, h.r., No. 2a without gum, 1c & 5c usual tropical o.g., No. 2a tiny scuff specks, o/w VG-F Lot ..... 660.00
- 19 ∞ **1c-5c Ovpts. (1, 2, 5). Tied by partial Agana Isl. Guam Grid Duplex on 1905 Zug Corresp. Cover to Wash. State, "Manila, P.I. Received" backstamp transit, Fine..... (Photo) 280.00 +**



- 20 ☒ **1c-5c Ovpts. (1, 2a, 5).** 1c natural s.e. at R., Average, tied by Black Str. Line "Agana Isle of Guam" & Purple "Aug 28 1899", Blue "U.S.S. Yosemite" Handstamp Corner Card, on Cover to U.S., Manila Mil. Sta. backstamp transit, slight soiling, Scarce..... (Photo) 285.00 +

- |      |  |              |
|------|--|--------------|
| 21 ☒ | <b>1c-5c Ovpts. (1, 2, 5).</b> Single & Vert. Strip of Three of 1c, singles of other two, on European Size Cover tied by Dark Violet Ovals of Dots & Stars, matching "Marianas" pmk. on Reg. (Boxed "Certif.") Cover to Manila, Magenta "Philippine Military Sta. No. 1, Philippine Isls," backstamp, cover edge file fold & few small tears, Fine, Very Rare, Illustr. & Described as the <b>Earliest Known U.S. Guam Registry Cover &amp; the Latest Known Use of the Captured Spanish Cancels</b> in Vol. XLV of the U.S. Specialist pp. 498-500..... (Photo) | <b>E.XIV</b> |
|------|--|--------------|

- 22 ☒ **1c-5c Ovpts. (1, 2a, 5).** Tied by Str. Line "San Luis D'Apra, Guam Dec 13 1899" pmks. & matching Odd Corks on Cover to Pa., First Printing (2c surface scuffs as often), Mil. Sta. Manila backstamp, Fine..... (Photo) 285.00 +
- 23 ☒ **1c-5c Ovpts. (1, 2, 5).** Tied by Blue Str. Line "San Luis D'Apra. Guam Dec 9 1899" pmks. on Printed Address Cover to San Francisco, Manila Mil. Sta. backstamp, 1c (natural s.e.) has some pre-use surface scuffs (lightly colored in), o/w Fine, Rare, Preceeds Earliest Known Use of this Cancel by Nearly One Year..... (Photo) 280.00 +
- 24 ☒ **1c-5c Ovpts. (1, 2a, 5).** Two Covers, one Reg. with 1c, two 2c & one 5c, Magenta Str. Line Agana Guam pmks. to U.S., Magenta "Agaña, Guam" Reg. handstamp, 5c stamp damaged, o/w Fine; other single 5c tied by Bold Blue Two Line "Agana Isle of Guam Oct 20 1899" pmk. on torn cover to U.S., Scarce Lot ..... 515.00 +
- 25 **1c-15c Ovpts. (1, 2, 2a, 5-8, 10, 11).** 34 Used Stamps, from one to nine of each, Mostly Nos. 2, 2a & 5, Variety of Cancels (both Naval & Post Office), mixed quality, Scarce Lot ..... **E.XII**
- 26 ☒ **1c-10c Ovpts. (1, 2a, 5, 8).** 2c is First Printing (surface scuffs as often), 5c perfs. in at R., Neatly tied by "Agana Island of Guam Nov 30 1901" pmks. on Reg. Cover to Switzerland, Purple "Mil. Sta. No. 1 Philippine Registered" backstamp, Attractive & Very Scarce ..... (Photo) 390.00 +
- 27 ☒ **1c-10c Ovpts. (1, 2, 5, 8).** On Apr. 1904 Reg. Cover to Switzerland, tied by "Agana Island Of Guam" pmks., Violet "Guam, Guam Registered", Manila P.I. backstamp transit, 2c repaired, small cover scuff to L. of 10c stamp (also barely affects stamp), o/w Fine ..... (Photo) 390.00 +
- 28 ★ **1c-15c Ovpts. (1 six, 2 eight, 5 three, 8, 10, E1 var).** Fresh, some without gum or tropical o.g., a few natural s.e.'s (incl. No. 8), mixed centering, a few with faults, o/w VG-F ..... 935.00
- 29 **1c-6c Ovpts. (1, 2, 6).** Tied on small piece by Blue "Guam Ladrone Isl's Aug 19, 1901" Duplex pmk., 1c & 2c some perf. tip toning, o/w VG-VF..... (Photo) 245.00
- 30 **1c Deep Green, 5c Blue (1, 5).** Used, Both with Violet Ovals of Dots & Stars (Captured Spanish Cancels), 5c s.e. at T. & tiny corner crease, o/w Fine..... **E.VII**
- 31 **1c-10c Ovpts. (1, 5, 7, 8 five, E1).** Used, one 10c tiny thin, another light crease, o/w F-VF..... 805.00
- 32 ★ **2c Carmine, Rose Carmine (2 seventeen, 2a seven).** All in Multiples incl. B. Impt. & Pl. No. Strip of Three of each, Fresh, h.r., some without gum, some with faults, o/w VG-F Lot ..... 770.00
- 33 ★田 **2c Rose Carmine (2a). B. Impt. & Pl. No. 764 Block of Six,** First Printing, without gum as virtually always, Fresh, T. row trivial scuff specks typical of First Printing, T.R. stamp tiny thin, o/w Fine..... 400.00

34	<b>2c Carmine (2).</b> Six, Used, tied on separate piece by Town pmks., Three Singles on one piece, one single tied by "Agana Isle/of Guam" Purple Str. Line pmk. (Used only in June, 1900, Murphy Ty. 1.3), all with faults or faulty, o/w VG-F Lot .....	175.00 +
35	<b>2c Carmine (2). Two Reconstructed Blocks</b> (Four Vert. Pairs), "Agana, Island of Guam Nov 30 1901" pmks., mounted on small piece (not original), Fine .....	200.00 +
36 田	<b>2c Carmine (2). B. Impt. &amp; Pl. No. 876 Block of Six</b> , Fresh, Purple Str. Line "Agana, Isle of Guam" pmks., selvedge tear, centered to L., perfs. touch (cat. \$400.00 Unused) .....	—
37 ㊞	<b>2c Carmine (2).</b> Tied by Blue Oval of Dots & Star, matching " <b>Marianas</b> " pmk. (Captured Spanish cancels) on Sept. 4, 1899 Cover to U.S., "Mil. Sta. No. 1 Manila Philippine Received" backstamp transit (similar to Baker CE-2), Fine, Rare .....	<b>(Photo) E.XII</b>
38 ㊞	<b>2c Carmine (2).</b> Two Average singles, vaguely tied by Blue "Agana, Guam." Str. Line on June 23, 1901 Cover to Wash, D.C., Sailor's Return Address, cover wrinkles from contents, Scarce non-Philatelic Cover .....	<b>(Photo) 235.00 +</b>
39 ㊞	<b>2c Rose Carmine (2a). Horiz Strip of Three</b> , First Printing (stamps damaged in transit to Guam), Purple Str. Line "Agana, Isle of Guam." pmk., Purple "Feb 24 1900" datestamp on Cover to San Francisco, partial " <b>Yokohama Japan</b> " backstamp transit, Scarce .....	<b>(Photo) 280.00 +</b>
40 ㊞	<b>2c Carmine, 3c Purple (2, 3).</b> Tied by "Agaña, Guam." Violet Str. Line pmks. on May 22, 1900 Cover to the Vice Consul of the Dominican Republic at Barcelona, Spain, "Navy Department", etc. above stamps, Enclosure on Official "Government House" Stationery from Capt. R.P. Leary, "Governor of Guam" regarding exchange of stamps, etc., Capt. Leary was also responsible for ordering the Overprinted Issue of 1899, cover has couple light file folds (minor faults along one), o/w Fine, Scarce & Desirable .....	<b>(Photo) 400.00 +</b>
41	<b>2c-10c Ovpts. (2 two, 5, 8).</b> Each tied by Town pmks. on separate piece, Three Diff. pmks., one 2c some nibbed perfs., o/w Fine Lot ....	185.00
42 S	<b>2c-15c Ovpts., "Specimen" Ovpts. (2S, 6S, 10S).</b> Fresh, o.g., h.r., 2c L. Pl. No. 898 Single, perfs. slightly in at L., tiny corner perf. crease, others Fine .....	<b>(Photo Ex) 750.00</b>
43 ★	<b>3c Purple (3). L. Arrow Vert. Strip of Three</b> , Fresh, Two Stamps Mint, Fine .....	375.00
44 ★田	<b>3c Purple (3). Block</b> , Fresh, B. Pair Mint, T. Pair h.r., one with tiny thin, o/w F-VF .....	<b>(Photo) 550.00</b>
45 ★田	<b>3c Purple (3). B. Impt. &amp; Pl. No. 448 Block of Six</b> , Fresh, usual tropical o.g., small hinge closed tear on one stamp, T. perfs. touch to slightly in, Scarce .....	<b>(Photo) 1,600.00</b>
46 ㊞	<b>3c-15c Ovpts. (3, 4, 6, 10).</b> Mixed centering, tied by light Purple Str. Line Agana pmks. on Jan. 5, 1901 Reg. Cover to U.S., some perf. & cover toning spots, Very Scarce .....	<b>(Photo) 1,425.00 +</b>
47 ★田	<b>4c Lilac Brown (4). Block</b> , Fresh, B. Pair Mint (one with light natural wrinkle), T. Pair h.r., Fine .....	<b>(Photo) 550.00</b>
48 ★田	<b>4c Lilac Brown (4). B. Impt. &amp; Pl. No. 792 Block of Six</b> , Fresh, usual slightly tropical o.g., F-VF, Scarce .....	<b>(Photo) 1,600.00</b>
49 ★田	<b>4c Lilac Brown (4). B. Impt. &amp; Pl. No. 791 Block of Six</b> , Fresh, usual slightly tropical o.g., B. perfs. touch on three, o/w Fine, Scarce .....	<b>(Photo) 1,600.00</b>
50 ㊞	<b>4c Lilac Brown (4). Horiz. Pair</b> , tied by "Agana Island of Guam Nov. 30 1901" pmk. on Zug Corresp. Cover to Wash., "Manila, P.I. Transit" backstamp, L. stamp single short perf., o/w VF .....	<b>(Photo) 625.00 +</b>



51	☒	<b>4c Lilac Brown, 8c Violet Brown (4, 7). Horiz. Pair</b> of latter, tied by Purple Str. Line "Agana, Guam Jan 2 1901" pmks. on Reg. Cover to Germany, various backstamp transits, couple tiny cover tears at L., F-VF, Scarce.....	(Photo)	800.00 +
52	★田	<b>5c Blue (5). Mint Block, F-VF</b> .....		150.00
53	★田	<b>5c Blue (5). B. Impt. &amp; Pl. No. 834 Block of Six</b> , usual slightly tropical o.g., one with gum toning speck, Fine .....	(Photo)	700.00
54		<b>5c Blue (5). B. Impt. &amp; Pl. No. 834 Strip of Three</b> , Purple Str. Line "Agana Isle of Guam" pmk., h.r., two with tiny thins, o/w VF..		135.00 +
55	☒	<b>5c Blue (5). Tied by Dark Violet Oval of Dots &amp; Star</b> , matching "Marianas" pmk. on Cover to the Asst. Supt. of Mails at San Francisco, Sept. 14 1899 "Mil. Sta. No. 1 Manila Philippine Received" backstamp transit, tiny cover edge tears & nicks, still a Great Rare Cover. <b>This is the First U.S. Mail From Guam</b> & shows Usage of the Spanish cancels captured by the U.S. Navy (in use Aug. to Oct. 1899), with contents. This cover is described in Vol. XLV of the U.S. Specialist, pg. 499.....	(Photo)	E.XIII
56	☒	<b>5c Blue (5). Tied by "Guam Isl. Guam" 1905 pmk.</b> on Zug Corresp. Cover to Wash., Manila Transit, VF .....	(Photo)	200.00
57	☒	<b>5c Blue (5). Perfs. touch</b> , tied by Clear Blue Two Line "Agana, Isle of Guam./Nov 21 1899" pmk. on Civilian Rate Cover to Texas, Manila Mil. Sta. backstamp (Baker CE-2), Fine.....	(Photo)	200.00
58		<b>5c-15c Ovpts. (5-8, 10). Used</b> , 5c-10c Str. Line pmks., 5c & 15c light creases, o/w VG-F Lot.....		640.00
59	★田	<b>6c Lake (6). Block, Fresh, B. Pair Mint, T. Pair lightly hinged</b> , VF .....	(Photo)	550.00
60	★田	<b>6c Lake (6). Mint Block, F-VF</b> .....	(Photo)	550.00
61	★田	<b>6c Lake (6). B. Impt. &amp; Pl. No. 924 Block of Six</b> , Fresh, Well-centered, usual slightly tropical o.g., T. Middle Stamp small natural translucency, VF, Scarce .....	(Photo)	1,600.00
62	★田	<b>6c Lake (6). B. Impt. &amp; Pl. No. 925 Block of Six</b> , Fresh, usual slightly tropical o.g., two stamps light natural wrinkle, Fine, Scarce.....	(Photo)	1,600.00
63	☒	<b>6c Lake, 10c Blue (6, E1). Former tiny margin nick</b> , latter natural s.e. at L., on U.S. <b>4c Brown on Amber Legal Size Entire (U372)</b> tied by Blue "Ladrone Isds. Guam Oct 4 1901" Grid Duplex pmks., Reg. Use to U.S., Very Attractive, Scarce.....	(Photo)	775.00 +
64	★田	<b>8c Violet Brown (7). Mint Block</b> , Exceptionally Well-centered, Extremely Fine.....	(Photo)	550.00
65	★田	<b>8c Violet Brown (7). Block, Fresh</b> , lightly hinged, One Stamp Mint, VF.....	(Photo)	550.00
66	★田	<b>8c Violet Brown (7). B. Impt. &amp; Pl. No. 929 Block of Six</b> , Fresh, usual slightly tropical o.g., Fine, Scarce .....	(Photo)	1,600.00
67	☒	<b>8c Violet Brown (7). Nicely Centered</b> , tied by Purple Str. Line Agana pmk. on Oct. 1900 Cover to <b>Saipan</b> (German Marianas), "Saipan * Marianen * 10/10 00" receiving pmk., cover file fold, VF .....	(Photo)	450.00
68	★田	<b>10c Brown, Ty. I (8). Block, Fresh</b> , Well-centered, usual tropical o.g., VF .....	(Photo)	250.00
69	★田	<b>10c Brown, Ty. I (8). B. Impt. &amp; Pl. No. 518 Block of Six</b> , Fresh, usual tropical o.g., B. perfs. touch on three, o/w Fine, Scarce.....	(Photo)	950.00

70 ★田	<b>10c Brown, Ty. I (8). L. Impt. &amp; Pl. No. 521 Block of Six</b> , Fresh, lightly hinged, Three Appear Mint, one with tiny thin, L. perfs. touch to slightly in, Scarce ..... (Photo)	950.00
71 ★	<b>10c Brown, Ty. I (8). Complete Sheet of 100 incl. L. &amp; B. Impt. &amp; Pl. No. 519 Blocks of Six</b> , slight tropical o.g. & some minor separations, mixed centering, Overall F-VF, Rare Sheet..... (Photo)	6,740.00+
72 匣	<b>10c Brown, Ty. I (8)</b> . On Zug Corresp. Reg. Cover to Wash. tied by "Guam Isl. Guam Jun 12, 1905" Grid Duplex pmk., Magenta "Guam Guam Registered Jun 12 1905" handstamp (Murphy Ty. 2.2), VF ..... (Photo)	275.00
73 匣	<b>10c Brown, Ty. I (8)</b> . On Oct. 1901 Reg. Cover to U.S. tied by <b>Blue 'Guam Ladrone Isls'</b> Grid Duplex pmk., (Murphy Ty. 1.8), "Agaña, Guam" Registry handstamp, Fine, Scarce ..... (Photo)	275.00
74 匣	<b>10c Brown, Ty. I (8)</b> . Natural s.e. at R., tied by Purple "Agana Guam" Str. Line on May 10, 1901 Reg. Cover to U.S., Fine. (Photo)	275.00
75 匣	<b>10c Brown, Ty. I (8)</b> . Natural s.e. at R., <b>Blue</b> Str. Line "Guam" pmk. ("Agana" missing), on June 21, 1901 Reg. Cover to U.S., pencil docketing, & slight soiling, o/w Fine ..... (Photo)	275.00
76 匣	<b>10c Brown, Ty. I (8). Horiz. Pair</b> , tied by "Guam Isls. Guam Jun 9 1905" Grid Duplex pmk. on Zug Corresp. Reg. Cover to Wash., "From P.M.D Guam Guam" handstamp return card, VF..... (Photo)	345.00+
77	<b>10c-\$1.00 Ovpts. (8, 10-12)</b> . Used, 10c-50c small faults, o/w VG ..... (Photo)	1,145.00
78 ★	<b>10c Brown, Ty. II (9)</b> . Natural s.e. at L., Fresh, h.r., Fine, Rare, with P.F. Certificate..... (Photo)	5,000.00
79 ★田	<b>15c Olive Green (10). Block</b> , Fresh, B. Pair Mint, Fine..... (Photo)	600.00
80 ★田	<b>15c Olive Green (10). B. Impt. &amp; Pl. No. 264 Block of Six</b> , Fresh, Well-centered, usual very slightly tropical o.g., VF, Scarce ..... (Photo)	2,100.00
81	<b>15c Olive Green (10)</b> . On part of U.S. 2c Carmine Entire (U362) Used with <b>Puerto Rico 1c Green Ovpt. (215)</b> tied by "Agana Island of Guam Mar 1902" pmks., Fine & Unusual..... (Photo)	175.00+
82 匣	<b>15c Olive Green (10)</b> . Used With <b>Average 3c Purple No. 3</b> , lightly tied by Purple Str. Line Agana pmks. on Oct. 1900 Cover to <b>Saipan</b> (German Marianas), "Saipan * Marianen * 10/10 00" receiving pmk., cover file fold, Fine, Scarce ..... (Photo)	900.00+
83 ★	<b>50c Red Orange (11a)</b> . Fresh, h.r., VF..... (Photo)	300.00
84 ★田	<b>50c Orange (11). Block</b> , Fresh, usual tropical o.g., F-VF, Scarce ..... (Photo)	1,150.00
85 ★田	<b>50c Orange (11). B. Impt. &amp; Pl. No. 75 Block of Six</b> , Fresh, usual tropical o.g., some separation in selvage, Fine, Rare ..... (Photo)	4,000.00
86	<b>50c Red Orange (11a)</b> . Oval Grid cancel, Well-centered, filled thin, VF Appearance, Unpriced Used ..... (Photo)	350.00+
87	<b>50c Orange (11)</b> . Used, Well-centered, tiny faint thin, VF Appearance.....	350.00
88 田	<b>50c Orange (11). Block</b> , perfs. in at R., on piece tied by "Guam Isl. Guam Apr 1 1903" Grid Duplex (Murphy Ty. 1.9), Very Scarce, ex-Tows (Usages of this pmk. after 1903 are philatelic)..... (Photo)	1,750.00
89	<b>50c Orange (11)</b> . Used, partial <b>1902 N.Y.</b> pmk., also incl. No. 1 with N.Y. Double Oval pmk., 50c minor faults, o/w Fine ..... (Photo)	385.00
90	<b>50c Orange (11)</b> . Two, "Agana" & "Guam" Str. Line pmks. (one Blue, one Red), one with faint thin, o/w Fine ..... (Photo Ex)	700.00





2 EX



3 EX



14 EX



16 EX



10



29



42 EX



78



83



86



90 EX



81



97



98



91 EX



92 EX



94



99



102



103



110



114





116



117



119



122



123



125



130



132



128 EX



129



131



134



133



139



142



145



187



190



209 EX



118



120



121



124



126





5



44



47



59



60



64



45



48



65



68



49



53



79





61



62



84



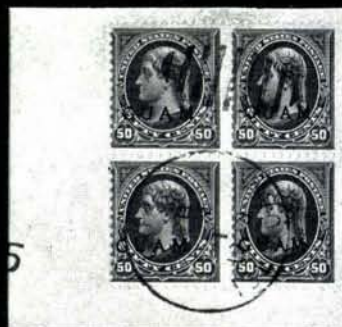
66



70



95



88



104



106



105



168 EX





69



80



85



96











882



111



112



882



113



135

136



140



137



143



144

146



138





153



185



189



158



167 EX



166 EX



188



191



1 1  
ONE CENT

Four identical 1-cent postage stamps from Guam are shown. Each stamp features a palm tree on the left and a sailboat on the right, with the word "GUAM" in the center. The stamps are arranged in a row.

Four identical 1-cent postage stamps from Guam are shown. Each stamp features a palm tree and the word 'GUAM'.

QUAN QUEN HAI QUEN QUEN HAI QUEN QUEN HAI QUEN QUEN HAI

1 1 1 1

ONE CENT ONE CENT ONE CENT ONE CENT

1 1 1 1 159

ONE CENT ONE CENT ONE CENT ONE CENT

159

170

Five identical 2-cent postage stamps from Guam are shown in a horizontal row. Each stamp features a palm tree on the left and a sailboat on the right, with the word "GUAM" in the center. The denomination "2" is in the bottom corners, and "TWO CENTS" is at the bottom.

Five identical 2-cent U.S. postage stamps are shown in a row. Each stamp features the word "GUAM" in a bold, sans-serif font, centered above a stylized palm tree. The palm tree is depicted with a long, slender trunk and a large, feathery frond. The background of the stamp is a light, textured gray. Below the palm tree, the words "U.S. POSTAGE" and "2 CENTS" are printed in a smaller font. The entire stamp is enclosed in a thin black border.

Five identical 2-cent postage stamps from Guam, each featuring a palm tree and a sailboat. The stamps are arranged in a horizontal row.

2 TWO CENTS 2

171



Islas Filipinas

H. D. José V. de Velasco



1

Manila



Mr. José Longson  
Registered:  
Saipan  
R. 178  
German Marian Islands  
48



Mr. Julius Rinze  
17 Maystrasse  
Dresden, A.

Germany

93

To be registered



Herrn G. Fritz  
Saipan





SAN LUIS D'APRA

FFR8

Capt. Thos. Thompson  
Canal St.  
Stapleton

11



barrier 132 at Sta. A.

6

FEB 20 1991



Rev. K. Wiegmann,  
Hacker, 1732  
Ill.  
-1930

13



Mr. H. Hough  
of The Bedford Company

12

SAN LUIS DARRA, GUAM

DEC 1 9 1899

at E. Cox.  
Broad Ave. & 29<sup>th</sup> St.



R 383

26

15343

Gruppenbau  
 H. Wirsing  
 3 Oldenburg  
 Humboldtstr.

17

U. S. YOUTH LITERATURE



John Hilleke Esq  
U.S. Engineer Office



Dr. C. Moensterias Podrig?

P.O. Box 7<sup>th</sup> 80

Ann. 6

Manila  
Philippine Islands

21



Mr. John Ing  
Engineer Office, U.S.S.  
Everett  
Washington.

19





Registered

Mr. F. Salzmann <sup>22721</sup>

30 Justice 26



MAKINS & CO.

SAN FRANCISCO,

Street. 23 CAL.

1899



*Mrs. Ann Hefner*  
*112 So. Commercial*

37



Registered

27



FEB 24 1900



39

*112 So. Commercial*

N 23 1901



38



46

21800

NAVY DEPARTMENT  
ADAMS ISLAND, GUAM

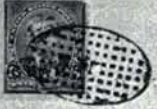


Señor Francisco Carreras y Candi,  
Vice Consul of the Dominican Republic,

Ronda San Pedro, 60 y 62,

Barcelona, Spain.

40



55

*W. A. Chapin*



Henri Fiachs  
Pöppelheimstrasse 17  
12581 Munich, Bavaria  
Germany.

R. 784  
12

51



JOHN ZUG,  
Engineer Officer, U. S. Army.  
EVERETT, WASH.

50

56

Mr. John E. Eng  
Engineer Office U.S. Army



57

Mr. Marion Shaw



Register!



To be registered

63



Hermin G. Fritz

67



72

no. 680



queller  
Southport. Ar

73



75

Mr. William L. Lindsey  
Sec. Branch. 79. N. A. L. C.



Mr. F. J. Wright

74

MAY 12 1901

AGA



108



P. M. D.  
MAY 12 1901

no. 594



76

To be registered



Hermin G. Fritz



Taipan

82





115



no. 636



109

This letter was carried on the first trip of internal mail system in the Island of Guam on 8 April, 1930. It was mailed at Agaña and delivered at Agaña.

*Wm. W. Bradley*  
Governor



147



141



148



150

*Dr. Jay F. Miller*

CABLEGRAM



149



152

MRS. R. F. HOTTER.

PATROL SQUADRON 3-M.

*A. Stuart*  
*42 Co.*

151



161

*Dr. Jay F. Miller*  
*Agaña*



160

*Jay F. Miller*



173

*Dr. Jay F. Miller*  
*Agaña*  
*Guam*



162

*Dr. Jay F. Miller*  
*Agaña*  
*Guam*

# COMMERCIAL PACIFIC CABLE

POSTAL TELEGRAPH (Landline System Throughout the United States)



## CABLEGRAM

No. FIVE

MR. W. G. JOHNSTON  
AGANA

175

PAY NO CHARGES  
TO MESSENGER

ANSWER BY COMMERCIAL PACIFIC CABLE



Dr. J. F. Miller  
Agana  
Dum

174



BUTLER'S, INC.  
AGANA,  
ISLAND OF GUAM.

Mrs H. W. Jor

182 EX



183

176



192

land,  
San Francisco  
as. F. Pond.  
Captani Charles F. Pond,  
U. S. S. "Supply"  
Guam  
North Pacific Ocean



202

194 EX 34820



193

Naval Government of Guam,  
Guam Postal Service



196 EX



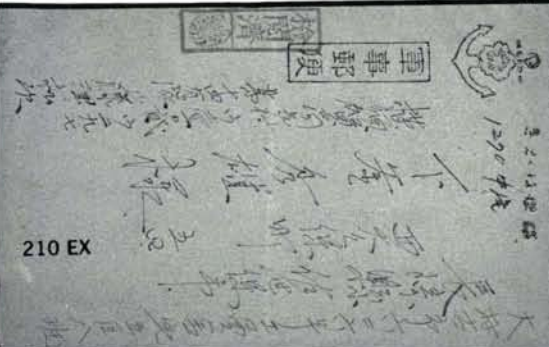
198



Superintendent,

GOVERNMENT HOUSE,  
AGANA, GUAM

NAVY DEPARTMENT,  
OFFICIAL BUSINESS,  
FRANCISCO



210 EX

POSTAL UNION  
d'Amérique)  
AGANA  
Justice  
Berne  
Switzerland

200

Richard  
Chicago,  
Ill.

199



- 91 **50c Orange, \$1.00 Black, Ty. I (11, 12).** Used, Blue Str. Line pmks., former tiny corner crease, o/w Fine ..... (Photo Ex) 900.00
- 92 **50c Orange, \$1.00 Black, Ty. I (11, 12).** Used, partial Black "Agana, Guam" Reg. pmks., former with thins, latter minor corner crease, perfs. touch ..... (Photo Ex) 900.00

- 93 ☒ **50c Orange, \$1.00 Black (11, 12).** Former natural s.e. at R., latter single short perf., Used With 2c, 5c & 10c Ty. I (2, 5, 8), tied by Blue "Guam Ladrone Isls." Grid Duplex pmks. on Aug. 24, 1901 Reg. Cover to Germany (Earliest Known Use Aug. 19, 1901), Manila backstamp (Baker Ty. DR-1a), 2c & 50c have stains around margins from glue used to affix stamps, light cover file fold, Very Rare ..... (Photo) E.XV

- 94 ★ **\$1.00 Black, Ty. I (12).** Fresh, Well-centered, usual tropical o.g., VF..... (Photo) 400.00
- 95 ★田 **\$1.00 Black, Ty. I (12). Block,** Fresh, Exceptionally Well-centered, B.R. stamp couple minute scuff specks, o/w VF, Scarce Block..... (Photo) 1,850.00

- 96 ★田 **\$1.00 Black, Ty. I (12). B. Impt. & Pl. No. 76 Block of Six,** Fresh, usual very slightly tropical o.g., Fine, Extremely Rare, ex-Lilly ..... (Photo) 7,000.00

- 97 **\$1.00 Black, Ty. I (12).** On piece tied by Blue "Agana Island Of Guam" pmk. (Murphy Ty. 1.6), VF..... (Photo) 550.00
- 98 **\$1.00 Black, Ty. I (12).** On piece tied by "Guam Isl. Guam" pmk. (Murphy Ty. 1.9), Fine ..... (Photo) 550.00
- 99 **\$1.00 Black, Ty. I (12).** Used, Fine ..... (Photo) 550.00

- 100 ☒ **\$1.00 Black, Ty. I (12). Used With 10c Blue Special Delivery (E1),** tied by "Agana Island Of Guam" 1902 pmk. on European Size Reg. Cover to Germany, Printed Address, Purple Manila backstamp transit, 10c has been reperfed, o/w Fine, Very Rare, with Miro & P.F. Certificates..... (Photo Front Cover) 2,200.00 +
- 101 ☒ **\$1.00 Black, Ty. I (12). Used With 1c Green No. 1** on Oct. 1900 Cover to Saipan (German Marianas), tied by Purple Str. Line Agana pmks., "Saipan \* Marianen \* 10/10 00" receiving pmk., gum staining around stamps due to use of glue to affix stamps (P.O. interleaving on back of stamps), cover file fold, Fine & Rare..... (Photo) 2,000.00 +
- 102 ★ **\$1.00 Black, Ty. II (13).** Fresh, without gum, Fine Example of This Rare Stamp, with P.F. Certificate ..... (Photo) 3,000.00

## SPECIAL DELIVERY, TYPE I

- 103 ★ **10c Blue (E1).** Mint, Beautiful Margins & Centering, Extremely Fine ..... (Photo) 150.00
- 104 ★ **10c Blue (E1). B. Impt. & Pl. No. 883 Strip of Three,** Fresh, Well-centered, usual tropical o.g., very faint crease at extreme B. edge of wide selvage (of no importance), VF..... (Photo) 750.00
- 105 ★ **10c Blue (E1). T.R. Imperf. Half Arrow, Impt. & Pl. No. 881 Strip of Four,** Fresh, Well-centered, Two Stamps Mint, some separation hinge reinforced, small sealed selvage tear at T. (can be trimmed out), o/w VF ..... (Photo) 900.00

106 ★田 **10c Blue (E1). Block, Fresh, Fine** ..... (Photo) 650.00

107 ★田 **10c Blue (E1). B. Impt. & Pl. No. 881 Block of Six, Fresh,**  
usual tropical o.g., one with small thin, o/w F-VF, Scarce.....  
..... (Photo) 4,000.00

108 田 **10c Blue (E1). Used With 2c Carmine (2) tied by "Guam Isl. Guam**  
Jun 14 1905" pmk. on Zug Corresp. Cover to Wash., some light  
cover soiling or staining, o/w VF..... (Photo) 600.00

109 田 **10c Blue (E1). Used With 10c Brown, Ty. I (8), tied by "Guam Isl.**  
Guam Jun 10 1905" pmk. on Zug Corresp. Reg. Cover to Wash.,  
Magenta "Guam Guam" Registered handstamp, No. E1 removed,  
reperfed at L. & reaffixed, o/w VF, Handsome Cover..... (Photo) 670.00 +

## SPECIAL DELIVERY, TYPE II

110 ★ **10c Blue, Dots in Curved Frame Above Messenger (E1 var).**  
Mint, couple light natural gum bends, VF, with P.F. Certificate .....  
..... (Photo) 275.00

111 ★田 **10c Blue, Dots in Curved Frame Above Messenger (E1 var).**  
**Block, Fresh, usual tropical o.g., F-VF, Scarce Block**..... (Photo) 1,100.00 +

112 ★田 **10c Blue, Dots in Curved Frame Above Messenger (E1 var).**  
**T. Impt. & Pl. No. 882 Block of Six, Fresh, usual tropical**  
o.g., B.R. stamp single pulled perf., T. perfs. touch to barely  
in, Scarce..... (Photo) 4,000.00 +

113 ★田 **10c Blue, Dots in Curved Frame Above Messenger (E1 var).**  
**B.R. Impt. & Pl. No. 882 Block of Eight, Stamps Mint,**  
couple small selvedge hinge reinforcements, perfs. close to  
slightly in, Rare..... (Photo) 4,550.00 +

114 **10c Blue, Dots in Curved Frame Above Messenger (E1 var).** Faint  
Purple Str. Line "Agana" pmk., Well-centered, tiny trivial margin  
tear, VF Appearance, Not Priced Used..... (Photo) 200.00 +

115 田 **10c Blue, Dots in Curved Frame Above Messenger (E1 var).**  
Perfs. in at B., **Used With 2c Carmine No. 2,** tied by "Agana  
Island Of Guam Nov 30 1901" pmk. on Zug Corresp. Cover to  
Wash., "Manila, P-I. Transit" backstamp, Very Scarce, Unpriced  
Used or on Cover..... (Photo) 600.00 +

## 1899 ISSUE SPECIAL PRINTING

*100 of the 1c, 2c, 5c and 200 of the other values were specially overprint-  
ed in 1899 for the Third Assistant Postmaster General. Two singles and  
two blocks of four were selected for display at the 1900 Paris Universal  
Exposition. Most of the remaining copies were used for specimen stamps,  
but a few reached the public by favor.*

116 ★ **1c Green, Special Printing (1 var). Horiz. Pair, Fresh, h.r., one**  
with small thin, o/w Fine, with P.F. Certificate..... (Photo) 700.00

117 ★ **2c Carmine, Special Printing (2 var). Horiz. Pair, Well-centered,**  
Fresh, h.r., VF, with P.F. Certificate ..... (Photo) 700.00

118 ★ **3c Purple, Special Printing (3 var). Horiz. Pair, Well-centered,**  
Mint, VF, with P.F. Certificate ..... (Photo) 700.00

119 ★ **4c Rose Brown, Special Printing (4 var). Horiz. Pair, Fresh, h.r.,**  
Fine, with P.F. Certificate..... (Photo) 700.00



- 120 ★ **5c Blue, Special Printing (5 var). Horiz. Pair**, Fresh, R. Stamp Mint, L. Stamp small sealed tear, o/w VF, with P.F. Certificate which states "Genuine" ..... (Photo) 700.00
- 121 ★ **6c Lake, Special Printing (6 var). Horiz. Pair**, Fresh, Stamps Never Hinged, tiny handstamp & pencil marks on back, Fine, with P.F. Certificate ..... (Photo) 700.00
- 122 ★ **8c Violet Brown, Special Printing (7 var). Horiz. Pair**, Fresh, h.r., R. Stamp R. perfs. touch, L. Stamp Fine, with P.F. Certificate ..... (Photo) 700.00
- 123 ★ **10c Brown, Ty. I, Special Printing (8 var). Horiz. Pair**, Fresh, h.r., Fine, with P.F. Certificate ..... (Photo) 700.00
- 124 ★ **15c Olive Green, Special Printing (10 var). T. Sheet Margin Horiz. Pair**, Well-centered, Stamps Mint, lightly folded along selvedge, VF, with P.F. Certificate ..... (Photo) 700.00
- 125 ★ **50c Red Orange, Special Printing (11 var). Horiz. Pair**, Well-centered, Fresh, h.r., R. Stamp tiny thin, o/w VF, with P.F. Certificate which states "Genuine" ..... (Photo) 800.00
- 126 ★ **\$1.00 Black, Ty. I, Special Printing (12 var). T. Impt. Margin Horiz. Pair**, Fresh, Stamps Never Hinged, tiny handstamp & pencil marks on back, ms. notation on back of selvedge, perfs. slightly in at L., with P.F. Certificate ..... (Photo) 1,300.00

127 ★	<b>The Preceding Eleven Pairs Offered as a "Set"</b> .....	8,400.00 +
-------	--	------------

- 128 ★ **1c-15c Ovpts., Special Printings (1 var, 6 var, 7 var, 10 var)**. Fresh, h.r., 15c small thin, o/w F-VF, each with 1973 P.F. Certificate stating "the overprint is counterfeit", 6c & 8c with 1974-75 A.P.S. Certificates stating "the special printing, genuine in all respects", each signed "Special Surcharge" Tows, ex-Tows, (cat. value as "genuine" \$1,400.00) ..... (Photo Ex) —
- 129 ★ **3c Purple, Special Printing (3 var)**. Fresh, h.r., light crease & small tear, VF Appearance ..... (Photo) 350.00

130 ★	<b>3c Purple, Special Printing (3 var). T. Impt. &amp; Pl.No. 447 Strip of Three</b> , h.r., small selvedge thin & faint overall toning, some separation, o/w Fine, Very Rare, Possibly Unique.... ..... (Photo) 1,050.00 +
-------	--

- 131 ★ **4c Lilac Brown, Special Printing (4 var)**. Fresh, h.r., Fine, signed Tows, with P.F. Certificate ..... (Photo) 350.00
- 132 ★ **5c Blue, Special Printing (5 var)**. Fresh, h.r., Magenta "Special Surcharge" backstamp, Fine ..... (Photo) 350.00

## 1930 GUAM GUARD MAIL

*Cmdr. Willis W. Bradley, Jr. was governor of Guam from 1929 to 1931. Among his many projects was the establishment of local mail service which the U.S. Post Office Dept. refused to provide. Marine Lt. Milo Carroll was appointed to organize the service, let the contracts and appoint personnel. He obtained stamps at cost from the Philippine Dept. of Commerce, which were shipped to Guam aboard the U.S.S. Gold Star, and overprinted "GUAM GUARD MAIL" at the Federal Public Works print shop at Agana, Guam. The stamps were not surcharged, but were valued at 2 Philippine centavos equaled 1 U.S. cent. Originally it was intended to use the name "Guam Postal Service", but due to objections from the U.S. Post Office Dept., this name was changed to "Guam Guard Mail" referring to the delivery of messages within this military reservation. The unit rates were 1c for a post card and 2c for letters. Lt. Carroll was succeeded as Superintendent by Marine Lt. J. A. Stuart before the service actually began on April 8, 1930. He ordered a local printing of stamps incorporating the Guam seal and two additional printings of the overprinted Philippine stamps. The Post Office Dept. capitulated and took over the main route of the Guam Guard Mail on Jan. 1, 1931 as a star route, and finally the entire route after April 8, 1931, when the Guard Mail service ended.*

### FIRST ISSUE, APRIL 8, 1930

- 133 ★ **2c Green (M1).** Well-centered, Fresh, lightly hinged, VF, with P.F. Certificate ..... **(Photo)** 400.00
- 134 ★ **2c Green (M1).** T. Pl. No. 122335 Single, Fresh, lightly hinged, Fine, with P.F. Certificate..... **(Photo)** 400.00 +

- 135 ★田 **2c Green (M1).** L. Margin Block, Fresh, F-VF, Scarce ..... **(Photo)** 1,700.00
- 136 ★田 **2c Green (M1).** Mint Block, perfs. touch to barely in, Pos. 24, 25, 34 & 35 from the Rothschild pane Showing **Vertically Shifted Ovpt. on L. Pair**, with P.F. Certificate..... **(Photo)** 1,700.00
- 137 ★田 **2c Green (M1).** Horiz. Block of Six With L. Pl. No. 108684, Fresh, B. stamps light crease, o/w VF, Scarce ..... **(Photo)** 2,500.00 +
- 138 ★田 **2c Green (M1).** Mint L. Pl. No. 108682 Block of Nine, centered to T.L., perfs. close to slightly in, Very Important First Issue Guard Mail Rarity, with P.F. Certificate. Illustrated & Described in Vol. XLV of the U.S. specialist as the **Largest Known First Issue Block & the Discovery Plate Block** (pp. 212 & 213)..... **(Photo)** 3,700.00 +

- 139 **2c Green (M1).** Used, Well-centered, VF..... **(Photo)** 350.00

- 140 田 **2c Green (M1).** Block, "Guam ——— Service Agana Apr 8 1930" **First Day** pmk., F-VF, Scarce ..... **(Photo)** 1,400.00 +

- 141 田 **2c Green (M1).** Horiz. Pair, tied by Clean "Guam ——— Service Asan Apr 8 1930" **First Day** pmk. on Cover to Agana, Fine, Rare, Unlisted..... **(Photo)** 850.00 +
- 142 ★ **4c Carmine (M2).** Mint, VF, signed Bloch, with P.F. Certificate ..... **(Photo)** 350.00



143 ★田	<b>4c Carmine (M2). Block</b> with natural Imperf. Half Arrow & T. Sheet Margin, Fresh, B.R. Stamp Mint, others Part o.g., B.L. stamp tiny margin tear, o/w F-VF Scarce, with P.F. Certificate..... (Photo)	1,500.00
144 ★田	<b>4c Carmine (M2). Block</b> , Fresh, B. Pair Mint, T. Pair lightly hinged, Fine, Scarce..... (Photo)	1,500.00
145	<b>4c Carmine (M2). Used</b> , VF, Scarce..... (Photo)	300.00
146 田	<b>4c Carmine (M2). Block</b> , "Guam ——— Service Agana Apr 30 1930" <b>First Day</b> pmk., Fine, Scarce..... (Photo)	1,200.00 +
147 田	<b>4c Carmine (M2). On legal size Cover</b> tied by "Guam ——— Service Agat Apr 8, 1930" <b>First Day</b> pmk., Embossed "Guam" Seal at L., typewritten statement at T. & signed by Willis Bradley, Gov. of Guam attesting that this cover was carried on the first trip of internal mail, stamp trifle faded, o/w Fine, Rare, First Day Cover Unlisted..... (Photo)	500.00 +
148 田	<b>4c Carmine (M2). Tied</b> by "Guam ——— Service Piti Apr 8 1930" <b>First Day</b> pmk. on Buff Cover to Agana, Fine, Very Scarce, Unlisted..... (Photo)	500.00 +
149 田	<b>4c Carmine (M2). Well-centered</b> tied by June 9, 1930 Agana pmk. on Commercial Pacific Cable Co. "Cablegram" cover, trivial cover toning, o/w VF..... (Photo)	500.00
150 田	<b>4c Carmine (M2). Well-Centered</b> , tied by "Guam ——— Service Agana Apr 8 1930" <b>First Day</b> pmk. on Fresh Yellow Cover, VF, Scarce, Unlisted..... (Photo)	500.00 +
151 田	<b>4c Carmine (M2). Tied</b> by Agana pmk. on legal size cover to a Lt. in the U.S. Marines, Fine..... (Photo)	500.00
152 田	<b>4c Carmine (M2). Horiz. Pair</b> , perfs. trifle in at R. on R. stamp, trivial perf. toning, tied by "Guam ——— Service Agana" pmk. on Cover to Sumay, Very Scarce..... (Photo)	800.00 +

## SECOND ISSUE, "SEALS"

*Printed at the Federal Public Works print shop, Agana, Guam from an inscription plate of 25 subjects — each vignette was impressed individually and directly from the die of the seal of Guam — ordinary letter paper bearing a papermaker's watermark: "CLEVELAND BOND" once in each sheet — issued without gum — rough perforated 12 on an old "GEM" single line perforator — the left and bottom margins are straight-edged and the top and right margins perforated, as the selvage was removed in the printing process. Quantities issued: 1c — 1,000 and 2c — 4,000. First day of issue given is July 10, 1930.*

153 P	<b>1c Seal, Black Vignette Large Die Proof on Glazed Wove (M3P).</b> 63x84mm, VF..... (Photo)	E.X
154 P	<b>1c Seal, Black Vignette Die Impression (M3P).</b> 98x98mm, printing on back, VF, Produced ca. 1939.....	E.X
155 P	<b>"Guam" Seal, Red Brown Large Die Trial Color Proof on Glazed Wove (M3TC).</b> 82x88mm, VF.....	E.X
156 P	<b>"Guam" Seal, Blue Green Large Die Trial Color Proof on Glazed Wove (M3TC).</b> 82x88mm, VF.....	E.X
157 P	<b>1c Seal, Proof Sheet of 25 (M3P).</b> Perforated With Huge Selvage at T. & R., Wmkd. "Cleveland Bond" in Center, <b>Single Red Impression "Guam Guard Mail/ 1 One Cent 1" in Pos. 1</b> (no Black Seal), Important Guard Mail Rarity, Believed Unique..... (Photo)	E.XV

- 158 ★ **1c Seal (M3). "L" Shaped Block of Six & Horiz. Pair**, Fresh, Five stamps natural s.e. (Three with Papermaker's Wmk.), one with natural inclusion, VF ..... **(Photo)** 1,000.00 +

- 159 ★田 **1c Seal (M3). Block of 19 & single (added at T.R.), VF, Largest Known Multiple of the 1c Seal** ..... **(Photo)** 2,700.00 +

- 160 田 **1c Seal (M3). Vert. Pair**, tied by "Guam ——— Service Asan" Aug. 25, 1930 pmk. on Cover to Agana, VF ..... **(Photo)** 450.00 +
- 161 田 **1c Seal (M3). Two Singles (one natural s.e.) cancelled by "Guam ——— Service Piti Aug 24, 1930" pmk. on Cover to Agana, VF..** ..... **(Photo)** 450.00 +
- 162 田 **1c Seal (M3). Horiz. Pair (natural s.e. at L.), on Cover to Agana tied by "Guam ——— Service Asan Aug 25 1930" pmk., VF.....** ..... **(Photo)** 450.00 +
- 163 ★ **1c, 2c Seals (M3, M4). With Papermaker's Wmk., VF Set** ..... 250.00
- 164 ★ **1c, 2c Seals (M3, M4). VF Set** ..... 250.00
- 165 ★ **1c, 2c Seals (M3, M4). Fresh, 1c with Papermaker's Wmk., VF, also incl. Used 2c with Papermaker's Wmk., soiled & small faults, o/w Fine** ..... 300.00 +
- 166 ★田 **1c, 2c Seals (M3, M4). Blocks, with Papermaker's Wmk., VF Set ...** ..... **(Photo Ex)** 1,100.00
- 167 ★田 **1c, 2c Seals (M3, M4). Blocks, one 2c tiny margin nick, o/w VF Set** ..... **(Photo Ex)** 1,100.00
- 168 **1c, 2c Seals (M3, M4). Horiz. Pair of former, Asan Aug. 25, 1930 pmk., latter on piece (removed to soak out gum staining & hinged back) tied by Agana Aug. 21 1930 pmk., VF** ..... **(Photo Ex)** 450.00
- 169 **1c, 2c Seals (M3, M4). Each tied on separate piece by "Guam ——— Service Agana Apr 8 1931" pmk., each with crease, o/w VF.....** ..... 300.00

- 170 ★田 **2c Seal (M4). Vert. Block of 15, Watermarked in the first & fifth rows instead of the third row as usual, VF, Scarce** ..... **(Photo)** 1,975.00 +

- 171 ★ **2c Seal (M4). Complete Sheet of 25 (servedge removed in printing), VF, Rare.....** ..... **(Photo)** 3,325.00 +

- 172 **2c Seal (M4). Natural s.e. at B., tied by "Guam ——— Service Agana" pmk. on "Naval Government of Guam" Corner Card cover front to the General Store (Atkins Knoll) in Agana, VF.....** ..... 150.00 +
- 173 田 **2c Seal (M4). "On Cover to Agana, tied by "Guam ——— Service Sumay Sep 10 1930" pmk., VF** ..... **(Photo)** 300.00
- 174 田 **2c Seal (M4). Natural s.e. at B., on Cover to Agana tied by "Guam ——— Service Agat Aug 26 1930" pmk., VF.....** ..... **(Photo)** 300.00
- 175 田 **2c Seal (M4). On Commercial Pacific Cable Co. Cablegram Cover tied by "Guam ——— Service Agana", margin show traces of brownish glue used to affix stamp, VF** ..... **(Photo)** 300.00
- 176 田 **2c Seal (M4). Tied by "Guam ——— Service Asan" Aug. 25, 1930 pmk. on Cover to Agana, VF.....** ..... **(Photo)** 300.00
- 177 田 **Guam Seal Collateral, 5x3" Card With Die Impression of Blue Seal Used as Corner Card (same as Vignette on Nos. M3 & M4), Printed "Compliments of James H. Underwood, Postmaster, Guam, Guam.", Often Used by Underwood With Christmas Greetings, VF, Scarce** ..... **E.VII**

### THIRD AND FOURTH ISSUES

- 178 ★ **2c Green (M5). Complete Mint Sheet of 100 (without R. servedge), slight tropical o.g., Pl. No. 103592 at T., F-VF** ..... 400.00 +



179	☒	<b>2c Green, 4c Carmine (M5, M6).</b> Two Covers, former with <b>Horiz. Pair</b> both pmkd. "Guam ——— Service Agana Sep 12 1930", same Corresp. to Lt. Stuart, USMC (Second Supt. of the Guard Mail) at Sumay, Guam, stamps natural s.e.'s, F-VF. Stuart in WWII (as a Maj. Genl.) led part of the invasion force which recaptured Guam from Japan .....	150.00 +
180	★	<b>2c-10c Third &amp; Fourth Issues (M5-M11).</b> Stock of 315 Unused Stamps, from 26 to 60 of each, Virtually All tropical o.g. to Mint, incl. Singles, Blocks, Pl. No. & Impt. & Pl. No. Blocks, some Position Items (Imperf. Guidelines, Guidelines, Arrow, Pl. No. Singles, etc.), also set of Used Singles, Virtually All F-VF.....	837.50 +
181	★田	<b>2c-10c Third &amp; Fourth Issues (M5-M11).</b> T. Pl. No. <b>Blocks of Six or Ten as Appropriate</b> (first four Pl. No. only, last three Impt. & Pl. No.), some tropical o.g., F-VF, Only 200 to 800 panes of each value printed, Unlisted & Unpriced .....	<b>E.IX</b>
182	☒	<b>4c Carmine (M6).</b> Two Commercial Covers (same Corresp. to Merizo from Agana), one pmkd. Sep. 13, 1930, other <b>Multicolor Coca-Cola Illustr. Corner Card Used With U.S. 2c Carmine (634)</b> & pmkd. Jan. 13, 1931 <b>Showing Guard Mail &amp; U.S.P.O. Star Route Service</b> (Inaugurated Jan. 1, 1931), both trifle toned, latter bit carelessly opened at T., Scarce.....	(Photo Ex) 150.00 +
183	☒	<b>2c Green, 4c Carmine (M6, M7).</b> <b>Vert. Strip</b> of Three of former, <b>Block</b> of latter (natural s.e. at R.), tied by <b>Three Line "Guam Guard Mail / Feb 5 1931 / Merizo"</b> pmks. on Cover to Agana, <b>Blue Die Impression of "Guam" Seal</b> (as on Nos. M3 & M4) <b>Corner Card</b> , F-VF, Scarce, Earliest Known Use .....	(Photo) <b>E.IX</b>
184	☒	<b>2c Green, 4c Carmine (M6, M7).</b> Three Covers, two 4c, one tied by Agana Oct. 15, 1930 pmk., "Senior High Agana" <b>Corner Card</b> , other tied on "Commercial Pacific Cable" Cover, 2c is natural s.e. <b>Vert. Pair</b> tied by <b>Three Line "Guam Guard Mail / Apr 8 1931 / Inarajan"</b> (so-called "Defiance" pmk.), also incl. two page letter from Lt. Stuart, Supt. of the Guam Guard Mail responding to a request for stamps, gives dates & quantities printed of the first three Guard Mail Issues, etc., VF Lot .....	200.00 +
185	★田	<b>2c Green, Normal, "GRAUD" &amp; "MIAL" Ovpt. Errors (M7, M7a, M7b).</b> <b>Vert. Block of Ten</b> , Fresh, natural s.e. at B., Fine, Errors signed Sloane, with P.F. Certificate, <b>One of only Four Known Double Error Blocks</b> .....	(Photo) 750.00 +
186	★	<b>2c Green, Normal Ovpt. &amp; "GRAUD" &amp; "MIAL" Errors (M7, M7a, M7b).</b> <b>Complete Mint Sheet of 100</b> With T. Pl. No. 121071, F-VF, Very Rare Sheet.....	875.00 +
187	★	<b>2c Green, "GRAUD" Ovpt. Error (M7a).</b> Fresh, VF .....	(Photo) 375.00
188	★田	<b>2c Green, "GRAUD" Ovpt. Error (M7a).</b> <b>Block</b> , B.R. Stamp the Error, Fresh, Fine, Scarce in Multiples, ex-Rueff .....	(Photo) 375.00
189	★田	<b>2c Green, "GRAUD" Ovpt. Error (M7a).</b> <b>Vert. Block of Six</b> , T.L. Stamp the Error, Fresh, usual tropical o.g., Error with natural perf. "dimple", Fine, Scarce in Multiples .....	(Photo) 375.00
190	★	<b>2c Green, "MIAL" Ovpt. Error (M7b).</b> Fresh, Well-centered, VF. ....	(Photo) 375.00
191	★田	<b>2c Green, "MIAL" Ovpt. Error (M7b).</b> <b>Block</b> , B.R. Stamp the Error, T. Pair h.r., T.L. stamp trivial gum soak, o/w F-VF, Error VF, Scarce in Multiples, ex-Rueff.....	(Photo) 375.00
192	☒	<b>2c-10c Fourth Issue (M7-M11).</b> Cpl. Set on Cover tied by "Guam ——— Service Agana Apr 8 1931" pmk., <b>Last Day of Local Postal Service</b> , F-VF, Scarce.....	(Photo) <b>E.IX</b>
193	☒	<b>2c-10c Fourth Issue (M7-M11).</b> Cpl. Set (4c natural s.e. at L.), tied on Fresh Cover by "Guam ——— Service Agana Apr 8 1931" <b>Last Day of Guard Mail Service At Agana</b> pmks., F-VF....	(Photo) <b>E.IX</b>

- 194 ☒ **2c-10c Fourth Issue (M7-M11). Margin Blocks**, 4c & 6c with Pl. Nos., tied by "Guam ——— Service Piti Dec 31 1930" pmks. on Separate Covers, **Last Day of Guard Mail Service from Piti**, F-VF Set, Scarce, In Use at Piti Only Two Days..... (Photo Ex) 323.50 +
- 195 ☒ **2c-10c Fourth Issue (M7-M11). Blocks** (4c & 8c natural s.e. one side), tied on oversize cover by "Guam ——— Service Agana Apr 8 1931" **Last Day of Guard Mail Service** pmks., VF, Scarce..... **E.IX**
- 196 ☒ **2c, 4c, 10c Fourth Issue (M7, M8, M11). Horiz. Pairs** on Separate Covers, each tied by "Guam ——— Service Piti Dec 31 1930" pmks., **Last Day of Guard Mail Service from Piti**, F-VF, Scarce, In Use at Piti Only Two Days..... (Photo Ex) 166.50 +
- 197 ☒ **6c, 8c Fourth Issue (M9, M10). Pairs** on Separate Covers (6c natural s.e. at R.), each tied by Dec. 29 1930 **First Day** pmk., 6c "Asan", 8c "Sumay", VF, Scarce, Unlisted..... 128.00 +

## OTHER GUAM COVERS

- 198 ☒ **Official Business Envelope** pmkd. "Guam ——— Service Agana Oct 1 1930" from the Commissioner of Agat. to The Supt. of the Guam Postal Service in Agana, Printed Return Card, Address & Penalty Indicia, couple filing creases, o/w VF, **Believed to be Unique**. This particular envelope was a present from Lt. Stuart (Supt.) to Lawrence Clark, Illustr. & described in the **Thirty-sixth American Philatelic Congress Book** (1970), pg. 143..... (Photo) **E.IX**
- 199 ☒ **"Agana, Guam."**, light Violet Str. Line on Sept. 1900 Cover to U.S. With Red **"Government House, Agaña, Guam."** at T.L. & **"Navy Department, Official Business, Penalty For Private Use \$300."** at T.R., light cover file fold, VF, Scarce..... (Photo) **E.VIII**
- 200 ☒ **"Agana Island Of Guam Nov 30 1901"** pmk. on U.S. 2c Postal Card (UX16) to Switzerland, "Manila P.I. Transit" backstamp, VF, Rare Usage..... (Photo) **E.VII**
- 201 ☒ **"Guam Guam Jan 1 1931"** Grid Duplex pmk. ties U.S. 2c Carmine (634) on **First Day of Star Route Service** Cover, Mimmeograph Cachet, reduced at L., slight cover toning, Scarce..... **E.VI**
- 202 ☒ **"Guam Isl. Guam Rec'd Dec (?) 1904"** backstamp (Similar to Murphy Ty. 1.9) on Cover from Wales (G.B. Edw. VII 2½p franking) to the U.S.S. Supply "stationed at Guam North Pacific Ocean," **Magenta "N.Z. Marine P.O. R.M.S. Ventura 20 Oct 1904"** transit on front, VF..... (Photo) **E.VIII**
- 203 ☒ **"Guam Ladrone, Isl's Rec'd."**, Transit Backstamps on Two 1902 Covers to a Naval Doctor in the Pacific Area, Loads of other Transits & Foreign Markings, incl. Victoria Hong Kong, Nagasaki, Yokohama, Manila, Cavite plus U.S. Towns, Each Seven or Eight Months in Transit, Fascinating Lot, also incl. 1917 Brazilian Post Card to Guam **E.VIII**
- 204 ☒ **Early 20th Century U.S. Used in Guam**, Two Reg. Covers, one 1904 with Nos. 300, 302, 303 & 319 to U.S. tied by "Agana Isl. Guam" pmks., other 1914 With Nos. 374, 375, 377-380 to Germany tied by "Guam, Guam" pmks., slight toning, etc., Scarce..... **E.VIII**
- 205 ☒ **Covers, 1901-74, 55 Covers**, incl. Trans-Pacific Flights, Four From P.M. Underwood (1921-41), No. 279B, Regular Issues of the 1920's, etc., also incl. seven unused picture post cards (early 20th) & some off-cover stamps or on piece with Guam cancels, Generally F-VF..... **E.XI**



206	☒	<b>Covers, 1906-45, Mounted Collection of 54 Covers Plus Nine Collateral Items, incl. 1906 Guam Postal Notice, German Marine Schiffpost No. 8 (S.M.S. Cormoran), "prisoner of war" Post Card to German Internee at Guam, U.S. Navy Ship cancels, Trans-Pacific Air Mail Flights, Guam Invasion Cover, WWII "Safe Hand" Cover (Ordinarily Contained Secret Documents), Censored Mail, letters from P.M. Underwood, Sheet of 25 of 1976 10c Guam Guard Mail Labels, etc., F-VF Lot.....</b>	<b>E.XII</b>
207	☒	<b>Military Covers, 1930's-40's, 58 Items, incl. Navy Dept. Official Business (Mostly Penalty envelopes), Censored Mail, A.P.O. pmks., 15 Navy Ship Cancels (Nine Cacheted), etc., Generally F-VF .....</b>	<b>E.IX</b>
208	☒	<b>W.W. I German Prisoner of War Covers, 1917, Four (one legal size) &amp; a front from a parcel, all handstamped "Prisoner of War From S.M.S." "Cormoran", covers with "Guam Guam" Grid Duplex pmks., piece with Boxed "Guam Guam", F-VF, Scarce.....</b>	<b>E.XI</b>
209		<b>German Mariana Islands Issue, 3pf-40pf Yacht Issue (17-20, 22, 23). Each with Blue Str. Line Agana pmk., Fresh, 5pf, 10pf &amp; 40pf light crease, o/w VF Lot, 30pf with P.F. Certificate which states "Genuine but cancellation not accepted for postal use", ex-J. Rothschild .....</b>	<b>(Photo Ex)</b>
210	☒	<b>Japanese Occupation of Guam, ca. 1944, Two Japanese Naval Post Cards (One with Anchor &amp; Cherry Blossom), both from "102" (Code for Guam) one from "U369" (217th Construction Battalion — Setsukitai), other from "U297" (263rd Air Group, 14th. Company — Kokutai), Rare &amp; VF, supporting documents accompany .....</b>	<b>(Photo Ex)</b>
			<b>E.X</b>

END OF SALE — THANK YOU

# 26th ANNUAL RARITY SALE

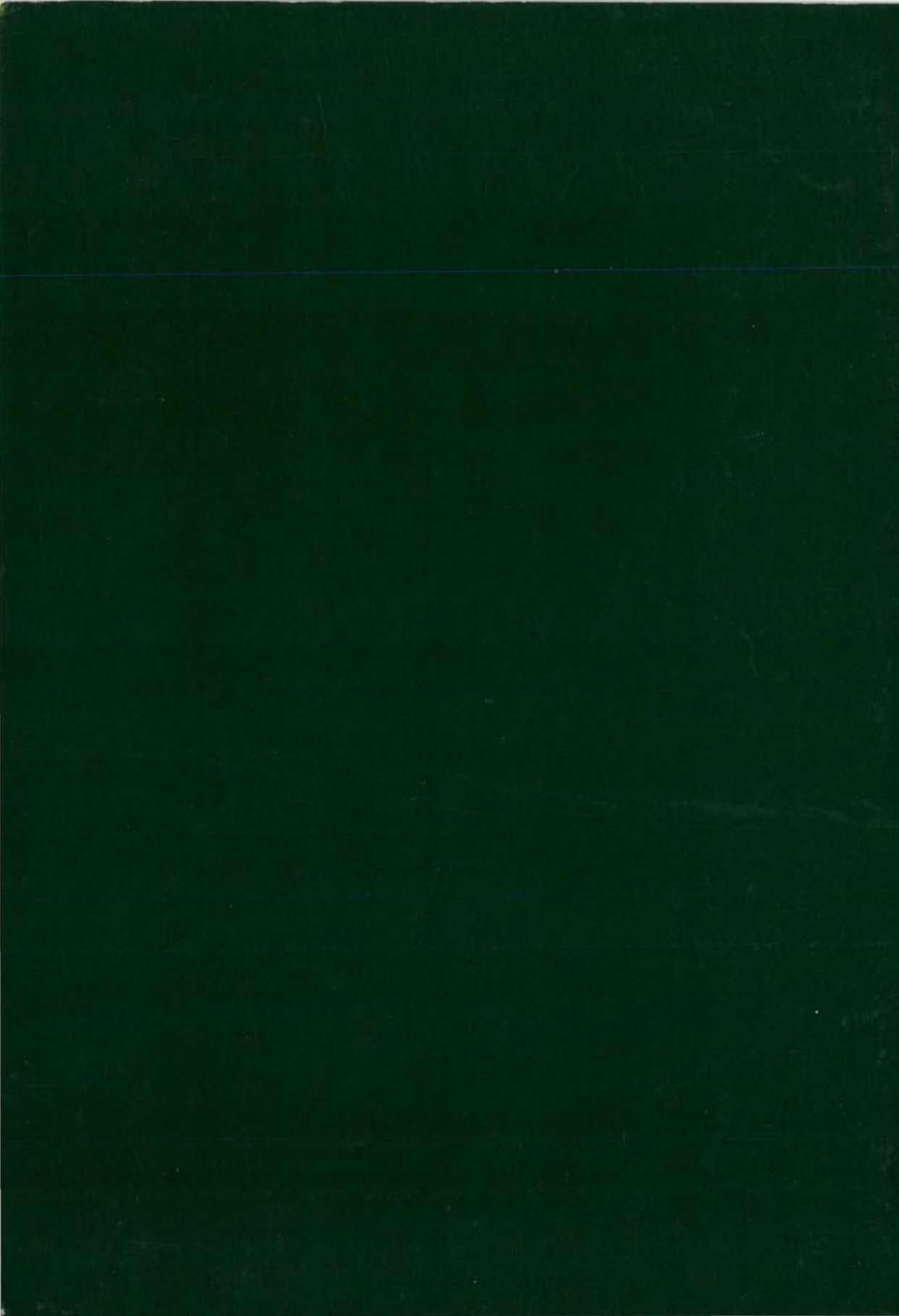
ON APRIL 8, 1989  
WE WILL CONDUCT OUR ANNUAL  
RARITIES OF THE WORLD AUCTION

CONSIGNMENTS ARE STILL BEING ACCEPTED.  
TO AVOID DISAPPOINTMENT  
YOUR CONSIGNMENT MUST BE RECEIVED BY  
FEBRUARY 1, 1989.

*Robert A. Siegel*  
AUCTION GALLERIES, INC.

160 EAST 56th STREET  
NEW YORK CITY, NY 10022





# GUAM

## AN AWARD WINNING COLLECTION

INDIVIDUAL REALIZATIONS ARE HAMMER PRICES. GROSS REALIZATION  
INCLUDES 10% BUYERS PREMIUM.

1	4750	60	250	127	17 000	185	1250
2	450	61	1350	128	425	186	4000
3	1150	62	400	129	190	187	220
4	105	63	1700	130	7500	188	325
5	170	64	525	131	600	189	1600
6	1050	65	190	132	575	190	210
7	75	66	850	133	180	191	325
8	475	67	425	134	450	192	90
9	115	68	85	135	425	193	100
10	160	69	425	136	300	194	110
11	625	70	180	137	1800	195	150
12	450	71	4000	138	5000	196	90
13	675	72	95	139	125	197	325
14	425	73	950	140	325	198	1850
15	6000	74	130	141	200	199	240
16	450	75	1000	142	190	200	325
17	270	76	240	143	210	201	52½
18	350	77	130	144	375	202	450
19	115	78	1200	145	100	203	290
20	800	79	170	146	325	204	125
21	3750	80	1800	147	850	205	1500
22	450	81	85	148	150	206	1900
23	65	82	900	149	425	207	220
24	70	83	375	150	210	208	1800
25	230	84	300	151	105	209	290
26	280	85	1700	152	700	210	650
27	240	86	270	153	200	END OF SALE THANK YOU	
28	300	87	75	154	210		
29	260	88	850	155	230	GROSS REALIZATION: \$180,268.00	
30	42½	89	60	156	220		
31	325	90	150	157	5250		
32	170	91	115	158	240		
33	95	92	105	159	725		
34	37½	93	2800	160	350		
35	42½	94	150	161	270		
36	375	95	850	162	190		
37	1000	96	7500	163	120		
38	65	97	375	164	100		
39	260	98	190	165	57½		
40	2000	99	210	166	280		
41	42½	100	1650	167	180		
42	1300	101	2900	168	80		
43	300	102	1650	169	45		
44	200	103	375	170	500		
45	290	104	400	171	3750		
46	525	105	375	172	280		
47	475	106	240	173	170		
48	2000	107	1300	174	140		
49	475	108	525	175	550		
50	350	109	450	176	115		
51	1050	110	210	177	52½		
52	150	111	300	178	75		
53	525	112	475	179	1050		
54	135	113	1900	180	425		
55	2700	114	47½	181	800		
56	70	115	725	182	1100		
57	475	116		183	525		
58	150	thru		184	1500		
59	270	126					