

UNITED STATES STAMPS AND POSTAL HISTORY



OFFICIAL WORLD STAMP EXPO '89SM AUCTION

NOVEMBER 18, 1989

Robert A. Siegel

AUCTION GALLERIES, INC.

160 EAST 56th STREET
NEW YORK CITY, NY 10022

NOVEMBER 18, 1989

U.S. STAMPS AND POSTAL HISTORY

SALE #715

CONDITIONS OF SALE

1. On all lots sold a commission of 10% on the hammer price is payable by the buyer.
2. The terms of sale are strictly cash on delivery to the highest bidder unless special arrangements have been made prior to the sale. The fact that an item is placed on extension (submitted to an expertising committee for certification) does not relieve the successful bidder from this condition of sale.
3. All bids are per lot as numbered in the catalogue unless otherwise announced by the auctioneer at the time of sale. The right is reserved to group two or more lots; to withdraw any lot or lots from the sale, or to act on behalf of the seller. The Galleries will bid on behalf of clients, but will not be responsible for any errors in the execution of bidding instructions. The auctioneer shall regulate the bidding and in the event of any dispute his decision shall be final.
4. All lots are offered subject to a reserve price. The auctioneer may implement such reserve price by bidding on behalf of the seller. It may also be inferred that all sellers have been given advances against the sale of their material and therefore we have a financial interest in such lots over and above the sellers commission they are charged.
5. Any lot, the description of which is incorrect, is returnable, but only within 14 days of receipt. All disputed lots must be returned intact as received. **The following lots may not be returned for any reason whatsoever: Lots containing ten or more stamps; Lots from buyers who have had the opportunity to examine them before the sale; Lots described as having defects or faults may not be returned because of any faults. No illustrated lots may be returned because of centering, margins or other factors shown in the illustrations.**
6. Successful bidders, unless they are known to us or supply acceptable references are expected to make payment in full before the lots are delivered. Mail bidders will be notified of the amounts of their purchases. All mail bidders who have established credit with us must make payment within three days after receipt. We reserve the right in our sole and absolute discretion to demand cash payment at the time a lot is knocked down to any bidder who has not previously established credit with us or whose account is in arrears. In the event any buyer refuses to pay cash for any lot at the time it is knocked down to him, the auctioneer reserves the right to re-offer the lot immediately for sale to the highest bidder. Sales tax will be added to purchases where applicable.
7. If the purchase price has not been paid within the time limit, nor lots taken up within seven days from date of sale they must be resold and any loss arising from such sale will be charged to the defaulter. Any account more than thirty days in arrears is subject to a late payment charge of 1½% per month so long as the account remains in arrears. If the auctioneer, in his discretion, should institute any action to secure payment of a delinquent account the defaulting purchaser shall pay all expenses incurred by the auctioneer and such charges will be added to the amount owed.
8. All lots are sold as genuine but should any lot be proved otherwise by written opinion of any competent, responsible authority acceptable to us, immediate refund of the full purchase price will be made, provided that such claim is made in writing within 14 days from date of sale. If claim is not made within this period, no lots are returnable for any reason at any time. So long as we are notified within the 14 day period that an opinion is being sought and **the material is submitted to an acceptable authority within that period** the matter will remain open until such opinion is rendered. **All "Extension" lots will be considered cleared and satisfactory to the buyer if we are not notified to the contrary within six months from date of sale. We will not be responsible for any charges incurred by the buyer for expertization fees and costs unless the opinion states the item is not genuine, in which case we will pay actual costs up to a maximum of \$50.00.** In the event an item is proved "not as described" it is returnable for full refund, and the buyer will be paid interest (at the prevailing Treasury Bill Rate) for the time his funds have been on deposit with us during the extension period.
9. Until paid for in full, all lots remain the property of Robert A. Siegel Auction Galleries, Inc. on behalf of the seller.
10. Some consignors have been advanced monies against the sale of their properties.
11. All forwarding charges will be added to the purchase price. The mode of shipment shall be at our option unless we are given specific instructions.
12. Lots may be sent for inspection to buyers known to us upon written application. All such lots must be returned to us by registered mail, adequately insured and within 24 hours after receipt. The applicant assumes all responsibility and will provide insurance against all risks from time of receipt until they are actually received back by us, and is to pay all expenses of postage and insurance. **No lots can be sent for inspection within ten days from date of local viewing. Large lots and collections cannot be sent for inspection.**
13. Agents are responsible for all purchases made on behalf of their clients unless other arrangements are made prior to the sale.
14. The placing of a bid shall constitute acceptance of the foregoing conditions of sale.

ROBERT A. SIEGEL, WALTER J. MADER, BRIAN M. BLECKWENN,
Licensed Auctioneers

N.Y.C. Auction License No. 371761, 797537

Upon request estimate of value furnished on any lots in this auction.

715th SALE



OFFICIAL WORLD STAMP EXPO '89SM AUCTION

UNITED STATES STAMPS AND POSTAL HISTORY

FEATURING

RARE UNUSED 1847 ISSUES, FABULOUS ARRAY OF 1861 ISSUE COVERS INCLUDING TWO "OLD STAMPS NOT RECOGNIZED," RARE DESTINATIONS, FIVE 90c COVERS, 15c 1869 INVERT, THE UNIQUE SET OF 1869 INVERT PROOF PLATE BLOCKS, COMPLETE TRANS-MISSISSIPPI ISSUE PLATE BLOCKS, PAN AMERICAN INVERTS, 4c NO. 314A COIL, NO. 476A PLATE BLOCK, COMPLETE UNCUT SHEET OF 400 OF NO. 485, \$1.00 LAMP INVERT, RARE TRANSPORTATION COIL VARIETIES, 1918-1923 AIR POST SHEETS, THREE SETS OF GRAF ZEPPELIN PLATE BLOCKS, TWO "MOON" COVERS, SCARCE NEWSPAPER ISSUES, 1984 HUNTING PERMIT SPECIAL PRINTING CROSS GUTTER BLOCK AND COVERS USED TO AND FROM HAWAII.

THE PROPERTY OF VARIOUS OWNERS
AND SOLD BY THEIR ORDER AT PUBLIC AUCTION

SATURDAY, NOVEMBER 18th, 1989 at 7:30 P.M.

**AT THE SHERATON WASHINGTON HOTEL
NORTH COTILLION BALLROOM**

FOR TABLE OF DESCRIPTIONS SEE PAGE 8

Robert A. Siegel
AUCTION GALLERIES, INC.

**160 EAST 56th STREET
NEW YORK CITY, NY 10022**

LOTS ON VIEW

NEW YORK VIEWING—Wednesday, November 15th from 9:30 A.M. until 5:00 P.M.

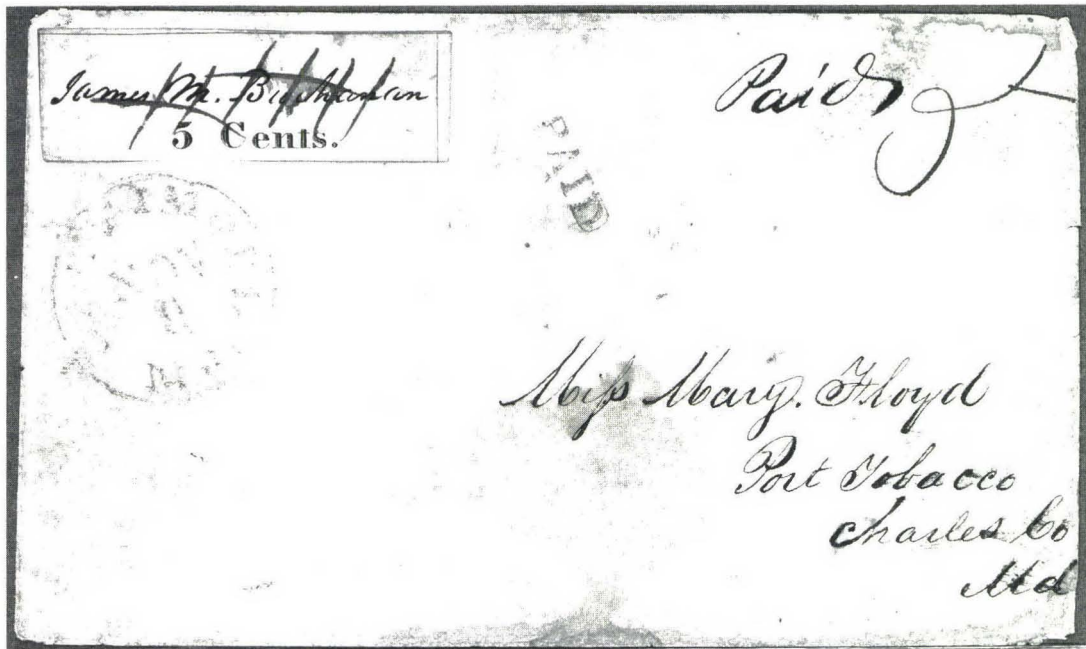
WORLD STAMP EXPO VIEWING—Friday, November 17th from 10:00 A.M. until 6:00 P.M. at our Super Booth number 133-136 in the Washington Convention Center and on Saturday, November 18th from 10:00 A.M. until 6:00 P.M. at the Sheraton Washington Hotel South Cotillion Ballroom.

UNITED STATES STAMPS AND COVERS

VERY RARE STAMP ALBUM

- 1 **The First U.S. Stamp Album**, 1863 Deluxe "Appleton" Album, 7½x9½", Handsomely Bound in Full Brown Leather, Gilded Pages, stamps removed (few cut out), About Fine, with Useful Articles Enclosed, Very Rare, **Less Than 20 of All Appleton Albums 1862-63 Known & Only Two of the Deluxe 1863**, This album is ex-Turner, The Other is in the Smithsonian **E. 2,000-3,000**

POSTMASTERS' PROVISIONALS



- 2 **Baltimore, Md., 5c Black on White (3X1)**. Frame Lines Nearly All Around, Neat ms. cancels, not tied, Blue Baltimore Md. pmk. & "Paid" on Cover to "Port Tobacco" Md., ms. "Paid 5", cover aging (more apparent on back), Stamp Very Fine **5500.00**

- 3 R **New Haven, Ct., 5c Red, 1872 Unsigned Reprint (8XU1R).** Very Fine, Scarce(Photo) E. 100-150
- 4 ★ **New York, N.Y., 5c Black (9X1).** Pos. 25, Fresh, Ample to Large Margins, small corner crease, Very Fine Appearance, with P.F. Certificate(Photo) 700.00
- 5 ★ **New York, N.Y., 5c Black, Double Transfer at T. (9X1).** Pos. 7, light corner crease, trace of cleaning in the background, o/w Fine, with A.P.S. Certificate(Photo) 1,000.00

- | | | |
|-----|--|----------|
| 6 ★ | New York, N.Y., 5c Black (9X1). Horiz. Pair, Three Clear to Ample Margins, Clear to slightly in at B., Exceptionally Fresh, trivial scissors cut at T.R. clear of frameline, Rare Pair .(Photo) | 2,000.00 |
|-----|--|----------|

- 7 **New York, N.Y., 5c Black, Without Signature (9X1d).** Clear to Ample Margins, Blue ms. penstroke cancel, tiny margin tear, Fine Appearance 600.00
- 8 ☒ **New York, N.Y., 5c Black (9X1). Two Singles,** Ample to Extra Large Margins, except partly in at B. of R. stamp, tied by Bold ms. penstrokes on Fresh Folded Cover to Phila., Pa., Red "New-York 10 cts." & "Paid" in Arc, **Large Blue "R"** (Recorded Letter), Very Fine Cover, Rare Usage(Photo) 775.00 +
- 9 R ☐ **Providence, R.I., 5c Gray Black, Reprint (10X1R). B.L. Sheet Corner Margin Block & B. Margin Single,** Large to Huge Margins, Fresh, Reprint Letters almost bleached out on block, o/w Very Fine .. 250.00
- 10 ★ **Providence, R.I., 10c Gray Black (10X2).** Margins All Around, Very Fine, with P.F. Certificate(Photo) 1,000.00

1847 ISSUE

- | | | |
|------|--|------------|
| 11 ★ | 5c Red Brown (1). An Outstandingly Choice B. Margin Single, Large to Immense Margins, o.g., couple h.r.'s, Extremely Fine, Genuinely Unused 1847's, Particularly in Such Wonderfully Nice Condition, Are Very Rare, with P.F. Certificate ..(Color Photo) | 4,500.00 |
| 12 ★ | 5c Red Brown, Ty. "A" Double Transfer (1 var). Pos. 80R1, Three Large to Huge Margins Showing Bit of Next Stamp at B. (Pos. 90R1), Ty. "B" Major Double Transfer (shows Doubling Along the T. Frame Line of Pos. 90R1), Just Clear at L., Fresh, trace of o.g., Very Fine, Rare, with P.F. Certificate, Major Double Transfers Unpriced Unused(Color Photo) | 4,500.00 + |

- 13 **5c Brown (1).** Ample to Large Margins, Rich Color & Sharp, Clear Impression, Neat ms. cancel, Very Fine(Photo) 375.00

- | | | |
|----|---|----------|
| 14 | 5c Red Brown (1). Horiz Pair, Ample to Large Margins, Red-Orange Grid cancels, faint crease in R. margin partly touching frameline, o/w Very Fine(Color Photo) | 1,600.00 |
|----|---|----------|

- 15 ☒ **5c Red Brown (1).** Ample to Large Margins, ms. # cancel, Used on Envelope to Manchester, Mass., **Blue "Eastern R.R. Jul 8"** pmk. & matching "Paid", Very Fine, with P.F. Certificate(Photo) 375.00
- 16 ☒ **5c Red Brown (1).** Ample to Large Margins except close at L., tied by Red Grids, **Blue Baltimore pmk.**, on Folded Cover to Philadelphia, Fine(Photo) 850.00



17



18



19

- 17 ★ **10c Black (2).** Mostly Large Margins incl. Sheet Margin at R., small tear T.L., o/w Very Fine, Handsome, Genuinely Unused No. 2's Are Extremely Rare In Any Condition, with P.F. Certificate 18,500.00
- 18 ★ **10c Black (2).** Three Large Margins except Clear to barely touching at B.L., tiny faint toning spot in R. margin, o/w Very Fine, Rare, with P.F. Certificate 18,500.00
- 19 ★ **10c Black, Double Transfer Ty. B (2 var).** Pos. 31R, Three Large to Huge Margins, Ample at B., Fresh, Part o.g., negligible repair at B. (on back), Very Fine Appearance, with P.F. Certificate, ex-Waterhouse, One of Thirteen Recorded Examples, **Unique Unused** (Double Transfer listed but Unpriced Unused) 18,500.00 +



- 20 ★ **10c Black (2). Horiz. Strip of Three,** Large Margins at T. & B., clear to barely in at sides, trifle heavy creases affect two stamps (one with tiny toning spot, other sealed tear); R. stamp tiny margin tear at B., o/w Sound, Fine-Very Fine Appearance, Enormously Rare 58,500.00
- 21 **10c Black (2).** Large to Immense Margins Showing Bit of Next Stamp at T., Red Grid cancel, Extremely Fine "Gem" (Color Photo) 2,000.00

BIDDING INTERVALS

BIDS	ADVANCE	BIDS	ADVANCE
Up to \$30.00	\$1.00	\$1,900.00 - \$3,000.00	\$100.00
\$32.50 - \$60.00	\$2.50	\$3,000.00 - \$7,500.00	\$250.00
\$60.00 - \$140.00	\$5.00	\$7,500.00 - \$15,000.00	\$500.00
\$140.00 - \$300.00	\$10.00	\$15,000.00 - \$30,000.00	\$1,000.00
\$300.00 - \$750.00	\$25.00	\$30,000.00 - \$75,000.00	\$2,500.00
\$750.00 - \$1,900.00	\$50.00		

Bids which do not conform to the above will be automatically reduced to the appropriate level.



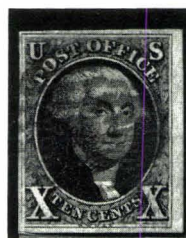
22



23



24



25



26

22	10c Black (2). Pos. 13R, Large to Huge Margins, Bold Red Grid cancels, Extremely Fine, with P.F. Certificate	2,000.00
23	10c Black (2). Three Immense Margins Showing Portion of B. Sheet Margin, Large at T., Black Grid cancel, Very Fine, Choice Stamp, with P.F. Certificate	2,100.00
24	10c Black (2). Large Margins, Blue pmk., Very Fine, with P.F. Certificate	2,050.00
25	10c Black (2). Ample to Immense Margins, Red Grid Cancel, Very Fine, with P.F. Certificate	2,000.00
26	10c Black (2). Three Large Margins, Ample at B., Red Grid cancel, Very Fine, with P.S.E. Certificate	2,000.00

- 27 ☒ **10c Black (2).** Large Margins, Neat Red Grid cancel (not tied), Red Rochester N.Y. pmk. on Aug. 14, 1847 Folded Cover, cover file fold, Stamp Very Fine & Choice(Photo) 2,350.00
- 28 ☒ **10c Black (2).** Three Large Margins, Clear at R., tied by Red Grid, matching "New-York" pmk. on June 24 1851 Folded Letter to Ohio, light soiling along file fold, Fine, **Last Week of Use**(Photo) 2,350.00

DESCRIPTIONS

EXTREMELY FINE: The finest condition for noteworthy, outstanding stamps.

VERY FINE: In prime condition such as to satisfy the requirements of particular collectors.

FINE: Perforations or margins do not touch design on issues after 1890 but in some cases may just touch in earlier issues. If used, fairly light cancellation.

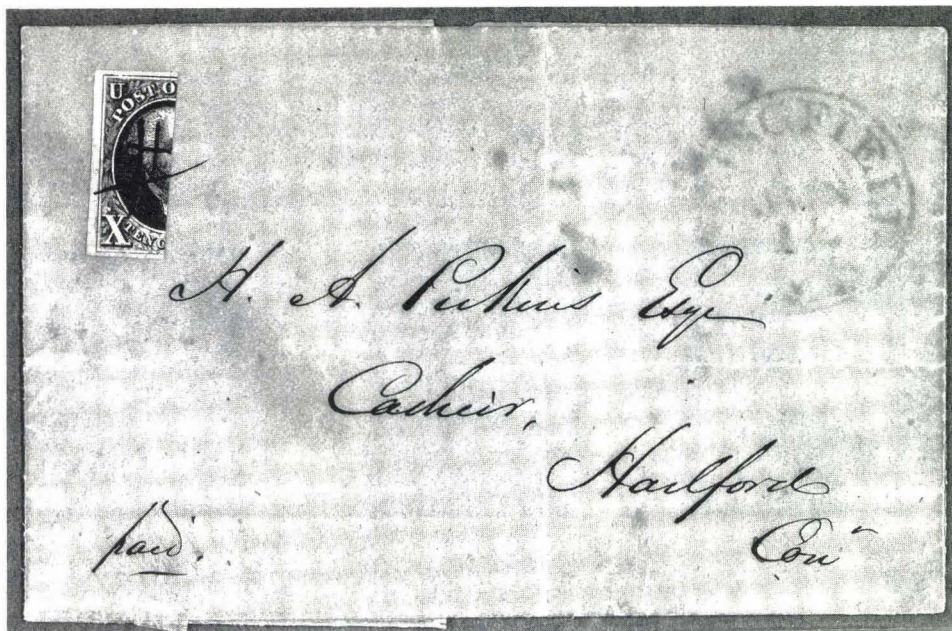
VERY GOOD: Generally nice appearance but margins or perforations may cut in slightly.

GOOD: Average off-centering or fairly attractive with slight defects.

ORIGINAL GUM is not to be expected on stamps prior to 1890 unless so stated in the description.

MINT: With original gum and never hinged.

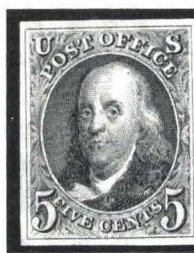
Unless otherwise noted the 1988 Scott United States Specialized Catalogue has been used for cataloguing lots in this sale.



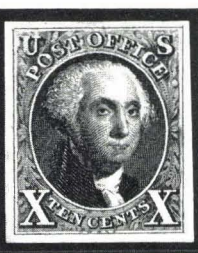
- | | | | |
|----|---|---|-----------|
| 29 | E | 10c Black, Vertical Half Used as 5c (2b). Large Margins, tiny scissors cut at T., tied by ms. cancel on Folded Cover to Hartford, Ct., faint "Springfield, Ms. Jun 12" pmk., Very Fine, with P.F. Certificate which "declines opinion", In Our Opinion The Cover is Genuine In All Respects | 21,000.00 |
| 30 | P | 5c, 10c 1847 Designs, "Atlanta" Trial Color Plate Proofs (3TC, 4TC). Cpl. Set (Ten Values), h.r.'s, few with slight mounting stains on back, Fresh, Fine-Very Fine, Rare | 3,000.00 |
-(Photo Ex)



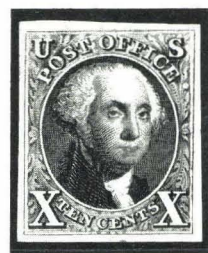
31



32



33



- | | | | |
|----|---|---|----------|
| 31 | ★ | 5c Red Brown, Reproduction (3). Large to Huge Margins, Fresh, Extremely Fine, with P.F. Certificate | 1,300.00 |
|----|---|---|----------|

- | | | | |
|----|---|---|----------|
| 32 | ★ | 5c Red Brown, 10c Black, Reproductions (3, 4). Extremely Fine Set, each with P.F. Certificate | 3,000.00 |
|----|---|---|----------|

- | | | | |
|----|---|--|----------|
| 33 | ★ | 10c Black, Reproduction (4). Large to Huge Margins, faults incl. some toning, o/w Extremely Fine | 1,700.00 |
|----|---|--|----------|

1851 ISSUE

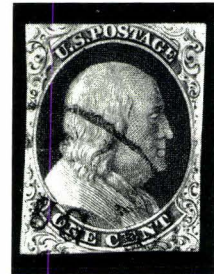
- 34 **1c Blue, Ty. 1b (5A).** Pos. 8R1E, Mostly Large to Immense Margins incl. Substantial Part of Next Stamp at B. (just touches B.L.), Light Blue Grid pmk., faint vert. crease, o/w Extremely Fine, Outstandingly Attractive, ex-Sheriff, with P.F. Certificate, which does not note the crease(Color Photo) 4,750.00



35



36



37

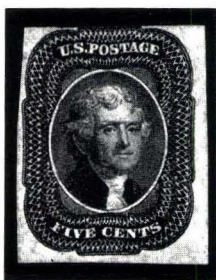
- 35 **1c Blue, Ty. Ia (6).** Pos. 100L4, Three Large to Huge Margins incl. 4mm of Pane Margin at R., just touched at T., Deep Rich Color, Sharp Clear Impression, Neat ms. "X" cancel, Very Fine for This Scarce & Difficult Stamp 2,350.00
- 36 **1c Blue, Ty. Ia (6).** Pos. 98R4, Three Large to Huge Margins, tiny bit in at T., Grid cancel, trivial corner margin crease, o/w Fine, Rare 5,500.00
- 37 **1c Blue, Ty. Ia (6).** Pos. 98R4, Margins to slightly in, Town pmk., some toning on back shows through faintly on face, o/w Fine, Scarce, A Better Than Normal Example of This Rare Type 5,500.00

- 38 ☒ **1c Blue, Ty. II, IIIa (7, 8A). Horiz. Combination Strip of Three, Ty. II, IIIa, IIIa/II.** Pos. 54-56R1E, Three Ample to Extra Large Margins, Ample to bit in at T., each stamp small scuff, Fresh Color, Tied by "Pittsfield Mass." pmks. on Buff Cover, Attractive(Photo) E. 250-350

- 39 **1c Blue, Ty. III (8).** Pos. 99R2, Three Large Margins Showing Bit of Next Stamp at T., Clear at R., **Blue** Town pmk., tiny faint corner crease, o/w Very Fine, This Position is the Finest Example of the Rare Ty. III, with P.S.E. Certificate(Color Photo) 2,600.00
- 40 **1c Blue, Ty. III (8).** Large Margins to barely touching, Grid cancels, Fine(Photo) 1,450.00

- 41 ★ **1c Blue, Ty. IIIa (8A).** Pos. 80R4, Mostly Clear Margins (touches couple spots T. & B.), Deep Intense Color, light crease & small thin, Fine & Attractive Appearance, with P.F. Certificate(Photo) 1,900.00
- 42 **1c Blue, Ty. IIIa (8A).** Huge T. Margin Showing Bit of Next Stamp, others Clear to cut in, Town pmk. (extraneous spot of cancelling ink), small corner crease, Attractive(Photo) 575.00
- 43 ☒ **1c Blue, Ty. IIIa (8A).** Pl. 4, Ample to Large Margins, Rich Color, tied by Clear "New-York" pmk. on Cover to Salem, N.H., small mended cover tear at B., Very Fine, ex-Judd(Photo) 750.00
- 44 ★田 **1c Blue, Ty. IV (9). Block,** Huge Margins to just touching Fresh, Full o.g., light creases affect three stamps (one with tiny tear), o/w Fine-Very Fine, Scarce(Photo) 1,500.00

- 45 **1c Blue, Ty. IV (9).** Large to Immense Margins (Clear All Around), incl. Sheet Margin at B. & Parts of Two Other Stamps, Light Town pmk., Extremely Fine, Outstandingly Choice, with P.F. Certificate (Color Photo) 75.00
- 46 **3c Orange Brown (10).** Pos. 36R1E, Large Margins to slightly in, **Blue "Jul 1" (1851) First Day pmk.**, trifle heavy thin breaks through on face, Scarce (Photo) **E. 100-150**
- 47 ★ **3c Red (11).** Huge Margins to barely in at B. incl. Sheet Margin at R. with Part Impt. & Showing Bit of Next Stamp at T., o.g., h.r., few tiny trivial toning specks mostly in Sheet Margin, o/w Very Fine .. (Photo) 130.00



48



50



51

- 48 ★ **5c Red Brown (12).** Three Clear to Huge Margins, just touching at T., Fresh, o.g., Rich Color, Fine, Rare Unused, with P.F. Certificate which mentions scissors cut at T.L. which has been subsequently trimmed out 9,500.00
- 49 **5c Red Brown (12).** Very Large to Huge Margins, Rich Fresh Color, Town pmk., Extremely Fine, Very Scarce This Nice, with P.F. Certificate (Color Photo) 1,300.00
- 50 **5c Red Brown (12).** Ample to Large Margins, Rich Color, Town pmk., Very Fine, Choice 1,300.00
- 51 **5c Red Brown (12).** Three Large to Huge Margins, Clear to barely touching at T., New Orleans pmk., Very Fine 1,300.00
- 52 **5c Red Brown (12).** Three Large to Huge Margins, Clear to barely touching at B., Town pmk., light corner crease, Very Fine Appearance, with P.F. Certificate (Photo) 1,300.00
- 53 **5c Red Brown (12).** Clear to Large Margins, Light Town pmk., small light corner crease, Very Fine Appearance, with P.F. Certificate .. (Photo) 1,300.00

- 54 ✉ **5c Red Brown (12).** Margins to barely touching (cut to octagon shape prior to use), tied by New Orleans pmk. on Jul 1856 Folded Letter to France, ms. "per British Steamer", various transits & receiving pmks., Fine (Photo) 3,000.00
- 55 ✉ **5c Red Brown (12).** Three Large Margins, cut in at L., tied by New Orleans pmk. on 1856 Folded Cover to France, Red New-York Br. Pkt., G.B. & French transits & receiving pmks., "16" Handstamp due mark, cover bleaching spot, Scarce Used Singly on Cover (Photo) 3,000.00
- 56 ★ **10c Green, Ty. I (13).** Large Margins, Deep Rich Color, small thin, Extremely Fine Appearance, Rare, with P.F. Certificate (Color Photo) 8,500.00
- 57 **10c Green, Ty. I (13).** Large to Huge Margins Showing Complete Shells at B., Town pmk., Extremely Fine & Choice, Rare, with P.F. Certificate (Color Photo) 700.00

58	10c Green, Ty. I (13). Margins All Around, tied on Small Piece by Blue Delavan , Wis. pmk., Very Fine, with P.F. Certificate(Photo)	725.00
59	10c Green, Ty. I (13). Ample Margins to just touching at B., Grid cancel, Fine(Photo)	700.00
60	⊠ 10c Green, Ty. I (13). Margins All Around except just touches at extreme B.L., Str. Line "Paid" cancel, not tied, on Small Neat Ladies Cover to Cal., with "Dixfield, Me." pmk., faint aging, o/w Very Fine, ex-Judd(Photo)	1,000.00
61	10c Green, Ty. II (14). Ample to Large Margins, Rich Color, Town pmk., Very Fine(Photo)	275.00
62	⊠ 10c Green, Ty. II (14). Three Large to Huge Margins incl. Pane Center Line at L., close at B., tied by "N. York Steamship" on nearly complete folded letter, Fine(Photo)	350.00
63	10c Green, Ty. III (15). Very Large Margins, faint cancel, Extraordinarily Choice, Extremely Fine, with P.F. Certificate(Color Photo)	285.00
64	10c Green, Ty. III (15). Ample to Huge Margins, Bold "3" Numeral cancel, (struck twice), Extremely Fine(Photo)	285.00
65	⊠ 10c Green, Ty. III (15). Margins Three Sides, touches at B., tied by North Fairfield O. pmk. on Neat Lavender Cover to Oregon Terr. , Fine(Photo)	400.00
66	⊠ 10c Green, Ty. III (15). Margins All Around, filing crease, tied by Large Paid in Grid, Boston pmk. on Folded Cover to Nova Scotia , "United States" Oval, Very Good(Photo)	400.00
67	10c Green, Ty. IV (16). Recut at T, Pos. 86L, Ample to Large Margins, Town pmk., Very Fine(Photo)	1,525.00
68	10c Green, Ty. IV (16). Horiz Pair, Recut at B. (Pos. 54, 55L1), Mostly Large Margins, Light Town pmk., Rich Color, R. stamp trivial corner crease, o/w Fine, L. Stamp Very Fine, with P.F. Certificate (does not mention crease)(Photo)	3,500.00
69	⊠ 10c Green, Ty. IV (16). Pos. 64L, Recut at T. & B., Margins All Around except just in at T.R. (Clear of Recut), tied by "Sonora, Cal." pmk. on Brown Cover to Georgia, cover reduced slightly at R., o/w Very Fine, ex-Judd(Photo)	2,250.00
70	★ 12c Black (17). Ample Margins except just touches B.R., Almost Fine, with P.F. Certificate, which notes (quite harshly in our opinion) "slight staining at T, mostly in the margin" ..(Photo)	1,850.00
71	12c Black (17). Large Margins to just barely touching at T, Town pmk., Very Fine(Photo)	250.00
72	12c Black (17). Clear to Huge Margins, Tied by Grid cancel, Matching "Paid", on Cover Front to "Washington City District of Columbia", Fresh & Fine 250.00 +	
73	⊠ 12c Black (17). Horiz. Pair, Three Ample to Large Margins, trifle in at R., tied by Grids, Red New 19 York pmk. on 1856 Cover to England, Fine(Photo)	625.00
74	⊠ 12c Black (17). Vert. Pair, Margins to just in, tied by Red Grid, Matching light Providence, R.I. pmk. on 1857 Cover to England, Attractive(Photo) E. 200-250	
75	⊠ 12c Black, Diagonal Half Used as 6c (17a). Ample to Large Margins, tied by Town pmk. on 1853 Buff Cover to Ohio, Cover bit soiled, reduced at T, missing portion of flap, Rare ..(Photo)	5,500.00

Due to the tremendous demand on our phones and staff, Prices Realized will not be available by telephone until 24 hours after the sale.

1857 ISSUE

- 76 ★ **1c Blue, Ty. I (18).** Well-centered, couple trivial perf. flaws, o/w Very Fine(Photo) 725.00



79



77



81

- 77 ★田 **1c Blue, Ty. I (18). Block,** Very Well-centered, small thin spot B.L., o/w Very Fine, with P.F. Certificate 4,750.00

- 78 ☒ **1c Blue, Ty. I (18). Horiz. Strip of Three,** Grids of Dots cancels, tied by Aug. 5, 1861 Phila. Pa. Octagon on "Tobacco, Snuff and Segar" Corner Card Cover, slight cover soiling & B.R. corner bit diagonal, o/w Fine, Scarce(Photo) 1,350.00 +

- 79 ★ **1c Blue, Ty. Ia (19).** Pos. 99R4, Large Part o.g. (disturbed), h.r., Rich Color, crease, few small gum toning spots show through on face, perfs. touch to slightly in, **An Extremely Rare Unused o.g. Stamp**, with A.P.S. Certificate which states "badly disturbed original gum, creased, stained" 9,500.00

- 80 ★ **1c Blue, Ty. II (20).** Pl. 11 or 12, Fresh, Large Part o.g., single short perf. at T., o/w Very Fine(Photo) 425.00

- 81 ★ **1c Blue, Ty. III (21).** Pos. 48L4, Nicely Centered (Shows Type Characteristics Clearly), light pressed out corner crease, o/w Almost Very Fine, Very Attractive, with P.F. Certificate, which mentions "... regummed causing staining along the perfs" (since washed off) 4,250.00
- 82 ☒ **1c Blue, Ty. III (21).** Tied by lightly struck West Pittsfield, Mass. pmk. on Drop Letter Cover, slight cover edge faults, Fine, Scarce(Photo) 1,600.00

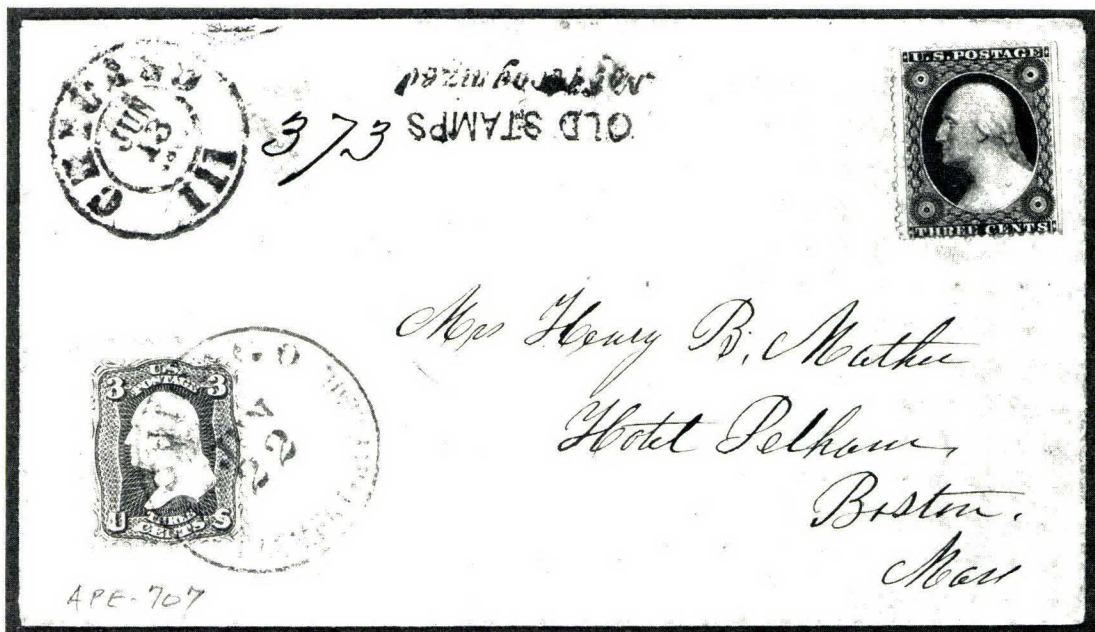
- 83 ☒ **1c Blue, Ty. IIIa (22).** Pl. 4, just touching at B., tied by light strike of Ga. pmk. on Yellow Cover to Athens, Ga., Very Fine, Attractive Southern Usage(Photo) 275.00

- 84 ☒ **1c Blue, Ty. IV (23).** Three Singles, two with T. perfs. trimmed, other small margin faults at R., tied by "Norwich Ct. 1858" pmk. on Petite Cover to New London, Very Good, Scarce(Photo) **E. 150-200**

- 85 ★ 1c Blue, Ty. V (24). Mint R. Margin Block, Beautifully Centered, Rich Intense Color, Very Fine, with P.F. Certificate(Photo) 475.00
- 86 1c Blue, Ty. V (24). Tied by Blue Baltimore Paid cancel on Illustr. Circular regarding a Hay Reaping & Mowing Machine, Very Fine, Choice E. 40-50
- 87 3c Rose, Ty. I (25). Tied by Bold Strike of Double Lined Circle "Profile House, N.H." pmk. (thought to be a Hotel pmk.) on Small Neat 1857 Cover to N.Y., minor cover aging, o/w Very Fine, Scarce Usage E. 50-75
- 88 3c Rose, Ty. I (25). Tied by Blue Str. Line "Steamboat" on 1857 Cover to Portsmouth, Va. with Matching Baltimore, Md. pmk. & Str. Line "Due 2 cts.", flap added, tiny cover repair at B.R., Still a Scarce Usage of this Stamp, ex-Judd(Photo) E. 100-150
- 89 3c Red (26). Straddle Margin Single, tied by Conn. River R.R. cancel (Rem. C27) on Fresh Cover to N.H., small cover tear, o/w Very Fine, Very Rare E. 75-100

"OLD STAMPS NOT RECOGNIZED"

- 90 3c Red, 1c Blue (26, 63). Both Huge Straddle Margin Singles, tied by "Philadelphia Pa. Sep 26 1862" pmk. & Two Line "Old Stamps/Not Recognized" on Red & Blue Patriotic Cover, some light staining & small tear at B. of cover, o/w Very Fine, Handsome & Very Rare, With Letter on matching stationery & P.F. Certificate, Probably a Unique Marking on a Patriotic(Color Photo) E. 7,000-10,000



- 91 3c Red, Rose (26, 65), Former Natural s.e., Uncancelled, Latter tied by Blue "Chicago Supplementary Mail" pmk., Blue Chicago Ill. Double Circle & matching Two Line "Old Stamps Not Recognized" on Cover to Mass., Blue Oval "Held For Postage" on Flap, A Great Demonitized Issue Rarity, ex-Baker, Haas, Illustrated in Simpson E. 4,000-6,000

92 ★	5c Brick Red (27). O.g., Well-centered, few barely irregular perfs, o/w Very Fine, A Lovely Example of This Rarity, with P.F. Certificate(Color Photo)	7,500.00
93	5c Brick Red (27). Perfectly Centered, Exceptionally Wide Margins, New Orleans & Red New York transit pmks., Extremely Fine, A "Gem", ex-Sheriff, with P.F. Certificate .(Color Photo)	1,050.00

94 ★ **5c Red Brown (28).** Fresh, Exceptionally Well-centered, Rich Color, regummed over small thins, Extremely Fine Appearance, Scarce Unused, with P.F. Certificate(Photo) 1,350.00

95 **5c Red Brown (28).** Rich Color, (Near Indian Red Shade), Light Blue Town pmk., single nibbed perf., o/w Fine(Photo) 285.00

96 ☒ **5c Red Brown (28). Vert. Strip of Three,** tied by New Orleans pmks. on Folded 1857 Prices Current to France, Matching Red N.Y. Paid pmk., Several Backstamps, cover slightly soiled, Fine(Photo) 900.00 +

97	5c Indian Red (28A). Horiz Strip of Three, New Orleans 1859 pmks., Rich Color, R. stamp rounded corner & toning, others light toning on back, R. perfs. touch, Scarce Strip(Photo)	4,750.00
----	---	----------

98 **5c Brown, Ty. I (29).** Virtually Perfect Centering, Rich Color, Neat New Orleans Corner pmk., Extremely Fine & Choice, with P.F. Certificate(Color Photo) 225.00

99 ☒ **5c Brown, Ty. I, 10c Green, Ty. V (29, 35).** Tied by **Red** Grid cancels on 1859 Folded Cover to France, **Red Boxed "Short Paid"**, N.Y. & French Transits, Paris Backstamp, Fine & Attractive Cover, with P.F. Certificate(Photo) 390.00

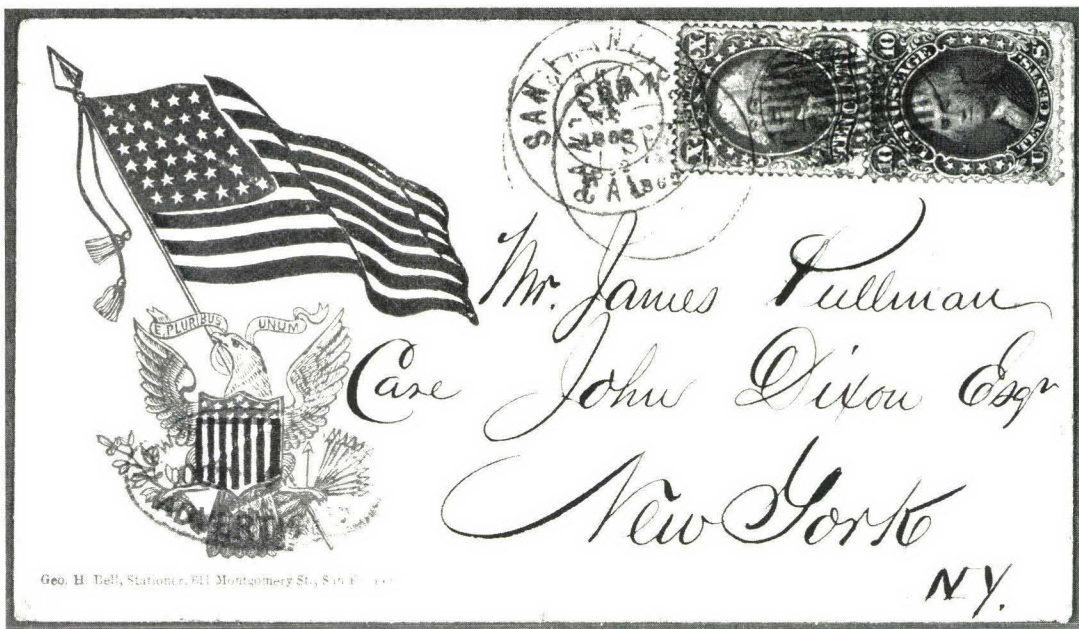
100 ★ **5c Orange Brown (30).** Fresh, Part o.g., couple nibbed perfs., o/w Very Fine(Photo) 750.00

101	5c Orange Brown (30). Very Wide Margins, Exceptionally Well-centered, Extremely Fine, Wonderfully Choice, with P.F. Certificate(Color Photo)	900.00
-----	---	--------

102 ★ **5c Brown, Ty. II (30A).** Fresh, reperfed at R., o/w Fine(Photo) 450.00

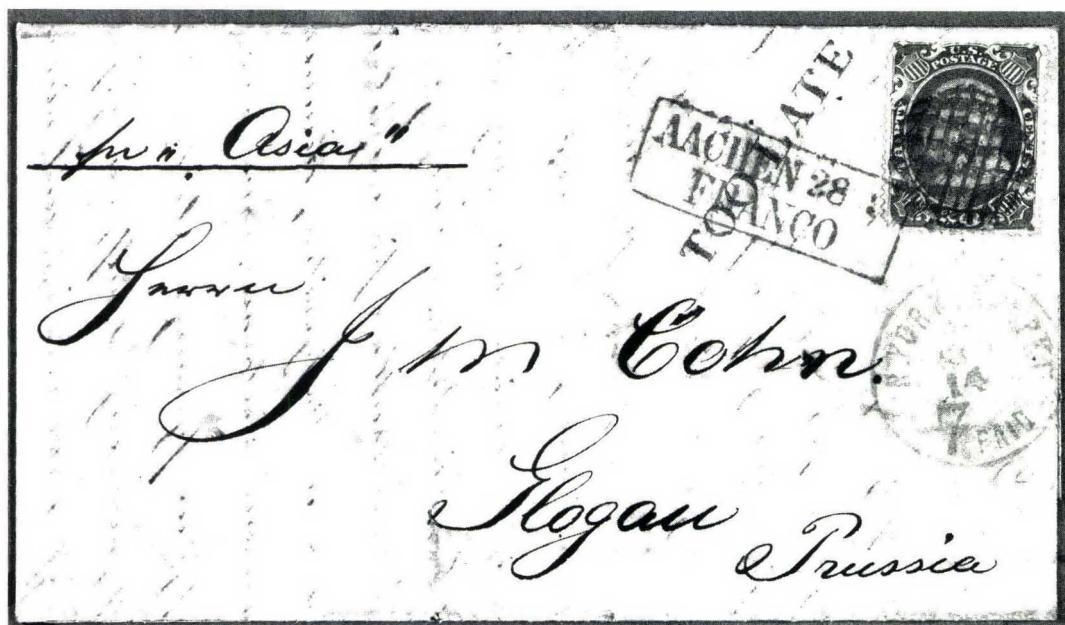
103 ☒ **10c Green, Ty. I (31).** Centered to T.L., tied by Large Paid in Grid, Red Boston pmk. on Small slightly stained cover to **Oregon City, Oregon**, Scarce(Photo) 800.00

104 ★ **10c Green, Ty. II (32). Horiz. Pair,** o.g., couple gum toning spots show through on face, perfs. in at L., Scarce(Photo) 3,450.00



105	10c Green, Ty. II, 10c Dark Green "First Design" (32, 62B). Tied by Grids & San Francisco pmks. on Patriotic Cover, Oval New York Advertised at B.L., negligible soiling, Fine, Very Rare Combination & Usage, ex-Hass	E. 2,500-3,000
106	10c Green, Ty. IV (34). Recut at B., Used (Appears Unused), tiny margin tear, perfs. in at R., Scarce	(Photo) 1,600.00
107	10c Green, Ty. IV (34). Recut at T., Pos. 3R, perfs. trifle in at L., tied by San Francisco pmk., on slightly stained cover to Vt., piece of flap missing, Very Scarce	(Photo) 2,250.00
108 ★	10c Green, Ty. V (35). Mint Horiz. Strip of Three, light diagonal crease at R. (really a light gum crease), o/w Very Fine, Quite Well-centered, with P.F. Certificate for Block of Six	(Photo) 535.00 +
109 ★	10c Green, Ty. V (35). Mint Horiz. Strip of Three, Very Well-Centered Throughout, some separations & faint crease, o/w Very Fine, with photocopy of P.F. Certificate for Block of Six	(Photo) 535.00
110 ★	10c Green, Ty. V (35). Block, Fresh, o.g., h.r. & couple separations hinge reinforced, one stamp tiny crease, B. perfs. touch to barely in	(Photo) 750.00
111	12c Black (36). Horiz. Pair, Tied by Town pmk. on 1859 Cover to England with pmk. Paid Liverpool U.S. Pkt. & "3" in Red, Backstamped Shrewsbury, light horiz. crease, o/w Fine, ex-Hargest	(Photo) E. 100-150
112 ★	12c Black, Pl. III (36b). B. Margin Block, Fresh, o.g., h.r., R. Pair crease, perfs. touch to barely in, Scarce Block	(Photo) 1,200.00
113 ★	12c Black, Pl. III (36b). Block, Fresh, o.g., h.r., some minor separations hinge reinforced, one with tiny tear, perfs. in at T., Scarce Block	(Photo) 1,200.00
114 ★	24c Gray Lilac (37). Exceptionally Fresh, Well-centered, small natural inclusion, o/w Very Fine	(Photo) 600.00
115 ★	24c Gray (37a). Fresh, trace of o.g., natural inclusion, o/w Very Fine	(Photo) 600.00
116 ★	24c Red Lilac (37b). Fresh, trace of o.g., Pretty Shade, side perfs. scissors separated, tiny thin, Fine Appearance, Scarce	(Photo) 1,000.00

117	★	24c Gray Lilac, Imperf. (37c). Large to Huge Margins Showing Bit of Next Stamp at B., Fresh, Extremely Fine, Scarce(Color Photo)	1,150.00
118		24c Gray Lilac (37). Near Perfect Centering, Light Face-Free Red Grid cancel, A Lovely Stamp, Extremely Fine, with P.F. Certificate(Color Photo)	220.00
119		24c Gray Lilac (37). Horiz. Pair, Wonderful Centering, Magenta ms. cancels, Extremely Fine, with P.F. Certificate(Photo)	240.00 +
120	✉	24c Gray Lilac (37). Tied by Red Grid, partial Red New 19 York & London Paid on Cover to England, Fine, Scarce (Photo)	1,100.00
121	★	30c Orange (38). Fresh, perfs. barely in at T., Fine(Photo)	750.00
122	★	30c Orange, Imperf. (38a). Clear to Large Margins, tiny scuff & small repair at T., o/w Very Fine, Scarce(Photo)	E. 500-750



123	✉	30c Orange (38). Red "Waffle" Grid cancel, tied by Boxed Red Aachen Transit mark on September 10, 1861 Folded Letter from New York (late use, stamps not demonitized in N.Y. until 1862) to Prussia, Str. Line "Too Late" Handstamp, Red "N. York Am. Pkt. 7 Paid" Transit, Handsome Late Usage(Photo)	2,250.00
124	✉	30c Orange (38). Tied by Large Rimless Grid & Red Aachen Franco Box on Cover to Prussia, Red N. York Am. Pkt. 7 Paid, cover tear affects stamp, o/w Fine(Photo)	2,250.00
125	✉	30c Orange (38). Perfs. slightly in at R., tied by Little Rock, Ark Apr 2, 1861 Double Circle pmk. & matching target on Cover to Germany, slightly reduced at L., light overall soiling & horiz. file fold, Scarce Cover(Photo)	2,250.00
126	★	90c Blue (39). O.g., Very Well-centered, Very Fine, Exceptionally Nice, with P.F. Certificate(Color Photo)	1,450.00
127	★	90c Blue (39). Fresh, tiny negligible corner perf. crease, Fine, Scarce(Photo)	1,450.00
128		90c Blue (39). Partial New Orleans pmk., faults incl. sealed tear & reperfed. at B., o/w Fine, Rare(Photo)	2,750.00

1857 REPRINTS

- | | | | |
|-----|---|---|----------|
| 129 | P | 1c-90c 1851-60 Designs, "Atlanta" Trial Color Plate Proofs (40TC-47TC). Cpl. Set (40 Values), Fresh Bright Colors, Almost All With Wide Margins, couple with shallow thins or slight mounting stains, Mostly Very Fine (Photo Ex) | 5,520.00 |
|-----|---|---|----------|

- | | | | |
|-----|---|---|--------|
| 130 | ★ | 1c Bright Blue, Reprint (40). Fresh, Exceptionally Well-centered, Extremely Fine & Choice (Photo) | 550.00 |
|-----|---|---|--------|

- | | | | |
|-----|---|---|--------|
| 131 | ★ | 1c Bright Blue, Reprint (40). Fresh, Very Fine..... (Photo) | 550.00 |
|-----|---|---|--------|

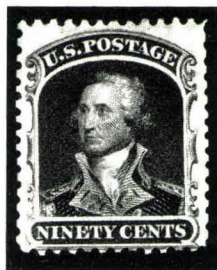
- | | | | |
|-----|---|---|----------|
| 132 | ★ | 3c Scarlet, Reprint (41). Fresh, Very Fine, Scarce..... (Color Photo) | 2,850.00 |
|-----|---|---|----------|

- | | | | |
|-----|---|---|--------|
| 133 | ★ | 5c Orange Brown, Reprint (42). Fresh, Exceptionally Well-centered, Extremely Fine, Scarce (Color Photo) | 950.00 |
|-----|---|---|--------|

- | | | | |
|-----|---|---|----------|
| 134 | ★ | 30c Yellow Orange, Reprint (46). Fresh, Well-centered, scissors separated at T. & B., Very Fine, Scarce (Color Photo) | 2,850.00 |
|-----|---|---|----------|



135



136

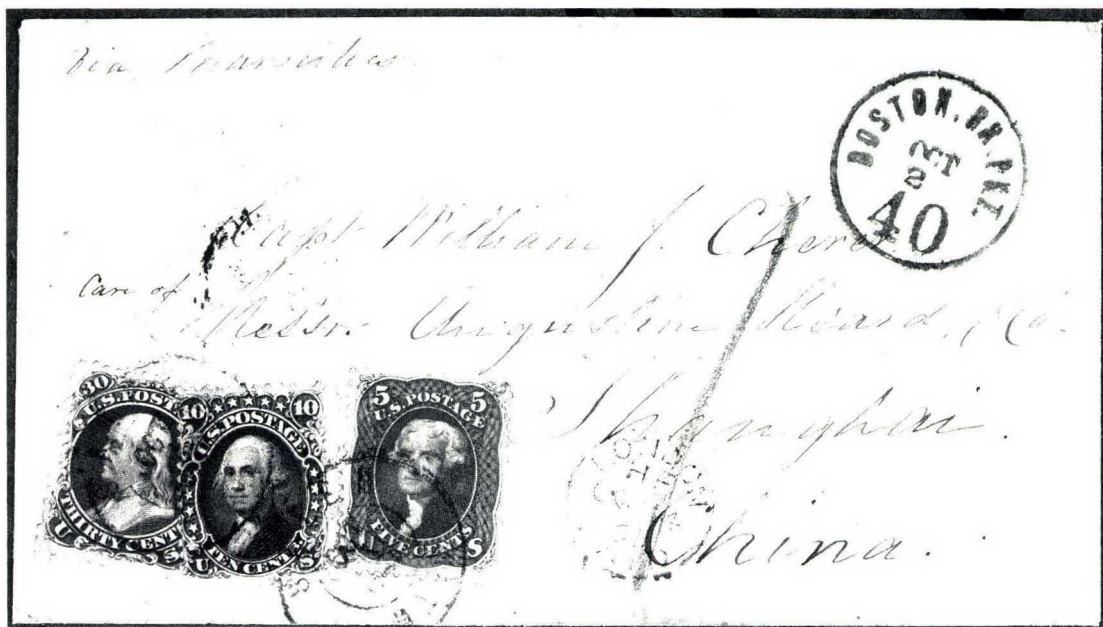
- | | | | |
|-----|---|---|----------|
| 135 | ★ | 30c Yellow Orange, Reprint (46). Fresh, Very Fine & Choice, Scarce | 2,850.00 |
|-----|---|---|----------|

- | | | | |
|-----|---|--|----------|
| 136 | ★ | 90c Deep Blue, Reprint (47). Fresh, scissors separated (as often) at sides, B. perf. trifle in, Fine for this Rare Stamp, with P.F. Certificate | 4,250.00 |
|-----|---|--|----------|

<p>Extension Lots must be paid for on receipt. In the event of an unsatisfactory certificate, payment will be refunded with interest at Treasury Bill rate.</p>
--

1861 ISSUE "FIRST DESIGNS"

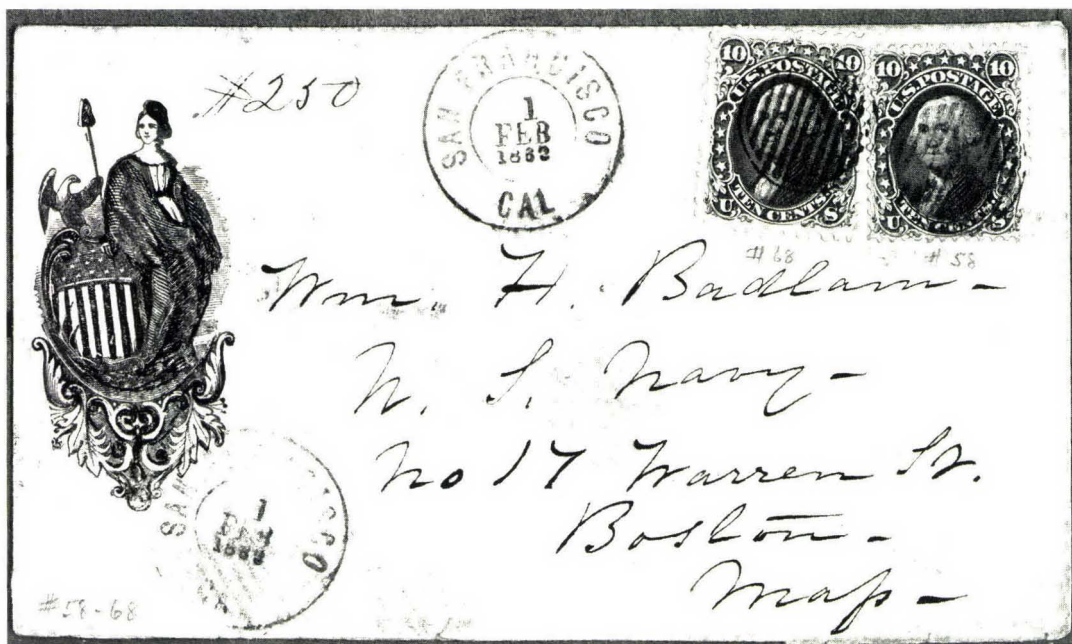
- | | | | |
|-------|---|---------|--------|
| 137 ★ | 3c Brown Rose, "First Design" (56). Fresh, o.g., trivial h.r., Very Fine | (Photo) | 700.00 |
| 138 ★ | 3c Brown Rose, "First Design" (56). O.g., very lightly hinged, Fresh, Well-centered, Very Fine, with P.F. Certificate | (Photo) | 700.00 |
| 139 ☒ | 10c Dark Green, "First Design" (62B). Rich Color, T.R. corner tear, tied by Grid, "Fort Madison Ioa" pmk. on Cover to Ione City Cal Forwarded to Placerville, bit reduced at L., Fine Appearance .. | (Photo) | 750.00 |



- | | | |
|-------|--|----------------|
| 140 ☒ | 10c Dark Green, "First Design", 5c Olive Yellow, 30c Orange (62B, 67, 71). 10c partly overlaps 30c, tied by Salem, Mass. pmks. on Oct. 1861 Augustine Heard Corresp. Cover to China, Red "Boston Br. Pkt. 40" & "London Paid", 30c trivial flaws, flap tear, still a Fine & Very Rare Cover, ex-Gibson | E. 1,500-2,000 |
|-------|--|----------------|

"E." = ESTIMATES

Our sales offer many covers, cancellations, varieties and other items for which there is no catalogue value or where catalogue value does not reflect the actual value. In order to assist our clients, we are placing a fair net valuation on such lots as a guide to our bidders. Lots may actually realize more or less than our estimates, which are under no circumstances to be considered reserves but merely a guide to bidding.



- 141 ✉ **10c Dark Green, "First Design" & Regularly Issued (62B, 68).** Nicely Centered Single of each, tied by Grids, San Francisco Cal. Feb. 1862 pmk. on Red & Blue on Yellow Female, Eagle & Shield **Patriotic Cover** to Mass., minor cover filing bends, Fine, Rare & Desirable Combination, with P.F. Certificate **E. 1,000-1,500**
- 142 ✉ **10c Dark Green, "First Design" (62B).** Two Singles, one natural s.e., Deep Rich Color, few trivial perf. toning specks, tied by Red "New Paid York" on Oct. 1861 Folded Letter to **Cuba**, Oval "NA" & "3", Exceptional & Rare Cover, with P.F. Certificate **(Photo) E. 750-1,000**
- 143 ✉ **10c Dark Green, "First Design" (62B).** Three, one with small faults, others Fine, Used with faulty **3c Rose (65)**, Two faulty **10c Green (68)** & Two **2c Black (73)**, tied by Red Grids on worn cover (opened both sides) to Germany, some stamps (incl. both 2c) have been added, Eyecatching Nonetheless **(Photo) E. 1,000-1,250**

144 ★田 **1c Blue (63). B. Margin Block with Part Impt.,** o.g., some perfs rejoined, Attractive & Fine **(Photo) 475.00 +**

- 145 ✉ **1c Blue (63).** Average, tied by Perfect Bold **Waterbury Ct. Elm Leaf** cancel (Rohloff Ty. L-1), July 21, 1866 pmk. (two days earlier than listed) on Fresh Orange Drop Letter Cover, Exquisite **(Photo) E. 750-1,000**
- 146 ✉ **1c Blue (63).** Large Margins, few short perfs., tied by Clear **Marshall Mich. Two Cent Coin** cancel (actual impression of the coin), on Neat Drop Letter Cover, couple back tears, Very Rare & Handsome **(Photo) E. 750-1,000**

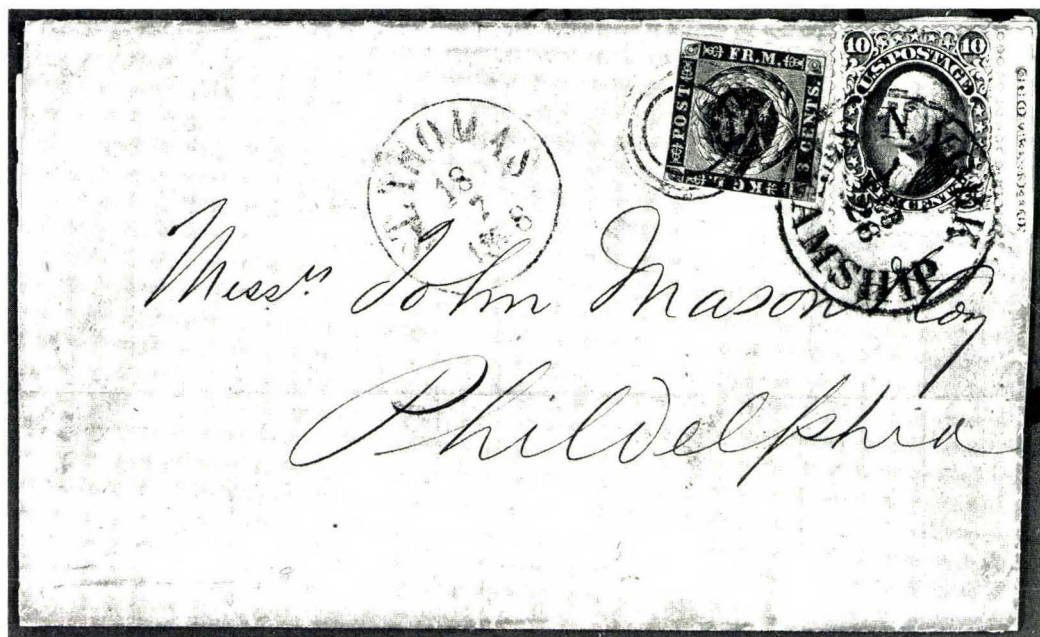
- 147 **3c Pink (64).** Beautifully Centered, Neat **Green** Grid cancel (Extremely Scarce On This Issue), small corner crease, o/w Very Fine, with P.F. Certificate **(Photo) 750.00**
- 148 ✉ **3c Pink (64).** Well-centered, single short perf., tied by Adrian, Mich. pmk. on Orange Cover, Attractive **(Photo) 350.00**

149	✉	3c Rose (65). Averse, tied by Waterbury Ct. Three-Sectioned Leaf Cancel (Rohloff L-2) on Neat Orange Cover, Bold Strike, Exceptional(Photo) E. 500-750
150	✉	3c Rose (65). Tied by Beautifully Struck Waterbury Ct. Skull & Crossbones (Rohloff R-1) on Very Fresh Apr. 13, 1866 Cover, without flap, A Beauty(Photo) E. 750-1,000
151	★	3c Lake, Imperf. (66a). Horiz Pair , Wide Even Margins, Rich Fresh Color, o.g., tiny thin & small corner crease, o/w Extremely Fine, A Very Scarce & Undercataloged Stamp, with P.F. Certificate(Color Photo) 1,850.00
152	✉	5c Dark Olive Yellow (67b). Fine Centering, tiny flaws B. margin, Rich Color, tied by Large Boston Paid in Grid on Neat Sept. 10, 1861 Folded Letter to India addressed to the "Ice House" (address of the Famous 90c 1869 Baker Cover), Framed Calcutta Steam Letter backstamp, etc., Very Attractive, Scarce(Photo) E. 500-750

- 153 ✉ **5c Buff (67).** Used with **1c Blue (63)**, tied by Large Paid in Grid, Red Boston pmk. on Fresh slightly reduced Yellow Buff Cover to Ripley Female College, Fine, Scarce Combination(Photo) **E. 350-500**

154	✉	5c Buff, 10c Green, 30c Orange (67, 68, 71). Nicely Centered, tied by Red Grids on Triple Rate Payen Corresp. Folded Cover to France, "Red New Paid York 9", etc., closed cover tear, mended T.L. corner, still a Colorful & Rare Combination ..(Photo) E. 1,000-1,500
155	✉	5c Buff (67). Three Singles, two with short perfs., tied by Bold Red Grids on trifle toned Oct. 1861 Cover to France, Red N.Y. & Havre Transits, Rare & Very Attractive despite the slight aging(Photo) E. 1,000-1,500
156	✉	5c Buff (67). Four Singles , two have faults, one minor, Rich Color, Used With 1c Blue (63) on Goddard Corresp. Folded Letter to India tied by Large "Paid" in Grids, Rare & Very Handsome(Photo) E. 2,500-3,000
157	✉	10c Green (68). Small faults, Cog cancel, tied by 1862 San Francisco pmk. on Cover to N.Y. State From Vancouver Is. Br. Columbia, Fancy Oval "Post Office Victoria V.I.," Oval "Paid" Under Stamp, lacks part of flap, Very Scarce .(Photo) E. 750-1,000
158	✉	10c Dark Green (68a). Average, vaguely tied by Cork, " P.O.D. U.S. Con. Genl. Shanghai " pmk. on Fresh June 1869 Folded Letter to Nagasaki, Very Rare Usage(Photo) E. 1,000-1,500
159	✉	10c Dark Green, 24c Red Lilac (68a, 70). Well-centered, Rich Colors, Used With average 1c Blue (63) tied by Phila., Pa. pmks. on Folded Cover to Switzerland, Red Boxed Aachen Franco, ms. rate marks, Very Fine & Handsome Cover(Photo) E. 500-750
160	✉	10c Dark Green (68a). Beautifully Centered, couple small tears, tied by Grid, San Francisco Cal. Jan. 1862 pmk. & Used With Br. Columbia & Vancouver Is. 5c Rose (5) , Red "1" Grid cancel, on Cover to Me., 10c over Red pencil "10", Red Oval "Paid" at L., cover corners expertly mended, Very Fine Appearance, with P.F. Certificate which does not mention faults(Photo) E. 1,000-1,500

Due to the tremendous demand on our phones and staff, Prices Realized will not be available by telephone until 24 hours after the sale.



- 161 ☒ **10c Green (68).** Part Impt. Single Used With Danish West Indies 3c Rose (2) tied by Target & "N. York Steamship" pmk. on 1868 Folded Cover from Trinidad to Phila., Pa., St. Thomas pmk., Fine, Rare & Handsome E. 3,500-5,000

- 162 ☒ **10c Green (68).** Vert. Pair, Used With 1c Blue (63) on 3c Pink Entire (U34) With Wells Fargo Printed Frank & Blue Victoria British Columbia Oval under stamps to England, tied by Fancy Rosettes, Red "N. York Br. Pkt. Paid 19", minor filing bend & flap tears, Fine & Very Rare, with P.F. Certificate (Photo) E. 1,500-2,000
- 163 ☒ **10c Green, 24c Lilac (68, 78).** Horiz. Pair of former, Used With 1c Blue (63), 24c Large Margins & Well-centered, natural s.e. at R., each other with Two Huge Margins, Large "X" cancels, tied by Red "Boston Br. Pkt. 40" & Red London Paid, "Plymton Ms." pmks. on 1864 Cover to Australia, few trivial toning specks, Rare Usage (Photo) E. 750-1,000
- 164 ☒ **10c Green (68).** Single & Horiz. Pair, Used With average 3c Rose (65) tied by Grids on Neat Yellow Cover to Mauritius, New Bedford Mass. pmk., Red "London Paid", Red "28" Credit, Red "4½d" handstamp, lacks part of flap, Fine & Very Handsome, Rare Destination (Photo) E. 1,000-1,500
- 165 ☒ **10c Dark Green (68a).** Six Singles, five partly overlapped, Wonderful Deep Rich Color, tied by Grid on Quadruple Rate 1867 Cover to France, Red "New Paid York 12", small cover faults, without flap, o/w Very Fine, Fabulous Usage With Six 10c Stamps (Photo) E. 750-1,000
- 166 ☒ **12c Black (69).** Used With 3c Rose (65), tied by Negative "US" ("S" Reversed) & New Orleans pmk. on May 1866 Folded Cover to France, Red "New Paid York 12" & French Transits, Fine, Very Scarce & Attractive (Photo) E. 500-750

167	✉	10c Green, 12c Black (68, 69). 10c partly overlaps 12c. Well-centered, tied by Grids, Monticello Va. pmk. on Fresh Orange Buff Cover to Peru , Br. "Panama" Transit, Callao & Lima backstamps, bit reduced at R., Very Fine(Photo) E. 500-750
168	✉	12c Black (69). Intense Color, Used With 3c Rose (65) tied by Paid in Grids on Angell Corresp. Patriotic Cover to Austria , Red "N. York 12 Brem. Pk Paid", Embossed Grocer's Oval on flap, mended back tear, Fine, Beautiful Cover, ex-Mathies(Color Photo) E. 3,000-4,000
169	✉	12c Black (69). Two Singles, Used With 1c Blue (63) & 3c Rose (65) tied by Large Paid in Grids & Red Boston Pkt. 7 Paid, on Angell Corresp. Patriotic Cover (Magee) to Austria , Very Fine, Exceptionally Handsome(Color Photo) E. 3,500-5,000
170		24c Red Lilac (70). Well-centered, Unusually Wide Margins, Extremely Fine, with P.F. Certificate(Photo) 77.50
171	✉	24c Red Lilac (70). Trivial flaws, Used With 1c Blue (63) & 3c Rose (65) tied by Large Paid in Grids & Red Boxed Paid to the Frontier (in German) on Angell Corresp. Patriotic Cover to Italy , Red "N. York Am. Pkt. 7 Paid" & Aachen Franco Box, Beautiful Rare Cover(Color Photo) E. 3,000-4,000
172	✉	24c Red Lilac (70). Hardly noticeable corner crease, Used With Two 3c Rose (65) , one scissors blunted perfs. at B., one 3c & 24c tied by Large Paid in Grid, other 3c tied by Small Boxed Paid & Red "PD" on Angell Corresp. Green Eagle Patriotic Cover to Paris Forwarded to London , Red "Boston Paid 12" etc., Rare & Beautiful, ex-Brown, Mathies, Haas(Color Photo) E. 3,000-4,000
173	✉	24c Brown Lilac (70a). Unusual Shade, Near Grayish Lilac, Unusually Well-centered, tied by Salem, Mass. pmk. & Red German Transit on Sept. 1862 Cover to England Forwarded to Russia (Pierce Corresp.), Red "New Paid York 3", "P" in Circle, etc., ms. rate marks, Very Fine, Rare Usage, ex-Gibson(Photo) E. 750-1,000
174	✉	24c Brown Lilac, 30c Orange (70a, 71). Well-centered, Used With Average 3c Rose (65) tied by Grids on Sept. 1862 Cover to China , Red N. York Am. Pkt. Paid, ms. rate marks, Hong Kong & Shanghai backstamps, without flap, Very Fine, ex-King, signed Ashbrook(Photo) E. 500-750
175	✉	24c Brown Lilac (70a). Horiz. Pair, tied by Grids of Squares & Blue Aachen Franco Box on Dec. 1866 Cover to Norway , Red "Boston Br. Pkt. Paid," light partly readable Brodhead Wis. pmk., various rate marks, etc., back tear, Very Fine, Very Rare Usage, signed Ashbrook(Photo) E. 750-1,000
176	✉	24c Steel Blue (70b). Well-centered, Rich True Color, Used With 3c Rose (65) , tied by Jamaica Plain Ms. pmk. on Fresh Remarkably Intact Thin Onion Skin Paper Cover to Italy, Red "Boston Paid 24," etc., Very Fine, Choice(Photo) E. 750-1,000
177	✉	24c Steel Blue (70b). Remarkably Well-centered, Used With 10c Dark Green (68a) tied by Targets, Washington D.C. pmk. on Crosby Corresp. Cover to Guatemala , E.G. Spaulding Congressional Free Frank, small piece out of pmk., o/w Very Fine, Rare, ex-Gibson(Photo) E. 1,000-1,500
178	✉	24c Violet, "First Color" (70c). Deep Rich Color, tied by Grid of Squares & Red "Phila. Am. Pkt. 19" on Oct. 1861 Folded Letter to England, Very Fine, Very Scarce(Photo) E. 500-750

- 179 ☒ **30c Orange (71).** Well-centered, Fresh Color, tied by Small Phila Pa. pmk. on Remarkably Fresh Orange Buff Cover to Prussia, Red "N. York Paid Hamb. Pkt. 24", Extremely Fine, An Ideal 30c Cover ..(Photo) **E. 250-350**

- 180 ☒ **30c Orange (71).** Natural s.e., minor flaws, Used With **3c Rose (65)** Boldly tied by Large Paid in Grid on Feb. 1862 Folded Cover to **Cape of Good Hope**, Red London Paid, "28" Credit & pencil "1" (local delivery charge), etc., Rare Usage(Photo) **E. 750-1,000**
- 181 ☒ **30c Orange, 5c Red Brown (71, 75).** 5c Well-centered, Used With **10c Green (68)**, small faults T. margin, tied by Large "Paid" in Grids on Oct. 1862 Cover to **India**, Red Transits & Rate Marks, slight cover toning, still Very Scarce & Quite Attractive(Photo) **E. 750-1,000**
- 182 ☒ **30c Orange (71).** Used With **10c Green (68)**, lightly creased at T. where folded over cover edge & **5c Brown (76)** tied by Crossroads on Sept. 1863 Cover to **New South Wales**, Red London Paid & Magenta ms. "24," Exceptionally Handsome, Rare Destination(Photo) **E. 1,000-1,500**

- 183 ☒ **30c Orange (71).** Used with **10c Green (68)** & **5c Brown (76)**, tied by **Leaf** cancels on March 1864 Payen Corresp. Cover to France, Red U.S. & French Transits, usual cover file fold, Fine(Photo) **E. 250-350**

- 184 ☒ **30c Orange (71).** Used With **Two 1c Blue (63)** **Two 10c Green (68)** & **5c Brown (76)** tied by Grids on 1863 Buff Cover to **China**, Red "N. York Am. Pkt. Paid" & "London Paid", magenta ms. "36", etc., Hong Kong & Shanghai backstamps, one 1c corner neatly replaced, o/w Very Fine, Rare & Colorful Franking, with P.F. Certificate (does not note repair on 1c but mentioned by Bartel on back in 1932)(Color Photo) **E. 750-1,000**
- 185 ☒ **30c Orange (71).** Horiz. Strip of Three, tied by Blue Louisville Ky. Target Duplex pmks. on Fresh Orange Sextuple Rate Cover to France, Red New Paid York, Boxed "PD", etc., negligible cover corner tear, Very Fine, Scarce(Photo) **E. 500-750**
- 186 ★ **90c Blue (72).** Extraordinarily Wide Margins, Choice Centering, Extremely Fine, with P.F. Certificate(Color Photo) **1,200.00**

- 186A ★ **90c Blue (72).** Reperfed, Very Fine Appearance(Photo) **1,200.00**

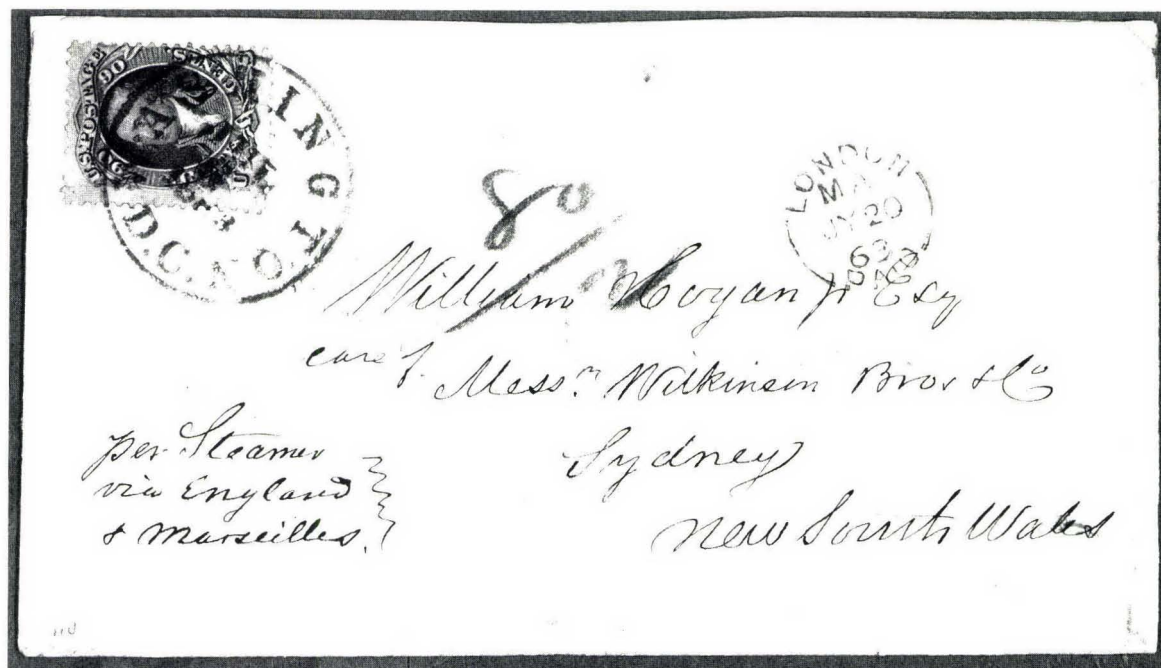
BIDDING INTERVALS

BIDS	ADVANCE	BIDS	ADVANCE
Up to \$30.00	\$1.00	\$1,900.00 - \$3,000.00	\$100.00
\$32.50 - \$60.00	\$2.50	\$3,000.00 - \$7,500.00	\$250.00
\$60.00 - \$140.00	\$5.00	\$7,500.00 - \$15,000.00	\$500.00
\$140.00 - \$300.00	\$10.00	\$15,000.00 - \$30,000.00	\$1,000.00
\$300.00 - \$750.00	\$25.00	\$30,000.00 - \$75,000.00	\$2,500.00
\$750.00 - \$1,900.00	\$50.00		

Bids which do not conform to the above will be automatically reduced to the appropriate level.



- 187 田 90c Blue (72). Horiz. Block of Ten, Large Circle of "V's" cancels, L. pair neatly rejoined, couple minor faults (to be expected on a used high value multiple of this size), o/w Very Fine 5,500.00 +



- 188 匣 90c Dark Blue (72b). Perfs. slightly in at R., Beautifully tied by "Washington D.C." pmk. on July 1863 Double Rate Cover to Sydney, New South Wales via Marseilles, Red "London Paid" Transit, Red Crayon "80/2" (British Credit/Double Rate), Red "Boston Br. Pkt. Paid" & "=Ship-Letter=Sydney" Rimless Circle Backstamps, cover slightly reduced at T., minor filing crease, Lovely Rarity, ex-Gibson, West, Baker, with P.F. Certificate 13,500.00



190



189

- 189 ✉ **90c Blue (72).** Well-Centered, single short perf., tied by Target, Baltimore Md." pmk. on Jul 1866 Double Rate Folded Business Announcement to **Shanghai, China**, Red "London Paid", ms. "Via Marseilles", Red Crayon "2" (Double Rate), Three Diff. Credits "68", "48" & "96", Rare & Very Handsome Cover from the Angustine Heard Corresp. (16c deficiency in postage presumably paid by addressee if sent via Marseilles, however if sent via Southampton, 9c would have satisfied full prepayment), ex-Newbury, Baker, Illustrated in Brookman, with P.F. Certificate 13,500.00
- 190 ✉ **90c Blue (72).** Tied with **12c Black, 3c Rose (69, 65)** on 1866 Prices Current from New Orleans via New York to France. The very fragile cover is partly rejoined along inside edges, with some ink erosion of the address, 90c with some nibbed perfs. T.R., o/w Fine, A Very Scarce Nine Times Rate, The 90c on Cover is Rare, ex-Gibson, with P.F. Certificate 13,500.00+

191	✉	90c Blue (72). Two Beautifully Centered Singles, Used With 10c Green (68) & 5c Red Brown (75) tied by N.Y. Circles of Wedges, 5c also just tied by Red New Paid York on 13 Times Rate Folded Cover to France, Magenta ms. "78" Credit, three small areas of address cut out, some sensible internal "silking," Enormously Rare High Franking, signed Ashbrook (Color Photo) E. 10,000-15,000
192	✉	2c Black (73). Tied by Phila. "Post Office" pmk. on Blue Illustr. "Union Volunteer Refreshment Saloon & Hospital" Cover, A Fabulous Rare Beauty, ex-Haas(Color Photo) E. 750-1,000
193	✉	2c Black, Diagonal Half Used as 1c (73a). Tied by Blue Quartered Cork, partial matching Easton Pa. pmk. on Fresh Orange Buff Drop Letter Cover With Handsome Foundry & Machine Shop Ad at L., Exceptionally Fine & Rare Cover, with P.F. Certificate(Photo) 1,650.00
194	★	5c Red Brown (75). Almost Perfectly Centered, Brilliant Color, Extremely Fine, with P.F. Certificate(Color Photo) 1,200.00
195	★	5c Red Brown (75). Fresh, Rich Color, Well-centered, Very Fine & Choice, with P.F. Certificate(Photo) 1,200.00
196		5c Red Brown (75). Rich Color, Lovely Centering, Boston PAID cancel, Very Fine, with P.F. Certificate(Color Photo) 210.00
197	✉	5c Dark Red Brown (75). Intense Color, used with 10c Green (68) & tied by Washington D.C. Double Circle, on Dec. 1863 Cover to Germany, Incorrectly Prepaid as evidenced by Black "N. York Hamb. Pkt. 6" & Boxed "Short Paid," Blue pencil "13" (silbergroschen) deleted & Red pencil "30" (Bremen Grote due) added, Fresh & Fine, Choice Cover, ex-Rohloff(Photo) E. 350-500
198	✉	5c Deep Red Brown (75). Two Singles, Marvelous Color, tied by Washington D.C. Double Circle on Crosby Corresp. Cover to Guatemala , Blue "2" handstamp, Fine & Rare(Photo) E. 750-1,000
199	✉	5c Red Brown (75). Two Singles, couple short perfs. on one, Deep Rich Color, tied by Large "Paid" in Grid on Goddard Corresp. Folded Letter to India , ms. British Rate mark, etc., Attractive & Very Scarce(Photo) E. 750-1,000
200	✉	5c Deep Red Brown (75). Vert. Strip of Three, Wonderful Color, lightly tied by Grids & Town pmk. on Small Mourning Cover to France, Red N.Y. & France Transits, flap tear, Fine & Attractive, with photocopy of P.F. Certificate(Photo) E. 350-500
201	✉	5c Bright Red Brown (75). Horiz. Strip of Three, average centering, few trivial flaws, Beautiful Color, tied by Large Paid in Grids on Angell Corresp. Patriotic Cover to Austria , Red "N. York Paid Hamb. Pkt. 10," A Lovely Rare Cover (Color Photo) E. 3,000-4,000
202	✉	5c Red Brown (75). Three average to Fine Singles, Rich Color, Used With Two 3c Rose (65) tied by Large Boston Paid in Grid cancels on Goddard Corresp. Tissue Paper Folded Letter to India , Usual Range of Transits, Remarkably Fresh & Rare .(Photo) E. 1,000-1,500
203	✉	5c Brown (76). Horiz. Strip of Three, Rich Color, tied by Black Hawk Col. Double Circles & Red N.Y. Transit on Oct. 1865 Cover to Germany, Beautiful & Rare Territorial Usage .(Photo) E. 500-750
204	✉	5c Brown (76). Average Horiz. Pair & Single, tied by Targets & Red Transit, Pennington, N.J. Double Circle pmk., on Neat 1866 Cover to France, minor cover faults, Attractive(Photo) E. 100-150
205	★	15c Black (77). Exceptionally Attractive Centering, reperfed at L., Extremely Fine Appearance(Photo) 450.00

206	✉	24c Dark Lilac (78). Used With 3c Rose (65) tied by Stars in Circles on Small Neat Mourning Cover to Belgium, Red N.Y. "7 Paid" Transit, Very Fine, Rare Usage & Quite Attractive, ex-Anderson, with P.F. Certificate (The 3c is called "Brown Red" on the Certificate. It is actually a slightly oxidized Rose)(Photo) E. 500-750	
207	✉	24c Lilac (78). Average Horiz. Pair , Used With creased 3c Rose (65) & Three 5c Brown (76) , one creased on June 1866 Folded Letter to Sweden tied by Maltese Crosses & Red N. York Br. Pkt. Paid, partly readdressed (contemporarily?), Very Rare Franking & Destination, with P.F. Certificate(Photo) E. 1,000-1,500	
208	✉	24c Grayish Lilac (78a). Used With 1c Blue (63) , damaged before use, & Horiz. Pair 3c Rose (65) , one small tear, on 3c Pink Entire (U58) to Barbados , tied by Grids, Watertown Mass. pmk., Red "24" Credit, "St. Thomas" backstamp transit, Rare & Unusual Usage(Photo) E. 1,000-1,500	
209	✉	24c Grayish Lilac (78a). Creased at T. where folded over cover edge, Used With Three 3c Rose (65) , one overlaps cover edge & 12c Black (69) on Cover to Portugal , Red London Paid & "24" Credit, Black "80" handstamp, Rare Destination(Photo) E. 500-750	
210	✉	24c Grayish Lilac (78a). Well-centered Horiz. Pair , natural s.e. at R., Used With 5c Brown (76) tied by Four Point Stars & Red London Paid on 1864 Augustine Heard Folded Letter to Shanghai, China , Very Fine(Photo) E. 500-750	
211	✉	24c Gray (78b). Tied by San Francisco Cog on Cover to England Used in Combination With British Columbia 3p Blue (7) tied by Red British Columbia Post Office Oval, Red N.Y. Paid 19 Transit, minor flap tears & tiny cover tape stain, o/w Fine, Rare Usage, with P.F. Certificate(Photo) E. 1,500-2,000	
212	✉	24c Blackish Violet (78c). Used With Two 2c Black (73) tied by Blue Targets & "Cincinnati O." pmks. on Cover to Germany, Printed "Per Prussian Closed Mail, Via London and Ostende," Red N.Y. "7 Paid" & Blue Boxed "Aachen Franco," Exceptionally Attractive, Rare Rate & Usage(Photo) E. 750-1,000	
213	✉	3c Rose, Grilled All Over (79). Usual rough perfs, tied on Cover by Galveston, Tex. pmk., faint oval Clothing Dealer's Corner Card at L., light toning, flap partly missing, Very Good(Photo) 750.00	
214	★	3c Rose, C. Grill, Imperf. (83a). T. Margin Impt. Pair , o.g., Wide Even Margins, Extraordinarily Sharp & Clearly Defined Grill, light corner crease B.R., o/w Extremely Fine, Scarce & Undercataloged, with P.F. Certificate(Photo) 1,650.00+	
215	✉	3c Rose, C. Grill (83). Tied on Cover by Blue Nashville, Ten. pmk., removed for examination & then carefully re-hinged back, Fine(Photo) 500.00	
216	✉	3c Rose, D. Grill (85). Centered a bit to B., few rough perfs. at R., tied on Maryland State House of Delegates Illustr. Cover, minor cover soiling at B.R., o/w Fine(Photo) 500.00	
217	★	2c Black, Z. Grill (85B). Remarkably Well-centered, Huge Margins, Extremely Fine, Rare This Nice, with P.F. Certificate(Color Photo) 1,200.00	
218	✉	3c Rose, Z. Grill (85C). Wide Margins except just in at T., tied by New York pmk. on Lady's Cover to Mass., lightly soiled, barely reduced at L., About Fine(Photo) 1,250.00	
219		1c Blue, E. Grill (86). Wide-Margined Beauty, Choice & Extremely Fine, with P.F. Certificate(Photo) 250.00	

- 220 ★ **10c Green, E. Grill (89).** Exceptionally Well-centered, Wide Margins, with P.F. Certificate, which mentions “. . . lightly soiled”, o/w Very Fine(Photo) 1,200.00

- 221 ✉ **2c Black, F. Grill, Diagonal Half Used as 1c (93a).** Tiny tear, tied by Bluish Black Target & Matching “Delaware O.,” Double Circle pmk. on tiny Ladies Envelope with Fancy Printed “G” Initial in Lavender, 1870 Enclosure, minor cover edge faults, Attractive, with P.F. Certificate(Photo) 1,600.00

- 222 **10c Yellow Green, F. Grill (96).** Very Wide Margins, Quite Well-centered, light pmks., few irregularly long perfs. at L., Very Fine, with P.F. Certificate(Photo) 110.00
- 223 ✉ **24c Gray Lilac, F. Grill (99).** Wonderfully Well-centered, small tear at T.L., tied by Circle of Wedges on Oct. 1869 Folded Cover to Spain, Red New York & London pmks., “Cadiz Franco” Oval, Extremely Fine Appearance, Very Scarce, with P.F. Certificate(Photo) 800.00
- 224 **90c Blue, F. Grill (101).** Well-centered, light cork cancel, small owner’s handstamp on back, reperfed at R., o/w Very Fine, with P.F. Certificate(Photo) 950.00

1861 RE-ISSUE

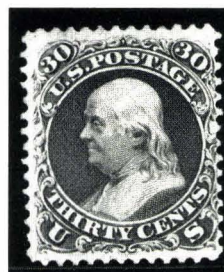
- 225 ★ **1c Blue, Re-Issue (102).** Remarkably Well-centered, tiny natural inclusion, Very Fine, with P.F. Certificate(Photo) 500.00
- 226 ★ **1c Blue, Re-Issue (102).** Lovely Centering, o.g., light pressed out crease, Very Fine Appearance, with P.F. Certificate(Photo) 500.00



227



228



229

- 227 ★ **3c Brown Red, Re-Issue (104).** Lovely Freshness, Fine +, A Choice Example of This Very Scarce Classic, with P.F. Certificate 3,250.00
- 228 ★ **15c Black, Re-Issue (108).** Fresh, Fine & Scarce, with P.F. Certificate 3,000.00
- 229 ★ **30c Brownish Orange, Re-Issue (110).** Fresh, Rich Color, R. perfs. just touch, Fine, Scarce, with P.F. Certificate 4,500.00

1869 PICTORIAL ISSUE

- 230 ㊦ **1c-90c Pictorials, Plate Proofs on India (112P3-117P3, 119P3-122P3, 129P3).** Blocks, 6c & 90c Card Mounted, All Fresh but 24c (some toning), two No. 119P3 & one No. 120P3 with faults, No. 121P3 Block with faint hinge thin, o/w Very Fine Set(Photo) 9,100.00

- 231 ★ **1c Buff (112).** O.g., Rich Color, Very Fine, with P.F. Certificate(Photo) 225.00
- 232 **1c Buff (112).** Bold **Waterbury Holly Sprig** cancel (Rohloff L-4), Very Fine & Choice, Handsome, with P.F. Certificate(Photo) E. 150-200
- 233 ★ **1c-3c Pictorials (112-114).** Fresh, o.g, 1c & 2c h.r., 2c single short perf., 3c tiny corner perf. crease, o/w Very Fine-Extremely Fine, each with P.F. Certificate 520.00



- 234 ★ **1c-90c Pictorials (112-122).** Cpl. Unused Set, 30c Nearly Full o.g., 90c Part o.g., Rich Colors, Quality varies somewhat but Overall a Fine-Very Fine Set, The Important Values for the most part are Exceptional (Particularly the 12c & 30c) 17,245.00

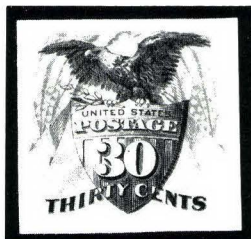
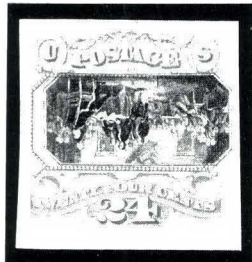
- 235 ★ **3c Ultramarine (114).** Mint, Deep Rich Color, Very Fine(Photo) 135.00
- 236 ★ **3c Ultramarine (114).** Mint, Very Fine, with P.F. Certificate .(Photo) 135.00
- 237 ★ **6c Ultramarine (115).** Exceptionally Fresh, Large Part o.g., tiny corner perf. tear, Very Fine Appearance, with P.F. Certificate which states that it is "genuine"(Photo) 775.00
- 238 ☒ **6c Ultramarine (115).** Well-centered, tied by Grid & Troy N.Y. pmk. on Double Rate Cover to Maine, bit reduced at R., Very Fine .(Photo) 300.00
- 239 ★ **10c Yellowish Orange (116).** Exceptionally Fresh, Well-centered, Gorgeous Color, Extremely Fine & Choice(Photo) 850.00
- 240 **10c Yellow (116).** Horiz. Pair, on piece, tied by San Francisco Cal. pmk., back stamp with unusual Oriental "Chop" Handstamp, Fine, Rare(Photo) 200.00 +
- 241 ☒ **10c Yellowish Orange (116).** Beautiful Margins & Centering, tied by "X's" & Terre Haute Ind. pmk. on neat June 1870 Cover to Germany, Red "New York Paid All Direct," Blue Oval Tobacconists' handstamp Corner Card, negligible age toning, o/w Extremely Fine(Photo) 325.00
- 242 ☒ **10c Yellow (116).** Tied by Odd Cork on May 1870 Folded Letter from New Orleans to France, Red NY. & Blue French Transits, ms. "8" due, Fine(Photo) E. 150-200
- 243 ☒ **10c Yellow (116).** Two, one soiled & faded, tied by Unusual Five Arms Cork cancels, "New Orleans La." pmk. on April 1870 Folded Cover to France, Red N.Y. pmk., Blue French Transit, ms. "16" Due Marking, Scarce, signed Ashbrook(Photo) E. 100-150
- 244 ★ **12c Green (117).** Exceptionally Fresh, Part o.g, Very Fine, with P.F. Certificate(Photo) 750.00
- 245 ★ **12c Green (117).** Fresh, o.g., Rich Color, Very Fine, with P.F. Certificate(Photo) 750.00
- 246 **12c Green (117).** Very Wide Margins, A Beauty, Extremely Fine, with P.F. Certificate(Color Photo) 90.00
- 247 **12c Green (117).** Exceptional Margins & Centering, small cork cancel, Extremely Fine & Choice(Photo) 90.00

- 248 ★ **15c Brown & Blue, Ty. II (119).** Fresh, Exceptional Margins & Centering, Deep Rich Colors, tiny owner's handstamp on back, Extremely Fine & Choice(Color Photo) 850.00

- 249 ★ **15c Brown & Blue, Ty. II (119).** Fresh, Part o.g., h.r., Deep Rich Colors, Fine, with P.F. Certificate(Photo) 850.00



250		15c Brown & Blue, Ty. II, Center Inverted (119b). Rosette cancel, Gorgeous Deep Rich Colors, small faults as virtually always, Very Fine Appearing Example of This Classic Rarity, One of the Best Centered 15c Inverts Known, with P.F. Certificate ..	17,500.00
251	✉	15c Brown & Blue, Ty. II (119). Tied by Quartered Cork cancel on 1870 Cover to Switzerland, Red "New York Paid All," Spietz, Basel & Sienne pmks., Very Fine, with P.F. Certificate(Photo)	800.00
252	✉	15c Brown & Blue, Ty. II (119). Rich Colors, Target cancel (not tied) on Oct 1869 Cover to France, Red "New Paid York 3" Very Fine(Photo)	800.00
253	✉	15c Brown & Blue, Ty. II (119). Deep Rich Colors, tied by Circle of Wedges, Red "Boston 12" & French Transits on Tissue Paper Cover to France, back tear, o/w Very Fine(Photo)	800.00
254	✉	15c Brown & Blue, Ty. II (119). Two Singles, Rich Colors, Small Cork cancels, tied by Red "New York Paid All Br. Transit" on Light Ochre Cover to Germany, "Greencastle Pa." pmk. of origin, Red Paid to the Lines "Coeln Transit," etc., Fine & Exceptionally Handsome(Color Photo)	920.00

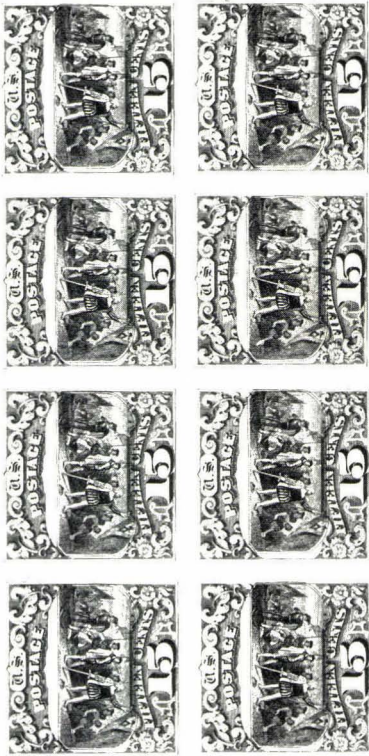


255	P	15c-90c Pictorials, Plate Proofs on Card, Centers, Flags Inverted (120aP4-122aP4, 129aP4). Pristine Cpl. Set, Exceptionally Fresh, Rich Colors, Very Fine & Choice	24,000.00
255A	P田	15c-90c Pictorial Plate Proofs on Card, Centers, Flags Inverted (120aP4-122aP4, 129aP4). Imprint & Plate No. Blocks of Eight, The Magnificent Unique Set! With P.F. Certificates (the 15c is noted as having "a faint diagonal bend affecting these stamps at lower left not appearing on the face"), An Astounding Exhibition Set of the Highest Order of Rarity. Considered to be the Most Valuable United States Proofs in Existence, Realized \$330,000.00 in our 1981 Rarity Sale	270,000.00
256	★	24c Green & Violet (120). Fresh, Rich Colors, Wide R. Margin, with P.F. Certificate, Very Fine(Color Photo)	2,500.00
257	★	24c Green & Violet (120). Small part o.g., Handsomely Centered, Very Fine, with P.F. Certificate(Photo)	2,500.00

258		24c Green & Violet (120). Perfectly Centered, Unusually Wide Margins, light cancel, Exceptionally Handsome, with P.F. Certificate, which notes "... Bleached to Remove Staining" (barely visible)(Photo)	450.00
-----	--	---	--------

17820

UNITED STATES POSTAGE
THIRTY CENTS



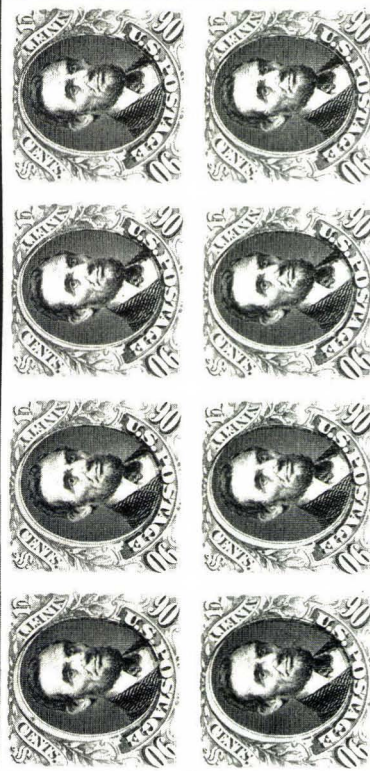
17820

UNITED STATES POSTAGE
THIRTY CENTS



UNITED STATES POSTAGE
THIRTY CENTS

17820



17820

UNITED STATES POSTAGE
THIRTY CENTS

259	P	30c Blue & Carmine, Flags Inverted, Plate Proof on Card (121aP4). Exceptionally Fresh, Very Fine, Rare(Photo)	6,000.00
-----	---	--	----------



260



262



263



264

260 ★ **30c Blue & Carmine (121).** Gorgeous Deep Rich Colors, Well-centered, tiny natural inclusion & tiny stain, o/w Very Fine, with P.F. Certificate. 2,250.00

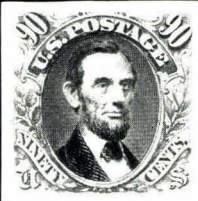
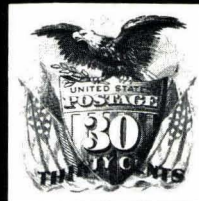
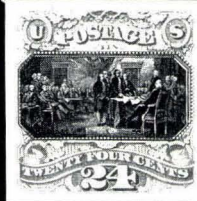
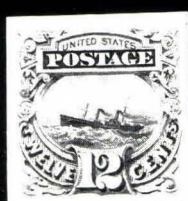
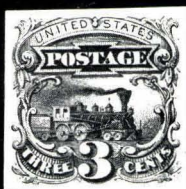
261	★	90c Carmine & Black (122). Exceptionally Fresh, Large Part o.g., Gorgeous Intense Deep Rich Colors, Very Fine, Scarce, with P.F. Certificate(Color Photo)	7,000.00
-----	---	--	----------

262	★	90c Carmine & Black (122). Fresh, Fine, Scarce, with P.F. Certificate	7,000.00
-----	---	--	----------

263	★	90c Carmine & Black (122). O.g., Fresh & Fine, Scarce, with P.F. Certificate	7,000.00
-----	---	---	----------

264	★	90c Carmine & Black (122). Fresh, Gorgeous Deep Rich Colors, perfs. touch at R., Scarce	7,000.00
-----	---	--	----------

1869 Pictorial Re-Issue



265	P	1c-90c Pictorials, "Atlanta" Trial Color Proofs (123TC-132 TC). Complete Set in All Issued Colors & Color Combinations, Fresh Bright Colors, few small thins (one each 90c, 30c, three 24c), couple cut close 85+ % of Value Very Fine & Choice, A Rare Set	27,500.00
-----	---	--	-----------

- 266 ★ **1c Buff, Re-Issue (123).** Exceptionally Fresh, o.g., Very Fine & Choice with P.F. Certificate(Photo) 325.00
- 267 **1c Buff, Re-Issue (123).** Almost Perfectly Centered, very faintly cancelled, Extremely Fine, with P.F. Certificate(Photo) 225.00
- 268 ★ **2c Brown, Re-Issue (124).** Fresh, Full o.g., Exceptionally Well-centered, Extremely Fine & Choice, with P.F. Certificate(Photo) 375.00



269



270



271

- 269 ★ **3c Blue, Re-Issue (125).** Exceptionally Fresh, Full o.g., Fine, Scarce, with P.F. Certificate 2,750.00
- 270 ★ **3c Blue, Re-Issue (125).** O.g., few nibbed perfs at R. & reperfed at L., o/w Fine 2,750.00
- 271 ★ **6c Blue, Re-Issue (126).** Fresh, Extraordinary Margins & Centering, Extremely Fine "Gem," with P.F. Certificate 850.00

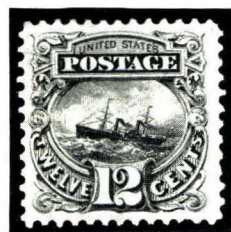
- 272 ★ **6c Blue, Re-Issue (126).** Faint, barely visible pressed-out crease, handsome, Very Fine Appearance, with P.F. Certificate(Photo) 850.00



273



274



275

- 273 ★ **10c Yellow, Re-Issue (127).** Fresh, Full o.g., Exceptionally Well-centered, Extremely Fine & Choice, with P.F. Certificate . 1,400.00
- 274 ★ **10c Yellow, Re-Issue (127).** Exceptionally Fresh, Full o.g., Very Fine, with P.F. Certificate 1,400.00
- 275 ★ **12c Green, Re-Issue (128).** Exceptionally Fresh, Full o.g., Very Fine, with P.F. Certificate 1,500.00
- 276 P **15c Brown & Blue, Center Inverted, Plate Proof on Card (129P4).** Wide Margins, slight brown staining in margins (outside design) & on back, o/w Very Fine, Very Rare, **Only 100 Issued**(Photo) 6,000.00
- 277 ★ **15c Brown & Blue, Re-Issue (129).** Exceptionally Fresh, Full o.g., Very Fine, with P.F. Certificate(Color Photo) 1,300.00

- 278 ★ **15c Brown & Blue, Re-Issue (129).** Near Perfect Centering, light crease & small thin, Very Fine Appearance(Photo) 1,300.00
- 279 **15c Brown & Blue, Re-Issue (129).** Wide Margins, Brilliant Fresh Color, light corner crease, Appears Almost Very Fine, with P.F. Certificate(Photo) 550.00
- 280 **15c Brown & Blue, Re-Issue (129).** Oval Reg. cancel, couple unpunched perfs., Fine(Photo) 550.00

281	★	24c Green & Violet, Re-Issue (130). Exceptionally Fresh, Part o.g., Choice Margins & Centering, Extremely Fine .(Color Photo)	1,250.00
282	★	24c Green & Violet, Re-Issue (130). Fresh, Exceptionally Well-centered, Extremely Fine, with P.F. Certificate(Color Photo)	1,250.00
283	★	24c Green & Violet, Re-Issue (130). Almost Perfectly Centered, faint light wrinkle & reperfed at R., Extremely Fine Appearance(Photo)	1,250.00
284	★	30c Blue & Carmine, Re-Issue (131). Fresh, Exceptional Margins & Centering, Extremely Fine & Choice, with P.F. Certificate(Color Photo)	1,750.00



285



286



287



288

285	★	30c Blue & Carmine, Re-Issue (131). O.g., Unusually Deep Rich Colors, Almost Very Fine, with P.F. Certificate	1,750.00
286	★	30c Blue & Carmine, Re-Issue (131). O.g., Fine	1,750.00
287	★	30c Blue & Carmine, Re-Issue (131). Brilliantly Fresh, About Fine, with P.F. Certificate	1,750.00
288		30c Blue & Carmine, Re-Issue (131). Remarkably Well-centered, Extraordinarily Wide Margins, light corner crease, Extremely Fine Appearance	1,000.00
289	★	90c Carmine & Black, Re-Issue (132). Gorgeous Margins & Centering, Exceptionally Fresh, Rich Colors, Extremely Fine "Gem", Scarce, with P.F. Certificate(Color Photo)	5,500.00



290

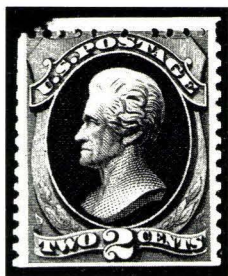


291

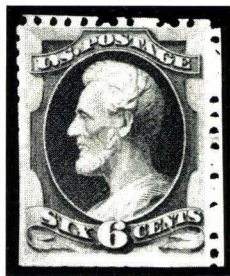
290	★	90c Carmine & Black, Re-Issue (132). O.g., Brilliant Color, Very Well-centered, Very Fine, A Most Attractive Example of this Scarce & Popular High Value, with P.F. Certificate	5,500.00
291	★	90c Carmine & Black, Re-Issue (132). Exceptionally Fresh, Part o.g., Fine, Scarce, with P.F. Certificate	5,500.00
292	★	1c Buff, Brown Orange, Soft Paper Re-Issues (133, 133a). Exceptionally Fresh, Former o.g., Latter without gum as issued, Extremely Fine, each with P.F. Certificate	375.00

1870-1890 BANK NOTE ISSUES

293	★	6c Carmine, Grill (137). Beautifully Centered, Very Fine, with P.F. Certificate which notes “. . . a few stained perfs” (unduly harsh in our opinion as we see virtually no staining)(Color Photo) 1,500.00
294	★	15c Orange, Grill (141). O.g., faint creases at T., Attractive, Fine Appearance, with P.F. Certificate(Photo) 1,700.00
295		15c Orange, Grill (141). Exceptionally Well-centered, Neat Light Target cancel, Very Fine, with P.F. Certificate(Color Photo) 700.00
296	★	30c Black, Grill (143). Nicely Centered, reperfed at R., Lovely, Very Fine Appearance, A Scarce Stamp, with P.F. Certificate(Photo) 4,000.00
297		30c Black, Grill (143). Perfectly Centered, light cancel, couple small corner creases, o/w Extremely Fine, with P.F. Certificate(Photo) 800.00
298		30c Black, Grill (143). Almost Perfectly Centered, Light Red Grid cancel, reperfed at L., o/w Very Fine(Photo) 900.00
299	★田	1c Ultramarine (145). Block, o.g., some weak &/or strengthened perfs, Nicely Centered, Almost Very Fine, with P.F. Certificate(Photo) 650.00
300	★	24c Purple (153). Perfectly Centered, Fresh, Extremely Fine, A Lovely “Gem”(Color Photo) 550.00
301	★	90c Carmine (155). Magnificent Centering, Brilliant Fresh Color, o.g., Extremely Fine, A “Gem,” with P.F. Certificate(Color Photo) 1,200.00
302	★	1c Ultramarine, Fletcher Patent Experimental Cancel (156 var). Mint, Remarkably Well-centered, Large to Huge Margins, An Outstanding Stamp, Extremely Fine, with P.F. Certificate(Photo) E. 150-200
303	★田	7c Orange Vermilion (160). Block, Fresh, o.g., h.r.’s at T., light horiz. crease at T., o/w Fine, with P.F. Certificate(Photo) 1,700.00
304	★	12c Blackish Violet (162). Fresh, couple tiny faint thins, Fine Appearance, with P.F. Certificate which states genuine (no faults mentioned)(Photo) 550.00
305	★	90c Rose Carmine (166). Mint B. Margin Pair with Full Impt., Incredibly Well-centered, Huge “Jumbo” Margins, An Extremely Fine “Gem”, Perfect in Every Respect, with P.F. Certificate(Color Photo) 2,500.00 +



306



307

306	★	2c Dark Brown, Special Printing (168). Fresh, Rich Color, small thin, perfs. slightly in at T., Scarce 3,500.00
307	★	6c Dull Rose, Special Printing (170). Fresh, traces of spots of mounting adhesive on back, tiny natural inclusion, Very Fine, Rare, with P.F. Certificate 8,500.00



3



4



5



6



10



13



30 EX



40



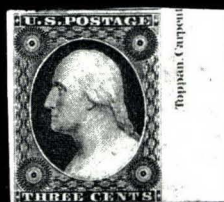
41



42



46



47



58



52



53



59



61



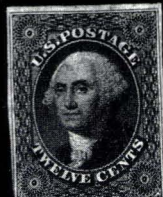
64



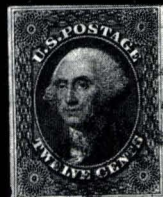
67



68



70



71



76



80



94



95



97



108



109



100



102



104



106



114



115



116



119



121



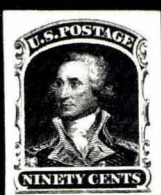
122



127



128



129EX



130



131



137



138



147



170



186 A



195



205



214



219



220



222



224



240



225



226



231



232



235



236



237



239



244



245



247



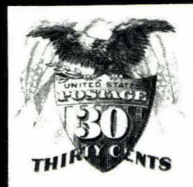
249



257



258



259



266



267



268



272



276



278



279



280



283



294



296



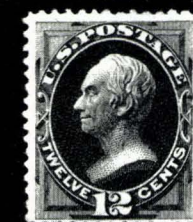
297



298



302



304



310



311



314



315



316



320



322



323



324



325 EX



317



326



327



328



329



345



332



334



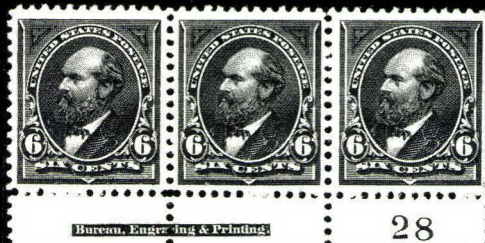
335



341



330



344

28



367



373



374



604

363



375



399



387



402



603

368



603



400



408



404



412 EX



421



422



409



423



429



428



424



431



430



426



425



432



433



434



435



436



7042



444



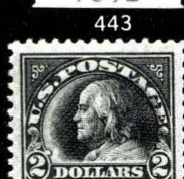
445



447



448



445



450



463



464



465



456



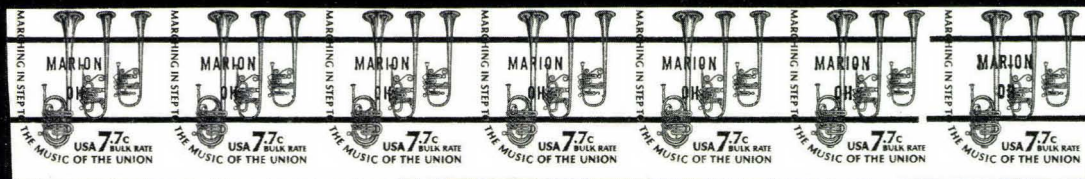
466



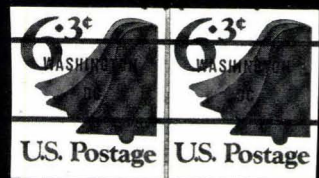
468



471



477



474



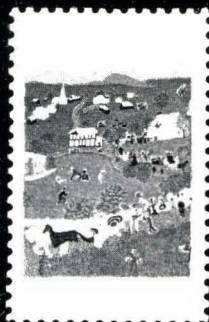
478



476



482



470



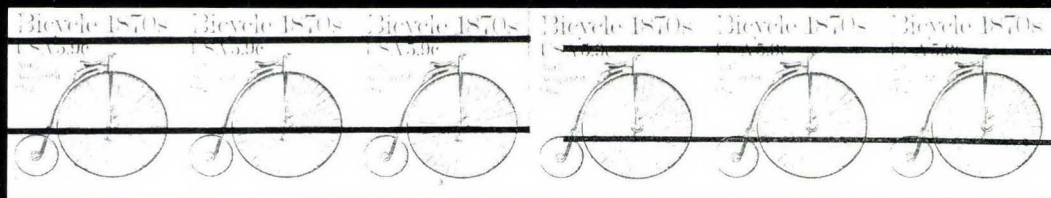
480



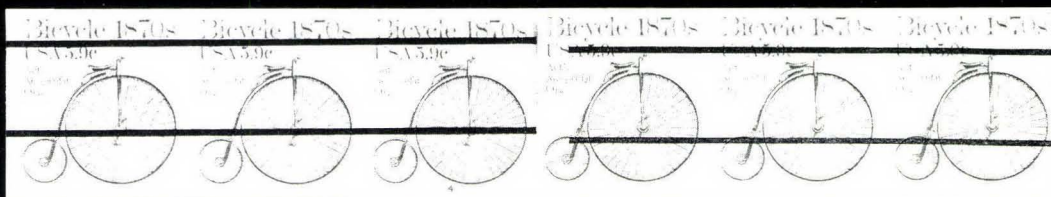
492



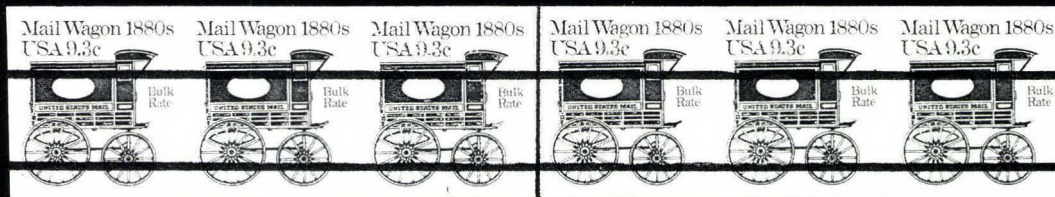
483



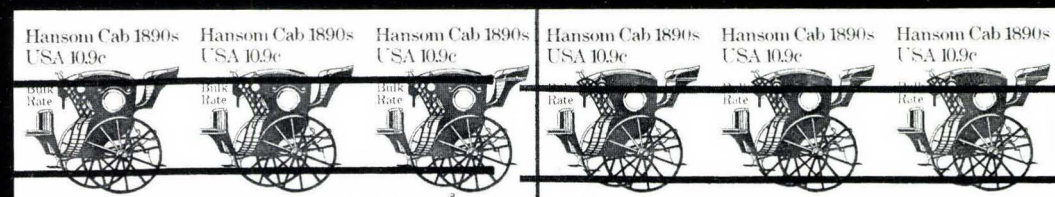
486



487



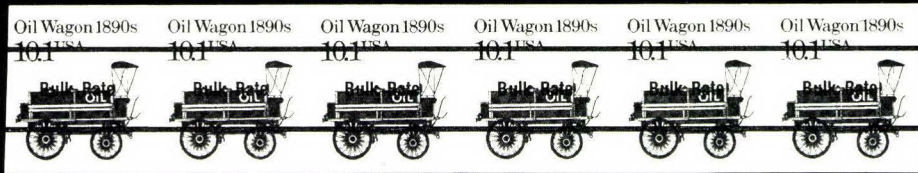
489



494



495



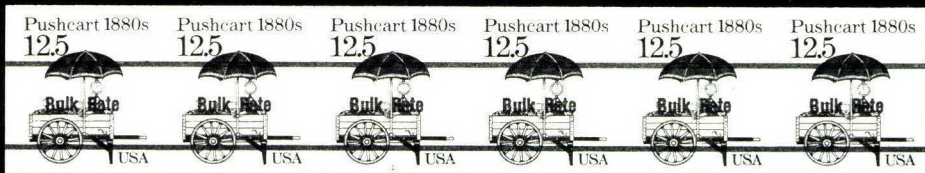
499



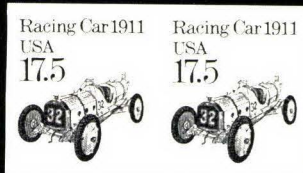
500



498



501



502



503



522



512



516



532



531



528



526



525



524



533



535



537 EX



538 EX



539



542 EX



547



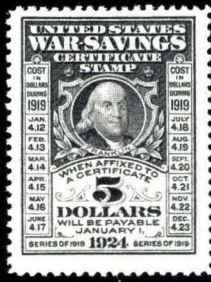
543



545



546



573



569 EX



551 EX



552



554



548



574



555



556



557



558



575



561 EX



563 EX



576



Bureau, Engraving & Printing.

71



581



577 EX

530



44



85



110



112



113



230 EX



144



299



303



418



405



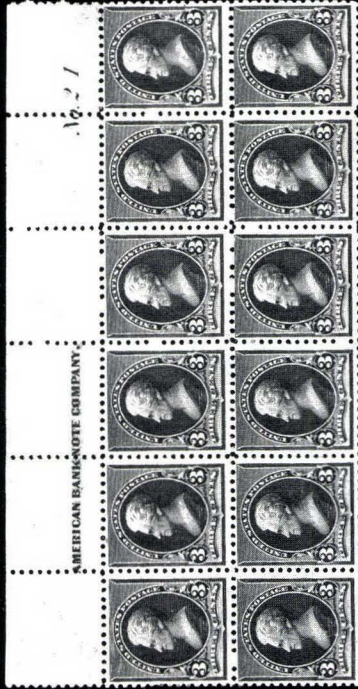
312



331



398



321



346

58

HARRIS, BARRETT & FENNELL



634

353



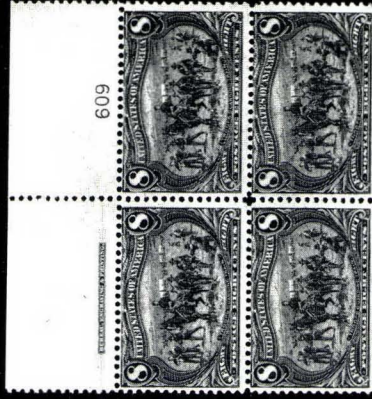
634



614



602



609

358

359

360



2105

HARRIS, BARRETT & FENNELL



604



609

361

407

364



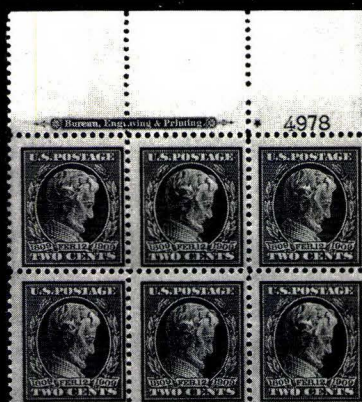
396



395



397



420



427



437



439



440



11



14



34



12



57



63



45



21



151



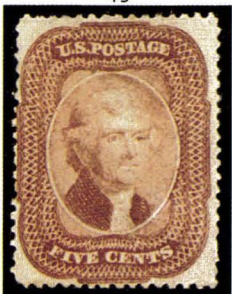
39



49



56



92



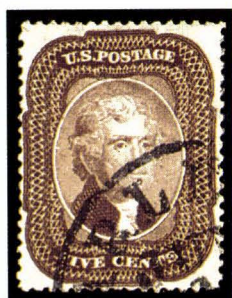
305



93



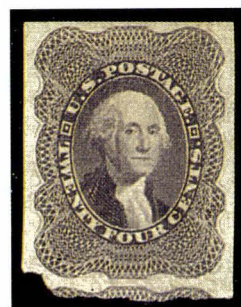
101



98



118



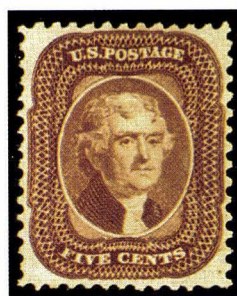
117



126



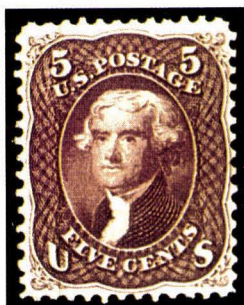
132



133



134



194



196



186



217



246



248



256



261



277



281



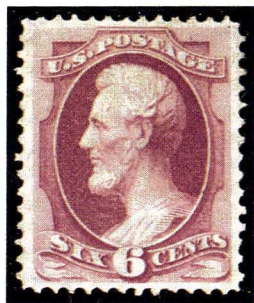
282



284



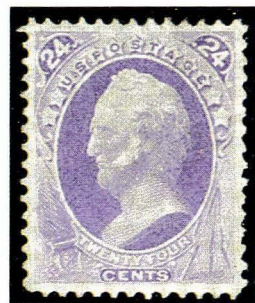
289



293



295



300



333



301



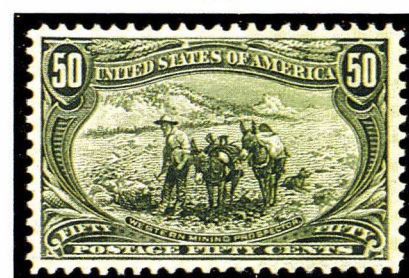
336



340



401



366



372



410



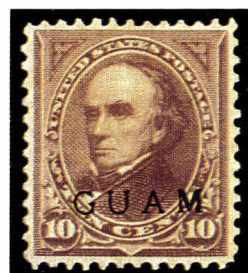
380



527



388



591





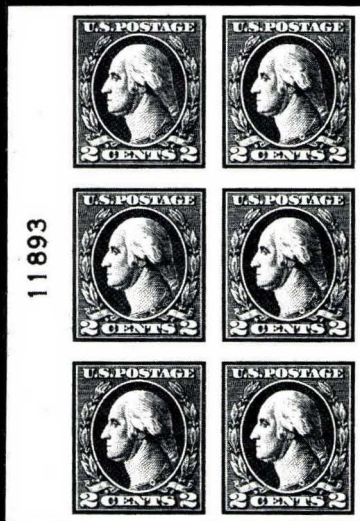
449



451



452



458



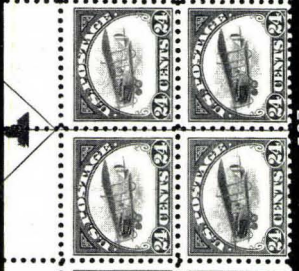
457



453



510





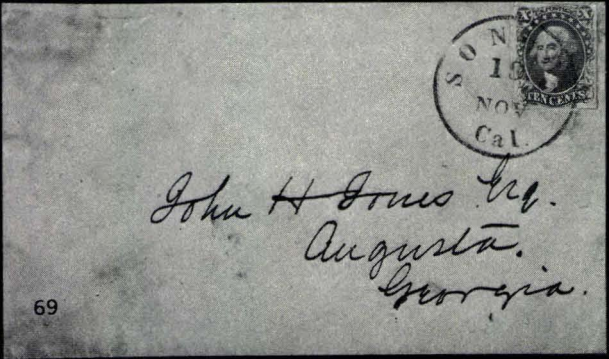
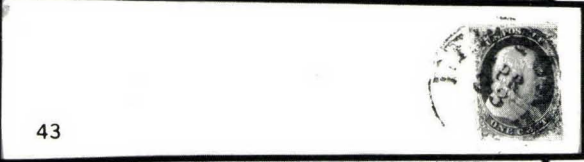
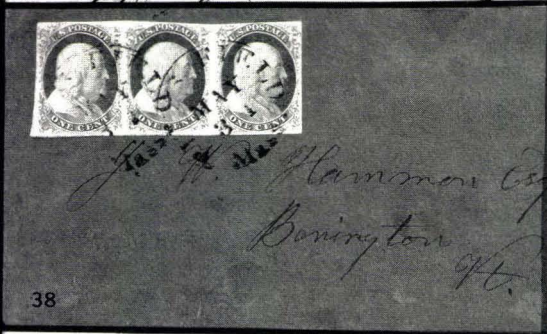
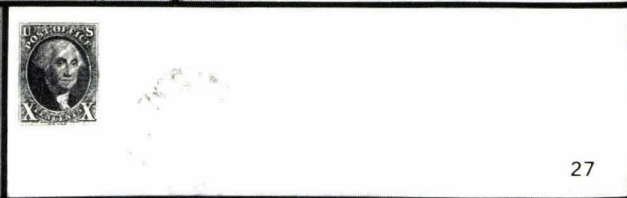
469

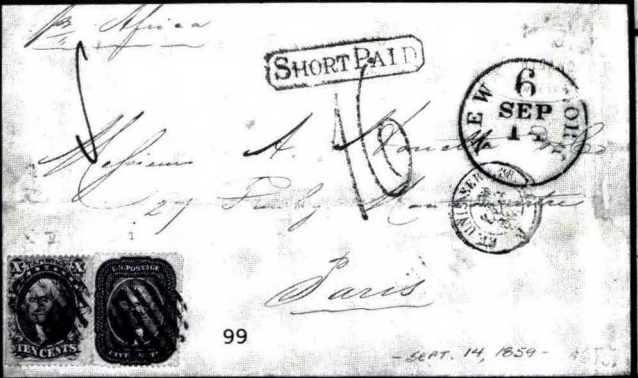
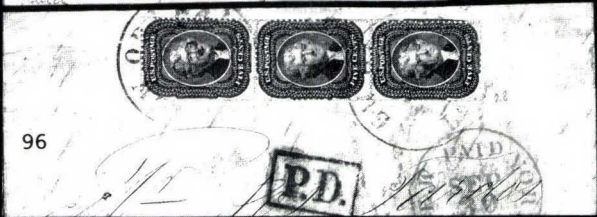
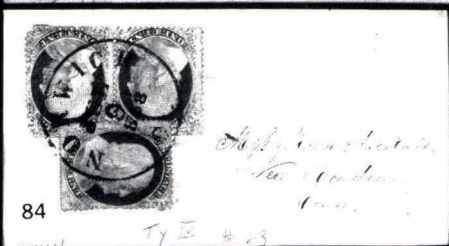


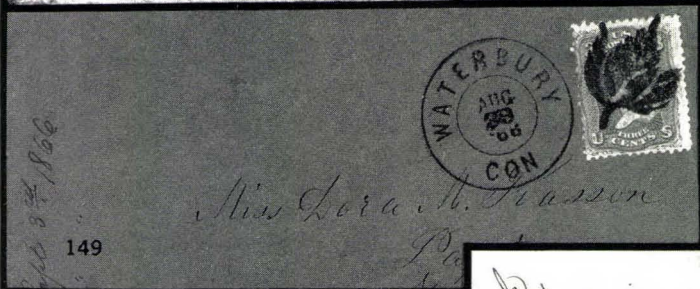
511



8







Via Marseilles
Ad. P. Lard
La Haye
3rd Floor
3rd Floor

152

Miss Emma M. Griggs
High School College
Portney St.

153

Arago
Cassius
John me des
Lyons

154

Mr. Europa
from Rotterdam for Liverpool
Mr. John B. D. D. D. D. D.
Paris & London
France

155

Mr. E. J. S. L. L. L. L. L.
Mr. E. J. S. L. L. L. L. L.
Mr. E. J. S. L. L. L. L. L.
Mr. E. J. S. L. L. L. L. L.

156

Mr. E. J. S. L. L. L. L. L.
Mr. E. J. S. L. L. L. L. L.
Mr. E. J. S. L. L. L. L. L.
Mr. E. J. S. L. L. L. L. L.

158

Mr. E. J. S. L. L. L. L. L.
Mr. E. J. S. L. L. L. L. L.
Mr. E. J. S. L. L. L. L. L.
Mr. E. J. S. L. L. L. L. L.

159

Mr. E. J. S. L. L. L. L. L.
Mr. E. J. S. L. L. L. L. L.
Mr. E. J. S. L. L. L. L. L.
Mr. E. J. S. L. L. L. L. L.

160

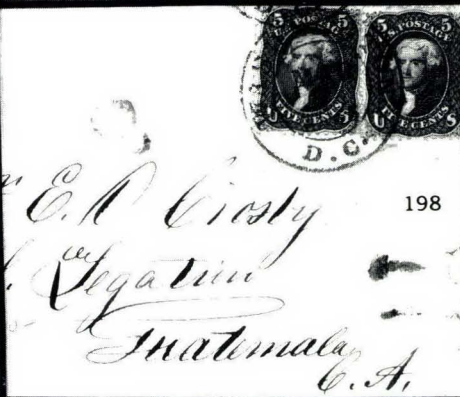
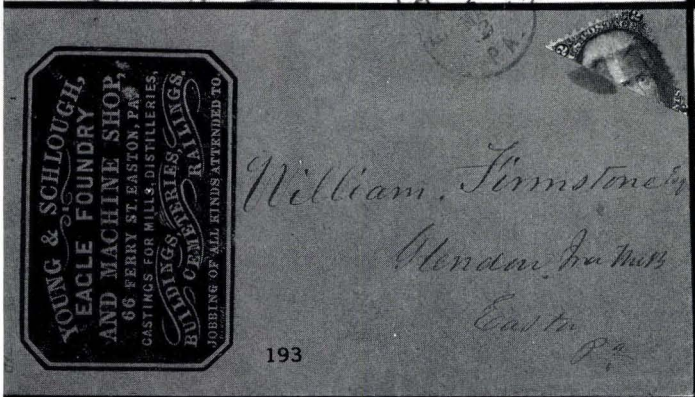
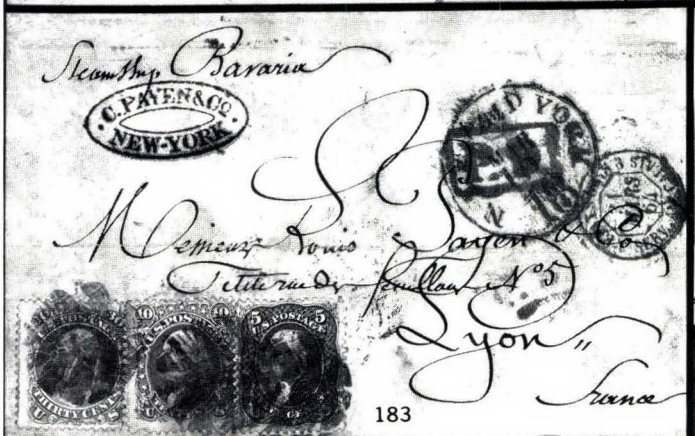
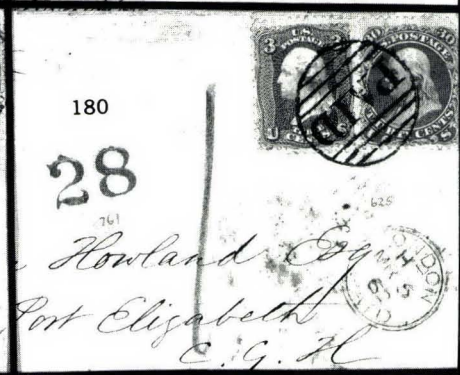
Mr. E. J. S. L. L. L. L. L.
Mr. E. J. S. L. L. L. L. L.
Mr. E. J. S. L. L. L. L. L.
Mr. E. J. S. L. L. L. L. L.

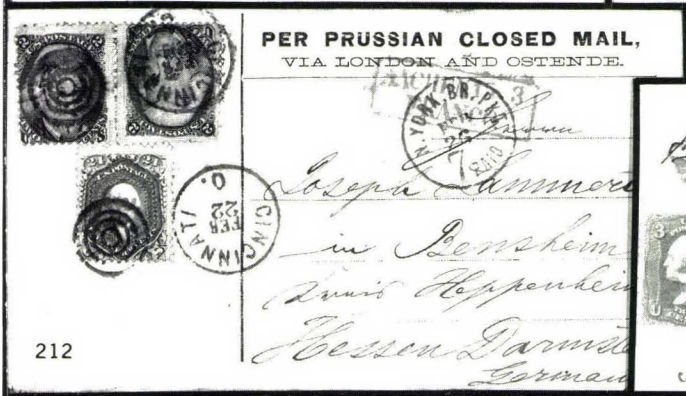
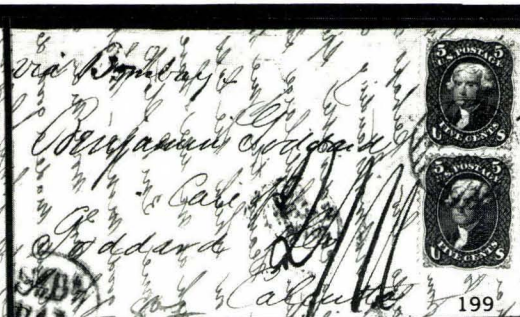
157

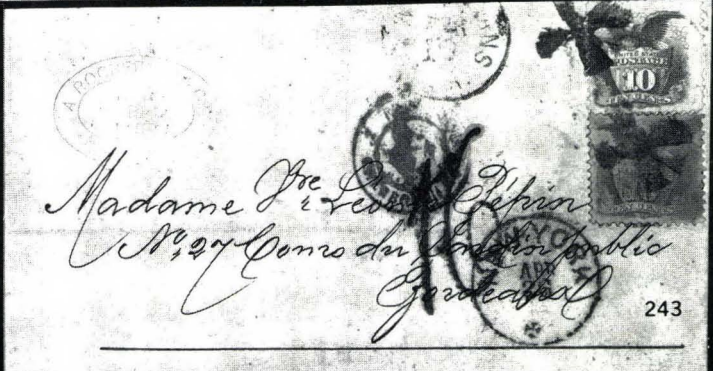
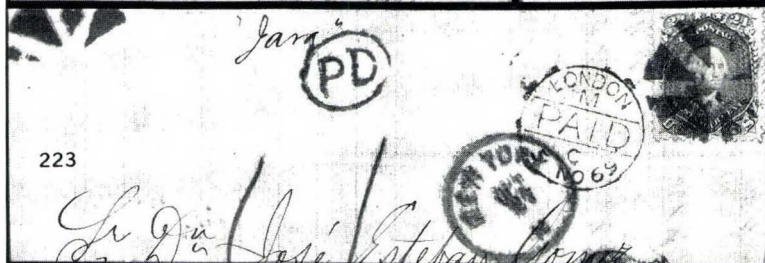
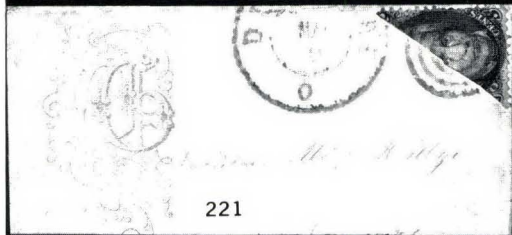
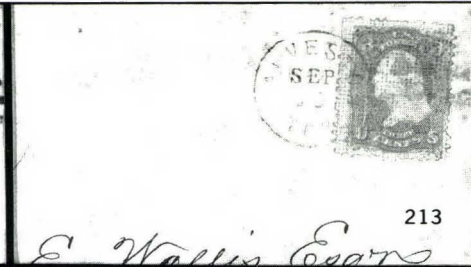
175

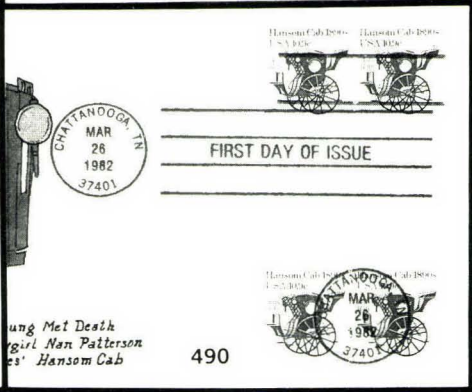
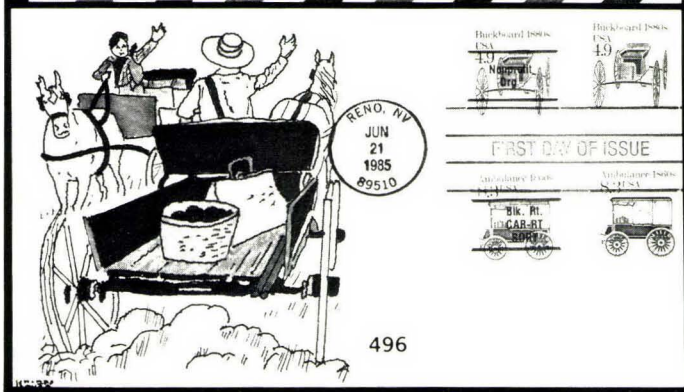
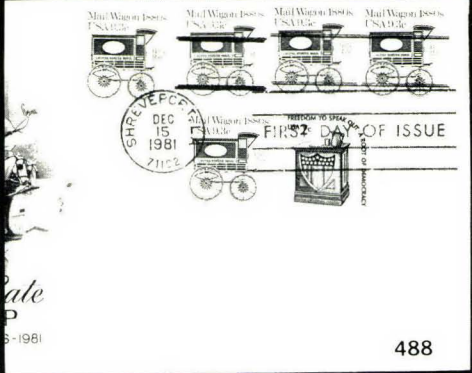
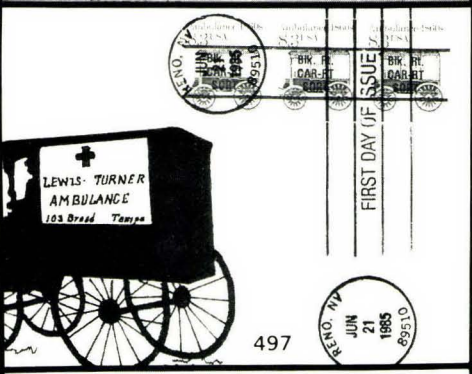
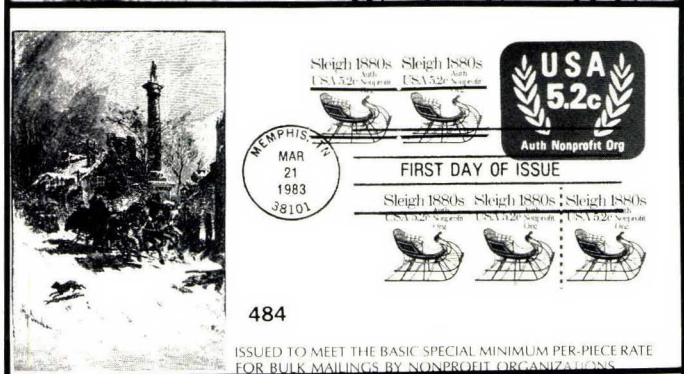
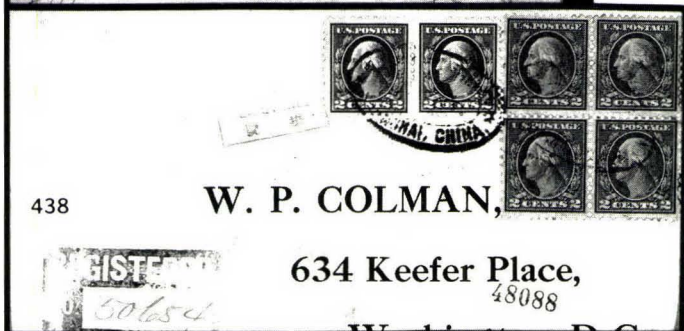
3. Fa. Police

176











579

Mr. Clarence E. Page
Hotel New Yorker
New York City
U. S. A.

504



D. Corbett to San No.



595

Mr. H. D. Drury
1414 S. Property
San Francisco, Cal.
May 24, 1932

593



Chas. H. Metmore Esq.

578

598



George B. Whittelsey M.P.
Randall's Is.
New York City



Miss Maria J. Dease
Edgartown
Mass.
U. S. A.



597

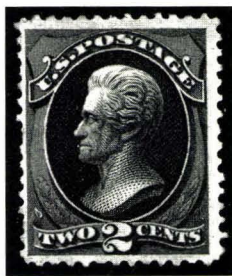


P. A. Bishop
v. S. E. Bishop
Hana
Lanai Islands.

594



308

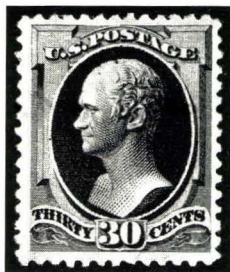


309

- | | | | |
|-----|---|---|-----------|
| 308 | ★ | 10c Pale Brown, Special Printing (172). Extraordinarily Wide-Margins, normal rough &/or scissors-cut perfs (see photo), Very Fine for This Rare Stamp, with P.F. Certificate | 7,750.00 |
| 309 | ★ | 2c Carmine Vermilion, Special Printing (180). Fresh, without gum as issued, few short or nibbed perfs., o/w Fine, Extremely Rare Special Printing, with P.F. Certificate | 17,000.00 |

- 310 ★ **6c Pink (186).** O.g., Lovely Centering & Freshness, Almost Very Fine, with P.F. Certificate(Photo) 400.00
- 311 ★ **10c Brown (187).** O.g., light pressed out crease, Attractive Fine Appearance, with P.F. Certificate(Photo) 700.00

- | | | | |
|-----|----|---|----------|
| 312 | ★田 | 30c Full Black (190). T. Impt. & Pl. No. 405 Block of Twelve (R. Block with Pl. No. rejoined), o.g., some additional perf. strengthening, B.L. pair some neatly covered light toning mostly in margin betw. stamps (L. stamp not necessary to Pl. No. Block), L. perfs. close to barely in, Scarce, Impressive Appearing Multiple (cat. as Blocks, Pl. No. Block cat. \$8,725.00)(Photo) | 5,850.00 |
|-----|----|---|----------|



- | | | | |
|-----|---|--|----------|
| 313 | ★ | 30c Greenish Black, Special Printing (201). Exceptionally Fresh, Bright Color, Extremely Fine & Exceptionally Choice for this Rare stamp, with P.F. Certificate | 7,000.00 |
|-----|---|--|----------|

- 314 ★ **10c Brown (209).** Mint, Huge "Jumbo" Side Margins, Wonderfully Attractive, Extremely Fine, with P.F. Certificate for Pair(Photo) 70.00
- 315 ★ **2c Pale Red Brown, Special Printing (211B).** Mint, Fresh & Very Fine, signed Geo P. Sloan, with P.F. Certificate(Photo) 700.00
- 316 ★ **2c Pale Red Brown, Special Printing (211B). T. Impt. Horiz. Pair,** o.g. (somewhat disturbed from hinge removal causing some perf. gum soaks on R. stamp), o/w Fine, Scarce, with P.F. Certificate ... (Photo) 1,400.00

317	★田	2c Pale Red Brown, Special Printing (211B). B. Margin Block, Well-centered, o.g., light wrinkles at B. & some perfs re-inforced/rejoined, o/w Fine-Very Fine(Photo)	3,000.00
318	✉	U.S. Postal Agency Panama, Purple Dateless pmks. & Large Grid on Three Diff. Envelopes (one Blue with "United States Consulate at" Printed Corner Card & Collector of Customs address, Very Fine, Extremely Rare, with photocopy of 1887 signed affidavit from the U.S. Consul at Colon in which he states he used these Provisional Envelopes from March 6, 1885 to May 2, 1885(Photo Ex) E. 500-750	
319	★田	3c Vermilion (214). B. Impt. & Pl. No. 421 Block of Twelve, Six Stamps Mint, light perf. strengthening, perfs. touch to slightly in on some, o/w Fine, Scarce(Photo)	1,300.00
320	★	90c Purple (218). Quite Fresh, o.g., Fine, with P.F. Certificate(Photo)	675.00
321	★田	3c Purple (221). T. Impt. & Pl. No. 21 Block of Twelve, Fresh, Seven Stamps Mint, light perf. strengthening along one vert. row of perfs., perfs. touch on few, o/w Fine, Scarce(Photo)	1,850.00
322	★	90c Orange (229). Nicely Centered, "Jumbo" Margins, lightly hinged, Very Fine, with P.F. Certificate(Photo)	325.00
323	★	90c Orange (229). Mint, Brilliantly Fresh, Pleasingly Well-Balanced Margins, Very Fine, Choice, with P.F. Certificate(Photo)	325.00
324	★	90c Orange (229). Mint R. Margin Single, Fresh, Almost Very Fine, with Photocopy of P.F. Certificate for Pair(Photo)	325.00

COLUMBIAN ISSUE

325	P	1c-\$5.00 Columbian Plate Proofs on Card (230P4-245P4). Cpl. Set, Very Fine.....(Photo Ex)	3,140.00
326	★	\$1.00 Columbian (241). Lightly hinged, Beautifully Centered, Fresh & Very Fine(Photo)	1,150.00
327	★	\$1.00 Columbian (241). Fresh, Rich Color, faint toning spot, o/w Very Fine, with P.F. Certificate(Photo)	1,150.00
328	★	\$2.00 Columbian (242). Beautiful Centering & Freshness, lightly hinged, Very Fine(Photo)	1,250.00
329	★	\$2.00 Columbian (242). Fresh, h.r., with P.F. Certificate, Very Fine(Photo)	1,100.00
330	★田	\$2.00 Columbian (242). Block, Wonderfully Well-centered Throughout, faults at B.R. & T.L., without gum, o/w Extremely Fine, A Very Scarce Multiple(Photo)	5,500.00
331	★田	\$2.00 Columbian (242). Block, Fresh, B. Pair Mint, B.R. stamp tiny natural inclusion, T. Pair narrow natural gum skip, reperfed at T., perfs. touch to slightly in at T., Scarce Block(Photo)	5,500.00
332		\$2.00 Columbian (242). Oval Reg. cancel, Exceptional Margins & Centering, small corner crease, Extremely Fine Appearance(Photo)	500.00
333	★	\$3.00 Columbian (243). Fresh, Very Fine, with P.F. Certificate(Color Photo)	2,300.00
334	★	\$3.00 Columbian (243). Fresh, gum trifle disturbed from hinge removal, Very Fine(Photo)	2,600.00
335	★	\$3.00 Columbian (243). Fresh, regummed, Fine, with P.F. Certificate(Photo)	2,600.00
336	★	\$4.00 Columbian (244). Near Perfect Centering, without gum, Extremely Fine, with P.F. Certificate(Color Photo)	3,400.00



337



338



339

- | | | | |
|-----|---|---|----------|
| 337 | ★ | \$4.00 Columbian (244). Deep Rich Color, Nice Margins, Very Fine, with P.F. Certificate | 3,400.00 |
| 338 | ★ | \$4.00 Columbian (244). Exceptionally Well-centered, Fresh, barest trace of hinging, Very Fine | 3,400.00 |
| 339 | ★ | \$4.00 Columbian (244). Fresh, Bright Color, without gum, tiny natural inclusion, Fine, signed Diena | 3,400.00 |

- | | | | |
|-----|--|--|------------------------|
| 340 | | \$4.00 Columbian (244). Wonderfully Well-centered, Brilliantly Fresh, New York Duplex pmk., Extremely Fine, with P.F. Certificate | (Color Photo) 1,450.00 |
|-----|--|--|------------------------|

- 341 **\$4.00 Columbian (244).** Small repair & tiny wrinkle, reperfed at B, Attractive, Fine Appearance(Photo) 1,450.00



342



343

- 342 ★ **\$5.00 Columbian (245).** Beautifully Centered, regummed, minor faults, Extremely Fine Appearance, Very Attractive **E. 400-600**

- | | | | |
|-----|---|--|----------|
| 343 | ★ | \$5.00 Columbian (245). Fresh, tiny natural inclusion, Very Fine, with P.F. Certificate | 3,600.00 |
|-----|---|--|----------|

1894-1895 ISSUES

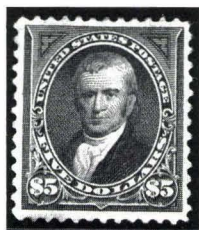
- 344 ★ **6c Dull Brown (256).** B. Impt. & Pl. No. 28 Strip of Three, Fresh, Very Fine, with P.F. Certificate(Photo) 575.00
- 345 ★ **10c Dark Green (258).** T. Impt. & Pl. No. 64 Strip of Three, Fresh, minor separation at extreme T. of selvage, Fine, Scarce, with P.F. Certificate(Photo) 750.00
- 346 ★田 **8c Violet Brown (257).** B. Impt & Pl. No. 58 Block of Eight, Lovely Centering, lightly hinged, few re-inforced vert. separations, Almost Very Fine(Photo) 1,320.00



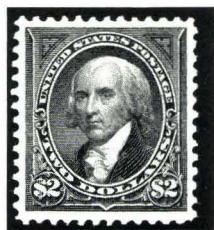
347



348



349



350

347	★	\$1.00 Black, Ty. II (261A). R. Margin Single, Beautiful Margins & Centering, Fresh, Extremely Fine "Gem", with P.F. Certificate	1,850.00
348	★	\$1.00 Black, Ty. I (261A). Fresh, h.r., Very Fine	1,850.00
349	★	\$5.00 Dark Green (263). Minor h.r., Very Fine	3,250.00

350	★	\$2.00 Bright Blue (277). Beautiful Margins & Centering, Fresh, without gum, Extremely Fine & Choice, with P.F. Certificate	900.00
-----	---	---	--------

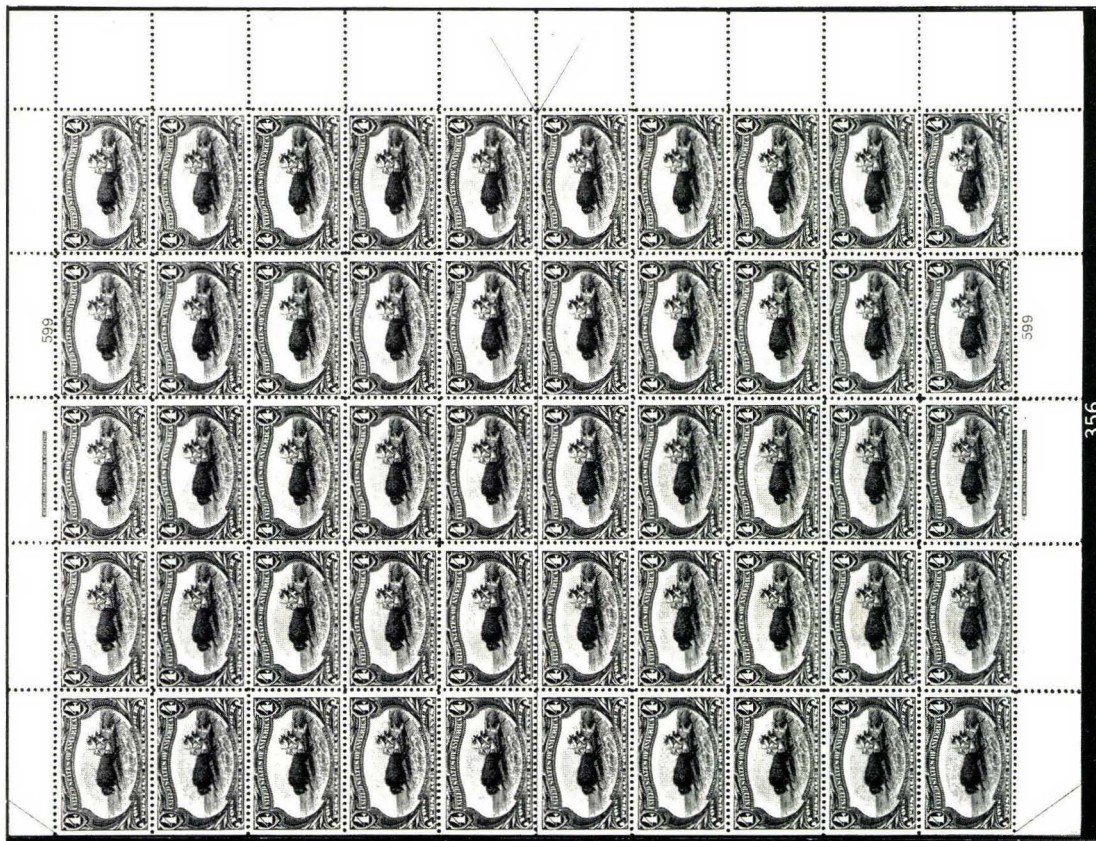
TRANS-MISSISSIPPI ISSUE

351	★田	1c Trans-Miss. (285). Mint T. Impt. & Pl. No. 598 Block of Six, selvage somewhat reduced, Very Fine	325.00
352	★田	2c Trans-Miss. (286). T.R. Corner Margin Block of Six with Impt. & Pl. No. 667, Stamps never hinged but some gum toning spots, o/w Fine	260.00
353	★田	4c Trans-Miss. (287). Mint B. Impt. & Pl. No. 634 Block, Brilliantly Fresh, R. perfs. close to touch	1,100.00
354	★田	4c Trans-Miss. (287). T. Impt. & Pl. No. 634 Block, Three Stamps Mint, small separation between T. & B. Pairs, L. perfs. close (Photo)	1,100.00

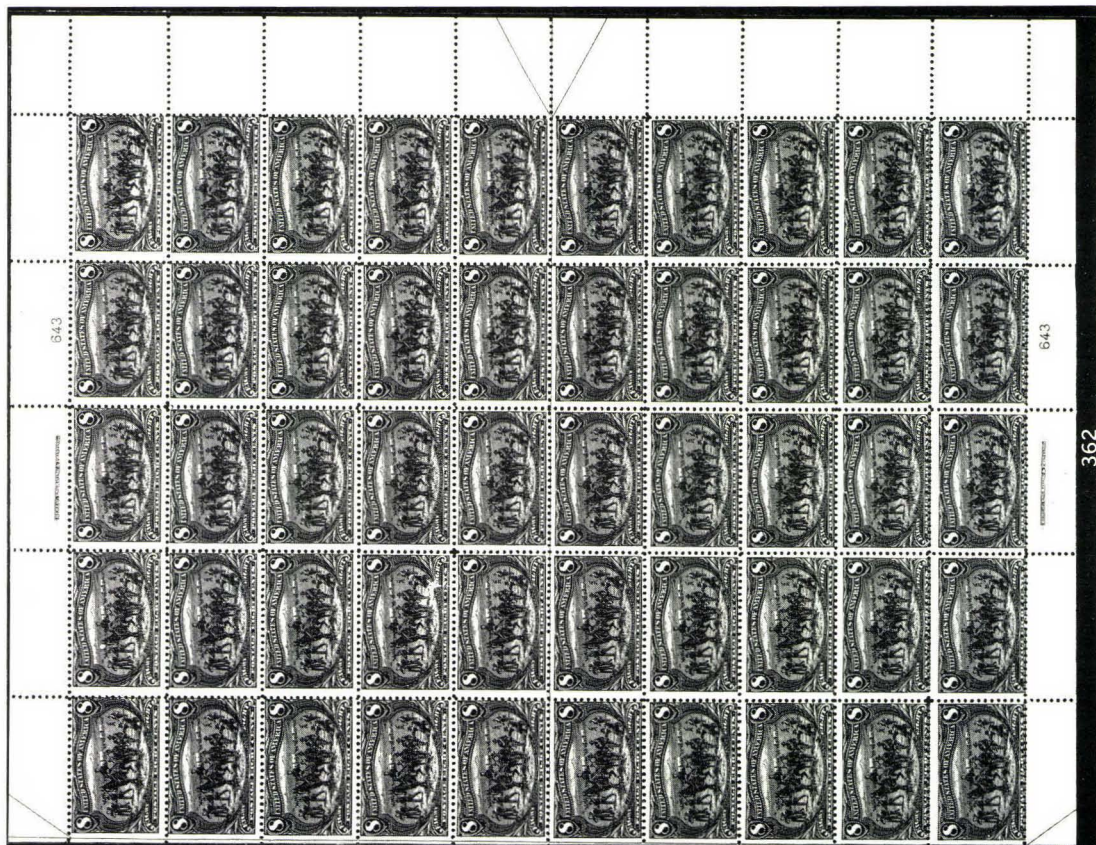
355	★田	4c Trans-Miss. (287). Mint B. Impt & Pl. No. 636 Block of Ten, Fresh & Fine	2,275.00
356	★	4c Trans-Miss. (287). Cpl. Sheet of 50, 45 Stamps Mint, Fresh & Remarkably Intact, T. selvage slightly reduced, some separation (hinge reinforced) in B. Pl. No. Block, perfs. touch on few, Overall Fine-Very Fine (Photo)	8,760.00

357	★	5c Trans-Miss. (288). Mint T. Impt. & Pl. No. 602 Strip of Four, Fresh, selvage somewhat reduced, Fine	550.00
358	★田	5c Trans-Miss. (288). T. Impt. & Pl. No. 614 Block, reduced selvage (selvage lightly folded along perfs.), slight gum disturbances from hinge removal, Fine (Photo)	1,000.00
359	★田	5c Trans-Miss. (288). Mint B. Impt. & Pl. No. 602 Block one stamp with natural inclusion, tiny trivial selvage tear, B. perfs. touch to cut in, Scarce (Photo)	1,000.00
360	★田	8c Trans-Miss. (289). Mint T. Impt. & Pl. No. 609 Block, T. perfs. close or touching (Photo)	1,750.00
361	★田	8c Trans-Miss. (289). Mint T.R. Impt. & Pl. No. 609 Block of Six, some separation not affecting Pl. No. Block of Four, selvage creasing in T. portion of Pl. No. Block selvage, B. perfs. touch to slightly in (Photo)	2,080.00

362	★	8c Trans-Miss. (289). Cpl. Sheet of 50, Virtually All Stamps never hinged but natural offset on back (printer's fingerprints), T. & B. selvage slightly reduced, Very Good, Scarce Sheet (Photo)	11,585.00
-----	---	--	-----------



356



362

604



604

363 ★ **10c Trans-Miss. (290). Mint T. Impt. & Pl. No. 604 Pair**, single short perf. in selvage, Fine(Photo) 450.00

364	★	10c Trans-Miss. (290). Mint T. Impt. & Pl. No. 604 Block of Six , selvage reduced, L. pair light natural gum bends, Fine-Very Fine(Photo) 3,500.00
365	★	10c Trans-Miss. (290). Cpl. Sheet of 50 , Nearly All Stamps Mint, extensive perf. rejoining in T. Pl. No. Block & some perf. strengthening along natural s.e. stamps, Very Good-Fine Sheet, Scarce(Photo) 14,065.00
366	★	50c Trans-Miss. (291). Fresh, Choice Margins & Centering , lightly hinged, minor gum bend, Extremely Fine ..(Color Photo) 725.00
367	★	50c Trans-Miss (291). Exceptionally Well-centered , lightly hinged, Extremely Fine "Gem", with P.F. Certificate ..(Photo) 725.00
368	★	50c Trans-Miss (291). T. Impt. & Pl. No. 603 Pair , Fresh, L. stamp never hinged, diagonal crease affects L. stamp & selvage of R. stamp, o/w Fine-Very Fine, Scarce(Photo) 1,750.00
369	★	50c Trans-Miss (291). B. Impt. & Pl. No. 603 Pair , Fresh, Deep Rich Color, centered to L., Fine, Scarce(Photo) 1,750.00



370	★田	50c Trans-Miss (291). B. Impt. & Pl. No. 603 Block , Exceptionally Fresh & Intact, B. Pair Mint, Fine-Very Fine, Scarce .. 13,500.00
371	★	50c Trans-Miss. (291). T. Impt. & Pl. No. 603 Horiz. Strip of Five , natural s.e. at R., Stamps Mint, lightly hinged in selvage only, Fine-Very Fine, Impt. & Pl. No. Pair Very Fine, Scarce(Photo) 3,925.00
372	★	\$1.00 Trans-Miss. (292). Perfectly Centered , lightly hinged, An Outstandingly Beautiful "Gem", Extremely Fine, with P.F. Certificate(Color Photo) 1,850.00
373	★	\$1.00 Trans-Miss. (292). Exceptionally Well-centered , Choice Large Margins, insignificant corner perf. crease, o/w Extremely Fine, with P.F. Certificate (does not mention perf. crease)(Photo) 1,850.00

603

REPLACEMENT OF POSTAGE



371



377

606

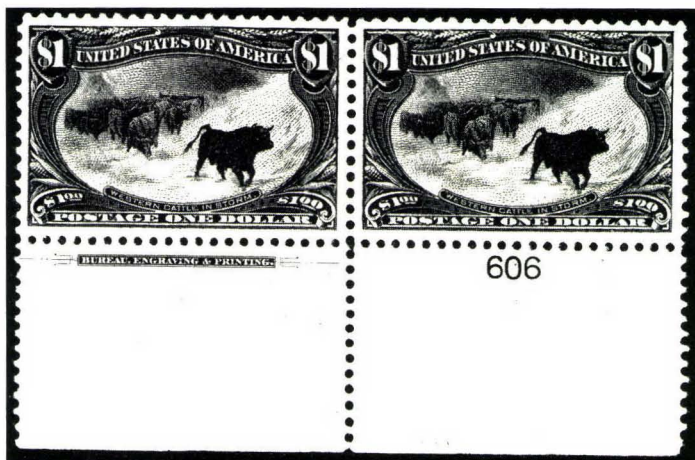
REPLACEMENT OF POSTAGE



379

- 374 ★ **\$1.00 Trans-Miss. (292).** Fresh, Exceptionally Well-centered, expertly reperfed at R., o/w Extremely Fine(Photo) 1,850.00

- 375 ★ **\$1.00 Trans-Miss. (292).** Fresh, Very Fine, with P.F. Certificate(Photo) 1,850.00



- 376 ★ **\$1.00 Trans-Miss. (292).** B. Impt. & Pl. No. 606 Pair, Fresh, Wide Even Margins, Gorgeous Centering, Extremely Fine "Gem," with P.F. Certificate 4,500.00
- 377 ★ **\$1.00 Trans-Miss. (292).** Mint R. Margin Horiz. Strip of Five, natural s.e. at L., one with small natural inclusion, few light gum bends, natural s.e. stamp Very Fine, others Fine, Scarce .(Photo) 9,250.00



- 378 ★田 **\$1.00 Trans-Miss. (292).** T. Impt. & Pl. No. 606 Block of Six, selvedge reduced, regummed, B. R. stamp with corner repair, o/w Fine-Very Fine Example of This Extremely Rare Pl. No. Block . 52,500.00

379 ★ 田 **\$1.00 Trans-Miss. (292). T.L. Impt. & Plate No. 606 & Imperf. Half Arrow Block of Ten**, Exceptionally Fresh, Five Stamps Mint, others lightly hinged, s.e. pair minor perf. strengthening, Very Fine, Rare & Gorgeous Showpiece(Photo) 59,500.00

380 ★ **\$2.00 Trans-Miss. (293)**. Almost Perfectly Centered, lightly hinged, Extremely Fine & Choice, with P.F. Certificate(Color Photo) 2,850.00



381



382



383

381 ★ **\$2.00 Trans-Miss. (293)**. Well-centered, Nice Margins, Extremely Fine, with P.F. Certificate 2,850.00
 382 ★ **\$2.00 Trans-Miss. (293)**. Fresh, Very Fine, with P.F. Certificate 2,850.00
 383 ★ **\$2.00 Trans-Miss. (293)**. Fresh, h.r., Very Fine, with P.F. Certificate 2,850.00



384 ★ **\$2.00 Trans-Miss. (293). T. Impt. & Pl. No. 613 Pair**, Fresh, Stamps Mint (L. stamp tiny speck of adhesive reinforcing perfs.), Fine, Extremely Rare, signed Bolaffi & Diena 7,000.00



- 385 ★田 \$2.00 Trans-Miss. (293). Block, Fresh, some gum disturbances from hinge removal, minor perf. strengthening, Fine-Very Fine, Rare Block, with P.F. Certificate 13,000.00

- 386 ★田 \$2.00 Trans-Miss. (293). B. Impt. & Pl. No. 613 Block, Fresh, B. Pair never hinged but some negligible perf. strengthening, perf. strengthening betw. T. Pair, Fine Example of This Enormously Rare Pl. No. Block(Photo Front Cover) 80,000.00

- 387 \$2.00 Trans-Miss. (293). Faint wrinkles & reperfed at R., Fine, Handsome Appearance(Photo) 875.00

PAN-AMERICAN ISSUE

- 388 ★ 1c Pan-Am., Center Inverted (294a). Exceptionally Fresh, somewhat disturbed o.g. as virtually always, Very Fine Example of This Rare Invert(Color Photo) 10,000.00



389



390

- 389 ★ 1c Pan-Am., Center Inverted (294a). Mint, Exceptionally Fresh, Rich Colors, Very Fine, A Beautiful Example of This Rare Invert (which usually is encountered with disturbed o.g. & small faults) 10,000.00
- 390 1c Pan-Am., Center Inverted (294a). One of the Best Centered Used Examples of This Rare Invert Existing, small natural inclusion, Extremely Fine, with P.F. Certificate 4,500.00



- 391 ★ **2c Pan-Am., Center Inverted (295a).** Well-centered, somewhat disturbed o.g. as always, light corner crease, Very Fine Appearing Example of This Major 20th Century Error, with P.F. Certificate 45,000.00



392



393

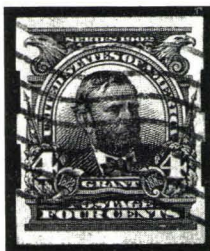
- 392 S **4c Pan-Am., Center Inverted, “Specimen” Overprint (296aSE).** Fresh, disturbed o.g. as virtually always, small faults as usual, perfs. slightly in at B., Very Presentable Example of This Rare & Normally Faulty Error 4,500.00
- 393 ★ **4c Pan-Am., Center Inverted (296a).** Beautifully Centered, small faults (regummed, reperfed & repaired at B), Attractive, Very Fine Appearance, Very Rare 13,000.00

- 394 ★田 **4c, 5c Pan-Am. (296, 297). Vert. B. Margin Blocks of Ten with Pl. No. & Part Impt (2x5),** 4c Very lightly hinged, 5c Mint (light gum toning spots), B.L. Stamp small surface scrape, o/w Fine 2,350.00 +
- 395 ★田 **8c Pan-Am. (298). B. Impt. & Pl. No. 1150 Block of Six,** two T.L. stamps lightly hinged, Others Mint, Fine, A Rare Plate Block(Photo) 4,750.00
- 396 ★田 **8c Pan-Am. (298). Mint B.R. Impt. & Pl. No. 1150 Block of Ten,** Deep Rich Color, Well-centered, light selvedge wrinkles barely affect two stamps, Almost Very Fine, A Rare & Attractive Plate Block(Photo) 10,000.00
- 397 ★田 **10c Pan-Am. (299). B. Impt. & Pl. No. 1151 Block of Six,** T. center stamp lightly hinged, Others Mint, light stain or offset on back of selvedge only, A Fine & Rare Plate Block(Photo) 7,500.00

1902 ISSUE

- 398 ★田 **13c Purple Black (308). T. Impt. & Pl. No. 3835 Block of Six,** Fresh, lightly hinged, Four Stamps Mint (one with tiny natural translucency), Very Fine(Photo) 650.00
- 399 ★ **\$2.00 Dark Blue (312).** Very Fine(Photo) 1,050.00

400	★田	\$2.00 Dark Blue (312). Block , Fresh, lightly hinged, slight separations, Fine-Very Fine, A Scarce & Very Attractive High Value Multiple, with P.F. Certificate(Photo)	4,440.00
401	★	\$5.00 Dark Green (313) . Barest trace of hinging, Very Fine(Color Photo)	2,750.00
402	★	\$5.00 Dark Green (313) . Fresh, Rich Color, owner's tiny handstamp on back, single short perf., o/w Very Fine ... (Photo)	2,750.00



403		4c Brown, Imperf., Schermack Ty. III Private Vending Machine Perforations (314A) . Exceptionally Well-centered, Wavy Line cancel, Extremely Fine "Gem", Extremely Rare, The Rarest 20th Century U.S. Coil, 23 Examples Known, P.F. Certificate, signed "O.K./K.K." (K. Koslowski)	9,000.00
404		5c Blue, Imperf. (315). Used Horiz. Pair , Target cancels, Very Fine, Scarce Used, with P.F. Certificate which notes vertical crease which in our opinion is a wrinkle from having been used(Photo)	500.00
405	★田	2c Lake, Imperf. (320a). R. Impt. & Pl. No. 4671 Block of Six , h.r. at T., B. Block Mint, Wide Margins, Very Fine(Photo)	1,100.00



406	★	2c Carmine, Coil (322). Pair , Exceptionally Fresh, Fine, Very Attractive & Desirable Example of This Rare Coil, with P.F. Certificate, ex-Col. Green	5,500.00
-----	---	--	----------

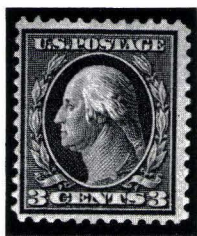
LOUISIANA PURCHASE — PANAMA-PACIFIC ISSUES

407	★田	10c La. Purchase (327). Mint T. Impt. & Pl. No. 2105 Block , light selvage wrinkles, Fresh, About Fine(Photo)	1,600.00
408	★	5c Blue, Coil (351). Pair , Perfectly Centered, lightly hinged at T., B. Stamp Mint, Extremely Fine, Exceptionally Choice, with P.F. Certificate(Photo)	290.00
409	★	5c Blue, Coil (355). Line Pair , Fine, with P.F. Certificate ... (Photo)	800.00
410	★	10c Yellow, Coil (356) . Exceptionally Well-centered, Fresh, Very Fine, with P.F. Certificate for Pair(Color Photo)	1,300.00

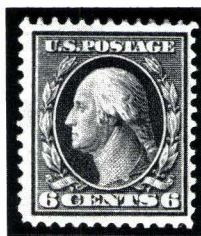


- 411 ★ **10c Yellow, Coil (356). Line Strip of Four**, slightly disturbed o.g., close to touching outer frameline at T., Fine, Very Rare, with P.F. Certificate 10,100.00 +

- 412 ★ **1c Green, 2c Carmine, Bluish (357, 358). Exceptional Margins & Centering, Former Mint, Extremely Fine & Choice**(Photo Ex) 210.00



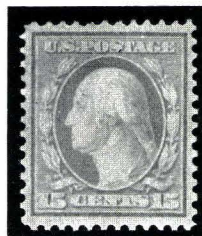
413



414



415



416



417

- 413 ★ **3c Deep Violet, Bluish (359). Fresh, reperfed at B., o/w Fine, Scarce**, with P.F. Certificate 1,650.00

- | | | |
|-------|--|----------|
| 414 ★ | 6c Red Orange, Bluish (362). Fresh, Fine, with P.F. Certificate | 1,000.00 |
| 415 ★ | 10c Yellow, Bluish (364). Mint, Fine, Scarce | 1,050.00 |
| 416 ★ | 15c Pale Ultramarine, Bluish (366). Fresh, Exceptional Margins & Centering, tiny natural inclusion, Extremely Fine, Scarce, with P.F. Certificate for Block | 1,000.00 |
| 417 ★ | 15c Pale Ultramarine, Bluish (366). Lovely Centering & Color, Mint, Very Fine, with P.F. Certificate | 1,000.00 |

- 418 ★田 **2c Lincoln, Bluish (369). Block, small h.r.'s, Remarkably Well-centered, Very Fine**.....(Photo) 1,150.00

- | | | |
|--------|--|----------|
| 419 ★田 | 2c Lincoln, Bluish (369). Mint T. Impt. & Pl. No. 4978 Block of Six, Fine, Rare Plate Block(Photo) | 4,250.00 |
| 420 ★田 | 2c Lincoln, Bluish (369). Mint B. Impt., Star & Pl. No. 4977 Block of Six, natural narrow selvage clear of Impt. & Pl. No., Fine, Rare(Photo) | 4,250.00 |

- 421 ★ **10c Pan-Pacific (400). Pl. No. Single, very lightly hinged, Excellent Centering, Extremely Fine, with Photocopy of P.F. Certificate for Block**(Photo) 160.00
- 422 ★ **10c Orange, Pan-Pacific (400A). Unusually Wide Margins, Choice Centering & Freshness, a Mint "Gem", Extremely Fine, with P.F. Certificate**(Photo) 250.00

1912-1916 ISSUES

- 423 ★ **15c Gray (418).** Mint, Flawless in every respect, an Extremely Fine "Gem", with Photocopy of P.F. Certificate for Block(Photo) 75.00
- 424 ★ **20c Ultramarine (419).** Very Well-centered, Fresh & Very Fine, with P.F. Certificate(Photo) 175.00
- 425 ★ **50c Violet (421).** Mint, Very Fine(Photo) 500.00

- 426 ★田 **50c Violet (421).** Block, lightly hinged, Nicely Centered, Fine-Very Fine, with P.F. Certificate(Photo) 2,100.00

- 427 ★田 **15c Gray (437).** T. Impt. & Pl. No. 5780 Block of Six, lightly hinged, Fine-Very Fine (B. Row Very Fine, B.L. & B.R. Stamps Mint)(Photo) 850.00
- 428 ★ **20c Ultramarine (438).** Virtually Perfect Centering, lightly hinged, Extremely Fine, a Beauty, with Photocopy of P.F. Certificate for Block(Photo) 225.00
- 429 ★ **20c Ultramarine (438).** Pl. No. Single, Very Well-centered, lightly hinged, Very Fine, with photocopy of P.F. Certificate for Block(Photo) 225.00
- 430 ★ **50c Violet (440).** Fresh, slightly disturbed from hinge removal, centered to T., Fine(Photo) 800.00
- 431 ★ **4c Brown, Coil (446).** Mint Line Pair, Fine-Very Fine, with P.F. Certificate(Photo) 650.00
- 432 ★ **2c Red, Ty. II, Coil (454).** Mint Line Pair, Fine(Photo) 575.00
- 433 ★ **2c Red, Ty. II, Coil (454).** Mint Strip of Four, Exceptionally Well-centered, Very Fine, with P.F. Certificate for Strip of Five(Photo) 480.00
- 434 ★ **3c Violet, Coil (456).** Fine(Photo) 300.00
- 435 ★ **3c Violet, Coil (456).** Line Pair, Well-centered, each with faint thin, Extremely Fine Appearance(Photo) 1,300.00

- 436 ★ **2c Carmine, Imperf. Coil (459).** Line Pair, creased along Line (as virtually always, crease entirely in L. stamp), o/w Very Fine, with P.F. Certificate(Photo) 2,100.00

- 437 ★田 **2c Pale Carmine Red (461).** Mint T. Pl. No. 7264 Block of Six, perfs. barely touch at T. on T. Stamps, Fine, Scarce(Photo) 950.00

- 438 ☒ **2c Pale Carmine Red (461).** Horiz. Pair, Used with Block of 2c Carmine Rose (540), tied by U.S. Postal Agency, Shanghai, China Double Oval cancels on 1920 Pale Blue Reg. Cover to Washington, D.C. (Printed Address), backstamps incl. Shanghai Agency, Chicago & Washington, D.C. Registry Cancels, No. 461 Pair lifted for expertizing & hinged back in place, Very Fine, Extremely Rare, Possibly Unique Usage of No. 461's from Shanghai Agency, with P.F. Certificate(Photo) E. 2,000-3,000

- 439 ★田 **5c Carmine, Error (467).** Mint Block of Twelve, Two Center Stamps The Errors, T. 5c Fine, B. 5c Unusually Choice, Very Fine & Exceptionally Choice Block(Photo) 1,750.00
- 440 ★田 **5c Carmine, Error (467).** Block of Twelve, Two Middle Stamps The Errors, Errors Mint, T. Error natural inclusion, Fine, B. Pair Extremely Fine(Photo) 1,750.00

Extension Lots must be paid for on receipt. In the event of an unsatisfactory certificate, payment will be refunded with interest at Treasury Bill rate.



441



442

441	★	30c Orange Red, Unwatermarked (476A). Pos. 74, Mint, Fine & Choice, A Far Superior Centered Example of This Rarity Than Usually Encountered, with P.F. Certificate	E. 5,000-6,000
442	★田	30c Orange Red, Unwatermarked (476A). Mint B. Pl. No. 6917 Block of Six, perfs. touch to tiny bit in on two, The Better of the Two Plate No. Blocks from the Discovery Sheet, Extraordinarily Rare, with P.F. Certificate	E. 60,000.00
443	★	50c Light Violet (477). B. Pl. No. Single, lightly hinged, Very Fine, Handsome & Scarce, with P.F. Certificate	(Photo) 1,400.00
444	★	50c Light Violet (477). Lightly hinged, Fresh, Nicely Centered, Very Fine	(Photo) 1,400.00
445	★	\$1.00 Violet Black (478). Mint, Very Fine & Choice ...	(Photo) 950.00
446	★	5c Carmine Error, Imperf. (485). Complete Uncut Sheet of 400 Containing Single & Double Errors, Fresh, Single Error Block, some minor offset on gum, Double Error Block Mint, one error with small natural inclusion, minor edge tear as almost always (couple hinge reinforced), Very Fine & Extremely Rare, One of Very Few of The Less Than 50 Sheets Known Still Intact, A Magnificent Display Piece	E. 30,000-40,000
447	★	2c Carmine, Ty. II, Coil (491). Pair, Very Well-centered, lightly hinged, Very Fine, a Choice Example of This Rare Coil, with P.F. Certificate	(Photo) 3,100.00

1917 — KANSAS-NEBRASKA ISSUE

448	★	2c Deep Rose, Ty. Ia (500). Mint, Exceptional Margins & Centering, tiny natural inclusion, Extremely Fine & Choice	(Photo) 275.00
449	★田	2c Deep Rose, Ty. Ia (500). Mint Horiz. Block of Six, natural s.e. at B., Fine	(Photo) 1,700.00
450	★	5c Rose, Error (505). In Horiz. Pair with 2c, Fine	(Photo) 550.00
451	★田	5c Rose, Error (505). Mint Block of Nine, Middle Stamp The Error, Very Well-centered, Very Fine, Choice Block	(Photo) 750.00
452	★田	5c Rose, Error (505). Mint Block of Nine, Middle Stamp The Error, Very Fine & Choice	(Photo) 750.00

453	★田	5c Rose, Error (505). Block of Twelve, Two Middle Stamps The Errors , One Error Mint, other Error tiny natural inclusion, Fine-Very Fine(Photo)	1,300.00
454	★田	5c Rose, Error (505). Block of Twelve, Two Middle Stamps The Errors , one Error Mint, one 2c faint thin, Errors Fine	1,300.00
455	★	\$2.00 Orange Red & Black (523). Fresh, Huge Margins, Extremely Fine & Choice, with P.F. Certificate(Photo)	1,100.00
456	★	\$2.00 Orange Red & Black (523). Gorgeous Wide "Jumbo" Margins, Extremely Fine "Gem", with P.F. Certificate(Photo)	1,100.00

457	★田	\$2.00 Orange Red & Black (523). Center Line Block, Fresh, h.r., B. Pair Mint, Fine-Very Fine(Photo)	4,750.00
458	★田	2c Carmine, Offset Imperf. Ty. V (533). L. Pl. No. 11893 Block of Six, Four Stamps Mint, Very Fine, Scarce(Photo)	2,000.00



459



460

459	★	2c Carmine, Offset Imperf. Ty. VII (534B). Horiz. Pair, Large to Huge Margins, lightly hinged, Extremely Fine, Scarce, with P.F. Certificate	3,100.00
460	★	2c Carmine Rose, Ty. II (539). Magnificent Margins & Centering, lightly hinged, pencil notation on back, Extremely Fine, A Magnificent Example of This Scarce Stamp, with P.F. Certificate	2,350.00

461	≡	1c Green, Rotary (542). Block on First Day Cover, Very Fine, Rare, with P.F. Certificate(Photo)	1,050.00
462	★田	1c-10c 1923 Issue (581-591). Mint Blocks, two 5c natural narrow gum skip, Fine-Very Fine Set	816.00

463		1c Green, Rotary (594). Used, Fine, with P.F. Certificate(Photo)	1,850.00
-----	--	---	----------

464	★	2c Carmine (595). Mint, Unusually Well-centered, Extremely Fine & Choice, with P.F. Certificate for Pair(Photo)	200.00
465		2c Carmine (595). "Gem" Centering & Margins, Extremely Fine, Very Scarce, Used, Particularly Nice, with P.F. Certificate(Photo)	175.00
466	★	2c Carmine, Ty. II, Coil (599A). Mint Line Pair, Exceptionally Well-centered, Very Fine, with P.F. Certificate(Photo)	800.00
467	★田	8c Kans. Ovpt. (666). Mint T.L. Pl. No. 18192 Block, Very Fine & Choice(Photo)	800.00

PRESIDENTIAL ISSUE TO DATE

468	★	1½c Presidential, Horiz. Pair Imperf. Betw. (805). Mint L. Margin Pair, Very Fine(Photo)	175.00
-----	---	---	--------

469	★田	\$1.00 Presidential, Wmkd. "USIR " (832b). Mint T. Double Pl. No. Block of 30 with Double "Top" & \$1.00, Fine, Scarce(Photo)	10,950.00
-----	----	--	-----------

- 470 ★ **6c Grandma Moses, Black & Prussian Blue Omitted (1370b).** Mint (slightly disturbed o.g. as is quite usual for this), Very Fine ...**(Photo)** 1,000.00
- 471 ★ **6.3c Liberty Bell Coil, Imperf. (1518b).** Mint Line Pair, Very Fine, Line Pair Unpriced**(Photo)** E. 300-400
- 472 ★ **6.3c Liberty Bell Coil, Imperf., Normal & Precancel (1518b, 1518c).** Mint Pairs, Very Fine 230.00
- 473 ★ **6.3c Liberty Bell Coil, Imperf., Normal & Precancel (1518b, 1518c).** Mint Pairs, former small horiz. scissors cut, o/w Very Fine 230.00
- 474 ★ **6.3c Liberty Bell Coil, Imperf., Precancel (1518c).** Mint Line Pair, Very Fine, Line Pair Unpriced**(Photo)** E. 250-350



- 475 ★ **\$1.00 Rush Lamp & Candle Holder, Intaglio Brown Color Inverted (1610c).** Mint, From the Original Find, Very Fine, Extremely Rare Invert**E.15,000-18,000**

- 476 ★ **3.1c Guitar Coil, Imperf. (1613b).** Pair, lightly hinged, Very Fine**(Photo)** 950.00

- 477 ★ **7.7c Saxhorns Coil, Imperf., Precancel (1614b).** Mint Strip of Seven with Gap between Last Pair, first pair with gripper marks, Very Fine, Only Exists Precancelled**(Photo)** E. 1,500-2,000

- 478 ★ **7.9c Drum Coil, Imperf. (1615b).** Mint Pair, Very Fine**(Photo)** 450.00
- 479 ★ **7.9c Drum Coil, Imperf. (1615b).** Mint Pair, Very Fine 450.00
- 480 ★ **7.9c Drum Coil, Imperf. (1615b).** Mint Strip of Five, L. Pair Fully Imperf., others Blind perfs. & fully perforated, Very Fine**(Photo)** 450.00 +
- 481 ★ **3.5c Violins Coil, Imperf. (1813b).** Line Strip of Eleven, Perforated, Blind perfs. & Imperf., Will Yield Two Mint Imperf. Pairs, Very Fine 500.00 +

- 482 ★ **3.5c Violins Coil, Imperf. (1813b).** Mint Line Strip of Six, Very Fine, Line Pair Unpriced**(Photo)** E. 750-1,000
- 483 ★ **3.5c Violins Coil, Imperf. (1813b).** Mint Line Strip of Six Showing 50% of Pl. Nos. 39360 & 39361, Scarce, Line Pair Unpriced, Possibly Unique**(Photo)** E. 1,000-1,500

- 484 ☒ **5.2c Sleigh Coil, Normal & Precancel (1900, 1900a).** Pl. No. 2 Line Strip of Three & Pair respectively, tied by First Day pmk. on Cacheted (K.M.C. Venture) Unaddressed 5.2c Nonprofit Entire (U604), Triple First Day Combination Usage, Very Fine, Reportedly Less Than 50 Known**(Photo)** E. 150-200
- 485 ☒ **5.9c Bicycle Coil, Precancel (1901a).** Two Pairs, tied by First Day pmk. on Multicolor Handdrawn Cacheted (Knibb's Kover) Unaddressed Cover, Very Fine, Reportedly Less Than 50 Known **(Photo)** E. 350-500

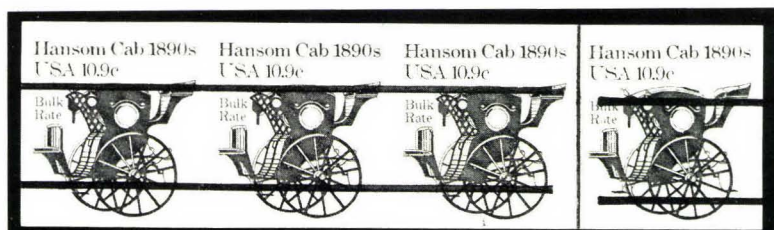
- 486 ★ **5.9c Bicycle Coil, Imperf., Precancel (1901b).** Mint Pl. No. 3 Line Strip of Six, with Gap at Line, Very Fine, Scarce, Line Pair Unpriced, Only Exists Precancelled**(Photo)** E. 1,000-1,500

487 ★ **5.9c Bicycle Coil, Imperf., Precancel (1901b). Mint Pl. No. 4**
Line Strip of Six, with Gap at Line, Very Fine, Scarce, Line Pair
 Unpriced, Only Exists Precancelled(Photo) E. 1,000-1,500

488 ☒ **9.3c Mail Wagon Coil, Normal & Precancel (1903, 1903a). Two**
Singles, Single & Pair respectively used with **2c Speaker's Stand**
(1582), tied by **First Day** pmk. on Cacheted (Artcraft) Unaddressed
 Cover, Very Fine, Reportedly Less Than 50 Known(Photo) E. 350-500

489 ★ **9.3c Mail Wagon Coil, Imperf., Precancel (1903b). Mint Pl.**
No. 1 Line Strip of Six, Very Fine, Scarce, Line Pair Unpriced,
 Only Exists Precancelled(Photo) E. 750-1,000

490 ☒ **10.9c Hansom Cab Coil, Normal & Precancel (1904, 1904a). Pair of**
each, tied by **First Day** pmk. on **Multicolor Handdrawn Cacheted**
(Knibb's Kover) Unaddressed Cover, Very Fine, Reportedly Less Than
 50 Known(Photo) E. 350-500



491 ★ **10.9c Hansom Cab Coil, Imperf., Precancel (1904b). Mint Pl.**
No. 1 Line Strip of Four, with Gap at Line, Very Fine, Scarce,
 Line Pair Unpriced, Only Exists Precancelled E. 900-1,200

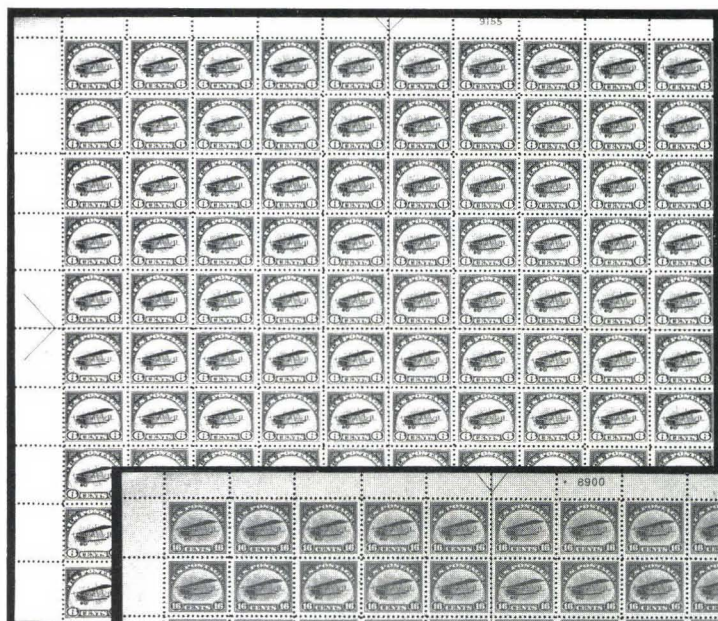
492 ★ **10.9c Hansom Cab Coil, Imperf., Precancel (1904b). Mint Pl.**
No. 2 Line Strip of Four, with Gap at Line, Very Fine, Scarce,
 Line Pair, Unpriced, Only Exists Precancelled(Photo) E. 900-1,200



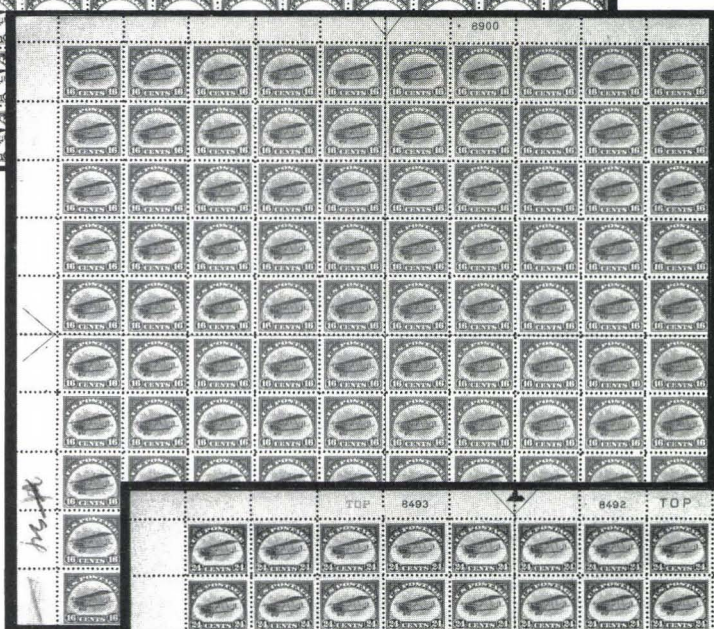
493 ★ **10.9c Hansom Cab Coil, Imperf., Precancel (1904b). Mint Pl.**
No. 1 Line Strip of Six, with Gap at Line, Very Fine, Scarce,
 Line Pair Unpriced, Only Exists Precancelled E. 1,000-1,500

494 ★ **10.9c Hansom Cab Coil, Imperf., Precancel (1904b). Mint Pl.**
No. 2 Line Strip of Six, with Gap at Line, Very Fine, Scarce,
 Line Pair Unpriced, Only Exists Precancelled(Photo) E. 1,000-1,500

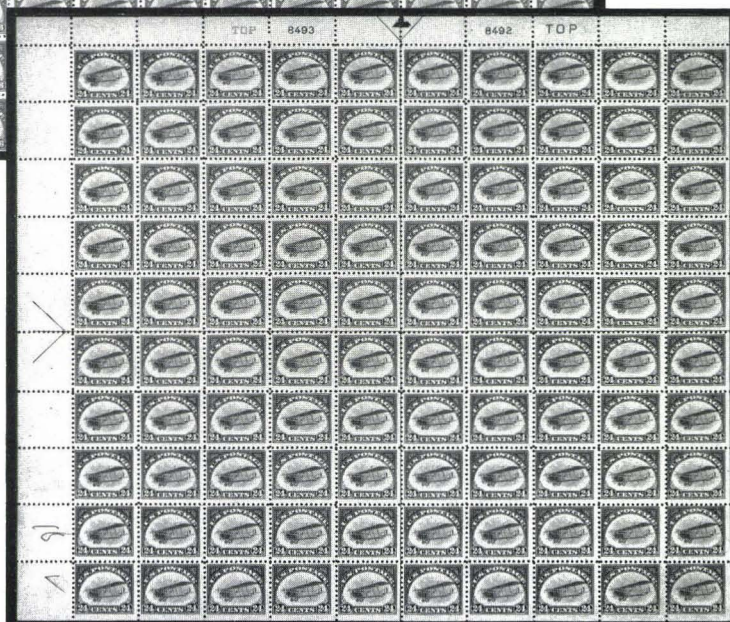
495 ★ **10.9c Hansom Cab Coil, Imperf., Precancel (1904b). Mint Pl.**
No. 2 Line Strip of Six, with Gap at Line, Very Fine, Scarce,
 Line Pair, Unpriced, Only Exists Precancelled(Photo) E. 1,000-1,500



505




506



508

 <p>GRAF ZEPPELIN EUROPE-PAN AMERICA FLIGHT 1930 UNITED STATES POSTAGE \$1.30</p>	 <p>GRAF ZEPPELIN EUROPE-PAN AMERICA FLIGHT 1930 UNITED STATES POSTAGE \$1.30</p>	 <p>GRAF ZEPPELIN EUROPE-PAN AMERICA FLIGHT 1930 UNITED STATES POSTAGE \$1.30</p>
 <p>GRAF ZEPPELIN EUROPE-PAN AMERICA FLIGHT 1930 UNITED STATES POSTAGE \$1.30</p>	 <p>GRAF ZEPPELIN EUROPE-PAN AMERICA FLIGHT 1930 UNITED STATES POSTAGE \$1.30</p>	 <p>GRAF ZEPPELIN EUROPE-PAN AMERICA FLIGHT 1930 UNITED STATES POSTAGE \$1.30</p>

20095

The image displays a 2x3 grid of six identical 1907 United States postage stamps. Each stamp features a map of the world with a ship sailing from Europe to America. The text on the stamps includes "GRAF ZEPPELIN", "EUROPE-TRAN AMERICA FLIGHT", "1907", "UNITED STATES POSTAGE", and "13c".

 <p>GRAF ZEPPELIN STURDESS-SPAN AMERICA FLIGHT \$2.60 UNITED STATES POSTAGE</p>	 <p>GRAF ZEPPELIN STURDESS-SPAN AMERICA FLIGHT \$2.60 UNITED STATES POSTAGE</p>	 <p>GRAF ZEPPELIN STURDESS-SPAN AMERICA FLIGHT \$2.60 UNITED STATES POSTAGE</p>
 <p>GRAF ZEPPELIN STURDESS-SPAN AMERICA FLIGHT \$2.60 UNITED STATES POSTAGE</p>	 <p>GRAF ZEPPELIN STURDESS-SPAN AMERICA FLIGHT \$2.60 UNITED STATES POSTAGE</p>	 <p>GRAF ZEPPELIN STURDESS-SPAN AMERICA FLIGHT \$2.60 UNITED STATES POSTAGE</p>

20091

- 496 ☒ **4.9c, 8.3c Buckboard, Ambulance Coils, Normal & Precancel (2124, 2124a, 2128, 2128a).** Single of each, tied by **First Day** pmk. on **Multicolor Handdrawn Cacheted** (Knibb's Kover) Unaddressed Cover, Very Fine, Reportedly Less Than 50 Known(Photo) E. 350-500
- 497 ☒ **8.3c Ambulance Coil, Precancel (2128a). Strip of Three,** tied by **First Day** pmk. on **Red & Black Handdrawn Cacheted** (Knibb's Kover) Unaddressed Cover, Very Fine, Reportedly Less Than 50 Known(Photo) E. 350-500
- 498 ★ **10.1c Oil Wagon Coil, Imperf., Precancel (2130b). Mint Pair,** Very Fine, Only Exists Precancelled(Photo) E. 100-150

499	★	10.1c Oil Wagon Coil, Imperf., Precancel (2130b). Mint Pl. No. 1 Strip of Six, Very Fine, Pl. No. Strip Unpriced, Only Exists Precancelled(Photo) E. 750-1,000
-----	---	---

- 500 ★ **12.5c Pushcart Coil, Imperf., Precancel (2133b). Mint Pl. No. 1 Strip of Five,** Very Fine, Pl. No. Strip Unpriced, Only Exists Precancelled(Photo) E. 350-500
- 501 ★ **12.5c Pushcart Coil, Imperf., Precancel (2133b). Mint Pl. No. 1 Strip of Six,** Very Fine, Pl. No. Strip Unpriced, Only Exists Precancelled(Photo) E. 350-500

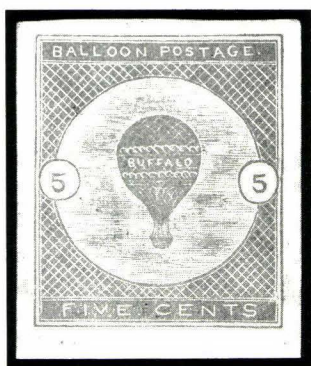
502	★	17.5c Racing Car Coil, Imperf. (2262b). Mint Pair, Scarce, Very Fine, Less Than 50 Pairs Believed Known(Photo) E. 750-1,000
503	★	25c Honeybee Coil, Intaglio Black Color Omitted (2281var). Mint Pair, Bee's Wings & Body Outline Missing, Extremely Fine, Dramatic & Striking Color Omitted Error(Photo) E. 500-750

AIR POST ISSUES

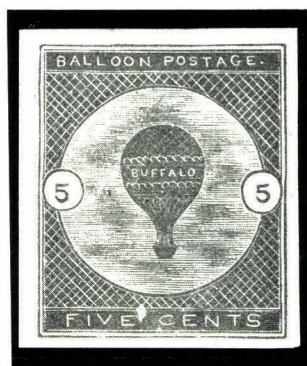
- | | | |
|-----|----|--|
| 504 | ☒ | 1932 (July 5) Attempted Round-the-World Record Flight (AAMC 1167). Cover with Signatures of Pilots J. Mattern & B.H. Griffin, U.S., Germany & Russia Frankings, Each Tied, Fine, Very Rare, Only Ten Known, The Plane Crashed in Siberia(Photo) AAMC 1,200.00 |
| 505 | ★ | 6c Orange (C1). Complete Mint Sheet of 100, Remarkably Intact, natural gum skips (trifle heavy on few), few natural inclusions, two with natural paper wrinkles, mixed centering (perfs. in on some) but incl. Some Really Choice Stamps, Overall Fine-Very Fine(Photo) 12,570.00 |
| 506 | ★ | 16c Green (C2). Complete Mint Sheet of 100, Remarkably Intact & Fresh, some light natural gum bends, few P.O. pencil notations in L. selvedge, mixed centering (perfs. on natural s.e.'s touch on some), Overall Fine-Very Fine(Photo) 17,410.00 |
| 507 | ★田 | 24c Carmine Rose & Blue (C3). Arrow, Double "Top" & Double Pl. No. Block of Twelve, lightly hinged, Stamps Mint, three stamps with natural paper wrinkle (heavy on T.L. stamp), o/w Fine Pl. No. Block, Scarce(Photo) 2,600.00 |
| 508 | ★ | 24c Carmine Rose & Blue (C3). Complete Mint Sheet of 100, Remarkably Intact, Fresh, light natural gum bends & few light natural wrinkles, perfs. touch on few, Overall Fine Sheet but incl. Some Very Fine Stamps(Photo) 16,825.00 |
| 509 | ★ | 8c Dark Green (C4). Complete Sheet of 100, some minor separations sensibly hinge reinforced, most disturbed o.g. (a few Appear Mint), Overall Fine-Very Fine Sheet 5,160.00 |

510	★田	16c Dark Blue (C5). L. Pl. No. 14828 Block of Six , lightly hinged, Beautifully Centered Throughout, Very Fine(Photo)	3,250.00
511	★	24c Carmine (C6). Complete Sheet of 100 , 96 Stamps Mint (four natural s.e. stamps hinged), foldover in sheet corner selvedge causes Dramatic Freak Perforations entirely in selvedge, Fine-Very Fine Sheet(Photo)	26,100.00
512	★	65c-\$2.60 Graf Zeppelins (C13-C15). Cpl. Set , \$2.60 Mint; \$1.30 Very Fine, 65c & \$2.60 Wide "Jumbo" Margins, Extremely Fine "Gems", 65c with P.F.Certificate(Photo)	3,050.00
513	★田	65c-\$2.60 Graf Zeppelins (C13-C15). Side Pl. No. Blocks of Six , Full Selvedge, Two Stamps of each Mint, 65c lightly hinged, one \$1.30 & \$2.60 tiny natural inclusion, Fine-Very Fine Set(Photo)	25,100.00
514	★田	65c-\$2.60 Graf Zeppelins (C13-C15). Cpl. Set of T. or B. Pl. No. Blocks of Six , 65c Exceptionally Well-centered, three 65c with natural paper wrinkle, \$1.30 natural gum skips & bends (minor separation in selvedge), \$2.60 trifle heavy natural gum creases, Fine-Very Fine(Photo)	25,100.00
515	★田	65c-\$2.60 Graf Zeppelins (C13-C15). Mint T. or B. Pl. No. Blocks of Six , Exceptionally Fresh & Intact, 65c & \$2.60 natural gum skips & bends, \$1.30 & \$2.60 trivial selvedge edge tears, \$1.30 T. perfs. close or just barely touching, others Fine-Very Fine, Scarce Set of Pl. No. Blocks(Photo)	25,100.00

- 516 **65c-\$2.60 Graf Zeppelins (C13-C15). Cpl. Set**, small faults (65c small thin & nibbed perf., \$1.30 smudge cancel, \$2.60 faint wrinkles, Very Fine Centering(Photo) 1,625.00



517



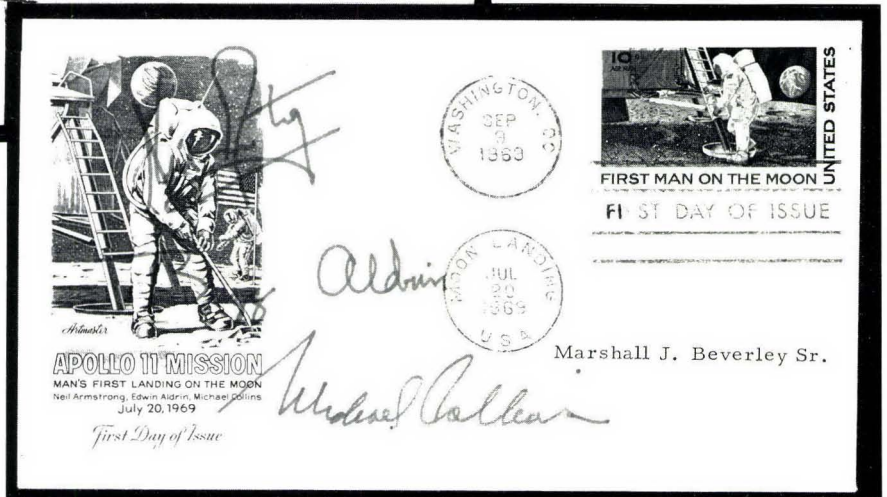
518

517	★	5c Deep Blue, "Buffalo Balloon" Air Post Semi-Official (CL1). Huge Margins, few light wrinkles nearly all in B. margin clear of design, Extremely Fine & Choice Example of This Air Post Rarity.	4,500.00
518	★	5c Deep Blue, "Buffalo Balloon" Air Post Semi-Official (CL1). Wide Margins, small faults (light crease, tiny edge tear & minuscule thin), Very Fine Appearance, Very Rare In Any Condition	4,500.00

MOON LANDING COVERS



520



519

- | | | |
|-----|---|---|
| 519 | ✉ | <p>Apollo 11 Flight, 1969 Cover with Signatures of The Three Apollo 11 Astronauts, Neil Armstrong, Buzz Aldrin & Michael Collins—The First Men on the Moon—with “Moon Landing/Jul 20, 1969/USA” pmk.; A later Washington, D.C. Sep 9, 1969 First Day pmk. Ties 10c Moon Landing Air Post (C76), Artmaster Cachet, Very Fine, Rare E. 1,000-1,500</p> |
| 520 | ✉ | <p>Apollo 15 Lunar Mission Flight Cover, July 26-August 7, 1971, Contemporary U.S. Postage tied by “USS Okinawa (LPH-3) Aug 7, 1971 AM” pmk., Autographed by Scott, Worden & Irwin, Printed Multicolor Moon Phase Label, “Launch” & “Recovery” Dated backstamps, NASA Serial No. 300 under flap (400 carried), with Sworn Affidavit Specifically Covering This Item & Signed by the Astronauts E. 1,500-2,000</p> |

SPECIAL DELIVERY—POSTAGE DUE ISSUES

- 521 ★田 **10c Blue (E5). T. Margin Block with Pl. No. 1259 & Part Impt.,**
Excellent Centering, Rich Color, stightly disturbed o.g., Very Fine
.....(Photo) 540.00 +
- 522 ★ **10c Ultramarine (E9). Mint, Wide Margins, Well-centered, Very Fine,**
with Photocopy & P.F. Certificate for Pair(Photo) 175.00

- 523 ★田 **10c Pale Ultramarine (E9). Mint T. Pl. No. 6043 Block of Six,**
Fresh & Well-centered, Fine-Very Fine, An Especially Choice
Example of This Very Scarce Plate Block(Photo) 4,250.00

- 524 ★ **5c Brown (J4). O.g., Wide Margins, Very Fine, with P.F. Certificate**
.....(Photo) 275.00
- 525 ★ **10c Brown (J5). Huge "Jumbo" Margins, o.g., Very Fine, an**
Unusually Large Stamp, with P.F. Certificate(Photo) 275.00

- 526 ★ **3c Deep Brown, Special Printing (J10). Well-centered, Fresh**
True Color, minute natural inclusion, Very Fine, Rare, with
Photocopy of P.F. Certificate(Photo) 3,500.00

- 527 ★ **30c Red Brown (J20). Unusually Wide Margins, Almost Perfectly**
Centered, Mint, Extremely Fine, a Beauty, with P.F. Certificate.....
.....(Color Photo) 90.00

- 528 ★ **50c Red Brown (J21). Mint, Perfectly Centered, tiny translucency**
(not thin), Extremely Fine, Exceptionally Beautiful, with P.F.
Certificate(Photo) 900.00

- 529 ★田 **1c Vermilion (J29). B. Margin Block with Part Impt.,** horiz.
separations (few reinforced by h.r.), tiny tear T.R., perfs. touch to tiny
bit in, Very Fresh, with P.F. Certificate(Photo) 2,100.00 +
- 530 ★田 **5c Deep Claret (J41). Mint B. Impt. & Pl. No. 71 Block,** Virtually
Perfect In Every Respect, Extremely Fine(Photo) 450.00
- 531 ★ **30c Deep Claret (J43). Lightly hinged, Quite Handsomely Centered,**
Very Fine, Very Attractive, with P.F. Certificate(Photo) 250.00
- 532 ★ **3c Carmine Lake (J54). Mint, light natural wrinkle, Very Fine**
Appearance(Photo) 375.00
- 533 ★ **3c Carmine Lake (J54). Mint, Rich Bright Color, Beautiful Centering,**
Fine(Photo) 375.00
- 534 ★ **½c-\$5.00 1930-31 Postage Dues (J69-J78). Cpl. Set, 5c & 10c h.r.,**
nearly all others Mint incl. 30c & 50c, \$5.00 trifle heavy natural gum
bend, Fine-Very Fine 444.50
- 535 ★ **1c Carmine Rose, Black "1c" Omitted (J89a). Mint T. Margin Single,**
Fine(Photo) 400.00

- 536 ★ **Postage Dues, Balance of Collection, 85 Nearly All Unused**
Stamps, incl. Many Better Unused Items, Used incl. Nos. J58 &
J59 (pencil cancel), also incl. some Savings Issues, Parcel Post
Due Set, last newspaper set & some newspaper facsimiles, mixed
quality yet Includes A Number of Scarce & Desirable Stamps . **E. 500-750**

OFFICES IN CHINA—DEPARTMENTAL ISSUES

537	★	2c-\$2.00 Offices in China (K1-K16). Cpl. Set, Select Centering, lightly hinged, Mostly Very Fine(Photo Ex)	1,775.00
538	★	2c-\$2.00 Offices in China (K1-K18). Cpl. Set, Fresh, h.r. (trifle heavy on some), 10c, 14c, 20c, 24c & 30c with thins, o/w Fine(Photo Ex)	E. 350-500
539	★	\$1.00 on 50c Light Violet (K15). Nicely Centered & Fresh, barest trace of hinging, Very Fine, with P.F. Certificate(Photo)	600.00
540	P	1c-30c Agriculture, "Goodall" Small Die Trial Color Proofs in Black (O1TC2a-O9TC2a). Cpl. Set, 45x52mm., Fresh, 12c light card bend barely touching stamp design, 30c repaired, o/w Very Fine	1,350.00
541	P	2c Navy, Deep Green Trial Color Plate Proof on Wove, Perforated (O36TC). Fresh, perfs. in at T. as usual	250.00
542	★	1c-90c State (O57-O67). Fresh, h.r., 30c small thin, o/w Very Good-Very Fine(Photo Ex)	1,050.00
543	★	\$2.00 State (O68). Fresh, couple short perfs., o/w Fine(Photo)	550.00
544		\$5.00 State (O69). Used (heavy cancel), faulty, Scarce	E. 150-200
545	★	\$10.00 State (O70). Fresh, o.g., Well-centered, single short perf., o/w Very Fine, Scarce(Photo)	2,750.00
546	★	\$20.00 State (O71). Fresh, o.g., Gorgeous Deep Rich Colors, single short perf., o/w Fine, Scarce(Photo)	2,250.00
547	★	1c Agriculture, Soft Paper (O94). Fresh, without gum as issued, thin spot, Fine Appearance, Scarce(Photo)	1,350.00
548	★	24c Interior, Soft Paper (O103). Fresh, o.g., h.r., tiny natural inclusion, centered to B.R., perfs. touch, Scarce(Photo)	1,100.00
549		Officials, Balance of Collection, 105 Diff. Used & Unused Stamps, lacks only State Dept. & Two Soft Papers to be complete, Better Unused incl. Nos. O5-O9, O11, O13, O14, O32(o.g.), O34(o.g.), O96(o.g.), O102(o.g.), O122(o.g.) & O123(o.g.), very mixed condition, Good-Very Fine	E. 500-750

NEWSPAPER ISSUES

550	★	5c-25c 1865-80 Newspapers (PR1-PR8). Cpl. Set of the Large Size Stamps, No. PR2 is Pelure paper ("a"), some faults as usual (No. PR2 crease, No. PR7 natural s.e., margin nick, PR8, couple thin spots, etc.), o/w Fine-Very Fine	715.00
551	★	2c-10c Gray Black, Special Printings (PR33-PR39). Couple values with trivial perf. flaws as usual, Fine-Very Fine(Photo Ex)	780.00
552	★	12c Pale Rose, Special Printing (PR40). Huge Margins, Beautifully Centered, Extremely Fine, Scarce, signed "Sp. Prtg. J.M. Bartels"(Photo)	210.00
553	★	24c, 36c Pale Rose, Special Printings (PR41, PR42). Latter tiny margin thin speck, perfs. close to touch, Rare (411 & 330 Issued respectively)	650.00
554	★	48c Pale Rose, Special Printing (PR43). Fresh & Fine, Rare (268 Issued)(Photo)	425.00
555	★	60c Pale Rose, Special Printing (PR44). Fresh, thin spot, Fine Appearance, Rare (222 Issued)(Photo)	500.00
556	★	72c Pale Rose, Special Printing (PR45). Well-centered, Large natural s.e. at B., Very Fine, Choice Rare Stamp (174 Issued)(Photo)	650.00

- 557 ★ **84c Pale Rose, Special Printing (PR46).** Fresh & Fine, Rare (164 Issued)(Photo) 675.00
- 558 ★ **96c Pale Rose, Special Printing (PR47).** Slight soiling & couple nibbed perfs., centered to L., Rare (141 Issued)(Photo) 800.00

- | | | | |
|-----|---|--|----------|
| 559 | ★ | \$1.92 Dark Brown, Special Printing (PR48). Fresh, centered trifle to B., Very Fine, An Immensely Rare Stamp, Less Than Half as Many Examples (41) Issued of this stamp than the Legendary Air Mail Invert, with P.F. Certificate | 2,400.00 |
|-----|---|--|----------|

- 560 ★ **2c-\$60.00 1879 Newspapers (PR57-PR69, PR71-PR73, PR75, PR77, PR79).** All o.g. except last two, some h.r., 84c natural s.e., \$36.00 reperfed at T., occasional faults, nearly all on lower values, o/w Fine-Very Fine 1,679.50
- 561 ★ **\$9.00, \$24.00 & \$48.00 Privately Perforated American Bank Note Co. Special Printings (PR74, PR76, PR78 vars).** Fine-Very Fine, Extremely Rare (Only 45 of each value exist)(Photo Ex) E. 350-500
- 562 ★ **2c Intense Black, Special Printing, 4c, 6c Intense Black, First Bureau Issue (PR80, PR92, PR93).** Fresh, first two o.g., h.r., 2c couple short perfs., o/w Fine; 6c Part o.g. (disturbed & offset), few tiny surface scuffs & tiny margin thin, o/w Fine 950.00
- 563 ★ **1c-96c 1885 Newspapers (PR81-PR89).** Cpl. Set, Fresh, o.g., h.r., 24c single nibbed perf., 48c couple nibbed perfs., o/w Fine-Very Fine, Better Than Usual Quality for these, also incl. Used No. PR89 (faults & off-center)(Photo Ex) 682.50
- 564 ★ **12c Pink (PR95).** Regummed, tiny thin specks, o/w Fine, Very Scarce 375.00



565



566



567



568

- | | | | |
|-----|---|--|----------|
| 565 | ★ | 36c Pink (PR97). Very lightly hinged, reperfed at R., Very Good Appearance, Rare | 2,500.00 |
| 566 | ★ | 60c Pink (PR98). Fresh, Large Part o.g., natural inclusion speck covered over thinning, Fine Appearance, Rare | 2,500.00 |
| 567 | ★ | \$3.00 Scarlet (PR100). Nicely Centered, Fresh, slight thin at T., Very Fine Appearance, Very Rare | 5,000.00 |
| 568 | ★ | \$6.00 Pale Blue (PR101). Fresh, h.r., gum disturbed by some black offset specks, trivial corner thin, Fine Appearance, Very Rare | 5,750.00 |

PARCEL POST—HUNTING PERMIT ISSUES

- 569 ★ **1c-\$1.00 Parcel Post (Q1-Q12).** Cpl. Set, some h.r., 2c, 4c, 5c & 75c small faults, o/w Fine(Photo Ex) 1,083.50

- | | | | | |
|-----|---|---|---|--|
| 570 | ★ | 田 | 25c Parcel Post (Q9). Mint B.L. Pl. No. 6175 Block of Eight with Siderographer's Initials, Excellent Centering Throughout, Extremely Fine(Photo) 2,510.00+ | |
| 571 | ★ | 田 | 2c Parcel Post Postage Due (JQ2). Mint R. Pl. No. 6243 Block of Six, couple faint gum bends as normal, Fine, A Very Scarce Plate Block(Photo) 2,750.00 | |

- 572 ★ **\$5.00 Deep Green, Rouletted (WS3).** O.g., h.r., numerous creases & minor toning spots, Scarce **E. 75-100**
- 573 ★ **\$5.00 Deep Blue (WS4)** Fresh, h.r., Fine 275.00
- 574 ★ **\$5.00 Carmine (WS5).** Fresh, small thin, Fine Appearance ... (Photo) 475.00
- 575 ★ **\$5.00 Orange on Green (WS6).** Fresh, h.r., Well-centered, small thin, Very Fine Appearance, Scarce(Photo) 2,500.00
- 576 ★ **\$1.00 Red on Green (TS1).** Fresh, without gum, natural s.e. at B., small faults, Rare Stamp(Photo) **E. 250-350**

- | | | | |
|-----|---|--|--|
| 577 | E | 2c-\$4.00 Pitney Bowes Social Security Coil Stamp Finished Essays, Six Diff. Mint Pairs, 2c, 10c, 40c, \$1.00, \$3.00 & \$4.00 Denominations, Six of Thirteen Total Denominations Issued, Very Fine, Scarce, Listed & Priced in Minkus .(Photo Ex) E. 1,000-1,500 | |
| 578 | ⊠ | Bicycle Mail Route, 25c Green, "San Francisco" Error of Spelling (12L1). Tied on Cover to Fresno, Jul 16, 1894 Backstamp, 2c Columbian (231) Tied as Postage, Fancy Illustrated Overton Wheel Co. Advert T.L., light vert file fold at L., o/w Very Fine, Quite Rare(Photo) 1,100.00 | |
| 579 | ⊠ | Bicycle Mail Route, 25c Brown Entire (12LU1). Fresno, Jul 18, 1894 pmk. at R., to Victor Bicycle Agency, Very Fine, Very Rare & Undercataloged(Photo) 1,350.00 | |

- 580 ★ **\$1.00 1934-39 Hunting Permits (RW1, RW3-RW6).** Unused, without gum, No. RW1 Wide "Jumbo" Margins, Nos. RW4 & RW5 small faults, o/w Fine-Very Fine **E. 200-250**
- 581 ★ **\$1.00 1935 Hunting Permit (RW2).** Trivial nibbed perf. at B., o/w Fine(Photo) 450.00
- 582 ★ **\$1.00 1940-48 Hunting Permits (RW7-RW15).** No. RW9 natural s.e. at R., couple h.r., No. RW15 tiny thin, o/w Fine-Very Fine 620.00
- 583 ★ **\$2.00 1949-58 Hunting Permits (RW16-RW25).** H.r., Fine-Very Fine Lot 530.00
- 584 ★ **\$3.00-10.00 1959-87 Hunting Permits (RW26-RW54).** Nos. RW29-RW31, RW33-RW37, RW39-RW54 Mint, No. RW32 small faults, No. RW38 disturbed o.g., o/w Very Fine 1,102.00

BIDDING INTERVALS

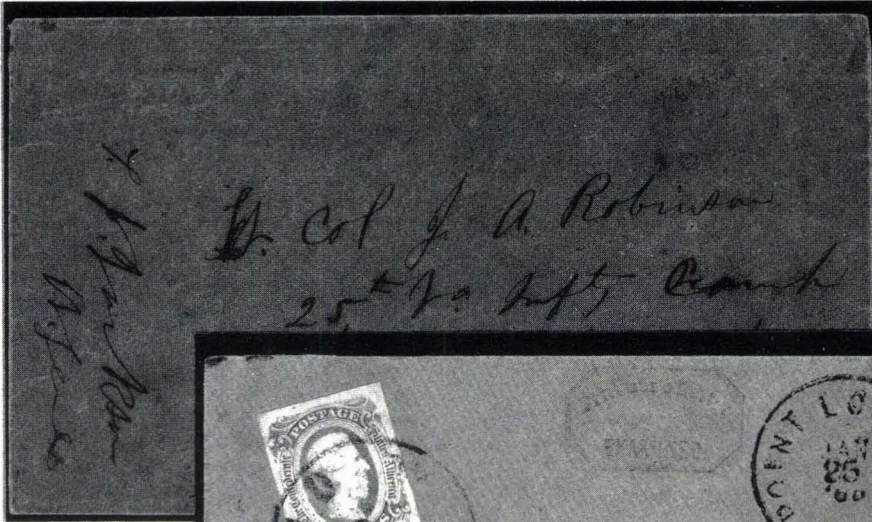
BIDS	ADVANCE	BIDS	ADVANCE
Up to \$30.00	\$1.00	\$1,900.00 - \$3,000.00	\$100.00
\$32.50 - \$60.00	\$2.50	\$3,000.00 - \$7,500.00	\$250.00
\$60.00 - \$140.00	\$5.00	\$7,500.00 - \$15,000.00	\$500.00
\$140.00 - \$300.00	\$10.00	\$15,000.00 - \$30,000.00	\$1,000.00
\$300.00 - \$750.00	\$25.00	\$30,000.00 - \$75,000.00	\$2,500.00
\$750.00 - \$1,900.00	\$50.00		

Bids which do not conform to the above will be automatically reduced to the appropriate level.

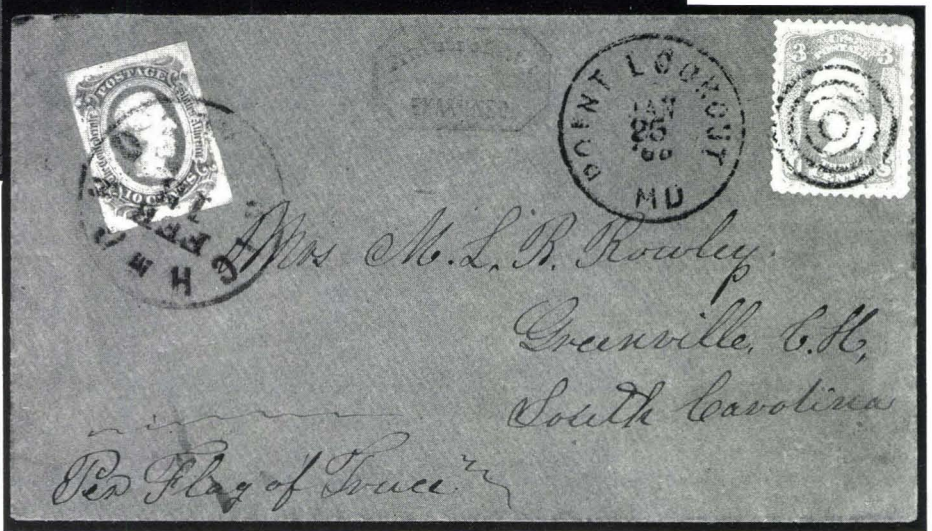


- 585 ★田 \$7.50 1984 Hunting Permit, Golden Anniversary Commemorative Special Printing (RW51 var). Mint Cross Gutter Block, From the Specially Prepared Uncut Sheets of 120 (Four Panes of 30 stamps each) Authorized by Congress to Commemorate the 50th Anniversary of Hunting Permit Stamps, Extremely Fine, from Sheet No. 12 of 15 Printed (Only 14 in Private Hands), Only Six Sheets have been broken up, **The Rarest Position Piece of The Special Printing** (Only 15 Cross Gutter Blocks Exist), A Major & Spectacular Hunting Permit Rarity, plate positions in pencil on back, with P.F. Certificate for Intact Sheet No. 12 E. 9,000-11,000

CONFEDERATE STATES



586



587

- 586 ☒ (Stonewall Jackson) T.J. Jackson, Lt. Genl., Autograph Signature of the Legendary Confederate General in the Margin of a Buff Cover Addressed to "Lt. Col. J.A. Robinson, 25th Va. Infty. Camp, Shenandoah West of Staunton, Virginia"; On the Flap is a **10c Blue (12)**, ms. cancelled, Very Fine, A Rare Signature & a Wonderfully Important Piece of American History, with Gordon Banks Certificate **E. 6,000-8,000**
- 587 ☒ **3c Rose (65) and C.S.A. 10c Blue (12)**, former Target cancel & Point Lookout Md. pmk., latter tied by Richmond Va. pmk. on Remarkably Fresh Prisoner's Cover to S.C., "Prisoner's Letter Examined" Octagon, ms. "Per Flag of Truce", Very Fine, Choice **E. 1,000-1,500**

U.S. POSSESSIONS

- 588 **CANAL ZONE, 1904, 2c Rose (1).** Unusually Well-centered, light cancel, Very Fine, signed Bloch, with Friedl Certificate 400.00
- 589 ★田 ———, **1924, 50c Lilac, Ty. A Ovpt. (80). R. Pl. No. 14042 Block of Six** (natural narrow selvage shows 50% of Pl. No.), Fresh, some minor perf. strengthening, Fine-Very Fine, Scarce Pl. No. Block**(Photo)** 1,750.00
- 590 P **CUBA, 1899, 1c-10c Pictorials, Large Die Proofs (227P1-231P1).** Complete Set, Die Sunk on 6x8" Cards, Exceptionally Fresh, Very Fine, Scarce (Reportedly Only 91 Sets Issued) 1,125.00

- 591 ★ **GUAM, 1899, 10c Brown, Ty. II (9).** Beautifully Centered, Fresh, h.r., tiny covered thin, Extremely Fine Appearance, Rare, with P.F. Certificate, signed "S.A." (Spencer Anderson).....
.....**(Color Photo)** 5,000.00

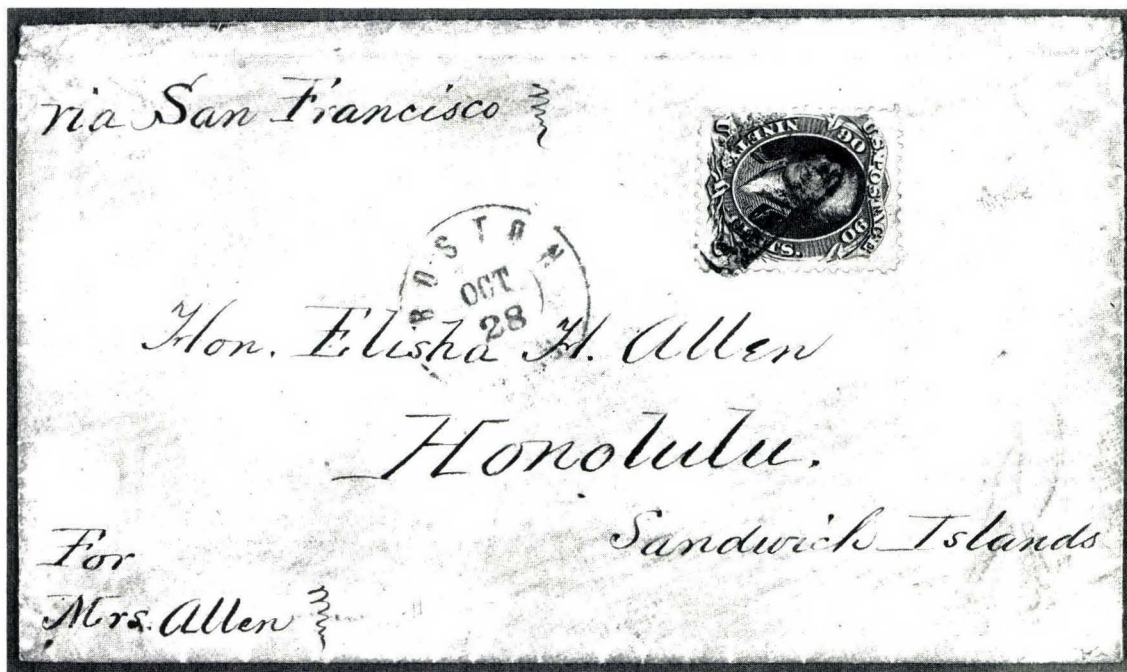
- 592 ★ ———, **1930, 2c Green, 4c Carmine, "Guam Guard Mail" Ovpts. (M1, M2).** Fresh, usual tropical o.g., Fine Set, 2c with P.F. Certificate 750.00

HAWAII

COVERS USED TO AND FROM HAWAII

- 593 ☒ **10c Green, Ty. II (32).** Pos. 35R, faults, tied by New York pmk. on Nov. 1857 Cover to **Hawaii**, without flap, Scarce Usage**(Photo)** E. 100-150

- 594 ☒ **5c Buff (67). Horiz. Pair,** Neatly tied by Grids, "Watertown N.Y. Aug 6, 1862" pmk. on Bishop Corresp. Cover to **Hawaii**, bit reduced at R., Fine, Extremely Rare, Ashbrook notes on back that this usage "May Be Unique"**(Photo)** E. 1,500-2,000
- 595 ☒ **12c Black (69).** Well-centered, minor perf. toning, tied by San Francisco Cog & Bold **Red, "Honolulu U.S. Postage Paid"** on Cover from **Hawaii** to Boston, flap tear, Lovely Usage, Scarce**(Photo)** E. 1,500-2,000

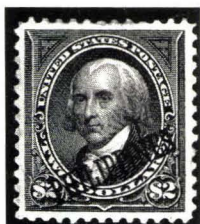


- 596 ☒ **90c Blue (72).** Rich Color, tied by Boxed "Paid" on Neat Blue Linen-lined Cover to **Honolulu, Hawaii**, Red Boston, Mass. pmk., Very Fine, An Extraordinary **Unique** Usage **E. 15,000-20,000**
- 597 ☒ **5c Brown (76).** Wide natural s.e. at L., tied by S.F. Cog on Cover to Mass. from **Hawaii**, Bold Red "Honolulu U.S. Postage Paid", bit reduced at L., Very Fine(Photo) **E. 750-1,000**
- 598 ☒ **5c Brown (76).** Horiz. Pair, Deep Shade, tied by Circles of Wedges, San Francisco Cal. pmk. on Cover **From Hawaii** to N.Y., Red Oval "Hawaiian Steam Service" & Black Honolulu Hawaiian Islands" pmk., part of flap & T.L. corner of cover professionally restored, Very Handsome Appearance, Rare(Photo) **E. 1,500-2,000**

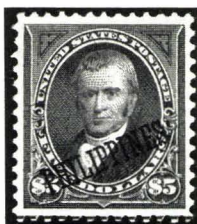
13c "MISSIONARY", TYPE I



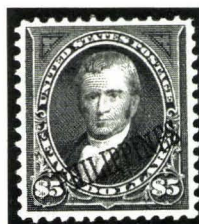
599



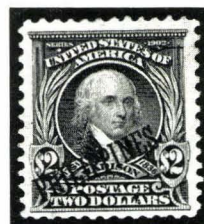
600



601



602



603

599		1851, 13c Blue, "Missionary" (3). Margins Three Sides (repaired at T. with some portions of design drawn in), Bold Grid of Squares Cancel, small crease & small tear, A Very Fresh & Presentable Example of This Classic Hawaiian Rarity (virtually all are repaired), with P.F. Certificate	9,000.00
600	★	PHILIPPINES, 1901, \$2.00 Dark Blue (224). Exceptionally Well-centered, Extremely Fine	700.00
601	★	_____, 1901, \$5.00 Dark Green (225). Fresh, Gorgeous Margins & Centering, Extremely Fine "Gem", with P.F. Certificate	1,650.00
602	★	_____, 1901, \$5.00 Dark Green (225). Fresh, Deep Rich Color, h.r. (lacking some gum from hinge removal), tiny hand-stamp on back, Very Fine, Scarce	1,650.00
603	★	_____, 1903, \$2.00 Dark Blue (238). Lightly hinged, Handsomely Centered, Very Fine, Unusually Nice, with P.F. Certificate	2,000.00

UNITED NATIONS

MAJOR AIR POST RARITY



604	★	1951, 15c Deep Ultramarine, Imperf. (C3 var). Mint Horiz. Pair, light bend betw. stamps, Very Fine, Fantastic United Nations Error Rarity, Mentioned in Scott but Unpriced, A Pair Has Never Been Offered at Public Auction, (Two Sheet Margin Singles were Sold at Auction More Than Ten Years Ago)	E. 10,000
-----	---	--	-----------

END OF SALE-THANK YOU

UNITED STATES STAMPS AND POSTAL HISTORY

INDIVIDUAL REALIZATIONS ARE HAMMER PRICES. GROSS REALIZATION
INCLUDES 10% BUYERS PREMIUM.

1	1650	60	220	119	280	178	600	236	220	294	425	353	325
2	2700	61	160	120	325	179	325	237	250	295	675	354	300
3	150	62	220	121	200	180	425	238	160	296	1000	355	1150
4	300	63	650	122	425	181	500	239	575	297	300	356	4500
5	200	64	170	123	750	182	700	240	100	298	325	357	120
6	400	65	90	124	325	183	150	241	220	299	350	358	230
7	135	66	80	125	500	184	1050	242	110	300	850	359	200
8	700	67	850	126	1550	185	650	243	85	301	1700	360	375
9	150	68	2200	127	475	186	1400	244	475	302	260	361	425
10	375	69	800	128	425	186A	280	245	650	303	425	362	2100
11	4250	70	500	129	1800	187	2900	246	280	304	130	363	135
12	1550	71	105	130	500	188	8000	247	150	305	4750	364	700
13	400	72	75	131	260	189	6500	248	800	306	1100	365	3000
14	600	73	240	132	2900	190	4750	249	450	307	4500	366	850
15	210	74	190	133	1450	191	9000	250	6250	308	3750	367	800
16	220	75	1050	134	1250	192	1700	251	400	309	8000	368	400
17	3250	76	200	135	2100	193	2000	252	210	310	350	369	1050
18	3500	77	1500	136	1450	194	1550	253	500	311	300	370	10,000
19	5250	78	200	137	350	195	675	254	1000	312	3250	371	3500
20	10,500	79	1450	138	400	196	240	255	10,000	313	9500	372	1550
21	1200	80	125	139	210	197	240	255A	—	314	200	373	1650
22	850	81	1400	140	2100	198	475	256	1100	315	375	374	525
23	1100	82	400	141	1700	199	400	257	1350	316	725	375	800
24	850	83	95	142	625	200	230	258	280	317	1100	376	4000
25	800	84	150	143	750	201	3500	259	2100	318	400	377	3250
26	600	85	450	144	260	202	800	260	400	319	375	378	12,500
27	850	86	32½	145	1550	203	600	261	4250	320	400	379	42,500
28	575	87	85	146	900	204	140	262	2200	321	700	380	1800
29	2100	88	160	147	325	205	350	263	2200	322	240	381	1900
30	1200	89	75	148	115	206	575	264	725	323	450	382	1450
31	1050	90	7000	149	700	207	1200	265	9500	324	170	383	1200
32	1850	91	7000	150	1650	208	2200	266	260	325	1200	384	2300
33	400	92	4500	151	1100	209	1100	267	270	326	1100	385	5250
34	3000	93	1250	152	375	210	450	268	375	327	575	386	55,000
35	1700	94	180	153	240	211	1650	269	1150	328	1000	387	240
36	2400	95	170	154	650	212	550	270	525	329	750	388	8500
37	1700	96	240	155	625	213	210	271	950	330	1300	389	8000
38	250	97	1200	156	1150	214	1250	272	300	331	900	390	5000
39	1650	98	425	157	575	215	125	273	1200	332	160	391	17,000
40	850	99	160	158	1250	216	110	274	850	333	1750	392	1600
41	475	100	240	159	1200	217	2400	275	1200	334	950	393	3500
42	160	101	675	160	1300	218	300	276	1650	335	525	394	625
43	400	102	100	161	2900	219	425	277	1100	336	1350	395	1150
44	425	103	200	162	1650	220	525	278	375	337	1650	396	3000
45	350	104	425	163	700	221	800	279	350	338	1400	397	2200
46	130	105	2500	164	1050	222	125	280	350	339	525	398	425
47	150	106	425	165	450	223	800	281	1150	340	1050	399	350
48	3000	107	550	166	625	224	270	282	800	341	350	400	1250
49	1450	108	525	167	300	225	350	283	450	342	650	401	1200
50	800	109	250	168	3500	226	230	284	1000	343	1550	402	575
51	325	110	220	169	3750	227	1800	285	1050	344	180	403	14,000
52	280	111	60	170	170	228	1500	286	500	345	280	404	725
53	425	112	400	171	2900	229	1450	287	575	346	650	405	475
54	450	113	270	172	3000	230	2300	288	475	347	1700	406	4000
55	425	114	450	173	525	231	260	289	3250	348	550	407	350
56	1650	115	150	174	800	232	350	290	4000	349	750	408	375
57	650	116	220	175	1350	233	375	291	2200	350	375	409	350
58	475	117	1100	176	675	234	7000	292	450	351	270	410	1000
59	140	118	350	177	800	235	260	293	700	352	115	411	2900
												412	210

413	375	490	150	567	4000				
414	450	491	750	568	4750				
415	450	492	750	569	220				
416	650	493	850	570	1900				
417	900	494	675	571	525				
418	300	495	650	572	80				
419	1650	496	150	573	115				
420	1650	497	160	574	85				
421	115	498	75	575	675				
422	350	499	350	576	475				
423	200	500	160	577	500				
424	105	501	180	578	850				
425	350	502	425	579	1100				
426	900	503	425	580	150				
427	425	504	325	581	100				
428	280	505	4000	582	135				
429	120	506	5750	583	160				
430	160	507	1000	584	375				
431	425	508	5750	585	7500				
431	475	509	1450	586	5250				
433	450	510	1750	587	850				
434	150	511	9500	588	290				
435	425	512	1350	589	475				
436	950	513	11,000	590	500				
437	350	514	13,000	591	1550				
438	3250	515	10,500	592	180				
439	1150	516	600	593	85				
440	900	517	6000	594	1100				
441	5000	518	3250	595	1200				
442	—	519	W/D	596	10,000				
443	700	520	1200	597	525				
444	450	521	270	598	1700				
445	525	522	170	599	3500				
446	27,000	523	2600	600	270				
447	3000	524	220	601	850				
448	325	525	350	602	625				
449	425	526	2300	603	750				
450	200	527	230	604	7500				
451	425	528	625	END OF SALE THANK YOU					
452	475	529	375						
453	575	530	475	GROSS REALIZATION:					
454	550	531	325						
455	700	532	280	\$1,013,991.25					
456	725	533	180						
457	1350	534	270						
458	650	535	190						
459	2100	536	900						
460	2900	537	850						
461	1250	538	300						
462	375	539	250						
463	3250	540	325						
464	300	541	45						
465	270	542	300						
466	500	543	90						
467	750	544	100						
468	160	545	1250						
469	4750	546	500						
470	525	547	210						
471	350	548	190						
472	290	549	525						
473	240	550	475						
474	240	551	600						
475	13,500	552	325						
476	850	553	350						
477	1700	554	450						
478	550	555	300						
479	400	556	260						
480	475	557	450						
481	325	558	475						
482	575	559	3500						
483	600	560	900						
484	80	561	750						
485	170	562	400						
486	650	563	375						
487	675	564	70						
488	170	565	425						
489	625	566	1250						