

DECEMBER 2, 1989

UNITED STATES POSTAL STATIONERY

THE AWARD WINNING CHARLES L. WUNSCH COLLECTION



OFFICIAL WORLD STAMP EXPO '89SM AUCTION

DECEMBER 2, 1989

Robert A. Siegel

AUCTION GALLERIES, INC.

160 EAST 56th STREET
NEW YORK CITY, NY 10022

UNITED STATES POSTAL STATIONERY

SALE #717

CONDITIONS OF SALE

1. On all lots sold a commission of 10% on the hammer price is payable by the buyer.
2. The terms of sale are strictly cash on delivery to the highest bidder unless special arrangements have been made prior to the sale. The fact that an item is placed on extension (submitted to an expertising committee for certification) does not relieve the successful bidder from this condition of sale.
3. All bids are per lot as numbered in the catalogue unless otherwise announced by the auctioneer at the time of sale. The right is reserved to group two or more lots; to withdraw any lot or lots from the sale, or to act on behalf of the seller. The Galleries will bid on behalf of clients, but will not be responsible for any errors in the execution of bidding instructions. The auctioneer shall regulate the bidding and in the event of any dispute his decision shall be final.
4. All lots are offered subject to a reserve price. The auctioneer may implement such reserve price by bidding on behalf of the seller. It may also be inferred that all sellers have been given advances against the sale of their material and therefore we have a financial interest in such lots over and above the sellers commission they are charged.
5. Any lot, the description of which is incorrect, is returnable, but only within 14 days of receipt. All disputed lots must be returned intact as received. **The following lots may not be returned for any reason whatsoever: Lots containing ten or more stamps; Lots from buyers who have had the opportunity to examine them before the sale; Lots described as having defects or faults may not be returned because of any faults. No illustrated lots may be returned because of centering, margins or other factors shown in the illustrations.**
6. Successful bidders, unless they are known to us or supply acceptable references are expected to make payment in full before the lots are delivered. Mail bidders will be notified of the amounts of their purchases. All mail bidders who have established credit with us must make payment within three days after receipt. We reserve the right in our sole and absolute discretion to demand cash payment at the time a lot is knocked down to any bidder who has not previously established credit with us or whose account is in arrears. In the event any buyer refuses to pay cash for any lot at the time it is knocked down to him, the auctioneer reserves the right to re-offer the lot immediately for sale to the highest bidder. Sales tax will be added to purchases where applicable.
7. If the purchase price has not been paid within the time limit, nor lots taken up within seven days from date of sale they must be resold and any loss arising from such sale will be charged to the defaulter. Any account more than thirty days in arrears is subject to a late payment charge of 1½% per month so long as the account remains in arrears. If the auctioneer, in his discretion, should institute any action to secure payment of a delinquent account the defaulting purchaser shall pay all expenses incurred by the auctioneer and such charges will be added to the amount owed.
8. All lots are sold as genuine but should any lot be proved otherwise by written opinion of any competent, responsible authority acceptable to us, immediate refund of the full purchase price will be made, provided that such claim is made in writing within 14 days from date of sale. If claim is not made within this period, no lots are returnable for any reason at any time. So long as we are notified within the 14 day period that an opinion is being sought and **the material is submitted to an acceptable authority within that period** the matter will remain open until such opinion is rendered. **All "Extension" lots will be considered cleared and satisfactory to the buyer if we are not notified to the contrary within six months from date of sale. We will not be responsible for any charges incurred by the buyer for expertization fees and costs unless the opinion states the item is not genuine, in which case we will pay actual costs up to a maximum of \$50.00.** In the event an item is proved "not as described" it is returnable for full refund, and the buyer will be paid interest (at the prevailing Treasury Bill Rate) for the time his funds have been on deposit with us during the extension period.
9. Until paid for in full, all lots remain the property of Robert A. Siegel Auction Galleries, Inc. on behalf of the seller.
10. Some consignors have been advanced monies against the sale of their properties.
11. All forwarding charges will be added to the purchase price. The mode of shipment shall be at our option unless we are given specific instructions.
12. Lots may be sent for inspection to buyers known to us upon written application. All such lots must be returned to us by registered mail, adequately insured and within 24 hours after receipt. The applicant assumes all responsibility and will provide insurance against all risks from time of receipt until they are actually received back by us, and is to pay all expenses of postage and insurance. **No lots can be sent for inspection within ten days from date of local viewing. Large lots and collections cannot be sent for inspection.**
13. Agents are responsible for all purchases made on behalf of their clients unless other arrangements are made prior to the sale.
14. The placing of a bid shall constitute acceptance of the foregoing conditions of sale.

ROBERT A. SIEGEL, WALTER J. MADER, BRIAN M. BLECKWENN,
Licensed Auctioneers

N.Y.C. Auction License No. 371761, 797537

FOR TABLE OF DESCRIPTIONS SEE PAGES 29 & 38

717th SALE



OFFICIAL WORLD STAMP EXPO '89SM AUCTION

UNITED STATES POSTAL STATIONERY

THE CHARLES L. WUNSCH COLLECTION

AWARDED FOUR LARGE INTERNATIONAL GOLDS,
EXHIBITED IN THE F.I.P. CLASS AT FINLANDIA '88 AND TO
DATE THE ONLY UNITED STATES POSTAL STATIONERY
EXHIBIT TO BE SO HIGHLY RATED INTERNATIONALLY.

ALMOST ENTIRELY 1853-1865 NESBITT ISSUES

FEATURING

WESTERN AND TERRITORIAL USAGES, WESTERN EXPRESS
COVERS, FANCY CANCELLATIONS, ENTIRES WITH POSTAL
HISTORY SIGNIFICANCE, "SOUTHERN LETTER UNPAID",
"OLD STAMPS NOT RECOGNIZED", U.S. USED IN THE
CONFEDERACY, RARE COMPOUND DIE USAGES, UNIQUE
USED SIX CENT STAR DIE CUT SQUARE, USED NO. U31,
UNUSED NO. U32, USED NO. U71.

SOLD BY ORDER OF THE OWNER
AT PUBLIC AUCTION

SATURDAY, DECEMBER 2, 1989 AT 7:30 P.M.

**AT THE SHERATON WASHINGTON HOTEL
DELAWARE SUITE**

Robert A. Siegel

AUCTION GALLERIES, INC.

160 EAST 56th STREET
NEW YORK CITY, NY 10022

LOTS ON VIEW

NEW YORK VIEWING—Wednesday, November 15th from 9:30 A.M. until 5:00 P.M.

WORLD STAMP EXPO VIEWING—Friday, November 17th thru Monday, November 20th and Friday, November 24th thru Friday, December 1st from 10:00 A.M. until 6:00 P.M. each day at our Super Booth number 133-136 in the Washington Convention Center and on Saturday, December 2nd from 10:00 A.M. until 6:00 P.M. at the Sheraton Washington Hotel Wisconsin Room.

We may be reached during World Stamp Expo
at our Super Booth
(202) 371-5075

PUBLIC AUCTION

SATURDAY, DECEMBER 2, 1989 AT 7:30 P.M.

UNITED STATES POSTAL STATIONERY The Award Winning Charles L. Wunsch Collection

WESTERN USAGES

- 4001 ☒ **Astoria Ogn Nov 12**, Mostly Clear pmk. on **10c Green on White Star Die Entire (U32)** to Maine, stamp Uncancelled (Will Yield Very Fine Unused Full Corner, cat. \$750.00), Very Fine(Photo) E. 250-350
- 4002 ☒ **Downieville, Cal. May 25, 1861**, Clear pmk., matching **Bold Star** cancel on **10c Green on White Star Die Entire (U32)** to N.Y., Very Fine, Scarce(Photo) E. 250-350
- 4003 ☒ **Downieville, Cal Jul 26, 1861**, Clear pmk., matching **Bold Star** cancel on **10c Green on Buff Star Die Entire (U33)** to Fort Madison, Iowa, Very Fine, Scarce(Photo) E. 250-350
- 4004 ☒ **Benecia, Fosters Bar & Nevada City, Cal.**, Clear pmks. on Separate **10c Green on Buff Entires (U16 two, U18)**, Fine Lot E. 75-100
- 4005 ☒ **Fiddletown, Cal.**, Clear pmk. on **10c Green on White Star Die Entire (U32)**, cover reduced at R. partly into stamp (mended with portion of stamp added) & ms. pmk. on **10c Pale Green on Buff Entire, Die 2 (U18a)**, cover edge faults, Scarce E. 100-150
- 4006 ☒ **Fort Jones Cal Oct 28**, Clear pmk., ms. cancel on **10c Yellow Green on Buff Entire (U41)** to Ill., some slight cover edge faults, o/w Fine, Scarce E. 75-100
- 4007 ☒ **Georgetown, Cal.**, Bold Town pmks. on **Two Diff. 10c Green Star Die Entires (U32, U33)**, former with 1861 year date in pmk., same correspondence, both with extensive sealed cover tears, still Very Fine Appearance E. 250-350
- 4008 ☒ **Grizzly Flat Cal Jul 18**, Bold pmk. on **10c Green on Buff Star Die Entire (U33)** to Ohio, Str. Line "Forwarded" & "Due 3" Handstamps, small tape stain over small edge tear, o/w Very Fine(Photo) E. 200-250

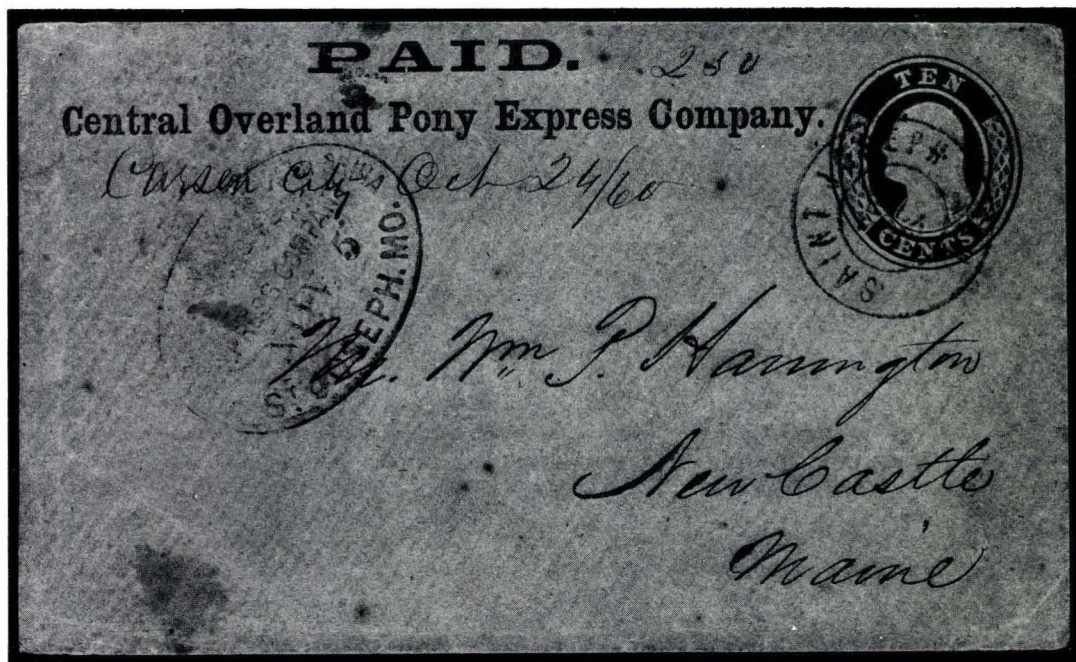
- 4009 ☒ **Ione Valley (Cal.) June 9, 1861**, Heading on four page letter enclosed in **10c Green on Buff Star Die Entire (U33)**, ms. penstroke cancel (no Town pmk.), contents mention farming, Washoe & Esmeraldo Silver Mines, The Civil War, The Douglas Democracy & Republican Parties, likely outcome of the War, etc., Very Fine E. 150-200
- 4010 ☒ **Iowa City Cal Feb 1**, Bold pmk. on **10c Pale Green on White Entire, Die 2 (U17a)** to Vt., expertly rejoined along edges, slightly reduced at R., o/w Very Fine(Photo) E. 50-75
- 4011 ☒ **Johnsons Ranch Cal May 4** (day in ms.), Clear pmk. on **10c Pale Green on Buff Entire (U16a)** to Ohio, flap mend, o/w Very Fine(Photo) E. 50-75
- 4012 ☒ **Marysville Cal Paid by Stamps Apr 19**, Clear Blue pmk. on **10c Pale Green on Buff Entire, Die 2 (U18a)**, matching Square Grid cancel, Very Fine E. 50-75
- 4013 ☒ **Marysville Cal Feb 2**, Clear Blue pmk., matching Grid of Squares cancel on **10c Green on Buff Star Die Entire (U33)**, ms. "Due 10", couple sealed cover tears (one through stamp), o/w Fine E. 100-150
- 4014 ☒ **Morman Island Cal Jan 31**, Clear pmk. on **10c Green on Buff Star Die Entire (U33)** ms. "Via Panama", slightly reduced at L., o/w Very Fine(Photo) E. 200-250
- 4015 ☒ **North San Juan Cal. Oct 10**, Clear pmk. on **10c Green on Buff Star Die Entire (U33)** to Conn., Very Fine(Photo) E. 250-350
- 4016 ☒ **Rattlesnake, Cal. March 23, 1863**, Clear Double Circle pmk. (date in ms.), Circle of Wedges cancel on **10c Yellow Green on Buff Entire (U41)** to Maine, slightly reduced at L., Very Fine E. 75-100
- 4017 ☒ **Strawberry Valley, Sutter Creek, Todds Valley, Cal.**, Clear or Mostly Clear pmks. on **10c Green on White, Buff Entires (U16 two, U17)**, first front only, o/w Fine E. 75-100
- 4018 ☒ **Suisun City Cal. Feb 26**, Bold pmk. on **10c Green on Buff Star Die Entire (U33)** to Ill., another Bold Strike of pmk. on back, reduced at R. (barely touching stamp), portion of entire with stamp torn away & skillfully restored, Scarce E. 100-150
- 4019 ☒ **Table Rock Cal 6 Jul**, Mostly Clear Bold pmk. on **10c Green on Buff Star Die Entire (U33)**, Fine E. 200-250
- 4020 ☒ **Yankee Jims Cal Feb 3**, Clear pmk. (additional Bold strike) on **10c Pale Green on Buff Entire (U18a)** to Pa., Very Fine E. 50-75

TERRITORIAL USAGES

- 4021 ☒ **Kansas Territory**, Three Diff. cancels on **3c 1853-60 Entires**, Cancels incl. Prairie City & Leavenworth City, former without flap, Very Fine E. 100-150
- 4022 ☒ **Monticello W.T. (Washington Territory) June 25**, ms. Territorial pmk. on **10c Green on Buff Star Die Entire (U33)** to Boston, ms. penstroke cancels, Boston backstamp, minor sealed edge tear, Very Fine, Scarce(Photo) E. 250-350
- 4023 ☒ **Port Townsend W.T. (Washington Territory)**, ms. pmk. on **10c Green on Buff Star Die Entire (U33)** to **Germany**, additionally franked with **Eleven 3c Red (26)**, Three on back, Two overlap L. cover edge, most 3c with faults or faulty, Red N. York Pkt pmk. & Red Boxed Transit, expertly rejoined along cover seams, small cover edge faults & flap mend, Rare Multiple Franking Territorial Cover, ex-Seybold(Photo) E. 250-350
- 4024 ☒ **Vancouver W.T. (Washington Territory) Oct 9**, Clear pmk. on **10c Pale Green on Buff Entire, Die 2 (U18a)** to Pa., cover mends, reduced at T., Very Fine Appearing, Scarce(Photo) E. 75-100
- 4025 ☒ **Territorial Covers**, Four Diff. on **3c 1853-60 Entires**: Saint Paul Min. Ter., Topeka K.T., Nebraska City N.T. & Fort Kearny N.T., Fine-Very Fine Lot E. 75-100

WESTERN EXPRESS COMPANY USAGES

- 4026 ☒ **J. Bamber & Co./Contra-Costa/Express/San Francisco**, Clear Large Oval Handstamp on **3c Red on Buff Star Die Entire (U27)** to Oakland, Cal., **W.F. & Co. Printed Frank** (Haller WF-E, #55), Bold **Blue** "Wells Fargo & Co. Oroville" Oval Handstamp, Very Fine, Attractive **E. 50-75**
- 4027 ☒ **J. Bamber & Cos./Paid/Contra Costa Express**, Bold Large Oval Handstamp, Large **Blue** "**J. Bamber & Cos. Express S.F.**" Double Circle cancel on **3c Pink on Buff Entire (U35)** to S.F., ms. "Pachico Sept 4" docketing (origin), Very Fine **E. 75-100**
- 4028 ☒ **J. Bamber & Cos./Paid/Contra Costa Express**, Bold Large Oval Handstamp, Bold "**Answered by/Bamber & Cos. Express/Office Davis St./Between Broadway & Vallejo**" Boxed Handstamp on **3c Red on Buff Entire (U10)** to S.F., couple cover scuffs in address, o/w Very Fine **E. 75-100**
- 4029 ☒ **J. Bamber & Cos./Paid/Contra Costa Express**, Clear Large Oval Handstamp, Clear "**Answered by/Bamber & Cos. Express/Office Davis St./Between Broadway & Vallejo**" Boxed Handstamp on **3c Red on Buff Entire (U10)** to S.F., back tear, Very Fine **E. 50-75**

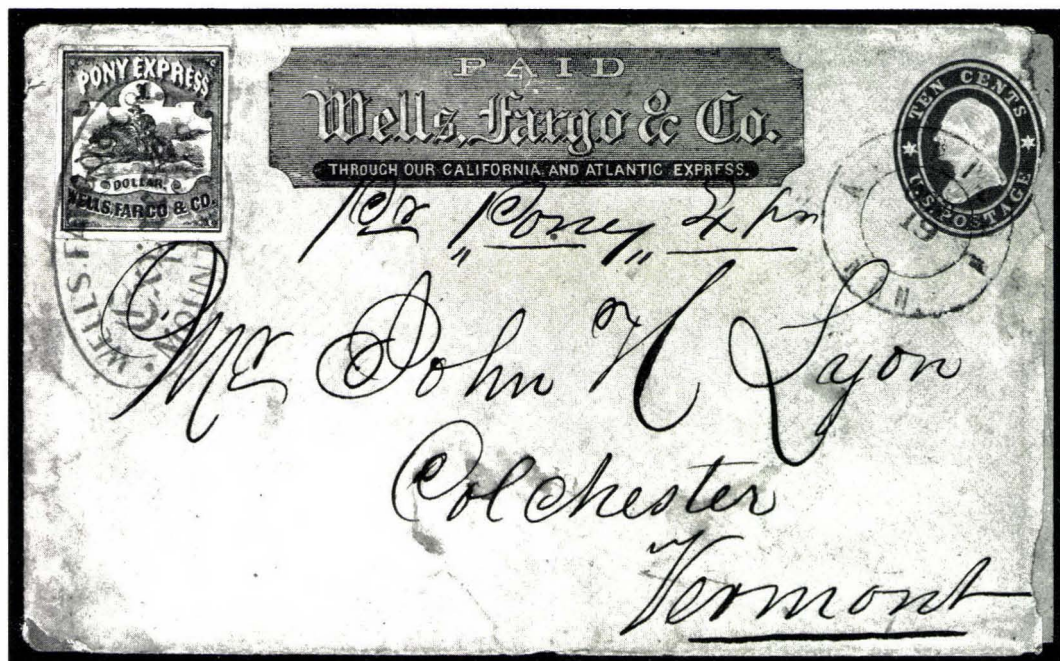


- 4030 ☒ **The Central Overland California/& Pikes Peak/Express Company/Nov 5/St. Joseph Mo.**, Partly Clear Large Oval Handstamp on **10c Pale Green on Buff Entire (U18a)** to Maine, ms. Carson City (Nevada) Oct 24/60 ms. pmk., St. Joseph, Mo. Double Circle pmk., ms. "2.50" rate mark, "**Paid 2.50 (amount in ms./Central Overland Pony Express Company)**" Printed Frank (Haller FC1, #28), Very Fine Trans-continental Rate Pony Express Cover, Rare, Haller states "**Three Covers Known**. Probably for company officials only" (Unpriced in Haller) . **E. 2,000-3,000**

- 4031 ☒ **The Central Overland California/& Pikes Peak/Express Company/Jul 18/Denver City K.T.** (Kans. Terr.), Clear Large Oval Handstamp (additional strike on back) on **3c Red on Buff Star Die Entire (U27)** to Wis., St. Joseph, Mo. pmk., 1860 Usage, slightly reduced at L., Very Fine, with P.F. Certificate(Photo) **E. 500-750**
- 4032 ☒ **The Central Overland California/& Pikes Peak/Express Company/Oct 18/St. Joseph MO.**, Mostly Clear Large Oval Handstamp on **3c Red on Buff Star Die Entire (U27)** to S.F., ms. "Pony Express" & Red "California/Paid/Pony Express" Oval Handstamp, ms. "Paid 5.00" (amount in pencil), 1860 or 1861 Usage, without flap, small mend & small sealed cover tear, o/w Very Fine, Scarce East to West Pony Express Cover (Photo) **E. 1,500-2,000**
- 4033 ☒ **Freeman & Co./Express/Grass Valley**, Bold Oval Handstamp on **3c Red on White Entire (U9)** to S.F., **Red Freeman & Co. Printed Frank** (Haller FF7, Ty. 3a, #15), Very Fine(Photo) **E. 100-150**
- 4034 ☒ **Freeman & Co./Express/Santa Cruz**, Clear Blue Oval Handstamp on **3c Red on Buff Entire (U10)** to San Jose, Cal., **Red Freeman & Co. Printed Frank** (Haller FF7, Ty. 4, #18), slightly reduced at L., minor cover stains & couple minor cover tears, o/w Very Fine **E. 75-100**
- 4035 ☒ **Greenhood & Newbauer/Express/Weaverville, Cal.**, Clear Blue Double Lined Oval Handstamp on **3c Red on White Entire (U9)** to S.F., **Greenhood & Newbauer Printed Frank** (Haller FG6, Ty. 1, #15), without part of flap, Very Fine(Photo) **E. 100-150**
- 4036 ☒ **Greenhood & Newbauer/Express/Weaverville, Cal.**, Clear Double Lined Oval Handstamp on **3c Red on Buff Entire (U10)** to S.F., **Greenhood & Newbaner (Spelling Error) Printed Frank** (Haller FG6, Ty. 1a, #18), Very Fine, Scarce, ex-Marcus White(Photo) **E. 100-150**
- 4037 ☒ **Greenhood & Newbauer/Weaverville**, Bold Blue Double Circle Handstamp on **3c Pink on Buff Entire (U35)** to Yreka, Cal., 1864 Usage, **Greenhood & Newbauer Printed Frank** (Haller FG6, Ty. 1, #77), Very Fine(Photo) **E. 100-150**
- 4038 ☒ **Hinckley & Co.'s Express/Denver City/Nov 19 1860**, Clear Large Circular Handstamp on **3c Red on White Entire (U9)** to Ill., Grid cancel, Saint Joseph, Mo. Double Circle pmk., **Hinckley & Co.'s Printed Frank in Fancy Scroll** (Haller FH7, Ty. 1, #15), flap reaffixed, o/w Very Fine(Photo) **E. 750-1,000**
- 4039 ☒ **Hinckley & Co.'s Express/Denver City/Oct 15, 1860**, Clear Large Circular Handstamp on **3c Red on Buff Entire (U10)** to Ill., Grid cancel, Saint Joseph, Mo. Double Circle pmk., **Hinckley & Co.'s Printed Frank in Fancy Scroll** (Haller FH7, Ty. 1, #18), Very Fine, Rare(Photo) **E. 750-1,000**
- 4040 ☒ **Holladay/Helena, Montano**, Partly Readable Circular Handstamp on **3c Pink on White Entire (U58)** to N.Y., "Boyd's Dispatch 39 Fulton St. . . . 15, 1867" cancel, **The Holladay Overland Mail and Express Company Printed Frank** (Haller FH9, #125), slightly reduced at L., minor cover edge faults at L., o/w Very Fine, Scarce(Photo) **E. 250-350**
- 4041 ☒ **Kennedy, Long & Co's/Express and Transfer Company/Office, 113 Post Street, San Francisco**, Blue Printed Frank (Haller FK4, Ty. 2, #127) on **3c Pink on White Entire (U58)** to Portland, Oregon, S.F., Cal. pmk., cover reduced at R. slightly into stamp, Scarce ... (Photo) **E. 200-250**
- 4042 ☒ **Langtons Express, Downieville**, Clear Large Oval Handstamp on **3c Red on Buff Entire (U10)** to S.F., **Langton's Pioneer Express Printed Frank** (Haller FL3, Ty. 4, #18), ms. "Val \$1.00", slightly reduced at L., o/w Very Fine **E. 75-100**

- 4043 ☒ **Langton's/Paid/Pioneer Express, Printed Frank** (Haller FL3, Ty. 5, # Unlisted) on **10c Green on White Star Die Entire (U32)** to Penn., **Blue "Virginia City Utah"** Large Circular Handstamp, overall soiling & light staining, opened two sides & small cover edge faults, o/w Fine, Scarce(Photo) **E. 350-500**
- 4044 ☒ **Langton's/Paid/Pioneer Express, Printed Frank** (Haller FL3, Ty. 5, Not Listed in Black) on **10c Yellow Green on Buff Entire (U41)**, ms. "per Steamer", New-York Double Circle pmk., Very Fine ... (Photo) **E. 100-150**
- 4045 ☒ **Livingston Fargo & Co./By The American Express, Blue Printed Frank** (Haller FL6, #18) on **3c Red on Buff Entire (U10)** to Ohio, ms. "Death Agent please deliver Immediately", flap reaffixed, cover mends, Fine Appearance(Photo) **E. 250-350**
- 4046 ☒ **From/Noisy Carrier's/Mail/77 Long Wharf S.F. Cal., Clear Green Boxed Handstamp on 6c Green on Buff Entire (U14)** to Maine, "New-York Ship Feb 21" pmk., ms. "Via Nicaragua", minor cover mends along B. edge, o/w Very Fine(Photo) **E. 500-750**
- 4047 ☒ **From/Noisy Carrier's/Mail/77 Long Wharf S.F. Cal., Clear Boxed Handstamp on 10c Pale Green on Buff Entire, Die 1 (U16a)** to Ill., S.F. 185? pmk., expertly rejoined along cover seams, o/w Very Fine(Photo) **E. 350-500**
- 4048 ☒ **Pacific Express Co./Paid/Stockton, Bold Blue Double Oval Handstamp on 3c Red on Buff Entire (U10)** to S.F., **Blue "Pacific Express Stockton Feb 18"** Oval cancel, Merchant's Handstamp Corner Card on back, Very Fine(Photo) **E. 150-200**
- 4049 ☒ **Pacific Express Co. San Francisco, Partly Readable Blue Double Circle Handstamp on 10c Pale Green on Buff Entire (U18a)** to Mass., N.Y. Receiving pmk., **Pacific Express Illustr. Printed Frank** (Haller FP1, Ty. 1, Unlisted), small sealed cover tear, o/w Very Fine(Photo) **E. 100-150**
- 4050 ☒ **Pacific Express Co./San Francisco/Feb 7, Bold Blue Large Double Circle Handstamp on 3c Red on Buff Entire (U10)** to Sacramento, Cal., **Pacific Express Illustr. Printed Frank** (Haller FP1, Ty. 1, #18), Very Fine(Photo) **E. 75-100**
- 4051 ☒ **Pacific Express Co./Sacramento/Dec 9, Mostly Readable Oval Handstamp on 3c Red on White Entire (U9)** to S.F., **Pacific Express Illustr. Printed Frank** (Haller FP1, Ty. 1, #15), Fine **E. 50-75**
- 4052 ☒ **Pacific Express Company/Franked Letter, Printed Frank** (Haller FP2, Ty. 2, #931-7) on **2c Green on White Entire (U311)** to Mo., "Paris, Tex. Oct 15, 1888" pmk., slightly reduced at R., o/w Very Fine(Photo) **E. 150-200**
- 4053 ☒ **Paid/Pacific Union Express Co., Red Printed Frank** (Haller FP4, Ty. 1, #127) on **3c Pink on Buff Entire (U59)** to S.F., Bold "Napa Messr, Oct 10" Large Double Circle cancel, Very Fine **E. 75-100**
- 4054 ☒ **Pacific Union Express Co., New York, Sep 16, Bold Blue Circular Handstamp on 9c Orange on Buff Entire (U67)** to S.F., **Pacific Union Express Co. Printed Frank** (Haller FP4, Ty. 1, Unlisted), small tear & edge nick at T., o/w Very Fine, Scarce **E. 100-150**
- 4055 ☒ **Tracy & Co's/Express/Dalles, Bold Blue Oval Handstamp on 3c Red on Buff Star Die Entire (U27)** to Oregon, Tracy & Co. Printed Frank (Haller FT10, Ty. 1, Unlisted), used as paste-up, address non-contemporary, o/w Very Fine(Photo) **E. 200-250**
- 4056 ☒ **Via Nicaragua/Ahead of the Mails/Leland, Clear Blue Boxed Handstamp on 6c Green on Buff Entire (U14)** to Churchville, N.Y., "New-York Ship Nov 10" Receiving pmk., flap added & cover mend at T. affecting stamp (extreme T. portion of stamp design painted in), o/w Very Fine & Rare, signed Ashbrook who notes Leland used Oct.-Nov. 1853(Photo) **E. 250-350**

- 4057 ☒ **Wells Fargo & Co.'s/Express/Boston**, Clear Huge Oval Handstamp (66x46mm) on back of **3c Red on Buff Star Die Entire (U27)** to Cal., additionally franked with **1c Blue (24)** faults & **3c Red Horiz. Pair (26)**, tied by light "Wells, Fargo & Co.'s Express, New York" Blue Double Circle cancel, ms. "Per Steamer by Wells Fargo & Co., Very Fine(Photo) E. 350-500
- 4058 ☒ **Wells, Fargo & Co., Carson City, Jul 31**, Bold Blue Oval Handstamp on **3c Red on Buff Star Die Entire (U27)** to Virginia City, second strike ties additional **3c Orange Brown (10)**, **W.F. & Co. Printed Frank** (Haller WF-E, #55), minor cover mend at L., o/w Very Fine, Attractive(Photo) E. 100-150



- 4059 ☒ **Wells, Fargo & Co./Express/Mount Ophir**, Bold Blue Oval Handstamp ties **Wells, Fargo & Co., \$1.00 Red (143L3)**, Ample to Large Margins, small corner crease, on **10c Green on Buff Star Die Entire (U33)** to Vt., "Atchison, Kan. Oct 19" Double Circle pmk., ms. "Pr Pony Express", **Red W.F. & Co. Printed Frank** (Haller WF-F in Red, #65), cover edge faults, irregularly opened at R. barely into No. U33, Rare Pony Cover 6,000.00
- 4060 ☒ **Wells, Fargo & Co. Express, New-York Mar 21**, Bold Blue Double Circle Handstamp on **18c Red on Buff Entire (U70)** to S.F., **W.F. & Co. Printed Frank** (Haller WF-G, #138), minor cover edge wear, o/w Very Fine, ex-Seybold(Photo) 650.00
- 4061 ☒ **Wells, Fargo & Co. Express, New-York**, Partly Readable (somewhat indistinct) Blue Double Circle Handstamp on **18c Red on Buff Entire (U70)** to S.F., **W.F. & Co. Printed Frank** (Haller WF-G, #138), expertly rejoined along cover seams & some cover mends at T., o/w Very Fine(Photo) 650.00
- 4062 ☒ **Wells, Fargo & Co. Express, New-York**, Partly Readable (somewhat indistinct) Blue Double Circle Handstamp on **12c Red Brown on Buff Entire (U69)**, **W.F. & Co. Printed Frank** (Haller WF-G, #137a), cleaned eradicating address, some back faults or mends, o/w Fine E. 75-100

- 4063 ☒ **Wells, Fargo & Co./Express/San Francisco, Mostly Clear Blue Oval, matching "Paid" in Oval cancel on 10c Pale Green on White Entire, Die 2 (U17a) to Wells, Fargo & Co., Panama, several cover creases, o/w Very Fine, Rare Usage(Photo) E. 500-750**
- 4064 ☒ **Wells, Fargo & Co., San Francisco, Aug, Blue Oval Handstamp (partly struck off cover) on 3c Pink on White Entire (U58) to Victoria, British Columbia, matching "Collect" in Oval (two strikes), Bold "W.F. & Co." in Bold Large Letters Printed Frank (Haller WF-O, #125) Over Light Blue Cigars & Tobacco Ad, Additional W.F. & Co. Printed Frank at L. Reading Up (Haller WF-E), Very Fine, Rare, Listed but Unpriced, Illustrated in Haller, **Reportedly Unique with Raised "O" of Co.**(Photo) E. 350-500**
- 4065 ☒ **Wells, Fargo & Co./San Francisco/Oct 20, Clear Blue Oval Handstamp on 24c Blue on Buff Entire (U71), used as paste-up, cleaned & extensively mended, Scarce Entire UsedE. 100-150**
- 4066 ☒ **Wells, Fargo & Co., S. Frco., 1 Aug, Clear Blue Large Double Circle Handstamp on 10c Green on White Star Die Entire (U32) to N.Y., Grid cancel, W.F. & Co. Red Printed Frank (Haller WF-G, #64), without flap, cover bends from contents, small margin nick at T., o/w Very Fine E. 200-250**
- 4067 ☒ **Wells, Fargo & Co., S. Frco., 29 May, Bold Blue Large Double Circle Handstamp (partly struck off cover) on 3c Red on White Star Die Entire (U26) to Sacramento, Cal., Ornate Illustr. Corner Card of Grape Vine & Leaves for "Golden Gate Nurseries", W.F. & Co. Printed Frank (Haller WF-E, #52, Frank Extends Over Stamp), sealed flap tear, o/w Very Fine, Quite Attractive(Photo) E. 150-200**
- 4068 ☒ **Wells, Fargo & Co./Express/Steamboat, Clear Blue Oval Handstamp on 3c Red on Buff Entire (U10) to S.F., W.F. & Co. Printed Frank (Haller WF-E, #18), Very Fine(Photo) E. 150-200**
- 4069 ☒ **Wells, Fargo & Co., Tucson A.T. (Arizona Terr.), Partly Readable Violet Oval Handstamp on 9c Orange Yellow on Buff Entire (U67a) to S.F., W.F. & Co. Printed Frank (Haller WF-G1, #136), expertly rejoined along cover seams, o/w Very FineE. 150-200**
- 4070 ☒ **Wells, Fargo & Co./Victoria (Vancouver Island)/Apr. 13, Bold Blue Oval Handstamp on 6c Dark Red on Amber Entire (U86) to England, Matching "For Great Britain/and Ireland "Str. Line Handstamp, Red "Paid/Liverpool/U.S. Packet/9 MY71" transit, W.F. & Co. Printed Frank (Haller WF-E), Red "Chicago Am. Pkt" transit on back, light cover stain, o/w Very Fine(Photo) E. 200-250**
- 4071 ☒ **Wells, Fargo & Co./Victoria (Vancouver Island)/Mar 10., Bold Blue Oval Handstamp on 10c Yellow Green on White Entire (U40) to S.F., Blue Victoria Oval pmk., 1869 Usage, W.F. & Co. Printed Frank (Haller WF-E, #93), Very Fine(Photo) E. 200-250**
- 4072 ☒ **Wells, Fargo & Co./Victoria (Vancouver Island)/Apr 4, Clear Blue Oval Handstamp on 3c Red on Buff Star Die Entire (U27) to Sacramento, Victoria Oval pmk., W.F. & Co. Printed Frank (Haller WF-E, #55), cover mend at B.L., o/w Very Fine(Photo) E. 200-250**
- 4073 ☒ **Paid/Whiting & Co.'s Feather River/Express, Printed Frank (Haller FW12, Ty. 3, #128) on 3c Pink on Buff Entire (U59) to S.F., ms. "Value \$20.00/Paid \$1.00", Very Fine, ex-Barkhausen(Photo) E. 150-200**

Due to the tremendous demand on our phones and staff, Prices Realized will not be available by telephone until 24 hours after the sale.

PACKETS AND STEAMBOATS

- 4074 ☒ **From Red River/Packet/W.A. Andrew**, Partly Clear Oval Handstamp, Str. Line "Steam" cancel on **3c Red on Buff Entire, Die 5 (U10)**, Carroll Hoy corresp. cover to New Orleans, Fine E. 50-75
- 4075 ☒ **Steamer/Bayou Belle/Capt. J.D. Walker**, Clear Red Oval Handstamp on **3c Red on Buff Entire, Die 5 (U10)**, Buchanon Carroll corresp. cover to New Orleans, Very Fine E. 100-150
- 4076 ☒ **Charmer & Dew Drop**, Mostly Readable Black Oval & Blue "N. O. & Vicksburg R.R." (River Route) pmk. on **3c Red on Buff Star Die Entire (U27)**, Carroll Hoy corresp. cover to New Orleans, Fine E. 75-100
- 4077 ☒ **Cincinnati & Louisville Mail Route Mar 30**, Clear Blue Circular Handstamp on **3c Red on Buff Entire, Die 5 (U10)** to Pittsburgh, negligible cover bleaching at B.R., o/w Very Fine E. 50-75
- 4078 ☒ **Geo. D. Hite & Co./Steamboat Agents/New Orleans, La.**, Clear Red Oval on **3c Red on White Entire, Die 5 (U9)**, Buchannon Carroll corresp. cover to New Orleans, Very Fine E. 50-75
- 4079 ☒ **Phillips Hunt & Co/Wharf-boat/&Forwarding Merchants/Cairo, Ills.**, Clear Large Oval Handstamp on **3c Red on Buff Entire, Die 5 (U10)** to New Albany, Ind., illegible Cairo, Ill 1857 pmk., Very Fine(Photo) E. 100-150
- 4080 ☒ **Louisville & Cincinnati Mail Line**, Clear pmks. (one partly struck over the other) on **3c Red on Buff Entire, Die 1 (U2)** to Indiana, Embossed CC on flap, small faults incl. nick at B., o/w Fine(Photo) E. 75-100
- 4081 ☒ **U.S. Mail/Packet/Natchez**, Bold Blue Oval Handstamp on **3c Red on Buff Entire, Die 5 (U10)**, Buchannon Carroll corresp. cover to New Orleans, Very Fine E. 50-75
- 4082 ☒ **Leaves New Orleans every Saturday at 5 P.M./Steamer/J.F. Pargoud/J.W. Tobin/Commander/Leaves Trenton every Tuesday at 10 o'clock**, Mostly Clear Large Circle cancel (small outer lettering indistinct as virtually always) on **3c Red on Buff Star Die Entire (U27)** (Hardie Correspondence) to New Orleans, sealed flap tears, Very Fine, Scarce(Photo) E. 75-100
- 4083 ☒ **Steamer Perry.**, light partly readable Red Circle, **Red Str. Line "Steamboat"** & Red Providence R.I. pmk. on **3c Red on White Star Die Entire (U26)** to Gardner Mass., some toning spots, o/w Fine, ex-Barkhausen E. 50-75
- 4084 ☒ **Steamer/Rapides**, Mostly Clear Oval Handstamp on **3c Red on Buff, Die 5 Entire (U10)**, Buchannon Carroll corresp. cover to New Orleans, **Red "Snapp & Hite, New Orleans, La" Oval Steamboat Agent Handstamp**, some cover wrinkles, Very Fine E. 75-100
- 4085 ☒ **"U.S. Mail Packet"/Steamer Lizzie Simmons/Geo. M. Kirk Capt./Maurice Langhorn, Clerk**, Mostly Clear Str. Line Cancel on **3c Red on Buff Entire, Die 5 (U10)**, Hardie & Co. correspondence cover to New Orleans, minor cover edge tear, Very Fine(Photo) E. 100-150
- 4086 ☒ **Steamboat Cancels**, Six Diff. on 3c 1853-64 Entires, Cancels incl. Route 7309, Steamer Pargoud, St. Nicholas, Detroit "Steamboat" in Ribbon & Mobile Str. Line "Steamboat" & "V. & N.O.M.L.", also incl. Two ms. Steamboat cancels, Fine-Very Fine LotE. 150-200

CHINA USAGES

- 4087 ☒ **China and Japan/Steam Service**, Partly Readable Magenta Oval Handstamp on **10c Blue Green on White Entire (U40a)** to Chicago, **Negative "U.S." cancel**, "P.O.D. U.S. Con. Genl. Shanghai" pmk., ms. "Overland Mail", slightly reduced at L. & couple cover edge tears, o/w Fine(Photo) E. 350-500

- 4088 ☒ **U.S. Postal Ag'cy Shanghai Dec 1**, Clear pmk., Circle of Wedges cancel on **10c Blue Green on White Entire (U40a)** to U.S., S.F. Double Circle pmk., rejoined along cover seams & flap added, o/w Fine.....(Photo) **E. 200-250**

RAILROADS AND AUXILLARY MARKINGS

- 4089 ☒ **Virginia Central R.R. Jan 6**, Clear cancel (Remele V3-b) on **3c Red on Buff Entire, Die 1 (U2)** to Va., Nesbitt Seal on flap, Very Fine, Extremely Rare cancel(Photo) **E. 200-250**
- 4090 ☒ **Railroad Cancels**, Four Diff. on **3c Red on White, Buff Entires (U1, U2, U10 two)**, Remele cancels M2-b, R8, T2-a & U1-d; No. R8 with cover mends, No. M2-b soiling, o/w Fine-Very Fine Lot**E. 100-150**
- 4091 ☒ **Chicago Supplementary Mail**, Two Diff. pmks. (Scott Ty. B & C), Latter in Blue (Bold Strike) on **3c Red on Buff Star Die Entire (U27)**, Former (Clear Strike) on **3c Pink on White Entire (U58)**, Very Fine **E. 50-75**
- 4092 ☒ **Auxillary Markings**, Six Diff. on 3c 1853 Entires incl. "Way", "Registered," "Adv 1", "Due 3" & "Due 7", Fine-Very Fine Strikes**E. 100-150**

CANCELLATIONS

- 4093 ☒ **Adrian, Mich. Bee** Fancy cancel, Fine Strike (Town pmk. indistinct), Adrian, Mich. printed return legend, on **3c Pink on White Entire (U58)**, with April, 1870 original contents, Fine(Photo) **E. 150-200**
- 4094 ☒ **Canton, Miss. Lyre** Fancy cancel, Very Fine Strike of Lyre, Mostly Readable Strike of pmk. on **3c Red on Buff Entire, Die 5 (U10)**, Carrol Hoy corresp. cover, Very Fine(Photo) **E. 100-150**
- 4095 ☒ **Chicopee, Mass. "VT"** Fancy Initial cancel, (Resembles Anchor), Very Fine Strike on **3c Pink on Buff Entire (U59)**, Very Fine(Photo) **E. 50-75**
- 4096 ☒ **Clayton, N.Y. "Paid" in Stylized Shield** Fancy cancel, Very Fine Strike on **3c Pink on White Entire (U34)**, tiny trivial corner nick at B.R., Very Fine **E. 50-75**
- 4097 ☒ **Evansville, Ind. Shoo Fly** Fancy cancel, Very Fine Strike on **3c Pink on White Entire (U58)**, cover seams & flap expertly rejoined, back mend & small cover mend at T.R. barely touching stamp, o/w Very Fine(Photo) **E. 100-150**
- 4098 ☒ **Morris, Ill. Beer Mug** Fancy cancel, Very Fine Strike on **3c Pink on Buff Entire (U59)** to Yale College, New Haven, Ct., couple expertly reinforced cover creases (from contents), Very Fine(Photo) **E. 75-100**
- 4099 ☒ **Newark, N.J. Jack-o'-Lantern** Fancy **Blue** cancel, Very Fine Strike on **3c Pink on Buff Entire (U59)**, Very Fine **E. 50-75**
- 4100 ☒ **Three Rivers, Mic. "Union" Around Five Point Star "U.S. Within**, Fancy Patriotic Star cancel, Very Fine Strike on **3c Red on Buff Star Die Entire (U27)**, Very Fine(Photo) **E. 75-100**
- 4101 ☒ **Toledo, O. Shoo Fly** Fancy cancel, Fine Strike on **3c Pink on Buff Entire (U59)**, Fine **E. 75-100**
- 4102 ☒ **Watkins, N.Y. "1870"** Fancy cancel, Very Fine Strike on **3c Pink on White Entire (U58)**, Very Fine(Photo) **E. 75-100**

- | | |
|--------|--|
| 4103 ☒ | Waterbury, Con. Eagle & Shield Fancy Cancel, Rohloff, Ty. 2, Very Fine Strike, Jan 12 '68 Double Circle pmk. on 3c Pink on Buff Entire (U59) , cover opened at L. & T. cover seam expertly rejoined, o/w Very Fine Strike, Rare, Illustrated in Rohloff(Photo) E. 350-500 |
|--------|--|

- 4104 ☒ **Waverly, N.Y. Skull & Crossbones**, Bold Fancy cancel on **2c Brown on White Entire, Die 1 (U277)** to Cal., Very Fine(Photo) **E. 75-100**
- 4105 ☒ **West Meriden, Conn. "Devil with Pitchfork"** Fancy cancel, Fine Strike on **3c Pink on White Entire (U58)**, slightly reduced at R. (clear of stamp), Very Fine(Photo) **E. 100-150**
- 4106 ☒ **Zanesville, O. Bee** Fancy cancel, Very Fine Strike on **3c Pink on Buff Entire (U59)**, slightly reduced at L., cover edge nick at L., o/w Very Fine(Photo) **E. 150-200**
- 4107 ☒ **Fancy Cancells**, Three **3c Pink on Buff Entires (U59)** with Bold Blue Jersey Shore, Pa. Star with Circle & Dot at Center, Carthage, Ill. Fancy Shield cancel & Alexandria, Va. Radial Geometric, last reduced into Return Legend at L., o/w Very Fine **E. 75-100**
- 4108 ☒ **Fancy Cancells**, Seven Diff. incl. Corry Pa. "Eagle" (reduced at R., partial strike), Union Oregon Fancy "Wheel of Fortune" cancel, Austinburg Ohio "Flower" & Stroudsburg Pa. Geometric, Mostly Fine-Very Fine Lot **E. 100-150**
- 4109 ☒ **Heart Cancells**, Two Diff., N.Y. **Heart Within a Heart** on **3c Pink on White Entire (U58)**; Salem, Oregon Bold **Heart** on **6c Dark Red on White Entire (U85)** to Silver City, Idaho Territory, reduced at R. slightly into stamp, Very Fine Strikes **E. 75-100**
- 4110 ☒ **Intertwined Six Point Star Cancells**, Two Diff. Bold Fancy Star cancels (The Glenn, N.Y. & Chicopee, Mass.), latter in Blue, on Separate **3c Red on Buff Entires, Die 5 (U10)**, Very Fine **E. 50-75**
- 4111 ☒ **Monogram & Initials Cancells**, Seven Diff. incl. Oxford N.Y. Negative PO in Double Box, Little Falls, N.Y. Negative "US" in Octagon etc., Fine-Very Fine Lot **E. 100-150**
- 4112 ☒ **Shield Cancells**, Two Diff. Bold Fancy Shield cancels (Jackson, Miss. & Cambridge, Mass.-Five Bar Cancel) on Separate **3c Pink on Buff, White Entires respectively (U58, U59)**, former Joseph Hoy corresp. cover, Very Fine **E. 50-75**
- 4113 ☒ **Star Cancells**, Seven Diff. incl. Jersey Shore Pa. Hollow Five Point Star, Chicopee Mass. Intertwined Star, Three Diff. Star in Circle cancels (one Tex.), some with faults, o/w Fine-Very Fine Lot **E. 50-75**

CARRIERS AND LOCALS

- 4114 ☒ **1c Blue, Eagle Carrier (LO2)**. Ample to Immense Margins, tied on **3c Red on White Entire, Die 5 (U9)** to Philadelphia, indistinct Washington, D.C. pmk., Very Fine(Photo) **175.00**
- 4115 ☒ **Baltimore, Md., 1c Black (1LB8)**. Huge Margins Showing Bit of Next Stamp at B. (uncancelled), Used on **3c Red on Buff Star Die Entire (U27)** to Churchville, Md., Blue Baltimore pmk., Very Fine, with A.P.S. Certificate which declines opinion because Carrier stamp is not cancelled, but signed Herman Herst, Jr. (from an original find) **150.00**
- 4116 ☒ **California Penny Post Co., 7c Vermilion (34LU7)**. Printed on **3c Red on Buff Entire, Die 5 (U10)**, Printed Penny Post Co. Envelope to Adams & Co. (S.F.), Square Grid cancel, several wrinkles & tiny edge tear, o/w Very Fine, Scarce, with P.F. Certificate, ex-Knapp(Photo) **600.00**

- | | | | |
|------|---|---|-----------------|
| 4117 | ☒ | California Penny Post Co., 7c Black (34LU11) . Printed on 3c Red on Buff Entire, Die 5 (U10) , Printed Penny Post Co. Envelope to S.F., "Paid" in Oval cancel, ms. docketing indicates sent from San Jose, some ms. offset on face, Very Fine & Scarce(Photo) | 1,000.00 |
|------|---|---|-----------------|

- 4118 ☒ **Carriers & Locals**, Five Used Covers: No 1LB8 on No. U26 (faulty), No. 15L18 on No. U10 (faults), No. 15LU5e on No. U2 & Two No. 15LU6A Entires, Good-Very Fine Lot **E. 75-100**

ADDITIONAL USED ENTIRES WITH POSTAL HISTORY SIGNIFICANCE

- 4119 ☒ **3c Red on White Entire, Die 1 (U1).** #2, Size 7, Knife 20, Wmk. 1, "New-York Jul 22 1853" pmk. (1853 Yeardate Used Only July 11-25 in N.Y.), Nesbitt Seal on flap, tiny flap mend & faint crease along T. edge, Very Fine, Scarce Cancel, ex-Gibson(Photo) **E. 100-150**
- 4120 ☒ **3c Red on White Entire, Die 1 (U1).** #2, Size 7, Knife 20, Wmk. 1, 1854 Usage to **England**, Red Natchez, Miss. pmk., properly treated as Unpaid, "24" Handstamp due mark, "5" in Circle due mark, British backstamp, cover cleaned & expertly rejoined along seams, o/w Very Fine, Scarce **E. 50-75**
- 4121 ☒ **3c Red on Buff Entire, Die 1 (U2).** Red Philadelphia Pa. Paid pmk., Matching "Paid 45" (rate in ms.), 1854 Usage to **China**, Addressed to Dr. on U.S. Steam Frigate Mississippi/Care of the American Consul/**Hong Kong/China**, Hong Kong backstamp, Very Fine, ex-Barkhausen(Photo) **E. 100-150**
- 4122 ☒ **3c Red on Buff Entire, Die 1 (U2).** Size 7, Knife 20, Wmk. 1, "New-York Jul 19 1853" pmk. (1853 Yeardate Used Only July 11-25 in N.Y.), Very Fine, Scarce Cancel **E. 75-100**
- 4123 ☒ **3c Red on White Entire, Die 2 (U3).** Size 7, Knife 20, Wmk. 1, Cincinnatus, N.Y. pmk., **Blue Gun Manufacturer & Dealer Corner Card**, Red Nesbitt Seal on flap, Very Fine 50.00 +
- 4124 ☒ **3c Red on White Entire, Die 2 (U3).** #5, Size 7, Knife 20, Wmk. 1, Used to **Germany**, N.Y. pmk. & "N. York Br. Pkt 23 Jun 28" cancel, **Blue Embossed Corner Card**, properly treated as Unpaid, German backstamps, Fine, Scarce **E. 50-75**
- 4125 ☒ **3c Red on White, Buff Entires, Dies 2, 5 (U3, U10).** Size 7, Knife 20, Wmk. 1, Former **Green Illustr. Textile Man. Corner Card**, Str. Line "Steam" cancel, latter **Glass Works Illustr. Corner Card**, Town pmk., also incl. Used No. U34 Entire with Identical Illustr. Corner Card as on No. U10, o/w Very Fine **E. 50-75**
- 4126 ☒ **3c Red on Buff Entire, Die 2 (U4).** #6, Size 7, Knife 20, Wmk. 1, 1853 Usage to **France**, Blue Annapolis, Md pmk., matching "Paid," Red "New York Am Pkt." cancel, but properly treated as Unpaid, ms. "21" due mark, Nesbitt Seal on flap, various British & French transits, Very Fine, Scarce **E. 50-75**
- 4127 ☒ **3c Red on Buff Entire, Die 5 (U10).** Size 7, Knife 20, Wmk. 1, additionally franked with **1c Blue, Ty. V (24), 3c Red (26) Horiz. Pair** (faded) & **10c Green, Ty. III (33) Horiz. Pair & Strip of Three**, some with small faults, tied by Four Strikes of Blue Marysville, Cal. Shaded Star cancels & Matching Town pmk., Red Grids, Red "N. York Am Pkt." cancel & Red Boxed Transit, Used to Germany, sealed tear through No. U10, Very Attractive, Scarce(Photo) **E. 250-350**
- 4128 ☒ **3c Red on Buff Entire, Die 5 (U10).** Size 7, Knife 20, Wmk. 1, **W.F. & Co. Printed Frank** (Haller WF-E), additionally franked with **10c Green, Ty. III, I (33, 31) Vert. Combination Pair & 10c Green, Ty. I (31)**, both Ty. I minor faults, tied by S.F. pmks., 1858 Usage to **France**, Red New-York pmk. & French transit, flap mend & flap reattached, expert cover edge mends at R. & B., o/w Fine, Scarce, with P.F. Certificate(Photo) **E. 350-500**
- 4129 ☒ **3c Red on Buff Entire, Die 5 (U10).** Size 7, Knife 20, Wmk. 1, additionally franked with **1c Blue, Ty. II (7), Double Transfer at B. & 3c Red (11) Horiz. Pair**, N.Y. & N.Y. Ocean Mail pmks., Used to Honolulu **Sandwich Islands**, ms. "via San Francisco", rejoined along cover seams, Very Fine Appearing, with P.F. Certificate which states "genuinely used on cover"..... **E. 150-200**

- 4130 ☒ **3c Red on Buff Entire, Die 5 (U10).** Size 7, Knife 20, Wmk. 1, Red N. York 6 U.S. Pkt. pmk., used with **3c Red (11) Single, Pair & Strip of Three** (last cut in at T.), ms. "X" cancels, Used to **Germany**, some cover seam rejoining, o/w Fine(Photo) **E. 100-150**
- 4131 ☒ **3c Red on Buff Entire, Die 5 (U10).** #18, Size 7, Knife 20, Wmk. 1, Clear **Balloon with Flags from Gondola Handstamp** (Attributed to John Wise "Father of Am. Aeronautics"), Lancaster, Pa Sep 15 1857 pmk., used to Carlisle, Pa., mend at T. just into T. portion of Balloon (portion of design drawn in), o/w Very Fine, Scarce, ex-Toasperm(Photo) **E. 150-200**
- 4132 ☒ **6c Red, Green on White, Buff Entires (U11-U14).** Used, No. U11 with W.F. & Co. Printed Frank & "Wells, Fargo & Co./Express/Yreka" Oval Handstamp, No. U13 with Benecia, Cal. pmk., all with some mends (mostly flap mends or some cover seam rejoining o/w Fine-Very Fine . **E. 75-100**
- 4133 ☒ **1c Blue, 3c Red on Buff, Star Die Entires (U19 three, U27 three).** Sizes 7 & 5 respectively, Each franked with additional Postage incl. Nos. 24 Two with Singles, Pair, No. 26, No. 63 Pair & No. 73, one of latter entires with horiz. file folds, o/w Fine-Very Fine **E. 100-150**
- 4134 ☒ **3c Red on White Star, Die Entire (U26).** #50, Size 5, Knife 12, Wmk. 1, Buffalo, N.Y. 1860 pmk., **Purple Overall Illustr. Ad for Saddlery Hardware**, Very Fine & Expectionally Handsome(Photo) **E. 50-75**
- 4135 ☒ **3c Red on White Star, Die Entire (U26).** #52, Size 7, Knife 20, Wmk. 1, **Red, White & Blue Waving Flag Patriotic Design**, "If any man attempts to take it down, shoot him on the spot" Verse below, Aurora, NY pmk., Military Address, slightly reduced at R., Very Fine .(Photo) **E. 75-100**
- 4136 ☒ **3c Red on Buff, Star Die Entire (U27).** #53, Size 7, Knife 20, Wmk. 1, **Red, White & Blue Eagle & Shield with Waving Flag Patriotic Design** (Walcott #2409), N.Y. May 1861 pmk., Very Fine ..(Photo) **E. 150-200**
- 4137 ☒ **10c Green on Buff, Star Die Entire (U33).** Size 7, Knife 20, Wmk. 1, **Red W.F. & Co. Printed Frank** (Haller WF-F), Blue "Paid" in Oval cancel (W.F. cancel, Western Origin), additionally franked with **10c Green (68)**, Boxed "Paid" cancels & Red Boston, Mass. pmk., Used to So. Weymouth, Mass., Double Trans-continental Rate, Very Fine(Photo) **E. 300-400**
- 4138 ☒ **10c Blue Green on White Entire (U40a).** #93, Size 7, Knife 24, Wmk. 1, Phila, Pa pmk., Used to Orizava, **Mexico**, Forwarded to Tehuacan, Mexico, "Admon Pral De Correos Orizava" Double Oval Forwarding pmk., "4" (r) rate mark, Very Fine(Photo) **E. 75-100**
- 4139 ☒ **10c Yellow Green on White, Buff Entires (U40 two, U41 two).** Size 7, Used, one of latter Bold "**N. York Steamship**" cancel, others with **Red Wells, Fargo & Co. Printed Franks** (Carson City & Two S.F. cancels, one used as paste-up), Fine-Very Fine**E. 100-150**
- 4140 ☒ **2c Black on Orange Entire, Die 3 (U52).** #110, Size 7, Knife 24, Wmk. 1, light cork cancel, **Illustr. Corner Card for Fancy Western Style Saddle**, Very Fine **E. 50-75**
- 4141 ☒ **2c Black on Orange Entire, Die 3 (U52).** Size 7, Knife 24, Wmk. 1, Chicago pmk., **Crosby Opera House Art Assoc. Printed Illustr. Corner Card**, Very Fine **E. 50-75**
- 4142 ☒ **3c Pink on White Entire (U58).** Size 7, Knife 24, Wmk. 1, additionally franked with **3c Red, F. Grill (94) & average 30c Orange (71)**, latter s.e. at R., creased before use, tied by Bellefonte, Pa. pmks., 1868 Usage to **India**, Purple "Phil'a Paid All" & Red London transit, various backstamps, cover expertly rejoined along seams, Attractive ..(Photo) **E. 150-200**
- 4143 ☒ **3c Pink on White Entire (U58).** Size 7, Knife 24, Wmk. 1, additionally franked with **3c Rose (65) & Two 12c Black (69)**, 3c long sealed tear, one 12c s.e. at L. (into design), other 12c corner repaired, 186? Usage to Nova Scotia, S.F. & Cogwheel pmks., "**Via Panama**" with **Illustr. of Steamboat Above**, Nova Scotia backstamps, Most Attractive.....(Photo) **E. 250-350**

4001



*Mr. Christian W. Clark
Peacham
Vermont*

4010

4002



*Mr. L. L. L. L. L.
P. M.
San Francisco*



RECEIVED

DUE 3

4008

*W. H. Gattermole
Fort Madison*

4003



*Mrs. Ann Taylor
Barnesville, P.O.*

4011



4014

*Montecito
July 25*



4022



4015



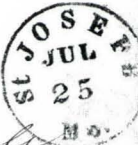
*Thos Crosby & Dibble
San Francisco*

4032



*Miss Mary L. Bowman
Wilkes-Barre*

4024



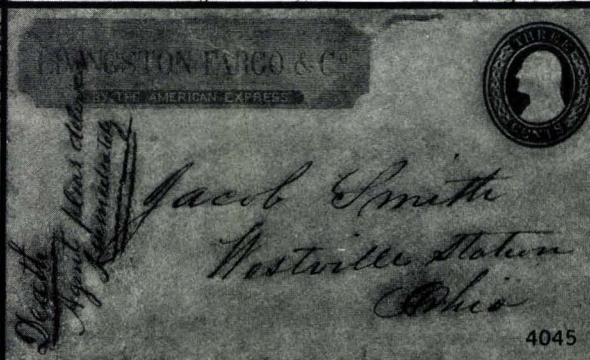
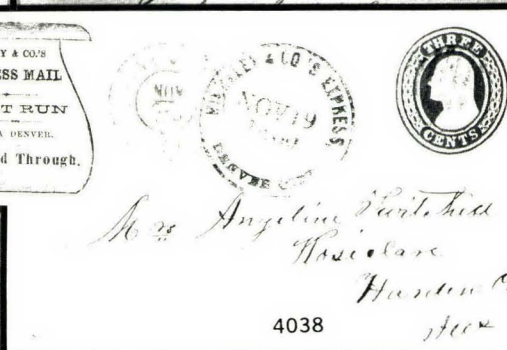
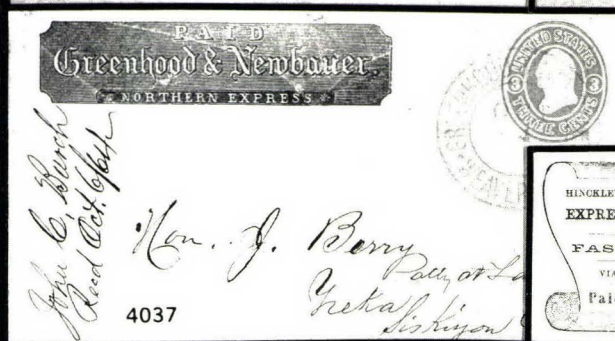
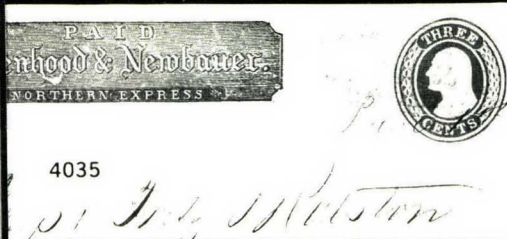
*Mrs. P. C. Hale
Care of Rev. M. Montague
Allens Grove
Walworth Co
Wisconsin*

4031



*Wm. P. P. P.
San Francisco*

4033



To Mrs D Y Mapey
To Knoxville Knop Co



4047

Mr. Joshua Chadbourne



PACIFIC EXPRESS



PAID

4049

Mr Harry Bonce
Harvard College
Cambridge

PACIFIC EXPRESS



PAID

Pacific Express Company
FRANKED LETTER.



4052



4055

Per Steamer,
by Wells Fargo Co.



4057

Mess. Pierce & Co.,
133 Jackson St.
San Francisco

VIA NICARAGUA
AHEAD OF THE MAIL.



4056

Mr. W. E. Richmond

4058

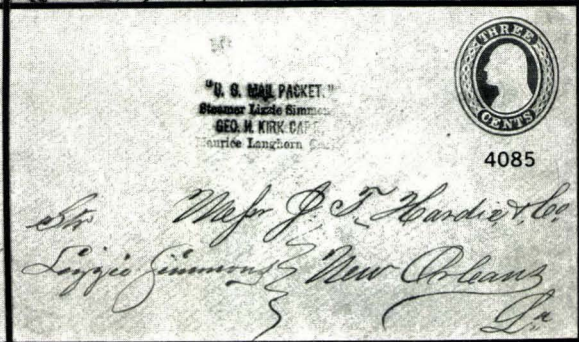
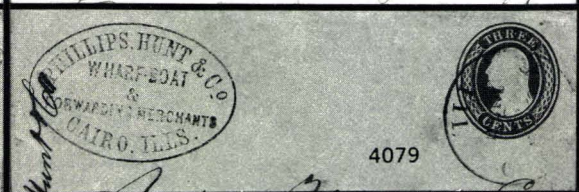
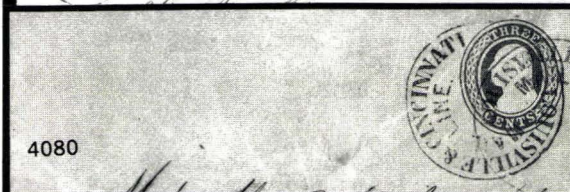
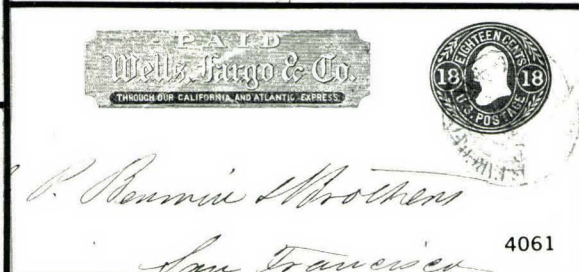
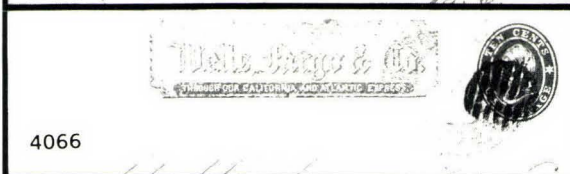


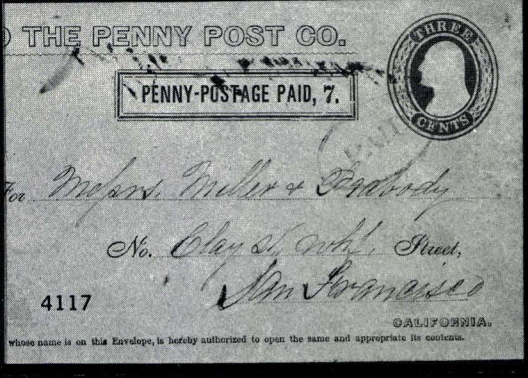
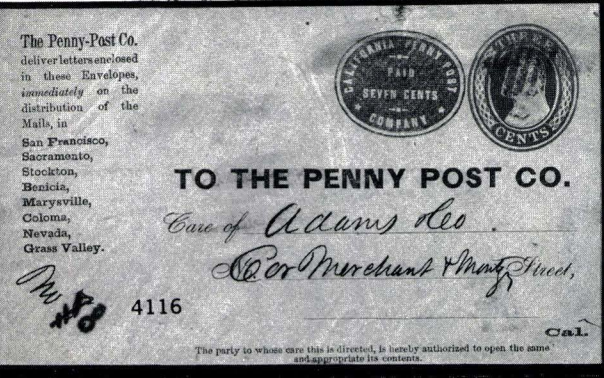
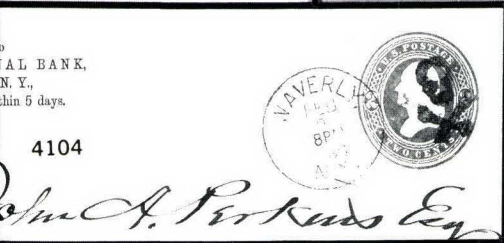
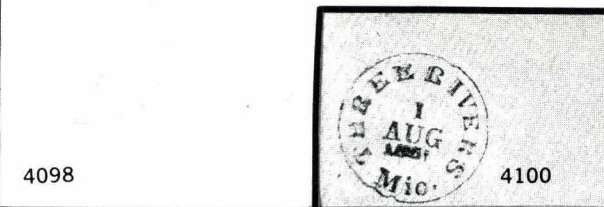
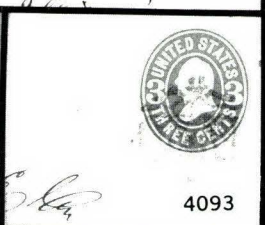
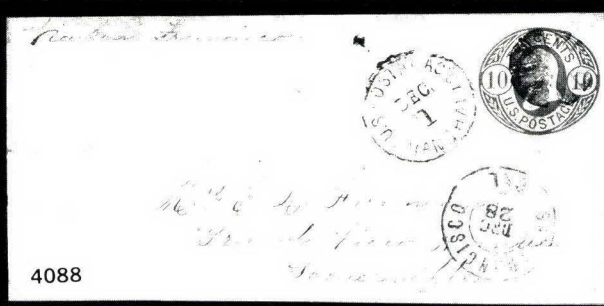
Mr. W. H. Whitney
Virginia City

4063

Mrs. F. J. Thibault
(of Panama)
Care of Panama
Mess Wells Fargo & Co
Panama







Dr. Nathan P. Sargent, N. H. M.
"Dr. A. M. Sargent" "Mississippi"
"Dr. A. M. Sargent" "American"

Mrs. Frederic T. Mygatt.

Landgericht
Silber

4130

4128 France.

4135

4136

4137

Mr. William B. Brown
4 Eagle
Mexico
Tehuacan

Lucerne

San Francisco CAL MAY 19
 4143
 Mr. Wm. C. Andrews
 Picture

PAID
 Mr. William C. Andrews, 4144
 College Brown, Shipley, No.

PAID
 Mr. Burns Wilson
 Knareborg
 York
 Eng
 4145

PAID
 4146
 Eugene A. Hancock

REPUBLICAN STATE CENTRAL COMMITTEE
 MILWAUKEE, WIS.
 4151 EX
 Luther & Duell
 557- Broadway
 City

PAID
 4148
 Mr. L. H. ...
 near of ...
 P. O. ...

PAID
 4162
 Hamburg Steamer
 ...
 paid

PAID
 4156
 Mr. A. C. ...
 (Captain ...)

PAID
 4163
 Jackson
 JUN 18
 1862
 Mr. A. R. Banks
 Indianapolis
 Arkansas

PAID
 4171
 Messrs. Carroll, Hoy & Co.
 New Orleans

4175



D. H. ...

4178



David Cleage Jr.

4177



W. W. Life
Newbern

Confederate States of America

POST OFFICE DEPARTMENT
OFFICE OF BUSINESS

N. W. ...
CHIEF OF THE FINANCE BUREAU

Mr. W. R. ...

4180

4181

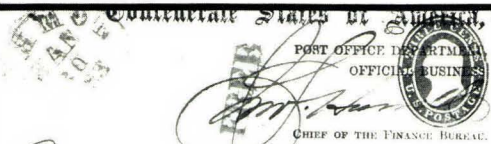


Confederate States of America
POST OFFICE DEPARTMENT
OFFICE OF BUSINESS
CHIEF OF THE FINANCE BUREAU

FREE



4183



P. M.

Black Walnut

4182

4190



Rev. A. D. McGill

4186



4185



4184



4206



A. Jacobs

4205



4204



4192



4213



4212



4211



4215



4216



4214



4218



Mrs. Marianne Innes
203 West 39 St

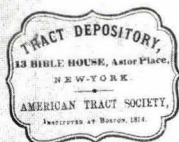
4217



4219



4222



Mr. C. C. Hoall

4221



4220



4225



Samuel Pitts Esq
Lynchburg
Mass

4224



Bry &
this
1863
Breckinridge
Danville
Ky

4223



4235

DUE 10

Mrs. S. Goddard
Brookline
Mass.

4239



4230



William McClinton Esq
West Union
Fayette Co
Iowa

4233



Franklin
Franklin Esq
Barre
Mass.

4232



Franklin
Franklin Esq
Barre
Mass.

J. A. PIERCE,

PRINTER IN

U. S. and
Foreign
Postage
Stamps,
Albums,
Autographs,
Confederate
Currency,
Navalities.



U. S. and
Foreign
Revenue
Stamps,
Coins and
Medals,
Confederate
Bills & Bonds,
Curiosities.

DECALCOMANIE,
Embossed Pictures, Gem Chromos, etc.
FLORAL, TRANSPARENT & CUT CARDS.



4243

*Beers
no 2586 Pacific
blue York*

4237



*imblecom
ung,*

4236



4273



4252



4253

THE NEW YORK GAS LIGHT COMPANY,
and 188 Hager Street, NEW YORK, N. Y.
pay if not found.

*Mrs Meyer Jeremiah & Co
325 Broadway*

4277



4276



4275



4274



4289



4293



4292



4279



advertisers within 10 days to be returned to

EDWARD RAWLINGS, Esq. A

MANAGING DIRECTOR

4294

Guarantee Company of North America,



4299



4298



4308



4305



4306



4307



4300



4246



4245



4242



4241



4240



4249



4259



4258



4257



4250



4260



4261



4262



4263



4264



4269



4268



4267



4266



4265



4284



4283



4282



4271



4270



4303



4301



4287



4285

- 4144 ☒ **3c Pink on White Entire (U58).** Size 7, Knife 23, Wmk. 1, additionally franked with average **10c Green (68)** small faults & **12c Black (69)**, 1867 Usage to **England**, Washington D.C. pmks., Red N. York Am. Pkt & London transits, expertly rejoined along T. & L. edges, Fine Appearance(Photo) **E. 100-150**
- 4145 ☒ **3c Pink on White Entire (U58).** Size 7, Knife 24, Wmk. 1, additionally franked with **Four 3c Ultramarine (114)**, one with s.e., two with minor faults, tied by Anderson, Ind. pmks., 1868 Usage to **England**, cover expertly rejoined along seams, Fine(Photo) **E. 75-100**
- 4146 ☒ **3c Pink on Buff Entire (U59).** Size 7, Knife 23, Wmk. 1, Prattville, Ala pmk., additional **12c Black (69)** tied by quartered cork, Used to Germany, small corner mend at B.R., o/w Very Fine, ex-Emerson(Photo) **E. 75-100**
- 4147 ☒ **6c Purple on White Entire (U64).** #132, Size 7, Knife 24, Wmk. 1, Used with **6c Carmine (148)** small faults, tied by Grid cancels, Boston, Mass. pmk., 1870 Usage to St. Stephen, **New Brunswick**, Very Fine, Scarce, ex-Gibson **E. 75-100**
- 4148 ☒ **6c Purple on Amber Entire (U65).** #133, Size 7, Knife 24, Wmk., 1, Wells, Fargo & Co. Printed Frank (Haller Ty. WF-E), 1873 Usage to **Ireland**, NYFM Star Cancel (Ty. A4), Red N.Y. pmk., cover mend & mended back faults, Very Fine Appearing, Scarce(Photo) **E. 100-150**
- 4149 ☒ **9c Orange Yellow on Buff Entire (U67a).** Size 21, Knife 97, Wmk. 1, W.F. & Co. Printed Frank, Clear Red "**Wells, Fargo & Co./Virginia, Nev.**" Oval cancel, Bank of Cal. Printed Address, "From Virginia Agency", Very Fine 225.00
- 4150 ☒ **24c Blue on Buff Entire (U71).** Size 24, Knife 120, Wmk. 1, W.F. & Co. Printed Frank, light Magenta "**Wells, Fargo & Co./Virginia Nev.**" "Oval cancel, Bank of Cal. Printed Address, From Gold Hill Agency," Very Fine, Scarce 650.00
- 4151 ☒ **2c Brown on White Entire, Die 1 (U277).** Size 10, Knife 54, Wmk. 6, **Blaine & Logan Republican 1884 Presidential Campaign Cover**, Candidates Portrait & Republican State Central Committee Impt., Milwaukee 1884 Duplex pmk., also incl. Unused No. U232 with Same Portraits in Diff. Pos. & without Republican Impt., Very Fine (Photo Ex) **E. 250-350**

DESCRIPTIONS

EXTREMELY FINE: The finest condition for noteworthy, outstanding stamps.

VERY FINE: In prime condition such as to satisfy the requirements of particular collectors.

FINE: Perforations or margins do not touch design on issues after 1890 but in some cases may just touch in earlier issues. If used, fairly light cancellation.

VERY GOOD: Generally nice appearance but margins or perforations may cut in slightly.


GOOD: Average off-centering or fairly attractive with slight defects.

Unless otherwise noted the 1988 Scott United States Specialized Catalogue has been used for cataloguing lots in this sale.

CIVIL WAR

"SOUTHERN LETTER UNPAID"

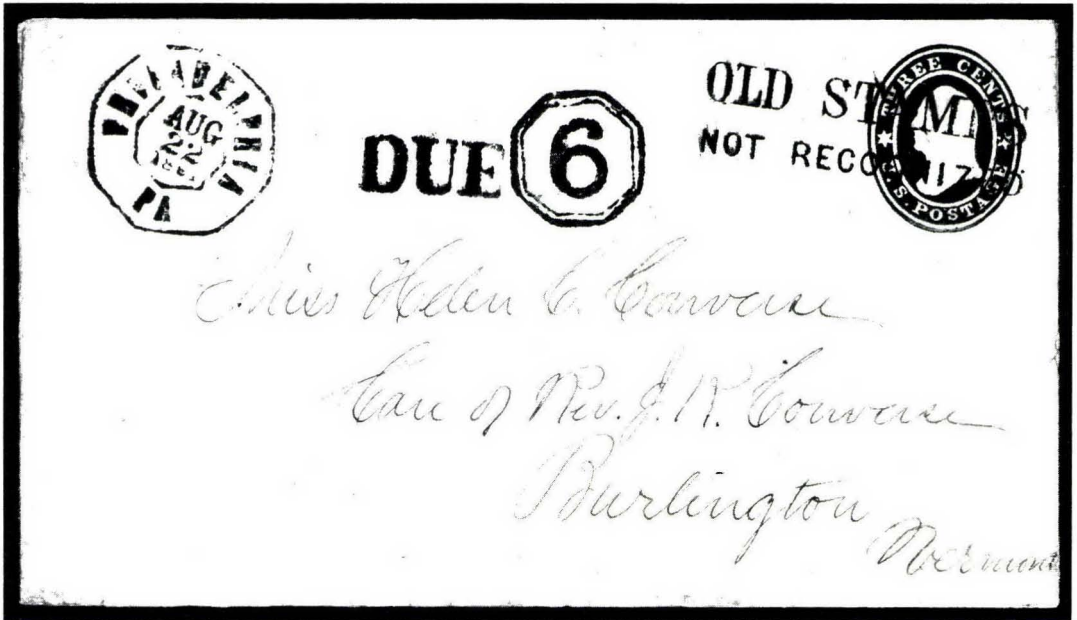


- 4152  **Southern Letter/Unpaid.**, Bold Greenish-Blue Str. Line Hand-stamp on U.S. 3c Red on Buff Star Die Entire (U27) to France, Matching Grid cancels (over ms. "Paid 15") & Louisville, Ky. Jun 27 (1861) Double Circle pmk., ms. "15" (due mark), N.Y. pmks., Red French transit & various French backstamps, Very Fine, Exceptionally Choice & Extremely Rare, Illustrated in Dietz (1986, page 206), signed Ashbrook **E. 10,000-15,000**

"E." = ESTIMATES

Our sales offer many covers, cancellations, varieties and other items for which there is no catalogue value or where catalogue value does not reflect the actual value. In order to assist our clients, we are placing a fair net valuation on such lots as a guide to our bidders. Lots may actually realize more or less than our estimates, which are under no circumstances to be considered reserves but merely a guide to bidding.

"OLD STAMPS NOT RECOGNIZED"



- 4153 ☒ **Old Stamps/Not Recognized, Bold Str. Line Handstamp on U.S. 3c Red on White, Star Die Entire (U26) to Vt., "Philadelphia, Pa. Aug. 22, 1861" Double Octagon pmk., Bold "Due 6" (Six in Double Octagon) Handstamp, cover expertly rejoined along seams & flap, o/w Very Fine, Demonitized in some Eastern Cities by August of 1861, Rare, Wonderful Looking E. 3,000-5,000**

PRISONER'S COVERS

- 4154 ☒ **Camp Douglas/Examined/Prisoner's Letter, Partly Readable Oval Handstamp on U.S. 3c Pink on Buff Entire (U35) to Ky., Blue Chicago, Ill. Double Circle pmk. & matching Circle of Wedges cancel, reduced at R. just clear of stamp & pressed out cover filefold through stamp, Still Attractive E. 50-75**
- 4155 ☒ **Prisoner's Letter/Examined/Fort Delaware Del, Clear Oval Handstamp on U.S. 3c Red on White, Star Die Entire (U26) to Ky., Delaware City, Del. pmk., Grid cancel & "Due 6" in Oval Handstamp, ms. examiner's marking, rejoined along cover seams, o/w Very Fine E. 75-100**
- 4156 ☒ **Union Prisoner's Cover to Canada, Old Point Comfort, Va. Double Circle pmk. on U.S. 3c Red on Buff Star Die Entire (U27) to Hamilton, Canada, ms. Examiner's markings, ms. "Flag of Truce," "10" (C.S.A.) Handstamp Rate Mark, Hamilton 1863 backstamp, some rejoining along cover seams, small mend at B.R., Rare Usage to Canada(Photo) E. 150-200**

U.S. USED IN THE CONFEDERACY

- 4157 ☒ **Charleston S.C. Mar 27 1861, Clear Double Circle pmk., Grid cancel on U.S. 3c Red on Buff Star Die Entire (U27) to Laurens C.H., S.C. Very FineDietz 75.00**

4158	✉	Charleston S.C. Apr 1861 , Bold Double Circle pmks. on Two Separate U.S. 3c Red, Star Die Entires (U26, U27) to Marion C.H. & Greenville S.C. respectively, former faint toning along T. edge, latter some staining on back, o/w Very FineDietz	150.00
4159	✉	Cheraw S.C. May 16 (1861) , Bold Double Circle pmk. on U.S. 3c Red on White Star, Die Entire (U26) to Sumter, S.C., flap faults, Very Fine, ex-BarkhausenDietz	75.00
4160	✉	Decatur Tex Mar 4/61 (1861) , ms. pmk. on U.S. Red on White Star Die Entire (U26) to Denton, Texas, Very Fine Independent Statehood UsageDietz	225.00
4161	✉	Ft Worth (Texas) Feb 5 (1861) , ms. pmk. on U.S. 3c Red on Buff, Star Die Entire (U27) to Detin, Texas, extensive 1861 ms. docketing, few small cover tears & Minor smearing in address, Very Fine Independent Statehood UsageDietz	250.00
4162	✉	Galveston Tex Apr 12 (1861) , Clear Double Circle pmk. (which has 1860 yeardate but is actually 1861 as proven by Three Diff. backstamps & the fact that the 3c Entire was issued in August of 1860) on U.S. 3c Red on Buff, Star Die Entire (U27) to Germany, additionally franked with Two Horiz. Pairs of 3c Red (26), tied by Grid cancels, Red "N. York Hamb Pkt Paid 10" pmk., ms. "or Hamburg Steamer", various receiving backstamps, Very Fine & Scarce Trans-Atlantic Usage(Photo) E.	350-500
4163	✉	Jackson La Jun 18 , Bold pmk., ms "Paid 5" on U.S. 3c Red on White, Star Die Entire (U26) on Carroll Hoy corresp. cover to New Orleans, C.S.A. Usage-U.S. Postage not recognized, tape used inside to close couple minor cover tears (not visible), Very Fine(Photo) E.	100-150
4164	✉	Lisbon, Ark/Paid 10c , ms. pmk. on U.S. 3c Red on Buff, Star Die Entire (U27) to Ala., Stamp ms. lined out, cover mend through stamp (portion added) & ms. mathematical docketing on front, UnusualDietz	250.00
4165	✉	Magnolia, Ark Jun 16 , Mostly Clear pmk., "Paid 5" (5 in ms) on U.S. 3c Red on White Entire (U26) to Ala., overall soiling, rejoined along cover seams, o/w Fine C.S.A. Usage - U.S. Postage not recognized .E.	150-200
4166	✉	Mobile & Montgomery, Ala., Charleston, S.C. , Clear pmks. on U.S. 3c 1853-60 Entires, All Confederate State Usage of U.S. Stamps, Very Fine(Photo) Dietz	255.00
4167	✉	Newnan Ga Mar 28 (1861) , Clear pmk. on U.S. 3c Red on Buff, Star Die Entire (U27) to Greenville, S.C., 1861 ms. docketing at L., Very FineDietz	70.00
4168	✉	Oak Grove Ark (Arkansas) Mch 20th (1862) , Bold ms. pmk. on U.S. 3c Red on Buff, Star Die Entire (U27) to Tulip, Ark., "1862" ms. docketing, cover corner mend at B.R. & slightly reduced at L., o/w Very Fine, Invalid for Postage in C.S.A. after May 31, 1861 but Apparently Accepted, ex-Marcus White(Photo) E.	100-150
4169	✉	Owl Run (Va) Apr 27 (1861) , ms. pmk. on U.S. 3c Red on Buff, Star Die Entire (U27) to Baltimore, Blue "Due 3" in Circle Handstamp (Baltimore) mostly likely short paid double rate cover, U.S. Postage accepted until May 31st, Very Fine Independent Statehood Usage, ex-BarkhausenDietz	125.00
4170	✉	Pattonsburgh, Va Aug 18, (1861) , Clear Blue pmk., matching "Paid/5" Handstamp on U.S. 3c Red on Buff, Star Die Entire (U27) to Richmond, stamp ms. obliterated by sender (invalid for Postage in C.S.A), Military Address, minor edge wear & tiny nick at B.R., o/w Very FineDietz	75.00
4171	✉	Richmond Tex Ma 7 , Most'ly Readable Blue pmk., matching Five Point Star on U.S. 3c Red on White, Star Die Entire (U26), Carroll Hoy correspondence cover to New Orleans, Very Fine ..(Photo) Dietz	175.00

- 4172 ☒ **Rock Hill, S.C. Apr 11 (1861)**, Partly Clear pmk. on **U.S. 3c Red on Buff Star Die Entire (U27)** to Charleston forwarded to York, S.C. Charleston May 21, 1861 Double Circle Receiving pmk. & "Due 2" Str. Line Handstamp (either for Advertising or to make up 5c C.S.A. Rate (Red "For 3" Forwarding fee) if delivered in York, S.C., after May 31st. Similar "Due 2" Handstamp Used by Colombia, S.C. Scarce Example of Two C.S.A. pmks. on US Entire **E. 100-150**
- 4173 ☒ **Winchester Va Jun 4 1861**, Clear Double Circle pmk., matching "Paid 5" Handstamp & "10" Handstamp over **U.S. 3c Red on White Entire (U9)** to Abingdon, Va, "10" used as obliterating cancel-invalid for Postage in C.S.A., Very Fine **E. 50-75**
- 4174 ☒ **Yorkville S.C. Mar 21 (1861)**, Bold pmk. & target cancel on **U.S. 3c Red on Buff Star Die Entire (U27)** to Chester, S.C., 1861 ms docketing at L., Very Fine Dietz 75.00
- 4175 ☒ **5c Blue St. 2(4). Horiz. Pair**, Large Margins to slightly in, tied by "Cheraw S.C. Apr 4" Double Circle pmk. & affixed over the stamp **U.S. 3c Red on White Star Die Entire (U26)** to Georgetown, S.C. flap mended & reaffixed, some mended cover tears, stamps lifted & moved on cover to show U.S. stamp, Very Fine, ex-Kohn **(Photo) E. 150-200**
- 4176 ☒ **5c Blue (7). Horiz. Pair**, Clear to Large Margins, tied by Mechum's River Va. Sep 11 pmk. & affixed over stamp of **U.S. 3c Red on White Star Die Entire (U26)** to Sink's Grove, Ga., R. stamp folded over to show U.S. stamp, long cover tear & without flap, o/w Very Fine .. **E. 75-100**

EXPRESS COMPANIES AND OFFICIAL IMPRINTS

- 4177 ☒ **Adams Express Co. Augusta Ga Jul 18 (1861)**, Clear Blue Oval Handstamp on **U.S. 3c Red on Buff Star Die Entire (U27)** to Newbern N.C., "Adams Express Co. Baltimore MD Jul 11, 1861" Circular Cancel & Str Line "Paid " (struck twice), light "Augusta Ga Jul 18" Double Circle pmk. with Matching "Paid 10" Handstamp, ms." per Express", flap mend, o/w Very Fine, Scarce **(Photo) Dietz 600.00**
- 4178 ☒ **Adams Express Company/Great Eastern/Western & Southern/Express Forwarders/New York**, Clear Blue Large Oval Handstamp on **U.S. 3c Red on Buff Star Die Entire (U27)** to Athens, Ten., indistinct Macon Ga Aug 5 (1861) pmk., matching target cancel light crease along T. edge of cover, Very Fine & Scarce, U.S. Stamp Accepted as Postage though used after May 31, 1861 **(Photo) Dietz 600.00**
- 4179 ☒ **Adams Express Co. New Orleans 11 Mar (1861)**, Clear Circular Cancel on **U.S. 3 Red on Buff Star Die Entire (U27)** to Baltimore, ms. "Examined", Fine, U.S. Postage Accepted Until May 31, 1861 **E. 250-350**
- 4180 ☒ **Confederate States of America/Post Office Department/Official Business/B.N. Clements (signature)/Chief of The Appointment Bureau Impt.** on **U.S. 3c Red on White Star Die Entire (U26)** to Gordonsville, Va., Richmond Nov. 20 pmk., Str. Line "Free" handstamp, flap mends & reaffixed, some seams rejoined, tiny corner mends, o/w Very Fine **(Photo) Dietz 375.00**
- 4181 ☒ **Confederate States of America/Post Office Department/Official Business/Jno. L. Harrell (signature)/Chief of The Finance Bureau Impt.** on **U.S. 3c Red on Buff Star Die Entire (U27)** to Pickens C.H., S.C., Richmond Jan 14 pmk., Str. Line "Free" Handstamp, minor sealed cover tear, o/w Very Fine **(Photo) Dietz 350.00**
- 4182 ☒ **Confederate States of America, Post Office Department, Official Business. Chief of the Finance Bureau, Impt. & Jns. L. Harrell Free Frank** on **U.S. 3c Star Die Entire (U27)**, partial Richmond pmk. & "Free," light cover bleaching & back faults, Scarce **(Photo) Dietz 350.00**

USED AND UNUSED ENTIRES

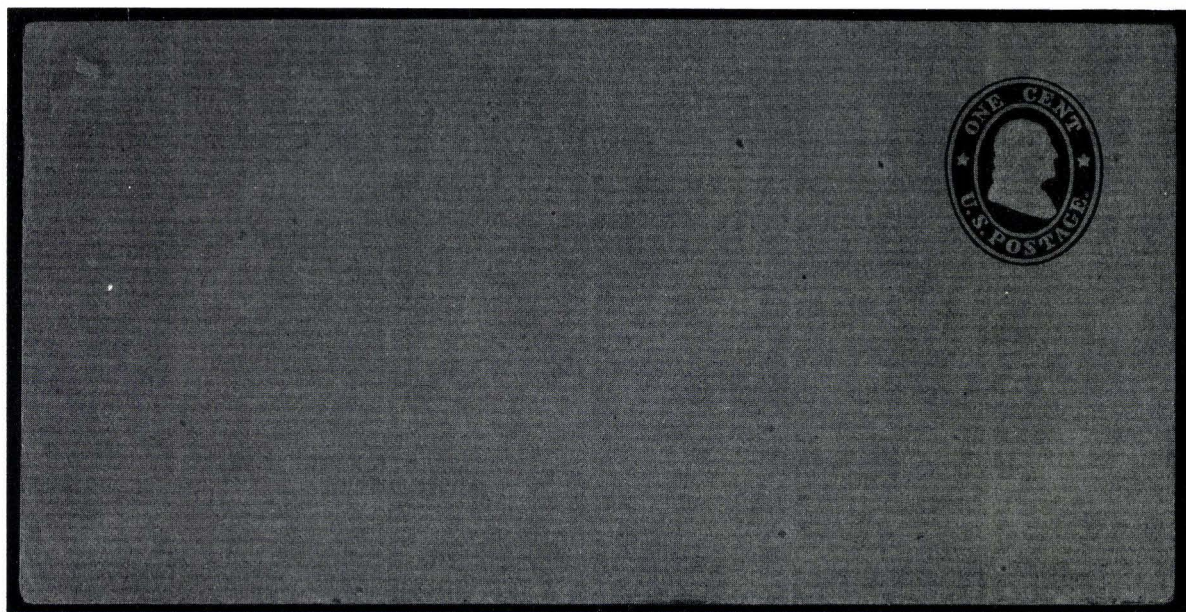
4183	✉	3c Red on White Entire, Die 1 (U1). Size 7, Knife 20, Wmk. 1, Unused, light crease through stamp small back thin, o/w Very Fine, Scarce Entire(Photo)	850.00
4184	✉	3c Red on White Entire, Die 1 (U1). Size 2, Knife 2, Wmk. 1, Unused, some stains bleached out, light creases through stamp, o/w Fine, Scarce Entire(Photo)	850.00
4185	✉	3c Red on Buff Entire, Die 1, Cracked Die Variety (U2 var). Size 7, Knife 20, Wmk. 1, Unused, Very Fine, Scarce(Photo)	575.00
4186	✉	3c Red on Buff Entire, Die 1 (U2). Size 7, Knife 20, Wmk. 1, Unused, Very Fine, Scarce(Photo)	575.00



4187	✉	3c Red on White Entire, Die 2 (U3). Size 7, Knife 20, Wmk. 1, Unused, Red Nesbitt Seal on flap, Very Fine, Rare, ex-Barkhausen	2,250.00
------	---	---	----------

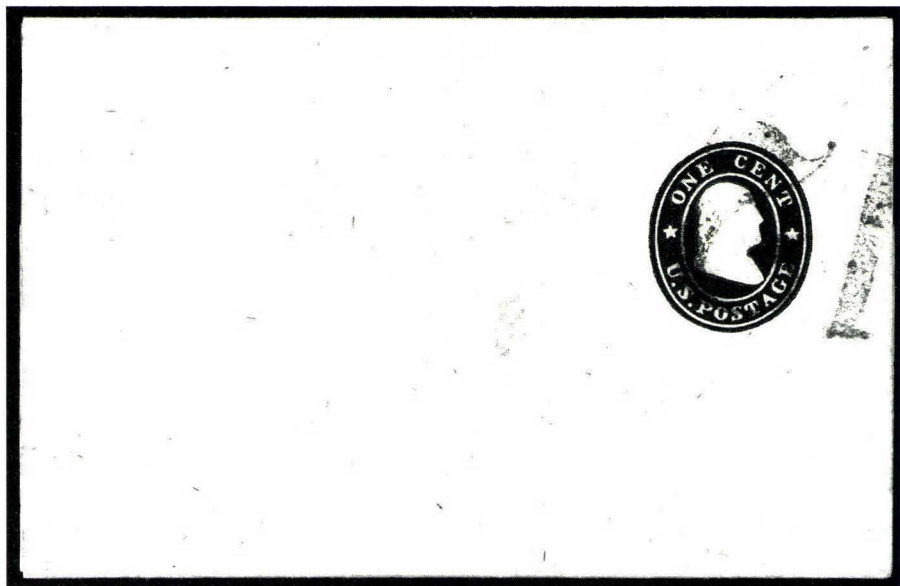
4188	✉	3c Red on Buff Entire, Die 2 (U4). Size 7, Knife 20, Wmk. 1, Addressed but Unused, some wrinkles, o/w Very Fine, U.P.S.S. "Unused" cat. \$350.00, cat. as Unused Cut Square	180.00
4189	✉	3c Red on Buff Entire, Die 2 (U4). Size 7, Knife 20, Wmk. 1, Addressed but Unused, some bends & wrinkles from contents, o/w Fine, U.P.S.S. "Unused" cat. \$350.00, cat. as Unused Cut Square	180.00
4190	✉	3c Red on White Entire, Die 3 (U5). Size 7, Knife 20, Wmk. 1, Red "Boston 3 cts" pmk., Black grid cancel, Very Fine(Photo)	450.00
4191	✉	3c Red on White, Buff Entires, Die 3 (U5, U6). Size 7, Knife 20, Wmk. 1, Used, ms. "X" cancels, Town pmks. (latter ms.), former with creases & slightly reduced at R., latter small stain at B.R., o/w Fine .	E. 75-100
4192	✉	3c Red on White Entire, Die 4 (U7). Size 7, Knife 20, Wmk. 1, Eddyville, Ky. ms. pmk., Stamp Uncancelled, cover mend at R. clear of stamp, o/w Fine, cat. as Unused Cut Square(Photo)	500.00

4193	☒	3c Red on White Entire, Die 5 (U9 var). U.P.S.S. #13, Size 1, Knife 1, Wmk. 1, "Ladies Note Size", Childres Store (Pa) ms. pmk., ms. "X" cancel, reduced at R. just clear of stamp, minor stain, o/w Fine, Scarce Size	U.P.S.S. 300.00
4194	☒	3c Red on White, Buff Entires, Die 5 (U9 two, U10 two). U.P.S.S. #16, 17, 19, 20, Size 7, Knives 21, 22, Wmk. 1, Unused, No. 16 vert. file fold, o/w Very Fine, Nos. 17 & 19 ex-Barkhausen	U.P.S.S. 520.00
4195	☒	6c Red on White Entire (U11). Size 21, Knife 94, Wmk. 1, Unused, Large Green Embossed Illustr. Corner Card for Carter's "Yankee Writing Fluid", small edge tear & minor edge stain, o/w Very Fine & Scarce	175.00 +
4196	☒	6c Red on White, Buff Entires (U11, U12 two). Size 21, Knife 94, Wmk. 1, Unused, former some light toning spots at L., o/w Fine-Very Fine	505.00
4197	☒	6c Red on White, Buff Entires (U11, U12 two). Size 21, Knife 94, Wmk. 1, Used except one of latter Unused, W.F. & Co. Printed Frank, vert. file folds not affecting stamp, No. U11 with Printed Address, No. U11 some faults, o/w Fine-Very Fine	395.00
4198	☒	6c Red, Green on Buff Entires (U12, U14). Sizes 21 & 7 respectively, Unused, former minor edge tears, o/w Very Fine	440.00
4199	☒	6c Green on White Entire (U13). Size 7, Knife 20, Wmk. 1, Unused, Very Fine, signed Sloane	250.00
4200	☒	6c Green on Buff Entire (U14). Size 7, Knife 20, Wmk. 1, Unused, Very Fine	275.00
4201	☒	10c Green on White, Buff Entires, Die 1 (U15, U16). Size 7, Knife 20, Wmk. 1, Unused, Very Fine	375.00
4202	☒	10c Green on White, Buff Entires, Die 2 (U17, U18). Size 7, Knife 20, Wmk. 1, Unused, former trivial corner crease at B.R., o/w Very Fine, latter ex-Barkhausen	390.00



4203	☒	1c Blue on Orange Star Die Wrapper, Die 1 (W22). 152, x257mm, Horiz. Laid, Unused, Very Fine, Rare, ex-Ackerman, Barkhausen	1,850.00
------	---	--	----------

- 4204 ☒ **1c Blue on Orange Star Die Entire, Die 2, "Specimen" Ovpt. (U23S).** #43S, Size 7, Knife 24, Wmk. 1, Will Yield Extremely Fine Full Corner, Very Fine(Photo) 350.00+
- 4205 ☒ **1c Blue on Orange Star Die Entire, Die 2 (U23).** #43, Size 7, Knife 24, Wmk. 1, Unused, Printed American Express Co. Return Legend, Very Fine, Scarce(Photo) 400.00
- 4206 ☒ **1c Blue on Orange Star Die Entire, Die 2 (U23).** Size 7, Knife 24, Wmk. 1, Corry, Pa. Fancy Eight Point Star cancel, small edge faults & some back faults, o/w Fine & Attractive(Photo) 400.00

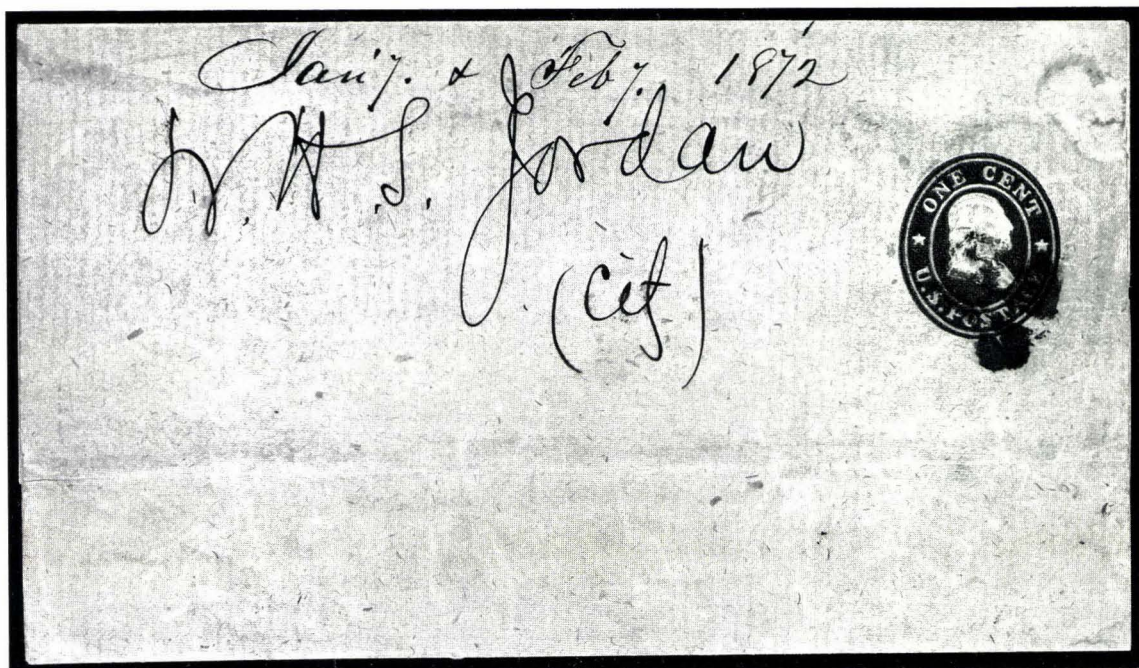


- 4207 ☒ **1c Blue on Buff Star Die Wrapper, Die 3 (W25).** Knife W1, Wmk. 1, U.P.S.S. #45, Used, Bold "12" Numeral cancel, surface scuff in center not affecting Stamp (Yields Extremely Fine Cut Square, cat. \$900.00), Rare, U.P.S.S. cat. \$3,000.00 2,500.00

BIDDING INTERVALS

BIDS	ADVANCE	BIDS	ADVANCE
Up to \$30.00	\$1.00	\$1,900.00 - \$3,000.00	\$100.00
\$32.50 - \$60.00	\$2.50	\$3,000.00 - \$7,500.00	\$250.00
\$60.00 - \$140.00	\$5.00	\$7,500.00 - \$15,000.00	\$500.00
\$140.00 - \$300.00	\$10.00	\$15,000.00 - \$30,000.00	\$1,000.00
\$300.00 - \$750.00	\$25.00	\$30,000.00 - \$75,000.00	\$2,500.00
\$750.00 - \$1,900.00	\$50.00		

Bids which do not conform to the above will be automatically reduced to the appropriate level.



4208	☒	1c Blue on Buff Star Die Wrapper, Die 3 (W25). Knife W1, Wmk. 1, U.P.S.S. #46, Cork cancel (1872 Local Usage), edge scuff at R. & horiz. file fold, (Will Yield Fine-Very Fine Cut Square, cat. \$900.00), Rare, U.P.S.S. cat. 3,000.00, One of Only Two Recorded of This Size, ex-Barkhausen	2,500.00
4209	E☒	3c Red on Buff Star Die Entire, Unissued Size (U27 var, Thorp Essay & Proof #5). Size 7, Knife 13, Unwatermarked, Very Fine	E. 100-150
4210	☒	3c Red on Buff Star Die Entire (U27). Size 7, Knife 20, Wmk. 1, Unused, Red, White & Blue Waving Flag Patriotic Design, Very Fine	E. 75-100
4211	E☒	3c Red + 1c Blue on White Star Die Entire Essay (U28E). Die 14A, Thorp #82A, Size 2, Knife 8, Wmk. 1, flap creases & light corner crease, o/w Very Fine, Scarce, Reportedly Unique , ex-Barkhausen	350.00
4212	☒	3c Red + 1c Blue on White Star Die Entire Essay (U28E). Die 14A, Thorp #82B, Size 3, Knife 2, Wmk. 1, large cover mend affecting stamps (tiny bit of 1c & bottom portion of 3c designs painted in), Scarce, Reportedly Unique , ex-Barkhausen (Thorp cat. \$350.00)	—
4213	☒	3c Red + 1c Blue on White Star Die Entire (U28). #57, Size 7, Knife 20, Wmk. 1, Unused, Very Fine	475.00
4214	☒	3c Red + 1c Blue on White Star Die Entire (U28). #56, Size 5, Knife 13, Wmk. 1, New-York Double Circle & Target Duplex cancel, Very Fine	350.00
4215	☒	3c Red + 1c Blue on White Star Die Entire (U28). #56, Size 5, Knife 13, Wmk. 1, "Williamsburgh, N.Y. Jan 17 1861" Double Circle pmk. (now part of Brooklyn), cork cancel, used to Savannah, Ga., original back rejoined to entire, reinforced vert. filing fold & small cover mend at T., Very Fine Appearance, Rare Used Outside of N.Y. City, Only Recorded Example from Williamsburgh	350.00 +

4216	Ex	3c Red + 1c Blue on Buff Star Die Entire Essay (U29E). Die 14A, Thorp #82C, Size 3, Knife 2, Wmk. 1, Very Fine, Possibly Unique, Scarce, ex-Marcus White(Photo)	350.00
4217	Ex	3c Red + 1c Blue on Buff Star Die Entire (U29). #60, Size 7, Knife 20, Wmk. 1, Unused, Fresh, tiny pinhole along extreme T. edge far from stamps, Very Fine(Photo)	375.00
4218	Ex	3c Red + 1c Blue on Buff Star Die Entire (U29). #59, Size 5, Knife 13, Wmk. 1, Blue Baltimore, Md pmk., flap mend which incl. tiny mend at T., flap rejoined, o/w Very Fine, Rare Used Outside of N.Y. City, One of Only Two Known from Baltimore, ex-Marcus White(Photo)	400.00 +
4219	Ex	3c Red + 1c Blue on Buff Star Die Entire (U29). #60, Size 7, Knife 20, Wmk. 1, Blue Chicago Ill Nov 29 1862 Double Circle with Target Duplex pmk., Embossed Corner Card (few tiny erosions in CC) & tiny toning spot, o/w Very Fine, Rare Used Outside N.Y. City, One of Only Two from Chicago the other a front only, ex-Marcus White(Photo)	400.00 +
4220	Ex	3c Red + 1c Blue on Buff Star Die Entire (U29). #60, Size 7, Knife 20, Wmk. 1, New-York Double Circle & Target Duplex cancel, Very Fine(Photo)	400.00
4221	Ex	3c Red + 1c Blue on Buff Star Die Entire (U29). #60, Size 7, Knife 20, Wmk. 1, New-York Double Circle & Target Duplex cancel, Bible Society Printed Corner Card, slightly reduced at R., Very Fine(Photo)	400.00
4222	Ex	3c Red + 1c Blue on Buff Star Die Entire (U29). #60, Size 7, Knife 20, Wmk. 1, New-York Double Circle & Target Duplex cancel, Bible Society Printed Corner Card, few minor edge tears, Very Fine(Photo)	400.00
4223	Ex	3c Red + 1c Blue on Buff Star Die Entire (U33). #60, Size 7, Knife 20, Wmk. 1, New-York & Target Duplex cancel, spot of ms. on front & flap mend, Very Fine(Photo)	400.00
4224	Ex	3c Red + 1c Blue on Buff Star Die Entire (U29). Size 5, Knife 13, Wmk. 1, N.Y. 1863 Double Circle pmk., ms. docketing at T. (just clear of stamps) & without flap, o/w Very Fine(Photo)	400.00
4225	Ex	3c Red + 1c Blue on Buff Star Die Entire (U29). Size 7, Knife 20, Wmk. 1, New-York with Star in Circle Duplex cancels, reduced at L., Yields Very Fine Cut Square, cat. as Cut Square(Photo)	175.00

DESCRIPTIONS

EXTREMELY FINE: The finest condition for noteworthy, outstanding stamps.

VERY FINE: In prime condition such as to satisfy the requirements of particular collectors.

FINE: Perforations or margins do not touch design on issues after 1890 but in some cases may just touch in earlier issues. If used, fairly light cancellation.

VERY GOOD: Generally nice appearance but margins or perforations may cut in slightly.

GOOD: Average off-centering or fairly attractive with slight defects.

Unless otherwise noted the 1988 Scott United States Specialized Catalogue has been used for cataloguing lots in this sale.

4228



4226

4226	✉	6c Red on White Star Die Entire (U30). Size 21, Knife 94, Wmk. 1, Unused, Fresh, Very Fine & Rare 2,750.00
------	---	--


UNIQUE SIX CENT STAR DIE CUT SQUARE




4227		6c Red on White Star Die Cut Square (U30). 26x32 mm, Grid cancels, crease ending in margin nick at R., Fine Appearance, Extremely Rare, Only Known Used Example (No Entires Recorded) 1,250.00
4228	✉	6c Red on Buff Star Die Entire (U13). Size 21, Knife 94, Wmk. 1, Very Fine & Rare 2,500.00

ONE OF TWO KNOWN USED SIX CENT STAR DIE ENTIRES



4229  **6c Red on Buff Star Die Entire (U31).** Size 21, Knife 94, Wmk. 1, Blue "Adams Express Co. N.Y." Double Circle cancel (without date slugs), Matching "Paid" in oval Handstamp, Carroll Hoy correspondence cover to New Orleans, ms. "pr Adams Express", some expert rejoining along cover seams & cover mend at T.R. (clear of stamp design), o/w Very Fine, An Exceptional Rarity, Possible Private Express Co. C.S.A. Usage, **One of Only Two Recorded Used Entires** (Scott cat. \$3,500.00)UPSS 5,000.00

4230  **10c Green on White Star Die Entire (U32).** Size 7, Knife 20, Wmk. 1, Salem, Oregon pmk., Stamp Uncancelled, cover & flaps mends (close but just clear of stamp), o/w Fine, cat. as Unused Cut Square **..(Photo)** 750.00

"E." = ESTIMATES

Our sales offer many covers, cancellations, varieties and other items for which there is no catalogue value or where catalogue value does not reflect the actual value. In order to assist our clients, we are placing a fair net valuation on such lots as a guide to our bidders. Lots may actually realize more or less than our estimates, which are under no circumstances to be considered reserves but merely a guide to bidding.

4234



4231

- | | | | |
|------|---|--|----------------|
| 4231 | ✉ | 10c Green on White Star Die Entire (U32). Size 7, Knife 20, Wmk. 1, Unused, trivial soiling far from stamp, o/w Very Fine, Rare & Desirable | 7,000.00 |
| 4232 | ✉ | 10c Green on White Star Die Entire (U32). #64, Size 7, Knife 20, Wmk. 1, Bold "San Francisco Cal Sep 12 1861" pmk. used to Mass., Fresh & Very Fine | (Photo) 350.00 |
| 4233 | ✉ | 10c Green on White Star Die Entire (U32). #64, Size 7, Knife 20, Wmk. 1, San Francisco Double Circle pmk., 1861 usage, slightly reduced at R., Very Fine, ex-Slawson | (Photo) 350.00 |
| 4234 | ✉ | 10c Green on Buff Star Die Entire (U33). Size 7, Knife 20, Wmk. 1, Unused, h.r. on back, Very Fine, Rare | 2,100.00 |
| 4235 | ✉ | 10c Green on Buff Star Die Entire (U33). #65, Size 7, Knife 20, Wmk. 1, Clear San Francisco Jun 1, 1861 pmk., Bold "Due 10" Handstamp, reduced at T. (just clear of stamp), small mend at T., o/w Very Fine | (Photo) 375.00 |
| 4236 | ✉ | 10c Green on Buff Star Die Entire (U33). #65, Size 7, Knife 20, Wmk. 1, San Francisco Apr 20, 1861 pmk., to Ill., ms. "Per Steamer," slightly reduced at L., o/w Very Fine | (Photo) 375.00 |
| 4237 | ✉ | 10c Green on Buff Star Die Entire (U33). Size 7, Knife 20, Wmk. 1, San Francisco 1861 pmk., cover & flap mends not affecting Cut Square, o/w Very Fine | (Photo) 375.00 |

4238	✉	3c Pink on Blue Letter Sheet (U36). #82, Knife L1, Wmk. 1, Blue Double Circle pmk. & Black Target cancel, Very Fine, Scarce Used, ex-BarkhausenUPSS	160.00
4239	✉	12c Red & Brown on Buff Entire (U42). Size 21, Knife 96, Wmk. 1, Unused, light overall soiling, small natural inclusion just clear of stamp design, o/w Very Fine(Photo)	375.00
4240	✉	20c Red & Blue on Buff Entire (U43). Size 22, Knife 105, Wmk. 1, Unused, few trivial toning specks (not affecting Cut Square), o/w Very Fine(Photo)	375.00
4241	✉	24c Red & Green on Buff Entire (U44). Size 24, Knife 120, Wmk. 1, Unused, Fresh, tiny negligible edge tear at R., (not affecting Cut Square), o/w Very Fine(Photo)	475.00
4242	✉	40c Black & Red on Buff Entire (U45). Size 24, Knife 120, Wmk. 1, Unused, faint bend along L. edge, o/w Very Fine, Scarce(Photo)	600.00
4243	✉	2c Black on Orange Entire, Die 4 (U56). U.P.S.S. #116, Size 7, Knife 24, Wmk. 1, Unused, Stamp Dealer Illustr. Corner Card Picturing The Rare 1c Pierce Match Co. Private Die Proprietary Revenue Stamp (RO145A), Very Fine & Attractive(Photo) UPSS	250.00 +
4244	✉	3c Pink on White, Buff Entire, George F. Nesbitt & Co. Advertising Collars "Specimen" Below Collars (U58 one, U59 four). Unused, All Diff. Colors, also incl. duplicate with ms. notations on front (worn), three with pinholes, o/w Very Fine & Attractive(Photo) E.	100-150
4245	✉	9c Lemon on Buff Entire (U66). Size 21, Knife 97, Wmk. 1, Unused, Fresh, Very Fine, Scarce(Photo)	500.00
4246	✉	9c Lemon on Buff Entire (U66). Size 21, Knife 97, Wmk. 1, Unused, some toning spots (not affecting Cut Square), o/w Very Fine, Scarce(Photo)	500.00
4247	✉	9c Orange, Orange-Yellow on Buff Entire (U67, U67a). Size 21, Knife 97, Wmk. 1, Unused, former minor back thins, latter minor soiling, o/w Very Fine	275.00
4248	✉	9c Orange, 18c Red on Buff Entire (U67, U70). Sizes 21 & 24 respectively, Unused, each with W.F. & Co. Printed Frank (Haller WF-G1 on #136 & WF-G on #138 respectively), latter couple vert. file folds at L. (partly through Frank) & minor edge stains, o/w Very Fine	335.00 +
4249	✉	12c Brown on Buff Entire (U68). Size 21, Knife 97, Wmk. 1, Unused, Fresh, Very Fine, Scarce, ex-Flanders(Photo)	500.00
4250	✉	12c Brown on Buff Entire (U68). Size 21, Knife 97, Wmk. 1, Unused, Red Pacific Union Express Co. Printed Frank (Haller FP4, Ty.1), couple faint toning spots not affecting Cut Square, o/w Very Fine, Not Listed in Haller on No. U68(Photo)	500.00 +
4251	✉	18c-40c 1864 Issue Entire (U70-U73). Size 24, Knife 120, Wmk. 1, Unused, 30c minor stains at extreme L., o/w Very Fine	765.00
4252	✉	10c Olive Black on White Entire (U89). #223b, Size 7, Knife 25, Wmk. 2, Unused, Exceptionally Fresh, Very Fine & Choice ..(Photo)	400.00
4253	✉	10c Olive Black on Amber Entire (U90). #226a, Size 7, Knife 25, Wmk. 2, Unused, Printed Return Legend, Exceptionally Fresh, Very Fine & Choice(Photo)	400.00
4254	✉	12c Plum on White Entire (U93). Size 21, Knife 98, Wmk. 2, Unused, Exceptionally Fresh, Extremely Fine	180.00
4255	✉	12c Plum on Amber Entire (U94). Size 21, Knife 98, Wmk. 2, Fresh, Extremely Fine, ex-Barkhausen	175.00
4256	✉	12c Plum on Amber Entire (U94). Size 21, Knife 98, Wmk. 2, Unused, Fresh, Extremely Fine	175.00
4257	✉	12c Plum on Cream Entire (U95). Size 21, Knife 98, Wmk. 2, Unused, Fresh, Extremely Fine(Photo)	325.00
4258	✉	12c Plum on Cream Entire (U95). Size 25, Knife 122, Wmk. 2, Unused, Fresh, Extremely Fine(Photo)	325.00

4259	✉	15c Red Orange on Amber Entire (U97). Size 21, Knife 98, Wmk. 2, Unused, Fresh, Extremely Fine, ex-Barkhausen(Photo)	350.00
4260	✉	15c Red Orange on Amber Entire (U97). Size 21, Knife 98, Wmk. 2, Unused, Fresh, Extremely Fine(Photo)	350.00
4261	✉	15c Red Orange on Cream Entire (U98). Size 21, Knife 98, Wmk. 2, Unused, Fresh, Extremely Fine, ex-Barkhausen(Photo)	275.00
4262	✉	15c Orange on Cream Entire (U98a). Size 21, Knife 98, Wmk. 2, Unused, Fresh, Extremely Fine(Photo)	275.00
4263	✉	24c Purple on Amber Entire (U100). Size 21, Knife 98, Wmk. 2, Unused, Exceptionally Fresh, Extremely Fine(Photo)	325.00
4264	✉	24c Purple on Cream Entire (U101). Size 21, Knife 98, Wmk. 2, Unused, Fresh, Extremely Fine, ex-Barkhausen(Photo)	300.00
4265	✉	24c Purple on Cream Entire (U101). Size 25, Knife 122, Wmk. 2, Unused, Fresh, Extremely Fine, ex-Barkhausen(Photo)	300.00
4266	✉	30c Black on Amber Entire(U103). Size 21, Knife 98, Wmk. 2, Unused, Extremely Fine, ex-Barkhausen(Photo)	450.00
4267	✉	30c Black on Cream Entire (U104). Size 21, Knife 98, Wmk. 2, Unused, Fresh, Extremely Fine(Photo)	300.00
4268	✉	30c Black on Cream Entire (U104). Size 25, Knife 122, Wmk. 2, Unused, Fresh, Extremely Fine, ex-Barkhausen (Photo)	300.00
4269	✉	90c Carmine on Amber Entire (U106). Size 21, Knife 98, Wmk. 2, Unused, Printed Return Legend, Fresh, Extremely Fine(Photo)	750.00
4270	✉	90c Carmine on Cream Entire (U107). Size 21, Knife 98, Wmk. 2, Unused, Fresh, Extremely Fine(Photo)	800.00
4271	✉	90c Carmine on Cream Entire (U107). Size 25, Knife 122, Wmk. 2, Unused, Exceptionally Fresh, Extrmely Fine, Scarce(Photo)	800.00
4272	✉	1c-10c Plimpton Entires (Betw. U108-U194). 53 Diff. Unused Entires incl. Nos. U108, U109, U122, U123, W127, U136, U137, U139-W141, U180, U188, etc., a few with some toning, Nearly All Very Fine	1,520.65

4273	✉	2c Vermilion on Manila Wrapper, Die 1 (W127). #302, Knife W2, Wmk. 2, Unused, Fresh, couple creases far from stamp, o/w Very Fine, Rare, Reportedly Three Known(Photo)	1,200.00
------	---	--	----------

4274	✉	2c Brown on White Entire, Die 4 (U134). Size 6, Knife 18, Wmk. 2, Unused, ms. address mostly eradicated, o/w Very Fine, Unused Cut Square cat. \$600.00(Photo)	625.00
4275	✉	2c Brown on Amber Entire, Die 4 (U135). Size 6, Knife 18, Wmk. 2, Unused, Printed Return Legend, Very Fine(Photo)	400.00
4276	✉	3c Green on White Entire, Die 3 (U168 var). #449, Size 10, Knife 54, Wmk. 5, Unused, light overall toning, o/w VF, Scarce(Photo)	1,500.00

4277	✉	3c Green on White Entire, Die 3 (U168 var). #448 Size 8, Knife 38, Wmk. 5, N.Y. 1883 Duplex pmk., Printed Return Legend, irregularly opened at T.R. not affecting stamp, o/w Very Fine, Rare, Believed to be Only Two Known—This is the Discovery Example, ex-Behrendsen, Barkhausen, signed Bartels(Photo) UPSS	1,000.00
------	---	---	----------

<p>Extension Lots must be paid for on receipt. In the event of an unsatisfactory certificate, payment will be refunded with interest at Treasury Bill rate.</p>
--

Return to DIEBOLD SAFE & LOCK CO.,
CANTON, Ohio,
If not delivered within 10 days.



Mr. Benoni Lechance
Mackinac
Mich

4278	✉	3c Green on Fawn Entire, Die 3 (U171). Size 10, Knife 54, Wmk. 5, Cork cancel, Canton, O. pmk., slightly reduced at R., small cover mend at B.R., o/w Very Fine, Extrmeley Rare, Not Known Unused 12,000.00	
4279	✉	6c Red on Cream "Centennial" Entire (U183). U.P.S.S. #530, Size 10, Knife 53, Wmk. 2, Unused, light crease, o/w Very Fine .(Photo) U.P.S.S. 300.00	
4280	✉	12c Plum, 15c Orange on White, Amber Entires (U195, U196, U198, U199). All Size 21, Knife 98, Wmk. 2, Unused, No. U195 light soiling, No. U198 toning band far from stamp, No. U199 light toning specks, o/w Very Fine 550.00	
4281	✉	12c-90c Plimpton Entires (U195, U198, U204, U207, U210, U211). All Size 25, Unused, first light toning band, No. U204 tiny stain, o/w Very Fine 555.00	
4282	✉	12c Plum on Cream Entire (U197). Size 21, Knife 98, Wmk. 2, Unused, Fresh, Extremely Fine .(Photo) 700.00	
4283	✉	15c Orange on Cream Entire (U200). Size 21, Knife 98, Wmk. 2, Unused, few tiny oily translucent specks on entire not affecting Full Corner, o/w Extremely Fine .(Photo) 850.00	
4284	✉	24c Purple on Cream Entire (U203). Size 21, Knife 98, Wmk. 2, Unused, Fresh, Extremely Fine .(Photo) 700.00	
4285	✉	24c Purple on Cream Entire (U203). Size 21, Knife 98, Wmk. 2, Unused, Extremely Fine .(Photo) 700.00	
4286	✉	30c Black, 90 Carmine Plimpton Entires (U204, U205, U210, U211, U212). All Size 21, Knife 98, Wmk. 2, Unused, No. U204, U205, & U212 some toning, o/w Very Fine 495.00	
4287	✉	30c Black on Cream Entire (U206). Size 21, Knife 98, Wmk. 2, Unused Fresh, Extremely Fine .(Photo) 700.00	
4288	✉	90c Carmine on White Entire (U211). #631-6, Size 25, Knife 123, Wmk. 6, Philadelphia Double Oval cancel, Mar. 1888 Registry usage to Germany , vert. file fold & usual small edge faults, o/w Very Fine, Far Better than Normal Condition for This Scarce Used EntireUPSS 250.00	

4289	✉	2c Red on Amber Entire, 3½ Links (U241). #743, Size 10, Knife 54, Wmk. 6, Unused, Small Engraved Illustr. Fraternal Lodge Corner Card, Very Fine & Choice, Scarce (Photo)	750.00
4290	✉	2c Red on Blue Entire, Die 1 (U286). #788 (Cat. \$250), Size 6, Knife 19, Wmk. 6, Unused, Very Fine, Scarce	200.00
4291	✉	2c Red on Manila Wrapper, Die 1, (W287). #789, Knife W3, Wmk. 6, Unused, Exceptionally Fresh, Very Fine	100.00
4292	✉	2c Brown on White Entire, Die 1 (U288). #854, Size 7, Knife 31, Wmk. 7, Unused, Fresh, Very Fine, Scarce (Photo)	300.00
4293	✉	1c Blue on White Entire, “Tiffany” (Rejected Die) (U294 var). Thorp #1140, Size 4½, Knife 49, Wmk. 7, Unused, Very Fine, Scarce, ex-Barkhausen (Photo) Thorp	250.00
4294	✉	2c Green on Manila Entire, Die 1 (U309). #921, Size 7, Knife 31, Wmk. 7, “Montpelier, Idaho Apr 12 1889” Territorial pmk., Used to Montreal, Canada with Printed Address, Montreal backstamp, Very Fine, Scarce, ex-Barkhausen (Photo)	500.00
4295	✉	2c Green 1887 Issue Entires, Die 3 (U318-U323). #1043, #1045, #1047, #1049-#1051, Size 13, Knife 74, Wmk. 7, Unused, Exceptionally Fresh, Very Fine & Choice Set of Die 3 Entires	930.00
4296	✉	30c Red Brown, 90c Purple Plimpton Entires (U336, U338, U341, U342 two U343, U344, U345 two). Unused, one of last some toning spots, o/w Very Fine Lot	535.00
4297	✉	90c Pale Purple on Amber Entire (U343). U.P.S.S. #1124, Size 8, Knife 38, Wmk. 7, Unused, Very Fine U.P.S.S.	150.00
4298	✉	4c Brown on White Entire, Die 1 (U371 var). #1346, Size 10, Knife 54, Wmk. 13, Unused, light vert. toning band (well clear of stamp), o/w Very Fine, Scarce (Photo) UPSS	550.00

4299	✉	5c Blue on Blue Entire, Die 1 (U418d). Thorp #2478A, Size 5, Knife 81, Wmk. 15, Unused, small stain far from stamp, o/w Very Fine, Rare, Only Seven Known (Photo)	1,200.00
------	---	--	----------

4300	✉	2c Carmine, Die 1, With Added Impression of 1c Green, Die 1 on White Entire (U429j) Thorp Size 3, Unused, One Impression Over the Other, couple trivial edge toning specks, o/w Very Fine, Spectacular Error (Photo)	300.00
4301	✉	2c on 2c Carmine on White Entire (U453). Thorp Size 8, Unused, edge tear at T. far from stamp, o/w Very Fine, Scarce (Photo)	750.00
4302	✉	2c on 2c Carmine, 3c Dark Violet on White, Amber Entires (U454, U476-U478). Unused, last Thorp Size 8, others Size 5 or 13, Very Fine	405.00
4303	✉	2c on 1c Green on White Entire (U465). Thorp Size 8, Unused, vert. filing fold at L. center far from stamp, o/w Very Fine, Scarce. (Photo)	800.00
4304	✉	2c on 2c Carmine on White Entire (U466A). Thorp #3349, Size 5, Knife 81, Wmk. 22, Unused, Very Fine	225.00
4305	✉	2c on 3c Dark Violet on White Entire (U479). Thorp #3468, Size 13, Knife 98, Wmk. 19, Unused, Very Fine, Scarce, signed Ward . (Photo)	325.00
4306	✉	2c on 3c Dark Violet on White Entire (U479). Thorp #3468, Size 13, Knife 98, Wmk. 19, Unused, Very Fine, Scarce (Photo)	325.00
4307	✉	2c on 3c Dark Violet on White Entire (U479). Thorp #3468, Size 13, Knife 98, Wmk. 19, Unused, Very Fine, Scarce (Photo)	325.00
4308	✉	1½c on 1c Green on White Entire (U488). Thorp #3476, Size 2, Knife 79, Wmk. 13, Very Fine, Scarce, Reportedly Only 24 Known . (Photo)	550.00

END OF SALE — THANK YOU



DUE 6

OLD STAMPS
NOT RECOGNIZED



Miss Helen C. Cowan
Care of Rev. J. W. Cowan
Burlington
Vermont



PAID
Wells, Fargo & Co.
THROUGH OUR CALIFORNIA AND ATLANTIC EXPRESS.



Per Pony Exp

Mr John M. Lyon
Colchester
Vermont

160 EAST 56 STREET, NEW YORK CITY, N.Y., 10022

(212) 753-6421

UNITED STATES POSTAL STATIONERY

THE CHARLES L. WUNSCH COLLECTION

INDIVIDUAL REALIZATIONS ARE HAMMER PRICES. GROSS REALIZATION
INCLUDES 10% BUYERS PREMIUM.

4001	500	4061	230	4119	170	4177	1350	4236	160	4295	230
4002	425	4062	85	4120	80	4178	375	4237	160	4296	375
4003	190	4063	325	4121	290	4179	230	4238	115	4297	125
4004	85	4064	525	4122	240	4180	220	4239	200	4298	200
4005	105	4065	100	4123	130	4181	325	4240	200	4299	1600
4006	65	4066	160	4124	95	4182	70	4241	220	4300	250
4007	180	4067	325	4125	350	4183	375	4242	375	4301	850
4008	180	4068	180	4126	105	4184	210	4243	W/D	4302	270
4009	100	4069	220	4127	675	4185	425	4244	550	4303	500
4010	55	4070	325	4128	350	4186	575	4245	300	4304	270
4011	130	4071	250	4129	350	4187	2100	4246	270	4305	170
4012	115	4072	350	4130	220	4188	170	4247	115	4306	150
4013	100	4073	300	4131	450	4189	110	5258	125	4307	160
4014	150	4074	60	4132	290	4190	270	4249	300	4308	350
4015	190	4075	170	4133	210	4191	115	4250	260	END OF SALE THANK YOU	
4016	125	4076	80	4134	280	4192	290	4251	300		
4017	105	4077	125	4134	280	4193	350	4252	475		
4019	65	4078	95	4135	210	4194	90	4253	450	GROSS REALIZATION:	
4019	220	4079	200	4136	425	4195	120	4254	170		
4020	95	4080	135	4137	375	4196	230	4255	160		
4021	100	4081	42½	4138	115	4197	220	4256	150	\$183,447.00	
4022	450	4082	170	4139	240	4198	200	4257	250		
4023	375	4083	42½	4140	115	4199	180	4258	230		
4024	135	4084	57½	4141	160	4200	190	4259	230		
4025	135	4085	140	4142	400	4201	260	4260	250		
4026	115	4086	425	4143	350	4202	525	4261	220		
4027	170	4087	1000	4144	80	4203	1650	4262	300		
4028	100	4088	375	4145	160	4204	250	4263	220		
4029	40	4089	210	4146	80	4205	375	4264	230		
4030	6250	4090	190	4147	170	4206	375	4265	210		
4031	900	4091	90	4148	240	4207	3250	4266	325		
4032	3250	4092	450	4149	260	4208	2100	4267	240		
4033	240	4093	210	4150	280	4209	105	4268	190		
4034	105	4093	210	4151	300	4210	70	4269	625		
4035	100	4094	170	4152	25,000	4211	850	4270	500		
4036	95	4095	90	4153	4250	4212	375	4271	500		
4037	95	4096	65	4154	50	4213	325	4272	1200		
4038	600	4097	130	4155	130	4214	240	4273	1800		
4039	2100	4098	210	4156	375	4215	850	4274	600		
4040	300	4099	95	4157	52½	4216	1050	4275	475		
4041	150	4100	525	4158	65	4217	270	4276	600		
4042	85	4101	160	4159	37½	4218	950	4277	475		
4043	650	4102	90	4160	325	4219	1200	4278	6750		
4044	115	4103	1500	4161	550	4220	375	4279	125		
4045	425	4104	160	4162	1200	4221	230	4280	300		
4046	1200	4105	375	4163	210	4222	290	4281	350		
4047	675	4106	350	4164	180	4223	260	4282	550		
4048	170	4107	95	4165	190	4224	200	4283	375		
4049	270	4108	130	4166	160	4225	150	4284	450		
4050	130	4109	90	4167	70	4226	2300	4285	400		
4051	37½	4110	135	4168	160	4227	800	4286	220		
4052	100	4111	200	4169	260	4228	2400	4287	700		
4053	55	4112	70	4170	105	4229	3750	4288	525		
4054	160	4113	100	4171	300	4230	400	4289	1350		
4055	300	4114	270	4172	475	4231	4500	4290	160		
4056	425	4115	65	4173	400	4232	220	4291	130		
4057	575	4116	400	4174	60	4233	190	4292	290		
4058	375	4117	700	4175	130	4234	1550	4293	550		
4059	9000	4118	130	4176	70	4235	190	4294	550		
4060	375										