

723rd SALE

UNITED STATES POSTAL HISTORY

Includes

STAMPLESS COVERS
1847-1890 POSTAGE ISSUES
CARRIERS & LOCALS
CONFEDERATE STATES

THE PROPERTY OF VARIOUS OWNERS AND ESTATES
AND SOLD BY THEIR ORDER
AT UNRESERVED PUBLIC AUCTION

APRIL 27, 1990

Robert A. Siegel
AUCTION GALLERIES, INC.

160 EAST 56th STREET
NEW YORK CITY, NY 10022

CONDITIONS OF SALE

1. On all lots sold a commission of 10% on the hammer price is payable by the buyer.
2. The terms of sale are strictly cash on delivery to the highest bidder unless special arrangements have been made prior to the sale. The fact that an item is placed on extension (submitted to an expertising committee for certification) does not relieve the successful bidder from this condition of sale.
3. All bids are per lot as numbered in the catalogue unless otherwise announced by the auctioneer at the time of sale. The right is reserved to group two or more lots; to withdraw any lot or lots from the sale, or to act on behalf of the seller. The Galleries will bid on behalf of clients, but will not be responsible for any errors in the execution of bidding instructions. The auctioneer shall regulate the bidding and in the event of any dispute his decision shall be final.
4. The auctioneer may bid on behalf of the seller. It may also be inferred that all sellers have been given advances against the sale of their material and therefore we have a financial interest in such lots over and above the sellers commission they are charged.
5. Any lot, the description of which is incorrect, is returnable, but only within 14 days of receipt. All disputed lots must be returned intact as received. **The following lots may not be returned for any reason whatsoever: Lots containing ten or more stamps; Lots from buyers who have had the opportunity to examine them before the sale; Lots described as having defects or faults may not be returned because of any faults. No illustrated lots may be returned because of centering, margins or other factors shown in the illustrations.**
6. Successful bidders, unless they are known to us or supply acceptable references are expected to make payment in full before the lots are delivered. Mail bidders will be notified of the amounts of their purchases. All mail bidders who have established credit with us must make payment within three days after receipt. We reserve the right in our sole and absolute discretion to demand cash payment at the time a lot is knocked down to any bidder who has not previously established credit with us or whose account is in arrears. In the event any buyer refuses to pay cash for any lot at the time it is knocked down to him, the auctioneer reserves the right to re-offer the lot immediately for sale to the highest bidder. Sales tax will be added to purchases where applicable.
7. If the purchase price has not been paid within the time limit, nor lots taken up within seven days from date of sale they must be resold and any loss arising from such sale will be charged to the defaulter. Any account more than thirty days in arrears is subject to a late payment charge of 1½% per month so long as the account remains in arrears. If the auctioneer, in his discretion, should institute any action to secure payment of a delinquent account the defaulting purchaser shall pay all expenses incurred by the auctioneer and such charges will be added to the amount owed.
8. All lots are sold as genuine but should any lot be proved otherwise by written opinion of any competent, responsible authority acceptable to us, immediate refund of the full purchase price will be made, provided that such claim is made in writing within 14 days from date of sale. If claim is not made within this period, no lots are returnable for any reason at any time. So long as we are notified within the 14 day period that an opinion is being sought and **the material is submitted to an acceptable authority within that period** the matter will remain open until such opinion is rendered. **All "Extension" lots will be considered cleared and satisfactory to the buyer if we are not notified to the contrary within six months from date of sale. We will not be responsible for any charges incurred by the buyer for expertization fees and costs unless the opinion states the item is not genuine, in which case we will pay actual costs up to a maximum of \$50.00.** In the event an item is proved "not as described" it is returnable for full refund, and the buyer will be paid interest (at the prevailing Treasury Bill Rate) for the time his funds have been on deposit with us during the extension period.
9. Until paid for in full, all lots remain the property of Robert A. Siegel Auction Galleries, Inc. on behalf of the seller.
10. Some consignors have been advanced monies against the sale of their properties.
11. All forwarding charges will be added to the purchase price. The mode of shipment shall be at our option unless we are given specific instructions.
12. Lots may be sent for inspection to buyers known to us upon written application. All such lots must be returned to us by registered mail, adequately insured and within 24 hours after receipt. The applicant assumes all responsibility and will provide insurance against all risks from time of receipt until they are actually received back by us, and is to pay all expenses of postage and insurance. **No lots can be sent for inspection within ten days from date of local viewing. Large lots and collections cannot be sent for inspection.**
13. Agents are responsible for all purchases made on behalf of their clients unless other arrangements are made prior to the sale.
14. The placing of a bid shall constitute acceptance of the foregoing conditions of sale.

ROBERT A. SIEGEL

STEPHEN G. EDELSTEIN

Licensed Auctioneers

N.Y.C. Auction License No. 371761

FOR TABLE OF DESCRIPTIONS SEE INSIDE BACK COVER

LOTS ON VIEW

Lots on view Wednesday, April 25th and Thursday, April 26th from 9:30 A.M. until 5:00 P.M. There will be NO VIEWING on day of sale.

FIRST SESSION

FRIDAY, APRIL 27, 1990 AT 10:30 A.M.

UNITED STATES COVERS

STAMPLESS COVERS

- 1 ☒ **"Advertised" Markings**, Three Incoming Trans-Atlantic Stampless Covers, incl. **Blue Str. Line "Advertised"**, "Chicago Ill. Advertised Feb 1 1858" Circle & Red Str. Line "Advertised 4 cts", range of other markings, mixed quality, F-VF Strikes **E. 100-150**
- 2 ☒ **Arkansas Stampless Covers**, 1838-51, Four Diff., incl. Blue Clarksville (Unlisted Color), Fort Smith, Little Rock "Arks." (Black & Blue), first slight toning, o/w F-VF **E. 75-100**
- 3 ☒ **Am. Packet**, Str. Line on Back of 1867 Cover From Belgium to U.S., Clear **"N.Y. Am. Pkt. On U.S. Notes 27/36"**, cover tears, Scarce **E. 100-150**
- 4 ☒ **"Art - 2"**, Str. Line of back of 1857 Folded Letter From **Havana, Cuba** Via New York to Scotland, handstamp "1/2½" (Br.) & "10" (U.S.) rates, filefold, Fine, Rare **E. 150-200**
- 5 ☒ **Berrien Spring, Mich July 1st 1845**, Ms. pmk. & "Paid 5" on Folded Letter to Detroit, Fine, Scarce **First Day of New 5c Rate** **E. 75-100**
- 6 ☒ **Bo 2/4**, ms. Boston pmk. on 1749 Folded Letter headed Boston to Newport, VF **E. 150-200**
- 7 ☒ **Boston**, Mostly Readable Magenta Str. Line pmk., matching "23SE" Franklin mark on 1773 Small Folded Cover to Portsmouth, Fine **E. 150-200**
- 8 ☒ **Boston Mas. Aug. 22**, Red pmk., "Ship" & "7" on 1848 Folded Letter from **Manila, Philippine Islands**, minor toning, Fine, Scarce Origin .. **E. 40-50**
- 9 ☒ **Brazos/Apl 10 1847**, Two Line Handstamp & "10" on Folded Cover to Ala., slight aging, Fine **(Photo) E. 75-100**
- 10 ☒ **Brazos/Apl 23, 1847**, Two Line Handstamp & "10" (deleted) on Folded Cover to the Adjutant Genl. of the U.S. (Official Mail), filing crease, VF **E. 75-100**
- 11 ☒ **Brenham Texas August 26, 1847**, ms. pmk. on Folded Letter to La Grange, ms. "Paid" deleted & "pay first" added, etc., light even aging, Fine, Scarce **E. 60-80**
- 12 ☒ **Chicago, Ill. - Sep 15**, Red pmk., Small **Black "5" in Cog on Neat** Cover With **Blue Printed "Merchant's Telegraph"** etc. at T., VF, Choice **(Photo) E. 100-150**

- 13 ☒ **Chicago. Ill. - Dec 12**, Dark Red pmk., matching "Paid" & Small "10" in Cog on 1849 Folded Letter to **Canada**, ms. "1/3" rate, VF, Scarce Usage **E. 50-75**
- 14 ☒ **Circular & Drop Letter Rate Stampless Covers**, Eight Diff., incl. N.Y. 2 cts. (2), one with **Additional Blue "2"**, Red Boston "1 cts" & "2" cts., Blue Baltimore "2" in Oval, Red "2 Paid" & Paid 2" (no Town pmks. (one a Ladies Cover With embossed Floral Corner Card), & Red "New-York Paid 3 cts" With **Fancy Black "Circular & "Paid" in Diamond**, Nearly All F-VF, Scarce Lot **E. 150-200**
- 15 ☒ **Consulate/U.S./Malaga**, Clear Blue Truncate Octagon on Fresh 1848 Pale Blue Folded Letter to U.S. Sent Through London & Forwarded by Baring Bros. & Co. to Boston, Spanish & English Transits, VF **E. 40-50**
- 16 ☒ **Connecticut Stampless Covers**, 1840's-50's, 30, Virtually All Diff., incl. Fancy Hampton Box, Warehouse Point Oval, Tolland Baker's Cap, etc., Generally F-VF **E. 150-200**
- 17 ☒ **Detroit Mich Mar 7**, Mostly Readable Red pmk., matching "Paid" & "30" in Octagon Handstamp on Fresh 1854 Folded Letter to Germany, Red "N. York 7 Am. Pkt. Paid" pmk. & Red "Franco" Str. Line, ms. "Paid the Whole Postage," VF **E. 50-75**
- 18 ☒ **Doakesville Ark May 17** (Choctaw Nation), Black pmk., ms. "10" rate on 1849 Folded Cover to N.Y. City, Fine, Scarce **(Photo) E. 100-150**
- 19 ☒ **Florida Stampless Covers**, Five Diff., incl. Apalachicola, Jacksonville, Milton, St. Augustine & Tallahassee (**Green**), last slight soiling along file fold, o/w VF Lot **E. 100-150**
- 20 ☒ **Florida Stampless Covers**, Five Diff., incl. Apalachicola, Milton, Minticello, Newnanville, Tampa, some aging etc., generally Fine Lot . **E. 75-100**
- 21 ☒ **"Forwarded by Ramon Leon Sanchez, Cartagena N.G."** Brownish Red Oval Handstamp & **"Forwarded by C.J. Fox, Aspinwall N.G."** Red Oval Handstamp on May 1859 Folded Letter from Cartagena to NY, VF, Very Scarce with Two Forwarders Markings, Sanchez Not Listed in ASCC, ex-Haus **E. 75-100**
- 22 ☒ **Forwd. By/T.W. Ward/Boston**, Mostly Clear Red Oval on 1845 Folded Cover to **Norway** forwarded through Hamburg, ms. rate marks, Fine, Scarce **E. 75-100**
- 23 ☒ **Fulton O**, Red Orange pmk., matching "Paid" & Framed "10" on Remarkably Fresh 1848 Folded Letter, VF **E. 50-75**
- 24 ☒ **Groton Mass. Jul 1**, Red pmk & "5" on July 1, 1845 Folded Letter, **First Day of the 5c Rate**, expert internal mend, VF **E. 75-100**
- 25 ☒ **Haddonfield, N.J.**, Str. Line, ms. date & rate on 1850 Folded Letter, VF **E. 60-80**
- 26 ☒ **Harnden's Forwarders**, 1841-42, Red Oval "No. 2 Wall St." to London, Red Circle "Forwarded by Harndens Express From Boston" from Venezuela to London, F-VF, Scarce **E. 100-150**
- 27 ☒ **Hart'd May 21**, Bold Str. Line pmk., ms. "10" rate on Fresh 1793 Folded Cover to Providence, tiny corner edge tears & tiny ink erosion speck in address, VF **(Photo) E. 100-150**
- 28 ☒ **Illinois Stampless Covers**, 1840's-50's, Eight, incl. Red Hampton Ill, With "10" in Sawtooth Box, Ottawa Ills., others Chicago Cogs (one is faulty but Cogged "10" deleted & "40" added for postage to Sutters Fort), Generally F-VF **E. 75-100**
- 29 ☒ **Johnsonsburgh N.J.**, Bold Black pmk. & "10" rate on 1847 Folded Letters to Mich., ms. "A" (for Advertised) & 2c fee added in ms. below postage rate, Fine **E. 50-75**
- 30 ☒ **Maine Stampless Covers**, 1840's-50's, Eleven, incl Partly Red "Paris, Maine." Double Circle, three ms., F-VF **E. 50-75**
- 31 ☒ **Maryland Stampless Covers**, 1840's-50's, Ten, incl. Green, Easton Oval, Blue Baltimore "1", Blue "Port Deposit", two ms., F-VF **E. 50-75**

- 32 ☒ **Massachusetts Stampless Covers**, 1840's-50's, 27, incl. Four Double Circles, few ms., Mostly F-VF E. 100-150
- 33 ☒ **Mid-Atlantic & New England Stampless Covers**, 1840's-50's, 27, incl. Washington, Georgetown & Alexandria, D.C., Vt. (4 incl. Red Rutland Oval, Del. (4), N.H. (3), & R.I. (6), Generally F-VF E. 100-150
- 34 ☒ **Middletown Point, Manmouth Co., N.J. August 17**, Clear Circular pmk. (date in ms.), matching V Handstamp Rate Mark on 1848 Buff Envelope, VF(Photo) E. 75-100
- 35 ☒ **Midwest Stampless Covers, 1840's-50's**, 11 Items, incl. Iowa (5, three ms.), Mo. (2), Mich. (3, two ms.) & Mukwonago Wisc. Terr., also one cover addressed to Racine "Wisconsin Territory", one Iowa cover torn, others F-VF E. 75-100
- 36 ☒ **Morningville P.O./Westchester Co. N.Y.**, Two Lines in Red Box on 1850 Folded Letter (mentions death of Pres. Taylor), VF, Scarce, About 25 Known E. 50-75
- 37 ☒ **New Haven, Ct Sep 6**, Red pmk., matching "Ship" in Ship Outline, ms. "7" rate on Fresh 1847 Folded Letter from Trinidad to Ct., VF E. 40-50
- 38 ☒ **New Haven, Ct 1 Apr.**, Red pmk., matching "Ship" in Ship Outline, matching "7" on Fresh 1851 Folded Letter from Puerto Rico to Portland, Maine, Fine E. 40-50
- 39 ☒ **New Jersey Stampless Covers**, 1840's-50's, Ten, incl. Fancy Rate Marks, Three Greens, one ms., Gloucester City with ms. "Way 6", also Green Shrewsbury on cover front, F-VF E. 50-80
- 40 ☒ **New 10 York**, Black pmk. over ms. "6" on Cover to Cal., 10c Due From Addressee (6c + 4c Penalty) on 1855 Change in Rate to 10c (partial prepayment not accepted?), Partly readable Red "—— ridge Landing Md." pmk., light crease & overall aging, Scarce & Unusual E. 40-50
- 41 ☒ **New York Post Office Advertised**, Clean Oval on 1872 Stampless Cover from Germany, "New York 16 U.S. Notes", Str. Line "Cannot Be Found", Boxed "Retour", Blue "Dead Letter Office" on back, etc., Fine, Scarce E. 75-100
- 42 ☒ **New York State Stampless Covers**, 1840's-50, 51 Virtually All Diff., incl. Hotel, Green, Ovals, Attached Rate, few ms., generally F-VF, Useful Lot E. 200-250
- 43 ☒ **Oak Grove W. Ty. Nov 18**, ms. pmk. on 1846 Folded Letter to Clyman Wisc. Terr., Forwarded to Watertown N.Y. (Port Beron N.Y., "Paid" & "10"), slight aging, Fine E. 40-50
- 44 ☒ **Ocala * Fla Mar 7**, Red pmk., "Paid" & "5" on 1850 Folded Letter, Fine E. 50-75
- 45 ☒ **Oconomowac, Rochester (Wisc. Terr.)**, former Blue ms., latter Red handstamp & "X", F-VF E. 75-100
- 46 ☒ **OHIO STAMPLESS COVERS**, Nine Diff. Towns, three ms., VF Lot E. 50-75
- 47 ☒ **Ohio Stampless Covers**, 1840's-50's, 26, incl. "Fowler's Mills.-O-" Double Circle, Fancy Rate Marks, three ms., Nearly All F-VF E. 100-150
- 48 ☒ **Pennsylvania Stampless Covers**, 1840's-50's 24, Mostly Diff., incl. Double Circles, Oval, Fancy Rate Marks, Ship (from Cuba), generally F-VF E. 100-150
- 49 ☒ **Picolata Fla July 17**, Blue pmk., matching "5" in Circle, on Folded Cover, Fine E. 40-50
- 50 ☒ **Pilatka Flor Apr 26**, Bold pmk. on Folded Cover, ms. "5" rate, VF E. 50-75
- 51 ☒ **Plymouth Hollow Ct. Jan 19**, Clear Red Large Circular pmk. with matching "Paid" in Fancy Scroll & Large "X" Rate Handstamp on 1849 Folded Letter to New Orleans, minor cover tear at T, VF E. 50-75
- 52 ☒ **Portsmouth O. Apr 29 & Small "5" in Circle** on Folded Bill of Lading (With Illustr. of Canal Boat), for Four Barrels of Beans Shipped Aboard the Canal Boat C. R. Kelly, VF E. 50-75

- 53 ☒ **Postage Paid/To Destination/By/Harnden & Co./of/Liverpool**, Black Truncated Octagon on 1846 Folded Letter to Germany, **Red Shield "Paid H & Co."** at T.R., **Red Oval** "Forwarded by/Harnden & Co./Boston.," range of markings, VF, Scarce **E. 50-75**
- 54 ☒ **Retaliatory Rate Stampless Covers**, 1848, Two to U.S., incl. Large Red "29" & Red "New-York Ship 34 cts.," F-VF **E. 75-100**
- 55 ☒ **Richmond Va.**, Four Red **Attached Rate** Covers, Large & Small "5", Large & Small "10", F-VF **E. 40-50**
- 56 ☒ **Sailor's Letter**, 1848, Letter headed "On board Ship Tsar at Sea, July 4, 1848, Latitude 17°56' South. Longitude 126°10' West", contents refer to trip to China, rounding Cape Horn, ports of call, etc., Cover accompanies pmkd. Stonington, Conn., Str. Line "Ship" & ms. "7" rate, Fine **E. 50-75**
- 57 ☒ **Saline Mich.**, Bold Blue pmk., matching "Paid" & "V" rate on 1851 Folded Letter to the Genl. Agent for the Central R.R., VF, Choice ... **E. 50-60**
- 58 ☒ **Sherwoods Corners N.Y.**, Fancy Dark Blue **Stencil Type** pmk on 1845 Folded Court Notice, ms. "Paid 10", VF **(Photo) E. 100-150**
- 59 ☒ **Southern States Stampless Covers**, 1840's-50's, 61, incl. Ala. (8), Geo. (8), La. (7), Ky. (6), Miss. (4), N.C. (7), S.C. (4), Tenn. (7), Tex. (1), & Va. (9), Some Better Markings, slight duplication, Nearly All F-VF **E. 250-350**
- 60 ☒ **Steam Ship 30 Cts**, N.Y. Incoming Ship Mail Rate on 1850 Folded Letter from **Tobago**, also incl. 1851 Letter from Cuba to Maine with "Steamship 12½ Cts" handstamp, VF **E. 100-150**
- 61 ☒ **Tallahassee Flor.**, Green pmks. on "5" & "10" rate Folded Covers, F-VF **E. 75-100**
- 62 ☒ **Tolland, Mas.**, Str. Line & "5" rate on Fresh Folded 1851 Election Report, VF **E. 50-60**
- 63 ☒ **Trans-Atlantic Stampless Covers**, Twelve, Ten Outbound to Europe, 1840's & 50's, Three With "Colonies . . . Oct. 13." Boxes, Wide Variety of other markings, Generally F-VF **E. 100-150**
- 64 ☒ **Trans-Atlantic Stampless Covers**, 1841-67, Four Outbound, Three Inbound, Great Range of Markings, incl. Blue "Per Steamer/From Liverpool"; "New York U.S. Currency Due 16" & "Unfrankirt" Box; Red "Hamburg Packet Paid 3"; N.Y. & Boston Harnden's Forwarders, etc., F-VF Lot **E. 250-350**
- 65 ☒ **Valentine**, Multicolor Valentine Card enclosed in Folded Cover with Red Malden, Mass. Feb 14 pmk., matching "5" Handstamp Rate Mark, VF & Unusual **E. 50-75**
- 66 ☒ **"Valley Towns, C.N. Mar 20 1838"** (Cherokee Nation) pmk., "Free E. Jones P.M." Free Frank on Folded Cover Addressed to" John Ross, Esq., Cherokee Delegation, Washington City" (First Chief of the re-organized Cherokee Nation), slight cover age stains, Very Rare Town pmk. (Believed to have been the original "Baptist Mission" P.O.), **One of Only Two Believed Known** **E. 350-500**
- 67 ☒ **"WAY" COVERS**, Two, incl. Red Unframed Oval New Orleans "Way 11 Cents" & Red Mobile "Way 11" Double Circle, VF **E. 50-75**
- 68 ☒ **Washington D.C. Jan 9 1861**, Mostly Readable pmk. on Cover to Postmaster at Sangersville, Va., ms. "R" (Registered), P.O. Registered Letter Bill form enclosure, some toning, o/w Fine **E. 40-50**
- 69 ☒ **STAMPLESS COVERS**, 26 Diff., inc. Ten New York State, Hartford Pointing Hand "Paid", Fancy Rate Marks, etc., 1840's-1851, Select Lot, Nearly All VF **E. 150-200**
- 70 ☒ **Stampless Covers, Auxillary Markings**, 1840's-50's, Nine Items, incl. Three Free Franks (Two Post Office, One Congressional), Red N.Y. Forwarded, Twice "Forwarded" (Detroit-Red, Buffalo-Blue), Blue "R" (Recorded Letter), "Adv 1" (on Handcolored Ladies, Cover), "Way 11 Cents" & "Way 5", generally F-VF **E. 100-150**

- 71 ☒ **Stampless Covers**, 1840's-50's, Nine Mostly Unusual on Scarce Items, incl. Oddly Folded Cover, Railroad Circular, Cover Sent Via Lake Champlian Schooner ("Pr. Sch. Col. Powers"), Hand-delivered Cover from San Jose to San Francisco, Cover from Key West, Fla. put in mail in N.Y., Unpaid "5" Rate Cover (San Fran. to Santa Clara), Red Aberdeen Miss "5" in Star, "New-York Ship 7", F-VF **E. 100-150**
- 72 ☒ **Stampless Covers to Canada**, Seven, Markings incl. "Too Late", "United States 6d", etc., Fine Lot **E. 50-75**
- 73 ☒ **STAMPLESS COVERS**, "U.S. Postal Markings, 1845-51", Collection of 41 Covers, Begins with Letter from **Punambuco Brazil** Sent by the **Whaler "Planter"** via Nantucket to Boston, also Mexican War Cover, Fancy Rate Markings, 2c Rates, one 40c Rate (East to West), Turned, Free Frank, etc., Attractively Mounted & Written-up, Virtually All VF **E. 300-500**

POSTMASTER PROVISIONAL

- 74 ☒ **New York, N.Y., 5c Black (9X1)**. Three Large Margins, Ample at T., tied by Red Square Grid on Fresh March 1847 Folded Letter to Catskill, N.Y., Red Arced "Paid" & "New York 5cts" pmk., small closed cover edge tear, VF **(Photo)** 450.00
- 75 ☒ **New York, N.Y., 5c Black (9X1)**. Large Margins, Red arced "Paid" cancel, used on Fresh 1846 Folded Letter to Albany, Red New-York 5cts pmk., cover file fold through stamp, o/w VF **(Photo)** 450.00

1847 ISSUE

- 76 ☒ **5c Dark Brown (1a)**. Clear to Large Margins, **Blue** Grid cancel, used on Fresh 1849 Folded Letter, Blue Dover N.H. pmk., VF, with P.F. Certificate which States "grid on stamp enhanced" **(Photo)** 875.00
- 77 ☒ **5c Brown (1)**. Three Large Margins, Ample to Large at B., Clear Impression, tied by Red Square Grid on Buff Envelope, Red New-York pmk., cover with stain from sealing wax, Stamp VF & Choice **(Photo)** 850.00
- 78 ☒ **5c Dark Brown (1a)**. Huge Margins All Around Showing Bit of Next Stamp at B., Clear Impression, tied by Red Grid cancel, matching New-York pmk. on Buff Envelope, cover with stain from sealing wax, Stamp Extremely Fine & Choice **(Photo)** 850.00
- 79 ☒ **5c Dark Brown (1a)**. Clear to Large Margins to barely in at B.R., tied by Red Grid, matching New Haven, Ct. pmk. on 1847 Folded Letter, Fine **(Photo)** 850.00
- 80 ☒ **5c Brown (1)**. Ample to Large Margins, tied by faint Red Grid cancel, matching partly readable "N. York & N. Haven R.R." pmk. on Buff Envelope to R.I., pencil ms. "5" rate, Stamp VF **(Photo)** 850.00 + +
- 81 ☒ **5c Red Brown (1)**. Three Ample to Large Margins, Clear to slightly in at T., tied by red Square Grid, matching New-York pmk. on 1850 Folded Letter, Fine **(Photo)** 850.00
- 82 ☒ **5c Brown (1)**. Three Clear to Large Margins, Clear to slightly in at L., tied by Red Rochester N.Y. pmk. on 1852 Folded Letter, minor cover bleaching spots, Fine **(Photo)** 850.00
- 83 ☒ **5c Red Brown (1)**. Ample to Large Margins except just touching at B.L., Red Grid cancel, matching **U.S. Express Mail N. York N.Y.**, pmk. on 1850 Folded Cover, Fine **(Photo)** 850.00
- 84 ☒ **5c Red Brown (1)**. Large Margins to slightly in at T.R., tied by Red Grid cancel, matching New-York pmk. on Folded Cover, Fine **(Photo)** 850.00

- 85 ☒ **5c Red Brown (1).** Three Large to Huge Margins, Ample at B., tied by Red Square Grid on 1848 Folded Letter, Red New-York 5cts pmk., couple cover file folds, o/w VF(Photo) 850.00
- 86 ☒ **5c Red Brown (1).** Three Large Margins Showing Part of Next Stamp at T., Clear to barely in at B., tied by Red Square Grid, New-York pmk. on 1849 Folded Cover, soiling along cover file fold, o/w Fine .(Photo) 850.00
- 87 ☒ **5c Red Brown (1).** Clear to Large Margins, tied by Red Square Grid, matching New-York pmk. or 1850 Envelope, cover file fold through stamp, o/w Fine E. 100-150
- 88 ☒ **5c Red Brown (1).** Large Margins to slightly in, tied by Red Cincinnati O. 5 cts pmks. on Buff Envelope, stamp with faults, o/w Fine E. 100-150
- 89 ☒ **5c Red Brown (1).** Three Clear to Large Margins, slightly in at T., tied by Red Grid, matching Batavia N.Y. pmk. on Large Size 1848 Folded Letter (7 $\frac{3}{4}$ x3 $\frac{1}{4}$ "), VG E. 100-150
- 90 ☒ **5c Brown (1).** Large Margins to cut in, ms. cancel, tied by Red Grid, matching Boston pmk. on Envelope, VG E. 100-150
- 91 ☒ **5c Brown (1).** Large Margins to cut in, tied by Red Orange Grid & ms. cancels, matching indistinct Town pmk. on Buff Envelope, some cover stains, VG E. 75-100
- 92 ☒ **5c Red Brown (1). Horiz. Pair,** Just clear to Large Margins, tied by Red Grid cancels, matching "Boston 10 cts" pmk. & Red Str. Line "Paid" on 1851 Folded Cover, Fine(Photo) 1,750.00
- 93 ☒ **5c Red Brown (1).** Two Singles, Clear to Large Margins except partly in at L. on one, tied by Red Grids, matching New-York pmk. on 1850 Folded Letter to New Orleans, one stamp with small scissors cut, o/w Fine(Photo) E. 300-400
- 94 ☒ **5c Red Brown (1).** Two Singles, Three Clear to Large Margins, touching to slightly in at B., tied by Red Grid cancels, matching indistinct New-York pmk. on Buff Envelope, small cover tear, one stamp with creases E. 300-400
- 95 ☒ **5c Red Brown (1). Horiz. Pair,** Large Margins to just touching at T. tied by Red Grids & Blue ms. on Fresh Nov. 2, 1848 Forwarded Letter addressed to President Millard Fillmore (Vice Presidential Candidate), Red "Forwarded" Str. Line Handstamp, cover file fold through stamp, o/w Fine E. 300-400
- 96 ☒ **5c Brown (1). Horiz. Pair,** Large Margins to cut in at B., ms. cancels, tied by Red "10" Handstamp on Buff Envelope to Ga., Red U.S. Express Mail Boston Mass. pmk., cover stain from sealing wax E. 200-250
- 97 ☒ **5c Dark Brown (1a). Horiz Pair,** Three Large Margins, Clear to Large at T., tied by Red Grid cancel on 1848 Folded Letter, Red Albany N.Y. pmk., couple cover file folds, one through R. Stamp which also has small corner crease, o/w VF(Photo) E. 300-400
- 98 ☒ **5c Red Brown (1).** Two Singles, Clear to Large Margins, ms. "X" cancel & Red Grids, Red Newark O. pmk. on Buff Envelope, some bleaching of stamps due to attempt to clean ms. cancel, o/w Fine ex-Sampson E. 200-250
- 99 ☒ **10c Black (2).** Clear to Large Margins, Clear Impression, tied by Red Grid, matching "Cincinnati, O. 10" pmk. on Fresh Sept. 1847 Folded Cover to Philadelphia, VF(Photo) 2,350.00
- 100 ☒ **10c Black (2).** Large Margins, tied by Red Square Grid on 1849 Folded Letter, Red New-York pmk., couple cover file folds, VF, ex-Seybold(Photo) 2,350.00
- 101 ☒ **10c Black (2).** Large to Huge Margins Showing Part of Next Stamp at T., tied by ms. "X" cancel on Fresh Homemade Envelope, **Fort Gaines, Ga.** pmk., Extremely Fine, Scarce Town of Origin, with P.F. Certificate 1,250.00 +

- 102 ☒ **10c Black (2).** Three Large Margins, Ample at T., tied by **Blue** Philada Pa 10 pmk., Used with Bloods Local, (1c) Bronze on Black Glazed (15L17), usual acid tied on 1849 Folded Letter to Ill., stamp with small scrape, Cover with some bleed through of contents, o/w VF **E. 1,000-1,500**
- 103 ☒ **10c Black (2).** Large Margins, tied by Red Square Grids, matching New-York pmk. on 1847 Folded Letter, waffle-like impressions on stamp from affixing over wax wafers, o/w VF**(Photo) E. 500-750**
- 104 ☒ **10c Black (2).** Large Margins All Around, tied by Red Square Grid matching New-York pmk. on 1847 Folded Letter, stamp tiny margin tear & cover file fold through stamp, o/w VF**(Photo) E. 300-400**
- 105 ☒ **10c Black (2).** Ample to Large Margins, Red Grid, matching New Haven, Ct. pmk. on 1848 Folded Letter, cover file fold through stamp, o/w VF**(Photo) E. 300-400**
- 106 ☒ **10 Black (2).** Clear to Large Margins, Red Grid cancel, matching New-York pmk. on Buff Envelope, stamp with tiny corner crease & couple negligible toning specks, o/w VF**(Photo) 2,350.00**

1847 ISSUE ADDRESSED TO PRESIDENT MILLARD FILLMORE

- 107 ☒ **5c Brown (1).** Three Large Margins, Clear at B., tied by **Blue** Philadelphia 5cts pmks. on Fresh Nov. 13, 1848 Folded Letter addressed to President Millard Fillmore (as Vice President elect), contents congratulates him on his victory, VF**(Photo) 850.00**
- 108 ☒ **5c Brown, Dot in "S" (1 var).** Three Ample Margins, Clear to cut in at B., tiny margin tear, tied by Red Square Grid, New-York pmk. on Fresh July 1848 Folded Letter addressed to President Millard Fillmore (as N.Y. State Comptroller), Attractive**(Photo) 850.00**
- 109 ☒ **5c Brown (1).** Ample to Large Margins, **Blue** Grid, matching Troy N.Y. pmk. on Fresh Sept. 1848 Folded Letter to President Millard Fillmore (as N.Y. State Comptroller), stamp with crease in R. margin, o/w VF**(Photo) 850.00**
- 110 ☒ **5c Dark Brown (1a).** Margins to slightly in, tied by **Blue Albany-Buffalo R.R.** pmk. on Fresh 1848 Folded Letter addressed to President Millard Fillmore (as N.Y. State Comptroller) contents regarding Presidential Election & probable votes, cover file fold through stamp, o/w Fine**(Photo) 1,050.00**
- 111 ☒ **5c Red Brown (1, 1 var). Horiz. Pair L.** Stamp Dot in "S", Three Large to Huge Margins, Clear to touching at R., tied by Red Grids, matching Washington City D.C. pmk. on Fresh Nov. 13, 1848 Folded Letter to President Millard Fillmore (as Vice President Elect), Blue boxed "Forwarded" & matching Double Oval Buffalo N.Y. Forwarding pmk., cover file fold through R. stamp, o/w VF**(Photo) 1,750.00**
- 112 ☒ **5c Brown (1). Horiz. Pair,** Large Margins to just Clear, tied by Red Orange Grids, matching Mobile, Ala. pmk. on July 1848 Folded Letter addressed to President Millard Fillmore (as N.Y. State Comptroller), both stamps with corner creases, o/w Fine**(Photo) 1,750.00**

1851 ISSUE

- 113 ☒ **1c Blue, Ty. II (7). Horiz. Pair,** Pos. 81, 82R1E, Large Margins to barely in at B. on R. stamp, tied by Bold New York pmk. on Fresh 1852 Folded Printed Circular, VF **185.00**
- 114 ☒ **1c Blue, Ty. II, IIIa (7, 8A). Horiz. Combination Strip of Three,** Middle Stamp Ty. IIIa, Large Margins to slightly in, tied by "**Prov. & Stonington R.R.**" pmk. on 1853 Folded Letter, VF Cover**(Photo) 920.00**

- 115 ☒ **1c Blue, Ty. IV (9). Horiz. Strip of Three**, Three Large to Huge Margins, touching to slightly in at T., tied by Lima, N.Y. pmks. on Cover, light cover stains, o/w Fine E. 50-75
- 116 ☒ **1c Blue, Ty. II, 3c Orange Brown (7, 10)**. Margins to just touching, tied by Montgomery, Ala. pmk. on 1852 Folded Letter headed New Orleans to Petersburg Va., “Way” Str. Line Handstamp, VF E. 100-150
- 117 ☒ **1c Blue, Ty. II, 3c Red (7, 11). Single & Horiz. Strip of Three** respectively, tied by Warrington, Fla. pmks. on Homemade Buff Cover to Stockton City, Cal., Fine E. 75-100
- 118 ☒ **1c Blue (9)**. Pos. 5L1L, Ample to Huge Margins with Part T. Sheet Margin & Showing Bits of Two Other Stamps, tied by indistinct Town pmk. on Orange Cover, Stamp VF & Choice 95.00
- 119 ☒ **1c Blue, Ty. IV (9). Horiz. Strip of Three**, Large Margins incl. R. Pane Margin & Center Line to cut in at L., ms. penstroke cancels removed, tied by Waterloo, N.Y. pmk. on Illustr. Blue Corner Card Cover, minor cover stains, o/w VF(Photo) 235.00 +
- 120 ☒ **1c Blue, Ty. IV (9)**. Three Singles, Large Margins to slightly in, tied by Philadelphia pmks. on Buff Cover with Blue Embossed Hotel Corner Card, some cover edge wear, Fine E. 100-150
- 121 ☒ **1c Blue, Ty. IV, 3c Red (9, 11)**. Two Singles of Former, Margins to slightly in, Grid cancels, tied by Red “Paid” & bit of Red French Transit on 1854 Folded Letter to **France**, Red Providence R.I. pmk. Red New-York Br. Pkt., various backstamps, F-VF E. 100-150
- 122 ☒ **1c Blue, Ty. IV (9)**. Pos. 86L1L, Double Transfer, Margins to cut in, Used with **3c Red (11) Horiz. Pair**, Large Margins to cut in, tied by Pittsburgh, Pa. 1856 pmks. on 3c Red on Buff Entire (U10) to **Nova Scotia**, No. 11 Pair additionally tied by faint “United States” Oval Handstamp, various Nova Scotia backstamps, Fine E. 75-100
- 123 ☒ **1c Blue, Ty. IV, 3c Red (9, 11)**. Tied by S.F. pmks. on **6c Green on Buff Entire (U14)** to Mass., without flap, Fine E. 100-150
- 124 ☒ **1c Blue, Ty. IIIa, IV (9, 22, 24)**. Former Large Margins, Pos. 82L1L (Double Transfer), No. 22 some short perfs., No. 24 scissors separated trimming perfs. at L. & partly at T., tied by Large “Paid” in Grids, Red Boston pmk. on Small Cover, Scarce Combination of Types .(Photo) E. 150-200
- 125 ☒ **3c Orange Brown (10)**. Margins to touched, neat ms. “#” cancel, ms. “Bow Feb 23 N.H.” pmk. on 10¼x8½” **Valentine Cover** (Ornate Gold Gilt Design), couple filing creases, Very Scarce E. 100-150
- 126 ☒ **3c Red (11)**. Pos. 50R3, R. Margin Single Showing **Large Part Impt. & Pl. No. 3**, other margins irregular & vary from Large to well in, tied by Bold Blue Cambridge, Mass. pmk. on Fresh Buff Cover, Scarce(Photo) E. 100-150
- 127 ☒ **3c Experimental Orange Brown Color (11 var)**. Pos. 36L3, Clear to Large Margins, light corner crease, tied by “U.S. Express Mail N. York N.Y.” on Fresh Folded Cover, also incl. No. 10 for comparison, VF . E. 75-100
- 128 ☒ **3c Red (11)**. Three Ample to Large Margins, cut in at L., tied by Clear “**Chi. St. P & F. Du Lac R.R.**” (Chicago, St. Paul & Fond Du Lac R.R.) pmk. on Buff Cover, Oval Hotel Corner Card, Fine Strike Scarce(Photo) E. 150-200
- 129 ☒ **3c Brownish Carmine (11)**. Large Margins to cut in, tied by Lockport, N.Y. pmk. on Buff Cover with **Merchant’s Gargling Oil Blue Illustr. Embossed Corner Card** (Issued M & M Revenue Stamp), small cover mend at B.L., o/w Fine(Photo) E. 75-100
- 130 ☒ **3c Red (11)**. Large Margins to slightly in, tied by **Clear Negative Square & Compass Masonic Fancy Cancel** on Buchannon Carroll Corresp. Cover, indistinct “Canton, Ms.” pmk., Fine(Photo) E. 75-100

- 131 ☒ **3c Brownish Carmine (11).** Margins to cut in, tied by "Paid" & Geometric Spiral of Dots Fancy Duplex cancel on Fresh 1852 Folded Cover, Red "Salem Ms. 3 cts." pmk., another cover tied with Spiral of Dots, Attractive Pair, F-VF **E. 50-75**
- 132 ☒ **3c Red, Shades (11).** Five, Large Margins to slightly in, each tied on Separate Cover by Diff. **Green** Town pmks., one on Embossed Ladies Envelope, one stamp small tear, one cover with tape stain, o/w F-VF Lot 445.00
- 133 ☒ **3c Red (11).** Two Singles, Large Margins to slightly in, light creases, tied by Bold New-York pmk., with additional **N.Y. Ocean Mail** cancel on Buff Cover Front to Culloma, Cal., ms. "pr Star of the West", front with minor edge tears, Fine, Illustrated in Ashbrook **(Photo) E. 75-100**
- 134 ☒ **3c Red (11).** Two Singles, Margins to cut in, New-York pmk., Blue "Forwarded via Nicaragua from Noisy Carriers Publishing Hall San Francisco" Handstamp on large portion of Buff Cover to Boston, L. portion of cover added, Scarce Handstamp **(Photo) E. 100-150**
- 135 ☒ **3c Red (11). L. Margin Block of Six & Horiz. Pair,** Large Margins to cut in, two stamps with faults (one defective), ms. penstroke cancels, used on 1856 Buff Cover to England, Red Wolcott, N.Y. pmk., Red "3" Handstamp & Red "America Liverpool" transit, without flap, some edge wear & light cover file fold through Block, o/w Fine, 24c Rate Cover **(Photo) E. 350-500**
- 136 ☒ **5c Red Brown (12).** Three Large Margins, slightly in at T., tied by New Orleans pmk. & Red New-York Br. Pkt. on 1856 Folded Cover to **France**, French transit & backstamps, small cover stain at B., o/w Fine, Singles on Cover are Scarce **(Photo) 3,000.00**
- 137 ☒ **5c Red Brown (12).** Cut to shape prior to use, tied by Annapolis, Md. pmk. on large portion of 1856 Folded Letter (lacks side flaps) to **Italy**, French Transit, Boston Br. Pkt. pmk. on back, British, French & Italian backstamps, small cover tears, Unusual **E. 200-300**
- 138 ☒ **10c Green, Ty. I (13).** Ample to Huge Margins, barely tied by "Paid" Str. Line cancel, Westport, Mass. pmk. on Buff Cover to **Whaling Ship Francis Henrietta at Whho, Sandwich Islands**, Same Ship purchased by U.S. Gov't & was one of the Ships in "Stone Fleet No. 1" scuttled to blockade Charleston, S.C. Harbor, trivial edge nicks, o/w VF **(Photo) 1,000.00**
- 139 ☒ **10c Green, Ty. II (14).** Clear to Large Margins, tied by Bold Large "Paid" in Grid cancel, Red "Boston 10 cts" pmk. on 1857 Buff Cover to **St. John, New Brunswick**, St. Andrews & St. John backstamps, some cover staining at L., o/w VF **E. 100-150**
- 140 ☒ **10c Green, Ty. III (15).** Two, Large Margins, tied on Separate Covers, one with additional ms. cancel & small cover crease with Oroville, Cal. pmk., other minor corner crease tied by St. Louis pmk. on Cover to Iowa Hill, Cal., Stamps VF Appearing **E. 200-250**
- 141 ☒ **10c Green, Ty. III (15). Horiz. Pair,** Large Margin at T., others slightly in to cut in, used with average **1c Blue, Ty. IV (9)**, tied by Grid cancels on 1855 Folded Cover to France, Red New Orleans pmk., Red "New York Am. Packet" pmk., French transit & backstamps, Scarce . **E. 150-200**
- 142 ☒ **12c Gray Black (17). Horiz. Pair,** Ample to Huge Margins Showing Bits of Next Stamps at B., **Red** Grid cancels, matching New 19 York pmk. on 1858 Orange Cover with Printed Address to **Ireland**, Blue "America Paid Dublin" Rimless Circular Transit, VF **(Photo) 665.00**
- 143 ☒ **12c Black (17). Horiz. Pair,** Clear to Large Margins except barely in at B.R., R. stamp light wrinkles, tied by Town pmk. on 1858 Orange Cover to **Cowes, Isle of White**, forwarded to London, Red "America Paid Liverpool" transit, Red "3", Cowes arrival pmk. & backstamps, & some back faults, o/w Fine, signed Ashbrook, ex-Krug **(Photo) 625.00**

- 144 ☒ **12c Black (17).** Large Margins to cut in, **Used with Horiz. Pair 3c Red (11)**, Three Large Margins, cut in at B., Grid cancels, used on 1855 Folded Letter to N.Y., Red New Orleans pmk., addresses name crossed out, Fine **E. 150-200**
- 145 ☒ **12c Black (17).** Large Margins to barely in, Used with Three average 3c Red (11), Grid cancels, Used on Folded Wrapper, Red New Orleans pmk., T. flap rejoined, side flap mend, o/w Fine' **E. 150-200**

1857 ISSUE

- 146 ☒ **1c Blue, Ty. II (20). Vert. Pair & Single**, two with corner creases, perfs. slightly in at L., tied by Big Lick, Va. pmks. on Orange Cover, Fine Cover **E. 50-75**
- 147 ☒ **1c Blue, Ty. II (20).** Exceptional Margins & Centering, used with **3c Red (26)**, some nibbed perfs., tied by Small Paid in Grid cancel, Red Boston pmk. on Small **Carrier Rate Cover** to N.H., **Small Embossed "Union" Waving Flag Patriotic Design** on flap, VF, signed Bartels . 175.00 +
- 148 ☒ **1c Blue, Ty. II, 3c Red (20, 26).** Two of former (one defective prior to use) & Single, **Vert. Pair & Vert. Strip of Three** of latter, tied by South Hanover, Ind. pmks. on Yellow Cover to S.F., minor edge soiling, o/w VF Double Trans-Continental Rate Cover **E. 100-150**
- 149 ☒ **1c Blue, Ty. III (21).** Perfs. slightly in at L., tied by Bold Large "Paid" in Grid cancel, Red Boston pmk. on Pale Buff Cover, Colorless Embossed Corner Card on flap, VF, Scarce, ex-White **(Photo) 1,600.00**
- 150 ☒ **1c Blue, Ty. Ic (22 var).** Scissors separated at T. & B. mostly trimming T. perfs., tied by St. Louis pmk. on Fresh Blue Cover, Scarce, signed Ashbrook **E. 100-150**
- 151 ☒ **1c Blue, Ty. V (24).** Well-centered, minor perf. tip toning, tied by **Bold "U.S.P.O. Dispatch Phila" Octagon pmk.** on Cover (second strike on cover), Attractive, VF **E. 50-75**
- 152 ☒ **1c Blue, Ty. V (24). Vert. Strip of Three**, Pos. 78, 88, 98R7, B. Stamp Curl on Shoulder var, Exceptionally Well-centered, tied by Grids & Rockford, Ill. pmk. on Fresh 1860 Orange Cover, VF & Choice, ex-Emerson **E. 50-75**
- 153 ☒ **1c Blue, Ty. V (24). Horiz. Strip of Three**, L. Stamp With Part Impt., R. stamp with corner crease, tied by Blue Petersburg, Va. 3cts. pmks. on Fresh Illustr. Blue Corner Card Cover, without flap, VF **E. 50-75**
- 154 ☒ **1c Blue, Ty. V, 3c Red (24, 26). Horiz. Pair & Two Singles** of Former, Two Singles of latter, Grid cancels, Lancaster, Pa. pmk. on 1861 Buff Cover to **Salt Creek, Oregon**, minor cover stains, o/w VF **E. 100-150**
- 155 ☒ **3c Red, Gash on Shoulder (25 var).** Average stamp tied by Council Bluffs (Iowa) pmk. on **Fremont Campaign Cover**, cover faults & light cover staining, o/w Fine **E. 40-50**
- 156 ☒ **3c Red (26).** Perfs. in at R., tied by Sandy Spring, Maryland 3 Mo 31" Double Circle **Quaker Date** pmk. on Blue Cover, cover tear through part of pmk., Fine **E. 40-50**
- 157 ☒ **3c Red (26). Block & Single**, tied by Grids on 1859 Buff Cover to **France**, Red "New Paid York 12" pmk. & French Transit, Paris backstamp, Fine, ex-Toasperm **(Photo) E. 150-200**
- 158 ☒ **3c Red (26). Horiz. Pair, Strip of Three & Five Singles**, Grid cancels, Philadelphia Octagon pmk. on 1860 Buff Homemade Cover to Stockton, Cal., one stamp faulty, couple others small faults, o/w Fine Triple Rate Cover **(Photo) E. 250-350**
- 159 ☒ **3c Red (26).** Two, tied by Town pmks. on Separate Covers each with **Wesleyan Female College Embossed Corner Cards** (one in Blue, other in Red), latter stamp with tiny margin scuff & small cover stain at B., o/w F—VF **E. 40-50**

- 160 ☒ **3c Rose (26).** Single pulled perf. (tiny), tied by **Blue** Burlington, Vt. Forwarding pmk. on 1858 Incoming Folded Letter headed Palermo, Italy, carried by favor to Marseille, France where it was franked with **Two Average France 40c Orange on Yellowish (18)**, cover file fold through one, tied by Numeral Diamond of Dots cancels & Red "New Paid York 15" pmk., Red Boxed "Br. Service", various French transits & backstamps, couple small cover edge tears, o/w Fine, Scarce .(Photo) **E. 250-300**
- 161 ☒ **5c Brick Red (27). Horiz. Pair,** Well-centered for these, L. stamp small corner crease, tied by New Orleans pmks. on Fresh 1859 Folded Letter to **Spain**, Red New-York pmk., "8Rs" Handstamp Rate Mark, London & Barcelona backstamps, VF & Choice Cover, Scarce(Photo) **2,600.00 +**
- 162 ☒ **5c Brick Red (27). Horiz. Strip of Three,** scissors separated, s.e. at L., tied by New Orleans pmks. on 1858 Folded Letter **to France**, Red "Boston 12" pmk., French transit & backstamps, perfs. in at R. on stamps, cover file fold through T. of one stamp, o/w Fine .(Photo)**E. 750-1,000**
- 163 ☒ **5c Red Brown, 10c Green, Ty. V (28, 35).** Former perfs. slightly in at L., tied by New Orleans pmk. on 1859 Folded Cover to **France**, "New 12 York" pmk., Blue French transit & French backstamps, Fine(Photo) **E. 200-250**
- 164 ☒ **10c Green, Ty. II, III (32, 33). Horiz. Combination Strip of Three,** Pos. 1-3L1, Ty. III, III, II, **Strip Shows Two of The Three Known Misplaced Reliefs**, perfs. slightly in at L. & one with couple tiny tears, **Used with 5c Red Brown (28)**, all tied by Highland, Ill. pmks. on Exceptionally Fresh Orange Cover to **Switzerland**, numerous transits & backstamps, VF & Rare Cover, signed Ashbrook(Photo) **E. 350-500**
- 165 ☒ **10c Green, Ty. II (32). Horiz Strip of Three,** Deep Rich Shade, perfs. slightly in at L., one stamp single short perf., tied by S.F. pmks. on 1860 Folded Cover to **France**, "New 3 York" pmk., "15" crossed out & re-rated "8", French transits & backstamps, VF Cover(Photo) **600.00 +**
- 166 ☒ **10c Green, Ty. II, III (32, 33). Vert. Combination Strip of Three,** Middle Stamp Ty. III, others Ty. II, scissors separated Showing Portions of Next Stamps at L. & trimming B. perfs., tied by New Orleans pmks. on 1858 Folded Letter **to France**, Red "New Paid York 24" & French transit, VF Cover **E. 150-200**
- 167 ☒ **10c Green, Ty. II, III (32, 33). Vert. Combination Strip of Three,** B. Stamp Ty. III, Fine, tied by Bangor, Me. pmks. on Large 1859 Cover to **Honolulu, Sandwich Islands**, vert. cover file fold, cover edge wear, o/w Fine, Scarce, with P.F. Certificate **600.00**
- 168 ☒ **10c Green, Ty. III (33). Used with Horiz. Pair 1c Blue, Ty. V (24).** Pos. 92-93L5, one with some nibbed perfs., tied by Town pmks. on Large Size 1858 Buff Cover which has been slightly reduced at R. & folded to normal size cover, o/w Fine **E. 100-150**
- 169 ☒ **10c Green, Ty. III (33).** Three average singles (one with rounded corner, another perf. tip toning), tied on Separate Covers, two covers with staining, o/w VG-F Lot **E. 75-100**
- 170 ☒ **10c Green, Ty. II, III (32, 33). Vert. Combination Pair,** T. Stamp Ty. II, used with **1c Blue, Ty. V (24)** natural s.e. at L., tied by **Blue** Louisville, Ky. pmks. on 1859 **3c Red on Buff Entire (U10) to England**, Red "3" Rate Mark & Red London transit, No. 32 horiz. crease before use, stamps with light vert. crease from contents, o/w Fine(Photo) **E. 200-250**
- 171 ☒ **10c Green, Ty. II, V (32, 35 three).** Tied by Sonora, Cal. pmks. on Separate 1859-61 Yellow Covers to Mass. (same correspondence), No. 32 perf. tip toning, two No. 35's faulty (one cover ms. "Via Panama"), most with cover faults, o/w Fine Lot **E. 75-100**

- 172 ☒ **10c Green, Ty. V (35).** Tied by New York 1861 pmk. & Red "New Paid York", pmk. & Grids on Small Cover to **Cuba**, Bold "NA1" in Oval Handstamp, Havana backstamp, light cover edge soiling at T., Fine **E. 75-100**
- 173 ☒ **10c Green, Ty. V (35).** Used with **Two Singles of 1c Blue, Ty. V (24)**, one shows Part Impt. & **3c Red (11)**, natural s.e., ms. "X" cancels, used on Buff Cover to Austria (via Bremen), St. Whegan, Me. pmk., Red "N. York Br. Pkt. Paid" pmk., stamps with perfs. faults from overlapping cover edge, o/w Fine **E. 100-150**
- 174 ☒ **12c Black (36).** Well-centered, some short perfs., tied by Wickford, R.I. pmk. on Cover to **France**, Red "Boston Paid 12" & French transit, "Boston Am. Pkt" on back, light cover soiling, Fine 450.00
- 175 ☒ **12c Black, Pl. III (36b).** Used with average **3c Red (26)**, Red Grid cancels, matching "New Paid York 12" pmk. on 1859 Folded Letter to **France**, French Transit & backstamps, Fine, ex-Moody 175.00
- 176 ☒ **24c Gray Lilac (37).** Perfs. in at B., some short perfs., tied by Grid cancel, Rochester N.Y. pmk. on 1860 Pale Buff Cover to Scotland, Embossed Corner Card, Red "3" & Red London Transit, Scottish backstamp, Fine(Photo) 1,100.00
- 177 ☒ **24c Gray Lilac (37).** Some short perfs. & small faults, tied by Grid cancel on 1861 Cover to **Ireland**, Red "**Detroit Am. Pkt 3 Paid**" pmk., Dublin backstamp, cover reduced at T., large cover tear & cover mend at B.R., Scarce **E. 150-200**
- 178 ☒ **24c Gray Lilac (37).** Tiny corner crease, o/w VF, used with defective **3c Red (26)** faulty before use, tied by Large "Paid" in Grid cancels on Fresh 1861 Tissue Paper Cover to Italy, Red "Boston Paid 24" pmk., Boston Br. Pkt. pmk. on back, French Transit & boxed "PD", Scarce **E. 200-250**
- 179 **24c Gray Lilac (37).** Two Singles, one with short perf. tied by **Red** Grid cancels, matching "N. York Br. Pkt. 38" pmk. on Cover Front to Ireland, "**Messrs. Barclay & Livingston New-York**" **Oval Forwarder's Handstamp**, Quite Attractive(Photo) **E. 400-600**
- 180 ☒ **30c Orange (38).** Well-centered, tied by Grid cancel on Fresh 1860 Folded Cover to France, Red "New Paid York 12" pmk., Red French Transit & Red Boxed "PP", French backstamps, VF & Choice(Photo) 2,250.00
- 181 ☒ **30c Orange (38).** Some short perfs., tied by **Red** Grid, N. York Br. Pkt. 7 Paid pmk. & Boxed Aachen Franco Handstamp on Fresh 1861 Folded Letter to the "Ship John G. Richardson/Care United States Consul/Bremen" (**Germany**), VF Cover(Photo) 2,250.00
- 182 ☒ **30c Orange (38).** Tied by Blue Grid & Matching Cincinnati, O. Duplex pmk. on Cover to **Germany**, Red "N. York Br. Pkt. 7 Paid" pmk. Red Boxed "Aachen 24 Franco", Fine, Scarce(Photo) 2,250.00
- 183 ☒ **30c Orange (38).** Tied by Red New Paid York 24 pmk. & Red Grid on 1860 Folded Cover to **France**, Red French Transit & French backstamps, couple negligible cover bleaching specks, o/w VF Cover(Photo) 2,250.00
- 184 ☒ **30c Orange (38).** Perfs. in at L. & tear, used with **Two 5c Brown (29) & 1c Blue, Ty. I, II (18, 20)**, tied by Salem, Ms. pmks. on 1861 Cover to Italy, Boston Am. Pkt. pmk., Red London Transit & Red Genoa Receiving pmk. on back, cover reduced at T. through all 5c & 1c stamps (stamps defective or repaired), Scarce **E. 300-400**
- 185 ☒ **30c Orange (38).** Horiz. Pair, faults, tied by **Blue** Grids on Large Cover to **Germany**, **Blue** Chicago Double Circle pmk., Red "N. York Hamb. Pkt. Paid" pmk., Hamburg backstamp, cover considerably reduced at L., light cover stain in center, Scarce 4X Rate Cover(Photo) **E. 350-500**

PACKETS AND RAILROADS

- 186 ☒ **Cleveland & Pittsburgh Railroad**, Bold Double Oval Handstamp on Fresh Buff Cover, Bold Pittsburgh pmk., matching "5" Handstamp, VF(Photo) **E. 75-100**
- 187 ☒ **3c Red (11)**. Two, Large Margins to slightly in, tied by "**Cleveland & Pittsh R.R.**" pmk. (Remelle C21-c) & "**Cleveland & Pittsbh R.R.**" pmk. (Remelle C21-b) on Separate Covers, former partly readable strike, latter cover with tape stain (far from stamp & cancel), o/w Fine, Scarce to Rare Cancels **E. 150-200**
- 188 ☒ **Homer**, Red Str. Line on 1898 Folded Letter from French Port, also incl. bill of lading & receipt for 15. bales of cotton, Fine(Photo) **E. 50-75**
- 189 ☒ **Housatonic Railroad 5**, Clear Red Single Circle Handstamp on Fresh 1849 Folded Letter, VF(Photo) **E. 75-100**
- 190 ☒ **Housatonic Railroad 5**, Clear Red Double Circle on 1848 Folded Letter, Fresh & Fine **E. 50-75**
- 191 ☒ **Housatonic Railroad, R.R.**, Two Covers, "5" in Double Circle & pmk. with Red "5" rate, latter small tear (ex-Judge Fay), Fine Lot ... **E. 50-75**
- 192 ☒ **Hudson River Mail N.Y.**, Three Covers, incl. Red 30mm Circles "5" & "10" rates, **34mm** Red Circle, "5" rate, some light aging, o/w F-VF **E. 50-75**
- 193 ☒ **3c Red (11)**. Two average singles, one tied by partly readable **Blue** "**Richmond & Danville R.R.**" cancel (additional ms. cancel) on 1852 Folded Cover (another VF strike on cover); other stamp tied by ms. on aged 1853 Folded Cover, ms. "Drakes Branch on/R. & D. Railroad Va" pmk., Scarce Cancel **E. 100-150**
- 194 ☒ **Steamer Montgomery**, Red Oval Above Heading of 1849 Letter Written Near Grand Gulf, Natchez Mi. pmk., "Steam" & "5", file folds, Fine **E. 75-100**
- 195 **Steamer Genl Quitman**, Bold **Blue** Oval Handstamp on Cover Front to Port Gibson, Miss., **3c Red (26) Horiz. Strip of Three** tied by Grand Gulf, Miss. pmks., stamps & front with small faults, o/w VF, Attractive **E. 50-75**
- 196 ☒ **From Steamer Storm**, Large Red Oval on 1851 Folded Cover to New Orleans, Red New Orleans La. pmk. & matching "Way 11 Cents" Oval, Fresh, Fine & Attractive(Photo) **E. 100-150**
- 197 ☒ **Steamer Warrior**, Ornamented Red Oval on 1849 Folded Letter, "Steam" & "10", cover file fold, Clean Strike, Fine **E. 75-100**
- 198 ☒ **From Steamer Storm**, Clear Red Double Oval Handstamp on Buchanan Carroll & Co. Buff Cover, Red New Orleans pmk. & Bold Red "**Way 11 Cents**" Handstamp, VF(Photo) **E. 100-150**
- 199 ☒ **U.S. Mail/Packet/Natchez**, Mostly Readable Blue Oval Handstamp, matching "Route 7309" Double Oval, Vicksburg Miss. pmk. on 1857 Cover to Richmond, La., slight cover staining, o/w Fine **E. 75-100**
- 200 ☒ **Washington Railrd. Aug 5**, Clear Blue pmk. & "10" on Fresh Blue Folded Letter, VF, Scarce **E. 75-100**
- 201 ☒ **Straight Line Railroad Markings**, Four Diff., incl. "**Baltimore R.R.**", **Philada. Railroad** & "**Railroad Car**", & **Rail R.**, F-VF . **E. 100-150**
- 202 ☒ **Railroad Stampless Covers**, Six Diff., incl. Red Baltimore Rail Rd., Red Boston & Albany, Red Naugatuck, Blue Northern R.R., most VF **E. 100-150**
- 203 ☒ **Railroad, Steamboat & Steamship Stampless Covers**, (13) Covers, incl. Two Red Baltimore & Philada. Railroad Str. Lines, Red Charleston "Ship 12," Red "Steam/Boat", "Steam Boat" Str. Lines, Blue Baltimore "**Steamboat 5**" Str. Line; "Steam Ship 20" Circle, etc., Generally F-VF **E. 100-150**

- 204 **FORWADED/VIA/NICARAGUA/FROM/NOISY CARRIERS PUBLISHING HALL/SAN FRANCISCO**, Framed Handstamp on 10¾x14¼" Multicolor Print of Two Military Offices in Dress Uniforms, French Imprints at B., creases & tears, Very Unusual Western Express Item

TERRITORIALS AND CALIFORNIA

- 205 ☒ **Benica, Cal. Sep 4**, Clear pmk. ties **10c Green, Ty. II (14)**, Large Margins to slightly in at T., on **10c Green on Buff Entire (U18)** to Mass., small cover edge faults incl. couple small tears, o/w Fine **E. 100-150**
- 206 ☒ **Bidwells Bar Cal. Jan 27**, Clear pmk. on Cover to Pa., two average **3c Red (11)** with Wide Bar Grid cancel, small cover edge faults, o/w Fine**(Photo) E. 75-100**
- 207 ☒ **Leavenworth City K.T. Aug 26 1959**, Clear pmk. ties **3c Red (26)** on Cover to N.C., Negative Black Law Office Oval Corner Card, minor cover soiling, VF**(Photo) E. 75-100**
- 208 ☒ **Kansas Territory Covers**, 1859. Two Covers with Leavenworth City, K.T. pmks., one with **3c Red (26)**, other 3c Red on White Entire, also incl. **3c Red (26)** tied on Corner Card Cover by Leavenworth City, Kas. Double Circle pmk. (year unknown), F-VF **E. 100-150**
- 209 ☒ **Oroville, Cal Sep 2 1859**, Partly Clear pmk. ties **Two 10c Green, Ty. III (33)**, some perf. flaws, on Orange Cover to Pa., with original contents, o/w Fine **E. 75-100**
- 210 ☒ **"Ship 2 & Ship 4"**, Bold Str. Line Handstamps on Separate Covers, S.F. pmks., former with 2c Green (213) & No. J23, other with Two Singles of No. J23, both opened at sides (former cover through Postage Due Stamp), both with Double Oval Cachets of Alaska Commercial Co. (**St. Michaels & Ounalaska, Alaska**), latter faint strike, Fine **E. 75-100**
- 211 ☒ **Silver City N.M. (Territory)**, Two Covers: One with **2c Green (213)** faults, 1888 pmk. on Cover to Texas, Whitesborough, Texas Receiving pmk., Purple "Unclaimed", with original contents & P.O. Dead Letter Office Envelope used to return cover to sender, Purple Boxed "Advertised Silver City, N.M." Handstamp, Fine **E. 40-50**
- 212 ☒ **Vancouver, W.T.** (Washington Terr.), Clear pmk. ties Extremely Fine **10c Green, Ty. V (35)** on Fresh Yellow Cover to Maryland, trivial cover corner nick at B.L., VF**(Photo) E. 100-150**
- 213 ☒ **10c Green (68)**. Some short perfs., tied by **Blue Wells, Fargo & Co. Express SFRco** Handstamp Cancel, matching "Paid" in Oval on Cover to Boston, pencil ms. "Via Panama" & Boston Receiving pmk., Fine Cover**(Photo) E. 100-150**
- 214 **TERRITORIAL LETTERS**, 1860-62, Nine Letters, Headings incl. "Denver J. Ter." (Nov. 30, 1860) "Lake Gulch Jefferson Ter." (Jan. 17, 1861), "French Gulch Utah Territory" (May 12, 1861), "Lake Gulch Colorado Terr." (Feb. 18, 1861) Couple Denver City, etc., one on Flag Patriotic Stationery, several covers but with stamps missing (the "Utah" letter with ms. "Breckenridge CT." pmk.), also note about sending mail to "Central City Jefferson Territory Care of Hickley and Cos Express St. Joseph Missouri", all same corresp., Fascinating Western Terr. Group

1861 ISSUE

- 215 ☒ **10c Dark Green, “First Design”, Regularly Issued Stamp (62B, 68a).** Former perfs. in at L., both **Used with 1c Blue (63)**, all tied by **Red Grids** on 1861 Folded Letter to **The Netherlands**, Red New York Am Pkt. pmk., Red London & Amsterdam backstamps, addresses name crossed out, o/w Fine, Scarce Combination Cover(Photo) 1,217.50
- 216 ☒ **1c Blue (63).** Used with **2c Bank Check, Orange (R6c)**, tied by Grid of Diamonds cancel on Small Ladies Cover, clear “Notre Dame, Ind” pmk., stamps with small faults & cover with light water spotting at B.L., Very Scarce & Fine Usage(Photo) **E. 200-300**
- 217 ☒ **3c Pink (64).** Rich Color, couple short perfs., tied by Blue Burlington, Vt. pmk. on Fresh Small Cover, VF Cover, with P.F. Certificate, ex-Grunin(Photo) 350.00
- 218 ☒ **3c Pink, Rose Pink (64, 64b).** Tied by Town pmks. on Separate Yellow Covers, latter without flap & cover with nicks at T., o/w F-VF **E. 125-175**
- 219 ☒ **3c Rose (65).** Barely tied by **Negative Square & Compass Masonic Fancy Cancel**, Alliance, O. pmk. on Orange Cover, slightly reduced at R. (tiny tape mended edge tear), o/w VF **E. 50-75**
- 220 ☒ **3c Rose (65).** Faint crease & single short perf., Bold “Charter Oak” (Tree) Fancy Cancel, Thomaston, Conn. pmk. on Cover, VF Strike ... **E. 75-100**
- 221 ☒ **3c Rose (65).** Perfs. slightly in at L., tied by **Bold Segmented Globe Fancy Cancel**, Matching Zanesville, O. pmk. on Fresh Cover, VF & Choice(Photo) **E. 75-100**
- 222 ☒ **3c Rose (65).** Perfs. slightly in at R., tied by **Bold Elaborate Star Within a Star Fancy Cancel**, Putnam, Con pmk. on Fresh Small Cover, VF & Choice(Photo) **E. 50-75**
- 223 ☒ **3c Rose (65).** Perfs. slightly in at R., Partly Clear **Rose in Circle Fancy Cancel**, Amherst, Mass 1863 Double Circle pmk. on Small Fresh Cover, Fine Strike **E. 50-75**
- 224 ☒ **3c Rose (65).** Perfs. slightly in at R., tied by **Bold Negative “Union” in Five Point Star Fancy Cancel**, West Hampton, Mass. 1863 pmk. on Fresh Yellow Cover, VF & Choice Strike(Photo) **E. 100-150**
- 225 ☒ **3c Rose (65).** **Bold Skull Fancy Cancel**, tied by Cambridge, Mass. pmk. on Small Neat Cover, stamp with some nibbed perfs. from slight overlapping cover edge, VF Strike(Photo) **E. 75-100**
- 226 ☒ **3c Rose (65).** Some perf. faults, Clear **Patriotic Shield** Fancy cancel, Patterson, N.J. Double Circle pmk. on Yellow Cover, minor cover edge soiling, o/w VF **E. 50-75**
- 227 ☒ **3c Rose (65).** Just tied by **Bold Negative “Lincoln” & Stars in Circle Fancy Cancel** on Small Mourning Cover, VF, Scarce(Photo) **E. 100-150**
- 228 ☒ **3c Rose (65).** Well-centered, tied by Bold Negative “Oct” in **Script Letters “Month” Fancy Cancel** on **3c Pink on Buff Entire (U59)**, Second partly readable strike on Envelope stamp, Putnam, Con. pmk., VF(Photo) **E. 75-100**
- 229 ☒ **Point Lookout, MD,** Mostly Readable Double Circle pmk. & Target ties **U.S. 3c Rose (65)**, perfs. in at L., on Orange **Prisoner’s Cover**, faint “Prisoner’s Letter/Aug 13 1864/Examined” in Octagon Handstamp, extensive ms. docketing, contemporary message on back of cover with war news, etc., Fine **E. 75-100**
- 229A ☒ **Prisoner’s Letter Johnsons Island Examined J. Coder,** Mostly Clear Oval Handstamp on Orange Buff Cover to Richmond, Va., **U.S. 3c Rose (65)**, corner fault, tied by Sandusky O. Target Duplex & faint Richmond, Va. Receiving pmk., **Bold Str. Line “Due 10” C.S.A. Handstamp**, ms. “Per Flag of Truce via Fort Monroe”, some cover tears at T.L., o/w Fine(Photo) **E. 100-150**

- 230 ☒ **3c Rose, Red, F. Grill (65 five, 94 four).** Tied by Targets on 3c Pink on Buff Entire (U59) to **Italy**, "Flora, Dale Pa.", New-York pmk., "Insufficiently Paid" Str. Line, Blue French Transit, Rome backstamp, cover reduced at T. trimming off perfs. on three stamps & barely into envelope stamp, Scarce(Photo) **E. 150-200**
- 231 ☒ **5c Buff (67). Horiz. Pair,** R. stamp small faults, tied by Hanover N.H. pmk. & Target on Feb. 1862 Cover to **Canada**, Derby Line, Vt. Transit, "U. States" in Arc backstamp, Rare & Attractive(Photo) 1,075.00 +
- 232 ☒ **5c Brown Yellow (67a).** Well-centered, used with **10c Dark Green (68a)**, both tied by S.F. Double Oval pmks. on Fresh 1861 Cover to **France**, Red "New Paid York 6" pmk., Red French Transit & Boxed "PP", VF(Photo) 730.00
- 233 ☒ **5c Brown Yellow (67a).** Rich Color, Used with **10c Green (68) Vert. Pair**, Target cancels, Blandingsville, Ill. pmk. on 1863 Cover to **Switzerland**, various transits, Red "N. York Brem Pkt. Paid" backstamp, Missing part of backflap, minor cover stain at B., o/w VF, Scarce(Photo) 760.00
- 234 ☒ **5c Buff (67).** S.e. at L., faulty, used with **10c Dark Green "First Design" (62B)**, perfs. in at B. & slightly at R., Grid cancels, former tied by Red French Transit on Cover to **France**, Brunswick, Me. Double Circle pmk., Red "Boston Paid 12" pmk., minor cover stain & cover tear, Scarce Combination Usage(Photo) **E. 200-250**
- 235 ☒ **10c Dark Green (68a).** Gorgeous Deep Rich Color, tied by Large Boston "Paid" in Grid on 1862 Folded Cover to **India**, Stamp pays Double 5c Inland Rate with 80c due on delivery, Aden credit mark on front, Boston Br. Pkt., London & Bombay backstamps, VF ..(Photo) **E. 150-200**
- 236 **10c Green (68).** Horiz. Pair & Single, used with **2c Black (73).** Vert. Pair & Single, stamps partly overlap one another, all with faults, tied by ms. cancels on part of 1866 Orange Cover to **Switzerland**, various backstamps, Scarce **E. 150-200**
- 237 ☒ **12c Black (69).** Two Singles, one scissors separated into design (both repaired, used with **Two 2c Black (73)**, tied by ms. cancels, Prattville, Ala. pmk. on Cover to **Germany**, Red "N. York Br. Pkt 7 Paid" pmk. & Blue Boxed "Aachen Franco", Scarce **E. 150-200**
- 238 ☒ **24c Red Lilac (70).** Well-centered, **Used with 3c Rose (65)**, tied by Grid cancels & ms. penstroke on Fresh 1862 Tissue Paper Cover to **Italy**, Red French transit & Rome backstamp, VF & Choice Cover, ex-Stephen Brown 200.00
- 239 ☒ **24c Brown Lilac (70a).** Few nibbed perfs. & minor perf. tip toning, used with **Two 2c Black (73)** couple short perfs., Crossroads cancels, used on Neat Folded Cover to **Germany**, Red "N. York Am. Pkt. 7 Paid" & Red Boxed "Aachen Franco", Fine(Photo) **E. 150-200**
- 240 ☒ **24c Brown Lilac (70a).** Perfs. slightly in at L., used with **Two 2c Black (73)** on light Buff Cover to **Germany**, Red "N. York Am. Pkt. 7 Paid" pmk. & Magenta Boxed "Aachen Franco", small cover mend at T.L., o/w Fine(Photo) **E. 150-200**
- 241 ☒ **24c Brown Lilac (70a).** Centered to B.R., perfs. touch to slightly in, Tied by Bold Blue Baltimore, Md. Double Circle pmk. on Small 1865 Cover to England, then **Forwarded to France, Great Britain 4p Vermilion (34)** partly covers U.S. stamp, tied by Numeral Grid cancel, Liverpool pmk. & French Transit, various backstamps, VF Cover(Photo) **E. 100-150**
- 242 ☒ **30c Orange (71).** Few partly nibbed perfs., perfs. slightly in at L., tied by Circle of Wedges cancel on 1866 Folded Cover to **Germany**, Red "N. York Br. Pkt. 7 Paid" pmk., Blue Boxed "Aachen Franco", Bremen backstamp, Scarce 500.00

243	✉	30c Orange (71). Centered to B.L., perfs. touch to slightly in, Cogwheel cancel, S.F. pmk. on 1867 Cover to Germany , Red "N. York Br. Pkt. 7 Paid" pmk.	500.00
244	✉	30c Orange (71). Perfs. slightly in at T. & short corner perf., tied by cork cancel, Hartford, Ct. pmk. on 1869 Cover to France, Red "New Paid York 12" pmk., Blue French transit, cover tear across cover & under stamp from opening, also incl. another No. 71 (stamp defective) on Folded Cover to France, former cover Fine	E. 100-150
245	✉	30c Orange (71). R. perfs. touch, used with 12c Black (69) tied by Segmented Cork cancels on 1867 Folded Letter (lacking R. side flaps) to Italy , Red "New Paid York 36" pmk., Red French Transit, Palermo backstamp, addresses name & street address ms. obliterated, o/w Fine .	E. 150-200
246	✉	30c Orange (71). Small faults, used with 24 Brown Lilac (70a) , repaired, & average 2c Black (73) , tied by targets on 1863 Orange Cover to Germany , Red "N. York Paid Hamb. Pkt. 20" pmk., German backstamps, sealed cover tears & other cover faults, Scarce	E. 150-200
247		30c Orange (71). Horiz. Pair, used with Average 12c Black (69) , all with faults, tied by Rockland, Ill. pmks. on rebacked cover front to England , Blue " Insufficiently Prepaid " in Arc Handstamp, Attractive	(Photo) E. 250-300
248	✉	30c Orange (71). Three Singles, one faulty, another with tear, tied by Segmented cork cancels on 1866 Folded Cover to Germany , ms. "Via Prussian Closed Mail", Red "N. York Am Pkt . . ." pmk., small cover edge tears, Scarce 6X Rate Cover	E. 200-250
249	✉	30c Orange (71). Horiz. Pair, Great Color, tied by Segmented cork cancels & New Orleans pmk. on Large Cover to France, Printed Return Card, Red "New Paid York 24" pmk. & Blue French Transit, without flap & slightly reduced at T., cover edge nicks, o/w Fine Quadruple Rate Cover	E. 150-200
250	✉	90c Blue (72). Perfs. slightly in at right, tear at bottom, Used with 24c Lilac (78) on Jan. 26, 1864 Augustine Heard Correspondence Folded Letter to Shanghai, China , Quartered Cork cancels (not tied), Red "N. York Br. Pkt. Paid" pmk. on back, ms. "via Marseilles", Red London transit and Blue Hong Kong Backstamp, some splitting along top file fold of cover, Rare, signed Ashbrook who stated that "If This Cover is Genuine. Overpaid by 8c" with P.F. Certificate which states "the stamps did not originate on this cover", sold as is	(Photo) —
251	✉	5c Red Brown (75). Rich Color, tied by Red Grid, matching "N. York Br. Pkt. Paid" pmk. on 1862 Folded Cover to Holland , ms. "p Open Mail via Ostende", London & Amsterdam backstamps, VF Cover	(Photo) 475.00
252	✉	5c Red Brown (75). Gorgeous Color, perfs. in at L. & short perf., tied by Blue Baltimore, pmk. on 1863 Cover to Holland , ms. "pr Asia from Boston", Red London & Amsterdam backstamp, Fine Cover	475.00
253	✉	5c Dark Red Brown (75). Used with 10c Green (68) , both with small flaws, tied by Blue Cincinnati Duplex pmk. on Orange Cover to Germany, Red "N. York Paid Hamb. Pkt. 10" pmk., Hamburg backstamp, Fine, signed Ashbrook	(Photo) E. 200-250
254	✉	5c Brown (76). Perfs. touch to slightly in, tied by Red "Boston Br. Pkt. Paid," pmks. on Cover to Baltimore, Incoming Ship Mail pmk. upon arrival in Boston, Fine	120.00
255	✉	5c Brown (76). Deep Rich Color, Bold Baltimore, M.D. Double Circle pmk. on 1866 Folded Tissue Paper Cover to Holland , Red "New-York Br. Pkt." pmk., ms. "Via Ostende", Red London & Amsterdam backstamps, some cover mends & refolded to enhance appearance, o/w Fine	120.00

- 256 ☒ **5c Brown (76)**. Two average partly overlapped Singles, one with light crease, **used with 1c Ultramarine (145)**, target cancels (1c tied) on Pink Reg. Cover, Orland, Me. pmk., slight cover staining, o/w Fine **.(Photo) E. 100-150**
- 257 ☒ **15c Black (77)**. Used with **Horiz. Pair 2c Black (73)**, all with small faults, Grid cancels, Emmitsburg, Md. pmk. on 1868 Cover to **Italy** Red Str. Line Transit ties 2c Pair, Red "New York Paid All Br. Transit" pmk., Rome backstamp, minor cover stains, Scarce 19c Rate Cover**(Photo) E. 150-200**
- 258 ☒ **24c Dark Lilac (78)**. Rich Color, centered to B.L., perfs. in, tied by Target & Plymouth, Mass. pmk. on 1866 Cover to England, Red "Boston Am. Pkt. 3 Paid", Red Str. Line Paid & Red London Transit, few small cover tears, Still Attractive, with P.F. Certificate 200.00
- 259 ☒ **24c Lilac (78)**. Repaired (piece added), used with **1c Blue (63)** s.e. at R., faults & **Horiz. Pair 10c Green (68)** faults, target cancels, Richmond, Me. Double Circle pmk., used on 1866 Buff Cover to **Shanghai, China**, Red "Boston Am. Pkt. Paid" pmk. on back cover mends at R., Scarce, 45c Rate Cover**(Photo) E. 250-300**
- 260 ☒ **24c Grayish Lilac (78a)**. Used with average **2c Black (73)** **Horiz. Pair**, tied by Small Philadelphia pmk. & Target on Cover to **Germany**, Red "N. York Am & Br Pkt 7 Paid", pmks., **Magenta** Boxed "Aachen Franco" Handstamp, VF, 28c Rate Prussian Closed Mail Cover **E. 50-200**
- 261 ☒ **24c Gray (78b)**. Fine, Used with **Two 2c Black (73)**, one with couple short perfs., tied by Segmented Cork cancels, Red N. York Br. Pkt. & Blue Boxed "Aachen Franco" markings on 1866 Cover with Printed Address to Bavaria, 28c Rate Prussian Closed Mail Cover, F-VF**(Photo) E. 150-200**
- 262 ☒ **Covers**, 1863-68, Three Covers from Same Correspondence with original contents: No. 71 used to France (stamp "bisected" when cover reduced at R.), average No. 68 to Germany & average Pair of No. 68 used with 3c Rose (65) to Italy, one letter written from Sacramento, Cal. mentions "the rocks veined with gold, silver & copper", G-F Lot **E. 50-60**

END OF FIRST SESSION

SECOND SESSION

FRIDAY, APRIL 27, 1990 AT 1:30 P.M.

PATRIOTIC COVERS

- 263 ☒ **1c Blue, Ty. IIIa (22).** Pl. 11 or 12, Exceptionally Well-centered, tied by Grid, Canonsburg, Pa. pmk. on **Red, White & Blue Waving Flag Patriotic Cover**, The Union Forever Impt. below, VF, Scarce **(Photo)** 800.00
- 264 ☒ **3c Red (26).** Tied by Big Grid cancel, Brooklyn, N.Y. pmk. on Small Fresh Red, **White & Blue Patriotic Cover**, Design of Shaking Hands before "The Constitution" (Wolcott #2824), VF & Choice **E. 40-50**
- 265 ☒ **10c Green, Ty. V (35).** Ms. "#" cancel on Small Cover with Printed Eagle & Flag Design in Center with Ribbon for Address, Yorkshire, N.Y. ms. pmk., used to **Canada**, indistinct 1860 Canadian backstamp, stamp with faults, Cover VF **E. 75-100**
- 266 ☒ **10c Dark Green, "First Design" & Regularly Issued Stamp (62B68a).** Nicely Centered Single of Each, tied by Grids on 1862 Red & Blue on Yellow **Patriotic Cover** to Mass., Design of Liberty, Eagle with Spear & Shield, S.F. Double Circle pmk., some light cover file folds, small cover edge tear & some very slight cover stains, o/w Fine, Rare & Desirable, with P.F. Certificate **(Photo) E. 1,000-1,500**
- 267 ☒ **3c Rose (65).** Tied by "Georgetown D.C." pmk. on front of Buff Cover, **Red Overall "The Champion Belt" Patriotic Design** on back, slightly reduced at L. o/w VF, Rare Design **(Photo) E. 300-400**
- 268 ☒ **3c Rose (65).** Some short perfs., tied by indistinct Town pmk. on Illustr. Patriotic Design Cover (Battle betw. Monitor & Merrimac), Military Address to Huntsville, Ala., without flap & minor edge faults, o/w Fine **E. 40-50**
- 269 ☒ **UNUSED PATRIOTIC COVERS**, 43 Magnus Designs incl. 12 Multicolored, 16 "Seecesh Chain" & 21 non-Magnus incl. Ten with Jeff. Davis or C.S.A. Flag Designs (produced in North, never used in the South), some with light soiling or small faults, Mostly F-VF Lot **E. 150-200**

1867 GRILL ISSUES

- 270 ☒ **3c Rose, Grilled All Over (79).** Used perf. flaws (single pulled perf.), Crossroads cancel (not tied), Washington D.C. pmk. on Official Business Cover to Postmaster at Fernandez de Taos, **New Mexico**, cover slightly reduced at L. (through "O.B.") & minor edge faults, o/w Fine, Scarce Cover 750.00
- 271 ☒ **3c Rose, C. Grill (83).** Fine, tied by Bold Rosette Cancel, New-York pmk. on Orange Cover with Printed Return Card, VF, Scarce **(Photo)** 500.00
- 272 ☒ **1c Blue, E. Grill (86). Horiz. Strip of Three**, minor perf. faults, tied by Six Point Radial Fancy Cancels, Putnam, Con. pmk. on Cover, Attractive Cover **E. 250-350**
- 273 ☒ **2c Black, E. Grill (87). Horiz. Strip of Five**, natural s.e. at R., one with tear, another small faults, centered to B.R., perfs. touch to slightly in **Red** cancels (owner claimed Masonic Square & Compass cancel), Red N.Y. City pmk. on Local Orange Cover (Overpaid Drop Letter?), slightly reduced at L., Attractive Cover **E. 150-200**

- 274 ☒ **3c Rose, E. Grill (88).** Perfs. in at R., faint crease in L. Margin, tied by **Bold "Open Book" Fancy Cancel**, Rutland, Vt. pmk. on Buff Cover, slightly reduced at R., VF Strike **E. 75-100**
- 275 ☒ **10c Green, E. Grill (89).** Two Singles, slightly overlapped, one with few nibbed perfs., tied by **Red Circle of V's cancels** on Folded Cover to **Germany**, Red Baltimore pmk., Red "New York Paid All Direct" pmk., light soiling along horiz. cover file fold, o/w VF **E. 100-150**
- 276 ☒ **10c Green, E. Grill (89).** Two Singles, minor perf. tip toning, tied by Rosette cancels on 1868 Folded Cover to **Italy**, Red "New York Paid All Br. Transit" pmk., Palermo & "Isoletta - Napoli" (Quarantine) backstamps, addressee's name blacked out, o/w Fine, Scarce 450.00
- 277 ☒ **5c Brown, F. Grill (95).** Cut in at L., used with **2c & 12c Black, F. Grills** (93, 97), former repaired, latter perf. tip toning, tied by Circle of Wedges cancels on 1869 Cover to **Italy**, Red "New York Paid All Br. transit" pmk. Messina backstamp, cover mend at T., Scarce **E. 200-250**
- 278 ☒ **1c Blue, F. Grill (92).** Horiz. Pair, negligible perf. tip toning, tied by Quartered Cork cancels on Manilla Wrapper with Printed Negative "La Press Libre/Paris/France" in Box, Red 15c handstamp, bit of Calais transit on back, VF, Scarce(Photo) **E. 100-150**
- 279 ☒ **1c Pale Blue, F. Grill (92a).** Perfs. slightly in at B., Used with **2c Brown (113)**, Grid of Tiny Squares cancels, Lawrenceville, Pa. pmk. on Neat Small Cover, Fine, sighed Ashbrook(Photo) **E. 100-150**
- 280 ☒ **3c Red, F. Grill (94).** Well-centered, **Bold Negative Crescent Fez Fancy Cancel**, tied by Philada, Pa. pmk. on Fresh Orange Cover, Printed Corner Card, VF **E. 50-75**
- 281 ☒ **3c Red, F. Grill (94).** Bold **Blue Boxed "Paid" in Circle Fancy Cancel**, matching Woosung, Ill. pmk. on Yellow Cover to Santa Clara, Cal., VF, ex-W.C. Michaels(Photo) **E. 50-75**
- 282 ☒ **5c Brown, F. Grill (95).** Vert. **Strip of Three**, centered to T.R., perfs. slightly in, used with average **3c Ultramarine (114)**, tied by Circle of V's cancels on Reg. Orange Cover "? Junction, Ioa. pmk., Fine(Photo) **E. 300-400**
- 283 ☒ **10c Green, F. Grill (96).** Slight perf. tip toning, used with average **2c Brown (113)** Straddle Margin Single & **Two 3c Green (147)** on Reg. Buff Cover, Ossineke, Mich. pmk., slightly reduced at L., o/w Fine, Three Diff. Issues Franking **E. 150-200**
- 284 ☒ **12c Black, F. Grill (97).** Couple nibbed perfs., tied by Quartered Cork cancel, Red S.F. Cal Paid pmk. on 1869 Folded Cover to Scotland, Red London transit, Dundee backstamp, soiling along horiz. cover file pfold, o/w VF **E. 75-100**

1869 ISSUES

- 285 ☒ **1c Buff (112).** Well-centered, tiny corner crease, tied by **Bold Five Point Star in Circle Cancel**, Washington, Ind. pmk. on Fresh Yellow Local Cover, slightly reduced at R., VF(Photo) 150.00
- 286 ☒ **1c Buff (112).** Vert. **Strip of Three**, one with crease, tied by Circle of Wedges cancels & Louisville, Ky. pmks. on Cover, tiny cover edge tears, Fine, Attractive(Photo) **E. 100-150**
- 287 ☒ **1c Buff, 3c Ultramarine (112 three, 114 two).** Pair & Single of former used with Single of latter tied on Yellow Cover, stamp with minor perf. tip toning, Second Cover with No. 114 used with **3c Green, Grill (136)** tied by Quartered cork cancels on Fresh Cover, former some minor cover edge faults o/w F-VF, former ex-Baker **E. 100-150**
- 288 ☒ **1c Buff (112).** Perfs. in at T., tied by **Shoo Fly Fancy Cancel**, used with **2c USIR Revenue Stamp (R15c)**, second partly legible strike of cancel, on Orange Cover Toledo, O. pmk., VF, ex-Green ...(Photo) **E. 250-350**

- 289 ☒ **1c Buff, 2c Brown (112, 113).** Perfs. slightly in, tied by Mostly Clear **Square & Compass Masonic Fancy Cancels** on Yellow Cover, Hartford, Co. pmk., slightly reduced at L., Fine Strikes(Photo) **E. 150-200**
- 290 ☒ **1c Buff, 2c Brown (112, 113). Horiz. Pair,** latter natural s.e. at L., perfs. slightly in on both, tied by Grid Cancels & N.Y. pmk. on 1870 Cover to **Canada**, Toronto backstamp, small cover edge faults & cover soiling, o/w Fine(Photo) **E. 150-200**
- 291 ☒ **2c Brown, Diagonal Half Used as 1c (113c).** Used with attached Single, tied by Targets on Orange Cover, **Colorado City C.T. (Colorado Territory)** pmk., sealed cover tears, o/w Fine, Scarce, Unpriced(Photo) **E. 500-750**
- 292 ☒ **3c Ultramarine (114).** Tied by Toledo O. **Shoo Fly** cancel on Fresh Orange Cover, (also incl. Postal Card (XU5) with Shoofly N.C. ms. pmk.), Beautiful strike of Shoo Fly cancel, VF(Photo) **E. 500-750**
- 293 ☒ **3c Ultramarine (114).** Well-centered, **Square & Compass in Large "C" Masonic cancel**, partly readable Williston, Vt. pmk. on Fresh Small Cover to Texas, VF Strike(Photo) **E. 100-150**
- 294 ☒ **3c Ultramarine (114).** Small cork cancel, tied by Medina, NY pmk. on Illustr. Ad for Waterpumps on Yellow Cover, VF Cover **E. 40-50**
- 295 ☒ **6c Ultramarine (115).** Average single, tied by Segmented Cork cancel, Red Boston pmk. on 1870 Forwarded Cover to England, Red London transit, Fine Cover 300.00
- 296 ☒ **6c Ultramarine (115). Horiz. Pair,** Used With 5c Brown (76) tied by Grid & Str. Line "Registered" on Legal size Cover from Bangor, Me. to **St. John New Brunswick**, few small cover tears, the 5c may have been substituted for a 15c stamp, Sold "as is" **E. 75-100**
- 297 ☒ **6c Ultramarine, 10 Yellow (115, 116).** Former perfs. touch at T., latter slightly oxidized, tied by indistinct Town pmks. on 1870 Blue Tissue Paper Cover to **Denmark**, Red "2 1/2" & Red Boxed "Bremen Franco Handstamp, Red "New York Paid All Direct" on back & Danish backstamp, slight cover edge wear, Fine **E. 150-200**
- 298 ☒ **10c Yellow (116).** Wide Natural s.e. at L., **used with average, Nos. 112 & 113**, tied by Leaf cancels on Fresh Yellow Cover to Germany Red New York Paid All Br. Transit Handstamp, 10c stamp VF & VF Cover, ex-Knapp(Photo) **E. 250-350**
- 299 ☒ **10c Yellow (116).** Light crease, used with **2c Brown (113) & 3c Ultramarine (114)**, all tied by Circle of V's cancels on Folded Cover to France, S.F., Cal. pmk. & French transit, French backstamps, VF(Photo) **E. 250-300**
- 300 ☒ **10c Yellow (116).** Uncancelled, small faults, **Used in Combination with Great Britain 6p Violet (51) and Peru 1d Green (14)**, both tied by "C38" Oval Grid, "Panama" British Transit, Small Black "N.Y. Steamship 10" on Small Cover to Tenn., some trivial aging spots, Rare and Attractive Triple Franking, signed Ashbrook "in my opinion This Cover is Genuine in Every Respect", with P.F. Certificate which states that the 10c U.S. stamp has been added. Offered as is, but we are in agreement with Ashbrook that the uncanceled No. 116 belongs. A Philatelic Impasse **E. 1,000-1,250**
- 301 ☒ **12c Green (117).** Perfs. slightly in at B., tied by Small Segmented Cork cancel, Morristown, N.J. pmk. on 1869 Cover to England, Red New York pmk., Clear **Red "United States Despatch Agent/B.F. Stevens London"** Double Oval Handstamp, London backstamp, Fine, signed Ashbrook(Photo) **E. 150-200**
- 302 ☒ **12 Green (117).** Fine, used with Two average **3c Green (147)**, tied by Targets, Berlin, Wis. Double Circle pmk. on French Orange Reg. **Telegram Cover**, North Western Telegraph Company Printed Impt. at T., with original 1871 Telegram enclosure, ms. docketing, VF(Photo) **E. 250-350**

BANKNOTE ISSUE

303	✉	7c Vermilion, Grill (138). Fine, used with 1c Ultramarine (145) & average 3c Green (147) , target cancels, 1c tied by Peotone, Ill. pmk. on Fresh Orange Cover, Fine, ex-Toasperm (Photo) E. 150-200	
304	✉	10c Brown, Grill (139). Perfs. touch at L., NYFM Cancel (Ty. S20), used on April 18, 1871 Folded Cover to Vera Cruz , Red New-York pmk., Fine 700.00	
305	✉	10c Brown, Grill (139). Horiz. Pair , perfs slightly in at R. Crossroads cancels, tied by Chicago pmk., Red "New York Paid All Br. Transit" pmk. on 1873 Cover to Belgium , Brussels backstamps, Fine, with P.F. Certificate (Photo) 1,100.00	
306	✉	2c Red Brown (146). Small faults, tied by Large Shield in distorted circle, on 9¾x5¾" Cover With Spectacular Overall Illustr. in Ocher of the Exterior of an Egyptian Temple or Tomb (Valley of the Kings?), Red Impt. "The Kaballah of The Egyptians And The Greek Canon of Proportion" etc; slight edge faults, Fascinating cover . (Photo) E. 150-200	
307	✉	2c Red Brown (146). Vert. Pair, one with minor corner crease, used with 3c Green (147) , tied by Rosette cancels & indistinct Red "New York Paid All Br. Transit" pmk. on 1872 Cover to Germany Forwarded to Italy, Italian Postage Due (J8) tied by Rome Pmk., VF, ex-Emerson (Photo) E. 150-200	
308	✉	3c Green (147). Horiz. Pair , perfs. in at B., tied by Cork cancels, Charlotte, N.C. pmk. on 1871 Orange Cover to England, Red New York pmk., Forwarded back to U.S. additionally franked with Great Britain 3p Rose (49) , tied by Oval Numeral Grid cancel, slightly irregularly opened at R., Fine E. 100-150	
309	✉	3c Green (147). Well-centered, Danbury, CT. Negative Top Hat Fancy cancel on Orange Cover (slightly reduced at L.), also incl. Two 3c Green on White Entires (U82), U163) with Printed Address with Danbury, Ct. Derby & Top Hat Fancy cancels respectively, former with some cover stains, F-VF Strikes E. 75-100	
310	✉	7c Vermilion (149). Fine, cork cancel, Rimless Springfield, Mass. pmk., Red "New York Paid All Br. Transit" pmk. on Cover to Germany Forwarded to Italy, Italian Postage Due (J8) Tied by Rome pmks, Trivial cover edge faults, o/w Fine 110.00 +	
311	✉	12c Dull Violet (151). Small faults, perfs. in at B., tied by cork cancel on 1872 Orange Cover to Germany , Red "New York Paid All Direct" pmk., Red Boxed "Hamburg Franco" Handstamp, opened two sides (slightly reduced at L.), Attractive 350.00	
312	✉	24c Purple (153). Used with Horiz. Pair 2c Brown (157) one 2c repaired, Target cancels, Kingwood, W. Va. pmk. on Cover to India , various backstamps, cover mend at T.L. & portion of back, o/w Fine, Scarce E. 250-300	
313	✉	3c Green (158). Well-centered, tied by Bold Negative Dagger Fancy cancel & N.Y. pmk. on Small Cover, Multicolor Letter Monogram. on flap, VF E. 40-50	
314	✉	3c Green (158). Horiz. Pair & Single , tied by NYFM Geometric Cancels (Ty. G16) on Mourning Cover to France , Red New York Paid pmk. & Blue French Transit, VF & Attractive 9c Rate Cover, Scarce . E. 40-50	
315	✉	6c Dull Pink (159). Two, Tied on Separate Covers to Germany & France, former used with No. 156 (both stamps natural s.c.'s), Latter Folded Letter with No. 158, both with S.F. pmks. & various transits, F-VF 50-75	
316	✉	7c Orange Vermilion (160). Fine, used with 3c Green (158) , both tied by Bold Crossroads cancels, San Francisco pmk. on Fresh 1876 Folded Letter to France, Red New York pmk., French Transit & backstamps, VF E. 100-150	

TRAFFIC
APR 10 1847
10
13
9 Mrs. David Crawford

18
MAY 17
1847

HART-D MAY 21 10
27 Mrs. Amy & Brown
owners of Boston mill

MERCHANT'S TELEGRAPH
OFFICE, No. 36 CLARKE STREET, CHICAGO.
12
CHICAGO
SEP 15
5
Mrs. Kellogg, Esq.

34
MAY 17
1847

58
P. H. Wood
Paid 10
of Oswego Co.
Oswego, New York

74
PAID
MAY 22 5cts
Mr. J. H. In. Jr.
Catskill

PAID
75
Zara
James B. Wright
care of Mrs. F. A. Humphreys
Albany -
N.Y.

76
PAID
MAY 22 5cts

77
PAID
MAY 22 5cts

78
PAID
MAY 22 5cts

81
NEW-YORK
JUN 4
Rev. Saml. H. Kiddle.
Secretary of the Am. Education Society
Boston
Mass.

84
NEW-YORK
JUN 4
Hon. E. D. Morgan
1 of the committee

82
PAID
MAY 22 5cts

85
PAID
MAY 22 5cts
Messrs. Cornwell & Son

79
PAID
MAY 22 5cts
Messrs. A. B. & Co.
No. 190 Nassau
New York

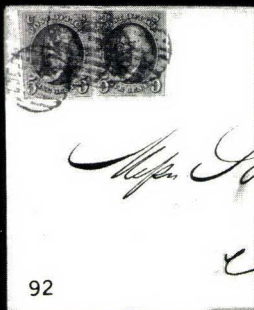
83
PAID
MAY 22 5cts
Messrs. A. B. & Co.
New York

86
PAID
MAY 22 5cts
G. Carpenter Esq. of New York
Merchants Bank

80
PAID
MAY 22 5cts

93
PAID
MAY 22 5cts
Messrs. A. B. & Co.
New York

97
PAID
MAY 22 5cts
Messrs. A. B. & Co.
New York



Mrs. J. Llop, David S Brown & Co,
Philadelphia

92



99



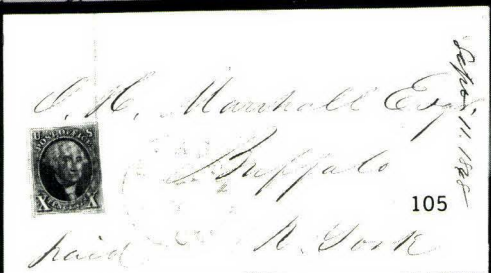
100



103



104



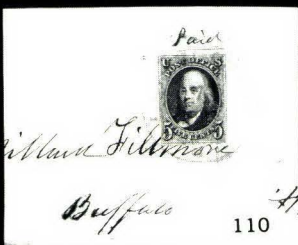
105



107



106



110



108



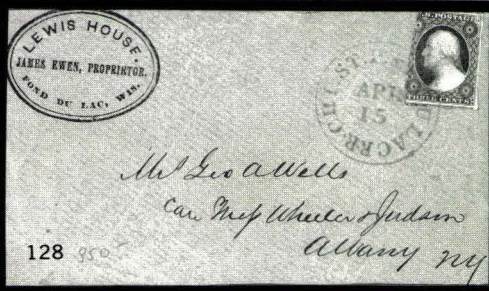
109



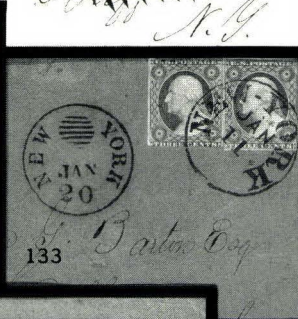
111



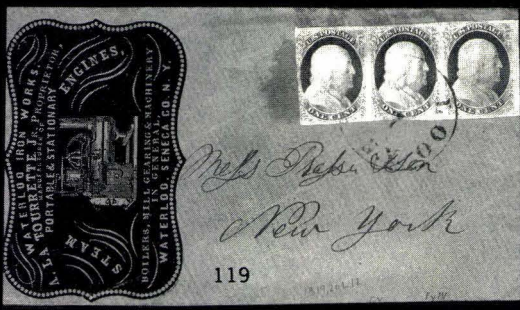
112



128



133



119



126



124



129



130



114



R. S. Hazard



135

Mr. W. L. P. Tenny
Care W. L. P. Tenny
I. Smith

134



136



138

"America" from Boston
PAID
11 JUL 28
1853
SAMUEL ROUGH, Esq.
NEW ROSS,
Ireland.

142

J. B. Smith
a. B. Smith
American Consul
Boston

143

PAID
M. Lane
Washington
Boston

149



158

California Society of Naturalists
Stockton
California

157

V. G. G. & P. Schopen
Lalerno
PAID
NOV 26
1853
Mr. George P. Menden
Burlington
United States of America

160

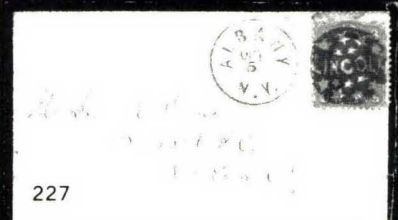
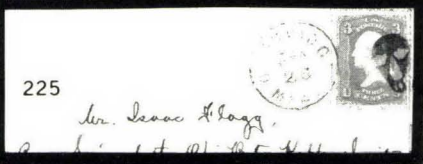
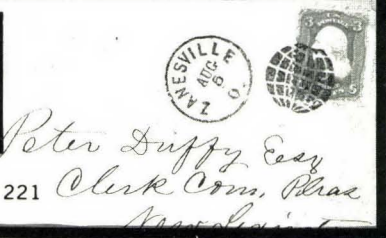
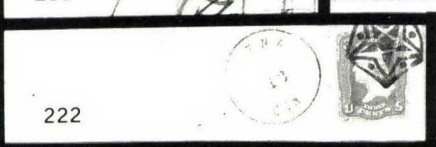
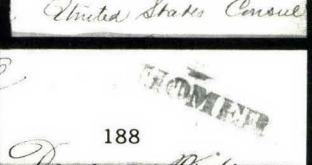
PAID
12 MAY 7
NEW YORK
Mrs. B. Menden
Paris

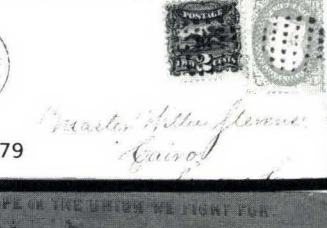
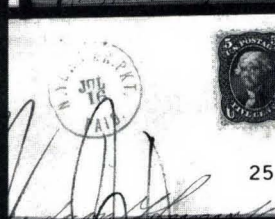
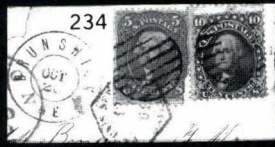
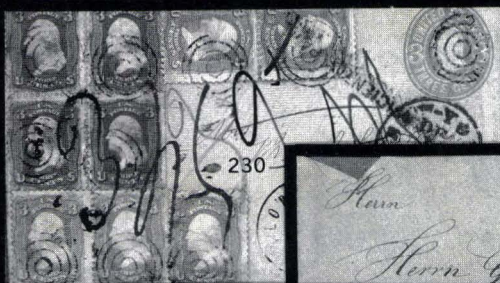
163

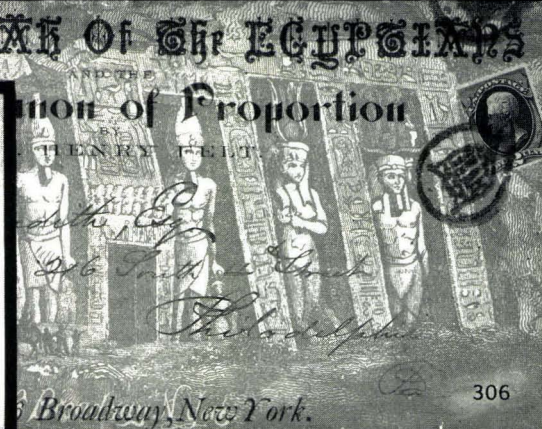
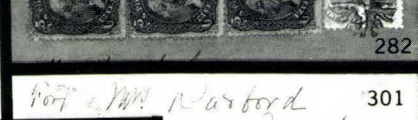
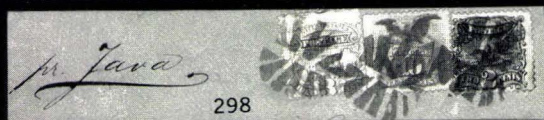
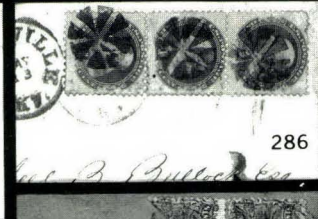
PAID
SEP 11 38
The Royal Bank of Ireland
Dublin

179


PAID
Hamburg
185PAID
L. C. T. Tenny
161PAID
M. Lane
162PAID
B. Smith
35
K. A. K. K. K. K.
C. B. B. B.
164







WINCHESTER
 REPEATING RIFLES, SHOT GUNS
 AND SINGLE SHOT RIFLES
 BEST IN THE WORLD



The Beckley Ralston Co

Chicago 332

9 Morris Street
 Brooklyn
 U.S.A.

325

Registered. **B.**

323

The M.A. Winter
 WASHINGTON D.C.

1262

351

Benjamin Jacobs
 Boston

340

Gorgerat
 Keeton
 Sierraleone

327

355

358

PAID

373

356

371

380

Messrs A.A. Low & Brother
 New York

381

372

368

360

362

374

384

395

378

382

397

Mrs Henry Metherbee
 Westfield
 Mass.

398

Messrs Dow & Lintner Co
 119 Broad St
 New York

394

North British & Mercantile
Insurance Company,
of London and Edinburgh.
U. S. Branch, 54 Wall St.,
NEW YORK

415

W. Blossom

402

414

399

396

421

426

404

410

422

442

424

429

TO THE PENNY POST CO.

PENNY-POSTAGE PAID, 5.

430

TO THE PENNY POST CO.

PENNY-POSTAGE PAID, 7.

438

428

425

427

437

444

445

HUGHES HOTEL
H. HART, Lessee
THOS. E. HUGHES, MANAGER
FRESNO, CAL

439

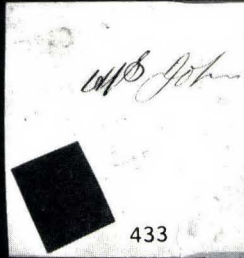
A. J. Wetzlar, Esqr
106 Liedersdorff Street
San Francisco
Cal

441

Mr. A. S. J. De Guere
404 Montgomery St
San Francisco
Cal



443



433



440



456



457



465



458



460



464



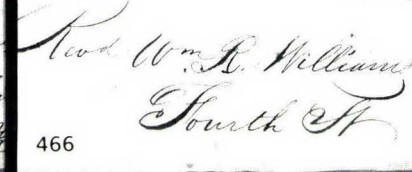
448



473



468



466



476



474



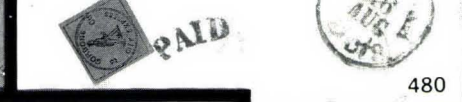
470



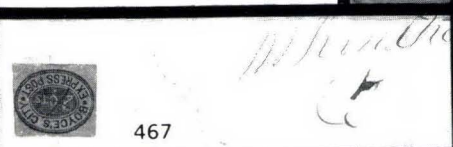
497



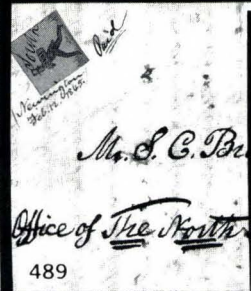
478



480



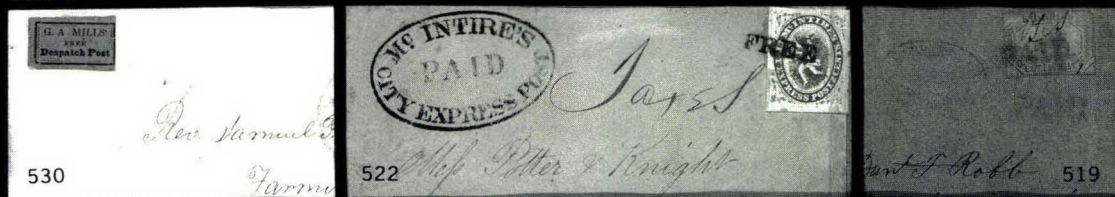
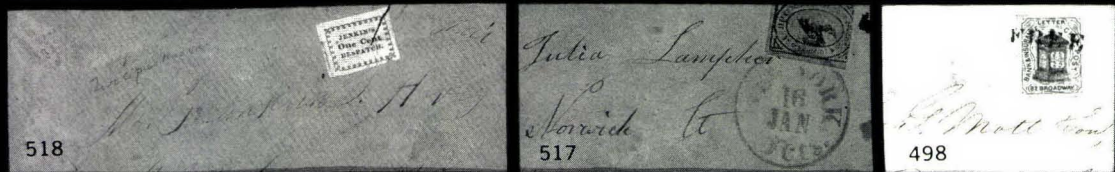
467



489



479





558



553



551



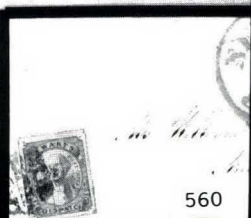
550



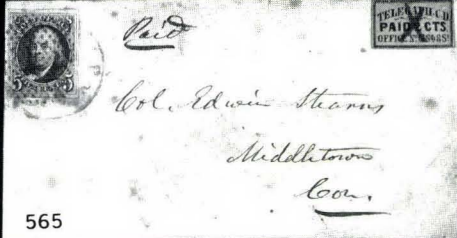
562



564



560



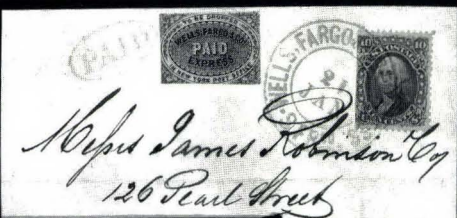
565



566



568



569



570



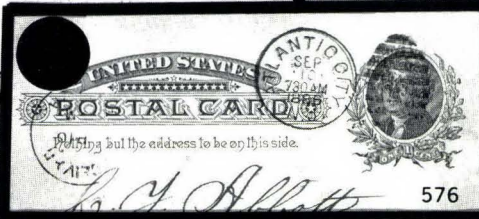
574



572



579



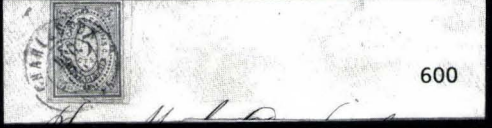
576



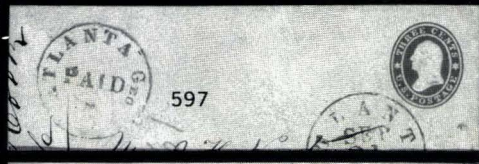
598



599



600



597



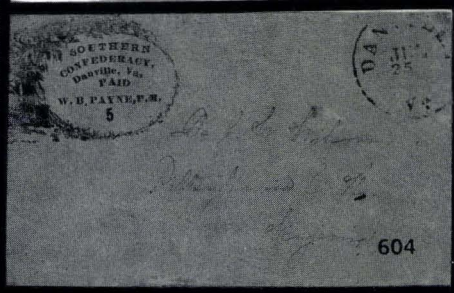
603



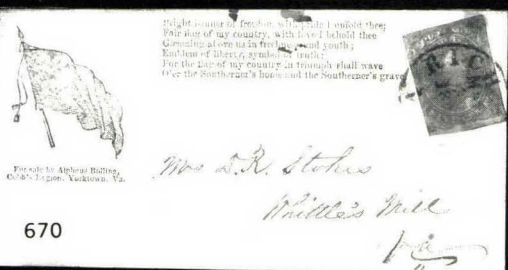
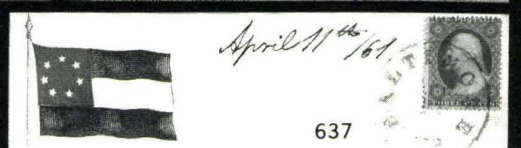
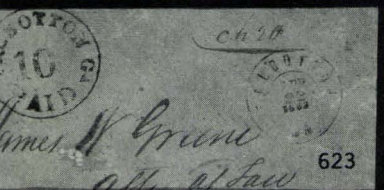
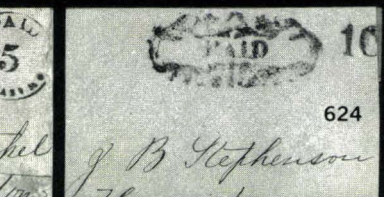
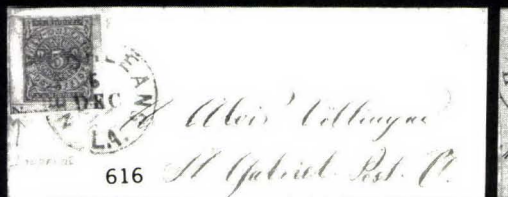
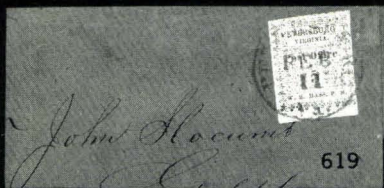
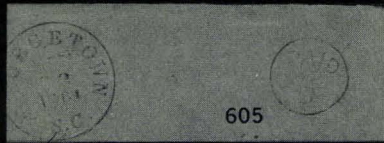
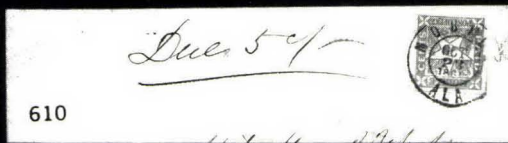
601

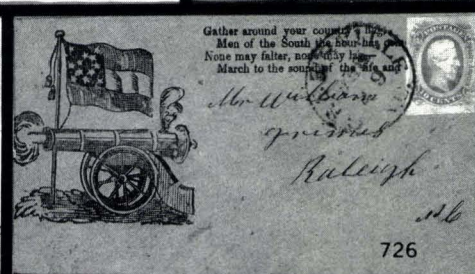
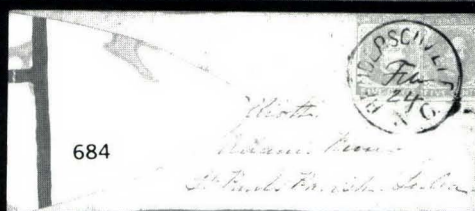
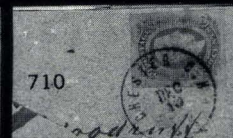
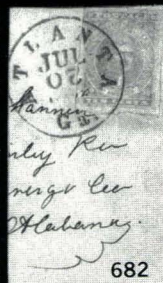
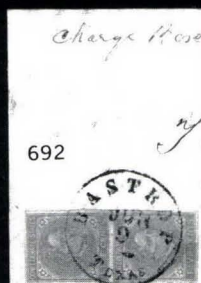


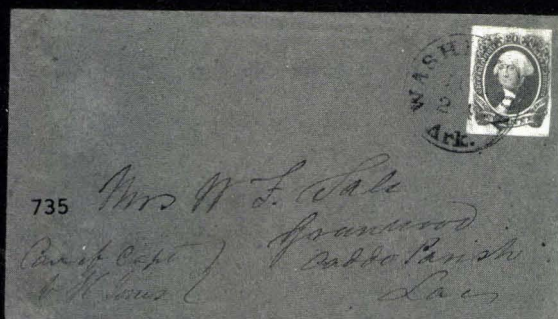
606



604



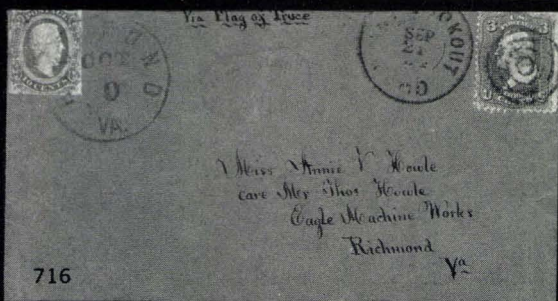




735



736



716



724



731



737



744



328



573



602



609



612



664



665



656

- 317 ☒ **7c Vermilion (160)**. Fine, used with **2c Brown (157)** blunted perfs. at T., tied by Bold **Blue** Circle of Wedges cancels, matching New Orleans pmk. on 1876 Folded Letter to **France**, Red N.Y. pmk. & Red French Transit, VF, ex-Emerson(Photo) 300.00 +
- 318 ☒ **12c Blackish Violet (162)**. Two Singles, used with **6c Dull Pink (159)** & **10c Brown (161)** all with faults, tied by Quartered cork cancels & Red "New York Transit" pmk. S.F. Cal. pmk. on Cover to **Germany**, cover mends at T., o/w Fine, Scarce(Photo) E. 150-200
- 319 ☒ **30c Gray Black (165)**. Rounded corner, used with **1c Dark Ultramarine (182)** & **6c Pink (186)**, tied by N.Y. Reg. Ovals on 1880 Large Size Reg. Cover, some corner faults, o/w Fine, ScarceE. 100-150
- 320 ☒ **2c Vermilion, Vert. half Used as 1c (178b)**. Rounded corner, well-tied by Purple Rectangular Grid matching "Rushford NY June 22 1878" pmk. on Fresh Local Cover, also incl. No. 182 (ms cancel) used on 1880 Cover to addressee's family on another Local Cover, VF Listed but Unpriced(Photo) E. 200-300
- 321 ☒ **3c Green (184)**. Tied by "Washington D.C. 1879 Nov 21 6 P.M." Grid Duplex on "**Executive Mansion**" **Corner Card Cover**, with enclosure from Mrs. Hayes' personal secretary, cover bit soiling, opened at R. & partly at T., Scarce Presidential Collateral E. 50-75
- 322 ☒ **5c Blue (179)**. Horiz. Pair, used with 3c with **3c Green (158)** tied by Cover cancels on **3c Green on Amber Entire (U164)**, Albino Impression of Entire Stamps with Fully Inked Impression (not an offset) on the inside of the back of the Entire, contemporary "ms. Stamp on Inside" notation on stamp, Very UnusualE. 100-150
- 323 ☒ **90c Carmine (191)**. Rounded corner, used with **15c red orange (189)** & **30c Full Black (190)**, all tied by N.Y. Reg. Ovals on Large Part of 1888 Reg. Cover with Printed Address to Germany, another stamp missing, o/w Fine, Rare(Photo) E. 500-750
- 324 ☒ **4c Blue Green, Diagonal Half Used as 2c (211 var)**. Boldly tied by N.Y. 1888 Duplex pmk. on Fresh Local Cover, VF(Photo) E. 200-300

1890-1909 ISSUES

- 325 ☒ **2c Carmine, Diagonal Half Used as 1c (220 var)**. Well-tied by Chicago, Ill. 1893 Machine pmk. on Fresh Cover, without flap & light cover crease at R., VFE. 100-150
- 326 ☒ **2c Carmine, Diagonal half Used as 1c (220 var)**. Used with normal **2c Carmine (220)** on **Canadian 1c Entire** to U.S., all tied by 1893 U.S. German Sea Post Duplex pmks. slight cover toning, specks, o/w VF(Photo) E. 100-150
- 327 ☒ **10c Green, Diagonal half Used as 5c (226 var)**. Tied by N.Y. 1992 Duplex pmk. on Cover to **Sierra Leone**, Freetown Sierra Leone backstamp, VF(Photo) E. 150-200
- 328 ☒ **3c Columbian (232)**. Sealed tear, tied by "**World's Fair Sta Chicago, Ill. Nov. 3, 1893**" Duplex pmk. on Multicolor World's Fair Post Card (UX10) "**Battleship Illinois**", to Austria, VF(Photo) 300.00 +
- 329 ☒ **2c-15c 1895 Issue (267, 268 three, 274)**. 2c & 3c B. Pl. No. Singles (latter all Diff. Nos.), tied by St. Paul, Minn. 1897 pmks. on 4c Carmine on White Entire (U324) to **Sweden** (9x4 $\frac{1}{8}$ "), all 3c faulty & cover edge faults at R., Scarce Triple Rate Cover E. 50-75
- 330 ☒ **8c Violet Brown (272)**. Used with faulty **2c Carmine (267)**, tied by Duplex pmks. on 1902 Cover to **Austria**, Cover returned to U.S., **New South Wales, 5p Dark Blue Green (65)** affixed over U.S. Stamps, tied by "Ship Mail Room Sydney N.S.W." pmk. address heavily crossed out & readdressed in Violet ink, cover slightly reduced at L., ex-Gibson .E. 100-150

- 331 ☒ **1c Trans-Miss. (285).** On 1c **Official Trans-Miss. Multicolor Postal Card** (Liberal Arts Building), July 1901 Use to **Alsace, Pan-Am Red & Blue Expo Label** tied by Mulhouse receiving pmk., minor card corner crease, o/w VF, Unusual **E. 30-40**
- 332 ☒ **2c Carmine (332).** Tied by Springfield Ohio 1910 Machine pmk. on **Multicolor Winchester Gun Adv. Cover**, Fresh, VF & Choice Cover(Photo) **E. 75-100**
- 333 ☒ **2c Hudson-Fulton, Imperf. (373). Horiz. Pair,** Used With **Pairs of 1c & 4c Imperfs.** (343, 346) tied on legal size Reg. **4c Entire (U328)**, to the German Consulate in the Netherlands, 1911 Usage, some cover wrinkling, o/w VF, Scarce **E. 100-150**
- 334 ☒ **5c Beacon (C11).** Two Singles tied by Washington, D.C. Jul 25, 1928 **First Day Duplex pmks.** on Separate Covers, each with Purple "Postage Due 5 Cents" Handstamps (5c Rate Aug 1st) & 5c Postage Dues, VF . 300.00

SPECIAL DELIVERY

- 335 ☒ **10c 1885-94 Special Deliveries (E1-E4).** 13 Covers, two, six, four & one respectively, Three E3's With 3c Columbians, other on "Pacific Express Co." Railroad Car Corner Card, mixed quality, generally Fine Lot **E. 100-150**
- 336 ☒ **10c 1885-95 Special Deliveries (E1-E5).** Tied on Separate 1890-95 Covers, All with 2c Postage on 2c Entires (two), No. E3 with s.e. at R., "Train Late" in Oval backstamp, o/w F-VF Lot **E. 100-150**
- 337 ☒ **10c 1885-1908 Special Deliveries (E1-E5, E7).** Used on Separate 1888-1910 Covers all with 2c Postage on 2c Entires (two) except No. E3 used with **3c Columbian (232)**, perfs. slightly in on couple, o/w F-VF 352.50
- 338 ☒ **10c Registration (F1).** Two, used on Separate 1913 Covers, one to Denmark, other from **Shanghai, China**, U.S. Postal Agency Double Oval pmks. on Large Cover, N.Y. Reg. labels overlap L. edge, cover edge faults, o/w Fine **E. 100-150**

POSTAGE DUES

- 339 ☒ **2c Bright Claret, Diagonal Half Used as 1c (J23 var).** Used with **3c Bright Claret (J24)**, perfs. in at L., tied together by cork cancels on Fresh Blue Cover, **2c Carmine (220)**, perfs. in at L., tied by Louisville Ky Mar 17, 1894 Machine pmk., ms. "Due 4", VF **E. 100-150**
- 340 ☒ **2c Deep Claret, Vert. Half Used as 1c, Overprinted "Due 1 cent" (J39 var).** Beautifully tied by Clear "Jefferson, Iowa Oct 12 1895" pmk. on **1c Blue on Manila Wrapper (W301)** to Scranton, Iowa forwarded to Jefferson, Pencil "Due 1c", Alton, Ill. Oval pmk. & cork cancel, sealed back tear (from opening), VF, Only 20 Bisect Covers Prepared, signed Sloane(Photo) **E. 200-300**
- 341 ☒ **1c Carmine Rose, Vert. Half Used as ½c (J61 var).** Matching Halves tied by "Valley Falls, NY Dec 26 10 A.M. 1932" pmks. on Separate Covers (Same Corresp.) franked with **½c Bicentennial (704)**, each with Purple "Postage Due" ½ "Cents" Str. Line Handstamps ("½" in ms.), VF, with Affidavit by one of the recipients **E. 100-150**
- 342 ☒ **2c Carmine Rose, Carmine, Bisects Used as 1c (J62, J71 vars.).** Each torn by hand, former Olympia Wash (1918) precancel, "Due 1 Cent." handstamp, latter tied by Marblehead, Mass. Double Oval, "Postage Due 1 Cent", Fine, Scarce Lot **E. 50-75**

- 343 ☒ **POSTAGE DUE COVERS**, 37 Covers & one front, Mostly Bank Note Period, Most With Postage Due Stamps & Regular Adhesives, incl. Attempted Use of 2c Battleship Revenue, Use With 10c Special Delivery No. E7, Nice Variety of Markings, etc., mixed quality, G-VF **E. 250-350**
- 344 ☒ **POSTAGE DUE STAMPS ON INCOMING MAIL**, 1875-91, 17 Stamps on Six Covers, one from England (on ½p Entire), two from **Sweden**, Strip of Five (J25) on "Ship Letter", Use from France, Use from Argentina (with Argentine stamps), also incl. 1920 Cover to **Sweden with 8ö Provisional Postage Due Adhesive**, F-VF, Scarce . **E. 150-200**
- 345 ☒ **1c Parcel Post Due (JQ1). Vert. Pair**, tied by somewhat oily Double Oval cancels on Fresh Neat Cover with Waving Flag Machine pmk. & "Due 2 Cents" Handstamp, VF **150.00**
- 346 ☒ **1c-5c Parcel Post Dues (JQ1 two, JQ2 two, JQ3)**. Both 1c used on Pink Second Class Matter P.O. Labels, others used on Separate First Class Domestic Covers, 1913-21 usages, one 2c Cover faulty, o/w VG-VF Lot **E. 200-300**
- 347 ☒ **1c, 5c Parcel Post Dues (JQ1, JQ3)**. Latter natural s.e. at T., indistinct cancel causes small fault on 5c, used on 1914 Incoming Cover from **South Africa**, franked with **South Africa ½p Green (2) Vert. Pair**, "Collect Postage. 06 Cents" Handstamp, cover creases & wrinkles, o/w Fine **E. 75-100**
- 348 ☒ **2c Parcel Post Due (JQ2)**. Perfs. in at R., Blue crayon cancel (not tied) used on 1913 Cover franked with **2c Parcel Post (Q2) used as First Class Postage** tied by Machine pmk., Red crayon "Due 2c", Fine ... **200.00 +**
- 349 ☒ **2c Parcel Post Due (JQ2). Vert. Pair**, Tied by Purple Double Circle pmk. on 1913 Incoming Cover from **Mexico**, franked with **Mexico 5c Black, Red & Green (344)** small faults, "Due 4 Cents" Handstamp, cover with paperclip rust mark & slightly reduced at L., o/w Fine **200.00 +**
- 350 ☒ **5c Parcel Post Due (JQ3). Vert. Pair**, Well-centered, tied by Boston Double Oval cancel on 1914 Incoming Cover from **Italy**, franked with **Italy, 25c (100)**, N.Y. "Due 10 Cents" in Circle Handstamp, some cover edge faults, o/w VF **185.00 +**
- 351 ☒ **10c Parcel Post Due (JQ4)**. T. perfs. touch, tied by N.Y. Double Oval cancel on 1914 Incoming Cover from **Poland**, N.Y. "Due 10 Cents" in Circle Handstamp, few pinholes, o/w Fine **(Photo) 650.00**
- 352 ☒ **10c Parcel Post Due (JQ4)**. Fine, folded over B. edge of cover, tied by N.Y. Double Oval cancel on 1918 Incoming Cover from **Russia**, Various Handstamps & Markings incl. N.Y. "Due 10 Cents" in Circle Handstamp, Fine **E. 100-150**

PARCEL POST

- 353 ☒ **15c Parcel Post (Q7)**. Used on 1918 Reg. Cover with 1c & 3c Pair Postage, light cover stains & some edge wear, o/w Fine, Scarce **350.00**
- 354 ☒ **20c Parcel Post (Q8)**. R. perfs. touch, used with Nos. 184 & 279 (both natural s.e.'s) & tied by Chicago Double Oval pmks. on Large 191? Manila Reg. Cover (10¼x4½"), some cover faults at sides, Scarce Used as Postage **750.00**

CARRIERS STAMPS

- 355 ☒ **(1c) Dull Blue, Franklin Carrier (LO1)**. Clear to Large Margins, Red Star cancel & Blue ms. line on Neat Envelope to Philadelphia, negligible soiling, VF, Rare, ex-Gibson **(Photo) 4,500.00**
- 356 ☒ **1c Blue, Eagle Carrier (LO2)**. Used With **3c Red (11)** tied by **Orange Red Caldwell N.Y.** pmk. on Neat Cover to Albany, another Strike of the Caldwell pmk. at L., VF, **Unique Usage** **(Photo) 150.00 +**

357	✉	1c Blue, Eagle Carrier (LO2). Red Star cancel, Used With 3c Red (11) , Both tied by Blue Phila., Pa. pmk. on Small Neat Cover, Fine, Very Attractive	150.00
358	✉	Baltimore, Md. 1c Red on Bluish (1LB1). Margins to tiny bit in, boldly tied by ms. on Small Cover, slight soiling, Fine(Photo)	250.00
359	✉	———, 1c Red on Bluish (1LB1). Ample to Large Margins, tied by Grid on locally used folded Cover, light cover creases, small erosion & tear, o/w VF	250.00
360	✉	———, 1c Blue (1LB6). Ample to Large Margins, Used With 3c Red (26), corner fault, both tied by Blue Baltimore pmk., Attractive, Scarce(Photo)	250.00
361	✉	———, 1c Blue, Plate Flaw in “One Cent” (1LB6). Clear to Large Margins, small tear, uncanceled, used with 3c Red (11) , tied by Blue Baltimore pmk. on Buff Cover to S.C., Small Printed Hotel Corner Card, VF Cover	250.00
362	✉	———, 1c Red (1LB7). Ample to Large Margins, Used With Average 3c Red (26) , Both tied by Baltimore pmk. on Fresh Yellow Buff Cover, Very Attractive(Photo)	250.00
363	✉	———, 1c Red (1LB7). Clear to Large Margins, ms. penstroke cancel (not tied) used with 3c Red (11) , tied by Blue Baltimore pmk. on 1856 Folded Letter to N.Y., VF	250.00
364	✉	———, 1c Black (1LB8). Three Large Margins, trifle in at L., pencil “X” cancel, Used With 3c Red (26), both tied by Blue Baltimore pmk. on Buff Cover, Fine	125.00
365	✉	———, 1c Black (1LB8). Partly overlapped by 3c Red (26), tied (the No. 26) by Blue Baltimore Md. pmk. on Cover to Del., VF	125.00
366	✉	———, 1c Red (1LB9). Margins All Around, light pencil cancel, Used With 3c Red (26) , both tied by Blue Baltimore pmk. on Tiny Cover, bit reduced at R., slight soiling, o/w VF	150.00
367	✉	Boston, Mass. 1c Blue (3LB1). Margins Virtually All Around, tied by Red Boston 5 cts. pmk. on 1849 Folded Letter to Me., VF	200.00
368	✉	———, 1c Blue on Grayish (3LB2). Margins Virtually All Around, Huge Two Sides, Used With Average 3c Orange Brown (10) , Bold Small “Paid” in Grid cancel, Both tied by Red Boston 3 cts. pmk. on Neat Cover to N.H., Fine, Exceptionally Handsome(Photo)	300.00
369	✉	———, 1c Blue on Grayish (3LB2). Margins All Around, tied by Small Red Circle, Used With 3c Red (11) tied by Large “Paid” in Grid, Red Boston Mass. pmk. on Cover to N.C., small cover toning spot, Fine	150.00
370	✉	———, 1c Blue on Bluish (3LB3). Margins All Around, tied by Small Red Circle on Small Neat Locally Used Cover, flap tear, opened two sides, Fine	200.00
371	✉	U.S. City Dispatch Post, 3c Black on Light Blue (6LB3). Orange Red “US” in Octagon cancels, Red “U.S. City Despatch Post” pmk. on Feb. 1846 Cover, minor cover tear, VF. Use of this stamp on this cover cannot be guaranteed, cat. as used stamp(Photo)	200.00 +
372	✉	———, 3c Black on Light Blue (6LB3). Large Margins, Indistinct Orange Red “US” in Octagon cancel, matching “US City Despatch Post” pmk. on Nov. 1842 Folded Cover, cover file fold, VF, signed Sloane(Photo)	500.00
373	✉	———, 3c Black on Blue (6LB5). Ample to Huge Margins, crease, just tied by Red “US” in Octagon, “U.S. City Despatch Post” & “Paid” in Arc on Cover, Fine Appearance(Photo)	300.00
374	✉	3c Black on Bluish Green (6LB6). Huge Margins, trivial margin scissors cut, Red “U.S.” in Octagon cancel (not tied), “U.S. City Despatch” pmk. on Folded Letter, Beautiful Stamp, Fine Cover(Photo)	300.00

375	✉	U.S. Mail, 1c Black on Rose (6LB9). Margins All Around, tied by Red "Paid" on Mourning Cover to Balt., Red "New-York 5 cts" pmk., 1849 docketing at L., slight cover wear, Fine	150.00
376	✉	———, 1c Black on Yellow (6LB10). On Buff Cover to Del. tied by Red N.Y. pmk., bit toned at R., o/w VF	125.00
377	✉	———, 1c Black on Buff (6LB11). Large Margins, tied by Red "Paid" on 1850 Folded Printed Prices Current, partial lightning of design from pencil cancel erasure, o/w VF	100.00
378	✉	Philadelphia, 1c Black on Rose (7LB1). Margins to slightly in, uncancelled (as usual) on Small 1850 Folded Letter, light Blue Philada. pmk., trifle aged, Very Scarce, ex-Gibson(Photo)	500.00
379	✉	———, 1c Gold on Black Glazed (7LB11). Margins All Around, uncancelled, on Cover to Buffalo, Blue Phila 10 pmk., some slight toning, o/w VF	200.00
380	✉	———, 1c Blue (7LB12). Ample to Large Margins, Red Star cancel (not tied), Blue Philadelphia pmk., "Paid" & "10" on Neat Folded Cover, Fine, ex-Caspary(Photo)	250.00
381	✉	———, 1c Blue (7LB12). Margins All Around, minor crase, Red Star cancel (not tied), Used With Fine 5c Red Brown (1) tied by Red N.Y. Square Grid on Nov. 1850 Folded Cover to N.Y. City, Very Attractive, Rare, Unlisted Combination(Photo) E.	500-750
382	✉	———, 1c Black (7LB13). Margins to touched, just tied by Red Star, Blue Philadelphia pmk. & "1" in Octagon on Neat Buff Cover, Fine & Rare, signed Ward(Photo)	1,000.00
383	✉	———, 1c Red, U.S.P.O. Despatch Handstamp (7LB18 var). Formerly listed as 7LBU9, light partial strike on 1853 Folded Circular, small tear at T., Scarce	E. 50-75

LOCALS

BOYD'S CITY EXPRESS POST

384	✉	2c Black on Green, Ty. I (20L1). Large Margins, Red "Free" cancel (not tied), Boxed Red "Boyd's City Express Post Sep 9 90'C", on 1844 Folded Letter, VF, Possibly The Finest Known(Photo)	400.00
385	✉	2c Black on Yellow Green, Ty. II (20L2). Margins All Around, Red "Free" cancel (not tied), partial Red Co. Oval on Fresh Petite Cover, VF, Very Attractive	150.00
386	✉	Unvalued, 1c & 2c Stamps & Entires (Betw. 20L2-20LU43). 16 Diff., Couple Used With U.S. Stamps, mixed quality, G-VF	E. 350-500
387	✉	2c Black on Bluish Green, Ty. III (20L3). Large Margins, trivial corner flaking specks, Red Cancel, on Folded Cover to Phila, Pa., Red Box "Collect/Six Cents/For/Hale & Co.", Fine Cover, Scarce	150.00
388	✉	2c Black on Green, Ty. IV (20L4). Large margins, tied by Grid & Red New York 10 cts. pmk. on 1849 Folded Letter to Cincinnati, O., cover filing crease, o/w VF	75.00
389	✉	2c Black on Green, Ty. IV (20L4). Three Folded Letter, two tied by N.Y. 5 cts. & 10 cts. pmks., other with Blue "5" in Circle but without Phila. Pa. pmk., VF	225.00
390	✉	2c Black on Green (20L4, 20L7, 20L7a, 20L14, 20L23). 15 Covers, one of last, these are cut to shape or die cut, one with light Red "N.Y. & Phila R.R." cancel, Generally F-VF	E. 350-500
391	✉	2c Gold on Cream (20L5). Large Margins, some flaking of glazing, tied by Str. Line "Paid/J.T.B." on Inter-city Forwarded Cover, light Co. Oval handstamps, VF Appearance, Rare, Unpriced	—

392	✉	2c Black on Green, Ty. V (20L7). Margins All Around, tied by mostly readable Red “Norwich & Worcester R.R.” pmk., matching “Way 6”, pencil “collect”, on Small Folded Cover, Fine, Very Scarce	75.00 +
393	✉	1c, 2c Eagles (20L7, 20L7a, 20L8, 20L10, 20L15, 20L17). Ten Covers, All Used With U.S. Postage, incl. Nos. 10, 11, U3, 26 & 65, Generally F-VF	885.00 +
394	✉	2c Dull Orange (20L13). Huge Margins, tied by Str. Line “Paid/ J.T.B.”, Boyd’s Co. Oval on Cover With Fancy Boxed “Hudson River Railroad Service From 12th st (ms.) Station” tiny cover tear, VF, Scarce, Very Attractive(Photo)	110.00
395	✉	1c Black on Green, Ty. IX (20L15). Tied by 1883 Purple Co. Oval on Fresh Neat Unsealed Cover, VF, Late Usage(Photo)	90.00
396	✉	1c Black on Green, “Cents” Error (20L15a). Margins All Around, trivial flaking, tied by Purple Boyd’s Oval on Fresh Fawn Cover, Fine, Very Scarce, Unpriced Unused, or Used, Unlisted on Cover, signed Sloane(Photo)	—
397	✉	1c Black on Lilac, Ty. X (20L17). Margins All Around, tied by Oval “Paid” on Cover to “Po keepsie” N.Y. Used With 3c Rose (65) tied by Large Grid of Squares, VF(Photo)	125.00
398	✉	1c Black on Lilac (20L17). Used With 3c Rose (65) ; Both tied by New York Target Duplex on Forwarded Cover to Mass., Original Use 10c Dark Green “First Design” (62B) tiny barely noticeable tear, tied by Grid, San Francisco Dec. 1861 pmk., 10c additionally cancelled (presumably at N.Y.) by ms., slight aging, Terrific Usage, Very Rare(Photo)	E. 350-500
399	✉	1c Black on Blue Gray, Ty. X, “Cents” Variety (20L18a). Margins All Around, tied by Oval “Paid”, Used With 3c Rose (65) , Both tied by N.Y. Target Duplex on Patriotic Cover to Ct. (Red & Blue Lines on back, Embossed Eagle, Shield, “Union And Constitution”), touch personal sentiments on back in pencil, Fine, Scarce(Photo)	200.00 +
400	✉	2c Gold on Dark Blue, Ty. X (20L21). Tied by 1880’s Purple Co. Oval on Fresh Neat Cover, VF, Late Usage	100.00
401	✉	2c Gold on Dark Blue, Ty. X (20L21). Large to Huge Margins Showing Portions of All Dividing Lines, tied by Bold Magenta “Boyd’s City Despatch/Paid/1 Park Place N.Y.” Oval Cancel on Exceptionally Fresh Fawn Cover, Extremely Fine “Gem”, ex-Malcolm	100.00
402	✉	2c Black on Red (20L23). Huge Sheet Margin Single, tied by “Paid” in Circle on Neat Light Blue Envelope, VF(Photo)	100.00
403	✉	1c Black on Lilac, Ty. XI (20L24). Margins All Around, tied by Large Boyds Dispatch Double Circle , Large “Paid” in Circle on Cover to Police Headquarters on Mulberry St., VF, Scarce	100.00
404	✉	(1c) Gray Lilac on Lilac (20L35b). Tied by Boyd’s Purple Co. Oval (“Paid” in Center Without Date), on Fresh Corner Card Cover, VF(Photo)	150.00
405	✉	(1c) Gray Lilac on Lilac (20L35b). Tied by Boyd’s Purple Co. Oval “Paid” & Date in Center, on Fresh Corner Card Cover, VF	150.00
406	✉	Black on Pink, Ty. I, Perf. 11½, Black on Blue, Ty. I, Perf. 12 (20L44, 20L45). On Separate Covers tied by Purple Boyd’s Ovals, Fine	160.00
407	✉	Black on Blue, Black on Pink, Ty. I-III (20L45, 20L53, 20L55, 20L56). Separate Covers, couple tiny flaws, Fine Lot	385.00
408	✉	Black on Blue, Black on Pink, Ty. I & II (20L45, 20L50, 20L53). Separate Covers, No. 20L50 tiny margin tear, o/w Fine Lot	285.00
409	✉	Black on Lavender (20L47). Tied by Purple Boyd’s Paid Circle on Neat Cover, VF	100.00
410	✉	Black on Lilac Pink (20L50). Tied by Purple Co. Oval on Locally Used Cover, “India Rubber Goods” Corner Card, minor cover edge tear, VF(Photo)	100.00

411	☒	Black on Pink, Ty. II, Perf. 16X12, Vert. Laid, Black on Lilac Pink, Ty. II, Perf. 11½, Horiz. Laid (20L53, 20L54). On Separate Covers, former tiny bit reduced, F-VF, Scarce Lot	200.00
412	☒	Black on Blue, Ty. III, Perf. 16 (20L55). Tied by Purple "City Circular Dispatch Boyd's/Park Place" Oval on Pale Lavender Printed Address Cover, VF	100.00
413	☒	Black on Blue, Ty. III, Perf. 16 (20L55). Tied by Purple Boyd's "Paid" & Date Oval on Pale Lavender Neat Printed Address Cover, VF	100.00
414	☒	Black on Blue (20L55). Horiz. Pair, R. Stamp small creasing from placement at cover edge, tied by Bold Purple Co. Oval, Neat, Insurance Co. Corner Card & Printed Address, Very Attractive, Scarce Multiple Use	100.00 +
415	☒	Black on Pink, Ty. III, Perf. 12 (20L56). Huge Imperf. Sheet Margin Single, tied by Bold Purple Boyd's Oval on Neat "Return To Writer" Cover, VF	100.00
416	☒	Black on Pink (20L56). Tied by Purple Co. Oval on Locally Used Cover With Handsome Illustr. of "Wood's Patent Document Boxes", tiny cover tear, VF	100.00
417	☒	1c, 2c Entires (20LU12, 20LU16, 20LU18, 20LU23, 20LU29, 20LU30). Used, 20LU23 small stains, 20LU30 small erosion, couple other minor faults, most F-VF, Scarce Lot	295.00
418	☒	2c Red on Amber, Entire (20LU13). Boyds Double Circle cancel, Locally Used, Fine	40.00
419	☒	Black & Red Entires (20LU33, 20LU34, 20LU38, 20LU43). Used, one lacks part of flap, another minor tears, F-VF, Last Unpriced	E. 100-150
420		2c Black Bank Notices (20LU45, 20LU47, 20LU49 two). Second No. 20LU49 with ms. "80" over 1879	—
421	☒	Broadway Post Office, New York, N.Y., (1c) Black (26L2). Cut to shape & tied by Boxed "Paid Swarts", repeated again & With "Swart's Post Office Chatham Square" Oval on Locally Used Cover, slight wrinkle & soiling, Fine, Very Scarce	750.00
422	☒	———, (1c) Black (26L2). Margins to touched, light pencil tie, Used With T. Sheet Margin 3c Red (11) , Both Stamps tied by the Scarce "New-York Jul 22 1853" Yeardate pmk. on Folded Letter, Fine, Very Scarce	750.00 +
423	☒	Brooklyn City Express Post, 2c Black on Dark Blue (28L5). Margins All Around, cancelled but not tied on Neat Cover, "Brooklyn, N-Y." pmk. & Red "Paid/3", VF	175.00
424	☒	Browne & Co.'s City Post Office, Cincinnati, Ohio, 1c Black (29L1). Margins to slightly in, tied by "City Post" Circle on Cover to England , Average 3c Red (11) tied by Black "5" is Circle (debit as unaccepted as partial prepayment), Blue Cincinnati, O. pmk., ms. "24" & "1/-" due marks, ms. "Recd 14th June/52", slight cover crease & soiling, o/w Fine, Extremely Fine Usage	600.00 +
425	☒	Brown's City Post, New York, 1c Black on Bright Red (31L1). Large margins, tied by Brown's Double Circle on Blue Cover, Brown's Return Label at T.L., part of auction description (?) at T. center, small cover corner tear, o/w VF, signed Costales	250.00
426	☒	———, 1c Black on Green (31L3). Margins All Around, slight rubs & corner creasing, tied by Brown's Double Circle on Shorthand Writing Corner Card Cover, Attractive, signed Costales	250.00
427	☒	———, 1c Black on Violet (31L4). Margins All Around, tied by Brown's Double Circle on Orange Cover, Brown's Return Label at T.L., L. cover corners trifle rounded, VF, signed Costales	250.00
428	☒	———, 1c Black on Vermilion (31L5). Large Margins, slight wrinkling, tied by Brown's Double Circle on Neat Cover, Brown's Return Label at T.L., VF, signed Costales	250.00

429	✉	California City Letter Express Co., San Francisco, Calif., 5c Black on Buff Entire (34LU9). Used With Pane Center Line 3c Red (11) tied by Stockton Cal. pmk. to San Francisco, Fresh & VF (Photo)	400.00
430	✉	———, 7c Black on Buff, Entire (34LU11). Used With Average ms. cancelled 3c Red (11) , Red San Jose Cal. pmk. to San Francisco, Fine & Handsome (Photo)	400.00
431	✉	G. Carter's Despatch, Philadelphia, Pa., 2c Black (36L1). Tied by ms. "X", "Carter's Despatch" handstamp & Blue "Phila 10" pmk. on Folded Letter to Mass., Fine, Scarce	150.00
432	✉	City Despatch Post, 2c Black on Green (40L2). Large Margins, minor creases, tied by Red Boxed "Free", Red New York 5 cts pmk. on 1847 Folded Letter, filefold & light toning, Attractive	150.00
433	✉	———, 2c Black on Vermilion (40L6). Large Margins, "Paid" cancel (not tied) on Folded Cover to N.C., Red New York 5 cts pmk. ("5" charged to "10" in blue ms.), small cover tear & slight aging, o/w VF, Scarce (Photo)	500.00
434	★	Allen's City Dispatch, Chicago, Ill., Pink, Black (3L1, 3L2). Cpl. Mint Sheets of 100, former without T. selvage, latter lacks tiny piece of corner selvage, typical mixed centering, Fine Lot	1,000.00 +
435	✉	American Letter Mail Co., 5c Black (5L1). Margins All Around, tied by Fancy Red Stars & Dots on March 1844 Folded Letter from Boston to N.Y. City, usual file fold, VF	85.00
436	✉	———, Black on Gray (5L2). Large margins, small scissors cut in T. margin, ms. "X" cancel, Red Oval Company cancel on Oct. 1844 Folded Letter from Boston to N.Y. City, VF	150.00
437	✉	Barr's Penny Dispatch, Lancaster, Pa., Black on Green (8L2). Tied by two Neat ms. penstrokes, Used With 3c Red (11) tied by Lancaster, Pa. pmk., on Small Neat Cover to Columbia, Pa., Fine, Rare Unlisted Cover (Photo)	—
438	✉	Bayone City Dispatch, Bayonne City, N.J., 1c Black (9L1). Margins All Around, tied by Purple Target, matching 1883 Co. Cancel on Fresh Locally Used Cover, VF (Photo)	300.00
439	✉	Bicycle Mail Route, Calif., 25c Green, Spelling Error (12L1). Tied by Bars on Illustr. Hotel Corner Card Cover, 2c Carmine, "Cap" on L. "2" (220a) tied by July 12, 1894 San Francisco pmk., Victor cachet on back, VF (Photo)	1,100.00
440	✉	———, 25c Green, Spelling Error Corrected (12L2). Tied by Bars & Fresno Cal. 1894 pmk. on Locally Used Orange Cover, 2c Carmine (220) tied by Grid, Victor cachet on back, VF (Photo)	850.00
441	✉	———, 25c Brown on 2c Green on Amber Entire (12LU2). Bar cancel & San Francisco Jul 19 1894 pmks., Victor Cachet on back, VF (Photo)	1,350.00

D. O. BLOOD AND CO.

442	✉	(3c) Black on Grayish (15L3). Large Margins to barely touched, tied by Two Strikes of Red "Paid" & partial Blue Phila. pmk., ms. "12" rate, slight soiling, Fine, Very Scarce (Photo)	500.00
443	✉	(3c) Black on Grayish (15L4). Large Margins, neat ms. cancel (not tied) on Aug. 1845 Folded Letter from Phila. to Boston, Red "New-York 10 cts" & Str. Line Philada. Railroad , VF, Handsome Scarce Cover (Photo)	500.00
444	✉	(2c) Black (15L5). Ample to Large Margins, Uncancelled, on July 1847 Pa. Railroad Folded Circular, VF, ex-Gibson (Photo)	350.00
445	✉	(2c) Black (15L6). Margins to barely touched, uncancelled, on Locally Used Cover With Blood's Black on Green Glazed Advertising Label , piece of flap missing, Fine, Very Scarce (Photo)	500.00

446	✉	(1c) Black (15L7) . Margins to slightly in, ms. "X" cancel (not tied), Blue Phila 5 pmk., on Folded Letter to Howard P.O., Pa., Fine, with P.F. Certificate	300.00
447	✉	(1c) Black (15L7) . Cut to shape, tied by Red "Paid" on 1846 Folded Letter, partial Blue Phila. pmk. & matching "5" in Circle, Fine, Scarce	300.00
448	✉	(1c) Black (15L9) . Large Margins, minor wrinkles, tied by Blue Phila. 5 cts. pmk. on Folded Cover, tiny cover tear & usual filefold, Fine, Scarce, ex-Worthington(Photo)	275.00
449	✉	Black on Blue (15L10) . Margins to touched, Black Grid cancel (not tied), Blue Phila 5 pmk. on Folded Cover to N.J. minor cover toning spots, Fine	250.00
450	✉	Black on Pale Green (15L11) . Margins All Around, Grid cancel, tied by ms., on Female Institute Folded Circular, usual filefold & light soiling, o/w VF, Scarce	150.00
451	✉	(1c) Gold on Black (15L12) . Two Folded Covers, stamps tied by Small Grids, each With Diff. Blood's Advertising Adhesive Label , VF, one ex-Gibson	200.00
452	✉	1c Penny Post, Dispatch (15L12-15L14) . Four Covers (two of last), First tied by Grid, "N. York & Phila R.R." pmk., others tied by Phila. Town pmks., No. 15L13 cover tear, Fine Lot	325.00 +
453	✉	(1c) Bronze on Black (15L13) . Acid tied on legal size faulty cover, ms. " Colored House of Refuge March 1853 " referring to the Underground Railroad used to get some of the black people out of the South. Just North of Webster, N.Y. was the terminus & Many of the refugees went on to Canada by boat across Lake Ontario, Fascinating Historical Cover	75.00 +
454	✉	Penny Post & Dispatch (15L13-15L16, 15L18, 15LU1, 15LU5) . Seven Separate Covers, also incl. two Stampless Covers with Diff. Blood's Handstamps, Generally F-VF	500.00 +
455	✉	1c Penny Post, Despatch (15L13 two, 15L14 three, 15L17, 15L18) . On Separate Covers, first six usual acid ties, last tied by Blood's Double Circle, Four of first with U.S. Postage, one with " Way " handstamp, two with Attractive Corner Cards (one Embossed), mixed quality, Generally Fine	465.00 +
456	✉	(1c) Bronze on Lilac (15L14) . Usual acid tie, Used With Average 3c Red (11) tied by Phila., Pa. pmk. on Buff Cover With " Phila. Wilm. & Balt. R.R. Co., Philadelphia. " Corner Card Showing Primitive Steam Engine in Center , Fine, Very Handsome, ex-Gibson ..(Photo)	75.00 +
457	✉	(1c) Bronze on Lilac (15L14) . Usual acid tie, Blood's Double Circle on Narrow Rectangular Patriotic Cover (Flag & Impt.), VF, Very Scarce & Unusual(Photo)	75.00 +
458	✉	(1c) Bronze on Lilac (15L14) . Usual Acid tie, Used With Three F-VF 1c Blue Ty. IV (9) tied by Phila. pmks. on Cover to S.C., 1856 Bloods handstamp, Fine & Scarce(Photo) E. 100-150	
459	✉	(1c) Bronze on Lilac (15L14) . Usual Acid tie, Blood's handstamp, Used With 3c Red (11), Major Plate Crack Pos. 96L5L , Large to Huge Margins & Extremely Fine, tied by Phila. pmk. on Cover to Vt., Choice, Scarce E. 75-100	
460	✉	(1c) Black (15L18) . Tied by Blood's Circular handstamp Used With 3c Red (26) , Grid cancel, Phila Octagon pmk. on Cover With Handsome Illustr. Grocer's Corner Card Featuring Oriental Man Standing on Tea Crates, etc., A Beautiful & Striking Cover, with Printed Enclosure & Glazed Business Card(Photo)	75.00 +
461	✉	Red Entires (15LU1, 15LU2, 15LU5, 15LU6A) . Used, No. 15LU2 with Blue "2" in Circle (no Town pmk., No. 15LU6A with "1" in Octagon, F-VF Lot	230.00

462	✉	Red Entire (15LU1, 15LU6A). Used, former with Red Str. Line "Philada. Railroad" & Red New York 5 cts. pmk., latter Black Phila Pa. 5, VF	115.00 +
463	✉	Red Entire (15LU2, 15LU5, 15LU6A). Six Entire, Two Used With Blood's Adhesives No. 15L14 (Acid tied), one with 3c Red (25) tied by Phila pmk., Variety of Papers & Shades, F-VF Lot	345.00 +
464	✉	Red on 3c U.S. Entire No. U9 (15LU5b). 3c cancelled by "Papertown Pa." Baloon Type pmk. to Blood's Dispatch Phila., Pa., small faults T.L., o/w VF, Scarce, ex-Gibson(Photo)	175.00
465	✉	Bouton's City Dispatch 2c Black on Gray Blue (18L2). Large Margins, tied by Str. Line "Paid/Bouton" on 1848 Folded Letter, Red N.Y. 5 cts. pmk. & Black "Huntingdon Pa." Forwarding pmk., some minor stray ms., VF, Very Scarce(Photo)	600.00
466	✉	———, 2c Black on Gray Blue (18L2). Large Margins, minor creases, tied by Red Two Line "Paid Bouton", Bouton's Red Oval Co. handstamp on Apr. 1848 Folded Letter, slight cover aging & wrinkling, o/w VF, Scarce(Photo)	600.00
467	✉	BOCYES CITY EXPRESS, 2c Green (19L1). Margins All Around, ms. "X" cancel, (not tied), "New-York 5 cts." paid on 1852 Folded Letter to Ct., usual file folds, slight soiling, Fine(Photo)	1,250.00
468	✉	———, 2c Green (19L1). Huge Margins incl. Part B. Sheet Margin to slightly in at R., pencil ms. "X" cancel, used on 1852 Folded Letter to Ky., "New-York 5 cts" pmk., small cover edge tear, o/w VF, Scarce, with P.F. Certificate, signed Sloane(Photo)	1,250.00
469	✉	City Despatch Phila. 1c Black (41L1). Ample to Large Margins, tied by Grid of "X" 's on Fresh Neat Cover, VF(Photo)	350.00
470	✉	Cressman & Cos. Penny Post, Philadelphia, Pa., (1c) Gold on Black (53L1). Margins All Around, tied by ms. on Embossed Valentine Cover With Enclosure , some trivial cover toning specks, Fine, Very Rare, Unpriced on Cover(Photo)	—
471	✉	Deming's Penny Post, Frankfort, Pa., (1c) Black on Grayish (58L1). Margins to touched, tiny tear, Acid tied on Locally Used Oversize Embossed Valentine Cover (with enclosure), tiny edge flaws & some trivial toning, Very Rare, cat. \$750.00 used or unused, Unpriced on Cover	—
472	✉	Douglas City Despatch, New York, N.Y., (1c) Pink (59L1). Tied by Ornate Purple cancel on Lavender Corner Card Cover, VF	150.00
473	✉	Eagle City Post, (2c) Black (61L2). Cut round, "80" deleted in ms., not tied on Cover to Va., Red Eagle Post handstamp & Blue Phila 5 cts. pmk., cover faults, Rare, with P.F. Certificate(Photo)	350.00
474	✉	———, (1c) Red on Bluish (61L3). Margins Virtually All Around, uncancelled, Red "Eagle/City Post/At/Adams' Express,/80/Chestnut St." handstamp on Folded Cover, slight aging spots, Scarce(Photo)	200.00
475	✉	East River Post Office, New York, N.Y., (1c) Green (62L4). Margins All Around, minor creasing, uncancelled, East River P.O. Three Line handstamp on aged & creased cover, without flap, Very Scarce	750.00
476	✉	Floyd's Penny Post, Chicago, Ill., (1c) Blue (68L1). Cut close, tied by Floyd's Co. handstamp on Cover to St. Louis Used With Three 1c Blue (63), All with perfs. trimmed off & tied by Blue Grids, matching Chicago pmk., 1962 ms. note at T.L., Very Scarce(Photo)	1,000.00 +
477		———, (1c) Brown (68L2). Margins All Around, Floyd's Oval cancel, VF, Grossly Undercataloged	80.00
478	✉	Glen Haven Daily Mail, Glen Haven, N.Y., 1c Green (71L3). Light crease, uncancelled on 3c Red on Buff Entire (U10) cancelled Girard O. to N.Y. State, part of flap missing & small tear, Very Scarce, signed Sloane(Photo)	600.00

479	✉	Gordon's City Express, 2c Black on Green (72L2). Margins All Around (uncancelled), on Beautiful Folded Cover to Germany , Red N.Y. pmk., Bold Black "24", Red Str. Line "America/Uber Bremen" & Rate marks, tiny cover tears, Exceptionally Handsome, Rare (Photo)	400.00
480	✉	2c Black on Green (72L3). Large Margins, tiny corner crease, uncancelled, Used on Folded Cover to Ct., partial Red N.Y. 5 cts pmks., Bold Red "Paid", Fine, Scarce (Photo)	450.00
481	✉	Guy's City Despatch, Philadelphia, Pa., (1c) Pink (74L1). Tied by Purple Co. Oval on Corner Card Cover, slight soiling, o/w VF, ex-Hollowbrush, signed Sloane (Photo)	300.00

HALE AND CO.

482	✉	(6c) Blue (75L1, 75L5 two). Folded Letters, First & one of last cut to shape, all tied by Red Hale Boxes, one with small edge tape stains, o/w Fine Lot	215.00
483	✉	(6c) Red on Bluish, (6c) Blue (75L2, 75L5). On Separate Folded Letter, former light filing crease, ms. cancel, Red "Forwarded By Hale & Co. from Northampton" Oval, latter Two Singles tied by Red Hale Box, stamps cut to shape, Very Attractive	140.00 +
484	✉	(6c) Blue (75L5). Narrow margins, ms. "X" cancel, tied by Red Hale & Co. Collect Six Cents Box, Red Hale Oval & light but readable Red "Jerome & Cos. Express From Boston" in Sawtooth Box , on Folded Cover, usual filefold, Fine, Scarce	125.00 +
485	✉	(6c) Blue (75L5). Cut to shape, Magenta ms. Initials, tied by Red Hale Box, Bold "Forwarded/By/Bates & Co./From/New Bedford" Oval , on Folded Cover to Phila., Pa., VF, Scarce	40.00 +
486	✉	(6c) Blue (75L5). Narrow margins, tied by Black Oval "Forwarded/Hale & Co./From/Boston", Another strike at L. on 1894 Folded Letter, cover filing crease, Fine, Scarce	125.00
487	✉	Hanford's Pony Express, New York, N.Y., Red Oval Pony Rider Handstamp on Neat Folded Letter, few trivial age bleaching specks, Fine	E. 100-150
488	✉	Hanford's Pony Express, New York, N.Y., Red & Black Pony Rider Handstamps on Separate Covers, slight soiling or minor toning, Fine for these	E. 150-200
489	✉	Hartford, Ct. Mail Route, (54) Black on Yellow (80L1). Small Margins to touching, ms. "South" cancel, ms. "Newington/Feb. 12. 1845" below stamp, Red "Paid" Str. Line on Folded Letter to Philadelphia, side & back flap sections of letter have separated along folds & need restoration, Scarce (Photo)	1,000.00

HUSSEY'S POST

490	★	(1c) Black, Rose Red, Red (87L6-87L8). Cpl. Sheets of 48, VF Set	552.00 +
491	★	1c Blue, Black, Red Brown (87L22-87L24, 87L26). Sheets of 49, 30, 30 & 25 respectively, VF	344.30 +
492	✉	2c Brown (87L35). Just Clear to Huge Margins, tied by "2 ct Paid Hussey 50 WM St" pmk. on Exceptionally Fresh Local Cover, Fire Ins. Co. Printed Corner Card, VF, signed Sloane (Photo)	125.00
493	✉	Red Brown on Thick Laid Paper (87L49). Large to Huge Margins tied by Hussey's Post Circular Cancel on Very Fresh Cover, Extremely Fine & Exceptionally Choice ex-Dos Passos	125.00
494	✉	Brown, Ty. I (87L3). Beautifully tied by Purple "Hussey's Special Messenger Express, Paid 54 Pine St." Oval, on Neat Printed Address Cover, Fine (Photo)	150.00

495	✉	Ultramarine, Ty. I, Imperf. (87L74a). Large Margins, tied by Purple Str. Line "Special Message" on Printed Address Cover, VF Unpriced on Cover	—
496	✉	1c Brown Red (87L4). Ample to Large Margins, creased at B., Boldly tied by "1 ct Paid Hussey 50 Wm. St." on Neat Cover, minor cover scuff, Scarce	150.00
497	✉	1c Brown Red (87L4). Ample to Huge Margins, scissors cut at L., tied by "1 ct Paid Hussey 50 Wm. St." on Folded Circular, light cover soiling & small tear, o/w VF	150.00
498	✉	1c Black (87L2). Large Margins, tied by "Free" on Neat Cover, minor toning spot, o/w VF, Very Scarce, signed Sloane	300.00
499	✉	1c Black (87L5). Ample to Large Margins, tied by Co. pmk. on Light Buff Cover, Fine, Unpriced Used or on Cover	—
500	✉	(1c) Black (87L6). Ample to Large Margins, tied by partly clear "1 ct Paid Hussey 50 Wm. St." on Howland & Aspinwall Corresp. Cover With Dark Blue Adams Express Co. & Eagle Embossed Corner Card , without flap, couple tiny edge faults, o/w VF, Rare, Unpriced Used or on Cover, ex-Worthington	—
501	✉	(1c) Black (87L6). Tied by Red "1 ct Paid Hussey 50 Wm. St." on Wrapper , VF, Very Rare, Unpriced on Cover	—
502	✉	(1c) Blue (87L22). Tied by "1 ct Paid Hussey 50 Wm. St." pmk. on Orange Buff Cover With Handsome Dark Blue Adams Express Co. & Eagle Embossed Corner Card , Howland & Aspinwall Corresp., bit of flap missing, VF, Rare, Unpriced Used or On Cover	—
503	✉	1c Brown Red (87L26). Large Margins, tied by "1 ct Paid Hussey 50 Wm. St." on Fresh Orange Buff Cover, VF, Choice, pencil note on back "Compliments of A H Caspary Sept. 21 1949"	125.00
504	✉	2c Blue, Dated "1865" (87L38). Huge Margins to slightly in, tied by Co. pmk. on Small Buff Cover, minor cover creases or wrinkles, Fine, Scarce	225.00
505	✉	2c Blue, Dated "1865" (87L38). Huge Margins to slightly in, tied by "2 Ct Paid Hussey 50 Wm. St." pmk. on Cover With Overall Ins. Co. Ad on Inside of cover, some soiling & small stain, Scarce & Unusual .	225.00
506	✉	2c Blue, Dated "1868" (87L40). Margins Virtually All Around, tied by "2 Ct Paid Hussey 50 Wm. St." pmk. on Neat slightly reduced cover, Fine & Scarce	225.00
507	✉	Black (87L43). Large Margins, tied by Purple Co. pmk. on Fancy Fire Insurance Co. Expiration Notification Card, VF	125.00
508	✉	2c Black (87L51). Large Margins, lightly tied by Co. cancel on Neat Cover, trivial reduction at L., VF	100.00
509	✉	Blue (87L59). Creased at B., tied by Purple Husseys Special Messenger Express Oval on Fresh Cover, VF	125.00
510	✉	Rose, Blue (87L60, 87L61). Tied on Separate Covers by Purple Co. Ovals, former has some wrinkles, o/w VF	250.00
511	✉	Red, Ty. II (87L75). Purple Target cancel, on Cover purportedly Siezed in a P.O. Dept. Raid in May of 1883, "Dead Letter Office May 21-83" in Triangle on back, light cover filing crease, Fine, Unusual .	100.00 +
512	✉	15c Gold on Black (87LE3). Huge Margins, Boldly tied by Blue Hussey Paid Double Oval, Extremely Fine	200.00
513	✉	20c Black (87LE4). Margins All Around, tied by Co. pmk. on Neat Yellow Buff Cover, VF	200.00
514	✉	25c Gold on Blue (87LE5). Large to Huge Margins, tied by Large Blue Three line Hussey handstamp, cover reduced at L., old auction description affixed at B., Fine, ex-Green	200.00
515	✉	Black on White, Amber, Handstamp on Wrappers (87LUP1). Former Complete Wrapper with "Paid G. Hussey" handstamp, latter front only, "Free" handstamp & Large "Home Ins. Co. New-York" cachet, Fine, Scarce	175.00 +

516	✉	Black Handstamp on Manila Wrapper (87LUP2). Fresh Wrappers & "Paid G. Hussey" handstamp, VF, Scarce(Photo)	175.00
517	✉	Jefferson Market P.O., New York, N.Y., 2c Black on Blue (88L2). Margins to slightly in, small faults from placement at cover edge, tied by Red New York 5 cts. pmk. to Ct., slight edge water stains, Extremely Rare, Only Three Covers Believed to Exist(Photo)	1,250.00
518	✉	Jenkins' Camden Dispatch, Camden N.J., 1c Black on Bluish (89L3). Small faults, tied by ms. on Cover to Phila., Extremely Rare, Unpriced Unused, Used or on Cover, Only Two Known , This is the Stamp Used for the Illustration in the Scott Specialized(Photo)	—
519	✉	Kidder's City Express Post, Brooklyn, N.Y., 2c Black on Pale Blue (93L1). Couple minor corner creases, "I S" ms. control, tied by Red "Paid", light Red Kidder Co. handstamp on Neat Cover, Attractive & Very Rare(Photo)	450.00
520	✉	Letter Express, 5c Black on Pink (96L1). Margins All Around, ms. "X" cancel, Red "U.S. Express Mail" & matching "Paid" on 1844 Folded Letter, cover filefold o/w Extremely Fine(Photo)	200.00
521	✉	5c Black on Green (96L2). Light crease, ms. "X" cancel (not tied), Blue Buffalo N.Y. pmk. & Red "Westin Hotel" handstamp on Folded Cover, Fine Appearance(Photo)	200.00
522	✉	Mc Intire's City Express Post, 2c Pink (99L1). Large Margins, light pressed crease, tied by Bold "Free" on Cover, Large Bold "Mc. Intire's City Express Post Paid", VF Appearance, ex-Emerson(Photo)	300.00
523	✉	Mercantile Library Association, New York, N.Y., 5c Blue (105L3). Horiz. Pair, Margins Three Sides, barely in at R., uncanceled on back of 1c Black on Buff Postal Card, 1875 Mercantile Double Oval, minor staining, Very Rare(Photo)	150.00
525	✉	Messenkope Union Square Post Office (1c/Green (106L1). Used With 3c Orange (10) , Both tied by Bold New York pmk. on Cover to Mich., some stray cancel ink on Cover, Fine(Photo)	250.00
526	✉	Metropolitan Errand & Currier Express, 1c Red Orange (107L1). Huge Margins, tied by Framed Paid's on Cover, slight stains & somewhat reduced at L., o/w VF(Photo)	225.00
527	✉	——, 1c Red Orange (107L1). Cut to shape & tied by Framed "Paid" on Neat Cover, Metropolitan Shield Shape Date Stamp , Green Illustr. Ins. Co. Embossed Corner Card, Fine ex-Caspary E.	100-150
528	✉	——, 1c Red Orange (107L1). Ample to Huge Margins, Bold Framed "Paid" cancel, "tied" by spot of Red ink, Red "A.M. Hinkley & Cos. Express New York. Oval , filing crease at L, VF(Photo)	225.00
529	✉	Metropolitan Post Office, 1c Red (108L9). Cut to shape, Used With slightly faded 3c Red (11) tied by New York pmk. on Cover to Pa., Fine(Photo)	225.00
530	✉	G.A. Mills' Despatch Post, New York, N.Y., 1c Black on Green (109L1). Uncanceled, on Feb. 1898 Folded Cover to Me., Red New York 10 cts pmk., Fine, sighed Sloane(Photo)	500.00
531	✉	New York City Express Post, 2c Black on Green (111L1). Cut to shape & uncanceled, on 1847 Folded Letter to Vt., Two Strikes of 1 Red "Steamer 5" in Oval , contents relating to death of addressee's brother (lock of his hair enclosed), some slight aging, Scarce(Photo)	125.00 +
532	✉	——, 2c Orange (111L2). Margins to tiny bit in, tied by Red NY pmk. on Folded Cover to Boston, Cover lacks B. flap, Fine, Rare, ex-Worthington, signed Costales & Sloane(Photo)	1,000.00
533	✉	One Cent Dispatch, Baltimore, 1c Violet (112L1). Tied by City Despatch handstamp on Neat (slightly soiled) Cover, o/w VF(Photo)	500.00
534	✉	1c Red (112L2). Boldly tied by "City Despatch" Double Circle on Cover to Va. Used With 3c Red (11) tied by Blue Balt. pmk., 3c stamp affixed with sealing wax wafer, some cover wrinkling & aging, o/w VF(Photo)	750.00 +

535	☒	Overton & Co., (6c) Black on Greenish (113L1). Margins All Around, T.R. trifle diagonal, Red "Cd." & ms. cancels on Tiny Homemade Valentine Folded Cover to Yale College, Red N.Y. pmk. & partial Red Co. Oval, Blue ms. "20" rate, VF, Very Scarce (Photo)	350.00
536	☒	Pomeroy's Letter Express, 5c Black on Yellow, Black (117L1, 117L4). On Separate Folded Letters, Former Red cancel, latter ms. "X" & partial Red Oval "Boyd's City Express Post" handstamp, from & to Albany, N.Y. respectively, Fine Lot, with 1945 Elliot Perry letter concerning the 117L1 cover	250.00
537	☒	———, 5c Black on Yellow, Black (117L1, 117L4). On separate folded Covers, former ms. precancel?, latter uncanceled, latter some cover edge staining, o/w Fine Lot	250.00
538	☒	———, 5c Lake (117L6). Clear to Huge Margins, Rich Color, tied by ms. on folded Letter/Printed Insurance Circular to Troy, N.Y., VF, Very Scarce, Unpriced on Cover (Photo)	100.00 +
539	☒	———, 5c Orange (117L7). Vert. Pair, ms. cancels (not tied) on Folded Letter to Milwaukee, Wisc., no postal markings, Sold "as is"	——
540	☒	Price's City Express, New York, N.Y., 2c Black on Vermilion (119L1). Some tiny scuff specks, ms. "X" cancel (not tied) on Folded Cover, ms. "Paid", some cover soiling, Very Scarce (Photo)	750.00
541	☒	Prince's Letter Dispatch, Portland, Maine, Black (122L1). Tied by Blue Co. Oval & Boston pmk. on Cover to Bangor, Me., Used With 3c Rose (65), small repair, Grid of Diamonds cancel, Attractive & Very Scarce (Photo)	750.00
542	☒	Rocke's City Dispatch, Wilmington, Del., (2c) Green (129L1). Cut to shape, some flaking of glazing, tied by Blue Wilmington Del. pmk. on Folded Letter to N.J., stains from internal tape mends, Rare ... (Photo)	1,250.00
543	☒	St. Louis City Delivery Col, St. Louis, Mo., (1c) Red (131L1). Tied by Grid, Fancy 1883 Sawtooth Double Circle Co. pmk. on Locally Used Wrapper, some light soiling, Fine	200.00
544	☒	Stait's Despatch Post/2/Adam's Exp's & 48 S. 3d St., Mostly Readable Red Handstamp on Fresh 1851 Folded Local Letter, Printed Phil. & Reading R.R. Letterhead, Fine Strike	E. 50-75
545	☒	Staten Island Express Post, Staten Island, N.Y., 3c Vermilion (133L1). Tied by ms. "X" & vaguely by Red Town pmk. on 1849 Folded Letter to Mass., Red Oval "Boyd's City Express Post", Fine, Very Rare, Unpriced on Cover (Photo)	——

SWARTS' CITY DISPATCH POST

546	☒	(2c) Black on Light Green (136L1). Ample to Large Margins, Red Paid cancel (not tied) & Red Swarts' Oval on Jan. 1851 Folded Circular for Sperm Oil & Sperm Candles, without L. flap, Fine (Photo)	250.00
547	☒	(2c) Red (136L4). Margins All Around, Unusual Blue Star Cancel (not tied), Red Swart's Oval & New York 10 cts pmk. on Dec. 1847 Folded Letter, VF	125.00
548	☒	(2c) Red (136L4). Margins to slightly in, tied by Odd Grid, Black Swarts' Oval & "Paid" on Buff Cover, small flap mend, slight cover crease, still Attractive	125.00
549	☒	(2c) Red on Bluish (136L6). Large Margins, tied by Blue "Paid" on Small Ladies Envelope, Red Swarts' Oval handstamp, VF, ex-Caspary (Photo)	175.00
550	☒	(2c) Red on Bluish (136L6). Large to Huge Margins, tied by Hollow Star in Circle & Red New York 5 cts. pmk. on Fresh 1851 Folded Letter, Extremely Fine (Photo)	175.00
551	☒	(2c) Blue (136L8). Margins All Around, tied by Red Paid, Red New York 5 cts pmk. on Folded Cover to Pa., VF, signed Perry ... (Photo)	300.00

552	☒	(1c) Red (136L9) . Margins All Around, Cork cancel (not tied), Red New York 5 cts. pmk. Tiny 1850 Folded Letter to Cortland Village N.Y., Fine	175.00
553	☒	(1c) Red (136L9) . Vaguely tied by Odd Cork, Used With 3c Red (11) tied by N.Y. pmk. on Cover to Me., Fine(Photo)	175.00 +
554	☒	(1c) Red (139L9) . Clean to Huge Margins, tied by Grid, Used With 3c Red (11) , Both tied by New-York pmk. on Buff Cover, minor cover flaws, Fine	175.00
555	☒	(1c) Red (136L9) . Large Margins, tied by Swart's Co. Oval, Framed "Paid Swarts" on Orange Buff Cover, repaired cover tear at T.L., o/w VF	175.00
556	☒	(1c) Red (136L9) . Ample to Large Margins, tied by Swart's Co. Oval, "Paid" handstamp, on Fresh Buff Cover, VF	175.00
557	☒	(1c) Red (136L9) . Margins All Around, tied by Swarts' Oval, Framed "Paid" on slightly stained cover, o/w Fine, ex-Emerson	175.00
558	☒	(1c) Red (136L9) . Large Margins, corners least bit diagonal, tied by Cork & magenta ms. rate mark on Attractive Small Embossed Ladies Cover to Germany , Black "N. York U.S. Pkt. 9" Debit, Red "5½ ggr. America Bremen" handstamp, minor soiling, still VF, Beautiful & Outstanding Usage(Photo)	175.00 +
559	☒	(1c) Red (136L9) . Margins All Around, Odd Cork cancel (not tied) on 3c Red on Buff Entrie (U2) tiny cover nick, Fine	175.00
560	☒	(1c) Pink (136L10) . Large Margins, tied by Red "Paid" on Small Cover to Ct; Red "New - York 5 cts." pmk., trivial soiling, VF, Much Scarces Than No. 136L9(Photo)	175.00
561	☒	(1c) Red on Bluish (136L11) . Large Margins, tied by Swarts Co. Oval, Boxed "Paid Swarts", on Neat Buff Cover, without part of flap, Extremely Fine, signed Robson Lowe, with P.F. Certificate	175.00
562	☒	1c Blue (136L14) . Margins Nearly All Around, tied by Odd Cork, Used With 3c Red (11) , couple creases, Both tied by N.Y. pmk. on Fresh Orange Buff Cover, Fine Appearance(Photo)	200.00
563	★田	1c Blue, Thin Paper (136L14a) . Cpl. Sheet of 25, Margins to slightly in, Fresh, o.g., Fine	145.00 +
564	☒	1c Red (136L15) . Three Large Margins, touched at L., Used With 3c Orange Brown (10) , small nick T.R. corner, Both tied by New York pmk. on Cover to N.J., slight aging, Fine(Photo)	250.00
565	☒	Telegraph Despatch P.O., Phila., Pa., 2c Black on Yellowish (138L2) . Large Margins, ms. "X" cancel, Used With 5c Red Brown (1) , Large to Huge Margins, Rich Orange Brown Shade, tied by Blue Phila. pmk. & matching Grid of Tiny Diamonds, on Cover to Ct., some cover toning spots & tiny cover tear, the local expertly repaired, really of no significance Since This is the Only Known Example , A Great Rarity, ex-Caspary. Catalogs \$2000.00 as a used stamp, Unlisted on Cover(Photo) E. 4,000-5,000	
566	☒	Union Square Post Office, New York, N.Y., 1c Black on Apple Green (141L2) . Margins All Around, ms. cancel, Used With average 3c Red (11) , Both tied by N.Y. pmk. on Neat Cover to Ct., Fine, Handsome, ex-Knapp(Photo)	200.00
567	☒	———, 1c Black on Apple Green (141L2) . Margins All Around, neat ms. cancel, Used With Average 3c Red (11) , Both tied by N.Y. pmk. on Cover to S.C., part of flap missing, Fine	200.00
568	☒	Walton & Co.'s City Express, Brooklyn, N.Y., 2c Black on Pink (142L1) . Cut to shape & tied by "Paid/W.W.", "Walton's Brooklyn City Express Post Feby 16 90'C" Oval on Locally Used Cover With Original Valentine Enclosure , part of address eradicated, A Very Rare Local Cover (only one off-cover single in Caspary) with P.F. Certificate(Photo)	700.00

- 569 ☒ **Wells, Fargo & Co., Black Newspaper Stamp (143LP1).** Uncancelled on Jan. 1863 Folded Cover to N.Y., natural s.e. **10c Green (68)** Boldly tied by Blue "Wells, Fargo & Co. Express Sfrco." Double Circle, matching Blue "Paid" in Oval, VF, Extremely Rare, Probably Unique, Unlisted on Cover, ex-Alfred Lichtenstein, with Costales letter of authenticity (only on piece in Caspary) **(Photo)** —
- 570 ☒ **Westervelt's Post, Chester, N.Y., (1c) Red on Pink (144L9).** Margins All Around, tied together with average **3c Rose (65)** on Cover to N.J., partial Chester, N.Y. pmk., trivial gum stain, Very Rare (none in Caspary) **(Photo)** 500.00
- 571 ☒ **Westtown, Westtown, Pa., (2c) Gold (145L1, 145L2).** Three Separate Covers, two of latter (Diff. Shades, one cut close), Former Used With **3c Red (11)** tied by Westchester Pa. pmk., latter two used with **3c Rose (65)** tied by Street Road, Pa. pmks, **All Locals on Fronts of Covers**, one of latter small hole, o/w Fine Lot **E. 100-150**
- 572 ☒ ———, **(2c) Gold, Tete-beche Pair (145L2a).** One slightly cut in, on Cover with **3c Ultramarine (114)**, Cork cancel (not tied), unreadable Town pmk. "ties" corner of pair, doubtful usage, Rare Variety nonetheless **(Photo)** 100.00+
- 573 **Whittelsey's Express, Chicago, Ill. 2 Red (146L1).** Margins to slightly in, Blue Co. cancel, small faults, Very Rare, **About Four Known** **(Photo)** 600.00
- 574 ☒ **W. Wyman, Boston, Mass., 5c Black (149L1).** Huge Margins, ms. "X" cancel (not tied), Red Wyman's Sawtooth Box handstamp, on 1844 Folded Cover, cover filing crease, o/w VF, Rare **(Photo)** 500.00
- 575 ☒ **Friend's Boarding School, Barnesville, Ohio, (1c) Black (151L1).** Uncancelled & affixed at T.L. Corner of Cover to Martins Ferry, Ohio, **3c Green (184)** faulty, tied by Barnesville O. Cork, Scarce 150.00
- 576 ☒ **Hackney & Bolte Penny Post, Atlantic City, N.J., (1c) Black on Red (153L1).** Two, one on front of **1c Buff Postal Card (UX8)** cancelled Atlantic City Sept. 10, 1886, other on back, VF, Rare, with P.F. Certificate **(Photo)** 900.00+
- 577 **Balance of Local Collection, Five Items, incl. Used Nos. 70L3 (Pair), 122L1, 132L4 (on piece tied with U.S. No. 20), No. 5L1 Cover & 106L1 Cover with 3c No. 11 added, Useful Lot** **E. 100-150**
- 578 R **Local Reprints, 552 Stamps, All in Sheets or Part Sheets, 19 Diff., VF, Useful Reference Lot** **E. 75-100**

POSTAL CARDS

- 579 ☒ **Philadelphia, Pa. Fancy Eagle Cancel, used on 1c Brown on Buff Postal Card (UX1), 1873 usage, VF Strike** **(Photo) E. 75-100**
- 580 ☒ **1c Brown on Buff Postal Card (UX1).** Written Message dated May 14, 1873 (**Second Day Use**), Merchants Blue Oval Handstamp date May 14, 1873 on front & back of card, no Postal Markings, slight soiling at T.L., o/w VF **E. 150-200**
- 581 ☒ **1c Black on Buff Postal Card (UX4).** N.Y. Duplex pmk., 1876 usage, VF 200.00
- 582 ☒ **1c Black on Buff Postal Card (UX7).** **Waving Flag Fancy Cancel & Enfield, Conn. 1884 pmk., minor card corner crease & minor edge stain at R., VF Strike** **E. 50-75**

MISC. COVER LOTS

- 583 ☒ **COVERS, 1960's - Early 20th., 110 Items, Virtually All City, State, County or Federal Agency Corner Cards, some Illustr. (State Seals, etc.), Generally F-VF** **E. 100-150**

- 584 ☒ **COVERS**, 19th. & Early 20th., Nearly 300 Meat, Produce & Related Advertising & Corner Card Covers, a few Illustr., Wide Variety, Mostly F-VF, Interesting Lot E. 250-350
- 585 ☒ **ADVERTISING COVERS**, 1850's - 80's, 30 Diff., Wide Variety of Topics, **Nearly All Illustr.**, F-VF Lot E. 350-500
- 586 ☒ **Illustrated Ads & Corner Cards on U.S. Entires**, Beautiful Mounted Collection of 91 Covers, Wide Range of Topics, Some Unused, Strength in Bank Note Period & Nesbit, F-VF, A Very Handsome Group Containing Many Scarces Items E. 750-1,000
- 587 ☒ **BISECT COVERS**, 1893-1925, Four Diff: Two Diff. Vert. Halves of No. 220 (1893 usage), Vert. Half of No. 499 Used as 1c on 1922 Picture Post Card (numerous card creases) Vert. Half of No. 614 Used as ½c on 1925 1c Entire, list 1c Entire with 1c Bisect (not accepted), ½c Postage Due & pencil ms. "Due ½", G-VF Lot E. 100-150
- 588 ☒ **POLAR COVERS**, Five, incl. "From" Polar Sea Crossing, Special "Polhavet" Ship cancel & two 3c Postage Dues," two 1931 Wilkins-Ellsworth Artic Submarine Covers; March 1929 Wilkins Antarctic Expedition on Cacheted Cover With Chilean franking (signed Wilkins); large size "Auxiliary Barque 'City of New York' " Cover (Byrd Antarctic Expedition 1928-30), Fine Lot E. 150-200
- 589 ☒ **PRISONER OF WAR COVERS**, ca. 1916, Card & Cover (without stamps) ms. "Service des prisonniers de guerre", **Japanese pmks.** & Censor Marks from German Prisoner of War, items headed Narashiro, VF E. 75-100
- 590 ☒ **WATERBURY CT. COVERS**, 1850's-Early 20th., 208 Covers & 38 Postal Cards, Mostly Bank Note Period, Cancels incl. Rosettes, Geometrics, Leafs, etc., also 50 Postal Cards Used to Waterbury, mixed quality, Very Useful Lot for the Specialist E. 350-500
- 591 ☒ **WATERBURY CT. FANCY CANCELS**, Five Diff., Four 3c Green Bank Notes & one 1c Bank Note Entire, incl. Rohloff Nos. F11, F12, L5, L8 & Q6, one 3c stamp damaged, 1c entire has toning & small tear, F-VF Strikes, Rare Lot E. 150-200
- 592 **CIVIL WAR**, Two Items, one a Soldier's Letter (guard? at Elmira Prison) on **Lincoln & His Cabinet Illustr & Stationery**, other a Rebel Cover & letter from a hospital clerk in E. Tenn. to Ga. (Three Diff. pmks.), some aging & wear, Scarce E. 50-75
- 593 ☒ **CIVIL WAR**, 26 Covers Virtually All Used in **Union Occupied Southern Towns**, States incl. La., S.C., Va., Tenn., few stampless, others franked with No. 65's, Generally F-VF E. 75-100
- 594 **AUTOGRAPHS**, Over 100 Items, on cut strips, cards, letter fragments, etc., Nearly All 1860's to early 20th., Virtually All Political, Military & Literary Personages, incl. Genl. Sheridan, Edwin Stanton, Fisher Ames (ca. 1795), Grover Cleveland, Henry Fowler, Charles Demens, A Japanese Prince (1904), Oliver Wendell Holmes, Henry W. Longfellow, Louisa M. Alcott, Thomas A. Edison, John Glenn & "Rocky" (Nelson Rockefeller), from the Howland Collection, Intersting Lot certain to yield other desirable autographs —
- 595 **President William McKinley**, Scrapbook with Large Number of Newspaper Clippings About the Assassination, Funeral, etc., incl. Newspaper & Magazine accounts with numerous photos, cartoons, Poems, etc., Printed Booklet Containing McKinley's Last Speech, also Mint No. 639 & No. 639 on 1936 Memorial Cover, Interesting Lot ... E. 75-100
- 596 **COIN & CURRENCY COLLATERAL**, Six Circulars or Letters, concerns Issuance of Nickel 3c & 5c pieces, Redemption of Mutilated Currency, Request for Silver Coin, etc., Interesting Lot —

CONFEDERATE STATES

POSTMASTER PROVISIONALS

597	✉	Atlanta Geo. Paid 5 , Mostly Clear Handstamp, Atlanta Sep 21 1861 pmk. on U.S. 3c Red on Buff Star Die Entire (U27) , VF(Photo)	750.00 +
598	✉	Athens, Ga., 5c Purple, Ty. II (5X1) . Close Margins to slightly in, tied by Grid cancel on Cover, Athens Jan 16 (1862) pmk., without flap & minor cover edge toning specks, Scarce(Photo)	2,000.00
599	✉	Baton Rouge, La., 5c Green & Carmine, Ty. I (11X2) . Ample to Huge Margins incl. 3mm of T. Sheet Margin, tied by Baton Rouge Aug 22, 1861 pmk. on Orange Cover to Miss., some cover edge faults at T., o/w VF, Scarce(Photo)	3,000.00
600	✉	Charleston, S.C., 5c Blue (16X1) . Three Huge Margins Showing Bit of Next Stamps at T. & B. and Part of Sheet Margin at R., Clear to Large at L., tied by Charleston Dec 5 1861 Double Circle pmk. on Yellow Cover, without flap, stamp with crease & tiny margin tear at T., o/w VF, ex-Kohn(Photo)	1,350.00
601	✉	Charleston, S.C., 5c Blue (16X1) . Margins to cut in, tied by Charleston Nov. 11 1861 Single Circle pmk. on Red & Blue Seven Star Waving Flag Patriotic , (Unlisted Ty. in Dietz) Buff Cover , Rare & Attractive Cover(Photo)	5,000.00
602	★	Charleston, S.C., 5c Blue (16X1) . Ample to Huge Margins Showing Part of Next Stamp at L., faint toning & small faults, o/w VF .(Photo)	550.00
603	✉	Columbia, S.C., 5c Blue (18XU1) . Mostly Clear Strike on Neat Cover to N.C., partly readable Blue Columbia pmk., & slightly reduced at L., VF(Photo)	750.00
604	✉	Danville, Va., 5c Black on Dark Buff (21XU3) . Printed at T.L., Danville, Va Jul 25 pmk. on Fresh Cover, VF, Scarce, signed Costales(Photo)	4,750.00
605	✉	Georgetown, S.C., 5c Black (28XU1) . Readable Strike with Georgetown Nov. 28 1861 pmk. on Fresh Orange Cover to N.C., Control Handstamp on back, Fine(Photo)	750.00
606	✉	Memphis, Tenn., 5c Red (56X2) . Clear to Huge Margins Showing Bit of Next Stamp at L., tied by Memphis 1861, pmk. on Cover to Arkansas, cover file fold through stamp where it overlapped cover edge & minor cover edge tears, o/w VF(Photo)	1,000.00
607	✉	Memphis, Tenn., 5c Red (56X2) . Two Singles (partly overlap), Huge Margins to cut in at L. on one, tied by Memphis pmk. on Cover Addressed "Hon. A.H. Stephens, Vice President C.S.A.", couple small cover tears, Scarce(Photo)	1,200.00 +
608	★	Mobile, Ala., 2c Black (58X1) . Large Margins to slightly in, Part o.g., h.r., Scarce Stamp E. 150-200	
609	★	Mobile, Ala., 5c Blue (58X2) . Large Margins to slightly in at B., tiny thin speck, Scarce, signed Dietz(Photo)	250.00
610	✉	Mobile, Ala., 5c Blue (58X2) . Three Large Margins Showing Tiny Bits of Three Other Stamps, Clear at B., tied by Mobile Oct 23, 1861 Double Circle pmk. on Small Cover to Va., ms. "Due 5 ct" stamp creased before use, o/w VF(Photo)	750.00
611	✉	Mobile, Ala., 5c Blue (58X2) . Three Clear to Large Margins, Clear to slightly in at B., affixed over U.S. 3c Red on White Entire (U9) & tied by Mobile Aug 16, 1861 Double Circle pmk., Fine(Photo)	750.00 +
612	★	Nashville, Tenn., 5c Violet Brown (61X5) . Clear to Large Margins, Fresh, faint thin & light corner crease, VF Appearance, ex-Ferrari(Photo)	600.00

- 613 ☒ **Nashville, Tenn., 5c Brick Red (61X3).** Large Margins to slightly in, tied by Blue Nashville Aug 3 1861 pmk. on Cover, without flap & slightly reduced at T., o/w Fine(Photo) 1,500.00
- 614 ★ **New Orleans, La., 5c Yellow Brown on Off White (62X5).** B. Impt. Horiz. Strip of Three, Pos. 33-35, Three Large to Huge Margins, Clear to cut in at T., o.g., two with light creases, Scarce, ex-Knapp 270.00 +
- 615 ☒ **New Orleans, La., 5c Brown on White (62X3).** Large to Huge Margins Showing Bit of Impt at B., tied by New Orleans 11 Aug (1861) pmk. on Cover to Florida, cover somewhat reduced at L., o/w VF 375.00
- 616 ☒ **New Orleans, La., 5c Red Brown on Bluish (62X4).** Three Huge Margins Showing Bit of Impt. at B., Clear at T., tied by New Orleans 6 Dec (1861) pmk. on Cover, slight cover soiling, o/w VF(Photo) 300.00
- 617 ☒ **New Orleans, La., 5c Red Brown on Bluish (62X4).** Huge Margins at Sides, Ample T. & B., tied by New Orleans 24 Oct (1861) pmk. on Cover to Miss., cover slightly reduced at R. (barely into address), o/w VF 300.00
- 618 ☒ **New Orleans, La., 5c Yellow Brown on Off-White (62X5).** Ample to Large Margins, tied by New Orleans 10 Dec (1861) pmk. on Folded Letter, cover file fold through stamp & couple trivial cover toning specks, o/w VF 425.00
- 619 ☒ **Petersburg, Va., 5c Red (65X1).** Three Large to Huge Margins incl. Bit of B. Sheet Margin, Clear to Ample at R., tied by Blue Petersburg Feb 11 (1862) pmk. on Orange Cover to N.C., minor cover edge faults, o/w VF, Scarce(Photo) 1,500.00
- 620 ☒ **Raleigh, N.C., 5c Red (68XU1).** Clear Red Handstamp, Blue Raleigh N.C. Aug 26 Double Circle pmk. on 1861 Folded Letter (on lined notepaper), Fine 425.00
- 621 ☒ **Raleigh, N.C., 5c Red (68XU1).** Mostly Readable Strike on Small Cover to Va. with Military Address, Blue Raleigh Double Circle pmk. (struck partly off cover), small cover stains entirely on back, o/w Fine 425.00
- 622 ☒ **Thomasville, Ga., 5c Black (82XU2).** Clear Handstamp, Thomasville, Ga. Dec 16 pmk. & ms. "Official" on Pale Buff Cover, R. Cover reduced barely affecting stamp, o/w VF(Photo) 900.00
- 623 ☒ **Talbotton, Ga., 10c Black (94XU2).** Mostly Clear Handstamp, partly readable Talbotton, Ga. Apr 22 1862 Double Circle pmk. on Homemade Buff Turned Cover, second usage Average Pair of No. 7, some minor cover edge wear, o/w Fine(Photo) 500.00
- 624 ☒ **Galveston, Tex., 10c Black (98XU2).** Partly readable strike on Addressed but Unused Light Buff Cover to Harrisburg, Texas, Fine Strike, VF Cover Unused listed in Dietz but Unpriced(Photo) E. 200-250
- 625 ☒ **Galveston Tex. 10 Paid (98XU3).** Poor barely readable Handstamp on Homemade Gray Cover made from printed form to Andersons, Texas, barely readable Galveston Double Circle pmk., some cover edge faults & minor toning spots, Scarce Provisional E. 100-150

HANDSTAMPED PAIDS

- 626 ☒ **Huntsville Ala Oct 29 1861, Bold Blue Double Circle, Bold Red "Due 5"** handstamp on slightly stained cover, flap faults, Fine, Scarce, Unlisted in Dietz E. 75-100
- 627 ☒ **Opelika Ala., Red pmk. & matching "10" in Circle on Adversity Paper** Cover to Society Hill, S.C., bit reduced at L., FineDietz 160.00
- 628 ☒ **Pine Level/5/Ala/Paid,** Negative Brass Handstamp, Bold Strike except "Pin" of Pine unstruck, on Small Cover to East Tenn., Fine, Very Rare, Unpriced in Dietz(Photo) E. 250-350
- 629 ☒ **Sumter S.C. Aug 8 1861,** Clear pmk., matching "Paid" & "10" in Circle on Fresh Homemade Buff Cover, VFDietz 150.00

- 630 ☒ **Treasury Dept C.S.A./Second Auditor's Office/(Official Business),** Printed Impt. at T.R. (Dietz Ty. VIa), Richmond Jun 25, 1861 pmk., "Paid 10" in Circle, small spots of violet ink at B.R., o/w VF **E. 75-100**
- 631 ☒ **Handstamp Paid & Soldier's Due Covers,** 17 Stampless Covers incl. 13 Due 10 & One Due 5, Two Richmond Paid 5 cts. & Richmond Paid 10 in Circle, extremely mixed condition, G-F Lot **E. 300-400**
- 632 ☒ **Handstamp Paid & Soldier's Due Covers,** Five Diff. incl. Mobile, Ala. "10", Rome Ga. "Paid 5" ("5" in Box), Weldon N.C. "Due 10", "Cheraw S.C." "Paid 5" & Houston Tex. "10" (due) from a **Texas Ranger**, Rome & last struck bit light, Fine Lot **E. 150-200**

U.S. STAMPS

CONFEDERATE USAGE

- 633 ☒ **Augusta, Ga. May** Double Circle pmk. ties **U.S. 3c Red (26)** corner faulty, on Multicolor Flag Design Patriotic Cover (Dietz F7-19), Cover forwarded with part of address over stamp & ms. "charge 3", cover without flap & staining at B.R. **E. 100-150**
- 634 ☒ **Canton, Miss. Feb. 9, 1861,** Clear pmks. on Carroll Hoy correspondence Gray Cover, **U.S. 3c Dull Red (26)**, sealead tear & some toning, tied by Fancy Canton, Miss. Five Point Star in Reeded Circle cancel, ms. "Due 3", VF Cover, Very Early C.S.A. Usage, ex-Rust **(Photo)** **E. 150-200**
- 635 ☒ **Charleston S.C.,** Clear to Bold pmks. on Three Covers, each franked with **U.S. 3c Red (26)**, One with Dec. 25, 1860 pmk. **(Independent Statehood Usage)**, others same correspondence with small Embossed Corner Cards, VF, all ex-Kohn **E. 75-100**
- 636 ☒ **Mississippi State Seal Patriotic Design** (Dietz FM-1) on Yellow Carroll Hoy correspondence Yellow Cover, **U.S. 3c Dull Red (26)** tied by light New Orleans Double Circle pmk., VF, ex-Chase, Stephen Brown **(Photo)** Dietz 1,000.00
- 637 ☒ **Seven Star Waving Flag Patriotic Design Cover (Dietz F7-4), U.S. 3c Dull Red (26)** tied by Blue Baltimore, Md. Apr 11 (1861) pmk. on Neat Cover to Princeton College, N.J., VF, **Border State Usage to The North** **(Photo)** **E. 250-300**

GENERAL ISSUES

- 638 ☒ **5c Green, Stone 1 (1).** Ample to Large Margins, tied by Bold New Orleans pmk. on Fresh Yellow Cover to Port Gibson, Miss., VF **(Photo)** 175.00
- 639 ☒ **5c Green (1).** Clear to Mostly Large Margins, tied by Bold Montgomery Ala Jan 3 1862 pmk. on Folded Printed Notice, Forwarded Cover, ms. "Missent due 5c", VF 175.00
- 640 ☒ **5c Green, Stone 1 (1).** Clear to Huge Margins, tied by Greenville, Ten. pmk. on Fresh Homemade Buff Cover, VF 175.00
- 641 ☒ **5c Green, Stone 1 (1).** Ample to Huge Margins incl. Part B. Sheet Margin, tied by Red Camden, S.C. Double Circle pmk. on Tiny Cover (4 $\frac{3}{8}$ x1 $\frac{3}{4}$ "), VF, ex-Kohn 255.00
- 642 ☒ **5c Green, Stone 2 (1).** Pos. 4, S-2, Clear to Large Margins, tied by Winchester, Va. pmk. on Cover, VF Cover, Plating by Knapp 175.00
- 643 ☒ **5c Green, Stone 1 (1).** Clear to Large Margins, tied by Amherst C.H. Va. pmk. on Small Cover, couple tiny cover edge tears, Fine 175.00

- 644 ☒ **5c Green, Stone 1 (1).** Margins Virtually All Around except touching at one point at B., tied by Tudor Hall, Va. pmk. on Homemade Buff Cover with "Headquarters, Dept. North Va" Impt. at T.R. (Unlisted Ty. in Dietz), ms. "Old Confederate Stamp" docketing below Impt., o/w Fine(Photo) **E. 150-200**
- 645 ☒ **5c Green, Stone 1 (1). Vert. Pair,** Clear to Huge Margins incl. Part L. Sheet Margin & Showing Bit of Next Stamp at T., tied by indistinct Town pmk. on Cover, B. stamp creased before use, o/w VF 335.00
- 646 ☒ **5c Green, Stone 1, 10c Light Blue, Paterson (1, 2a).** Clear to Large Margins, tied by Town pmks. to Separate Covers, former with Blue pmk., latter Scratched Stone var, latter cover with small stain, o/w Fine, latter ex-Kohn 685.00
- 647 ☒ **5c Green, Dark Blue, 10c Light Blue (1, 2a, 4a).** Both 5c Margins to cut in, 10c Large to Huge Margins, tied by Town pmks. on Separate Covers, last with cover file fold through part of stamp's R. Margin, o/w VG-VF Lot **E. 150-200**
- 648 ☒ **5c Green, Blue, 10c Blue (1 three, 2 four, 4 three).** Large Margins to cut in, tied on Separate Covers or Portions of Covers, also incl. Savannah Ga. Stampless with "Paid 5" in Oval Handstamp, extremely mixed condition, G-F Lot **E. 350-500**
- 649 **5c Green, 10c Blue, Rose (1, 2, 5).** Used, Clear to Large Margins except last slightly in at T., first tied by New Orleans pmk., No. 2 used on piece, also incl. No. 58X2 tied on small piece, No. 5 with thin, o/w Mostly F-VF Lot 950.00
- 650 ☒ **5c Green, Stone 1, Blue, Stone 2 (1, 4).** Large Margins to slightly in, each tied by separate strikes of Richmond Jun 13 1862 pmks. to one another & on Fresh Buff Homemade Cover to Ga., stamps with light staining from adhesive used to affix them, o/w Fine, Attractive Combination Franking(Photo) **E. 200-300**
- 651 **5c, 10c General Issues (1, 4, 5, 9, 10).** Used, Clear to Large Margins, No. 9 with ms. cancel, No. 10 Shows Portions of Three Framelines, No. 5 rebacked, No. 10 repaired, others with faults, o/w F-VF **E. 350-500**
- 652 ☒ **5c Dark Green, Stone 1 (1b).** Clear to Large Margins, tied by Jamestown, Va. pmk. on **Patriotic Cover** (Mounted Dragoon Design, Dietz SM-1, Verse 7, Slogan 38), stamp with light toning, cover with small scuff & some soiling, o/w Fine(Photo) 1,100.00
- 653 ★ **5c Olive Green, Stone A or B (1c). Reconstructed Irregular Multiple of Eight** (Strips of Three & Four and One Single), Margins to barely in, nearly all with faults (three with reinforced crease), Scarce, Useful for Plating Stone A or B **E. 200-250**
- 654 ☒ **5c Olive Green, Stone A or B (1c).** Large to Huge Margins, tied by Montgomery Ala Nov 23 1861 pmk. on Exceptionally Fresh Yellow Cover, Extremely Fine(Photo) 225.00
- 655 ☒ **5c Green, Stone 2, Unofficial Roulette (1 var).** Ample to Large Margins, tied by Blue Columbia S.C. pmk. on Buff Cover to S.C., without flap, VF, ex-Shenfield, Kohn(Photo) 325.00+
- 656 ★田 **10c Blue, Paterson (2). Block of Nine,** Ample to Huge Margins, Nice Color, o.g., light crease affects five stamps (one crease ends in tiny tear), o/w VF, Scarce, Very Presentable Showpiece(Photo) **E. 300-400**
- 657 ☒ **10c Blue (2).** Three Large Margins, Ample to touching at T., tied by Blue Double Circle pmk. on Pale Pink Overall Design **Cumberland University College Cover**, stamp creased before use & some toning, cover edge faults, Scarce **E. 100-150**

- 658 ☒ **10c Light Blue, Paterson (2a).** Ample to Large Margins, tied by Staunton, Va. Dec. 15 (1862). **Red, White & Blue Captured Union Patriotic Cover** with Maj. Gen. McClellan's Portrait surrounded by Wreath of U.S. Flags, with original Soldier's Letter "Our loss is estimated at 1500-2000 men. . . . 600 prisoners en route to Richmond", VF, Scarce & Unusual(Photo) **E. 500-750**
- 659 ☒ **10c Light Milky Blue, Stone Y (2a).** Ample to Large Margins, tied by Thomasville, Ga. pmk. on Fresh Homemade Buff Cover, VF .(Photo) 375.00
- 660 ☒ **10c Light Blue, Paterson (2a).** Three Large Margins, Clear at B., tied by Charleston Nov 4 1862 Double Circle pmk. on Fresh Cover to S.C., VF, ex-Kohn(Photo) 225.00
- 661 ☒ **10c Light Blue, Paterson (2a).** Ample to Large Margins, tied by Richmond Oct 20 1862 pmk. on Cover to Mobile, stamp with tiny margin tear at T., o/w VF 225.00
- 662 ☒ **10c Light Blue (2a).** Huge Margins, Fresh Color, small ms. cancel, used on Orange Cover, ms. Lewisburg Va (W. Va.) pmk. (Listed but Unpriced in Dietz), cover tears at T. & light cover stains, Stamp Extremely Fine (cat. \$175.00) 225.00
- 663 ☒ **10c Dark Blue, Hoyer (2b).** Ample to Large Margins, Grid cancel, Washington, Tex Feb 27 pmk. on Cover to Ala., slight cover soiling, o/w VF, signed Bartels(Photo) 375.00 +
- 664 ★ **2c Green (3). R. Margin Horiz. Pair,** Ample to Huge Margins, Exceptionally Fresh, o.g., h.r., light crease in L. margin touching design, R. Stamp Extremely Fine "Gem"(Photo) 1,200.00
- 665 **2c Green (3).** Clear to Large Margins, Richmond pmk., faults, o/w VF, Scarce Used(Photo) 625.00
- 666 ☒ **2c Green (3).** Clear to Large Margins, tied by Bold Montgomery Aug 1 1862 pmk. on Local Cover, stamp with tear & corner scuff at B.R., cover stain at T.L., o/w Fine, Rare, Listed but Unpriced in Scott, with P.F. Certificate(Photo) 4,000.00
- 667 ☒ **2c Green (3).** Fragments of three stamps on flap of **Turned Cover** (originally a Strip of Five), Used from Eutaw Ala. (July 22, 1862), other use creased **10c Light Blue (2)**, small ms. cancel, ms. Ala. Town pmk., A True Philatelic Tragedy —
- 668 ☒☐ **5c Blue, Stone 2 (4). Vert. Block of Eight,** Clear to Large Margins, o.g., h.r., Positions mis-aligned in relationship to one another, wrinkles, L. stamps light creasing, all with toning spots, o/w VF, Scarce, ex-Knapp **E. 300-400**
- 669 ☒ **5c Blue, Stone 2 (4).** Just Clear to Large Margins, tied by Charleston S.C. pmk. on Fresh **Embossed Lady's Cover** to Ga., VF Cover 225.00
- 670 ☒ **5c Blue, Stone 2 (4).** Clear to Large Margins, tied by Richmond pmk. on **Patriotic Cover** (Eleven Star Waving Flag, Dietz F11-16, Verse 1, Impt. 15), stamp stained from adhesive, o/w Cover VF(Photo) 1,250.00
- 671 ☒ **5c Blue, Stone 2 (4).** Used with **5c Blue (7)**, Margins to slightly in, both tied by Richmond Feb 22 1863 pmk. on Turned Cover to Charlottesville, Va., first usage **10c Blue (12)** on Homemade Cover from Black on Pink Printed Form, Fine, ex-Antrim **E. 150-200**
- 672 ☒ **5c Blue, Stone 2 (4).** Two Singles, Margins to cut in, tied by Clear "Company Shops N.C." pmk. on Fresh Homemade Buff Cover, Fine Cover 325.00
- 673 ☒ **5c Blue, Light Blue (4). Two Pairs,** Margins to slightly in, tied on Separate Buff Covers, stamp with faults, o/w F-VF **E. 100-150**
- 674 ☒ **5c Dark Blue, Stone 3 (4a). Vert. Pair,** Clear to Large Margins, Deep Rich Shade, tied by Charleston S.C. pmk. on Fresh Homemade Buff Cover, without flap, one stamp tiny toning speck, o/w VF, ex-Kohn(Photo) 425.00

675	✉	5c Blue (4, 7). Former Margins to slightly in, latter Large Margins, tied by Richmond Jun 6 1863 pmk. on Cover to N.C., without flap, former minor faults, o/w Fine Combination Franking(Photo) E. 150-200	
676	✉	10c Rose (5). Three Large Margins, Clear at T., tied by Chattanooga Aug 24 1862 pmk. on Fresh Yellow Cover to Montgomery, stamp some gum soaking, cover slightly reduced at L., VF(Photo)	825.00
677	✉	10c Deep Rose (5). Three Large Margins, Ample at L., tied by Blue Emory, Va pmk. on 1862 Buff Cover, cover reduced at R., o/w VF(Photo)	825.00
678	✉	10c Rose (5). Large Margins, tied by Richmond Jul 5 1862 pmk. on Cover to Ga., VF(Photo)	825.00
679	✉	10c Rose (5). Huge to Immense Margins incl. Part T. Sheet Margin, tied by Macon, Ga. pmk. on Small Mourning Cover to N.C., o/w VF(Photo)	825.00
680	✉	10c Rose (5). Large to Huge Margins, indistinct cancel, used on Homemade Cover, Vicksburg pmk., cover reduced at L. & cover stains, stamp faint soiling spot, o/w Extremely Fine Stamp(Photo)	825.00
681	✉	10c Rose (5). Huge Margins to barely touching, tied by Richmond pmk. on 1862 Buff Cover, stamp with corner crease & small cover edge faults, Fine stamp(Photo)	825.00
682	✉	10c Dull Rose (5). Ample to Large Margins, tied by Atlanta pmk. (day date slug inverted) on Fresh Cover to Ala., slightly reduced at L., VF, ex-Risdon(Photo)	825.00
683	✉	10c Rose (5). Large Margins to slightly in at B.R., tied by Holly Springs Miss. pmk. on Large Cover (8x3¼") to Va., with original contents, cover reduced at L. & soiling, stamp with small faults, o/w Fine E. 150-200	
684	✉	5c Light Blue (6). Two Singles, Large Margins to cut in, tied by Hendersonville, N.C. pmk. (date in ms.) on Wallpaper Cover to S.C., Brown & Beige Design, Fine(Photo)	400.00
685	✉	5c Light Blue (6). Vert. Strip of Three & Single, Clear to Large Margins (scissors cut in strip), tied by Madison, Ga. pmks. on badly defective Turned Cover , other use Two Horiz. Pairs of 5c Blue (7) , front & back of cover separated & hinge rejoined, Scarce Double Rate Turned Cover E. 150-200	
686	✉	5c Light Blue, Blue (6, 7). Large Margins to touching, tied together by Grid cancel on 1863 Folded Letter, Vienna, Ga. pmk., Fine E. 50-75	
687	✉	5c Light Blue, Blue (6, 7 four). Pairs, Clear to Huge Margins, tied by Town pmks. on Separate Covers, cancels incl. Greensborough N.C. in Red & Clear Botetourt Springs, Va. , most covers with small faults or soiling, o/w F-VF Lot E. 100-150	
688	✉	5c Blue, Shades (6, 7). Ten Pairs & One Single used on Separate Covers, One No. 6 Pair on Cover with Blue Printed Corner Card, Single No. 7 on Cover (Due 5), extremely mixed condition, G-VF E. 250-350	
689	✉	5c, 10c Blue, Shades (6, 7, 11 two, 12 two). Horiz. Pairs of Nos. 6 & 7, tied by Town pmks. on Separate Covers, All with Sheet Margins , incl. Nos. 11 & 12 T.R. & T.L. Sheet Corner Margin Singles, couple stamps barely in one side, o/w Fine-Extremely Fine Lot E. 150-200	
690	✉	5c, 10c Blue (6, 7, 11, 12). 18 Covers, incl. Pair No. 6, Pair No. 7, others Nos. 11 & 12, incl. Military Targets & Grid, Blue Towns, "Commissioner of Taxes" Corner Card, etc., also incl. U.S. No. 26 Used in Ala., mixed condition but mostly F-VF E. 350-500	
691	✉	5c Blue (7). Horiz. Pair, Ample to Large Margins, tied by Dalton, Ga. 1862 pmk. on Small Embossed Lady's Envelope to Miss., VF 100.00	
692	✉	5c Blue (7). Vert. Pair, Clear to Large Margins, tied by Bastrop, Texas pmk. on 1863 Folded Letter to Houston, Texas, VF(Photo) 190.00	
693	✉	5c Blue (7). Vert. Pair, Margins Nearly All Around except into frameline at R., tied by Violet Pendleton, S.C. pmk. on Tiny Homemade Buff Cover, Fine, ex-Kohn 210.00	

- 694 ☒ **5c Blue (7). Horiz. Pair**, Margins Nearly All Around, tied by Glenville, Ala. Feb 18 pmk. on Small Cover with Small Handwritten **Valentine** Enclosure, some cover staining along B. edge, o/w Fine **E. 75-100**
- 695 ☒ **5c Blue (7). Horiz. Pair**, Ample to Large Margins, tied by "**Chattanooga Ten.**" **Army of Tenn. Field Post cancel** on Dec. 24, 1863 Light Buff Cover, Fine Strike, VF Cover (Used after formally established on Dec. 14, 1863), Fine **E. 75-100**
- 696 ☒ **5c Blue (7). Horiz. Pair**, Large to Huge Margins, tied by **Violet** Augusta, Ga. pmk. on Fresh Homemade Buff Cover, stamps with light toning spots (one with tiny scuff speck), o/w Fine 210.00
- 697 ☒ **5c Blue (7). Vert. Pair**, Large Margins to touching, tied by **Green** Chester C.H. S.C. Double Circle pmk. of Orange Turned Cover (previously Orange Cover with Printed Address), Fine, ex-Kohn **(Photo)** 225.00
- 698 ☒ **5c Blue (7). L. Margin Block**, folded over cover edge (L. pair broken), tied both front & back by Greensborough pmks. on Cover to Richmond, Military Address, tiny cover corner nick, still Very Attractive, Rare in Any Condition **(Photo) E. 150-200**
- 699 ☒ **5c, 10c Blue (7, 12)**. Two Average singles (one with faults) of former, Fine single of latter used on Separate Covers each with **Goodson (Va.) Str. Line pmks.**, former homemade buff cover, latter tied on Orange Cover (reduced at R.), o/w Fine **E. 75-100**
- 700 ☒ **5c Deep Blue (5a)**. Two Singles, Ample to Large Margins, one with small tear, tied by **Violet** Pendleton S.C. pmk. on **Turned Cover** (Printed Form), second usage VF No. 11, some light cover toning, o/w VF 210.00 +
- 701 ★ **2c Brown Red (8, 8 var). Horiz. Strip of Three, Middle Stamp Major Double Transfer**, Pos. R47-49, Ample to Large Margins, Fresh, o.g., end stamps Mint, VF & Choice 225.00 +
- 702 ☒ **2c Brown Red (8). Horiz. Strip of Five**, Ample to Huge Margins, ms. "X" cancels, used on Homemade Cover (Printed Survey Form), Milledgeville, Ga. pmk., VF, Scarce (cat. \$5500 with non-ms. cancels), with P.F. Certificate **(Photo) E. 1,000-1,500**
- 703 ☒ **2c Pale Red (8a)**. Part Sheet Margin at L., Other Margins Ample to slightly in, tied by Bold Richmond pmk. on Folded Printed Circular to Ga., Circular headed Confederate States of America—Treasury Dept. & dated Feb. 9, 1864, Fine, Scarce **(Photo) 1,300.00**
- 704 ☒ **10c Milky Blue, "T-E-N" (9a)**. Ample to Huge Margins, used, on Yellow Cover care of Sgt. with "Palmetto Guard **Seige Train** Allstons Battalion, Charleston S.C.", portion of Charleston pmk. drawn-in on stamp (stamp may not belong), o/w VF **E. 150-200**
- 705 ☒ **10c Gray Blue, "T-E-N" (9b)**. Large to Huge Margins, tied by Richmond May 8 1863 pmk. on Cover to Southern Express Co., Staunton, Va., light bend across stamp (from cover contents), cover slightly reduced at L. & sealed cover tear, o/w VF, Scarce, signed Bartels **(Photo) E. 200-300**
- 706 ☒ **10c Blue, "Frameline" (10)**. Large Margins Showing Portions of All Four Framelines, tied by Richmond Jun 12 1863 pmk. on Homemade Buff Cover to Va., stamp with some light toning, o/w VF, Attractive **(Photo) 2,250.00**
- 707 ☒ **10c Blue, Frameline (10)**. Clear to Huge Margins Showing Two Full Framelines, tied by Mobile Double Circle pmk. on **U.S. 3c Red on Buff Star Die Entire (U27)** to Ga., 10c Blue (11) tied by indistinct Bainbridge Ga. pmk. to pay forwarding postage, VF **(Photo) 2,250.00 +**
- 708 ☒ **10c Milky Blue, Frameline (10a)**. Pos. 31, Large Margins Showing Portions of All Framelines, tied by Dublin, Va. pmk. on Light Buff Homemade Cover, stamp with small tear at R. & cover with light staining, Scarce, ex-Knapp **(Photo) 2,250.00**

709	✉	10c Blue (11). Large Margins to touching at B., tied by Bold Green Monticello, Ga. pmk. on Fresh Homemade Buff Cover, VF ... (Photo)	175.00
710	✉	10c Blue (11). Large to Huge Margins, tied by Chester C.H. S.C. pmk. on Wallpaper Cover (Red, White & Green on Gray), minor cover stains (mostly on back), o/w VF, signed Dietz, ex-Kohn (Photo)	400.00
711	✉	10c Blue (11). Ample to Huge Margins incl. Part L. Sheet Margin, tied by indistinct Town pmk. on Wallpaper Cover (Fine Beige Ruled Lines), VF & Attractive	400.00
712	✉	10c Blue (11). Immense Margins All Around, tied by Richmond Va. pmk. on Prisoner's Cover addressed to Danville, Va., ms. " per Flag of Truce Boat ", Boxed " Approval/June 6 1864/Charles M. Whelden/ . . . Norfolk Dist., Va. " Censor Handstamp on back, in Box, VF, signed Dietz (Photo)	600.00
713	✉	10c Blue (11). Margins to cut in, Used with Average U.S. 3c Rose (65) on Orange Flag of Truce Cover , latter tied by Delaware City Del Jan 27 Target Duplex pmk., former by Richmond pmk., ms. "Per Flag of Truce via Fort Monroe", some minor back faults, o/w Fine ... (Photo)	E. 500-750
714	✉	10c Blue (11). Large Margins, small nick in B. margin Used with U.S. 3c Rose (65) , both tied by Delaware City, Del Jan 24 Target Duplex pmk. on Orange Flag of Truce Cover to Va., C.S.A. No. 11 additionally tied by Richmond pmk., ms. Care of . . . Officer Fort Monroe, By Flag of Truce, VF (Photo)	E. 750-1,000
715	✉	10c Blue (11). Clear to Ample Margins, light toning, used with U.S. 3c Rose (65) , B. perfs. trimmed, both tied by Segmented cork cancel on Prisoner of War Cover to Md., Old Point Comfort, Va pmk., ms. "Flag of Truce Boat", address faded, o/w Fine, signed Ashbrook, ex-Richey (Photo)	1,100.00
716	✉	10c Blue (11). Margins to slightly in, creased before use, tied by Richmond pmk. on Orange Prisoner's Cover also franked with U.S. 3c Rose (65) target cancel & Point Lookout, MD Double Circle pmk., faint "Prisoner's Letter/Examined" in Octagon handstamp, ms. "Via Flag of Truce", Fresh & Fine Cover (Photo)	1,100.00
717	✉	10c Blue, Shades (11 Five, 12 Two). Clear to Large Margins, tied on Separate Covers (Two Turned Covers), cancels incl. Two Red pmks., Choice Milky Blue Shade, also incl. Perforated No. 11 & 12 on Separate Covers (One Turned Cover), both of latter highly suspect, o/w Generally F-VF Lot	E. 200-250
718	✉	10c Blue, Shades (11, 12). Eighteen Stamps on Separate Covers (Two Stamps uncanceled), Town pmks. incl. Three in Blue & Two in Red (two with ms. pmks.), extremely mixed condition, G-VF	E. 350-500
719	✉	10c Milky Blue (11a). Ample to Large Margins, tied by Blue Richmond, Va. pmk. (Sans serif letters without date slugs, used 1863, Dietz Ty. 8) on Buff Cover, stamp with margin crease, cover edge nick at T., o/w VF	E. 40-50
720	✉	10c Greenish Blue (11c). Large to Huge Margins, tied by light Palestine, Tex Aug 5 pmk. on 1864 Folded Letter to Houston on back of Printed State of Texas Cotton Bond form, minor tape mend along central vert. file fold, o/w VF, ex-Caspary	125.00
721	✉	10c Greenish Blue (11c). Clear to Huge Margins, tied by Blue Grid, matching University of Virginia, Va. Apr 30 1864 Double Circle pmk. on Small Mourning Cover, slightly reduced at R., VF	E. 75-100
722	✉	5c Greenish Blue (11c). Immense Margins, tied by Lake City, Fla. pmk. on back of Handmade Soldier's Cover, some cover staining & slightly reduced at L., Scarce	265.00
723	✉	10c Blue (12). Ample to Large Margins, tied by Black Hawk, Miss. pmk. on Cover, Nov. 1, 1864 pencil ms. docketing, VF, Scarce Town	70.00 +
724	✉	10c Blue (12). Clear to Large Margins, tied by Charlotte N.C. pmk. on Wallpaper Cover (Red, White & Blue Floral Design on Blue Gray), Attractive, VF (Photo)	400.00

- 725 ☒ **10c Blue (12).** Ample to Large Margins, tied by **Red** Social Circle Ga pmk. on Fresh Light Buff Cover, VF 105.00
- 726 ☒ **10c Blue (12).** Large Margins to slightly in, tied by Greenville, N.C. pmk. on **Patriotic Cover** (Firing Cannon with 12 Star Flag, Dietz CN-1, Verse 9), stamp creased before use, o/w VF, Scarce(Photo) 750.00
- 727 ☒ **10c Blue (12).** Irregular margins, Huge Three Sides, Large to trifle in at L., tied by **Blue** Greensborough N.C. pmk. on Fresh Buff Cover with "Chief Enrolling Office, 6th Congressional District, Greensborough, N.C." Impt. at T.R. (Dietz Ty. III), stamp with faults prior to use, VF Cover **E. 100-150**
- 728 ☒ **10c Blue (12).** Three with Large to Huge Margins, tied by Town pmks. on Separate Covers (one Light Buff Homemade Cover, other on Printed Form), one with **Blue** pmk., VF & Choice Stamps on Fresh VF Covers 210.00
- 729 ☒ **10c Greenish Blue (12c).** Large to Huge Margins, creased before use, tied by Richmond pmk. on Turned Flag of Truce Cover addressed to Hospital at Petersburg, Va., other use **U.S. 3c Rose (65)** tied by Grid, Old Point Comfort, Va. Double Circle pmk. & ms. "Per Truce Boat", cover without back & one side flap, o/w VF **E. 100-150**
- 730 ☒ **10c Greenish Blue (12c).** Huge Margins, tied by **Red** Yanceyville N.C. pmk. on Cover to Va., VF 105.00
- 731 ☒ **10c Deep Blue (12d).** Large Margins to cut in, tied by Tuscaloosa Ala. pmk. on **Wallpaper Cover** (Blue, White & Brown on Buff Floral Design), Cover VF(Photo) 400.00
- 732 ★ **10c Blue, Sewing Machine Perfs. (12 var).** **T. Margin Strip of Three** with Major Portions of Next Stamps at B., Pos. 6-8, 16-18, Fresh, o.g., Pos. 6 & 8 **Double Transfers**, Fine 450.00 +
- 733 ☒ **20c Green (13).** Ample to Large Margins, tied by Danville, Va pmk. on 1864 Folded Letter to Ga., cover cleaned, cover file fold in B. margin of stamp, o/w Fine, ex-Gibson(Photo) 1,000.00
- 734 ☒ **20c Green (13).** Irregular Margins, Large to cut in, well tied by Richmond pmk. on Homemade Light Buff Cover, light cover stains, stamp partly overlaps cover edge, tiny tear & creased before use, Scarce on Cover **E. 150-200**
- 735 ☒ **20c Dark Green (13b).** Three Ample to Large Margins, just Clear at R., tied by **Washington, Ark.** pmk. on Fresh Orange Cover to La., VF(Photo) 1,000.00
- 736 ☒ **20c Green, B. Half of Horiz. Bisect Used as 10c (13c).** Tied by **Tyler, Tex.** pmk. on Orange Cover to La., 1865 ms. docketing, slight cover edge wear & couple minor cover stains, without flaps, o/w Fine, Scarce, with P.F. Certificate, signed Dietz(Photo) 4,000.00 +
- 737 ☒ **20c Green, Diagonal Bisect Used as 10c (13c).** Margins to barely in, well tied by Savannah pmk. on **Wallpaper Cover** (Pale Green & Red Floral Design) to Va., cover without one side flap & some soiling, o/w Fine, Scarce(Photo) 4,000.00 +
- 738 ★ **General Issues**, Approx. 80 Unused Stamps, Mostly Nos. 11 & 12, incl. Nos. 1-4, 8(5), 13, 14(3), mixed quality, Many F-VF **E. 350-500**
- 739 **General Issues**, Nearly 60 Items, Virtually All Used, incl. Nos. 2(2), 4, 5-7, 9, 11, 12, 13, also Three Provisionals, mixed quality, some F-VF **E. 250-350**
- 740 ☒ **General Issue Covers**, Five, incl. Nos. 4; 6 (Pair); 11 Homemade from Overall Ad Cover; Impt. Single; 12, also No. 12 on front tied by **Brown** Brownsbury, Va. pmk. & U.S. 3c Star Die Entire Used in Carrollton Miss. Apr. 8, 1861 (Yeardate inverted), generally F-VF Lot **E. 150-200**
- 741 ☒ **Covers**, Six Covers incl. Red, White & Blue **Eight Star Flag Patriotic Stampless Cover** (Dietz F8-7), indistinct Ga. pmk., defective No. 13 on cover (pencil ms., not tied) & Four Pairs of Nos. 6 or 7 used on separate covers (two covers faulty), o/w VG-F Lot **E. 250-350**

- 742 ☒ **COVERS**, Seven Items, incl. **L. Sheet Margin No. 1** (discolored & faded ms.), others mostly Ga. & Va. Stampless, G-F **E. 75-100**
- 743 ☒ **Confederate Covers**, Five Covers & One Front (with No. 4), Covers incl. Pairs of Nos. 6 & 7, L. Sheet Margin No. 12 tied by Blue Town pmk., Stampless Soldier's Cover & No. 11 with Three Huge Margins incl. Part "Richmond" Impt. at B. (cover with address retraced), VG-VF Lot **E. 100-150**

HAWAII

- 744 ☒ **10c Brown (161)**. Faulty, Used with **2c Brown (157)**. **Horiz. Pair**, tied by Bold Circle of Wedges cancels on 1880 Cover from Hawaii to U.S. franked with **Hawaii 6c Green (33)**, tied by Segmented Target Cancel, Purple "Honolulu, H.I. Paid All" pmk., Attractive & Scarce, ex-Braus(Photo) **E. 500-750**

END OF SALE — THANK YOU

DESCRIPTIONS

EXTREMELY FINE: The finest condition for noteworthy, outstanding stamps.

VERY FINE: In prime condition such as to satisfy the requirements of particular collectors.

FINE: Perforations or margins do not touch design on issues after 1890 but in some cases may just touch in earlier issues. If used, fairly light cancellation.

VERY GOOD: Generally nice appearance but margins or perforations may cut in slightly.

GOOD: Average off-centering or fairly attractive with slight defects.

ORIGINAL GUM is not to be expected on stamps prior to 1890 unless so stated in the description.

MINT: With original gum and never hinged.

Unless otherwise noted the 1988 Scott United States Specialized Catalogue has been used for cataloguing lots in this sale.

UNITED STATES POSTAL HISTORY

INDIVIDUAL REALIZATIONS ARE HAMMER PRICES. GROSS REALIZATION
INCLUDES 10% BUYERS PREMIUM.

1	90	59	450	117	80	175	57½	232	1250	290	170
2	95	60	65	118	32½	176	135	233	325	291	625
3	105	61	57½	119	95	177	115	234	120	292	800
4	230	62	40	120	160	178	170	235	200	293	200
5	100	63	135	121	95	179	450	236	190	294	60
6	90	64	180	122	135	180	850	237	120	295	70
7	85	65	55	123	70	181	550	238	160	296	160
8	80	66	575	124	210	182	725	239	270	297	425
9	60	67	28	125	45	183	375	240	200	298	450
10	52½	68	65	126	125	184	240	241	280	299	300
11	32½	69	135	127	230	185	375	242	105	300	700
12	140	70	120	128	260	186	135	243	100	301	220
13	28	71	90	129	160	187	135	244	85	302	270
14	130	72	85	130	160	188	52½	245	90	303	190
15	45	73	425	131	52½	189	100	246	170	304	160
16	125	74	400	132	260	190	50	247	160	305	230
17	47½	75	250	133	180	191	60	248	180	306	280
18	170	76	210	134	125	192	40	249	105	307	135
19	130	77	325	135	280	193	120	250	230	308	135
20	95	78	425	136	600	194	40	251	140	309	75
21	125	79	140	137	135	195	30	252	110	310	130
22	65	80	250	138	450	196	105	253	105	311	60
23	28	81	160	139	90	197	52½	254	30	312	220
24	70	82	160	140	160	198	325	255	32½	313	47½
25	35	83	170	141	120	199	50	256	170	314	35
26	70	84	160	142	230	200	90	257	190	315	30
27	80	85	280	143	150	201	105	258	52½	316	60
28	52½	86	170	144	115	202	105	259	240	317	105
29	42½	87	85	145	85	203	160	260	220	318	180
30	35	88	105	146	90	204	160	261	230	319	100
31	55	89	115	147	210	205	75	262	55	320	375
32	105	90	100	148	85	206	60	263	375	321	55
33	100	91	75	149	375	207	57½	264	65	322	260
34	50	92	400	150	42½	208	70	265	75	323	525
35	110	93	270	151	47½	209	70	266	1150	324	325
36	52½	94	250	152	300	210	105	267	425	325	70
37	45	95	450	153	325	211	30	268	90	326	240
38	45	96	210	154	115	212	150	269	300	327	300
39	105	97	425	155	22	213	115	270	220	328	115
40	42½	98	180	156	26	214	375	271	160	329	60
41	40	99	700	157	160	215	425	272	180	330	130
42	240	100	800	158	260	216	350	273	240	331	30
43	60	101	950	159	60	217	150	274	160	332	105
44	45	102	650	160	425	218	140	275	115	333	180
45	65	103	475	161	525	219	110	276	80	334	200
46	50	104	230	162	325	220	115	277	160	335	170
47	100	105	200	163	135	221	210	278	125	336	70
48	105	106	550	164	500	222	105	279	115	337	160
49	57½	107	425	165	270	223	115	280	30	338	325
50	57½	108	300	166	75	224	150	281	110	339	170
51	65	109	260	167	270	225	160	282	220	340	425
52	24	110	210	168	50	226	90	283	350	341	105
53	85	111	1000	169	55	227	375	284	95	342	90
54	105	112	325	170	240	228	325	285	135	343	290
55	35	113	220	171	55	229	50	286	95	344	190
56	70	114	300	172	32½	229a	90	287	210	345	35
57	45	115	57½	173	75	230	200	288	375	346	80
58	130	116	140	174	140	231	270	289	240		

347	30	424	1050	501	230	578	350	655	190	732	105
348	75	425	270	502	230	579	52½	656	525	733	260
349	60	426	220	503	160	580	90	657	170	734	90
350	115	427	325	504	125	581	100	658	3750	735	2600
351	65	428	375	505	55	582	75	659	160	736	2600
352	50	429	240	506	135	583	160	660	240	737	1250
353	75	430	210	507	135	584	325	661	65	738	425
354	75	431	115	508	125	585	500	662	160	739	200
355	13,000	432	190	509	160	586	2300	663	475	740	180
356	425	433	300	510	160	587	55	664	500	741	170
357	115	434	200	511	325	588	170	665	75	742	75
358	55	435	170	512	350	589	35	666	750	743	160
359	230	436	60	513	260	590	375	667	280	744	1000
360	270	437	450	514	350	591	105	668	260		
361	125	438	375	515	70	592	85	669	125		
362	300	439	1100	516	160	593	110	670	260		
363	60	440	700	517	2600	594	375	671	1300		
364	90	441	1000	518	1750	595	140	672	75		
365	52	442	675	519	1500	596	55	673	110		
366	140	443	525	520	170	597	725	674	190		
367	110	444	150	521	135	598	1050	675	170		
368	250	445	280	522	675	599	1350	676	350		
369	100	446	220	523	240	600	350	677	280		
370	170	447	75	524	NO LOT	601	1600	678	260		
371	150	448	325	525	400	602	105	679	1750		
372	450	449	70	526	130	603	260	680	150		
373	85	450	100	527	260	604	2800	681	110		
374	400	451	260	528	90	605	170	682	325		
375	80	452	105	529	350	606	210	683	130		
376	40	453	37½	530	900	607	325	684	190		
377	20	454	105	531	425	608	210	685	65		
378	260	455	160	532	3250	609	85	686	70		
379	220	456	105	533	210	610	180	687	220		
380	270	457	95	534	550	611	425	688	250		
381	1350	458	250	535	575	612	160	689	160		
382	500	459	260	536	290	613	425	690	300		
383	45	460	210	537	240	614	90	691	85		
384	500	461	75	538	200	615	190	692	260		
385	160	462	220	539	50	616	160	693	52½		
386	475	463	90	540	725	617	105	694	130		
387	160	464	105	541	725	618	160	695	70		
388	50	465	350	542	700	619	1200	696	45		
389	105	466	325	543	325	620	105	697	170		
390	475	467	375	544	30	621	105	698	95		
391	400	468	1150	545	1700	622	280	699	60		
392	180	469	240	546	135	623	170	700	95		
393	400	470	475	547	65	624	375	701	90		
394	300	471	900	548	30	625	240	702	750		
395	125	472	375	549	260	626	350	703	500		
396	400	473	85	550	260	627	85	704	75		
397	65	474	60	551	220	628	270	705	280		
398	500	475	500	552	35	629	75	706	950		
399	120	476	725	553	70	630	115	707	1900		
400	110	477	160	554	40	631	210	708	525		
401	190	478	160	555	45	632	170	709	300		
402	200	479	525	556	45	633	120	710	190		
403	170	480	125	557	35	634	230	711	115		
404	180	481	210	558	350	635	110	712	525		
405	180	482	105	559	40	636	450	713	375		
406	160	483	240	560	70	637	525	714	525		
407	150	484	47½	561	250	638	120	715	200		
408	80	485	400	562	80	639	90	716	375		
409	160	486	32½	563	80	640	70	717	375		
410	45	487	52½	564	400	641	180	718	325		
411	70	488	190	565	8000	642	75	719	35		
412	47½	489	1250	566	290	643	70	720	80		
413	42½	490	400	567	80	644	240	721	105		
414	150	491	160	568	2000	645	100	722	45		
415	105	492	220	569	1550	646	140	723	85		
416	85	493	220	570	675	647	105	724	300		
417	220	494	170	571	115	648	150	725	140		
418	25	495	52½	572	210	649	125	726	350		
419	260	496	50	573	750	650	350	727	135		
420	80	497	120	574	425	651	500	728	125		
421	425	498	350	575	50	652	500	729	85		
422	2700	499	180	576	1350	653	280	730	95		
423	270	500	170	577	170	654	190	731	180		

END OF SALE
THANK YOU

GROSS
REALIZATION
\$218,299.00