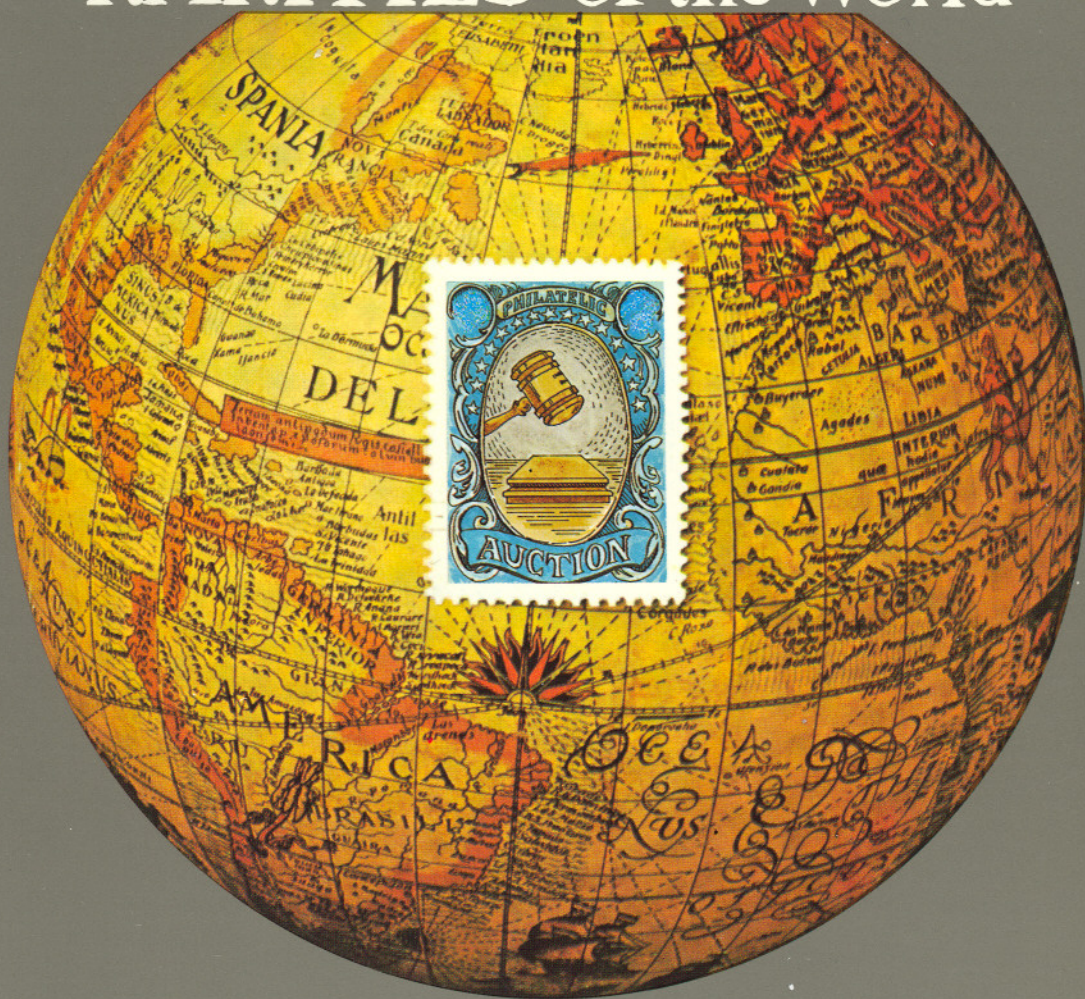


1990

RARITIES of the World



Robert A. Siegel

AUCTION GALLERIES, INC.

CONDITIONS OF SALE

1. On all lots sold a commission of 10% on the hammer price is payable by the buyer.
2. The terms of sale are strictly cash on delivery to the highest bidder unless special arrangements have been made prior to the sale. The fact that an item is placed on extension (submitted to an expertising committee for certification) does not relieve the successful bidder from this condition of sale.
3. All bids are per lot as numbered in the catalogue unless otherwise announced by the auctioneer at the time of sale. The right is reserved to group two or more lots; to withdraw any lot or lots from the sale, or to act on behalf of the seller. The Galleries will bid on behalf of clients, but will not be responsible for any errors in the execution of bidding instructions. The auctioneer shall regulate the bidding and in the event of any dispute his decision shall be final.
4. The auctioneer may bid on behalf of the seller. It may also be inferred that all sellers have been given advances against the sale of their material and therefore we have a financial interest in such lots over and above the sellers commission they are charged.
5. Any lot, the description of which is incorrect, is returnable, but only within 14 days of receipt. All disputed lots must be returned intact as received. **The following lots may not be returned for any reason whatsoever: Lots containing ten or more stamps; Lots from buyers who have had the opportunity to examine them before the sale; Lots described as having defects or faults may not be returned because of any faults. No illustrated lots may be returned because of centering, margins or other factors shown in the illustrations.**
6. Successful bidders, unless they are known to us or supply acceptable references are expected to make payment in full before the lots are delivered. Mail bidders will be notified of the amounts of their purchases. All mail bidders who have established credit with us must make payment within three days after receipt. We reserve the right in our sole and absolute discretion to demand cash payment at the time a lot is knocked down to any bidder who has not previously established credit with us or whose account is in arrears. In the event any buyer refuses to pay cash for any lot at the time it is knocked down to him, the auctioneer reserves the right to re-offer the lot immediately for sale to the highest bidder. Sales tax will be added to purchases where applicable.
7. If the purchase price has not been paid within the time limit, nor lots taken up within seven days from date of sale they must be resold and any loss arising from such sale will be charged to the defaulter. Any account more than thirty days in arrears is subject to a late payment charge of 1½% per month so long as the account remains in arrears. If the auctioneer, in his discretion, should institute any action to secure payment of a delinquent account the defaulting purchaser shall pay all expenses incurred by the auctioneer and such charges will be added to the amount owed.
8. All lots are sold as genuine but should any lot be proved otherwise by written opinion of any competent, responsible authority acceptable to us, immediate refund of the full purchase price will be made, provided that such claim is made in writing within 14 days from date of sale. If claim is not made within this period, no lots are returnable for any reason at any time. So long as we are notified within the 14 day period that an opinion is being sought and **the material is submitted to an acceptable authority within that period** the matter will remain open until such opinion is rendered. **All "Extension" lots will be considered cleared and satisfactory to the buyer if we are not notified to the contrary within six months from date of sale. We will not be responsible for any charges incurred by the buyer for expertization fees and costs unless the opinion states the item is not genuine, in which case we will pay actual costs up to a maximum of \$50.00.** In the event an item is proved "not as described" it is returnable for full refund, and the buyer will be paid interest (at the prevailing Treasury Bill Rate) for the time his funds have been on deposit with us during the extension period.
9. Until paid for in full, all lots remain the property of Robert A. Siegel Auction Galleries, Inc. on behalf of the seller.
10. Some consignors have been advanced monies against the sale of their properties.
11. All forwarding charges will be added to the purchase price. The mode of shipment shall be at our option unless we are given specific instructions.
12. Lots may be sent for inspection to buyers known to us upon written application. All such lots must be returned to us by registered mail, adequately insured and within 24 hours after receipt. The applicant assumes all responsibility and will provide insurance against all risks from time of receipt until they are actually received back by us, and is to pay all expenses of postage and insurance. **No lots can be sent for inspection within ten days from date of local viewing. Large lots and collections cannot be sent for inspection.**
13. Agents are responsible for all purchases made on behalf of their clients unless other arrangements are made prior to the sale.
14. The placing of a bid shall constitute acceptance of the foregoing conditions of sale.

ROBERT A. SIEGEL

STEPHEN G. EDELSTEIN

Licensed Auctioneers

N.Y.C. Auction License No. 371761

724th SALE

RARITIES OF THE WORLD

**THE PROPERTY OF VARIOUS OWNERS
AND SOLD BY THEIR ORDER**

AT PUBLIC AUCTION

**SATURDAY, MAY 19, 1990
at 1:00 P.M.**

**AT THE NEW YORK HELMSLEY HOTEL
SUITE "ABC"
THIRD AVENUE AND FORTY-SECOND STREET
NEW YORK, NY**

RESERVATIONS

The importance and interest in this sale is such that we cannot guarantee seating space for all who wish to attend. We are therefore recommending advance reservations on a first come first served basis for those who wish to attend. A phone call or letter to our office will assure you a seat.

It is advisable to arrive approximately 30 minutes prior to starting time of the Sale.

LOTS ON VIEW

Lots on view at our offices Friday, May 18th from 9:30 A.M. to 2:30 P.M.

ADDITIONAL CONDITIONS OF SALE

All lots are offered subject to a reserve price.

The auctioneer may implement such reserve price by bidding on behalf of the seller.

It may also be inferred that all sellers have been given advances against the sale of their material and therefore we have a financial interest in such lots over and above the sellers commission they are charged.

FOR TABLE OF DESCRIPTIONS SEE PAGES 40 & 84

**ROBERT A. SIEGEL
AUCTION GALLERIES, INC.**

**160 EAST 56TH STREET
NEW YORK, NY 10022**

ESTABLISHED 60 YEARS

**TEL: (212) 753-6421
FAX: (212) 753-6429**

FOREWORD

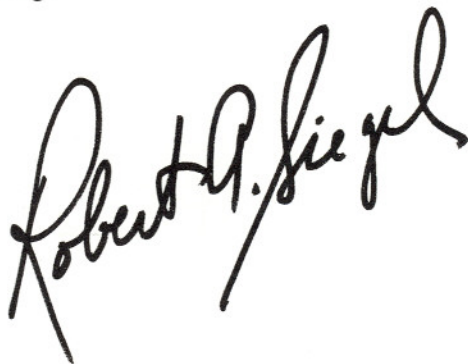
This year marks my 60th Anniversary in the presentation of Public Stamp Auctions. In those years, over One Billion Dollars worth of philatelic material, at today's market value, has passed through our auctions. In the wake of "World Stamp Expo" in Washington, D.C. this past fall, we have found ourselves in a constant state of catch-up. Even in this hectic time in which we find ourselves, we assemble a few hundred world rarities together for auction.

It is with great pride that I present to you the 27th Annual Rarities Sale.

This sale begins with an extremely rare legal document signed by A. Lincoln in three separate places, followed by Unique 1847 Issue Essays, the largest known multiple of 1851 one cent type IV, the Unique 24c 1869 invert on cover, and other World Rarities too numerous to mention.

As I said earlier, this marks the 60th year we have held public stamp auctions. It is our intent to continue this tradition of providing a forum for stamp enthusiasts throughout the world to buy and sell. Our Rarities Sale is the frosting on the cake.

The sale will again be held at the New York Helmsley Hotel. As seating accommodations are limited, advanced reservations are advisable. A note or a card to our office will assure you of seating.

A handwritten signature in black ink, reading "Robert G. Siegel". The signature is written in a cursive, flowing style with a large, prominent "R" and "S".

Upon request estimate of value furnished on any lots in this auction.

PUBLIC AUCTION

SATURDAY, MAY 19, 1990 at 1:00 P.M.

RARITIES OF THE WORLD

UNITED STATES

AUTOGRAPHS ADAMS, LINCOLN

- 1 ☒ **J(ohn) Q(uincy) Adams. Presidential Frank** on 1837 folded letter, "Washn. City, Mar 2" pmk., straight line "Free", Fine, with P.S.E. Certificate **E. 500-750**
- 2 **Abraham Lincoln**, Two Page December 1858 Legal Brief Filed With the Circuit Court of "Champaign" County, **Written Entirely in Lincoln's hand and signed "A. Lincoln" in three places**, "Lincoln" appears twice again as part of "Lincoln and Herndon" Law Partnership, separated vertically, weak at horizontal folds with some separation, Signatures Unaffected, Rare Autograph Item **E. 10,000-20,000**

STAMPLESS COVERS

- 3 ☒ **Mendon, Mss.**, Fancy Bold Clear Strike in Red Oval, Solid Sawteeth over upper half & Matching ms. 6 on Neat 1832 Folded Letter to Grafton, Very Fine, The Best of Four Known **E. 500-750**
- 4 ☒ **Panama N.Y. Jul 21**, Bold Strike, "Steamship 30 Cts." on neat folded letter to Philadelphia, This is the Latest Known Usage of this Rare Panama N.Y. Marking, De Voss reports Jul. 10 as the latest usage & less than ten known examples, Very Fine, with P.F. Certificate **E. 1,000-1,500**
- 5 ☒ **Steampacket Columbia**, Bold two line strike, matching Oval "Sam. Ricker Jr., New Orleans, Agent of the Texas Post Office" ms. "prepaid in the N States 25c, Free from this place, Galveston, Mch 5/38" on back of 1838 folded letter to Houston, Texas, Blue Philadelphia pmk., ms. "25", Very Fine, Rare Texas Republic Cover, with P.F. Certificate .. **E. 500**

POSTMASTERS' PROVISIONALS

- 6 **5c Bluish, Signed RHM (9X1b)**. Wonderfully Fresh, Clear to Large Margins, Very Fine, An Outstanding Example of This Rarity, One of the Finest Known, with P.F. Certificate **2,250.00**
- 7 ★ **New York, N.Y. 5c Black on Bluish (9X1)**. Horizontal Pair, Remarkably Fresh, o.g., h.r., right stamp tiny corner crease, o/w Very Fine Pair, Ex-Caspary, with P.F. Certificate **2,000.00**
- 8 ☒ **5c Bluish (9X1). Pair**, Clear to Ample Margins, except just touching at top left, tied by pen cancel on folded letter sheet, Red New York Dec. 10 (1845) pmk. & "Paid", Attractive & Fine, with P.F. Certificate .. **1,250.00**



Mr. John D. Wheeler

Grafton
Mass.

3

Received July 14, 1850.



Mrs. Dr. Caspar Wistar
No 184 Arch St.
Philadelphia
U. S.

4

William Jackson and
for, Manager of Atlantic
Steam Line
Alincola
for Disbursements
McClernand and Pratt
W. Davis Judge
According to them

2



J. L. Adams

Miss Anna P. Mc Knight

1

Care of Mr. Smith 181 South 6th St.

The only question for the court to determine
is whether the said stream is navigable - If
they decide it is a navigable stream within the
meaning of the law then plaintiff cannot collect
any damages; but if they decide the stream to be a
not navigable stream then plaintiff may be given a judgment
in the full amount of money petitioned for.

Alincola



RETURNS TO THE POST OFFICE

STEAM PACKET
COLUMBIA

5



8

PAID



Mrs. J. J. Porter



PAID

11



23

Map. Owen & Burthe
South Sea
Map.



24



J. M. Hughes Esq.
Attorney at Law
Pottsville, Pa.

- 9 ★ **Providence, R.I., 5c, 10c Black Se-Tenant Pair (10X2a).** Fresh & Extremely Fine with P.F. Certificate for the Complete Sheet from which the Pair came 1,300.00
- 10 **St. Louis, Mo., 10c Black on Gray Lilac (11X5).** Outstandingly Large Margins, Neat Light ms. cancel, tiny pinhole and couple negligible corner creases, Beautiful Extremely Fine Appearance 1,750.00
- 11 ☒ **St. Louis, Mo., 10c Gray Lilac (11X5).** Pre-printing fold, Clear to Large Margins except just in at top right, tied by Bold Red St. Louis Apr. 28 (1846) pmk., ms. cancel on Charnley & Whalen folded letter to Philadelphia, Red "Paid" ms. "10", Clean & Fine, with P.F. Certificate 2,750.00

1847 ISSUE



- 12 E **5c Black, 10c Black (28E-A, 29E-A). Unique Essays,** 5c Black, Original Model for 5c 1847. Engraved vignette mounted on frame & some lettering on frame engraved; remainder of frame is a wash drawing on cardboard, light back staining from mounting & tiny spot on forehead, Unique. A Great Rarity. 10c Black, Original Model for 10c 1847, Post Office & Five Cents Engraved as on 28E-A, U & S in top corners & X drawn in both lower corners in black ink, remainder of frame is a wash drawing on cardboard. Light backstaining from mounting. Unique, a Great Rarity E. 15,000-20,000

"E." = ESTIMATES

Our sales offer many covers, cancellations, varieties and other items for which there is no catalogue value or where catalogue value does not reflect the actual value. In order to assist our clients, we are placing a fair net valuation on such lots as a guide to our bidders. Lots may actually realize more or less than our estimates, which are under no circumstances to be considered reserves but merely a guide to bidding.



13

14

15

16

18

- 13 ★ **5c Dark Brown (1a).** Large Margins, Fresh, Extremely Fine, with P.F. Certificate 4,500.00
- 14 ★ **5c Red Brown (1).** Ample, Beautifully Balanced Margins, o.g., tiny trivial paper inclusion, Very Fine, with P.F. Certificate 4,500.00
- 15 ★ **5c Red Brown (1).** Incredibly Fresh, Deep Color, Crisp Impression, Large Margins to just clear at couple points, Fine, with P.F. Certificate 4,500.00
- 16 ★ **5c Dark Brown (1a).** Clear to Ample Margins, Rich Bright Color Fresh, Fine, with P.F. Certificate 4,500.00



17



19

- 17 ★ **5c Brown (1).** Ample to Huge Margins incl. T.L. Sheet Corner, Wonderful Rich Color, Sharp Impression, Fresh, part o.g., small spot of brown gum on back, o/w Extremely Fine Beautiful Stamp, ex West ... 4,500.00
- 18 ★ **5c Red Brown (1).** Full o.g., small hinge remnant, Mostly Large Margins (closer but easily clearing top left). few very minor flaws (slight creasing from gum cracks, tiny marginal scissors cut bottom right and just a bit of soiling), otherwise Very Fine, with P.F. Certificate 4,500.00
- 19 ★ **5c Dark Brown (1a).** Left Margin Horizontal Strip of Three, Full o.g., Fresh Bright Color, Sharp Impression, touching to just in at Top & light creasing, o/w Fine, Scarce Piece, with P.F. Certificate 16,500.00
- 20 ★ **5c Red Brown (1).** Horizontal Strip of Three, Margins All Around (Mostly Large Except at Top), o.g., Each Stamp with light vertical creases ending in small tears, Fine Appearance, A Very Rare Multiple, with P.F. Certificate 16,500.00

- 21 田 **5c Brown (1). Block**, Large Margins to touching or barely in on two stamps, ms. cancel removed, but reasonably good color & impression, faults (top stamps repaired), **Extremely Rare & Impressive Multiple**, (Used Blocks with non-ms. cancel cat. \$30,000.00), with P.F. Certificate —
- 22 **5c Red Brown (1). Horizontal Pair**, Enormous Margins Including Parts of Four Other Stamps, Light Blue Town Cancels, A Wonderfully Choice "Gem", Extremely Fine, with P.F. Certificate 1,600.00
- 23 ☒ **5c Brown (1).** Ample to Huge Margins, Tied on Folded Letter by Reading Seven Bar Grid in Red, Unique on Cover, Choice, Very Fine Showpiece **E. 1,000-1,500**
- 24 ☒ **5c Dark Brown (1a).** Ample to Huge Margins, 3mm Sheet Margin at Right tied by Red Rectangular New York Grid on Folded Letter to Mass., Cyrus W. Field corner card, ex Grunin, Very Fine Showpiece .. **E. 1,000-1,500**
- 25 ☒ **5c Orange Brown (1b).** Horizontal Pair, Large Margins, Tied by Blue Grids on Wilmington N.C. Folded Letter to Boston, Extremely Fine & Choice **E. 1,500-2,000**



26



27

- 26 ★ **10c Black (2).** Ample margins, shallow thins do not detract from the Very Fine appearance of this Rarity, with S.P.A. Certificate 18,500.00
- 27 ★ **10c Black (2). Horizontal Pair**, o.g., Large to Huge Margins, Bold Fresh Color & Sharp Impression, L. Stamp light crease & thin speck, other Very Fine, Rare Pair, with P.F. Certificate 40,000.00
- 28 **10c Black (2).** Huge Margins All Around incl. Part of Next Stamp at Bottom, Red grid, Extremely Fine 2,000.00
- 29 **10c Black (2).** Very Large to Huge Margins incl. Part of Next Stamp at Right, Neat Light Red Grid Cancel, Extremely Fine, with P.F. Certificate 2,000.00
- 30 **10c Black (2).** Neat Red Grid Cancel, Very Fresh, Sharp, Intense Impression, Ample to Large Margins, Very Fine & Exceptionally Lovely, with P.F. Certificate 2,000.00
- 31 **10c Black (2).** Large Margins, Recut Error Pos. 94R, Large Red "10" in Circle cancel, Very Fine, Rare Position 2,000.00

- 32 **10c Black (2). Horizontal Pair**, Ample to Large Margins, just in at tip of U.L., Left Stamp with light crease, Reddish Brown **New Brunswick** Grid Cancel, Unlisted in Scott as New Brunswick did not get stamps until 1851. This item must represent a demonetized usage. One of the rarest and most exotic uses of the 10c 1847, with P.F. Certificate E. **2,000-3,000**
- 33 ☒ **10c Black (2).** Large to Immense Margins Showing Portions of Next Stamps at Top and Bottom, tied by Red Square Grid, matching "New York Oct 21" pmk. on Fresh 1850 Cover to **Canada**; Red Montreal backstamp, Extremely Fine, with Friedl Certificate 2,350.00
- 34 ☒ **10c Black (2).** Ample to Large Margins, except just clear at bottom left, tied by Red Grid, matching New York Jul. 23, 1847 pmk. on folded letter, slightly trimmed, Fine, Only Two Earlier July 1847 Covers Known, with A.P.S. Certificate 2,350.00+

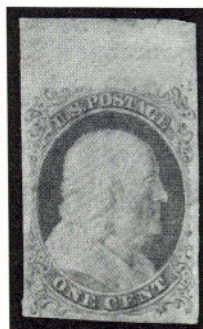


- 35 ★田 **5c Red Brown, 10c Black, Reproduction (3, 4).** Vert. Blocks of Six, Large Margins all around, No. 3 trivial light thins & small stain between Bottom pair, o/w Extremely Fine, Magnificent Showpiece of Great Rarity 25,750.00
- 36 ★ **10c Black, Reproduction (4).** Ample to Large Margins Very Fine, with P.F. Certificate 1,700.00

VALUATIONS

Upon request estimate of value furnished on any lots in this auction.

1851 ISSUE



37



38



39



41

- 37 ★ **1c Blue, Ty. Ib (5A).** Position 8RIE, Huge 8mm Top Sheet Margin Single, Large Margins Other Three Sides except barely into plume at bottom left, Typical Light Blue Plate One Early Color, disturbed slightly toned o.g., paper wrinkle, Attractive & Extremely Rare, Only a Few Unused Examples Exist 13,000.00
- 38 **1c Blue, Ty. Ib (5A).** Position 8RIE, Large Margins, Neat Town pmk., An Extremely Fine Example of This Rare Type 4,750.00
- 39 **1c Blue, Ty. Ib (5A).** Position 8RIE, Mostly Very Large Margins including Ample Part of Next Stamp at Left and Sheet Margin at Top (just touches top right). Light Town pmk., Wonderfully Choice, Extremely Fine, with P.F. Certificate 4,750.00
- 40 ☒ **1c Blue, Ty. Ib, II (5A, 7). Horizontal Combination Strip of Three, Positions 1RIE-3RIE,** Huge Sheet Margins to just in at bottom left, tied by Blue Pa. pmks. on cover to Virginia, tiny tear at bottom right of Ty. Ib stamp, slight cover waterstain, Still Most Attractive & Rare, with Dr. Chase notes on back, P.F. Certificate **E. 3,000-4,000**
- 41 **1c Blue, Ty. Ia (6).** Ample to Huge Margins, just in at bottom left scroll, Type clearly shows, Town cancel, light crease, o/w Fine, with P.F. & P.S.E. Certificates 5,500.00
- 42 ★田 **1c Blue, Ty. II (7). Block,** Position 61-62, 71-72R2, Mostly Large Margins Including Sheet Margin at Left (Clearing at Top), o.g. (faint gum bend at bottom), lightly hinged, Bright Fresh Color, A Lovely Block, Very Fine, with P.F. Certificate 2,100.00



43



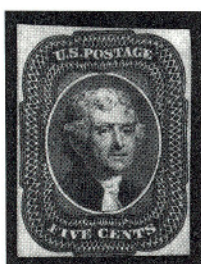
45



47

- 43 **1c Blue, Ty. II, Position 41L2, Chicago Private Perf. (7 var).** Chicago Dec. Town pmk., reperfed at left, tiny corner crease at top right, Decent Centering for This, Fine appearance & Quite Rare, with P.F. Certificate 2,500.00
- 44 **1c Blue, Ty. II, IIIa (7, 8A). Horizontal Combination Strip of Three,** Middle Stamp Ty. II, End Stamps Ty. IIIa (Positions 15R1E-17R1E), Neat Red "Paid" cancels, Amazingly Fresh, Ample to Huge Margins except just touching at bottom, tiny scissors cut at bottom between right stamps, Very Fine, with P.F. Certificate 1,275.00 +
- 45 ★ **1c Blue, Ty. III (8).** Fresh o.g., h.r., Margins to barely close at top left, Very Fine, Rare Unused Stamp with P.F. Certificate 7,500.00
- 46 ☒ **1c Blue, Ty. IIIa (8A).** Wonderfully Wide Margins (Well Clear All Around and With Parts of Two Other Stamps), Lightly Tied by Town Pmk. on Immaculate Jackson, Mich. Drop Cover, Gorgeous Extremely Fine "Gem," with Two P.F. Certificates 850.00
- 47 **1c Blue, Ty. IIIa (8A).** Remarkably Fresh, Light Cancel, Large to Huge Margins, An Outstanding "Gem", with P.F. Certificate 575.00
- 48 ☐ **1c Blue, Ty. IIIa (8A). Block,** Positions 42, 43, 52, 53R4. Clear to Large Margins, just touching at top and right, Mobile Alabama pmks., two small corner creases, Fine Rare Block, signed Ashbrook with P.F. Certificate 6,000.00
- 49 ★☐ **1c Blue, Ty. IV (9). Block of Eighty Two, Unique, From The Left Pane of Plate One Late.** Nearly full top and left sheet margins (position one has been reattached and its margins are now only "huge") showing complete left imprint and plate "No. 1." The stamps are a beautiful deep rich color. There are a few light creases between rows, positions 10 and 30 have creases ending in tears, three stamps have negligible surface scuffs and there is a margin thin just affecting position 81, otherwise EXTREMELY FINE, the **largest known** multiple from the left pane of plate one late, Ex. Neinken **E. 50,000-75,000**
- 50 **1c Blue, Ty. IV (9). Vertical Strip of Three,** Neat Blue Cancels, Gigantic Margins with Wide Sheet Margin at Right, Showing Parts of Adjoining Stamps at Top, Bottom & Left, An Incredible Piece, with P.F. Certificate for Strip of Four from which these are the bottom three stamps 265.00
- 51 ★ **3c Orange Brown (10).** O.g. Ample to Wide Margins Fresh Color, Very Fine & Choice 1,100.00

- 52 ☒ **3c Dull Red, Unofficial Perf. 12½ (11 var).** Tied by Bold Chicago, Ill. Feb. 5, 1857 pmk. on Fresh Buff Cover with Embossed Corner Card, some perfs. trimmed at right, o/w Fine, Scarce, with P.F. Certificate **E. 1,000-1,500**
- 53 ☒ **3c Dull Red (11).** Tied by Boston "Paid" on Small Cover, Letter written in Damascus May 11, 1857 and forwarded by J. M. Gordon AB.C. F.M. Boston in Double Oval on back, with Small Full Strike **Beirut May 11, 1857 Straight Line** pmk. on Front, Very Rare, only Four Known . **E. 1,000-1,500**
- 54 ☒ **3c Dull Red (11). Vertical Pair,** Large Side Margins including Sheet Margin at Right, Beautifully tied by "New-York Ship" pmk. on Cover to Maine, Light but Clear Handstamp "**Via Nicaragua/Ahead of the Mails**", Very Fine, a Gem From the Haas Collection, with P.F. Certificate **E. 1,000-1,500**



55



56



57

- 55 ★ **5c Red Brown (12).** Three Clear Margins, just touching at bottom, Fresh Color & Impression, Fine, with P.F. Certificate **9,500.00**
- 56 ★ **5c Red Brown (12).** Bottom Left Sheet Corner Margin Single, Pos. 91L, Ample Margin at Right, slightly in at top, Extraordinarily Fresh, Full o.g., small faint corner crease at top left, A Spectacular Example of This Very Rare Unused Stamp, with P.F. Certificate for Pair which notes "some light soiling" which is an undue comment **9,500.00**
- 57 ★ **5c Red Brown (12). Horizontal Pair,** Large to Huge Margins, Bold Impression & Rich Dark Color, tiny thin speck left stamp, Extremely Fine appearance, Rare Pair **20,000.00**

BIDDING INTERVALS

BIDS	ADVANCE	BIDS	ADVANCE
\$750 - \$1,950	\$50.00	\$15,000 - \$29,000	\$1,000
\$2,000 - \$2,900	\$100.00	\$30,000 - \$72,500	\$2,500
\$3,000 - \$7,250	\$250.00	\$75,000 - \$145,000	\$5,000
\$7,500 - \$14,500	\$500.00	\$150,000 - \$290,000	\$10,000

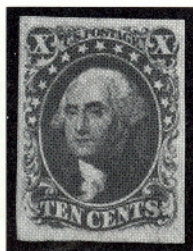
Bids which do not conform to the above will be automatically reduced to the appropriate level.



58



59



61



64

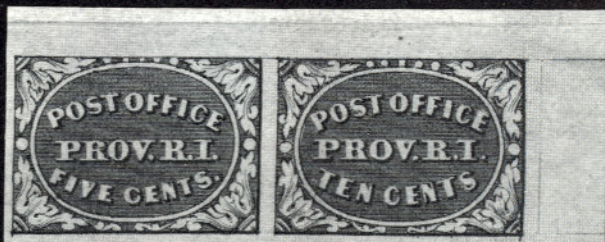


65

- 58 **5c Red Brown (12).** Extraordinarily Wide, Perfectly Balanced Margins, Deep Rich Color, Light Cleveland, O. pmk., Wonderfully Choice, Extremely Fine, with P.F. Certificate 1,300.00
- 59 **5c Red Brown (12).** Outstandingly Wide "Jumbo" Margins Including Part of Next Stamp at Top, An Extremely Fine "Gem", with P.F. Certificate 1,300.00
- 60 **10c Green, Ty. I (13). Horizontal Pair,** Very Wide, Even Margins, Blue Grid and Red Transit pmks., faint, barely visible crease bottom right, otherwise Extremely Fine, with P.F. Certificate 1,650.00
- 61 ★ **10c Green, Ty. II (14).** Beautifully Wide Margins, Large Part o.g., Choice, Extremely Fine, with P.F. Certificate 1,700.00
- 62 ★田 **10c Green, Type II (14). Right Corner Margin Block,** Including Position 20R Plate I Double Transfer in Postage, o.g., margins Bold Color & Impression, creases, o/w Very Fine & Choice Position Block, with P.F. Certificate 9,000.00
- 63 田 **10c Green, Ty. II, III (14, 15). Combination Block of Nine,** Ty. III at Top and Bottom, Ty. II in Center, Wide Margins Almost All Around (just touches bottom right), lightened ms. cancel, small faults, Attractive Very Fine Appearance, A Very Rare Block **E. 5,000-7,500**
- 64 ★ **10c Green, Ty. III (15).** Full Fresh o.g., Bright Deep Color, Ample to Wide Margins, Very Fine 1,750.00
- 65 ★ **10c Green, Ty. III (15).** Wonderfully Fresh, Nice Impression, Ample to Large Margins, Very Fine, with P.F. Certificates 1,750.00
- 66 **10c Green, Ty. IV (16).** Position 86L (Recut at Top), Huge Margins Including Part of Next Stamp at Right, Neat Town pmk., An Outstandingly Choice "Gem", Extremely Fine, with P.F. Certificate 1,525.00
- 67 ★田 **12c Black (17). Block,** Enormous Margins All Around Including Sheet Margin at Left and Part of Next Stamp at Bottom, Part o.g., Expertly Repaired, Extremely Fine Appearance, A Rare Block 11,000.00
- 68 匣 **12c Black, Diagonal Half Used as 6c (17c).** Tied by San Francisco, Cal. pmk. on neat folded letter sheet to New York, Fine 5,500.00



7



9



6



10



20



22



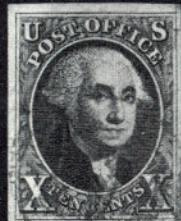
28



29



30



31



32



36



50



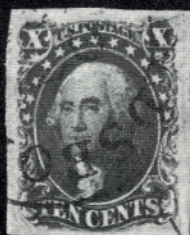
44



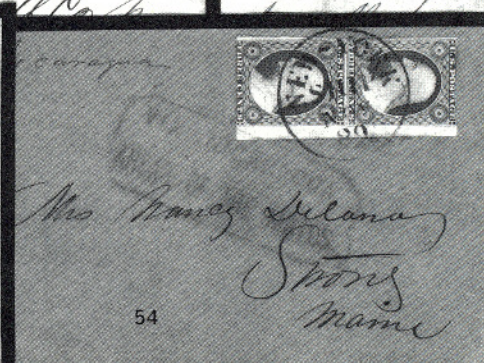
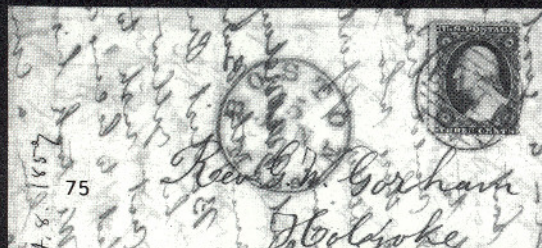
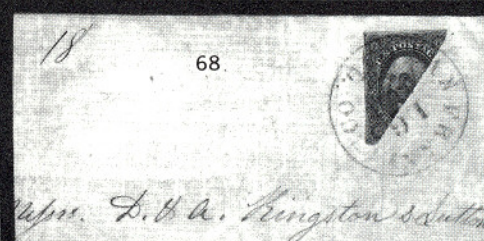
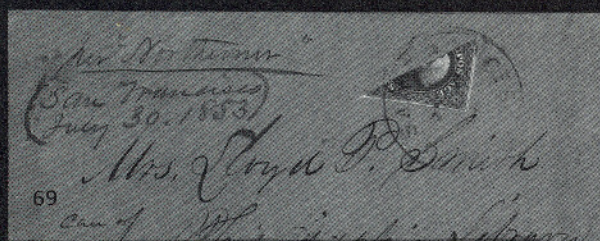
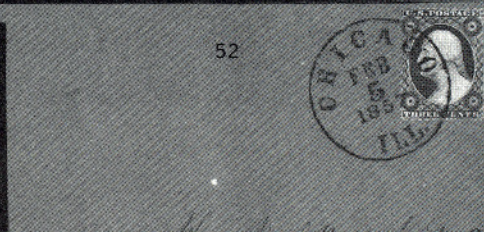
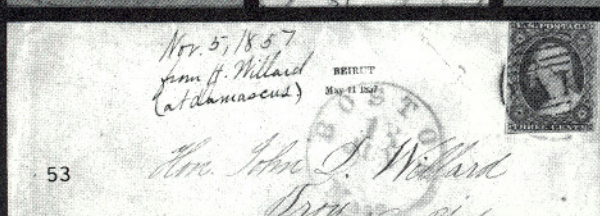
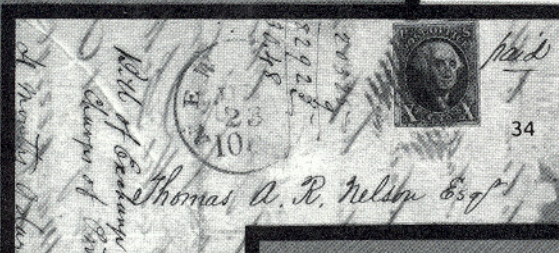
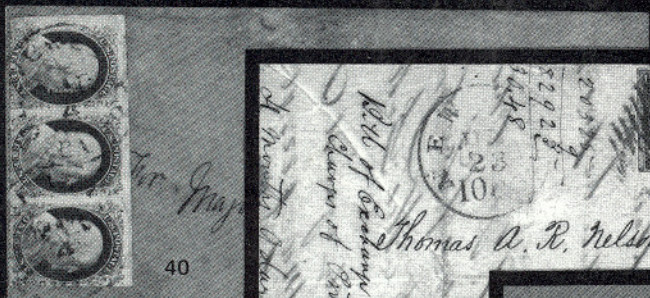
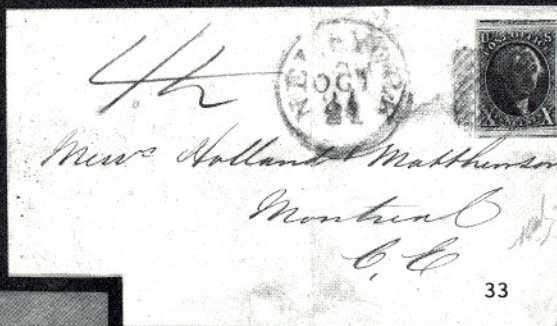
51



60



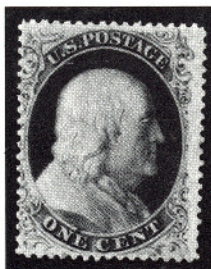
66



- 69 ☒ **12c Black, Diagonal Half Used as 6c (17a).** Tied by San Francisco pmk., ms. "Per Northerner" on 1853 amber cover to Philadelphia, some slight cover edge wear, Still Quite Attractive & Desireable, with Original Enclosure, P.F. Certificate 5,500.00

1857 ISSUE

- 70 ☒ **1c Blue, Ty. Ia, Plate IV, Position 98R4 (19).** Nice Margins (just in at top, Showing Type Characteristics Clearly), Tied by Boston Grid cancel, minor cover toned spots affect a few perf. tips, o/w Very Fine, signed Ashbrook 3,250.00
- 71 ☒ **1c Blue, Ty. IA, Plate IV (19).** Bottom Sheet Margin Single, perfs. touch to slightly in, some trimmed at top, tied by "Albany, N.Y. Paid" pmk. on Buff Cover, Scarce, signed Ashbrook 3,250.00



- 72 ★ **1c Blue, Ty. III (21).** Fresh Deep Dark Color, Barely visible pinpoint stain, o/w Fine Example of this Rare Stamp with P.F. Certificate for block from which this came 4,250.00
- 73 ★田 **1c Blue, Ty. V (24).** Mint Vertical Block of Eight, Beautifully Centered Throughout, Quite Fresh, Extremely Fine, A Choice Multiple, with P.F. Certificate 950.00



- 74 **1c Blue, Ty. V and 3c Dull Red, Ty. II (24, 26).** Two of Latter, "Tied" Together by Clearly Struck Old Stamps Not Recognized Handstamp (Indicating Late use from Philadelphia), Very Fine, with Two P.F. Certificates E. 2,000-2,500
- 75 ☒ **3c Dull Red, Ty. II (26).** Folded Letter written in Burma Oct 8, 1857, Red Oval "Four from Baptist Miss Rooms Boston" on back to Boston, Large Boston Paid ties Stamp & Red Boston pmk. Very Fine & Rare Cover E. 1,000-1,500



21



42



73



48



67



62



63



- 76 ★田 **3c Red, Ty. I (25). Block**, Rich Vivid Color, Fresh, o.g., lightly hinged, tiny thin spot in T.L. stamp, o/w Very Fine, Handsome & Very Rare Block in this Condition, Ex-Caspary, Lilly 3,250.00



77



78



81

- 77 ★ **5c Brick Red (27). Fresh Full o.g., Nice Color, Fine, Rare Unused, with P.F. Certificate** 7,500.00
- 78 **5c Brick Red (27). Perfectly Centered Within Extraordinarily Wide Margins for This Issue, Lightly Cancelled, Very Fresh, An Extremely Fine "Gem," with P.F. Certificate** 1,000.00
- 79 **5c Brick Red (27). Vertical Pair, Town cancels, Quite Fresh & Remarkably Well Centered, Very Fine, with P.F. Certificate for Strip of Three from which these are the top two stamps** 2,100.00

Due to the tremendous demand on our phones and staff, Prices Realized will not be available by telephone until 24 hours after the sale.



80

84

- 80 ☒ **5c Brick Red (27). Vertical Strip of Three**, tied by New Orleans pmks. on 1859 folded letter to France, Red New York "Paid 12," Very Fine, Rare Multiple on Cover, with P.F. Certificate E. 2,000-3,000
- 81 **5c Indian Red (28A). Three Large Margins**, Deep Rich True Color, light Town pmk., Fine, with P.F. Certificate for Vertical Pair from which this is the Top Stamp 1,500.00
- 82 ☒ **5c Indian Red (28A). Vertical Strip of Three**, Vivid, Beautiful Color, reperfed at top, tied by "New Orleans, La." pmks. on small neat cover to France, Red New York "Paid 12" & French transits, Fine, attractive & Rare Cover, ex-Casparly 4,750.00 +
- 83 ★ **5c Brown (29). Fresh**, Full o.g. Dark Color, Well Centered, Very Fine, with P.F. Certificate 750.00
- 84 ☒ **5c Brown (29). Tied by Annapolis, Md. July 4, 1859 pmk.** on Cover to Sardinia, additional "New 6 York Jul 6" & "Et Unis Serv. Br. R.C. 16 Jul 59" in Double Circle on Front, Various receivers on back. Stamp with negligible toning at bottom right, trivial in light of the fact that this is **The Earliest Known Usage** of this Stamp E. 2,000-3,000

- 85 **5c Orange Brown (30). Steam Ship** cancel, Unusually Large Margins, Fresh, Fine, Very Rare with this cancel, with PSE Certificate 1,010.00
- 86 ✉ **Overland Mail, Via Los Angeles, Imprint Above Illustrated "Choo Choo" Corner Card** on Fresh 1859 Yellow Cover to Ohio, **10c Green Ty. II (32)** tied by "San Francisco Cal" pmk., without flap, Exceptionally Fine, Rare, ex-Knapp, with P.F. Certificate E. 1,000-1,500
- 87 **10c Green, Ty. III (34). Recut at Top & Bottom, Position 64L1**, Tied on piece by nice strike of Star within Star, Very Fine & Quite Attractive, with P.F. Certificate 1,650.00 +



90



88

- 88 ★田 **24c Gray Lilac (37). Block**, o.g., Fresh & Bright, Lovely Centering for This Difficult Issue, Very Fine, Ex-Moody, with P.F. Certificate 3,000.00
- 89 ★ **30c Orange (38). Fresh**, o.g., Magnificent Centering for This Difficult Issue, Extremely Fine, with P.F. Certificate 750.00
- 90 ★ **30c Orange 1857 Issue (38a). Imperforate Pair**, Full o.g., tiny h.r., Large Margins except just touching at bottom, trifling corner crease, Fine, Only Three Pairs Known, with P.F. Certificate 6,000.00
- 91 ✉ **30c Orange (38). Fine**, tied by San Francisco, Cal. Sept. 2, 1861 pmk., Red Cork on cover to London, Tear lower left, small piece of back missing but an example of Rare Usage of 30c Orange to pay the 29c rate from the Pacific Coast to a foreign country, signed Ashbrook, with B.P.A. & P.F. Certificates 2,250.00

Extension Lots must be paid for on receipt. In the event of an unsatisfactory certificate, payment will be refunded with interest at Treasury Bill rate.



- 92 ☒ **30c Orange (38).** Well-centered, Used with 5c Brown, Ty. II (30A) and 10c Green, Ty. V (35), tied by Large "Paid" in Grid on Aug. 10, 1860 Augustine Heard Folded Letter to **Shanghai China**, Red "Paid London," Red Crayon "24" Credit, "**Boston Am. Pkt. Aug 10**" Backstamp, Red manuscript "No 2" (second Heard cover to China), 5c small surface scuff, nevertheless Remarkably Handsome and Rare, Used **Two Days After Earliest Date Indicated in Scott.** A Very Important Postal History Cover, ex-Haas, with Friedl Certificate **E. 4,000-6,000**

- 93 ★ **90c Blue (39).** Mint, Fresh & Very Fine **1,450.00**

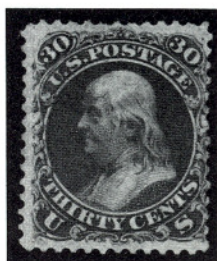
REPRINTS OF 1857 ISSUE

- 94 ★ **3c Scarlet, Reprint (41).** Fresh, Bright Color, Nicely Centered, Very Fine for this **2,850.00**
- 95 ★ **5c Orange Brown, Reprint (42).** Rich Bright Color, Well-centered, Very Fine, with P.F. Certificate **950.00**
- 96 ★ **10c Blue Green, Reprint (43).** Fresh, Fine, with P.F. Certificate **2,250.00**
- 97 ★ **12c Greenish Black, Reprint (44).** Fresh, Well-centered, Very Fine .. **2,600.00**
- 98 ★ **24c Blackish Violet, Reprint (45).** Intense Dark Color, Perfectly Centered, Extremely Fine with P.F. Certificate **2,850.00**
- 99 ★ **30c Yellow Orange, Reprint (46).** Fresh & Fine **2,850.00**

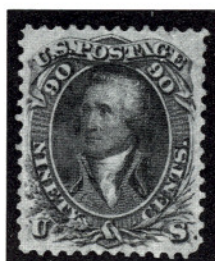
- 100 ★ **30c Yellow Orange, Reprint (46).** Very Fresh, Bright Color, perfs. scissors separated, Fine with P.F. Certificate 2,850.00
- 101 ★ **90c Deep Blue, Reprint (47).** Very Well Centered, Rich Bright Color, Exceptionally Choice, Very Fine, with Two P.F. Certificates 4,250.00

1861 ISSUE

- 102 ★ **3c Brown Rose, "First Design" (56).** Very Fresh, Full o.g., Fabulous Centering, An Extremely Fine "Gem," with P.F. Certificate for Block from which this is the top right stamp 700.00



103



104

- 103 ★ **30c Red Orange, "First Design" (61).** Fresh, Brilliant, Deep Color, large part o.g., thin spot, o/w Very Fine for This Rarity 16,000.00
- 104 ★ **90c Dull Blue, "First Design" (62).** Rich Color, Perfectly Centered, small trivial natural inclusion and expertly repaired thin, A Gorgeous, Extremely Fine Appearing Example of This Great Rarity 20,000.00
- 105 **10c Dark Green, "First Design" (62B).** Neat Red Town cancel, Fabulous Centering for This Difficult Issue, Extremely Fine, with P.F. Certificate 500.00
- 106 P **1c-90c 1861 Issue, Small Die Proofs (63P2, 66P2, 68P2, 69P2, 71P2, 72P2, 73P2, 76P2-78P2).** Complete Set on Full Gray Card from a Roosevelt Album, Very Fine 4,250.00
- 107 ★ **3c Pink (64).** Fresh Lovely Color, Perfectly Centered, Extremely Fine, with P.F. Certificate 3,500.00
- 108 ★ **3c Pink (64).** Large Part o.g. (some album adherences), Bright True Color, Very Well Centered, slight thinning, o/w Very Fine, with P.F. Certificate 3,500.00
- 109 ★ **3c Pink (64).** Bright True Color, o.g., trivial tiny corner crease and perfs. at left just a bit rough, otherwise Fine, with P.F. Certificate 3,500.00
- 110 ☒ **3c Rose (65).** Centered to left, tied by Clear Strike of Corry, Pa. Eagle & Shield on cover to New York, Fine, a Lovely Example of This Ever-Popular Fancy Cancel E. 750-1,000



111

112

- 111 ☒ **3c Rose (65).** Average, tied by Bold strike of **Port Royal, S.C.** "Fighting Cat" on cover to New Jersey, An Excellent Example of This Classic Postmark, Possibly Unique, Ex-Gramm E. 2,000-2,500
- 112 ☒ **3c Rose (65).** Average, tied by **Bold Eagle Holding May 10, NEW YORK Shield in its Talons with 13 Stars in Curve Above**, ms. "Way 10" at top left, Incredibly Rare, Possibly Unique, as the only other known example is dated May 8th and is on piece E. 3,000-4,000
- 113 ☒ **3c Rose (65).** Average, tied by **Large Blue Uncle Sam Thumbing His Nose cancel**, matching "Battleboro Vt. Oct 22" Double Circle pmk. on Cover to Boston, neat 1866 docketing at right, One of the Most Fantastic Fancy Cancels Known of which, to our knowledge **Only Two Exist** E. 3,000-4,000
- 114 ☒ **Magnus Patriotic Cover**, Multicolor Overall with Gen. McClellan & Gen. Banks framed, surrounded by soldiers & sailors, 3c Rose (65) tied by Black Grid, matching Concord, N.H. pmk. on reverse, Very Fine, Scarce E. 500-750
- 115 ☒ **Magnus Patriotic Cover**, Potomac Army Multicolor Overall with Gen. McClellan & Gen. Banks framed by Zouaves & Flowers, 3c Rose (65) tied by Annapolis Junction, Md. pmk., opened at three sides, Very Fine & Scarce E. 500-750
- 116 ★ **5c Buff (67).** Very Well-centered, Rich Fresh Color, o.g., reperfed at Right, o/w Very Fine, with P.F. Certificate 4,000.00
- 117 ★ **5c Buff (67).** Part o.g., Well Centered, trivial corner perf. crease, o/w Very Fine, Rare Unused with P.F. Certificate 4,000.00



83



85



87



79



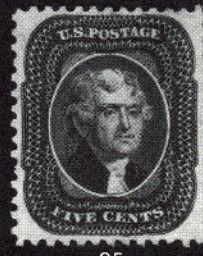
89



93



94



95



96



97



98



99



100



101



102



105



107



108



109



116



117



118



119

82

91

W. H. G. Allip
Post Office
Haverhill

SAN
CAL
JUL 10 1891

U.S. POSTAGE

113

Jane Macintosh Esq
Box of Mrs A.G. & G.B. James
Mrs.

1502

Post Office
Keele Staffordshire

25544-1866

Wm L. Hume

Care of
 Merchants
 95 Bman
 110
 A. P. Messenger
 CHICAGO
 27
 PA.
 U.S. POSTAGE

114

M. C. 1864

126

6
Ms.
48
Archibut & Co
Hong Kong
China. 122

- 118 ★ **24c Steel Blue (70b).** Wide Handsome Margins, Deep Color, o.g., lightly hinged, small imperceptible crease and small toned spot (visible almost entirely from back only), o/w Very Fine, with P.F. Certificate . 3,000.00
- 119 ★ **24c Steel Blue (70b).** Near Perfect Centering, o.g., light horizontal crease and color minimally affected, o/w Extremely Fine 3,500.00



120

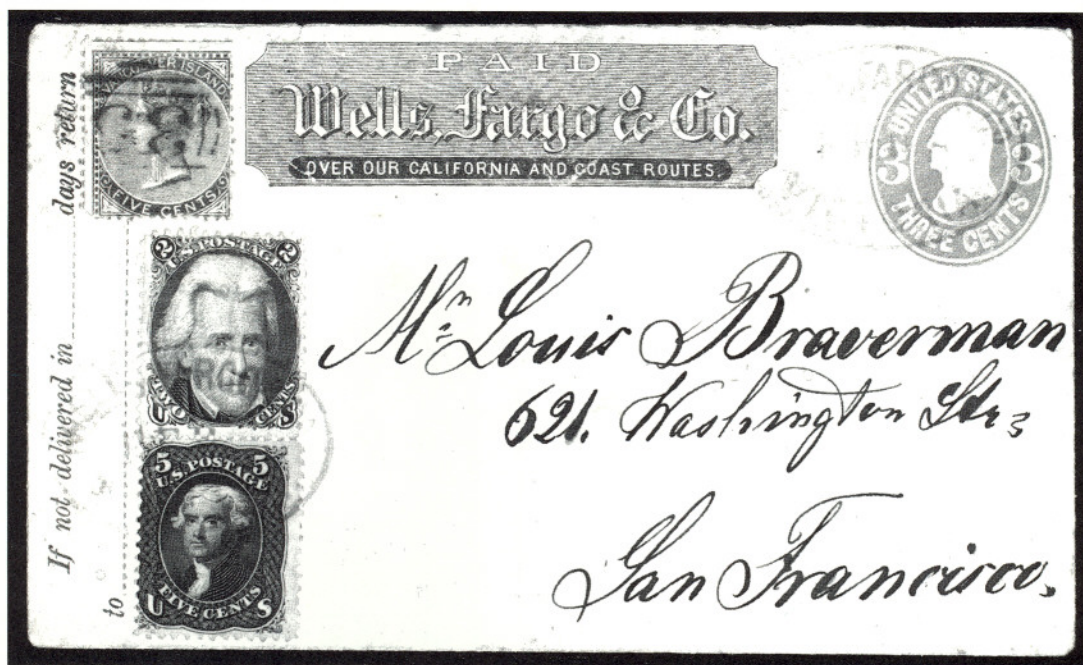


123

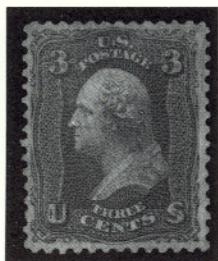


124

- 120 ★ **24c Violet (70c).** Deep True Color, o.g., perfs. close at right, Fine, Scarce, with P.F. Certificate 3,500.00
- 121 **24c Grayish Lilac (70d).** Vertical Pair, tied on small piece by clear Blue Cincinnati pmk. & grid cancels, Lovely Color, Very Fine, Ex-Newbury, with P.F. Certificate 550.00 +
- 122 ☒ **24c Red Lilac (70), 30c Orange (71).** Rich Colors, perfs. just in on both, tied by Crossroads cancels on 1863 folded letter to Hong Kong, China, Red London "Paid" transit. Red 1d, ms. 48 & "Overland Mail via Marseilles," Red "N.YorkBr.Pkt.Paid" & Blue "Hong Kong Fe. 11, '64" arrival marking, Very Attractive, Very Fine Cover E. 1,000-1,500
- 123 ★ **90c Blue (72).** Fresh Full o.g., h.r., Four Wide Even Margins, Extremely Fine Beautiful Stamp 1,200.00
- 124 ★田 **90c Blue (72).** Block, Incredibly Fresh, Deep Color, o.g., faint internal creases, Fine-Very Fine, with P.F. Certificate 6,250.00
- 125 田 **90c Blue (72).** Block of 12 (4x3), A Very Striking & Very Rare Multiple, about Fine, with P.F. Certificate 6,100.00 +
- 126 ☒ **2c Black, Vertical Pair, Bottom stamp Diagonal Bisect (73, 73a), Horizontal Pair, Left stamp Vertical Bisect (73, 73a).** First faintly tied, latter ms. tied on respective covers to Pennsylvania, first with filing fold, bit reduced at left, accounting marks on face, o/w Fine, signed Sloane, latter Fine, each with P.F. Certificate 3,300.00



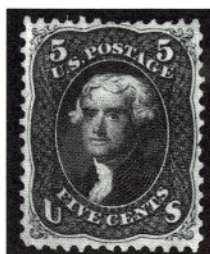
- 127 **2c Black (73), 5c Brown (76).** Tied by Blue oval "Wells, Fargo & Co., Feb. 8, Victoria" pmk. on U58 Wells, Fargo Frank addressed to San Francisco, Vancouver, Island No. 5 tied by numeral "35" pmk. at left, Very Fine, Handsome E. 1,500-2,000



128



129



130

- 128 ★ **3c Scarlet (74).** Well Centered, Nice Color, Very Fine Scarce 4,500.00
- 129 **3c Scarlet (74).** Fresh, Four horizontal ms. pen strokes, Deep Shade, Fine 1,850.00
- 130 ★ **5c Red Brown (75).** Exceptionally Beautiful Centering, Rich Color, Very Fine and Choice, with P.F. Certificate 1,200.00
- 131 ★ **24c Lilac (78). Block of Nine,** Vivid Color, disturbed o.g., light vertical crease affects left stamps, some toned spots., most on back & bottom right stamp, o/w Very Fine Block with Middle Row Exceptionally Well-centered, Still a Handsome, Rare Multiple, with P.F. Certificate 2,565.00+



121



125



132



133



139



131



196



157

- 132 **Encased Postage, 1c Aerated Bread (1).** Mica Fully Intact, Very Fine, with P.F. Certificate 1,750.00
- 133 **Enclosed Postage 24c Gault (99a).** Mica Fully Intact, Very Fine, with P.F. Certificate, Rare 1,800.00

1867 GRILL ISSUES



134



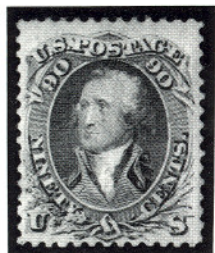
135



141

- 134 ★ **3c Rose, C. Grill (83),** o.g., bit disturbed from hinge removal, Well Centered, Very Fine, Scarce, with P.F. Certificate 1,600.00
- 135 ★ **3c Rose, D. Grill (85).** Beautifully Centered Within Wide Margins, Lovely Bright Color, One of The Finest Existing Examples of This Issue, Extremely Fine, with P.F. Certificate 1,350.00
- 136 **3c Rose, D. Grill (85).** Neat Black Target, Wonderfully Fresh, Sharp Impression, Wide Margins, Extremely Fine 425.00
- 137 ★ **10c Green, E. Grill (89).** Well Defined Grill, Major Part o.g., Fine, with P.F. Certificate 1,200.00
- 138 ★ **12c Black, E. Grill (90).** Fresh o.g., Well-centered, Very Fine 1,400.00
- 139 ★田 **12c Black, E. Grill (90).** Block, Fresh, o.g., h.r., top pair with horizontal crease & tiny thins, Sharp Impression, Rich Color, Very Good & Very Scarce Multiple 7,250.00
- 140 ★ **15c Black, E. Grill (91).** Almost Perfectly Centered, o.g., improved perms. at right, o/w Extremely Fine, Outstandingly Choice Appearance, with P.F. Certificate which mentions "... tiny purple ink spots" 3,000.00
- 141 ★ **15c Black, E. Grill (91).** Top Left Corner Margin Horizontal Pair, Full Fresh o.g., Bold Dark Color, Well Centered, Very Fine & Choice Pair, Rare, ex Caspary 6,100.00
- 142 ★ **24c Gray Lilac, F. Grill (99).** Fresh, Full o.g., Intense Shade, Very Fine 1,250.00

- 143 **24c Gray Lilac, F. Grill (99).** Bright Red Cancel, Fresh, Beautiful Color. Perfs. & Centering Far Above the Norm, An Extremely Fine, Striking "Gem", with P.F. Certificate 500.00



144



145

- 144 ★ **90c Blue, F. Grill (101).** Deep Rich Color, Nearly Full o.g., Fine, with P.F. Certificate 4,000.00
- 145 **90c Blue, F. Grill (101). Horizontal Strip of Four,** Very Well-Centered, Straight-Line "Registered" Cancels Lightly Struck in Blue, small expert repair at left margin and small trivial corner crease at top right, o/w Very Fine, An Attractive and Very Rare Large High Value Multiple, with P.F. Certificate 3,900.00 +

1861 RE-ISSUES

- 146 ★ **2c Black, Re-Issue (103).** Dark Shade, Nearly Full o.g., Fine, with P.F. Certificate 2,500.00
- 147 ★ **3c Brown Red, Re-Issue (103).** Brilliant Rich Color, Fresh, o.g., Very Fine, with P.F. Certificate 3,250.00
- 148 ★ **5c Brown, Re-Issue (105).** Fresh, Full o.g., Nice Margins, Very Fine, with P.F. Certificate 1,800.00
- 149 ★ **5c Brown, Re-Issue (105).** Dark Rich Color, Part o.g., Very Fine, with P.F. Certificate 1,800.00
- 150 ★ **10c Green, Re-Issue (106).** Fresh o.g. Dark Intense Color, Very Fine with P.F. Certificate 2,100.00
- 151 ★ **12c Black, Re-Issue (107).** Fresh, Deep Dark Shade, Very Fine with P.F. Certificate 3,000.00
- 152 ★ **15c Black, Re-Issue (108).** Intense Dark Color, Full Fresh o.g., Well Centered, Very Fine with P.F. Certificate 3,000.00
- 153 ★ **24c Deep Violet, Re-Issue (109).** Large Margins and Exceptionally Choice Centering, o.g., slight toning (entirely on back), o/w Extremely Fine 4,000.00
- 154 ★ **24c Deep Violet, Re-Issue (109).** Dark Intense Color, o.g., Fine with P.F. Certificate 4,000.00

- 155 ★ **30c Brownish Orange, Re-Issue (110).** Fresh Bright Shade, o.g. Very Fine with P.F. Certificate 4,500.00
- 156 ★ **90c Blue, Re-Issue (111).** Brilliant Rich Color, Perfectly Centered, Extremely Fine, Rare 5,750.00

1869 ISSUE

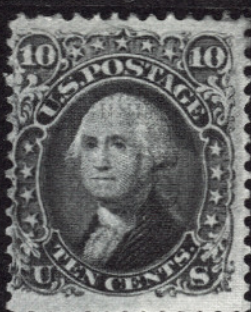
- 157 ★田 **3c Ultramarine (114). Block.** Beautifully Centered, Fresh Full o.g. lightly hinged & Very Fine with P.S.E. Certificate 625.00
- 158 ★田 **3c Ultramarine (114). Mint Top Imprint Plate & No. 26 Block of 25,** minor selvedge faults, few gum bends, Fine, Scarce Pictorial Multiple . 8,935.00+



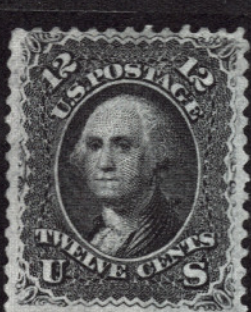
- 159 ☒ **Waterbury "Buttonless Shoe" (Rohloff 0-12),** Clear Strike, along with Mar. 21 (1870) pmk. ties 3c Ultramarine (114) to cover, Attractive & Extremely Rare **E. 2,000-3,000**
- 160 ★ **10c Yellow (116).** Beautifully Centered Within Very Wide Margins, o.g., Lightly hinged, Fresh and Extremely Fine, Extraordinarily Choice, with P.F. Certificate 850.00
- 161 ★ **15c Brown & Blue, Ty. I (118).** Fresh, Well Centered, Very Fine, with P.F. Certificate 1,750.00



136



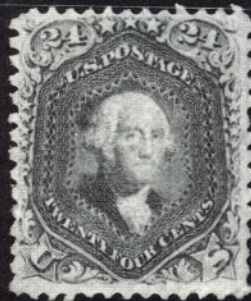
137



138



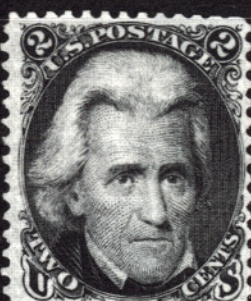
140



142



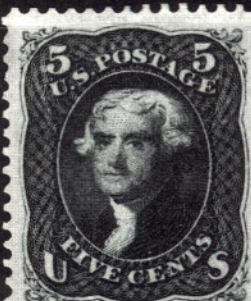
143



146



147



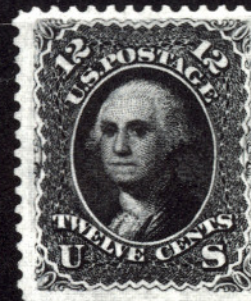
148



149



150



151



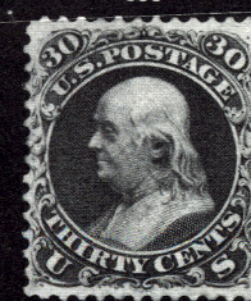
152



153



154



155



156



160



161



163

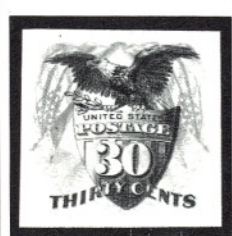


162



167

- 162 **15c Brown & Blue, Ty. II, Center Inverted (119b), defective & repaired, Very Fine Centering** 17,500.00
- 163 ★ **24c Green & Violet (120). Precisely Centered, Vivid Colors, Extremely Fine, Wonderful Stamp** 2,500.00
- 164 ★ **24c Green & Violet (120). Very Well Centered, Large Margins, Rich Colors, Extremely Fine** 2,500.00
- 165 ★ **24c Green & Violet (120). Very Well Centered, Bright Fresh Color, Very Fine, with P.F. Certificate** 2,500.00
- 166 ★ **24c Green & Violet (120). Exceptionally Fresh, Rich Colors, Large Margins, trifling corner crease, Extremely Fine appearance, with P.F. Certificate** 2,500.00
- 167 **24c Green & Violet, Center Inverted (120b). Well Centered, Lightly Cancelled, few small faults (creases, small tear, couple irregular perfs. at bottom), straight edge at top, Appears Almost Very Fine, with P.F. Certificate** 16,500.00
- 168 ✉ **24c Green & Violet, Center Inverted (120b). Perfs. trifle in at bottom, minor wrinkle, Used with 3c Green (147) on domestic usage, large size court house cover, tied by Cork, indistinct town pmk., neat 1874 docketing, stamp lifted & hinged back in place, cover reduced at sides & closed cover tear, The Only Known Cover Franked With a 24c 1869 Invert, Outstanding Rarity with P.F. Certificates** **E. 60,000-75,000**



- 169 P **15c-90c Pictorials, Center Inverted, Plate Proofs on Card (120aP4-122aP4, 129aP4). Very Fine Set, Very Rare** 24,000.00

- 170 ★ **30c Blue & Carmine (121).** Fresh, Lovely Colors, Large Margins, Outstanding Centering, disturbed o.g., Extremely Fine & Choice, with P.F. Certificate 2,250.00
- 171 ★ **30c Blue & Carmine (121).** Mint, Bold Rich Colors, Very Fine & Choice 2,250.00
- 172 ★ **30c Blue & Carmine (121).** Beautifully Centered Within Exceptionally Wide Margins, o.g. (slightly disturbed by hinge removal and by removal of stains from grill), Very Fine 2,250.00
- 173 ★ **30c Blue & Carmine Without Grill (121a).** O.g., h.r. Perfectly Centered, Vivid Colors, Extremely Fine, Scarce 3,750.00



- 174 **30c Blue & Carmine, Flags Inverted (121b).** Fresh, Incredibly Lovely Colors, Perfect Centering, Extremely Fine, One of the Finest Known Examples of This Classic 19th Century Rarity, A Remarkable Showpiece, with P.F. Certificate 45,000.00
- 175 ★ **90c Carmine Rose & Black (122).** Bold Sharp Colors, Full Fresh o.g., very lightly hinged, trivial corner perf. crease, o/w Very Fine 7,000.00
- 176 ★ **90c Carmine & Black (122).** Fresh, Lovely Colors, Large Margins, minute corner crease, o/w Extremely Fine, with P.F. Certificate 7,000.00
- 177 ★ **90c Carmine & Black (122).** Fresh Colors, somewhat disturbed o.g. from hinge removal, Three Large Margins, Fine, with P.F. Certificate . 7,000.00
- 178 ★ **90c Carmine & Black (122).** Outstanding Proof-like Colors, enclosed P.F. Certificate mentions tiny stains on face which in our opinion are natural printers marks, o/w Fine 7,000.00
- 179 ★ **90c Carmine & Black, Without Grill (122a).** Very Handsomely Centered, o.g., somewhat heavy ink notations on gum (do not show on face), Very Fine, An Exceptionally Attractive Example of a Very Rare Variety, with P.F. Certificate 13,500.00
- 180 **90c Carmine & Black 122).** Used, Fresh, Rich Color, Large Wide Margins, Red cancel, Very Fine with P.F. Certificate 1,400.00

1869 RE-ISSUES

181 ★	3c Blue, Re-Issue (125). Fresh, Well Centered, o.g., Very Fine, Scarce	2,750.00
182 ★	3c Blue, Re-Issue (125). Fresh, o.g., Fine	2,750.00
183 ★	10c Yellow, Re-Issue (127). Perfectly Centered Within Exceptionally Wide Margins, Quite Fresh, o.g. (slightly disturbed from hinge removal), Extremely Fine, A "Gem", with P.F. Certificate	1,400.00
184 ★	10c Yellow, Re-Issue (127). Perfectly Centered, Vivid Color, part o.g., perfs. scissor separated at top, Very Fine	1,400.00
185 ★	12c Green, Re-Issue (128). Perfectly Centered Within Huge Margins, A Marvelous "Gem", Extremely Fine, with P.F. Certificate	1,500.00
186 ★	12c Green, Re-Issue (120). Fresh, Vivid Color, Very Well Centered, Very Fine, with P.F. Certificate	1,500.00
187 ★	15c Brown & Blue, Re-Issue (129). Rich Colors, large part o.g., Very Fine, with P.F. Certificate	1,300.00
188 ★	15c Brown & Blue, Ty. III Re-Issue (129). Full, but disturbed o.g., Well Centered, Vivid Colors, Very Fine	1,300.00
189 ★	24c Green & Violet Re-Issue (130). Fresh, Dark Rich Colors, part o.g., Fine	1,250.00
190 ★	30c Blue & Carmine, Re-Issue (131). Fresh, Intense Colors, major part o.g., Large Margins, centered bit to top, Fine, with P.F. Certificate ..	1,750.00
191 ★	30c Blue & Carmine, Re-Issue (131). Well Centered, part o.g., Vivid Colors, bits of black paper adhere to back, o/w Very Fine	1,750.00



192



193



194



195

192 ★	90c Carmine & Black, Re-Issue (132). o.g., Very Wide Margins, Excellent Centering and Bright Intense Colors, A Beautiful "Gem", Extremely Fine, with P.F. Certificate	5,500.00
193 ★	90c Carmine & Black, Re-Issue (132). Deep Colors, major part o.g., h.r., Large, Even Margins, Extremely Fine Gem	5,500.00
194 ★	90c Carmine & Black, Re-Issue (132). Vivid Rich Colors, part o.g., trivial thin specks o/w Very Fine, Beautiful Appearance	5,500.00
195 ★	90c Carmine & Black, Re-Issue (132). Magnificent Colors, part o.g., Fine, with P.F. Certificate	5,500.00



164



165



166



170



171



172



173



175



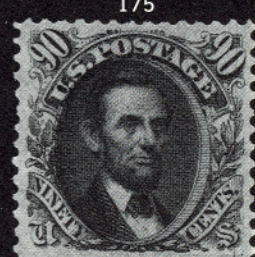
176



177



178



179



180



181



182



183



184



185



186



187



188



189



190



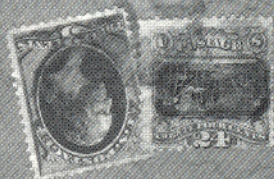
191

BANKNOTE ISSUES

196	★田	2c Red Brown, Grill (135). Block , Remarkably Fresh & Bright, full o.g., bottom pair Mint, F-VF, Beautiful, Scarce Block, with P.S.E. Certificate	1,400.00
197	★	6c Carmine, Grill (137). Very Well Centered, Prominent Grill Points, Very Fine, Scarce, with P.F. Certificate	1,500.00
198	★	7c Vermilion, Grill (138). Bold Rich Color, Prominent Grill Points, Well Centered, Very Fine, with P.F. Certificate	1,000.00
199	★	15c Bright Orange, Grill (141). Bright Fresh Color, Well Centered, Very Fine, with P.F. Certificate	1,700.00
200	★	15c Orange, Grill (141). Lovely Centering and Freshness, Very Clear Grill, large part o.g. (slight gum staining), small trivial corner creases, o/w Very Fine, with P.F. Certificate	1,700.00
201		24c Purple, Grill (142). Beautiful Color, Neat New York Foreign Mail Cancel, Exceptionally Strong Grill, sealed tear, perfs. touch at top, still an Attractive Example of This Elusive Issue, with Brookman letter (also signed Brookman) & P.F. Certificate	10,500.00
202	★	30c Black, Grill (143). Full Fresh o.g., Fine, Very Scarce Stamp with P.F. Certificate	4,000.00
203	★	90c Carmine, Grill (144). Extraordinarily Choice Centering, Brilliantly Fresh, Large Part o.g., an Extremely Fine "Gem," with A.P.S. Certificate, and with P.F. Certificate which mentions "lightly stained" (i.e. gum stained), of which we can find no trace	5,500.00
204	★	90c Carmine, Grill (144). Bold Bright Shade, Full o.g., Three Wide Margins, Fine, Rare with P.F. Certificate, ex-Gruen	5,500.00
205		90c Carmine, Grill (144). Beautifully Centered, Rich Fresh Color, Lightly Cancelled, Extremely Fine, Choice, with P.F. Certificate	700.00
206	★田	24c Purple (153). Block , Fresh, reperfed at R., Very Good-Fine Centering, Scarce Block	4500.00
207	★	30c Black (154). Outstandingly well-centered, Brilliantly Fresh, o.g. (slightly disturbed from hinge removal and with natural skip), An Extremely Fine Block with P.F. Certificate	900.00
208	★田	30c Black (154). Block, large part o.g., natural S.E. at left, Fresh, Nice Shade, VG-F & Scarce Block	7,000.00
209	★田	6c Dull Pink (159). Block of Twelve (4x3). Outstanding Freshness, o.g., some h.r., Five Stamps Mint, Bottom Two Rows Fine, Top Row Very Fine, Striking & Handsome, with P.F. Certificate	2,430.00 +

VALUATIONS

Upon request estimate of value furnished on any lots in this auction.



Click McCracken Court Com. Plea
Paducah
Ky.
Filed 11-11-51
Post 11-11-51
1894
211

- 210 ✉ **10c Brown (161)**, Des Moines, Iowa pmk. (not tied) on cover to Japan, sent to San Francisco (backstamped) for the 10c Trans-Pacific rate, but then sent to New York for the Trans-Atlantic route via London, Hong Kong Marine Sorter backstamp & Yokahama, Underpaid cover, correct postage applied for Trans-Pacific route, ms. rate & due markings Incl. scarce boxed "Colony's Share of Fine . . .," Japan 4s Green, Syll. 3 (42) added to pay internal postage, roughly opened resulting in cover tear, o/w Very Fine, A Remarkable Double Franking, ex-K.G. Clark
..... **E. 8,000-10,000**
- 211 ★田 **12c Blackish Violet (162). Block of Six**, Fresh, slightly disturbed o.g., VG-F, Scarce Multiple **4,100.00**
- 212 ★ **90c Rose Carmine (166)**. Fresh, o.g., Very Well Centered, Very Fine
..... **1,250.00**



- 213 ★ **90c Rose Carmine (166). Mint Bottom Margin Pair with Full Impt.**, P.O. Fresh, Incredibly Well-centered, Huge Margins, An Extremely Fine "Gem," with P.F. Certificate **2,500.00 +**

DESCRIPTIONS

EXTREMELY FINE: The finest condition for noteworthy, outstanding stamps.

VERY FINE: In prime condition such as to satisfy the requirements of particular collectors.

FINE: Perforations or margins do not touch design on issues after 1890, but in some cases may just touch in earlier issues. If used, fairly light cancellation.

VERY GOOD: Generally nice appearance but margins or perforations may cut in slightly.

GOOD: Average off-centering or fairly attractive with slight defects.

ORIGINAL GUM is not to be expected on 19th Century stamps unless so stated in the description.

MINT: With original gum and never hinged.

Unless otherwise noted the Scott 1988 Specialized Catalogue has been used for cataloguing lots of the United States. The Scott 1988 Standard Catalogue Volumes 1-4 has been used for cataloguing all others.



214

215

216

217

218

- 214 ★ **2c Dark Brown, Special Printing (168).** Fresh, Deep Rich Color, few perfs. scissor separated at U.R., Fine, Scarce with P.F. Certificate 3,500.00
- 215 ★ **7c Reddish Vermilion, Special Printing (171).** Fresh, Bright Color, Some nibbed perfs, Ver Fine, with P.F. Certificate 2,100.00
- 216 ★ **7c Reddish Vermilion, Special Printing (171).** Vivid Color, Nice Margins, perfs. scissors separated as usual, Very Fine with P.F. Certificate 2,100.00
- 217 ★ **10c Pale Brown, Special Printing (172).** Nicely Centered, Fresh True Color, scissors-separated perfs at bottom (trifle blunt at right as well) as characteristic of this rare issue, Very Fine, with P.F. Certificate 7,750.00
- 218 ★ **12c Dark Violet, Special Printing (173).** Vivid Color bottom perfs. trimmed as always, Fine with P.F. Certificate 2,750.00



219

220

- 219 ★ **24c Dull Purple Special Printing (175).** Fresh Well Centered, All perfs. Intact, tiny paper inclusion, Very Fine with P.F. Certificate 1,850.00
- 220 ★ **30c Greenish Black Special Printing (176).** Fresh, trimmed as usual at B., Very Fine Rare 7,000.00
- 222 ★田 **10c Brown (187).** Block, Fresh, o.g., Fine-Very Fine, with P.F. Certificate 3,250.00
- 221 ★田 **5c Blue (179).** Block of 36 (6x6), Fresh, Impressive Color, o.g., few h.r., many Mint, several with light gum bends, Outstanding Centering for a Multiple of This Size, Very Fine-Extremely Fine, The Largest Known Multiple, with P.F. Certificate 6,525.00 +
- 223 ★田 **90c Carmine (191).** Block, Wonderfully Fresh, Vivid Color, Fine Block, wit P.S.E. Certificate 4,750.00



224



226



227



228

- 224 ★ **90c Carmine Imperforate Pair (191b).** Large Margins with Wide Sheet Margin at Top, part o.g., Extremely Fine & Rare, with P.F. Certificate 3,250.00
- 225 田 **90c Carmine (191). Block of 20 (4x5),** Registry cancels, some strengthened perfs., three stamps faulty, couple with nibbed perfs., o/w Fine Block, Multiple Rare This Size 3,620.00+
- 226 ★ **15c Orange, Special Printing (199).** Bright Fresh Color, Nicely Centered For This Rare Issue, couple small thins (one expertly repaired), Fine Appearing, with P.F. Certificate, which doesn't mention the flaws 8,250.00
- 227 ★ **24c Dark Violet, Special Printing (200).** Fresh, Deep Color, Very Fine, with P.F. Certificate 2,750.00
- 228 ★ **24c Dark Violet Special Printing (200).** Vivid Color, Well Centered, Very Fine with P.F. Certificate 2,750.00
- 229 ㊄ **2c Red Brown (210).** Tied by Crawfordville, Ind. Oct. 1 (1883) **First Day** pmk., matching Black Fancy Grid on cover, bit reduced at left, Very Fine, with P.E.S. Certificate 1,700.00
- 230 ★ **2c Pale Red Brown, Special Printing (211B).** Mint Bottom Left Corner Margin Single, Fresh, Lovely Color, Large Stamp, Very Fine, with photocopy of P.F. Certificate for Block 700.00
- 231 ★ **2c Pale Red Brown, Special Printing (211B).** Imprint Margin Single, Precisely Centered, Wide Even Margins, Extremely Fine 700.00



222



223



221



232



225

- 231A ★田 1c Ultramarine (212). Bottom Imprint and Plate No. 575 Block of 12, s.e. at right, 11 stamps Mint, few perf. seps., reinforced with tiny bit of hinge, Fine-Very Fine 1,500.00
- 231B ★田 1c Green (213). Top Imprint, RR and Plate No. 704 Block of Ten, Fresh, perfs. sensibly reinforced with bits of hinge, Fine-Very Fine ... 700.00
- 231C ★田 3c Vermilion (214). Top Imprint and Plate No. 421 Block of 12, s.e. at right, Fresh Striking Color, two stamps light thins, few perfs. hinge reinforced, o/w Fine-Very Fine 1,300.00
- 231D ★田 4c Carmine (215). Top Imprint L., and Plate No. 546 Block of 12. Straight edge at right, few gum bends, few perfs. hinge reinforced and single stamp thin, o/w Very Fine 4,250.00
- 231E ★田 5c Indigo (216). Top Imprint K, and Plate No. 539 Block of 12, Bright Bold Color, Six Stamps Mint, few perfs. sensibly reinforced, Fine-Very Fine 4,250.00
- 231F ★田 30c Orange Brown (217). Bottom Imprint and Plate No. 405 Block of 12, s.e. at left, Vibrant Color, light gum disturbance top row, and tiny hinge reinforcement, few perf. seps. in bottom selvage, o/w Fine Scarce Block with P.F. Certificate 8,150.00
- 231G ★田 90c Purple (218). Mint Bottom Imprint and Plate No. 23 Block of Ten, Wonderfully Fresh and True Purple Shade, few perf. seps. in selvage only, single stamp with trace of thin, o/w Fine-Very Fine . 22,500.00
- 231H ★田 1c-90c Banknote (212-218). Imprint and Plate No. Blocks. The previous seven lots offered as one lot. A wonderful opportunity to acquire the complete set of these elusive Blocks —
- 232 ★田 30c Orange Brown (217). Block of Sixteen (4x4), Sheet Margin at Right, Nine Stamps Mint, Fine-Very Fine, Choice, Scarce Block with P.F. Certificate 5,600.00
- 233 ★ 1c-90c 1890 Issue, Imperforate Pairs Cpl. Set (219c-229a). Fresh, some h.r., 1c, 2c Carmine Mint, 2c Lake no gum as issued, 5c, 6c, 10c, 90c minor faults, 30c tiny ink speck, o/w Very Fine-Extremely Fine Set, with P.F. Certificate for 3c, 5c & 10c 8,000.00

BIDDING INTERVALS

BIDS	ADVANCE	BIDS	ADVANCE
\$750 - \$1,950	\$50.00	\$15,000 - \$29,000	\$1,000
\$2,000 - \$2,900	\$100.00	\$30,000 - \$72,500	\$2,500
\$3,000 - \$7,250	\$250.00	\$75,000 - \$145,000	\$5,000
\$7,500 - \$14,500	\$500.00	\$150,000 - \$290,000	\$10,000

Bids which do not conform to the above will be automatically reduced to the appropriate level.



197



198



199



200



201



202



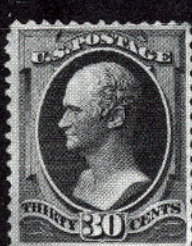
203



204



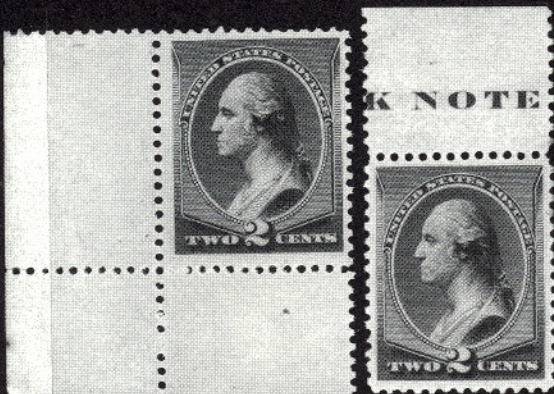
205



207



212



230

231



235 EX



233 EX



238



242



243

COLUMBIAN ISSUE

- 234 P **1c-\$5.00 Columbians, Large Die Proofs Printed Directly on Card (230P1-245P1).** Cpl. Set, 8-11/16" x 5 5/8", with Original Presentation Folder, some minor overall toning, 1c soiled on back, o/w Very Fine, Rare, Ex Princeton University Library 13,800.00+
- 235 P **1c-\$5.00 Columbians, Plate Proofs on Card (230P4-245P4).** Complete Set, Very Fine 3,140.00



- 236 ★ **4c Blue, Columbian Error of Color (233a).** Fresh, Rich Color, gum bit disturbed, Beautiful Centering, Extremely Fine 6,500.00
- 237 ★田 **50c Columbian (240). Block,** bottom pair Mint, Fine-Very Fine, with P.F. Certificate 1,450.00
- 238 ★ **\$1.00 Columbian (241).** Virtually Perfect Centering, Lovely Bright Color, lightly hinged, Exceptionally Choice, Extremely Fine, with P.F. Certificate 1,150.00
- 239 ★田 **\$1.00 Columbian (241). Block,** Fresh, Deep Color, Very Fine, Beautiful Block, with P.F. Certificate 5,000.00
- 240 田 **\$1.00 Columbian (241). Block,** Very Fresh, Brilliant Color, Right Pair Fine, Left Pair Extremely Fine, Attractive Block, with P.F. Certificate 2,500.00
- 241 匣 **\$1.00 Columbian (241).** Rich Color, Extremely Fine, tied by New York Oct. 20, 1900 Duplex cancels on large registered U325 entire to France, cover fold & light ink staining, Stamp Fresh & Choice, with P.F. Certificate 1,900.00
- 242 ★ **\$2.00 Columbian (242).** Mint, Flawless Centering, Bright Fresh Color, Perfect in Every Respect, An Extremely Fine "Gem," with P.F. Certificate 1,250.00
- 243 ★ **\$2.00 Columbian (242).** Well-centered, lightly hinged, Very Fine, with P.F. Certificate 1,250.00
- 244 ★田 **\$2.00 Columbian (242). Block,** Fresh, Bottom Pair Mint, F-VF, with P.F. Certificate 5,500.00



237



239



240



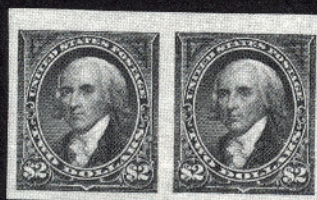
244



265



273

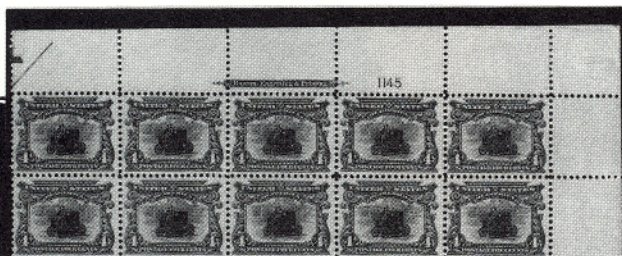




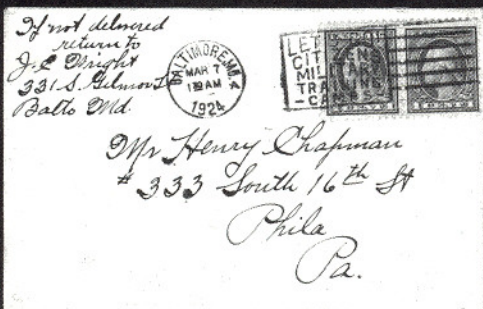
234



291



296



Mr. Clarence E. Page
Hotel New Yorker
New York City
U. S. A.

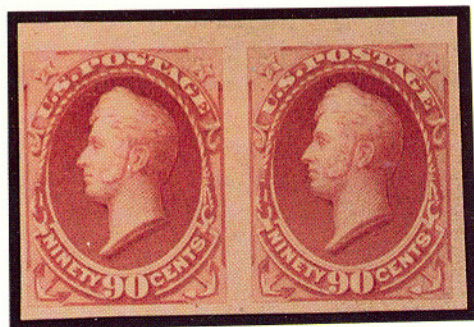
376

351







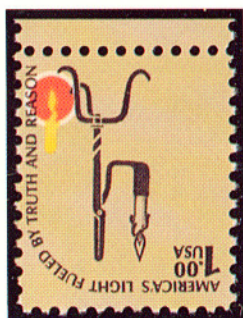






603











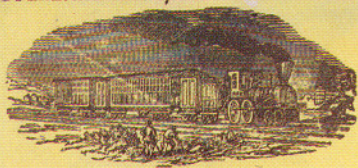
*Imp. Chamberly & Co
Philad*

*per "Northern"
(San Francisco)
July 30. 1853*



*Mrs. Lloyd P. Smith
care of Philadelphia Library
Philadelphia*

OVERLAND MAIL, VIA LOS ANGELES.



*Mrs Mary Hood
Care Hon B. Wood
Cleveland*



*L. & A. Kingston & Co
New York
U. S. of A*

via Marseilles

NO 2



*Mrs. Augustine Heard & Co
Shanghai*

May 10



*John R. Atkinson
Henderson
Ky*

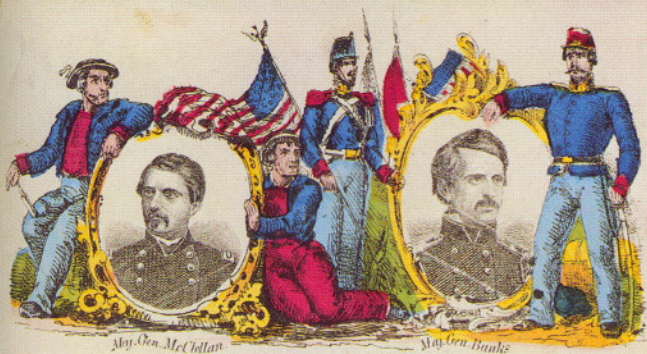
If not delivered in 10 days return to



*Mr. Louis Braverman
621. Washington St
San Francisco.*



*Mrs. R. Sprakes
Black Hills
mouth. County
Cal. jersey*



May Gen. McCallan

May Gen. Banks

Chief Magazine of Frankfort St. Ky.

21/64
B. Rogers Esq
Merchant Assn
Hawaii



2/64
Capt. H. M.
Latta Rifles of the
Volunteers.



TOMAC ARMY



Mr. A. L. Surges



R. F. Coan



A. Graham
Memphis
Tenn



PAID
Wells, Fargo & Co
SAN FRANCISCO



Manuel Lugo Esq

San Francisco Ca



Fulkner & Son
Danville Va



Edward Smith Esq
New York



bassey. NF



Postmaster
Rome
It. I.



STRAPP'S PHARMACY
 The *Rezall* STORE
 HARBOR GRACE, NEWFOUNDLAND
 Printed in U.S.A.

Via Trans-Atlantic Air Mail
 (Columbia.)



Messrs. Evans Sons Lescher & Webb Ltd.,
 56 Hanover Street,
 LIVERPOOL,
 ENGLAND.



Shortall
in P. Van Leemputten
Woyant Dallen (Allier)
France



P. Van Leemputten

143/95



Nº 119

Certificación a D.º
Julio en D.º



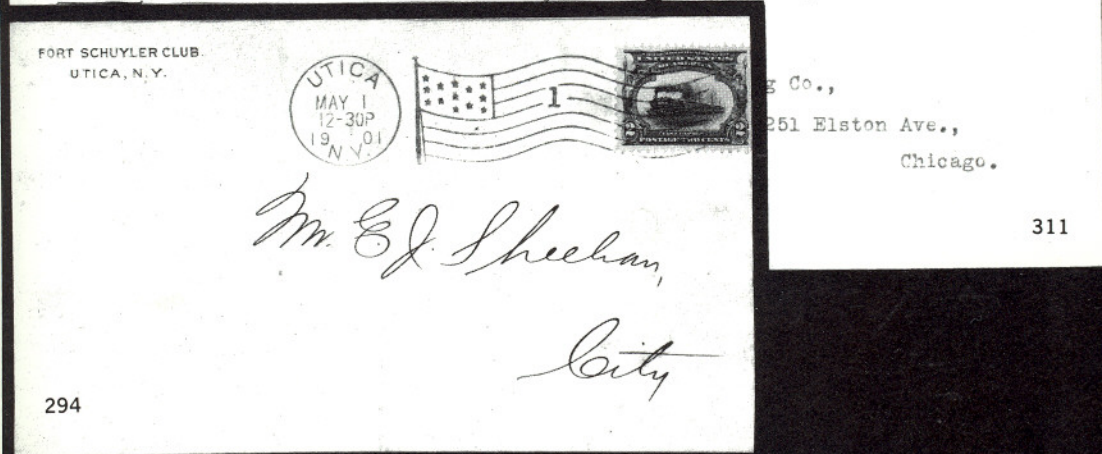
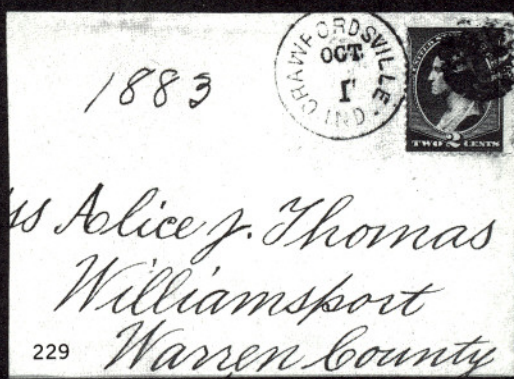
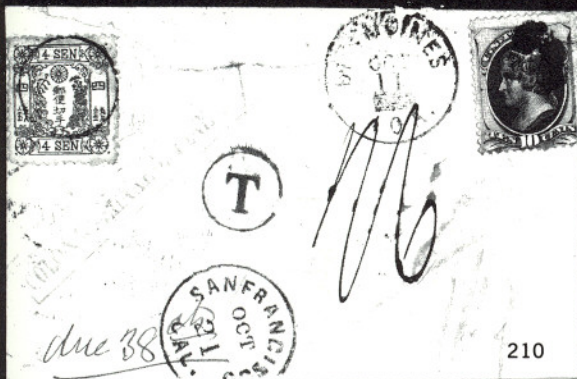
Recibido el contenido

Don D.º Magud Don Magud Centro
Trujillo

Compania

Cable

mbalemas



1883

Miss Alice J. Thomas
Williamsport
Warren County

R. BÜHLER,
182 Broadway,
P. O. Box 2285, New York.

Per S. L. "Lucania"

Mr. Alexandre Bühler
7. Avenue Blanche

UNITED STATES OF AMERICA
NEW YORK, N. Y.
No. 85392

Registered

Mr. Anton Rothmüller

259

Newmarket
N. H.

urbevoie, Seine
near Paris
France

241

CHICAGO, ILL.
APR 30
1-PM
1904

UNITED STATES OF AMERICA
LINCOLN, N. H.
POSTAGE PAID

FORT SCHUYLER CLUB.
UTICA, N. Y.

UTICA
MAY 1
12-30P
1901



Mr. E. J. Sheehan,

City

294

Co.,
251 Elston Ave.,
Chicago.

311

245 ★	\$3.00 Columbian (243). Fresh, Deep Color, lightly hinged, Lovely, Even Margins, Extremely Fine, with P.F. Certificate	2,600.00
246 ★	\$3.00 Columbian (243). Beautiful Centering, Deep Rich Color, Very Fine, Exceptionally Choice, with P.F. Certificate	2,600.00
247 ★	\$3.00 Columbian (243). Mint, Very Fresh, Beautiful Color, Fine, with P.F. Certificate	2,600.00
248	\$3.00 Columbian (243). Outstandingly well-centered, very lightly cancelled, Extremely Fine, with P.F. Certificate	1,100.00
249 ★	\$4.00 Columbian (244). Beautifully Centered, Brilliantly Fresh, A Lovely "Gem", Extremely Fine, with P.F. Certificate	3,400.00
250 ★	\$4.00 Columbian (244). Perfectly Centered Within Wide Margins, Beautifully Fresh, Choice, Extremely Fine, with P.F. Certificate	3,400.00
251 ★	\$4.00 Columbian (244). Fresh, lightly hinged, Rich Shade, Very Fine	3,400.00
252 ★	\$4.00 Columbian (244). Extraordinary Freshness & Color, lightly hinged, Large Margins, Very Fine, with P.F. Certificate	3,400.00
253 ★	\$4.00 Columbian (244). Quite Fresh, Outstanding Color, h.r., Well-centered, Very Fine, with A.P.S. Certificate	3,400.00
254 ★	\$4.00 Columbian (244). Without gum, Beautiful Color, Fine+, with P.F. Certificate	3,400.00
255	\$4.00 Columbian (244). Perfectly Centered, Imperceptibly Faint Cancel, An Outstandingly Choice "Gem", Extremely Fine, with P.F. Certificate	1,450.00
256 ★	\$5.00 Columbian (245). Without gum, Very Fresh, Nice Margins, Very Fine, with P.F. Certificate	3,500.00
257 ★	\$5.00 Columbian (245). Part Bottom Imprint Single, gum trifle glazed from mount (not mentioned on accompanying P.F. Certificate), Well-centered, Very Fine	3,600.00
258	\$5.00 Columbian (245). Used, Very Fine with P.F. Certificate	1,700.00
259 ☒	\$5.00 Columbian (245). Tied by Extra Bold New York "J" Double Oval on Small 1894 Registered Cover to New Hampshire, Very Fine, Rare & Attractive, with P.F. Certificate	4,500.00

Due to the tremendous demand on our phones and staff, Prices
Realized will not be available by telephone until 24 hours after the sale.



245



246



247



248



249



250



251



252



253



254



255



256

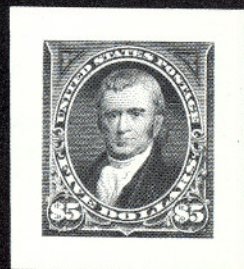


NOTE COMPANY.

257



258



260 EX

1894-1898 ISSUES

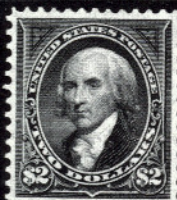
260	P	1c-\$5.00 1894 Issue, Small Die Proofs (247P2, 250P2, 253P2-263P2). Cpl. Set as issued, Very Fine	3,535.00
261	★	3c-5c, 10c 1894 Issue, Imperforate Pairs (253a-255a, 258a). 3c without gum, 10c gum bit disturbed, 5c minor internal wrinkle, 10c tiny thin speck, o/w Very Fine	1,700.00
262	★	\$1.00 Black, Ty II (261A). Fresh Dark Shade, o.g., slightly disturbed from hinge removal, Very Fine	1,850.00
263	★	\$1.00 Black, Ty. II (261A). Fresh, gum bit disturbed, Nice Even Margins, Very Fine, with P.F. Certificate	1,850.00
264	★	\$2.00 Bright Blue (262). Perfectly Centered, Bold Prooflike Impression & Color, barest trace of hinging, Extremely Fine with P.F. Certificate .	2,100.00
265	★田	\$2.00 Bright Blue (262). Right Margin Block, Nicely Centered Throughout, Lightly hinged, Very Fine, with P.F. Certificate	8,500.00
266	★	\$5.00 Dark Green (263). Fresh & Well-centered, gum bit disturbed from hinge removal, Very Fine	3,250.00
267	★	\$5.00 Dark Green (263). O.g., (disturbed) Fresh Dark Color, Very Fine, with P.F. Certificate for Block from which it came	3,250.00
268	★	1c-\$5.00 1895 Issue, Imperforate Horizontal Pairs (264c//278a). Fresh, Bright Colors, some h.r., 10c, 15c tiny thins, o/w Very Fine Set, Difficult to Assemble, with P.F. Certificate for 8c, \$1.00-\$5.00	21,525.00
269	★	\$1.00 Black, Ty. II (276A). Perfectly centered, Rich Color, Extremely Fine with P.F. Certificate	1,200.00
270	★	\$1.00 Black, Ty. II (276A). Exceptionally Fresh, Well-centered, Very Fine, with P.F. Certificate	1,250.00
271	★	\$2.00 Bright Blue (277). Extraordinarily Wide, Almost Perfectly Balanced Margins, Lightly hinged, An Outstandingly Choice "Jumbo", Extremely Fine, with P.F. Certificate	900.00
272	★	\$5.00 Dark Green (278). Beautifully Centered, Lightly hinged, Deep Rich Color, Choice, Extremely Fine, with P.F. Certificate for pair	2,000.00
273	★田	\$5.00 Dark Green (278). Block, Fresh, Deep Color, Very lightly hinged, Beautifully Centered, Extremely Fine, with P.F. Certificate ...	8,250.00
274	P	1c-\$2.00 Trans-Mississippi, Large Die Proofs (285P1-293P1). Cpl. Set, Die Sunk on Cards & Bound in Original Presentation Book with Gold "Trans-Mississippi" & "John E. Stearns" Imprint on Front Cover, very minor top edge toning, \$1.00 with minute card nick, o/w Very Fine	9,200.00 +
275	P	1c-\$2.00 Trans-Mississippi, Small Die Proofs (285P2-293P2). Cpl. Set, Mounted on Small Gray Cards from a Roosevelt Album, Fresh, Very Fine	5,850.00



262



263



264



266



267



269



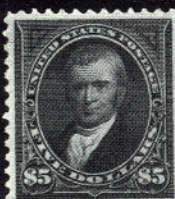
270



271



275 EX



272



281



283



282



286



287



288



290



303



316



317



318



320



322

TRANS-MISSISSIPPI ISSUE

- 276 ★ **1c-50c Trans-Mississippi (285-291). Imprint & Plate No. Pairs, 2c, 10c Mint, 8c one stamp Mint, many lightly hinged, Very Good-Fine, 50c perfs. just in at bottom** 3,385.00
- 277 ★田 **5c Trans-Mississippi (288). Bottom Imprint & Plate No. 602 Block of Four, Outstanding Freshness & Color, Stamps Mint, lightly hinged in selvedge only, Very Fine, with P.F. Certificate** 1,000.00
- 278 ★田 **8c Trans-Mississippi (289). Top Imprint & Plate No. 609 Block of Four, Fresh, Rich Color, two stamps very lightly hinged, Two Mint, Very Fine, Choice Block** 1,750.00



- 279 **8c Trans-Mississippi, Mint Vert. Pair, Imperforate Horiz. (289a). Fresh, Deep Color, Extremely Fine, Only 25 Pairs Known** 12,000.00
- 280 ★田 **50c Trans-Mississippi (291). Bottom Imprint & Plate No. 603 Block of Four, Fresh, Deep Color, gum bit disturbed from hinge removal, Top Pair Mint, few selvedge perfs. strengthened, light natural selvedge bend, F-VF Block** 13,500.00
- 281 ★ **\$1.00 Trans-Mississippi (292). P.O. Fresh, Lovely Margins, Extremely Fine, with P.F. Certificate** 1,850.00
- 282 ★ **\$1.00 Trans-Mississippi (292). Well-centered Within Very Wide Margins, lightly hinged, Choice, Very Fine, with P.F. Certificate** 1,850.00
- 283 ★ **\$1.00 Trans-Mississippi (292). Mint Right Margin Single, Well-centered and Choice, Very Fine, with P.F. Certificate** 1,850.00
- 284 ★ **\$1.00 Trans-Mississippi (292). Bottom Imprint & Plate No. 606 Pair, Very Fresh, lightly hinged, perfs. just touch at bottom** 4,000.00
- 285 ★田 **\$1.00 Trans-Mississippi (292). Block, Bottom Pair Mint, Fresh, few perfs. separated, Top Pair Fine, Bottom Pair Very Fine, with P.F. Certificate** 8,000.00
- 286 ★ **\$2.00 Trans-Mississippi (293). Virtually Perfect Centering Within Uncommonly Wide Margins, Rich Fresh Color, lightly hinged, A Beautiful "Gem", Extremely Fine, with P.F. Certificate** 2,850.00



277



276 EX



285



289



278



284



280

609

602

603

606

613

603

- 287 ★ **\$2.00 Trans-Mississippi (293).** Exceptionally Well-centered, lightly hinged, Extremely Fine and Choice, with P.F. Certificate 2,850.00
- 288 ★ **\$2.00 Trans-Mississippi (293).** Fresh, Rich Color, Very Fine, with P.F. Certificate 2,850.00
- 289 ★ **\$2.00 Trans-Mississippi (293). Top Imprint & Plate No. 613 Pair,** few perfs. hinge strengthened, tiny selvage tear, perfs. just touch at top 7,000.00
- 290 **\$2.00 Trans-Mississippi (293).** Very Well-centered, Neatly and Lightly Cancelled, Exceptionally Handsome, Extremely Fine, with P.F. Certificate 875.00

PAN AMERICAN ISSUE

- 291 P **1c-10c Pan-American, Large Die Proofs (294P1-299P1).** Cpl. Set, Die Sunk on 8x6" Cards, 1c tiny card stain, 10c minor card crease, o/w Very Fine Set 3,450.00



- 292 ★ **1c Pan-American, Center Inverted (294a).** Fresh, Lovely Colors, lightly hinged, gum intact, A Beautifully Centered, Very Fine Example of this Major 20th Century Error 10,000.00



- 293 ★ **1c Pan-American, Center Inverted (294a).** Rich Colors, h.r., A beautifully Centered, Very Fine Example of This Ever Popular Rarity 10,000.00
- 294 ✉ **2c Pan-American (295).** Tied by Utica, N.Y. May 1, 1901 **First Day** pmk., matching flag cancel on cover, light crease, o/w Very Fine, with A.F.D.C. Society Certificate 3,000.00



- 295 ★ **2c Pan-American, Center Inverted (295a).** Fresh, gum intact, hinge remnant, Unusually Well-centered, A Very Fine Example of This Major Error, with P.F. Certificate 45,000.00
- 296 ★田 **4c Pan-American (296). Mint Top Imprint and Plate No. 1145 Block of Ten,** Beautifully Centered Throughout, An Extraordinary Choice Block, Extremely Fine 2,940.00 +

1902-1908 ISSUES

- 297 S **3c-\$5.00 1902 Issue (302S, 305S, 307S, 309S-313S).** Type E Specimen Overprints, applied to Official Post Office Letter indicating they came from the First Sheets Printed. Letter dated March 23, 1903 before many of the stamps were released to the public, Extremely Rare and possibly Unique E. 2,500-3,000
- 298 ★田 **50c Orange (310). Block,** lightly hinged, Top Pair Extremely Fine "Gems", Choice Block 1,900.00
- 299 ★田 **50c Orange (310). Mint Block,** Very Fresh, Deep Shade, B.L. stamp minor gum creasing, Very Fine, with P.F. Certificate 1,900.00
- 300 ★田 **\$1.00 Black (311). Block,** Top Pair lightly hinged, Fine, Bottom Pair Mint, Very Fine-Extremely Fine "Gem", with P.F. Certificate 3,300.00
- 301 ★田 **\$2.00 Dark Blue (312). Block,** Fresh, few perf. separations, Very Fine with P.F. Certificate 4,400.00
- 302 ★田 **\$2.00 Dark Blue (312). Block,** Bottom Right Stamp Mint, top pair light crease, o/w Very Fine Block, with P.F. Certificate 4,400.00
- 303 ★ **\$5.00 Dark Green (313).** Fresh, gum slightly disturbed from hinge removal, Very Fine, with P.F. Certificate 2,750.00



- 304 **4c Brown Imperforate, Schermack Type III Private Perforations (314A).** Wavy line machine cancel, tiny corner thin o/w Extremely Fine 9,000.00



305



306

- 305 ★ **5c Blue, Coil (317). Pair,** couple perfs. hinge strengthened, A Magnificently Centered Example of This Rare Coil, Extremely Fine, with P.F. Certificate 5,500.00
- 306 ★ **5c Blue, Coil (317). Pair,** Very Fine, Rare with P.F. Certificate 5,500.00



307



308

- 307 ★ **1c Blue Green, Coil (318). Pair,** Fresh, Deep Color, Very lightly hinged, Very Fine, An Outstanding Example of This Rare Coil, with P.F. Certificate 4,250.00
- 308 ★ **1c Blue Green, Coil (318). Pair,** Wonderfully Well-centered, lightly hinged, A magnificent Example of This Rare Experimental Coil, Extremely Fine, with P.F. Certificate 4,250.00



298



299



300



301



302



329



314



331



315



309



310

- 309 ★ **1c Blue Green, Coil (318). Pair**, hrs. Deep Rich Color, Tiny handstamp C. M. on reverse, Very Fine Rare with APS Certificate 4,250.00
- 310 ★ **2c Carmine, Coil (322). Pair**, lightly hinged, Very Fine, Rare, with P.F. Certificate 5,500.00
- 311 ✉ **2c La Purchase (324)**, Well-centered, tied by "Chicago, Ill. Apr. 30 1904" **First Day Machine Slogan** pmk. on local Commercially Used Cover, typed address, Printed Return Address, Additional Apr 30, 1904 Receiving pmk. on back, Very Fine & Exceptionally Choice, From A New Find, Written-up in Linn's on 9/25/89 2,750.00



312



313

- 312 ★ **2c La. Purchase, Vert. Pair, Imperforate Horizontally (324a)**. Some h.r., Fresh & Fine, Only 25 Pairs Known, with P.F. Certificate 6,000.00
- 313 ★ **2c Louisiana Purchase, Vertical Pair Imperforate. Horizontally (324a)**. Fresh, Precisely Centered, Only 25 Pairs Known, without gum Extremely Fine 6,000.00
- 314 ★ 田 **10c Louisiana Purchase (327). Bottom Imprint and Plate No. 2107 Block**, Virtually Perfect Centering Throughout, lightly hinged at top, Bottom Pair Mint, perfs in bottom margin sensibly Re-inforced, Extremely Fine 1,600.00
- 315 ★ 田 **10c Louisiana Purchase (327). Bottom Imprint & Plate No. 2106 Block of Six**, Fresh, lightly hinged, F-VF 2,500.00

- 316 ★ **4c Orange Brown, Coil (350). Line Pair**, Magnificent Centering, lightly hinged at top (Bottom Stamp Mint), Extremely Fine, Choice, with P.F. Certificate 800.00

BLUISH PAPER ISSUE

- 317 ★ **3c Deep Violet, Bluish (359)**. Perfectly Centered, Rich Color, barest trace of hinging, Extremely Fine with P.F. Certificate 1,650.00
- 318 ★ **3c Deep Violet, Bluish (359)**. Well-centered, Exceptionally Wide Margins, lightly hinged, choice, Extremely Fine, with P.F. Certificate . 1,650.00



319



321

- 319 ★ **4c Orange Brown, Bluish (360)**. Beautiful Near-Perfect Centering, lightly hinged, A Magnificent Example of This Rarity and Certainly One of The Very Finest Known, Extremely Fine, with Two P.F. Certificates 14,000.00
- 320 ★ **6c Red Orange, Bluish (362)**. Very Fine, with P.F. Certificate 1,000.00
- 321 ★ **8c Olive Green, Bluish (363)**. Very Fresh, lightly hinged, Very Fine, Very Rare, with P.F. Certificate 14,000.00
- 322 ★ **10c Yellow, Bluish (364)**. Fresh, Very Fine with Photo copy of P.F. Certificate of block from which it came 1,050.00
- 323 ★ **13c Blue Green, Bluish (365)**. Fresh, Very Fine 2,100.00
- 324 ★ **15c Pale Ultramarine, Bluish (366)**. Wonderfully Fresh & Very Fine . 1,000.00

BIDDING INTERVALS

BIDS	ADVANCE	BIDS	ADVANCE
\$750 - \$1,950	\$50.00	\$15,000 - \$29,000	\$1,000
\$2,000 - \$2,900	\$100.00	\$30,000 - \$72,500	\$2,500
\$3,000 - \$7,250	\$250.00	\$75,000 - \$145,000	\$5,000
\$7,500 - \$14,500	\$500.00	\$150,000 - \$290,000	\$10,000

Bids which do not conform to the above will be automatically reduced to the appropriate level.

1910 TO DATE



- 325 **3c Deep Violet "Orangeburg" Coil (389).** Machine cancel, minute corner perf. crease, still Very Fine & Rare, with A.P.S. Certificate ... 5,500.00
- 326 ★田 **10c Pan-Pacific (400).** Mint Bottom Plate No. 6135 Block of Six, Extraordinary Centering, Extremely Fine "Gem" Plate, with P.F. Certificate 3,000.00
- 327 ★ **10c Pan-Pacific (404).** Very Fine 1,400.00
- 328 ★田 **30c Orange Red (420).** Mint Top Plate No. 6911 Block of Six, Brilliant Fresh Color, An Attractive Block 1,750.00
- 329 ★田 **50c Violet (421).** Block, Fresh and Well-centered, very lightly hinged, Very Fine, with P.F. Certificate 2,100.00
- 330 ★田 **12c Claret Brown, Vertical Pair, Imperforate Between (435b).** Middle stamps in Block of Six, lightly hinged, very light gum crease, o/w Very Fine, Very Rare, Rarer Than Catalog Value Indicates 650.00
- 331 ★田 **50c Violet (440).** Mint Block, Well-centered Throughout, Exceptionally Choice, Very Fine, with P.F. Certificate 3,300.00



- 332 ★ **2c Red, Ty. I, Coil (449).** Pair, Very Well-centered, Bottom Stamp Mint, barest trace of hinge at top (Appears Mint), An Outstandingly Choice Example of This Rare Type, Extremely Fine, with P.F. Certificate 3,500.00



326



328



330



334



339



337



342



340

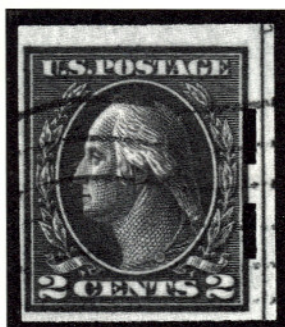


344



343

- 333 ★ **2c Carmine Ty. 1 Imperforate Coil (459). Mint Line Pair**, creased as usual, Very Fine, with P.F. Certificate 2,100.00
- 334 ★田 **2c Pale Carmine Red (461). Top Plate No. 7264 Block of Six**, Five stamps Mint (top center stamp lightly hinged), Well-centered and Beautifully Fresh, Fine with P.F. Certificate 950.00
- 335 ★ **50c Light Violet (477). Mint, "P.O. Fresh", Very Fine**, with P.F. Certificate 1,400.00



- 336 **2c Deep Rose, Ty. Ia, Imperforate (482A). Lightly Cancelled**, Bright Color, Fine, An Extremely Rare Stamp, Much Rarer Than Catalog Value Suggests, with P.F. Certificate 6,000.00
- 337 ★田 **5c Carmine Error, Imperforate (485). Mint Block of 12, Two Middle Stamps the Errors**, Wide Even Margins, Flawless and Extremely Fine, A Gem of Philately and One of The Rarest of U.S. Stamps, with P.F. Certificate 28,500.00
- 338 ✉ **2c Carmine, "Brooklyn" Counterfeit (499 type). Six Singles** (mixed centering) From the Sheet of Ten making up the 2c + 10c Special Delivery Rate, tied by N.Y. 1923 Duplex pmks., cover filing creases, Extremely Rare, Few Than Ten Covers Known, This being the **Only Documented Cover With Multiple Franking** —
- 339 ★田 **2c Deep Rose, Ty. Ia (500). Mint top Plate No. F10209 Block of Six**, Fresh, Fine 2,250.00
- 340 ★田 **3c Dark Violet Ty. II, Block of Six, Imperforate Horizontally (502c). Middle pair h.r., others Mint, L. pair trifle gum bends**, Very good-Very Fine, with P.F. Certificate 750.00 +
- 341 ★ **5c Blue, T. Pl. No. 8902 Horizontal Pair, Imperforate Between (504a). Tiny thin speck, o/w Fine+, Only Two Pairs Known, Unique with Pl. No.** 1,250.00
- 342 ★田 **\$1.00 Deep Brown (518b). Right Arrow Block, Bottom Left Stamp** Mint, others lightly hinged, Fine, A Rare Shade in Multiples, with P.F. Certificate 2,800.00 +
- 343 ★田 **\$2.00 Orange Red & Black (523). L. Margin Block, T. Pair lightly hinged, bottom Pair Mint, Fine-Extremely Fine**, with P.F. Certificate . 4,500.00



323



324



327



341



333



349



346



335



345



347



348



350



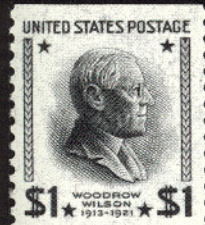
352



355



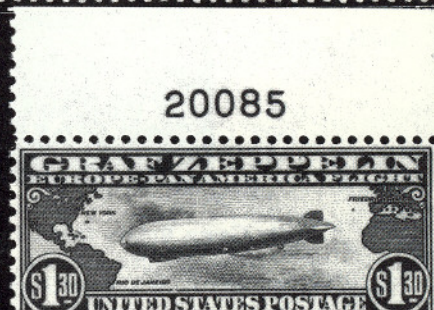
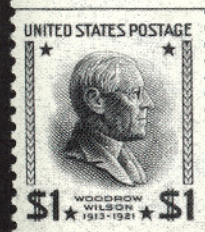
20079



359



360



20085



370

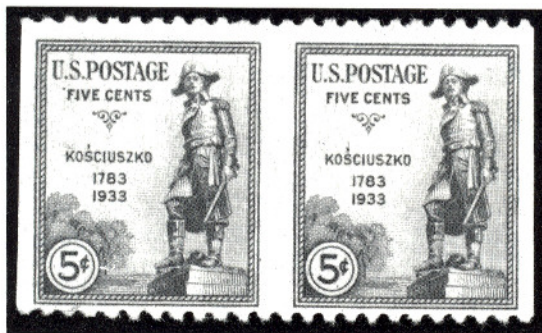
- 344 ★田 **2c Carmine Ty. V (533). Left Plate No. 11260 Block of Six**, lightly hinged, Very Fine 2,000.00
- 345 ★ **2c Carmine Ty. VII (534B). Large to Huge Margins, Extremely Fine**, with P.F. Certificate 1,550.00
- 346 ★ **2c Carmine, Offset Imperforate Ty. VII (534B). Horizontal Pair**, very lightly hinged, Very Fine & Choice 3,100.00
- 347 ★ **2c Carmine Rose Rotary, Ty. II (539). Deep Rich Color, Well-centered** for this Scarce Stamp, Very Fine with two P.F. Certificates 2,350.00
- 348 ★ **2c Carmine Rose Ty. II (539). Mint, Fresh, Fine** for this with P.F. Certificate 2,350.00
- 349 ★ **2c Carmine, Offset Imperf. Ty. VII (534B). Bottom Sheet Margin** Single, lightly hinged, Extremely Fine with P.F. Certificate 1,550.00
- 350 **1c Green, Rotary (544). Light pre-cancel, Fresh, Very Fine** 1,500.00
- 351 ✉ **1c Green, Rotary (544). Pair, R. stamp perfs. barely touch at R., Left stamp Extremely Fine, tied on small cover, Pair on cover Extremely Rare**, with P.F. Certificate 4,000.00 +
- 352 ★ **10c Orange, Partial Perf. 10 at Bottom (562c). Mint, Fine, Not Listed** Unused in either Scott or Hotchner Dec., 1982 U.S. Specialist Article compiling all known multiple perfs., with P.S.E. Certificate **E. 750-1,000**
- 353 ★田 **\$2.00 Deep Blue (572). Mint Top Plate No. F14306 Block of Six**, Beautifully Centered, Very Fine and Choice 1,650.00



- 354 **1c Green Rotary (594). Pair**, Very Fine, Extremely Scarce as a Pair, Largest Multiple with P.F. Certificate 3,700.00
- 355 **2c Harding (613). Extraordinarily Wide Margins, Lightly Cancelled**, defective, Attractive Very Fine Appearance, with P.F. Certificate 13,500.00
- 356 P **1c-5c Huguenot-Walloon, Large Die Proofs (614P1-616P1). Cpl. Set**, India, Die Sunk on 3x6" Cards, Approved & Signed by Postmaster General, 1c tiny toned spots at top of card, o/w Very Fine Set, Very Rare 1,950.00 +



- 357 ★ **2c Von Steuben, Imperforate Horizontal Pair (689a).** Positions 23, 24 from the only Pane of 100 known, small h.r., Extremely Fine, with P.F. Certificate 2,250.00



- 358 ★ **5c Kosciuszko, Horizontal Pair, Imperforate Vertically (734a).** Small h.r., Fine + 1,750.00
- 359 ★ **\$1.00 Presidential, Mint Vertical Pair, Imperforate Horizontally (832a).** Positions 44, 54 from Pane of 100, light pencil on gum, Very Fine 1,000.00
- 360 ★ **\$5.00 Presidential, Red Brown & Black Error of Color (834a).** Mint Top Plate No. 22167 Single, Very Fine & Rare, with photocopy of P.F. Certificate for Plate Block from which this is the top left stamp 850.00
- 361 ★ **10c Haym Solomon, Red Omitted (1561b).** Complete Mint Sheet of 50, Very Fine, Major Color Missing Error, Possibly Two Sheets Known 16,250.00 +

Due to the tremendous demand on our phones and staff, Prices Realized will not be available by telephone until 24 hours after the sale.



- 361A ★ **\$1.00 Push Lamp & Candle Holder, Intaglio Brown Color Inverted (1610c).** Mint, From the Original Find, Very Fine, Rare InvertE. 12,500-15,000 +

AIR POST ISSUES

- 362 ★田 **6c Orange (C1).** Mint Top Arrow & Plate No. 9155 Block of Six, Fine-Very Fine 1,200.00
- 363 ★田 **16c Green (C2).** Top Arrow and Plate No. 8900 Block of Six, Bottom Row Mint, barest trace of hinge at top (Appears Mint), Well-centered, Fine-Very Fine 2,250.00
- 364 ★田 **24c Carmine Rose & Blue (C3).** Mint Arrow, Double "Top" & Double Plate No. Block of Twelve, Fresh, F-VF 2,600.00



- 365 ★ **24c Carmine Rose & Blue, Center Inverted (C3a).** Position 27, Fresh Full Original Gum, very lightly hinged, Large Margins, Well-centered Very Fine, A Popular Rarity with P.F. Certificate 120,000.00
- 366 ★田 **16c Dark Blue (C5).** Bottom Plate No. 14828 Block of Six, Five Stamps Mint (top center stamp lightly hinged), Beautifully Centered Throughout, Very Fine 3,250.00
- 367 ★田 **16c Dark Blue (C5).** Mint Bottom Plate No. 14831 Block of Six, Fine-Very Fine 3,250.00
- 368 ★田 **24c Carmine (C6).** Mint Top Plate No. 14841 Block of Six, Choice Plate Block, Fine-Very Fine 4,250.00



353



362



363



366



364



367



368

- 369 ★田 **65c Graf Zeppelin (C13). Mint Bottom Plate No. 20080 Block of Six,**
Fine-Very Fine 3,850.00
- 370 ★ **65c-\$2.60 Graf Zeppelins (C13-C15). 65c, \$1.30 with Plate Nos.,**
Mint, F-VF, with P.F. Certificate 3,050.00 +
- 371 ★田 **65c-\$2.60 Graf Zeppelins (C13-C15). Blocks, \$1.30 with Top Plate**
No., Mint except 65c top pair lightly hinged, 65c Very Fine, \$1.30,
\$2.60 Fine-Very Fine 12,450.00 +
- 372 ★田 **65c-\$2.60 Graf Zeppelins (C13-C15). Mint Blocks with Plate No.,**
light natural gum bends, 65c Very Fine, \$1.30, \$2.60 Fine-Very Fine,
with Friedl Certificate 12,450.00 +



- 373 ★田 **16c Air Post Special Delivery, Mint B.R. Corner Margin Block,**
Imperforate Vertically (CE2a). Positions 44, 45, 49, 50 from Single
Known Sheet, Fine-Very Fine 6,500.00 +
- 374 ★ **5c Deep Blue, "Buffalo Balloon" Air Post Semi-Official (CL1). Wide**
Even Margins, Bright Fresh Color, shallow thin and light crease,
Beautiful Extremely Fine Appearance 4,500.00
- 375 ★ **5c Deep Blue, "Buffalo Balloon" (CL1). Large to Huge Margins, some**
scrapes on face, o/w Very Fine 4,500.00
- 376 匣 **Mattern & Griffin Round the World Flight (AAMC 1167). US C16,**
Germany 361, Russia 421 tied by respective New York, Berlin &
Moscow pmks. on cover to New York, signed by Mattern & Griffin,
minor toning at flap seams, o/w Very Fine, Very Rare, Only Ten Covers
Flown, with P.F. Certificate AAMC 1,200.00
- 377 ★田 **10c Ultramarine (E9). Top Pl. No. 5863 Block of Ten, Pl. No. Block**
very lightly hinged, other stamps Mint, Fresh, minor gum bends, A
Handsome, Very Fine & Rare Block 4,950.00



20080

369



371



20077



20086



20092

372

POSTAGE DUE, NEWSPAPERS ETC.



378



379

- 378 ★ **1c Deep Brown, Special Printing (J8).** Perfectly Centered Bright True Color, small thin spot, Magnificent Extremely Fine Appearance, with P.F. Certificate 5,750.00
- 379 ★ **50c Carmine Lake (J58).** Centered to R. Just Clear, Fine, the Rarest of the Regularly Issued Postage Dues, with P.F. Certificate 5,000.00



380



381

- 380 ★田 **\$2.00 on \$1.00 Violet Brown, Offices in China (K16).** Mint B. Impt., "A", & Pl. No. 5782 Block of Six. Precise Centering, Deep Rich Color, Extremely Fine, Rare Block, with P.F. Certificate 7,500.00
- 381 ★ **\$2.00 Offices in China, Double Surcharge (K16a).** One of the Very Best Centered Examples of this Rare Error, Quite Fresh, hinge remnant and trivial light blue pencil mark on gum, Very Fine with A.P.S. Certificate 2,500.00
- 382 ★田 **1c Agriculture, Soft Paper (O94).** Block, Very Fresh & Bright, without gum as issued, Fine for this, Rare Block, with P.F. Certificate 6,000.00



383



384



385



386

- 383 ★ **\$1.92 Dark Brown, Special Printing (PR48).** Quite Fresh & Attractive, Fine, Only 41 Issued, with P.F. Certificate 2,400.00
- 384 ★ **\$3.00 Vermilion, Special Printing (PR49).** Fresh, Gorgeous Color, Very Fine, Only 20 Issued, with P.F. Certificate 5,000.00
- 385 ★ **\$6.00 Pale Blue (PR101).** Fresh, lightly hinged, Fine, Very Rare, with P.F. Certificate 5,750.00
- 386 ★ **\$6.00 Pale Blue (PR101).** Fresh, Bright Color, Lightly hinged, tiny gum crease, o/w a Very Fine Example of This Rarity, with P.F. Certificate 5,750.00
- 387 ★田 **50c Parcel Post (Q10). Top Imprint & Plate No. 6428 Block of Four,** P.O. Fresh, very lightly hinged in selvedge only, Stamps Mint, Very Fine, Choice Block, with P.F. Certificate 1,500.00

CARRIERS AND LOCALS

- 388 (1c) **Dull Blue on Rose (LO1).** Light Red cancel, Clear to Huge Margins Showing Part of Adjoining Stamp at Top Right, small faults incl. filled thin, Still An Attractive Example, Very Rare Used, Ex-Caspary, with P.F. Certificate 2,000.00
- 389 ★ **City Despatch Post, 3c Grayish (40L1).** Mint Pair, Large to Huge Margins, B.R. Sheet Margin Pair, Fresh & Very Fine 600.00
- 390 匣 **3c Grayish (6LB1).** Large to Huge Margins, tied by Red "US" within Octagon cancels on reduced folded wine list, stamp with tiny pinhole, Stamp Extremely Fine Appearance E. 2,000-2,500
- 391 匣 (1c) **Blue (68L1).** Tied by Double Oval "Floyd's Penny Post, Chicago" pmk. on amber cover, endorsed "Floyd Dec. 21, '61," Extremely Fine, quite Lovely Cover, with P.F. Certificate E. 2,000-2,500
- 392 匣 (1c) **Blue (68L1).** Extremely Fine, tied by Oval Company cancel on cover, very light staining, bit restored at top left, o/w Fine, Scarce . E. 750-1,000

- 393 ☒ **Wells, Fargo & Co., 10c Brown "Running Pony" (143C7).** Three Margins just touching at U.L., Fresh Color on bit worn 3c Pink Entire (U34). Tied by "Wells, Fargo & Co. Virginia City N. (Nevada)" T. Oval, Printed Express Co. Frank to San Francisco with Friedl Certificate **E. 3,000-5,000**
- 394 ☒ **10c Yellow Green on Buff (U41).** Entire with **Red Oval "China & Japan Steam Service,"** from Yokohama to Elmira, N.Y. via San Francisco, ms. "per Steamer", San Francisco pmk., Very Fine, Rare Steamship Marking, with P.F. Certificate **E. 750-1,000**
- 395 ☒ **1c Black on Buff (UX17).** Used, couple minor corner creases o/w Very Fine, Still a Nice Example of This Popular Rarity **2,500.00**

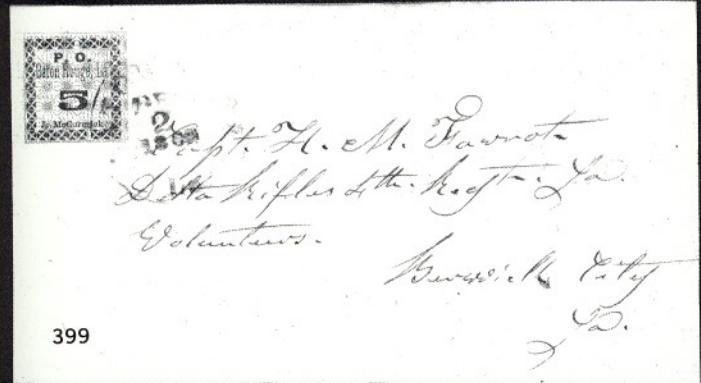
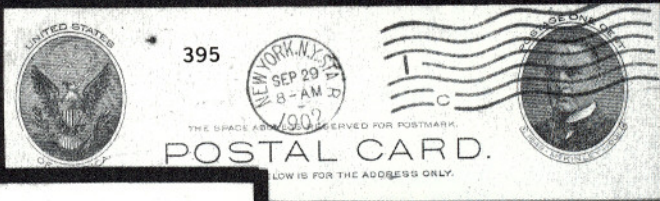
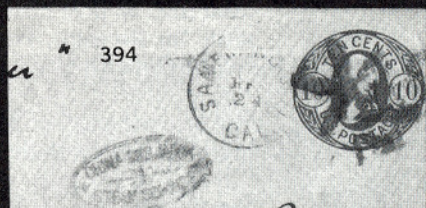
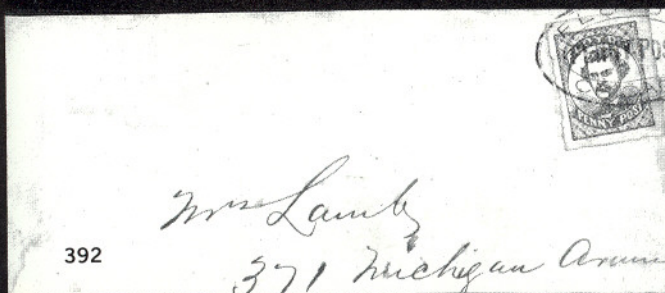
REVENUES

- 396 **1871, \$5.00 Green & Black (RB10).** Fresh, Vivid Colors, Very Fine & Choice **2,500.00**
- 397 ★ **1c-\$20.00 Stock Transfer Imperforates (RD67-RD85).** Horiz. Imperf. Pairs, See Footnote in Scott Specialized, Scarce, Very Fine **E. 750-1,000**
- 398 ★田 **\$1.00 1935 Hunting Permit (RW1).** Mint Top Left Plate No. 12920. Block of Six, Virtually Perfect Centering Throughout, A Beautiful "Gem" Plate Block, Extremely Fine **6,000.00**

CONFEDERATE STATES

POSTMASTER PROVISIONALS

- 399 ☒ **Baton Rouge, La., 5c Green & Carmine (11X2).** Ample to Huge Margins, lightly tied by Baton Rouge Dec. 2, 1861 pmk. on cover addressed to Captain of Louisiana Volunteers, flap missing, Still a Gorgeous, Exceptional "Gem" Cover, with P.F. Certificate **3,000.00**
- 400 ☒ **Chattanooga, Tenn., 5c Black on Amber Provisional Entire (17XU2).** Chattanooga Oct. 6, 1861 pmk., Very Fine Example of This Scarce Provisional, with P.F. Certificate **1,750.00**
- 401 ☒ **Iuka, Miss., 5c Black (42XU1).** Attractive strike on cover to Port Gibson, Miss., Iuka Oct. 10, 1861 pmk., Clean, Very Fine Cover, Rare, with C.S.A. Certificate **2,000.00**
- 402 ☒ **Jackson, Miss., 10c Black (43XU3 var.).** Struck Twice, once over "Paid 5" which was struck over "Paid 3 cts." (U.S. Rate) on Yellow cover to Virginia, Jackson, Miss. Jun. 24 (1861) pmk., bit reduced at right, Probably Unique 10c Over 5c Revalued Triple Rate Provisional, with P.F. Certificate **E. 2,000-3,000**
- 403 ★ **Greenville Ala., 5c Red & Blue Ty. I (33X1).** Huge Margins All Around, light impression & light creases, o/w Extremely Fine & Rare . **4,500.00**



- 404 ☒ **Lenoir, N.C., 5c Blue & Orange, (49X1).** Margins Clear to just in at left, ms. cancel (not tied as usual), Blue Lenoir Oct. (1861) pmk. at left, on cover to Capt. Thomas Lenoir, Wilmington, N.C., tiny cover tear at right, a Handsome, Very Fine Cover, Quite Rare, Only About 12 Recorded, with P.F. Certificate 10,000.00
- 405 ★ **Marion, Va., 5c Black (55X2).** Large Margins to irregularly in at bottom, o.g., light stains, Still a Presentable Example of This Very Rare Provisional, with C.S.A. Certificate 16,500.00
- 406 ☒ **Memphis, Tenn., 2c Blue (56X1).** Large Margins to just in, tied by Four Ring Target on Drop Rate cover to Memphis, cover bit wrinkled, small holes on front from ms. ink, still a Fine & Very Rare Cover, Only about Ten Recorded, Possibly Unique with Target Cancel, with P.F., C.S.A. Certificates 7,500.00
- 407 ★ **Mobile, Alabama, 2c Black (58X1).** Large Part o.g., h.r., Clear to Large Margins, Very Fine, with P.F. Certificate 1,250.00
- 408 ☒ **New Orleans, La., 2c Red (62X2).** Three Large to Huge Margins, just in at left, tied by New Orleans Mar. 7 (1862) pmk., cover restored at left, some stains, Still a Highly Desirable, Rare Cover 16,000.00
- 409 **New Orleans, La., Red on Bluish (62X7).** Margins to just in at T. & L. (New Orleans Town Cancel) tiny thins & small repairs. The New Orleans Red Stamps are Great Rarities as only Four used examples have been recorded. This includes No. 62X6, A True Confederate Rarity with P.F. & Erwin Certificates, ex Crocker 10,000.00

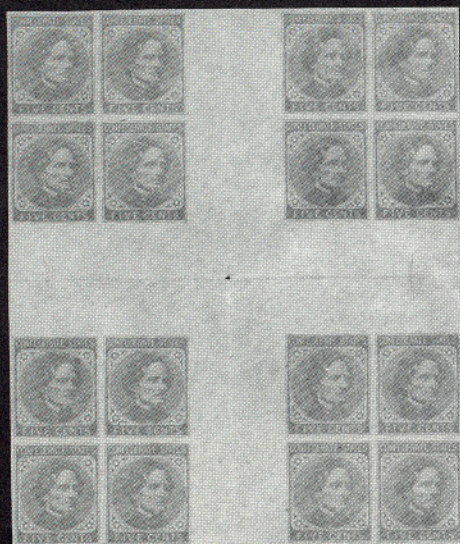
GENERAL ISSUES

- 410 P田 **5c Blue, Plate Proof on Wove Paper (6P5). Crossed Gutter Block of 16,** gutter folds & small tears do not affect Very Fine impressions, Fantastic Showpiece, Possibly Unique signed Robson Lowe, with photocopy of P.F. Certificate for complete Unique sheet of 400 from the De La Rue Archivesas singles 9,600.00
- 411 ☒ **2c Brown Red (8).** Large Margins to just touching at couple of points, tied by partial Richmond, Va. pmk. to neat Drop Rate Mourning Cover, Very Fine & Quite Attractive, with C.S.A. Certificate 1,300.00
- 412 ☒ **10c Greenish Blue (11c), Extremely Fine, Two 20c Green (13),** Huge Margins to just touching (stamps overlap slightly), tied by Enterprise, Miss. pmks. on **Quintuple Rate Cover** addressed to Richmond, Va., Very Fine, Attractive & Rare, with Original Military Enclosure, C.S.A. Certificate E. 1,500-2,000
- 413 ☒ **10c Blue (12).** Horizontal Strip of Three & Single, slight crease between second & third stamps & second stamp torn, Tied by Richmond Va pmks. on cover Paying **40c Trans-Mississippi Rate** to Lewisville, Arkansas, Scarce & Highly Desirable Cover E. 2,000-3,000
- 414 ☒ **20c Green, Diagonal Half Used as 10c (13c).** Tied by Augusta, Ga. pmk. on 1864 cover to Danville, Va., Very Fine, with Original Enclosure & C.S.A. Certificate 4,000.00



387

398



410



415



412

- 415 P☐ **1c Light Yellow Brown, Trial Color Plate Proof on Wove Paper (14TC5).** Vertical Gutter Block of 12, Very Fine, Very Rare, Possibly Unique, with photocopy of P.F. Certificate for complete sheet of 200 as singles 7,200.00

CONFEDERATE SPECIALIZED USAGES

- 416 ☒ **Fort Washita Choctaw Nation Indian Territory Ms. Paid 5 cts to "Press"** Paris Texas with original letter headed Fort Washita C.N. Jan. 7, 1862, ms. on cover "From F. W. Miner in R. Nee Taylors Regiment", tiny corner cover mend, o/w VF. Only three known, C.S.A. Certificate **E. 1,500-2,000**
- 417 ☒ **Hickory Valley M.C.R.R., Nov. 28, 1861 pmk., ms. "Paid 5 Cts"** on folded letter to Bolivar, Tenn., Very Fine, Rare Railroad Marking, with C.S.A. Certificate **E. 750-1,000**
- 418 ☒ **"Hanging Jeff Davis" Patriotic Cover (Walcott 907).** Ms. "Soldier's letter," New Bern, N.C. Jan. 29, 1863 pmk., "Due 3" in Oval on cover to New Jersey, Fine **E. 600-750**
- 419 ☒ **24c Gray Lilac (37).** F-VF centering, few clipped perfs., tied by partial New Orleans Feb. 15 (1861) pmk. on cover via Boston to Scotland, Red Boston Feb. 23 (1861) pmk., Neat Strike of "Glasgow Packet, Paid, Mr 7 1861," ms. "Via Liverpool" & "By Steamer," Very Fine Example of **After Secession Usage of U.S. Stamp**, with Original Enclosure & C.S.A. Certificate **E. 750-1,000**
- 420 ☒ **"Mails Suspended,"** Clear Strike in Oval, 3c Rose (65) tied by Fancy Star of Glens Falls, N.Y. on cover to P.O.W. at Libby Prison, Richmond, Va., faint water stain, Still One of the Better Examples of Its Kind, with C.S.A. Certificate **E. 1,500-2,000**
- 421 ☒ **"Old Stamps, Not Recognized,"** Two line strike on U27 entire, Philadelphia, Pa. Sept. 4, 1861 pmk. (after Demonetization), straight line "Due 3," small repair at top right, o/w Very Fine, Rare Marking, with P.F. Certificate **E. 1,000-1,500**

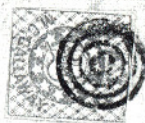
"E." = ESTIMATES

Our sales offer many covers, cancellations, varieties and other items for which there is no catalogue value or where catalogue value does not reflect the actual value. In order to assist our clients, we are placing a fair net valuation on such lots as a guide to our bidders. Lots may actually realize more or less than our estimates, which are under no circumstances to be considered reserves but merely a guide to bidding.

404
St. Louis in 1861



Capt Thomas J.



Spaham 406

411

James B. Buchanan Esq
For Genl J. R. Rives
Richmond

Rev. Thos H. Mackham
New Orleans 408

413

Mr. Warden or
Warden's Office



Wm E. L. Haymaker
Lewisville

414

Pulaski & Son
Danville Va

416

"Puss"

Paris

Mr. J. B. Hill
Boston
Nov 28 1861
N.Y.C.R.R.

417



JEFF DAVIS.
TAKEN FROM LIFE.

418

Soldier's Letter
Dated
William M. Davis
Bristol, Va.,

419

CUSTOMER
PAID
MR
T861

Mr. A. Ferguson
N. 1. Carlton Street
Edinburgh
Scotland

U.S. POSSESSIONS

- 422 **GUAM, 10c Brown Ty. II (9).** Light Cancel, thin spot, o/w Fine,
Stated to be the Only Known Used Example, with P.F. Certificate E. 3,000-4,000



- 423 ☒ **HAWAII, 5c Blue on Bluish (21).** Plate XVI, No. 3, Large to Huge Margins, Block Grid cancel (not tied), U.S. 1861 3c Rose (65), 2c Black (73) at left tied by cogwheels, Hawaii & San Francisco pmks., on 1866 cover to New York via San Francisco, Lovely Fine Example of This Rare Mixed Franking, Ex-Harris & Gibson, signed Bloch with Friedl Certificate E. 5,000-6,000
- 424 ☒ ———, **5c Blue on Blue (21).** Two Singles, Tied by Block Grids, Red Honolulu pmk., U.S. 65 (two), 73 alongside, Block Target cancels on amber cover, San Francisco pmk. & target below, one Hawaii 21, U.S. 65 defective, other Hawaii 21 Large Margins, Extremely Fine, cover somewhat worn & soiled, but Still A Very Rare Hawaii Item, with P.F. Certificate E. 3,000-3,500
- 425 ★ **PHILIPPINES, 1901, \$5.00 Dark Green (225).** Virtually Perfect Centering, Bright Fresh Color, Choice, Extremely Fine, with P.F. Certificate 1,650.00
- 426 ★田 **PUERTO RICO, 1899, 8c Violet Brown (213).** Bottom Plate No. Block of 6, all but one Mint, Extremely Fine(Photo) 1,000.00



374



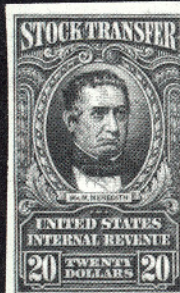
375



382



388



397 EX



389



405



396



407



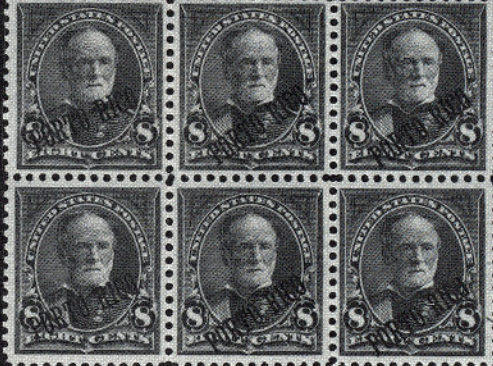
409



425



422



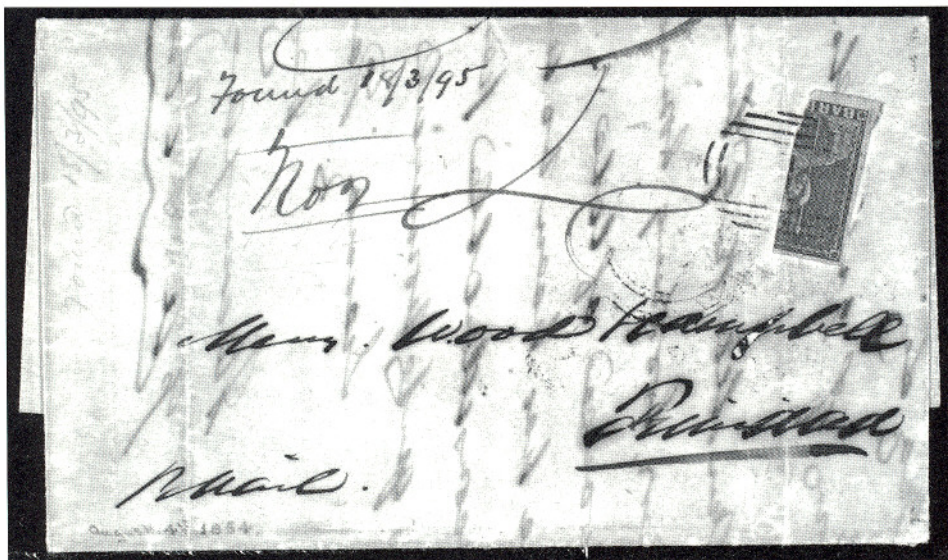
249

Bureau, Engraving & Printing

426

GENERAL FOREIGN

- 427 **ARGENTINA, 1862, 15c Blue, Without Accent on "U" (7a).** Margins all around, Blue town pmk. Very Fine 4,000.00
- 428 ★ **AUSTRIA, 1933, 50g WIPA Souv. Sheet (B111).** Stamps Mint, Very Fine Sheet, with original folder 2,000.00



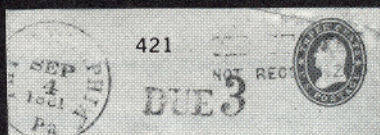
- 429 ☒ **BARBADOS, 1852, (2p) Grayish Slate Vert. Half Used as 1p (3b).** Tied by "1" in Grid on Aug. 1854 Folded Letter to Trinidad, trivial erosion spot in address, light neat ms. "Found 18/3/95 No. 2", Fine & Very Rare 8,500.00



- 430 **BANGKOK, 1882, 8c Yellow Orange, Inverted Ovpt., (17a).** Used, Fine, Rare, with P.F. Certificate 4,500.00
- 431 ☒ **BENIN, 1892, 1c-75c Ovpts., Surcharges (15, 16-19).** Tied by 1896 Benin pmks. on Reg. Cover to France, Fine-Very Fine, Very Rare 3,815.00 +



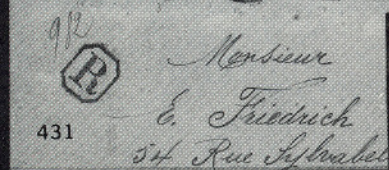
420



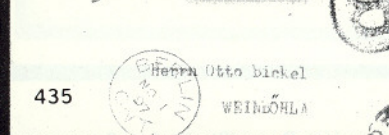
421



431



435



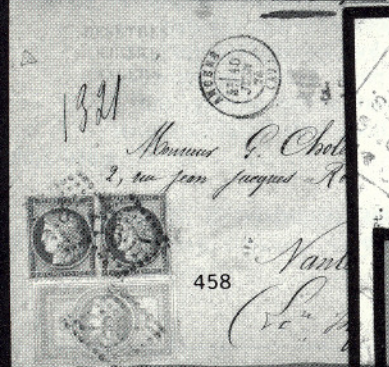
424



443



458



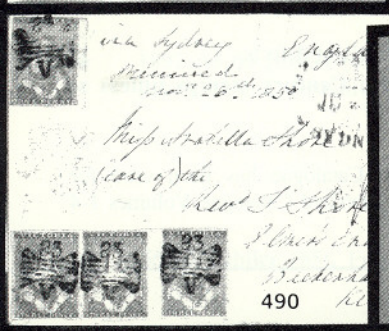
444



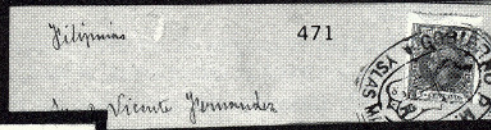
454



466



490




471



481

CANADA



- 432  **1852-57, 3p Red (4), Clear to Huge Margins, ½p Rose (8), Strip of Three, Pair & Single, Strip & Pair pre-cut for separation, Margins all around except just touching at one point at bottom of strip & bottom left of pair, pre-cut into one stamp of pair, tied by Circular Numeral "21" cancels, Montreal, L.C. Dec. 20, 1858 pmk. below on embossed hardware merchant's cover to New York, part of flap missing, Still a Spectacular Multiple on Fine Cover, signed Bloch, with Friedl Certificate** **E. 4,000-5,000**
- 433 **1855, 6p Gray Violet (5d). Huge Margins, Numeral "21" Target cancel, Extremely Fine, with Royal Certificate** **1,500.00**

DESCRIPTIONS

EXTREMELY FINE: The finest condition for noteworthy, outstanding stamps.

VERY FINE: In prime condition such as to satisfy the requirements of particular collectors.

FINE: Perforations or margins do not touch design on issues after 1890, but in some cases may just touch in earlier issues. If used, fairly light cancellation.

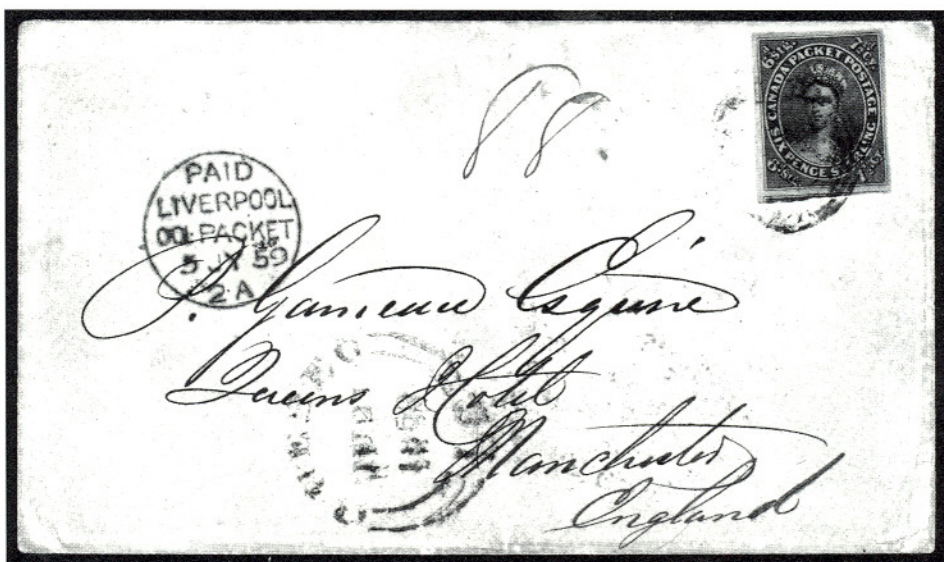
VERY GOOD: Generally nice appearance but margins or perforations may cut in slightly.

GOOD: Average off-centering or fairly attractive with slight defects.

ORIGINAL GUM is not to be expected on 19th Century stamps unless so stated in the description.

MINT: With original gum and never hinged.

Unless otherwise noted the Scott 1988 Specialized Catalogue has been used for cataloguing lots of the United States. The Scott 1988 Standard Catalogue Volumes 1-4 has been used for cataloguing all others.



- 434 ☒ **1857, 7½p Green (9).** Ample to Huge Margins, tied by Target, Quebec L.C. pmk. on 1859 Cover to England, Red Liverpool Packet handstamp, Very Fine, with Royal Certificate2,000.00+
- 435 ☒ **1897, \$2.00 Jubilee (62).** Tied by Berlin, Ontario pmk. on registered cover to Germany, Very Fine & Extremely Rare, **Only Two** Such Covers Known **E. 2,000-3,000**
- 436 ★田 **\$3.00 Jubilee (64).** Mint Block, Unusually Fresh, Lovely Color, Very Fine, Very Scarce in Block, with P.F. Certificate6,000.00+
- 437 ★ **1897, \$5.00 Jubilee (65).** Wide Margins and Virtually Perfect Centering, lightly hinged, Beautiful "Gem", Extremely Fine, with P.F. Certificate 1,500.00
- 438 ★ **\$5.00 Jubilee (65).** Fresh, Rich Color, Even Margins, Extremely Fine 1,500.00



439



440

- 439 ★田 **\$5 St. Lawrence, Seaway, Center Inverted (387a). Mint Top Right, Corner Margin Block, A Fine-Very Fine Example of This Major 20th Century Error, Rare, with P.F. Certificate** 60,000.00+
- 440 **5¢ St. Lawrence Seaway, Center Inverted (387a). Very Fine, Very Rare Used, with P.F. Certificate** 12,500.00
- 441 **CAPE GOOD HOPE, 1861, 1p Red "Wood Block" (7). Ample Margins, Fine with Rendon Certificate** 3,500.00
- 442 **————, 1861, 4p Blue "Wood Block" (9). Large Margins, Very Fine** 3,000.00
- 443 ☒ **————, 1900, 1p Blue on Blue (178). Two Singles, Diff. Shades, tied by 1900 Mafeking C.G.H. pmks. on Local Cover, slight cover toning specks, o/w Very Fine, Rare, signed Bloch** (Photo) **E. 2,000-3,000**
- 444 ☒ **CHINA, \$5.00 Red & Slate (267). Tied with 3¢(252), 30¢ Pair(263), \$1.00(265) by Peking cancels on registered 1930 Parcel Post label to Boston, Mass., Fine, This is the Only Known Usage of the \$5.00 Value on "Cover", with P.F. Certificate** —

COLOMBIA

- 445 ★ **1859, 5c Blue Error of Transfer (6b), In Se-Tenant Pair With 20¢, Sheet Margin at L. Ample to Large Margins, Fresh o.g. minute paper inclusion & tiny thinning, o/w Very Fine & Extremely Rare Pair, Only Two Others Known. ex Ferrari, Caspary, Lilly** 40,000.00
- 446 ☒ **1863, 20c Red (26). Ample to Large Margins, Tied by Bogota Oval on Folded Cover to Ambalema, Very Fine. One of the Two Recorded Covers Bearing the 20c, ex Wickersham** **E. 4,000-6,000**
- 447 **1863, 50¢ Red, Error, Transfer of 50¢ in Stone of 20¢ Ty. I (26b). Ample to Immense Margins, Blue Town pmk., Fresh, Rich Color, Very Fine, Signed Brun, Choice Example of This Rarity** 5,000.00



427



433



437



438



441



442



445



447



453



455 EX



459



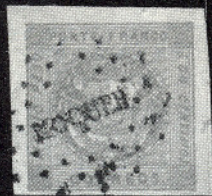
460



482



465



486



461

- 448 ☒ **1864, 5c Orange (30).** Two, Ample to Large Margins except R. stamp just touched at T., each with crease (one trivial) from cover filing fold, Tied by Bogota Oval on 1865 Folded Cover to Ambalema, Very Rare. **One of Two Recorded Covers Bearing the 5c** E. 2,500-3,500
- 449 ☒ **1864, 10c Blue, 20c Scarlet (31, 32).** Ample to Large Margins, Tied by Bogota Oval cancel on Folded Cover to Ambalema, Extremely Rare. **One of the Two Recorded Combination Covers,** ex Wickersham E. 2,000-3,000
- 450 ☒ **1864-65, 50c Green (33). Used with 10c Violet (38).** Large Margins to touching at B. of 10c, Tied by **Red Two Line Bogota Reg.** pmk. on Reg. Cover to Cali Red 'O's. Red Official Coat of Arms Reg. Backstamps, Fine & Extremely Rare. **Only Recorded Cover Bearing the 50c** E. 5,000-6,000
- 451 ☒ **1864, 1p Red Violet (34).** Large Margins, **Used With 10c Blue (31).** Tied by Bogota Oval pmk. on Folded Cover to Valparaiso, Very Fine, Extremely Rare as This is **The Only Recorded Cover Bearing the One Peso.** One of the greatest Covers in Colombian Philately, ex Newbury, Burrus E. 7,500-10,000
- 452 ☒ **1865, 10c Violet (38).** Large to Huge Margins Tied by Bogota Oval on Folded Letter to San Jose de Cuenta with Red Two Line Bogota Reg. pmk. & Red "O's, Very Fine & Rare E. 1,000-1,500
- 453 **1920, 10c Blue, Red, Yellow & Black (C5).** Used with Full Strike of The Compania Colombiana de Navegacion Aerea Co. Oval in Violet, Extremely Fine & Choice. Scarce 2,250.00
- 454 ☒ **CRETE, 1898, 20pa Violet (1).** Three Large Margins, Ample at L., tied by Str. Line pmk. on Cover vert. file fold, Very Fine, signed Bloch, Scarce Cover E. 1,500-2,000
- 455 ★ **FALKLAND IS. 1933, ½-£1, Centenary (65-76).** Cpl. Set, £1 Mint, rest lightly hinged or hrs., Fresh & Fine-Very Fine Set 5,173.75



456



457

- 456 **FRANCE, 1849, 20c Black Yellowish Tete Beche Pair (3c).** Used, Margins to just touching at L.L., o/w Fine-Very Fine Rare Tete Beche Pair with Holcombe Certificate 6,000.00
- 457 ★ ———, **1849, 1fr Dark Carmine on Yellowish (9).** Fresh, o.g., small hr., Large to Huge Margins, A Beautiful, Extremely Fine Example of This Classic Issue, with P.F. Certificate 6,750.00

18/5

Contents of

Joseph Henry Count
Esq.

Cate

450

Señores

Rico, Hijo y Compañia

Ambrose

449



es Lafaurie Rasch & Co.

Ambalema

448

Sres. Viza, Hijo y C^{as}.

Am. Salem

446

Vergara Calles
Certificacion a Bogota
Salio en 8 de abril

Salto em 8 de Abril de 1868

1865

Manfredo J. Cabrera.

San José de Cuesta.

452

Yrs

Cerda Hermann

Valpurga

451

- 458 ☒ ———, 1869, 5fr Gray Lilac on Lavender (37). B. perfs. touch, used with 10c Bistre on Rose (55). Horiz. Pair, tied by "66" in Diamond of Dots cancels on 1874 Cover, Angers pmk., small cover edge tear, o/w Fine E. 1,500-2,000

- 459 ★ GIBRALTAR, 1927, £1 Orange & Black (92). Mint Strip of Three, R. Sheet Margin, P.O. Fresh, Very Fine, signed Bloch 750.00 +



- 460 ★ ———, 1925, £5 Dull Violet & Black, Precisely Centered, faintest trace of hinging, appears Mint, Fresh & Bright, Extremely Fine & Choice 3,500.00

- 461 ★ ———, 1925, £5 Dull Violet and Black (93). Well-centered, Quite Fresh, lightly hinged, Very Fine 3,500.00



462



463

- 462 ★田 GREAT BRITAIN, 1840, 1p Black (1). L. Sheet Margin Block, Margins to just in at B.R., o.g., light gum creases, creased between and at T. affecting top pair, o/w Fine, Attractive Rare Block, Catalogued as Singles 14,000.00 +

- 463 ★ ———, 1840, 1p Black (1). Fresh o.g. Margins All Around, Very Fine with BPA Certificate 3,500.00

- 464 ★田 ———, £1 Postal Union Congress (209). Mint Top Left Corner Margin Block, Extremely Fine 4,000.00 +
- 465 **GRENADA, 1875, 1sh Purple "Shilling" Surcharge Error (11a).**
Very Fine, with P.F. Certificate 1,850.00
- 466 ☒ **ITALY, 1934, 5.25L + L44.75L "Servizio-Di Stato"-Balbo Flight Triptych (CO1).** Tied by Appropriate 1933 pmks. on European Size Reg. Cacheted Cover to Montreal, the preparer of the cover inadvertently separated the stamp into three parts but neatly affixed them to the cover in their proper sequence, Very Fine, Rare **E. 2,000-3,000**
- 467 ☒ **VENICE, 15th Century, 37 folded letters, most to or from Venice, destinations or points of origin incl. Damascus, Laodicea, Beyrouth, Bugia (all Syria), Candia (Crete), Alexandria, Solonica, Aman, Pera (Turkey), Austria, Bergamo, Bologna, Modena, Tortona, Piacenza, Montone, Gerensamo (Parvia), Brunico, Firenze (Florence), & Fiume.** These letters were delivered by runners or messengers & were the beginning of modern postal systems, many display merchant's guild markings & represents a step forward from the ancient mails that served only a privileged few, also many display partial or complete seals, Condition throughout is remarkable considering the age of the collection, Impressive philatelically & historically, with translation of one of the letters, All Mounted in Album **E. 2,500-3,500**
- 468 ★ **IVORY COAST, 1903, 1fr on 10c Gray Brown (Q19).** O.g., margins all around, Very Scarce, Very Fine, A.P.S. Certificate 3,000.00



469

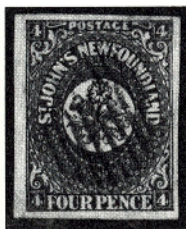


470

- 469 **LABUAN, 1901, 8c Red & Black, Center Inverted, Postage Due (J6a).** Lightly cancelled, Fine for this Rare Stamp 5,000.00
- 470 **LIBERIA, 1901, \$5.00 Carmine & Black, Overprinted "Ordinary" (81).** Fresh, partial "Buckerman 1902" cancel, Fine, Scarce, with Holcombe Certificate 2,000.00
- 471 ☒ **MARIANA ISLANDS, 1899, 5c Carmine Rose, Ovpt. (3).** Tied by Large Fancy Double Oval "Gobierno P.M. Yslas Marianas" on Cover to Manila, Fine, Scarce **E. 1,500-2,000**



472



473



475

- 472 **NEW BRUNSWICK 1851, 1sh Bright Red Violet (3).** Nice Color, Ample to Large Margins, Very Fine, with P.F. Certificate, R.P.S. letter 3,250.00

NEWFOUNDLAND

- 473 **1857, 4p Scarlet Vermilion (4).** Neat Grid cancel, Fresh, Vivid Color, Ample to Huge Margins, Very Fine, An Outstanding Example of This Scarce Issue, with P.F. Certificate 3,250.00



- 474 **1857, 8p Scarlet Vermilion, Vert. Half Used as 4p (8a).** Large Margins, tied by Oval Grid on 1860 Folded Cover to U.S., Red St. John's Paid pmk., Boston Br. Pkt 5 Handstamp, Very Fine, Scarce ... 3,750.00
- 475 **1860, 1sh Orange (15).** Margins All Around, Light black grid & tiny part of Red cancel, Fine, Rare stamp, with Royal Certificate 7,000.00



476



477

- 476 **1919, 3c Red Brown, "Hawker" (C1).** Machine cancel, initials "JAR" on back, a Fresh, Fine Example of This Air Post Classic, with P.F. Certificate 20,000.00
- 477 ★ **1921, 35c Red Inverted Ovpt. (C3b),** Fresh, lightly hinged, Fine, Rare, signed Bloch 5,250.00
- 478 ☒ **1927, 60c Black, "De Pinedo" (C4).** Position 32, Tied by "St. Johns N.'fld May 20 1927" Wavy Line Machine, pmk. on Cover to Italy, "Trepassey" Transet & "Rome" backstamp, Very Fine, with Diena & Nussbaum Certificates 15,000.00+
- 479 ☒ **1927, 60c Black "De Pinedo" (C4).** Tied by St. John's May 20, 1927 pmk., Trepassey pmk. at L., on cover addressed to France, Rome Jun 22, 1927 backstamp, Very Fine stamp on nice cover, with B.P.A. Certificate 15,000.00+
- 480 ☒ **1930, 50c on 36c Olive Green (C5).** Tied by Harbor Grace Oct. 9, 1930 pmk. on flown cover addressed to England (AAMC 21b, cat. \$10,000), Two line "Via Trans-Atlantic Air Mail (Columbia)", minor cover filing fold does not affect Very Fine Stamp 8,000.00+
- 481 ☒ **NICARAGUA, 1880, 10c Vermilion, Rouletted (11).** Well-centered, tied by Bold "13/N" Boxed cancel on 1882 Orange Cover with Steamship Corner Card to France, Blue San Juan del Norte pmk. & Calais transit, Red London transit & Paris receiving backstamps, cover tear at T., o/w Very Fine, with P.F. Certificate E. 1,500-2,000
- 482 ★ **NORTH WEST PACIFIC IS., 1915, £1 Ultramarine & Brown (10).** Vertical Strip of Three, B. two Mint, middle stamp light gum bend, pencil on back of B., stamp, Extremely Fine 4,050.00

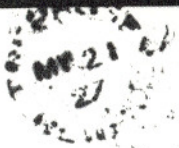
By Air. Mail from Innapassey. NF



The Postmaster
Rome
Italy



478



Miss M. G. Shortall
c/o Monsieur P. Van Leemputten
Noyant D'allen (Allen)
France

479

STRAPP'S PHARMACY
THE Rexall STORE
HARBOR GRACE, NEWFOUNDLAND
Printed in U.S.A.

Via Trans-Atlantic Air Mail
(Columbia.)



Messrs. Evans Sons Lescher & Webb Ltd.,
56 Hanover Street,
LIVERPOOL,
ENGLAND.

480



487 EX



488 EX



436



INTERNATIONALE
POSTWERTZEICHEN-AUSSTELLUNG
WIEN 1933



428



464



483



484



485

- 483 ★ ———, 1915, 2½p Dark Blue (14). Fresh, Extremely Fine, Attractive Rarity, signed Bloch, with Friedl Certificate 9,500.00
- 484 ★ ———, 1915, 2½p Dark Blue, "1" of Fraction Omitted (28a). Fresh, Very Fine Example of This Rarity, with R.P.S. Certificate 7,000.00
- 485 NOVA SCOTIA, 1851, 1sh Dull Violet (7). Large Margins, Grid cancel, Extremely Fine, ex-Dale-Lichtenstein 3,750.00
- 486 PERU, 1858, ½p Rose Red (5). Margins All Around, Town cancel, Very Fine, Rare 5,000.00
- 487 ★S RHODESIA, 1910, 1/2p-£1 Ovpt. Specimen (S101-S118). Fresh Vibrant Colors, lightly hinged, Fine-Very Fine Set Gibbons £2,750.00
- 488 ★ ———, 1910, 1/2p-£1 (101-118). Cpl. Set few hrs. Fresh & Fine-Very Fine, No. 113 with Friedl Certificate, No. 117 with P.F. Certificate 6,167.75



- 489 ★ SAXONY, 1850, 3pf Red (1). Setting III, Pos. 13, Large to Wide Margins, Fresh & Very Fine, Rare, with Friedl Certificate 6,500.00
- 490 ✉ VICTORIA, 1850, 1p, 3p (1, 3) No. 3 Strip of Three showing full gutter between 2nd & 3rd stamps, #23 Butterflies ties No. 1 at U.L. Strip not tied, on Cover to England, showing various transits in Red & Black, Spectacular showpiece of the highest Rarity E. 2,000-3,500

END OF SALE — THANK YOU

RARITIES OF THE WORLD

INDIVIDUAL REALIZATIONS ARE HAMMER PRICES. GROSS REALIZATION
INCLUDES 10% BUYERS PREMIUM.

1	600	61	2500	121	900	181	2600	233	3250	293	7500	353	700
2	9500	62	6750	122	850	182	1450	234	3500	294	1650	354	8500
3	675	63	4250	123	2900	183	1400	235	1500	295	35000	355	4250
4	1300	64	1300	124	2300	184	700	236	7000	296	2700	356	1250
5	850	65	1300	125	3250	185	2100	237	1700	297	1550	357	2100
6	3750	66	2200	126	900	186	1000	238	1700	298	1300	358	1350
7	1600	67	1500	127	3000	187	800	239	6000	299	1200	359	1050
8	450	68	950	128	3250	188	900	240	1900	300	1500	360	1250
9	1100	69	1150	129	2700	189	600	241	750	301	2000	361	6250
10	1050	70	2300	130	850	190	800	242	3750	302	1450	361A	11500
11	2600	71	550	131	1700	191	950	243	1100	303	900	362	525
12	12500	72	1650	132	1500	192	4750	244	3250	304	10500	363	950
13	2100	73	950	133	1200	193	4000	245	3500	305	3750	364	1550
14	2500	74	1300	134	1700	194	1500	246	1800	306	3000	365	115000
15	1800	75	850	135	2800	195	1700	247	1650	307	3750	366	1700
16	1250	76	2100	136	650	196	750	248	725	308	5250	367	1300
17	2300	77	4500	137	525	197	1050	249	2200	309	2900	368	2200
18	1050	78	1400	138	900	198	625	250	3000	310	6250	369	1100
19	13000	79	1450	139	1050	199	900	251	2400	311	3500	370	1200
20	2000	80	1250	140	1300	200	700	252	2300	312	4500	371	5000
21	4000	81	1100	141	13000	201	3000	253	1700	313	4000	372	5000
22	2200	82	3000	142	1100	202	1100	254	675	314	950	373	5000
23	1350	83	800	143	1150	203	5000	255	1250	315	1000	374	3500
24	750	84	1150	144	1800	204	4750	256	850	316	1300	375	1650
25	1050	85	900	145	2800	205	1350	257	3250	317	1350	376	1050
26	3000	86	725	146	1600	206	575	258	1000	318	1250	377	2200
27	1800	87	1300	147	2100	207	1550	259	2300	319	14500	378	3500
28	2200	88	4000	148	1300	208	625	260	1300	320	950	379	2600
29	1400	89	1150	149	1100	209	1500	261	625	321	12000	380	5250
30	950	90	4250	150	1400	210	6000	262	850	322	850	381	1700
31	1150	91	400	151	2400	211	625	263	600	323	1700	382	3750
32	1500	92	3250	152	2400	212	1000	264	2700	324	700	383	1800
33	1800	93	4250	153	2500	213	5250	265	3250	325	3750	384	6250
34	1100	94	1550	154	2100	214	2600	266	1400	326	1900	385	6750
35	14000	95	1100	155	2700	215	1050	267	1300	327	725	386	5000
36	850	96	1550	156	4250	216	1800	268	14000	328	625	387	850
37	5250	97	1900	157	750	217	4250	269	1350	329	900	388	1550
38	3750	98	2500	158	2300	218	650	270	900	330	1800	389	600
39	4550	99	1200	159	3750	219	1900	271	1600	331	2500	390	1300
40	1700	100	1100	160	2800	220	8000	272	1250	332	4500	391	1250
41	2700	101	3500	161	900	221	5500	273	9000	333	1550	392	1050
42	2200	102	850	162	4000	222	2100	274	3000	334	950	393	3250
43	800	103	5000	163	1550	223	1700	275	2800	335	950	394	750
44	2300	104	8000	164	1500	224	2700	276	800	336	6000	395	1150
45	6750	105	1550	165	1200	225	850	277	1400	337	22000	396	2100
46	1100	106	1450	166	800	226	4250	278	1100	338	350	397	650
47	900	107	3250	167	5500	227	3750	279	15000	339	950	398	4500
48	3250	108	800	168	52500	228	3000	280	5000	340	475	399	1700
49	32500	109	1100	169	8500	229	1000	281	1600	341	2800	400	900
50	1000	110	600	170	1550	230	800	282	1000	342	2400	401	1300
51	950	111	3500	171	1700	231	600	283	1350	343	1900	402	2300
52	525	112	5250	172	900	231A	sold	284	1300	344	650	403	1000
53	850	113	2000	173	3500	231B	for	285	2800	345	1100	404	5000
54	700	114	850	174	65000	231C	a	286	2500	346	2500	405	3500
55	2500	115	850	175	4250	231D	total	287	2000	347	2600	406	4500
56	1250	116	1300	176	6000	231E	of	288	1650	348	1800	407	750
57	12500	117	1300	177	2200	231F	'	289	1450	349	1100	408	7000
58	1600	118	1400	178	2200	231G	'	290	750	350	1700	409	2600
59	1200	119	1200	179	6500	231H	16000	291	1050	351	5250	410	3750
60	1650	120	1050	180	1050	232	2700	292	8000	352	950	411	1150

412	1900	490	12500				
413	3250						
414	2100						
415	3000	END OF SALE					
416	1100	THANK YOU					
417	850						
418	550	GROSS					
419	1000	REALIZATION					
420	1700						
421	1150	\$1,582,150					
422	2800						
423	4750						
424	2800						
425	850						
426	2700						
427	650						
428	1550						
429	2500						
430	2100						
431	1150						
432	3750						
433	625						
434	1550						
435	1800						
436	4250						
437	800						
438	625						
439	23000						
440	5000						
441	850						
442	850						
443	1200						
444	525						
445	28000						
446	6000						
447	2800						
448	4000						
449	2800						
450	6000						
451	9000						
452	1000						
453	1550						
454	800						
455	1500						
456	1150						
457	3250						
458	1150						
459	400						
460	1400						
461	1400						
462	4500						
463	1800						
464	2500						
465	425						
466	1150						
467	2200						
468	1500						
469	950						
470	1050						
471	1000						
472	1700						
473	1200						
474	1800						
475	1350						
476	6000						
477	2100						
478	6250						
479	6000						
480	2600						
481	2500						
482	1250						
483	11000						
484	4000						
485	1700						
486	1400						
487	1050						
488	2600						
489	5000						