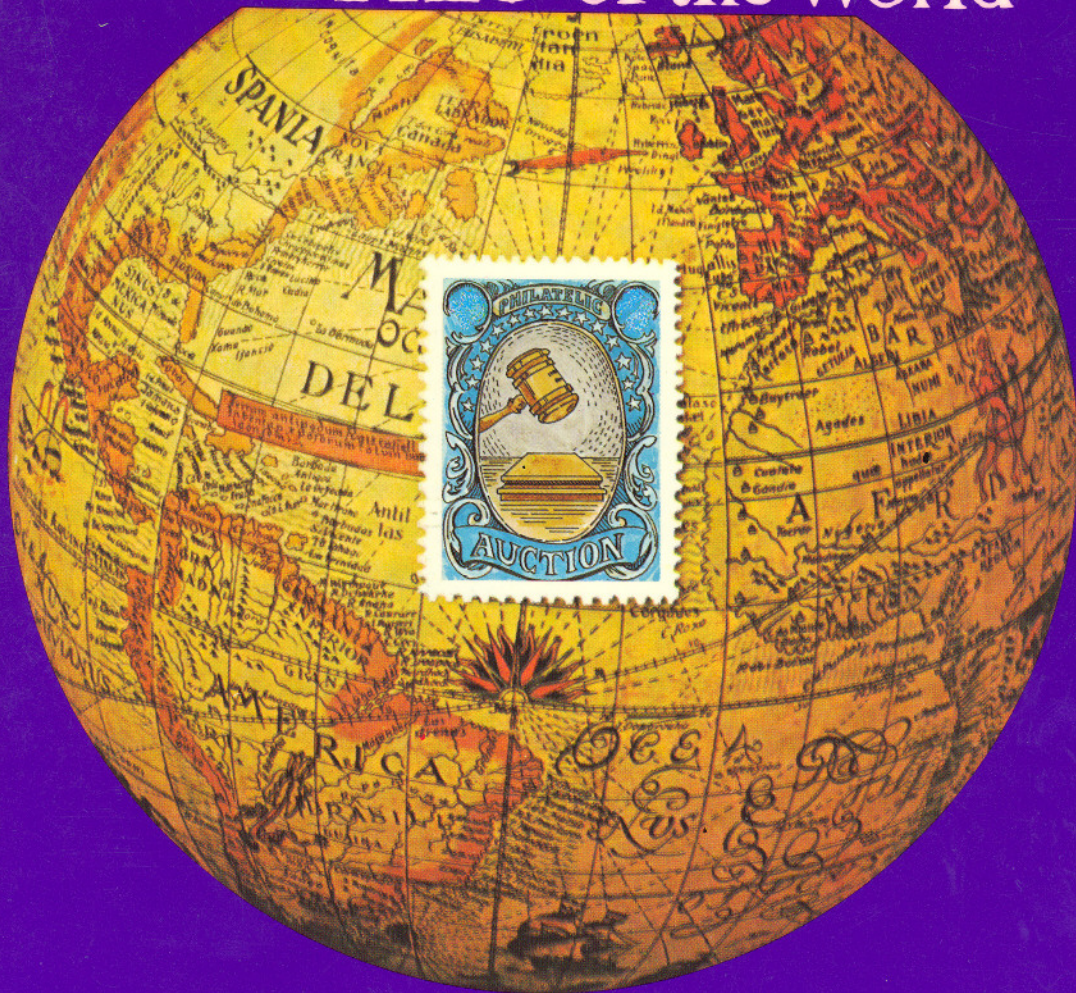


1991

RARITIES of the World



Robert A. Siegel

AUCTION GALLERIES, INC.

CONDITIONS OF SALE

1. On all lots sold a commission of 10% on the hammer price is payable by the buyer.
2. The terms of sale are strictly cash on delivery to the highest bidder unless special arrangements have been made prior to the sale. The fact that an item is placed on extension (submitted to an expertising committee for certification) does not relieve the successful bidder from this condition of sale.
3. All bids are per lot as numbered in the catalogue unless otherwise announced by the auctioneer at the time of sale. The right is reserved to group two or more lots; to withdraw any lot or lots from the sale, or to act on behalf of the seller. The Galleries will bid on behalf of clients, but will not be responsible for any errors in the execution of bidding instructions. The auctioneer shall regulate the bidding and in the event of any dispute his decision shall be final.
4. The auctioneer may bid on behalf of the seller. It may also be inferred that all sellers have been given advances against the sale of their material and therefore we have a financial interest in such lots over and above the sellers commission they are charged.
5. Any lot, the description of which is incorrect, is returnable, but only within 14 days of receipt. All disputed lots must be returned intact as received. **The following lots may not be returned for any reason whatsoever: Lots containing ten or more stamps; Lots from buyers who have had the opportunity to examine them before the sale; Lots described as having defects or faults may not be returned because of any faults. No illustrated lots may be returned because of centering, margins or other factors shown in the illustrations.**
6. Successful bidders, unless they are known to us or supply acceptable references are expected to make payment in full before the lots are delivered. Mail bidders will be notified of the amounts of their purchases. All mail bidders who have established credit with us must make payment within three days after receipt. We reserve the right in our sole and absolute discretion to demand cash payment at the time a lot is knocked down to any bidder who has not previously established credit with us or whose account is in arrears. In the event any buyer refuses to pay cash for any lot at the time it is knocked down to him, the auctioneer reserves the right to re-offer the lot immediately for sale to the highest bidder. Sales tax will be added to purchases where applicable.
7. If the purchase price has not been paid within the time limit, nor lots taken up within seven days from date of sale they must be resold and any loss arising from such sale will be charged to the defaulter. Any account more than thirty days in arrears is subject to a late payment charge of 1½% per month so long as the account remains in arrears. If the auctioneer, in his discretion, should institute any action to secure payment of a delinquent account the defaulting purchaser shall pay all expenses incurred by the auctioneer and such charges will be added to the amount owed.
8. All lots are sold as genuine but should any lot be proved otherwise by written opinion of any competent, responsible authority acceptable to us, immediate refund of the full purchase price will be made, provided that such claim is made in writing within 14 days from date of sale. If claim is not made within this period, no lots are returnable for any reason at any time. So long as we are notified within the 14 day period that an opinion is being sought and **the material is submitted to an acceptable authority within that period the matter will remain open until such opinion is rendered. All "Extension" lots will be considered cleared and satisfactory to the buyer if we are not notified to the contrary within six months from date of sale. We will not be responsible for any charges incurred by the buyer for expertization fees and costs unless the opinion states the item is not genuine, in which case we will pay actual costs up to a maximum of \$50.00.** In the event an item is proved "not as described" it is returnable for full refund, and the buyer will be paid interest (at the prevailing Treasury Bill Rate) for the time his funds have been on deposit with us during the extension period.
9. Until paid for in full, all lots remain the property of Robert A. Siegel Auction Galleries, Inc. on behalf of the seller.
10. Some consignors have been advanced monies against the sale of their properties.
11. All forwarding charges will be added to the purchase price. The mode of shipment shall be at our option unless we are given specific instructions.
12. Lots may be sent for inspection to buyers known to us upon written application. All such lots must be returned to us by registered mail, adequately insured and within 24 hours after receipt. The applicant assumes all responsibility and will provide insurance against all risks from time of receipt until they are actually received back by us, and is to pay all expenses of postage and insurance. **No lots can be sent for inspection within ten days from date of local viewing. Large lots and collections cannot be sent for inspection.**
13. Agents are responsible for all purchases made on behalf of their clients unless other arrangements are made prior to the sale.
14. The placing of a bid shall constitute acceptance of the foregoing conditions of sale.

ROBERT A. SIEGEL

STEPHEN G. EDELSTEIN

Licensed Auctioneers

N.Y.C. Auction License No. 371761

737th SALE

RARITIES OF THE WORLD

THE PROPERTY OF VARIOUS OWNERS
AND SOLD BY THEIR ORDER

AT PUBLIC AUCTION

SATURDAY, APRIL 20, 1991
at 1:00 P.M.

AT THE NEW YORK HELMSLEY HOTEL
SUITE "ABC"
THIRD AVENUE AND FORTY-SECOND STREET
NEW YORK, NY

RESERVATIONS

The importance and interest in this sale is such that we cannot guarantee seating space for all who wish to attend. We are therefore recommending advance reservations on a first come first served basis for those who wish to attend. A phone call or letter to our office will assure you a seat.

It is advisable to arrive approximately 30 minutes prior to starting time of the Sale.

LOTS ON VIEW

Lots on view at our offices Friday, April 19th from 9:30 A.M. to 2:30 P.M.

ADDITIONAL CONDITIONS OF SALE

All lots are offered subject to a reserve price.

The auctioneer may implement such reserve price by bidding on behalf of the seller.

It may also be inferred that all sellers have been given advances against the sale of their material and therefore we have a financial interest in such lots over and above the sellers commission they are charged.

FOR TABLE OF DESCRIPTIONS SEE PAGES 14 & 41

**ROBERT A. SIEGEL
AUCTION GALLERIES, INC.**

160 EAST 56TH STREET
NEW YORK, NY 10022

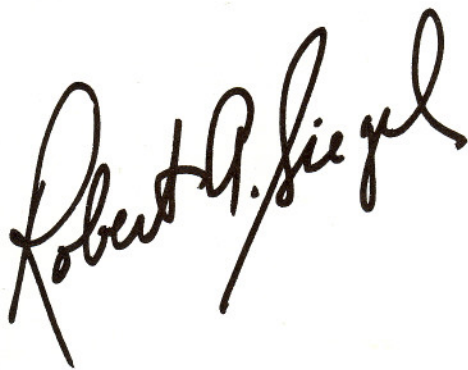
ESTABLISHED 61 YEARS

TEL: (212) 753-6421
FAX: (212) 753-6429

FOREWORD

When I presented our first "Rarities of the World" auction in 1964, I envisioned an annual gathering of important and choice philatelic material, but such dreams did not include 27 additional auctions and forewords, and yet here we are: It's 1991 and "Rarities of the World" carries all the weight of a reliable and familiar trademark. Needless to say, this sale continues an outstanding tradition. It also marks my 61st year of conducting stamp auctions, which should be a record. Certainly it feels like one, at least from the viewpoint of someone who has always been a little intimidated by age and longevity. When you've seen more than 730 auctions come and go, it becomes more and more difficult to be impressed or even surprised by quality and rarity, but in going over the lots presented herein, I've been repeatedly rewarded with the same sense of pleasure which accompanied that first Rarities of the World sale. Hopefully collectors and dealers in attendance will share some of these feelings. The Rarities Sale has always been something of a bellwether for the philatelic market, and this sale should prove to be no exception.

The sale will again be held at the New York Helmsley Hotel. As seating accommodations are limited, advanced reservations are advisable. A note or a card to our office will assure you of seating.

A handwritten signature in black ink, reading "Robert G. Siegel". The signature is written in a cursive, flowing style with a large, prominent "R" and "S".

LOTS ON VIEW

Lots on view at our offices Friday, April 19th from 9:30 A.M. to 2:30 P.M.

Unless otherwise noted, the Scott 1991 United States Specialized Catalogue and the Scott 1991 Standard Catalogues, Volumes 1-4 have been used for cataloguing lots in this sale.

PUBLIC AUCTION

SATURDAY, APRIL 20, 1991 AT 1:00 P.M.

RARITIES OF THE WORLD

UNITED STATES

STAMPLESS COVERS

- 200 ☒ **Albany NY Paid 3** pmk. on Printed Cover with "Map of the Routes of the American Express Co.", Very Fine **E. 750-1,000**
- 201 ☒ **Marietta Northwest Territory**, 1798, Addressed to Congressman in Philadelphia, Very Fine Stampless Cat. 3,500.00
- 202 ☒ **N* Orleans ★ AP 8**. Straight-line pmk, well-struck, on 1804 Folded Letter to New York, ms. "25" rate, Very Fine, Choice Example from the "Pre-Territorial" Period **E. 1,500-2,000**
- 203 ☒ **Pleasant Grove, Allegany County, Md.** printed in Red, Zevely P.M. Frank, "Free Sept. 25, 1852" pmk. Rare Cover, Very Fine **E. 2,000-3,000**

POSTMASTER PROVISIONALS

- 204 ☒ **Baltimore, Md., 5c Black (3X1)**. Almost Four Framelines, ms. cancels (not tied), Blue Baltimore pmk. with matching "Paid" on cover to Charles Co., Md., minor cover wear & soiling, Still Attractive & Desirable 8,000.00

Maine
27 Nov.

Free

Honourable

Dwight

201

Representative

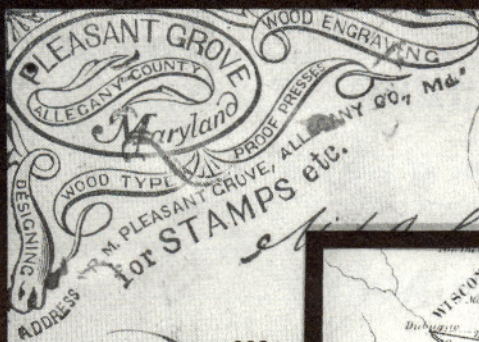
New Orleans Ap 9

New Orleans 7th April 1874

Mr D. M. Mumford

202

New York



203

Longthorpe



200

C. C. Dwight Esq
Coshoe ton
Ohio

James M. Buckingham
5 Cents.

Paid

204

James M. Buckingham
5 Cents.

James M. Buckingham
5 Cents.

PAID

Mr. H. M. Richards

136 Front St.

New York

205

- 205 ☒ **Baltimore, Md., 5c Black on Bluish (3X3).** Margins Mostly Large On Three Sides to just in at top, pen cancelled and Used on 1846 Folded Letter from Baltimore to New York, Blue "Paid", "5" and Town postmarks, Fine, A Very Clean and Attractive Example of This Rarity, with P.F. Certificate 7,500.00
- 206 ☒ **Baltimore, Md., 5c Black on Bluish (3X3)** Margins showing Frame-lines at sides & parts at bottom, tied by Blue "Paid" on Feb. 1846 folded letter to the U.S. Naval School at Annapolis, matching Baltimore cds, "5" in oval and 2nd strike of Paid, vertical file crease through adhesive, Fine appearing Rarity 7,500.00
- 207 ☒ **Baltimore, Md., 10c Blue on Salmon (3XU4).** Clear strikes of handstamps on Salmon envelope to Huntsville, Ala, with 1846 enclosure; docketing in Blue ink affects rate handstamp but clear of signature. Fine Rarity, **the Only Recorded Example**, Ex-Weill 17,500.00
- 208 **New York, N.Y., 5c Black (9X1).** Complete Plating of 40 Stamps including Plate Varieties, VG-VF 12,000.00 +
- 209 **New York, N.Y., 5c Black on Blue (9X2).** Light Face-Free Red Corner Cancel, Large, Evenly Balanced Margins, An Unusually Choice Example of This Rare Variety, Very Fine, with P.F. Certificate 1,350.00
- 210 ★ **Providence, R.I., 5c, 10c Gray Black, Se-tenant Pair (10X2a).** Very Wide Margins All Around, Fresh, Choice, Extremely Fine, with P.F. Certificate 1,300.00
- 211 ★田 **Providence, R.I., 5c, 10c Gray Black (10X1, 10X2).** Cpl. Sheet of Eleven 5c & One 10c, almost Full o.g., light diagonal crease at bottom right affects three stamps, top left stamp tiny filled thin, o/w Fresh & Very Fine, Rare Sheet, with Ebel & Dena Certificates 3,850.00



212



213

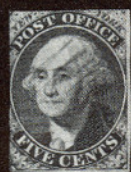


214



215

- 212 **St. Louis, Mo., 10c Black on Greenish (11X2).** Four Margins, canceled by pen stroke, thin spots, Very Fine appearance, with P.F. Certificate (Photo) 2,300.00
- 213 ★ **St. Louis, Mo., 10c Black on Gray Lilac (11X5).** Large Margins, clear at right, small shallow thin at top, Fine appearance 4,500.00
- 214 **St. Louis, Mo., 20c Black on Gray Lilac (11X6).** Neat ms. cancel, Fresh, A Rare Stamp in Choice Condition for the Issue, with only very slight creasing, otherwise Extremely Fine, with P.F. Certificate 10,000.00
- 215 **St. Louis, Mo., 5c Black on Bluish (11X7).** Position 1, ms. & Red "Paid" cancels, Clear Margins All Around, small repaired spot, Fine appearance, with P.S.E. Certificate 6,000.00



James M. Buchanan
5 Cents.

Cap^t. Franklin Buchanan

206

James M. Buchanan
Dear Sir,
I have the honor to acknowledge the receipt of your letter of the 10th inst. in relation to the purchase of the land for the proposed canal. I have the pleasure to inform you that the same has been approved by the Board of Directors of the Canal Company, and that the necessary arrangements are being made for the purchase of the land. I am, Sir, very respectfully,
Your obedient servant,
James M. Buchanan

207



Charles
Pur

223



211



Miss Susan Brewster
Brooklyn
Mass

224



Anna Bradley
Oliver
Ohio

222

1847 ISSUE



217



218

- | | | |
|-------|---|----------|
| 217 ★ | 5c Red Brown (1). Full Naturally Crackly o.g., Large Margins All Around Including Sheet Margin at right, Outstandingly Choice, Extremely Fine, with P.F. Certificate | 3,500.00 |
| 218 ★ | 5c Dark Brown (1a). Position 90R, Showing Double Transfer Type "B" , Large to Huge Margins All Around Including Large Sheet Margin at right, Rich Intense Color, Extremely Fine with P.F. Certificate | 3,500.00 |
| 220 | 5c Red Brown (1). Ample to Huge Margins, Pretty Color, Blue grid, Extremely Fine, with P.F. Certificate | 400.00 |

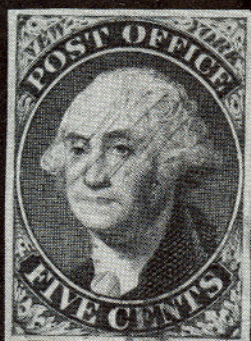


221



236

- | | | |
|-------|---|----------------|
| 221 | 5c Red Brown (1). Vertical Pair, Red New York square grids, Outstandingly Fresh, Rich Color, Sharp Impression, Three Ample to Large Margins & Huge Sheet Margin at right, An Impressive, Extremely Fine Showpiece, Ex-Sweet, Lehman, with P.F. Certificate | 900.00 |
| 222 ☒ | 5c Brown (1). Ample to Large Margins, Red grid and "Cincinnati O. 5cts" pmk on embossed lady's envelope to Sligo, Ohio, Very Fine, with P.F. Certificate | E. 600-800 |
| 223 ☒ | 5c Brown (1). Margins to bit in, tied by grid and Bridgeport Ct. cds in Bright Green , matching "Paid", on 1849 folded letter headed Housatonic R.R. Office, Fine and Rare | E. 1,000-1,250 |
| 224 ☒ | 5c Brown (1). Margins to touching at bottom, tied by light Red Grid, matching Boston & Albany R.R. cds on pretty Valentine Envelope in Bronze Gray, Fine-Very Fine, handsome usage, with P.F. Certificate (Photo) | E. 2,000-2,500 |
| 225 ☒ | 5c Red Brown (1), Two Singles, left stamp with three margins, right stamp ample to huge margins, tied by Red grids on 1848 front only to Lyon, France , with matching Mobile, Ala cds and Way handstamp, "Colonies & Art 13" handstamp, Boulogne transit, Very Fine, with P.F. Certificate | E. 1,000-1,250 |



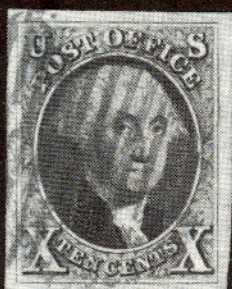
209



210



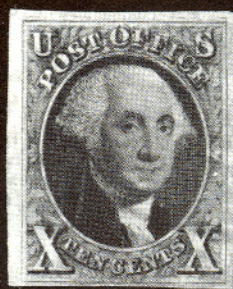
220



230



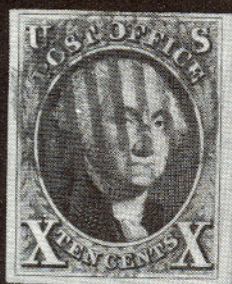
231



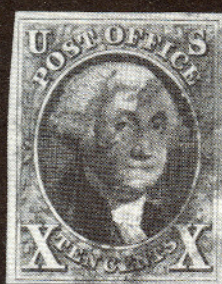
232



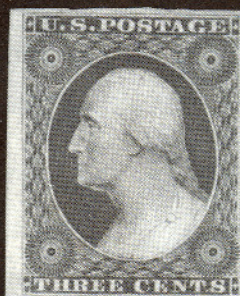
233



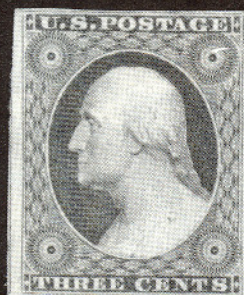
234



235



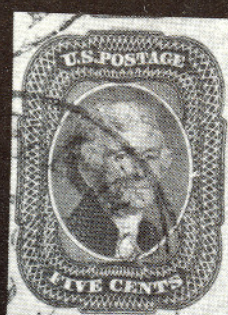
264



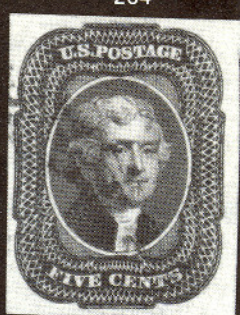
265



270



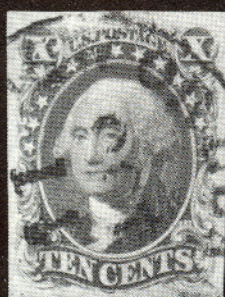
271



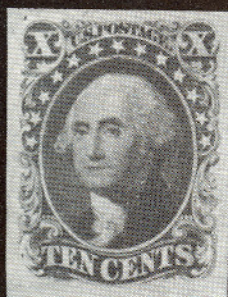
272



273



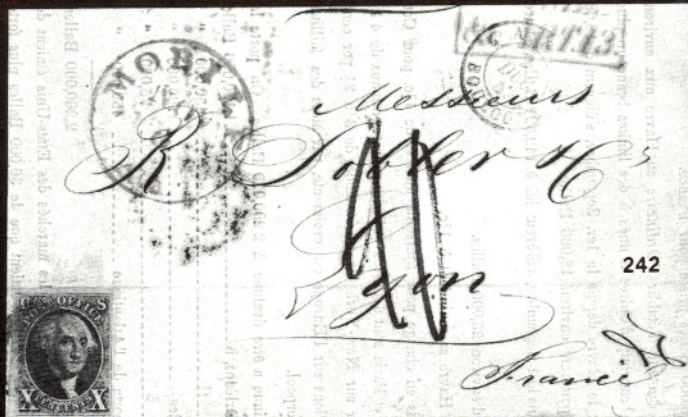
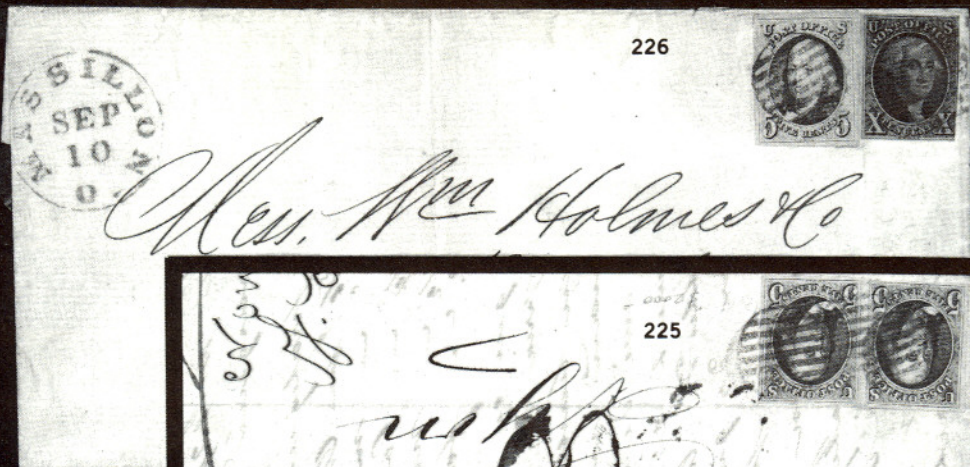
281



284



291



- 226 ☒ **5c Red Brown, 10c Black (1, 2). Used Together** on 7¼x3½" Folded Cover From Massillon, Ohio to Pittsburgh, Pa, dated on back **Sept. 10 1851, Two Months After Demonitization**, paying five times the 3c Rate. Stamps tied by Red grids, each with corner crease, otherwise Fine, Very Rare with P.F. Certificate **E. 10,000-12,500**



227



228



229

- 227 ★ **10c Black (2).** Ample to Large Margins, tiny margin tear not into design, Very Fine appearance, with P.F. Certificate 15,000.00
- 228 ★ **10c Black (2).** Ample to Large Margins, o.g., small thin and vertical crease, Very Fine and Choice Appearance 15,000.00
- 229 ★ **2c Black (2),** Four Margins, small part o.g., light corner crease at bottom left, trivial soiling, Very Fine appearance, with P.F. Certificate 15,000.00
- 230 **10c Black (2).** Wide, Beautifully Balanced Margins, Neat Red square grid cancel, Choice, Extremely Fine, with P.F. Certificate 1,100.00
- 231 **10c Black (2).** Large Margins, Fresh Color, Red square grid, Extremely Fine, with P.F. Certificate 1,200.00
- 232 **10c Black (2). Double Transfer in "Post Office"** (Position 31R1), Red cancel, Beautifully Fresh, Ample to Huge Margins, Very Fine, with P.F. Certificate 1,250.00
- 233 **10c Black (2).** Large Margins to Ample at bottom, Red square grid and bit of New York cds, Very Fine, with P.F. Certificate 1,200.00
- 234 **10c Black (2).** Three Large Margins, Ample at top, neat Red grid, Very Fine, with P.F. Certificate 1,100.00
- 235 **10c Black (2).** Position 88L, **Green** cancel, Ample to Large Margins, Very Fine, with P.F. Certificate 2,100.00
- 236 **10c Black (2). Vertical Pair,** Positions 30L, 40L, Red grid cancels, Lovely Freshness, Vivid Impression, Ample to Large Margins, Very Fine, with P.F. Certificate 2,400.00



237



238

- 237 **10c Black (2). Horizontal Pair,** Four Margins, Attractive Blue grids, repaired vertical tear at far left, Very Fine appearance 2,500.00
- 238 **10c Black (2). Strip of Three,** Positions 68R-70R (Position 68 with Line Through "F" of Office), Red Panama grid cancels, Fresh, Sharp Impression, Three Ample to Large Margins, Huge Sheet Margin at right, Very Fine & Beautiful, with P.F. Certificate 7,650.00
- 239 ☒ **10c Black (2).** Four Margins, tied by Red grid, neat matching, "Boston 10 Cts" cds on Apr 1851 cover to Philadelphia, Fresh, Very Fine, with P.F. Certificate 1,200.00

- 240 ☒ **10c Black (2)**, Ample to Large Margins, tied by bright Red grids, matching **U.S. Express Mail Boston Mass** pmk., Very Fine, with PSE Certificate 1,550.00
- 241 ☒ **10c Black (2)**. Three Large Margins, clear at bottom, tied by Blue "10", matching Baltimore, Md. pmk. at left on Fresh folded letter sheet to North Carolina, Fine, Very Attractive 1,300.00
- 242 ☒ **10c Black (2)**. Four Margins, Bright Color, tied by Orange Red grid, matching "Mobile Ala." cds on front only to **Lyon, France**, Very Fine, with P.F. Certificate **E. 1,500-2,000**
- 243 ☒ **10c Black, Left Vertical Half Used as 5c (2b)**. Uncanceled, on restored folded cover to Washington, **Not Accepted as Postage**, with Red "New-York 5cts" cds at right, stamp lifted and hinged back, toned spot; lot includes photo of cover with matching right hand position showing bisect accepted as 5c postage five days earlier. Rare and Interesting Usage. Ex-Hart, with P.F. Certificate **E. 2,000-2,500**

1851 ISSUE



- 244 **1c Blue Type I (5). Position 71E**. Mostly Ample Margins showing complete design except just in at bottom right, Excellent Impression and Color, Blue Town cancel, vertical crease, Fine Appearing Example of This Classic Rarity, with P.F. Certificate 18,000.00

DESCRIPTIONS

EXTREMELY FINE: The finest condition for noteworthy, outstanding stamps.

VERY FINE: In prime condition such as to satisfy the requirements of particular collectors.

FINE: Perforations or margins do not touch design on issues after 1890 but in some cases may just touch in earlier issues. If used, fairly light cancellation.

VERY GOOD: Generally nice appearance but margins or perforations may cut in slightly.

GOOD: Average off-centering or fairly attractive with slight defects.

ORIGINAL GUM is not to be expected on stamps prior to 1890 unless so stated in the description.

MINT: With original gum and never hinged.

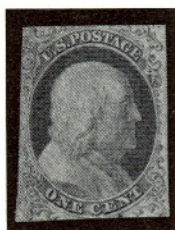
Unless otherwise noted the Scott 1991 Specialized Catalogue has been used for cataloguing lots of the United States. The Scott 1991 Standard Catalogue Volumes 1-4 has been used for cataloguing all others.



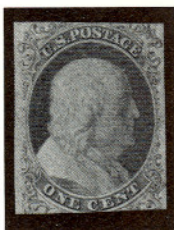
246
245

- 245 ☒ **1c Blue Types I-IIIa-II (5, 8A, 7). Vertical Strip of Three, Positions 7-17-27R1E, Mostly Large Margins, tied by Red grids, matching "Louisville & Cincinnati" Mail Line balloon-style pmk. on folded cover to Philadelphia, Type I with sealed tear at top, bottom stamp with piece added at bottom left, Very Fine appearance, the Only Known Type I Cover with This Marking, ex-Cipolla** 48,500.00 +
- 246 ☒ **1c Blue, Types I-Ib-II (5, 5A, 7). Three Singles incl. the Rare 7R1E beautifully tied by Blue Philadelphia pmks. on 1851 cover, Red Star shows Carrier use, Type I cut in at top & bottom, stamp at right is Type Ib, Position 6R1E, also cut bit close top & bottom, left stamp is Type II, Three Large Margins, Neat, Clean cover, Quite Handsome Showpiece of Great Rarity, signed Ashbrook** 30,835.00 +

Extension Lots must be paid for on receipt. In the event of an unsatisfactory certificate, payment will be refunded with interest at Treasury Bill rate.



247



248



249



250

- 247 ★ **1c Blue, Type Ib (5A). Position 5R1E**, Margins to slightly in, small toned spot at bottom, otherwise Fine, with Ashbrook letter and P.F. Certificate 13,000.00
- 248 ★ **1c Blue, Type Ib (5A). Position 6R1E**, Margins to in at bottom, barest trace of pmk., small toned spot, otherwise Fine, with photocopies of P.F. Certificates 13,000.00
- 249 **1c Blue, Type Ib (5A). Position 4R1E**, Mostly Large Margins (Well Clear on Three Sides, just touching bottom right scrolls but showing Type Characteristics Well), Two Bold Cincinnati Postmarks, small faint corner crease, otherwise Very Fine, A Nice Example of This Rare Type, with P.F. Certificate 5,000.00
- 250 **1c Blue, Type Ib (5A). Position 9R1E**, Large Margins to touched, light cancel, pinpoint scrape under "P" of "Postage", Fine appearance 5,000.00



- 251 ☒ **1c Blue, Type Ib, II (5A, 7). Top Left Corner Sheet Margin Strip of Three** from the right pane of Plate One Early, **Right stamp Type Ib, Positions 1R1E-3R1E**, Lovely First Printing Color & Impression, Large to Gigantic Margins, Neat Red grids & matching Newburgh, N.Y. Jul. 4 (1851) pmk. on small cover to Kingston, N.Y., Fourth Day of Usage, Extremely Fine, Unlisted in Scott, Ex-Newbury, Mason, Ishikawa, Grunin, with P.F. Certificate E. 12,000-15,000



252



253



254



255

- 252 ★ **1c Blue, Type Ia (6). Position 95L4**, part o.g., crease and thins, Fine appearance, with PSE Certificate 22,500.00
- 253 **1c Blue, Type Ia (6)**. Large Margins except barely in at bottom right, Town cancel with 1859 year date; small repaired tear at bottom, Very Fine appearance, with P.F. Certificate 6,500.00
- 254 **1c Blue, Type Ia (6). Pair, Positions 97R4, 98R4** (left stamp Curl in "c"), Fresh, Deep Color, Large Margins to just touching at bottom, A Handsome Example of This Very Scarce Type, ex-Sheriff, with P.F. Certificate 13,500.00
- 255 **1c Blue, Type II, Unofficial Chicago 12½ Perforations (7 var)**. Position 48R2, Double Transfer at bottom, Fresh, Attractive Color, A Very Fine Example of This Rarity, with P.F. Certificate 4,000.00
- 256 ★田 **1c Blue, Type II, IIIa (7, 8A) Mint Block of Four, Positions 61-72L1E**, the bottom right stamp being Type IIIa, **Position 71 a Triple Transfer, One Inverted**, small scissors cut between top pair, Fine, Very Scarce Multiple, with P.F. Certificate **E. 1,500-2,000**



257



258



259



260

- 257 **1c Blue, Type III (8). Plate IV, "C" Relief**, Town pmk., Fresh, Large to Huge Margins, Extremely Fine, ex-Emerson, with P.F. Certificate . 1,500.00
- 258 **1c Blue, Type III (8) Position 70L4**, Margins All Around except barely touched at top right, Red Carrier cancel, Very Fine, with P.F. Certificate 1,650.00
- 259 **1c Blue, Type III (8). Position 99R2**, Town pmk., Very Fresh, Large to Huge Margins, An Extremely Fine Example of the **Finest of All Type III's**, with Friedl & P.F. Certificates 2,750.00
- 260 **1c Blue, Type IIIa (8A). Pair**, Mobile (Ala.) Jul. 15 cancel, Large to Huge Margins to close at right, A Most Attractive Pair, with P.F. Certificate 1,250.00
- 261 ☒ **1c Blue, Type IIIa (8A)**. Ample to Large Margins, tied by New York three-bar cds on Jan. 1852 printed notice to South Lee, Mass., Very Fine **E. 600-800**
- 262 ★田 **1c Blue, Type IV (9). Bottom Margin Block of 16 (4x4)**, Positions 63-66, 73-76, 83-86, 93-96R1L, Very Fresh, Deep Color, some pressed out creases, Fine-Very Fine appearance, with P.F. Certificate 7,000.00 +
- 263 ☒ **1c Blue, Type IV, 3c Dull Red (9, 11)**. Tied by Westcambridge, Ms. pmk. on **Hand drawn Illustrated Cover**, Horse & Buggy with two Men, one Thumbing His Nose, Most Unusual, small closed tear, Very Attractive **E. 1,500-2,500**

267

E. Cornell Esq



261



263



5



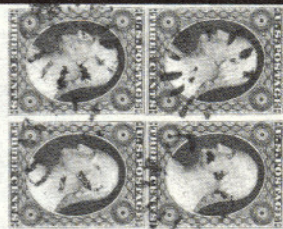
Dr. D. J. Gomez y Gomez

283

Vera Cruz



262



*Minot Esq
Commissioner of Pension
Washington D.C.*

269

- 264 ★ **3c Orange Brown (10).** Large to Huge Margins (Easily Clearing All Around, with Sheet Margin at left). Brilliantly Rich Color, Choice, Extremely Fine, with P.F. Certificate 950.00
- 265 ★ **3c Orange Brown (10).** Full o.g., lightly hinged, Ample to Very Large Margins Including Part of Next Stamp at left, Rich Bright Color, Choice, Very Fine, with P.F. Certificate 950.00
- 266 **3c Orange Brown (10). Complete Reconstruction of Right Pane of Plate 2 Early,** Singles, including several sheet margin (one corner margin) stamps, mixed condition, Generally Fine study **E. 2,500-3,500**
- 267 ✉ **3c Brownish Carmine (11).** Mostly Large Margins, tied by perfect Blue "X" in double circle of Troy N.Y. on Buff cover to Canada, Red "U. States" in ribbon and "6d" in circle; closed cover tear at bottom, stamp with light corner crease, Fine, striking example of part payment not recognized on cross border mail **E. 500-700**
- 268 **3c Red (11). Complete Reconstruction of Right Pane of Plate 4.** Includes shades, **Complete Imprint and Plate Number**, many with town cancels, Fine, Rarely Offered **E. 1,250-1,500**
- 269 ✉ **3c Brownish Carmine (11). Block.** Ample to Gigantic Margins incl. 19½mm bottom sheet margin, just in at top right corner, canceled by 4 strikes of odd pinwheel cancel of Maquoketa Iowa and tied at right on cover to Washington, clear cds struck at left, expertly rebacked, Spectacular Appearance, ex-Caspary, with Friedl Certificate **E. 3,000-4,000**
- 270 **5c Red Brown (12).** Neat Light Town Cancel, Exceptionally Large, Beautifully Balanced Margins, Extremely Fine Gem, with P.F. Certificate 950.00
- 271 **5c Red Brown (12).** Very Large to Huge Margins including a bit of the Next Stamp at top, Light New Orleans cancel, Choice, Extremely Fine, with P.F. Certificate 950.00
- 272 **5c Red Brown (12).** Large Margins All Around, lightly cancelled, Extremely Fine, Choice 950.00
- 273 **5c Red Brown (12).** Large Margins, Bright Red grid cancel, Extremely Fine 1,000.00

"E." = ESTIMATES

Our sales offer many covers, cancellations, varieties and other items for which there is no catalogue value or where catalogue value does not reflect the actual value. In order to assist our clients, we are placing a fair net valuation on such lots as a guide to our bidders. Lots may actually realize more or less than our estimates, which are under no circumstances to be considered reserves but merely a guide to bidding.



274

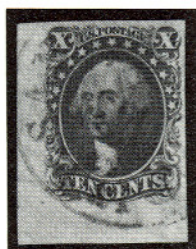


277



278

- 274 **5c Red Brown (12). Strip of Three**, Light New Orleans pmks., Wonderfully Fresh, Rich Color, Large to Huge Margins showing traces of adjoining stamps at top, Choice Multiple, Extremely Fine, Ex-Weinberger, with P.F. Certificate 4,000.00
- 275 ☒ **5c Red Brown, 10c Green, Type IV (12, 34).** First with Three Margins, touched at bottom, latter centered to top, each tied by Red "Paid" on 1858 cover to France from Providence R.I., matching pmk. at left, New York exchange pmk. also ties 5c, both stamps with small faults, Fine appearance E. 1,500-2,000
- 276 ☒ **5c Red Brown (12).** Four Margins, used with **1c Blue (24)** and **12c Black (36)** on large Front only with printed address for 1859 Election Returns, all tied together by **Magenta** grids, Black Hartford Ct cds, 5c VF, Rare usage E. 1,000-1,500
- 277 ★ **10c Green, Type I (13).** Large Margins All Around, Extremely Fine . 9,000.00
- 278 ★ **10c Green, Type I (13).** Ample to Large Margins All Around, Rich Fresh Color, Very Fine, signed Bloch, with P.F. Certificate, which notes "... a faint spot at top"—so faint that we cannot see it 9,000.00



279



280



282

- 279 **10c Green, Type I (13).** Position 91L1, Bottom Left Sheet Margin Single, Fresh & Bright, Ample to Large Margins at top & right, Gigantic Sheet Margins at left & bottom, Extremely Fine & Gorgeous, Ex-Newberry, with P.F. Certificate 600.00
- 280 **10c Dark Green, Type I (13).** Large to Huge Margins, Town cancel, Extremely Fine, with P.F. Certificate 600.00
- 281 **10c Green, Type I (13).** Large Margins All around, Extremely Fine, Choice 600.00
- 282 **13c Green, Type I (13). Horizontal Strip of Three**, Mostly Large Margins, Grid cancels, Very Fine, with P.F. Certificate 1,950.00



288

Mrs. J. L. Lamm
Lamm

275

Moses B. Jacobson Esq
care of
Moses B. Jacobson & Co
No 5 Rue de la Paix
Paris France



287

Maurice H. Schermer
No 62 Boulevard de Strasbourg
Paris

to U.S. States

John MacGregor Esq
86-87-88-89
Athens Ga. Cal. mail

292



294

Miss Sophia M. Joy
Dunsmill
Upper Canada



289

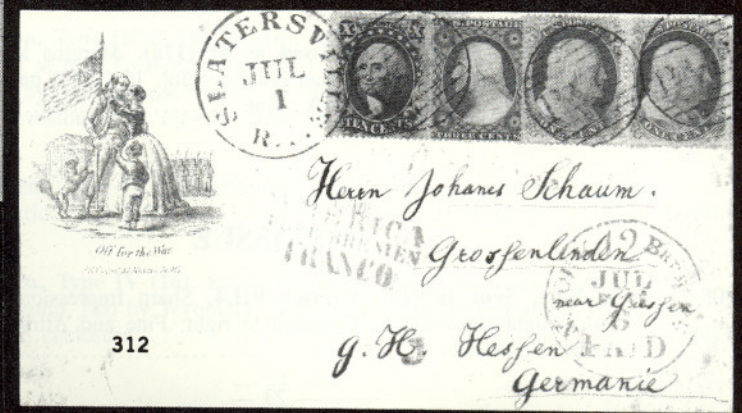
Mr Robert W. Lamm
Perk Shire
Scotland

- 283 ☒ **10c Green, Type III, II, III, I (13, 14, 15). Vertical Combination Strip of Four**, Three Ample to Large Margins, tied by New Orleans, La. pmks. on 1857 folded letter sheet to Mexico, Bold "5" handstamp, some minor erosion in address, top stamp (Type III) slightly cut in, remaining Strip of Three (Ty. II, III, I) Very Fine, Unlisted in Scott, Very Attractive 10c 1851 Combination, with Alcuri & P.F. Certificates . **E. 4,000-5,000**
- 284 ★ **10c Green, Type II (14).** Full o.g., Huge, Even Margins, Rich Color, Extremely Fine, with P.F. Certificate **2,000.00**
- 285 **10c Green, Types II-III-II (14, 15). Vertical Combination Strip of Three.** Margins All Around, Rich Color, lightly canceled by twice struck pmks., Very Fine, Pretty Example of this combination. With P.S.E. Certificate **E. 1,000-1,250**
- 286 **10c Green, Type II, IV (14, 16). Strip of Four**, Positions 1R1-4R1 (third stamp Type IV), Clear New Orleans Jun. 14 pmks., Gorgeously Fresh, Rich Color, Large to Huge Margins, Extremely Fine, Handsome with P.F. Certificate **1,950.00 +**
- 287 ☒ **10c Green, Type II, 5c Brown (14, 29). Strip of Three, Vertical Strip of Three** respectively, tied by New Orleans La. Oct 4 1857 pmks. on mostly complete folded cover to France, Red N.Y. exchange pmk. and Blue Merchant's Oval; 10c in at bottom, 5c part Imprint, small faults, Attractive Cover **E. 1,500-2,000**
- 288 ☒ **10c Green, Type III (15).** Ample to Enormous Margins, tied by New York Ocean Mail pmk. on 1856 folded cover to San Francisco, Extremely Fine Stamp **E. 500-750**
- 289 ☒ **10c Green, Type III, 1c Blue Type II (15, 7). Pair, Strip of Four**, respectively, Large Margins except one 1c touched at top, tied by Monroe, Mich pmks. on 1857 cover to Scotland, Red 19 credit; some cover wear right, 1c with tear, Fine, Very Scarce, signed Ashbrook . **E. 1,500-2,000**
- 290 **10c Green, Type III & IV (15, 16). Horizontal Pair**, Large to Huge Margins All Around, A Beautiful "Gem" Piece, Extremely Fine **1,500.00 +**
- 291 **10c Green, Type IV (16).** Large Margins, Recut at bottom, Extremely Fine, Outstanding Copy, with P.F. Certificate **1,150.00**
- 292 ☒ **10c Green, Type III & IV (15, 16). Strip of Three**, Left stamp Type IV, Recut at top, Positions 86L1-88L1, Three Large Margins, clear at left, tied by San Francisco pmks. & Red London transit on 1857 cover front to London, Very Fine & Quite Attractive, with P.F. Certificate . **1,725.00**
- 293 **10c Green, Type IV (16). Position 76L1**, Recut at bottom, Boston "Paid" grid, Large Margins, Very Fine, with P.F. Certificate **1,150.00**
- 294 ☒ **10c Green, Type IV (16).** Recut at bottom, Ample to Large Margins, Lovely Stamp, tied by Wyoming, N.Y. pmk. on cover to Canada, Very Fine, with enclosure **1,350.00**

- 295 ☒ **10c Green, Type IV (16). Position 86L1**, Ample to Large Margins, tied by "Breaux's Bridge La" pmk. on 1857 cover to France, Red N.Y. exchange pmk. and "GB/1 Fr 60c" accounting mark, etc., stamp with two tiny tears at top, Very Fine appearance, Rare small town usage ... 1,350.00
- 296 ☒ **10c Green, Type IV (16). Position 55L**, Large Margins to touched at left, tied by grid on Black on Yellow **Noisy Carrier's Mining Envelope** to Richmond, Va., light Downieville, Cal. cds, Very Fine **E. 2,000-2,500**
- 297 ★ **12c Black (17)**. Margins All Around, Sheet Margin at right, Very Fine 2,500.00
- 298 ★ **12c Black (17)**. Four Margins, o.g. which is slightly disturbed (described by P.F. as "redistributed") o/w Fresh, Very Fine, with P.F. Certificate 2,500.00
- 299 **12c Black, Printed on Both Sides (17c)**. Wide Left Margin, others clear to just in, minute corner crease, Still a Presentable Example of This Exceedingly Rare Item 3,500.00
- 300 **12c Black (17). Strip of Six**, Large Margins showing portions of adjoining stamps at top & bottom to touching or just in at bottom left & right, left stamp minute corner crease, right stamp small thin, Four Center Stamps Extremely Fine & Beautiful, with P.F. Certificate 1,575.00 +
- 301 ☒ **12c Black (17). Horizontal Pair**, Margins to slightly in, tied by indistinct cds on 1858 cover to **Belgium**, Red "New-York Am. Pkt" cds, ms. "2" and Blue Belgian "4", backstamps including "56" in circle, tiny tear between stamps, Fine and Rare Usage **E. 750-1,000**
- 302 ☒ **12c Black, Diagonal Half Used as 6c (17a)**. Well tied by San Francisco pmk. on cover to Philadelphia, lengthy 1853 contents, "Per Northener" in ms., Very Fine 3,500.00
- 303 ☒ **12c Black, Diagonal Half Used As 6c (17a)**. Tied by Beautifully Centered San Francisco, Cal. pmk., addressed to Philadelphia, with "21st March, 1853" Docketing inside; Adhesive with Large Margin at Right, cutting at bottom and lightly affected by cover file fold, otherwise Fine, Quite Attractive, Very Rare 3,500.00
- 304 ☒ **12c Black, Diagonal Half Used as 6c (17a)**. Margins to just into frameline at top left, tied by San Francisco Jul. 16 (1853) pmk. on neat folded letter sheet to New York, Fine 3,500.00

1857 ISSUE

- 305 **1c Blue, Type Ia (19). Position 92L4**, Sharp Impression and Nice Color, light town cancel, Centered to right, Fine and Attractive, with P.S.E. Certificate 2,500.00





306



307



308



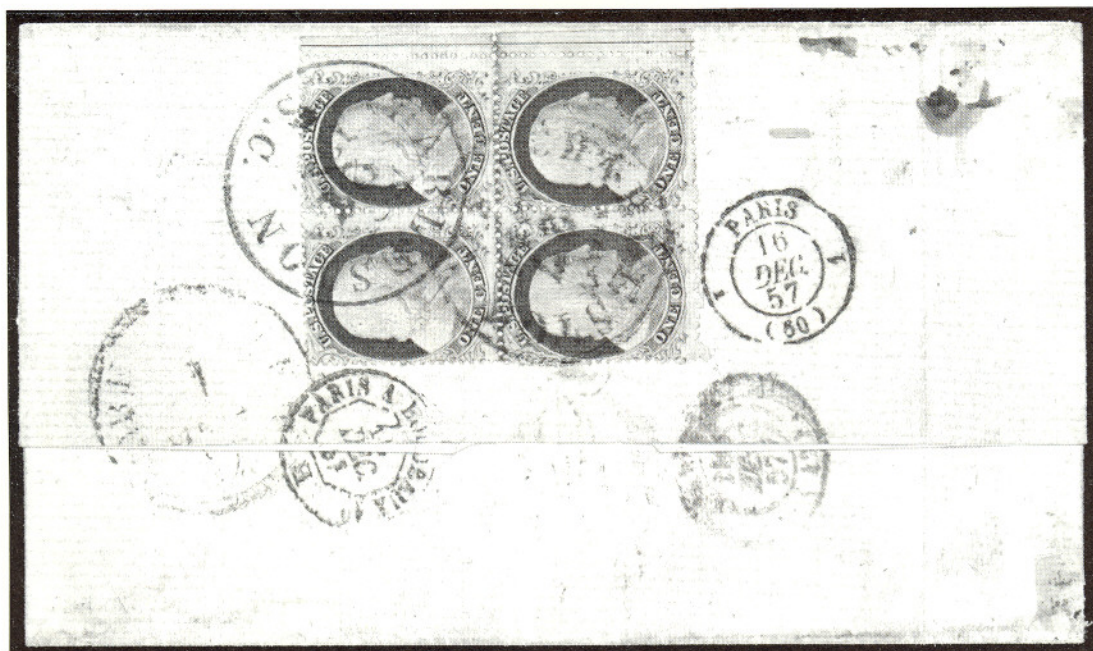
310

- 306 ★ **1c Blue, Type III (21).** Mint, Fresh, Brilliant Color, Extremely Fine, Very Rare in This Condition, Ex Moody, with copy of P.F. Certificate showing this as one out of a Block 5,000.00
- 307 ★ **1c Blue, Type III (21).** Mint, Fresh, Gorgeous Color, Extremely Fine, Very Rare in This Condition, Ex Moody with P.F. Certificate showing this as one out of a Block 5,000.00
- 308 ★ **1c Blue, Type III (21).** Brilliant Rich Color, Nicely Centered, Fresh, o.g., Very Fine, Choice, with Photocopy of P.F. Certificate for Block 5,000.00
- 309 ★ **1c Blue, Ty. III (21).** Left Margin Single, Position 21R4, minute closed tear at right, Fine and Choice appearance, Very Scarce, with P.S.E. Certificate 5,000.00
- 310 **1c Blue, Type III (21). Position 99R11,** The Finest of All Type III's, Brilliant Color, centered bit to top, Fine, Less Than Twelve Known, Signed & Plated by Ashbrook, Ex-Ishikawa, with P.F. Certificate 6,000.00
- 311 ☒ **1c Blue Type Ic, IIIa, 5c Red Brown (22 var, 22, 28).** Singles, all Well-centered, 1c Excellent Impressions, tied by Ripley Miss. pmks. on U10 entire to Portland Oregon; slightly reduced at right, Neinken notes on back, Very Fine, Beautiful and Rare Combination E. 3,000-4,000
- 312 ☒ **1c Blue, Pair, 3c Red, 10c Green (22, 26, 35).** Tied on Kimmel Patriotic Cover "Off for the War" to Germany, Very Fine, Rare . E. 1,000-1,500

BIDDING INTERVALS

BIDS	ADVANCE	BIDS	ADVANCE
\$750 - \$1,950	\$50.00	\$15,000 - \$29,000	\$1,000
\$2,000 - \$2,900	\$100.00	\$30,000 - \$72,500	\$2,500
\$3,000 - \$7,250	\$250.00	\$75,000 - \$145,000	\$5,000
\$7,500 - \$14,500	\$500.00	\$150,000 - \$290,000	\$10,000

Bids which do not conform to the above will be automatically reduced to the appropriate level.

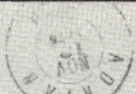


- 313 ☒ **1c Blue, Type IV (23). Block** with Centerline at right, on back of folded cover to France, tied by Charleston S.C. Dec. 1857 pmks., 3c Rose (25) on address side (two additional stamps have been removed) Fine and Very Rare, One of Three Used Blocks Recorded, and the Only Known Example on Cover. Ex-Waterhouse 10,000.00 +
- 314 ☒ **1c Blue, Type V (24), Used After Denomination with 2c Black (73), and 3c Rose (65)** on Nov 12 1865 cover from Adrian Mich. to New York, stamps tied by quartered cork cancels, pmk. repeated on back, small reduction at left, just into corner card, otherwise Fresh, Very Fine, Very Rare Usage, with P.F. Certificate **E. 2,000-2,500**
- 315 ★田 **3c Rose, Type I (25). Corner Margin Block**, Well-centered, Full o.g., only a couple faint pressed-out creases, otherwise Extremely Fine, the Top Right Stamp Being Entirely Sound and Spectacularly Choice, One of the Finest of the Few Remaining Blocks, with P.F. Certificate 3,250.00
- 316 ★田 **3c Claret (25). Block**, o.g., h.r. in top pair, blind vertical perfs. in center, Fine, Very Scarce Multiple 3,250.00
- 317 ☒ **3c Red (26). Strip of Three and Pair**, each stamp canceled by Red grid, Strip tied by matching New York Paid 6 exchange pmk. on Aug 3 1861 tissue cover to France with Patriotic Sticker at top left corner, Very Fine, Neat and Attractive Usage **E. 500-750**
- 318 ★ **5c Brick Red (27). O.g.**, barely touched at left, trivial gum toning in bottom perfs., Fine and Rare, with P.F. Certificate 8,000.00
- 319 **5c Brick Red (27). Strip of Three**, New Orleans May 10, 1859 pmks., Incredibly Fresh, Rich Color, Outstanding Centering, A Very Fine-Extremely Fine Showpiece of the Highest Calibre, ex-Grunin, Sheriff, with P.F. Certificate 2,825.00
- 320 ☒ **5c Indian Red, 10c Green, Type III (28A, 33)**, 5c Rich Color, Well-centered, both tied by New Orleans cds on 1858 folded letter to France, Red "Boston 6 Paid" exch. pmk., tape stain barely affects 10c, 5c corner perf. crease, o/w Very Fine, with P.F. Certificate **E. 1,250-1,500**
- 321 ★ **5c Orange Brown (30). Outstandingly Wide Margins**, Fresh, traces of o.g., Choice, Extremely Fine, with P.F. Certificate 750.00

L. TABOR,
ATTORNEY AT LAW,
ADRIAN, MICH.

314

R. M. K. Ormsby
at Law
39 & 40 Park Row
New York City



J. Campbell Esq
Gaddeek
Cape Breton

322

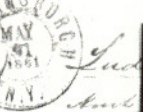
William Ship. Co.
Monsieur M. Rie
New & Co.

320



for Hamburg Steamer
Mr. Eugene Lape
Ludwig
Ang

323



Underfoot
Miss Deans
80 Bowling Green
Paris
France

317

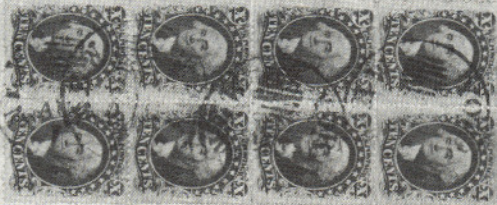
For Steamer via Liverpool
Mr. Wm Koels
of Messrs Koels & Meyer
Bremer
Germany

324



Poussier
San Francisco

328



Messrs D. Franks Esq
Messrs John Murray & Co
No 5 Rue de la Paix
Paris France

327



- 322 ☒ **5c Orange Brown (30).** Well-centered, tied by New York cds on Sept. 1861 Folded letter to Cape Breton, "8d" handstamp with Braddock and Boston Br. Pkt. backstamps, stamp with few short perfs., Fine and Rare, with P.F. Certificate **E. 750-1,000**
- 323 ☒ **5c Orange Brown, 10c Green, Type V (30, 35).** Tied together by "10" in circle and "Williamsburgh N.Y. May 31 1861" pmk. on **Soldier's Flag Patriotic to Kingdom of Hanover**, indistinct New York exchange pmk., few toned spots, 5c with small sealed tear at bottom, Fine, Handsome Cover, with P.F. Certificate **E. 3,000-3,500**
- 324 ☒ **5c Brown, Type II, 10c Green, Type V (30A, 35).** Two of each, affixed over Multicolored **Waving Flag Patriotic** design & beautifully tied by San Francisco Sep. 2, 1861 pmks., Unusual Usage, San Francisco to Bremen, Germany (30c Postage), A Very Fine, Spectacular Showpiece **E. 1,000-1,500**



325



326

- 325 ★ **10c Green, Type I (31). Position 99R1,** Curl in Left X, Bottom Sheet Margin Single, o.g., Extremely Fine, a Beautiful Stamp, with P.F. Certificate.(Photo) **5,750.00**
- 326 **10c Green, Type IV (34). Vertical Pair,** Positions 76L1, 86L1, New York May 4, 1858 pmk., Fresh, Lovely Centering, Very Fine, The Only Vertical Pair on the Plate of 200 That is Type IV, with P.F. Certificate **3,500.00**
- 327 ☒ **10c Green, Type IV (34).** Well-centered, tied by Red "Paid" in circle on cover to France with **5c Brick Red (27)**. Red Providence R.I. 1859 pmk. and Black Boston exch pmk. with "Short Paid" handstamp applied (judged to be double rate), 10c with short perf. at bottom, 5c perfs trimmed at left, otherwise Very Fine, Rare Combination **E. 750-1,000**
- 328 ☒ **10c Green, Type V (35) Six Singles and Pair,** arranged as Block of Eight, tied by four strikes of New York Ocean Mail pmk. on refolded cover to San Francisco, Fine and Rare **E. 1,000-1,250**
- 329 ☒ **10c Green, Type V (35).** Single tied by San Francisco Apr 30, 1860 cds on cover **Originating in British Columbia** with pen canceled **2½p Dull Rose (2)** at left, to Oriskany, N.Y., flap tears barely extend to face, 2½p small faults, still Fine and Rare. Very early use of the 2½p Dull Rose, with P.F. Certificate **E. 2,000-3,000**
- 330 P **12c Black, Plate 3, Imperforate Plate Proof on Stamp Paper (36Pd).** Four Margins, Very Fine and Rare with P.F. Certificate **E. 2,000-2,500**
- 331 **12c Black, Horizontal Pair, Imperforate Between (36c).** Light cancel, some clipped perfs., some faults incl. closed tear & tiny pinholes, Still a Presentable Example of This Exceedingly Rare Variety, with P.F. Certificate

- 332 ★ **24c Gray Lilac (37).** Beautifully Centered, Very Fresh and with Full o.g., lightly hinged, Extremely Fine, with P.F. Certificate 600.00
- 333 P **24c Gray Lilac, Imperforate Plate on Stamp Paper (37Pc).** Four Margins, Very Fine, with P.F. Certificate 2,500.00
- 334 P **30c Orange, Imperforate Plate Proof on Stamp Paper (38Pa).** Fresh & Fine, Very Scarce, with P.F. Certificate 2,500.00
- 335 ☒ **30c Orange (38).** Centered bit to right, tied by Boston "Paid" grid, Red New York transit on neat cover to St. Petersburg, Russia, Boxed Red Aachen transit, "Paid to Border" mark, Rare Usage, Fine, Attractive, Ex-Gibson, with P.F. Certificate E. 2,000-2,500
- 336 ☒ **30c Orange, 12c Black Plate 3 (38, 36b).** Tied together by New Orleans La. pmk. on Sept 1860 folded letter to Genoa, Italy, unusual steamship and railroad endorsement at top, Red Aachen Franco pmk., etc., each stamp with perfs trimmed one side, Very Fine appearance, Rare and Early Use of 30c 1860 E. 750-1,000
- 337 P **30c Black, Trial Color Plate Proof on Stamp Paper (38TC5)** Single canceled by **Trial Postmark** in Black ink, Very Fine, Includes portion of Bureau Specialist article with letter by Postmaster General Zevely objecting to this color because of the difficulty in canceling it; the writer speculates this arose from experiments carried out by the P.O. rather than past experience with the 12c stamp since the Department "kept the black color for the 12c value for nine years and did not mention their objections when Toppan, Carpenter & Co. first recommended black." Very Rare E. 2,500-3,000

OLD STAMPS NOT RECOGNIZED



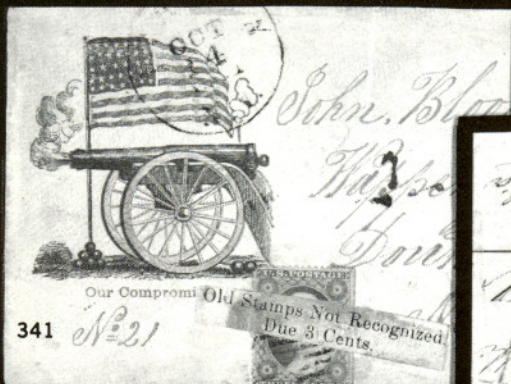
- 338 **"Old Stamps Not Recognized,"** Clear handstamps on 1c Blue, Type I (18), 1c Blue, Type IIIa (22), Pair of latter, with Type I reattached at top left, s.e. at left, right stamp with tiny flaws, Very Fine Strikes, Very Rare E. 1,500-2,000
- 339 ☒ **"Old Stamps Not Recognized".** Bold strike of two line handstamp ties 3c Red (26) on cover to Long Branch, N.J. "Due 3" handstamp and Philadelphia Aug 15 pmk. (probably 1862) at left; ink bit smeared in datestamp o/w Very Fine, Attractive Demonitized Usage, with PSE Certificate E. 5,000-7,500



329



335



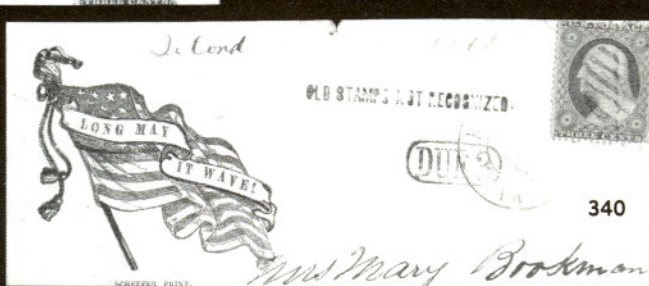
341



336



339



340



342

- 340 ☒ **"Old Stamps Not Recognized."** Straight line handstamp of Harrisburgh, Pa., framed "Due 3" & partial Oct 16 1861 cds, 3c Dull Red tied by grid & rim of cds on **Flag Patriotic**, Fine & Very Rare, Considered Unique on Patriotic, with P.F. Certificate E. 4,000-5,000
- 341 ☒ **"Old Stamps Not Recognized. Due 3 Cents."** Printed label placed over 3c Red (26) which is tied by grid on **Flag and Cannon Patriotic** from Ithaca N.Y. to Wappengers Falls. Oct 14 1861 pmk., no flap, slightly reduced at top, Fine and Enormously Rare. With P.F. Certificate E. 3,000-4,000
- 342 ☒ **"Held For Postage,"** Oval handstamp of New Orleans on May 13 1863 cover to Boston originally franked by **Demonitized 3c 1857** (26), with 3c Rose (65) placed over it, one month later both canceled by grids, docketing at left, 3c '61 small faults, Very Fine appearing "Old Stamps Not Recognized" Usage E. 750-1,000

1857 REPRINTS



- 343 ★ **1c-90c 1857 Reprints (40-47).** Cpl. Set, Outstandingly Fresh, Lovely Colors, 5c tiny thin speck, o/w Fine-Very Fine with 30c, 90c particularly Well Centered, with P.F. Certificates for 3c-90c 16,000.00
- 344 ★ **1c Bright Blue, Reprint, Imperforate (40 var).** Large Margins to just touched at bottom left, Very Fine, Very Rare, listed as a Footnote in Scott, page 380, with P.F. Certificate E. 2,000-3,000
- 345 ★ **3c Scarlet, Reprint (41). Stitch Watermark Variety,** Fresh, few short perfs. at bottom, Fine, with P.F. Certificate 2,250.00
- 346 ★ **3c Scarlet, Reprint (41),** Rich Color, Fine, with P.F. Certificate 2,250.00
- 347 ★ **3c Scarlet, Reprint (41).** Rich Intense Color, Mostly Large to Huge Margins (except perforations just in at top), Fine, with P.F. Certificate 2,250.00
- 348 ★ **5c Orange Brown, Reprint (42).** Very Well Centered, Wide Margins, Rich Color, Extremely Fine, with P.F. Certificate 1,000.00
- 349 ★ **10c Blue Green, Reprint (43).** Very Fresh, All perfs. intact, centered bit to top, Fine 2,000.00
- 350 ★ **10c Blue Green, Reprint (43).** Fresh, pinpoint inclusion, Very Fine, with P.F. Certificate 2,000.00
- 351 ★ **10c Blue Green, Reprint (43).** Wide Margins, perfs clear at left, Bright & Fresh, Fine, with P.F. Certificate 2,000.00

WESTERN COVERS



- 352 ☒ **1c Blue, Type IV, 10c Green, Type II (9, 14).** Pair of 10c, Large Margins to just in at left & bottom right, small stain between stamps, tied by Grids, **Santa Fe, N.M. Sep. 1 (1856)** pmk. at left on cover to France, Red New York transit, various foreign transits, ms. "13", Very Attractive & Rare New Mexico Territorial Cover, with P.F. Certificate **E. 8,000-10,000**
- 353 ☒ **Hinckley & Co's Express Mail.** Paid printed frank on 3c Red on Buff Entire (U27) to Wisconsin, Denver City origin with Feb '61 company pmk, Green Saint Joseph, Mo. pmk. and matching grid, No. 26 added for forwarding, pencil "Due 3cts" and Madison, Wis pmk., Very Fine, with P.F. Certificate **E. 1,250-1,500**
- 354 ☒ **10c Green (68).** Tied by San Francisco pmk. on cover with **Horizontal Strip of Three British Columbia no. 7**, strip canceled by 10 barred ovals, perfs mostly trimmed, Red pencil "10" and woodcut "Paid" handstamp, and 2nd strike of San Francisco pmk, Fine and Rare Combination, with P.F. Certificate **E. 3,500-4,000**
- 355 ☒ **2c Black (73).** Used with **5c Brown (76)** and **Vancouver Island no. 5** on Wells Fargo entire (U59) to San Francisco **from Victoria**, stamps tied by Wells Fargo oval in Blue and 1866 docketing, 5c Rose additionally canceled by usual Blue barred oval "35", Fresh & Fine, Rare Usage, with PSE Certificate **E. 4,000-4,500**
- 356 ☒ **24c Lilac (78).** Tied by Cogwheel cancel of San Francisco on Jan 1864 cover to England with stamp placed over **British Columbia 2½p Dull Rose (2)** tied by "Paid" in oval, Express style handstamp, all transit markings on Face, 24c partially lifted (still retains Full, Fresh o.g.) Very Fine, Rare and Most Attractive Mixed Franking **E. 3,000-4,000**



357

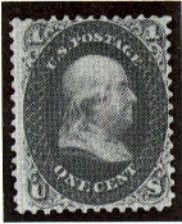
358

- 357 ☒ **Humboldt's Express, 25c Brown (86L1).** Margins All Around, tied by Red Langton's Pioneer Express oval handstamp on 3c Pink Entire (U34) to San Francisco with Printed Paid Frank and Blue Wells Fargo & Co Nevada oval pmk., minor soiling, Fine-Very Fine, Very Rare Western Local, with P.F. Certificate 50,000.00
- 357A ☒ **Virginia City, Utah (territory) July 11 (1861?) pmk., ms.** "Paid 10" on Multicolored **Flag & Cannon** cover with text "The Union must & shall be preserved," bit reduced at right, o/w Fresh, Very Fine **E. 1,500-2,000**
- 358 ☒ **Wells, Fargo & Co., 25c Red "Running Pony" (143L9).** Four Even Margins, tied by Blue Wells Fargo & Co. Virginia City oval on 3c Pink (U34) entire from Crittenden Correspondence, printed frank, July 1864 enclosure, cover with mended small corner nick at top right, otherwise Fresh, Very Fine, with P.F. Certificate 4,000.00

Due to the tremendous demand on our phones and staff, Prices Realized will not be available by telephone until 24 hours after the sale.

1861 "FIRST ISSUE"

- 359 P **1c Ultramarine, First Design, Trial Color Plate Proof on India, mounted on Card (55TC). Bottom Imprint and Plate No. 1 Block of Eight, pinpoint toned spots in three stamps, otherwise Very Fine, Believed to be Unique E. 4,000-5,000**



360



362



363



364

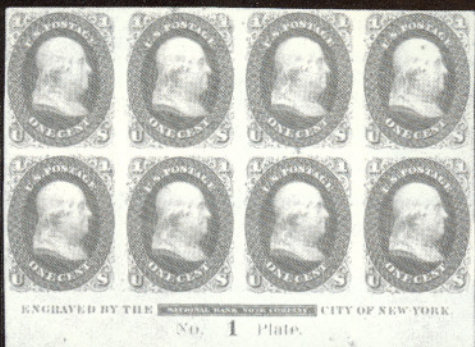


365

- 360 ★ **1c Indigo, "First Design" (55).** Rich, Characteristically Deep Color, Full o.g., Very Fine for This Issue, A Lovely Example of One of the Greatest of U.S. Rarities, Ex-Lilly, with P.F. Certificate 20,000.00
- 361 ★ **1c Indigo "First Design" (55).** O.g., faults, Still a Respectable Example of this Rarity, with PSE Certificate 20,000.00
- 362 ★ **10c Dark Green "First Design" (51).** Rich Color, Nicely Centered, Very Fine and Choice 6,000.00
- 363 ★ **10c Dark Green, "First Design" (58).** O.g., lightly hinged, Deep, Rich Color, A Fine & Quite Attractive Example of This Rarity, with P.F. Certificate 6,000.00
- 364 ★ **10c Dark Green "First Design" (58).** Fresh, repaired perf. tear at bottom right, Very Fine appearance, with PSE and P.F. Certificates ... 6,000.00
- 365 ★ **10c Dark Green, "First Design" (58).** Remarkably Fresh, tiny pinpoint thin speck, Fine appearance, with P.F. Certificate 6,000.00
- 366 ★田 **10c Dark Green (62B). Block,** Incredibly Fresh, Full o.g., Fine-Very Fine, A Lovely Block of the Utmost Rarity 26,000.00
- 367 匣 **10c Green, First Design (62B).** Single with faint pen cancel and tied by "Adrian Mich" cds on **Flag & Cannon Patriotic** to Canada, in Red and Blue on lemon, Red "U.S. Paid 10" in frame, cover slightly reduced at top with small nick, stamp with few short or nibbed perfs., appears Fine and Attractive, ex-Matthies 2,000.00



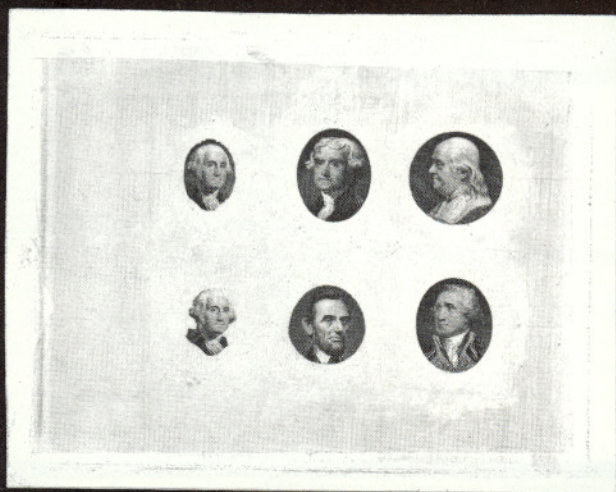
- 368 ★ **12c Black, First Design (59).** Marvelously Well-centered, with full o.g. and Excellent Color, trivial tiny thin, otherwise Extremely Fine, One of the Premier U.S. Rarities, About Ten Copies Known in Any Condition, with APS Certificate 40,000.00
- 369 ★ **24c Dark Violet (60).** Nice Color, tiny corner crease, couple nibbed perfs., centered to left, Still a Presentable Example of This Rarity, with P.F. Certificate 6,500.00



359



399



370



406



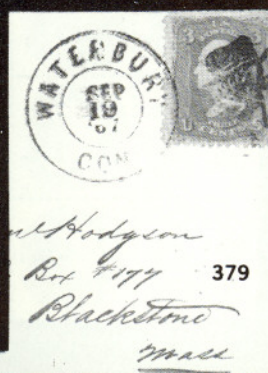
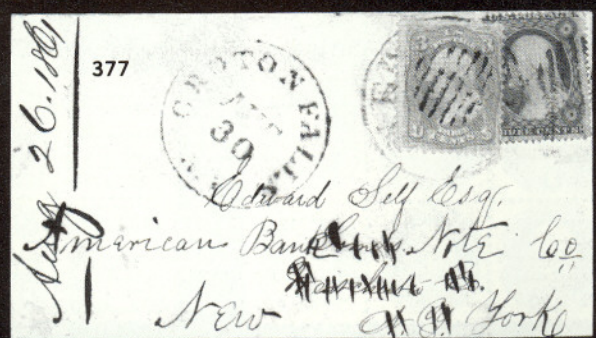
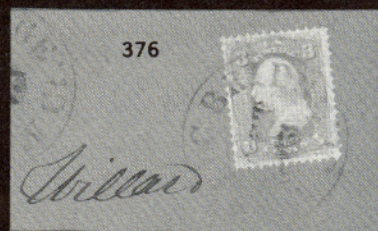
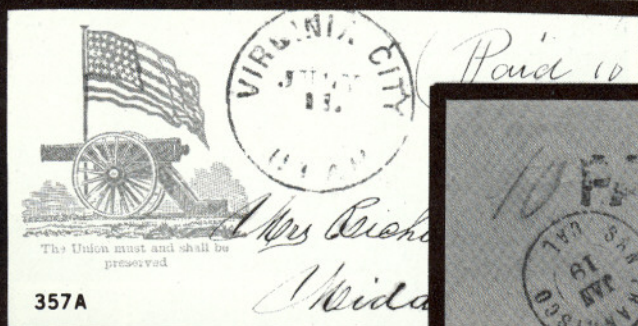
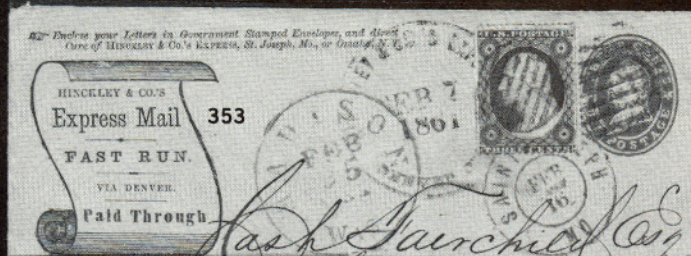
448



458



482



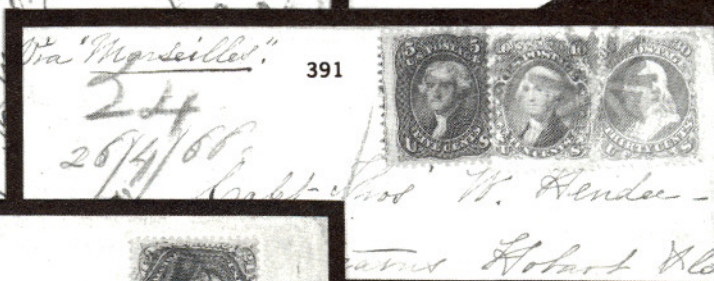
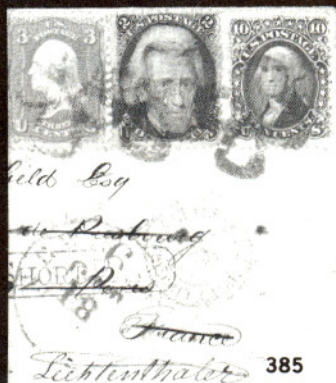
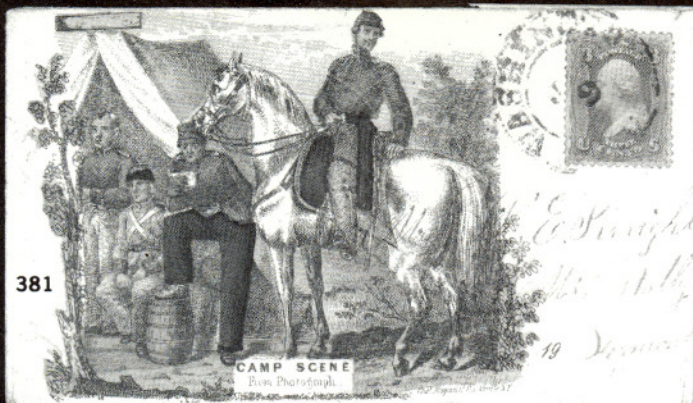
1861 ISSUE

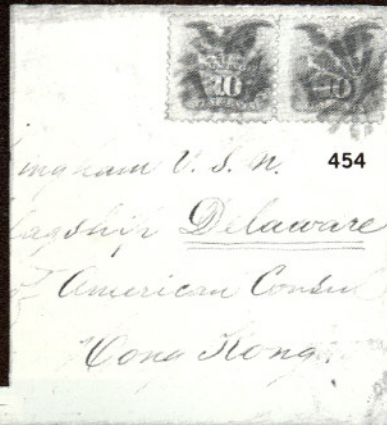
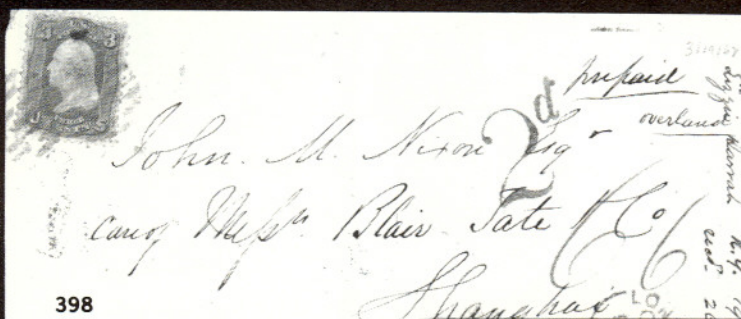
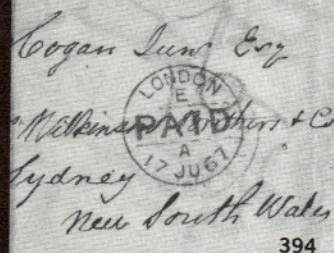
- 370 **Unlisted Black Die Essay of Six Vignettes on India, Die Sunk on Card**, 111x87mm, showing portraits from 24c 1860 and 1861 5c, 15c, 24c, 30c and 90c values, Very Fine, Beautiful and Very Rare .. E. 2,000-2,500



- 371 **1c Blue, 3c Rose, 12c Black (two) (63, 65, 69)**. Tied by Boston Paid cancels on hand-colored **Kimmel Patriotic Cover** to Austria, from the Angell Correspondence; part of back flap missing, Very Fine. Unquestionably the Finest and Most Beautiful Kimmel Cover Known .. E. 12,000-15,000
- 372 **3c Pink (64)**. O.g., Fresh True Color, Fine, with P.F. Certificate 4,500.00
- 373 **3c Pink (64)**. Bright Color, o.g., very light crease, minor perf. flaws, o/w Very Fine & Rare, with P.F. Certificate 4,500.00
- 374 **3c Pink (64)**. O.g., h.r., centered to left, bit toned, but Rare Unused, with P.F. Certificate 4,500.00
- 375 **3c Pink (64)**. Tied by partial strikes of Kanawha C.H., Va. pmks. on **Union Caricature**, also franked by **3c Red (26)** canceled by matching rim of pmk. and tied by portion of address, Nov '61 docketing, 3 ¢ '61 rounded corner perf., cover with small edge faults, Fine appearance, interesting "mystery" cover: either a double rate using both issues or Old Stamps Not Recognized usage E. 750-1,000
- 376 **3c Pigeon Blood Pink (64a)**. Outstandingly Fresh, Rich, True Shade, Wonderful Centering, tied by Mystic Bridge, Ct. Oct. 5 (1861) pmk. on lovely cover to Willimantic Ct., Extremely Fine, Among the Finest Pigeon Blood Pinks on cover, ex-Fleckenstein, signed Ashbrook, with P.F. Certificate 2,250.00
- 377 **3c Pigeon Blood Pink (64a)**. Single with Rich Color, used as forwarding postage on cover to Someis, N.Y. with No. 26 tied by New York cds & grid duplex, Croton Falls N.Y. cds and readdressed to the **American Bank Note Co.** in New York City, Aug 25 1861 docketing at left, Very Fine and Rare, with P.F. Certificate E. 1,500-2,000

- 378 ★田 **3c Rose, Imperforate (65c). Block**, on stamp paper, o.g. (slightly mottled as always with this scarce variety), small h.r., Wide Even Margins, Extremely Fine E. 1,500-2,000
- 379 匣 **3c Rose (65). Single canceled by clear strike of Watching Man Smoking Pipe** and tied by Sep 19 1867 pmk. on cover from the Hodgson correspondence; stamp with skillful restoration at top, Very Fine appearing Rarity, with P.F. Certificate E. 1,500-2,000
- 380 匣 **3c Rose (65). Vertical Pair**, tied by Washington pmks. on reverse of **Magnus Rose of Washington** Patriotic, to Lancaster Pa., part of flap gone from opening, edges expertly reattached on two sides, Very Fine appearance, Very Rare E. 3,000-3,500
- 381 匣 **3c Rose (65)**, Well-centered, tied by large double circle Washington pmk. on Multicolor **Magnus Patriotic**—"Camp Scene" No. 19 (not listed in Walcott), June 1863 docketing at left, adhesive with small faults, cover with tiny edge tears, Very Fine appearance, Rare design, with P.F. Certificate E. 1,000-1,250
- 382 ★ **3c Lake (66)**. Fresh o.g., Fine, with P.F. Certificate 1,800.00
- 383 ★ **5c Buff (67)**. Fresh Bright Color, Quite Nicely Centered, Very Fine, A Rare Stamp in This Condition, with two P.F. Certificates 5,750.00
- 384 **10c Green, Imperforate Horizontally (68b)** Single, tied on piece by grid and Red New York exchange pmk. Fine and Very Rare, Only Two Pairs and This Single Recorded, with P.F. Certificate E. 1,000-1,500
- 385 匣 **10c Green, 2c Black (68, 73)**. Used with 3c Rose (65) and each tied by N.Y. Four Leaf Clover Foreign Mail cancel on underpaid double rate cover to France, **Forwarded to Baden with France No. 25**, "short Paid" handstamp and Black N.Y. exch pmk., bottom flap lifted to show 10c Bister, Very Fine, Handsome usage, with P.F. Certificate .. E. 2,500-3,000
- 386 匣 **24c Brown Lilac (70a)**. Centered to top, tied by grid on **Anti-Slavery Patriotic** to England, Red "N. York Br. Pkt. Paid 19" exchange pmk. dated Aug 19 (1862); cover with edge staining and slightly reduced at top, otherwise Fine, Attractive usage, Very Rare design that appears to have also functioned as a publisher's ad, with P.F. Certificate 3,000.00
- 387 ★田 **24c Steel Blue (70b). Block**, o.g., Pretty Color, perfs. bit scissor trimmed in bottom right stamp, bottom left with tiny thin, o/w Fresh, Fine, Very Rare Multiple, ex-Hind, Lilly, with P.F. Certificate 15,500.00
- 388 匣 **24c Steel Blue (70b)**. Well-centered, tied by Illinois town cancel on **Liberty & Flag Patriotic** to England, Red "**Detroit Am Pkt 3 Paid**" exch. pmk., 1862 docketing. Evidence that sender originally franked cover with two additional stamps & then removed them, with 2nd strike of cds in their place; skillful cover restoration (minor), stamp with small perf. faults, Fine, Very Rare on Patriotic E. 1,000-1,250





- 389 ★ **24c Violet (70c).** Well-centered, Pretty "August" Color, major part o.g., Very Fine, with P.F. Certificate 4,500.00
- 390 ★田 **30c Orange (71) Block,** slightly disturbed o.g., few perf. separations at left, Fine & Rare, with P.F. Certificate 2,500.00
- 391 ㊟ **30c Orange, 10c Green, 5c Brown (71, 68, 76).** Tied by Circle of Arrows on 1866 cover to **India** paying 45c British Mail Rate via Marseilles, Red Boston Am Pkt Paid backstamp, etc.; minor edge wear, Fine-Very Fine, ex-Rohloff, with P.F. Certificate **E. 750-1,000**
- 392 ㊟ **30c Orange (71). Pair and Single** used with 3c Rose (65, two) and 10c Green (68) on 1866 folded letter to **Hong Kong**, double 53c British Mail rate via Marseilles; single 30c and left 3c with minor faults, Fine Cover **E. 1,000-1,250**
- 393 ㊟ **30c Orange (71).** Pair and Single, tied by segmented Cork cancels on 1865 folded cover to France, three times 30c rate for 1½ oz, Magenta 36 credit deleted and no credit shown in Red New York exchange pmk. which otherwise indicates cover was properly Paid, Fine and Very Scarce, Interesting Usage **E. 750-1,000**
- 394 ㊟ **30c Orange (71) Horizontal Pair,** tied by segmented cork cancels with #65 pair on cloth-lined cover to **Sydney, New South Wales** paying two times 33c, small Washington D.C. pmk.; few small edge tears, 3c creased, Fine appearance, Very Scarce **E. 600-800**
- 395 ★田 **90c Blue (72). Block,** o.g., Remarkably Fresh, Rich Color, Fine, with P.F. Certificate 6,500.00
- 396 田 **90c Blue (72). Block,** Cork cancels, Fresh, Large Margins, Very Well Centered, Very Fine-Extremely Fine & Beautiful, with P.F. Certificate 2,500.00

DESCRIPTIONS

EXTREMELY FINE: The finest condition for noteworthy, outstanding stamps.

VERY FINE: In prime condition such as to satisfy the requirements of particular collectors.

FINE: Perforations or margins do not touch design on issues after 1890 but in some cases may just touch in earlier issues. If used, fairly light cancellation.

VERY GOOD: Generally nice appearance but margins or perforations may cut in slightly.

GOOD: Average off-centering or fairly attractive with slight defects.

ORIGINAL GUM is not to be expected on stamps prior to 1890 unless so stated in the description.

MINT: With original gum and never hinged.

Unless otherwise noted the Scott 1991 Specialized Catalogue has been used for cataloguing lots of the United States. The Scott 1991 Standard Catalogue Volumes 1-4 has been used for cataloguing all others.



- 397 ☒ **90c Blue (72).** Centered, tied by grids and light Red exchange pmk. on May 1863 cover to Shanghai paying 2 x 45c rate for British mail via Southampton, "1d" local charge deleted and 2 substituted, London and Hong Kong pmks., Slightly reduced at left, Very Fine, One of the Finest of the Single 90c covers with P.F. Certificate **E. 15,000-20,000**
- 398 ☒ **90c Blue (72).** Well-centered, Beautiful Dark Color, tied by Red grid on 1862 cover to **Shanghai** with two 3c Rose (65) and 12c Black (69), each with matching grids, magenta ms. "66", bold Red "2d", London Transit, N.Y. exchange pmk. and Hong Kong backstamp, cover professionally refolded at top & bottom, one 3c repaired, a handsome Rarity, Fresh and Very Fine appearance, with P.F. Certificate **13,500.00 +**
- 399 ★田 **2c Black (73). Block of 15,** Well-centered, some perf. rejoining and perf. toning, tiny thin in top left stamp, Still a Very Fine multiple ... **1,940.00 +**
- 400 ☒ **2c Black, 1c Blue, 12c Black (73, 63, 69).** Singles, each with matching segmented cork cancel, 2c also tied by Red New York exchange pmk. on **Angell Patriotic** to Vienna via Bremen-Hamburg mail, Straight-line "Franco", Hamburg & Vienna backstamps; light water staining at sides, 12c small tear, Fine-Very Fine, an Important Black Jack Rarity, signed Ashbrook, ex-Mathies, Allen, and illustrated in Lane (Figure 3) . **E. 2,500-3,000**
- 401 ★ **3c Scarlet (74).** Part o.g., centered to right and bottom, with P.F. Certificate **5,500.00**
- 402 ★ **3c Scarlet (74).** O.g., Fine, with two P.F. Certificates **5,500.00**



- 403 ★田 **3c Scarlet (74). Block**, o.g. Very Fresh, h.r., Fine-Very Fine, An Exceedingly Rare Multiple, Much Rarer than Catalogue Indicates, with P.F. Certificates 22,000.00
- 404 ★ **5c Red Brown (75)**. Rich Bright Color, Fine and Attractive, with P.F. Certificate 1,450.00
- 405 ★ **15c Black (77)**. Large Margins, o.g., one nibbed perf. at left, otherwise Extremely Fine, with P.F. Certificate 575.00
- 406 ★田 **24c Lilac (78). Block of Nine**, o.g., Good Impression and Color, Better Than Usual Centering for a 24c piece this size; some gum disturbance, toned spots though only significant in bottom right stamp, Fine and Rare multiple E. 2,500-3,000

1867 GRILL ISSUES

- 407 ★田 **3c Rose, A. Grill (79). Block**, Lovely Freshness & Color, part o.g., minor gum stains barely show on face, top left stamp few nibbed perfs., otherwise Fine, Still An Attractive & Very Rare Block, with P.F. Certificate 11,000.00
- 408 P **3c Rose, A. Grill, Plate Proof on Stamp Paper (79P). Horizontal Pair**, o.g., pen canceled, very minor toning, o/w Very Fine 1,750.00
- 409 ★ **3c Rose, C. Grill (83)**. Large Margins with Full Perforations All Around, o.g., Very Fine and Choice, with P.F. Certificate 2,000.00
- 410 ★ **3c Rose, C. Grill (83)**. Couple nibbed perfs. at right, otherwise Very Fine, with P.F. Certificate 2,000.00
- 411 ★田 **3c Rose, D. Grill (83). Block**, natural printing smear in bottom right stamp, perfs. touch at left and at bottom (in top pair), Rare Multiple, with P.F. Certificate 8,500.00

- 412 ★ **3c Rose, C. Grill, Imperforate (83a). Horizontal Pair**, o.g., Wide Margins (Except close but clearing at right), Very Fresh, A Lovely Example of this Rare Grill Variety, Very Fine, with P.F. Certificate .. 1,650.00
- 413 ☒ **3c Rose, Partially Erased C. Grill (83 var.)**. Centered to right and bottom, tied by fancy cork cancel and New York cds on oblong cover to Boston, Fine and Rare Variety which Perry and Brookman felt could more properly be considered a partially erased B. Grill. One of Three Examples Known on Cover, with PSE Certificate E. 3,000-4,000
- 414 ★☐ **3c Rose, D. Grill (85). Block**, Beautifully Fresh, centered bit to top right, A Fine Example of This Rare Block 9,000.00
- 415 ★ **2c Black, Z. Grill (85B)**. Well-centered, small part o.g., Extremely Fine 1,500.00
- 416 ★ **10c Green, E. Grill (89)**. Wide, Even Margins, Rich Fresh Color, Outstandingly Beautiful and Extremely Fine, with P.F. Certificate 1,500.00
- 417 ★☐ **15c Black, E. Grill (91). Block**, Full o.g., Right Pair Particularly Well Centered, couple tiny thins at bottom, otherwise Fine-Very Fine, Extremely Rare 16,000.00
- 418 ☒ **2c Black, F. Grill, Diagonal Half Used as 1c (93a)**. Vertical Pair with bottom stamp bisected to pay the 3c rate, tied by targets on cover from Newtown Pa. to Philadelphia and marked "Due 1", Philadelphia receiving pmk. on back; small tear at top from flap, otherwise Fresh and Very Fine, with P.F. Certificate E. 1,500-2,000
- 419 ☒ **10c Green, F. Grill (96)**. Two Singles, each tied by quartered cork cancel on Wheelright cover to **Rosario, Argentina**, Boston Mass. cds, Red "15" handstamp, 1869 docketing at right, Very Fine, Very Attractive usage E. 750-1,000
- 420 ★ **12c Black, F. Grill (97)**. Large part o.g., Exceptional Centering, Outstanding and Extremely Fine, with P.F. Certificate 800.00
- 421 ★☐ **12c Black, F. Grill (97). Top Right Corner Margin Block**, Bottom Pair o.g., Top Pair large part o.g., Fresh, Sharp Impression, top pair light horiz. crease, o/w Fine, A Very Handsome & Rare Block 4,000.00
- 422 ★☐ **12c Black, E. Grill (97). Block**, o.g., small thin in top pair, otherwise Fine 4,000.00
- 423 ★☐ **24c Gray Lilac, F. Grill (99). Block**, o.g., Pretty Color, Fine & Rare, ex-Worthington, with P.F. Certificate 7,000.00
- 424 ☒ **24c Gray Lilac, 10c Green, F. Grills (99, 96)**. Singles, 24c Well-centered, tied by targets on 1869 cover to **Peru**, Oakland Cal. and Panama pmks. on face, bold Red "24", reverse with San Francisco and Lima bkstps; edge wear, flap faulty, Fine, Rare with the 24c Grill . E. 1,000-1,250
- 425 ★ **90c Blue, F. Grill (101)**. Fresh, Deep Shade, centered bit to left, Fine, Scarce, with P.F. Certificate 4,750.00
- 426 **90c Blue, F. Grill (101)**. Roller cancel, Large, Even Margins, Deep Color, An Extremely Fine "Gem," with P.F. Certificate 750.00
- 427 **90c Blue, F. Grill (101)**. Outstanding Margins, Wide at Top and Bottom, quartered cork cancel, Extremely Fine, Choice 750.00
- 428 ☐ **90c Blue, F. Grill (101). Block**, Outstandingly Fresh, Deep Color, top left stamp tiny thin, centered bit to right, A Rare & Very Desirable Block 5,000.00



423



503



522



469



501



428



449



524

1861 RE-ISSUES

429 ★	2c Black, Reissue (103). O.g., Extremely Fine, with P.F. Certificate .	2,500.00
430 ★	2c Black Re-Issue (103). Part o.g. Fine, with P.F. Certificate	2,500.00
431 ★	3c Brown Red, Re-Issue (104). Large, Even Margins, Fresh True Color, o.g., A Outstanding Example of this Scarce Stamp, Extremely Fine, with P.F. Certificate	3,250.00
432 ★	3c Brown Red, Re-Issue (104). Rich Color, o.g., light gum bend and single slightly nibbed perforation at bottom, otherwise Fine, Quite Attractive	3,250.00
433 ★	5c Brown, Re-Issue (105). Fresh Color, Choice, Very Fine, with P.F. Certificate	1,800.00
434 ★	5c Brown, Re-Issue (105). O.g., faint, almost imperceptible crease, otherwise Very Fine	1,800.00
435 ★	5c Brown, Reissue (105). Good Color, Fresh and Fine, with PSE Certificate	1,800.00
436	5c Brown, Re-Issue (105). Beautifully Centered, unobtrusive barred oval cancel, Extremely Fine, signed Sloane, with P.F. Certificate	2,250.00
437 ★	10c Green, Re-Issue (106). Full o.g., lightly hinged, Excellent Centering, A Very Beautiful Example, Extremely Fine, with P.F. Certificate .	2,100.00
438 ★	12c Black, Re-Issue (107). Exceptional Centering, o.g., Extremely Fine, with P.F. Certificate	3,000.00
439 ★	3c Black, Re-Issue (107). O.g., Rich Color, perfs. close at bottom, almost Fine, with P.F. Certificate	3,000.00
440 ★	24c Deep Violet, Re-Issue (109). Well-centered, Very Fine, with P.F. Certificate	4,000.00
441 ★	24c Deep Violet, Re-Issue (109). Rich Color, single nibbed perforation at bottom, otherwise Very Fine	4,000.00
442	30c Brownish Orange, Reissue (110). Nicely centered, light diagonal crease, Very Fine appearance, Rare Used, with P.F. and PSE Certificates	6,000.00
443 ★	90c Blue, Re-Issue (111). Precisely Centered, Brilliant Fresh Color, Extremely Fine, with P.F. Certificate	5,500.00
444 ★	90c Blue, Re-Issue (111). Outstandingly Choice, Fresh and Well-centered with Full o.g., Extremely Fine, with P.F. Certificate	5,500.00
445 ★	90c Blue, Re-Issue (111). Very Fresh, Deep Color, Large Margins, few perf. flaws at left, otherwise Extremely Fine	5,500.00

1869 PICTORIAL ISSUE

- 446 P **1c-90c 1869 Pictorials, Plate Proofs on Card with SPECIMEN Overprints (112P4-122P4 var), Complete Set** with Red or Black (10c & 30c) ovpts, h.r.'s, 3c & 24c with trivial toning specks, o/w Very Fine, Believed to be Unique, each with P.F. Certificate **E. 3,000-4,000**
- 447 P **1c-90c Pictorial Issue "Atlanta" Trial Color Plate Proofs (123TC-132TC).** Complete Set of 78 Proofs in All Colors and Combinations, some slight residue of mounting adhesive on back, Fine-Very Fine **27,500.00**
- 448 ★田 **1c Buff (112). Block of 20,** hinge reinforcement and some tiny soiling, light vertical crease through 5th vertical row, otherwise Fine, Attractive Piece **4,900.00+**
- 449 ★ **2c Brown (113 var). Left Margin Vertical Pair Showing End Roller Grill,** centered to left, small faults, otherwise Fine and Rare, listed by Scott only on the 3c, 10c and 12c values, with PSE Certificate **E. 750-1,000**
- 450 ★田 **3c Ultramarine (114). Block of 55 (5x11).** Very Fresh, Lovely Color, All but two stamps Mint, couple very trifling natural gum bends, Very Good-Very Fine with most stamps Fine-Very Fine **9,925.00**
- 451 ★ **6c Ultramarine (115).** Wide Margins, Choice Centering, o.g., Very Fresh, Extremely Fine, with P.F. Certificate **775.00**
- 452 ★ **10c Yellow (116).** Almost Perfectly Centered, Fresh & Lovely, Extremely Fine, with P.F. Certificate **850.00**
- 453 匣 **10c Yellow, 2c Brown, 3c Ultramarine (116, 113, 114).** Each tied by circle of wedges on Dec. 1869 cover to France paying 15c French mail rate; cover faults, Fine and Attractive appearance, late use of this rate, with P.F. Certificate **E. 1,000-1,250**
- 454 匣 **10c Yellow (116). Horizontal Pair** tied by fancy segmented cork cancels, no other markings, on cover to U.S.S. Delaware **at Hong Kong,** endorsed **Via Pacific R.R.** Presumably sent by American Packet via San Francisco & Yokohama (dble 10c rate); minor soiling, still Fine and Very Scarce, with P.F. Certificate **E. 1,250-1,500**
- 455 ★ **12c Green (117).** Exceptionally Choice Centering, Very Fresh, Extremely Fine, with P.F. Certificate **750.00**
- 456 ★ **15c Brown & Blue, Type I (118).** Wide, Even Margins, Fresh Bright Color, Extremely Fine & Choice, with P.F. Certificate **1,900.00**
- 457 ★ **15c Brown & Blue, Type I, Without Grill (118a).** Bright Colors, Nicely Centered, Very Fine **3,500.00**
- 458 ★田 **15c Brown & Blue, Type II (119). Block,** Fresh & Crisp, Rich Colors, o.g., h.r.'s, perfs. just in at bottom, Still An Attractive & Desirable Block **4,500.00**



450



523



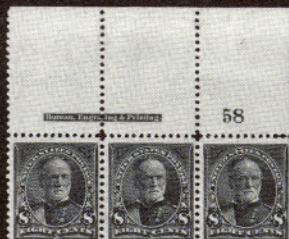
562



563



521EX



605



561



564

453

Monsieur le recteur en chef
 Nat. Emancipation a. Noulonse
 Noulonse
 France



468

Gen A. Grant.
 Green Stars Inn. Market St.
 Glousterbridge.
 Worcestershire
 England.



518

via Brindisi



Rev. Lemuel Bissell
 Ahmednagar
 Western India



513

Palermo
 Italy



E. & C. Gomez Esq.
 Lima

San Juan de los Rios
 South America



516

Rev. C. Freeman
 West Seminary
 Wellington
 Cape of Good Hope
 South Africa



525



Elisha & Gomez Esq.
 Lima
 Peru
 San Juan de los Rios
 South America





450



523



562



563



521EX



605



561



564

453

PD
 Monsieur le rédacteur en chef
 Nat. Emancipation & Montrose
 Montrose
 France



468

Ben A. Grant.
 Green Stars Inn. Market St.
 Stourbridge.
 Worcestershire.
 England.



518

via Brindisi



Rev. Lemuel Bissell
 Ahmednagar
 Western India

513



Permo
 Italy



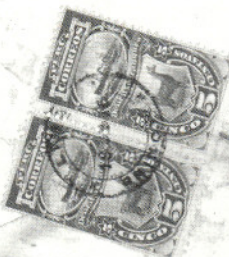
E. & Cames Esq.
 Lima Peru
 C. & O. R. South America



516



R. Ferguson
 Seminary
 Wellington
 Cape of Good Hope
 South Africa



525



Eliska & Cames Esq.
 Lima Peru
 C. & O. R. South America





459



460



461



467

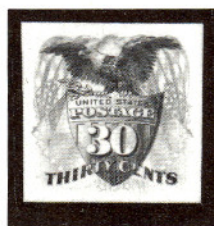
- 459 **15c Brown & Blue, Type II, Center Inverted (119b).** Very Fresh, Rich Colors, small faults incl. repaired tear, Still a Lovely, Fine Appearing Example of This Popular Rarity 17,500.00
- 460 **15c Brown & Blue, Type II, Center Inverted (119b).** Light cork cancel, creases and pinhole, still a Respectable Example of This Rarity, with P.F. and PSE Certificates 17,500.00
- 461 **15c Brown & Blue, Type II, Center Inverted (119b).** Faults incl. repaired corner, but Well-centered Example of This Popular Rarity 17,500.00



462 P



463 S



464 ★



465 ★

466

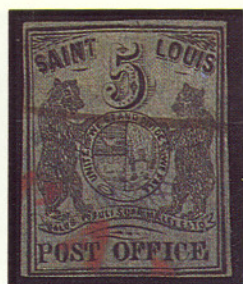
467

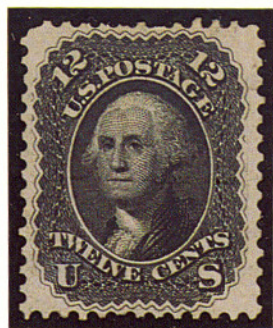
468 ☒

469 P☐

470 S

- 15c-90c 1869 Pictorial Issue, Centers/Flags Inverted, Plate Proofs on Card (120P4a-122P4a, 129P4a).** A Complete Set of These Extremely Rare Inverts (Only 100 Sets Issued) with Wide Margins and Rich Bright Colors, Extremely Fine 13,000.00
- 24c Green & Violet, Without Grill, Ms. "Specimen" in Red (120Sa var).** Slightly disturbed o.g., Fresh, Deep, Vivid Colors, minute thin speck, Fine appearance, Issued Stamp Without Grill Cat. \$5,000.00 "Specimen" Listed but Unpriced, Very Rare —
- 24c Green & Violet (120).** Small part o.g., Fresh, Very Well-centered, Very Fine, with P.F. Certificate 2,000.00
- 24c Green & Violet (120).** Small part o.g., Fresh Colors, Very Fine, with PSE Certificate 2,000.00
- 24c Green & Violet (120), Double Grill Variety,** Almost Perfectly Centered, with Wide Margins and a Neat, Struck Circle-of-Wedges Cork Cancel, An Extremely Fine "Gem" 1,000.00
- 24c Green & Violet, Center Inverted (120b).** Black Cork cancel, negligible pressed out corner crease, minute tear at top, centered to bottom right, Still a Presentable Example of This Classic Rarity 16,500.00
- 24c Green & Violet (120).** Centered to right, tied by quartered cork cancel on Nov. 1869 cover to England, Washington D.C. pmk. and faint Red exchange pmk.; closed cover tears at left, slit open on back (not affecting face) and resealed, Fine appearance, Rare, with P.F. Certificate 10,000.00
- 30c Blue & Carmine, Plate Proof on India (121P3). Top Right Imprint Block of Fifteen,** tiny thinning in top margin, inclusion at bottom right, otherwise Very Fine..... 1,975.00 +
- 30c Blue & Carmine, Without Grill, Ms. "Specimen" in Red (121Sa var).** Major part o.g., Very Fresh, Bold, Intense Colors, Large Stamp, Very Fine, Issued Stamp Without Grill Cat. \$3,750.00, "Specimen" Listed but Unpriced, Very Rare —









James M. Buchanan
5 Cents.

James M. Buchanan
5 Cents.



PAID



Mr. Richard
136 Front St
New York



Master John McAllister
Care of
Mr Wm G McAllister
47 South 13th Street
Philadelphia

J. C. Grody & Co
Kingston
N. Y.



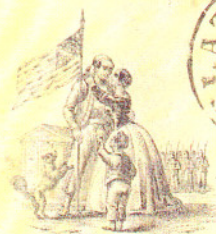
Campbell Major Esq
U.S. Arsenal
Pikeville Mo



Esq
of Pension
D. C.



Major



Herrn Johannes Schaum.
Geosfenlinden
near Gießen
Germany

J. H. Hesfen

Per Steamer via

per. Hamburg Steamers.



Mr. G. H. [unclear]



Mar. Emma Hays.

Ludingworth Moor.
Ant Otterdoof.
Kings Hainover.

"The star spangled banner in triumph SHALL wave,
Over the land of the free and the home of the brave.

ACHEN 13 7
FRANCO

Speak Puri
M. B. Petrusburg

Russia
Hans. Harrier. Womers.



A circular postmark from Delhi, India, dated 1904. The text "DELHI" is at the top, "INDIA" is at the bottom, and "1904" is in the center. There is some illegible text on the left side of the circle.

and

OLD STAMPS
NOT RECOGNIZED

Fisher Learning Co.

ells. Hango & Co.



Para el Contandén
Occidental Hotel
San Francisco



Mr S. G.

Ac 410 Soc. N.

1890



UNION AND CONSTITUTION

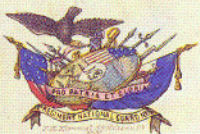


C. Angell
rns 1 Stock the
Vienna
Austria



CAMP SCENE
From Photographs

From Photograph



Doct^r Henry C. Angell
 Vienna

Per Niagara

via England
 Belgium

Austria
 Michelbäursche Fund
 Jan 24 1864

U. S. N.
 ship Delaware
 American Consul
 Vene. Hono.



ROSE OF



No Fellowship with Traitors.

WASHINGTON

via Brindisi



Rev. Lemuel Bissell

Wm A. Grant.

Slirs Inn. Market St.

Per Str. America

Conthampton

Prussian Closed Mail.



Messrs. BROCK & SCHNARS,
 HAMBURG,

Germany.



Kiou
 Gate & Co
 Shanghai China



*Harold -
Capt A M Davis*



Capt Alexander M Davis

Company C 15th Regt Va Inf

DAVENPORT
Female College,
LENOIR, N. C.



XLIX



*Major R. L. Hanson - 24th Va. Reg.
Early's Brigade
Kearnses Junction*

*Mrs. Langdon Chees
Look Mt Mountain, N.C.*



*Mr. James
For his daughter*



*Casado & Teller
New York*

J. H. Foster

Rich

Shel

St. Asa



Wason Smith

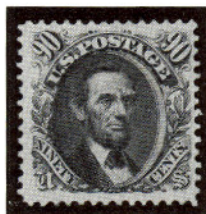
*Grinnell -
Solca*



- 471 ★ **30c Blue & Carmine (121).** Large part o.g., Very Fine, with PSE Certificate 2,250.00
- 472 ★ **30c Blue & Carmine (121).** Bold Rich Colors, regummed, Very Fine, with PSE Certificate 2,250.00
- 473 ★ **30c Blue & Carmine (121).** O.g., Fresh Colors, P.F. Certificate mentions some minor perf. staining which has been subsequently removed, Very Fine 2,250.00
- 474 ★ **30c Blue & Carmine (121).** Fresh and Fine, with PSE Certificate 2,250.00
- 475 ★ **30c Blue & Carmine, Without Grill (121a).** Bright Colors, Fresh and Fine, signed Bartels 3,750.00



- 476 **30c Blue & Carmine, Flags Inverted (121b).** Neat quartered cork cancel, Bright Colors, Very Well Centered, couple tiny internal cuts do not detract from the Handsome, Extremely Fine Appearance of This Major 19th Century Rarity, ex-Caspary, Hewitt, with P.F. Certificate . 45,000.00



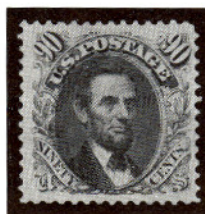
477



478



479



480



481

- 477 S **90c Carmine & Black, Without Grill, Ms. "Specimen" in Red (122Sa var).** Major part o.g., Fresh, Brilliant, Proof-like Colors, Three Large Margins, Very Fine, Issued Stamp Without Grill, Cat. \$13,500.00, "Specimen" Listed but Unpriced, Very Rare —
- 478 ★ **90c Carmine and Black (122).** Excellent Centering, Extremely Fine and Beautiful, with P.F. Certificate 6,000.00
- 479 ★ **90c Carmine & Black (122).** Wide Margins at Top and Bottom, Lovely Colors, Very Fine, with P.F. Certificate 6,000.00
- 480 ★ **90c Carmine & Black, Without Grill (122a).** Full o.g., Marvelously Well-centered, Fresh Intense Color, A Beautiful Example, Very Fine, with P.F. Certificate 13,500.00
- 481 **90c Carmine & Black (122).** Very light cancel, Lovely Colors, Precise Centering, Extremely Fine, Handsome, with P.F. Certificate 1,000.00

1869 RE-ISSUES

- 482 ★田 **2c Brown, Re-Issue (124). Block of Six (3x2),** Fresh, Rich Color, o.g., left pair light vertical crease, o/w Fine Block, Very Scarce Multiple . 3,250.00 +
- 483 ★ **3c Blue, Re-Issue (125).** Full o.g., Precisely Centered, A Choice "Gem", Extremely Fine, with Two P.F. Certificates 3,000.00
- 484 ★ **15c Brown & Blue, Re-Issue (129).** Full o.g., Choice, Beautifully Fresh, Extremely Fine, with P.F. Certificate 1,300.00
- 485 ★ **15c Brown & Blue, Re-Issue (129).** Full o.g., Well-centered with Very Wide Margins, Extremely Fine, with P.F. Certificate 1,300.00

- 486 ★ **15c Brown & Blue, Re-Issue (129).** Rich Colors, Very Fine, with P.F. Certificate 1,300.00
- 487 ★ **24c Green & Violet, Re-Issue (130).** O.g., Well-centered, Extremely Fine and Choice, with P.F. Certificate 1,250.00
- 488 ★ **24c Green & Violet, Re-Issue (130).** Lovely Centering, Choice, Extremely Fine, with P.F. Certificate 1,250.00
- 489 ★ **24c Green & Violet, Re-Issue (130).** O.g., Very Well-centered, Choice, Very Fine, with Two P.F. Certificates 1,250.00
- 490 ★ **30c Blue & Carmine Re-Issue (131).** Fresh, traces of o.g., Extremely Fine, with P.F. Certificate 1,750.00
- 491 ★ **30c Blue & Carmine Re-Issue (131).** O.g., Beautifully Fresh, Well-centered, Extremely Fine, with P.F. Certificate 1,750.00



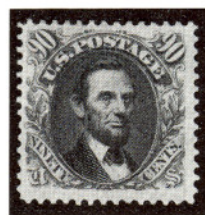
492



493



494

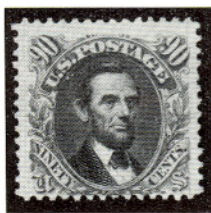


495

- 492 ★ **90c Carmine & Black, Re-Issue (132).** Large Margins, Fresh and Extremely Fine, with P.F. Certificate 5,000.00
- 493 ★ **90c Carmine & Black, Re-Issue (132).** Large Margins, small part o.g., Handsome Colors, Extremely Fine, with P.F. Certificate 5,000.00
- 494 ★ **90c Carmine & Black, Re-Issue (132).** Full o.g., lightly hinged, Deep Rich Color, Well-centered, Very Fine and Choice, with P.F. Certificate 5,000.00
- 495 ★ **90c Carmine & Black, Re-Issue (132).** O.g., Brilliant Rich Color, Almost Very Fine, with P.F. Certificate 5,000.00



496



497



498



499



500

- 496 ★ **90c Carmine & Black, Re-Issue (132).** Beautifully Fresh and Well-centered, single nibbed perforation at right, otherwise Extremely Fine . 5,000.00
- 497 ★ **90c Carmine & Black, Re-Issue (132).** Fresh Color, Fine, with P.F. Certificate 5,000.00
- 498 **90c Carmine & Black, Re-Issue (132).** Fresh Colors, light Face-Free cancel, Very Fine and Choice with P.F. Certificate 6,000.00
- 499 **90c Carmine & Black, Re-Issue (132).** Cork Cancel, Rich Bright Colors, Almost Perfectly Centered, Very Fine, with P.F. Certificate ... 6,000.00
- 500 **90c Carmine & Black Re-Issue (132).** Well centered, tiny closed tear in margin, Extremely Fine Appearance, with P.F. Certificate 6,000.00
- 501 ★田 **1c Brown Orange, Re-Issue (133a).** Bottom Corner Margin Block of Eight, Fresh and Well-centered, natural straight edge at bottom, Very Fine 1,600.00 +



485



486



487



488



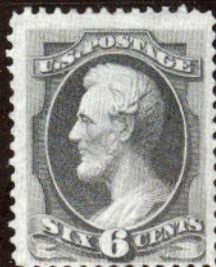
489



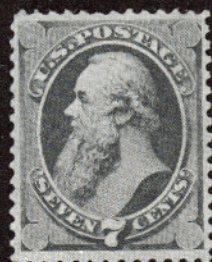
490



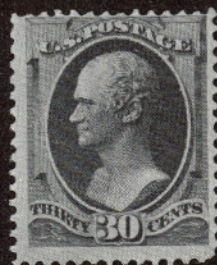
491



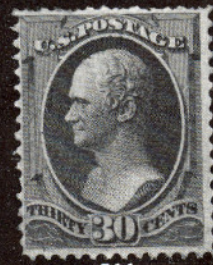
502



504



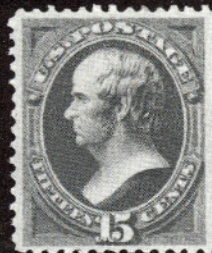
510



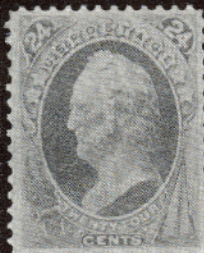
511



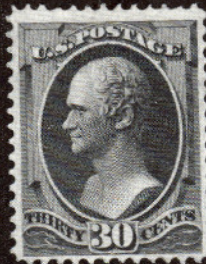
512



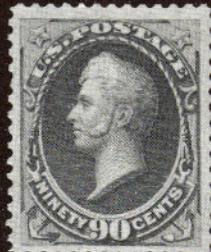
514



515



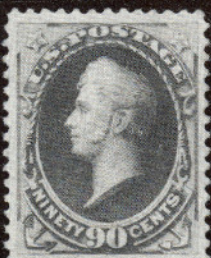
519



526



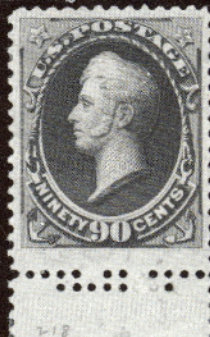
527



531



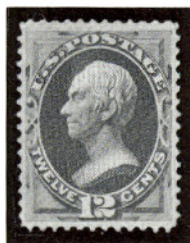
556



559

BANK NOTE ISSUES

- 502 ★ **6c Carmine, Grill (137).** Bright Fresh Color, slightly disturbed o.g., Fine, with P.F. Certificate 1,850.00
- 503 ★田 **10c Brown, Grill (139). Vertical Block of Six,** Fresh Color, Fine and Rare, with P.F. Certificate 13,200.00
- 504 ★ **7c Vermilion, Grill (138).** O.g., Well-centered, Very Fine, with P.F. Certificate 1,250.00



505



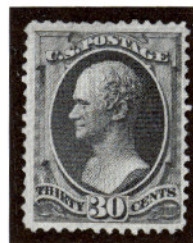
506



507



508



509

- 505 **12c Dull Violet, Grill (140).** Clear Grill, Well-centered, barest trace of Red cancel (on forehead), appears Unused, Extremely Fine & Choice, with P.S.E. Certificate 1,500.00
- 506 **24c Purple, Grill (142).** Very Light, Face-Free Cancel, Quite Fresh, Clearly Defined Grill, couple small faults, Very Fine Appearing Example of This Rarity, with P.F. Certificate 9,500.00
- 507 **24c Purple, Grill (142).** Cork cancel, Clear Grill, stamp slightly toned and reperfed at top, o/w Fine, Rare 9,500.00
- 508 **24c Pale Purple, Grill (142).** Red Cancel, Well Centered, P.S.E. Certificate states "Imm sealed tear in left margin" however, this small fault may be a crease 10,000.00
- 509 ★ **30c Black, Grill (143).** O.g., Quite Well-centered, Fresh, Choice and Very Fine, with P.F. Certificate 5,000.00
- 510 ★ **30c Black, Grill (143).** Fresh, perfs clear but close at top, Fine, with P.F. Certificate 5,000.00
- 511 ★ **30c Black, Grill (143).** Fresh, major part o.g., short perfs. at top, o/w Fine, Very Scarce, with P.F. Certificate 5,000.00
- 512 ★ **90c Carmine, Split Grill (144 var).** Fresh, Deep Color, minute sealed tear at top, perfs. just touch at bottom, Fine appearance for this Very Rare Variety, with P.F. Certificate 6,750.00
- 513 田 **10c Brown (150). Horizontal Pair,** tied by NYFM Geometric in bright Red on 1873 folded letter to Italy with **Supplementary Mail** Type A handstamp, Blue merchant's oval, New York and Hamburg pmks, Very Fine, Lovely usage **E. 750-1,000**
- 514 ★ **15c Bright Orange (152).** Full o.g., lightly hinged, Wide Margins, Well-centered, An Extremely Fine "Gem," with P.F. Certificate 550.00
- 515 ★ **24c Purple (153).** O.g., Extraordinarily Deep Rich Color, Choice Centering, Extremely Fine, with P.F. Certificate 675.00
- 516 田 **24c Purple (153).** Used with #158, each with cork cancel, 3c tied, on 1875 cover to **Cape of Good Hope**, all transit markings on face, slightly reduced at left, Fine and Attractive **E. 1,000-1,500**
- 517 田 **24c Purple (153). Two Singles,** one with Part Imprint, used with 147, 156 and 157(2) on Eight times 7c, NGU Closed Mail cover to Hamburg, Jan '75, all tied by indistinct NYFM cancels in Claret, 1c is a convincing replacement, right 24c with closed tear, cover has skillful edge repairs, still Very Fine usage, Colorful **E. 1,500-2,000**

Per Str. America
de Vonthauston Prussian Closed Mail.

517



Messrs. BROCK & SCHNARS,

530



520

INDIA.

570



569 EX



580

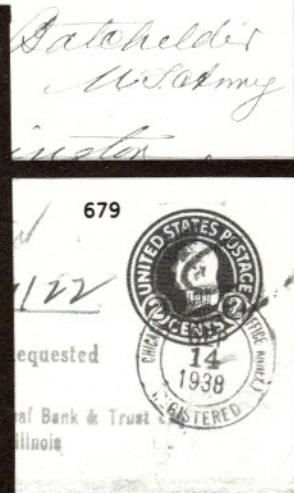


G. GROSVENOR DAWES
 CLINTON HALL
 13 ASTOR PLACE, NEW YORK



599

679



- 518 ☒ **24c Purple, 30c Greenish Black (153, 165).** Singles tied by Fancy cork cancels with 2c Brown (157) on Bissell cover to India paying double 28c rate via Brindisi, 24c Rich color, s.e. at right, cover with minor wrinkles, Fresh and Fine, with PSE Certificate E. 1,250-1,500
- 519 ★ **30c Black (154).** O.g., Very Fine, with P.F. Certificate 1,150.00
- 520 ☒ **30c Black (154). Horizontal Pair,** tied by cork cancels, with 6c Carmine (148) on 1871 Bissell cover to India paying triple 22c rate via Southampton, slight edge wear, Fine appearance, with P.F. Certificate, ex-Gibson E. 1,000-1,500
- 521 P **1c-90c Banknotes, "Atlanta" Trial Color Proofs (156TC-166TC, 179TC).** Complete Set of Blocks in All Listed Colors, Fresh, Fine-Very Fine 32,328.00
- 522 ★田 **2c Brown (157). Block of 15,** one stamp with small margin thin, others Fine-Very Fine, with P.F. Certificate E. 1,000-1,500
- 523 ★田 **10c Brown (161). Block of Ten (5X2),** Fresh, Sharp Color, o.g., couple light natural gum bends, bottom left stamp couple slightly nibbed perfs., otherwise Fine Multiple 2,625.00
- 524 ★田 **15c Yellow Orange (163). Irregular Block of 14,** Ten Stamps Mint, Very Fresh, two stamps at right with few perfs bit nibbed, centered bit to top right, Very Good-Fine, Scarce Piece 10,050.00
- 525 ☒ **30c Gray Black (165).** Single tied by large quartered cork cancel with #156 on U219 entire to Lima, Peru paying double 17c rate. Lot includes a 2nd U219 entire with 161 and 178 pair tied by "OK" cancels, paying single rate (same correspondence), both entires with Peru 5c Postage Dues (JO pair); 1st center flap lifted to show stamps; other opened at sides, Very Fine, Rare Pair E. 3,000-4,000
- 526 ★ **90c Rose Carmine (166).** O.g., Fresh and Very Fine, with P.F. Certificate 1,500.00
- 527 ★ **90c Rose Carmine (166).** O.g., Rich, Bright Color, Fine, with P.F. Certificate 1,500.00



528



529

- 528 ★田 **90c Rose Carmine (166). Block,** o.g., Very Fresh, Exceptionally Lovely Centering, Very Fine-Extremely Fine, An Outstanding Multiple, with P.F. Certificate 6,500.00
- 529 ★田 **90c Rose Carmine (166). Block,** Fresh, major part o.g., Very Fine .. 6,500.00
- 530 ☒ **3c Green (184).** Tied by bulls-eye and brilliant Red U.S. Consulate in Hong Kong Eagle & Shield on Round-the-World UX5, dated 1880, via Aden, India & China, range of twelve transits on front & back, some wear as to be expected, Fine and eye-catching E. 1,000-1,250

- 531 ★ **90c Carmine Rose (191).** A Beauty, Extremely Fine, with P.F. Certificate 1,150.00
- 532 ★田 **90c Carmine (191).** Block, Fresh & Bright, Fine, with P.F. Certificate 5,000.00

BANK NOTE SPECIAL PRINTINGS



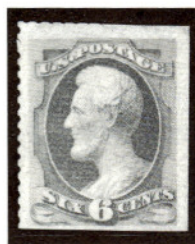
533



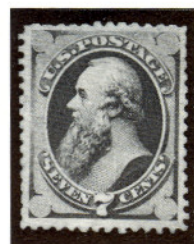
534



535



536



537

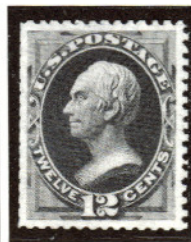
- 533 ★ **1c Ultramarine, Special Printing (167).** Fresh & Bright, usual scissor cut perfs., Fine 8,000.00
- 534 ★ **2c Dark Brown, Special Printing (168).** Part Imprint at Bottom, clear of design at top, Fine, with P.F. Certificate 3,500.00
- 535 ★ **3c Blue Green, Special Printing (169).** Fresh, Fine Rarity, with P.F. Certificate 9,500.00
- 536 ★ **6c Dull Rose, Special Printing (170).** Beautifully Fresh, clipped perfs. as almost always, a Very Fine Example of this Rare Special Printing, with A.P.S. Certificate 8,500.00
- 537 ★ **7c Reddish Vermilion, Special Printing (171).** Well-centered, couple of small sealed tears, Very Fine appearance, with P.F. Certificate 2,250.00



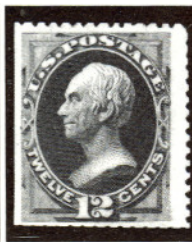
538



539



540

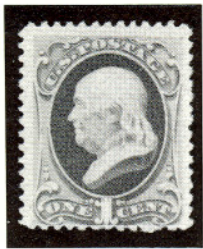


541

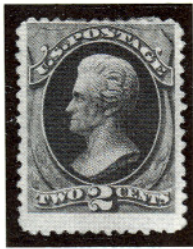


542

- 538 ★ **10c Pale Brown, Special Printing (172).** Fresh, minute thin speck not mentioned in P.F. Certificate, Fine, Attractive Appearance 8,250.00
- 539 ★ **12c Dark Violet, Special Printing (173).** Beautifully Centered, Fantastically Wide, Even Margins, Rich Bright Color, tiny trivial corner perf crease, still Extremely Fine, Probably the Finest Existing Example, with P.F. Certificate which mentions no flaws 3,000.00
- 540 ★ **12c Dark Violet, Special Printing (173).** Well-centered, Bright Rich Color, small thin, otherwise Extremely Fine, with Friedl Certificate ... 3,000.00
- 541 ★ **12c Dark Violet, Special Printing (173).** Outstanding Freshness, Brilliant Color, usual scissor separated perfs., Very Fine, with P.F. Certificate 3,000.00
- 542 ★ **24c Dull Purple, Special Printing (175).** Very Fresh, Rich Color, usual scissor cut perfs., Fine, with P.F. Certificate 1,850.00



543



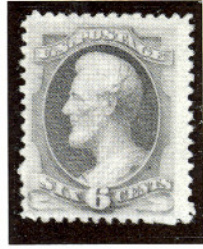
544



545

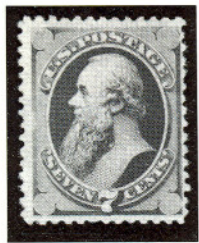


546



547

- 543 ★ **1c Dark Ultramarine, Special Printing (192).** Large Margins to perfs clear at bottom, Fresh, Very Fine, Very Scarce, with P.F. Certificate . 10,000.00
- 544 ★ **2c Black Brown, Special Printing (193).** Bright Color, thinned, A Fine Appearing Example, with P.F. Certificate 6,500.00
- 545 ★ **2c Black Brown, Special Printing (193).** Rich Color, single short perf., otherwise Fine, Rare, with P.F. Certificate 6,500.00
- 546 ★ **6c Dull Rose, Special Printing (195).** Beautifully Fresh and Well-centered, Very Fine and Rare, with A.P.S. and with P.F. Certificates . 11,000.00
- 547 ★ **6c Dull Rose, Special Printing (195).** Wonderfully Fresh, Nice Color, minute natural inclusion speck, A Very Attractive, Fine Example of This Rare Issue, with P.F. Certificate 11,000.00



548



549



550



551



552

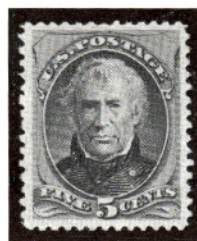
- 548 ★ **7c Scarlet Vermilion, Special Printing (196).** Fresh Color, tiny thin spot, Fine, Attractive Appearance 2,250.00
- 549 ★ **10c Deep Brown, Special Printing (197).** Bright, Intense Color, Beautifully Centered, A Magnificent Example, Extremely Fine, with P.F. Certificate 10,000.00
- 550 ★ **15c Orange, Special Printing (199).** Beautifully Fresh, Rich Color, s.e. at right, a Lovely, Very Fine Example of This Rare Issue, with P.F. Certificate 9,750.00
- 551 ★ **24c Dark Violet, Special Printing (200).** Rich Color, thin spot, perfs. touch at top, Very Scarce 3,500.00
- 552 ★ **24c Dark Violet, Special Printing (200).** Brilliant Fresh Color, Fine, with P.F. Certificate 3,500.00



553



554



555



557

- 553 ★ **90c Dull Carmine, Special Printing (202).** Fresh, Bright Color, couple barely perceptible tiny thins, otherwise Fine, with P.F. Certificate 9,000.00
- 554 ★ **90c Dull Carmine, Special Printing (202).** Fresh & Bright, small thin spot, Fine appearance, with P.F. Certificate 9,000.00
- 555 ★ **5c Deep Blue, Special Printing (204).** Wide Margins, Beautifully Centered, Deep True Color (realized \$46,750) Extremely Fine, Choice and Believed to be the Finest Known Example, A Great Rarity, Ex-Cole with Two P.F. Certificate 30,000.00
- 556 ★ **2c Pale Red Brown, Special Printing (211B).** Well-centered Left Margin Single, o.g., lightly hinged, Choice, Extremely Fine, with P.F. Certificate for Block 650.00
- 557 ★ **2c Pale Red Brown, Special Printing, Horizontal Pair, Imperf Between (211Bc).** O.g., lightly hinged, almost Very Fine, Rarely Offered, with P.F. Certificate for Block 2,750.00

1887-1890 ISSUES

- 558 E田 **2c Red Brown on Vertically Laid Paper (212E).** Bottom Imprint and Plate No. 556 Block of 16 with Part Arrow, Mint except for small hinge reinforcement in left vertical pair, small margin flaws in same, o/w Very Fine, Rare E. 1,800-2,000
- 559 ★ **90c Purple (218).** Bottom Margin Single with Double Perforations, o.g., lightly hinged, Extremely Fine & Choice, with P.F. Certificate 700.00
- 560 ★田 **90c Purple (218).** Block, o.g., h.r. and reinforced, o/w Fine-Very Fine 3,000.00
- 561 P田 **2c Lake, Imperforate Plate Proof on Stamp Paper (219DPe).** Top Imprint, "B" and Plate No. 10 Block of Eighteen, light creasing in top selvage, Very Fine appearance, with P.F. Certificate E. 1,500-2,000
- 562 P田 **3c Purple, Imperforate Plate Proof on Stamp Paper (221Pa).** Top Imprint and Plate No. 21 Block of 12, Wide Margins, Extremely Fine, A Rare Multiple (Cataloged as Singles) 1,650.00 +
- 563 P田 **3c Purple, Imperforate Plate Proof on Stamp Paper (221Pa).** Bottom Margin Imprint and Plate No. 21 Block of 12, without gum, Very Fine with P.F. Certificate 1,650.00 +
- 564 P田 **15c Indigo, Imperforate Plate Proof on Stamp Paper (227Pa).** Bottom Margin Block with Plate No. 22 and part Arrow, o.g., natural gum creases, Very Fine appearance, with P.F. Certificate 1,500.00
- 565 ★田 **30c Black (228).** Bottom Imprint & Plate No. 24 Block of Twelve, bit disturbed gum, few perfs. sensibly strengthened, minute gum soak in trifle reduced selvage, top left stamp tiny thin, o/w Fine-Very Fine, Rare Plate No. Block 9,450.00
- 566 P **90c Orange, Imperforate Plate Proof on Stamp Paper (229Pa).** Single, Large Margins, o.g., Extremely Fine, with P.F. Certificate —

— TWENTY MINUTE INTERMISSION —

RARITIES OF THE WORLD 1991

INDIVIDUAL REALIZATIONS ARE HAMMER PRICES. GROSS REALIZATION
INCLUDES 10% BUYERS PREMIUM.

200	800	257	1800	315	3750	371	16500	428	2700	485	1800
201	1050	258	1150	316	850	372	2300	429	2500	486	800
202	1150	259	5250	317	325	373	1000	430	1450	487	1450
203	2300	260	1050	318	2000	374	950	431	5250	488	1250
204	3250	261	475	319	3500	375	575	432	1250	489	1050
205	3500	262	2800	320	950	376	3500	433	1550	490	1250
206	3500	263	3250	321	625	377	1550	434	1000	491	2600
207	5000	264	950	322	525	378	700	435	1000	492	3250
208	8000	265	1600	323	1550	379	1550	436	1500	493	3250
209	2200	266	1250	324	1650	380	1350	437	2500	494	3500
210	850	267	375	325	10000	381	1150	438	4500	495	2700
211	2200	268	725	326	2700	382	1450	439	1100	496	1350
212	1200	269	1800	327	550	383	5750	440	2100	497	1400
213	2100	270	1450	328	725	384	900	441	1200	498	2800
214	7000	271	950	329	1650	385	1900	442	3750	499	3750
215	2400	272	1550	330	725	386	1050	443	3500	500	1700
216	2500	273	1100	331	1250	387	4250	444	5250	501	1350
217	5000	274	4750	332	950	388	850	445	1750	502	950
218	4000	275	950	333	1300	389	4250	446	3250	503	2500
219	No lot	276	725	334	1250	390	950	447	10500	504	1900
220	650	277	7000	335	1500	391	850	448	1400	505	3000
221	2700	278	2300	336	1150	392	850	449	450	506	3750
222	500	279	1800	337	1000	393	450	450	4500	507	2800
223	900	280	900	338	1200	394	550	451	1800	508	3750
224	2100	281	625	339	3500	395	3000	452	1050	509	4250
225	1050	282	1550	340	3500	396	1650	453	850	510	1100
226	6500	283	3000	341	2300	397	12000	454	1050	511	850
227	3250	284	5000	342	600	398	5250	455	700	512	1100
228	4500	285	750	343	9500	399	1450	456	2700	513	725
229	4500	286	2100	344	700	400	3250	457	1750	514	1800
230	1350	287	1650	345	1050	401	1800	458	2400	515	1500
231	1200	288	425	346	1100	402	3000	459	8500	516	600
232	1550	289	1150	347	950	403	18000	460	5000	517	1700
233	850	290	3250	348	1500	404	550	461	4500	518	1000
234	800	291	1250	349	750	405	1800	462	8000	519	1300
235	3500	292	1450	350	1400	406	1650	463	1250	520	750
236	2200	293	1350	351	850	407	4000	464	2100	521	10000
237	1250	294	1100	352	3750	408	800	465	1450	522	725
238	8500	295	600	353	750	409	3250	466	1400	523	1350
239	1200	296	1750	354	2600	410	1050	467	8500	524	1700
240	1150	297	725	355	2400	411	3000	468	4500	525	1550
241	800	298	1400	356	1100	412	1500	469	850	526	1400
242	1600	299	4750	357	23000	413	1800	470	1200	527	650
243	1650	300	3250	357A	1150	414	4000	471	1450	528	4250
244	8500	301	500	358	2500	415	1650	472	725	529	3250
245	21000	302	1300	359	1750	416	2500	473	1450	530	800
246	9500	303	675	360	16000	417	5750	474	950	531	700
247	3250	304	950	361	3750	418	4400	475	950	532	1600
248	2600	305	1250	362	4000	419	425	476	29000	533	3000
249	2200	306	12000	363	4000	420	1500	477	3000	534	2000
250	1500	307	8000	364	1350	421	1500	478	6500	535	5000
251	8500	309	1200	365	1100	422	1050	479	3250	536	4250
252	2600	310	3750	366	13500	423	2700	480	8000	537	1050
253	1800	311	2500	367	600	424	800	481	1800	538	2800
254	8500	312	2800	368	29000	425	1600	482	1550	539	4250
255	4000	313	5000	369	1000	426	900	483	5750	540	1700
256	1000	315	3750	370	1500	427	1050	484	3000	541	1400
										542	1000

543	6500	619	2800	695	2500	771	750	847	500
544	1900	620	1050	696	1150	772	900	848	650
545	1750	621	1450	697	1250	773	2500	849	5000
546	9000	622	1200	698	1650	774	650	850	2100
547	11500	623	1100	699	1100	775	600	851	850
548	1050	624	950	700	6250	776	9000	852	500
549	10500	625	2300	701	2100	777	5250	853	725
550	2700	626	4000	702	1850	778	625	854	800
551	1000	627	950	703	5250	779	725	855	850
552	1800	628	500	704	900	780	700	856	550
553	4000	629	4500	705	5750	781	1450	857	500
554	2400	630	14500	706	5250	782	1600		
555	37500	631	4250	707	4250	783	1000	END OF SALE	
556	950	632	1700	708	5250	784	650	THANK YOU	
557	1650	633	1550	709	3250	785	1850		
558	1600	634	1700	710	4500	786	1600	TOTAL	
559	950	635	2100	711	1350	787	1350	REALIZATION	
560	1050	636	1000	712	1550	788	850		
561	750	637	475	713	1700	789	750		
562	2100	638	800	714	2600	790	375	\$1,694,495.00	
563	1900	639	1100	715	1250	791	800		
564	1000	640	900	716	725	792	2300		
565	2600	641	2000	717	1350	793	675		
566	725	642	2200	718	1400	794	1050		
567	3500	643	600	719	850	795	1800		
568	1450	644	1650	720	1250	796	2700		
569	1500	645	1650	721	750	797	1350		
570	1750	646	7000	722	1500	798	3750		
571	3750	647	3750	723	1800	799	725		
572	800	648	1350	724	17500	800	1300		
573	3500	649	850	725	14000	801	575		
574	2000	650	10000	726	1900	802	1900		
575	800	651	7500	727	1050	803	2200		
576	2000	652	3250	728	3250	804	1350		
577	1600	653	12500	729	1550	805	950		
578	1350	654	800	730	1400	806	900		
579	900	655	1150	731	3250	807	1550		
580	1250	656	1400	732	1650	808	2600		
581	1750	657	1250	733	1250	809	725		
582	2500	658	550	734	1500	810	1000		
583	950	659	3750	735	1500	811	850		
584	5000	660	1700	736	1200	812	2250		
585	1200	661	4750	737	2100	813	325		
586	1100	662	900	738	850	814	2100		
587	3750	663	2300	739	3250	815	2000		
588	2100	664	950	740	3000	816	1450		
589	2300	665	1600	741	950	817	1650		
590	1700	666	625	742	1150	818	300		
591	3000	667	1700	743	4250	819	425		
592	1500	668	2400	744	650	820	350		
593	1000	669	2600	745	3250	821	625		
594	3000	670	9000	746	2300	822	675		
595	1900	671	1650	747	1150	823	1850		
596	6500	672	9500	748	7500	824	1600		
597	2000	673	950	749	1900	825	2300		
598	1350	674	1800	750	725	826	2100		
599	1050	675	1100	751	625	827	3500		
600	1000	676	625	752	1750	828	300		
601	750	677	425	753	1150	829	475		
602	1400	678	2100	754	725	830	1400		
603	2000	679	1000	755	1600	831	260		
604	2000	680	1350	756	3500	832	575		
605	3000	681	2600	757	3500	833	425		
606	1750	682	1450	758	1550	834	1450		
607	1050	683	1600	759	4000	835	2200		
608	850	684	950	760	1100	836	4500		
609	4500	685	5000	761	2100	837	475		
610	2200	686	6000	762	1650	838	675		
611	1050	687	4500	763	400	839	2500		
612	1850	688	900	764	1100	840	750		
613	5000	689	800	765	4250	841	1050		
614	700	690	1650	766	4250	842	550		
615	900	691	4750	767	1550	843	450		
616	3750	692	1400	768	1500	844	1550		
617	4000	693	1850	769	725	845	4250		
618	2500	694	1800	770	850	846	325		