

The Kapiloff Collection

United States 1851-57 Issue Covers

Sale 744

Saturday, October 3, 1992



Robert A. Siegel
AUCTION GALLERIES, INC.

PARK AVENUE TOWER, 17th FLOOR • 65 EAST 55th STREET
NEW YORK, NEW YORK 10022 • TEL. (212) 753-6421



Robert A. Siegel

AUCTION GALLERIES, INC.

PARK AVENUE TOWER, 17th FLOOR • 65 EAST 55th STREET
NEW YORK, NEW YORK 10022
TEL. (212) 753-6421 • FAX (212) 753-6429

Robert A. Siegel
Chairman

Scott R. Trepel
President

Administration
Helen Galatan-Stone
Rosanne Trepel

Descriptions
David Petruzelli
Scott R. Trepel



U.S. and Hawaiian mixed franking (lot 53)

UNITED STATES 1851-57 ISSUE COVERS

The Award-Winning Kapiloff Collection

Sold by Order of The Kapiloff Family
and Leonard Kapiloff Foundation

Saturday, October 3, 1992 at 10:00 a.m.

at The Plaza Hotel, Baroque Room

Please enter on Central Park South between
Fifth and Sixth Avenue.

Pre-Sale Registration

To expedite registration on the morning of the sale, we strongly recommend contacting our office at least two days in advance to register for a paddle number. You may request your number when checking in prior to the sale.

Pre-Sale Exhibition

Lots may be viewed by appointment and on Friday, October 2, from 10:00 a.m. until 3:30 p.m.

Hotel Accommodations

For out-of-town clients who plan to attend the sale, we have made arrangements with The Plaza Hotel to provide rooms. For rates and reservations, please call the reservations office at The Plaza Hotel, (212) 546-5493

Arrangement of Sale

Category (Scott Nos.) Page

1851-56 Issue Imperforate

1c Blue (5-9)	5
3c O.B., Red (10, 11)	20
5c Red Brown (12)	26
10c Green (13-16)	34
12c Black (17)	44

1857-61 Issue Perforated

1c Blue (18-24)	51
3c Red (25, 26)	59
5c Type I (27-29)	65
5c Type II (30, 30A)	70
10c Green (31-35)	76
12c Black (36, 36b)	87
24c Gray Lilac (37)	95
30c Orange (38)	102
90c Blue (39)	108

On The Cover

The 90c 1860 cover to
Spain, ex Caspary and Rust
(lot 193)

Conditions of Sale

The property described in this catalogue will be offered at public auction by Robert A. Siegel Auction Galleries, Inc. ("Galleries") on behalf of various consignors and itself or affiliated companies. By placing a bid on any lot, the bidder acknowledges acceptance of and will be bound to these Conditions of Sale.

1. The highest bidder acknowledged by the auctioneer shall be the buyer. The term "final bid" means the last bid acknowledged by the auctioneer, which is normally the highest bid offered. **The purchase price payable by the buyer will be the sum of the final bid and a commission of 10% of the final bid ("buyer's premium"), together with any sales tax or use tax which may be due on the sale.**

2. The auctioneer has the right to reject any bid, to advance the bidding at his discretion and, in the event of a dispute between bidders, to determine the successful bidder, to continue the bidding or to reoffer and resell the lot in dispute. The Galleries' record of the final sale shall be conclusive.

3. All bids are per numbered lot in the catalogue unless otherwise announced by the auctioneer at the time of sale. The right is reserved to group two or more lots, to withdraw any lot or lots from the sale, or to act on behalf of the seller. The Galleries will execute bidding instructions on behalf of clients, but will not be responsible for any errors in the execution of such bids.

4. Lot numbers followed by the symbol ° are offered subject to one or more of the following conditions: (i) the lot is subject to a minimum final bid ("reserve"), below which it will not be sold, (ii) the Galleries have advanced monies to the seller and have a financial interest in the lot, (iii) the Galleries have guaranteed the seller a minimum sale price, and (iv) the Galleries may have ownership interest in the lot, either in part or whole. The absence of the symbol ° means that the lot is offered without reserve.

5. Any lot, the description of which is obviously incorrect, is returnable, but only if the lot is returned within 14 days of receipt. All disputed lots must be returned intact with the original packing material. **The following lots may not be returned for any reason: Lots containing ten or more items; lots from buyers who have registered for the pre-sale exhibition or received lots by postal viewing, thereby having had the opportunity to inspect them before the sale; any lot described with "faults" or "defects" may not be returned because of any fault or defect. No illustrated lots may be returned because of centering, margins or other factors shown in the illustrations.**

6. Successful bidders, unless they have established credit with the Galleries prior to the sale, must make payment in full before the lots will be delivered. Buyers not known to the Galleries must make payment in full within three days from the date of sale. The Galleries retain the right to demand payment at the time the lot is knocked down to the highest bidder, for any reason whatsoever. In the event that any buyer refuses or fails

to make payment in cash for any lot at the time it is knocked down to him, the auctioneer reserves the right to reoffer the lot immediately for sale to the highest bidder.

7. If the purchase price has not been paid within the time limit specified above, nor lots taken up within seven days from the date of sale, the lots will be resold by whatever means deemed appropriate by the Galleries, and any loss incurred from resale will be charged to the defaulting buyer. Any account more than thirty days in arrears will be subject to a late payment charge of 1½% per month as long as the account remains in arrears. Any expenses incurred in securing payment from delinquent accounts will be charged to the defaulter.

8. All lots are sold as genuine. **Any lot which is accompanied by an expert certificate (for U.S. items, the accepted authority is The Philatelic Foundation), dated within the past five years of the sale date, is sold "as is" and in accordance with the description on the certificate. Such lots may not be returned for any reason, including but not limited to a contrary certificate of opinion obtained after the sale.** Buyers who wish to obtain a certificate for any item that is not accompanied by a certificate dated with the past five years may do so, provided that the following conditions are met: (1) the purchase price must be paid in full, (2) the item must be submitted to an acceptable expertizing committee with a properly executed application form within 21 days of the sale, (3) a copy of the application form must be given to the Galleries, (4) in the event that an adverse opinion is received, the Galleries retain the right to resubmit the item on the buyer's behalf for reconsideration, without time limit or other restrictions, (5) unless written notification to the contrary is received, items submitted for certification will be considered cleared 90 days from the date of sale, and (6) in the event any item is determined to be "not as described", the buyer will be refunded the purchase price, plus interest accrued on the purchase price at the prevailing Treasury Bill Rate from the date of payment, and the certification fee up to \$100.00 unless otherwise agreed.

9. Until paid for in full, all lots remain the property of the Galleries on behalf of the seller.

10. Agents executing bids on behalf of clients will be held responsible for all purchases made on behalf of clients unless otherwise arranged prior to the sale.

11. The buyer assumes all risk for delivery of purchased lots, and agrees to pay for all out-of-pocket costs incurred in shipping.

ROBERT A. SIEGEL

N.Y.C. Auctioneer's License No. 371761

SCOTT R. TREPEL

N.Y.C. Auctioneer's License No. 795952

RASAG 4/92

Terms and Abbreviations Used in Descriptions

Centering

The width of margins and the centering of the design within perforations are graded in strict accordance with the Scott Standard Postage Stamp Catalogue standards. The following grades are used in this catalogue:

Extremely Fine (EF): Exceptionally large margins or near perfect centering, used to describe stamps which are of superior grade for the issue.

Very Fine (VF): Normal size margins for the issue and well-centered with design a bit closer to one side. **Please note that this grade is superior to the one on which Scott Catalogue retail prices are based.**

Fine (F): Imperforate stamps may have smaller than usual margins and perforated stamps will be noticeably off-center. Issues before 1890 may have the design touched in places. If used, fairly lightly cancelled.

Very Good (VG): Attractive appearance, but margins or perforations may cut into.

Good (G): Average off-centered example with slight faults. This condition is generally acceptable for multiples and rarities.

Gum

Stamps issued before 1900 should not be expected to have original gum unless specifically stated in the description. 20th Century issues may be expected to have original gum unless described otherwise. Terms used to describe the condition of gum are as follows:

Mint: As issued by the post office and never hinged.

Original Gum (O.G.): Stamp retains full original gum showing slight disturbance caused by previous hinge, which may be present or entirely removed. Early 19th century stamps should be expected to show crackling and toning in gum, which occurs naturally over time.

Part Original Gum: Up to half of the gum is missing, but the remaining portion is original.

Disturbed Original Gum: The gum is original to the stamp, but has been noticeably affected by hinge removal and/or humidity, mount glazing, etc.

Hinge Mark: Noticeable area where hinge has been removed and gum has been redistributed. Stamps described with hinge marks may not be returned because of gum disturbance.

Hinge Remnant (H.R.): All or part of hinge remaining affixed to gum.

Covers

Minor nicks, tears and slight reduction from opening are to be expected in 19th century covers. Folded letters normally have tears in the reverse and file folds, which will not be mentioned unless they affect the stamps or markings. Light cleaning of covers is an accepted form of conservation and is not grounds for return of a lot. The terms "Extremely Fine", etc., are meant to convey the overall appearance of cover, not the condition of an individual stamp.

Catalogue Values and Estimates

Unless otherwise noted, U.S. stamps are catalogued according to the *Scott 1992 U.S. Specialized Catalogue* or Volume 1 (previous editions have been used to catalogue certain Special Printings). *Scott 1992 Standard Catalogue* Volumes 1-4 have been used for British and foreign stamps. The *1992 Stanley Gibbons British Commonwealth Catalogue* and other foreign catalogues are cited where appropriate.

Catalogue values are indicated by decimal figures in the right column (for example, "175.00"). Stamps in extremely fine quality and items for which catalogue values are not available have been given estimate ranges (for example "E. 750-1,000"). Lots offered subject to a reserve will never be reserved for more than the estimate (usually a fraction of the estimate).

Symbols and Abbreviations

★★	Mint (never hinged)	No.	Scott Catalogue Number
★	Unused (with or without gum, as described)	cds	Circular datestamp
田	Block of four or larger	hs	Handstamp
∞	Folded letter or cover	E	Essay
o.g.	Original gum	P	Proof
pmk.	Postmark (in black unless described otherwise)	TC	Trial color proof
var.	Variety	R	Reprint

Copyright Notice: This catalogue is protected by copyright. The descriptions, format, illustrations and information used herein may not be reprinted, distributed or copied in any form without the express written consent of Robert A. Siegel Auction Galleries. Application for permission may be made in writing. © 1992, Robert A. Siegel Auction Galleries, Inc.

INTRODUCTION

Of the many stamps issued by the United States, the 1851-57 Issue provides the widest variety of printing and production varieties, as well as the most fascinating postal usages.

We are not alone in this opinion. The United States Classics Society was founded by philatelists who had a common interest in the 1851-57 Issue, and, for many years, the group focused almost exclusively on this issue. The leading authorities—Carroll Chase, Stanley Ashbrook and Mortimer Neinken—made their marks by researching the 1851-57's. Furthermore, the most accomplished United States collectors during our 62 years in business—Caspary, Newbury, Moody, Lilly, Rohloff, Grunin, Haas, Klein and Ishikawa—emphasized the classic imperforates and first perforated issues.

Therefore, it should not come as any surprise that Dr. Kapiloff, who distinguished himself in philately by collecting the 1847 Issue, also assembled one of the finest collections of 1851-57 Issue covers ever formed. We are pleased to offer this collection in a sale that may be described as the most important of its kind since the Grunin collection was dispersed at auction.

The crowning piece of this collection is the famous 1860 90c Blue cover to Spain. As far back as the 1956 Caspary sale, this item was widely regarded as one of the "top five" covers in United States philately. Rivalled only by the 90c cover to the Cape of Good Hope, which was sold through these galleries to Ryohei Ishikawa, the Kapiloff cover to Spain is, in our opinion, one of the finest United States covers ever sold through this firm. Last June, we set the record for a United States cover sold at auction twice in a row, the top price being \$363,000 for the 80c rate 1847 cover to California. On October 3, we expect to break it once more with the sale of this spectacular 90c cover.

The majority of our clients who collect covers of more modest value will find a great many items to admire and bid for in the auction. One of our favorites is the 1c plus 3c Star Die entire with additional stamps paying the 11c transcontinental/carrier rate, which gives us as much joy as any cover worth ten times its estimate.

This sale represents years of effort on Dr. Kapiloff's part. We applaud him for assembling one of the best of its kind and congratulate those of you who are successful in acquiring items for your own collections.

Robert A. Siegel
Scott R. Trepel

SATURDAY, OCTOBER 3, 1992, AT 10:00 A.M.

THE AWARD-WINNING KAPILOFF COLLECTION
UNITED STATES 1851-57 ISSUE COVERS

1851 ONE-CENT BLUE



1° 1c Blue, Type Ib (5A). Position 6R1E, one of the best examples of this type on Plate One Early, ample margins, lightly tied by grid on fresh April 1852 folded prices current from Baltimore to Ohio, Very Fine, plated and signed by Ashbrook who notes that a single of this stamp on cover is far rarer than a strip of three E. 5,000-6,000

2° 1c Blue, Type Ib (5A). Horizontal pair, positions 3-4R1E, ample to enormous margins including top sheet margin, exceptionally bright color and fine impression, tied by blue "Apalachicola Fla. Paid 3 Apr. 12" cds on folded prices current to Boston, Extremely Fine, a very rare pair and one of the finest of the scarce "over 500 miles" circular rate usages, ex Emerson, Cohen, with 1976 P.F. certificate E. 8,000-10,000

Type II-II-Ib Strip of Three



3° 1c Blue, Types II-II-Ib (7-7-5A). Horizontal strip of three, positions 1-3R1E, large to enormous margins including full corner sheet margins, brilliant early shade and impression, canceled by three bright red grids, the left strike tying strip on buff cover to Detroit, matching red "Newburgh N.Y. Aug. 4" cds, couple light cover folds well clear of strip

By a remarkable coincidence, another cover is known from Newburgh, N.Y.—from a different correspondence and dated exactly one month earlier—bearing an identical strip of three from the same positions with similar sheet margins (Grunin Sale, Part One, Christie's, Mar. 25, 1987, \$18,150). The datestamp on this cover is struck more clearly.

Extremely Fine and Colorful Cover. A Superb Strip Containing the Scarce Type Ib. Ex Emerson. From Our 1981 Rarities Sale Where It Realized \$14,850 E. 10,000-15,000

Type I-Ib-Ib Strip of Three



4° **1c Blue, Types I-Ib-Ib (5-5A-5A).** Horizontal strip of three, positions 7 (Type I), 8-9R1E, mostly large margins, type characteristics complete all around, beautiful Plate One Early printing in bright shade, superb impression, tied by two strikes of "Saint Louis, Mo. 3 Nov. 21" integral rate cds on 1851 folded letter to Galena Ill.

There are ten such multiples with the rare Type I recorded on cover, including nine strips of three and an L-shaped block of three. Nearly all have faults or have part of the design cut away. Only three of these covers may be considered very fine or better: the famous Newbury strip from Richmond, Virginia (now in the Ishikawa collection), a cover from North Cumberland, Pennsylvania (although pos. 6 has a closed tear), and this cover.

Very Fine and Rare Multiple Containing The Most Desirable Positions on Plate One Early. One of The Highlights of This Important Collection. Ex Richey, Hindes. Signed Ashbrook. With 1967 P.F. Certificate. E. 50,000-75,000



5° 1c Blue, Type Ia (6). Plate Four, large margins except just touched at bottom left plume, intense shade and impression on crisp white paper, neatly tied by "Walpole N.H." cds on buff drop letter cover, negligible mended flap tear, Very Fine example of this rare stamp on cover, ex Gibson, from our 1981 Rarities sale where it realized \$14,300 E. 7,500-10,000



6° 1c Blue, Type Ia (6). Position 100R4, large margins showing full Type Ia characteristics at bottom, used with perforated 1c Blue, Type II (20) on 3c Red Nesbitt entire (U10) to Torino, Italy, stamps tied by "Ellicottville N.Y. Aug. 6" (1857) cds and Le Havre octagonal transit, instructions for British packet service but sent by French mail and treated as unpaid with appropriate "New York 12" debit cds, Type Ia faintly creased, flap missing, some minor cover wear, Very Fine foreign mail usage of this rare stamp E. 7,500-10,000

Seal and direct San Francisco and Sacramento Letters as usual; then enclose in this envelope.

Copy-Right Secured.

Letters, Papers and other mail matter, Small Parcels, Daguerreotypes, &c., addressed to the Care of the Penny Post Co., and deposited in any Post Office, will be delivered immediately on the distribution of the mails in Stockton and Marysville.

San Francisco and Sacramento Letters, when sent by mail should be directed To the Penny Post Co., care of the party for whom they are intended.



To Agent of the Penny-Post Co. 12
 Care of *Wm B. Wadsworth* AUG 12
 No. *Secy Chamber of Commerce* Street,
San Francisco CAL.

Any party to whose care a Letter for the Penny-Post Co. is directed, is hereby authorized to open the same and appropriate its contents.

7° 1c Blue, Type IV (9). Fine single, tied by "San Francisco Cal. Aug. 12" cds on printed California Penny Post Co., 7c Black entire (34LU14), used locally with interesting instructions to the carrier penned on back: "Mr. Weller will please notice the address on this letter and in delivering it establish a precedent from which he will not depart." Extremely Fine, Believed to be a Unique use of this stamp on a California Penny Post Co. 7c entire, illustrated in Ashbrook, Volume Two (p. 309), ex Emerson, Knapp, Jessup, Pearce, Haas and Grunin E. 7,500-10,000



8° 1c Blue, Type II (7). Mostly large margins including bits of adjoining stamps at left and bottom, just touched at lower right, tied by "Hartford Ct." cds on Geo. Jewett Temperance cover, negligible opening flaw at left. Very Fine, drop letter usages of these envelopes are extremely scarce, this example was used in the manufacturer's home city E. 1,250-1,500

Type II Strip of Five Used on Cover to Canada



9° 1c Blue, Type II (7). Horizontal strip of five and a pair, positions 43-47 and 41-42R1E, ample margins except touched to slightly in on three positions, faint creases and two with small closed tear, used with 3c Orange Brown (10) and tied by six strikes of "Rochester N.Y. Dec. 6" two-slug cds on buff 1851 cover to **Quebec, Canada**, blue ribbon-style "U.States" cross-border marking, red Montreal cds, mended opening tear at right

Fine and Very Attractive. An Exceedingly Rare Franking to Pay 10c Rate to Canada. Ex J. David Baker. E. 7,500-10,000

Type II Block of Ten Used on Cover to Canada

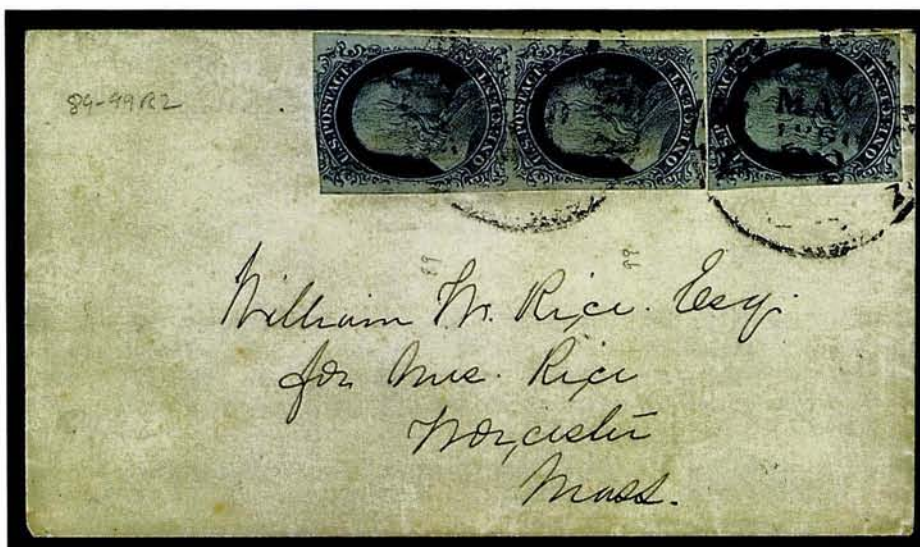


10° 1c Blue, Type II (7). Horizontal block of ten, positions 6-10/16-20R2, full even margins virtually all around, tied by neat pen strokes on small embossed lady's cover to **Pike River Landing, Canada East**, ms. "Cambridge Vt. May 28" pmk. on address side, ms. "10" and "6" rates, the block is lightly canceled and tied by three different cds, including "Saint John's May 29, 1857" and "Montreal My 29 57" cds

Very Fine. One of The Few Recorded 1c 1851 Blocks on Cover. Certainly Among The Largest and Finest Multiple Usages. E. 7,500-10,000



11° 1c Blue, Type III (8). Plate Four, mostly large margins, rich color, wide breaks at top and bottom, tied by "Beverly Ms. Sep. 22" cds on 1857 bank notice used locally, Very Fine, ex Haas, Sheriff (1985, \$3,850) E. 1,500-2,000



12° 1c Blue, Type III, Position 99R2 (8). Vertical pair with positions 89/99R2, Type II-III, and single Type II, arranged vertically and tied by "New-York May 1860 22" cds on small white cover to Mass., pair touched at top, but 99R2 with large margins, faint pre-use crease, Extremely Fine Appearance, very rare use of the finest Type III position, unpriced as a combination pair on cover, from our 1981 Rarities sale where it realized \$9,900 E. 7,500-10,000



13° 1c Blue, Type Ic (8A var). Position 81R4 (variety of Type IIIa), Big Curl on Shoulder, large margins, tied by "Fall River Ms." cds on lettersheet with original verse contents, "A 5th Avenue Valentine" dated 1859, Very Fine and choice, signed Ashbrook with his plating card . E. 750-1,000



14° 1c Blue, Type IIIa (8A). Ample to large margins, tied by neat "Beverly Ms. Sep. 22" cds on 1857 folded bank notice, same date and sender as Type III cover offered as lot 11, Very Fine E. 600-800

Strip of Six Used from California



15° 1c Blue, Types IIIa-IIIa-II-IIIa-II (8A-7). Horizontal strip of six, positions 31-36R1E (32,33 and 35 are Type IIIa), ample to huge margins including left sheet margin with guide line, pos. 35 light natural pre-printing fold, just touched at bottom of pos. 36, fresh bright color and superb Plate One Early impression, tied by three strikes of "Sacramento City Cal. Mar. 1" cds on buff cover to Illinois, the cover has been skilfully silked with small nick at right mended

The 6c trans-continental rate was effective from July 1, 1851, to April 1, 1855. This usage of the 1c stamp from a very early printing probably dates to 1852. Approximately seven such West Coast multiples are known to us, this being among the most attractive.

Very Fine. A Beautiful and Rare Franking. Illustrated in Neinken (p. 81). Ex Caspary, Chase. From Our 1981 Rarities Sale Where It Realized \$17,050. E. 10,000-15,000

Strip of Six Used from California



16° 1c Blue, Types IIIa-II (8A-7). Horizontal strip of six, positions 81-86L1E, the left stamp being Type IIIa and an Inverted Double Transfer position, others Type II, large margins except where touched at top of two Type II positions, tied by 8-bar split grid cancels, "San Francisco Cal. Oct. 15" (1851) cds on cover to Mass.

The late Mortimer Neinken wrote about this cover in *Opinions* (The Philatelic Foundation, 1983): "This cover is most unusual. It is one of the very few letters noted from the west coast in 1851, with a strip of six 1c stamps paying the 6c postage. The San Francisco postmark is dated October 15th, undoubtedly 1851, because the stamps are from Plate 1 Early. This beautiful strip consists of positions 81L1E through 86L1E. 81L1E is an inverted double transfer position, Type IIIA, and this position is very difficult to find, either on or off cover. The writer has seen far fewer stamps of position 81L1E than the Type I, 7R1E... This cover is one of the gems of 19th century U.S. philately."

Very Fine and Rare Franking. One of The Earliest Recorded Usages of The 1851 1c Stamp from California. Described by Neinken as "One of The Gems of 19th Century U.S. Philately." With 1980 P.F. certificate. E. 7,500-10,000



17° 1c Blue, Type IV (9). Horizontal strip of three, large margins, tied by "Philadelphia Pa. Jan. 9" cds on handsome **advertising** cover for Snyder & Grubb's Premium Clothing Emporium, indigo on buff woodcut building illustration, small ink smear from address on left pair, still Extremely Fine E. 500-750

18° 1c Blue, Type IV (9). Vertical strip of three, positions 42/52/62L1L, bright shade, ample margins to in at right, bottom stamp faulty and repaired with part of another stamp, tied by two strikes of "Louisville & Cincinnati Mail Line May 13" cds on blue folded cover docketed 1853 from Cincinnati to Indianapolis, Fine appearance, ex Chase, Emerson E. 200-300

19° 1c Blue, Type IV (9). Horizontal strip of three and pair, margins all around except at bottom of right stamp in pair, tied by "New Orleans La. Feb. 2, 1857" cds on folded letter to **Bordeaux, France**, mailed during the "three months" period with appropriate "GB/1f60c" accountancy handstamp, New York and French transits, Very Fine, the 5c shore-to-ship rate was rarely prepaid with five 1c stamps, this "three months" usage is especially desirable (see Hargest, p. 62-69) E. 2,000-3,000



20° 1c Blue, Type II-IV (7-9). Horizontal strip of nine with full sheet margin, positions 2-10R1L, position 4R1L Type II, large to enormous margins incl. 12½ mm sheet margin at right and portion of adjoining row along bottom, tied by "Chicago Ill." cds on 9½ x 3¾ in. cover to Goshen N.Y., the strip includes all of the late state versions of Type Ib and Type I, the latter still showing the major double transfer at top and mostly complete plumes at bottom, the Type II being the only stamp on Plate One Late which is not recut, docketed Aug. 1855 with ms. notations, including curious label "Washington" on four stamps and "snakes" written at bottom, exceptional condition for a multiple and cover of this size, couple negligible flaws, still Extremely Fine, an incomparable piece of great significance in the study of the fascinating 1c 1851 plates, ex West and Newbury E. 2,500-3,500

1851 THREE-CENT ORANGE BROWN

July 1st First Day of Issue



21° 3c Orange Brown (10). Position 31R1E, large margins at sides, touched to just slightly in, tied by black grid on folded letter with blue "Baltimore Md. Jul. 1" cds, stamp applied with wax wafer seal, fresh

Although the letter contents and postmark are not year dated, an accompanying letter from the late Tracy Simpson correctly points out that this must be an 1851 first day usage, because a large post office such as Baltimore's could not have had Plate One Early stamps on hand as late as July 1852. More significantly, the Baltimore post office favored black ink for its datestamp in 1852.

Fine and Attractive Example of This Desirable Classic First Day Cover. Plated and Signed by Simpson. E. 7,500-10,000

New Orleans U.S. City Post Usage to France



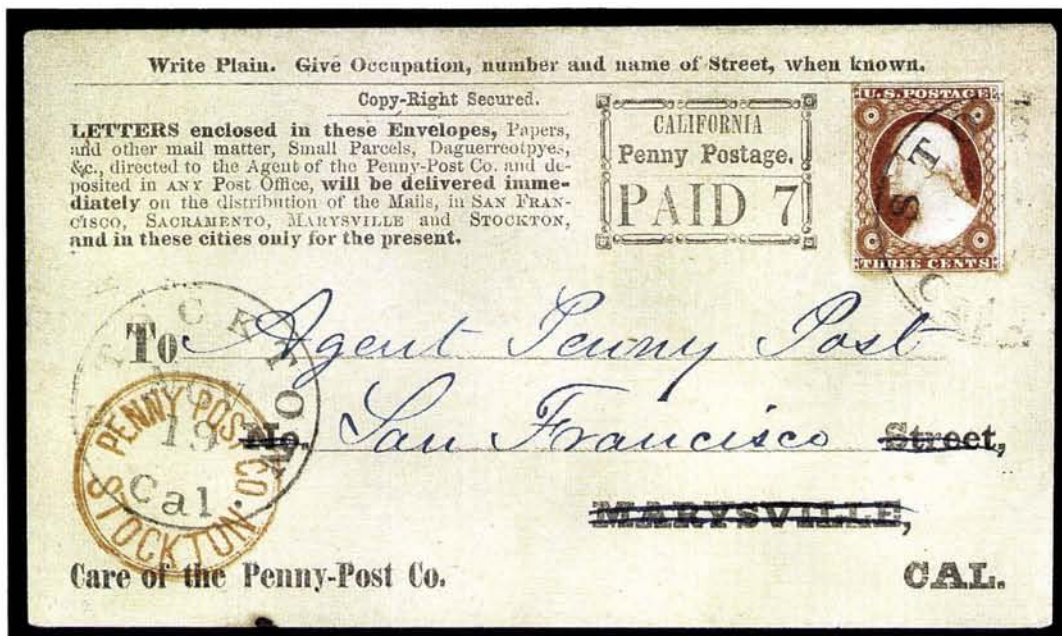
22° 3c Orange Brown (10). Two singles, one with large margins, other just in at left, each canceled by bold black grid, brilliant red "New Orleans La. Sep. 30" cds on 1851 folded letter to France, clearly struck green "N.O.U.S. City Post Sep. 29" framed handstamp, the so-called "snow-shovel" U.S. carrier marking indicating "to the mails" service, appropriate French transits, negligible ink smears in address

According to contemporary advertisements for the New Orleans carrier service, which began on July 1, 1851, there was no charge for letters carried to the post office for delivery outside of New Orleans. Examples of the N.O.U.S. markings on such outbound mail are exceedingly scarce, especially on letters bound for Europe. The 6c postage on this letter was probably intended, out of the sender's misunderstanding of the carrier fees, to prepay the 5c inland rate *plus* 1c for carrier service.

Very Fine. An Extremely Rare, Perhaps Unique, Usage of New Orleans Carrier Service on Mail Bound For Europe. A Colorful and Unusual Postal History Item. E. 2,500-3,500

1851 THREE-CENT RED (SHADES)

California Penny Post Company



23° 3c Brownish Carmine (11). Fine single tied by "Stockton Cal. Nov. 19" cds on **California Penny Post Co. 7c Black entire (34LU14)** to San Francisco, "Marysville" portion of printed address crossed out in blue and "Agent Penny Post, San Francisco" substituted, perfectly struck red "Penny Post Co. Stockton" double-line circular handstamp

Covers bearing the company handstamp in addition to the government postmark are considerably rarer than those without the Penny Post Co. mark. Use of the Stockton branch office handstamp in conjunction with the very rare 7c entire is believed unique.

Extremely Fine. A Remarkable 1851 Issue and California Local Post Combination Cover. Ex Caspary, Jessup, Pearce, Haas and Grunin. E. 7,500-10,000

TO THE PENNY POST CO

PENNY-POSTAGE PAID



"PAID 7"

25



24

*Mr. Samuel Moody.
No. 66 Silver Street.
South Boston.
Mass.*

73-74 L3 THS



24° 3c Brownish Carmine (11). Horizontal pair, tied by "New-York Sep. 9" cds on buff cover to Mass. with perfectly struck blue "Via Nicaragua/Ahead of the Mails/Leland" in truncated rectangular frame, Extremely Fine, the finest known example of this scarce marking, ex Wiltsee, Simpson, Polland, Haas, with 1981 P.F. certificate E. 3,000-4,000

25° 3c Rose Red (11). Horizontal pair, tied by "New-York Aug. 7" cds on cover to Natchez Miss., blue "Stmr. Sierra Nevada/Via Nicaragua/Advance of the Mails" in oval, mostly readable strike, Fine and scarce E. 750-1,000

26° 3c Rose Red (11). Two, both slightly cut in, tied by "Camptonville Cal. Feb. 14" cds on California Penny Post Co. 7c Black entire (34LU11) to San Francisco, faint stain at top right corner, otherwise fresh and Fine E. 400-500



27° 3c Rose Red (11). Fine single tied by "New-York Aug. 6" cds on "Eureka/The California Escutcheon" cover with elaborate allegorical design in black on buff, addressed to Mass., red oval "Freeman & Co.'s Express San Francisco" oval handstamp, Very Fine, a rare and unusual design, especially desirable express usage, ex J. David Baker E. 1,500-2,000



28° 3c Rose Red (11). Large margins to barely touched, tied by blue "Toledo Ohio Jul. 23" cds on Anti-Slavery Propaganda cover, J. Valentine imprint, all-over engraved design in black on gray, these British anti-slavery envelopes did not see widespread use in America and are very scarce, very slight wear, Very Fine E. 1,000-1,500



29° 3c Rose Red (11). Horizontal strip of five, full margins except right stamp touched, tied by "Oxford O. Sep. 11" cds on 1853 cover to **Germany**, red "N. York Brm. Pkt. 10 Paid" credit cds, straightline "Franco" hs and ms. rates, minor edge wear, Fine and scarce usage, illustrated in Hargest (p. 113) E. 1,000-1,500



30° 3c Orange Red (11). Horizontal blocks of six and eight, margins to slightly in, tied together by grids and by red "New Orleans La. Nov. 4" cds on 1855 folded cover to **Bordeaux, France**, red New York and black Calais transits also tying blocks, ms. rates, filing crease thru bottom rows of blocks, refolded at bottom to enhance appearance, a most attractive and very rare multiple franking for double 21c American Packet rate to France, ex Rust, signed Ashbrook E. 3,500-4,500

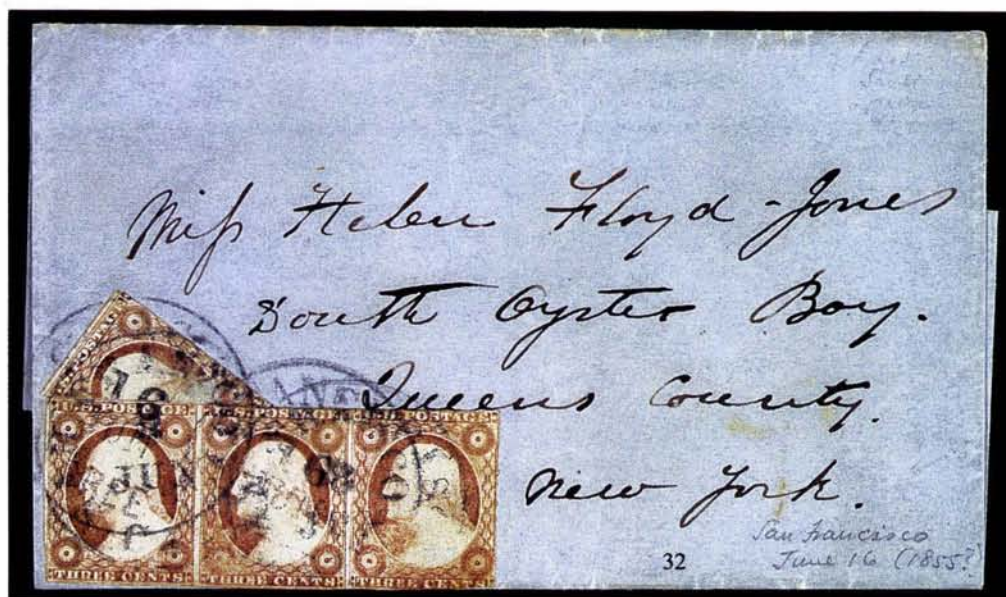
United States and Canadian "Beaver" Combination



31° 3c Dull Red (11). Large margins, used from Canada with 1852 3p Red on Wove (3), top margin single, tied by bold ms. cancel on a July 1853 folded cover to E. D. Morgan in New York City, "Toronto U.C. Jy 6, 1853" rimless cds, treated by the Canadian postal authorities as entirely unpaid, straightline "Canada 10 Cts" and large "6" applied, the latter overstruck with a Canadian target, 3p with tiny hole in selvage

Although a handful of similar mixed frankings are recorded, Canadian postal regulations did not provide for such combinations, and postal officials sent them to the U.S. as unpaid letters. However, the American postal officials were obviously willing to accept these combinations in prepayment of U.S. postage, as the absence of due markings on this and other similar usages indicates. With or without Canadian stamps, the 1851 Issue used from Canada is far rarer than the 1847 Issue.

Very Fine. An Extremely Rare and Desirable Mixed Franking. Signed Ashbrook. From Our 1970 Rarities Sale. E. 20,000-30,000



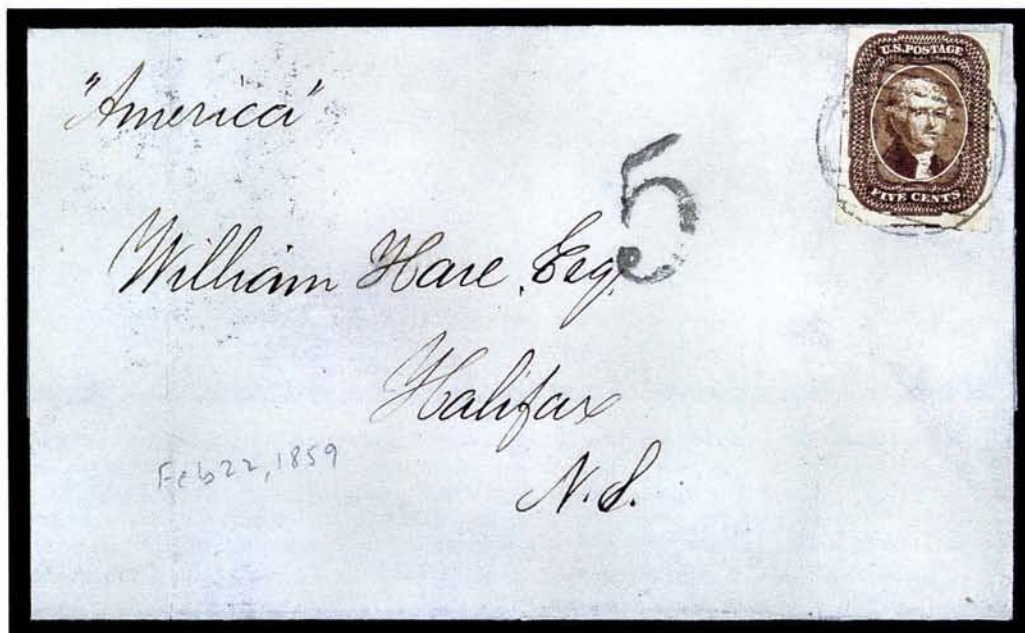
32° 3c Dull Red, Diagonal Half Used as 1c (11d). Upper right diagonal half used with 3c strip of three, positions 93-95R1L and 85R1L (bisect), well tied by several strikes of "San Francisco Cal. Jun. 8" cds and additional Jun. 16 cds with integral "Free" on folded cover to South Oyster Bay N.Y., c. 1854-55, bisect with tiny crease, Very Fine, only sixteen 3c 1851 bisect covers are recorded by Piller (*Chronicle* 136, 137), two of which are not considered genuine and only five of which are 10c rate usages, illustrated in *Letters of Gold* (p. 111), ex Beals E. 7,500-10,000

33° 3c Yellowish Rose Red, Vertical One-Third Used as 1c (11c). Left vertical third adjoining vertical strip of three, Plate Four, tiny corner crease, each with ms. "X," matching "Garrote Cal. May 31st" pmk. on light buff cover to East Brooklyn N.Y., small edge flaws, still Very Fine, as noted in previous lot, one of only sixteen genuine 3c bisected usages; this cover, along with the previous lot, are the finest of the 10c rate usages, ex Cohen, realized \$8,800 in our 1982 Rarities sale E. 6,000-8,000

1856 FIVE-CENT RED BROWN



34° 5c Red Brown (12). Three large margins, touched at top, tied by blue "Baltimore Md. Apr. 8" cds, matching "Ship" straightline hs on small cover to Maine, endorsed "Ship Letter", left edge repaired, otherwise Fine, very rare usage, ex Gibson E. 750-1,000



35° 5c Red Brown (12). Mostly large margins, tied by lightly struck Boston "Paid" in grid on 1859 folded cover to Halifax, Nova Scotia, large numeral "5" hs, repaired cover tear at right, otherwise Very Fine, signed Ashbrook E. 1,000-1,500



38° 5c Red Brown (12). Margins except just in at top, tied by "New Orleans La. Mar. 24, 1857" cds and Calais transit on folded letter with mourning border to **Geneva, Switzerland**, mailed from Boston on Apr. 8—the first sailing after the U.S.-French convention came into operation, but still receiving the "GB/1f60c" accountancy mark associated with the "three-months" period, fresh and Fine, desirable foreign mail usage E. 1,500-2,000



39° 5c Red Brown, 10c Green, Type II (12,14). 5c large margins showing two guide dots at top right, bright color, fresh paper, 10c Fine, tied by "New Orleans La." cds on Jul. 1857 folded letter to **Bordeaux, France**, red "New York Paid 12 Jul. 22" credit cds, French transit, Extremely Fine stamp and choice cover, with P.F. certificate E. 1,500-2,000



40° 5c Red Brown (12). Ample margins except just in at right, used with perforated 10c Green, Type V (35), both tied by "Paid" in grid, red "Boston Br. Pkt. Sep. 7" credit cds on cover to France, ms. "12" credit, French transit, framed "P.D.," opened on two sides and reduced at right, Fine and attractive mixed issue franking E. 1,000-1,500



41° 5c Red Brown (12). Used with 10c Green Ty. II (14), Horizontal strip of three, margins to slightly in, tied by "Troy N.Y." cds on 1877 tissue cover to Geneva, Switzerland via Prussian Closed Mail, red Auchen transit and rate handstamp struck in red in, "12" at upper right, magenta "F2", Fine, a small neat cover E. 2,500-3,500



42° **5c Red Brown (12).** Two singles, each with ample to large margins, right stamp just touched at top, each tied by "New Orleans La." cds on Jul. 1856 folded letter to **France**, red New York and Calais transits, appropriate "26" decimes due hs, negligible excess gum at edges of stamps, still Very Fine and rare franking E. 2,000-3,000

43° **5c Red Brown (12).** Vertical pair, large margins showing parts of adjoining stamps at right, just in at top, scissors cut halfway between stamps, tied by grids, "Westfield Ms. Apr. 19, 1858" cds, "Paid" & "10" hs on neat cover to San Francisco, Very Fine, pairs of the 5c Red Brown are extremely scarce on cover E. 2,000-3,000



44° **5c Red Brown (12)**. Vertical pair, large margins except just touched at lower right, rich color, tied by indistinct "New Orleans La." cds on Nov. 1856 folded cover **to Vera Cruz, Mexico**, neat and Fine, the vast majority of 1851-57 covers to Mexico are prepaid with 10c stamps, this 5c usage is enormously rare E. 2,000-3,000

45° **5c Red Brown (12)**, huge margins to clear at top, just in at right, Horizontal strip of three, tied by "New Orleans La." cds on May 1857 folder cover **to France**, red "New York Paid 12" credit cds, strip with small faults at top, Very Fine appearance, ex Hindes E. 3,000-4000

Strip of Four Used to Hong Kong



46° 5c Red Brown (12). Horizontal strip of four, margins all around except touched to barely in on right stamp, tied by red "Trenton N.J. Aug. 19, 1856" cds with 1c Blue, Type IV (9), margins to just in, on small neat cover to **Hong Kong**, red "New-York Am. Pkt." transit and receiving backstamps, original eight-page letter enclosure

This cover comes from the well-known correspondence of Lieutenant Earl English, who served on board the U.S. sloop *Levant*. To the best of our knowledge, only one other identical franking for the 21c rate was contained in this correspondence, the two being the only 1856 5c multiples on cover to Hong Kong extant, as well as the only 1856 5c covers known from New Jersey. This cover was sent by American packet, while the other went by the more usual British packet. Any multiple of this stamp larger than a strip of three is very rare, the majority having been used to pay the 15c rate to France. This strip on cover realized \$22,000 in 1985, while the other matching cover realized \$19,800 in the 1988 Grunin sale.

Very Fine and Colorful Cover. A Rare Multiple and Unusual Usage to Hong Kong. Ex Rohloff. With 1977 P.F. Certificate. E. 20,000-25,000

Two Strips of Three Used to France



47° **5c Red Brown (12)**. Two horizontal strips of three, ample to large margins, deep rich color, tied by three strikes of "New Orleans La. Aug. 12" cds on 1857 folded letter to **Port Vendres, France**, 60c postage fully prepaying the 1/2 ounce rate by French mail, red "New York Paid 24 Aug. 19" credit cds, French transits front and back, one stamp with tiny tear, another with negligible corner margin crease, file fold neatly reinforced

Similar frankings in the Gibson, Hill, Rohloff and Grunin collections were limited to the perforated issue. There is one block of six recorded on a cover from Virginia, as well as a strip of six on a restored cover to Germany.

Very Fine. One of The Largest Known 1856 5c Frankings and One of The Greatest 1851 Issue Covers Extant. E. 50,000-75,000

1855 TEN-CENT GREEN



48° 10c Green, Type I (13). Single with ample to large margins, tied by "San Francisco Cal. 30 Jun." cds on c. 1855 cover to Long Island N.Y., imprinted "Via Nicaragua" with ms. "too late for Nicaragua" indicating that this letter missed the sailing for the Nicaragua route, **California Penny Post Co. 5c Blue (34L4)** affixed at left, used appropriately with this imprinted envelope, opened a bit irregularly at right and neatly restored, 5c with tiny scuff in left denomination, Very Fine appearance, an extremely rare California local post usage, notation on back dates missing contents to 1855, making this a very early use of the 10c 1855 from California, illustrated in Neinken book (p. 13), ex Eno, Jessup, Pearce, Haas E. 5,000-7,500

49° 10c Green, Type I (13). Horizontal pair, positions 98-99L1, large margins, rich color, tiny scissors cut at top entirely between stamps, small ink spot in margin, tied by "Milford Conn. Apr. 19" cds on buff cover to San Francisco, minor cover edge wrinkles, pair is Extremely Fine, ex Cohen, with 1977 P.F. certificate E. 1,000-1,500



50° 10c Green, Type I (13). Horizontal strip of four, margins to slightly in, left stamp with few tiny scrapes, right stamp with small nicks, used with 3c Claret (11), tied by blue "Memphis Ten." cds on Apr. 1857 cover to **Hong Kong**, franked for the old 43c rate via Marseilles but endorsed "Via Southampton," magenta ms. "40" credit, red British transit, colorful and attractive cover from the Lieutenant English correspondence, a very great rarity in terms of franking and usage, ex Beals

E. 6,000-8,000

Type I Strip of Four Used to Vera Cruz



51° 10c Green, Type I (13). Horizontal strip of four, positions 92-95L1, large to huge margins except just slightly into bottom right shell of the right stamp, tied by "New Orleans La. Oct. 14" cds on 1856 folded letter to **Vera Cruz**, merchant's oval return card handstamp at top left, "7" rate handstamp applied in Mexico, the cover has been lightly cleaned

Multiples of Type I larger than a strip of three are extremely rare, as the most common use of the 1855 10c stamp was to prepay rates of 30c or less, while higher rates were usually prepaid with combinations of different stamps.

Very Fine. A Superb Strip and Cover From The Well-Known Hargous Correspondence. Ex Caspary, Rust and Klein. E. 10,000-15,000

Block of Four Used to England



52° **10c Green, Type II (14).** Block of four, ample margins to just in at top left, canceled by "Brooklyn N-Y Jan. 15" cds and tied by grids on 3c Red Nesbitt entire (U10) with 1c Blue, Type IV (9) pair and 3c Dull Red (11), paying double 24c rate **to England**, various transits including appropriate credit, the block has a tiny tear at top left, the cover is slightly worn with a mended corner nick and slight reduction at top

Although pairs and strips of the 10c 1855 stamp exist in fairly large numbers, any block is rare, and very few covers exist showing use of such a multiple. This scarcity is attributed to the practice of conveniently separating unused sheets into rows of stamps at the post office in New Orleans and the commercial firms mailing a large volume of letters. As an indication of the extreme rarity of 10c blocks on cover, consider that none was contained in the Neinken, West, Gibson, Moody, Newbury, Rohloff and Baker collections. The Caspary collection contained a front only, bearing a Type II block. The Grunin collection contained a Type II/III block on cover to Vera Cruz.

Fine and Colorful Cover. Blocks of The 10c 1855 Stamp Are Great Rarities On or Off Cover.
Signed Ashbrook. E. 4,000-5,000

United States and Hawaiian Mixed Franking



53° 10c Green, Type II (14). Margins all around, used with 3c Orange Red (11), Fine, in combination with Hawaiian Islands 1857 5c on 13c Dark Red, Manuscript Provisional Overprint (7), large even margins, uncanceled, U.S. postage tied by "San Francisco Cal. Jul. 20, 1857" cds on fresh buff cover to South Hadley Mass., from the Hastings correspondence, red "Honolulu U.S. Postage Paid June 27" cds, envelope neatly refolded around edges

The Hawaiian manuscript overprint was applied to a small supply of the discontinued 13c stamps to compensate for a shortage of 5c stamps that arose from the 1855 rate change and the transition from one postmaster to another. Only 12-15 covers are thought to exist (the 1948 Meyer-Harris survey recorded nine covers). In most cases the provisional stamp is used with the U.S. 12c stamp. In this unusual case, the 3c and 10c combination overpays the 12c rate. A notation on the back of this cover by Stanley B. Ashbrook states: "In My Opinion, This Superb Cover Is Genuine In Every Respect."

Very Fine. A Colorful and Extremely Rare Combination Franking. One of the Finest of The Few Recorded Hawaiian Manuscript Provisional Covers. Ex Caspary, Rust. E. 30,000-40,000



54° 10c Green, Type II (14). Ample margins, deep shade, tied by "New Orleans La. Jan. 21" cds on blue 1857 folded cover to Paris, France, red "New-York Br. Pkt. Jan. 27" cds, British transit on back, framed "GB/1f60c" accountancy hs and Calais transit, "16" decimes due hs, part of back missing, otherwise Fine, rare use of 10c 1855 on "three month" period cover E. 750-1,000

55° 10c Green, Type II (14). Two horizontal strips of three, mostly large margins, barely in at places, fresh bright color, canceled by red grids, matching "New Haven Con. Jul. 25, 1856" cds on cover to Germany, red "N.York Am. Pkt. 7 Jul. 26 Paid" credit cds, ms. revision to "14," Aachen transit, cover has been skilfully cleaned with a few small repairs along edges, Very Fine appearance and an attractive double Prussian Closed Mail rate usage, with 1979 P.F. certificate .. E. 2,500-3,500

56° 10c Green, Types II, III (14,15). Single of each, ample to huge margins, Type II with left sheet margin, used with 1c Blue, Type II (7) and 3c Dull Red (11), tied together by red grids on Oct. 1856 blue corner card cover to London, black "New York" cds also ties 10c, red "New York 3" credit cds, London receiving datestamp, short closed tear in cover at left, light bend at right from contents, Fine and colorful franking E. 750-1,000



57° 10c Green, Type II/III (14-15). Vertical pair, Type II/III combination, ample to large margins, used with single Type III, close at right, all with deep rich color, tied by "Columbus Ga. Dec. 14" cds on bright yellow 1858 cover to Prussia, red "N.York 7 Br. Pkt. Dec. 23" credit cds and red Aachen transit, receiving backstamp, Very Fine and colorful E. 750-1,000

58° 10c Green, Type III (15). Ample to large margins, tied by "Rochester N.Y." cds on beautiful Newspaper advertising cover to Canada West, red "United States/Paid 6" two-line cross-border hs, skilfully cleaned, Very Fine appearance E. 750-1,000

59° 10c Green, Type III (15). Large margins to just in at bottom, tied by "Washington D.C. Sep. 18, 1856" cds, also ties Washington City One Cent Despatch, 1c Violet (112L1), Type I, large margins, "City Despatch Sep. 17/9 P.M./1856" company cds on cover to San Francisco, tiny rust mark on 10c stamp, minor wear, still Very Fine, rare to-the-mails usage of this local post, carried late in the evening and posted the following day E. 2,000-3,000



60° 10c Green, Type III (15). Three margins, barely in at right, tied by **Canadian** target in brownish black ink, matching "St. Vincent de Paul L.C." double circle with ms. "3 Novembre 1856" date on cover to Albany N.Y., Montreal transit backstamp, cover has minor closed tear at top clear of stamp, Fine and extremely rare use of U.S. 1855 10c stamp from Canada, absence of U.S. due markings indicates acceptance of prepayment, with 1969 P.F. certificate . E. 1,500-2,000

61° 10c Green, Types III/II/III (15/14/15). Vertical strip of three, large margins, tied by "Narrowsburgh N.Y." cds and red "N.York Am. Pkt. 7 Paid" credit cds on 1856 buff cover to **Vienna, Austria**, cds heavily impressed into top stamp, Very Fine, attractive franking E. 1,000-1,500

62° 10c Green, Type III (15). Horizontal strip of three, large margins mostly all around, used with 12c Black (17), mostly ample margins, tied by "Galva Ill. Jun. 7" balloon-style cds on 1857 cover to **Sweden** via Prussian Closed Mail, Aachen and Helsingborg transits, no U.S. exchange marking which is unusual, stamps neatly lifted and replaced, Fine and rare destination in this period, ex J. David Baker, with 1983 P.F. certificate E. 3,000-4,000



63° 10c Green, Type IV (16). Recut at Top, large margins to almost clear at left, tied by blue "St. Louis Cal." cds on small embossed lady's cover to Maine, small toned spot, Fine and attractive E. 750-1,000



64° 10c Green, Types IV/I (16/13). Vertical sheet margin pair, positions 86/96L1, top stamp Recut at Top, rich color, mostly large margins, just barely in at right, used with 1c Blue, Type IV (9), three large margins, tied by red grids, matching "New York 3" credit cds overstruck by grid, "New-York Am. Pkt" cds on smal neat cover to Paris, France, "8" decimes due hs, British and French transit backstamps, Fine and colorful, these 10c positions are the only possible Type I/IV combination pair on the plate, extremely rare E. 1,500-2,000



65° 10c Green, Types III-IV-IV (15-16-16). Horizontal strip of three, positions 63-65L1, the right pair showing Double Recut (unique to this position) and Recut at Top, other stamp Type III, large margins except barely in at bottom left (Type III stamp), tied by indistinct cds on small mourning cover **to Bremen**, red Aachen transit ties strip, red "N.York Am. Pkt. 7 Paid" credit cds, Very Fine usage, the Type IV pair is superb E. 4,000-5,000



66° 5c Red Brown, 10c Green, Types II-II-IV (14-14-16). Horizontal strip of three, positions 72-74L1, pos. 74 Recut at Bottom, large margins, used with 5c single, Fine, tied by "New Orleans La." cds on Dec. 1857 folded letter **to Switzerland**, red "12" credit hs and "P.D.," pressed file fold thru 10c strip, still attractive and rare E. 2,000-2,500

1851 TWELVE-CENT BLACK



67° **12c Black (17)**. Margins to just touched, tied by distinctive 8-bar open grid on undated folded cover to New York City, red large "Paid" hs and black "San Francisco Cal. 2 Mar." cds, Fine, very scarce and attractive single use of the 12c 1851, ex Haas E. 1,000-1,500

68° **12c Black (17)**. Margins to just touching, used with strip of three 3c Orange Brown (10), clear to ample margins, rich color, tied by red grids, matching "New-York Aug. 23" cds on blue 1851 folded cover to **Lyon, France**, endorsed "Steamer Humboldt", red Le Havre transit cds, ms. "6" decimes due, several faint bleach specks, Fine and very attractive franking, scarce 21c rate via Le Havre, illustrated in Hargest, ex Schuh E. 750-1,000

69° **12c Black (17)**. Large margins to just in at bottom right, tied by "San Francisco Cal." cds on 1856 Lipman's Adhesive Despatch Envelope from Hawaii to Mass., clear red "**Honolulu U.S. Postage Paid Nov. 30**" cds, straightline "Due 10" hs applied in San Francisco, some lightened toning at edges, Fine and rare, unusual part payment of double 10c rate plus 2c ship captain's fee, with 1964 P.F. certificate E. 2,500-3,500

Usage to England Via Nicaragua Line



70° 12c Black (17). Fine pair, used with 1c Blue, Type IV (9) and 3c Dull Red (11), margins to slightly in, file crease thru one 1c, faint red strike of "Via Nicaragua/In Advance of the Mails/Sullivan" oval double-line handstamp ties 3c and 12c pair, stamps also tied by multiple strikes of red "19" New York credit handstamp on Oct. 1854 folded letter from San Francisco to England, red receiving datestamp

Fine. Very Few Covers Bearing the Entire 1851 Issue Exist. This 29c Rate from California to England via The Nicaragua Line is Believed to be Unique. Ex Hubbard and Grunin (Where It Realized \$14,850). With 1960 P.F. Certificate. E. 7,500-10,000



71° 12c Black (17). Horizontal pair, enormous margins showing parts of eight surrounding stamps, used with 1c Blue, Type IV (9), Fine pair, tied by "San Francisco Cal. Jan. 16" cds on 1855 folded letter to France, red "New-York Am. Packet" exchange cds, French and British transits, 12c faint corner crease, still Very Fine, scarce 29c rate from West Coast via American packet through British Open Mail, ex Haas E. 1,250-1,500



72° 10c Green, Type III, 12c Black (15,17). Horizontal pairs of each, mostly large margins, tiny toned spot on one 10c, tied by clear strikes of "Piqua Ohio" cds on Aug. 1856 cover to Belize, Honduras, red "24" credit hs and clearly struck "Jamaica/Ship Letter" two-line handstamp, Kingston (Jamaica) and Belize backstamps, Very Fine, an extraordinary destination in this period and probably unique with Jamaica ship letter marking, ex Knapp, Rust E. 7,500-10,000



73° 12c Black (17). Horizontal strip of five and ten singles, margins to a bit in, some with insignificant flaws, tied by multiple strikes of blue "Cincinnati O. Dec. 16" cds, red "N.York Am. Pkt. 7 Paid" credit cds with ms. revision, on front only, addressed to **Germany**, "Franco" hs, ms. rates, a spectacular six-times Prussian Closed Mail rate franking, undoubtedly unique, ex Seybold, Rust E. 5,000-7,500

74° 12c Black (17). Block of four, deep shade, fine impression, tied by three strikes of blue "Madison Wis." cds on cover to **Norway** via Prussian Closed Mail, red "38" credit cds overstruck by grid, Aachen transit and ms. rates, New York exchange office backstamp, block has skilfully added margins at bottom and upper left to enhance appearance, Very Fine appearance, a beautiful and rare cover, one of five 12c blocks we record on cover, ex "Patrick Henry" E. 4,000-5,000

United States and Hawaiian Mixed Franking



75° **12c Black (17)**. Huge margins to just in at left, tied by "San Francisco Cal. Jun. 20" cds on 1856 folded letter from Hilo, Hawaii, to Boston, used in combination with **Hawaiian Islands 1853 5c Blue, 13c Dark Red (5,6)**, tied together and on cover by red "Honolulu U.S. Postage Paid" cds, letter mentions lava flow from erupting volcano, 12c with minor gum toning, 13c small part of left margin repaired to enhance appearance

When the U.S. trans-continental rate changed from 6c to 10c in 1855, the Hawaiian Islands 13c stamp could no longer be used alone to prepay postage (previously 5c Hawaiian plus 2c ship fee and 6c U.S. postage). In combination with the 5c, it overpaid the necessary 17c postage by 1c. According to Meyer-Harris, the Honolulu post office probably applied the U.S. 12c stamp, a supply of which was kept for use on outgoing mail entering the U.S. post office. Only a few combinations of this variety are recorded.

Fine Appearance and Extremely Rare United States and Hawaiian Mixed Franking. Illustrated in Meyer-Harris (p.42). Ex Gibson, Harris and Rust. E. 15,000-20,000

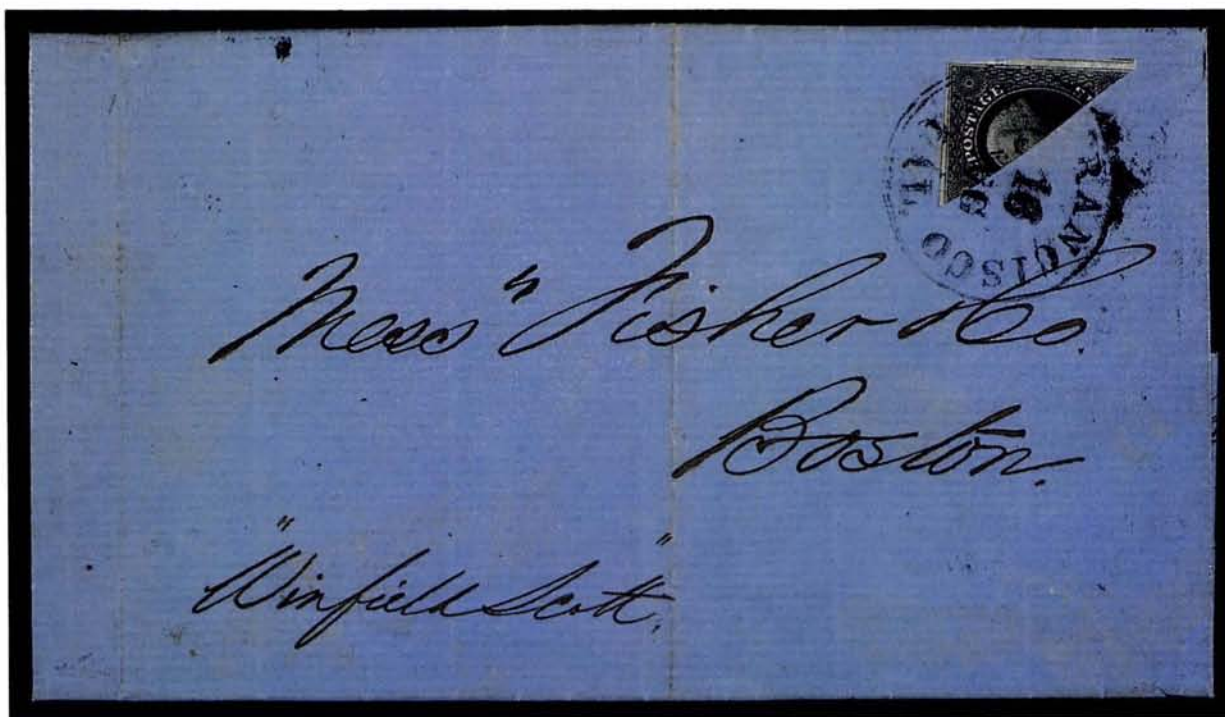


76° 12c Black (17). Margins to slightly in, used with Hawaiian Islands 1857 5c on 13c Dark Red, Manuscript Provisional Overprint (7), margins all around, both tied by "San Francisco Cal. " cds on cover to Bakersville Conn., lightly struck red "Honolulu U.S. Postage Paid" cds, cover with some wear and scattered toning specks, 5c tiny corner crease.

Fine and Extremely Rare Mixed Franking. With 1983 P.F. Certificate, Scott Retail \$15,000.00
 E. 12,000-15,000

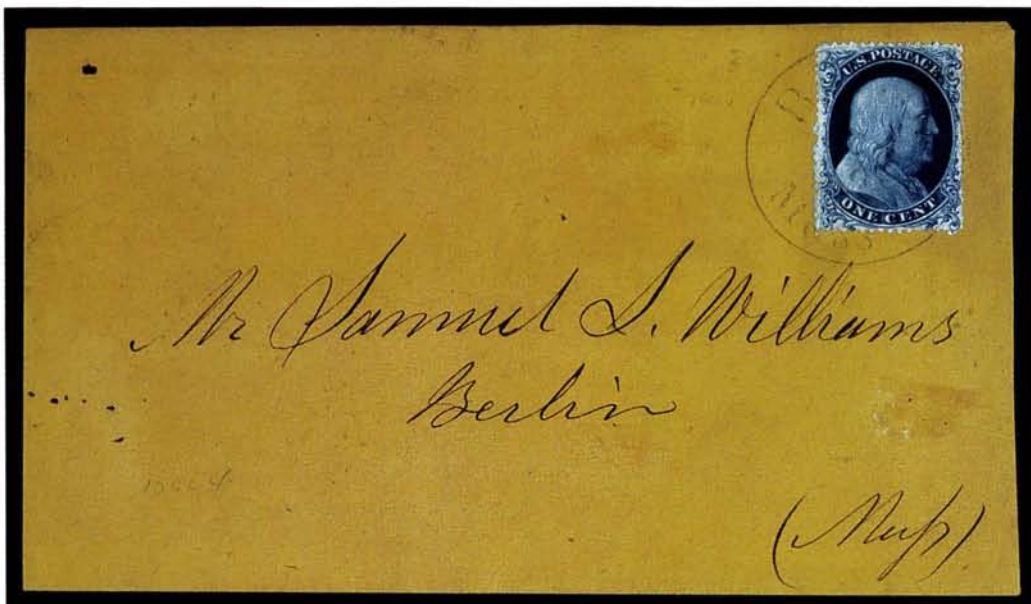


77° 12c Black, Diagonal Half Used as 6c (17a). Upper left diagonal half tied by large "Paid" in grid on cover to San Francisco, the bisect refused as indicated by "Boston 10 cts Jan. 4" black cds due marking, Extremely Fine, bisects originating in the East are very rare E. 3,000-4,000



78° 12c Black, Diagonal Half Used as 6c (17a). Upper right diagonal half well tied by "San Francisco Cal." cds on Aug. 1853 folded letter to Boston, "Winfield Scott" ship instructions at lower left, vertical file folds far from bisect, Very Fine E. 2,500-3,500

1857 ONE-CENT BLUE



79° 1c Blue, Type Ia (19). Position 100L4, beautiful color and impression, **outstanding centering with full intact perfs showing the complete design**, tied by lightly struck "Berlin Mass." cds on buff cover, local usage, Extremely Fine, the Type Ia is among the most difficult classic issues to find centered and sound, this superb stamp on cover is one of the finest known, an opinion confirmed by Ashbrook, ex Brooks E. 7,500-10,000



80° 1c Blue, Type Ia (19). Excellent impression and color, exceedingly well-centered showing the **complete Type Ia design**, tied by unobtrusive large "Paid" in grid, red "Boston Mass. 18 Sep." cds on locally addressed cover, Extremely Fine, ex Waterhouse, where described by Stanley Ashbrook as "A gem, and in my humble opinion, on a par with the Newbury cover and the Brooks cover. These three are the finest that I have seen.", the Newbury cover realized \$17,600 in the Grunin sale (1987) and the Brooks cover is the previous lot E. 7,500-10,000



81° 1c Blue, Type Ia (19). Horizontal pair, positions 92-93L4, beautiful impression, centered to right but still showing almost complete top and bottom design, tied by neat 11-bar grids on local cover, "Philadelphia Pa. Dec. 17" cds, original Quaker-dated 1857 enclosure, opened a bit irregularly on back, still Fine, rare, Ashbrook notes on back, Scott retail for pair off cover is \$5,500.00 E. 3,000-4,000



82° 1c Blue, Type Ia (19). Horizontal strip of three, positions 92-94R4, centered to bottom but scissors cut along selvage and showing the full Type Ia design, rich color, grid cancels, "Cornwall Ct. Dec. 26" cds on cover to Va., original 1857 enclosure talks about petition to remove incompetent postmaster, small wax seal in address, attractive and rare multiple, Scott retail off cover is \$8,500.00 E. 4,000-5,000



83° 1c Blue, Type I (18). Vertical pair (positions 85/95R12) and single, well-centered, pair is superb with full plumes and balls at top and bottom, tied by grids on cover to N.H., clear "Rockville Md. Aug. 21" cds, Extremely Fine, scarce in this quality, ex Newbury E. 800-1,000

84° 1c Blue, Type II (20). Position 2L12, bright fresh color, excellent impression, neither characteristic of this usually unsatisfactory plate, well-centered, used with 3c Dull Red (26) and both tied by "New-York May 14, 1861" cds and grid on **Flag patriotic** cover to Maine, Very Fine, attractive carrier rate usage E. 500-750

85° 1c Blue, Type II (20). Single used with 1861 3c Rose Pink (64b), tied by "Paid" in oval cancels on **Soldier & Flag patriotic** cover, red "Boston Mass. Aug. 23" double-circle ds, small closed tear at top, Fine, scarce mixed issue franking during the brief pre-demonetization period when both were acceptable for postage E. 750-1,000

86° 1c Blue, Type III (21). Position 55L4, perfs clear of design all around, rich color, fine impression, tied by bold "Boston Mass." cds and large "Paid" in grid on 1858 folded printed notice for gas light company, Extremely Fine and choice E. 500-750

Used on Carrier Rate Star Die Entire to California



87° **1c Blue, Type IIIa (22).** Single, natural paper crease, used with two 3c Dull Red (26) on **3c + 1c Red & Blue Star Die Entire (U28)** to San Francisco, 10c trans-continental rate plus 1c carrier fee, stamps tied by several strikes of "New York Sep. 9" Ocean Mail cds with integral grid, Feb. 1861 usage, neatly mended opening tear along top edge, insignificant and otherwise in choice condition

Very Fine Appearance. A Colorful Combination Franking for This Rare Usage. Believed to Be Unique. Ex Eno. E. 5,000-7,500

88° **1c Blue, Type IIIa (22).** Single canceled by rare P.M. handstamp "J. Spalti" in two lines, used with 10c Green, Type III (33) pair, tied by balloon-style "Pleasantville Iowa Feb. 22" cds on 1859 cover **to Switzerland**, red "Paid" and "21," appropriate French transits, 1c creased horizontally, lifted and replaced, Fine and attractive, with 1975 P.F. certificate E. 750-1,000

89° **1c Blue, Type IV (23).** Tied by "Syracuse N.Y. Oct. 18, 1857" cds on fresh printed notice, Very Fine E. 300-400

90° **1c Blue, Type IV (23).** Three singles arranged vertically, tied by "Cazenovia N.Y. Paid Nov. 30" cds on illustrated **advertising** cover for Town Clock Maker, bottom stamp with small closed tear, otherwise Very Fine and appealing E. 1,000-1,500

91° **1c Blue, Type V (24).** Single **used from England**, tied by 1859 Cardiff "162" barred oval on yellow cover to Lincolnville, Maine and treated by both countries as unpaid with bold "Br. Picket 24 Boston" black debit cds, ms. "Due 24 cents" applied at Lincolnville, backstamps include Liverpool and Bute Docks datestamps, cover with natural paper wrinkle, slightly reduced at left, clear of markings, Fine, very unusual usage and probably unique cancel on this stamp, ex "Patrick Henry" E. 500-750

92° **1c Blue, Type V (24).** Three singles, left stamp position 14R8, tied by "New-York May 19, 1859" cds on cover with **embossed oval corner card illustrating plow**, dark blue on yellow, Very Fine and extremely handsome E. 500-750

93° **1c Blue, Type V, 3c Dull Red (24,26).** Tied by "New-York" cds and duplex grid on outstanding **advertising** cover illustrating melodeon in red and blue on yellow bistre, Extremely Fine E. 1,000-1,500





94° 1c Blue, Type V (24). Horizontal pair, tied by "Charleston S.C. Jul. 28, 1860" cds on folded prices current to **Palma, Island of Majorca**, red two-line "British 2/Foreign 1 1/2" hs with ms. rates inserted, various ms. rates in brown and magenta, Very Fine, an extremely rare and remarkably attractive transatlantic circular rate usage E. 2,500-3,500



95° 1c Blue, Type V (24). Four singles, tied by "New-York Sep. 24, 1861" cds and duplex grid on **Eagle & Flag** patriotic cover to "Col. Duryea's Zouaves" at Federal Hill in Baltimore, 3c plus 1c carrier fee, two stamps with minor creasing at top, still Very Fine E. 750-1,000



96° 1c Blue, Type V (24). Horizontal strip of three and three singles, rich color, excellent impression, tied by three sharp strikes of "Nebraska City Neb. Nov. 2, 1858" cds on cover to Maine, minor gum soiling and slightly reduced at right, still Very Fine, scarce territorial use of 1c 1857 and uncommon franking E. 750-1,000



97° 1c Blue, Type V (24). Two blocks of four and two singles arranged as a single block of ten on reverse of buff 1860 cover to Pa., tied by three strikes of "San Francisco Cal." cds, few negligible faults as must be expected, Fine and striking appearance E. 1,000-1,500



98° 1c Blue, Type V (24). Horizontal block of seven, tied by blue "Wells Fargo & Co. Express" double-circle cds on back of 3c Red on Buff Nesbitt entire (U10) to New York City, matching company cds and "Paid" in oval, trivial corner nicks from opening, otherwise Fine and eye-catching cover, probably a unique franking with express company usage E. 1,500-2,000



99° 1c Blue, Type V (24). Vertical block of six used with single and 3c Dull Red (26), tied by grids, "New York 3" debit cds on Apr. 1859 folded letter to France, sent via French mail and underpaid for 15c rate, appropriate transit and French due markings, negligible corner crease and file crease affecting stamps, insignificant considering the great rarity of the multiple franking E. 2,000-3,000

1857 THREE-CENT RED (SHADES)



100° 3c Dull Red (26). Neat pen cancel, matching "Little York Mar. 29th" pmk. on J. M. Hutching **California Envelope**, "**The Expressman**" design, with rider delivering "letters from home," to Rhode Island, slightly reduced at right, Very Fine, unusually fresh example of one of Hutching's most desirable designs, ex Haas E. 500-750

101° 3c Dull Red (26). Very Fine single tied by blue "Saint Joseph Mo." cds and "**The Central Overland California & Pike's Peak Express Company Denver City K.T. Jun. 5**" oval express company datestamp, second strike on 1860 cover to Philadelphia, bit reduced at right, couple tiny tears at bottom, still Very Fine and attractive E. 500-750

102° 3c Dull Red (26). Uncanceled, properly used on buff cover to San Francisco with illustrated printed frank of **Nichols & Co. Express**, attractive woodcut design with typical express company motifs (train, steamship, safe, etc.), faint red express company oval, Very Fine, scarce frank, this company first operated between San Francisco and San Jose and later expanded into Oregon, sold out to American Express Co. who continued to use the illustrated part of this frank on their envelopes, with 1972 P.F. certificate E. 1,000-1,500



103° **3c Dull Red (26)**. Ms. cancel, matching "Cedar City Dec 19/61" pmk. on orange cover with red **Sammy's Pacific Mule Railroad Envelope** design, humorous anti-railroad slogans on front, verse on back entitled "The Pacific Railroad," addressed to "John T. Caine Esq, President's Office, Salt Lake City," small discolored spot at lower left, otherwise Very Fine, with original enclosure, rare design, ex Haas, Grunin E. 2,000-3,000

104° **3c Brownish Carmine (26)**. Rich color, used with **Squier & Co. City Letter Dispatch (St. Louis)**, **1c Green (132L1)**, large margins to just barely in, both tied by blue "Louisville Ky. Sep. 20, 1859" cds on yellow cover to St. Louis, Very Fine, extremely rare local post usage, Squier's began operation in St. Louis in July 1859 and was discontinued in early 1860, a similar cover was in the Caspary collection and none was contained in the vast Middendorf collection E. 1,500-2,000

105° **3c Dull Red (26)**. Tied by "Brooklyn N.Y." cds on all-over **illustrated French Comic envelope**, "Une Fete aux environs de Paris" which includes such side-splitting activities as a horse-drawn coach trampling a man, negligible flap faults ending in two small tears at top, Fine and very scarce E. 750-1,000

106° **3c Dull Red (26)**. Tied by segmented cork cancel on **hand-drawn** cover with grotesque Pinocchio-like figure displaying a sign board address hanging from his nose, "West Cambridge Ms. Jan. 23, 1858" cds, some creasing and soiling, Fine, from the famous Pattee correspondence discovered by Harry Keffer, ex Grunin E. 500-750

107° **3c Dull Red (26)**. Tied by target, "Rockford Ill. May 31, 1861" double-circle ds on all-over **Flag patriotic** cover with hand-colored stripes, no flap, still choice and Very Fine, ex Judd E. 400-500

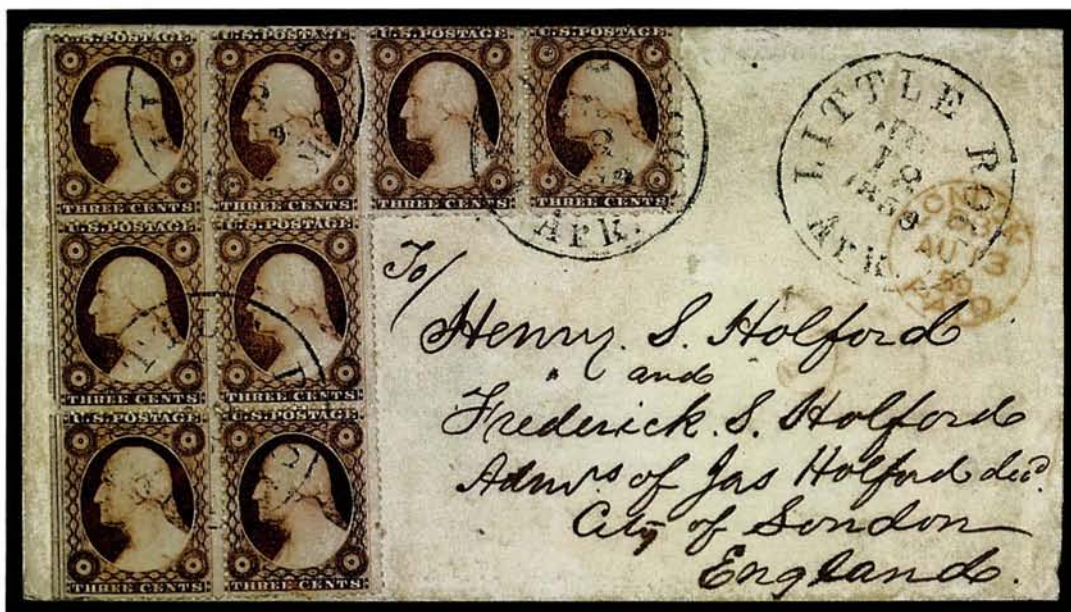
108° **3c Dull Red (26)**. Three singles tied by large "Paid" in grid, red "Boston Ms. Jun. 26, 1860" cds on cover to Chicago, blue "**Chicago Advertised**" in Shield-shaped frame, additional "**P.O. Department Dead Letter Office**" double oval, two stamps with tears, cover skilfully repaired at edges, Very Fine appearance E. 200-300

109° **3c Dull Red (26)**. Horizontal strip of three, used with **1c Blue, Type V (24)**, each tied by square grid, **originating in Canada**, "Toronto U.C. Ju. 8, 1859" cds on orange cover to Rochester N.Y., large "10" hs indicating that Canadian authorities did not recognize prepayment, no U.S. due markings, Very Fine, very rare 1857 Issue usage from Canada E. 1,000-1,500





110° 3c Dull Red (26). Two strips of five and single, tied by dotted grid cancels, "Lexington Ky. Mar. 12, 1861" double-circle ds on neat cover to U.S.S. Richmond at Sicily, via Prussian Closed Mail with appropriate transits including "Paid to the Border" marking usually associated with Swiss mail, few negligible stamp flaws, a bit edgeworn, still Fine and very scarce usage E. 1,250-1,500



111° 3c Dull Red (26). "L" shaped block of eight, straddle margin at left, tied by "Little Rock Ark., Jul. 18, 1859" cds on cover to England, red "3" credit, neat London receiving ds, stamp slightly oxidized, Fine, extremely rare franking to England and one of the few transatlantic covers from the classic period from Arkansas, ex Chase, Knapp, Grunin E. 1,500-2,000

"Old Stamps Not Recognized"



112° 3c Rose Red, Type I (25). Single tied by bold "Old Stamps Not Recognized" two-line handstamp, equally bold "Philadelphia Pa. Apr. 22, 1862" cds and "Due 3" hs on small yellow cover to R.I., Extremely Fine, one of the most attractive "Old Stamps" covers extant and extremely rare with such a late use of the Type I stamp, with 1978 P.F. certificate E. 7,500-10,000



113° 3c Dull Red (26). Tied by grid on yellow cover to Farm School Pa., double-struck "Old Stamps Not Recognized" straightline hs, matching "Due 3" in frame and "Harrisburgh Pa. Sep. 28, 1861" double-circle ds, Very Fine, the Harrisburgh handstamp is far rarer than its Chicago and Philadelphia counterparts, one of three reported examples, Weill backstamp, with 1983 P.F. certificate E. 3,000-4,000

“Southern Letter Unpaid”



114° 3c Dull Red (26). Tied by indistinct Tennessee cds and clearly struck blue “Southn Letter Unpaid” straightline handstamp on buff cover to Princeton N.J., matching “Due 3” and partial “Louisville Ky.” cds (probably July 1861 usage), cover lightly aged, Fine and attractive example of this rare Civil War demonetization marking, ex Hull, with P.F. certificate ... E. 7,500-10,000

1857 FIVE-CENT TYPE I



115° **5c Brick Red (27)**. Left margin vertical pair with guideline and single, rich color, each tied by "New Orleans La. Feb. 24, 1859" cds on folded letter **to Barcelona, Spain**, red "New York Br. Pkt." exchange cds, bold "16 Rs" Spanish due hs, small stain spot in margin of pair, otherwise Very Fine, rare usage to Spain E. 1,500-2,000

116° **5c Brick Red (27)**. Vertical strip of three, tied by "New Orleans La." cds on 1859 folded letter **to France**, red "New York Paid 12" credit cds, French transit, top perfs trimmed, otherwise Fine and attractive E. 500-750

117° **5c Brick Red (27)**. Bright shade, used with **10c Green, Types II, III (32,33)**, both in deep shade, tied by red grids, matching "**Short Paid**" in frame, black "New York 6 Jun. 22" debit cds on 1859 folded cover **to Nantes, France**, French transit and "16" decimes due hs, lightly age toned on back, Very Fine and scarce combination short-paying 30c rate, ex Rust E. 750-1,000

118° **5c Red Brown (28)**. Horizontal strip of four, scissors trimmed with s.e. at left, perfs in, second stamp from right showing Damaged Transfer variety, tied by "New Orleans La. Sep. 1, 1857" cds on folded cover **to Vera Cruz**, "2" hs due, merchants return card hs on back, light toning along file fold, Fine and rare usage of the Red Brown, illustrated in Hill book, ex Warm E. 1,500-2,000

Red Brown Strip of Six Used to Germany



119° **5c Red Brown (28).** Horizontal strip of six, rich color, nearly invisible scoring along bottom, tied by "New Orleans La. Dec. 20, 1857" cds on folded letter to **Breslau, Silesia**, "Boston Br. Pkt." backstamp and corresponding red "7" credit hs, red Aachen transit

A Very Fine and Spectacular Franking. This Cover Was Described as "One of The Gems of The Gibson Collection" When Offered in The 1944 Ward Sale. Ex Gibson, Grunin (Where It Realized \$15,950) E. 10,000-15,000

Red Brown Block of Six Used to France



120° 5c Red Brown (28). Horizontal block of six, well-centered, three stamps have small faults, several perf separations at upper right, lightly cancelled by grids and tied by "Donaldsonville La. Apr. 9" cds on 1858 cover to France, from the Labusquiere correspondence, red "Boston 21 Apr. Paid 24" credit cds, French transit and receiving datestamps front and back, the cover is slightly worn around edges, part of backflap missing

Very Fine Appearance. Only One Larger Block of The 5c Red Brown and Another Block of Six are Recorded on Cover. This Cover Highlighted The Hill, Rohloff and Klein Collections. Illustrated in Hill Book (p. 44) and Brookman (p. 223). Signed Ashbrook. E. 15,000-20,000

Indian Red Shade



121° 5c Indian Red (28A). Two vertical strips of three arranged in block form, well-centered, rich color, tied by "New Orleans La. May 19, 1859" cds and ultramarine French transit on folded cover to France, red Boston exchange cds and tiny "PD," top stamps with minor toning in margins, the cover has been neatly silked and refolded

Very Fine and Remarkable Franking. One of The Greatest of All Indian Red Covers. Ex Caspary, Rohloff and Klein. With P.F. Certificate. E. 12,000-15,000

Eight Indian Red Stamps on Cover to Belgium



122° 5c Indian Red (28A). Three pairs and two singles, the two pairs at left arranged in block form, well-centered, exceptionally rich color, four have negligible faults, used with 1c Blue, Type V (24), another 1c stamp missing, tied by "New Orleans La." cds on Jan. 1859 folded letter to Belgium, red and black Boston exchange cds, French transit cds and "PD" in frame, clean and attractive cover

A Magnificent Franking of The Highest Order of Rarity. Believed to Be The Largest Number of Indian Red Stamps on One Cover. Ex Caspary, Rust. Signed Ashbrook. . E. 15,000-20,000



123° **5c Brown (29).** Two vertical strips of three, each with trimmed perfs at one end, tied by "New Orleans La. Dec. 29, 1859" cds on attractive yellow cover **to France**, one stamp with trivial short perfs, otherwise Very Fine E. 750-1,000

1859-61 FIVE-CENT TYPE II

124° **5c Orange Brown (30).** Single, remarkably rich Orange Brown color, well-centered, tied by "New York Aug. 20" cds on bright blue 1861 partial folded cover **to Halifax, Nova Scotia**, two-line red **forwarder's** hs of J. V. Onativia & Co., endorsed via Boston with exchange office backstamp, Halifax receiving backstamp, "5" due hs, reduced at left, side flaps missing, still a handsome use of the Orange Brown, with 1985 P.F. certificate E. 1,500-2,000

125° **5c Orange Brown (30).** Single, rich color, extra row of perfs at right, used with 10c Green, Type V (35), each canceled by matching red grid on Sep. 1861 oblong cover in an unusual **green** color **to Oldenburg**, partly readable red "New York Paid Hamb. Pkt." cds, negligible cover soiling, still Fine, a striking and beautiful example of the Orange Brown on cover, ex Gibson, More E. 2,000-2,500



126° 5c Deep Orange Brown (30). Single used with 10c Green, Type V (35) and 30c Orange (38), tied by red grids and matching "New York Paid 9 Sep. 14" credit cds on 1861 cover to France, appropriate transits, 5c creased and repaired, Very Fine appearance, ex Hart, signed Ashbrook, with 1984 P.F. certificate E. 750-1,000



127° 5c Orange Brown (30). Very Fine single, unusual deep shade, used with 3c Dull Red (26) and 30c Orange (38), latter with natural s.e., each with tiny lightened ms. "X," "Newburyport Ms. Aug. 12, 1861" cds on cover to Calcutta, India, red Aachen transit ties 5c, Alexandria, Bombay and Calcutta backstamps, small piece of side flap missing, otherwise Fine, a rare and beautiful combination franking for Prussian Closed Mail rate to India, signed Ashbrook, with 1949 P.F. certificate, from our 1981 Rarities sale where it realized \$10,450 E. 6,000-8,000



128° 5c Orange Brown (30). Single, used with 10c Green, Type V (35) and 30c Orange (38), 5c and 10c with natural s.e., tied by grids, New York exchange cds on back of Sep. 11, 1861 folded cover to Grand Canary Island, merchant's oval hs, magenta "40" ms. credit, red "PD" in oval, light fold barely affects 5c and 10c, Very Fine appearance, rare destination and lovely three-color franking with the Orange Brown, ex Gibson, Krug, signed Ashbrook E. 6,000-8,000



129° 5c Orange Brown (30). Vertical pair used with 1c Blue, Type II (20) and 10c Green, Type V (35), tied by large "Paid" in grid, "Boston Mass Aug. 5" cds on cover to San Francisco, filing number in blue pencil, slightly reduced at left, 5c pair with tiny margin flaws, Fine and colorful, this 20c double rate plus 1c carrier fee is scarce by itself, franked with a pair of the Orange Brown it is probably unique E. 3,000-4,000

Orange Brown Strip of Three on Patriotic Cover



130° 5c Orange Brown (30). Vertical strip of three, well-centered, rich color, tied by red grids on 1861 Liberty and Flag patriotic cover to Prussia, red "N.York Paid Hamb. Pkt. 10 Aug 10" credit cds, small "Franco" hs, bottom stamp with nibbed perfs

Very Fine. The Short-Lived 5c Orange Brown is Extremely Rare in Multiples on Cover. This Usage on a Patriotic Cover is Widely Regarded as The Finest Orange Brown Cover Extant. Ex Hill. With 1955 P.F. Certificate. E. 12,000-15,000



131° 5c Brown (30A). Two singles used with 1c Blue, Type V (24) and 10c Green, Type V (35), tied by grids and red "New York Paid 12 Sep. 29" credit cds on 1860 folded letter to **Amsterdam, Holland**, merchant's oval hs and appropriate French transits, Extremely Fine, a beautiful cover in superb condition E. 2,000-2,500



132° 5c Brown (30A). Deep shade, choice centering, attractively positioned between two pairs of 10c Green, Type V (35), each tied by large "Paid" in grid on Jul. 1860 folded letter to **Manila, Philippines**, red London transit, ms. "40" credit, "2" and "1d" rate hs, bold Manila receiving backstamp, tiny natural bleach specks around 10c perfs, vertical file fold thru far right stamp only, still Very Fine, a most attractive franking and extremely rare destination, from the Peirce correspondence E. 4,000-5,000



133° 5c Brown (30A). "L" shaped block of three, one stamp faulty, tied by red grids, matching "New York Paid 12 Aug. 1" cds on 1860 buff cover to **Guelma, French Algeria**, French transits front and back, Guelma receiving backstamp, Very Fine cover and scarce destination . E. 750-1,000

134° 5c Brown (30A). Horizontal strip of three with guideline and part of stamp from adjoining pane, tied by red grids, matching "N.York Paid Hamb. Pkt. 10 Jun. 29" credit cds on red and blue 1861 **Soldier and Flag** patriotic cover to **Germany**, lightly soiled, Fine and rare, ex Haas, Paliafito E. 2,000-3,000

135° 5c Brown (30A). Horizontal strip of four, well-centered, lightly canceled by open grid, "Detroit Mich. Jun. 3, 1861" cds and red "Paid 20" hs on buff cover to **Branford, Canada**, transit and receiving backstamps, right stamps with few short perfs, still Very Fine, strips larger than four are extremely rare on cover, ex Rohloff, Klein, includes two small oval photographs of a gentleman in period garb (possibly an original enclosure) E. 2,500-3,500

1857 TEN-CENT GREEN



136° 10c Green, Type I (31). "L" shaped block of three, bottom pair Type I, top stamp Type III (33), tied by blue "Carrolton Ky." cds on Nov. 1857 folded letter to **Switzerland**, two additional strikes of cds on back, red "N.York Am. Pkt. 7 Paid" credit cds., Aachen transit and "Paid to the Border" hs tying stamps, horizontal file fold thru Type III stamp, otherwise Fine, scarce Type I usage and colorful cover E. 1,250-1,500



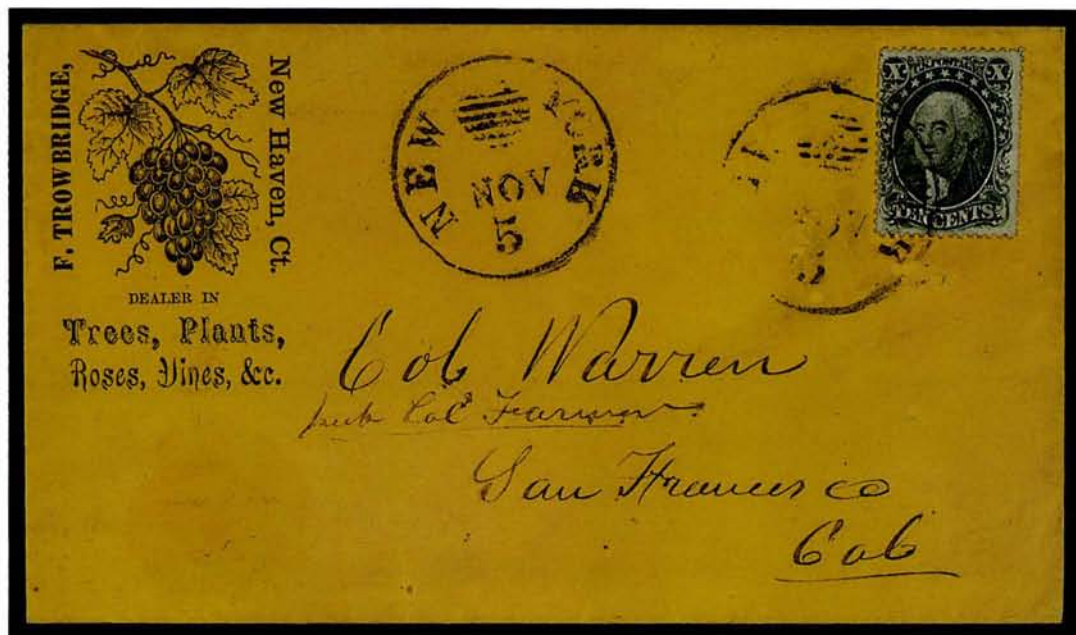
137° 10c Green, Type I (31). Horizontal strip of four, centered to right, tied by "New York" cds on Oct. 1857 docketed cover to San Francisco, Fine, strips of the Type I larger than three are extremely rare, believed to be the largest size perforated Type I multiple on cover E. 1,500-2,000

All Four Types Used on Cover to Germany



138° 10c Green, Types I-II-III-IV (31-34). Vertical block of six, positions 74-75/84-85/94-95L1, Types IV (Recut at Top)-II/III-III/I-I respectively, the last is separated from block but appears intact, canceled by bold "Pine Lake Wis. Dec. 2" cds and two "line" cancels on double rate Prussian Closed Mail cover to Germany, partly clear red New York credit cds, Aachen transit, blue ms. due mark, stamps have few tiny flaws

Very Fine. One of The Most Important 10c 1857 Covers Known. Illustrated in Neinken's Book Where Described as "Remarkable" (p. 171). Ex Baker. E. 10,000-15,000



139° 10c Green, Type II (32). Fine, tied by "New York Nov. 5" Ocean Mail cds with integral grid on buff cover to San Francisco with illustrated **Horticulturalist** corner card, negligible soiling, otherwise Fine E. 200-300



140° 10c Green, Type II (32). Beautiful centering, tied by "Downieville Cal." cds on illustrated Hutching's "**Eureka/The California Escutcheon**" cover, elaborate allegorical design in black on orange, negligible corner wear, still Very Fine, rare and handsome gold-rush era usage, ex Haas E. 1,500-2,000



141° 10c Green, Types II, III (32,33). Horizontal strip of three Type II in pale shade, scissors trimmed at top and right, three singles in dark shade (one Type III), used with 3c Dull Red (26), s.e. at right, two 10c stamps slightly faulty, tied by "New Orleans La. Dec. 4, 1858" cds on folded letter to **Lisbon, Portugal**, red pencil "58" credit, red London transit, "350" hs due and Lisbon backstamp. Very Fine appearance, the 63c British Mail rate via Southampton is rare at this date since the introduction of the lower Bremen-Hamburg and British Mail via France rates in 1857, ex Warm, Grunin E. 7,500-10,000



142° 10c Green, Types II, III (32,33). Two singles, used with three 3c Dull Red (26) and 1c Blue, Type V (24), tied by "San Francisco Cal. Aug. 30, 1859" cds and red "N. York Br. Pkt. 7 Paid Sep. 14" credit cds on yellow cover to **Bremen, Germany**, 10c with perfs trimmed one or more sides, otherwise Very Fine, colorful franking and scarce usage E. 1,000-1,500



143° 10c Green, Types II/III/II (32,33). Vertical strip of three, positions 31/41/51L1, Fine-Very Fine, tied by "New Orleans La. May 1, 1858" cds on blue folded cover to **Fiume (Austria)**, red "N.York Am. Pkt. 7 Paid May 8" credit cds and red Aachen transit, "Fiume" receiving backstamp, file folds, Very Fine, rare destination E. 750-1,000

144° 10c Green, Types II/III/II (32,33). Vertical strip of three with sheet margin showing guideline, rich color, top stamp partly separated from bottom pair due to file fold, tied by "New Orleans La. May 3, 1859" cds and red "New York 21 Paid" credit cds on folded cover to **Nantes, France**, from the Garnier correspondence, French transits front and back, Very Fine, ex Grunin E. 600-800

145° 10c Green, Types II-IV-IV (32-34-34). Horizontal strip of three, positions 53-55L1, right pair Type IV Recut at Bottom, centered a bit to right, tied by large "Paid" in grid, red "Boston Ms. May 5, 1859" cds on cover to St. Johns, New Brunswick, "United States" double-line oval cross-border hs, mended corner nick at bottom right, otherwise Fine, plated and signed by Ashbrook E. 1,000-1,500



146° 10c Green, Type V (35). Tied by "San Francisco" cds on illustrated "Via Panama" cover with paddle steamer and Geo. Bell imprint, stamp with few nibbed perfs, light stain at lower right, still Very Fine, scarce, especially with stationer's imprint, illustrated in *Letters of Gold* (p.83), ex Haas E. 1,000-1,500

147° 10c Green, Type V (35). Two singles, tied together by "San Francisco Cal." cds on 1859 cover with illustrated "Per Overland Mail Stage, Via Los Angeles" four-horse corner card, Geo. Hitchcock imprint, minor cover wear, lightened stains at left edge, Very Fine appearance E. 1,500-2,000

148° 10c Green, Type V (35). Perf flaws, tied by "San Francisco Cal." cds on 1860 cover to New York City, California Penny Post Co. 5c Blue (34L4) just tied at corner by large "X" in red pencil, small ink stain at bottom, otherwise Very Fine, rare California local post usage E. 2,000-3,000



149° 10c Green, Type V (35). Well-centered, tied by green grid, matching "Saint Joseph Mo. Mar. 20" double-circle ds on blue 1861 folded letter to New York City, full but lightly inked strike of San Francisco "Running Pony" oval datestamp at lower left, few letters strengthened in blue pencil, matching "Central Overland California & Pikes Peak Express Co. San Francisco Cal." oval hs, stamp creased, attractive example of this rare and historic Pony Express usage E. 6,000-8,000



150° 10c Green, Type V (35). Three singles, two with left guideline, one with part imprint at right, used with 3c Dull Red (26), tied by large "Paid" in grids on Jan. 1861 folded letter to **Cape of Good Hope**, red pencil "28" credit, red London transit and "1d" credit hs, Extremely Fine and attractive cover E. 1,500-2,000



151° 10c Green, Type V (35). Three singles, centered to bottom, used with 3c Dull Red (26), tied by grids, "Augusta Me. Mar. 27" cds on 1861 cover to **St. Paul de Loanda, West Coast of Africa** (now Angola), red "N. York Am. Pkt. Paid" backstamp, red ms. "12" credit, red London transit, Very Fine, rare West African destination E. 1,500-2,000



152° 10c Green, Type V (35). Horizontal strip of three, left stamp with s.e., used with 3c Dull Red (26), tied together by several strikes of red criss-crossed grids, matching "Deep River Ct. Sep. 17" cds and "Paid" in circle hs on 1860 cover to **Melbourne, Australia**, red New York exchange backstamp, red "28" credit hs, partly clear Williamstown Victoria crown oval backstamp, bit reduced at left, Fine, colorful example of 33c rate to Australia E. 1,500-2,000



153° 10c Green, Type V (35). Three singles, nice margins, used with 5c Brown (29), tied by "Kansas Mo. May 14, 1860" cds on buff cover to **Switzerland**, Aachen transit and ms. rates, Extremely Fine, exceptionally beautiful Prussian Closed Mail usage, ex White, Knapp, Rohloff and Ishikawa E. 2,000-2,500



154° 10c Green, Type V (35). "L" shaped block of three, exceptionally well-centered, bottom pair with tiny corner perf creases, tied by "Showhegan Me. Aug. 3" cds, matching "Paid" hs on buff cover to **Vienna, Austria**, redirected to Josefstadt, red New York 21c credit cds, blue Bremen transit, Vienna backstamps, wrinkles in cover not affecting stamps, Fine E. 500-750



155° 10c Green, Type V (35). Horizontal strip of four used with well-centered 5c Brown (30A), tied by blue "Baltimore Md." cds on 1860 blue triple rate cover to **France**, red "New York Paid 36 Jun. 6" credit cds, French receiving ds, Extremely Fine and colorful, ex Rohloff, Haas E. 1,000-1,500



156° 10c Green, Type V (35). Two vertical strips of three used with 5c Brown (29) vertical strip of three, some with short or trimmed perfs, tied by "New Orleans La. Aug. 24, 1859" double-circle cds, red "New York Paid Aug. 31" cds on cover to **Bordeaux, France, redirected to Paris**, red ms. "60" credit, French transits front and back, neatly refolded and lightly cleaned to improve appearance, Fine and scarce five-times rate, ex Grunin E. 2,000-3,000



157° 10c Green, Type V (35). Horizontal strip of six, centered to bottom, tied by "line" cancels and "Edgartown Ms. Sep. 17" cds on 1860 cover to the ship **Art Union** at **Calcutta, India**, prepaid at 60c 1/2 ounce French Mail rate but sent by British packet via Marseilles, red London transit, "40" credit and ms. "1" credit, Very Fine and rare multiple usage, Ashbrook notes on back, ex Krug E. 2,000-2,500

1857-59 TWELVE-CENT BLACK



158° 12c Black (36). Unusually well-centered, tied by sharp clear "New York Nov. 5" Ocean Mail cds with integral grid on small neat cover to San Francisco, trivial flap tear, otherwise Extremely Fine, single uses of the perforated 12c 1857 are far rarer than the imperforate issue and seldom found on small envelopes, ex Gibson E. 500-750



159° 12c Black (36). Two singles, tied by "Reading Pa. Jul. 6, 1861" cds on magnificent red and blue Eagle, Shield and Flag patriotic cover to Ireland, red "19" credit hs, receiving backstamp, Extremely Fine, very scarce usage and handsome cover, ex Haas E. 1,500-2,000



160° 12c Black (36). Horizontal pair, tied by lightly struck blue "Charlotteville Va." cds on 1858 cover to **England**, forwarded to **Paris** with two **Great Britain 4p Rose (26)**, tied by grids over part of Boston "19" credit hs, British and French transits and "PD" in oval, Very Fine, choice and beautiful mixed franking E. 1,000-1,500



161° 12 Black (36). Two horizontal pairs, slight toning and some faults, tied by "Waddington N.Y. Aug. 5" cds on 1858 cover to **London**, redirected to **Boulogne, France**, red transits on front, Baring Bros. forwarding hs on back, skilfully cleaned with edges improved, Fine and striking usage E. 600-800



162° 12c Black (36). Two horizontal pairs and two singles, one of latter with trimmed perfs, tied by "Newport Flor. Sep. 8" cds on 1858 underpaid four-times rate cover to **Nottingham, England**, framed "Short Paid" hs and "New-York Br. Pkt." cds, ms. "20" debit and "4/-" due marking, transits on back, lightly soiled, still Very Fine, a most unusual usage and scarce franking E. 2,000-2,500



163° 12c Black (36). Horizontal strip of five, few short perfs, slightly gum toned, tied by "New Orleans La." cds on 1858 folded cover to **Vera Cruz**, from the Hargous correspondence, "8" hs due marking, Fine, rare franking for six-times rate, ex Grunin, Klein E. 1,500-2,000



164° 12c Black (36). Block of four used with single, each stamp with “#” ms. cancel, tied by red Louisiana town cds, red “N.Y.ork Am. Pkt. 14 Paid Feb. 12” credit cds and Aachen transit on buff 1859 cover **to Baden, Germany**, transit backstamp, Fine, 12c 1857 blocks are extremely rare on cover, a similar cover of the imperforate 12c stamp realized \$71,500 in 1986, with 1977 P.F. certificate E. 1,500-2,000

165° 12c Black (36). Right margin block of four and three singles, used with two 3c Dull Red (26), tied by “Steubenville O.” cds on triple rate Prussian Closed Mail cover **to Baden, Germany**, red New York credit cds, Aachen transit and receiving backstamp, minor soiling, still Fine, blocks of the 12c 1857 are extremely rare on cover, this Plate One multiple is one of the finest, signed Bartels and Ashbrook, ex West, “Patrick Henry” E. 2,000-3,000



166° 12c Black (36). Horizontal strips of four and six, positions 1-6, 13-16R1, the latter showing wide straddle margin at left and s.e. at top, perfs in, grid cancels, strip of six tied by "Saint Louis Mo. Jun. 5, 1860" cds on quadruple rate Prussian Closed Mail cover **to Austria**, red "N.York Am. Pkt. Paid" cds and Aachen transit, top strip faintly creased, otherwise Very Fine, a magnificent multiple rate franking, illustrated in Graham's "Great Stamps Make Greater Covers" (*American Philatelist*, Oct. 1977), ex Baker and Grunin (where it realized \$17,050) E. 7,500-10,000

Matching Covers from The Barrand Correspondence

167° Two Covers from The Barrand Correspondence, Comprising:

12c Black (36). Pair and three singles, small faults, used with **5c Red Brown (28)**, trivial margin toning, tied by blue "Norfolk Va. Mar. 20, 1858" cds on cover to **Funchal, Madeira**, Boston exchange backstamp, red "60" credit hs, red London transit, blue "160" reis due hs, Fine, enormously rare destination, illustrated in Starnes book (p. 28), ex Gibson, Baker, Grunin

12c Black (36). Horizontal strip of five, used with **5c Red Brown (28)**, tied by blue "Norfolk Va. Jan. 20, 1859" cds on cover to **Isle St. Vincent, Cape Verde**, red New York exchange backstamp, magenta ms. "60" credit, red London transit, minor perf toning and small flaws, still Very Fine, rare multiple franking and destination, ex Grunin

A Spectacular and Extremely Rare Matching Pair of Covers. Two of The Most Outstanding 12c 1857 Covers Known, Which Highlighted Part Three of The Grunin Sales Where They Realized \$17,600. E. 10,000-15,000





168° 12c Black (36). Vertical pair and two singles, used with three 10c Green, Type V (35), one with rounded corner, and single 3c Dull Red (26), tied by "Charleston S.C. Jul. 19, 1859" cds on cover to **Rome, Italy**, faint ultramarine Le Havre transit, red "PD" in frame, magenta ms. "45/3" credit, red "New York Am. Pkt.", French and Italian transits on back, small bit of flap missing, still Fine, spectacular franking for 3/4 ounce rate via French Mail E. 1,500-2,000



169° 12c Black, Plate Three (36b). Single used with strip of three 10c Green, Type V (35), tied by red grids, matching "New-York Am. Pkt. Jun. 29" cds on 1860 folded cover to **Cadiz, Spain**, blue "12 Rs" due hs, some negligible perf toning, still Very Fine, colorful and rare American Packet rate from the Gomez correspondence E. 2,000-3,000



170° 12c Black, Plate Three (36b). Left straddle margin horizontal pair, small faults, used with 10c Green, Type V (35), tied by grids, "Bloomsburg Pa. Sep. 17" cds on 1860 folded letter to Quito, Ecuador, red "24" credit hs, British Post Office in Panama transit cds, Fine, attractive and rare 1857 Issue usage, ex Baker E. 2,000-3,000

171° 12c Black, Plate Three (36b). Horizontal strip of seven, second and third stamps from left show double framelines, well-centered, used with two 3c Dull Red (26), tied by "Philadelphia Pa. Jul. 9" cds and red "Philadelphia Pa. 1860 Jul. 9" exchange cds on cover to Paris, France, six times rate, French transit, fold at center, minor flaws in cover and strip, still Very Fine, one of the largest Plate Three multiples recorded on cover, illustrated in Brookman (p. 248), ex Grunin E. 3,000-4,000

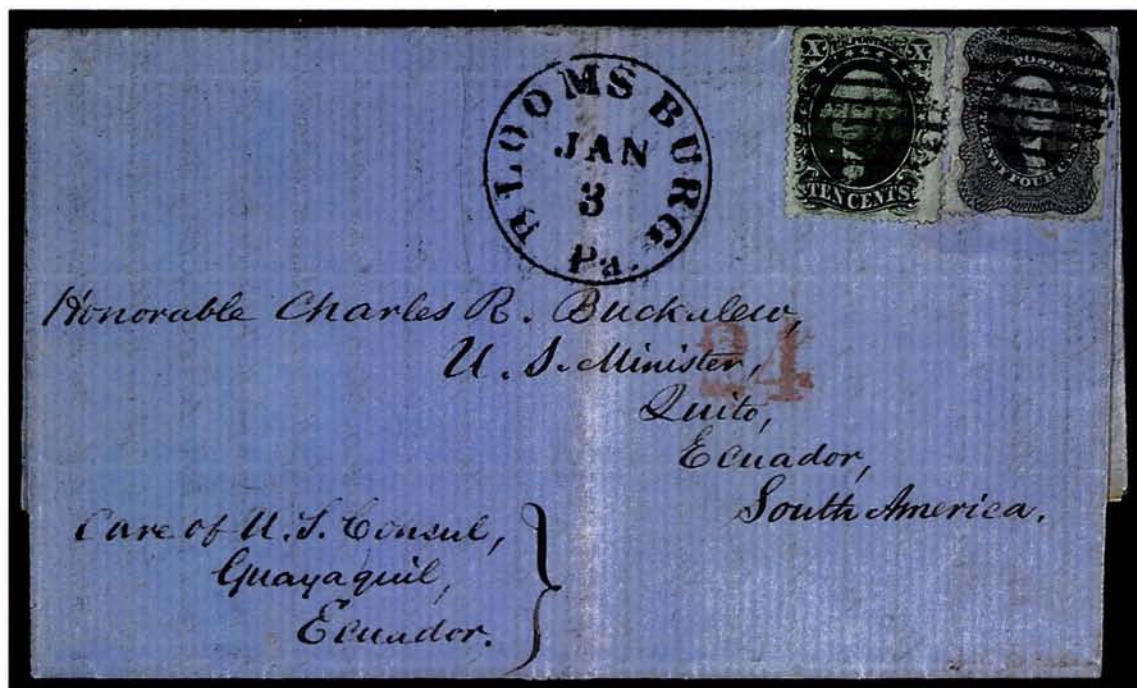
1860 TWENTY-FOUR CENT GRAY LILAC



172° 24c Gray Lilac (37). Single used in a four-color combination with 1c Blue, Type V (24) pair, 3c Dull Red (26), faults, and 10c Green, Type V (35), all tied by red grids, matching lightly struck New York cds on Oct. 1860 cover to Hong Kong, embossed oval corner card, magenta "Over 1/4 oz." and "28" credit in same hand, sender's endorsement "Via Marseilles," red "1d" hs and matching London transit, Hong Kong receiving backstamp, backflap partly missing, Fine appearance and a spectacular franking, prepaid at 39c French Mail rate via Marseilles, found to be over 1/4 ounce limit at exchange office and re-routed by British Mail via Southampton with appropriate 28c credit, ex Chase, Gibson, signed Ashbrook E. 4,000-5,000



173° 24c Gray Lilac (37). Used with 10c Green, Type V (35), huge margin showing part imprint, each tied by grid, bold red "Providence R.I. Jan. 28, 1861" cds, matching "24" and "Paid" in circle hs on cover to **Talcahuano, Chile**, British Post Office in Panama transit cds, Very Fine, choice quality and extremely rare usage, ex Hollowbush, Grunin E. 4,000-5,000



174° 24c Gray Lilac (37). Used with 10c Green, Type V (35), 24c with tear not mentioned in certificate, each tied by grid, bold "Bloomsburg Pa. Jan. 3" cds on 1861 folded letter to **Quito, Ecuador**, red "24" credit hs, **fascinating lengthy letter from anti-abolitionist** regarding Lincoln's election, secession of South Carolina, "Abolition virus," Ft. Moultrie and Ft. Sumter, etc., Fine appearance despite stamp fault, extremely rare and desirable usage, with 1978 P.F. certificate E. 3,000-4,000



175° 24c Gray Lilac (37). Used with 3c Dull Red (26), 12c Black, Plate Three (36b), tied by large Boston "Paid" in grids on Nov. 1860 cover to **Calcutta, India**, red ms. "34" credit, red London transit and matching "1d" credit, Calcutta Steam Letter backstamp, thin tissue-paper envelope wrinkled in places, bit reduced at right, still Very Fine, rare foreign destination for the 24c 1857, paying the 39c British Mail rate via Marseilles, a long list of past owners including White, Emerson, Knapp, Krug, Baker and Grunin, with 1978 P.F. certificate E. 4,000-5,000



176° 24c Gray Lilac (37). Single tied by "Bridgeport Ct. Nov. 23" cds and bold red "3" credit on 1860 cover to **England, redirected to Cairo, Egypt**, red British transits and clearly struck British Post Office in Cairo cds, no flap, two minor edge nicks, otherwise Fine, marvelous usage, ex Haas E. 2,000-3,000



177° 24c Gray (37a). Horizontal pair, small perf flaws, used with four 3c Dull Red (26), each with red grid cancel, matching "New York Paid 18 Aug. 3" cds on 1861 cover to **Paris, France**, red "PD" in frame and Calais transit cds, slight wear and soiling at edges, Fine and very unusual franking for the 60c rate, ex Klein E. 1,500-2,000



178° 24c Gray Lilac (37). Well-centered, grid cancel, tied by red "Phila. Am. Pkt. 3 Jun. 21" credit cds on 1861 **Union Caricature patriotic cover to Liverpool, England**, red London transit cds, corner nicked at top left, some minor edge wear, still Fine and scarce cover from the Newton correspondence E. 2,000-3,000



179° 24c Gray Lilac (37). Tied by "Paid" hs, red "Boston Aug. 23 A.Pkt. 3" credit cds on red and blue Crossed Flags and Union States patriotic cover to Liverpool, England, redirected twice with Great Britain 1p Red tied by Liverpool duplex, receiving backstamps, Very Fine, handsome cover from the Newton correspondence, ex Grunin, with 1976 P.F. certificate E. 2,500-3,500



180° 24c Gray Lilac (37). Horizontal strip of four, small faults, canceled by grids, tied at left on Jul. 1861 cover to London, England, four-times 24c rate, red "76" pencil credit, small cover tears, Fine appearance, one of the largest multiples on a small cover E. 3,000-4,000

“Southern Letter Unpaid”

181° **24c Gray Lilac (37)**. Well-centered, tied by bold blue **“Southn Letter Unpaid”** handstamp in two lines, also tied by matching **“Due”** handstamp with **“24”** rate struck below, matching **“Louisville Ky. Jul. 11”** cds on fresh 1861 folded cover originating from Petersburg Va. and addressed to **Liverpool, England**, docketed on back **“Cameron & Crawford, Petersburg 5 July, Recd 27—1861, Ansd,”** black **“N.York Am. Pkt. 21 Jul. 13”** debit cds with integral **“21”** rate, red London transit on back, Liverpool receiving cds on front, ms. **“1/-”** due, neat vertical fold at center

The postmaster at Louisville, Kentucky, was ordered on June 24, 1861, to treat all letters from the South as unpaid and to send letters addressed to foreign countries directly to the Washington, D.C., dead letter office. Despite this directive, some letters were sent to New York's exchange office for foreign-bound mail. Prepaid postage was ignored, and the letters were marked **“Southn. Letter Unpaid”** at Louisville. We record four examples of the U.S. 1857 Issue used on mail to Europe with the **“Southn. Letter Unpaid”** marking: two to France with 3c and 12c stamps, one to Germany with three 10c stamps (ex Grunin, \$55,000, 1987) and this 24c cover to England.

Extremely Fine. Considered by Many to be The Greatest of The “Southern Letter Unpaid” Covers and One of The Most Outstanding Civil War Period Covers in Existence. Illustrated in Brookman. Ex Knapp and Freeland. E. 100,000-150,000



1860 THIRTY-CENT ORANGE



182° 30c Orange (38). Well-centered, tied by red grid, matching "N.York Br. Pkt. Paid May 14" cds on 1861 oblong cover to Athens, Greece, magenta ms. "27" credit, French transit and "P.D." in frame, neat docketing discreetly ties stamp, Very Fine, an exceedingly rare destination in this period, ex "Patrick Henry" E. 5,000-7,500



183° 30c Orange (38). Used with 3c Dull Red (26), each tied by red grids, matching New York backstamp on Aug. 1861 blue folded cover to Buenos Aires, Argentina, red ms. "28" credit, red London transit, Fine and rare destination, ex Krug, Grunin E. 2,500-3,500



184° 30c Orange (38). Used with 3c Dull Red (26), 30c tiny perf break, 3c few short perfs, each tied by black grids and large red circular grid of diamonds, matching "New Haven Con. May 7, 1861" cds on cover to **Bangkok, Siam**, red ms. "28" credit, red London transit and "1" credit, backflap missing, otherwise Very Fine, a remarkable and very rare usage, ex Grunin E. 3,000-4,000



185° 30c Orange (38). Used with 3c Dull Red (26), each tied by large "Paid" in grid, Boston backstamp on June 1861 folded letter to **Manila, Philippines**, red "28" credit hs, red London transit, Hong Kong backstamp, **excellent letter content** from a merchant to George H. Peirce regarding the Union blockade and a sober view of the war's future: "The slight skirmishes thus far recorded will have the effect to prepare our soldiers for the realities of the battle field & will give us more confidence in their powers when the real struggle does commence.", ink stains affecting bottom portion of cover, nevertheless a Fine cover, believed to be the only 30c 1860 to the Philippines in private hands, a marvelous usage E. 10,000-15,000



186° 30c Orange (38). Used with 5c Brown, Type II (30A) and 10c Green, Type V (35), each tied by large "Paid" in grids, red "Boston Br. Pkt. 40 Aug. 8" credit cds on 1860 tissue-paper cover to **Malaga, Spain**, red London transit, ms. "4" rate, some cover wear as is to be expected in an envelope of this type, still Very Fine, colorful and rare usage, with Maria Brett certificate E. 2,000-2,500



187° 30c Orange (38). Used with 5c Brown, Type II (30A), vertical strip of three, tied by bold "New Orleans La. Mar. 19" cds, **Confederate States Usage**, on 1861 tissue-paper cover to **Rio de Janeiro**, magenta "40" credit, red London transit, fancy framed forwarder's handstamp at left of Geo. J., Esling, the cover has some paper loss from ink erosion, a bit faulty and creased through stamps, still a wonderful and exhibitable usage E. 1,500-2,000

Magnus Patriotic Cover



188° 30c Orange (38). Horizontal pair, negligible corner crease, tied by red grids, matching "N.York Am. Pkt. 14 Paid Aug. 17" credit cds on **hand-colored Charging Revolutionary War Soldier and Flag patriotic cover to Prussia**, Chas. Magnus design, double 30c Prussian Closed Mail rate with red Aachen transit

There is no year date on this cover, but it is almost certainly an 1861 usage, just prior to demonetization of the 1857 Issue.

Very Fine. The Only Reported 30c 1860 Stamp on a Magnus Patriotic. A Colorful and Outstanding Civil War Period Usage. Ex Matthies, Haas, Paliafito, Grunin. E. 10,000-15,000



189° 30c Orange (38). Horizontal pair, s.e. at right, tied by octagonal "Philadelphia Pa. Dec. 18, 1860" cds on registered cover to Vienna, Austria, red "New-York Dec. 19, 1860" cds in an unusual style for foreign mail, red Aachen transit and "Recommandirt." rectangular framed registry hs, receiving backstamp, short sealed tear at upper left corner, otherwise Very Fine, registered mail to foreign countries is extremely rare in this period, ex Klein E. 1,500-2,000



190° 30c Orange (38). Horizontal pair, cancelled by red grids, tied by matching "New York Paid 48 Mar. 13" credit cds on blue 1861 folded cover to Lyon, France, from the Payen correspondence, red French transit, "PD" in frame, neat file fold, Very Fine, choice and scarce use of 30c 1860 pair, ex Caspary E. 2,000-3,000



191° 30c Orange (38). Horizontal pair, used with two 3c Dull Red (26), each tied by large Boston "Paid" in grids on May 1861 folded cover to Port Elizabeth, Cape of Good Hope, red "24" pencil credit, red London transit, negligible back faults, still Very Fine, rare double rate to this destination, ex Knapp, Rust E. 3,000-4,000

192° 30c Orange (38). Horizontal pair, rich color, used with two 5c Brown, Type II (30A) and two 10c Green, Type V (35), one 10c is the scarce pos. 47R2 Double Transfer, 5c small faults, tied by grids on Jan. 1861 folded letter from New York to Melbourne, Australia, New York backstamp, magenta ms. "74" credit, red London transit, Melbourne receiving backstamp, Fine and rare cover, unusual 84c rate via Marseilles for 3/4 ounce (1c overpayment), ex White, Krug, Grunin, with 1975 P.F. certificate E. 5,000-6,000

1860 Ninety-Cent Blue on Cover to Spain The Celebrated Caspary Cover

193° **90c Blue (39)**. Well-centered, bright rich color, used with a Very Fine **5c Brown, Type II (30A)**, showing part imprint, and **10c Green, Type V (35)**, well-tied by red grid cancels, matching "New York Paid Nov. 3" circular datestamp on blue 1860 folded cover **to Barcelona, Spain**, paying the French Mail rate for 1¾ ounce, endorsement for "Arabia" crossed out, "Illinois" added at top, blue "Forwarded by Rivera & Hall New-York" double-line oval handstamp on backflap, magenta ms. "60" credit, French transit ties 5c, "P.D." in frame, bold "16 Rs" due handstamp at center, addressee's name discreetly changed in ink

This cover is one of five recorded with the 90c 1860, listed chronologically below:

- 1 September 11, 1860, addressed to Augustine Heard & Co., Shanghai, China, single franking for double 45c rate, stamp has sealed tears, ex Gibson, Hindes and Kapiloff
- 2 The cover offered in this sale
- 3 November 9, 1860, addressed to Augustine Heard & Co., Shanghai, China, used with 3c, 5c, 10c and 30c (pair) for \$1.68 rate, 90c stamp reperfed on all sides and replaced on cover, ex Paliapito (Ishikawa Collection)
- 4 January 8, 1861, single 90c used on legal-size cover from Cincinnati, Ohio, ex Filstrup and Grunin
- 5 July 16, 1861, addressed to Edwin Howland, Cape of Good Hope, used with 1c (pair), 3c, 10c and 30c for four-times 33c rate, ex Jacobs, Newbury (Ishikawa Collection)

Very Fine. This Magnificent Cover Was The Featured Item in The Caspary Sale of 1847 to 1861 Issues. Described as "One of The Finest Known" 90c 1860 Covers by Dr. Carroll Chase and Stanley B. Ashbrook. Accompanied by Ashbrook Letter. Exhibited in the Court of Honor at Ameripex in 1986. Ex Caspary and Rust. E. 500,000-750,000

END OF SALE—THANK YOU



The U.S. Philatelic Classics Society, Inc.

A.P.S. UNIT NO. 11

This specialist group, founded in 1948 as "The 3 Cent 1851 - 57 Unit", has a membership of over 1000 serious collectors with interests spanning the pre-stamp era up to the Bureau Issues of 1894. It is the only society devoted exclusively to 19th century U.S. philately and postal history.

If you are not a member and have an interest in 19th century U.S. postal history and classic U.S. stamps, you should consider the advantages of membership:

- **The opportunity for personal contact with a select group of serious philatelists (many of whom are recognized experts in their field of interest).**
- **A subscription to *The Chronicle of the U.S. Classic Postal Issues* (felt by many to be the best philatelic research journal in the U.S.).**
- **A quarterly newsletter on philatelic happenings involving fellow members.**
- **Prepublication discounts on philatelic reference books sponsored by the Society, such as *Simpson's U.S. Postal Markings*, by Thomas J. Alexander, *Letters of Gold*, by Jesse L. Coburn (Edited by Susan M. McDonald), *Bakers' Classics*, and *North Atlantic Mail Sailings 1840-75* by Walter Hubbard and Richard F. Winter.**

Annual dues are \$15. For further information and an application write:

Michael C. O'Reilly, Membership Chairman
P.O. Box 1131
Huntsville, AL 35807-0131

[To help measure the effectiveness of this ad, kindly note where you saw it.]

This bid form may be
faxed to (212) 753-6429



Robert A. Siegel

AUCTION GALLERIES, INC.

PARK AVENUE TOWER, 17th FLOOR • 65 EAST 55th STREET
NEW YORK, NEW YORK 10022
TEL. (212) 753-6421 • FAX (212) 753-6429



For internal use

BID FORM – SALE 744

Please purchase for me at your auction to be held **October 3, 1992**, the lots listed below, the prices annexed being my maximum bid on each lot. I agree to remit for purchases in accordance with the **Conditions of Sale** printed in this catalogue and to comply with all other terms stated in the Conditions of Sale (as may be amended by saleroom announcement). I understand that a **10% buyer's premium will be added to the final successful bid** and agree to pay for all sales tax or use tax which may be due on the total purchase price. I also understand that these bids will be executed as a service provided by Siegel Auction Galleries and that no legal responsibility shall lie with the auctioneer if these bids are not executed. I have checked the accuracy of the information contained in this bid form and will honor all bids, regardless of any errors on my part.

PLEASE LIST 2 REFERENCES BELOW
(if you are bidding for the first time)

.....
Name and Current Telephone Number

.....
Name and Current Telephone Number

BANK

SIGNED

Please Print Name and Address for Invoicing:

.....

.....

.....

Telephone

THE AMOUNT OF YOUR BIDS DOES NOT INCLUDE THE 10% BUYER'S PREMIUM

Lot	Bid	Lot	Bid	Lot	Bid

PLEASE WRITE SHIPPING INSTRUCTIONS IN SPACE PROVIDED ON REVERSE

100

[illegible]

SHIPPING INSTRUCTIONS: Siegel Auction Galleries will be pleased to arrange for packing and shipping of lots for purchasers. Please indicate in the space below the preferred method of shipment and any special instructions (shipping address if different from billing address). Purchases under \$200 will be sent First Class Insured; over \$200 by Registered Insured Mail; large or bulky lots by U.P.S.; and, if requested, lots may be sent by Federal Express or Express Mail. **The purchaser assumes all risk of shipping, including loss or damage. Charges for shipping and insurance will be added to your invoice.**

“E.” = ESTIMATES: Our sales offer many covers, cancellations, varieties and other items for which there is no appropriate catalogue value. In order to assist clients, we have placed fair net valuations on such lots. These estimates should be used as a guide to bidding; lots may realize more or less than our estimates. In no case will the reserve price for any lot exceed the low estimate.

BIDDING INTERVALS: The auctioneer may vary the intervals between bids at his discretion. For the purpose of submitting order bids, please follow the bidding intervals below:

\$60.00 - \$140.00	\$5.00	\$750.00 - \$1,900.00	\$50.00
\$140.00 - \$300.00	\$10.00	\$1,900.00 - \$3,000.00	\$100.00
\$300.00 - \$750.00	\$25.00	\$3,000.00 & above	\$250.00

Services for Buyers

If you wish to participate in this sale, we will be pleased to assist you in many ways. The following services are provided without additional charge (except for any out-of-pocket expenses):

- Most lots may be inspected by registered or overnight mail, and all lots may be viewed by appointment or during the pre-sale exhibition
- Prospective bidders may request up-to-the-minute valuations for any lot in the sale
- We will be pleased to assist out-of-town clients in obtaining hotel reservations nearby our gallery
- Bidders who cannot attend the sale may submit bids by telephone/fax, by mail, or in special cases, we will provide a telephone link to the auction in progress (must be confirmed in advance)
- Any item sold without an expert certificate dated within the past five years may be purchased subject to certification (please see Conditions of Sale)
- Instructions for shipping purchased lots may be given to the gallery immediately after the sale
- Prices realized will be available one day after the final sale day

Services for Sellers

If you have stamps you wish to sell, we will be pleased to provide the following services and options for auction or outright sale:

- Free verbal appraisal of material brought to our gallery; Written appraisals for estate tax purposes (rates available on request)
- Free on-site consultation for any collection with fair market value of \$100,000 or more
- Auction consignments will be processed within six months of receipt, and proceeds will be paid 42 days from date of sale
- Commission rate of 10% (no other charges for lotting or illustration)
- Immediate interest-free advances up to 50% of the auction valuation
- On certain collections, we will guarantee the seller a minimum net amount, which eliminates the downside risk while still providing the potential for maximum auction realization
- If you wish to sell your stamps for immediate cash, we will be pleased to make an outright offer
- Suitable collections will be considered for single-owner sales and/or our annual Rarities of the World sale

PRICES REALIZED FOR SALE 744---10/03/92

Kapiloff 1851-57 Sale

Robert A. Siegel Auction Galleries, Inc.
60 East 56th Street, 4th Floor, New York, NY 10022
Tel (212) 753-6421 Fax (212) 753-6429

Lot#	Realized	Lot#	Realized	Lot#	Realized	Lot#	Realized	Lot#	Realized
1	3,000	49	950	94	1,700	146	900	189	1,800
2	8,750	50	2,500	95	750	147	1,200	190	1,800
3	8,000	51	6,500	96	1,200	148	2,200	191	3,500
7	10,000	52	8,500	97	2,200	149	8,500	192	3,500
8	1,100	53	23,000	98	2,600	150	1,800	193	500,000
10	10,500	57	625	100	550	151	3,500		
11	1,600	58	750	101	525	152	1,000		
12	4,750	59	3,750	103	1,000	153	2,200		
13	2,500	60	1,000	104	4,750	154	220		
14	850	61	1,000	105	1,000	155	1,300		
15	10,000	62	2,400	106	750	156	1,500		
16	6,500	63	1,000	107	325	157	2,100		
17	1,400	64	1,900	108	400	158	2,000		
18	350	65	3,250	109	525	159	7,000		
19	2,200	66	2,800	110	1,100	160	2,100		
20	5,250	67	900	111	1,000	161	375		
21	3,750	68	600	112	6,500	162	1,250		
22	1,700	69	2,600	113	3,000	163	2,200		
23	5,750	70	15,500	114	8,000	164	800		
24	3,000	71	1,300	115	750	165	1,300		
25	800	72	10,500	116	550	166	8,000		
26	400	73	6,000	118	800	167	9,500		
27	1,600	74	2,600	120	12,000	168	2,500		
28	1,300	75	12,000	122	10,000	169	1,900		
29	525	76	10,500	123	650	170	1,200		
30	2,900	77	3,750	126	1,300	171	1,800		
32	12,500	78	2,100	127	4,600	172	4,750		
33	7,500	79	8,000	128	10,000	173	3,250		
34	1,800	80	7,500	129	2,800	175	2,500		
35	1,500	81	2,100	131	1,700	176	1,300		
36	1,600	82	2,000	132	7,500	177	850		
38	1,800	83	800	133	450	178	1,800		
39	1,800	84	525	135	1,600	179	4,500		
40	1,000	85	850	136	800	180	2,000		
41	2,500	86	800	137	800	181	100,000		
42	2,200	87	7,500	138	13,500	182	3,250		
43	1,500	88	525	139	260	183	2,400		
44	1,700	89	160	140	800	184	8,500		
45	2,300	90	850	141	5,000	185	8,000		
46	20,000	91	1,800	142	950	186	2,600		
47	70,000	92	260	143	600	187	2,300		
48	2,700	93	1,900	145	1,500	188	7,500		