

# R<sup>1994</sup>ARITIES

*The Concord Collection*



Thursday Evening  
May 19, 1994

*Robert A. Siegel*

AUCTION GALLERIES, INC.

PARK AVENUE TOWER, 17th FLOOR • 65 EAST 55th STREET  
NEW YORK, NEW YORK 10022 • TEL. (212) 753-6421



*Robert A. Siegel*

AUCTION GALLERIES, INC.

PARK AVENUE TOWER, 17th FLOOR • 65 EAST 55th STREET  
NEW YORK, NEW YORK 10022

TEL. (212) 753-6421 • FAX (212) 753-6429

---

Scott R. Trepel

*President*

Roberta S. Edelstein

*Vice President*

Elizabeth C. Pope

*Vice President*

*Administration*

Cindy Stein

Rosanne Trepel

*Descriptions*

Chris Anderson

David Petruzelli

Scott R. Trepel

---



30c 1869 Pictorial Invert,  
ex Newbury (lot 142)

## 1994 RARITIES SALE

### *The Concord Collection of United States Classic Issues*

Offered by order of the Owner

Thursday Evening, May 19, 1994  
at 6:30 p.m. in the Galleries

To be followed immediately by the offering of  
the 1918 24c Inverted "Jenny" Positions 99 and 50  
(lots 1001 and 1002 - see separate catalogue)

#### Pre-Sale Exhibition

Monday, May 16	10:30 a.m. - 4:00 p.m.
Tuesday, May 17	10:30 a.m. - 4:00 p.m.
Wednesday, May 18	10:30 a.m. - 4:00 p.m.
Thursday, May 19	10:30 a.m. - 4:00 p.m.

To arrange an appointment for viewing at another time,  
please feel welcome to call (212) 753-6421.

## Arrangement of Sale

Category	Pages
----------	-------

Thursday Evening, May 19, 6:30 p.m.

Postmasters' Provisionals....	5-20
1847 Issue .....	21-23
1851-56 Issue .....	24-29
1857-60 Issue .....	30-34
1851-60 Reprint.....	35
Pony Express Covers.....	36-37
1861 First Designs and Colors .....	38-41
1861-66 Issue .....	42-44
1867-68 Grilled Issue .....	44-49
1861-66 Re-Issue.....	50-51
1869 Pictorial Issue .....	52-54
1869 Pictorial Re-Issue.....	55-56
1870 National Bank Note ...	57-59
1873 Continental Bank Note	60-61
1875 Special Printing.....	62-63
1879 American Bank Note .	64
1880-83 Special Printings ...	65-69
1882-93 Bank Note .....	70

See separate catalogue for Sale 760:

24c Inverted "Jenny" Position 99  
24c Inverted "Jenny" Position 50

## On The Cover

Front Cover: 1c 1851 Type I-Ib-Ib  
unused strip, ex Ferrary, Hind,  
Waterhouse and Wunderlich (lot 28)  
Back Cover: St. Louis, Mo. 20c Black  
on Gray Lilac on cover (lot 20) and  
William H. Russell free-franked cover  
carried by Pony Express (lot 77)

## Conditions of Sale

The property described in this catalogue will be offered at public auction by Robert A. Siegel Auction Galleries, Inc. ("Galleries") on behalf of various consignors and itself or affiliated companies. By placing a bid on any lot, the bidder acknowledges acceptance of and will be bound to these Conditions of Sale.

1. The highest bidder acknowledged by the auctioneer shall be the buyer. The term "final bid" means the last bid acknowledged by the auctioneer, which is normally the highest bid offered. **The purchase price payable by the buyer will be the sum of the final bid and a commission of 10% of the final bid ("buyer's premium"), together with any sales tax or use tax which may be due on the sale.**

2. The auctioneer has the right to reject any bid, to advance the bidding at his discretion and, in the event of a dispute between bidders, to determine the successful bidder, to continue the bidding or to reoffer and resell the lot in dispute. The Galleries' record of the final sale shall be conclusive.

3. All bids are per numbered lot in the catalogue unless otherwise announced by the auctioneer at the time of sale. The right is reserved to group two or more lots, to withdraw any lot or lots from the sale, or to act on behalf of the seller. The Galleries will execute bidding instructions on behalf of clients, but will not be responsible for any errors in the execution of such bids.

4. **Lot numbers followed by the symbol ° are offered subject to one or more of the following conditions:** (i) the lot is subject to a minimum final bid ("reserve"), below which it will not be sold, (ii) the Galleries have advanced monies to the seller and have a financial interest in the lot, (iii) the Galleries have guaranteed the seller a minimum sale price, and (iv) the Galleries may have ownership interest in the lot, either in part or whole. The absence of the symbol ° means that the lot is offered without reserve.

5. Any lot, the description of which is obviously incorrect, is returnable, but only if the lot is returned within 14 days of receipt. All disputed lots must be returned intact with the original packing material. **The following lots may not be returned for any reason: Lots containing ten or more items; lots from buyers who have registered for the pre-sale exhibition or received lots by postal viewing, thereby having had the opportunity to inspect them before the sale; any lot described with "faults" or "defects" may not be returned because of any fault or defect. No illustrated lots may be returned because of centering, margins or other factors shown in the illustrations.**

6. Successful bidders, unless they have established credit with the Galleries prior to the sale, must make payment in full before the lots will be delivered. Buyers not known to the Galleries must make payment in full within three days from the date of sale. The Galleries retain the right to

demand payment at the time the lot is knocked down to the highest bidder, for any reason whatsoever. In the event that any buyer refuses or fails to make payment in cash for any lot at the time it is knocked down to him, the auctioneer reserves the right to reoffer the lot immediately for sale to the highest bidder.

7. If the purchase price has not been paid within the time limit specified above, nor lots taken up within seven days from the date of sale, the lots will be resold by whatever means deemed appropriate by the Galleries, and any loss incurred from resale will be charged to the defaulting buyer. Any account more than thirty days in arrears will be subject to a late payment charge of 1½% per month as long as the account remains in arrears. Any expenses incurred in securing payment from delinquent accounts will be charged to the defaulter.

8. All lots are sold as genuine. **Any lot which is accompanied by an expert certificate (for U.S. items, the accepted authority is The Philatelic Foundation), dated within the past five years of the sale date, is sold "as is" and in accordance with the description on the certificate. Such lots may not be returned for any reason, including but not limited to a contrary certificate of opinion obtained after the sale.** Buyers who wish to obtain a certificate for any item that is not accompanied by a certificate dated within the past five years may do so, provided that the following conditions are met: (1) the purchase price must be paid in full, (2) the item must be submitted to an acceptable expertizing committee with a properly executed application form within 21 days of the sale, (3) a copy of the application form must be given to the Galleries, (4) in the event that an adverse opinion is received, the Galleries retain the right to resubmit the item on the buyer's behalf for reconsideration, without time limit or other restrictions, (5) unless written notification to the contrary is received, items submitted for certification will be considered cleared 90 days from the date of sale, and (6) in the event any item is determined to be "not as described", the buyer will be refunded the purchase price, plus interest accrued on the purchase price at the prevailing Treasury Bill Rate from the date of payment, and the certification fee up to \$100.00 unless otherwise agreed.

9. Until paid for in full, all lots remain the property of the Galleries on behalf of the seller.

10. Agents executing bids on behalf of clients will be held responsible for all purchases made on behalf of clients unless otherwise arranged prior to the sale.

11. The buyer assumes all risk for delivery of purchased lots, and agrees to pay for all out-of-pocket costs incurred in shipping.

SCOTT R. TREPEL  
N.Y.C. Auctioneer's License No. 795952

RASAG 1/94

# Terms and Abbreviations Used in Descriptions

---

## Centering

The width of margins and the centering of the design within perforations are graded in strict accordance with the Scott Standard Postage Stamp Catalogue standards. The following grades are used in this catalogue:

**Extremely Fine (EF):** Exceptionally large margins or near perfect centering, used to describe stamps which are of superior grade for the issue.

**Very Fine (VF):** Normal size margins for the issue and well-centered with design a bit closer to one side. **Please note that this grade is superior to the one on which Scott Catalogue retail prices are based.**

**Fine (F):** Imperforate stamps may have smaller than usual margins and perforated stamps will be noticeably off-center. Issues before 1890 may have the design touched in places. If used, fairly lightly cancelled.

**Very Good (VG):** Attractive appearance, but margins or perforations may cut into.

**Good (G):** Average off-centered example with slight faults. This condition is generally acceptable for multiples and rarities.

## Gum

Stamps issued before 1900 should not be expected to have original gum unless specifically stated in the description. 20th Century issues may be expected to have original gum unless described otherwise. Terms used to describe the condition of gum are as follows:

**Mint:** As issued by the post office and never hinged.

**Original Gum (O.G.):** Stamp retains full original gum showing slight disturbance caused by previous hinge, which may be present or entirely removed. Early 19th century stamps should be expected to show crackling and toning in gum, which occurs naturally over time.

**Part Original Gum:** Up to half of the gum is missing, but the remaining portion is original.

**Disturbed Original Gum:** The gum is original to the stamp, but has been noticeably affected by hinge removal and/or humidity, mount glazing, etc.

**Hinge Mark:** Noticeable area where hinge has been removed and gum has been redistributed. Stamps described with hinge marks may not be returned because of gum disturbance.

**Hinge Remnant (H.R.):** All or part of hinge remaining affixed to gum.

## Covers

Minor nicks, tears and slight reduction from opening are to be expected in 19th century covers. Folded letters normally have tears in the reverse and file folds, which will not be mentioned unless they affect the stamps or markings. Light cleaning of covers is an accepted form of conservation and is not grounds for return of a lot. The terms "Extremely Fine", etc., are meant to convey the overall appearance of cover, not the condition of an individual stamp.

## Catalogue Values and Estimates

Unless otherwise noted, U.S. stamps are catalogued according to the *Scott 1993 U.S. Specialized Catalogue* or Volume 1 (previous editions have been used to catalogue certain Special Printings). *Scott 1994* Volumes 1-5 have been used for British and foreign stamps. The *1994 Stanley Gibbons British Commonwealth Catalogue* and other foreign catalogues are cited where appropriate.

Catalogue values are indicated by decimal figures in the right column (for example, "175.00"). Stamps in extremely fine quality and items for which catalogue values are not available have been given estimate ranges (for example "E. 750-1,000"). Lots offered subject to a reserve will never be reserved for more than the estimate (usually a fraction of the estimate).

## Symbols and Abbreviations

★★	Mint (never hinged)	No.	Scott Catalogue Number
★	Unused (with or without gum, as described)	cds	Circular datestamp
田	Block of four or larger	hs	Handstamp
∞	Folded letter or cover	E	Essay
o.g.	Original gum	P	Proof
pmk.	Postmark (in black unless described otherwise)	TC	Trial color proof
var.	Variety	R	Reprint

---

**Copyright Notice:** This catalogue is protected by copyright. The descriptions, format, illustrations and information used herein may not be reprinted, distributed or copied in any form without the express written consent of Robert A. Siegel Auction Galleries. Application for permission may be made in writing. © 1994, Robert A. Siegel Auction Galleries, Inc.

---

## INTRODUCTION

Our 31st annual Rarities sale is unlike all others.

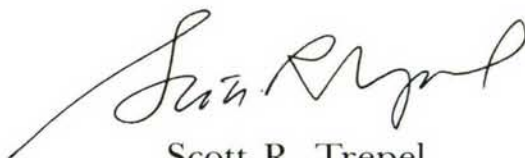
Since 1964 the Siegel Rarities sales have always contained items gleaned from collections throughout the year.

Now, for the first time, we offer as our Rarities sale The Concord Collection, one man's collection of United States classic issues. Here we present postmasters' provisionals, choice stamps and unusual covers, featuring many of the key rarities of 19th century United States philately.

The importance of The Concord Collection is self-evident. Our decision to make it this year's Rarities sale was based on two less-obvious factors.

First, this collection includes a significant array of items recognizable from our past Rarities sales. Second, Mr. Siegel expressed his strong desire during the past two years to bring the Rarities sale back to its traditional springtime spot. The Concord Collection presents us with the opportunity to honor his wish.

The 1994 Rarities sale is dedicated to the memory of Robert A. Siegel.

A handwritten signature in black ink, appearing to read "Scott R. Trepel", with a long, sweeping horizontal line extending to the left.

Scott R. Trepel  
President

THURSDAY, MAY 19, 1994 AT 6:30 P.M.

THE 1994 RARITIES SALE  
*The Concord Collection of United States Classic Issues*

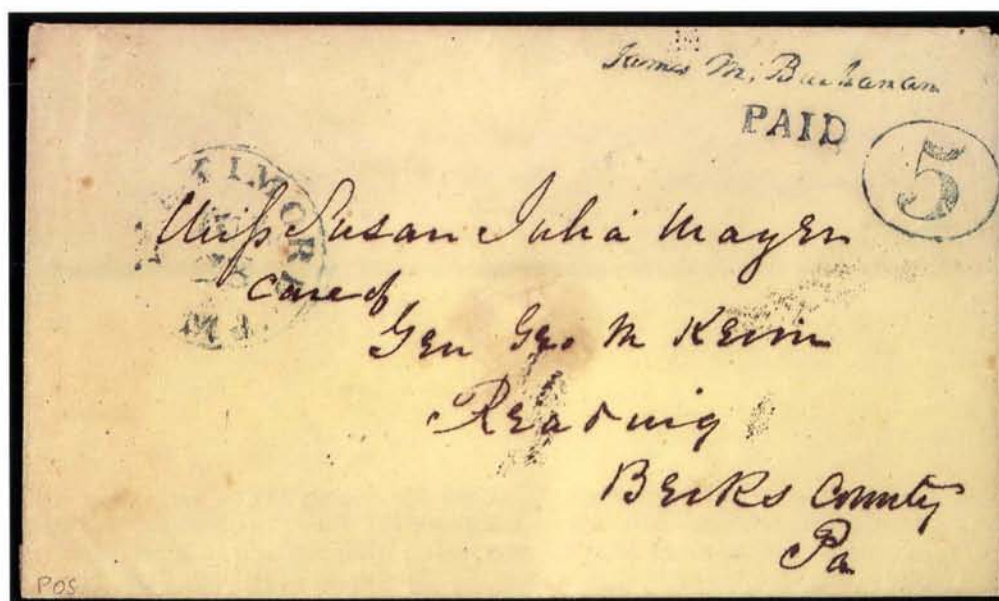
POSTMASTERS' PROVISIONALS  
BALTIMORE, MARYLAND



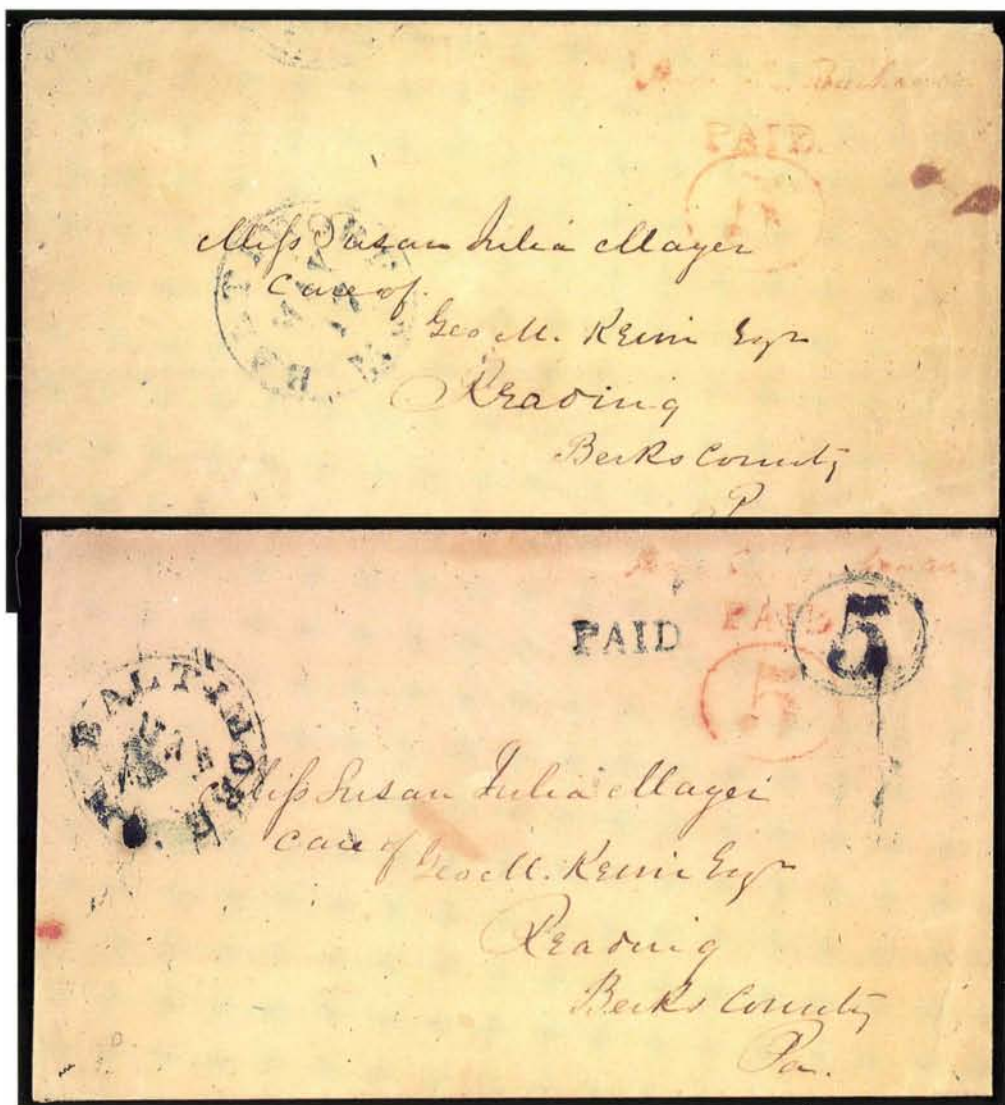
- 1°∞ **5c Blue on Gray Entire, Black Signature Handstamp (3XU1 var).** Clear strikes of provisional markings, mostly clear "Baltimore Md. Feb. 27" (1846) circular datestamp on entire addressed to Mrs. G. Rogers Jr., Washington D.C., neat pencil receipt docketing, blue manuscript check mark, small ink smear, Extremely Fine, a great rarity and early usage of the Baltimore provisional entires, at which time the signature was applied in black, this example is not listed in the Hayes census, only one or two others known on Gray stationery, from the Weill sale ..... E. 5,000-7,500



- 2° 5c Blue on Manila Entire (3XU1). Sharp strikes of provisional markings, blue "Baltimore Md. Jul. 12" (1846) circular datestamp on entire addressed to Miss Susan Julia Mayer, Reading Pa., negligible wax seal stain at center, otherwise fresh and Extremely Fine, number 31 in the Hayes census, from the Weill sale ..... 5,000.00



- 3° 5c Blue on Manila Entire (3XU1). Superb bold strikes of provisional markings, clear "Baltimore Md. Jul. 28" (1846) circular datestamp on entire addressed to Miss Susan Julia Mayer, Reading Pa., fresh and Extremely Fine, number 34 in the Hayes census (as Jul. 26), seldom seen with markings so clearly struck, from the Weill sale. 5,000.00



- 4°∞ **5c Red on Manila Entire (3XU2).** As usual for the scarcer Red provisional, the markings are lightly inked but mostly clear, sharp blue "Baltimore Md. May 17" (1846) circular datestamp on entire addressed to Miss Susan Julia Mayer, Reading Pa., small stain spot at right, still Very Fine, number 17 in the Hayes census, only six examples of the 5c Red on Manila recorded in Hayes, possibly ten known in total, from the Weill sale ..... 10,000.00

- 5°∞ **5c Red on Manila Entire (3XU2).** typical lightly inked strike of signature handstamp in Red, but with bolder-than-usual "Paid" and "5" handstamps along with bold blue "Baltimore Md. May 7" (1846) circular datestamp and matching "Paid" and "5" in oval cancellations on entire addressed to Miss Susan Julia Mayer, Reading Pa., tiny sealed tear at top, fresh and Very Fine, number 15 in the Hayes census where only six 5c Red entires recorded, illustrated in Luff book (plate VIII), ex Caspary, Lilly and from the Weill sale ..... 10,000.00



6° 5c Red on Manila Entire (3XU2). Lightly inked but virtually complete strikes of provisional markings in Red, clear blue "Baltimore Md. May 15" (1846) circular datestamp, matching "5" in oval on entire addressed to Miss Susan Julia Mayer, Reading Pa., fresh and Very Fine, number 16 in the Hayes census where six 5c Red entires recorded, ex Ferrary, Caspary, Texas Collection, Isleham Collection and from the Weill sale, signed Costales ..... 10,000.00



7° 10c Red on Manila Entire (3XU4). Mostly clear strikes of provisional markings with 10c rate handstamp virtually complete, blue "Baltimore Md. Sep. 17" (1846) circular datestamp on entire addressed to Thomas B. Cooper Esq., Cedar Bluff Ala., neat manuscript docketing at right, lightly soiled and minor wrinkles

ONLY FIVE EXAMPLES OF THE 10-CENT RED PROVISIONAL ENTIRE ARE RECORDED, OF WHICH THIS AND TWO OTHERS ARE OF COMPARABLY FINE QUALITY

Signed by Stanley B. Ashbrook, who notes "A Very Great Rarity". Unlisted in the Hayes census. From the Weill sale ..... 20,000.00

## MILLBURY, MASSACHUSETTS



8° **5c Black on Bluish (7X1).** Two clear to ample margins, just into outer rim at top and left, clear impression on bright fresh paper, tied by neat "Milbury Ms. Mar. 23" circular datestamp in red on piece of folded cover (circa 1847), light folds in piece clear of stamp

A VERY FINE EXAMPLE OF THIS DISTINCTIVE POSTMASTER'S PROVISIONAL STAMP

The Millbury provisional, issued by Asa Holman Waters, is unusual in several respects. It is one of two United States postmasters' provisional stamps bearing a portrait, the other being the New York City provisional issued by Robert H. Morris. Both depict George Washington, the Millbury being a rather crude, cartoon-like representation. Also unusual is the absence of a post office designation in the design, in common with the Baltimore and Boscawen provisionals. The third noteworthy point is the incorrect spelling of the town name, Millbury with one "L" instead of two, in the circular postmark, a peculiarity that one can appreciate in this example, in which the town marking has been used to cancel the stamp.

This piece is illustrated and discussed in Philip T. Wall's article on the Millbury provisional (*Chronicle* 120 and 121), in which he records seventeen examples, including three on pieces such as this one. There is no auction record or ownership history given for this example.

With "W.H.C." (Colson) handstamp on back of piece ..... 25,000.00

# NEW YORK, NEW YORK



9° 5c Black on Bluish, "RHM" Initials (9X1d). Position 5, large even margins, tiny scissors cut at right, tied at bottom by smeared manuscript cancel (bleed also ties thru stamp), used with uncanceled **United States City Despatch Post, 3c Black on Blue Glazed Paper (6LB5)**, large margins, tied at lower right corner by slight ink smear from first letter of address, manuscript "New Hamburg N.Y. Aug. 20" postmark and "5" rate to the right of carrier stamp on folded letter from James Lenox, datelined "Netherwood 20 Augt. 1845", to the Sun Mutual Insurance Co. on Wall Street in New York City, red "Paid" in arc handstamp applied at N.Y.C. post office, neat August 21 receipt docketing

From the time of their discovery until the early 1970s, there were two Lenox letters with this combination of postage: the August 20th letter in this sale and the September 2nd letter with the carrier stamp affixed below the provisional. The Philatelic Foundation certified this cover as genuine, but declined opinion on the September 2nd usage. To obtain a favorable opinion, the carrier stamp was removed. One other New York provisional/carrier combination (a cover front outbound to Europe) is recorded. In this usage, it appears that Lenox intended to have the government carrier deliver his letter from the main post office to the Wall Street address; however, the absence of carrier service markings indicates that this probably did not occur.

A VERY FINE AND OUTSTANDING COMBINATION OF THE TWO FORERUNNERS TO THE FIRST UNITED STATES FEDERAL ISSUE

Ex Lapham, Chaffee, Shierson and from the Weill sale. With 1974 P.F. certificate ....  
..... E. 30,000-40,000



10° 8     **5c Black on Bluish, "RHM" Initials (9X1d).** Very large margins all around, bold clear initials in magenta reading down, no manuscript cancel, tied by bold red "Paid" in arc, matching strike and "New-York 5 cts. 13 Mar." (circa 1846) circular datestamp with integral rate on blue folded cover to New Bedford Mass., few small bleach specks not affecting stamp, Extremely Fine, a magnificent example of this rarity and quite possibly the finest existing on cover, ex Caspary and from the Weill sale, with 1989 P.F. certificate ..... 3,000.00

11° 8     **5c Black on Bluish, "ACM" Initials (9X1).** Position 7, double transfer at top, large margins mostly all around, just touched at bottom, tied by red "Paid" in arc, second strike at left, bold orange-red "Washington City D.C. Nov. 4" (circa 1845) circular datestamp and matching "5" rate handstamp on folded cover addressed to Mrs. Eliza Schuyler with New York City street address, Very Fine, one of three recorded usages of the New York provisional from Washington; the others also have street addresses and were handled by the U.S. City Despatch Post carrier, who applied the "U.S." in octagon marking; although this cover does not have the "U.S." handstamp, the street address indicates that it was probably intended for carrier delivery; ex Grunin and from the Weill sale, with 1970 P.F. certificate ..... E. 4,000-5,000





- 13<sup>∞</sup> **5c Black on Bluish, "ACM" Initials (9X1).** Position 32, extra large margins all around, no manuscript cancel, tied by red "New-York 5 Paid" circular datestamp of the New York City foreign mail office on July 1846 folded letter to London forwarder, James Lang, for carriage outside the mails to **Trieste, Austria**, manuscript "1/-" due, red receiving backstamp, faint bleached spot well clear of stamp, Extremely Fine, very attractive foreign mail usage of the New York provisional, Wall records thirteen covers from this correspondence, from the Weill sale ..... E. 2,500-3,500



- 14<sup>∞</sup> **5c Black on Bluish, "ACM" Initials (9X1).** Large even margins, no manuscript cancel, tied by large red "New-York 5 Paid May 15" foreign mail office circular datestamp on 1846 folded letter to **Edinburgh, Scotland**, bold "1/-" due handstamp, transit and receiving backstamps, two file folds clear of stamp, Very Fine, a remarkably rare British Isles destination with only three covers to Scotland recorded, ex Waterhouse, from the Weill sale ..... E. 2,500-3,500

# PROVIDENCE, RHODE ISLAND



15° 5c Gray Black, 10c Gray Black (10X1, 10X2). Tied on individual 1846 blue folded letters addressed to Ripley & Talcott, Hartford Conn., the 10c with margins just in and tied by manuscript check mark, red "Providence R.I. Oct. 17" circular datestamp, the 5c with margins all around, canceled by manuscript check mark and tied by filing crease, red "Providence R.I. Oct. 21" circular datestamp, both letters rated with red "Paid" and "5" handstamps, indicating that the 10c adhesive overpaid the rate

A FINE AND REMARKABLE PAIR OF PROVIDENCE PROVISIONAL COVERS, SHOWING THE ONLY GENUINE USE OF THE 10-CENT STAMP ON COVER

The plate of Providence provisionals comprised eleven 5c and one 10c denomination. The similarity of the designs might have caused the sender's error in overpaying the 5c rate with a 10c stamp. To date, it is the only confirmed genuine use of the 10c on cover.

With 1969 P.F. certificates signed by John R. Boker, Jr. From the Weill sale  
 ..... 39,000.00

ST. LOUIS, MISSOURI  
FIRST PRINTING ON GREENISH PAPER



- 16°     **5c Black on Greenish (11X1).** Positions 3/5, vertical pair, large even margins all around, clear impression on deeply colored paper, light natural paper fold in top stamp, manuscript cancel, tiny corner margin crease at upper right not touching design, Extremely Fine, "W.H.C." (Colson) backstamp, ex Caspary ..... 6,000.00



- 17° 5c Black on Greenish (11X1). Position 5, full lower left corner sheet margin copy, tiny tear at top, lightened manuscript cancel, tied by red "St. Louis Mo. Dec. 21" circular datestamp on large part of 1845 folded cover with part letter to Benjamin F. Stickman at Jefferson City Mo., red "Paid" straightline and ms. "Paid 5", the stamp has been lifted and reaffixed, filing creases in lettersheet, Extremely Fine appearance, a choice stamp and rare single 5c usage for distance under 300 miles, ex Caspary, from the Weill sale, with 1989 P.F. certificate ..... E. 12,000-15,000

## SECOND PRINTING ON GRAY LILAC PAPER



18° **5c Black on Gray Lilac (11X4).**  
Position 5, the only 5c denomination on the altered plate used to print Bears on Gray Lilac paper, large margins, neat manuscript cancel, Extremely Fine, the 5c Gray Lilac is, in our experience, second in rarity only to the 20c on Greenish, with 1976 P.F. certificate ..... 4,250.00

19° **5c Black on Gray Lilac, 20c Black on Gray Lilac (11X4, 11X6).** Two 5c stamps, both Position 5 (the only 5c denomination on the plate used to print the Bears on Gray Lilac paper), ample margins except at bottom of one and left of the other, used with 20c Position 3, three large margins, slightly into frameline at left, intense impressions on fresh paper, probably an early printing from the altered plate (earliest known usage is February 27, 1846), **without manuscript cancel**, tied only by a single bold strike of the vivid red "St. Louis Mo. Apr. 10" circular datestamp, matching "Paid" and ms. "30" rate on blue folded cover to the Charnley & Whelen firm in Philadelphia, light fold in cover at bottom, the 5c stamp at center has a faint corner crease ending in a small tear of no significance

The Second Printing of the Bears on Gray Lilac paper was made from the altered plate, in which the 5c denominations in positions 1 and 3 were changed to 20c, leaving only one 5c denomination (position 5). The rarity of the 5c on Gray Lilac (statistically, a 1:5 ratio) was increased by the circumstances of usage. The large finds yielding examples of the Bears were mainly between correspondents more than 300 miles apart, thus requiring 10c rates or multiples thereof. Thus, the conspicuous rarity of the 20c provisional on this cover is amplified by the presence of two very rare 5c on Gray Lilac stamps.

A VERY FINE AND MAGNIFICENT COVER FROM THE CHARNLEY & WHELEN CORRESPONDENCE  
From the Weill sale and ex Middendorf. With 1989 P.F. certificate. E. 50,000-75,000



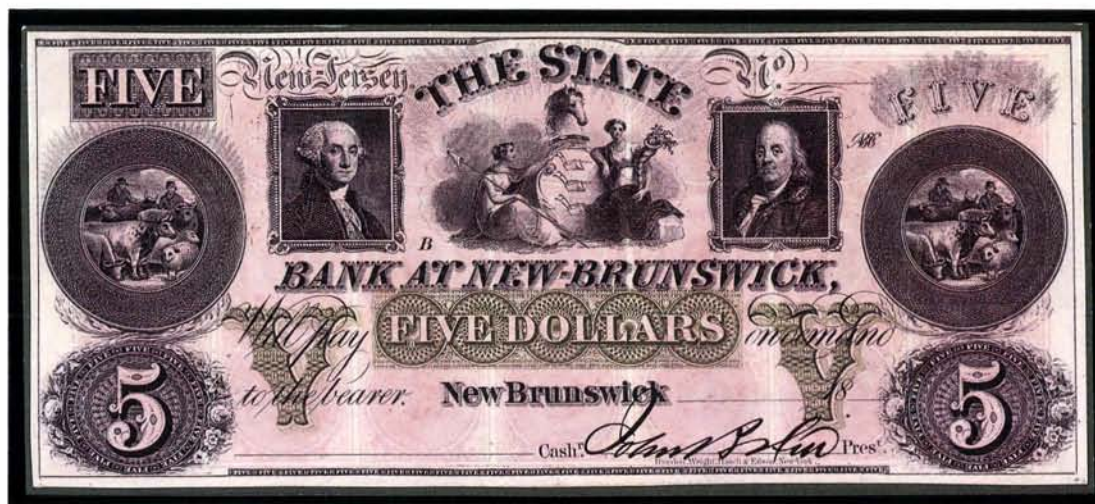


20<sup>00</sup> **20c Black on Gray Lilac (11X6).** Position 1, ample to large margins except slightly in at bottom frameline, light manuscript cancel, tied by bold red "St. Louis Mo. May 12" circular datestamp, matching "Paid" and ms. "20" rate on blue 1846 folded letter to the Charnley & Whelen firm in Philadelphia, neat file fold, fresh and attractive

A VERY FINE AND CHOICE SINGLE USAGE OF THE 20-CENT PROVISIONAL ON A SMALL AND ATTRACTIVE CHARNLEY & WHELEN COVER

Ex Texas Collection and from the Weill sale. With 1989 P.F. certificate .. 15,000.00

# 1847 ISSUE



21



22



23



24



25

- 21° **Washington and Franklin Vignettes, Rawdon Wright Hatch & Edson, New York.** The two engravings used for the 5c and 10c 1847 Issue, incorporated into the design of a \$5.00 remainder note issued by The State Bank at New-Brunswick, New Jersey (Haxby G52c, "ABCo" monogram, one signature), crisp uncirculated ..... E. 200-250
- 22°★ **5c Red Brown (1).** Horizontal pair, large part original gum, large even margins, bright shade, faint vertical crease at right affecting only one stamp, otherwise Very Fine, with 1969 P.F. certificate ..... 10,000.00
- 23°★ **10c Black (2).** Large part original gum, large to huge margins, intense shade and impression, faintest trace of vertical creasing typical of 10c 1847 stamps with original gum and completely invisible on the face of the stamp, Extremely Fine appearance, with 1969 P.F. certificate ..... 20,000.00
- 24°★ **5c Red Brown, Reproduction (3).** Large margins, fresh and Extremely Fine. 700.00
- 25°★ **10c Black, Reproduction (4).** Large even margins, tiny corner crease at bottom right, otherwise Extremely Fine ..... 900.00



26° 26' 5c Red Brown, 10c Black (1, 2). The matching pair of buff covers from the same correspondence to Miss J. A. Mitchell, Sprakers Basin N.Y., one bearing two superb copies of the 5c tied by bold bright red strikes of the circular wide-spaced six-bar grid and with an equally perfect matching "Waukegan Ill. Jun. 13" circular datestamp; the other franked with a superb 10c tied by sharp blue matching grid and "Waukegan Ill. Jan. 17" circular datestamp, 5c cover with original letter enclosure dated 1850

THE CELEBRATED MATCHING PAIR OF WAUKEGAN COVERS, REPRESENTING THE QUINTESENCE OF QUALITY AND BEAUTY IN THE FIRST UNITED STATES GENERAL ISSUE

Ex West and Caspary (where the pair was united with the 10c 1847 strip of four from Waukegan, which was recently sold in the Ishikawa auction for \$222,500). From the Weill sale. Each cover with 1989 P.F. certificate ..... E. 50,000-75,000



27° 27' 10c Black, Diagonal Half Used as 5c (2a). Upper right diagonal half, clear at top with enormous 5.5 mm sheet margin at right, deep shade and impression, well-tied across the cut by blue grid, matching "Concord N.H. Aug. 31" circular datestamp on neat white envelope to Manchester N.H., from the Stilphin correspondence with a matching cover, 5c Red Brown (1), ample to large margins, rich color on deeply blued paper, tied by blue grid, matching "Concord N.H. Apr. 17" circular datestamp on neat white envelope, pencil notations on back of each cover indicate 1850 usage

AN EXTREMELY FINE PAIR OF COVERS EXHIBITING THE 5-CENT RATE PAID BY A SINGLE STAMP AND A BISECT

Each with 1990 F.F. Certificate ..... E. 15,000-20,000



Count Philippe de la Renotiere von Ferrary



Arthur Hind

THE UNUSED 1851 ONE-CENT TYPE I strip was owned by Ferrary and sold to Arthur Hind in the 1921-25 auction dispersal of his monumental collection. Hind's worldwide collection was auctioned in 1933, and the strip then passed to Sir Nicholas E. Waterhouse, a principal in the international accounting firm of Price, Waterhouse & Company.



Sir Nicholas E. Waterhouse

# 1851-56 ISSUE

## TYPE I POSITION 7R1E



28°★ **1c Blue, Type I-Ib-Ib (5-5A-5A).** Positions 7-8-9R1E, single Type I and pair of Type Ib forming an unused horizontal strip of three, beautiful bright Plate 1 Early shade and impression, ample to large margins mostly all around

THE ONLY RECORDED SOUND AND UNUSED ONE-CENT 1851 TYPE I STAMP AND THE KEY TO A COMPLETE COLLECTION OF UNUSED CLASSIC UNITED STATES ISSUES

The elusive 1851 1c Type I stamp owes its desirability to the fact that, among the many design variations created by the firm of Toppan, Carpenter & Casilear in laying down the plates used to print the imperforate 1c stamps, only one position—the 7th stamp in the top row of the right side of Plate 1 Early (7R1E)—shows the *complete design* with full ornamentation at top and bottom. All other positions (199 in Plate 1E and 800 in total for Plates 1 Late, 2, 3 and 4) required some degree of erasure in order to accommodate the size of the printing plate. Considering this tremendous statistical rarity (a ratio of 1:999) and the brief period of use for Plate 1 Early (it was reworked into Plate 1 Late one year after production), collectors seeking to show an imperforate stamp with the complete design (Type I, Scott 5) are faced with approximately 100 examples, with all but four in used condition. Of the unused examples, only the stamp offered in this sale is sound.

The unused Type I and its companion Type Ib pair were offered as an intact strip during the series of Ferrary sales. The strip was acquired by an agent for Arthur Hind and remained intact when sold to Sir Nicholas Waterhouse in the 1933 Hind sale. Waterhouse severed the single Type I from the strip and offered it during World War II in one of the charity auctions in England held on behalf of the Red Cross and St. John Fund. When the Waterhouse collection was sold at auction in 1955, Raymond H. Weill flew to London with the specific goal of acquiring the Type Ib pair, which he planned to re-unite with the Type I single. Since then, the strip has remained together and has appeared at auction only once, when our firm offered the Rudolf G. Wunderlich collection of United States Classics (Sale 484). In that sale the single and pair realized \$57,500 and \$4,500 (versus 1976 Scott Catalogue value of \$22,500 and \$2,950, respectively).

The 1994 Scott valuation for an unused Type I is \$200,000; the Type Ib is priced at \$13,000 for Position 8R1E and \$8,500 for Position 9R1E, for a total Scott value of \$221,500. With 1955 P.F. certificate for the Type Ib pair and 1987 P.F. certificate for the Type I.

Ex Ferrary, Hind, Waterhouse and Wunderlich ..... 221,500.00



29°★

**1c Blue, Type Ia (6).** Position 100R4, large part original gum, large margins showing part of adjoining stamp at left, deep rich Plate 4 color and impression, exceptional freshness, a faint brown spot on the gum noted in accompanying certificate, really negligible and still an Extremely Fine example of this rare stamp, almost unobtainable as a sound single with original gum, with 1991 P.F. certificate .... 22,500.00

30°★

**1c Blue, Type II (7).** Plate 2 bottom sheet margin copy with large even margins all around, original gum, Extremely Fine, with 1984 P.F. certificate ..... 575.00



31°★

**1c Blue, Type III, Position 99R2 (8).** Original gum, extra large bottom and lefthand margins, fresh and Very Fine example of the rare and desirable Position 99R2, showing the widest breaks of any Type III stamp, ex Caspary and Lilly as part of a strip of three, with 1977 and 1990 P.F. certificates ..... 11,000.00

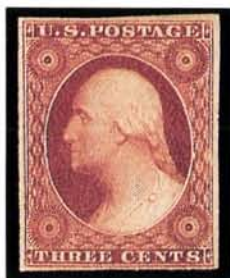
- 32°★ **1c Blue, Type IIIa (8A).** Unused, large margins with trace of imprint at right, marvelous deep rich color and impression, fresh and Extremely Fine, with 1988 P.F. certificate ..... 2,600.00



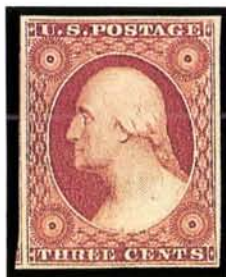
- 33°★ **1c Blue, Type IV (9).** Position 7R1L, the recut version of Type I Position 7R from Plate 1 Early, unused, large even margins, Extremely Fine "Gem" ..... E. 750-1,000

- 34°★ **1c Blue, Type IV (9).** Original gum, large even margins incl. part right sheet margin, rich color, fresh and Extremely Fine ..... 425.00





- 35°★ **3c Orange Brown (10).** Unused, ample even margins, minor corner crease at top right, otherwise Very Fine ..... 1,250.00



- 36°★ **3c Rose Red, Brownish Carmine (11).** Two, each with part original gum, ample to large margins, Very Fine ..... 260.00



- 37°★ **5c Red Brown (12).** Unused, ample to large margins, rich color, Very Fine, a rare stamp in unused condition, with 1977 P.F. certificate ..... 9,000.00



- 38°★ **10c Green, Type I (13).** Three large margins showing part of sheet margin, close at top, traces of original gum, fresh and Very Fine, with 1990 P.F. certificate ..... 9,000.00

- 39°★ **10c Green, Type II (14).** Wonderful deep rich color and impression, sweated original gum, faint corner crease at lower right, still an Extremely Fine stamp, with 1986 P.F. certificate ..... 2,100.00



- 40°★ **10c Green, Type III (15).** Large even margins, small part original gum, Extremely Fine, with 1985 P.F. certificate ..... 2,100.00



- 41°★ **10c Green, Type IV (16).** Position 64L1, Recut at Top and Bottom (the only double recut position), unused, large to huge margins, rich color, minute corner crease at extreme bottom right completely clear of design and not noted on accompanying certificate, Extremely Fine, quite possibly the finest unused Type IV Position 64L1 extant, ex Lilly, Seymour and Wunderlich, with 1968 P.F. certificate ..... 14,000.00



- 42°★ **12c Black (17).** Large to huge margins except touched at lower right frameline, disturbed original gum, Fine ..... 2,600.00



## 1857-60 ISSUE

- 43°★ **1c Blue, Type I (18).** Plate 12, unused, fresh and Very Fine, ex Sheriff, with 1973 P.F. certificate ..... 800.00
- 44°★ **1c Blue, Type II (20).** Original gum, small h.r., remarkably precise centering with deep Plate 2 color and fine impression, fresh and Extremely Fine, a "Gem" copy, with 1983 P.F. certificate ..... 450.00
- 45°★ **1c Blue, Type III (21).** Plate 4, prooflike impression with wide breaks at top and bottom, perfectly centered and practically uncanceled except for a trace of cds on three perfs at top right, tiny natural inclusion, Extremely Fine ..... 1,000.00
- 46°★ **1c Blue, Type IIIa (22).** Plate 4, beautiful color and prooflike impression, well-centered, Extremely Fine ..... 800.00
- 47°★ **1c Blue, Type IV (23).** A magnificent unused example of this scarce perforated type, perfectly centered showing recuts at top and bottom, bright color, Extremely Fine "Gem" ..... 2,750.00
- 48°★★ **1c Blue, Type V (24).** Mint, fresh and Extremely Fine, with 1986 P.F. certificate ..... 120.00
- 49°★ **3c Rose, Type I (25).** Unused, well-centered but with creases and toning, still Very Fine looking example of this scarce stamp ..... 900.00
- 50°★ **3c Dull Red, Types II, IIa (26, 26a).** Original gum, Very Fine ..... 150.00
- 51° **5c Brick Red (27).** Probably an unused stamp but must be offered as used due to black soiling specks and rubbed area, attractive, with 1990 P.F. certificate ("faintly canceled") ..... 675.00
- 52° **5c Red Brown (28).** Lightly canceled, Very Fine. with 1991 P.F. certificate. 1,350.00
- 53°★ **5c "Indian Red" (28A).** Unused, intense shade and impression, one of the best examples of the distinctive Indian Red extant, well-centered, a few perfs at top blunted by scissors separation, natural inclusion speck and a small, almost imperceptible, rub in lathework design at center right, still Very Fine and one of the rarest major color varieties in unused condition, with 1992 P.F. certificate ..... 12,000.00
- 54°★ **5c Brown (29).** Part original gum, well-centered, single nibbed perf at right, still Very Fine ..... 850.00



43



44



45



46



47



48



49



50



51



52



53



54

55°★	<b>5c Orange Brown, Type II (30).</b> Original gum, rich color, fresh and Extremely Fine .....	750.00
56°★	<b>5c Brown, Type II (30A).</b> Original gum, extraordinary centering with wide margins clear all around, Extremely Fine .....	475.00
57°★	<b>10c Green, Type I (31).</b> Unused, deep rich color, well-centered, tiny pinhole, Extremely Fine appearance, with 1961 P.F. certificate .....	6,750.00
58°★	<b>10c Green, Type II (32).</b> Original gum with slight disturbance, small thin spot, Very Fine appearance .....	2,800.00
59°★	<b>10c Green, Type III (33).</b> Unused, bright color, perf expertly mended at upper right, Extremely Fine appearance .....	2,800.00
60°★	<b>10c Green, Type V (35).</b> Crackly original gum causing some creasing, well-centered and otherwise Extremely Fine .....	200.00
61°★	<b>12c Black (36).</b> Plate 1, right sheet margin with part imprint, original gum, thin spots in selvage and one tiny speck in stamp, otherwise Very Fine .....	400.00
62°★	<b>12c Black, Plate 3 (36b).</b> Intense shade, unused, Extremely Fine .....	350.00
63°★	<b>24c Gray Lilac (37).</b> Original gum, fresh and Very Fine, with 1986 P.F. certificate .....	675.00
64°★	<b>30c Orange (38).</b> Original gum, choice centering and bright color, Extremely Fine, with 1986 P.F. certificate .....	750.00
65°★	<b>90c Blue (39).</b> Part original gum, deep rich color, beautiful centering, Extremely Fine, with 1978 P.F. certificate .....	1,150.00
66°	<b>90c Blue (39).</b> Vivid red grid cancel, centered slightly to bottom, internal paper fault and small tear at bottom, short perf at upper right, otherwise Fine, a rare genuinely used stamp, with 1988 P.F. certificate .....	5,000.00



55



56



57



58



59



60



61



62



63



64



65



66

## 1860 IMPERFORATES



- 67°★ **24c Gray Lilac, 30c Orange, 90c Blue, Imperforate (37b, 38a, 39a).** Horizontal pairs of each, 24c ample margins to in at top with a faint crease, 30c mostly ample margins, 90c huge margins with tiny thin in right stamp

THE FAMOUS COMPLETE SET OF 1860 IMPERFORATE PAIRS, WHICH IS UNIQUE BY VIRTUE OF THE 90-CENT PAIR

Apart from singles, there is record of only two 24c pairs, three 30c pairs, and this one 90c pair. The 90c is ex Ferrary, and it is believed that Arthur Hind assembled this complete set, which was sold in our 1971 Rarities sale (\$25,000), 1983 Rarities sale (\$68,750) and 1989 Rarities sale (where acquired for The Concord Collection at \$57,750).

Each with 1971 P.F. certificate ..... 57,500.00

# 1875 REPRINT OF 1851-60 ISSUE



68



69



70



71



72



73



74



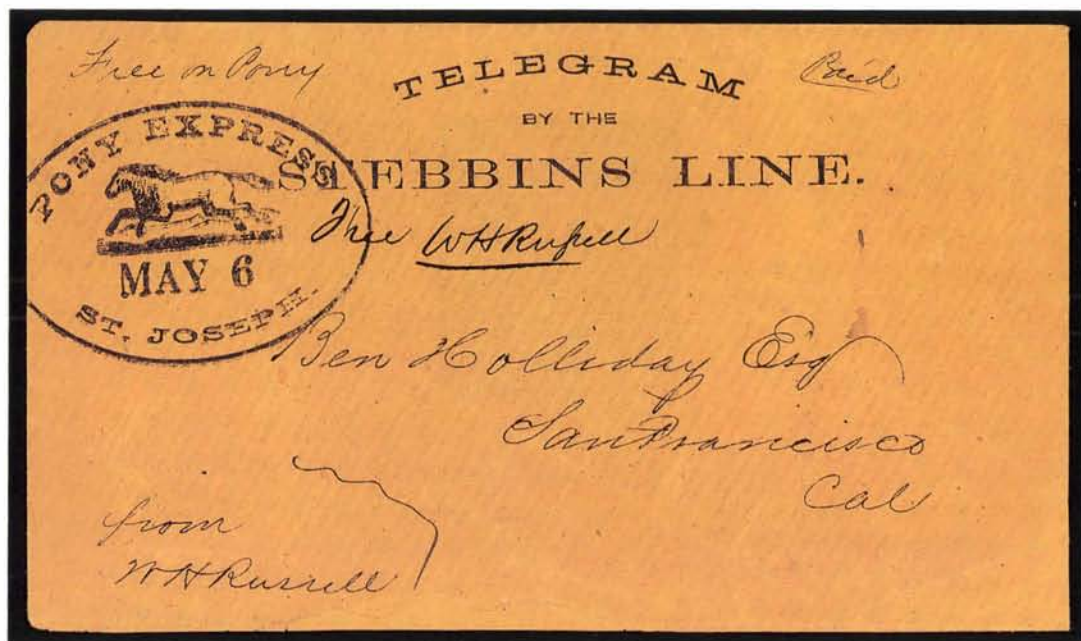
75

- 68°★ **1c Bright Blue, Reprint (40).** Fresh and Extremely Fine, with 1981 P.F. certificate ..... 500.00
- 69°★ **3c Scarlet, Reprint (41).** Brilliant color, Very Fine, with 1981 P.F. certificate ..... 2,000.00
- 70°★ **5c Orange Brown, Reprint (42).** Exceptionally well-centered, bright color, Extremely Fine ..... 900.00
- 71°★ **10c Blue Green, Reprint (43).** Deep rich color, near perfect centering, Extremely Fine ..... 1,750.00
- 72°★ **12c Greenish Black, Reprint (44).** Well-centered, Very Fine, with 1980 P.F. certificate ..... 2,000.00
- 73°★ **24c Blackish Violet, Reprint (45).** Faint hinge stain on back, Fine, with 1959 P.F. certificate ..... 2,000.00
- 74°★ **30c Yellow Orange, Reprint (46).** Bright color, perfs at left slightly blunted by scissors separation, still Fine ..... 2,000.00
- 75°★ **90c Deep Blue, Reprint (47).** Deep shade, tiny natural inclusion speck in left margin, Very Fine, with 1972 P.F. certificate ..... 3,250.00

# THE PONY EXPRESS



76° **Wells, Fargo & Co., \$1.00 Red (143L3).** Large margins to clear at upper left, rich color, tied by mostly clear blue **"Pony Express San Francisco Aug. 31" Running Pony** oval datestamp on 10c Green, Star Die Entire (U32) with red Wells, Fargo & Co. printed frank, addressed to A. W. Canfield in New York City, "St. Joseph Mo. Sep. 14" circular datestamp cancels entire, with 1861 enclosure, short sealed opening tears at top, otherwise fresh and Very Fine, an attractive Pony Express usage during the Civil War period ..... E. 12,000-15,000



77° Free W. H. Russell. Autograph free frank on deep buff cover with imprint TELEGRAM BY THE STEBBINS LINE across the top, addressed to Ben Holladay at San Francisco, endorsed "Free on Pony/Paid/From W. H. Russell", clear well-inked strike of "Pony Express St. Joseph. May 6" Running Pony oval datestamp (1860) at upper left, one backflap missing, small piece out of bottom edge has been neatly mended, otherwise in excellent condition

A VERY RARE AND HISTORIC PONY EXPRESS COVER, CARRIED FREE WITH THE AUTOGRAPH FRANK OF WILLIAM H. RUSSELL, CO-FOUNDER AND PRESIDENT OF THE FIRM THAT OPERATED THE LEGENDARY PONY EXPRESS

The partners in the firm of the Central Overland California & Pikes Peak Express Company, which operated the Pony Express from April 1860 to November 1861, were William H. Russell, Alexander Majors and William B. Waddell. Russell was president of the firm, with headquarters in Leavenworth, Kansas. Ben Holladay, to whom this cover is addressed, was a major creditor of COC&PP and eventually bought the firm at public sale after it had been through long, difficult financial problems.

It is known that a small amount of mail was carried free of charge by the express. Based on the ten examples recorded in the Nathan book, it appears that United States Senators William M. Gwin (one recorded cover) and Milton S. Latham (six recorded covers) were permitted to send at least some of their Pony Express mail without charge. It also seems that official company correspondence was carried without charge. The record shows three such covers, including two signed by William H. Russell and one signed by his brother, John W. Russell, who was acting company secretary.

This franked cover is the earliest westbound Pony Express usage. Westbound trips were made from St. Joseph as early as April 3, 1860, but none from this first month is known to exist.

Ex Knapp and Emerson, from the Weill sale ..... E. 75,000-100,000

## 1861 FIRST DESIGNS AND FIRST COLORS



- 78°★ **1c Indigo, First Design (55).** Original gum, intense shade and impression, fresh and Fine, extremely rare, with 1986 P.F. certificate ..... 20,000.00



- 79°★ **3c Brown Rose, First Design (56).** Original gum, Extremely Fine ..... 500.00

- 80°★ **5c Brown, First Design (57).** Unused, deep rich color, perfectly centered, Extremely Fine, a very rare printing, ex Cole, with 1956 and 1988 P.F. certificates. 14,000.00

- 81°★ **10c Dark Green, First Design (58/62B).** Original gum, intense prooflike color and impression, choice centering and Very Fine, ex Lilly, with 1979 P.F. certificate ..... 5,000.00



- 82°★ **12c Intense Black, First Design (59).** Original gum, exceptionally well-centered with wide margins and perfs clear of design all around, fresh, two partly nibbed perfs at bottom

EXTREMELY FINE EXAMPLE OF THE RAREST OF THE 1861 TRIAL PRINTINGS

We estimate that approximately fifteen examples of this rare 1861 First Design have survived, of which four are in condition comparable to this stamp; one of these is contained in the Miller collection at The New York Public Library. We have offered this stamp on three prior occasions: 1969 Rarities (sold \$19,000), 1971 Rarities (sold \$20,000) and Lessmann Collection (sold \$32,500). It was acquired for The Concord Collection at the 1986 Steve Ivy sale of the James O. Hewitt collection (sold \$25,300).

"W.H.C." (Colson) backstamp. With 1984 P.F. certificate ..... 45,000.00



83°★

**24c Dark Violet, First Color (60).**

Original gum, choice centering, distinctive Gray Lilac early color on thin semi-transparent paper (not the typical trial printing shade), Extremely Fine, with 1988 P.F. certificate ..... 6,000.00

84°★

**30c Red Orange, First Color (61).**

Original gum, brilliant color, beautifully centered with perfs well clear all around, barest trace of diagonal crease at upper right, a typical characteristic of the 30c trial printing and really negligible, still Extremely Fine, ex Lilly and Seymour, with 1988 P.F. certificate .... 17,500.00



85°★

**90c Blue, First Design (62).**

Unused, perfectly centered, intense color and impression, Extremely Fine and very rare, this stamp was the finer of Caspary's two 90c trial printings, with 1983 P.F. certificate ..... 22,500.00

- 86°     **1c Indigo, First Design (55).** Target cancel at upper right, thin spot, still Fine, this canceled trial printing forms a pair with the similar example offered in our 1992 Rarities sale, with 1962 P.F. certificate .....  
 ..... E. 5,000-6,000



- 87°     **5c Brown, First Design (57).** Target cancel at lower right, similar to the 1c First Design in the previous lot, thin spot, Very Fine appearance, we believe these trial printings with target cancels are experimental, with 1962 P.F. certificate .....  
 ..... E. 5,000-6,000

- 88°     **10c Dark Green, First Design (62B).** Target cancel, perfectly centered with exceptionally wide margins, Extremely Fine, very scarce in this choice condition, with 1986 P.F. certificate .....  
 ..... 450.00



## 1861-66 ISSUE

- 89°★ **1c-3c 1861-68 Issues (63, 65, 73, 87).** 1c regummed, 3c o.g. (crease), 2c unused, 2c E. Grill red cancel, well-centered and attractive group ..... 455.00



- 90°★ **3c Pink (64).** Original gum, lightly hinged, bright early Pink color, Very Fine, sound original gum examples of the 1861 Pink are exceedingly rare, with 1962 P.F. certificate ..... 4,500.00

- 91°★ **3c Lake (66).** An enormous wide-margined stamp, part original gum, beautiful centering and prooflike impression, couple tiny natural coal speck inclusions, Extremely Fine ..... 2,000.00



- 92°★ **5c Buff (67).** Unused, rich color and impression, near perfect centering, Extremely Fine, among the most difficult classic stamps to obtain in choice unused condition, with 1987 P.F. certificate ..... 6,000.00



93



94



95



96



97



98



99



100

- 93°★ **10c Green (68).** Original gum, well-centered, Very Fine, with 1982 P.F. certificate ..... 275.00
- 94°★ **12c Black (69).** Unused, wide margins, Extremely Fine, with 1983 P.F. certificate ..... 550.00
- 95°★ **24c Brownish Lilac (70a).** Part original gum, beautiful centering and rich color, nibbed perf at right, otherwise Extremely Fine ..... 700.00
- 96°★ **30c Orange (71).** Original gum, well-centered, Very Fine, with 1988 P.F. certificate ..... 625.00
- 97°★ **90c Blue (72).** Unused, choice centering and margins, couple faint horizontal creases not noted in accompanying certificate, Extremely Fine appearance, with 1988 P.F. certificate ..... 1,450.00
- 98°★ **3c Scarlet (74).** Unused, well-centered, light surface rubbing at lower left as often encountered in this trial printing, otherwise Extremely Fine, with 1966 P.F. certificate ..... 7,000.00
- 99°★ **5c Red Brown (75).** Unused, rich color and choice centering, Extremely Fine ..... 1,450.00
- 100°★ **5c Brown (76).** Unused, perfectly centered, Extremely Fine, with copy of 1972 P.F. certificate ..... 375.00



101°★ **15c Black (77).** Original gum, fresh and Very Fine, very scarce as a well-centered original gum stamp, with 1987 P.F. certificate. 575.00

102°∞ **24c Lilac (78).** Original gum, fresh and Very Fine ..... 300.00



## 1867-68 GRILLED ISSUE



103°★ **3c Rose, A. Grill, Imperforate (79a).** Horizontal pair, large margins, part original gum which soaks thru grill points, thin spot in left stamp, otherwise Very Fine, with 1969 P.F. certificate ..... 1,750.00



104° **5c Dark Brown, A. Grill (80a).** Target cancel, well-defined grill with only minor characteristic perf flaws

IN OUR OPINION, THIS IS THE FINEST OF THE SIX RECORDED EXAMPLES OF THE 5-CENT EXPERIMENTAL A. GRILL STAMP

The first experiments in grilling postage stamps employed a device that grilled the entire surface of the sheet. Of the different experimental all-over grills, it is certain that one type—the female A. grill—was issued to the public in 1867, as evidenced by numerous examples of the 3c Rose A. Grill (Scott 79) and a few examples of canceled 5c and 30c A. Grill stamps (Scott 80 and 81). Production of the all-over grills was curtailed when it was observed that the grill interfered with the perforations, causing stamps to tear irregularly rather than along the rows of perforations. Also for this reason, surviving examples show varying degrees of perforation defects.

This example of the 5c A. Grill was among the early discoveries of the experimental grill rarities. It is accompanied by a 1922 American Philatelic Association Expert Committee photo-certificate signed by John N. Luff and John A. Klemann, and also bears the “S.S. & Co.” backstamp of Scott Stamp & Coin Company.

From our 1977 Rarities sale, ex Hewitt. With 1982 P.F. certificate. E. 50,000-60,000



- 105°★ **3c Rose, C. Grill (83).** Full fresh original gum, perfectly centered with extra wide margins, bright color and Extremely Fine, extremely rare in this quality, ex Cole, with 1988 P.F. certificate ..... 2,250.00



- 106°★ **3c Rose, D. Grill (85).** Unused, bright and fresh, well-centered, Extremely Fine, very rare unused, with 1979 P.F. certificate ..... 1,900.00



- 107°★ **12c Intense Black, Z. Grill (85E).** Original gum, very lightly hinged, intense shade and impression with strongly defined Z. grill, very well-centered and fresh, Very Fine, a rare stamp with original gum, with 1971 P.F. certificate ..... 2,500.00



108



109



110



111



112

## E. GRILL

- 108°★ **1c Blue, E. Grill (86).** Fresh, slightly disturbed original gum, Very Fine, ex Hewitt, with 1984 P.F. certificate ..... 1,000.00
- 109°★ **2c Black, E. Grill (87).** Unused, wide margins, Extremely Fine ..... 450.00
- 110°★ **10c Green, E. Grill (89).** Unused, choice centering, Extremely Fine, with 1982 P.F. certificate ..... 1,750.00
- 111°★ **12c Black, E. Grill (90).** Unused, well-centered, Very Fine ..... 2,000.00
- 112°★ **15c Black, E. Grill (91).** Unused, perfectly centered, fresh and Extremely Fine, with 1989 P.F. certificate ..... 5,000.00

## F. GRILL

- 113°★ **1c Blue, F. Grill (92).** Original gum, extraordinary margins and centering, Extremely Fine, with 1985 P.F. certificate ..... 450.00
- 114°★ **2c Black, F. Grill (93).** Original gum, choice centering, fresh and Extremely Fine, with 1988 P.F. certificate ..... 175.00
- 115°★ **3c Red, F. Grill (94).** Two shades, one with disturbed original gum, other regummed, Extremely Fine ..... 250.00
- 116°★ **5c Brown, F. Grill (95).** Original gum, lightly hinged, perfectly centered, rich color, Extremely Fine, rare in this choice original gum state, the majority of unused 5c F. Grill stamps comes from multiples that were stuck together, with 1987 P.F. certificate ..... 1,500.00
- 117°★ **10c Green, F. Grill (96).** Original gum, dark shade and choice centering, Very Fine ..... 900.00
- 118°★ **12c Black, F. Grill (97).** Original gum, thin spot in grill not noted in certificate, Extremely Fine "Gem" appearance, with 1989 P.F. certificate ..... 900.00
- 119°★ **15c Black, F. Grill (98).** Original gum, a magnificent stamp with extra wide margins, Extremely Fine "Gem", with 1987 P.F. certificate ..... 900.00
- 120°★ **24c Gray Lilac, F. Grill (99).** Small part original gum, Very Fine ..... 1,700.00
- 121°★ **90c Blue, F. Grill (101).** Unused, rich color, Fine, with 1988 P.F. certificate. 5,000.00



113



114



115



116



117



118



119



120



121

## 1875 RE-ISSUE OF 1861-66 ISSUE

- |       |   |          |
|-------|---|----------|
| 122°★ | <b>1c Blue, Re-Issue (102).</b> Original gum, bright and fresh, Extremely Fine ....   | 500.00   |
|       |   |          |
| 123°★ | <b>2c Black, Re-Issue (103).</b> Original gum, intense shade and impression, Extremely Fine, with 1985 P.F. certificate .....   | 2,250.00 |
|       |   |          |
| 124°★ | <b>3c Brown Red, Re-Issue (104).</b> Original gum, perfectly centered with wide margins, Extremely Fine, with 1981 P.F. certificate .....                               | 2,500.00 |
|       |   |          |
| 125°★ | <b>5c Brown, Re-Issue (105).</b> Unused, Very Fine, with 1977 P.F. certificate ..   | 1,850.00 |
|       |   |          |
| 126°★ | <b>10c Green, Re-Issue (106).</b> Unused, extra wide margins, Extremely Fine, with 1977 P.F. certificate .....  | 2,000.00 |
|       |   |          |
| 127°★ | <b>12c Black, Re-Issue (107).</b> Original gum, intense shade and extra wide margins, Extremely Fine, ex Sheriff, with 1972 P.F. certificate .....                      | 2,750.00 |
|       |   |          |
| 128°★ | <b>15c Black, Re-Issue (108).</b> Original gum, superb centering, deep shade, Extremely Fine, with 1969 P.F. certificate .....  | 3,500.00 |
|       |   |          |
| 129°★ | <b>24c Deep Violet, Re-Issue (109).</b> Original gum, naturally brownish in places, perfectly centered, Extremely Fine, with 1982 P.F. certificate .....                | 3,750.00 |
|       |   |          |
| 130°★ | <b>30c Brownish Orange, Re-Issue (110).</b> Original gum, beautifully centered with unusually wide margins, Extremely Fine, ex Hewitt, with 1980 P.F. certificate ..... | 4,250.00 |
|       |   |          |
| 131°★ | <b>90c Blue, Re-Issue (111).</b> Unused, fresh and Very Fine .....  | 5,250.00 |



122



123



124



125



126



127



128



129



130



131

## 1869 PICTORIAL ISSUE

- 132°★ **1c-3c 1869 Pictorials (112-114).** 1c regummed & reperfed at R., 2c large part o.g., 3c part o.g., Extremely Fine ..... 650.00
- 133°★ **6c Blue (115).** Original gum, perfectly centered, small blue owner's backstamp, Extremely Fine, with 1986 P.F. certificate ..... 825.00
- 134°★ **10c Yellow (116).** Original gum, Very Fine, with 1983 P.F. certificate ..... 900.00



- 135°∞ **10c Yellow Orange (116).** Perfectly centered, vibrant color, tied by circle of wedges, clearly struck "P.O.D. U.S. Con. Genl. Shanghai Oct. 13" circular datestamp on fresh 1870 cover to Iowa, San Francisco transit backstamp, Extremely Fine, ex Dale-Lichtenstein ..... E. 1,000-1,500
- 136°★ **12c Green (117).** Original gum, some gum soaks in grill points, wide margins and Extremely Fine centering ..... 850.00
- 137°★ **15c Brown & Blue, Type I (118).** Original gum, remarkably choice centering with wide margins and fresh rich colors, Extremely Fine "Gem" example of this 1869 Pictorial ..... 2,250.00
- 138°★ **15c Brown & Blue, Type II (119).** Regummed with faults, Extremely Fine centering ..... 1,000.00
- 139°★ **24c Green & Violet (120).** Unused, beautiful centering and margins, Extremely Fine, with 1984 P.F. certificate ..... 2,400.00
- 140°★ **30c Blue & Carmine (121).** Original gum, fresh and Very Fine ..... 2,400.00
- 141°★ **90c Carmine & Black (122).** Large part original gum, well-centered, fresh colors and prooflike impression, Extremely Fine ..... 5,000.00



132



133



134



136



137



138



139



140



141

## FLAGS INVERTED



142° **30c Blue & Carmine, Flags Inverted (121b).** Perfectly centered, bright fresh colors, neat circle of V's cancellation

ONE OF THE TWO FINEST USED EXAMPLES OF THE 30-CENT 1869 INVERT

Our records contain 36 used and 7 unused 30c 1869 Invert stamps. Only one other used example can be compared to this stamp in terms of centering, soundness and color.

Ex Newbury, Engel and Back. With 1961 and 1991 P.F. certificates ..... 55,000.00

# 1875 RE-ISSUE OF 1869 PICTORIAL ISSUE



143



144



145



146



147



148

- 143°★ **1c Buff, Re-Issue (123).** Original gum, h.r., Very Fine ..... 325.00
- 144°★ **1c Buff, Re-Issue (123).** Unused, small handstamp on back, Very Fine ..... 325.00
- 145°★ **2c Brown, Re-Issue (124).** Original gum, naturally brownish, Very Fine ..... 375.00
- 146°★ **3c Blue, Re-Issue (125).** Original gum, well-centered, Extremely Fine and very scarce, with 1986 P.F. certificate ..... 3,000.00
- 147°★ **6c Blue, Re-Issue (126).** Original gum blunt corner perf otherwise Very Fine ..... 850.00
- 148°★ **10c Yellow, Re-Issue (127).** Original gum, minor hinge marks, brilliant color and wide margins, Extremely Fine, with 1985 P.F. certificate ..... 1,400.00



149



150



151



152



153



154

- 149°★ **12c Green, Re-Issue (128).** Original gum, intense color and impression, fresh and Very Fine ..... 1,500.00
- 150°★ **15c Brown & Blue, Re-Issue (129).** Perfectly centered, part original gum, Extremely Fine, with 1986 P.F. certificate ..... 1,300.00
- 151°★ **24c Green & Violet, Re-Issue (130).** Original gum, crackling has caused a light corner crease at lower left, still fresh and Very Fine ..... 1,250.00
- 152°★ **30c Blue & Carmine, Re-Issue (131).** Original gum, beautiful centering and colors, fresh and very Fine, with 1970 P.F. certificate ..... 1,750.00
- 153°★ **90c Carmine & Black, Re-Issue (132).** Original gum, brilliant color and impression, Extremely Fine "Gem" ..... 4,500.00
- 154°★ **1c Buff, Re-Issue (133).** Original gum, Extremely Fine ..... 200.00

# 1870 NATIONAL BANK NOTE COMPANY ISSUE



155



156



157



158



159



160

155°★ **1c Ultramarine, Grill (134).** Unused, extra wide margins, Extremely Fine ... 900.00

156°★ **2c Red Brown, Grill (135).** Unused, well-centered, tiny perf thin, Extremely Fine appearance ..... 525.00

157°★ **3c Green, Grill (136).** Original gum, fresh and Very Fine ..... 400.00

158°★ **6c Carmine, Grill (137).** Original gum, rich color, Very Fine ..... 2,100.00

159°★ **7c Vermilion, Grill (138).** Original gum, h.r., vivid color, Very Fine ..... 1,500.00

160°★ **10c Brown, Grill (139).** Original gum, slightly disturbed from hinge removal, negligible corner perf crease at top right, otherwise Very Fine ..... 1,800.00



161



162

- 161° **12c Dull Violet, Grill (140).** Light face-free cancel, clear grill, remarkably choice centering and rich color, Extremely Fine ..... 1,750.00
- 162°★ **15c Orange, Grill (141).** Unused, bright shade, strong grill, Extremely Fine, scarce unused, with 1986 P.F. certificate ..... 2,750.00



163

- 163° **24c Purple, Grill (142).** Cork cancel, very strong grill, deep shade, Very Fine, rare in sound condition, experts' backstamps and 1956 P.F. certificate ..... 11,500.00



164



165

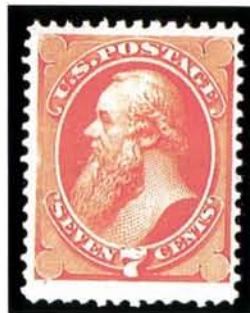
- 164°★ **30c Black, Grill (143).** Unused, intense shade, faint grill points, Very Fine, with 1989 P.F. certificate ..... 5,750.00
- 165°★ **90c Carmine, Grill (144).** Unused, perfectly centered, rich color and strong grill, Extremely Fine, a very rare unused stamp in this grade, with 1982 P.F. certificate ..... 7,500.00



166 EX



167



168



169



170



171



172 EX

- 166°★ **1c-3c 1870 Bank Notes (145-147).** 1c o.g., 2c o.g., 3c part o.g., each well-centered and fresh, Extremely Fine ..... 535.00
- 167°★ **6c Carmine (148).** Original gum, bright fresh color, superb centering, Extremely Fine "Gem" ..... 325.00
- 168°★ **7c Vermilion (149).** Original gum, vivid shade and exceptionally fresh, Very Fine ..... 425.00
- 169°★ **10c Brown (150).** Small part original gum, reperfed at right, Very Fine appearance ..... 325.00
- 170°★ **12c Dull Violet (151).** Beautiful pastel shade, large part original gum, extra wide margins, Extremely Fine ..... 700.00
- 171°★ **15c Bright Orange (152).** Large part original gum, vivid color, beautifully centered and Extremely Fine ..... 650.00
- 172°★ **24c-90c 1870 Bank Notes (153-155).** 24c and 30c regummed and reperfed, 90c unused and well-centered, each with Very Fine appearance ..... 3,775.00

# 1873 CONTINENTAL BANK NOTE COMPANY ISSUE



173 EX



174



175



176



177



178

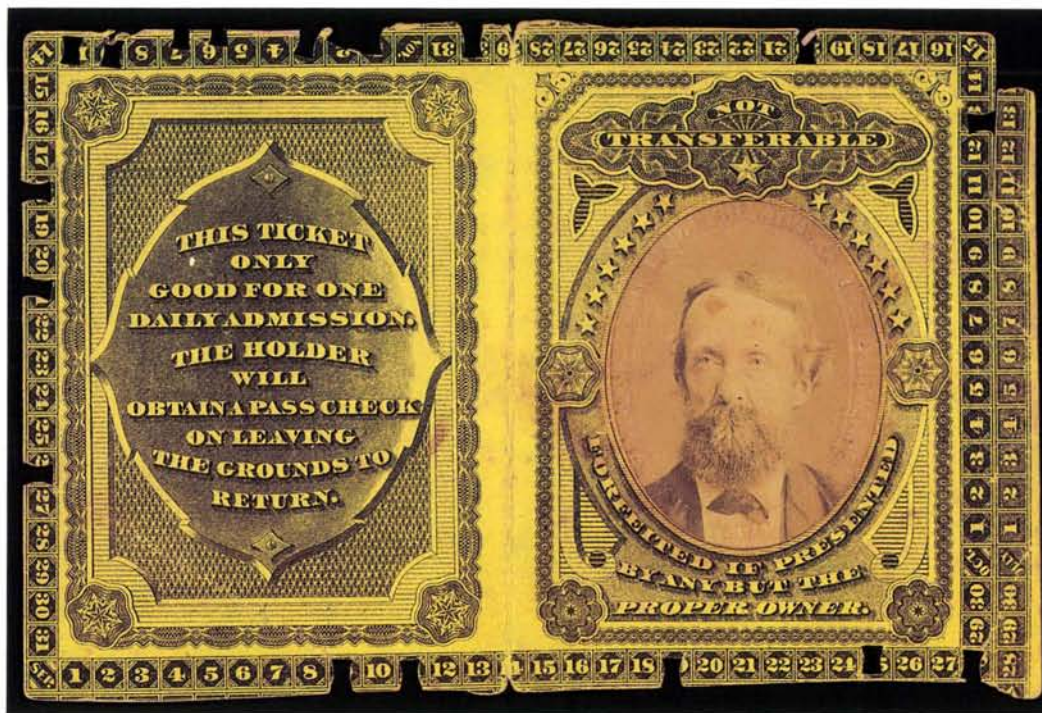


179



180 EX

- 173°★ **1c-6c 1873 Bank Notes (156-159).** 1c unused, others o.g., 3c & 6c with slight crease, otherwise Extremely Fine group ..... 690.00
- 174°★ **7c Vermilion (160).** Original gum, intense shade, well-centered and Extremely Fine ..... 600.00
- 175°★ **10c Brown (161).** Unused, fresh and Very Fine ..... 335.00
- 176°★ **12c Blackish Violet (162).** Extraordinary gigantic margins, deep shade, original gum with slight disturbance, Extremely Fine "Gem" ..... 900.00
- 177°★ **15c Yellow Orange (163).** Well-centered, large part original gum, vivid color and fresh, Extremely Fine, scarce in this grade ..... 800.00
- 178°★ **30c Gray Black (165).** Original gum, reperfed at top, Extremely Fine appearance ..... 925.00
- 179°★ **90c Rose Carmine (166).** Original gum, h.r., bright and fresh color, Extremely Fine ..... 1,800.00
- 180°★ **2c Vermilion, 5c Blue (178, 179).** Original gum, each with a few irregular perfs, otherwise Extremely Fine ..... 470.00



- 181°     **1876 Centennial Exhibition Exhibitor's Pass.** Booklet with security printing, photographic identification and key punches for dates used, in excellent condition, the ideal collateral item for an exhibit of Centennial-related philately .....     E. 200-300



## 1875 CONTINENTAL BANK NOTE SPECIAL PRINTING

- 182°★ **1c-90c 1875 Continental Bank Note Co. Special Printing on Hard Paper (167-177).** The complete set with top or bottom plate number selvage, all fresh and bright, 2c, 7c, 10c and 90c are Very Fine, others Fine, perfs just in on 30c, 10c sealed tear in selvage only

A SPECTACULAR SET OF THE CONTINENTAL SPECIAL PRINTINGS FROM THE EARL OF CRAWFORD IMPRINT STRIPS

Ex Earl of Crawford and Senator Ackerman ..... 68,100.00



- 183°★ **2c Carmine Vermilion, Special Printing (180).** Vivid color and impression, extra wide margins and perfect centering, perfs complete without any scissors separation

AN EXTREMELY FINE EXAMPLE OF THIS RARE SPECIAL PRINTING

Ex Hewitt. With 1985 P.F. certificate ..... 20,000.00

- 184°★ **5c Bright Blue, Special Printing (181).** Well-centered and fresh, perfs complete all around without scissors separation

A VERY FINE EXAMPLE OF THIS SPECIAL PRINTING RARITY

We estimate that seven or eight 5c 1875 Special Printing stamps exist, this being one of the three finest examples. In our opinion, the 5c Continental printing on hard paper is undervalued in Scott; its counterpart on soft paper, Scott 204, is listed at \$30,000, although twice as many examples are recorded.

"W.H.C." (Colson) backstamp. Ex Ambassador and Hewitt. With 1984 P.F. certificate ..... 27,500.00



# 1879-93 AMERICAN BANK NOTE COMPANY ISSUE



185 EX



186



187



188



189



190



191



192

- 185°★ **1c-3c 1879 Bank Notes (182-184).** Original gum, h.r., Very Fine to Extremely Fine ..... 315.00
- 186°★ **5c Blue (185).** Original gum, fresh and Extremely Fine ..... 325.00
- 187°★ **6c Pink (186).** Brownish original gum, extra wide margins, Extremely Fine. 600.00
- 188°★ **10c Brown, Without Secret Mark (187).** Original gum, slightly disturbed, otherwise Extremely Fine ..... 975.00
- 189°★ **10c Brown, With Secret Mark (188).** Original gum, reperfed at top, Extremely Fine appearance ..... 700.00
- 190°★ **15c Red Orange (189).** Original gum, reperfed at right, Very Fine appearance ..... 225.00
- 191°★ **30c Full Black (190).** Well-centered, disturbed original gum, Extremely Fine. 625.00
- 192°★ **90c Carmine (191).** Original gum, improved perfs or reperfed, Extremely Fine appearance ..... 1,300.00

# 1880-85 AMERICAN BANK NOTE SPECIAL PRINTING



- 193°★ **1c Dark Ultramarine, Special Printing (192).** Fresh, centered to bottom, still Very Fine, very rare, signed Stern and Colson ..... 10,000.00

- 194°★ **2c Black Brown, Special Printing (193).** Deep rich color, slight thinning, Very Fine appearance, signed Stern ..... 6,000.00



- 195°★ **3c Blue Green, Special Printing (194).** Intense color and impression, fresh, faint corner crease at upper right, otherwise Very Fine, one of the rarest Special Printings, signed E.B.P. (Powers) ..... 15,000.00



196°★

**6c Dull Rose, Special Printing (195).** Fresh, small thin, reperfed at right, otherwise Fine, ex West, illustrated in Brookman Vol. III (p. 213), signed Stern ..... 11,000.00

197°★

**7c Scarlet Vermilion, Special Printing (196).** Vivid color, faint horizontal bend, Fine appearance, signed Stern ..... 2,250.00



198°★

**10c Deep Brown, Special Printing (197).** Magnificent margins and centering, deep rich color, Extremely Fine, a great rarity and one of the finest known, ex West, illustrated in Brookman Vol. III (p. 213), signed Klein ..... 10,000.00

199°★

**12c Blackish Purple, Special Printing (198).** Well-centered, thin, tear and scuff, Very Fine centering ..... 3,500.00



- 200°★ **15c Orange, Special Printing (199).** Beautiful centering and vivid color, tiny natural perf flaw at left, really inconsequential and otherwise an Extremely Fine example of this rarity, signed "E.B.P." (Powers)  
..... 11,000.00



- 201°★ **24c Dark Violet, Special Printing (200).** Well-centered, deep shade, Very Fine, ex Col. Green  
..... 3,500.00

- 202°★ **30c Greenish Black, Special Printing (201).** Fresh, marvelous impression and centering with wide margins, Extremely Fine "Gem" and very rare, ex West, illustrated in Brookman Vol. III (p. 213), signed Klein  
..... 8,500.00



- 203°★ **90c Dull Carmine, Special Printing (202).** Rich color, fresh and superbly centered, Extremely Fine, one of the most difficult of all Special Printings to find in this grade, ex Col. Green  
..... 9,000.00



- 204°★ **2c Scarlet Vermilion, Special Printing (203).** Vibrant color  
 A FINE EXAMPLE OF THIS SPECIAL PRINTING RARITY  
 "W.H.C." (Colson) backstamp ..... 18,000.00



- 205°★ **5c Deep Blue, Special Printing (204).** Magnificent deep shade and impression, extra wide margins  
 AN EXTREMELY FINE EXAMPLE OF THIS VERY RARE SPECIAL PRINTING, OF WHICH THERE ARE FIFTEEN CONFIRMED COPIES KNOWN TO US  
 Ex West. Illustrated in Brookman Vol. III (p. 213). Signed Klein ..... 30,000.00



- 206° ★ **5c Gray Brown, Special Printing (205C).** Perfectly centered with wide margins, fresh  
 AN EXTREMELY FINE EXAMPLE OF THIS ELUSIVE SPECIAL PRINTING  
 This stamp was in the upper left position of the Caspary block of four. With 1957 P.F.  
 certificate ..... 18,000.00



- 207° ★ **4c Deep Blue Green, Special Printing (211D).** Right sheet margin, perfectly centered,  
 intense shade and impression  
 THIS SUPERB STAMP RANKS AMONG THE VERY FINEST OF THE APPROXIMATELY 25 CON-  
 FIRMED EXAMPLES OF THE 4-CENT SPECIAL PRINTING  
 Ex Col. Green and Hewitt. Signed Gotzinger. With 1945 A.P.S. and 1981 P.F.  
 certificates ..... 15,000.00



208



210



211



212



213



214



217

- 208°★ **2c Pale Red Brown, Special Printing (211B).** Original gum, Extremely Fine and fresh ..... 500.00
- 209°★ **1c-10c 1882-83 Bank Notes (205-211).** Original gum, h.r., each well-centered and fresh, a few with minor faults, otherwise Very Fine ..... 757.00
- 210°★ **6c Rose, Re-Engraved (206).** Original gum, fresh, exceptionally choice centering, tiny thin speck, Extremely Fine appearance, this shade is very seldom seen in this condition ..... 208.00
- 211°★★ **1c Ultramarine (212).** Mint, Extremely Fine ..... 65.00
- 212°★★ **2c Green (213).** Mint, Extremely Fine ..... 25.00
- 213°★ **3c Vermilion (214).** Lightly hinged, Extremely Fine ..... 50.00
- 214°★★ **4c Carmine (215).** Mint, Extremely Fine ..... 160.00
- 215°★ **5c, 30c, 90c 1888 Bank Notes (216-218).** Original gum, h.r., 30c & 90c reperfed, 5c creased, otherwise Very Fine ..... 1,270.00
- 216°★ **1c-30c 1890-93 Issue (219-228).** 6c & 8c Mint, others h.r., Very Fine ..... 898.00
- 217°★ **90c Orange (229).** Original gum, vibrant color, extra wide margins, Extremely Fine and choice ..... 350.00

END OF SALE—THANK YOU

This bid form may be  
faxed to (212) 753-6429



*Robert A. Siegel*



*For internal use*

AUCTION GALLERIES, INC.

PARK AVENUE TOWER, 17th FLOOR • 65 EAST 55th STREET  
NEW YORK, NEW YORK 10022  
TEL. (212) 753-6421 • FAX (212) 753-6429

---

## BID FORM – SALE 759

---

Please purchase for me at your auction to be held **May 19, 1994**, the lots listed below, the prices annexed being my maximum bid on each lot. I agree to remit for purchases in accordance with the **Conditions of Sale** printed in this catalogue and to comply with all other terms stated in the Conditions of Sale (as may be amended by saleroom announcement). I understand that a **10% buyer's premium will be added to the final successful bid** and agree to pay for all sales tax or use tax which may be due on the total purchase price. I also understand that these bids will be executed as a service provided by Siegel Auction Galleries and that no legal responsibility shall lie with the auctioneer if these bids are not executed. I have checked the accuracy of the information contained in this bid form and will honor all bids, regardless of any errors on my part.

PLEASE LIST 2 REFERENCES BELOW  
(if you are bidding for the first time)

.....  
*Name and Current Telephone Number*

.....  
*Name and Current Telephone Number*

BANK.....

SIGNED.....

Please Print Name and Address for Invoicing:

.....

.....

.....

Telephone.....

---

### THE AMOUNT OF YOUR BIDS DOES NOT INCLUDE THE 10% BUYER'S PREMIUM

---

Lot	Bid	Lot	Bid	Lot	Bid

---

PLEASE WRITE SHIPPING INSTRUCTIONS IN SPACE PROVIDED ON REVERSE

---

\_\_\_\_\_

[illegible]

**SHIPPING INSTRUCTIONS:** Siegel Auction Galleries will be pleased to arrange for packing and shipping of lots for purchasers. Please indicate in the space below the preferred method of shipment and any special instructions (shipping address if different from billing address). Purchases under \$300 will be sent by Priority Mail; over \$300 by Registered Insured Mail; over \$2,000 by Federal Express or Express Mail; and large or bulky lots by U.P.S. **The purchaser assumes all risk of shipping, including loss or damage. Charges for shipping and insurance will be added to your invoice.**

.....

.....

.....

**“E.” = ESTIMATES:** Our sales offer many items for which there is no appropriate catalogue value. In order to assist clients, we have placed fair net valuations on such lots. These estimates should be used as a guide to bidding; lots may realize more or less than our estimates. In no case will the reserve price for any lot exceed the low estimate.

**BIDDING INTERVALS:** The auctioneer may vary the intervals between bids at his discretion. For the purpose of submitting order bids, please follow the bidding intervals below:

\$60.00 - \$140.00	\$5.00	\$750.00 - \$1,900.00	\$50.00
\$140.00 - \$300.00	\$10.00	\$1,900.00 - \$3,000.00	\$100.00
\$300.00 - \$750.00	\$25.00	\$3,000.00 & above	\$250.00

# Travel Calendar

---

Our firm will be represented at each of the following exhibitions and events.

If you wish to meet with us to discuss the sale of your collection, please contact Elizabeth C. Pope at (212) 753-6421.

**San Francisco**  
**April 29-30**

WESTPEX  
Cathedral Hill Hotel

**Boxborough, Mass.**  
**April 29-30**

PHILATELIC SHOW '94  
(U.S. CLASSICS ANNUAL MEETING)  
Boxborough Host Hotel

**Jupiter, Florida**  
**May 13-15**

STAMPOREE  
(C.S.A. ANNUAL MEETING)  
Jupiter Beach Resort

**Atlanta, Georgia**  
**May 24-28**

THE MANUSCRIPT SOCIETY  
ANNUAL MEETING  
The Ritz-Carlton (Buckhead)

**Dallas, Texas**  
**June 10-12**

TEXPEX  
Embassy Suites

**Washington, D.C.**  
**June 24-26**

NAPEX  
Sheraton National Hotel,  
Arlington



PAID

24

Messrs. Chamberlay & Whelan

Philadelphia  
Pa.



Free on Order TELEGRAM BY THE

WEBBINS LINE.

Free W. H. Russell

Ben Holliday Esq  
San Francisco  
Cal

from  
W. H. Russell