

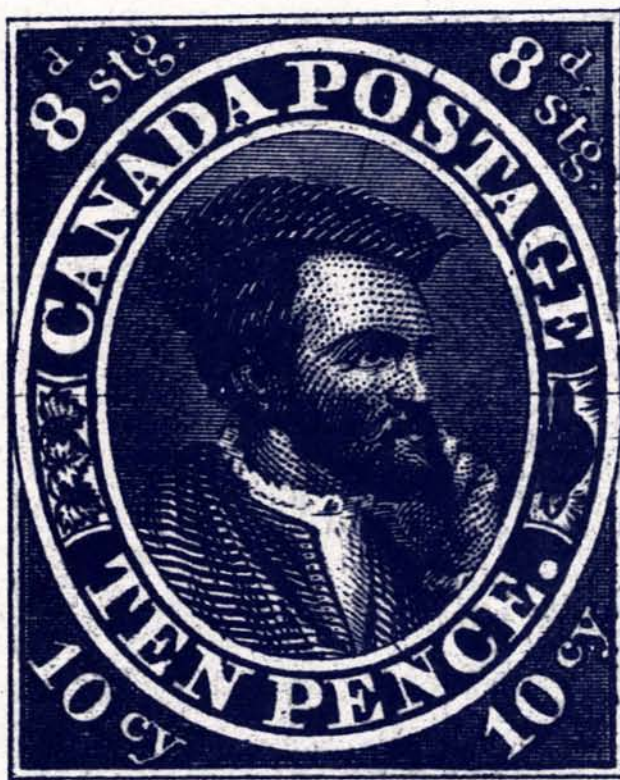
Sale 762

Thursday, September 29, 1994

CANADA AND BRITISH NORTH AMERICA
STAMPS AND COVERS

Featuring

The Guilford Collection of
Canada Pence Issues



Robert A. Siegel

AUCTION GALLERIES, INC.

PARK AVENUE TOWER, 17th FLOOR • 65 EAST 55th STREET
NEW YORK, NEW YORK 10022 • TEL. (212) 753-6421



Robert A. Siegel

AUCTION GALLERIES, INC.

PARK AVENUE TOWER, 17th FLOOR • 65 EAST 55th STREET
NEW YORK, NEW YORK 10022
TEL. (212) 753-6421 • FAX (212) 753-6429

Scott R. Trepel

President

Roberta Siegel Edelstein

Vice President

Elizabeth C. Pope

Vice President

Administration

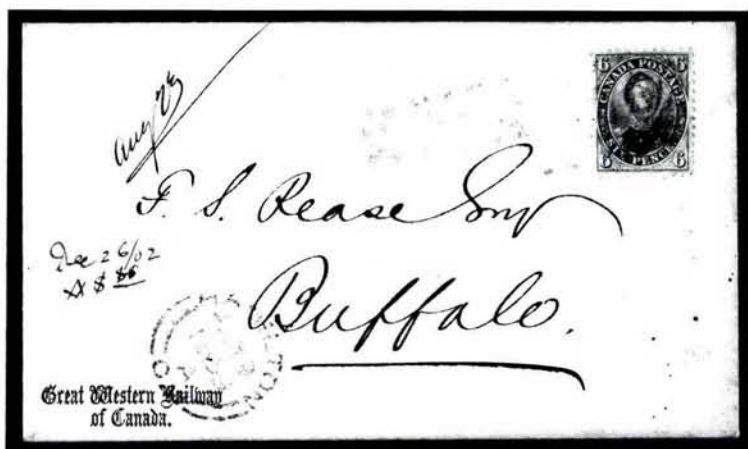
Cindy Stein
Rosanne Trepel
Khem Persaud

Descriptions

Chris Anderson
David Petruzelli
Scott R. Trepel

Robert A. Siegel

1913-1993



1859, 6p Brown Violet, Perforated (13, SG 27) tied on Great Western Railway imprint cover (lot 2171)

Canada and British North America Stamps and Covers

Featuring

The Guilford Collection of
Canada Pence Issues

A Portion of An Award-Winning
Classic Canada Exhibit Collection

A Canada 5c Seaway Invert
from The Elizabeth R. Bell Trust

Vancouver Island and British Columbia
from The Wellburn Collection

Thursday, September 29, 1994
at 1:30 p.m. (Lots 2001-2407)

Pre-Sale Exhibition

Friday, September 23	10:30 a.m. - 4:00 p.m.
Saturday, September 24	By appointment only
Monday, September 26	9:00 a.m. - 4:00 p.m.
Tuesday, September 27	9:00 a.m. - 12:00 noon
Thursday, September 29	9:00 a.m. - 12:00 noon

Please note that there is no viewing on Wednesday, September 28th

To arrange an appointment for viewing at another time,
please feel welcome to call (212) 753-6421.

Arrangement of Sale

Category	Pages
1851 Laid Paper Issue	5-13
1852-57 Wove Paper Issue..	14-39
1858-59 Perforated Issue	40-43
COLOR PLATES	44-55
1859-64 Cents Issue	56-61
1864-93 Large and Small Queen Issues.....	62-63
1897 Jubilee and 1897-1902 Victoria Issues ...	64-66
1903 Edw. VII to Date	66-70
Canada Collections and Balances	71
Vancouver Is. and British Columbia.....	72-81
Incoming Mail to British Columbia.....	82-87
New Brunswick to Prince Edward Island	88-91

Conditions of Sale

The property described in this catalogue will be offered at public auction by Robert A. Siegel Auction Galleries, Inc. ("Galleries") on behalf of various consignors and itself or affiliated companies. By placing a bid on any lot, the bidder acknowledges acceptance of and will be bound to these Conditions of Sale.

1. The highest bidder acknowledged by the auctioneer shall be the buyer. The term "final bid" means the last bid acknowledged by the auctioneer, which is normally the highest bid offered. **The purchase price payable by the buyer will be the sum of the final bid and a commission of 10% of the final bid ("buyer's premium"), together with any sales tax or use tax which may be due on the sale.**

2. The auctioneer has the right to reject any bid, to advance the bidding at his discretion and, in the event of a dispute between bidders, to determine the successful bidder, to continue the bidding or to reoffer and resell the lot in dispute. The Galleries' record of the final sale shall be conclusive.

3. All bids are per numbered lot in the catalogue unless otherwise announced by the auctioneer at the time of sale. The right is reserved to group two or more lots, to withdraw any lot or lots from the sale, or to act on behalf of the seller. The Galleries will execute bidding instructions on behalf of clients, but will not be responsible for any errors in the execution of such bids.

4. **Lot numbers followed by the symbol * are offered subject to one or more of the following conditions:** (i) the lot is subject to a minimum final bid ("reserve"), below which it will not be sold, (ii) the Galleries have advanced monies to the seller and have a financial interest in the lot, (iii) the Galleries have guaranteed the seller a minimum sale price, and (iv) the Galleries may have ownership interest in the lot, either in part or whole. The absence of the symbol * means that the lot is offered without reserve.

5. Any lot, the description of which is obviously incorrect, is returnable, but only if the lot is returned within 14 days of receipt. All disputed lots must be returned intact with the original packing material. **The following lots may not be returned for any reason: Lots containing ten or more items; lots from buyers who have registered for the pre-sale exhibition or received lots by postal viewing, thereby having had the opportunity to inspect them before the sale; any lot described with "faults" or "defects" may not be returned because of any fault or defect. No illustrated lots may be returned because of centering, margins or other factors shown in the illustrations.**

6. Successful bidders, unless they have established credit with the Galleries prior to the sale, must make payment in full before the lots will be delivered. Buyers not known to the Galleries must make payment in full within three days from the date of sale. The Galleries retain the right to

demand payment at the time the lot is knocked down to the highest bidder, for any reason whatsoever. In the event that any buyer refuses or fails to make payment in cash for any lot at the time it is knocked down to him, the auctioneer reserves the right to reoffer the lot immediately for sale to the highest bidder.

7. If the purchase price has not been paid within the time limit specified above, nor lots taken up within seven days from the date of sale, the lots will be resold by whatever means deemed appropriate by the Galleries, and any loss incurred from resale will be charged to the defaulting buyer. Any account more than thirty days in arrears will be subject to a late payment charge of 1½% per month as long as the account remains in arrears. Any expenses incurred in securing payment from delinquent accounts will be charged to the defaulter.

8. All lots are sold as genuine. **Any lot which is accompanied by an expert certificate (for U.S. items, the accepted authority is The Philatelic Foundation), dated within the past five years of the sale date, is sold "as is" and in accordance with the description on the certificate. Such lots may not be returned for any reason, including but not limited to a contrary certificate of opinion obtained after the sale.** Buyers who wish to obtain a certificate for any item that is not accompanied by a certificate dated within the past five years may do so, provided that the following conditions are met: (1) the purchase price must be paid in full, (2) the item must be submitted to an acceptable expertizing committee with a properly executed application form within 21 days of the sale, (3) a copy of the application form must be given to the Galleries, (4) in the event that an adverse opinion is received, the Galleries retain the right to resubmit the item on the buyer's behalf for reconsideration, without time limit or other restrictions, (5) unless written notification to the contrary is received, items submitted for certification will be considered cleared 90 days from the date of sale, and (6) in the event any item is determined to be "not as described", the buyer will be refunded the purchase price, plus interest accrued on the purchase price at the prevailing Treasury Bill Rate from the date of payment, and the certification fee up to \$100.00 unless otherwise agreed.

9. Until paid for in full, all lots remain the property of the Galleries on behalf of the seller.

10. Agents executing bids on behalf of clients will be held responsible for all purchases made on behalf of clients unless otherwise arranged prior to the sale.

11. The buyer assumes all risk for delivery of purchased lots, and agrees to pay for all out-of-pocket costs incurred in shipping.

SCOTT R. TREPEL

N.Y.C. Auctioneer's License No. 795952

RASAG 1/94

Terms and Abbreviations Used in Descriptions

Centering

The width of margins and the centering of the design within perforations are graded in strict accordance with the Scott Standard Postage Stamp Catalogue standards. The following grades are used in this catalogue:

Extremely Fine (EF): Exceptionally large margins or near perfect centering, used to describe stamps which are of superior grade for the issue.

Very Fine (VF): Normal size margins for the issue and well-centered with design a bit closer to one side. **Please note that this grade is superior to the one on which Scott Catalogue retail prices are based.**

Fine (F): Imperforate stamps may have smaller than usual margins and perforated stamps will be noticeably off-center. Issues before 1890 may have the design touched in places. If used, fairly lightly cancelled.

Very Good (VG): Attractive appearance, but margins or perforations may cut into.

Good (G): Average off-centered example with slight faults. This condition is generally acceptable for multiples and rarities.

Gum

Stamps issued before 1900 should not be expected to have original gum unless specifically stated in the description. 20th Century issues may be expected to have original gum unless described otherwise. Terms used to describe the condition of gum are as follows:

Mint: As issued by the post office and never hinged.

Original Gum (O.G.): Stamp retains full original gum showing slight disturbance caused by previous hinge, which may be present or entirely removed. Early 19th century stamps should be expected to show crackling and toning in gum, which occurs naturally over time.

Part Original Gum: Up to half of the gum is missing, but the remaining portion is original.

Disturbed Original Gum: The gum is original to the stamp, but has been noticeably affected by hinge removal and/or humidity, mount glazing, etc.

Hinge Mark: Noticeable area where hinge has been removed and gum has been redistributed. Stamps described with hinge marks may not be returned because of gum disturbance.

Hinge Remnant (H.R.): All or part of hinge remaining affixed to gum.

Covers

Minor nicks, tears and slight reduction from opening are to be expected in 19th century covers. Folded letters normally have tears in the reverse and file folds, which will not be mentioned unless they affect the stamps or markings. Light cleaning of covers is an accepted form of conservation and is not grounds for return of a lot. The terms "Extremely Fine", etc., are meant to convey the overall appearance of cover, not the condition of an individual stamp.

Catalogue Values and Estimates

Unless otherwise noted, U.S. stamps are catalogued according to the *Scott 1994 U.S. Specialized Catalogue* or Volume 1 (previous editions have been used to catalogue certain Special Printings). *Scott 1995* Volumes 1-5 have been used for British and foreign stamps. The *1994 Stanley Gibbons British Commonwealth Catalogue* and other foreign catalogues are cited where appropriate.

Catalogue values are indicated by decimal figures in the right column (for example, "175.00"). Stamps in extremely fine quality and items for which catalogue values are not available have been given estimate ranges (for example "E. 750-1,000"). Lots offered subject to a reserve will never be reserved for more than the estimate (usually a fraction of the estimate).

Symbols and Abbreviations

★★	Mint (never hinged)	No.	Scott Catalogue Number
★	Unused (with or without gum, as described)	cds	Circular datestamp
田	Block of four or larger	hs	Handstamp
☒	Folded letter or cover	E	Essay
o.g.	Original gum	P	Proof
pmk.	Postmark (in black unless described otherwise)	TC	Trial color proof
var.	Variety	R	Reprint

Copyright Notice: This catalogue is protected by copyright. The descriptions, format, illustrations and information used herein may not be reprinted, distributed or copied in any form without the express written consent of Robert A. Siegel Auction Galleries. Application for permission may be made in writing. © 1994, Robert A. Siegel Auction Galleries, Inc.

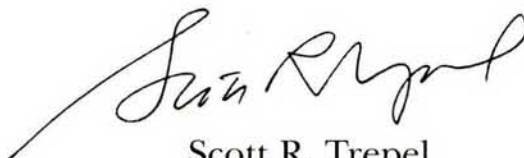
INTRODUCTION

The stamps and postal history of Canada and other British North American provinces are, in our opinion, among the most challenging and fascinating areas of philately.

They possess all that collectors could wish for: enough rarities to make the hunt exciting, yet a wealth of material sufficient to maintain a satisfying pace of acquisition and study; a vast array of plate and production varieties, not only among the 19th century issues, but well into the 20th century and back-of-book issues; a postal history as far-reaching as the North American continent and as diverse as its population and business interests; and, finally, a legacy of collecting that includes such renowned philatelists as Alfred Lichtenstein, Louise Boyd Dale, Alfred H. Caspary, and many others whose collections have been memorialized in auction catalogues.

The Siegel firm has been privileged to offer significant collections of Canada and British North America in the past, both at auction and by private treaty. In fact, 545 sales and 35 years ago, our firm presented "A Magnificent Collection of British North America 'Pence' Issues", in which a number of the choice stamps now offered will be found.

The heart of this sale is The Guilford Collection, which is presented on behalf of an anonymous collector, whose penchant for superb Pence Issues required 40 years of patience to satisfy. At the risk of stating the obvious, we doubt very much that a collection of comparable quality will be offered anytime in the near future.

A handwritten signature in dark ink, appearing to read "Scott R. Trepel", with a long, sweeping horizontal line extending to the left.

Scott R. Trepel
President

THURSDAY, SEPTEMBER 29, 1994 AT 1:30 P.M.

CANADA AND BRITISH NORTH AMERICA

CATALOGUE NUMBERS AND VALUES

We have cross-referenced Scott and Stanley Gibbons numbers where it seems appropriate, usually in the case of shades, papers or varieties more accurately classified by Stanley Gibbons. Listings preceded by "CS" refer to the Unitrade Specialized Catalogue of Canadian Stamps. Values quoted in Canadian dollars are marked "C\$".

1851-57 PENCE ISSUE ESSAYS AND PROOFS



2006



2007



2008

- 2001°P **1851-59, 3p-10p, 12½c Plate Proofs (1P/18P).** Ten different items incl. 3p & 6p proofs in Black, 6p Deep Blue trial color, 6p in three issued colors, 10p Blue, ½p Rose, all with "Specimen" overprints, and 12½c plate proof in issued color, large margins, all Very Fine or better, choice lot E. 750-1,000
- 2002°P **1851-67, ½p-10p, 1c-17c, Plate Proofs.** Twelve different (trial and issued colors) in horizontal pairs, includes three with Specimen ovpts., No. 1P shaved down, o/w Very Fine, CS \$4,950.00 E. 1,500-2,000
- 2003°P **1851, 3p Orange-Yellow, Red, Scarlet-Vermilion, Plate Proofs on India (1P).** Three colors, each with ample margins, light India paper wrinkles, Very Fine group E. 200-300
- 2004°P **1851, 6p Albert, Trial Color Plate Proofs, "Specimen" Ovpt. (2P, CS 2TCx, 2TCxi).** Gray Blue with Carmine ovpt., and Black with Orange ovpt., each a sheet margin copy, Very Fine E. 100-150
- 2005°P **1851, 6p Slate Gray, 10c Blue, ½p Rose, Plate Proofs on India (2P, 7P, 8P).** Blocks of four of each value with "Specimen" overprint, large margins incl. sheet margin at one side, Extremely Fine and choice group E. 500-600
- 2006°P **1851, 12p Black, Defaced Die Proof on India (CS 3TC).** 24 x 30mm, mounted on card, Very Fine and scarce(Photo) C\$3,000.00
- 2007°P **1851, 12p Vermilion, Defaced Die Proof on India (CS 3TC).** 24 x 29mm, mounted on card, Very Fine and rare(Photo) C\$3,000.00
- 2008°P **1851, 12p Black, Plate Proof on India, "Specimen" Ovpt. (CS 3P).** Carmine "Specimen" overprint (vertical reading up), large margins incl. sheet margin at left, Extremely Fine(Photo) C\$1,500.00

1851 ISSUE ON LAID PAPER

3-PENCE BEAVER



2009

- 2009°★ **1851, 3p Red, Laid (1, SG 1).** Unused, ample to large margins, fresh and bright color, clear impression, faint horizontal crease, otherwise Very Fine, rare in unused condition, with 1969 B.P.A. certificate(Color Photo) 10,000.00



2010

- 2010° **1851, 3p Red, Laid (1, SG 1a).** Large to huge margins including portion of bottom sheet margin, brilliant color and impression, neat target cancel, Extremely Fine Gem(Color Photo) 350.00

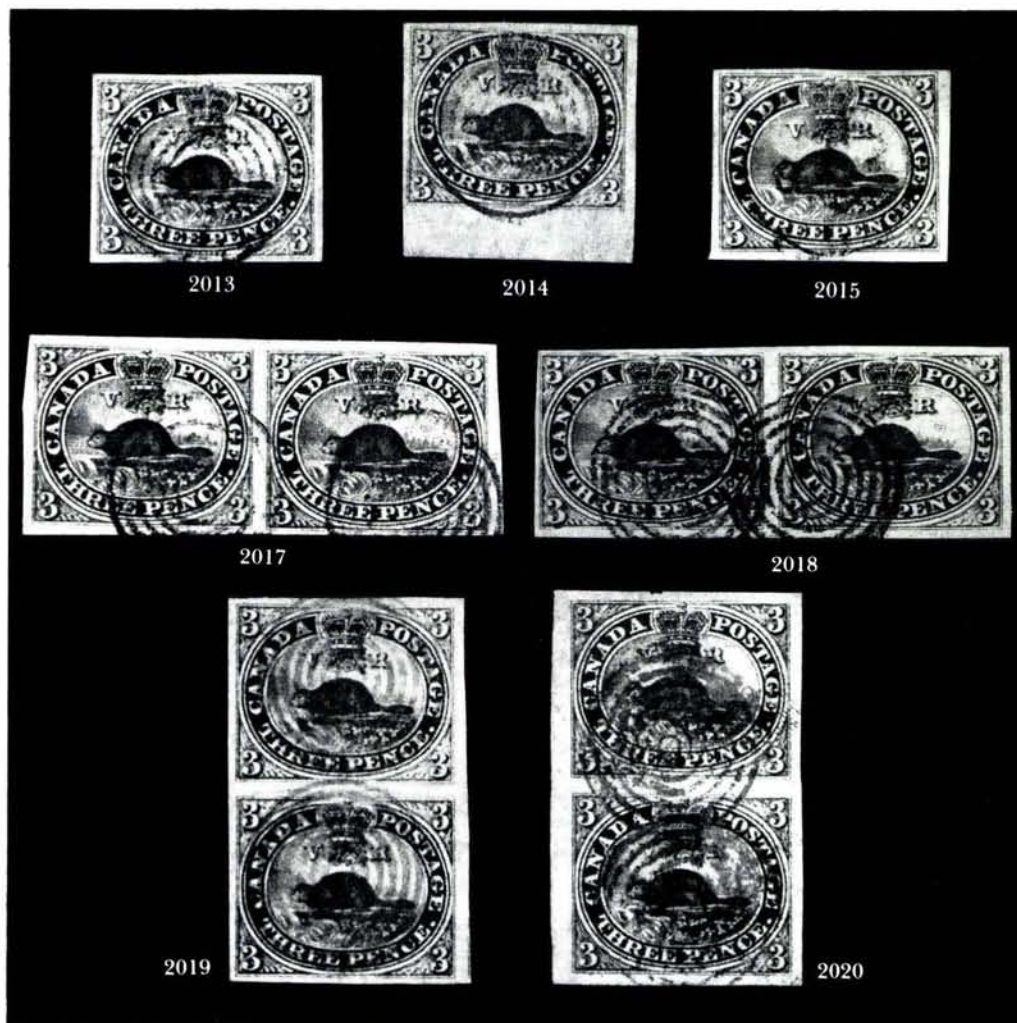


2011



2012

- 2011° **1851, 3p Red, Laid (1, SG 1).** A magnificent top right corner margin copy with large margins all around, lightly struck target, tiny tear in top edge of sheet margin noted for the record but of no significance, Extremely Fine, ex Dale-Lichtenstein (Sale 2) where this superb stamp realized \$650(Color Photo) 350.00
- 2012° **1851, 3p Red, Laid (1, SG 1).** A phenomenal top right corner copy with enormous sheet margins, others large to just touching at bottom right outer frameline, sharp target cancel, Extremely Fine(Color Photo) 350.00

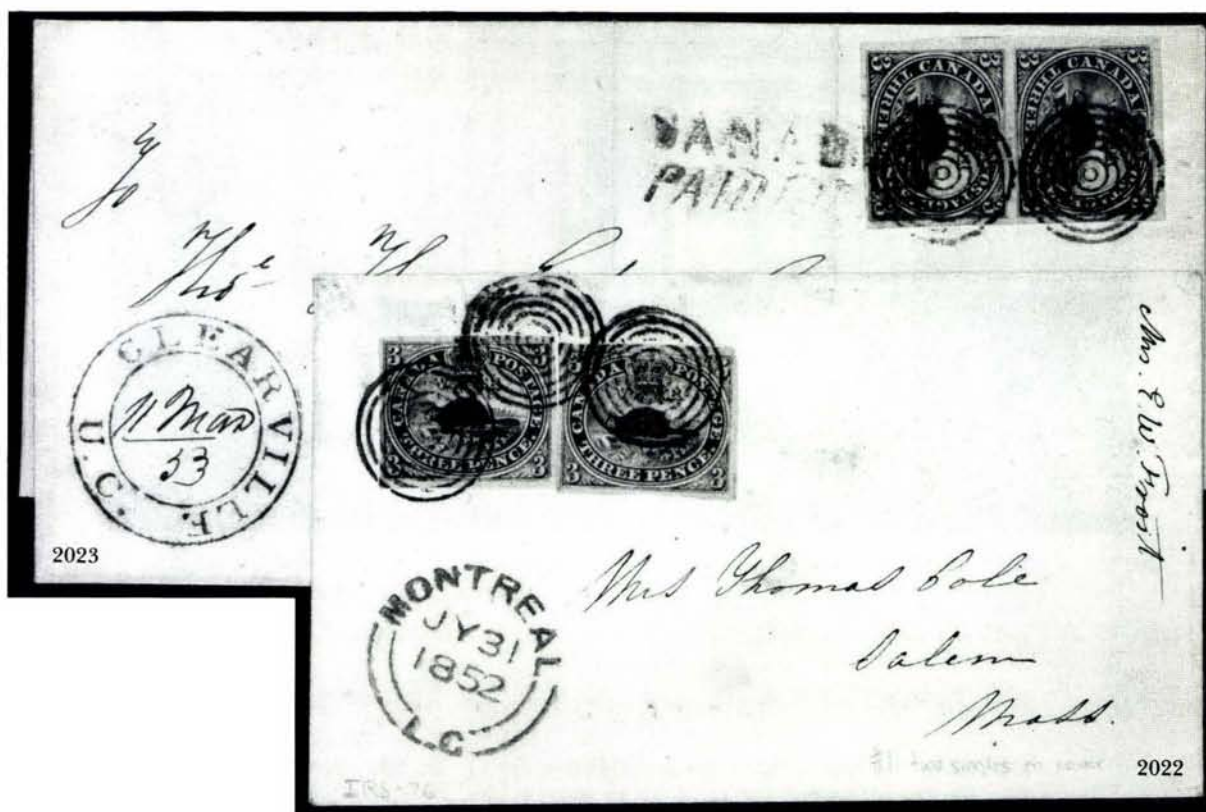


- 2013° **1851, 3p Red, Laid (1, SG 1).** Large margins incl. huge bottom sheet margin, neat target cancel, Extremely Fine(Photo) 350.00
- 2014° **1851, 3p Red, Laid (1, SG 1).** Large even margins, target cancel, Extremely Fine, with 1980 P.F. certificate(Photo) 350.00
- 2015° **1851, 3p Red, Laid (1, SG 1).** Close to large margins, unusual “3D” cancel, Very Fine(Photo) 350.00
- 2016° **1851-1855, 3p Red, Laid, Thin & Ribbed Wove (1, 4c, 4d).** Two No. 1, four No. 4d, two No. 4c, one No. 1 defective, other small faults, F-VF appearing 1,850.00
- 2017° **1851, 3p Red, Laid (1, SG 1).** Horizontal pair, large margins, vivid color and fine impression, neat target cancels, Very Fine to Extremely Fine and choice(Photo) 700.00 +
- 2018° **1851, 3p Red, Laid (1, SG 1).** Horizontal pair, large margins to ample at left, bright attractive color, neat targets, Very Fine to Extremely Fine(Photo) 700.00 +
- 2019° **1851, 3p Red, Laid (1, SG 1).** Vertical pair, bold red target cancels, large margins, color slightly oxidised, horizontal crease between stamps, tiny scissors cut in R. margin, still Extremely Fine appearance and very scarce canceled in red(Photo) 700.00 +
- 2020° **1851, 3p Red, Laid (1, SG 1a).** Vertical pair, huge margins incl. sheet margin at left, top stamp with small scissor cut in right margin, the bottom stamp would make a magnificent single, Extremely Fine(Photo) 700.00 +



2021

- 2021° 1851, 3p Red, Laid (1, SG 1). Horizontal strip of four, three large margins, ample to clear at top, bright color, target cancels and part of red "Canada" cross-border hs, two small tears in top of left-hand pair, negligible considering the Very Fine appearance of this rare Beaver multiple(Color Photo) E. 1,500-2,000



- 2022° 1851, 3p Red, Laid (1, SG 1). Two choice singles with ample to large margins, very slightly oxidized, tied by bold targets on small white cover with red "Montreal L.C. Jy31 1852" cds, to Mrs. Thomas Cole at Salem Mass., Very Fine cover bearing the laid paper issue(Photo) E. 1,000-1,500
- 2023° 1851, 3p Red, Laid (1, SG 1). Pair (pos. 31-41, lower pane), large margins, very slightly oxidized, tied by target cancels on 1853 folded letter to Michigan, "Clearville U.C." double-circle hs with ms. "11 Mar/53" date, file folds not affecting stamps, Extremely Fine, ex Dale-Lichtenstein(Color Photo) E. 1,000-1,500

1851 6-PENCE ALBERT ON LAID PAPER



2024

2024°★ **1851, 6p Grayish Purple, Laid (2, SG 2).** Unused with large even margins, fresh and rich color

AN EXTREMELY FINE EXAMPLE OF THE 6-PENCE LAID PAPER ISSUE, WHICH IS AMONG THE RAREST OF THE PENCE ISSUES IN UNUSED CONDITION

With 1986 Vincent Graves Greene certificate, Stanley Gibbons cat. £7,500
(Color Photo) 10,000.00



2025



2026

2025° **1851, 6p Grayish Purple, Laid (2, SG 2).** Top left corner margin copy with large sheet margins, right margin large, clear to ample at bottom, target cancel, deep shade, Extremely Fine and rare corner position from the laid paper issue
(Color Photo) 550.00

2026° **1851, 6p Grayish Purple, Laid (2, SG 2).** Large even margins all around, attractive blue target cancel, deep shade and fine impression, Extremely Fine Gem
(Color Photo) 550.00



2027



2028

2027° **1851, 6p Grayish Purple, Laid (2, SG 2).** Large to huge margins, wonderful prooflike color and impression, neat target cancel, tiny natural wood fiber inclusion, Extremely Fine, with 1974 B.P.A. certificate(Color Photo) 550.00

2028° **1851, 6p Grayish Purple, Laid (2, SG 2).** Large margins incl. frameline of adjoining stamp at bottom, target and part of red cancels, Extremely Fine Gem
(Color Photo) 550.00



- 2029° **1851, 6p Grayish Purple, Laid (2, SG 2).** Large to enormous margins, bold target cancel, Extremely Fine and choice(Photo) 550.00
- 2030° **1851, 6p Grayish Purple, Laid (2, SG 2).** Large margins, bold target, Extremely Fine(Photo) 550.00
- 2031° **1851, 6p Grayish Purple, Laid (2, SG 2).** Large even margins, choice quality, Extremely Fine(Photo) 550.00
- 2032° **1851, 6p Grayish Purple, Laid (2, SG 2).** Three large margins, ample to clear at left, blue target cancel, Very Fine, ex Geldert, with 1956 R.P.S. certificate. (Photo) 550.00
- 2033° **1851, 6p Grayish Purple, Laid (2, SG 2).** Vertical pair with almost half of adjoining stamp below (the extra portion lightly creased), the pair has huge margins to clear at top left, neat target cancels, deep shade and impression, Extremely Fine and very scarce as a multiple on laid paper(Photo) 1,100.00 +
- 2034° **1851, 6p Grayish Purple, Laid (2, SG 2).** Vertical pair, large margins all around, an Extremely Fine pair(Photo) 1,100.00 +
- 2035° **1851, 6p Grayish Purple, Laid (2, SG 2).** Horizontal pair, large margins to just touched at top left frameline, target cancels, bright shade and Very Fine. (Photo) 1,100.00 +



2036

- 2036° **1851, 6p Grayish Purple, Laid (2, SG 2).** Horizontal strip of three, large margins to just touching, target cancels, faint corner crease and small nick in top margin of left stamp, still a Very Fine and rare multiple of the laid paper issue. **(Color Photo)** 1,650.00+
- 2037° **1851, 6p Grayish Purple, Laid (2, SG 2).** Intense shade and prooflike impression, large even margins except close at extreme top left corner, tied by target, red "Montreal L.C. De13 1852" cds and "Canada" cross-border hs on fresh white cover to Mrs. Francis Parkman at Boston Mass., pristine and Extremely Fine, ex Vincent Graves Greene**(Color Photo)** E. 1,200-1,500
- 2038° **1851, 6p Grayish Purple, Laid (2, SG 2).** Ample to large margins incl. sheet margin at left, tied by target cancel on 1853 folded letter to New York, red "Montreal L.C. Mr31 1853" cds, matching "Canada" in frame, red "Paid" in arc applied at N.Y., Very Fine**(Photo)** E. 800-1,000

1851 12-PENCE VICTORIA ON LAID PAPER



2039

2039°★ **1851, 12p Black, Laid (3, SG 4).** Unused, fine impression, margins all around, large at top and bottom

A VERY FINE UNUSED EXAMPLE OF THE RAREST CANADA PENCE ISSUE AND ONE OF THE WORLD'S MOST DESIRABLE CLASSIC IMPERFORATE STAMPS

This 1851 12p is accompanied by two certificates issued by The Philatelic Foundation. The first opinion, given in 1953, describes the stamp as genuine. The second, given in 1985, states "genuine with an ironed out horizontal crease." We could find no evidence of a crease and, to confirm this observation, we soaked the stamp in warm water, which will always return a pressed crease to its original state. After soaking, the stamp still shows no evidence whatsoever of a crease. In watermark fluid there is a faint horizontal seam line, which is a well-established part of the laid lines of any 1851 issue on this type of paper. Therefore, the 1985 Foundation opinion apparently has mistaken the natural seam of the laid paper lines to be an ironed crease. We hope our analysis and explanation will set the record straight.

Stanley Gibbons cat. £60,000(Color Photo) 60,000.00



2040

2040° **1851, 12p Black, Laid (3, SG 4).** Large margins all around, intense shade and impression, very fresh with two bold overlapping target cancels, sound in every respect
 THE RAREST AND MOST CELEBRATED OF THE PENCE ISSUES
 With 1961 P.F. certificate signed by Louise Boyd Dale, Stanley Gibbons cat. £40,000
(Color Photo) 30,000.00



2041

2041° **1851, 12p Black, Laid (3, SG 4).** Three ample to large margins, just into outer
 frameline at lower left, neat target cancel centrally struck around portrait, sound in
 every respect
 A FINE USED EXAMPLE OF THIS CLASSIC IMPERFORATE RARITY
 Stanley Gibbons cat. £40,000(Color Photo) 30,000.00

1852 ISSUE ON WOVE PAPER

A NOTE REGARDING SHADES AND PAPERS

There are few areas more confusing in philately than the 1852-57 Pence Issue printings. Consistent classification of shades and papers, particularly of the 3p Beaver stamp, is notoriously difficult. Part of the reason for this is the great difference between the Scott and Stanley Gibbons catalogue listings and the subjectiveness in evaluating color names. The other factor is the effect of time and environment on the colors and papers, which is especially evident in the myriad 6p shades. In offering a substantial number of Pence Issues, we have endeavored to assign basic colors to each stamp. Other than the major rarities whose values are dependent on proper identification, no lot may be returned because of a minor mis-classification of color or paper. This disclaimer has appeared in virtually every significant Canada Pence offering, and we are believers in tradition.

1852 3-PENCE BEAVER—OFF-COVER SINGLES (RED SHADES)

2042° ★	1852, 3p Deep Red, Wove (4, SG 18). Unused with large even margins, intense shade and impression, Extremely Fine Gem, signed Bloch(Color Photo) 1,000.00
2043° ★	1852, 3p Red, Thin Wove (4d, SG 5). Top sheet margin copy with large even margins all around, original gum, deep shade, faint vertical crease and tiny thin speck, Extremely Fine appearance(Color Photo) 1,000.00
2044° ★	1852, 3p Red, Thin Wove (4d, SG 5). Unused, large margins, fresh color, minor corner crease at B.L., o/w Very Fine(Photo) 1,000.00
2045° ★	1852, 3p Red, Wove (4, SG 5). Original gum, h.r., margins just touch frameline at T.R., o/w ample to large margins, bright fresh color, Fine(Photo) 1,000.00
2046°	1852, 3p Red, Thin Wove (4d, SG 5). Top right corner copy with enormous margins all around, beautiful rich color and clear impression, Extremely Fine and choice, with 1979 R.P.S. certificate(Color Photo) 150.00
2047°	1852, 3p Red, Thin Wove (4d, SG 5). Large margins, deep shade, Extremely Fine(Photo) 150.00
2048°	1852, 3p Red, Thin Wove (4d, SG 5). Top left corner copy with enormous margins except where touched at upper right, light smudged target cancel, horizontal crease at B., otherwise Very Fine(Photo) 150.00
2049°	1852, 3p Red, Thin Wove (4d, SG 5). Large margins, vivid color and impression, neat target clear of the Beaver, tiny corner crease at T.R., still Extremely Fine(Photo) 150.00
2050°	1852, 3p Red, Brown Red (4, 4a; SG 5, 8). Large margins, No. 4 small faults, No. 4a light soiling, Very Fine appearance 215.00
2051°	1852, 3p Red, Wove (4, shades). Six examples, mostly large margins, two showing broken framelines, one with Montreal & Kingston R.R. cancel, a few tiny flaws, o/w F-VF 570.00

SCARLET-VERMILION AND BROWN RED SHADES

2052°	1852, 3p Scarlet-Vermilion, Thin Wove (4d, SG 7). An astounding bottom left corner position copy with gigantic sheet margins and huge margins all around, deep rich color, bold target cancel, Extremely Fine(Color Photo) 150.00
2053°	1852, 3p Scarlet-Vermilion, Thin Wove (4d, SG 7). Large to huge margins incl. part of adjoining stamp at left, lightly struck target, faint internal wrinkles, still Extremely Fine(Photo) 150.00
2054°	1852, 3p Scarlet-Vermilion, Thin Wove (4d, SG 7). Vivid color, large margins, neat target clear of Beaver, Very Fine and choice(Photo) 150.00



2042



2043



2044



2045



2046



2047



2048



2049



2054



2052



2053

- 2055° **1852, 3p Brown Red, Wove (4a, SG 8).** Large even margins, deep shade, lightly canceled, Extremely Fine(Photo) 125.00
- 2056° **1852, 3p Brown Red, Wove (4a, SG 8).** Large margins, target cancel, Very Fine(Photo) 125.00

THE MAJOR RE-ENTRY

- 2057° **1852, 3p Brown Red, Wove, Major Re-Entry (4a, SG 8b).** Large even margins, deep rich color and impression, pos. 47 pane A, showing **major re-entry in EE PEN**, blue "5" numeral cancel, Extremely Fine, choice example of this scarce plate variety, Stanley Gibbons cat. £650(Color Photo) 125.00
- 2058° **1852, 3p Red, Thin Wove, Major Re-entry (4a, SG 8b).** Pos. 47 pane A, close to large margins, small thin spot, Very Fine appearance, Stanley Gibbons cat. £650(Photo) 125.00

1852 3-PENCE BEAVER MULTIPLES (RED SHADES)

- 2059° **1852, 3p Red, Thin Wove (4d, SG 5).** Bottom sheet margin horizontal pair, large margins all around, lightly struck targets and large part of red "Canada" cross-border hs, faint corner crease at B.L., still Extremely Fine, ex Dale-Lichtenstein(Color Photo) 300.00 +
- 2060° **1852, 3p Red, Wove (4, SG 5).** Horizontal pair, large margins all around, rich color, lightly canceled by **bright green** target cancels, a minute scissors cut at top between stamps mentioned only to emphasize the Extremely Fine quality of this pair(Color Photo) 190.00 +
- 2061° **1852, 3p Red, Thin Wove (4d, SG 5).** Horizontal pair, large even margins, vibrant color, neat **blue** target cancels, right stamp shows minor double transfer, horizontal scissors cut along margin at top left, still Extremely Fine(Photo) 190.00 +
- 2062° **1852, 3p Brown Red, Wove (4a, SG 8).** Horizontal pair, large margins, tiny corner margin creases, o/w Extremely Fine(Photo) 190.00 +
- 2063° **1852, 3p Red, Wove (4, SG 5).** Vertical pair with top sheet margin, "15" in rings cancel (Guelph, U.C.), rarity factor 8 (very rare), Fine-Very Fine(Photo) 190.00 +
- 2064° **1852, 3p Brown Red, Wove (4a, SG 8).** Vertical pair, large margins to ample at lower left, target cancels, deep shade, much of the original gum still present, Extremely Fine and choice(Photo) 250.00 +
- 2065° **1852, 3p Brown Red, Wove (4a, SG 8).** Vertical pair, large even margins, deep shade, light indistinct cancels, tiny wrinkle in bottom stamp, still Extremely Fine and choice(Photo) 250.00 +



2055



2056



2057



2058



2059



2060



2061



2062



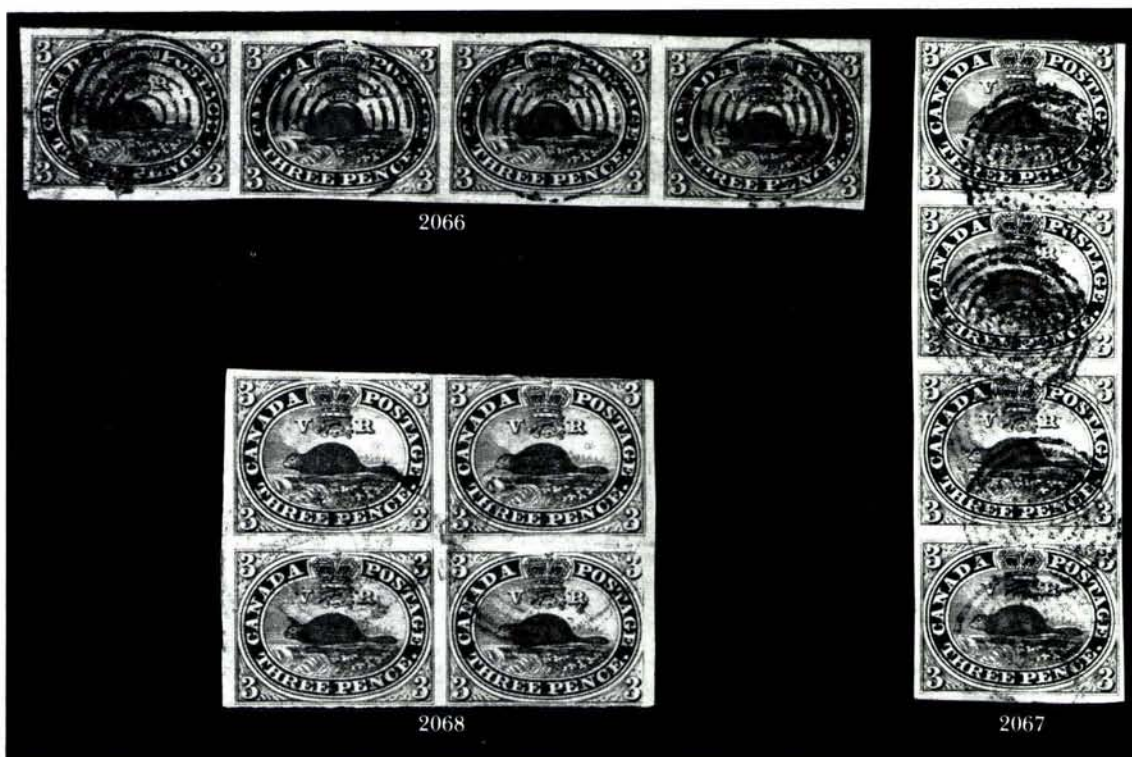
2063



2064



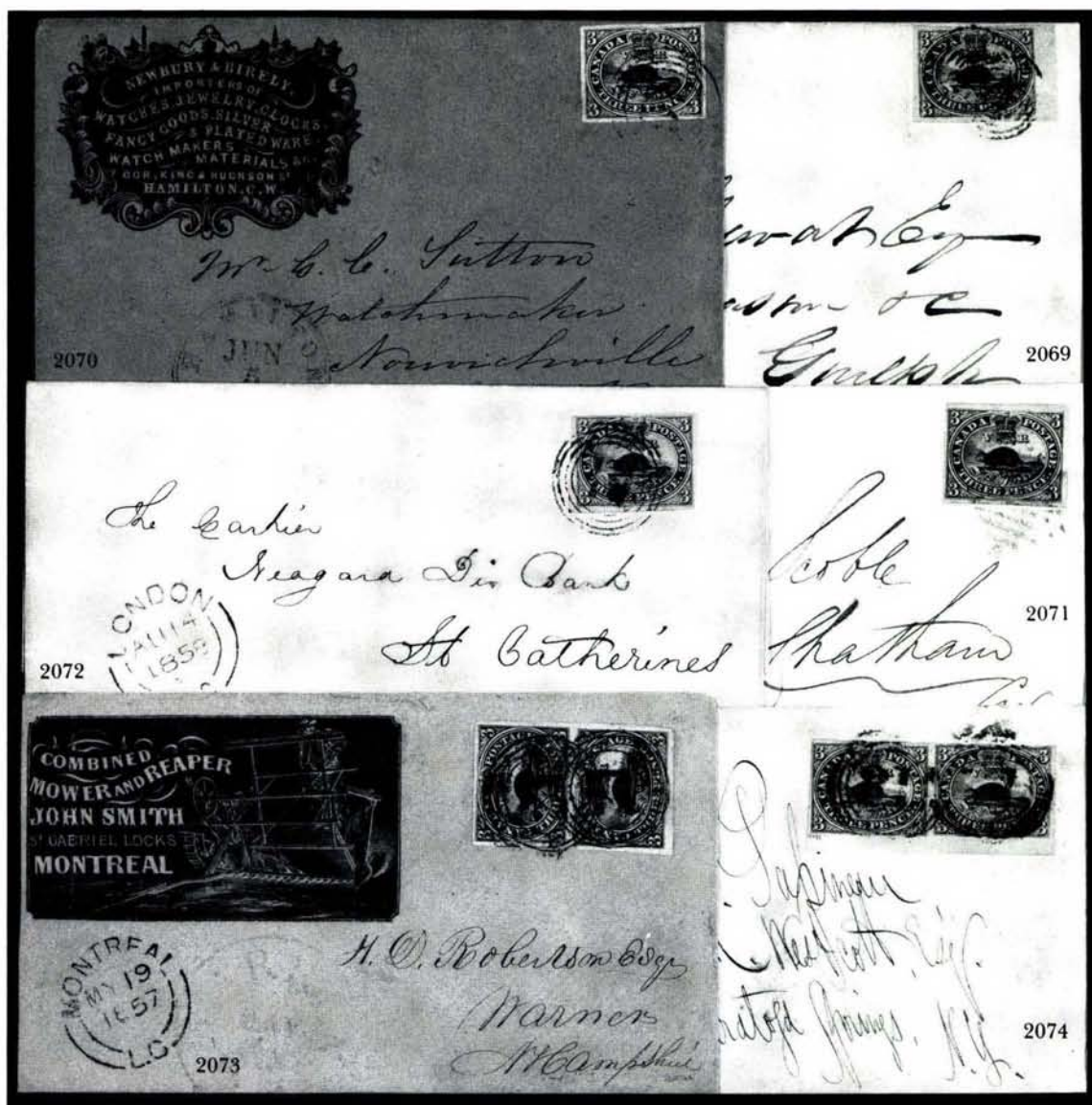
2065



- 2066° **1852, 3p Red, Thin Wove (4d, SG 5).** Horizontal strip of four, large margins, rich color, target cancels, negligible margin tear, light crease and thin speck, of little significance in this scarce multiple, Extremely Fine appearance(Color Photo) 600.00+
- 2067° **1852, 3p Red, Wove (4, SG 5).** Vertical strip of four, mostly ample to large margins, touched at top, target cancels, small thin and corner crease in bottom stamp only, otherwise Very Fine and scarce multiple(Photo) 380.00+
- 2068°田 **1852, 3p Red, Wove (4, SG 5).** Block of four, bright rich color, large margins to touching or cutting at top and bottom, lightly struck numeral cancels, Fine and a very scarce used block(Color Photo) E. 500-750

1852 3-PENCE BEAVER COVERS (RED SHADES)

- 2069° ∞ **1852, 3p Deep Red, Thin Wove (4d, SG 6).** A superb right sheet margin copy with large margins all around, tied by target, July 1854 cds on small neat cover to Guelph U.C., Extremely Fine Gem(Photo) E. 500-600
- 2070° ∞ **1852, 3p Red, Wove (4, SG 18).** Marvelous 1857 color and impression, large even margins, tied by "16" numeral cancel, "Hamilton C.W. Jun. 5, 1857" cds on buff cover with handsome blue embossed woodcut corner card of **watchmaker and jewelry importer**, Extremely Fine, absolute perfection(Color Photo) E. 600-800
- 2071° ∞ **1852, 3p Brown Red, Wove (4a, SG 8).** Ample to large margins, deep shade and prooflike impression, tied by strongly impressed square grid, "Toronto C.W. Nov. 18" cds on small white cover to Chatham C.W., Very Fine(Photo) E. 200-250
- 2072° ∞ **1853, 3p Brown Red, Wove (4a, SG 8).** Tied by numeral "19" cancel on Aug. 1858 folded letter from London U.C. to St. Catherines (backstamp), Very Fine(Photo) E. 200-250



2073° 1852, 3p Brown Red, Wove (4a, SG 8). Vertical pair, large margins all around, remarkable deep rich color, tied by two bold strikes of "21" numeral cancel, "Montreal L.C. My19 1857" cds on cover to Warner N.H. with blue **illustrated mower and reaper manufacturer's corner card**, presumably missent and forwarded from Warren N.H. with their blue cds, other than a small mended nick at bottom the cover is Very Fine, a scarce advertising usage in exceptional condition, ex Vincent Graves Greene (Color Photo) E. 750-1,000

2074° 1852, 3p Deep Red, Wove (4, SG 5). Horizontal pair from B.R. sheet margin (pos. 99-100) showing small portion of **imprint**, tied by "21" numeral cancels on Jul. 1858 cover from Montreal to Saratoga Springs N.Y., Very Fine (Photo) E. 400-500

1852-55 6-PENCE ALBERT ON WOVE PAPER

Please see note preceding lot 2042



2075

2075°★ **1852, 6p Slate Gray, Wove (5, SG 9).** Large part original gum, large even margins, superb color and prooflike impression

A FLAWLESS EXAMPLE OF THIS PENCE ISSUE, WHICH IS OF THE UTMOST RARITY IN SOUND UNUSED CONDITION

Ex Eno. With 1980 Vincent Graves Greene certificate, Stanley Gibbons cat. £7,500
(Color Photo) 7,500.00



2076



2077



2078



2079

2076° **1852, 6p Slate Gray, Wove (5, SG 9).** Remarkable large even margins showing trace of adjoining stamp below, target cancel, distinctive shade toward greenish, fresh and Extremely Fine Gem(Color Photo) 400.00

2077° **1852, 6p Slate Gray, Wove (5, SG 9).** Large even margins, excellent color and impression, well-struck Toronto cds, Extremely Fine Gem(Color Photo) 400.00

2078° **1852, 6p Slate Gray, Wove (5, SG 9).** Large margins all around, fresh, Extremely Fine(Color Photo) 400.00

2079° **1852, 6p Slate Gray, Wove (5, SG 9).** Top left corner margin copy with large margins all around, neat target cancel, negligible corner crease at top right, still Extremely Fine, scarce corner position(Color Photo) 400.00



- 2080° **1852, 6p Slate Gray, Wove (5, SG 9).** Large margins, lightly canceled by target, Extremely Fine, with 1981 Vincent Graves Greene certificate(Photo) 400.00
- 2081° **1852, 6p Slate Gray, Wove (5, SG 9).** Remarkably deep shade and clear impression, huge margins showing part of adjoining stamp above, well-struck "21" numeral cancel, trace of corner crease at lower right shows in fluid, mentioned for the record and in no way affecting the Extremely Fine appearance of this stamp, ex Greene(Photo) 400.00
- 2082° **1852, 6p Slate Gray, Wove (5, SG 9).** Large margins, lightly struck square grid cancel, fresh color and Extremely Fine, ex Denton(Photo) 400.00
- 2083° **1852, 6p Slate Gray, Wove (5, SG 9).** Large even margins, blue cancel, tiny thin pierces paper, Extremely Fine appearance(Photo) 400.00
- 2084° **1852, 6p Slate Gray, Wove (5, SG 9).** Full even margins, handsome color and impression, clearly struck "42" numeral (Sherbrooke), Very Fine(Photo) 400.00
- 2085° **1852, 6p Slate Gray, Wove (5, SG 9)).** Full even margins, excellent color and impression, lightly struck grid cancel, Very Fine(Photo) 400.00
- 2086° **1852, 6p Slate Gray, Wove (5, SG 9).** Ample to large margins, rich color, lightly canceled, Very Fine and choice(Photo) 400.00
- 2087° **1852, 6p Slate Gray, Wove (5, SG 9).** Large to huge margins incl. left sheet margin, lightly canceled, tiny coal speck inclusion, Very Fine, ex Fairbanks ...(Photo) 400.00



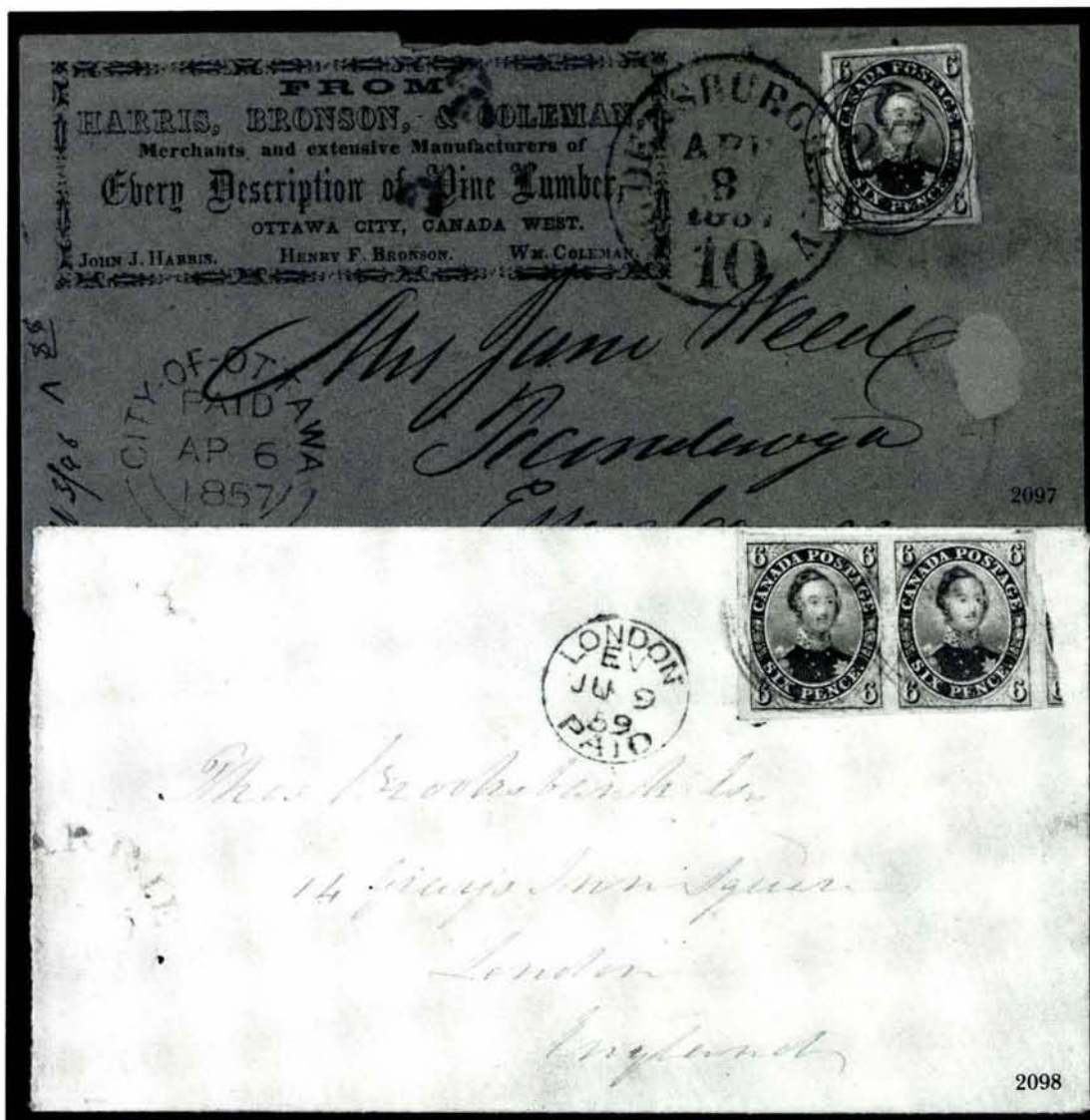
- 2088° **1852, 6p Slate Gray, Wove (5, SG 9).** Full margins all around, target cancel, bright and fresh, faint corner crease at T.R., Very Fine appearance(Photo) 400.00
- 2089° **1852, 6p Slate Gray, Wove (5, SG 9).** Remarkable pre-printing **paper fold**, large margins, lightly canceled, minute faint thin speck, still Extremely Fine, very scarce printing variety(Photo) 400.00
- 2090° **1852, 6p Slate Gray, Wove (5, SG 9).** Horizontal pair, **blue** target cancels, three enormous margins, close to touching at top, faint crease at L. and small shallow thin, otherwise Fine(Photo) 800.00 +
- 2091° **1852, 6p Brownish Gray, Wove (5a, SG 11).** Mostly large margins, minor corner crease, o/w Very Fine(Photo) 700.00
- 2092° **1852, 6p Greenish Gray, Wove (5b, SG 10).** Large margins all around, exceptionally bright greenish shade, lightly struck "21" numeral, Extremely Fine and choice(Photo) 650.00
- 2093° **1852, 6p Greenish Gray, Wove (5b, SG 10).** Ample to large margins, light soiling, o/w Very Fine(Photo) 650.00
- 2094° **1852, 6p Gray Violet, Thick Hard Wove (5d, SG 19).** Ample to large margins, "21" in target cancel, Very Fine and rare printing(Photo) 775.00
- 2095° **1852-58, ½p-10p Pence Issues (5/11).** Small balance comprising Nos. 5, 7 (3, one repaired), 8 (3), 9, 11 (2), 13, mixed condition and margins or centering, scarce group 6,795.00



2096° 1852, 6p Slate Gray, Wove (5, SG 9). Two singles, each with ample to large margins, rich color and fine impressions, one with trivial small tear, tied by targets on $7\frac{3}{4} \times 5\frac{1}{4}$ in. **embossed Valentine envelope** with floral decoration and "Juliet" figure, beautifully addressed to Stamford Conn., clear "Montreal L.C. Fe14 1856" Valentine's Day cds, with matching colored Valentine enclosure, Romeo and Juliet design with decorative floral paste-ons in silk, paper and gilt (a few pieces missing)

A VERY FINE AND EXTRAORDINARY USE OF THE PENCE ISSUE ON A VALENTINE ENVELOPE, SENT TO THE UNITED STATES WITH PROPER PREPAID DOUBLE RATE

Ex Nickle(Color Photo) E. 6,000-8,000



- 2097° 1852, 6p Slate Gray, Wove (5, SG 9). Large to huge margins showing part of adjoining stamp at left, bright shade, tied by sharp strike of "27" numeral with red "City-of-Ottawa U.C. Paid Ap6 1857" cds on buff cover with printed corner card of **lumber merchant**, ornately framed, addressed to Ticonderoga N.Y. with red "Ogdensburgh N.Y. Apr. 8, 1857 10" integral rate cross-border exchange office cds, flap torn from opening and minor edge nick at top, still Very Fine and a most attractive Pence issue cover, ex Greene(Color Photo) E. 1,000-1,500
- 2098° 1852, 6p Slate Gray, Wove (5, SG 9). Horizontal pair, large to huge margins showing part of adjoining stamp at right, tied by lightly struck targets with partly clear cds on 1859 cover to England, bold red London receiving cds, cover has small spindle hole at upper left, pair with faint stains, otherwise a superb pair and cover, Very Fine(Color Photo) E. 2,000-2,500

1855 10-PENCE CARTIER ON WOVE PAPER

Please see note preceding lot 2042



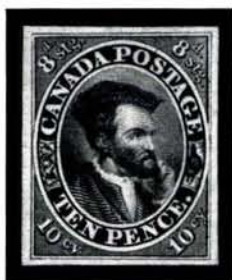
2099

2099°★ **1855, 10p Bright Blue, Wove (7, SG 13).** Full bottom right corner sheet margin with large margins all around, original gum, fresh, deep shade and fine impression

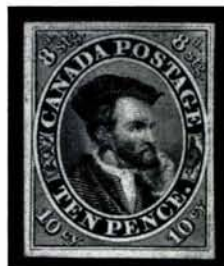
UNDOUBTEDLY THE FINEST EXAMPLE OF THE 10-PENCE CARTIER WITH ORIGINAL GUM

This superb stamp was cut from the lower right corner of a larger block, from which also came the celebrated bottom sheet margin block of four (ex Gill, Foxbridge et al). It has been reported that the original block was purchased from the post office at Montreal by the Duc de Polignac.

Ex Amundsen with 1945 Royal certificate issued to him. Stanley Gibbons cat. £7,000
.....(Color Photo) 4,000.00



2100



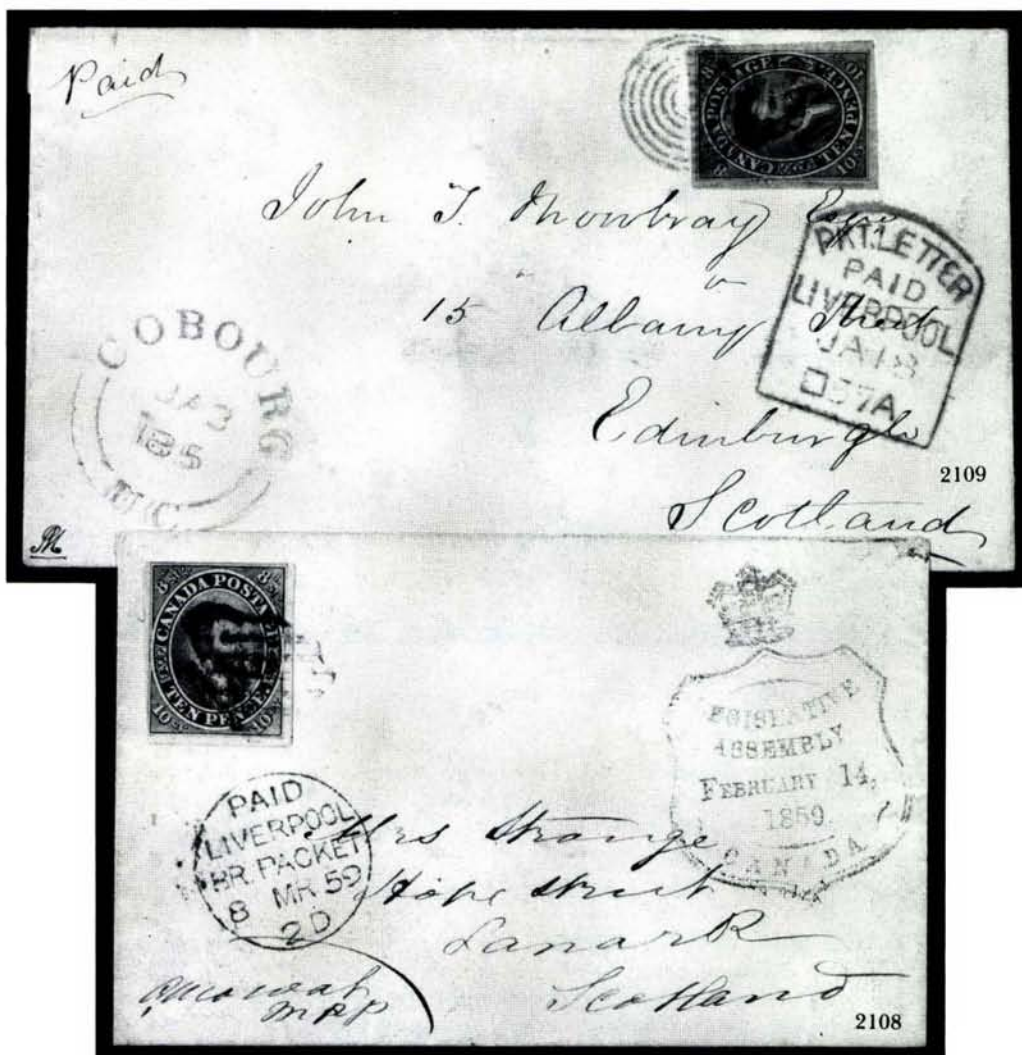
2101

2100°★ **1855, 10p Blue, Thick Wove (7a, SG 20).** A brilliant unused copy with large even margins, intense color and prooflike impression, Extremely Fine, with 1977 Bloch certificate(Color Photo) 4,000.00

2101°★ **1855, 10p Blue, Wove (7, SG 15).** Unused, full even margins all around, rich color, Very Fine and choice, with 1959 R.P.S. certificate(Color Photo) 4,000.00



- 2102° **1855, 10p Blue, Wove (7, SG 14).** Huge margins all around incl. parts of three adjoining stamps, lightly canceled, a magnificent stamp, Extremely Fine, ex Geldert, with 1964 R.P.S. certificate(Color Photo) 700.00
- 2103° **1855, 10p Blue, Wove (7, SG 14).** Large margins incl. part of adjoining stamp at right, "21" numeral cancel, Extremely Fine(Color Photo) 700.00
- 2104° **1855, 10p Blue, Wove (7, SG 14).** Large even margins, neat numeral cancel, minute corner margin creases, really negligible and otherwise an Extremely Fine stamp(Photo) 700.00
- 2105° **1855, 10p Blue, Wove (7, SG 14).** Ample to large margins, "27" in rings cancel, Very Fine(Photo) 700.00
- 2106° **1855, 10p Blue, Thick Wove (7a, SG 20).** Margins all around, deep rich color, lightly canceled, Very Fine, with 1985 Vincent Graves Greene certificate ..(Photo) 1,000.00
- 2107° **1855, 10p Blue, Thick Wove (7a, SG 20).** Horizontal strip of three, large even margins except close but clear at right, deep shade, "37" (Quebec) numeral cancels, tiny corner crease, still Very Fine, multiples of the 10p are exceedingly scarce, ex Caspary(Color Photo) 3,000.00+



2108° 1855, 10p Bright Blue, Thick Wove (7a, SG 20). Large margins on two sides, close to just touching lower left frameline, tied by square grid cancel on small cover to Lanark, Scotland, from the Mrs. Strange correspondence, full clear strike of "Legislative Assembly, February 14, 1869, Canada" handstamp in red surrounded by shield and Crown, red "Liverpool Br. Packet 8 Mr 69 2D" transit cds, Lanark receiving backstamp; endorsed at lower left "O. Mowatt, MPP", Mowatt was member of the Provincial Parliament and Postmaster General in 1863-64, the mate to this cover bears a 7½p stamp and is addressed to Mrs. Stange at Forres, Scotland; a Very Fine and outstanding 10p Cartier usage, ex Seybold, Dale-Lichtenstein and Nickle(Color Photo) E. 3,000-4,000

2109° 1855, 10p Blue, Wove (7, SG 14). A superb stamp with large even margins, deep rich color, prooflike impression on very thin paper (slight characteristic gum wrinkling), tied by neat target cancel, "Cobourg U.C. Ja3 185-" cds on small cover to Edinburgh, Scotland, red Liverpool packet tombstone (1857), transit and receiving backstamps, minor opening tear in upper right corner of cover, still Extremely Fine, ex Dale-Lichtenstein(Color Photo) E. 2,500-3,500



2110

2110° 1855, 10p Blue, Wove (7, SG 14). Large margins all around, deep shade, fine impression on thin paper (light gum wrinkles), tied by target cancel, "Toronto C. W. Feb. 16" cds on cover to London, red receiving cds, fresh and Extremely Fine(Color Photo) E. 2,500-3,500

2111° 1855, 10p Blue, Wove (7, SG 14). Large to huge margins incl. part of right sheet margin and adjoining stamp below, tied by targets, "Hamilton U.C. Mr31 1856" cds on yellow cover to Scotland, red Liverpool tombstone transit hs, green Aberdeen receiving backstamp, the cover is lightly wrinkled, numerous small brown spots, one of which touches margin of stamp, otherwise Very Fine, a choice stamp and cover(Photo) E. 1,500-2,000

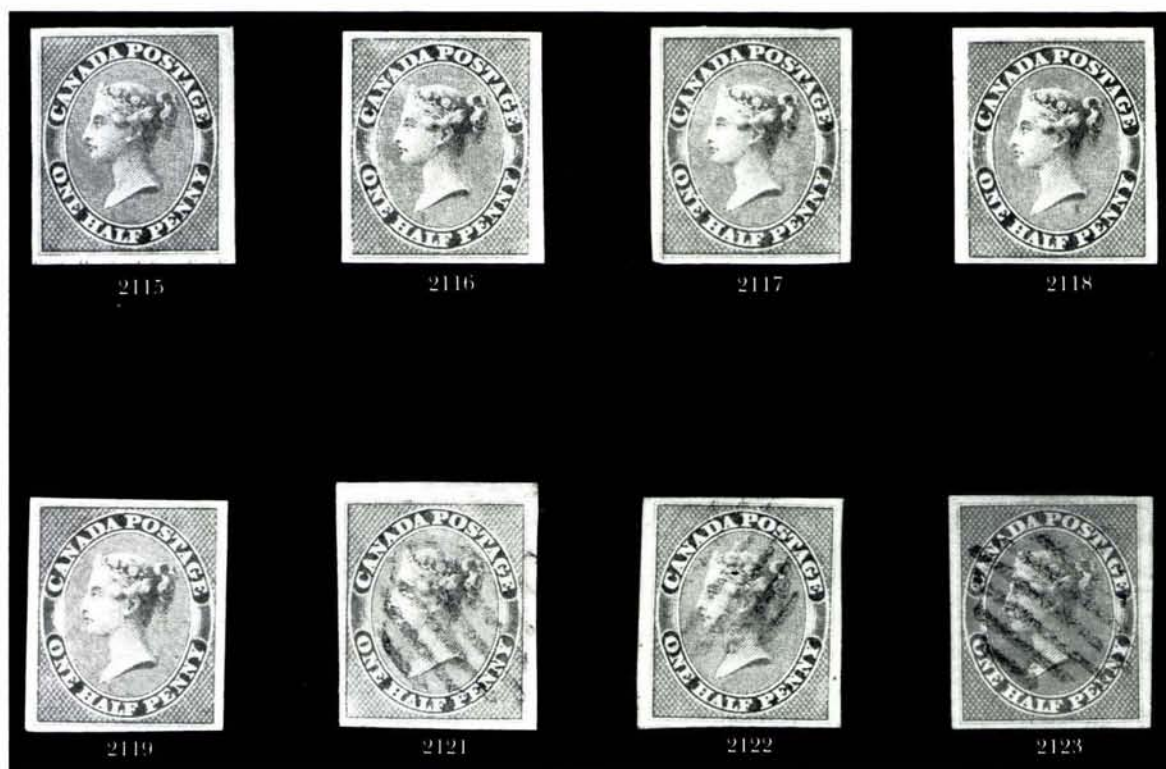
2112° 1855, 10p Blue, Thick Wove (7a, SG 20). Full margins all around, tied by target cancel, red "Montreal Canada Jul3 1859" rimless tombstone ds and matching "8stg. PAID 10d Cd." straightline hs, a bold mostly complete strike on small cover to Scotland, red Liverpool transit cds, Aberdeen receiving backstamp, Very Fine and attractive usage, ex Fairbanks(Photo) E. 2,500-3,500

2113° 1855, 10c Blue, Thick Wove (7a, SG 20). Large margins, tied by indistinct target, "Hamilton U.C. De15 1856" cds on blue cover to England, "8" hs, red ms. docketing, light file fold at top not affecting stamp, a Very Fine cover and choice stamp(Photo) E. 1,500-2,000

2114° 1855, 10p Blue, Wove (7, SG 14). Close to large margins, tied by "37" numeral cancel, "Quebec L.C. Jul8 1859" cds on front only to France, red London transit and "PD" in circle, French receiving cds, Fine appearing, though this is a front only, the markings are practically complete, representing the only recorded Allan Line rate usage to France(Photo) E. 1,000-1,500



1857 HALF-PENNY VICTORIA



- 2115°★★ 1857, ½p Rose (8, SG 17). Large margins showing part of **imprint** at bottom, notably fresh, Mint, Extremely Fine, an exceptional stamp, with 1986 Greene certificate stating the stamp is never hinged(Photo) 450.00
- 2116°★ 1857, ½p Rose (8, SG 17). Double frameline at B.L., full even margins, original gum, fresh, Extremely Fine(Photo) 450.00
- 2117°★ 1857, ½p Rose (8, SG 17). Original gum, h.r., large even margins, Extremely Fine and choice, signed Bloch(Photo) 450.00
- 2118°★ 1857, ½p Rose (8, SG 17). Original gum, h.r., ample to large margins, fresh and Very Fine(Photo) 450.00
- 2119°★ 1857, ½p Rose (8, SG 17). Unused, large even margins, Extremely Fine and fresh(Photo) 450.00
- 2120° 1857, ½p Rose (8, SG 17). Large margins all around, neat face-free target cancel, Extremely Fine Gem(Photo) 265.00
- 2121° 1857, ½p Rose (8, SG 17). Large to huge margins incl. part top sheet margin, neat grid cancel, Extremely Fine, ex Caspary(Photo) 265.00
- 2122° 1857, ½p Rose (8, SG 17). Large even margins, grid cancel, Extremely Fine(Photo) 265.00
- 2123° 1857, ½p Rose (8, SG 17). Large margins all around, grid cancel, Extremely Fine(Photo) 265.00



- 2124° 1857, ½p Rose (8, SG 17). Large margins, tied by "Cobourg A Feb. 9, 1858" cds on folded part-printed notice, file fold under extreme right margin of stamp (does not affect it), Extremely Fine(Photo) E. 300-400
- 2125° 1857, ½p Rose (8, SG 17). Horizontal pair (right stamp with re-entry), in at right, other margins large, tied by "Point-Levi LC No24 1857" rimless cds on folded letter to Quebec, paying the ½p drop letter plus ½p ferriage rates, Fine, extremely rare franking, only three examples of this rate are said to be recorded, with 1986 Holcombe certificate(Color Photo) E. 1,500-2,000



2126

- 2126° 1857, ½p Rose, Horizontally Ribbed Paper (8a, SG 21). Horizontal pair, just touches at top frameline on right stamp, other margins ample to large, small crease in right stamp, Fine-Very Fine appearance, a scarce multiple, with 1982 Greene certificate stating "genuine in all respects"(Photo) 2,400.00

1857 7½ PENCE VICTORIA

Please see note preceding lot 2042



2127



2128

- 2127°★ **1857, 7½p Deep Yellow Green (9, SG 12).** A spectacular unused copy with left sheet margin showing “(Ra)wdon, Wright, Hatch & Edson, New-Yor(k)” imprint, large margins all around, beautiful shade and impression, horizontal crease does not affect the Extremely Fine appearance, ex Jarrett(Color Photo) 5,000.00
- 2128°★ **1857, 7½p Deep Yellow Green (9, SG 12).** Top margin imprint pair, original gum, margins a bit uneven at right, otherwise large margins, fresh color, right stamp with corner crease, still Very Fine, an extremely rare position piece, ex Amundsen, Burrus, with 1959 R.P.S. certificate(Color Photo) 10,000.00 +



2129



2130



2131



2132

- 2129°★ **1857, 7½p Deep Yellow Green (9, SG 12).** Unused, large even margins, deep rich color and fine impression, Extremely Fine, a magnificent stamp, with 1965 R.P.S. certificate(Color Photo) 5,000.00
- 2130°★ **1857, 7½p Deep Yellow Green (9, SG 12).** Choice unused copy with large even margins, rich color, fine impression, Extremely Fine Gem, with 1957 R.P.S. certificate(Color Photo) 5,000.00
- 2131°★ **1857, 7½p Deep Yellow Green (9, SG 12).** Unused, large even margins, Extremely Fine, with 1986 R.P.S. certificate(Color Photo) 5,000.00
- 2132°★ **1857, 7½p Deep Yellow Green (9, SG 12).** Close to large margins, traces of o.g., rich color, Fine, scarce unused, with 1994 Holcombe certificate. (Color Photo) 5,000.00



- 2133° **1857, 7½p Deep Yellow Green (9, SG 12).** Enormous margins incl. left sheet margin, dark shade, target cancels, Extremely Fine(Color Photo) 850.00
- 2134° **1857, 7½p Deep Yellow Green (9, SG 12).** Large even margins, light grid cancel, Extremely Fine and choice(Color Photo) 850.00
- 2135° **1857, 7½p Deep Yellow Green (9, SG 12).** Lovely deep shade, large margins, clearly struck "Regist(ered)" straightline cancel, Extremely Fine, with 1983 R.P.S. certificate(Color Photo) 850.00
- 2136° **1857, 7½p Deep Yellow Green (9, SG 12).** Large margins, fresh color, New Brunswick town cancel, Extremely Fine(Color Photo) 850.00
- 2137° **1857, 7½p Deep Yellow Green (9, SG 12).** Large to huge margins showing frameline of adjoining stamp at right, "12" numeral cancel, Extremely Fine(Color Photo) 850.00
- 2138° **1857, 7½p Deep Yellow Green (9, SG 12).** Large margins, "21" numeral cancel, minute margin tear well clear of design, still Extremely Fine(Photo) 850.00
- 2139° **1857, 7½p Deep Yellow Green (9, SG 12).** Full margins all around, rich color, indistinct numeral cancel, Very Fine, ex Geldert, with 1956 R.P.S. certificate ..(Photo) 850.00
- 2140° **1857, 7½p Deep Yellow Green (9, SG 12).** Ample to huge margins, light horizontal crease, o/w Very Fine(Photo) 850.00



- 2141° 1852-57, 3p Red, 7½p Deep Yellow Green (4, 9; SG 6, 12). 3p large margins, 7½p three ample to large margins, rich colors, tied by square grids, "Toronto U.C. Sp6 58" cds on 1858 cover, paying the 10p rate to England, red London receiving cds ties 3p, very slightly soiled, still Very Fine and attractive, covers sent by British Packet with overpayment are rare, with 1982 B.P.A. certificate(Color Photo) E. 4,000-5,000
- 2142° 1857, 7½p Deep Yellow Green (9, SG 12). Large margins to ample at top, beautiful rich color, tied by "21" numeral cancel, "Montreal L.C. Au23 1858" cds on **mourning** envelope to Ireland, bright red Liverpool tombstone transit ds, matching red **BY-CANADIAN/PACKET** handstamp in two straight lines on back, Dublin receiving backstamp, Extremely Fine, a scarce and most attractive cover, ex Geldert, with 1959 R.P.S. certificate(Color Photo) E. 2,500-3,500
- 2143° 1857, 7½p Deep Yellow Green (9, SG 12). Large margins, tied by numeral cancel, "Hamilton U.C. Au13 1857" cds on 1857 yellow cover to England, red London receiving cds, ms. docketing, file folds and slight wear, otherwise Very Fine cover and choice stamp, with 1982 Bühler certificate(Photo) E. 1,000-1,500
- 2144° 1857, 7½p Deep Yellow Green (9, SG 12). Three large margins showing trace of imprint at upper right, touched at L., small nick in margin at B. and faint corner creases, tied by numeral target, "Quebec L.C. Mar25 1859" cds on small cover to Scotland, red Liverpool transit cds, Edinburgh receiving backstamp, Fine, ex Seybold(Photo) E. 600-800

1857 6-PENCE ALBERT ON VERY THICK SOFT WOVE PAPER



2145

2145°★ **1857, 6p Reddish Purple, Very Thick Soft Wove (10, SG 23).** Unused, large even margins, rich color and fine impression

ONE OF THE RAREST PENCE ISSUES IN UNUSED CONDITION AND CERTAINLY AMONG THE FINEST OF THE FEW KNOWN

This superb unused copy of the 1857 printing on very thick wove paper was the *only* unused single in the vast Dale-Lichtenstein collection (a heavily creased and thinned strip of three was also offered). The Caspary collection contained an unused single with minor faults, and we have been able to locate only three other unused singles among the important Canada sales searched (the Gill-Consort stamp being the only equal to the one offered here).

Ex Dale-Lichtenstein. With 1993 P.F. certificate. Stanley Gibbons cat. £11,000
(Color Photo) 11,000.00



2146

2146°★ **1857, 6p Reddish Purple, Very Thick Soft Paper (10, SG 23).** Unused, ample to large margins, fresh color and fine impression, tiny faint spot referred to as a stain in certificate, insignificant and unworthy of mention, completely sound and very attractive

A VERY FINE EXAMPLE OF ONE OF THE RAREST OF ALL PENCE ISSUES IN UNUSED CONDITION

With 1994 Holcombe certificate, Stanley Gibbons cat. £11,000
(Color Photo) 11,000.00



2147

- 2147° **1857, 6p Reddish Purple, Very Thick Soft Wove (10, SG 23).** Large even margins all around, **deep green** target cancel, deep shade and Extremely Fine, a magnificent stamp, ex Caspary(Color Photo) 1,800.00



2148



2149

- 2148° **1857, 6p Reddish Purple, Very Thick Soft Wove (10, SG 23).** Astounding large margins all around, trace of imprint shows at lower right, neat numeral cancel leaving portrait clear, rich color and fine impression, Extremely Fine Gem, incalculably rare in this quality, with 1959 B.P.A. certificate(Color Photo) 1,800.00
- 2149° **1857, 6p Reddish Purple, Very Thick Soft Paper (10, SG 23).** Large margins including “(Rawdo)n, Wright, Hatch & Edson, Ne(w York)” imprint in top sheet margin, lightly struck numeral cancel, Extremely Fine, ex Dale-Lichtensein .(Color Photo) 1,800.00

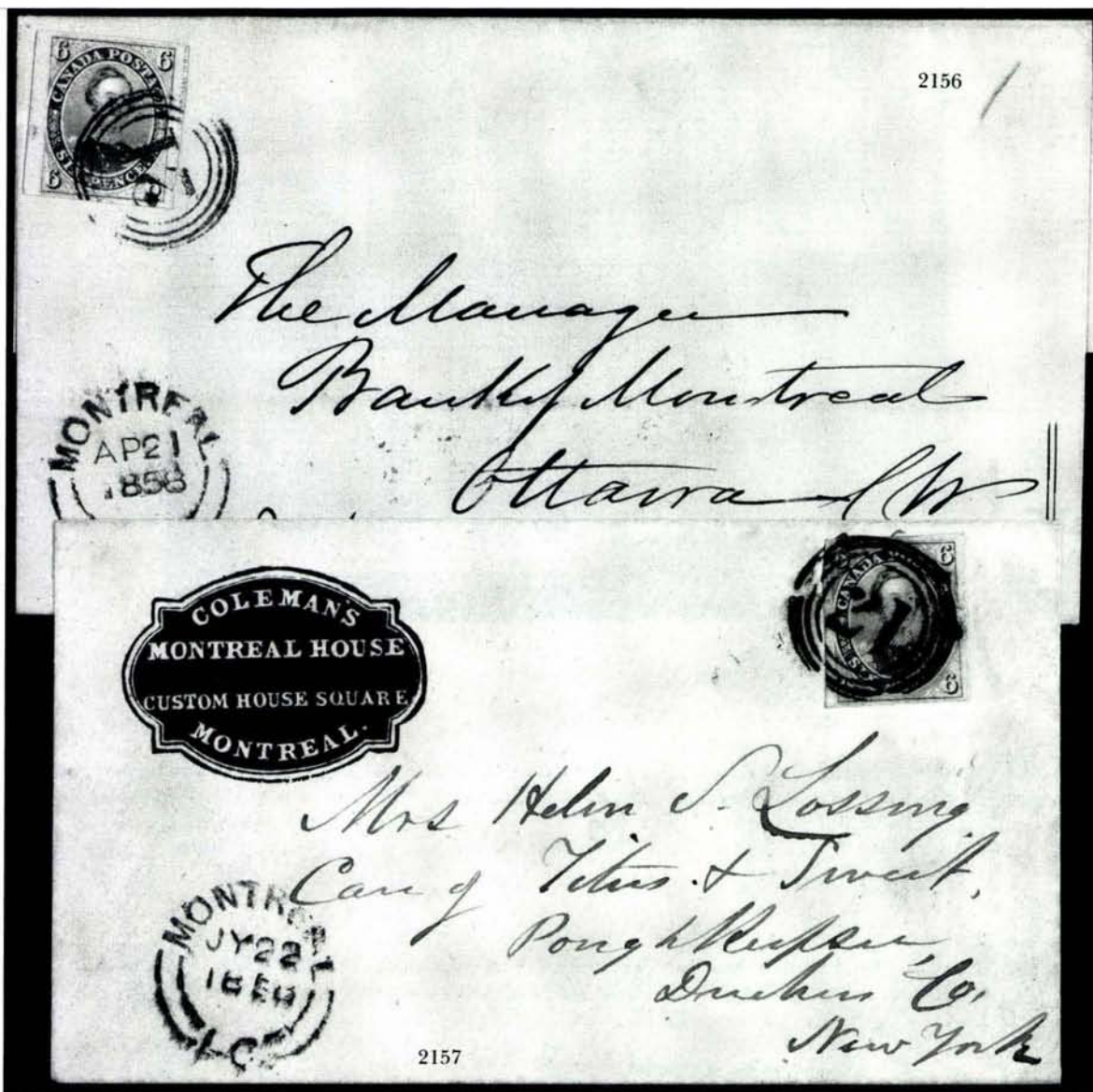


2150

- 2150° **1857, 6p Reddish Purple, Very Thick Soft Wove (10, SG 23).** Large margins, lightly canceled by numeral, fresh and Extremely Fine(Color Photo) 1,800.00

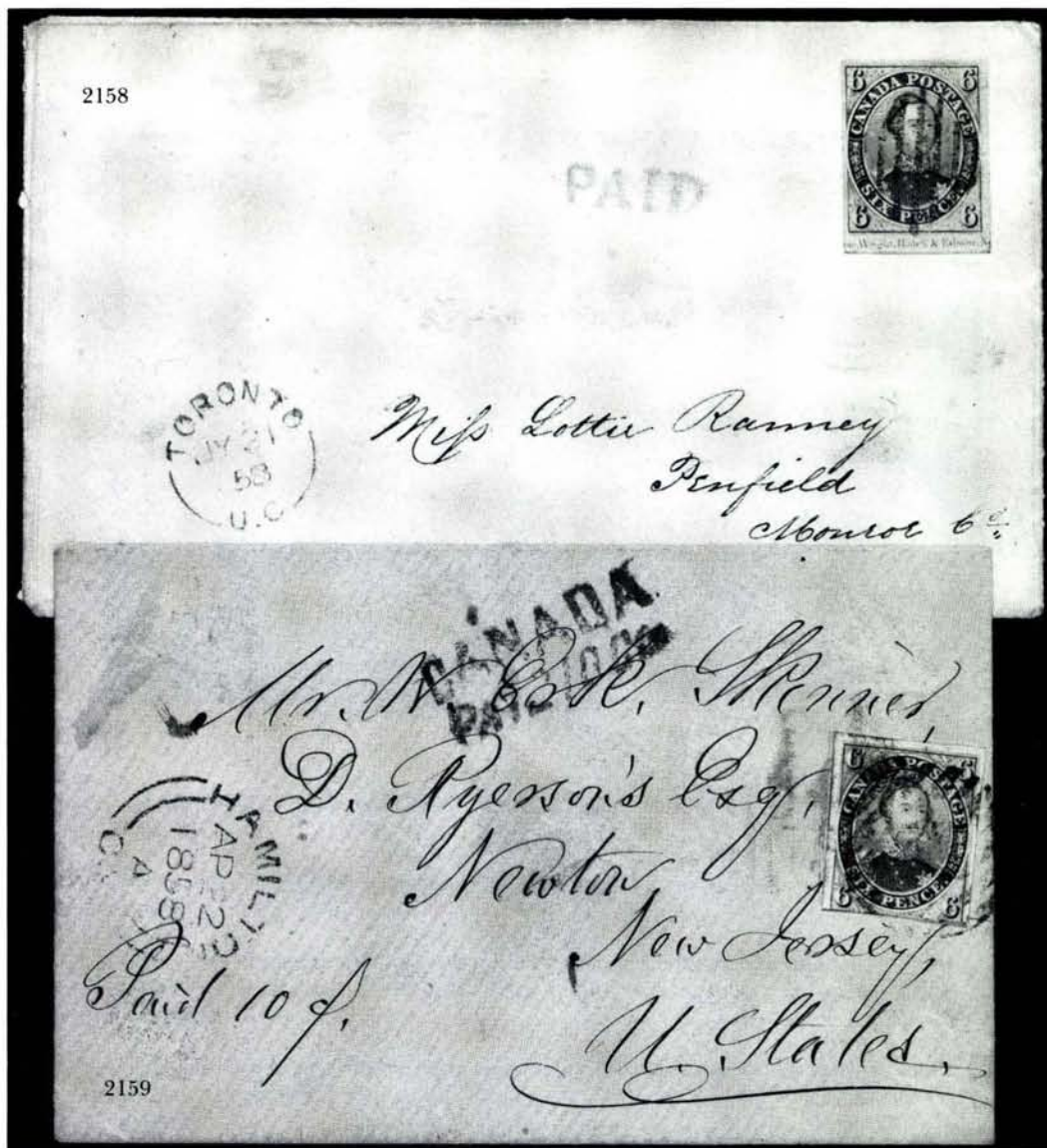


- 2151° **1857, 6p Reddish Purple, Very Thick Soft Wove (10, SG 23).** Three enormous margins showing part of adjoining stamp at bottom, nice full margin at top, lightly canceled by numeral, microscopic pinhole and tiny thin speck, Very Fine appearance and vastly superior to most examples of this scarce stamp(Photo) 1,800.00
- 2152° **1857, 6p Reddish Purple, Very Thick Soft Wove (10, SG 23).** Large even margins, numeral cancel, deep shade, faint staining at bottom, otherwise Extremely Fine(Photo) 1,800.00
- 2153° **1857, 6p Reddish Purple, Very Thick Soft Paper (10, SG 23).** Large margins, small thinnings and faint crease as usual for this issue, Very Fine appearance(Photo) 1,800.00
- 2154° **1857, 6p Reddish Purple, Very Thick Soft Paper (10, SG 23).** Just cuts outer frameline at top, "21" in rings cancel, tiny thin spot as usual, Fine appearance. (Photo) 1,800.00
- 2155° **1857, 6p Reddish Purple, Very Thick Soft Wove (10, SG 23).** Horizontal pair, red target cancels, three huge margins, mostly ample at top, Very Fine handsome appearance though the upper right corner has a repaired fault, still of exhibition caliber and a very rare multiple, especially canceled in red(Color Photo) 3,600.00 +



2156° 1857, 6p Reddish Purple, Very Thick Soft Wove (10, SG 23). A superb copy with right sheet margin showing **part of imprint**, other margins full to large, rich color, tied by sharp strike of "21" numeral cancel, "Montreal L.C. Ap21 1858" cds on blue folded cover to Ottawa, Extremely Fine, an outstanding quality cover bearing this rare printing of the 6p Albert, ex Denton(Color Photo) E. 4,000-5,000

2157° 1857, 6p Reddish Purple, Very Thick Soft Wove (10, SG 23). A choice copy with margins all around, mostly large, tied by bold "21" numeral cancel, "Montreal L.C. Jy22 1858" cds on fresh cover to Poughkeepsie N.Y. with black **hotel corner card**, Extremely Fine, an exhibition quality cover bearing the rarest of the 6p printings, ex Denton(Color Photo) E. 4,000-5,000



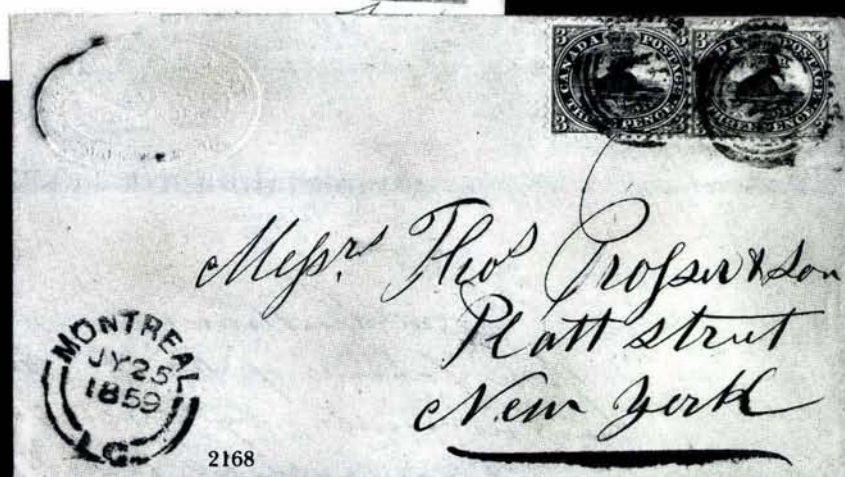
2158° 1857, 6p Reddish Purple, Very Thick Soft Paper (10, SG 23). Ample to huge margins including “(Rawd)on Wright, Hatch & Edson N(ew York)” imprint in bottom margin, neat square grid cancel, small “Toronto U.C. Jy21 58” cds and red “Paid” straightline on cover to N.Y., a superb stamp and Extremely Fine cover with original enclosure, ex Moody, with R.P.S. certificate(Color Photo) E. 3,000-4,000

2159° 1857, 6p Reddish Purple, Very Thick Soft Wove (10, SG 23). Three large margins, in at bottom, tied by grid cancel, “Hamilton C.W. Ap 22 1858 A” cds on blue cover to Newton N.J., red “Canada/Paid 10 Cts” exchange office hs, Fine stamp and attractive cover, very rare(Photo) E. 1,000-1,500

1858-59 PERFORATED PENCE ISSUE



- 2160° 1858, ½p Rose, Perforated (11, SG 25). Face-free cancel, fresh and Very Fine(Photo)1 425.00
- 2161° 1858, ½p Rose, Perforated (11, SG 25). Goderich cds, Fine, ex-Lichtensein (War Relief sale)(Photo) 425.00
- 2162° 1858, ½p Rose, Perforated (11, SG 25). Tied by KING'S & TORONTO R. TRK. R. WAY P.O. NO. 2 D/MAY 13, 1859 cds on folded cover to Perth (backstamp), Fine and scarce(Photo) E. 500-750
- 2163° 1858, 3p Red, Perforated (12, SG 26). A superb example with wide margins and perfect centering, neat "8" numeral cancel, rich color, Extremely Fine, very scarce in this quality(Photo) 275.00
- 2164° 1858, 3p Red, Perforated (12, SG 26). With imprint in top margin, part of "(St)eambo(at)" straightline cancel, trivial thin spot, o/w Fine(Photo) 275.00
- 2165° 1858, 3p Red, Perforated (12, SG 26). Horizontal pair, very slightly oxidized, bold "37" numeral cancels, Fine and scarce pair(Photo) 550.00
- 2166° 1858, 3p Red, Perforated (12, SG 26). Extraordinarily well-centered, tied by "38" numeral cancel (RF8, rare), red "St. Catherines UC 18 Jun 1859" cds on cover to Toronto, Extremely Fine and scarce(Color Photo) E. 750-1,000
- 2167° 1858, 3c Red, Perforated (12, SG 26). Tied by "8" numeral cancel on folded partly printed 1859 notice to Montreal, "Chatham U.C. Jul7 1856" cds (the wrong year slug), file fold, Very Fine, ex Lea, Lubke(Photo) E. 400-500
- 2168° 1858, 3p Red, Perforated (12, SG 26). Two singles tied by "21" numeral cancels on 1859 cover to N.Y. with embossed Bartley & Gilbert corner card, bold "Montreal L.C. Jy25 1859" cds, embossed area with a bit of blue ink, o/w Very Fine, ex Moody(Photo) E. 1,000-1,500





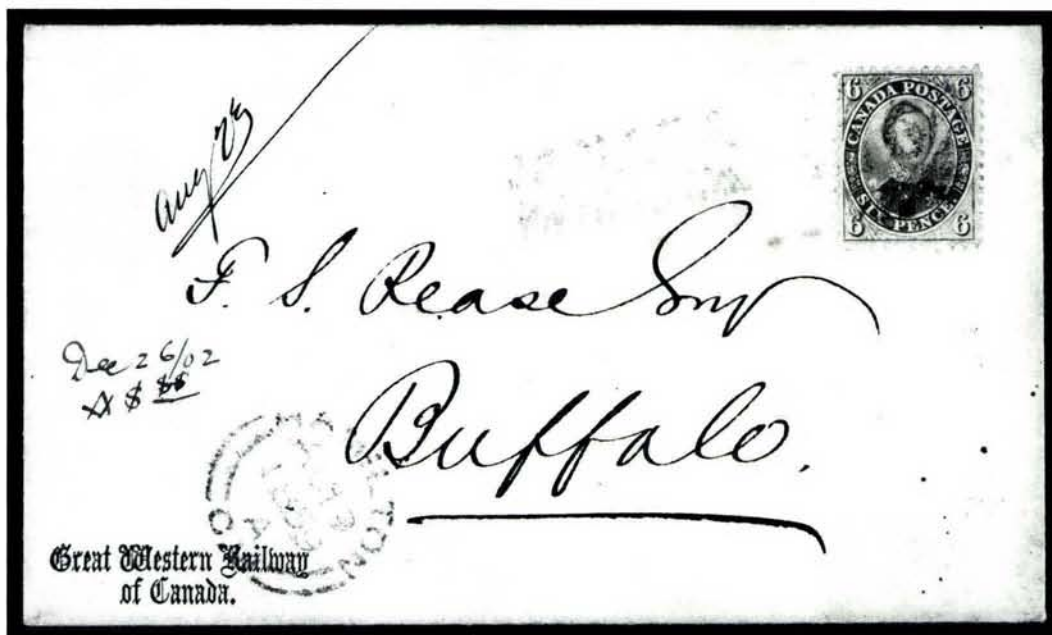
2169



2170

2169°★ **1859, 6p Brown Violet, Perforated (13, SG 27).** Large part original gum, deep rich color and prooflike impression, perfs just slightly in as almost always, Fine and extremely rare, Stanley Gibbons cat. £5,500(Color Photo) 5,500.00

2170° **1859, 6p Gray Violet, Perforated (13a, SG 27a).** Lightly canceled, fresh, top right corner with small repaired tear, Fine appearance(Photo) 1,800.00



2171

2171°≡ **1859, 6p Brown Violet, Perforated (13, SG 27).** Perfectly centered with full perfs and deep rich color, tied by numeral cancel, "Hamilton C.W. Au19 1859" cds on immaculate cover to Buffalo N.Y. with "Great Western Railway of Canada" corner card at lower right, two-line "Canada Paid 10 Cts" handstamp in red

A VERY RARE STAMP ON COVER, THIS BEING THE FINEST SINGLE USAGE OBSERVED BY US AMONG THE EIGHTEEN DIFFERENT EXAMPLES LOCATED IN MAJOR PENCE COLLECTIONS SOLD AT AUCTION

Ex Denton(Color Photo) E. 6,000-8,000



2172

2172° 1859, 6p Gray Violet, Perforated (13a, SG 27a). Fresh color in distinctive Gray Violet shade, just tied by target cancel on 1859 cover to New Jersey, partly visible "Waterdown U.C." Ju13 1859" cds, Hamilton backstamp, Fine and rare cover, ex Dale-Lichtenstein(Color Photo) E. 2,000-2,500

CATALOGUE NUMBERS AND VALUES

We have cross-referenced Scott and Stanley Gibbons numbers where it seems appropriate, usually in the case of shades, papers or varieties more accurately classified by Stanley Gibbons. Listings preceded by "CS" refer to the Unitrade Specialized Catalogue of Canadian Stamps. Values quoted in Canadian dollars are marked "C\$".



2009



2010



2011



2012



2021



2024



2025



2026



2027



2028



2036



2039



2040



2041



2042



2043



2046



2057



2075



2052



2076



2059



2060



2066



2077



2078



2079



2099



2100



2128



2101



2102



2103



2129



2107



2127



2130



2131



2132



2133



2134



2135



2136



2137



2145



2146



2147



2148



2149



2155



2150



2233



2244



2234



2264



2265



2169



2293



2381



2386



2188



2198



2243



2068



2237



2238



2239





2096



*Miss Emily Leeds
Hamford
Connecticut
U.S.*







2166

Mr. W. C. Skinner,
 Care of Mr. M. Murtrie,
 Newark,
 New Jersey,
 N. H. State,



2172

Aug 25

F. S. Reese Esq

Dec 26/2
X \$ 50

Buffalo.

2171

Great Western Railway
of Canada.



2186



2184

J. O. Blackwell Esq
 Ovid
 N.Y.







1859-64 FIRST CENTS ISSUE

- 2173°★ **1859, 1c Rose (14).** Part of **imprint** in B. margin, o.g., hinge marks, Very Fine
.....(Photo) 190.00
- 2174°∞ **1859, 1c Rose (14).** Tied to circular by "Hamilton C.W. My10 60" duplex, **to New Brunswick**, Fine, only 10 circulars recorded to New Brunswick, this being the earliest
.....(Photo) E. 600-800
- 2175°∞ **1859, 1c Rose (14).** Tied by "13" numeral cancel to large part of Globe newspaper masthead dated Dec. 1, 1862, addressed to Dundas, Fine, scarce single newspaper rate
.....(Photo) E. 125-150
- 2176°∞ **1859-64, 1c Rose, 2c Rose (14, 20).** Pair 2c, single 1c, tied by target cancels on 1866 orange cover to Lyndock (backstamp), faint town cds, Fine cover paying the 5c domestic rate, with 1982 B.P.A. certificate(Photo) E. 300-400
- 2177°∞ **1859, 1c Rose, 5c Vermilion (14, 15).** Pair of 1c and single 5c tied to registered 1865 orange cover by "Montreal C.E. PM Sp30 65" duplex cds and grid, to Drummondville, Very Fine, scarce franking, ex Moody(Photo) E. 150-200
- 2178°P **1859, 5c Vermilion, Plate Proof on India (CS 15P).** Imprint strip of four mounted on card (pos. 60-90), Very Fine(Photo) C\$1,000.00
- 2179°★ **1859, 5c Vermilion (15).** Well-centered, o.g., h.r., perf dimples on face, Extremely Fine
.....(Photo) 175.00
- 2180°∞ **1859, 5c Vermilion (15).** Tied by "Montreal C.E. AM Ju2 60" cds and grid on 1860 cover **to Nova Scotia**, Fine, very rare Cents Issue cover from Province of Canada to Nova Scotia, accompanied by same stamp on 1864 cover(Photo) E. 400-500
- 2181°P **1859, 10c Blackish Brown, Plate Proof on Card, Red "Specimen" Ovpt. (CS 16Pii).** Pos. 2 showing major flaw behind head, Very Fine(Photo) 275.00
- 2182° **1859, 10c Red Lilac (17, SG 34).** Extra wide margins, neat target cancel, Extremely Fine "Gem"(Photo) 35.00
- 2183°∞ **1859, 10c Black Brown (16, SG 33).** The "Double Epaulette" variety (pos. 61), tied by numeral cancel, "Kingston U.C. Au8 1859" cds on folded letter to N.Y., Fine, a scarce variety and use of the Black Brown stamp(Photo) C\$3,000.00



2184

- 2184°∞ **1859, 10c Deep Red Purple (17a, SG 35).** Tied by numeral cancel on **orange lithographed all-over advertising cover** for Brantford Steam Engine Works, a marvelous depiction of equipment with descriptive text on back in green, faint town cds, Very Fine, a remarkable exhibition cover(Color Photo) E. 1,000-1,500



2173



2179



2181



2182



2174

2175



EARLY READER'S - JAMES

1. 1862.

George Carr Glyn
Frydland of Canada
pay on behalf of
the Canadian
Upper Canada
Hinder, M.P.P.
E. P. Tuck, M.L.A.
Hon. James Morris
The Hon.
President of the
Bank of America
and Colonial Bank
to 24 premium upon
the issue of shares
of the Bank of America
and Colonial Bank



2177

2180

Nia Portland Steamer



2176



2183

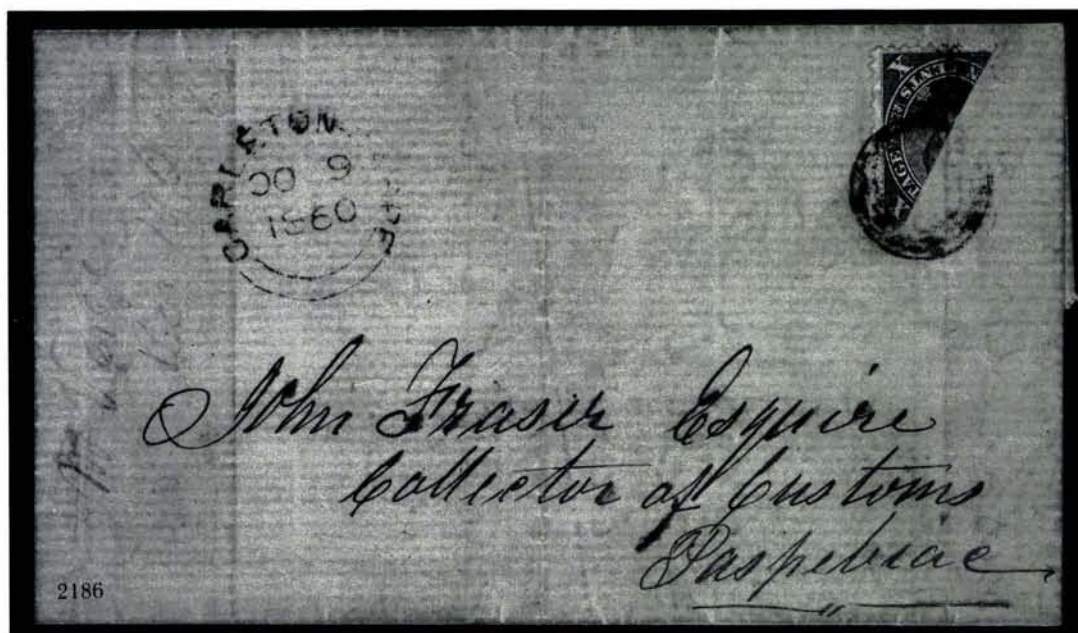
Hilton Esq.
Canadian Recorder
Califant
Nova Scotia



2178



2185° 1859, 1c Rose, 5c Vermilion, 10c Brown (14, 15, 17b). Pair 1c, singles 5c & 10c, tied by square grids, lightly struck Toronto cds on 1865 folded cover to Scotland, Glasgow backstamp, Very Fine and fresh cover, attractive three-color franking for 17c transatlantic rate(Color Photo) E. 500-750



2186° 1859, 10c Deep Red Purple, Diagonal Half Used as 5c (17d, SG 33Ba). Well-tied across cut by target cancel, "Carleton-Gaspe 6 OC 1860" cds on blue folded cover to Collector of Customs at Paspebiac, light file fold through stamp, otherwise Fine, a great Cents Issue rarity, ex Dale-Lichtenstein and Consort collections, illustrated in Boggs (p. 208), with 1969 B.P.A. certificate(Color Photo) 3,500.00



2187



2188



- 2187°★ **1859, 12½c Green (18).** Well-centered, part o.g., rough perfs at top, o/w Extremely Fine(Photo) 225.00
- 2188°★田 **1859, 12½c Blue Green (18a).** Left sheet margin block with imprint, o.g., crease through left pair, two stamps with small tears, Fine appearance, a very rare unused multiple(Color Photo) 2,600.00
- 2189°∞ **1859, 12½c Green (18).** Tied to 1863 mourning cover by Montreal duplex, sent to England, small part of reverse where wax seal was has been removed, o/w Very Fine, ex Jarrett(Photo) E. 200-250
- 2190°∞ **1859, 12½c Blue Green (18a).** Part selvage showing imprint, perfs in, one short perf, tied by target on 1865 cover to England, red "Fonthill C.W." cds, Fine E. 50-75
- 2191°∞ **1859, 12½c Yellow Green (18).** Two singles tied by duplex cds and large grids on 1868 cover to Scotland, few small cover tears, o/w Fine, very late usage of the Allan Line rate(Photo) E. 400-500
- 2192°∞ **1859, 12½c Green (18).** Pair, tied by "Hamilton U.C. Mr20 1861" cds on registered cover to Scotland, with "Glasgow Packet/Col. Paid/AP 6 1861" and red "Registered" handstamps, receiving and transit backstamps, light file folds, otherwise Very Fine, a scarce cover paying the 25c registered rate to U.K., with 1979 Greene certificate(Color Photo) E. 1,000-1,500



- 2193° 1859, 5c Vermilion, 12½c Green (15, 17). Tied by "Montreal C.E. PM Sp8 62" cds and grid on folded cover to Scotland, light show-thru from writing inside, Very Fine and scarce franking(Photo) E. 250-350
- 2194° 1859, 5c Vermilion, 12½c Green (15, 18). Tied by lightly struck Hamilton cds and grid on 1864 mourning cover to England, red London receiving cds also ties 12½c, small tear at L., otherwise Very Fine, scarce combination on a very attractive cover(Photo) E. 750-1,000
- 2195° 1859, 5c Vermilion, 12½c Green (15, 18). Two singles each tied by "Montreal C.E. PM No18 67" cds and grids on folded letter to England, one 5c shows PF98a as noted by Calders note below stamps, cover with small faults, still a Fine and scarce double British Packet usage (three recorded)(Photo) E. 750-1,000
- 2196° 1859, 17c Blue (19). Tied by "Montreal C.E. PM De20 61" cds and grid on small cover to France, red London transit and "PD" in oval, French receiving cds, light file fold and small cover tear, still Fine(Photo) E. 400-500
- 2197° 1859, 17c Deep Blue (19). Whitworth's New Blue shade (the first of the perf 12 x 12 printings), tied by Montreal duplex on 1863 cover to France, red London transits, French receiving cds, stamp with slightly toned perfs from gum, removed for examination and hinged back in place, Fine and scarce(Photo) E. 400-500



2198

- 2198°★ 1859, 17c Blue, Imperforate (19b, SG 42a). Block of four, large even margins
 AN EXTREMELY FINE AND VERY RARE BLOCK OF THE IMPERFORATE 17-CENT CARTIER
 With 1987 Vincent Graves Greene certificate. Scott Retail \$6,000.00 as two pairs
(Color Photo) E. 7,000-9,000



- 2199°★ 1859, 17c Blue, Imperforate (19b, SG 42a). Sheet margin single, part o.g., Very Fine, catalogs \$3,000.00 as a pair(Photo) E. 400-500
- 2200°P 1864, 2c Dark Rose, Trial Color Plate Proof on India, Card Mounted (CS 20TC). Margin block of eight with imprint (pos. 27-30, 37-40), pos. 37 with re-entry, Very Fine(Photo) C\$1,600.00
- 2201 ★ 1864, 2c Rose (20). Unused, Very Fine(Photo) 325.00
- 2202 ★ 1864, 2c Rose, Imperforate (20b, SG 45a). Vertical pair, unused, Very Fine(Photo) 1,750.00

1864-93 LARGE AND SMALL QUEEN ISSUES

2203°★	1868, ½c-15c Large Queen (21/29e). Nos. 21(2), 22, 23, 24b, 25, 27c, 28, 29e, six with full or part o.g., generally F-VF 2,575.00
2204°	1868, 1c Brown Red, Watermarked (22a, SG 55b). Wide margins, 1868 cds, Extremely Fine(Photo) 125.00
2205°★	1868, 3c Red, Thin Paper (25b, SG 49). Well-centered, o.g., Extremely Fine(Photo) 450.00
2206°★	1875, 5c Olive Green (26, SG 72). Wide margins, part o.g., Extremely Fine(Photo) 475.00
2207°	1868, 6p Dark Brown, Watermarked (27b, SG 59a). Light corner crease at B.L. o/w Fine(Photo) 850.00
2208°★	1868, 12½c Blue, Watermarked (28a, SG 60b). Part o.g., small thin, fresh color, scarce, Very Fine appearance(Photo) 1,500.00
2209°★	1868, 15c Red Lilac (29b, SG 52). Part o.g., Fine(Photo) 600.00
2210°★	1868, 15c Gray Violet, Imperforate (29d). Vertical pair, o.g., Extremely Fine, ex Col. Green(Photo) 700.00
2211°	1868, 1c Bright Red, Laid (31, SG 55a). Deep shade, ms. cancel, horizontal crease, Fine appearance(Photo) 1,750.00
2212°	1868, 3c Bright Red, Laid (33, SG 58a). Pen cancel removed, thin spot, Extremely Fine appearance(Photo) 400.00
2213°E	1880, 1p Victoria Essay, Bradbury, Wilkinson & Co. Five colors: Black, Brown, Purple, Dull Blue and Ultramarine, all on bond paper, Very Fine E. 300-400
2214°E	1880, 6p Black, Viking Head Essay, Bradbury, Wilkinson & Co. Top left corner position on card, Very Fine(Photo) E. 150-200
2215°★	1870-82, ½c-2c Small Queen, Imperforate (34a, 35b, 36a). Horiz. pairs, 1c o.g., Very Fine 800.00
2216°∞	1882, ½c Black (34). Tied to wrapper by grid cancel, small cover tape repairs, o/w Fine, scarce(Photo) C\$300.00
2217°∞	1872, 3c Dull Red (37). Tied on U.S. 2c Entire to pay the forwarding fee, 1887 St. John pmk., Fine E. 75-100
2218°	1870, 3c Copper Red, Perf 12½ (37d, SG 64a). Horiz. pair, Fine and scarce(Photo) 1,150.00
2219°∞	1870, 3c Copper Red, Perf 12½ (37d, SG 64a). Tied by "1" numeral cancel, Saint John N.B. cds on Aug. 1870 cover, Newcastle backstamp, Fine, scarce on cover, ex Jarrett(Photo) C\$1,200.00
2220°★	1870, 10c Deep Lilac Rose (40b, SG 67a). Part o.g., Very Fine(Photo) 200.00
2221°★田	1888, 3c Bright Vermilion, Imperforate (41b, SG 79a). Two blocks of four, one with imprint (light crease in selvage), other o.g. and light vertical crease, Extremely Fine appearance(Photo Ex) 800.00
2222°★	1888, 5c, 6c, 10c Small Queen, Imperforate (42a, 43b, 45c). Horizontal pairs, o.g., 6c Fine, others Extremely Fine 900.00
2223°★田	1893, 8c Gray, Imperforate (44d, SG 117a). Top margin block of four, o.g. (stamps Mint), Extremely Fine(Photo) 600.00
2224°★	1888, 10c Dull Rose (45a, SG 82a). Jumbo margins and near-perfect centering, deep color, o.g., small adherence on gum, Extremely Fine "gem"(Photo) 80.00



2204



2205



2206



2207



2208



2209



2211



2212



2214



2218



2220



2224



2210



2223



2221 EX



2217



2219



2216

1897 JUBILEE ISSUE

2225°P	1897, ½c-5c Jubilee, Plate Proofs on Card (50P-54P). Horiz. pairs, Very Fine C\$580.00
2226°S	1897, \$4.00, \$5.00 Jubilee, Violet "Specimen" Ovpt. (64S, 65S). \$4.00 o.g., h.r., \$5.00 unused, F-VF(Photo) E. 150-200
2227°★	1897, ½c-50c Jubilee (50-60). Generally well-centered with wide margins, 15c & 50c lightly hinged, others Mint, Extremely Fine(Photo Ex) 370.00
2228°	1897, ½c-\$5.00 Jubilee (50-65). Well-centered, each with neat black town cds , \$1.00 with small faults, \$4.00 & \$5.00 with small creases, o/w a fresh and Very Fine-Extremely Fine set, the dollar values are extremely scarce canceled in this manner(Photo Ex) 3,092.00
2229°★田	1897, 10c Jubilee (57). Top imprint and plate no. 19 block of six, o.g., vertical perfs folded, Very Fine(Photo) 225.00
2230°	1897, \$1.00-\$5.00 Jubilee (61-65). \$1.00-\$3.00 with roller cancels, \$4.00 and \$5.00 violet Winnipeg cds, \$3.00 light creasing, \$5.00 with corner perf crease, Very Fine centering 2,725.00
2231°★★	1897, \$1.00 Jubilee (61). Mint, Very Fine(Photo) 400.00
2232°★	1897, \$1.00 Jubilee (61). Wide margins, o.g., small h.r., Very Fine ..(Photo) 400.00
2233°★★	1897, \$2.00 Jubilee (62). Mint, well-centered with wide margins, rich color, Extremely Fine Gem(Color Photo) 650.00
2234°★★	1897, \$3.00 Jubilee (63). Mint, fresh, Extremely Fine(Color Photo) 775.00
2235°★	1897, \$3.00 Jubilee (63). O.g., h.r., Very Fine(Photo) 775.00
2236°★★	1897, \$4.00 Jubilee (64). Mint, wide margins, brilliant color, Extremely Fine(Photo) 775.00
2237°田	1897, \$3.00 Jubilee (63). Used block of four, violet Winnipeg cds, light crease in T.R. stamp, otherwise Fine-Very Fine(Color Photo) 2,700.00
2238°田	1897, \$4.00 Jubilee (64). Used block of four, violet Winnipeg cds's, Fine-Very Fine(Color Photo) 2,700.00
2239°田	1897, \$5.00 Jubilee (65). Used block of four, violet Winnipeg cds's, Very Fine block(Color Photo) 2,500.00

1897-1902 VICTORIA ISSUES

2240°★	1897-98, ½c-10c Maple Leaf, Imperforate (66a-68a, 70a, 72a-73a). Horiz. pairs except 8c vertical pair and 10c block of four, last two o.g., most with sheet margin, Very Fine(Photo Ex) 2,200.00
2241°P	1898-1902, ½c-20c Numerals, Plate Proofs on Card (74P-84P). Horizontal pairs, Very Fine, rare, listed but unpriced in Canadian Specialized ... (Photo Ex) E. 3,500-4,500
2242°★	1898-1902, ½c-10c Numerals, Imperforate (74a-79a, 82a-83a). Horizontal pairs, without gum, Very Fine(Photo Ex) C\$2,780.00



2226



2228 EX



2228 EX



2227 EX



2231



2232



2233



2234



2235



2236



2240 EX



2241 EX



2229



2241 EX



2242 EX



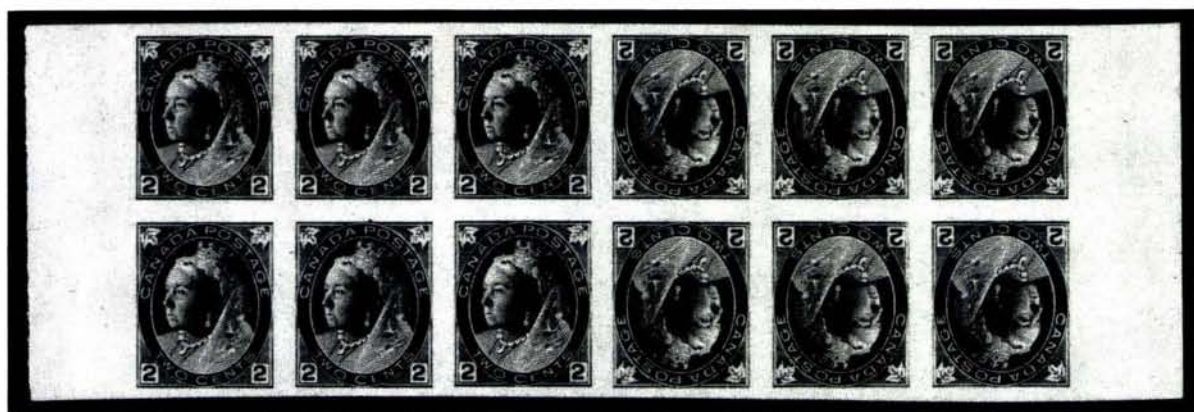
2237



2238



2239

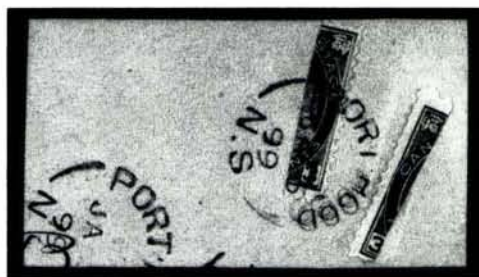


2243

2243° ★ 1898, 2c Carmine Booklet Pane, Tête-Bêche Imperforate Panes (CS 77bi). Without gum as issued

ONE OF THE GREAT RARITIES OF THE NUMERAL ISSUE

Listed and priced in Canadian Specialized(Color Photo) C\$15,000.00



2244

2244° 1899, 1(c) on 3c Carmine, Port Hood Provisional (88B, SG 169). Two (left and right portions) on piece paying the 2c rate, one tied by proper rimless "Port Hood Ja5 99" cds, Very Fine, used only one day, approximately 100 1c bisects were used (all in pairs paying 2c rate), with a number of those destroyed by the Postmaster at Halifax, one of the great rarities of Canadian philately, this piece illustrated in Boggs (p. 336), Stanley Gibbons cat. £3,500 for each bisect(Color Photo) E. 2,000-2,500

1903 EDWARD VII AND SUBSEQUENT ISSUES

2245° ★ 1903-08, 1c-50c Edward VII (89-95). O.g., hinge marks, Very Fine set 524.00

2246° ★ 1903, 1c Green, Imperforate (89a). Pair, no gum, toned spot, o/w Very Fine(Photo) 400.00

2247° ★ 1903, 2c Carmine, Booklet Pane of Six (90b). Two panes in booklet with back cover missing, gum soaked off and minor faults but panes intact, Good and extremely rare as a complete booklet 1,450.00



2248

- 2248° E **1908, 1/2c Tercentenary, King in Civilian Dress, Large Die Essay (96E).** 55 x 36 mm, the unissued design showing George V in civilian attire, the few examples known exist only as die proofs, Very Fine, extremely rare(Photo) E. 2,000-3,000
- 2249° ∞ **1908, 1/2c-20c Tercentenary (96-103).** Complete set tied by grids, "Laggan Alta De16 08" cds on 1908 cover to Japan, cover with faults incl. flap & small part of back missing, a rare usage, ex Nickle(Photo) E. 500-600
- 2250° ★ **1908, 1/2c-20c Tercentenary, Imperforate (96a-103a).** Vertical pairs, o.g., 1/2c with thin speck, 2c with light bend, o/w Very Fine, accompanied by an extra 15c imperforate horizontally pair(Photo Ex) 3,150.00
- 2251° ★ **1924, 7c Red Brown, Imperforate (114a).** Left sheet margin pair, lightly hinged, Very Fine(Photo) 800.00
- 2252° ★ **1912, 8c Dark Blue, Imperforate (115a).** Pair, h.r., Very Fine(Photo) 800.00
- 2253° ★ **1925, 10c Bistre Brown, Imperforate (118a).** Pair, lightly hinged, Very Fine(Photo) 800.00
- 2254° ★ **1912, 20c Olive Green, Imperforate (119a).** Retouched framelines, lightly hinged, Very Fine(Photo) 900.00
- 2255° ★ **1923, \$1.00 Orange, Imperforate (122a).** Pair, Very Fine(Photo) 1,100.00
- 2256° ★田 **1922-24, 1c-3c, Perf 8 Coil, Blocks of Four (126a, 128a, 130a).** H.r., Very Fine 500.00
- 2257° ★ **1926, 2c on 3c Carmine, Triple Surcharge (140b).** Single and pair, lightly hinged, F-VF(Photo Ex) 525.00
- 2258° ★★ **1928-29, 1c-\$1.00 Geo. V, Views, Imperforate (149b-159a).** Pairs, Mint, Very Fine(Photo) 1,455.00
- 2259° ★田 **1928-29, 1c-\$1.00 Geo. V, Views, Imperforate Horizontally (CS 149ii-159ii).** Blocks of four, lightly hinged, Very Fine(Photo Ex) C\$5,500.00
- 2260° ★田 **1928, 1c, 2c, 5c Geo. V, Tête-Bêche Imperforate Booklet Panes (CS 149ai, 150ai, 153ai).** Hinged in top selvage only, Very Fine, rare(Photo Ex) C\$6,075.00
- 2261° ★★ **1932, 5c Dark Blue, Horizontal Pair, Imperforate Vertically (199a).** Mint, Very Fine(Photo) 500.00
- 2262° ∞ **1942, POW Cover.** From Boom Road, N.B. to the Japanese Red Cross at Tokyo, 5c stamp tied, censor label & usual chop markings, note on reverse indicates cover was received in April 16, 1944, Fine E. 125-150
- 2263° ∞ **1943, Free Franked POW Cover.** Addressed to Canadian member of the Royal Rifles with Canadian censor tape, sent to Tokyo with unusual Japanese red figures on reverse, Very Fine E. 75-100

1959 SEAWAY INVERT



2264

- 2264°★★ **1959, 5c Seaway, Center Inverted (387a).** Mint, fresh and Very Fine, a choice example of this major 20th Century error(Color Photo) 8,500.00



2265

- 2265° **1959, 5c Seaway, Center Inverted (387a).** Neat wavy line machine cancel, well-centered, Very Fine, a great rarity in this choice used condition(Color Photo) 6,500.00

AIR POST AND BACK-OF-BOOK ISSUES

- 2266°★★ **1928, 5c Air Post, Imperforate (C1a).** Pair, plus pairs imperf vertically and horizontally (CS C1ii, C1iii), Mint, Very Fine C\$900.00
- 2267°★田 **1927, 20c Special Delivery, Imperforate (E3a).** Block of four, plus blocks of imperf horiz. and vert. (CS E3i, E3ii), lightly hinged, Very Fine C\$1,500.00
- 2268°★ **1875, 5c Registration, Imperforate (F2c).** Vert. pair, o.g., h.r., Very Fine(Photo) 850.00
- 2269°★ **1916, 2c + 1c Brown War Tax, Imperforate (MR4c).** Margin pair, no gum as issued, Very Fine, only 50 pairs issued(Photo) 600.00
- 2270°★田 **1916, 2c + 1c Brown War Tax, Imperforate Horizontally (CS MR4iv).** Block of four, no gum, Fine(Photo) C\$700.00
- 2271°★★田 **1963, 1c Deep Brown Official, Double "G" Ovpt. (CS O46i).** Block of four, Mint, Very Fine(Photo) C\$3,200.00
- 2272°★ **1879, Brown Officially Sealed (CS OX1).** Original gum, h.r., Very Fine, very scarce in this condition(Photo) C\$250.00



2246



2251



2252



2253



2254



2255



2257 EX



2261



2269



2258 EX



2250 EX



2259 EX



2272



2260 EX



2249



2268



2271



2270

CANADA COLLECTIONS AND BALANCES

- 2273° ∞ **1851-54, STAMPLESS COVERS.** Four, 1851 red Montreal Paid with Canada in arc with ms. "6", one 1852 red Montreal cds with Canada in arc, one 1852 Toronto cds and "CANADA 10Cts." straightline, and one 1854 Quebec Steamboat Letter cds, last one addressed to Montreal, others to New York, VG-F E. 200-250
- 2274° **1859-64 CENTS ISSUES.** Over 40 incl. five unused, with shades, cancels, imprints, etc., some small faults, mostly Fine E. 400-500
- 2275° **1868-75 LARGE QUEEN ISSUES.** Over 80 incl. a few unused, collected for shades & cancels, generally F-VF E. 400-500
- 2276° ★ **1870-93 SMALL QUEEN ISSUES.** 28 unused, incl. 30c & 50c, some o.g., generally F-VF E. 200-300
- 2277° **1870-93 SMALL QUEEN ISSUES.** Over 180 used, collected for shades, cancels, varieties, etc., please inspect E. 200-300
- 2278° **1897 JUBILEE ISSUE.** 23 used, incl. ½c-50c plus shades, \$1.00 and two \$2.00 (roller cancels), few minor faults, Very Fine centering E. 200-300
- 2279° ★ **1897-1899 MAPLE LEAF, NUMERAL ISSUES.** Over 100 incl. both sets cplt. unused, used incl. duplication with shades & cancels, 2c surcharges incl. inverted, etc., some small faults, F-VF appearing E. 200-300
- 2280° **1898 IMPERIAL PENNY POSTAGE (85-86).** Over 30 stamps incl. five unused, with shades & cancels, plus five covers and imperf block of four with imprint (small faults), mixed condition, F-VF appearing E. 150-200
- 2281° **1903-08 EDWARD VII.** 23 used incl. three 50c, some better cancels, also 2c imperfs incl. used strip of three and block of four, and an unused plate block of ten, some small faults, F-VF appearing E. 150-200
- 2282° ★ **1908 TRICENTENARY.** Unused & used cplt. sets, plus a few duplicates incl. better cancels, few minor faults, F-VF appearing E. 100-150
- 2283° ★ **1912-25 GEORGE V ISSUES.** Over 100, cplt. set unused, duplicated used incl. cancels, used & unused coil pairs and 1924 imperf, generally F-VF E. 300-400
- 2284° ★ **1917-27 COMMEMORATIVES.** About 50 items, value in imperf & part-perf (about 25 items), incl. 1917 3c imperf pair and 1927 sets in imperf and part-perf blocks, generally Very Fine E. 1,000-1,500
- 2285° ★ **1928-42 ISSUES.** A few hundred, most of the better sets present both used & unused, also a few varieties & booklets, generally F-VF E. 300-400
- 2286° ★ **BACK-OF-BOOK ISSUES.** About 150 used & unused, incl. airmails, special delivery, postage due, registration incl. 8c(3), revenues, etc., a little duplication, mixed condition E. 300-400
- 2287° ★ **OFFICIALS.** O.H.M.S. ovpts. complete, plus about 30 perforated officials incl. \$1.00 Destroyer plate block, F-VF E. 200-300
- 2288° ★ **CANADA COLLECTION.** To 1937 in old Marquette album, some used & a few unused classics, value in o.g. 20th Cent. with Jubilee to 50c and nearly complete from there (50c Edward & \$1.00 KGV used), back-of-book includes 8c Registration, a few small faults, generally F-VF E. 750-1,000
- 2289° ★ **CANADA & PROVINCES.** Collection to 1954 on Scott pages, mostly used to 1932, most o.g. after, includes some better Newfoundland, generally F-VF E. 300-400



2290



2291 EX



2292



2294 EX



2299

VANCOUVER ISLAND AND BRITISH COLUMBIA

1860-69 ISSUES OFF COVER

- 2290°★田 **1860, 2½p Dull Rose (2).** B.R. corner margin block of four, o.g., T.L. stamp with a few clipped perfs, o/w Fine(Photo) 700.00
- 2291° **1860, 2½p Dull Rose (2).** Six singles, one pair, and one strip of three, each with "Dietz & Nelson's" cancels, incl. circular, collect, paid, ms. "2", etc., stamps VG-F(Photo Ex) E. 750-1,000
- 2292° **1860, 2½p Dull Rose (2).** Two overlapping pairs with blue Dietz & Nelson's cancel, making up 1sh postal tax for heavy letter, also a similar cancel on piece with one 2½p, Very Good(Photo) E. 150-200



2293

- 2293° **1865, 5c Rose, Imperforate (3).** Close to large margins, blue "35" cancel, Fine, a scarce stamp, with 1988 Greene certificate(Color Photo) 5,250.00
- 2294° **1865, 10c Blue, Imperforate (4).** Seven stamps incl. a pair and a severed pair, includes the only known example with scarce **Nanaimo** post office handstamp, and one with unofficial pin-perf, generally F-VF, a rare lot with excellent exhibit potential(Photo Ex) 5,600.00
- 2295°★ **1865, 10c Blue (6).** Five singles and a block, incl. two wing margin, generally o.g., Fine 2,250.00
- 2296° **1865, 3p Blue (7).** Five singles (one unused) and two strips of three (one unused), minor varieties incl. inverted wmk., double perfs, very thin paper, etc., generally Fine E. 400-500
- 2297° **1865, 3p Blue (7).** Six with **foreign** postmarks, incl. San Francisco and Portland transits, other four unidentified, Fine E. 250-300
- 2298° **1865, 3p Blue (7).** Three singles and a strip of three, with diff. **Victoria** cancels, Fine E. 250-300
- 2299° **1867, 5c-\$1.00 on 3p Surcharges, From The "Destruction" Sheet (9-13).** Each with small "x" obliteration which were retained at the time all British Columbia stamps were destroyed, accompanied by handwritten official certificate of destruction, and a \$1.00 surcharge with notarized statement that this stamp was retained from the destruction sheets, an extremely rare and probably unique group of destruction stamps(Photo) E. 4,000-5,000
- 2300°★ **1867, 2c on 3c Brown (8).** Fine, accompanied by four other De La Rue surcharges from diff. countries 42.00
- 2301°★ **1867, 2c on 3p Brown (8).** Seven stamps (three used) showing minor varieties, incl. one in block of four, incl. various ovpt. vars., wing margin, double perforation, etc., generally Fine E. 300-400
- 2302° **1867, 2c on 3p Brown (8).** Single, four pairs, and a strip of three, each with diff. **Victoria** cancel, generally Fine E. 400-500

2303°	1867, 2c on 3p Brown (8). Pair and four singles, each with diff. New Westminster cancels, generally Fine E. 200-250
2304°	1867, 2c on 3p Brown (8). Five with foreign cancels, incl. two U.S., one British and two which are not identified, generally Fine E. 200-250
2305°★	1867, 2c, 50c on 3p Surcharges (8, 17). Fine 417.00
2306°★	1867, 5c-\$1.00 on 3p Surcharges (9-13). Incl. five 25c and two \$1.00, incl. wing and sheet margin copies, one inverted wmk., most o.g., Fine 2,540.00
2307°	1867, 5c on 3p Red (9). Five with diff. Victoria cancels, incl. one with dramatic mis-perf, generally Fine E. 200-250
2308°	1867, 5c on 3p Red (9). Four with portions of Well Fargo "For Great Britain and Ireland" cancels, two with additional U.S. cancels, generally Fine E. 200-250
2309°	1867, 5c, 25c on 3p Surcharges (9, 11). Four 5c, one 25c, each with foreign grid or cork cancel, most probably U.S. transits, generally Fine E. 200-250
2310°	1867, 25c on 3p Orange (11). Five with diff. Victoria cancels, two with additional London Paid, generally Fine E. 200-250
2311°	1867, 50c on 3p Violet (12). Two with ms. "BX" cancels of Barnard's Express, accompanied by a similar cancel on 3p (No. 7), Fine, a rare cancel on this stamp E. 300-400
2312°	1867, 5c on 3p Red (14). Six, with diff. cancels, incl. Mar. and Aug. 1869 datestamps, coat-of-arms, "35", etc., VG-F 2,700.00
2313°★	1869, 25c on 3p Orange (16). Part o.g., Fine, accompanied by three other De La Rue or Perkins perf 12½ stamps from other countries 300.00
2314°	1869, 25c on 3p Orange (16). Two with blue "35" and London receiving pmks., Fine 500.00

BRITISH COLUMBIA POSTAL HISTORY

2315°∞	Official Post Office Notice. Dec. 23, 1858 handwritten notice of P.O. in Toronto letterhead stating rate for Vancouver Is. of 15c, letter will be forwarded to N.Y. and to Oregon, Fine E. 300-400
2316°∞	O.H.M.S. c. 1863 official cover from P.M. O'Reilly, Gold Commissioner, Richfield to New Westminster, most likely carried by the Gold Escort, Fine ..(Photo) E. 600-800
2317°∞	Nanaimo. 1864 cover with red oval "Post Office Nanaimo Vancouver Island" and black oval paid, sent to New Westminster, small piece missing at T.L., light soiling, o/w Fine appearance, rare(Photo) E. 600-800
2318°∞	Vancouver's Island Customs Crown. Circular handstamp with negative lettering on a 10c Green Nesbitt entire with red Wells Fargo express frank, carried out of the mails via Panama to New York, with "New-York May 26, 1859" cds, Very Fine, illustrated in Robson Lowe (p. 563) where he states fewer than six are recorded(Color Photo) E. 1,000-1,500
2319°∞	Victoria Coat of Arms. Blue oval handstamp on 1867 10c Green entire with black Wells Fargo frank, three additional U.S. 1861 10c Green (68) stamps paying the 40c quadruple California rate, tied by blue oval Wells Fargo Victoria hs, paste-up address missing, Fine and scarce(Color Photo) E. 1,000-1,500
2320°∞	(Express) 5c Due. Pencil "5 cts due" and blue crayon "5" on 3c Pink entire with black Wells Fargo frank, blue Salem Ore. oval express ds, to Victoria where postage due, soiling, o/w Fine usage(Photo) E. 400-500
2321°∞	(Victoria B.C.) PAID. Bold blue double-line oval "PAID" on cover from Victoria to New Westminster, "Victoria B.C. Nov. 5, 1868" cds, Fine, the Paid marking was used provisionally after the supply of 5c stamps ran out, accompanied by original letter offering \$25,000 Vancouver Is. bonds at 12% per annum(Photo) E. 500-600

2316

O.A.M.S.
The Hon^{ble}
The Attorney
H. F.
John Cummings
Richford New

Received April 19/66

PAID

Thomas Cunningham Esq.
New Westminster
B.C.



2317



2318

M.

POST OFFICE
days, return to



If not delivered within

2319

2321



H. D. House Esq.
New Westminster
B.C.



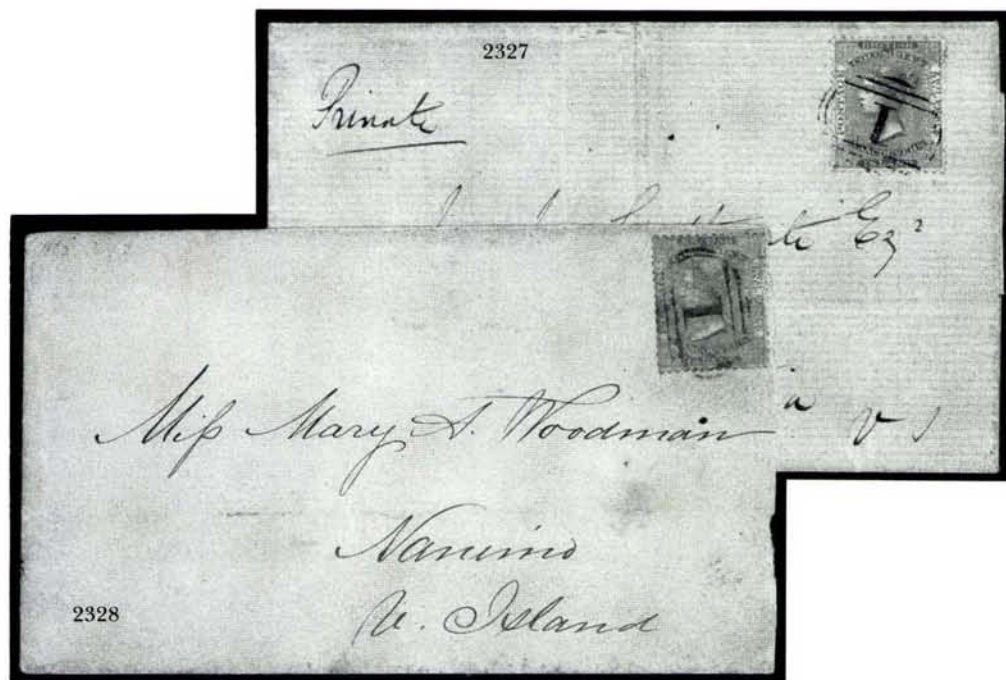
W. Williams Esq.
Victoria
Vancouver Island

2320

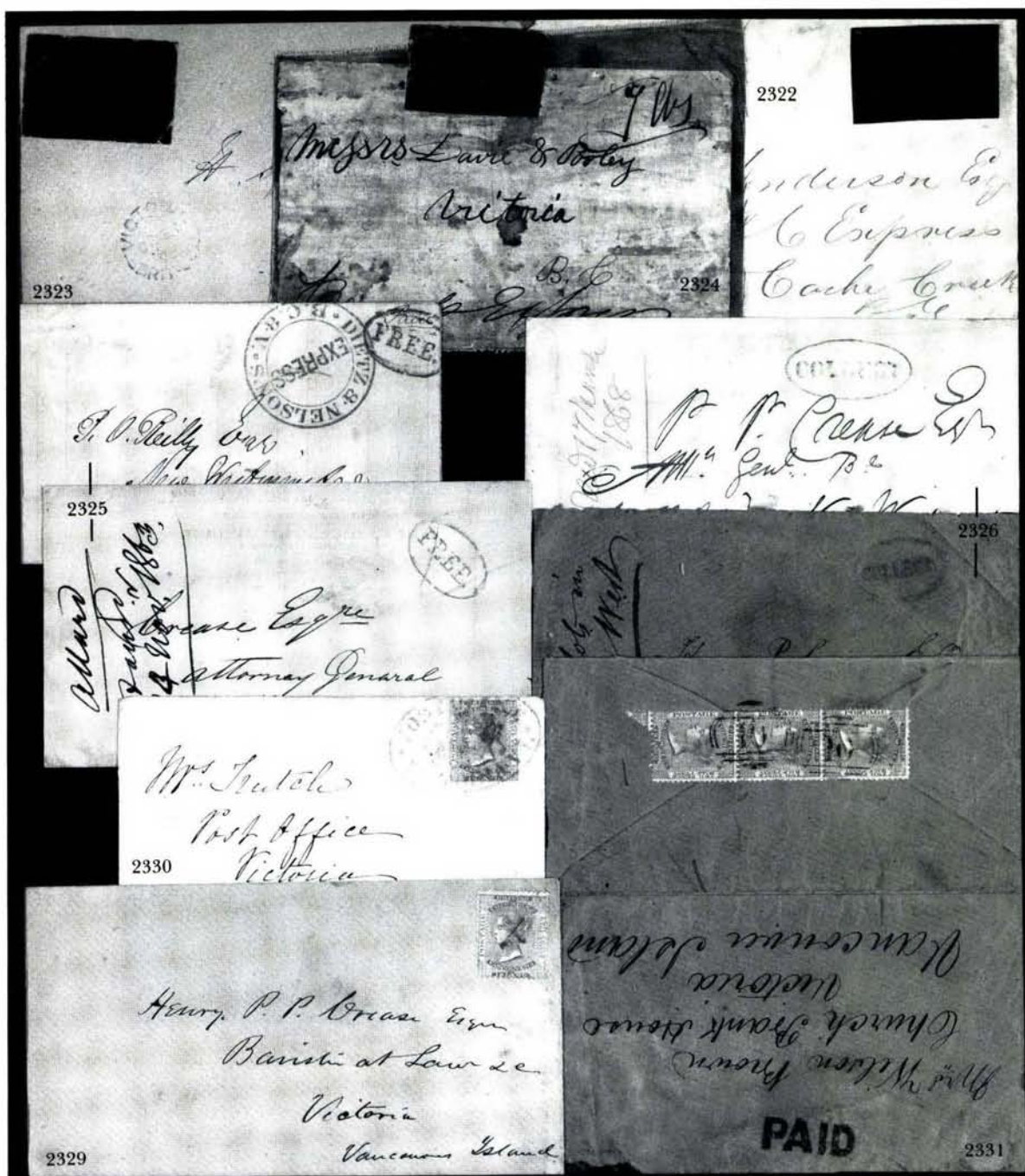
BRITISH COLUMBIA EXPRESS COMPANY USAGES

- 2322° ∞ **British Columbia Express Co.** Black on vermillion adhesive label on 1878 cover addressed to A. Henderson, B.C. Express, Cache Creek, B.C., Henderson was a stage driver, roughly opened at left, a few cover tears, o/w Fine(Photo) E. 500-750
- 2323° ∞ **British Columbia Express Co.** Black on red-orange label on cover from Cariboo to Victoria, with "Victoria Brit-Col De31 1873" cds, adhesive label with small faults, o/w Fine(Photo) E. 400-500
- 2324° ∞ **British Columbia Express.** Black on orange label on piece of **canvas wrapper**, endorsed "Barnards Express", sent from Cariboo to Victoria, ms. "7 lbs", stains, unusual usage(Photo) E. 400-500
- 2325° ∞ **Dietz & Nelson Express.** Two covers from Soda Creek to New Westminster, first is 1865 ms. Paid and blue oval "FREE", other is from Jasen Allard The Chief Factor at Fort Yale to Henry Crease Attorney General in New Westminster with blue oval "FREE", F-VF, reportedly only one other cover exists with this marking(Photo) E. 1,000-1,500
- 2326° ∞ **Dietz & Nelson Collect.** Two covers, one 1863 small oval in black, other 1868 large oval in blue, both from the Cariboo to New Westminster, F-VF ... (Photo) E. 1,000-1,500

VANCOUVER ISLAND AND BRITISH COLUMBIA 1860-69 ISSUES ON COVER



- 2327° ∞ **1860, 2½p Dull Rose (2).** Tied on Feb. 26, 1861 folded letter by "1" numeral cancel, sent from Westminster to Victoria, this is the **earliest dated letter** bearing a "numeral" cancel, Fine(Photo) E. 1,500-2,000
- 2328° ∞ **1860, 2½p Dull Rose (2).** Tied by red "1" numeral cancel on cover to Nanaimo, roughly opened at right, o/w Fine, the red cancel was only used for a short period of time in 1862, examples are rare(Photo) E. 750-1,000



- 2329° 1860, 2½p Dull Rose (2). Blue ms. cancelled (not tied) on cover from Westminster to Victoria, probably 1860 use, Fine, an early inter-colonial usage of the 2½p stamp(Photo) E. 1,200-1,500
- 2330° 1860, 2½p Dull Rose (2). Used as 5c on cover (after change to decimal currency), sent from San Francisco and cancelled on arrival with blue oval coat-of-arms cancel, flap missing, otherwise Fine(Photo) E. 1,000-1,500
- 2331° 1860, 2½p Dull Rose (2). Vertical strip of three tied by "10" numeral cancel on back of 1864 cover from Williams Creek to Victoria, large "PAID" on front, cover with minor faults and opened for display, Fine appearance, rare(Photo) E. 1,200-1,500



- 2332° 1860, 2½p Dull Rose (2). Tied by "1" numeral cancel on 1863 yellow cover to Iowa, oval "Paid" hs, red crayon "10", British Columbia GPO double-circle ds beneath U.S. 1861 3c Rose (65) tied by S.F. cogwheel cancel, "San Francisco Cal. Sep. 18, 1863" double-circle ds, U.S. stamp lifted for inspection, 2½p stamp with corner defect, nevertheless a fresh and Very Fine mixed franking cover(Color Photo) E. 1,500-2,000
- 2333° 1860, 2½p Dull Rose (2). Tied by blue oval "Collect" hs on 3c Pink entire with black Wells Fargo frank, from San Francisco to New Westminster, blue Dietz & Nelson's express company hs, the 2½p stamp was added to collect the 3p Postal Tax, repaired at top and left, Fine appearance, rare mixed franking(Photo) E. 1,500-2,000
- 2334° 1860, 2½p Dull Rose (2). Five stamps (strip of three and a pair) tied by coat-of-arms cancels on large cover, paying the 25c 2½ oz. rate, minor flaws, o/w Fine and possibly the only cover with five 2½p stamps, also with excellent strike of Bank of British North America sealing wax cut out from back of cover(Photo) E. 1,500-2,000



- 2335° ∞ **1865, 5c Rose, Imperforate (3).** Tied by blue "35" numeral cancel on paste-up Wells Fargo cover, without address, stamp with margins just touching to large incl. part of adjacent at left, cover opened at left, Fine, rare and attractive mixed franking, with 1988 Greene certificate(Color Photo) E. 4,000-5,000
- 2336° ∞ **1865, 5c Rose (5).** Cancelled on arrival by "Victoria B.C. Sep. 5, 1868" cds, endorsed Sep. 4 at lower left, probably hand-carried from New Westminster on the 4th and posted as a drop letter on the 5th, stamp with small faults, o/w Fine(Photo) E. 750-1,000
- 2337° ∞ **1865, 5c Rose (5).** On cover from the Attorney General of Vancouver Is. to the Attorney General of British Columbia, pen cancelled, blue oval "Victoria Vancouver Island Post Office Paid", soiled at right, o/w Fine(Photo) E. 600-800
- 2338° ∞ **1865, 5c Rose (5).** Tied by "1" numeral cancel on cover from New Westminster to E. Mallandaine, Road Tax Collector in Victoria, with G.P.O., British Columbia backstamp, flap missing, cover repaired at top, Fine appearance, accompanied by Road Tax receipt signed by Mallandaine(Photo) E. 400-500
- 2339° ∞ **1865, 5c Rose (5).** Uncancelled pair on cover from Peter Henry Nind to Peter O'Reilly, Gold Commissioner, Yale, probably carried by private messenger, Fine(Photo) E. 400-500



2340

- 2340° ∞ **1865, 3p Blue (7).** L-shaped block of three and single tied by "1" numeral cancels on cover to Germansen Creek, Ominica, two stamps with clipped perfs at right, insignificant considering the Very Fine and fresh condition of this rare cover(Color Photo) E. 2,000-2,500
- 2341° ∞ **1865, 3p Blue (7).** Pair on large cover to New Westminster, tied by "PAID" (cancelled at receiving office), ms. "Collect", addressed to acting P.M.G., cover with small faults incl. part of flap missing, Fine appearance(Photo) E. 600-750
- 2342° ∞ **1867, 5c on 3p Red (9).** Corner perf rounded, tied by "35" numeral cancel on cover to Burrard Inlet, bold blue double-oval "Victoria Jun. 23, 1871" ds, Very Fine cover(Photo) E. 1,000-1,500
- 2343° ∞ **1867, 5c on 3p Red (9).** Broken "T" variety, tied to part of cover by blue "35" numeral cancel, with U.S. 1868 10c Green, F. Grill (96) tied by cork and San Francisco cds, sender's hs dated 1870, only two days later U.S. stamps ceased to be used on letters from British Columbia, small faults, Fine appearance(Photo) E. 400-500
- 2344° ∞ **1867, 5c on 3p Red (9).** Tied by blue oval Wells Fargo express ds on 3c Pink entire with black printed frank, blue oval "Paid" hs, the 5c stamp was applied in San Francisco, roughly opened at left, stain and light soiling, o/w Fine mixed franking(Photo) E. 500-750
- 2345° ∞ **1867, 5c on 3p Red (9).** Used on U.S. 10c Green entire pasted up to 3c Pink entire with Wells Fargo frank, tied by blue oval cancel, hs. "COLLECT" and ms. "15", typical small edge faults, o/w Fine(Photo) E. 750-1,000
- 2346° ∞ **1867, 25c on 3p Orange (11).** Tied by blue double-oval "New Westminster B.C. Jul. 20, 1871" ds on cover to Ominica, on this day British Columbia became a province of Canada, cover with stain and small tear, still Fine, a rare and exhibitable usage(Photo) E. 2,000-2,500
- 2347° ∞ **1867, 25c on 3p Orange (11).** Tied by "35" numeral cancel on small neat cover to Ominica, blue double-oval "Victoria B.C. Jun. 22, 1871" ds, fresh and Very Fine(Photo) E. 1,500-2,000
- 2348° ∞ **1867, 25c on 3p Orange (11).** Tied by blue "35" numeral on cover to Cariboo, "Victoria B.C. Sep. 12, 1870" cds, original letter closes: "I have not a cent in my pockets, and must try and borrow a quarter to post this letter", cover somewhat toned and worn with small faults, opened at right, o/w Fine(Photo) E. 1,000-1,500



Secretary of Mount Herman Lodge 1874

2341



2342

2343



2344

*Robert T Williams
Libborn store*

Victoria R. C.



*If not delivered within days, return to
Mills & Co.*

*Collect 15
Kesturnan
Secretary
of the same Lodge
Victoria*

2345

*Monmouth
Rice 13th Aug 74
Hilly Esq
Manson Creek
Minocqua*

2346



*via Desmet mouth -
Rice 15th July*



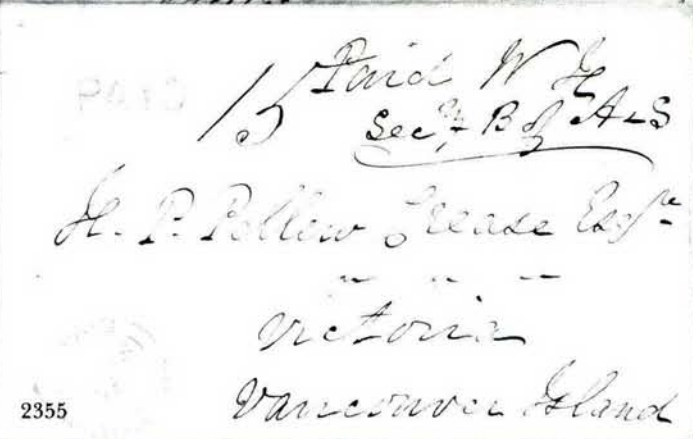
*Hilly Esq
Manson Creek
Minocqua*

2347



2348

*Mr. A. C. Allen
Cariboo
E. of the Indian 17th C.*



INCOMING MAIL TO BRITISH COLUMBIA

- 2349° ∞ **Victoria (Australian States) to Victoria, British Columbia.** 1871 cover with three 6p Blue Victoria stamps tied by indistinct cancels, red London Paid, Melbourne & Victoria B.C. backstamps, bleach spots and small faults, o/w Fine appearance, addressed to a member of the Hudson Bay Company and marked on back "My Brother", a remarkable piece of mail sent from opposite ends of the earth(Photo) E. 300-400
- 2350° ∞ **New South Wales (Australian States) to Victoria, British Columbia.** 1874 cover with N.S.W. 1sh and four 1p stamps tied by Sydney cds and "NSW" in oval rings, ms. "Per Tartar", Victoria backstamp, file fold through two stamps and small cover tear at top, o/w Fine, handsome franking and extraordinary usage(Photo) E. 400-500



2351

- 2351° ∞ **British Guiana to Victoria B.C..** 1871 mourning cover with British Guiana 4c, 6c, and 24c Perf 10 (52, 67, 68) tied by "A04" in oval cancels, "Berbice Oc8 1871" cds on back along with St. Thomas transit, red crayon "4", minor edge nicks and soiling, still Fine and quite rare(Color Photo) E. 1,500-2,000

FROM CANADA

- 2352° ∞ **Canada to Victoria B.C. via Panama.** 1859 cover with partly visible St. Andrews C.E. cds., red "Paid" hs, ms. "3" crossed out and changed to "9", Montreal backstamp, flap missing, Fine appearance, very scarce usage(Photo) E. 1,200-1,500
- 2353° ∞ **Toronto to Victoria B.C..** 1859 cover franked by member of Legislative Assembly, with red "Legislative Assembly, Canada, February 10, 1859" datestamp surrounded by shield and Crown, light red Toronto cds, "Paid" and ms. "30" (for overweight letter), usual cover wear, o/w Fine, very scarce marking(Photo) E. 1,200-1,500
- 2354° ∞ **Toronto to Victoria B.C. Postage Due Cover.** Unpaid 1859 small cover from Toronto to Victoria, with "DUE 15" hs. over "UNPAID 10", Toronto cds, cover well worn, o/w Fine(Photo) E. 750-1,000
- 2355° ∞ **Quebec to Victoria B.C.** 1859 cover franked by Sec. Board of Agriculture Statistics (blue crest on flap), ms. "15" and red "Paid Quebec L.C. De15 1859" cds, additional "Paid" straightline hs, light soiling, o/w Fine(Photo) E. 750-1,000
- 2356° ∞ **Canada to New Westminster B.C.** Two 1861 covers, one from St. Thomas U.C. via New York, other from Quebec, each with ms. "15" and crayon "5" (Br. Columbia local charge), Fine pair showing scarce usage(Photo) E. 1,500-2,000

- 2357° **Quebec to New Westminster B.C.** 1863 cover with ms. "25", red "Quebec L.C. PM Ja23 63" cds, ms. "Via New York, California & c.", Fine, covers paying the 25c British Columbia rate are rare(Photo) E. 1,500-2,000
- 2358° **Upper Canada to Victoria B.C.** August 1864 yellow cover with red "Hyde Park Corner" dateless and rimless circle, Canada 1859 10c Albert pen-cancelled, sent via London U.C. by Great Western Railway sorting car to U.S. border, then to St. Louis for stage to California, several backstamps, letter received Oct. 1864, opened at left, o/w Fine, a rare cover demonstrating the intricacies of North American mail routes(Photo) E. 1,000-1,500
- 2359° **Upper Canada to Victoria B.C.** A similar usage, June 1865 cover with red Hyde Park Corner hs, Canada 10c Albert pen-cancelled, London U.C. backstamp, Fine(Photo) E. 1,000-1,500
- 2360° **Canada West to Victoria B.C.** 1866 cover from London C.W. with two Canada 5c Beaver stamps tied by cds and grids, Fine and exceedingly scarce franked as such(Photo) E. 1,200-1,500
- 2361° **France to New Westminster B.C.** Two 1863 covers from Boulogne, one Aug. 1863 with 80c Napoleon imperf tied, other Nov. 1863 folded letter with 80c Napoleon perforated, each with red London Paid, clean covers, F-VF(Photo) E. 1,000-1,500

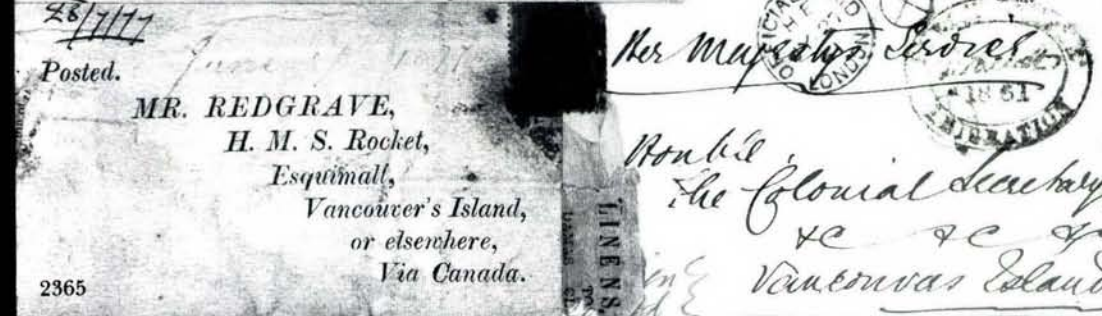
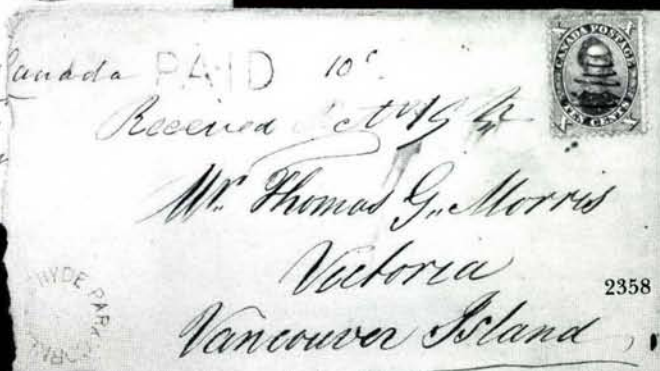


2362

- 2362° **(German States) Baden to New Westminster B.C.** 1867 mourning cover to "New Westminster, British Columbia, North Pacific" with Baden 1kr, 3kr, and pair of 9kr tied by "Heidelberg 28 Mai" cds, red "PAID 10" in frame, Bremen backstamp, minor corner nicks, still a Very Fine and handsome three-color franking, mail between Baden and British Columbia is very rare(Color Photo) E. 2,000-2,500

FROM GREAT BRITAIN

- 2363° **Great Britain to British Columbia.** Two stampless covers, one 1861 Leeds to New Westminster via Overland Stage, other 1863 London to Vancouver's Is. via New York, appropriate transit markings, small cover faults, o/w Fine(Photo) E. 600-750
- 2364° **Great Britain to Vancouver Island.** Two covers, one is 1859 from Plymouth to Victoria with red San Francisco Paid, ms. "1/ 2½" rate, other is 1861 O.H.M.S. folded letter from Gov't Immigration Board, with red London Official Paid and oval Emigration handstamps, Fine pair(Photo) E. 1,000-1,500
- 2365° **Great Britain to Vancouver Is.** G.B. 1p Red tied by black smudge on part of 1877 wrapper, interesting printed address to Esquimalt Naval Station, typical faults(Photo) E. 200-250



James E. Allen & Co.
Express Office
 Victoria
 Vancouver's Island
 2366

Mrs O'Keilly
 Point Ellen
 Victoria
 British Columbia
 Canada
 2367

A AND CHINA
 The Calcutta mail we have re-
 correspondence and files of papers
 the 22d of October; Shanghai
 and Hongkong, the 10th of
 INDIA.
 The letter of our Calcutta cor-
 escape. The latter, however, appeared to have
 gained some of the expedition, and had all disap-
 peared when the two gunboats arrived off Ketsu
 island, one of their favourite resorts. As, however,
 the whole Chusan archipelago abounds in cover to
 which it is well known that pirates habitually resort,
 it was determined to prosecute the search. On the
 9th information was obtained that two piratical
 junks had just put to sea from Sheikoo har-
 bour, but they were lost sight of, and hours, on J
 during the three following days no suspicious
 MANIFE
 The follow-
 position of pi-
 rate States in
 United States
 Georgia, into
 Georgia, into
 Georgia, into

Temperance Permanent Band
 34, MOORGATE STREET
 Mr Edward M. M. M.
 Broadway
 (Corner of Gates Street)
 Victoria
 2368

2369
 Via United States
 Vancouver's Island

Mr Donald McHugh
 (Late of Portmachi)
 Hudson Bay Co. Store
 Victoria
 Vancouver's Island
 2370

2371
 Victoria
 Vancouver's Island

Via Vancouver
 Mrs O'Keilly
 Victoria
 Vancouver's Island
 British Columbia
 2372

2375
 Victoria
 British Columbia

Lates Mail via Queenstown
 26/66
 Mr John H. L. L. L.
 Messrs Lindley Durham
 Victoria
 Vancouver's Island
 2373

2374
 Victoria
 Vancouver's Island

- 2366° ∞ **Great Britain to Victoria B.C.** Nov. 23, 1864 London Evening Mail newspaper addressed to Victoria with two G.B. 1p stamps tied, Fine, rare ..(Photo) E. 600-750
- 2367° ∞ **Great Britain to Victoria B.C.** ½p Plate 20 (58) on 1880 **wrapper**, tied by Folklore "303" cancel, sent to Victoria, usual small wrapper faults, Fine appearance, very unusual usage(Photo) E. 400-500
- 2368° ∞ **Great Britain to Victoria.** Two covers, 1859-61, each franked with G.B. 1sh and three 1p stamps, one from Temperance Permanent Land & Building Society, London, other with ms. "via United States" and Brentwood pmk., one cover with small faults, other Fine(Photo) E. 300-400
- 2369° ∞ **Great Britain to Victoria B.C.** 1861 cover with G.B. 1sh, 2p, and 1p stamps tied by London cds and "W21" in oval grid, ms. "Per Mefss Fargo & Wells Express", cover repaired and with part of address missing, still an attractive three-color franking(Photo) E. 100-150
- 2370° ∞ **Scotland to Victoria B.C.** March 1866 cover with two G.B. 6d Purple stamps tied by Ardgay cds, red Derby Paid, received June 1866, small cover faults at top, o/w Fine(Photo) E. 150-200
- 2371° ∞ **Great Britain to Victoria B.C..** 1864 cover with 1sh Green tied by "547" cancel, Stoke-on-Trent duplex, Fine(Photo) E. 150-200
- 2372° ∞ **Great Britain to Victoria B.C..** 1864 cover with two G.B. 1sh and one 4p stamp tied by London "W11" in oval grids, ms. "Via Panama", Fine, a lovely franking and small neat cover(Photo) E. 250-350
- 2373° ∞ **Great Britain to Victoria B.C.** 1866 long cover with three G.B. 1sh stamps paying the triple weight tied by London "82" in grids, directed by U.S. Mail via Queenstown, contained invoice for cargo, small cover faults and slightly reduced at left, o/w Fine(Photo) E. 250-350
- 2374° ∞ **Great Britain to New Westminster B.C.** 1867 long cover with pair of G.B. 2sh Blue tied by London "84" in oval grids, minor cover faults, Fine appearance, a scarce quadruple-rate cover(Photo) E. 400-500
- 2375° ∞ **Jamaica to Victoria B.C.** 1878 cover with Jamaica 6p Purple tied by "AO1" cancel, Kingston cds, New York and "Paid All" backstamps, few edge nicks, o/w Fine, very rare destination from Jamaica(Photo) E. 750-1,000



2376

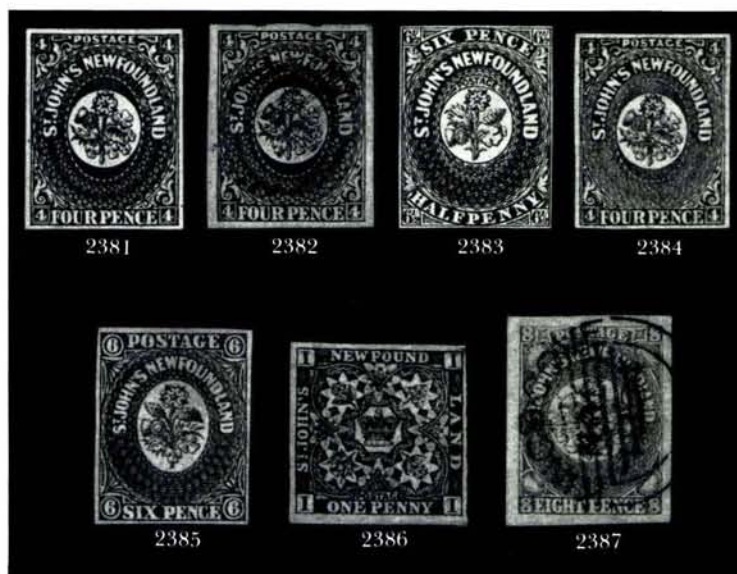
- 2376° ∞ **Trinidad to Victoria B.C.** 1871 cover with Trinidad 1sh Purple and strip of three 1p Red tied by "Trinidad Jy7 1871" cds, red "Trinidad Paid" cds, crayon "1/2" rate, St. Thomas backstamp, F-VF and attractive, very attractive franking and scarce usage(Color Photo) E. 1,500-2,000

NEW BRUNSWICK

- 2377° **1851, 6p Olive Yellow (2, SG 4).** Large margins, red "PAID" (Colonial Express Mail cancel), Very Fine(Photo) 325.00
- 2378°★ **1860, 1c Red Lilac, Imperforate Vertically (6b).** Horiz. pair, unused, Fine(Photo) 350.00
- 2379°∞ **1860, 12½c Blue (10, SG 18).** Tied by oval grid on 1861 mourning cover to London, red London receiving cds, St. John backstamp, Very Fine(Photo) E. 200-300
- 2380° **NEW BRUNSWICK.** Collection balance, 37 stamps, ten Specimens, five reprints, and one cover, incl. 1851 two shades of 3p & 6p plus reprints, 1860 incl. shades and imprints, proofs incl. two imprint pairs, mixed condition, F-VF appearing E. 300-400

NEWFOUNDLAND

PENCE ISSUES



- 2381°★ **1857, 4p Scarlet Vermilion (4, SG 4).** Large even margins, brilliant color, choice quality, Very Fine, a marvelous example of this rare stamp, with 1994 Holcombe certificate(Color Photo) 4,000.00
- 2382° **1857, 4p Scarlet Vermilion (4, SG 4).** Huge margins, oval grid, light vertical crease, o/w Extremely Fine, with 1994 Holcombe certificate(Photo) 1,200.00
- 2383°★ **1857, 6½p Scarlet Vermilion (7, SG 7).** Unused, margins all around, fresh color, Fine, with 1994 Holcombe certificaec(Photo) 1,500.00
- 2384°★ **1860, 4p Orange (12, SG 12).** Unused, large even margins, Very Fine, with 1994 Holcombe certificate(Photo) 1,100.00
- 2385°★ **1860, 6p Orange (13, SG 14).** Unused, full margins all around, Very Fine, ex Col. Green, with 1994 Holcombe certificate(Photo) 1,350.00
- 2386°★ **1861, 1p Reddish Brown (16, SG 21).** Ample to large margins, fresh, Very Fine, the rare 1p shade, with 1994 Holcombe certificate(Color Photo) 2,750.00
- 2387° **1861, 8p Rose (22, SG 24d).** Huge margins, "Kings-Cove" cds & grid, light corner crease, o/w Extremely Fine, very scarce used with town cancel(Photo) 105.00

LATER ISSUES



2377



2378



2388



2390



2392



2393



2391

- 2388°★ 1876, 5c Seal, Roulette (40). Showing full imprint, part o.g., Very Fine(Photo) 100.00
- 2389°★ 1897-1901, 1c Victoria, Imperforate Horizontally, 2c & 4c Imperforate (80b, 82a, 84a). 4c unused, others o.g., couple small faults, F-VF, also No. 80b tied to piece by St. John's grids (cat. as unused) 665.00
- 2390°★ 1920, 2c on 30c Slate, Inverted Surcharge (127a). H.r., Very Fine ..(Photo) 275.00
- 2391°★田 1920, 3c on 35c Red, Block of 25 with Two Stamps Showing Only Top and Only Bottom of "Three" (130 var., SG 147 var.). F-VF, scarce(Photo) E. 200-300
- 2392° 1920, 3c on 35c Red, Only Top of "THREE" printed (130var., SG 147 var.). On piece, small hole caused by cds, o/w Fine, a scarce variety(Photo) E. 100-150
- 2393°★ 1929, 3c on 6c Gray, Inverted Surcharge (160a). Very Fine, scarce. (Photo) 500.00



2401



2405



2406



BY AIR MAIL
PAR AVION

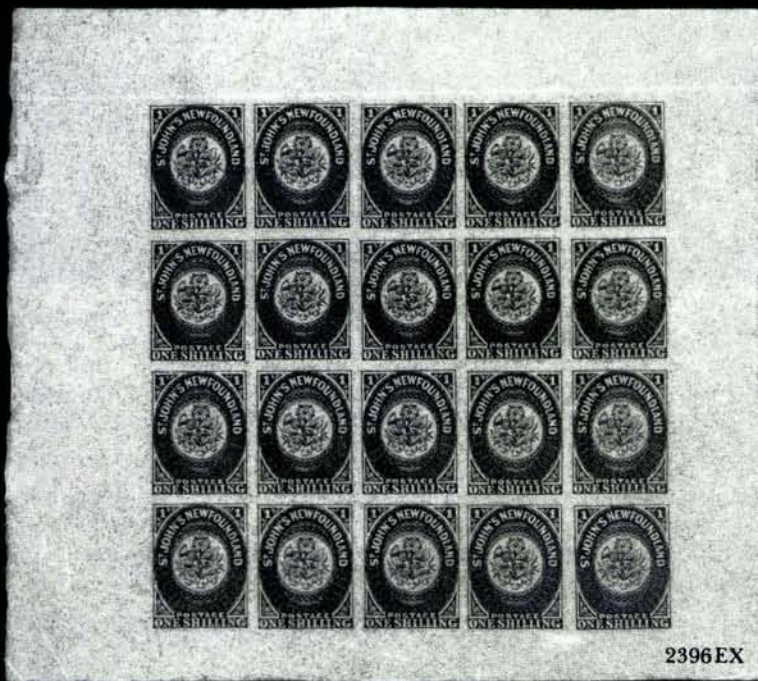
R. J. Reel,
c/o Postmaster,
London, England

G.P.O.

2394

Per Air Mail "Columbia"
Mr. Grace to London, Sept. 25, 1930.

St. John's, Newfoundland



2396 EX

- 2394°∞ **Second "Columbia" Flight from Harbour Grace, Oct 9, 1930 (AAMC 21a).** Newfoundland 20c & 30c tied by St. John's Sep. 25 cancel, numerous backstamps, F-VF(Photo) 1,000.00
- 2395°★ **1910, Labrador Bogus Designs.** 5c, 25c, \$1.00 values, o.g., 25c faulty, accompanied by 2c Entire with "Par Cometique/By Labrador Dog-team Post" cachet in red, addressed to Fred Jarrett, with Dec. 2, 1926 Lourdes Du Blanc Sablon pmk., Fine lot E. 100-150

NEWFOUNDLAND COLLECTIONS AND BALANCES

- 2396°★ **NEWFOUNDLAND, 1857-62 PENCE ISSUES.** 41 singles, one pair, and six blocks, most unused, incl. used 4p & 6p Orange, others to about \$200.00 catalog, also **full sheets of 20 of 1861 4p, 6p, and 1sh Heraldics**, some o.g., mixed condition but the vast majority with four margins (the sheets are Very Fine), substantial catalogue value(Photo Ex) E. 1,000-1,500
- 2397°★ **NEWFOUNDLAND, 1866-1896 ISSUES.** Well over 100 used & unused incl. two blocks, includes 5c Brown Seal (one unused & three used) and other better stamps, duplication incl. shades, some varieties and imprint copies, slightly mixed condition, generally F-VF E. 500-750
- 2398°★ **NEWFOUNDLAND, 1897-1947 ISSUES.** Good run of sets (most present both o.g. and used), plus some varieties, and two stampless covers (1918 St. John's, 1920 St. Joseph's), generally F-VF E. 500-750
- 2399°★ **NEWFOUNDLAND AIRMAILS.** About 35 items incl. blocks, many present both used & unused incl. Nos. C12 & C18, generally F-VF E. 600-800
- 2400°★ **NEWFOUNDLAND BACK-OF-BOOK ISSUES.** Small group incl. six postage due values, officially sealed stamp (no gum, VF), five pieces of stationery incl. one used, F-VF E. 100-150

NOVA SCOTIA

- 2401°★ **1851, 1p Red Brown (1).** Unused, ample margins, Very Fine(Photo) 1,250.00
- 2402° **1851-53, 1p-1sh Pence Issues (1/6).** Nos. 1(2), 3(2), 4(2), 5, and 6, last two Very Good, others four margins, mixed condition 3,500.00
- 2403°★ **1851, 3p Blue, Dark Blue (2, 3; SG 3, 4).** Unused, F-VF 950.00
- 2404°★ **NOVA SCOTIA.** 1860-63 balance, 36 items, used & unused singles incl. unused 5c, four imprint blocks incl. 1c imperf vert. block of four, and five Specimen (two counterfeit), a few small faults, o/w F-VF E. 300-400

PRINCE EDWARD ISLAND

- 2405°P **1862, 3p Blue, Plate Proof, Tête-Bêche Gutter Pair (6P var.).** Small faults, Very Fine appearance, very scarce, mentioned in Robson Lowe(Photo) E. 100-150
- 2406°P **1862, 3p Blue, Plate Proof with Impression of 4p in Black on Reverse (6Pvar.).** Pair, Very Fine, rare, mentioned in Robson Lowe(Photo) E. 150-200
- 2407°★ **PRINCE EDWARD ISLAND.** Collection balance of 1862-1872 issues, over 30 items, incl. shades and varieties, two bisects on piece, eleven imperf or imperf between pairs (these cat. \$850.00), and full panes of 30 of 3p Blue and 4p Black, a few small faults but generally fresh and Fine E. 300-400

END OF SALE—THANK YOU

Catalogue Subscriptions

Our policy for mailing catalogues is simple. We feel we owe it to our consignors to send catalogues to every active bidder. Therefore, if you submit competitive bids or purchase lots in our auctions, you will continue to receive catalogues for at least another year, whether or not your paid subscription is current.

If your collecting interests are highly specialized, or you bid only on occasions when something in your particular area is offered, we recommend a paid subscription to ensure that you do not miss any offering that might be important to you. The charge for a one-year subscription (a *minimum* of six catalogues and frequently more) is just \$25, which covers the cost of Priority Mail postage and mailing. We do not charge our clients for catalogues, just postage reimbursement. Prices realized lists—a valuable tool for assessing current market trends—are mailed to bidders and buyers in each sale, as well as currently paid subscribers.

The 1994-95 Siegel auction season is off to a great start, and we hope you will keep current with the market by subscribing to our catalogues. Better yet, we hope you will bid competitively (and successfully) and continue receiving catalogues without charge.

If you wish to order a one-year subscription for \$25, please provide the following information and enclose your check or money order with this form. Or, if you are considering selling part or all of your collection, please let us know.

Yes, I would like to receive Siegel auction catalogues for the next twelve months (a minimum of six catalogues) and enclose \$25 to reimburse you for postage costs.

NAME

COMPANY (If Applicable)

ADDRESS

CITY/STATE/ZIP

TEL. (Optional)

FAX (Optional)

If you have your mailing label available, please provide the 5-digit number that appears to the right of your name:

.....

I am considering selling, and wish to be contacted at the above address and/or telephone number. My collection is described below.

.....
.....
.....

Bid Form

Sale 762

September 29, 1994

1

Please provide the following information:

NAME.....

ADDRESS.....

CITY/STATE/ZIP

TEL. (DAY) FAX.....

PADDLE #

Do not write in box

2

Have you purchased from us in the past 5 years? ☐ YES (if so, please go to Section 3)☐ NO (please provide a trade reference and bank information)

References:

Stamp Firm:..... Telephone.....

Bank:..... Account #.....

3

In the space provided below, enter the **lot number** from **Sale 762** and your corresponding bid. Please use **whole dollar amounts** only and enter the **maximum bid** you wish to have us execute on your behalf, according to the bidding increments (on other side of this form). **Your bid will NOT include the 10% buyer's premium.** We will advance the bidding at one increment over the next

highest bid; therefore, you may be awarded the lot at less than your maximum bid. Please do not use "plus" bids or "buy" bids. If you wish to bid on one lot **or** the other, indicate your "or" bid between lot number/bid entries and bracket your choices. If you wish to place a **bidding limit** on the total amount of your bids, please enter your limit in the space marked "Limit Bids".

Lot	Bid	Lot	Bid	Lot	Bid
	\$		\$		\$

☐ **LIMIT BIDS:** Check this box if you wish to limit the total amount of your bids (not including the 10% buyer's premium) in this sale. Your bids will be executed until your bidding limit no longer allows for additional bids.

The total amount you wish to bid is: \$

4

AGREEMENT: By signing this bid form, you agree to pay for purchases resulting from your bids, in accordance with the **Conditions of Sale** printed in the sale catalogue. You also agree to pay the 10% buyer's premium and any shipping costs (see reverse), which will be added to your successful bids, and any sales tax or use tax which may be due

on the total invoiced amount. It is understood that these bids will be executed by Siegel Auction Galleries as a courtesy to absentee bidders, but that no legal responsibility shall lie with the auctioneer or the firm if these bids are not executed. **You are responsible for your written bids, including any errors on your part.**



SIGNED..... TODAY'S DATE.....

5

Please submit your bids promptly (telephone bids must be confirmed in writing).

Mail to: Robert A. Siegel Auction Galleries, Inc.
65 E. 55th Street, New York, N.Y. 10022
Telephone (212) 753-6421

OR FAX YOUR BIDS: (212) 753-6429

Shipping Instructions, Bidding Increments and space for additional bids on other side of form

Additional Bids**Sale 762—September 29, 1994**

Lot	Bid	Lot	Bid	Lot	Bid
	\$		\$		\$

Shipping and Transit Insurance

We will be pleased to arrange for shipping and transit insurance for purchases in this sale (except those described as "floor sale only"). To expedite billing and delivery of lots to hundreds of buyers per sale, we use standard charges for postage and insurance, based on the invoiced total and mailing requirements (see schedule). The standard charges are sometimes slightly more or less than the actual postage, but we do not include any fees for our labor or packing costs. Therefore, we ask all buyers to remit the prescribed amount for shipping charges.

Transit insurance is provided in all cases, except when the buyer has furnished us with proof that insurance coverage is effective under another policy. Proof, in such cases, will be accepted in the form of a written certificate from the insurance carrier.

You are responsible for insurance charges, which will be added to your invoice. This coverage is provided for our mutual protection against theft or loss in transit.

Invoice Total	Shipping Method	Charges
Up to \$500	Certified Mail or Insured Priority	\$6.00
\$500-1,000	Certified Mail or Insured Priority	\$10.00
\$1,000-10,000	Fedex or Express Mail	\$15.00
\$10,000-25,000	Fedex or Express Mail	\$20.00
Over \$25,000	Fedex or Express Mail	\$20.00 plus insurance at \$1 per \$1,000 value over \$25,000
Foreign Destinations (any value)	Registered or Express mail	\$10.00 plus insurance at \$2 per \$1,000 value
Bulk Lots	UPS Preferred	By weight and value (min. \$25.00)

Bidding Increments

The auctioneer may regulate the bidding at his discretion. However, to assist absentee bidders in establishing their maximum bid for each lot, the increments shown at right will be used in most cases. We recommend that written bids conform to these increments (those which do not will be reduced to the next level).

Up to \$140	\$5	\$3,000-7,000	\$250
\$140-300	\$10	\$7,000-20,000	\$500
\$300-700	\$25	\$20,000-30,000	\$1,000
\$700-1,400	\$50	\$30,000-75,000	\$2,500
\$1,400-3,000	\$100	\$75,000 up	\$5,000

Services for Buyers

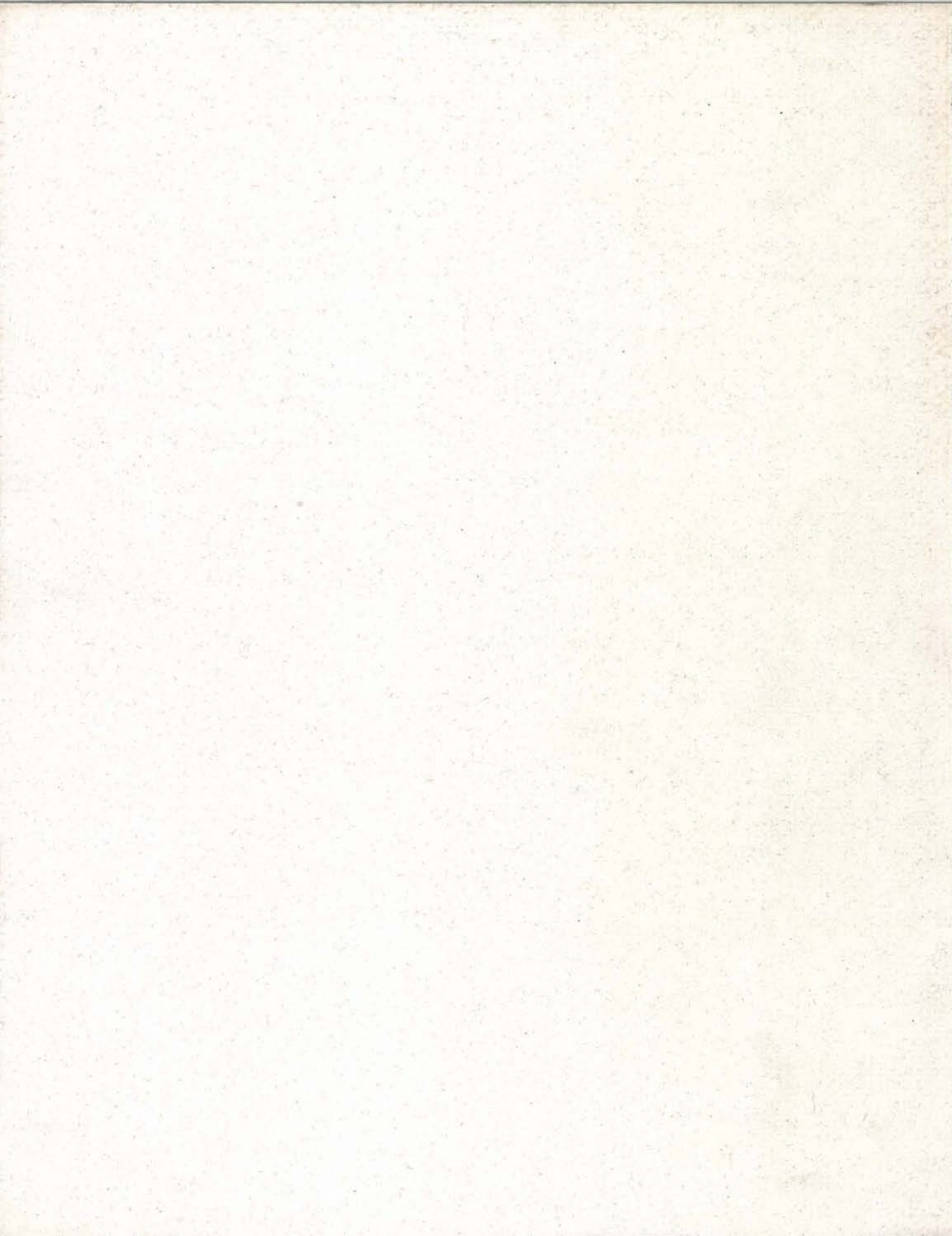
If you wish to participate in this sale, we will be pleased to assist you in many ways. The following services are provided without additional charge (except for any out-of-pocket expenses):

- Most lots may be inspected by registered or overnight mail, and all lots may be viewed by appointment or during the pre-sale exhibition
- Prospective bidders may request up-to-the-minute valuations for any lot in the sale
- We will be pleased to assist out-of-town clients in obtaining hotel reservations nearby our gallery
- Bidders who cannot attend the sale may submit bids by telephone/fax, by mail, or in special cases, we will provide a telephone link to the auction in progress (must be confirmed in advance)
- Any item sold without an expert certificate dated within the past five years may be purchased subject to certification (please see Conditions of Sale)
- Instructions for shipping purchased lots may be given to the gallery immediately after the sale
- Prices realized will be available one day after the final sale day

Services for Sellers

If you have stamps you wish to sell, we will be pleased to provide the following services and options for auction or outright sale:

- Free verbal appraisal of material brought to our gallery; Written appraisals for estate tax purposes (rates available on request)
- Free on-site consultation for any collection with fair market value of \$100,000 or more
- Auction consignments will be processed within six months of receipt, and proceeds will be paid 42 days from date of sale
- Commission rate of 10% (no other charges for lotting or illustration)
- Immediate interest-free advances up to 50% of the auction valuation
- On certain collections, we will guarantee the seller a minimum net amount, which eliminates the downside risk while still providing the potential for maximum auction realization
- If you wish to sell your stamps for immediate cash, we will be pleased to make an outright offer
- Suitable collections will be considered for single-owner sales and/or our annual Rarities of the World sale



PRICES REALIZED FOR SALE 762---9/29/94
Canada and British North America Stamps and Covers

Robert A. Siegel Auction Galleries, Inc.
60 East 56th Street, 4th Floor, New York, NY 10022
Tel (212) 753-6421 Fax (212) 753-6429

Lot#	Realized	Lot#	Realized	Lot#	Realized	Lot#	Realized	Lot#	Realized	Lot#	Realized	Lot#	Realized	Lot#	Realized
2001	800	2047	200	2090	600	2142	3,250	2193	270	2242	2,600	2291	600	2382	525
2003	280	2048	230	2091	300	2143	1,400	2195	650	2243	7,500	2292	220	2383	325
2004	135	2049	105	2092	650	2144	425	2196	425	2244	2,400	2293	2,500	2384	525
2005	675	2050	100	2093	150	2145	17,000	2197	500	2245	270	2294	2,700	2385	900
2006	1,600	2051	240	2094	550	2146	5,750	2198	6,500	2246	100	2295	750	2386	1,600
2007	2,100	2052	2,200	2095	850	2147	4,500	2199	625	2247	300	2296	425	2387	80
2008	600	2053	260	2096	8,000	2148	7,000	2202	1,400	2248	2,000	2298	250	2389	300
2009	7,500	2054	240	2097	1,600	2149	2,500	2203	650	2249	1,600	2299	3,000	2390	180
2010	1,000	2055	260	2098	3,000	2150	1,900	2204	300	2250	1,350	2301	325	2391	450
2011	1,800	2056	85	2099	15,000	2151	900	2205	625	2251	425	2302	425	2392	100
2012	2,500	2057	900	2100	5,250	2152	750	2206	450	2252	425	2303	230	2393	300
2013	900	2058	150	2101	4,000	2153	350	2207	325	2253	450	2304	200	2395	75
2015	525	2059	450	2102	1,050	2154	325	2208	350	2254	450	2306	1,500	2396	2,200
2016	350	2060	950	2103	900	2155	1,800	2210	800	2255	425	2307	240	2397	1,500
2017	1,400	2061	170	2105	400	2156	4,750	2211	325	2256	425	2309	200	2398	2,500
2018	950	2062	150	2106	625	2158	3,500	2212	160	2257	210	2310	260	2399	1,800
2019	950	2063	130	2108	4,500	2160	625	2213	950	2258	1,000	2311	350	2400	170
2021	3,500	2064	200	2109	2,500	2161	290	2214	240	2259	1,400	2313	200	2403	200
2022	2,300	2065	325	2110	1,300	2162	1,600	2215	350	2260	1,350	2314	220	2404	350
2023	2,900	2066	900	2111	800	2163	2,100	2216	260	2261	525	2315	400	2405	200
2024	16,000	2067	375	2114	650	2164	850	2217	70	2262	120	2316	600	2406	240
2025	2,900	2068	1,100	2115	1,250	2165	450	2218	850	2263	75	2318	1,900	2407	750
2026	2,000	2069	400	2116	675	2166	550	2219	750	2265	5,500	2319	1,900		
2027	1,000	2070	1,100	2117	400	2167	375	2220	210	2266	280	2325	1,000		
2028	750	2071	325	2118	400	2168	1,200	2221	1,000	2267	450	2327	1,500		
2029	800	2072	325	2119	300	2170	450	2222	500	2269	375	2328	850		
2030	475	2073	4,000	2121	325	2171	6,250	2223	950	2270	180	2330	1,000		
2031	475	2074	375	2124	800	2172	2,300	2224	180	2274	850	2331	1,200		
2032	375	2075	18,000	2125	1,700	2173	300	2225	290	2275	1,400	2333	1,500		
2033	1,400	2076	1,100	2126	1,600	2176	525	2226	260	2276	500	2340	2,000		
2034	1,500	2077	1,200	2127	4,000	2177	180	2227	700	2277	625	2348	950		
2035	500	2078	425	2128	11,000	2179	170	2228	2,600	2278	500	2360	1,200		
2036	2,300	2079	1,150	2129	4,500	2180	100	2229	240	2279	475	2361	1,550		
2037	1,500	2080	525	2130	3,750	2181	160	2230	1,000	2280	425	2362	2,000		
2038	1,050	2081	950	2132	1,300	2183	1,600	2231	350	2281	170	2366	750		
2039	37,500	2082	625	2133	2,200	2184	3,500	2232	220	2282	190	2372	250		
2040	16,500	2083	105	2135	1,350	2185	1,000	2233	2,200	2283	750	2374	350		
2041	15,000	2084	475	2136	1,350	2186	3,000	2234	1,100	2284	2,000	2376	2,200		
2042	1,400	2085	525	2137	1,050	2187	160	2235	750	2285	475	2377	325		
2043	1,700	2086	475	2138	700	2188	2,800	2236	1,600	2286	650	2378	425		
2044	325	2087	400	2139	700	2189	210	2239	1,800	2287	350	2379	350		
2045	260	2088	250	2140	230	2190	120	2240	1,500	2288	1,700	2380	550		
2046	2,500	2089	500	2141	5,500	2192	900	2241	3,500	2289	1,000	2381	2,500		