



THE V. P. MANWOOD COLLECTION
OF
NEW SOUTH WALES
1838-1860



SALE 770

WEDNESDAY EVENING, NOVEMBER 8, 1995

Robert A. Siegel

AUCTION GALLERIES, INC.

PARK AVENUE TOWER, 17th FLOOR • 65 EAST 55th STREET
NEW YORK, NEW YORK 10022 • TEL. (212) 753-6421



Robert A. Siegel

AUCTION GALLERIES, INC.

PARK AVENUE TOWER, 17th FLOOR • 65 EAST 55th STREET
NEW YORK, NEW YORK 10022
TEL. (212) 753-6421 • FAX (212) 753-6429

Scott R. Trepel
President

Roberta Siegel Edelstein
Vice President

Elizabeth C. Pope
Vice President

Administration
Cindy Stein
Rosanne Trepel
Khem Persaud

Descriptions
David Petruzelli
Scott R. Trepel

Robert A. Siegel
1913-1993



1850, 1p Crimson-Lake, Plate II, unused pair
(lot 4043)

The V. P. Manwood Collection of New South Wales 1838-1860

Featuring

Sydney View, Laureate and Diadem Issues
Stamps, Multiples, Cancellations and Covers

Wednesday Evening, November 8, 1995,
6:30 p.m. at our Galleries

This sale will be held in conjunction with our sale of
The Honolulu Advertiser Collection. Prospective buyers
should allow sufficient time for viewing during the hours
listed below.

Pre-Sale Exhibition

Friday, November 3	10:30 a.m. - 2:30 p.m.
Monday, November 6	10:30 a.m. - 2:30 p.m.
Tuesday, November 7	10:30 a.m. - 2:30 p.m.

Please note that there is no viewing on the day of sale.

To arrange an appointment for viewing at another time,
please feel welcome to call (212) 753-6421.

Arrangement of Sale

<i>Category</i>	<i>Pages</i>
1838 Two-Penny Post.....	5-6
The Sydney View Issues	
1-Penny	7-23
2-Pence	24-58
3-Pence	59-67
Victoria and New South Wales	
Mixed Frankings	68-69
Victoria Used in N.S.W.....	70-71
Butterfly Cancellations	71-75
Diamond of Dots	
Cancellations.....	75-76
Sub-Office Markings	76
Sydney View and Laureate	
Mixed-Issue Frankings...	77-79
The Laureate Issues	
Unwatermarked Paper ..	80-101
Watermarked Paper	101-106
Registration Stamp	107-112
The Diadem Issues	
Essays and Proofs	113-117
Issued Stamps.....	118-143

On The Cover

1850 2p Plate II Late tête-bêche
pair on cover (lot 4166)

Conditions of Sale

The property described in this catalogue will be offered at public auction by Robert A. Siegel Auction Galleries, Inc. ("Galleries") on behalf of various consignors and itself or affiliated companies. By placing a bid on any lot, the bidder acknowledges acceptance of and will be bound to these Conditions of Sale.

1. The highest bidder acknowledged by the auctioneer shall be the buyer. The term "final bid" means the last bid acknowledged by the auctioneer, which is normally the highest bid offered. **The purchase price payable by the buyer will be the sum of the final bid and a commission of 10% of the final bid ("buyer's premium"), together with any sales tax or use tax which may be due on the sale.**

2. The auctioneer has the right to reject any bid, to advance the bidding at his discretion and, in the event of a dispute between bidders, to determine the successful bidder, to continue the bidding or to reoffer and resell the lot in dispute. The Galleries' record of the final sale shall be conclusive.

3. All bids are per numbered lot in the catalogue unless otherwise announced by the auctioneer at the time of sale. The right is reserved to group two or more lots, to withdraw any lot or lots from the sale, or to act on behalf of the seller. The Galleries will execute bidding instructions on behalf of clients, but will not be responsible for any errors in the execution of such bids.

4. **Lot numbers followed by the symbol ° are offered subject to one or more of the following conditions:** (i) the lot is subject to a minimum final bid ("reserve"), below which it will not be sold, (ii) the Galleries have advanced monies to the seller and have a financial interest in the lot, (iii) the Galleries have guaranteed the seller a minimum sale price, and (iv) the Galleries may have ownership interest in the lot, either in part or whole. The absence of the symbol ° means that the lot is offered without reserve.

5. Any lot, the description of which is obviously incorrect, is returnable, but only if the lot is returned within 14 days of receipt. All disputed lots must be returned intact with the original packing material. **The following lots may not be returned for any reason: Lots containing ten or more items; lots from buyers who have registered for the pre-sale exhibition or received lots by postal viewing, thereby having had the opportunity to inspect them before the sale; any lot described with "faults" or "defects" may not be returned because of any fault or defect. No illustrated lots may be returned because of centering, margins or other factors shown in the illustrations.**

6. Successful bidders, unless they have established credit with the Galleries prior to the sale, must make payment in full before the lots will be delivered. Buyers not known to the Galleries must make payment in full within three days from the date of sale. The Galleries retain the right to

demand payment at the time the lot is knocked down to the highest bidder, for any reason whatsoever. In the event that any buyer refuses or fails to make payment in cash for any lot at the time it is knocked down to him, the auctioneer reserves the right to reoffer the lot immediately for sale to the highest bidder.

7. If the purchase price has not been paid within the time limit specified above, nor lots taken up within seven days from the date of sale, the lots will be resold by whatever means deemed appropriate by the Galleries, and any loss incurred from resale will be charged to the defaulting buyer. Any account more than thirty days in arrears will be subject to a late payment charge of 1½% per month as long as the account remains in arrears. Any expenses incurred in securing payment from delinquent accounts will be charged to the defaulter.

8. All lots are sold as genuine. **Any lot which is accompanied by an expert certificate (for U.S. items, the accepted authority is The Philatelic Foundation), dated within the past five years of the sale date, is sold "as is" and in accordance with the description on the certificate. Such lots may not be returned for any reason, including but not limited to a contrary certificate of opinion obtained after the sale.** Buyers who wish to obtain a certificate for any item that is not accompanied by a certificate dated within the past five years may do so, provided that the following conditions are met: (1) the purchase price must be paid in full, (2) the item must be submitted to an acceptable expertizing committee with a properly executed application form within 21 days of the sale, (3) a copy of the application form must be given to the Galleries, (4) in the event that an adverse opinion is received, the Galleries retain the right to resubmit the item on the buyer's behalf for reconsideration, without time limit or other restrictions, (5) unless written notification to the contrary is received, items submitted for certification will be considered cleared 90 days from the date of sale, and (6) in the event any item is determined to be "not as described", the buyer will be refunded the purchase price, plus interest accrued on the purchase price at the prevailing Treasury Bill Rate from the date of payment, and the certification fee up to \$100.00 unless otherwise agreed.

9. Until paid for in full, all lots remain the property of the Galleries on behalf of the seller.

10. Agents executing bids on behalf of clients will be held responsible for all purchases made on behalf of clients unless otherwise arranged prior to the sale.

11. The buyer assumes all risk for delivery of purchased lots, and agrees to pay for all out-of-pocket costs incurred in shipping.

SCOTT R. TREPEL

N.Y.C. Auctioneer's License No. 795952

RASAG 1/94

Terms and Abbreviations Used in Descriptions

Centering

The width of margins and the centering of the design within perforations are graded in strict accordance with the Scott Standard Postage Stamp Catalogue standards. The following grades are used:

Extremely Fine (EF): Exceptionally large margins or near perfect centering, used to describe stamps which are of superior grade for the issue.

Very Fine (VF): Normal size margins for the issue and well-centered with design a bit closer to one side. **Please note that this grade is superior to the one on which Scott Catalogue retail prices are based.**

Fine (F): Imperforate stamps may have smaller than usual margins and perforated stamps will be noticeably off-center. Issues before 1890 may have the design touched in places. If used, fairly lightly cancelled.

Very Good (VG): Attractive appearance, but margins or perforations may cut into.

Good (G): Average off-centered example with slight faults. This condition is generally acceptable for multiples and rarities.

Gum

Stamps issued before 1900 should not be expected to have original gum unless specifically stated in the description. 20th Century issues may be expected to have original gum unless described otherwise. Terms used to describe the condition of gum are as follows:

Mint: As issued by the post office and never hinged.

Original Gum (O.G.): Stamp retains full original gum showing slight disturbance caused by previous hinge, which may be present or entirely removed. Early 19th century stamps should be expected to show crackling and toning in gum, which occurs naturally over time.

Part Original Gum: Up to half of the gum is missing, but the remaining portion is original.

Disturbed Original Gum: The gum is original to the stamp, but has been noticeably affected by hinge removal and/or humidity, mount glazing, etc.

Hinge Mark: Noticeable area where hinge has been removed and gum has been redistributed. Stamps described with hinge marks may not be returned because of gum disturbance.

Hinge Remnant (H.R.): All or part of hinge remaining affixed to gum.

Covers

Minor nicks, tears and slight reduction from opening are to be expected in 19th century covers. Folded letters normally have tears in the reverse and file folds, which will not be mentioned unless they affect the stamps or markings. Light cleaning of covers is an accepted form of conservation and is not grounds for return of a lot. The terms "Extremely Fine", etc., are meant to convey the overall appearance of cover, not the condition of an individual stamp.

Catalogue Values and Estimates

Unless otherwise noted, U.S. stamps are catalogued according to the *Scott 1995 U.S. Specialized Catalogue* or Volume 1 (previous editions have been used to catalogue certain Special Printings). *Scott 1995* Volumes 1-5 have been used for British and foreign stamps. The *1995 Stanley Gibbons British Commonwealth Catalogue* and other foreign catalogues are cited where appropriate.

Catalogue values are indicated by decimal figures in the right column (for example, "175.00"). Stamps in extremely fine quality and items for which catalogue values are not available have been given estimate ranges (for example "E. 750-1,000"). Lots offered subject to a reserve will never be reserved for more than the estimate (usually a fraction of the estimate).

Symbols and Abbreviations

★★	Mint (never hinged)	No.	Scott Catalogue Number
★	Unused (with or without gum, as described)	cds	Circular datestamp
田	Block of four or larger	hs	Handstamp
☒	Folded letter or cover	E	Essay
FC	Fancy cancel	P	Proof
o.g.	Original gum	TC	Trial color proof
pmk.	Postmark (in black unless described otherwise)	R	Reprint
var.	Variety		

Copyright Notice: This catalogue is protected by copyright. The descriptions, format, illustrations and information used herein may not be reprinted, distributed or copied in any form without the express written consent of Robert A. Siegel Auction Galleries. Application for permission may be made in writing. © 1995, Robert A. Siegel Auction Galleries, Inc.

FOREWORD

The following commentary on the V. P. Manwood Collection of New South Wales has been generously contributed by one of the foremost authorities on Australasian philately, Mr. Geoffrey Kellow. We are grateful to Mr. Kellow for providing this most informative background to New South Wales philately, and we wish to acknowledge his work in preparing the Manwood collection for exhibition. The owner of the collection also wishes to express his profound gratitude to Mr. Robson Lowe, whose distinguished career in philately provided three generations of the owner's family with professional guidance and service.

New South Wales was established as a penal colony in 1788, and appropriately the first postmaster, in 1809, was an ex-convict, Isaac Nichols. Despite these humble beginnings, New South Wales commands a pre-eminent position in classic philately. In 1838, embossed lettersheets which prepaid postage within the Sydney city limits were issued. These were the idea of the Postmaster, James Raymond, who had read Rowland Hill's pamphlet advocating postal reform. The Sydney prepaid stationery was a world first and preceded the issue of the Penny Black by eighteen months. Examples of these items in the "Manwood" collection include the earliest recorded date of use.

New South Wales became the tenth country in the world to issue adhesive stamps, on January 1, 1850. The imperforate issues form three distinct groups—the "Sydney Views", the "Laureates", and the "Diadems". The "Sydney Views" plates, for 1d, 2d and 3d values, were each hand-engraved on copper by a different engraver. Subsequent wear meant that the 1d plate had to be re-engraved once, and the 2d plate four times. The "Sydney Views" are noteworthy for being amongst the first stamp issues ever to be "plated" by philatelists, and it is probably accurate to say that these stamps were the most popular in the world amongst serious collectors at the turn of the 20th century.

The "Laureates" were also hand-engraved plates, and re-engravings were needed of the 2d (twice) and 6d plates. Even as the "Laureates" were being prepared and issued, arrangements were being made for the production of engraved stamps by Perkins, Bacon & Co. in London. These were the "Diadems", and their interest is enhanced by the fact that all printings were made in the colony.

The first issues of New South Wales have always held a fascination, and been the most popular of Australian issues, for the great collectors. There remain four major permanent collections still intact. These are the H. L. White and A. A. Vickery collections, both in Sydney museums, the Tapling Collection in the British Library, and the Royal Philatelic Collection. The Tapling and White Collections were both completed by 1910. However, the Vickery and Royal Collections include much material from the Ferrary and Arthur Hind Collections. Later famous collectors who have formed important collections of New South Wales include Pack, Caspary, Burrus, Dale/Lichtenstein, Lilly and Boker. The most notable of the specialized New South Wales collectors have been George Ginger, John Hutson and W.R.D. Wiggins in the U.K., and Theodore Steinway in U.S.A.

The "Manwood" collection is replete with material from all these sources and represents the finest collection of imperforate New South Wales that is possible today. The collection is particularly strong in unused multiples, and in this regard contains almost all the significant items that are still available. The covers include important sections of "mixed issue" frankings and of the interchangeable use of "Sydney Views" with Victoria's "Half-Length" stamps.

The collection also contains what is universally considered to be the most important, and most valuable, item of Australasian philately. This is the vertical tête-bêche pair of the 2d Sydney View used on cover. This is the only such pair known, and proves that the stamps were produced by a "print and turn" technique on large sheets of paper. The cover, discovered in 1903, is further enhanced by being addressed to Charles Latrobe, the then Superintendent of the Port Phillip District (and following political separation, the first Governor of Victoria). The cover at first graced the New South Wales collection of Harvey Clarke, and later passed into the collection of Australian rarities formed by Louis Meinertzhagen. In 1941 it was acquired by Alfred F. Lichtenstein, and only reappeared on the market with the dispersal of the Dale/Lichtenstein Australians in 1990. This unique piece is hard to surpass for its spectacular nature and its deep technical interest.

Geoffrey Kellow

WEDNESDAY, NOVEMBER 8, 1995, AT 6:30 P.M.

THE V. P. MANWOOD COLLECTION OF
NEW SOUTH WALES 1838-1860

1838 SYDNEY TWO-PENNY POST EMBOSSED STAMP



- 4001° **1838, Sydney Two-Penny Post.** Embossed stamp on part of entire with bold red "FREE/NO*29/1839" crown oval datestamp, sealed crack in embossing

THE EARLIEST RECORDED USE OF THE SYDNEY POST OFFICE STAMP—THE WORLD'S FIRST PREPAID POSTAGE, PRE-DATING BY TWO YEARS GREAT BRITAIN'S FIRST ISSUE.

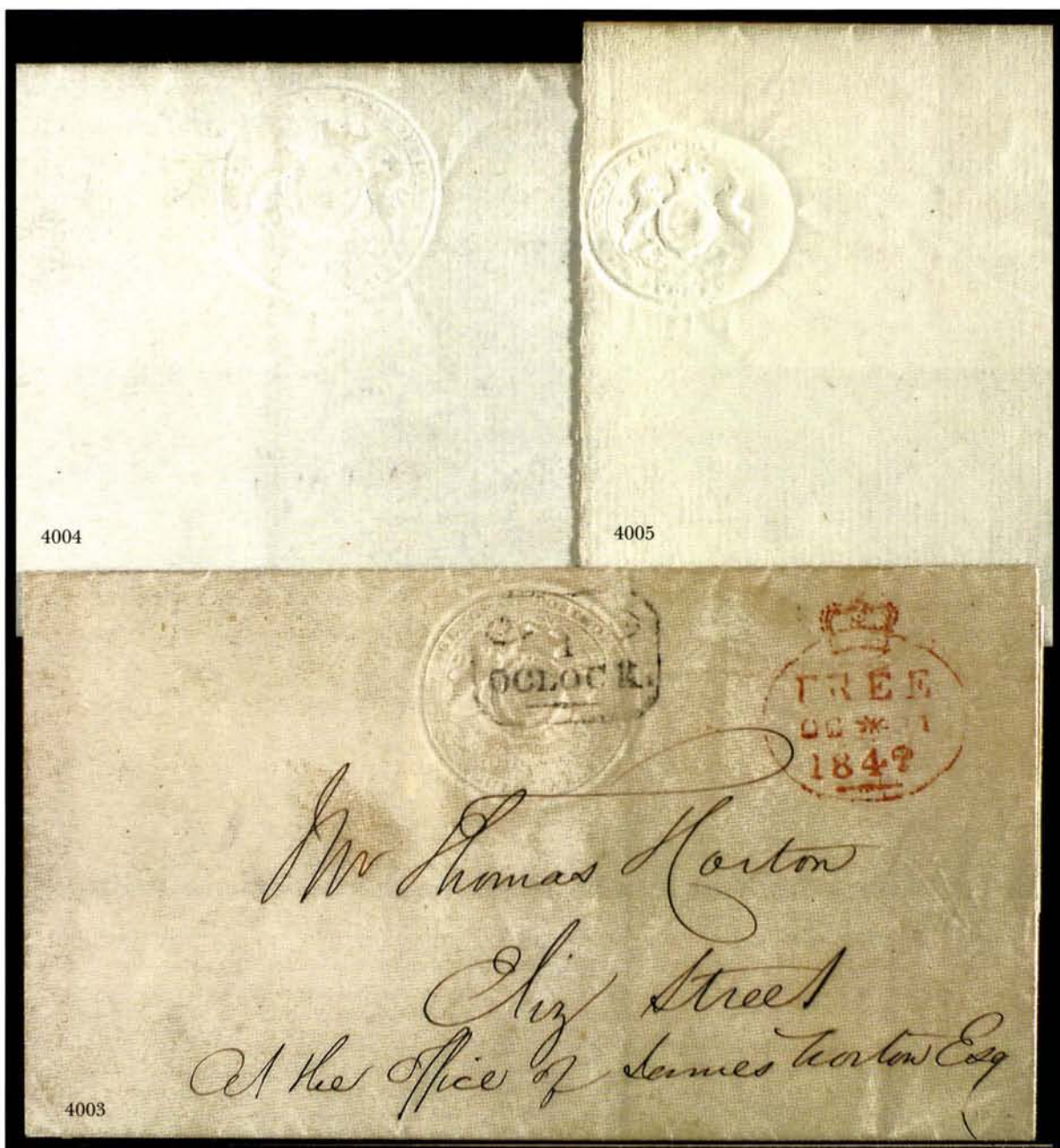
Spurred on by a copy of Rowland Hill's 1837 pamphlet on postal reform, the New South Wales postmaster, James Raymond, introduced the world's first prepaid postage stamp in November 1838. The colorless embossing was applied with a die showing the Royal Arms, engraved by W. Wilson. The stationery was sold for 1½p each or 1sh3p per dozen and were valid within the Sydney Local Post, for which the normal rate was 2p. The embossed stamps did not prove popular, despite a price reduction in 1841, but remained in use until 1851. Examples are very rare, this being the earliest dated use.

Ex G. Boucher..... E. \$3,000-4,000

- 4002°☒ **1838, Sydney Two-Penny Post.** Clear embossing on cream lettersheet stamped to order and addressed to W. R. Scott in Sydney, red "FREE/OC*20/1840" crown oval datestamp, small repaired nick at top of lettersheet

THE EARLIEST RECORDED COMPLETE ENTIRE WITH THIS SYDNEY LOCAL POST STAMP—THE WORLD'S FIRST POSTAGE STAMP.

The public was also permitted to bring stationery to the post office for stamping. This example is the earliest dated complete entire and shows embossing through all folds, indicating its stamped-to-order status..... E. \$3,000-4,000



- 4003° 1838, **Sydney Two-Penny Post**. Clear embossing on folded post office lettersheet addressed to Mr. Thomas Horton on Elizabeth Street, red "FREE/OC*1/1842" crown oval datestamp, black framed "1 O'CLOCK" timestamp, Very Fine, the second earliest date of the known examples of this rare New South Wales local post stamp E. \$2,000-2,500
- 4004° 1838, **Sydney Two-Penny Post**. Unused lettersheet on grayish vertically laid paper, clear embossing, pencil note on reverse "*Guaranteed the only true original kind received from Sir Daniel Cooper*" and signed "*Edward Pemberton*", the Sydney embossed stamp was first brought to light by Sir Daniel Cooper in 1869, later reprints exist on yellowish wove paper E. \$750-1,000
- 4005° 1838, **Sydney Two-Penny Post**. Unused pale greenish white wrapper with similar embossed design but in oval format, possibly used for newspapers, only two examples known, both unused E. \$750-1,000

THE SYDNEY VIEW ISSUES

1850 1-PENNY PROOFS AND ESSAYS



4006



4007

- 4006°P **1850, 1p Red, Plate Proof on Thin Yellowish Paper.** Left sheet margin block of fifteen reconstructed from corner blocks of six and nine, the former (Pos. 1-3/6-8) has a faint colorless impression of the oval grid "26" cancel of Shoalhaven (ex Pack and Wiggins), the latter (Pos. 11-13/16-18/21-23) is one of the largest recorded multiples of the 1p proof (ex Dale-Lichtenstein), slight creasing in both, ending in a small tear in the larger block, still an outstanding exhibition item E. \$4,000-5,000
- 4007°E **1849, 1p Red, Sydney View Lithographed Essay.** Pos. 13-15, horizontal strip of three, ample margins to slightly in, tiny thin spot in center stamp, faint discoloration on back only, otherwise Fine and rare..... E. \$750-1,000

1850 1-PENNY PLATE I — UNUSED

- 4008°★ **1850, 1p Reddish Rose, Pl. I (SG 3; Sc. 1).** Pos. 19, unused, clear to ample margins, rich color, Very Fine, with 1990 R.P.S. certificate, Scott Retail \$4,750.00...
..... SG £3,750



4008



4009

- 4009°★ **1850, 1p Brownish Red, Pl. I (SG 4; Sc. 1).** Pos. 6, unused, full to large margins, fresh, thinned but of Extremely Fine appearance, rare unused, ex Ginger, with 1946 R.P.S. certificate, Scott Retail \$4,750.00 SG £4,000

- 4010°★ **1850, 1p Pale Red, Bluish Wove, Pl. I (SG 5; Sc. 1b).** Pos. 6, unused, full even margins, beautiful bright shade
A FRESH AND EXTREMELY FINE UNUSED EXAMPLE FROM PLATE I.
With 1989 R.P.S. certificate, Scott Retail \$4,750.00 SG £3,750



4010



4011

- 4011°★ **1850, 1p Pale Red, Bluish Wove, Pl. I (SG 5; Sc. 1b).** Pos. 6, unused, full even margins all around
AN EXTREMELY FINE UNUSED EXAMPLE FROM PLATE I AND A GREAT RARITY IN SUCH CONDITION.
Ex Ferrary. Signed Bloch. With 1976 R.P.S. certificate. Scott Retail \$4,750.00...
..... SG £3,750

- 4012°★ **1850, 1p Pale Red, Bluish Wove, Pl. I** (SG 5; Sc. 1b). Pos. 4, unused, large even margins, accompanying R.P.S. certificate describes color as "A little faded" which seems at odds with reality (please refer to color photograph), mention is also made of a small thin "probably as a result of gum removal", truly an Extremely Fine stamp despite these comments, ex Ferrary, Scott Retail \$4,750.00..... SG £3,750



4012



4013

- 4013°★ **1850, 1p Pale Red, Bluish Wove, Pl. I** (SG 5; Sc. 1b). Unused, **no dot in S.W. star**, large even margins, lightly soiled, tiny thin speck, some traces of original gum, Extremely Fine appearance, with 1961 B.P.A. certificate, Scott Retail \$4,750.00..... SG £3,750

1850 1-PENNY PLATE I — USED



4014



4015



4016



4017

- 4014° **1850, 1p Carmine, Pl. I** (SG 2; Sc. 1). Pos. 12, large even margins, fine impression, oval grid, Extremely Fine, Scott Retail \$350.00..... SG £400
- 4015° **1850, 1p Carmine, Pl. I** (SG 2; Sc. 1). Pos. 20, **no dot in N.W. star**, large even margins, deep rich color and impression, "40" oval grid (Bomballa), Extremely Fine, Scott Retail \$350.00..... SG £400
- 4016° **1850, 1p Carmine, Pl. I** (SG 2; Sc. 1). Pos. 15, full to huge margins, rich color, oval grid, Very Fine, Scott Retail \$350.00..... SG £400
- 4017° **1850, 1p Carmine, Pl. I** (SG 2; Sc. 1). Pos. 10, full even margins, oval grid, Very Fine, Scott Retail \$350.00..... SG £400



- 4018° **1850, 1p Reddish Rose, Pl. I (SG 3; Sc. 1).** Pos. Large margins, fine impression, neat oval grid, Extremely Fine, Scott Retail \$350.00 SG £375
- 4019° **1850, 1p Reddish Rose, Pl. I (SG 3; Sc. 1).** Pos. 11, large margins, rich color, lightly cancelled, faint horizontal crease, still Extremely Fine, Scott Retail \$350.00 SG £375
- 4020° **1850, 1p Reddish Rose, Pl. I (SG 3; Sc. 1).** Pos. 19, large to huge margins showing bit of adjoining stamp at right, lightly cancelled, faint horizontal crease, Extremely Fine appearance, Scott Retail \$350.00 SG £375
- 4021° **1850, 1p Reddish Rose, Pl. I (SG 3; Sc. 1).** Pos. 6, full to large margins, oval grid, Very Fine, Scott Retail \$350.00 SG £375
- 4022° **1850, 1p Reddish Rose, Pl. I (SG 3; Sc. 1).** Pos. 18, full to large margins, oval grid, tiny thin, Very Fine appearance, Scott Retail \$350.00 SG £375
- 4023° **1850, 1p Reddish Rose, Pl. I (SG 3; Sc. 1).** Pos. 1, clear to ample margins, "71" oval grid (Tamworth) and small bit of blue cds, Fine, Scott Retail \$350.00 SG £375
- 4024° **1850, 1p Pale Red, Bluish Wove, Pl. I (SG 5; Sc. 1b).** Pos. 9, large even margins, oval grid, faint thin speck, Extremely Fine appearance, Scott Retail \$450.00 SG £375
- 4025° **1850, 1p Pale Red, Bluish Wove, Pl. I (SG 5; Sc. 1b).** Pos. 2, ample to large margins, oval grid, Very Fine, Scott Retail \$450.00 SG £375
- 4026° **1850, 1p Pale Red, Bluish Wove, Pl. I (SG 5; Sc. 1b).** Pos. 23, full to large margins, lightly cancelled, Very Fine, Scott Retail \$450.00 SG £375

1850 1-PENNY PLATE I

BLOCK OF FOUR



4027

4027°田 **1850, 1p Reddish Rose, Pl. I (SG 3; Sc. 1).** Pos. 14-15/19-20, block of four, large margins, rich color, lightly cancelled by oval grids, lower left stamp has tiny natural paper inclusion, tiny sealed margin tear at left

A VERY FINE AND BEAUTIFUL BLOCK. ONLY THREE USED BLOCKS OF THE 1-PENNY PLATE I ARE RECORDED, ONE OF WHICH IS UNAVAILABLE TO COLLECTORS.

Of the 1p Plate I stamp, Forster records two used blocks of four in private hands and one used block of eight in the Tapling collection at the British Library. This block is ex Caspary, Butterwick and Boker (1981, realized £10,000).....

E. \$20,000-30,000



4028



4029



4030



4031



4032



4033



4034



4035



4036



4037



4038



4039

1850 1-PENNY PLATE I — USED MULTIPLES

- 4028° **1850, 1p Reddish Rose, Pl. I (SG 3; Sc. 1).** Pos. 16-19, horizontal strip of four, mostly large margins except at lower right where clear, oval grids, rich color and Very Fine, a rare multiple in choice quality, ex Hind E. \$3,000-4,000
- 4029° **1850, 1p Carmine, Pl. I (SG 2; Sc. 1).** Pos. 8-9, horizontal pair, large even margins, rich color, fine impression, neat oval grids, Extremely Fine Gem quality pair, ex Caspary SG £800+
- 4030° **1850, 1p Carmine, Pl. I (SG 2; Sc. 1).** Horizontal pair, large even margins, deep rich color and fine impression, "89" oval grids (Kempsey) in brownish ink, Extremely Fine and choice pair SG £800+
- 4031° **1850, 1p Reddish Rose, Pl. I (SG 3; Sc. 1).** Horizontal pair, large even margins, fine impression, "48" oval grids (Tarcutta), Extremely Fine..... SG £750+
- 4032° **1850, 1p Reddish Rose, Pl. I (SG 3; Sc. 1).** Pos. 14-15, horizontal pair, large even margins, oval grids, Extremely Fine SG £750+
- 4033° **1850, 1p Reddish Rose, Pl. I (SG 3; Sc. 1).** Pos. 21-22, horizontal pair, large to huge margins, deep shade and fine impression, oval grids, Extremely Fine and choice pair, ex Caspary, signed A. Diena SG £750+
- 4034° **1850, 1p Reddish Rose, Pl. I (SG 3; Sc. 1).** Pos. 21-22, horizontal pair, large even margins, "32" oval grids (Berrima), Extremely Fine SG £750+
- 4035° **1850, 1p Reddish Rose, Pl. I (SG 3; Sc. 1).** Pos. 13-14, horizontal pair, full to large margins, oval grids, Very Fine and choice SG £750+
- 4036° **1850, 1p Reddish Rose, Pl. I (SG 3; Sc. 1).** Pos. 7-8, horizontal pair, full even margins, "66" oval grids (Singleton), Very Fine pair..... SG £750+
- 4037° **1850, 1p Reddish Rose, Pl. I (SG 3; Sc. 1).** Pos. 3-4, horizontal pair, ample to large margins, rich color, neat "25" oval grids (Kiama), slight thin affects both, Very Fine appearance..... SG £750+
- 4038° **1850, 1p Brownish Red, Pl. I (SG 4; Sc. 1).** Pos. 16-17, horizontal pair, mostly large margins, clear at bottom left, deep rich color, oval grids, Very Fine SG £800+
- 4039° **1850, 1p Pale Red, Bluish Wove, Pl. I (SG 5; Sc. 1b).** Pos. 24-25, horizontal pair, mostly large margins, close at top right corner, oval grids, two tiny tears at bottom left, otherwise Very Fine..... SG £750+

1850 1-PENNY PLATE I AND 2-PENCE PLATE I

PAIRS USED ON OFFICIAL COVER

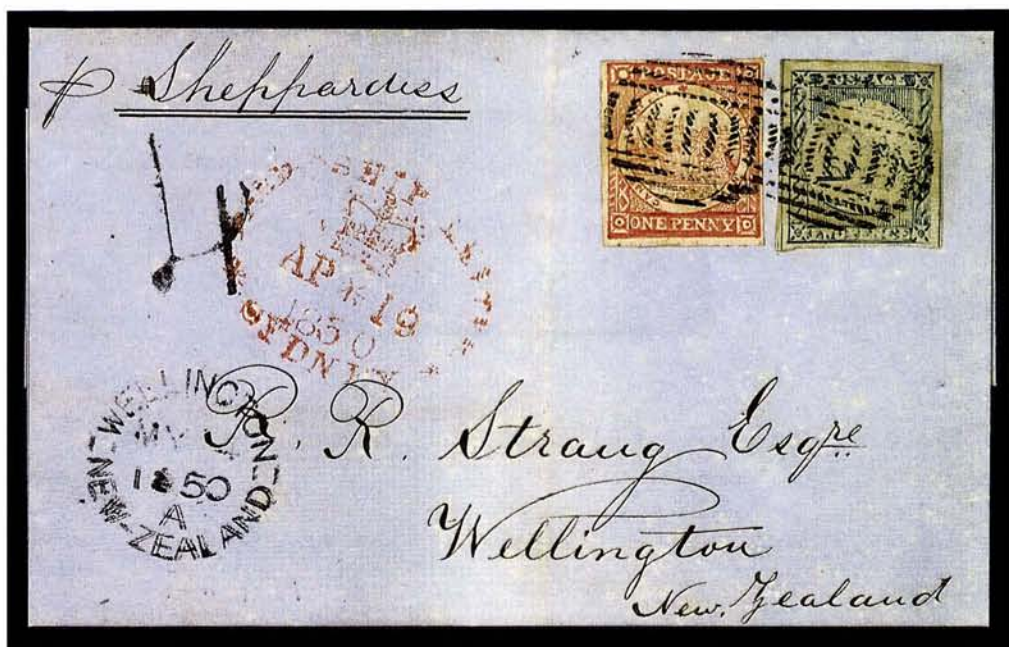


4040

4040⁰ 1850, 1p Bright Red, Pl. I (SG 3; Sc. 1). Two horizontal pairs (Pos. 11-12 and 21-22), mostly full margins, touching in places, pinhole in one, used with 1850 2p Grayish Blue, Pl. I (SG 15; Sc. 3a), horizontal pair, earliest impression, cancelled by "65" oval grid of Wollombi on legal-size folded cover endorsed "On Her Majesty's Service" and "Police Office Wollombi 8th March 1850" and addressed to the Criminal Crown Solicitor at Sydney, Wollombi crown circle and Sydney rimless datestamp on back, the content is the last page of a printed application and petition to commit someone of "unsound mind"

AN EXTREMELY FINE AND OUTSTANDING SYDNEY VIEW COVER WITH A UNIQUE FRANKING AND RARE NUMERAL CANCELLATION.

Ex Dr. Wiggins..... E. \$20,000-30,000



4041

- 4041° 1850, 1p Reddish Rose, Pl. I (SG 3; Sc. 1). Used with 1850, 2p Blue, Retouched, Pl. I (SG 19; Sc. 4), both with large even margins, tied by oval grids, "PAID SHIP LETTER/SYDNEY/AP*19/1850" crown oval datestamp on folded cover to **Wellington, New Zealand**, receiving datestamp. Extremely Fine and rare use of the Sydney Views to New Zealand, with 1992 Brandon certificate..... E. \$4,000-5,000



4042

- 4042° 1850, 1p Carmine, Pl. I (SG 2; Sc. 1). Two singles, large even margins, earliest impression in deep rich color, one has slight crease, tied by "38" oval grids on 1850 folded cover from Queanbeyan to Brisbane, Moreton Bay District (later Queensland), backstamped at origin (Aug. 16), Sydney (Aug. 18) and on arrival (Aug. 24). Very Fine and choice example of the 1-penny used to prepay 2p inland rate, ex Boucher..... E. \$2,500-3,500

1850 1-PENNY PLATE II — UNUSED



4043

- 4043°★ **1850, 1p Crimson-Lake, Bluish Wove, Pl. II (SG 9; Sc. 2c).** Horizontal pair, unused, full margins to close or touching at bottom left, deep rich color

A VERY FINE AND EXTREMELY RARE UNUSED MULTIPLE.

There is one block known, in the Tapling collection, leaving pairs as the largest available unused multiples. Ex Hutson. With 1956 R.P.S. certificate. SG £5,000 for two singles E. \$7,500-10,000



4044

- 4044°★ **1850, 1p Dull Carmine, Pl. II (SG 8; Sc. 2).** Horizontal pair, unused, large to huge margins except at top right where touched

A VERY FINE EXAMPLE OF THE LARGEST AVAILABLE UNUSED MULTIPLE.

Ex Pack. SG £5,000 for two singles E. \$5,000-7,500



4045

- 4045°★ **1850, 1p Dull Carmine, Bluish Wove, Pl. II (SG 11; Sc. 2c).** Unused, large even margins, rich color and unusually fresh

EXTREMELY FINE AND VERY RARE UNUSED, ESPECIALLY IN THIS CHOICE QUALITY.

Ex Ferrary. With 1976 R.P.S. certificate. Scott Retail \$2,500.00 SG £2,250

1850 1-PENNY PLATE II — USED



- 4046★ **1850, 1p Dull Carmine, Bluish Wove, Pl. II (SG 11; Sc. 2c).** Unused, huge even margins, pressed creases, Extremely Fine appearance, with 1983 R.P.S. certificate, Scott Retail \$2,500.00..... SG £2,250
- 4047° **1850, 1p Crimson-Lake, Bluish Wove, Pl. II (SG 9; Sc. 2c).** Pos. 22, "SID" for "SIC" variety, large to enormous margins, oval grid, deep shade described in Amundsen sale as the rare Gooseberry-Red but correctly identified as Crimson-Lake on accompanying 1975 B.P.A. certificate, Extremely Fine and choice stamp, Scott Retail \$235.00 SG £300
- 4048° **1850, 1p Crimson-Lake, Bluish Wove, Pl. II (SG 9; Sc. 2c).** Pos. 23, enormous margins all around, oval grid, fresh and Extremely Fine Gem, with 1981 Robson Lowe certificate, Scott Retail \$235.00 SG £300
- 4049° **1850, 1p Crimson-Lake, Bluish Wove, Pl. II (SG 9; Sc. 2c).** Pos. 9, large even margins, oval grid, Extremely Fine, Scott Retail \$235.00 SG £300
- 4050° **1850, 1p Crimson-Lake, Bluish Wove, Pl. II (SG 9; Sc. 2c).** Pos. 19, large even margins, "64" oval grid (West Maitland), tiny thin speck, Extremely Fine appearance, Scott Retail \$235.00..... SG £300
- 4051° **1850, 1p Crimson-Lake, Bluish Wove, Pl. II (SG 9; Sc. 2c).** Pos. 4, large even margins, lightly cancelled, faint crease, Extremely Fine appearance, Scott Retail \$235.00 SG £300
- 4052° **1850, 1p Crimson-Lake, Bluish Wove, Pl. II (SG 9; Sc. 2c).** Pos. 10, full to large margins, oval grid, Very Fine, Scott Retail \$235.00 SG £300
- 4053° **1850, 1p Crimson-Lake, Bluish Wove, Pl. II (SG 9; Sc. 2c).** Pos. 5, full to large margins except for a tiny nick at bottom, lightly cancelled, Very Fine, Scott Retail \$235.00 SG £300
- 4054° **1850, 1p Dull Carmine, Bluish Wove, Pl. II (SG 11; Sc. 2c).** Pos. 3, huge margins, oval grid, Extremely Fine, Scott Retail \$235.00..... SG £275
- 4055° **1850, 1p Dull Carmine, Bluish Wove, Pl. II (SG 11; Sc. 2c).** Pos. 18, large margins all around, oval grid, Extremely Fine, Scott Retail \$235.00..... SG £275



- 4056° **1850, 1p Dull Carmine, Bluish Wove, Pl. II (SG 11; Sc. 2c).** Pos. 21, ample to large margins, lightly cancelled, Very Fine, Scott Retail \$235.00 SG £275
- 4057° **1850, 1p Dull Carmine, Bluish Wove, Pl. II (SG 11; Sc. 2c).** Pos. 16, clear to large margins, oval grid, Very Fine, Scott Retail \$235.00 SG £275
- 4058° **1850, 1p Dull Carmine, Bluish Wove, Pl. II (SG 11; Sc. 2c).** Pos. 11, full to large margins, butterfly cancel (indistinct numeral), Very Fine and choice, Scott Retail \$235.00 SG £275
- 4059° **1850, 1p Dull Carmine, Bluish Wove, Pl. II (SG 11; Sc. 2c).** Pos. 12, ample to full margins, oval grid, Very Fine, Scott Retail \$235.00 SG £275
- 4060° **1850, 1p Dull Carmine, Bluish Wove, Pl. II (SG 11; Sc. 2c).** Pos. 17, full to large margins, oval grid, Very Fine, Scott Retail \$235.00 SG £275
- 4061° **1850, 1p Dull Carmine, Bluish Wove, Without Clouds, Pl. II (SG 11c; Sc. 2g).** Pos. 15, full to large margins, oval grid, Very Fine, Scott Retail \$235.00 SG £475
- 4062° **1850, 1p Brownish Red, Bluish Wove, Pl. II (SG 12; Sc. 2c).** Pos. 14, large even margins, rich color, oval grid, Extremely Fine and choice, Scott Retail \$235.00 SG £275
- 4063° **1850, 1p Brownish Red, Bluish Wove, Pl. II (SG 12; Sc. 2c).** Pos. 13, large margins, "78" oval grid (Cassilis), Extremely Fine, Scott Retail \$235.00 .. SG £275
- 4064° **1850, 1p Brownish Red, Bluish Wove, Hill Unshaded, Pl. II (SG 12b; Sc. 2f).** Pos. 8, large margins, oval grid, Extremely Fine, Scott Retail \$235.00..... SG £475

1850 1-PENNY PLATE II — USED MULTIPLES



4065

4065° **1850, 1p Crimson-Lake, Bluish Wove, Pl. II (SG 9; Sc. 2c).** Pos. 21-25, horizontal strip of five, the complete bottom row of Plate II, huge margins including portion of outer sheet margins at sides and bottom, "71" oval grids (Tamworth), rich color, small tear at top of lefthand stamp, mentioned only to emphasize the exceptionally choice condition of this multiple

THE LARGEST RECORDED USED MULTIPLE OF THE 1-PENNY PLATE II SYDNEY VIEW.

Ex Ferrary, Pack, Caspary and Boker (1981, realized £11,250) .. E. \$20,000-25,000



4066

4066° **1850, 1p Crimson-Lake, Bluish Wove, Pl. II (SG 9; Sc. 2c).** Two vertical strips of three rejoined into their original block formation, oval grids, mostly large margins except top right stamp touched at one point; a Very Fine and important multiple, inasmuch as the largest intact used multiple is a strip of five (previous lot), ex Pack, Hutson ... E. \$3,000-4,000





4067



4070

- 4067° **1850, 1p Crimson-Lake, Bluish Wove, Pl. II (SG 9; Sc. 2c).** Horizontal pair, huge even margins all around, oval grids, faint crease in left stamp, still Extremely Fine and choice, ex Burrus, with 1944 R.P.S. certificate SG £600+
- 4068° **1850, 1p Crimson-Lake, Bluish Wove, Pl. II (SG 9; Sc. 2c).** Pos. 20/25, rejoined vertical pair, large to huge margins, oval grids, Extremely Fine..... SG £600+
- 4069° **1850, 1p Dull Carmine, Bluish Wove, Pl. II (SG 11; Sc. 2c).** Horizontal pair, full to large margins, "95" oval grid (Brisbane), deep shade and Very Fine SG £600+
- 4070° **1850, 1p Brownish Red, Bluish Wove, Pl. II (SG 12; Sc. 2c).** Horizontal pair, enormous margins all around, lightly cancelled by oval grids, Extremely Fine Gem pair, ex Ferrary..... SG £550+
- 4071° **1850, 1p Brownish Red, Bluish Wove, Pl. II (SG 12; Sc. 2c).** Horizontal pair, large even margins, rich color and impression, oval grids, faint crease in left stamp, still Extremely Fine SG £550+
- 4072° **1850, 1p Brownish Red, Bluish Wove, Pl. II (SG 12; Sc. 2c).** Pos. 1-2, horizontal pair, full to large margins, oval grids, rich color and Very Fine..... SG £550+
- 4073° **1850, 1p Brownish Red, Bluish Wove, No Trees on Hill, Pl. II (SG 12a; Sc. 2h).** Pos. 6-7, righthand stamp in horizontal pair is the variety, full to large margins, lightly cancelled, Very Fine..... SG £750+

1850 1-PENNY PLATE II — COVERS

- 4074° **1850, 1p Gooseberry-Red, Bluish Wove, Pl. II (SG 10; Sc. 2c var).** Horizontal strip of three (left stamp severed), full to large margins, striking Gooseberry-Red shade, tied by oval grids on front only from Sydney to London, England, two-times 3p ship-letter rate (half paid by stamps, other half in cash, indicated by ms. "3"), "De 13, 1851" Sydney crown circle datestamp, ms. "1/4" (pence) charged on arrival, Very Fine, the largest recorded multiple of the rare Gooseberry-Red shade, ex Hutson E. \$4,000-5,000
- 4075° **1850, 1p Brownish Red, Bluish Wove, Pl. II (SG 12; Sc. 2c).** Used with **1850, 2p Deep Blue, Pl. III (SG 30; Sc. 6),** 1p clear to ample margins, 2p full margins, tied by oval grids on Nov. 1850 cover to Hobart Town, Van Diemen's Land, Sydney crown circle datestamp, Hobart Town receiving backstamp, endorsed "*per Emma, 21st Nov. 50*", ms. "4" (pence) charged on arrival, Very Fine..... E. \$2,500-3,500
- 4076° **1850, 1p Brownish Red, Bluish Wove, Pl. II (SG 12; Sc. 2c).** Horizontal pair, clear to large margins, tied by oval grids on 1850 folded cover from Sydney to the Maranoa District, near Warialda, redirected to Wee Waa, with Sydney, Warialda and Tamworth backstamps, ms. "*to pay 2d*" for forwarding, Very Fine, with 1977 B.P.A. certificate E. \$2,000-2,500

1850 1-PENNY PLATE II ON LAID PAPER



- 4077° 1850, 1p Vermilion, Laid, Pl. II (SG 14; Sc. 2e). Large margins all around, rich color, brownish-black oval grid and part of manuscript cancel, Extremely Fine, Scott Retail \$235.00..... SG £475
- 4078° 1850, 1p Vermilion, Laid, Pl. II (SG 14; Sc. 2e). Pos. 24, ample margins except touched at bottom left, oval grid, faint horizontal crease, otherwise Fine, Scott Retail \$235.00 SG £450
- 4079° 1850, 1p Carmine, Laid, Pl. II (SG 13; Sc. 2e). Horizontal strip of four, large margins except just clear at right, oval grids, deep shade, thinning in three stamps, Very Fine appearance and an extremely rare multiple, ex Hutson..... E. \$2,500-3,500
- 4080° 1850, 1p Carmine, Laid, Pl. II (SG 13; Sc. 2e). Horizontal pair, enormous margins on three sides, ample at left, oval grids, Very Fine to Extremely Fine.. SG £950+
- 4081° 1850, 1p Vermilion, Laid, Pl. II (SG 14; Sc. 2e). Horizontal pair, large even margins, rich color and impression, oval grid, faintly crease, Extremely Fine appearance..... SG £900+
- 4082° 1850, 1p Vermilion, Laid, Pl. II (SG 14; Sc. 2e). Vertical pair, large margins all around, oval grids, Extremely Fine Gem pair, ex Caspary..... SG £900+
- 4083° 1850, 1p Vermilion, Laid, Pl. II (SG 14; Sc. 2e). Vertical pair, clear to large margins, lightly cancelled, Very Fine SG £900+



- 4084° 1850, 1p Vermilion, Laid, Pl. II (SG 14; Sc. 2e). Horizontal strip of three, large margins all around, a superb strip tied by oval grids on 1851 folded cover to St. Boswell's, Scotland, Sydney May 12, 1851 crown circle datestamp, boxed Boswell's receiving backstamp and ms. "8" (pence) due on arrival
AN EXTREMELY FINE AND RARE USE OF THE 1-PENNY STRIP OF THREE TO PREPAY THE 3-PENCE SHIP-LETTER RATE.
Signed A. Diena..... E. \$10,000-15,000
- 4085° 1850, 1p Carmine, Laid, Pl. II (SG 13; Sc. 2e). Vertical pair, large even margins, tied by oval grids on small Jun. 1851 cover from Sydney to Gragin cattle station, near Warialda, origin backstamp, Very Fine and choice inland-rate cover..... E. \$1,500-2,000

1850 2-PENCE CARMICHAEL'S PLATE ESSAY



4086

- 4086°E **1850, 2p Gray Blue, Carmichael's Plate Essay.** The unadopted version with letters H and A in lower corners and different figures in vignette—identical to Position 19 in other respects; large even margins, slight thins

AN IMPORTANT ESSAY OF THE SYDNEY VIEW ISSUE AND ONE OF TWO KNOWN EXAMPLES AVAILABLE TO COLLECTORS (THE OTHER IN BLACK).

The John Carmichael essays are discussed in the Hutson book (pp. 3-4), where the existence of three different colors in the Tapling collection is noted and a fourth in black is cited from the author's collection. In addition, there is a plate proof of the issued design in the Royal collection. E. \$5,000-7,500

1850 2-PENCE PLATE I EARLY



4087



4088



4089



4090

- 4087° **1850, 2p Grayish Blue, Pl. I Early (SG 15; Sc. 3a).** Full to large margins, unused appearance but a pen cancellation has been removed, Very Fine and choice looking E. \$400-500
- 4088° **1850, 2p Grayish Blue, Pl. I Early (SG 15; Sc. 3a).** Pos. 5, large to huge margins, beautiful shade and impression, brownish black "61" oval grid (Gresford), Extremely Fine, Scott Retail \$275.00..... SG £350
- 4089° **1850, 2p Grayish Blue, Pl. I Early (SG 15; Sc. 3a).** Pos. 21, three large margins, ample at left, deep shade and impression, "43" oval grid (Gunning), Very Fine, Scott Retail \$275.00..... SG £350
- 4090° **1850, 2p Grayish Blue, Pl. I Early (SG 15; Sc. 3a).** Horizontal strip of three with full top sheet margin and full to large margins on other sides, beautiful color and impression, oval grids, tiny thin in one stamp at left, still Extremely Fine and very rare multiple from Plate I Early, ex Hutson E. \$3,000-4,000



4091

- 4091°✉ **1850, 2p Grayish Blue, Pl. I Early (SG 15; Sc. 3a).** Clear to large margins, beautiful earliest impression, tied by oval grid, Sydney backstamp dated **January 3, 1850—third day of issue** - on folded letter to Parramatta, receiving backstamp, Very Fine, ex Pack E. \$2,000-2,500

1850 2-PENCE PLATE I INTERMEDIATE



4092

- 4092°★ **1850, 2p Deep Blue, Pl. I Intermediate (SG 16c; Sc. 3a).** Unused, full even margins, fine impression in deep shade
 AN ENORMOUSLY RARE SOUND UNUSED EXAMPLE OF THE 2-PENCE FROM PLATE I.
 Ex Ferrary. With 1977 Friedl certificate. This fine intermediate impression falls within Scott's general "Early" classification, which is valued at \$4,500.00 unused.....
 SG £3,250



- 4093° **1850, 2p Grayish Blue, Pl. I Intermediate (SG 16b; Sc. 3a).** Pos. 12, large margins all around, "32" oval grid (Berrima), Extremely Fine and beautiful stamp, Scott Retail \$275.00 SG £275
- 4094° **1850, 2p Grayish Blue, Pl. I Intermediate (SG 16b; Sc. 3a).** Pos. 20, large even margins, fine impression, "35" oval grid (Goulburn), tiny corner crease, still Extremely Fine, Scott Retail \$275.00 SG £275
- 4095° **1850, 2p Grayish Blue, Pl. I Intermediate (SG 16b; Sc. 3a).** Pos. 14, ample to large margins, beautiful shade and impression, "47" oval grid (Tumut), Very Fine, Scott Retail \$275.00 SG £275
- 4096° **1850, 2p Grayish Blue, Pl. I Intermediate (SG 16b; Sc. 3a).** Pos. 11, ample margins, oval grid, Very Fine, Scott Retail \$275.00 SG £275
- 4097° **1850, 2p Grayish Blue, Pl. I Intermediate (SG 16b; Sc. 3a).** Pos. 19, full to large margins, "41" oval grid (Collector), tiny thinning at top mostly in margin, still Very Fine, Scott Retail \$275.00 SG £275
- 4098° **1850, 2p Grayish Blue, Pl. I Intermediate (SG 16b; Sc. 3a).** Pos. 17 (ten loops in right border), full margins, bold "44" oval grid (Yass), corner crease and tiny thin, Very Fine appearance, Scott Retail \$275.00 SG £275
- 4099° **1850, 2p Grayish Blue, Pl. I Intermediate (SG 16b; Sc. 3a).** Pos. 22, three large margins, ample at right, fine impression, bold "55" oval grid (Newcastle), two tiny thin specks in margin, Very Fine appearance, Scott Retail \$275.00 SG £275
- 4100° **1850, 2p Grayish Blue, Pl. I Intermediate (SG 16b; Sc. 3a).** Pos. 16 (ten loops in right border), full margins all around, oval grid, Very Fine, Scott Retail \$275.00 SG £275
- 4101° **1850, 2p Deep Blue, Pl. I Intermediate (SG 16c; Sc. 3a).** Pos. 2, large margins, oval grid, Extremely Fine, Scott Retail \$275.00 SG £325
- 4102° **1850, 2p Deep Blue, Pl. I Intermediate (SG 16c; Sc. 3a).** Pos. 6, full margins all around, oval grid, faint crease, Very Fine appearance, Scott Retail \$275.00 SG £325
- 4103° **1850, 2p Deep Blue, Pl. I Intermediate (SG 16c; Sc. 3a).** Pos. 1, ample to large margins, fine impression, "75" oval grid (Jerry's Plains), tiny thin, Very Fine appearance, Scott Retail \$275.00 SG £325
- 4104° **1850, 2p Deep Blue, Pl. I Intermediate (SG 16c; Sc. 3a).** Pos. 9, clear at lower left, ample on two sides, oval grid, Fine, Scott Retail \$275.00 SG £325

1850 2-PENCE PLATE I INTERMEDIATE—USED MULTIPLES



4105

- 4105° 田 **1850, 2p Grayish Blue, Pl. I Intermediate (SG 16b; Sc. 3a).** Block of four, Positions 4-5/16-17, large top and bottom margins, ample at sides except touched at upper left, beautiful shade and impression, “95” oval grids (Brisbane, Queensland), right vertical pair slightly creased

A VERY FINE AND OUTSTANDING 2-PENCE SYDNEY VIEW BLOCK.

Ex Caspary, Amundsen and Boker (1981, realized £7,250). With 1962 R.P.S. certificate E. \$10,000-15,000



4106



4107



4108

- 4106° **1850, 2p Grayish Blue, Pl. I Intermediate (SG 16b; Sc. 3a).** Pos. 23-24, horizontal pair, large margins on three sides, full at right, “95” oval grid (Brisbane), choice and Very Fine pair SG £550+
- 4107° **1850, 2p Grayish Blue, Pl. I Intermediate (SG 16b; Sc. 3a).** Pos. 7-8, horizontal pair, ample to large margins, fine impression, clear strikes of “44” oval grid (Yass), two tiny thin specks in left stamp, still Very Fine..... SG £550+
- 4108° **1850, 2p Deep Blue, Pl. I Intermediate (SG 16c; Sc. 3a).** Horizontal pair, large even margins, “35” oval grid (Goulburn), horizontal crease, otherwise Very Fine.... SG £650+



1850 2-PENCE PLATE I LATE

- 4109° **1850, 2p Dull Blue, Pl. I Late (SG 18; Sc. 3).** Pos. 10, large even margins, oval grid, Extremely Fine, Scott Retail \$110.00 SG £140
- 4110° **1850, 2p Dull Blue, Pl. I Late (SG 18; Sc. 3).** Pos. 13, ample to large margins, "66" oval grid (Singleton), tiny thinning in top margin only, still Very Fine, Scott Retail \$110.00 SG £140
- 4111° **1850, 2p Dull Blue, Pl. I Late (SG 18; Sc. 3).** Pos. 3, ample to large margins, "64" oval grid (West Maitland), small corner crease, Very Fine appearance, Scott Retail \$110.00 SG £140
- 4112° **1850, 2p Dull Blue, Pl. I Late (SG 18; Sc. 3).** Pos. 18, ample margins, "64" oval grid (West Maitland), couple small faults, Fine appearance, Scott Retail \$110.00 SG £140
- 4113° **1850, 2p Dull Blue, Pl. I Late (SG 18; Sc. 3).** Horizontal pair, three large margins, ample at left, "48" oval grids (Tarcutta), Very Fine SG £280+

1850 2-PENCE RETOUCHE PLATE I

- 4114° **1850, 2p Blue, Retouched Pl. I (SG 19; Sc. 4).** Pos. 23, large margins, "48" oval grid (Tarcutta), tiny thin speck, Extremely Fine appearance, Scott Retail \$250.00 SG £275
- 4115° **1850, 2p Grayish Blue, Retouched Pl. I (SG 20; Sc. 4).** Pos. 15, large margins, part of Sydney oval ds, Very Fine, Scott Retail \$250.00 SG £225
- 4116° **1850, 2p Grayish Blue, Retouched Pl. I (SG 20; Sc. 4).** Pos. 20, large margins, indistinct oval grid, corner creases, otherwise Very Fine, Scott Retail \$250.00 SG £225
- 4117° **1850, 2p Grayish Blue, Retouched Pl. I (SG 20; Sc. 4).** Pos. 15 (ten loops in right border), ample margins, "65" oval grid (Wollombi), Fine, Scott Retail \$250.00 SG £225

1850 2-PENCE RETOUCHE PLATE I — USED MULTIPLES



4118

4118°田 **1850, 2p Blue, Retouched Pl. I (SG 19; Sc. 4).** Positions 5-6/17-18, block of four, bottom pair retouched (top pair SG 17), with huge straddle-pane margins at top and bottom, large at sides, "49" oval grids (Wagga Wagga), top left stamp has tiny thin speck

EXTREMELY FINE BLOCK AND THE FINEST OF THE EIGHT RECORDED 2-PENCE PLATE I MULTIPLES, WITH MARGINS PROVING THE LAYOUT OF THE SHEET.

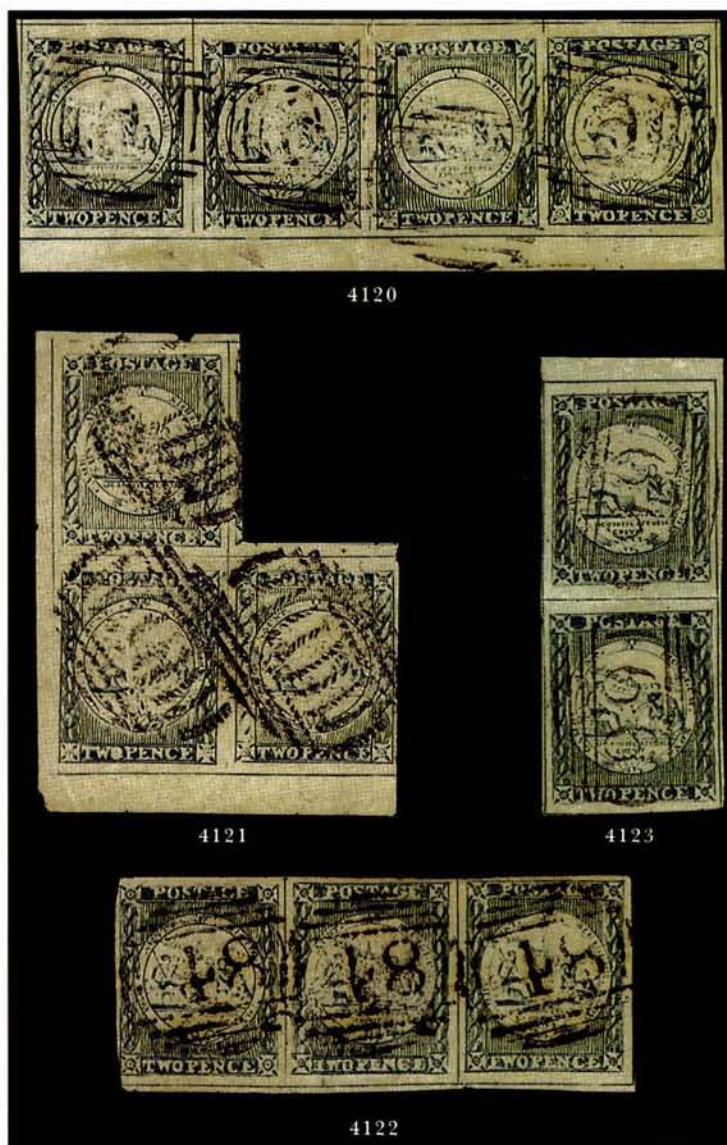
Ex Caspary and Boker (1981, realized £13,000)..... E. \$20,000-25,000



4119

4119°田 **1850, 2p Blue, Retouched Pl. I (SG 19; Sc. 4).** Two blocks of four, rejoined at center in their original configuration, Positions 4-7/16-19, bottom row retouched (top pair SG 17), large margins all around, "26" oval grids (Shoalhaven), right block has slight creasing, otherwise Extremely Fine, one intact block of eight is recorded (in poor condition), only eight blocks known in total from Plate I, ex Hutson.....

E. \$10,000-15,000



- 4120° **1850, 2p Blue, Retouched Pl. I (SG 19; Sc. 4).** Positions 20-23, horizontal strip of four, huge top margin, sheet margin at bottom, large at sides, "6" oval grid (St. Mary's), vertical crease at center, few tiny scuffs in bottom margin and tiny scissors-cut at top right, still Extremely Fine and a very rare multiple..... E. \$3,000-3,500
- 4121° **1850, 2p Blue, Retouched Pl. I (SG 19; Sc. 4).** Pos. 1/13-14, L-shaped block of three, bottom pair retouched (top stamp SG 18), lower left sheet margins and full to large margins on other sides, oval grids, small thins, Extremely Fine appearance, very rare used multiple, ex Hutson..... E. \$2,500-3,500
- 4122° **1850, 2p Dull Blue, Retouched Pl. I (SG 19; Sc. 4).** Pos. 20-22, horizontal strip of three, large to ample on three sides, clear at lower left, "48" oval grids (Tarcutta), creases thru left pair, otherwise Fine E. \$750-1,000
- 4123° **1850, 2p Dull Blue, Retouched Pl. I (SG 19; Sc. 4).** Pos. 12/24, bottom stamp retouched (top SG 18), vertical pair with large top sheet margin and margins showing dividing lines all around, excellent color and impression, "66" oval grid (Singleton), Extremely Fine and choice..... E. \$1,500-2,000



4134

- 4134° 1850, 2p Indigo, Pl. II Early (SG 21; Sc. 5h). Ample to large margins, remarkable deep shade, minor gum toning, used with 1850, 1p Reddish Rose, Pl. I (SG 3; Sc. 1), large margins to touching, tied by oval grids, red "PAID SHIP LETTER/SYDNEY/JU 5/1850" crown oval on folded cover to Stokesley, Yorkshire, with one flap showing red transit and blue receiving cds, ms. "8" (pence) due on arrival, Very Fine usage
..... E. \$2,500-3,500

1850 2-PENCE PLATE II EARLY — LILAC BLUE



4135

- 4135° 1850, 2p Lilac Blue, Pl. II Early (SG 22; Sc. 5h). Pos. 12, full top right corner sheet margin, full to large on other sides, unusually fresh color and fine impression, "1" oval grid (Hyde), Extremely Fine Gem, ex Clayton, with 1983 R.P.S. certificate, this shade is unlisted in Scott
..... SG £1,000

- 4136° 1850, 2p Lilac Blue, Pl. II Early (SG 22; Sc. 5h). Pos. 7, large even margins, beautiful early impression and shade, "8" oval grid (Hartley), Extremely Fine Gem, unlisted in Scott..... SG £1,000



4136

- 4137° **1850, 2p Lilac Blue, Pl. II Early (SG 22; Sc. 5h).** Large even margins, deep shade, "37" Butterfly cancellation (Victoria), slight thin, Extremely Fine appearance, unlisted in Scott..... SG £1,000
- 4138° **1850, 2p Lilac Blue, Pl. II Early (SG 22; Sc. 5h).** Margins all around, oval grid, Very Fine, unlisted in Scott..... SG £1,000
- 4139° **1850, 2p Lilac Blue, Pl. II Early (SG 22; Sc. 5h).** Dark shade, margins all around, Very Fine, unlisted in Scott..... SG £1,000



- 4140° **1850, 2p Lilac Blue, Pl. II Early (SG 22; Sc. 5h).** Horizontal strip of four, ample to large margins, beautiful color and impression, "48" oval grids (Tarcutta), Very Fine and the only recorded multiple of the distinctive Lilac Blue, ex Mann, Caspary and Hutson, SG £1,000 per stamp E. \$5,000-7,500

1850 2-PENCE PLATE II EARLY — GRAY BLUE

- 4141° **1850, 2p Gray Blue, Pl. II Early (SG 23; Sc. 5h).** Pos. 19, large even margins, beautiful color and impression, indistinct oval grid, Extremely Fine Gem, Scott Retail \$225.00 SG £225
- 4142° **1850, 2p Gray Blue, Pl. II Early (SG 23; Sc. 5h).** Pos. 15, large margins, lightly cancelled, slight creases, Extremely Fine appearance, Scott Retail \$225.00... SG £225
- 4143° **1850, 2p Gray Blue, Pl. II Early (SG 23; Sc. 5h).** Pos. 12, full to large margins, indistinct oval grid, Very Fine, Scott Retail \$225.00 SG £225
- 4144° **1850, 2p Gray Blue, Pl. II Early (SG 23; Sc. 5h).** Pos. 14, full to large margins, "77" oval grid (Merriwa), Very Fine, Scott Retail \$225.00..... SG £225
- 4145° **1850, 2p Gray Blue, Pl. II Early (SG 23; Sc. 5h).** Pos. 18, full to large margins, indistinct oval grid, tiny thin specks, Very Fine appearance, Scott Retail \$225.00.... SG £225
- 4146° **1850, 2p Gray Blue, Pl. II Early (SG 23; Sc. 5h).** Pos. 21, ample margins, oval grid, small thin, Fine appearance, Scott Retail \$225.00..... SG £225



4147

- 4147° 田 **1850, 2p Gray Blue, Pl. II Early (SG 23; Sc. 5h).** Pos. 3-4/15-16, block of four, ample to large margins except touched at upper left, "89" oval grid (Kempsey)
A FINE AND EXTREMELY RARE BLOCK FROM PLATE II EARLY.
Ex Pack E. \$5,000-7,500



4148

4149

4150

- 4148° **1850, 2p Gray Blue, Pl. II Early (SG 23; Sc. 5h).** Horizontal pair, full to huge margins, bright shade, oval grid, crease on right stamp, otherwise Extremely Fine pair SG £450+

1850 2-PENCE PLATE II EARLY — BRIGHT BLUE

- 4149° **1850, 2p Bright Blue, Pl. II Early (SG 24; Sc. 5h).** Pos. 23, ample margins, oval grid, small thin, Fine appearance, Scott Retail \$175.00 SG £225
- 4150° **1850, 2p Bright Blue, Pl. II Early (SG 24; Sc. 5h).** Pos. 4-5, horizontal pair, three huge margins, full at left, deep shade and fine impression, oval grids, Extremely Fine, with 1955 R.P.S. certificate SG £450+



4151



4152



4153



4154



4155



4156



4157



4158



4159



4160



4161



4162



4163



4164



4165

- 4151° **1850, 2p Bright Blue, Pl. II Early (SG 24; Sc. 5h).** Pos. 23-24, horizontal pair, full margins all around, oval grids, small thin spot, Very Fine appearance SG £450+
- 4152° **1850, 2p Bright Blue, Ty. C Fan, Pl. II Early (SG 24a; Sc. 5h).** Pos. 1, large margins, "62" oval grid (Morpeth), Extremely Fine, Scott Retail \$225.00 SG £375
- 4153° **1850, 2p Bright Blue, Ty. C Fan Shaded, Pl. II Early (SG 24b; Sc. 5h).** Pos. 2, full to large margins, oval grid, Very Fine, Scott Retail \$225.00..... SG £375
- 4154° **1850, 2p Bright Blue, Pick & Shovel Omitted, Pl. II Early (SG 24c; Sc. 5d).** Pos. 10, large even margins, "54" oval grid (Carrington), small thin, Extremely Fine appearance, Scott Retail \$225.00 SG £375
- 4155° **1850, 2p Bright Blue, "CREVIT" Omitted, Pl. II Early (SG 24d; Sc. 5c).** Pos. 13, ample margins, "18" oval grid (Mudgee), Fine, Scott Retail \$300.00..... SG £600
- 4156° **1850, 2p Bright Blue, No Whip, Pl. II Early (SG 24e; Sc. 5e).** Pos. 8, large to huge margins, indistinct oval grid, Extremely Fine, Scott Retail \$250.00..... SG £300
- 4157° **1850, 2p Bright Blue, No Whip, Pl. II Early (SG 24e; Sc. 5e).** Pos. 20, large even margins, "3" oval grid (Windsor), thin along top margin, Extremely Fine appearance, Scott Retail \$250.00..... SG £300

1850 2-PENCE PLATE II LATE

- 4158°★ **1850, 2p Prussian Blue, Pl. II Late (SG 26; Sc. 5).** Unused, large even margins, fresh and Extremely Fine, ex Caspary, Scott Retail \$1,150.00..... SG £1,900
- 4159° **1850, 2p Dull Blue, Pl. II Late (SG 25; Sc. 5).** Pos. 9, full margins, "3" oval grid (Windsor), Very Fine, Scott Retail \$175.00..... SG £130
- 4160° **1850, 2p Prussian Blue, Pl. II Late (SG 26; Sc. 5).** Pos. 5, large margins, oval grid, Extremely Fine, Scott Retail \$175.00..... SG £170
- 4161° **1850, 2p Prussian Blue, Pl. II Late (SG 26; Sc. 5).** Pos. 11, large to huge margins incl. top sheet margin, oval grid, creases, otherwise Extremely Fine, Scott Retail \$175.00 SG £170
- 4162° **1850, 2p Prussian Blue, Pl. II Late (SG 26; Sc. 5).** Pos. 16, full to large margins, "18" oval grid (Mudgee), Very Fine, Scott Retail \$175.00 SG £170
- 4163° **1850, 2p Prussian Blue, Pl. II Late (SG 26; Sc. 5).** Pos. 22, full to large margins, oval grid, tiny corner crease, otherwise Very Fine, Scott Retail \$175.00.. SG £170
- 4164° **1850, 2p Prussian Blue, No Whip, Pl. II Late (SG 26e; Sc. 5e).** Pos. 4, large margins, "64" oval grid (West Maitland), Extremely Fine, Scott Retail \$250.00 SG £225
- 4165° **1850, 2p Bright Blue, Pick & Shovel Omitted, Worn Pl. II (SG 26c; Sc. 5d).** L-shaped block, Positions 9-10/22, top right stamp the variety, bottom stamp Retouched (SG 28), lightly cancelled, large margins to just touching top of left stamp, the righthand vertical pair containing both varieties is Very Fine, ex Pack, SG cat. £580 as singles E. \$750-1,000



4166

THE UNIQUE TÊTE-BÊCHE PAIR ON COVER

THIS FAMOUS AND UNIQUE EXAMPLE OF THE SYDNEY VIEW ISSUE IN TÊTE-BÊCHE FORM IS RENOWNED AS THE MOST IMPORTANT ITEM IN AUSTRALIAN PHILATELY AND ONE OF THE WORLD'S OUTSTANDING PHILATELIC PIECES.

This cover was discovered in 1903 by a Sydney stamp dealer, Fred Hagen. The cover was part of the Clarke and Meinertzhagen collections before passing into the Alfred F. Lichtenstein collection of Australian States. It was retained by the Dale-Lichtenstein Foundation until 1990.

With 1990 B.P.A. certificate	E. \$150,000-200,000
------------------------------------	----------------------

1850 2-PENCE RETOUCED PLATE II



- 4167°★ **1850, 2p Prussian Blue, Retouched Pl. II (SG 27; Sc. 5F).** Unused, ample margins, Very Fine, with 1983 R.P.S. certificate, Scott Retail \$1,850.00 SG £2,750
- 4168° **1850, 2p Prussian Blue, Retouched Pl. II (SG 27; Sc. 5F).** Pos. 14, bottom sheet margin, large even margins all around, oval grid, Extremely Fine Gem, Scott Retail \$200.00 SG £225
- 4169° **1850, 2p Dull Blue, Retouched Pl. II (SG 28; Sc. 5F).** Pos. 15, large even margins, oval grid, Extremely Fine, Scott Retail \$200.00 SG £150
- 4170° **1850, 2p Dull Blue, Retouched Pl. II (SG 28; Sc. 5F).** Pos. 23, large margins, lightly cancelled, Extremely Fine, Scott Retail \$200.00 SG £150
- 4171° **1850, 2p Dull Blue, Retouched Pl. II (SG 28; Sc. 5F).** Pos. 16, ample even margins, oval grid, thin, Very Fine appearance, Scott Retail \$200.00 SG £150
- 4172° **1850, 2p Dull Blue, Retouched Pl. II (SG 28; Sc. 5F).** Positions 17-21, horizontal strip of five, large margins to clear at places, "84" oval grids (Tenterfield), two faint creases, still Fine-Very Fine, extremely rare used multiple from Plate II Retouched, ex Ginger, Hutson E. \$2,500-3,000
- 4173° **1850, 2p Prussian Blue, Retouched Pl. II (SG 27; Sc. 5F).** Pos. 1/13, vertical pair, bottom stamp retouched (top stamp SG 26), large even margins, tiny scuff in upper right margin, otherwise Extremely Fine SG £395+
- 4174°✉ **1850, 2p Dull Blue, Retouched Pl. II (SG 28; Sc. 5F).** Pos. 16, full to large margins, tied by "64" oval grid on Aug. 1850 folded cover from West Maitland to Sydney, back-stamps of each office, Very Fine, early usage from the retouched plate. E. \$600-800

1850 2-PENCE PLATE III — UNUSED



4175

- 4175°★ **1850, 2p Ultramarine, Pl. III (SG 29; Sc. 6).** Positions 1-2/13, L-shaped block of three with left sheet margin, full original gum, thickened and crackled in places, causing some toning on face, attractive Lilac shade, fine impression, small tear in top left stamp, slight creasing in right stamp
 THE ONLY RECORDED UNUSED MULTIPLE FROM PLATE III.
 Ex Lye and Hutson. SG value for three singles is £6,750 E. \$10,000-15,000



4176

- 4176°★ **1850, 2p Ultramarine, Pl. III (SG 29; Sc. 6).** Unused, large even margins, partially rebacked over thinning, Extremely Fine appearance, Scott Retail \$1,400.00
 SG £2,250

- 4177°★ **1850, 2p Deep Blue, Fan with 6 Segments, Pl. III (SG 30b; Sc. 6a).** Original gum, large margins, Extremely Fine, with 1968 B.P.A. certificate, listed but unpriced in Stanley Gibbons
 E. \$1,500-2,000



4177

1850 2-PENCE PLATE III — USED



- 4178° **1850, 2p Ultramarine, Pl. III (SG 29; Sc. 6).** Pos. 1, large even margins, deep shade, "48" oval grid (Tarcutta), Extremely Fine Gem, Scott Retail \$175.00..... SG £160
- 4179° **1850, 2p Ultramarine, Pl. III (SG 29; Sc. 6).** Pos. 9, large even margins, "64" oval grid (West Maitland), Extremely Fine, Scott Retail \$175.00..... SG £160
- 4180° **1850, 2p Ultramarine, Pl. III (SG 29; Sc. 6).** Pos. 22, large even margins, oval grid, Extremely Fine, Scott Retail \$175.00..... SG £160
- 4181° **1850, 2p Ultramarine, Pl. III (SG 29; Sc. 6).** Pos. 11, full even margins, oval grid, Very Fine, Scott Retail \$175.00 SG £160
- 4182° **1850, 2p Ultramarine, Pl. III (SG 29; Sc. 6).** Pos. 14, full margins, "55" oval grid (Newcastle), Very Fine, Scott Retail \$175.00..... SG £160
- 4183° **1850, 2p Ultramarine, Pl. III (SG 29; Sc. 6).** Pos. 2, full margins, oval grid, Very Fine, Scott Retail \$175.00..... SG £160
- 4184° **1850, 2p Ultramarine, Pl. III (SG 29; Sc. 6).** Pos. 3, full to large margins, oval grid, Very Fine, Scott Retail \$175.00 SG £160
- 4185° **1850, 2p Ultramarine, Pl. III (SG 29; Sc. 6).** Pos. 4, ample to large margins, "6" oval grid (St. Mary's), Very Fine, Scott Retail \$175.00 SG £160
- 4186° **1850, 2p Ultramarine, Pl. III (SG 29; Sc. 6).** Pos. 18, ample to full margins, oval grid, Very Fine, Scott Retail \$175.00..... SG £160
- 4187° **1850, 2p Deep Blue, Pl. III (SG 30; Sc. 6).** Pos. 21, large even margins, beautiful color and impression, oval grid, Extremely Fine Gem, Scott Retail \$175.00..... SG £160
- 4188° **1850, 2p Deep Blue, Pl. III (SG 30; Sc. 6).** Pos. 13, large even margins, deep shade and fine impression, oval grid, Extremely Fine, Scott Retail \$175.00..... SG £160
- 4189° **1850, 2p Deep Blue, Pl. III (SG 30; Sc. 6).** Pos. 6, large even margins, oval grid, Extremely Fine, Scott Retail \$175.00..... SG £160



- 4190° **1850, 2p Deep Blue, Pl. III (SG 30; Sc. 6).** Pos. 23, large margins, "64" oval grid (West Maitland), Extremely Fine, Scott Retail \$175.00 SG £160
- 4191° **1850, 2p Deep Blue, Pl. III (SG 30; Sc. 6).** Pos. 8, large even margins, oval grid, small toned spot, otherwise Extremely Fine, Scott Retail \$175.00..... SG £160
- 4192° **1850, 2p Deep Blue, Pl. III (SG 30; Sc. 6).** Pos. 5, ample to large margins, brownish "5" oval grid (Gosford), Very Fine, Scott Retail \$175.00..... SG £160
- 4193° **1850, 2p Deep Blue, Pl. III (SG 30; Sc. 6).** Pos. 16, ample to large margins, oval grid, Very Fine, Scott Retail \$175.00..... SG £160
- 4194° **1850, 2p Deep Blue, Pl. III (SG 30; Sc. 6).** Pos. 17, ample to large margins, oval grid, Very Fine, Scott Retail \$175.00..... SG £160
- 4195° **1850, 2p Deep Blue, Pl. III (SG 30; Sc. 6).** Pos. 24, ample to large margins, oval grid, faint internal crease, otherwise Very Fine, Scott Retail \$175.00..... SG £160
- 4196° **1850, 2p Deep Blue, No Whip, Pl. III (SG 30a; Sc. 6c).** Pos. 19, full to large margins, oval grid, Very Fine, Scott Retail \$250.00 SG £250
- 4197° **1850, 2p Deep Blue, No Whip, Pl. III (SG 30a; Sc. 6c).** Pos. 15, three large margins, close at bottom, oval grid, Fine, Scott Retail \$250.00 SG £250
- 4198° **1850, 2p Deep Blue, Fan with 6 Segments, Pl. III (SG 30b; Sc. 6a).** Pos. 20, ample to large margins, "35" oval grid (Goulburn) and ms., Very Fine, Scott Retail \$300.00 SG £375
- 4199° **1850, 2p Deep Blue, Double Lines on Bale, Pl. III (SG 30c; Sc. 6b).** Pos. 12, large even margins, oval grid, Extremely Fine, Scott Retail \$250.00 225.00
- 4200° **1850, 2p Ultramarine, Double Lines on Bale, Pl. III (SG 30c; Sc. 6b).** Pos. 10, large even margins, oval grid, slight bend, still Extremely Fine, Scott Retail \$250.00 SG £225
- 4201° **1850, 2p Ultramarine, Double Lines on Bale, Pl. III (SG 30c; Sc. 6b).** Pos. 7, full to large margins, attractive shade, "48" oval grid (Tarcutta), Very Fine, Scott Retail \$250.00 SG £225

1850 2-PENCE PLATE III — USED MULTIPLES



4202

- 4202°田 **1850, 2p Ultramarine, Pl. III (SG 29; Sc. 6).** Positions 1-2/13-14, block of four, full to large margins, oval grids, slight bend in bottom pair
 EXTREMELY FINE AND THE ONLY RECORDED USED BLOCK FROM PLATE III.
 Ex Hutson E. \$10,000-15,000



4203

- 4203° **1850, 2p Ultramarine, Pl. III (SG 29; Sc. 6).** Positions 3-6, horizontal strip of four, large even margins, rich Lilac Blue shade and early impression, "35" oval grids (Goulburn)
 A SUPERB AND UNIQUE USED MULTIPLE OF THE RARE LILAC BLUE SHADE FROM PLATE III IN AN EARLY STATE.
 Ex Caspary, Burrus and Boker (1981, realized £11,500) E. \$10,000-15,000



4204

4204°

1850, 2p Ultramarine, Pl. III (SG 29; Sc. 6). Pos. 12/24, vertical pair, top stamp Double Lines on Bale (SG 30c), large margins, "51" oval grids (Deniliquin) and vivid red Sydney ship-letter crown circle, faint trace of small crease mentioned in Caspary sale description but not apparent to us, Extremely Fine Gem pair, ex Caspary SG £320+



4205

4205°

1850, 2p Ultramarine, Pl. III (SG 29; Sc. 6). Pos. 1/13, vertical pair, full to large margins, Extremely Fine and choice..... SG £320+

4206°

1850, 2p Ultramarine, Pl. III (SG 29; Sc. 6). Pos. 11-12, horizontal pair, large even margins, oval grid, minor scissors cut between stamps, Extremely Fine..... SG £320+



4206

1850 2-PENCE PLATE III AND 3-PENCE
ON COVER TO FRANCE



4207

- 4207° 1850, 2p Ultramarine, Pl. III (SG 29; Sc. 6). Pos. 9, large margins, deep shade, used with 1850, 3p Emerald Green (SG 41; Sc. 9a), full to large margins, rich color, tied by "89" oval grid on folded cover (without side flaps) to Paris, France, back-stamped with "KEMPSEY/NEW S.WALES" dateless crown oval, bold strike, Armidale oval datestamp also on back, red "PAID SHIP LETTER/SYDNEY/MY 13/1851" crown oval handstamp, red British transit backstamp, red Calais transit cds on face, Paris receiving backstamp, ms. "8" crossed out and re-rated "30" (decimes) due on arrival A BEAUTIFUL SHIP-LETTER FRANKING WITH THE KEMPSEY CROWN OVAL PRE-STAMP MARKING USED DURING THE ADHESIVE PERIOD—A GREAT RARITY IN ITS OWN RIGHT. Ex Caspary E. \$10,000-15,000

1850 2-PENCE PLATE III AND 1-PENNY PLATE I
ON COVER TO SCOTLAND



4208

4208° 1850, 2p Deep Blue, Pl. III (SG 30; Sc. 6). Pos. 1/13, vertical pair, large to huge margins, used with 1850, 1p Reddish Rose, Pl. I (SG 3; Sc. 1), large margins to just touched, rich color, tied by "48" oval grids (Tarcutta) on bluish folded cover to Perth, Scotland, "Tarcutta New S. Wales Jy 14, 1851" oval datestamp on back, also backstamped at Gundagai and Sydney, red "PAID SHIP LETTER/SYDNEY/JY 18/1851" crown circle datestamp also ties pair, ms. "8" (pence) due on arrival, Perth receiving backstamp

VERY FINE EXAMPLE OF THE SHIP-LETTER RATE WITH AN UNUSUAL FRANKING.

The more usual franking for the 5p ship-letter rate was one 3p and one 2p stamp
..... E. \$6,000-8,000



4209



4210



4211



4212



4213



4214



4215



4216



4217



4218



4219



4220



4221



4222

1851 2-PENCE PLATE IV ON BLuish WOVE

4209°	1851, 2p Ultramarine, Bluish Wove, Pl. IV (SG 31; Sc. 7). Pos. 19, full to large margins, oval grid, Very Fine, Scott Retail \$150.00 SG £160
4210°	1851, 2p Ultramarine, Bluish Wove, Pl. IV (SG 31; Sc. 7). Pos. 16, full to large margins, "84" oval grid (Tenterfield), Very Fine, Scott Retail \$150.00..... SG £160
4211°	1851, 2p Ultramarine, Bluish Wove, Pl. IV (SG 31; Sc. 7). Pos. 6, cleaned pen cancel, ample to large margins, Very Fine appearance, Scott Retail \$150.00 SG £160
4212°	1851, 2p Ultramarine, Bluish Wove, Pl. IV (SG 31; Sc. 7). Pos. 21, clear to large margins, "66" oval grid (Singleton), Fine, Scott Retail \$150.00 SG £160
4213°	1851, 2p Ultramarine, Bluish Wove, No Clouds, Pl. IV (SG 31c var; Sc. 7d). Pos. 22, large margins, oval grid, Extremely Fine, Scott Retail \$200.00, SG value for 33c SG £225
4214°	1851, 2p Prussian Blue, Bluish Wove, Pl. IV (SG 32; Sc. 7). Pos. 8, ample to large margins, unusually dark shade and fine impression, oval grid, Very Fine, Scott Retail \$150.00 SG £130
4215°	1851, 2p Prussian Blue, Bluish Wove, Pl. IV (SG 32; Sc. 7). Pos. 17 (no waves), dark shade, clear to full margins, lightly cancelled, Fine, Scott Retail \$150.00 SG £130
4216°	1851, 2p Prussian Blue, Bluish Wove, Pl. IV (SG 32; Sc. 7). Pos. 11, ample to large margins, dark shade, oval grid, Fine, Scott Retail \$150.00 SG £130
4217°	1851, 2p Prussian Blue, Bluish Wove, Fan with 6 Segments, Pl. IV (SG 33b; Sc. 7c). Pos. 20, full margins all around, oval grid, Very Fine, Scott Retail \$200.00..... SG £225
4218°	1851, 2p Bright Blue, Bluish Wove, Pl. IV (SG 33; Sc. 7). Pos. 2, full to large margins, brownish "89" oval grid (Kempsey), slight crease, Extremely Fine appearance, Scott Retail \$150.00..... SG £150
4219°	1851, 2p Bright Blue, Bluish Wove, Pl. IV (SG 33; Sc. 7). Pos. 9 (no waves), ample to large margins, "76" oval grid (Merton), Very Fine, Scott Retail \$150.00..... SG £150
4220°	1851, 2p Bright Blue, Bluish Wove, Hill Unshaded, Pl. IV (SG 33a; Sc. 7). Pos. 12, full margins all around, oval grid, Very Fine..... SG £225
4221°	1851, 2p Bright Blue, Bluish Wove, Pl. IV (SG 33; Sc. 7). Pos. 18, full to large margins, deep shade, oval grid, corner crease, otherwise Very Fine, Scott Retail \$150.00 SG £150
4222°	1851, 2p Bright Blue, Bluish Wove, Pl. IV (SG 33; Sc. 7). Pos. 5, ample margins, "64" oval grid (West Maitland), Fine, Scott Retail \$150.00..... SG £150



4225



4226



4227



4228



4229



4230



4231



4232



4233



4234



4235

- 4223°★ **1851, 2p Bright Blue, Bluish Wove, No Clouds, Pl. IV (SG 33c; Sc. 7d).** Pos. 22, unused, full to large margins, rich color, couple thin spots, Extremely Fine appearance, very rare unused and unpriced as such in Stanley Gibbons, with 1980 R.P.S. certificate..... E. \$2,000-2,500



4223

1851 2-PENCE PLATE IV ON LAID PAPER



4224

- 4224°★ **1851, 2p Prussian Blue, Laid, Hill Unshaded, Pl. IV (SG 35a; Sc. 7a).** Pos. 12, unused, large even margins, rich color and fine impression, fresh and Extremely Fine Gem, ex Caspary, with 1974 R.P.S. certificate, unpriced unused in Stanley Gibbons E. \$3,000-4,000

- 4225°★ **1851, 2p Bright Blue, Laid, No Clouds, Pl. IV (SG 35c; Sc. 7d).** Pos. 22, small part original gum, large margins, worn impression, Extremely Fine, with 1983 R.P.S. certificate, unpriced unused in Stanley Gibbons E. \$1,500-2,000
- 4226° **1851, 2p Ultramarine, Laid, Pl. IV (SG 34; Sc. 7a).** Pos. 4, large even margins, oval grid, faint horizontal crease, otherwise Extremely Fine, Scott Retail \$150.00..... SG £160
- 4227° **1851, 2p Ultramarine, Laid, Pl. IV (SG 34; Sc. 7a).** Pos. 14, margins all around, "89" oval grid (Dempsey), Fine, Scott Retail \$150.00 SG £160
- 4228° **1851, 2p Ultramarine, Laid, Pl. IV (SG 34; Sc. 7a).** Pos. 23, ample to large margins, oval grid, Fine, Scott Retail \$150.00..... SG £160
- 4229° **1851, 2p Prussian Blue, Laid, Pl. IV (SG 35; Sc. 7a).** Pos. 3, ample to large margins, "49" oval grid (Wagga Wagga), Very Fine, Scott Retail \$150.00 SG £160
- 4230° **1851, 2p Prussian Blue, Laid, Pl. IV (SG 35; Sc. 7a).** Pos. 1, full to large margins, "64" oval grid (West Maitland), Very Fine, Scott Retail \$150.00 SG £160
- 4231° **1851, 2p Prussian Blue, Laid, Pl. IV (SG 35; Sc. 7a).** Pos. 15, ample to large margins, oval grid, Very Fine, Scott Retail \$150.00 SG £160
- 4232° **1851, 2p Prussian Blue, Laid, Pl. IV (SG 35; Sc. 7a).** Pos. 7, **papermaker's watermark**, margins all around, brownish "6" oval grid (St. Mary's), Very Fine, examples of watermarked paper are rare..... E. \$200-300
- 4233° **1851, 2p Prussian Blue, Laid, Retouched, Pl. IV (SG 35d; Sc. 7a).** Pos. 13, three huge margins, ample at right, oval grid, corner crease, otherwise Very Fine..... SG £325
- 4234° **1851, 2p Prussian Blue, Laid, "PENOE", Pl. IV (SG 35f; Sc. 7a).** Pos. 10, large even margins, oval grid, Extremely Fine, scarce variety, listed but unpriced in Stanley Gibbons E. \$400-500
- 4235° **1851, 2p Prussian Blue, Laid, "PENOE", Pl. IV (SG 35f; Sc. 7a).** Pos. 24, full to large margins, "66" oval grid (Singleton), tiny crease, otherwise Very Fine, unpriced in Stanley Gibbons E. \$200-300

1851 2-PENCE PLATE IV — USED MULTIPLES



- 4236°田 **1851, 2p Prussian Blue, Bluish Wove, Pl. IV (SG 32; Sc. 7).** Positions 5-6/17-18, block of four, three full to large margins, slightly in at upper right, oval grids, Fine-Very Fine, only four used blocks recorded from Plate IV E. \$3,000-4,000
- 4237°田 **1851, 2p Prussian Blue, Bluish Wove, Pl. IV (SG 32; Sc. 7).** Positions 3-4/15-16, block of four, large margins to clear at left and bottom right, oval grids, minor toned spot, still Fine-Very Fine E. \$2,500-3,500
- 4238° **1851, 2p Prussian Blue, Laid, Pl. IV (SG 35; Sc. 7a).** Pos. 9-11, horizontal strip of three, large margins, oval grids, slight thinning, Extremely Fine appearance, very scarce multiple, ex Hutson E. \$1,000-1,500
- 4239° **1851, 2p Bright Blue, Bluish Wove, Pl. IV (SG 33; Sc. 7).** Pos. 4-5, horizontal pair, wonderful deep shade and fine impression, "55" oval grid (Newcastle), large margins to just touched, Fine-Very Fine SG £320+



- 4240° 1851, 2p **Bright Blue, Bluish Wove, Retouched, Pl. IV** (SG 33d; Sc. 7). Pos. 13, large margins, tied by oval grid on small blue Feb. 1851 cover from Sydney to Melbourne, backstamps of both offices, slightly reduced at bottom and one backflap missing, Extremely Fine E. \$600-800
- 4241° 1851, 2p **Prussian Blue, Laid, Pl. IV** (SG 35; Sc. 7a). Pos. 16-18, horizontal strip of three, righthand stamp shows **papermaker's watermark**, large margins, tied by bold oval grids on Sep. 1851 cover to Birmingham, England, red Sydney crown circle backstamp, blue receiving backstamp, ms. "1/4" double rate due, legal-size cover has been reduced and refolded for exhibit, Extremely Fine strip and attractive cover..... E. \$3,000-4,000



4245



4246



4247



4248



4249



4250



4251



4252



4253



4254



4255



4256



4257



4258

1851 2-PENCE PLATE V



4242



4243



4244

- 4242°★ **1851, 2p Ultramarine, Pl. V (SG 36; Sc. 8).** Unused, large even margins, dark shade and fine impression, Extremely Fine, a superb unused example from Plate V, with 1979 Friedl certificate, signed Bloch, Scott Retail \$1,650.00..... SG £2,500
- 4243°★ **1851, 2p Ultramarine, Pl. V (SG 36; Sc. 8).** Unused, large even margins, dark shade, Extremely Fine Gem, with 1950 B.P.A. certificate, Scott Retail \$1,650.00..... SG £2,500
- 4244°★ **1851, 2p Ultramarine, Pl. V (SG 36; Sc. 8).** Unused, ample even margins all around, fresh and Very Fine, Scott Retail \$1,650.00 SG £2,500
- 4245° **1851, 2p Ultramarine, Pl. V (SG 36; Sc. 8).** Pos. 15, large even margins, dark shade and fine impression, "64" oval grid (West Maitland), Extremely Fine Gem, Scott Retail \$150.00 SG £140
- 4246° **1851, 2p Ultramarine, Pl. V (SG 36; Sc. 8).** Pos. 8, large margins, oval grid, Extremely Fine, Scott Retail \$150.00..... SG £140
- 4247° **1851, 2p Ultramarine, Pl. V (SG 36; Sc. 8).** Pos. 13, large even margins, beautiful fresh color and fine impression, Extremely Fine, Scott Retail \$150.00..... SG £140
- 4248° **1851, 2p Ultramarine, Pl. V (SG 36; Sc. 8).** Pos. 22, large even margins, rich color, fine impression, "66" oval grid, Extremely Fine, Scott Retail \$150.00..... SG £140
- 4249° **1851, 2p Ultramarine, Pl. V (SG 36; Sc. 8).** Pos. 16, large margins, dark shade, early impression, oval grid, Extremely Fine, Scott Retail \$150.00 SG £140
- 4250° **1851, 2p Ultramarine, Pl. V (SG 36; Sc. 8).** Pos. 12, large even margins, oval grid, Extremely Fine, Scott Retail \$150.00..... SG £140
- 4251° **1851, 2p Ultramarine, Pl. V (SG 36; Sc. 8).** Pos. 14, ample to large margins, "39" oval grid (Cooma), Very Fine, Scott Retail \$150.00 SG £140
- 4252° **1851, 2p Ultramarine, Pl. V (SG 36; Sc. 8).** Pos. 23, full margins all around, "19" oval grid (Rylstone), Very Fine, Scott Retail \$150.00 SG £140
- 4253° **1851, 2p Ultramarine, Pl. V (SG 36; Sc. 8).** Pos. 9, full margins all around, "25" oval grid (Kiama), Very Fine, Scott Retail \$150.00 SG £140
- 4254° **1851, 2p Ultramarine, Pl. V (SG 36; Sc. 8).** Pos. 3, full even margins, oval grid, Very Fine, Scott Retail \$150.00 SG £140
- 4255° **1851, 2p Ultramarine, Pl. V (SG 36; Sc. 8).** Pos. 2, full even margins, oval grid, Very Fine, Scott Retail \$150.00 SG £140
- 4256° **1851, 2p Ultramarine, Pl. V (SG 36; Sc. 8).** Pos. 5, full to large margins, "3" oval grid (Windsor), Very Fine, Scott Retail \$150.00..... SG £140
- 4257° **1851, 2p Ultramarine, Pl. V (SG 36; Sc. 8).** Pos. 19, full margins all around, oval grid, Very Fine, Scott Retail \$150.00..... SG £140
- 4258° **1851, 2p Ultramarine, Pl. V (SG 36; Sc. 8).** Pos. 4, **papermaker's watermark**, ample margins all around, oval grid, corner crease, otherwise Very Fine, Scott Retail \$150.00 SG £140



- 4259° 1851, 2p Ultramarine, Pl. V (SG 36; Sc. 8). Pos. 7, full to large margins, oval grid, thin specks in right margin, Very Fine appearance, Scott Retail \$150.00 SG £140
- 4260° 1851, 2p Ultramarine, Pl. V (SG 36; Sc. 8). Pos. 1, ample margins all around, oval grid cancel, thin specks, Very Fine appearance, Scott Retail \$150.00..... SG £140
- 4261° 1851, 2p Ultramarine, Pl. V (SG 36; Sc. 8). Pos. 10, full to large margins, "55" oval grid (Newcastle), tiny corner crease in margin only, still Very Fine, Scott Retail \$150.00 SG £140
- 4262° 1851, 2p Ultramarine, Pl. V (SG 36; Sc. 8). Pos. 20, ample margins, "55" oval grid (Newcastle), Fine, Scott Retail \$150.00 SG £140
- 4263° 1851, 2p Ultramarine, Pl. V (SG 36; Sc. 8). Pos. 21, ample margins, oval grid, Fine, Scott Retail \$150.00..... SG £140
- 4264° 1851, 2p Ultramarine, Pl. V (SG 36; Sc. 8). Pos. 24, large margins to touched at bottom right where slightly thinned, oval grid, Fine appearance, Scott Retail \$150.00 SG £140
- 4265° 1851, 2p Dull Blue, Pl. V (SG 37; Sc. 8). Pos. 11, ample to large margins, oval grid, Fine, Scott Retail \$150.00..... SG £140
- 4266° 1851, 2p Dull Blue, Pl. V (SG 37; Sc. 8). Pos. 6, ample even margins, "25" oval grid (Kiama), Fine, Scott Retail \$150.00 SG £140
- 4267° 1851, 2p Dull Blue, Pl. V (SG 37; Sc. 8). Pos. 18, ample margins, "6" oval grid (St. Mary's), faint toning, otherwise Fine, Scott Retail \$150.00..... SG £140
- 4268° 1851, 2p Ultramarine, Pick & Shovel Omitted, Pl. V (SG 37a; Sc. 8c). Pos. 17, large margins, "6" oval grid (St. Mary's), Extremely Fine, Scott Retail \$150.00 SG £250

1851 2-PENCE PLATE V — USED MULTIPLES



4269

- 4269° **1851, 2p Ultramarine, Pl. V (SG 36; Sc. 8).** Positions 20-24, horizontal strip of five, Pos. 20 **Fan with 6 Segments**, large margins, "46" oval grids (Gundagai) and faint red pen cancels, two vertical creases

A VERY FINE APPEARING AND EXTREMELY RARE STRIP FROM PLATE V.

Ex Caspary, Burrus and Boker (1981, realized £4,200)..... E. \$7,500-10,000



- 4270° **1851, 2p Ultramarine, Pl. V (SG 36; Sc. 8).** Horizontal pair, large margins, oval grids, small corner crease at bottom right, Extremely Fine appearance SG £280+
- 4271° **1851, 2p Ultramarine, Pl. V (SG 36; Sc. 8).** Horizontal pair, large even margins, "82" oval grids (Armidale), left stamp creased, otherwise Extremely Fine SG £280+
- 4272° **1851, 2p Ultramarine, Pl. V (SG 36; Sc. 8).** Horizontal pair, full to large margins, dark shade and fine impression, oval grid, Very Fine..... SG £280+
- 4273° **1851, 2p Dull Ultramarine, Laid, Pl. V (SG 38; Sc. 8a).** Pos. 20-22, horizontal strip of three, lefthand stamp shows **Fan with 6 Segments** (SG 38b), large to huge margins, oval grids, thins and creases, Extremely Fine appearance, ex Dale-Lichtenstein E. \$500-750



4274° 1851, 2p Ultramarine, Pl. V (SG 36; Sc. 8). Large even margins, marvelous color and early impression, tied by "44" oval grid on Jul. 1851 folded letter from Yass to Cowra, backstamps of both offices, three additional transit backstamps (1850 & 1851 year dates, the former obviously in error), Extremely Fine Gem stamp and choice cover E. \$1,000-1,500

4275° 1851, 2p Dull Ultramarine, Laid, Pl. V (SG 38; Sc. 8a). Horizontal pair, deep shade and fine early impression, tied by neat "48" oval grids on May 1851 folded letter from Tarcutta to Albury, oval datestamp on back

AN ABSOLUTELY BREATHTAKING PAIR OF SYDNEY VIEWS ON AN IMMACULATE INLAND DOUBLE-RATE COVER.

This superb cover realized £4,800 when sold at auction in 1979 .. E. \$6,000-8,000

1850 3-PENCE PROOFS



4276

4276°P **1850, 3p Deep Green Plate Proof on Card.** Full to large margins, fresh and Extremely Fine..... E. \$750-1,000



4277

4277°P **1850, 3p Deep Green Plate Proof on Card.** Full to large margins, couple tiny ink marks at top, still Extremely Fine, very scarce..... E. \$750-1,000



4278

4278°P田 **1850, 3p Black Trial Color Proof on Card.** Block of four, large even margins all around, two vertical creases, one heavy and partially broken, but not readily apparent on face, Extremely Fine appearance, the only recorded proof block in private hands..... E. \$5,000-6,000

1850 3-PENCE UNUSED BLOCK OF FOUR



4279

4279°★田 **1850, 3p Yellow Green, Bluish Wove (SG 42; Sc. 9).** Top right corner margin block of four, Positions 4-5/9-10, full original gum, rich color and fine impression, horizontal crease in top pair and a slight diagonal crease in top margin

THE ONLY RECORDED UNUSED BLOCK OF ANY OF THE SYDNEY VIEWS IN PRIVATE HANDS AND ONE OF THE MOST OUTSTANDING ITEMS IN AUSTRALIAN PHILATELY.

Most surviving Sydney View unused blocks are in two old-time collections held by institutions. The Tapling collection in the British Library has three unused blocks: a block of four 1p Plate I, a block of nine 1p Plate II and a block of four 2p Plate IV. Tapling never had the opportunity to acquire a 3p unused block, since the only find of unused 3p multiples was made after his death. In 1912 a lady in London found a part-sheet of 3p Sydney View stamps, which was purchased from her by Henry Duveen. The find was reported and illustrated in *Stanley Gibbons Stamp Monthly*, June 29, 1912. The largest piece from this find was a block of thirteen, and when Charles Phillips dispersed the Duveen collection privately, he divided that block into a corner block of four (offered here) and a marginal block of nine. The block of nine passed into the Royal collection, as did an unused block of four of the 1p Plate I, also from the Duveen collection. Thus, of the six known unused Sydney View multiples, only this corner margin block remains available to collectors, to the best of our knowledge. Another unused block of four is rumored to exist but remains unconfirmed.

This 3p block remained in private hands after the Duveen dispersal and was purchased by Arthur Hind. It later appeared in the Burrus, Tomasini and Boker collections. Other than an irregular piece of the 2p Plate I (a strip of five and parts of adjoining stamps below, pictured in the Hutson book) and the L-shaped block of three (lot 4175), we know of no other unused Sydney View multiples larger than a pair in private hands.

Ex Duveen, Hind, Burrus, Tomasini and Boker (1981, realized £29,000).....
..... E. \$60,000-80,000

1850 3-PENCE UNUSED



4280

- 4280° ★ **1850, 3p Yellow Green, Yellowish Wove (SG 39; Sc. 9a).** Position 15, unused, large margins all around, beautiful deep shade and fresh color
 AN EXTREMELY FINE UNUSED EXAMPLE OF THE 3-PENCE SYDNEY VIEW, DESCRIBED IN THE CASPARY SALE AS "ONE OF THE FINEST KNOWN."
 Ex Caspary and Lilly. Scott Retail \$2,750.00 SG £3,000

1850 3-PENCE DOUBLE IMPRESSION, ONE ALBINO



4281

- 4281° **1850, 3p Yellow Green, Bluish Wove, Double Impression, One Albino (SG 42 var; Sc. 9 var).** The unique discovery copy, ample to large margins, albino impression clear and shifted down slightly from inked impression, oval grid, Very Fine, accompanied by Robson Lowe article on the discovery (*The Philatelist*), ex Hutson E. \$4,000-5,000

1850 3-PENCE MYRTLE GREEN



- 4282° **1850, 3p Myrtle Green, Yellowish Wove (SG 40; Sc. 9a).** Pos. 14, large even margins, wonderful color and fine impression, lightly cancelled by "18" oval grid (Mudgee), Extremely Fine Gem, ex Caspary SG £1,000
- 4283° **1850, 3p Myrtle Green, Yellowish Wove (SG 40; Sc. 9a).** Large even margins, deep shade, oval grid, Extremely Fine, choice example of the elusive Myrtle Green shade, with 1962 R.P.S. certificate SG £1,000
- 4284° **1850, 3p Myrtle Green, Yellowish Wove (SG 40; Sc. 9a).** Ample to full margins, "18" oval grid (Mudgee), slightly toned, tiny thin specks, otherwise Very Fine, with 1956 R.P.S. certificate SG £1,000
- 4285° **1850, 3p Myrtle Green, Yellowish Wove (SG 40; Sc. 9a).** Horizontal strip of three in this rare shade, ample to large margins, "71" oval grids (Tamworth), faults incl. heavy crease between second and third stamps, still Very Fine appearance and the only recorded multiple of the Myrtle Green shade, ex Hutson, SG value for three singles SG £3,000
- 4286° **1850, 3p Myrtle Green, Yellowish Wove (SG 40; Sc. 9a).** Two of the Myrtle Green shade used with single 3p Yellow Green (SG 39) and 1p Dull Carmine (SG 11), tied by "46" oval grids on Jan. 1851 blue folded cover to Sussex, England, faint Gundagai oval handstamp on back, red Sydney crown circle ship-letter handstamp, red and blue receiving cds, ms. "1/4" due rate on arrival, filing crease thru Yellow Green, some reinforced wear along fold, Fine, one of three recorded usages of the rare Myrtle Green on cover E. \$5,000-7,500

1850 3-PENCE YELLOW GREEN AND EMERALD GREEN



- 4287° **1850, 3p Yellow Green, Yellowish Wove (SG 39; Sc. 9a).** Large to huge margins, beautiful deep shade, lightly cancelled, Extremely Fine Gem, ex Caspary, Scott Retail \$150.00 SG £250
- 4288° **1850, 3p Yellow Green, Yellowish Wove (SG 39; Sc. 9a).** Pos. 16, large to huge margins, bright shade, lightly cancelled, Extremely Fine Gem, Scott Retail \$150.00 SG £250
- 4289° **1850, 3p Yellow Green, Yellowish Wove (SG 39; Sc. 9a).** Pos. 1, large even margins, oval grid, fresh and Extremely Fine, Scott Retail \$150.00 SG £250
- 4290° **1850, 3p Yellow Green, Yellowish Wove (SG 39; Sc. 9a).** Pos. 17, large even margins, oval grid, Extremely Fine and choice, Scott Retail \$150.00 SG £250
- 4291° **1850, 3p Yellow Green, Yellowish Wove (SG 39; Sc. 9a).** Pos. 7, large even margins, oval grid, deep shade, Extremely Fine, Scott Retail \$150.00..... SG £250
- 4292° **1850, 3p Yellow Green, Yellowish Wove (SG 39; Sc. 9a).** Pos. 8, ample to large margins, crease, filled thin at corner, Very Fine appearance, Scott Retail \$150.00 SG £250
- 4293° **1850, 3p Yellow Green, Yellowish Wove (SG 39; Sc. 9a).** Pos. 2, full to large margins, oval grid, Very Fine, Scott Retail \$150.00 SG £250

- 4294° **1850, 3p Emerald Green, Yellowish Wove, "SIGIIIUM" (SG 41b; Sc. 9a).** Pos. 23, large to huge margins, "71" oval grid (Tamworth), Extremely Fine, with 1942 B.P.A. certificate SG £450
- 4295° **1850, 3p Yellow Green, Bluish Wove (SG 42; Sc. 9).** Pos. 9, large margins, oval grid, two thin specks, Extremely Fine appearance, Scott Retail \$150.00 .. SG £225
- 4296° **1850, 3p Emerald Green, Bluish Wove (SG 43; Sc. 9).** Pos. 4, repaired with margins added, Scott Retail \$150.00 SG £225
- 4297° **1850, 3p Emerald Green, Bluish Wove (SG 43; Sc. 9).** Pos. 6, large even margins, neat "6" oval grid (St. Mary's), Extremely Fine, Scott Retail \$150.00 SG £225
- 4298° **1850, 3p Emerald Green, Bluish Wove (SG 43; Sc. 9).** Pos. 12, full to large margins, oval grid, Very Fine, Scott Retail \$150.00 SG £225
- 4299° **1850, 3p Emerald Green, Bluish Wove (SG 43; Sc. 9).** Pos. 11, full to large margins, oval grid, toned spots, otherwise Very Fine, Scott Retail \$150.00 SG £225
- 4300° **1850, 3p Yellowish Green, Laid (SG 43e; Sc. 9b/c).** Pos. 3, large even margins, lightly cancelled, Extremely Fine, Scott Retail \$350.00 SG £450



- 4301°田 **1850, 3p Yellow Green, Bluish Wove (SG 42; Sc. 9).** Positions 11-12/16-17, block of four, large even margins, "64" oval grids (West Maitland), some traces of filled thins show in fluid
 AN EXTREMELY FINE APPEARING BLOCK OF THE 3-PENCE SYDNEY VIEW.
 There are nine recorded used blocks of the 3p Sydney View, including the block of eight on cover and two blocks of four on covers.
 Ex Wiggins E. \$5,000-6,000



- 4302°田 **1850, 3p Emerald Green, Bluish Wove (SG 43; Sc. 9).** Block of four, bright shade on strongly blued paper, large margins virtually all around, a bit close at top corners, oval grids, small thin spots
A VERY FINE AND RARE USED BLOCK OF THE 3-PENCE SYDNEY VIEW.
Nine used blocks are recorded, including three blocks on covers. Ex Ferrary E. \$3,000-4,000
- 4303° **1850, 3p Emerald Green, Bluish Wove (SG 43; Sc. 9).** Pos. 5/10/15/20, vertical strip of four, "95" oval grids (Brisbane, Queensland), top stamp creased, bottom has corner crease, otherwise Fine-Very Fine, rare used multiple E. \$1,000-1,500
- 4304° **1850, 3p Yellow Green, Bluish Wove (SG 42; Sc. 9).** Pos. 23-25, horizontal strip of three, left stamp "SIGIHUM" for "SIGILLUM" variety (Pos. 23, SG 43c), large margins, bold oval grids, Extremely Fine and choice strip E. \$1,000-1,500
- 4305° **1850, 3p Emerald Green, Bluish Wove, No Whip (SG 43b; Sc. 9d).** Pos. 18-19, horizontal pair, both showing No Whip variety, large margins all around, bright shade, cancelled by red "PAID AT MELBOURNE" handstamp, trivial corner crease at top left, still Extremely Fine, choice pair E. \$1,000-1,500
- 4306° **1850, 3p Yellow Green, Bluish Wove (SG 42; Sc. 9).** Pos. 21-22, horizontal pair, ample margins, "47" oval grids (Tumut), corner crease at top right, otherwise Very Fine SG £450+
- 4307° **1850, 3p Yellow Green, Yellowish Wove (SG 39; Sc. 9a).** Pos. 13-14, horizontal pair, appears to have large margins and Extremely Fine appearance, but repaired with part of design and paper added at left SG £500+
- 4308° **1850, 3p Yellowish Green, Laid (SG 43e; Sc. 9b/c).** Horizontal pair, large margins all around, oval grid, Extremely Fine SG £900+
- 4309° **1850, 3p Yellowish Green, Laid, No Whip (SG 43f; Sc. 9b/c).** Pos. 18-19, horizontal pair, both stamps show variety, large margins, horizontal crease in top margin, vertical crease in left stamp, otherwise Extremely Fine SG £1,300+
- 4310° **1850, 3p Yellow Green, Yellowish Wove (SG 39; Sc. 9a).** Two (Pos. 18, 21), former the No Whip variety, each with large margins, deep rich color, used with **1850, 2p Blue, Retouched Pl. I (SG 19)**, two, large margins, tied by "9" oval grid (Bathurst) on piece, a superb and remarkable piece, ex Caspary E. \$2,000-2,500

1850 3-PENCE BLOCK OF EIGHT ON COVER



4311

4311° 1850, 3p Yellowish Green, Laid (SG 43e; Sc. 9b/c). Vertical block of eight, mostly large margins except at left where close or just touched, tied by bold oval grids on August 1851 blue folded cover from Sydney to Edinburgh, Scotland, red "PAID SHIP LETTER/SYDNEY/AU 8/1851" crown circle datestamp, receiving backstamps and ms. "5/4" (8 x 8p) due on arrival, file folds, pressed creases in block and a few short edge tears, internally reinforced along wear along folds

AN ASTOUNDING FRANKING, WHICH IS THE LARGEST RECORDED BLOCK OF ANY SYDNEY VIEW STAMP ON COVER.

Ex Hutson E. \$30,000-40,000

1850 3-PENCE STRIP OF FOUR ON COVER



4312

4312[°] 1850, 3p Yellow Green, Bluish Wove (SG 42; Sc. 9). Positions 11-14 (12 showing missing ray), horizontal strip of four, large even margins, beautiful color and impression, neatly tied by "48" oval grids on six-times rate, blue May 1852 folded letter from Tarcutta to Albury, backstamps of both offices, refolded slightly to reduce size for exhibition, file fold thru third stamp from left

AN EXTREMELY FINE AND OUTSTANDING FRANKING FOR THE MULTIPLE INLAND RATE.

Ex Wiggins E. \$15,000-20,000

VICTORIA AND NEW SOUTH WALES MIXED FRANKING
USED FROM VICTORIA



4313

4313^o 1850, 3p Yellow Green, Yellowish Wove (SG 39; Sc. 9a). Ample to large margins, used with 1850, 2p Dull Brownish Lilac, Sixth Ham Printing (SG 15c), ample to large margins, cancelled or tied by "1" Butterfly cancel of Melbourne, red "PAID SHIP LETTER/SYDNEY/AU*10/1850" oval datestamp on bluish folded letter to London, England, ms. "8" (pence) due on arrival, receiving backstamps, in impeccable condition

AN EXTREMELY FINE AND UNIQUE MIXED FRANKING, SHOWING CONCURRENT USE OF THE NEW SOUTH WALES SYDNEY VIEW AND VICTORIA HALF-LENGTH ISSUES. THE ONLY RECORDED MIXED-FRANKING COVER FROM VICTORIA.

The letter mentions "We are to have a New Constitution and Port Phillip is to get separation from Sydney. . . When all this shall come to pass there will plenty of new berths opening, in the Post Office, Customs & all. The Post Office is a good billet in these Colonies." The cover is one of two known with Victoria and New South Wales stamps used together (the other offered in the following lot), and it is the only recorded combination on cover from the Port Phillip District.

Ex Wiggins. With 1984 R.P.S. certificate..... E. \$50,000-60,000

VICTORIA AND NEW SOUTH WALES MIXED FRANKING
USED FROM NEW SOUTH WALES



4314



4314° 1850, 2p Blue, Pl. I Late (SG 17; Sc. 3). Two, Pos. 12 and 18 (retouched), both with large margins, used with **Victoria, 1850, 1p Red Brown, Second Ham Printing (SG 5)**, clear to large margins, tied by "21" oval grids on blue folded cover to Edinburgh, Scotland, "Campbelltown, New South Wales, Ju 14, 1850" oval back-stamp, Sydney and British transits also on back, ms. "8" (pence) due on arrival, several file folds slightly affecting stamps

A VERY FINE AND UNIQUE MIXED-FRANKING COVER FROM NEW SOUTH WALES.

This is one of two recorded covers with stamps of Victoria and New South Wales used in combination. It is the only recorded mixed-franking cover from New South Wales. Ex Davy and Wiggins. With 1960 B.P.A. certificate..... E. \$50,000-60,000

VICTORIA STAMPS USED IN NEW SOUTH WALES



- 4315°  **Victoria, 1850, 2p Lilac Mauve, First Ham Printing (SG 2).** Ample margins to touched as usual, fresh color, tied by "50" oval grid on Feb. 1850 blue folded cover from Albury to Melbourne, backstamps of both offices, Extremely Fine example of the Victoria Half-Length issue used in New South Wales (valid concurrently with the Sydney Views)..... E. \$3,000-4,000
- 4316°  **Victoria, 1850, 2p Gray, Sixth Ham Printing (SG 10).** Margins all around, tied by "51" oval grid of Deniliquin on mostly complete blue folded cover to Melbourne, backstamped with "Deniliquin New S. Wales Jy*25 1850" oval, transit and receiving backstamps, some bleached specks, Fine example of Victoria Half-Length issue used at New South Wales post office, with 1965 B.P.A. certificate (with additional opinion from J. R. W. Purves) E. \$3,000-4,000

- 4317° **1850, 1p Reddish Rose, Pl. I (SG 3; Sc. 1).** Large even margins, rich color, used with **Victoria, 1850, 2p Brown Lilac, Fourth Ham Printing (SG 3)**, ample margins to touched, tied by oval grids on piece with red Sydney ship-letter oval and Auckland cds, dated Apr. 23 and May 6, 1850, respectively, Very Fine example of Victoria and Sydney View issues used concurrently in New South Wales..... E. \$1,500-2,000
- 4318° **1850, 1p Dull Carmine, Pl. II (SG 8; Sc. 2).** Ample to large margins, rich color, used with **Victoria, 1850, 3p Bright Blue, First Ham Printing (SG 4)**, large margins, tied by oval grids on large piece with "Newcastle*New S. Wales/Mr*11/1851" crown oval datestamp, pre-mailing fold in lettersheet does not affect stamps, part of flap with Sydney backstamp, Extremely Fine example of Victoria and Sydney View issues used together in New South Wales, ex Pack .. E. \$1,500-2,000



BUTTERFLY CANCELLATIONS ON SYDNEY VIEWS

- 4319° **1850, 2p Ultramarine, Pl. III (SG 29; Sc. 6).** Ample margins to touched at sides, tied by bold "1" Butterfly cancel on **incoming ship letter cancelled on arrival at Melbourne**, blue folded cover with "p Shamrock" endorsement and addressed to Lucerne, Melbourne, no origin markings, arrival datestamp of Melbourne ("JA 7/1851"?), on back, Very Fine, probably posted on board the *Shamrock* with Sydney View stamp affixed by writer, ex Harvey..... E. \$2,000-2,500



4321



4320



4323



4324



4325



4322



4326



4327



4328



4329



4330



4331



4332



4333



4334



4335



4336



4337



4338

- 4320° **1850, 2p Ultramarine, Pl. III (SG 29; Sc. 6).** Large margins incl part of sheet margin at top, clear "1" Butterfly cancel, on piece with part of backflap showing Melbourne origin oval ds and Sydney crown circle, diagonal crease in stamp, otherwise Very Fine, ex Hutson E. \$750-1,000
- 4321° **1850, 2p Ultramarine, Pl. III (SG 29; Sc. 6).** Ample to large margins, bold "1" Butterfly cancel of Melbourne, Very Fine..... E. \$400-500
- 4322° **1850, 1p Reddish Rose, Pl. I (SG 3; Sc. 1).** Horizontal pair, margins all around, two strikes of "1" Butterfly of Melbourne, Fine, with 1976 R.P.S. certificate, ex Harvey..... E. \$750-1,000
- 4323° **1850, 3p Yellow Green, Yellowish Wove (SG 39; Sc. 9a).** Large margins, "1" Butterfly cancel of Melbourne, thin spots, Extremely Fine appearance, ex Harvey, with 1931 R.P.S. certificate E. \$300-400
- 4324° **1850, 2p Deep Blue, Pl. III (SG 30; Sc. 6).** Large margins to just clear, "2" Butterfly of Kilmore, Fine E. \$300-400
- 4325° **1850, 2p Prussian Blue, No Whip, Pl. II Late (SG 26e; Sc. 5e).** Pos. 17, full margins, "3" Butterfly of Seymour, thin spot, Very Fine appearance, with 1976 R.P.S. certificate..... E. \$300-400
- 4326° **1850, 2p Ultramarine, Pl. III (SG 29; Sc. 6).** Full even margins, "4" Butterfly of Broken River, thin spot and vertical crease, otherwise Very Fine..... E. \$300-400
- 4327° **1850, 1p Reddish Rose, Pl. I (SG 3; Sc. 1).** Close margins, bold "8" Butterfly of Dandenong, thin spot and crease, otherwise Fine, with 1968 R.P.S. certificate E. \$200-300
- 4328° **1850, 2p Dull Blue, Pl. I Late (SG 18; Sc. 3).** Large to huge margins, "9" Butterfly of Flooding Creek, Extremely Fine Gem, with 1983 Holcombe certificate..... E. \$400-500
- 4329° **1850, 2p Prussian Blue, Retouched Pl. II (SG 27; Sc. 5F).** Large even margins, "10" Butterfly of Alberton, crease ending in small tear, otherwise Extremely Fine E. \$300-400
- 4330° **1850, 3p Emerald Green, Bluish Wove (SG 43; Sc. 9).** Large even margins, "14" Butterfly of Swan Hill, bold strike, horizontal crease, otherwise Extremely Fine E. \$400-500
- 4331° **1850, 3p Yellow Green, Bluish Wove (SG 42; Sc. 9).** Margins all around, clear "15" Butterfly of Geelong, corner creases, otherwise Fine..... E. \$200-300
- 4332° **1850, 1p Reddish Rose, Pl. I (SG 3; Sc. 1).** Close margins touching in places, "23" Butterfly of Burn Bank, Fine E. \$200-300
- 4333° **1850, 1p Brownish Red, Bluish Wove, Pl. II (SG 12; Sc. 2c).** Ample to large margins, "27" Butterfly of Fiery Creek, Very Fine..... E. \$200-300
- 4334° **1850, 2p Indigo, Pl. II Early (SG 21; Sc. 5h).** Large margins, deep shade and fine impression, "32" Butterfly of Portland, faint vertical crease, undetectable out of fluid, Extremely Fine E. \$500-600
- 4335° **1850, 2p Indigo, Pl. II Early (SG 21; Sc. 5h).** Full to large margins, "32" Butterfly of Portland, Very Fine E. \$300-400
- 4336° **1850, 2p Gray Blue, Pl. II Early (SG 23; Sc. 5h).** Ample to large margins, beautiful early impression, "37" Butterfly, faint vertical crease at left, otherwise Very Fine, ex Pack and Caspary..... E. \$500-750
- 4337° **1850, 2p Gray Blue, Pl. II Early (SG 23; Sc. 5h).** Ample to large margins, fine early impression, "37" Butterfly cancel, minor corner crease, Fine appearance E. \$400-500
- 4338° **1850, 2p Gray Blue, Pl. II Early (SG 23; Sc. 5h).** Pos. 15-16, horizontal pair, large to huge margins, beautiful early color and impression, "37" Butterfly cancel clearly struck on each stamp, negligible thin spots not detracting from Extremely Fine appearance, ex Pack, Caspary E. \$1,200-1,500



4339



4340



4341



4342



4343



4344



4345



4350



4346



4347



4348



4349



4351



4352



4353



4354

- 4339° **1850, 2p Gray Blue, Pl. II Early (SG 23; Sc. 5h).** Large even margins, beautiful color and impression, "37" butterfly cancel, slight thins, Very Fine appearance..... E. \$400-500
- 4340° **1850, 2p Dull Blue, Retouched Pl. II (SG 28; Sc. 5F).** Clear to ample margins, "37" Butterfly cancel, Fine..... E. \$300-400
- 4341° **1850, 2p Dull Blue, Retouched Pl. II (SG 28; Sc. 5F).** Full to large margins, "37" Butterfly cancel, faint crease, Very Fine appearance E. \$300-400
- 4342° **1851, 2p Dull Ultramarine, Laid, Pl. V (SG 38; Sc. 8a).** Three large margins, clear at right, "47" Butterfly of Ovens, small tear at right, otherwise Fine E. \$200-300

DIAMOND OF DOTS CANCELLATION

- 4343° **Victoria, 1850, 1p Dull Rose, Second Ham Printing (SG 9b).** Vertical pair, margins to slightly in, two clear strikes of Diamond of Dots cancel, vertical crease with tiny tear at left, still Fine and very rare example of Victoria Half-Length issue cancelled at Sydney, ex Caspary..... E. \$500-750
- 4344° **1850, 1p Reddish Rose, Pl. I (SG 3; Sc. 1).** Clear to ample margins, Diamond of Dots cancel, thin speck, Fine appearance E. \$200-300
- 4345° **1850, 1p Pale Red, Bluish Wove, Pl. I (SG 5; Sc. 1b).** Full even margins all around, Diamond of Dots cancel, deep thin, otherwise Extremely Fine appearance..... E. \$150-200
- 4346° **1850, 2p Bright Blue, Pl. II Early (SG 24; Sc. 5h).** Full to huge margins, deep shade and fine impression, Diamond of Dots cancel, faint crease, Extremely Fine appearance E. \$300-400
- 4347° **1850, 2p Bright Blue, Pl. II Early (SG 24; Sc. 5h).** Large margins, deep shade, well-struck Diamond of Dots cancel, faint corner crease, Extremely Fine appearance E. \$300-400
- 4348° **1850, 2p Bright Blue, Pl. II Early (SG 24; Sc. 5h).** Ample margins, deep shade, Diamond of Dots cancellation, Fine, with 1980 B.P.A. certificate..... E. \$300-400
- 4349° **1850, 2p Bright Blue, Pl. II Early (SG 24; Sc. 5h).** Horizontal pairs, large to huge margins, fine impression, two clear strikes of Diamond of Dots cancel, scissors cut at top between stamps, Extremely Fine, ex Stevens, Hutson E. \$1,000-1,500
- 4350° **1850, 2p Ultramarine, Pl. III (SG 29; Sc. 6).** Vertical pair, large margins incl. part of top sheet margin, Diamond of Dots cancel, Extremely Fine Gem pair E. \$1,000-1,500
- 4351° **1850, 2p Ultramarine, Pl. III (SG 29; Sc. 6).** Clear to large margins, Diamond of Dots cancel, horizontal crease, otherwise Fine..... E. \$300-400
- 4352° **1851, 2p Bright Blue, Bluish Wove, Pl. IV (SG 33; Sc. 7).** Ample to large margins, Diamond of Dots cancel, Fine E. \$300-400
- 4353° **1851, 2p Ultramarine, Pl. V (SG 36; Sc. 8).** Large even margins, Diamond of Dots cancel, pinhole, otherwise Extremely Fine..... E. \$300-400
- 4354° **1850, 3p Emerald Green, Bluish Wove (SG 43; Sc. 9).** Large even margins, Diamond of Dots cancel, Extremely Fine..... E. \$300-400



- 4355° 1850, 3p Yellow Green, Yellowish Wove (SG 39; Sc. 9a). Large even margins, bright color, tied by Diamond of Dots cancel on Nov. 1850 folded cover to Edinburgh, Scotland, lightly struck red Sydney ship letter crown oval datestamp, receiving backstamps, ms. "8" (pence) due on arrival

EXTREMELY FINE AND ONE OF FOUR COVERS RECORDED WITH THE DIAMOND OF DOTS CANCELLATION.

The four recorded Sydney View covers with stamps cancelled by the Diamond of Dots device appear to have originated in Sydney E. \$4,000-5,000

SUB-OFFICE MARKINGS

- 4356° 1850, 3p Yellow Green, Bluish Wove (SG 42; Sc. 9). Large to huge margins, tied by oval grid on bluish folded cover to London, England, red "PAID SHIP LETTER/ SYDNEY/SE*10/1850" crown oval datestamp, mostly clear "QUEEN'S WHARF" straightline sub-office handstamp, ms. endorsement "*p Diana via Hong Kong & Overland Mail*" and carried on the steamer *Pekin*, leaving Hong Kong on Nov. 29, ms. "2/3" due rate indicates routing via Marseilles, London backstamp, Extremely Fine and choice example of the Queen's Wharf marking, applied at this dockside sub-office before the letter was carried to the Sydney G.P.O.—this is the earliest of the eight recorded examples E. \$2,000-3,000
- 4357° 1850, 1p Reddish Rose, Pl. I (SG 3; Sc. 1). Clear to ample margins, deep shade, part oval grid and clear "LIVERPOOL(L STREET)" straightline sub-office marking, unusual use as a canceller, two thin spots, Fine appearance E. \$200-300

SYDNEY VIEW AND LAUREATE MIXED-ISSUE FRANKINGS



- 4358° 1850, 1p Dull Carmine, Bluish Wove, Pl. II (SG 11; Sc. 2c). Large even margins, choice, used with 1852, 1p Carmine, Bluish (SG 45; Sc. 13a), full margins to touched, tied by oval grids on Apr. 1852 folded cover from Newtown to West Maitland, mostly complete brownish red "COOKS RIVER" straightline in frame on back, Sydney crown circle also on back, small pieces missing from interior of letter-sheet, file fold and small spot of scratched-out writing, Fine, the earliest recorded date of the Cooks River sub-office marking and an attractive mixed-issue franking, ex Dale-Lichtenstein, with 1990 B.P.A. certificate E. \$1,500-2,000
- 4359° 1850, 1p Dull Carmine, Bluish Wove, Pl. II (SG 11; Sc. 2c). Ample to large margins, rich color, used with 1851, 2p Chalky Blue, Bluish, Pl. I (SG 53; Sc. 14), ample to large margins, tied by oval grids, partly struck red Sydney ship-letter crown circle on Dec. 1852 small envelope to "Col. McDonall, 2d Life Guards, Horse Guards, London" with red receiving backstamps and ms. "8" (pence) due, Extremely Fine and very choice Sydney View/Laureate mixed-issue cover, with 1988 Holcombe certificate..... E. \$2,000-3,000




- 4360° 1850, 1p Dull Carmine, Pl. II (SG 8; Sc. 2). Large margins to clear at upper left, deep shade, used with two 1851, 2p Chalky Blue, Bluish, Pl. I (SG 53; Sc. 14), both with full to large margins, tied by "68" oval grids, Scone crown oval datestamp on back, red "PAID SHIP LETTER/SYDNEY/AP*2/1852" crown circle on blue folded cover to London, England, ms. "8" (pence) due on arrival, red receiving backstamp, file fold between two 2p stamps slightly affects margins of each, Very Fine and rare mixed-issue franking E. \$2,000-3,000
- 4361° 1850, 3p Emerald Green, Bluish Wove (SG 43; Sc. 9). Large margins all around, used with 1852, 2p Ultramarine, Bluish, Pl. I (SG 52; Sc. 14a), large to huge margins, tied by "6" oval grids, Bathurst crown oval datestamp on back of Oct. 1852 folded letter to Helston, England, ms. "via Singapore & Southampton" routing instructions, with Sydney ship-letter crown oval and red transit backstamps, red Helston receiving cds on face, ms. "1/4" due on arrival, Extremely Fine mixed-issue franking E. \$2,000-3,000



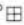
- 4362° 1850, 3p Yellow Green, Bluish Wove (SG 42; Sc. 9). Large even margins, used with 1852, 2p Ultramarine, Bluish, Pl. I (SG 53; Sc. 14a), large to huge margins, tied by "36" oval grids, Braidwood crown oval datestamp on back of Nov. 1852 bluish folded letter to Rochdale, England, ms. "*p Formosa Steamer via Southampton*" routing instructions, Sydney ship-letter crown circle on back, transit and receiving back-stamps, ms. "*1/4*" due on arrival, file crease affects stamps but is barely noticeable, still Extremely Fine and desirable mixed-issue franking..... E. \$1,500-2,000
- 4363° 1850, 3p Yellow Green, Bluish Wove (SG 42; Sc. 9). Full to large margins, used with vertical pair of 1852, 6p Chocolate Brown, Bluish, Pl. I (SG 75; Sc. 18), a superb vertical pair with full margins all around, fine impression and deep shade, tied by oval grids, "SHIP-LETTER/SYDNEY/FE*25/1853" crown circle on back of blue folded cover (address panel and one flap) to Stokesley, England, ms. "*Melbourne*" ship routing instructions, this cover left on the first homeward voyage on which the new packet rate of 1/3p per 1/2 oz. was prepayable, Extremely Fine, ex Dale-Lichtenstein E. \$2,000-3,000
- 4364° 1850, 3p Emerald Green, Bluish Wove (SG 43; Sc. 9). Large even margins, used with 1852, 6p Gray Brown, Bluish, "WALLS", Pl. I (SG 76a; Sc. 18b), the variety is Pos. 8 of horizontal pair (8-9), clear to ample margins, deep shade, tied by oval grids on piece, part of Sydney May 31, 1853 crown circle on back, Extremely Fine E. \$750-1,000

THE LAUREATE ISSUES



- 4365°  **1851, 1p Brick Red, Plate Proof on Bluish Wove.** Horizontal block of twelve, Positions 13-18/23-28, Pos. 15 shows variety 2 Leaves Right of "SOUTH", ample margins to slightly cut in, ms. "51/11.993" across block, Fine-Very Fine; On Dec. 18, 1851, Mr. Manning, the Inspector of Stamps, forwarded a proof sheet of the 1p value to the Governor-General's Office, writing "I have the honour to forward for the inspection of His Excellency the new steel plate for printing the Penny Postage Stamps. The accompanying prints are struck from the plate." Ex Slade..... E. \$1,500-2,000

1851 1-PENNY ON YELLOWISH WOVE

- 4366°★ **1851, 1p Carmine, Yellowish Wove (SG 44; Sc. 10).** Unused, ample margins all around, deep rich color, Very Fine, Scott Retail \$1,650.00..... SG £1,800
- 4367°  **1851, 1p Carmine, Yellowish Wove (SG 44; Sc. 10).** Block of four, deep shade, fine impression, lightly cancelled by "50" oval grids (Albury), Very Fine appearance but repaired along top of upper pair, ex Caspary E. \$750-1,000
- 4368° **1851, 1p Carmine, Yellowish Wove (SG 44; Sc. 10).** Horizontal strip of five, clear to ample margins, rich color, lightly cancelled by "8" oval grids (Hartley), minor thin in right stamp, still Fine-Very Fine and a very rare used multiple, ex Hutson E. \$1,000-1,500
- 4369° **1851, 1p Carmine, Yellowish Wove (SG 44; Sc. 10).** Horizontal pair, full to large margins, intense shade and impression, "87" oval grid (Queensland), vertical crease between stamps, otherwise Extremely Fine..... SG £380+

1852 1-PENNY ON BLUISH WOVE

UNUSED BLOCK OF TEN



4370

4370°★田 **1852, 1p Vermilion, Bluish Wove (SG 47; Sc. 13).** Horizontal block of ten, Positions 21-25/31-35, top left stamp (Pos. 21) is variety No Leaves Right of "SOUTH" (SG 47a; Sc. 13b), nearly full original gum, ample margins to touched in places, fourth stamp of top row has small tear and rubbed spot, slight creasing in places but of beautiful rich color

A VERY FINE BLOCK AND THE LARGEST RECORDED UNUSED MULTIPLE OF THE UNWATERMARKED 1-PENNY LAUREATE.

Ex Ferrary, Caspary, Lilly and Boker (1981, realized £16,500) E. \$25,000-35,000



4371



4372



4373



4374



4375



4376



4378



4377

- 4371°★ **1852, 1p Pale Carmine, Bluish Wove (SG 45; Sc. 13).** Horizontal pair, part original gum, bright shade, vertical crease between stamps, still Very Fine, with Robson Lowe certificate SG £2,000+
- 4372°★ **1852, 1p Carmine, Bluish Wove (SG 45; Sc. 13).** Unused, full margins all around, deep shade, fine impression, Very Fine and choice, Scott Retail \$750.00 .. SG £1,000
- 4373°★ **1852, 1p Brick Red, Bluish Wove (SG 48; Sc. 13).** Original gum, large margins all around, fresh and Extremely Fine Gem, Scott Retail \$750.00..... SG £900
- 4374° **1852, 1p Carmine, Bluish Wove (SG 45; Sc. 13a).** Horizontal pair with full corner sheet margin, large margins, deep shade and fine impression, "18" oval grids (Mudgee), slight crease, still Extremely Fine and an extraordinary pair SG £240+
- 4375° **1852, 1p Scarlet, Bluish Wove (SG 46; Sc. 13).** Horizontal pair with right sheet margin, margins all around, deep shade, oval grids, broken crease in left stamp, small scissors-cut between stamps, small thin in margin, otherwise Very Fine, ex Pack SG £240+
- 4376° **1852, 1p Scarlet, Bluish Wove, No Leaves Right of "SOUTH" (SG 46 var; Sc. 13b).** Pos. 7-8, horizontal pair, lefthand stamp the variety, margins all around, vivid shade on deeply blued paper, bold "64" oval grids (West Maitland), Very Fine and choice..... SG £335+
- 4377° **1852, 1p Vermilion, Bluish Wove (SG 47; Sc. 13).** Horizontal strip of four, large margins to just clear at bottom, bright shade, "7" oval grids (Penrith), two thin spots, Fine appearance, scarce multiple, ex Ferrary, Boker..... E. \$300-400
- 4378° **1852, 1p Brick Red, Bluish Wove (SG 48; Sc. 13).** Horizontal pair, ample margins to touched, bright shade, oval grids, long tear but scarce, ex Hutson... SG £200+



4379

- 4379°☒ **1852, 1p Vermilion, Bluish Wove (SG 47; Sc. 13).** Used with 1851, 2p Ultramarine, Bluish, Pl. I (SG 52; Sc. 14a), both with three ample margins, touched at one side, tied by oval grids on Nov. 1853 bluish folded letter to Manila, Philippines, backstamped at Sydney and Manila, "1" (reale) due handstamp, ms. "Per Duke of Northumberland" ship routing endorsement, Very Fine and rare usage E. \$2,000-2,500



4380



4381



4382



4383



4384



4385



4386



4387



4388



4389



4390



4391



4392



4394



4393



4395

1852 1-PENNY ON BLUISH LAID

- 4380° **1852, 1p Orange Brown, Bluish Laid (SG 49; Sc. 12).** Horizontal pair, large to huge margins, close at top, deep shade, "66" oval grid (Singleton), corner crease at top right, still Very Fine and choice pair, ex Slade SG £700+
- 4381° **1852, 1p Orange Brown, Bluish Laid (SG 49; Sc. 12).** Horizontal pair, ample margins to close but clear, "66" oval grid, couple small thins, Fine appearance..... SG £700+
- 4382° **1852, 1p Claret, Bluish Laid, No Leaves Right of "SOUTH" (SG 50a; Sc. 12a).** Pos. 7-8, horizontal pair, lefthand stamp the variety, deep shade, three ample margins, touched at left, "62" oval grids (Morpeth), Fine-Very Fine, ex Ferrary..... SG £900+
- 4383° **1852, 1p Orange Brown, Bluish Laid, No Leaves Right of "SOUTH" (SG 50a; Sc. 12a).** Ample margins to just touched, bold oval grid, pinhole, otherwise Very Fine, Scott Retail \$500.00..... SG £550
- 4384° **1852, 1p Orange Brown, 2 Leaves Right of "SOUTH" (SG 50b; Sc. 12b).** Bright shade, full even margins, bold "45" oval grid (Binalong), Extremely Fine, Scott Retail \$500.00 SG £650
- 4385° **1852, 1p Orange Brown, Bluish Laid, "WALE" (SG 50c; Sc. 12c).** Ample margins to touching, lightly cancelled, Fine, Scott Retail \$500.00 SG £650

1851 2-PENCE PLATE I

- 4386°★ **1851, 2p Ultramarine, Bluish, Pl. I (SG 52; Sc. 14a).** Original gum, large to huge margins, deep shade and fine impression, Extremely Fine Gem, Scott Retail \$325.00 SG £750
- 4387°★ **1851, 2p Grayish Blue, Bluish, Pl. I (SG 55; Sc. 14).** Original gum, full even margins, minor toning, otherwise Very Fine, Scott Retail \$300.00 SG £650
- 4388°★ **1851, 2p Grayish Blue, Bluish, Pl. I (SG 55; Sc. 14).** Unused, large margins, slight discoloration at bottom, otherwise Very Fine, Scott Retail \$300.00 SG £650
- 4389° **1851, 2p Ultramarine, Bluish, Pl. I (SG 52; Sc. 14a).** Horizontal strip of four, clear to large margins, deep shade, oval grids, vertical crease, otherwise Very Fine, ex Pack..... E. \$300-400
- 4390° **1851, 2p Ultramarine, Bluish, Pl. I (SG 52; Sc. 14a).** Bottom left corner sheet margins, large on other sides, "64" oval grid (West Maitland), Extremely Fine Gem, Scott Retail \$25.00..... SG £30
- 4391° **1851, 2p Chalky Blue, Bluish, Pl. I (SG 53; Sc. 14).** Bottom right corner copy, large margins all around, lightly cancelled by oval grid, toned spot, faint diagonal crease, still Extremely Fine, Scott Retail \$25.00 SG £30
- 4392°田 **1851, 2p Grayish Blue, Bluish, Pl. I (SG 55; Sc. 14b).** Block of four, large margins, fine impression, "46" oval grids (Gundagai), appears Extremely Fine but bottom right margin has a large scuff that touched design, still a choice and rare block E. \$400-500
- 4393° **1851, 2p Grayish Blue, Bluish, Pl. I (SG 55; Sc. 14b).** Horizontal strip of four, full to large margins, oval grids, Extremely Fine and choice strip..... E. \$750-1,000
- 4394° **1851, 2p Grayish Blue, Bluish, Pl. I (SG 55; Sc. 14b).** Large to enormous margins incl. part of sheet margin, oval grid, Extremely Fine Gem, Scott Retail \$25.00 SG £30
- 4395 **1851, 2p Grayish Blue, Bluish, Pl. I (SG 55; Sc. 14b).** Bottom right corner copy, lightly cancelled, repaired with piece of margin added SG £30



4397



4398

Chas. Kent Str. North Sydney.



4399



4402



4403

1851 2-PENCE WORN PLATE I



4396

- 4396°★ **1851, 2p Ultramarine, Bluish, Worn Pl. I (SG 56; Sc. 14a).** Horizontal strip of eight, full original gum, three large margins, margin at bottom is full to slightly in on three stamps, fresh and rich color, three vertical creases (one at left is partly broken)

A FINE AND EXTREMELY RARE STRIP—THE ONLY LARGER MULTIPLE IS THE BLOCK OF NINE IN THE ROYAL COLLECTION.

Ex Avery, Ginger and Hutson E. \$7,500-10,000

- 4397°★ **1851, 2p Ultramarine, Bluish, Worn Pl. I (SG 56; Sc. 14a).** Unused, full to large margins, Very Fine, Scott Retail \$325.00 SG £450

- 4398° **1851, 2p Ultramarine, Bluish, Worn Pl. I (SG 56; Sc. 14a).** Horizontal pair with bottom sheet margin showing part of imprint, clear to large margins other sides, oval grids, deep thin in left stamp, other is Extremely Fine E. \$200-300

- 4399°⊞ **1851, 2p Ultramarine, Bluish, Worn Pl. I (SG 56; Sc. 14a).** Three large-margined singles, used with 1855, 2p Prussian Blue on White, Pl. III (SG 55; Sc. 16), clear to ample margins, tied by "35" oval grids, "REGISTERED/GOULBURN" two-line hand-stamp on Mar. 1855 blue cover to Sydney, backstamps of Goulburn and Sydney offices, small spindle hole causing tiny tear in one 2p Ultramarine, still Extremely Fine E. \$1,500-2,000

1853 2-PENCE PLATE II



4400



4401

- 4400°★ **1853, 2p Indigo, Bluish, Pl. II (SG 61; Sc. 15).** Unused, full to large margins, deep shade, small tear at left, otherwise Extremely Fine, Scott Retail \$900.00 ... SG £1,100
- 4401°★ **1853, 2p Deep Prussian Blue, Bluish, Worn Pl. II (SG 62; Sc. 15).** Original gum, full even margins, Extremely Fine and choice, Scott Retail \$900.00..... SG £1,000
- 4402° **1853, 2p Deep Ultramarine, Bluish, Pl. II (SG 60; Sc. 15).** Horizontal strip of five, large margins except at upper right where touched, oval grids, couple tiny tears of no significance, still Very Fine, ex Hutson E. \$500-600
- 4403° **1853, 2p Indigo, Bluish, Pl. II (SG 61; Sc. 15).** Horizontal strip of four, top sheet margin, ample at sides and clear to ample at bottom, "66" oval grids (Singleton), Fine-Very Fine E. \$500-600



- 4404° **1853, 2p Indigo, Bluish, Pl. II (SG 61; Sc. 15).** Horizontal pair, large to huge margins incl. part of bottom sheet margin, deep shade and fine impression, Extremely Fine Gem pair..... SG £160+
- 4405° **1853, 2p Indigo, Bluish, Pl. II (SG 61; Sc. 15).** Horizontal pair, enormous margins all around, deep shade, oval grids, Extremely Fine Gem pair SG £160+

1853 2-PENCE WORN PLATE II

- 4406° **1853, 2p Deep Prussian Blue, Bluish, Worn Pl. II (SG 62; Sc. 15).** Large margins incl. "H. C. JERVIS" imprint at bottom, deep shade, oval grid, Extremely Fine Gem, Scott Retail \$87.50 SG £100
- 4407° **1853, 2p Deep Prussian Blue, Bluish, Worn Pl. II (SG 62; Sc. 15).** Top right corner copy, other sides clear to large, oval grid, faint diagonal crease, still Extremely Fine, Scott Retail \$87.50 SG £100
- 4408° **1853, 2p Deep Prussian Blue, Bluish, "WAEES", Worn Pl. II (SG 62a; Sc. 15a).** Pos. 23, full even margins all around, lightly cancelled, Extremely Fine, Scott Retail \$250.00 SG £375

1855 2-PENCE PLATE III

- 4409°★ **1855, 2p Prussian Blue, Bluish, Pl. III (SG 63; Sc. 16).** Unused, large to huge margins incl. part of adjoining stamp below, faint crease, still Extremely Fine, ex Pack, Scott Retail \$425.00 SG £475
- 4410°田 **1855, 2p Prussian Blue, Bluish, Pl. III (SG 63; Sc. 16).** Block of four, large to huge margins, rich color, "NSW" oval grids, corner crease at top right, still Extremely Fine and choice block E. \$500-750
- 4411° **1855, 2p Prussian Blue on White, Pl. III (SG 64; Sc. 16).** Horizontal strip of four, large even margins, deep shade, "35" oval grids (Goulburn), Extremely Fine Gem strip..... E. \$200-300

1852 3-PENCE BLOCK OF FIFTEEN



4412

4412°★田 1852, 3p Dull Yellow Green, Grayish Blue Wove (SG 67; Sc. 17). Vertical block of fifteen with nearly full original gum, sheet margins on three sides including part of imprint at bottom, ornamental border, "Storekeeper's Dept." and "Stamp Office" circular handstamps at left, ms. "Five of these stamps given this day to Sir Daniel Cooper as requested—7 Oct. 70"; folded in several places resulting in slight creases, still fresh and brilliant color

AN EXTREMELY FINE AND RENOWNED MULTIPLE. THE MOST OUTSTANDING PIECE OF THE LAUREATE ISSUE AND ONE OF THE GREATEST ITEMS IN AUSTRALIAN PHILATELY.

This block was cut from a part-sheet of 38 stamps presented to Sir Daniel Cooper, Governor of New South Wales and the first President of the London Philatelic Society. It passed to Ferrary, Hind, Caspary, Lilly and was later divided, including the block of fifteen offered here.

Ex Ferrary, Hind, Caspary, Lilly, Tomasini and Boker..... E. \$75,000-100,000

1852 3-PENCE — UNUSED



4413

- 4413°★ **1852, 3p Dull Yellow Green, Grayish Blue Wove (SG 67; Sc. 17).** Vertical pair with top right corner sheet margin, pencil signature of J. Carmichael, the engraver, in margin, original gum, large margins to slightly in at bottom right, slight creases and pinhole, bottom stamp has split in paper at left, still Fine-Very Fine and a striking pair, ex Ferrary, with 1959 R.P.S. certificate SG £2,400+



4414

- 4414°★ **1852, 3p Green, Grayish Blue Wove (SG 66; Sc. 17).** Part original gum, full to large margins, beautiful rich color, minute thin speck, still Extremely Fine, ex Ferrary, Scott Retail \$900.00 SG £1,300

- 4415°★ **1852, 3p Green, Grayish Blue Wove (SG 66; Sc. 17).** Part original gum, three ample to large margins, close but clear at bottom, deep shade, fresh and Fine, Scott Retail \$900.00 SG £1,300



4415

1852 3-PENCE — USED MULTIPLES



4416

- 4416°田 **1852, 3p Emerald Green, Thick Blue Wove (SG 69; Sc. 17a).** Horizontal block of six, mostly large or ample margins, touched in places, dark shade, oval grids, thin speck in top left stamp, still Fine-Very Fine and scarce block E. \$750-1,000



4417

- 4417°田 **1852, 3p Emerald Green, Thick Blue Wove (SG 69; Sc. 17a).** Block of four, large margins on two sides, ample to slightly in on others, bright shade, oval grids, Fine-Very Fine, ex Pack E. \$400-500

- 4418°田 **1852, 3p Emerald Green, Thick Blue Wove (SG 69; Sc. 17a).** Block of four, margins touching, oval grids, faint diagonal crease in lower pair, scissors cut at right between stamps, still Fine E. \$300-400



4418



- 4419^o 1852, 3p Deep Green, Grayish Blue Wove (SG 65; Sc. 17). Horizontal pair, ample to full margins, intense deep shade, tied by oval grids on small cover to Gateshead, England, "Sydney*N.S.W.*MR*7/1855" backstamp, red "Australian Packet/Paid/Liverpool" transit cds, red "5" (pence) due hs applied on arrival, endorsed per "James Baines", receiving backstamp, Extremely Fine and choice E. \$1,000-1,500
- 4420^o 1851-54, 1p-3p Laureates (SG 56, 82, 86 three; Sc. 14, 23, 24 three). A remarkable six-stamp, three-color franking with two different printings of the 2p on Apr. 1855 cover to Bristol, England, an address panel with one flap, stamps tied by oval grids, partly clear Sydney backstamp, red "Australian Packet/Paid/Liverpool" transit cds and red ms. "10" (pence) for double rate, receiving backstamps, endorsed "By Ship Lightning", Very Fine and astounding franking E. \$2,000-3,000

1852 6-PENCE PLATE I



- 4421°P **1852, 6p Brown Plate Proof on Yellowish Wove.** Clear to ample margins, tiny thin specks, Very Fine appearance, six examples recorded, with 1990 Robson Lowe certificate E. \$750-1,000
- 4422°★ **1852, 6p Yellow Brown, Bluish, Pl. I (SG 74; Sc. 18).** Positions 5/10, top right vertical sheet margin pair, unused, large margin at bottom, touched to slightly in at left, vertical crease, small thin in selvage, otherwise Fine, extremely rare unused 6p Laureate multiple, ex Ferrary, with Robson Lowe certificate, Scott Retail \$4,000.00+ SG £3,600+
- 4423°★ **1852, 6p Vandyke Brown, Bluish, Pl. I (SG 73; Sc. 18).** Unused, margins all around, rich color, trivial thin, Very Fine appearance, with 1984 R.P.S. certificate, Scott Retail \$2,000.00..... SG £1,700
- 4424° **1852, 6p Yellow Brown, Bluish, Pl. I (SG 74; Sc. 18).** Large even margins, oval grid, Extremely Fine Gem, Scott Retail \$200.00..... SG £275
- 4425° **1852, 6p Gray Brown, Bluish, Pl. I (SG 76; Sc. 18).** Large even margins, oval grid, fresh and Extremely Fine, Scott Retail \$200.00..... SG £250
- 4426° **1852, 6p Gray Brown, Bluish, Pl. I (SG 76; Sc. 18).** Horizontal strip of three, ample margins to slightly in, dark shade, oval grids, tear at top of left stamp, otherwise Fine, ex Ginger, Hutson SG £750+
- 4427° **1852, 6p Gray Brown, Bluish, "WALLS", Pl. I (SG 76a; Sc. 18b).** Margins all around, intense shade and impression, oval grid, Very Fine, ex Slade, Scott Retail \$425.00 SG £500
- 4428° **1852, 6p Brown, Bluish, "WALLS", Pl. I (SG 76a; Sc. 18b).** Pos. 8-9, horizontal pair, left stamp the variety, tied by oval grids on piece with Auckland N.Z. Jun. 8, 1852 cds, margins all around, right stamp has small faults, other Very Fine, ex Burrus, Tomasini, with 1988 B.P.A. certificate..... SG £750+

1852 6-PENCE PLATE I STRIP OF THREE
ON COVER TO THE PHILIPPINES



4429

4429² 1852, 6p Yellow Brown, Bluish, Pl. I (SG 74; Sc. 18). Horizontal strip of three, ample to large margins, rich color, tied by oval grids, "Registered/Sydney" two-line handstamp and Sydney crown circle datestamp on back of Mar. 1853 folded cover to Manila, Philippines, ms. "Registered Per Cornelius Houtman via Batavia", Manila receiving backstamp and "3½" (reales) due rate handstamp on face, slight wear along horizontal file folds

THE LARGEST RECORDED 6-PENCE PLATE I MULTIPLE ON COVER AND AN OUTSTANDING USAGE.

Ex Pack..... E. \$15,000-20,000



4430

- 4430° 1852, 6p Gray Brown, Bluish, Pl. I (SG 76; Sc. 18). Margins all around, strong gray shade, tied by oval grid, "SHIP LETTER/SYDNEY/JA*27/1853" crown circle date-stamp on back of blue folded cover to London, prepaid for double 3p Colonial ship letter rate (½ to 1 oz. letter), ms. "8" (pence) due on arrival, redirected to Cork and struck with red framed "POSTAGE NOT PAID/TO LONDON", re-rated "9" (pence) for 8p plus 1p redirection postage, several red transits on back, Very Fine and choice 6p Laureate usage..... E. \$1,500-2,000

1853 6-PENCE PLATE II



4431

- 4431°★ 1853, 6p Brown, Pl. II (SG 77; Sc. 19). Unused with small part of original gum, margins all around, dark shade, Very Fine, choice example of this rare unused stamp, ex Col. Green, with 1984 R.P.S. certificate, Scott Retail \$2,000.00 SG £1,800



- 4432° **1853, 6p Brown, Pl. II (SG 77; Sc. 19).** Horizontal strip of five, ample margins to slightly in, rich color, brownish "20" oval grids (Liverpool), faults incl. tears and thins, but a very rare multiple, ex Ginger, Hutson, SG value for five singles is £1,500..... E. \$400-500
- 4433° **1853, 6p Brown, Pl. II (SG 77; Sc. 19).** Clear to ample margins, oval grid, Very Fine, Scott Retail \$225.00..... SG £300
- 4434° **1853, 6p Brown, Pl. II (SG 77; Sc. 19).** Mostly large margins, clear at lower left, tied by oval grid on small piece with Auckland N.Z. Dec. 26, 1853 cds, Very Fine, ex Caspary, Pack, Scott Retail \$225.00 SG £300
- 4435° **1853, 6p Brown, Pl. II (SG 77; Sc. 19).** Margins all around, oval grid, tiny corner crease, still Very Fine, Scott Retail \$225.00 SG £300
- 4436° **1853, 6p Gray Brown, Pl. II (SG 78; Sc. 19a).** Horizontal pair, used with 1852-53, 2p Deep Prussian Blue, Worn Pl. II, 3p Emerald Green, Thick Blue Wove (SG 62, 69; Sc. 15, 17a), all with ample margins to barely in, "26" oval grids (Shoalhaven) on piece, stamps hinged in place, Fine-Very Fine, SG cat. £900..... E. \$500-750
- 4437° **1853, 6p Gray Brown, Pl. II (SG 78; Sc. 19a).** Margins all around, oval grid, Very Fine, ex Steinway, Scott Retail \$225.00..... SG £300
- 4438° **1853, 6p Gray Brown, Pl. II (SG 78; Sc. 19a).** Margins all around, oval grid, thin speck, Very Fine appearance, Scott Retail \$225.00 SG £300

1853 8-PENCE



4439

- 4439°P **1853, 8p Deep Blue, Unfinished Plate Proof on Card.** Large margins, thinned but of Extremely Fine appearance, about twelve examples of this plate proof are known, they were made from the unfinished plate (panels containing "New" and "Wales" are unfinished, no lines in spandrels over "Postage"), ex Slade E. \$750-1,000



4440

- 4440°★ **1853, 8p Orange Yellow, Bluish (SG 80; Sc. 20).** Brilliant unused example with small part original gum, wide left sheet margin, other sides ample to touching, vibrant color, small pinpoint dimple in left margin
A VERY FINE EXAMPLE OF THE 8-PENCE LAUREATE IN UNUSED CONDITION. AN EXTREMELY RARE STAMP.
With 1981 R.P.S. certificate, Scott Retail \$3,600.00 SG £3,500



4441

- 4441°田 **1853, 8p Orange Yellow, Bluish (SG 80; Sc. 20).** Block of four, Positions 1-2/11-12, top right stamp **No Lines in Spandrels (SG 80c)**, ample margins to slightly in, oval grids, two small closed tears, light crease in lower pair, otherwise Fine-Very Fine, the only recorded used block of the 8p Laureate, ex Caspary E. \$2,000-2,500



- 4442° **1853, 8p Orange Yellow, Bluish (SG 80; Sc. 20).** Horizontal pair, margins all around, oval grid and part of debit marking (probably U.S.), almost invisible small sealed tear at bottom right, still Very Fine, ex Caspary SG £1,200+
- 4443° **1853, 8p Orange, Bluish, No Leaves Right of "SOUTH" (SG 81b; Sc. 20b).** In horizontal pair with **No Lines in Spandrel** variety (SG 81c), Positions 21-22, full margins all around, few ink spots on back, Extremely Fine and rare pair with these two major plate varieties, ex Hutson SG £2,100+
- 4444° **1853, 8p Orange Yellow, Bluish (SG 80; Sc. 20).** Top left corner sheet margin copy with large margins on other sides, vibrant color on deeply blued paper, oval grid, Extremely Fine Gem, ex Caspary, Amundsen, with 1959 R.P.S. certificate, Scott Retail \$350.00 SG £600
- 4445° **1853, 8p Orange Yellow, Bluish (SG 80; Sc. 20).** Enormous margins all around incl. bit of adjoining stamp at left, bold "82" oval grid (Armidale), Extremely Fine and choice, Scott Retail \$350.00 SG £600
- 4446° **1853, 8p Orange Yellow, Bluish (SG 80; Sc. 20).** Part of imprint and sheet margin at bottom, other sides ample to touched, oval grid, Very Fine, ex Ferrary, Scott Retail \$350.00 SG £600
- 4447° **1853, 8p Dull Yellow, Bluish (SG 79; Sc. 20).** Margins all around, bold "50" oval grid (Albury), Very Fine, Scott Retail \$350.00 SG £600
- 4448° **1853, 8p Orange, Bluish (SG 81; Sc. 20a).** Three full margins, close but clear at bottom, deep shade, oval grid, Fine, ex Caspary, Scott Retail \$350.00 SG £650

1853 8-PENCE ON REGISTERED COVER TO THE PHILIPPINES



4449

4449° 1853, 8p Dull Yellow, Bluish (SG 79; Sc. 20). Ample margins to touched, used with 1852, 1p Scarlet, 6p Brown, Pl. I, Bluish (SG 46, 77; Sc. 13, 18), margins to slightly in, tied by oval grids, clearly struck Sydney crown circle datestamp on back of Mar. 1854 folded cover to Manila, Philippines, "Registered/Sydney" two-line handstamp, Manila receiving backstamp and "2" (reales) due handstamp, lettersheet a bit fragile at folds with small erosion spot along file fold on front

A FINE AND SPECTACULAR THREE-COLOR FRANKING ON REGISTERED COVER TO THE PHILIPPINES.

The postage comprises the triple 3p rate for a 1 to 1½ oz. letter, plus 6p registration fee. Accompanying 1975 R.P.S. certificate states genuine but "stamps removed from cover and replaced", though we find no evidence of this—even if accurate, of no significance. Ex Seybold E. \$7,500-10,000

SYDNEY VIEW AND LAUREATE
MIXED-ISSUE FRANKING COVER



4450

4450² 1853, 8p Dull Yellow, Bluish (SG 79; Sc. 20). Margins all around, used with 1850, 3p Emerald Green, Bluish (SG 43; Sc. 9), large margins, tied by oval grids, Sydney circular datestamp on back of small Jul. 1853 cover to Stokesley, England, redirected to South Shields, ms. "Postage Paid Thro" endorsement and "p. Chusan" ship routing, "TOO LATE" handstamp in frame, ms. "6" late fee, red ms. "8" (pence) confirming prepayment of U.K. incoming ship letter charge, red receiving back-stamp

AN EXTREMELY FINE AND VERY UNUSUAL MIXED-ISSUE FRANKING WITH THE 3-PENCE SYDNEY VIEW AND 8-PENCE LAUREATE USED TOGETHER.

This cover was sent on the *Chusan*, which left Sydney on July 28, 1853, arriving at Marseilles on October 26, and at Southampton on November 3. This cover is back-stamped at London on October 28, so it clearly travelled with the mails via Marseilles. The prepaid Marseilles rate at this time was an extra 5p per ¼ oz., which should have been charged to the addressee on this cover, but there is no indication that this was done. It appears that the prepayment of the 8p U.K. ship-letter charge, in addition to the 3p Colonial ship-letter rate, carried the letter to its recipient free of any further charges.

A remarkable and rare franking and one of the outstanding covers of New South Wales E. \$5,000-7,500



4451

- 4451^o 1853, 8p Dull Yellow, Bluish (SG 79; Sc. 20). Used with 1852, 1p Brick-Red, 2p Ultramarine, Pl. I, Bluish (SG 48, 52; Sc. 13, 14a), stamps with margins on all sides, tied by oval grids, Sydney ship-letter crown circle on back of Sep. 1853 cover to Stokesley, England, ms. "Paid thro" and red ms. "8" confirming prepaid U.K. ship letter rate, red receiving datestamp, Very Fine three-color franking; from Jan. 1, 1853, until Sep. 30, 1854, it was possible to prepay the U.K. ship-letter charge, but such usages are very unusual and rare, with 1967 B.P.A. certificate..... E. \$2,500-3,500

1854 WATERMARKED LAUREATES



4452

- 4452^o 1854, 1p Orange Vermilion, Wmk. "1", "WALE" (SG 83c; Sc. 23c). Block of four, Positions 8-9/18-19, top right stamp the variety, original gum, vivid color, three ample margins, just in at right, faint vertical crease, otherwise Fine-Very Fine, a very rare block, ex Hutson E. \$2,000-2,500



4453



4454



4455

- 4453° 1854, 1p Orange Vermilion, Wmk. "1" (SG 83; Sc. 23). Horizontal block of fourteen, large margins to slightly cut in, indistinct oval grids, one pair has vertical crease, otherwise Fine, the largest recorded used multiple, ex Castle, Ginger E. \$2,000-3,000
- 4454° 1854, 1p Orange Vermilion, Wmk. "1" (SG 83; Sc. 23). Horizontal block of eight, margins all around, vivid color, indistinct oval grid cancels, one pair has vertical crease, otherwise Fine-Very Fine, very scarce used block, ex Pack E. \$1,500-2,000
- 4455° 1854, 1p Red Orange, Wmk. "1" (SG 82; Sc. 23). Horizontal strip of four, clear to large margins, tied by "NSW" ovals on blue folded cover from Launceston to Sydney, ms. "Per Shamrock" ship endorsement, probably posted on board with New South Wales stamps used to prepay the Tasmanian 4p ship letter rate, Very Fine and scarce usage E. \$1,000-1,500

1854 2-PENCE WATERMARK “2” BLOCK OF FIFTEEN



4456

4456°★田 1854, 2p Prussian Blue, Wmk. “2”, Pl. III (SG 85; Sc. 24). Top right corner sheet margin block of fifteen, large margins on other sides including parts of adjoining stamps at left, marvelous deep shade and fresh color, fine impression, three creases which are somewhat heavy but not readily apparent on face, a few tiny thin specks
A MAGNIFICENT BLOCK AND THE LARGEST RECORDED MULTIPLE AVAILABLE TO COLLECTORS.

The only larger block is one of 30 in the Royal Collection. Ex Duveen, Caspary, Lilly and Boker (1981, realized £5,750)..... E. \$10,000-15,000



4457



4458



4462



4461



4459



4463

- 4457° 1854, 2p Chalky Blue, Wmk. "2", Pl. III (SG 86; Sc. 24). Block of four, large to huge margins, bright shade, oval grids, Extremely Fine Gem block ... E. \$600-800
- 4458° 1854, 2p Prussian Blue, Wmk. "2", Pl. III (SG 85; Sc. 24). Block of four, large to huge margins, deep shade, oval grids, faint horizontal crease in bottom pair, still Extremely Fine E. \$500-750
- 4459° 1854, 2p Ultramarine, Wmk. "2", Pl. III (SG 84; Sc. 24a). Horizontal strip of five, Pos. 3-7, lefthand stamp the variety "WALES" partly covered, full to large margins, oval grids, natural printing wrinkle in third stamp, Extremely Fine... E. \$200-300



4460

- 4460° 1854, 2p Ultramarine, Wmk. "2", Pl. III (SG 84; Sc. 24a). Nine singles, two have three margins, others with large margins, beautiful deep shades, tied by oval grids on legal-size cover to Ayr, Scotland, "Sydney*N.S.W.*DE*13/1854" circular datestamp on back along with Ayr and Mayhole receiving date stamps, red Liverpool tombstone ship-letter date stamp, red ms. "6" (pence) due on arrival, ms. "Pr. Antelope via Melbourne" routing endorsement, folded in at left to reduce size, Extremely Fine and outstanding franking, ex Burrus..... E. \$2,000-3,000
- 4461° 1854, 3p Yellow Green, Wmk. "3" (SG 87; Sc. 25). Horizontal pair, original gum, mostly ample margins, clear at right, deep shade and impression, Very Fine and remarkably choice pair SG £400+
- 4462° 1854, 3p Yellow Green, Wmk. "3" (SG 87; Sc. 25). Block of four, ample margins practically all around, touched at upper right, dark shade and fine impression, lightly cancelled by oval grids, two tiny corner creases, very trivial and mentioned only to emphasize the Very Fine condition of this rare block E. \$1,500-2,000
- 4463° 1854, 3p Yellow Green, Wmk. "3" (SG 87; Sc. 25). Horizontal strip of six, large to huge margins, bright shade, oval grids, quite remarkably sound and Extremely Fine, a rare used multiple..... E. \$750-1,000

1854 3-PENCE WATERMARK "2" ERROR



4464

- 4464° ★ **1854, 3p Yellow Green, Wmk. "2" Error (SG 87b; Sc. 25b).** Unused, ample margins except at top right where close but clear, deep shade, minor thin spot, faint soiling

ONE OF THREE RECORDED UNUSED EXAMPLES OF THE WATERMARK ERROR AND THE ONLY UNUSED COPY AVAILABLE TO COLLECTORS.

Of the three unused 3p Watermark "2" Error stamps known, one is contained in the Royal Collection, and another is part of the White collection at the Mitchell Library in Sydney. This stamp has a 1979 R.P.S. certificate that states, "Genuine but cannot be certified as unused", but such wording is typical of the Royal Philatelic Society Expert Committee and does not change the accepted status of this unused copy.

Ex Pack. Listed but unpriced in unused condition..... E. \$3,000-4,000



4465

- 4465° **1854, 3p Yellow Green, Wmk. "2" Error (SG 87b; Sc. 25b).** Three large margins touched at left, deep shade, oval grid, Fine and very rare watermark error, ex Pack
..... SG £2,250

1856 6-PENCE REGISTRATION STAMP



4466

- 4466° ★ 田 **1856, (6p) Vermilion & Blue, Watermarked, Registration (SG 92a; Sc. F1 var).** Bottom right corner margin block of four, original gum, large margins all around, wrinkling and slight creasing which appears to be gum-related, minor surface marks, most of which are printer's ink smudges

A VERY FINE AND OUTSTANDING MULTIPLE, WHICH IS ONE OF TWO RECORDED UNUSED BLOCKS OF THE REGISTRATION STAMP.

Ex Snowden, Tomasini and Boker (1981, realized £3,700) E. \$7,500-10,000



4467



4468



4469

- 4467° ★ **1856, (6p) Vermilion & Blue, Watermarked, Registration (SG 92a; Sc. F1 var).** Horizontal pair, unused with part original gum, full to large margins, deep rich colors, faint trace of crease in lower right corner margin, still Extremely Fine, a superb and rare pair, ex Ferrary, Hind, Caspary, Lilly, Boker (1981, realized £3,000)..... SG £1,700+

- 4468° ★ **1856, (6p) Salmon & Indigo, Registration (SG 89; Sc. F1).** Horizontal pair, large margins to touched, thins and creases but of Fine appearance, a very rare unused multiple, ex Hutson SG £1,400+

- 4469° ★ **1856, (6p) Salmon & Indigo, Registration (SG 89; Sc. F1).** Unused, large to huge margins, two thin spots, Extremely Fine appearance, Scott Retail \$600.00 SG £700



4470



4471



4472



4473



4474



4475



4476



4477



4478



4479



4480

- 4470°★ **1856, (6p) Orange & Blue, Registration (SG 90; Sc. F1).** Original gum, large to huge margins, trivial corner crease in bottom left margin, still Extremely Fine, Scott Retail \$600.00 SG £700
- 4471° **1856, (6p) Vermilion & Prussian Blue, Registration (SG 88; Sc. F2).** A phenomenal top right corner margin copy, oval grid, Extremely Fine Gem quality, ex Boker (1981, realized £525) SG £150
- 4472° **1856, (6p) Vermilion & Prussian Blue, Registration (SG 88; Sc. F2).** Enormous margins, "175" dotted oval, two tiny margin tears at right, small corner margin crease, still Extremely Fine, Scott Retail \$75.00 SG £150
- 4473° **1856, (6p) Salmon & Indigo, Registration (SG 89; Sc. F1).** Full margins all around, fresh, "85" oval grid, Very Fine, Scott Retail \$75.00 SG £170
- 4474° **1856, (6p) Salmon & Indigo, Registration (SG 89; Sc. F1).** Ample to large margins, "35" dotted oval, tiny thin speck, Very Fine appearance, Scott Retail \$75.00 SG £170
- 4475° **1856, (6p) Orange & Blue, Registration (SG 90; Sc. F1).** Large to enormous margins, used with 1856, 2p Dull Blue, Wmk. "2" (SG 106; Sc. 33), clear to ample margins, both tied by "97" dotted oval on small blue piece, Extremely Fine and choice, SG cat. £208 E. \$500-750
- 4476° **1856, (6p) Orange & Blue, Registration (SG 90; Sc. F1).** Ample to large margins, "6" dotted oval, faint filled thin spot, Very Fine appearance, Scott Retail \$75.00 SG £200
- 4477° **1856, (6p) Orange & Blue, Registration (SG 90; Sc. F1).** Full to large margins, "45" dotted oval, Very Fine, Scott Retail \$75.00 SG £200
- 4478° **1856, (6p) Orange & Indigo, Registration (SG 91; Sc. F1).** A phenomenal bottom right corner margin copy, large on other sides, dotted oval, slight creasing, still Extremely Fine, ex Boker (1981, realized £390) SG £180
- 4479° **1856, (6p) Orange & Blue, Watermarked, Registration (SG 92; Sc. F1 var).** Ample to large margins, oval grid, corner crease at bottom left, very minor and otherwise Very Fine, Scott Retail \$75.00 SG £130
- 4480° **1856, (6p) Orange & Blue, Watermarked, Registration (SG 92; Sc. F1 var).** Horizontal pair, ample margins to barely in at right, "62" dotted oval, thinned but of Fine appearance, an extremely rare used multiple—the registration fee of 6p applied to all mail except for certain rates to Central Europe and the Americas, to which the double fee applied—ex Hutson SG £260

1856 6-PENCE REGISTRATION STAMP
FRAME PRINTED ON BOTH SIDES



Front



Back

4481

4481°★ **1856, (6p) Vermilion & Blue, Registration, Frame Printed on Back (SG 88a; Sc.F2a).** Unused, trivial thin speck and corner crease

THE ONLY UNUSED COPY AMONG THE THREE RECORDED EXAMPLES OF THIS ERROR, AND ONE OF TWO AVAILABLE TO COLLECTORS.

Two of the three recorded printed-on-both-sides errors are in the Manwood collection. A third used copy is in the Royal Collection.

Ex Hutson..... SG £2,500



Front



Back

4482

4482° **1856, (6p) Vermilion & Blue, Registration, Frame Printed on Back (SG 88a; Sc.F2a).** Oval grid cancel, two small thin specks

ONE OF TWO AVAILABLE COPIES OF THIS MAJOR ERROR, THE OTHER BEING THE UNUSED STAMP IN THE PREVIOUS LOT.

The other used example of this error is contained in the Royal Collection.

Ex Hutson..... SG £1,000

1856 6-PENCE REGISTRATION STAMP USED ON COVER
IN THE MORETON BAY DISTRICT (QUEENSLAND)



4483

4483° 1856, (6p) Vermilion & Prussian Blue, Registration (SG 88; Sc. F2). Full to large margins, scissors cut at upper left, used in a remarkable combination with 1856, 1p Orange Red, 2p Prussian Blue, 3p Yellow Green, Watermarked Laureates (SG 104, 106 two, 111), mostly large margins, touched at places, deep rich colors, tied by "81" dotted ovals, "REGISTERED/WARWICK" two-line handstamp on blue Feb. 1858 folded cover to Ipswich, four-times inland rate plus 6p registration fee, Warwick and Ipswich backstamps

A BREATHTAKING MULTICOLORED FRANKING AND EXTREMELY RARE COVER.

Warwick and Ipswich are in the Moreton Bay District of Queensland.....
..... E. \$10,000-15,000



- 4484° 1856, (6p) Vermilion & Prussian Blue, Registration (SG 88; Sc. F2). Large margins, rich colors, used with 1856, 2p Prussian Blue, Wmk. "2" (SG 106; Sc. 33), large even margins, tied by "81" oval grids, "REGISTERED/WARWICK" two-line handstamp on blue Apr. 1857 folded cover to Ipswich, backstamps of Warwick, Drayton and Ipswich offices, Extremely Fine in every respect, rare usage within Moreton Bay District (Queensland) and one of the finest Registered covers known E. \$3,000-4,000
- 4485° 1856, (6p) Salmon & Indigo, Registration (SG 89; Sc. F1). Large margins all around, used with 1856, 2p Prussian Blue, Wmk. "2" (SG 106; Sc. 33), margins all around, tied by "59" dotted ovals on blue folded cover to Sydney, "Dundog N.S.W. JU 28, 1858" and Sydney receiving backstamps, Very Fine and choice Registered stamp usage in New South Wales..... E. \$1,500-2,000

PERKINS, BACON & COMPANY DIADEM ISSUES

ESSAYS AND PROOFS



- 4486°E **1853, 2p Black, Perkins Bacon & Co. Queen-on-Throne Essay, Black Die proof on India.** Hinged to card, small thin, Very Fine appearance, only two examples recorded, one being in the Royal Collection, ex Hutson..... E. \$2,500-3,500
- 4487°E **1853, Perkins Bacon & Co. Queen-on-Throne Essay, Blue Die Proof on Watermarked Paper.** Ms. "Postage Blue/1 of Specimens/printed 1877" referring to proofs struck in 1877 prior to despatch of the die to the Agent-General for New South Wales in London, Very Fine, of the six recorded examples of this essay proof, one is in the Royal Collection and two are in the Tapling collection at the British Library, ex Hall, Hutson..... E. \$1,500-2,000
- 4488°E **1855, Perkins Bacon & Co. Progressive Die Essays.** Three, comprising Queen Victoria vignette used for high values, Black die proof on India affixed to card (three recorded, one in the Royal Collection); 6p progressive die proof in Black on card, no value or labels (two recorded, one in the Royal Collection); and 1sh progressive die proof in Black on card, no value or labels (two recorded, one in the Royal Collection); Very Fine set, vignette is ex Hutson, 6p and 1sh ex Yardley, Ginger and Hutson E. \$5,000-7,500



4489°P **1856, 1p-1sh Diadem, Perkins Bacon & Co. Die Proofs in Black.** Complete set of seven values: 1p, 2p, 3p & 8p on India paper affixed to card; 5p, 6p & 1sh directly on card; 5p, 8p & 1sh have minor toning and couple small thins, otherwise Very Fine, all extremely rare, three low values with B.P.A. or R.P.S. certificates..... E. \$7,500-10,000



4490



4491



4492

- 4490° P 1856, Perkins Bacon & Co. Trial Plate Essay in Ochre. Complete plate proof of six subjects on yellowish wove paper, made from unfinished roller die of low-value design with corners waxed, ms. note in margin, Very Fine..... E. \$1,500-2,000
- 4491° P 1856, Perkins Bacon & Co. Trial Plate Essay, 6p in Purple. Complete plate proof of four subjects on thick gummed paper, made from unfinished roller die of 6p design with corners waxed, ms. "D.P." in margin, Very Fine..... E. \$1,500-2,000
- 4492° E 1853, Perkins Bacon & Co. Ink Recipe Essays, 6p Diadem. Five different colors made from 6p Diadem trial plate, each with waxed corner, affixed to sheet headed "Australian Colour" with Perkins Bacon & Co.'s recipes for ink mixtures for proposed 1p, 2p, 3p, 6p and 1sh stamps, Very Fine and unique, ex Yardley, Ginger and Hutson..... E. \$3,000-4,000



4493

4493° P 1855, 1p Diadem, Brown Red Trial Color Plate Proof on Blue Paper. Block of twenty, margins all around with bottom right corner sheet margins intact, small hole and tear at upper right have been rebacked, inconsequential considering the rarity of this trial color—in the identical color of the Cape of Good Hope 1p stamps printed by Perkins Bacon & Co., with characteristic blueing thru paper—discovered in 1943 by A. F. Basset Hull (copy of article reporting discovery accompanies) E. \$2,000-2,500

1861 ROWLAND HILL PRESENTATION PROOFS

At the request of Ormond Hill, nephew of Rowland Hill, Perkins Bacon supplied in August 1861 six presentation sets of Colonial stamps printed by them. These sets were distributed to members of the Hill family. The stamps were obliterated by an oval grid containing the word "CANCELLED". This action, taken without consultation with the Colonial Agent-General or the Colonial administrations, was a major factor leading to the forfeit by Perkins Bacon of many of the Colonial contracts the following year. These sets are the first Specimen stamps of the British Colonies. New South Wales represents an unusual case. Since no supplies of any Diadem values were ever printed in London, the only New South Wales stamps available were plate proofs in issued colors. Two values only, 6p and 1sh, are recorded with the Perkins Bacon obliterator. It was the only colony for which proofs were used for this purpose.



4494

- 4494°P **1854, 6p Brown Plate Proof on Wove, "CANCELLED" Obliteration.** One of the specimens presented to members of Rowland Hill's family by Perkins Bacon & Co. in 1861, large margins, Extremely Fine, only five of the six 6p prepared by Perkins Bacon have been recorded (one in the Royal Collection) E. \$4,000-5,000



4495

- 4495°P **1854, 1sh Blue Plate Proof on Wove, "CANCELLED" Obliteration.** One of the specimens presented to members of Rowland Hill's family by Perkins Bacon & Co. in 1861, large margins, Extremely Fine, only three of the six 1sh prepared by Perkins Bacon have been recorded (one in the Royal Collection) E. \$4,000-5,000



4496

- 4496°P **1854, 1sh Blue Plate Proof on Wove, "CANCELLED" Obliteration.** One of the six specimens presented by Perkins Bacon & Co. to members of Rowland Hill's family in 1861, thinned but of Fine appearance, only three of the six 1sh proofs have been recorded, one of which is in the Royal Collection E. \$1,000-1,500



4497



4498



4500



4499



4502



4504



4501



4506



4507



4505



4508

1856 1-PENNY WATERMARK "1"

- 4497°★ **1856, 1p Orange Vermilion, Wmk. "1" (SG 102; Sc. 32).** Original gum, large margins, brilliant color, Extremely Fine, Scott Retail \$90.00 SG £130
- 4498°★ **1856, 1p Orange Vermilion, Wmk. "1", Experimental Roulette (SG 102 var; Sc. 32 var).** Horizontal pair, original gum, Fine-Very Fine, made by James Dutton in 1856, very rare E. \$1,200-1,500
- 4499°★ **1856, 1p Orange Vermilion, Wmk. "1", Experimental Roulette (SG 102 var; Sc. 32 var).** Block of four, original gum, Fine-Very Fine, made by James Dutton in 1856 and affixed to 2pp **autograph letter signed by Dutton**, datelined at Woolloomooloo, Nov. 3, 1856, and addressed to W. H. Christie, Postmaster-General, a proposal to perforate stamps for New South Wales and enclosing a sample of his work, with Christie's note on back, a very rare block and unique solicitation letter E. \$2,000-3,000
- 4500°★ **1856, 1p Carmine Vermilion, Wmk. "1" (SG 103; Sc. 32).** Horizontal strip of four, original gum, large margins to slightly in at right, intense shade, Fine and rare strip, ex Ginger E. \$1,500-2,000
- 4501°★ **1856, 1p Carmine Vermilion, Wmk. "1" (SG 103; Sc. 32).** Original gum, large margins, deep rich color, Extremely Fine, Scott Retail \$90.00 SG £130
- 4502°★ **1856, 1p Orange Red, Wmk. "1" (SG 104; Sc. 32).** Horizontal block of six, original gum, thin speck at bottom right, sealed tear at top left, otherwise Extremely Fine, fresh and rare block, ex Crocker, Hutson E. \$1,500-2,000
- 4503°★ **1856, 1p Orange Red, Wmk. "1", Printed on Both Sides (SG 104a; Sc. 32b).** Unused, strong second impression on back
 VERY FINE AND THE ONLY KNOWN UNUSED EXAMPLE OF THIS ERROR, OF WHICH THREE ARE RECORDED IN TOTAL, INCLUDING ONE IN THE ROYAL COLLECTION.
 Ex Hutson. With 1932 R.P.S. certificate. Listed by unpriced in unused condition in Stanley Gibbons... E. \$3,000-4,000



4503

- 4504°田 **1856, 1p Orange Vermilion, Wmk. "1" (SG 102; Sc. 32).** Block of four, vivid color, large margins to touched at left, "43" oval grids (Gunning), scissors cut at left between stamps, Fine-Very Fine E. \$750-1,000
- 4505° **1856, 1p Orange Vermilion, Wmk. "1" (SG 102; Sc. 32).** L-shaped block of four, large margins to slightly in at left, "NSW" dotted ovals, bottom stamp with small scissors cut and crease, otherwise Fine-Very Fine E. \$300-400
- 4506° **1856, 1p Carmine Vermilion, Wmk. "1" (SG 103; Sc. 32).** Horizontal strip of four, large margins, deep shade, "23" oval grid (Wollongong), Extremely Fine, choice used multiple E. \$500-600
- 4507°田 **1856, 1p Orange Red, Wmk. "1" (SG 104; Sc. 32).** Block of twelve, cancelled by multiple strikes of Sydney Nov. 11, 1858 cds, large to huge margins virtually all around, slightly in along top of second stamp, deep shade, horizontal crease between two rows, otherwise Very Fine, the largest recorded used multiple, ex Ginger, Burrus, Tomasini E. \$2,000-2,500
- 4508° **1856, 1p Orange Red, Wmk. "1" (SG 104; Sc. 32).** Horizontal strip of eight, large margins to slightly in, "81" dotted ovals (Warwick, Queensland), trivial wrinkle in one stamp, otherwise Fine, very rare large used strip, ex Pack E. \$1,000-1,500



4509



4510

- 4509° 1856, 1p Orange Vermilion, 2p Prussian Blue, Watermarked (SG 102, 107; Sc. 32, 33). Each with large margins, tied by oval grids on Nov. 1856 blue folded cover to St. Denis, Reunion, endorsed "Per Natal via Mauritius" with Mauritius G.P.O. crown circle, Sydney cds on back along with St. Denis receiving cds, Extremely Fine, the 3p ship-letter rate is rarely seen paid with stamps other than the 3p..... E. \$1,000-1,500

- 4510° 1856, 1p Carmine Vermilion, Wmk. "1" (SG 103; Sc. 32). Large margins, remarkable vibrant shade, tied by "NSW" dotted oval on local Sydney cover, Jul. 23, 1857 backstamp, Extremely Fine and choice E. \$400-500

1856 2-PENCE PLATE I

4511°★田 1856 2p Prussian Blue, Wmk. "2", Pl. I (SG 106; Sc. 33). Vertical block of 29—the three end rows with full sheet margin, less one stamp at lower left corner—original gum, large margins, deep shade and fine impression, three horizontal creases, one at top is partly broken, otherwise in excellent condition

A MAGNIFICENT BLOCK, WHICH IS THE LARGEST RECORDED MULTIPLE OF THE 2-PENCE DIADEM.

Positions 24 and 36 show the beginnings of the plate damage that eventually worsened and necessitated retouching. On this part sheet one may observe the misalignment of rows that later caused problems with perforations.

Ex Pack..... E. \$10,000-15,000





4512



4513



4514



4516



4515



4517



4521



4518



4519



4520



4522



4523



4524



4525



4526



4527



4528

- 4512°★ **1856, 2p Pale Blue, Wmk. "5" Error, Pl. I (SG 108b; Sc. 33b).** Unused, ample margins to clear at bottom, fresh and Fine, Scott Retail \$550.00..... SG £450
- 4513° **1856, 2p Pale Blue, Wmk. "5" Error, Pl. I (SG 108b; Sc. 33b).** Horizontal pair, large margins, deep shade, dotted ovals, slight creasing, Extremely Fine appearance SG £120+

1858 2-PENCE PLATE I RETOUCED

- 4514°★ **1858, 2p Dull Blue, Wmk. "2", Pl. I Retouched (SG 109; Sc. 33).** Pos. 6, original gum, clear to ample margins, deep shade, Very Fine, rare in unused condition..... SG £1,800
- 4515°田 **1858, 2p Dull Blue, Wmk. "2", Pl. I Retouched (SG 109; Sc. 33).** Block of twenty containing Pos. 104 (First Retouch) and 105 (blistered state) in second row from bottom, fourth and fifth stamps from left; large margins to slightly in, Sydney duplex cancels, three holes caused by thinning, rebaked with other stamps, presentable and very rare used multiple E. \$2,000-2,500
- 4516° **1858, 2p Dull Blue, Wmk. "2", Pl. I Retouched (SG 109; Sc. 33).** Righthand stamp shows First Retouch, in pair with normal, Pos. 23-24, large margins to slightly in, "26" dotted oval pierces paper, Fine SG £458
- 4517° **1858, 2p Dull Blue, Wmk. "2", Pl. I Retouched (SG 109; Sc. 33).** Top stamp shows Second Retouch, in vertical pair with blistered state, Pos. 24/36, huge margins incl. right sheet margin, Sydney duplex, Extremely Fine Gem pair containing this rare stamp..... SG £458
- 4518° **1858, 2p Dull Blue, Wmk. "2", Pl. I Retouched (SG 109; Sc. 33).** Horizontal pair, Pos. 49-50, lefthand stamp Retouched, large margins all around, Extremely Fine and choice SG £458
- 4519° **1858, 2p Dull Blue, Wmk. "2", Pl. I Retouched (SG 109; Sc. 33).** Horizontal pair, right stamp Third Retouch, Pos. 35-36, large margins, tear at left, corner crease at bottom right, Extremely Fine appearance SG £458
- 4520° **1858, 2p Dull Blue, Wmk. "2", Pl. I Retouched (SG 109; Sc. 33).** Horizontal pair, Pos. 13-14, lefthand stamp Retouched, ample to large margins, "35" dotted oval (Goulburn), Fine-Very Fine SG £458
- 4521° **1858, 2p Dull Blue, Wmk. "2", Pl. I Retouched (SG 109; Sc. 33).** Horizontal pair, Pos. 104-105, left stamp Second Retouch, right stamp blistered state, large margins to touched, tied by "66" dotted oval with Singleton cds on piece, faint diagonal crease at left, otherwise Fine E. \$500-750
- 4522° **1858, 2p Dull Blue, Wmk. "2", Pl. I Retouched (SG 109; Sc. 33).** Third Retouch, Pos. 24, large even margins, lightly cancelled, Extremely Fine SG £450
- 4523° **1858, 2p Dull Blue, Wmk. "2", Pl. I Retouched (SG 109; Sc. 33).** First Retouch, Pos. 104, large margins to touched at lower left, "23" oval grid (Wollongong), Fine, ex Slade SG £450
- 4524° **1858, 2p Dull Blue, Wmk. "2", Pl. I Retouched (SG 109; Sc. 33).** Pos. 104, Third Retouch, full to large margins, Extremely Fine, "66" dotted oval (Singleton), Extremely Fine SG £450
- 4525° **1858, 2p Dull Blue, Wmk. "2", Pl. I Retouched (SG 109; Sc. 33).** Pos. 105, blistered state, ample to large margins, lightly cancelled, Very Fine..... SG £450
- 4526° **1858, 2p Dull Blue, Wmk. "2", Pl. I Retouched (SG 109; Sc. 33).** Pos. 105 Retouched, clear to ample margins, "73" dotted oval (Warialda), Very Fine, ex Slade SG £450
- 4527° **1858, 2p Dull Blue, Wmk. "2", Pl. I Retouched (SG 109; Sc. 33).** Pos. 73, clear to large margins, "NSW" oval, Very Fine..... SG £450
- 4528° **1858, 2p Dull Blue, Wmk. "2", Pl. I Retouched (SG 109; Sc. 33).** Pos. 37, full to large margins, Very Fine..... SG £450



- 4529° 1858, 2p Dull Blue, Wmk. "2", Pl. I Retouched (SG 109; Sc. 33). L-shaped block of three, Pos. 25-26/38, upper left stamp Retouched, upper pair with full to large margins, lower stamp touched, scissors cut between two at right, deep shade and fine impression, tied by "NSW" oval on Feb. 1860 part-printed life insurance questionnaire form, printed address to London, England, backstamped at Sydney, red London receiving cds, fresh and Extremely Fine, very attractive use of the 2p Diadem with retouching E. \$750-1,000
- 4530° 1858, 2p Dull Blue, Wmk. "2", Pl. I Retouched (SG 109; Sc. 33). Third Retouch, Pos. 24, clear to ample margins, tied by dotted oval, Wagga-Wagga Sep. 8, 1859 cds on back of small cover to Sydney, Gundagai and Sydney backstamps, Very Fine, the earliest known date for the Third Retouch, with 1966 B.P.A. certificate..... E. \$500-750



1859 2-PENCE LITHOGRAPHED

- 4531° **1859, 2p Pale Cobalt Blue, Lithographed (SG 110; Sc. 34C).** Large margins all around, lightly cancelled, Extremely Fine Gem, ex Steinway, with 1947 R.P.S. certificate, Scott Retail \$550.00 SG £750
- 4532° **1859, 2p Pale Cobalt Blue, Lithographed (SG 110; Sc. 34C).** Large to huge margins, "NSW" oval, fresh and Extremely Fine, with 1955 B.P.A. certificate, Scott Retail \$550.00 SG £750
- 4533° **1859, 2p Pale Cobalt Blue, Lithographed (SG 110; Sc. 34C).** Full even margins, beautiful color and impression, "NSW" oval, Extremely Fine, with 1987 R.P.S. certificate, Scott Retail \$550.00 SG £750
- 4534° **1859, 2p Pale Cobalt Blue, Lithographed (SG 110; Sc. 34C).** Full to large margins, neat "NSW" oval, bright shade and Extremely Fine, with 1926 R.P.S. certificate, Scott Retail \$550.00..... SG £750
- 4535° **1859, 2p Pale Cobalt Blue, Lithographed (SG 110; Sc. 34C).** Clear to large margins incl. sheet margin at top, "55" dotted oval (Newcastle), Very Fine, with Robson Lowe certificate, Scott Retail \$550.00 SG £750
- 4536° **1859, 2p Pale Cobalt Blue, Lithographed (SG 110; Sc. 34C).** Full to large margins, "43" dotted oval (Gunning), faint toning, otherwise Very Fine, with 1987 R.P.S. certificate, Scott Retail \$550.00 SG £750
- 4537° **1859, 2p Pale Cobalt Blue, Lithographed (SG 110; Sc. 34C).** Horizontal pair, ample to large margins except barely touched at right, tied by Sydney Sep. 1, 1859 duplex on small piece, Fine-Very Fine, rare multiple of the 2p Diadem lithograph, ex Hutson, with 1953 B.P.A. certificate..... SG £1,500+
- 4538° **1859, 2p Pale Cobalt Blue, Lithographed, Retouched (SG 110a; unlisted in Scott).** Pos. 109-110, horizontal pair, both show Retouched design at base, large margins to slightly in or touching, "66" dotted oval (Singleton), translucent staining (appears gum-related), otherwise Fine, the only recorded pair of this rare retouched variety from the lithographed 2p Diadem, ex Hutson SG £5,000+



- 4539° 1859, 2p Pale Cobalt Blue, Lithographed (SG 110; Sc. 34C). Ample to large margins except touched at lower left, used with 1854, 1sh Pale Red, Wmk. "12" (SG 128; Sc. 31), huge margins all around, tied together by Sydney duplex with "NSW" oval on Aug. 1859 bluish folded cover to Prospect Ferry, Maine, in the United States, red London transit, black New York "5" cents debit cds, carried on the *Salsette* and *Delta*, arriving Southampton Oct. 14, prepaid for the ½ oz. rate to U.S. via England, ms. "8" (pence) due the British post office, New York debit for postage due on arrival, minor creasing in cover and tape stain at bottom right, still Very Fine, the only recorded usage of the 2p Diadem lithograph on an overseas cover, and the only usage in combination with another value, ex Wiggins, with 1967 B.P.A. certificate E. \$3,000-4,000

1860 2-PENCE PLATE II RECESS



4540



4543



4541



4542

- 4540° 田 **1860, 2p Blue, Pl. II Recess (SG 110b; Sc. 33).** Bottom sheet margin block of six, original gum, large margins, beautiful rich color and impression, brown spot on back of middle stamp in upper row causing tiny erosion hole, otherwise Extremely Fine, a very rare block in choice condition, the largest known multiple, ex Ginger, Morten Bond and Amundsen, with 1959 R.P.S. certificate E. \$2,000-3,000
- 4541° **1860, 2p Blue, Pl. II Recess (SG 110b; Sc. 33).** Horizontal strip of three, large to huge margins, part of Queensland post office duplex, Extremely Fine, choice and scarce strip..... E. \$500-750
- 4542° **1860, 2p Blue, Pl. II Recess (SG 110b; Sc. 33).** Horizontal strip of three, large margins, deep shade, "96" dotted oval (Maryborough, Queensland), Extremely Fine and scarce strip E. \$500-750
- 4543° ㊦ **1860, 2p Blue, Pl. II Recess (SG 110b; Sc. 33).** Horizontal strip of three, two large margins, ample to touching at top and right, tied by Sydney duplex on Dec. 1860 cover to Gladstone, Queensland, 6p ship-letter rate, backstamped on arrival, Fine strip and a most unusual cover—the imperforate Plate II stamps were only issued in Queensland (all New South Wales issues being perforated); this cover was franked with stamps carried by the writer from Queensland to Sydney E. \$750-1,000

1856 3-PENCE WATERMARK "3"



- 4544° ★ 1856, 3p Dull Green, Wmk. "3" (SG 113; Sc. 34). Unused, remarkably deep rich color and fine impression, close but clear margins at upper right, large on other sides, Fine and scarce unused, with 1984 R.P.S. certificate, Scott Retail \$750.00 SG £750
- 4545° 1856, 3p Bluish Green, Wmk. "3" (SG 112; Sc. 34). Block of four, lightly cancelled, appears Very Fine but repaired along left and right sides with paper and design added, still a presentable and very rare multiple—only two used blocks of four are known, in addition to the block of eight on cover in this collection.... E. \$400-500
- 4546° 1856, 3p Yellow Green, Wmk. "3" (SG 111; Sc. 34a). Horizontal strip of four, oval grids, left stamp cut into and creased, right strip of three Very Fine, used 3p Diadem multiples larger than a pair are extremely rare E. \$500-750
- 4547° 1856, 3p Dull Green, Wmk. "3" (SG 113; Sc. 34). Horizontal pair, ample to large margins, "50" dotted oval (Albury), Fine-Very Fine SG £160+
- 4548° 1856, 3p Dull Green, Wmk. "3" (SG 113; Sc. 34). Horizontal pair, large margins except at top right due to misalignment of subjects, "1" Melbourne circular grid, Fine-Very Fine SG £160+

1856 3-PENCE WATERMARK "3" BLOCK OF EIGHT
ON COVER TO ENGLAND



4549

4549☒ **1856, 3p Yellow Green, Wmk. "3"** (SG 111; Sc. 34a). L-shaped block of eight, mostly full margins, touched in places, "51" dotted ovals, Deniliquin backstamp on blue Jun. 1857 folded cover (address panel and one large flap) to London, England, from the Lewes correspondence, Albury and Sydney transit backstamps, red London "Paid" cds on arrival, wrinkles in lettersheet and block

A VERY FINE AND OUTSTANDING FRANKING. PROBABLY THE LARGEST USED MULTIPLE OF THE 3-PENCE DIADEM EXTANT ON OR OFF COVER.

This cover travelled from Sydney on the *Columbian* via Suez, arriving in London on September 25, 1857. There are very few used blocks of the 3p Diadem on record. One is in a private collection and another is in the Manwood collection (lot 4545), both of which are in faulty or repaired condition. This is believed to be the largest used multiple.

Ex Steinway E. \$4,000-5,000



4550

- 4550° 1856, 3p Yellow Green, Wmk. "3" (SG 111; Sc. 34a). Horizontal pair, deep early shade and impression, large margins, used with 1854, 6p Deep Slate, Wmk. "6" (SG 115; Sc. 29), ample to large margins, tied by oval grids, Sydney backstamp on Jan. 1857 cover to Melbourne, substantially reduced at left and right, two flaps intact, still Very Fine appearance and exhibitable, an extremely rare and unusual franking, the 3p Diadem is seldom used in combination with other values, signed Calves E. \$1,000-1,500

- 4551° 1856, 3p Dull Green, Wmk. "2" Error (SG 113a; Sc. 34b). Large margins all around, bright shade, "NSW" oval

AN EXTREMELY FINE EXAMPLE OF THE RARE WATERMARK ERROR AND CERTAINLY AMONG THE FINEST IN EXISTENCE.

Ex Boucher, Hutson. With 1939 R.P.S. certificate. Scott Retail \$4,000.00..... SG £3,000



4551



4552

- 4552° 1856, 3p Dull Green, Wmk. "2" Error (SG 113a; Sc. 34b). Full margins all around, deep shade, lightly cancelled

A VERY FINE EXAMPLE OF THIS RARE WATERMARK ERROR AND ONE OF THE FINEST OF THE APPROXIMATELY TWENTY COPIES KNOWN.

Ex Isleham. With 1947 R.P.S. certificate. Scott Retail \$4,000.00..... SG £3,000

1855 5-PENCE WATERMARK "5"



4553

- 4553°★ **1855, 5p Dull Green, Wmk. "5"** (SG 114; Sc. 26). Bottom sheet margin pair, part original gum, in at left, ample on other sides, deep shade and fine impression, Fine, the only recorded unused multiple of the 5p Diadem imperforate, ex Pack, Scott Retail \$1,600.00+ SG £2,000+



4554



4555

- 4554°★ **1855, 5p Dull Green, Wmk. "5"** (SG 114; Sc. 26). Bottom left corner margin copy, original gum, small margin at right, ample at top, beautiful deep shade, Extremely Fine, ex Caspary, with 1971 B.P.A. certificate, Scott Retail \$800.00 SG £1,000
- 4555°★ **1855, 5p Dull Green, Wmk. "5"** (SG 114; Sc. 26). Unused bottom right corner margin copy, ample other sides, deep shade, fine impression, Extremely Fine, ex Ferrary, Hind, Wiggins, Scott Retail \$800.00 SG £1,000



4556

- 4556°★ **1855, 5p Dull Green, Wmk. "5"** (SG 114; Sc. 26). Watermark inverted and reversed, unused, large even margins, prooflike color and impression, Extremely Fine Gem, ex Ferrary, Scott Retail \$800.00..... SG £1,000



- 4557°★ 1855, 5p Dull Green, Wmk. "5" (SG 114; Sc. 26). Watermark inverted and reversed, unused, large even margins, deep shade, Extremely Fine and choice, Scott Retail \$800.00 SG £1,000
- 4558°★ 1855, 5p Dull Green, Wmk. "5" (SG 114; Sc. 26). Watermark inverted and reversed, unused, ample to large margins, dark shade, Very Fine, the variety is scarce and unlisted, Scott Retail \$800.00 SG £1,000
- 4559° 1855, 5p Dull Green, Wmk. "5" (SG 114; Sc. 26). Large to huge margins, lightly cancelled, Extremely Fine Gem, ex Steinway, Scott Retail \$375.00..... SG £500
- 4560° 1855, 5p Dull Green, Wmk. "5" (SG 114; Sc. 26). Large to enormous margins, neat duplex cancel, fresh and Extremely Fine Gem, Scott Retail \$375.00 SG £500
- 4561° 1855, 5p Dull Green, Wmk. "5" (SG 114; Sc. 26). Horizontal pair, large even margins, deep shade, prooflike impression, Sydney duplex cancels, Extremely Fine Gem pair, certainly the finest of the four or five known in private hands, ex Hutson SG £1,000+

1854 6-PENCE WATERMARK "6"



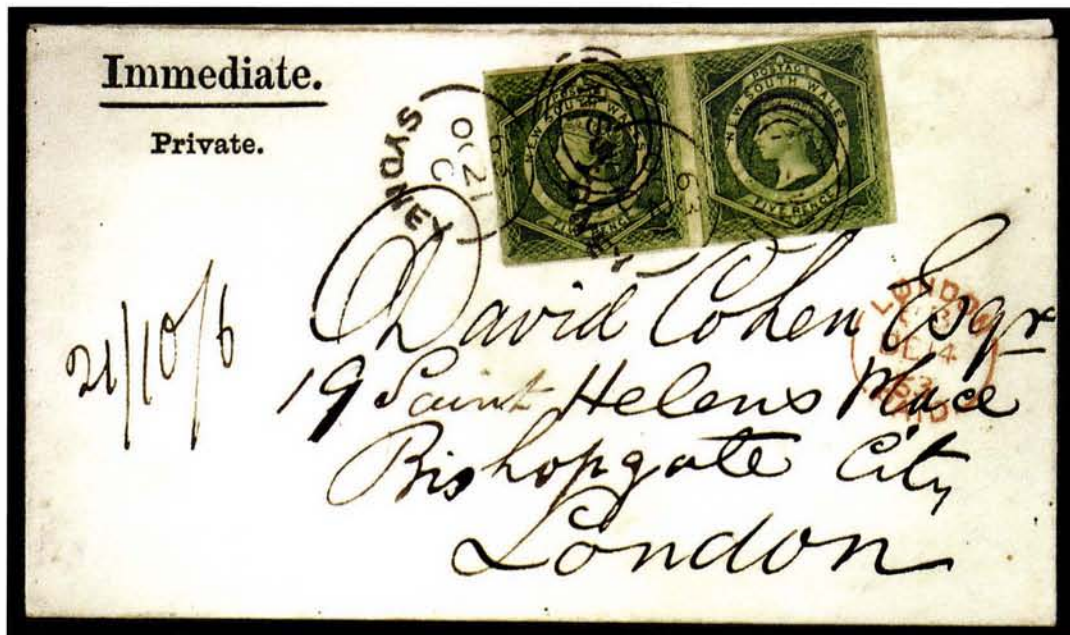
4563

- 4563° ★ 田 **1854, 6p Greenish Gray, Wmk. "6"** (SG 116; Sc. 29). Unused block of four, large to huge margins, deep shade, fine impression, faint creases not affecting superb appearance
A MAGNIFICENT AND RARE BLOCK—THE LARGEST EXTANT.
Ex Ferrary, Burrus, Hutson..... E. \$4,000-5,000
- 4564° ★ **1854, 6p Fawn, Wmk. "6"** (SG 119; Sc. 28). Horizontal pair, original gum, some slight creasing related to gum, large margins, Extremely Fine, Scott Retail \$900.00+..... SG £1,000+
- 4565° ★ **1854, 6p Grayish Brown, Wmk. "6"** (SG 122; Sc. 28). Horizontal pair, unused, enormous margins all around, fresh and Extremely Fine Gem pair, ex Ferrary, Scott Retail \$900.00+..... SG £900+
- 4566° **1854, 6p Greenish Gray, Wmk. "6"** (SG 116; Sc. 29). Unused, ample to large margins incl. part of adjoining stamp below, Very Fine, Scott Retail \$325.00..... SG £400
- 4567° ★ **1854, 6p Slate Green, Wmk. "6"** (SG 117; Sc. 27). Unused, deep shade, large even margins, Extremely Fine, with 1933 R.P.S. certificate, Scott Retail \$325.00..... SG £400
- 4568° ★ **1854, 6p Olive Gray, Wmk. "6"** (SG 121; Sc. 29). Unused, ample to large margins, trivial corner crease, still Very Fine, Scott Retail \$325.00..... SG £450
- 4569° 田 **1854, 6p Greenish Gray, Wmk. "6"** (SG 116; Sc. 29). Block of four, full to large margins, dark shade, grid cancels, Extremely Fine, a superb block, ex Burrus..... E. \$750-1,000
- 4570° 田 **1854, 6p Greenish Gray, Wmk. "6"** (SG 116; Sc. 29). Block of four, beautiful bright shade, ample margins to cut in at top, clearly struck oval grids, Fine and very attractive..... E. \$400-500
- 4571° **1854, 6p Grayish Brown, Wmk. "6"** (SG 122; Sc. 28). Horizontal strip of four, large margins except bottom right corner slightly rounded, three faint vertical creases, otherwise Very Fine, ex Hutson..... E. \$300-400
- 4572° **1854, 6p Gray, Wmk. "6"** (SG 120; Sc. 29). Horizontal pair, large margins all around, "NSW" ovals, Extremely Fine and choice used pair..... SG £110+



- 4573° 1854, 6p Fawn, Wmk. "6" (SG 119; Sc. 28). Horizontal pair, full to large margins, light brown shade, tied by Sydney duplex cds and "NSW" oval on blue Dec. 1859 cover to London, England, red receiving backstamp; the additional 6p postage (over the 6p ship-letter rate) is believed to have paid for the supplementary mail fee after regular London mails closed—carried on the *Malta* and *Delta*, arriving in London on Feb. 9, 1860; Extremely Fine and choice usage E. \$1,000-1,500
- 4574° 1854, 6p Grayish Brown, Wmk. "6" (SG 122; Sc. 28). Ample to large margins, used with 1856, 2p Prussian Blue, Wmk. "2" (SG 106; Sc. 33), large margins, both stamps tied by "96" dotted ovals on Sep. 1860 registered folded cover from Maryborough to Brisbane, red seal on flap with the old "96" oval grid canceller impressed in wax, backstamps of both offices, Extremely Fine, unusual franking used in Queensland for registered fee and inland postage E. \$1,000-1,500
- 4575° 1859, 6p Fawn, Wmk. "8" Error (SG 119a; Sc. 28a). Unused, ample margins, Very Fine, Scott Retail \$1,650.00 SG £1,600
- 4576° 1859, 6p Fawn, Wmk. "8" Error (SG 119a; Sc. 28a). Horizontal pair, large even margins, "NSW" ovals, Extremely Fine SG £240+
- 4577° 1859, 6p Fawn, Wmk. "8" Error (SG 119a; Sc. 28a). Watermark sideways, large margins, thin, Extremely Fine appearance, Scott Retail \$60.00 SG £120
- 4578° 1859, 6p Fawn, Wmk. "8" Error (SG 119a; Sc. 28a). Large to huge margins, "50" dotted oval (Albury), faint trace of crease, still Extremely Fine, Scott Retail \$60.00 SG £120

1855 5-PENCE PAIR ON COVER TO ENGLAND



4562

4562° 1855, 5p Dull Green, Wmk. "5" (SG 114; Sc. 26). Horizontal pair, ample to large margins, tied by Sydney duplex cds and "NSW" oval on Oct. 1863 cover to London, England, "Immediate/Private" imprint at upper left, red London "Paid" circular datestamp

AN IMMACULATE COVER, BEARING ONE OF FOUR OR FIVE KNOWN PAIRS OF THE 5-PENCE DIADEM IMPERFORATE AND THE ONLY RECORDED EXAMPLE ON COVER.

This cover was carried on the steamer *Bombay*, leaving Sydney on October 22, thence per *Nemesis* and *Vectis*, arriving at Marseilles on December 12 and at London on December 14. The pair prepays the 10p rate for a ½ oz. letter via Marseilles to England.

Only four or five pairs of this stamp are recorded in private hands, this being the singular example of the imperforate 5p Diadem on cover.

Ex Pack..... E. \$12,000-15,000



4564



4565



4566



4567



4568



4572



4569



4570



4571

1855 8-PENCE GOLDEN YELLOW

4579°

1855, 8p Golden Yellow, Wmk. "8" (SG 125; Sc. 30a). Vertical pair, full to large margins, marvelous vivid First Printing color and impression, neat "88" dotted oval cancel (Port Macquarie)

THIS EXTREMELY FINE PAIR IS THE FINEST KNOWN MULTIPLE OF THE IMPERFORATE 8-PENCE DIADEM ISSUE.

Ex Caspary, Burrus, Tomasini.....
..... E. \$7,500-10,000



4579



4580

4580°

1855, 8p Golden Yellow, Wmk. "8" (SG 125; Sc. 30a). Vertical pair, brilliant First Printing color and impression, large margins, two tiny punctures caused by points of "88" dotted oval cancels (Port Macquarie)

EXTREMELY FINE APPEARANCE AND EXCEPTIONALLY CHOICE CONDITION FOR THIS RARE STAMP.

Ex Hutson E. \$3,000-4,000



4581



4582

4581°

1855, 8p Golden Yellow, Wmk. "8" (SG 125; Sc. 30a). Full to large margins, clear impression of Second Printing, bold "23" oval grid (Wollongong), Extremely Fine Gem, Scott Retail \$500.00 SG £850

4582°

1855, 8p Golden Yellow, Wmk. "8" (SG 125; Sc. 30a). Full to large margins, remarkably deep shade, fine Second Printing impression, "NSW" dotted oval, Extremely Fine Gem, ex Caspary, Scott Retail \$500.00 SG £850

1855 8-PENCE GOLDEN YELLOW ON REGISTERED COVER




4583

4583° 1855, 8p Golden Yellow, Wmk. "8" (SG 125; Sc. 30a). Large even margins, deep First Printing shade and impression, negligible pre-use vertical crease, used with 1854, 2p Ultramarine, Wmk. "2", Pl. III (SG 84; Sc. 24a), large margins, tied by "81" oval grids on blue May 1856 folded registered cover from Warwick to Ipswich in the Moreton Bay District (Queensland), backstamped with ovals of Warwick, Drayton and Ipswich offices, double inland rate plus 6p registration fee

AN EXTREMELY FINE AND UNUSUAL FRANKING, COMBINING THE RARE IMPERFORATE 8-PENCE DIADEM WITH THE 2-PENCE LAUREATE ISSUE TO PREPAY INLAND POSTAGE PLUS THE REGISTRATION FEE.

The 6p Registration stamp was issued in January 1856 to prepay the fee for registered letters. The use of ordinary postage stamps for this purpose, in the period when the special stamps were available, is very unusual. E. \$7,500-10,000

- 4584°  **1855, 8p Golden Yellow, Wmk. "8" (SG 125; Sc. 30a).** Four, of which two are Fine and two Very Fine, tied by "23" oval grids on large part of blue folded cover to Ireland, originating in Wollongong in May 1857, appropriate markings, additional stamps have been cut from the cover, which has been refolded into its present form to make an attractive exhibit item, an extremely rare multiple franking of the imperforate 8p Diadem, ex Consul Weinberger, SG cat. for stamps off cover is £3,400 E. \$1,500-2,000



1855 8-PENCE DULL YELLOW ORANGE

- 4585°★ **1855, 8p Dull Yellow Orange, Wmk. "8" (SG 126; Sc. 30).** Vertical pair, part original gum, large margins except at upper right where touched, wonderful deep rich color and impression
THE ONLY RECORDED UNUSED MULTIPLE OF THE IMPERFORATE 8-PENCE DIADEM AND ONE OF THE OUTSTANDING PIECES OF THE ENTIRE DIADEM ISSUE.
Ex Ferrary, Hind and Hutson. With Robson Lowe certificate. SG cat. £7,000 as two singles E. \$7,500-10,000
- 4586°★ **1855, 8p Dull Yellow Orange, Wmk. "8" (SG 126; Sc. 30).** Unused, large even margins, deep rich color
AN EXTREMELY FINE UNUSED EXAMPLE OF THE IMPERFORATE 8-PENCE DIADEM—A GREAT RARITY IN THIS QUALITY.
Ex Burrus. With 1974 P.F. certificate and 1980 Friedl certificate. Scott Retail \$4,750.00 SG £3,500

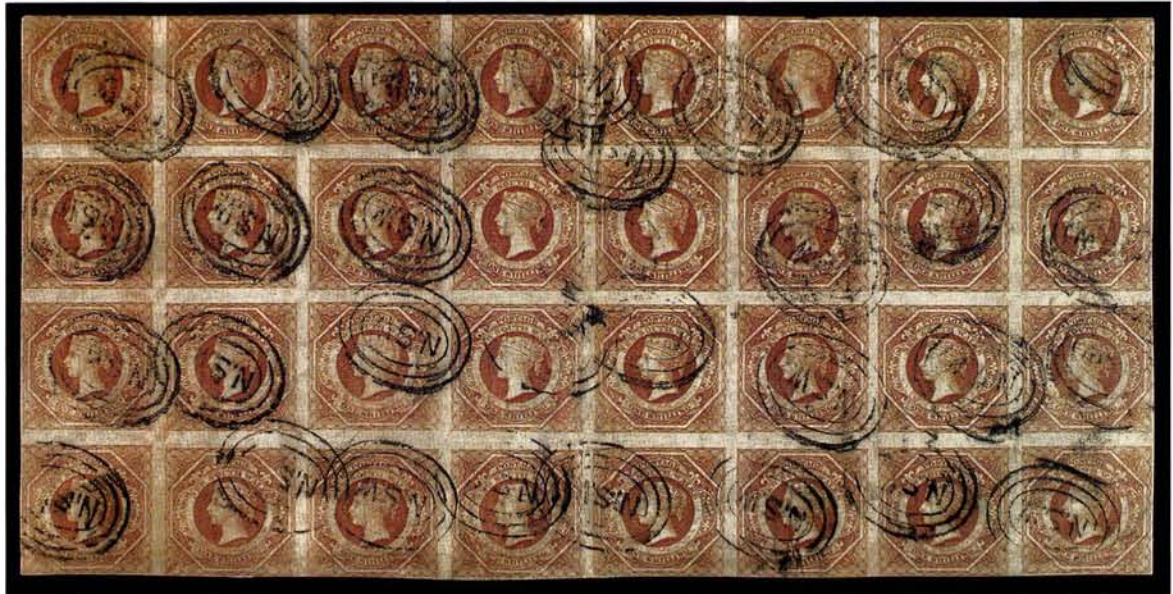


- 4587° **1855, 8p Dull Yellow Orange, Wmk. "8" (SG 126; Sc. 30).** Large even margins, deep shade, used with 1854, 6p Gray, Wmk. "6" (SG 120; Sc. 29), clear to large margins, tied by "87" dotted ovals (Ipswich) on blue piece, red London cds also ties, Extremely Fine, ex Caspary, Burrus, Amundsen, Wiggins, with 1964 B.P.A. certificate SG £855
- 4588° **1855, 8p Dull Yellow Orange, Wmk. "8" (SG 126; Sc. 30).** Full margins all around, "95" dotted oval (Brisbane, Queensland), Very Fine, Scott Retail \$450.00.... SG £800
- 4589° **1855, 8p Dull Yellow Orange, Wmk. "8" (SG 126; Sc. 30).** Three large margins, touched at right, affixed to a July 1859 blue folded cover from Windsor to Fenay Lodge, near Huddersfield, England, appropriate markings, an average 1856 1p Orange-Vermilion, Wmk. "1" (SG 102; Sc. 32) is tied, the 8p appears to have been added (or possibly moved from its original position), offered as is..... SG £800

1854 1-SHILLING WATERMARK "12"

- 4590°★ **1854, 1sh Pale Red, Wmk. "12" (SG 128; Sc. 31).** Unused, top sheet margin and large margins all around, deep rich color, Extremely Fine Gem, with 1979 B.P.A. certificate, Scott Retail \$550.00 SG £750
- 4591°★ **1854, 1sh Pale Red, Wmk. "12" (SG 128; Sc. 31).** Unused, top sheet margin and large margins all around, deep rich color, horizontal crease, otherwise Extremely Fine, Scott Retail \$550.00..... SG £750
- 4592°★ **1854, 1sh Brownish Red, Wmk. "12" (SG 129; Sc. 31a).** Original gum, large margins, tiny corner crease, still Extremely Fine, with Robson Lowe certificate, Scott Retail \$550.00..... SG £800

1854 1-SHILLING BLOCK OF 32



4593

4593°田 **1854, 1sh Brownish Red, Wmk. "12" (SG 129; Sc. 31a).** Horizontal block of 32, "NSW" ovals, margins touching or slightly in all around, pressed creases and some minor repairs along the central vertical gutter where the block was probably folded over the edge of a parcel

THE LARGEST RECORDED MULTIPLE OF ANY AUSTRALIAN STATES STAMP.

Large blocks of the 1sh Diadem were used to prepay postage on parcels containing gold mined from this region. E. \$5,000-7,500



- 4594°田 **1854, 1sh Rosy Vermilion, Wmk. "12" (SG 127; Sc. 31a).** Horizontal block of six, large even margins, oval grids, Extremely Fine, scarce used block in unusually fine condition E. \$1,000-1,500
- 4595°田 **1854, 1sh Brownish Red, Wmk. "12" (SG 129; Sc. 31a).** Block of four, large even margins, "NSW" ovals, Extremely Fine, very scarce..... E. \$750-1,000
- 4596° **1854, 1sh Rosy Vermilion, Wmk. "12" (SG 127; Sc. 31a).** Vertical strip of five with sheet margins and large margins all around, oval grids, Extremely Fine Gem strip E. \$750-1,000
- 4597° **1854, 1sh Brownish Red, Wmk. "12" (SG 129; Sc. 31a).** Horizontal strip of three, watermark inverted and reversed, large margins all around, Sydney duplex cds and oval, Extremely Fine strip E. \$400-500
- 4598° **1854, 1sh Brownish Red, Wmk. "12" (SG 129; Sc. 31a).** Horizontal pair, full to large margins, "NSW" oval, Extremely Fine..... SG £150+
- 4599° **1854, 1sh Pale Red, Wmk. "12" (SG 128; Sc. 31).** Vertical pair, large margins, oval grid, deep shade and Extremely Fine SG £130+
- 4600° **1854, 1sh Brownish Red, Wmk. "12" (SG 129; Sc. 31a).** Large to huge margins, neat "NSW" oval, Extremely Fine Gem, Scott Retail \$30.00..... SG £75
- 4601° **1854, 1sh Brownish Red, Wmk. "12" (SG 129; Sc. 31a).** Large margins, Sydney duplex cds and oval, Extremely Fine, Scott Retail \$30.00..... SG £75



- 4602° 1854, 1sh Rosy Vermilion, Wmk. "12" (SG 127; Sc. 31a). Large to huge margins, used with 1853-54, 2p Ultramarine, 8p Orange, Laureates (SG 79, 84; Sc. 20, 24a), ample margins to in at one side, tied by oval grids on Apr. 1854 cover to Dublin, Ireland, Sydney crown circle and red receiving backstamps, red London "Paid" ties 8p and 1sh, red ms. "8" (pence) due on arrival, red ms. "Per Private Ship", prepaid for double rate but rated a single letter on arrival, Very Fine, colorful and rare mixed-issue franking E. \$1,000-1,500
- 4603° 1854, 1sh Pale Red, Wmk. "12" (SG 128; Sc. 31). Large margins used with 1854-56, 3p Dull Green, 6p Grayish Brown (SG 113, 122; Sc. 28, 34), 6p large margins, 3p touched at one side, tied by bold oval grids on blue May 1857 cover to Locarno, Switzerland, Sydney backstamp, British and French transits, receiving backstamps, addressee's last name scratched out, still Extremely Fine, unusual franking for the 1/2 to 1/4 oz. rate via Marseilles E. \$1,000-1,500
- 4604° 1857, 1sh Rosy Vermilion, Wmk. "8" Error (SG 127a; Sc. 31b). Large margins all around, oval grid, bright color, Extremely Fine Gem, Scott Retail \$110.00 SG £180
- 4605° 1857, 1sh Rosy Vermilion, Wmk. "8" Error (SG 127a; Sc. 31b). Top sheet margin and large on other sides, oval grid, Extremely Fine Gem, Scott Retail \$110.00 SG £180
- 4606° 1857, 1sh Rosy Vermilion, Wmk. "8" Error (SG 127a; Sc. 31b). Large margins all around, oval grid, Extremely Fine, Scott Retail \$110.00 SG £180

END OF SALE — THANK YOU

Services for Buyers

If you wish to participate in this sale, we will be pleased to assist you in many ways. The following services are provided without additional charge (except for any out-of-pocket expenses):

- Most lots may be inspected by registered or overnight mail, and all lots may be viewed by appointment or during the pre-sale exhibition
- Prospective bidders may request up-to-the-minute valuations for any lot in the sale
- We will be pleased to assist out-of-town clients in obtaining hotel reservations nearby our gallery
- Bidders who cannot attend the sale may submit bids by telephone/fax, by mail, or in special cases, we will provide a telephone link to the auction in progress (must be confirmed in advance)
- Any item sold without an expert certificate dated within the past five years may be purchased subject to certification (please see Conditions of Sale)
- Instructions for shipping purchased lots may be given to the gallery immediately after the sale
- Prices realized will be available one day after the final sale day

Services for Sellers

If you have stamps you wish to sell, we will be pleased to provide the following services and options for auction or outright sale:

- Free verbal appraisal of material brought to our gallery; Written appraisals for estate tax purposes (rates available on request)
- Free on-site consultation for any collection with fair market value of \$100,000 or more
- Auction consignments will be processed within six months of receipt, and proceeds will be paid 42 days from date of sale
- Commission rate of 10% (no other charges for lotting or illustration)
- Immediate interest-free advances up to 50% of the auction valuation
- On certain collections, we will guarantee the seller a minimum net amount, which eliminates the downside risk while still providing the potential for maximum auction realization
- If you wish to sell your stamps for immediate cash, we will be pleased to make an outright offer
- Suitable collections will be considered for single-owner sales and/or our annual Rarities of the World sale



PRICES REALIZED FOR SALE 770---11/8/95
The V.P. Manwood Collection of New South Wales

Robert A. Siegel Auction Galleries, Inc.
60 East 56th Street, 4th Floor, New York, NY 10022
Tel (212) 753-6421 Fax (212) 753-6429

Lot#	Realized	Lot#	Realized	Lot#	Realized	Lot#	Realized	Lot#	Realized	Lot#	Realized	Lot#	Realized	Lot#	Realized
4001	4,500	4072	675	4128	425	4182	160	4256	135	4353	260	4424	320	4492	4,250
4002	4,500	4073	700	4129	425	4189	135	4257	60	4354	260	4425	260	4494	5,000
4003	2,400	4076	1,500	4130	270	4191	125	4258	90	4355	4,000	4427	650	4495	5,000
4004	1,400	4077	300	4133	9,500	4192	135	4259	50	4356	1,600	4428	400	4496	1,000
4005	1,700	4078	65	4135	2,600	4193	130	4262	50	4358	2,400	4430	2,600	4497	240
4006	3,250	4079	1,100	4136	1,600	4194	100	4265	140	4359	2,200	4431	1,000	4498	850
4007	300	4080	800	4137	1,100	4195	120	4266	50	4360	2,300	4433	350	4506	400
4010	1,700	4082	900	4138	425	4196	130	4268	325	4361	2,700	4434	240	4507	1,600
4011	2,000	4085	850	4139	350	4199	170	4273	400	4362	1,900	4435	150	4509	1,250
4014	325	4086	11,000	4140	5,500	4201	135	4275	8,000	4363	2,000	4437	160	4510	300
4015	475	4087	300	4141	325	4203	7,000	4280	4,000	4365	1,500	4438	170	4512	200
4016	190	4088	325	4142	180	4204	800	4282	1,350	4366	900	4440	2,600	4513	100
4018	375	4089	375	4143	300	4206	500	4284	260	4369	425	4441	1,600	4515	2,000
4019	220	4090	2,000	4144	120	4209	100	4286	5,000	4372	500	4443	675	4517	1,400
4020	300	4091	1,500	4145	60	4210	75	4288	210	4373	800	4444	950	4518	400
4022	270	4093	230	4146	50	4211	70	4291	180	4374	1,000	4445	260	4519	400
4024	90	4094	190	4149	50	4212	65	4292	60	4375	260	4446	260	4520	300
4025	130	4095	350	4150	800	4213	270	4294	400	4381	400	4447	375	4521	500
4027	16,500	4096	75	4151	300	4214	105	4295	75	4382	525	4448	525	4522	450
4028	2,500	4097	220	4152	510	4215	160	4296	25	4384	250	4449	6,000	4523	160
4029	1,000	4098	75	4153	100	4216	75	4298	80	4386	1,250	4450	5,000	4524	190
4030	1,100	4100	210	4154	375	4217	140	4300	260	4390	115	4451	6,500	4526	150
4034	325	4101	180	4155	325	4218	180	4305	2,200	4391	40	4453	1,600	4527	425
4036	475	4102	100	4156	180	4219	110	4306	300	4393	525	4454	1,250	4529	1,000
4038	280	4104	50	4157	100	4221	50	4312	15,000	4394	160	4455	800	4530	525
4042	3,750	4105	6,000	4159	160	4224	2,500	4313	57,500	4395	45	4457	700	4531	675
4043	8,000	4106	650	4161	80	4225	1,300	4315	3,000	4397	500	4458	525	4532	625
4045	3,000	4107	260	4162	220	4226	85	4316	2,500	4398	280	4459	200	4533	675
4047	425	4109	190	4163	50	4229	115	4322	500	4399	1,600	4460	2,200	4534	1,000
4048	425	4110	150	4164	150	4230	90	4323	375	4401	850	4461	900	4535	500
4049	160	4111	150	4166	150,000	4231	80	4324	260	4406	140	4462	1,300	4536	600
4050	100	4112	80	4167	900	4232	180	4325	260	4407	100	4463	1,000	4537	900
4051	210	4113	425	4168	375	4234	200	4328	325	4408	475	4466	7,500	4538	1,000
4052	210	4114	230	4169	220	4240	600	4331	125	4409	425	4471	1,000	4539	4,250
4055	100	4115	280	4170	220	4242	2,000	4332	200	4410	400	4472	250	4540	1,900
4058	280	4116	100	4171	105	4244	1,000	4335	300	4411	230	4473	200	4541	500
4062	260	4117	200	4172	2,000	4246	180	4338	1,600	4413	1,600	4476	50	4543	750
4063	120	4118	18,000	4174	625	4250	100	4340	260	4414	750	4483	15,000	4549	6,500
4064	160	4119	8,000	4175	6,000	4251	140	4344	75	4416	750	4484	4,250	4550	2,200
4065	18,000	4120	2,700	4177	1,700	4252	90	4345	65	4418	300	4485	1,500	4551	3,500
4066	5,500	4123	1,250	4178	210	4253	110	4347	250	4419	1,700	4487	1,500	4552	2,300
4069	900	4125	5,500	4179	140	4254	70	4349	1,100	4420	4,750	4488	5,750	4553	2,500
4070	1,300	4126	2,400	4181	80	4255	70	4350	1,050	4423	1,000	4491	2,700	4554	1,150

PRICES REALIZED FOR SALE 770---11/8/95
The V.P. Manwood Collection of New South Wales

Robert A. Siegel Auction Galleries, Inc.
60 East 56th Street, 4th Floor, New York, NY 10022
Tel (212) 753-6421 Fax (212) 753-6429

Lot#	Realized
4559	525
4560	425
4561	2,000
4562	11,000
4563	5,500
4564	1,600
4565	1,600
4569	750
4570	450
4572	160
4573	1,000
4574	2,200
4575	500
4576	200
4577	85
4578	50
4579	7,000
4582	750
4584	4,250
4585	6,000
4586	3,000
4587	1,500
4588	400
4589	650
4590	700
4591	550
4593	5,000
4594	1,000
4596	525
4600	100
4601	70
4602	4,250
4603	2,600
4604	125
4605	210
4606	85