



The K.L. Collection of Classic Rarities

TUESDAY EVENING, APRIL 23, 1996



Sale 776

Robert A. Siegel

AUCTION GALLERIES, INC.

PARK AVENUE TOWER, 17th FLOOR • 65 EAST 55th STREET
NEW YORK, NEW YORK 10022 • TEL. (212) 753-6421



Robert A. Siegel

AUCTION GALLERIES, INC.

PARK AVENUE TOWER, 17th FLOOR • 65 EAST 55th STREET
NEW YORK, NEW YORK 10022
TEL. (212) 753-6421 • FAX (212) 753-6429

Scott R. Trepel
President

Roberta Siegel Edelstein
Vice President

Elizabeth C. Pope
Vice President

Administration
Cindy Stein
Bevin Bravacos
Rosanne Trepel

Descriptions
David Petruzelli
John Zuckerman
Scott R. Trepel

Robert A. Siegel
1913-1993



Great Britain 1840 1p Black, VR Official,
block of six (lot 33)

The K.L. Collection of Classic Rarities

Featuring

British America

Great Britain

Mauritius

Australian Colonies

China, Hong Kong and Thailand

Hawaiian Islands

Tuesday Evening, April 23, 1996,
at 6:30 p.m. (Lots 1-69)

Pre-Sale Exhibition

Lots for this sale will be available by appointment only.
Please call (212) 753-6421.

Arrangement of Sale

<i>Country</i>	<i>Pages</i>
Antigua	5-7
Barbados	8-9
Bermuda	10-11
British Columbia	12-13
Canada	14-29
China	30-31
Great Britain	32-33
Hawaiian Islands	34-35
Hong Kong	36
Mauritius	37-39
New Brunswick	40-42
Nova Scotia	43-47
St. Vincent	48
South Australia	49-51
Tasmania	51
Thailand (Siam)	52
Trinidad	53-55
Victoria	56-60

On The Cover

*Mauritius 1848 1p Orange-Vermilion,
Earliest Impression, unused block of
four (lot 37)*

Conditions of Sale

The property described in this catalogue will be offered at public auction by Robert A. Siegel Auction Galleries, Inc. ("Galleries") on behalf of various consignors and itself or affiliated companies. By placing a bid on any lot, the bidder acknowledges acceptance of and will be bound to these Conditions of Sale.

1. The highest bidder acknowledged by the auctioneer shall be the buyer. The term "final bid" means the last bid acknowledged by the auctioneer, which is normally the highest bid offered. **The purchase price payable by the buyer will be the sum of the final bid and a commission of 10% of the final bid ("buyer's premium"), together with any sales tax or use tax which may be due on the sale.**

2. The auctioneer has the right to reject any bid, to advance the bidding at his discretion and, in the event of a dispute between bidders, to determine the successful bidder, to continue the bidding or to reoffer and resell the lot in dispute. The Galleries' record of the final sale shall be conclusive.

3. All bids are per numbered lot in the catalogue unless otherwise announced by the auctioneer at the time of sale. The right is reserved to group two or more lots, to withdraw any lot or lots from the sale, or to act on behalf of the seller. The Galleries will execute bidding instructions on behalf of clients, but will not be responsible for any errors in the execution of such bids.

4. **Lot numbers followed by the symbol ° are offered subject to one or more of the following conditions:** (i) the lot is subject to a minimum final bid ("reserve"), below which it will not be sold, (ii) the Galleries have advanced monies to the seller and have a financial interest in the lot, (iii) the Galleries have guaranteed the seller a minimum sale price, and (iv) the Galleries may have ownership interest in the lot, either in part or whole. The absence of the symbol ° means that the lot is offered without reserve.

5. Any lot, the description of which is obviously incorrect, is returnable, but only if the lot is returned within 14 days of receipt. All disputed lots must be returned intact with the original packing material. **The following lots may not be returned for any reason: Lots containing ten or more items; lots from buyers who have registered for the pre-sale exhibition or received lots by postal viewing, thereby having had the opportunity to inspect them before the sale; any lot described with "faults" or "defects" may not be returned because of any fault or defect. No illustrated lots may be returned because of centering, margins or other factors shown in the illustrations.**

6. Successful bidders, unless they have established credit with the Galleries prior to the sale, must make payment in full before the lots will be delivered. Buyers not known to the Galleries must make payment in full within three days from the date of sale. The Galleries retain the right to

demand payment at the time the lot is knocked down to the highest bidder, for any reason whatsoever. In the event that any buyer refuses or fails to make payment in cash for any lot at the time it is knocked down to him, the auctioneer reserves the right to reoffer the lot immediately for sale to the highest bidder.

7. If the purchase price has not been paid within the time limit specified above, nor lots taken up within seven days from the date of sale, the lots will be resold by whatever means deemed appropriate by the Galleries, and any loss incurred from resale will be charged to the defaulting buyer. Any account more than thirty days in arrears will be subject to a late payment charge of 1½% per month as long as the account remains in arrears. Any expenses incurred in securing payment from delinquent accounts will be charged to the defaulter.

8. All lots are sold as genuine. **Any lot which is accompanied by an expert certificate (for U.S. items, the accepted authority is The Philatelic Foundation), dated within the past five years of the sale date, is sold "as is" and in accordance with the description on the certificate. Such lots may not be returned for any reason, including but not limited to a contrary certificate of opinion obtained after the sale.**

Buyers who wish to obtain a certificate for any item that is not accompanied by a certificate dated within the past five years may do so, provided that the following conditions are met: (1) the purchase price must be paid in full, (2) the item must be submitted to an acceptable expertizing committee with a properly executed application form within 21 days of the sale, (3) a copy of the application form must be given to the Galleries, (4) in the event that an adverse opinion is received, the Galleries retain the right to resubmit the item on the buyer's behalf for reconsideration, without time limit or other restrictions, (5) unless written notification to the contrary is received, items submitted for certification will be considered cleared 90 days from the date of sale, and (6) in the event any item is determined to be "not as described", the buyer will be refunded the purchase price, plus interest accrued on the purchase price at the prevailing Treasury Bill Rate from the date of payment, and the certification fee up to \$100.00 unless otherwise agreed.

9. Until paid for in full, all lots remain the property of the Galleries on behalf of the seller.

10. Agents executing bids on behalf of clients will be held responsible for all purchases made on behalf of clients unless otherwise arranged prior to the sale.

11. The buyer assumes all risk for delivery of purchased lots, and agrees to pay for all out-of-pocket costs incurred in shipping.

SCOTT R. TREPEL

N.Y.C. Auctioneer's License No. 795952

RASAG 1/94

Terms and Abbreviations Used in Descriptions

Centering

The width of margins and the centering of the design within perforations are graded in strict accordance with the Scott Standard Postage Stamp Catalogue standards. The following grades are used:

Extremely Fine (EF): Exceptionally large margins or near perfect centering, used to describe stamps which are of superior grade for the issue.

Very Fine (VF): Normal size margins for the issue and well-centered with design a bit closer to one side.

Fine (F): Imperforate stamps may have smaller than usual margins and perforated stamps will be noticeably off-center. Issues before 1890 may have the design touched in places. If used, fairly lightly cancelled.

Very Good (VG): Attractive appearance, but margins or perforations may cut into.

Good (G): Average off-centered example with slight faults. This condition is generally acceptable for multiples and rarities.

Gum

Stamps issued before 1900 should not be expected to have original gum unless specifically stated in the description. 20th Century issues may be expected to have original gum unless described otherwise. Terms used to describe the condition of gum are as follows:

Mint: As issued by the post office and never hinged.

Original Gum (O.G.): Stamp retains full original gum showing slight disturbance caused by previous hinge, which may be present or entirely removed. Early 19th century stamps should be expected to show crackling and toning in gum, which occurs naturally over time.

Part Original Gum: Up to half of the gum is missing, but the remaining portion is original.

Disturbed Original Gum: The gum is original to the stamp, but has been noticeably affected by hinge removal and/or humidity, mount glazing, etc.

Hinge Mark: Noticeable area where hinge has been removed and gum has been redistributed. Stamps described with hinge marks may not be returned because of gum disturbance.

Hinge Remnant (H.R.): All or part of hinge remaining affixed to gum.

Covers

Minor nicks, tears and slight reduction from opening are to be expected in 19th century covers. Folded letters normally have tears in the reverse and file folds, which will not be mentioned unless they affect the stamps or markings. Light cleaning of covers is an accepted form of conservation and is not grounds for return of a lot. The terms "Extremely Fine", etc., are meant to convey the overall appearance of cover, not the condition of an individual stamp.

Catalogue Values and Estimates

Unless otherwise noted, U.S. stamps are catalogued according to the *Scott 1996 U.S. Specialized Catalogue* or Volume 1 (previous editions have been used to catalogue certain Special Printings). *Scott 1996* Volumes 1-5 have been used for British and foreign stamps. The *1996 Stanley Gibbons British Commonwealth Catalogue* and other foreign catalogues are cited where appropriate.

Catalogue values are indicated by decimal figures in the right column (for example, "175.00"). Stamps in extremely fine quality and items for which catalogue values are not available have been given estimate ranges (for example "E. 750-1,000"). Lots offered subject to a reserve will never be reserved for more than the estimate (usually a fraction of the estimate).

Symbols and Abbreviations

★★	Mint (never hinged)	No.	Scott Catalogue Number
★	Unused (with or without gum, as described)	cds	Circular datestamp
田	Block of four or larger	hs	Handstamp
☒	Folded letter or cover	E	Essay
FC	Fancy cancel	P	Proof
o.g.	Original gum	TC	Trial color proof
pmk.	Postmark (in black unless described otherwise)	R	Reprint
var.	Variety		

Copyright Notice: This catalogue is protected by copyright. The descriptions, format, illustrations and information used herein may not be reprinted, distributed or copied in any form without the express written consent of Robert A. Siegel Auction Galleries. Application for permission may be made in writing. © 1996, Robert A. Siegel Auction Galleries, Inc.



INTRODUCTION

Our firm is privileged to hold this important auction of worldwide classic rarities from the K.L. Collection. Although just 69 lots in size, we measure this offering as one of the most outstanding sales our firm has ever held. In one single-owner auction we have several of the world's most renowned rarities—the Bermuda 1854 1p Red Perot Postmaster's Provisional cover, the Canada 1851 12p Black tied on cover, the block of Canada 1857 7½p Green on cover, the Hawaiian Islands 1851 5c Missionary on cover with Lahaina forwarder's marking, the Mauritius 1848 1p "Post Paid" Earliest Impression unused block of four, the Thailand 1885 1-tical surcharge on cover, and the Victoria 1850 3p Blue Interpanneau strip on cover. These highlights rest on a foundation of choice blocks and covers selected for their rarity and exhibition quality.

We will hold this auction in our galleries during the evening of Tuesday, April 23rd. It will take place about four weeks prior to our 1996 *Rarities of the World* auction, which is scheduled for May 21st, but we consider this sale to be Part One of that event. Our decision to offer the K.L. Collection in April was based on the needs of Capex exhibitors who might wish to acquire some of the British North American gems in this collection with time enough to mount them for display. If you have any special needs related to Capex, please feel welcome to contact our office before the auction to make advance arrangements for immediate shipment of your purchases.

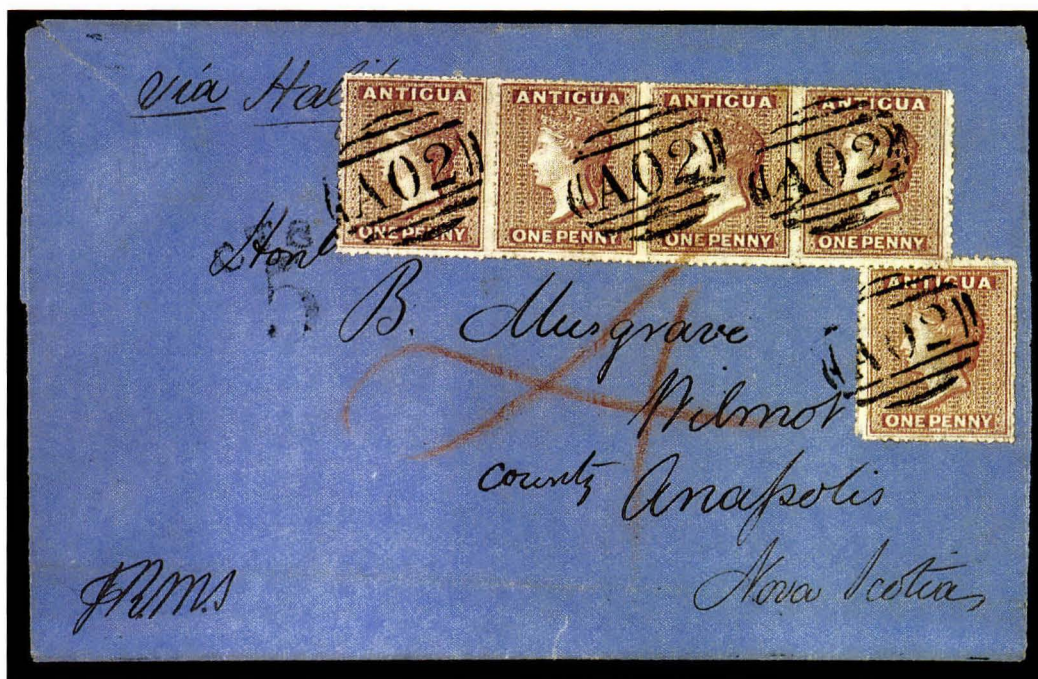
So often the most accomplished collectors of our time choose to remain anonymous. However, the remarkable items in this sale catalogue are sufficient testimony to the philatelic prowess of the collector who formed the K.L. Collection.

We applaud his great achievement.

TUESDAY EVENING, APRIL 23, 1996, AT 6:30 P.M.
AT THE GALLERIES

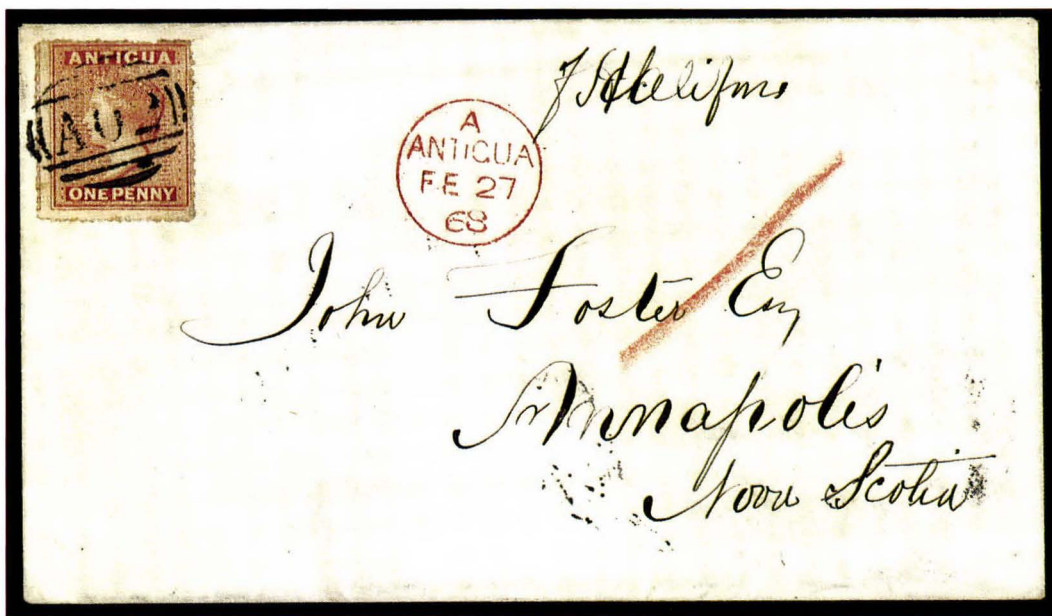
THE K.L. COLLECTION OF CLASSIC RARITIES

ANTIGUA



1

- 1° 1864, 1p Dull Rose, Small Star Wmk., Rough Perf 14-16 (2; SG 6). Horizontal strip of four and single tied by sharp strikes of black "A02" oval cancel on deep blue folded cover to Annapolis, Nova Scotia, red crayon "4" rate, "CTS/5" due handstamp, backstamped "A Antigua Ju 11 64", "St. Thomas Ju 13 1864", Halifax and Wilmot transits, side flaps removed and small tears at upper left and bottom center are neatly sealed, still Extremely Fine, a rare and outstanding franking..... E. 2,500-3,500



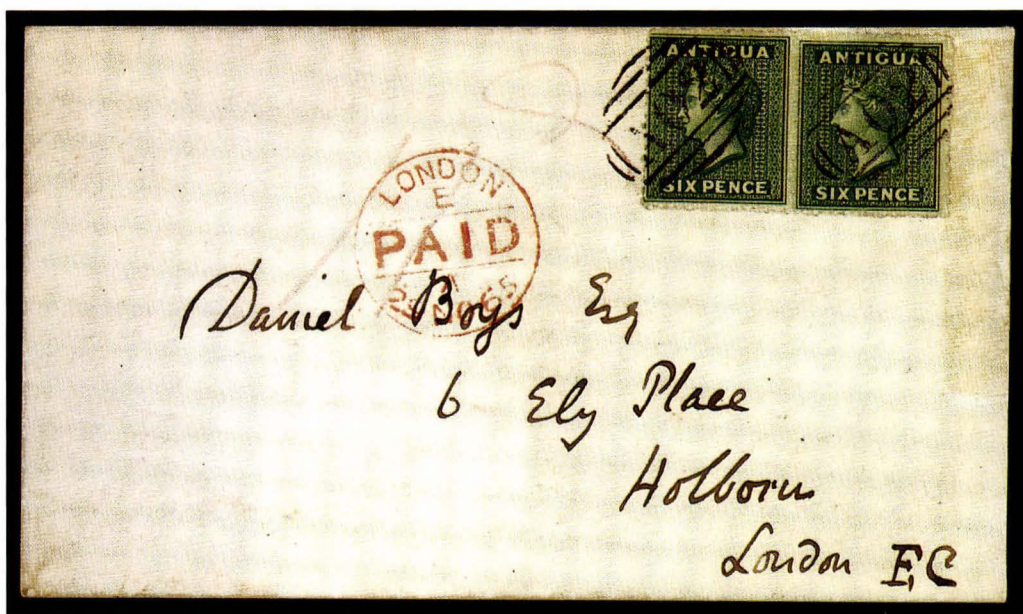
2

- 2° 1867, 1p Vermilion, Small Star Wmk., Rough Perf 14-16 (3; SG 7). Rich color, tied by black "A02" oval cancel, well-struck red "A Antigua Fe 27 68" small circular datestamp on unsealed printed matter rate cover to Annapolis, Nova Scotia, red crayon "1" rate, "St. Thomas A Fe 29 68" backstamp, fresh and Very Fine, a choice cover from the Foster correspondence..... E. 750-1,000



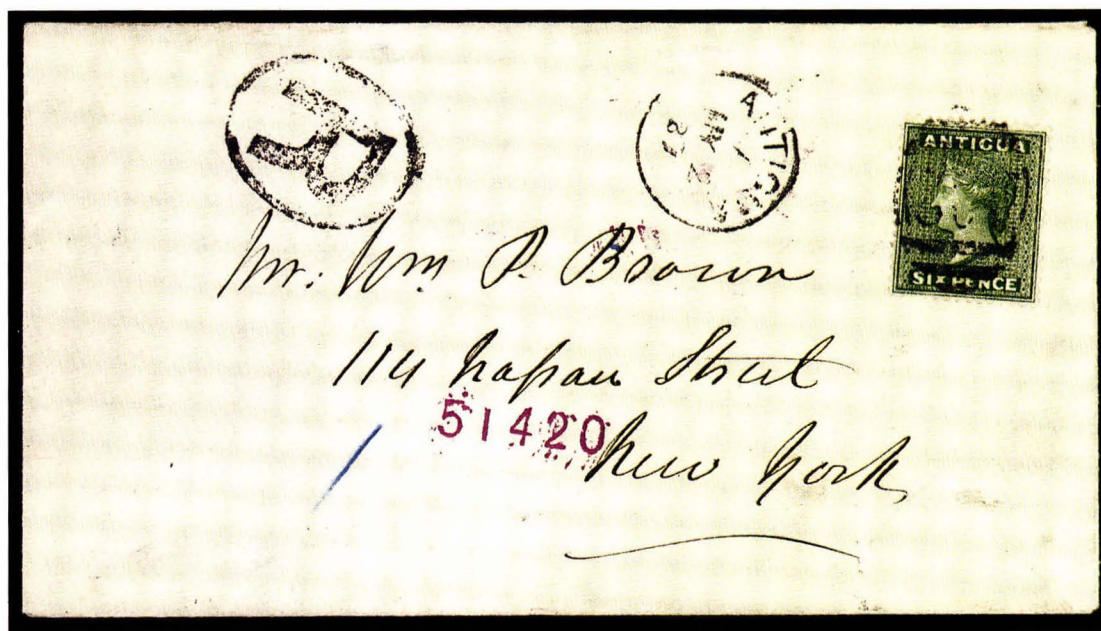
3

- 3° 1867, 1p Vermilion, Small Star Wmk., Rough Perf 14-16 (3, SG 7). Bright shade, tied by perfectly struck black "A02" oval cancel, clear red "A Antigua Oc 31 68" small circular datestamp on folded printed prices current to Demerara, British Guiana, constructed to show "PER SOUTHERN MAIL." printed route inscription at left, Very Fine, excellent quality for this usage..... E. 750-1,000



4

- 4° 1863, 6p Green, Small Star Wmk., Rough Perf 14-16 (4; SG 8). Horizontal pair, deep rich color, tied by "A02" oval cancels on cover to London, England, red pencil "11d" rate, "A Antigua No 11 65" backstamp and red London Paid receiving cds on front, light vertical file fold, Extremely Fine, a scarce franking in pristine condition
..... E. 1,500-2,000



5

- 5° 1884, 6p Deep Green, Crown CA Wmk., Perf 14 (19; SG 29). Well-centered, tied by oval cancel, "Antigua A My 2 87" cds and "R" in oval registry handstamp on cover to stamp dealer, William P. Brown, in New York City, receiving backstamp, Very Fine, scarce on cover, SG £1,200..... E. 500-750

BARBADOS

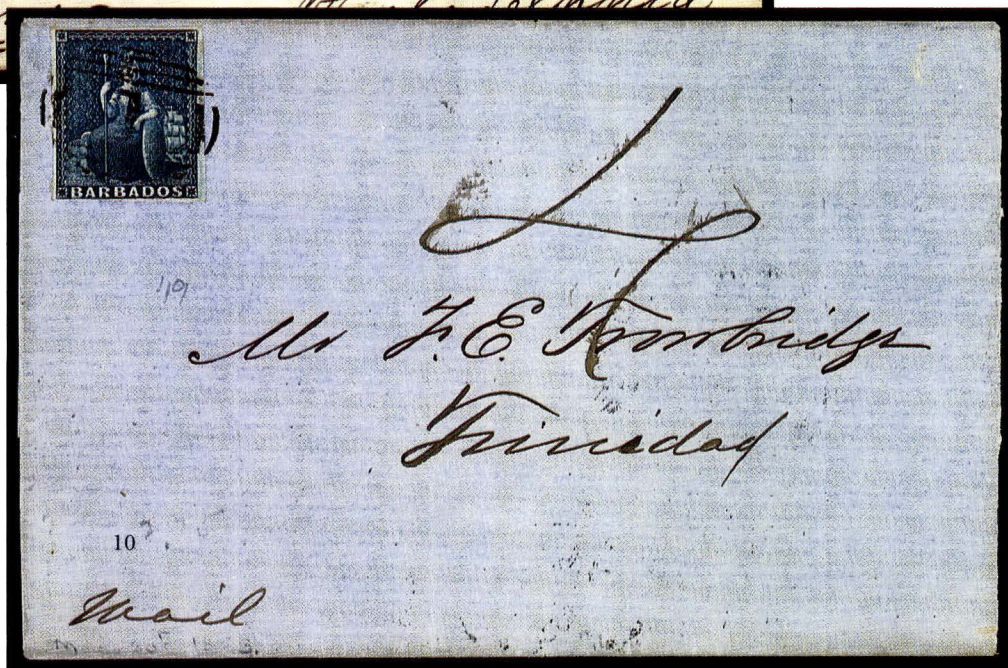


6



7

- 6°★ 1852, (½p) **Deep Green on Blued Paper (1; SG 2)**. Top sheet margin block of twelve, full original gum, large margins, rich color, small faint spot on one stamp, otherwise Extremely Fine, Scott Retail \$1,080.00 as singles, SG £960 as singles E. 750-1,000
- 7°★ 1852, (no value) **Deep Slate on Blued Paper (3a; SG 5b)**. Block of four, full original gum, large margins, Extremely Fine and choice, a very scarce block of the unissued Deep Slate stamp, with 1991 Brandon certificate, Scott Retail \$800.00 as singles, SG £800 as singles..... E. 750-1,000
- 8° 1852, (2p) **Grayish Slate on Blued Paper (3a; SG 2a)**. Large margins, tied by "1" oval cancel on double-rate cover to Philadelphia, backstamped "Barbadoes Au 11 1854", "St. Thomas Au 15 1854", and "Kingston Jamaica Au 22 1854" circular datestamps, red crayon "1/-" rate corrected to "2/-" for double rate, black "New-York Ship 12 cts Sep. 25" circular due datestamp (2 x 5c plus 2c ship fee), the cover is toned and a bit fragile at edges, still Fine, an extremely rare use of the 2p Grayish Slate, which was normally bisected and used as a 1p stamp (listed only that way in Gibbons), though in this instance it clearly prepaid the double rate, with 1958 R.P.S. certificate..... E. 1,200-1,500
- 9° 1852, (1p) **Deep Blue on Blued Paper (2; SG 4)**. Three mostly large margins, touched at upper left, deep shade, tied by "1" oval cancel and also by red "Paid at Barbadoes" Crown-Circle handstamp, on small cover to Philadelphia, backstamped "Barbadoes De 12 1854", "St. Thomas De 15 1854" and "Kingston Jamaica De 21 1854", red crayon "4" rate, "New-York Ship 7 cts Feb. 14" circular due datestamp, small faint wax seal stain, Fine and very attractive franking E. 750-1,000
- 10° 1855, (1p) **Deep Blue on White Paper (6; SG 10)**. Ample to large margins, deep shade, tied by "1" oval cancel on blue folded cover to Trinidad, backstamped "Barbadoes Mr 21 1858" and Trinidad receiving cds, ms. "4" rate, without side flaps, Very Fine..... E. 500-750





11

BERMUDA

1854 ONE-PENNY RED, PEROT POSTMASTER PROVISIONAL

- 11° ☒ **William B. Perot, 1854, 1p Red on Bluish Wove Paper (X2; SG O4).** Huge octagonal margins, clear impression of the large rimless circle and "1854" year date, neatly denominated "*One penny*" and signed "*W B Perot*", used on flap of folded letter datelined at Hamilton, April 15, 1855, from N. Butterfield, a banker, to B. Wilson Higgs in St. Georges

THE FINEST OF THE ELEVEN RECORDED EXAMPLES OF PEROT'S FIRST PROVISIONAL STAMPS. THE ONLY 1854 DATE IN PRIVATE HANDS—THE OTHER BEING PART OF THE ROYAL PHILATELIC COLLECTION—AND BY FAR THE BETTER OF THE TWO PEROT FIRST-TYPE PROVISIONALS KNOWN ON COVERS. THE MOST OUTSTANDING ITEM OF BERMUDA AND RANKED AMONG THE WORLD'S MOST IMPORTANT PHILATELIC RARITIES.

This example was the first of the Perot postmaster's provisional stamps to be seen outside of Bermuda. It was shown by Louis Mowbray to Alfred Smith & Co. of Bath, England, in 1897 (*Alfred Smith's Monthly Circular*, July 1897). Sometime thereafter the cover was sold to Count Philippe de la Renotiere von Ferrary, whose massive worldwide collection was dispersed between 1921 and 1925 in a series of auctions at the Hotel Drouot in Paris under the supervision of M. G. Gilbert. In the fifth Ferrary sale (November 15, 1922, lot 122) this 1854 Red on Bluish Wove on cover was sold for 35,250 French francs (approximately \$5,021) to Maurice Burrus, an Alsatian tobacco magnate whose own vast collection was sold in various auctions from 1962 to 1967. At the Robson Lowe sale of the Burrus Bermuda (July 24, 1963, lot 478), the cover was acquired by the Italian collector, Tomasini, for £11,000.

Ten years after the Burrus sale the cover again traded hands when part of the Tomasini collection was sold through Stanley Gibbons (October 4, 1973, lot 5). At the Tomasini sale, or sometime after, the cover was acquired for £50,000 by an American collector, who later consigned it to our firm's *Rarities of the World* auction (April 5, 1980, lot 368), where it realized \$231,000, selling to the late Dr. Leonard Kapiloff. Prior to his death, Dr. Kapiloff sold the cover through Christie's London (June 13, 1991, lot 1079) for \$337,810.

Of the eleven recorded examples of Perot's first provisional stamp, in black or red, this stamp is of vastly superior quality. It has the largest margins of any of the eleven stamps (several of which are badly cut into), and, unlike the others, it is free of any faults or repairs.

There are only two provisionals dated "1854", the other being part of the collection of Her Majesty the Queen. Perhaps of greater significance, given the current emphasis on postal history, is the fact that only two first-type Perot provisionals are known on covers. Both emanate from the Butterfield-Higgs correspondence, the other being the Black on Bluish Gray stamp dated "1848", which was affixed across the flap and torn in half upon opening (repaired).

Described and illustrated in *Stamps of Fame*, L. N. and M. Williams (p. 80-84, plate 12). The Perot provisionals are discussed in detail in M. H. Ludington's *The Postal History and Stamps of Bermuda*.

Ex Ferrary, Burrus, Tomasini and Kapiloff. With 1991 B.P.A. certificate. Stanley Gibbons £250,000..... E. 300,000-400,000

BRITISH COLUMBIA AND
UNITED STATES MIXED FRANKING



12

- 12°✉ **1860, 2½p Dull Rose (2; SG 3).** Used with **United States 1861 5c Buff, 10c Green (67, 68),** 10c horizontal strip of three (right stamp has small faults), U.S. stamps tied by cogwheel cancels, 2½p tied by red "4" oval grid on buff cover **from Fort Yale, British Columbia, to Bergamo, Italy,** red "Paid" in oval handstamp, "San Francisco Cal. Aug. 1, 1862" double-circle datestamp, red "N.York Br. Pkt. 7 Paid" credit datestamp, red Aachen transit and rare matching directive handstamp (translates "Paid Prussian Union Members Deliver to Border"), transit backstamps

VERY FINE AND EXCEEDINGLY RARE MIXED FRANKING FOR TRANSIT FROM BRITISH COLUMBIA TO ITALY.

The 35c U.S. postage was insufficient to prepay the 42c rate to Lombardy via Prussian Closed Mail. At the New York exchange office, the cover was rated as a fully prepaid 28c rate letter to the German Union and collect beyond its borders. The three-line directive handstamp is very rare.

Illustrated in *Letters of Gold* (p. 138) and in an article by Charles J. Starnes, "Prussian Directive: Paid to the Border" (*Chronicle*, Vol. 39, No. 4). Ex Grunin and Ishikawa. E. 25,000-35,000

BRITISH COLUMBIA



13

- 13° 1865, 5c Rose, Imperforate (3; SG 11). Full to huge margins showing part of adjoining stamp at right, deep rich color, tied by blue "Post Office Victoria Vancouver Island Paid" in oval on cover mailed from Maple Bay to New Westminster B.C., intriguing docketing "Bread once eaten is soon forgotten", opening tears in flap and along top edge

A SUPERB EXAMPLE OF THE RARE 5-CENT IMPERFORATE AND ONE OF THE CHOICEST OF THE FEW COVERS KNOWN.

The imperforate stamps were usually separated only partially by scissors, resulting in irregular margins with parts of the design touched or cut into where the stamps were torn apart. This example is extraordinary both for its margins and for the quality of the cover.

With 1988 B.P.A. certificate E. 25,000-35,000



14

CANADA

1851 12-PENCE BLACK TIED ON COVER

- 14°✉ **1851, 12p Black on Laid Paper (3; SG 4).** Large margins all around, tied by well-struck target cancel on double-rate bluish folded cover to New York City, red "Montreal L.C. Jy 21 1852" circular datestamp, matching "Canada" in framed arc cross-border handstamp, red "Paid" handstamp, half of one backflap missing and sealed tear from bottom into address panel, with part of letter contents including a request for investment advice

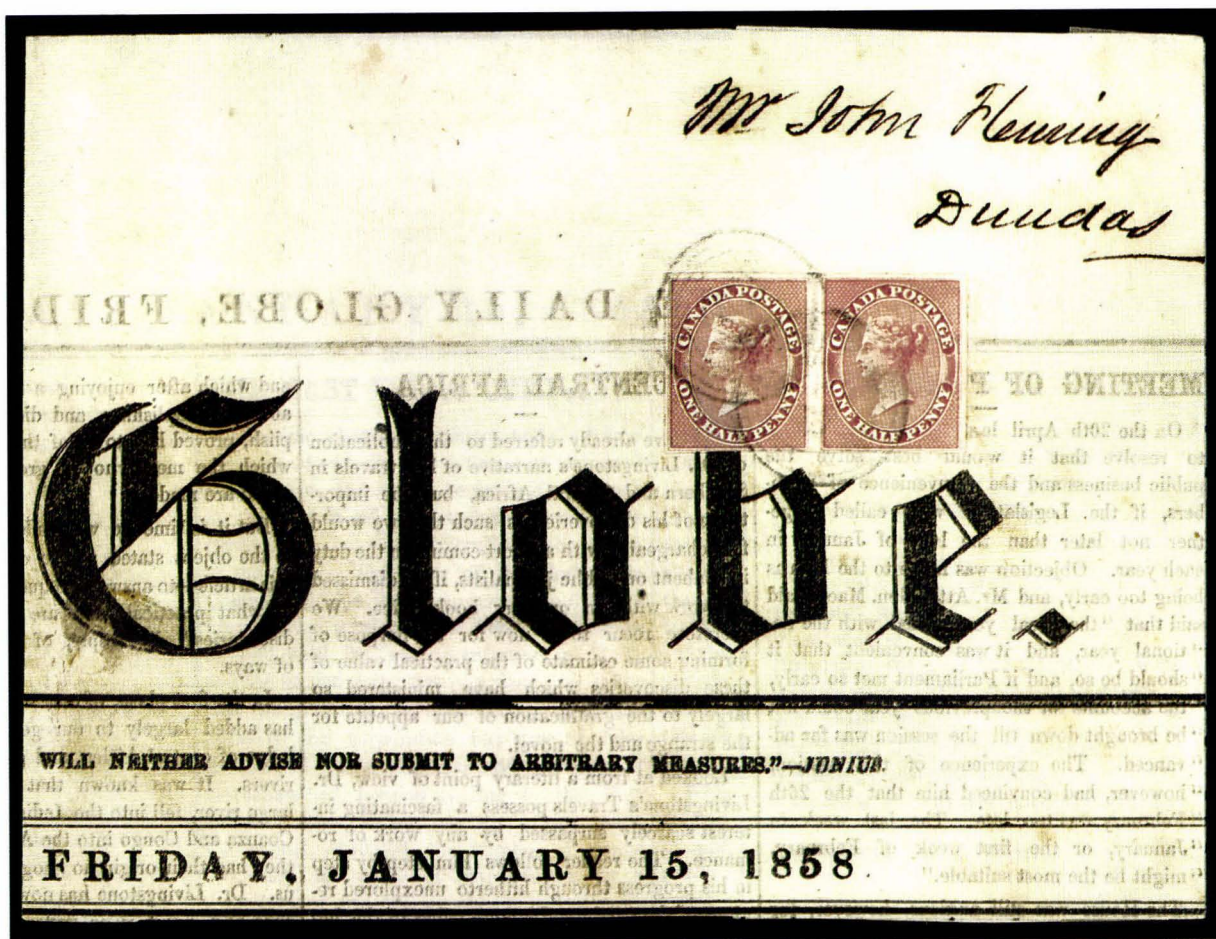
EXTREMELY FINE AND ONE OF THE MOST IMPORTANT COVERS OF BRITISH NORTH AMERICA. VERY FEW 12-PENCE STAMPS ARE KNOWN ON COVER, AND THIS IS THE FINEST OF THE TWO OR THREE TIED EXAMPLES.

The 1851 12-pence stamp was issued for prepayment of the basic letter rate to Newfoundland, Bermuda and the West Indies, but its value—stated in pence rather than "one shilling" to avoid confusion—also corresponded to the double 6p rate to the United States and certain other countries. However, its use was very limited, and most of the printing was destroyed, with only approximately 1,500 stamps sold.

In his *Encyclopedia of Rare and Famous Stamps*, L. N. Williams estimates that five covers have survived. The two best known covers are this tied usage from Montreal and the untied usage from Hamilton (see Boggs, p. 137).

Illustrated in *A Special Exhibition of Greatest Covers from the Collections of Alfred F. Lichtenstein and Louise Boyd Dale*, exhibition catalogue, The Philatelic Foundation's Fiftieth Anniversary, November 6, 1995.

Ex Worthington, Dale-Lichtenstein, Nickle. With 1995 B.P.A. certificate
..... E. 200,000-250,000



15

15° 1857, ½p Deep Rose on Wove (8; SG 17). Horizontal pair, three large margins, full at bottom, right stamp has faint pre-use crease, tied by lightly struck targets on large part of *The Globe* with address to Dundas, dated January 15, 1858, Very Fine printed matter usage, ex Dale-Lichtenstein, with 1995 B.P.A. certificate..... E. 3,000-4,000



- 16° 1857, ½p Deep Rose on Wove (8; SG 17). Vertical strip of six, large to huge margins at sides, clear to touching at top and bottom, tied by "41" target cancels, "Sandwich U.C. Jy 2 1858" circular datestamp on buff cover to Toronto, back-stamped "Windsor C.W. Jy 22 1858" and Toronto receiving datestamps, docketing partly over strip, small area of address at bottom scraped away with a short tear resulting. Some postal historians have argued persuasively that this cover originated in Detroit, Michigan, and was carried by ferry boat to its docking point at Sandwich. On July 12, 1858, the Windsor postmaster was authorized by the Post Office Department to supply the local Canadian packet agent at Detroit with 7½ and ½ pence stamps. Illustrated in Boggs book (p. 162). An outstanding and very rare franking for the 3p rate. With 1995 B.P.A. certificate. Ex Dale-Lichtenstein, Nickle..... E. 4,000-5,000
- 17° 1857, ½p Deep Rose on Wove (8; SG 17). Vertical strip of four and single, all stamps with large margins, strip creased and pressed, tied by "37" target cancels, "Quebec L.C. Jy 13 1858" circular datestamp on folded printed notice to Bremen, Germany, "1" handstamp deleted in ms. with matching "2" rate, blue ms. rate, red Aachen transit backstamp, Extremely Fine appearance, a rare correctly prepaid example of the 2½p printed matter rate, with 1995 B.P.A. certificate..... E. 6,000-8,000



18

18°✉ **1852, 3p Red on Wove (4; SG 18).** Two singles, each with full to large margins all around, tied by partly clear “**Pembina Min. Apr. 27**” circular datestamp, second very clear strike on 1862 buff cover to Ottawa, forwarded to Almonte, blue framed “U.S. STATES/10” cross-border exchange office handstamp, possibly originating from Fort Garry, Manitoba, backstamped in transit at Prescott (May 17), Ottawa (May 19), Franktown (May 22 in red) and Almonte (May 22), straightline “FORWARDED” handstamp

EXTREMELY FINE AND ONE OF TWO RECORDED CANADIAN BEAVER FRANKINGS ON MAIL ORIGINATING IN THE RED RIVER SETTLEMENT AND POSTMARKED AT PEMBINA.

Ex Jarrett, Dr. Chan, Nickle. With 1995 B.P.A. certificate..... E. 15,000-20,000



19

- 19° 1852, 3p Red on Wove (4; SG 5). Three large margins, ample at left, deep shade, tied by target cancel on cover to London U.C., "Chippawa U.C. Mr 17 1853" circular datestamp, "MONEY=LETTER" straightline handstamp struck twice, ms. "Money" endorsement and registry notations, backstamped Queenston and London, Extremely Fine and choice..... E. 750-1,000



20

- 20° 1852, 3p Brown Red on Wove (4a; SG 8). Large to huge margins, deep rich color, tied by "Cobourg U.C. Aug. 27, 1854" circular datestamp on fresh cover to Toronto, receiving backstamp, Extremely Fine, ex Dale-Lichtenstein, Nickle..... E. 600-800



21

21° 1852, 3p Red on Wove, Diagonal Half Used as 1½p (4b; SG 8a). Upper right diagonal half joined with vertical pair, full to large margins except touched at lower right, cancelled and well-tied across cut by targets, "Montreal L.C. Jy 17 1856" circular datestamp on buff cover to **Bury St. Edmunds, England**, red "Paid" tombstone datestamp, backstamped "Bury St. Edmunds Jy 31 1856 C" circular datestamp, light folds in cover clear of stamps

A VERY FINE EXAMPLE OF THE SINGLE CANADIAN PACKET LETTER RATE TO ENGLAND PREPAID BY THE BISECTED BEAVER STAMP, OF WHICH ONLY THREE ARE KNOWN.

The 7½p Canadian packet rate became effective in May 1856, but the 7½p stamps were not available until one year later.

Ex Dale-Lichtenstein (May 21, 1969, when it realized \$11,000), Nickle. With 1995 B.P.A. certificate. Scott Retail \$30,000.00 E. 20,000-30,000



22

22° 1852, 6p Gray Lilac on Wove (5; SG 19). Two of 6p, one with large margins, other clear to large margins, used with 1858, ½p Rose on Wove, Perf 11¼ (11; SG 25), each stamp tied by "21" target cancel, "Montreal L.C. Fe 7 1859" circular datestamp on folded letter to **Chalon Sur Saone, France**, red "London Paid", "PD" and black Calais transit datestamps, receiving backstamps, the name and location of addressee were eradicated but have been skillfully restored, lightly bleached in address panel, minor wrinkles not affecting stamps, interesting content regarding the depressed market for wine ("*Champagne is almost unsaleable. . .*")

ONLY TWO EXAMPLES OF THIS 12½ PENCE FRANKING TO FRANCE ARE RECORDED.

The 12½p rate to France via an American port was established on February 20, 1858. The alternate route via St. Lawrence was 10p. This cover left Boston on the *Arabia* on February 9, 1859, arriving in Liverpool on February 20.

Ex Dale-Lichtenstein, Nickle. With 1995 B.P.A. certificate..... E. 10,000-15,000

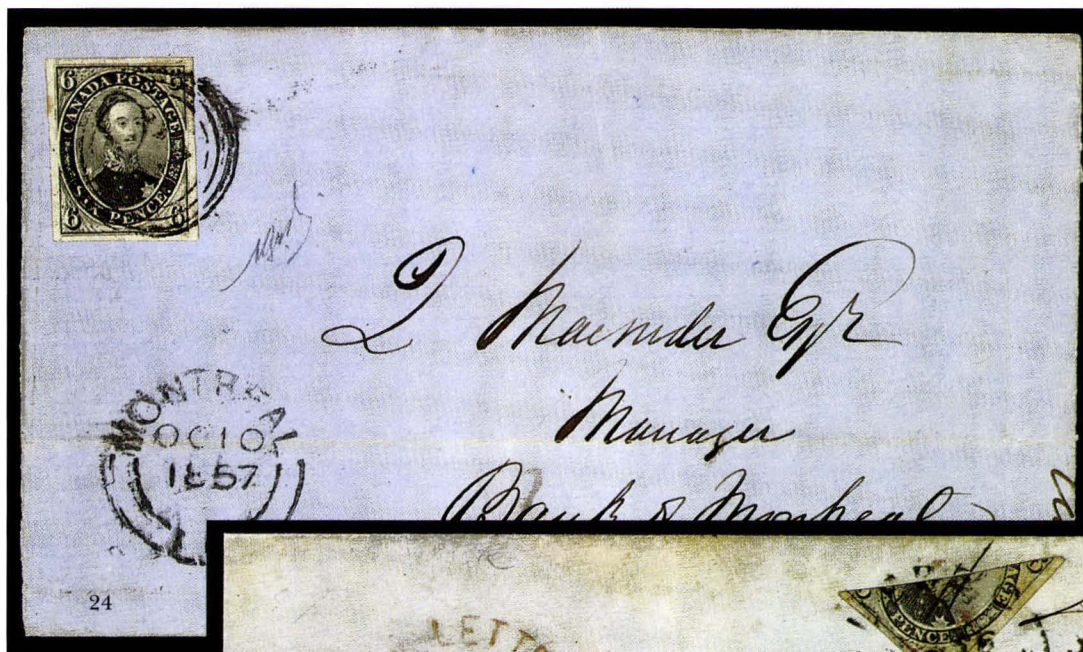


23

23°✉ **1852, 6p Gray Lilac on Wove (5; SG 19).** Mostly ample margins to just in at bottom left, rich color, used with strip of three **1858, 1/2p Deep Rose on Wove, Perf 11 3/4 (11; SG 25),** well-centered, each stamp tied by "30" target cancel, "Peterboro C.W. Sp 26 1859" circular datestamp on fresh cover **to Navan, Ireland,** clear red "Paid Liverpool Col. Packet" transit datestamp, backstamped Cobourg (Sep. 26), Montreal (Sep. 27), Dublin (Oct. 13) and Navan (Oct. 13)

AN EXTREMELY FINE AND RARE COMBINATION OF IMPERFORATE AND PERFORATED PENCE ISSUES TO PREPAY 7 1/2 PENCE PACKET RATE.

With 1995 B.P.A. certificate E. 7,500-10,000

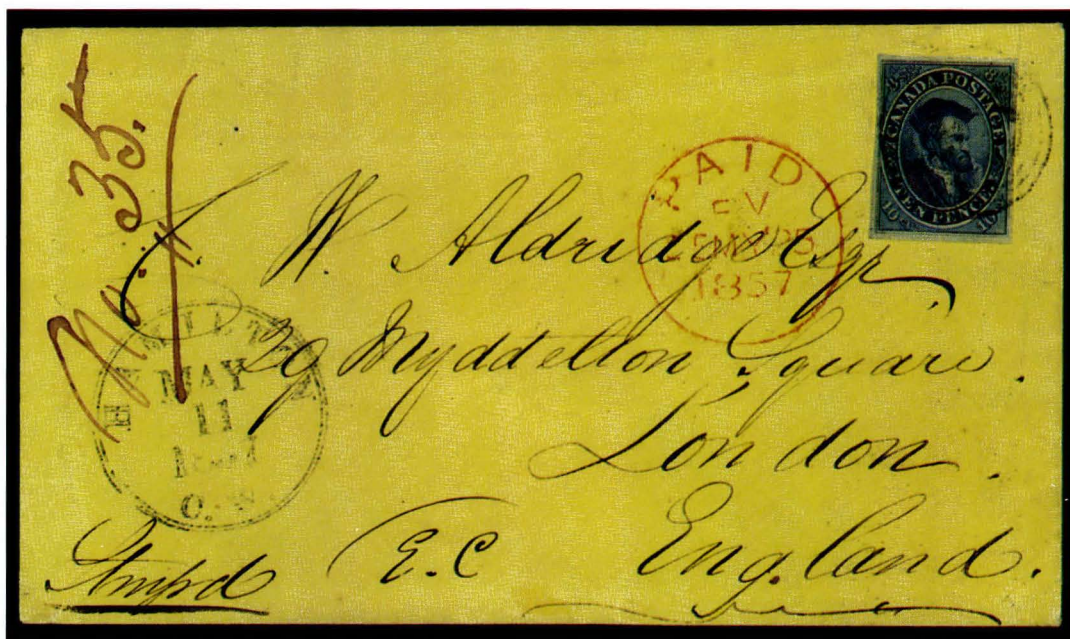


24° ☒ **1852, 6p Deep Slate Gray on Wove (5; SG 9).** Large even margins, beautiful rich color, tied by "21" target cancel, "Montreal L.C. Oc 10 1857" circular datestamp on blue folded cover to Belleville C.W., side flaps removed, light horizontal fold clear of stamp, Extremely Fine and choice, ex Dale-Lichtenstein, Nickle, signed Bloch, with 1974 B.P.A. certificate E. 1,500-2,000

25° ☒ **1857, 6p Reddish Purple on Thick Soft Paper, Diagonal Half Used as 3p (10a; SG 23a).** Lower right diagonal half with large margins, tied across cut by two ms. lines, matching ms. "3" rate on blue folded cover to Montreal, red "Steamboat Letter Quebec Oc 6 1858" circular datestamp, bisect also well-tied by "Quebec L.C. Oc 6 1858" black circular datestamp, red Montreal receiving backstamp, light bleached spots in cover

A FINE AND EXTREMELY RARE BISECTED USAGE OF THE 6-PENCE ON THICK PAPER.

Ex Greene, Nickle. With 1965 B.P.A. certificate. Scott Retail \$20,000.00, Stanley Gibbons £18,000 E. 15,000-20,000



26

- 26° 26 1855, 10p Dull Blue on Wove (7; SG 14). Full to large margins, dark shade, beautiful impression and color, tied by target cancel, "Hamilton C.W. May 11, 1857" circular datestamp on yellow cover to **London, England**, red London "Paid" datestamp, magenta ms. number at left, Very Fine and choice, ex de Volpi, Foxbridge, Nickle, with 1995 B.P.A. certificate E. 2,500-3,500



27

27° ☒ **1855, 10p Bright Blue on Wove (7; SG 13).** Large margins, deep shade, used with horizontal pair of **1852, 3p Scarlet Vermilion on Wove (4; SG 7),** vivid color, large margins to clear at top, small closed tear at left, each stamp tied by target cancel, "Hamilton U.C. Ja 29 1855" circular datestamp on bluish gray cover **to London, England,** red "Paid 10" handstamp, red London "Paid" Feb. 13 circular datestamp, endorsed "*per Royal Mail Steamer*", prepaid 1sh4p for the Crimean War emergency rate, slight creasing in stamps

ONE OF THE FINEST OF THE APPROXIMATELY SEVEN KNOWN COVERS FRANKED AT THE CRIMEAN WAR EMERGENCY RATE FOR PASSAGE ON THE COLLINS LINE FROM BOSTON.

During the Crimean War it became necessary to take several Cunard vessels out of British mail packet service for naval duty. To supplement mail transport to and from Canada, vessels of the Collins Line were used, but letters carried by this American packet service were subject to a higher rate of 1sh4p. Very few are known (seven is a widely circulated estimate).

With 1995 B.P.A. certificate E. 10,000-15,000



1857 7½ PENCE BLOCK OF FOUR
USED ON COVER

28° ☒ **1857, 7½p Green on Wove (9; SG 12).** Block of four, three large margins, clear at top, fine impression in deep shade, single neat strike of "37" target cancel, "Quebec L.C. Ju 11 1859" circular datestamp on folded letter **to New Ross, Ireland**, endorsed "*pr Hungarian*", red "Paid Liverpool Col. Pakcet Ju 21 59 4A" transit datestamp, Dublin (Jun. 22) and New Ross (Jun. 22) backstamps, fresh and clean, file fold thru bottom pair has been neatly pressed and is invisible on face

THE MAGNIFICENT AND UNIQUE 7½ PENCE BLOCK ON COVER. WIDELY REGARDED AS ONE OF THE MOST OUTSTANDING ITEMS OF THE CANADIAN PENCE ISSUE.

This extraordinary cover was absent from the major Canadian Pence Issue collections formed by Reford, Eno, Dale-Lichtenstein, Caspary, Gill, Hillmer, Nickle et al. It was featured on the front cover of the Capex 1987 private treaty sale catalogue published by William and Michael Lea, at which point its existence became widely known.

With 1992 B.P.A. certificate..... E. 80,000-100,000




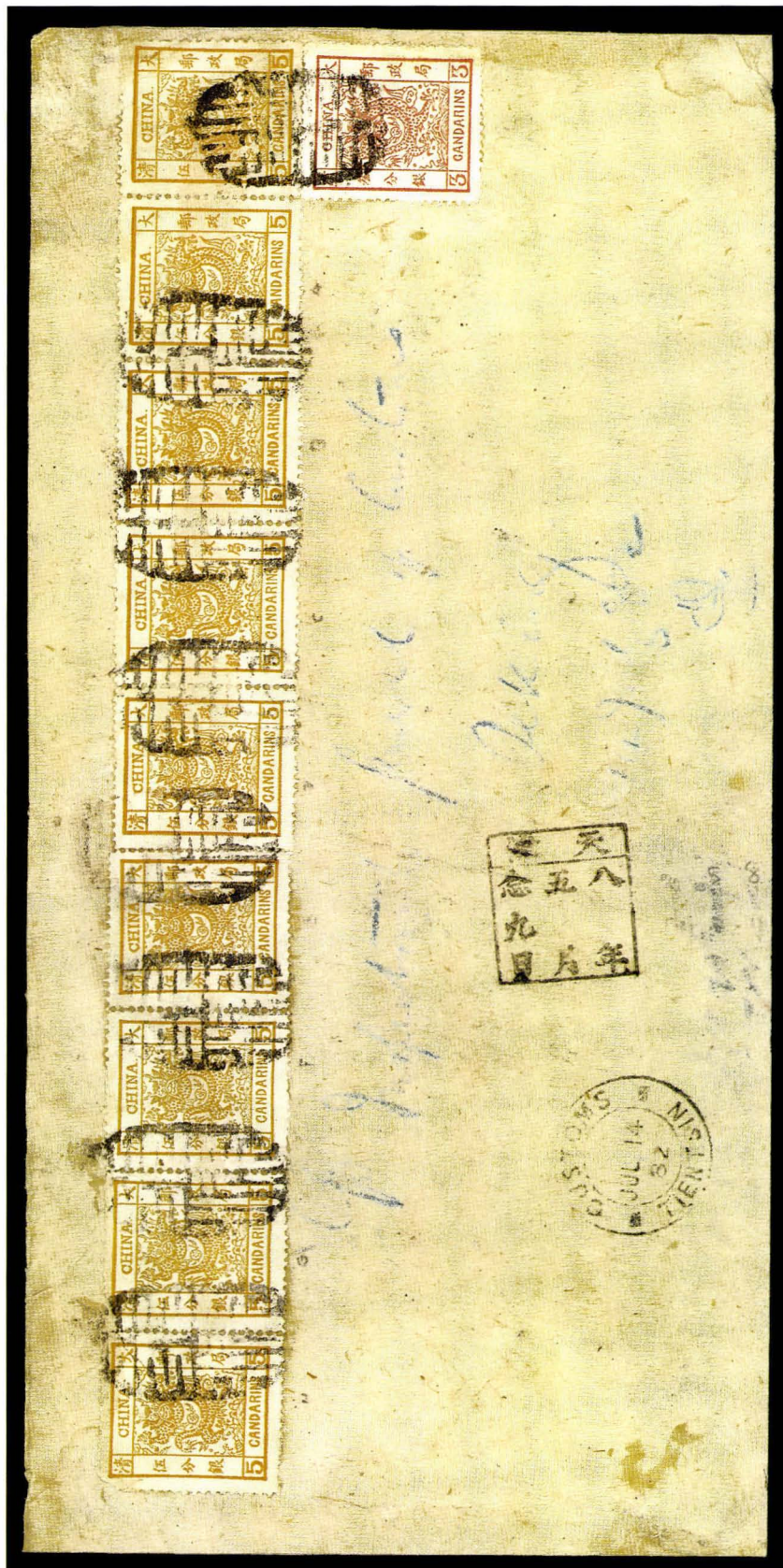
29

- 29° ☒ **1857, 7½p Green on Wove (9; SG 12).** Large margins all around, used with **1857, 3p Red on Soft Ribbed Paper (4c; SG 22),** barely detectable pre-use crease, each stamp tied by "1" target cancel, "Barrie U.C. A 11 Feb. 1858" circular datestamp on **registered cover to London, England,** red "REGISTERED" straightline handstamp, ms. registry numbers and "6" rate, red Crown "Registered" handstamp with matching London backstamps, faint Toronto transit backstamp, small spindle hole at bottom right, still Very Fine, rare franking for 10p rate (overpaid ½p) from the Brooksbank correspondence, ex Dale-Lichtenstein, with 1995 B.P.A. certificate E. 4,000-5,000



30

- 30°  **1857, 7½p Green on Wove (9; SG 12).** Full to large margins, used with **1858, 3p Red on Wove, Perf 11¾ (12; SG 26),** centered to bottom, each stamp tied by "1" target cancel, lightly struck "Barrie U.C. Ju 23 1859" circular datestamp on cover to **London, England,** from the Brooksbank correspondence, red "London Paid" circular datestamp on front and back, small spindle hole at bottom right, Very Fine, extremely rare combination of imperforate and perforated Pence issues, illustrated in Robson Lowe's *Encyclopedia* (Vol. V, opposite p. 161), with 1957 R.P.S. certificate
 E. 4,000-5,000



31

CHINA

1882 5-CANDARIN WIDE SPACING

- 31°✉ **1882, 5ca Pale Yellow-Ochre, Wide Spacing (6).** Setting III, horizontal strip of four (6-20-13-14) and another strip of five (full row, 7-5-4-12-8), used with 1882, 3ca Brown Red, Wide Spacing (5), Setting VI or VII, tied by multiple strikes of Tientsin seal on large native cover to Inspector General of Customs at Peking, red band and address in Chinese on back, blue pencil address on front, "Tientsin Jul. 14 82" circular datestamp, opened for display, minor cover wrinkles and small pieces missing from two stamps at upper left, such minor flaws are to be expected in such a cover

A MAGNIFICENT LARGE DRAGON FRANKING, BEARING NINE OF THE 5-CANDARIN WIDE-SPACING STAMP. THE LARGEST FRANKING KNOWN—ONLY ONE OTHER COVER RECORDED.

Ex Starr (Sotheby's, Sept. 12-13, 1991, lot 303, realized £40,700) . E. 60,000-80,000

GREAT BRITAIN



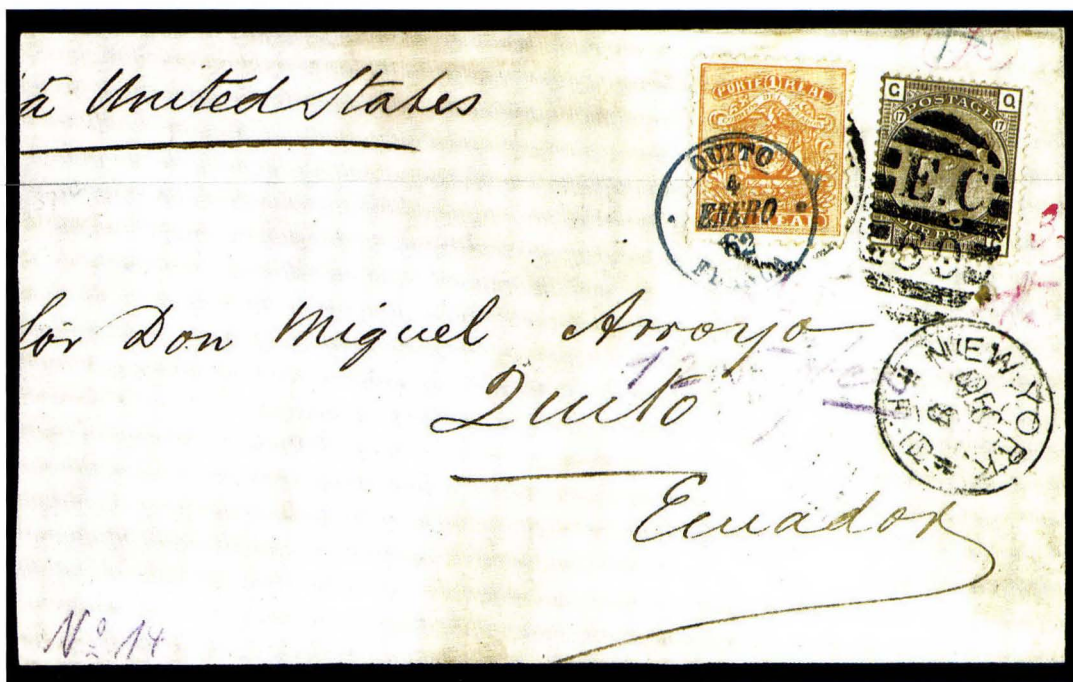
32

- 32°★田 **1853, 10p Red Brown, Embossed (6; SG 57).** Die 3, horizontal block of ten with full sheet margins and original gum, strongly embossed, fresh color and paper
 AN EXTREMELY FINE AND VERY RARE BLOCK OF THE EMBOSSED ISSUE.
 With 1989 B.P.A. certificate. Scott Retail \$22,500.00 for singles, Stanley Gibbons
 £25,000 for singles..... E. 25,000-35,000



33

- 33°★田 **1840, 1p Black, V.R. Official (O1; SG V1).** Horizontal block of six (FJ-GL) with right sheet margin showing part of imprint, large part original gum, large margins all around, pre-printing paper crease in sheet margin
 EXTREMELY FINE AND RARE IMPRINT BLOCK OF THE FIRST OFFICIAL STAMP IN THE WORLD.
 With 1956 R.P.S. and 1992 B.P.A. certificates E. 60,000-80,000



34

- 34° **1880, 4p Gray Brown, Pl. 17 (84; SG 160).** Tied by "London No 22 81" duplex datestamp and oval grid on cover front only, addressed to Quito, Ecuador, via the United States, with **Ecuador 1872, 1r Orange (10)** affixed and tied by blue "Quito Franca 4 Enero 82" double-circle datestamp, "New-York F.D. Dec. 6" transit datestamp, a bit reduced, light stain, still Fine and one of two known mixed frankings with this combination, the Ecuador 1 real stamp paying the internal postage from the port of entry, with 1992 Holcombe certificate..... E. 7,500-10,000



35

HAWAIIAN ISLANDS

1851 5-CENT MISSIONARY COVER WITH GILMAN FORWARDER'S HANDSTAMP

35°✉ **1851, 5c Blue (2).** Type I, full margins, deep shade and clear impression, few small and negligible tears, but free of any repairs or serious faults, tied by bold 7-bar grid, red "Honolulu*Hawaiian-Islands*Oct. 4" circular datestamp on 1852 folded cover to John Caminels, in care of Lemuel Gooding, Portland, Maine, red Lahaina forwarder's handstamp "FORWARDED Via S. FRANCISCO/By G. D. GILMAN./LAHAINA." in three lines within truncated frame, surrounded by large outer frame of handstamping device, black "San Francisco Cal. 1 Nov." circular datestamp, "12" due handstamp (10c U.S. rate plus 2c ship captain's fee), a few ink smears have been lightened

ONE OF THE FINEST OF THE EIGHT AVAILABLE COVERS BEARING A SINGLE 5-CENT MISSIONARY STAMP AND ONE OF TWO RECORDED MISSIONARY COVERS WITH A HANDSTAMPED FORWARDER'S MARKING.

Ten 5c Missionary covers are recorded in our census (see *Honolulu Advertiser* sale, November 7-11, 1995, Appendix I). Included in this total are the 2c and 5c Missionary cover and the 5c cover acquired by the National Postal Museum in the *Advertiser* sale, which leaves eight 5c covers for collectors. Of the 29 recorded Missionary covers, only two were handstamped by forwarders in Hawaii: the Porter & Ogden cover (*Advertiser* sale, lot 2) and this Gilman cover.

This letter was carried on the *Mary A. Jones* from Honolulu on October 5, 1852, and arrived in San Francisco on October 26. The same voyage carried the famous 2c Missionary cover and a 13c Missionary cover (Census No. 3-I-COV-142). This letter was stamped for prepayment of Hawaiian postage only, leaving the addressee to pay 12c for U.S. postage and the ship captain's fee. It was marked "12" due in San Francisco and postmarked on November 1, the usual first-of-month sailing day for mails bound via Panama.

Census No. 2-I-COV-70. Ex Worthington, Frank Godden (trade), Krug, Harris, Meroni and Collector C. With 1994 P.F. certificate..... E. 200,000-250,000

HONG KONG



36

36° 1863-71, 2c Brown, 4c Slate, 6c Lilac, 30c Violet, Crown CC Wmk. (8, 10, 12, 20; SG 8, 9, 10, 16). Pair of 6c, all bright and fresh colors, tied by bold blue "S1" oval cancel, matching "Shanghai Fe 25 75" backstamp on cover **originating in Peking and addressed to Dresden, Germany**, ms. "No. 12 7/2 75 Peking" docketing at lower left (Feb. 7, 1875), sent by hand to Shanghai where it entered the Treaty Port mails, backstamped "Hong-Kong Mr 1 75" along with Brindisi transit (Apr. 7) and Dresden receiving datestamp, red "P.D." indicating full prepayment of double letter rate (24c) via Brindisi

AN EXTREMELY FINE AND MAGNIFICENT FRANKING. CONSIDERED TO BE ONE OF THE MOST OUTSTANDING TREATY PORT COVERS EXTANT.

With 1992 Holcome certificate..... E. 30,000-40,000

MAURITIUS

1848 ONE-PENNY "POST PAID" EARLIEST IMPRESSION



37

37° ★ 田 **1848, 1p Orange Vermilion on Yellowish Paper, Earliest Impression (3; SG 3).** Positions 7-8/10-11, unused block of four from lower left corner of the sheet, beautiful prooflike impression from the earliest state of the plate, richly inked and vivid fresh color, large to huge margins including part of sheet margins at left and bottom, horizontal crease between the stamps and vertical crease thru two right-hand stamps, not affecting appearance, few faint toned spots on back

THE FAMOUS AND UNIQUE UNUSED BLOCK OF THE ONE-PENNY "POST PAID" EARLIEST IMPRESSION. THE MOST IMPORTANT UNUSED MULTIPLE OF MAURITIUS AND ONE OF THE OUTSTANDING IMPERFORATE BLOCKS OF THE BRITISH EMPIRE.

This remarkable survivor from the early period of the Mauritius post office can be traced as far back as Henry J. Duveen's ownership. It is not known from whom Duveen acquired the block, although he did purchase a significant portion of Sir William B. Avery's Mauritius collection. When the Duveen collection was dispersed through private sales by Charles J. Phillips in 1922-1926, the block figured prominently among the items purchased by Arthur Hind. After Hind's death, his Mauritius was offered as the fourth part of the British Empire series conducted by H. R. Harmer of London (June 12, 1934), and the "Post Paid" block sold for the U.S. dollar equivalent of \$23,688, a staggering price that eclipsed the combined figure paid for the 1p and 2p "Post Office" stamps and came close to matching the amount realized by the 1p and 2p "Post Office" combination cover. The buyer was Alfred H. Caspary, presumably in competition with Maurice Burrus and Alfred F. Lichtenstein. Although Caspary's Mauritius collection paled in comparison to the holdings of his contemporaries, Burrus and Lichtenstein—he lacked even a single example of the "Post Office" stamps—the two titans of British Empire philately must have coveted their friend's "Post Paid" block. In 1958, after Caspary's death, his Mauritius was sold by H. R. Harmer, and the "Post Paid" block was featured *in color* in the sale catalogue, the only item in all of the Caspary sales to receive such chromatic distinction. It realized \$18,500 and soon became part of the Josiah K. Lilly collection. When our firm sold the Lilly collection after his death, the "Post Paid" block realized \$64,000 (March 16, 1967).

Ex Duveen, Hind, Caspary and Lilly. With 1995 B.P.A. certificate E. 200,000-250,000



38

1848 2-PENCE INDIGO-BLUE "POST PAID" EARLIEST IMPRESSION

38°✉ **1848, 2p Indigo Blue on Bluish Paper, Earliest Impression (4; SG 4).** Position 11, full to large margins, deep rich color in the intense Indigo shade, prooflike impression, tied by lightly struck grid cancel on folded cover to Port Louis, two-line "FLACQ/JUY 10 1849" framed datestamp, "INLAND" framed handstamp, backstamped "Mauritius Post Office 10(?) Jy 1849" circular datestamp

EXTREMELY FINE. ONE OF TWO KNOWN COVERS WITH THE RARE INDIGO-BLUE SHADE OF THE 2-PENCE "POST PAID" EARLIEST IMPRESSION.

Although experts now accept two different shades and print qualities in classifying the earliest impressions of the 1848 2p "Post Paid" stamp, the Indigo-Blue shade, with its intense depth of impression, is the longstanding and unmatched *earliest* printing. The Blue shade, with its characteristic "dry" or "sticky" impression, is represented by a group of covers from one correspondence (approximately four or five; see Caspary and David Feldman Mauritius sales). These dry prints are considerably less intense than the Indigo-Blue stamps, a result of the ink failing to adhere to, or flaking off of, the insufficiently moistened grainy paper. While experts have adopted new parameters of print quality in classifying the earliest impressions, there can be no debate over the Indigo-Blue stamps—they are striking examples of the engraver's best and earliest product.

The other recorded cover with the Indigo-Blue earliest impression was in the Dale-Lichtenstein sale (October 21, 1968, lot 7, realized \$18,000). It has an uncanceled stamp tied by a manuscript transit marking.

Ex Caspary, Dr. Chan and Gray; it was the highlight of the Stevens collection (illustrated on front cover of 1964 sale catalogue) and ex Kanai. With 1958 B.P.A. certificate E. 75,000-100,000

NEW BRUNSWICK



39

39° 1851, 3p Dull Red (1; SG 2). Horizontal pair, ample to large margins, deeply blued paper, faint crease between stamps, tied by "New-York Sep. 4" circular datestamp and also by "United States" in oval on 1856 cover **from the United States to Sussex, New Brunswick**, sent from The American Institute of the City of New York, straightline "Held for Postage" handstamp of New York City crossed out in pen, "10" rate, backstamped "New-York Sep. 5", St. John transit and Sussex receiving datestamp

A VERY FINE AND UNIQUE COVER, SHOWING USE OF NEW BRUNSWICK STAMPS ON MAIL FROM THE UNITED STATES.

The sender apparently misunderstood postal regulations and presumed that New Brunswick stamps would be accepted by the U.S. post office.

Ex Dale-Lichtenstein. With 1993 B.P.A. certificate E. 30,000-40,000



40

- 40° 1851, 3p Bright Red (1; SG 1). Two, each is superb with full even margins, vivid color and fine impression, tied by oval grids on folded cover to Frederickton, back-stamped "W.O. Stanley N.B. Jun. 10, 1852" red circle (date in ms.) and "Frederickton N.B. Ju 13 1852" receiving datestamp, Extremely Fine Heraldic cover, ex Argenti E. 1,000-1,500



41

- 41° 1851, 3p Dull Red, Half Used as 1½p (1b; SG 2a). Lower half with margins touching, used with 1852, 6p Yellow (2; SG 3), clear to ample margins, tied together and across cut by "1" oval grids on mourning cover to Ware, England, dark red "St. John N.B. Paid Ju 1 1855" circular datestamp, red Liverpool Paid tombstone datestamp, faint red British transit datestamp, Ware receiving backstamp, pressed vertical fold clear of stamps, Very Fine and colorful franking, ex Argenti, with 1952 R.P.S. certificate, Scott Retail \$3,500.00, Stanley Gibbons £2,750... E. 4,000-5,000



42

- 42° ☒ **1851, 6p Yellow, Half Used as 3p (2b; SG 4a).** Left half with large margins, tied across cut by "1" oval grid on June 1860 folded cover to Moncton, backstamped St. John, light fold clear of stamp, Extremely Fine and choice bisected usage, Scott Retail \$3,000.00, Stanley Gibbons £3,000..... E. 4,000-5,000



43

- 43° ☒ **1851, 6p Yellow, Half Used as 3p (2b; SG 4a).** Top half with full margins, tied across cut by "24" oval grid on December 1859 cover to Amherst, Nova Scotia, backstamped "Sackville N.B. De 13 1859", sealed flap tear, still Extremely Fine, Scott Retail \$3,000.00, Stanley Gibbons £3,000..... E. 4,000-5,000

NOVA SCOTIA



44

- 44° 1851, 1p Red Brown, 3p Bright Blue, 6p Dark Green (1, 2, 5; SG 1, 3, 6). Each with full to large margins, deep rich colors, tied by oval grid cancels, "Halifax-Nova-Scotia Au 11 1859" backstamp on small narrow cover to **Paris, France**, red "London Paid" transit datestamp also tying 1p and matching "PD" in circle, ms. "7" rate, Calais transit datestamp and Paris receiving backstamp

AN EXTREMELY FINE AND SPECTACULAR THREE-COLOR FRANKING FOR THE RARE 10-PENCE RATE TO FRANCE.

It is reported that only four Nova Scotia covers franked at the 10p rate are known, including two double 5p packet rate covers to the United States and two to Europe with the 6p Dark Green (both from the Butterfield correspondence).

Ex Granger. With 1995 B.P.A. certificate..... E. 15,000-20,000



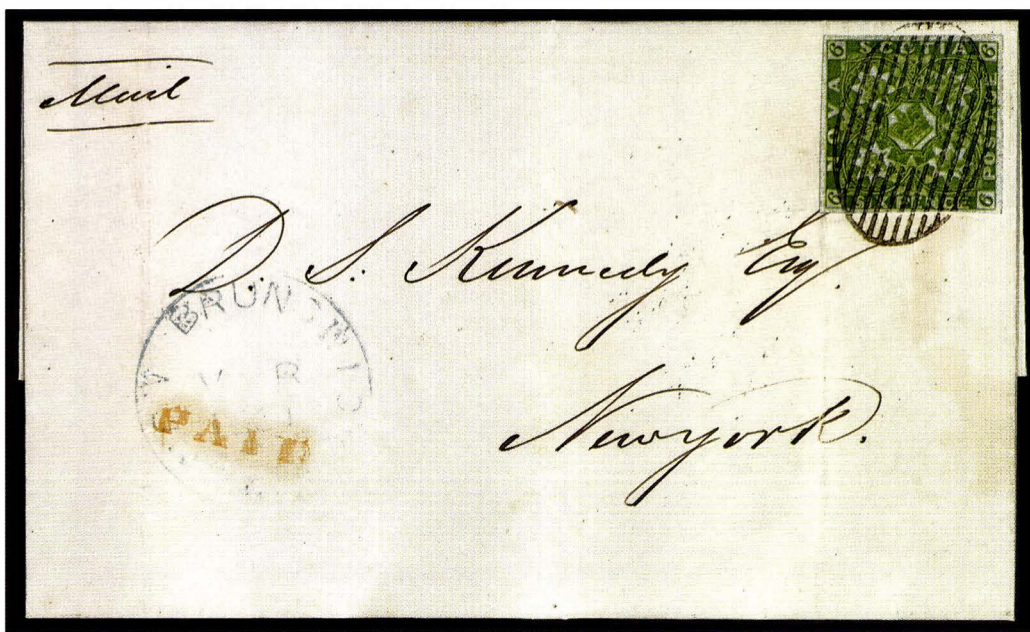
45

- 45° ☒ **1851, 1p Red Brown, 3p Dark Blue (1, 3; SG 1, 2).** Horizontal pair of 1p Red Brown, large margins almost all around (clear at bottom center), 3p three ample to large margins, touched at one side, tied by oval grid cancels, "Halifax-Nova-Scotia No 2 185(?)" backstamp on small neat cover to New York City, bold "5 Boston Br. Pkt. Nov. 5" circular due handstamp, fresh and Very Fine example of the 5p packet rate prepaid with the 1p, with 1995 B.P.A. certificate E. 5,000-7,500



46

- 46° ☒ **1857, 3p Pale Blue, Half Used as 1 1/2p (2a; SG 4).** Left half with large margins, used with two single 3p, each with full to large margins, tiny scissors cut in margin of center stamp, tied by oval grid cancels on small cover to **Ardrossan, Scotland**, backstamped red "Yarmouth N.S. Fe 20 1860" circular datestamp and transits of Halifax (Feb. 22), Glasgow (Mar. 5) and Ardrossan (Mar. 5), Very Fine and choice example of the 3p bisect making up part of the 7 1/2p rate, with 1995 B.P.A. certificate, Scott Retail \$2,500.00, Stanley Gibbons £2,250 E. 3,000-4,000



47

- 47° ☒ **1851, 6p Yellow Green (4; SG 5).** Full to large margins, beautiful bright shade and early impression on deeply blued paper, tied by oval grid cancel on folded letter from Halifax to New York City, backstamped "Halifax-Nova-Scotia Oc 4 1851" and "St. John N.B. Oc 6 1851", blue "New Brunswick X V R 1851" circular exchange office handstamp and red "PAID" on front, Extremely Fine and very early use of the Heraldic issue E. 1,500-2,000



48

- 48° ☒ **1851, 6p Yellow Green, Half Used as 3p (4a; SG 5a).** Right half with huge margins, well-tied across cut by oval grid cancels on tiny cover to Cornwallis, backstamped "Lower-Horton N.S. Au 15 1860" with Kentville and Wolfville transits, small tear at top left and minor wrinkles, still Very Fine and choice 6p Yellow Green bisect, with 1950 R.P.S. certificate, Scott Retail \$3,500.00, Stanley Gibbons £3,000 E. 3,000-4,000



49

- 49° 1857, 6p Dark Green (5; SG 6). Large to huge margins, gorgeous deep rich color and impression, tied by oval grid cancel on embossed lady's cover to Salisbury Cove, Maine, backstamped "Guysborough Ju 29 1859" circular datestamp (and another indistinct cds), "St. John New Brunswick Jy 4 1859" circular exchange office datestamp on front, red "Paid 10" in circle also ties 6p, ms. beneath stamp "Paid 10cts." Extremely Fine, a superb example of the 6p Dark Green on cross-border cover, ex Halifax Collection, with 1986 P.F. certificate..... E. 2,000-2,500



50

- 50° 1857, 6p Dark Green, Half Used as 3p (5a; SG 6a). Top half with large margins, dark shade, well-tied across cut by oval grid cancel on small cover to Bridgetown, part of "Wilmot N.S. Ja 14 1860" backstamp, Bridgetown receiving backstamp, neat ms. docketing, one backflap removed, slight wear, otherwise Very Fine, the 6p Dark Green bisect is considerably rarer than its Yellow Green counterpart, with 1961 R.P.S. and 1990 B.P.A. certificates, Scott Retail \$3,500.00 (the same as for Yellow Green bisect), Stanley Gibbons £5,000 (reflecting greater rarity).... E. 3,000-4,000

1851 ONE-SHILLING COLD VIOLET ON COVER TO INDIA



51

51° 1851, 1sh Cold Violet (7; SG 7). Horizontal pair, large even margins, beautiful rich color, used with 1851, 6p Yellow Green (4; SG 5), full to large margins, well-tied by clearly struck oval grids on cover from Cape Breton to **Peshawar, India**, addressed to Walter Lawrence Ingles, a member of Her Majesty's 32nd Regiment, "Sydney CB Fe 28 1852" circular datestamp on back along with Halifax transit oval, red "Paid DT 20 Mr 30 1852" British transit and black framed Bombay transit handstamp on front, red ms. "1/10" rate, one backflap has been skillfully added and two small opening tears at top mended (not noted on accompanying B.P.A. certificate, which does state that the stamps have been lifted for examination and replaced, but we disagree with this opinion)



THE SECOND FINEST OF THE NOVA SCOTIA ONE-SHILLING COLD VIOLET COVERS TO INDIA FROM THE INGLES CORRESPONDENCE.

There are four or five covers from the Ingles correspondence with Nova Scotia 1sh Cold Violet stamps making up the rate to India. The finest of these is the ex Dale-Lichtenstein mourning cover, which has a full-margined pair and is sound in all respects. The cover offered here has a superb pair with large margins, and the minor opening faults in the envelope do not affect its appearance at all. The other Ingles covers have stamps that are cut into.

Ex Gibson, Foxbridge. Backstamped Vincent Graves Greene. With 1995 B.P.A. certificate E. 30,000-40,000

ST. VINCENT



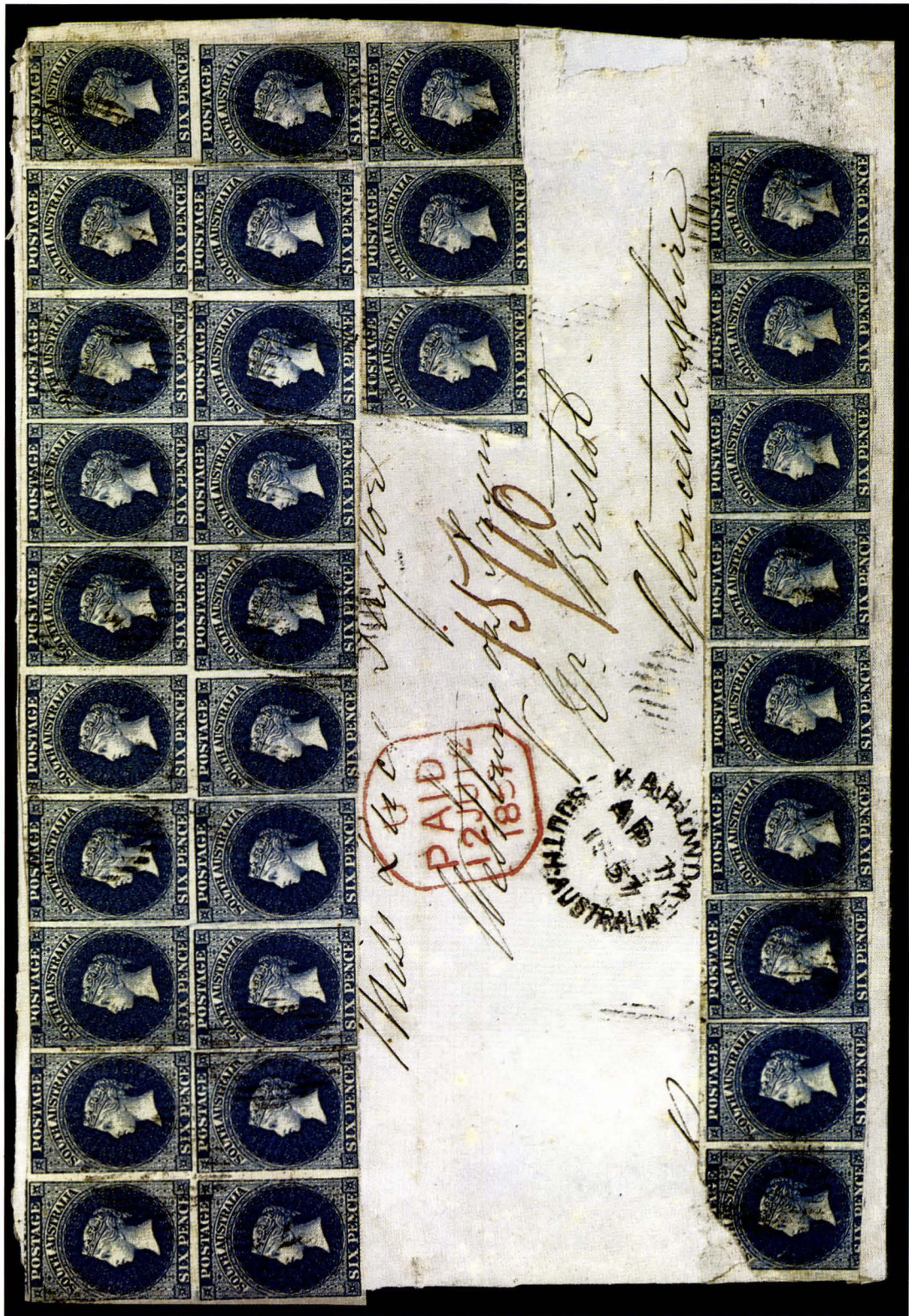
- 52°  **1866, 4p Deep Blue, Perf 11-13 (6; SG 6).** Horizontal strip of four, tied by "A10" oval grid cancels on blue 1871 folded cover **to Paris, France**, "St-Vincent Jy 10 71" circular datestamp, red "London Paid" and black Calais transit datestamps, red "PD" in circle handstamp, Very Fine, extremely rare multiple usage from the de Polignac correspondence, with 1995 B.P.A. certificate..... E. 3,000-4,000
- 53°  **1869, 4p Yellow, 1sh Indigo, Perf 11-12½ (7, 9; SG 12, 13).** Tied by "A10" oval grid cancel on 1870 blue folded cover **to Paris, France**, "St-Vincent A Mr 11 70" circular datestamp, red "London Paid" and black Calais transit datestamps also tie 4p, red "PD" in circle handstamp, Very Fine, colorful and rare franking from the famous de Polignac correspondence, the 4p Yellow being very scarce on cover, with 1995 B.P.A. certificate E. 2,500-3,500

SOUTH AUSTRALIA



54

- 54° ☒ **1855, 2p Dull Carmine, Large Star Wmk. (2; SG 2).** Full margins all around, tied by red oval grid cancel, matching "Paid Adelaide S.A. 1 Ja 1855 O" **January 1, 1855, first day of issue** circular datestamp, second strike at lower left on blue folded cover front with portions of original letter expertly restored (essentially a repaired folded letter), datelined "Goodwood, January 1st, 1855" and addressed to Adelaide where redirected to Glenelg, Very Fine appearance, one of the outstanding items of Australian philately and among the few first day covers of the British Empire classics, with 1992 B.P.A. certificate..... E. 25,000-35,000



55° 1855, 6p Deep Blue, Large Star Wmk. (3; SG 3). Horizontal block of eighteen (2 x 9 across top), used with right sheet margin L-shaped strip of five (at upper right) and horizontal strip of nine (at bottom, originally attached to strip of five), generally large margins, corner stamps have faults, tied by oval grids, "Kapunda South-Australia Ap 7 1857" circular datestamp on large blue folded cover to **Bristol Post Office in England**, red Adelaide and blue Bristol backstamps, red London "Paid" tombstone transit datestamp on front, red ms. "15/10" credit, some cover folds and faults

A PHENOMENAL FRANKING, WHICH IS REPUTED TO BE THE HIGHEST-RATED PREPAID COVER EXTANT OF ANY BRITISH COLONY IN THIS EARLY CLASSIC PERIOD.

The "15/10" credit of 15 shillings 10 pence to England corresponds to a 38 x 6p rate (total 19 shillings with 3sh2p retained by colonial post office). The additional 3 shillings postage was presumably paid in currency, as there is no evidence of six stamps missing from this cover.

To the best of our knowledge, there is no other cover franked with classic imperforate stamps of any British colony that even approaches this extraordinary multiple rate.

Ex Griffiths. With 1991 B.P.A. certificate..... E. 30,000-40,000

TASMANIA



56

56° 1853, 4p Orange, Pl. II (2; SG 10). Large even margins all around, fine impression, tied by clearly struck "60" oval grid, "Launceston 12 Ap 12 1855" circular datestamp on folded cover to Hobart Town, red "Pre-Paid 13 Ap 13 1855" receiving datestamp, Extremely Fine Gem, with 1984 Royal Philatelic Society of Victoria certificate E. 1,500-2,000

THAILAND
(SIAM)

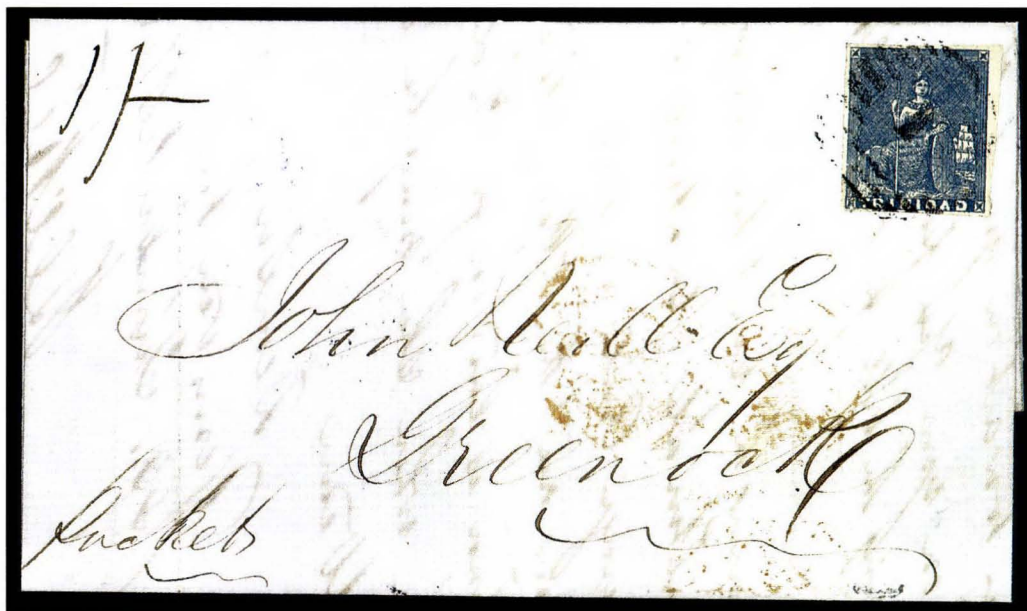


57

57° ☒ **1885, 1t on 1s Blue, Red Ty. B Surcharge (7; SG 7).** Plate 1, well-centered, tied by "Bangkok P Paid 22/11 86" circular datestamp on cover to St. Gallen, Switzerland, purple backstamp of Bangkok merchant, Swiss transit and receiving backstamps
THE CELEBRATED AND UNIQUE COVER BEARING THE RARE TYPE B ONE-TICAL SURCHARGE. REGARDED BY MANY TO BE THE MOST OUTSTANDING COVER OF THAILAND.

Ex Madden, Indhusophon. With 1967 R.P.S. and 1978 Friedl certificates.....
..... E. 50,000-75,000

TRINIDAD



58

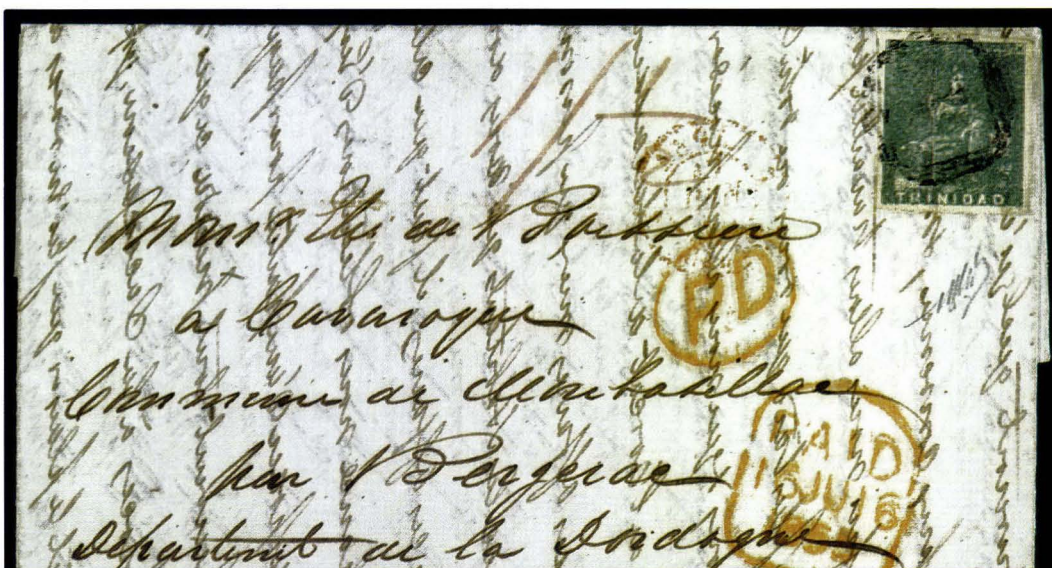
58° 1852, (1p) Blue on Yellowish, Lithographed, First Issue (9; SG 13). Full to large margins, fine early impression, tied by lightly struck "1" grid cancel on folded letter to Greenock, Scotland, ms. "1/-" rate, backstamped with "Trinidad No 24 1852" circular datestamp along with red transit and Greenock receiving datestamp, file folds clear of stamp, Very Fine and choice use of the rare First Lithograph, with R.P.S. certificate E. 3,000-4,000



59

59° 1855, (1p) Pale Blue on Thin White, Lithographed, Second Issue (9b; SG 15). Clear to large margins, tied by "1" grid cancel on folded cover to Glasgow, Scotland, backstamped "Trinidad Ap 10 1855" circular datestamp along with red transit and Greenock receiving backstamp, Very Fine..... E. 2,000-3,000

60



61



- 60° 1855, (1p) **Greenish Blue on Thin White, Lithographed, Second Issue (12a; SG 15)**. Large even margins, strong impression showing some lines of background shading, tied by "1" grid cancel on folded letter to **Bergerac, France**, "1 My 25 1855" circular datestamp on back, along with French transit and receiving datestamps, red London "Paid" tombstone datestamp and matching "PD" in oval, red ms. "11½" rate, faint red Calais transit, wear along file folds has been skillfully strengthened, Very Fine, scarce Lithograph usage, signed Bloch... E. 1,500-2,000
- 61° 1856, (1p) **Bright Blue on White, Lithographed, Third Issue (12; SG 16)**. Three large margins, clear at left, tied by "1" grid cancel on blue folded letter to **New York City**, "Trinidad No 25 1858" circular datestamp and "1 No 25 58" in circle on back, red "Paid at Trinidad" Crown Circle handstamp lightly struck on front, red crayon "4" pence rate, "St. Thomas No 30 1858" transit backstamp, "New Orleans La. Dec. 30, 1858" circular datestamp and "Steamship 10" in circle due handstamp, light folds clear of stamp, Very Fine, rare use of Third Issue..... E. 1,500-2,000



62

63

- 62° ☒ **1858, (1p) Deep Greenish Blue on White, Lithographed, Fourth Issue (12a; SG 17).** Large to huge margins, early impression, tied by "1" grid cancel on blue folded letter to **Bergerac, France**, "Trinidad Oc 9 1858" circular datestamp and "1 Oc 10 1858" in circle on back, red "Paid at Trinidad" Crown Circle handstamp on front along with red "London Paid" transit and "PD" in circle, red crayon "7" rate, Calais transit, additional French transits on back, Extremely Fine, extremely early use of the Fourth Issue lithograph (available October 1858), with 1991 Holcombe certificate E. 2,000-2,500
- 63° ☒ **1858, (1p) Deep Greenish Blue on White, Lithographed, Fourth Issue (12a; SG 17).** Large margins, tied by "1" oval grid cancel on blue folded letter to **Corse, France**, "Trinidad No 9 1858" circular datestamp and "1 No 09 58" datestamp on back, Calais transit (Dec. 2) datestamp and "GB/2F" accountancy handstamp on front, ms. "10" rate, backstamped London (Dec. 2) and French transits, Very Fine and choice E. 1,500-2,000

VICTORIA

1850 ONE-PENNY FIRST HAM PRINTING



64°田 **1850, 1p Orange-Brown, First Ham Printing (1; SG 1a).** Block of six, large margins, each stamp neatly cancelled by "15" Butterfly cancel (Geelong), two faint vertical creases and bare trace of pinhole

EXTREMELY FINE APPEARANCE. THE LARGEST RECORDED MULTIPLE OF THE FIRST HAM PRINTING AND ONE OF THE MOST IMPORTANT ITEMS OF THE AUSTRALIAN COLONIES.

This extraordinary block realized £22,000 in the John R. Boker Jr. sale (H. R. Harmer, Apr. 14, 1981, lot 85). Ex Pack, Boker E. 40,000-50,000



65

- 65°★田 1851, 1p Bright Pinky Red, Third Ham Printing (2a; SG 12a). Top sheet margin block of ten, full to large margins other sides, large part original gum, slight creases in places, tiny pinhole and small thin, still Very Fine and an extremely rare large multiple of this classic Half-Length issue, ex Ferrary, Hind, Burrus and Boker E. 10,000-15,000



66



67

- 66°★田 1855, 1p Pink, Campbell & Fergusson Printing (2a; SG 28). Horizontal block of six, part original gum, clear to large margins, creased, traces of thins and few tiny black marks on surface, otherwise Very Fine, rare block, ex Caspary, Lilly and Boker E. 3,000-4,000
- 67°★田 1855, 1p Pink, Campbell & Fergusson Printing (2a; SG 28). Horizontal block of six, part original gum, clear to large margins, creased, traces of thins and few tiny black marks on surface, otherwise Very Fine, rare block, ex Burrus, Boker E. 3,000-4,000



1850 3-PENCE INTERPANNEAU STRIP ON COVER

68°✉ **1850, 3p Blue, Second Ham Printing, Interpanneau Gutter Between Stamps (3 var; SG 4a var).** First state of die, horizontal strip of three, Positions 4-5-1 with wide gutter between second and third stamps, used with 1850, 1p Pale Dull Red Brown, Third Ham Printing (1; SG 5a), second state of die, sheet margin at right, the strip and single cancelled by "23" Butterfly cancel of Burn Bank on June 1850 folded letter from Glenmona to England, backstamped "Burnbank Pt. Phillip" datestamp along with Melbourne and London transit datestamps, red "Paid Ship Letter Sydney Ju*25 1850" Crown Oval datestamp on front

EXTREMELY FINE. THE UNIQUE EXAMPLE OF A VICTORIA INTERPANNEAU MULTIPLE ON COVER AND ONE OF THE MOST OUTSTANDING COVERS IN ALL OF AUSTRALIAN PHILATELY.

Illustrated in *The Stamps of Victoria*, Geoffrey Kellow (p. 46, color plate 2).
Discovered in 1981. Ex Perry, Kapiloff..... E. 75,000-100,000



69

69° ☒ **1854, 3p Blue, J. S. Campbell & Co. Printing (3; SG 24).** Horizontal pair, large margins, tied by "2" grid cancel on blue folded letter to London, England, "Geelong Victoria Se*15 1858" backstamp, red "London Paid" transit datestamp, Extremely Fine and choice Half-Length usage E. 750-1,000

END OF SALE—THANK YOU

America's premier stamp auctioneer will offer some of the British Empire's premier stamps.



**The Edward M. Passano Collection of
British Commonwealth, Offered on Behalf of
Johns Hopkins University**

SALE DATE: MAY 22, 1996

**The Henry S. Schneider Collection
of British America**

SALE SCHEDULED FOR OCTOBER 1996

Shown here are just a few choice stamps of the realm from two outstanding collections that Siegel Auction Galleries will offer in auctions during the next six months. To obtain your **free catalog** for the May 22 sale, please complete the coupon at right and mail or fax your request immediately.

America's premier stamp auctioneer for 66 years.

Robert A. Siegel

AUCTION GALLERIES, INC.

65 E. 55th STREET, NEW YORK, N.Y. 10022 • TEL. (212) 753-6421

BRITISH COMMONWEALTH CATALOG REQUEST
Please send me the May 22 catalog of British Commonwealth stamps.

NAME
ADDRESS
CITY
STATE/PROVINCE
POSTAL CODE/ZIP
COUNTRY
COLLECTING SPECIALTY

Mail to: Siegel, 65 E. 55th St., 17th Fl., New York, NY 10022 USA
or Fax to: (212) 753-6429

Catalog limit 1 per request if available. Substitute may be sent at our discretion.



Anniversary Philatelic Exhibition

Commemorating

The Collectors Club's 100th Anniversary

**The Waldorf-Astoria, Grand Ballroom
New York, New York**

November 28 – December 2, 1996

*Over \$100 million of rare stamps and covers from all over the world
featuring*

The Aristocrats of Philately

**The finest international Gold Medal collections
*especially invited for this unique exhibition***

The Collectors Club members' one-frame exhibits

**The world's leading professionals
*including Robert A. Siegel Auction Galleries***

ANPHILEX '96

Bid Form

The K.L. Collection of Classic Rarities—Tuesday, April 23, 1996

1

Please provide the following information:

NAME.....

ADDRESS.....

CITY/STATE/ZIP.....

TEL. (DAY)..... FAX.....

PADDLE #

Do not write in box

2

Have you purchased from us in the past 5 years? ☐ YES (if so, please go to Section 3)☐ NO (please provide a trade reference and bank information)

References:

Stamp Firm:..... Telephone.....

Bank:..... Account #.....

3

In the space provided below, enter the **lot number** from **Sale 776** and your corresponding bid. Please use **whole dollar amounts** only and enter the **maximum bid** you wish to have us execute on your behalf, according to the bidding increments (on other side of this form). **Your bid will NOT include the 10% buyer's premium.** We will advance the bidding at one increment over the next

highest bid; therefore, you may be awarded the lot at less than your maximum bid. Please do not use "plus" bids or "buy" bids. If you wish to bid on one lot **or** the other, indicate your "or" bid between lot number/bid entries and bracket your choices. If you wish to place a **bidding limit** on the total amount of your bids, please enter your limit in the space marked "Limit Bids".

☐ **LIMIT BIDS:** Check this box if you wish to limit the total amount of your bids (not including the 10% buyer's premium) in this sale. Your bids will be executed until your bidding limit no longer allows for additional bids.

The total amount you wish to bid is: \$.....

Lot	Bid	Lot	Bid	Lot	Bid
	\$		\$		\$

4

AGREEMENT: By signing this bid form, you agree to pay for purchases resulting from your bids, in accordance with the **Conditions of Sale** printed in the sale catalogue. You also agree to pay the 10% buyer's premium and any shipping costs (see reverse), which will be added to your successful bids, and any sales tax or use tax which may be due

on the total invoiced amount. It is understood that these bids will be executed by Siegel Auction Galleries as a courtesy to absentee bidders, but that no legal responsibility shall lie with the auctioneer or the firm if these bids are not executed. **You are responsible for your written bids, including any errors on your part.**



SIGNED.....

TODAY'S DATE.....

5

Please submit your bids promptly (telephone bids must be confirmed in writing).

Mail to: Robert A. Siegel Auction Galleries, Inc.
 65 E. 55th Street, New York, N.Y. 10022
 Telephone (212) 753-6421

OR FAX YOUR BIDS: (212) 753-6429**Shipping Instructions, Bidding Increments and space for additional bids on other side of form**

Additional Bids

Sale 776—April 23, 1996

Lot	Bid	Lot	Bid	Lot	Bid
	\$		\$		\$

Shipping and Transit Insurance

We will be pleased to arrange for shipping and transit insurance for purchases in this sale (except those described as "floor sale only"). To expedite billing and delivery of lots to hundreds of buyers per sale, we use standard charges for postage and insurance, based on the invoiced total and mailing requirements (see schedule). The standard charges are sometimes slightly more or less than the actual postage, but we do not include any fees for our labor or packing costs. Therefore, we ask all buyers to remit the prescribed amount for shipping charges.

Transit insurance is provided in all cases, except when the buyer has furnished us with proof that insurance coverage is effective under another policy. Proof, in such cases, will be accepted in the form of a written certificate from the insurance carrier.

You are responsible for insurance charges, which will be added to your invoice. This coverage is provided for our mutual protection against theft or loss in transit.

Current Postage & Insurance Charges

Invoice Total	Shipping Method	Charges
Up to \$1,000	Certified Mail or Insured Priority	\$10.00
\$1,000-10,000	Fedex or Express Mail	\$16.00
\$10,000-25,000	Fedex or Express Mail	\$22.00
Over \$25,000	Fedex or Express Mail	\$22.00 plus insurance at \$1 per \$1,000 value over \$25,000
Foreign Destinations (any value)	Registered or Express mail	\$10.00 plus insurance at \$2 per \$1,000 value
Bulk Lots	UPS Preferred	By weight and value (min. \$25.00)

2/95

Bidding Increments

The auctioneer may regulate the bidding at his discretion. However, to assist absentee bidders in establishing their maximum bid for each lot, the increments shown at right will be used in most cases. We recommend that written bids conform to these increments (those which do not will be reduced to the next level).

Up to \$140	\$5	\$3,000-7,000	\$250
\$140-300	\$10	\$7,000-20,000	\$500
\$300-700	\$25	\$20,000-30,000	\$1,000
\$700-1,400	\$50	\$30,000-75,000	\$2,500
\$1,400-3,000	\$100	\$75,000 up	\$5,000

Services for Buyers

If you wish to participate in this sale, we will be pleased to assist you in many ways. The following services are provided without additional charge (except for any out-of-pocket expenses):

- Most lots may be inspected by registered or overnight mail, and all lots may be viewed by appointment or during the pre-sale exhibition
- Prospective bidders may request up-to-the-minute valuations for any lot in the sale
- We will be pleased to assist out-of-town clients in obtaining hotel reservations nearby our gallery
- Bidders who cannot attend the sale may submit bids by telephone/fax, by mail, or in special cases, we will provide a telephone link to the auction in progress (must be confirmed in advance)
- Any item sold without an expert certificate dated within the past five years may be purchased subject to certification (please see Conditions of Sale)
- Instructions for shipping purchased lots may be given to the gallery immediately after the sale
- Prices realized will be available one day after the final sale day

Services for Sellers

If you have stamps you wish to sell, we will be pleased to provide the following services and options for auction or outright sale:

- Free verbal appraisal of material brought to our gallery; Written appraisals for estate tax purposes (rates available on request)
- Free on-site consultation for any collection with fair market value of \$100,000 or more
- Auction consignments will be processed within six months of receipt, and proceeds will be paid 42 days from date of sale
- Commission rate of 10% (no other charges for lotting or illustration)
- Immediate interest-free advances up to 50% of the auction valuation
- On certain collections, we will guarantee the seller a minimum net amount, which eliminates the downside risk while still providing the potential for maximum auction realization
- If you wish to sell your stamps for immediate cash, we will be pleased to make an outright offer
- Suitable collections will be considered for single-owner sales and/or our annual Rarities of the World sale

PRICES REALIZED FOR SALE 776---4/23/96

The K.L. Collection of Classic Rarities

Robert A. Siegel Auction Galleries, Inc.
60 East 56th Street, 4th Floor, New York, NY 10022
Tel (212) 753-6421 Fax (212) 753-6429

Lot#	Realized	Lot#	Realized
1	2,800	56	2,100
2	525	57	67,500
3	700	59	1,500
4	1,600	60	1,250
5	1,100	61	1,900
6	1,100	62	1,600
7	625	63	2,200
8	24,000	64	25,000
9	1,100	65	6,250
11	340,000	66	3,250
13	22,000	67	2,500
14	230,000	68	75,000
15	4,000	69	3,250
16	3,500		
17	8,000		
18	17,000		
19	800		
20	1,100		
21	27,000		
22	12,000		
23	10,000		
24	2,100		
25	13,000		
26	3,000		
27	10,000		
28	80,000		
29	10,000		
30	10,500		
33	70,000		
35	260,000		
37	250,000		
38	75,000		
39	27,000		
40	1,600		
44	15,000		
45	10,500		
46	3,500		
47	4,250		
48	2,700		
49	3,000		
51	52,500		
52	3,250		
53	2,400		