



THE  
VERNON R. MORRIS JR. M.D.  
COLLECTION

---

CLASSIC UNITED STATES STAMPS  
OF  
EXTRAORDINARY QUALITY AND COLOR

Sale 793

Friday Evening at 6:30 p.m.  
September 26, 1997

*Robert A. Siegel*

AUCTION GALLERIES, INC.

PARK AVENUE TOWER, 17th FLOOR • 65 EAST 55th STREET  
NEW YORK, NEW YORK 10022 • TEL. (212) 753-6421



*Robert A. Siegel*

AUCTION GALLERIES, INC.

PARK AVENUE TOWER, 17th FLOOR • 65 EAST 55th STREET

NEW YORK, NEW YORK 10022

TEL. (212) 753-6421 • FAX (212) 753-6429

---

Scott R. Trepel

*President*

Roberta Siegel Edelstein

*Vice President*

Elizabeth C. Pope

*Vice President*

*Administration*

Cindy Stein

Bevin Bravacos

Rosanne Trepel

*Descriptions*

John Zuckerman

Scott R. Trepel

---

Robert A. Siegel

1913-1993



30c 1869 Pictorial (lot 302)

## The Vernon R. Morris Jr. M.D. Collection of Classic United States Stamps of Extraordinary Quality and Color

Offered at Unreserved Public Auction

Friday Evening, September 26, 1997  
at 6:30 p.m. in our Galleries

*Refreshments will be served*

### Pre-Sale Exhibition

Tuesday, September 23	10:30 a.m. - 4:00 p.m.
Wednesday, September 24	10:30 a.m. - 4:00 p.m.
Thursday, September 25	10:30 a.m. - 4:00 p.m.
Friday, September 26	10:30 a.m. - 5:30 p.m.

To arrange an appointment for viewing at another time,  
please feel welcome to call (212) 753-6421.

Please note that our sale of the Jonathan W. Rose 1869 Pictorials  
will be held on Saturday, September 27th, at 1:30 p.m. — please  
see separate catalogue (Sale 794).

### Arrangement of Sale

<i>Category</i>	<i>Pages</i>
Postmasters' Provisionals ....	5-11
1847 Issue.....	12-20
1851-56 Issue.....	21-34
1857-60 Issue & Reprints ....	34-47
1861-66 Issue.....	48-58
1867-68 Grilled Issue.....	59-68
1861-66 Re-Issues.....	69
1869 Pictorial Issue .....	70-75
1869 Pictorial Re-Issues.....	76
1870-88 Bank Note Issues ...	77-88

## Conditions of Sale

The property described in this catalogue will be offered at public auction by Robert A. Siegel Auction Galleries, Inc. ("Galleries") on behalf of various consignors and itself or affiliated companies. By placing a bid on any lot, the bidder acknowledges acceptance of and will be bound to these Conditions of Sale.

1. The highest bidder acknowledged by the auctioneer shall be the buyer. The term "final bid" means the last bid acknowledged by the auctioneer, which is normally the highest bid offered. **The purchase price payable by the buyer will be the sum of the final bid and a commission of 10% of the final bid ("buyer's premium"), together with any sales tax or use tax which may be due on the sale.**
2. The auctioneer has the right to reject any bid, to advance the bidding at his discretion and, in the event of a dispute between bidders, to determine the successful bidder, to continue the bidding or to reoffer and resell the lot in dispute. The Galleries' record of the final sale shall be conclusive.
3. All bids are per numbered lot in the catalogue unless otherwise announced by the auctioneer at the time of sale. The right is reserved to group two or more lots, to withdraw any lot or lots from the sale, or to act on behalf of the seller. The Galleries will execute bidding instructions on behalf of clients, but will not be responsible for any errors in the execution of such bids.
4. **Lot numbers followed by the symbol ° are offered subject to one or more of the following conditions:** (i) the lot is subject to a minimum final bid ("reserve"), below which it will not be sold, (ii) the Galleries have advanced monies to the seller and have a financial interest in the lot, (iii) the Galleries have guaranteed the seller a minimum sale price, and (iv) the Galleries may have ownership interest in the lot, either in part or whole. The absence of the symbol ° means that the lot is offered without reserve.
5. Any lot, the description of which is obviously incorrect, is returnable, but only if the lot is returned within 14 days of receipt. All disputed lots must be returned intact with the original packing material. **The following lots may not be returned for any reason: Lots containing ten or more items; lots from buyers who have registered for the pre-sale exhibition or received lots by postal viewing, thereby having had the opportunity to inspect them before the sale; any lot described with "faults" or "defects" may not be returned because of any fault or defect. No illustrated lots may be returned because of centering, margins or other factors shown in the illustrations.**
6. Successful bidders, unless they have established credit with the Galleries prior to the sale, must make payment in full before the lots will be delivered. Buyers not known to the Galleries must make payment in full within three days from the date of sale. The Galleries retain the right to demand payment at the time the lot is knocked down to the highest bidder, for any reason whatsoever. In the event that

any buyer refuses or fails to make payment in cash for any lot at the time it is knocked down to him, the auctioneer reserves the right to reoffer the lot immediately for sale to the highest bidder.

7. If the purchase price has not been paid within the time limit specified above, nor lots taken up within seven days from the date of sale, the lots will be resold by whatever means deemed appropriate by the Galleries, and any loss incurred from resale will be charged to the defaulting buyer. Any account more than thirty days in arrears will be subject to a late payment charge of 1½% per month as long as the account remains in arrears. Any expenses incurred in securing payment from delinquent accounts will be charged to the defaulter.

8. All lots are sold as genuine. **Any lot which is accompanied by an expert certificate (for U.S. items, the accepted authority is The Philatelic Foundation), dated within the past five years of the sale date, is sold "as is" and in accordance with the description on the certificate. Such lots may not be returned for any reason, including but not limited to a contrary certificate of opinion obtained after the sale.** Buyers who wish to obtain a certificate for any item that is not accompanied by a certificate dated within the past five years may do so, provided that the following conditions are met: (1) the purchase price must be paid in full, (2) the item must be submitted to an acceptable expertizing committee with a properly executed application form within 21 days of the sale, (3) a copy of the application form must be given to the Galleries, (4) in the event that an adverse opinion is received, the Galleries retain the right to resubmit the item on the buyer's behalf for reconsideration, without time limit or other restrictions, (5) unless written notification to the contrary is received, items submitted for certification will be considered cleared 90 days from the date of sale, and (6) in the event any item is determined to be "not as described", the buyer will be refunded the purchase price, plus interest accrued on the purchase price at the prevailing Treasury Bill Rate from the date of payment, and the certification fee up to \$100.00 unless otherwise agreed.

9. Until paid for in full, all lots remain the property of the Galleries on behalf of the seller.

10. Agents executing bids on behalf of clients will be held responsible for all purchases made on behalf of clients unless otherwise arranged prior to the sale.

11. The buyer assumes all risk for delivery of purchased lots, and agrees to pay for all out-of-pocket costs incurred in shipping.

SCOTT R. TREPEL  
N.Y.C. Auctioneer's License No. 795952

RASAG 2/97

---

**Copyright Notice:** This catalogue is protected by copyright. The descriptions, format, illustrations and information used herein may not be reprinted, distributed or copied in any form without the express written consent of Robert A. Siegel Auction Galleries. Application for permission may be made in writing. © 1997, Robert A. Siegel Auction Galleries, Inc.

---

# Grading Terms, Abbreviations and Values Used in Descriptions

## Centering and Gum

Margin width, centering and gum are graded according to Scott Catalogue standards.







**Extremely Fine (EF):** Exceptionally large margins or near perfect centering. The term "Gem" describes condition that is the finest possible for the issue.

**Very Fine (VF):** Normal size margins for the issue and well-centered with the design a bit closer to one side.

**Fine (F):** Smaller than usual margins or noticeably off center. Pre-1890 issues may have the design touched in places.

**Very Good (VG):** Attractive appearance, but margins or perforations cut into the design.

**Good (G) or Average (Ave.):** Cut into or perfs far into design and usually with slight faults. This condition is generally acceptable for rarities, scarce multiples or stamps used on unusual covers.

Gum Categories:	MINT N.H.	ORIGINAL GUM (O.G.)				NO GUM
	 <b>Mint Never Hinged</b> <i>Free from any disturbance</i>	 <b>Lightly Hinged</b> <i>Faint impression of a removed hinge over a small area</i>	 <b>Hinge Mark or Remnant</b> <i>Prominent hinged spot with part or all of the hinge remaining</i>	 <b>Part o.g.</b> <i>Approximately half or more of the gum intact</i>	 <b>Small part o.g.</b> <i>Approximately less than half of the gum intact</i>	 <b>No gum</b> <i>Only if issued with gum</i>
Catalogue Symbol:	★ ★	★	★	★	★	(★)
PRE-1890 ISSUES	<i>Pre-1890 stamps in these categories trade at a premium over Scott value</i>			Scott Value for “O.G.”		Scott “No Gum” Values thru No. 218
1890-1935 ISSUES	Scott “Never Hinged” Values for Nos. 219-771	Scott Value for “O.G.” (Actual value will be affected by the degree of hinging)		<b>Disturbed Original Gum:</b> Gum showing noticeable effects of humidity, climate or hinging over more than half of the gum. The significance of gum disturbance in valuing a stamp in any of the Original Gum categories depends on the degree of disturbance, the rarity and normal gum condition of the issue and other variables affecting quality. For example, stamps issued in tropical climates are expected to have some		
1935 TO DATE	Scott Value for “Unused”					

## Covers

Minor nicks, short edge tears, flap tears and slight reduction at one side are normal conditions for 19th century envelopes. Folded letters should be expected to have at least one file fold. Light cleaning of covers and small mends along the edges are accepted forms of conservation. Unusual covers may have a common stamp with a slight crease or tiny tear. **These flaws exist in virtually all 19th century covers and are not always described. They are not grounds for return.**

## Catalogue Values and Estimates

Unless otherwise noted, the currently available *Scott Catalogue* values are quoted in dollars with a decimal point. Other catalogues are often used for foreign countries or specialized areas and are referred to by their common name: *Stanley Gibbons* (SG), *Dietz*, *American Air Mail Catalogue* (AAMC), *Michel*, *Zumstein*, *Facit*, etc. Estimates are indicated with an "E." and reflect our conservative valuation in dollars. Reserves will never exceed the low end of the estimate range; they will sometimes exceed Scott Catalogue value for stamps in Extremely Fine condition.

Because of certain pricing inconsistencies in the Scott Catalogue—for example, blocks that have no gum, the absence of premiums for Mint N.H. items, etc.—we cannot guarantee the accuracy of values quoted for multiples, specialized items and collection lots. We generally try to be conservative, but buyers may not return a lot because of a discrepancy in catalogue value due to Scott pricing inconsistencies.

## Symbols and Abbreviations (see chart for gum symbols)

⊞	Block	E	Essay	pmk.	Postmark	No.	Scott Catalogue Number
⊞	Cover	P	Proof	cds	Circular Datestamp	hs	Handstamp
FC	Fancy Cancel	TC	Trial Color Proof	var.	Variety	ms.	Manuscript

## INTRODUCTION



Dr. Vernon R. Morris Jr. M.D.

**S**TANLEY B. ASHBROOK, whose pioneering studies helped form the basis of modern scholarship in United States philately, used his 1941 *Stamp Specialist* article on the Saul Newbury collection as an opportunity to identify six essential elements of condition: 1) Color, 2) Impression (or Engraving), 3) Margins, 4) Color of Cancellation, 5) Placement of Cancellation and 6) Paper. Ashbrook lamented the widespread mis-use of the word *Superb*, writing "There is I suppose little question but what 'superb' is the most abused word in the philatelic vocabulary..." That was fifty years ago.

Today, the situation does not seem much different. In advertisements, sale catalogues and over the counter at dealers' booths, terms used to describe the highest grade of condition are zealously applied to stamps noticeably lacking in the attributes Ashbrook recognized.

The collection formed by Dr. Vernon R. Morris Jr. gives us the opportunity to re-examine the characteristics of truly superb condition. Every stamp in the Dr. Morris collection of used United States classics is fault-free—with the exception of a few unusual 1847 varieties or cancellations and only three other special items. Almost every stamp in the collection meets the highest grades of condition used in Siegel auction descriptions—Extremely Fine and Extremely Fine Gem. There are numerous stamps that meet every Ashbrook criteria for Superb, and many that are demonstrably the finest examples extant.

The Dr. Morris collection is rich in shade and color variations, plate varieties (including an outstanding group of 1847 double transfers) and unusual cancellations, such as numerals, colors and fancy designs. Almost all of the stamps in the collection are off cover. A few selected items are on piece to retain their valuable tying cancellation, and a few are on full cover (stamp only is illustrated).

This sale will take its place among Siegel auctions of the past in which United States collections of extraordinary quality were brought to market. The Newbury sales (1961-63), the Collection of a Distinguished Connoisseur (who was Marc Haas—October 10-11, 1972), Louis Grunin's 1861-1869 Issues (April 15, 1975), the Leonard Sheriff Collection (December 11-12, 1985), the "Winslow" Collection (December 15-17, 1988) and the Van Koppersmith Collection (March 22-23, 1995 and 1995 Rarities Sale) form part of an elite corps now joined by the Dr. Morris collection. Hereafter, stamps carrying the ex-Morris pedigree will be immediately recognizable as superb examples of their kind.

**This auction will be conducted without reserves.** Dr. Morris, who often paid five, ten or twenty times catalogue value in open competition to acquire the stamps he desired, was adamant that buyers be given a completely free market to bid competitively. Scott values are quoted for most of the stamps offered, but bidders should remember that the catalogue values are based on Very Fine condition. Stamps in Extremely Fine or Extremely Fine Gem condition, and those enhanced by factors such as a variety or unusual cancellation, always trade at multiples of the Scott value.

The Ashbrook article also contained words that we feel describe this auction: "There is always that elusive copy, pair, strip, block, or cover, whether color or cancellation, which if added, is like setting an additional jewel in an appropriate setting." We wish all of our clients success in acquiring new jewels.

FRIDAY EVENING, SEPTEMBER 26, 1997, AT 6:30 P.M.

THE VERNON R. MORRIS JR. M.D. COLLECTION OF  
CLASSIC UNITED STATES STAMPS OF  
EXTRAORDINARY QUALITY AND COLOR

POSTMASTERS' PROVISIONALS

MILLBURY, MASSACHUSETTS



1

- 1 **Millbury Mass., 5c Black on Bluish (7X1).** Two clear to ample margins, just into outer rim at top and left, clear impression on bright fresh paper, tied by neat "Milbury Ms. Mar. 23" circular datestamp in red on piece of folded cover (circa 1847), light folds in piece clear of stamp

A VERY FINE EXAMPLE OF THIS DISTINCTIVE POSTMASTER'S PROVISIONAL STAMP. THE ONLY SOUND STAMP AMONG THE NINE USED EXAMPLES RECORDED ON PIECE OR OFF COVER.

The 5c stamp issued by Millbury postmaster Asa Holman Waters is one of two United States provisionals with a portrait (George Washington in both cases). It is also unusual in that the designation "Post Office" appears without any town name, a characteristic in common with the Baltimore and Boscawen provisionals, and that the circular datestamp has the town name mis-spelled "Milbury" with one L.

This piece is illustrated and discussed in Philip T. Wall's article on the Millbury provisional (*Chronicle* 120 and 121), in which he records seventeen examples (an eighteenth stamp on cover has since been recorded). There are three stamps known on pieces, two of which are tied by the town marking. The stamps on the other two pieces are creased. All of the six used stamps off cover or piece have creases or more serious faults.

Backstamped W.H.C. (Warren H. Colson). With 1996 P.F. certificate ..... 27,500.00



2



3



4

- 2 **New Haven Conn., 5c Red on White, Blue Signature, 1874 Reprint (8XU1R).** Large margins, adhesive remnants on back, Extremely Fine, the scarce first reprint (30 made) ..... 550.00
- 3 **(Grieg's) City Despatch Post, New York N.Y., 3c Black on Grayish (40L1).** Large margins all around, full bold red "Free" in octagonal frame, Extremely Fine, choice example of the first adhesive stamp used in the United States (issued in February 1842), with 1996 P.F. certificate ..... 250.00
- 4 **U.S. City Despatch Post, New York N.Y., 3c Black on Light Blue (6LB3).** Large even margins, deep impression on beautiful bright shade of paper, vivid orange-red "U.S." in octagonal frame cancel centered on stamp, fresh and Extremely Fine, the first stamp printed and issued under authority of the U.S. government (August 1842), with 1994 P.F. certificate ..... 500.00

## NEW YORK, N.Y.



5



6

- 5 ★ **5c Black, "ACM" Initials (9X1).** Pos. 6, small part original gum, full margins all around, bright paper and Very Fine, examples with any part of original gum are rare, with 1996 P.F. certificates ..... 1,250.00
- 6 (★) **5c Black, "AC M" Initials, Pelure Paper (9X1a var).** Pos. 11, unused (no gum), deep impression with bold initials, Extremely Fine, a superb stamp and very rare on this ultra-thin pelure paper, ex Boker, Wall, Farrington, with 1992 P.F. certificate ..... 1,500.00



7

- 7 **5c Black, "ACM" Initials (9X1).** Full even margins, deep shade and fine impression, bold red "Paid" in arc cancels, fresh and Extremely Fine, with 1990 P.S.E. certificate ..... 500.00

- 8 **5c Black, "AC M" Initials (9X1a).** Large even margins, neatly cancelled by blue ms. and trace of red cds, Extremely Fine, with 1994 P.F. certificate ..... 550.00



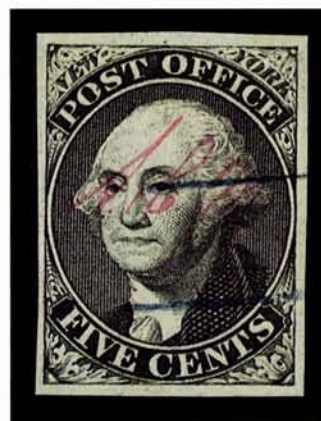
8



9

- 9 **5c Black, "A.C.M." Initials (9X1b).** Large margins, deep shade, bold red large cds with integral "5 Paid"—the New York foreign mail marking of this period—a beautiful and Extremely Fine stamp, with 1993 P.F. certificate ..... 800.00

- 10 **5c Black, "A.C.M." Initials, Pelure Paper (9X1b var).** Large to huge margins, neat blue ms. cancel, deep shade, Extremely Fine, a rare early printing on very thin pelure paper, ex Farrington, with 1992 P.F. certificate ..... 650.00



10

- 11 (★) **5c Black, Without Signature (9X1e).**  
 Unused (no gum), full even margins, beautiful proof-like impression on fresh paper  
 EXTREMELY FINE AND RARE UNUSED EXAMPLE OF THE NEW YORK PROVISIONAL WITHOUT SIGNATURE.  
 With 1996 P.F. certificate ..... 3,000.00



11



12

- 12 **5c Black, Without Signature (9X1e).** Large margins all around, intense shade and impression, lightly cancelled by red "Paid" in arc  
 EXTREMELY FINE GEM. ONE OF THE FINEST KNOWN USED EXAMPLES OF THE UNSIGNED STAMP. EXTREMELY RARE WITHOUT PEN CANCELLATION.  
 Ex Boker and Farrington. With 1994 P.F. certificate ..... 750.00



13

13

**5c Black on Blue, Without Signature (9X2d).** Pos. 4 with slight double transfer, large to huge margins, intense shade and impression on deeply blued paper, vivid red "Paid" in arc cancels

EXTREMELY FINE GEM. ONLY TWO EXAMPLES OF THE UNSIGNED PROVISIONAL ON BLUE PAPER ARE RECORDED, THIS BEING THE ONLY SOUND STAMP.

The Philatelic Foundation has certified seven New York provisional stamps on blue paper, of which only two are without signature. The other example of Scott 9X2d on record at the P.F. is creased. With 1992 P.F. certificates ..... 5,600.00

14

**5c Black on Gray, Without Signature (9X3b).** Pos. 4 with slight double transfer, large margins, distinctive "battleship gray" paper shade, red square grid cancel and trace of red cds

EXTREMELY FINE. THE ONLY EXAMPLE OF THE UNSIGNED NEW YORK PROVISIONAL STAMP ON GRAY PAPER CERTIFIED BY THE PHILATELIC FOUNDATION.

The gray paper was used late in the life of the New York provisional. The Philatelic Foundation has certified 16 gray paper stamps in total, of which only one is without the control initials. Examples on gray paper are usually cancelled by the red square grid. With 1996 P.F. certificate..... 6,000.00



14



—15—

- 15     5c New York Provisional Hussey Reprint, Sperati 5c New York and 10c 1847 Reproductions. Three, first with large margins (from the sheet of nine), Sperati 5c with red "Paid", 10c uncanceled, Very Fine group..... E. 500-750



16

- 16 ★田     Providence R.I., 5c & 10c Gray Black, Se-Tenant (10X1, 10X2). Complete sheet of twelve (eleven 5c, one 10c), original gum, Extremely Fine, with 1991 P.F. certificate..... 6,250.00
- 17 R     Providence R.I., 5c & 10c Gray Black, Se-Tenant, Reprint (10X1R, 10X2R). Complete sheet of twelve, letters on back, Extremely Fine, with 1992 P.F. certificate—*Not illustrated*..... 725.00



18

- 18 **Providence R.I., 5c Gray Black (10X1).** Full to large margins, ms. check mark cancel, tied by red circular datestamp on small piece, lifted to examine condition and hinged in place

EXTREMELY FINE AND RARE EXAMPLE OF THE PROVIDENCE PROVISIONAL TIED BY THE CIRCULAR DATESTAMP.

Virtually all known Providence provisionals are not cancelled or tied by the town datestamp. Scott value for an example tied by the town marking on a full cover is \$20,000. Ex Caspary. Realized \$1,200 in our 500th Sale more than 20 years ago. With 1996 P.F. certificate ..... 1,500.00



19

- 19 **St. Louis Mo., 10c Black on Greenish (11X2).** Pos. 4, large even margins all around, neatly cancelled by red town cds, fine impression on rich greenish paper

EXTREMELY FINE GEM. SOUND EXAMPLES OF THE ST. LOUIS BEAR PROVISIONALS CANCELLED ONLY BY THE RED CIRCULAR DATESTAMP (WITHOUT THE USUAL PEN CANCELLATION) ARE EXCEEDINGLY RARE. THIS SUPERB STAMP IS AMONG THE FINEST OF ALL RECORDED ST. LOUIS BEARS.

Backstamped W.H.C. (Warren H. Colson). With 1994 P.F. certificate. The Scott Catalogue states "Values for used off-cover stamps are for pen-cancelled copies. Handstamp cancelled copies sell for much more." ..... 2,500.00

# 5-CENT AND 10-CENT 1847 ISSUE



20

- 20 **5c Brown, 10c Black (1, 2).** Each has ample to large margins except 5c close at top left, tied by red grids on part of January 1849 folded letter from New Orleans to Blackburn, England, sent during the restored rate period (originally with two 10c and one 5c stamps, overpaying 24c rate), shilling due handstamp on face, most of blue Blackburn backstamp

A VERY FINE AND COLORFUL PIECE BEARING BOTH OF THE 1847 FIRST GENERAL ISSUES.

Covers or pieces combining the 5c and 10c 1847 stamps are extremely rare. With 1973 P.F. certificate and 1996 Calvet M. Hahn analysis..... E. 4,000-5,000

## THE "ASHBROOK RECONSTRUCTION"



21

- 21 田 **5c Red Brown (1).** Reconstructed block of six from vertical strips of Pos. 79/89/99R and 80/90/100R showing Double Transfers A (Pos. 80) and B (Pos. 90), mostly large margins all around, rich Deep Brown color and impression from the first printing, each with vivid red grid cancel, top two stamps faintly creased

THE UNIQUE "ASHBROOK RECONSTRUCTION", ORIGINALLY TWO VERTICAL STRIPS NOW FORMING ONE EXTREMELY FINE AND INCOMPARABLE SHOWPIECE.

The left strip was owned by Stanley B. Ashbrook. In 1918, while viewing the Judge Emerson collection, he realized that a similar strip owned by the judge had once adjoined his own. The reconstructed block is illustrated in Brookman, Volume 1, p. 43. Probably fewer than a half-dozen vertical strips are available on or off cover.

Ex Emerson, Ashbrook and Newbury. With 1980 Freidl and 1983 P.F. certificates. 1996 Calvet M. Hahn analysis accompanies..... E. 25,000-35,000



22

22 **5c Red Brown (1).** Position 91L with enormous bottom left corner sheet margin—10mm at left and 11mm at bottom—distinctive Brownish Orange shade of 5th Printing (according to Hahn analysis) on deeply blued paper, blue grid cancel, slight dry print typical of corner positions where paper dried first, pre-print vertical crease and a few tiny toned specks

EXTREMELY FINE APPEARANCE AND ONE OF THE FEW FULL CORNER MARGIN EXAMPLES OF THE 5-CENT 1847 IN EXISTENCE.

With 1996 Calvet M. Hahn analysis..... 550.00



23



24



25



26

- 23 **5c Red Brown (1).** Large margins all around, beautiful deep rich color and early impression, clear strike of red square grid cancel, Extremely Fine Gem, with 1996 P.F. certificate..... 550.00
- 24 **5c Red Brown (1).** Large even margins, neat red square grid cancel, Extremely Fine and choice, ex Gore (as Chocolate Brown), with 1990 P.F. certificate..... 550.00
- 25 **5c Red Brown (1).** Full to large margins, beautiful warm reddish shade, blue grid cancel, Extremely Fine, with 1996 P.F. certificate ..... 575.00
- 26 **5c Dark Brown (1a).** Large to huge margins, wonderfully dark shade, red grid cancel, Extremely Fine, with 1996 P.F. certificate ..... 575.00



27



28



29

- 27 **5c Brown (1).** Large even margins, dark shade and early impression, blue Philadelphia "Paid" in oval cancel, Extremely Fine, with 1991 P.F. certificate ..... 600.00
- 28 **5c Blackish Brown (1a).** Vertical pair in the distinctive and scarce Blackish Brown shade, Top stamp has full to large margins, bottom ample to large with faint crease, red grids, Fine-Very Fine, very rare multiple of this shade, with 1996 P.F. certificate .... 1,200.00
- 29 **5c Grayish Brown (1a).** Large even margins, fine impression and distinctive shade, vibrant socked-on-the-nose "paint" red grid cancel of Mobile, Extremely Fine Gem, a marvelous stamp, ex Caspary, with 1992 P.F. certificate ..... 600.00



31



32



33



34



35



36



37



38



39



40



30

30

**5c Red Orange (1c).** Three large margins, ample to full at top, bright shade of the true Red Orange, **red** grid cancels, Very Fine, sound examples of the Red Orange with full margins are extremely rare, ex Amonette, with 1997 P.F. certificate for the folded letter from which this stamp was removed (cover accompanies) ..... 4,000.00

- 31 **5c Red Brown (1).** Dark shade (actually a Scott 1a Dark Brown, but classified as a dark shade of the Red Brown by P.F.), mostly large margins, touched at bottom, tied by **blue numeral "2" in double-line circle** cancel of Philadelphia, Very Fine, ex Stollnitz, with 1996 P.F. certificate ..... 650.00
- 32 **5c Brown (1).** Left sheet margin, full to large margins on other sides, unusually pale shade, bold **red "5" numeral** cancel, Extremely Fine, ex Emerson, with 1991 P.F. certificate ..... 650.00
- 33 **5c Red Brown (1).** Ample margins to touching, bold **green numeral "5" in frame** cancel of Princeton N.J., Fine, choice strike, very rare, ex Stollnitz, with 1996 P.F. certificate ... 2,300.00
- 34 **5c Red Brown (1).** Left sheet margin, full to ample margins on other sides, tied by vivid **red "Burlington Vt. 17 Feb. 5"** integral rate cds on piece, stamp on beautifully contrasting blue paper, Extremely Fine, with 1996 P.F. certificate ..... 550.00
- 35 **5c Red Brown (1).** Three large margins, ample at top, bold **red "6" numeral in circle** cancel struck twice, tiny creases, otherwise Very Fine, scarce, ex Stollnitz, with 1996 P.F. certificate ..... 650.00
- 36 **5c Red Brown (1).** Three large margins, touched at bottom, **blue numeral "12" in double-line circle** cancel of Philadelphia, Fine stamp and choice strike of this cancel, which is rare on the 5c 1847, with 1996 P.F. certificate ..... 675.00
- 37 **5c Red Brown (1).** Large even margins, rich color, tied by beautiful bold **blue "Baltimore Rail Road Aug. 28"** cds on orange piece, Extremely Fine Gem, ex Durham, with 1996 P.F. certificate ..... 775.00
- 38 **5c Red Brown (1).** Large even margins, fine impression and dark shade, part of **red Philadelphia "RAIL(ROAD)" straightline**, Extremely Fine, with 1994 P.F. certificate ..... 750.00
- 39 **5c Dark Brown (1a).** Large to huge margins, deep rich color, red square grid and part of **red "Colonies & C. Art. 13"** framed transatlantic mail accountancy handstamp, Extremely Fine, this marking is rarely found cancelling the stamp, ex Stollnitz, with 1996 P.F. certificate ..... 550.00
- 40 **5c Red Brown (1).** Large margins all around, bold **Boston large "Paid" grid applied after demonetization** and part of red cds, Extremely Fine, one of the finest stamps recorded with a post-demonetization cancellation, ex Stollnitz, with 1996 P.F. certificate ..... 550.00



41

41

**5c Red Brown, Double Transfer Ty. B (1-B).** Pos. 90R1, right sheet margin, unusual **red rectangular dotted grid** cancel, faint crease and faint bleaching described as "light staining" on certificate, these very minor flaws not detracting from Extremely Fine appearance, rare with fancy cancel (among those recently listed on the 1847 Issue in the *Chronicle*), ex Stollnitz, with 1996 P.F. certificate .... 675.00



42

42

**5c Orange Brown, Double Transfer Ty. C (1-C).** Left stamp in horizontal pair, full margins, warm shade, blue Philadelphia cds, right stamp has faint crease, Very Fine, extremely rare—one of the best of only 13 Ty. C double transfer stamps recorded, including two pairs (see Wagshal census, *Chronicle* 167), ex Caspary, Rust, Stollnitz, with 1996 P.F. certificate ..... 3,100.00



43

43

**5c Red Brown, Double Transfer Ty. D (1-D).** Full to large margins, red grid cancel, vertical crease, otherwise Very Fine, very rare double transfer from the re-worked plate, fewer than fifteen recorded, ex Stollnitz, with 1996 P.F. certificate ..... 2,500.00

44 ☒

**5c Red Brown, Double Transfer Ty. E (1-E).** Two singles tied by red "New-York Jan. 6" cds on brown cover, the lefthand stamp Ty. E double transfer, margins all around, Very Fine, ex Stollnitz, with 1996 P.F. certificate ..... E. 500-750



44 Detail



45



46



47

- 45 **10c Black (2).** Large bottom sheet margin and full to large margins on other sides, blue Troy N.Y. cds and part of ms. at lower left, horizontal crease entirely in sheet margin, Extremely Fine, ex Mayer, Stollnitz, with 1996 P.F. certificate ..... 1,350.00
- 46 **10c Black (2).** Large to huge margins, neatly cancelled by blue Philadelphia cds with "10" integral rate, Extremely Fine, with 1995 P.F. certificate ..... 1,350.00
- 47 **10c Black (2).** Large margins all around, fully struck **blue Philadelphia "Paid"** in frame cancel, faint toned spot in top margin, still Extremely Fine, ex Hessel, Stollnitz, with 1996 P.F. certificate ..... 1,400.00



48



49



50



51 Detail

- 48 **10c Black (2).** Three huge margins, full at top, beautiful shade and impression, cancelled by bright **red** Cincinnati cds, Extremely Fine and choice, much scarcer with town cds, with 1988 P.F. certificate..... 1,300.00
- 49 **10c Black (2).** Full to large margins, fine impression, full perfect strike of **red "19" transatlantic mail credit handstamp**, tiny thin spot at bottom left, Extremely Fine appearance, rare use of credit marking as canceller, ex Stollnitz, with 1996 P.F. certificate ..... 1,550.00
- 50 **10c Black (2).** Full margins all around, full and clear strike of **red "38" transatlantic mail credit handstamp**, double 19c credit, small corner crease, tiny closed tear, Very Fine appearance, extremely rare, if not unique, cancel on the 10c 1847, ex Stollnitz, with 1996 P.F. certificate ..... 1,550.00
- 51 **10c Black (2).** Large margins to just touching, fine impression, tied by bold **red "20" in circle handstamp** on piece, Very Fine, extremely rare and striking piece, ex Matthies, Stollnitz, with 1996 P.F. certificate ..... 1,550.00



52



53



54

- 52     **10c Black (2).** Large margins all around, fine impression, cancelled by clear strike of **New Brunswick (B.N.A.) oval grid**, Extremely Fine Gem, extremely rare and probably unique on the 10c 1847, ex Amonette, with 1997 P.F. certificate ..... 2,550.00
- 53     **10c Black, Remarkable Inking Variety Resembling a Double Impression (2 var).** Full margins except touched at bottom left, intense over-inking creates the illusion of a double impression, bold red "10" cancel, closed tear at top, Very Fine and striking appearance, believed to be unique, illustrated in Brookman, Vol. 1 (p. 71), ex Rust, Stollnitz, with 1996 P.F. certificate ..... 2,000.00
- 54     **10c Black, Double Transfer Ty. C (2).** Pos. 2R, ample to large margins, fine impression, bold red "19" **credit handstamp** cancel, minor thin spots, Very Fine appearance, ex Stollnitz, with 1996 P.F. certificate ..... 2,100.00



55

- 55     **10c Black, Double Transfer Ty. B & Ty. D (2-B, 2-D).** Pos. 31/41R, left margin vertical pair, top stamp showing double transfer in "Post Office", clear to huge margins, blue grids, both stamps faintly creased, Fine-Very Fine appearance, any vertical pairs of the 10c 1847 are very rare, this combination of double transfers has to be a great rarity (and possibly unique), ex Sweet, Stollnitz, with 1996 P.F. certificate ..... 4,150.00

# 1851-56 ISSUE

## ONE-CENT TYPE I-IB COMBINATION PAIR



56

56

**1c Blue, Ty. I, Ib (5, 5A).** Position 6R1E (one of the two best examples of Type Ib on the plate) and 7R1E (the only Type I position on any of the imperforate plates), a horizontal combination pair with full to large margins, beautiful bright Plate 1 Early shade and fine impression, each stamp cancelled by two criss-crossing strikes of vivid red "PAID", a few tiny faint surface scrapes in edge of top margin well clear of design

EXTREMELY FINE. THE ONLY RECORDED EXAMPLE OF THE RARE ONE-CENT 1851 TYPE I CANCELLED BY A RED "PAID". WIDELY REGARDED AS THE FINEST OFF-COVER MULTIPLE CONTAINING TYPE I.

This pair was originally part of a strip of three comprising Positions 6-7-8R1E, used on a cover postmarked at Alexandria, Louisiana, and addressed to Buchannon Carroll & Co. (later known as Carroll, Hoy & Co.) in New Orleans. A photograph and listing of the original cover is found in the catalogue for the May 26-28, 1943, auction held by Harmer, Rooke & Co., which comprised Part VIII of the Col. Edward H. R. Green collection. This eighth sale of the Green estate actually comprised the Storrow collection of United States, which Green acquired intact, providing him with a large number of important classic stamps and covers. The strip was subsequently soaked from the cover and the righthand stamp was removed.

Out of the many 1c 1851 stamps extant, it is estimated that between 100 and 150 examples of Type I (Pos. 7R1E) have survived—only 20 sound examples have been certified by The Philatelic Foundation and most of these do not have four margins. This combination pair of both rare types is the only example of Type I cancelled by a red "Paid".

Ex Storrow, Col. Green, Newbury and Ishikawa. With 1993 P.F. certificate. Scott value for combination pair (without premium for cancellation)..... 46,000.00



57

- 57      **1c Blue, Ty. II (7).** Pos. 89L1E, large to huge margins incl. part of adjoining stamp at right, intense shade and impression, vivid **red** New York cds and part of **red French transit**, Extremely Fine Gem, ex Caspary (as a pair), Koppersmith, with 1995 P.F. certificate..... 145.00



58

- 58      **1c Blue, Ty. II (7).** Pos. 20R1E, large to huge margins incl. part of right sheet margin and bits of three surrounding stamps, bright shade, **blue** Charleston cds, Extremely Fine Gem, with 1996 P.F. certificate..... 142.00



59



60



61



62



63



64



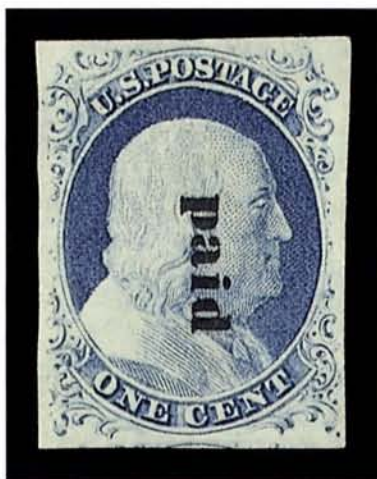
65

- 59 **1c Blue, Ty. II (7).** Full margins, beautiful deep shade and fine impression, neat town cds, Very Fine and choice, with 1984 A.P.S. certificate ..... 140.00
- 60 **1c Blue, Ty. II (7).** Full margins, rich color, perfectly struck “1 ct” in frame, carrier rate handstamp of St. Louis, Extremely Fine, very scarce, with 1990 P.F. certificate. 155.00
- 61 **1c Blue, Ty. II (7).** Ample margins, bright shade, part of red “TOO LATE” straightline cancel, ms. stroke, fresh and Very Fine, extremely rare cancellation, with 1991 P.F. certificate ..... E. 400-500
- 62 **1c Blue, Ty. II (7).** Pos. 86L from **Plate 3**, clear to ample margins, striking deep shade, vivid red **New York carrier** cds, Very Fine, the scarcest of the 1c imperforate plates, with 1996 P.F. certificate ..... 400.00
- 63 **1c Blue, Ty. II (7).** **Plate 3**, clear to ample margins, beautiful deep Prussian Blue shade, Boston cds, Very Fine, with 1996 P.F. certificate ..... 400.00
- 64 **1c Blue, Ty. II (7).** Margins all around, bright shade, red **New York carrier** cds, Very Fine, ex Koppersmith, with 1986 P.F. certificate ..... 165.00
- 65 **1c Blue, Ty. II (7).** Full even margins, bright shade, blue “**Balto. Paid**” double-circle cancel, Very Fine, with 1996 P.F. certificate ..... 147.00



66

- 66 **1c Blue, Ty. IIIa (8A).** Pos. 58L4, full to large margins, deep rich Plate 4 color, **red New York carrier cds** with "2" integral rate, fresh and Extremely Fine, imperforate Plate 4 stamps are very scarce because most of the supply was perforated soon after printing, ex Newbury, with 1996 P.F. certificate ..... 1,035.00



67

- 67 **1c Blue, Ty. IV (9).** Large margins all around, **printed "paid" pre-cancel**, in lower case type, fresh and Extremely Fine, **the finest example of this rare pre-cancel on record** at The Philatelic Foundation (six are recorded—three of each type—and this is the only stamp with four large margins among them), with 1991 P.F. certificate ..... 2,125.00



68



69



70

- 68 **1c Blue, Ty. IV (9).** Pos. 5L1L, gigantic margins including part of top sheet margin and bits of all adjoining stamps, bright color, lightly struck red grid cancel, Extremely Fine Gem, with 1988 P.F. certificate ..... 135.00
- 69 **1c Blue, Ty. IV (9).** Large margins, deep shade, **blue** grid cancel, Extremely Fine, with 1986 P.F. certificate ..... 127.00
- 70 **1c Blue, Ty. IV (9).** Pos. 52L1L, **recut twice at bottom and twice at top**, only two positions recut as such, large to huge margins, neat face-free town cancel, Extremely Fine, very scarce, ex Koppersmith, with 1995 P.F. certificate ..... 220.00



71

- 71 **1c Blue, Ty. IV (9).** Pos. 89R1L, **bottom frameline broken** variety, three large margins including part of stamp at right, clear at top, lightly cancelled by town cds, Very Fine, rare plate variety, with 1996 P.F. certificate ..... 275.00

- 72 **1c Blue, Ty. IV (9).** Pos. 71L1L, **triple transfer, one inverted**, large margins, clear part strike of New York cds (Ocean Mail type), Extremely Fine, with 1996 P.F. certificate ..... 175.00



72

## NO RESERVES

Please remember that this auction will be conducted without reserves.



73 Detail



74 Detail



75



76



77



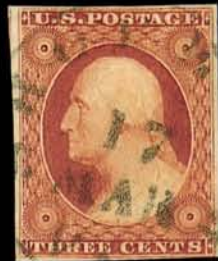
78



79



80



81



82



83



84



85



86



87

- 73 ☒ **3c Orange Brown (10).** Pos. 41L5E showing large margin at left with **imprint and no plate number**, full to barely in other sides, deep rich color, tied by small "Paid" in grid on 1851 folded cover, red "Boston 3cts 16 Aug." cds, minor stain in address, Very Fine, on-cover examples of this position confirming the absence of a plate number in the early state are very rare, ex Chase ..... E. 500-750
- 74 ☒ **3c Copper Brown (10 var).** Plate 5 Early, large to gigantic margins including right sheet margin with **centerline** and parts of three adjoining stamps, incredibly intense color and superb impression, tied by bold blue "Woonsocket R.I. Aug. 19" cds on small white cover to Worcester Mass., Extremely Fine, a magnificent stamp and choice cover, ex Grunin, with 1987 P.F. certificate ..... E. 600-800
- 75 **3c Orange Brown (10).** Pos. 1R5E, gigantic margins including top sheet margin and **guideline at left with part of stamp from adjoining pane**, just shaving frameline at bottom right, Memphis cds, Very Fine showpiece, straddle copies from any Orange Brown plate are enormously rare, ex Amonette..... E. 500-750
- 76 **3c Orange Brown (10).** Pos. 71L1E, full margins to barely touching at bottom left, **magenta** grid, probably Hartford Conn., Very Fine, magenta cancel unlisted in Scott, ex Amonette, with 1997 P.F. certificate..... 75.00
- 77 **3c Orange Brown (10).** Pos. 74L1i, showing **triple transfer**, close to large margins, small red Boston "Paid" grid, Fine and scarce, ex Amonette, with 1997 P.F. certificate..... 310.00
- 78 **3c Orange Brown (10).** Pos. 26L1E, margins all around, deep shade, small red Boston "Paid" grid, Very Fine, ex Amonette, with 1997 P.F. certificate ..... 85.00
- 79 **3c Orange Brown (10).** Pos. 80L2E, clear to ample margins, rich color, full strike of small Boston "Paid" in grid, Very Fine, with 1991 P.F. certificate..... 80.00
- 80 **3c Deep Orange Brown (10).** Pos. 78L2E, full margins all around, fiery shade, blue Philadelphia cds, Extremely Fine Gem, with 1991 P.F. certificate ..... 77.00
- 81 **3c Orange Brown (10).** Pos. 79L5E, large margins to just clear of frameline at bottom right, Shoreham Vt. cds in **green**, Very Fine, ex Amonette, with 1997 P.F. certificate..... 250.00
- 82 **3c Orange Brown (10).** Pos. 55L5E, large margins, **blue cross** cork cancel, Extremely Fine, ex Amonette, with 1997 P.F. certificate..... 75.00
- 83 **3c Orange Brown, Part-India Paper (10 var).** Pos. 14R1E, mostly large margins, **greenish blue** grid cancel, Very Fine, rare with a cancel indicating use outside of Boston, ex Amonette, with 1997 P.F. certificate ..... 377.00
- 84 **3c Orange Brown (10).** Pos. 99R2E, large margins, New York cds with integral **"1Ct."**, Extremely Fine, rare cancel on the 3c, ex Amonette, with 1997 P.F. certificate ... 75.00
- 85 **3c Orange Brown (10).** Pos. 18L5E, large margins, rich color, sharply struck Taunton Ms. cds with integral **"3cts"** rate, Extremely Fine, ex Amonette, with 1997 P.F. certificate ..... 75.00
- 86 **3c Orange Brown (10).** Pos. 56L1i, large margins, **blue "Paid 3"** in circle, Very Fine, ex Amonette, with 1997 P.F. certificate ..... E. 150-200
- 87 **3c Orange Brown (10).** Pos. 51R1E, full to huge margins including selva showing guideline at left, light blue cds and bold strike of numeral **"6"** hs, Very Fine, ex Amonette, with 1997 P.F. certificate ..... E. 300-400



88



89 Detail



90 Detail



91 Detail



92



93



94



95



96



97

- 88      **3c Orange Brown (10).** Horizontal pair, large margins to in at right, incredibly intense color, "STEAM/SHIP" two-line handstamp, light ms. offset on back, Fine-Very Fine and striking, ex Amonette, with 1997 P.F. certificate..... 395.00
- 89    ☒      **3c Orange Brown (10).** Pos. 33L2E, margins all around, rich color, cancelled by bold strike of blue "Way 6" in circle on Aug. 1851 folded letter from Richmond to Lynchburg, cover with central vertical file fold, Very Fine, this marking was applied to mail traveling on the James River & Kanawha Canal, ex Amonette..... E. 300-400
- 90    ☒      **3c Brownish Carmine (11).** Pos. 51L5L showing **part imprint and plate no. "5"**, large to huge margins, rich color, tied by "Richmond Ill. Jan. 29" cds on cover, some pen notes erased with bleach, stamp is Extremely Fine, probably the finest known used example of this position, ex Amonette ..... E. 300-400
- 91    ☒      **3c Claret, Plate Crack (11).** Pos. 94L5L showing the major crack, full margins, tied by cds on cover to Carthage Ill., Very Fine, ex Amonette..... E. 200-300
- 92      **3c Yellowish Rose Red (11).** Pos. 1R5L, extra large to gigantic margins with guideline at left, attractive 1856 shade and impression, Extremely Fine Gem, ex Amonette, with 1997 P.F. certificate ..... 10.00
- 93      **3c Claret (11).** Large to huge margins including part of adjoining stamp at right, dark shade, grid cancel, Extremely Fine, with 1992 P.F. certificate ..... 15.00
- 94      **3c Brownish Carmine (11).** Pos. 95L1L, **five lines recut in upper left triangle**, large margins, blue cds, Extremely Fine, ex Amonette, with 1997 P.F. certificate ..... 100.00
- 95      **3c Dull Red (11).** Large margins, bright color, **green** town cds, Extremely Fine, with 1986 P.F. certificate..... 110.00
- 96      **3c Brownish Carmine (11).** Pos. 46-47R6, horizontal pair, right stamp showing **recut bust**, large to huge margins, beautiful rich color, blue cds, left stamp creased, recut stamp is an Extremely Fine Gem, ex Amonette, with 1997 P.F. certificate ..... 150.00
- 97      **3c Rose Red (11).** Pos. 77-78L2L, horizontal pair, large margins, mostly clear "STEAM/SHIP" two-line handstamp, Very Fine, ex Amonette, with 1997 P.F. certificate.. 110.00



98

98 **5c Red Brown (12).** Position 100L, bottom right stamp of left pane with full corner sheet margin and guideline, large margins on other sides, rich color, cancelled by two light strikes of New Orleans circular datestamp

EXTREMELY FINE. ONE OF TWO RECORDED FULL CORNER COPIES (THE OTHER IS ON COVER) AND WIDELY REGARDED AS THE MOST OUTSTANDING SINGLE USED EXAMPLE OF THE 5-CENT 1856.

Illustrated in Henry W. Hill book on the 5c 1856 (p. 11). Ex Ishikawa. With 1993 P.F. certificate..... E. 10,000-15,000



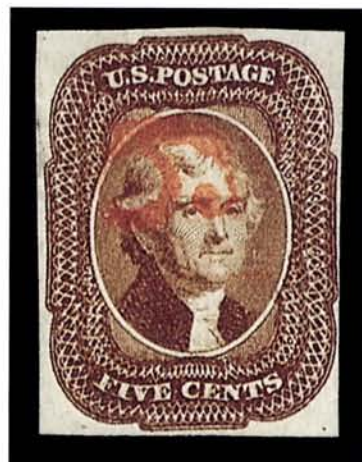
99

99

**5c Dark Red Brown (12).** Full margins all around, cancelled by bold **blue** Bethlehem Pa. circular datestamp, rich color, Extremely Fine, colored town markings on the 5c 1856 are exceedingly rare—probably fewer than 20 copies cancelled in blue exist—ex Amonette, with 1997 P.F. certificate ..... 1,125.00

100

**5c Red Brown (12).** Clear to ample margins, rich color, full clear strike of **red** “6” numeral cancel, Very Fine, a numeral on the 5c 1856 is unlisted in Scott, this is the only recorded example on or off cover with the “6” numeral on the stamp, ex Newbury, with 1996 P.F. certificate..... E. 1,500-2,000



100



101

101

**5c Red Brown (12).** Large margins, proof-like impression, **red** New York credit datestamp and part of black town cds, Extremely Fine and choice, ex Ishikawa, with 1993 P.F. certificate ..... 1,175.00



102



103



104



105



106



107



108



109

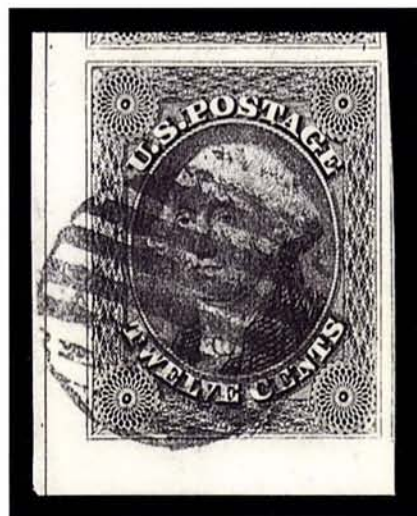
- 102     **10c Green, Ty. I (13).** Large margins all around, bold **blue Negative “3”** in circle cancel, Extremely Fine, an extremely rare and unusual cancel on the 10c 1855, ex Koppersmith, with 1995 P.F. certificate ..... 775.00
- 103     **10c Green, Ty. I (13).** Three full margins, clear at bottom, dark shade, bold **six-ring Canadian target** cancel (certificate declines opinion on origin), Very Fine, ex Koppersmith, with 1996 P.F. certificate ..... 750.00
- 104     **10c Green, Ty. II (14).** Pos. 10R1, full to huge margins including top right corner sheet margin, dark shade, town cds, Extremely Fine, ex Koppersmith, with 1995 P.F. certificate..... 225.00
- 105     **10c Green, Ty. II (14).** Large margins, rich color, two strikes of **red “PAID” handstamp**, Extremely Fine, ex Grunin, with 1997 P.F. certificate ..... 275.00
- 106     **10c Green, Ty. II (14).** Full to large margins, wonderful rich color, bright **orange-red** grid cancel, Very Fine and choice, with 1986 P.F. certificate ..... 250.00
- 107     **10c Green, Ty. II (14).** Clear to ample margins, unusually dark shade, bold **“7” numeral** cancel, Very Fine, rare cancel, with 1996 P.F. certificate ..... 275.00
- 108     **10c Green, Ty. III (15).** Mammoth margins all around with parts of three adjoining stamps, rich yellowish green shade, neat **red** grid cancel, Extremely Fine Gem, a beautiful stamp, ex Hindes, with 1992 P.F. certificate..... 250.00
- 109     **10c Green, Ty. III (15).** Large even margins all around, deep shade and proof-like impression, vivid **red** grid cancel and large part of vibrant **red “Aachen Franco” German transit**, Extremely Fine Gem, colorful and scarce with these markings, with 1986 P.F. certificate..... 250.00



110

- 110      **10c Green, Ty. IV (16).** Position 55L1, recut at bottom, large to huge margins, **red** grid cancel virtually face free, rich color and Extremely Fine, with 1992 P.F. certificate ..... 1,650.00

- 111      **12c Black (17).** Position 91R, full bottom left corner sheet margin with guideline at left, huge margins all around including part of adjoining stamp above, bold grid cancel, Extremely Fine Gem, a magnificent 12c 1851 stamp, with 1997 P.F. certificate ..... 325.00



111



112

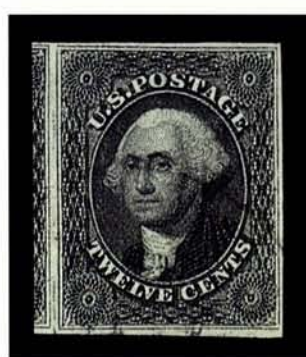
- 112      **12c Black (17).** Top sheet margin and unbelievably huge margins on other sides with full framelines of three surrounding stamps, neat face-free grid cancels and trace of red datestamp at lower left, stitch watermark variety, Extremely Fine Gem, truly superb and one of the finest used single 12c 1851's on record, ex Lehman, Haas, with 1993 P.F. certificate ..... 325.00



113



114



115

- 113     **12c Black (17).** Large to huge margins, intense shade and impression, black town cds and bright red "3" credit handstamp, Extremely Fine, with 1996 P.F. certificate ..... 325.00
- 114     **12c Black (17).** Large to huge margins including part of adjoining stamp at right, lightly cancelled by blue town cds, deep shade and impression, Extremely Fine Gem, with 1997 P.F. certificate ..... 330.00
- 115     **12c Black (17 var).** Recut at bottom left corner, large to huge margins with part of adjoining stamp at left, jet-black shade and impression, lightly cancelled by town cds, Extremely Fine, with 1996 P.F. certificate ..... 400.00

## 1857-60 ISSUE



116



117



118

- 116     **1c Blue, Ty. I (18).** Plate 12, exceptionally well-centered, beautiful bright shade and fine impression, full socked-on-the-nose strike of "FREE" in oval cancel, Extremely Fine Gem, this cancel is very rare on the 1c 1857 (unlisted in Scott), with 1995 P.F. certificate ..... 450.00
- 117     **1c Blue, Ty. I (18).** Plate 12, wide margins and perfectly centered, incredibly deep shade with strong blue plate wash, contrasting vivid red New York carrier cds, Extremely Fine Gem, ex T. Charlton Henry, Grunin with 1991 P.F. certificate ..... 535.00
- 118     **1c Blue, Ty. I (18).** Pos. 25L12, double transfer, well-centered, bright shade, lightly cancelled by town cds, Very Fine, with 1995 P.F. certificate ..... 500.00



119

119      **1c Blue, Ty. Ia (19).** Position 99R4, magnificent centering with perfs clear of full plumes at bottom, intense Plate 4 shade, target cancel

EXTREMELY FINE. ONE OF THE FEW EXISTING PERFORATED TYPE IA STAMPS IN SOUND CONDITION WITH THE PERFORATIONS CLEAR OF THE DESIGN.

This is not a wide-spacing Type Ia stamp, which makes the fact that the perforations are clear of the design even more remarkable. The Scott Catalogue footnote to No. 19 states "Copies of this stamp exist with perforations not touching the design at any point. Such copies command very high prices."

Ex Ishikawa. With 1993 P.F. certificate ..... 4,000.00



120

- 120 **1c Blue, Ty. II (20).** Plate 12, perfectly centered, handsome rich color, vivid **red** New York carrier cds, Extremely Fine Gem, a spectacular stamp and very scarce in this condition, with 1995 P.F. certificate..... 220.00

- 121 **1c Blue, Ty. III (21).** Plate 4, magnificent centering and margins, intense shade and impression, cancelled by light **blue** segmented cork, Extremely Fine, a remarkably choice Type III stamp with wide breaks at top and bottom, with 1989 P.F. certificate ..... 1,625.00



121



122

- 122 **1c Blue, Ty. IIIa (22).** Plate 12, beautiful centering and bright shade, **blue** town cds, Extremely Fine, with 1992 P.F. certificate ..... 355.00

- 123 **1c Blue, Ty. IV (23).** Perfectly centered, unusually fine impression, face-free **red** New York carrier cds, Extremely Fine Gem, this early perforated issue, produced from the supply of Plate 1 Late imperforate sheets, is notorious among collectors for its poor centering—perforated Type IV stamps in this superb condition are extremely rare, ex Emerson, with 1994 P.F. certificate..... 540.00



123



- 124 1c Blue, Ty. V (24). Wide margins and perfect centering, bold red grid cancel, Extremely Fine Gem, with 1991 P.F. certificate ..... 40.00
- 125 1c Blue, Ty. V (24). Plate 5, well-centered, town cds, Very Fine, scarce plate that produced both the Type V and Type Va perforated 1c stamp, with 1995 P.F. certificate ..... 105.00
- 126 1c Blue, Ty. V (24). Horizontal strip of three, beautifully centered, two clear strikes of "STEAMBOAT" straightline, Extremely Fine and choice, with 1996 P.F. certificate ..... 285.00
- 127 1c Blue, Ty. Va (24 var). Pos. 99L5, well-centered, lightly cancelled, Very Fine, Type Va is the scarce sub-type of Type V, with 1996 P.F. certificate ..... 105.00
- 128 1c Blue, Ty. Va (24 var). Pos. 2R5, wide margins, dark shade, town cds, Very Fine, with 1997 P.F. certificate ..... 105.00
- 129 3c Rose, Ty. I (25). Rich color, well-centered, town cds, Very Fine ..... 65.00
- 130 3c Dull Red, Ty. II (26). Remarkable margins and centering, deep rich color, New York cds, Extremely Fine Gem, with 1991 P.F. certificate ..... 5.00
- 131 3c Dull Red, Ty. II (26). Well-centered, rich color, "10" numeral cancel, Extremely Fine ..... 7.00
- 132 3c Dull Red, Ty. IIa (26a). Cancelled by the Hebron O. cds in bright green, Very Fine, rare color cancel on the Ty. IIa, ex Amonette, with 1997 P.F. certificate ..... 220.00
- 133 3c Dull Red, Ty. IIa (26a). Well-centered, bright shade, blue town cds, Extremely Fine, with 1991 P.F. certificate ..... 47.00
- 134 3c Dull Red, Ty. IIa (26a). Pos. 99R11L showing triple transfer, three wide margins, red grid cancel, Very Fine, scarce, ex Amonette, with 1997 P.F. certificate ..... 260.00



135

- 135      **5c Brick Red (27).** Perfectly centered with perfs clear all around, bright shade, lightly cancelled, Extremely Fine Gem, with 1989 P.F. certificate ..... 900.00

- 136      **5c Brick Red (27).** Beautiful centering, lightly cancelled by **blue** town cds, Extremely Fine, scarce colored cancel on Brick Red, with 1995 P.F. certificate ..... 925.00



136



137

- 137      **5c Red Brown (28).** Intense shade and wonderful impression—should be classified as a Scott 28b, Bright Red Brown, almost Indian Red (despite certificate)—lightly cancelled by black town cds and vivid **red transatlantic credit** cds, extra wide margins, Extremely Fine Gem, with 1997 P.F. certificate ..... 425.00

- 138      **5c Red Brown (28).** Fiery red color, well-centered, "PAID" cancel perfectly struck completely on stamp, Extremely Fine, with 1991 P.F. certificate.. 435.00



138



139

- 139      **5c Indian Red (28A).** Intense shade and richly-inked impression filling every line with fiery red color, perfectly centered with unusually wide margins at both top and bottom, neat New Orleans circular datestamp cancel

EXTREMELY FINE GEM EXAMPLE OF THE INDIAN RED AT THE MOST EXTREME END OF THE SPECTRUM. A GREAT RARITY IN THIS SUPERB CONDITION.

With 1996 P.F. certificate..... 2,550.00



140



141

- 140     **5c Brown (29).** Beautiful centering, dark shade and proof-like impression, faintly cancelled leaving face free, Extremely Fine, with 1997 P.F. certificate..... 275.00
- 141     **5c Brown (29).** Well-centered, black town cds and **ultramarine French transit** also cancels stamp, Very Fine, this color cancel is unlisted in Scott, with 1997 P.F. certificate ..... E. 400-500



142

- 142     **5c Orange Brown, Ty. II (30).** Brilliant color and well-centered with perfs clear of design all around, vivid **red** grid cancel almost entirely clear of face, Extremely Fine, with 1991 P.F. certificate..... 1,300.00

- 143     **5c Brown, Ty. II (30A).** A remarkable stamp with incredibly wide margins on all four sides—almost unheard of on the 5c Type II—deep rich color and proof-like impression, vivid **“paint” red** grid cancel, Extremely Fine Gem, a great rarity in this condition, with 1997 P.F. certificate ..... 260.00



143



144



145

- 144     **10c Green, Ty. I (31).** Beautiful centering and color, **deep red** grid cancel, Extremely Fine, with 1995 P.F. certificate ..... 725.00
- 145     **10c Dark Green, Ty. II (32).** Extra wide margins and perfect centering, dark shade and intense proof-like impression, well-struck Boston "Paid" in large grid, Extremely Fine Gem, with 1993 P.F. certificate..... 270.00



146



147



148



149

- 146     **10c Green, Ty. III (33).** Unusually wide margins all around, beautiful color and impression, neat town cds, Extremely Fine Gem, with 1994 P.F. certificate ..... 250.00
- 147     **10c Green, Ty. III (33).** Choice centering and dark rich color, neat Yankee Jims Cal. cds cancel, Extremely Fine, with 1996 P.F. certificate ..... 250.00
- 148     **10c Green, Ty. III (33).** Beautiful centering with wide margins, **red transatlantic mail credit datestamp with integral "Paid"** used as cancel, very unusual and Extremely Fine, with 1996 P.F. certificate ..... 270.00
- 149     **10c Green, Ty. III (33).** Well-centered, unusual dark shade and intense impression, **blue town cds**, Extremely Fine, with 1993 P.F. certificate ..... 255.00



150

150

**10c Green, Ty. IV (34).** Position 86L1, recut line at top, extraordinarily well-centered, wonderful deep shade and early impression, bold **New York Ocean Mail datestamp with integral grid**, fresh and Extremely Fine Gem, a choice example of the 10c Type IV and extremely rare with the N.Y. Ocean Mail cancel, which is not listed in Scott, with 1986 P.F. certificate..... 1,900.00

151

**10c Green, Ty. V (35).** Enormous margins, intense shade and impression, vivid **red New York "Paid" transatlantic mail datestamp** used as cancel, 1860 year date, Extremely Fine and colorful, with 1996 P.F. certificate..... 67.00



151



152



153

152

**10c Green, Ty. V (35).** Horizontal pair, perfectly centered, **blue Wells, Fargo & Co. large double-circle datestamp**, Extremely Fine Gem pair, a scarce cancellation and rarely found on such a choice pair, ex Amonette, with 1997 P.F. certificate..... 140.00

153

**10c Green, Ty. V (35).** Horizontal pair, beautifully centered, deep rich color, contrasted by vibrant **red grids**, Extremely Fine Gem pair, with 1996 P.F. certificate ..... 145.00

154

**12c Black (36).** Vertical pair, incredibly well-centered with huge side margins showing framelines of adjoining stamps at left, neat black town cds and part of red "19" transatlantic mail credit handstamp, cancels free of face on top stamp, Extremely Fine Gem, one of the most challenging of the perforated classics to find in superb condition—a remarkable pair—with 1996 P.F. certificate..... 370.00



154



155

155

**12c Black (36).** Horizontal pair, unusually well-centered, deep shade and fine impression, **bright red Philadelphia "6" cents transatlantic credit datestamp** used as a cancel, left stamp Extremely Fine, other Very Fine, choice pair, with 1996 P.F. certificate ..... 365.00



156

156

**12c Black, Plate 3 (36b).** Showing **double frameline at left**, remarkably well-centered, vivid red grid cancel, Extremely Fine, with 1991 P.F. certificate ..... 160.00



157

157

**24c Gray Lilac (37).** A magnificent stamp with **wide margins completely around the design**, almost unheard of on this narrowly-spaced plate, lightly cancelled in black, clear and centered strike of **blue "Aachen Franco" German transit marking**, rarely found on the stamp itself, a stunning and Extremely Fine Gem, with 1995 P.F. certificate ..... 290.00

158

**24c Gray Lilac (37).** Well-centered, bright shade, **blue Louisville Ky. cds** and part of **red "19" transatlantic mail credit hand-stamp**, Extremely Fine and colorful, with 1994 P.F. certificate ..... 320.00



158



159

159

**24c Gray Lilac (37).** Perfectly centered, rich color, bright **red grid cancel** struck clear of face, Extremely Fine, with 1989 P.F. certificate ..... 310.00



160

- 160      **30c Orange (38).** Absolutely perfect centering, intense shade and impression, clearly struck **red** grid cancel, Extremely Fine Gem—with very little space between stamps on the plate, the 30c 1860 is one of the most elusive classics to find in this superb condition—a marvelous stamp, with 1991 P.F. certificate ..... 425.00



161

- 161      **30c Orange (38).** Deep shade, choice margins, clear and mostly complete **red** "Supplementary Mail" Type A handstamp, Very Fine, very scarce cancel on the 30c and rarely struck this clearly, ex Lehman, with 1993 P.F. certificate ..... 475.00



162

162 **90c Blue (39).** Perfectly centered, intense shade and impression on bright fresh paper, **deep red** grid cancel struck at lower left almost entirely clear of face

EXTREMELY FINE GEM. A SUPERB EXAMPLE OF THE SHORT-LIVED 90-CENT 1860—THE FIRST UNITED STATES 90-CENT ISSUE—OF WHICH ONLY FIVE SOUND COPIES CANCELLED IN RED HAVE BEEN CERTIFIED BY THE PHILATELIC FOUNDATION, THIS BEING THE FINEST.

The 90c stamp was issued in 1860, along with the 24c and 30c values, all of which were needed to prepay high international letter rates established by various postal treaties. The basic 24c and 30c rates to England, France and Germany created a large volume of mail franked with those values. However, the 90c saw much more limited use, partly due to the rates in effect, but more because of the American Civil War. When supplies of current postage stamps were declared invalid in the South and ultimately demonetized by the Federal government, the 90c had been in use for only one year. For this reason, genuinely cancelled copies and covers bearing the 90c are extremely rare. Approximately 180 used examples have been certified by The Philatelic Foundation, of which one-quarter are sound. Of these sound examples, only five are cancelled in red, and this stamp is the best centered and most attractively cancelled.

With 1994 P.F. certificate..... 6,000.00

1875 REPRINT OF 1851-60 ISSUE



163

163

**10c Blue Green, Reprint (43).** Perfectly centered, deep rich color, bold "2" numeral oval grid cancel, New York City duplex of 1870s to 1880s

EXTREMELY FINE GEM. THE ONLY RECORDED EXAMPLE OF THE 10-CENT 1857 ISSUE REPRINT IN USED CONDITION.

The Philatelic Foundation has certified only this example in used condition. It was probably used during the mid to late 1870's on stamp dealer's or collector's registered mail, as were the 1861 and 1869 Re-Issues.

Unlisted as used in Scott. With 1994 P.F. certificate ..... E. 4,000-5,000



164

164

**24c Blackish Violet, Reprint (45).** Well-centered, deep shade, lightly cancelled by circular datestamps, circa 1875, small thin spot

VERY FINE APPEARANCE. THE ONLY RECORDED USED EXAMPLE OF THE 24-CENT 1857 REPRINT.

As in the case of the 10c offered in the previous lot, it is evident that some of the 1875 Reprints of the 1851-57 Issue were used on mail at the time of issue, despite the fact that they were not legally valid for postage. Unlike the 1861 and 1869 Re-Issues, which were valid for postage, the 1857 Reprints are extremely rare used.

Unlisted as used in Scott. With 1995 P.F. certificate ..... E. 1,500-2,000

# 1861-66 ISSUE



165

165

**10c Dark Green, First Design (62B).** Remarkably well-centered with perfs clear all around, magnificent color and impression, lightly cancelled by blue Burlington Vt. circular datestamp, Extremely Fine Gem—Plate 4, which produced the 1861 10c Type I, was probably replaced by the Type II plate because of the narrow spacing between stamps, which left very little room for the perforations—centered examples such as this superb stamp are extremely rare, accompanied by original piece to which the stamp was tied, with 1996 P.F. certificate..... 625.00

166

**10c Dark Green, First Design (62B).** Incredibly well-centered, deep rich color, cancelled by red circular datestamp, Extremely Fine and choice, with 1988 P.F. certificate ..... 650.00



166



167

167

**1c Blue (63).** Cancelled by blue "Baltimore Md. Aug. 17, 1861" circular datestamp on the first day of use, centered slightly to right, sealed tear at bottom not mentioned on certificate

ONE OF TWO RECORDED AUGUST 17, 1861, FIRST DAY CANCELLATIONS ON THE 1861 ISSUE.

This stamp and a Rose Pink on cover are the only recorded August 17th usages of the 1861 Issue, which was delivered to the government stamp agent on August 16th and placed on sale at post offices on August 17th, as documented by contemporary newspaper notices. Ex Fisher. Discussed in Brookman, Vol. 2, p. 5, and illustrated in the Evans 1c 1861-68 book, p. 6. With 1996 P.F. certificate ..... E. 2,000-2,500



168

169

170

171

172

- 168     **1c Blue (63).** Beautiful centering and wide margins, vivid **red New York City carrier cds**, bright and fresh Extremely Fine, with 1996 P.F. certificate ..... 30.00
- 169     **1c Blue (63).** Well-centered, wide margins, proof-like color and impression, "**PAID**" cancel, Extremely Fine, with 1991 P.F. certificate..... 27.00
- 170     **1c Blue (63).** Well-centered, vivid **red** rimless grid cancel, Very Fine, with 1991 P.F. certificate ..... 30.00
- 171     **1c Blue (63).** Unusually wide margins, **blue** rimless grid cancel, Extremely Fine, with 1984 P.F. certificate ..... 26.00
- 172     **1c Blue (63).** Bold **Heart** fancy cancel of New York City, choice stamp and Extremely Fine strike, scarce on the 1c, with 1996 P.F. certificate ..... E. 200-250



173

- 173     **3c Pink (64).** Wonderful bright color with strong Pink shade, perfectly centered with lightly struck "**Paid 3**" cancel, Extremely Fine Gem, one of the choicest 3c Pink stamps extant, with 1991 P.F. certificate ..... 600.00

### EXTENSION POLICY

Any lot offered with a Philatelic Foundation (P.F.) or Professional Stamp Expertizing (P.S.E.) certificate dated from 1992 to 1997 is sold on the basis of the certificate and will not be sold subject to an extension for further certification.



174



175



176



177

- 174     **3c Rose (65).** Socked-on-the-nose “R” in ornate circular frame fancy cancel of Rockville Conn., Extremely Fine, with 1997 P.F. certificate ..... E. 100-150
- 175     **3c Rose (65).** Perfectly centered, long full perfs, bright shade, perfectly struck **blue** “PAID” cancel, Extremely Fine Gem, with 1991 P.F. certificate ..... E. 50-75
- 176     **3c Rose (65).** Perfectly centered, **green** segmented cork cancel, Extremely Fine, with 1994 P.F. certificate ..... 77.00
- 177     **3c Brown Red (65 var).** Gigantic margins with straddle-pane margin at left and part of adjoining stamp at right, deep shade, crisp **blue** Cincinnati cds and grid, Extremely Fine, a remarkable stamp, with 1997 P.F. certificate ..... E. 50-75



178



179



180

- 178     **5c Buff (67).** Absolutely perfect centering, deep shade and rich color, bright **red** grid cancel, Extremely Fine Gem, a superb example of this difficult 1861 Issue, with 1993 P.F. certificate ..... 675.00
- 179     **5c Brown Yellow (67a).** Perfectly centered, extraordinary rich color and fine impression, bold **blue** Baltimore datestamp, Extremely Fine Gem, truly superb, with 1996 P.F. certificate ..... 660.00
- 180     **5c Olive Yellow (67b).** Incredibly well-centered, bright shade of the true Olive Yellow (or Mustard) color, bold **red** grid cancel, Extremely Fine Gem, very rare 5c shade, with 1992 P.F. certificate ..... 775.00



- 181     **10c Yellow Green (68).** Remarkably wide margins, deep shade, **blue** target cancel, Extremely Fine and choice, with 1994 P.F. certificate ..... 46.00
- 182     **10c Yellow Green (68).** Huge margins all around, dark shade, brownish-black grid cancel, Extremely Fine, with 1995 P.F. certificate..... 45.00
- 183     **10c Yellow Green (68).** Lovely color and fine impression, face-free cancel, Extremely Fine, with 1997 P.F. certificate..... 45.00
- 184     **10c Dark Green (68a).** Spectacularly wide margins and dark rich color, circle of wedges cancel, Extremely Fine Gem, with 1996 P.F. certificate ..... 47.00
- 185     **10c Yellow Green (68).** Fine impression, vivid **red** New York transatlantic mail cds with integral "Paid", Very Fine, with 1991 P.F. certificate..... 45.00
- 186     **10c Dark Green (68a).** Well-centered, unusually dark shade, **blue** geometric cancel, Extremely Fine, with 1988 P.F. certificate..... 48.00
- 187     **12c Black (69).** Gargantuan margins all around and perfectly centered, deep shade, grid cancel, Extremely Fine Gem, an unbelievable stamp, with 1991 P.F. certificate ... 85.00
- 188     **12c Black (69).** Extraordinary margins and centering, intense shade and impression, **blue and red** cancels, Extremely Fine Gem, with 1994 P.F. certificate ..... 85.00
- 189     **12c Black (69).** Well-centered, deep shade, **magenta** circle of V's cancel, Very Fine, scarce fancy cancel on the 12c, with 1995 P.F. certificate ..... 185.00



190



191

- 190     **24c Red Lilac (70).** Wonderfully well-centered with huge margins, dark shade and fine impression, circle of V's cancel, Extremely Fine Gem, with 1994 P.F. certificate ..... 120.00
- 191     **24c Red Lilac (70).** Beautiful centering and rich color in early Red Lilac shade, neat **red** grid cancel, Extremely Fine, with 1992 P.F. certificate ..... 125.00



192



193



194

- 192     **24c Steel Blue (70b).** Exceptionally rich color and strong Steel Blue shade, full perfs all around, **red** grid cancel, Very Fine and choice, with 1991 P.F. certificate..... 405.00
- 193     **24c Violet, Thin Paper (70c).** The early and darker shade, remarkably well-centered, beautiful bold **red** grid cancel, Extremely Fine Gem, extremely rare in this superb condition, with 1992 P.F. certificate..... 855.00
- 194     **24c Pale Gray Violet (70d).** The elusive early shade, well-centered, **blue** Cincinnati cds, Extremely Fine Gem, extremely scarce color and rare in this choice condition, with 1996 P.F. certificate ..... 500.00



195

- 195      **30c Orange (71).** Enormous margins all around—together with the shade, paper and cancel, this closely resembles its 1875 Re-Issue counterpart (but the P.F. has ruled Scott 71 more than once)—Extremely Fine Gem and a remarkable stamp—one of the finest used 30c 1861's extant—with 1992 P.F. certificate      110.00



196



197



198

- 196      **30c Orange (71).** Phenomenal margins, gigantic on all sides including wide right straddle-pane margin showing a large part of the stamp from adjoining pane, target cancel and part of town cds, a breathtaking Extremely Fine Gem, ex Emerson, Ishikawa, with 1993 P.F. certificate.....      110.00
- 197      **30c Orange (71).** Bold **Leaf** cancel, bright color and Very Fine stamp, with 1994 P.F. certificate.....      110.00
- 198      **30c Orange (71).** Bold full strike of **Negative "U" in 6-Point Star** cancel, Extremely Fine, very rare fancy cancel on the 30c 1861, with 1996 P.F. certificate.....      E. 400-500

- 199      **30c Orange, Imperforate (71 var).** Three full to large margins, touched at left, original gum, ms. "X" for presentation purposes, Fine and extremely rare, only a few exist, with 1992 P.F. certificate.....      E. 1,000-1,500



199



200

200

**90c Blue (72).** Absolutely perfect centering with wide margins, crisp color on bright paper, vivid red grid cancel, Extremely Fine Gem, with 1991 P.S.E. certificate ..... 350.00



201

201

**90c Blue (72).** Perfectly centered with wide margins, fine impression and bright blue shade, neat target cancel, Extremely Fine Gem, with 1991 P.F. certificate ..... 325.00



202

202

**90c Blue, Imperforate (72 var).** Three large margins, ample at left, neat ms. "X" for presentation purposes, part original gum, Very Fine, only a few imperforates exist, with 1991 P.F. certificate ..... E. 1,200-1,500



203

203

**2c Black (73).** Beautiful centering and margins, deep shade, clearly struck blue Wells, Fargo & Co. oval datestamp, Extremely Fine, rare marking on the Black Jack, with 1997 P.F. certificate . 485.00



- 204     **2c Black (73).** Perfectly centered, intense shade and impression, target cancel, Extremely Fine Gem, with 1996 P.F. certificate ..... 35.00
- 205     **2c Black (73).** Remarkably wide even margins all around, fine impression and dark shade, cork cancel, Extremely Fine Gem, with 1995 P.F. certificate..... 35.00
- 206     **2c Black (73).** Extra wide margins, neatly cancelled, Extremely Fine, with 1991 P.F. certificate ..... 35.00
- 207     **2c Black (73).** Beautifully centered with wide even margins, neat **Negative Star in Circle** cancel, fresh and Extremely Fine Gem, ex Klein, with 1996 P.F. certificate ..... 35.00
- 208     **2c Black (73).** Perfectly centered, neat New York cds, Extremely Fine, with 1997 P.F. certificate ..... 35.00
- 209     **2c Black (73).** Well-centered, bold **red** grid cancel, few scissors blunted perfs at left, still Extremely Fine, with 1997 P.F. certificate ..... 60.00
- 210     **2c Black (73).** Beautiful centering and margins, **red** cork cancel, Extremely Fine, with 1997 P.F. certificate ..... 60.00
- 211     **2c Black (73).** Intense shade and impression, well-centered, **blue Circle of Diamonds** cancel, Extremely Fine, a beautiful stamp, ex Haas, with 1989 P.F. certificate .... 36.00
- 212     **2c Black (73).** Well-centered, neat **blue** town cds, Extremely Fine, with 1996 P.F. certificate ..... 36.00



213

213 **3c Scarlet (74).** Well-centered, rich color, bold “D” oval grid cancel of New York City Station D

VERY FINE. ONE OF THE FEW GENUINELY CANCELLED EXAMPLES OF THE 3-CENT SCARLET TRIAL COLOR ON STAMP PAPER. ONLY FIVE SUCH STAMPS ARE BELIEVED TO EXIST, THIS BEING THE FINEST.

The Scarlet trial color comes unused, pen-cancelled with four lines, or, as this example shows, cancelled by the oval grid, which was part of the duplex datestamp device used at New York City's Station D post office. It has been established that the 3c Scarlet printing was not regularly issued during the life of the 1861-66 Issue, but was released through one or more channels and ultimately reached John W. Scott, who published the Scott Catalogue. Evidence points to Scott himself as the source of the few recorded 3c Scarlet stamps cancelled by the oval grid, and it is accepted as fact that he posted letters with some of his supply to validate his claim that these stamps were legitimate postage. Today, there are perhaps five copies cancelled in this manner. The other four recorded examples have perfs touching or cutting in at right and two also have faults.

With 1996 P.F. certificate. Unpriced in Scott with handstamped cancellation (usual pen-stroke cancel valued at \$5,000) ..... E. 5,000-7,500



214



215



216

- 214     **5c Red Brown (75).** Perfectly centered, deep rich color, bright **red** grid and faint blue cancel, Extremely Fine Gem, truly rare in this superb condition, with 1988 P.F. certificate..... 400.00
- 215     **5c Brown (76).** Extra wide margins, neat town cds cancel, Extremely Fine, a remarkable stamp, with 1989 P.F. certificate..... 95.00
- 216     **5c Brown (76).** Perfectly centered, beautiful color and impression, neat **red Bank of Boston** datestamp indicating revenue usage (certificate declines opinion in this respect), Extremely Fine, with 1982 P.F. certificate ..... 100.00



217



218

- 217     **15c Black (77).** Unusually well-centered with extra wide top and bottom margins, lightly cancelled by bluish-black target, Extremely Fine, ex Koppersmith, with 1985 P.F. certificate..... 110.00
- 218     **15c Black (77).** Well-centered, wide margins, black **Negative 5-Point Star in Circle** cancel, part of red cds, Extremely Fine, with 1995 P.F. certificate ..... 110.00



219



220

219     **24c Lilac (78).** Wide margins, well-centered, bright fresh color, attractive **blue** circle of wedges cancel, Extremely Fine and choice, with 1996 P.F. certificate ..... 82.00

220     **24c Lilac (78).** Remarkably well-centered, beautiful rich purplish color, grid cancel, Extremely Fine Gem, with 1994 P.F. certificate ..... 80.00



221

221     **24c Blackish Violet (78c).** Dark shade, NYFM flower petals cancel and part of red cds  
EXTREMELY FINE EXAMPLE OF THIS RARE AND ELUSIVE 24-CENT 1863 SHADE.  
With 1992 P.F. certificate..... 1,750.00

**NO RESERVES**

**Please remember that this auction will be conducted without reserves.**

## 1867-68 GRILLED ISSUE

### A. GRILL



222

222 **3c Rose, A. Grill (79).** Horizontal pair, beautifully centered with **all perforations intact**, fresh color in bright Rose shade, bold **blue** quartered cork and Savannah Ga. circular datestamp

EXTREMELY FINE. WITHOUT QUESTION THE FINEST KNOWN 3-CENT EXPERIMENTAL ALL-OVER GRILL STAMPS.

The 3c stamps issued in August 1867 with experimental Type A grills were the first of the 1867-68 grills. As a test of the efficacy of grilling, they were unsuccessful, because the all-over embossing severely weakened the sheets and interfered with separation, causing rough perforations and pieces torn out of the margins. Within two months of A. Grill production the apparatus was modified by dividing the embossed area into rectangular units contained within the perimeter of each stamp, thereby leaving the perforations undisturbed—the resulting grill is classified as Type C (Scott 83).

The 3c A. Grill is one of the most distinctive of 19th century United States stamps by virtue of its consistently poor appearance. The Scott Catalogue values this issue in Fine-Very Fine grade and with perforation faults, the norm for the issue. In this context the ex-Caspary pair offered here is one of the outstanding items in the Dr. Morris collection. Both stamps in this pair are not only well-centered, but all perforations are complete and there are no faults whatsoever. In addition, the bright Rose color is complemented by a deep blue cancellation. The soundness of the perforations is attributable to the grill impression, which is clear but not as deep as usual, which helped to strengthen the perf teeth.

Accompanied by the original piece from which the stamps were removed. Ex Caspary. Realized \$9,900 in our 1992 Rarities of the World sale. With 1992 P.F. certificate .....  
..... 2,000.00



223



224

- 223 **3c Rose, C. Grill (83).** Well-centered, bold **Blue Bird** fancy cancel of Rockford Ill., Extremely Fine Gem, a beautiful stamp that meets every Ashbrook criteria for superb, with 1994 P.F. certificate ..... 760.00

- 224 **3c Rose, Double C. Grill (83 var).** Overlapping impressions on well-centered stamp, blue quartered cork cancel, Very Fine, extremely rare C. Grill variety, ex Koppersmith, with 1996 P.F. certificate ..... 1,850.00



225



226

- 225 **2c Black, D. Grill (84).** Clear grill measuring 16 by 20 points, remarkably well-centered, deep shade, quartered cork cancel, Extremely Fine Gem, the 2c D. Grill is extremely rare in this choice condition, with 1991 P.F. certificate ..... 1,900.00

- 226 **3c Rose, D. Grill (85).** Extra wide margins, bright fresh color, **blue** target cancel, Extremely Fine Gem, with 1995 P.F. certificate ..... 610.00



227



228

- 227     **2c Black, Z. Grill (85B).** Perfectly centered with wide even margins, deep shade, bright red cork cancel, Extremely Fine Gem, a marvelous stamp, with 1994 P.F. certificate ..... 675.00
- 228     **2c Black, Z. Grill (85B).** Perfectly centered, neat blue quartered cork cancel, Extremely Fine and choice, with 1991 P.F. certificate ..... 635.00



229



230

- 229     **3c Rose, Z. Grill (85C).** An astonishing example of this rare Z. Grill, mammoth margins all around, blue diamond cancel, clear grill impression, Extremely Fine Gem, no other known 3c Z. Grill rivals this phenomenal stamp, the quintessence of Ashbrook's standards of superb, with 1994 P.F. certificate ..... 1,900.00
- 230     **12c Black, Z. Grill (85E).** Perfectly centered with wide even margins, intense shade and impression, circle of wedges cancel, Extremely Fine Gem, with 1990 P.F. certificate ..... 875.00



231



232



233

- 231 **1c Blue, E. Grill (86).** Gigantic margins all around, bright shade, **blue** cancel, Extremely Fine, with 1995 P.F. certificate ..... 380.00
- 232 **2c Black, E. Grill (87).** Remarkably wide margins, intense shade, unusual Maltese Cross cancel with Jackson's eye peering out from center, Extremely Fine Gem, with 1987 P.F. certificate..... 100.00
- 233 **2c Black, E. Grill (87).** Perfectly centered with wide even margins, **blue** circle of V's geometric cancel, Extremely Fine Gem, with 1995 P.F. certificate ..... 102.00



234



235



236

- 234 **3c Rose, E. Grill (88).** Superb centering, rich color, lightly cancelled, Extremely Fine Gem, with 1996 P.F. certificate ..... 15.00
- 235 **3c Lake Red, E. Grill (88a).** Enormous margins and beautifully centered, deep rich color, target cancel, Extremely Fine Gem, with 1996 P.F. certificate..... 19.00
- 236 **3c Rose, E. Grill (88).** Wide margins, target cancel, Extremely Fine, with 1989 P.F. certificate ..... 15.00



237

237

**10c Green, E. Grill (89).** Enormous margins all around, lightly cancelled by segmented cork, Extremely Fine Gem, one of the widest-margined 10c E. Grills extant, with 1992 P.F. certificate..... 260.00

238

**10c Blue Green, E. Grill (89 var).** Perfectly centered with wide even margins, dark shade, clear part strike of **New York Steamship** cds, Extremely Fine Gem, with 1992 P.F. certificate..... 310.00



238



239

239

**10c Green, E. Grill (89).** Well-centered, bright **red** cork cancel, Extremely Fine, with 1996 P.F. certificate..... 310.00



240

240

**12c Black, E. Grill (90).** Extra wide margins, well-centered, cork cancel, Extremely Fine, with 1992 P.F. certificate..... 275.00



241



242

- 241 **15c Black, E. Grill (91).** Perfectly centered, intense shade and impression, vibrant red cork cancel, Extremely Fine Gem, a marvelous stamp, with 1995 P.F. certificate..... 625.00
- 242 **15c Black, E. Grill (91).** Wide margins all around, neat grid cancel, Extremely Fine and choice, with 1994 P.F. certificate..... 550.00



243



244

- 243 **1c Blue, F. Grill (92).** Unusually wide margins all around, lightly struck target cancel, Extremely Fine, with 1995 P.F. certificate ..... 140.00
- 244 **1c Blue, F. Grill (92).** Perfectly centered with wide even margins, bold circle of wedges cancel, Extremely Fine, with 1996 P.F. certificate ..... 140.00



245

- 245 **2c Black, F. Grill (93).** A magnificent stamp with enormous margins and perfect centering, bold and unusual grid cancel, Extremely Fine Gem, with 1992 P.F. certificate..... 35.00



246



247



248



249

- 246     **2c Black, F. Grill (93).** Wide margins all around, **blue** cork cancel and part cds, Extremely Fine and choice, with 1995 P.F. certificate ..... 37.00
- 247     **2c Black, F. Grill (93).** Well-centered, bold **blue Geometric** fancy cancel, Very Fine, with 1995 P.F. certificate ..... 37.00
- 248     **2c Black, F. Grill (93).** Fine impression, vivid **red Sunburst** fancy cancel, Very Fine, a beautiful stamp, ex Haas, Grunin, with 1995 P.F. certificate ..... 42.00
- 249     **3c Red, F. Grill (94).** Gigantic margins all around, rich color, perfectly struck “C” in circle cancel of Cecilton Me., Extremely Fine Gem, with 1996 P.F. certificate ..... E. 200-300



250

251

252

253

254

- 250     **3c Red, F. Grill (94).** Extra wide margins all around, deep shade, target cancel, Extremely Fine, with 1993 P.F. certificate ..... 4.00
- 251     **3c Red, F. Grill (94).** Well-centered, deep shade, full socked-on-the-nose strike of Negative “OK” cancel, Extremely Fine, with 1992 P.F. certificate ..... E. 200-300
- 252     **3c Red, F. Grill (94).** Well-centered, rich color, blue grid cancel, Extremely Fine. 4.00
- 253     **3c Red, F. Grill (94).** Rich color, vibrant **red** cancel, pulled perf at bottom, otherwise Very Fine, with 1991 P.F. certificate ..... 7.00
- 254     **3c Red, F. Grill (94).** Wide margins, well-centered, **Flower Petals** fancy cancel, Extremely Fine and choice ..... 4.00



255



256



257

- 255     **5c Brown, F. Grill (95).** Perfectly centered, deep rich color, bold **blue Geometric** cancel, Extremely Fine Gem, one of the rarest of all 1867-68 Grills in this superb condition, with 1992 P.F. certificate ..... 480.00
- 256     **10c Yellow Green, F. Grill (96).** Well-centered, rich color, **red cork** cancel, Extremely Fine, with 1994 P.F. certificate ..... 165.00
- 257     **10c Yellow Green on Very Thin Paper, F. Grill (96 var).** Well-centered, dark shade, quartered cork cancel, Very Fine, with 1996 P.F. certificate ..... 150.00



258



259

- 258     **12c Black, F. Grill (97).** A spectacular stamp with extra wide margins all around, perfectly centered, **blue** cancel and part of red cds, Extremely Fine Gem, the finest attainable quality, meeting every element of Ashbrook's standards for superb, with 1994 P.F. certificate ..... 182.00
- 259     **12c Black on Very Thin Paper, F. Grill (97 var).** Well-centered, deep shade, bold **Leaf** cancel, Extremely Fine, with 1997 P.F. certificate ..... 190.00

- 260      **15c Black, F. Grill (98).** Well-centered, bold attractive **blue** cork cancel, Extremely Fine, with 1995 P.F. certificate ..... 252.00



260



261

- 261      **15c Black, Double F. Grill (98 var).** Perfectly centered, vivid **red** cork cancel, certificate notes a tiny faint crease at lower left, still Extremely Fine, choice example of this scarce variety, with 1995 P.F. certificate ..... 455.00

- 262      **24c Gray Lilac, F. Grill (99).** Beautiful centering and margins, long full perfs all around, deep shade, neat circle of wedges cancel, Extremely Fine Gem, one of the most elusive of the 1867-68 Grills in this choice condition, with 1994 P.F. certificate ..... 600.00



262



263

- 263      **24c Gray, F. Grill (99 var).** Well-centered, fine impression and unusual Gray shade, black cork and red cds, Extremely Fine, with 1992 P.F. certificate ..... 650.00



264



265

- 264     **30c Orange, F. Grill (100).** Remarkable centering and wide margins, strong grill and rich color, neat and unusual cogwheel cancel, Extremely Fine Gem, a great rarity in this condition, ex Haas, with 1992 P.F. certificate ..... 600.00

- 265     **30c Orange, F. Grill (100).** Well-centered, unusual 4-squares cork cancel, Very Fine, with 1996 P.F. certificate ..... 600.00



266



267

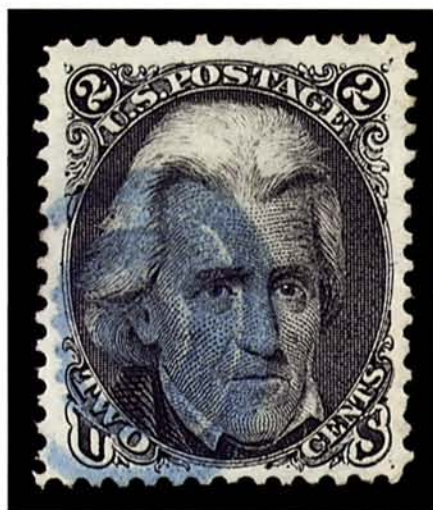
- 266     **30c Orange, Double F. Grill, One Split (100 var).** Perfectly centered, bright shade, cork cancel, clear grill impressions (causing few nibbed perfs at left), Extremely Fine and very rare variety, listed but unpriced in Scott, with 1996 P.F. certificate ..... E. 750-1,000

- 267     **90c Blue, F. Grill (101).** Perfectly centered, deep rich color, **red** cork cancel, fresh and Extremely Fine Gem, incredibly brilliant and one of the finest used examples of the 90c F. Grill extant, with 1994 P.F. certificate ..... 1,150.00

# 1875 RE-ISSUE OF 1861-66 ISSUE

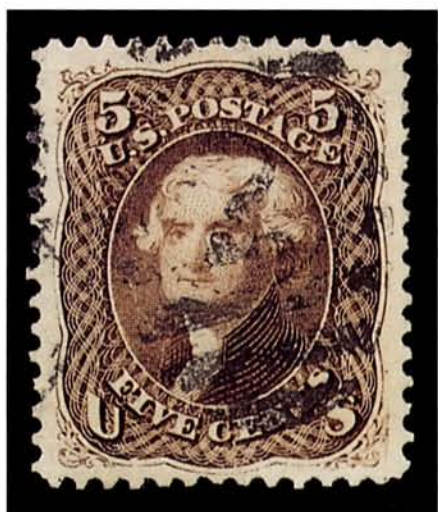


268



269

- 268     **1c Blue, Re-Issue (102).** Well-centered, lightly cancelled, Extremely Fine, with 1989 P.F. certificate..... 950.00
- 269     **2c Black, Re-Issue (103).** Huge margins and centering, intense shade and impression, **blue** target cancel, Extremely Fine Gem, one of two 2c Black Jack Re-Issues cancelled in blue (according to our Levi records), a spectacular Re-Issue, with 1986 P.F. certificate ..... 4,500.00



270



271

- 270     **5c Brown, Re-Issue (105).** Extra wide margins all around, neatly cancelled by oval grid, Extremely Fine Gem, approximately 20-30 used examples are known, of which half are sound, with 1994 P.F. certificate ..... 2,500.00
- 271     **15c Black, Re-Issue (108).** Well-centered, intense shade and impression, bold oval grid cancel, certificate mentions "toned spots" which is nothing more than oily bleed from the cancellation, Extremely Fine and choice, a great rarity, only seven used 15c 1861 Re-Issues certified by The Philatelic Foundation, with 1996 P.F. certificate..... 5,250.00

# 1869 PICTORIAL ISSUE



- 272     **1c Buff (112).** Well-centered, breathtaking shade, bold **green** quartered cork cancel, Extremely Fine, with 1994 P.F. certificate ..... 790.00
- 273     **1c Buff (112).** Well-struck “**3**” **numeral** cancel, Very Fine, with 1995 P.F. certificate..... 90.00
- 274     **2c Brown (113).** Enormous margins all around, cork cancel, Extremely Fine Gem, with 1989 P.F. certificate ..... 35.00
- 275     **2c Brown (113).** Beautiful centering and margins, deep rich color, crisp strike of **blue** grid cancel, Extremely Fine, with 1995 P.F. certificate ..... 36.00
- 276     **2c Brown (113).** Perfectly centered, part strike of “**Paid All**” cancel, Extremely Fine, with 1997 P.F. certificate..... 60.00
- 277     **3c Ultramarine (114).** Wide margins, beautiful color and impression, **red** cork cancel, Extremely Fine Gem, with 1996 P.F. certificate ..... 18.00
- 278     **3c Ultramarine (114).** Bright color, **red** “**M**” cancel of Manchester Vt., Very Fine, with 1996 P.F. certificate ..... E. 150-200
- 279     **3c Ultramarine (114).** Well-centered, “**Paid 3**” cancel, Extremely Fine, with 1992 P.F. certificate ..... 20.00



280



281



282

- 280     **3c Ultramarine (114).** Beautiful purplish color, bright **green** cork cancel, Extremely Fine, with 1990 P.F. certificate ..... 210.00
- 281     **3c Ultramarine (114).** Well-centered, bold **blue** cork cancel, Very Fine, with 1991 P.F. certificate ..... 10.00
- 282     **3c Ultramarine, Vertical Two-Thirds Used as 2c (114c var).** Right two-thirds tied by grid on piece of Luray Va. tax form, Very Fine, with 1996 P.F. certificate.. E. 400-500



283



284



285



286

- 283     **6c Ultramarine (115).** Perfectly centered with wide even margins, bold **deep red** cork cancel, Extremely Fine Gem, with 1989 P.F. certificate..... 180.00
- 284     **6c Ultramarine (115).** Wide margins, deep shade, neat small circle of V's cancel, Extremely Fine, with 1996 P.F. certificate ..... 150.00
- 285     **6c Ultramarine (115).** Beautiful **blue and red** cancels, fresh and Very Fine, ex Ishikawa, with 1993 P.F. certificate ..... 155.00
- 286     **6c Ultramarine (115).** Enormous margins with part of dividing arrow at top right, neat grid cancel, Extremely Fine, ex Newbury, with 1991 P.F. certificate ..... 150.00



287



288



289



290

- 287     **10c Yellow (116).** Spectacular brilliant color and impression, huge margins and well-centered, **blue** grid cancel, Extremely Fine, with 1995 P.F. certificate..... 150.00
- 288     **10c Yellow (116).** Well-centered, perfectly struck **blue** target cancel, Extremely Fine and choice, ex Hessel, with 1987 P.F. certificate..... 150.00
- 289     **10c Yellow (116).** Well-centered, bright color, bold **red** circle of wedges cancel, Extremely Fine, ex Ishikawa, with 1993 P.F. certificate ..... 150.00
- 290     **10c Yellow (116).** Well-centered, deep shade, clear part strike of **New York Steamship** cds, Extremely Fine, with 1986 P.F. certificate ..... 155.00



291



292



293



294

- 291     **12c Green (117).** Perfectly centered with extra wide margins all around, **deep red 4-Diamonds** cancel, Extremely Fine Gem, a spectacular stamp, with 1991 P.F. certificate ..... 280.00
- 292     **12c Green (117).** Beautiful centering and deep rich color, fine proof-like impression, long full perfs, **blue** cork cancel, Extremely Fine, ex Klein, with 1994 P.F. certificate ..... 280.00
- 293     **15c Brown & Blue, Ty. I (118).** Unusually deep rich colors, well-centered, **blue** target cancel, Extremely Fine, with 1988 P.F. certificate ..... 550.00
- 294     **15c Brown & Blue, Ty. I (118).** Vivid **red** cork cancels, fresh and Very Fine, ex Ishikawa, with 1993 P.F. certificate ..... 550.00



295



296



297

- 295     **15c Brown & Blue, Ty. I, Double Grill (118 var).** Wide margins, two distinct grills, bright and fresh, cork cancel, Extremely Fine, probably the finest example of this scarce grill variety extant, with 1996 P.F. certificate ..... 550.00
- 296     **15c Brown & Blue, Ty. II (119).** Well-centered, neat **red** New York cds at bottom, Extremely Fine, with 1995 P.F. certificate ..... 375.00
- 297     **15c Brown & Blue, Ty. II (119).** Beautiful centering, bright and fresh, clearly struck **greenish blue** "X" cancel, Extremely Fine, ex Koppersmith, with 1995 P.F. certificate ..... 260.00



298



299



300



301

- 298     **15c Brown & Blue, Ty. II (119).** Deep rich colors, **blue** cork cancel, Extremely Fine and choice, with 1995 P.F. certificate ..... 260.00
- 299     **15c Brown & Blue, Ty. II (119).** Deep shades, bold **blue** grid cancel, Very Fine, ex Hessel, Ishikawa, with 1993 P.F. certificate ..... 260.00
- 300     **24c Green & Violet (120).** Well-centered, extraordinarily rich colors and proof-like impressions, **red** cork cancel, Extremely Fine, with 1991 P.F. certificate ..... 850.00
- 301     **24c Green & Violet (120).** Remarkably wide margins all around, small quartered cork cancel, Extremely Fine and choice, with 1983 P.F. certificate ..... 650.00



302

- 302      **30c Blue & Carmine (121).** Perfectly centered with huge even margins on all sides, rich colors and remarkable proof-like impression, neat quartered cork cancel and part of Washington D.C. cds

EXTREMELY FINE. THIS WELL-KNOWN STAMP IS CONSIDERED TO BE THE FINEST USED SINGLE OF THE 30-CENT AND COULD WELL BE THE TOP-RANKED STAMP IN A CONDITION CENSUS OF ALL NON-ERROR 1869 PICTORIALS. THE QUINTESSENTIAL SUPERB STAMP BY ASHBROOK'S STANDARDS.

Ex Lehman, Haas, Grunin and Klein (where it realized the then-record price of \$4,180).  
With 1994 P.F. certificate ..... 425.00



303



304



305

- 303     **30c Blue & Carmine (121).** Well-centered, bold **cobalt blue Negative 5-Point Star in Circle** cancel, Extremely Fine, rare fancy cancel on 1869 high-value, ex Koppersmith, with 1995 P.F. certificate ..... 475.00
- 304     **30c Blue & Carmine (121).** Well-centered, unusually rich colors, neat circle of wedges cancel, Extremely Fine, with 1996 P.F. certificate ..... 425.00
- 305     **30c Blue & Carmine (121).** Well-centered, bright fresh colors, vivid **red** cork cancel, Very Fine, with 1995 P.F. certificate ..... 675.00



306

- 306     **90c Carmine & Black (122).** A superb stamp with wide margins all around, deep rich color and impression, unused appearance with the barest trace of a cancellation at lower left, Extremely Fine Gem, with 1996 P.F. certificate ..... 1,750.00

#### EXTENSION POLICY

Any lot offered with a Philatelic Foundation (P.F.) or Professional Stamp Expertizing (P.S.E.) certificate dated from 1992 to 1997 is sold on the basis of the certificate and will not be sold subject to an extension for further certification.

# 1875 RE-ISSUE OF 1869 PICTORIAL ISSUE



307



308



309

- 307 **1c Buff, Re-Issue (123).** Perfectly centered, deep shade, **violet** cancel, Extremely Fine Gem, with 1988 P.F. certificate..... 290.00
- 308 **2c Brown, Re-Issue (124).** Perfectly centered, lightly struck duplex grid and cds, Extremely Fine, extremely rare in this superb used condition—much undervalued in this grade—with 1996 P.F. certificate ..... 400.00
- 309 **6c Blue, Re-Issue (126).** Beautifully centered, bright fresh color, neat face-free oval grid cancel, Extremely Fine, extremely rare in this choice used condition, with 1991 P.F. certificate ..... 1,250.00



310



311



312

- 310 **12c Green, Re-Issue (128).** Wide margins, deep rich color and proof-like impression, lightly cancelled in **magenta** at lower right, Extremely Fine Gem, with 1991 P.F. certificate ..... 2,250.00
- 311 **15c Brown & Blue, Re-Issue (129).** Magnificent centering and margins, deep rich colors, neat New York oval registry cancel, Extremely Fine, with 1989 P.S.E. certificate ..... 900.00
- 312 **1c Brown Orange, 1880 Re-Issue (133a).** Well-centered, unusual **Outline Maltese Cross** fancy cancel, Very Fine, fancy cancels are rare on the 1869 Re-Issue, with 1995 P.F. certificate..... 150.00

# 1870-88 BANK NOTE ISSUES



313



314



315



316

- 313     **1c Ultramarine, Grill (134).** Beautifully centered, light target cancel, clear grill, Extremely Fine, with 1991 P.F. certificate ..... 90.00
- 314     **2c Red Brown, Grill (135).** Deep rich color, wide margins, **blue** cork and cds cancels, Extremely Fine, with 1987 P.F. certificate ..... 53.00
- 315     **2c Red Brown, Grill (135).** Well-centered, bold **NYFM Circle of Hearts** cancel (Ty. TR-W5), Extremely Fine, with 1992 P.F. certificate ..... 52.00
- 316     **3c Green, Grill (136).** Wide margins, rich color, neat face-free cork cancel and part of **red** New York cds at bottom, Very Fine, with 1992 P.F. certificate ..... 18.00



317

- 317     **6c Carmine, Grill (137).** Remarkably well-centered, rich color, strong grill, bold **blue** circle of wedges cancel, fresh and Extremely Fine Gem, with 1991 P.F. certificate ..... 405.00



318



319



320

- 318 **7c Vermilion, Grill (138).** Well-centered, vibrant color, bold **blue Negative "A"** cancel, Extremely Fine, a colorful and choice stamp, with 1991 P.F. certificate..... 355.00
- 319 **7c Vermilion, Split Grill (138 var).** Wide margins, clear horizontal split grill, attractive **blue cork** cancel, Extremely Fine, scarce Bank Note grill variety in unusually choice condition, with 1997 P.F. certificate ..... 385.00
- 320 **7c Vermilion, Double Grill (138 var).** Perfectly centered, bright shade, socks-on-the-nose "Excelsior Pa. May 27, 1874" cds, two clear grill impressions, Extremely Fine Gem, a rare Bank Note grill variety in astoundingly choice condition, with 1997 P.F. certificate ..... 575.00



321



322

- 321 **10c Brown, Grill (139).** Beautiful centering and deep rich color, superb strike of vivid **red target** cancel, Extremely Fine and colorful, with 1991 P.F. certificate..... 640.00
- 322 **10c Brown, Grill (139).** Magnificent centering and margins, rich color, bold circle of wedges cancel, Extremely Fine, with 1996 P.F. certificate ..... 600.00

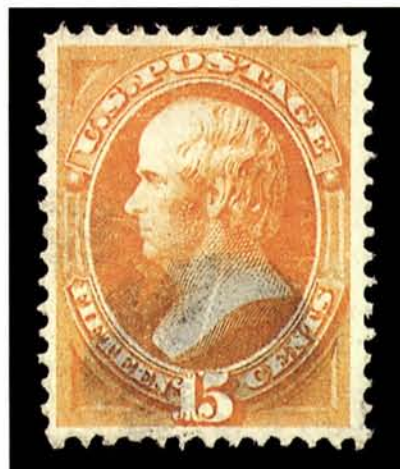


323

- 323     **12c Dull Violet, Grill (140).** Well-centered with wide margins, rich color in beautiful pastel shade, lightly struck cork cancel and part of **red German transit marking**, many grill points showing clearly  
 EXTREMELY FINE. ONE OF THE FINEST EXAMPLES RECORDED, OF WHICH VERY FEW ARE CANCELLED IN RED.  
 Ex Kantor. With 1992 P.F. certificate..... 2,850.00



324



325

- 324     **15c Orange, Grill (141).** Unusually wide margins, well-centered, bold **blue Negative 5-Point Star in Circle** cancel, a perfect strike on an Extremely Fine stamp, very few high-value Bank Note grills exist with fancy cancellations, a stunning example, with 1992 P.F. certificate..... 910.00
- 325     **15c Orange, Double Grill (141 var).** Well-centered, bright shade with lightly struck cork cancel, clear impressions of two distinct grills, Extremely Fine, an enormously rare variety, with 1997 P.F. certificate, unpriced in Scott..... E. 1,500-2,000



326

326

**24c Purple, Grill (142).** Perfectly centered with wide even margins, unusually fine impression in typical light pastel shade of the 24c Grill, crisp centrally-struck small circle of squares cancel and part of blue town cds

EXTREMELY FINE. ONE OF THE FEW SOUND AND CENTERED EXAMPLES OF THIS BANK NOTE RARITY, AND POSSIBLY THE FINEST IN TERMS OF COLOR AND CANCELLATION.

With 1993 P.S.E. certificate..... 8,500.00

327

**30c Black, Grill (143).** Remarkably choice centering and margins, deep shade, several clear grill points, **red cork** cancel

EXTREMELY FINE AND RARE CANCELLED IN RED.

With 1996 P.F. certificate ..... 1,500.00



327



328

328

**90c Carmine, Grill (144).** Extraordinarily wide margins, rich color, vivid **red cork** cancel, several clearly discernible grill points, long full perfs all around

EXTREMELY FINE. PROBABLY THE FINEST 90-CENT BANK NOTE GRILL EXTANT, OF WHICH VERY FEW ARE KNOWN CANCELLED IN COLOR.

Ex Braus and Klein. With 1994 P.F. certificate ..... 1,325.00



- 329      **2c Red Brown (146).** Wide margins, rich color, **NYFM geometric** and part of red cds, Extremely Fine Gem, with 1996 P.F. certificate ..... E. 200-250
- 330      **2c Red Brown (146).** Wide margins, fine impression and rich color, New York cds, Extremely Fine, with 1997 P.F. certificate..... E. 100-150
- 331      **2c Red Brown (146).** Perfectly centered, rich color, **Maltese Cross** cork cancel, Extremely Fine, with 1991 P.F. certificate ..... E. 75-100
- 332      **3c Green (147).** Bold **"DONT USM"** fancy cancel of Bridgeport Conn., Very Fine, with 1997 P.F. certificate ..... E. 100-150
- 333      **6c Carmine (148).** Perfectly centered with socked-on-the-nose **blue target** cancel, Extremely Fine Gem ..... 18.00
- 334      **6c Carmine (148).** Perfectly centered, rich color, **magenta target** cancel, Extremely Fine Gem, magenta cancel unlisted in Scott, with 1991 P.F. certificate ..... 20.00
- 335      **6c Carmine (148).** Horizontal pair, well-centered, deep rich color, each with clearly struck **NYFM Shield** fancy cancel, Extremely Fine, with 1981 and 1996 P.F. certificates ..... E. 300-400
- 336      **7c Vermilion (149).** Enormous margins all around, circle of wedges cancel, bright and fresh, Extremely Fine Gem, with 1986 P.F. certificate ..... 75.00
- 337      **7c Vermilion (149).** Beautiful centering and vibrant color, **red** circle of wedges cancel, Extremely Fine, with 1996 P.F. certificate ..... 85.00



338



339



340



341

- 338 **10c Brown (150).** Well-centered, rich color, **red NYFM Star** fancy cancel, colorful and Extremely Fine, with 1996 P.F. certificate..... 20.00
- 339 **10c Brown (150).** Extra wide margins, bold segmented grid cancel, Extremely Fine, a difficult issue to find in superb condition, with 1991 P.F. certificate..... 16.00
- 340 **12c Dull Violet (151).** Well-centered, rich color, attractive **blue** target cancel, Extremely Fine, with 1995 P.F. certificate ..... 102.00
- 341 **12c Dull Violet (151).** Unusually large margins, deep shade, Extremely Fine, with 1991 P.F. certificate ..... 100.00



342



343



344



345

- 342 **12c Dull Violet (151).** Perfectly centered, dark shade, **red** cork cancel, Extremely Fine, a beautiful stamp, with 1995 P.S.E. certificate ..... 110.00
- 343 **15c Bright Orange (152).** Huge even margins all around, neat face-free cancel, brilliant color and Extremely Fine Gem, with 1994 P.F. certificate..... 110.00
- 344 **24c Purple (153).** Beautiful centering and intense shade, attractive **red** cork cancel, Extremely Fine, with 1990 P.F. certificate ..... 120.00
- 345 **24c Purple (153).** Pale shade typical of 1870 grilled issue, **blue** target and town cds, Extremely Fine, with 1996 P.F. certificate ..... 112.00



346



347



348

- 346 **30c Black (154).** Enormous margins all around, lightly cancelled, deep shade, Extremely Fine Gem, a magnificent stamp, the 30c 1870 National is extremely rare in this condition, with 1995 P.F. certificate..... 145.00

- 347 **30c Black (154).** Perfectly centered, fine impression, **red** cork cancel, Extremely Fine Gem, with 1992 P.F. certificate..... 180.00

- 348 **30c Black (154).** Well-centered, attractive **blue** cork cancel, Extremely Fine, very scarce cancelled in blue, with 1996 P.F. certificate ..... 147.00



349



350



351

- 349 **90c Carmine (155).** Well-centered, lovely deep shade, neat face-free cancel, Extremely Fine, the 90c 1870 National is extremely scarce in this choice condition, with 1996 P.F. certificate..... 240.00

- 350 **90c Carmine (155).** Well-centered, intense shade, striking **red** cork cancel, Extremely Fine, a beautiful stamp, with 1995 P.F. certificate..... 270.00

- 351 **90c Carmine (155).** Wide even margins, bold **NYFM Circle of Hearts** fancy cancel, Extremely Fine, with 1986 P.F. certificate ..... 240.00



- 352     **1c Ultramarine (156).** Well-centered, bold "G" printed pre-cancel of Glastonbury Conn., Extremely Fine, with 1990 P.F. certificate ..... E. 300-400
- 353     **1c Ultramarine (156).** Pale violet cancel, Very Fine ..... 2.00
- 354     **2c Brown (157).** Enormous margins, rich color, crisp blue target cancel, Extremely Fine Gem, with 1995 P.F. certificate ..... 15.00
- 355     **2c Brown (157).** Well-centered, rich color, bold blue target cancel, pulled perf at top, otherwise Extremely Fine, with 1992 P.F. certificate ..... 15.00
- 356     **3c Green (158).** Gargantuan margins, lightly cancelled, Extremely Fine Gem, with 1989 P.F. certificate ..... 1.00
- 357     **6c Dull Pink (159).** Well-centered, small circle of wedges cancel (probably Shanghai, China), Extremely Fine, with 1991 P.F. certificate ..... 15.00
- 358     **7c Orange Vermilion (160).** Perfectly centered with wide even margins, vivid color, perfect socked-on-the-nose blue target cancel, Extremely Fine Gem, with 1988 P.F. certificate ..... 77.00
- 359     **7c Orange Vermilion (160).** Wide even margins, rich color, bold red cancel, Extremely Fine Gem, with 1987 P.F. certificate ..... 82.00
- 360     **10c Brown (161).** Wide margins, neat blue Leaf fancy cancel, Extremely Fine and choice, with 1997 P.F. certificate ..... 250.00
- 361     **10c Brown (161).** Well-centered, bold blue grid cancel, Extremely Fine, with 1991 P.F. certificate ..... 16.00

- 362      **12c Blackish Violet (162).** A breathtaking stamp, enormous margins on all sides, dark shade on bright paper, perfectly struck circle of V's cancel, Extremely Fine Gem, a common stamp of incalculable rarity in this superb condition—we dare say the finest used single of the 12c Continental extant—realized \$990 at its last auction appearance, with 1992 P.F. certificate ..... 85.00



362



363



364



365



366

- 363      **12c Blackish Violet (162).** Beautiful centering and margins, **blue** target cancel, Extremely Fine, with 1995 P.F. certificate ..... 87.00
- 364      **12c Blackish Violet (162).** Well-centered, part strike of **red NYFM geometric** cancel, trace of French transit at lower right, Extremely Fine, with 1994 P.F. certificate ..... 100.00
- 365      **15c Yellow Orange (163).** Enormous margins all around, neat face-free cork cancel, Extremely Fine Gem, the 15c 1873 Continental is very elusive in this quality, with 1994 P.F. certificate ..... 85.00
- 366      **15c Yellow Orange (163).** Well-centered, bright color, vibrant **purple** target cancel, Extremely Fine, with 1996 P.F. certificate ..... 95.00

### NO RESERVES

Please remember that this auction will be conducted without reserves.



- 367     **15c Yellow Orange (163).** Perfectly centered, **bright blue** cork cancels, Extremely Fine, a beautiful stamp, with 1996 P.F. certificate..... 87.00
- 368     **30c Gray Black (165).** Extra wide margins, **red** circle of V's cancel, Extremely Fine, with 1992 P.F. certificate..... 100.00
- 369     **30c Gray Black (165).** Beautiful centering, deep shade, lightly cancelled, Extremely Fine Gem, with 1994 P.F. certificate ..... 80.00
- 370     **90c Rose Carmine (166).** Well-centered, attractive **purple** cork cancel, Extremely Fine, unusual colored cancel on the 90c 1873 Continental, with 1996 P.F. certificate . 260.00
- 371     **1c Dark Ultramarine (182).** Perfectly centered, vivid **red** cork cancel, Extremely Fine, with 1991 P.F. certificate ..... 9.00
- 372     **1c Dark Ultramarine (182).** Well-centered with large margins, bold **Shield** fancy cancel of Worcester Mass., Extremely Fine, with 1997 P.F. certificate..... 250.00
- 373     **1c Dark Ultramarine (182).** Enormous margins, lightly cancelled, Extremely Fine, with 1991 P.F. certificate ..... 2.00
- 374     **2c Vermilion (183).** Well-centered, bold **"4"** numeral grid cancel, Extremely Fine, with 1991 P.F. certificate ..... 6.00
- 375     **3c Green (184).** Gigantic margins, light bold cancel, Extremely Fine Gem ..... 1.00
- 376     **3c Green (184).** Well-centered, deep shade, **magenta** target cancel, Extremely Fine, with 1991 P.F. certificate ..... 1.00



- 377     **6c Pink (186).** Extra wide margins, neat **purple Maltese Cross** fancy cancel, Extremely Fine Gem, an exceedingly scarce stamp in this condition, with 1994 P.F. certificate ..... 18.00
- 378     **10c Brown, With and Without Secret Mark, Se-Tenant Pair (187-188).** Horizontal pair, perfectly centered, deep shade, **blue** quartered cork cancels, Extremely Fine Gem, probably the finest used se-tenant pair extant, much rarer than generally perceived, with 1995 P.F. certificate..... 221.00
- 379     **10c Brown, Without Secret Mark (187).** Wide margins all around, grid cancel, Extremely Fine..... 22.00
- 380     **10c Brown, With Secret Mark (188).** Beautiful centering and rich color, neat town cds, Extremely Fine, with 1991 P.F. certificate..... 25.00
- 381     **10c Brown, With Secret Mark (188).** Huge margins, New York 1881 oval cancel, Extremely Fine Gem, with 1991 P.F. certificate ..... 22.00
- 382     **10c Brown, With Secret Mark (188).** Large margins, **blue** cork cancel, Extremely Fine, with 1991 P.F. certificate..... 23.00
- 383     **10c Brown, With Secret Mark (188).** Well-centered, **red** cork cancel, Extremely Fine, with 1991 P.F. certificate..... 32.00
- 384     **15c Red Orange (189).** Enormous margins, town cds and cork cancel, Extremely Fine, with 1996 P.F. certificate..... 21.00
- 385     **15c Red Orange (189).** Well-centered, deep shade, **purple** target cancel, Extremely Fine, with 1991 P.F. certificate..... 24.00



- 386     **30c Full Black (190).** Gigantic margins all around, neat oval cancel, Extremely Fine Gem, extremely rare in this superb condition, with 1996 P.F. certificate..... 45.00
- 387     **30c Full Black (190).** Beautifully centered with wide margins all around, deep shade, lightly cancelled, Extremely Fine Gem, with 1996 P.F. certificate..... 45.00
- 388     **90c Carmine (191).** Perfectly centered, rich color, neat **purple** target cancel, Extremely Fine Gem, a superb stamp, with 1994 P.F. certificate ..... 240.00
- 389     **90c Carmine (191).** Well-centered, bold New York oval cancels, Extremely Fine, with 1996 P.F. certificate..... 220.00
- 390     **6c Rose (208).** Exceptionally well-centered, bold **"2"** numeral cancel, Extremely Fine, the 1882 6c Rose is very scarce in this choice used condition, with 1996 P.F. certificate ..... 60.00
- 391     **6c Deep Brown Red (208a).** Beautiful centering and deep rich color, lightly cancelled by **red town cds**, Extremely Fine, a magnificent stamp which realized \$825 in our 1988 Clifford C. Cole sale, with 1994 P.F. certificate ..... 100.00
- 392     **6c Deep Brown Red (208a).** Horizontal pair, well-centered, deep shade, striking **purple** **"Registered Schenectady N.Y." serrated oval datestamp**, Extremely Fine, with 1996 P.F. certificate ..... 185.00
- 393     **2c Red Brown (210).** Extra wide margins, perfect strike of **Kicking Mule** fancy cancel of Port Townsend Wash., Extremely Fine Gem, with 1997 P.F. certificate ..... E. 200-300
- 394     **90c Purple (218).** Large margins, perfectly centered, deep shade, bold New York registry oval cancel, Extremely Fine, with 1996 P.F. certificate ..... 190.00

END OF SALE—THANK YOU

## Services for Buyers

If you wish to participate in this sale, we will be pleased to assist you in many ways. The following services are provided without additional charge (except for any out-of-pocket expenses):

- Most lots may be inspected by registered or overnight mail, and all lots may be viewed by appointment or during the pre-sale exhibition
- Prospective bidders may request up-to-the-minute valuations for any lot in the sale
- We will be pleased to assist out-of-town clients in obtaining hotel reservations nearby our gallery
- Bidders who cannot attend the sale may submit bids by telephone/fax, by mail, or in special cases, we will provide a telephone link to the auction in progress (must be confirmed in advance)
- Any item sold without an expert certificate dated within the past five years may be purchased subject to certification (please see Conditions of Sale)
- Instructions for shipping purchased lots may be given to the gallery immediately after the sale
- Prices realized will be available one day after the final sale day

## Services for Sellers

If you have stamps you wish to sell, we will be pleased to provide the following services and options for auction or outright sale:

- Free verbal appraisal of material brought to our gallery; Written appraisals for estate tax purposes (rates available on request)
- Free on-site consultation for any collection with fair market value of \$100,000 or more
- Auction consignments will be processed within six months of receipt, and proceeds will be paid 42 days from date of sale
- Commission rate of 10% (minimum commission \$25 per lot; no other charges for lotting or illustration)
- Immediate interest-free advances up to 50% of the auction valuation
- On certain collections, we will guarantee the seller a minimum net amount, which eliminates the downside risk while still providing the potential for maximum auction realization
- If you wish to sell your stamps for immediate cash, we will be pleased to make an outright offer
- Suitable collections will be considered for single-owner sales and/or our annual Rarities of the World sale



**PRICES REALIZED FOR SALE 793---9/26/97**  
**The Vernon R. Morris, Jr., M.D. Collection of Used U.S.**

Robert A. Siegel Auction Galleries, Inc.  
60 East 56th Street, 4th Floor, New York, NY 10022  
Tel (212) 753-6421 Fax (212) 753-6429

Lot#	Realized	Lot#	Realized	Lot#	Realized	Lot#	Realized	Lot#	Realized	Lot#	Realized	Lot#	Realized	Lot#	Realized
1	18,000	44	950	87	325	130	210	173	1,800	216	325	259	300	302	12,000
2	425	45	1,100	88	450	131	20	174	130	217	525	260	280	303	1,200
3	750	46	1,350	89	1,100	132	675	175	325	218	300	261	425	304	650
4	850	47	950	90	550	133	290	176	200	219	350	262	2,300	305	325
5	750	48	1,100	91	425	134	550	177	210	220	290	263	1,250	306	6,000
6	1,100	49	1,800	92	425	135	1,900	178	2,100	221	3,500	264	3,250	307	625
7	475	50	950	93	105	136	1,800	179	1,800	222	10,500	265	700	308	625
8	650	51	1,700	94	280	137	1,700	180	2,500	223	1,300	266	425	309	3,250
9	950	52	2,100	95	220	138	1,700	181	125	224	2,100	267	4,000	310	3,500
10	625	53	1,600	96	400	139	5,750	182	105	225	5,000	268	1,250	311	1,250
11	2,400	54	650	97	425	140	900	183	120	226	1,350	269	12,500	312	325
12	2,000	55	3,500	98	17,000	141	500	184	170	227	2,900	270	3,250	313	425
13	5,250	56	62,500	99	2,300	142	2,900	185	60	228	1,500	271	9,000	314	120
14	5,250	57	1,700	100	2,300	143	2,400	186	270	229	7,500	272	1,100	315	140
15	800	58	750	101	2,300	144	2,600	187	325	230	2,200	273	210	316	100
16	3,750	59	325	102	750	145	350	188	350	231	750	274	575	317	800
17	400	60	750	103	550	146	800	189	250	232	550	275	130	318	325
18	1,500	61	300	104	280	147	325	190	625	233	450	276	160	319	475
19	7,000	62	800	105	400	148	325	191	525	234	200	277	230	320	900
20	4,500	63	425	106	300	149	325	192	700	235	220	278	210	321	1,600
21	37,500	64	325	107	100	150	4,750	193	2,100	236	55	279	60	322	750
22	3,750	65	240	108	625	151	115	194	1,800	237	525	280	675	323	5,000
23	900	66	1,250	109	400	152	280	195	1,000	238	525	281	130	324	1,800
24	650	67	4,500	110	2,400	153	525	196	625	239	270	282	250	325	1,800
25	325	68	750	111	2,700	154	1,500	197	180	240	425	283	350	326	8,500
26	600	69	130	112	2,500	155	525	198	550	241	1,500	284	500	327	3,000
27	850	70	260	113	550	156	475	199	750	242	650	285	220	328	6,250
28	1,100	71	250	114	575	157	1,050	200	1,300	243	600	286	260	329	150
29	2,400	72	300	115	425	158	800	201	1,600	244	325	287	450	330	85
30	5,000	73	625	116	1,350	159	425	202	1,200	245	575	288	220	331	25
31	300	74	1,250	117	1,100	160	1,500	203	800	246	270	289	425	332	30
32	1,000	75	450	118	400	161	900	204	75	247	525	290	230	333	85
33	1,100	76	115	119	17,000	162	17,000	205	350	248	500	291	1,200	334	130
34	800	77	350	120	650	163	7,500	206	180	249	425	292	950	335	210
35	190	78	270	121	3,250	164	3,750	207	210	250	150	293	700	336	400
36	375	79	180	122	1,100	165	1,100	208	160	251	150	294	300	337	200
37	2,000	80	250	123	2,700	166	1,300	209	160	252	50	295	675	338	160
38	500	81	210	124	210	167	3,000	210	75	253	35	296	210	339	40
39	550	82	350	125	160	168	280	211	375	254	75	297	1,700	340	240
40	1,200	83	750	126	425	169	400	212	75	255	2,200	298	150	341	210
41	525	84	200	127	80	170	100	213	11,500	256	325	299	500	342	400
42	4,250	85	230	128	200	171	210	214	1,350	257	80	300	1,600	343	625
43	3,500	86	200	129	110	172	290	215	350	258	750	301	500	344	600

**PRICES REALIZED FOR SALE 793---9/26/97**  
**The Vernon R. Morris, Jr., M.D. Collection of Used U.S.**

Robert A. Siegel Auction Galleries, Inc.  
60 East 56th Street, 4th Floor, New York, NY 10022  
Tel (212) 753-6421 Fax (212) 753-6429

Lot#	Realized	Lot#	Realized
345	105	388	800
346	425	389	280
347	450	390	100
348	300	391	350
349	550	392	325
350	500	393	110
351	750	394	350
352	105		
353	35		
354	70		
355	80		
356	45		
357	75		
358	425		
359	325		
360	200		
361	80		
362	1,300		
363	400		
364	130		
365	800		
366	325		
367	500		
368	120		
369	325		
370	300		
371	95		
372	210		
373	20		
374	60		
375	10		
376	30		
377	190		
378	750		
379	50		
380	160		
381	70		
382	55		
383	20		
384	65		
385	45		
386	400		
387	290		

**PRICES REALIZED FOR SALE 793---9/26/97**  
**The Vernon R. Morris, Jr., M.D. Collection of Used U.S.**

Robert A. Siegel Auction Galleries, Inc.  
60 East 56th Street, 4th Floor, New York, NY 10022  
Tel (212) 753-6421 Fax (212) 753-6429

Lot#	Realized	Lot#	Realized	Lot#	Realized	Lot#	Realized	Lot#	Realized	Lot#	Realized	Lot#	Realized	Lot#	Realized
1	18,000	44	950	87	325	130	210	173	1,800	216	325	259	300	302	12,000
2	425	45	1,100	88	450	131	20	174	130	217	525	260	280	303	1,200
3	750	46	1,350	89	1,100	132	675	175	325	218	300	261	425	304	650
4	850	47	950	90	550	133	290	176	200	219	350	262	2,300	305	325
5	750	48	1,100	91	425	134	550	177	210	220	290	263	1,250	306	6,000
6	1,100	49	1,800	92	425	135	1,900	178	2,100	221	3,500	264	3,250	307	625
7	475	50	950	93	105	136	1,800	179	1,800	222	10,500	265	700	308	625
8	650	51	1,700	94	280	137	1,700	180	2,500	223	1,300	266	425	309	3,250
9	950	52	2,100	95	220	138	1,700	181	125	224	2,100	267	4,000	310	3,500
10	625	53	1,600	96	400	139	5,750	182	105	225	5,000	268	1,250	311	1,250
11	2,400	54	650	97	425	140	900	183	120	226	1,350	269	12,500	312	325
12	2,000	55	3,500	98	17,000	141	500	184	170	227	2,900	270	3,250	313	425
13	5,250	56	62,500	99	2,300	142	2,900	185	60	228	1,500	271	9,000	314	120
14	5,250	57	1,700	100	2,300	143	2,400	186	270	229	7,500	272	1,100	315	140
15	800	58	750	101	2,300	144	2,600	187	325	230	2,200	273	210	316	100
16	3,750	59	325	102	750	145	350	188	350	231	750	274	575	317	800
17	400	60	750	103	550	146	800	189	250	232	550	275	130	318	325
18	1,500	61	300	104	280	147	325	190	625	233	450	276	160	319	475
19	7,000	62	800	105	400	148	325	191	525	234	200	277	230	320	900
20	4,500	63	425	106	300	149	325	192	700	235	220	278	210	321	1,600
21	37,500	64	325	107	100	150	4,750	193	2,100	236	55	279	60	322	750
22	3,750	65	240	108	625	151	115	194	1,800	237	525	280	675	323	5,000
23	900	66	1,250	109	400	152	280	195	1,000	238	525	281	130	324	1,800
24	650	67	4,500	110	2,400	153	525	196	625	239	270	282	250	325	1,800
25	325	68	750	111	2,700	154	1,500	197	180	240	425	283	350	326	8,500
26	600	69	130	112	2,500	155	525	198	550	241	1,500	284	500	327	3,000
27	850	70	260	113	550	156	475	199	750	242	650	285	220	328	6,250
28	1,100	71	250	114	575	157	1,050	200	1,300	243	600	286	260	329	150
29	2,400	72	300	115	425	158	800	201	1,600	244	325	287	450	330	85
30	5,000	73	625	116	1,350	159	425	202	1,200	245	575	288	220	331	25
31	300	74	1,250	117	1,100	160	1,500	203	800	246	270	289	425	332	30
32	1,000	75	450	118	400	161	900	204	75	247	525	290	230	333	85
33	1,100	76	115	119	17,000	162	17,000	205	350	248	500	291	1,200	334	130
34	800	77	350	120	650	163	7,500	206	180	249	425	292	950	335	210
35	190	78	270	121	3,250	164	3,750	207	210	250	150	293	700	336	400
36	375	79	180	122	1,100	165	1,100	208	160	251	150	294	300	337	200
37	2,000	80	250	123	2,700	166	1,300	209	160	252	50	295	675	338	160
38	500	81	210	124	210	167	3,000	210	75	253	35	296	210	339	40
39	550	82	350	125	160	168	280	211	375	254	75	297	1,700	340	240
40	1,200	83	750	126	425	169	400	212	75	255	2,200	298	150	341	210
41	525	84	200	127	80	170	100	213	11,500	256	325	299	500	342	400
42	4,250	85	230	128	200	171	210	214	1,350	257	80	300	1,600	343	625
43	3,500	86	200	129	110	172	290	215	350	258	750	301	500	344	600

**PRICES REALIZED FOR SALE 793---9/26/97**  
**The Vernon R. Morris, Jr., M.D. Collection of Used U.S.**

Robert A. Siegel Auction Galleries, Inc.  
60 East 56th Street, 4th Floor, New York, NY 10022  
Tel (212) 753-6421 Fax (212) 753-6429

Lot#	Realized	Lot#	Realized
345	105	388	800
346	425	389	280
347	450	390	100
348	300	391	350
349	550	392	325
350	500	393	110
351	750	394	350
352	105		
353	35		
354	70		
355	80		
356	45		
357	75		
358	425		
359	325		
360	200		
361	80		
362	1,300		
363	400		
364	130		
365	800		
366	325		
367	500		
368	120		
369	325		
370	300		
371	95		
372	210		
373	20		
374	60		
375	10		
376	30		
377	190		
378	750		
379	50		
380	160		
381	70		
382	55		
383	20		
384	65		
385	45		
386	400		
387	290		