

THE ARGENTUM COLLECTION

United States Stamps and Covers



Sale 807

Tuesday Evening, February 23, 1999

Robert A. Siegel

AUCTION GALLERIES, INC.

PARK AVENUE TOWER, 17th FLOOR, 65 EAST 55th STREET, NEW YORK, N.Y. 10022

Phone (212) 753-6421 Fax (212) 753-6429 E-mail: siegelstp@aol.com

Internet: <http://SiegelAuctions.com/home.htm>

Robert A. Siegel

AUCTION GALLERIES, INC.

America's premier stamp auctioneer since 1930

PARK AVENUE TOWER, 17th FLOOR, 65 EAST 55th STREET, NEW YORK, N.Y. 10022

Phone (212) 753-6421 Fax (212) 753-6429 E-mail: siegelstp@aol.com

Internet: <http://SiegelAuctions.com/home.htm>

Scott R. Trepel

President

John Zuckerman

Vice President

Elizabeth C. Pope

Vice President

Accounts

Cindy Stein

Sale Administration

Carlene Conlon

Descriptions

John Zuckerman

Andrew Kupersmit

Scott R. Trepel

Principal Auctioneer

Scott R. Trepel

N.Y.C. Auctioneer's License No. 795952

Robert A. Siegel

1913-1993

AREA HOTELS

The Hotel Elysee

60 E. 54th St. • 800-535-9733

Omni Berkshire

21 E. 52nd St. • 800-843-6664

The Plaza Hotel

Fifth Ave. & 59th St. • 800-228-3000

The Four Seasons

57 E. 57th St. • 800-332-3442

INTERNET

For on-line catalogue,
sale updates and information,
please visit our website:

<http://SiegelAuctions.com/home.htm>

Bids may be sent by e-mail, using the
Top-Speed On-Line Bidding

form available in our website.

E-mail: siegelstp@aol.com

PHONE & FAX

Phone 212-753-6421

Inquiries and bidding

Fax 212-753-6429

24-hour fax line

**Toll-free 800-882-8853
for catalogue orders only**

Messages and faxes only



30c 1869 Pictorial Invert (lot 151)

The Argentum Collection of United States Stamps and Covers

Offered at unreserved public auction

Tuesday, February 23, 1999
at 6:00 p.m. (Lots 1-302)

Pre-Sale Exhibition

Monday, February 22 10:30 a.m. - 4:00 p.m.
Tuesday, February 23 10:30 a.m. - 4:00 p.m.

To arrange an appointment for viewing at another time,
please feel welcome to call (212) 753-6421.

Arrangement of Sale

Category Pages

Tuesday, February 23, at 6:00 p.m..

Postmasters' Provisionals.....	5-6
1847 Issue.....	7-12
1851-56 Issue.....	13-23
1857-60 Issue and Reprints	23-35
1861-66 Issue.....	35-39
1867-68 Grilled Issue	40-43
1869 Pictorial Issue and Re-Issue...	44-50
1870-88 Bank Note Issues	50-58
Columbian Issue.....	59-64
1894-1901 Bureau Issues	65
Pan-American Inverts.....	66-67
1902-08 Issues	68
Washington-Franklin Issues.....	69-77
1922-29 Issue.....	77-79
Later Issues and Air Post	80-82
Back-of-Book Issues	83-84
Group Lots.....	85

On The Cover

Front Cover: *St. Louis 5c Greenish (lot 3); 1851 1c Blue Ty. I (lot 25); 1869 90c Pictorial (lot 148); 1901 2c Pan-American Invert (lot 223); and 24c Inverted Jenny (lot 282)*

Back Cover: *1893 \$5.00 Columbian plate strip (lot 207) and 1923 1c Rotary Perf 11 cover (lot 274)*

Conditions of Sale

The property described in this catalogue will be offered at public auction by Robert A. Siegel Auction Galleries, Inc. ("Galleries") on behalf of various consignors and itself or affiliated companies. By bidding on any lot, whether directly or by or through an agent, in person, or by telephone, facsimile or any other means, the bidder acknowledges and agrees to all of the following Conditions of Sale.

1. The highest bidder acknowledged by the auctioneer shall be the buyer. The term "final bid" means the last bid acknowledged by the auctioneer, which is normally the highest bid offered. The purchase price payable by the buyer will be the sum of the final bid and a commission of 10% of the final bid ("buyer's premium"), together with any sales tax or use tax which may be due on the sale.

2. The auctioneer has the right to reject any bid, to advance the bidding at his discretion and, in the event of a dispute between bidders, to determine the successful bidder, to continue the bidding or to reoffer and resell the lot in dispute. The Galleries' record of the final sale shall be conclusive.

3. All bids are per numbered lot in the catalogue unless otherwise announced by the auctioneer at the time of sale. The right is reserved to group two or more lots, to withdraw any lot or lots from the sale, or to act on behalf of the seller. The Galleries will execute bidding instructions on behalf of clients, but will not be responsible for any errors in the execution of such bids.

4. **Lots with numbers followed by the symbol ° are offered subject to a confidential minimum final bid ("reserve"), below which the lot will not be sold. The absence of the symbol ° means that the lot is offered without a reserve.** In the absence of a reserve, the auctioneer has sole discretion to establish a minimum opening bid and may refuse an offer of less than half of the published estimate. Any lot that does not reach its reserve or opening bid requested by the auctioneer will be announced as "passed" and excluded from the prices realized lists after the sale. The Galleries may have a direct or indirect ownership interest in any or all lots in the sale resulting from an advance of monies or goods-in-trade or a guarantee of minimum net proceeds made by the Galleries to the seller.

5. Any lot, the description of which is obviously incorrect, is returnable, but only if the lot is returned within 14 days of receipt. All disputed lots must be returned intact with the original packing material. **The following lots may not be returned for any reason: Lots containing ten or more items; lots from buyers who have registered for the pre-sale exhibition or received lots by postal viewing, thereby having had the opportunity to inspect them before the sale; any lot described with "faults" or "defects" may not be returned because of any fault or defect. No illustrated lots may be returned because of centering, margins or other factors shown in the illustrations.**

6. Successful bidders, unless they have established credit with the Galleries prior to the sale, must make payment in full before the lots will be delivered. Buyers not known to the Galleries must make payment in full within three days from the date of sale. **The Galleries retain the right to demand a cash deposit from anyone prior to bidder registration and/or to demand payment at the time the lot is knocked down to the highest bidder, for any reason whatsoever.** In the event that any buyer refuses or fails to make payment in cash for any lot at the time it is knocked down to him, the auctioneer reserves the right to reoffer the lot immediately for sale to the highest bidder.

7. If the purchase price has not been paid within the time limit specified above, nor lots taken up within seven days from the date of sale, the lots will be resold by whatever means deemed

appropriate by the Galleries, and any loss incurred from resale will be charged to the defaulting buyer. Any account more than thirty days in arrears will be subject to a late payment charge of 1 1/2% per month as long as the account remains in arrears. Any expenses incurred in securing payment from delinquent accounts will be charged to the defaulter. A fee of \$250.00 per check will be charged for each check returned for insufficient funds.

8. All lots are sold as genuine. **Any lot which is accompanied by an expert certificate (for U.S. items, the accepted authority is The Philatelic Foundation), dated within the past five years of the sale date, is sold "as is" and in accordance with the description on the certificate. Such lots may not be returned for any reason, including but not limited to a contrary certificate of opinion obtained after the sale.** Buyers who wish to obtain a certificate for any item that is not accompanied by a certificate dated within the past five years may do so, provided that the following conditions are met: (1) the purchase price must be paid in full, (2) the item must be submitted to an acceptable expertizing committee with a properly executed application form within 21 days of the sale, (3) a copy of the application form must be given to the Galleries, (4) in the event that an adverse opinion is received, the Galleries retain the right to resubmit the item on the buyer's behalf for reconsideration, without time limit or other restrictions, (5) unless written notification to the contrary is received, items submitted for certification will be considered cleared 90 days from the date of sale, and (6) in the event any item is determined to be "not as described", the buyer will be refunded the purchase price and the certification fee up to \$100.00 unless otherwise agreed.

9. Until paid for in full, all lots remain the property of the Galleries on behalf of the seller.

10. Agents executing bids on behalf of clients will be held responsible for all purchases made on behalf of clients unless otherwise arranged prior to the sale.

11. The buyer assumes all risk for delivery of purchased lots and agrees to pay for prescribed shipping costs (see back of Bid Form).

12. The bidder consents that any action or proceeding against it may be commenced and maintained in any court within the State of New York or in the United States District Court for the Southern District of New York, that the courts of the State of New York and United States District Court for the Southern District of New York shall have jurisdiction with respect to the subject matter hereof and the person of the bidder. The bidder agrees not to assert any defense to any action or proceeding initiated by Galleries based upon improper venue or inconvenient forum. The bidder agrees that any action brought by the bidder shall be commenced and maintained only in a Federal Court in the United States District Court for the Southern District of New York or the State Court in the county in which Galleries has its principal place of business in New York. These Terms and Conditions shall be governed by and construed in accordance with the substantive laws of the State of New York.

SCOTT R. TREPEL, Principal Auctioneer

Auctioneer's License No. 795952
N.Y.C. Department of Consumer Affairs
80 Lafayette Street, New York, N.Y. 10013
Telephone (212) 577-0111

Revised 2/98

Copyright Notice: This catalogue is protected by copyright. The descriptions, format, illustrations and information used herein may not be reprinted, distributed or copied in any form without the express written consent of Robert A. Siegel Auction Galleries. Application for permission may be made in writing.

© 1999, Robert A. Siegel Auction Galleries, Inc.

Grading Terms, Abbreviations and Values Used in Descriptions

Centering and Gum

Margin width, centering and gum are graded according to Scott Catalogue standards.







Extremely Fine (EF): Exceptionally large margins or near perfect centering. The term "Gem" describes condition that is the finest possible for the issue.

Very Fine (VF): Normal size margins for the issue and well-centered with the design a bit closer to one side.

Fine (F): Smaller than usual margins or noticeably off center. Pre-1890 issues may have the design touched in places.

Very Good (VG): Attractive appearance, but margins or perforations cut into the design.

Good (G) or Average (Ave.): Cut into or perfs far into design and usually with slight faults. This condition is generally acceptable for rarities, scarce multiples or stamps used on unusual covers.

Gum Categories:	MINT N.H.	ORIGINAL GUM (O.G.)				NO GUM
	 Mint Never Hinged <i>Free from any disturbance</i>	 Lightly Hinged <i>Faint impression of a removed hinge over a small area</i>	 Hinge Mark or Remnant <i>Prominent hinged spot with part or all of the hinge remaining</i>	 Part o.g. <i>Approximately half or more of the gum intact</i>	 Small part o.g. <i>Approximately less than half of the gum intact</i>	 No gum <i>Only if issued with gum</i>
Catalogue Symbol:	★ ★	★	★	★	★	(★)
PRE-1890 ISSUES	<i>Pre-1890 stamps in these categories trade at a premium over Scott value</i>			Scott Value for "O.G."		Scott "No Gum" Values thru No. 218
1890-1935 ISSUES	Scott "Never Hinged" Values for Nos. 219-771	Scott Value for "O.G." (Actual value will be affected by the degree of hinging)		Disturbed Original Gum: Gum showing noticeable effects of humidity, climate or hinging over more than half of the gum. The significance of gum disturbance in valuing a stamp in any of the Original Gum categories depends on the degree of disturbance, the rarity and normal gum condition of the issue and other variables affecting quality. For example, stamps issued in tropical climates are expected to have some		
1935 TO DATE	Scott Value for "Unused"					

Covers

Minor nicks, short edge tears, flap tears and slight reduction at one side are normal conditions for 19th century envelopes. Folded letters should be expected to have at least one file fold. Light cleaning of covers and small mends along the edges are accepted forms of conservation. Unusual covers may have a common stamp with a slight crease or tiny tear. **These flaws exist in virtually all 19th century covers and are not always described. They are not grounds for return.**

Catalogue Values and Estimates

Unless otherwise noted, the currently available *Scott Catalogue* values are quoted in dollars with a decimal point. Other catalogues are often used for foreign countries or specialized areas and are referred to by their common name: *Stanley Gibbons* (SG), *Dietz*, *American Air Mail Catalogue* (AAMC), *Michel*, *Zumstein*, *Facit*, etc. Estimates are indicated with an "E." and reflect our conservative valuation in dollars. Reserves will never exceed the low end of the estimate range; they will sometimes exceed Scott Catalogue value for stamps in Extremely Fine condition.

Because of certain pricing inconsistencies in the Scott Catalogue—for example, blocks that have no gum, the absence of premiums for Mint N.H. items, etc.—we cannot guarantee the accuracy of values quoted for multiples, specialized items and collection lots. We generally try to be conservative, but buyers may not return a lot because of a discrepancy in catalogue value due to Scott pricing inconsistencies.

Symbols and Abbreviations (see chart for gum symbols)

⊞ Block	E Essay	pmk. Postmark	No. Scott Catalogue Number
⊞ Cover	P Proof	cds Circular Datestamp	hs Handstamp
FC Fancy Cancel	TC Trial Color Proof	var. Variety	ms. Manuscript

INTRODUCTION

THIS SALE PRESENTS THE FIRST PART OF THE ARGENTUM COLLECTION, which encompasses one gentleman's collection of United States, Confederate States and British North America stamps and covers.

The United States portion of the Argentum collection, which is offered in this sale catalogue, reflects the character of the entire collection and collector. Rarely satisfied with simple representation of an issue, Argentum acquired many unusual and rare pieces, and he was eager to obtain superb-quality stamps and multiples when given the opportunity.

For example, the Postmasters' Provisionals include three superb St. Louis "Bears", all cancelled by the red town datestamp without the usual pen mark (lots 3-5). Examples of such remarkable quality and beauty have rarely been offered.

The 1847 Issue is represented in depth, but there are two distinct highlights. The first is a large-margined example of the 5c Red Orange, Scott 1c, cancelled in blue (lot 10). This stamp retains the vividness of a true Red Orange. Argentum acquired it from a collection formed before World War II—its rich color is due to the unusual circumstance of having been hidden from daylight for most of its 150-year existence. The second of the extraordinary 1847 items is the 10c bisect on a cover from the Stilphin correspondence (lot 24). Bisections of the 1847 Issue are desirable in any form, but the record shows that only two exist with a numeral used exclusively to cancel the stamp.

The imperforate classics continue with an 1851 1c Blue, Type I, Position 7R1E (lot 25), which was Henry C. Gibson's stamp during the early part of the century. Gibson and many others believed it to be unused—the absence of anything resembling a cancellation leads us to the same conclusion—but "faintly cancelled" is the Philatelic Foundation's current opinion. Seeing is believing, and the brilliant unused appearance of this stamp will certainly attract many bidders who need this rarity for their collection.

Cover collectors will find several outstanding usages. A great rarity certain to draw attention is the 1851 3c Orange Brown cancelled by the Mobile "Due Way 1c" framed grid (lot 42). Another highlight is the cover from San Francisco to France with six 10c 1861's in a dark shade—a most uncommon form of franking (lot 110).

Rare errors will be found throughout the sale, beginning with the imperforate-between variety of the 1857 1c Type III (an as-yet unlisted Scott 21b—lot 64). The Inverts are offered, including a superb used 30c 1869 (lot 151), perfectly-centered 2c and 4c Pan-American stamps with original gum (lots 223-224), and one of the best-centered 24c Inverted "Jenny" stamps in existence (lot 282).

Of the numerous high points of the collection, there are a few personal favorites. The 90c 1869 with original gum—which was Caspary's best example—tops our list (lot 148). The magnificent original-gum examples of the 15c and 90c 1870 National Grills (lots 160 and 163) are two condition-rarities. The \$1.00 Columbian block and \$5.00 Columbian plate number strip (lots 201 and 207) look as though Argentum bought them just yesterday at the post-office. Finally, there is the 1923 1c Rotary Perf 11 cover (lot 274), which we regard as one of the most outstanding 20th century covers extant.

This portion of Argentum has been presented in full color and will be offered at auction without reserves. For updates and color images in digital form, please visit our website at SiegelAuctions.com/home.htm.

— SCOTT R. TREPEL

EVENING SESSION (LOTS 1-302)
TUESDAY, FEBRUARY 23, 1999, AT 6:00 P.M.
THE ARGENTUM COLLECTION OF UNITED STATES
POSTMASTERS' PROVISIONALS



1

- 1 ☒ **New York N.Y., 5c Black, "ACM" Initials (9X1).** Horizontal pair, ample margins to in at left and top, tied by red square grids, matching "Paid" arc on large part of folded letter datelined "Charleston 7 December 1846" to New York City, red "Charleston S.C. Dec. 7" circular datestamp with matching "10" handstamp (partially restored), file fold thru one stamp, one inch of letter at right has been professionally restored (including part of "10" rate). Fine appearance, the only recorded use of the New York provisional from Charleston S.C. (missing from the cities identified in the Piller book) — the "10" rating suggests that the Charleston postmaster was uncertain whether or not to accept New York's stamps, but the "Paid" arc applied at New York confirms acceptance — with 1974 P.F. certificate..... E. 1,500-2,000



2

- 2 ★ **Providence R.I., 5c & 10c Gray Black, Se-Tenant (10X1, 10X2).** Original gum, top right sheet corner margins and large margins on other sides, slight natural crease characteristic of original-gum examples, still Extremely Fine..... 2,250.00



3

3

St. Louis Mo., 5c Black on Greenish (11X1). Position 1, large even margins, cancelled only by the orange-red "St. Louis Mo. Feb. 27" circular datestamp, deep impression on bright greenish paper, faint vertical crease

EXTREMELY FINE APPEARANCE. THE 5-CENT FIRST PRINTING ON GREENISH PAPER IS EXTREMELY RARE IN THIS CHOICE USED CONDITION. ONLY 20-25 OFF-COVER EXAMPLES ARE KNOWN CANCELLED EXCLUSIVELY BY THE RED DATESTAMP.

Illustrated in Luff book as Position 1 of the plate reconstruction. Lightly backstamped "SS&CCO" (Scott Stamp and Coin Co.). 2,750.00

4

St. Louis Mo., 10c Black on Greenish (11X2). Positions 4/6, vertical pair with bottom sheet margin and huge margins all around, wonderful intense impression on deep greenish paper, beautifully tied by bold orange-red "St. Louis Mo. Jan. 29" circular datestamp, without any pen cancellation, on large piece

EXTREMELY FINE GEM. THIS PAIR IS THE FINEST OF THE RECORDED MULTIPLES OF THE 10-CENT ST. LOUIS PROVISIONAL ON GREENISH PAPER WITHOUT PEN CANCELLATION. A MAGNIFICENT AND EXTREMELY RARE POSTMASTER PROVISIONAL PIECE.

Fewer than a half-dozen pairs or strips of the 10c First Printing exist without the usual pen cancellation. Of these, only this pair, a strip of three on piece and another on cover can be considered Extremely Fine. The Scott Catalogue does not list No. 11X2 as an off-cover pair E. 15,000-20,000



4



5

5

St. Louis Mo., 10c Black on Gray Lilac (11X5). Positions 2/4, vertical pair, full to large margins all around, tied by red "St. Louis Mo. Mar. 20" circular datestamp on small piece, top stamp has a few natural wrinkles at lower left

EXTREMELY FINE. ONE OF THE FINEST KNOWN MULTIPLES OF THE 10-CENT SECOND PRINTING ON GRAY LILAC PAPER. ONLY A FEW EXIST CANCELLED SOLELY BY THE RED DATESTAMP.

By the time of the Second Printing on Gray Lilac paper, St. Louis almost always used a pen cancellation. Therefore, without a pen cancel, the 10c No. 11X5 is even rarer than its counterpart on Greenish paper, No. 11X2. This pair is one of the three or four finest multiples cancelled only by the town datestamp.

Ex Hind and Caspary. Scott Retail \$5,750.00 as a pair with usual pen cancellation..... E. 10,000-15,000

1847 ISSUE

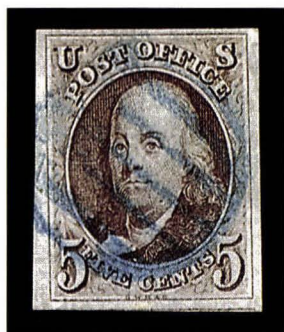


6

- 6 (★) **5c Red Brown (1).** Unused (no gum), large to huge margins, beautiful deep rich color on strongly blued paper

EXTREMELY FINE. A CHOICE AND SCARCE UNUSED EXAMPLE OF THE 5-CENT 1847 ISSUE.

With 1981 P.F. certificate..... 2,600.00



7



8

- 7 **5c Red Brown (1).** Large to huge margins incl. part of frameline from adjoining stamp below, unusual **blue 5-bar grid in circle** cancel, Extremely Fine..... 635.00
- 8 **5c Red Brown (1).** Large even margins, late worn impression, red square grid, tiny scissors-cut in bottom left margin, otherwise Extremely Fine 600.00



9

- 9 **5c Dark Brown (1a).** Incredibly intense color and proof-like impression from the first printing, full to large margins, lightly cancelled by red grid, accompanied by Boston Aug. 11, 1847 cover from which this stamp was removed, Very Fine 625.00



10

- 10 **5c Red Orange (1c).** Huge even margins all around, showing bits of frameline from adjoining stamps above and below, vivid color in unmistakable Red Orange shade, bold blue grid

EXTREMELY FINE GEM. ONE OF THE FINEST KNOWN EXAMPLES OF THE ELUSIVE 1847 RED ORANGE SHADE. A MAGNIFICENT STAMP.

With 1994 P.F. certificate..... 5,000.00



11

- 11 田 **5c Red Brown (1).** Block of four, large margins at top and right, slightly in at left and bottom, cancelled by blue grids and originating on blue piece, lifted and replaced, light wrinkles

A FINE AND VERY RARE USED BLOCK OF THE 5-CENT 1847 ISSUE.

Ex Claffin 27,500.00



12

- 12 ☒ **5c Dark Brown (1a).** Huge margins including bit of adjoining frameline at right, intense dark shade and early impression, tied by lightly struck red "New-York Aug. 15" circular datestamp on blue 1848 folded letter to Philadelphia, fresh and Extremely Fine, a marvelous stamp..... 750.00



13

- 13 ☒ **5c Red Brown (1).** Margins all around, late worn impression, tied by red grid, matching "Mobile Ala. Feb. 3" circular datestamp on brown cover to Pensacola Fla., neat 1851 docketing, Very Fine and scarce usage..... E. 500-750



14

- 14 (★) **10c Black (2).** Unused (no gum), large to enormous margins, accompanying certificate notes smudges of printer's ink at top — a natural flaw — bright and fresh

EXTREMELY FINE. AN EXTREMELY RARE AND ATTRACTIVE UNUSED EXAMPLE OF THE 10-CENT 1847 ISSUE.

With 1956 P.F. certificate..... 15,000.00

- 15 ★ **10c Black (2).** Full original gum, three full to large margins, ample to just clear at top, short transfer variety at top of design

FINE. AN EXCEEDINGLY RARE ORIGINAL-GUM EXAMPLE OF THE 10-CENT 1847 ISSUE.

With 1943 A.P.S. certificate 26,000.00



15



16

- 16 **10c Black (2).** Gigantic margins all around, including frameline of adjoining stamp above, neat **black grid** cancel — scarce on the 10c 1847 — deep shade and impression

EXTREMELY FINE GEM. A SUPERB 10-CENT 1847 WITH SCARCE BLACK GRID CANCEL.

Ex Newbury. With 1988 P.F. certificate..... 1,575.00

- 17 **10c Black (2).** Large even margins, proof-like impression on bright bluish paper, two strikes of red **"10" numeral cancel** (Baltimore)

EXTREMELY FINE GEM. A CHOICE 10-CENT 1847 WITH UNUSUAL CANCELLATION.

Scott Retail for numeral cancel..... 1,650.00



17



18



19



20



21

- 18 10c Black (2). Large even margins, blue grid, Extremely Fine 1,450.00
- 19 10c Black (2). Huge margins including right sheet margin, red square grid, faint horizontal crease, otherwise Extremely Fine 1,400.00
- 20 ★ 5c Red Brown, Reproduction (3). Without gum as issued, large margins, Extremely Fine 850.00
- 21 ★ 10c Gray Black, Reproduction (4). Without gum as issued, large margins, Extremely Fine 1,100.00

22



23

- 22 ☒ 10c Black (2). Large even margins, tied by red grid, matching "Cincinnati O. Dec. 28 10" integral rate circular datestamp on greenish 1847 folded letter to Philadelphia, neat file fold, Extremely Fine stamp and colorful handsome cover E. 1,000-1,500
- 23 ☒ 10c Black (2). Horizontal pair, large margins mostly all around, ample at bottom right, deep shade, tied by red grids, matching "U.S. Express Mail Boston Mass. Apr. 25" route agent's circular datestamp on greenish folded cover to Philadelphia, from the Ludlow Beebe & Co. correspondence, scissors-cut in margin between stamps at top
EXTREMELY FINE PAIR AND SCARCE USAGE WITH AN UNUSUALLY CLEAR STRIKE OF THE U.S. EXPRESS MAIL ROUTE AGENT'S MARKING.
With 1988 P.F. certificate..... E. 5,000-7,500



24

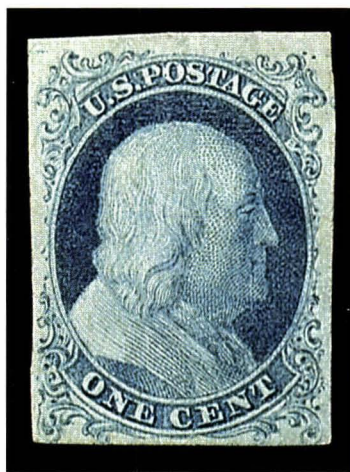
- 24 ☒ **10c Black, Diagonal Half Used as 5c (2a).** Bottom left diagonal corner, large margins, tied across the cut by blue "5" numeral cancel, matching "Concord N.H. Sep. 20" (1850) circular datestamp on small white envelope to Miss Mary Stilphin at Manchester N.H., the sender folded top flap two millimeters above original fold to accommodate letter, the bisect was affixed by sender slightly over original fold in envelope but the stamp has not been affected in any way (checked carefully by us and the P.F.)

EXTREMELY FINE. ONE OF TWO RECORDED 10-CENT 1847 BISECTS WITH A NUMERAL USED EXCLUSIVELY TO CANCEL THE STAMP. AN OUTSTANDING 1847 ISSUE USAGE.

The Stilphin correspondence was described in detail by Susan M. McDonald in *The Chronicle* (Nos. 115 and 117). Ten 10c 1847 bisect covers from this correspondence are recorded, including four with manuscript Ballard Vale Mass. postmarks. Of the six from Concord, only two have the numeral cancel used to cancel the bisect. We are unaware of any other genuine 10c 1847 bisects cancelled solely by a numeral rate marking.

With 1980 P.F. certificate 15,000.00

1851-56 ISSUE



25

- 25 **1c Blue, Ty. I (5).** Position 7R1E, large margins, clear at bottom except right plume just slightly touched, beautiful bright color in distinctive Plate 1 Early shade, intense impression showing minute details of double transfer, no visible trace of a cancellation (P.F. certificate states "faintly cancelled"), a small thin spot does not detract from appearance, otherwise sound

EXTREMELY FINE UNUSED APPEARANCE. ONLY POSITION 7R1E—THE SEVENTH STAMP IN THE RIGHT PANE OF PLATE 1 EARLY—FURNISHED IMPERFORATE 1851 ONE-CENT STAMPS SHOWING THE COMPLETE DESIGN (TYPE I). VERY FEW OF THE 80 CONFIRMED EXAMPLES OF THIS STAMP HAVE MARGINS AS LARGE AS THIS EXAMPLE, AND ONLY THREE ARE UNUSED. ONE OF THE RAREST AND MOST DESIRABLE CLASSIC UNITED STATES STAMPS.

The census compiled by Mal Brown contains at least 80 unduplicated records of Scott 5. There are probably no more than ten examples existing outside of the Brown census population. Therefore, the 1c 1851 Type I is the rarest of all United States stamps issued regularly prior to the 1868 Grills.

Because of the significance attached to outer portions of the 1c 1851 design, the rare types that have been carefully cut apart, so as not to impinge on any part of the design, are extremely desirable. The narrow spacing between stamps in the sheet and the users' indifference to the outlying ornamentation during separation are factors that contributed to the great rarity of four-margin examples. Among the recorded imperforate Type I stamps (Scott 5), a small fraction of the copies on or off cover have four full margins. Considering the value premium assigned to complete ornaments at top and plumes at bottom—the distinguishing characteristics of Type I—the value of ample margins is paramount among all condition factors.

With the recent discovery of another unused Scott 5, the record of unused examples of this stamp has been increased to three, of which one is sound. Prior to 1930, the stamp offered here was owned by Henry C. Gibson, who regarded it as unused. Subsequently, a debate arose as to whether or not it had been cancelled, due to the presence of a few tiny, very faint spots. The same sort of spotting is found on the two original-gum examples of Scott 5. We believe it is quite possible that this stamp is unused, although the current 1996 P.F. certificate states "faintly cancelled with a small thin spot."

Ex Gibson and Lawrence. With 1996 P.F. certificate 31,000.00



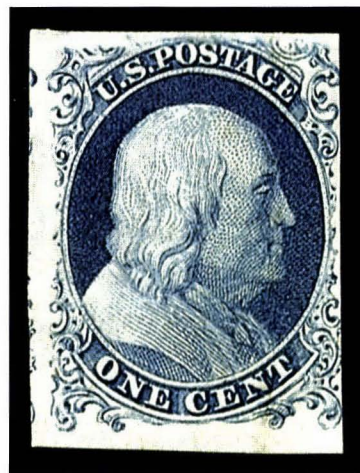
26

- 26 **1c Blue, Ty. I (5).** Position 7R1E, ample margins just touching extreme portions of ornaments at top and bottom, bright shade although a later printing from Plate 1 Early, cancelled by black circular datestamp of Mobile Ala., faint creases show in fluid
 VERY FINE APPEARANCE. A CHOICE EXAMPLE OF THE IMPERFORATE TYPE I ONE-CENT STAMP—ONE OF CLASSIC PHILATELY'S GREATEST RARITIES.
 With 1950 P.F. certificate 31,000.00

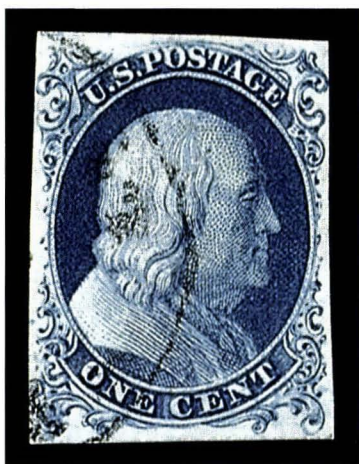
- 27 ★ **1c Blue, Ty. Ia (6).** Plate 4, large part original gum, large to huge margins at left and bottom, full at top and just touching at right, dark shade, vertical crease ending in small tear

FINE APPEARANCE. A VERY RARE ONE-CENT 1851 TYPE WITH ORIGINAL GUM.

With 1974 P.F. certificate 30,000.00



27

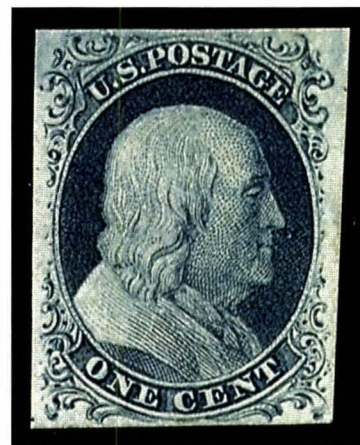


28

- 28 **1c Blue, Ty. Ia (6).** Position 94R4, full to large margins except touched along side ornaments near top, deep rich color, lightly cancelled
VERY FINE. A CHOICE USED EXAMPLE OF THE RARE ONE-CENT 1851 TYPE IA.

Plate 4 stamps were issued imperforate briefly before the introduction of perforations on the 1c 1851 stamp in mid-1857. Imperforate Type Ia stamps, produced only by the bottom row of Plate 4, are very rare in sound condition. 8,500.00

- 29 (★) **1c Blue, Ty. II (7).** Plate 2, unused (no gum), full to large margins, deep rich color, Very Fine..... 500.00



29



30

- 30 (★) 田 1c Blue, Ty. II (7). Positions 9-10/19-20R2, full top right corner sheet margin block of four with huge margins showing parts of five adjoining stamps, unused (no gum), beautiful rich color and intense impression, minor creasing in selvage and small internal tear in bottom left stamp, truly insignificant

EXTREMELY FINE APPEARANCE. A BREATHTAKING CORNER-MARGIN BLOCK OF THE ONE-CENT 1851 ISSUE.

With 1981 P.F. certificate..... 4,250.00



31

32

- 31 1c Blue, Ty. II (7). Plate 2, large even margins, New Orleans cds, Extremely Fine..... 150.00
- 32 ☒ 1c Blue, Ty. II (7). Intense Plate 2 color and impression — resembles a Plate 3 printing, but plates as Pos. 81L2 — large margins all around, including bits of adjoining stamps, tied by bold "Portsmouth N.H. Oct. 7" circular datestamp on small local cover, Extremely Fine Gem stamp and cover, with 1989 P.F. certificate 175.00



- 33 **1c Blue, Ty. III (8).** Plate 4, wide breaks at top and bottom, stitch watermark, deep Plate 4 shade, Mobile Ala. datestamp cancel, Very Fine 2,250.00
- 34 (★) **1c Blue, Ty. IIIa (8A).** Plate 4, unused (no gum), three large margins, touched at left, slight soiling mentioned on certificate (which does not note a small thin), Very Fine appearance, a rare unused stamp, with 1959 P.F. certificate 2,250.00
- 35 **1c Blue, Ty. IIIa (8A).** Pos. 75L4, large even margins, deep rich color, black town datestamp, Extremely Fine, with 1983 P.F. certificate 900.00
- 36 (★) **1c Blue, Ty. IV (9).** Unused (no gum), huge margins all around, dark shade, Extremely Fine Gem..... 375.00
- 37 **1c Blue, Ty. IV (9).** Large to huge margins showing bits of stamps above and below, blue town datestamp, Extremely Fine..... 127.00
- 38 **1c Blue, Ty. IV (9).** Ample margins, **green** town datestamp, bright shade of true green, toned spot and corner crease, otherwise Very Fine, rare 475.00
- 39 **1c Blue, Ty. IV (9).** Two, grid cancels, large margins and bright shades, Very Fine..... (Photo Ex) 250.00
- 40 **1c Blue, Ty. IV (9).** Vertical pair, Positions 41/51L1L with imprint "[Toppan, Carpe]nter, Casilear & Co. BANK NOTE ENGRAVERS. Phila, New York, Bosto[n]" in left sheet margin, plate number not showing, Philadelphia cds, couple faint creases, still Extremely Fine, a marvelous used imprint pair..... E. 750-1,000



41

- 41 **3c Orange Brown (10).** Large margins to just touched at left, bright color, **blue** "Troy & New York Steam Boat" two-line framed handstamp, tiny corner crease at top right, otherwise Fine..... 160.00

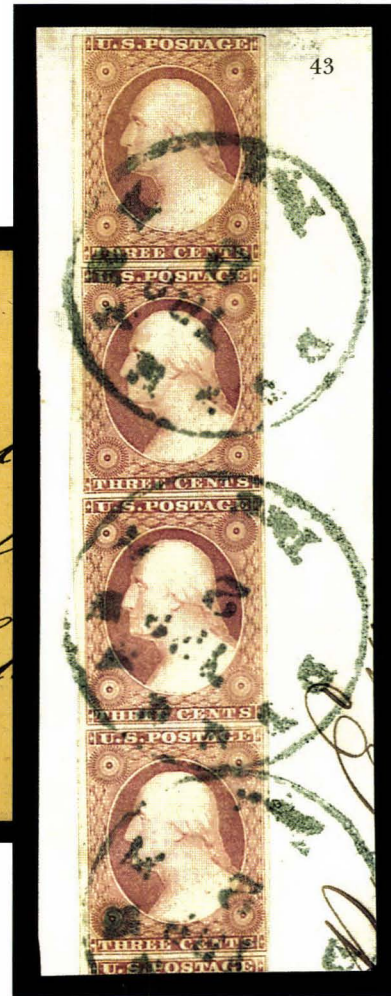


42

- 42 **3c Orange Brown (10).** Margins all around, mostly ample, intense shade and impression, tied by bold dark blue "Due WAY 1c" in frame with integral grid, an extremely rare marking created to cancel stamp and indicate way fee in one operation, matching "Mobile Ala. Jan. 21" (1852) circular datestamp on greenish folded cover to Providence R.I., probably originated at New Orleans

EXTREMELY FINE. ONE OF THE FINEST EXAMPLES OF THIS RARE MOBILE "WAY" MARKING.
Ex Emerson..... E. 1,500-2,000

- 43 **3c Rose Red (11).** Vertical strip of four, large margins except at top where touching, tied on large piece by three strikes of **green** town dates-tamp, a dull mossy green color, Extremely Fine..
..... E. 500-750



- 44 ☒ **3c Dull Red (11).** Pos. 15R1L, 1852 printing in a distinctive shade (3c color specialists take note), tied by brownish (the color of mud) "Pottsville Pa. Apr. 22" circular datestamp on buff cover to Philadelphia, Extremely Fine E. 100-150



- 45 ☒ **3c Dull Red (11).** Margins all around, color affected by light, tied by bold "WAY" straight-line, red "New Orleans La. Jul. 15" circular datestamp, red oval "From Steamer Natchez No. 2" route agent's handstamp on 1853 folded letter to New Orleans, Very Fine.....
..... E. 300-400

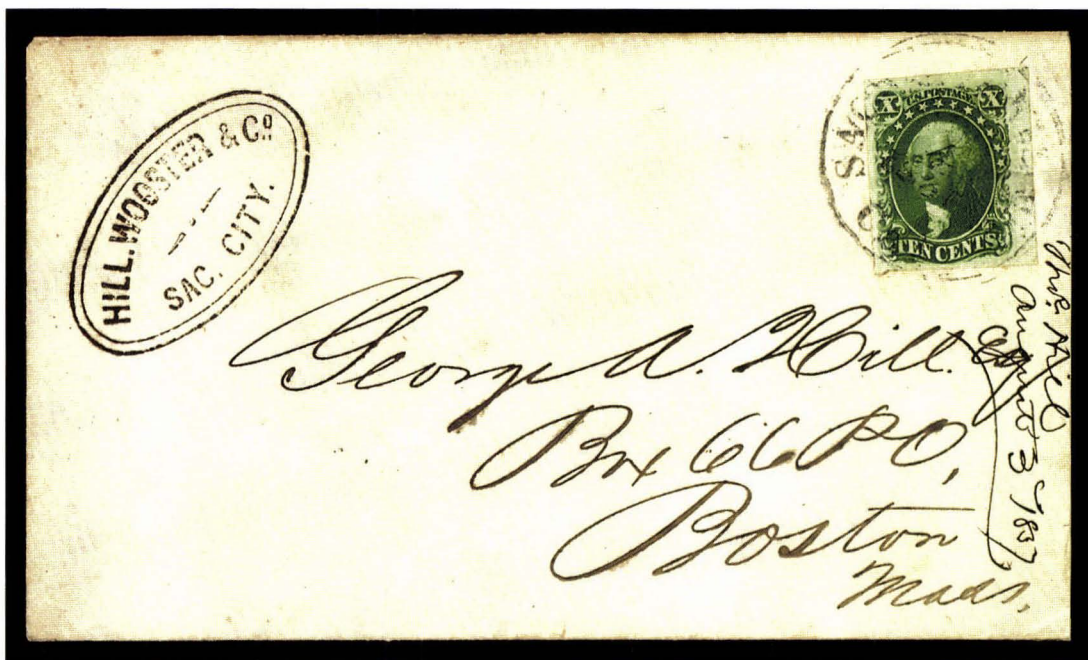


- 46 **5c Red Brown (12).** Large even margins, **blue** town cancel, minor corner crease at bottom right, Extremely Fine appearance 1,225.00
- 47 (★) **10c Green, Ty. I (13).** Unused (no gum), bottom sheet margin and large side margins, slightly in at top, corner margin crease at bottom left, still Very Good and rare in unused condition, with 1952 P.F. certificate..... 8,000.00
- 48 **10c Green, Ty. I (13).** Large margins including bottom sheet margin, lightly cancelled, Extremely Fine 750.00
- 49 ★ **10c Green, Ty. II (14).** Original gum, lightly hinged, three large to huge margins including part of adjoining stamp above, ample at left, rich color and fine impression
EXTREMELY FINE. AN EXCEPTIONALLY CHOICE ORIGINAL-GUM EXAMPLE OF THE 10-CENT 1855 ISSUE.
With 1982 P.F. certificate..... 3,100.00
- 50 (★) **10c Green, Ty. II (14).** Unused (no gum), large to huge margins, incredibly deep rich color and proof-like impression
EXTREMELY FINE GEM. ONE OF THE MOST BEAUTIFUL UNUSED EXAMPLES OF THE 10-CENT 1855 IN EXISTENCE.
With 1992 P.F. certificate..... 1,750.00
- 51 **10c Green, Ty. II (14).** Horizontal pair, full to large margins, rich color, neat town dates-tamp, Extremely Fine pair..... 500.00
- 52 **10c Green, Ty. II, III (14, 15).** Lightly cancelled, each has tiny thin specks, appear Very Fine and Extremely Fine, respectively(Photo Ex) 450.00



53

- 53 ☒ **10c Green, Ty. II (14).** Horizontal strip of three, full to large margins, pre-use corner crease and some toned spots, tied by two clear strikes of "San Francisco Cal. 20 Jun." circular datestamp on blue 1856 folded cover to Boston, endorsed "Sonora", Fine and unusual triple-rate franking, ex Gibson E. 750-1,000



54

- 54 ☒ **10c Green, Ty. III (15).** Enormous margins including right sheet margin, rich color, tied by "San Francisco Cal." circular datestamp on cover to Boston, oval merchant's handstamp at upper left, Extremely Fine, a remarkable stamp and attractive transcontinental cover E. 500-750

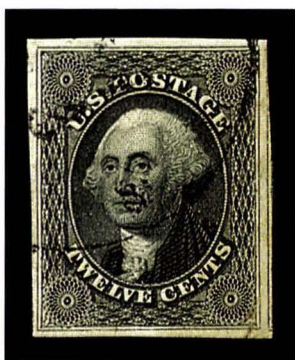


- 55 ☒ **10c Green, Ty. III (15).** Enormous margins including left sheet margin, deep shade, tied by "New York Jul. 6" **Ocean Mail** circular datestamp on yellow cover to **Panama, New Granada**, with 1857 letter enclosure from a wife to her husband with news about the Dakota territory, flap tear extends just over edge of cover above stamp, unnoticeable and otherwise Extremely Fine..... E. 750-1,000
- 56 ☒ **10c Green, Ty. III (15).** Large even margins, beautiful color and impression, tied by "Pekin Ills. Mar. 14" circular datestamp on lady's small embossed cover to "Indian Diggings" in California, minor staining around edge, Extremely Fine stamp and attractive cover..... E. 300-400



- 57 **10c Green, Ty. IV (16).** Position 54L1, recut at bottom, large margins, neat San Francisco datestamp, Extremely Fine, choice example of the Type IV stamp..... 1,600.00

57



58

- 58 **12c Black (17).** Huge margins showing full frameline of adjoining stamp at right, lightly cancelled, tiny tear and corner crease at bottom right, almost invisible, Extremely Fine appearance 325.00

1857-60 ISSUE



59

- 59 **1c Blue, Ty. I (18).** Plate 12, well-centered, town datestamp, minor age stains noted on certificate, still Very Fine, with 1981 P.F. certificate..... 475.00



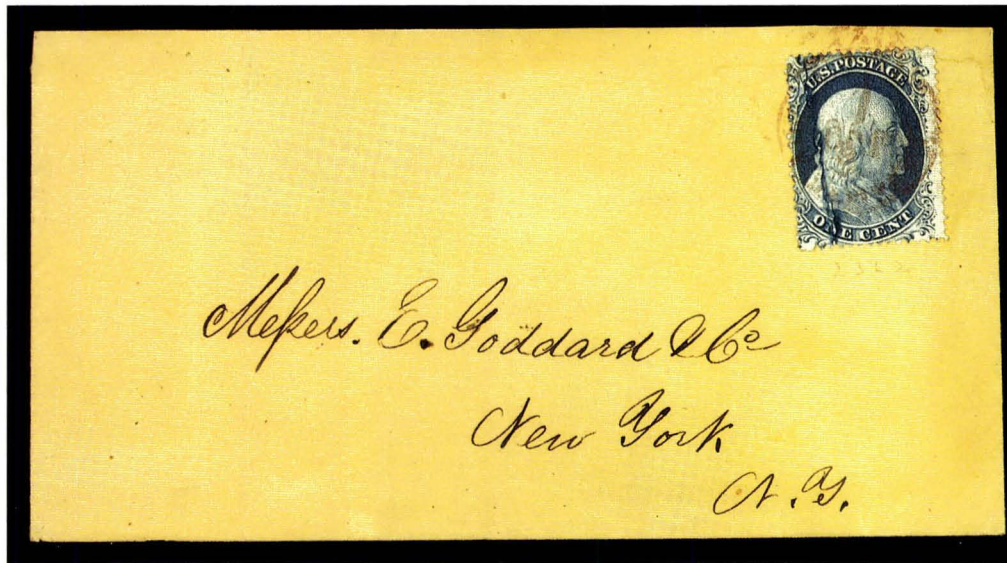
60

- 60 **1c Blue, Ty. Ia (19).** Position 96L4, well-centered with most of bottom plumes showing, lightly cancelled by town datestamp, faint tiny corner crease at top left, still Very Fine, extremely rare 4,000.00



61

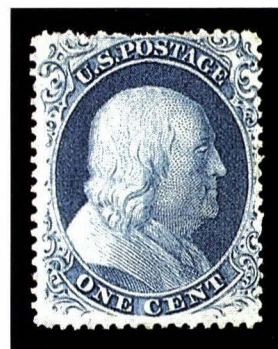
- 61 ☒ **1c Blue, Ty. Ia (19).** Position 97R4, lower stamp in pair with Ty. IIIa Pos. 87R4, used with single Ty. III (C Relief), all in remarkably dark early Plate 4 color, tied by "Chicago Ill. Nov. 20, 1857" circular datestamps on small cover to Columbus O., backflap removed, Ty. III stamp has few short perfs, all with perfs in two sides, nonetheless Fine, an attractive and very rare combination, Scott Retail \$6,200.00 off cover (No. 19 valued at \$5,250.00 on cover), ex Forscheimer E. 4,000-5,000



62

- 62 ☒ **1c Blue, Ty. II, Plate 2 Crack (20 var).** Position 23L2, huge lightning bolt crack thru entire stamp, dark shade, tied by red New York City carrier datestamp on small buff cover with local address, reduced at top, otherwise Very Fine, the perforated stamps from Plate 2 are very scarce — those showing the remarkable flaw are very rare E. 1,000-1,500

- 63 (★) **1c Blue, Ty. III (21).** Plate 4, unused (no gum), rich color, minor short perfs at top, otherwise Fine, very scarce unused, with 1974 P.F. certificate 5,500.00



63

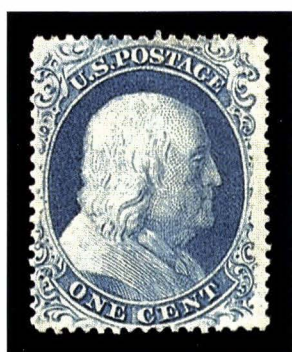


64

- 64 **1c Blue, Ty. III, Horizontal Pair, Imperforate Between (Unlisted - should be 21b).** Positions 52-54L4, horizontal strip of three, full vertical row of perfs between first and second stamps (Ty. IIIa and III) but **no trace whatsoever of vertical perforations between Type III pair at right**, lightly cancelled by town datestamps, deep rich color and fine Plate 4 impression, centered to top and some scissors-trimmed perfs (as would be expected), tiny insignificant tear at top right

ONE OF TWO RECOGNIZED IMPERFORATE-BETWEEN PAIRS OF THE ONE-CENT 1857 ISSUE AND THE ONLY RECORDED TYPE III.

A horizontal pair of Type IIIa is known imperforate-between (Scott 22b) and there is the possibility that a second pair exists, also Type IIIa. The existence of this Type III pair is noted in the Ashbrook-Neinken book (p. 283). Ex Forscheimer..... E. 7,500-10,000



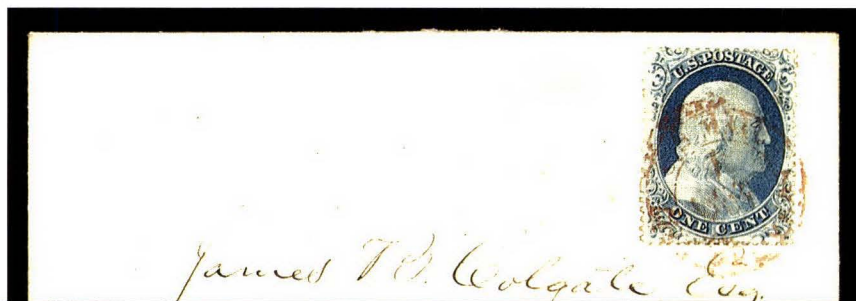
65

- 65 (★) **1c Blue, Ty. IIIa (22).** Plate 12, unused (no gum), bright and fresh, Very Fine, with 1973 P.F. certificate..... 425.00



66

- 66 **1c Blue, Ty. IV (23).** Well-centered with right centerline margin and large part of adjoining stamp at left, lightly cancelled by town datestamp. Extremely Fine Gem, the perforated Plate 1L stamps are notorious for poor centering — this superb example is very rare as such 525.00



67

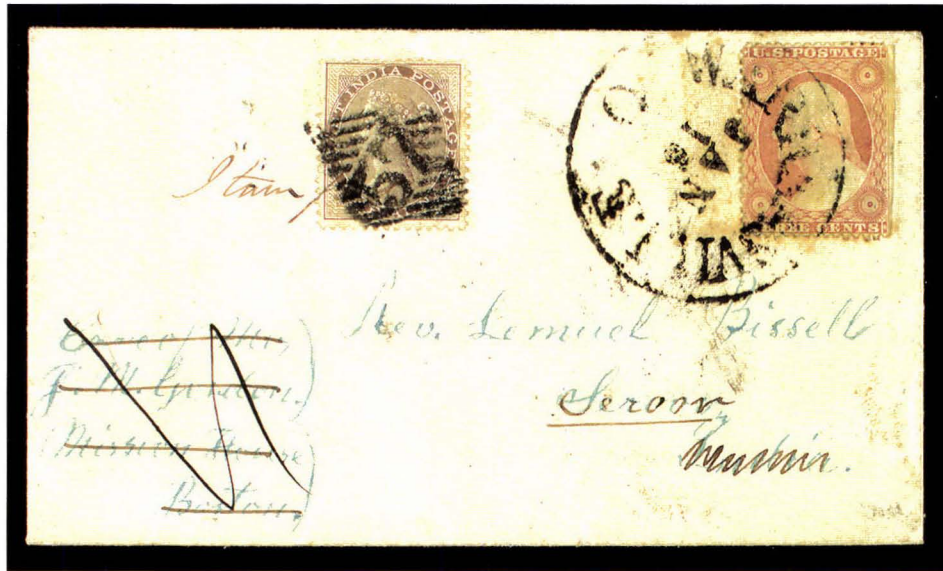


68

- 67 ☒ **1c Blue, Ty. IV (23).** Tied by red New York City carrier datestamp on small cover with local address, small piece of flap missing, Very Fine E. 500-750
- 68 ☒ **1c Blue, Ty. IV (23).** Three, each well-centered, stamp at left is Position 91L1, stamp at right Position 81L1, **both are Triple Transfers, One Inverted varieties**, tied by large "Paid" grids, red "Boston Mass. 11 Mar." circular datestamp on cover to New York City, some lightened toning, left stamp has small pre-use tear at mid-margin on left side, still Very Fine to Extremely Fine, an extremely rare Type IV usage, ex Forscheimer..... E. 1,500-2,000



- 69 ★ 1c Blue, Ty. V (24). Original gum, lightly hinged, bright shade, Extremely Fine 175.00
- 70 ★★田 1c Blue, Ty. V (24). Vertical block of six, original gum, lower block of four Mint N.H. with sheet margin, top pair lightly hinged, Extremely Fine and choice..... 1,125.00
- 71 1c Blue, Ty. V (24). Wide side margins with captured imprint, vivid red New York City carrier datestamp, Extremely Fine E. 100-150
- 72 ★ 3c Rose, Ty. I (25). Original gum, beautiful bright shade on fresh paper, much better centering than usually associated with this first perforated issue
VERY FINE. AN OUTSTANDING ORIGINAL-GUM EXAMPLE OF THIS ELUSIVE CLASSIC ISSUE.
We consider 3c Type I perforated stamps with original gum to be among the most difficult classic stamps to obtain in sound, well-centered condition 1,900.00
- 73 ★ 3c Dull Red, Ty. II (26). Original gum, lightly hinged, Extremely Fine 75.00



74

- 74 ☒ **3c Dull Red, Ty. II (26).** S.e. at right, tied by "Warnersville O. Jan. 16" balloon-style circular datestamp on small 1859 cover to Boston with forwarding address to Rev. Bissell in India, carried by missionaries outside mails and posted in India with **1855, 1a Brown (12)**, tied by ms. "Stamped" and "57" diamond grid, red mailing and receiving back-stamps, faint toning, still Very Fine, an unusual dual-country franking that saved the thrifty missionaries considerable transatlantic postage, ex Gibson E. 750-1,000



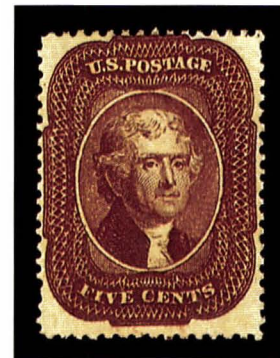
75

- 75 **5c Brick Red (27).** Well-centered, bright shade, scarce open-grid cancel, small crease at right, otherwise Very Fine, with 1976 P.F. certificate..... 1,000.00

- 76 (★) **5c Indian Red (28A).** Unused (traces of gum), magnificent intense shade at the extreme fiery end of the Indian Red color spectrum, on bright fresh paper, top perfs touch

VERY FINE. ONE OF THE FEW SOUND UNUSED EXAMPLES OF THE EXTREMELY RARE INDIAN RED. THE BRILLIANT COLOR OF THIS STAMP IS UNSURPASSED BY ANY OTHER INDIAN RED EXAMPLE WE HAVE SEEN.

With 1992 P.F. certificate noting "traces of gum". Scott Retail \$19,000.00 with gum 13,000.00



76

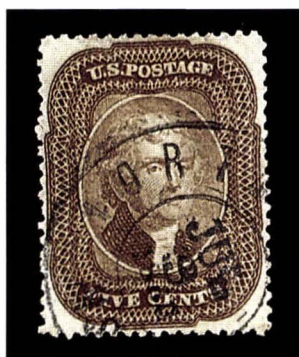


77

- 77 **5c Indian Red (28A).** L-shaped strip of three, rich color, lightly cancelled by Baton Rouge La. datestamps, upper right stamp has slightly rounded corner, bottom left stamp perfectly centered with wide margins all around

VERY FINE TO EXTREMELY FINE. A CHOICE AND VERY RARE MULTIPLE OF THE INDIAN RED.

Ex Caspary. With 1985 P.F. certificate 8,000.00



78



79



80



81

- 78 **5c Brown (29).** Well-centered, New Orleans double-circle datestamp, Extremely Fine 300.00
- 79 **5c Brown, Ty. II (30A).** Well-centered, proof-like impression, vivid red grid cancel, Very Fine 280.00
- 80 **10c Green, Ty. I (31).** Wide margins, neat town datestamp, Very Fine 700.00
- 81 **10c Green, Ty. II (32).** Well-centered with wide even margins, deep rich color and proof-like impression, three neat pen lines, Extremely Fine Gem 105.00



82

- 82 ☒ **10c Green, Ty. I (31).** Horizontal strip of three, few short perfs at top, used with 3c Dull Red (26), tied by grids, "Fitchburgh Mass. Oct. 15" circular datestamp on 1859 yellow cover to **Melbourne, Australia**, red crayon "28" credit and Boston backstamp, red London transit, with original letters enclosed, Very Fine, colorful and extremely rare Type I franking for the 33c British Mail rate to Australia E. 2,000-3,000



83

- 83 ☒ **10c Green, Ty. II, III (32, 33).** Horizontal pair Ty. II (Pos. 14-15R1) and strip of four Ty. III (Pos. 24-27R1) with s.e. at right, tied by multiple strikes of "New Orleans La. Oct. 15, 1857" circular datestamps on folded cover to **Vera Cruz**, "7" reales due handstamp, faint toning, still Very Fine, a spectacular franking for the six-times rate to Mexico, ex Knapp E. 2,000-3,000



- 84 **10c Green, Ty. III (33).** Well-centered, wide margins, neat face-free cancel, tiny natural inclusion and faint toning, otherwise Extremely Fine 275.00
- 85 ★ **10c Green, Ty. V (35).** Original gum, lightly hinged, Extremely Fine 275.00
- 86 ★ **10c Green, Ty. V (35).** Horizontal pair with right sheet margin, original gum, h.r., Very Fine 575.00
- 87 **10c Green, Ty. V (35).** Vertical pair, deep rich color, red grids, Extremely Fine, faint owner's backstamp 150.00
- 88 ★ **12c Black, Plate 3 (36b).** Original gum, fine impression, Very Fine 675.00
- 89 **24c Gray Lilac (37).** Well-centered, tied by bold red "Supplementary Mail" Ty. A handstamp on piece, Extremely Fine and choice, rarely struck so clearly on the stamp itself...
..... 450.00



90

- 90 ★ **30c Orange (38).** Original gum, lightly hinged, remarkably well-centered with vibrant color
EXTREMELY FINE. A SUPERB ORIGINAL-GUM EXAMPLE OF THE 30-CENT 1860 ISSUE.
With 1989 P.F. certificate 1,500.00



91

- 91 ☒ **24c Gray Lilac (37).** Well-centered, deep shade, tied by vivid red grid and matching "New York 19 Nov. 13" (1860) credit datestamp on blue 1860 folded cover to London, handsomely addressed with sailing instructions across top, receiving backstamp, tiny gum bleached spots around stamp, otherwise Extremely Fine 1,000.00



92

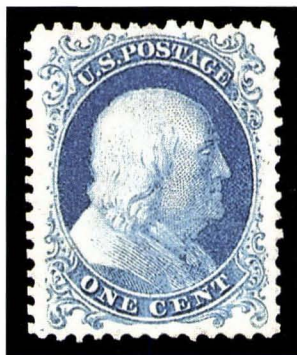
- 92 ☒ **30c Orange (38).** Perfectly centered, vibrant color, tied by bold blue "Baltimore Aug. 17, 1860" circular datestamp on bright orange-buff cover to **Bavaria, Germany**, red New York credit datestamp, Aachen transit and Hassloch receiving backstamp, tiny opening tear at upper left corner of cover, fresh and Extremely Fine, a beautiful single franking to Germany 1,300.00



93

- 93 (★) **90c Blue (39).** Unused (no gum), perfectly centered, rich color, Extremely Fine and choice 1,450.00

1875 REPRINT OF 1857-60 ISSUE



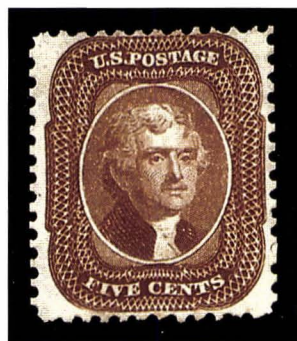
94

- 94 ★ **1c Bright Blue, Reprint (40).** Without gum as issued, perfectly centered, beautiful bright color, Extremely Fine Gem 525.00

- 95 ★ **3c Scarlet, Reprint (41).** Without gum as issued, well-centered, vibrant color, Very Fine.... 2,200.00



95



96

- 96 ★ **5c Orange Brown, Reprint (42).** Without gum as issued, well-centered, rich color, Very Fine 1,000.00



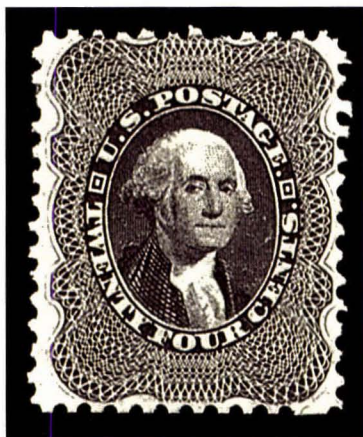
97

- 97 ★ **10c Blue Green, Reprint (43).** Without gum as issued, extraordinary margins and centering, beautiful proof-like color and impression, tiny natural fiber inclusion at bottom right, Extremely Fine Gem 2,000.00

- 98 ★ **12c Greenish Black, Reprint (44).** Without gum as issued, perfs clear all around, intense shade and impression, Extremely Fine, rarely found with complete margins 2,250.00



98



99

- 99 ★ **24c Blackish Violet, Reprint (45).** Without gum as issued, well-centered, fresh and bright, Very Fine 2,250.00

- 100 ★ **30c Yellow Orange, Reprint (46).** Without gum as issued, nearly perfect centering, vibrant color, tiny natural inclusion on Franklin's nose, still Extremely Fine 2,250.00



100



101

- 101 ★ **90c Deep Blue, Reprint (47).** Without gum as issued, intense shade and impression, Very Fine and rare, with 1983 P.F. certificate... 3,500.00

1861-66 ISSUE

- 102 ★ **3c Brown Rose, First Design (56).** Full original gum, lightly hinged, well-centered, rich color, Very Fine and choice 475.00



102



- 103 ☒ **3c Pink (64)**. Bright color, tied by perfectly struck grid, "Pittsfield Mass. Oct. 30, 1861" circular datestamp with yeardate in ms. on cover to Washington D.C., fresh and Very Fine 725.00
- 104 ☒ **3c Pink (64)**. Pretty color, well-centered, tied by "Portland Me. Mar. 31, 1862" double-circle datestamp on immaculate buff cover to Richland Me., Very Fine and choice, ex Gibson 725.00
- 105 ☒ **3c Pink (64)**. Tied by grid, matching "Havana N.Y. Aug. 29" cds on **Flag patriotic** cover with "Long May it Wave" slogan, to Jefferson N.Y., beautiful ornate penmanship for address, stamp with slightly rounded corner at top left, otherwise Very Fine, an attractive cover..... 900.00
- 106 ☒ **3c Pigeon Blood Pink (64a)**. Deep shade, tied by "Belair Md. Sep. 2" (1861) circular datestamp on buff cover to Germantown Pa., stamp has a diagonal pre-use tear at bottom, lifted to seal tear and check shade, hinged in place, Fine appearance, with Philip H. Ward's note on back: "Ashbrook writes that this is the rare deep Pigeon Blood of which he has seen less than half dozen and that it is earliest known usage - Sept. 2, 61" 3,250.00



107

- 107 ★ **5c Buff (67).** Large part original gum, beautiful shade with bright color, reperfed at top—not mentioned on accompanying 1971 P.F. certificate, which notes “two minute spots”

EXTREMELY FINE APPEARANCE. A BEAUTIFUL AND RARE EXAMPLE OF THE 1861 5-CENT BUFF WITH PART ORIGINAL GUM.

With 1971 P.F. certificate 15,000.00



108

- 108 **5c Buff (67).** Vertical pair, rich color with bright yellow pigment, neat town datestamp
VERY FINE AND CHOICE. A VERY DESIRABLE PAIR OF THE 5-CENT BUFF.

With 1983 P.F. certificate 1,500.00



109

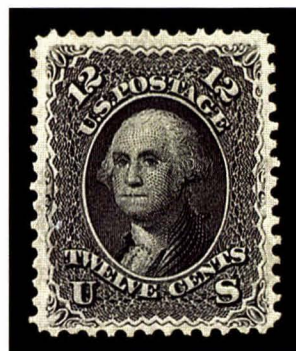
- 109 ☒ **5c Buff (67).** Deep shade, used with 10c Green (68), tied by targets, "San Francisco Cal. Apr. 9, 1862" double-circle datestamp on blue 1862 folded letter to **Podensac, France**, 12c credit datestamp from New York also ties stamps, French transits and receiving backstamps, Very Fine and rare usage of the 5c Buff from California, signed Ashbrook and with his notes on back..... E. 1,000-1,500



110

- 110 ☒ **10c Green (68).** Horizontal strip of four and two singles arranged as a strip of six, beautiful dark early shade, tied by grids, "San Francisco Cal. Dec. 11, 1861" double-circle datestamp on blue folded letter to **Podensac, France**, "New York Paid 24" credit datestamp also ties strip, French transits and receiving backstamps
VERY FINE AND OUTSTANDING MULTIPLE FRANKING OF THE 10-CENT 1861—A FAR RARER FORM OF PREPAYMENT FOR THE QUADRUPLE RATE THAN TWO 30-CENT STAMPS.
Ex Emerson..... E. 2,000-3,000

- 111 ★ **12c Black (69).** Original gum, sharp proof-like impression, well-centered, small sealed internal tear, appears Extremely Fine 875.00



111



112

- 112 **24c Red Lilac (70).** Horizontal pair, beautiful rich color and sharp impression, neat red grid cancels, left stamp tiny tear, right stamp small crease, Very Fine appearance, an attractive pair, with 1987 P.F. certificate 260.00

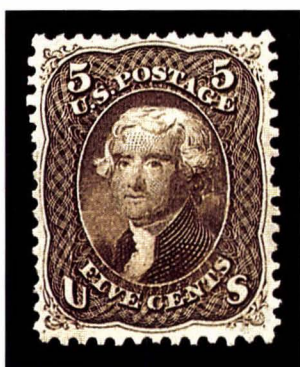
- 113 **24c Steel Blue (70b).** Horizontal pair, gorgeous true Steel Blue color contrasted by bright red grid cancels, well-centered

EXTREMELY FINE AND CHOICE. AN OUTSTANDING USED PAIR OF THE 24-CENT STEEL BLUE SHADE.

With 1989 P.F. certificate 900.00



113



114

- 114 ★ **5c Brown (76).** Full original gum, lightly hinged, rich color on bright white paper, well-centered

EXTREMELY FINE GEM. AN OUTSTANDING ORIGINAL-GUM EXAMPLE OF THE 1863 5-CENT BROWN IN THE FINEST QUALITY ATTAINABLE.

Scott value is meaningless for a stamp in such pristine condition 800.00

1867-68 GRILLED ISSUE



115

- 115 ★ **3c Rose, C. Grill, Grill Points Down (83 var).** Large part original gum, strong and sharp grill points clearly showing the variety, bright color
A FINE EXAMPLE OF THIS RARE VARIETY OF THE EXPERIMENTAL C GRILL.

The C Grill with points down was caused when the sheet was laid down with the gummed side facing the depressions in the grill.

With 1958 P.F. certificate not mentioning the variety 5,250.00

- 116 ★ **2c Black, D. Grill (84).** Bottom sheet margin single, full original gum, clear and sharp grill points with second impression of grill in selvage, centered to right

VERY GOOD. A RARE AND PRESENTABLE ORIGINAL-GUM EXAMPLE OF THE 2-CENT D GRILL.

The device equipped with the D Grill was refitted with the E Grill on or about February 9, 1868. Based on the earliest known usages of the 2c D Grill (2/15/68) and 3c E Grill (2/19/68), it is our theory that the conversion from the D to E Grill took place only a day or so after sheets of 2c stamps were first run through the D-equipped machine. The great rarity of 2c D Grills, relative to all other regular-production grills, bears out this theory.

With 1958 P.F. certificate..... 12,500.00



116



117

- 117 ★ **3c Rose, Z. Grill (85C).** Original gum, slight disturbance from hinge removal, clear grill points and bright Rose color, small sealed tear, horizontal crease at bottom, otherwise Very Fine, extremely rare with original gum, with 1971 P.F. certificate 8,500.00

- 118 (★) **3c Rose, D. Grill (85).** Unused (no gum), clear grill points and bright color, well-centered, light soiling, small corner crease at bottom right, few short perfs at top, otherwise Extremely Fine 2,500.00



118



119

- 119 ★ **1c Blue, E. Grill (86).** Full original gum, deep rich color, wide margins, Extremely Fine and choice, exceedingly rare in this choice condition... 2,250.00

- 120 (★) **1c Blue, F. Grill (92).** Unused (no gum), bright color, clear grill points, well-centered, Extremely Fine and choice 475.00



120

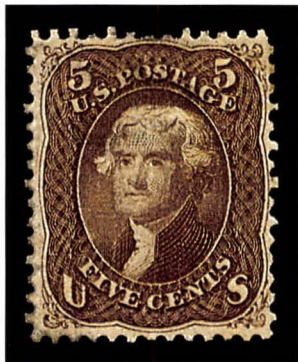


121

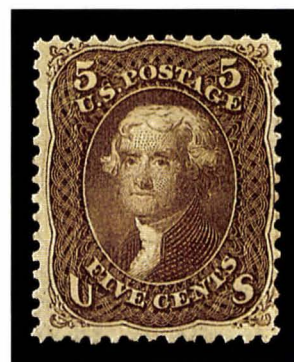
- 121 **1c Blue, F. Grill (92).** Rich color, neat quartered cork cancel, well-centered with wide margins all around, few slightly toned perfs at top which are not very noticeable due to placement of cancel, Extremely Fine 150.00



122



123



124

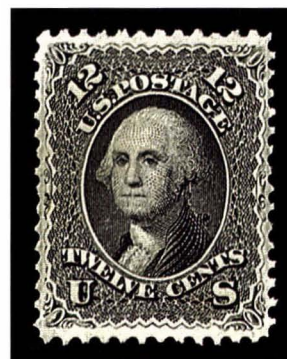
- 122 ★ **3c Red, F. Grill (94).** Full original gum, perfectly clear grill points, bright color, well-centered, few small toned spots on gum only, Extremely Fine and choice 300.00
- 123 ★ **5c Brown, F. Grill (95).** Original gum, h.r., clear grill points, bright color, small thin spot and tiny margin tear at left, otherwise Very Fine 2,400.00
- 124 (★) **5c Brown, F. Grill (95).** Unused (no gum), clear grill points, fresh and bright color, Fine 1,350.00



125

- 125 ★ **10c Yellow Green, F. Grill (96).** Full original gum, bright color, well-centered, Extremely Fine Gem, a beautiful stamp 1,900.00

- 126 (★) **12c Black, F. Grill (97).** Unused (no gum), sharp proof-like impression, well-centered, fresh and Very Fine 1,350.00



126

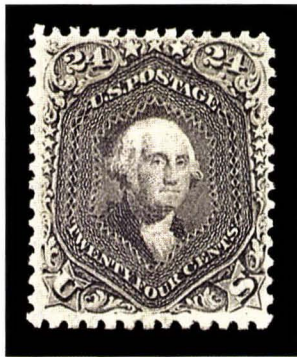
- 127 ★ **15c Black, F. Grill (98).** Original gum, sharp grill points, remarkably well-centered

EXTREMELY FINE EXAMPLE OF THE 15-CENT F GRILL. ONE OF THE MOST DIFFICULT OF ALL GRILLED ISSUES TO OBTAIN IN CENTERED, ORIGINAL-GUM CONDITION.

Grilled issues in this grade have been consistently realizing multiples of Scott value 2,500.00



127



128

- 128 ★ **24c Gray Lilac, F. Grill (99).** Original gum, perfectly clear and sharp grill points, brilliant color on fresh bright paper

VERY FINE. A BEAUTIFUL ORIGINAL-GUM EXAMPLE OF THE 24-CENT F GRILL.

The 24c F Grill is very rarely found with perforations clear of the design..... 4,000.00

- 129 (★) **30c Orange, F. Grill (100).** Small part original gum, bright color, fresh and Fine 2,500.00



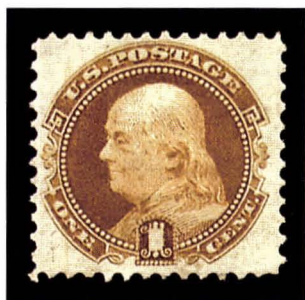
129



130

- 130 (★) **90c Blue, F. Grill (101).** Unused (no gum), rich color, well-centered with wide margins, Extremely Fine and choice, with 1961 P.F. certificate..... 4,000.00

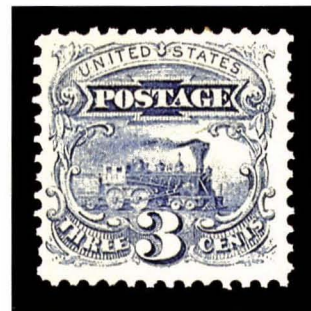
1869 PICTORIAL ISSUE



131



132



133

- 131 ★ **1c Buff (112).** Full original gum, bright color, fresh and Very Fine 525.00
- 132 ★ **2c Brown (113).** Full original gum, deep shade, Very Fine and choice..... 450.00
- 133 ★ **3c Ultramarine (114).** Original gum, bright color on fresh paper, Very Fine..... 275.00



134

- 134 ★ **6c Ultramarine (115).** Original gum, single hinge mark, incredibly bright color on fresh white paper, well-centered
EXTREMELY FINE GEM. A BEAUTIFUL EXAMPLE OF THE 6-CENT 1869 ISSUE.

A rare stamp with such well-balanced margins . 1,750.00

- 135 ★ **6c Ultramarine (115).** Block of four, full original gum, bottom stamps very lightly hinged, bright color

FINE-VERY FINE. A RARE BLOCK OF THE 6-CENT 1869 PICTORIAL ISSUE.

Jonathan Rose estimates that there are 7-8 unused blocks of the 6c 1869 Pictorial Issue. Of these, most have perfs significantly into the design.

With 1989 P.F. certificate..... 8,750.00



135

- 136 (★) **10c Yellow (116).** Unused (no gum), bright color, reperfed at left, Extremely Fine appearance 900.00



136



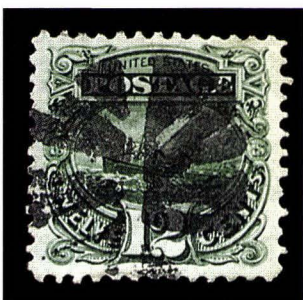
137

- 137 **10c Yellow (116).** Bold segmented cork cancel, fresh and bright color, well-centered, Extremely Fine and choice 130.00

- 138 ★ **12c Green (117).** Original gum, small h.r., rich color, well-centered
EXTREMELY FINE. A WONDERFULLY FRESH AND CHOICE 12-CENT 1869 ISSUE.
The 12c is extremely rare in centered condition with original gum..... 1,600.00



138



139

- 139 **12c Green (117).** Deep color, segmented cork cancel, well-centered, very fresh and Extremely Fine 140.00



140



141



142



143

- 140 ★ **15c Brown & Blue, Ty. I (118).** Original gum, small h.r., beautiful deep rich colors, well-centered

EXTREMELY FINE GEM. AN OUTSTANDING ORIGINAL-GUM EXAMPLE OF THE 15-CENT TYPE I 1869 PICTORIAL ISSUE IN THE FINEST QUALITY ATTAINABLE.

With 1980 P.F. certificate..... 5,500.00

- 141 **15c Brown & Blue, Ty. I (118).** Bright colors, segmented cork cancel entirely free of vignette, fresh and Very Fine..... 575.00

- 142 (★) **15c Brown & Blue, Ty. II (119).** Unused (no gum), deep colors, corner crease at bottom left, appears Very Fine 1,250.00

- 143 **15c Brown & Blue, Ty. II (119).** Circle of wedges cancel, fresh and Very Fine.. 225.00



144

- 144 ☒ **15c Brown & Blue, Ty. II (119).** Well-centered, tied by target cancels on 3c Pink entire (U58), similarly cancelled, **registered** usage to H. B. Shaw, Alfred Me., "Loachapoka Ala. May 24" datestamp, magenta registry no. at top left, fresh and Extremely Fine.....

E. 500-750

- 145 ★ **24c Green & Violet (120).** Full original gum, lightly hinged, beautiful bright colors on fresh paper, well-centered

EXTREMELY FINE GEM. AN OUTSTANDING ORIGINAL-GUM EXAMPLE OF THE 24-CENT 1869 PICTORIAL ISSUE. RARE IN SUCH PRISTINE CONDITION.

The 24c 1869 Pictorial is notoriously difficult to find centered and with original gum 5,000.00



145



146

- 146 **24c Green & Violet (120).** Beautiful red cork cancel, bright colors, well-centered with wide margins, Extremely Fine Gem, a beautiful stamp, with 1987 P.F. certificate 850.00

- 147 ★ **30c Ultramarine & Carmine (121).** Full original gum, lightly hinged, beautiful colors, well-centered, tiny natural coal speck inclusion

EXTREMELY FINE ORIGINAL-GUM EXAMPLE OF THE 30-CENT 1869. ONE OF THE RAREST PICTORIAL ISSUES IN THIS CONDITION.

The 30c is widely regarded as the most elusive of the 1869 Pictorial stamps in original-gum condition. 5,250.00



147



148

- 148 ★ **90c Carmine & Black (122).** Original gum, sharp proof-like impression, deep rich color, well-centered with enormous margins on all sides
EXTREMELY FINE GEM. THIS IS THE CELEBRATED CASPARY COPY—WIDELY REGARDED AS THE FINEST 90-CENT 1869 PICTORIAL ISSUE KNOWN WITH ORIGINAL GUM.
Ex Caspary..... 7,250.00



149

- 149 **90c Carmine & Black (122).** Faintly cancelled, well-centered with unusually wide margins, Extremely Fine Gem, with 1983 P.F. certificate..... 2,000.00

1869 PICTORIAL INVERTS



150

- 150 **24c Green & Violet, Center Inverted (120b).** Light quartered cork cancel and trace of red transit mark, rich colors and sharp, clear impressions, faint crease and two tiny breaks in grill points not mentioned on accompanying P.F. certificate

VERY FINE APPEARING EXAMPLE OF THE 24-CENT 1869 PICTORIAL INVERT.

Our published 1869 Invert census (with unpublished updates) contains 88 copies of the perforated 24c Invert, including four unused stamps and multiples.

With 1969 P.F. certificate which states "Genuine" 20,000.00



151

- 151 **30c Ultramarine & Carmine, Center Inverted (121b).** Well-centered, rich colors and fine impressions, clear strike of New York City circle of V's cancel

EXTREMELY FINE AND CHOICE. AN OUTSTANDING EXAMPLE OF THE 30-CENT 1869 PICTORIAL INVERT. ONLY A FEW OF THE 37 RECORDED USED COPIES ARE CENTERED AND SOUND.

Our published census of 30c 1869 Invert (with unpublished updates) contains a total of 44 stamps, including 7 unused and 37 used.

With 1946, 1969 and 1990 P.F. certificates..... 57,500.00



1875-80 RE-ISSUES OF 1869 PICTORIAL ISSUE

- 152 (★) **15c Brown & Blue, Re-Issue (129).** Unused (no gum), deep rich colors, well-centered, Extremely Fine..... 1,100.00
- 153 ★ **1c Buff, 1880 Re-Issue (133).** Full original gum, fresh and bright color, Very Fine and choice 275.00

1870 NATIONAL BANK NOTE CO. GRILLED ISSUE

- 154 ★ **1c Ultramarine, Grill (134).** Large part original gum, clear grill points, rich color, small corner crease at top left, otherwise Very Fine 1,400.00
- 155 ★ **3c Green, Grill (136).** Original gum, fresh color, perfectly centered, Extremely Fine and choice 600.00
- 156 (★) **6c Carmine, Grill (137).** Unused (no gum), beautiful rich color, perfectly centered with incredibly wide margins on all sides, Extremely Fine Gem, a gorgeous stamp . 1,750.00
- 157 ★ **10c Brown, Grill (139).** Full original gum, deep color, fresh and Very Fine, extremely rare, with 1989 P.F. certificate 3,500.00



158

- 158 ★田 **10c Brown, Grill (139).** Block of six, grills show clearly on three stamps (very faint on others), full original gum, proof-like impression on bright paper

FINE-VERY FINE. THIS IS THE LARGEST RECORDED MULTIPLE OF THE 10-CENT NATIONAL BANK NOTE GRILLED ISSUE. A GREAT RARITY AND AN OUTSTANDING SHOWPIECE.

Ex Caspary and Lilly. With 1995 P.F. certificate. Scott Retail as a block of four and a pair
 25,500.00



159

- 159 **12c Dull Violet, Grill (140).** Bold circle of V's cancel, rich color with easily discernible grill points

EXTREMELY FINE. A VERY CHOICE USED EXAMPLE OF THE RARE 12-CENT 1870 GRILLED BANK NOTE ISSUE.

With 1987 P.F. certificate..... 2,500.00



160

- 160 ★ **15c Orange, Grill (141).** Full original gum, intense color, perfectly centered within nicely proportioned margins

EXTREMELY FINE GEM. EASILY ONE OF THE TWO OR THREE FINEST RECORDED EXAMPLES OF THE 15-CENT 1870 GRILL—ONE OF THE MOST DIFFICULT OF THE 1870 GRILLED ISSUES TO FIND IN SUCH CONDITION.

With 1976 and 1989 P.F. certificates..... 4,250.00

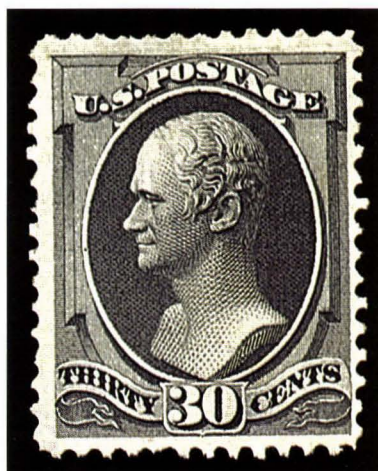


161

- 161 **24c Purple, Grill (142).** Excellent color and impression for this stamp, but unquestionably the genuine pale shade, neat strike of circle of V's cancel, perfectly centered with wide margins on all sides

EXTREMELY FINE GEM. A BEAUTIFUL EXAMPLE OF THE 24-CENT NATIONAL BANK NOTE GRILLED ISSUE.

This stamp, with its fresh color and perfect centering, is a true condition rarity. With 1992 P.F. certificate 6,500.00



162

- 162 ★ **30c Black, Grill (143).** Full original gum, easily discernible grill points, sharp proof-like impression

FRESH AND VERY FINE. ONE OF THE BEST-CENTERED ORIGINAL-GUM EXAMPLES OF THE 30-CENT NATIONAL BANK NOTE GRILLED ISSUE EXTANT.

With 1967 and 1989 P.F. certificates..... 9,000.00



163

- 163 ★ **90c Carmine, Grill (144).** Original gum, clear grill points, beautiful intense shade and proof-like impression, well-centered with wide even margins

EXTREMELY FINE GEM. EASILY ONE OF THE TWO OR THREE FINEST-EXISTING ORIGINAL-GUM EXAMPLES OF THE RARE 90-CENT NATIONAL BANK NOTE GRILLED ISSUE. AN OUTSTANDING CONDITION RARITY.

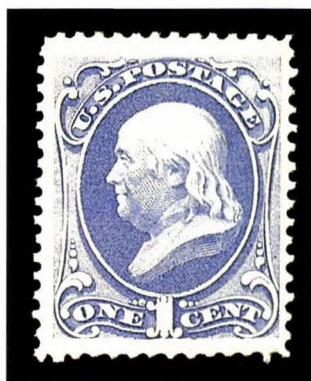
With 1984 P.F. certificate..... 10,000.00

1870 NATIONAL BANK NOTE CO. ISSUE



- 164 (★) **6c Carmine (148)**. Unused (no gum), incredibly vivid color, perfectly centered with nicely proportioned margins, Extremely Fine Gem..... 260.00
- 165 (★) **7c Vermilion (149)**. Unused (no gum), brilliant color, well-centered, Extremely Fine and choice 350.00
- 166 ★ **10c Brown (150)**. Disturbed original gum, rich color, well-centered, Extremely Fine..... 525.00
- 167 ★ **12c Dull Violet (151)**. Slightly sweated original gum, rich color, well-centered, Very Fine 1,300.00
- 168 ★ **15c Bright Orange (152)**. Original gum, brilliant color, well-centered
EXTREMELY FINE GEM. THE 15-CENT NATIONAL IS ONE OF THE RAREST OF BANK NOTE
REGULAR ISSUES IN THIS CHOICE ORIGINAL-GUM CONDITION.
Scott value does not reflect the premium assigned to the 15c 1870 in this condition 1,400.00
- 169 ★ **24c Purple (153)**. Original gum, bright color, Very Fine and choice..... 1,300.00
- 170 (★) **30c Black (154)**. Unused (regummed), sharp proof-like impression, well-centered with wide and even margins, Extremely Fine and choice, rare with such large margins 1,750.00
- 171 **30c Black (154)**. Horizontal pair, sharp proof-like impression on bright white paper, vivid red circle of wedges cancel, faint crease and short perf in left stamp, otherwise Very Fine-Extremely Fine, signed Ashbrook..... 345.00
- 172 (★) **90c Carmine (155)**. Unused (no gum), rich color, well-centered, Extremely Fine and choice 1,750.00

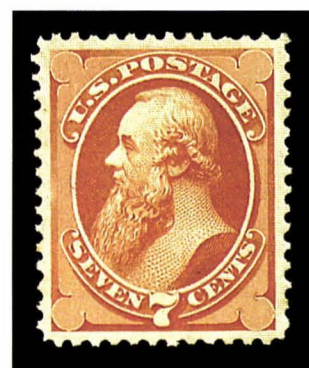
1873-75 CONTINENTAL BANK NOTE CO. ISSUE



173



174



175

- 173 ★ **1c Ultramarine (156).** Full original gum, lightly hinged, fresh and bright color, well-centered with wide margins, fresh and Very Fine..... 180.00
- 174 (★) **6c Dull Pink (159).** Unused (no gum), bright color, well-centered, Extremely Fine..... 200.00
- 175 (★) **7c Orange Vermilion (160).** Unused (no gum), incredibly vivid color, perfectly centered with nicely balanced margins, Extremely Fine and choice 450.00

- 176 ★ **10c Brown (161).** Original gum, deep rich color, well-centered with wide margins all around
EXTREMELY FINE GEM. A BEAUTIFUL EXAMPLE OF THE 10-CENT CONTINENTAL BANK NOTE ISSUE.
Although common in used condition, the 10c Continental is exceedingly scarce with original gum..... 525.00



176

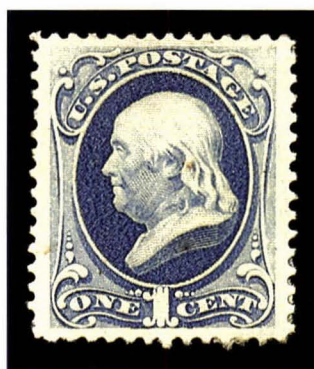


177

- 177 ★ **90c Rose Carmine (166).** Large part original gum, rich color, single partly nibbed perf at bottom
VERY FINE. A BEAUTIFUL ORIGINAL-GUM EXAMPLE OF THE 90-CENT CONTINENTAL ISSUE.
Ex Lilly 2,400.00



178



179



180

- 178 ★ **2c Vermilion (178).** Full original gum, lightly hinged, bright color on fresh paper, Very Fine and choice 300.00

1879 AMERICAN BANK NOTE CO. ISSUE

- 179 ★ **1c Dark Ultramarine (182).** Original gum, rich color, perfectly centered with wide margins, couple minute toned specks, Extremely Fine Gem 225.00
- 180 ★★ **2c Vermilion (183).** Mint N.H., rich color, well-centered, Extremely Fine Gem, Scott Retail for hinged..... 110.00



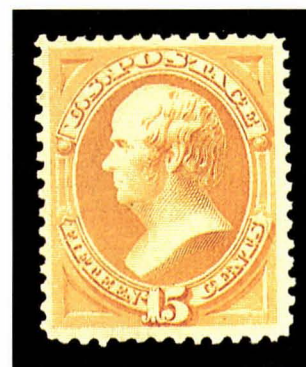
181



182

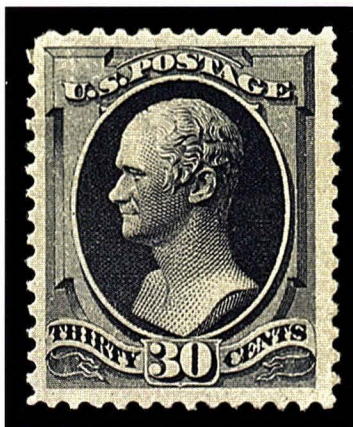


183



184

- 181 ★ **5c Blue (185).** Original gum, deep rich color, well-centered, Extremely Fine and choice .
..... 425.00
- 182 ★ **6c Pink (186).** Original gum, h.r., rich color, reperfed at top, Very Fine appearance,
owner's backstamp 750.00
- 183 ★ **10c Brown, With Secret Mark (188).** Original gum, lightly hinged, tiny natural wood
fiber inclusion, Very Fine 1,100.00
- 184 ★ **15c Red Orange (189).** Original gum, lightly hinged, Very Fine..... 300.00



185

- 185 ★ **30c Full Black (190).** Full original gum, lightly hinged, sharp impression
 EXTREMELY FINE. AN OUTSTANDING EXAMPLE OF THIS AMERICAN BANK NOTE CO. PRINT-
 ING, WHICH IS EXTREMELY RARE IS CHOICE ORIGINAL-GUM CONDITION.
 With copy of 1984 P.F. certificate for horizontal pair, this being the right stamp
 900.00



186

- 186 ★ **90c Carmine Rose (191).** Original gum, barest trace of hinging, beautiful bright color on
 fresh paper, well-centered
 EXTREMELY FINE. A SCARCE ORIGINAL-GUM EXAMPLE OF THE 90-CENT AMERICAN
 BANK NOTE CO. ISSUE.
 With 1982 P.F. certificate..... 1,850.00

1882-88 AMERICAN BANK NOTE CO. ISSUE



- 187 ★★ **1c Ultramarine (212)**. Mint N.H. right sheet margin single, fresh color, Very Fine and choice, Scott Retail for hinged 90.00
- 188 ★★ **2c Green, 3c Vermilion (213, 214)**. Mint N.H., both have deep rich color and are Very Fine, Scott Retail for hinged **(Photo Ex)** 105.00
- 189 ★田 **3c Vermilion (214)**. Bottom imprint and plate no. 421 block of sixteen, showing part arrow and natural straight-edge at left, "dry" gum with natural disturbances, rich color, few perf separations, thins in selvage, otherwise Fine-Very Fine..... 1,680.00
- 190 ★ **5c Indigo (216)**. Original gum, barely hinged, deep rich color on bright paper, well-centered, Extremely Fine and choice..... 200.00
- 191 ★★ **30c Orange Brown (217)**. Mint N.H., rich color, well-centered, fresh and Very Fine, with 1984 P.F. certificate, Scott Retail for hinged 425.00
- 192 ★ **90c Purple (218)**. Original gum, very lightly hinged, beautiful deep color, well-centered, Extremely Fine and choice, with 1984 P.F. certificate 1,100.00

COLUMBIAN ISSUE



193EX



194



195

- 193 ★ **1c-4c, 6c-50c, \$4.00 Columbian (230-233, 235-240, 244).** 4c and 6c Mint N.H., \$4.00 unused (regummed), others original gum, 2c few toned perf tips, 30c light crease. Fine-Very Fine group.....(Photo Ex) 3,230.00
- 194 ★★ **5c Columbian (234).** Mint N.H., well-centered, sharp impression on bright white paper, Extremely Fine Gem..... 140.00
- 195 (★) **\$1.00 Columbian (241).** Unused (regummed), bright color, fresh and Fine 725.00

- 196 ★ **\$2.00 Columbian (242).** Original gum, barest trace of hinging, bright and fresh, Extremely Fine and choice example of this difficult stamp..... 1,550.00



196



197

- 197 ★ **\$3.00 Columbian (243).** Mount-glazed original gum, rich color, tiny thin speck, corner crease and natural inclusion, appears Very Fine..... 2,400.00



198

- 198 ★ **\$4.00 Rose Carmine, Columbian (244a).** Full original gum, barely hinged, rich color on bright paper

EXTREMELY FINE GEM. A WONDERFULLY FRESH EXAMPLE OF THIS SCARCE AND BEAUTIFUL COMMEMORATIVE ISSUE.

With 1985 P.F. certificate 3,250.00

- 199 (★) **\$5.00 Columbian (245).** Unused (no gum), rich color and a sharp impression, natural inclusion, fresh and Fine 1,750.00



199



200

- 200 ☒ **\$5.00 Columbian (245).** Well-centered, tied by clear "New York 3-13-1894" oval registry datestamp on small cover to **Germany**, Very Fine and choice cover 4,750.00

COLUMBIAN ISSUE MULTIPLES



201

201 ★★田 \$1.00 Columbian (241). Block of 30, all Mint N.H., top row with straight edge, all well-centered, brilliant color and bright fresh paper

EXTREMELY FINE GEM BLOCK. ONE OF THE MOST OUTSTANDING-QUALITY BLOCKS OF THE COLUMBIAN DOLLAR VALUE IN EXISTENCE.

Scott Retail for 30 Mint N.H. singles..... 72,000.00



202EX

- 202 ★ 1c-30c Columbian (230-239). Top or bottom imprint and plate no. strips of four, 1c, 3c & 4c Mint N.H., others original gum, 15c disturbed, bright colors but some toning, 1c, 5c (two stamps each), 8c, 30c (one stamp each) with small faults, 1c, 2c & 4c with few minor margin faults, overall Very Good-Fine centering.....(Photo Ex) 6,060.00



203

- 203 (★) 50c Columbian (240). Bottom imprint and plate no. strip of four, beautiful deep rich color, well-centered, bright and fresh, traces of gum over thins and small corner creases, perf separations, still Fine-Very Fine appearance..... 3,250.00



204

- 204 ★ \$1.00 Columbian (241). Bottom imprint and plate no. strip of four, mount-glazed original gum, remarkable choice centering and rich color, selvage thinned in places and with small tear at bottom right corner, otherwise Extremely Fine, a handsome and rare plate strip..... 7,750.00



205

- 205 ★ **\$2.00 Columbian (242).** Bottom imprint and plate no. strip of four, full original gum with barest traces of hinging, natural gum skip, well-centered, deep rich color, few tiny thins along right-side perfs and in selvage below second stamp from left

EXTREMELY FINE CENTERING AND WONDERFULLY FRESH CONDITION. ONE OF THE CHOICEST PLATE NUMBER STRIPS OF THE \$2.00 COLUMBIAN WE HAVE ENCOUNTERED.

The \$2.00 plate number block of eight is believed to be unique; therefore, a strip of four is the only practical means to show the complete imprint and plate number. .. 8,750.00



206

- 206 ★ **\$4.00 Rose Carmine, Columbian (244a).** Bottom imprint and plate no. strip of four, well-centered, pinkish shade on bright white paper, full original gum, right pair lightly hinged (a few rejoined perf separations), left pair with minor thin spots

EXTREMELY FINE CENTERING. AN IMPRESSIVE AND VERY RARE PLATE NUMBER STRIP OF THE \$4.00 COLUMBIAN.

The gum on this strip is the white crackly variety that leaves the paper completely free of toning. There is only one block of the \$4.00 with complete imprint and plate number, which leaves the few known strips of four as the only practical means to show the entire imprint..... 18,500.00



207

- 207 ★★ **\$5.00 Columbian (245).** Bottom imprint and plate no. strip of four, **Mint N.H.** and absolutely post-office fresh, extremely well-centered, deep shade and proof-like impression on bright paper

EXTREMELY FINE GEM IMPRINT AND PLATE NUMBER STRIP. IN OUR OPINION, THIS IS THE FINEST PLATE STRIP OF THE \$5.00 COLUMBIAN IN EXISTENCE. AS FRESH AND CHOICE AS THE DAY IT WAS ISSUED.

Scott does not list a plate strip as Never Hinged. The \$5.00 plate number block of eight is believed to be unique; therefore, a strip of four is the only practical means to show the complete imprint and plate number. 20,000.00



208

- 208 ★ **\$5.00 Columbian (245).** Bottom imprint and plate no. strip of four, mount-disturbed original gum, well-centered, small thin at upper right corner

VERY FINE APPEARANCE. AN ATTRACTIVE AND VERY RARE PLATE NUMBER STRIP OF THE \$5.00 COLUMBIAN.

The \$5.00 plate number block of eight is believed to be unique; therefore, a strip of four is the only practical means to display the complete imprint and plate number 20,000.00



- 209 ★ **2c Carmine Lake, Ty. I (249).** Full original gum, h.r., rich color, perfectly centered within jumbo margins, Extremely Fine and choice, a superb stamp..... 130.00
- 210 ★★ **8c Violet Brown (257).** Mint N.H., deep rich color and sharp proof-like impression, Very Fine..... 210.00
- 211 ★ **\$1.00 Black Ty. I (261).** Original gum, lightly hinged, well-centered within large margins, deep shade, sharp impression on bright paper, Extremely Fine and choice, an outstanding stamp..... 800.00
- 212 ★ **\$1.00 Black, Ty. II (261A).** Original gum, well-centered, sharp proof-like impression on crisp white paper, Extremely Fine and choice 1,900.00
- 213 ★ **\$2.00 Bright Blue (262).** Original gum, well-centered, deep rich color on bright paper, Extremely Fine, with 1984 P.F. certificate for block of four from which this is the bottom left stamp 2,600.00
- 214 ★ **\$5.00 Dark Green (263).** Original gum, intense shade and sharp impression, reperfed at top, appears Extremely Fine, with 1985 P.F. certificate..... 4,000.00
- 215 ★★ **15c Dark Blue (274).** Mint N.H., intense color, sharp proof-like impression on bright paper, well-centered and Very Fine, a beautiful stamp..... 300.00
- 216 ★ **\$1.00 Black, Ty. I (276).** Original gum, small hinge mark, sharp proof-like impression on bright paper, Extremely Fine and choice 600.00
- 217 ★ **\$1.00 Black, Ty. II (276A).** Original gum, deep shade, sharp impression on crisp white paper, Very Fine and choice 1,200.00
- 218 ★ **\$2.00 Bright Blue (277).** Original gum, crisp white paper, fresh and Extremely Fine, a very pretty stamp..... 975.00
- 219 ★ **\$5.00 Dark Green (278).** Original gum, lightly hinged, deep rich color on fresh white paper, Very Fine 2,250.00
- 220 ★ **1c-\$2.00 Trans-Mississippi (285-293).** Complete set, 1c, 5c Mint N.H., 50c unused (regummed), \$2.00 unused (no gum), others original gum, bright colors, most well-centered, fresh and Very Fine(Photo Ex) 3,632.00
- 221 ★ **1c-10c Pan-American (294-299).** Complete set, 2c, 5c, 8c Mint N.H., 1c slightly sweated gum, 4c h.r., 10c slightly glazed gum, bright colors, Fine-Very Fine set..... 668.00

PAN-AMERICAN INVERTS



222

- 222 ★ **1c Pan-American, Center Inverted (294a).** Lightly hinged, rich color and fine impressions, faint natural diagonal printing crease at upper left
- VERY FINE AND REMARKABLY FRESH EXAMPLE OF THE ONE-CENT PAN-AMERICAN INVERT. The 1c Pan-American Inverts were found in at least four different post offices around the country, soon after release of the issue in May 1901. Between 600 and 700 are likely to have been issued. 10,000.00



223

- 223 ★ **2c Pan-American, Center Inverted (295a).** Lightly hinged, perfectly centered, rich color and clear impressions of vignette and frame
- EXTREMELY FINE GEM. ONE OF THE FINEST ORIGINAL-GUM EXAMPLES OF THE 2-CENT PAN-AMERICAN INVERT.
- The 2c is the rarest of the three Pan-American Inverts. It is surmised that approximately 200 were issued through the post office, with two distinct shades known. Estimates of surviving examples range from an early count (1945) of 55 unused and 2-3 used to the 1998 Datz estimate of 150 unused, 3-5 used and a block of four intact. Our Levi records contain the intact block (4), reconstructed block (4), 64 unused singles and 6 used singles, for a total of 72 unused and 6 used. Many of the unused singles have disturbed gum or no gum, and/or are off center to top or top left.
- Ex Chapin. Faint "W.H.C." (Colson) backstamp. With 1973 P.F. certificate. Scott footnote states "Almost all unused copies of No. 295a have partial or disturbed gum. Values are for examples with full original gum that is slightly disturbed." 37,500.00



224

224 ★ **4c Pan-American, Center Inverted (296a).** Beautiful colors, full original gum showing usual slight disturbance, remarkably well-centered and fresh

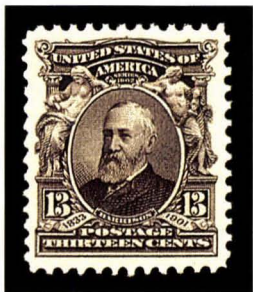
EXTREMELY FINE AND CHOICE. ONE OF THE FINEST KNOWN EXAMPLES OF THE 4-CENT PAN-AMERICAN INVERT.

The 4c Pan-American Invert was a special printing and not regularly issued. Examples were distributed through two official channels, and the gum on the majority of stamps without "Specimen" overprint was disturbed. In fact, the stamps removed from mounting paper are generally thinned or have seriously disturbed gum. Examples with full intact gum are very scarce.

We compared this stamp with two blocks of four and several singles. The gum on this stamp is among the freshest and least disturbed of any that we examined, comparing closely to the stamp in our 1998 Rarities sale (lot 356).

With 1989 P.F. certificate which states that "it is genuine with disturbed o.g." 18,000.00

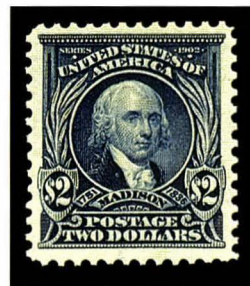
1902-08 ISSUE



225



226



227

- 225 ★★ **13c Purple Black (308).** Mint N.H., deep rich color, perfectly centered with wide margins all around, Extremely Fine Gem, a superb stamp..... 72.00
- 226 ★ **\$1.00 Black (311).** Slightly disturbed original gum, perfectly centered with wide margins all around, Extremely Fine and choice 700.00
- 227 ★ **\$2.00 Dark Blue (312).** Lightly hinged, bright shade, Very Fine, a pretty stamp..... 1,100.00



228

- 228 ★ **\$5.00 Dark Green (313).** Original gum, well-centered with wide margins, Extremely Fine, with 1984 P.F. certificate 2,750.00

- 229 ★★ **5c Blue, Imperforate (315).** Mint N.H. pair, large margins and rich color, fresh and Very Fine..... 950.00



229



230

- 230 ★ **1c Blue Green, Horizontal Coil (318).** Lightly hinged pair, deep rich color and fresh
VERY FINE. AN OUTSTANDING PAIR OF THIS RARE 1908 COIL.
With 1983 P.F. certificate..... 7,500.00

1908 ISSUE



- 231 ★★ 15c Pale Ultramarine (340). Mint N.H., bright color, fresh and Very Fine..... 105.00
- 232 ★ 50c Violet (341). Lightly hinged, rich color, sharp impression on bright paper, well-centered, Extremely Fine Gem, a superb stamp 325.00
- 233 ★★ 1c Green, Coil (348). Mint N.H. guide line pair with line at right, deep rich color, post-office fresh and Very Fine 300.00
- 234 ★★ 5c Blue, Coil (351). Mint N.H. guide line strip of four, deep rich color, bottom pair with tiny natural gum skips, fresh and Very Fine 1,770.00
- 235 ★ 5c Blue, Coil (355). Lightly hinged pair, well-centered, rich color, sharp proof-like impression on bright paper, Extremely Fine Gem pair..... 400.00



236

- 236 ★ 10c Yellow, Coil (356). Lightly hinged guide line pair, vivid color
EXTREMELY FINE AND WONDERFULLY FRESH LINE PAIR OF THE RARE 10-CENT PERF 12 COIL.
With 1989 P.F. certificate for strip of four 9,000.00

BLUISH PAPER



237

- 237 ★ **3c Deep Violet, Bluish (359).** Full original gum, lightly hinged, intense color, unbelievably wide margins

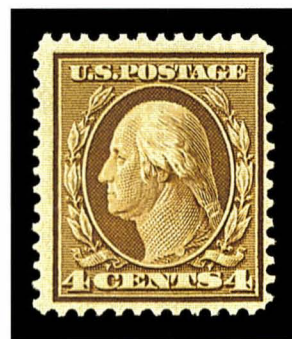
EXTREMELY FINE GEM. A MAGNIFICENT EXAMPLE OF THIS DIFFICULT STAMP. A TRUE CONDITION RARITY.

With 1973 P.F. certificate 1,800.00

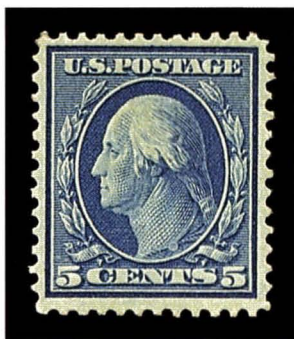
- 238 ★★ **4c Orange Brown, Bluish (360).** Mint N.H., deep rich color, sharp proof-like impression on crisp paper

FINE AND CHOICE POST-OFFICE FRESH EXAMPLE OF THE RARE 4-CENT BLUISH PAPER. ALMOST IMPOSSIBLE TO OBTAIN NEVER HINGED.

With 1976 P.F. certificate..... 25,000.00



238



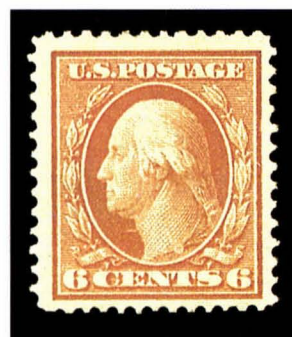
239

- 239 ★ **5c Blue, Bluish (361).** Lightly hinged, bright color, sharp proof-like impression on crisp paper, well-centered

VERY FINE. A BEAUTIFUL EXAMPLE OF THE 5-CENT BLUISH PAPER. THE THIRD RAREST OF THE ISSUE AND ESPECIALLY DIFFICULT TO FIND WELL-CENTERED.

With 1980 and 1990 P.F. certificates 4,500.00

- 240 ★ **6c Red Orange, Bluish (362).** Full original gum, h.r., bright color, clear impression, fresh and Very Fine..... 1,350.00

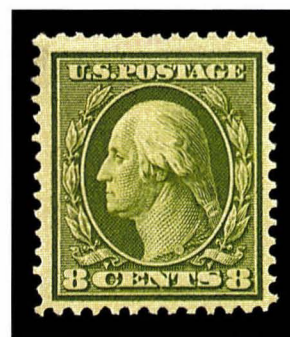


240

- 241 ★ **8c Olive Green, Bluish (363).** Lightly hinged, deep rich color, proof-like impression on strongly blued paper

VERY FINE AND CHOICE EXAMPLE OF THIS EXTREMELY RARE STAMP.

Signed Weill. With 1957 P.F. certificate 20,000.00



241



242

- 242 ★★ **10c Yellow, Bluish (364).** Mint N.H., well-centered, bright and fresh

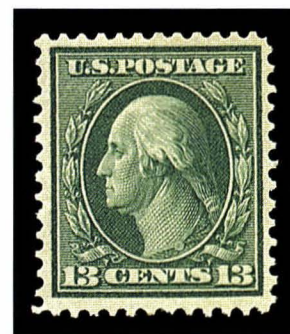
EXTREMELY FINE EXAMPLE OF THE 10-CENT BLUISH PAPER.

With 1980 and 1990 P.F. certificates 2,250.00

- 243 ★ **13c Bluish Green, Bluish (365).** Small h.r., deep shade and impression

EXTREMELY FINE. A SUPERB EXAMPLE OF THE 13-CENT BLUISH PAPER.

Signed Colson..... 2,800.00



243



244

- 244 ★★ **15c Pale Ultramarine, Bluish (366).** Mint N.H., lovely color and impression, well-centered within large margins

VERY FINE. A CHOICE 15-CENT BLUISH PAPER.

With 1981 P.F. certificate 1,950.00

1910-17 AND PANAMA-PACIFIC ISSUES



- 245 ★ **15c Pale Ultramarine (382).** Lightly hinged, perfectly centered, Extremely Fine Gem..... 260.00
- 246 ★ **2c Carmine, Coil (393).** Guide line pair, lightly hinged, deep rich color, fresh and Extremely Fine 225.00
- 247 ★★ **3c Deep Violet, Coil (394).** Mint N.H. guide line pair, deep rich color, Extremely Fine and choice, a gorgeous post-office fresh line pair 500.00
- 248 ★ **4c Brown, Coil (395).** Lightly hinged pair with end roll paper at right, Fine-Very Fine... 110.00
- 249 ★★ **5c Blue, Coil (396).** Mint N.H. pair, intense color, post-office fresh paper, Extremely Fine pair 180.00
- 250 ★ **1c-10c Panama-Pacific (397-400A).** Nos. 397 & 398 Mint N.H., Nos. 399 & 400A lightly hinged, No. 400 h.r., fresh and bright, No. 400A natural gum crease, Very Fine..... (Photo Ex) 470.00
- 251 ★ **1c-10c Panama-Pacific, Perf 10 (401-404).** 2c, 5c Mint N.H., 1c disturbed gum, 10c h.r., rich colors, fresh and Very Fine..... (Photo Ex) 1,350.00
- 252 ★★ **1c Green, Coil (412).** Mint N.H. guide line pair, deep rich color, well-centered with wide margins, Extremely Fine Gem 165.00
- 253 ★★ **2c Carmine, Coil (413).** Mint N.H. guide line pair, deep rich color, post-office fresh and Extremely Fine 350.00



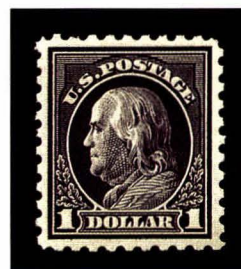
- 254 ★★田 9c Salmon Red (415). Mint N.H. block of four, deep rich shade, fresh and Very Fine..... 350.00
- 255 ★ 50c Violet (421). Original gum, h.r., incredibly intense color on bright white paper, usual traces of offset on gum, fresh and Very Fine 425.00
- 256 ★★ 4c, 6c, 8c 1913-15 Issue (427, 429, 431). Mint N.H., fresh and Very Fine trio..... (Photo Ex) 185.00
- 257 ★★ 9c Salmon Red (432). Mint N.H., rich color, bright white paper, post-office fresh and Extremely Fine..... 80.00
- 258 ★★ 20c Ultramarine (438). Mint N.H., bright shade, Very Fine and choice 340.00
- 259 ★★ 50c Violet (440). Mint N.H., rich color, well-centered and Extremely Fine, with 1980 P.F. certificate..... 875.00
- 260 ★ 3c Violet, Coil (445). Pair, barest trace of hinging, deep color, fresh and Very Fine 525.00
- 261 ★ 5c Blue, Coil (447). Guide line pair, lightly hinged, deep rich color, near perfect centering, Extremely Fine Gem pair 240.00
- 262 ★★ 2c Red, Ty. II, Coil (454). Mint N.H. joint line pair, intense color, post-office fresh and Very Fine 650.00
- 263 ★ 3c Violet, Coil (456). Pair, h.r., rich color, well-centered and Very Fine 575.00



264

- 264 ★★ **2c Carmine, Ty. I, Imperforate Coil (459).** Mint N.H. pair, intense color, huge margins all around, Extremely Fine and choice 750.00

- 265 ★ **\$1.00 Violet Black (460).** Lightly hinged, rich color, perfectly centered within well-balanced even margins, Extremely Fine Gem 775.00



265



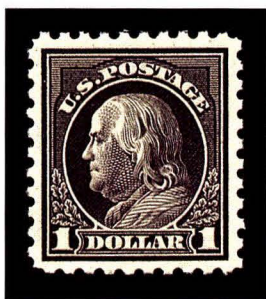
266

- 266 ★★田 **5c Carmine, Error (467).** Double error in block of twelve, Mint N.H., natural straight-edge in bottom 2c stamps, rich color
 VERY FINE. A CHOICE EXAMPLE OF THE 5-CENT CARMINE PERF 10 DOUBLE-ERROR BLOCK.
 Scott Retail as hinged 1,750.00



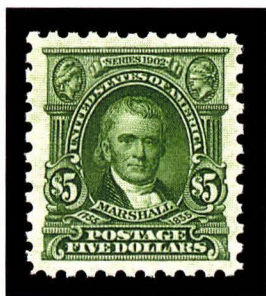
267

- 267 ★ **30c Orange Red, Perf 10 (476A).** Left margin single, intense color
 FINE AND CHOICE EXAMPLE OF THE VERY RARE 30-CENT UNWATERMARKED PERF 10. ONLY
 209 ACCEPTED EXAMPLES.
 With copy of 1973 P.F. certificate for pair 4,000.00



268

- 268 ★★ **\$1.00 Violet Black (478).** Mint N.H., rich color, near perfect centering, post-office fresh
 and Extremely Fine 1,100.00



269

- 269 ★★ **\$5.00 Light Green (480).** Mint N.H., rich color, bright white paper, Extremely Fine Gem
 375.00



270 Detail

270 ★★田 **5c Carmine, Imperforate, Error (485)**. Mint N.H. single error block with additional 2c stamps, a total of thirty

EXTREMELY FINE GEM. AN OUTSTANDING EXAMPLE OF THE 5-CENT IMPERFORATE ERROR.

Scott Retail as hinged 15,000.00



271



272 Detail

271 ★★田 5c Rose, Error (505). Single error in block of nine, error Mint N.H., natural s.e. at top, error with erased pencil notes on gum, Very Fine 650.00

272 田 5c Rose, Error (505). Single error in **used complete pane of 100**, Milwaukee Oct. 24, 1917 duplex cancels, natural straight-edges at top and left, few selvage faults

FINE AND RARE COMPLETE USED PANE OF PLATE NO. 7942 WITH THE ERROR IN POSITION 18. THE EARLY POSTMARK DATE SUGGESTS A PARCEL-POST USE RATHER THAN A PHILATELIC ONE. A WONDERFUL SHOWPIECE.

Scott Retail for used single error block of nine 875.00

1922-29 ISSUE



273

273 ★★田 \$5.00 Carmine & Blue (573). Mint N.H. top margin arrow and double plate no. block of twelve, bright colors, few trivial selvage perf separations and natural flat-plate gum bends, Extremely Fine 3,940.00

1923 ONE-CENT ROTARY PRESS PERF 11



274 (Detail at left)

- 274 ☒ **1c Green, Rotary, Perf 11 (594).** Perfectly centered, long full perfs all around, tied by "NEW YORK, N.Y. STA. Y 1924" dateless machine cancel with "REGISTER OR INSURE VALUABLE MAIL" slogan in bars on unsealed circular-rate envelope with typewritten local address

EXTREMELY FINE GEM STAMP AND IMMACULATE COVER. THE FINEST EXAMPLE OF SCOTT 594 EXTANT ON COVER AND AMONG THE FOUR BEST-CENTERED OF ALL KNOWN COPIES OF THIS RARITY. AN IMPORTANT 20TH CENTURY COVER.

The 1c Green, Scott 594, is waste from a horizontal rotary printing used to make coils. At the beginning or end of a coil-stamp print run from the 170-subject rotary plates, some leading or trailing paper was produced that was too short for rolling into 500-stamp rolls. In 1919 the Bureau devised a plan to salvage this waste by perforating and cutting the sheets into panes. They were put through the 11-gauge flat-plate perforator in use at the time, giving the sheets full perforations on all sides. In 1923 coil waste from the new 1c and 2c rotary production was turned into stamps later classified as Scott 578-579 and 594-595. These were the last of the coil-waste issues. The existence of Scott 594 was not reported until four months after the final sheets were delivered, and the 1c Rotary Perf 11 was soon recognized as one of the rarest United States stamps.

There are today fewer than 100 confirmed examples of Scott 594. The first major find of this stamp was made in 1934 by Ernest E. Fairbanks, who retrieved nine pairs (18 stamps, one or two damaged) on nine separate covers that were returned by the post office years earlier from a bulk mailing. All were postmarked at New York City on October 4, 1924. The nine Fairbanks covers were cut down into pieces, and today there are perhaps five or six of these pieces intact. According to a survey of the Levi records and The Philatelic Foundation patient records, there are four Scott 594 usages. Two are postcards, each bearing a single stamp, cancelled at New York City on March 25 and October 16(?), 1924. A pair on cover (an envelope) is cancelled at New York City on October 13, 1924. The second cover (offered here) is a circular-rate unsealed envelope cancelled at New York City in 1924, but the machine postmark is dateless, as normal for third-class mail.

The stamp on this cover ranks among the four best-centered copies of Scott 594 that exist in any condition. It is the finest of the four recorded usages and the only single franking on an envelope. The perfs cut into the top of the pair on the other known envelope.

Ex Ewing. Signed by Gordon Usticke (Stanley Gibbons backstamp). With 1988 P.F. certificate 7,000.00

1923 2-CENT HARDING ROTARY PRESS PERF 11



275

275

2c Harding, Rotary Perf 11 (613). Much better centering than usual with wide even margins at sides and bottom, top perfs just clear, sharp impression, very light New Orleans machine cancel

FRESH AND FINE. ONE OF THE FEW SOUND AND ATTRACTIVE SINGLES OF THE 43 2-CENT HARDING ROTARY PERF 11 STAMPS RECORDED IN OUR CENSUS.

Our census of the 2c Harding Rotary Perf 11 (see Zoellner sale, Appendix, p. 389) records 39 used singles (one faintly cancelled, if at all) and two used pairs. Of the singles, 22 are sound, but of these quite a few are centered strongly to one corner.

The 2c Harding Rotary Perf 11 stamp was first discovered in 1938 by Leslie Lewis of the New York firm, Stanley Gibbons Inc. The Weills discovered three additional singles, including the stamp offered here, among unsorted 2c stamps soaked off envelopes post-marked at New Orleans, circa November 1923.

Gary Griffith presents his hypothesis in *United States Stamps 1922-26* that rotary-printed sheets of 400 were first reduced to panes of 100 and then fed through the 11-gauge perforating machine normally used for flat plate sheets. This method distinguishes sheet-waste stamps—Scott 544, 596 and 613—from the coil-waste stamps and explains the existence of a straight-edge on Scott 613.

Census No. 613-CAN-34. Signed Weill. With 1987 P.F. certificate..... 20,000.00

LATER ISSUES AND AIR POST



277EX



278EX



280



279



281

- 276 ★★ 2c White Plains Souvenir Sheet (630). Mint N.H., rich color, fresh and Very Fine-Extremely Fine 575.00
- 277 ★★ 1c-10c Kans. Overprints (658-668). Mint N.H., bright colors, all are fresh and Very Fine (Photo Ex) 391.00
- 278 ★ 1c-10c Nebr. Overprints (669-679). 1c, 2c, 4c, 7c, 8c, 10c Mint N.H., others lightly hinged, bright colors, Very Fine-Extremely Fine (Photo Ex) 452.00
- 279 ★★ 4 \$5.00 Presidential (834). Mint N.H. top margin arrow and double plate no. block of four, post-office fresh and Extremely Fine 450.00
- 280 ★★ 24c Carmine Rose & Blue, 1918 Air Post (C3). Mint N.H., bright colors, perfectly centered within large margins, post-office fresh and Extremely Fine 155.00
- 281 ★★ 12 24c Carmine Rose & Blue, 1918 Air Post (C3). Mint N.H. top plate no. arrow and double "TOP" block of twelve, bright colors, usual natural gum skips and bends, Fine-Very Fine 2,000.00

1918 24-CENT INVERTED "JENNY"



282

- 282 ★ **24c Carmine Rose & Blue, Center Inverted (C3a).** Position 86, lightly hinged, nearly perfect centering, rich colors on fresh bright paper, a tiny bit of mount-glazing is noted on accompanying certificate, but the faint diagonal gum crease (characteristic of lower rows in the sheet) is not mentioned

EXTREMELY FINE CENTERING AND BRILLIANT COLORS. ONE OF THE BEST-CENTERED EXAMPLES OF THIS WORLD-FAMOUS RARITY IN EXISTENCE.

According to *Jenny!* by George Amick (Amos Press, 1986), the original sheet of 100 "Jenny" Invert stamps was purchased by William T. Robey on May 14, 1918, one day after the stamp was placed on sale. Robey bought the sheet at the New York Avenue Post Office window in Washington, D.C. Soon after, the sheet was sold to Col. Edward H. R. Green through Eugene Klein, a Philadelphia stamp dealer. Green paid \$20,000 for the sheet, then instructed Klein to divide it into singles and blocks, and to sell all but a few key position blocks. This stamp, Position 86, was joined with the bottom plate number and arrow block at the time of the Green sale in 1944.

It is well-known among stamp specialists and professionals that examples of this stamp come in different grades of freshness and condition. Many of the original 100 stamps were mistreated by collectors during the years, despite the stamps' rarity and value. Colonel Green himself allowed moisture to affect some of the stamps he retained. Other examples have become slightly toned from improper storage and climatic conditions. Hinging has caused thins and creases in numerous stamps, and at least seven have been "lost" to philately—or nearly so as in the case of the copy swept up in a vacuum cleaner. This example is among the best-centered in the original sheet and is unusually fresh and bright.

Ex Col. Green and Eno. With 1989 P.F. certificate ("mount glazed o.g.") 150,000.00

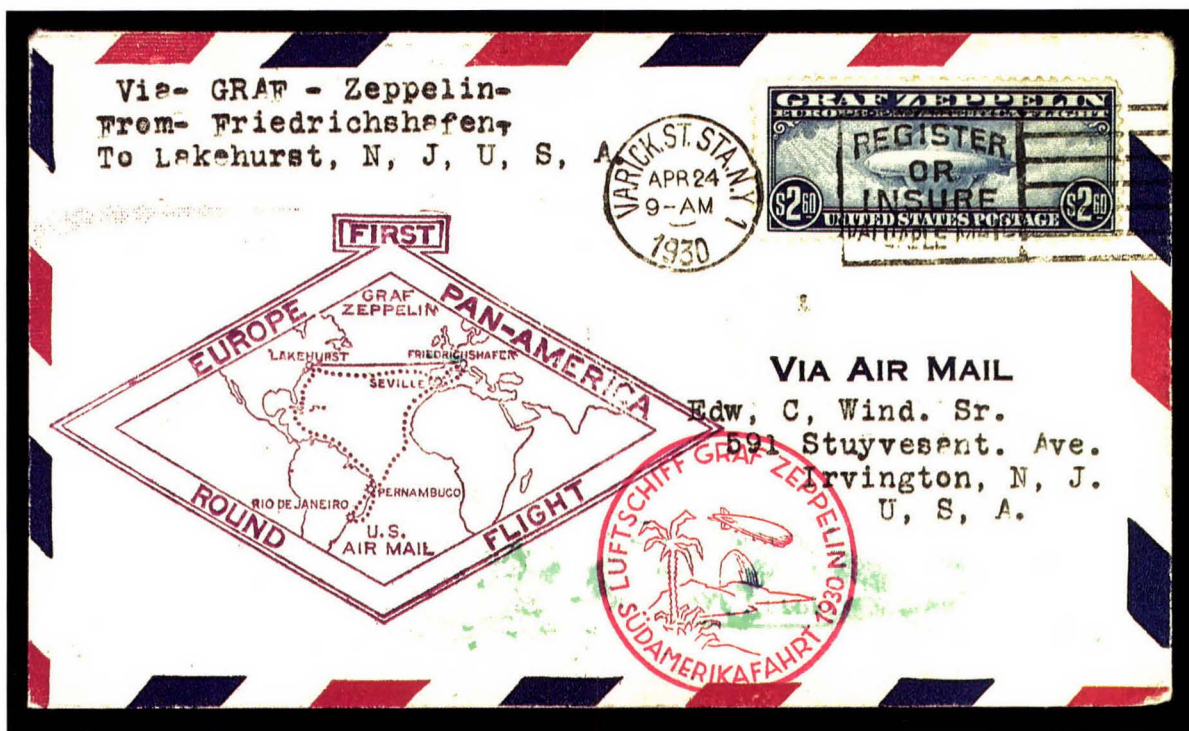


283



284

- 283 ★ 65c-\$2.60 Graf Zeppelin (C13-C15). Lightly hinged, 65c small thin spot, \$1.30 tiny pre-printing paper fold at bottom right, Very Fine..... 1,675.00
- 284 65c-\$2.60 Graf Zeppelin (C13-C15). Lightly cancelled, \$2.60 faint crease, otherwise Fine-Very Fine..... 1,110.00



285EX

- 285 ☒ 65c-\$2.60 Graf Zeppelin (C13-C15). Each tied to individual flown card (65c) or covers (\$1.30, \$2.60) by April 1930 New York cancels, with appropriate Zeppelin flight markings, \$1.30 with minor cover rubbing, Fine-Very Fine(Photo Ex) 1,175.00

SPECIAL SERVICE STAMPS



286



287EX



288EX

- 286 ★ **10c Orange, Special Delivery (E3).** Original gum, small h.r., deep color, Very Fine 165.00
- 287 ★ **1c-25c Parcel Post Dues (JQ1-JQ5).** 2c, 5c Mint N.H., 1c tiny thin speck (Scott Retail \$9.00), 25c few gum-soaked perf tips, 10c h.r., Fine, otherwise Very Fine set (Photo Ex) 374.00
- 288 ★ **1c-\$1.00 Parcel Post (Q1-Q12).** Complete set, 1c, 3c, 10c, 15c Mint N.H., 2c faulty, 10c reperfed, 20c natural gum crease, 50c & 75c small thins, generally Fine-Very Fine, the \$1.00 is an Extremely Fine plate no. single (Photo Ex) 1,086.00

LOCAL AND CARRIER STAMPS



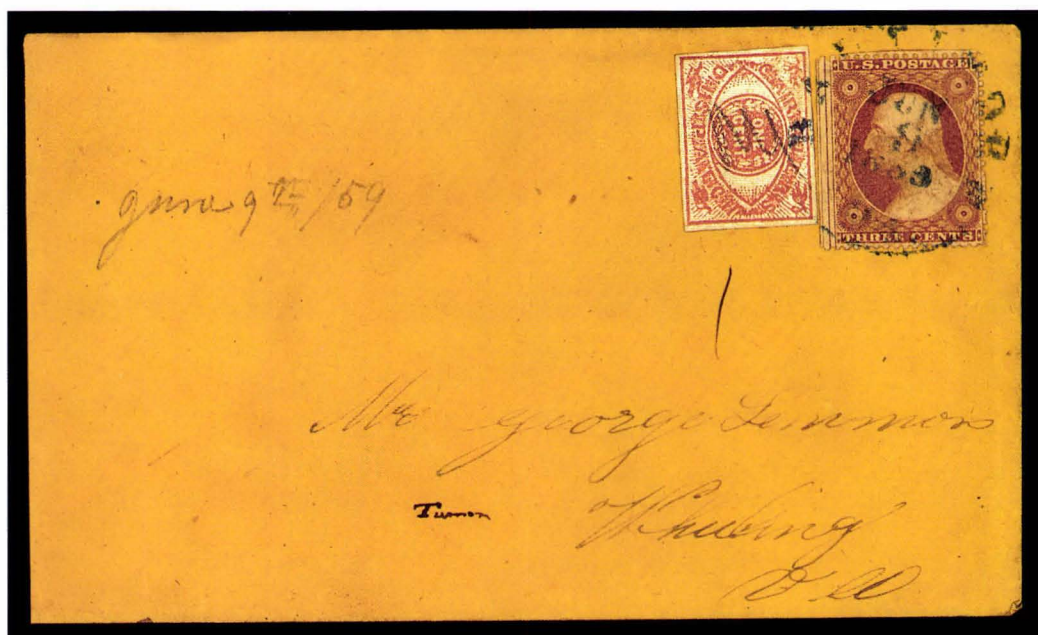
289

- 289 (Greig's) **City Despatch Post, New York N.Y., 3c Black on Grayish (40L1).** Large margins incl. mostly complete framelines, neatly cancelled with red framed "FREE", small corner crease, otherwise Extremely Fine, with 1989 P.F. certificate..... 250.00



290

- 290 ☒ **U.S. City Despatch Post, New York N.Y., 3c Black on Blue Green Glazed (6LB5).** Huge margins, tied by red framed "U.S." with matching "U.S. City Despatch Post/Aug. 9/9 O'Clock" circular datestamp to locally addressed small folded letter, Extremely Fine and choice cover, ex Caspary 500.00



291

- 291 ☒ **Baltimore Md., 1c Red (1LB7).** Large margins, pencil cancel, used with 3c Dull Red (26), both stamps tied by blue "Baltimore Md. Jun. 9, 1859" circular datestamp on buff cover to Wheeling Ill., 3c has natural s.e., Very Fine 550.00



292

- 292 ☒ **Baltimore Md., 1c Black, "SENT" (1LB8a).** Position 7, ample to large margins, used with 3c Dull Red (26), tied by blue "Baltimore Md. Jun. 8" circular datestamp on buff cover to Houston Tex., Very Fine, unpriced on cover in Scott E. 750-1,000

GROUP LOTS FROM THE ARGENTUM COLLECTION

- 293 **1851-68 Issues.** A select group of 46 stamps incl. ten unused and 36 used, unused incl. Nos. 11, 26 (block of four), 73, used incl. Nos. 10, 17, 20, 36, 37, 67, 70, 71, 72, 76, 87, deep colors, many are well-centered within large margins, most have minor faults, overall Very Fine-Extremely Fine appearance 5,297.00
- 294 **1c-6c, 24c 1869 Pictorial (112-115, 120).** 3c original gum, others used, 24c with red cancel (repaired), bright colors, 3c thinned, extra 2c with suspect green cancel not catalogued, otherwise Fine-Very Fine group 1,470.00
- 295 **1c-90c 1870-93 Bank Note Issues (135/229).** A valuable group of 47 stamps incl. 29 unused and sixteen used, unused incl. Nos. 135, 145-147, 157, 158, 163, 165, 179, 205, 206-211, 214-216, 219D, 222-229, used incl. Nos. 148, 154, 162 (two), 182-191, many unused without gum or regummed, Nos. 165, 210 and others with faults, appear Fine-Very Fine 6,253.00
- 296 ★ **1c-50c 1894-99 Issues (246/284).** 33 unused stamps, incl. Nos. 246-248, 250-256, 258-260, 264-273, 275, 279-284, Nos. 246, 248, 252, 254, 264, 265, 267 Mint N.H., No. 260 part original gum, others full original gum, Nos. 255, 256, 260 with minor faults, otherwise Fine-Extremely Fine group 3,234.00
- 297 ★ **1c-50c 1902 Issues (300-307, 309-310, 314, 319, 320).** Nos. 300, 301, 306, 319, 320 (pair) Mint N.H., bright colors, No. 305 piece out at top (Scott Retail \$65), Fine-Very Fine 997.00
- 298 ★ **Washington-Franklin Issues.** Collection of unused singles, coil pairs and guide line pairs, better singles incl. Nos. 333-339, 342, 374-381, 414-420, 422, 423, 437, 439, 461, 462-466, 468-475, 476, 477, 500, 506-518, 523, 524, 547, better coil pairs incl. Nos. 386, 446, better guide line pairs incl. Nos. 392, 443, 444, 458, 492-497, some Mint N.H., Fine-Very Fine, Scott Retail as hinged 11,045.00
- 299 ★ **20th Century Regular Issue Balance.** 1922-81, virtually complete unused, better incl. Nos. 551-573, 578, 579, 581-591, 595, 599A (single and pair), 692-701, 803-834, 839-850 line pairs, 1053, few imperf coil pairs, most Mint N.H., Fine-Very Fine, years 1963-81 face value \$40, years 1922-63 Scott Retail approximately 3,500.00
- 300 ★ **20th Century Commemorative Issue Balance.** 1904-81, virtually complete unused, better incl. Nos. 323-330, 367-373, 548-550, 614-621, 616 plate no. block, vast majority Mint N.H., Fine-Very Fine, years 1944-1981 face value \$70, years 1904-1944 Scott Retail 2,343.00
- 301 ★ **Back-of-Book Balance.** 140 unused singles, coil pairs and booklet panes, mostly Air Posts, better incl. Nos. C1-C3, C4-C5, C18 (two each), C6 (three), C10a, C83a, F1, vast majority Mint N.H., Fine-Very Fine, Scott Retail in excess of 2,300.00
- 302 ★ **Special Delivery Issues (E1-E2, E4-E23).** Nos. E7, E11-E23 Mint N.H., others original gum, No. E2 tiny adherence, No. E4 tiny thin speck, also incl. duplicate E11, overall Very Fine group 2,105.00

END OF SALE—THANK YOU

Sell through America's premier stamp auctioneer

Other firms may try to copy the Siegel firm's formula for success, but no one can match our expertise and track record in selling collections at auction.

When the time comes to sell your collection, there are some facts we would like you to consider:

- Year after year, the Siegel firm sells more United States and Confederate stamps and covers than anyone else.
- Siegel sales generate the kind of excitement that creates more competitive bidding and higher prices.
- The Siegel mailing list has been built over 68 years and has a 90% active-buyer rate over the past five years. It continues to grow every day, and our clients continue to increase their buying power.
- The Siegel website received 200,000 hits in September 1998, and we sold more than 1,200 Zoellner sale catalogues before the auction.
- Siegel sale catalogues win top national awards. They have become philately's most effective selling tool by educating and enticing buyers.
- The Siegel firm's reputation for paying all obligations on time is backed by a strong capital base and consistent record of profitability.

If excellence is your goal in collecting, when it is time to sell, it makes sense to choose an auctioneer whose excellence has been proven over time.

Robert A. Siegel

AUCTION GALLERIES, INC.

PARK AVENUE TOWER, 65 EAST 55th STREET, 17th FLOOR, NEW YORK, N.Y. 10022

Phone (212) 753-6421 Fax (212) 753-6429 E-mail: siegelstp@aol.com

Internet: <http://SiegelAuctions.com/home.htm>

Bid Form

Sale 807
February 23, 1999

1

Please provide the following information:

NAME.....
ADDRESS.....
CITY/STATE/ZIP.....
TEL. (DAY)..... FAX.....
E-MAIL.....

PADDLE #

Do not write in box

2

Have you purchased from us in the past 5 years? ☐ YES (if so, please go to Section 3)
☐ NO (please provide a trade reference and bank information)

References:

Stamp Firm:..... Telephone.....

Bank:..... Account #.....

3

In the space provided below, enter the **lot number** from **Sale 807** and your corresponding bid. Please use **whole dollar amounts** only and enter the **maximum bid** you wish to have us execute on your behalf, according to the bidding increments (on other side of this form). **Your bid will NOT include the 10% buyer's premium.** We will advance the bidding at one increment over the next

highest bid; therefore, you may be awarded the lot at less than your maximum bid. Please do not use "plus" bids or "buy" bids. If you wish to bid on one lot **or** the other, indicate your "or" bid between lot number/bid entries and bracket your choices. If you wish to place a **bidding limit** on the total amount of your bids, please enter your limit in the space marked "Limit Bids".

☐ **LIMIT BIDS:** Check this box if you wish to limit the total amount of your bids (not including the 10% buyer's premium) in this sale. Your bids will be executed until your bidding limit no longer allows for additional bids.

The total amount you wish to bid is: \$

Lot	Bid	Lot	Bid	Lot	Bid
	\$		\$		\$

4

AGREEMENT: By signing this bid form, you agree to pay for purchases resulting from your bids, in accordance with the **Conditions of Sale** printed in the sale catalogue. You also agree to pay the 10% buyer's premium and any shipping costs (see reverse), which will be added to your successful bids, and any sales tax or use tax which may be due

on the total invoiced amount. It is understood that these bids will be executed by Siegel Auction Galleries as a courtesy to absentee bidders, but that no legal responsibility shall lie with the auctioneer or the firm if these bids are not executed. **You are responsible for your written bids, including any errors on your part.**



SIGNED.....

TODAY'S DATE

5

Please submit your bids promptly (telephone bids must be confirmed in writing).

Mail to: Robert A. Siegel Auction Galleries, Inc.
65 E. 55th Street, New York, N.Y. 10022
Telephone (212) 753-6421

OR FAX YOUR BIDS: (212) 753-6429

Shipping Instructions, Bidding Increments and space for additional bids on other side of form

Additional Bids

Sale 807—February 23, 1999

Lot	Bid	Lot	Bid	Lot	Bid
	\$		\$		\$

Shipping and Transit Insurance

We will be pleased to arrange for shipping and transit insurance for purchases in this sale (except those described as "floor sale only"). To expedite billing and delivery of lots to hundreds of buyers per sale, we use standard charges for postage and insurance, based on the invoiced total and mailing requirements (see schedule). The standard charges are sometimes slightly more or less than the actual postage, but we do not include any fees for our labor or packing costs. Therefore, we ask all buyers to remit the prescribed amount for shipping charges.

Transit insurance is provided in all cases, except when the buyer has furnished us with proof that insurance coverage is effective under another policy. Proof, in such cases, will be accepted in the form of a written certificate from the insurance carrier.

You are responsible for insurance charges, which will be added to your invoice. This coverage is provided for our mutual protection against theft or loss in transit.

Current Postage & Insurance Charges

Invoice Total	Shipping Method	Charges
Up to \$1,000	Certified Mail or Insured Priority	\$10.00
\$1,000-10,000	Fedex or Express Mail	\$16.00
\$10,000-25,000	Fedex or Express Mail	\$22.00
Over \$25,000	Fedex or Express Mail	\$22.00 plus insurance at \$1 per \$1,000 value over \$25,000
Foreign Destinations (any value)	Registered or Express mail	\$10.00 plus insurance at \$2 per \$1,000 value
Bulk Lots	UPS Preferred	By weight and value (min. \$25.00)

2/95

Bidding Increments

The auctioneer may regulate the bidding at his discretion. However, to assist absentee bidders in establishing their maximum bid for each lot, the increments shown at right will be used in most cases. We recommend that written bids conform to these increments (those which do not will be reduced to the next level).

Up to \$140	\$5	\$3,000-7,000	\$250
\$140-300	\$10	\$7,000-20,000	\$500
\$300-700	\$25	\$20,000-30,000	\$1,000
\$700-1,400	\$50	\$30,000-75,000	\$2,500
\$1,400-3,000	\$100	\$75,000 up	\$5,000

SERVICES FOR BUYERS

If you wish to participate in our auctions, we will be pleased to assist you in many ways. Most of the following services are provided without additional charge.

Mail Viewing

Subject to availability, many lots can be sent to established clients (or those who submit references) for examination. Requests must be made no later than five days prior to the auction. Lots must be returned on the day of receipt. Postage/insurance costs will be invoiced. Large lots will not be available for mail viewing.

Viewing by Appointment

In addition to the regular public viewing hours, prospective bidders may view lots at our galleries by appointment.

Lot Review

Our on-staff philatelists will be pleased to review the description of any lot and provide more detailed information.

Opening Bids

During the two days prior to the sale, we will furnish approximate opening bids by phone or fax. Openings often change (up or down) and cannot be guaranteed as a reliable indicator of where the auctioneer will start the bidding. Opening bids will not be given on sale days.

Hotel and Restaurant Reservations

We will be pleased to furnish the names of good hotels and restaurants in the area. During peak seasons, we may be able to assist in placing reservations.

Absentee Bidding by Phone or Fax

Bidders who cannot attend the sale may leave written bidding instructions (see Bid Form). Bids called in must be confirmed in writing by fax or mail.

Telephone Bidding

Prospective bidders may apply for a telephone link to the auction and bid through one of our staff members. Applicants must call at least 24 hours prior to the sale date. Phone links are subject to availability and may be cancelled due to oversubscription.

Expert Certification

Individual items offered without a Philatelic Foundation certificate (or other accepted authority's certificate) dated within the past five years may be purchased subject to certification (please see Conditions of Sale for details).

Shipping and Delivery of Lots

Instructions for shipping must be given to the gallery prior to or immediately after the sale. Unless special instructions are received, we will follow the shipping guidelines on the back of the Bid Form. Buyers are responsible for all prescribed shipping charges, whether or not the actual out-of-pocket expense is equal to the invoiced charge.

Prices Realized

A list of prices realized will be included with every buyer's invoice. We will accept phone and fax requests for prices realized at any time during or after the auction. For those who qualify, our *ASAP Prices Realized* service will provide faxed daily results during the evening of the sale day (application available upon request). Printed prices realized lists are mailed to all others within 30 to 60 days of the sale.

SERVICES FOR SELLERS

If you wish to sell stamps, we will be pleased to provide the following standard services and options. Specially tailored proposals will be made for significant items and collections.

Appraisals

Verbal appraisals of material brought to our galleries are free of charge. Written appraisals for estate tax, insurance or other purposes are billed at hourly (\$50) or daily (\$500) rates. Fees will be rebated if the property is consigned within a certain period of time.

On-Site Sale Consultation

If your consignment is worth \$75,000 or more, we will travel to you at our expense.

Consignment Deadlines

Closing dates for consignment can always be found in our quarterly newsletter, *The Siegel Dispatch*, and in our web site:

<http://SiegelAuctions.com/home.htm>.

Sale Settlement

42 days from the sale date, consignor proceeds are mailed. Since 1930 our firm has never missed settlement day.

Commission Rates

10% seller's commission and 10% buyer's premium. Minimum seller's commission is \$25 per lot. Special terms for more valuable properties may be discussed.

The Siegel Guarantee

Major collections can be offered at auction with a guaranteed minimum net realization. Estate executors who must protect beneficiaries' interests will be fully insured against a market downturn by the Siegel Guarantee.

Advances

Advances up to 50% of our valuation are available to consignors under certain terms.

Negotiated Sale for Immediate Payment

If you wish to sell your stamps for a specific price, we will be pleased to make an offer on behalf of ourselves or other clients.

Single-Owner Sales

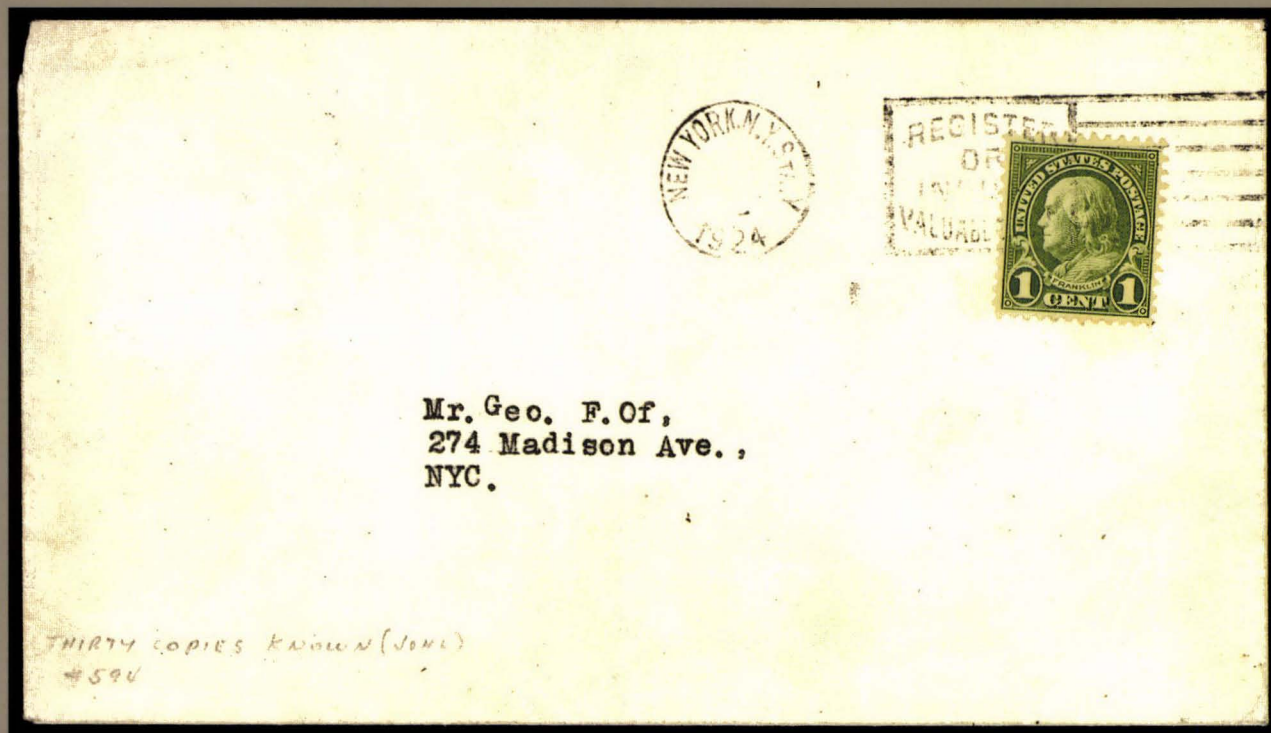
Collections with a fair market value of \$300,000 or more may qualify for a special single-owner sale catalogue. The Siegel firm leads the way in offering major name sales, including over the years the Krug, Newbury, Lilly, Matthies, Weatherly, Grunin, Rohloff, Baker, Haas, Kimmel, Wunderlich, Cole, Kapiloff, Honolulu Advertiser, Morris, Rose and Birkinbine collections.

Annual Rarities of the World Sale

Suitable individual rarities will be accepted for our annual Rarities of the World auction. The consignment deadline for this auction is generally in early March.

Robert A. Siegel

AUCTION GALLERIES, INC.



PRICES REALIZED FOR SALE 807---2/23/99

The Argentum Collection of United States

Robert A. Siegel Auction Galleries, Inc.
60 East 56th Street, 4th Floor, New York, NY 10022
Tel (212) 753-6421 Fax (212) 753-6429

Lot#	Realized	Lot#	Realized	Lot#	Realized	Lot#	Realized	Lot#	Realized	Lot#	Realized	Lot#	Realized
1	3,000	46	550	90	1,900	136	375	186	2,400	232	900	279	425
2	1,700	47	2,700	91	625	137	350	187	120	233	220	280	270
4	17,000	48	1,400	92	1,400	138	2,300	188	175	234	2,000	282	130,000
5	8,500	49	3,750	93	1,300	139	200	189	850	235	800	283	900
6	3,750	50	2,000	94	1,000	140	6,250	190	375	236	11,000	284	650
7	675	51	525	95	1,500	141	425	191	800	237	4,750	285	625
8	500	52	200	96	1,250	142	325	192	1,000	239	5,500	286	190
9	850	53	550	97	2,800	143	210	193	1,250	241	19,000	287	260
10	12,000	54	600	98	3,500	144	1,150	194	300	242	7,500	288	500
11	8,000	55	600	99	1,700	145	11,500	196	2,100	244	3,250	289	575
12	1,000	56	260	100	1,250	146	2,700	197	525	245	400	290	1,350
13	525	57	1,900	101	4,250	147	4,500	198	3,750	246	425	291	450
14	10,500	58	160	102	700	148	35,000	199	675	248	150	292	750
15	8,000	59	475	103	425	149	5,000	200	5,500	249	300	293	2,400
16	2,800	60	3,000	104	600	150	12,000	201	85,000	250	170	294	450
17	1,800	61	2,000	105	400	151	57,500	202	2,300	251	900	295	2,400
18	1,100	62	1,800	106	2,300	152	750	203	1,250	252	450	296	2,300
19	1,100	63	1,250	107	5,750	156	1,700	204	4,750	253	1,150	297	500
20	650	64	14,500	108	1,400	157	2,800	205	8,500	254	115	298	6,000
21	750	65	625	109	700	158	15,500	206	11,500	255	290	299	1,600
22	1,400	66	1,200	110	2,800	159	2,100	207	40,000	256	190	300	800
23	4,000	67	475	111	325	160	18,500	208	15,500	257	375	301	550
24	19,000	68	4,750	112	210	161	6,500	209	400	258	230	302	800
25	62,500	69	200	113	1,400	162	9,000	210	210	259	1,900		
26	32,500	70	750	114	3,500	163	32,500	211	2,400	260	425		
27	11,500	71	230	115	2,600	164	350	212	2,500	261	350		
28	10,500	72	2,000	116	3,500	166	1,050	213	2,800	262	625		
29	425	73	170	117	3,000	167	950	214	1,000	263	325		
30	3,500	74	600	118	675	168	5,250	215	675	264	600		
32	260	75	950	119	3,250	169	1,250	217	950	265	950		
33	2,000	76	30,000	120	625	170	1,350	218	950	266	2,400		
34	950	77	11,500	121	375	171	900	219	1,600	267	3,750		
35	1,300	78	750	123	375	172	1,350	220	1,700	268	2,200		
36	500	79	325	124	550	173	475	221	240	269	850		
37	270	80	625	125	3,250	175	525	222	5,750	270	21,000		
38	675	81	200	127	6,750	176	1,700	223	60,000	271	500		
39	170	82	2,000	128	5,000	177	950	224	29,000	272	1,600		
40	1,600	83	1,600	129	750	178	240	225	325	273	2,100		
41	475	84	210	130	4,000	179	300	226	500	274	19,000		
42	5,000	85	475	132	1,000	181	800	227	1,100	275	35,000		
43	500	86	450	133	350	182	270	228	3,250	276	300		
44	425	87	125	134	6,250	184	170	230	9,500	277	350		
45	850	88	500	135	4,500	185	1,500	231	95	278	220		