

Sale 809

Monday, April 26, 1999

THE DUANE H. HILLMER COLLECTION OF
UNITED STATES STAMPS AND COVERS



Robert A. Siegel

AUCTION GALLERIES, INC.

PARK AVENUE TOWER, 17th FLOOR, 65 EAST 55th STREET, NEW YORK, N.Y. 10022

Phone (212) 753-6421 Fax (212) 753-6429 E-mail: siegelstp@aol.com

Internet: <http://SiegelAuctions.com/home.htm>

Robert A. Siegel

AUCTION GALLERIES, INC.

America's premier stamp auctioneer since 1930

PARK AVENUE TOWER, 17th FLOOR, 65 EAST 55th STREET, NEW YORK, N.Y. 10022

Phone (212) 753-6421 Fax (212) 753-6429 E-mail: siegelstp@aol.com

Internet: <http://SiegelAuctions.com/home.htm>

Scott R. Trepel

President

John Zuckerman

Vice President

Elizabeth C. Pope

Vice President

Accounts

Cindy Stein

Sale Administration

Carlene Conlon

Descriptions

John Zuckerman

Andrew Kupersmit

Scott R. Trepel

Principal Auctioneer

Scott R. Trepel

N.Y.C. Auctioneer's License No. 795952

Robert A. Siegel

1913-1993

AREA HOTELS

The Hotel Elysee

60 E. 54th St. • 800-535-9733

Omni Berkshire

21 E. 52nd St. • 800-843-6664

The Plaza Hotel

Fifth Ave. & 59th St. • 800-228-3000

The Four Seasons

57 E. 57th St. • 800-332-3442

INTERNET

For on-line catalogue,
sale updates and information,
please visit our website:

<http://SiegelAuctions.com/home.htm>

Bids may be sent by e-mail, using the
Top-Speed On-Line Bidding
form available in our website.

E-mail: siegelstp@aol.com

PHONE & FAX

Phone 212-753-6421

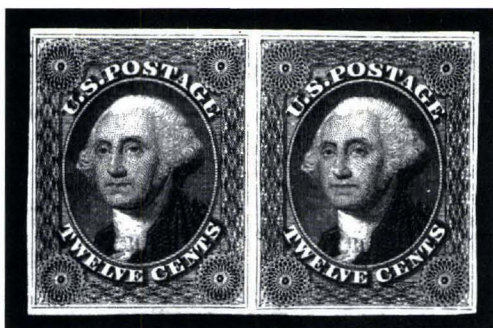
Inquiries and bidding

Fax 212-753-6429

24-hour fax line

Toll-free 800-882-8853
for catalogue orders only

Messages and faxes only



12c Black (17), original gum (lot 46)

The Duane H. Hillmer Collection of United States Stamps and Covers

Offered at unreserved public auction
by order of the executor

Monday, April 26th
at 10:30 a.m. (Lots 1-236)
and at 1:30 p.m. (237-577)

Refreshments will be served during the afternoon session

Pre-Sale Exhibition

Thursday, April 22 10:30 a.m. - 4:00 p.m.
Friday, April 23 10:30 a.m. - 4:00 p.m.

To arrange an appointment for viewing at another time,
please feel welcome to call (212) 753-6421.

Arrangement of Sale

<i>Category</i>	<i>Pages</i>
-----------------	--------------

First Session

Monday, April 26, at 10:30 a.m.

1847 Issue	5-11
1851-56 Issue	12-15
1857-60 Issue	15-25
1861-68 Issues.....	25-31
1869 Pictorial Issue.....	31-35
1870-93 Bank Note Issues.....	36-41

Second Session

Monday, April 26, at 1:30 p.m.

Columbian Issue	44-47
1894-98 Bureau Issue.....	48-49
Trans-Mississippi, Pan-American and 1902-08 Issues.....	50-52
Louisiana-Purchase and 1908 Issues.....	53-56
1909 and Later Issues.....	56-67
Air Post, Special Delivery.....	67
Postage Due	67-71
Officials.....	71-74
Newspaper, Parcel Post	75-77
Carriers and Locals	78
Hunting Permits	79
Confederate States	81
Collection Balances and Groups	81-82

Conditions of Sale

The property described in this catalogue will be offered at public auction by Robert A. Siegel Auction Galleries, Inc. ("Galleries") on behalf of various consignors and itself or affiliated companies. By bidding on any lot, whether directly or by or through an agent, in person, or by telephone, facsimile or any other means, the bidder acknowledges and agrees to all of the following Conditions of Sale.

1. The highest bidder acknowledged by the auctioneer shall be the buyer. The term "final bid" means the last bid acknowledged by the auctioneer, which is normally the highest bid offered. **The purchase price payable by the buyer will be the sum of the final bid and a commission of 10% of the final bid ("buyer's premium"), together with any sales tax or use tax which may be due on the sale.**

2. The auctioneer has the right to reject any bid, to advance the bidding at his discretion and, in the event of a dispute between bidders, to determine the successful bidder, to continue the bidding or to reoffer and resell the lot in dispute. The Galleries' record of the final sale shall be conclusive.

3. All bids are per numbered lot in the catalogue unless otherwise announced by the auctioneer at the time of sale. The right is reserved to group two or more lots, to withdraw any lot or lots from the sale, or to act on behalf of the seller. The Galleries will execute bidding instructions on behalf of clients, but will not be responsible for any errors in the execution of such bids.

4. **Lots with numbers followed by the symbol ° are offered subject to a confidential minimum final bid ("reserve"), below which the lot will not be sold. The absence of the symbol ° means that the lot is offered without a reserve.** In the absence of a reserve, the auctioneer has sole discretion to establish a minimum opening bid and may refuse an offer of less than half of the published estimate. Any lot that does not reach its reserve or opening bid requested by the auctioneer will be announced as "passed" and excluded from the prices realized lists after the sale. The Galleries may have a direct or indirect ownership interest in any or all lots in the sale resulting from an advance of monies or goods-in-trade or a guarantee of minimum net proceeds made by the Galleries to the seller.

5. Any lot, the description of which is obviously incorrect, is returnable, but only if the lot is returned within 14 days of receipt. All disputed lots must be returned intact with the original packing material. **The following lots may not be returned for any reason: Lots containing ten or more items; lots from buyers who have registered for the pre-sale exhibition or received lots by postal viewing, thereby having had the opportunity to inspect them before the sale; any lot described with "faults" or "defects" may not be returned because of any fault or defect. No illustrated lots may be returned because of centering, margins or other factors shown in the illustrations.**

6. Successful bidders, unless they have established credit with the Galleries prior to the sale, must make payment in full before the lots will be delivered. Buyers not known to the Galleries must make payment in full within three days from the date of sale. **The Galleries retain the right to demand a cash deposit from anyone prior to bidder registration and/or to demand payment at the time the lot is knocked down to the highest bidder, for any reason whatsoever.** In the event that any buyer refuses or fails to make payment in cash for any lot at the time it is knocked down to him, the auctioneer reserves the right to reoffer the lot immediately for sale to the highest bidder.

7. If the purchase price has not been paid within the time limit specified above, nor lots taken up within seven days from the date of sale, the lots will be resold by whatever means deemed

appropriate by the Galleries, and any loss incurred from resale will be charged to the defaulting buyer. Any account more than thirty days in arrears will be subject to a late payment charge of 1½% per month as long as the account remains in arrears. Any expenses incurred in securing payment from delinquent accounts will be charged to the defaulter. A fee of \$250.00 per check will be charged for each check returned for insufficient funds.

8. All lots are sold as genuine. **Any lot which is accompanied by an expert certificate (for U.S. items, the accepted authority is The Philatelic Foundation), dated within the past five years of the sale date, is sold "as is" and in accordance with the description on the certificate. Such lots may not be returned for any reason, including but not limited to a contrary certificate of opinion obtained after the sale.** Buyers who wish to obtain a certificate for any item that is not accompanied by a certificate dated within the past five years may do so, provided that the following conditions are met: (1) the purchase price must be paid in full, (2) the item must be submitted to an acceptable expertizing committee with a properly executed application form within 21 days of the sale, (3) a copy of the application form must be given to the Galleries, (4) in the event that an adverse opinion is received, the Galleries retain the right to resubmit the item on the buyer's behalf for reconsideration, without time limit or other restrictions, (5) unless written notification to the contrary is received, items submitted for certification will be considered cleared 90 days from the date of sale, and (6) in the event any item is determined to be "not as described", the buyer will be refunded the purchase price and the certification fee up to \$100.00 unless otherwise agreed.

9. Until paid for in full, all lots remain the property of the Galleries on behalf of the seller.

10. Agents executing bids on behalf of clients will be held responsible for all purchases made on behalf of clients unless otherwise arranged prior to the sale.

11. The buyer assumes all risk for delivery of purchased lots and agrees to pay for prescribed shipping costs (see back of Bid Form).

12. The bidder consents that any action or proceeding against it may be commenced and maintained in any court within the State of New York or in the United States District Court for the Southern District of New York, that the courts of the State of New York and United States District Court for the Southern District of New York shall have jurisdiction with respect to the subject matter hereof and the person of the bidder. The bidder agrees not to assert any defense to any action or proceeding initiated by Galleries based upon improper venue or inconvenient forum. The bidder agrees that any action brought by the bidder shall be commenced and maintained only in a Federal Court in the United States District Court for the Southern District of New York or the State Court in the county in which Galleries has its principal place of business in New York. These Terms and Conditions shall be governed by and construed in accordance with the substantive laws of the State of New York.

SCOTT R. TREPEL, Principal Auctioneer

Auctioneer's License No. 795952
N.Y.C. Department of Consumer Affairs
80 Lafayette Street, New York, N.Y. 10013
Telephone (212) 577-0111

Revised 2/98

Copyright Notice: This catalogue is protected by copyright. The descriptions, format, illustrations and information used herein may not be reprinted, distributed or copied in any form without the express written consent of Robert A. Siegel Auction Galleries. Application for permission may be made in writing.

© 1999, Robert A. Siegel Auction Galleries, Inc.

Grading Terms, Abbreviations and Values Used in Descriptions

Centering and Gum

Margin width, centering and gum are graded according to Scott Catalogue standards.







Extremely Fine (EF): Exceptionally large margins or near perfect centering. The term “Gem” describes condition that is the finest possible for the issue.

Very Fine (VF): Normal size margins for the issue and well-centered with the design a bit closer to one side.

Fine (F): Smaller than usual margins or noticeably off center. Pre-1890 issues may have the design touched in places.

Very Good (VG): Attractive appearance, but margins or perforations cut into the design.

Good (G) or Average (Ave.): Cut into or perfs far into design and usually with slight faults. This condition is generally acceptable for rarities, scarce multiples or stamps used on unusual covers.

Gum Categories:	MINT N.H.	ORIGINAL GUM (O.G.)				NO GUM
	 Mint Never Hinged <i>Free from any disturbance</i>	 Lightly Hinged <i>Faint impression of a removed hinge over a small area</i>	 Hinge Mark or Remnant <i>Prominent hinged spot with part or all of the hinge remaining</i>	 Part o.g. <i>Approximately half or more of the gum intact</i>	 Small part o.g. <i>Approximately less than half of the gum intact</i>	 No gum <i>Only if issued with gum</i>
Catalogue Symbol:	★ ★	★	★	★	★	(★)
PRE-1890 ISSUES	<i>Pre-1890 stamps in these categories trade at a premium over Scott value</i>			Scott Value for “O.G.”		Scott “No Gum” Values thru No. 218
1890-1935 ISSUES	Scott “Never Hinged” Values for Nos. 219-771	Scott Value for “O.G.” (Actual value will be affected by the degree of hinging)		Disturbed Original Gum: Gum showing noticeable effects of humidity, climate or hinging over more than half of the gum. The significance of gum disturbance in valuing a stamp in any of the Original Gum categories depends on the degree of disturbance, the rarity and normal gum condition of the issue and other variables affecting quality. For example, stamps issued in tropical climates are expected to have some		
1935 TO DATE	Scott Value for “Unused”					

Covers

Minor nicks, short edge tears, flap tears and slight reduction at one side are normal conditions for 19th century envelopes. Folded letters should be expected to have at least one file fold. Light cleaning of covers and small mends along the edges are accepted forms of conservation. Unusual covers may have a common stamp with a slight crease or tiny tear. **These flaws exist in virtually all 19th century covers and are not always described. They are not grounds for return.**

Catalogue Values and Estimates

Unless otherwise noted, the currently available *Scott Catalogue* values are quoted in dollars with a decimal point. Other catalogues are often used for foreign countries or specialized areas and are referred to by their common name: *Stanley Gibbons* (SG), *Dietz*, *American Air Mail Catalogue* (AAMC), *Michel*, *Zumstein*, *Facit*, etc. Estimates are indicated with an “E.” and reflect our conservative valuation in dollars. Reserves will never exceed the low end of the estimate range; they will sometimes exceed Scott Catalogue value for stamps in Extremely Fine condition.

Because of certain pricing inconsistencies in the Scott Catalogue—for example, blocks that have no gum, the absence of premiums for Mint N.H. items, etc.—we cannot guarantee the accuracy of values quoted for multiples, specialized items and collection lots. We generally try to be conservative, but buyers may not return a lot because of a discrepancy in catalogue value due to Scott pricing inconsistencies.

Symbols and Abbreviations (see chart for gum symbols)

⊞	Block	E	Essay	pmk.	Postmark	No.	Scott Catalogue Number
⊞	Cover	P	Proof	cds	Circular Datestamp	hs	Handstamp
FC	Fancy Cancel	TC	Trial Color Proof	var.	Variety	ms.	Manuscript

INTRODUCTION



"Collectors look for the interesting, the unusual, the beautiful, and from the results of their finds they get knowledge and a feeling of accomplishment."

Duane H. Hillmer
Pictorial Treasury of U.S. Stamps

IN 1970, A STAMP COLLECTOR FROM OMAHA, NEBRASKA, PAID \$2.25 MILLION for the Scott Publishing Company, creators of the Scott Catalogue and manufacturers of albums for collectors. The gentleman's name was Duane Hillmer. It is not an overstatement to say that for several years Mr. Hillmer was one of the leading forces in American philately. He collected on a grand scale. He was publisher of the collectors' bible to stamps and their values. And, perhaps more than anyone before him, Duane Hillmer embraced color printing as a means to convey the beauty of the stamps he loved as an art form.

In December 1998, at the age of 82, Duane Hillmer passed away. Mr. Hillmer was highly regarded by members of his community in Omaha, where he was a civic leader and patron of the arts. In philately, his prominent role in the 1970's will be remembered by those who were there, and to this day the innovations he made continue to benefit philately.

To the select group of professionals who worked with Mr. Hillmer on his stamp collections in recent years, Mr. Hillmer's loss leaves a void — measured not by sales, but by the conspicuous absence of his resonant voice on the telephone, eager to bid and to buy in the quest for beautiful stamps. When his health began to fail him, Mr. Hillmer derived intense satisfaction from the process of acquiring choice and rare stamps. The introduction he wrote for *Pictorial Treasury of U.S. Stamps*, from which the above quote is derived, also contained this comment: "Acquirement is related to self-preservation, a prime instinct in nearly everyone."

Robert A. Siegel and Duane Hillmer were good friends. One came from Kansas City; the other from Omaha. They were close in age, and during the 1970's they were a big part of the organizing force in stamp collecting in this country. If Mr. Siegel were alive today, he would have written this introduction for his friend. Nonetheless, the firm that bears the Siegel name is honored to have been given the responsibility to sell the Hillmer collection, and I am personally gratified to make this dedication.

The artwork chosen for the catalogue cover is a photograph of the stained-glass window at 407 Royal Street in New Orleans, the shop of Raymond and Roger Weill. It was featured in *Pictorial Treasury* and graciously loaned by Raymond H. Weill for this catalogue. For a catalogue dedicated to a passionate collector and art lover, we can think of no better image.

—SCOTT R. TREPEL

FIRST SESSION (LOTS 1-236)
MONDAY, APRIL 26, 1999, AT 10:30 A.M.

THE DUANE H. HILLMER COLLECTION OF UNITED STATES STAMPS AND COVERS

1847 ISSUE



1

- 1 (★) **5c Red Brown (1)**. Horizontal pair, unused (no gum), stitch watermark, large margins to ample at top, bright color, fresh and Very Fine, with photocopies of 1970 and 1998 P.F. certificates **(Photo)** 5,200.00



2



3



4



5



6



7

- 2 **5c Brown (1)**. Large margins all around, red grid cancel, Extremely Fine, with 1995 P.F. certificate..... **(Photo)** 600.00
- 3 **5c Red Brown (1)**. Three large margins, just clear at B., bold **red Binghamton N.Y. Herringbone** cancel, Very Fine strike..... **(Photo)** E. 750-1,000
- 4 **5c Red Brown (1)**. Full to large margins, deep shade and sharp impression, red square grid cancel, small crease visible only in fluid, Very Fine appearance **(Photo)** 600.00
- 5 **5c Dark Brown (1a)**. Intense early color and impression from the first printing, full to large margins, bright red cancel, Very Fine, with 1983 P.F. certificate.... **(Photo)** 625.00
- 6 **5c Red Brown (1)**. Horizontal pair, Pos. 89-90R, right stamp **Double Transfer Type "B"**, three large margins, clear at right, blue grid cancels, Fine-Very Fine, with 1998 P.F. certificate **(Photo)** 1,325.00
- 7 **5c Brown (1)**. Horizontal strip of three, circular red grid cancels, color faded, faint horizontal crease, otherwise Fine-Very Fine **(Photo)** 2,500.00



8

- 8 ☒ **5c Red Brown (1).** Two singles, bright reddish shade, each with three margins to irregularly in at T., tied by red square grid cancels, matching bold "New-York Feb. 17" cds on 7½ by 5¼ in. **embossed Valentine envelope with original Valentine enclosure**, outside comprises lace and silk panel with silver and gilt paste-on decorations surrounding a multicolored enamel vignette picturing two cherubic figures, the inside with a handwritten love poem dated 1851, cover lightly creased with negligible splits along the embossing

VERY FINE. AN OUTSTANDING 1847 VALENTINE WITH ORIGINAL MATCHING ENCLOSURE.

Ex Pope and Kapiloff.....(Photo) E. 5,000-7,500



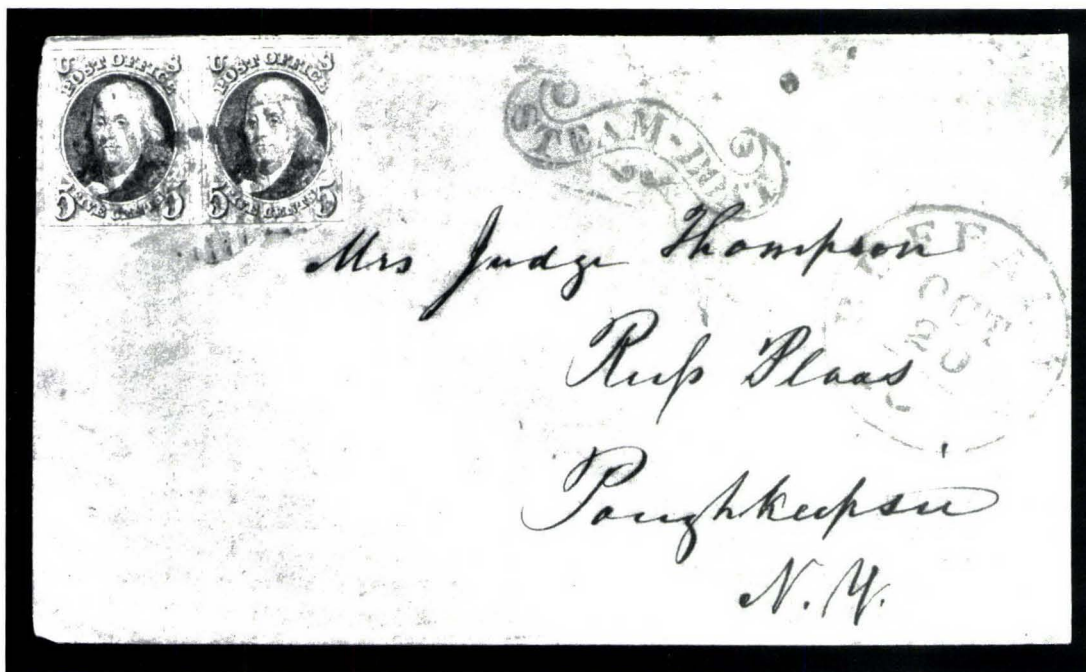
9

- 9 ☒ **5c Brown (1).** Horizontal pair with left sheet margin and full even margins all around, dark shade from an early 1847 printing, tied by light red grids, matching "Cincinnati O. Nov. 14 10" cds on 1847 folded letter to David B. Crockett in Newark N.J., the nephew of the legendary Davy Crockett, Extremely Fine pair and attractive cover, ex Sevenoaks (Photo) 1,400.00



10

- 10 ☒ **5c Grayish Brown (1a).** Distinctive shade and fine impression, horizontal pair with mostly full margins, just touched at lower right, tied by red square grid, matching "New-York Jun. 24" cds on 1848 folded cover to **Toronto, Canada**, red "Queenston U.C. Jun. 26, 1848" cds, ms. "4½" Canadian rate, Toronto receiving backstamp, Very Fine, a beautiful cross-border cover with one of the more elusive 1847 shades, ex Matthies, Sevenoaks (Photo) 1,400.00



11

- 11 ☒ **5c Red Brown (1)**. Horizontal pair, three large to enormous margins, with part of adjacent stamps at T., just into at B., tied by blue grid cancels, matching fancy "STEAM-BOAT" in Ornate Frame with Fleurons and "Buffalo N.Y. Oct. 20 10" integral rate cds, on brown cover to Poughkeepsie, backflap tears just barely affecting top edge on front, slightly reduced at R., stamp with small corner fault, otherwise Very Fine, ex Meroni, Ring, Sampson and Kapiloff.....(Photo) E. 1,000-1,500



12

- 12 ☒ **5c Red Brown (1)**. Vertical pair, ample to large margins all around, tied by red circular grid cancels, with matching "Calais Me. Jun. 1" cds, on 1850 folded cover to New York, tiny tear in B. stamp, otherwise Very Fine.....(Photo) 1,400.00



13

- 13 ☒ **5c Dark Brown (1).** Full to large margins, intense early shade and impression, tied by pen cancel on folded letter datelined "New York May 15, 1848" to Philadelphia, Very Fine, evidently a railroad usage without handstamped markings.....(Photo) E. 300-400



14

- 14 ☒ **5c Brown (1).** Just touching to huge margins, tied by red square grid cancel, matching "New-York Jun. 29" cds, on 1848 blue folded letter to Columbia Pa., Very Fine(Photo) 650.00



15

- 15 ★ **10c Black (2).** Full to large margins all around, full original gum, slight gum toning
EXTREMELY FINE AND VERY RARE WITH ORIGINAL GUM.
With 1997 P.S.E. certificate(Photo) 26,000.00



16



17



18

- 16 **10c Black (2).** Huge even margins all around, light red grid cancel, fresh and Extremely Fine, with 1982 P.F. certificate(Photo) 1,400.00
- 17 **10c Black (2).** Huge margins with sheet margin at L., red grid cancel, sharp impression on fresh white paper, Extremely Fine and choice(Photo) 1,400.00
- 18 **10c Black (2).** Full to large margins, light black criss-crossed grid cancel, fresh and Very Fine, with 1996 P.F. certificate(Photo) 1,575.00



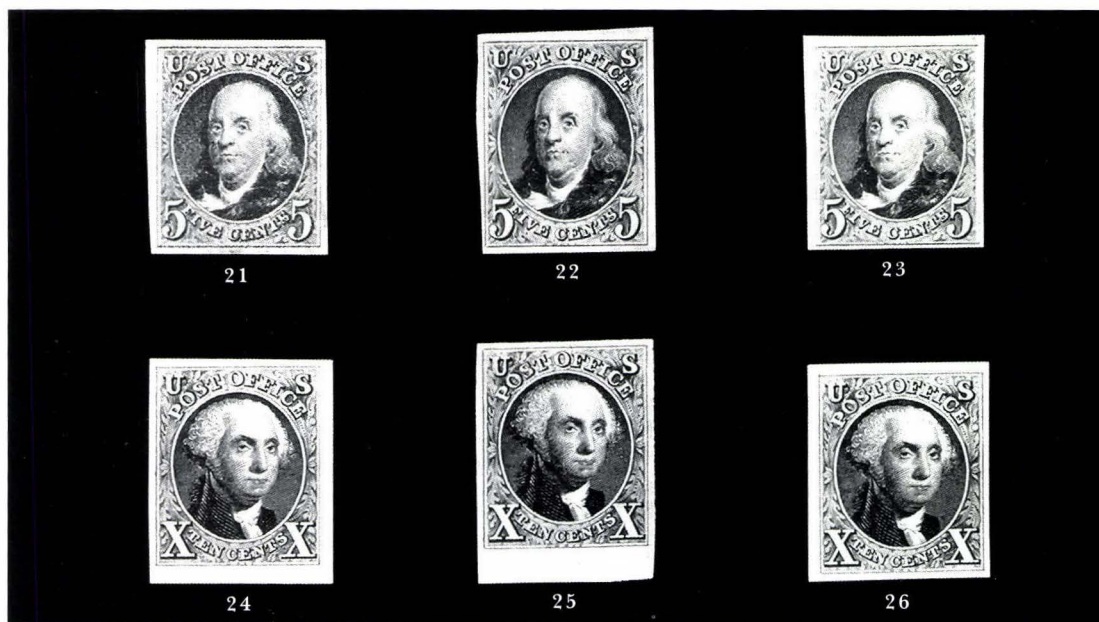
19

- 19 **10c Black (2).** Vertical pair, Positions 10/20R, large to huge margins all around, sharp impression, neat red grid cancels
EXTREMELY FINE GEM. VERTICAL PAIRS IN THIS SUPERB CONDITION ARE OF THE GREATEST RARITY.
With 1996 P.F. certificate(Photo) 3,250.00



20

- 20 ☒ **10c Black (2).** Vertical pair, Pos. 90/100R, with huge right sheet margin, tied by red cancels, matching "New Haven Ct. Aug. 23" cds on 1849 folded letter to New York, bottom stamp with tiny scrape and staple hole, otherwise Fine(Photo) 3,500.00

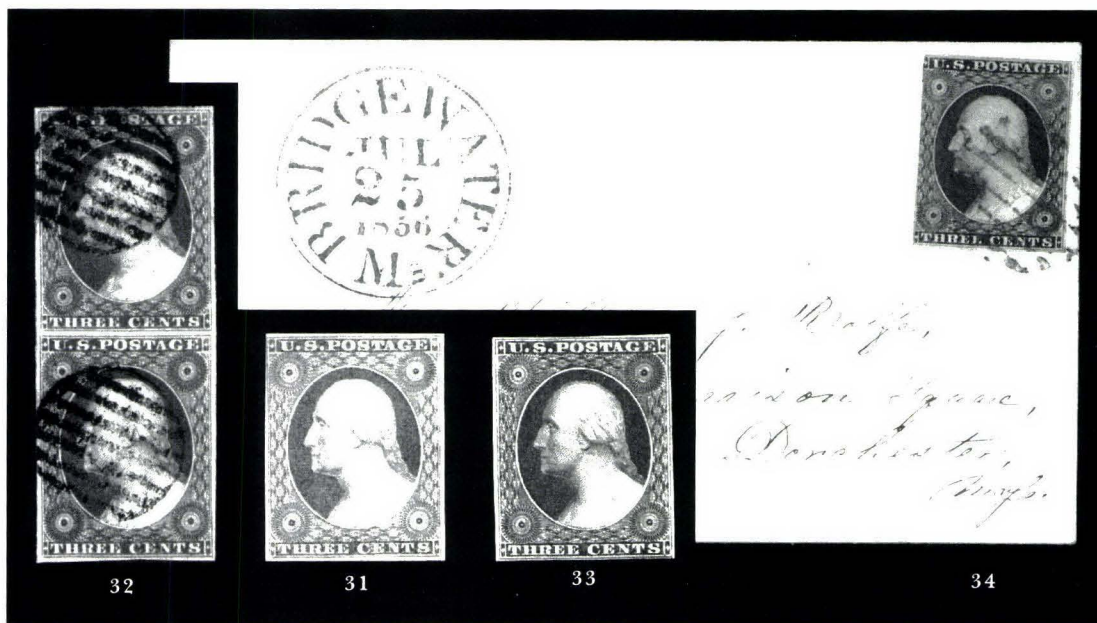


- 21 ★ **5c Red Brown, Reproduction (3).** Without gum as issued, large to huge margins all around, pretty color, Extremely Fine and choice, with 1977 P.F. certificate(Photo) 850.00
- 22 ★ **5c Red Brown, Reproduction (3).** Without gum as issued, mostly huge margins, ample at B.L., deep shade, Very Fine, with 1997 P.F. certificate(Photo) 850.00
- 23 ★ **5c Red Brown, Reproduction (3).** Without gum as issued, full to large margins, Very Fine(Photo) 850.00
- 24 ★ **10c Gray Black, Reproduction (4).** Without gum as issued, huge margins all around showing sheet margin at B. and R., sharp impression, an Extremely Fine Gem, with 1988 P.F. certificate(Photo) 1,100.00
- 25 ★ **10c Gray Black, Reproduction (4).** Without gum as issued, three large margins, enormous sheet margin at B., sharp impression, Extremely Fine and choice, with 1998 P.F. certificate(Photo) 1,100.00
- 26 ★ **10c Gray Black, Reproduction (4).** Without gum as issued, full to large margins, fresh and Extremely Fine(Photo) 1,100.00



1851-56 ISSUE

- 27 **1c Blue, Ty. Ia (6).** Pos. 98L4, ample margins at sides, just in at T. and B., lightly cancelled by town cds, trace of red cancel at upper left, Fine, attractive example of this rare imperforate classic, with 1996 P.S.E. certificate and photocopy of 1989 P.F. certificate for pair from which this is the right stamp(Photo) 8,500.00
- 28 **1c Blue, Ty. III (8).** Plate 4, two huge margins, touched on other sides, lightly cancelled, deep shade, Very Fine, with 1996 P.S.E. certificate(Photo) 2,250.00
- 29 **1c Blue, Ty. IIIa (8A).** Plate 1E, ample to large margins all around, bright early shade, blue Philadelphia cds, fresh and Very Fine, with 1996 P.F. certificate(Photo) 940.00
- 30 ★ **1c Blue, Ty. IV (9).** Pos. 96R1L, large to enormous margins, with large part of adjacent stamp at T. and sheet margin at B., full original gum, Extremely Fine and choice, this position shows distinct plate bruises (mentioned in Neinken), with 1994 P.F. certificate...(Photo) 675.00



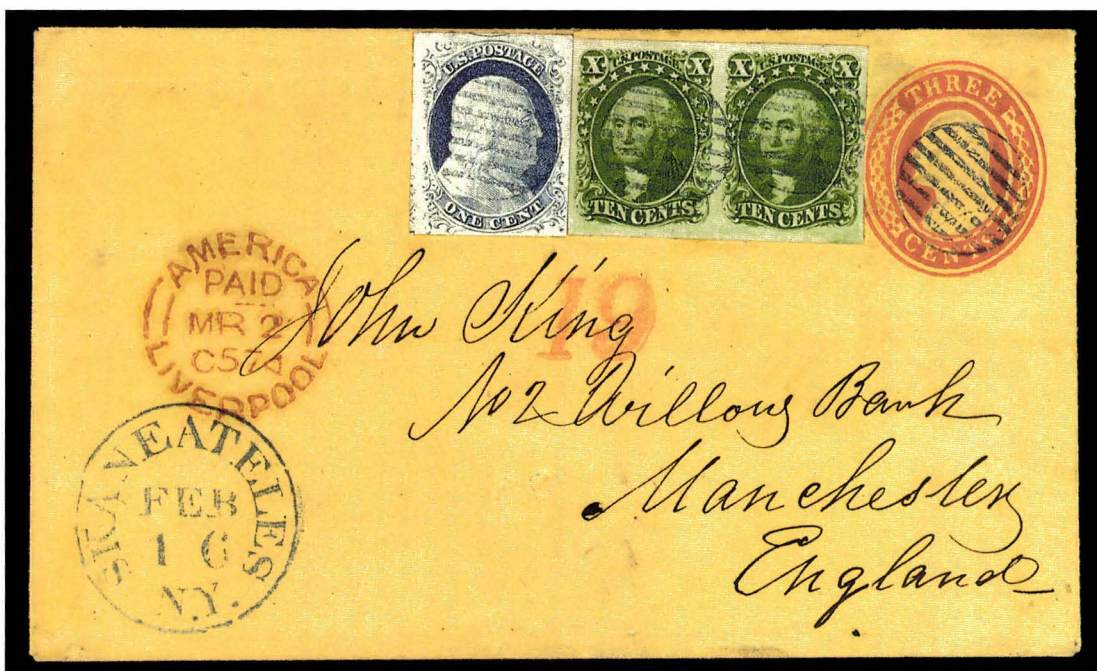
- 31 ★ **3c Orange Brown (10).** Ample margins all around, full original gum, lightly hinged, rich color, bright and fresh, Very Fine and choice, with 1979 and 1998 P.F. certificates(Photo) 2,600.00
- 32 **3c Orange Brown (10 var).** Stitch watermark, vertical pair, large margins all around, circular grid cancels, Extremely Fine, with 1988 P.F. certificate.....(Photo) 325.00
- 33 ★ **3c Dull Red (11).** Clear to ample margins, original gum, barest trace of hinging, pale shade, two natural inclusions on gum, Very Fine, with 1997 P.F. certificate(Photo) 225.00
- 34 ✉ **3c Brownish Carmine (11).** Three large margins, in at L., tied by blue grid, perfectly struck red "Bridgewater Ms. Jul. 25, 1856" cds on immaculate cover to Dorchester Mass., Very Fine and rare, 1856 year-dated cancels are scarce and the only year-date not listed in Scott.....(Photo) E. 300-400



- 35 ☒ **3c Brownish Carmine (11).** Tied by circular grid cancel, with red "Charlestown Mass. Aug. 18" cds on **Buchanan and Breckinridge Campaign cover**, design in salmon, slightly reduced at R., small tear at B.R., some toned spots on back only, still Very Fine, handsome usage and rare(Photo) E. 750-1,000
- 36 ☒ **3c Dull Red (11).** Tied by "Gustavus O. Nov. 10" cds on very fresh all-over **Peace Propaganda** cover to Oberlin O., imprints on back, Extremely Fine example of this beautiful design.....(Photo) E. 300-400
- 37 ☒ **3c Dull Red (11).** Mostly ample margins, small faults, tied by "Elmira N.Y." cds on all-over illustrated "**Intemperance is the Bane of Society**" cover to Potter N.Y., minor corner wear and small repair, otherwise Fine.....(Photo) E. 300-400



- 38 **5c Red Brown (12).** Ample to huge margins, rich color, New Orleans and French cds cancels, fresh and Very Fine(Photo) 1,200.00
- 39 **10c Green, Ty. I (13).** Large margins to ample at B.L., rich color, light red cds, Very Fine, with 1988 P.F. certificate(Photo) 800.00
- 40 ★ **10c Green, Ty. II (14).** Small part original gum, ample to huge margins, rich color and sharp impression, light horizontal crease and a tiny toning spot, otherwise Fine, with 1973 P.F. certificate(Photo) 3,100.00
- 41 **10c Green, Ty. II (14).** Enormous even margins all around, bright color on crisp white paper, very light cds cancels, Extremely Fine and choice, with 1988 P.F. certificate, a beautiful stamp.....(Photo) 225.00
- 42 **10c Green, Ty. II (14).** Three massive margins incl. guideline sheet margin at R., close at B., rich color on bright white paper, sharp New York **Ocean Mail** cds with grid, Very Fine.....(Photo) 225.00
- 43 **10c Green, Ty. II, III (14, 15).** Each with large to enormous margins all around, deep color and sharp impression, No. 15 with trace of red cancel and tiny margin corner crease not mentioned on accompanying certificate, otherwise Extremely Fine, each with 1986 P.F. certificate..... 450.00



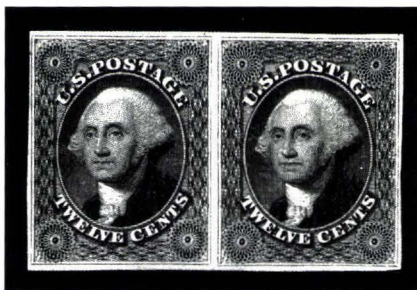
44

- 44 ☒ **10c Green, Ty. II (14).** Horizontal pair, Positions 4-5R1, large to huge margins all around, deep rich color and impression, used with **1c Blue, Ty. IV (9)**, full to large margins with traces of adjacent stamps at T. and L., tied by circular **blue** grid cancels with matching "Skaneateles N.Y. Feb. 16" (1857) cds on 3c Red Nesbitt entire **to Manchester, England**, sharp red "19" credit hs and vivid red Liverpool transit, receiving backstamp, Extremely Fine, a colorful and choice franking, with 1986 P.F. certificate, ex Sevenoaks(Photo) E. 3,000-4,000



45

- 45 ☒ **10c Green, Ty. II-II-IV (14-14-16).** Positions 1-3R1, horizontal strip of three from upper left corner, 3R recut at top, full to large margins including left sheet margin—the recut position is aligned significantly lower and thus has a wider top margin than 1-2R—lightly cancelled by **magenta** grid cancels, matching "New Haven Con. Jul. 11, 1856" cds on cover **to Munich, Germany**, bright red "N. York Am. Pkt. 7 Paid Jul. 12" credit cds and Aachen transit, backflap partly removed, small edge nick mended at top, otherwise Very Fine, colorful and very rare multiple containing Type IV, with 1990 P.F. certificate, Ex Sevenoaks(Photo) 3,000.00



46

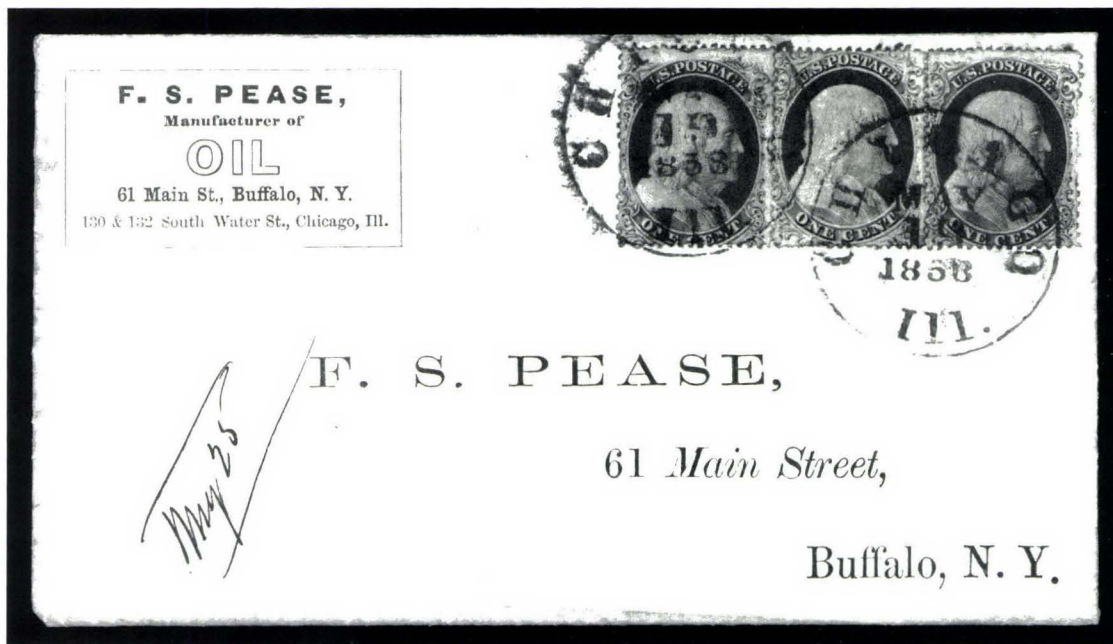
- 46 ★ **12c Black (17).** Horizontal pair, full original gum, h.r., sharp and proof-like impression, large and even margins all around, left stamp has vertical crease, otherwise an Extremely Fine and choice pair, with 1998 P.F. certificate(Photo) 8,250.00



- 47 ★ **12c Black (17).** Part original gum, four margins, close at L., light horizontal and corner creases, otherwise Very Fine(Photo) 4,000.00
- 48 ☒ **12c Black (17).** Horizontal pair, three large margins incl. part of adjacent stamp at T.L., just touching at B., tied by circular blue grid cancels, matching "Batavia N.Y. Jan. 11 (1858)" cds and "Paid 24" hs, on cover to **Devon, England**, red "19" credit hs, vivid red Liverpool transit, receiving backstamp, light edgewear, otherwise Very Fine.....(Photo) 800.00

1857-60 ISSUE

- 49 ★ **1c Blue, Ty. I (18).** Plate 12, full original gum, bright color, small light diagonal crease not mentioned on certificate, Very Fine appearance, with 1996 P.F. certificate.....(Photo) 1,400.00
- 50 **1c Blue, Ty. I (18).** Plate 12, well-centered with wide margins at sides, neat dotted grid cancel, Extremely Fine, with 1997 P.F. certificate(Photo) 475.00



51

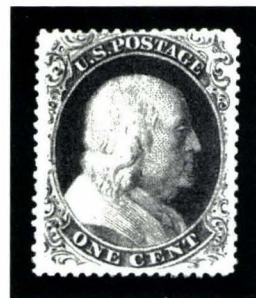
- 51 ✉ **1c Blue, Ty. Ia (19).** Two Plate 4 bottom row singles, perfs in but clearly "F" Reliefs, used with **1c Blue, Ty. IV (23)**, Plate 1L, tied by "Chicago Ill. May 19, 1858" cds on printed return address cover with matching enclosure from oil manufacturer, beautiful illustration of whaling ships in pursuit, Ty. Ia stamps have several short perfs, all with brownish perf tip gum soaks, still Fine and a truly extraordinary franking combining two of the rarest of the perforated 1c types, perfect for exhibition, Scott Retail for off-cover stamps \$6,825.00(Photo) E. 2,000-2,500



52

- 52 ★ **1c Blue, Ty. II (20).** Plate 12, full original gum, small hinge mark, well-centered, Extremely Fine, with 1989 P.F. certificate.....(Photo) 850.00

- 53 ★ **1c Blue, Ty. IIIa (22).** Plate 11, A Relief, full original gum, lightly hinged, well-centered within even margins, bright blue shade, Extremely Fine and choice, with 1994 P.F. certificate.....(Photo) 1,600.00



53



54



55

- 54 (★) **1c Blue, Ty. IIIa (22).** Unused (no gum), deep shade, natural s.e. at L., Very Fine, with 1998 P.F. certificate.....(Photo) 950.00
- 55 **1c Blue, Ty. IV (23).** Well-centered, light indistinct cds, few nibbed perfs at right, Very Fine, with 1995 P.S.E. certificate(Photo) 525.00



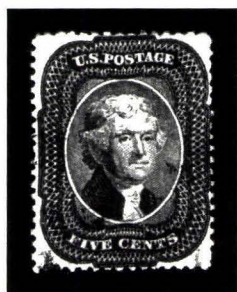
- 56 ★田 **1c Blue, Ty. V (24).** T. margin block of fourteen, full original gum, some hinge reinforcing, most with small thins or adherences, one with vertical crease, otherwise Fine, Scott Retail for three blocks of four and two singles, a scarce multiple, especially with original gum(Photo) 2,600.00
- 57 ★ **3c Rose, Ty. I (25).** Full original gum, rich color on crisp white paper, Very Fine and choice, with 1997 P.S.E. certificate(Photo) 1,900.00
- 58 ☒ **3c Dull Red, Ty. II (26).** Tied by sharp "OLD STAMPS/NOT RECOGNIZED" two-line hs, matching "Philadelphia Pa. Sep. 9 1861" cds and "Due 3" hs, on cover to Trenton N.J., cover expertly repaired at T. incl. addition of paper and stamp, appears as an Extremely Fine example of this scarce demonetization handstamp.....(Photo) E. 750-1,000



59

60

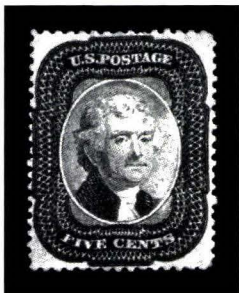
- 59 **5c Brick Red (27).** Vertical strip of three, remarkably well-centered, brilliant color, clear "New Orleans La. Apr. 11, 1859" cds, couple nibbed perfs at upper left, fresh and Extremely Fine strip, with 1977 P.F. certificate(Photo) 3,750.00
- 60 **5c Brick Red (27).** Scissors-trimmed perfs at R. and pulled perf at T., tied by "New Orleans La. Apr. 20, 1859" cds and red "New York Apr. 27 Br. Pkt." cds on small mourning cover to **Santander, Spain**, blue "4R" credit hs, receiving and London transit back-stamps, Fine, with 1990 P.F. certificate(Photo) E. 500-750
- 61 **5c Red Brown (28).** Horizontal pair, cancelled by "Paid" in grid cancel and tied by red "Boston Ms. Nov. 19, 1858" cds on blue folded letter to **San Francisco** regarding a shipment of Madeira wine, L. stamp with perfs trimmed, otherwise Very Fine.....(Photo) 1,050.00



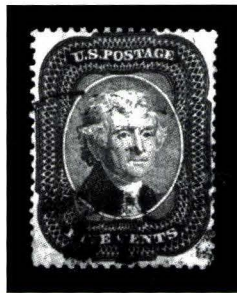
62

62

- 5c Indian Red (28A).** Rich color, well-centered, light cds cancel, one nibbed perf, otherwise Very Fine, with 1971 A.P.S. certificate(Photo) 2,500.00



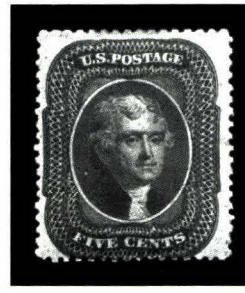
63



64

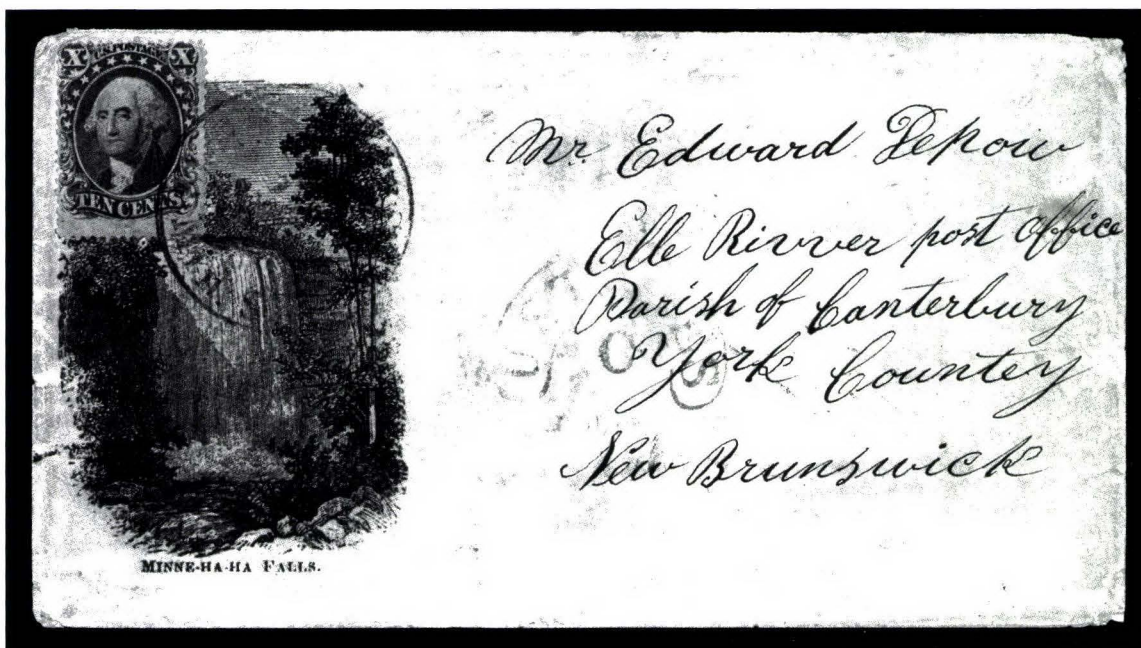


65



66

- 63 **5c Brown (29).** Pos. 23R1 **defective transfer** variety, Well-centered, appears unused, but certificate states "faintly cancelled", Extremely Fine, only one position on the plate produced this very scarce variety, with 1989 P.F. certificate(Photo) E. 400-500
- 64 **5c Brown (29).** Well-centered, lightly struck cds, fresh and Very Fine, with 1989 P.S.E. certificate.....(Photo) 300.00
- 65 (★) **5c Orange Brown, Ty. II (30).** Unused (regummed), perfectly centered within even margins, deep rich color, fresh and Extremely Fine.....(Photo) 650.00
- 66 ★ **5c Brown, Ty. II (30A).** Original gum, hinge mark, rich color, few gum soaked perfs at T., otherwise Very Good.....(Photo) 1,500.00



67

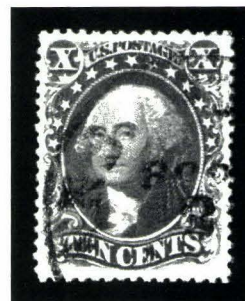
- 67 ☒ **10c Green, Ty. I (31).** Tied by "Minneapolis Min." cds on 1859 **illustrated corner card cover depicting Minne-Ha-Ha Falls**, to New Brunswick, light "U. States" in arc, transit backstamps, light overall wear, Fine usage.....(Photo) E. 400-500



68

- 68 ★ **10c Green, Ty. II (32).** Full original gum, lightly hinged, deep rich color, Very Fine, with 1985 P.F. certificate, a difficult stamp to find with original gum(Photo) 4,000.00

- 69 **10c Green, Ty. III (33).** Intense color and impression, well-centered and Extremely Fine, with 1991 P.F. certificate.....(Photo) 275.00



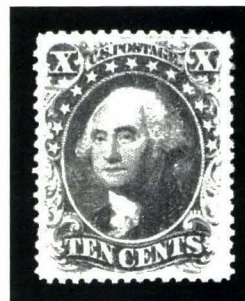
69



70

- 70 **10c Green, Ty. IV (34).** Pos. 54L1, recut at B., perfectly centered within balanced margins, light cds, Extremely Fine, with photocopy of 1981 P.F. certificate.....(Photo) 2,050.00

- 71 ★ **10c Green, Ty. V (35).** Original gum, lightly hinged, well-centered within large margins, deep rich color, Extremely Fine, with 1997 P.F. certificate(Photo) 275.00



71



72



73

- 72 ★ **10c Green, Ty. V (35).** Full original gum, perfectly centered with very wide margins at sides, dark shade, Extremely Fine, with 1994 P.S.E. certificate(Photo) 275.00
- 73 ★ **12c Black, Plate 3 (36b).** Original gum, lightly hinged, large margins, dark shade, Very Fine, with 1989 P.F. certificate(Photo) 675.00



74

- 74 **12c Black, Plate 3 (36b).** Horizontal strip of four, sharp "Mobile Ala. Feb. 21, 1860" double-circle ds, third stamp with light vertical crease, otherwise Fine, Scott Retail for two pairs(Photo) 750.00



75

- 75 ☒ **12c Black, Plate 3 (36b).** Horizontal strip of four, tied by red grid cancels, matching "New York 19 Nov. 29" credit cds on cover front only to London, Very Good centering, colorful, Scott Retail as two pairs(Photo) 750.00



- 76 ★ **24c Gray Lilac (37).** Original gum, well-centered, sharp impression, fresh and Extremely Fine Gem, with 1994 P.F. certificate(Photo) 1,200.00
- 77 (★) **24c Lilac, Imperforate (37c).** Unused (no gum), large to huge margins all around, Extremely Fine, with 1952 and 1991 P.F. certificates.....(Photo) 1,500.00
- 78 ★ **30c Orange (38).** Original gum, lightly hinged, vibrant shade and intense color on crisp white paper, Extremely Fine Gem, with 1995 P.F. certificate(Photo) 1,500.00
- 79 ★ **90c Blue (39).** Well-centered, original gum, lightly hinged, Extremely Fine, with 1989 P.F. certificate.....(Photo) 2,400.00



- 80 ★ **90c Blue (39).** Well-centered, wide margins, original gum with slight hinge mark, bright color, Extremely Fine, with 1988 P.F. certificate(Photo) 2,400.00
- 81 ★ **90c Blue (39).** Original gum, hinge mark, rich color, rounded corner at T.R., otherwise Very Fine, with 1995 P.F. certificate.....(Photo) 2,400.00
- 82 (★) **90c Blue (39).** Unused (expertly regummed), deep blue shade, Very Fine.....(Photo) 1,450.00
- 83 **90c Blue (39).** Well-centered, light red circular grid cancel, small thins and tears, otherwise Extremely Fine, with 1988 P.F. certificate(Photo) 5,500.00



84

- 84 ☒ **30c Orange (38).** Cancelled by red grid and tied by matching "N. York Br. Pkt. Paid Nov. 7" cds on light green cover **to Palermo, Sicily**, stamp also tied by boxed "P.D." hs, ms. magenta credit crossed out and re-rated, transit and receiving markings, barely reduced at T. and missing part of backflap, Very Fine, attractive usage ...**(Photo)** E. 1,500-2,000



85

- 85 ☒ **30c Orange (38).** Horizontal pair, tied by grid, red "New Paid York 48 Jun. 5" cds on blue 1861 folded cover **to Lyon, France**, sender's hs, stamps also tied by red "P.D." hs, transit and receiving backstamps, fresh and Very Fine quadruple-rate cover.....**(Photo)** E. 2,000-3,000



86



87



88



89



90



91



92



93



94



95



96



97



98



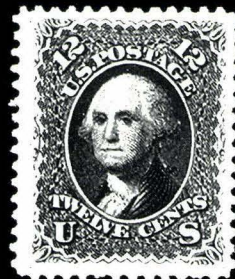
99



100



101



102

1875 REPRINT OF 1857-60 ISSUE

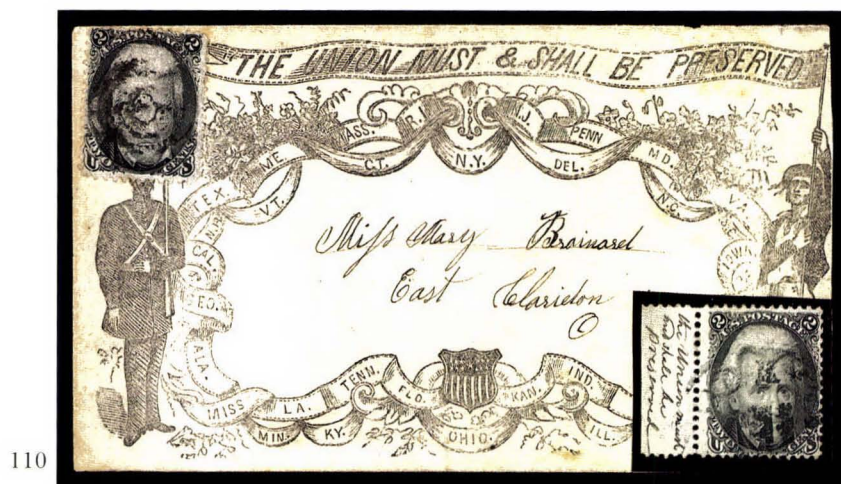
- 86 ★ **1c Bright Blue, Reprint (40).** Without gum as issued, bright color and proof-like impression, Extremely Fine, with 1994 P.F. certificate(Photo) 525.00
- 87 ★ **1c Bright Blue, Reprint (40).** Without gum as issued, rich color, proof-like impression, Very Fine, with 1972 P.F. certificate(Photo) 525.00
- 88 ★ **5c Orange Brown, Reprint (42).** Without gum as issued, remarkably well-centered, bright shade on crisp white paper, Extremely Fine, with 1978 P.F. and 1990 P.S.E. certificates, only 878 issued(Photo) 1,000.00
- 89 ★ **5c Orange Brown, Reprint (42).** Without gum as issued, well-centered, rich color, Very Fine, with 1998 P.F. certificate(Photo) 1,000.00
- 90 ★ **12c Greenish Black, Reprint (44).** Without gum as issued, perfs practically clear of framelines on all four sides, fine impression on fresh white paper, Extremely Fine Gem, with 1988 P.F. certificate(Photo) 2,250.00
- 91 ★ **24c Blackish Violet, Reprint (45).** Without gum as issued, rich color on bright paper, Fine, with 1984 P.F. and 1992 P.S.E. certificates, only 479 issued.....(Photo) 2,250.00

1861-66 ISSUE

- 92 ★ **3c Brown Rose, First Design (56).** Original gum, intense color, Extremely Fine, with 1998 P.F. certificate.....(Photo) 475.00
- 93 **10c Dark Green, First Design (62B).** Deep rich color, light red cancel, well-centered, Extremely Fine, with 1989 P.F. certificate(Photo) 735.00
- 94 ★ **1c Blue (63).** Full original gum, lightly hinged, deep rich color on bright white paper, Extremely Fine Gem, with 1998 P.F. certificate.....(Photo) 280.00
- 95 ★ **1c Blue (63).** Full original gum, lightly hinged, well-centered with wide margins, fresh and bright, single partly nibbed perf at upper right, still Extremely Fine and choice, with 1996 P.F. certificate.....(Photo) 280.00
- 96 ★ **1c Blue (63).** Full original gum, well-centered and Extremely Fine. with 1997 P.F. certificate(Photo) 280.00
- 97 ★ **1c Blue (63).** Original gum, pretty shade, fresh and Extremely Fine, with 1995 P.F. certificate.....(Photo) 280.00
- 98 ★★ **3c Rose Pink (64b).** Mint N.H., bright and fresh, Very Fine, with 1989 P.F. certificate stating o.g. only, Scott Retail for hinged(Photo) 450.00
- 99 ★★ **3c Rose (65).** Mint N.H., rich color and sharp impression, a post-office fresh and Extremely Fine Gem, with 1995 P.F. certificate for pair from which this is the left stamp, Scott Retail for hinged.....(Photo) 125.00
- 100 ★ **3c Rose, Imperforate (65c).** T. margin horizontal pair with imprint, enormous margins all around, slightly disturbed original gum, Extremely Fine, with 1992 P.F. certificate(Photo) 1,000.00
- 101 **5c Buff (67).** Bright color (P.F. calls Olive Yellow, but it is not, in our opinion), clear "San Francisco Nov. 2, 1861" double-circle ds, trace of red cancel at R., Fine, with 1991 P.F. certificate.....(Photo) 650.00
- 102 (★) **12c Black (69).** Unused (regummed), enormous margins for an unused 12c 1861, deep shade, Extremely Fine, with 1994 P.F. certificate(Photo) 525.00



- 103 ★ **30c Orange (71).** Full original gum, lightly hinged, well-centered, bright early shade and vivid color, fresh and Very Fine, with 1998 P.S.E. certificate.....(Photo) 975.00
- 104 **30c Orange (71).** Cancelled by perfectly struck **New York City Union Soldier's Head** fancy cancel, couple insignificant tiny corner creases visible only in fluid do not detract from this Extremely Fine strike.....(Photo) E. 750-1,000
- 105 ★ **2c Black (73).** Original gum, wide margins with perfs clear of design all around, Extremely Fine, with 1996 P.F. certificate(Photo) 300.00
- 106 ★ **2c Black (73).** Full original gum, well-centered, Extremely Fine and choice, with 1993 P.F. and P.S.E. certificates(Photo) 300.00
- 107 ★ **2c Black (73).** Original gum, h.r., proof-like impression, perfs well clear of design on all four sides, Extremely Fine, with 1998 P.S.E. certificate(Photo) 300.00
- 108 (★) **2c Black (73).** Unused (no gum), large margins, deep shade and proof-like impression on bright white paper, fresh and Extremely Fine, with 1980 P.F. certificate.(Photo) 140.00
- 109 ★ **24c Lilac (78).** Original gum, lightly hinged, few nibbed perfs, otherwise Very Fine(Photo) 750.00



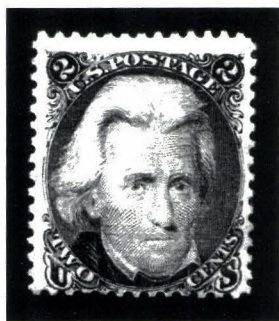
- 110 ☒ **2c Black (73).** Two Civil War-related items: lightly cancelled off-cover stamp with left sheet selva containing sender's message in ms. "**the Union must and shall be preserved**"; coupled with single cancelled by target on "**The Union Must and Shall Be Preserved**" patriotic cover locally addressed to East Claridon O., slight wear, Very Fine, a remarkable and highly exhibitable pair, each with 1997 P.F. certificate(Photo) E. 2,000-3,000



- 111 ★ **5c Red Brown (75).** Large part original gum, well-centered, rich color, Very Fine, extremely rare in this choice original-gum condition, with 1986 P.F. and 1989 P.S.E. certificates(Photo) 3,500.00
- 112 (★) **5c Red Brown (75).** Unused (no gum), deep rich color, one nibbed perf, still Extremely Fine, with 1987 P.F. certificate(Photo) 1,900.00
- 113 **5c Brown (76).** Well-centered, dark shade on crisp paper, cork cancel, fresh and Extremely Fine, with 1987 P.F. certificate(Photo) 95.00
- 114 (★) **15c Black (77).** Unused (no gum), fine impression, fresh and Very Fine, someone has written "Philadelphia" on back in ink, with 1976 P.F. certificate(Photo) 600.00

1867-68 GRILLED ISSUE

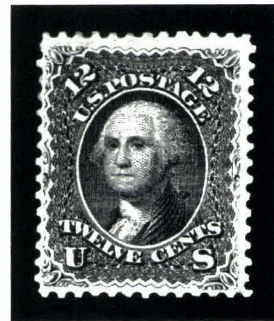
- 115 (★) **3c Rose, A. Grill (79).** Unused (no gum), well-centered with perfs remarkably complete, bright color, tiny rust specks in back of grill, of no significance and not even noted on certificate, Very Fine, with 1998 P.F. certificate(Photo) 2,250.00
- 116 ★ **3c Rose, C. Grill (83).** Original gum, lightly hinged, bright color, Very Fine and remarkably choice, with 1997 P.F. certificate(Photo) 4,250.00
- 117 **3c Rose, D. Grill (85).** Wide margins, neat circle of wedges cancel, Very Fine, with 1997 P.F. certificate(Photo) 750.00
- 118 **2c Black, Z. Grill (85B).** Perfectly centered with wide margins, faint target cancel, deep color and sharp impression, Extremely Fine and choice, with 1993 P.F. certificate(Photo) 750.00
- 119 ★ **1c Blue, E. Grill (86).** Full original gum, beautiful blue shade on bright white paper, near perfect centering, Extremely Fine Gem, very rare in this original-gum condition, with 1994 P.F. certificate(Photo) 2,250.00



120

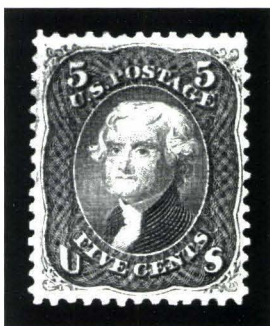


121



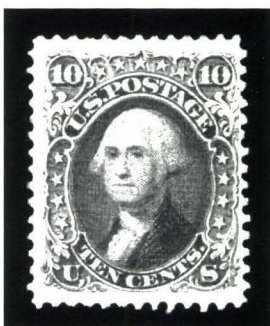
122

- 120 ★ **2c Black, E. Grill (87).** Original gum, dark shade on fresh paper, Fine
(Photo) 850.00
- 121 **2c Black, E. Grill (87).** Well-centered for this difficult stamp, bold red New York City
 cork cancel, Very Fine, with 1983 P.F. certificate(Photo) 125.00
- 122 ★ **12c Black, E. Grill (90).** Original gum, fine impression, Very Fine, very scarce with orig-
 inal gum, with 1981 P.F. certificate(Photo) 3,500.00



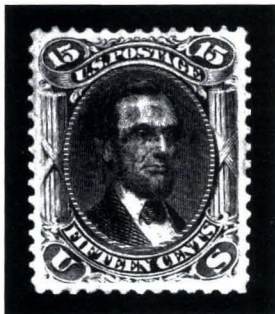
123

- 123 ★ **5c Brown, F. Grill (95).** Original gum, deep shade, well-centered, fresh and Extremely
 Fine, one of the most difficult grilled stamps to find centered and with original gum, a
 true condition rarity, with 1970 and 1992 P.F. certificates.....(Photo) 2,400.00



124

- 124 (★) **10c Yellow Green, F. Grill (96).** Unused (no gum), well-centered with three wide
 margins, deep color on fresh white paper, Very Fine(Photo) 1,200.00



125



126



127

- 125 **15c Black, F. Grill (98).** Well-centered, faintly cancelled, sharp impression, Very Fine, with 1997 P.F. certificate.....**(Photo)** 275.00
- 126 **30c Orange, F. Grill (100).** Light cancel, reperfed at R. (not mentioned on accompanying certificate), Fine, with 1983 P.F. certificate.....**(Photo)** 625.00
- 127 **90c Blue, F. Grill (101).** Well-centered with even jumbo margins at T. and B., pretty blue shade, light circle of wedges cancel, Very Fine and choice copy of this scarce stamp, with 1986 P.F. certificate**(Photo)** 1,100.00

1875 RE-ISSUE OF 1861-66 ISSUE



128

- 128 ★ **1c Blue, Re-Issue (102).** Original gum, intense blue shade on bright white paper, Very Fine, with 1989 P.F. certificate.....**(Photo)** 650.00

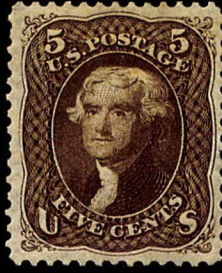


129

- 129 (★) **1c Blue, Re-Issue (102).** Unused (no gum), perfectly centered with wide margins, intense color on bright white paper, Extremely Fine, with 1995 P.F. certificate ..**(Photo)** 400.00



130



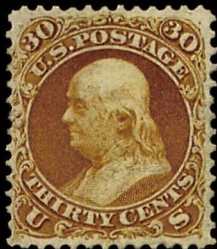
131



132



133



134



135



136EX



137



138



139



140



141



142



143



144



145

- 130 ★ **2c Black, Re-Issue (103).** Part original gum, sharp impression on crisp paper, Very Fine, with 1998 P.F. certificate, only 979 issued(Photo) 2,500.00
- 131 ★ **5c Brown, Re-Issue (105).** Original gum, virtually perfect centering with wide margins, deep color and sharp impression, Extremely Fine, with 1996 P.F. certificate, only 672 issued(Photo) 2,100.00
- 132 ★ **10c Green, Re-Issue (106).** Original gum, well-centered with wide margins, intense shade and impression, Very Fine, with 1996 P.F. certificate, only 451 issued(Photo) 2,250.00
- 133 ★ **24c Deep Violet, Re-Issue (109).** Full original gum, lightly hinged, intense color and proof-like impression, fresh and Extremely Fine Gem, with 1994 P.F. certificate, only 346 issued(Photo) 3,750.00
- 134 ★ **30c Brownish Orange, Re-Issue (110).** Original gum, brilliant color and fine impression, Very Fine, with 1983 P.F. certificate, only 346 issued(Photo) 4,000.00

1869 PICTORIAL ISSUE

- 135 ★ **2c Brown (113).** Full original gum, lightly hinged, deep color on bright white paper, Very Fine, with 1996 P.F. certificate(Photo) 450.00
- 136 ★ **3c Ultramarine (114).** Three singles, original gum, well-centered, bright shade, one with two short perfs, fresh and Very Fine, each with P.F. or P.S.E. certificates (1988, 1995, 1997)(Photo Ex) 825.00
- 137 (★) **6c Ultramarine (115).** Unused (no gum), well-centered, Extremely Fine, with 1995 P.S.E. certificate.....(Photo) 950.00
- 138 ★ **6c Ultramarine (115).** Disturbed o.g., tiny thin, Very Fine appearance (Photo) 1,750.00
- 139 (★) **10c Yellow (116).** Unused (no gum), vivid shade, Very Fine(Photo) 900.00
- 140 (★) **12c Green (117).** Unused (no gum), beautiful deep green color, perfectly centered with wide even margins, Extremely Fine, with 1998 P.S.E. certificate(Photo) 900.00
- 141 (★) **12c Green (117).** Unused (no gum), dark green shade, well-centered within large margins, Extremely Fine and choice, with 1998 P.S.E. certificate(Photo) 900.00
- 142 (★) **12c Green (117).** Unused (regummed), rich color, well-centered and Very Fine, with 1994 P.F. certificate.....(Photo) 900.00
- 143 ★ **15c Brown & Blue, Ty. II (119).** Part original gum, rich colors, well-centered, few nibbed perfs at R., otherwise Very Fine, with 1996 P.S.E. certificate(Photo) 2,250.00
- 144 (★) **15c Brown & Blue, Ty. II (119).** Unused (no gum), intense colors on bright white paper, Fine(Photo) 1,250.00
- 145 (★) **15c Brown & Blue, Ty. II (119).** Unused (no gum), fresh colors, tiny pinhole near grill, otherwise Very Fine, with 1998 P.S.E. certificate(Photo) 1,250.00

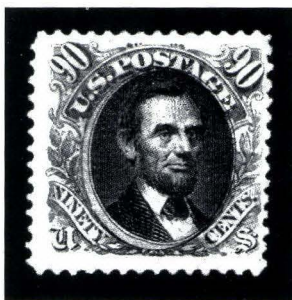


- 146 (★) **24c Green & Violet (120).** Unused (no gum), deep colors and proof-like impression, perfectly centered with wide even margins, Extremely Fine Gem, with 1991 P.S.E. certificate(Photo) 3,250.00



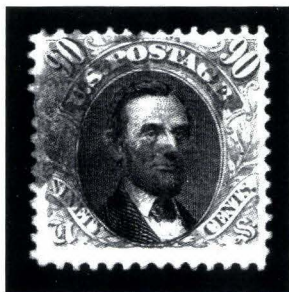
-

SIEGEL AUCTION GALLERIES

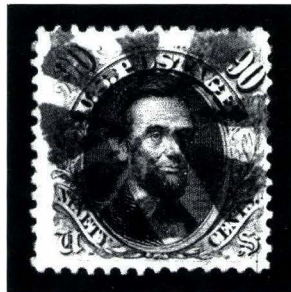


152

- 152 (★) **90c Carmine & Black (122).** Unused (no gum), deep colors, small light corner creases, Fine, with 1984 P.F. certificate(Photo) 4,250.00



153



154

- 153 **90c Carmine & Black (122).** Light cancel, Very Fine, with 1968 P.F. certificate(Photo) 2,000.00
- 154 **90c Carmine & Black (122).** Bold circle of wedges cancel, fresh and Very Fine.....(Photo) 2,000.00



155



156

- 155 **90c Carmine & Black (122).** Faint indistinct cancel, one short perf, otherwise Very Fine.(Photo) 2,000.00
- 156 **90c Carmine & Black (122).** Cork cancel, two perf creases, otherwise Fine.....(Photo) 2,000.00

1875 RE-ISSUE OF 1869 PICTORIAL ISSUE



- 157 (★) **3c Blue, Re-Issue (125).** Unused (no gum), pretty blue shade on fresh white paper, Very Fine, with 1970 A.P.S. certificate.....(Photo) 3,000.00
- 158 (★) **6c Blue, Re-Issue (126).** Unused (no gum), perfectly centered, couple nibbed perfs, Extremely Fine, with 1998 P.S.E. certificate(Photo) 750.00
- 159 ★ **10c Yellow, Re-Issue (127).** Original gum, perfectly centered, vivid color, Extremely Fine, with 1992 P.F. certificate(Photo) 1,750.00
- 160 (★) **10c Yellow, Re-Issue (127).** Unused (no gum), well-centered and Extremely Fine, with 1979 P.F. certificate(Photo) 1,250.00
- 161 (★) **12c Green, Re-Issue (128).** Unused (no gum), dark color and proof-like impression, perfectly centered with wide margins, Extremely Fine, with 1995 P.F. certificate(Photo) 1,350.00
- 162 ★ **15c Brown & Blue, Re-Issue (129).** Original gum, well-centered with wide margins, rich colors, sharp impression, Extremely Fine and choice, with 1994 P.F. certificate.....(Photo) 1,600.00
- 163 (★) **15c Brown & Blue, Re-Issue (129).** Unused (no gum), near perfect centering, couple nibbed perfs, still Extremely Fine, with 1975 P.F. certificate(Photo) 1,100.00
- 164 (★) **15c Brown & Blue, Re-Issue (129).** Unused (no gum), fine impression, Very Fine, with 1987 P.F. certificate(Photo) 1,100.00



- 165 ★ **24c Green & Violet, Re-Issue (130).** Original gum, rich colors and sharp impression, fresh and Extremely Fine Gem, with 1995 P.F. certificate(Photo) 1,600.00
- 166 (★) **24c Green & Violet, Re-Issue (130).** Unused (no gum), perfectly centered with wide margins, intense colors and prooflike impression, light vertical crease not mentioned on accompanying certificate, otherwise Extremely Fine, with 1985 P.F. certificate(Photo) 1,100.00
- 167 **24c Green & Violet, Re-Issue (130).** Fine impression, bold New York registry oval, Very Fine, with 1981 P.F. certificate(Photo) 1,050.00
- 168 ★ **30c Blue & Carmine, Re-issue (131).** Original gum, vibrant colors on bright white paper, wonderful proof-like impression, Extremely Fine, with 1993 P.S.E. certificate(Photo) 2,400.00
- 169 (★) **30c Blue & Carmine, Re-Issue (131).** Unused (no gum), intense colors, perfectly centered with wide margins, fresh and Extremely Fine, with 1992 P.F. certificate(Photo) 1,700.00

- 170 ★ **90c Carmine & Black, Re-Issue (132).** Original gum, very well-centered with huge margins, deep rich colors

EXTREMELY FINE GEM EXAMPLE OF THE 90-CENT 1869 RE-ISSUE. SCARCE WITH ORIGINAL GUM. A REMARKABLE CONDITION RARITY.

With 1991 P.F. certificate(Photo) 4,500.00



170



171

- 171 (★) **90c Carmine & Black, Re-Issue (132).** Unused (no gum), perfectly centered, intense colors on fresh paper, Extremely Fine, with 1994 P.F. certificate(Photo) 3,100.00



172



173



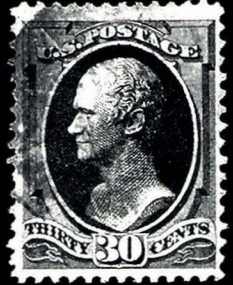
174



175



176



177



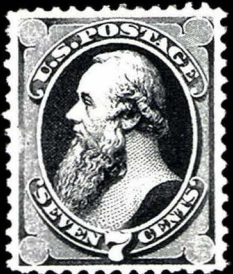
178



179



180



181



182



183



184



185



186



187



188



189



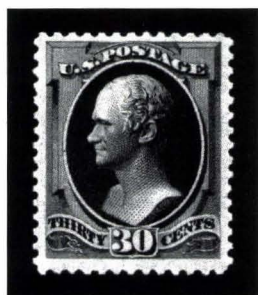
190

1870-88 BANK NOTE ISSUES

- 172 ★ **2c Red Brown, Grill (135).** Original gum, deep color, well-centered and Very Fine, with 1989 P.F. certificate(Color Photo, p. 42) 850.00
- 173 ★ **3c Green, Grill (136).** Original gum, fresh, Very Fine, with 1995 P.F. certificate(Photo) 600.00
- 174 **12c Dull Violet, Grill (140).** Cork grid cancel, clear grill, fresh and Very Fine, with 1995 P.S.E. and 1997 P.F. certificates(Color Photo, p. 42) 2,500.00
- 175 **15c Orange, Grill (141).** Perfectly centered with wide even margins, vibrant color, target cancel, natural s.e. at L., Extremely Fine(Photo) 1,000.00
- 176 **15c Orange, Grill (141).** Rich color on fresh crisp paper, neat cork cancel, Very Fine, with 1986 P.F. certificate(Photo) 1,000.00
- 177 **30c Black, Grill (143).** Light cancel and trace of red cancel, well-centered and Very Fine, with 1981 P.F. certificate(Photo) 1,600.00
- 178 ★ **2c Red Brown (146).** Original gum, lightly hinged, rich color and sharp impression, perfectly centered, fresh and Extremely Fine, with 1985 P.F. and 1993 P.S.E. certificates(Photo) 250.00
- 179 ★ **2c Red Brown (146).** Original gum, well-centered within large margins, fresh and Extremely Fine, with 1998 P.S.E. certificate(Photo) 250.00
- 180 ★ **3c Green (147).** Original gum, dark shade on fresh white paper, Extremely Fine, with 1998 P.S.E. certificate for block of four from which this is the B.R. stamp(Photo) 250.00
- 181 ★ **7c Vermilion (149).** Original gum, deep shade, well-centered, Extremely Fine, with 1998 P.S.E. certificate(Photo) 600.00
- 182 ★ **10c Brown (150).** Full original gum, lightly hinged, rich color and proof-like impression, Extremely Fine and choice, with 1994 P.S.E. certificate(Color Photo, p. 42) 525.00
- 183 ★ **10c Brown (150).** Original gum, proof-like impression, fresh and Fine, with 1997 P.F. certificate(Photo) 525.00
- 184 (★) **12c Dull Violet (151).** Unused (no gum), sharp impression on crisp white paper, well-centered, Extremely Fine, with 1983 P.F. certificate(Photo) 725.00
- 185 (★) **15c Bright Orange (152).** Unused (no gum), vibrant color, single nibbed perf, still Extremely Fine, with 1998 P.F. certificate(Photo) 775.00
- 186 ★ **24c Purple (153).** Original gum, well-centered, bright color, fresh and Extremely Fine, a beautiful stamp, with 1997 P.F. certificate(Color Photo, p. 42) 1,300.00
- 187 ★ **24c Purple (153).** Original brownish gum, excellent color, Very Fine ..(Photo) 1,300.00
- 188 **30c Black (154).** Light circle of wedges cancel, perfectly centered with wide even margins, Extremely Fine, with 1997 P.F. certificate(Photo) 145.00
- 189 (★) **90c Carmine (155).** Unused (regummed), perfectly centered, dark shade, Extremely Fine, with 1981 P.F. certificate(Photo) 1,750.00
- 190 (★) **90c Carmine (155).** Unused (no gum), fine impression on white paper, one perf tip creased, Very Fine, with 1981 P.F. certificate(Photo) 1,750.00



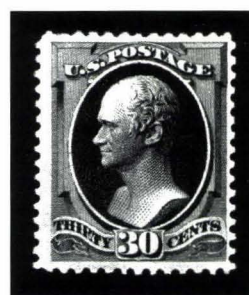
- 191 ★ **2c Brown (157)**. Original gum, lightly hinged, well-centered with massive margins at T. and B., Extremely Fine, with 1997 P.S.E. certificate(Photo) 325.00
- 192 ★★ **3c Green (158)**. Mint N.H., deep rich color and proof-like impression on fresh white paper, Extremely Fine, with 1996 P.F. certificate, Scott Retail for hinged(Photo) 110.00
- 193 ★ **6c Dull Pink (159)**. Original gum, lightly hinged, lovely bright shade, perfectly centered, fresh and Extremely Fine, with 1996 P.F. certificate.....(Color Photo, p. 42) 375.00
- 194 ★ **7c Orange Vermilion (160)**. Original gum, pulled perf at B., Very Fine(Photo) 800.00
- 195 ★ **12c Blackish Violet (162)**. Full original gum, lightly hinged, intense deep color and impression, bright crisp paper, nibbed perf at R., still Very Fine, with 1986 P.F. certificate(Photo) 1,350.00
- 196 ★ **30c Gray Black (165)**. Disturbed o.g., few short perfs, small thin, Very Fine appearance.(Photo) 1,600.00
- 197 ★ **90c Rose Carmine (166)**. Original gum, lightly hinged, near perfect centering on fresh white paper, Extremely Fine Gem, with 1987 P.F. certificate(Color Photo, p. 42) 2,400.00
- 198 ★ **2c Vermilion (178)**. Original gum, lightly hinged, intense fiery color, bright white paper, Extremely Fine, with 1996 P.F. and P.S.E. certificates, a gorgeous stamp(Color Photo, p. 42) 300.00
- 199 ★★ **2c Vermilion (183)**. Mint N.H., well-centered, Extremely Fine and choice, with 1997 P.F. certificate, Scott Retail for hinged(Photo) 110.00
- 200 ★★ **2c Vermilion (183)**. Mint N.H., sharp impression on bright white paper, tiny paper wrinkle at T., Very Fine, with 1998 P.S.E. certificate, Scott Retail for hinged (Photo) 110.00
- 201 ★★ **3c Green (184)**. Mint N.H., dark shade, Very Fine, with 1989 P.F. certificate, Scott Retail for hinged(Photo) 85.00
- 202 ★ **3c Green (184)**. Original gum, lightly hinged, perfectly centered within large even margins, deep color, fresh and Extremely Fine.....(Photo) 85.00



203



204



205

- 203 ★ **30c Full Black (190).** Full original gum, lightly hinged, well-centered, deep shade and fine impression, fresh and Extremely Fine, with 1993 P.F. certificate.....
(Color Photo, p. 42) 900.00
- 204 ★ **30c Full Black (190).** Original gum, lightly hinged, sharp impression, Very Fine and choice, with 1987 P.F. certificate, very rare well-centered with original gum.....
(Photo) 900.00
- 205 ★ **30c Full Black (190).** Original gum, lightly hinged, Very Fine, with 1988 P.F. certificate.
(Photo) 900.00



206

207

208

209

210

- 206 ★ **90c Carmine (191).** Original gum, rich color, faint crease, otherwise Very Fine.....
(Photo) 1,850.00
- 207 ★ **5c Yellow Brown (205).** Original gum, lightly hinged, deep brown shade, perfectly centered, fresh and Extremely Fine, with 1988 P.F. certificate.....
(Color Photo, p. 42) 190.00
- 208 ★★ **1c Gray Blue (206).** Mint N.H., beautiful deep shade, well-centered on fresh paper, Extremely Fine Gem, with 1995 P.F. certificate, Scott Retail for hinged....(Photo) 55.00
- 209 ★ **1c Gray Blue (206).** Original gum, lightly hinged, perfectly centered within jumbo margins, deep shade, fresh and Extremely Fine, with 1986 P.F. and 1993 P.S.E. certificates.....(Photo) 55.00
- 210 ★ **1c Gray Blue (206).** Original gum, lightly hinged, rich color on fresh white paper, Extremely Fine and choice, with 1998 P.F. certificate.....(Photo) 55.00



211

- 211 ★ **6c Deep Brown Red (208a).** Original gum, lightly hinged, deep shade, perfectly centered with huge margins at T. and B., fresh and Extremely Fine, with 1992 P.F. certificate.....(Color Photo, p. 42) 375.00



- 212 ★★ **2c Brown (209)**. Mint N.H., intense color and impression, perfectly centered, Extremely Fine, with 1993 P.S.E. certificate, Scott Retail for hinged....(Color Photo, p. 42) 120.00
- 213 ★ **2c Red Brown (210)**. Original gum, barest trace of hinging, dark shade, perfectly centered and Extremely Fine.....(Photo) 45.00
- 214 ★ **2c Red Brown (210)**. Original gum, lightly hinged, deep dark shade on fresh white paper, Extremely Fine and choice, with 1984 P.F. certificate(Photo) 45.00
- 215 ★ **2c Red Brown (210)**. Original gum, lightly hinged, well-centered within huge jumbo margins, Extremely Fine, with 1997 P.F. certificate(Photo) 45.00
- 216 ★ **4c Blue Green (211)**. Original gum, h.r., well-centered, huge margins, rich color, fresh and Very Fine(Photo) 210.00
- 217 ★ **2c Pale Red Brown, Special Printing (211B)**. Original gum, lightly hinged, well-centered and Very Fine, with 1995 P.F. certificate(Photo) 650.00
- 218 ★★ **2c Pale Red Brown, Special Printing (211B)**. Mint N.H., post-office fresh, Very Fine, with 1994 P.F. certificate, Scott Retail for hinged(Photo) 650.00
- 219 ★★ **1c Ultramarine (212)**. Mint N.H., well-centered on bright white paper, Extremely Fine Gem, with 1996 P.F. certificate, Scott Retail for hinged(Photo) 90.00
- 220 ★ **1c Ultramarine (212)**. Original gum, lightly hinged, huge jumbo margins, deep rich color, Extremely Fine, with 1990 P.F. certificate(Photo) 90.00
- 221 ★★ **3c Vermilion (214)**. Mint N.H., perfectly centered, huge margins at T. and B., intense color, Extremely Fine Gem, Scott Retail for hinged.....(Photo) 70.00
- 222 ★★ **3c Vermilion (214)**. Mint N.H., well-centered, rich color, fresh and Extremely Fine, with 1995 P.F. certificate, Scott Retail for hinged(Photo) 70.00
- 223 ★★ **4c Carmine (215)**. Mint N.H., deep rich color, fresh and Very Fine, with 1998 P.F. certificate, Scott Retail for hinged.....(Photo) 200.00
- 224 ★★ **5c Indigo (216)**. Mint N.H., deep rich color on fresh white paper, Very Fine and choice, Scott Retail for hinged.....(Photo) 200.00



225



226



227

- 225 ★ **30c Orange Brown (217)**. Original gum, lightly hinged, deep rich color and proof-like impression, Extremely Fine.....(Color Photo, p. 42) 425.00
- 226 ★ **90c Purple (218)**. Original gum, barest trace of hinging, beautiful violet shade, sharp impression on bright paper, Extremely Fine and choice...(Color Photo, p. 42) 1,100.00
- 227 ★ **90c Purple (218)**. Original gum, lightly hinged, well-centered, rich color, fresh and Extremely Fine, with 1998 P.F. certificate.....(Color Photo, p. 42) 1,100.00



228



229



230



231



232



233



234



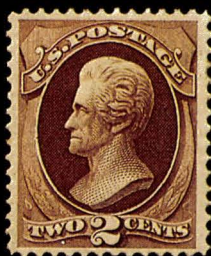
235



236

- 228 ★★ **2c Lake (219D)**. Mint N.H., deep rich color on fresh white paper, well-centered with jumbo margins at T. and B., Extremely Fine, with 1991 P.F. certificate for plate strip of three from which this is the left stamp (without selvage).....(Photo) 260.00
- 229 ★ **2c Lake (219D)**. Original gum, lightly hinged, rich color, Extremely Fine and choice, with photocopy of 1990 P.F. certificate for block of four from which this is the upper left stamp.....(Photo) 190.00
- 230 ★★ **4c Dark Brown (222)**. Mint N.H., dark shade, well-centered and Extremely Fine, with 1998 P.S.E. certificate.....(Photo) 110.00
- 231 ★★ **5c Chocolate (223)**. Mint N.H., well-centered, bright white paper, post-office fresh and Extremely Fine, with 1995 P.F. certificate.....(Photo) 105.00
- 232 ★★ **6c Brown Red (224)**. Mint N.H., rich color, well-centered and Extremely Fine, with 1998 P.F. certificate.....(Photo) 110.00
- 233 ★★ **6c Brown Red (224)**. Mint N.H., bright and fresh, well-centered, Very Fine, with 1997 P.F. certificate.....(Photo) 110.00
- 234 ★ **8c Lilac (225)**. Original gum, lightly hinged, huge jumbo margins, fresh white paper, Extremely Fine, with 1993 P.F. certificate.....(Photo) 52.00
- 235 ★ **15c Indigo (227)**. Original gum, lightly hinged, gorgeous intense blue shade on bright paper, Very Fine, with 1989 P.F. certificate.....(Photo) 180.00
- 236 ★★ **90c Orange (229)**. Mint N.H., radiant color, well-centered with wide even margins all around on fresh white paper, tiny barely visible natural inclusion, Extremely Fine and choice, with 1994 P.F. certificate.....(Color Photo, p. 42) 700.00

END OF FIRST SESSION



172



174



182



186



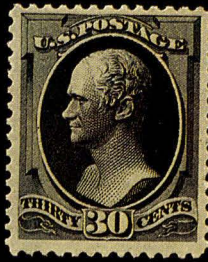
193



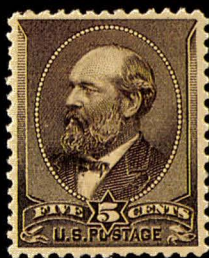
197



198



203



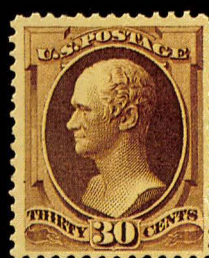
207



211



212



225



226



227



236



253



254



255



256



259



260



261



262



265



266



267



268



275



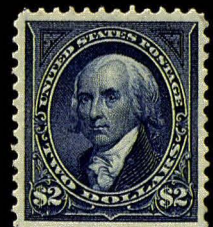
283



284



285



288



289



290



292



293



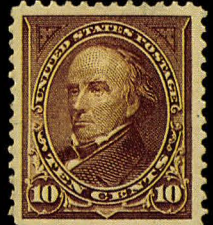
294



295



298



299

SECOND SESSION (LOTS 237-577)
MONDAY, APRIL 26, 1999, AT 1:30 P.M.



1893 COLUMBIAN ISSUE

- 237 ★★ **1c Columbian (230).** Mint N.H., perfectly centered, Extremely Fine Gem, with 1997 P.F. certificate(Photo) 40.00
- 238 ★★ **3c Columbian (232).** Mint N.H., deep dark shade, well-centered with wide margins, incredibly sharp impression, fresh and Extremely Fine, with 1997 P.F. certificate(Photo) 95.00
- 239 ★★ **5c Columbian (234).** Mint N.H., rich color and proof-like impression, well-centered and Extremely Fine, with 1990 P.F. certificate(Photo) 140.00
- 240 ★★ **5c Columbian (234).** Mint N.H., perfectly centered, deep color, clear impression on fresh white paper, Extremely Fine and choice(Photo) 140.00
- 241 ★★ **8c Columbian (236).** Mint N.H., rich color and sharp impression, bright and fresh, Extremely Fine, with 1995 P.F. certificate(Photo) 120.00
- 242 ★★ **8c Columbian (236).** Mint N.H., perfectly centered on bright white paper, Extremely Fine Gem(Photo) 120.00
- 243 ★★ **10c Columbian (237).** Mint N.H., pretty grayish black shade, well-centered on bright paper, Very Fine, with 1998 P.F. certificate(Photo) 210.00
- 244 ★★ **15c Columbian (238).** Mint N.H., R. margin single, perfectly centered with wide margins at T. and B., slight underinking on R. "15" visible in the photograph on accompanying 1995 P.F. certificate but not mentioned, Extremely Fine and choice(Photo) 375.00
- 245 ★★ **15c Columbian (238).** Mint N.H., sharp impression on fresh paper, Extremely Fine, with 1993 P.S.E. certificate(Photo) 375.00
- 246 ★ **30c Columbian (239).** Original gum, lightly hinged, rich color, well-centered with wide margins, Extremely Fine, with 1998 P.F. certificate(Photo) 300.00
- 247 ★ **30c Columbian (239).** Original gum, lightly hinged, well-centered within large margins, bright paper, Extremely Fine, with 1998 P.F. certificate(Photo) 300.00
- 248 ★★ **30c Columbian (239).** Mint N.H., deep color, fine impression, fresh and Very Fine, with 1998 P.S.E. certificate(Photo) 450.00

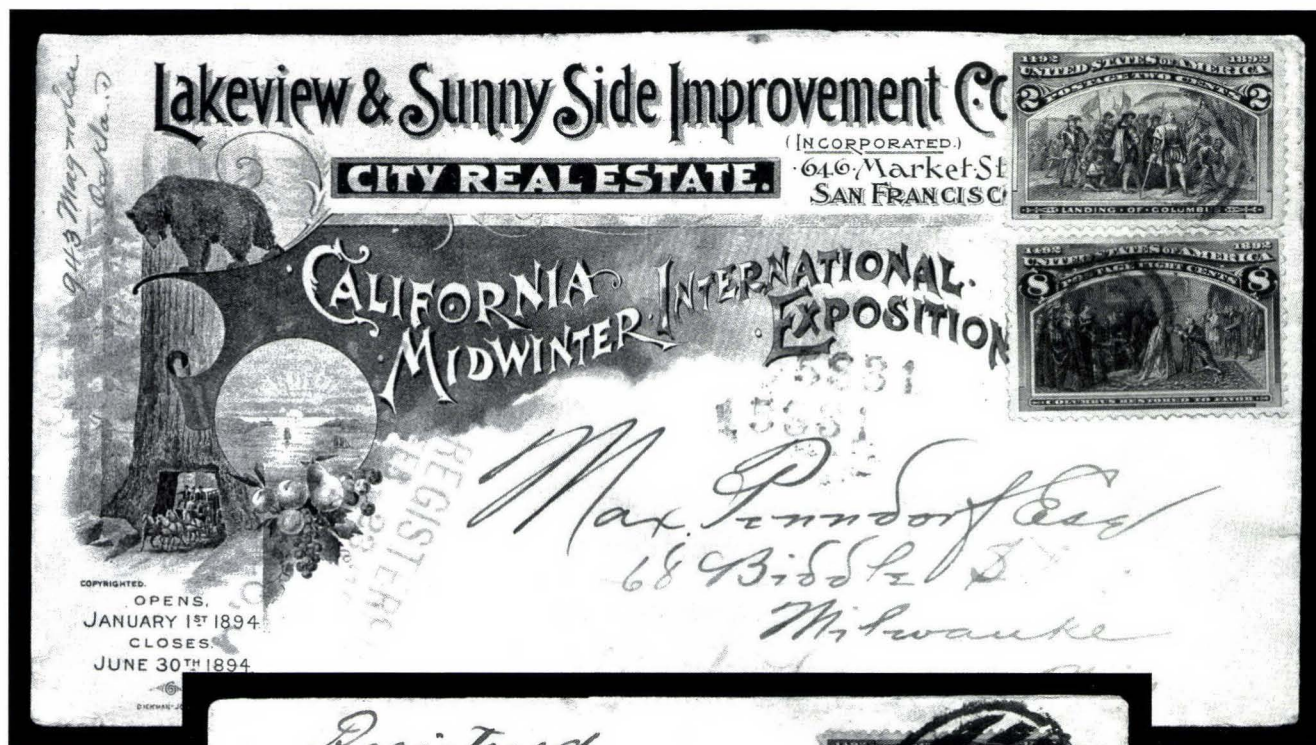


- 249 ★★ **50c Columbian (240)**. Mint N.H., deep rich color and clear proof-like impression on fresh white paper, tiny perf tip corner crease, Very Fine.....(Photo) 875.00
- 250 ★ **\$1.00 Columbian (241)**. Original gum, lightly hinged, well-centered, fresh and Very Fine, with 1998 P.S.E. certificate.....(Photo) 1,500.00
- 251 ★ **\$1.00 Columbian (241)**. Original gum, bright and fresh, Fine.....(Photo) 1,500.00
- 252 (★) **\$1.00 Columbian (241)**. Unused (regummed), rich color, Fine(Photo) 725.00
- 253 **\$1.00 Columbian (241)**. Full strike of "Worlds Fair Sta. Chicago Ill Jul. 21" duplex cds, rich color on fresh white paper, Extremely Fine and choice(Color Photo, p. 42) 650.00
- 254 ★ **\$2.00 Columbian (242)**. Original gum, barest trace of hinging, well-centered, Extremely Fine, a choice example of this challenging stamp, with 1998 P.S.E. certificate(Color Photo, p. 42) 1,550.00
- 255 ★ **\$2.00 Columbian (242)**. Original gum, lightly hinged, rich color, well-centered and Extremely Fine, with 1997 P.F. certificate(Color Photo, p. 42) 1,550.00
- 256 ★ **\$2.00 Columbian (242)**. Original gum, h.r., rich color, perfectly centered, Extremely Fine, with 1974 P.F. certificate(Color Photo, p. 42) 1,550.00
- 257 (★) **\$2.00 Columbian (242)**. Unused (no gum), sharp impression, fresh and bright, Extremely Fine.....(Photo) 750.00
- 258 ★ **\$2.00 Columbian (242)**. Original gum, h.r., tiny adherences, fresh and Very Fine(Photo) 1,550.00
- 259 **\$2.00 Columbian (242)**. Neat 1894 N.Y. town cds, pretty shade, Very Fine, with 1984 P.F. certificate.....(Color Photo, p. 43) 600.00
- 260 ★ **\$3.00 Columbian (243)**. Original gum, lightly hinged, deep shade, sharp impression, well-centered, Extremely Fine and choice, with 1998 P.F. certificate(Color Photo, p. 43) 2,400.00



- 261 ★ **\$3.00 Olive Green Columbian (243a).** Original gum, barest trace of hinging, perfectly centered and Extremely Fine, with 1997 P.F. certificate ... **(Color Photo, p. 43)** 2,400.00
- 262 ★ **\$3.00 Columbian (243).** Original gum, lightly hinged, rich color, very well-centered with wide margins, Extremely Fine, with 1990 P.F. certificate .. **(Color Photo, p. 43)** 2,400.00
- 263 ★ **\$3.00 Columbian (243).** Original gum, h.r., Fine, with 1998 P.F. certificate **(Photo)** 2,400.00
- 264 ★ **\$3.00 Columbian (243).** Original gum, rich color, fresh and Fine..... **(Photo)** 2,400.00
- 265 **\$3.00 Columbian (243).** Oval New York registry cancel, faint blue crayon at L., perfectly centered with large even margins, Extremely Fine, with 1991 P.F. certificate **(Color Photo, p. 43)** 1,000.00
- 266 ★ **\$4.00 Columbian (244).** Original gum, lightly hinged, deep shade, fresh and Extremely Fine, with 1992 P.F. certificate **(Color Photo, p. 43)** 3,250.00
- 267 ★ **\$4.00 Rose Carmine, Columbian (244a).** Original gum, lightly hinged, pretty shade on bright white paper, Very Fine, with 1997 P.S.E. certificate **(Color Photo, p. 43)** 3,250.00
- 268 ★ **\$4.00 Columbian (244).** Original gum, lightly hinged, rich color on fresh white paper, well-centered and Very Fine, with 1998 P.F. certificate **(Color Photo, p. 43)** 3,250.00
- 269 ★ **\$4.00 Columbian (244).** Original gum, lightly hinged, few gum soaked perfs and small crease at T.R., otherwise Fine..... **(Photo)** 3,250.00
- 270 ★ **\$4.00 Columbian (244).** Original gum, deep shade, fresh and Fine, with 1998 P.F. certificate **(Photo)** 3,250.00

- 271 ★ \$5.00 **Columbian (245)**. Original gum, lightly hinged, sharp impression on bright white paper, fresh and Very Fine(Photo) 3,750.00
- 272 ★ \$5.00 **Columbian (245)**. Original gum, h.r., fine impression, fresh and Very Fine, with 1987 P.F. certificate(Photo) 3,750.00
- 273 ★ \$5.00 **Columbian (245)**. Disturbed o.g., well-centered within large even margins, two tiny perf corner creases, Very Fine appearance(Photo) 3,750.00
- 274 (★) \$5.00 **Columbian (245)**. Unused (regummed), tiny gum soak at T.R., Fine(Photo) 1,750.00
- 275 \$5.00 **Columbian (245)**. Neat "Chicago Ill. Oct. 23" cds, Very Fine(Color Photo, p. 43) 1,600.00



276

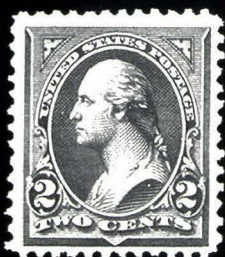


277

- 276 ☒ 8c **Columbian (236)**, With 2c **Columbian**, each with target cancels, on registered all-over illustrated 1894 **California Midwinter International Exposition** cover to Milwaukee, cover also advertises for a Real Estate Improvement Co., a Fine and attractive expo usage(Photo) 450.00
- 277 ☒ \$5.00 **Columbian (245)**. Tied by bold New York registry cancel on cover to New Market New Hampshire, blue registry number and violet boxed cancels, receiving backstamp, Extremely Fine, with 1982 P.F. certificate.....(Photo) 4,750.00



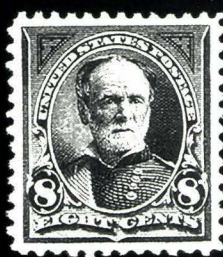
278EX



279



280



281



282



283



284



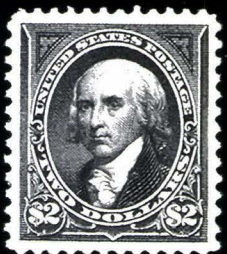
285



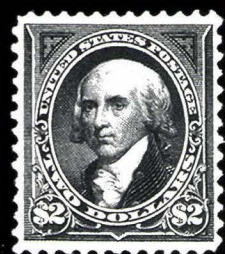
286



287



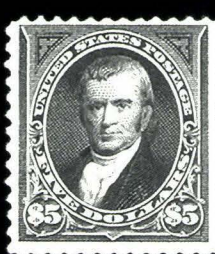
288



289



290



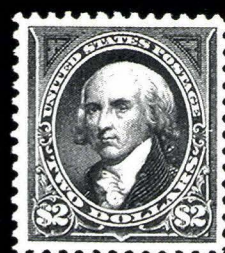
291



292



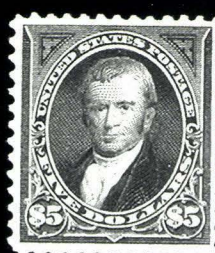
293



294



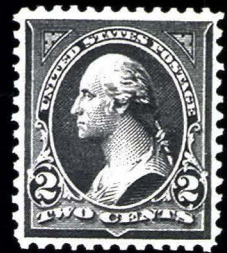
295



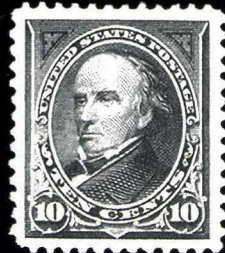
296



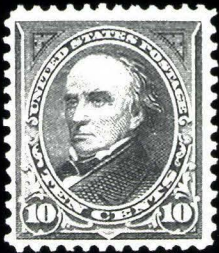
297



298



299



300



301



302

1894-98 BUREAU ISSUES

- 278 ★★ **1c Ultramarine, Blue (246, 247).** Mint N.H., rich color, both well-centered and Extremely Fine, No. 247 with 1997 P.S.E. certificate for plate strip of three from which this is the center stamp(Photo) 142.00
- 279 ★★ **2c Carmine, Ty. II (251).** Mint N.H., bright and fresh, Very Fine, with 1998 P.F. certificate(Photo) 325.00
- 280 ★ **2c Carmine, Ty. III (252).** Full original gum, lightly hinged, beautiful bright color on fresh paper, Extremely Fine and choice, with 1994 P.F. certificate(Photo) 110.00
- 281 ★ **8c Violet Brown (257).** Full original gum, lightly hinged, deep shade, Extremely Fine(Photo) 130.00
- 282 ★ **10c Dark Green (258).** Original gum, lightly hinged, bright and fresh, well-centered, Extremely Fine, with 1997 P.F. certificate(Photo) 200.00
- 283 ★ **50c Orange (260).** Original gum, lightly hinged, very well-centered, fresh and Extremely Fine, with 1997 P.F. certificate(Color Photo, p. 43) 375.00
- 284 ★ **\$1.00 Black (261).** Original gum, lightly hinged, bright white paper, Extremely Fine, with 1980 P.F. certificate(Color Photo, p. 43) 800.00
- 285 ★ **\$1.00 Black, Ty. II (261A).** Original gum, lightly hinged, fresh and Extremely Fine, with 1983 P.F. and 1998 P.S.E. certificates.....(Color Photo, p. 43) 1,900.00
- 286 ★ **\$1.00 Black, Ty. II (261A).** Original gum, lightly hinged, well-centered, reperfed, Extremely Fine appearance.....(Photo) 1,900.00
- 287 ★ **\$1.00 Black, Ty. II (261A).** Original gum, Very Fine, with 1998 P.S.E. certificate.....(Photo) 1,900.00
- 288 ★ **\$2.00 Bright Blue (262).** Part original gum, deep blue shade on white paper, well-centered and Extremely Fine, with 1988 P.F. certificate ... (Color Photo, p. 43) 2,600.00
- 289 ★ **\$2.00 Bright Blue (262).** Original gum, lightly hinged, well-centered, fresh and Very Fine, with 1994 P.F. certificate.....(Color Photo, p. 43) 2,600.00
- 290 ★ **\$5.00 Dark Green (263).** Original gum, deep dark color on bright white paper, Very Fine, with 1975 and 1993 P.F. certificates.....(Color Photo, p. 43) 4,000.00
- 291 ★ **\$5.00 Dark Green (263).** Original gum, fresh and Fine, with 1977 P.F. certificate.....(Photo) 4,000.00
- 292 ★ **\$1.00 Black, Ty. I (276).** Original gum, h.r., well-centered, sharp impression, Extremely Fine and choice.....(Color Photo, p. 43) 600.00
- 293 ★ **\$1.00 Black, Ty. II (276A).** Original gum, lightly hinged, proof-like impression on bright paper, Extremely Fine, with 1972 and 1995 P.F. certificates.....(Color Photo, p. 43) 1,200.00
- 294 ★ **\$2.00 Bright Blue (277).** Original gum, lightly hinged, pretty blue shade on bright white paper, Extremely Fine, with 1998 P.F. certificate.....(Color Photo, p. 43) 975.00
- 295 ★ **\$5.00 Dark Green (278).** Original gum, lightly hinged, rich color, tiny natural inclusion, Extremely Fine and choice, with 1980 P.F. certificate.....(Color Photo, p. 43) 425.00
- 296 ★ **\$5.00 Dark Green (278).** Original gum, hinge mark, fresh and Very Fine, with 1996 P.F. certificate(Photo) 2,250.00
- 297 ★ **\$5.00 Dark Green (278).** Original gum, small thin, Extremely Fine appearance, with 1983 P.F. certificate (does not note thin).....(Photo) 2,250.00
- 298 ★★ **2c Rose Carmine, Ty. III (279Bc).** Mint N.H., perfectly centered, intense color, Extremely Fine Gem, with 1998 P.S.E. certificate for block of four from which this is the T.R. stamp(Color Photo, p. 43) 350.00
- 299 ★ **10c Brown, Ty. I (282C).** Original gum, lightly hinged, very well-centered within massive margins, Extremely Fine, with 1985 P.F. certificate.....(Color Photo, p. 43) 180.00
- 300 ★★ **10c Orange Brown, Ty. II (283).** Mint N.H., rich color, Very Fine, with 1998 P.F. certificate(Photo) 175.00
- 301 ★ **15c Olive Green (284).** Original gum, lightly hinged, perfectly centered, Extremely Fine, with 1994 P.S.E. certificate(Photo) 150.00
- 302 ★★ **15c Olive Green (284).** Mint N.H., dark shade, fresh paper, Very Fine, with 1997 P.F. certificate.....(Photo) 240.00



303



304



305



306



307



308



309



310



311



312



313



314



315



316



317



318



319



320EX



322



323



324



325



326



327



328



329



330

1898 TRANS-MISSISSIPPI ISSUE

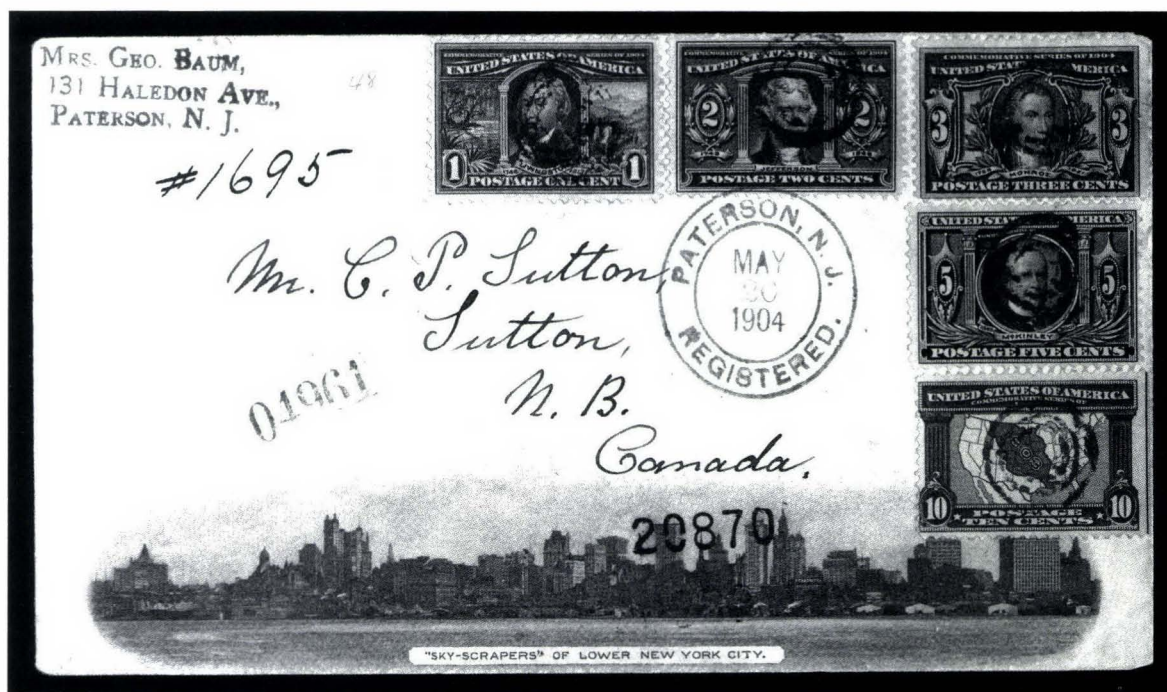
- 303 ★★ **4c Trans-Mississippi (287).** Mint N.H., vivid color, fresh and Extremely Fine, with 1998 P.S.E. certificate for plate no. pair from which this is the left stamp(Photo) 225.00
- 304 ★★ **5c Trans-Mississippi (288).** Mint N.H., gorgeous deep shade, proof-like impression, wide margins, Extremely Fine Gem, with 1989 P.F. certificate(Color Photo, p. 54) 225.00
- 305 ★★ **8c Trans-Mississippi (289).** Mint N.H., dark shade, sharp impression, fresh and Extremely Fine, with 1997 P.S.E. certificate(Color Photo, p. 54) 290.00
- 306 ★ **8c Trans-Mississippi (289).** Original gum, barest trace of mount glaze, faint internal paper wrinkle, Extremely Fine appearance(Photo) 175.00
- 307 ★★ **10c Trans-Mississippi (290).** Mint N.H., well-centered, fine impression, fresh and Extremely Fine, with 1997 P.S.E. certificate for block of four from which this is the T.L. stamp(Color Photo, p. 54) 275.00
- 308 ★ **10c Trans-Mississippi (290).** Original gum, lightly hinged, well-centered with wide margins, Extremely Fine and choice(Photo) 170.00
- 309 ★ **50c Trans-Mississippi (291).** Original gum, lightly hinged, deep rich color on bright white paper, virtually invisible paper wrinkle, otherwise Extremely Fine, with 1984 P.F. certificate(Color Photo, p. 54) 600.00
- 310 ★ **50c Trans-Mississippi (291).** Original gum, lightly hinged, well-centered and Extremely Fine(Color Photo, p. 54) 600.00
- 311 ★ **50c Trans-Mississippi (291).** Original gum, lightly hinged, well-centered, sharp impression, Very Fine, with 1998 P.S.E. certificate(Color Photo, p. 54) 600.00
- 312 ★ **\$1.00 Trans-Mississippi (292).** Original gum, lightly hinged, dark shade and proof-like impression on crisp white paper, Extremely Fine and choice, with 1992 P.F. certificate ... (Color Photo, p. 54) 1,250.00
- 313 ★ **\$1.00 Trans-Mississippi (292).** Original gum, lightly hinged, dark shade, Very Fine, with 1995 P.F. certificate(Color Photo, p. 54) 1,250.00
- 314 ★ **\$1.00 Trans-Mississippi (292).** Original gum, lightly hinged, fine impression, Very Fine, with 1998 P.F. certificate(Photo) 1,250.00
- 315 ★ **\$1.00 Trans-Mississippi (292).** Original gum, lightly hinged, well-centered, bright paper, Very Fine, with 1998 P.F. certificate(Photo) 1,250.00
- 316 ★ **\$2.00 Trans-Mississippi (293).** Slightly disturbed o.g., well-centered, sharp impression, Very Fine, with 1990 P.F. and 1993 P.S.E. certificates(Color Photo, p. 54) 2,100.00
- 317 (★) **\$2.00 Trans-Mississippi (293).** Unused (no gum), rich color, Very Fine(Photo) 1,000.00
- 318 (★) **\$2.00 Trans-Mississippi (293).** Unused (no gum), fresh and Fine(Photo) 1,000.00
- 319 **\$2.00 Trans-Mississippi (293).** New York oval cancel, well-centered, pressed crease, Extremely Fine appearance(Photo) 850.00

PAN-AMERICAN AND 1902-08 ISSUES

- 320 ★ **1c-10c Pan-American (294-299).** 1c-4c, 10c Mint N.H., 5c & 8c traces of mount glaze, rich colors, Extremely Fine set(Photo Ex) 699.00
- 321 ★★田 **1c, 2c Pan-American (294, 295).** Mint N.H. B. plate no. blocks of ten, deep rich colors, Fine-Very Fine(Photo Ex) 1,400.00
- 322 ★★ **4c Pan-American (296).** Mint N.H., perfectly centered, Extremely Fine, with 1997 P.F. certificate(Photo) 135.00
- 323 **8c Pan-American (298).** Block of four, oval "Saginaw Mich" cancel, few hinge reinforcements, Extremely Fine(Photo) 375.00
- 324 ★★ **10c Pan-American (299).** Mint N.H., rich colors, Extremely Fine(Photo) 280.00
- 325 ★★ **10c Pan-American (299).** Mint N.H., fresh and Extremely Fine, with 1997 P.F. certificate(Photo) 280.00
- 326 ★★ **3c Bright Violet (302).** Mint N.H., sharp impression, perfectly centered with wide even margins, Extremely Fine and choice, with 1997 P.S.E. certificate(Photo) 80.00
- 327 ★★ **6c Claret (305).** Mint N.H., deep color, fresh and Extremely Fine(Photo) 105.00
- 328 ★★ **10c Pale Red Brown (307).** Mint N.H., dark shade, perfectly centered, Extremely Fine Gem, with 1997 P.F. certificate for pair from which this is the Left stamp(Photo) 95.00
- 329 ★★ **15c Olive Green (309).** Mint N.H., deep shade, well-centered, fresh and Extremely Fine, with 1997 P.F. certificate(Photo) 240.00
- 330 ★ **15c Olive Green (309).** Lightly hinged, rich color, wide margins, Extremely Fine, with 1998 P.S.E. certificate(Photo) 150.00



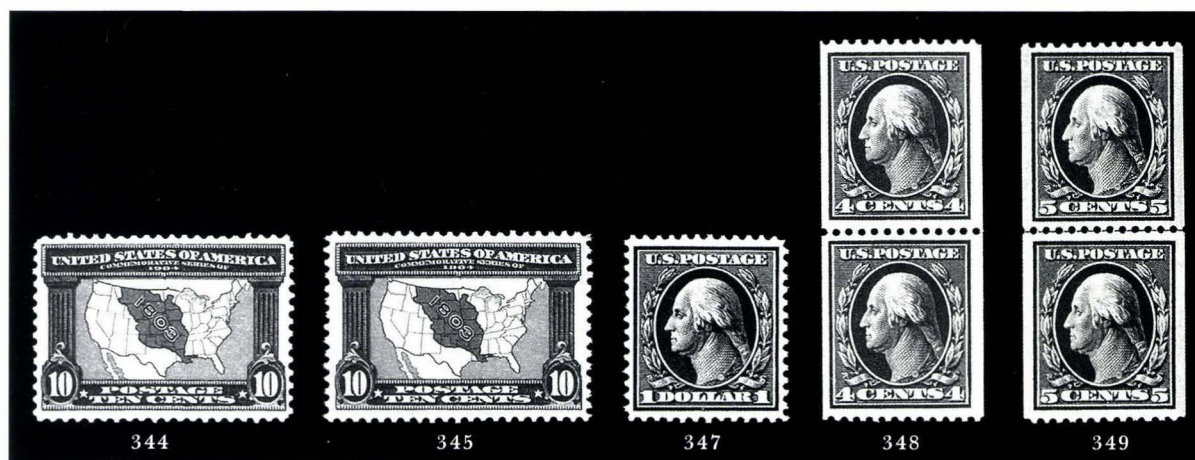
- 331 ★ **\$1.00 Black (311)**. H.r., well-centered within large margins, bright paper, Extremely Fine(Color Photo, p. 54) 700.00
- 332 ★ **\$1.00 Black (311)**. Lightly hinged, fresh and Extremely Fine, with 1994 P.F. certificate .. (Color Photo, p. 54) 700.00
- 333 ★ **\$1.00 Black (311)**. Lightly hinged, well-centered, Extremely Fine and choice, with 1997 P.F. certificate(Photo) 700.00
- 334 **\$1.00 Black (311)**. Enormous margins, fresh white paper, Extremely Fine, with 1995 P.F. certificate(Photo) 55.00
- 335 ★ **\$2.00 Dark Blue (312)**. Lightly hinged, sharp impression on crisp paper, Very Fine, with 1997 P.F. certificate.....(Color Photo, p. 54) 1,100.00
- 336 ★ **\$2.00 Dark Blue (312)**. Lightly hinged, deep shade, small thin, Extremely Fine appearance, with 1988 P.F. certificate(Photo) 1,100.00
- 337 ★ **\$5.00 Dark Green (313)**. Lightly hinged, rich color, proof-like impression, Very Fine, with 1985 P.F. certificate.....(Color Photo, p. 54) 2,750.00
- 338 ★★ **5c Blue, Imperforate (315)**. Mint N.H. horizontal pair, deep rich color, Extremely Fine Gem(Photo) 950.00
- 339 ★ **5c Blue, Imperforate (315)**. Horizontal pair, large margins, barely hinged, Extremely Fine.....(Photo) 650.00
- 340 ★★ **5c Blue, Imperforate (315)**. Mint N.H., horizontal pair, deep color, R. stamp with tiny corner crease and natural inclusion, Extremely Fine pair(Photo) 950.00
- 341 **5c Blue, Imperforate (315)**. Horizontal pair, neat wavy-line machine cancel, Extremely Fine and choice, with 1987 P.F. certificate(Photo) 1,150.00
- 342 ★ **5c Blue, U.S. Automatic Vending Co. Ty. I (315)**. Vertical pair, T. stamp lightly hinged, B. stamp Mint N.H., very fresh, Extremely Fine, with 1989 P.F. certificate(Photo) 650.00



343

LOUISIANA-PURCHASE AND 1908 ISSUES

- 343 ☒ **1c-10c Louisiana Purchase (323-327).** Complete set, cancelled by neat targets on illustrated registered cover to Canada depicting **skyscrapers of Lower New York City**, purple "Paterson N.J. May 20, 1904" datestamp, appropriate backstamps, 10c natural s.e. at R., few perfs affected from placement at edge of cover, still Very Fine, an extremely unusual and attractive design.....(Photo) E. 1,500-2,000



- 344 ★★ **10c Louisiana Purchase (327).** Mint N.H., rich color, well-centered and Extremely Fine, with 1997 P.F. certificate.....(Photo) 290.00
- 345 ★ **10c Louisiana Purchase (327).** Deep color, lightly hinged, perfectly centered with wide margins, Extremely Fine and choice, with 1998 P.S.E. certificate(Photo) 180.00
- 346 ★ **1c-50c 1908 Issue (331-341).** 1c Mint N.H., 3c h.r., others lightly hinged, rich colors, 5c & 8c tiny thins, Fine-Very Fine 747.00
- 347 ★ **\$1.00 Violet Brown (342).** Lightly hinged, near perfect centering, proof-like impression, Extremely Fine(Photo) 500.00
- 348 ★★ **4c Orange Brown, Coil (350).** Mint N.H. pair, deep rich color, post-office fresh and Very Fine, with 1988 P.F. certificate(Photo) 450.00
- 349 ★ **5c Blue, Coil (351).** Guide line pair, lightly hinged, well-centered, deep shade, Extremely Fine and choice, with 1975 and 1998 P.F. certificates.....(Color Photo, p. 55) 900.00



304



305



307



309



310



311



312



313



316



331



332



335



337

MRS. GEO. BAUM,
131 HALEDON AVE.,
PATERSON, N. J.

#1695

Mr. C. P. Sutton,
Sutton,
N. B.

Canada.

20870



"SKY-SCRAPERS" OF LOWER NEW YORK CITY.

343



349



353



354



355



356



357



358



361



362



363



383



391



405



417



350

351

352

- 350 ★ **4c Orange Brown, Coil (354).** Guide line pair with 2mm spacing, lightly hinged, deep dark shade, fresh and Fine, with 1988 P.F. certificate.....(Photo) 1,100.00
- 351 ★ **4c Orange Brown, Coil (354).** Lightly hinged pair with 3mm spacing, rich color, Very Fine, with 1988 P.F. certificate(Photo) 360.00
- 352 ★ **5c Blue, Coil (355).** Guide line pair, lightly hinged, fine impression, tiny thin spot at T., Very Fine appearance, with 1977 P.F. certificate(Photo) 1,100.00
- 353 ★ **10c Yellow, Coil (356).** Pair, lightly hinged, intense color, lightly hinged, well-centered
EXTREMELY FINE. AN OUTSTANDING PAIR OF THIS SCARCE COIL.
With 1951 and 1984 P.F. certificates.....
.....(Color Photo, p. 55) 5,000.00



353

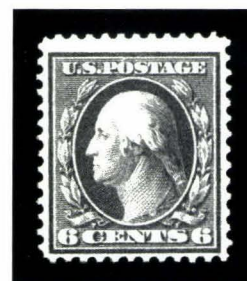
1909 BLUISH PAPER



354

- 354 ★ **3c Deep Violet, Bluish (359).** Lightly hinged, very well-centered, deep rich color
EXTREMELY FINE GEM. A WONDERFUL EXAMPLE OF THE 3-CENT BLUISH PAPER.
With 1997 P.F. certificate
.....(Color Photo, p. 55) 1,800.00

- 355 ★ **6c Red Orange, Bluish (362).** Lightly hinged, intense color, fresh and Very Fine
.....(Color Photo, p. 55) 1,350.00



355

- 356 ★ **10c Yellow, Bluish (364).** Small hinge remnant, vivid color, wide margins and well-centered
EXTREMELY FINE AND CHOICE. A BEAUTIFUL EXAMPLE OF THE 10-CENT BLUISH PAPER.
With 1989 P.F. certificate
.....(Color Photo, p. 55) 1,600.00



356



357

- 357 ★★ **13c Bluish Green, Bluish (365).** Mint N.H., wonderful centering with remarkably wide margins, deep color and sharp impression
EXTREMELY FINE GEM. A MAGNIFICENT COPY OF THE 13-CENT BLUISH PAPER.
With 1975 and 1992 P.F. certificates
.....(Color Photo, p. 55) 4,000.00

- 358 ★ **15c Pale Ultramarine, Bluish (366).** Lightly hinged, lovely shade, Very Fine
.....(Color Photo, p. 55) 1,350.00



358

1909 COMMEMORATIVES, 1910-13 ISSUES

- 359 ★ **2c Lincoln, Bluish (369).** Lightly hinged, fresh and Very Fine and choice
.....(Photo) 225.00
- 360 ★ **1c-15c 1910-11 Issue (374-382).** 2c disturbed gum, 3c, 4c h.r., others lightly hinged, intense colors, well-centered, 4c tiny thin (cat \$30), Very Fine-Extremely Fine set
.....597.00
- 361 ★★ **15c Pale Ultramarine (382).** Mint N.H. bright and fresh, perfectly centered with wide margins, natural inclusion on gum, Extremely Fine and choice, with 1996 P.S.E. certificate for pair from which this is the left stamp(Color Photo, p. 55) 425.00



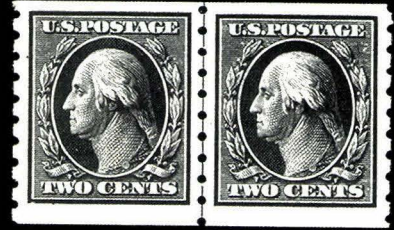
359



361



364



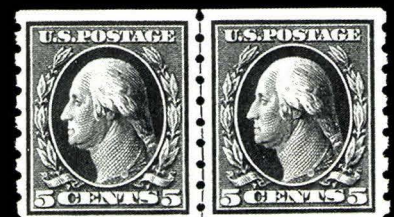
365



366



367



368



369



370



371



372



373



374



375



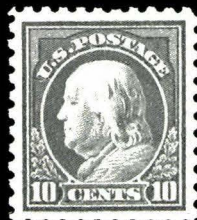
376



377



378



379



380

- 362 ★ **2c Carmine, Coil (388).** Pair with 3mm spacing, lightly hinged, deep color and fine impression

EXTREMELY FINE. A CHOICE EXAMPLE OF THE SCARCE 2-CENT SINGLE-LINE WATER-MARKED PERF 12 HORIZONTAL COIL WITH 3MM SPACING.

With 1992 P.S.E. and 1998 P.F. certificates.....(Color Photo, p. 55) 2,200.00



362

363



- 363 ★ **2c Carmine, Coil (388).** Pair with 2mm spacing, lightly hinged, rich color and sharp impression.

FINE-VERY FINE. A BRIGHT AND FRESH EXAMPLE OF THE SCARCE PERF 12 COIL WITH 2MM SPACING.

With 1972 P.F. certificate.....
.....(Color Photo, p. 55) 2,150.00

- 364 ★ **2c Carmine, Coil (391).** Guide line pair, lightly hinged, dark color, fresh and Extremely Fine.....(Photo) 190.00
- 365 ★ **2c Carmine, Coil (393).** Guide line pair, fresh bright paper, wide margins, Very Fine, with 1989 P.F. certificate.....(Photo) 225.00
- 366 ★★ **3c Deep Violet, Coil (394).** Mint N.H. pair with 3mm spacing, bright and post-office fresh, Extremely Fine(Photo) 175.00
- 367 ★★ **4c Brown, Coil (395).** Mint N.H. pair with 3mm spacing, Extremely Fine and choice.....
.....(Photo) 175.00
- 368 ★ **5c Blue, Coil (396).** Guide line pair, lightly hinged, beautiful deep shade, well-centered and Extremely Fine, with 1975 A.P.S. certificate(Photo) 325.00

PANAMA-PACIFIC AND 1912-15 ISSUES

- 369 ★★ **5c Panama-Pacific (399).** Mint N.H., deep dark color, Extremely Fine Gem, with 1995 P.F. certificate(Photo) 120.00
- 370 ★★ **10c Orange Yellow, Panama-Pacific (400).** Mint N.H., vivid color, well-centered and Extremely Fine, with 1998 P.F. certificate(Photo) 200.00
- 371 ★ **10c Orange Yellow, Panama-Pacific (400).** Lightly hinged, fresh and bright, Extremely Fine and choice(Photo) 125.00
- 372 ★ **10c Orange, Panama-Pacific (400A).** Lightly hinged, deep rich color, Very Fine.....
.....(Photo) 210.00
- 373 ★★ **5c Panama-Pacific, Perf 10 (403).** Mint N.H., well-centered, sharp impression, post-office fresh and Extremely Fine, with 1998 P.F. certificate(Photo) 280.00
- 374 ★ **5c Panama-Pacific, Perf 10 (403).** Lightly hinged, perfectly centered, bright paper, fresh and Extremely Fine(Photo) 175.00
- 375 ★ **5c Panama-Pacific, Perf 10 (403).** Barest trace of disturbed gum from mounting, deep color and proof-like impression, Very Fine, with 1997 P.F. certificate (which reads "never hinged")(Photo) 175.00
- 376 ★ **10c Panama-Pacific, Perf 10 (404).** Lightly hinged, intense color, short perf at R. not mentioned on accompanying certificate, Very Fine, with 1995 P.F. certificate
.....(Photo) 925.00
- 377 ★ **50c Violet (421).** Lightly hinged, well-centered, pretty shade on fresh paper, Very Fine and choice, with 1988 P.F. certificate for block of four from which this is the B.L. stamp
.....(Photo) 425.00
- 378 ★ **50c Violet (422).** Lightly hinged, intense color and impression, bright and fresh, Extremely Fine(Photo) 250.00
- 379 ★★ **10c Orange Yellow (433).** Mint N.H., perfectly centered within large even margins, intense color, Extremely Fine Gem.....(Photo) 75.00
- 380 ★★ **11c Dark Green (434).** Mint N.H., gorgeous deep dark color, intense proof-like impression on bright paper, Extremely Fine Gem, with 1997 P.S.E. certificate for plate block from which this is the B.L. stamp.....(Photo) 35.00

- 381 ★ **30c Orange Red (439).** Lightly hinged, radiant color, post office fresh, Very Fine and choice(Photo) 250.00
- 382 ★ **1c Green, Coil (443).** Guide line pair, lightly hinged, deep color, Extremely Fine(Photo) 135.00
- 383 ★★ **3c Violet, Coil (445).** Mint N.H. pair, perfectly centered, deep shade and proof-like impression, Extremely Fine Gem, with 1977 and 1998 P.F. certificates.....(Color Photo, p. 55) 800.00
- 384 ★ **4c Brown, Coil (446).** Lightly hinged, perfectly centered with huge margins all around, rich color, Extremely Fine, with 1997 P.F. certificate(Photo) 120.00
- 385 ★★ **4c Brown, Coil (446).** Mint N.H. pair, perfectly centered within massive margins, rich color, post-office fresh Extremely Fine Gem, with 1996 P.F. certificate ... (Photo) 450.00
- 386 ★★ **4c Brown, Coil (446).** Mint N.H. pair, fine impression on bright paper, Very Fine(Photo) 450.00
- 387 ★★ **5c Blue, Coil (447).** Mint N.H. guide line pair, gorgeous color, fresh and Very Fine, with 1988 P.F. certificate for strip of four from which this is the center pair ..(Photo) 360.00
- 388 ★★ **5c Blue, Coil (447).** Mint N.H. pair, intense color, sharp impression, Extremely Fine Gem pair, with 1993 P.F. certificate for strip of four from which this is the left pair(Photo) 160.00
- 389 ★ **2c Carmine Rose, Ty. I, Coil (453).** Guide line pair, lightly hinged, bright and fresh, Very Fine, with 1988 P.F. certificate(Photo) 550.00
- 390 ★★ **2c Red, Ty. II, Coil (454).** Mint N.H. pair, well-centered, rich color, Extremely Fine(Photo) 280.00
- 391 ★★ **3c Violet, Coil (456).** Mint N.H. pair, perfectly centered on bright white paper, Extremely Fine, with 1975 and 1996 P.F. certificates.....(Color Photo, p. 55) 885.00
- 392 ★ **3c Violet, Coil (456).** Pair, lightly hinged, beautiful shade, bright and fresh, Extremely Fine, with 1996 P.F. certificate(Photo) 575.00
- 393 ★★ **2c Carmine, Ty. I, Imperforate Coil (459).** Mint N.H. pair, Extremely Fine, with 1993 P.F. certificate(Photo) 750.00
- 394 ★★ **2c Carmine, Ty. I, Imperforate Coil (459).** Mint N.H. pair, large margins, Extremely Fine and choice(Photo) 750.00
- 395 ★ **\$1.00 Violet Black (460).** Disturbed gum from hinge removal, well-centered and Very Fine.....(Photo) 775.00

1916-23 ISSUES

- 396 ★ **1c-20c 1916-17 Issue (462-466, 468-476).** 7c and 12c Mint N.H., others lightly hinged (incl. 15c, 20c) or small h.r., rich colors, mostly Very Fine, 12c with 1996 P.S.E. certificate(Photo Ex) 1,165.00
- 397 ★ **5c Carmine, Error (467).** Double error in block of twelve, both errors and six 2c stamps Mint N.H., other four 2c stamps h.r., natural s.e. at B., Fine.....(Photo) 1,750.00
- 398 ★★ **6c Red Orange (468).** Mint N.H., perfectly centered, bright and fresh, Extremely Fine Gem, with 1997 P.F. certificate.....(Photo) 150.00
- 399 ★ **20c Light Ultramarine (476).** Lightly hinged, fresh and Very Fine(Photo) 240.00
- 400 ★ **20c Light Ultramarine (476).** Lightly hinged, pretty shade on bright paper, Extremely Fine.....(Photo) 240.00
- 401 ★ **\$1.00 Violet Black (478).** Lightly hinged, deep shade, sharp impression on crisp white paper, Extremely Fine and choice.....(Photo) 725.00
- 402 ★ **\$2.00 Dark Blue, \$5.00 Light Green (479-480).** H.r., \$5.00 glazed gum and tiny thin speck, Extremely Fine appearance(Photo) 540.00
- 403 ★★ **\$5.00 Light Green (480).** Mint N.H., fine impression, Very Fine, with 1998 P.F. certificate(Photo) 375.00
- 404 ★ **3c Violet, Ty. I (483).** Paste-up strip of four with **Type IV Mail-O-Meter private perforations with plate no. 8137 under paste up**, lightly hinged, Extremely Fine and choice, with 1997 P.F. certificate.....(Photo) 175.00



433



434



436



437



441



444



446



447



451



455



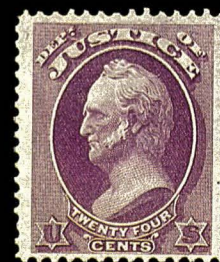
456



460



476



483



496



498



499



500



510



513



516



517



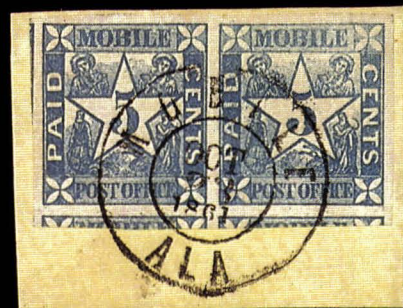
518



529



534



557



406EX



407EX



408



409



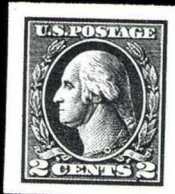
410



411



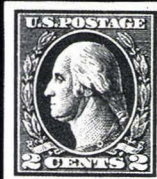
412



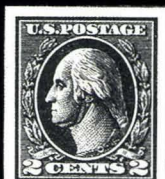
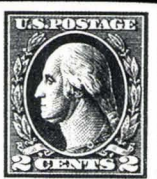
413



414



415



416



418



419

VIA AIR MAIL

EDWARD C. WORDEN
MILBURN, N. J.

VIA AIR MAIL

REGISTERED

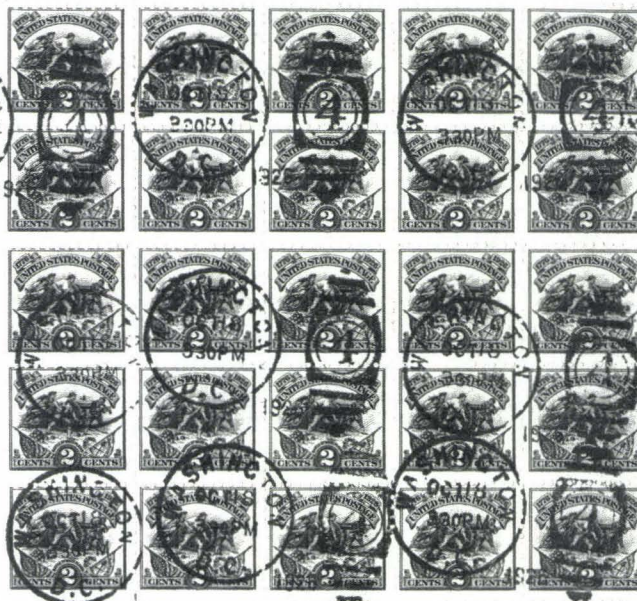
NO.

JAMES D. WORDEN,
1642 NORTH HARDING AVE.,
CHICAGO, ILL.

FIRST DAY
COVER

INTERNATIONAL PHILATELIC EXHIBITION, OCT. 16TH TO 23RD 1926

18770



NEW

YORK

18770

N.Y.

U.S.A.

- 405 ★ **2c Carmine, Ty. II, Coil (491).** Pair, lightly hinged
 VERY FINE. A FRESH AND WELL-CENTERED
 EXAMPLE OF THIS RARE ROTARY COIL.
 With 1967 and 1998 P.F. certificates
(Color Photo, p. 55) 4,750.00



405

- 406 ★ **1c-\$1.00 1917-19 Issue (498-504, 506-515, 517-518).** Nos. 498, 499, 501, 507, 518 Mint N.H., Nos. 515, 517 h.r., others lightly hinged, No. 506 tiny thin (cat \$12.50), generally a well-centered Very Fine group, No. 509 with 1993 P.F. certificate(Photo Ex) 658.00
- 407 ★ **1c-\$1.00 1917-19 Issue (498-499, 501-504, 506-518).** 1c, 2c, 9c, 11c, 12c, 15c, 20c, 50c Mint N.H., others mostly lightly hinged, few h.r., rich colors, Fine-Very Fine
(Photo Ex) 512.00
- 408 ★★ **30c Orange Red (516).** Mint N.H., vibrant shade on bright white paper, post-office fresh and Extremely Fine(Photo) 60.00
- 409 ★ **\$2.00 Orange Red & Black (523).** Lightly hinged, well-centered, Very Fine, with 1998 P.F. certificate(Photo) 625.00
- 410 ★ **\$2.00 Orange Red & Black (523).** H.r., fresh and Very Fine(Photo) 625.00
- 411 ★★ **\$5.00 Deep Green & Black (524).** Mint N.H., rich color, fresh and Very Fine
(Photo) 340.00
- 412 ★★ **2c Carmine, Ty. V, Imperforate (533).** Mint N.H., large margins all around, post-office fresh and Extremely Fine, with 1997 P.F. certificate for pair from which this is the left stamp.....(Photo) 275.00
- 413 ★★ **2c Carmine, Ty. V, Imperforate (533).** Mint N.H., huge even margins, bright and fresh, Extremely Fine Gem, with 1997 P.F. certificate.....(Photo) 275.00
- 414 ★★ **2c Carmine, Ty. V, Imperforate (533).** Mint N.H. L. margin horizontal pair, enormous margins, Extremely Fine and choice.....(Photo) 550.00
- 415 ★ **2c Carmine, Ty. V, Imperforate (533).** Horizontal pair, lightly hinged, Extremely Fine...
(Photo) 350.00
- 416 ★ **2c Carmine, Ty. VII, Imperforate (534B).** Lightly hinged, large margins all around, tiny natural inclusion, Extremely Fine, with 1997 P.F. certificate for vertical guide line pair from which this is the bottom stamp.....(Photo) 1,550.00



417

- 417 **1c Green, Rotary Perf 11 (544).** Light cancel, well-centered, faint horizontal crease visible only in fluid, Extremely Fine appearance, very scarce this well-centered and with such large margins, with 1964 P.F. certificate(Color Photo, p. 55) 3,250.00

- 418 ★★ **\$2.00 Carmine & Black (547).** Mint N.H., deep rich colors, post-office fresh and Very Fine.....(Photo) 300.00

LATER ISSUES

- 419 ★★ **2c Carmine, Rotary (579).** Mint N.H. T. margin single, Very Fine, with 1997 P.F. certificate for block of four from which this is the upper left stamp(Photo) 135.00
- 420 ★★ **2c White Plains Souvenir Sheet (630).** Mint N.H., very well-centered throughout, Extremely Fine 575.00



427



428



429



430



431



432



433



434



435

- 421 ★★ **2c White Plains Souvenir Sheet (630).** Mint N.H., few tiny natural inclusions, Fine-Very Fine 575.00
- 422 ★★ **2c White Plains Souvenir Sheet (630).** Mint N.H., Very Fine-Extremely Fine.... 575.00
- 423 ★★ **2c White Plains Souvenir Sheet (630).** Mint N.H., lightly folded along one row of perfs, Fine-Very Fine 575.00
- 424 ★★ **2c White Plains Souvenir Sheet (630).** Mint N.H., lightly folded along one row of perfs, Fine-Very Fine 575.00
- 425 **2c White Plains Souvenir Sheet (630).** Complete sheet, Fine, tied to **Worden First Day Cover** by multiple "Washington D.C. Oct. 18" duplex cancels on registered cover to James Worden in Chicago, sheet with selva reduced (as usual), Very Fine and scarce...
.....(Photo, p. 64) 1,500.00

AIR POST AND SPECIAL DELIVERY

- 426 ★★ **6c-24c 1918-23 Air Post (C1-C6).** No. C5 lightly hinged, others Mint N.H., vivid colors, fresh and Very Fine-Extremely Fine set.....(Photo) 745.00
- 427 ★ **65c-\$2.60 Graf Zeppelin (C13-C15).** 65c, \$2.60 Mint N.H., \$1.30 lightly hinged, all are well-centered within large margins, \$2.60 with small natural gum creases, Extremely Fine(Photo) 2,150.00
- 428 ★ **65c-\$2.60 Graf Zeppelin (C13-C15).** Lightly hinged, 65c tiny gum soak at T.R., otherwise Fine-Very Fine.....(Photo) 1,675.00
- 429 ★ **65c-\$2.60 Graf Zeppelin (C13-C15).** Lightly hinged, small faults, mostly invisible on face, otherwise Very Fine.....(Photo) 1,675.00
- 430 **65c-\$2.60 Graf Zeppelin (C13-C15).** 65c plate no. single, light cancels, \$1.30 Very Fine, other two Extremely Fine, \$2.60 with 1990 P.F. certificate(Photo) 1,110.00
- 431 ★ **10c Blue, Special Delivery (E1).** Original gum, tiny h.r., beautiful bright shade, well-centered and Very Fine, with 1998 P.F. certificate(Photo) 275.00
- 432 ★ **10c Blue, Special Delivery (E4).** Original gum, lightly hinged, deep dark color on fresh white paper, Very Fine and choice, with 1998 P.F. certificate.....(Photo) 600.00
- 433 ★★ **10c Pale Ultramarine, Special Delivery (E10).** Mint N.H., perfectly centered with wide margins, lovely pastel shade, Extremely Fine Gem, with 1994 P.F. certificate(Color Photo, p. 62) 400.00

POSTAGE DUE

- 434 ★★ **2c Brown (J2).** Mint N.H., very well-centered, huge margins, bright color, Extremely Fine Gem, with 1992 P.F. certificate(Color Photo, p. 62) 300.00
- 435 ★ **30c Brown (J6).** Original gum, barest trace of hinging, rich color, fresh and Very Fine, with 1998 P.S.E. certificate(Photo) 260.00



436

- 436 ★ **30c Deep Brown, Special Printing (J13).** Original gum, lightly hinged, very well-centered
EXTREMELY FINE GEM. A BEAUTIFUL EXAMPLE OF THE RARE 30-CENT POSTAGE DUE SPECIAL PRINTING.
Approximately 179 30c Special Printing stamps reached the public. With 1956 and 1998 P.F. certificates(Color Photo, p. 62) 2,600.00



437



438



439



440



442



443



444



445



446



447



448



449



450



451



452



453



454



455



456



457



458



459

- 437 ★ **3c Red Brown (J17).** Full original gum, fine impression, well-centered, Very Fine and choice.....(Color Photo, p. 62) 825.00
- 438 ★ **5c Red Brown (J18).** Full original gum, lightly hinged, dark shade, fresh and Very Fine, with 1998 P.S.E. certificate(Photo) 390.00
- 439 ★ **10c Red Brown (J19).** Full original gum, small h.r., rich color, well-centered with wide margins on fresh paper, Extremely Fine(Photo) 390.00
- 440 ★ **10c Red Brown (J19).** Full original gum, barest trace of hinging, deep shade and proof-like impression, fresh and Very Fine, with 1987 P.F. and 1992 P.S.E. certificates(Photo) 390.00

- 441 ★ **50c Red Brown (J21).** Full original gum, small h.r., beautifully centered
EXTREMELY FINE AND CHOICE EXAMPLE OF THE 50-CENT RED BROWN POSTAGE DUE.
With 1992 P.F. certificate(Color Photo, p. 62) 1,500.00



441

- 442 ★★ **3c Bright Claret (J24).** Mint N.H., rich color and fine impression, fresh and Extremely Fine, with 1998 P.S.E. certificate, Scott Retail for hinged(Photo) 55.00
- 443 ★★ **3c Bright Claret (J24).** Mint N.H., vibrant color on bright white paper, post-office fresh, Extremely Fine Gem, Scott Retail for hinged(Photo) 55.00
- 444 ★ **50c Bright Claret (J28).** Full original gum, lightly hinged, perfectly centered with wide margins all around, intense color and impression, Extremely Fine and choice, with 1996 P.F. certificate.....(Color Photo, p. 62) 425.00
- 445 ★ **1c Vermilion (J29).** Original gum, lightly hinged, bright color, tiny natural inclusion, small faint corner crease, fresh and Fine(Photo) 1,400.00
- 446 ★ **2c Vermilion (J30).** Original gum, lightly hinged, intense shade and impression, fresh and Extremely Fine, with 1993 P.F. and P.S.E. certificate ... (Color Photo, p. 62) 500.00
- 447 ★ **2c Vermilion (J30).** Original gum, lightly hinged, rich color, proof-like impression on bright paper, Very Fine, with 1990 P.F. certificate.....(Color Photo, p. 62) 550.00
- 448 ★ **5c Deep Claret (J34).** Original gum, lightly hinged, well-centered, bright and fresh, Extremely Fine, with 1996 P.S.E. certificate(Photo) 225.00
- 449 ★ **10c Deep Claret (J35).** Original gum, paper h.r., rich color, Extremely Fine(Photo) 225.00
- 450 ★ **30c Pale Rose (J36b).** Original gum, beautiful shade, well-centered, bright white paper, Extremely Fine and choice, with 1996 P.S.E. certificate.....(Photo) 310.00
- 451 ★ **30c Deep Claret (J43).** Full original gum, lightly hinged, wide margins and perfectly centered, fresh and Extremely Fine, with 1986 P.F. certificate.....(Color Photo, p. 62) 500.00
- 452 ★★ **30c Deep Claret (J43).** Mint N.H., sharp impression, bright and fresh, Fine(Photo) 775.00
- 453 ★ **3c Deep Claret (J47).** Original gum, small h.r., Fine.....(Photo) 500.00
- 454 ★★ **5c Deep Claret (J48).** Mint N.H., beautiful bright shade on fresh paper, Very Fine, with 1998 P.F. certificate.....(Photo) 130.00
- 455 ★★ **50c Deep Claret (J50).** Barest trace of hinging, deep color, perfectly centered with gigantic margins, Extremely Fine Gem, with 1996 P.F. certificate(Color Photo, p. 62) 1,250.00
- 456 ★★ **3c Carmine Lake (J54).** Mint N.H., intense color on bright white paper, Very Fine, with 1989 P.F. certificate.....(Color Photo, p. 62) 1,250.00
- 457 ★★ **30c Carmine Lake (J57).** Mint N.H., perfectly centered, bright and fresh, Extremely Fine, with 1996 P.F. certificate.....(Photo) 350.00
- 458 ★★ **30c Carmine Lake (J57).** Mint N.H., deep shade, tiny natural inclusion, Extremely Fine with 1998 P.F. certificate.....(Photo) 350.00
- 459 ★★ **30c Carmine Lake (J57).** Mint N.H., bright and fresh, Very Fine(Photo) 350.00



461



463EX



464



465EX



466EX



467



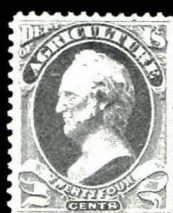
469



470



471



472



473



474



475



476



477



478



479

Department of Agriculture.

OFFICIAL BUSINESS.

ANY PERSON using this envelope to avoid the payment of postage on private matter of any kind, will be subject to a fine of THREE HUNDRED DOLLARS.



468



462

- 460 ★ **50c Carmine Lake (J58).** Lightly hinged, rich color on bright white paper
A VERY FINE EXAMPLE OF THE RARE 50-CENT PERF 10 WATERMARKED POSTAGE DUE.
With 1983 P.F. certificate
.....(Color Photo, p. 62) 9,000.00



460

- 461 ★★ **30c Carmine Rose (J66).** Mint N.H., deep rich color, well-centered with wide margins at sides, post-office fresh, Extremely Fine Gem.....(Photo) 135.00
- 462 ☒ **2c Claret (J39).** Tied by indistinct oval on all-over red and blue patriotic depicting "Men of the Hour," clear "Military Sta. No. 5 Bacolod, P.I. May 16, 1899" cds, straightline "Postage Due Two Cents," hs, all-over text on back for tea and cigars, soldier's endorsement on back (Cal. volunteers) from Isabella, Negros Island, Very Fine and choice, scarce design(Photo) E. 500-600
- 463 ★ **2c-60c Offices in China (K1-K14, K17-K18).** With extra K9 & K14, Nos. K1, K4, K9 (both), K10, K17, K18 Mint N.H., K2 & K11 disturbed gum, others lightly hinged or h.r., bright colors, No. K3 thin, No. K5 small corner crease, overall Very Fine group, Nos. K4, K9, K17 with 1996 or 1997 P.F. certificates.....(Photo Ex) 1,612.00
- 464 ★★ **\$1.00 on 50c Offices in China (K15).** Mint N.H., deep rich color on bright crisp paper, post-office fresh, Extremely Fine Gem.....(Photo) 725.00
- 465 ★ **\$1.00 on 50c, \$2.00 on \$1.00 Offices in China (K15, K16).** Lightly hinged, rich colors, fresh and Fine(Photo Ex) 840.00

OFFICIALS

- 466 **1c-30c Agriculture (O1-O6, O8, O9).** Used, variety of shapes and colors incl. 1c with red cancel, 3c with violet fancy cancel, 1c with small tear, Fine(Photo Ex) 757.00
- 467 ★ **3c Agriculture (O3).** Full original gum, lightly hinged, rich color, Extremely Fine and choice(Photo) 110.00
- 468 ☒ **3c Agriculture (O3).** Barely tied by violet "Washington D.C. Aug. 19, 1879" duplex cancel on official Department of Agriculture corner card cover to St. Paul Minn., minor soiling, Very Fine, with 1995 P.F. certificate.....(Photo) 600.00
- 469 ★ **10c Agriculture (O5).** Original gum, lightly hinged, intense color, bright and fresh, Extremely Fine, with 1995 P.S.E. certificate for block of four from which this is the lower right stamp(Photo) 240.00
- 470 ★ **12c Agriculture (O6).** Full original gum, lightly hinged, well-centered, deep color and sharp impression, Extremely Fine and choice(Photo) 325.00
- 471 ★ **15c Agriculture (O7).** Slightly mount-glazed original gum, deep color, fresh and Very Fine.....(Photo) 275.00
- 472 ★ **24c Agriculture (O8).** Original gum, perfectly centered, deep rich color, tiny natural inclusion, fresh and Extremely Fine(Photo) 275.00
- 473 ★ **1c Executive (O10).** Original gum, slightly glazed, well-centered, rich color on bright white paper, Very Fine(Photo) 525.00
- 474 ★ **2c Executive (O11).** Original gum, h.r., dark color and proof-like impression, bright and fresh, Very Fine.....(Photo) 350.00
- 475 ★ **3c Executive (O12).** Full original gum, lightly hinged, perfectly centered within even margins, Extremely Fine(Photo) 425.00
- 476 ★ **6c Executive (O13).** Full original gum, lightly hinged, incredibly wide margins, beautiful rich color, Extremely Fine Gem, the Executive series is almost unobtainable in this choice grade, with 1986 P.F. certificate.....(Color Photo, p. 62) 625.00
- 477 ★ **10c Executive (O14).** Original gum, lightly hinged, pretty color, Very Fine, with 1996 P.F. certificate(Photo) 575.00
- 478 ★ **12c Interior (O20).** Slightly disturbed original gum from hinge removal, deep rich color and proof-like impression on bright white paper, Extremely Fine, with 1997 P.S.E. certificate(Photo) 47.00
- 479 ★ **90c Interior (O24).** Original gum, perfectly centered with wide margins, beautiful bright orange color, fresh and Extremely Fine.....(Photo) 180.00



- 480 ★ **1c Justice (O25)**. Original gum, beautiful shade and proof-like impression on bright white paper, well-centered and Extremely Fine Gem(Photo) 100.00
- 481 ★ **2c Justice (O26)**. Slightly disturbed original gum, perfectly centered on fresh paper, Extremely Fine(Photo) 165.00
- 482 ★ **12c Justice (O30)**. Original gum, sharp impression, bright and fresh, Fine(Photo) 135.00
- 483 ★ **24c Justice (O32)**. Full original gum, wide margins, proof-like impression on bright paper, Extremely Fine, with 1998 P.S.E. certificate(Color Photo, p. 62) 650.00
- 484 ★ **30c Justice (O33)**. Original gum, reperfed at T., fresh and Fine(Photo) 650.00
- 485 ★ **90c Justice (O34)**. Original gum, pretty shade, Extremely Fine, with 1995 P.F. certificate(Photo) 825.00
- 486 ★ **24c Navy (O43)**. Original gum, small h.r., bright shade, well-centered with huge margins at T. and B., nibbed perf at T., Extremely Fine and choice(Photo) 165.00
- 487 ★ **10c Post Office (O51)**. Original gum, lightly hinged, proof-like impression, well-centered with wide margins, fresh and Extremely Fine(Photo) 65.00
- 488 ★ **2c State (O58)**. Original gum, deep rich color, fresh and Extremely Fine Gem, with 1991 P.F. certificate(Photo) 200.00
- 489 ★ **3c State (O59)**. Original gum, perfectly centered with wide margins, deep rich color on fresh paper, Extremely Fine Gem(Photo) 80.00
- 490 ★ **10c State (O62)**. Original gum, lightly hinged, perfectly centered, intense color and impression, Extremely Fine(Photo) 120.00
- 491 ★ **12c State (O63)**. Original gum, lightly hinged, well-centered with huge margins at T. and B., deep color and sharp impression, Extremely Fine and choice, with 1991 P.F. certificate(Photo) 185.00
- 492 ★ **12c State (O63)**. Original gum, h.r., perfectly centered, rich color, fresh and Extremely Fine, with 1998 P.F. certificate(Photo) 185.00
- 493 ★ **24c State (O65)**. Original gum, small h.r., deep color and proof-like impression, Very Fine, with 1998 P.F. certificate(Photo) 400.00
- 494 ★ **30c State (O66)**. Original gum, deep color, fresh and Very Fine, with 1996 P.F. certificate(Photo) 375.00
- 495 ★ **90c State (O67)**. Part original gum, reperfed at R., rich color, Very Fine appearance(Photo) 700.00



496



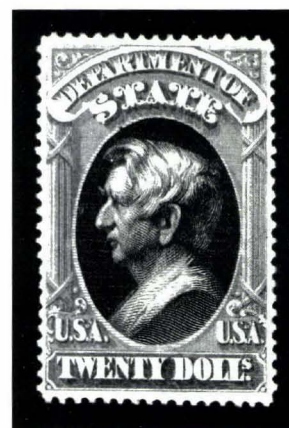
497



498

- 496 ★ **\$2.00 State (O68).** Original gum, perfectly centered with unusually wide margins, beautiful colors on fresh paper, Extremely Fine, a true condition rarity, with 1987 P.F. and 1992 P.S.E. certificates(Color Photo, p. 63) 850.00
- 497 (★) **\$5.00 State (O69).** Unused (no gum), rich colors, reperfed at R., Very Fine appearance ..
.....(Photo) 6,000.00
- 498 ★ **\$10.00 State (O70).** Original gum, lightly hinged, well-centered, fresh and Extremely Fine, with 1991 P.F. and P.S.E. certificates.....(Color Photo, p. 63) 4,000.00

- 499 ★ **\$20.00 State (O71).** Original gum, lightly hinged, well-centered, Extremely Fine, seldom seen in this choice sound condition, with 1992 P.F. and 1993 P.S.E. certificates
.....(Color Photo, p. 63) 3,250.00



499

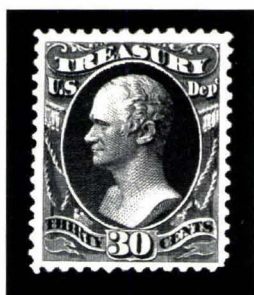


500

- 500 ★ **\$20.00 State (O71).** Original gum, well-centered, fresh and Very Fine
.....(Color Photo, p. 63) 3,250.00



- 501 ★ **24c Treasury (O80).** Original gum, deep shade, fresh and Fine(Photo) 400.00
- 502 ★ **30c Treasury (O81).** Large part original gum, well-centered, deep dark color and sharp impression, one short perf, otherwise Extremely Fine(Photo) 135.00
- 503 ★ **90c War (O93).** Full original gum, lightly hinged, rich color on fresh white paper, Extremely Fine and choice, with 1995 P.S.E. certificate for block of four from which this is the lower left stamp(Photo) 85.00
- 504 ★ **3c Agriculture, Soft Paper (O95).** Full original gum, barest trace of hinging, deep color, well-centered and Extremely Fine, with 1990 P.F. (for block of four from which this is the lower left stamp) and 1991 P.S.E. certificates.....(Photo) 275.00
- 505 ★★ **1c Interior, Soft Paper (O96).** Mint N.H., gorgeous color and proof-like impression on bright white paper, Very Fine and choice, with 1996 P.F. certificate, Scott Retail for hinged(Photo) 200.00
- 506 ★ **10c Interior, Soft Paper (O100).** Original gum, lightly hinged, intense color, huge margins, four gum soaked perfs, Extremely Fine(Photo) 60.00
- 507 ★ **12c Interior, Soft Paper (O101).** Original gum, hinge mark, intense color and impression, tiny thin spot, Very Fine appearance(Photo) 120.00
- 508 ★ **15c Interior, Soft Paper (O102).** Original gum, rich color, well-centered and Extremely Fine, with 1989 P.F. certificate for block of four from which this is the upper left stamp(Photo) 275.00
- 509 ★ **10c Treasury, Soft Paper (O111).** Original gum, lightly hinged, perfectly centered, intense color and impression, fresh and Extremely Fine Gem, with 1997 P.S.E. certificate(Photo) 75.00



510

- 510 ★ **30c Treasury, Soft Paper (O112).** Full original gum, lightly hinged, well-centered with enormous margins, rich color and fine impression on bright paper, Extremely Fine Gem, the 30c Treasury Soft Paper stamp is one of the most elusive of the Official series in this choice original-gum condition, with 1995 P.F. certificate(Color Photo, p. 63) 1,200.00

- 511 **Officials Balance.** Approximately 300 unused and used stamps, better unused incl. Nos. O13, O32, O39, O63-O65, O68, O70, O95, O96, O103, used incl. Nos. O11, O14, O45, condition mixed, most sound, Fine-Very Fine appearance, Scott Retail in excess of 18,800.00

NEWSPAPER STAMPS



- 512 (★) **96c Rose, 1875 Issue (PR23).** Unused (no gum), deep color, some ink on back, fresh and Very Fine, with 1998 P.F. certificate(Photo) 350.00
- 513 ★ **\$48.00 Red Brown, 1875 Issue (PR31).** Original gum, lightly hinged, rich color and sharp impression, fresh and Very Fine, extremely scarce, with 1990 P.F. certificate(Color Photo, p. 63) 2,100.00
- 514 ★ **\$60.00 Violet, 1875 Issue (PR32).** Part original gum, rich color and fine impression, small corner perf repair at top left, Extremely Fine appearance, with 1997 P.F. certificate(Photo) 2,100.00
- 515 ★ **3c Gray Black, 1875 Issue, Special Printing (PR34).** Without gum as issued, deep rich color on bright paper, Fine(Photo) 240.00
- 516 ★ **36c Pale Rose, 1875 Issue, Special Printing (PR42).** Without gum as issued, beautiful bright shade, Very Fine and scarce, with 1991 P.F. and 1992 P.S.E. certificates.....(Color Photo, p. 63) 1,100.00
- 517 ★ **48c Pale Rose, 1875 Issue, Special Printing (PR43).** Without gum as issued, bright shade and sharp impression, Very Fine, with 1991 P.F. and P.S.E. certificates(Color Photo, p. 63) 1,250.00
- 518 ★ **60c Pale Rose, 1875 Issue, Special Printing (PR44).** Without gum as issued, perfectly centered with balanced margins, rich color on bright white paper, few nibbed perfs at right, still Extremely Fine, ex Engel, with 1958 P.F. and 1990 P.S.E. certificates(Color Photo, p. 63) 1,400.00
- 519 P **1c-\$60.00 1879-85 Issue, Plate Proofs on India (PR57P3-PR79P2, PR81P3).** A remarkable set of top imprint blocks of twelve, 1c has ABNCo. imprint and plate no. 482, all others have Continental imprint, two of 2c incl. one with plate no. 2 (creased), large margins, fresh, small holes and thinning in 6c, 8c, 10c & \$60.00, several others have minor hinge translucency or thinning in corner stamps, still Very Fine, a breathtaking set of imprint blocks, Scott Retail with simple block premium is \$3,480.00(Photo Ex) E. 4,000-5,000



- 520 ★ **\$9.00 Orange, 1879 Issue (PR74).** Full original gum, intense color and impression, well-centered, Extremely Fine and choice.....(Photo) 230.00
- 521 ★ **\$24.00 Dark Violet, 1879 Issue (PR76).** Original gum, lightly hinged, well-centered, deep shade on fresh paper, Extremely Fine, with 1995 P.F. certificate(Photo) 425.00
- 522 ★★ **\$36.00 Indian Red, 1879 Issue (PR77).** Mint N.H., rich color, fresh and Very Fine, with 1996 P.F. certificate, Scott Retail for hinged.....(Photo) 525.00
- 523 ★ **\$36.00 Indian Red, 1879 Issue (PR77).** Original gum, well-centered, fresh and Very Fine, with 1996 P.F. certificate(Photo) 525.00
- 524 ★ **\$36.00 Indian Red, 1879 Issue (PR77).** Original gum, h.r., intense color, bright white paper, Extremely Fine and choice.....(Photo) 525.00
- 525 ★ **\$48.00 Yellow Brown, 1879 Issue (PR78).** Original gum, lightly hinged, deep rich color, thinned at upper left, Extremely Fine appearance.....(Photo) 650.00
- 526 (★) **\$48.00 Yellow Brown, 1879 Issue (PR78).** Unused (no gum), intense color and impression, tiny corner crease, Very Fine.....(Photo) 650.00
- 527 ★ **\$60.00 Purple, 1879 Issue (PR79).** Original gum, h.r., beautiful bright shade, natural s.e. at B., Extremely Fine.....(Photo) 650.00
- 528 (★) **2c Intense Black, 1883 Special Printing (PR80).** Unused (no gum), deep shade and proof-like impression, well-centered within enormous margins, fresh and Extremely Fine(Photo) 500.00
- 529 ★ **84c Carmine, 1885 Issue (PR88).** Original gum, deep rich color and proof-like impression, Extremely Fine and choice, with 1998 P.S.E. certificate(Color Photo, p. 63) 360.00
- 530 ★ **96c Carmine, 1885 Issue (PR89).** Original gum, paper h.r., rich color, fresh and Very Fine.....(Photo) 275.00



- 531 ★ **1c-\$60.00 1894 Newspaper, Colman Special Printing, Privately Perforated and Gummed (Unlisted in Scott; described in Luff).** Complete set of 25 values incl. unissued 9c, special printings prepared in 1894 when stamp production was turned over to the Bureau, lightly hinged or tiny h.r., 2c thin, \$12.00 faulty, four of the dollar values have blunted perfs at one side, otherwise Fine-Very Fine, very rare — only 45 sets believed to exist(Photo Ex) E. 2,000-3,000
- 532 ★ **50c Carmine, Newspaper (PR107).** Plate no. single, original gum, deep dark color, Fine.(Photo) 500.00
- 533 ★ **\$2.00 Scarlet, Newspaper (PR108).** Original gum, vibrant color, couple tiny thins, Extremely Fine appearance(Photo) 600.00
- 534 ★ **\$50.00 Dull Rose, Newspaper (PR112).** Original gum, well-centered, vivid color, Extremely Fine Gem, very scarce in this condition, with 1991 P.S.E. and 1992 P.F. certificates(Color Photo, p. 63) 1,400.00
- 535 (★) **\$100.00 Purple, Newspaper (PR113).** Unused (no gum), rich color, perfectly centered, reperfed at B., otherwise Extremely Fine(Photo) 1,600.00
- 536 **Newspaper Collection.** 84 stamps comprising 70 unused and fourteen used, mostly American Bank Note Co. printings with many better incl. unused Nos. PR75, PR76 (two), PR77 (three), PR78, PR89, some Bureaus, few Nationals incl. 1865 Issue and reprints, also incl. No. R159 used, mounted on Scott Specialty pages, condition mixed, Fine-Very Fine appearance..... E. 2,000-2,500
- 537 ★ **\$1.00 Parcel Post (Q12).** Rich color and proof-like impression, perfectly centered with jumbo margins, barest trace of disturbed gum from mounting, Extremely Fine Gem, with 1994 P.F. certificate which states "never hinged"(Photo) 325.00
- 538 ★ **\$1.00 Parcel Post (Q12).** Intense color and impression, well-centered, small spot of slightly disturbed gum, Extremely Fine(Photo) 325.00
- 539 **Parcel Post Accumulation.** 24 unused stamps, fourteen Mint N.H. incl. Nos. Q5, Q6 (two), Q7 (four), Q8, Q9 (two), Q11 (three), Q12, ten lightly hinged or h.r., incl. Nos. Q3, Q5, Q6 (two), Q7, Q9-Q12, Fine-Very Fine, five with 1995-1998 P.F. or P.S.E. certificates stating "never hinged"..... 2,785.00

CARRIERS AND LOCAL POSTS



540



541

- 540 ★ **1c Blue, Eagle Carrier, Special Printing (LO6).** Vertical strip of three, without gum as issued, bright and fresh, Fine, very scarce multiple, Scott Retail as singles.....(Photo) 570.00
- 541 ★★ **(Greig's) City Despatch Post, New York N.Y., 3c Black on Grayish (40L1).** Mint N.H., huge margins all around, with full frame line at R., Extremely Fine and choice, with 1995 P.F. certificate(Photo) 400.00



- 542 ☒ **Floyd's Penny Post, (1c) Blue (68L1).** Large to huge margins all around, tied by blue "Floyd's Penny Post Chicago" double oval on locally-addressed cover, no backflap, Extremely Fine and exceptionally choice(Photo) 1,500.00
- 543 ★ **Wells, Fargo & Co., Pony Express, \$1.00 Red, \$2.00 Green, Virginia City Pony Express 25c Blue (143L3, 143L4, 143L8).** Singles, ample to large margins all around, rich colors, \$2.00 unused (no gum), 25c and \$1.00 original gum, Very Fine, 25c with 1983 A.P.S. certificate, \$2.00 with 1998 P.F. certificate 415.00
- 544 ☒ **Wells, Fargo & Co., Virginia City Pony Express, 25c Blue (143L8).** Ample to huge margins, tied by blue "Wells, Fargo & Co. Virginia City Nev." oval datestamp on 3c Pink on Buff entire (No. U35) with black printed frank, printed address to Sol. Wangenheim, San Francisco, ms. docketing, reduced at left, otherwise Very Fine.....(Photo) 4,000.00
- 545 ☒ **Local Post Covers.** Five covers comprising No. 5L1 with pen cancel to Philadelphia with red "Forwarded by American Mail Co. No. 56 Wall St. NY" three-line hs, No. 5L2 with pen cancel and ms. "ALM Co. Paid" to Providence R.I., No. 15L15 with No. 11 to Indiana, No. 15L15 with No. 11 to Wilmington Del., No. 20L18 tied by oval "PAID" hs with No. 65 to Orange N.Y., usual minor cover flaws, mostly on backs, otherwise Very Fine 1,050.00



HUNTING PERMITS

- 546 ★★ **\$1.00 1934 Hunting Permit (RW1).** Mint N.H., well-centered, Very Fine, with P.S.E. certificate for block of four from which this is the lower right stamp(Photo) 675.00
- 547 ★★ **\$1.00 1934 Hunting Permit (RW1).** Mint N.H., rich color, fresh and Very Fine, with 1998 P.S.E. certificate for block of four from which this is the upper left stamp(Photo) 675.00
- 548 ★★ **\$1.00 1934 Hunting Permit (RW1).** Mint N.H., deep color, Very Fine, with 1998 P.S.E. certificate for block of four from which this is the upper left stamp.....(Photo) 675.00
- 549 ★★ **\$1.00 1935 Hunting Permit (RW2).** Mint N.H., perfectly centered, Extremely Fine Gem.(Photo) 650.00
- 550 ★★ **\$1.00 1935 Hunting Permit (RW2).** Mint N.H., intense color on bright white paper, usual light natural gum crease, Extremely Fine.....(Photo) 650.00
- 551 ★★ **\$1.00 1935 Hunting Permit (RW2).** Mint N.H., well-centered, Very Fine and choice(Photo) 650.00
- 552 ★ **HUNTING PERMITS.** 1934-1992, complete collection of unused singles, \$1.00-\$3.00 Ducks lightly hinged, \$5.00-\$15.00 Mint N.H., No. RW35 disturbed gum, Fine-Extremely Fine E. 1,000-1,200
- 553 ★ **HUNTING PERMITS.** 1934-1990, collection of 51 unused singles incl. Nos. RW1 (no gum), RW3-RW29, RW32-RW53, RW57, 44 Mint N.H., six lightly hinged incl. Nos. RW3, RW7, RW9, RW21, RW22, RW38, many are plate no. singles, Fine-Extremely Fine, No. RW5 with 1998 P.S.E. certificate E. 1,200-1,400
- 554 ★ **HUNTING PERMITS.** 1935-1993, collection of 57 unused singles incl. Nos. RW2-RW5, RW7-RW40, RW42-RW60, 46 Mint N.H., five lightly hinged (Nos. RW2, RW3, RW5, RW6, RW38), six not catalogued (Nos. RW18, RW19, RW23, RW26, RW30, RW31), Fine-Extremely Fine E. 1,300-1,500
- 555 ★ **HUNTING PERMITS.** 1936-1992, 51 unused singles, minor duplication incl. No. RW3 (three), few with plate nos., 46 Mint N.H., three lightly hinged incl. Nos. RW3, RW24, RW25, Nos. RW31 & RW38 not catalogued, Fine-Extremely Fine E. 1,400-1,600
- 556 ★★ **HUNTING PERMITS.** 1936-1991, complete collection of unused singles, incl. Nos. RW3-RW58, Mint N.H., Fine-Extremely Fine, No. RW5 with 1998 P.S.E. certificate 4,222.00



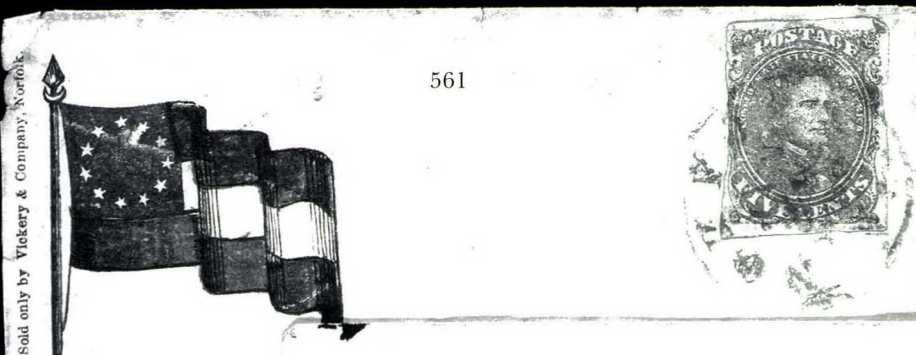
557



566



558



561



559

To arms! to arms, ye brave,
The avenging sword unsheath,
March on! march on! all hearts
On victory or death.



Sold by J. W. Randolph,
Richmond Va.

Confederate States of America.

On, on to the rescue, the Vandals are coming—
Go meet them with bayonet, sabre and spear;
Drive them back to the desolate land they are leaving—
Go, trusting in God, you'll have nothing to fear.



562

Miss Mattie H. Hammer



563



565



560

"THE GIRL I LEFT BEHIND ME."

He turn'd and left the spot—O! do not deem him weak—
For dauntless was the soldier's heart, though tears were on his cheek
Go, watch the foremost run, in danger's dark career;
Be sure the hand most daring then has wiped away a tear.

CONFEDERATE STATES

- 557 **Mobile Ala., 5c Blue (58X2).** Horizontal pair, huge to enormous margins all around, with large part of adjacent stamps at B., tied on small piece by perfectly struck "Mobile Ala. Oct. 23, 1861" double-circle ds, Extremely Fine and choice, ex Caspary, with 1991 P.F. certificate.....(Color Photo, p. 63) 575.00
- 558 ★★ **New Orleans La., 2c Blue (62X1).** Mint N.H., large to huge margins all around, with full frameline at T., deep color and proof-like impression on bright white paper, Extremely Fine, with 1997 P.F. certificate, Scott Retail for hinged(Photo) 150.00
- 559 **New Orleans La., 2c Blue (62X1).** Ample to large margins, just touching at B., clear New Orleans cds, bright color, Very Fine, with 1997 P.F. certificate.....(Photo) 500.00
- 560 **New Orleans La., 5c Brown on White (62X3).** Jumbo margins at sides, large margins at T. and B. with framelines, rich color on bright white crisp paper, bold "Paid" cancel, Extremely Fine, with 1990 P.F. certificate(Photo) 150.00
- 561 ☒ **5c Green, Stone 1-2 (1).** Irregular margins in at places, tied by blue "Norfolk Va. Jan. 23, 1862" cds on red and blue **11-Star Confederate Flag and verse patriotic** cover (Dietz F11-5) to Richmond, trivial opening flaws at left, still Fine and attractive, ex Judd, Everett.....(Photo) 1,250.00
- 562 ☒ **5c Green, Stone 1-2 (1).** Large to enormous margins all around, with sheet margin at B. & L. and part of adjacent stamp at T., tied by bold "Richmond Va. Feb. 1, 1862" cds on cover to Warrenton Va., Extremely Fine and choice cover(Photo) E. 200-300
- 563 ☒ **5c Olive Green, Stone A or B (1c).** Average single tied by indistinct cds dated Jan. 1862 on **Flag and Verse patriotic** to Coveseville, Va., in black on off-white, small stain at R. and minor toning, stamp with small piece out at L., still Fine.....(Photo) E. 150-200
- 564 ☒ **5c Light Blue, Blue (6, 7).** Three covers, incl. very fresh No. 6 horizontal pair on **turned cover** to S.C., inside with No. 11a, second with No. 7 vertical pair on **adversity cover** made from Dry Goods circular, file folds, third with No. 7 horizontal pair, roughly opened at L., first Very Fine, other two Fine E. 200-250
- 565 ☒ **10c Blue, Die A (11).** Full to huge margins with part of adjacent stamp at B., tied by army target cancel on **Captured Union Patriotic** with sentimental woodcut design, "The Girl I Left Behind Me" in black on off white, to Moffets Creek, Va., Very Fine, one of the finest known of these interesting "captured" usages, ex Walcott, Haas(Photo) E. 500-750
- 566 ★★ **CANADA, 1934, 3c Cartier, Imperforate (208a).** Mint N.H. horizontal pair, post-office fresh and Extremely Fine, Unitrade states 250 stamps known, Unitrade Can \$1,125(Photo) 425.00

COLLECTION BALANCES AND GROUPS

- 567 **Accumulation.** Stockbook loaded with better unused and used stamps, unused incl. Nos. 232 (plate no. block of eight), 573 (four), 1053 (three), C1, C2, C5 (three), C6, C18 (two), used incl. Columbian and Trans-Mississippi Issues to \$1.00, Pan-Americans complete (three), 1902 Issue to \$2.00, few faults, most Fine-Very Fine E. 1,500-2,000
- 568 **Fancy and Colored Cancels.** Over 900 stamps, nice variety of colors and shapes, incl. No. 65 (100+) incl. Pompey NY blue anchor (with PFC), majority are Bank Notes, 1c-90c (mostly 1c-10c), also incl. Bureau's to 90c, Columbians to 50c, Trans-Miss to 50c, condition mixed, most sound and Fine-Very Fine E. 1,500-2,000
- 569 **19th and 20th Century Collection.** 1851-1920, hundreds of unused and used stamps, commemoratives and definitives, mounted in a Scott Specialty album, many better incl. unused Nos. 20, 24, 35, 69, 71, 72, 76, 145-150, 152, 155, 188, 218, 228, Columbians to \$4.00, 1894's to 50c, 1895's to \$5.00, 1902's to \$2.00, 323-327, 400, Washington-Franklins with strength in coil singles, pairs and line pairs, few VAMP's, some used incl. Nos. 2, 22, 37, 72, 89, 191, 218, 313, plus a nice selection of Postage Dues, incl. No. J1-J5, J7, J18, J22-J28, J36, J44, and Confederates, condition mixed, most sound, Fine-Very Fine, 23 with P.F. certificates E. 8,000-10,000
- 570 **20th Century Collection.** Over 500 unused and used stamps, vast majority unused incl. Nos. 551-573, 581-591, 595, 630, 658-679, 692-701, 803-834, C1-C6, C18, E1 (no gum), E2 (two), E3 (two), E4-E8, E10, Q1-Q11, FA1 (two), used incl. Nos. C1-C6, mounted in a Scott Specialty album, Fine-Very Fine..... E. 2,000-2,500
- 571 **19th and 20th Century Duplicates.** Hundreds of unused stamps, mounted on Scott album pages, many better incl. Bank Notes to 10c, Columbians to 30c, Trans-Mississippi to 10c, Pan-Americans to 10c, Nos. 547, 621 (plate no. block), 834 (block of four), Air Posts incl. C10a complete booklet, Shanghai's, few earlier, also incl. few used, Fine-Very Fine, few with P.F. certificates E. 4,000-5,000

- 572 ☒ **3c Banknote Covers.** Two singles, each tied by "Denver Colo. Aug. 24 or 27" cds on two different advertising covers addressed to Fort Collins, Colo., first depicts **campaign banners and flags** with text on back, second depicts **steam engines** with picture on front, both covers slightly reduced at sides outside of designs, Very Fine E. 200-250
- 573 ☒ **Advertising Covers.** 1850's, three covers, first with all-over design for **Virginia Hotel in St. Louis**, second with design depicting **maps, books and prints**, forwarded, third with large Phrenology head on front and all-over text on back, last two with tears on back, otherwise Fine-Very Fine..... E. 200-300
- 574 ☒ **Bisects on Cover.** 1899-1925, eight covers incl. 4c Trans-Miss, 2c Bureau's (three), 1c Huguenot, 1c Franklin, 3c Lincoln, two also with postage dues, generally fresh and Very Fine E. 150-200
- 575 ☒ **Colored and Fancy Cancels on Cover.** 1850's-80's, 21 covers incl. No. 26 with blue grid, No. 65 with **"UNION" star within star** (two), three No. 65's and one No. 73 on cover with **Clover Leaf cancels to Germany**, No. 65 with **Weston Mass. "W"**, Banknotes incl. stars, grids, circles and crosses, also incl. No. 11 with green cancel, condition mixed, most sound and Fine E. 750-1,000
- 576 ☒ **Illustrated Covers.** 1850's -1929, fifteen covers incl. eleven advertising with few all-over, wide variety of topics incl. Books, Pianos, Physicians, Carnivals, plus one multicolor St. Louis Fair, one all-over flag Spanish-American War Patriotic, one all-over Peace Society cover, one first flight cover from San Juan to Pernambuco addressed to Br. Guiana franked by blocks of four of the 4c & 6c Nebraska Issue, few faults as usual, overall Very Fine and useful E. 500-600
- 577 ☒ **Cover Balance.** 19th-20th Century, approximately 60 items, incl. about 50 covers and ten post cards, mostly 19th century, better incl. two used Civil War Patriotics, No. 98 on cover to **France**, No. 116 (pair) on cover to **Saxony**, No. 327 on cover, No. C18 FDC, few advertising, few with letters, mixed condition, most Fine E. 500-700

END OF SALE — THANK YOU

Bid Form

Sale 809
April 26, 1999

1

Please provide the following information:

NAME.....
ADDRESS.....
CITY/STATE/ZIP.....
TEL. (DAY)..... FAX.....
E-MAIL.....

PADDLE #

Do not write in box

2

Have you purchased from us in the past 5 years? ☐ YES (if so, please go to Section 3)
☐ NO (please provide a trade reference and bank information)

References:

Stamp Firm:..... Telephone.....

Bank:..... Account #.....

3

In the space provided below, enter the **lot number** from **Sale 809** and your corresponding bid. Please use **whole dollar amounts** only and enter the **maximum bid** you wish to have us execute on your behalf, according to the bidding increments (on other side of this form). **Your bid will NOT include the 10% buyer's premium.** We will advance the bidding at one increment over the next

highest bid; therefore, you may be awarded the lot at less than your maximum bid. Please do not use "plus" bids or "buy" bids. If you wish to bid on one lot **or** the other, indicate your "or" bid between lot number/bid entries and bracket your choices. If you wish to place a **bidding limit** on the total amount of your bids, please enter your limit in the space marked "Limit Bids".

☐ **LIMIT BIDS:** Check this box if you wish to limit the total amount of your bids (not including the 10% buyer's premium) in this sale. Your bids will be executed until your bidding limit no longer allows for additional bids.

The total amount you wish to bid is: \$.....

Lot	Bid	Lot	Bid	Lot	Bid
	\$		\$		\$

4

AGREEMENT: By signing this bid form, you agree to pay for purchases resulting from your bids, in accordance with the **Conditions of Sale** printed in the sale catalogue. You also agree to pay the 10% buyer's premium and any shipping costs (see reverse), which will be added to your successful bids, and any sales tax or use tax which may be due

on the total invoiced amount. It is understood that these bids will be executed by Siegel Auction Galleries as a courtesy to absentee bidders, but that no legal responsibility shall lie with the auctioneer or the firm if these bids are not executed. **You are responsible for your written bids, including any errors on your part.**



SIGNED..... TODAY'S DATE.....

5

Please submit your bids promptly (telephone bids must be confirmed in writing).

Mail to: Robert A. Siegel Auction Galleries, Inc.
65 E. 55th Street, New York, N.Y. 10022
Telephone (212) 753-6421

OR FAX YOUR BIDS: (212) 753-6429

Shipping Instructions, Bidding Increments and space for additional bids on other side of form

Additional Bids

Sale 809—April 26, 1999

Lot	Bid	Lot	Bid	Lot	Bid
	\$		\$		\$

Shipping and Transit Insurance

We will be pleased to arrange for shipping and transit insurance for purchases in this sale (except those described as "floor sale only"). To expedite billing and delivery of lots to hundreds of buyers per sale, we use standard charges for postage and insurance, based on the invoiced total and mailing requirements (see schedule). The standard charges are sometimes slightly more or less than the actual postage, but we do not include any fees for our labor or packing costs. Therefore, we ask all buyers to remit the prescribed amount for shipping charges.

Transit insurance is provided in all cases, except when the buyer has furnished us with proof that insurance coverage is effective under another policy. Proof, in such cases, will be accepted in the form of a written certificate from the insurance carrier.

You are responsible for insurance charges, which will be added to your invoice. This coverage is provided for our mutual protection against theft or loss in transit.

Current Postage & Insurance Charges

Invoice Total	Shipping Method	Charges
Up to \$1,000	Certified Mail or Insured Priority	\$10.00
\$1,000-10,000	Fedex or Express Mail	\$16.00
\$10,000-25,000	Fedex or Express Mail	\$22.00
Over \$25,000	Fedex or Express Mail	\$22.00 plus insurance at \$1 per \$1,000 value over \$25,000
Foreign Destinations (any value)	Registered or Express mail	\$10.00 plus insurance at \$2 per \$1,000 value
Bulk Lots	UPS Preferred	By weight and value (min. \$25.00)

2/95

Bidding Increments

The auctioneer may regulate the bidding at his discretion. However, to assist absentee bidders in establishing their maximum bid for each lot, the increments shown at right will be used in most cases. We recommend that written bids conform to these increments (those which do not will be reduced to the next level).

Up to \$140	\$5	\$3,000-7,000	\$250
\$140-300	\$10	\$7,000-20,000	\$500
\$300-700	\$25	\$20,000-30,000	\$1,000
\$700-1,400	\$50	\$30,000-75,000	\$2,500
\$1,400-3,000	\$100	\$75,000 up	\$5,000

SERVICES FOR BUYERS

If you wish to participate in our auctions, we will be pleased to assist you in many ways. Most of the following services are provided without additional charge.

Mail Viewing

Subject to availability, many lots can be sent to established clients (or those who submit references) for examination. Requests must be made no later than five days prior to the auction. Lots must be returned on the day of receipt. Postage/insurance costs will be invoiced. Large lots will not be available for mail viewing.

Viewing by Appointment

In addition to the regular public viewing hours, prospective bidders may view lots at our galleries by appointment.

Lot Review

Our on-staff philatelists will be pleased to review the description of any lot and provide more detailed information.

Opening Bids

During the two days prior to the sale, we will furnish approximate opening bids by phone or fax. Openings often change (up or down) and cannot be guaranteed as a reliable indicator of where the auctioneer will start the bidding. Opening bids will not be given on sale days.

Hotel and Restaurant Reservations

We will be pleased to furnish the names of good hotels and restaurants in the area. During peak seasons, we may be able to assist in placing reservations.

Absentee Bidding by Phone or Fax

Bidders who cannot attend the sale may leave written bidding instructions (see Bid Form). Bids called in must be confirmed in writing by fax or mail.

Telephone Bidding

Prospective bidders may apply for a telephone link to the auction and bid through one of our staff members. Applicants must call at least 24 hours prior to the sale date. Phone links are subject to availability and may be cancelled due to oversubscription.

Expert Certification

Individual items offered without a Philatelic Foundation certificate (or other accepted authority's certificate) dated within the past five years may be purchased subject to certification (please see Conditions of Sale for details).

Shipping and Delivery of Lots

Instructions for shipping must be given to the gallery prior to or immediately after the sale. Unless special instructions are received, we will follow the shipping guidelines on the back of the Bid Form. Buyers are responsible for all prescribed shipping charges, whether or not the actual out-of-pocket expense is equal to the invoiced charge.

Prices Realized

A list of prices realized will be included with every buyer's invoice. We will accept phone and fax requests for prices realized at any time during or after the auction. For those who qualify, our *ASAP Prices Realized* service will provide faxed daily results during the evening of the sale day (application available upon request). Printed prices realized lists are mailed to all others within 30 to 60 days of the sale.

SERVICES FOR SELLERS

If you wish to sell stamps, we will be pleased to provide the following standard services and options. Specially tailored proposals will be made for significant items and collections.

Appraisals

Verbal appraisals of material brought to our galleries are free of charge. Written appraisals for estate tax, insurance or other purposes are billed at hourly (\$50) or daily (\$500) rates. Fees will be rebated if the property is consigned within a certain period of time.

On-Site Sale Consultation

If your consignment is worth \$75,000 or more, we will travel to you at our expense.

Consignment Deadlines

Closing dates for consignment can always be found in our quarterly newsletter, *The Siegel Despatch*, and in our web site:

<http://SiegelAuctions.com/home.htm>.

Sale Settlement

42 days from the sale date, consignor proceeds are mailed. Since 1930 our firm has never missed settlement day.

Commission Rates

10% seller's commission and 10% buyer's premium. Minimum seller's commission is \$25 per lot. Special terms for more valuable properties may be discussed.

The Siegel Guarantee

Major collections can be offered at auction with a guaranteed minimum net realization. Estate executors who must protect beneficiaries' interests will be fully insured against a market downturn by the Siegel Guarantee.

Advances

Advances up to 50% of our valuation are available to consignors under certain terms.

Negotiated Sale for Immediate Payment

If you wish to sell your stamps for a specific price, we will be pleased to make an offer on behalf of ourselves or other clients.

Single-Owner Sales

Collections with a fair market value of \$300,000 or more may qualify for a special single-owner sale catalogue. The Siegel firm leads the way in offering major name sales, including over the years the Krug, Newbury, Lilly, Matthies, Weatherly, Grunin, Rohloff, Baker, Haas, Kimmel, Wunderlich, Cole, Kapiloff, Honolulu Advertiser, Morris, Rose and Birkinbine collections.

Annual Rarities of the World Sale

Suitable individual rarities will be accepted for our annual Rarities of the World auction. The consignment deadline for this auction is generally in early March.

A stylized, cursive signature of Robert A. Siegel in black ink.

AUCTION GALLERIES, INC.

PRICES REALIZED FOR SALE 809---4/26/99
The Duane Hillmer Collection of United States Stamps

Robert A. Siegel Auction Galleries, Inc.
60 East 56th Street, 4th Floor, New York, NY 10022
Tel (212) 753-6421 Fax (212) 753-6429

Lot#	Realized	Lot#	Realized	Lot#	Realized	Lot#	Realized	Lot#	Realized	Lot#	Realized	Lot#	Realized	Lot#	Realized
1	3,750	44	3,750	92	625	136	750	180	325	227	650	273	1,200	319	550
2	500	45	3,250	93	700	137	600	181	1,700	228	475	274	450	321	425
3	100	46	6,250	94	500	138	525	183	575	229	240	275	1,200	322	210
4	300	47	500	95	475	140	700	184	500	230	240	276	525	323	280
5	575	48	250	96	425	141	900	185	375	231	270	277	2,000	325	325
6	650	49	1,500	97	375	142	475	186	2,300	232	350	278	300	327	250
7	800	50	750	99	400	143	1,350	187	600	233	105	279	475	328	375
8	13,000	51	2,800	100	650	144	750	188	450	234	220	280	240	329	850
9	1,800	52	1,250	101	325	145	260	189	525	235	230	281	210	330	260
10	1,100	53	3,500	102	450	146	2,800	190	600	236	1,150	282	450	331	500
11	2,000	54	325	103	1,800	147	525	191	250	237	95	283	525	332	575
12	1,200	55	475	104	450	148	800	192	400	238	90	284	2,300	333	675
13	260	56	600	105	800	149	525	193	750	239	210	285	1,900	334	160
14	525	58	1,500	106	1,050	150	140	194	325	241	450	286	900	335	850
15	32,500	59	2,900	107	325	151	120	195	800	242	270	287	700	336	325
16	1,300	60	325	108	210	152	1,500	197	1,800	243	300	288	1,600	337	1,250
17	1,100	61	270	109	800	153	800	198	900	244	270	289	1,700	338	600
18	1,150	63	1,050	110	1,000	154	1,350	199	400	245	475	290	2,500	339	425
19	3,750	64	250	111	4,500	155	525	200	160	246	400	291	1,700	340	475
20	2,000	65	425	112	1,100	156	575	201	230	247	260	292	650	341	3,500
21	600	66	300	113	270	157	2,600	202	260	248	100	293	2,300	342	575
22	625	67	600	114	365	158	525	203	1,250	249	575	294	900	343	1,200
23	525	68	3,250	115	2,000	159	3,750	204	750	250	625	295	2,500	344	375
24	1,200	69	400	116	5,125	160	1,000	205	400	251	325	296	1,500	345	280
25	850	70	3,500	117	600	161	1,300	206	300	252	170	297	850	346	325
26	850	71	500	118	1,700	162	3,875	207	550	253	1,100	298	1,000	347	475
27	4,000	72	300	119	5,000	163	750	208	230	254	1,800	299	475	348	950
28	1,900	73	775	120	260	164	800	209	270	255	1,150	300	325	349	2,700
29	1,400	74	250	121	525	165	3,500	210	190	256	950	301	240	350	600
30	1,700	75	280	122	4,750	166	1,250	211	1,050	257	375	302	230	351	290
31	3,000	76	1,800	123	3,750	167	1,300	212	475	258	350	303	325	352	650
32	375	77	1,050	124	400	168	3,250	213	140	260	2,500	304	325	353	8,000
33	200	78	2,400	125	575	169	1,600	214	100	261	2,400	305	525	354	2,800
34	280	81	700	126	290	170	9,000	215	160	262	2,400	306	160	355	800
35	525	82	900	127	1,900	171	2,600	216	350	263	750	307	650	356	2,200
36	675	83	900	128	325	172	1,300	217	375	264	425	309	650	357	17,000
37	475	84	700	129	550	173	425	218	500	265	1,600	311	650	359	200
38	625	85	1,600	130	1,200	174	1,900	219	210	266	2,500	313	950	360	300
39	525	86	700	131	2,600	175	350	220	325	268	1,800	314	625	361	1,250
40	500	87	400	132	2,300	176	750	222	105	269	575	315	625	362	3,875
41	350	88	1,700	133	7,250	177	2,000	223	375	270	900	316	1,500	363	2,000
42	230	90	2,600	134	3,500	178	750	225	250	271	1,800	317	475	364	190
43	375	91	1,350	135	600	179	475	226	750	272	1,900	318	270	365	350

PRICES REALIZED FOR SALE 809---4/26/99
The Duane Hillmer Collection of United States Stamps

Robert A. Siegel Auction Galleries, Inc.
60 East 56th Street, 4th Floor, New York, NY 10022
Tel (212) 753-6421 Fax (212) 753-6429

Lot#	Realized	Lot#	Realized	Lot#	Realized	Lot#	Realized	Lot#	Realized
366	325	409	325	454	250	500	1,800	544	2,500
367	400	410	350	455	2,200	501	100	545	300
368	280	411	250	456	1,100	502	150	546	450
369	210	412	125	457	600	503	160	547	525
370	230	413	220	458	220	504	400	548	350
371	75	414	350	459	220	505	475	549	650
372	180	415	240	460	8,000	506	60	550	450
373	550	416	1,400	461	210	507	65	551	425
374	160	417	4,000	462	650	508	550	552	1,250
375	350	418	210	463	1,000	509	280	553	1,100
376	400	419	55	465	210	510	2,400	554	2,000
377	375	420	400	466	350	511	6,000	555	1,500
378	270	421	290	467	300	512	220	556	2,000
379	375	422	375	468	450	513	950	557	850
380	220	423	325	469	425	514	750	558	325
381	170	424	260	471	100	515	190	559	150
382	210	425	1,100	472	260	516	1,300	560	300
383	2,000	426	450	473	375	517	2,000	561	900
384	375	427	1,150	474	240	518	1,350	562	170
385	2,000	428	800	475	650	519	3,000	563	170
386	375	429	700	476	1,200	520	550	564	150
387	220	430	900	477	400	521	700	565	400
388	260	431	350	478	130	522	850	566	325
389	550	432	675	479	550	523	450	567	2,000
390	200	434	1,250	480	170	524	450	568	3,750
391	1,400	435	230	481	210	526	100	569	27,000
392	800	436	5,000	482	70	527	200	570	3,250
393	600	437	850	483	900	528	400	571	6,750
394	500	438	350	484	125	529	650	572	105
395	625	439	550	485	1,100	530	140	573	60
396	625	440	750	487	160	531	2,300	574	270
397	525	441	1,900	488	500	532	625	575	625
398	500	442	135	489	170	533	170	576	350
399	130	443	180	490	200	534	2,700	577	525
400	290	444	900	491	350	535	450		
401	500	445	425	492	230	536	4,750		
402	240	446	675	493	290	537	800		
403	300	447	500	494	350	538	450		
404	280	448	375	495	125	539	1,500		
405	4,250	450	475	496	1,600	540	350		
406	350	451	700	497	1,025	541	325		
407	200	452	350	498	3,500	542	425		
408	180	453	130	499	4,000	543	230		