

Sale 812

Friday Evening, June 25, 1999

THE LEWIS F. GOLIN COLLECTION OF
OUTSTANDING UNITED STATES STAMPS



Robert A. Siegel

AUCTION GALLERIES, INC.

PARK AVENUE TOWER, 17th FLOOR, 65 EAST 55th STREET, NEW YORK, N.Y. 10022

Phone (212) 753-6421 Fax (212) 753-6429 E-mail: stamps@siegelauctions.com

Internet: SiegelAuctions.com

Robert A. Siegel

AUCTION GALLERIES, INC.

America's premier stamp auctioneer since 1930

PARK AVENUE TOWER, 17th FLOOR, 65 EAST 55th STREET, NEW YORK, N.Y. 10022

Phone (212) 753-6421 Fax (212) 753-6429 E-mail: stamps@siegelauctions.com

Internet: SiegelAuctions.com

Scott R. Trepel

President

John Zuckerman

Vice President

Elizabeth C. Pope

Vice President

Accounts

Cindy Stein

cstein@siegelauctions.com

Sale Administration

Carlene Conlon

cconlon@siegelauctions.com

Descriptions

Scott R. Trepel

strepel@siegelauctions.com

Andrew Kupersmit

akupersmit@siegelauctions.com

John Zuckerman

jzuckerman@siegelauctions.com

Principal Auctioneer

Scott R. Trepel

N.Y.C. Auctioneer's License No. 795952

Robert A. Siegel

1913-1993

AREA HOTELS

The Hotel Elysee

60 E. 54th St. • 800-535-9733

Omni Berkshire

21 E. 52nd St. • 800-843-6664

The Plaza Hotel

Fifth Ave. & 59th St. • 800-228-3000

The Four Seasons

57 E. 57th St. • 800-332-3442

INTERNET

For on-line catalogue,
sale updates and information,
please visit our website:

SiegelAuctions.com

Bids may be sent by e-mail, using the
Top-Speed On-Line Bidding

form available in our website.

E-mail: bids@siegelauctions.com

PHONE & FAX

Phone 212-753-6421

Inquiries and bidding

Fax 212-753-6429

24-hour fax line

Toll-free 800-882-8853
for catalogue orders only

Messages and faxes only



1857 10c Green, Ty. IV (Sc. 34)
Mint Never Hinged (lot 34)

The Lewis F. Golin Collection of Outstanding United States Stamps

Offered at unreserved public auction

Friday Evening, June 25th
at 6:30 p.m. (Lots 1-342)

Refreshments will be served during the intermission

Pre-Sale Exhibition

Thursday, June 24 10:30 a.m. - 4:00 p.m.
Friday, June 25 10:30 a.m. - 5:00 p.m.

To arrange an appointment for viewing at another time,
please feel welcome to call (212) 753-6421.

Arrangement of Sale

Category	Pages
<i>Evening Session</i>	
Friday, June 25, at 6:30 p.m.	
Provisionals, 1847 Issue.....	5-6
1851-56 Issue	6-9
1857-60 Issue and Reprints	10-19
1861-66 Issue	20-22
Encased Postage.....	23-27
1867-68 Grilled Issue	28-34
1861-66 Re-Issue	35-38
1869 Pictorial and Re-Issue.....	38-42
1870-75 Bank Note Issues.....	43-49
1875 Continental Special Printing ..	50-54
1879 Bank Note Issue	55-56
1880-84 American Special Printing.	57-62
1882-88 Bank Note Issue	63
1890-93 and Columbian Issues	64-65
1894-95 Bureau Issue.....	66
Trans-Mississippi Issue	67
Pan-American Inverts.....	68-69
1902-08 Issues.....	70-72
Washington-Franklin Issues.....	73-80
1923 Rotary Perf 11 Issue	81
Vending/Affixing Machine Perfs.....	82-83
Modern Errors.....	84-85
Air Post.....	86
Special Delivery, Postage Due	87-92
Back-of-Book, Postal Stationery	93
Group Lots.....	93-94

On The Cover

1851 1c Blue, Ty. IIIa (Sc. 8A), with
imprint and original gum (lot 9)

Conditions of Sale

The property described in this catalogue will be offered at public auction by Robert A. Siegel Auction Galleries, Inc. ("Galleries") on behalf of various consignors and itself or affiliated companies. By bidding on any lot, whether directly or by or through an agent, in person, or by telephone, facsimile or any other means, the bidder acknowledges and agrees to all of the following Conditions of Sale.

1. The highest bidder acknowledged by the auctioneer shall be the buyer. The term "final bid" means the last bid acknowledged by the auctioneer, which is normally the highest bid offered. **The purchase price payable by the buyer will be the sum of the final bid and a commission of 10% of the final bid ("buyer's premium"), together with any sales tax or use tax which may be due on the sale.**

2. The auctioneer has the right to reject any bid, to advance the bidding at his discretion and, in the event of a dispute between bidders, to determine the successful bidder, to continue the bidding or to reoffer and resell the lot in dispute. The Galleries' record of the final sale shall be conclusive.

3. All bids are per numbered lot in the catalogue unless otherwise announced by the auctioneer at the time of sale. The right is reserved to group two or more lots, to withdraw any lot or lots from the sale, or to act on behalf of the seller. The Galleries will execute bidding instructions on behalf of clients, but will not be responsible for any errors in the execution of such bids.

4. **Lots with numbers followed by the symbol ° are offered subject to a confidential minimum final bid ("reserve"), below which the lot will not be sold. The absence of the symbol ° means that the lot is offered without a reserve.** In the absence of a reserve, the auctioneer has sole discretion to establish a minimum opening bid and may refuse an offer of less than half of the published estimate. Any lot that does not reach its reserve or opening bid requested by the auctioneer will be announced as "passed" and excluded from the prices realized lists after the sale. The Galleries may have a direct or indirect ownership interest in any or all lots in the sale resulting from an advance of monies or goods-in-trade or a guarantee of minimum net proceeds made by the Galleries to the seller.

5. Any lot, the description of which is obviously incorrect, is returnable, but only if the lot is returned within 14 days of receipt. All disputed lots must be returned intact with the original packing material. **The following lots may not be returned for any reason: Lots containing ten or more items; lots from buyers who have registered for the pre-sale exhibition or received lots by postal viewing, thereby having had the opportunity to inspect them before the sale; any lot described with "faults" or "defects" may not be returned because of any fault or defect. No illustrated lots may be returned because of centering, margins or other factors shown in the illustrations.**

6. Successful bidders, unless they have established credit with the Galleries prior to the sale, must make payment in full before the lots will be delivered. Buyers not known to the Galleries must make payment in full within three days from the date of sale. **The Galleries retain the right to demand a cash deposit from anyone prior to bidder registration and/or to demand payment at the time the lot is knocked down to the highest bidder, for any reason whatsoever.** In the event that any buyer refuses or fails to make payment in cash for any lot at the time it is knocked down to him, the auctioneer reserves the right to reoffer the lot immediately for sale to the highest bidder.

7. If the purchase price has not been paid within the time limit specified above, nor lots taken up within seven days from the date of sale, the lots will be resold by whatever means deemed

appropriate by the Galleries, and any loss incurred from resale will be charged to the defaulting buyer. Any account more than thirty days in arrears will be subject to a late payment charge of 1½% per month as long as the account remains in arrears. Any expenses incurred in securing payment from delinquent accounts will be charged to the defaulter. A fee of \$250.00 per check will be charged for each check returned for insufficient funds.

8. All lots are sold as genuine. **Any lot which is accompanied by an expert certificate (for U.S. items, the accepted authority is The Philatelic Foundation), dated within the past five years of the sale date, is sold "as is" and in accordance with the description on the certificate. Such lots may not be returned for any reason, including but not limited to a contrary certificate of opinion obtained after the sale.** Buyers who wish to obtain a certificate for any item that is not accompanied by a certificate dated within the past five years may do so, provided that the following conditions are met: (1) the purchase price must be paid in full, (2) the item must be submitted to an acceptable expertizing committee with a properly executed application form within 21 days of the sale, (3) a copy of the application form must be given to the Galleries, (4) in the event that an adverse opinion is received, the Galleries retain the right to resubmit the item on the buyer's behalf for reconsideration, without time limit or other restrictions, (5) unless written notification to the contrary is received, items submitted for certification will be considered cleared 90 days from the date of sale, and (6) in the event any item is determined to be "not as described", the buyer will be refunded the purchase price and the certification fee up to \$100.00 unless otherwise agreed.

9. Until paid for in full, all lots remain the property of the Galleries on behalf of the seller.

10. Agents executing bids on behalf of clients will be held responsible for all purchases made on behalf of clients unless otherwise arranged prior to the sale.

11. The buyer assumes all risk for delivery of purchased lots and agrees to pay for prescribed shipping costs (see back of Bid Form).

12. The bidder consents that any action or proceeding against it may be commenced and maintained in any court within the State of New York or in the United States District Court for the Southern District of New York, that the courts of the State of New York and United States District Court for the Southern District of New York shall have jurisdiction with respect to the subject matter hereof and the person of the bidder. The bidder agrees not to assert any defense to any action or proceeding initiated by Galleries based upon improper venue or inconvenient forum. The bidder agrees that any action brought by the bidder shall be commenced and maintained only in a Federal Court in the United States District Court for the Southern District of New York or the State Court in the county in which Galleries has its principal place of business in New York. These Terms and Conditions shall be governed by and construed in accordance with the substantive laws of the State of New York.

SCOTT R. TREPEL, Principal Auctioneer

Auctioneer's License No. 795952
N.Y.C. Department of Consumer Affairs
80 Lafayette Street, New York, N.Y. 10013
Telephone (212) 577-0111

Revised 2/98

Copyright Notice: This catalogue is protected by copyright. The descriptions, format, illustrations and information used herein may not be reprinted, distributed or copied in any form without the express written consent of Robert A. Siegel Auction Galleries. Application for permission may be made in writing.

© 1999, Robert A. Siegel Auction Galleries, Inc.

Grading Terms, Abbreviations and Values Used in Descriptions

Centering and Gum

Margin width, centering and gum are graded according to Scott Catalogue standards.







Extremely Fine (EF): Exceptionally large margins or near perfect centering. The term "Gem" describes condition that is the finest possible for the issue.

Very Fine (VF): Normal size margins for the issue and well-centered with the design a bit closer to one side.

Fine (F): Smaller than usual margins or noticeably off center. Pre-1890 issues may have the design touched in places.

Very Good (VG): Attractive appearance, but margins or perforations cut into the design.

Good (G) or Average (Ave.): Cut into or perfs far into design and usually with slight faults. This condition is generally acceptable for rarities, scarce multiples or stamps used on unusual covers.

Gum Categories:	MINT N.H.	ORIGINAL GUM (O.G.)				NO GUM
	 Mint Never Hinged <i>Free from any disturbance</i>	 Lightly Hinged <i>Faint impression of a removed hinge over a small area</i>	 Hinge Mark or Remnant <i>Prominent hinged spot with part or all of the hinge remaining</i>	 Part o.g. <i>Approximately half or more of the gum intact</i>	 Small part o.g. <i>Approximately less than half of the gum intact</i>	 No gum <i>Only if issued with gum</i>
Catalogue Symbol:	★★	★	★	★	★	(★)
PRE-1890 ISSUES	<i>Pre-1890 stamps in these categories trade at a premium over Scott value</i>			Scott Value for "O.G."		Scott "No Gum" Values thru No. 218
1890-1935 ISSUES	Scott "Never Hinged" Values for Nos. 219-771	Scott Value for "O.G." (Actual value will be affected by the degree of hinging)		Disturbed Original Gum: Gum showing noticeable effects of humidity, climate or hinging over more than half of the gum. The significance of gum disturbance in valuing a stamp in any of the Original Gum categories depends on the degree of disturbance, the rarity and normal gum condition of the issue and other variables affecting quality. For example, stamps issued in tropical climates are expected to have some		
1935 TO DATE	Scott Value for "Unused"					

Covers

Minor nicks, short edge tears, flap tears and slight reduction at one side are normal conditions for 19th century envelopes. Folded letters should be expected to have at least one file fold. Light cleaning of covers and small mends along the edges are accepted forms of conservation. Unusual covers may have a common stamp with a slight crease or tiny tear. **These flaws exist in virtually all 19th century covers and are not always described. They are not grounds for return.**

Catalogue Values and Estimates

Unless otherwise noted, the currently available *Scott Catalogue* values are quoted in dollars with a decimal point. Other catalogues are often used for foreign countries or specialized areas and are referred to by their common name: *Stanley Gibbons* (SG), *Dietz*, *American Air Mail Catalogue* (AAMC), *Michel*, *Zumstein*, *Facit*, etc. Estimates are indicated with an "E." and reflect our conservative valuation in dollars. Reserves will never exceed the low end of the estimate range; they will sometimes exceed Scott Catalogue value for stamps in Extremely Fine condition.

Because of certain pricing inconsistencies in the Scott Catalogue—for example, blocks that have no gum, the absence of premiums for Mint N.H. items, etc.—we cannot guarantee the accuracy of values quoted for multiples, specialized items and collection lots. We generally try to be conservative, but buyers may not return a lot because of a discrepancy in catalogue value due to Scott pricing inconsistencies.

Symbols and Abbreviations (see chart for gum symbols)

⊞	Block	E	Essay	pmk.	Postmark	No.	Scott Catalogue Number
⊞	Cover	P	Proof	cds	Circular Datestamp	hs	Handstamp
FC	Fancy Cancel	TC	Trial Color Proof	var.	Variety	ms.	Manuscript

INTRODUCTION

THERE IS SOMETHING I CALL THE "FREQUENCY OF ACQUISITION RATE", and it has served me well as an accurate indicator of a collector's readiness to sell. When the rate declines by a significant percentage, the collector begins to feel he has achieved his goal, or he has gone about as far as his means and inclination will take him.

After the Zoellner and Argentum sales, I called Lewis Golin, whom I have known for about ten years, and told him about my Frequency of Acquisition theory. I finished by noting that his rate had shown a significant drop in the last couple of years, and I wondered (as auctioneers do) if he might be turning into a seller, rather than a buyer. Yes, he answered, the time had come.

Selling his stamps does not come easy to Lewis Golin. He loves to tell the story of his introduction to stamps as a boy at the birthday party of another kid in the neighborhood. He took home a party bag, which included a stamp-collecting kit. When he was done putting all the stamps in the spaces, he told his father that there were still empty spaces. Off they went to the local stamp shop, and Lewis began his quest for stamps.

Later in life, when his means caught up with his inclination, Lewis made a serious and nearly successful attempt to complete a United States stamp collection. It was in 1989, 1990 and 1991 that Lewis could be found at most major stamp auctions and shows, bidding for and buying the "tough numbers" in choice unused or original-gum condition. These years were a great time to collect, and Lewis was having fun chasing the stamps he coveted most.

Anyone who has talked at length with Lewis knows of his uncanny ability to remember the appearance, condition and pedigree of stamp rarities. Lewis has committed to memory the collections of Caspary, West, Lilly, Seymour, Ambassador, Klein and many more auctions, and he is acutely aware of what others owned, did not own and how stamps in the marketplace compare against past offerings. Such a mind is unnerving to a professional who likes to think he knows more than his clients.

The collection Lewis is offering is unusually complete, but more remarkable is the quality of so many rarities. Among the 1851-57 Issues is the superb Mint Never-Hinged 1857 10c Type IV (Scott 34)—one of the rarest of all United States stamps in unused or original-gum condition, and probably the rarest of all 19th century stamps that exist in Mint Never-Hinged condition. The 1867-68 Grilled Issues include a number of choice rarities, highlighted by the 90c F Grill (Scott 101). The 1875 and 1880-84 Bank Note Special Printings are a wonderful group. Among the 20th century highlights is a set of Pan-American Inverts and the 1923 1c Rotary Perf 11 (Scott 594) with original gum. In back-of-book issues, Lewis managed to acquire what is believed to be the finest Buffalo Balloon tête-bêche pair (Scott CL1) and a splendid group of Postage Due stamps, including Scott J29, the 1c Vermilion, in Mint Never-Hinged condition.

Collectors should also pay special attention to one of the finest offerings of Civil War Encased Postage to be made in many years.

This brief review cannot adequately describe the collection, but our full-color presentation will convey the quality and beauty of Lewis Golin's stamps.

We wish our clients success in maintaining their own satisfying Frequency of Acquisition rate.

—SCOTT R. TREPEL

FRIDAY EVENING, JUNE 25, 1999, AT 6:30 P.M.

THE LEWIS F. GOLIN COLLECTION OF OUTSTANDING UNITED STATES STAMPS

POSTMASTER PROVISIONALS



1



2

- 1 (★) **Providence R.I., 5c Gray Black (10X1).** Unused (no gum), large margins including top sheet margin, fresh and Extremely Fine..... 425.00
- 2 ★ **Providence R.I., 5c & 10c Gray Black, Se-Tenant (10X1, 10X2).** Unused (no gum), horizontal pair with top right corner sheet margin, large margins on other sides, faint creases, Extremely Fine appearance, with 1956 P.F. certificate..... 2,250.00

1847 ISSUE



3

- 3 ★ **5c Red Brown (1).** Full original gum, barest trace of hinge, large margins at left and bottom, others ample, rich color on bright bluish paper
VERY FINE. AN UNUSUALLY FRESH ORIGINAL-GUM EXAMPLE OF THE 5-CENT 1847 ISSUE.
VERY SCARCE IN THIS CONDITION.
Ex "Angel" Collection. With 1976 P.F. certificate..... 5,000.00



5



4

- 4 ☒ **5c Red Brown (1).** Ample margins to huge at bottom, red square grid cancel, matching "New-York Aug. 5" circular datestamp on cover to West Cambridge Mass., **publisher's blue shield-shaped return card** on backflap, Very Fine 650.00
- 5 ★ **5c Red Brown, 10c Black Reproductions (3, 4).** Without gum as issued, ample to full margins, 10c faintly creased, otherwise Fine-Very Fine 1,950.00

1851-56 ISSUE



6



7



8

- 6 **1c Blue, Ty. Ib (5A).** Position 6R1E — one of the two most desirable positions of Type Ib — appears uncanceled with few specks of blue cancel at lower right, cut into at top and bottom, but sound and very rare, signed and plated by Ashbrook, with copy of 1989 P.F. certificate for strip containing this stamp 7,500.00
- 7 ★ **1c Blue, Ty. Ia (6).** Position 85L4, part original gum, margins mostly clear of design, bottom margin shows complete Type Ia characteristics, rich color and fine Plate 4 impression, creased and thinned
FINE APPEARANCE. AN EXTREMELY RARE ORIGINAL-GUM EXAMPLE OF THE TYPE IA.
With 1990 P.F. certificate 30,000.00
- 8 ★ **1c Blue, Ty. II (7).** Original gum, full to large margins, rich color, fresh and Very Fine .
..... 950.00



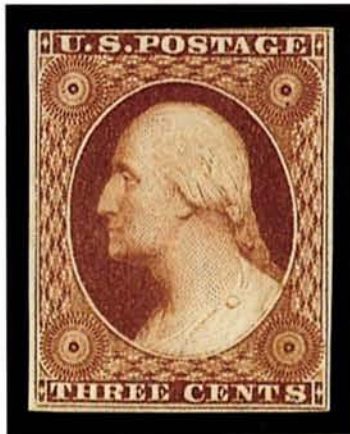
9

- 9 ★ **1c Blue, Ty. IIIa (8A).** Position 41L14 (very wide break in line at top), left sheet margin with **part imprint** “(Toppan, Carp)enter, Casilear & Co. BANK NOTE (ENGRAVERS)” and large margins all around, original gum, beautiful intense dark shade and impression, bright paper and very fresh

EXTREMELY FINE GEM. A REMARKABLE AND SUPERB TYPE IIIA. PROBABLY UNIQUE AS A PLATE 4 IMPERFORATE STAMP WITH IMPRINT AND ORIGINAL GUM.

The Neinken book states “Stamps from Plate 4 showing part of the imprint are very rare. Ashbrook states that he had never seen an imperforate vertical pair with the imprint. . .” (p. 277).

Ex Ishikawa 1c 1851-57 Issue collection. With 1980 P.F. certificate..... 4,000.00



10

- 10 ★ **3c Orange Brown (10).** Small part original gum, margins clear to slightly in, rich color, fine impression, Fine, very scarce 1,500.00

- 11 ★ **5c Red Brown (12).** Original gum, huge margins including part of adjoining stamp at right, rich color, accompanying 1992 P.F. certificate notes "small corner crease and lightly stained at bottom right", but the 1989 P.S.E. certificate states "genuine unused, o.g." — in fact, there was a faint gum stain when this stamp was offered in the 1976 Grunin sale, but it was subsequently lightened and no longer affects appearance (we do not see the corner crease noted by P.F., nor was this mentioned in the 1976 sale catalogue)

EXTREMELY FINE. ONE OF THE FINEST OF THE FEW 5-CENT 1856 STAMPS WITH ORIGINAL GUM. A KEY CLASSIC UNITED STATES RARITY.

Ex Grunin. With 1989 P.S.E. and 1992 P.F. certificates 16,000.00



11



12

- 12 ★ **10c Green, Ty. I (13).** Full original gum, three enormous margins including part of bottom sheet margin, full at top, marvelous dark shade and intense impression on bright paper

EXTREMELY FINE GEM. ONE OF THE CHOICEST EXAMPLES OF THE 10-CENT TYPE, WHICH WAS FURNISHED BY THE BOTTOM ROW OF THE PLATE. VERY FEW ORIGINAL-GUM TYPE I STAMPS EXIST, AND THIS IS CERTAINLY AMONG THE FINEST IN TERMS OF COLOR, IMPRESSION AND MARGINS.

With 1985 P.F. certificate 13,000.00



13



14

- 13 ★ **10c Green, Ty. II (14).** Original gum, full to large margins all around, remarkably intense color and impression from an early printing

EXTREMELY FINE AND FRESH. A BEAUTIFUL AND SCARCE ORIGINAL-GUM EXAMPLE OF THE CLASSIC 10-CENT 1855 ISSUE.

With 1989 P.F. certificate..... 3,100.00

- 14 (★) **10c Green, Ty. III (15).** Unused (no gum), ample to large margins, fresh and Very Fine, with 1991 P.S.E. certificate..... 1,750.00

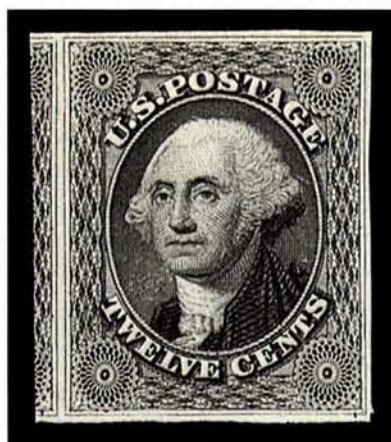
- 15 ★ **10c Green, Ty. IV (16).** Position 74L1 recut at top, large to huge margins, certificate states "part o.g." but original gum covers entire back, faint offset and adherence from a 1c Express revenue stamp, lightly and evenly toned, invisible corner crease at upper right shows only in fluid

EXTREMELY FINE APPEARANCE. THE 1855 10-CENT TYPE IV WITH ORIGINAL GUM IS ONE OF THE RAREST OF ALL CLASSIC UNITED STATES STAMPS. A LARGE-MARGINED AND VERY ATTRACTIVE EXAMPLE.

With 1992 P.F. certificate..... 21,000.00



15



16

- 16 (★) **12c Black (17).** Unused (no gum), large to huge margins including part of adjoining stamp at left, fine impression on brilliant white paper

EXTREMELY FINE GEM. REMARKABLY WIDE MARGINS FOR THIS ISSUE, WHICH WAS PRINTED FROM A PLATE THAT PROVIDED LITTLE SPACE BETWEEN STAMPS.

Ex "Angel". With 1987 P.F. certificate..... 2,400.00



17

1857-60 ISSUE

- 17 ★ **1c Blue, Ty. I (18).** Position 65R12, original gum, lightly hinged, deep shade and attractive mottled impression, unusually well-centered, Extremely Fine, with 1991 P.F. certificate 1,400.00



18

- 18 **1c Blue, Ty. Ia (19).** Plate 4 (possibly Position 92R), 26.5 mm space between top and bottom perforations, perfectly centered, rich color, cancelled by **blue** Tennessee cds
EXTREMELY FINE GEM. AN OUTSTANDING EXAMPLE OF THE RARE TYPE IA PERFORATED STAMP. VERY FEW EXIST WITH SUCH WIDE MARGINS.

Type Ia stamps were produced from 18 of the 20 bottom-row positions on Plate 4. After perforations were introduced in mid-1857, sheets on hand printed from Plates 1 Late and 2 were fed through the new perforating machine, but the narrow spaces between stamps made perforating difficult to accomplish without cutting into the designs. Plate 4 was produced in early 1857 when the introduction of perforations was anticipated; thus, it was entered from a new six-relief transfer roll, and the spaces between stamps were enlarged to allow for perforations.

Plate 4's most distinctive feature is that the top row (Pos. 1-10L and 1-10R) was entered with the designs complete at top (Type II) and the bottom row (Pos. 91-100L and 91-100R) was entered with designs complete or nearly complete at bottom (Types Ia and Ic). Although the plate layout provided sufficient space for perforations, the height of the top-row and bottom-row designs was larger than others in the sheet, which resulted in perforations cutting into either the top or bottom rows, depending on which direction the sheet was fed into the perforator. Type Ia and Ic stamps from the bottom row are almost always cut into at bottom, an unfortunate situation for collectors because the bottom part of the design is what makes Type Ia and Ic stamps desirable.

The exceptions to the normal cut-into condition of top-row and bottom-row Plate 4 stamps are those with perforations clear of the design, ranging in width from 26.5 mm to nearly 30 mm (the wide-spaced variety). Ashbrook states: "I consider perforated Type Ia stamps that are not touched by perforations as the rarest stamps in the 1857 perforated issue." (Neinken book, p. 279). The Scott Catalogue contains a footnote to the basic price quotes: "Copies of this stamp exist with perforations not touching the design at any point. Such copies command very high prices."

With 1997 P.F. certificate..... 4,000.00



19

- 19 ★ **1c Blue, Ty. II (20).** Position 11L12, full original gum, lightly hinged, perfectly centered with wide margins all around, rich color

EXTREMELY FINE GEM. AN EXTRAORDINARY 1857 1-CENT STAMP WITH IMMENSE MARGIN WIDTH RARELY FOUND AMONG EXAMPLES FROM THE PERFORATED ISSUE. SUPERB IN EVERY RESPECT.

With 1990 P.F. certificate for pair from which this stamp comes 850.00



20

- 20 ★ **1c Blue, Ty. III (21).** Position 45L4, wide break in line at top and distinct break in bottom line, full original gum, lightly hinged, beautiful rich color and unusually fresh

EXTREMELY FINE GEM. A REMARKABLY CHOICE ORIGINAL-GUM EXAMPLE OF THE RARE PERFORATED 1857 1-CENT TYPE III STAMP.

This stamp was part of the vertical block of six, Positions 34-35/44-45/54-55L4, formerly in the Moody collection.

Ex Moody. With 1991 P.F. certificate 10,000.00



21



22



23

- 21 **1c Blue, Ty. IV (23).** Lightly cancelled by town circular datestamp, clear of face, near perfect centering with extraordinarily wide margins all around, Extremely Fine Gem, very rare in this superb condition, with 1993 P.F. certificate 525.00
- 22 ★★ **1c Blue, Ty. V (24).** Mint N.H., well-centered, bright and fresh, Very Fine, with 1988 P.F. certificate 175.00
- 23 ★ **3c Rose, Ty. I (25).** Original gum, barely hinged, rich color, perfs clear of framelines on three sides, Very Fine for this early perforated issue — the Type I plate did not provide sufficient room for perforations, and stamps showing lines on three sides are very scarce (rare with original gum), with copy of 1989 P.F. certificate for block 1,900.00



24



25

- 24 ★★ **3c Dull Red, Ty. II (26).** Mint N.H., wide margins all around with sheet selvage at right, rich color, Extremely Fine Gem, with 1992 P.F. certificate 75.00
- 25 ★ **3c Dull Red, Ty. II (26).** Double frameline at left, original gum, rich color, fresh and Very Fine, with 1990 P.F. certificate 75.00



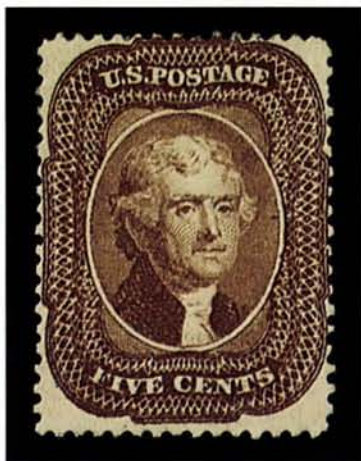
26

- 26 ★ **5c Brick Red (27).** Original gum, well-centered with perfs well clear on three sides and just touching at left, bright shade and very fresh, tiny natural inclusion speck

VERY FINE. AN EXTREMELY RARE ORIGINAL-GUM EXAMPLE OF THE 1857 5-CENT BRICK RED SHADE — IN OUR OPINION, THE BRICK RED IS ONE OF THE RAREST STAMPS OF THE CLASSIC PERIOD IN SOUND CONDITION WITH ORIGINAL GUM.

To verify our intuition about the rarity of original-gum Brick Red stamps, we surveyed dozens of classic United States sale catalogues. We found approximately twenty stamps with original gum, allowing for duplicate offerings and excluding the one known original-gum block. Of the stamps we counted, about half had perfs touching two sides or were deeply cut into on one side. Almost two-thirds had stains or small faults. Judging from past auction sales — some dating as far back as fifty years, when condition standards were far less stringent — we estimate that perhaps six or seven sound o.g. Brick Red stamps exist with centering that grades Very Fine or better. Judging from collectors who have tried to acquire the Brick Red in recent years, such as Ryohei Ishikawa and Eliot Weisman, the stamp is practically unavailable in this condition (Ishikawa had an average example with small flaws; Weisman had none). We urge collectors who still have Scott 27 (with original gum) on their want lists to compete vigorously for this choice example or face a long wait for another opportunity.

From our 1990 Rarities of the World sale. With 1978 P.F. certificate 14,000.00



27

- 27 ★ **5c Red Brown (28).** Original gum, intense reddish shade and fine impression, centered to top but perfs clear on three sides

FINE. THE 1857 5-CENT RED BROWN IS AN EXTREMELY RARE STAMP WITH ORIGINAL GUM AND, IN OUR OPINION, CONSIDERABLY UNDERVALUED.

Our findings for the Brick Red (see previous lot description) may also be applied to the Red Brown shade. Although somewhat more available than the Brick Red, due to the survival of a few original-gum multiples, the Red Brown is notorious for poor centering and gum-related stains. Without making a thorough survey, we estimate that approximately twelve to fifteen sound, original-gum 5c Red Brown stamps with Fine-Very Fine centering will be found in past auction sales. It is unlikely that more than four or five stamps surpass this example.

With 1976 P.F. certificate..... 2,750.00



28

- 28 ✉ **5c Indian Red (28A).** Vertical strip of three, usual scissors-separation with perfs complete except for a few blunted perfs at bottom, rich color, tied by "New Orleans La. Apr. 10, 1858" circular datestamps on folded letter to Bordeaux, France, red Boston credit dates-tamp and French transits, Fine and handsome Indian Red usage, with 1972 P.F. certificate, Scott Retail for off-cover strip of three..... 8,000.00



29



30



31

- 29 ★ **5c Brown (29).** Original gum, perfectly centered, very fresh
EXTREMELY FINE. A CHOICE ORIGINAL-GUM 1857 5-CENT BROWN — VERY RARE IN THIS
GRADE AND CONDITION.
With 1989 P.F. certificate..... 1,750.00
- 30 ★ **5c Orange Brown, Ty. II (30).** Original gum, rich color, couple tiny corner perf creases,
top perfs slightly blunted by scissors separation, otherwise Very Fine 1,100.00
- 31 ★ **5c Brown, Ty. II (30A).** Original gum, rich color, fine impression, centered to left but
perfs clear all around, Very Fine, the Brown Ty. II is scarce with original gum 1,500.00



32

- 32 ★ **10c Green, Ty. II (32).** Original gum, bright and fresh, extra wide bottom margin
 VERY FINE. A PRISTINE ORIGINAL-GUM EXAMPLE OF THE 1857 10-CENT TYPE II.
 With 1991 P.F. certificate..... 4,000.00



33

- 33 ★ **10c Green, Ty. III (33).** Original gum, wonderfully well-centered with wide margins, rich color
 EXTREMELY FINE GEM. ONE OF THE FINEST KNOWN EXAMPLES OF THE 1857 10-CENT GREEN FROM PLATE I. A SPECTACULAR STAMP IN TERMS OF CENTERING, COLOR, IMPRESSION AND ORIGINAL GUM.
 Ex "Angel". With 1989 P.F. certificate..... 4,000.00



34

- 34 ★★ **10c Green, Ty. IV (34).** Position 86L1 recut at top, **Mint Never Hinged**, intense shade and proof-like impression, wide margins with perfs clear all around, single faintly toned perf tip at bottom mentioned only for complete accuracy and not noted on certificate

EXTREMELY FINE. ONE OF THE RAREST OF ALL 19TH CENTURY UNITED STATES STAMPS THAT EXIST IN MINT NEVER-HINGED CONDITION AND THE FINEST OF THE FEW ORIGINAL-GUM 1857 10-CENT TYPE IV STAMPS EXTANT.

The 1857 10c Type IV stamps come from eight positions scattered throughout Plate 1 that have the top, bottom or both lines recut. Only 4% of all 10c Plate 1 stamps produced were Type IV's, and an even smaller percentage was issued with perforations. Except for a few blocks containing Type IV positions, original-gum examples are exceedingly rare. We know of one other Extremely Fine original-gum single, ex Ambassador Collection (Siegel Sale 300), but it is hinged. To the best of our knowledge, this Mint Never-Hinged example is unique in terms of condition and grade.

Ex "Angel". With 1991 P.F. certificate 25,000.00

- 35 ★ **10c Green, Ty. V (35).** Original gum, lightly hinged, well-centered, intense shade and impression, Extremely Fine 275.00



35



36

- 36 ★ **24c Gray Lilac (37).** Original gum, well-centered, bright and fresh, Extremely Fine, with 1990 P.F. certificate 1,200.00

- 37 ★ **30c Orange (38).** Original gum, well-centered, vibrant color with slight oxidation as often, some minor album offset on gum, still Extremely Fine. 1,500.00



37



38

- 38 (★) **90c Blue (39).** Unused (regummed), well-centered, wide margins, bright and fresh, Extremely Fine 2,400.00



39

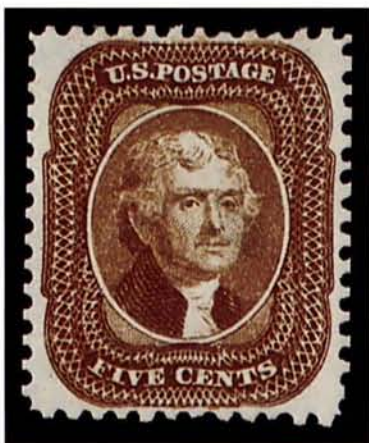
1875 REPRINT OF 1851-60 ISSUE

- 39 ★ **1c Bright Blue, Reprint (40).** Without gum as issued, well-centered, Very Fine, with 1992 P.F. certificate..... 525.00

- 40 ★ **3c Scarlet, Reprint (41).** Without gum as issued, vibrant color, centered to top but margins better than usual, two short perfs at top, otherwise Fine 2,200.00



40



41

- 41 ★ **5c Orange Brown, Reprint (42).** Without gum as issued, rich color, perfectly centered with wide even margins, bright and fresh

EXTREMELY FINE GEM. THE 5-CENT 1857 REPRINT IS RARELY FOUND WITH THE CENTERING AND MARGINS FOUND IN THIS SUPERB EXAMPLE.

With 1994 P.F. certificate..... 1,000.00

- 42 ★ **10c Blue Green, Reprint (43).** Without gum as issued, perfectly centered, intense shade and impression on bright paper

EXTREMELY FINE. ONE OF THE BEST-CENTERED 10-CENT 1857 REPRINTS KNOWN.

With 1985 P.F. certificate 2,000.00



42

- 43 ★ **12c Greenish Black, Reprint (44).** Without gum as issued, three wide margins, bottom perfs touch, a few scissors-blunted perfs at lower right, Very Fine, with 1980 P.F. certificate... 2,250.00



43



44

- 44 ★ **24c Blackish Violet, Reprint (45).** Without gum as issued, unusually well-centered, intense color and impression

EXTREMELY FINE. THE 24-CENT 1860 REPRINT IS RARELY FOUND CENTERED.

With 1984 P.F. certificate..... 2,250.00

- 45 ★ **30c Yellow Orange, Reprint (46).** Without gum as issued, vibrant color and proof-like impression on bright paper, uncharacteristically well-centered with perfs fully clear on three sides and barely touching at top

EXTREMELY FINE. ONE OF THE MOST CHALLENGING OF THE 1857-60 REPRINTS TO FIND CENTERED AND SOUND.

With 1985 P.F. certificate 2,250.00



45



46

- 46 ★ **90c Deep Blue, Reprint (47).** Without gum as issued, well-centered, deep shade on bright paper

VERY FINE. A RARE STAMP IN CHOICE WELL-CENTERED CONDITION.

Only 454 issued 3,500.00

1861-66 ISSUE



47

- 47 ★ **3c Brown Rose, First Design (56).** Original gum, lightly hinged, rich color, fresh and Very Fine..... 475.00

- 48 ★ **1c Blue (63).** Original gum, lightly hinged, wide margins, beautiful bright shade on crisp white paper, Extremely Fine, with 1991 P.F. certificate 280.00



48



49EX

- 49 E **1c 1861, Bowlsby Coupon Essays (63-E13 varieties).** Study group of ten items, includes Die Essays on India in Orange and Yellow Brown (63-E13a two), Die Essays on White Glazed Paper in Black and Scarlet (63-E13b two), pair of Plate Essay on Gummed Pelure in Red (63-E13c), Plate Essays on White Paper incl. Perf Between Coupon and Stamp (63-13f, Blue and Red), Imperforate Between (63-E13g, Blue and Red) and Rouletted Between (63-E13h Blue, with 1993 P.F. certificate), couple trivial flaws in India proofs, otherwise Very Fine 3,650.00

- 50 ★ **3c Pink (64).** Original gum, virtually perfect centering, bright fresh color in true Pink shade

EXTREMELY FINE. THE EARLY PINK IN ORIGINAL-GUM CONDITION IS EXTREMELY RARE — IT IS DOUBTFUL THAT MORE THAN TEN SOUND AND CENTERED EXAMPLES EXIST.

The 3c Pink stamps known with original gum are almost invariably creased and/or toned. This stamp is a rare exception. With 1992 P.F. certificate..... 5,750.00



50



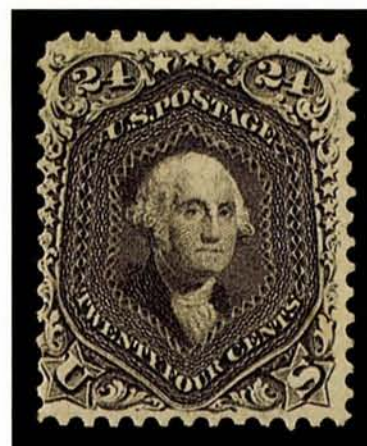
51

- 51 ★ **3c Lake (66).** Original gum, intense shade and proof-like impression on bright paper, wide margins and perfect centering

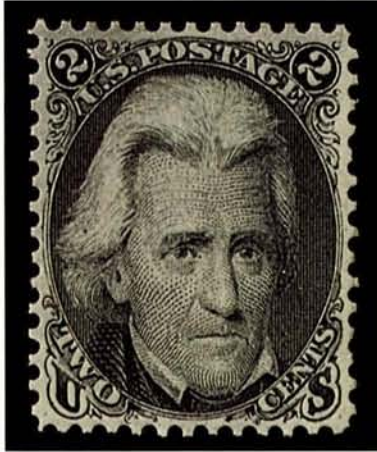
EXTREMELY FINE GEM. ONE OF THE BEST-CENTERED EXAMPLES OF THE LAKE PRINTING IN EXISTENCE.

With 1983 P.F. certificate. Scott Retail as No. 66 in Trial Color section 2,000.00

- 52 ★ **24c Red Lilac (70).** Original gum, deep early shade, minute thin speck, Very Fine appearance, extremely scarce shade with original gum 1,300.00



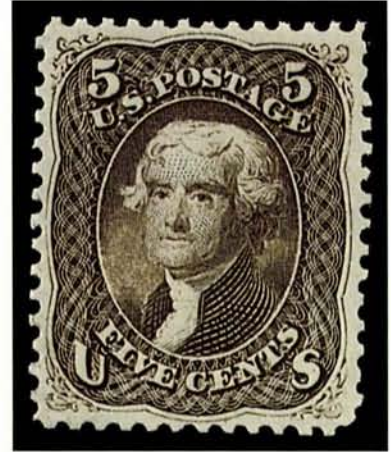
52



53



54



55

- 53 ★ **2c Black (73).** Original gum, lightly hinged, perfectly centered with wide even margins, Extremely Fine Gem, with 1993 P.F. certificate for block..... 300.00
- 54 (★) **5c Red Brown (75).** Unused (no gum), fiery red color, trivial short perf at top, Very Fine, an elusive stamp in genuine unused condition, with 1964 P.F. certificate..... 1,900.00
- 55 ★ **5c Brown (76).** Original gum, lightly hinged, extraordinary margins and centering, dark shade and proof-like impression
 EXTREMELY FINE GEM. MAGNIFICENT QUALITY FOR THE 5-CENT 1861-63 ISSUE, WHICH IS RARELY ENCOUNTERED WITH SUCH WIDE MARGINS AND ORIGINAL GUM.
 With 1988 P.F. certificate 800.00



56



57

- 56 ★ **15c Black (77).** Original gum, small h.r., deep shade, fine impression on bright paper, Fine, far scarcer in original-gum condition than many collectors realize, with 1968 P.F. certificate ("part o.g.")..... 1,100.00
- 57 ★ **24c Lilac (78).** Original gum, unusually well-centered, rich color and fine impression
 EXTREMELY FINE. THE 24-CENT 1861-63 ISSUE IS EXTREMELY RARE IN SOUND AND WELL-CENTERED ORIGINAL-GUM CONDITION. A FAR GREATER CHALLENGE TO ACQUIRE IN THIS GRADE THAN MANY COLLECTORS REALIZE.
 With 1983 P.F. certificate 750.00

ENCASED POSTAGE



- 58 **"Feuchtwanger" Nine-Cent Strip.** Unusual case with three partly imperforate 3c stamps in metal case and with mica, mica with few cracks and some light lamination, Very Fine and very rare, usually found in 9-cent denominations, these were likely not produced by Gault. The name comes from the similarity in design to the 1837 Feuchtwanger cent coin E. 200-300
- 59 **"Feuchtwanger" Nine-Cent Strip.** Three stamps in strip, stamps each showing perforations, mica showing some slight lamination, small piece of mica missing at top left, otherwise Very Fine and very rare E. 200-300
- 60 **Aerated Bread Co., New York, 1c Blue (EP1).** Bright color, mica with crack at left and trivial lamination, Fine and rare, only 56 examples are recorded, with 1985 P.F. certificate 1,750.00
- 61 **Ayer's Cathartic Pills, Lowell Mass., 3c Rose (EP3).** Mica intact with very trivial lamination, Fine 180.00
- 62 **Ayer's Cathartic Pills, Lowell Mass., 3c Rose (EP3).** Mica with some slight lamination, otherwise Fine 180.00
- 63 **Take Ayer's Pills, 3c Rose (EP9).** Intact mica except for trivial lamination at edge, Extremely Fine and choice 175.00
- 64 **Ayer's Sarsaparilla, 1c Blue, Medium "Ayer's" (EP13).** Some slight lamination, small crack at bottom, otherwise Fine 220.00
- 65 **Ayer's Sarsaparilla, 1c Blue, Medium "Ayer's" (EP13).** Mica cracked and missing in places, notable for the large amount of silvering present on both front and back, a presentable example 220.00
- 66 **Ayer's Sarsaparilla, 3c Rose, Medium "Ayer's" (EP15).** Full mica with two cracks at bottom, Very Fine 175.00
- 67 **Ayer's Sarsaparilla, 3c Rose, Large "Ayer's" (EP15b).** fresh color, intact mica with only very slight lamination at bottom visible mostly from an angle, Very Fine and choice, only 139 are recorded 400.00
- 68 **Bailey & Co., Philadelphia, 5c Brown (EP23).** Bright color, mica with slight lamination, trivial crack at bottom, Very Fine and rare, only 37 examples are recorded, with 1987 P.F. certificate 1,000.00
- 69 **Joseph L. Bates, Boston, 1c Blue, Two Words (EP26a).** Bright color, fresh and intact mica with trivial lamination, showing some silvering on back, Extremely Fine and choice, only 103 examples are recorded 325.00



- 70 **Brown's Bronchial Troches, 10c Green (EP34).** Some mica lamination and small crack at top (probably opened), otherwise Fine, only 63 examples are recorded 600.00
- 71 **F. Buhl & Co., Detroit, 1c Blue (EP38).** Full mica with only very slight lamination, Very Fine and choice, very rare, only 38 examples are recorded 800.00
- 72 **Burnett's Cocoaine Kalliston, 10c Green (EP47).** Extremely fresh with mica fully intact except for one insignificant spot of slight lamination, Extremely Fine and choice, only 97 examples are recorded 400.00
- 73 **Burnett's Cocoaine Kalliston, 10c Green (EP47).** Rich color, mica free from any lamination, showing few signs of silvering on back, trivial mica crack at top, otherwise Very Fine and choice, only 97 examples are recorded 400.00
- 74 **Burnett's Cooking Extracts, 5c Red Brown (EP54).** Fresh color, some slight lamination and trivial mica crack at bottom, otherwise Very Fine, only 99 examples are recorded 300.00



75 Obverse

75 Reverse

- 75 **A. M. Claflin, Hopkinton Mass., 1c Blue (EP59).** Excellent condition with only very few spots of light lamination and trivial mica crack, stamp with toned spot
VERY FINE. A CHOICE EXAMPLE OF THE RARE ONE-CENT CLAFLIN, ONE OF THE MOST DESIRABLE OF ALL ENCASED POSTAGE ISSUES.
Only 22 examples are recorded 6,000.00



- 76 **H. A. Cook, Evansville Ind., 10c Green (EP65).** Intact mica showing only very slight lamination, small dent to tab at left, partially cleaned, still Very Fine appearance, very rare, only 44 examples are recorded, with 1987 P.F. certificate 800.00
- 77 **Dougan, Hatter, New York, 3c Rose (EP67).** Complete and intact mica with only very slight lamination as usual, Extremely Fine and choice, rare, only 40 examples are recorded 1,150.00
- 78 **Drake's Plantation Bitters, 1c Blue (EP70).** Fresh and intact mica free of usual small imperfections, showing some silvering on back, Extremely Fine and choice, rare in this exceptional condition, only 151 are recorded 225.00
- 79 **Drake's Plantation Bitters, 1c Blue (EP70).** Rich color, intact mica with vertical scratch and usual slight lamination, Very Fine and choice, only 151 are recorded 225.00



- 80 **Drake's Plantation Bitters, 3c Rose (EP71).** Intact mica showing some lamination and small crack at top, Very Fine and choice, only 158 are recorded..... 200.00
- 81 **Ellis, McAlpin & Co., Cincinnati, 10c Green (EP81).** Some slight laminations, unusual for the stamp's orientation in the case, Fine and rare, only 53 recorded..... 1,000.00
- 82 **C. G. Evans, Philadelphia, 1c Blue (EP84).** Fresh and intact, Extremely Fine Gem, beautiful condition, only 53 examples are recorded 600.00
- 83 **C. G. Evans, Philadelphia, 1c Blue (EP84).** Fresh and intact mica with only very trivial lamination, Very Fine and rare, only 53 recorded, with 1986 P.F. certificate 600.00
- 84 **Gage Bros. & Drake, Tremont House, Chicago, 10c Green (EP91).** Mica shows some slight cracks and lamination, some silvering present on back, Very Fine, only 126 examples are recorded 400.00
- 85 **Gage Bros. & Drake, Tremont House, Chicago, 10c Green (EP91).** Rich color, some very trivial mica lamination, Very Fine and choice, only 126 examples are recorded . 400.00
- 86 **J. Gault, 5c Red Brown (EP96).** Fresh color, mica shows only very slight lamination and trivial light crack, with some silvering on front and remarkably complete silvering on back, Extremely Fine Gem, very rare in such wonderful condition, one of the finest of the 185 examples recorded 225.00
- 87 **J. Gault, 5c Red Brown, Ribbed Frame (EP96a).** Very fresh with only some very slight lamination, Very Fine and rare, only 110 examples are recorded, also incl. EP96 with mica missing 500.00
- 88 **J. Gault, 12c Black (EP98).** Some slight lamination, Very Fine and rare, only 93 examples are recorded 800.00



89 Obverse and Reverse



90 Obverse and Reverse

- 89 **J. Gault, 30c Orange (EP100).** Fresh with completely intact mica showing only some slight lamination when viewed at an angle
EXTREMELY FINE. THE 30-CENT GAULT IS VERY RARE AND ESPECIALLY DESIRABLE IN THIS SUPERIOR GRADE.
Only 63 examples are recorded 2,200.00
- 90 **J. Gault, 90c Blue (EP101).** Complete and intact mica, very slight lamination visible only when viewed at an angle
EXTREMELY FINE AND CHOICE. A BEAUTIFUL EXAMPLE OF THE 90-CENT GAULT.
Only 43 examples are recorded 6,000.00



- 91 **L. C. Hopkins & Co., Cincinnati, 3c Rose (EP103).** Fresh color, some slight lamination, small crack to mica at top, otherwise Very Fine and rare, only 34 examples are recorded 1,000.00
- 92 **Hunt & Nash, Irving House, New York, 10c Green, Ribbed (EP109a).** Fresh with only very slight mica lamination, very small mica crack, otherwise Very Fine, only 73 examples are recorded 650.00
- 93 **Kirkpatrick & Gault, New York, 5c Red Brown (EP115).** Complete and intact mica, case shows some silvering on tabs and **remarkably complete silvering on back**, few green oxidation spots, otherwise Extremely Fine, rare with such complete silvering on back, only 123 examples are recorded 350.00
- 94 **Kirkpatrick & Gault, New York, 5c Red Brown (EP115).** Mica with some slight lamination and small crack at bottom, small piece of mica missing at bottom left, otherwise Fine, only 123 examples are recorded 350.00



95 Obverse and Reverse

- 95 **Kirkpatrick & Gault, New York, 30c Orange (EP119).** Rich color, mica shows some slight lamination, trivial mica crack at edge
VERY FINE APPEARANCE. ONE OF THE RAREST OF ENCASED POSTAGE ISSUES.
Only 60 examples are recorded 2,500.00
- 96 **Lord & Taylor, New York, 12c Black (EP125).** Some slight lamination to mica, mica with small crack, notable for **significant silvering on back**, Very Fine and choice, very rare, only 30 examples are recorded 1,250.00
- 97 **Mendum's Family Wine Emporium, New York, 1c Blue (EP129).** Bright color, some slight mica lamination as usual and few mica cracks, tiny dent in rim at top, otherwise Very Fine and rare, only 105 are known 500.00
- 98 **John W. Norris, Chicago, 1c Blue (EP136).** Fresh color with intact mica except for trivial crack at top, fresh and Very Fine, only 26 examples are recorded 1,000.00
- 99 **North America Life Insurance Co., New York, 3c Rose, Straight Line (EP141a).** Mica shows some lamination and cracking along edges, Very Fine and rare, only 77 examples are recorded 400.00



100 Obverse and Reverse



104 Obverse and Reverse

- 100 **Pearce, Tolle & Holton, Cincinnati, 3c Rose (EP146).** Fresh and intact mica with only very slight lamination at edge
VERY FINE AND CHOICE EXAMPLE OF THIS RARITY.
Only 33 examples are recorded 1,750.00
- 101 **Ayer's Sarsaparilla, 3c Rose, Large "Ayer's" (EP15b).** Full mica, small crack at bottom left, few scratches to mica, otherwise Very Fine..... 400.00
- 102 **Schapker & Bussing, Evansville Ind., 10c Green (EP158).** Some slight mica lamination, central mica crack, still Very Fine and rare, only 76 examples are recorded 550.00
- 103 **John Shillito & Co., Cincinnati, 5c Red Brown (EP162).** Few mica cracks incl. scrape at left affecting stamp, case likely opened, Fine appearance, 116 examples are recorded 550.00
- 104 **S. Steinfeld, New York, 1c Blue (EP165).** Complete and intact mica with very slight lamination seen only at an angle, barely noticeable crack at left
FRESH AND VERY FINE. A BEAUTIFUL EXAMPLE OF THE 1-CENT STEINFELD IN WONDERFUL CONDITION.
Only 57 examples are recorded 1,500.00
- 105 **N. G. Taylor & Co., Philadelphia, 1c Blue (EP169).** Fresh color, some slight lamination and crack at right, case with dent on back, otherwise Fine and rare, only 42 examples are recorded 1,500.00
- 106 **Weir & Larminie, Montreal, 10c Green (EP177).** Some very trivial mica lamination viewable only at an angle, Very Fine and choice, rare, only 79 examples are recorded 1,250.00
- 107 **White, The Hatter, New York, 3c Rose (EP179).** Completely intact mica, some lamination visible mostly from an angle, stamp shows some buckling, still Very Fine and very rare, only 25 are recorded..... 1,400.00





108

1867-68 GRILLED ISSUE

- 108 ★ **3c Rose, A. Grill (79).** Original gum, beautiful bright color and very fresh, centered to upper left, usual perf flaws from all-over grill

FINE AND FAR ABOVE THE USUAL CONDITION FOR THIS EXPERIMENTAL GRILLED ISSUE.

With 1989 P.F. certificate 3,750.00

- 109 ★ **3c Rose, A. Grill, Imperforate (79a).** Single, original gum, rich color, minor thin, Very Fine appearance, with 1971 P.F. certificate.....
..... E. 400-500



109



110

- 110 ★ **3c Rose, C. Grill (83).** Original gum (a few soaks in grill points), bright color, well-centered

VERY FINE. A CHOICE ORIGINAL-GUM EXAMPLE OF THE 1867 3-CENT C GRILL.

The C Grill followed the all-over A Grill and was made by planing strips off of the A Grill device to create individual grill units that were confined to a space within the dimensions of each stamp. The 1867 experiments led to the regular-production grills of 1868.

With 1988 P.F. certificate 4,250.00



111

- 111 ★ **2c Black, D. Grill (84).** Original gum, right sheet margin with **part of "NATIONAL BANK (NOTE CO.)" imprint**, intense shade and impression, full clear grill impression showing the requisite 15 columns of points

FINE CENTERING WITH WIDE MARGINS ON THREE SIDES BALANCED BY SHEET MARGIN AT RIGHT. ONLY ONE OTHER IMPRINT STAMP WITH ORIGINAL GUM IS RECORDED. APART FROM THE A AND Z GRILL RARITIES, THE 2-CENT 1868 D GRILL IS THE RAREST OF ALL GRILLED ISSUES.

The grilling device equipped with the D Grill was probably refitted with the E Grill on or about February 9, 1868. Based on the earliest known usages of the 2c D Grill (2/15/68) and 3c E Grill (2/19/68), it is our theory that the conversion from the D to E Grill took place only a day or so after sheets of 2c stamps were first run through the D-equipped machine. The great rarity of 2c D Grills, relative to all other regular-production grills, bears out this theory.

Ex Crocker, Eno and Sheriff as part of a block; the adjoining block below (with second half of imprint) was part of the Close collection. With 1992 P.F. certificate. Scott Retail for Fine centering..... 12,500.00

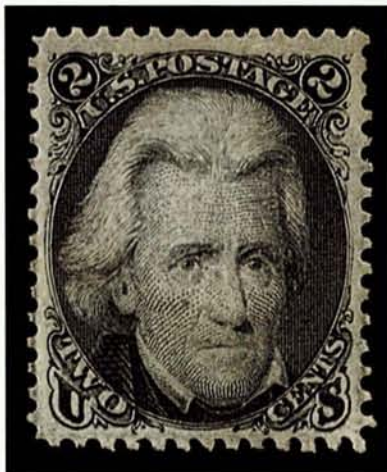


112

- 112 (★) **3c Rose, D. Grill (85).** Unused (no gum), wide margins, beautiful bright Rose shade on unusually fresh paper, with full clear grill showing requisite 15 columns of points

EXTREMELY FINE. THE 3-CENT 1868 D GRILL — A SCARCE STAMP IN ANY FORM — IS TRULY RARE IN CENTERED UNUSED CONDITION. IN OUR OPINION, ONE OF THE UNDERRATED RARITIES OF THE GRILLED ISSUES.

With 1993 P.F. certificate..... 2,500.00



113

- 113 (★) **2c Black, Z. Grill (85B).** Unused (no gum), colossally wide margins and nearly perfect centering, deep shade, strong grill

EXTREMELY FINE GEM. A SPECTACULAR 2-CENT Z GRILL — ONE OF THE SCARCER REGULAR ISSUE GRILLS — VERY RARE IN UNUSED CONDITION AND ALMOST IMPOSSIBLE TO OBTAIN IN THIS QUALITY.

With 1994 P.F. certificate..... 3,000.00



114

- 114 (★) **12c Black, Z. Grill (85E).** Unused (no gum), beautiful deep shade, well-centered, strong grill

VERY FINE. THE 12-CENT Z GRILL IS AN EXTREMELY RARE STAMP IN UNUSED CONDITION. THIS EXAMPLE RANKS AMONG THE VERY BEST IN TERMS OF CENTERING AND CONDITION.

With 1993 P.F. certificate..... 4,250.00

- 115 ★ **1c Blue, E. Grill (86).** Original gum, barest trace of hinge, breathtaking bright shade and proof-like impression on bright white paper, wide margins, full even perfs all around

EXTREMELY FINE GEM — AS BEAUTIFUL AND FRESH AS THE DAY IT WAS PRINTED. THE ONE-CENT 1868 E GRILL IS FAR SCARCER THAN ITS F-GRILL COUNTERPART, ESPECIALLY IN ORIGINAL-GUM CONDITION.

Sometime ago we observed that the 1c E Grill appeared at auction very infrequently, in any form. After analyzing the early 1868 regular-production grills (Z, D, E and F), we concluded that grilling of 1c with the E (and Z) Grill must have been short-lived, occurring sometime around February 28, 1868. Later grilling of 1c stamps was probably done with the F Grill. Of the 1c E Grill supply, relatively little appears to have reached the philatelic market, as evidence by the stamp's scarcity.

At its last auction appearance in 1991 this stamp realized five times Scott value, which should be a useful guide to current bidders. With 1990 P.F. certificate..... 2,250.00



115



116

- 116 ★ **2c Black, E. Grill (87).** Original gum, prominent grill, nearly perfect centering, short perf at upper left

EXTREMELY FINE EXCEPT FOR SINGLE SHORT PERF. ONE OF THE MOST DIFFICULT OF ALL GRILLED ISSUES TO FIND WITH ORIGINAL GUM AND WELL CENTERED.

We recently searched numerous major name sales containing 1867-68 grilled issues (Caspary, Lilly, Grunin, etc.), in order to compare this stamp with other original-gum examples. We found only a couple that compare favorably, and we were surprised that several collections lacked even an average copy with gum..... 850.00

- 117 ★ **3c Rose, E. Grill (88).** Original gum, lightly hinged, beautiful bright shade in the Rose shade characteristic of early regular-issue 3c grilled stamps, the paper and gum are pristine

EXTREMELY FINE GEM. DESPITE THE ABUNDANCE OF 3-CENT 1861-68 ISSUES, THIS E GRILL STAMP — DISTINCTIVE IN COLOR AS WELL AS GRILL SIZE — IS A RARITY BY VIRTUE OF ITS CONDITION.

With 1991 P.F. certificate..... 600.00



117



118

- 118 (★) **10c Green, E. Grill (89).** Unused (no gum), staggering margins stretching to the outer limits of the surrounding stamps, fresh and bright

EXTREMELY FINE GEM. A SPECTACULAR UNUSED 10-CENT E GRILL.

With 1989 P.F. certificate 2,000.00

- 119 ★ **12c Black, E. Grill (90).** Part original gum, well-centered, fine impression on bright paper, single partly nibbed perf at top

VERY FINE CENTERING AND UNUSUALLY ATTRACTIVE QUALITY FOR THE 12-CENT E GRILL, WHICH IS VERY SCARCE WITH ORIGINAL GUM.

With 1987 P.F. certificate 2,000.00



119



120

- 120 ★ **15c Black, E. Grill (91).** Original gum, lightly hinged, remarkably fresh and well-centered with strong grill impression

EXTREMELY FINE. ONE OF THE RAREST OF THE GRILLED ISSUES IN THIS WELL-CENTERED ORIGINAL-GUM CONDITION.

With 1991 P.F. certificate 6,500.00



121



122



123

- 121 ★ **2c Black, F. Grill (93).** Original gum, well-centered, fresh and Extremely Fine, with 1992 P.F. certificate 350.00
- 122 ★ **3c Red, F. Grill (94).** Original gum, well-centered, bright shade, Extremely Fine 300.00
- 123 (★) **5c Brown, F. Grill (95).** Unused (no gum), well-centered, Very Fine, exceedingly scarce in sound well-centered unused condition..... 1,350.00



124



125

- 124 ★ **24c Gray Lilac, F. Grill (99).** Part original gum, well-centered, rich color
VERY FINE. THE 24-CENT F GRILL IS VERY RARE IN WELL-CENTERED ORIGINAL-GUM
CONDITION.
With 1984 P.F. certificate..... 4,000.00
- 125 ★ **30c Orange, F. Grill (100).** Original gum, bright and fresh, faint horizontal crease,
almost invisible
VERY FINE APPEARANCE. ONE OF THE MOST ELUSIVE OF CLASSIC UNITED STATES STAMPS
IN ORIGINAL-GUM CONDITION.
With 1991 P.F. certificate..... 4,250.00



126

- 126 ★ **90c Blue, F. Grill (101).** Original gum, lightly hinged, intense shade and proof-like impression, perfectly centered

EXTREMELY FINE GEM. ONE OF TWO RECORDED SUPERB ORIGINAL-GUM EXAMPLES OF THE 90-CENT F GRILL. THE FINEST ATTAINABLE QUALITY.

We know of one other 90c F Grill that compares to this stamp—the example from the Hewitt sale in 1986 (Steve Ivy Ameripex). There are perhaps two others in the Extremely Fine category, but they are not quite as well centered as this stamp.

Ex Morris. With 1993 P.F. certificate 7,000.00

1875 RE-ISSUE OF 1861-66 ISSUE

- 127 (★) **1c Blue, Re-Issue (102).** Unused (no gum), wide margins, Extremely Fine..... 400.00



127



128

- 128 (★) **2c Black, Re-Issue (103).** Unused (no gum), wide margins and well-centered, couple nibbed perfs at right, otherwise Extremely Fine, with 1974 P.F. certificate..... 1,600.00

- 129 ★ **3c Brown Red, Re-Issue (104).** Original gum, intense shade and impression, well-centered
EXTREMELY FINE. AN OUTSTANDING EXAMPLE OF THE 3-CENT 1861 RE-ISSUE, WHICH SO RARELY COMES WITH ORIGINAL GUM, CENTERING AND SOUNDNESS COMBINED.
With 1974 P.F. certificate 2,750.00



129



130

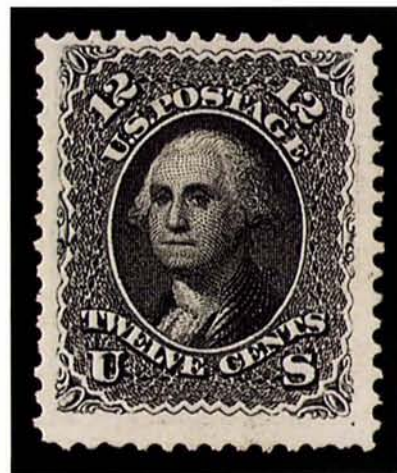
- 130 ★ **5c Brown, Re-Issue (105).** Original gum, gigantic margins and almost perfectly centered, intense shade and proof-like impression, the paper is bright and the gum is white
EXTREMELY FINE. A MAGNIFICENT 5-CENT 1861 RE-ISSUE.
Ex Back. With 1986 P.F. certificate..... 2,100.00



131

- 131 ★ **10c Green, Re-Issue (106).** Original gum, dark shade and proof-like impression on brilliant white paper, centered almost exactly within stupendous margins on all sides
EXTREMELY FINE GEM. WITHOUT QUESTION THIS STAMP RANKS AMONG THE TOP TWO OR THREE KNOWN EXAMPLES OF THE 10-CENT 1861 RE-ISSUE. NO FINER QUALITY IS ATTAINABLE.
Ex Back. With 1986 P.F. certificate..... 2,250.00

- 132 (★) **12c Black, Re-Issue (107).** Unused (no gum), intense shade and impression, three huge margins, Very Fine and scarce, with 1983 P.F. certificate 2,000.00



132



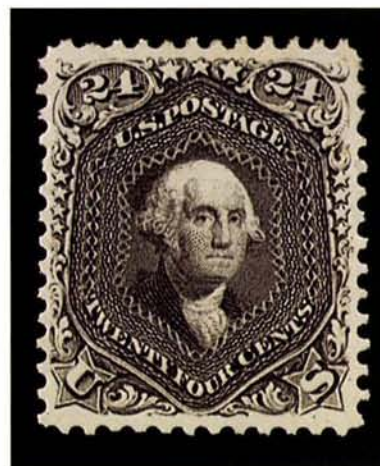
133

- 133 ★ **15c Black, Re-Issue (108).** Original brownish gum, deep shade and proof-like impression, Very Fine, scarce, with 1991 P.F. certificate 3,000.00

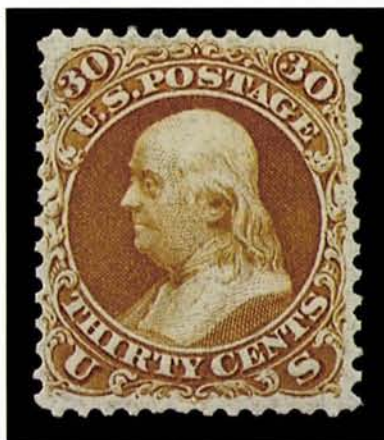
- 134 ★ **24c Deep Violet, Re-Issue (109).** Original gum, barest trace of hinge, deep dark shade and proof-like impression on very bright paper with clear white gum, perfectly centered

EXTREMELY FINE GEM. ONE OF THE MOST BEAUTIFUL ORIGINAL-GUM EXAMPLES OF THE 24-CENT 1861 RE-ISSUE WE HAVE SEEN OR RECORDED OVER MANY YEARS. IT IS DOUBTFUL THAT ANY FINER EXISTS, AND CERTAINLY NO MORE THAN THREE OR FOUR OTHERS CAN APPROACH THE QUALITY OF THIS STAMP.

With 1985 P.F. certificate 3,750.00



134



135

- 135 ★ **30c Brownish Orange, Re-Issue (110).** Original gum — described as "part o.g." on certificate, but it appears to us to be full with minor hinge marks — vibrant color and proof-like impression, well-centered, particularly so for the 30c

VERY FINE. A RARE WELL-CENTERED ORIGINAL-GUM 30-CENT 1861 RE-ISSUE.

With 1991 P.F. certificate 4,000.00



136

- 136 (★) **90c Blue, Re-Issue (111).** Unused (no gum), deep shade, Fine and rare, with 1968 P.F. certificate 3,500.00

1869 PICTORIAL ISSUE



137



138



139EX

- 137 ★ **1c Buff (112).** Original gum, very lightly hinged, rich color, fresh and Very Fine, with 1980 P.F. certificate..... 525.00
- 138 ★ **2c Brown (113).** Original gum, lightly hinged, deep rich color, well-centered, Extremely Fine and choice, with 1997 P.F. certificate 450.00
- 139 (★) **3c-10c 1869 Pictorial (114-116).** 3c original gum, 6c unused (regummed), 10c unused (no gum), bright colors, Fine-Very Fine 2,125.00

- 140 ★ **12c Green (117).** Original gum, very lightly hinged, incredibly deep color, well-centered
EXTREMELY FINE. A BRILLIANT FRESH EXAMPLE
OF THE 12-CENT 1869 WITH ORIGINAL GUM.
With 1998 P.F. certificate 1,600.00



140

- 141 (★) 15c Brown & Blue, Ty. I (118). Unused (no gum), bright colors, well-centered with huge margins all around, Extremely Fine and choice ..
..... 3,750.00



141



142

- 142 ★ 15c Brown & Blue, Ty. II (119). Original gum, rich colors, fresh and Very Fine 2,250.00

- 143 (★) 24c Green & Violet (120). Unused (no gum), rich colors and proof-like impressions, small faint toned spots on back, otherwise Fine ... 3,250.00



143



144

- 144 (★) 30c Ultramarine & Carmine (121). Unused (no gum), reperfed, Very Fine appearance, rare unused 3,250.00



145

- 145 ★ **90c Carmine & Black (122).** Full original gum, lightly hinged, beautiful rich color and sharp proof-like impression

EXTREMELY FINE. A CHOICE EXAMPLE OF THE 90-CENT 1869 ISSUE. RARELY FOUND IN SUCH OUTSTANDING ORIGINAL-GUM CONDITION.

Ex "Angel". With 1984 P.F. certificate..... 7,250.00



146

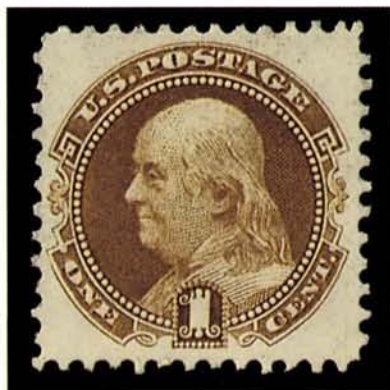
- 146 ★ **90c Carmine & Black, Without Grill (122a).** Large part original gum, fresh and bright colors, well-centered for this difficult stamp

EXTREMELY FINE. AN EXTREMELY RARE EXAMPLE OF THE 90-CENT 1869 PICTORIAL ISSUE WITHOUT GRILL. ONE OF THE TWO OR THREE FINEST OF THE SEVEN SOUND ORIGINAL-GUM COPIES THAT HAVE BEEN CERTIFIED AS GENUINE BY THE PHILATELIC FOUNDATION.

Of the 21 examples certified as genuine by the Philatelic Foundation, only fourteen have either part or full original gum. Only seven of these are completely sound.

With 1991 P.F. certificate 12,500.00

1875 RE-ISSUE OF 1869 PICTORIAL ISSUE



147



148



149

- 147 (★) **1c Buff, Re-Issue (123).** Unused (no gum), rich color, fresh and Very Fine 275.00
- 148 ★ **2c Brown, Re-Issue (124).** Original gum, h.r., deep rich color, well-centered, Extremely Fine and choice 575.00
- 149 (★) **3c Blue, Re-Issue (125).** Unused (traces of original gum), rich color and proof-like impression, fresh and Fine, with 1968 A.P.S. certificate 3,000.00



150



151



152

- 150 ★ **6c Blue, Re-Issue (126).** Original gum, small h.r., bright color and sharp impression, Fine 1,100.00
- 151 ★ **10c Yellow, Re-Issue (127).** Original gum, vivid color, reperfed, Very Fine appearance 1,750.00
- 152 ★ **12c Green, Re-Issue (128).** Original gum, deep color, centered to left with perfs just touching, small spot at top left, otherwise Fine, with 1978 P.F. certificate 1,900.00



153



154



155

- 153 (★) **15c Brown & Blue, Re-Issue (129).** Unused (no gum), incredibly deep colors and sharp proof-like impressions, fresh and Fine 1,100.00
- 154 ★ **24c Green & Violet, Re-Issue (130).** Large part original gum, rich colors and sharp impressions, Very Fine and choice 1,600.00
- 155 (★) **30c Blue & Carmine, Re-Issue (131).** Unused (no gum), beautiful rich colors on bright paper, single short perf at bottom, otherwise Fine 1,700.00



156

- 156 (★) **90c Carmine & Black, Re-Issue (132).** Unused (no gum), rich color and sharp impressions, Very Fine, with 1966 P.F. certificate 3,100.00

- 157 ★ **1c Buff, 1880 Re-Issue (133).** Original gum, well-centered, Extremely Fine Gem..... 275.00



157

1870 NATIONAL BANK NOTE CO. GRILLED ISSUE



158

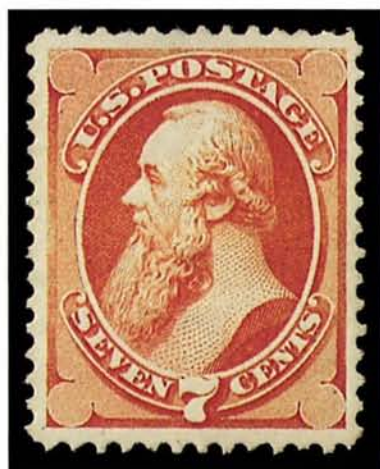


159



160

- 158 ★ **1c Ultramarine, Grill (134).** H. Grill, full original gum, small h.r., clear grill points, fresh and bright color, well-centered
EXTREMELY FINE AND CHOICE. VERY RARE IN SUCH PRISTINE CONDITION.
This stamp has larger margins than the Zoellner copy, which realized \$2,200. With 1992 P.F. certificate 1,400.00
- 159 ★ **3c Green, Grill (136).** I. Grill, original gum, lightly hinged, deep rich color and proof-like impression, **clearly showing the entire grill**, well-centered, Extremely Fine Gem in the finest condition attainable, with 1992 P.F. certificate 600.00
- 160 ★ **6c Carmine, Grill (137).** I. Grill, disturbed original gum, clear grill points, bright color, well-centered, few light gum soaks around perf tips, appears Extremely Fine, very rare with any original gum 3,250.00

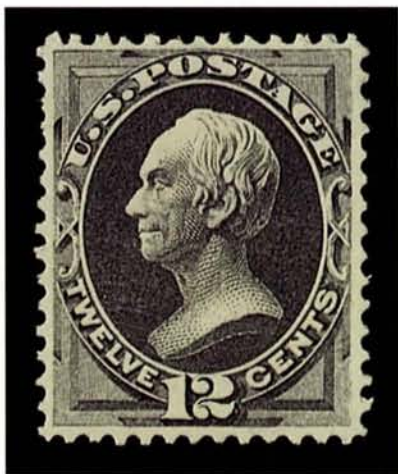


161



162

- 161 (★) **7c Vermilion, Grill (138).** H. Grill, unused (no gum), fresh and bright color, very well-centered with wide margins, Extremely Fine Gem, rare with such wide margins, with 1990 P.F. certificate 1,250.00
- 162 (★) **10c Brown, Grill (139).** H. Grill, unused (no gum), rich color and sharp impression, clear grill points at bottom, Fine, with 1980 P.F. certificate 1,900.00



163

- 163 (★) **12c Dull Violet, Grill (140).** H. Grill, unused (no gum), well-centered, fresh color and fine impression, clearly showing some grill points at bottom

EXTREMELY FINE GEM. THE 12-CENT NATIONAL GRILLED ISSUE IS EXTREMELY DIFFICULT TO FIND WITH SUCH WONDERFUL COLOR, PERFECT CENTERING AND CLEAR GRILL POINTS. AN OUTSTANDING STAMP IN EVERY RESPECT.

With 1991 P.F. certificate 9,500.00

- 164 ★ **15c Orange, Grill (141).** H. Grill, original gum, vivid color, grill points show clearly on face of stamp, well-centered

EXTREMELY FINE. A CHOICE EXAMPLE OF THE 15-CENT NATIONAL GRILLED ISSUE.

With 1971 and 1990 P.F. certificates .. 4,250.00



164

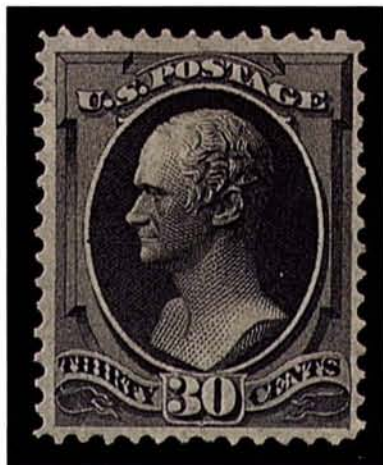


165

- 165 **24c Purple, Grill (142).** H. Grill, fresh color for this stamp, very well-centered with wide margin at right, perfectly struck **blue quartered cork cancel**,

EXTREMELY FINE GEM. A BEAUTIFUL EXAMPLE OF THE 24-CENT NATIONAL GRILLED ISSUE. VERY DIFFICULT TO FIND WITH SUCH WIDE MARGINS

With 1992 P.S.E and 1995 P.F. certificates 6,500.00



166

- 166 (★) **30c Black, Grill (143).** H. Grill, unused (no gum), sharp proof-like impression, well-centered

FRESH AND VERY FINE. A CHOICE EXAMPLE OF THE 30-CENT NATIONAL GRILLED ISSUE.

With 1988 P.F. certificate..... 5,750.00



167

- 167 ★ **90c Carmine, Grill (144).** H. Grill, original gum, clear grill points, beautiful bright color, very well-centered for this difficult stamp

EXTREMELY FINE AND CHOICE. AN EXTREMELY RARE WELL-CENTERED ORIGINAL-GUM EXAMPLE OF THE 90-CENT NATIONAL GRILL ISSUE. A GREAT CONDITION RARITY.

Small blue backstamp. With 1971 and 1989 P.F. certificates..... 10,000.00

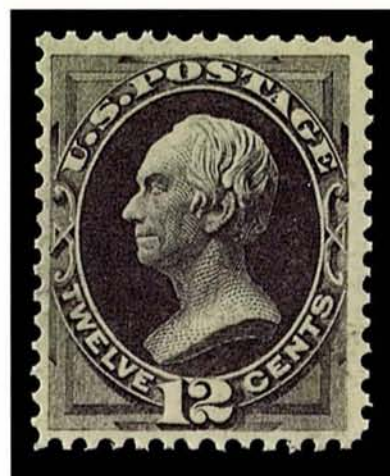
1870 NATIONAL BANK NOTE CO. ISSUE



168

- 168 ★★ **2c Red Brown (146).** Mint N.H., bright color, fresh and Extremely Fine, with 1991 P.F. certificate 250.00

- 169 ★ **12c Dull Violet (151).** Full original gum, barest faint trace of hinging, rich color, well-centered with wide margins for this difficult stamp
EXTREMELY FINE GEM. A VERY DIFFICULT STAMP TO FIND IN THIS SUPERB CONDITION.
With 1993 P.F. certificate for block of four, this being the bottom left stamp 1,300.00



169

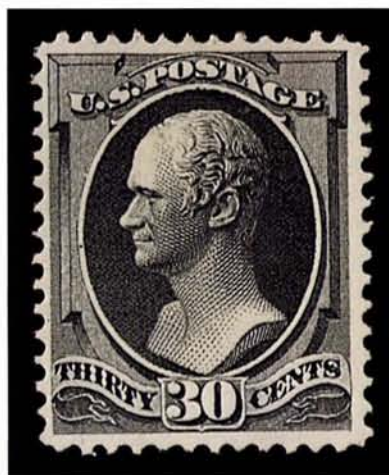


170

- 170 (★) **15c Bright Orange (152).** Unused (regummed), bright color, trivial natural inclusion, couple short perfs at top, otherwise Very Fine . 775.00



171



172



173

- 171 (★) **24c Purple (153)**. Unused (no gum), bright shade, well-centered, fresh and Very Fine..... 725.00
- 172 (★) **30c Black (154)**. Unused (no gum), sharp proof-like impression, Very Fine and choice, with 1976 A.P.S. and 1989 P.F. certificates..... 1,750.00
- 173 ★ **90c Carmine (155)**. Original gum, deep rich color, Fine and choice, with 1969 P.F. certificate 3,000.00

1873-75 CONTINENTAL BANK NOTE CO. ISSUE



174



175



176

- 174 ★ **1c Ultramarine (156)**. Original gum, lightly hinged, bright shade, well-centered, Extremely Fine and choice 180.00
- 175 ★ **2c Brown (157)**. Original gum, small h.r., rich color, reperfed at right, Very Fine appearance..... 325.00
- 176 ★ **3c Green (158)**. Original gum, dark shade on bright paper, Extremely Fine and choice .. 110.00



177

- 177 ★ **6c Dull Pink (159).** Original gum, lightly hinged, fresh and bright color, very well-centered, Extremely Fine Gem, a beautiful stamp, with 1992 P.F. certificate..... 375.00

- 178 ★ **7c Orange Vermilion (160).** Original gum, intense color, perfectly centered with huge margins

EXTREMELY FINE GEM. AN OUTSTANDING EXAMPLE OF THE 7-CENT CONTINENTAL BANK NOTE PRINTING IN THE FINEST QUALITY ATTAINABLE. AN EXTRAORDINARY STAMP.

With 1991 P.F. certificate..... 800.00



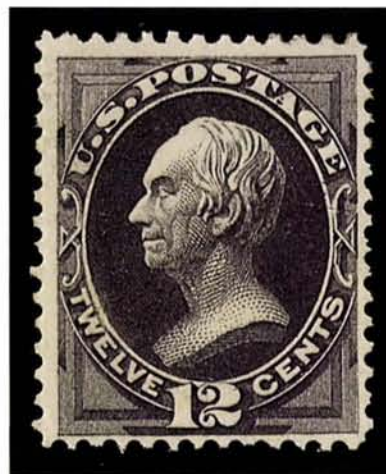
178



179

- 179 ★ **10c Brown (161).** Original gum, fresh color, very well-centered with beautifully proportioned margins, single slightly nibbed perf at left, Extremely Fine, very rare this well-centered, with 1988 P.F. certificate 525.00

- 180 ★ **12c Blackish Violet (162).** Original gum, lightly hinged, intense shade and sharp impression, Very Fine and choice, with 1990 P.F. certificate..... 1,350.00



180



181

- 181 ★ **15c Yellow Orange (163).** Original gum, lightly hinged, vivid color, perfectly centered with even margins all around, tiny smear of printer's ink at bottom left, trivial natural gum inclusion

EXTREMELY FINE GEM. THE 15-CENT CONTINENTAL IS AMONG THE MOST ELUSIVE OF THE REGULAR BANK NOTE ISSUE IN THIS CHOICE ORIGINAL-GUM CONDITION.

With 1989 P.F. certificate..... 1,500.00

- 182 ★ **90c Rose Carmine (166).** Original gum, well-centered with wide margins, bright color, couple partly nibbed perfs at bottom, otherwise Very Fine 2,400.00



182

1875 CONTINENTAL BANK NOTE CO. SPECIAL PRINTING



183

- 183 ★ **1c Ultramarine, Special Printing (167).** Without gum as issued, intense shade and sharp proof-like impression, scissors-separated as almost always but leaving intact perfs on three sides, perfectly centered

EXTREMELY FINE. AN OUTSTANDING EXAMPLE OF THE ONE-CENT CONTINENTAL SPECIAL PRINTING.

Approximately 35-40 examples of Scott 167 are believed to exist. The typical centering is quite poor. With 1989 P.F. certificate 9,000.00



184

- 184 ★ **2c Dark Brown, Special Printing (168).** Without gum as issued, deep shade and proof-like impression, without scissors-trimmed perfs (a few short or nibbed)

FINE AND ATTRACTIVE EXAMPLE OF THE 2-CENT CONTINENTAL SPECIAL PRINTING.

Probably fewer than 75 examples have survived. Ex Caspary and Hetherington. With 1957 P.F. certificate 4,000.00



185

- 185 ★ **6c Dull Rose, Special Printing (170).** Without gum as issued, beautiful rich color, scissors-separated as almost always but leaving intact perms all around

EXTREMELY FINE GEM. ONE OF THE BEST-CENTERED EXAMPLES OF THE 6-CENT CONTINENTAL SPECIAL PRINTING. APPROXIMATELY 35 ARE KNOWN TO EXIST AND ONLY HALF OF THESE HAVE PERFORATIONS COMPLETE ON ALL SIDES.

Ex West and DuPont. With 1991 P.F. certificate 9,500.00



186

- 186 ★ **7c Reddish Vermilion, Special Printing (171).** Without gum as issued, vibrant color, scissors-separated as usual but full perfs on three sides and full margin at bottom
 FRESH AND VERY FINE. APPROXIMATELY 50 OF THE 7-CENT CONTINENTAL SPECIAL PRINTING ARE BELIEVED TO EXIST.
 Ex Hewitt. With 1982 P.F. certificate 2,300.00



187

- 187 ★ **10c Pale Brown, Special Printing (172).** Without gum as issued, incredibly bright color, well-centered, scissors-separated as usual but leaving full intact perfs all around
 EXTREMELY FINE AND CHOICE. EASILY ONE OF THE FINEST OF THE FEWER THAN 40 10-CENT CONTINENTAL SPECIAL PRINTING STAMPS BELIEVED TO EXIST — ONLY EIGHT IN OUR RECORDS HAVE FULL PERFS.
 Ex Engel. With 1991 P.F. certificate 9,500.00

- 188 ★ **12c Dark Violet, Special Printing (173).**
Without gum as issued, rich color, well-centered

EXTREMELY FINE. ONE OF THE BEST-CENTERED OF THE APPROXIMATELY 60 EXAMPLES OF THE 12-CENT CONTINENTAL SPECIAL PRINTING BELIEVED TO EXIST.

With 1986 P.F. certificate 3,500.00



188



189

- 189 ★ **24c Dull Purple, Special Printing (175).**
Without gum as issued, intense shade and proof-like impression, well-centered with scissors-trimmed perfs at right and bottom

VERY FINE EXAMPLE OF THE 24-CENT CONTINENTAL SPECIAL PRINTING.

Approximately 80-90 examples are believed to exist. With 1952 P.F. certificate 2,250.00

- 190 ★ **90c Violet Carmine, Special Printing (177).**
Without gum as issued, beautiful bright color on fresh paper, scissors-separated as usual but leaving intact

EXTREMELY FINE AND CHOICE EXAMPLE OF THE 90-CENT CONTINENTAL SPECIAL PRINTING. APPROXIMATELY 40 ARE BELIEVED TO EXIST.

Ex "Ambassador" and Seymour. With 1991 P.F. certificate 8,500.00



190



191

- 191 ★ **2c Carmine Vermilion, Special Printing (180).** Without gum as issued, fiery color and fine impression, without scissors-separation, nibbed perf at upper right

VERY FINE EXAMPLE OF THE 2-CENT CARMINE VERMILION CONTINENTAL SPECIAL PRINTING. ONE OF THE RAREST SPECIAL PRINTINGS. ONLY 23 EXAMPLES ARE RECORDED IN OUR CENSUS.

Our census of Scott 180 (see Zoellner catalogue, Sale 804, Appendix, p. 376) records 23 examples of this rare Special Printing, one of which is in the New York Public Library collection.

Census No. 180-UNC-09. Ex Caspary. With 1992 P.F. certificate 26,000.00

1879 AMERICAN BANK NOTE CO. ISSUE



192



193

192 ★★ **2c Vermilion (183).** Mint N.H., brilliant color, wide margins, Extremely Fine Gem, with 1990 P.F. certificate..... 110.00

193 ★ **3c Green (184).** Original gum, lightly hinged, bright color, jumbo margins, light gum soak, otherwise Extremely Fine and choice 85.00

194 ★★ **5c Blue (185).** Mint N.H., deep rich color, very well-centered with wide margins all around

EXTREMELY FINE GEM. AN OUTSTANDING MINT NEVER-HINGED EXAMPLE OF THE 5-CENT AMERICAN BANK NOTE ISSUE.

With 1996 P.F. certificate..... 425.00



194



195

195 ★ **6c Pink (186).** Original gum, lightly hinged, fresh and bright color, very well-centered with wide margins

EXTREMELY FINE GEM. A SUPERB STAMP IN POST-OFFICE FRESH CONDITION.

With 1995 P.F. certificate..... 750.00



196

- 196 ★ **10c Brown, Without Secret Mark (187).** Original gum, very lightly hinged, beautiful deep rich color and proof-like impression, well-centered with wide margins, tiny natural translucent spot in upper right margin

EXTREMELY FINE. AN EXCEPTIONALLY FRESH AND WIDE-MARGINED EXAMPLE OF THE 10-CENT 1879 WITHOUT SECRET MARK.

The 10c Without Secret Mark is considerably scarcer than Scott 188 (With Secret Mark)..... 1,500.00

- 197 ★ **10c Brown, With Secret Mark (188).** Original gum, lightly hinged, rich color, small natural inclusion at top left, Very Fine 1,100.00



197



198

- 198 ★ **90c Carmine (191).** Large part original gum, rich color, very well-centered

EXTREMELY FINE AND CHOICE. VERY DIFFICULT TO FIND WITH SUCH SUPERB CENTERING.

A beautiful stamp 1,850.00

1880-84 AMERICAN BANK NOTE CO. SPECIAL PRINTING



199

- 199 ★ **1c Dark Ultramarine, Special Printing (192).** Without gum as issued, rich color, three wide margins with perfs well clear at bottom

VERY FINE. A CHOICE SOUND EXAMPLE OF THE RARE ONE-CENT AMERICAN SPECIAL PRINTING. APPROXIMATELY 30 ARE KNOWN.

Our records indicate that many of the surviving Scott 192 stamps are not sound (more than half). Of the four or five centered (Extremely Fine) stamps, only one is sound; perhaps six or seven Very Fine sound stamps exist. Therefore, the collector who wishes to acquire a sound 1c American Special Printing is well-advised to bid aggressively for this stamp.

Ex West. With 1973 P.F. certificate 12,500.00



200

- 200 ★ **2c Black Brown, Special Printing (193).** Without gum as issued, deep rich color, creases and thins, handsome appearance

VERY FINE APPEARING EXAMPLE OF THE 2-CENT AMERICAN SPECIAL PRINTING. FEWER THAN 55 EXAMPLES ARE BELIEVED TO EXIST.

With 1957 P.F. certificate 7,000.00



201

- 201 ★ **6c Dull Rose, Special Printing (195).** Without gum as issued, fresh color, beautifully centered

EXTREMELY FINE. THIS SUPERB STAMP RANKS AMONG THE TWO OR THREE FINEST SOUND EXAMPLES OF THE RARE 6-CENT AMERICAN SPECIAL PRINTING. FEWER THAN 30 COPIES ARE BELIEVED TO EXIST.

Ex "Ambassador" and Cole. With 1988 P.F. certificate 13,500.00



202

- 202 ★ **7c Scarlet Vermilion, Special Printing (196).** Without gum as issued, wide margins, vibrant color

EXTREMELY FINE. A BEAUTIFUL EXAMPLE OF THE 7-CENT AMERICAN SPECIAL PRINTING.

Probably fewer than 100 copies exist, and of these at least a third have thins or small flaws. This sound example is very rare.

Ex Kantor. With 1950 and 1963 P.F. certificates 2,600.00

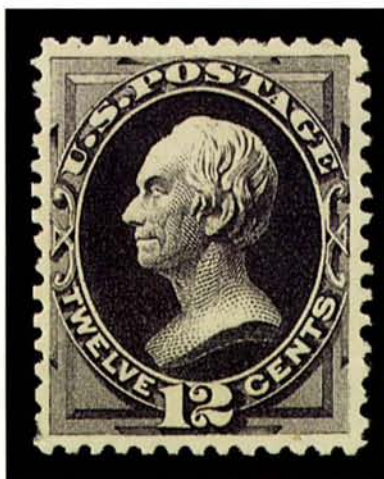


203

- 203 ★ **10c Deep Brown, Special Printing (197).** Without gum as issued, intense color and proof-like impression, beautifully centered with wide and even margins all around

EXTREMELY FINE GEM. WITHOUT QUESTION THIS STAMP IS AMONG THE FINEST OF THE FEWER THAN 30 10-CENT AMERICAN BANK NOTE COMPANY SOFT-PAPER SPECIAL PRINTING STAMPS BELIEVED TO EXIST.

Ex T. Charlton Henry, Klein. With 1988 P.F. certificate..... 12,500.00



204

- 204 ★ **12c Blackish Purple, Special Printing (198).** Without gum as issued, rich color and proof-like impression, perfectly centered

EXTREMELY FINE GEM. EASILY ONE OF THE FINEST KNOWN COPIES OF THE 12-CENT AMERICAN SPECIAL PRINTING.

Probably fewer than 75 copies exist. With 1991 P.F. certificate 4,250.00



205

- 205 ★ **15c Orange, Special Printing (199).** Without gum as issued, near perfect centering, bright color, fine impression
 EXTREMELY FINE. ONE OF THE BEST-CENTERED SOUND EXAMPLES OF THE 15-CENT AMERICAN SPECIAL PRINTING. PROBABLY FEWER THAN 30 EXIST, AND LESS THAN TEN OF THESE ARE IN SOUND CENTERED CONDITION.
 Ex "Angel". With 1991 P.F. certificate 14,000.00



206

- 206 ★ **24c Dark Violet, Special Printing (200).** Without gum as issued, deep rich color
 FINE. PROBABLY FEWER THAN 75 EXAMPLES OF THE 24-CENT AMERICAN SPECIAL PRINTING EXIST.
 With 1974 P.F. certificate 4,250.00



207

- 207 ★ **30c Greenish Black, Special Printing (201).** Without gum as issued, intense shade and fine impression

EXTREMELY FINE FOR THIS VERY RARE AMERICAN SPECIAL PRINTING, OF WHICH FEWER THAN 40 EXAMPLES ARE BELIEVED TO EXIST. PERHAPS TEN OF THESE ARE SOUND AND WELL-CENTERED.

Ex Chanin. With 1978 P.F. certificate..... 10,000.00



208

- 208 ★ **90c Dull Carmine, Special Printing (202).** Without gum as issued, rich color, enormous margins

EXTREMELY FINE GEM. NO FINER EXAMPLE OF THE 90-CENT AMERICAN SPECIAL PRINTING WILL BE FOUND AMONG THE FEWER THAN 40 RECORDED.

Our records show that more than half of the known examples of Scott 202 are centered strongly to one or two sides, and many of the better-centered examples have thins.

Ex Engel. With 1989 P.F. certificate..... 11,000.00



209

- 209 ★★ **2c Pale Red Brown, Special Printing (211B).** Mint N.H. with full bottom left corner margins, deep shade, fresh and Very Fine, with 1990 P.F. certificate..... 650.00



210

- 210 ★ **4c Deep Blue Green, Special Printing (211D).** Without gum as issued, beautifully centered with wide margins, deep shade and sharp proof-like impression
EXTREMELY FINE AND VERY RARE. ONE OF THE FINEST KNOWN EXAMPLES OF THE 4-CENT AMERICAN SPECIAL PRINTING.

Our revised census of the 4c 1883 Special Printing contains 26 stamps offered as No. 211D, of which 25 have been certified by The Philatelic Foundation (see Zoellner sale, Appendix, p. 381, eliminate duplicate entry 211D-UNC-27). Post Office Department records indicate that only 26 were sold.

Census No. 211D-UNC-22. With 1992 P.F. certificate 21,000.00

1882-88 AMERICAN BANK NOTE CO. ISSUE



211



212



213

- 211 ★ **6c Rose (208).** Original gum, fresh color and sharp impression, well-centered with wide margins
EXTREMELY FINE GEM. THE ROSE SHADE OF THE 6-CENT 1882 IS EXTREMELY RARE IN THIS CONDITION.
With 1996 P.F. certificate 425.00
- 212 ★★ **10c Brown (209).** Mint N.H., rich color and crisp impression, very well-centered, Extremely Fine and choice, with 1995 P.F. certificate..... 120.00
- 213 ★ **5c Indigo (216).** Original gum, h.r., rich color and proof-like impression, enormous jumbo margins all around, Extremely Fine Gem, a huge stamp, ex Morris, with 1989 P.F. certificate..... 200.00



214



215

- 214 ★ **30c Orange Brown (217).** Original gum, lightly hinged, fresh color, trivial natural inclusion, Very Fine and choice, with 1995 P.S.E. certificate 425.00
- 215 ★ **90c Purple (218).** Original gum, lightly hinged, rich color and fine impression, jumbo margins all around
EXTREMELY FINE WITH GARGANTUAN MARGINS.
With 1997 P.S.E. certificate 1,100.00

1890-93 AND COLUMBIAN ISSUE



216

- 216 ★田 2c Carmine, Cap on "2" (220a, 220c). Block of four, the left stamps with single Cap over left "2", the right stamps with Cap over both "2"'s, original gum, top stamps h.r., bottom stamps Mint N.H., incredibly rich color and well-centered

VERY FINE-EXTREMELY FINE. AN INCREDIBLY RARE COMBINATION BLOCK SHOWING BOTH VARIETIES OF CAP OVER "2". A HIGHLY EXHIBITABLE ITEM — THE LOWER RIGHT STAMP COULD WELL BE THE FINEST EXAMPLE OF THIS VARIETY EXTANT.

With 1997 P.F. certificate. Scott Retail as singles (meaningless for an item of this rarity)..

..... 660.00



217EX

- 217 ★ 1c-\$5.00 Columbian (230-245). Complete set, 1c-4c, 10c-\$4.00 original gum, 5c-8c, \$5.00 unused (regummed), 10c, 30c, \$2.00, \$4.00 disturbed gum, few with small faults, Fine-Very Fine appearance..... 11,187.00



218

- 218 ★ **4c Columbian, Error of Color (233a).** Original gum, lightly hinged, the more intense of the two error shades, fresh and bright paper, well-centered with wide margins
 VERY FINE AND CHOICE. AN OUTSTANDING EXAMPLE OF THE RARE 4-CENT COLUMBIAN ERROR OF COLOR.

The 4c Columbian color error was caused by the use of a wrong batch of ink. It has been noted in the past that the color matches that of the 1c, but in fact the true color error is an even darker shade.

With 1961 and 1980 P.F. certificates 17,000.00

1894-95 BUREAU ISSUE



219

220

221

- 219 ★ **1c Ultramarine (246).** Left sheet margin plate number single, original gum, bright color, well-centered with wide margins, Extremely Fine Gem 30.00
- 220 ★★ **8c Violet Brown (257).** Mint N.H., deep rich color, well-centered with beautifully proportioned margins, Extremely Fine Gem, with 1991 P.F. certificate 210.00
- 221 ★★ **50c Orange (260).** Mint N.H., intense color on bright paper, well-centered, Extremely Fine and choice, with 1996 P.F. certificate 600.00



222

223

224

- 222 ★ **\$5.00 Dark Green (263).** Disturbed original gum from album mount, rich color, Very Fine 4,000.00
- 223 ★ **10c Dark Green (273).** Top sheet margin part imprint single, original gum, barest faint trace of hinging, bright color, well-centered with huge margins all around, Extremely Fine Gem, with 1990 P.F. certificate 75.00
- 224 ★ **\$5.00 Dark Green, Imperforate (278a).** Horizontal pair, large margins all around, original gum, lightly hinged, intense color and sharp impression
 EXTREMELY FINE GEM. A RARE IMPERFORATE PAIR OF THE \$5.00 WATERMARKED BUREAU ISSUE.
 With 1986 P.F. certificate..... 4,000.00

TRANS-MISSISSIPPI ISSUE

- 225 ★ **1c-50c Trans-Mississippi (285-291).** Original gum, 5c, 6c h.r., others lightly hinged, rich colors, well-centered, 10c light toning, 50c reperfed at L., Very Fine-Extremely Fine.....
Not illustrated 1,267.00



226

- 226 ★ **\$1.00 Trans-Mississippi (292).** Disturbed original gum from hinge removal, sharp proof-like impression, well-centered, small corner crease at top left, otherwise Extremely Fine .
 1,250.00



227

- 227 ★ **\$2.00 Trans-Mississippi (293).** Original gum, lightly hinged, rich color, wide margins, reperfed at right, Extremely Fine appearance 2,100.00

PAN-AMERICAN INVERTS



228

- 228 ★ **1c Pan-American, Center Inverted (294a).** Lightly hinged, rich color and fine impressions

VERY FINE. A REMARKABLY FRESH EXAMPLE OF THE ONE-CENT PAN-AMERICAN INVERT.

The 1c Pan-American Inverts were found in at least four different post offices around the country. Between 600 and 700 are likely to have been issued..... 10,000.00



229

- 229 ★ **2c Pan-American, Center Inverted (295a).** Lightly hinged, perfectly centered, rich colors and clear impressions of vignette and frame, tiny corner crease at top right

EXTREMELY FINE AND CHOICE. ONE OF THE BEST-CENTERED ORIGINAL-GUM EXAMPLES OF THE 2-CENT PAN-AMERICAN INVERT.

The 2c is the rarest of the three Pan-American Inverts. It is surmised that approximately 200 were issued through the post office, with two distinct shades known. Estimates of surviving examples range from an early count (1945) of 55 unused and 2-3 used to the 1998 Datz estimate of 150 unused, 3-5 used and a block of four intact. Our Levi records contain the intact block (4), reconstructed block (4), 64 unused singles and 7 used singles, for a total of 72 unused and 7 used. Many of the unused singles have disturbed gum or no gum, and/or are off center to top or top left.

With 1992 P.F. certificate. Scott footnote states "Almost all unused copies of No. 295a have partial or disturbed gum. Values are for examples with full original gum that is slightly disturbed."..... 37,500.00



230

- 230 ★ **4c Pan-American, Center Inverted (296a).** Beautiful colors, full original gum, h.r., FRESH AND VERY FINE. AN OUTSTANDING EXAMPLE OF THE 4-CENT PAN-AMERICAN INVERT.

The 4c Pan-American Invert was a special printing and not regularly issued. Examples were distributed through two official channels, and the gum on the majority of stamps without "Specimen" overprint was disturbed. In fact, the stamps removed from mounting paper are generally thinned or have seriously disturbed gum. Examples with full intact gum are very scarce. This stamp is very fresh and has the cleanest gum of any 4c Invert that we have examined.

With 1970 and 1992 P.F. certificates, both stating that "it is genuine previously hinged."
..... 18,000.00



231

- 231 S **4c Pan-American, Center Inverted, Specimen Overprint (296a-S).** Unused (no gum), fresh color and fine impressions
FINE EXAMPLE OF THE 4-CENT PAN-AMERICAN INVERT WITH SPECIMEN OVERPRINT.

If the reported numbers are correct, a total of 203 4c Inverts was released, both with and without the overprint. An unknown quantity of the 4c Pan-American invert was overprinted with a small "Specimen" overprint. Some examples, both with and without the overprint, were given away by Third Asst. Postmaster General Edwin C. Madden. When postal authorities learned of the practice, they destroyed 194 copies and put one pane of 100 into the official archives. At a later date, 97 of these were later traded for rarities missing from the archives.

With 1964 P.F. certificate..... 5,000.00

1902-08 ISSUE

- 232 ★★ 1c Blue Green, Booklet Pane of Six (300b). Mint N.H., deep rich color, very well-centered for this difficult booklet, Extremely Fine and choice, very rare in such pristine condition..... 825.00



233

- 233 ★ 5c Blue, Imperforate (315). Horizontal pair, large margins all around, lightly hinged, fresh and Very Fine..... 310.00



232



234

- 234 ★田 5c Blue, Imperforate (315). Right margin imprint and plate no. 4075 block of six, large margins all around, h.r., rich color, Extremely Fine and choice plate block..... 3,000.00



235

- 235 ★ **5c Blue, Vertical Coil (317).** Pair, original gum, fresh color, well-centered with huge margins at sides

VERY FINE. AN OUTSTANDING EXAMPLE OF THE RARE 5-CENT 1908 VERTICAL COIL.

Armstrong notes that as of 1980 only 79 pairs had been certified by the Philatelic Foundation.

With 1957 P.F. certificate 12,500.00



236

- 236 ★ **1c Blue Green, Horizontal Coil (318).** Original gum, lightly hinged, incredibly rich color, well-centered top to bottom

FRESH AND VERY FINE EXAMPLE OF THE RARE 1-CENT 1908 HORIZONTAL COIL.

Armstrong notes that as of 1980 only 80 pairs had been certified by the Philatelic Foundation.

With 1967 and 1993 P.F. certificates 8,500.00



237

- 237 ★ **2c Carmine, Horizontal Coil (322).** Original gum, lightly hinged, fresh and bright, almost perfect centering

EXTREMELY FINE GEM PAIR OF THE 2-CENT 1908 HORIZONTAL COIL IN THE FINEST ATTAINABLE QUALITY. A SUPERB PAIR.

Armstrong notes that only 167 examples had been certified by the Philatelic Foundation as of 1980. Issued on July 31, 1908, and intended only to be used by private vending machine companies, Scott 322 is only known with the Die II widened line at lower left.

Signed "S.A." in pencil on back (Spencer Anderson). Ex Irvin. With 1988 P.F. certificate
.....7,500.00

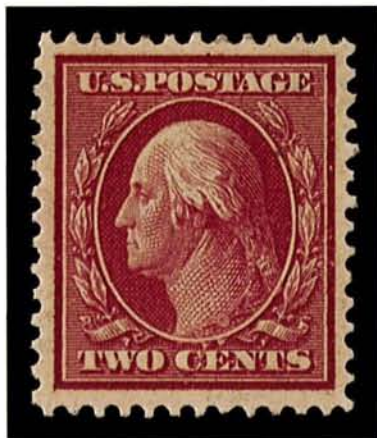


238

- 238 ★ **10c Yellow, Horizontal Coil, Perf 12 (356).** Guide line pair, h.r., fresh and bright color FINE. A VERY RARE GUIDE LINE PAIR OF THIS EARLY COIL.

With 1971 P.F. certificate..... 9,000.00

1909 BLUISH PAPER



239EX



240

- 239 ★ **1c Green, 2c Carmine, Bluish (357-358).** H.r., Fine-Very Fine..... 185.00
- 240 ★ **3c Deep Violet, Bluish (359).** Lightly hinged, intense color on deeply blued paper, wide margins, Very Fine and choice 1,800.00



241

- 241 ★ **4c Orange Brown, Bluish (360).** Very lightly hinged, rich color on strongly blued paper, wide margins, centered slightly to right
FINE EXAMPLE OF THE RARE 4-CENT BLUISH PAPER.
Ex Close. With 1957 P.F. certificate 19,000.00



242

- 242 ★ **5c Blue, Bluish (361).** Slightly disturbed original gum, deep color on strongly blued paper, Very Fine and choice, with two owner's backstamps 4,500.00

- 243 ★ **6c Red Orange, Bluish (362).** Bright color on strongly blued paper, Very Fine and choice, signed in pencil by George Sloane ... 1,350.00



243



244

- 244 ★ **8c Olive Green, Bluish (363).** Bright color on strongly blued paper, trivial natural inclusion at bottom right, bottom perfs just in
A RARE EXAMPLE OF THE 8-CENT BLUSH PAPER.
With 1968 P.F. certificate..... 20,000.00



245

- 245 ★ **10c Yellow, Bluish (364).** Left sheet margin single, h.r., vivid color on deeply blued paper, very well-centered
 EXTREMELY FINE GEM EXAMPLE OF THE 6-CENT BLuish PAPER.
 The deeply blued sheet margin and excellent centering make this a very striking stamp..
 1,600.00



246

- 246 ★ **13c Bluish Green, Bluish (365).** H.r. at top, rich color on strongly blued paper, wide margins, fresh and Very Fine, owner's purple backstamp
 2,800.00

- 247 ★ **15c Pale Ultramarine, Bluish (366).** Slightly disturbed original gum from hinge removal, bright color, Very Fine..... 1,350.00



247



248



248A

- 248 ★ **2c Carmine, Horizontal Coil, Perf 12 (388).** Pair with 3 mm spacing, barely hinged, vivid color
 VERY FINE. A CHOICE PAIR OF THE RARE 2-CENT SINGLE-LINE WATERMARKED PERF 12 HORIZONTAL COIL.
 With 1974 P.F. certificate..... 2,150.00
- 248A ★ **3c Violet, Horizontal Coil, Perf 10 (445).** Guide line pair, hinge mark, beautifully centered, rich color, Extremely Fine..... 1,200.00



249



250

- 249 ★ **2c Red, Ty. I, Vertical Coil, Perf 10 (449).** Lightly hinged, bright color, very well-centered for this stamp with perfect centering from side to side
 EXTREMELY FINE GEM. A BEAUTIFUL SINGLE OF THE RARE TYPE I ROTARY PRESS VERTICAL COIL.
 With 1991 P.F. certificate..... 2,400.00
- 250 ★ **2c Red, Ty. I, Vertical Coil, Perf 10 (449).** Joint line pair, bottom stamp Mint N.H., fresh and bright color
 FINE AND CHOICE JOINT LINE PAIR OF THE RARE TYPE I ROTARY PRESS VERTICAL COIL.
 The 2c Type I rotary plate was used very briefly to make vertical coils issued in December 1915. It was superseded in February 1916 by the Type III plate. The early printing of the 2c rotary vertical coil was almost completely overlooked by contemporary collectors and dealers, who did not anticipate further production of vertical coils.
 With 1970 P.F. certificate..... 13,500.00



251

- 251 ★★ **5c Carmine, Error (467).** Single error in horizontal block of ten, the error at bottom center, entire bottom row including the error Mint N.H., fresh and Very Fine.. 825.00



252

- 252 ★★田 **5c Carmine Error, Imperforate (485).** Single error in block of nine, enormous margins all around, block barely hinged at top, other stamps including error Mint N.H., fresh color

EXTREMELY FINE GEM. AN OUTSTANDING EXAMPLE OF THE 5-CENT IMPERFORATE ERROR, OF WHICH LESS THAN 50 SHEETS WERE RELEASED TO THE PUBLIC.

With 1988 P.F. certificate 15,000.00

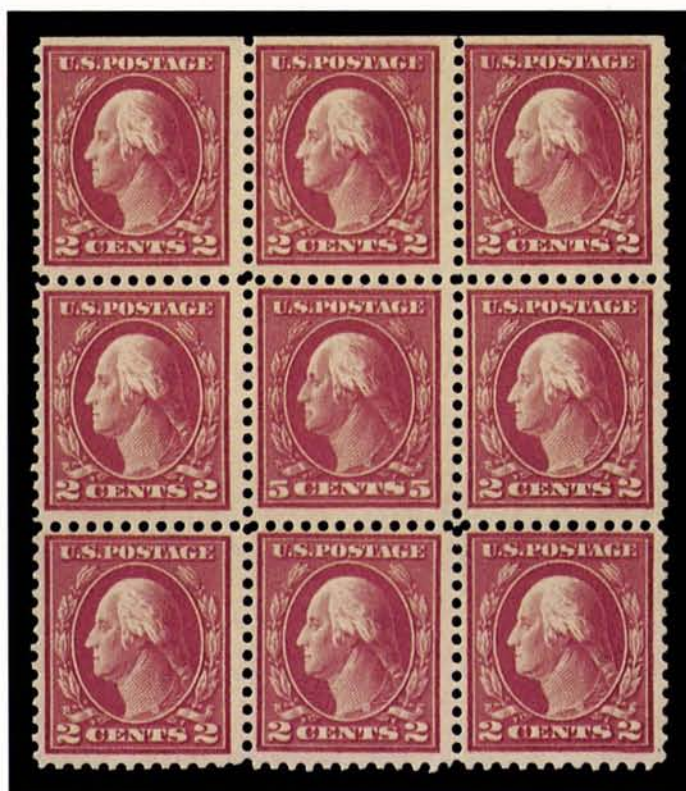


253



254

- 253 ★★ **2c Carmine, Ty. II, Horizontal Coil (491).** Barest faint trace of hinging, rich color, well-centered, Very Fine and choice, with 1990 P.F. certificate..... 2,750.00
- 254 ★ **2c Carmine, Ty. II, Horizontal Coil (491).** Pair, single h.r. at top, fresh and bright color, well-centered for this difficult coil
 VERY FINE. A CHOICE PAIR OF THE RARE TYPE II PERF 10 ROTARY HORIZONTAL COIL.
 With 1972 A.P.S. certificate 4,750.00



255

- 255 ★★ **5c Rose, Error (505).** Single error in block of nine, natural s.e. at top, top stamp lightly hinged, others including error Mint N.H., fresh and Fine 575.00
- 256 ★★ **5c Rose, Error (505).** Mint N.H. double error in complete pane of 100, small margin tear, otherwise very fresh and Fine..... 1,379.00

- 257 ★ **2c Carmine, Ty. VII, Imperforate (534B).** Large margins all around, barely hinged, incredibly intense shade, Very Fine and choice, with 1991 P.F. certificate 1,550.00



257



258

- 258 ★★田 **2c Carmine, Ty. VII, Imperforate (534B).** Top margin block of four showing plate number, wide margins, top right stamp h.r., others Mint N.H., bright color, crease affects three stamps, small tear at top of selvage (easily trimmed)

VERY FINE. A VERY RARE BLOCK OF THE 2-CENT TYPE VII IMPERFORATE.

Most Type VII stamps were used by private vending-and affixing-machine companies. However, unlike Scott 314A and 482A, a small supply of the imperforate Type VII stamps did reach the public..... 8,300.00



259

- 259 ★ **2c Carmine Rose, Ty. II, Rotary Perf 11 x 10 (539).** Lightly hinged, rich color, well-centered for this difficult stamp with wide margins
 EXTREMELY FINE. A CHOICE AND RARE 2-CENT TYPE II COIL-WASTE PERF 11 X 10.
 With pencil notation on back. With 1991 P.F. certificate 3,000.00



260

- 260 ★ **1c Green, Rotary Perf 11 (544).** Barely hinged, deep rich color, centered slightly to left
 VERY FINE AND EXTREMELY RARE. ONE OF THE FINEST OF THE 31 UNUSED EXAMPLES THAT HAVE BEEN CERTIFIED BY THE PHILATELIC FOUNDATION.
 A small quantity of 1c Rotary Press stamps was perforated 11 at the end of 1922, using remainder sheets from the earlier printings that were normally perforated in 10 gauge or 11/10 compound gauge. Its existence as a Perf 11 variety was discovered in 1936, and the stamp received its Scott catalogue listing in 1938.
 Most of the unused copies of Scott 544 are centered similar to the stamp offered here.
 With 1988 P.F. certificate 13,500.00



261

- 261 ★ **1c Green, Rotary, Perf 11 (594).** Original gum, fresh and bright color, centered to right FINE. THE ONLY SOUND ORIGINAL-GUM EXAMPLE OF SCOTT 594 (WITHOUT PERFORATED INITIALS) CERTIFIED BY THE PHILATELIC FOUNDATION OR CONTAINED IN OUR RECORDS. ONLY 21 UNUSED EXAMPLES OF THIS RARITY ARE RECORDED, OF WHICH ONLY THREE ARE SOUND WITH ANY PART OF ORIGINAL GUM.

Our census of Scott 594 unused, based on the Levi and P.F. records, contains only 21 stamps. Of these, ten have no gum at all, and eight have only a small part of original gum (these were removed from postcards and envelopes). Of all unused stamps, only six are sound. The stamp offered here is the only recorded sound original-gum example without the perforated initials of Crowell Publishing Co. of Springfield, Ohio. Two of the latter are known with gum, one of which is faulty.

With 1991 P.F. certificate 17,500.00

VENDING AND AFFIXING MACHINE PERFORATIONS



262



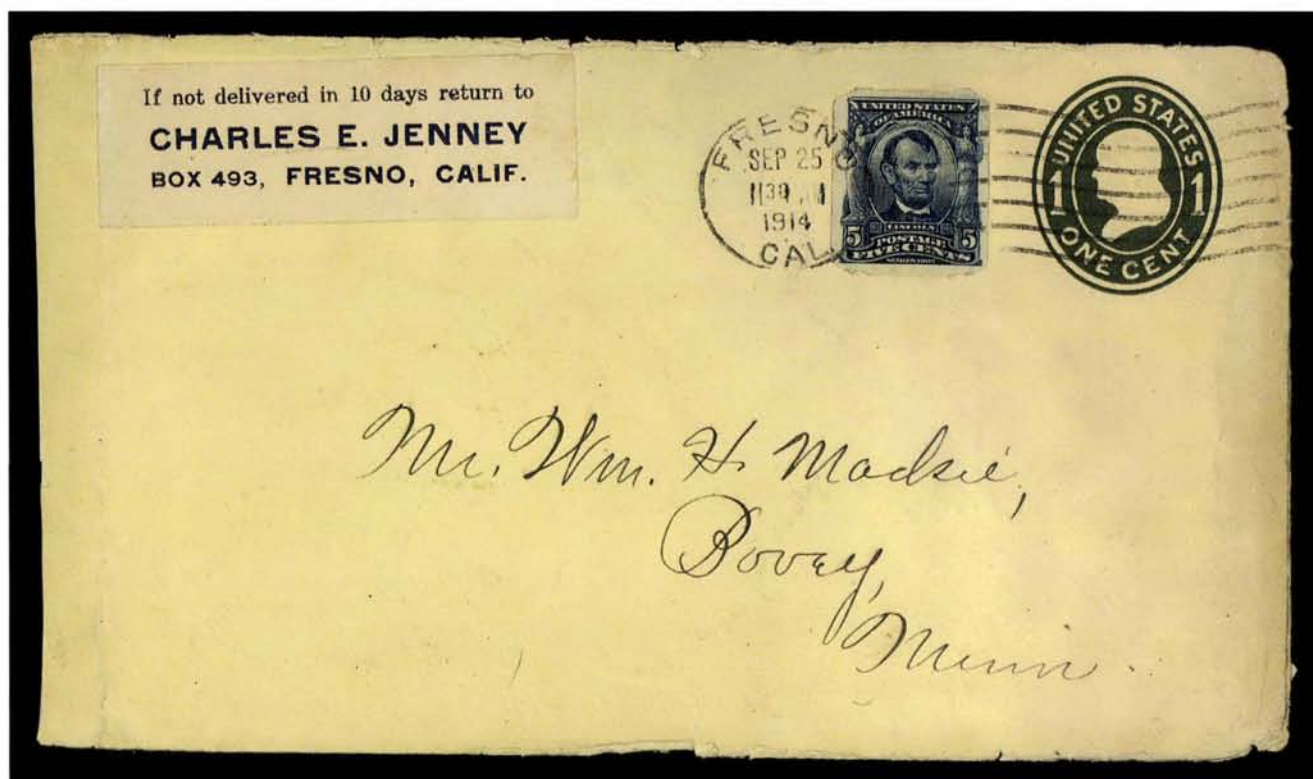
263

- 262 ★★ 2c Scarlet, Imperforate, International Vending Machine Co. Private Perforation 12½ to 13 (320b). Mint N.H. pair, rich color, fresh and Very Fine and rare, with 1997 P.F. certificate, Scott Retail for hinged 1,250.00
- 263 ★ 3c Deep Violet, Imperforate, Schermack Ty. I Private Perforations (345). Original gum, h.r., rich color, well-centered, Extremely Fine and choice, rare, ms. notation on back 900.00



264

- 264 ★ 5c Blue, Imperforate, U.S. Automatic Vending Co. Ty. I Private Perforations (315). Original gum, h.r., rich color and well-centered, Extremely Fine and choice, signed Harris in pencil on back..... 650.00



265

- 265 ☒ **5c Blue, Imperforate, U.S. Automatic Vending Co. Ty. I Private Perforation (315).** Well-centered and rich color, tied by "Fresno Cal. Sep. 25, 1914" wavy-lines machine cancel on 1c Green entire (U401) to Bovey Minn., return address label, slightly reduced at left, some edge wear, top flap detached, still Very Fine, used a few years after production in 1908, but extremely rare, listed but unpriced in Scott E. 1,000-1,500

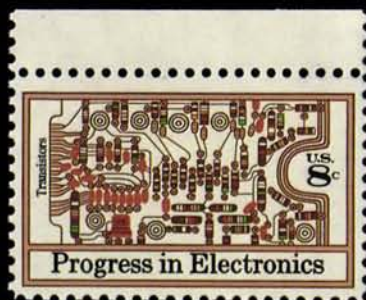


266



267

- 266 ★ **5c Blue, Imperforate, U.S. Automatic Vending Co. Ty. II Private Perforations (315).** Guide line pair, original gum, h.r., rich color, Extremely Fine Gem, a very rare guide line pair, signed Harris in pencil on back 2,000.00
- 267 ★ **5c Blue, Imperforate, U.S. Automatic Vending Co. Ty. III Private Perforations (315).** Original gum, h.r., rich color, well-centered, Extremely Fine and choice, very rare, signed Harris in pencil on back 950.00
- 268 **Vending and Affixing Machine Perforations Collection.** Comprehensive collection of more than 100 pairs and a few singles, neatly arranged and mounted on album pages by company and type, many better incl. Brinkerhoff Ty. I Nos. 314, 320, 320a, 368 guide line pair, nice group of Mailometer incl. Ty. II No. 346 strip of four, and 371, interesting group of Schermack incl. Ty. II Nos. 344, 345, 346, most in very fresh condition, a Very Fine-Extremely Fine and choice group suitable for the general U.S. collector and specialist alike, Scott Retail approximately 13,500.00



269



271



274



270



275



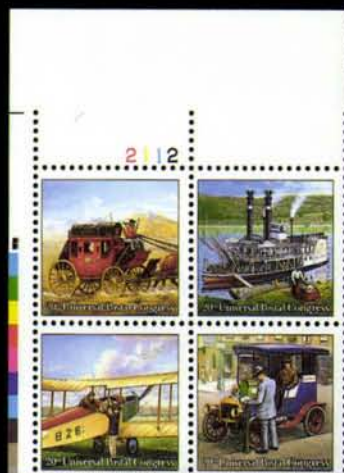
273



272



278



279



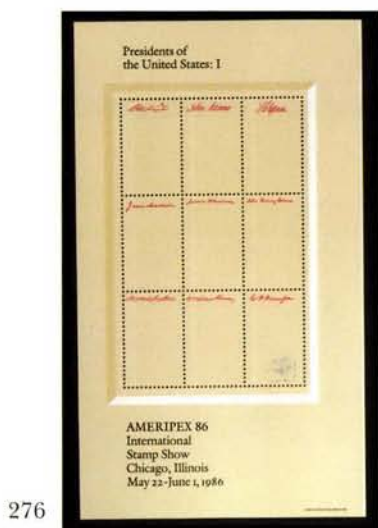
280



281

MODERN ERRORS

- 269 ★★ **8c Electronics, Tan and Lilac Omitted (1501b).** Mint N.H. top margin single, Very Fine 1,500.00
- 270 ★★田 **10c Mariner, Red Omitted (1557a).** Mint N.H. plate no. block of four, Very Fine, with 1990 P.S.E. certificate..... 2,400.00
- 271 ★★ **13c Spirit of '76, Imperforate (1631b).** Mint N.H. right margin strip of three, Very Fine, with 1990 P.F. certificate 1,300.00
- 272 ★★ **31c Bicentennial Souvenir Sheet "USA/31c" Omitted and Imperforate (1689f).** Mint N.H., Very Fine 2,750.00
- 273 ★★田 **15c Coral Reefs, Imperforate (1830b).** Mint N.H. Zip block of four, Very Fine..... 1,250.00
- 274 ★★ **20c Roberto Clemente, Imperforate Vertically (2097a).** Mint N.H. horizontal pair, Very Fine and choice..... 1,900.00
- 275 ★★ **22c Love, Imperforate (2143a).** Mint N.H. horizontal pair with top right margin, Very Fine 1,750.00



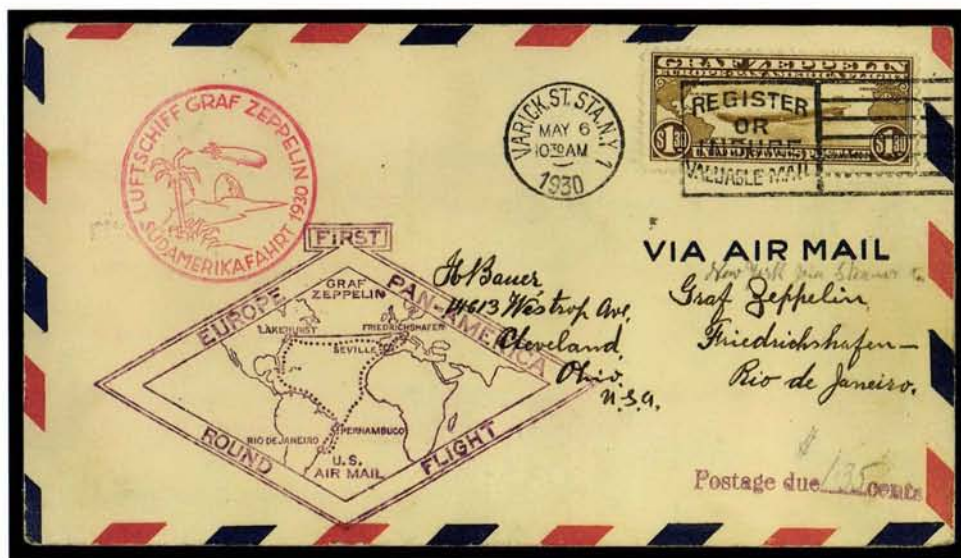
276



277

- 276 ★★ **22c AMERIPEX Souvenir Sheet I, Intaglio Blue Omitted (2216j).** Mint N.H., traces of design from tagging roller on bottom right stamp, fresh and Very Fine 3,500.00
- 277 ★★ **\$2.40 Moon Landing, Intaglio Black Omitted (2419a).** Mint N.H. left margin single with plate no., Very Fine, with 1990 P.F. certificate 2,750.00
- 278 ★★田 **25c Prehistoric Animals, Intaglio Black Omitted (2425b).** Mint N.H. block of four, Very Fine, rarely seen with this centering as Scott Retail is for Fine block..... 1,150.00
- 279 ★★田 **25c U.P.U. Congress, Intaglio Dark Blue Omitted (2437b).** Mint N.H. plate no. block of four, standard Fine centering, Scott Retail for Fine block of four 1,000.00
- 280 ★★田 **25c Sea Creatures, Intaglio Black Omitted (2511b).** Mint N.H. top margin block of four, Very Fine..... 1,200.00
- 281 ★★田 **45c U.P.U. Congress, Intaglio Light Blue Omitted (C125b).** Mint N.H. plate no. block of four, Very Fine, Scott Retail for block of four 1,000.00
- 282 ★★ **Transportation Coils, Imperforate.** Mint N.H. group of ten pairs and one strip of three, incl. Nos. 1898Ac, 1906b, 1908a, 2130b (red precancel), 2228b, 2259a (two), 2263a, 2265a, 2457a, 2464a, Very Fine 2,255.00
- 283 ★★田 **Modern Commemorative Errors.** 29 major errors and eight freaks, errors incl. Nos. 966a, 1271a, 1355c, 1363b, 1370b, 1547b, 1690a, 1711b, 1730a, 1786b, 1926a, 1951b, 2014a (two), 2045a, 2096a, 2108a, 2238b, 2561a, 2566b (one pane in a complete booklet), freaks incl. seven color misregistrations & No. 1332 with red omitted, Very Fine group 10,640.00
- 284 ★★ **Modern Definitive Errors.** 47 major errors and 13 misperfed freaks, errors mostly imperforate coil pairs, better incl. Nos. 1229b, 1304b, 1616a, 1618Ce, 1811a, 2521a, also incl. Nos. 1509b, 1597a sheet of 100 (50 pairs), 1610a, 2431b, 2517a, C73a, C76a, minor duplication of inexpensive errors, No. 2431b with photocopy of 1990 P.F. certificate 7,191.00

AIR POST



285EX

- 285 ☒ **65c-\$2.60 Graf Zeppelin (C13-C15).** 65c tied to flown card to Germany, others on flown covers, \$1.30 tied to cover with instructions to Germany and Rio, resulting in \$1.35 postage due (stamps affixed on back), 65c card lightly toned, \$2.60 with light mounting stains on front, Fine-Very Fine 1,175.00



- 286 ★ **1877, 5c Deep Blue, Buffalo Balloon Air Post Semi-Official, Tête-Bêche Pair (CL1a).** Large margins all around, full original gum, one stamp Mint N.H., other lightly hinged, small adherence on face in margin only of one stamp, does not affect the pair and is most likely from another sheet, based on similarity between papers

EXTREMELY FINE. ONE OF ONLY THREE SOUND TÊTE-BÊCHE PAIRS CONTAINED IN OUR RECORDS. A GREAT AIR POST RARITY.

Only two of the 11 tête-bêche pairs certified by the Philatelic Foundation are sound. Seven of the nine faulty tête-bêche pairs in the Foundation records are thinned or defective in the margin, further evidence supporting our theory on the adherence on the pair offered in this sale.

The Buffalo Balloon stamp, designed by John F. B. Lillard and engraved by John H. Snively, was printed by Wheeler Brothers Printers in Nashville, Tennessee. The stamps were intended for use on a balloon flight from Nashville to Gallatin, Tennessee, which took place on June 18, 1877. Of the 300 that were printed, only 23 were used. 15,000.00

286



SPECIAL DELIVERY AND POSTAGE DUE

- 287 ★ **10c Blue, Special Delivery (E4).** Original gum, lightly hinged, deep rich color, well-centered with wide margins all around, Extremely Fine Gem 600.00
- 288 ★ **1c Brown, 2c Brown (J1-J2).** Both stamps original gum, the 1c very well-centered, Fine-Very Fine 347.00
- 289 ★ **5c Brown (J4).** Original gum, very lightly hinged, fresh and bright color, well-centered with wide and even margins, Extremely Fine Gem 500.00
- 290 ★ **10c Brown (J5).** Original gum, bright color, well-centered, fresh and Very Fine 525.00
- 291 ★ **10c Brown, Imperforate Pair (J5a).** Horizontal pair, large margins all around, original gum, deep rich color and sharp proof-like impression
EXTREMELY FINE. A VERY RARE IMPERFORATE PAIR OF THE 10-CENT BROWN LARGE NUMERAL POSTAGE DUE.
With copy of 1991 P.F. certificate for block of four, this being the top pair E. 2,000-2,500
- 292 ★ **30c Brown (J6).** Original gum, single h.r., rich color, trivial natural inclusion, fresh and Very Fine 260.00
- 293 ★ **50c Brown (J7).** Original gum, rich color and sharp impression, well-centered, Extremely Fine and choice 390.00



- 294 ★★ **1c Red Brown (J15).** Mint N.H., rich color and proof-like impression, well-centered with wide margins, trivial natural inclusion, Extremely Fine Gem, with 1991 P.F. certificate ... 45.00
- 295 ★ **5c Red Brown (J18).** Original gum, h.r., deep color and proof-like impression, Very Fine and choice, with 1991 P.F. certificate 390.00
- 296 ★ **30c Red Brown (J20).** Original gum with offset on back, fine impression, tiny natural inclusion, Very Fine 175.00
- 297 ★ **50c Red Brown (J21).** Original gum, lightly hinged, fresh and bright color, sharp impression, well-centered with even margins all around, Extremely Fine Gem, with 1979 P.F. certificate 1,500.00
- 298 ★★ **5c Bright Claret (J25).** Mint N.H. top sheet margin single showing **part imprint**, incredibly deep color, well-centered, Extremely Fine Gem, with 1990 P.F. certificate, Scott Retail for hinged 67.00
- 299 ★★ **10c Bright Claret (J26).** Original gum, lightly hinged, fresh and Very Fine..... 110.00
- 300 ★★ **30c Bright Claret (J27).** Original gum, lightly hinged, bright color, well-centered with wide margins, Extremely Fine and choice, with 1991 P.F. certificate for strip of six, this being the left stamp..... 400.00
- 301 ★ **50c Bright Claret (J28).** Original gum, lightly hinged, rich color, wide margins, fresh and Very Fine 425.00



302EX

- 302 ★ **1c-50c Bright Claret, Imperforate (J22a-J28a).** Horizontal pairs of each, the 1c and 30c with sheet margin at right and left respectively, all have large margins and fresh color, original gum, few thin spots, otherwise Very Fine-Extremely Fine and rare set of imperforate pairs..... 3,125.00



303

- 303 ★★ **1c Vermilion (J29).** Mint N.H., incredibly fresh color, sharp impression showing intricate detailing in the background machinework, well-centered for any Bureau issue, but especially so for this rare stamp

EXTREMELY FINE GEM. THE ONLY WELL-CENTERED MINT NEVER-HINGED SCOTT J29 CERTIFIED BY THE PHILATELIC FOUNDATION. PROBABLY THE FINEST ONE-CENT VERMILION POSTAGE DUE STAMP EXTANT.

With 1982 and 1992 P.F. certificates..... 2,100.00



- 304 ★ **2c Vermilion (J30).** Original gum, lightly hinged, bright color, well-centered, Extremely Fine and choice, with 1991 P.F. certificate 600.00
- 305 ★★ **1c Deep Claret (J31).** Mint N.H., rich color, fresh and Fine 60.00
- 306 ★★ **2c Deep Claret (J32).** Mint N.H., rich color and sharp proof-like impression on bright paper, wide margins, Extremely Fine and choice 57.00
- 307 ★★ **3c Deep Claret (J33).** Mint N.H., incredibly deep shade and sharp impression, well-centered with beautifully proportioned margins, Extremely Fine Gem..... 225.00
- 308 ★★ **5c Deep Claret (J34).** Mint N.H., well-centered, fresh and Extremely Fine..... 340.00
- 309 ★ **10c Deep Claret (J35).** Original gum, bright color, wide margins, Extremely Fine and choice 225.00
- 310 ★★ **30c Pale Rose (J36b).** Mint N.H., bright shade, wide margins, Extremely Fine, with 1990 P.F. certificate for block of nine, this being the bottom right stamp..... 475.00
- 311 ★ **50c Deep Claret (J37).** Original gum, very lightly hinged, intense color and sharp impression, wide margins, Extremely Fine and choice, with 1992 P.F. certificate 1,050.00



- 312 ★ **1c-3c Deep Claret (J38-J40).** 1c Mint N.H., others barely hinged, interesting range of shades, Fine-Extremely Fine group..... 71.00
- 313 ★★ **5c Deep Claret (J41).** Mint N.H., rich color, fresh and Very Fine..... 87.00
- 314 ★★ **10c Deep Claret (J42).** Mint N.H., bright shade, Very Fine..... 90.00
- 315 ★ **30c Deep Claret (J43).** Original gum, intense shade, fresh and Fine 500.00
- 316 ★★ **50c Deep Claret (J44).** Mint N.H., rich color and sharp proof-like impression, well-centered, Very Fine and choice, with copy of 1990 P.F. certificate for block of four, this being the bottom right stamp..... 475.00
- 317 ★ **3c Deep Claret (J47).** Intense shade, fresh and Fine..... 500.00
- 318 ★ **50c Deep Claret (J50).** Very lightly hinged, bright color, well-centered with wide margins, Extremely Fine and choice..... 825.00
- 319 ★★ **3c Carmine Lake (J54).** Mint N.H., incredibly deep shade from an overinked impression that still shows background detail, bright paper, well-centered with wide margins incl. very wide margin at right, some slight offset on back as would be expected for a stamp with such deep color, Extremely Fine Gem..... 1,250.00
- 320 ★★ **5c Carmine Lake (J55).** Mint N.H., fresh and bright color, very well-centered with enormous and even margins all around, Extremely Fine Gem, a superb stamp..... 57.00
- 321 ★ **30c Carmine Lake (J57).** Lightly hinged, deep rich color and fine impression, wide margins all around, Extremely Fine and choice 225.00



322

- 322 ★ **1c Rose (J59).** Right sheet margin single, very lightly hinged, bright color, well-centered with wide margins all around and enormous margins at sides
EXTREMELY FINE GEM. A SUPERB STAMP. THE 1916 1-CENT PERF 10 UNWATERMARKED POSTAGE DUE IS ONE OF THE UNDERRATED RARITIES OF TWENTIETH CENTURY PHILATELY.
The Perf 10 Postage Due stamps were printed on unwatermarked paper for a brief time. Well-centered original-gum examples are exceedingly rare.
With 1997 P.F. certificate..... 2,200.00



323

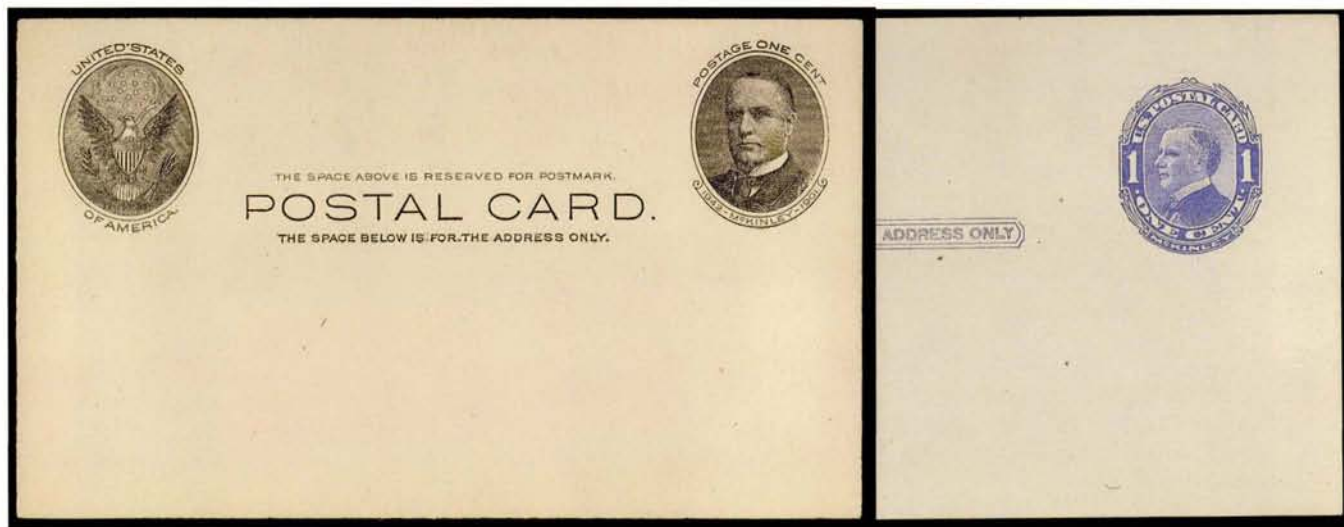


324



325EX

- 323 ★★ **30c Carmine Rose (J66).** Mint N.H., fresh color, very well-centered with wide and even margins all around, Extremely Fine Gem, a beautiful stamp, with 1990 P.F. certificate.... 135.00
- 324 ★★ **30c Deep Claret (J66a).** Mint N.H., intense color, well-centered, Extremely Fine and choice 135.00
- 325 ★ **2c-\$2.00 Offices in China (K1-K18).**The 10c, 40c and 50c Mint N.H., others lightly hinged, fresh and Fine-Very Fine set..... 2,172.00
- 326 ★ **1c-\$100.00 1895-97 Newspaper (PR114-PR125).** Original gum, h.r., couple minor corner creases, otherwise Fine-Very Fine set.....*Not illustrated* 289.00



327

328

- 327 ★ **1c Black, Full Face McKinley Postal Card (UX17).** Unused without printed message, post-office fresh with sharp corners and edges, tiny trace of thinning in extreme corner of card, otherwise Extremely Fine and choice example of this rare unused card..... 4,500.00
- 328 ★ **1c Blue Harding Postal Card, Pointed Arcs (UX21e).** Unused, post office fresh with sharp edges and corners, Extremely Fine and choice, normal card provided for comparison..... 1,000.00

GROUP LOTS



329EX

330EX

331EX

332EX

- 329 (★) **1847-1869 Issues.** Fourteen stamps, comprising thirteen unused incl. Nos. 9, 11, 22, 36b, 65, 98 (each no gum), 68, 69, 71, 97 (each regummed), Nos. 72, 92, 133a (each with original gum), No. 2 used, Nos. 2, 22, 72, 97, 98 with faults, also incl. Nos. 112P4-122P4 with blue color faded, stamps with bright colors, Fine-Very Fine appearing group 11,720.00
- 330 ★ **1870-88 Bank Note Issues.** 22 unused stamps, incl. Nos. 135 (regummed), 147, 148, 150, 165, 178, 179 (each no gum), 145, 148 (pair), 182, 189, 190, 205, 210, 211, 212, 214 (each with original gum), 206, 207, 213, 215 Mint N.H., Nos. 145, 148 (two), 212 disturbed gum, Nos. 165 & 190 reperfed, also incl. dubious No. 149 (not counted), Fine-Very Fine appearing group..... 5,615.00
- 331 ★ **1c-90c 1890 Issue (219-229).** Fourteen stamps incl. Nos. 219 (two), 220, 221, 222, 225 Mint N.H., others original gum with Nos. 219D, 224, 226, 228, 229 lightly hinged, Nos. 220, 223, 227 disturbed gum, No. 227 with small fault, also incl. No. 219DPe unused (no gum), mostly Very Fine-Extremely Fine 1,925.00
- 332 ★ **1c-\$2.00 1894 Issue (246-256, 258, 259, 261-262).** No. 262 (two), others one each, Nos. 250, 252 Mint N.H., others original gum, mostly lightly hinged, few disturbed gum, rich colors, No. 252 couple tiny spots of gum toning, No. 261 short perf, one No. 262 with small tear, generally Very Fine-Extremely Fine 9,876.00



- 333 ★ **1c-\$5.00 1895, 1898 Issues (264-284).** Complete sets, No. 265 Mint N.H., No. 276A unused (regummed), others original gum, most lightly hinged, No. 275 slightly disturbed gum, Nos. 276A-278 small faults, Fine-Very Fine..... 5,641.00
- 334 ★ **1c-\$5.00 1902 Issue (300-313, 314, 319, 320, 320a).** Nos. 320a pair, others singles, Nos. 314, 320a Mint N.H., balance lightly hinged or h.r., No. 308 disturbed gum, deep colors, Nos. 303, 305, 307, 309 small faults, Fine-Very Fine appearance..... 5,730.00
- 335 ★ **Early 20th Century Commemoratives.** 1901-1915, 36 unused stamps comprising Nos. 294-299, 323-330, 367-373, 397-404, Nos. 368, 371, 373 singles & pairs, others singles, seventeen stamps Mint N.H. incl. Nos. 325-329, 400, Nos. 402 & 404 unused (regummed), others o.g., Fine-Very Fine..... 3,720.00
- 336 **20th Century Collection Balance.** 1923-1991, virtually complete except for rarities, incl. Nos. 551-573, 578, 579, 581-591, 595, 599A (two pairs), 630, 634A, 658-679, 692-701, few back-of-book, 1923-1935 Scott Retail over \$5,000.00, 1936-1991 face value approximately \$500.00, mostly Mint N.H., generally Very Fine..... E. 1,500-2,000
- 337 ★ **Washington-Franklin Collection.** Comprehensive unused collection, incl. many better singles, pairs and line pairs, incl. Nos. 331-342, 374-382, 392-396 (singles and pairs), 405-420, 422 (two), 423, 424-440, 446 & 447 (pairs), 452-458 (pairs), 459 (single and pair), 460, 461, 477-480, 506-518, 519, 523, 524, 525-534A, 547, some Mint N.H., a few dubious early coils not catalogued, Fine-Very Fine..... 17,940.00
- 338 ★ **Air Post Issues (C1-C19).** Complete run, Nos. C1-C10, C16, C17 Mint N.H., Nos. C11-C15, C18, C19 lightly hinged, Nos. C2, C5, C13 Extremely Fine, others Fine-Very Fine... .. 2,487.00
- 339 ★ **Back-of-Book Balance.** 43 unused stamps, incl. Nos. E1-E3, E5-E19, F1, Q1-Q12, JQ1-JQ5, QE1-QE4, five stamps Mint N.H. incl. Nos. JQ3 & JQ5, few disturbed gum, others lightly hinged or h.r., mostly Very Fine-Extremely Fine..... 3,164.00
- 340 ★ **Postage Due Balance.** 42 unused stamps, incl. Nos. J3, J16, J19, J22-J24, J45/J56, J60-J87, 28 stamps Mint N.H. incl. Nos. J16, J22, J23, J49, J52, J53, J53a, J60, No. J19 unused (no gum), others original gum, Nos. J77a, J78a, J83a creased (Scott Retail \$68.00), mostly Extremely Fine..... 2,223.00
- 341 ★ **\$1.00-\$15.00 Hunting Permits (RW1-RW58).** Complete to 1991, 49 Mint N.H. incl. Nos. RW6, RW7, RW10-RW12, RW14-RW20, RW22-RW58, RW4 unused (regummed), other eight lightly hinged or small h.r., Nos. RW33-RW58 virtually all plate singles, mostly Very Fine-Extremely Fine..... 4,200.00
- 342 ☒ **Schullermann First Day and Event Covers.** 1934-39, 117 **handpainted and multicolored** covers, all drawn by Schullermann and mailed to himself, comprising 63 first day covers incl. Parks perf and imperf, 25 3c purples, twelve **flown Zeppelin covers** incl. eight with German frankings and four with U.S. frankings, and 42 event and anniversary covers, an absolutely gorgeous and breathtaking collection in remarkable condition, Extremely Fine..... E. 750-1,000

END OF SALE — THANK YOU

Bid Form

Sale 812
June 25, 1999

1

Please provide the following information:

NAME.....
ADDRESS.....
CITY/STATE/ZIP
TEL. (DAY) FAX.....
E-MAIL.....

PADDLE #

Do not write in box

2

Have you purchased from us in the past 5 years? ☐ YES (if so, please go to Section 3)
☐ NO (please provide a trade reference and bank information)

References:

Stamp Firm: Telephone.....

Bank: Account #

3

In the space provided below, enter the **lot number** from **Sale 812** and your corresponding bid. Please use **whole dollar amounts** only and enter the **maximum bid** you wish to have us execute on your behalf, according to the bidding increments (on other side of this form). **Your bid will NOT include the 10% buyer's premium.** We will advance the bidding at one increment over the next

highest bid; therefore, you may be awarded the lot at less than your maximum bid. Please do not use "plus" bids or "buy" bids. If you wish to bid on one lot **or** the other, indicate your "or" bid between lot number/bid entries and bracket your choices. If you wish to place a **bidding limit** on the total amount of your bids, please enter your limit in the space marked "Limit Bids".

☐ **LIMIT BIDS:** Check this box if you wish to limit the total amount of your bids (not including the 10% buyer's premium) in this sale. Your bids will be executed until your bidding limit no longer allows for additional bids.

The total amount you wish to bid is: \$

Lot	Bid	Lot	Bid	Lot	Bid
	\$		\$		\$

4

AGREEMENT: By signing this bid form, you agree to pay for purchases resulting from your bids, in accordance with the **Conditions of Sale** printed in the sale catalogue. You also agree to pay the 10% buyer's premium and any shipping costs (see reverse), which will be added to your successful bids, and any sales tax or use tax which may be due

on the total invoiced amount. It is understood that these bids will be executed by Siegel Auction Galleries as a courtesy to absentee bidders, but that no legal responsibility shall lie with the auctioneer or the firm if these bids are not executed. **You are responsible for your written bids, including any errors on your part.**



SIGNED..... TODAY'S DATE

5

Please submit your bids promptly (telephone bids must be confirmed in writing).

Mail to: **Robert A. Siegel Auction Galleries, Inc.**
65 E. 55th Street, New York, N.Y. 10022
Telephone (212) 753-6421

OR FAX YOUR BIDS: (212) 753-6429

Shipping Instructions, Bidding Increments and space for additional bids on other side of form

Additional Bids

Sale 812—June 25, 1999

Lot	Bid	Lot	Bid	Lot	Bid
	\$		\$		\$

Shipping and Transit Insurance

We will be pleased to arrange for shipping and transit insurance for purchases in this sale (except those described as "floor sale only"). To expedite billing and delivery of lots to hundreds of buyers per sale, we use standard charges for postage and insurance, based on the invoiced total and mailing requirements (see schedule). The standard charges are sometimes slightly more or less than the actual postage, but we do not include any fees for our labor or packing costs. Therefore, we ask all buyers to remit the prescribed amount for shipping charges.

Transit insurance is provided in all cases, except when the buyer has furnished us with proof that insurance coverage is effective under another policy. Proof, in such cases, will be accepted in the form of a written certificate from the insurance carrier.

You are responsible for insurance charges, which will be added to your invoice. This coverage is provided for our mutual protection against theft or loss in transit.

Current Postage & Insurance Charges

Invoice Total	Shipping Method	Charges
Up to \$1,000	Certified Mail or Insured Priority	\$10.00
\$1,000-10,000	Fedex or Express Mail	\$16.00
\$10,000-25,000	Fedex or Express Mail	\$22.00
Over \$25,000	Fedex or Express Mail	\$22.00 plus insurance at \$1 per \$1,000 value over \$25,000
Foreign Destinations (any value)	Registered or Express mail	\$10.00 plus insurance at \$2 per \$1,000 value
Bulk Lots	UPS Preferred	By weight and value (min. \$25.00)

2/95

Bidding Increments

The auctioneer may regulate the bidding at his discretion. However, to assist absentee bidders in establishing their maximum bid for each lot, the increments shown at right will be used in most cases. We recommend that written bids conform to these increments (those which do not will be reduced to the next level).

Up to \$140	\$5	\$3,000-7,000	\$250
\$140-300	\$10	\$7,000-20,000	\$500
\$300-700	\$25	\$20,000-30,000	\$1,000
\$700-1,400	\$50	\$30,000-75,000	\$2,500
\$1,400-3,000	\$100	\$75,000 up	\$5,000

SERVICES FOR BUYERS

If you wish to participate in our auctions, we will be pleased to assist you in many ways. Most of the following services are provided without additional charge.

Mail Viewing

Subject to availability, many lots can be sent to established clients (or those who submit references) for examination. Requests must be made no later than five days prior to the auction. Lots must be returned on the day of receipt. Postage/insurance costs will be invoiced. Large lots will not be available for mail viewing.

Viewing by Appointment

In addition to the regular public viewing hours, prospective bidders may view lots at our galleries by appointment.

Lot Review

Our on-staff philatelists will be pleased to review the description of any lot and provide more detailed information.

Opening Bids

During the two days prior to the sale, we will furnish approximate opening bids by phone or fax. Openings often change (up or down) and cannot be guaranteed as a reliable indicator of where the auctioneer will start the bidding. Opening bids will not be given on sale days.

Hotel and Restaurant Reservations

We will be pleased to furnish the names of good hotels and restaurants in the area. During peak seasons, we may be able to assist in placing reservations.

Absentee Bidding by Phone or Fax

Bidders who cannot attend the sale may leave written bidding instructions (see Bid Form). Bids called in must be confirmed in writing by fax or mail.

Telephone Bidding

Prospective bidders may apply for a telephone link to the auction and bid through one of our staff members. Applicants must call at least 24 hours prior to the sale date. Phone links are subject to availability and may be cancelled due to oversubscription.

Expert Certification

Individual items offered without a Philatelic Foundation certificate (or other accepted authority's certificate) dated within the past five years may be purchased subject to certification (please see Conditions of Sale for details).

Shipping and Delivery of Lots

Instructions for shipping must be given to the gallery prior to or immediately after the sale. Unless special instructions are received, we will follow the shipping guidelines on the back of the Bid Form. Buyers are responsible for all prescribed shipping charges, whether or not the actual out-of-pocket expense is equal to the invoiced charge.

Prices Realized

A list of prices realized will be included with every buyer's invoice. We will accept phone and fax requests for prices realized at any time during or after the auction. For those who qualify, our *ASAP Prices Realized* service will provide faxed daily results during the evening of the sale day (application available upon request). Printed prices realized lists are mailed to all others within 30 to 60 days of the sale.

SERVICES FOR SELLERS

If you wish to sell stamps, we will be pleased to provide the following standard services and options. Specially tailored proposals will be made for significant items and collections.

Appraisals

Verbal appraisals of material brought to our galleries are free of charge. Written appraisals for estate tax, insurance or other purposes are billed at hourly (\$50) or daily (\$500) rates. Fees will be rebated if the property is consigned within a certain period of time.

On-Site Sale Consultation

If your consignment is worth \$75,000 or more, we will travel to you at our expense.

Consignment Deadlines

Closing dates for consignment can always be found in our quarterly newsletter, *The Siegel Despatch*, and in our web site:

SiegelAuctions.com

Sale Settlement

42 days from the sale date, consignor proceeds are mailed. Since 1930 our firm has never missed settlement day.

Commission Rates

10% seller's commission and 10% buyer's premium. Minimum seller's commission is \$25 per lot. Special terms for more valuable properties may be discussed.

The Siegel Guarantee

Major collections can be offered at auction with a guaranteed minimum net realization. Estate executors who must protect beneficiaries' interests will be fully insured against a market downturn by the Siegel Guarantee.

Advances

Advances up to 50% of our valuation are available to consignors under certain terms.

Negotiated Sale for Immediate Payment

If you wish to sell your stamps for a specific price, we will be pleased to make an offer on behalf of ourselves or other clients.

Single-Owner Sales

Collections with a fair market value of \$300,000 or more may qualify for a special single-owner sale catalogue. The Siegel firm leads the way in offering major name sales, including over the years the Krug, Newbury, Lilly, Matthies, Weatherly, Grunin, Rohloff, Baker, Haas, Kimmel, Wunderlich, Cole, Kapiloff, Honolulu Advertiser, Morris, Rose and Birkinbine collections.

Annual Rarities of the World Sale

Suitable individual rarities will be accepted for our annual Rarities of the World auction. The consignment deadline for this auction is generally in early March.

Robert A. Siegel

AUCTION GALLERIES, INC.

PRICES REALIZED FOR SALE 812---6/25/99

The Lewis Golin Collection of U.S.

Robert A. Siegel Auction Galleries, Inc.
60 East 56th Street, 4th Floor, New York, NY 10022
Tel (212) 753-6421 Fax (212) 753-6429

Lot#	Realized	Lot#	Realized	Lot#	Realized	Lot#	Realized	Lot#	Realized	Lot#	Realized	Lot#	Realized	Lot#	Realized
1	260	45	2,600	88	800	133	2,100	178	3,000	222	850	267	800	313	150
2	900	46	4,750	89	2,200	134	7,000	179	1,350	223	400	268	6,750	314	80
3	1,900	47	270	90	6,000	135	2,900	180	1,000	224	2,800	269	400	315	190
4	2,800	48	1,050	91	1,700	136	1,700	181	3,000	225	525	270	325	316	450
5	750	49	2,500	92	950	137	800	183	7,500	226	600	271	600	317	190
6	3,500	50	10,500	93	350	138	3,500	184	3,000	227	950	272	1,000	320	210
7	6,750	51	3,750	94	325	139	900	185	13,500	228	7,500	273	200	322	6,750
9	23,000	52	350	95	2,500	140	4,250	186	2,100	229	35,000	274	850	323	425
10	475	53	1,600	96	2,200	141	2,000	187	15,000	230	32,500	275	250	324	280
11	14,000	54	200	97	800	142	2,800	188	4,250	231	3,250	276	1,900	325	850
12	17,500	55	5,250	98	2,400	143	600	189	2,300	233	450	277	950	326	75
13	6,500	56	425	99	700	144	575	190	12,000	234	1,700	278	200	327	2,200
14	1,200	57	2,200	100	2,700	145	15,500	191	20,000	235	9,000	279	150	328	800
15	26,000	58	230	101	230	146	15,500	192	270	236	7,500	280	200	329	2,200
16	2,000	59	260	102	425	148	1,050	193	200	237	17,000	281	160	330	1,800
17	2,100	60	2,200	103	250	149	800	194	2,100	238	4,000	282	300	331	1,200
18	11,000	61	150	104	2,600	150	600	195	2,900	239	100	283	3,500	332	2,100
19	4,000	62	180	105	1,600	151	700	196	4,750	242	2,800	284	2,100	333	1,250
20	14,500	63	260	106	900	152	300	197	1,050	243	900	285	650	334	1,800
21	2,500	64	160	107	2,400	153	500	198	3,000	244	6,250	286	19,000	335	1,250
22	150	65	160	108	1,800	154	1,150	199	21,000	245	3,500	287	900	336	2,000
23	1,500	66	180	109	375	155	425	200	4,250	246	2,200	288	300	337	7,500
24	425	67	270	110	3,750	156	2,700	201	23,000	247	500	289	1,300	338	1,100
25	50	68	1,700	111	20,500	157	550	202	6,750	248	3,000	290	325	339	2,000
26	35,000	69	425	112	3,750	158	2,000	203	27,000	248A	1,600	291	1,150	340	1,900
27	6,250	70	550	113	6,250	159	2,000	204	6,750	249	4,750	292	200	341	1,700
28	2,600	71	1,700	114	4,250	160	1,600	205	18,500	250	4,750	294	170	342	2,400
29	4,250	72	525	115	9,500	161	2,200	206	3,000	251	800	295	400		
30	350	73	475	117	2,700	162	850	207	12,000	252	18,250	296	40		
31	525	74	425	118	3,250	163	6,000	208	35,000	253	3,250	298	225		
32	4,750	75	11,500	119	2,600	164	5,000	209	675	254	4,750	299	55		
33	8,000	76	1,150	120	9,500	165	9,000	210	40,000	255	400	300	700		
34	75,000	77	1,800	121	1,250	166	5,000	211	1,600	256	650	301	900		
35	400	78	375	123	600	167	15,500	212	525	257	1,800	302	1,250		
36	1,000	79	240	124	3,250	168	850	213	800	258	4,500	303	11,000		
37	1,700	80	230	125	4,000	169	2,400	214	240	259	5,250	304	1,200		
38	950	81	1,100	126	30,000	170	400	215	2,150	260	14,500	305	80		
39	800	82	1,000	127	400	171	375	216	6,250	261	56,000	306	160		
40	550	83	650	128	1,600	172	525	217	2,800	262	1,200	308	1,300		
41	4,000	84	260	129	3,750	173	700	218	17,500	263	2,200	309	950		
42	2,300	85	850	130	4,000	175	75	219	210	264	375	310	550		
43	1,600	86	450	131	10,000	176	180	220	1,000	265	9,000	311	1,300		
44	4,750	87	650	132	1,500	177	1,250	221	2,800	266	1,500	312	100		