

Sale 813

Saturday, June 26, 1999

UNITED STATES STAMPS AND COVERS

Featuring

A Quality Collection of 19th and 20th Century Stamps,
Specialized Washington-Franklin Issues and Hawaii



Robert A. Siegel

AUCTION GALLERIES, INC.

PARK AVENUE TOWER, 17th FLOOR, 65 EAST 55th STREET, NEW YORK, N.Y. 10022

Phone (212) 753-6421 Fax (212) 753-6429 E-mail: stamps@siegelauctions.com

Internet: SiegelAuctions.com

Robert A. Siegel

AUCTION GALLERIES, INC.

America's premier stamp auctioneer since 1930

PARK AVENUE TOWER, 17th FLOOR, 65 EAST 55th STREET, NEW YORK, N.Y. 10022

Phone (212) 753-6421 Fax (212) 753-6429 E-mail: stamps@siegelauctions.com

Internet: SiegelAuctions.com

Scott R. Trepel

President

John Zuckerman

Vice President

Elizabeth C. Pope

Vice President

Accounts

Cindy Stein

cstein@siegelauctions.com

Sale Administration

Carlene Conlon

cconlon@siegelauctions.com

Descriptions

Scott R. Trepel

strepel@siegelauctions.com

Andrew Kupersmit

akupersmit@siegelauctions.com

John Zuckerman

jzuckerman@siegelauctions.com

Principal Auctioneer

Scott R. Trepel

N.Y.C. Auctioneer's License No. 795952

Robert A. Siegel

1913-1993

AREA HOTELS

The Hotel Elysee

60 E. 54th St. • 800-535-9733

Omni Berkshire

21 E. 52nd St. • 800-843-6664

The Plaza Hotel

Fifth Ave. & 59th St. • 800-228-3000

The Four Seasons

57 E. 57th St. • 800-332-3442

INTERNET

For on-line catalogue,
sale updates and information,
please visit our website:

SiegelAuctions.com

Bids may be sent by e-mail, using the
Top-Speed On-Line Bidding
form available in our website.

E-mail: bids@siegelauctions.com

PHONE & FAX

Phone 212-753-6421

Inquiries and bidding

Fax 212-753-6429

24-hour fax line

**Toll-free 800-882-8853
for catalogue orders only**

Messages and faxes only



\$5.00 Columbian (245), block with original gum (lot 749)

United States Stamps and Covers

Featuring

A Quality Collection of 19th and 20th Century Stamps

Specialized Washington-Franklin Issues and Hawaii

Most lots offered without reserves

Saturday, June 26h
at 10:30 a.m. (Lots 501-795)
and at 1:30 p.m. (796-1197)

Refreshments will be served during the afternoon session

Pre-Sale Exhibition

Thursday, June 24 10:30 a.m. - 4:00 p.m.
Friday, June 25 10:30 a.m. - 5:00 p.m.

To arrange an appointment for viewing at another time,
please feel welcome to call (212) 753-6421.

Arrangement of Sale

Category Pages

First Session

Saturday, June 26, at 10:30 a.m.

Provisionals, 1847 Issue.....	5-6
1851-56 Issue	7-8
1857-60 Issue and Reprints	8-9
1861-66 Issue	10
1867-68 Grilled Issue.....	10
1869 Pictorial Issue	11
1870-93 Bank Note Issues.....	12-13
Columbian Issue	14-15
1894-98 Bureau Issue.....	16
Trans-Mississippi Issue	16-17
Pan-American Issue	17

Second Session

Saturday, June 26, at 1:30 p.m.

1902-08 Issues.....	18
Louisiana Purchase & Jamestown	18
Washington-Franklin Issues.....	19-25
Later Issues	25-26
Air Post and B-O-B Issues.....	26-28
Carriers and Locals.....	28-29
Sanitary Fairs, Revenues	29-30
Confederate States	30
U.S. Possessions	30-33
Group Lots.....	33-36
COLOR PLATES.....	37-44
PHOTO PLATES.....	45-70

On The Cover

30c Orange, superb (lot 599)

Conditions of Sale

The property described in this catalogue will be offered at public auction by Robert A. Siegel Auction Galleries, Inc. ("Galleries") on behalf of various consignors and itself or affiliated companies. By bidding on any lot, whether directly or by or through an agent, in person, or by telephone, facsimile or any other means, the bidder acknowledges and agrees to all of the following Conditions of Sale.

1. The highest bidder acknowledged by the auctioneer shall be the buyer. The term "final bid" means the last bid acknowledged by the auctioneer, which is normally the highest bid offered. **The purchase price payable by the buyer will be the sum of the final bid and a commission of 10% of the final bid ("buyer's premium"), together with any sales tax or use tax which may be due on the sale.**

2. The auctioneer has the right to reject any bid, to advance the bidding at his discretion and, in the event of a dispute between bidders, to determine the successful bidder, to continue the bidding or to reoffer and resell the lot in dispute. The Galleries' record of the final sale shall be conclusive.

3. All bids are per numbered lot in the catalogue unless otherwise announced by the auctioneer at the time of sale. The right is reserved to group two or more lots, to withdraw any lot or lots from the sale, or to act on behalf of the seller. The Galleries will execute bidding instructions on behalf of clients, but will not be responsible for any errors in the execution of such bids.

4. **Lots with numbers followed by the symbol ° are offered subject to a confidential minimum final bid ("reserve"), below which the lot will not be sold. The absence of the symbol ° means that the lot is offered without a reserve.** In the absence of a reserve, the auctioneer has sole discretion to establish a minimum opening bid and may refuse an offer of less than half of the published estimate. Any lot that does not reach its reserve or opening bid requested by the auctioneer will be announced as "passed" and excluded from the prices realized lists after the sale. The Galleries may have a direct or indirect ownership interest in any or all lots in the sale resulting from an advance of monies or goods-in-trade or a guarantee of minimum net proceeds made by the Galleries to the seller.

5. Any lot, the description of which is obviously incorrect, is returnable, but only if the lot is returned within 14 days of receipt. All disputed lots must be returned intact with the original packing material. **The following lots may not be returned for any reason: Lots containing ten or more items; lots from buyers who have registered for the pre-sale exhibition or received lots by postal viewing, thereby having had the opportunity to inspect them before the sale; any lot described with "faults" or "defects" may not be returned because of any fault or defect. No illustrated lots may be returned because of centering, margins or other factors shown in the illustrations.**

6. Successful bidders, unless they have established credit with the Galleries prior to the sale, must make payment in full before the lots will be delivered. Buyers not known to the Galleries must make payment in full within three days from the date of sale. **The Galleries retain the right to demand a cash deposit from anyone prior to bidder registration and/or to demand payment at the time the lot is knocked down to the highest bidder, for any reason whatsoever.** In the event that any buyer refuses or fails to make payment in cash for any lot at the time it is knocked down to him, the auctioneer reserves the right to reoffer the lot immediately for sale to the highest bidder.

7. If the purchase price has not been paid within the time limit specified above, nor lots taken up within seven days from the date of sale, the lots will be resold by whatever means deemed

appropriate by the Galleries, and any loss incurred from resale will be charged to the defaulting buyer. Any account more than thirty days in arrears will be subject to a late payment charge of 1½% per month as long as the account remains in arrears. Any expenses incurred in securing payment from delinquent accounts will be charged to the defaulter. A fee of \$250.00 per check will be charged for each check returned for insufficient funds.

8. All lots are sold as genuine. **Any lot which is accompanied by an expert certificate (for U.S. items, the accepted authority is The Philatelic Foundation), dated within the past five years of the sale date, is sold "as is" and in accordance with the description on the certificate. Such lots may not be returned for any reason, including but not limited to a contrary certificate of opinion obtained after the sale.** Buyers who wish to obtain a certificate for any item that is not accompanied by a certificate dated within the past five years may do so, provided that the following conditions are met: (1) the purchase price must be paid in full, (2) the item must be submitted to an acceptable expertizing committee with a properly executed application form within 21 days of the sale, (3) a copy of the application form must be given to the Galleries, (4) in the event that an adverse opinion is received, the Galleries retain the right to resubmit the item on the buyer's behalf for reconsideration, without time limit or other restrictions, (5) unless written notification to the contrary is received, items submitted for certification will be considered cleared 90 days from the date of sale, and (6) in the event any item is determined to be "not as described", the buyer will be refunded the purchase price and the certification fee up to \$100.00 unless otherwise agreed.

9. Until paid for in full, all lots remain the property of the Galleries on behalf of the seller.

10. Agents executing bids on behalf of clients will be held responsible for all purchases made on behalf of clients unless otherwise arranged prior to the sale.

11. The buyer assumes all risk for delivery of purchased lots and agrees to pay for prescribed shipping costs (see back of Bid Form).

12. The bidder consents that any action or proceeding against it may be commenced and maintained in any court within the State of New York or in the United States District Court for the Southern District of New York, that the courts of the State of New York and United States District Court for the Southern District of New York shall have jurisdiction with respect to the subject matter hereof and the person of the bidder. The bidder agrees not to assert any defense to any action or proceeding initiated by Galleries based upon improper venue or inconvenient forum. The bidder agrees that any action brought by the bidder shall be commenced and maintained only in a Federal Court in the United States District Court for the Southern District of New York or the State Court in the county in which Galleries has its principal place of business in New York. These Terms and Conditions shall be governed by and construed in accordance with the substantive laws of the State of New York.

SCOTT R. TREPEL, Principal Auctioneer

Auctioneer's License No. 795952
N.Y.C. Department of Consumer Affairs
80 Lafayette Street, New York, N.Y. 10013
Telephone (212) 577-0111

Revised 2/98

Copyright Notice: This catalogue is protected by copyright. The descriptions, format, illustrations and information used herein may not be reprinted, distributed or copied in any form without the express written consent of Robert A. Siegel Auction Galleries. Application for permission may be made in writing.

© 1999, Robert A. Siegel Auction Galleries, Inc.

Grading Terms, Abbreviations and Values Used in Descriptions

Centering and Gum

Margin width, centering and gum are graded according to Scott Catalogue standards.







Extremely Fine (EF): Exceptionally large margins or near perfect centering. The term “Gem” describes condition that is the finest possible for the issue.

Very Fine (VF): Normal size margins for the issue and well-centered with the design a bit closer to one side.

Fine (F): Smaller than usual margins or noticeably off center. Pre-1890 issues may have the design touched in places.

Very Good (VG): Attractive appearance, but margins or perforations cut into the design.

Good (G) or Average (Ave.): Cut into or perfs far into design and usually with slight faults. This condition is generally acceptable for rarities, scarce multiples or stamps used on unusual covers.

Gum Categories:	MINT N.H.	ORIGINAL GUM (O.G.)				NO GUM
	 Mint Never Hinged <i>Free from any disturbance</i>	 Lightly Hinged <i>Faint impression of a removed hinge over a small area</i>	 Hinge Mark or Remnant <i>Prominent hinged spot with part or all of the hinge remaining</i>	 Part o.g. <i>Approximately half or more of the gum intact</i>	 Small part o.g. <i>Approximately less than half of the gum intact</i>	 No gum <i>Only if issued with gum</i>
Catalogue Symbol:	★ ★	★	★	★	★	(★)
PRE-1890 ISSUES	<i>Pre-1890 stamps in these categories trade at a premium over Scott value</i>			Scott Value for “O.G.”		Scott “No Gum” Values thru No. 218
1890-1935 ISSUES	Scott “Never Hinged” Values for Nos. 219-771	Scott Value for “O.G.” (Actual value will be affected by the degree of hinging)		Disturbed Original Gum: Gum showing noticeable effects of humidity, climate or hinging over more than half of the gum. The significance of gum disturbance in valuing a stamp in any of the Original Gum categories depends on the degree of disturbance, the rarity and normal gum condition of the issue and other variables affecting quality. For example, stamps issued in tropical climates are expected to have some		
1935 TO DATE	Scott Value for “Unused”					

Covers

Minor nicks, short edge tears, flap tears and slight reduction at one side are normal conditions for 19th century envelopes. Folded letters should be expected to have at least one file fold. Light cleaning of covers and small mends along the edges are accepted forms of conservation. Unusual covers may have a common stamp with a slight crease or tiny tear. **These flaws exist in virtually all 19th century covers and are not always described. They are not grounds for return.**

Catalogue Values and Estimates

Unless otherwise noted, the currently available *Scott Catalogue* values are quoted in dollars with a decimal point. Other catalogues are often used for foreign countries or specialized areas and are referred to by their common name: *Stanley Gibbons* (SG), *Dietz*, *American Air Mail Catalogue* (AAMC), *Michel*, *Zumstein*, *Facit*, etc. Estimates are indicated with an “E.” and reflect our conservative valuation in dollars. Reserves will never exceed the low end of the estimate range; they will sometimes exceed Scott Catalogue value for stamps in Extremely Fine condition.

Because of certain pricing inconsistencies in the Scott Catalogue—for example, blocks that have no gum, the absence of premiums for Mint N.H. items, etc.—we cannot guarantee the accuracy of values quoted for multiples, specialized items and collection lots. We generally try to be conservative, but buyers may not return a lot because of a discrepancy in catalogue value due to Scott pricing inconsistencies.

Symbols and Abbreviations (see chart for gum symbols)

田	Block	E	Essay	pmk.	Postmark	No.	Scott Catalogue Number
☒	Cover	P	Proof	cds	Circular Datestamp	hs	Handstamp
FC	Fancy Cancel	TC	Trial Color Proof	var.	Variety	ms.	Manuscript

Sell through America's premier stamp auctioneer

Other firms may try to copy the Siegel firm's formula for success, but no one can match our expertise and track record in selling collections at auction.

When the time comes to sell your collection, there are some facts we would like you to consider:

- Year after year, the Siegel firm sells more United States and Confederate stamps and covers than anyone else.
- Siegel sales generate the kind of excitement that creates more competitive bidding and higher prices.
- The Siegel mailing list has been built over 69 years and has a 90% active-buyer rate over the past five years. It continues to grow every day, and our clients continue to increase their buying power.
- The Siegel website receives many thousands of hits before the auction, which gives your stamps wider exposure and creates more competitive bidding.
- Siegel sale catalogues win top national awards. They have become philately's most effective selling tool by educating and enticing buyers.
- The Siegel firm's reputation for paying all obligations on time is backed by a strong capital base and consistent record of profitability.

If excellence is your goal in collecting, when it is time to sell, it makes sense to choose an auctioneer whose excellence has been proven over time.

Robert A. Siegel

AUCTION GALLERIES, INC.

Park Avenue Tower, 65 East 55th Street, 17th Floor, New York, N.Y. 10022
Phone (212) 753-6421 Fax (212) 753-6429 E-mail: stamps@siegelauctions.com
Internet: www.siegelauctions.com

FIRST SESSION (LOTS 501-795)
SATURDAY, JUNE 26, 1999, AT 10:30 A.M.

UNITED STATES STAMPS AND COVERS

POSTMASTERS' PROVISIONALS

- 501 **New York N.Y., 5c Black, "AC M" Initials (9X1a).** Three large margins, clear to just in at T., cancelled by three magenta pen strokes on small piece, crease at T.L. from hasty application, otherwise Fine(Photo) 675.00
- 502 **New York N.Y., 5c Black, Without Signature (9X1e).** Ample to large margins, sharp proof-like impression on bright white paper, cancelled only by part of red New York cds, Very Fine and choice, a beautiful stamp, with 1992 P.F. certificate(Color Photo, p. 37) 850.00
- 503 **New York N.Y., 5c Black, Without Signature (9X1e).** Pos. 38, clear to ample margins, cancel expertly removed, appears unused, slightly toned and a tiny tear at B., otherwise Fine, scarce, with 1998 P.F. certificate(Photo) 750.00
- 504 **New York N.Y., 5c Black on Blue, "ACM" Initials (9X2).** Horizontal pair, large to huge margins all around, fine impression, red square grid cancels and part of red cds, left stamp has faint diagonal crease, right stamp has pressed vertical crease ending in a small tear, Extremely Fine appearance, only four pairs on Blue paper are known, this being one of the finest appearing, ex Caspary(Color Photo, p. 37) 13,000.00
- 505 ★ **Providence R.I., 5c & 10c Gray Black, Se-Tenant (10X1-10X2).** O.g., top right sheet corner margin and large margins on other sides, Extremely Fine, with 1997 P.F. certificate(Color Photo, p. 37) 2,150.00
- 506 R **Providence R.I., 5c & 10c Gray Black, Se-Tenant, Reprint (10X1R-10X2R).** Complete sheet with letters on reverse, without gum as issued, remarkably fresh and Extremely Fine 725.00
- 507 R **Providence R.I., 5c & 10c Gray Black, Se-Tenant, Reprint (10X1R-10X2R).** Part of sheet, one 5c and selvage removed, small thin in outer margin, otherwise Very Fine, Scott Retail as singles 625.00
- 508 **St. Louis Mo., 10c Black on Gray Lilac (11X5).** Huge margins to clear at B.R., showing part of adjacent stamp at L., neat pen cancel and trace of red cds, tiny filled thin, otherwise Very Fine, with 1998 P.F. certificate(Color Photo, p. 37) 2,200.00

1847 ISSUE

- 509 **5c Red Brown (1).** Large even margins all around, lightly cancelled by vivid red grid, fine early impression and marvelous rich color, Extremely Fine Gem(Color Photo, p. 37) 600.00
- 510 **5c Red Brown (1).** Large margins all around, bold blue grid cancel, pressed vertical crease at R., Extremely Fine appearance(Photo) 635.00
- 511 **5c Red Brown (1).** Large even margins all around, bright orange-red grid cancel, scissors-cut at T.R. into frameline, slight creases, Extremely Fine appearance(Photo) 600.00
- 512 **5c Brown (1).** Large margins all around, lightened red grid cancel, pale shade, faint crease at T.R., otherwise Extremely Fine(Photo) 600.00
- 513 **5c Red Brown (1).** Ample to large margins, red grid cancels, Very Fine and choice, with 1988 P.F. certificate(Photo) 600.00
- 514 **5c Red Brown (1).** Full margins all around, red grid cancel, tiny corner crease at T.L., still Very Fine(Photo) 600.00
- 515 **5c Red Brown (1).** Ample to large margins, pale shade, bold magenta grid cancel, very faint horizontal crease at R., otherwise Fine, small purple backstamp(Photo) 950.00
- 516 **5c Red Brown (1).** Ample to large margins all around, red square grid cancel, Very Fine(Photo) 600.00
- 517 **5c Brown (1).** Ample to large margins showing part of adjacent stamp at B., pen cancel removed and black cork added at lower left, Very Fine appearance(Photo) 675.00
- 518 **5c Red Brown (1).** Horizontal pair, large to immense margins all around showing part of adjacent stamps at T., faint red Rochester cds, R. stamp vertical crease, L. stamp tiny natural inclusion on back, otherwise Extremely Fine(Photo) 1,250.00

- 519 ☒ **5c Red Brown (1).** Three huge margins incl. part of adjacent stamp at right, just touched at left, tied by **red Herringbone** cancel, matching "Binghamton N.Y. Nov. 2" cds on light blue 1848 folded letter to New York City, pressed file crease thru stamp, otherwise Very Fine, wonderfully bold strike of this rare 1847 Issue fancy cancellation.....**(Color Photo, p. 38)** E. 2,000-3,000
- 520 ☒ **5c Red Brown (1).** Large to huge margins all around, part of adjacent stamp at L., intense shade and impression, tied by red grid, matching "New-York Mar. 15" cds on folded letter addressed in blue to the principal of the "Normal School" of Albany, 1850 letter regarding admission requirements, fresh and Extremely Fine, a very choice stamp on a colorful cover**(Color Photo, p. 38)** 650.00
- 521 ☒ **5c Brown (1).** Huge margins all around, tied by blue grid cancel, matching "Manchester N.H. Apr. 6" cds on 1850 blue folded letter to Lancaster N.H., Extremely Fine Gem stamp and choice cover**(Color Photo, p. 38)** 685.00
- 522 ☒ **5c Blackish Brown (1a).** Full margins, tied by blue "Philadelphia Pa. Apr. 14" cds on blue 1849 folded letter to Belvidere N.J., small light stain at B.R., Very Fine, with 1994 P.F. certificate as the scarce Blackish Brown shade.....**(Color Photo, p. 38)** 685.00
- 523 ☒ **5c Dark Brown (1a).** Large margins all around, tied by blue grid cancels, matching "Troy N.Y. May 29" cds on 1848 folded letter to Prattsville N.Y., Extremely Fine**(Color Photo, p. 38)** 685.00
- 524 ☒ **5c Orange Brown (1b).** Massive margins at sides with wide sheet margin at right and part of adjacent stamp at left, bright shade, tied by blue "Philadelphia Pa. Dec. 22" cds on printed folded circular from the Delaware Coal Company to Bristol R.I., datelined 1849, Extremely Fine, with 1988 P.F. certificate, ex Haas.....**(Color Photo, p. 38)** 735.00
- 525 ☒ **5c Red Brown (1).** Close to large margins, just touching at B.R., tied by red grid cancel, matching "New Haven Ct. 19 Aug." cds, on folded letter to Derby Conn., datelined 1850 with "City Bank of New Haven" at T., Very Fine**(Photo)** 650.00
- 526 **10c Black (2).** Large margins all around, tied by red grid and tiny bit of ms. line on small piece, Extremely Fine, with 1984 P.F. certificate**(Color Photo, p. 37)** 1,400.00
- 527 **10c Black (2).** Large margins, red grid cancel, sharp proof-like impression, Extremely Fine and choice**(Color Photo, p. 37)** 1,400.00
- 528 **10c Black (2).** Large margins showing part of adjacent stamp at T., bold red square grid cancel, Extremely Fine, signed Richter**(Color Photo, p. 37)** 1,400.00
- 529 **10c Black (2).** Large margins all around, blue cds, barest trace of corner crease, Extremely Fine, with 1998 P.F. certificate.....**(Photo)** 1,450.00
- 530 **10c Black (2).** Large margins all around, red square grid cancel, tiny corner crease at B.L., otherwise Extremely Fine**(Photo)** 1,400.00
- 531 **10c Black (2).** Full to large margins all around, neat red square grid cancel, two small filled thin spots, Extremely Fine appearance**(Photo)** 1,400.00
- 532 **10c Black (2).** Ample to large margins, tied on piece by bold blue "Paid" in oval frame, part of matching Philadelphia cds at right, "Paid" also ties **D. O. Blood & Co., (1c) Black, "For the Post Office" (15L8)**, both stamps affected by toning, 10c creased, still Fine, an extremely rare 1847 and Local Post combination**(Color Photo, p. 37)** E. 1,000-1,500
- 533 **10c Black (2).** Ample to large margins all around, pen cancel, sharp proof-like impression on bright white paper, fresh and Very Fine.....**(Photo)** 750.00
- 534 **10c Black (2).** Clear to large margins, lightened pen cancel, faint corner crease, otherwise Very Fine**(Photo)** 750.00
- 535 **10c Black, Double Transfer Ty. C (2-C).** Pos. 2R, three large margins, in to clear at L., interesting grid cancel in both red and black inks, tiny filled thin, otherwise Fine, rare double transfer**(Photo)** 2,000.00
- 536 **5c Red Brown, 10c Black (1, 2).** 5c close to large margins, into at B., 10c close at T.L. otherwise large margins all around, light blue cancels, 10c small tear at T., Fine appearance**(Photo Ex)** 2,085.00
- 537 **5c Red Brown, 10c Black (1, 2).** 5c (two), 10c (one), close to large margins, 10c touches at B., each with red grid cancels, Fine 2,600.00
- 538 ★ **5c Red Brown, 10c Black Reproductions (3, 4).** Without gum as issued, ample to large margins all around, fresh and Very Fine**(Photo)** 1,950.00
- 539 ★ **5c Red Brown, Reproduction (3).** Without gum as issued, large margins, fresh color, Extremely Fine and choice, with 1988 P.F. certificate**(Photo)** 850.00
- 540 ★ **5c Red Brown, Reproduction (3).** Without gum as issued, clear to large margins, fresh and Fine.....**(Photo)** 850.00
- 541 ★ **10c Gray Black, Reproduction (4).** Without gum as issued, large margins, sharp impression, Very Fine, with 1989 P.F. certificate.....**(Photo)** 1,100.00
- 542 ★ **10c Gray Black, Reproduction (4).** Without gum as issued, full margins, diagonal crease, otherwise Very Fine.....**(Photo)** 1,100.00

1851-56 ISSUE

- 543 **1c Blue, Ty. II (7).** Pos. 98R2, huge margins all around showing part of adjacent stamp at T., bright color, bold **Valentine's Day "New-York Feb. 14, 1857"** cds, corner creases at T.L., otherwise Extremely Fine(Photo) 150.00
- 544 **1c Blue, Ty. II (7).** Pos. 76L2, large margins all around, town cancel, Extremely Fine and choice(Photo) 150.00
- 545 **1c Blue, Ty. II (7).** Plate 2, large even margins, New Orleans cds, barest traces of stray pen at T.R., Extremely Fine(Photo) 150.00
- 546 **1c Blue, Ty. II, 10c Green, Ty. V (7, 35).** 1c used horizontal pair, Plate 1E, bold "New York Dec 3" cds, tiny corner crease, Fine, 10c four unused singles, o.g., faults incl. natural s.e. at L., otherwise Very Fine..... 1,425.00
- 547 **1c Blue, Ty. IIIa (8A).** Plate 1E, large margins to just touched, neat grid cancels, Very Fine, with 1988 P.F. certificate(Photo) 900.00
- 548 (★) **1c Blue, Ty. IV (9).** Pos. 24L1L, recut once at T. and twice at B., unused (no gum), fresh color, ample to large margins, Extremely Fine, with 1989 P.F. certificate(Photo) 375.00
- 549 (★)田 **1c Blue, Ty. IV (9).** Block of four, unused (no gum), huge margins to just in at L. and showing part of adjacent stamps at R., horizontal crease affects B. stamps, otherwise Fine-Very Fine, Scott Retail as four unused singles \$1,500.00, Scott Retail for block of four....(Photo) 3,000.00
- 550 **1c Blue, Ty. IV (9).** Pos. 100L1 showing **double transfer** at T., three huge margins showing full guideline at R., sheet margin at B. and part of adjacent stamp at T., just barely touched at L., perfectly struck face-free grid cancel, Very Fine and choice, a huge stamp(Photo) 130.00
- 551 **1c Blue, Ty. IV (9).** Recut once at T. and once at B., huge margins all around showing part of adjacent stamps at T. and B., bold grid cancel, Extremely Fine Gem, with 1996 P.S.E. certificate.....(Photo) 125.00
- 552 **1c Blue, Ty. IV (9).** Recut at T. and B., large margins with part of adjacent stamp at B., red grid cancel, rich color, tiny thin spot, Extremely Fine appearance, with 1999 P.S.E. certificate.....(Photo) 135.00
- 553 **1c Blue, Ty. IV (9).** Pos. 73R1L, recut once at T. and once at B., just touched to huge margins showing part of adjacent stamp at L., bold grid cancel, fresh and Very Fine.....(Photo) 125.00
- 554 **1c Blue, Ty. IV (9).** Pos. 48R1L, recut once at T., three huge margins showing part of adjacent stamps at L. and B., just in at T., bold Boston cds, light corner crease at B.L., otherwise Very Fine(Photo) 130.00
- 555 **1c Blue, Ty. IV (9).** Pos. 3L1L, recut twice at B., clear to large margins showing part of adjacent stamp at B. and part of sheet margin at T., grid cancel, Very Fine and choice....(Photo) 145.00
- 556 **1c Blue, Ty. IV (9).** Pos. 14-15L1L, each recut once at T. and once at B., just touched at B. of L. stamp to huge margins showing part of adjacent stamps at T. and B., town cancel, Very Fine-Extremely Fine pair.....(Photo) 260.00
- 557 **3c Orange Brown (10).** Large margins to just barely touched, rich color, neat blue town cancel, fresh and Very Fine.....(Photo) 90.00
- 558 **3c Dull Red (11).** Pos. 80L6, large margins all around incl. **right sheet margin**, cancelled by neat strike of **Chicopee "Star" fancy cancel**, small corner crease at T.R., otherwise Very Fine, ex Chase(Photo) E. 150-200
- 559 **3c Dull Red (11, 26).** Old-time collection of mostly used stamps, majority No. 11's incl. wide range of shades (a few Orange Brown No. 10's), cancels incl. green, various towns, several Steam or Steamship, Way, some multiples incl. strip of seven, strips of seven, five, four, three (3), block of eight and block of four, also cracked plate, mixed condition, an interesting and very valuable group for the specialist E. 1,000-1,500
- 560 ∞ **3c Dull Red (11).** In at B., massive margin with large part of adjacent stamp at T., tied by straightline "Steamboat" with large red oval packetboat hs on blue folded letter datelined Demopolis Ala. Apr. 15, 1855, to Mobile, bleach spots, Fine.....(Photo) E. 100-150
- 561 **5c Red Brown (12).** Huge margins all around, deep rich color, light strike of New Orleans cds, Extremely Fine Gem, a beautiful stamp(Color Photo, p. 37) 1,200.00
- 562 **5c Red Brown (12).** "A" relief from the T. row of the plate, clear to large margins, neat New Orleans cds, two faint creases, appears Very Fine(Photo) 1,200.00
- 563 **10c Green, Ty. I (13).** Large margins all around, red grid cancel, fresh color, Extremely Fine Gem, with small purple backstamp.....(Color Photo, p. 37) 800.00

- 564 **10c Green, Ty. II (14).** Huge margins, red town cds, bright color and fine impression, Extremely Fine Gem, a beautiful stamp(Color Photo, p. 37) 250.00
- 565 **10c Green, Ty. II (14).** Huge margins, rich color, light town ds, Extremely Fine Gem, with small red backstamp(Photo) 225.00
- 566 **10c Green, Ty. III (15).** Huge margins all around, rich color on bright paper, neat San Francisco cds, Extremely Fine and choice(Photo) 225.00
- 567 **10c Green, Ty. III (15).** Large to huge margins showing significant portion of adjoining stamp at B., grid cancel and trace of red transit at T.R., trivial corner crease at B.R. (easily trimmed), otherwise Extremely Fine(Photo) 225.00
- 568 **10c Green, Ty. III (15).** Large margins all around, used with **1c Blue, Ty. II** and **3c Dull Red (7, 11)** on small piece, unusual brownish-black open grid cancels, Extremely Fine, ex Ashbrook(Photo) E. 200-250
- 569 **12c Black (17).** Full to large margins showing part of adjacent stamps at sides, sharp impression, town cancel and red transit, Extremely Fine, a gorgeous stamp.....(Color Photo, p. 37) 325.00
- 570 **12c Black (17).** Pos. 27R1 showing **major double transfer**, large even margins all around, light cancel, horizontal crease mostly in margin at B., otherwise Extremely Fine(Photo) 350.00
- 571 ☒ **12c Black (17).** Huge margin at R. with large part of adjacent stamp, other three margins ample to large, with three No. 11's, tied by "New Orleans La. Jul. 1" cds on blue legal-size cover to "*the clerk of the law side of the Common law. . .*" of Memphis, Tenn., docketing at left indicates contents as depositions in a legal matter, cover slightly reduced at R., with faults, mostly on back, Fine, still a rare and interesting piece with seven-times rate... (Photo) 1,500.00

1857-60 ISSUE

- 572 ★ **1c Blue, Ty. I (18).** O.g., h.r., well-centered, fresh color, small repaired tear at T.L., otherwise Extremely Fine, with 1990 P.F. certificate.....(Photo) 1,400.00
- 573 **1c Blue, Ty. Ia (19).** Rich color, well-centered for this difficult stamp, faint town cancel, tiny thin spot, corner crease at B.R. and short perf at R., appears Fine.....(Color Photo, p. 37) 4,000.00
- 574 **1c Blue, Ty. IIIa (22).** Pos. 55R4, well-centered, bold town cancel, tiny corner margin crease and natural paper inclusion, Extremely Fine and choice appearance, purple ms. notation on back, with 1990 P.F. certificate(Photo) 400.00
- 575 (★) **1c Blue, Ty. IV (23).** Unused (expertly regummed), recut once at T., twice at B., dark shade, tiny soiling speck, otherwise Fine, with 1999 P.S.E. certificate...(Photo) 3,750.00
- 576 **1c Blue, Ty. IV (23).** Pos. 52L1L, **recut twice at T. and twice at B.**, town cds, two horizontal creases, otherwise Very Fine, only two positions are recut twice at T. and B.....(Photo) 650.00
- 577 ★ **1c Blue, Ty. V (24).** O.g., lightly hinged, fresh and bright color, well-centered, Extremely Fine and choice(Photo) 175.00
- 578 ★田 **1c Blue, Ty. V (24).** Block of four, o.g., h.r., light bend in B. stamps, otherwise Fine(Photo) 750.00
- 579 ★ **3c Dull Red, Ty. II (26).** O.g., barest faint trace of hinging, fresh color, Extremely Fine and choice, with 1988 P.F. certificate(Photo) 75.00
- 580 ★ **3c Dull Red, Ty. II (26).** O.g., barely hinged, rich color, well-centered, Extremely Fine Gem(Photo) 75.00
- 581 **5c Brick Red (27).** Well-centered, bright color, light cancel, faint corner crease at T.R., otherwise Very Fine.....(Photo) 1,000.00
- 582 **5c Red Brown (28).** Fresh color, bold 1859 cancel, Fine(Photo) 450.00
- 583 **5c Indian Red (28A).** Light cds cancel, intense shade and impression, expertly reperfed, Fine appearance(Photo) 2,750.00
- 584 **5c Brown (29).** Vertical strip of three, scissors-separated showing part of seven adjacent stamps, tied by "New Orleans La. Dec. 28, 1859" double-circle ds on piece, fresh and Very Fine.....(Photo) 1,000.00
- 585 ★ **5c Orange Brown, Ty. II (30).** O.g., lightly hinged, deep rich color and sharp proof-like impression, fresh and Very Fine, with 1988 P.F. certificate(Photo) 1,100.00
- 586 ★ **5c Orange Brown, Ty. II (30).** O.g., barely hinged, fresh color, Very Fine and choice(Photo) 1,100.00

587 (★)	5c Orange Brown, Ty. II (30). Unused (no gum), tiny corner crease at B.L., short perfs at T., otherwise Very Fine.....	(Photo) 650.00
588 (★)	5c Orange Brown, Ty. II (30). Unused (regummed), Very Fine	(Photo) 650.00
589	10c Green, Ty. III (33). Pos. 23L1, well-centered, town ds, small toned spot at B.R., otherwise Extremely Fine	(Photo) 275.00
590	10c Green, Ty. III (33). Two strikes of Mobile Ala. cds, fresh and Very Fine	(Photo) 275.00
591 (★)	10c Green, Ty. IV (34). Pos. 76L1, recut at B., light cancel, intense color and impression, reperfed at R., otherwise Extremely Fine	(Photo) 2,100.00
592	10c Green, Ty. IV (34). Pos. 64L1 recut at T. and B. , New Orleans cds, Fine	(Photo) 2,000.00
593 ★	12c Black, Plate 3 (36b). O.g., well-centered with unusually wide margins at sides, intense shade, Extremely Fine and choice, with 1971 P.F. certificate.....	(Color Photo, p. 37) 675.00
594 (★)田	12c Black, Plate 3 (36b). Block of four, unused (no gum), T.R. stamp with stray printer's ink on forehead, B.L. stamp with light diagonal crease, appears Very Fine, with 1997 P.F. certificate, Scott Retail without block premium	(Photo) 1,600.00
595	12c Black, Plate 3 (36b). Horizontal pair, sharp impression on bright paper, town cds, R. stamp faint vertical crease, otherwise Very Fine	(Photo) 375.00
596 ★	24c Gray Lilac (37). Horizontal pair, o.g., h.r., few perf seps, R. stamp creased, otherwise Fine-Very Fine	(Photo) 2,600.00
597	24c Gray Lilac (37). Well-centered, bold red grid, few toned perf tips at B. not mentioned on certificate, Extremely Fine and choice, with 1998 P.F. certificate	(Photo) 330.00
598 (★)	30c Orange (38). B. margin single, unused (no gum), rich color, fresh and Fine, with 1983 P.F. certificate for pair containing this stamp	(Photo) 850.00
599	30c Orange (38). Perfectly centered, brilliant color, bold and clearly-struck New York datestamp, Extremely Fine Gem, a beautiful stamp, extremely rare in this superb condition	(Color Photo—Front Cover) 400.00
600 (★)	90c Blue (39). Unused (no gum), rich color on bright paper, Very Fine and choice	(Photo) 1,450.00
601 (★)	90c Blue (39). Unused (no gum), intense color and proof-like impression, reperfed, otherwise Very Fine	(Photo) 1,500.00
602°	90c Blue (39). Bold red grid cancel, deep rich color, well-centered, tiny tear and short perf at T., otherwise Extremely Fine, with 1989 P.F. certificate not mentioning faults	(Color Photo, p. 37) 5,500.00
603	90c Blue (39). Boston "Paid" grid cancels, rich color, Fine and rare used example of the 90c 1860	(Color Photo, p. 37) 5,500.00

1875 REPRINT OF 1857-60 ISSUE

604 ★	1c Bright Blue, Reprint (40). Without gum as issued, fresh and bright color, well-centered, Very Fine, with 1989 P.F. certificate	(Photo) 1,100.00
605 ★	1c Bright Blue, Reprint (40). Without gum as issued, rich color and sharp impression, Very Fine	(Photo) 525.00
606 ★	1c Bright Blue, Reprint (40). Without gum as issued, bright color, short perf at T., otherwise Very Fine	(Photo) 525.00
607 ★	3c Scarlet, Reprint (41). Without gum as issued, vibrant shade and proof-like impression, scissors-blunted perfs at R., otherwise Very Fine	(Photo) 2,200.00
608 ★	12c Greenish Black, Reprint (44). Without gum as issued, sharp impression, small corner crease, pulled perf at L., otherwise Fine	(Photo) 2,250.00
609 ★	24c Blackish Violet, Reprint (45). Without gum as issued, deep shade, Very Fine	(Photo) 2,250.00
610 ★	30c Yellow Orange, Reprint (46). Without gum as issued, rich color, small repair at B.R., otherwise Fine	(Photo) 2,250.00
611 ★	90c Deep Blue, Reprint (47). Without gum as issued, deep dark shade and proof-like impression, tiny tear at B., otherwise Extremely Fine	(Photo) 3,750.00

1861-66 ISSUE

- 612 ☒ **3c Pink (64).** Intense shade with such strong bluish cast that we are tempted to classify it as a Pigeon Blood (the blue cancel may contribute to the bluish effect), tied by blue grid, matching "Louisville Ky. Nov. 17, 1861" double-circle ds on red and blue **Shield Patriotic** cover to Ohio, couple stains at lower right, still Fine(Photo) 900.00
- 613 ★★ **3c Rose Pink (64b).** Mint N.H., fresh color, bright and Very Fine, unusually choice and scarce in Mint N.H. condition, with 1988 P.F. certificate, Scott Retail for hinged(Color Photo, p. 37) 450.00
- 614 **3c Rose (65).** Cancelled by well-struck **Waterbury Star within a Star** fancy cancel (Rohloff S6), Very Fine example of this extremely scarce cancel(Photo) E. 150-200
- 615 ☒ **3c Rose, 12c Black (65, 69).** Two of each, red grid cancels, on cover to **Paris, France**, one 12c stamp with natural s.e., usual postmarks, Fine E. 100-150
- 616 **24c Brown Lilac (70a).** Rich color and sharp proof-like impression, very wide margins for this stamp, bold target cancel, tiny corner crease, otherwise fresh and Extremely Fine, with 1990 A.P.S. certificate(Photo) 115.00
- 617 **90c Blue (72).** Tied by "Baltimore Md. Jun. 12" cds on large blue piece to Hong Kong, red 1865 London transit, magenta "80" ms, address indicates part of Augustine Heard correspondence, Fine, rare on piece especially showing such a wide range of postal markings, Scott Retail on cover is \$17,500.00(Photo) E. 500-750
- 618 **90c Blue (72).** Sharp impression, faint horizontal crease and tiny thin spot, both visible only in fluid, Very Fine appearance, with 1998 P.S.E. certificate(Photo) 375.00
- 619 **5c Dark Red Brown (75).** Deep color, neat Philadelphia 1863 cds, tiny thin spot, Extremely Fine appearance(Photo) 425.00
- 620 P **5c Brown, Plate Proof on Card (76P4).** Large to huge margins, tied by **New York oval grid cancel** on piece, fresh and Extremely Fine, scarce and unusual (Photo) E. 100-150
- 621 **15c Black (77).** Well-centered, light black and red cancels, two slightly toned perf tips, appears fresh and Extremely Fine, with 1998 P.S.E. certificate(Photo) 140.00
- 622 ★ **24c Lilac (78).** O.g., tiny h.r., deep shade, fresh and Fine, with 1994 P.S.E. certificate(Photo) 750.00

1867-68 GRILLED ISSUE

- 623 **3c Rose, A. Grill (79).** Strong grill, bold cancel, typical perfs normally associated with the all-over grill, tear at B. as a result of grilling, Very Fine appearance(Photo) 800.00
- 624 **3c Rose, C. Grill (83).** Clear and sharp grill points, bold cancel, reperfed at R., Extremely Fine appearance(Photo) 800.00
- 625 **3c Rose, Partially Erased C. Grill (83 var).** Boldly struck rosette fancy cancel, prominent grill points, short perfs at upper left, otherwise Fine, this is the famous Worthington stamp that Elliot Perry believed to be the B Grill — the partially-erased grill variety was created when areas between the 13 x 16 mm C Grills were not completely erased, ex Worthington and Dos Passos, with 1981 P.F. certificate(Photo) 2,000.00
- 626 **2c Black, D. Grill (84).** Light cancel, well-centered with large margins for the issue, prominent grill point, reperfed at top, Extremely Fine appearance — after the A and Z Grill rarities, the 2c D is the scarcest of the 1867-68 Grills(Photo) 2,250.00
- 627 (★) **3c Rose, E Grill (88).** Unused (no gum), distinct early 1867-68 Rose shade, fresh and Very Fine, with 1983 P.F. certificate(Photo) 350.00
- 628 ☒ **3c Red, 12c Black, F Grill (94, 97).** Tied by unusual grid cancels, "Clarrington O. 1 Feb." cds on buff cover to **Bern, Switzerland**, red N.Y. transit, small piece of backflap missing, Fine E. 150-200
- 629 ★ **12c Black, F. Grill (97).** O.g., well-centered, clearly-defined grill points, Very Fine, scarce in this choice original-gum condition, with 1994 P.S.E. certificate(Color Photo, p. 37) 2,250.00
- 630 **12c Black, F. Grill (97).** Perfectly centered with wide and even margins, faint cancel, very faint diagonal crease at T.R., otherwise Extremely Fine(Photo) 200.00
- 631 **30c Orange, F. Grill (100).** Huge margins, clear and sharp grill points, red and black cancels, faint corner crease at T.R., entirely forgivable and otherwise Extremely Fine, rare with such huge margins, with 1989 P.F. certificate(Color Photo, p. 37) 675.00
- 632 ☐ **90c Blue, F. Grill (101).** Block of four comprised of two rejoined pairs, centered to right, clear and sharp grill points, large red segmented cork cancels, top left stamp small corner crease and top right stamp rounded corner, otherwise Fine, an extremely rare multiple, Scott Retail as block(Photo) 6,750.00

1869 PICTORIAL ISSUE

- 633 (★) **2c-90c 1869 Pictorial (113-117, 119-122, 133).** Most unused (no gum or regummed), 30c cleaned, all have faults, Very Good-Fine centering E. 750-1,000
- 634 (★) **1c Buff (112).** Unused (no gum), well-centered and bright color, Extremely Fine and choice, with 1987 P.F. certificate(Photo) 300.00
- 635 ★ **2c Brown (113).** O.g., fresh and Very Fine.....(Photo) 450.00
- 636 **3c Ultramarine (114).** 866 used copies on stockpages, variety of cancels, mixed condition, interesting study, Very Good-Very Fine..... 12,990.00
- 637 ☒ **3c Ultramarine (114).** 22 covers, each with different duplex cancel, one franked by vertical strip of three addressed to A.H. Stephens, others franked by single, incl. four with printed or embossed corner card & one with all-over advertising on back, overall fresh and Very Fine group E. 100-150
- 638 **10c Yellow (116).** Well-centered, rich color, bold cancel, Extremely Fine and choice..... (Photo) 130.00
- 639 **10c Yellow (116).** Well-centered, fresh color, segmented cork cancel, Extremely Fine and choice(Photo) 130.00
- 640 ☒ **10c Yellow (116).** Perfectly centered with huge margins, grid cancel (not tied) on fresh yellow cover to **Germany**, matching "Atlanta Ill. Jun. 10" double-circle ds, appropriate transit and receiving cancels, stamp and cover Extremely Fine and choice, with 1983 P.F. certificate(Color Photo, p. 38) 375.00
- 641 **12c Green (117).** Well-centered with large margins, light cork cancel, fresh and Very Fine(Photo) 140.00
- 642 ☒ **12c Green (117).** Blue cork cancel and tied by matching "Savannah Ga. Nov. 27" cds on blue 1869 folded cover to Liverpool, red New York cds, Fine and attractive (Photo) 550.00
- 643 (★) **15c Brown & Blue, Ty. I (118).** Unused (no gum), rich colors, fresh and Fine, with 1984 P.F. certificate (notes "regummed" but gum has been removed)(Photo) 3,750.00
- 644 **15c Brown & Blue, Ty. I (118).** Well-centered, bright colors, light rosette and part of blue boxed cancel, Extremely Fine and choice(Color Photo, p. 39) 575.00
- 645 **15c Brown & Blue, Ty. I (118).** Light cancel, Very Fine(Photo) 600.00
- 646 ☒ **15c Brown & Blue, Ty. I (118).** Tied by cork cancel on 1870 blue folded letter to France, red New York and blue French transit cds, "8" decimes marking in blue, merchant's blue datestamp, Very Fine, with 1980 P.F. certificate.....(Color Photo, p. 38) 1,750.00
- 647 **15c Brown & Blue, Ty. II (119).** Rich colors, wide margins, segmented cork cancel, Extremely Fine(Photo) 250.00
- 648 **15c Brown & Blue, Ty. II (119).** Rich colors, cork cancel, faint diagonal crease at B.L., otherwise Extremely Fine, with 1998 P.F. certificate(Photo) 225.00
- 649 **30c Ultramarine & Carmine (121).** Beautiful deep rich colors and proof-like impression on bright white paper, well-centered with extraordinary wide margins, bold rosette cancel, tiny natural fiber inclusion in margin, Extremely Fine Gem, with 1995 P.F. certificate(Color Photo, p. 39) 500.00
- 650 **90c Carmine & Black (122).** Rich colors, natural inclusion, repaired and reperfed, Very Fine appearance.....(Photo) 2,000.00
- 651 (★) **1c Buff, Re-Issue (123).** Unused (no gum), rich color, single short perf at T.R. not mentioned on accompanying certificate, otherwise Very Fine, with 1989 P.F. certificate .. (Photo) 275.00
- 652 (★) **3c Blue, Re-Issue (125).** Unused (no gum), bright color and sharp impression, small sealed tear at B. described on accompanying certificate as a vertical crease, single short perf at T., otherwise Very Fine, with 1979 P.F. certificate(Photo) 3,000.00
- 653 ★ **24c Green & Violet, Re-Issue (130).** O.g., lightly hinged, deep rich colors and sharp proof-like impressions, fresh and Very Fine, with 1994 P.F. certificate..... (Color Photo, p. 39) 1,600.00
- 654 (★) **30c Blue & Carmine, Re-Issue (131).** Unused (no gum), deep rich colors, well-centered with wide margins all around, Extremely Fine Gem(Color Photo, p. 39) 1,700.00
- 655 ★ **1c Brown Orange, 1880 Re-Issue (133a).** Without gum as issued, rich color, Extremely Fine and choice(Photo) 210.00
- 656 (★) **1c Brown Orange, 1880 Re-Issue (133a).** Without gum as issued, deep color, one Fine, other Extremely Fine(Photo Ex) 420.00

1870-93 BANK NOTE ISSUES

- 657 ★ **1c Ultramarine, Grill (134).** Large part original gum, clear grill points, rich color, small corner crease and stray perf at top left, otherwise Very Fine(Photo) 1,400.00
- 658 ★ **2c Red Brown, Grill (135).** O.g., lightly hinged, deep rich color on bright white paper, tiny inclusion in gum, fresh and Very Fine, with 1973 P.F. certificate(Photo) 850.00
- 659 **6c Carmine, Grill (137).** Clear and sharp grill points, well-centered, bold quartered cork cancel, Extremely Fine, with 1992 P.F. certificate(Photo) 450.00
- 660 **7c Vermilion, Grill (138).** Clear grill points, bright color, very light cancel, fresh and Very Fine, with 1996 P.F. certificate(Photo) 375.00
- 661 **10c Brown, Grill (139).** Bold red cancel, several clear grill points, Extremely Fine and choice, with 1993 P.S.E. and 1996 P.F. certificates(Color Photo, p.) 640.00
- 662 **12c Dull Violet, Grill (140).** Light cancel, trivial corner crease, Fine(Color Photo, p. 39) 2,500.00
- 663 P **1c-90c National Bank Note Co., Large Die Proofs on India (145P1-146P1, 148P1-155P1).** Each die sunk on 146 x 223mm. card and each taken from a Bank Note Company presentation book (part of binding at L.), pencil notation at B.R. reads "No. 1 - Last Issue 1870" and also each numbered in pencil at T., all are Fine-Very Fine(Photo Ex) 2,650.00
- 664 **6c Carmine, Dull Pink (148, 159).** Three used singles comprising No. 148 with sharp **geometric fancy cancel**, No. 148 with bold **green cancel**, and No. 159 with "New York" and small red cancel, Very Fine(Photo Ex) E. 100-150
- 665 ★ **10c Brown (150).** O.g., hinge mark, rich color and proof-like impression, Extremely Fine and choice, with 1994 P.S.E. certificate(Color Photo, p. 39) 525.00
- 666 **90c Carmine (155).** Perfectly centered with gigantic margins all around, deep rich color, circle of wedges cancel, extremely faint natural pre-printing paper fold visible only in fluid, Extremely Fine Gem, an outstanding stamp(Color Photo, p. 39) 250.00
- 667 ★ **2c Brown (157).** O.g., slight gum disturbance, rich color, well-centered, Extremely Fine..(Photo) 325.00
- 668 ★ **3c Green (158).** Disturbed o.g., gigantic margins all around, rich color, Extremely Fine and choice(Photo) 110.00
- 669 ★★田 **3c Green (158).** Mint N.H. half sheet of 50 with plate no. 253 and imprint at B., rich color, one stamp in B. row with adherence on gum, some perf separations, natural s.e. at L., usual Good-Very Fine centering, a scarce multiple, especially Mint N.H., Scott Retail for hinged plate block, six blocks of four and twelve singles 8,070.00
- 670 ★ **6c Dull Pink (159).** O.g., lightly hinged, deep shade, tiny nibbed perf at top, still Extremely Fine and choice, with 1977 P.F. certificate(Color Photo, p. 39) 375.00
- 671 (★) **7c Orange Vermilion (160).** Unused (no gum), perfectly centered with even margins all around, rich color and sharp impression, fresh and Extremely Fine, with 1992 P.F. certificate(Photo) 450.00
- 672 **7c Orange Vermilion (160).** Well-centered, bright color, quartered cork cancel, Extremely Fine and choice(Photo) 75.00
- 673 ★ **2c Vermilion (183).** O.g., barest trace of hinging, rich color, well-centered, Extremely Fine, with 1999 P.F. certificate(Photo) 120.00
- 674 ★ **2c Vermilion (183).** Two horizontal pairs, o.g., one stamp each with light crease & tiny thins, and one stamp each with barest trace of hinging, well-centered, Very Fine-Extremely Fine(Photo Ex) 460.00
- 675 ★田 **6c Pink (186).** Block of four, disturbed o.g., T. stamps with small thin spots, B. stamps with light creases, few usual natural inclusions, otherwise Fine and rare block(Photo) 3,250.00
- 676 ★ **10c Brown, With Secret Mark (188).** O.g., lightly hinged, reperfed at L., tiny natural wood fiber inclusion, otherwise Very Fine, with 1999 P.S.E. certificate.(Photo) 1,100.00
- 677 ★ **5c Yellow Brown (205).** O.g., lightly hinged, well-centered with wide margins, rich color, Extremely Fine and choice(Color Photo, p. 39) 190.00
- 678 ★ **1c Gray Blue (206).** O.g., small h.r., well-centered, bright color, Extremely Fine Gem(Photo) 55.00
- 679 ★ **10c Brown (209).** Barest faint trace of hinging at T., perfectly centered with nicely proportioned margins, deep color, Extremely Fine Gem, a beautiful stamp(Color Photo, p. 39) 120.00
- 680 ★ **1c Ultramarine (212).** O.g., single h.r., well-centered, bright color, Extremely Fine Gem.(Photo) 90.00

681 ★	5c Indigo (216). O.g., very lightly hinged, perfectly centered, rich color, Extremely Fine Gem.....(Color Photo, p. 39) 200.00
682 ★	90c Purple (218). O.g., well-centered, rich color, Extremely Fine and choice(Color Photo, p. 39) 1,100.00
683	90c Purple (218). Rich color, wide margins, light registry cancel, Very Fine, with 1994 P.F. certificate(Photo) 200.00
684 ★★	8c Lilac (225). Mint N.H., well-centered with wide margins, Extremely Fine Gem.....(Color Photo, p. 39) 85.00
685 ★田	8c Lilac (225). Block of four, o.g., three stamps Mint N.H., T.R. stamp lightly hinged, T.R. stamp tiny ink mark, otherwise Very Fine block, with 1998 P.F. certificate, Scott Retail as singles(Photo) 307.00
686 ★	10c Green (226). O.g., h.r., well-centered and bright color, Extremely Fine.....(Color Photo, p. 39) 140.00
687 ★	90c Orange (229). O.g., small h.r., vibrant color, well-centered, a brilliant Extremely Fine Gem.....(Color Photo, p. 39) 450.00

COLUMBIAN ISSUE

688 P	1c-\$5.00 Columbian, Plate Proofs on Card (230P4-245P4). Full to large margins, \$2.00 & \$3.00 with small faults invisible on face, appears Fine-Very Fine(Photo Ex) 1,520.00
689 P	1c-\$5.00 Columbian, Plate Proofs on Card (230P4-245P4). Full to large margins, most with small faults invisible on face, appears Fine-Very Fine(Photo Ex) 1,520.00
690 ★	1c-\$5.00 Columbian, 10c Special Delivery (230-245, E3). Complete set, 30c unused (no gum), otherwise o.g., heavy h.r., \$4.00 & \$5.00 with part imprint selvage, 2c, 4c, 6c, 50c-\$2.00 & \$5.00 have faults, otherwise Fine set.....(Photo Ex) 14,352.00
691 ★	1c-\$5.00 Columbian (230, 231, 233-237, 241-245). 8c unused (regummed), \$3.00, \$5.00 unused (no gum), others o.g., most with faults, Fine appearing.....(Photo Ex) 8,895.00
692 ★	1c, 4c, 10c Columbian (230, 233, 237). Mint N.H., Very Fine, each with P.F. certificate... (Photo Ex) 405.00
693 (★)	3c, 10c, 30c, 50c Columbian (232, 238-240). Five stamps, unused (no gum), 50c (two), others one each, rich colors, Fine appearance(Photo Ex) 1,697.00
694 ★	4c-8c, 15c, 30c Columbian (233-236, 238, 239). Seven stamps, 15c (two), others one each, o.g., 6c & 8c h.r., 15c disturbed gum, balance lightly hinged, 6c-30c Very Fine, 4c & 5c Extremely Fine.....(Photo Ex) 1,132.00
695 ★★	3c Columbian (232). Mint N.H., well-centered, rich color, Extremely Fine Gem.....(Photo) 95.00
696 ★★	4c Columbian (233). Mint N.H., rich color, Extremely Fine.....(Photo) 130.00
697 ★★	4c Columbian (233). Mint N.H., well-centered, Extremely Fine Gem(Photo) 130.00
698 ★★	5c Columbian (234). Mint N.H., deep color, fresh and Very Fine.....(Photo) 140.00
699 ★★	10c Columbian (237). Mint N.H., proof-like impression, well-centered, Extremely Fine and choice, with 1988 P.F. certificate.....(Color Photo, p. 39) 210.00
700 ★	10c Columbian (237). O.g., barest trace of hinging, proof-like impression on bright white paper, usual light natural gum creases, tiny corner crease, otherwise Extremely Fine, with 1998 P.S.E. certificate(Photo) 135.00
701 ★	15c Columbian (238). O.g., barely hinged, intense color, Extremely Fine Gem, with 1958 P.F. certificate(Photo) 240.00
702 ★	30c Columbian (239). O.g., barely hinged, deep rich color on bright paper, fresh and Very Fine(Photo) 300.00
703 ★	50c Columbian (240). O.g., very lightly hinged, Very Fine and choice, with 1988 P.F. certificate.....(Photo) 600.00
704	50c Columbian (240). Perfectly centered with wide even margins, light registry cancel, Extremely Fine and choice, with 1997 P.F. certificate.....(Color Photo, p. 39) 160.00
705	50c-\$2.00, \$4.00 Columbian (240-242, 244). Seven used stamps, 50c (three), \$1.00 (two), \$2.00 & \$4.00 one each, deep colors, most with light creases, Fine-Very Fine(Photo Ex) 3,730.00
706 ★	\$1.00 Columbian (241). Well-centered, unused (regummed), trivial natural inclusion, Extremely Fine.....(Photo) 725.00
707 ★	\$1.00 Columbian (241). O.g., lightly hinged, fresh color, Very Fine and choice, with 1990 P.F. certificate.....(Photo) 1,500.00

708 ★	\$1.00 Columbian (241). O.g., h.r., bright and fresh, Fine(Photo)	1,500.00
709 (★)	\$1.00 Columbian (241). Unused (regummed), bright color, fresh and Fine.....(Photo)	725.00
710 ★	\$2.00 Columbian (242). O.g., disturbed from hinge removal, bright and fresh, Very Fine(Photo)	1,550.00
711 ★	\$2.00 Columbian (242). Slightly disturbed o.g., deep color on bright white paper, tiny light corner crease, Very Fine(Photo)	1,550.00
712 (★)	\$2.00 Columbian (242). Unused (no gum), rich color, small internal crease visible only in fluid, otherwise Very Fine(Photo)	750.00
713	\$2.00 Columbian (242). Light target cancel, intense color and sharp proof-like impression, bright and fresh, tiny natural inclusion, Extremely Fine, an absolutely gorgeous stamp(Color Photo, p. 39)	600.00
714 (★)	\$3.00 Columbian (243). Unused (regummed), beautiful shade, Very Fine(Photo)	1,150.00
715 ★	\$3.00 Columbian (243). Redistributed o.g., tiny thin spot, otherwise Very Fine, with 1998 P.S.E. certificate(Photo)	2,400.00
716 (★)	\$3.00 Columbian (243). Slightly disturbed o.g., deep shade, reperfed, otherwise Fine(Photo)	2,400.00
717 (★)	\$4.00 Columbian (244). Unused (regummed) with few gum soaked perf tips, deep shade, Very Fine.....(Photo)	1,500.00
718 (★)	\$4.00 Columbian (244). Disturbed o.g., deep rich color, Very Fine(Photo)	3,250.00
719 ★	\$4.00 Columbian (244). O.g., h.r., rich color on bright paper, couple tiny thins, Very Fine appearance.....(Photo)	3,250.00
720 ★	\$4.00 Rose Carmine, Columbian (244a). O.g., h.r., rich color, couple tiny faults and reperfed at L., otherwise Very Fine.....(Photo)	3,250.00
721 (★)	\$4.00 Columbian (244). Unused (regummed), natural s.e. at T., tiny natural inclusion, Very Fine.....(Photo)	1,500.00
722 (★)	\$4.00 Columbian (244). Unused (no gum), bright color, trivial natural inclusion, reperfed at L., single slightly thinned perf tip at B.L., otherwise Fine(Photo)	1,500.00
723	\$4.00 Rose Carmine, Columbian (244a). Lynn Mass. oval cancel, well-centered with even margins, Extremely Fine, with 1983 and 1998 P.F. certificates(Color Photo, p. 40)	1,350.00
724 (★)	\$5.00 Columbian (245). Unused (partly regummed), well-centered, Extremely Fine.....(Photo)	1,750.00
725 (★)	\$5.00 Columbian (245). Unused (no gum), fine impression on bright white paper, barest trace of crease visible in fluid only, otherwise Extremely Fine.....(Photo)	1,750.00
726 (★)	\$5.00 Columbian (245). Unused (no gum), small light creasing, otherwise Extremely Fine(Photo)	1,750.00
727 (★)	\$5.00 Columbian (245). Unused (no gum), proof-like impression, couple very tiny facial scuffs, otherwise Very Fine(Photo)	1,750.00
728 ★	\$5.00 Columbian (245). O.g., h.r., reperfed at T., scissors separated perfs at R., otherwise Very Fine.....(Photo)	3,750.00
729 ★	\$5.00 Columbian (245). O.g., deep color, barest traces of thinning at R., otherwise Very Fine(Photo)	3,750.00
730 (★)	\$5.00 Columbian (245). Unused (no gum), well-centered, fine impression, reperfed at T., otherwise Very Fine.....(Photo)	1,750.00
731 ★	\$5.00 Columbian (245). Disturbed o.g., fresh and Fine.....(Photo)	3,750.00
732 (★)	\$5.00 Columbian (245). Unused (no gum), trivial natural inclusion, small thin spot, otherwise Very Good(Photo)	1,750.00
733	\$5.00 Columbian (245). Near perfect centering, light oval registered cancel, incredibly fresh with bright white paper, Extremely Fine and choice.....(Color Photo, p. 40)	1,600.00
734	\$5.00 Columbian (245). Light duplex cancel, fresh and Extremely Fine(Color Photo, p. 40)	1,600.00

COLUMBIAN ISSUE BLOCKS

- 735 ★田 **1c-30c Columbian (230-239)**. Blocks of four, 10c unused (no gum), others o.g., fourteen stamps Mint N.H. incl. 1c (four), 3c (three), 4c (two), 6c (four), 15c (one), others lightly hinged or h.r., 4c & 6c (two stamps each) natural s.e., Fine group..(Photo Ex) 5,335.00
- 736 ★田 **1c-15c Columbian (230-238)**. 1c-10c blocks of four (8c two), 15c plate no. pair, 1c-4c, 5c (two stamps), 6c (three stamps), 8c (one stamp) Mint N.H., others o.g., lightly hinged or h.r., 4c T. pair with traces of gum toning, 10c one stamp with small stain, otherwise Fine-Very Fine.....(Photo Ex) 2,815.00
- 737 ★田 **1c-6c Columbian (230-235)**. Blocks of four, 1c, 3c, two 2c stamps Mint N.H., others lightly hinged or tiny h.r., 4c tiny adherences, deep rich colors, 2c hinged pair lightly creased (cat \$45), Very Fine-Extremely Fine(Photo Ex) 1,830.00
- 738 ★田 **1c, 3c, 5c Columbian (230, 232, 234)**. 1c B. plate no. block of eight, 3c B. margin imprint block of four, 5c T. plate no. strip of four, o.g., six 1c stamps & two 3c stamps Mint N.H., others lightly hinged or small h.r., 1c & 3c Fine, 5c Fine-Very Fine(Photo Ex) 1,390.00
- 739 ★田 **1c, 5c, 8c Columbian (230, 234, 236)**. Blocks of four, 1c unused (regummed), 5c Mint N.H., 8c tiny hinge reinforcement, 1c Very Fine, 5c & 8c Fine(Photo Ex) 1,005.00
- 740 ★★田 **8c Columbian (236)**. Mint N.H. block of four, deep shade and fine impression, three stamps Very Fine, T.L. stamp is an Extremely Fine Gem, Scott Retail for singles.....(Photo) 480.00
- 741 ★★田 **10c Columbian (237)**. Mint N.H. block of four, sharp impression on bright white paper, Very Fine, Scott Retail for singles.....(Photo) 840.00
- 742 ★田 **15c Columbian (238)**. Block of four, B. pair Mint N.H., T. pair hinge mark, dark shade, B.R. stamp tiny natural inclusion, Very Fine, with 1991 P.F. certificate.....(Photo) 1,230.00
- 743 ★田 **30c Columbian (239)**. Block of four with left sheet margin, T. pair o.g, lightly hinged, B. pair Mint N.H., couple perf disc inclusions, B.L. stamp tiny natural inclusion, R. pair Very Fine, L. pair Extremely Fine, with 1991 P.F. certificate.....(Color Photo, p. 41) 1,500.00
- 744 ★田 **50c Columbian (240)**. Block of four, o.g., lightly hinged, intense color on bright paper, Very Fine, with 1991 P.F. certificate(Color Photo, p. 41) 2,600.00
- 745 ★田 **\$1.00 Columbian (241)**. Left margin block of four with imprint, o.g., lightly hinged, selvage mostly reattached with hinges, bright and fresh, T.R. stamp natural inclusion and tiny thin speck (not mentioned on certificate), Very Fine, with 1991 P.F. certificate(Color Photo, p. 41) 6,500.00
- 746 ★田 **\$2.00 Columbian (242)**. Block of four, o.g., top pair lightly hinged, **bottom pair Mint N.H.**, rich color on bright white paper, T.R. stamp natural inclusion and faint paper wrinkle, Fine-Very Fine, with 1991 P.F. certificate(Color Photo, p. 41) 8,000.00
- 747 ★田 **\$3.00 Columbian (243)**. Block of four, slightly disturbed o.g., rich color and sharp impression, Very Fine and choice, with 1991 P.F. certificate.....(Color Photo, p. 41) 11,000.00
- 748 ★田 **\$4.00 Columbian (244)**. Block of four, original gum, top pair h.r., bottom pair lightly hinged, rich color
EXTREMELY FINE. A GORGEOUS AND SCARCE BLOCK.
With 1991 P.F. certificate(Color Photo, p. 42) 14,000.00
- 749 ★田 **\$5.00 Columbian (245)**. Block of four, **bottom left stamp Mint N.H.**, others lightly hinged, sharp proof-like impression on bright white paper, B.L. stamp natural inclusion
VERY FINE. A WONDERFUL EXAMPLE OF THE RARE \$5.00 COLUMBIAN BLOCK.
With 1991 P.F. certificate(Color Photo, p. 42) 17,000.00

1894-98 BUREAU ISSUE

750	★★	3c Purple (253). Mint N.H., well-centered, rich color, Extremely Fine and choice, with 1991 P.F. certificate.....	(Photo)	2,600.00
751	★	4c Dark Brown (254). O.g., hinge mark, rich color, Extremely Fine and choice.....	(Photo)	120.00
752	★★	6c Dull Brown (256). Mint N.H., Extremely Fine and choice.....	(Photo)	225.00
753	★★	8c Violet Brown (257). O.g., lightly hinged, rich color, Extremely Fine ..	(Photo)	130.00
754		\$1.00 Black (261). Wide margins all around on bright fresh paper, Extremely Fine Gem, with 1983 P.F. certificate.....	(Photo)	250.00
755	★	\$1.00 Black, Ty. II (261A). O.g., small h.r., well-centered, Extremely Fine and choice	(Color Photo, p. 40)	1,900.00
756	★	\$2.00 Bright Blue (262). O.g., lightly hinged, rich color, well-centered, Extremely Fine and choice, with 1984 P.F. certificate	(Color Photo, p. 40)	2,600.00
757	★★	6c Dull Brown (271). Mint N.H., fresh and Very Fine, with 1989 P.F. certificate.....	(Photo)	120.00
758	★★	8c Violet Brown (272). Mint N.H., rich color, well-centered, Extremely Fine Gem.....	(Color Photo, p. 40)	90.00
759	★★	10c Dark Green (273). Mint N.H., rich color, wide margins, Extremely Fine and choice, with 1989 P.F. certificate.....	(Photo)	120.00
760	★	15c Dark Blue (274). O.g., small h.r., deep rich color, Extremely Fine and choice.....	(Photo)	190.00
761	★	50c Orange (275). O.g., h.r., bright color, well-centered, Extremely Fine and choice, with 1982 P.F. certificate.....	(Photo)	260.00
762	★	50c Orange (275). O.g., h.r., bright color, well-centered, small internal crease, appears Extremely Fine, with 1998 P.F. certificate	(Photo)	260.00
763	★	50c Orange (275). O.g., h.r., reperfed at T., Extremely Fine appearance (Photo)		260.00
764	★	\$1.00 Black, Ty. I (276). O.g., lightly hinged, sharp impression, fresh and Very Fine, with 1978 P.F. certificate.....	(Photo)	600.00
765	田	\$1.00 Black, Ty. I & II (276, 276A). Block of four, oval reg. cancels, L. pair Ty. I, R. pair Ty. II, a rare combination block, perfs reinforced, Fine, with 1999 P.F. certificate.....	(Photo)	1,150.00
766	★	\$1.00 Black, Ty. II (276A). O.g., fresh and Very Fine, with 1977 A.P.S. certificate	(Photo)	1,200.00
767	★	\$2.00 Bright Blue (277). O.g., h.r., rich color, fresh and Extremely Fine	(Color Photo, p. 40)	975.00
768	★	\$2.00 Bright Blue (277). O.g., h.r., pretty shade, reperfed at B., Very Fine appearance, with 1998 P.F. certificate.....	(Photo)	975.00
769	★	\$5.00 Dark Green (278). O.g., lightly hinged, deep rich color, fesh and Very Fine, with 1987 P.F. certificate.....	(Color Photo, p. 40)	2,250.00
770	★	\$5.00 Dark Green (278). O.g., lightly hinged, reperfed at L., Extremely Fine appearance, with 1998 P.F. certificate	(Photo)	2,250.00
771	★田	5c Dark Blue, 6c Lake (281, 282). Blocks of four, o.g., 5c tiny h.r., 6c T. pair lightly hinged, B. pair Mint N.H., deep rich colors on bright white paper, 6c T. pair lightly creased, Very Fine-Extremely Fine appearance	(Photo Ex)	385.00
772		10c Orange Brown, Ty. II (283). Cancelled by neat strike of straightline "CHINA" cancel, well-centered, small faults, appears Very Fine, scarce cancel, listed but unpriced in Scott	(Photo)	E. 150-200

TRANS-MISSISSIPPI ISSUE

773	★	1c-\$2.00 Trans-Mississippi (285-293). Complete set with extra 5c, o.g., h.r., 2c tiny thin, 50c reperfed, \$2.00 corner crease, Fine group	(Photo Ex)	4,747.00
774	★	1c-10c Trans-Mississippi (285-290). 1c-8c Mint N.H., 10c slightly disturbed o.g., few reperfed, Very Fine-Extremely Fine appearance, 4c with 1990 P.F. certificate.....	(Photo Ex)	1,000.00
775	★田	1c-8c Trans-Mississippi (285-289). T. plate no. blocks of four, 1c & 4c Mint N.H., others original gum, lightly hinged, two 5c stamps with disturbed gum, bright and fresh, 1c, 5c, 8c Fine, 2c & 4c Fine-Very Fine.....	(Photo Ex)	4,565.00

- 776 ★田 **1c Trans-Mississippi (285)**. T. margin plate no. block of 25, fourteen stamps Mint N.H., eleven stamps with tiny hinge reinforcing incl. all five with natural s.e., two s.e. with faults (not catalogued), most Very Fine, few Extremely Fine 912.00
- 777 ★★田 **1c, 2c Trans-Mississippi (285-286)**. Blocks of four, Mint N.H., rich colors, 1c B. pair light natural gum creases, B.R. stamp tiny natural inclusion, Extremely Fine (Photo Ex) 360.00
- 778 ★田 **4c, 10c Trans-Mississippi (287, 290)**. Blocks of four, o.g., 4c slightly disturbed gum, Fine-Very Fine, 10c R. pair Mint N.H., L. pair lightly hinged, B. pair tiny inclusions, Fine..... (Photo Ex) 1,490.00
- 779°★★ **5c Trans-Mississippi (288)**. Mint N.H. with bottom imprint sheet selvage, gorgeous color, sharp proof-like impression on bright white paper, Extremely Fine Gem..... (Color Photo, p. 40) 225.00
- 780 ★ **10c Trans-Mississippi (290)**. O.g., slightly disturbed gum from hinge removal, small faint crease, well-centered with wide margins, Extremely Fine and choice (Photo) 170.00
- 781 ★ **50c Trans-Mississippi (291)**. O.g., h.r., fresh color, reperfed at B., Extremely Fine appearance (Photo) 600.00
- 782 **50c Trans-Mississippi (291)**. O.g., h.r., tiny toned spot and light creases, Very Fine (Photo) 170.00
- 783 **50c Trans-Mississippi (291)**. Light cancel, gorgeous shade, perfect centering, Extremely Fine (Color Photo, p. 40) 170.00
- 784 ★ **\$1.00 Trans-Mississippi (292)**. O.g., hinge mark, dark shade and proof-like impression on crisp white paper, Extremely Fine and choice, with 1992 P.F. certificate (Color Photo, p. 40) 1,250.00
- 785 ★★ **\$1.00 Trans-Mississippi (292)**. Mint N.H. sharp impression on bright white paper, tiny pinkish spot at B., otherwise Extremely Fine, with 1992 P.F. certificate..... (Photo) 2,100.00
- 786 (★) **\$1.00 Trans-Mississippi (292)**. Unused (regummed), reperfed, Extremely Fine appearance, with 1972 P.F. certificate which states "genuine with disturbed o.g." (Photo) 1,250.00
- 787 ★ **\$1.00 Trans-Mississippi (292)**. O.g., h.r., deep dark shade on bright white paper, Fine .. (Photo) 1,250.00
- 788 ★ **\$2.00 Trans-Mississippi (293)**. O.g., lightly hinged, fine impression, Very Fine and choice..... (Photo) 2,100.00
- 789 ★ **\$2.00 Trans-Mississippi (293)**. O.g., h.r., fresh and Fine..... (Photo) 2,100.00
- 790 (★) **\$2.00 Trans-Mississippi (293)**. Unused (regummed), reperfed at L. and tiny thin, otherwise Fine..... (Photo) 1,000.00

PAN-AMERICAN ISSUE

- 791 ★ **1c-10c Pan-American (294-299)**. 1c-4c, 10c Mint N.H., 5c & 8c traces of mount glaze, rich colors, Extremely Fine set (Photo Ex) 689.00
- 792 ★ **1c-10c Pan-American (294-299)**. 1c & 2c Mint N.H., 4c slightly disturbed gum, 5c & 8c lightly hinged, 10c small fingerprint on gum, 8c tiny corner crease, rich colors, otherwise fresh and Very Fine-Extremely Fine..... (Photo Ex) 524.00
- 793 ★ **1c-10c Pan-American (294-299)**. Incl. two each of 2c and 4c, all except 8c are Mint N.H., few reperfed, Very Fine-Extremely Fine appearance..... 923.00
- 794 ★★田 **1c-8c Pan-American (294-298)**. Blocks of four, eleven stamps Mint N.H. incl. 1c & 4c (three), 2c & 8c (two), 5c (one), others lightly hinged or h.r., one 1c stamp with wrinkle, one 4c with natural inclusion, Very Fine (Photo Ex) 1,628.00
- 795 ★ **10c Pan-American (299)**. B. margin imprint and plate no. 1151 strip of three, center stamp barely hinged, others Mint N.H., well-centered, Extremely Fine, with 1998 P.S.E. certificate..... (Photo) 625.00

END OF FIRST SESSION

SECOND SESSION (LOTS 796-1197)
SATURDAY, JUNE 26, 1999, AT 1:30 P.M.

1902-08 ISSUE

- 796 ★ **2c-\$1.00 1902-03 Issue (301-311, 314, 315, 319f, 320).** No. 307 unused (no gum), others heavy h.r. or part o.g., pretty colors, No. 304 with large adherence, No. 314 thin, No. 315 Very Fine, others Fine.....**(Photo Ex)** 1,995.00
- 797 ★ **3c Bright Violet (302).** Lightly hinged, well-centered, rich color, Extremely Fine Gem....**(Photo)** 50.00
- 798 ★★ **6c Claret (305).** Mint N.H., well-centered, Extremely Fine and choice....**(Photo)** 105.00
- 799 ★田 **10c Pale Red Brown (307).** Block of four, deep shade on bright white paper, T. pair lightly hinged, B. pair Mint N.H., overall Very Fine with the bottom pair being Extremely Fine Gems**(Photo)** 310.00
- 800 ★ **50c Orange (310).** Very lightly hinged, vibrant color, Very Fine, with copy of 1984 P.F. certificate for block of four, this being the B.R. stamp**(Photo)** 400.00
- 801 ★ **\$1.00 Black (311).** H.r., fresh and Very Fine.....**(Photo)** 700.00
- 802 ★ **\$2.00 Dark Blue (312).** H.r., fresh color, reperfed at T., Very Fine appearance**(Photo)** 1,100.00
- 803 ★ **\$2.00 Dark Blue (312).** Small h.r., Very Fine.....**(Photo)** 1,100.00
- 804 **\$2.00 Dark Blue, \$5.00 Dark Green (312, 313).** Light cancels, \$2.00 blue cancel and light creasing, otherwise Fine-Very Fine.....**(Photo Ex)** 845.00
- 805 ★ **\$5.00 Dark Green (313).** Well-centered, intense deep color, small corner crease at T.R., otherwise Extremely Fine, with 1994 P.F. certificate.....**(Photo)** 2,750.00
- 806 ★ **\$5.00 Dark Green (313).** H.r., deep rich color, reperfed at B., otherwise Extremely Fine, with 1995 P.F. certificate**(Photo)** 2,750.00
- 807 (★) **\$5.00 Dark Green (313).** Unused (regummed), rich color, horizontal crease at reperfed at R., Very Fine appearance, with 1999 P.F. certificate**(Photo)** 825.00
- 808 **\$5.00 Dark Green (313).** Rich color, well-centered, natural s.e. at R., otherwise Extremely Fine.....**(Photo)** 675.00
- 809 ★ **5c Blue, Imperforate (315).** Large margins, barely hinged, Very Fine, with copy of 1989 P.F. certificate for block of four, this being the B.L. stamp**(Photo)** 310.00
- 810 ★ **5c Blue, Imperforate (315).** Horizontal pair, barest trace of hinging, large margins and rich color, fresh and Very Fine, with 1999 P.F. certificate**(Photo)** 650.00
- 811°★ **5c Blue, Coil (317).** Pair, top stamp lightly hinged, bottom stamp **Mint N.H.**, deep rich color and proof-like impression
- FINE PAIR OF THE RARE 5-CENT 1908 COIL, CONTAINING A MINT NEVER-HINGED STAMP.
- Stanley Gibbons backstamp on lower stamp. Scott Retail for hinged pair; unpriced Mint N.H. With 1982 and 1997 P.F. certificates.....**(Color Photo, p. 40)** 12,500.00

LOUISIANA PURCHASE AND JAMESTOWN ISSUES

- 812 ★ **1c-10c Louisiana Purchase (323-327).** All except 3c Mint N.H., 10c small corner crease at B.L., otherwise Very Fine-Extremely Fine set, the 5c with 1989 P.F. certificate**(Photo Ex)** 622.00
- 813 ★ **1c-10c Louisiana Purchase (323-327).** Horizontal pairs, 1c, 2c, 5c Mint N.H., 3c lightly hinged, 10c gum is slightly sweated, Fine-Very Fine.....**(Photo Ex)** 1,025.00
- 814 ★田 **1c-10c Louisiana Purchase (323-327).** 1c T. plate block of eight, 2c-10c plate blocks of four, 1c & 5c Mint N.H., 2c & 3c with barest traces of hinging, 10c lightly hinged, fresh and intact, 2c with slightly reduced selvage, Fine set**(Photo Ex)** 3,560.00
- 815 ★田 **1c-10c Louisiana Purchase (323-327).** Blocks of four, 2c and 10c are plate blocks, 5c arrow block, 3c L. pair Mint N.H., R. pair lightly hinged, others h.r., few perf separations, one 1c stamp thinned, 10c with faults, 2c, 5c Fine-Very Fine, 1c, 3c, 10c appear Extremely Fine.....**(Photo Ex)** 2,515.00
- 816 ★田 **1c-10c Louisiana Purchase (323-327).** Blocks of four, eleven stamps Mint N.H. incl. 1c (four), 2c, 3c (two), 10c (four), 5c h.r., other 2c & 3c stamps lightly hinged, 1c & 5c with few perf separations, Fine-Very Fine set.....**(Photo Ex)** 2,382.00
- 817 ★★ **5c Louisiana Purchase (326).** Mint N.H., rich color on crisp paper, post-office fresh Extremely Fine Gem.....**(Photo)** 150.00
- 818 ★★田 **1c, 5c Jamestown, 50c Chicago Zeppelin (328, 330, C18).** Blocks of four, 5c (two stamps) lightly hinged, otherwise Mint N.H., 50c with usual tiny natural gum skips, 1c & 5c Fine, 50c Fine-Very Fine 1,340.00

1908-10 ISSUE

- 819 ★ **1c-\$1.00 1908-09 Issue (331-342).** 1c, 2c Mint N.H., few faults incl. \$1.00 regummed and few reperfed, still Very Fine and attractive appearing set.....**(Photo Ex)** 1,178.00
- 820 ★田 **1c-15c 1908-09 Issue (331-340).** Blocks of four, T. pairs h.r., B. pairs Mint N.H., four blocks with natural s.e. incl. 4c (R.), 5c & 10c (T.), 15c (B.), 10c T.L. stamp creased, generally Fine-Very Fine**(Photo Ex)** 2,185.00
- 821 ★★ **4c Orange Brown (334).** Mint N.H., well-centered, bright color, Extremely Fine Gem.....**(Photo)** 65.00
- 822 ★★ **6c Red Orange (336).** Mint N.H., well-centered, fresh and Very Fine, with photocopy of 1996 P.F. certificate for block.....**(Photo)** 100.00
- 823 ★★ **13c Blue Green (339).** Mint N.H., well-centered, Extremely Fine and choice**(Photo)** 65.00
- 824 ★★田 **13c Blue Green (339).** T. plate no. block of six, rich color, fresh and Fine-Very Fine.....**(Photo)** 700.00
- 825 ★ **50c Violet (341).** Slightly disturbed o.g., Very Fine**(Photo)** 325.00
- 826 ★田 **50c Violet (341).** Block of four, T. pair lightly hinged, B. pair h.r., pretty shade on bright paper, Fine-Very Fine**(Photo)** 1,400.00
- 827 ★ **\$1.00 Violet Brown (342).** H.r., rich color, fresh and Very Fine**(Photo)** 500.00
- 828 ★★田 **\$1.00 Violet Brown (342).** Block of four, T. pair h.r., B. pair Mint N.H., sharp impression, small crease at T.R., Fine**(Photo)** 2,600.00
- 829 ★ **1c-5c 1908-09 Issue, Imperforate (343-347).** Horizontal pairs of each, 3c T. imprint, 4c part imprint at L., 1c h.r., others Mint N.H., 2c tiny tear in margin at B., otherwise Very Fine-Extremely Fine set 283.00
- 830 ★田 **1c-5c 1908-09 Issue, Imperforate (343-347).** Blocks of four, T. pairs h.r., B. pairs Mint N.H., with extra 5c block (h.r.), one hinged 2c stamp with tiny thin, three hinged 5c stamps with creases, otherwise Extremely Fine.....**(Photo Ex)** 601.00
- 831 ★★ **1c Green, Coil (348).** Mint N.H. pair, bright color, Extremely Fine and choice, with 1991 P.F. certificate**(Photo)** 115.00
- 832 ★ **4c Orange Brown, Coil (350).** Guide line pair, T. stamp h.r., B. stamp Mint N.H., deep shade and proof-like impression, Fine**(Photo)** 875.00
- 833 ★ **4c Orange Brown, Coil (354).** Guide line pair, single h.r., bright color, fresh and Extremely Fine guide line pair, with 1975 and 1999 P.F. certificates....**(Photo)** 1,100.00
- 834 ★ **5c Blue, Coil (355).** Paste-up pair, well-centered, fresh and Very Fine, with 1994 P.S.E. certificate.....**(Photo)** 400.00

BLUISH PAPER AND LINCOLN COMMEMORATIVE

- 835 ★ **6c Red Orange, Bluish (362).** Full original gum, h.r., bright color, clear impression, reperfed at B., fresh and Very Fine, with 1999 P.S.E. certificate**(Photo)** 1,350.00
- 836 ★ **13c Bluish Green, Bluish (365).** Small h.r., deep shade and impression, reperfed at top, Extremely Fine appearance, signed Colson, with 1999 P.F. certificate ..**(Photo)** 2,800.00
- 837 ★ **15c Pale Ultramarine, Bluish (366).** Perfectly centered, beautiful light blue shade, Extremely Fine, with 1995 P.F. certificate**(Color Photo, p. 40)** 1,350.00
- 838 ★★ **15c Pale Ultramarine, Bluish (366).** Mint N.H. huge T. margin single, sharp impression, Very Fine, with 1971 A.P.S. certificate**(Photo)** 1,950.00
- 839 ☒ **2c Lincoln (367).** Two singles, each tied by **First Day of Issue** "Boston Mass. Feb. 12, 1909" cds on two different picture postcards illustrating Lincoln and the Emancipation Proclamation, fresh and Very Fine pair, Scott Retail \$950.00 for usual FDC's**(Photo Ex)** E. 500-750
- 840 ★ **2c Lincoln, Bluish (369).** Lightly hinged, well-centered, Extremely Fine and choice**(Photo)** 225.00

1910-13 ISSUE

- 841 ★田 **1c, 3c-15c 1910-11 Issue (374, 376-382).** Blocks of four, T. pairs h.r., B. pairs Mint N.H., vivid colors, 10c perf seps & Very Good, others Fine.....**(Photo Ex)** 3,081.00
- 842 ★ **8c Olive Green (380).** Small h.r., gigantic margins all around, incredibly deep color, Extremely Fine Gem.....**(Photo)** 110.00

- 843 ★★ **1c Green, Coil (385).** Mint N.H. guide line pair, Very Fine and choice, with 1996 P.F. certificate.....(Photo) 500.00
- 844 ★★ **1c Green, 2c Carmine, Coil (390, 391).** Mint N.H. guide line pairs, well-centered, 2c one insignificant nibbed perf at T., otherwise Extremely Fine(Photo Ex) 337.00
- 845 ★ **1c-5c 1910-14 Coils (390-396, 443-447).** Paste-up pairs, rich colors, No. 395 several pulled perfs, usual mixed centering, mostly Fine, Scott Retail for pairs.....(Photo Ex) 1,657.00
- 846 ★★ **3c Deep Violet, Coil (394).** Mint N.H. joint line pair, well-centered with wide margins, fresh color, Extremely Fine Gem(Color Photo, p. 40) 500.00
- 847 **3c Deep Violet, Coil (394).** Guide line strip of four, deep shade, lightly cancelled, Very Fine, with 1996 P.F. certificate(Photo) 395.00
- 848 ★★ **4c Brown, Coil (395).** Mint N.H. guide line pair, rich color, Very Fine and choice, with 1997 P.F. certificate.....(Photo) 500.00
- 849 ★ **4c Brown, Coil (395).** Guide line pair, deep color, Fine, with 1986 P.F. certificate.....(Photo) 325.00
- 850 ★ **5c Blue, Coil (396).** Pair, lightly hinged, well-centered, rich color, Extremely Fine(Photo) 115.00
- 851 **5c Blue, Coil (396).** Guide line pair, bright and fresh, lightly cancelled, Extremely Fine, with 1996 P.F. certificate(Color Photo, p. 40) 450.00

PANAMA-PACIFIC ISSUE

- 852 ★田 **1c-10c Panama-Pacific (397-403).** Blocks of four, No. 400A Mint N.H., Nos. 397-400, 401 two stamps Mint N.H., two stamps lightly hinged or h.r., Nos. 402 slightly disturbed gum, No. 403 h.r., Fine-Very Fine(Photo Ex) 3,800.00
- 853 ★ **10c Orange Yellow, Panama-Pacific (400).** Barely hinged, well-centered, Extremely Fine, with 1984 P.F. certificate.....(Photo) 125.00
- 854 ★★ **10c Orange, Panama-Pacific (400A).** Mint N.H., intense color on bright white paper, Very Fine(Photo) 340.00
- 855 ★★ **5c Panama-Pacific, Perf 10 (403).** Mint N.H., deep color and sharp proof-like impression, well-centered, Extremely Fine, with 1990 P.F. certificate.....(Photo) 280.00
- 856 ★ **10c Panama-Pacific, Perf 10 (404).** Tiny traces of mount disturbance, well-centered, rich color, Extremely Fine.....(Color Photo, p. 40) 925.00
- 857 ★ **10c Panama-Pacific, Perf 10 (404).** Vivid color, well-centered with large even margins, slightly disturbed gum from hinge removal, fresh and Extremely Fine.....(Color Photo, p. 40) 925.00
- 858 ★ **10c Panama-Pacific, Perf 10 (404).** H.r., small corner crease at B.L., otherwise Fine, with 1988 P.F. certificate.....(Photo) 925.00

1912-14 ISSUE

- 859 ★田 **7c-30c 1912-1914 Issue (407, 414-420).** Blocks of four, 15c lightly hinged, others T. pairs h.r., B. pairs Mint N.H., 10c natural s.e. at L., 30c Very Good-Fine, otherwise Fine-Very Fine.....(Photo Ex) 3,475.00
- 860 ★★ **8c Pale Olive Green (414).** Mint N.H., well-centered, Extremely Fine.....(Photo) 72.00
- 861 ★★ **9c Salmon Red (415).** Mint N.H., perfectly centered with wide even margins, intense color, post-office fresh, Extremely Fine Gem, with 1990 P.S.E. and 1996 P.F. certificates.(Photo) 87.00
- 862 ★ **10c Orange Yellow (416).** Barely hinged, well-centered, vibrant color, Extremely Fine....(Photo) 45.00
- 863 ★★ **12c Claret Brown (417).** Mint N.H., rich color, Extremely Fine and choice(Photo) 80.00
- 864 ★ **30c Orange Red (420).** R. plate no. single, well-centered, rich color, Extremely Fine Gem(Photo) 125.00
- 865 ★★ **30c Orange Red (420).** Mint N.H., rich color, well-centered, Extremely Fine and choice(Photo) 200.00
- 866 ★ **50c Violet (421).** H.r., fresh and Very Fine.....(Photo) 425.00
- 867 ★ **50c Violet (421).** Barely hinged, well-centered, Very Fine and choice, with 1989 P.F. certificate.....(Photo) 425.00

868 ★田	50c Violet (422). Block of four, T. pair h.r., B. pair Mint N.H., rich color and sharp impression, Very Fine(Color Photo, p. 42)	1,300.00
869 ★	\$1.00 Violet Brown (423). H.r., rich color, Extremely Fine(Photo)	500.00
870 ★田	\$1.00 Violet Brown (423). Block of four, T. pair h.r., B. pair Mint N.H., fresh and Fine-Very Fine(Color Photo, p. 42)	2,700.00

1913-15 ISSUE

871 ★	1c-50c 1913-15 Issue (424-440). H.r., bright colors, Fine-Extremely Fine set(Photo Ex)	1,534.00
872 ★★	9c Salmon Red (432). Mint N.H., well-centered, bright color, Extremely Fine Gem(Photo)	80.00
873 ★田	15c Gray (437). R. plate no. block of six, T. pair has hinge mark, other four stamps Mint N.H., Very Fine(Photo)	1,100.00
874 ★	20c Ultramarine (438). Very lightly hinged, bright color, Extremely Fine and choice.....(Photo)	210.00
875 ★	20c Ultramarine (438). Barest faint trace of hinging, wide margins, Very Fine, with 1985 P.F. certificate(Photo)	210.00
876 ★	30c Orange Red (439). Intense color, well-centered, Extremely Fine.....(Photo)	250.00
877 ★	50c Violet (440). Small h.r., fesh color on bright paper, Very Fine(Photo)	550.00
878 ★	50c Violet (440). Fresh and Very Fine, with 1979 P.F. certificate.....(Photo)	550.00
879 ★	1c-\$1.00 1916-17 Issue (438, 462-466, 468-475, 477-478). 2c,3c and 11c Mint N.H., 10c reperfed at T. & slightly disturbed o.g., 20c watermarked, Fine-Very Fine(Photo Ex)	2,873.00
880 ★★	3c Violet, Coil (445). Mint N.H. pair, wide margins, intense color, fresh and Very Fine..(Color Photo, p. 42)	800.00
881 ★	3c Violet, Coil (445). Pair, lightly hinged, Very Fine, with 1988 A.P.S. certificate(Photo)	525.00
882 ★	3c Violet, Coil (445). Guide line pair, lightly hinged, well-centered, Very Fine and choice, with 1998 A.P.S. certificate.....(Color Photo, p. 42)	1,200.00
883	3c Violet, Coil (445). Guide line pair, iintense shade on bright paper, light oval cancels, Fine, with 1996 P.F. certificate(Color Photo, p. 42)	950.00
884 ★	4c Brown, Coil (446). Pair, very lightly hinged, well-centered, fresh color, Extremely Fine and choice(Photo)	300.00
885 ★	4c Brown, Coil (446). Guide line pair, rich color, well-centered, Extremely Fine and choice, with 1999 P.F. certificate(Color Photo, p. 42)	675.00
886 ★	4c Brown, Coil (446). Guide line pair, lightly hinged, rich color, Very Fine(Photo)	675.00
887°	5c Blue, Coil (447). Pair, perfect part strike of Stone Harbor cds, beautiful deep blue shade on bright white paper, Extremely Fine and choice(Color Photo, p. 42)	210.00
888	5c Blue, Coil (447). Guide line pair, deep rich color, light machine cancel, fresh and Very Fine, with 1996 P.F. certificate.....(Color Photo, p. 42)	475.00
889 ★	2c Carmine Rose, Ty. I, Coil (453). Pair, lightly hinged, Very Fine(Photo)	250.00
890 ★	2c Carmine Rose, Ty. I, Coil (453). Joint line pair, h.r., well-centered, bright color, Very Fine and choice, with 1994 A.P.S. certificate.....(Photo)	550.00
891 ★	2c Red, Ty. II, Coil (454). Pair, lightly hinged, well-centered, Extremely Fine Gem pair(Photo)	180.00
892 ★★	2c Red, Ty. II, Coil (454). Mint N.H. pair, fresh and Very Fine, with 1992 P.F. certificate(Photo)	280.00
893 ★★	3c Violet, Coil (456). Mint N.H., fresh and Fine(Photo)	375.00
894 ★	3c Violet, Coil (456). Pair, very lightly hinged, well-centered, bright color, Extremely Fine Gem pair(Color Photo, p. 43)	575.00
895 ★	4c Brown, Coil (457). Pair, R. stamp Mint N.H., L. stamp lightly hinged, brilliant color, well-centered with huge margins, Extremely Fine and choice, a beautiful pair(Photo)	65.00
896 ★	5c Blue, Coil (458). Joint line pair, barely hinged, rich color, well-centered with wide margins, Extremely Fine Gem line pair, with 1999 P.F. certificate(Photo)	180.00

- 897 ★★ **5c Blue, Coil (458).** Mint N.H. joint line pair, fresh color, Very Fine and choice.....**(Photo)** 280.00
- 898 ★★ **2c Carmine, Ty. I, Imperforate Coil (459).** Mint N.H., large margins all around, post-office fresh and Extremely Fine Gem, with 1999 P.F. certificate**(Photo)** 350.00
- 899 ★★ **2c Carmine, Ty. I, Imperforate Coil (459).** Mint N.H., large margins, Extremely Fine....**(Photo)** 350.00
- 900 ★ **\$1.00 Violet Black (460).** H.r., well-centered, sharp proof-like impression, Extremely Fine and choice.....**(Color Photo, p. 43)** 775.00
- 901 ★★ **\$1.00 Violet Black (460).** Mint N.H., post-office fresh, Very Fine, with photocopy of 1992 P.F. certificate for block.....**(Photo)** 1,150.00
- 902 ★ **\$1.00 Violet Black (460).** Slightly disturbed o.g. from hinge removal, thin spot at T., otherwise Very Fine, with 1995 P.S.E. certificate.....**(Photo)** 775.00
- 903 ★ **2c Pale Carmine Red, Ty. I (461).** T. plate no. block of six, center pair slightly disturbed gum from hinge removal, other four stamps Mint N.H., L. pair with preprinting paper crease, otherwise Very Fine, still a scarce plate no. block, with 1992 P.F. certificate**(Photo)** 1,150.00

1916-17 ISSUE

- 904 ★ **3c-20c 1916-17 Issue (464-466, 468-476).** 3c, 9c, 20c Mint N.H., 10c h.r., otherwise lightly hinged, rich colors, 3c reperfed, 15c tiny thin spot, otherwise Fine-Very Fine 1,290.00
- 905 ★★ **3c Violet (464).** Mint N.H., well-centered with wide margins, intense color, Extremely Fine Gem**(Photo)** 120.00
- 906 ★田 **5c Carmine, Error (467).** Single error in block of six, natural s.e. at B., Very Fine**(Photo)** 550.00
- 907 ★田 **5c Carmine, Error (467).** Single Mint N.H. error in block of six, natural s.e. at B., Fine..**(Photo)** 825.00
- 908 ★ **5c Carmine, Error (467).** Single Mint N.H. error in block of nine, natural s.e., at T., lightly folded along one row of perfs, Fine.....**(Photo)** 900.00
- 909 ★★ **5c Carmine, Error (467).** Mint N.H. double error in block of twelve, natural s.e. at B., Fine-Very Fine.....**(Photo)** 1,750.00
- 910 ★田 **5c Carmine, Error (467).** Double error in block of twelve, errors Mint N.H., natural s.e. at B., heavy small corner crease, otherwise Fine-Very Fine.....**(Photo)** 1,750.00
- 911 田 **5c Carmine, Error (467).** Double error in block of twelve, natural s.e. at B., bold "Chattanooga Tennessee" precancel, both errors Mint N.H., fresh and Fine, rare with the precancel**(Photo)** 1,625.00
- 912 ★田 **7c Black (469).** Block of four, three stamps Mint N.H., T. L. stamp lightly hinged, proof-like impression, Fine-Very Fine.....**(Photo)** 690.00
- 913 ★★田 **11c Dark Green (473).** T. plate no. block of six, Mint N.H., deep shade, fresh and intact, R. pair usual light natural gum skip, well-centered and Very Fine**(Photo)** 550.00
- 914 ★田 **15c Gray (475).** Block of four, small h.r., fresh and Fine-Very Fine**(Photo)** 800.00
- 915 ★★ **20c Light Ultramarine (476).** Mint N.H., well-centered, fresh color, Extremely Fine and choice**(Photo)** 375.00
- 916 ★ **50c Light Violet (477).** Small hinge mark, well-centered, Extremely Fine, with 1996 P.F. certificate**(Color Photo, p. 43)** 950.00
- 917 ★ **50c Light Violet (477).** Fresh and Very Fine, with 1992 P.F. certificate ..**(Photo)** 950.00
- 918 ★ **\$1.00 Violet Black (478).** Rich color, Very Fine, with 1994 A.P.S. certificate**(Photo)** 725.00
- 919 ★ **\$2.00 Dark Blue, \$5.00 Light Green (479-480).** Both h.r., both well-centered with wide margins, Extremely Fine**(Photo)** 540.00
- 920 ★ **\$2.00 Dark Blue, \$5.00 Light Green (479-480).** H.r., \$5.00 tiny natural inclusion, Very Fine**(Photo Ex)** 540.00
- 921 ★ **\$2.00 Dark Blue (479).** Beautiful shade, well-centered, barest trace of hinging, Very Fine, with 1999 P.F. certificate**(Photo)** 300.00
- 922 ★ **\$2.00 Dark Blue (479).** Lightly hinged, rich color, Very Fine, with 1987 P.F. certificate ..**(Photo)** 300.00
- 923 ★ **\$5.00 Light Green (480).** Barely hinged, rich color, light diagonal crease, otherwise Very Fine, with 1987 P.F. certificate**(Photo)** 240.00

- 924 ◻ **2c Carmine, Ty. II, Coil (491).** Single with part of adjacent stamp at L. and guide line, removed and hinged in place, originally tied by "Mayfield Ky Feb 21 1917" flag cancel on embossed attorney's cc, cover with small faults, otherwise Very Fine(Photo) 750.00
- 925 ★★ **10c Orange Yellow, Coil (497).** Mint N.H. joint line pair, fresh and bright color, well-centered, Extremely Fine and choice, with 1998 P.F. certificate(Photo) 210.00

1917-23 ISSUE

- 926 ★田 **1c-\$1.00 1917-19 Issue (498-504, 506-518).** Blocks of four, with extra shades of the 5c, 8c, 10c, 11c, T. pairs h.r., B. pairs Mint N.H., 1c-12c Fine-Very Fine, 13c-\$1.00 Very Fine-Extremely Fine(Photo Ex) 4,410.00
- 927 ★★ **2c Deep Rose, Ty. Ia (500).** Mint N.H., perfectly centered with wide margins, vibrant color, Extremely Fine Gem, a beautiful stamp, with 1990 P.F. certificate(Color Photo, p. 43) 375.00
- 928 ★ **2c Deep Rose, Ty. Ia (500).** Lightly hinged, Very Fine, with 1984 P.F. certificate(Photo) 240.00
- 929 ★★ **2c Deep Rose, Ty. Ia (500).** Mint N.H., deep rich color, Fine, light backstamp, with 1990 A.P.S. certificate(Photo) 375.00
- 930 ★田 **2c Deep Rose, Ty. Ia (500).** T. plate no. block of six, five stamps Mint N.H., beautiful rich color, magnificent centering for this notoriously challenging plate, Extremely Fine and choice(Color Photo, p. 43) 1,900.00
- 931 ★★田 **5c Blue, 13c Apple Green (504, 513).** Three Mint N.H. plate no. blocks, 5c (two), one with full top selvage, other with reduced top selvage and perf disc inclusion, rich colors, fresh and Fine-Very Fine 570.00
- 932 ★★ **5c Rose, Error (505).** Single error in Mint N.H. block of six, fresh and Fine(Photo) 575.00
- 933 ★田 **5c Rose, Error (505).** Mint N.H. single error in block of nine, 2c lightly hinged, natural s.e. at T., fresh and Very Fine(Photo) 650.00
- 934 ★田 **5c Rose, Error (505).** Single error in block of nine, eight stamps incl. error Mint N.H., top center stamp h.r., top row with natural s.e., Fine-Very Fine(Photo) 650.00
- 935 田 **5c Rose, Error (505).** Single error in block of nine, natural s.e. at T., bold "Duluth Minnesota" precancel, light bend affects three 2c stamps, otherwise Fine(Photo) 875.00
- 936 ★田 **5c Rose, Error (505).** Mint N.H. double error in block of twelve, natural s.e. at B., two stamps small hinge reinforcement, Fine-Very Fine(Photo) 1,250.00
- 937 ★田 **5c Rose, Error (505).** Mint N.H. double error in block of twelve, T. row small flaws, natural s.e. at B., otherwise Fine-Very Fine(Photo) 1,250.00
- 938 ★★ **50c Red Violet (517).** Mint N.H., gorgeous color, well-centered with enormous margins, superb in every respect, with 1996 P.F. certificate(Color Photo, p. 43) 110.00
- 939 ★★田 **\$1.00 Violet Brown (518).** Mint N.H. B. plate no., imprint and "A" block of six, sharp impression, Fine-Very Fine(Photo) 2,000.00
- 940 ★★ **2c Carmine (519).** Mint N.H., bright color, Extremely Fine and choice, with 1978 P.F. certificate(Color Photo, p. 43) 550.00
- 941 ★★ **2c Carmine (519).** Mint N.H., intense color and impression, a post-office fresh Extremely Fine Gem, with 1998 P.F. certificate(Color Photo, p. 43) 600.00
- 942 ★ **\$2.00 Orange Red & Black (523).** Vignette slightly mis-registered, Fine, with 1984 P.F. certificate(Photo) 625.00
- 943 ★ **\$2.00 Orange Red & Black, \$2.00 Carmine & Black, \$5.00 Deep Green & Black (523, 524, 547).** No. 523 small h.r., others lightly hinged, No. 523 usual natural gum crease, 547 couple of tiny creases, Fine-Very Fine(Photo Ex) 1,035.00
- 944 ★ **\$2.00 Orange Red & Black, \$2.00 Carmine & Black, \$5.00 Deep Green & Black (523, 524, 547).** H.r., rich colors, Fine(Photo Ex) 1,035.00
- 945 ★★ **2c Carmine, Ty. V, Imperforate (533).** Ample to huge margins showing part of adjacent stamp at T., trivial natural inclusion, Very Fine, with copy of 1985 P.F. certificate for block of four, this being the T.R. stamp(Photo) 275.00
- 946 ★ **2c Carmine, Ty. VII, Imperforate (534B).** Barely hinged, large margins showing part of guideline at R., Extremely Fine and choice, with copy of 1990 P.F. certificate for horizontal pair, this being the L. stamp(Color Photo, p. 43) 1,550.00
- 947 **2c Carmine, Ty. VII, Imperforate (534B).** Large margins, neat wavy-lines pmk., fresh and Very Fine, with 1991 P.F. certificate(Color Photo, p. 43) 800.00

- 948 ★★田 **3c Violet, Ty. II (541)**. Mint N.H. B. margin block of eight, well-centered, Very Fine.....
.....(Photo) 460.00
- 949° **1c Green, Rotary Perf 11 (544)**. Three absolutely huge margins, light cancel, rich color,
fresh and Extremely Fine, with 1988 P.F. certificate(Color Photo, p. 43) 3,250.00
- 950 ★★ **2c Carmine Rose, Ty. III, Rotary (546)**. Mint N.H., well-centered and fresh color,
Extremely Fine.....(Photo) 150.00
- 951 ★ **\$2.00 Carmine & Black (547)**. Lightly hinged, well-centered, intense color, Extremely
Fine.....(Photo) 190.00
- 952 ★田 **\$2.00 Carmine & Black (547)**. Center line block of four, T. pair h.r. or lightly hinged, B.
pair Mint N.H., small natural gum skips, Fine-Extremely Fine(Photo) 980.00

WASHINGTON-FRANKLIN FREAKS AND VARIETIES

- 953 ★田 **1c Green (331)**. L. margin block of ten with plate no., large preprinting paper fold splits
the design of two stamps and affects a third, also plate scratches in the margin, fifth
stamp small thin, still a very striking freak(Photo) E. 200-250
- 954 ★田 **6c Red Orange (336)**. T.R. corner margin block of four, paperfold after printing but
before perforating and gumming creates drastically misaligned perfs, an interesting freak
.....(Photo) E. 150-200
- 955 ★ **2c Carmine (332)**. Vertical strip of three, vertical preprinting paperfold creates huge split
between the front and the back of Washington's head, couple toned perfs at T. & small
thin at B. do not detract from this unusual strip(Photo) E. 250-300
- 956 ★田 **2c Carmine, Imperforate (409)**. B.R. margin block of eight, large diagonal preprinting
paperfold creates enormous gap in design of B.R. stamp.....(Photo) E. 100-150
- 957 ★田 **2c Rose (499)**. L. margin block of four, margin with printed partial designs from slipped
plate, L. pair slightly underinked, a striking freak(Photo) E. 100-150
- 958 ★田 **2c Rose (499)**. Vertical block of six with plate no., massive preprinting paperfold splits
the design on two stamps by a whopping 13mm, a wonderful freak..(Photo) E. 200-250
- 959 ★田 **2c Rose (499)**. L. margin strip of five, large diagonal foldover creates an amazing freak,
the front has four stamps with partial printing of design and one albino, each with extra
and misaligned margin perfs, while the back has the balance of the designs with perfs
cutting through and plate no. with a gummed margin, one staple hole in the top margin
does not detract from this phenomenal freak(Photo) E. 200-250
- 960 ★ **2c Rose, Ty. I, Horizontal Pair, Imperforate Vertically (499b)**. T. margin block of four
with plate no. yielding two errors, slightly disturbed gum from hinge removal, Very Fine,
both signed Sloane(Color Photo, p. 43) 550.00
- 961 ★★ **3c Light Violet, Ty. I, Major Double Transfer (501 var)**. Center stamp in Mint N.H.
plate no. 8129 block of nine, double transfer visible to the naked eye, discovered by
George B. Sloane and mentioned in King and Johl, Fine-Very Fine .(Photo) E. 200-300
- 962 ★田 **3c Light Violet, Ty. I, Major Double Transfer (501 var)**. Center stamp in block of nine,
three outer stamps h.r., otherwise Mint N.H.. pencil note (plate no.) 8129 on gum, Fine.
.....(Photo) E. 150-250
- 963 ★ **3c Light Violet, Ty. I, Imperforate Horizontally (502c)**. Block of four yielding two pairs,
h.r., Stanley Gibbons backstamp, L. pair with pencil "Part of sheet of 75 copies and
handled by GBS (Sloane)" on gum, Very Good, Datz states 40-50 pairs known
.....(Photo) 500.00
- 964 ★田 **10c Orange Yellow, 13c Apple Green (510, 513)**. 10c B. margin strip of three, 13c T.L.
margin block of four, each with foldover creating drastically misaligned perfs, 10c L.
stamp with natural s.e., R. stamp with few pulled perfs at B.R., still very attractive.....
.....(Photo Ex) E. 100-150
- 965 ★田 **3c Purple, Ty. IV, Double Printed (530 var)**. Block of four, natural s.e. at T., with partial
page from the March 1919 Economist Bulletin which states that this is from a complete
sheet and that the first impression was from plate No. 9374 in a very pale lilac shade
while the second was from plate No. 9396 in a dark purple, Very Good
.....(Photo) E. 100-150
- 966 **1c Green, Rotary Perf 11 x 10, Vertical Pair, Imperforate Horizontally (538a)**. With T.
margin, perfectly centered, very lightly cancelled, Extremely Fine and choice, with 1994
P.F. certificate(Photo) 100.00
- 967 ★田 **1c Green, Perf 10 (543)**. Eleven stamps comprising B.R. margin block of six, R. margin
block of four & single, overinked and smeared, single with traces of blue ink at B., inter-
esting(Photo Ex) E. 100-150

- 968 **Washington-Franklin Freak and Varieties Collection.** Approximately 600 stamps, mostly unused, singles and multiples, mostly shades and various minor freaks and varieties incl. plate scratches, plate flaws, dry prints, some regular stamps incl. Nos. 375 (Lake), 420 (three), 386 (pair), 443 & 444 (pairs and line pairs), 526 (plate block), blocks of four of Nos. 337, 528A, 528B, 534A, some Mint N.H., few faults, generally Fine-Very Fine E. 2,000-3,000
- 969 ★田 **Washington-Franklin Misprints.** Collection of approximately 130 stamps, mostly margin blocks of four with wild redirected perfs caused by foldovers, also incl. No. 538a (two) and eleven imperforate between vertical pairs with blind perfs, an interesting group with tremendous visual appeal and a wonderful complement to a Washington-Franklin collection..... E. 800-1,000
- 970 ★田 **Washington-Franklin Preprinting Paperfolds.** Eleven stamps incl. Nos. 406 (three; one used), 504 (vertical strip of five with plate no.), 507, 510 (two stamps in precancelled block of four), attractive group E. 250-300

PILGRIM TERCENTENARY AND LATER ISSUES

- 971 ★田 **1c-5c Pilgrim Tercentenary (548-550).** T. plate no. blocks of six, 2c & 5c Mint N.H., 1c lightly hinged, deep rich colors, fresh and Fine-Very Fine(Photo Ex) 760.00
- 972 ★★ **½c-\$5.00 1922-25 Issue (551-573, 622-623).** Mint N.H., all have vibrant color, few light natural gum skips on high values, Very Fine-Extremely Fine set..... 1,078.00
- 973 ★田 **6c Red Orange (558).** Three plate no. blocks, two with five stamps Mint N.H. and one lightly hinged, one plate block with slightly glazed gum, Very Fine 1,200.00
- 974 ★★田 **\$5.00 Carmine & Blue (573).** Mint N.H. top margin block of four with plate no., fresh and bright, usual light natural gum creases, B.R. stamp perf dimple, Fine-Very Fine(Photo) 1,040.00
- 975 ★★ **1c Green, 2c Carmine (578-579).** Mint N.H., both well-centered and Extremely Fine.....(Photo Ex) 285.00
- 976 ★★ **2c Carmine, Rotary, Perf 11 (595).** Mint N.H., well-centered, rich color, Extremely Fine and choice, with 1984 P.F. certificate.....(Color Photo, p. 43) 425.00
- 977 ★田 **2c, 5c Norse-American (620-621).** Plate no. blocks of eight, lightly hinged, 2c Very Fine, 5c with massive selvage and Extremely Fine(Photo Ex) 815.00
- 978 ★★田 **13c Green, 17c Black (622, 623).** T. plate no. blocks of six, well-centered, 17c with tiny natural gum skip, Very Fine(Photo Ex) 440.00
- 979 ★★ **2c White Plains Souvenir Sheet (630).** Mint N.H., Very Fine-Extremely Fine.... 575.00
- 980 ★★ **2c White Plains Souvenir Sheet (630).** Mint N.H., tiny margin corner crease, fresh and Fine-Very Fine 550.00
- 981 ★★ **2c White Plains Souvenir Sheet (630).** Two Mint N.H. sheets, one with small margin faults, Fine-Very Fine, other with natural gum skips and lightly folded along two rows of perfs, Extremely Fine..... 1,100.00
- 982 ★★ **2c White Plains Souvenir Sheet (630).** Two sheets, one Mint N.H., other Dot over "S" variety with stamps Mint N.H., each with small margin tear, former Fine-Very Fine, latter Fine 1,025.00
- 983 ★★ **2c Carmine, Ty. II (634A).** Mint N.H. top sheet margin single, rich color, Very Fine and choice, with 1990 P.F. certificate(Photo) 475.00
- 984 ★★ **2c Carmine, Ty. II (634A).** Mint N.H., rich color, fresh and Very Fine ..(Photo) 475.00
- 985 ★★ **1c-10c Kans., Nebr. Overprints (658-679).** Mint N.H., Very Fine-Extremely Fine set.....(Photo Ex) 893.00
- 986 ★ **1c-10c Kans., Nebr. Overprints (658-679).** 6c Kans. and 1c, 5c, 6c and 8c Nebr. lightly hinged, all others Mint N.H., fresh and Very Fine-Extremely Fine set, Nos. 662 and 679 with P.F. certificates(Photo Ex) 838.00
- 987 ★田 **1c-10c Kans., Nebr. Overprints (658-679).** Complete set of plate no. blocks, lightly hinged or small h.r., No. 674 with small piece of selvage missing, Fine-Very Fine(Photo Ex) 6,945.00
- 988 ★★ **1c Nebr. Ovpt., Period Omitted (669var).** Two center stamps in Mint N.H. block of 18 (6x3), known only in Pos. 26 & 36 on plate nos. 19338 or 19339 U.R., varieties perfectly centered with large margins, post-office fresh, Extremely Fine and choice example of this scarce item.....(Photo) E. 200-300

- 989 ★★田 **\$1.00-\$5.00 Presidential (832-834)**. Accumulation incl. six centerline blocks (two each), seven plate no. blocks of four of Nos. 832 (two), 832c, 833 (two) & 834, singles of Nos. 832 (three), 832c, 833 (four) & 834, also incl. No. 833 plate no. block of twenty, one \$2.00 CLB h.r., others Mint N.H., usual natural gum skips and creases, few \$2.00 stamps with light gum toning, Fine-Very Fine 2,661.00
- 990 ★★田 **1½c Presidential, Imperforate Between (805b)**. Mint N.H. L. margin block of three pairs, "Saint Louis Mo." precancel (as all are), center pair with one perf hole punched, Scott Retail as two pairs(Photo) 350.00
- 991 ★★田 **\$1.00 Presidential, USIR Wmk. (832b)**. Mint N.H. bottom margin block of four, fresh and Very Fine.....(Photo) 1,100.00
- 992 ★★ **\$1.00 Presidential, USIR Wmk. (832b)**. Three Mint N.H. singles, Very Fine..... 825.00
- 993 田 **\$1.00 Presidential, USIR Wmk. (832b)**. Block of four, neat cancel, fresh and Very Fine(Photo) 280.00
- 994 ★★田 **\$5.00 Presidential (834)**. Mint N.H. plate no. block of twenty, couple small margin faults outside of plate block, Fine(Photo) 2,300.00
- 995 ★★ **22c Love, Imperforate (2143a)**. Mint N.H., R. pair at the end of a perforated strip of eight, Very Fine. with 1999 A.P.S. certificate.....(Photo) 1,750.00
- 996 ★★ **8.4c Wheel Chair, Imperforate (2256a)**. Mint N.H. precancelled pair, Very Fine(Photo) 750.00
- 997 ★ **25c Pheasant, Imperforate Between (2283d)**. Vertical pair, very tiny spot of disturbed gum, Very Fine, with 1998 A.P.S. certificate(Photo) 2,250.00
- 998 ★★ **"F" Rate Flower, Imperforate (2517a)**. Mint N.H. horizontal pair, Very Fine, with 1996 A.P.S. certificate.....(Photo) 750.00
- 999 ★★ **29c Love, Imperforate Vertically (2618a)**. Mint N.H. horizontal pair, perfectly centered, Very Fine(Photo) 900.00

AIR POST

- 1000 ★★ **6c-24c 1918-23 Air Post (C1-C6)**. Mint N.H., No. C3 approaching the "fast plane" variety, Very Fine set.....(Photo Ex) 795.00
- 1001 ★ **6c-24c 1918-23 Air Post, 50c Chicago Zeppelin (C1-C6, C18)**. Eight unused stamps comprising No. C3 & one No. C18 Mint N.H., one No. C18 lightly hinged, Nos. C1, C2, C4-C6 h.r., Fine group 772.00
- 1002 ★★田 **24c Carmine Rose & Blue, 1918 Air Post (C3)**. Mint N.H. top plate no. arrow and double "TOP" block of twelve, bright colors, usual natural gum skips and bends, Fine-Very Fine.....(Photo) 2,000.00
- 1003 ★田 **24c Carmine Rose & Blue, 1918 Air Post (C3)**. Plate no. arrow and double "TOP" block of twelve, lightly hinged, usual light natural gum creases, one stamp natural gum skip, Fine(Photo) 1,500.00
- 1004 ★★田 **10c-20c Map Air Post (C7-C9)**. Two sets of Mint N.H. B. plate no. blocks of six, post office fresh and Very Fine 445.00
- 1005 ★★ **65c-\$2.60 Graf Zeppelin (C13-C15)**. Mint N.H., Extremely Fine set(Photo) 2,350.00
- 1006 ★★ **65c-\$2.60 Graf Zeppelin (C13-C15)**. Mint N.H., usual light natural gum creases, post-office fresh and Very Fine(Photo) 2,235.00
- 1007 ★ **65c-\$2.60 Graf Zeppelin (C13-C15)**. Margin singles, \$2.60 Mint N.H., 65c & \$1.30 lightly hinged, 65c natural gum skips, Very Fine-Extremely Fine.....(Photo) 1,900.00
- 1008 ★ **65c-\$2.60 Graf Zeppelin (C13-C15)**. \$1.30 barely hinged (if at all), other two Mint N.H., \$2.60 tiny natural inclusion, Very Fine set, each with 1996 P.F. certificate(Photo) 2,010.00
- 1009 ★ **65c-\$2.60 Graf Zeppelin (C13-C15)**. 65c Mint N.H., others barest trace of hinging, \$2.60 small surface rubbing, otherwise Fine-Very Fine.....(Photo) 1,660.00
- 1010 ★ **65c-\$2.60 Graf Zeppelin (C13-C15)**. \$1.30 and \$2.60 Mint N.H., 65c small mark on gum and sealed tear at T., otherwise Fine-Very Fine set, each with A.P.S. certificate.....(Photo) 2,225.00
- 1011 ★ **65c-\$2.60 Graf Zeppelin (C13-C15)**. H.r., \$2.60 creased, Very Fine(Photo) 1,550.00
- 1012 ★ **65c-\$2.60 Graf Zeppelin (C13-C15)**. H.r., \$1.30 lightly creased, \$2.60 Fine, other two Fine-Very Fine.....(Photo) 1,550.00
- 1013 ★ **65c-\$2.60 Graf Zeppelin (C13-C15)**. 65c lightly hinged, \$1.30 unused (regummed), \$2.60 h.r., large thin, 65c & \$1.30 Fine, \$2.60 Very Fine(Photo) 1,550.00

- 1014 (★)田 **65c Graf Zeppelin (C13)**. Block of four, unused (regummed), Very Fine
.....(Photo) 1,150.00
- 1015 ★ **\$1.30 Graf Zeppelin (C14)**. Small h.r., usual tiny natural gum skip, Extremely Fine
.....(Photo) 550.00
- 1016 ★ **\$1.30 Graf Zeppelin (C14)**. Three singles, one regummed over tiny thin, one reperfed
with tiny nick at T., one with light soiling and small corner crease, two appear Fine-Very
Fine, one appears Extremely Fine 1,500.00
- 1017 ★★ **\$1.30, \$2.60 Graf Zeppelin (C14, C15)**. Mint N.H., well-centered with wide margins,
post-office fresh Extremely Fine Gems(Photo) 1,950.00
- 1018 ☒ **65c-\$2.60 Graf Zeppelin (C13-C15)**. Complete set tied by "New York May 31 1930"
duplex cancel to flown Zeppelin cover addressed to **Lucerne, Switzerland**, usual cachets,
cover with small sealed tear & toning spot at R., otherwise Very Fine, Scott Retail for
used set(Photo) 1,110.00
- 1019 ☒ **65c-\$2.60 Graf Zeppelin (C13-C15)**. Tied on separate cover or post card: 65c tied by
"Lakehurst N.J. May 30, 1930" pmk.(small scuff to pmk.); \$1.30 tied by "Varick St. Sta.
N.Y. Apr. 29" pmk., \$2.60 tied by similar pmk. of Apr. 26, each with red and purple
cachets, 65c with Friedrichschafen cds, Fine-Very Fine(Photo Ex) 1,175.00

SPECIAL DELIVERY

- 1020 ★ **10c Blue, Special Delivery (E1)**. B. margin part imprint single showing 37 mm of
selvage, o.g., h.r., well-centered and rich color, few perf separations sensibly reinforced,
Extremely Fine and choice, a huge stamp(Color Photo, p. 43) 275.00
- 1021 ★ **10c Orange, Special Delivery (E3)**. Single h.r., well-centered, vibrant color, Extremely
Fine(Photo) 165.00
- 1022 ★ **10c Blue, Special Delivery (E4)**. Lightly hinged, deep rich color, Extremely Fine and
choice, with 1989 P.F. certificate(Color Photo, p. 44) 600.00
- 1023 ★ **10c Ultramarine, Special Delivery (E8)**. Very lightly hinged, incredibly deep color on
bright paper, Extremely Fine Gem(Photo) 95.00
- 1024 ★★ **10c Ultramarine (E9)**. Mint N.H. top plate no. single, rich color, Extremely Fine Gem ...
.....(Photo) 240.00
- 1025 ★★ **10c Pale Ultramarine, Special Delivery (E10)**. Mint N.H., perfectly centered with wide
margins, lovely pastel shade, tiny natural inclusion, Extremely Fine Gem, with 1994 P.F.
certificate.....(Photo) 400.00
- 1026 ★★ **10c Pale Ultramarine, Special Delivery (E10)**. Mint N.H., perfectly centered with wide
and even margins all around, beautiful color, Extremely Fine Gem.....(Photo) 400.00
- 1027 ★ **10c Pale Ultramarine, Special Delivery (E10)**. Lightly hinged, well-centered with wide
margins, bright color, Extremely Fine, with 1984 P.F. certificate(Photo) 265.00

POSTAGE DUE

- 1028 (★)田 **2c Brown (J2)**. Block of four, traces of o.g., separated along vertical perfs and rejoined,
appears Fine, with 1993 P.S.E. certificate, Scott Retail as a block of four
.....(Photo) 1,250.00
- 1029 ★ **30c Brown (J6)**. H.r., fresh and Very Fine(Photo) 260.00
- 1030 ★ **3c Red Brown (J17)**. O.g., h.r., rich color, light diagonal crease, otherwise Very Fine,
with 1991 P.F. certificate(Photo) 825.00
- 1031 ★★ **30c Red Brown (J20)**. Mint N.H., well-centered and sharp impression, Extremely Fine
and choice, Scott Retail for hinged(Photo) 175.00
- 1032 ★ **50c Red Brown (J21)**. O.g., Fine and rare, with 1991 P.F. certificate ... (Photo) 1,500.00
- 1033 ★★ **1c Bright Claret (J22)**. Mint N.H., perfectly centered, rich color, Extremely Fine Gem ...
.....(Photo) 22.00
- 1034 ★ **1c Vermilion (J29)**. O.g., fresh color, horizontal crease, otherwise Fine
.....(Photo) 1,400.00
- 1035 ★ **3c Deep Claret (J47)**. B. plate no. single, barest faint trace of hinging, Fine, with 1995
P.S.E. certificate.....(Photo) 500.00
- 1036 ★ **50c Deep Claret (J50)**. Well-centered, bright color, slightly irregular perf hole at T., still
Extremely Fine, with 1996 A.P.S. certificate(Photo) 825.00
- 1037 ★ **3c Carmine Lake (J54)**. Deep rich color, single short perf at T., otherwise Very Fine.....
.....(Photo) 825.00
- 1038 ★★ **2c Rose (J60)**. Mint N.H., rich color, Extremely Fine.....(Photo) 240.00
- 1039 ★★ **30c Carmine Rose (J66)**. Mint N.H., well-centered with wide margins, Extremely Fine ...
.....(Photo) 135.00

OFFICES IN CHINA

- 1040 ★ **2c-\$2.00 Offices in China (K1-K18).** Incl. two shades of 16c, the 1c, 12c, both 16c, 40c, \$2.00 and K17-K18 Mint N.H., others lightly hinged, fresh and Very Fine-Extremely Fine set.....(Photo Ex) 2,562.00
- 1041 ★ **2c-\$2.00 Offices in China (K1-K18).** Complete set, Nos. K3, K9, K11 h.r., Nos. K8, K10, K14 disturbed gum, others lightly hinged, rich colors, Nos. K2, K5, K14 small faults, Fine-Very Fine appearance(Photo Ex) 1,997.00
- 1042 ★ **2c-\$2.00 Offices in China (K1-K18).** Complete set, Nos. K5, K7, K16, K17 h.r., others lightly hinged, No. K6, K12 usual natural gum creases, No. K16 tiny thin, Fine.....(Photo Ex) 1,997.00
- 1043 **1c-\$2.00 Offices in China (K1-K2, K10-K16).** Five remarkable pieces of burlap, each bearing mixed frankings tied by obliterator cancels, one bears pair of 4c, 20c and \$1.00; one bears 4c, 30c and two \$1.00; one bears two 4c and six 40c; one bears 2c, 4c, 60c and \$2.00; last bears 2c, three 4c, single and pair of 60c, few faults to be expected considering that these were used on large parcels, still all appear Fine-Very Fine, a fascinating and rare group commercially-used pieces, all originate from a family archive, each with 1999 P.F. certificate.....(Photo Ex) E. 2,000-3,000

OTHER BACK-OF-BOOK ISSUES

- 1044 ★ **\$2.00 State (O68).** O.g., h.r., rich colors, Very Fine.....(Photo) 850.00
- 1045 ★田 **2c War (O84).** T. plate no. block of fourteen, o.g., T.R. stamp lightly hinged, others Mint N.H., deep rich color and sharp impression, remarkably fresh and intact, natural s.e. at R., one stamp with natural paper wrinkle, Very Fine-Extremely Fine and scarce plate, Scott Retail for three hinged blocks of four and two hinged singles(Photo) 1,740.00
- 1046 ★ **90c Treasury, Soft Paper (O113).** O.g., light gum soak and few thin spots, otherwise Fine, with 1985 P.F. certificate(Photo) 1,650.00
- 1047 ★ **\$1.00 Postal Savings (O123).** Lightly hinged, well-centered and bright color, Extremely Fine.....(Photo) 120.00
- 1048 (★) **\$24.00 Dark Gray Violet, 1875 Issue (PR29).** Unused (no gum), slightly faded, short perf at T., appears Very Fine, with 1995 P.S.E. certificate(Photo) 1,400.00
- 1049 ★ **\$36.00 Indian Red, 1879 Issue (PR77).** O.g., h.r., rich color, single short perf at B., otherwise Very Fine(Photo) 525.00
- 1050 ★ **\$48.00 Yellow Brown, 1879 Issue (PR78).** O.g., h.r., vertical crease, otherwise Very Fine(Photo) 650.00
- 1051 ★ **\$48.00 Yellow Brown, 1879 Issue (PR78).** O.g., lightly hinged, deep rich color, thinned at T.L., corner crease at B.R. shows only in fluid, Extremely Fine appearance(Photo) 650.00
- 1052 ★ **1c-\$1.00 Parcel Post (Q1-Q12).** 3c and 15c lightly hinged, others Mint N.H., fresh and Very Fine-Extremely Fine set 1,499.00
- 1053 ★田 **50c Parcel Post (Q10).** Block of four, T. pair h.r., B. pair lightly hinged, rich color, over-all Fine-Very Fine with the T.L. stamp being Extremely Fine(Photo) 1,100.00
- 1054 ★ **1c-25c P.P. Postage Due (JQ1-JQ5).** 2c barely hinged, others Mint N.H., all are fresh and Very Fine-Extremely Fine, 25c with 1989 P.F. certificate for pair, this being the L. stamp 469.00
- 1055 ★田 **1c-25c P.P. Postage Due (JQ1-JQ5).** Blocks of four, 5c Mint N.H., others T. pair h.r., B. pair Mint N.H., 5c two stamps with natural gum crease, one stamp creased, one hinged 10c stamp with tiny thin, Very Good-Fine 1,686.00

CARRIERS AND LOCALS

- 1056 ★田 **1c Blue, Eagle Carrier (LO2).** B.L. margin block of four, other margins with full frame-lines, B.R. stamp Mint N.H., other three stamps o.g., lightly hinged, fresh and Extremely Fine block.....(Photo) 165.00
- 1057 **U.S. City Despatch Post, New York N.Y., 3c Black on Blue Green Glazed (6LB5).** Large margins all around, red octagonal "U.S." cancel, very tiny corner crease, otherwise Extremely Fine(Photo) 140.00
- 1058 **D. O. Blood & Co., Philadelphia Pa., (2c) Black (15L5).** Large margins, close at T.L., small pen cancel at L., light soiling and small adherence, otherwise Very Fine.....(Photo) 140.00

- 1059 ☒ **Blood's City Despatch, Philadelphia Pa., (1c) Bronze on Lilac (15L14).** In at T., large part of adjacent stamp at R., used with 3c Dull Red (26), tied by "Philadelphia Pa. Jan. 7" cds, matching "Blood's Despatch Jan. 7 4½ P.M. 1856" cds on buff cover to Savannah Ga., Very Fine appearance(Photo) 400.00
- 1060 ★ **Carnes' City Letter Express, San Francisco Cal., (35L1, 3L4, 35L6-35L8).** Most with large to huge margins all around, rose o.g., others unused (no gum), black with faint crease, Very Fine group(Photo Ex) 300.00
- 1061 ★ **Carnes' City Letter Express, San Francisco Cal.** Two unlisted 42mm x 26mm red double oval parcel stamps reading "Carnes & Co., City Package Express, 621 Montg. St.," one 15 Cents, other 25 Cents, former unused (no gum), latter large part o.g., Extremely Fine, latter with 1992 P.F. certificate which states "it is a genuine (1870) parcel stamp which is unknown used and may not have been issued"(Photo Ex) E. 100-150
- 1062 ★ **Jabez Fearey & Co.'s Mustang Express, Newark N.J., (no value) Black on Red Glazed (66L1).** O.g., h.r., slightly oxidized, otherwise Very Fine, Scott notes some consider this to be an express company label(Photo) 175.00
- 1063 ★ **(Greig's) City Despatch Post, New York N.Y., 3c Black on Grayish (40L1).** Huge margins all around, with full frameline at B. and R., full sheet margin at R., o.g., small h.r., purple "W.H.P." handstamp on back, Extremely Fine(Photo) 400.00
- 1064 (★) **(Greig's) City Despatch Post, New York N.Y., 3c Black on Grayish (40L1).** Full corner margin horizontal pair, huge margins all around, with full frameline on three sides, unused (no gum), Extremely Fine(Color Photo, p. 44) 950.00
- 1065 ★★田 **Swarts' City Dispatch Post, New York N.Y., (2c) Red (136L4).** Mint N.H. T.L. margin block of 25, deep shade, L. column with light crease, Very Fine, rare with original gum, with 1998 P.F. certificate, Scott Retail for 25 hinged singles 625.00
- 1066 (★)田 **Swarts' City Dispatch Post, New York N.Y., (2c) Red (136L4).** Block of 25 (5 x 5) with sheet margin on three sides, unused (no gum), Very Fine, Scott Retail as singles 625.00
- 1067 (★) **Wells, Fargo & Co., Pony Express, \$1.00 Red, \$4.00 Black (143L3, 143L5).** \$4.00 ample to large margins, \$1.00 large to huge margins, unused (no gum), \$1.00 tiny natural inclusion, also incl. black reprint part sheet of sixteen comprising one column each of the 10c, 25c, \$1.00, \$2.00, sheet with light horiz. crease, Very Fine(Photo Ex) 265.00
- 1068 **LOCAL POSTS BALANCE.** Five stamps incl. Nos. 5L2 & 96L1 used, Nos. 15L10, 70L2, 117L6 unused (no gum), each with ample to large margins all around, Nos. 15L10, 70L2 & 117L6 with small faults, Very Fine 550.00

SANITARY FAIRS

- 1069 ★ **Army Relief Bazaar, Albany N.Y., (10c) Black (WV2).** Vertical pair, o.g., huge margins with full frameline all around, B. stamp with vertical crease ending in a small tear in the T. stamp, otherwise Extremely Fine(Color Photo, p. 44) 1,500.00
- 1070 (★) **Brooklyn Sanitary Fair, 5c Black on Rosy Buff (WV6).** Unused (no gum), four margins, tiny natural inclusion, fresh and Fine, with 1996 P.S.E. certificate(Photo) 750.00
- 1071 °★ **Brooklyn Sanitary Fair, 10c Green (WV7).** Original gum, large margins, Extremely Fine, approximately 25-30 copies known(Color Photo, p. 44) 950.00
- 1072 °★ **Metropolitan Fair, New York, 10c Red (WV9).** Position 1, original gum, h.r., large margins to ample at lower right, Very Fine, an extremely scarce stamp, fewer than 20 examples recorded(Color Photo, p. 44) 1,200.00

REVENUES

- 1073 **6c Proprietary (R31c).** Remarkably vibrant color, bright fresh paper, light herringbone cancel, usual Fine centering but far above average condition for this rarity(Color Photo, p. 44) 1,600.00
- 1074 ° **\$2.00 Rose, Narcotic (RJA22).** Light red cancel, two insignificant scuff marks, otherwise Very Fine and rare, with 1995 P.S.E. certificate(Photo) 1,000.00
- 1075 ° **\$500.00 Gray, Silver Tax (RG131).** Nine, incl. vertical strip of four, two vertical pairs and a single, each with light red cancel and affixed to piece which shows part of Treasury Dept. form, three stamps cut out and reattached, few faults incl. thin spots, appears Fine, very rare piece representing \$4,500.00 face value, Scott Retail as singles 4,275.00
- 1076 ★★ **\$2.00, \$3.00 Hunting Permits (RW21/RW32).** Thirteen Mint N.H. stamps, mostly plate no. singles, incl. Nos. RW21, RW25 (three), RW26 (three), RW27, RW28 (two), RW30-RW32, Very Fine 1,097.00

- 1077 **STOCK TRANSFERS.** Over 25 pounds of Federal and N.Y. State, sorted in oversized envelopes, usual mixed condition, overall sound & Fine-Very Fine..... E. 600-800
- 1078 **REVENUES.** Stockbook of approximately 775 stamps, strength in First Issues incl. virtually complete imperf's, part perf's and perf's, also incl. Beer, Documentary, Silver Tax, few others, usual mixed condition, vast majority Fine-Very Fine appearing.. E. 1,500-2,000
- 1079 **EMBOSSSED REVENUES ON DOCUMENTS.** 1790's-1810's, collection of approximately 50 complete documents from Massachusetts colony to the Third Federal Issue, better incl. Nos. RM2, RM3, RM176-RM179, RM214, RM215, RM217, generally Very Fine, seldom-seen group, Scott Retail in excess of..... 2,500.00

CONFEDERATE STATES

- 1080 **Charleston S.C., 5c Blue (16X1).** Large margins with three framelines, light partial Charleston cds, Extremely Fine and choice.....(Color Photo, p. 44) 750.00
- 1081 (★) **Memphis Tenn., 2c Blue, Nashville Tenn., 3c Carmine (56X1, 61X1).** Ample to large margins all around, without gum as issued, 2c few light wrinkles, otherwise Very Fine.... (Photo Ex) 230.00
- 1082 ★ **5c Olive Green, Stone A-B (1c).** O.g., ample to large margins, fresh and Very Fine, with copy of 1989 P.F. certificate for block of four, this being the B.L. stamp(Photo) 225.00
- 1083 ★ **10c Blue, Hoyer & Ludwig (2b).** O.g., large margins all around, fresh and Extremely Fine.....(Photo) 550.00
- 1084 ★ **2c Green (3).** O.g., lightly hinged, small natural inclusion at B., expert repair at T., Very Fine appearance(Photo) 700.00
- 1085 ★ **2c Green (3).** Ample to large margins all around, o.g., light vertical crease at L., otherwise Very Fine, with 1993 P.F. certificate.....(Photo) 700.00
- 1086 **10c Rose (5).** Large margins, bold Chattanooga cds, small corner crease at T.R. not mentioned on accompanying certificate, otherwise Very Fine, with 1988 P.F. certificate .. (Photo) 500.00
- 1087 ★田 **2c Brown Red (8).** B. margin block of four, ample to large margins, o.g., h.r., few light bends in margin only, otherwise Very Fine(Photo) 350.00
- 1088 ★ **10c Milky Blue, "TEN" (9a).** Ample to large margins, o.g., fresh color, Very Fine, with 1990 P.F. certificate.....(Photo) 800.00
- 1089 **10c Blue, Frameline (10).** Ample to large margins showing full frameline at T. and part at L., neat town cancel and trace of ms., Fine, with 1983 P.F. certificate(Photo) 1,250.00
- 1090 **CONFEDERATE BALANCE.** Eight stamps: used Nos. 4, 12, unused Nos. 6-8, 11, 13-14, all are fresh and Very Fine..... 357.00

CANAL ZONE

- 1091 ★ **1912, 2c Vermilion & Black, Ovpt. Reading Down, Inverted Center (39e).** Part tropicalized o.g., faint horizontal crease at B. not mentioned on accompanying certificate, otherwise Very Fine, with 1997 A.P.S. certificate(Photo) 700.00
- 1092 ★ **1920, 2c Orange Vermilion & Black, Ty. III Ovpt. (47).** Disturbed o.g., h.r., horizontal crease and two small corner creases, otherwise Very Fine and very rare unused, with 1981 P.F. certificate(Photo) 3,000.00
- 1093 (★) **1924, 1c Green, Mount Hope Ovpt. (67).** Traces of o.g., corner crease at T.R., otherwise Very Fine(Photo) 500.00
- 1094 ★ **1925, 10c Rose Red, Postage Due, Double Ovpt. (J20c).** Lightly hinged, clearly showing doubling of the ovpt., fresh and Very Fine, with 1997 A.P.S. certificate ..(Photo) 425.00

HAWAII

- 1095 ★ **1853, 13c Dark Red, Thick White Wove (6).** Pos. 3, ample and even margins all around, o.g., h.r., corner crease at T.L. and faint horizontal crease, appears Very Fine(Photo) 600.00
- 1096 **1857, 5c on 13c Dark Red (7).** Ty. II numeral with short flag, ample margin at B., others to in, neat San Francisco cds, few thin spots and small tear at R., otherwise Very Good example of this rarity, with 1995 P.F. certificate(Color Photo, p. 44) 9,000.00

- 1097 ☒ **1857, 5c Blue, Thin White Wove (8).** clear margins to in at B.L., uncanceled, **used with United States 12c Black (17)**, tied by well-struck "San Francisco Cal. Sep. 6, 1858" cds on cover to Old Lyme Conn., red Honolulu cds, Hawaiian stamp "tied" by light file fold, small tear at T. of cover, Very Fine and very rare, with 1975 P.F. certificate**(Color Photo, p. 38)** 10,000.00
- 1098 ★ **1861, 5c Blue, Thin Bluish Wove, Line thru "Honolulu" (9a).** Pos. 2, clear to ample margins except just in at T.R., large part o.g., h.r., Fine**(Photo)** 750.00
- 1099 ☒ **1861, 5c Blue, Thin Bluish Wove (9).** Three large margins, clear to ample at B., uncanceled, on cover to Cambridgeport Mass., red "Honolulu U.S. Postage Paid Feb. 11" cds, also red "San Francisco Cal. Mar. 6, 1863" transit cds, ms. "Paid 17c" crossed out by blue crayon, very light overall cover wear, otherwise Fine, offered on its own merits**(Photo)** 3,750.00
- 1100 ★田 **1868, 5c Blue, Re-Issue (10).** Complete sheet of 20, B.R. corner margin block of four and single, the sheet o.g., h.r., light toning and few light natural gum bends, the block in similar condition, the single unused (no gum) and thin spot, all appear Very Fine 775.00
- 1101 **1868, 13c Dull Rose, Re-Issue, 13c Orange Red, Reprint (11, 11R).** Both have clear to large margins, the former o.g., the latter unused (no gum), No. 11 natural inclusion, No. 12 small thin spot, otherwise Fine-Very Fine**(Photo Ex)** 500.00
- 1102 ★田 **1868, 13c Dull Rose, Re-Issue, Black Specimen Ovpt. (11Sa).** Complete Mint N.H. sheet of 20, few natural inclusions, some overall toning and small edge nicks (easily trimmed), otherwise Very Fine 480.00
- 1103 **1859, 2c Light Blue, Bluish White (13).** Plate 3-A or 3-B, Ty. V (Westerberg Pos. 5), interesting stamp showing partial gap at T.L., large margins, pen cancels, toned spots and thins, still Very Fine, interesting stamp**(Photo)** 3,500.00
- 1104 **1862, 2c Black, Greenish Blue (14).** Plate 3-Gx, Ty. III (Westerberg Pos. 1), large margins to just touched at left, magenta pen cancel, small thin spot at top right, otherwise Fine, ex Twigg-Smith, with 1999 P.F. certificate**(Photo)** 3,500.00
- 1105 (★) **1863, 1c Black, Grayish (15).** Plate 4-B, Ty. II (Westerberg Pos. 2), ample to large margins, unused (no gum), toned spot and light gum soak, otherwise Very Fine**(Photo)** 450.00
- 1106 (★) **1863, 1c Black, Grayish (15).** Plate 4-A, Ty. I, III (Westerberg Pos. 1, 3), vertical pair, large margins all around, unused (no gum), few light age bleach spots, light creases, otherwise Very Fine**(Photo)** 900.00
- 1107 (★) **1863, 2c Black, Grayish (16).** Plate 3-G, Ty. III (Westerberg Pos. 1), full margins, unused (no gum), thin at B.R. causing translucency, otherwise Very Fine**(Photo)** 800.00
- 1108 **1863, 2c Black, "2" at Top (16a).** Plate 3-C, Ty. IX (Westerberg Pos. 9), margins to in, neat "Koloa" ms. cancel, thin spots incl. one with pinhole, otherwise Fine**(Photo)** 2,500.00
- 1109 (★) **1863, 2c Black, Blue Gray (18).** Plate 5-A, Ty. VII (Westerberg Pos. 7), full margins, unused (no gum), light creases and thin spot, appears Fine, with 1956 B.P.A. certificate**(Photo)** 2,750.00
- 1110 (★) **1864, 1c Black (19).** Plate 6-A, Ty. VII (Westerberg Pos. 7), raised "I" of "Inter" ample margins all around, unused (no gum), light crease, otherwise Very Fine**(Photo)** 475.00
- 1111 (★) **1864, 1c Black (19).** Plate 6-A, Ty. X (Westerberg Pos. 10), ample margins, unused (no gum), some toning, light crease and small filled thin, appears Very Fine**(Photo)** 475.00
- 1112 (★) **1864, 2c Black (20).** Plate 5-C, Ty. V (Westerberg Pos. 5), ample margins, unused (no gum), small thin spot, otherwise Fine**(Photo)** 650.00
- 1113 **1865, 5c Blue on Blue (21).** Plate 9-A, Ty. VIII (Westerberg Pos. 4), ample margins, bold square grid cancel, few creases incl. pre-printing paper fold, appears Very Fine**(Photo)** 475.00
- 1114 (★) **1865, 5c Blue on Blue (22).** Plate 12-A, Ty. IV (Westerberg Pos. 4), large margins, unused (no gum), fresh and Very Fine**(Photo)** 500.00
- 1115 ★ **1865, 5c Blue on Blue (22).** Plate 12-A, Ty. V, I (Westerberg Pos. 9-10), horizontal pair, clear to large margins, o.g., h.r., some toning from gum shows thru, light crease, otherwise Fine-Very Fine pair**(Photo)** 1,000.00
- 1116 ★ **1865, 5c Blue on Blue (22).** Horizontal strip of three, Pl. 12-A, Ty. VIII, III, VIII (Westerberg Pos. 7, 8, 7), large margins all around, o.g., h.r., few creases, otherwise Very Fine and rare straddle-pane strip of three, Scott Retail as singles**(Color Photo, p. 44)** 1,500.00

- 1117 ★ **1865, 5c Blue, Tête Bêche (22a).** Pl. 12-A, Ty. VI, I (Westerberg Pos. 10, 2), large margins all around, large part o.g., some toning from gum shows thru, vertical crease between stamps, small thin spot, Very Fine appearance, a rare tête-bêche pair.....**(Color Photo, p. 44)** 5,000.00
- 1118 ★ **1864, 1c Black, Laid (23).** Three, Pl. 8-A, Ty. IX, IV and II, Ty. IX reset, Ty. II with dropped "C", two o.g., one unused (no gum), all have ample to large margins, few small faults, all appear Fine-Very Fine 750.00
- 1119 (★) **1864, 1c Black, "HA" (23a).** Plate 8-A, Ty. IX (Westerberg Pos. 10), ample margins, unused (no gum), fresh and Very Fine.....**(Color Photo, p. 44)** 2,500.00
- 1120 (★)田 **1864, 2c Black, Laid (24).** Block of four, Plate 7A, Ty. I-IV (Westerberg Pos. 1-4), unused (no gum), huge to immense margins all around, T. margin with **papermaker's embossment** in fancy frame at R., Extremely Fine and choice, with 1993 P.F. certificate.....**(Color Photo, p. 44)** 1,100.00
- 1121 (★) **1864, 2c Black, Laid (24).** Plate 7-A, Ty. V (Westerberg Pos. 5), large margins, unused (no gum), fresh and Very Fine.....**(Photo)** 250.00
- 1122 (★) **1864, 2c Black, Laid (24).** Pl. 7-A, Ty. VIII (Westerberg Pos. 8), ample to large margins, unused (no gum), fresh and Fine.....**(Photo)** 250.00
- 1123 (★) **1864, 2c Black, Laid, Offset "2" (24 var).** Plate 7-A, Ty. IX (Westerberg Pos. 9), three huge margins, clear at T., unused (no gum), showing clear offset at T.L., tiny corner crease, otherwise Very Fine, interesting stamp, with 1974 P.F. certificate**(Photo)** E. 500-750
- 1124 (★) **1865, 1c Dark Blue, 2c Dark Blue (25, 26).** The former Pl. 11-A, Ty. VI (Westerberg Pos. 6), clear to ample margins and toned spot at B., the latter Pl. 10-A, Ty. X (Westerberg Pos. 2), full margins, unused (no gum), tiny extraneous violet spot, both appear Fine-Very Fine**(Photo Ex)** 500.00
- 1125 (★) **1865, 2c Dark Blue (26).** Pl. 10-A, Ty. II (Westerberg Pos. 10), showing **broken toe of "2"**, three large margins, just touched to clear at R., unused (no gum), fresh and Fine ...**(Photo)** 250.00
- 1126 E **1860, 1c-3c Die Essays on Thin Pale Buff Card.** Seven, incl. two of 1c, three 2c and two 3c, mostly cut close, no duplication of colors, few small faults, all appear Fine**(Photo Ex)** E. 750-1,000
- 1127 (★) **1861, 2c Pale Rose, Horizontally Laid, Vertically Laid (27, 28).** Single of each, the former traces of o.g., ample to large margins, faint corner crease, the latter unused (no gum), ample margins, faint corner crease and ink mark at R., both appear Fine 550.00
- 1128 ☒ **1861, 2c Pale Rose, Horizontally Laid (27).** Mostly large margins, small pen cancel and tied by red square grid on Coan cover to Punahou, Oahu, neat docketing also ties stamp, cover with small opening tears at left edge (easily trimmed), Very Fine.....**(Photo)** 1,000.00
- 1129 ☒ **1861, 2c Pale Rose, Vertically Laid (28).** Full to large margins except barely touching at bottom right corner, tied by two strikes of square grid, on March, 23, 1864 folded letter to H. M. Whitney, from Kaloka via Hilo, contents in Hawaiian; some cover wear including natural paper crease at center, stamp with corner crease at bottom left, Fine appearance**(Photo)** 1,500.00
- 1130 (★)田 **1869, 2c Red, Re-Issue (29).** Complete sheet of fifteen, unused (no gum), thin spot, light crease and faint toning, otherwise Very Fine 765.00
- 1131 ★ **1886, 2c Orange Vermilion, Reproduction, Specimen Ovpt. (50, 50S).** Pair of No. 50, T.L. corner margin block of four of Specimen, both o.g., h.r., both ample to large margins, No. 50 small crease at B.L., otherwise Very Fine 550.00
- 1132 **1863, 2c Carmine Rose, 1889, 2c Carmine, Reprint Ovpt. (28a, 51, 51S).** Single of each and complete sheet of No. 50, few faults, otherwise Fine-Very Fine 670.00
- 1133 ☒ **1864, 2c Rose Vermilion (31).** Cancelled by perfectly struck **negative "HI" fancy cancel** on blue cover to Lahainaluna, matching "Honolulu, Hawaiian-Islands Oct. 28" cds, 1869 docketing at L., edge wear incl. B.L. corner off, Extremely Fine strike of the cancel**(Photo)** E. 200-250
- 1134 ☒ **1882, 2c Lilac Rose (38).** Tied by large target cancel on cover to **Kahala**, matching "Post Office (?) Jul 17 1883" cds, Extremely Fine**(Photo)** E. 100-150
- 1135 ★ **1893, 2c-50c Black Provisional Overprints.** Nine stamps each showing minor variety, incl. split ovpt., faint doubling, faint periods, few faults, still an interesting group E. 200-300

- 1136 ☒ **1893, 2c, 5c, 10c, 18c Provisional Govt. and 1898 1c-12c Final Issues (57, 59, 68, 71, 74-78).** Tied by red target cancels, matching "Honolulu Hawaii Mar 23 1895" double circle ds on cover **to Sydney, Australia**, two red registered markings, Fine.....(Photo) E. 400-500
- 1137 ☒ **1893, 5c Deep Indigo, 12c Black, 18c Dull Rose (58, 62, 71).** Tied by target cancels on registered buff cover **to Barbadoes**, red "Honolulu, Hawaii Jan 5 1894" double circle ds and two registered markings, San Francisco fancy and New York registry transit back-stamps, Very Fine, a scarce destination.....(Photo) E. 300-400
- 1138 ☒ **1893, 5c Ultramarine, Red Ovpt. (59).** Tied by "Honolulu, H.I. Dec. 4, 1893" duplex on cover **to Osnabruck, Germany**, with hand-colored Japanese figures, Fine and pretty, ex Honolulu Advertiser, with 1996 P.F. certificate.....(Photo) E. 300-400
- 1139 ☒ **1894, 12c Blue (78).** Tied by "Honolulu H.I. Jan 3 1899" cds on very fresh cover to Baltimore, San Francisco transit backstamp, Extremely Fine and choice.....(Photo) E. 200-250
- 1140 ☒ **1899, 2c Rose (81).** Three singles tied by light violet cds on cover **to Queensland, Australia**, "Honolulu H.I. Feb 22 1900" cds, locally forwarded, Fine.....(Photo) E. 100-150
- 1141 ☒ **1893, 10c Black, Red Ovpt. (U13).** Uprated with Nos. 55 (six) and 57 (two) and registered **to Germany**, red "Honolulu Hawaii Jan 6 1894" double circle ds, two registered markings, appropriate backstamps, one 1c stamp with small sealed tear, otherwise Very Fine and choice.....(Photo) E. 400-500
- 1142 ☒ **U.S. 1857 10c Green, Ty. III (33).** Cancelled by pen strokes, red "North Livermore Me. May 14" with date changed to "28" in matching ms., on cover **to Hilo, Hawaii**, ms. "*Ship Metacom, Care Benj. Putnam*", some slight toning around stamp and faint overall wear, otherwise Fine.....(Photo) E. 150-200
- 1143 ☒ **HAWAII COVERS.** Two: first bears U.S. 12c Black (17) tied by "San Francisco Cal. 5 Jul" cds with red "Honolulu * U.S. Postage Paid * Jun. 6" cds to New Bedford Mass. with 1857 docketing, stamp and cover defective; second bears Hawaii 5c Blue (8) and small part of U.S. 12c Black (17) tied by San Francisco 1858 cds on cover to Harwinton Ct., red Honolulu cds, some cover faults, interesting covers..... E. 400-500
- 1144 ☒ **HAWAII POSTAL CARDS.** Three items: Nos. UY1 unsevered card, UX4 and UX6, all are fresh and Very Fine..... 330.00
- 1145 ☒ **HAWAII COVERS.** Three: first bears red "Honolulu * Hawaiian-Islands * Dec. 8" cds and "Ship 12" hs on cover to West Wareham Mass.; second bears similar cds and hs on buff cover to New London Conn.; last bears strip of three of No. 35 tied by targets on cover to New Haven Conn., some faults, otherwise Fine..... E. 200-300
- 1146 **HAWAII LITERATURE.** Three items: red leatherbound Crocker book on Numerals; Meyer-Harris; and *Additions to Hawaiian Postal History* by Edward J. Burns, some wear to covers, a useful group..... E. 300-400
- 1147 **HAWAII COLLECTION.** 1857-99, collection of unused and used stamps, incl. group of Numerals incl. No. 9a unused, few other better, nice selection of Royal Portraits with some multiples incl. blocks of four of Nos. 34, 38, also some Officials, Postal Cards, Revenues, Kahului R.R., mixed condition, still many appear Fine-Very Fine, high catalogue value..... E. 5,000-7,500
- 1148 ★ **PHILIPPINES, 1903, \$2.00 Dark Blue (238).** Slightly tropicalized o.g., rich color, thin spot at T., otherwise Very Fine, with 1994 A.P.S. certificate.....(Photo) 750.00
- 1149 ★★ **RYUKYU ISLANDS.** 1948-1972, Virtually complete Mint N.H. collection incl. Nos. 1-16, 18-30, C1-C23, E1, neatly mounted on Scott Specialty album pages, Very Fine, Scott Retail in excess of..... 1,050.00
- 1150 ★ **U.S. POSSESSIONS.** Collection of hundreds of unused and used stamps neatly hinged to Scott Specialty album pages, strength in Guan incl. unused Nos. 1-8, 10, 12, M3, M4, used Nos. 8, 11, E1, Hawaii unused Nos. 13 & 24 (no gum), 52c, used Nos. 30-34, Philippines unused Nos. 212, 225, J5, full corners incl. Nos. U17-U27, also incl. few US Revenues and Telegraph stamps, Scott Retail approximately..... 7,000.00

GROUP LOTS BY ISSUE

- 1151 (★) **1851-57 Issues.** Twelve stamps, eleven unused (no gum or regummed) up to 90c, incl. Nos. 24 (two), 26, 30A, 35, 36b-39, most with faults, Fine appearing group. E. 600-800
- 1152 (★) **1861-66 Issues.** Twelve unused stamps, all no gum or regummed, incl. Nos. 69-72, 76, 77, most with small faults, Fine appearances..... E. 600-800

- 1153 ★ **1870-88 Bank Note Issues.** 25 unused stamps, mostly unused (no gum or regummed), others o.g., unused incl. Nos. 149, 151, 153, 165, 166, 190, 218, o.g., incl. Nos. 157, 179, 189, 211-217, few with small faults, generally Fine-Very Fine 8,500.00
- 1154 ★ **1890, 1894-1898 Issues (219-229, 247/284).** 38 stamps, o.g., incl. Nos. 260, 268-276, 277, 278, 282C, 284, few faults, rich colors, most appear Fine-Very Fine 7,350.00
- 1155 ☒ **Trans-Mississippi Issues.** Six covers, incl. foreign destinations and mixed frankings, incl. 1c & 4c & 8c used with 2c & 10c 1898 issue on cover **to Belgium**, also incl. 1c on postcard **to Germany**, 4c Columbian (two) and 3c Columbian on 10c and 2c Columbian postal stationery **to Germany and France** respectively, overall Very Fine lot E. 300-400
- 1156 **Washington-Franklin Accumulation.** Few hundred unused and used stamps to \$1.00, on pages and on stockcards, incl. singles, coil pairs and line pairs, few better unused incl. Nos. 416-420, 469 (four), 506-518, some faults, generally Fine-Very Fine E. 2,000-3,000
- 1157 ★ **Washington-Franklin Balance.** Approx. 100 unused stamps, incl. Nos. 340, 407, 422, 506-518, 523, 524, coils incl. pairs of Nos. 442, 450, many Mint N.H., few small faults, otherwise Fine-Very Fine group, Scott Retail as hinged approx. 3,000.00
- 1158 ★ **Washington-Franklin Balance.** 21 unused stamps, h.r., incl. Nos. 338, 339, 341, 342, 382, 507-517, couple in two different shades, Nos. 341 & 342 tiny adherences, Fine 1,532.00
- 1159 ★ **Washington Franklin Coils.** Four pairs incl. Nos. 350, 351, 354 & 446, and No. 459 single, one stamp of Nos. 351 & 354 Mint N.H., others lightly hinged or h.r., Fine-Very Fine 1,560.00
- 1160 ★☐ **Washington Franklin Blocks.** Five blocks of four, comprising Nos. 340, 418, 430, 471, 518, latter two Mint N.H., others h.r. or slightly disturbed gum, Very Fine 1,720.00
- 1161 ★★☐ **Washington-Franklin Plate Blocks.** Eight plate no. blocks of six comprising Nos. 343, 346, 408, 409, 425, 429, 482, 507, first two with imprint and star, others plate no. only, lightly hinged or h.r., No. 409 faint tiny stain, Very Fine 1,232.00
- 1162 ★☐ **20th Century Blocks.** Five blocks of four comprising Nos. 560, 570, 578, 579 & 591, five stamps Mint N.H. incl. Nos. 560 (two), 591 (three), No. 570 unused (regummed), others lightly hinged or h.r., Fine-Very Fine 1,550.00
- 1163 ★ **20th Century Commemoratives.** 32 unused stamps, h.r., incl. Nos. 294-299, 3232-330, 400A, 403, 548-550, 614-621, few with tiny thins, Nos. 548 & 549 crayon on gum, Fine-Very Fine appearances 1,735.00
- 1164 **Modern Commemoratives.** 1920's-1940's collection of a few hundred stamps neatly hinged on homemade pages, Fine-Very Fine E. 50-75
- 1165 **Coils.** Accumulation of a few thousand Mint N.H. stamps, mostly Presidentials, some Liberties, few Airmail & 1923 Issue, pairs, line pairs & part coils, latter incl. Nos. 602 (40+), 603 (90+), 845-847 (90+), C61 (100+), also incl. leader strips of Nos. 603, 839-847, 1054, 1055, 1057, 1058, Fine-Very Fine E. 700-900
- 1166 ★★ **Massive Accumulation of Souvenir Sheets (730, 731, 735, 750).** 1,720 sheets comprising Nos. 730 (100), 731 (200), 735 (950), 750 (470), No. 750 Mint N.H., others without gum as issued, Extremely Fine 37,250.00
- 1167 **Booklets and Booklet Panes.** 20th Century accumulation comprising over 70 booklet panes incl. Nos. 319g, 405b, 501b, 502b (two each), many scarce positions, about 60 booklet pane first day covers, and over 150 complete booklets incl. Nos. BK54 & BK59 (cover faults), BK96 with partial plate nos., BK108, BKC15, also incl. four different "Stamp Savers" booklets available at Safeway 1988-1990, many more, generally Very Fine E. 1,000-1,200
- 1168 **Air Post.** 1918-39, sixteen unused items incl. Nos. C1-C6 (with extra Nos. C1, C4, C6), C10a, C18 (two), plus plate blocks of Nos. C7-C9, C24, Nos. C1-C6 h.r., Fine, others Mint N.H., Fine-Very Fine 372.00
- 1169 ☒ **Air Post Stamped Envelopes.** Accumulation of approx. 1,280 unused entires, 21 different, mostly 30 to 80 each, incl. No. UC29 (seven), Very Fine 2,157.00
- 1170 ★ **Back-of-Book Balance.** 29 unused stamps, incl. Nos. E5, E7, E8, F1, Postage Dues incl. Nos. J25, J31, LO6, many Mint N.H., few small faults, most are Fine-Very Fine, Scott Retail as hinged 1,048.00
- 1171 **Back-of-Book Balance.** Approximately 150 used stamps, mostly Officials incl. Nos. O15-O24, O26, O42-O44, O60-O62, O66, O72-O82, few unused incl. No. O87, hinged on pages, Fine-Very Fine, Scott Retail in excess of 1,625.00
- 1172 **Officials Collection.** Virtually complete collection to 1985, Nos. O114-O120 unused, others used incl. Nos. O1-O5, O10, O12, O15-O24, O57-O66, O72-O93, neatly hinged on Scott album pages, Fine-Very Fine, Scott Retail over 2,975.00

- 1173 P **U.S. Proofs and Essays.** 75 items, over 60 plate proofs on card, mostly two each incl. Nos. 3P, 4P, 41P-45P, 112P-122P, strength in essays incl. Nos. 63E11c (two), 65E15d, 67E9d (two), 69E6d (two), 71E2b, 72E7g, 122E2b, Fine-Very Fine 1,500.00
- 1174 ☒ **Illegal Usages.** Four covers, each franked with stamps which are invalid for postage, incl. No. R163 used as part payment with No. 319 (two) on cover **to Sweden**, No. R164 cancelled with No. 279B affixed atop it and cancelled, No. R228 (two) cancelled with No. J61 (two) cancelled at L., No. WS5 on mourning cover, Fine-Very Fine group E. 100-150

GROUP LOTS

- 1175 **ACCUMULATION.** Thousands of unused and used stamps, mostly 3c-5c commemoratives, also incl. Mint N.H. plate blocks of Nos. 1053, RVB2, few booklets, two albums of state revenues, stockbook of used Bank Notes, covers incl. No. 165 on legal sized, overall Fine-Very Fine E. 2,500-3,000
- 1176 **ACCUMULATION.** 1845-1907, approximately 200 unused and used stamps on two stockpages, mostly used incl. Nos. 9X1, 1 & 2 (cancels removed), 1851's to 12c, 1857's to 24c, 1861's to 30c incl. 5c Buff, Grills to 30c, Bank Notes to 90c, 1894's to \$.50, 1902's to \$.50, unused incl. Nos. 38, 39, 72, 215-218, 219-229, 262, 323-330, mixed condition, most Fine-Very Fine appearing E. 1,500-2,000
- 1177 **UNUSED BALANCE.** Approximately 150 unused stamps, Nos. 77, 179 & 209 unused (no gum), others o.g. incl. Nos. 237, 238, 294-299 (disturbed gum), Mint N.H. incl. Nos. 326, 402, 473 (four), 524, C8 sheet of 50, Fine-Very Fine, Scott Retail over 3,650.00
- 1178 **USED BALANCE.** Approx. 50 stamps, better incl. Nos. 9, 77, 78 (pair), 113 (three), 116 (two), 117, 152, 153, 239, 240, 276A (nine), also incl. study of over 625 3c 1857's and about 150 Bank-Notes to 10c, many with fancy cancels, some faults as expected, most Fine-Very Fine, Scott Retail in excess of 5,000.00
- 1179 **19TH CENTURY BALANCE.** 37 mostly unused stamps, incl. used Nos. 11 (large margins), 30 (small repair), 67a, 117, 162, unused Nos. 56, 219D, 228, 282C, 283, 284, few faults, all appear Fine-Extremely Fine, four with certificates 4,325.00
- 1180 **19TH CENTURY BALANCE.** Four stamps, two unused incl. Nos. 65 original gum, h.r. & 243 unused (regummed) over pinhole, light perf tip toning, two used incl. Nos. 78b & 277, light cancels, Very Fine, No. 65 with 1999 P.F. certificate 1,660.00
- 1181 **19TH CENTURY BALANCE.** Nine stamps and two covers, incl. covers of No. 10 and 24 var (Ty. Va), used Nos. 9, 67b, 68a pair, 72, 121, 123, unused Nos. 229, 274, each with fault, still most all appear Very Fine, most with 1998 P.F. certificates 3,100.00
- 1182 ★ **EARLY 20TH CENTURY BALANCE.** 1902-32, 69 unused stamps, incl. Nos. 300-304, 307-309, 327-330, 369, 397-400, 401-402, 581-591, few Mint N.H., few faults, most are Fine-Very Fine, Scott Retail as hinged 1,715.00
- 1183 **19TH & 20TH CENTURY BALANCE.** 22 used stamps, incl. Nos. 14 (3), 63 (4), 69 (2), 72, 115, 117 (2), 118, 832b (2), some faults, most appear Fine-Very Fine, Scott Retail approx. 3,000.00
- 1184 **19TH CENTURY BALANCE.** 24 mostly used stamps, incl. Nos. 9, 15, 38 (3), 39 (fraudulent black cancel, PFC), 67, 72, 77, 100, 119, 479, 480, unused Nos. 238, 79-E15c privately perforated, mixed condition incl. some items of questionable nature, a few appear Fine-Very Fine E. 1,500-2,000
- 1185 **TURN-OF-THE-CENTURY COLLECTION.** Accumulation of singles, blocks and plate blocks, strength in Pan-American plate no. blocks incl. 1c & 2c (PB's of ten), 4c (PB's of ten, six and four), 5c (PB of ten), 8c (PB of twelve), blocks of four incl. Nos. 285 (two), 288, 296 (three), 298, 324 (two), also incl. Nos. 289, 290 (four each), No. 299 blocks of twelve and five, No. 323 three plate blocks of four, plus a quantity of unused battleship and other revenues, some cinderellas and worldwide stamps, Mint N.H. or paper h.r., No. 297 plate block counted as ten singles, overall Fine-Very Fine E. 4,000-5,000
- 1186 **COLLECTION.** Hundreds of unused and used stamps on stockpages, strength in used incl. No. 1 (pair), 67, 1869's to 90c, Bank Notes to 90c, Columbians to 50c, Trans-Miss to \$.20, condition mixed, most Fine-Very Fine E. 1,500-2,000
- 1187 **20TH CENTURY COLLECTION.** Many hundreds of unused stamps, singles incl. Nos. 569-573, 630, C1-C6, C18 (two), E1, Q1-Q12, plate blocks incl. Nos. 859-893, also incl. Canal Zone collection, hinged on pages, Fine-Very Fine E. 1,000-1,500
- 1188 **20TH CENTURY COLLECTION.** Approximately 1,000 unused and used stamps incl. mostly complete Definitives & Commemoratives between Nos. 498 & 1275, Air Posts & Special Deliveries virtually complete, and a selection of Hunting Permits, better unused incl. Nos. C1-C6, C13, C18, RW1-RW6, used incl. Nos. 658-668, most Mint N.H., many Hunting Permits without gum, Fine-Very Fine E. 600-800

- 1189 ★★田 **20TH CENTURY SHEETS AND PART SHEETS.** 1920's-1930's, all Mint N.H., incl. Nos. 726 (sheet), 730, 731, also incl. No. 20 used on large piece and foreign incl. Canada No. 208 plate block of ten with **scarface variety**, Fine-Very Fine..... E. 200-250
- 1190 **POSTAGE.** Thousands of unused stamps, mostly 3c-8c in plate blocks and blocks of four, also a quantity of souvenir sheets, few better, Mint N.H., Fine-Very Fine, Face value approximately \$800 E. 500-600
- 1191 **POSTAGE.** 1,174 1c-5c 1947-1948 Commemoratives, mostly 3c, 13 to 54 of each, sorted (Face value \$1,966), also incl. No. 651 (three sheets and three blocks of 50), No. UC17 (600), and 100 4c Canadian sheets of 50, Mint N.H., Very Fine..... E. 1,600-1,800
- 1192 **STAMPS BY THE POUND.** Over 40 pounds, mostly 1920's-70's, neatly bundled or sorted in glassines, some better incl. Washington-Franklins, 1922's, Presidentials, Famous Americans, Air Posts, Postage Dues, much easily added to stock, Fine-Very Fine E. 600-800
- 1193 **FIRST DAY COVERS.** 1934-1946, accumulation of approximately 1,300 incl. Parks, Famous Americans, Overrun Countries, mostly unaddressed, variety of cachets incl. Farnum, Staehle, Cachet Craft, mostly Artcraft, also incl. few hundred later FDC's and covers (incl. flown Zeppelins), most one to twenty each, Fine-Very Fine E. 400-500
- 1194 ☒ **20TH CENTURY COVERS.** 50-plus covers and postal cards, few better incl. eight Transatlantics, two Pan-American Expositions, few Bank notes and postal cards with fancy cancels, twelve postal cards to foreign destinations, also incl. approx. 100 covers, mostly U.S. and German W.W. II era frankings, over 60 unused Pent-Arts cacheted W.W. II patriotics, and 160 picture post cards, Fine-Very Fine E. 400-600
- 1195 **UNITED NATIONS.** New York, 1950's-1970's, accumulation comprising Nos. 38 (six), five UNTEA sets, inscription blocks of four of Nos. 1-11, year sets from 1958 incl. 1959 (five), plus covers and postal stationery and a two-page letter from Trygve Lie (?) angrily stating his refusal to sign any philatelic items relating to "that damned stamp", Fine-Very Fine E. 500-600
- 1196 **GENERAL FOREIGN.** Accumulation of tens of thousands of unused and used stamps, strength in Asia, with solid showings of South America and Europe, mostly sorted in glassines and on stockpages, also incl. over 200 D.D.R. booklets (Michel Nos. 3b1 & 3b2; DM3,600+), Fine-Very Fine..... E. 4,000-6,000
- 1197 **GENERAL FOREIGN.** Accumulation of hundreds of stamps and covers strength in stamps and souvenir sheets France, China incl. Nos. 1290-1307, Japan, also incl. Belgium 1958 UN set in sheets, 37 Japanese official metal engravings of stamp designs, a world-wide collection, and more, generally Fine-Very Fine E. 700-900

END OF SALE — THANK YOU



502



504



508



509



505



526



527



528



532



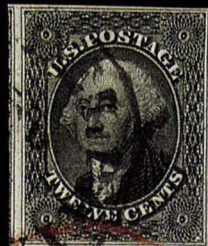
561



563



564



569



573



593



602



603



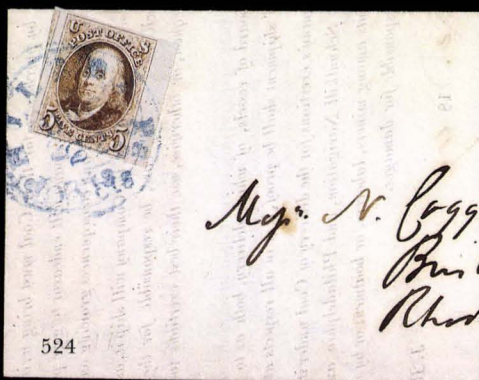
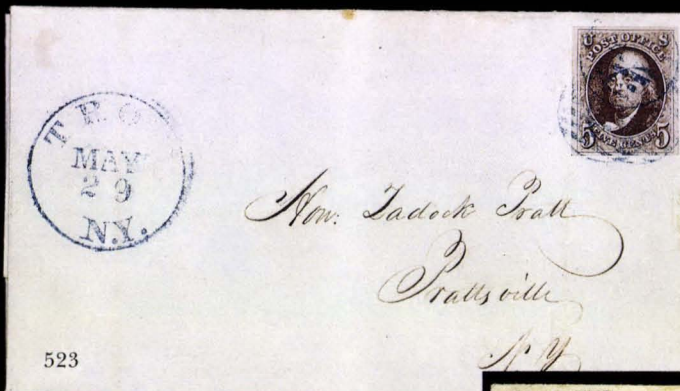
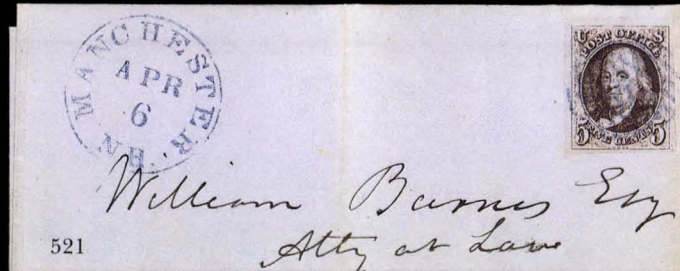
613



629



631





644



649



653



654



661



662



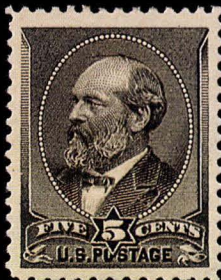
665



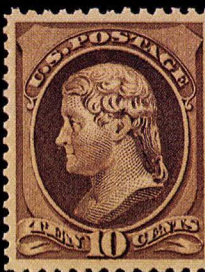
666



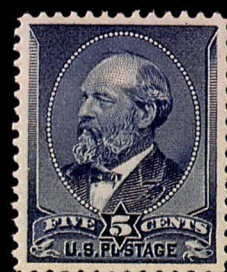
670



677



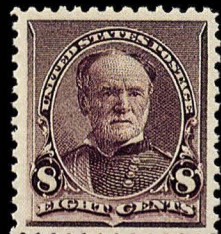
679



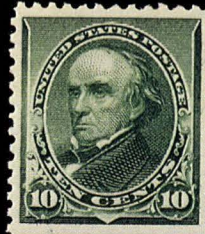
681



682



684



686



687



699



704



713



723



733



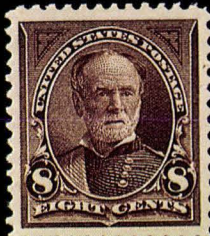
734



755



756



758



767



769



779



783



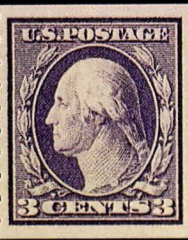
784



837



846



811



851



856



857



743



744



746



745



747



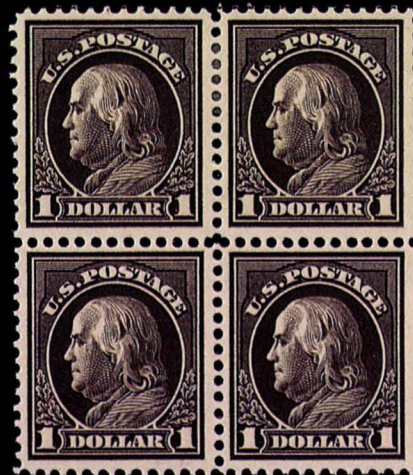
748



868



749



870



880



882



883



885



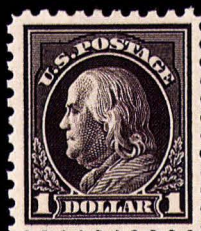
887



888



894



900



916



927



930



960



938



940



941



946



AMERICAN BANK NOTE COMPANY



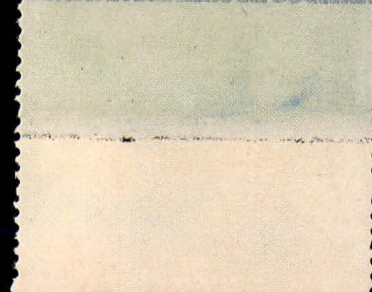
947



949



976



1020



1022



1064



1069



1071



1072



1073



1080



1096



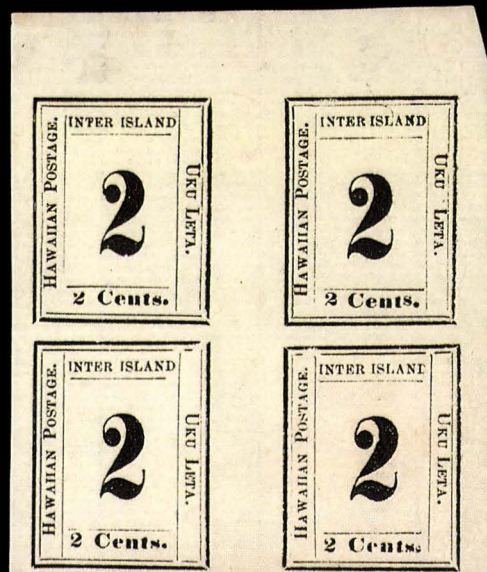
1117



1116



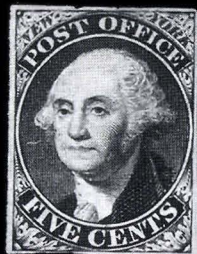
1119



1120



501



503



510



511



512



513



514



515



516



517



518



529



530



531



533



534



535



536EX



538



539



540



541



542



543



544



545



547



548



550





549



551



552



553



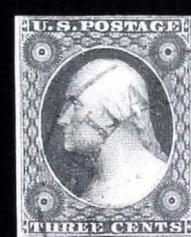
554



555



556



557



558



562



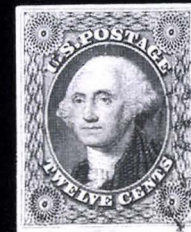
565



566



567



570



568



572



574



575



578



576



577



579



580



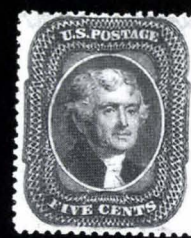
581



582



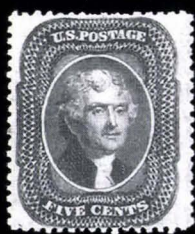
583



585



586



587



588



589



590



591



592



595



596



597



594



598



600



601



604



605



606



607



608



609



610



611



614



616



618



619



620



621



622



623



624



625



626



627



630



634



635



632



638



639



641



643



645



647



648



650



651



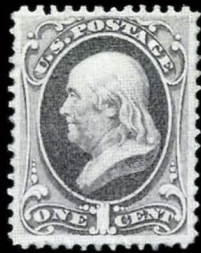
652



655



656EX



657



658



659



660



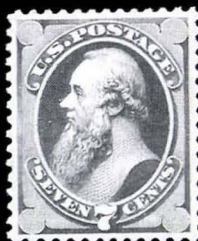
664EX



667



668



671



672



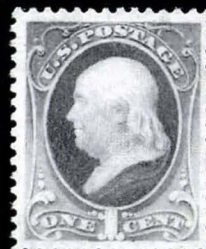
674



673



676



678



675



680



688EX



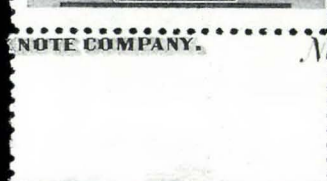
685



683



689EX



690EX



691EX



692EX



693EX



694EX



695



696



697



698



700



701



702



703



705EX



706



707



708



709



710



711



712



714



715



716



717



718



719



720



721



722



724



725



726



727



728



729



730



731



732



750



751



752



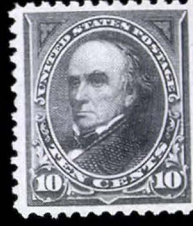
753



754



757



759



765



760



761



762



763



764



766



768



770



735EX



736EX



737EX



AMERICAN BANK NOTE COMPANY.



739EX



740



741



742



771EX



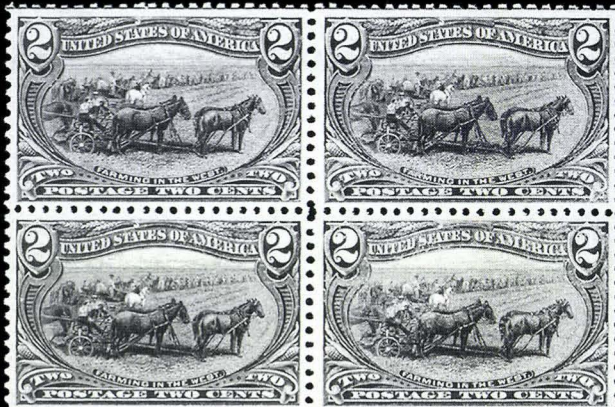
772



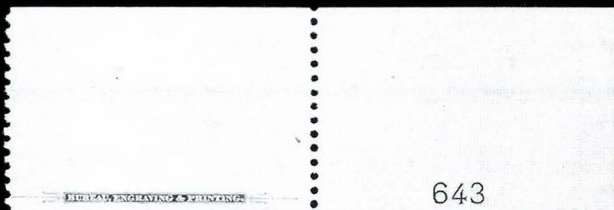
773EX



774EX



777EX



643



778EX



775EX



780

781



782



785



786



787



788



789



790



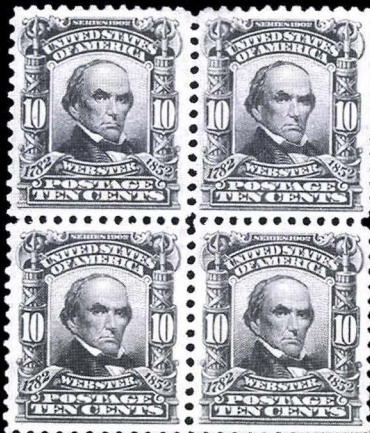
791EX



794EX



795



799



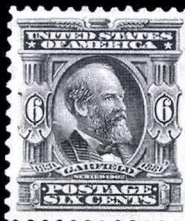
792EX



796EX



797



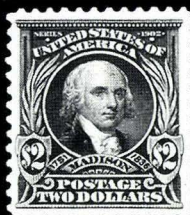
798



800



801



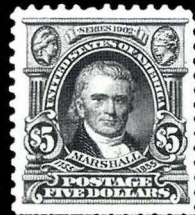
802



803



804EX



805



806



807



808



809



810



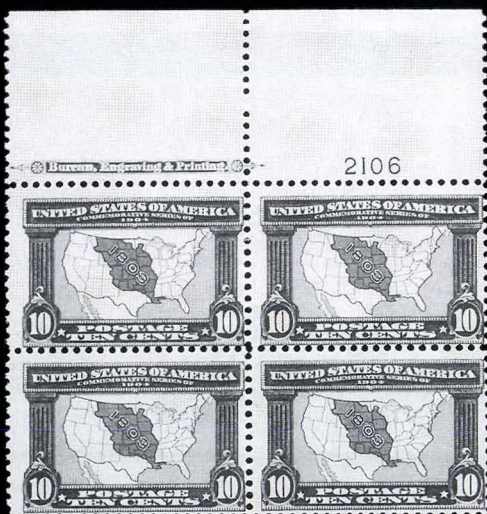
812EX



813EX



817



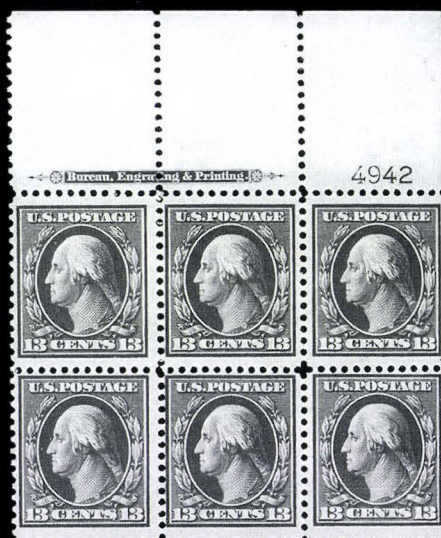
814EX



815EX



816EX



824



820EX



826



828



830EX



841EX



852EX



859EX



819EX



821



822



823



825



831



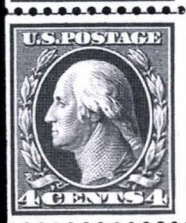
832



827



833



835



834



836



840



842



845EX



838



843



844EX



848



849





847



850



853



854



855



858



860



861



862



863



865



864



866



867



869



871EX



872



874



875



876



877



878



879EX



881



873



903



906



907



909



908



910



911



912



914



913



884



886



889



890



891



892



893



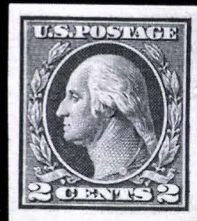
895



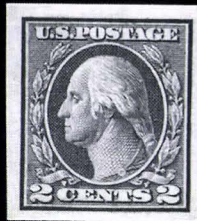
896



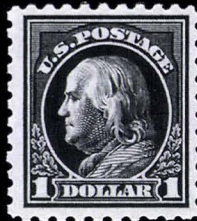
897



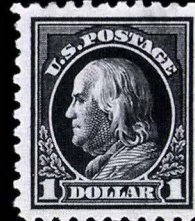
898



899



901



902



904EX



905



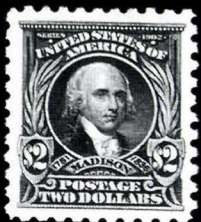
915



917



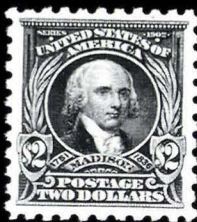
918



919



920EX



921



922



923



925



926EX



928



929



932



933



934



935



936



937



942



943EX



944EX



945



939



948



950



951



952



971EX



953



954



955



957



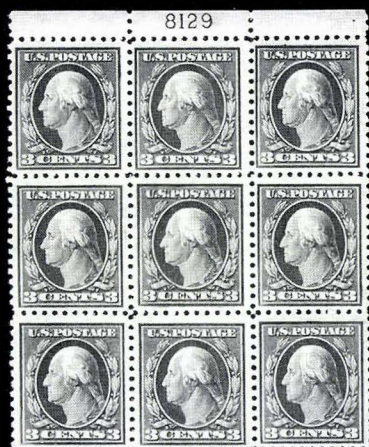
956



958



959



961



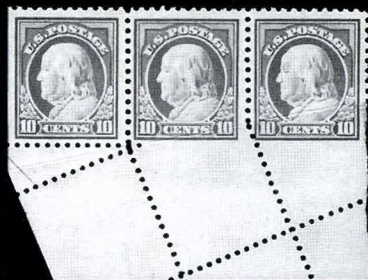
962



965



963



964EX



966



967EX

F 14327



974



975



18021



978EX

F 16928

5¢

16926



977EX



983



984



987EX



985EX



986EX



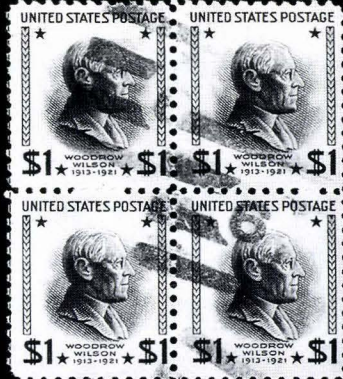
988



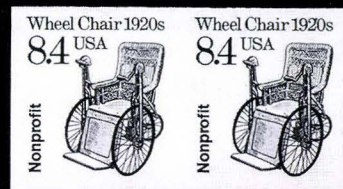
990



991



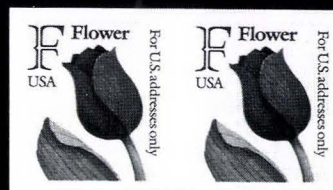
993



996



994



998



995



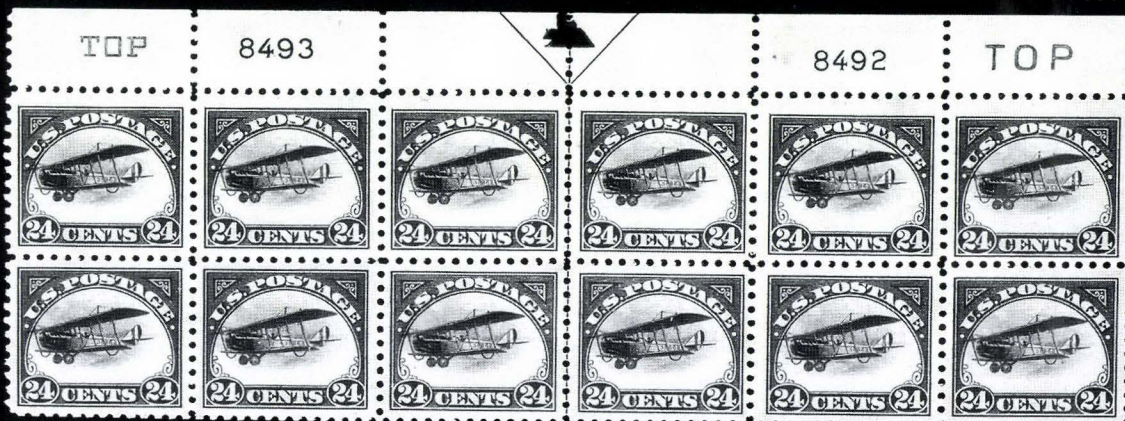
1000EX



999



997



1002



1003



1005



1006



1007



1008



1009



1010



1011



1012



1013



20088

1014

1015



1017



1021

5863



1023



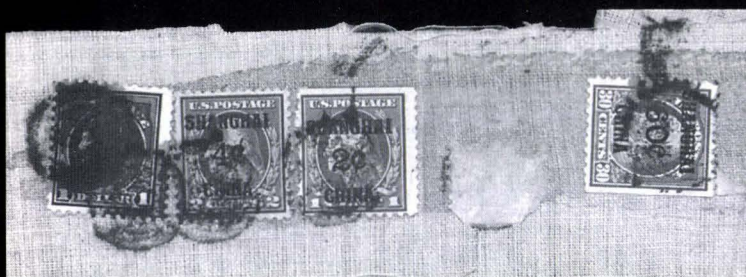
1024



1025



1026





1048



1049



1050



1051



1056



1053



1057



1060EX



1058



1063



1061EX



1062



1067EX



1070



1074



1081EX



1082



1083



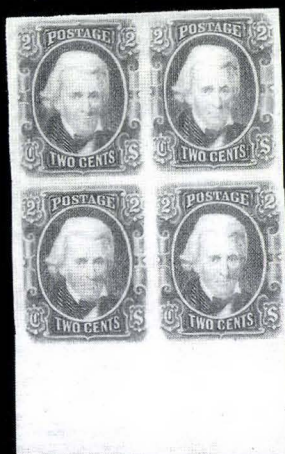
1084



1085



1086



1087



1088



1089



1091



1092



1093



1094



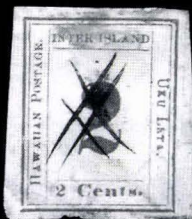
1095



1098



1101EX



1103



1104



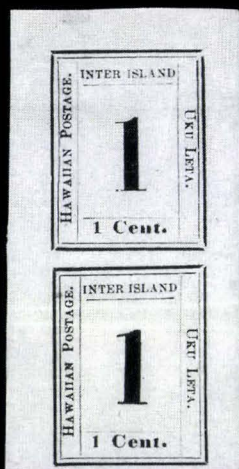
1105



1107



1108



1106



1109



1110



1111



1112



1113



1114



1115



1121



1122



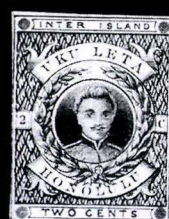
1123



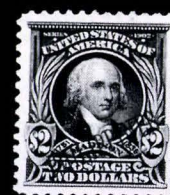
1124EX



1125



1126EX



1148



1136



1139



1129



1109



1128

Bid Form

Sale 813
June 26, 1999

1

Please provide the following information:

NAME.....
ADDRESS.....
CITY/STATE/ZIP.....
TEL. (DAY) FAX.....
E-MAIL.....

PADDLE #

Do not write in box

2

Have you purchased from us in the past 5 years? ☐ YES (if so, please go to Section 3)
☐ NO (please provide a trade reference and bank information)

References:

Stamp Firm: Telephone.....

Bank: Account #

3

In the space provided below, enter the **lot number** from **Sale 813** and your corresponding bid. Please use **whole dollar amounts** only and enter the **maximum bid** you wish to have us execute on your behalf, according to the bidding increments (on other side of this form). **Your bid will NOT include the 10% buyer's premium.** We will advance the bidding at one increment over the next

highest bid; therefore, you may be awarded the lot at less than your maximum bid. Please do not use "plus" bids or "buy" bids. If you wish to bid on one lot **or** the other, indicate your "or" bid between lot number/bid entries and bracket your choices. If you wish to place a **bidding limit** on the total amount of your bids, please enter your limit in the space marked "Limit Bids".

☐ **LIMIT BIDS:** Check this box if you wish to limit the total amount of your bids (not including the 10% buyer's premium) in this sale. Your bids will be executed until your bidding limit no longer allows for additional bids.

The total amount you wish to bid is: \$

Lot	Bid	Lot	Bid	Lot	Bid
	\$		\$		\$

4

AGREEMENT: By signing this bid form, you agree to pay for purchases resulting from your bids, in accordance with the **Conditions of Sale** printed in the sale catalogue. You also agree to pay the 10% buyer's premium and any shipping costs (see reverse), which will be added to your successful bids, and any sales tax or use tax which may be due

on the total invoiced amount. It is understood that these bids will be executed by Siegel Auction Galleries as a courtesy to absentee bidders, but that no legal responsibility shall lie with the auctioneer or the firm if these bids are not executed. **You are responsible for your written bids, including any errors on your part.**



SIGNED

TODAY'S DATE

5

Please submit your bids promptly (telephone bids must be confirmed in writing).

Mail to: Robert A. Siegel Auction Galleries, Inc.
65 E. 55th Street, New York, N.Y. 10022
Telephone (212) 753-6421

OR FAX YOUR BIDS: (212) 753-6429

Shipping Instructions, Bidding Increments and space for additional bids on other side of form

Additional Bids

Sale 813—June 26, 1999

Lot	Bid	Lot	Bid	Lot	Bid
	\$		\$		\$

Shipping and Transit Insurance

We will be pleased to arrange for shipping and transit insurance for purchases in this sale (except those described as “floor sale only”). To expedite billing and delivery of lots to hundreds of buyers per sale, we use standard charges for postage and insurance, based on the invoiced total and mailing requirements (see schedule). The standard charges are sometimes slightly more or less than the actual postage, but we do not include any fees for our labor or packing costs. Therefore, we ask all buyers to remit the prescribed amount for shipping charges.

Transit insurance is provided in all cases, except when the buyer has furnished us with proof that insurance coverage is effective under another policy. Proof, in such cases, will be accepted in the form of a written certificate from the insurance carrier.

You are responsible for insurance charges, which will be added to your invoice. This coverage is provided for our mutual protection against theft or loss in transit.

Current Postage & Insurance Charges

Invoice Total	Shipping Method	Charges
Up to \$1,000	Certified Mail or Insured Priority	\$10.00
\$1,000-10,000	Fedex or Express Mail	\$16.00
\$10,000-25,000	Fedex or Express Mail	\$22.00
Over \$25,000	Fedex or Express Mail	\$22.00 plus insurance at \$1 per \$1,000 value over \$25,000
Foreign Destinations (any value)	Registered or Express mail	\$10.00 plus insurance at \$2 per \$1,000 value
Bulk Lots	UPS Preferred	By weight and value (min. \$25.00)

2/95

Bidding Increments

The auctioneer may regulate the bidding at his discretion. However, to assist absentee bidders in establishing their maximum bid for each lot, the increments shown at right will be used in most cases. We recommend that written bids conform to these increments (those which do not will be reduced to the next level).

Up to \$140	\$5	\$3,000-7,000	\$250
\$140-300	\$10	\$7,000-20,000	\$500
\$300-700	\$25	\$20,000-30,000	\$1,000
\$700-1,400	\$50	\$30,000-75,000	\$2,500
\$1,400-3,000	\$100	\$75,000 up	\$5,000

SERVICES FOR BUYERS

If you wish to participate in our auctions, we will be pleased to assist you in many ways. Most of the following services are provided without additional charge.

Mail Viewing

Subject to availability, many lots can be sent to established clients (or those who submit references) for examination. Requests must be made no later than five days prior to the auction. Lots must be returned on the day of receipt. Postage/insurance costs will be invoiced. Large lots will not be available for mail viewing.

Viewing by Appointment

In addition to the regular public viewing hours, prospective bidders may view lots at our galleries by appointment.

Lot Review

Our on-staff philatelists will be pleased to review the description of any lot and provide more detailed information.

Opening Bids

During the two days prior to the sale, we will furnish approximate opening bids by phone or fax. Openings often change (up or down) and cannot be guaranteed as a reliable indicator of where the auctioneer will start the bidding. Opening bids will not be given on sale days.

Hotel and Restaurant Reservations

We will be pleased to furnish the names of good hotels and restaurants in the area. During peak seasons, we may be able to assist in placing reservations.

Absentee Bidding by Phone or Fax

Bidders who cannot attend the sale may leave written bidding instructions (see Bid Form). Bids called in must be confirmed in writing by fax or mail.

Telephone Bidding

Prospective bidders may apply for a telephone link to the auction and bid through one of our staff members. Applicants must call at least 24 hours prior to the sale date. Phone links are subject to availability and may be cancelled due to oversubscription.

Expert Certification

Individual items offered without a Philatelic Foundation certificate (or other accepted authority's certificate) dated within the past five years may be purchased subject to certification (please see Conditions of Sale for details).

Shipping and Delivery of Lots

Instructions for shipping must be given to the gallery prior to or immediately after the sale. Unless special instructions are received, we will follow the shipping guidelines on the back of the Bid Form. Buyers are responsible for all prescribed shipping charges, whether or not the actual out-of-pocket expense is equal to the invoiced charge.

Prices Realized

A list of prices realized will be included with every buyer's invoice. We will accept phone and fax requests for prices realized at any time during or after the auction. For those who qualify, our *ASAP Prices Realized* service will provide faxed daily results during the evening of the sale day (application available upon request). Printed prices realized lists are mailed to all others within 30 to 60 days of the sale.

SERVICES FOR SELLERS

If you wish to sell stamps, we will be pleased to provide the following standard services and options. Specially tailored proposals will be made for significant items and collections.

Appraisals

Verbal appraisals of material brought to our galleries are free of charge. Written appraisals for estate tax, insurance or other purposes are billed at hourly (\$50) or daily (\$500) rates. Fees will be rebated if the property is consigned within a certain period of time.

On-Site Sale Consultation

If your consignment is worth \$75,000 or more, we will travel to you at our expense.

Consignment Deadlines

Closing dates for consignment can always be found in our quarterly newsletter, *The Siegel Despatch*, and in our web site:

SiegelAuctions.com

Sale Settlement

42 days from the sale date, consignor proceeds are mailed. Since 1930 our firm has never missed settlement day.

Commission Rates

10% seller's commission and 10% buyer's premium. Minimum seller's commission is \$25 per lot. Special terms for more valuable properties may be discussed.

The Siegel Guarantee

Major collections can be offered at auction with a guaranteed minimum net realization. Estate executors who must protect beneficiaries' interests will be fully insured against a market downturn by the Siegel Guarantee.

Advances

Advances up to 50% of our valuation are available to consignors under certain terms.

Negotiated Sale for Immediate Payment

If you wish to sell your stamps for a specific price, we will be pleased to make an offer on behalf of ourselves or other clients.

Single-Owner Sales

Collections with a fair market value of \$300,000 or more may qualify for a special single-owner sale catalogue. The Siegel firm leads the way in offering major name sales, including over the years the Krug, Newbury, Lilly, Matthies, Weatherly, Grunin, Rohloff, Baker, Haas, Kimmel, Wunderlich, Cole, Kapiloff, Honolulu Advertiser, Morris, Rose and Birkinbine collections.

Annual Rarities of the World Sale

Suitable individual rarities will be accepted for our annual Rarities of the World auction. The consignment deadline for this auction is generally in early March.

Robert A. Siegel

AUCTION GALLERIES, INC.

JUNE 20, 1993

UNITED STATES STAMPS AND COVERS

SALE 613

PRICES REALIZED FOR SALE 813---6/26/99

U.S. Stamps and Covers

Robert A. Siegel Auction Galleries, Inc.
60 East 56th Street, 4th Floor, New York, NY 10022
Tel (212) 753-6421 Fax (212) 753-6429

Lot#	Realized	Lot#	Realized	Lot#	Realized	Lot#	Realized	Lot#	Realized	Lot#	Realized	Lot#	Realized	Lot#	Realized
502	625	546	50	592	800	636	550	681	425	727	525	774	425	819	280
503	100	547	700	593	1,050	637	190	683	160	728	2,200	775	1,700	820	650
504	4,000	548	230	594	800	638	180	684	425	729	1,250	776	525	821	475
505	1,500	549	475	595	350	639	85	685	475	730	675	777	200	822	150
506	800	550	350	596	900	640	575	686	210	731	800	778	350	823	210
507	135	551	400	597	550	642	400	687	675	732	300	780	115	824	190
508	1,700	552	85	598	190	643	1,600	688	525	733	1,400	781	675	825	280
509	1,200	553	90	599	1,300	644	750	689	550	735	425	782	270	826	650
510	300	554	90	600	625	645	450	690	1,250	736	450	783	425	827	425
511	300	555	75	601	700	646	1,500	692	200	737	850	784	1,000	828	700
512	240	556	300	602	1,800	648	80	693	290	738	240	785	2,300	829	140
513	450	557	180	603	2,800	649	1,250	694	375	739	190	786	675	830	280
514	230	558	45	604	650	650	450	695	150	740	350	787	550	831	170
515	260	559	2,300	605	230	651	210	696	190	742	850	788	1,600	832	300
517	160	560	130	606	375	652	475	697	260	743	1,600	789	425	833	1,900
518	475	561	1,200	607	1,200	653	1,300	698	80	744	1,550	790	350	834	250
519	2,600	562	500	608	900	654	1,225	699	650	745	3,250	791	260	835	450
520	700	563	1,200	609	1,550	655	375	700	110	746	2,500	792	260	836	1,250
521	2,600	564	625	610	750	656	200	701	190	747	3,500	793	400	837	1,900
522	950	565	260	611	1,300	657	200	702	300	748	14,000	794	400	838	950
523	1,050	566	100	613	1,400	658	400	703	400	749	7,500	795	675	839	625
524	1,000	567	100	614	550	659	425	704	500	750	500	796	350	840	180
525	300	568	200	615	60	660	250	705	850	751	260	797	260	841	625
526	700	569	625	616	325	661	1,600	706	290	752	675	798	425	842	230
527	1,000	570	190	617	1,000	662	800	707	1,150	753	230	800	525	843	220
528	900	571	200	618	350	663	1,500	708	300	754	650	801	280	844	260
529	675	572	675	619	170	664	525	709	220	755	3,250	802	525	845	240
530	900	574	280	620	130	665	1,900	710	575	756	4,000	803	575	846	1,400
531	550	575	1,600	621	275	666	300	711	675	757	350	804	400	847	475
532	1,100	576	300	622	675	667	375	712	300	759	425	805	800	848	425
533	400	577	150	623	220	668	230	713	1,000	760	450	806	2,250	849	260
534	350	578	100	624	300	669	2,700	714	500	761	400	807	600	850	170
535	600	579	135	625	850	670	725	715	550	762	170	808	375	851	800
536	500	580	180	626	2,300	671	500	716	325	764	325	809	240	852	850
537	625	581	425	627	200	672	190	717	600	765	625	810	450	853	80
538	1,000	582	525	628	50	673	160	718	750	766	900	811	6,000	854	325
539	500	584	800	629	3,750	674	450	719	600	767	800	812	500	855	700
540	450	585	950	630	140	675	500	720	575	768	400	813	525	856	800
541	685	586	425	631	650	676	280	721	1,050	769	1,350	814	1,350	858	325
542	475	587	160	632	1,800	677	525	722	350	770	1,350	815	450	859	1,000
543	160	588	210	633	1,150	678	180	723	1,050	771	170	816	700	860	210
544	250	590	190	634	300	679	375	724	850	772	75	817	425	861	270
545	250	591	950	635	625	680	170	726	750	773	950	818	375	862	190

PRICES REALIZED FOR SALE 813---6/26/99

U.S. Stamps and Covers

Robert A. Siegel Auction Galleries, Inc.
60 East 56th Street, 4th Floor, New York, NY 10022
Tel (212) 753-6421 Fax (212) 753-6429

Lot#	Realized	Lot#	Realized	Lot#	Realized	Lot#	Realized	Lot#	Realized	Lot#	Realized	Lot#	Realized	Lot#	Realized
863	210	910	750	955	290	1000	400	1044	600	1091	210	1134	130	1177	625
864	150	911	900	956	180	1001	125	1046	100	1092	525	1135	190	1178	950
865	350	912	375	957	210	1002	800	1047	170	1093	200	1136	675	1179	1,700
866	300	913	575	958	220	1003	450	1048	50	1094	325	1137	900	1180	300
867	475	914	280	959	240	1004	110	1049	375	1095	100	1138	450	1181	1,250
868	2,100	915	475	960	575	1006	1,500	1050	55	1096	1,500	1139	130	1182	625
869	575	916	950	961	300	1007	1,300	1051	100	1097	1,400	1140	130	1183	1,700
870	2,300	917	725	962	140	1008	1,250	1052	1,450	1098	260	1141	450	1184	1,900
871	850	918	350	963	350	1009	750	1053	450	1099	550	1142	80	1185	6,500
872	675	919	325	964	190	1010	1,150	1054	725	1100	400	1143	450	1186	3,250
873	1,450	920	220	965	210	1011	650	1055	210	1101	150	1144	75	1187	1,550
874	170	921	290	966	280	1012	700	1056	160	1102	350	1145	400	1188	750
875	230	922	160	967	100	1013	550	1057	55	1103	800	1146	350	1189	180
876	200	923	90	968	1,800	1014	425	1058	110	1104	800	1147	3,250	1190	600
877	220	924	400	969	1,400	1015	260	1059	110	1105	120	1148	120	1191	1,800
878	325	925	290	970	600	1016	575	1060	475	1106	750	1149	300	1192	600
879	950	926	1,900	971	400	1017	2,200	1061	210	1107	210	1150	800	1193	650
882	600	927	1,300	972	600	1018	1,100	1062	250	1108	750	1151	625	1194	400
883	1,300	928	260	973	550	1019	575	1063	200	1109	375	1152	675	1195	375
884	350	929	200	974	400	1020	525	1064	650	1110	120	1153	1,350	1196	1,900
885	1,000	930	1,550	975	600	1021	260	1066	180	1111	50	1154	800	1197	800
886	475	931	220	976	1,050	1022	600	1067	350	1112	200	1155	300		
887	450	932	325	977	700	1023	100	1068	450	1113	160	1156	1,250		
888	725	933	500	979	350	1024	350	1069	375	1114	130	1157	1,400		
889	180	934	450	980	260	1025	925	1070	260	1115	160	1158	375		
891	400	935	325	981	450	1026	825	1071	1,000	1116	1,600	1159	650		
892	100	936	575	982	450	1027	220	1072	1,250	1117	2,000	1160	600		
893	210	937	625	983	1,200	1028	300	1073	850	1118	425	1161	450		
894	950	938	500	984	475	1029	100	1076	400	1119	3,750	1162	290		
895	160	939	450	985	475	1030	230	1077	400	1120	1,250	1163	260		
896	450	940	825	986	325	1031	240	1078	1,150	1121	80	1164	85		
898	270	941	900	987	1,850	1032	400	1079	400	1122	75	1165	270		
899	250	942	250	988	400	1033	170	1080	950	1123	900	1166	5,250		
900	1,200	943	350	989	675	1034	150	1081	180	1124	130	1167	900		
901	1,000	944	300	990	100	1035	105	1082	260	1125	55	1168	180		
902	180	945	85	991	700	1036	260	1083	650	1126	1,100	1169	20		
903	350	946	1,800	992	425	1037	350	1084	200	1127	160	1170	575		
904	260	948	270	993	140	1038	475	1085	210	1128	700	1171	425		
905	375	950	350	994	1,100	1039	230	1086	400	1129	1,000	1172	900		
906	500	951	115	995	300	1040	2,600	1087	50	1130	600	1173	2,100		
907	230	952	325	996	150	1041	625	1088	1,000	1131	55	1174	50		
908	425	953	170	997	400	1042	550	1089	675	1132	400	1175	1,500		
909	1,200	954	190	999	150	1043	2,000	1090	400	1133	260	1176	3,250		