

# Sale 842

Tuesday, February 26, 2002

## The Piedmont Collection of United States Stamps



*Robert A. Siegel*  
AUCTION GALLERIES, INC.

[www.siegelauctions.com](http://www.siegelauctions.com)

# Sale 842

Tuesday, February 26, 2002

## The Piedmont Collection of United States Stamps

**Offered without reserves**

### Pre-sale exhibition

Friday, February 22 — 10:00 a.m. to 4:00 p.m..  
Monday, February 25 — 10:00 a.m. to 4:00 p.m..  
Tuesday, February 26 — 10:00 a.m. to 12:00 p.m.  
or by appointment (please call 212-753-6421)

**On-line catalogue, e-mail bid form, resources and  
the Siegel Encyclopedia are available on our web site:**

[www.siegelauctions.com](http://www.siegelauctions.com)



Scott 539  
Mint N.H.  
(lot 248)

### Arrangement of Sale

**First session (lots 1-345)  
Tuesday, February 26, at 1:30 p.m.**

Trans-Mississippi Issue .....	5-6
Pan-American Issue .....	7
1902-08 Issue .....	7-11
Louisiana Purchase, Jamestown Issues .....	12
1908-12 Issues .....	13-21
Bluish Paper .....	21-24
1908-12 Issues continued .....	24-30
Panama-Pacific Issue.....	31
1908-12 Issues continued .....	32-34
1912-23 Issues .....	35-61
1922-29 Issues .....	61-63
Air Post, Special Delivery and Registration .....	64-66
Postage Due .....	67-75
Parcel Post .....	76-77
Balance Lots .....	78

### On the cover

Front (T to B): Sc. 363 (lot 74), Sc. 449 (lot 163),  
Sc. 355 (lot 68), Sc. 491 (lot 212), Sc. J28 (lot 311),  
Sc. J50 (lot 322)

Back: Sc. 485 detail of block of 70 (lot 203)

## Introduction to The Piedmont Collection

THE PIEDMONT COLLECTION WAS FORMED WITH THE BASIC goal of acquiring one superb example of each issue from the 1898 Trans-Mississippi set through the 1934 Trans-Mississippi Philatelic Exposition souvenir sheet. Earlier issues from the Special Delivery and Postage Due series were also included.

Completeness was considered secondary to condition. Nearly every issue is represented by a stamp that qualifies as one of the finest of its kind. Gum was an important factor, and, in all but a few cases, Mint Never-Hinged is the standard. Several issues—such as Scott 449, 491, 539, J28, J50 and J54—are extremely rare in Mint Never-Hinged state, and the beautifully-centered examples in the Piedmont collection are sure to draw collectors' determined bidding.

The transition from the 20th to 21st Century has brought about a growing fascination with stamps issued during the past 100 years. The 1902-08 Issue and Washington-Franklin series are now highly regarded as the Classics of the period. The myriad Washington-Franklin varieties produced from 1908 through 1923 challenge philatelists. In meeting the challenges of study and acquisition, collectors have developed greater appreciation of the rarity of many stamps, such as the early coils, 1909 Bluish Paper Issue and the Rotary Press "waste" types.

We wish to make a prediction. In time—perhaps five or ten years—this Siegel sale catalogue of the Piedmont collection will become a collectors' guidebook to condition for issues of the 1900 to 1930 period.

We also predict that many collectors—some yet to start and others who are timid in bidding—will look at the stamps and the realizations in this sale and have feelings of missed opportunity that collectors inevitably experience.

Sales such as this earn a prominent position among the library shelves of auction catalogues. We are pleased to see it join the 72-year run of Siegel catalogues.

— SCOTT R. TREPEL



AFTERNOON SESSION (LOTS 1-339)  
TUESDAY, FEBRUARY 26, 2002, AT 1:30 P.M.

THE PIEDMONT COLLECTION OF UNITED STATES STAMPS  
TRANS-MISSISSIPPI ISSUE



- 1 ★★ **1c Trans-Mississippi (285).** Mint N.H., deep rich color and sharp proof-like impression, perfect centering with wide margins, Extremely Fine Gem, with 2001 P.F. certificate ..... 60.00
- 2 ★★ **2c Trans-Mississippi (286).** Mint N.H., brilliant color on bright paper, perfectly centered with unusually wide margins for this issue, Extremely Fine Gem, with 2000 and 2001 P.F. certificates ..... 55.00
- 3 ★★ **4c Trans-Mississippi (287).** Mint N.H., vibrant color, choice centering with wide margins, fresh and Extremely Fine, with 1996 P.F. certificate ..... 300.00
- 4 ★★ **5c Trans-Mississippi (288).** Mint N.H., intense color and detailed impression, Jumbo margins all around, Extremely Fine Gem, a stunning stamp, with 2000 and 2001 P.F. certificates..... 280.00
- 5 ★★ **8c Trans-Mississippi (289).** Mint N.H., deep rich color and detailed impression, choice centering, fresh and Extremely Fine, one of the most difficult values of the set to obtain in superb condition, with 1999 P.F. certificate..... 360.00
- 6 ★★ **10c Trans-Mississippi (290).** Mint N.H., beautiful color and crisp impression, wide margins, Extremely Fine Gem, with 2000 P.F. certificate ..... 360.00





7

- 7 ★★ **50c Trans-Mississippi (291).** Mint N.H., bright shade on fresh paper, wide margins

VERY FINE AND CHOICE MINT NEVER-HINGED EXAMPLE OF THE 50-CENT TRANS-MISSISSIPPI.

With 1998 P.F. certificate ..... 1,350.00

- 8 ★★ **\$1.00 Trans-Mississippi (292).** Mint N.H., sharp proof-like impression on bright paper, extra wide margins

VERY FINE AND CHOICE. A BEAUTIFUL MINT NEVER-HINGED EXAMPLE OF THE \$1.00 TRANS-MISSISSIPPI, WHICH IS WIDELY CONSIDERED TO BE ONE OF THE MOST BEAUTIFUL UNITED STATES STAMPS EVER PRODUCED.

With 1996 P.F. certificate ..... 2,600.00



8



9

- 9 ★★ **\$2.00 Trans-Mississippi (293).** Mint N.H., intense color and proof-like impression, almost perfect centering with unusually wide margins for this issue

EXTREMELY FINE GEM. THIS MINT NEVER-HINGED EXAMPLE OF THE \$2.00 TRANS-MISSISSIPPI IS ONE OF THE FINEST COPIES IN EXISTENCE. A REMARKABLE STAMP.

The \$2.00 is the most difficult value of the set to obtain in centered, Mint Never-Hinged condition. The margins are almost always narrow on the \$2.00. This makes it difficult to fit the collecting criteria of most Gem-quality collectors. The stamp offered here, which is Mint Never-Hinged with choice centering and fresh color, is a true condition rarity.

With 1989 and 1998 P.F. certificates..... 4,500.00



### PAN-AMERICAN ISSUE

- 10 ★★ **1c Pan-American (294).** Mint N.H., rich color and choice centering, Extremely Fine, with 2000 P.F. certificate ..... 32.00
- 11 ★★ **2c Pan-American (295).** Mint N.H., rich colors, wide margins, Very Fine, with 2000 P.F. certificate ..... 31.00
- 12 ★★ **4c Pan-American (296).** Mint N.H., deep rich colors and proof-like impressions on bright paper, fresh and Extremely Fine, with 1999 P.F. certificate ..... 150.00
- 13 ★★ **5c Pan-American (297).** Mint N.H., brilliant colors, choice centering, Extremely Fine, with 1999 P.F. certificate ..... 175.00
- 14 ★★ **8c Pan-American (298).** Mint N.H., dark shade and proof-like impressions, extra wide margins, Extremely Fine Gem, with 2001 P.F. certificate ..... 225.00
- 15 ★★ **10c Pan-American (299).** Mint N.H., fresh colors and crisp impressions, perfectly centered with Jumbo margins, Extremely Fine Gem, a beautiful stamp, with 1998 P.F. certificate..... 325.00

### 1902-08 ISSUE

- 16 ★★ **2c Carmine (301).** Mint N.H., brilliant color on bright paper, wide margins, Extremely Fine Gem, with 1997 P.F. certificate ..... 29.00
- 17 ★★ **3c Bright Violet (302).** Mint N.H., deep rich color, perfectly centered with wide and generous margins, Extremely Fine Gem, superb in every respect, with 1999 P.F. certificate..... 100.00
- 18 ★★ **4c Brown (303).** Mint N.H., fresh color, choice centering with extra wide margins, Extremely Fine, with 1996 P.F. certificate..... 110.00
- 19 ★★ **6c Claret (305).** Mint N.H., intense color and impression, choice centering with extra wide margins, Extremely Fine Gem, a stunning stamp, with 1997 P.F. certificate..... 130.00





- 20 ★★ **8c Violet Black (306).** Mint N.H., brilliant color and crisp impression, perfectly centered with enormous margins all around, Extremely Fine Gem, one of the widest-margined examples of this stamp we have ever encountered, with 2000 P.F. certificate ..... 80.00
- 21 ★★ **10c Pale Red Brown (307).** Mint N.H., brilliant color, extra wide margins for this issue, Extremely Fine, with 1999 P.F. certificate ..... 125.00
- 22 ★★ **13c Purple Black (308).** Mint N.H., deep rich color and proof-like impression, perfectly centered with Jumbo margins all around, Extremely Fine Gem, a superb stamp in every respect, with 2001 P.F. certificate ..... 90.00
- 23 ★★ **15c Olive Green (309).** Mint N.H., intense color, enormous margins all around, Extremely Fine Gem, a superb example of the 15c 1902 Issue, with 1996 P.F. certificate. .... 310.00

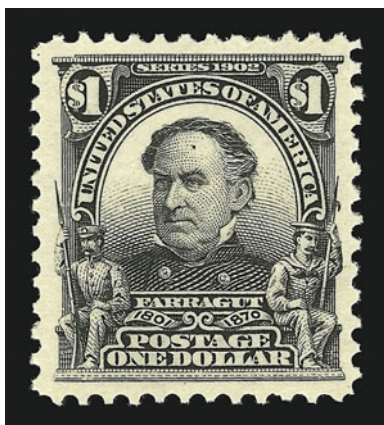
- 24 ★★ **50c Orange (310).** Mint N.H., vibrant color on bright paper, almost perfectly centered with wide margins all around

EXTREMELY FINE GEM. A SUPERB MINT NEVER-HINGED EXAMPLE OF THE 50-CENT 1902 ISSUE IN REMARKABLY FRESH CONDITION.

With 1992 and 2000 P.F. certificates ..... 950.00



24



25

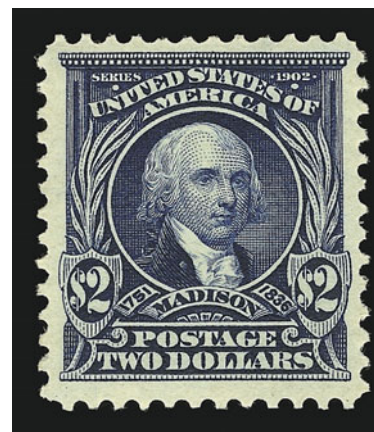
- 25 ★★ **\$1.00 Black (311).** Mint N.H., bright shade and crisp impression, almost perfect centering
- FRESH AND EXTREMELY FINE. A SUPERB MINT NEVER-HINGED EXAMPLE OF THE \$1.00 1902 ISSUE.
- With 1997 and 2001 P.F. certificates ..... 1,600.00



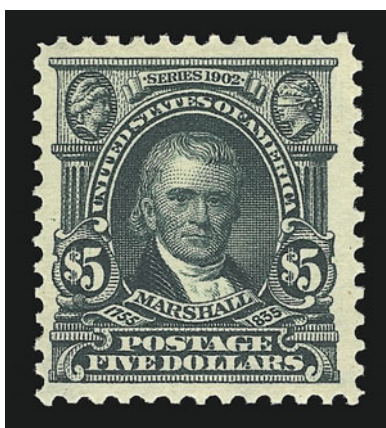
- 26 ★★ **\$2.00 Dark Blue (312).** Mint N.H., deep rich color and detailed impression, wide margins

VERY FINE AND CHOICE MINT NEVER-HINGED  
EXAMPLE OF THE \$2.00 1902 ISSUE.

With 1995 P.F. certificate ..... 2,600.00



26



27

- 27 ★★ **\$5.00 Dark Green (313).** Mint N.H., deep rich color and proof-like impression, wide margins

VERY FINE AND CHOICE. THE \$5.00 IS THE MOST  
DIFFICULT VALUE OF THE SET TO FIND IN MINT  
NEVER-HINGED CONDITION.

With 1987 and 1995 P.F. certificates ..... 6,500.00



28

29

30

- 28 ★★ **5c Blue, Imperforate (315).** Mint N.H., huge margins, fresh color, Extremely Fine, with 1997 P.F. certificate ..... 450.00

- 29 ★★ **2c Carmine, Ty. I (319).** Mint N.H., brilliant color, Jumbo margins, Extremely Fine Gem, with 1997 P.F. certificate ..... 11.00

- 30 ★★ **2c Lake, Ty. II, Imperforate (320a).** Mint N.H., intense color in the true Lake shade, large margins, fresh and Extremely Fine, with 1996 P.F. certificate ..... 90.00



31

- 31 ★ **5c Blue, Vertical Coil (317).** Pair, barest trace of hinging, deep rich color, choice centering for this difficult issue

VERY FINE. A CHOICE EXAMPLE OF THE RARE 5-CENT 1908 VERTICAL COIL.

Armstrong notes that as of 1980 only 79 pairs had been certified by the Philatelic Foundation.

With 2000 P.F. certificate ..... 12,500.00



32

- 32 ★ **1c Blue Green, Horizontal Coil (318).** Original gum which is barely hinged, rich color, slightly dry print at right, almost perfectly centered  
 EXTREMELY FINE EXAMPLE OF THE RARE ONE-CENT 1908 HORIZONTAL COIL.  
 Armstrong notes that as of 1980 only 80 pairs had been certified by the Philatelic Foundation.  
 With 1992 P.F. certificate ..... 11,000.00

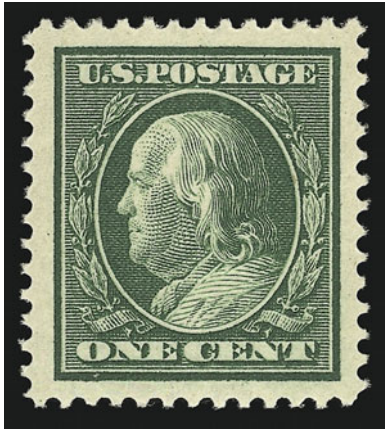




## LOUISIANA PURCHASE AND JAMESTOWN ISSUES

- 33 ★★ **1c Louisiana Purchase (323).** Mint N.H., rich color, perfectly centered with unusually wide margins, Extremely Fine Gem, a superb stamp in every respect, with 1996 P.F. certificate ..... 55.00
- 34 ★★ **2c Louisiana Purchase (324).** Mint N.H., rich color, wide even margins all around, Extremely Fine, with 2000 P.F. certificate..... 50.00
- 35 ★★ **3c Louisiana Purchase (325).** Mint N.H., rich color and proof-like impression, perfectly centered with wide and well-balanced margins, Extremely Fine Gem, a beautiful stamp, with 2000 P.F. certificate ..... 160.00
- 36 ★★ **5c Louisiana Purchase (326).** Mint N.H., detailed impression on crisp paper, perfectly centered with wide and well-balanced margins, Extremely Fine Gem, a superb stamp and one of the most difficult of the series to obtain in such choice condition, with 1978, 1999 and 2001 P.F. certificates ..... 170.00
- 37 ★★ **10c Louisiana Purchase (327).** Mint N.H., fresh and bright color, mathematically perfect centering, Extremely Fine Gem, the most difficult stamp in the series to obtain in such choice condition, with 1999 P.F. certificate ..... 340.00
- 38 ★★ **1c Jamestown (328).** Mint N.H., incredibly deep rich color on bright paper, perfect centering, Extremely Fine Gem, with 1999 P.F. certificate ..... 55.00
- 39 ★★ **2c Jamestown (329).** Mint N.H., brilliant color on bright paper, Extremely Fine Gem, with 1999 and 2000 P.F. certificates ..... 65.00
- 40 ★★ **5c Jamestown (330).** Mint N.H., deep rich color and detailed impression on white paper, Jumbo margins for this issue, Extremely Fine Gem, a phenomenal stamp in the finest condition attainable, with 1984, 1999 and 2001 P.F. certificates ..... 250.00

## 1908-12 ISSUES



41



42



43



44



45

- 41 ★★ **1c Green (331).** Mint N.H., Jumbo margins all around, rich color, Extremely Fine Gem, a huge stamp, with 1998 P.F. certificate ..... 13.00
- 42 ★★ **2c Carmine (332).** Mint N.H., huge margins, brilliant color, Extremely Fine Gem, with 1995 P.F. certificate ..... 12.00
- 43 ★★ **3c Deep Violet (333).** Mint N.H., Jumbo margins, deep shade, Extremely Fine Gem, a phenomenal stamp, with 2000 P.F. certificate ..... 62.00
- 44 ★★ **4c Orange Brown (334).** Mint N.H., enormous margins, fresh color and detailed impression, Extremely Fine Gem, a huge stamp, with 1997 P.F. certificate ..... 75.00
- 45 ★★ **5c Blue (335).** Mint N.H., deep rich color on bright paper, choice centering, fresh and Very Fine and choice, with 1997 P.F. certificate ..... 95.00





46



47



48



49



50

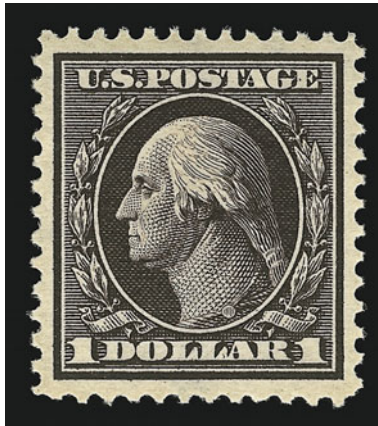
- 46 ★★ **6c Red Orange (336)**. Mint N.H., brilliant color, extra wide margins, trivial natural inclusion, Extremely Fine, with 1997 P.F. certificate ..... 115.00
- 47 ★★ **8c Olive Green (337)**. Mint N.H., brilliant color, huge margins, tiny natural gum skip, fresh and Extremely Fine, with 1999 and 2000 P.F. certificates, the former for a plate block..... 90.00
- 48 ★★ **10c Yellow (338)**. Mint N.H., bright color, choice centering, fresh and Extremely Fine, one of the most difficult values of the set to obtain this choice, with 1999 P.F. certificate. .... 125.00
- 49 ★★ **13c Blue Green (339)**. Mint N.H., almost perfectly centered with wide margins all around, incredibly fresh color and detailed impression, Extremely Fine Gem, with 1983 and 2000 P.F. certificates..... 75.00
- 50 ★★ **15c Pale Ultramarine (340)**. Mint N.H., bright shade, choice centering with wide and well-proportioned margins, Extremely Fine Gem, with 1997 P.F. certificate..... 125.00





51

- 51 ★★ **50c Violet (341).** Mint N.H., choice centering, beautiful deep shade on bright paper  
 EXTREMELY FINE GEM. A REMARKABLY CHOICE HIGH-DENOMINATION WASHINGTON  
 ISSUE IN POST-OFFICE FRESH CONDITION.  
 With photocopy of 1987, 1994 and 2001 P.F. certificates ..... 625.00



52

- 52 ★★ **\$1.00 Violet Brown (342).** Mint N.H., incredibly rich color and proof-like impression,  
 extraordinarily wide margins  
 EXTREMELY FINE GEM. A SUPERB MINT NEVER-HINGED EXAMPLE OF THE \$1.00 WASHING-  
 TON ISSUE IN THE FINEST CONDITION ATTAINABLE.  
 With 1999 P.F. certificate..... 950.00



- 53 ★★ **1c Green, Coil (348).** Mint N.H., absolutely perfect centering and fresh color, Extremely Fine Gem, with 1997 P.F. certificate ..... 67.00
- 54 ★★ **2c Carmine, Coil (349).** Mint N.H., choice centering with Jumbo margins all around, deep rich color, Extremely Fine Gem, a huge stamp, small blue backstamp, with 2000 P.F. certificate ..... 145.00
- 55 ★★ **4c Orange Brown, Coil (350).** Mint N.H., choice centering with wide margins, rich color, fresh and Extremely Fine, with 1994 P.F. certificate..... 310.00
- 56 ★★ **5c Blue, Coil (351).** Mint N.H., Jumbo margins, deep shade on bright paper, Extremely Fine Gem, a huge stamp, with 1999 P.F. certificate..... 325.00



57

- 57 ★★ **1c Green, Coil (348).** Mint N.H. guide line pair, both stamps are perfectly centered with well-proportioned margins, fresh color, Extremely Fine Gem, with 1999 P.F. certificate ..  
..... 525.00

- 58 ★★ **2c Carmine, Coil (349).** Mint N.H. guide line pair, near perfect centering with wide and well-balanced margins on all sides, fresh color and detailed impression, bottom stamp trivial natural inclusion

EXTREMELY FINE GEM. THIS IS EASILY ONE OF THE FINEST GUIDE LINE PAIRS OF THIS COIL IN TERMS OF CENTERING, COLOR, FRESHNESS OF GUM AND OVERALL APPEAL.

With 1984 and 1999 P.F. certificates, neither of which mentions an inclusion. .... 1,000.00



58



59

- 59 ★★ **4c Orange Brown, Coil (350).** Mint N.H. guide line pair, deep rich color and proof-like impression, wide margins

EXTREMELY FINE. AN EXCEEDINGLY RARE MINT NEVER-HINGED GUIDE LINE PAIR OF THE 4-CENT PERF 12 DOUBLE-LINE WATERMARKED COIL.

According to Johl (Vol. 1, page 153), this coil was issued approximately eighteen months *after* the horizontal coil Scott 354 and was only in use for a short period of time.

With 1999 P.F. certificate ..... 2,250.00





60

- 60 ★★ **5c Blue, Coil (351).** Mint N.H. guide line pair, perfect centering with even margins in both directions, beautiful rich color and detailed impression

EXTREMELY FINE GEM. THIS IS EASILY ONE OF THE FINEST GUIDE LINE PAIRS OF THE 5-CENT VERTICAL COIL IN EXISTENCE. REMARKABLE IN EVERY RESPECT.

Interestingly, this is the only 5c Washington-Franklin vertical coil stamp ever produced. Demand proved to be so low that no others were made.

With 1999 P.F. certificate..... 2,250.00



61

62

63

64

- 61 ★★ **1c Green, Coil (352).** Mint N.H., intense color, wide margins, Extremely Fine, a difficult stamp to find in choice condition, with 1999 P.F. certificate..... 170.00
- 62 ★★ **2c Carmine, Coil (353).** Mint N.H., wide margins, bright color on white paper, Extremely Fine Gem, with 1998 P.F. certificate..... 170.00
- 63 ★★ **4c Orange Brown, Coil (354).** Mint N.H., enormous margins all around, fresh color  
EXTREMELY FINE GEM. A HUGE EXAMPLE OF THIS STAMP.  
With 1999 P.F. certificate..... 400.00
- 64 ★★ **5c Blue, Coil (355).** Mint N.H., wide margins, rich color, fresh and Extremely Fine, with 1998 P.F. certificate ..... 415.00



65

- 65 ★★ **1c Green, Coil (352).** Mint N.H. guide line pair, extraordinarily choice centering, beautiful rich color on crisp bright paper

EXTREMELY FINE GEM. UNQUESTIONABLY ONE OF THE FINEST GUIDE LINE PAIRS OF THE ONE-CENT PERF 12 DOUBLE-LINE WATERMARKED HORIZONTAL COIL IN EXISTENCE.

With 1995 P.F. certificate ..... 1,350.00



66

- 66 ★★ **2c Carmine, Coil (353).** Mint N.H. guide line pair, choice centering with wide margins on all sides, brilliant color and remarkably detailed impression

EXTREMELY FINE GEM. A SUPERB GUIDE LINE PAIR OF THE 2-CENT PERF 12 DOUBLE-LINE WATERMARK HORIZONTAL COIL IN THE FINEST CONDITION ATTAINABLE.

According to Johl (Vol. 1, p. 108), "When the stamps were current, coils were still in small favor with philatelists and as this sidewise type was more popular with users of affixing machines fewer were saved than the endwise coil."

With 2000 P.F. certificate ..... 1,350.00



67

- 67 ★★ **4c Orange Brown, Coil (354).** Mint N.H. guide line pair, beautifully centered with wide and well-proportioned margins all around, fresh and bright colors, trivial natural inclusion at top left

EXTREMELY FINE GEM. A SUPERB GUIDE LINE PAIR OF THIS RARE COIL IN THE FINEST CONDITION ATTAINABLE.

With 1998 P.F. certificate (not mentioning the natural inclusion)..... 2,700.00



68

- 68 ★★ **5c Blue, Coil (355).** Mint N.H. guide line pair, almost perfectly centered with wide and well-balanced margins, brilliant color and detailed impression

EXTREMELY FINE GEM. THIS IS POSSIBLY THE FINEST GUIDE LINE PAIR OF THE 5-CENT 1909 HORIZONTAL COIL IN EXISTENCE. SUPERB IN EVERY RESPECT — CENTERING, COLOR, GUM, PAPER AND OVERALL APPEAL.

With 1996 P.F. certificate ..... 2,700.00





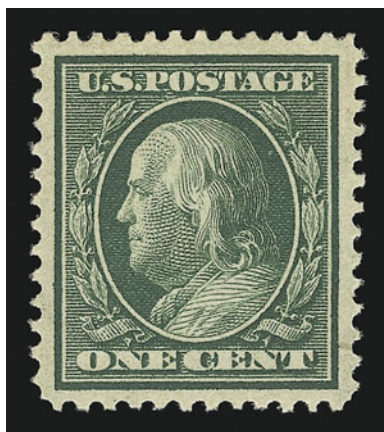
69

- 69 ★ **10c Yellow, Coil (356).** Single hinge mark at top, unusually wide margins, vibrant color  
EXTREMELY FINE GEM SINGLE OF THE RARE 10-CENT PERF 12 COIL.

According to Johl (Volume 1, page 181), only 10,000 of this coil were issued. They were made especially for a New York firm to send out advertising samples, similar to the 3c Orangeburg coil. Only a few rolls were sold to the firm, and the remaining rolls were distributed to some of the larger post offices across the country. Dealers acquired several rolls, but as most collectors of the time did not collect coils many were used and destroyed.

With 2001 P.F. certificate ..... 2,500.00

## BLuish PAPER



70



71

- 70 ★★ **1c Green, Bluish (357).** Mint N.H., choice centering, rich color on deeply blued paper,  
Extremely Fine, with 1996 P.F. certificate ..... 160.00
- 71 ★★ **2c Carmine, Bluish (358).** Mint N.H., choice centering, rich color on deeply blued paper,  
Extremely Fine, with 1997 P.F. certificate ..... 155.00



72

- 72 ★ **5c Blue, Bluish (361).** Single small hinge mark, fresh color and detailed impression on nicely blued paper, choice centering for this issue

EXTREMELY FINE. AN EXCEPTIONAL EXAMPLE OF THE 5-CENT BLUISH PAPER.

Of the 4,000 issued, the majority of surviving examples are off-center. The 5c is the third-scarcest value of the set, after the 4c and the 8c. It was discovered at the post office at Rockford Ill.

With 1969 and 2000 P.F. certificates..... 5,000.00

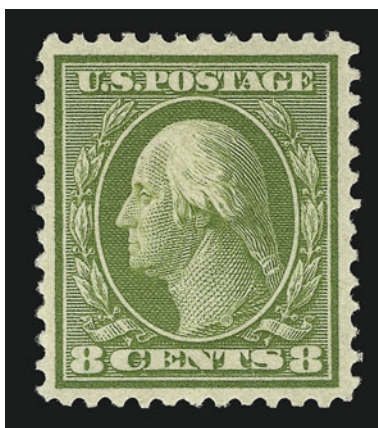


73

- 73 ★★ **6c Red Orange, Bluish (362).** Mint N.H., fresh and radiant color, very well-centered for this difficult stamp

EXTREMELY. A BEAUTIFUL EXAMPLE OF THE 6-CENT BLUISH PAPER.

With 1999 P.F. certificate..... 2,700.00



74

- 74 ★ **8c Olive Green, Bluish (363).** Barest trace of hinging, crisp color on deeply blued paper, exceptional centering for this difficult stamp

EXTREMELY FINE GEM. THIS IS ONE OF THE FINEST EXAMPLES OF THE RARE 8-CENT BLuish PAPER IN EXISTENCE. A SUPERB STAMP.

According to Johl (Vol. 1, page 175), the only source of the 4c and 8c Bluish stamps was the archives of the Post Office Department. Approximately 80 of each were traded for rare stamps missing from the archives.

Ex Lyons. With 1973 and 2000 P.F. certificates ..... 26,000.00



- 75 ★★ **15c Pale Ultramarine, Bluish (366).** Mint N.H., brilliant color on deeply blued paper, choice centering with extra wide margin at top

EXTREMELY FINE. A SUPERB MINT NEVER-HINGED EXAMPLE OF THE 15-CENT BLUISH PAPER.

The 15c Bluish stamps were discovered at the post office in Buffalo N.Y.

With 1997 P.F. certificate ..... 2,600.00



75

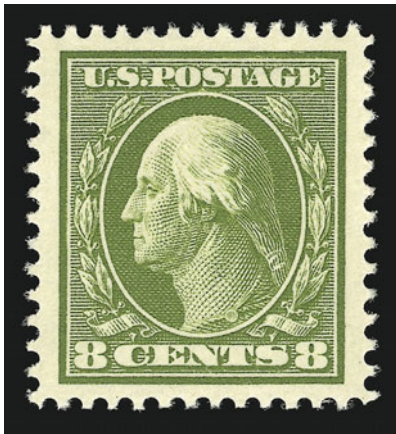


- 76 ★★ **2c 1909 Commemoratives (367-368, 370-373).** Mint N.H., all have Jumbo margins, rich color, each is an Extremely Fine Gem, a superb group, each with 1997 or 1998 P.F. certificate .....(Photo Ex) 174.00
- 77 ★★ **2c Lincoln, Bluish (369).** Mint N.H., perfectly centered with wide margins, sharp impression on deeply blued paper, Extremely Fine Gem, with 1999 and 2001 P.F. certificates... 380.00
- 78 ★★ **1c Green (374).** Mint N.H., Jumbo margins, deep rich color, Extremely Fine Gem, with 2000 P.F. certificate ..... 12.00
- 79 ★★ **2c Carmine (375).** Mint N.H., enormous margins, rich color and detailed impression, Extremely Fine Gem, with 1998 and 2000 P.F. certificates..... 12.00
- 80 ★★ **3c Deep Violet (376).** Mint N.H., Jumbo margins, brilliant color, Extremely Fine Gem, a superb stamp in every respect, with 1999 and 2000 P.F. certificates ..... 36.00
- 81 ★★ **4c Brown (377).** Mint N.H., enormous Jumbo margins all around, incredibly deep rich color on bright paper, Extremely Fine Gem, a beautiful stamp, with 2000 P.F. certificate ..... 57.00
- 82 ★★ **5c Blue (378).** Almost perfectly centered with extra wide margins, deep rich color and proof-like impression, Extremely Fine Gem, a beautiful stamp, with 2001 P.F. certificate. .... 57.00

- 83 ★★ **6c Red Orange (379).** Mint N.H., perfectly centered with wide and well-balanced margins, vibrant color, fresh and Extremely Fine, a superb stamp in every respect, with 1992 and 2001 P.F. certificates ..... 67.00



83



84

- 84 ★★ **8c Olive Green (380).** Mint N.H., choice centering with wide margins, rich color and detailed impression, Extremely Fine Gem, scarce with such wide margins, with 2000 P.F. certificate..... 210.00

- 85 ★★ **10c Yellow (381).** Mint N.H., huge margins, brilliant color, Extremely Fine Gem, a huge stamp, with 1996 P.S.E. and 2001 P.F. certificates ..... 190.00



85



86

- 86 ★★ **15c Pale Ultramarine (382).** Mint N.H., brilliant color, perfectly centered  
EXTREMELY FINE GEM. A SUPERB EXAMPLE OF THE 15-CENT PERF 12 SINGLE-LINE WATERMARK STAMP.  
With 1999 P.F. certificate..... 500.00





87



88

- 87 ★★ **1c Green, Coil (385).** Mint N.H., perfectly centered with wide margins, rich color, Extremely Fine Gem, with 1998 P.F. certificate ..... 72.00
- 88 ★★ **2c Carmine, Coil (386).** Mint N.H., choice centering with extra wide margins at sides, rich color, Extremely Fine, with 1997 P.F. certificate ..... 125.00



89

- 89 ★★ **1c Green, Coil (385).** Mint N.H. guide line pair, perfect centering with Jumbo margins on all sides, rich color and proof-like impression  
EXTREMELY FINE GEM. A SUPERB MINT NEVER-HINGED GUIDE LINE PAIR IN THE FINEST CONDITION ATTAINABLE.  
With 1993 P.F. certificate..... 850.00



- 90 ★★ **2c Carmine, Coil (386).** Mint N.H. guide line pair, Jumbo margins all around, beautiful bright color and sharp impression

EXTREMELY FINE GEM. PROBABLY THE FINEST GUIDE LINE PAIR OF THIS VERTICAL COIL IN EXISTENCE. TRULY REMARKABLE.

According to Johl (Vol. 1, p. 111), the Bureau switched to Perf 8½ for their coils after a very short period of time. The Perf 12 coils proved to be too susceptible to falling apart in the machines used to affix (and make) the coils. Scott 386 was one of the first to be discontinued.

With 1999 P.F. certificate ..... 1,500.00



91



90

- 91 ★★ **1c Green, Coil (387).** Mint N.H., huge margins, fresh color, Extremely Fine, with 1996 P.F. certificate..... 290.00

- 92 ★★ **2c Carmine, Coil (388).** Mint N.H., exceptionally choice centering and with 2mm spacing at sides, brilliant color and proof-like impression

EXTREMELY FINE GEM. THE 2-CENT 1911 PERF 12 HORIZONTAL COIL IS ONE OF THE MOST DIFFICULT OF ALL 20TH CENTURY UNITED STATES STAMPS TO FIND IN MINT NEVER-HINGED CONDITION.

This 2c coil was in production for only a short period of time before being superseded by the Perf 8½ issue. Due to the greater popularity of the horizontal coils with users, combined with a wary attitude by many collectors that early coils were simply trimmed stamps, many were used and few preserved. The rarity of this stamp in Mint N.H. condition cannot be understated. As an additional rarity factor, an even smaller percentage were produced with the 2mm spacing, making this centered example probably the finest known single.

With 1996 P.F. certificate ..... 1,600.00



92



93EX

- 93 ★★ **1c Green, 2c Carmine, Coil (390-391).** Mint N.H., huge margins, Extremely Fine Gems, with 1996 and 2000 P.F. certificates ..... (Photo Ex) 82.00
- 94 ★★ **1c Green, Coil (390).** Mint N.H. guide line pair, perfectly centered with wide margins, intense shade, Extremely Fine Gem, with 2000 P.F. certificate ..... 67.00



94



95

- 95 ★★ **2c Carmine, Coil (391).** Mint N.H. guide line pair, perfect centering with Jumbo margins, brilliant color

EXTREMELY FINE GEM. AN OUTSTANDING MINT NEVER-HINGED GUIDE LINE PAIR IN THE FINEST CONDITION ATTAINABLE.

The Perf 8½ coil stamps were produced after the Bureau introduced a new machine to assist in the production of coil stamps. The earlier Perf 12 stamps were too fragile for use in the machine, which necessitated the change in perforation gauge from 12 to 8½.

With 1987 and 2001 P.F. certificates ..... 475.00





- 96 ★★ **1c Green, Coil (392).** Mint N.H., choice centering, bright shade, Extremely Fine, with 1999 P.F. certificate ..... 45.00
- 97 ★★ **2c Carmine, Coil (393).** Mint N.H., extra wide margins, brilliant color, fresh and Extremely Fine, with 1999 and 2000 P.F. certificates ..... 85.00
- 98 ★★ **3c Deep Violet, Coil (394).** Mint N.H., wide margins, intense color, Extremely Fine Gem, with 1999 P.F. certificate ..... 105.00
- 99 ★★ **4c Brown, Coil (395).** Mint N.H., wide margins, rich color, fresh and Extremely Fine, with 1997 P.F. certificate ..... 105.00
- 100 ★★ **5c Blue, Coil (396).** Mint N.H., Jumbo margins, intense shade, Extremely Fine Gem, with 1995 P.F. certificate ..... 105.00
- 101 ★★ **1c Green, Coil (392).** Mint N.H. guide line pair, perfectly centered, deep rich color and detailed impression, Extremely Fine Gem, choice in every respect, with 1996 P.F. certificate ..... 340.00



102

- 102 ★★ **2c Carmine, Coil (393).** Mint N.H. guide line pair, perfectly centered with wide and well-proportioned margins, rich color and proof-like impression  
EXTREMELY FINE GEM. A SUPERB MINT NEVER-HINGED GUIDE LINE PAIR OF THIS COIL IN THE FINEST CONDITION ATTAINABLE.  
With 1999 P.F. certificate..... 550.00





103

- 103 ★★ **3c Deep Violet, Coil (394).** Mint N.H. guide line pair, perfectly centered with enormous margins, post-office fresh

EXTREMELY FINE GEM. AN ABSOLUTELY SUPERB MINT NEVER-HINGED GUIDE LINE PAIR OF THE 3-CENT 1911 HORIZONTAL COIL.

With 1999 P.F. certificate .....  
 ..... 725.00

- 104 ★★ **4c Brown, Coil (395).** Mint N.H. guide line pair, choice centering, rich color and post-office fresh

EXTREMELY FINE. A CHOICE MINT NEVER-HINGED GUIDE LINE PAIR OF THE 4-CENT 1911 HORIZONTAL COIL.

With 1998 P.F. certificate .....  
 ..... 725.00



104



105

- 105 ★★ **5c Blue, Coil (396).** Mint N.H. guide line pair, deep dark shade on bright paper

EXTREMELY FINE MINT NEVER-HINGED GUIDE LINE PAIR OF THE 5-CENT 1911 HORIZONTAL COIL.

With 1998 P.F. certificate .....  
 ..... 725.00

## PANAMA-PACIFIC ISSUE



- 106 ★★ **1c Panama-Pacific (397).** Mint N.H., Jumbo margins, rich color, Extremely Fine Gem, a huge stamp, with 2000 P.F. certificate..... 30.00
- 107 ★★ **2c Panama-Pacific (398).** Mint N.H., perfectly centered with well-proportioned margins, deep shade on bright paper, Extremely Fine Gem, with 1999 P.F. certificate..... 37.00
- 108 ★★ **5c Panama-Pacific (399).** Mint N.H., well-centered with Jumbo margins, rich color, Extremely Fine Gem, an outstanding stamp, with 1986 P.F. certificate..... 135.00
- 109 ★★ **10c Orange Yellow, Panama-Pacific (400).** Mint N.H., choice centering, brilliant color on bright paper, Extremely Fine Gem, with 1996 P.F. certificate..... 240.00
- 110 ★★ **10c Orange, Panama-Pacific (400A).** Mint N.H., beautifully centered, detailed impression, Extremely Fine, with 2000 P.F. certificate ..... 375.00
- 111 ★★ **1c Panama-Pacific, Perf 10 (401).** Mint N.H., perfect centering, intense color, Extremely Fine Gem, with 1997 P.F. certificate ..... 45.00
- 112 ★★ **2c Panama-Pacific, Perf 10 (402).** Mint N.H., perfectly centered, bright shade on white paper, Extremely Fine Gem, a remarkably fresh stamp, with 1997 P.F. certificate..... 135.00
- 113 ★★ **5c Panama-Pacific, Perf 10 (403).** Mint N.H., choice centering with well-proportioned margins, deep rich color on bright white paper, Extremely Fine Gem, with 2000 P.F. certificate..... 310.00
- 114 ★★ **10c Panama-Pacific, Perf 10 (404).** Mint N.H., choice centering, intense color and detailed impression on bright white paper

VERY FINE. A CHOICE MINT NEVER-HINGED 10-CENT PERF 10 PANAMA-PACIFIC ISSUE.

According to Johl (Vol. 1, page 239) the 10c Perf 10 Panama-Pacific was issued only six months prior to its being discontinued. The series had been available for over 2½ years, and so this latecomer to the series was largely overlooked. Unlike some of the other denominations, this stamp is difficult to find in well-centered Mint N.H. condition.

With 1997 P.F. certificate..... 1,650.00



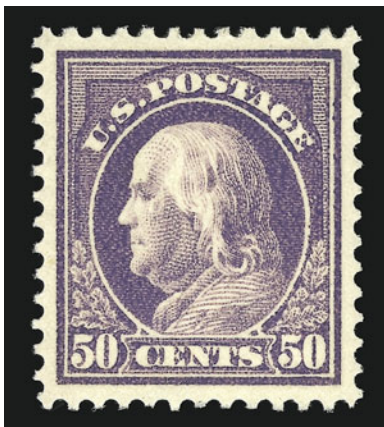


- 115 ★★ **1c Green (405)**. Mint N.H., perfectly centered with absolutely enormous margins, rich color on bright paper, Extremely Fine Gem, a phenomenal stamp, with 1999 and 2000 P.F. certificates..... 12.00
- 116 ★★ **2c Carmine (406)**. Mint N.H., perfect centering, rich color on white paper, Extremely Fine, with 1998 P.F. certificate ..... 12.00
- 117 ★★ **7c Black (407)**. Mint N.H., perfectly centered, intense shade and impression on bright paper, Extremely Fine Gem, with 1997 P.F. certificate ..... 145.00
- 118 ★★ **1c Green, 2c Carmine, Coils (410-411)**. Mint N.H., wide margins, Extremely Fine, with 1997 and 1998 P.F. certificates .....(Photo Ex) 29.00
- 119 ★★ **1c Green, Coil (410)**. Mint N.H. guide line pair, beautiful centering with wide and even margins, pretty shade, Extremely Fine Gem, with 2000 P.F. certificate ..... 55.00
- 120 ★★ **2c Carmine, Coil (411)**. Mint N.H. guide line pair, magnificent color and centering, Extremely Fine Gem, with 1997 P.F. certificate ..... 100.00
- 121 ★★ **1c Green, Coil (412)**. Mint N.H., Jumbo margins, rich color, Extremely Fine, with 1997 P.F. certificate ..... 45.00
- 122 ★★ **2c Carmine, Coil (413)**. Mint N.H., intense color and impression on bright paper, Extremely Fine, with 2001 P.F. certificate..... 90.00





- 123 ★★ **1c Green, Coil (412).** Mint N.H. guide line pair, perfectly centered, intense dark color and sharp impression, Extremely Fine, a superb Mint N.H. guide line pair, with 1994 P.F. certificate ..... 220.00
- 124 ★★ **2c Carmine, Coil (413).** Mint N.H. guide line pair, wide margins, brilliant color  
EXTREMELY FINE GEM. A SUPERB MINT NEVER-HINGED GUIDE LINE PAIR.  
With 1991 and 1999 P.F. certificates ..... 500.00
- 125 ★★ **8c Pale Olive Green (414).** Mint N.H., choice centering, pretty pastel shade, fresh and Extremely Fine, with 1997 P.F. certificate..... 80.00
- 126 ★★ **9c Salmon Red (415).** Mint N.H., beautiful centering, brilliant color on bright paper, Extremely Fine, with 2001 P.F. certificate..... 100.00
- 127 ★★ **10c Orange Yellow (416).** Mint N.H., wide margins, vibrant color on white paper, Extremely Fine Gem, with 1999 P.F. certificate ..... 80.00
- 128 ★★ **12c Claret Brown (417).** Mint N.H., perfect centering, rich color and proof-like impression, Extremely Fine Gem, this was the first 12c stamp issued in the Washington-Franklin series, with 1998 P.F. certificate ..... 90.00
- 129 ★★ **15c Gray (418).** Mint N.H., perfectly centered with wide margins, brilliant color on bright paper, Extremely Fine Gem, a superb stamp, with 2000 P.F. certificate ... 155.00
- 130 ★★ **20c Ultramarine (419).** Mint N.H., gorgeous color, almost perfectly centered with extra wide margins, Extremely Fine and choice, with 2000 P.F. certificate ..... 360.00
- 131 ★★ **30c Orange Red (420).** Mint N.H., extra wide margins, brilliant color on white paper, Extremely Fine, with 1998 P.F. certificate..... 225.00



132

- 132 ★★ **50c Violet (421).** Mint N.H., perfectly centered with well-proportioned margins, deep rich color on bright white paper

EXTREMELY FINE GEM. ONE OF THE FINEST EXAMPLES OF THE 1914 50-CENT PERF 12 SINGLE-LINE WATERMARKED STAMP IN EXISTENCE.

As the next description notes, this stamp was actually issued well after Scott 422. With 1997 P.F. certificate ..... 775.00

- 133 ★★ **50c Violet (422).** Mint N.H., remarkable centering with unusually wide margins at sides, brilliant color on bright paper

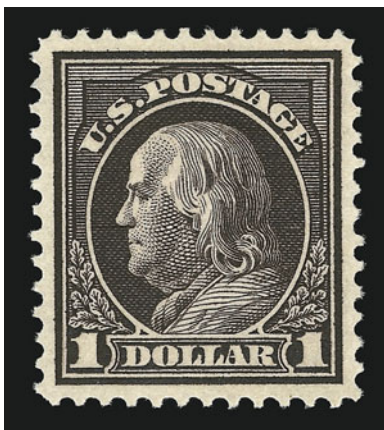
EXTREMELY FINE GEM. A SUPERB EXAMPLE OF THE 1912 50-CENT FRANKLIN ON DOUBLE-LINE WATERMARKED PAPER.

According to Johl (Vol. 1, page 203), Scott 422 was issued more than two years prior to the release of Scott 421. A supply of the double-line watermark paper was still on hand to fulfill the needs of the higher denomination stamps.

With 1998 P.F. certificate ..... 450.00



133



134

- 134 ★★ **\$1.00 Violet Brown (423).** Mint N.H., almost perfect centering with well-balanced margins, deep shade and proof-like impression on bright paper

EXTREMELY FINE GEM. THIS IS AN EXTREMELY DIFFICULT STAMP TO FIND WITH SUCH CHOICE CENTERING.

This stamp occasionally comes with wide margins, but is rarely found with such perfect centering. A condition rarity. With 1997 P.F. certificate ..... 950.00



## 1912-23 ISSUES

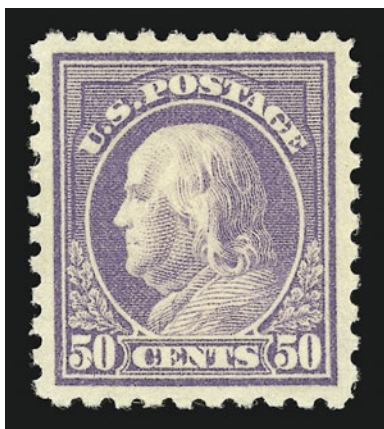


- 135 ★★ **1c Green, 2c Rose Red (424-425).** Mint N.H., each has Jumbo margins and intense color, Extremely Fine Gems, with 1997 and 1998 P.F. certificates.....(Photo Ex) 8.00
- 136 ★★ **3c Reddish Violet (426 var).** Mint N.H., choice centering, brilliant shade on white paper, Extremely Fine example of this shade variety, with 1998 P.F. certificate ..... 27.00
- 137 ★★ **4c Brown (427).** Mint N.H., wide margins, rich color, fresh and Extremely Fine, with 1997 P.F. certificate ..... 62.00
- 138 ★★ **5c Blue (428).** Mint N.H., perfectly centered, deep shade and proof-like impression, Extremely Fine Gem, a stamp of great visual appeal, with 1998 P.F. certificate.... 62.00
- 139 ★★ **6c Red Orange (429).** Mint N.H., choice centering with wide margins, bright shade, fresh and Extremely Fine, with 1997 P.F. certificate ..... 90.00
- 140 ★★ **7c Black (430).** Mint N.H., deep dark shade and intense impression on bright paper, Very Fine and choice, with 1998 P.F. certificate ..... 160.00
- 141 ★★ **8c Pale Olive Green (431).** Mint N.H., pretty pastel shade on bright paper, Extremely Fine and choice, with 2000 P.F. certificate..... 65.00
- 142 ★★ **9c Salmon Red (432).** Mint N.H., perfectly centered, brilliant shade on white paper, Extremely Fine Gem, a stamp of remarkable freshness, with 2000 P.F. certificate. 90.00





- 143 ★★ **10c Orange Yellow (433).** Mint N.H., wide margins, fresh color, Extremely Fine, with 1997 P.F. certificate ..... 85.00
- 144 ★★ **11c Dark Green (434).** Mint N.H., Jumbo margins, dark color on bright paper, Extremely Fine Gem, a superb stamp, with 1997 P.F. certificate..... 45.00
- 145 ★★ **12c Claret Brown (435).** Mint N.H., choice centering with extra wide margins at sides, intense shade and impression on white paper, Extremely Fine Gem, with 1997 P.F. certificate ..... 50.00
- 146 ★★ **15c Gray (437).** Mint N.H., virtually perfectly centered, rich color, Extremely Fine, with 2000 P.F. certificate ..... 250.00
- 147 ★★ **20c Ultramarine (438).** Mint N.H., choice centering, brilliant color, fresh and Extremely Fine, a beautiful stamp, with 1995 P.F. certificate ..... 400.00
- 148 ★★ **30c Orange Red (439).** Mint N.H., deep rich color on bright paper, fresh and Extremely Fine, with 1997 P.F. certificate ..... 475.00



- 149 ★★ **50c Violet (440).** Mint N.H., perfect centering with well-balanced margins, bright shade on crisp paper  
EXTREMELY FINE GEM. THIS IS AN EXTREMELY DIFFICULT STAMP TO FIND IN SUCH SUPERB CONDITION. A WONDERFUL CONDITION RARITY.  
With 1996 P.F. certificate..... 1,050.00

149



- 150 ★★ **1c Green, 2c Carmine, Coil (441-442).** Mint N.H., each with Jumbo margins, both are Extremely Fine Gems, with 1997 and 2001 P.F. certificates .....**(Photo Ex)** 19.00
- 151 ★★ **1c Green, Coil (441).** Mint N.H. guide line pair, choice centering, bright color, Extremely Fine Gem, with 2000 P.F. certificate ..... 14.00
- 152 ★★ **2c Carmine, Ty. I, Coil (442).** Mint N.H. guide line pair, perfectly centered, stunning color on white paper, Extremely Fine Gem, with 1997 P.F. certificate..... 110.00
- 153 ★★ **1c Green, Coil (443).** Mint N.H., perfect centering, rich color, Extremely Fine Gem, with 2001 P.F. certificate ..... 45.00
- 154 ★★ **2c Carmine, Coil (444).** Mint N.H., brilliant color, fresh and Extremely Fine, with 2001 P.F. certificate ..... 72.00





155



156



157

- 155 ★★ **3c Violet, Coil (445).** Mint N.H., enormous margins on all sides, striking color on bright paper, Extremely Fine Gem, a huge stamp, with 2001 P.F. certificate ..... 400.00
- 156 ★★ **4c Brown, Coil (446).** Mint N.H., wide margins, fresh color, Extremely Fine, with 1996 P.F. certificate ..... 225.00
- 157 ★★ **5c Blue, Coil (447).** Mint N.H., almost perfect centering, deep shade on bright paper, Extremely Fine, with 1999 P.F. certificate..... 80.00



158

- 158 ★★ **1c Green, Coil (443).** Mint N.H. guide line pair, Jumbo margins, rich color on bright paper, Extremely Fine Gem, a phenomenal guide line pair, with 1990 and 1999 P.F. certificates..... 280.00



159

- 159 ★★ **2c Carmine, Coil (444).** Mint N.H. guide line pair, beautiful centering with wide margins, bright color  
EXTREMELY FINE GEM. A SUPERB MINT NEVER-HINGED GUIDE LINE PAIR OF SCOTT 444.  
With 1999 P.F. certificate..... 525.00





160

160 ★★ **3c Violet, Coil (445).** Mint N.H. guide line pair, almost perfect centering with extra wide margins, fresh color on bright paper

EXTREMELY FINE GEM. ONE OF THE FINEST MINT NEVER-HINGED GUIDE LINE PAIRS OF SCOTT 445 IN EXISTENCE.

According to Johl (Vol. 1, page 143), the 3c stamps were mainly used for special mailings such as samples and pamphlets and were therefore not widely available to collectors of the day. This accounts for their rarity in such superb and pristine condition.

With 1999 P.F. certificate ..... 2,350.00



161

161 ★★ **4c Brown, Coil (446).** Mint N.H. guide line pair, phenomenal centering with perfect margins all around, bright shade and crisp impression

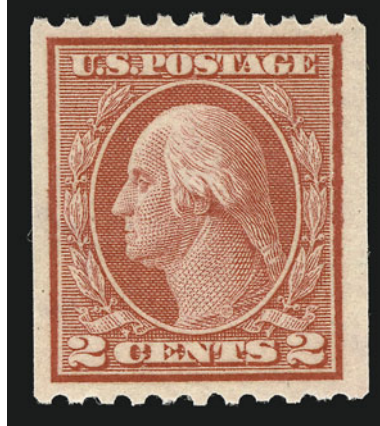
EXTREMELY FINE GEM. EASILY ONE OF THE FINEST MINT NEVER-HINGED GUIDE LINE PAIRS OF SCOTT 446 IN EXISTENCE.

With 1996 P.F. certificate . 1,350.00

162 ★★ **5c Blue, Coil (447).** Mint N.H. guide line pair, choice centering with well-proportioned margins, intense color and proof-like impression, Extremely Fine Gem, with 1998 P.F. certificate ..... 475.00



162



163

- 163 ★★ **2c Red, Ty. I, Coil (449).** Mint N.H., exceptional centering with wide margins all around, brilliant color and detailed impression.

EXTREMELY FINE GEM. AN EXTRAORDINARILY RARE MINT NEVER-HINGED EXAMPLE OF THE 1915 TYPE I VERTICAL COIL. AN OUTSTANDING RARITY.

Type I rotary press stamps were produced using the same master dies as had been used for flat plate printings. However, due to the curve of the plate to fit the rotary press, the impressions lacked some of the details of the flat plate printings. New dies were made with strengthened lines, resulting in the Type II stamps. After plate wear was noticed, further strengthening was necessary, resulting in the Type III stamps. Scott 449 was not produced until almost a year and a half after the Type I horizontal coil, Scott 453. Due to the unpopularity of vertical coils, this Type I stamp was in production for only a short period of time before being discontinued. The stamp offered here, in a Mint N.H. condition and with such choice centering and color, is a major rarity.

With 1999 P.F. certificate ..... 4,700.00





- 164 ★★ **1c Green, Coil (448).** Mint N.H. joint line pair, choice centering, bright shade, Extremely Fine, with 1998 P.F. certificate ..... 72.00
- 165 ★★ **2c Carmine, Ty. III, Coil (450).** Mint N.H. joint line pair, brilliant color, fresh and Extremely Fine, with 1999 P.F. certificate ..... 140.00
- 166 ★★ **1c Green, Coil (452).** Mint N.H., Jumbo margins, detailed impression, Extremely Fine Gem, with 1997 P.F. certificate ..... 18.00
- 167 ★★ **2c Carmine Rose, Ty. I, Coil (453).** Mint N.H. joint line pair, wide margins, bright color, fresh and Extremely Fine, with 2000 P.F. certificate ..... 270.00
- 168 ★★ **2c Red, Ty. II, Coil (454).** Mint N.H., almost perfect centering, bright color, Extremely Fine, with 1996 P.F. certificate ..... 150.00
- 169 ★★ **2c Carmine, Ty. III, Coil (455).** Mint N.H., choice centering, rich color, Extremely Fine, with 2000 P.F. certificate ..... 15.00
- 170 ★★ **3c Violet, Coil (456).** Mint N.H., wide margins all around, fresh color and detailed impression, Extremely Fine Gem, a beautiful stamp, with 1999 P.F. certificate... 430.00
- 171 ★★ **4c Brown, Coil (457).** Mint N.H., wide margins, bright color, Extremely Fine, with 1997 P.F. certificate ..... 45.00
- 172 ★★ **5c Blue, Coil (458).** Mint N.H., enormous margins, rich color, Extremely Fine, a huge stamp, with 2001 P.F. certificate ..... 55.00





173

- 173 ★★ **1c Green, Coil (452).** Mint N.H. joint line pair, perfectly centered, fresh color, Extremely Fine Gem, with 1999 P.F. certificate..... 130.00

- 174 ★★ **2c Carmine Rose, Ty. I, Coil (453).** Mint N.H. joint line pair, almost perfectly centered (the right stamp with Jumbo margins all around), beautiful bright color on white paper

EXTREMELY FINE GEM. A SUPERB MINT NEVER-HINGED GUIDE LINE PAIR OF SCOTT 453 IN THE FINEST CONDITION ATTAINABLE.

The Type I rotary press stamps were produced using the same master dies as had been used for flat plate printings. However, due to the curve of the plate to fit the rotary press, the impressions lacked some of the details of the flat plate printings. New dies were made with strengthened lines, resulting in the Type II stamps.

With 1999 P.F. certificate ..... 1,250.00



174



175

- 175 ★★ **2c Red, Ty. II, Coil (454).** Mint N.H. joint line pair, perfectly centered, brilliant color, detailed impression

EXTREMELY FINE GEM. A SUPERB MINT NEVER-HINGED EXAMPLE OF THE 1915 TYPE II ROTARY HORIZONTAL COIL.

As mentioned in our description for Scott 449, the Type II stamps were replaced by the more deeply-engraved Type III after plate wear was noticed on the new rotary printing presses.

With 1992 and 2000 P.F. certificates ..  
..... 725.00

- 176 ★★ **2c Carmine, Ty. III, Coil (455).** Mint N.H. joint line pair, rich color, fresh and Extremely Fine, with 1997 P.F. certificate..  
..... 85.00



176



177

- 177 ★★ **3c Violet, Type I, Coil (456).** Mint N.H. joint line pair, choice centering with wide margins and part of adjoining stamps at sides, fresh color and detailed impression

EXTREMELY FINE. A SUPERB MINT NEVER-HINGED JOINT LINE PAIR OF THE 1916 3-CENT HORIZONTAL COIL.

With 1978 and 1997 P.F. certificates..... 2,250.00



178

- 178 ★★ **4c Brown, Coil (457).** Mint N.H. joint line pair, almost perfectly centered with wide margins, intense color and impression, Extremely Fine, with 1999 P.F. certificate..... 270.00



179

- 179 ★★ **5c Blue, Coil (458).** Mint N.H. joint line pair, perfect centering with wide margins, rich color and proof-like impression, Extremely Fine Gem, superb in every respect, with 2001 P.F. certificate ... 325.00





180

- 180 ★★ **2c Carmine, Ty. I, Imperforate Coil (459).** Mint N.H., large margins, rich color, Extremely Fine, with 1996 P.F. certificate ... 350.00

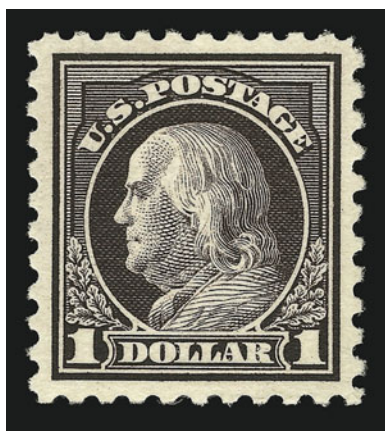
- 181 ★★ **2c Carmine, Ty. I, Imperforate Coil (459).** Mint N.H. joint line pair, **without usual crease between stamps**, large and even margins

EXTREMELY FINE GEM JOINT LINE PAIR.  
SUPERB IN EVERY RESPECT.

Most joint line pairs of this stamp are creased. The example offered here, without a crease, is a rare exception to the rule. With 2000 P.F. certificate. Scott Retail for creased..... 1,600.00



181



182

- 182 ★★ **\$1.00 Violet Black (460).** Mint N.H., mathematically perfect centering with wide and well-balanced margins, deep rich color and sharp proof-like impression on bright paper

EXTREMELY FINE GEM. THIS SUPERB EXAMPLE OF THE PERF 10 DOUBLE-LINE WATERMARK FRANKLIN IS EASILY ONE OF THE FINEST IN EXISTENCE. A REMARKABLE CONDITION RARITY.

Even though this stamp is not particularly rare, collectors who have been searching know that it is extremely difficult to find with such perfect centering and in such pristine condition.

With 1999 P.F. certificate ..... 1,500.00

- 183 ★★ **2c Pale Carmine Red, Ty. I (461).** Mint N.H., choice centering with wide margins, brilliant color on white paper, Extremely Fine, with 1984 and 1999 P.F. certificates..... 270.00



183



- 184 ★★ **1c Green, 2c Carmine (462-463).** Mint N.H., both have Jumbo margins and are Extremely Fine Gems, each with 1998 P.F. certificate .....**(Photo Ex)** 20.00
- 185 ★★ **3c Violet (464).** Mint N.H., wide margins, rich color, Extremely Fine Gem, with 1997 P.F. certificate..... 135.00
- 186 ★★ **4c Orange Brown (465).** Mint N.H., choice centering with wide margins, bright shade, fresh and Extremely Fine, with 2000 P.F. certificate ..... 80.00
- 187 ★★ **5c Blue (466).** Mint N.H., wide margins, rich color, Extremely Fine, with 1997 P.F. certificate..... 135.00



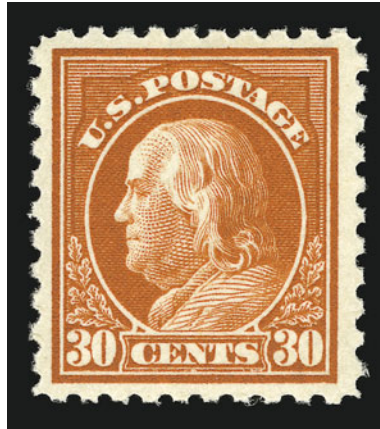
188

- 188 ★★田 **5c Carmine, Error (467).** Mint N.H. double error in block of twelve, remarkably choice centering, brilliant color on bright white paper  
 EXTREMELY FINE GEM. THE 5-CENT PERF 10 ERROR IS SURPRISINGLY DIFFICULT TO FIND IN SUCH SUPERB CONDITION.  
 This error and the Perf 11 Scott 505 are rarely found with such choice centering. With 1992 and 1999 P.F. certificates ..... 2,900.00





- 189 ★★ **6c Red Orange (468)**. Mint N.H., beautiful centering, vibrant color, Extremely Fine Gem, a superb stamp, with 1997 P.F. certificate ..... 170.00
- 190 ★★ **7c Black (469)**. Mint N.H., intense shade and proof-like impression, fresh and Extremely Fine, with 1997 P.F. certificate ..... 210.00
- 191 ★★ **8c Olive Green (470)**. Mint N.H., almost perfect centering, pretty shade, fresh and Extremely Fine, with 2000 P.F. certificate ..... 110.00
- 192 ★★ **9c Salmon Red (471)**. Mint N.H., perfectly centered, brilliant color on bright paper, Extremely Fine Gem, a superb stamp in every respect, with 1999 P.F. certificate ..... 110.00
- 193 ★★ **10c Orange Yellow (472)**. Mint N.H., well-balanced margins, brilliant color, fresh and Extremely Fine, with 2000 P.F. certificate ..... 200.00
- 194 ★★ **11c Dark Green (473)**. Mint N.H., wide margins, deep dark color on bright paper, Extremely Fine, with 1998 P.F. certificate ..... 72.00
- 195 ★★ **12c Claret Brown (474)**. Mint N.H., almost perfect centering, fresh color and crisp impression on bright paper, Extremely Fine, with 1998 P.F. certificate ..... 100.00
- 196 ★★ **15c Gray (475)**. Mint N.H., extra wide margins at sides, bright shade, Extremely Fine, with 1997 P.F. certificate ..... 360.00
- 197 ★★ **20c Light Ultramarine (476)**. Mint N.H., beautiful centering with wide margins, brilliant color on white paper, Extremely Fine Gem, with 2001 P.F. certificate ..... 450.00



198

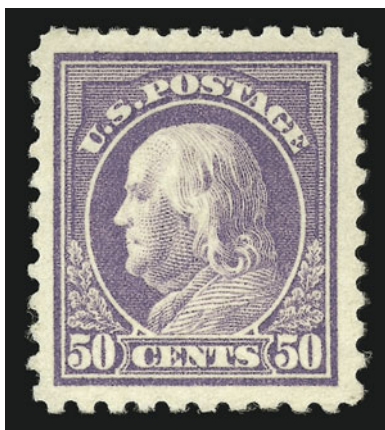
198 ★★ **30c Orange Red, Perf 10 (476A).** Position 73 from Plate No. 6911, Mint N.H., very deep and intense color, sharp proof-like impression on bright white paper, well-centered for this difficult stamp

FRESH AND EXTREMELY FINE. AN OUTSTANDING EXAMPLE OF THE VERY RARE 30-CENT PERF 10 WASHINGTON-FRANKLIN ON UNWATERMARKED PAPER.

In an article in *Philatelic Opinions V* published by the Philatelic Foundation, William T. Crowe, head of the Expert Committee, discusses the discovery of this rare stamp and how it might have been issued. The production of Scott 476A occurred during the period of transition from gauge-10 perfs to gauge 11. Bureau records do not list a 30c printing on unwatermarked paper that was perforated 10, but the existence of two certified panes—one bottom-right pane from Plate 6917 and one top-right pane from Plate 6911—is evidence that the combination of new unwatermarked paper and old 10-gauge perfs occurred, even if inadvertantly. Stamps from these two panes (200 total), two left sheet-margin blocks of four and a bottom plate no. 6914 single, none of which have any trace of watermark, are the only accepted examples of Scott 476A.

With 1984 and 1998 P.F. certificates..... 5,500.00





199

- 199 ★★ **50c Light Violet (477).** Mint N.H., exceptional centering with wide margins all around, rich color on bright white paper

EXTREMELY FINE GEM. EASILY ONE OF THE FINEST EXAMPLES OF THE 50-CENT PERF 10 FRANKLIN STAMP ON UNWATERMARKED PAPER IN EXISTENCE.

This 50c stamp was only in production for a very short period of time. It was actually released only three weeks prior to the beginning of the new Perf 11 series and was only used for a short period of time before being superseded by the new issue.

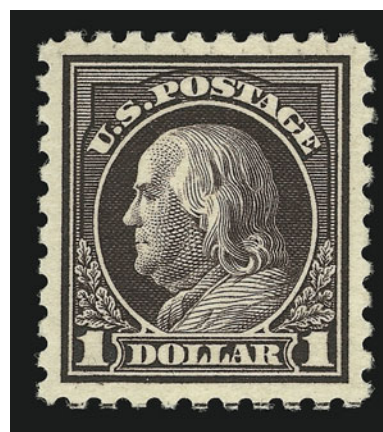
With 1987 and 2001 P.F. certificate..... 2,000.00

- 200 ★★ **\$1.00 Violet Black (478).** Mint N.H., perfect centering with wide and well-balanced margins, intense color and impression on bright paper

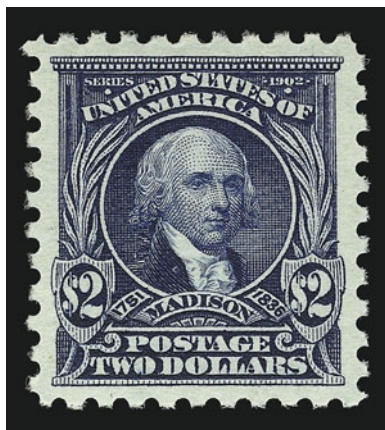
EXTREMELY FINE GEM. A SUPERB EXAMPLE OF THE \$1.00 PERF 10 UNWATERMARKED FRANKLIN STAMP IN THE FINEST CONDITION ATTAINABLE.

This stamp was only used for less than six months before the Perf 11 stamps were produced. Due to its short production run and the only difference between this and the previous \$1.00 stamp (Scott 460) being the watermark, many collectors and dealers of the day overlooked this stamp. It is especially scarce with such perfect centering.

With 1997 P.F. certificate ..... 1,450.00



200



201

- 201 ★★ **\$2.00 Dark Blue (479).** Mint N.H., wide margins, rich color, Extremely Fine, with 1998 P.F. certificate..... 525.00

- 202 ★★ **\$5.00 Light Green (480).** Mint N.H., beautiful centering, bright shade, Extremely Fine, with 2000 P.F. certificate..... 425.00



202



203

- 203 ★★田 5c Carmine, Imperforate, Error (485). Mint N.H. double error in **block of 70**, sheet margin at left and top each with plate no. 7942 and full guideline at bottom, large margin at right, fresh color

EXTREMELY FINE GEM. AN OUTSTANDING EXAMPLE OF THE 5-CENT IMPERFORATE ERROR, OF WHICH LESS THAN 50 SHEETS WERE RELEASED TO THE PUBLIC.

During the course of production of the normal 2c plate No. 7942, three positions were noted to be defective. The plate was sent back to the siderographer, who burnished out the three positions and mistakenly re-entered them using a transfer roll for the 5c stamp. The error passed unnoticed and the sheets were issued to the public both Perf 10, Imperforate and Perf 11 (Scott 467, 485 and 505). The imperforate is by far the rarest of the three.

With 1999 P.F. certificate ..... 43,035.00





- 204 ★★ **2c Carmine, Ty. II, Coil (487).** Mint N.H., choice centering, fresh color, Extremely Fine, with 2000 P.F. certificate ..... 24.00
- 205 ★★ **2c Carmine, Ty. III, Coil (488).** Perfectly centered, brilliant color and detailed impression, Extremely Fine Gem, a superb stamp, with 2001 P.F. certificate..... 4.00
- 206 ★★ **3c Violet, Ty. I, Coil (489).** Mint N.H., Jumbo margins all around, bright color, Extremely Fine Gem, with 1992 and 1999 P.F. certificates ..... 9.00
- 207 ★★ **2c Carmine, Ty. II, Coil (487).** Mint N.H. joint line pair, extra wide margins, rich color, Extremely Fine, with 1999 P.F. certificate ..... 190.00
- 208 ★★ **2c Carmine, Ty. III, Coil (488).** Mint N.H. joint line pair, wide margins, bright shade, Extremely Fine Gem, with 1998 P.F. certificate ..... 27.00
- 209 ★★ **3c Violet, Ty. I, Coil (489).** Mint N.H. joint line pair, wide margins all around, brilliant color, fresh and Extremely Fine, with 1999 P.F. certificate ..... 60.00
- 210 ★★ **1c Green, Coil (490).** Mint N.H. joint line pair, wide margins, fresh and Extremely Fine, with 1998 P.F. certificate ..... 6.00



211

211 ★★ **2c Carmine, Ty. II, Coil (491).** Mint N.H., almost perfectly centered, fresh color and detailed impression

EXTREMELY FINE. A SUPERB MINT NEVER-HINGED EXAMPLE OF THE RARE 2-CENT TYPE II PERF 10 HORIZONTAL COIL ON UNWATERMARKED PAPER.

Unlike most other issues, the horizontal coil is actually scarcer than the vertical coil. It was in production for only a short period of time before being replaced by the Type III, Scott 492.

With 1980 and 1997 P.F. certificates..... 3,750.00





212

212 ★★ **2c Carmine, Ty. II, Coil (491).** Mint N.H. pair, choice centering with well-proportioned margins, fresh color and detailed impression

EXTREMELY FINE GEM. AN EXTRAORDINARILY RARE MINT NEVER-HINGED PAIR OF THIS RARE COIL.

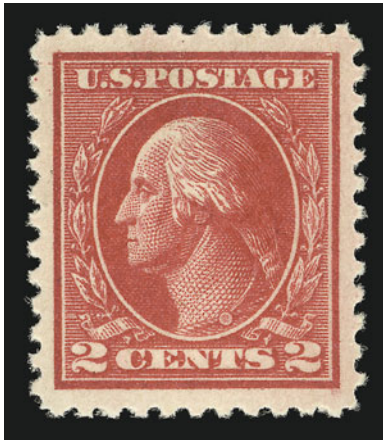
Unlike most other issues, the horizontal coil is actually scarcer than the vertical coil. It was in production for only a short period of time before being replaced by the Type III, Scott 492. This coil is easily one of the rarest of all 20th Century issues in Mint Never-Hinged condition.

With 1968, 1988 and 1995 P.F. certificates..... 9,000.00



- 213 ★★ **2c Carmine, Ty. III, Coil (492).** Mint N.H. joint line pair, perfectly centered, bright color, Extremely Fine, with 1998 P.F. certificate..... 100.00
- 214 ★★ **3c Violet, Ty. I, Coil (493).** Mint N.H. joint line pair, extra wide margins, fresh color, Extremely Fine, with 1997 P.F. certificate..... 200.00
- 215 ★★ **3c Violet, Ty. II, Coil (494).** Mint N.H. joint line pair, wide margins, intense impression, Extremely Fine, with 1997 P.F. certificate..... 135.00
- 216 ★★ **4c Orange Brown, Coil (495).** Mint N.H. joint line pair, almost perfectly centered, post-office fresh and Extremely Fine, with 1997 P.F. certificate..... 135.00
- 217 ★★ **5c Blue, Coil (496).** Mint N.H. joint line pair, well-balanced margins, rich color and detailed impression, Extremely Fine Gem, with 1997 P.F. certificate..... 55.00
- 218 ★★ **10c Orange Yellow, Coil (497).** Mint N.H. joint line pair, perfect centering, brilliant color, Extremely Fine Gem, a superb joint line pair, with 1997 P.F. certificate... 250.00
- 219 ★★ **1c-10c 1916-22 Coils (490, 492-497).** Mint N.H., each has choice centering and fresh color, all are Extremely Fine, each has at least one P.F. certificate.....(Photo Ex) 125.00
- 220 ★★ **1c-9c 1917-19 Issue (498-499, 504, 508-509).** Mint N.H., all have choice centering and fresh color, Extremely Fine, each with 1997-99 P.F. certificate .....(Photo Ex) 63.00





221

- 221 ★★ **2c Deep Rose, Ty. Ia (500).** Mint N.H., perfectly centered with uncharacteristically wide and even margins, post-office fresh

EXTREMELY FINE GEM. EASILY ONE OF THE FINEST MINT NEVER-HINGED EXAMPLES OF SCOTT 500 IN EXISTENCE.

The Type Ia Scott 500 was created during an experiment of the Bureau in creating a new type of transfer roll. A die was made from the old Type I transfer roll, having ten impressions on it. A new transfer roll was then made, using the new ten-impression master die. This new transfer roll was then used to create two new plates. Since this is essentially a "lossy" process, there are some noticeable differences between the plates created using this method and the old method of using one die impression to create the transfer roll.

With 1999 P.F. certificate ..... 500.00



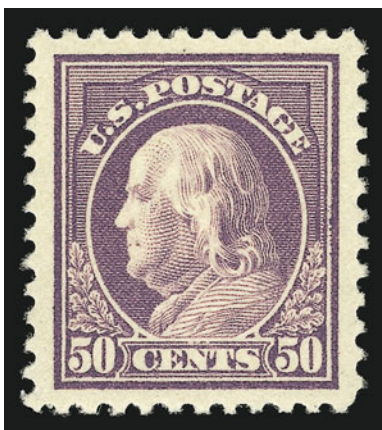
222

- 222 ★★田 **5c Rose, Error (505).** Mint N.H. double error in block of twelve, brilliant color, Very Fine-Extremely Fine, the bottom error is a real Gem, with 1997 P.F. certificate..... 2,100.00



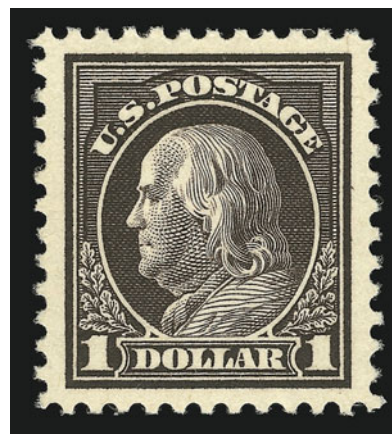
- 223 ★★ **3c Light Violet, Ty. I (501).** Mint N.H., Jumbo margins, brilliant color on bright paper, Extremely Fine Gem, with 1997 P.F. certificate..... 20.00
- 224 ★★ **3c Dark Violet, Ty. II (502).** Mint N.H., wide margins, intense shade, Extremely Fine, with 1997 P.F. certificate ..... 25.00
- 225 ★★ **4c Brown (503).** Mint N.H., perfectly centered with wide margins, bright shade, Extremely Fine Gem, with 1992 and 2001 P.F. certificates..... 18.00
- 226 ★★ **6c Red Orange (506).** Mint N.H., incredibly radiant color, Extremely Fine Gem, a beautiful stamp, with 1997 P.F. certificate..... 22.00
- 227 ★★ **7c Black (507).** Mint N.H., sharp impression on white paper, fresh and Extremely Fine, with 1998 P.F. certificate..... 50.00
- 228 ★★ **10c Orange Yellow (510).** Mint N.H., choice centering with wide margins, brilliant color, Extremely Fine, with 1997 P.F. certificate ..... 30.00
- 229 ★★ **11c Light Green (511).** Mint N.H., Jumbo margins, rich color on bright paper, Extremely Fine, with 1998 P.F. certificate ..... 16.00
- 230 ★★ **12c Claret Brown (512).** Mint N.H., perfectly centered with massive margins, gorgeous bright color, Extremely Fine Gem, a huge stamp, with 2000 P.F. certificate ..... 16.00
- 231 ★★ **13c Apple Green (513).** Jumbo margins, brilliant color on bright paper, Extremely Fine Gem, with 1998 P.F. certificate ..... 20.00
- 232 ★★ **15c Gray (514).** Mint N.H., bright shade, fresh and Extremely Fine, with 1997 P.F. certificate..... 67.00
- 233 ★★ **20c Light Ultramarine (515).** Mint N.H., almost perfect centering, radiant color, Extremely Fine, with 1999 P.F. certificate..... 85.00
- 234 ★★ **30c Orange Red (516).** Mint N.H., massive margins all around, rich color on bright paper, trivial natural inclusion, Extremely Fine Gem, a huge stamp, with 2000 P.F. certificate not mentioning the inclusion ..... 67.00





235

- 235 ★★ **50c Red Violet (517).** Mint N.H., perfectly centered with Jumbo margins, rich color on bright white paper, Extremely Fine Gem, a superb stamp in every respect, with 1989 and 2001 P.F. certificates ..... 120.00



236

- 236 ★★ **\$1.00 Violet Brown (518).** Mint N.H., choice centering with massive margins at sides, rich color and proof-like impression, Extremely Fine Gem, a beautiful stamp, with 1994 P.F. certificate..... 95.00



237

- 237 ★★ **2c Carmine (519).** Mint N.H., choice centering with well-proportioned margins, rich color and proof-like impression

EXTREMELY FINE. A BEAUTIFUL MINT NEVER-HINGED EXAMPLE OF SCOTT 519.

This stamp was created in 1917 when a small excess supply of the imperforate Scott 344 was returned from the post office in New York City to the Bureau. Rather than credit the New York post office for the returned postage, the Bureau preferred to perforate the sheets. They were then returned to the post office in New York and placed on sale.

With 1990 and 2000 P.F. certificates ..... 675.00

- 238 ★★ **\$2.00 Orange Red & Black (523).** Mint N.H., choice centering, rich color

EXTREMELY FINE. A BEAUTIFUL MINT NEVER-HINGED EXAMPLE OF THE \$2.00 ORANGE RED & BLACK ISSUE.

With 2000 and 2001 P.F. certificates... 1,050.00



238



239



240



241



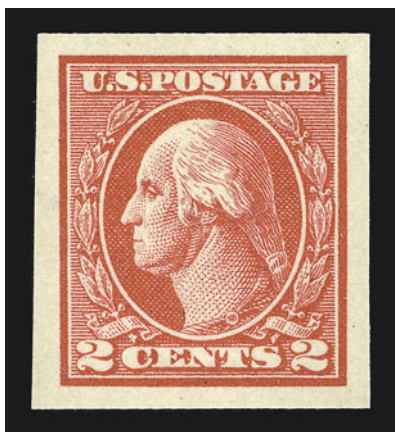
242



243

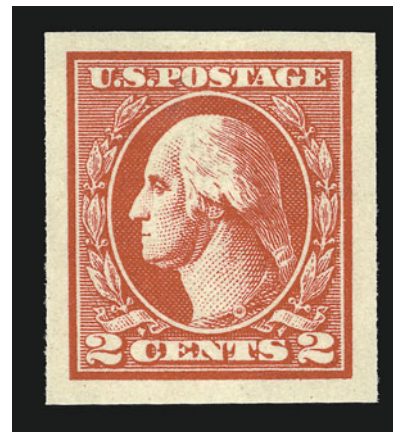
- 239 ★★ **\$5.00 Deep Green & Black (524).** Mint N.H., deep rich color, Extremely Fine, with 1997 P.F. certificate ..... 375.00
- 240 ★★ **2c Carmine, Ty. IV (526).** Mint N.H., wide margins, bright color, fresh and Extremely Fine, with 1999 P.F. certificate ..... 50.00
- 241 ★★ **2c Carmine, Ty. V (527).** Mint N.H., Jumbo margins, brilliant color, on bright paper, Extremely Fine Gem, with 1999 P.F. certificate ..... 36.00
- 242 ★★ **2c Carmine, Ty. Va (528).** Mint N.H., perfectly centered, fresh color, Extremely Fine Gem, with 1999 P.F. certificate ..... 17.00
- 243 ★★ **2c Carmine, Ty. VI (528A).** Mint N.H., wide margins, bright color, Extremely Fine, with 1999 P.F. certificate ..... 95.00





244

- 244 ★★ **2c Carmine, Ty. V, Imperforate (533).** Mint N.H., huge margins all around, radiant color on bright paper, Extremely Fine Gem, with 2001 P.F. certificate ..... 215.00



245

- 245 ★★ **2c Carmine, Ty. VI, Imperforate (534A).** Mint N.H., large margins all around, fresh and Extremely Fine, with 1997 P.F. certificate ... 80.00



246

- 246 ★★ **2c Carmine, Ty. VII, Imperforate (534B).** Mint N.H., large margins all around, brilliant color on crisp paper, detailed impression

EXTREMELY FINE GEM. A SUPERB MINT NEVER-HINGED EXAMPLE OF THE RARE TYPE VII IMPERFORATE OFFSET STAMP.

Most Type VII stamps were used by private vending and affixing machine companies. However, unlike Scott 314A and 482A, a small supply of the imperforate 2c Type VII stamps did reach the public.

With 1997 P.F. certificate ..... 3,600.00



247

- 247 ★★ **1c Gray Green (536).** Mint N.H., Jumbo margins, bright shade, Extremely Fine Gem, with 1998 P.F. certificate ..... 40.00



248

248 ★★ **2c Carmine Rose, Ty. II, Rotary (539).** Mint N.H., rich color and sharp impression, wide balanced margins and choice centering

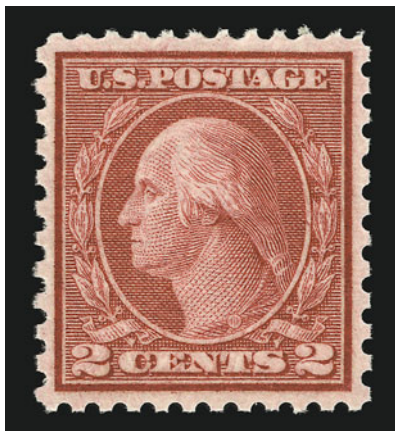
EXTREMELY FINE GEM. A SUPERB MINT NEVER-HINGED EXAMPLE OF THIS RARE ROTARY-PRESS PRINTING. AN EXCEEDINGLY DIFFICULT STAMP TO FIND IN SUCH CONDITION.

At the beginning or end of a coil-stamp print run from the 170-subject rotary plates, some leading or trailing paper was left over that was too short for rolling into 500-stamp rolls. In 1919, the Bureau devised a plan to salvage this waste by converting the stamps from coil stamps into sheet stamps. This was accomplished by cutting the sheets into panes and putting the panes through the flat-plate perforator in use at the time, giving the stamps perforations on all sides.

Since Scott 539 was put through two different perforating machines of differing gauges at different times, most of the stamps are off-center. The stamp offered here is a true condition rarity by virtue of its centering, margins and Mint N.H. state.

With 1968, 1988 and 2000 P.F. certificates..... 3,750.00





249



250

- 249 ★★ **2c Carmine Rose, Ty. III, Rotary Perf 11 x 10 (540).** Mint N.H., almost perfectly centered with well-balanced margins, rich color and sharp impression, Extremely Fine Gem, scarce with such superb centering, with 1997 P.F. certificate ..... 23.00
- 250 ★★ **3c Violet, Ty. II (541).** Mint N.H., extra wide margins, vibrant color, Extremely Fine, with 1996 and 2001 P.F. certificates..... 80.00



251

- 251 ★★ **1c Green, Rotary (545).** Mint N.H., mathematically perfect centering with extra wide margins all around, fresh color and detailed impression

EXTREMELY FINE GEM. THIS IS PROBABLY THE FINEST COPY OF SCOTT 545 IN EXISTENCE. A REMARKABLE STAMP IN EVERY RESPECT — MARGINS, COLOR, IMPRESSION AND OVERALL APPEAL.

As collectors who have sought this issue know, the rotary press printings from 1919 to 1921 are very difficult to find with choice centering. When a well-centered copy does present itself, the margins are usually small. The stamp offered here, with extra wide margins all around, is a rare and striking anomaly.

With 2000 and 2001 P.F. certificates ..... 340.00



- 252 ★★ **2c Carmine Rose, Ty. III, Rotary (546).** Mint N.H., choice centering, deep rich color, fresh and Extremely Fine, with 1994 P.F. certificate..... 225.00
- 253 ★★ **\$2.00 Carmine & Black (547).** Mint N.H., wide margins, rich colors on white paper, fresh and Extremely Fine, with 1998 P.F. certificate..... 325.00
- 254 ★★ **1c-5c Pilgrim Tercentenary (548-550).** Mint N.H., all have choice centering and rich color, Extremely Fine set, the 1c and 5c with 2001 P.F. certificates .....**(Photo Ex)** 87.00

## 1922-29 ISSUES

- 255 ★★ **14c Blue (565).** Mint N.H., Jumbo margins, rich color, Extremely Fine Gem, a huge stamp ..... 6.00
- 256 ★★ **15c Gray (566).** Mint N.H., enormous margins, fresh color, Extremely Fine Gem, a huge stamp..... 37.00
- 257 ★★ **20c Carmine Rose (567).** Mint N.H., wide margins, brilliant color, Extremely Fine Gem, with 2000 and 2001 P.F. certificates..... 35.00
- 258 ★★ **25c Yellow Green (568).** Mint N.H., wide margins, rich color, Extremely Fine, with 2001 P.F. certificate..... 29.00
- 259 ★★ **\$1.00 Violet Black (571).** Mint N.H., choice centering, rich color on bright paper, Extremely Fine, with 2001 P.F. certificate..... 72.00
- 260 ★★ **\$2.00 Deep Blue (572).** Mint N.H., intense color on bright paper, proof-like impression, Extremely Fine, with 2001 P.F. certificate..... 145.00
- 261 ★★ **\$5.00 Carmine & Blue (573).** Mint N.H., perfectly centered, brilliant colors, Extremely Fine Gem, with 2001 P.F. certificate..... 240.00





- 262 ★★ **1c Green, Rotary (578).** Mint N.H., perfectly centered, fresh color, Extremely Fine Gem, with 1996 P.F. certificate ..... 160.00
- 263 ★★ **2c Carmine, Rotary (579).** Mint N.H., unusually wide margins for this issue, rich color and detailed impression, Extremely Fine, with 2001 P.F. certificate ..... 145.00
- 264 ★★ **2c Carmine, Rotary, Perf 11 (595).** Mint N.H., almost perfectly centered with wide margins, bright color, Extremely Fine Gem, a superb stamp, with 2000 P.F. certificate.... 475.00
- 265 ★★ **2c Carmine, Ty. II, Coil (599A).** Mint N.H., perfectly centered, Extremely Fine Gem, with 1999 P.F. certificate ..... 200.00
- 266 ★★ **2c Carmine, Ty. II, Coil (599A).** Mint N.H. joint line pair, choice centering, intense color and impression clearly showing the characteristics of the type, Extremely Fine Gem, a superb joint line pair, with 1997 P.F. certificate ..... 1,075.00
- 267 ★★ **8c Olive Green, Perf 10 (589).** Mint N.H., post-office fresh and Extremely Fine Gem, with 1995 and 2001 P.F. certificates ..... 47.00
- 268 ★★ **1c-10c 1923-32 Issue, Coils (597-599, 600-606, 723).** Mint N.H. joint line pairs, each has choice centering and fresh color, Very Fine-Extremely Fine group....**(Photo Ex)** 259.00
- 269 ★★ **2c White Plains Souvenir Sheet (630).** Mint N.H., choice centering, tiny scuff in sheet margin only at left, otherwise Extremely Fine .....*Not illustrated* 550.00
- 270 ★★ **1½c-50c 1926-31 Issue (631-634, 635-642, 653, 692-701).** Mint N.H., all have choice centering and rich colors, fresh and Very Fine-Extremely Fine, a beautiful group .....**(Photo Ex)** 162.00
- 271 ★★ **2c Carmine, Ty. II (634A).** Mint N.H., brilliant color and detailed impression, Extremely Fine, with 1997 P.F. certificate ..... 500.00

## KANSAS-NEBRASKA ISSUE



- 272 ★★ 1c-10c Kans., Nebr. Ovpts (658-660, 665, 668, 669-674, 678). Mint N.H., all have rich color, Very Fine-Extremely Fine group, seven with 2001 P.F. certificates ..... (Photo Ex) 267.00
- 273 ★★ 3c Kans. Ovpt. (661). Mint N.H., unusually wide margins, rich color, Extremely Fine, with 2001 P.F. certificate ..... 34.00
- 274 ★★ 4c Kans. Ovpt. (662). Mint N.H., perfectly centered with wide margins, intense shade, Extremely Fine Gem, with 2001 P.F. certificate ..... 34.00
- 275 ★★ 5c Kans. Ovpt. (663). Mint N.H., perfectly centered with well-proportioned margins, rich color, Extremely Fine Gem, with 2001 P.F. certificate ..... 21.00
- 276 ★★ 6c Kans. Ovpt. (664). Mint N.H., choice centering with well-balanced margins, bright color, fresh and Extremely Fine, with 1997 P.F. certificate ..... 50.00
- 277 ★★ 8c Kans. Ovpt. (666). Mint N.H., choice centering, rich color, Extremely Fine, scarce this well-centered, with 2001 P.F. certificate ..... 165.00
- 278 ★★ 9c Kans. Ovpt. (667). Mint N.H., choice centering, fresh color, Extremely Fine, with 2001 P.F. certificate ..... 24.00
- 279 ★★ 6c Nebr. Ovpt. (675). Mint N.H., perfectly centered, brilliant color, Extremely Fine Gem, with 1998 P.F. certificate ..... 72.00
- 280 ★★ 7c Nebr. Ovpt. (676). Mint N.H., perfect centering, Extremely Fine, with 2001 P.F. certificate ..... 41.00
- 281 ★★ 8b Nebr. Ovpt. (677). Mint N.H., perfectly centered with wide margins for this issue, fresh color, Extremely Fine Gem, with 2000 and 2001 P.F. certificates ..... 57.00



## AIR POST AND SPECIAL DELIVERY



282EX



283EX



284EX

- 282 ★★ **6c-24c 1918 Air Post (C1-C3).** Mint N.H., choice centering, Extremely Fine, with 1997, 1998 or 1999 P.F. certificates.....(Photo Ex) 400.00
- 283 ★★ **8c-24c 1923 Air Post (C4-C6).** Mint N.H., beautiful centering and color, Extremely Fine, with 1998 or 1999 P.F. certificates.....(Photo Ex) 345.00
- 284 ★★ **65c-\$2.60 Graf Zeppelin (C13-C15).** Mint N.H., fresh and Extremely Fine set, with 1997, 1998 or 1999 P.F. certificate..... 2,235.00

- 285 ★★ **10c Blue, Special Delivery (E1).** Mint N.H., wide margins, rich color and detailed impression

EXTREMELY FINE. A SCARCE MINT NEVER-HINGED EXAMPLE OF THE FIRST SPECIAL DELIVERY STAMP.

Issued in October 1885, this issue was printed by the American Bank Note Company. This centered, Mint Never-Hinged example should be considered a rarity.

With 1997 P.F. certificate..... 650.00



285



286



287

- 286 ★★ **10c Blue, Special Delivery (E2).** Mint N.H., wide margins, fresh color  
EXTREMELY FINE. A DIFFICULT STAMP TO FIND IN SUCH SUPERB CONDITION.  
With 1996 P.F. certificate..... 600.00
- 287 ★★ **10c Orange, Special Delivery (E3).** Mint N.H., perfectly centered, radiant color on bright paper, Extremely Fine Gem, a superb stamp, with 2001 P.F. certificate..... 400.00

- 288 ★★ **10c Blue, Special Delivery (E4).** Mint N.H., Jumbo margins, rich color and proof-like impression on bright white paper

EXTREMELY FINE GEM. A HUGE MINT NEVER-HINGED EXAMPLE OF THE 1894 10-CENT SPECIAL DELIVERY STAMP.

With 1996 P.F. certificate ..... 1,500.00



288



289



291



290



292



293

- 289 ★★ **10c Blue, Special Delivery (E5).** Mint N.H., wide margins, rich color, fresh and Extremely Fine, with 1996 P.F. certificate ..... 300.00
- 290 ★★ **10c Ultramarine, Special Delivery (E6).** Mint N.H. part imprint bottom margin single, bright shade, fresh and Extremely Fine, with 1996 P.F. certificate ..... 200.00
- 291 ★★ **10c Green, Special Delivery (E7).** Mint N.H., bright shade, Extremely Fine, with 1996 P.F. certificate ..... 110.00
- 292 ★★ **10c Ultramarine, Special Delivery (E8).** Mint N.H., Jumbo margins, intense shade on white paper, Extremely Fine Gem, with 1999 and 2001 P.F. certificates ..... 185.00
- 293 ★★ **10c Ultramarine (E9).** Mint N.H., perfectly centered with enormous balanced margins on bright white paper, Extremely Fine Gem, with 1997 and 2001 P.F. certificate .... 340.00





294

- 294 ★★ **10c Pale Ultramarine, Special Delivery (E10).** Mint N.H., perfectly centered with enormous margins, bright shade, Extremely Fine Gem, with 1995 P.F. certificate ..... 500.00



295



296



297EX



298

- 295 ★★ **10c Ultramarine, Special Delivery (E11).** Mint N.H., perfectly centered with Jumbo margins, detailed impression, Extremely Fine Gem, with 2001 P.F. certificate ..... 37.00
- 296 ★★ **15c Deep Orange, Special Delivery (E13).** Mint N.H., perfectly centered, brilliant shade on fresh paper, Extremely Fine Gem, with 1994 and 2001 P.F. certificates ..... 45.00
- 297 ★★ **Special Delivery Balance.** Seven Mint N.H. stamps, Nos. E12, E14-E19, all are beautifully centered and rich color, Extremely Fine, E12 and E14 with 1998 P.F. certificates ..... (Photo Ex) 72.00
- 298 ★★ **10c Ultramarine, Registration (F1).** Mint N.H., wide margins, brilliant color on white paper, Extremely Fine, with 1998 P.F. certificate ..... 130.00

POSTAGE DUE



299



300



301

- 299 ★★ **1c Brown (J1).** Mint N.H., choice centering, bright shade, fresh and Extremely Fine, scarce in Mint N.H. condition, with 1994 P.F. certificate, Scott Retail as hinged .. 57.00
- 300 ★★ **2c Brown (J2).** Mint N.H., bright shade on white paper, fresh and Extremely Fine, scarce in Mint N.H. condition, with 1990 and 2000 P.F. certificates, Scott Retail as hinged..... 375.00
- 301 ★★ **3c Brown (J3).** Mint N.H., fresh and bright color and detailed impression, well-centered, Extremely Fine, a scarce stamp in Mint N.H. condition, with 2000 and 2001 P.F. certificates, Scott Retail as hinged..... 52.00



302

- 302 ★★ **5c Brown (J4).** Mint N.H., perfectly centered with well-balanced margins, bright shade and detailed impression on crisp paper
- EXTREMELY FINE GEM. EASILY ONE OF THE FINEST EXAMPLES OF THIS STAMP IN EXISTENCE. THIS IS ONE OF THE MOST DIFFICULT OF ALL POSTAGE DUE STAMPS TO OBTAIN IN CENTERED, MINT NEVER-HINGED CONDITION.
- With 1992 and 2000 P.F. certificates. Scott Retail as hinged..... 575.00





303

303 ★★ **1c Red Brown (J15).** Mint N.H., almost perfect centering with wide margins, brilliant color and proof-like impression, Extremely Fine, with 1997 P.F. certificate, Scott Retail as hinged ..... 55.00



304

304 ★★ **10c Red Brown (J19).** Mint N.H., choice centering, absolutely stunning shade on bright paper

EXTREMELY FINE. A RARE AND SUPERB MINT NEVER-HINGED EXAMPLE OF THE 10-CENT 1884 RED BROWN POSTAGE DUE. A STAMP OF TREMENDOUS VISUAL APPEAL AND PROBABLY ONE OF THE FINEST IN EXISTENCE.

With 1992 and 1997 P.F. certificates. Scott Retail as hinged..... 475.00

- 305 ★★ **30c Red Brown (J20).** Mint N.H., rich color on bright paper, fresh and Extremely Fine, with 1995 P.F. certificate, Scott Retail as hinged ..... 165.00



305



306

- 306 ★★ **50c Red Brown (J21).** Mint N.H., almost perfectly centered, intense color and sharp impression on bright paper  
 EXTREMELY FINE GEM. THIS EASILY QUALIFIES AS ONE OF THE FINEST MINT NEVER-HINGED EXAMPLES OF THE 50-CENT 1884 POSTAGE DUE IN EXISTENCE.  
 A search of major auction catalogues, including Zoellner, Weisman and Cole, failed to turn up any other Mint N.H. examples of this stamp.  
 With 1998 P.F. certificate. Scott Retail as hinged..... 1,650.00





307

- 307 ★★ **1c Bright Claret (J22).** Mint N.H., choice centering, intense color and impression on bright paper, Extremely Fine Gem, with 2000 P.F. certificate, Scott Retail as hinged..... 26.00

- 308 ★★ **2c Bright Claret (J23).** Mint N.H., almost perfectly centered, bright color, Extremely Fine Gem, with 2000 P.F. certificate, Scott Retail as hinged ..... 32.00



308

- 309 ★★ **3c Bright Claret (J24).** Mint N.H., well-balanced margins, rich color and detailed impression, fresh and Extremely Fine, with 2000 P.F. certificate, Scott Retail as hinged..... 62.00



309

- 310 ★★ **10c Bright Claret (J26).** Mint N.H., brilliant color on white paper, crisp impression, Extremely Fine Gem, a beautiful stamp, with 1979 and 2000 P.F. certificate, Scott Retail as hinged..... 125.00



310



311

- 311 ★★ **50c Bright Claret (J28).** Mint N.H., mathematically perfect centering with wide and even margins, beautiful rich color and sharp proof-like impression on bright paper

EXTREMELY FINE GEM. AN OUTSTANDING EXAMPLE OF THE 50-CENT BRIGHT CLARET POSTAGE DUE IN THE FINEST CONDITION ATTAINABLE..

To illustrate the rarity of this stamp in well-centered Never-Hinged condition, the Zoellner collection's J28 (ex Clifford Cole) was hinged. Years of searching failed to turn up a copy containing the necessary requirements of superior centering and color combined with gum. The stamp offered here is truly remarkable.

With 1990 and 1999 P.F. certificate. Scott Retail as hinged..... 525.00



312

- 312 ★★ **2c Vermilion (J30).** Mint N.H., vibrant color on bright white paper

VERY FINE AND CHOICE. A SCARCE MINT NEVER-HINGED EXAMPLE OF THE 2-CENT VERMILION 1894 POSTAGE DUE ISSUE.

At the time the Bureau of Engraving and Printing issued this stamp they were struggling with problems with adequately perforating the stamps. That makes this issue, as well as the regular issues (Scott 246-263), often difficult to find in such choice condition. This stamp should be considered a condition rarity.

With 1995 and 2000 P.F. certificates..... 1,200.00





313

- 313 ★★ **1c Deep Claret (J31).** Mint N.H., choice centering, deep rich color, fresh and Very Fine, with 2000 P.F. certificate..... 82.00

- 314 ★★ **3c Deep Claret (J33).** Mint N.H., intense color and proof-like impression, perfectly centered with balanced margins

EXTREMELY FINE GEM. A SUPERB EXAMPLE OF THIS DIFFICULT UNWATERMARKED FIRST BUREAU ISSUE POSTAGE DUE.

With 1997 and 2001 P.F. certificates..... 280.00



314



315EX



316



317



318

- 315 ★★ **1c, 2c Deep Claret (J38-J39).** Mint N.H., beautiful centering and color, both are Extremely Fine, with 2000 or 2001 P.F. certificate.....**(Photo Ex)** 30.00
- 316 ★★ **3c Deep Claret (J40).** Mint N.H., perfectly centered, fresh color and detailed impression, Extremely Fine Gem, with 1999 P.F. certificate..... 100.00
- 317 ★★ **5c Deep Claret (J41).** Mint N.H., perfectly centered, intense shade and impression, Extremely Fine Gem, a marvelous stamp, with 1999 P.F. certificate..... 115.00
- 318 ★★ **10c Deep Claret (J42).** Mint N.H., almost perfectly centered with well-balanced margins, intense shade, Extremely Fine, with 2000 P.S.E. and 2001 P.F. certificates..... 120.00



319



320



321

- 319 ★★ **1c Deep Claret (J45).** Mint N.H., perfectly centered with wide margins at sides, rich color and proof-like impression, Extremely Fine Gem, with 2000 P.F. certificate..... 55.00
- 320 ★★ **5c Deep Claret (J48).** Mint N.H., intense shade and impression, enormous margins all around, Extremely Fine Gem, a huge stamp, with 2000 P.F. certificate ..... 165.00
- 321 ★★ **10c Deep Claret (J49).** Mint N.H., choice centering with well-balanced margins, rich color and proof-like impression, Extremely Fine, with 1996 P.F. certificate..... 200.00



322

- 322 ★★ **50c Deep Claret (J50).** Mint N.H., well-proportioned margins, brilliant color on bright white paper, detailed impression
- EXTREMELY FINE. THE 50-CENT PERF 12 SINGLE-LINE WATERMARK POSTAGE DUE IS A DIFFICULT STAMP TO FIND IN MINT NEVER-HINGED CONDITION.
- With 2000 P.F. certificate ..... 2,000.00





323



324

323 ★★ **1c Carmine Lake (J52).** Mint N.H., wide margins, bright color, fresh and Extremely Fine, with 1996 P.F. certificate ..... 105.00

324 ★★ **2c Vermilion (J53b).** Mint N.H., enormous margins on three sides, beautiful color, Extremely Fine example of this shade variety, with 1998 P.F. certificate ..... 90.00



325

325 ★★ **3c Carmine Lake (J54).** Mint N.H., beautiful rich color and detailed impression, well-centered

EXTREMELY FINE AND CHOICE EXAMPLE OF THE 3-CENT CARMINE LAKE POSTAGE DUE. AN EXCEEDINGLY DIFFICULT STAMP TO FIND IN MINT NEVER-HINGED CONDITION.

To underscore the scarcity of this stamp in Mint N.H. condition, the Zoellner collection contained a lightly hinged copy. Years of searching failed to uncover a Mint N.H. stamp with suitable centering for his collection.

With 2000 P.F. certificate ..... 1,500.00



- 326 ★★ **5c Carmine Lake (J55).** Mint N.H., enormous margins all around, intense color and impression, Extremely Fine Gem, a phenomenal stamp of huge dimensions, with 2000 and 2001 P.F. certificates..... 65.00
- 327 ★★ **10c Dull Rose (J56a).** Mint N.H., almost perfect centering with Jumbo margins, deep rich color on bright paper, Extremely Fine Gem, a huge stamp, with 1990 and 2000 P.F. certificates..... 125.00
- 328 ★★ **30c Carmine Lake (J57).** Mint N.H., perfectly centered, beautiful deep shade nicely contrasted by white paper, Extremely Fine Gem, a stamp of great visual appeal, with 2001 P.F. certificate ..... 425.00
- 329 ★★ **2c Rose (J60).** Mint N.H., radiant color on bright paper, crisp impression, fresh and Extremely Fine, with 2001 P.F. certificate ..... 280.00
- 330 ★★ **30c Deep Claret (J66a).** Mint N.H., perfectly centered, dark shade on fresh paper, Extremely Fine Gem, with 1995 and 2001 P.F. certificates..... 155.00
- 331 ★★ **50c Carmine Rose (J67).** Mint N.H., fresh color and proof-like impression, Extremely Fine, with 1998 P.F. certificate ..... 195.00
- 332 ★★ **30c Carmine (J75).** Mint N.H., wide margins, intense shade, Extremely Fine, with 1998 P.F. certificate ..... 175.00
- 333 ★★ **50c Carmine (J76).** Mint N.H., extra wide margins at top and bottom, brilliant color, natural gum skip at top, Very Fine and choice, with 1997 P.F. certificate..... 250.00



PARCEL POST



- 334 ★★ **1c-15c Parcel Post (Q1-Q3, Q6-Q7).** Mint N.H., all have huge margins, rich color, Very Fine-Extremely Fine, each with 1996 or 1997 P.F. certificate .....**(Photo Ex)** 260.00
- 335 ★★ **4c Parcel Post (Q4).** Mint N.H., almost perfectly centered, rich color, Extremely Fine, with 1998 P.F. certificate ..... 67.00
- 336 ★★ **5c Parcel Post (Q5).** Mint N.H., gigantic margins all around, gorgeous color and proof-like impression, Extremely Fine Gem, a superb stamp, with 1997 P.F. certificate . 60.00
- 337 ★★ **20c Parcel Post (Q8).** Mint N.H., perfectly centered with well-proportioned margins, intense color, Extremely Fine, with 1995 P.F. certificate ..... 250.00
- 338 ★★ **25c Parcel Post (Q9).** Mint N.H., almost perfect centering with wide margins all around, rich color, Very Fine and choice, with 1997 P.F. certificate..... 120.00

- 339 ★★ **50c Parcel Post (Q10).** Mint N.H., extra wide margins, brilliant color and crisp impression, Extremely Fine Gem, with 1997 P.F. certificate..... 500.00



339



340

- 340 ★★ **75c Parcel Post (Q11).** Mint N.H., Jumbo margins, brilliant color, Extremely Fine, with 1997 P.F. certificate ..... 170.00

- 341 ★★ **\$1.00 Parcel Post (Q12).** Mint N.H., perfectly centered with huge margins all around, intense color and proof-like impression

EXTREMELY FINE GEM. A SUPERB MINT NEVER-HINGED EXAMPLE OF THE \$1.00 PARCEL POST STAMP.

With 1997 P.F. certificate..... 625.00



341



342EX



343EX

- 342 ★★ **1c-25c Parcel Post Postage Due (JQ1-JQ5).** Mint N.H., choice centering, rich colors, Very Fine-Extremely Fine set, with 1996, 1997 or 1998 P.F. certificate ..... (Photo Ex) 702.00
- 343 ★★ **10c-25c Special Handling (QE1-QE4).** Mint N.H., each has enormous margins, Extremely Fine Gems ..... (Photo Ex) 45.00



## BALANCE LOTS

- 344 ★★ **Balance of Regular Issues of the Piedmont Collection.** 1902-34, 171 Mint N.H. stamps, incl. Nos. 300, 314, 343-347, 448, 450, 481-484, 486 (single and joint line pair), 528B, 532, 534, 535, 538, 542, 543, 551-564, 569-570, 581-588, 590-591, 614-616, 617-619, 620-621, 622-623, 656 joint line pair, 704-715, 730, 731, 735, 750-751, several qualify as Jumbo copies, all are remarkably fresh

VERY FINE TO EXTREMELY FINE. AS MANY COLLECTORS KNOW, THESE LOWER-VALUE STAMPS CAN BE DIFFICULT TO OBTAIN IN CHOICE CONDITION.

In our many conversations with collectors, we are often told that it is difficult to find lower-value stamps such as these in superb condition, as many dealers don't stock these inexpensive stamps. This is an opportunity to obtain many of these in pristine condition.

Accompanied by 45 P.F. certificates from 1997 thru 2001. .... 1,985.00

- 345 ★★ **Back-of-Book Balance of the Piedmont Collection.** 29 Mint N.H. stamps, incl. Nos. C7-C12, C16-C18, J61-J65, J68, J70, J79-J87, all have choice centering and fresh color, Very Fine-Extremely Fine group, eight with P.F. certificate from either 1997 or 2000..... 333.00

END OF SALE—THANK YOU

# PRICES REALIZED FOR SALE 842---2/26/2002

## The Piedmont Collection of Superb U.S. Stamps

Robert A. Siegel Auction Galleries, Inc.  
60 East 56th Street, 4th Floor, New York, NY 10022  
Tel (212) 753-6421 Fax (212) 753-6429

Lot#	Realized	Lot#	Realized	Lot#	Realized	Lot#	Realized	Lot#	Realized	Lot#	Realized	Lot#	Realized	Lot#	Realized
1	270	44	325	87	450	130	1,600	174	2,300	217	220	260	170	304	2,900
2	220	45	325	88	450	131	525	175	850	218	500	261	200	305	300
3	525	46	290	89	2,600	132	4,000	176	110	219	325	262	375	306	4,500
4	900	47	325	90	6,750	133	2,500	177	2,000	220	230	263	230	307	100
5	1,000	48	450	91	1,150	134	3,250	178	800	221	3,250	264	1,300	308	260
6	1,150	49	375	92	4,750	135	125	179	950	222	1,900	265	500	309	425
7	3,750	50	475	93	500	136	170	180	350	223	230	266	1,700	310	1,250
8	4,250	51	1,700	94	400	137	210	181	2,400	224	110	267	135	311	2,600
9	9,000	52	4,500	95	1,400	138	190	182	5,250	225	115	268	425	312	2,400
10	220	53	150	96	350	139	400	183	475	226	115	269	325	313	220
11	100	54	900	97	550	140	325	184	210	227	170	270	210	314	1,600
12	210	55	700	98	400	141	400	185	210	228	210	271	700	315	325
13	300	56	950	99	475	142	500	186	325	229	160	272	325	316	400
14	500	57	750	100	280	143	350	187	200	230	250	273	350	317	425
15	850	58	3,500	101	950	144	270	188	2,800	231	260	274	140	318	675
16	160	59	3,750	102	2,500	145	170	189	650	232	125	275	105	319	230
17	335	60	4,500	103	3,500	146	650	190	900	233	375	276	120	320	900
18	400	61	675	104	1,400	147	1,050	191	425	234	220	277	140	321	525
19	425	62	850	105	1,400	148	950	192	450	235	950	278	65	322	5,500
20	800	63	1,600	106	160	149	2,600	193	550	236	450	279	200	323	450
21	425	64	1,100	107	100	150	260	194	220	237	1,500	280	100	324	200
22	375	65	4,000	108	325	151	105	195	425	238	1,500	281	200	325	3,500
23	1,300	66	5,250	109	475	152	210	196	700	239	230	282	475	326	500
24	3,250	67	3,750	110	675	153	350	197	1,200	240	140	283	525	327	850
25	2,100	68	5,750	111	210	154	220	198	12,000	241	400	284	1,600	328	1,050
26	3,000	69	4,500	112	450	155	2,100	199	5,500	242	160	285	2,100	329	575
27	7,500	70	425	113	650	156	700	200	2,900	243	190	286	1,300	330	300
28	700	71	260	114	1,250	157	280	201	1,050	244	260	287	1,100	331	350
29	220	72	6,250	115	130	158	400	202	625	245	200	288	4,500	332	325
30	270	73	4,500	116	110	159	3,000	203	50,000	246	4,750	289	425	333	270
31	15,500	74	37,500	117	270	161	3,500	204	170	247	105	290	425	334	525
32	13,500	75	4,250	118	110	162	1,600	205	75	248	19,000	291	160	335	250
33	375	76	400	119	150	163	10,500	206	55	249	110	292	385	336	325
34	200	77	850	120	270	164	350	207	325	250	210	293	900	337	600
35	290	78	125	121	260	165	1,100	208	450	251	2,700	295	110	338	350
36	385	79	170	122	375	166	170	209	350	252	525	296	260	339	850
37	850	80	180	123	600	167	650	210	105	253	325	297	200	340	450
38	290	81	550	124	1,800	168	280	211	10,000	254	250	298	375	341	1,375
39	230	82	375	125	260	169	65	212	17,000	255	75	299	1,700	342	1,200
40	800	83	260	126	375	170	1,050	213	450	256	65	300	1,050	343	210
41	290	84	1,600	127	350	171	160	214	500	257	150	301	260	344	4,000
42	130	85	750	128	260	172	130	215	450	258	110	302	2,600	345	700
43	625	86	1,500	129	550	173	400	216	350	259	65	303	230		