

Sale 849

September 20, 2002

The
Christopher Gruys
Collection
of
United States
Rarities
and
Worldwide
Air Post

Robert A. Siegel

AUCTION GALLERIES, INC.

www.siegelauctions.com



Sale 849

Friday, September 20, 2002
at 6:30 p.m.

The Christopher Gruys Collection of United States Rarities and Worldwide Air Post

Pre-sale exhibition

Monday, September 16 — 10:00 a.m. to 4:00 p.m.
Tuesday, September 17 — 10:00 a.m. to 4:00 p.m.
or by appointment (please call 212-753-6421)

**On-line catalogue, e-mail bid form, resources and
the Siegel Encyclopedia are available on our web site:**

www.siegelauctions.com



Arrangement of Sale

**Evening session (lots 4001-4108)
Friday, September 20, at 6:30 p.m.**

United States

Pony Express.....pages	4-14
St. Louis Postmaster's Provisionals	15-16
1847 Issue	17
1857 Issue	18
1869 Pictorial Issues.....	19-20
Columbian Issue	21-22
Trans-Mississippi Issue	23-25
Pan-American Issue	26-27
Air Post Issues	28
U.S. Pioneer Flights	29-32
Apollo XII Flight	33
Space-Related Covers	34

Foreign

Canada	35
Newfoundland	36-38
Zeppelin Flights	
R-34 and R-100.....	39
South America Flight	40-57
Finland "1830" Error	58
Egypt Flight	59
Polar Flight	60-62
Italy Flight	63-68
Hindenburg Crash Cover.....	69

On the cover

Above: Lot 4062

Front: Lots 4011, 4006, 4033, 4063

Back: Lot 4108



4001 front and back

EVENING SESSION (LOTS 4001-4108)
FRIDAY, SEPTEMBER 20, 2002, AT 6:30 P.M.

THE CHRISTOPHER GRUYS COLLECTION OF
UNITED STATES RARITIES AND
WORLDWIDE AIR POST

PONY EXPRESS

4001°✉ **Pony Express, St. Joseph. Dec. 6 (1860).** Bold detailed strike of Running Pony oval datestamp on back of cover **to Olympia, Washington Territory**, neat ***“Free Isaac I. Stevens, MC” free frank*** and endorsed in his hand ***“Pony Express”***, evidently carried outside the mails from Washington D.C., no postal markings applied until it reached California where bold **“San Francisco Cal. Dec. 21”** circular datestamp was applied, pencil **“\$5.00”** Pony Express rate and **“Paid J.T.C.”**, with original enclosure datelined ***“Washington City November 27, 1860”***, contents discuss recipient’s appointment to the Indian Service ***“Col. Simmons has been removed from the Indian Agency and you have been appointed in his place. The commission will go out next steamer. . . I shall send this letter by Pony Express, so that you may have an early notice of the appointment. And I want you to write me very fully by Pony Express as to the Indian Service by the Sound.”***, offset impression of Running Pony handstamp on front of cover, small expertly repaired tear in top flap not mentioned on accompanying certificate

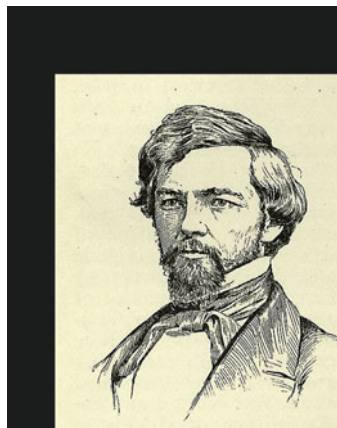
EXTREMELY FINE. A VERY RARE FREE-FRANKED COVER CARRIED BY THE LEGENDARY PONY EXPRESS. THIS IS THE ONLY RECORDED PONY COVER FRANKED BY TERRITORIAL DELEGATE ISAAC STEVENS AND THE ONLY PONY COVER ADDRESSED TO WASHINGTON TERRITORY.

According to *Appleton’s*, Major General Isaac I. Stevens (1818-62) served two terms as Washington’s first territorial delegate to Congress from December 1857 to March 1861. Stevens had a long career as a public servant, including service in the Mexican War and in the U.S. Coastal Survey office. In 1853 he was appointed governor of Washington Territory, in which capacity he conducted explorations for the northern route of the Pacific Railroad. During this period he was also superintendent of Indian affairs and negotiated a number of significant treaties with Native Americans in Washington Territory. In 1856 Stevens became involved in a bloody confrontation with Native American tribes who rebelled against the white settlers. After suppressing the rebellion and slaying the tribal chiefs, Stevens arrested whites alleged to have sympathized with the Indians. When a territorial judge, Chief Justice Edward Landers, issued the writ of

habeas corpus, Stevens declared two counties under martial law and had Landers arrested and held prisoner until the end of the war. Soon after, Stevens joined Congress and succeeded in vindicating his treaties and actions in the Indian war. With the outbreak of the Civil War, Stevens became an officer in the Federal army. He was killed at the battle of Chantilly in September 1862.

This letter was carried on the westbound Pony Express trip that departed St. Joseph Mo. on December 6, 1860, arriving in San Francisco and entering the mails on December 21. During this period, westbound covers were carried privately to St. Joseph to take advantage of the 3c under-3,000 miles rate. However, in this instance, the Stevens free frank meant no postage was required (but the express fee was paid).

With 1996 P.F. certificate E. 15,000-20,000





4002 front and back

4002° ☒ **Pony Express, St. Joseph, Aug. 16 — Carmine Running Pony Datestamp.** Mostly clear strike with ms. "I AM" arrival time next to date on back of cover to "Capt. James Coffin, Warren R.I. U.S.A." with instructions "To be forwarded by Pony Express", **10c Green, Ty. V (35)** tied by blue "The Central Overland California & Pikes Peak Express Company, San Francisco, Cal. Aug. 4" oval datestamp and also by bluish-black "St. Joseph Mo. Aug. 17, 1860" circular datestamp

VERY FINE. APPROXIMATELY TWELVE EXAMPLES OF THE RUNNING PONY HANDSTAMP ARE KNOWN IN CARMINE. THIS IS ONE OF THE FINEST COVERS AND ONE OF THE FEW IN COMBINATION WITH THE 1857 ISSUE.

The St. Joseph Running Pony handstamp was normally struck in black, but approximately twelve covers are known in the distinctive Carmine color. All are dated in August and September 1860, and all but two are struck on the backs of covers. The "U.S.A." designation in the address and "To be forwarded" instructions make it almost certain that this cover originated outside the United States, probably from a travelling member of the Coffin family, some of whom were merchant sea captains.

Ex Hall. E. 50,000-75,000



4003

4003°✉ **Pony Express Way Usage from Fort Bridger (Utah Territory).** Manuscript "From Fort Bridger U.T. June 20, 1861" and "7c Paid" on 3c Red Star Die entire to Col. Mason W. Tappan, 1st Regiment, New Hampshire Vol., Washington D.C., sender's notation "Pony Express, Paid 2.00", well-centered **10c Green, Ty. V (35)** affixed over the "7c Paid" and tied by a green grid and matching "St. Joseph Mo. Jun. 27" (1861) circular datestamp, additional strike of grid on 3c embossed stamp

EXTREMELY FINE AND PRISTINE CONDITION. A REMARKABLE PONY EXPRESS WAY COVER, PICKED UP AT FORT BRIDGER BY A PONY RIDER ALONG THE ROUTE FROM CALIFORNIA. BELIEVED TO BE A UNIQUE FRANKING AND USAGE.

Based on another Pony Express cover postmarked at St. Joseph on June 27, 1861, this Pony Express trip originated in San Francisco on June 15. Fort Bridger was a regular stop along the Pony route, and this cover was handed to the rider on June 20.

Fort Bridger was established in 1843 by famed mountain man Jim Bridger and a partner, Louis Vasquez, on Black's Fork of the Green River in the southwest corner of what is now Wyoming. It was for many years an important emigrant supply stop and Indian trading post along the Oregon Trail. In 1853 the Mormons took control of the fort after trying to arrest Bridger for selling gunpowder to the Indians — this event led to a dispute over ownership that lasted many years. In 1857, with the outbreak of the Mormon War, the fort was abandoned and burned by the Mormons. In the summer of 1858, Fort Bridger was occupied by United States troops under the command of Albert Sydney Johnston, 2nd U.S. Cavalry. Fort Bridger postal markings from this early period carry the "U.T." Utah Territory designation. In 1861 most of the troops headed east to participate in the Civil War.

Ex Emerson..... E. 15,000-20,000



4004

4004° ☒ **Wells, Fargo & Co. Pony Express, \$2.00 Red (143L1).** Large margins to just touched at bottom left incl. part of adjoining stamps at top and left, tied by well-struck “**Pony Express San Francisco Jun. 22**” (1861) **Running Pony** datestamp on 10c Green Star Die entire to Lucien Birdseye in New York City, neat strike of green “St. Joseph Mo. Jul. 4” circular datestamp

VERY FINE AND CHOICE. A SUPERB STRIKE OF THE BLUE RUNNING PONY OVAL TYING THE \$2.00 PONY EXPRESS STAMP.

Ex Knapp. With 1980 P.F. certificate E. 15,000-20,000



4005

4005°☒ **Wells, Fargo & Co. Pony Express, \$1.00 Red (143L3).** Three large margins, mostly clear at bottom, rich color and proof-like impression, tied by blue **“Pony Express, San Francisco, Jul. 20” (1861) Running Pony** oval datestamp on 10c Green Nesbitt entire to Edward B. Merrill, New York City, with red **Wells, Fargo & Co. frank printed twice over green Freeman & Co. frank**, “St. Joseph Mo. 1 Aug.” circular datestamp, small piece of backflap removed, tiny edge tear at top left clear of stamp

VERY FINE. AN OUTSTANDING PONY EXPRESS USAGE WITH THE OLD FREEMAN & COMPANY FRANK SURPRINTED WITH WELLS, FARGO & COMPANY'S FRANK. ONLY A FEW PONY COVERS EXIST IN THIS FORM.

This cover is not listed in Nathan-Boggs, where five other covers are recorded with the old Freeman & Co. frank.

Ex Hall. E. 15,000-20,000



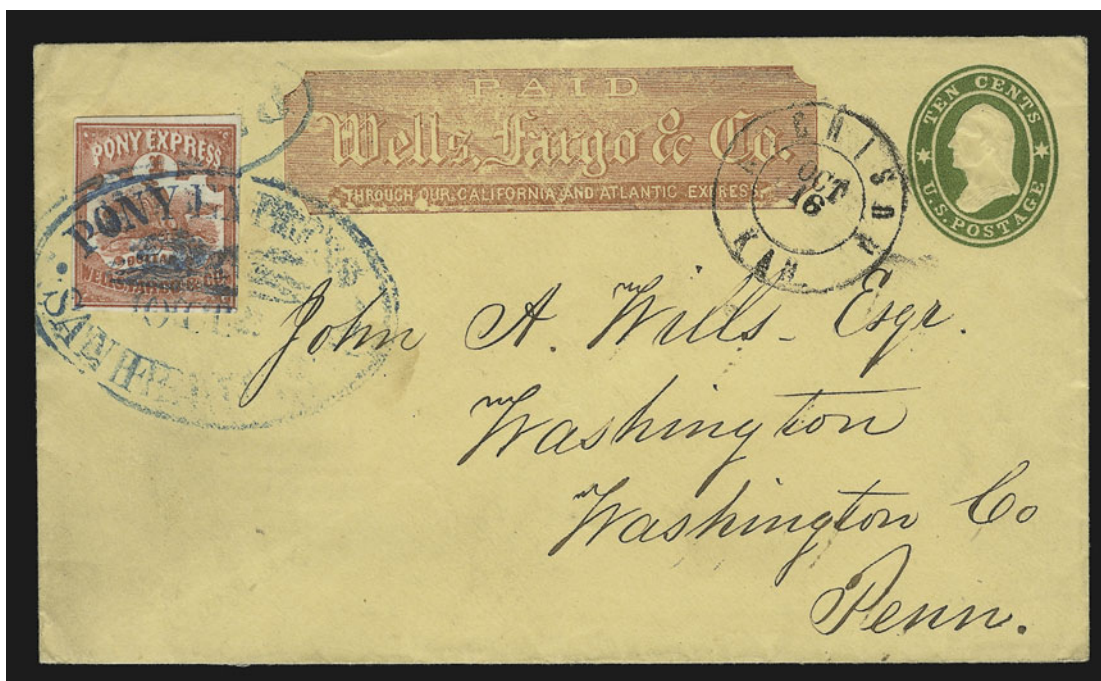
4006

4006°

Wells, Fargo & Co. Pony Express, \$1.00 Red (143L3). Large margins all around, tied by well-struck blue “**Pony Express Sacramento Sep. 1**” (1861) oval handstamp on 10c Green Star Die front (expertly rebacked) with red Wells, Fargo & Co. imprint, to Robert E. Dietz in New York City, entire cancelled by clear strike of “St. Joseph Mo. Sep. 14” circular datestamp

EXTREMELY FINE. A BEAUTIFUL EASTBOUND PONY EXPRESS USAGE.

With 1959 P.F. certificate (as a front) E. 6,000-8,000



4007

4007°✉ **Wells, Fargo & Co. Pony Express, \$1.00 Red (143L3).** Full margins all around, deep shade, affixed over blue "Paid" in oval, tied by blue "Pony Express, San Francisco, Oct. 1(?)" (1861) Running Pony oval datestamp on 10c Green Star Die entire (U33) to John A. Wills, Washington Pa., red Wells, Fargo & Co. frank, "Atchison Kan. Oct. 16" (1861) double-circle datestamp, light vertical fold at center

VERY FINE. A LATE PONY EXPRESS USAGE WITH THE DATESTAMP OF ATCHISON, KANSAS, THE EASTERN TERMINUS AS OF SEPTEMBER 1861.

As the railroad line was extended further west, the eastern terminus of the Pony Express was moved from St. Joseph to Atchison. The Pony Express was terminated in early November 1861 — outmoded by the completion of the transcontinental telegraph line — and there are very few Pony covers known with the Atchison postmark.

Ex Hall. E. 10,000-15,000

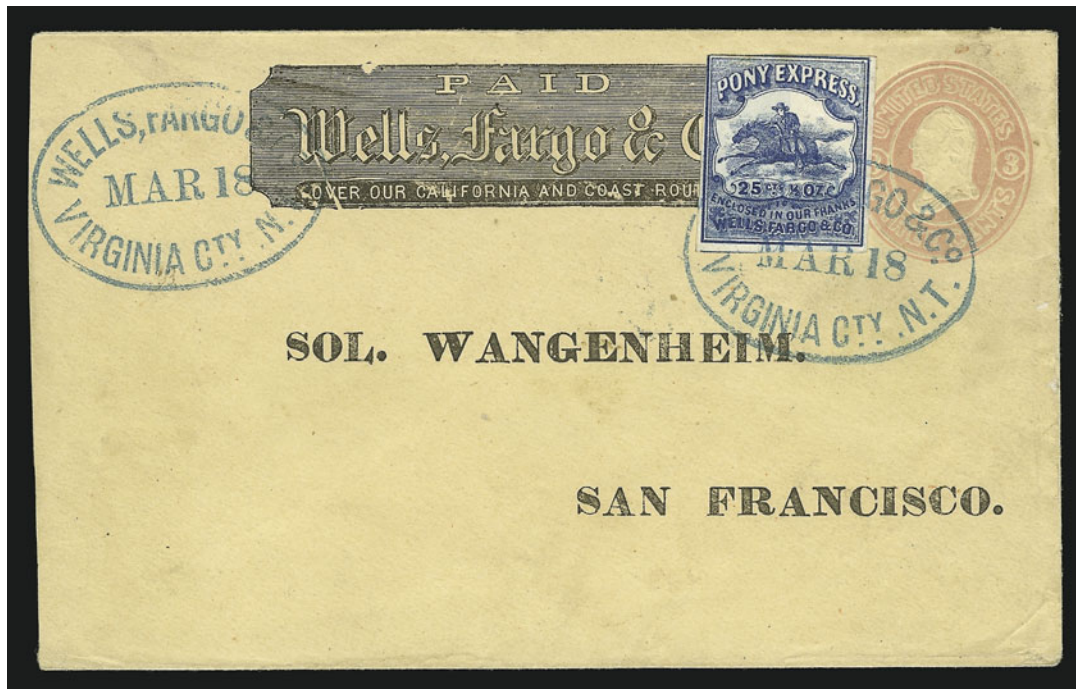


4008

4008° **Wells, Fargo & Co. Pony Express, \$1.00 Blue, Garter (143L6).** Huge margins including bottom sheet margin with “G. F. Nesbitt & Co. N.Y.” imprint, ms. cancel, small faint thin

EXTREMELY FINE APPEARANCE. THE DISCOVERY EXAMPLE OF A NESBITT IMPRINT ON THE FAMOUS PONY EXPRESS “GARTER” STAMP, HERETOFORE BELIEVED TO HAVE BEEN PRINTED IN SAN FRANCISCO AND NOW KNOWN TO BE THE PRODUCT OF GEORGE F. NESBITT & CO., THE PROMINENT NEW YORK PRINTER WHO PRODUCED THE NESBITT SERIES OF UNITED STATES POSTAL STATIONERY.

This remarkable stamp came to light in England a few years ago. The Wells, Fargo & Co. stamp, known to collectors as the Garter issue, is known used on westbound transcontinental covers carried by the Pony Express. It has always been assumed that the stamp was printed by Britton and Rey, the San Francisco printers who produced the famous Pony Express issues. However, with this discovery of an imprint example, the true identity of the printer is now known. The stamp was created for use on mail originating from the east coast, thus it makes perfect sense that the New York City office of Wells, Fargo & Co. should make arrangements with one of the city’s prominent stamp and stationery printers for the production of the Garter issue. E. 4,000-5,000



4009

4009° ☒ **Wells, Fargo & Co. Pony Express, 25c Blue (143L8).** Large margins to a bit close, tied by well-struck blue “Wells, Fargo & Co. Virginia Cty. N.T. Mar. 18” oval datestamp on 3c Pink entire with printed address to Sol Wangenheim, San Francisco, very slightly reduced at left thin

EXTREMELY FINE. A CHOICE STAMP AND A BEAUTIFUL VIRGINIA CITY PONY COVER.

Ex Wickersham and Hall E. 6,000-8,000



4010

4010°P Wells, Fargo & Co., 10c-\$4.00 Pony Express Reprint, Black Plate Proof on Wove. Complete sheet with defaced \$4.00 column at left, central vertical creases thru 25c and \$1.00 rows, margin reduced at top, Very Fine, rare, ex Hall E. 750-1,000

SAINT LOUIS MO. POSTMASTER'S PROVISIONAL



4011

- 4011° **St. Louis Mo., 5c Black on Greenish (11X1).** Position 5, full to huge margins all around, corner angled at top left well clear of design, **tied only by red "St. Louis Mo. Feb. 10" circular datestamp** on small piece, deep impression on bright greenish paper
EXTREMELY FINE. ONLY 20-25 OFF-COVER EXAMPLES ARE KNOWN TIED EXCLUSIVELY BY THE RED ST. LOUIS DATESTAMP.
With 1974 P.F. certificate 4,250.00



4012

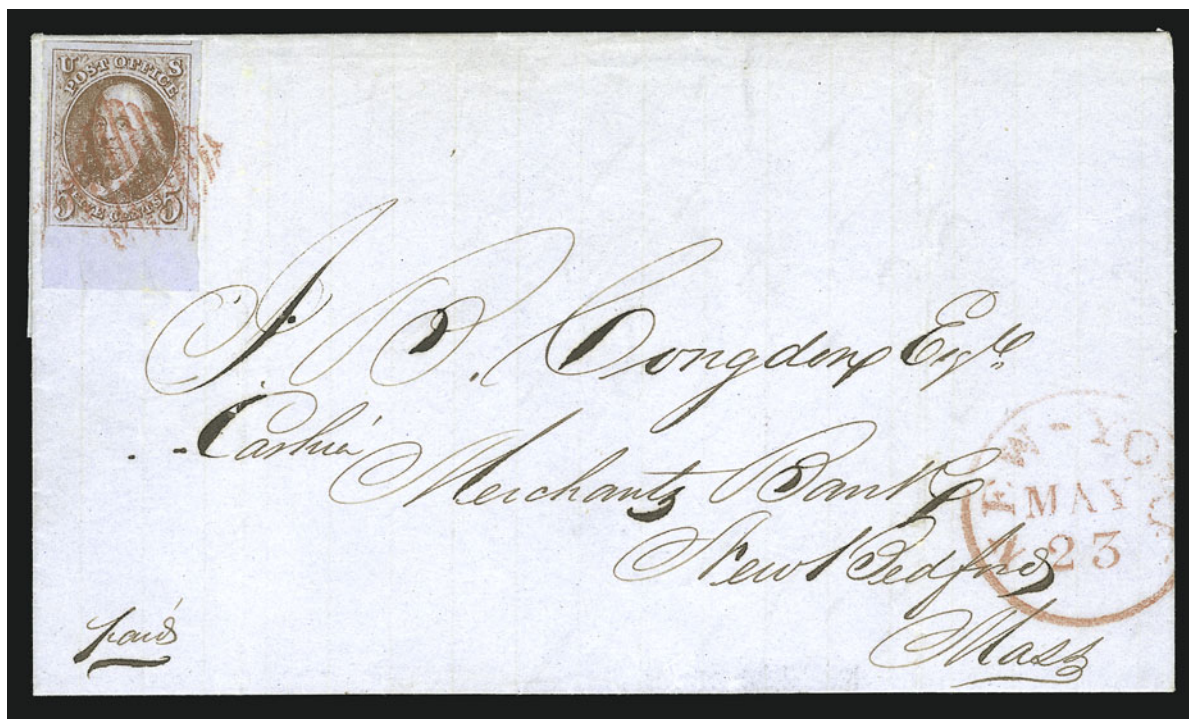
4012°

St. Louis Mo., 10c Black on Greenish (11X2). Positions 4/6, vertical pair with bottom sheet margin and huge margins all around, wonderful intense impression on deep greenish paper, beautifully tied by **bold orange-red "St. Louis Mo. Jan. 29" circular dates-tamp**, without any pen cancellation, on large piece

EXTREMELY FINE GEM. THIS PAIR IS THE FINEST OF THE RECORDED MULTIPLES OF THE 10-CENT ST. LOUIS PROVISIONAL ON GREENISH PAPER WITHOUT PEN CANCELLATION. A MAGNIFICENT AND EXTREMELY RARE POSTMASTER PROVISIONAL PIECE.

Fewer than a half-dozen pairs or strips of the 10c First Printing exist without the usual pen cancellation. Of these, only this pair, a strip of three on piece and another on cover can be considered Extremely Fine. Ex Argentum. The Scott Catalogue does not list No. 11X2 as an off-cover pair. 8,500.00

1847 ISSUE



4013

4013° 5c Orange Brown (1b). Huge margins incl. **sheet margin at bottom** and part of adjoining stamps at top and right, interesting plate wash in left margin, tied by red square grid, matching "New-York May 23" circular datestamp on gray 1851 folded letter to New Bedford Mass., light vertical file folds well clear of stamp and markings

EXTREMELY FINE GEM. A SUPERB SHEET-MARGIN EXAMPLE OF THE 5-CENT 1847 IN THE ORANGE BROWN SHADE ON AN IMMACULATE COVER.

Ex Rohloff and Hill..... E. 5,000-7,500



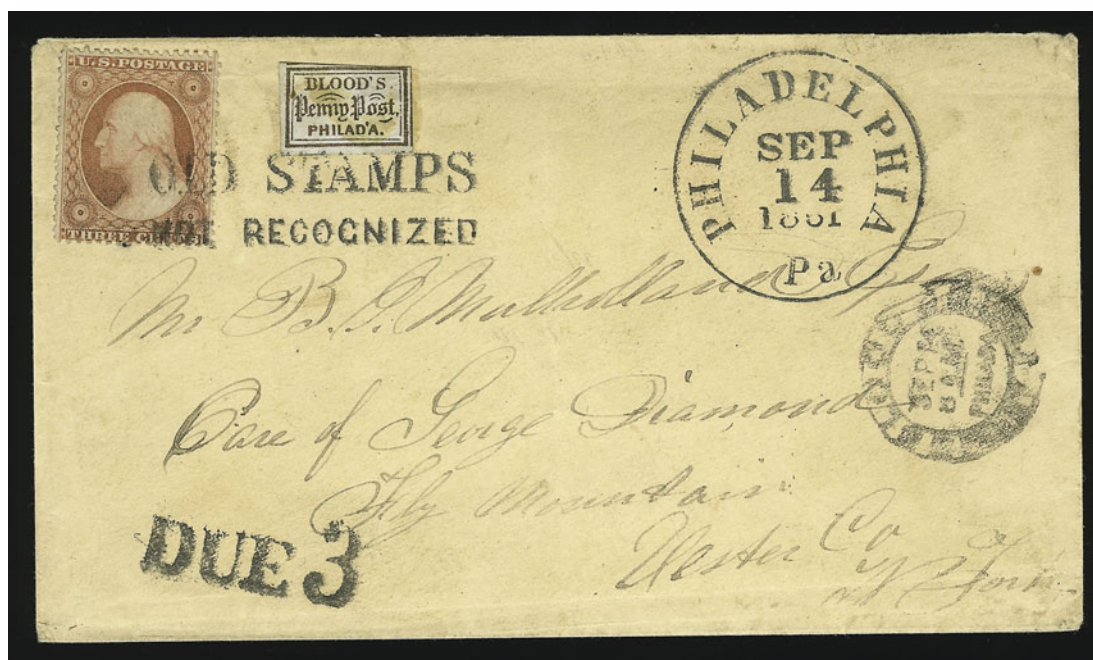
4014

4014° 10c Black (2). Position 55R, large even margins, sharp proof-like impression, tied by ms. cross-hatching, bold red "STEAMER ATLANTIC" in oval handstamp with ms. "D" in center on gray 1848 folded cover to New Orleans La., light horizontal file fold clear of stamp

EXTREMELY FINE. A RARE MISSISSIPPI RIVER PACKET BOAT MARKING — POSSIBLY UNIQUE WITH THE 1847 ISSUE.

Ex Rust and Kapiloff..... E. 3,000-4,000

1857 ISSUE



4015

4015°

3c Dull Red, Ty. II (26). Bright color, used with **Blood's Penny Post 1c Bronze on Lilac (15L14)** and both stamps tied by well-struck "OLD STAMPS/NOT RECOGNIZED" two-line handstamp on cover to Fly Mountain N.Y., choice strike of "Philadelphia Pa. Sep. 14, 1861" circular datestamp and "Due 3" handstamp, Blood's double-circle datestamp at right, light horizontal bend at top affects stamps and should be considered minor

EXTREMELY FINE. THIS IS THE FINER OF THE TWO COVERS KNOWN CONTAINING THE COMBINATION OF DEMONETIZED 3-CENT STAMP AND THE BLOOD'S LOCAL. A WONDERFUL HISTORICAL ARTIFACT.

The contract with Toppan, Carpenter & Co. for printing the postage stamps of the 1857 Issue expired on June 10, 1861. A new contract was made with the National Bank Note Co. The designs were changed and the old issue was demonetized, as large stocks of some denominations remained on hand in the seceded post offices of the South.

An elaborate plan was devised for phasing out the old and issuing the new stamps, which were not ready until mid-August 1861. To begin, supplies were issued to major post offices. Then the post office would advertise to exchange the old for the new. Finally, after a short exchange period, the old stamps would no longer be recognized as valid postage.

Philadelphia was one of the first to receive the new stamps, and so the 1857 Issue was demonetized by that post office earlier than at many others. The "Old Stamps Not Recognized" marking was applied, and postage was marked as due. Covers are known bearing this handstamp dated as early as August 26. The other known cover bearing the 3c/Blood's combination was used on August 27. The sender of this cover may not have realized that the old issue was no longer valid for use in Philadelphia, as it was still being used at other post offices.

Ex Kaplan and Malcolm. With 1980 P.F. certificate. E. 30,000-40,000

1869 PICTORIAL ISSUE



4016

4016°P **15c-90c 1869 Pictorial Inverts, Plate Proofs on Card (120aP4, 121aP4, 122aP4, 129aP4).**
 Large margins all around, rich colors and detailed impressions

EXTREMELY FINE. A BEAUTIFUL SET OF 1869 PICTORIAL ISSUE PLATE PROOFS WITH
 INVERTED CENTERS. ONLY ONE SHEET OF 100 OF EACH WAS PRODUCED.

All known examples of these invert come from the sheets in the Earl of Crawford collec-
 tion. Each with 1976 P.F. certificate..... 10,750.00



4017

4017° **15c Brown & Blue, Ty. I (118).** Enormous even margins all around, perfectly centered, fancy rosette cancel

EXTREMELY FINE USED EXAMPLE OF THE 15-CENT TYPE I 1869 PICTORIAL ISSUE. A SUPERB STAMP THAT MUST SURELY RANK AMONG THE FINEST EXTANT.

With 1991 P.F. certificate 650.00

4018°(★) **15c Brown & Blue, Re-Issue, Imperforate Horizontally (129a).** Unused (no gum), incredibly fresh colors and sharp impressions, choice centering with wide margins at top and bottom, scissors separated perfs, small violet backstamp does not show thru

EXTREMELY FINE AND CHOICE EXAMPLE OF THE 15-CENT 1869 RE-ISSUE IMPERFORATE HORIZONTALLY.

Jonathan W. Rose, in his book *United States Postage Stamps of 1869*, estimates that no more than five to ten copies of this error exist, although our estimate is higher. Only one sheet of 100 was issued, and all were cut into singles by a clerk in the Third Assistant Postmaster General's office. It is not known how many were sold..... 3,500.00



4018



4019

4019°★ **30c Blue & Carmine, Re-Issue (131).** Original gum, perfectly centered with unusually wide margins, deep rich colors on crisp paper, sharp proof-like impressions

EXTREMELY FINE GEM. AN OUTSTANDING ORIGINAL-GUM EXAMPLE OF THE 30-CENT 1869 PICTORIAL RE-ISSUE IN THE FINEST CONDITION ATTAINABLE.

With 1989 P.F. certificate..... 3,000.00

COLUMBIAN ISSUE



4020



4021

- 4020°★★ **1c Columbian (230).** Mint N.H. bottom margin single with part imprint, Jumbo margins, deep rich color, Extremely Fine Gem..... 45.00
- 4021°★★ **4c Columbian (233).** Mint N.H., perfectly centered with wide margins, detailed impression, Extremely Fine Gem..... 175.00



4022

- 4022°★ **4c Columbian, Error of Color (233a).** Original gum which is very slightly disturbed, lightly hinged, the more intense of the two error shades, fresh and bright paper, perfectly centered with enormous wide margins

EXTREMELY FINE GEM. ONE OF THE FINEST EXAMPLES OF THE RARE 4-CENT COLUMBIAN ERROR OF COLOR. A PHENOMENAL STAMP.

The 4c Columbian color error was caused by the use of a wrong batch of ink, and spectrographic analysis has shown that the blue inks of the 4c error and 1c Columbian have the same components. There are two slightly different shades of the 4c error, this being the deeper of the two.

Stamps from at least two panes reached collectors, and the few cancelled examples indicate that stamps used by the public came from other panes. It is likely that a number of full sheets were printed using the wrong ink, and most of the stamps have simply been lost to philately.

A significant number of the 4c error stamps extant have faults, poor centering and/or heavy hinge remnants. The examples that periodically appear at auction rarely grade better than Very Fine. This Extremely Fine stamp is certainly among the finest known examples of this classic commemorative error.

Ex Zoellner. With 1984 and 1998 P.F. certificates..... 19,000.00



4023

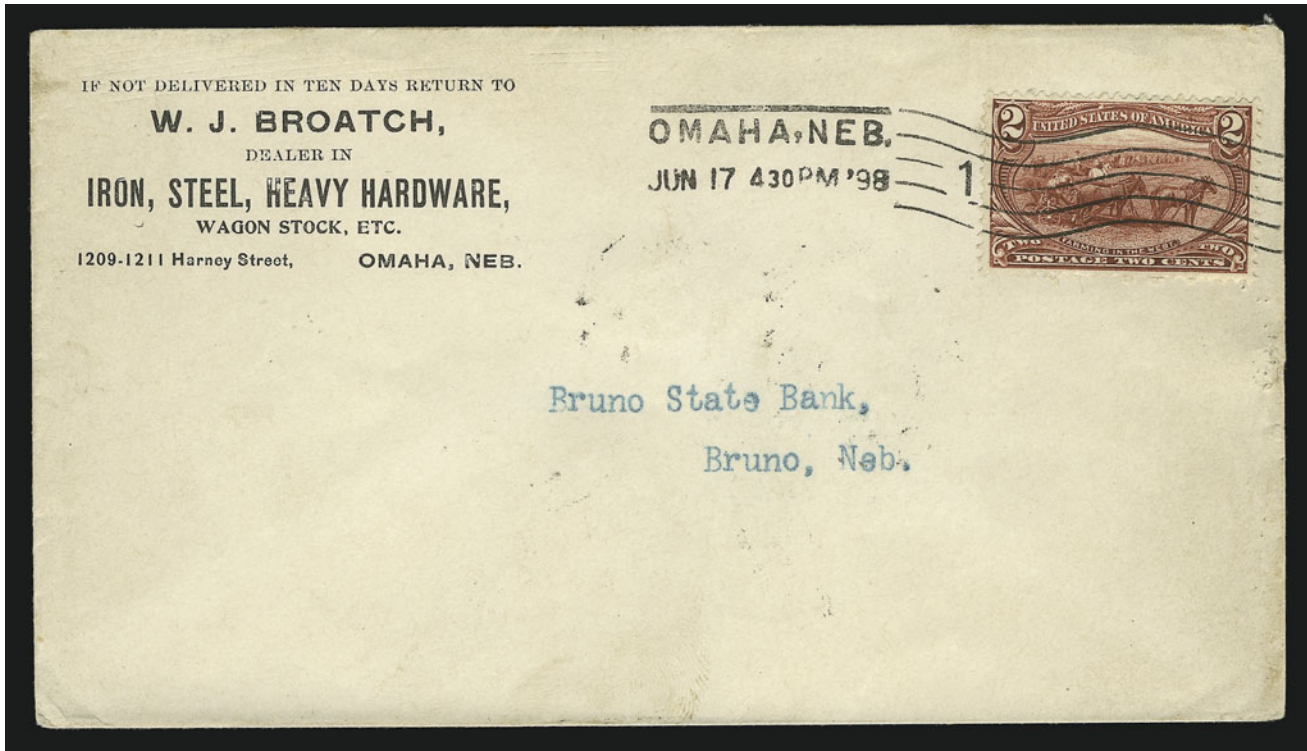
4023°

✉ **\$5.00 Columbian (245).** Perfectly centered, tied by neat "Washington D.C. Dec. 20, 1893" machine cancel on locally-addressed cover to "Henry C. Quimby, c/o Genl. A.N. Batchelder, U.S. Army, Washington D.C."

EXTREMELY FINE GEM STAMP AND COVER. A SUPERB EXAMPLE OF THE \$5.00 COLUMBIAN ON AN IMMACULATE COVER.

With 1990 P.F. certificate 4,750.00

TRANS-MISSISSIPPI ISSUE



4024

4024^o 2c **Trans-Mississippi (286)**. Choice centering, tied by neat “Omaha, Neb. Jun. 17 4:30 PM ‘98” machine cancel on **First Day** cover with **corner card for heavy hardware**, to Bruno Nebr., June 18 receiving backstamp

EXTREMELY FINE. AN EXCEEDINGLY RARE FIRST DAY COVER OF THE 2-CENT TRANS-MISSISSIPPI ISSUE. THIS IS ONE OF ONLY TWO FIRST DAY COVERS OF ANY VALUE OF THE SET KNOWN CANCELLED AT OMAHA NEBRASKA, WHICH WAS THE SITE OF THE TRANS-MISSISSIPPI EXPOSITION.

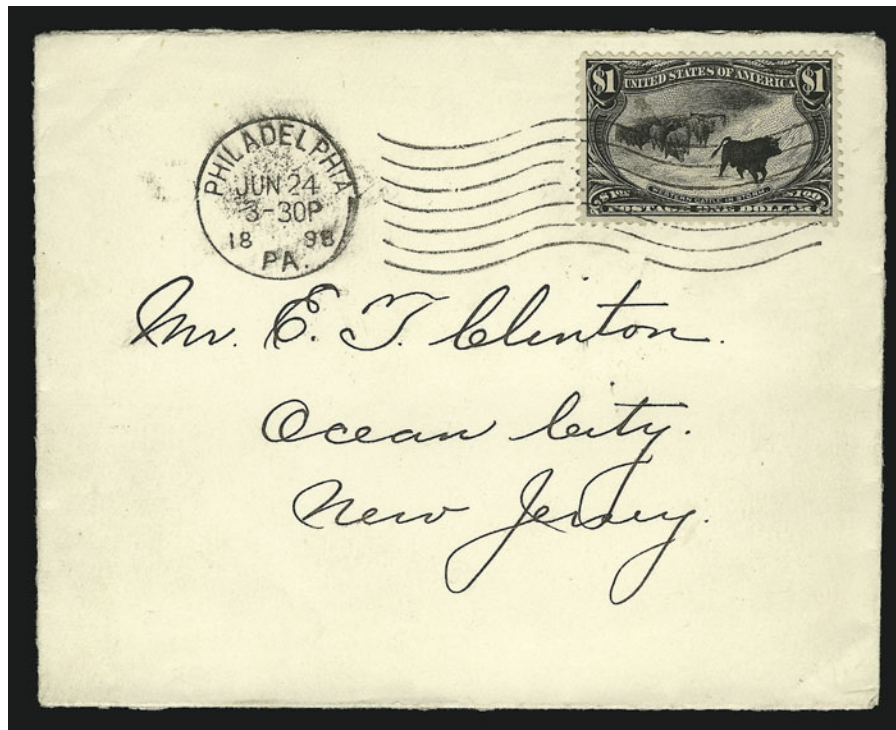
A total of seven First Day covers are known of the 2c Trans-Mississippi issue. . 9,500.00



- 4025° 8c Trans-Mississippi (289). Bottom imprint and plate no. pair, used with 2c Trans-Mississippi (286) and tied by "Pittsburgh Pa." ovals on registered cover to **Vienna, Austria**, also tied by purple "Pittsburgh Pa. Registry Div. Dec. 5, 1905" double-circle datestamp, New York transit backstamps and registry label, some slight toning along a few perfs at top, otherwise Very Fine..... E. 300-400

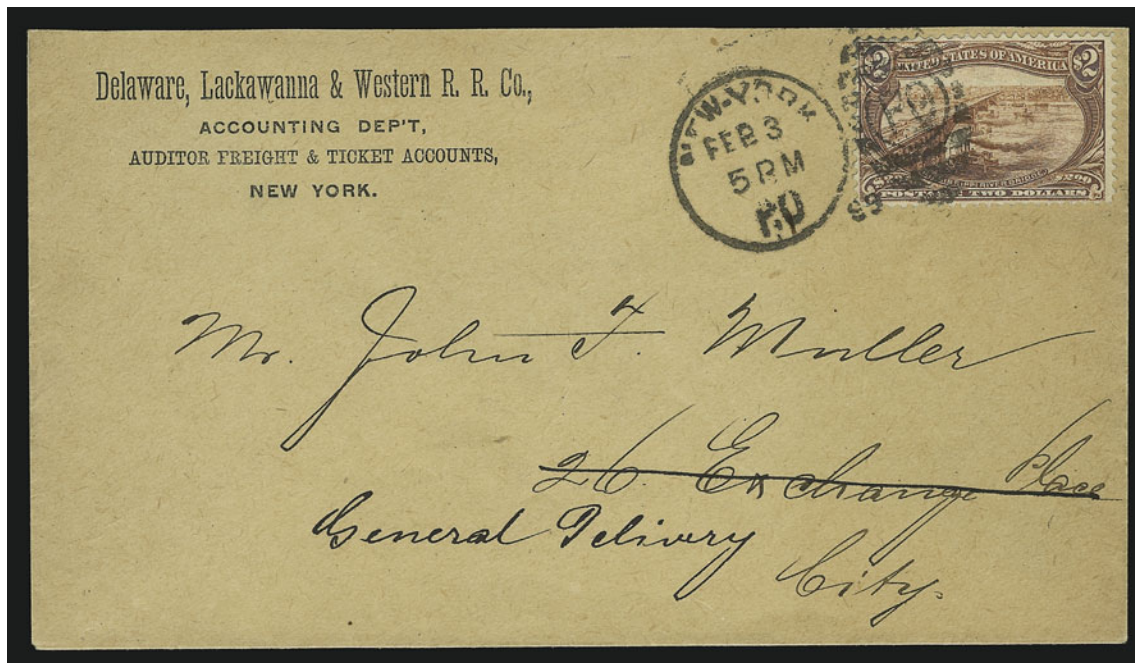


- 4026° 50c Trans-Mississippi (291). Tied by neat strike of "U.S. German Sta. P.O. Nov. 7, 1898" duplex on cover to **Paris, France**, Very Fine and choice, a beautiful cover..... 1,750.00



4027

- 4027°✉ **\$1.00 Trans-Mississippi (292).** Choice centering, tied by neat "Philadelphia Pa. Jun. 24, 1898" wavy-line machine cancel on cover to Ocean City N.J., receiving backstamp (June 25) EXTREMELY FINE. A SUPERB STAMP AND COVER BEARING THE \$1.00 TRANS-MISSISSIPPI ISSUE. The first day of usage was June 17, one week prior to this cover's mailing date..... 4,000.00



4028

- 4028°✉ **\$2.00 Trans-Mississippi (293).** Rich color, tied by well-struck "New-York P.O. Feb. 3 5P.M." duplex on locally-addressed cover re-routed to General Delivery address, Delaware, Lackawanna & Western R.R. Co. printed return address, receiving backstamp VERY FINE AND CHOICE. A BEAUTIFUL AND RARE EXAMPLE OF THE \$2.00 TRANS-MISSISSIPPI ON COVER. VERY FEW ARE KNOWN. In *The Trans-Mississippi Issue of 1898*, Randy Neil records a total of seven covers franked solely by the \$2.00 Trans-Mississippi. Others are known in mixed frankings with other values of the series..... 12,500.00

PAN-AMERICAN ISSUE



4029



4030



4031

- 4029°★★ **1c Pan-American (294).** Mint N.H. with part imprint at top, deep rich colors and proof-like impressions, Jumbo margins, Extremely Fine Gem, a superb stamp in every respect, with 2000 P.F. certificate 32.00
- 4030°★★ **2c Pan-American (295).** Mint N.H., intense colors and detailed impressions, perfectly centered with well-proportioned margins, Extremely Fine Gem, with 1997 P.F. certificate 31.00
- 4031°★★ **4c Pan-American (296).** Mint N.H., pretty shade and crisp impressions, perfectly centered with wide margins, Extremely Fine Gem, a superb stamp, with 2000 P.F. certificate for block of four..... 150.00



4032

- 4032°★ **1c Pan-American, Center Inverted (294a).** Lightly hinged, perfectly centered, rich color and fine impressions
EXTREMELY FINE AND REMARKABLY WELL-CENTERED EXAMPLE OF THE ONE-CENT PAN-AMERICAN INVERT.
The 1c Pan-American Inverts were found in at least four different post offices around the country, soon after release of the issue in May 1901. Between 600 and 700 are likely to have been issued. With 1971 P.F. certificate..... 10,000.00



4033

4033°★ **2c Pan-American, Center Inverted (295a).** Lightly hinged, superbly centered with wide balanced margins, rich color and clear impressions of vignette and frame

EXTREMELY FINE. ONE OF THE FINEST ORIGINAL-GUM EXAMPLES OF THE 2-CENT PAN-AMERICAN INVERT.

The 2c is the rarest of the three Pan-American Inverts. It is surmised that approximately 200 were issued through the post office, with two distinct shades known. Estimates of surviving examples range from an early count (1945) of 55 unused and 2-3 used to the 1998 Datz estimate of 150 unused, 3-5 used and a block of four intact. Our Levi records contain the intact block (4), reconstructed block (4), 64 unused singles and 6 used singles, for a total of 72 unused and 6 used. Many of the unused singles have disturbed gum or no gum, and/or are off center to top or top left. This Extremely Fine sound stamp with original gum is among the finest known examples.

With 1984 and 1998 P.F. certificates. Scott footnote states "Almost all unused copies of No. 295a have partial or disturbed gum. Values are for examples with full original gum that is slightly disturbed." The stamp offered here has fresh lightly-hinged gum.....

42,500.00



4034

4034°★ **4c Pan-American, Center Inverted (296a).** Beautiful colors, full original gum showing usual slight disturbance, unusually well-centered and fresh

VERY FINE AND CHOICE. ONE OF THE FINEST KNOWN EXAMPLES OF THE 4-CENT PAN-AMERICAN INVERT.

The 4c Pan-American Invert was a special printing and not regularly issued. Examples were distributed through two official channels, and the gum on the majority of stamps without "Specimen" overprint was disturbed. In fact, because the stamps were removed from mounting paper, they are generally thinned or have seriously disturbed gum. Examples with full intact gum are very scarce.

We compared this stamp with two blocks of four and several singles. The gum on this stamp is the freshest and least disturbed of any that we examined.

With 1963 P.F. certificate which states that "it is genuine" and with 1997 P.F. certificate which states that "it is genuine previously hinged with disturbed o.g. as usually found on this stamp", which reflects the new P.F. policy on 4c Pan-American Invert gum.....

22,500.00

AIR POST ISSUES



- 4035°✉ **65c Graf Zeppelin (C13).** Choice centering, tied by two strikes of "Bridgeport Conn. May 31, 1930" duplex cancels on flown cover to Bridgeport Conn., back of cover with **5c and 10c Postage Due stamps** tied by Bridgeport Conn. ovals, Friedrichshafen and New York receiving backstamps, red and purple cachets (latter clear impression but extra ink smudges at bottom), small purple "Postage Due 65 cents" handstamp with amount in pencil, Very Fine and choice, a most unusual usage E. 800-1,000
- 4036°✉ **\$2.60 Graf Zeppelin (C15).** Choice centering with wide margins, tied by "Washington D.C. Apr. 19, 1930" machine postmark on **First Day** cover to Los Angeles Cal., red and purple cachets, Lakehurst backstamp, Extremely Fine 1,250.00
- 4037°✉ **6c Eagle, Imperforate Horizontally (C23a).** Vertical pair, tied by "New York Grand Central Annex Jan. 18, 1939" duplex cancels on cover with airmail border to Chicago Ill., Kessler return address in pencil on backflap, Extremely Fine, rare on cover, unpriced on cover in Scott E. 1,000-1,500

U.S. PIONEER FLIGHTS



4038

- 4038°✉ **1911, Nov. 3-5, Louisville, Kentucky. Aero Military Tournament (AAMC 8).** 1c Green tied by well-struck special tournament cancel on postcard to Louisville Ky.
 VERY FINE AND CHOICE EXAMPLE OF THIS SCARCE PIONEER FLIGHT.
 While dated Nov. 4th, this cover was flown on Nov. 5 because there were no flights on the 4th. AAMC states "very few known". Ex Mack.AAMC 4,000.00



- 4039°✉ **1912, Jan. 1-2, Wilmington N.C. Highwood Park Aviation Meet (AAMC 14).** Jan. 1 flight cancel on locally addressed 1c Blue postal card (UX22), message side with printed notice of the meeting of the Fraternal Mystic Circle, Very Fine, AAMC states less than ten pieces known from the 1,600 flown, ex Mack.....AAMC 700.00
- 4040°✉ **1912, Feb. 17-25, Oakland Cal. Emeryville Race Track Aviation Meet (AAMC 16).** 1c Green tied by Feb. 17 (First Day) cancel on picture post card depicting aviatrix Blanche Scott and addressed to Chicago Ill., fresh and Fine.....AAMC 275.00
- 4041°✉ **1912, June 7-8, Mansfield O., Fair Grounds Aviation Meet (AAMC 34).** 1c Green tied by Mansfield Ohio oval cancel and beautifully struck violet flight cancel on locally addressed Mansfield Daily News souvenir postcard, Extremely Fine, only five to ten cards known, ex Lettick and Mack.....AAMC 2,000.00
- 4042°✉ **1912, Sep. 28, Puyallup-Tacoma Wash. Crawford's Puget Sound Aerial Mail (AAMC 60).** "Tacoma Wash. Sep. 28 1PM 1912" Panama Pacific Expo cancel on locally addressed 1c Blue postal card (UX22) specially printed for the flight, Extremely Fine, AAMC states "very few are known today in collectors' hands", ex Mack.....AAMC 600.00
- 4043°✉ **1912, Nov. 24, San Francisco Cal. Ingleside Park Aviation Meet (AAMC 65).** Flight cancel on locally addressed 2c Red entire, Extremely Fine and scarce, approximately 50 items flown, ex Mack.....AAMC 400.00

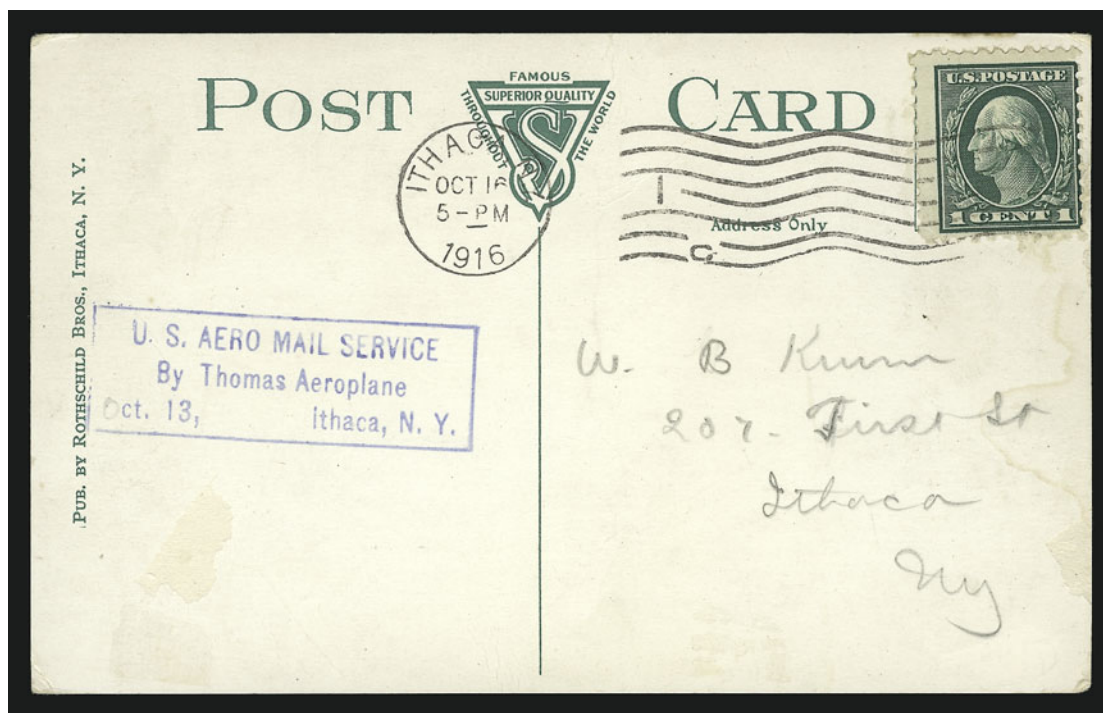


4044

4044° ☒ **1914, January 18, Koloa, Kauai, Hawaiian Islands Experimental Flying Exhibition (AAMC 78).** 1c Green tied by indistinct strike of "Koloa Jan. 20" duplex cancel on picture post card depicting Tom Gunn in flight, addressed to Mrs. John Gribble at Koloa Hawaii, purple "Aerial Mail Route/Tom Gunn/Carrier" three-line handstamp, card with few light bends

VERY FINE AND CHOICE. ONLY TWO PIECES OF MAIL ARE KNOWN FROM THIS PIONEER FLIGHT. A GREAT PIONEER AIR POST RARITY.

According to the *American Air Mail Catalogue*, Chinese aviator Tom Gunn made two flights on Jan. 18, and mail was carried on at least one of them.....AAMC 5,500.00



4045

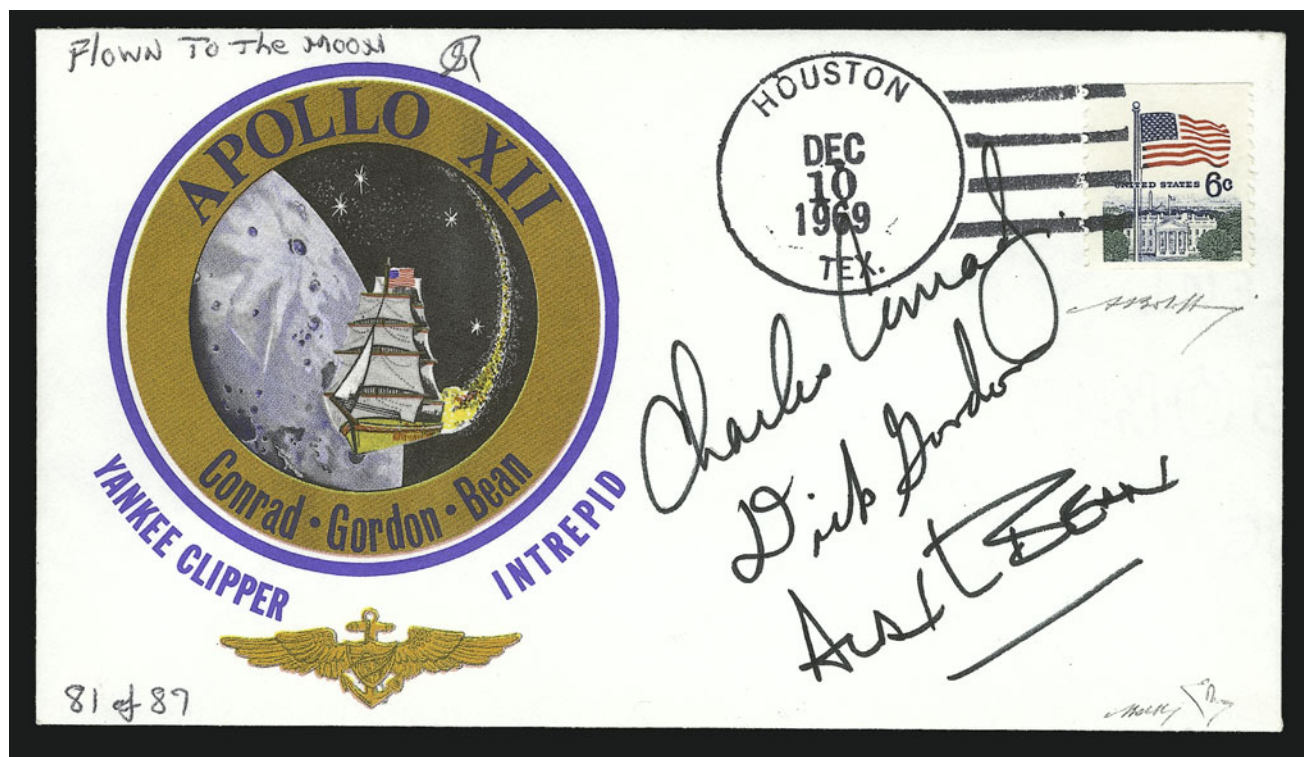
4045° ☒ **1916, Oct. 14, Ithaca N.Y. Experimental Aeroplane Mail Flight (AAMC 96).** 1c Green tied by Ithaca Oct. 16 machine cancel on locally addressed picture postcard of the Ithaca City Hospital, blue boxed flight handstamp cachet

VERY FINE AND CHOICE. OF THE APPROXIMATELY 1,000 PIECES OF MAIL FLOWN, ONLY TEN ARE RECORDED.

The mail was delayed as the flight was rescheduled from Oct. 13 to Oct. 14 due to inclement weather. The pilot then erred by dropping the mail in the woods from which it was not recovered and deposited into the general mail stream until Oct. 16.

Ex Mack.AAMC 3,000.00

APOLLO XII FLIGHT



4046

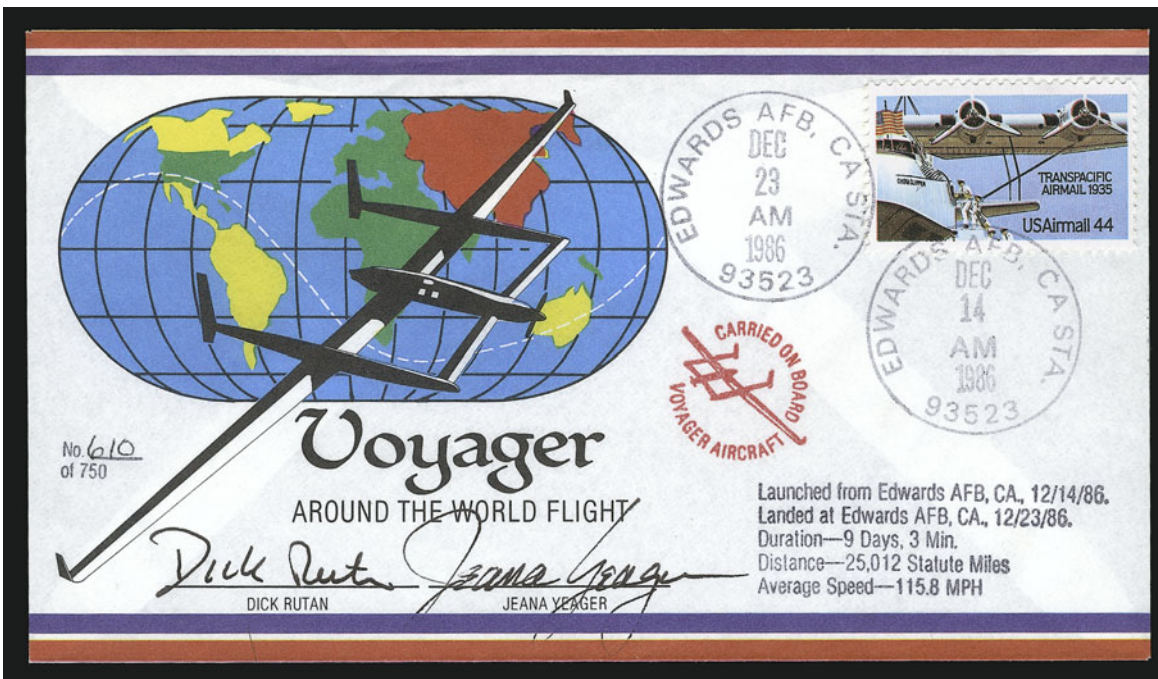
4046° 1969, Apollo XII Moon Exploration Cover. 6c coil tied by "Houston Tex. Dec. 10, 1969" machine cancel, numbered "81 of 87" at bottom left and signed by the three astronauts — Charles Conrad, Dick Gordon and Alan Bean, back of cover bears pen "This envelope was flown to the moon on Apollo 15 Richard F. Gordon", also "Flown to the moon RG" at top left VERY FINE AND RARE. THIS COVER WAS CARRIED TO THE MOON AND BACK ON THE APOLLO 12 MISSION. A GREAT SPACE-RELATED RARITY.

The Apollo 12 mission was the second time that humans walked on the surface of the moon and returned safely to Earth. Launched on November 12, Apollo 12 was struck by lightning two times after takeoff, temporarily shutting off electrical power with no permanent damage. The lunar module *Intrepid* spent 31 hours and 31 minutes on the moon's surface. The *Yankee Clipper* command module returned to Earth on November 24. This cover was postmarked after quarantine had ended..... E. 7,500-10,000



4047

- 4047°✉ **Mercury 7 Autographed Cover.** Cacheted cover from 1986 Sandical exhibition bearing 4c Mercury and 18c coil stamps tied by "Old Town Philatelic Center, San Diego California 92110, Oct. 11, 1986" oval pmk. which also ties label from International Aerospace Hall of Fame, signed by Scott Carpenter, Gordon Cooper, John Glenn, Wally Schirra, Alan Shepard, Deke Slayton and Betty (Mrs. Gus) Grissom, fresh and Very Fine, back of cover signed by creator of cachet design..... E. 400-500



4048

- 4048°✉ **1986, December 14 — Voyager Around the World Flight (Unlisted).** Cover numbered 610 of 750 with multicolored printed design, with 44c stamp tied by "Edwards A.F.B. Dec. 14 AM 1986" circular datestamp, also tied by Dec. 23 receiving datestamp, signed by Dick Rutan and Jeana Yeager, Very Fine and choice, accompanied by fact sheet and certificate of authenticity..... E. 300-400

CANADA



4049

4049° ★田 **CANADA, 1959, 5c Seaway Invert (387a; SG 513a).** Top right corner block of four, three stamps barely hinged, top left stamp Mint N.H., rich colors on bright paper, choice centering

EXTREMELY FINE CORNER MARGIN BLOCK OF THE FAMOUS CANADA SEAWAY INVERT.

This block comes from the position that should yield the plate number. There are no known examples of this invert error with the plate number.

With 1985 P.F. certificate 33,000.00

NEWFOUNDLAND
MARTINSYDE FLIGHT



4050

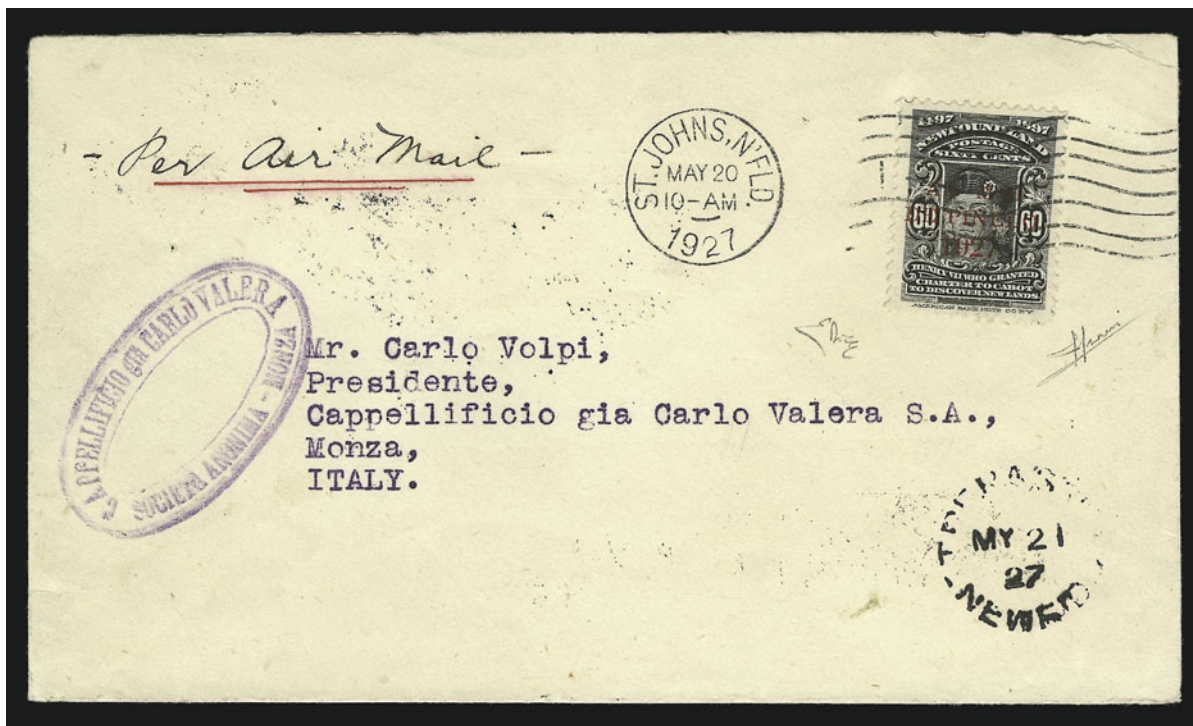
4050°✉ **NEWFOUNDLAND, 1919, 3c Red Brown, Martinsyde Flight, Manuscript Overprint (C1 var; SG 142a).** Manuscript "Aerial Atlantic Mail" and signed "JAR" on cover to the Postmaster General in London, tied by "St. John's Nfld Apr. 19, 1919" machine cancel, General Post Office corner card, with original TLS from J. Alex Robinson, Postmaster General: "The aeroplane 'Raymor' is about to leave for England, and the Sopwith Aeroplane has not left yet. The latter carries a mail with the stamps surcharged 'First Trans-Atlantic Air' Flight. There is a possibility of the Martinsyde Aeroplane outstripping her. I take the opportunity, therefore, of sending this aeroplane mail in the hope and expectation that it may be a pioneer, if not the pioneer, of rapid mail connection between the Motherland and her oldest Colony.", trivial foxing and paper clip mark at top left

VERY FINE AND EXTREMELY RARE. ONE OF THE FINEST OF THE APPROXIMATELY SIXTEEN RECORDED MARTINSYDE COVERS. THE CONTENTS ARE OF GREAT HISTORICAL SIGNIFICANCE AND MAKES THIS ONE OF THE MOST IMPORTANT NORTH AMERICAN FLIGHT COVERS IN EXISTENCE.

Although the April 19th flight and a subsequent July attempt both ended in failure (the *Raymor* succeeded in flying only a few hundred yards), its mail bag was placed on the S.S. *Grampian* in July, but it was not given to the London office until Jan. 20, 1920.

With 1991 Diena certificate..... E. 50,000-75,000

DE PINEDO FLIGHT



4051

4051° ☒ **NEWFOUNDLAND, 1927, 60c Black, De Pinedo Air Post (C4; SG 163).** Choice centering, tied by well-struck "St. Johns, Nfld. May 20 10-AM 1927" machine cancel on cover addressed to Carlo Volpi in **Monza, Italy**, usual faint strike of "Trepassy Newfld MY 21, 1927" datestamp, Rome and receiving backstamps, purple oval company receiving handstamp

FRESH AND VERY FINE. A GREAT AIR POST RARITY. ONLY 225 DE PINEDO STAMPS WERE USED ON FLIGHT COVERS.

Signed Sorani and Diena. With 1998 B.P.A. certificate E. 7,500-10,000

DORNIER DO-X INVERTED OVERPRINT



4052

- 4052° ★ **NEWFOUNDLAND, 1932, \$1.50 on \$1.00 Dornier DO-X, Inverted Surcharge (C12a).**
 Lightly hinged, choice centering, rich colors on bright paper
 EXTREMELY FINE. A BEAUTIFUL EXAMPLE OF THE RARE DORNIER DO-X WITH INVERTED SURCHARGE. APPROXIMATELY 50 WERE PRINTED.

These stamps were printed in sheets of four for use on the return flight of the Dornier DO-X from New York to Germany. According to the *American Air Mail Catalogue*, Newfoundland mail was accepted for despatch by the DO-X, to be prepaid by Newfoundland stamps. According to the Sanabria catalogue, a total of 8,000 stamps with the DO-X surcharge were printed. Of these, 50 received inverted surcharges.

Signed Bloch..... 11,500.00

ZEPPELIN FLIGHTS

R-34 AND R-100



- 4053°✉ **1919, July 2-6, Dirigible R-34. Flight from East Fortune, Scotland to Roosevelt Field N.Y. (AAMC Z-460).** Postcard depicting dirigible R-34 and with message written enroute by 2d Lt. Jack D. Shotter and also signed by crew member Maj. Herbert Scott and other officers, text reads "This card was written up 50 miles from the Newfoundland Coast after 52hrs in the air. I am feeling fairly well", with U.S. 1c stamp tied by "Hempstead N.Y. Jul. 7, 1919" duplex and addressed to Faversham, England, neat due marking, fresh and Fine, scarce, this was the first East-West non-stop transatlantic lighter-than-air flight, only two cards are known with messages written on board, ex Rubin, with 1996 S.I.A. certificate..... E. 750-1,000
- 4054°✉ **1932, May 2, British Airship R-100 Trial Flight (AAMC Z-462).** Picture postcard depicting Dornier DO-X, G.B. 1½p stamp tied by "Bedford 2 May 1932 8:15pm" cancel with "Get the Telephone Habit" slogan and addressed to **Basel, Switzerland**, signed by Ralph Booth, the captain of Airship R100, fresh and Very Fine, carried on the return trip of this trial flight from Cardington to Montreal and back, this is the only cover carried on this flight addressed to Switzerland..... E. 1,000-1,500
- 4055°✉ **1930, August 13 — Dirigible R-100. Return Flight from Montreal (St. Hubert) (AAMC Z-462).** Cover with vertical pair and single of Canada 5c Air Post stamp tied by "Montreal, Canada St. Hubert Aug. 9, 1930" circular datestamp **to Basel, Switzerland**, receiving datestamp (Aug. 18), cachet handstamp, one stamp affected from placement at edge of cover, otherwise Very Fine, though not flown this is still a scarce item E. 1,000-1,500

SOUTH AMERICA FLIGHT



4056

- 4056° ☒ **1930, May 18-June 6 — Europe Pan-America Round Trip Flight, Moscow (Z-106 var).** Registered German 8pf postal card **originating in Moscow, Russia** bearing four Russian Air Post stamps tied by "Moscow 3.5.30" datestamps and addressed to Friedrichshafen on one side with Koln and receiving handstamps, other side bears 2m and 4m Zeppelin stamps tied by "Friedrichshafen 18.5.30" datestamps with Friedrichshafen receiving datestamp, red and purple cachets, minor edgewear

VERY FINE AND CHOICE. A RARE POSTAL CARD ORIGINATING IN RUSSIA AND SENT ON THE EUROPE PAN-AMERICA FLIGHT FROM GERMANY. PROBABLY A UNIQUE USAGE.

Signed Arthur Falk. E. 4,000-5,000



4057

- 4057° ☒ **1930, May 18-June 6 — Europe Pan-America Round Trip Flight, Czechoslovakia (AAMC Z-106 var).** Registered cover with four Czechoslovakia stamps tied by "Praha 82 Letiste 15.V.30" datestamp, second strike at left, and addressed to Czechoslovakia, with two Germany 2m and two 4m South America Flight stamps tied by purple "Luftschiff Graf Zeppelin 19.5.1930" datestamps, one purple and two red cachets, transit and receiving backstamps incl. Berlin (May 15), Ostrava (May 16), Friedrichshafen (June 6) and Chebz (June 7)

VERY FINE AND CHOICE. AN EXCEEDINGLY RARE ZEPPELIN POST COVER ORIGINATING IN CZECHOSLOVAKIA.

Very few are known. E. 4,000-5,000



4058

4058° 1930, May 18-June 6 — **Europe Pan-America Round Trip Flight, Switzerland to Germany (AAMC Z-106 var).** Oversize cover with vertical pairs of Switzerland 35c and 1fr Air Post stamps tied by "Romanshorn 16.V.30" datestamp, also with Germany 4m South America Flight stamp tied by "Luftschiff Graf Zeppelin 22.5.1930" datestamp, Brazil 200rs and 10,000rs stamps tied by Recife circular datestamp of May 28, U.S. \$1.30 Graf Zeppelin stamp (C14) tied by "Lakehurst N.J. Jun. 2, 1930" duplex, neat Friedrichshafen receiving datestamp of June 6, purple, red and black cachets

VERY FINE AND VERY RARE. A SPECTACULAR FOUR-COUNTRY FRANKING CARRIED ABOARD THE FIRST EUROPE PAN-AMERICA ROUND TRIP FLIGHT OF THE GRAF ZEPPELIN.

Signed by four people, including Dr. Hugo Eckner. E. 4,000-5,000



4059

- 4059° 1930, May 18-June 6 — Europe Pan-America Round Trip Flight, Hungary to Seville (AAMC Z-106 var). Picture postcard depicting Graf Zeppelin and map with horizontal pair of Hungary 80f and 20f stamps tied by "Legi Posta Budapest 72 1930 Maj. 1916" datestamps to Seville, Spain, red cachet, receiving handstamp, Very Fine and choice E. 400-500



4060

- 4060° 1930, May 18-June 6 — Europe Pan-America Round Trip Flight, Canada to Germany to Canada (AAMC Z-106 var). Oversize cover with Canada 1c, 5c, two 12c and 20c stamps tied by "Regina Sask. Apr. 24, 1930" datestamps and addressed to Chief Postmaster at Friedrichshafen, Germany with instructions to remail to Regina, Saskatchewan, Canada, Germany 2m South America Flight stamp tied by "Luftschiff Graf Zeppelin 19.5.30" datestamp, eight strikes of Seville circular datestamp, red cachet, additional Montreal (Apr. 28) and Friedrichshafen receiving backstamp (May 13), also Winnipeg transit (June 2)
- VERY FINE. AN EXCEEDINGLY RARE COVER SENT FROM CANADA TO GERMANY THEN FLOWN ON THE ZEPPELIN FLIGHT. A GREAT RARITY.
- Sieger No. 64 I. E. 4,000-5,000



4061

4061[°] 1930, May 18-June 6 — Europe Pan-America Round Trip Flight, Vatican City to New York (AAMC Z-106 var). Picture postcard with Vatican City 21 stamp tied by "Citta del Vaticano Poste 10.5.30" datestamp, also with Italy 21 Air Post stamp tied by "Roma Ferrovia Posta Aerea 10.5.30" datestamp and Germany 4m South America Flight stamp tied by on-board "Luftschiff Graf Zeppelin 19.5.30" datestamp, red cachet, Lakehurst receiving datestamp

VERY FINE AND CHOICE. A RARE ZEPPELIN DISPATCH FROM THE VATICAN TO NEW YORK, BEARING THE STAMPS OF THREE COUNTRIES.

Only 67 cards and 11 covers were flown. Signed Diena and with 1981 Diena certificate...
..... E. 4,000-5,000

PARAHYBA OVERPRINT



4062 front and back

4062°✉ **BRAZIL, 1930, "5" on 20,000r Blue, Parahyba Provisional (Unlisted).** Choice centering, rich color, bold overprint, tied by neat strike of "Syndicato Condor Ltda., Parahyba, Servico Aereo No Brasil, 30 Mai 1930" double-circle datestamp on picture post card depicting a public plaza, to Principality of Monaco, other side of post card bears 500r stamp similarly tied and with cachet, Friedrichschafen receiving datestamp

VERY FINE AND CHOICE. AN EXCEEDINGLY RARE EXAMPLE OF THE PARAHYBA PROVISIONAL STAMP USED FROM PARAHYBA. ONLY FIVE ARE KNOWN USED ON ZEPPELIN MAIL. ONE OF THE GREAT RARITIES OF AIR POST PHILATELY.

At Parahyba, the supply of 5,000r stamps had been exhausted. The local post office authorized the overprinting of thirteen of the 20,000r stamps on hand. Some were sold at Parahyba, and some were sold at Recife. Only five examples used on Zeppelin mail are known. One of the others, used from Recife, is offered in the following lot.

Signed Sieger and with 1960 Sieger certificate. E. 60,000-80,000



4063 front and back

4063 ☒ **BRAZIL, 1930, "5" on 20,000r Blue, Parahyba Provisional (Unlisted).** Choice centering, rich color, used with horizontal pair of 200r and tied by neat strikes of "Syndicato Condor Ltda., Recife, Servico Aereo No Brasil, 28 Mai 1930" double-circle datestamp on picture post card depicting LZ127 after landing, to Friedrichschafen, Germany, bold "Lakehurst N.J. Jun. 1, 1930" transit, purple cachets

VERY FINE AND CHOICE. AN EXCEEDINGLY RARE EXAMPLE OF THE PARAHYBA PROVISIONAL USED FROM RECIFE. ONLY FIVE ARE KNOWN USED ON ZEPPELIN MAIL. ONE OF THE GREAT RARITIES OF AIR POST PHILATELY.

At Parahyba, the supply of 5,000r stamps had been exhausted. The local post office authorized the overprinting of thirteen of the 20,000r stamps on hand. Some were sold at Parahyba, and some were sold at Recife. Only five examples used on Zeppelin mail are known. One of the others, used from Parahyba, is offered in the previous lot.

Ex Kofler. Signed Sieger and with 1964 Sieger certificate. Also accompanied by 1964 Robson Lowe certificate..... E. 60,000-80,000

4064



4065



4066

- 4064°✉ **1930, May 26-June 6 — Europe Pan-America Round Trip Flight, Porto Alegre Brazil to New York (AAMC Z-109a var).** Cover with all three values of Brazil Zeppelin ovpt. stamps and additional 300rs stamp tied by "Syndicato Condor Ltda. Porto Alegre 22 Mai 30" datestamps, to New York U.S.A., Recife cachet on back, small cover tear at top, Very Fine ... E. 200-300
- 4065°✉ **1930, May 26-June 6 — Europe Pan-America Round Trip Flight, Recife to Lakehurst (AAMC Z-109a).** Horizontal pair of Brazil 50rs and 20rs used with 10,000 on 20,000rs Blue and 5,000 on 1,300rs Green, tied by "Syndicato Condor Ltda Servico Aereo no Brasil, Recife, 28 Mai 1930" datestamps on picture postcard to Bellingham Wash., U.S.A., neat "Lakehurst N.J. Jun. 2, 1930" duplex, purple and Recife cachets, Very Fine and choice, scarce with the 5,000rs stamp..... E. 750-1,000
- 4066°✉ **1930, May 26-June 6 — Europe Pan-America Round Trip Flight, Rio De Janeiro to Berlin, Germany (AAMC Z-109c).** Cover with complete set of Brazil Zeppelin stamps and 500r stamp, tied by "Syndicato Condor Ltda Rio De Janeiro 24 Mai 30" double-circle datestamp, purple cachet, cover with printed Zeppelin design and text, usual Recife cachet, Friedrichschafen and Berlin backstamps, Very Fine and choice..... E. 800-1,000



4067

4067°✉ **1930, May 28-June 6 — Europe Pan-America Round Trip Flight, Valparaíso Chile to New York (AAMC Z-110 var).** Cover with 5c, 20c, 25c, 30c and 40c stamps of Chile tied by "Correo Aereo Valparaíso 14 May 1930" datestamps and addressed first to Buenos Aires and then to New York, also with Argentina 5c and 3.60p stamps tied by "Serv. Aeropostal Buenos Aires 21 May 1930" circular datestamp, Lakehurst and Buenos Aires backstamps, some slight waterstaining at bottom left

VERY FINE AND VERY RARE USAGE FROM CHILE TO NEW YORK. VERY FEW ARE KNOWN.

The cover offered here was mailed from Valparaíso, Chile to Buenos Aires, Argentina, presumably to a friend of the sender. It was then sent via Graf Zeppelin from Argentina to New York. Listed but unpriced in Sieger (No. 64 IV) E. 3,000-4,000

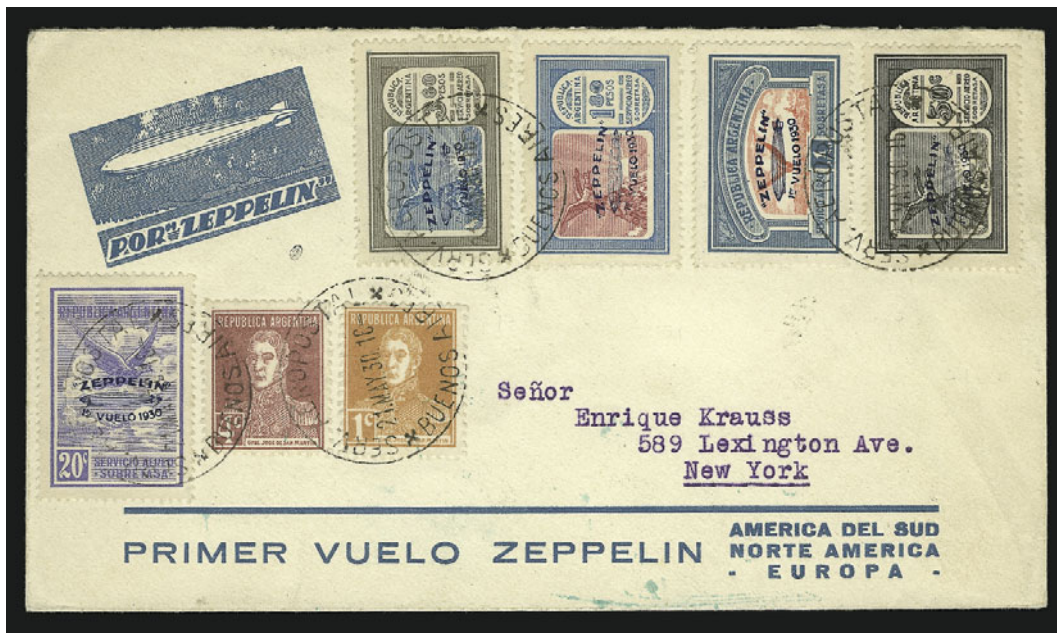


4068

4068°✉ **1930, May 28-June 6 — Europe Pan-America Round Trip Flight, Valparaiso Chile to Germany (AAMC Z-110 var).** Card with Chile 10c, 15c, 20c and 50c stamps used with 1p and 2p Air Post stamps, tied by "Correos Aereo Valparaiso 30 Abr. 1930" datestamps to Bremen, Germany, also with Brazil 100rs and 200rs and 5,000rs stamps tied by "Rio de Janeiro 24 May 1930" datestamps, purple cachet also ties one stamp, Recife and Friedrichschafen backstamps, some slight edgewear affects one stamp

VERY FINE. AN INCREDIBLY RARE CARD SENT FROM VALPARAISO, CHILE TO GERMANY VIA THE ZEPPELIN POST. VERY FEW ARE KNOWN.

Listed but unpriced in Sieger (No. 64 IV)..... E. 5,000-7,500



4069

- 4069° 1930, May 28-June 6 — Europe Pan-America Round Trip Flight, Argentine Dispatch (AAMC Z-110d). Cacheted cover with Argentina 20c-3.60p Air Post (C20-C24) with 1c and 4c stamps, tied by "Serv. Aeropostal Buenos Aires 21 May 30" datestamps, to New York, green Lakehurst receiving backstamp, fresh and Very Fine E. 300-400



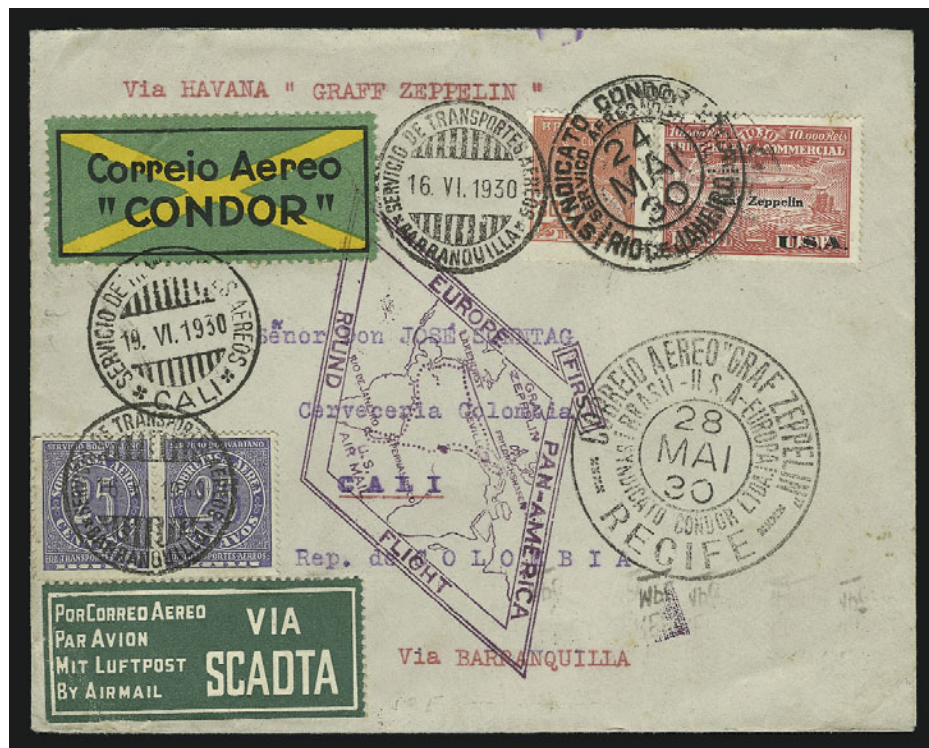
4070

- 4070° 1930, May 28-June 6 — Europe Pan-America Round Trip Flight, Bolivia Dispatch (AAMC Z-110i var). Cover with all three values of Bolivia Zeppelin stamps, also six additional stamps, tied by purple "Correos de Bolivia La Paz 14 Mayo 1930" datestamps to Liverpool, England, neat "Friedrichschafen 6.6.30" receiving backstamp, two purple cachets, fresh and Very Fine, scarce cover containing the entire set of three values of the Bolivia Zeppelin stamps, small Sieger handstamp and with 1960 Sieger certificate..... E. 1,000-1,500



4071

- 4071° 1930, May 28-June 6 — Europe Pan-America Round Trip Flight, Paraguay to New York (Z-110j). 70c Postal Card with block of four of 10c and 0.95c stamps tied by purple boxed "P R "Zeppelin" Primer Vuelo, America del Sud, Norte America Europa-Mayo 1930 Republica del Paraguay" cancels and addressed to New York, also bearing "Correo Aereo Sevilla 5 Jun. 30" receiving datestamp (not carried on this leg), back of postal card with oval "Baquera, Kusche & Martin, S.A., Seville-Spain, Agent of the Graf Zeppelin" company handstamp, fresh and Very Fine, scarce usage, only 60 pieces total were sent from Paraguay to Lakehurst..... E. 1,000-1,500



4072

- 4072° 1930, May 28-June 6 — Europe Pan-America Round Trip Flight, Brazil to Colombia (AAMC Z-109 var). Cover with Brazil 300rs and 10,000rs stamps tied by "Syndicato Condor Ltda., Rio de Janeiro, 24 Mai 1930" datestamp and addressed to Cali, Colombia, routing instructions "Via Havana Graf Zeppelin", Recife and purple cachets, neat "Havana Cuba June 2, 1930" backstamp, two Colombia 25c stamps tied by "Servicios de Transportes Aereos, Barranquilla, 16.VI.1930" datestamp, Cali receiving datestamp (June 19), Very Fine and choice, scarce usage E. 750-1,000

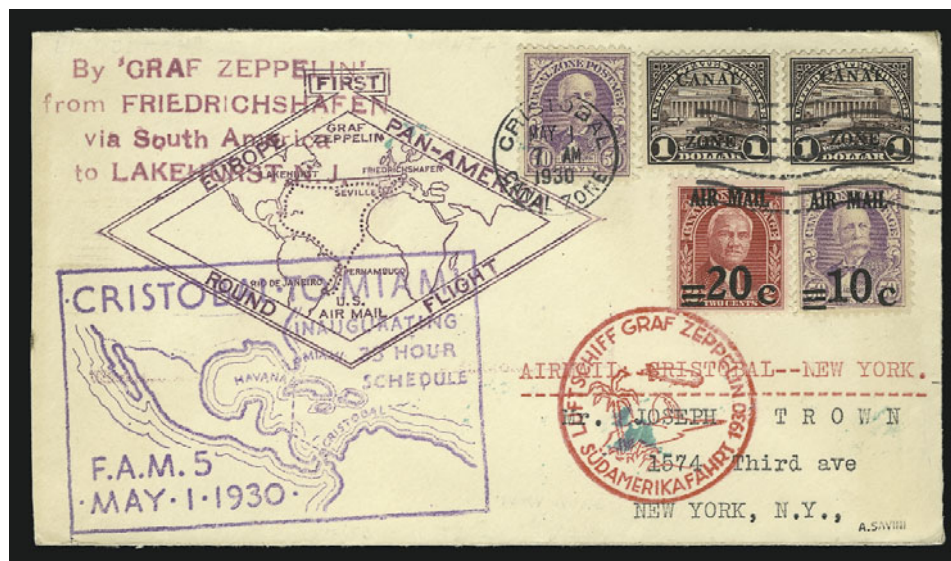


4073

4073°✉ **1930, May 26-June 6 — Europe Pan-America Round Trip Flight, Suriname to Netherlands (AAMC Z-109 var).** Cover with 2c, 5c, 10c, two 25c and two 50c of Suriname tied by "Paramaribo 17.5.30" datestamps, used with Brazil 200rs (two) and 10,000rs Graf Zeppelin stamps tied by "Correio Aereo Graf Zeppelin Recife 28 Mai 30" datestamps, purple cachet, neat "Friedrichshafen 6.6.30" receiving backstamp

VERY FINE AND CHOICE. AN EXCEEDINGLY RARE ZEPPELIN USAGE ORIGINATING IN SURINAME. ONLY A VERY FEW ARE KNOWN.

Signed Kohler in pencil on back. E. 2,500-3,000



4074

4074°✉ **1930, June 2-June 6 — Europe Pan-America Round Trip Flight, Canal Zone to New York via Miami (AAMC Z-111 var).** F.A.M. First Flight cover from Canal Zone to Miami, with 10c, 20c, 50c and two \$1.00 stamps tied by "Cristobal Canal Zone May 1, 1930" pmk., large purple boxed cachet, also with red and purple Zeppelin cachets, "Lakehurst N.J. May 31, 1930" receiving backstamp

VERY FINE. A RARE ZEPPELIN COVER USED FROM CANAL ZONE TO NEW YORK.

Only 15 covers and 25 cards are known. This was the first northbound flight of the new service. The inaugural flight of this trip to Miami was piloted by Charles Lindbergh. ... E. 2,000-3,000



4075

4075°

1930, June 2-June 6 — Europe Pan-America Round Trip Flight, Canal Zone to Germany (AAMC Z-111 var). Behrens cacheted cover with Canal Zone block of ten of 15c and pair of 25c tied (between perfs) by targets and “Cristobal C.Z. May 15, 1930” duplex to Brunswick, Germany, carried by plane via Havana, Cuba to Seville, Spain and thence by Zeppelin to Germany, Havana (May 16), Seville (June 4) and Friedrichschafen (June 6) backstamps

VERY FINE AND CHOICE. VERY FEW COVERS ARE KNOWN FLOWN ON THIS ROUTE.

Small Savini handstamp..... E. 2,000-3,000



4076

4076°

1930, June 2-June 6 — Europe Pan-America Round Trip Flight, Panama to Germany (AAMC Z-111 var). Behrens cacheted card with three Panama 5c on 10c, one 15c and one 20c stamp tied by “Agencia Postal Panama May 15, 1930” duplexes to Braunschweig, Germany, Havana transit backstamp, also with U.S. 65c Graf Zeppelin (C13) tied by “New York Grand Central Sta. May 27” duplex, red and purple cachets also tie stamps, Friedrichschafen receiving datestamp, Very Fine and choice, scarce usage from Panama (AAMC lists Canal Zone only), Sieger separates Panama from Canal Zone (Sieger No. 64X)..... E. 1,000-1,500



4077

- 4077°☒ **1930, May 26-June 6 — Europe Pan-America Round Trip Flight, Tela, Honduras Dispatch (AAMC Z-111 var).** Registered cover with 10c, 20c, 50c and 1p stamps tied by "Honduras" in five-bar grid and faint strike of "Tela, Honduras May 28, 1930" circular datestamp to Cottbus, Germany, red and purple cachets also tie stamps, also with U.S. \$1.30 Graf Zeppelin stamp (C14) tied by "Lakehurst Jun. 2, 1930" duplex, neat "Friedrichschafen 6 6 30" receiving backstamp, purple registry marking

VERY FINE AND CHOICE. AN EXCEEDINGLY RARE USAGE AND COMBINATION FRANKING. ONLY THREE CARDS AND FIVE COVERS ARE RECORDED.

One of the great rarities of Zeppelin Air Post collecting..... E. 6,000-8,000



4078

4078°✉ **1930, June 2-June 6 — Europe Pan-America Round Trip Flight, Mexico to Germany (AAMC Z-111 var).** Horizontal pair and single of Mexico 1p tied by "Servicio Aereo Mexico D.F. 30 May 30" datestamp on Air Post cover to Cottbus, Germany, purple and red cachets, neat "Friedrichshafen 6 6 30" receiving backstamp

VERY FINE AND CHOICE. A RARE USAGE ON THIS ZEPPELIN FLIGHT FROM MEXICO TO GERMANY. ONLY FIVE COVERS AND TEN POST CARDS ARE KNOWN. ESPECIALLY RARE WITH MEXICO POSTAGE ONLY.

Signed Sieger. E. 4,000-5,000



4079

4079° 1930, June 2-June 6 — Europe Pan-America Round Trip Flight, Mexico to Germany (AAMC Z-111 var). Post card with Mexico 30c Air Post stamp tied by "Servicio Aereo Mexico, D.F. 30 May 30" datestamp to Cottbus, Germany, also with U.S. 65c Graf Zeppelin (C13) tied by "Brownsville Tex." duplex, red and purple cachets, neat "Friedrichshafen 6 6 30" receiving datestamp

VERY FINE AND CHOICE. A RARE POST CARD FROM MEXICO TO GERMANY ON THIS FIRST ROUND FLIGHT. ONLY FIVE COVERS AND TEN POST CARDS ARE KNOWN USED FROM MEXICO.

Signed by Dr. Hugo Eckner at left. E. 4,000-5,000



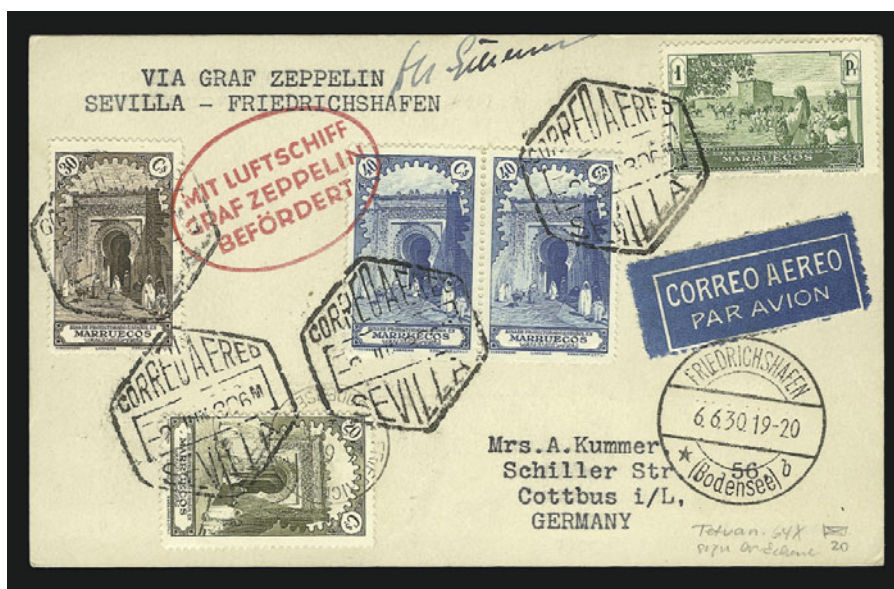
4080

4080° 1930, May 22 — Casablanca-Friedrichshafen via Sevilla, Return Flight (AAMC Z-111 var). Cover bearing three 2fr and three 3fr Morocco stamps tied by "Casablanca Maroc 22-5 30" datestamps to Cottbus, Germany, red oval cachet also ties one stamp and label, Sevilla, Friedrichshafen and receiving backstamps

VERY FINE AND VERY RARE. ONLY FIVE CARDS AND FIVE COVERS ARE KNOWN USED FROM MOROCCO ON THIS FLIGHT.

Signed Arthur Falk. Unlisted in AAMC. Sieger No. 64 XV E. 3,000-4,000

4081



- 4081°✉ 1930, May 19-June 6 — Europe Pan-America Round Trip Flight, Seville to Friedrichschafen (AAMC Z-111 var). Post card to Cottbus, Germany, bearing stamps of Spanish Morocco 20cs, 30cs, 40cs (two) and 1p, tied by "Correo Aeres Sevilla" hexagonal datestamps and red oval cachet, one stamp also tied by "Friedrichschafen 6.6.30" circular datestamp, second different strike of receiving datestamp at right, fresh and Very Fine, scarce with the stamps of Spanish Morocco..... E. 800-1,000

4082



- 4082°✉ 1930, May 19-June 6 — Europe Pan-America Round Trip Flight, Andorra to Germany (AAMC Z-111 var). Cover with Andorra 2c-1p (13-22) with additional 10c, 15c and 40c stamps, tied by "Andorra Correos, Andorra La Vieja 17 Abr. 30" datestamps and addressed to Berlin, Germany, Seville (June 2), Friedrichschafen (June 6) and Berlin (June 7) backstamps, red rectangular cachet
 VERY FINE AND VERY RARE. VERY FEW ZEPPELIN COVERS ARE KNOWN USED FROM ANDORRA.
 Signed Arthur Falk on back E. 1,500-2,000

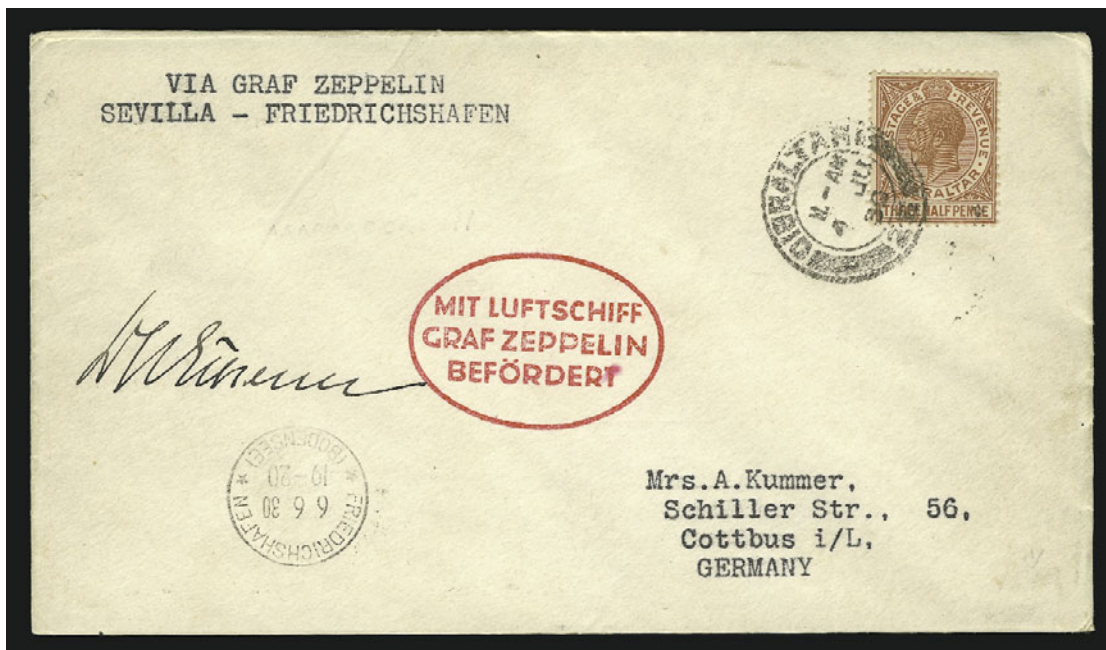


4083

4083° 1930, June 2-June 6 — Europe Pan-America Round Trip Flight, Gibraltar to Germany (AAMC Z-111 var). Card with Gibraltar 1p stamp tied by "Gibraltar 4 JU 1930" circular datestamp and addressed to Cottbus, Germany, red oval cachet, neat "Friedrichschafen 6.6.30" receiving datestamp

VERY FINE AND CHOICE. A RARE ZEPPELIN USAGE FROM GIBRALTAR. ONLY FIVE CARDS AND FIVE COVERS ARE KNOWN.

Signed Arthur Falk. E. 1,500-2,000



4084

4084° 1930, June 2-June 6 — Europe Pan-America Round Trip Flight, Gibraltar to Germany (AAMC Z-111 var). Card with Gibraltar 1p stamp tied by "Gibraltar 4 JU 1930" circular datestamp and addressed to Cottbus, Germany, red oval cachet, neat "Friedrichschafen 6.6.30" receiving datestamp

VERY FINE AND CHOICE. A RARE ZEPPELIN USAGE FROM GIBRALTAR. ONLY FIVE COVERS AND FIVE CARDS ARE KNOWN.

Signed by Dr. Hugo Eckner. E. 3,000-4,000

FINLAND "1830" ERROR ON COVER



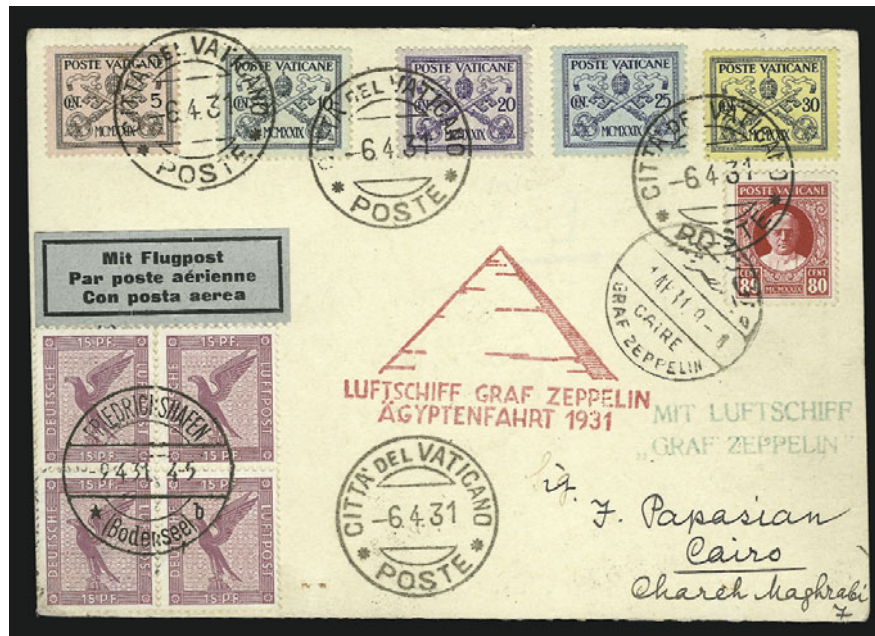
4085

4085°✉ **FINLAND, 1930, 10m Gray Lilac, "1830" for "1930" (C1a).** On cover with normal and 2m stamp, tied by "Helsingfors Helsinki 25.9.30" datestamps on Finlands Bank cover to Hamburg, Germany, error also tied by "Friedrichschafen 25.9.30" circular datestamp, purple "Suomi Finland 24/9 1930" cachet and four-line Zeppelin handstamp, Friedrichschafen backstamp

VERY FINE AND CHOICE. A RARE FLOWN EXAMPLE OF THE FINLAND "1830" OVERPRINT ERROR. ESPECIALLY DESIRABLE USED ON THE SAME COVER WITH THE NORMAL STAMP.

According to the *Sanabria* catalogue, 200 examples of the error were sold before it was discovered. It occurred only once on each sheet. With 2001 Gummesson certificate.
 E. 10,000-15,000

EGYPT FLIGHT



4086

4086°

1931, April 9-13 — Flight to Egypt and Palestine (AAMC Z-151 var). Postal card with Vatican 5c-80c stamps tied by "Citta del Vaticano Poste 6.4.31" datestamps, also with block of four of Germany 15pf stamps, two 10pf and five 4pf stamps on back tied by "Friedrichshafen 9.4.31" datestamps, red pyramid cachet, addressed to Cairo, Egypt and with receiving datestamp

VERY FINE AND CHOICE. A RARE ZEPPELIN COVER TO EGYPT ORIGINATING AT THE VATICAN.

With Lippmann owner's backstamp. E. 3,000-4,000



4087

4087°

1931, April 9-13 — Return Flight to Egypt and Palestine, Dispatched from Cairo (AAMC Z-151c var). Cover with Egypt, 1931, 100m on 27m Air Post, double impression (C4) tied by "Caire Graf Zeppelin 10 AP 31" datestamp, second strike at bottom, to Wurttemberg, Germany, neat "Friedrichshafen 13.4.31" receiving backstamp, easily discernible double overprint

VERY FINE AND VERY RARE. ONLY A FEW EXAMPLES OF THE 100M ON 27M WITH DOUBLE OVERPRINT ARE KNOWN USED ON FLOWN COVERS. A GREAT RARITY.

Small Sieger handstamp and with 1965 Sieger certificate. Unlisted in AAMC. Sieger No. 105Aya. Sieger catalogue value DM12,000. E. 4,000-5,000

POLAR FLIGHT



4088

4088° 1931, July 24-31 — Polar Flight (AAMC Z-166). Post card with Germany 2m Polar Flight stamp tied by red on-board "Luftschiff Graf Zeppelin 26.7.31" datestamp to Magdeburg, Germany, **unusual red-purple colored cachet**, Berlin receiving datestamps of July 30

VERY FINE. THE COLOR OF THE CACHET ON THIS USAGE IS UNIQUE.

Other examples of the cachet on this flight are struck in a distinctive red color, as can be seen in the following lot. The example offered here is distinctly darker, with traces of the lighter color present. The cachet must have been applied using the incorrect purple ink when the handstamping device was out of red ink. With Zierer backstamp. E. 3,000-4,000



4089

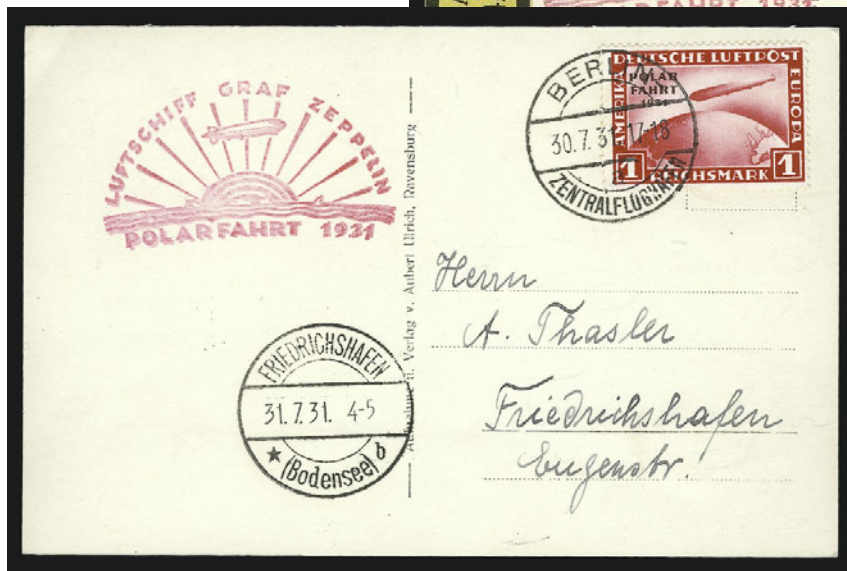
4089° 1931, July 24-31 — Polar Flight (AAMC Z-166 var). Picture post card depicting Graf Zeppelin LZ 127 with two Germany 1m Polar Flight stamps tied by purple "Luftschiff Graf Zeppelin 24.7.1931" datestamps to Friedrichshafen, third strike at left, receiving datestamp of July 31, **two strikes of red cachet**, Very Fine and choice, very rare with two strikes of the cachet. E. 2,500-3,500



4090



4091



4092

- 4090°✉ **1931, July 24-31 — Polar Flight via Leningrad (AAMC Z-166).** Picture postcard of DO-X with Germany 1m Polar Flight, **missing hyphen variety**, stamp tied by "Friedrichshafen 24.7.31" datestamp addressed to Germany, neat "Paravion Leningrad 25.VII.31" cancel, red cachet, Very Fine and choice, scarce usage of the missing-hyphen variety dropped at Leningrad, small Zierer handstamp, Sieger DM4,250 for the stamp variety... E. 1,500-2,000
- 4091°✉ **1931, July 24-31 — Polar Flight (AAMC Z-166 var).** Picture post card depicting Graf Zeppelin over hanger and with Germany 2m Polar Flight stamp tied by well-struck red "Luftschiff Graf Zeppelin 26 7 1931" datestamp to Germany, red German cachet, bold Icebreaker Malyguin cancel of July 27, Very Fine and choice, rare usage, posted on board and dropped to icebreaker "Malyguin"..... E. 1,000-1,500
- 4092°✉ **1931, July 24-31 — Polar Flight via Leningrad (AAMC Z-166g).** Picture postcard depicting Graf Zeppelin and DO-X with Germany 1m Polar Flight, **missing hyphen variety**, stamp tied by "Berlin Zentralflughafen 30.7.31" datestamp and addressed to Friedrichshafen, neat "Friedrichshafen 31.7.31" receiving datestamp, red cachet, Very Fine and choice, scarce usage of the missing-hyphen variety, Sieger DM4,250 for the stamp variety.. E. 1,000-1,500



4093

- 4093° 1931, July 24-31 — Polar Flight, Dispatched from Leningrad and Dropped to Icebreaker “Malyguin” (AAMC Z-166c). Registered cover with complete set of perforated Russia North Pole set (C30-C33) tied by “Paravion Leningrad 25.VII.31” datestamps and addressed to Moscow, Russia, purple Leningrad registry handstamp, purple and red cachets, also with Malyguin and Moscow receiving datestamps, Very Fine and choice E. 300-400



4094

- 4094° 1931, July 24-31 — Polar Flight, Return Flight, Postmarked on Icebreaker “Malyguin” (AAMC Z-166e). Registered picture postcard with complete set of Russia Imperforate North Pole issue (C26-C29) tied by “Brise-Glace Malyguin 18.VII.31” datestamps to Moscow, Russia, purple Malyguin registry handstamp, Friedrichshafen (July 31) and Moscow datestamps, red cachet, additional purple three-line cachet, Very Fine and choice, beautiful usage, small Zierer backstamp E. 600-800

ITALY FLIGHT



4095

- 4095°✉ **1933, May 22, Crociera Zeppelin Flight (Sieger 2080).** Post card with seven Albania stamps tied by "Shkoder Posta Aerore 22.5.33" datestamps to Rome, Italy, registry label at bottom left, cachet handstamp at top left, Tirane and Rome postmarks on back

FRESH AND VERY FINE. A RARE ZEPPELIN COVER FROM ALBANIA TO ROME.

Small Savini backstamp..... E. 2,000-3,000



4096

- 4096°✉ **1933, May 29-30 — Italy Flight from Liechtenstein to Rome (AAMC Z-213 var).** Post card with Liechtenstein 20rp and 1Fr Air Post stamps tied by well-struck "Triesenberg (Liechtenstein) 26.V.33" datestamps to Rome, Italy, neat strike of Friedrichshafen transit and Rome receiving backstamp (both May 29), red and blue cachets, 20rp stamp creased prior to use

VERY FINE. A RARE FLOWN COVER FROM LIECHTENSTEIN TO ROME. PERHAPS FOUR OR FIVE ARE KNOWN. A GREAT ZEPPELIN POST RARITY.

Small Savini handstamp..... E. 3,000-4,000

4097



4098



4099

- 4097°✉ **1933, May 29-30 — Italy Flight from Switzerland to Rio de Janeiro (AAMC Z-213 var).** Registered cover with Switzerland 15c, 20c (2), 40c, 65c, 90c and 1fr stamps tied by "Zurich Flugpost 22.V.33" datestamps, Rome backstamp (May 29), blue cachet, Rio de Janeiro receiving backstamp (June 7), Very Fine and choice, scarce usage..... E. 1,500-2,000
- 4098°✉ **1933, May 29-30 — Italy Flight from San Marino to Rome (AAMC Z-213var).** Cover used from San Marino with 20c, 30c and 5l Zeppelin stamp, first two tied by "Repubblica di San Marino Borgo 27 Mag. 1933" datestamp, second strike at left, Zeppelin stamp tied by blue-green octagonal Zeppelin cancel, to Rome, Italy, blue cachet, green Friedrichschafen and receiving backstamps, Very Fine and choice, scarce used from Borgo..... E. 500-750
- 4099°✉ **1933, May 29-30 — Italy Flight from San Marino to Rome (AAMC Z-213 var).** 30c Postal Card from San Marino with 3l Zeppelin stamp, cancelled by "Repubblica di San Marino Borgo 27 Mag 1933" datestamp and addressed to Rome, Italy, Zeppelin stamp tied by blue-green octagonal Zeppelin handstamp, green Friedrichschafen datestamp and blue cachet, receiving backstamp, fresh and Very Fine, scarce with the Borgo town cancel..... E. 300-400



4100

- 4100° 1933, May 29-30 — Italy Flight to Switzerland (AAMC Z-213 var). Germany 25pf and 50pf stamps tied by on-board “Luftschiff Graf Zeppelin 29.5.33” datestamp on picture postcard to Lausanne, Switzerland, two strikes of red cachet, fresh and Very Fine E. 300-400



4101

- 4101° 1933, May 29-30 — Italy Flight from Germany to Italy (AAMC Z-213). Chinese-style cover with Germany 50pf and 1m Air Post stamps tied by well-struck “Luftschiff Graf Zeppelin 30.5.33” datestamp to Rome, blue and red cachets, green Friedrichshafen (May 30) and Rome (May 31) backstamps, Very Fine and choice, scarce with both cachets . E. 1,000-1,500



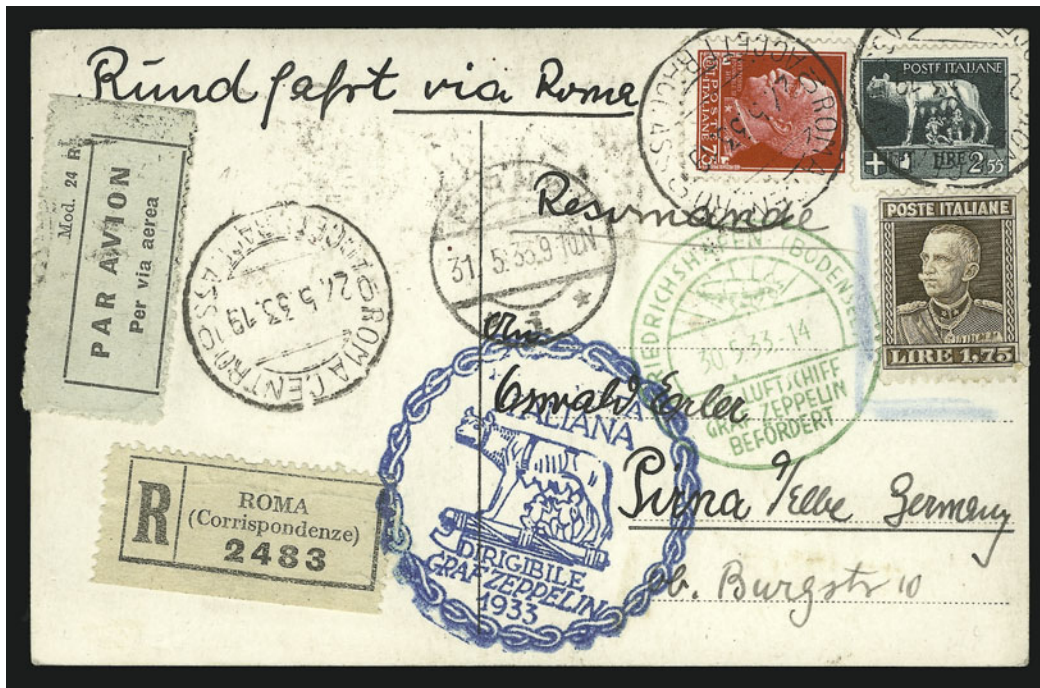
4102

- 4102° 1933, May 29-30 — Italy Return Flight from Eritrea to Spain (AAMC Z-213c). Picture post card depicting Graf Zeppelin and map with Eritrea 25c, 21 and 2.50l stamps tied by "Asmara Eritrea Raccomandate 17.5.33" datestamps to Barcelona, Spain, two cachets incl. one in purple and one from Port Taufiq, octagonal receiving datestamp ties one stamp, fresh and Very Fine, scarce usage..... E. 1,000-1,500



4103

- 4103° 1933, May 29-30 — Italy Flight from Vatican City to Barcelona (AAMC Z-213 var). Cover with Vatican City 5c (two), 12½c, 30c, 2.50l and 2.75l stamps tied by "Citta del Vaticano Poste 31.5.33" datestamps and addressed to Barcelona, Spain, blue cachet, June 4 receiving datestamps, few perf tips slightly affected by gum toning, Very Fine and unusual usage, this was delivered too late for the return flight and was taken by plane to Friedrichshafen where it was delivered for the second South America flight, it was then dropped at Barcelona where it received the arrival datestamps, ex Kofler ... E. 600-800



4104

- 4104° 1933, May 29-30 — Italy Flight from Rome to Germany (AAMC Z-213c). Registered picture postcard with Italy 75c, 1.75l and 2.55l stamps tied by "Roma Centro 27.5.33" datestamps to Pirna, Germany, green Friedrichshafen and receiving datestamps, blue cachet, one stamp with small corner crease, otherwise Very Fine..... E. 1,000-1,500



4105

- 4105° 1933, May 29-30 — Italy Return Flight from Malta to Germany (AAMC Z-213c). Post card with Malta 2 1/2p stamp tied by purple May 23, 1933 datestamp, also with Italy 2l and 3l Air Post stamps and 75c stamp tied by "Posta Aerea Roma Terrovia 25.5.33" datestamps to Germany, two different cachets, additional different Malta circular datestamp, Rome cachet on back, light fold in card affects Malta stamp, some toning, otherwise Fine, unusual usage..... E. 300-400



4106

- 4106°✉ **1933, May 29-30 — Italy Flight from Italy to Cleveland (AAMC Z-213var).** Registered cover with **complete set** of Italy Graf Zeppelin issue (C42-C47) with two additional stamps, tied by "Roma Aerea Zeppelin 29.5.33" and second type of Rome circular datestamp, green Friedrichschafen receiving backstamp (May 30), also with bold "Friedrichschafen 3.6.33" circular datestamp, New York and Cleveland backstamps, blue cachet from Italy flight and green cachet from South America flight, Very Fine and choice, rare usage **carried aboard two separate Zeppelin flights** - one from Italy to Germany, the other the second South America flight, very few are known..... E. 1,000-1,500



4107

- 4107°✉ **1933, May 29-30 — Italy Flight from Italy to Philadelphia (AAMC Z-213var).** Registered cover with 20l and 2.75l stamps tied by "Roma Aerea Zeppelin 29.5.33" and second type of Rome circular datestamp, green Friedrichschafen receiving backstamp (May 30), also with bold "Friedrichschafen 3.6.33" circular datestamp, New York and Philadelphia backstamps, blue cachet from Italy flight and green cachet from South America flight, Very Fine and choice, rare usage **carried aboard two separate Zeppelin flights** - one from Italy to Germany, the other the second South America flight, very few are known..... E. 1,000-1,500



4108

4108°✉ **1937, May 5, Hindenburg Disaster Flight.** Largely intact cover with scorched edges, bearing four singles of Germany 75pf Air Post stamps, cancelled on board and tied by bold purple "Deutsche Luftpost Europa-Nordamerika Luftschiff Hindenburg 5.5.1937" double-circle datestamp and **addressed to Mexico**, with original enclosure dated April 30, 1937 which shows some burn marks

EXTREMELY FINE. THE UNIQUE COVER TO MEXICO RECOVERED FROM THE WRECK OF THE HINDENBURG. A SUPERB COVER FROM ONE OF THE MOST FAMOUS AIR DISASTERS IN HISTORY.

On Thursday, May 6, 1937, the airship *Hindenburg* exploded as it was approaching to make a landing at Lakehurst N.J. The cover offered here was mailed by the recipient, Mr. Doehner, to himself in Mexico. Unfortunately, he and his daughter perished in the crash. His wife and two young sons survived.

Accompanied by copy of Bulletin of Verification which accompanied the cover on its delivery to Mexico. With 2001 S.I.A. certificate. E. 20,000-25,000

END OF SALE — THANK YOU

Sell through America's premier stamp auctioneer

Other firms may try to copy the Siegel firm's formula for success, but no one can match our expertise and track record in selling collections at auction.

When the time comes to sell your collection, there are some facts we would like you to consider:

- Year after year, the Siegel firm sells more United States and Confederate stamps and covers than anyone else.
- Siegel sales generate the kind of excitement that creates more competitive bidding and higher prices.
- The Siegel mailing list has been built over 70 years and has a 90% active-buyer rate over the past five years. It continues to grow every day, and our clients continue to increase their buying power.
- The Siegel website receives many thousands of hits before the auction, which gives your stamps wider exposure and creates more competitive bidding.
- Siegel sale catalogues win top national awards. They have become philately's most effective tool by educating and enticing buyers.
- The Siegel firm's reputation for paying all obligations on time is backed by a strong capital base and consistent record of profitability.

If excellence is your goal in collecting, when it is time to sell, it makes sense to choose an auctioneer whose excellence has been proven over time.

Robert A. Siegel

AUCTION GALLERIES, INC.

www.siegelauctions.com

60 East 56th Street, 4th Floor, New York, N.Y. 10022

Phone (212) 753-6421 • Fax (212) 753-6429 • E-mail: stamps@siegelauctions.com

PRICES REALIZED FOR SALE 849---9/2002**The Christopher Gruys Collection**

Robert A. Siegel Auction Galleries, Inc.
60 East 56th Street, 4th Floor, New York, NY 10022
Tel (212) 753-6421 Fax (212) 753-6429

Lot#	Realized	Lot#	Realized
4001	40,000	4053	1,600
4002	120,000	4054	1,000
4003	32,500	4058	4,000
4004	26,000	4059	525
4005	26,000	4062	55,000
4006	11,000	4064	350
4007	20,000	4065	800
4008	5,750	4066	800
4009	8,000	4068	5,000
4010	1,350	4069	550
4011	8,500	4070	1,100
4012	23,000	4072	850
4014	4,750	4073	2,500
4016	7,500	4074	2,000
4017	3,750	4082	1,400
4018	2,800	4086	3,000
4019	7,500	4087	3,750
4020	210	4093	800
4021	325	4094	750
4024	12,000	4096	3,000
4025	575	4098	625
4026	1,300	4099	450
4027	4,000	4100	280
4028	6,500	4101	1,000
4029	450	4102	2,000
4030	200	4103	500
4031	325	4104	1,000
4032	16,000	4105	300
4033	57,500	4106	1,300
4034	27,500	4108	20,000
4035	800		
4037	1,600		
4038	3,750		
4039	675		
4041	1,250		
4042	1,000		
4044	8,000		
4045	2,100		
4046	8,500		
4047	700		
4048	550		
4051	7,000		
4052	8,000		