

Part 3

United States Possessions



Sale 856

Wednesday, February 26, 2003

*Robert A. Siegel*

AUCTION GALLERIES, INC.

# Sale 856

Wednesday, February 26, 2003

## The Drucker Family Collection of United States Possessions

Offered without reserves

### Pre-sale exhibition

Monday, February 24 — 10:00 a.m. to 4:00 p.m.

Tuesday, February 25 — 10:00 a.m. to 12:00 p.m.  
or by appointment (please call 212-753-6421)

**On-line catalogue, e-mail bid form, resources and  
the Siegel Encyclopedia are available on our web site:**

[www.siegelauctions.com](http://www.siegelauctions.com)



1912, 5c with Cordoba  
Portrait of 2c (Scott 40a)

### Arrangement of Sale

**First session (lots 501-690)**  
Wednesday, February 26, at 10:30 a.m.

Canal Zone .....pages 5-58

**Second session (lots 691-922)**  
Wednesday, February 26, at 1:30 p.m.

Cuba ..... 59-69  
Guam ..... 70-71  
Hawaii..... 72-91  
Philippines ..... 92-109  
Puerto Rico..... 110

### On the cover

Front Cover: Lot 568

Back Cover: Lot 718, 737, 838  
749, 755, 811  
902

## United States Possessions



THE IMAGE ABOVE CAPTURES THE MOMENT WHEN \$10 MILLION FACE value of United States stamps overprinted for use in the Canal Zone were burned in Panama after a new arrangement with the Panamanian government rendered them valueless in 1905 (photo reproduced from *Harper's Weekly*).

The Spanish-American War of 1898 marked a major turning point in America's role in world politics. With the defeat of Spanish colonial forces, the United States gained possession of territory in Cuba, Guam, the Philippines and Puerto Rico. At about the same time, the Republic of Hawaii, the successor government to the Kingdom of Hawaii, was annexed to the United States.

In 1904, during the Theodore Roosevelt administration, the United States established the Canal Zone under its jurisdiction after supporting the revolution that created the Republic of Panama in the region held by Colombia. The "White Fleet" naval force that defeated Spain in 1898 was now being used to achieve political objectives to secure American interests around the world. Work on the Panama Canal commenced in 1904, and the canal was completed in 1914.

The philatelic aspects of America's administration of territories around the world are as complicated as the politics. The first issues of Canal Zone are three layers: Colombian stamps overprinted by the Republic of Panama, and overprinted again for use in the Canal Zone. United States stamps were overprinted for sale by postal administrations in the Canal Zone, Cuba, Guam, the Philippines and Puerto Rico. And the influence of philatelic-minded officials, such as J. C. Perry, inspired varieties and usages to excite collectors.

Not since the 1993 Plass sale has a Possessions collection of this magnitude been brought to the auction market. However, as Teddy Roosevelt said, "Walk softly, but carry a big stick." We will let this sale speak for itself.

— SCOTT R. TREPEL

FIRST SESSION (LOTS 501-690)  
WEDNESDAY, FEBRUARY 26, 2003, AT 10:30 A.M.

# THE DRUCKER FAMILY COLLECTION OF UNITED STATES POSSESSIONS

## CANAL ZONE



- 501 ★ **1904, 2c Rose (1).** Both “Panama” overprints at left, left “Panama” with inverted “V” for second “A”, slightly tropicalized original gum, fresh and bright colors, Extremely Fine, with 1973 A.P.S. certificate..... 550.00
- 502 ★田 **1904, 2c Rose (1).** Block of four, Positions 77-78/87-88, tropicalized original gum, fresh and bright colors, Very Fine and choice, a beautiful block, with 1978 A.P.S. certificate.... 2,500.00
- 503 ★ **1904, 2c Rose, “Panama” 15mm Long (1 var).** H.r., bright color, one “Panama” split horizontally, tiny thin spot, otherwise Very Fine, only 260 printed with “Panama” 15mm long, with 1969 A.P.S. certificate ..... 600.00
- 504 ★ **1904, 2c Rose, “Panama” 15mm Long (1 var).** Original gum, rich color, fresh and Fine, only 260 printed, light Colman backstamp..... 600.00
- 505 (★) **1904, 2c Rose, “P nama” (1 var).** Unused (no gum), brilliant colors, bar also partly split at top and bottom, Extremely Fine ..... 600.00





506

- 506 ★ **1904, 2c Rose, “Panama” Reading Down and Up, “Canal Zone” Inverted (1e).** Position 100 with natural s.e. at bottom and part arrow, h.r., fresh and bright color

FINE. THE UNIQUE UNUSED EXAMPLE OF CANAL ZONE NUMBER ONE WITH “CANAL ZONE” INVERTED AND “PANAMA” READING DOWN AND UP. ONE OF THE HIGHLIGHTS OF CANAL ZONE PHILATELY.

According to *Canal Zone Stamps*, one pane of 100 was printed with “Canal Zone” inverted. There were two positions on the pane with “Panama” reading down and up: Positions 1 and 100. Position 1 was used at Culebra and is offered in the following lot.

Ex Plass. Illustrated in *Canal Zone Stamps* on p. 13. With 1967 P.F. certificate. .... 6,500.00

- 507 **1904, 2c Rose, “Panama” Reading Down and Up, “Canal Zone” Inverted (1e).** Position 1, neat strike of “Culebra, Canal Zone, Jun. 25, 1904” circular dates-tamp, rich color

FINE. THE UNIQUE USED EXAMPLE OF CANAL ZONE NUMBER ONE WITH “CANAL ZONE” INVERTED AND “PANAMA” READING DOWN AND UP. ONE OF THE GREAT RARITIES OF CANAL ZONE PHILATELY.

One pane of 100 was printed with “Canal Zone” inverted. There were two positions on the pane with “Panama” reading down and up: Positions 1 and 100. Position 100 is unused, and is offered in the previous lot. The example offered here was also used on the first day of use of the cancel at Culebra. ... 6,500.00



507



508

- 508 ★ **1904, 2c Rose, Vertical Pair, “Panama” Reading Up on Top 2c, Down on Other (1f).** Top stamp h.r., fresh and bright color  
VERY FINE AND CHOICE. A RARE VERTICAL PAIR WITH “PANAMA” READING UP ON TOP STAMP AND DOWN ON BOTTOM STAMP.

The “Panama” overprints were applied using the “work-and-turn” method. One half of the pane received the overprint and was then turned to overprint the second half. Only 260 pairs were printed. Of these, only eighteen are recorded, including two in vertical strips of three on cover.

Ex Plass. Signed J.C. Perry. With 1993 P.F. certificate.. 2,100.00



- 509 ★ 1904, 5c Blue, Left “Panama” 2¼mm Below Bar (2 var). Position 36, slightly tropicalized original gum, Very Fine and choice, this variety is found only on Positions 31 and 36, only 156 were printed from these two positions, and it is believed only eight are extant, ex Plass, illustrated in *Canal Zone Stamps* on p. 18, signed J.C. Perry, with 1993 P.F. certificate..... 525.00
- 510 ★田 1904, 5c Blue (2). Block of four, unused (some tropicalized original gum), fresh and bright colors, few short perfs at bottom right, otherwise Very Fine, scarce block, purple backstamps, with 1973 A.P.S. certificate ..... 1,250.00
- 511 ★田 1904, 5c Blue (2). Left margin block of four, Positions 21-22/31-32, bottom left stamp “Panama” 2¼ mm below bar, traces of tropicalized original gum, bright colors, light creases in top left sheet margin only, otherwise fresh and Fine, only 156 examples of this variety were printed, with 1968 P.F. certificate, Scott Retail as singles ..... 1,275.00
- 512 ★ 1904, 5c Blue, “Canal Zone” Inverted (2a). Large part original gum, brilliant color, Extremely Fine, only 100 printed, some of which were used, the example offered here is superb, faint Colman backstamp, with 1969 A.P.S. certificate ..... 725.00



513

- 513 ★田 1904, 5c Blue, Pair, One Without “Canal Zone” Ovpt. (2c). Left margin block of six with part imprint, Positions 51-53/61-63, center stamp at top missing “Canal Zone”, lightly hinged, fresh and bright colors
- VERY FINE AND CHOICE. ONE OF FOUR RECORDED EXAMPLES OF THIS VARIETY, AND THE ONLY UNUSED EXAMPLE AVAILABLE IN A VERTICAL PAIR WITH NORMAL STAMP.
- Of the four recorded examples, one is used on cover, and two are the right stamps in a block of six. This is the only unused vertical pair known.
- Ex Tows and Plass. With 1969 P.F. certificate. Scott Retail as pair and four singles of basic stamp..... 6,000.00





514

516

515

- 514 ★ **1904, 10c Yellow (3).** Slightly tropicalized original gum, lightly hinged, brilliant color, Very Fine and choice, with 1973 A.P.S. certificate..... 375.00
- 515 ☒ **1904, 10c Yellow, Left “Panama” 2¼mm Below Bar (3 var).** Tied by “La Boca \* Canal Zone \* Jul. 12, 1904” datestamp on cover to Panama City, Ancon (Jul. 13 with “13” inverted) and Panama Agency (Jul. 13) backstamps, rich color, Very Fine and choice, only 100 were printed, of these only two unused and five used are known, ex Plass, with 1969 A.P.S. certificate, Scott Retail as used ..... 575.00
- 516 ★ **1904, 10c Yellow, “Canal Zone” Inverted (3a).** Tropicalized original gum, brilliant color, choice centering, fresh and Very Fine, only 200 printed, with 1976 A.P.S. certificate ..... 725.00



517

- 517 **1904, 10c Yellow, “Canal Zone” Double (3b).** Top “Canal Zone” heavy impression, neat cancel, small thin spot, faint corner crease at bottom left
- VERY FINE APPEARANCE. ONLY TWO EXAMPLES OF THIS GREAT RARITY ARE KNOWN. BOTH ARE USED.
- The other example of this variety has a lighter second overprint, and a faint cancel. In *Canal Zone Stamps* the authors speculate that the second, clear impression of the overprint was added when the original overprint was deemed unreadable.
- Ex Plass. Illustrated in *Canal Zone Stamps* on p. 19. With 1967 P.F. certificate ..... 15,000.00

- 518 ★田 1904, 1c Blue Green (4). Left plate no, 2061 and imprint block of six, tropicalized original gum, h.r., deep rich color, beautiful centering, Very Fine and choice ..... 875.00



518



519EX

- 519 ★★ 1904, 1c Blue Green, 5c Blue, 8c Gray Black (4, 6, 7). Mint N.H., rich colors, Very Fine and choice ..... (Photo Ex) 317.00

- 520 ★田 1904, 8c Violet Black (7). Left plate no. 1500 and imprint block of six, h.r., few sensibly reinforced perf separations, choice centering EXTREMELY FINE. A RARE PLATE BLOCK OF THE 8-CENT 1904 ISSUE.  
Plate blocks are known from four plates, but only from left and bottom positions. As an indication of rarity (other than catalogue value), none was offered in the Plass sale..... 3,000.00



520





521



523



524



526



525



527



528



529



530



531

- 521 ★田 **1904, 10c Rose, Dropped "ON" of "Zone" (10 var).** Single of variety in bottom margin block of six with part imprint, Positions 86-88/96-98, center stamps (including variety at top center) **Mint N.H.**, others lightly hinged, brilliant color, beautiful centering, Extremely Fine, a beautiful and rare block, the overprint variety was corrected early in the printing process, only ten copies are recorded, Scott Retail as singles..... 397.00



522

- 522 ★★田 **1904, 2c Rose, Inverted Ovpt. (10a).** Mint N.H. right margin block of six with imprint, center stamp at right with spaced "A L" of "Canal", rich color, Very Fine and choice, scarce position multiple, an estimated 240 inverts were issued, this multiple is especially desirable with the spaced "A L" variety, with 1969 A.P.S. certificate, Scott Retail as hinged singles..... 1,350.00
- 523 ★田 **1905, 2c Rose, Inverted "M" in "Panama", Left "Panama" 16mm Long (11 var).** Block of four, top left stamp with inverted "M" in right "Panama", top right stamp left "Panama" 16mm long, tropicalized original gum, deep rich color, Very Fine and choice, attractive multiple, Scott Retail as singles..... 105.00
- 524 ★ **1905, 2c Rose, "Panama" Ovpt. Inverted, Bar at Bottom (11b).** Small part tropicalized original gum, fresh and bright colors, choice centering, Extremely Fine, it is likely only 200 were printed, only 35 are recorded..... 350.00
- 525 ★★田 **1904, 5c Blue, "Pamana" Reading Up (12).** Bottom left stamp in Mint N.H. block of four (gum slightly tropicalized), bright colors, beautiful centering, Extremely Fine Gem, this variety occurred only on Positions 54 and 59, Scott Retail as hinged singles..... 99.00
- 526 ★ **1904, 5c Blue, "Canal Zone" Double (12c).** H.r., bright colors, clear strike of second overprint, Very Fine and choice, this is undoubtedly from Stage V, only 200 were printed (100 from Stage I and 100 from Stage V), ex Conger, with 1975 A.P.S. certificate..... 600.00
- 527 ★ **1904, 5c Blue, "Panama" Double (12d).** Single error in horizontal strip of three, center stamp the variety, slightly tropicalized original gum, rich colors, Very Fine and choice, a rare variety, it is believed that 120 were printed, of these only 20 are recorded (nine unused and eleven used) — as the red bar at top indicates, this variety was created when the pane was fed too deeply into the press when the second half of the pane received the overprint, causing one vertical row to receive the double overprint..... 1,066.00
- 528 ★ **1904, 10c Yellow, "Pamana" Reading Down (13 var).** In pair with normal, right stamp the variety, "Pamana" and "Panama" 1½mm below bar as is usual for this variety, tropicalized original gum, brilliant color, Very Fine and choice, the variety is known only from Positions 95 and 100, only 200 were printed..... 222.00
- 529 ★田 **1904, 10c Yellow, "Canal" in Antique Type (13a).** Bottom left stamp in block of four, Positions 16-17/26-27, slightly tropicalized original gum, top stamps h.r., bright color, Very Fine and choice, only 200 were printed, Scott Retail as singles..... 267.00
- 530 ★ **1904, 8c on 50c Bister Brown, "Canal Zone" Inverted (14b).** Barely hinged, rich color, almost perfect centering, Extremely Fine, a superb example of this variety, only 200 were printed, see lot 532 for description of its discovery, with copy of 1969 A.P.S. certificate for block of eight, this being the top right stamp..... 325.00
- 531 ★ **1904, 8c on 50c Bister Brown, "Canal Zone" Inverted, Right "Panama" 5mm Below Bar (14b var).** H.r., deep rich color, almost perfectly centered, Extremely Fine, scarce variety, only four were printed, Scott Retail as normal variety..... 425.00





532

- 532 ★★田 1904, 8c on 50c Bister Brown, "Canal Zone" Inverted (14b). Mint N.H. block of four, crisp impression, remarkably fresh

EXTREMELY FINE. A VERY RARE MULTIPLE OF THE 1904 8-CENT SURCHARGE WITH "CANAL ZONE" INVERTED.

According to *Canal Zone Stamps*, the two error panes of 100 were sold in 1908 by their original owner, who claimed to have purchased them at the Administration Building in Ancon.

With 1969 A.P.S. certificate for block of eight, this being the center block, Scott Retail as hinged singles..... 1,700.00

- 533 ★田 1904, 8c on 50c Bister Brown, "Canal Zone" Inverted (14b). Block of four, barely tropicalized original gum, bottom stamps Mint N.H., top right stamp spaced "A L" variety, deep rich color

VERY FINE AND CHOICE. ONLY TWO WERE PRINTED WITH THE SPACED "A L" OVER-PRINT VARIETY. A GREAT RARITY.

Only 200 inverted overprints were printed in total. Of these, only two (one per pane) were printed with the wide "A L" spacing variety.

Small green backstamps. With 1972 A.P.S. certificate, Scott Retail as four inverted overprint singles with no premium for the variety ..... 1,700.00



533



- 534 ★ 1904, 8c on 50c Bister Brown, "Panama" Ovpt. in Rose Brown, "Canal" in Antique Type (14d). In vertical pair with normal, Positions 16/26, bottom stamp in Antique type, lightly hinged

EXTREMELY FINE. AN ESTIMATED TEN COPIES WERE PRINTED, OF WHICH ONLY FOUR ARE RECORDED. A GREAT RARITY.

Ex Pass. With 1993 P.F. certificate. .... 2,290.00

534



535



536

- 535 ★田 1904. 8c on 50c Bister Brown, "Panama" Ovpt. in Rose Brown, "Zone" in Antique Type (14e). Top right stamp in block of four with "Zone" in antique type, Positions 47-48/57-58, slightly tropicalized original gum, "Panama" shifted significantly to right, deep rich colors

VERY FINE AND CHOICE. AN EXCEEDINGLY RARE BLOCK OF THE ROSE BROWN OVERPRINT CONTAINING ONE STAMP WITH "ZONE" IN ANTIQUE TYPE.

According to *Canal Zone Stamps*, an estimated ten copies of this variety were issued. Of these, perhaps five are known, including one in a pair with normal (ex Plass), one in right margin block of six with imprint (illustrated in *Canal Zone Stamps*) and one in block of four with small fault in bottom margin (ex Tows).

Small green backstamps. With 1969 A.P.S. certificate. .... 2,370.00

- 536 (★) 1904. 8c on 50c Bister Brown, "Panama" Ovpt. in Rose Brown, "8cts" Double (14f). Unused (no gum), deep rich colors, fresh and Fine, scarce, according to *Canal Zone Stamps*, only 30 were printed (25 from the lower right quadrant of one pane and five from the top row or a quadrant of another) ..... 850.00



537

- 537 ★田 1904. 8c on 50c Bister Brown, "Panama" Ovpt. in Rose Brown, "8" Omitted (14g). Left margin block of four, top left stamp (Position 1) the error, "Panama" overprints shifted to left so that "Panama" reads up and down close to one another and is completely missing at left side of right stamps, small h.r.

FINE AND RARE. THIS IS THE LISTING EXAMPLE OF THE "8" OMITTED ERROR. A TOTAL OF SIX WERE PRINTED.

According to *Canal Zone Stamps*, all other examples of this variety were caused by shifted overprints where "cts" is split horizontally on the stamp. To our knowledge, this is the only example with the "8" missing due to either the "8" falling out of the typeset form or from foreign matter blocking the impression.

Ex Plass. Illustrated in *Canal Zone Stamps* on p. 53. With 1967 P.F. certificate. Scott Retail as error and three normal stamps with no premium for shifted overprint variety. .... 4,370.00





538

- 538 ★ **1904, 8c on 50c Bister Brown (15).** Position 31 with broken second "A" of "Canal", slightly tropicalized original gum described on accompanying certificate as part original gum, fresh colors

VERY FINE. A RARE EXAMPLE OF CANAL ZONE SCOTT NO. 15.

It is uncertain whether 400 or 500 were printed. With 1975 P.F. certificate for block of four, this being the bottom left stamp.....  
..... 2,600.00

- 539 ★ **1904, 8c on 50c Bister Brown, "Panama" 15mm Long (15 var).** Slightly tropicalized original gum described on accompanying certificate as original gum, overprint shifted downwards, rich colors, beautiful centering

EXTREMELY FINE. A SUPERB UNUSED EXAMPLE OF CANAL ZONE NO. 15 WITH ELONGATED "PANAMA".

Only 50 were printed. With 1983 P.F. certificate..... 2,750.00



539



540

- 540 ★ **1904, 8c on 50c Bister Brown, "Panama" Reading Down and Up (15a).** Position 51 with part imprint at left, left stamp with faint first "A" of "Panama", barely tropicalized original gum, deep rich colors, almost perfectly centered

EXTREMELY FINE. A RARE EXAMPLE OF CANAL ZONE NO. 15 WITH "PANAMA" READING DOWN AND UP.

According to *Canal Zone Stamps*, this variety comes from Positions 1 and 51. Either eight or ten were printed. Eight are known.

Ex Plass. Illustrated in *Canal Zone Stamps* on p. 55. With 1967 P.F. certificate.. 6,500.00



- 541 ★ **1905, 8c on 50c Bister Brown, Both “Panama” Reading Up (18).** Four varieties, comprising one with part imprint and “Panama” 15mm long, one with split bar variety, one Position 28 with “P nama” variety, one with vertical pair with “Panama” shifted and at right only, mostly tropicalized gum, Very Fine and choice group, Scott Retail with premium for Scott-listed varieties only ..... (Photo Ex) 415.00
- 542 ★田 **1905, 8c on 50c Bister Brown, “Panama” Reading Down and Up (18b).** Top left stamp in block of four with others normal, slightly tropicalized original gum, the variety with faint first “A” of “Panama”, rich colors, Very Fine and choice, only 350 were printed, Scott Retail as singles ..... 340.00
- 543 ★ **1906, 8c on 50c Bister Brown, Both “Panama” Reading Up, “Panama” 15mm Long (19 var).** Lightly hinged, fresh and Very Fine, accompanied by normal stamp for comparison ..... (Photo Ex) 140.00
- 544 ★ **1906, 8c on 50c Bister Brown, Both “Panama” Reading Up, “Zone” in Antique Type (19b).** Position 48, slightly tropicalized original gum, almost perfectly centered, fresh color, Extremely Fine, an estimated 190 were issued ..... 210.00

- 545 ★田 **1906, 8c on 50c Bister Brown, “Panama” Reading Up and Down, “8 cts” Omitted (20c).** Block of four, Positions 55-56/65-66, right stamps the error, numerous other varieties incl. bottom right stamp misplaced entry of basic stamp, both left stamps 3mm spacing between “8” and “cts” instead of normal 2½mm, bottom left stamp with antique “N” of “Canal” and also misplaced entry of basic stamp, barely tropicalized original gum, small h.r. at bottom, rich color, choice centering

VERY FINE AND CHOICE. A RARE BLOCK CONTAINING TWO STAMPS AT RIGHT WITH “8 CTS” OMITTED.

The “8 cts” omitted error occurred on the right half of one pane of 100, thus 50 stamps were printed with the surcharge omitted. However, only ten pairs are possible containing one with and one without the surcharge.

Ex Plass. With 1970 A.P.S. certificate. Scott Retail with no premium for minor varieties. . . . . 1,590.00



545

- 546 ★ **1906, 8c on 50c Bister Brown, “Panama” Reading Up and Down, “8 cts” Omitted (20c).** Barely hinged, sharp proof-like impression, almost perfectly centered, Extremely Fine Gem, only 50 were printed with the surcharge omitted, ex Schay ..... 750.00





547

- 547 ★ **1907, 1c Green & Black, Horizontal Pair, imperforate Between (22a).** Lightly hinged, deep rich colors, wide margins, Extremely Fine, it is believed only 50 were printed..... 1,300.00

- 548 ★ **1907, 1c Green & Black, Imperforate Horizontally (22c).** Vertical strip of three with horizontal perforations at bottom only, slightly disturbed original gum, deep rich colors, wide margins, rounded corner at bottom left not affecting error pair

VERY FINE AND CHOICE. A RARE EXAMPLE OF THIS IMPERFORATE HORIZONTALLY ERROR. ONLY 20 PAIRS WERE ISSUED, AND MOST HAVE BEEN LOST TO PHILATELY.

According to *Canal Zone Stamps*, the top five rows of one pane had the horizontal perforations omitted. Most were probably used, as only three unused pairs and two strips of three (both with perforations at bottom) are known.

With 1969 A.P.S. certificate..... 2,250.00



548

- 549 ★ **1907, 1c Green & Black, Imperforate Horizontally (22c var).** Bottom margin single, slightly tropicalized original gum, Very Fine and choice, scarce variety, there are only three unused vertical pairs and two unused vertical strips of three (with horizontal perfs at bottom) recorded of the Scott-listed No. 22c, Scott Retail for the listed variety is \$2,250.00 .... E. 400-500



549



550

- 550 ★ **1907, 1c Green & Black, Double Ovpt. (22e).** Sheet margin at top, lightly hinged, proof-like impressions, Very Fine and choice, only 300 were printed, with copy of 1978 A.P.S. certificate for block of four, this being the top right stamp ..... 275.00

- 551 ★ **1907, 1c Green & Black, Double Ovpt., One Inverted (22f).** Tropicalized original gum, beautiful colors, wide margins, Very Fine and choice, it is not known how many were printed, approximately 20 are known, blue Colman backstamp ..... 1,350.00



551



552



552 ★ **1907, 1c Green & Black, Inverted Center, Ovpt. Reading Up (22g).** Sheet margin at top, slightly tropicalized original gum, perfectly centered, deep rich colors

EXTREMELY FINE. A SUPERB EXAMPLE OF THE 1907 ONE-CENT BALBOA WITH INVERTED CENTER AND OVERPRINT READING UP. ONLY 22 COPIES ARE KNOWN UNUSED.

According to *Canal Zone Stamps*, one pane of 100 was printed. It was sold in March 1909 to the Panama Railroad Co. and all but 22 copies were used before the error was discovered. Only about thirteen used copies were recovered after the error was noticed. The stamp offered here, with sheet margin at top, is especially desirable.

With 1971 A.P.S. certificate. .... 4,000.00

553



553 **1907, 1c Green & Black, Inverted Center, Ovpt. Reading Up (22g).** Light strike of town datestamp, almost perfectly centered, rich colors

EXTREMELY FINE. A RARE USED EXAMPLE OF THE 1907 INVERTED BALBOA ERROR. ONLY THIRTEEN USED COPIES ARE RECORDED.

The previous description describes the discovery of this error. It is scarcer in used condition.

With 1978 P.F. certificate. .... 2,750.00



554

- 554 ★田 **1906, 2c Red & Black, Horizontal Pair, Imperforate Between (23a).** Top margin block of four with imprint, barely tropicalized original gum, lightly hinged, intense colors, beautiful centering

EXTREMELY FINE. A SUPERB TOP MARGIN POSITION BLOCK OF THIS PERFORATION ERROR. ONLY 20 ERROR PAIRS WERE PRINTED IN TOTAL.

According to *Canal Zone Stamps*, two panes of 100 were discovered with the center vertical row of perforations omitted. Of the 20 pairs printed of this variety, only two position blocks such as this are possible.

Scott Retail as two pairs. .... 4,000.00

- 555 ★ **1906, 2c Red & Black, Ovpt. Reading Down, Vertical Pair, One Without Ovpt. (23b).** Top stamp missing overprint, slightly tropicalized original gum, h.r., few sensibly reinforced perf separations, intense colors, Very Fine and choice, only ten pairs were printed, the error was caused when the top row of the sheet missed receiving the overprint, with 1969 A.P.S. certificate ..... 1,750.00



555



556

- 556 ★ 1906, 2c Red & Black, Ovpt. Reading Down, Vertical Pair, One Without Ovpt. (23b). Top stamp missing overprint, tropicalized original gum, h.r., few perf separations sensibly reinforced, bright color, Very Fine, rare, only ten pairs were printed, purple Colman backstamps..... 1,750.00



557

- 557 ★ 1906, 2c Red & Black, Ovpt. Reading Down, Double Ovpt. (23c). Bottom margin with part imprint, slightly tropicalized original gum, h.r., deep rich colors, clear second overprint, Very Fine and choice, scarce position single, only one pane of 100 was printed ..... 500.00



558

- 558 ★ 1906, 2c Red & Black, Ovpt. Reading Down, Double Ovpt, One Diagonal (23d). Tropicalized original gum, intense colors, light gum soaks, otherwise Very Fine, scarce, only part of one pane is known to have been printed with this variety ..... 750.00



- 559 ★ **1906, 2c Red & Black, Ovpt. Reading Down, "Canal" Double (23i).** In pair with normal, tropicalized original gum, intense color

VERY FINE AND CHOICE. ONLY THREE EXAMPLES ARE KNOWN.

Of the three recorded examples, only this one and one other are in a pair with normal stamp. Ex Plass. Illustrated in *Canal Zone Stamps* on p. 77 (detail). With 1970 A.P.S. certificate..... 3,250.00



559



560

- 560 ★ **1906, 5c Ultramarine & Black, Double Ovpt. (24c).** 6¾mm spacing, tropicalized original gum, deep rich colors, fresh and Fine, only 200 were printed (one pane with 6¾mm spacing, one with 7¼mm spacing) .... 450.00



561

- 561 ★ **1906, 5c Ultramarine & Black, "Canal" Only (24d).** Part tropicalized original gum, h.r., fresh and bright color, light corner crease at bottom right

VERY FINE APPEARING EXAMPLE OF THIS "CANAL" ONLY VARIETY. OF THE TEN THAT WERE PRINTED, ONLY THREE ARE KNOWN. A GREAT RARITY OF THE ISSUE.

According to *Canal Zone Stamps*, one pane of 100 was printed with the overprint shifted left, so that the right vertical row received "Canal" only and the other 90 stamps received the "Zone Canal" variety, Scott 24e (two of the 90 are known). Only three copies of Scott 24d are recorded: 1) single with part sheet margin at right, ex Plass lot 486; 2) in rejoined horizontal pair with "Zone Canal" variety, ex Plass lot 487; and 3) the example offered here..... 3,500.00





562

- 562 ★ 1906, 8c Purple & Black, Horizontal Pair, Imperforate Between and at Left Margin (25a). Part imprint at left, lightly hinged, rich colors, Fine and scarce position piece, only 34 of the 40 panes printed are believed to exist..... 2,000.00



563

- 563 ★ 1906, 10c Violet & Black, Double Ovpt., One Reading Up (26, 26a, 26b). Left margin strip of three with "Zone" printed in sheet margin, left stamp Reading Up (Scott 26b), center stamp Double Ovpt. one reading up (Scott 26a), right stamp normal (Scott 26), original gum or large part original gum, h.r., rich colors, few small thin spots

VERY FINE APPEARANCE. THE UNIQUE STRIP OF THREE CONTAINING THREE DIFFERENT VARIETIES OF THE OVERPRINT. A GREAT RARITY.

According to *Canal Zone Stamps*, the overprint was originally printed too far to the right, and the left vertical row did not receive an overprint. To correct the error, the printer turned the pane, intending to print just the one missing row. However, he placed the pane too far into the press, thus two rows received the inverted overprint.

There are five copies known with the double overprint (Scott 26a) and four known with the overprint reading up (Scott 26b). These were mostly contained in an irregular block of eight with four of No. 26b and three of 26a. The strip offered here was the bottom row of the block, and is unique with three different states of the overprint. One of the two singles of Scott 26a not contained in the block is offered in the following lot.

Ex Plass. Illustrated in *Canal Zone Stamps* on p. 79. With 1969 A.P.S. (copy) and 1993 P.F. certificates. Scott Retail as singles. .... 7,770.00

- 564 ★ **1906, 10c Violet & Black, Double Ovpt., One Reading Up (26a).** Tropicalized original gum, deep rich colors

VERY FINE AND CHOICE. ONLY TEN COPIES OF THIS RARE ERROR WERE PRINTED. OF THESE ONLY FIVE ARE KNOWN.

Please refer to the previous description for an explanation of the origin of this rare error.....  
 ..... 3,750.00



564



- 565 ★ **1909, 2c Vermilion & Black, Ovpt. Reading Down, Vertical Pair, One Without Ovpt. (27b).** Bottom margin pair, large part original gum, rich color

VERY FINE AND CHOICE. ONLY THREE PAIRS OF THIS OVERPRINT VARIETY ARE RECORDED.

Illustrated in *Canal Zone Stamps* on p. 82. Ex Plass. Small purple Colman backstamp in sheet margin barely shows thru. With 1993 P.F. certificate. ....  
 ..... 2,750.00

565





566

566 ★ **1909, 10c Violet & Black, Ovpt. Reading Down, Vertical Pair, One Without Ovpt. (30b).**

Top stamp with overprint shifted to right and bottom stamp missing overprint, small part tropicalized original gum, deep rich colors

VERY FINE AND CHOICE. THE UNIQUE VERTICAL PAIR CONTAINING ONE STAMP WITHOUT OVERPRINT. THIS IS ALSO THE FINEST OF THE THREE PAIRS RECOGNIZED AS BEING IN A PAIR WITH NORMAL STAMP.

In addition to the unique vertical pair offered here, two examples are recognized as being in horizontal pair with normal stamp. One has significant faults, including a rust mark on the face of the stamp. The other has the overprint shifted to the right so that part of "Can" of "Canal" extends onto the stamp missing the overprint, but has usually been accepted as the error variety, Scott 30a.

Ex Plass. Illustrated in *Canal Zone Stamps* on p. 83. With 1993 P.F. certificate.. 2,600.00



567

567 ★ **1909, 1c Dark Green & Black (31).** Lightly hinged, unusual perforation shift causing "Canal" to be partly split, fresh and Fine, unusual freak ..... E. 100-150





568

568 **1909, 1c Dark Green & Black, Inverted Center and Ovpt. Reading Down (31a).** Neat strike of duplex datestamp, deep rich colors

VERY FINE AND CHOICE. ONLY FOUR EXAMPLES OF THIS INVERT ARE RECORDED, AND ALL ARE USED. ONE OF THE GREAT RARITIES OF CANAL ZONE PHILATELY.

According to *Canal Zone Stamps*, the first copy of this error was discovered by George W. Wirth in 1932 on a postcard used in 1913, from which it was removed. The example offered here is the second copy, discovered in the 1950's. A third example is badly damaged. The clipped perforations at left on this stamp indicates that these may have come from sheet stamps used to make handmade booklets.

Ex Plass. With 1967 P.F. certificate. .... 15,000.00



- 569 ★★ 1909, 1c Dark Green & Black, Booklet Pane of Six, Handmade, Perf Margins (31c). Intact booklet of four **Mint N.H.** panes, Position G, Very Fine and choice, scarce complete booklet, Scott Retail as four hinged panes ..... 2,300.00
- 570 ★★ 1909, 2c Vermilion & Black, Booklet Pane of Six, Handmade, Perf Margins (32c). Complete booklet of two **Mint N.H.** panes, Position J, fresh colors, Very Fine and choice, scarce complete booklet, Scott Retail as two hinged panes..... 1,500.00
- 571 ★ 1909, 5c Deep Blue & Black, Double Ovpt. (33a). Sheet margin at left, lightly hinged, incredibly dark colors on bright paper, Very Fine and choice, only 200 were printed ..... 375.00



- 572 ★田 1909, 8c Violet & Black, Vertical Pair, One Without Ovpt. (34a). Top left corner margin block of four with "8 Centisimos No." imprint at top, top stamps missing overprint, full original gum, h.r., typical centering for this variety, deep rich colors
- FINE AND RARE. THE UNIQUE TOP LEFT CORNER MARGIN BLOCK OF THIS MISSING OVERPRINT VARIETY. IT IS BELIEVED THAT ONLY TEN WERE PRINTED.
- This error was caused when a sheet was misfed into the press, causing the top row to miss receiving the overprint, which was printed in the bottom sheet margin instead.
- Scott Retail as two pairs. .... 3,000.00





- 573 ★ 1911, 10c on 13c Gray, "10 cts" Inverted (36a). Barely tropicalized original gum, bright shade, Very Fine and choice, it is believed than only one pane of 100 was issued, some of which are known used..... 325.00
- 574 ★ 1911, 10c on 13c Gray, "10 cts" Omitted (36b). Slightly tropicalized original gum described on accompanying certificate as disturbed original gum, fresh color, Very Fine and choice, it is believed that only one pane of 100 was issued, it is not known used, with 1979 A.P.S. certificate..... 275.00
- 575 ★ 1913, 1c Green & Black, Booklet Pane of Six, Imperforate Margins (38b). Part tropicalized original gum described on accompanying certificate as disturbed original gum, huge margins, deep rich color, bottom left stamp small rust spot, otherwise Extremely Fine, a beautiful pane, with 1981 A.P.S. certificate ..... 625.00
- 576 ★ 1913, 1c Green & Black, Booklet Pane of Six, Handmade, Perf Margins (38c). Tab at bottom with stitch binding holes, adhering to interleaving as usual, Fine and rare, accompanied by booklet covers also with stitch binding and part of binding string ... 1,000.00



- 577 ★ 1912, 2c Vermilion & Black, Horizontal Pair, Right Stamp Without Ovpt. (39a). Right margin horizontal strip of three, right stamp missing overprint, small part tropicalized original gum, fresh and bright colors, Very Fine and choice, a total of 30 were printed, including ten where the left stamp is missing the overprint..... 1,258.00



578

- 578 ★ **1912, 2c Vermilion & Black, Booklet Pane of Six, Imperforate Margins (39c).** Barely hinged, brilliant color, wide margins, Very Fine and choice, accompanied by staple booklet covers and interleaving..... 500.00



579

- 579 ★ **1912, 2c Vermilion & Black, Ovpt. Reading Down (39d).** Part arrow at left, barely hinged, deep shade, Extremely Fine..... 175.00



580

- 580 ★ **1912, 2c Vermilion & Black, Ovpt. Reading Down, Inverted Center (39e).** Lightly hinged, intense color, almost perfect centering. Extremely Fine Gem, it is surmised that 400 were printed including at least 168 of which were used for booklets..... 600.00





581

581 **1912, 5c Deep Blue & Black, With Cordoba Portrait of 2c (40a).** Faint cancel at top leaves entire design clearly visible, deep rich colors

VERY FINE AND CHOICE. ONE OF THE MOST UNUSUAL ERRORS IN ALL OF PHILATELY. ONLY NINE COPIES ARE RECORDED.

Little is known of how this error was made or why there are so few of them. The discovery of this error is described in an article by Edward S. Conger in the 1952 *Philatelic Congress Book*. The first copy was discovered in Paris in 1925, where it was supposedly found in a packet mixture of Canal Zone stamps. It was brought to the United States by a dealer, who sold it to Eugene Costales of Scott Stamp & Coin Co. It was first written up the July 1925 issue of *Scott Stamp Monthly*, which started a frenzy as dealers and collectors checked their inventories for more examples. Other copies were found in New Zealand, Reading Pa., Toronto, and in the Canal Zone.

Ex Plass. Illustrated in *Canal Zone Stamps* on p. 92. With 1966 and 1993 P.F. certificates.  
 ..... 8,750.00



582



583



584



585EX



586



587



588



590



- 582 ★★ **1915, 1c Green & Black (46).** Mint N.H., variety “Z” of “Zone” under “C” of “Canal”, Very Fine and choice, Scott Retail as hinged..... 160.00
- 583 ★ **1915, 1c Green & Black, Double Ovpt. (46b).** Tropicalized original gum, overprints well apart, wide margins, Very Fine and choice, scarce, only 180 printed, two panes were printed, one with overprints close together, the pane with overprints apart also produced two other varieties: Scott 46c “Zone” double (two) and 46d double overprint one reading “Zone Canal” (18) ..... 275.00
- 584 ★ **1915, 5c Deep Blue & Black (48).** First printing with “E” of “Zone” under “L” of “Canal”, barely hinged, deep rich colors, Very Fine and choice, this spacing variety occurred on only three positions of the first printing, Scott Retail as normal ..... 500.00
- 585 ★田 **1917, 12c-24c Views of Culebra Cut (49-51).** Top right corner margin blocks of twelve, most stamps Mint N.H., left vertical row of all three some perf separations sensibly reinforced, rich colors, few light natural gum bends, Fine-Very Fine, attractive set of matched blocks, Scott Retail as blocks of four .....(Photo Ex) 1,612.00
- 586 ★ **1918, 1c Green & Black, Ovpt. Reading Down (52a).** Sheet margin at top, part tropicalized original gum, choice centering, Extremely Fine ..... 175.00
- 587 ★ **1918, 1c Green & Black, Booklet Pane of Six (52b).** Slightly tropicalized original gum, wide margins, rich color, fresh and Very Fine, accompanied by stapled booklet cover ..... 650.00
- 588 ★ **1918, 2c Vermilion & Black (53).** Left margin with **part of “Zone” printed in sheet margin**, barely disturbed original gum, rich color, Very Fine and choice, only 20 of this variety exist and come from the sheet which caused the horizontal pair, one missing overprint variety (Scott 53b, see next lot), Scott Retail as normal..... 115.00



589

- 589 ★ **1918, 2c Vermilion & Black, Horizontal Pair, Right Stamp Without Ovpt. (53b).** Horizontal strip of four, right stamp missing overprint, large part tropicalized original gum brilliant color, beautiful centering  
VERY FINE AND VERY RARE. ONLY 22 PAIRS ARE KNOWN TO EXIST.  
The error was caused when the sheet was misfed into the printing press, and the right-most vertical row did not receive the overprint. Two additional copies are known caused by a foldover. (An example of the overprint printed in the sheet margin from the same sheet is offered in the previous lot) ..... 2,000.00
- 590 ★★ **1920, 5c Deep Blue & Black (54).** Mint N.H., sharp proof-like impressions, perfectly centered, Extremely Fine Gem, Scott Retail as hinged..... 175.00

591



- 591 ★ 1921, 1c Light Green & Black, "Zone" Only (55d). In left margin horizontal pair with normal, "Canal" clearly visible in sheet margin, lightly hinged, left stamp with vertical foldover creases which caused the error, rich colors

VERY FINE AND CHOICE EXAMPLE OF THE "ZONE" ONLY ERROR. ONLY FOUR ARE KNOWN, ONE OF WHICH IS USED.

This error was created by a foldover in the left vertical row of one pane, which caused "Canal" to print in the sheet margin. The following are known: 1) the example offered here; 2) unused in horizontal pair with normal, part of "Canal" visible at left, ex Plass lot 581; 3) a single contained in a large unused block; and 4) left stamp in horizontal strip of five used on cover, ex Plass lot 582. .... 2,777.00



592

- 592 ★ 1920, 2c Orange Vermilion & Black, Double Ovpt. (56a). Clear strike of second overprint, almost perfectly centered, Extremely Fine, only 100 were printed..... 600.00



593

- 593 ★ 1920, 2c Orange Vermilion & Black, Horizontal pair, Left Stamp Missing Overprint (56d). Left margin horizontal strip of five, left stamp missing overprint, h.r., brilliant color, fresh and Extremely Fine, only 20 were printed ..... 1,275.00





594

- 594 ★ 1920, 2c Orange Vermilion & Black, "Zone" Double (56f). Sheet margin at left with part of "Canal", intense shade, barely hinged, Very Fine and choice, scarce, of the 30 printed only ten show part of "Canal" in selvage..... 1,250.00



595

- 595 ★ 1921, 5c Deep Blue & Black (57). Slightly tropicalized original gum, rich colors, beautiful centering, Extremely Fine, scarce in such superb condition..... 300.00



596

- 596 ★ 1921, 5c Deep Blue & Black, Horizontal Pair, Right Stamp Without Ovpt. (57a). Bottom right corner margin with narrow selvage at right and huge selvage at bottom, barely tropicalized original gum, h.r. reinforces a few internal perf separations

VERY FINE AND CHOICE. THE UNIQUE BOTTOM RIGHT CORNER MARGIN PAIR CONTAINING ONE STAMP WITHOUT OVERPRINT. ONLY TEN PAIRS WERE PRINTED WITH THE RIGHT STAMP MISSING THE OVERPRINT.

According to *Canal Zone Stamps*, the missing overprint occurs on the *left* pane of the sheet of 200, as evidenced by the narrow selvage at right and the existence at one time of a horizontal strip of ten with wide selvage and "Canal Zone" printed at left.

With 1978 A.P.S. certificate. .... 2,500.00



- 597 ★★ **1920, 50c Orange & Black (58).** Mint N.H., intense color, wide margins, Extremely Fine, Scott Retail as hinged..... 275.00
- 598 ★ **1920, 1b Dark Violet & Black (59).** Lightly hinged, intense colors, extra wide margins, Extremely Fine Gem ..... 160.00



- 599 ★ **1921, 1c Green, “Canal” Double (60a).** Right stamp in right margin horizontal pair with normal, barely tropicalized original gum, rich color  
 VERY FINE AND CHOICE EXAMPLE OF THIS DOUBLE “CANAL” ERROR. ONLY TEN WERE PRINTED.  
 According to *Canal Zone Stamps*, this error was apparently created on the right vertical row of the left pane. The sheet was placed too far into the press for overprinting of the right pane, causing “Canal” to print on the right stamps of the left pane and “Zone” to print in the gutter. Theoretically, this stamp should exist with overprint missing, but none have been discovered.  
 With 1969 A.P.S. certificate. .... 2,500.00
- 600 ★ **1921, 1c Green, Booklet Pane of Six (60b).** Lightly hinged, sharp proof-like impression, extra wide margins, Extremely Fine, a superb pane ..... 900.00
- 601 ★ **1921, 2c Carmine, Ovpt. Reading Down (61a).** Barely tropicalized original gum, intense color on bright paper, Very Fine and choice, with copy of 1979 P.F. certificate for block of four, this being the bottom right stamp ..... 200.00





602



603

- 602 ★ **1921, 2c Carmine, Double Ovpt. (61b).** Vertical pair, top stamp the variety, bottom stamp normal, lightly hinged, rich color, Very Fine and choice, only ten were printed with this close placement of the two overprints and come from the top horizontal row of one pane, another pane received a skewed second overprint on approximately 30-40 stamps, with 1979 A.P.S. certificate ..... 900.00
- 603 ★ **1921, 2c Carmine, "Canal" Double (61d).** Right stamp in horizontal pair with normal, lightly hinged, intense color
- VERY FINE AND CHOICE. ONLY TEN EXAMPLES OF THE 2-CENT WITH "CANAL" DOUBLE WERE PRINTED. This variety was printed using the same method as explained in the description of Scott 60a, lot 599. With 1978 P.F. certificate..... 1,900.00



604



605



606EX

- 604 ★ **1924, 1c Green (67).** Barely tropicalized original gum which is Mint N.H., wide margins, Extremely Fine, scarce in such superb condition, probably no more than 500 unused copies are known, many of which are off-center and have adherences on the gum ..... 500.00
- 605 ★ **1924, 1c Green, "Zone Canal" Reading Down (67a).** Lightly hinged, rich colors, fresh and Fine, one pane was printed with 80 stamps "Zone Canal" reading down, an additional ten stamps from the pane had "Zone" only reading down, an additional ten from the right margin had "Canal" reading down in the right margin ..... 850.00
- 606 ★ **1924, 5c-1b Coat of Arms, Unissued Set (68var-69var).** Complete set of seven values, tropicalized original gum, rich colors, Very Fine and choice, scarce as only 600 sets were not destroyed, according to *Canal Zone Stamps*, these values were never issued as a decision was made to use U.S. stamps overprinted "Canal Zone" starting July 1, 1924.....(Photo Ex) 2,420.00





607



610



611



614



609EX



612



613



- 607 ★田 1924, 1c Deep Green, "Zone" Inverted (71b). Position 30 in block of fifteen with natural s.e. at top and right, slightly tropicalized original gum, deep rich color, choice centering, Extremely Fine, it is estimated that between 150-200 are known ..... 350.00



608

- 608 ★田 1924, 1c Deep Green, "Canal" Only, "Zone Canal" (71c, 71d). Top margin block of four with part arrow at left, natural s.e. at left, barely tropicalized original gum, deep rich color  
 VERY FINE AND CHOICE. A RARE TOP SHEET-MARGIN BLOCK WITH TOP STAMPS THE "CANAL" ONLY VARIETY AND BOTTOM STAMPS THE "ZONE CANAL" VARIETY. ONLY TWENTY SUCH COMBINATION PAIRS WERE PRINTED.  
 This variety was created when the sheet was shifted downwards during overprinting. 180 stamps bear the "Zone Canal" variety. Only twenty were printed with "Canal" only. It is believed the bottom panes were destroyed.  
 Purple "Klein" backstamps. With 1984 P.F. certificate. Scott Retail as four singles..... 4,500.00
- 609 ★ 1924-25, 5c-50c Flat A's (74, 77, 78, 80). Mint N.H. (14c barely tropicalized), rich colors, Very Fine-Extremely Fine, Scott Retail as hinged .....(Photo Ex) 176.00
- 610 ★田 1924, 12c Brown Violet (76). Bottom plate no. 14405 block of six, slightly tropicalized original gum, center stamps small h.r., intense color, almost perfectly centered, Extremely Fine, a beautiful plate block..... 475.00
- 611 ★★田 1925, 14c Dark Blue (77). Mint N.H. top plate no. 14515 block of six, dark color on bright paper, superb centering, Extremely Fine Gem..... 425.00
- 612 ★★ 1924, \$1.00 Violet Brown (81). Mint N.H., intense color and impression, wide margins, Extremely Fine Gem, with 1983 P.F. certificate ..... 225.00
- 613 ★田 1926, 2c Carmine (84). Left plate no. 17842 block of six, intense color, barely hinged, Very Fine and choice ..... 300.00
- 614 ★田 1926, 2c Carmine (84). Right plate no. 17814 and large five-point star block of eight, barely tropicalized original gum, brilliant color, beautiful centering throughout, Extremely Fine Gem, a scarce plate block with large five-point star..... 1,810.00



615

- 615 ★ **1926, 2c Carmine, "Canal" Only, "Zone Canal" Ovpts. (84a, 84b).** Top sheet margin vertical pair, top stamp "Canal" only, lightly hinged, bottom stamp with part of plate work-up at left, rich color, choice centering

EXTREMELY FINE. A RARE PAIR WITH TOP STAMP THE "CANAL" ONLY VARIETY AND BOTTOM STAMP "ZONE CANAL". ONLY TWENTY SUCH PAIRS WERE PRINTED.

This variety was printed as explained in lot 608. Only twenty of Scott 84a were printed.

With 1970 A.P.S. certificate..... 1,925.00



- 616 ★★ **1c-\$1.00 Canal Zone Ovpts. (85-87, 90, 93, 95-98, 100-104, 116).** Mint N.H., wide margins, rich colors, Extremely Fine Gem group, Scott Retail as hinged.....(Photo Ex) 316.00
- 617 ★田 **1925, 3c Violet (85).** Right plate no. 16400 block of six, top four stamps single h.r., deep rich color, beautiful centering, Extremely Fine..... 175.00
- 618 ★田 **1925, 3c Violet, Wrong Font Varieties (85 var).** Two items: first is left margin horizontal pair with right stamp wrong "Zone" variety (Position 82 from top left pane), second is block of four with bottom left stamp wrong "Canal" font (Position 51 from top left pane), rich color, choice centering, Extremely Fine, the "Zone" is considerably scarcer than the "Canal" ..(Photo Ex) E. 100-150
- 619 ★ **1925, 3c Violet, "Zone Zone" Ovpt. (85a).** Top stamp in vertical pair with normal, from Position 18 of the bottom right pane, lightly hinged, deep rich color, almost perfectly centered, Extremely Fine, with 1973 P.F. certificate..... 600.00





620

- 620 ★ 1926, 5c Dark Blue, “Canal” Inverted (86b). Right stamp in horizontal pair with normal, error is Position 7 from bottom right pane, s.e. as always, tropicalized original gum, rich color, Very Fine and choice, scarce, approximately 30 are known ..... 950.00



621

- 621 ★田 1926, 5c Dark Blue, Inverted Overprint (86c). Bottom margin block of four with additional overprints in selvage, barely hinged, deep rich color, overprint shifted slightly horizontally

VERY FINE AND CHOICE. AN EXTREMELY RARE BOTTOM SHEET-MARGIN BLOCK OF THIS INVERTED OVERPRINT VARIETY. ONLY TEN SHEET-MARGIN EXAMPLES WERE PRINTED. A WONDERFUL SHOWPIECE.

According to *Canal Zone Stamps*, these errors were created because the press was set up as a 100-subject overprint form to accommodate narrow selvage at bottom. When one pane was mistakenly inserted in the wrong direction the top row missed receiving the overprint, which was printed instead on the wide selvage at bottom.

With 1969 A.P.S. certificate. Scott Retail as four singles of the inverted overprint variety, with no premium for either the block or sheet margin ..... 2,000.00



622

- 622 ★ 1926, 5c Dark Blue, Inverted Overprint (86c). Single hinge mark, deep rich color, overprint slightly split horizontally, Very Fine and choice, only 90 were printed, ten of which are in pairs with unoverprinted stamps (Scott 86g, see lot 623), with 1980 P.F. certificate ..... 500.00



623

- 623 ★★田 1926, 5c Dark Blue, Vertical Pair, One Without Ovpt., Other with Ovpt. Inverted (86g). Right margin block of four with part arrow, natural s.e. at top as are all examples of the missing overprint variety, **Mint N.H.**, rich color
- VERY FINE AND CHOICE. AN EXTREMELY RARE BLOCK WITH TOP STAMPS MISSING OVERPRINT AND BOTTOM STAMPS WITH INVERTED OVERPRINT. ONLY TEN PAIRS IN TOTAL WERE PRINTED. A WONDERFUL POSITIONAL SHOWPIECE.
- Please refer to the description of lot 621 for an explanation of how these were created. With 1969 A.P.S. certificate. Scott Retail as two pairs..... 4,500.00





624

- 624 ★田 1926, 5c Dark Blue, "Canal" Only Ovpt. (86h). Bottom margin block of sixteen with part arrow and natural s.e. at left, top left stamp "Canal" only, three stamps "Zone Canal", most others with vertically split "Zone", top row lightly hinged, bottom stamps Mint N.H., deep rich color, few minor perf separations

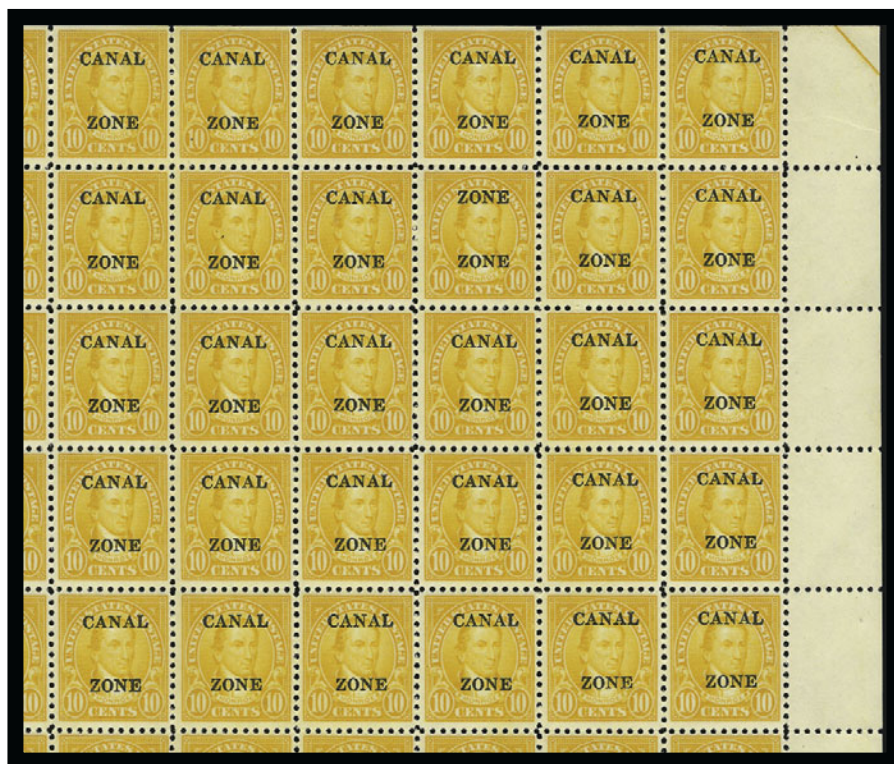
VERY FINE. AN IMPRESSIVE MULTIPLE CONTAINING TWO MAJOR OVERPRINT VARIETIES. ONLY EIGHT EXAMPLES OF THE "CANAL" ONLY OVERPRINT VARIETY ARE RECORDED.

Signed in pencil by Gilbert Plass. Scott Retail as singles. .... 3,289.00

- 625 ★田 1925, 10c Orange (87). Mint N.H. right plate no. block of six (gum barely tropicalized at bottom), vibrant color, choice centering, Extremely Fine ..... 500.00



625



626 detail

- 626 ★田 1925, 10c Orange, "Zone Zone" (87a). Position 18 in pane of 100 from Plate 16378, slightly tropicalized original gum, brilliant color, choice centering, Position 79 minor imperfection, choice centering

VERY FINE. ONLY FIVE COPIES OF THE "ZONE ZONE" ERROR ARE RECORDED FOR THE 10-CENT VALUE.

According to *Canal Zone Stamps*, the error only occurs on Position 18 of the bottom right pane. All were officially destroyed, except for five copies. Two of the five are contained in complete panes. The other pane is plate no. 16379.

Signed I. Koslow in pencil at bottom right. Scott Retail as the error, two plate blocks, nineteen blocks of four and six singles.....(Photo Detail) 7,250.00



627

- 627 ★田 1928, 12c Brown Violet (88). Right plate no. 15352 block of six, slightly tropicalized original gum, deep rich color, choice centering, Very Fine..... 375.00





628

- 628 ★田 1926, 12c Brown Violet, “Zone Zone” Ovpt. (88a). Position 18 in right margin block of twelve, slightly tropicalized original gum, h.r., deep rich color, choice centering  
VERY FINE AND CHOICE. ONE OF THE FINEST OF THE FOUR KNOWN EXAMPLES OF THIS VARIETY.

According to *Canal Zone Stamps*, this error comes only from Position 18 on the lower right pane of the plate. Four panes were sold before the remaining 246 lower right panes on hand were officially destroyed, on Oct. 15, 1926. One pane is still intact (ex Tows and Grebian).

Ex Plass. Illustrated in *Canal Zone Stamps* on p. 153 (detail). With 1967 P.F. certificate. ... 5,517.00

- 629 ★田 1925, 15c Gray (90). Left plate no. 14912 block of six, **bottom left stamp “Canal” wrong font** variety, barely tropicalized original gum, rich color, Very Fine and choice, small backstamp, Scott Retail as normal ..... 200.00



629



630

- 630 ★田 1925, 15c Gray, "Zone Zone" Ovpt. (90a). Position 18 in block of 28 with plate no. at right and natural s.e. at top, barely tropicalized original gum, rich color

FRESH AND FINE. ONLY THREE EXAMPLES OF THE 15-CENT "ZONE ZONE" OVERPRINT ARE RECORDED. A GREAT RARITY.

According to *Canal Zone Stamps*, official records indicate that all 250 panes from the lower right portion of the sheet were destroyed. However, three are known, including one in a full pane (ex Tows), which has not been seen for some time. It is possible that these were part of a shipment sent on a later date with second printing stamps.

Ex Pass. Illustrated in *Canal Zone Stamps* on p. 154 (detail). With 1967 P.F. certificate. .... 5,711.00



631



632

- 631 ★★ 1926, 17c Black, "Zone" Only (91a). Mint N.H. with sheet margin at bottom, almost perfectly centered, bright shade, Extremely Fine Gem, only 20 were printed, this was caused by the overprint being shifted to top on two panes and only occurred on the bottom row of the sheets ..... 900.00

- 632 ★★ 1926, 17c Black, "Canal" Only (91b). Plate no. 18021 at top, stamp Mint N.H., natural gum skip at top, intense impression

FINE. THE UNIQUE PLATE NUMBER SINGLE OF THE "CANAL" ONLY OVERPRINT ON THE 17-CENT SCOTT 91. A WONDERFUL POSITION PIECE.

According to *Canal Zone Stamps*, this error occurred on one pane when the overprint was shifted too far downwards. It also occurred on one stamp due to a foldover, and is occasionally found on some shifted overprints from the bottom row of a sheet or sheets. There are perhaps a total of fifteen in existence, including at least one with a trace of the word "Zone". The example offered here, with plate number at top, is a great rarity. .... 1,700.00





633

- 633 ★田 1926, 20c Carmine Rose (92). Top plate no. 16648 block of six, barely hinged, brilliant color, fresh and Extremely Fine..... 175.00



634

- 634 ★田 1926, 20c Carmine Rose, "Canal" Inverted (90a). Position 48 from the upper right pane in block of 25 with plate no. 17530 at right, two stamps at top lightly hinged, **error Mint N.H.**, few sensibly reinforced perf separations in selvage, deep rich color

FINE AND RARE. ONLY TWO EXAMPLES OF THIS OVERPRINT ERROR ARE RECORDED.

According to *Canal Zone Stamps*, both examples are in blocks with plate numbers. The other example is from Plate No. 17531, and both have similar centering.

Ex Plass. Illustrated in *Canal Zone Stamps* (detail). With 1967 P.F. certificate ... 3,788.00



635



636

- 635 ★田 **1926, 20c Carmine Rose, "Zone" Inverted (92b).** Position 76 from the lower left pane, in block of 25 with plate no. 16648 at bottom, stamps Mint N.H., few sensibly reinforced perf separations at bottom, one stamp tiny thin spot not mentioned on accompanying certificate FINE AND RARE. ONLY THREE EXAMPLES OF THE "ZONE" INVERTED OVERPRINT VARIETY ARE KNOWN. A GREAT RARITY.

All three known examples of the 20c "Zone" Inverted error are in large multiples such as the example offered here, and all have similar centering. Interestingly, they come from three different plates.

Ex Plass. Illustrated in *Canal Zone Stamps* on p. 159 (detail). With 1967 P.F. certificate..... 4,030.00

- 636 ★田 **1926, 20c Carmine Rose, "Zone Canal" Ovpt. (92c).** Position 91 in block of fifteen with bottom left corner margin incl. siderographer's initials and plate no. 16648 at left, few sensibly reinforced perf separations, intense color FINE AND RARE. ONLY THREE EXAMPLES OF THE "ZONE CANAL" OVERPRINT VARIETY ARE RECORDED.

Unlike many other overprint varieties of this type, this one was caused not by a shift in the overprint, but rather by the mistaken use of the slugs on the overprint form.

Ex Plass. Illustrated in *Canal Zone Stamps* on p. 159 (detail). With 1967 P.F. certificate..... 3,708.00



637

- 637 ★ **1926, \$1.00 Violet Brown (95).** Lightly hinged, Position 51 with "Canal" wrong font, wide margins, Very Fine and choice, scarce variety, Scott Retail as normal ..... 125.00





638

- 638 ★田 **1926, 2c Carmine, Pair, One Without Ovpt. (97a).** Left margin block of four, both left stamps missing overprint, lightly hinged, deep rich color, centering is typical for this variety

VERY FINE AND CHOICE. ONLY TEN EXAMPLES OF THE MISSING OVERPRINT VARIETY WERE PRINTED.

According to *Canal Zone Stamps*, the error occurred when the bottom left pane of Plate No. 18633 was misplaced in the printing press.

Ex Plass. Illustrated in *Canal Zone Stamps* on p. 164 (detail). With 1966 P.F. certificate. ... 6,500.00



639

- 639 ★ **1926, 2c Carmine, Pair, One Without Ovpt. (97a).** Left margin horizontal pair, left stamp missing overprint, lightly hinged, brilliant color, centering is typical for this variety

VERY FINE AND CHOICE. A FRESH PAIR OF THE 1926 2-CENT CARMINE PERF 10 STAMP WITH LEFT STAMP MISSING THE OVERPRINT. ONLY TEN WERE PRINTED.

According to *Canal Zone Stamps*, the error occurred when the bottom left pane of Plate No. 18633 was misplaced in the overprinting press. .... 3,250.00



640EX

640 ★★田 1927, 3c Violet, Perf 10, 1c Green, Perf 11 x 10½ (98, 100). Plate no. blocks of four, Mint N.H., rich colors, Extremely Fine .....(Photo Ex) 140.00



641

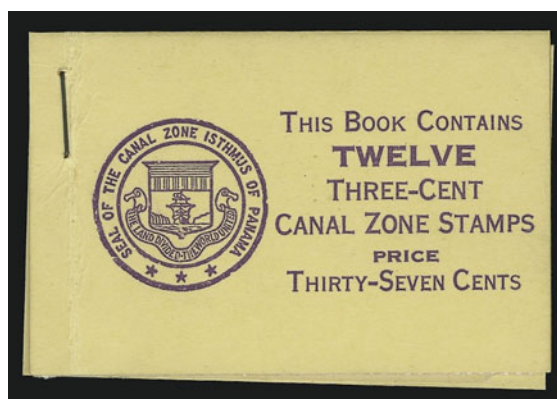
641 ★田 1927, 1c Green, Vertical Pair, One Without Ovpt. (100a). The unique bottom right corner margin plate no. block of four, bottom stamps missing overprint, bottom stamps Mint N.H., fresh and bright color

VERY FINE AND CHOICE. THIS IS THE UNIQUE PLATE BLOCK CONTAINING THE "CANAL ZONE" OMITTED ERROR. ONLY TEN WERE PRINTED.

According to *Canal Zone Stamps*, the error was caused when the sheet was misfed into the press. The overprint was omitted from the bottom row of the plate.

Ex Pass. Illustrated in *Canal Zone Stamps* on p. 167. With 1967 P.F. certificate. .... 8,000.00





642

- 642 ★ **1931, 3c Violet, Booklet Pane of Six, Handmade Perf Margins (102a).** Complete booklet of two panes, both panes placed inverted in relation to cover, top pane with plate No. 18803, single staple at top, cover with slight fold at left from being bent back, few perfs sensibly reinforced

VERY FINE. AN EXCEEDINGLY RARE COMPLETE BOOKLET OF THE 3-CENT LINCOLN, SCOTT 102a. ONLY TWO INTACT BOOKLETS ARE KNOWN, AND ONLY SIX PANES IN TOTAL ARE RECORDED.

According to *Canal Zone Stamps*, the 3c Lincoln was in production for only a short period of time before the switch was made to the 3c Washington stamp. Only one intact booklet and four panes are reported by the authors; the booklet offered here was apparently unknown to them.

Scott Retail as two panes, with no premium for intact booklet with covers and interleaving. .... 13,000.00



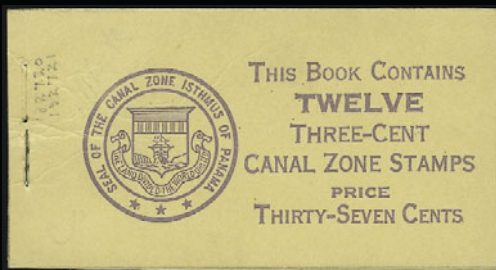
643

- 643 ★田 **1933, 3c Deep Violet, "Zone" Only (115a).** Position 9 in top right corner plate no. 20933 block of six, lightly hinged at top reinforcing perf separations which caused foldover and left part of "Canal" printed on back, lightened blue crayon affects the error

FINE. THE UNIQUE "ZONE" ONLY OVERPRINT ERROR ON THE 3-CENT 1933 ROTARY PRESS PRINTING STAMP.

According to *Canal Zone Stamps*, the error was created by a foldover. Some perforations at top became separated, causing the one stamp to fold over. It was apparently noticed and marked for destruction in blue crayon, but was never destroyed. The blue crayon has been lightened, partly affecting the color of the error stamp.

With 1981 A.P.S. certificate. Illustrated in *Canal Zone Stamps* on p. 170. Unlisted in Scott. The "Canal" only variety, of which two are known, is priced at \$2,600.00 ..... E. 2,000-3,000



644

645EX



646



647EX



649



651



648



653



652EX



- 644 ★★ **1934, 3c Red Violet, Booklet Pane of Six (117a).** Complete booklet of two panes, top booklet with plate no. 132720, bottom pane with plate no. 132721, cover with one staple removed and light creasing, otherwise Very Fine, most unusual with two different plate nos. in same booklet, Scott Retail as two panes..... 90.00
- 645 ★ **1934-57, 3c Deep Violet, Booklet Pane of Six, 3c Black on Dull Blue Green, Perforation Shifts (117a var, 148 var).** Complete pane of first and block of six of second, lightly hinged, Very Fine, unusual varieties.....(Photo Ex) E. 100-150
- 646 P **1939, 1c Yellow Green, Large Die Proof on India (120P1).** Die sunk on 189 x 136mm card with full die sinkage and salesman's sample book punch holes at top, blue "593721" and "Engraver's Stock Proof" on back, scotch tape stain at bottom edge on back only, otherwise Extremely Fine, scarce unlisted in Scott as large die proof..... E. 750-1,000
- 647 ★★田 **1939, 1c-50c 25th Anniversary Commemoratives (120-135).** Mint N.H. plate no. blocks of six, beautiful colors and centering, Very Fine-Extremely Fine, superb set.....(Photo Ex) 1,782.00
- 648 P **1951, 10c Carmine, Large Die Proof on India (146P1).** Die sunk on 153 x 202mm card with full die sinkage, blue "42931B" on back with printed "Engraver's Stock Proof Authorized by" and initialled, small scotch tape mark on back, Very Fine, scarce, unlisted in Scott ..... E. 750-1,000
- 649 P **1955, 3c Violet, Large Die Proof on India (147P1).** Die sunk on 199 x 150mm card with full die sinkage, blue "159538B" with "Engraver's Stock Proof Authorized by" and signed, small scotch tape mark on back only, trivial edgewear, Extremely Fine, scarce, unlisted in Scott ..... E. 750-1,000



650

- 650 ★★ **1962, 4c Thatcher Ferry Bridge, Silver (Bridge) Omitted (157a).** Position 40, Mint N.H. with sheet margin at right, brilliant colors on bright paper  
EXTREMELY FINE. A SUPERB SHEET-MARGIN EXAMPLE OF THE THATCHER FERRY BRIDGE ERROR. ONLY ONE PANE OF 50 IS AVAILABLE TO COLLECTORS.  
According to *Canal Zone Stamps*, one sheet, consisting of four panes of 50, was printed. three panes were caught by postal authorities, while the fourth pane of 50 was sent to H.E. Harris & Co. as part of a larger order from the Canal Zone Philatelic Agency. At the same time this error was printed, the U.S. had issued the Dag Hammarskjöld error in huge quantities. The Canal Zone authorities made plans to do the same, but they were successfully sued by H.E. Harris, and the larger printing never took place. The pane was broken up in 1969.  
With 1985 P.F. certificate. .... 7,500.00
- 651 ★田 **1929, 20c on 2c Carmine, Air Post, Dropped "2" in Surcharge (C5a).** Block of four with plate no. at bottom, right stamps the error, top right stamp small h.r., others Mint N.H., rich color, wide margins, Extremely Fine..... 170.00
- 652 ★田 **1939, 5c-\$1.00 Air Post (C15-C20).** Plate no. blocks of six, Nos. C19 and C20 lightly hinged, others Mint N.H., Very Fine-Extremely Fine.....(Photo Ex) 1,082.00
- 653 P **1939, 15c Light Brown, Large Die Proof on India (C17P1).** Die sunk on 189 x 136mm card with full die sinkage and salesman's punch holes at top, blue "593420" and "Engraver's Stock Proof Authorized by" and signed, also pencil "25 years later I engraved the 15c 50th Anniversary Airmail Matt Fenton", tape mark along bottom edge on back from attachment of protective plastic, otherwise Very Fine, scarce, unlisted in Scott ..... E. 750-1,000



- 654 ★★ 1951, 31c Cerise, Horizontal Pair, Imperforate Vertically (C25a). Mint N.H. with sheet margin at bottom, rich color, fresh and Fine, only 98 pairs and one single are recorded ..... 1,000.00
- 655 1921, 5c-40c Air Post Officials, "Panama Canal" 17mm Long (CO8-CO12). Used as almost always, fresh and Very Fine ..... (Photo Ex) 855.00
- 656 ★★ 1941, 30c Rose Lake, Air Post Official, "Panama Canal" 17mm long (CO11). Mint N.H., deep rich color, Very Fine and choice, extremely scarce in unused condition, none was offered in the Plass sale, unpriced in Scott ..... E. 500-750



657

1947, 6c Yellow Brown, Air Post Official, "Panama Canal" 19-20mm long, Inverted Ovpt. (CO14a). Roller precancel, Mint N.H. (small natural gum skip), rich color, wide margins

VERY FINE AND CHOICE A RARE EXAMPLE OF THE 6-CENT AIR POST OFFICIAL STAMP WITH INVERTED OVERPRINT.

Only one pane of 50 reached the public. Of these, only 36 are perforated on all four sides. It is only known with the roller precancel.

With 1983 P.F. certificate.. 2,500.00

657



658



659

- 658 ★★ 1914, 1c Rose Carmine, Postage Due (J1). Mint N.H. bottom plate no. 5541, imprint and star strip of three, incredibly deep color, Jumbo margins, Extremely Fine Gem, Scott Retail as hinged singles ..... 255.00
- 659 ★ 1914, 10c Rose Carmine, Postage Due (J3). Barely tropicalized original gum, rich color, wide margins, Very Fine and choice, scarce with such wide margins, most examples of this stamp are used or were cancelled before being sold, only a few escaped as unused stamps ..... 850.00





660

- 660 ★ **1919, 4c on 4c Olive Brown, Postage Due, “Zone” Omitted (J11a).** Lightly hinged, deep rich color, clear strike of the surcharge

FINE. THE UNIQUE EXAMPLE OF THE 4-CENT ON 4-CENT POSTAGE DUE WITH “ZONE” OMITTED. ONE OF THE RAREST OF ALL CANAL ZONE STAMPS.

This error was likely caused when some foreign matter adhered between the stamp and the printing plate.

Ex Plass. Illustrated in *Canal Zone Stamps* on p. 239. With 1967 P.F. certificate. .... 7,500.00



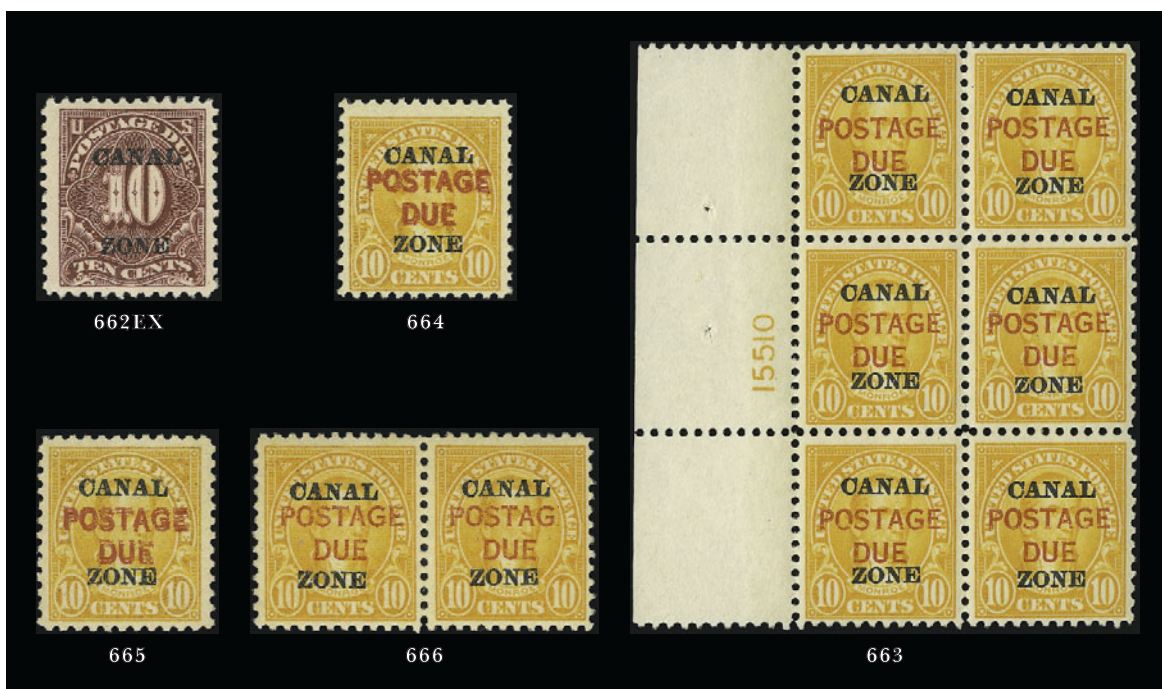
661

- 661 ★ **1919, 4c on 4c Olive Brown, Postage Due, “4” Omitted (J11b).** Slightly tropicalized original gum, fresh color

FINE AND RARE. IT IS BELIEVED THAT ONLY TWO COPIES OF THIS VARIETY EXIST.

Part of the “C” of “Canal” is also missing, which indicates that this error was caused by foreign matter blocking the overprint impression.

Ex Plass. Illustrated in *Canal Zone Stamps* on p. 239. With 1971 A.P.S. certificate. .. 7,500.00



- 662 ★ 1924, 1c-10c Postage Due (J12-J14). Lightly hinged, rich colors, wide margins, Extremely Fine .....(Photo Ex) 380.00
- 663 ★田 1925, 10c Orange, Postage Due (J17). Left plate no. 15510 block of six, slightly tropicalized original gum, brilliant color, choice centering, Extremely Fine ..... 500.00
- 664 ★ 1925, 10c Orange, Postage Due, “Postage Due” Double (J17a). Barely tropicalized original gum, vibrant color, clear second overprint, Very Fine and choice, only 98 were printed, with copy of 1978 A.P.S. certificate for block of four, this being the top left stamp ..... 500.00
- 665 ★ 1925, 10c Orange, Postage Due, “Postage Due” Double (J17a). Position 38, slightly tropicalized original gum, bright color, Very Fine and choice, only 98 were printed ..... 500.00
- 666 ★ 1925, 10c Orange, Postage Due, “E” of “Postage” Omitted (J17b). Right stamp in horizontal pair with normal, Positions 82-83, brilliant color, barely tropicalized original gum, Very Fine and choice, the error is only found on Positions 83 and 93 and was caused by a foldover on some sheets, most stamps from this position display more of the missing “E” than the example offered here ..... 500.00



667

- 667 ★ 1925, 10c Orange, Postage Due, “Postage Due” Double, “Postage Due” Double (J17a, J17c). Horizontal pair, Positions 83-84, slightly tropicalized original gum, intense color  
FINE AND RARE EXAMPLE OF THIS DOUBLE OVERPRINT VARIETY. ONLY TWO EXAMPLES ARE KNOWN OF THE MISSING “E” OF “POSTAGE”.  
According to *Canal Zone Stamps*, only one pane of 100 with the double overprint was issued. On this pane, two positions — 83 and 93 — have either all or most of the “E” of “Postage” omitted. The other example, from Position 93, has a straight-edge at bottom.  
Ex Pass. Illustrated in *Canal Zone Stamps* on p. 240. With 1967 P.F. certificate. .... 3,750.00





- 668 ★田 1925, 1c Carmine Rose, Postage Due, "Zone Zone" Ovpt. (J18a). Position 18 from the bottom right pane in right margin part arrow block of twelve, natural s.e. at top, slightly tropicalized original gum, few perf separations sensibly reinforced at top, rich color, blue crayon "X" in sheet margin means pane was marked for destruction, Very Fine and choice, rare, of the 75 which were issued only approximately fifteen are known, the rest may be lost to philately, with 1969 A.P.S. certificate ..... 1,341.00
- 669 ★田 1925, 2c Carmine Rose, Postage Due, "Zone Zone" Ovpt. (J19a). Position 18 from bottom right pane in block of nine, natural s.e. at top, tropicalized original gum, bright color, Very Fine and choice, scarce, of the 40 copies which were issued, only approximately fifteen are known, the rest may be lost to philately, with 1968 P.F. certificate as block of twelve and with 1970 A.P.S. certificate as block of nine..... 1,620.00
- 670 ★ 1925, 10c Carmine Rose, Postage Due, Vertical Pair, One Missing Ovpt. (J20a). Sheet margin at top, top stamp missing overprint as always, small h.r., Very Fine and choice, rare, only ten were printed, three of which are in the unique plate block, with 1969 A.P.S. certificate ..... 1,750.00
- 671 1925, 10c Carmine Rose, Postage Due, "Canal" Wrong Font (J20 var). Position 51, bold grid cancel, wide margins, Very Fine, scarce especially used ..... E. 150-200
- 672 ★ 1925, 10c Rose Red, Postage Due, Double Ovpt. (J20c). Lightly hinged, clear second overprint, bright color, few natural gum skips, Very Fine, only one pane of 100 was printed ..... 450.00



673

- 673 ★ **1930, 1c on 5c Blue, Postage Due, "Postage Due" Omitted (J21a).** Bottom plate no. 118117 vertical pair, bottom stamp the error, h.r., deep rich color, small tear in sheet margin only

VERY FINE. THE UNIQUE PLATE NO. EXAMPLE OF THE "POSTAGE DUE" OMITTED VARIETY.

This variety was caused by a dramatic upward shift of the overprint. The "1" is split on all stamps, and "Postage Due" is omitted on the bottom five stamps of the pane.

Ex Plass. Illustrated in *Canal Zone Stamps* on p. 246. With 1967 P.F. certificate..... 5,500.00

- 674 ★ **Canal Zone Postage Due Balance.** Nine unused stamps, Nos. J1, J2, J8, J9, J15-J18, J20, No. J9 with wider spacing between "1" and "0" of surcharge, few Mint N.H., Very Fine-Extremely Fine ..... *Not illustrated* 703.00



- 675 P **1941, (No Value) Official Ovpt. (O1P).** On 21 x 25mm white paper, fresh and Very Fine ..... E. 100-150
- 676 ★ **1941, 5c Blue, Official (O3).** Lightly hinged, natural s.e. at right with part of guideline, rich color, light natural gum bend, scarce unused..... 1,000.00
- 677 **1941, 50c Rose Lilac, Official (O8).** Usual precancel, lightly hinged, rich color, extra wide margins, Extremely Fine Gem, only 1,000 were printed, with copy of 1970 A.P.S. certificate for block of four, this being the top right stamp ..... 550.00
- 678 ★田 **1907, (No Value) Blue, Post Office Seal (OX1).** Pane of eight, brilliant color, Very Fine-Extremely Fine, Scott Retail as two blocks of four..... 350.00





- 679 ✉ **1916, 2c Carmine & Black entire, Head and Ovpt. (Black) Only (U2b).** Unused, Very Fine and choice, only six unused examples are recorded, small purple Sloane backstamp ..... 1,500.00
- 680 ✉ **1916, 2c Carmine & Black entire, Frame (Red) Only (U2c).** Unused, bright color, Extremely Fine, only eight unused and two used examples are recorded ..... 1,000.00
- 681 ✉ **1923, 2c Carmine entire (U5).** Unused, Extremely Fine, a beautiful example in pristine condition ..... 200.00
- 682 ✉ **1934, 3c on 2c Carmine entire (U14).** Unused, post-office fresh and Extremely Fine ..... 450.00
- 683 ✉ **1919, 10c on 5c Black & Red on Cream entire, Registration, 9¼mm Between "Canal" and "Zone" (UF1a).** Size 10, unused, fresh and Very Fine, scarce, only 6,000 printed this size ..... 1,250.00



- 684 ☒ **1907, 1c on 2c Carmine, Postal Card, Double Surcharge (UX1a).** Rich color, clear second overprint, cancelled by well-struck "Paraiso C.Z. Dec. 17 17:30 PM 1913" duplex datestamp to local address, Very Fine and choice, scarce used, ex Brooks..... 1,500.00
- 685 ☒ **1925, 1c Green, Postal Card (UX5).** Unused, Very Fine and choice, scarce in such pristine condition ..... 1,100.00
- 686 ☒ **1924, 1c Green, Postal Card (UX6).** Unused, fresh and Very Fine, scarce postal card ..... 725.00
- 687 ☒ **Postal Stationery Balance.** Three unused entires and one unused Postal Cards, Nos. U6-U8, UX3, fresh and Very Fine ..... **(Photo Ex)** 274.00
- 688 ★ **Canal Zone Balance.** 17 unused stamps, Nos. 13, 14, 21, 22, 35 (bottom left corner margin with control no.), 36 with sheet margin at left, 37, 38, 41, 49-51, 52, 55 with sheet margin at right, 57, 62a, 64, few Mint N.H., fresh colors, beautiful centering, Very Fine-Extremely Fine, also incl. Cuba No. 226 lightly hinged..... *Not illustrated* 874.00
- 689 ★田 **Canal Zone Air Post, Postage Due Plate Blocks.** Five, Nos. C1 (two), C4, J19 left plate with wrong "Canal" font on Position 51, J24, fresh and Very Fine-Extremely Fine ..... *Not illustrated* 590.00
- 690 ★ **Canal Zone Back-of-Book Issues.** 31 unused stamps, Nos. C15-C20, C27-C31, CO1-CO7, CO14, O1-O7 (O3 used), O9, OX1, OX3, OX3a, OX5a, fresh and Very Fine-Extremely Fine group ..... *Not illustrated* 407.00

END OF FIRST SESSION



SECOND SESSION (LOTS 691-922)  
WEDNESDAY, FEBRUARY 26, 2003, AT 1:30 P.M.

## CUBA



- 691 S 1899, 1c-10c Issues, "Specimen" Overprints. Thirteen stamps, incl. Nos. 221, 222A, 223-226, E1, E2, J1-J4, each with purple "Specimen" overprint and on part of original U.P.U. page, Fine-Very Fine, scarce set, from the Natal sample book used to detect forgeries, three with 1981 R.P.S. certificates .....(Photo Ex) E. 1,000-1,500
- 692 S 1899, 1c-10c on 1c-10c 1899 Issue, "Specimen" Overprints (221S-226S). Original gum, most lightly hinged, Fine-Very Fine set .....(Photo Ex) 1,050.00
- 693 ★★田 1899, 1c on 1c Yellow Green (221). Mint N.H. bottom plate no. 574 and imprint block of six, intense color, beautiful centering, Extremely Fine Gem, Scott Retail as hinged ..... 300.00
- 694 ★★田 1899, 2c on 2c Reddish Carmine, Ty. III (222). Mint N.H. bottom plate no. 759 and imprint block of six, brilliant color, almost perfect centering, Extremely Fine Gem, with 1986 P.F. certificate, Scott Retail as hinged ..... 700.00
- 695 ★田 1899, 2c on 2c Reddish Carmine, Ty. IV, "Cupa" (222A var). Position 99 in block of six with part arrow at right, original gum, h.r., bright color, fresh and Fine position piece, Scott Retail as singles ..... 203.00





697



698



699



700



701EX



704



702



703





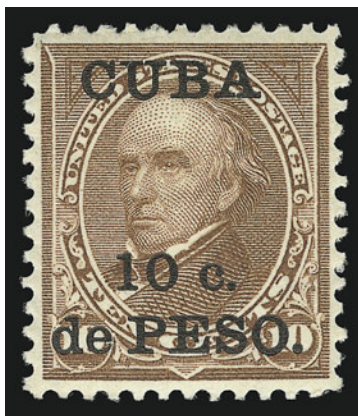
696

- 696 **1899, 2c on 2c Reddish Carmine, Ty. IV, Inverted Surcharge (222Ad).** Clear strike of Matanzas circular datestamp, intense shade  
VERY FINE AND CHOICE. A RARE USED EXAMPLE OF THE CUBA TWO-CENT INVERTED SURCHARGE. VERY FEW ARE KNOWN.  
With 1986 P.F. certificate. .... 3,500.00
- 697 ★田 **1899, 2c on 2c Reddish Carmine, Ty. IV, "Cuba" at Bottom (222A var).** Block of ten with shifting overprint, left stamps qualify as the variety and right stamps normal, original gum, h.r., bright color, few sensibly reinforced perf separations, Fine-Very Fine, attractive and dramatic multiple, Scott Retail for single variety is \$600.00 ... E. 500-750
- 698 ★田 **1900, 2½c on 2c Reddish Carmine, Ty. III, Special Printing (223 var).** Block of four, h.r., deep rich color, few perf separations, top left stamp tear, otherwise Fine, scarce block, with 1976 P.F. certificate, Scott Retail as singles ..... 2,400.00
- 699 ★★田 **1899, 5c on 5c Blue (225).** Mint N.H. top plate no. 408 and imprint block of six, deep rich color, beautiful centering, Extremely Fine Gem, a superb plate block, Scott Retail as hinged..... 800.00
- 700 ★ **1899, 5c on 5c Blue, "Cupa" (225 var).** Position 50, natural s.e. at right as always, original gum, lightly hinged, bright color, perfectly centered, Extremely Fine..... 70.00
- 701 ★ **1900, 1c-5c on 1c-5c Special Printing (221 var-225 var).** Each with purple "Special Surcharge" backstamp, h.r., rich colors  
VERY FINE AND CHOICE. A RARE SET OF THE MARCH 1900 SPECIAL PRINTING.  
Only one pane of 100 of each was overprinted for displays at the Paris and Pan-American Expositions.....(Photo Ex) 3,000.00
- 702 ★田 **1899, 10c on 10c Brown, Ty. I (226).** Bottom plate no. 305 and imprint block of six, original gum, bottom stamps Mint N.H., intense color and impression, Extremely Fine..... 1,150.00
- 703 ★★田 **1899, 10c on 10c Brown, Ty. I (226).** Mint N.H. left plate no. 306 and imprint block of six, deep rich color, fresh and Fine, Scott Retail as hinged..... 1,150.00
- 704 **1899, 10c on 10c Brown, Ty. I, "Cuba" at Bottom (226 var).** Natural s.e. at top, neat strike of cancel at bottom left, two light creases and small thin spot, otherwise Very Fine, scarce variety..... 325.00



705

- 705 ★ **1899, 10c on 10c Brown, Ty. I, “Cuba” Omitted (226b).** Sheet margin at bottom, original gum, lightly hinged, rich color  
 FINE AND RARE. EXAMPLE OF THE “CUBA” OMITTED ERROR.  
 Ex Plass. With 1974 P.F. certificate..... 4,000.00



706

- 706 ★ **1900, 10c on 10c Brown, Ty. II (226A).** Lightly hinged, deep rich color and proof-like impression, almost perfect centering with well-balanced margins  
 EXTREMELY FINE GEM. A SUPERB EXAMPLE OF THE CUBA 10-CENT ON 10-CENT TYPE II STAMP IN THE FINEST CONDITION ATTAINABLE.  
 With 1983 P.F. certificate..... 6,000.00





- 707 E **1899, 1c-10c Republic Issues, Small Die Proofs on Wove (227P2-231P2, E3P2).** Each on original gray card backing, Special Delivery slightly oxidized, otherwise Very Fine, scarce, only 85 sets were produced.....**(Photo Ex)** 1,125.00
- 708 S **1899, 1c-10c Republic Issues, "Specimen" Overprints (227S-231S).** Original gum, h.r., rich colors, Very Fine, accompanied by normal unoverprinted set for comparison .....**(Photo Ex)** 1,000.00
- 709 ★★田 **1899, 1c Yellow Green, 2c Carmine (227, 228).** Mint N.H. plate no. and imprint blocks of ten, deep rich colors, Extremely Fine, Scott Retail as hinged .....**(Photo Ex)** 405.00
- 710 TC **1899, 10c Black, Large Die Trial Color Proof on India (231TC1).** Die sunk on 154 x 203mm card with full die sinkage, tiny tear at left edge of card, otherwise Very Fine..... 625.00



711

- 711 ★★ 1899, 10c on 10c Blue, Special Delivery (E1). Mint N.H. with top left corner margin, intense color and proof-like impression, beautiful centering, natural foldover at top left of sheet margin leaves small gummed area on front, Extremely Fine Gem, Scott Retail as hinged..... 130.00



712

- 712 ★田 1899, 10c on 10c Blue, Special Delivery (E1). Top plate no. 492 and imprint block of six, original gum, bottom stamps lightly hinged, top stamps Mint N.H., deep rich color, beautiful centering

EXTREMELY FINE. A SUPERB PLATE BLOCK OF THE CUBA 10-CENT ON 10-CENT SPECIAL DELIVERY.

As an indication of the rarity of this plate block, Scott Retail for a block of four and two singles is \$835.00, and catalogue value for the plate no. and imprint strip of three is \$1,000.00 ..... 6,000.00





- 713 ★ 1899, 10c on 10c Blue, Special Delivery, No Period After "Cuba" (E1a). Position 22, original gum, lightly hinged, intense color and impression, Extremely Fine ..... 450.00
- 714 TC 1899, 10c Blue, Large Die Trial Color Proof on India (E2TC1). Die sunk on 201 x 154 mm card with full die sinkage, minor corner bends, otherwise Very Fine, scarce ..... 1,050.00
- 715 S 1899, 10c Orange, Special Delivery, Specimen Overprint (E2S). Original gum, lightly hinged, vibrant color, Very Fine and choice ..... 350.00
- 716 ★★田 1899, 10c Orange, Special Delivery (E2). Mint N.H. right arrow block of four, vibrant color, fresh and Very Fine, Scott Retail as hinged block of four with no premium for arrow position. 250.00
- 717 ★ 1899, 1c on 1c Deep Claret, Postage Due (J1). Bottom plate no. and imprint strip of three and single, original gum, h.r., fresh color, Very Fine, Scott Retail as singles ..... (Photo Ex) 180.00



718

- 718 **1899, 2c on 2c Deep Claret, Postage Due, Inverted Surcharge (J2a).** On small piece, neat cancel, deep color and proof-like impression

VERY FINE EXAMPLE OF THE CUBA 2-CENT ON 2-CENT POSTAGE DUE WITH INVERTED OVERPRINT. VERY FEW ARE KNOWN, OF WHICH THIS IS THE REPUTEDLY THE FINEST KNOWN.

With 1986 P.F. certificate ..... 2,750.00



719



720



721

- 719 ★田 **1899, 5c on 5c Deep Claret, Postage Due (J3).** Bottom plate no. 255 and imprint block of six, bottom stamps and top right stamp Mint N.H., others lightly hinged, intense shade, few minor perf separations, Fine, scarce plate block..... 900.00
- 720 ★ **1900, 5c on 5c Deep Claret, Postage Due, Special Printing (J3 var).** Lightly hinged, intense shade and impression, Very Fine and choice, only one pane of 100 was overprinted for the Paris and Pan-American expositions, with 1986 P.F. certificate... 600.00
- 721 ★★田 **1899, 10c on 10c Deep Claret, Postage Due (J4).** Mint N.H. bottom plate no. 256 and imprint block of six, beautiful color and centering, fresh and Extremely Fine, scarce Mint N.H. plate block, Scott Retail as hinged..... 850.00





- 722 ☒ **1899, 1c on 1c Green on Blue entire, Double Surcharge (U2a).** Unused, trivial toning around edges  
 VERY FINE EXAMPLE OF THIS RARE DOUBLE SURCHARGE ERROR. THIS IS THE LISTING EXAMPLE.  
 Ex White. .... 3,750.00
- 723 ☒ **1899, 2c on 2c Green entire, Inverted Surcharge (U3 var).** Bearing 5c Blue "Cupa" variety (225 var) and cancelled by "Havana, Cuba May 12, 189" duplex datestamp to local address, Very Fine and choice, this is the unique used example of this variety, one other is known in unused condition, with 1986 P.F. certificate ..... E. 1,000-1,500
- 724 ☒ **1899, 2c on 2c Green entire, Misprinted and Misfolded (U3 var).** Unused, shifted surcharge and design close at edge from misfolding, Very Fine, interesting variety ..... E. 300-400

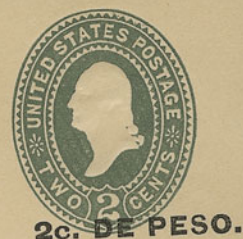


- 725 ☒ **1899, 2c on 2c Green entire, Double Surcharge (U3a).** Unused, clear second strike of the surcharge  
 VERY FINE AND CHOICE UNUSED EXAMPLE OF THIS DOUBLE SURCHARGE VARIETY.  
 Only two are known unused. .... 3,750.00
- 726 ☒ **1899, 2c on 2c Green entire (U3a).** Bearing 5c Blue, "Cupa" variety (225 var) and cancelled by "Havana, Cuba May 12, 1899" duplex datestamp to local address, clear second strike of the surcharge  
 VERY FINE AND CHOICE. A RARE USED EXAMPLE OF THIS DOUBLE SURCHARGE VARIETY.  
 Ex Tows. .... 3,750.00
- 727 ☒ **1899, 2c on 2c Green on Amber entire, Double Surcharge (U4a).** Unused, deep rich colors  
 VERY FINE AND CHOICE. ONLY ONE OTHER EXAMPLE OF THIS DOUBLE SURCHARGE ERROR IS KNOWN.  
 Ex Tows and White. Signed Bartels and Sloane. .... 3,750.00



After 5 days, return to  
F. S. SMITH,  
Olrapia 127. HAVANA.

728EX



*McGowan* Clerk  
Headquarters Division of Cuba,  
Employee's Letter.

729

Mr. H. F. Colman,  
Genl. Land Office,  
Washington, D.C.

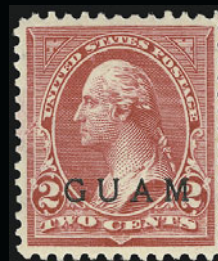


- 728 ☒ **1899, 2c on 2c Green on Buff, 2c on 2c Carmine on Blue, entires, Shifted Surcharge (U5 var, U8 var).** Unused, with "Cuba" almost completely missing due to upward shifting of surcharge, Very Fine and choice, interesting varieties, unlisted in Scott .....**(Photo Ex)** E. 500-750
- 729 ☒ **2c on 2c Carmine on Blue entire, Double Surcharge (U8a).** Cancelled by "Havana, Cuba May 11, 1899" duplex datestamp and addressed to H. F. Colman at General Land Office in Washington D.C., signed by postal clerk Townsend and with typed "Headquarters Division of Cuba, Employee's Letter", trivial edgewear  
VERY FINE AND CHOICE. THE UNIQUE EXAMPLE OF THE DOUBLE SURCHARGE ON THE CARMINE ON BLUE ENTIRE. A GREAT RARITY.  
Ex Tows and White. .... 3,750.00
- 730 ☒ **Postal Stationery Balance.** 29 unused and 22 used entires, mounted on Marcus White's original album pages, few with corner cards, few minor varieties, most Fine-Very Fine, interesting group for the specialist .....*Not illustrated* E. 200-300
- 731 S **1899, 1c-5c Entires, "Specimen" Overprints (U9S-U18S).** Complete set of 24 entires with "Specimen" overprint across design and with either "Size No. 13" or "Size No. 8" printed at left, Very Fine and choice, only sixteen complete sets were printed, ex White and on his original exhibit pages.....*Not illustrated* E. 300-400





732



733



734



735EX



736



738



739



740



741



742



743EX



744



745



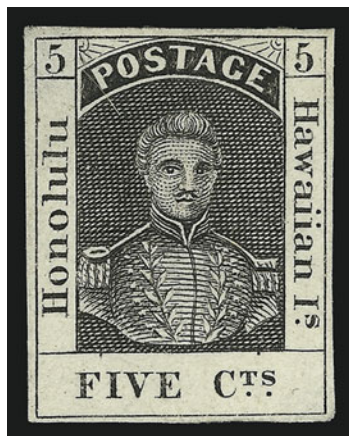
## GUAM

- 732 ★田 **1899, 1c Deep Green (1).** Bottom plate no. 813 and imprint block of six, slightly tropicalized original gum, deep rich color, beautiful centering, Extremely Fine Gem..... 350.00
- 733 ★ **1899, 2c Rose Carmine (2a).** Original gum with light adherences on back, brilliant color, perfectly centered, Extremely Fine ..... 22.00
- 734 ★ **1899, 3c Purple (3).** Original gum, lightly hinged, intense color and proof-like impression, wide margins, Extremely Fine, only 5,000 issued, with 1980 P.F. certificate..... 125.00
- 735 ★ **1899, 5c Blue, 10c Brown, Ty. I (5, 8).** Two 5c, one 5c Mint N.H. (purple backstamp), others lightly hinged, fresh and Very Fine, No. 8 with 1983 P.F. certificate.....**(Photo Ex)** 105.00
- 736 ★★ **1899, 8c Violet Brown (7). Mint N.H.,** almost perfectly centered with wide margins, rich color, Extremely Fine Gem, with copy of 1984 P.F. certificate for block of four and 1984 P.F. certificate as single, Scott Retail as hinged..... 125.00
- 737 ★ **1899, 10c Brown, Ty. II (9).** Original gum, lightly hinged, rich color, choice centering with **damaged “G” of “Guam”**  
 VERY FINE AND CHOICE. A RARE EXAMPLE OF THE GUAM 10-CENT BROWN TYPE II. ESPECIALLY RARE WITH THE DAMAGED “G” OF “GUAM”.  
 With 1984 P.F. certificate ..... 4,000.00
- 738 ★ **1899, 15c Olive Green (10).** Original gum, lightly hinged, rich color on bright paper, Jumbo margins, Extremely Fine Gem, a huge stamp, with 1984 P.F. certificate.. 150.00
- 739 ★ **1899, 50c Orange (11).** Original gum, lightly hinged, bright color except slight oxidation at top, Extremely Fine..... 350.00
- 740 ★ **1899, \$1.00 Black, Ty. I (12).** Original gum, lightly hinged, sharp proof-like impression, wide margins, Extremely Fine, with 1983 P.F. certificate ..... 350.00
- 741 ★★ **1899, 10c Blue, Special Delivery (E1). Mint N.H.,** intense color on bright paper, almost perfectly centered with wide margins, Extremely Fine Gem, a superb stamp, with 1983 P.F. certificate, Scott Retail as hinged..... 150.00
- 742 ★ **1930, 2c Green, Guard Mail (M1).** Small h.r., brilliant color, wide margins, Extremely Fine, only 2,000 issued, with 1984 P.F. certificate..... 400.00
- 743 ★ **1930, 1c Red & Black, 2c Black & Red, Guard Mail (M3-M4).** Without gum as issued, few minor perf faults as is usual on this issue, Very Fine.....**(Photo Ex)** 200.00
- 744 ★ **1930, 2c Green “GRAUD” Mail (M7a).** Position 63, lightly hinged, brilliant color, extra wide margins, Extremely Fine, only 500 issued ..... 425.00
- 745 ★ **1930, 2c Green, Guard “MIAL” (M7b).** Position 84, lightly hinged, bright color, Jumbo margins, Extremely Fine, only 500 issued ..... 425.00



737

## HAWAII



746

- 746 TC **1853, 5c Black, Trial Color Plate Proof on Wove (5TC).** Large and even margins all around, crisp impression, few thin spots, otherwise Very Fine, rare, only two or three are known, with 1983 P.F. certificate ..... 4,500.00

- 747 ★ **1853, 5c Blue, Thick White Wove (5).** Original gum, lightly hinged, large margins to clear, deep rich color, fresh and Very Fine, scarce with full original gum ..... 1,400.00



747



748

- 748 ★ **1853, 13c Dark Red, Thick White Wove (6).** Original gum, h.r., large margins to huge, intense color, Extremely Fine Gem ..... 600.00

- 749 (★) **1857, 5c on 13c Dark Red (7).** Type I numeral with long flag, unused (no gum), large margins to clear all around, brilliant color

VERY FINE AND CHOICE. A RARE SOUND UNUSED EXAMPLE OF THE 5-CENT ON 13-CENT MANUSCRIPT SURCHARGE.

With 1983 P.F. certificate ..... 6,750.00



749



- 750 (★) **1861, 5c Blue, Line Thru "Honolulu" (9a).** Position 2, large margins incl. part of sheet margin at top, fresh and Extremely Fine ..... 750.00



750



751



752



753



754

- 751 ★★ **1868, 5c Blue, Re-Issue (10).** Mint N.H., large margins, Extremely Fine, Scott Retail as hinged ..... 25.00
- 752 ★★ **1889, 5c Blue, Reprint (10R).** Mint N.H., large margins incl. **sheet margin** at left, brilliant color, Extremely Fine Gem, Scott Retail as hinged ..... 60.00
- 753 ★ **1889, 13c Orange Red, Reprint (11R).** Original gum, huge margins incl. **bottom left corner sheet margin**, brilliant color, Extremely Fine, with 1984 P.F. certificate.. 250.00
- 754 S **1889, 13c Orange Red, Reprint Ovpt. (11RS).** Original gum, large and even margins, brilliant color, Extremely Fine..... 225.00



755

- 755 (★) **1859, 1c Light Blue, Bluish White (12).** Plate 2-B, Ty. II (Westerberg Pos. 10), unused (no gum), huge margins all around, bright color

EXTREMELY FINE GEM. EASILY ONE OF THE FINEST UNUSED EXAMPLES OF THE ONE-CENT LIGHT BLUE ON BLuish WHITE PAPER HAWAIIAN NUMERAL STAMPS IN EXISTENCE.

Due to the fragile nature of this paper, most examples have been damaged to some degree. The stamp offered here, with wide margins, fresh color and in completely sound condition, is a true condition rarity. .... 9,000.00



756

- 756 (★) **1859, 2c Light Blue, Bluish White (13).** Plate 3-B, Ty. V (Westerberg Pos. 5), unused (no gum), large and even margins all around, bright color, faint vertical creases

EXTREMELY FINE APPEARING EXAMPLE OF THE RARE 2-CENT LIGHT BLUE ON BLuish WHITE PAPER.

This is one of the most difficult of all Numeral issues to find in such choice-appearing condition. .... 6,250.00



757

**1862, 2c Black, Greenish Blue (14).** Plate 3-G, Ty. VII (Westerberg Pos. 7), huge margins all around, neat ms. "X" cancel, tiny scissors-cut at bottom entirely in margin

EXTREMELY FINE. A SUPERB EXAMPLE OF THE 2-CENT BLACK ON GREENISH BLUE HAWAIIAN NUMERAL.

This stamp has remarkable freshness and color. ....  
..... 4,500.00



757



758



759



760

758 (★) **1863, 1c Black, Grayish (15).** Plate 4-B, Ty. II (Westerberg Pos. 2), unused (no gum), enormous margins, Extremely Fine Gem, a superb stamp in every respect ..... 475.00

759 (★) **1863, 1c Black, Grayish (15).** Plate 4-A, Ty. V (Westerberg Pos. 5), unused (no gum), full margins, intense impression, Very Fine and choice, initialed in pencil by Spencer Anderson ..... 475.00

760 **1863, 2c Black, Grayish (16).** Plate 3-G, Ty. VI (Westerberg Pos. 6), huge margins all around, sharp impression nicely contrasted by red "Postage Paid" oval cancel, tiny thin speck, otherwise Extremely Fine ..... 700.00

761 (★) **1863, 2c Dark Blue, Bluish (17).** Plate 5-B, Ty. VI (Westerberg Pos. 6), unused (no gum), full margins, deep rich color

VERY FINE AND CHOICE. A BEAUTIFUL EXAMPLE OF THE 1863 2-CENT DARK BLUE ON BLUISH PAPER — ONE OF THE RAREST OF ALL NUMERAL ISSUES.

With 1987 P.F. certificate ..... 7,750.00



761

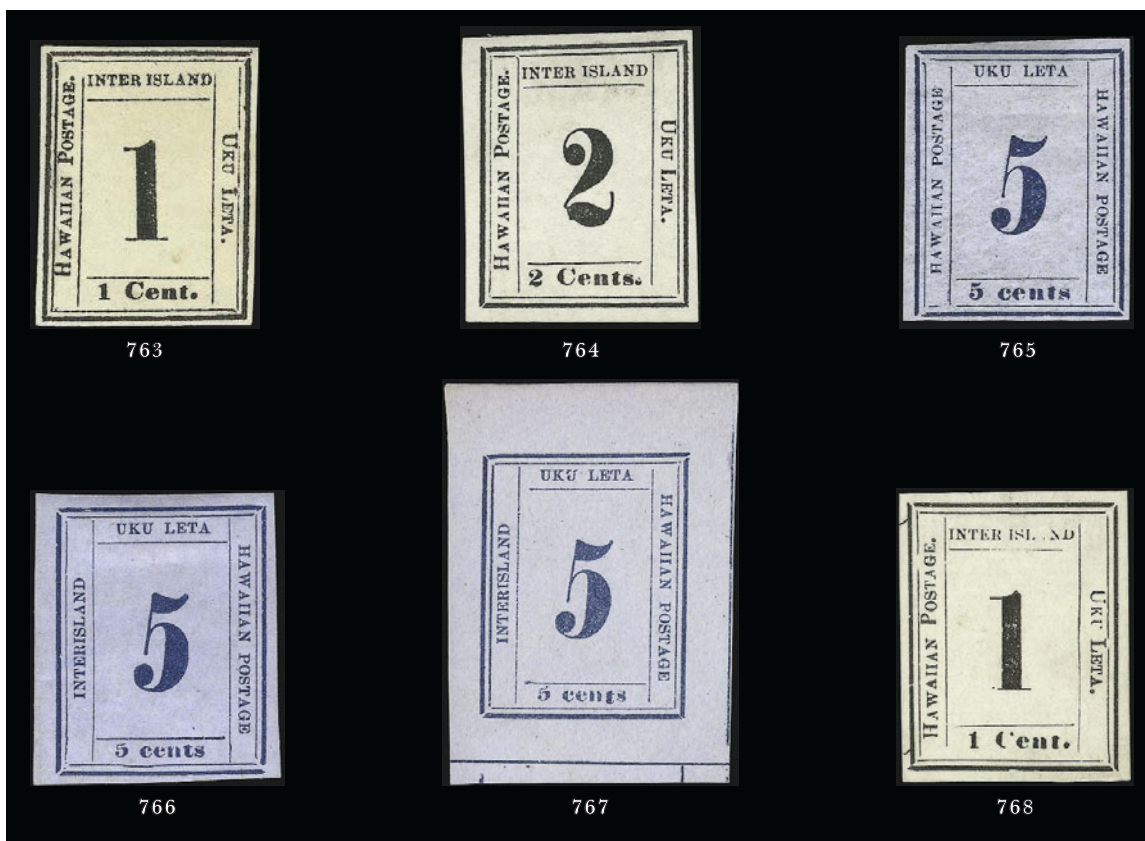


762

- 762 (★) **1863, 2c Black, Blue Gray (18).** Plate 5-A, Ty. IV (Westerberg Pos. 4) with **broken toe variety**, unused (no gum), large and even margins

VERY FINE AND CHOICE. A BEAUTIFUL UNUSED EXAMPLE OF THE "BROKEN TOE" VARIETY OF THE 1863 2-CENT BLACK ON BLUE GRAY HAWAIIAN NUMERAL STAMP.

Initialed in pencil by Spencer Anderson. Scott Retail with no premium for the variety. .... 3,250.00



- 763 (★) **1864, 1c Black (19).** Plate 6-A, Ty. II (Westerberg Pos. 2), unused (no gum), full margins all around, Very Fine and choice. .... 475.00
- 764 (★) **1864, 2c Black (20).** Plate 5-C, Ty. IV (Westerberg Pos. 4) with **broken toe of "2" variety**, unused (no gum), large margins all around, Very Fine and choice, Scott Retail with no premium for the variety. .... 725.00
- 765 ★ **1865, 5c Blue on Blue (21).** Plate 9-A, Ty. III (Position 7), **full original gum**, h.r., tiny thin spot at top left, otherwise Very Fine, a scarce stamp with original gum. .... 775.00
- 766 ★ **1865, 5c Blue on Blue (22).** Plate 12-A, Ty. IV (Westerberg Pos. 4), **full original gum**, h.r., large margins all around, light natural gum bend at left, Very Fine and choice, scarce with original gum. .... 550.00
- 767 (★) **1865, 5c Blue on Blue, Sperati Imitation (22 var).** Unused (no gum), huge margins, Very Fine and choice, scarce. .... E. 300-400
- 768 (★) **1864, 1c Black, Laid, Missing "A" of "Island" (23 var).** Plate 8-A, Ty. IXc (Westerberg Pos. 10), unused (no gum), large margins, clear laid lines, Very Fine and choice, scarce variety, with 1979 Hawaiian Philatelic Society certificate, Scott Retail as normal. .... 275.00



- 769 ★ **1864, 1c Black, "HA" (23a).** Plate 8-A, Ty. IXb (Westerberg Pos. 10), **full original gum**, single hinge mark, clear laid lines

EXTREMELY FINE. A RARE SOUND ORIGINAL-GUM EXAMPLE OF THE ONE-CENT BLACK ON LAID PAPER, WITH THE "HA" INSTEAD OF "HAWAIIAN" VARIETY. A GREAT RARITY.

With 1984 P.F. certificate ..... 3,750.00



769



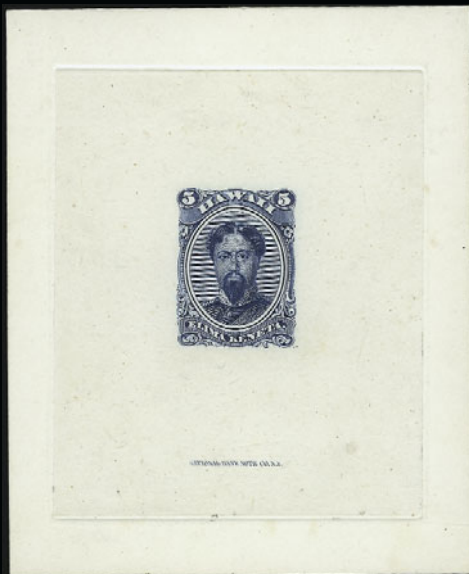
- 770 (★) **1864, 2c Black, Laid (24).** Plate 7-A, Ty. IV (Westerberg Pos. 4), unused (no gum), enormous margins, clear laid lines, Extremely Fine Gem, a huge stamp ..... 300.00
- 771 (★) **1865, 1c Dark Blue, Missing "t" of "Cent" (25 var).** Plate 11-A, unused (no gum), large margins, Extremely Fine, scarce variety, none was offered in either our Honolulu Advertiser or Aall auctions, ex Hogan, with 1978 Hawaiian Philatelic Society certificate, Scott Retail as normal..... 300.00
- 772 (★) **1865, 2c Dark Blue (26).** Plate 10-A, Ty. VII (Westerberg Pos. 2), unused (no gum), huge margins incl. **sheet margin at left**, rich color, fresh and Extremely Fine..... 300.00
- 773 ★ **1861, 2c Pale Rose, Vertically Laid (28).** Original gum, bright color, wide margins, Very Fine and choice ..... 275.00

#### HAWAII ESSAYS AND PROOFS

- 774 E **1860, 1c Pale Gray, Die Essay on Thin White Card.** Large margins, Very Fine, rare and unlisted ..... E. 200-300
- 775 E **1860, 1c Orange, Die Essay on Thin Pale Buff Card.** Large margins all around, brilliant color, Extremely Fine, rare, unlisted ..... E. 200-300



780



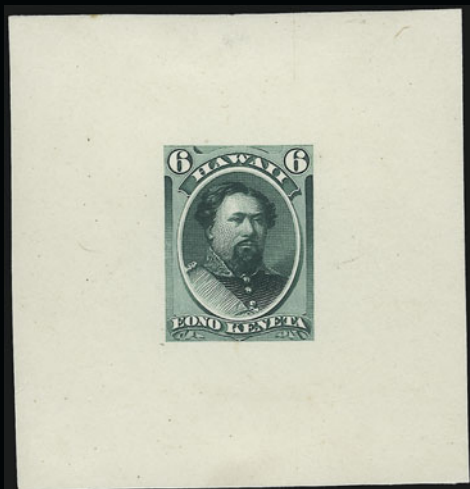
781



782EX



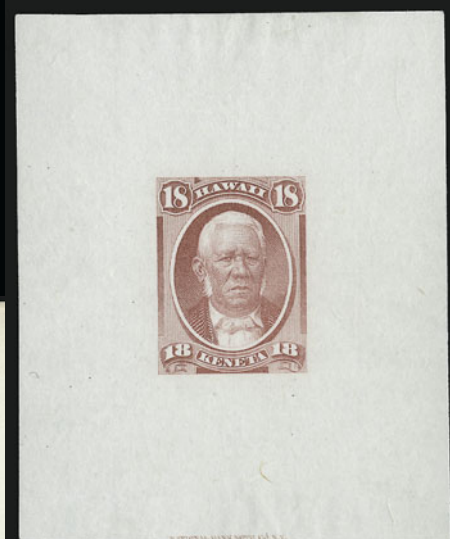
784



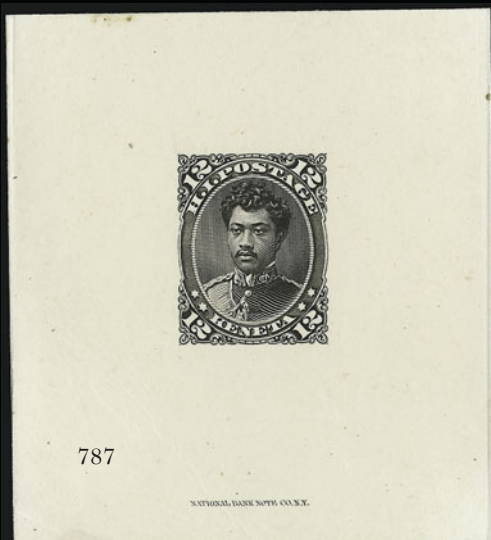
783



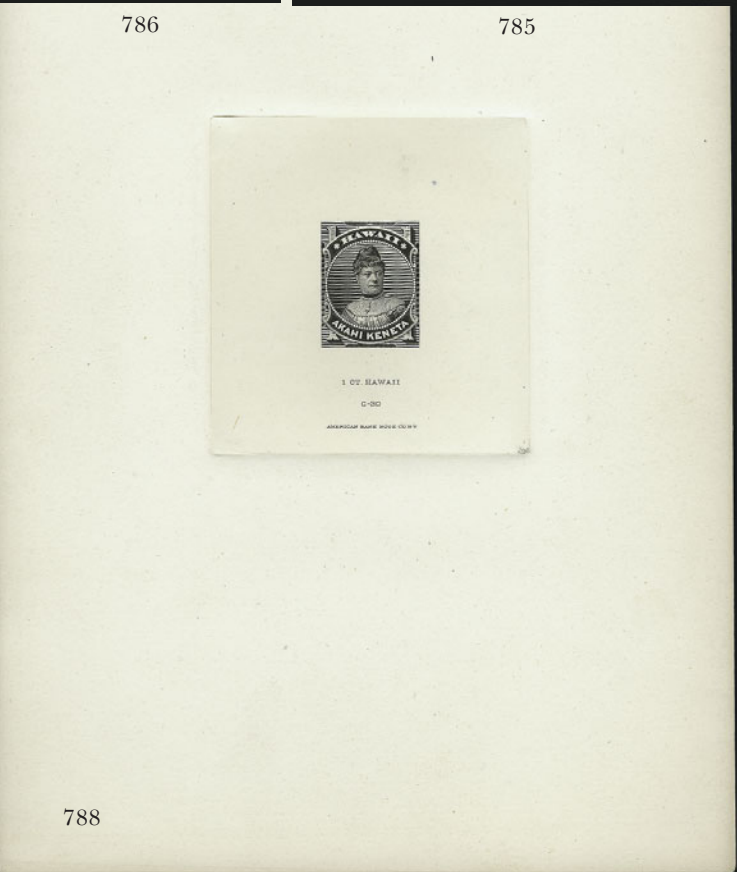
786



785



787



788





776



777



778



779

- 776 E **1860, 1c Brown, Die Essay on Thin White Card.** Huge margins, intense color, Extremely Fine, rare and unlisted ..... E. 200-300
- 777 E **1860, 2c Green, Die Essay on Thin White Card.** Huge margins, deep rich color, Extremely Fine, unlisted ..... E. 200-300
- 778 E **1860, 2c Light Blue, Die Essay on Thin White Card.** Huge margins, brilliant color, Extremely Fine, unlisted ..... E. 200-300
- 779 E **1860, 3c Dark Green, Die Essay on Thin Pale Buff Card.** Huge margins, intense color, Extremely Fine ..... E. 200-300
- 780 P **1864, 2c Rose Vermilion, Plate Proof on India (31P3).** Vertical pair, large margins all around, brilliant color, Very Fine and choice, Scott Retail as singles ..... 350.00
- 781 P **1866, 5c Blue, Large Die Proof on India (32P1).** Die sunk on 77 x 94mm card with full die sinkage and imprint at bottom, rich color, Very Fine and choice..... 625.00
- 782 P **1866, 5c Blue, Orange, Green, Plate Proof, Trial Color Plate Proofs on India (32P3, 32TC3).** Large and even margins, deep rich colors, Green mounted on card, Very Fine and choice .....**(Photo Ex)** 525.00
- 783 P **1871, 6c Green, Large Die Proof on India (33P1).** 60 x 62mm on card, intense color, fresh and Very Fine ..... 625.00
- 784 P **1871, 6c Green, Plate Proof on India (33P3).** Large margins, deep rich color, Very Fine and choice ..... 175.00
- 785 P **1871, 18c Dull Rose, Large Die Proof on India (34P1).** 57 x 70mm, light corner creases, otherwise Very Fine ..... 625.00
- 786 P **1871, 18c Dull Rose, Plate Proof on India (34P3).** On card, large margins incl. **sheet margin at left**, intense color, Very Fine and choice..... 175.00
- 787 P **1875, 12c Black, Large Die Proof on India (36P1).** On 64 x 70mm card with imprint at bottom, Very Fine, scarce large die proof ..... 625.00
- 788 TC **1883, 1c Black, Large Die Trial Color Proof (42TC1).** Die sunk on 150 x 228mm card with full die sinkage and imprint, tiny tear at top left of card, otherwise Very Fine, reputed to be unique, unlisted in Scott ..... E. 750-1,000



789



790



QUEEN OF HAWAII  
1841

C-888  
AMERICAN BANK NOTE CO. NEW YORK

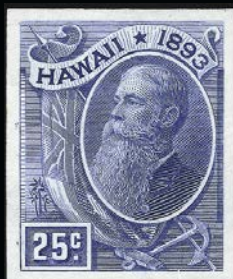
791



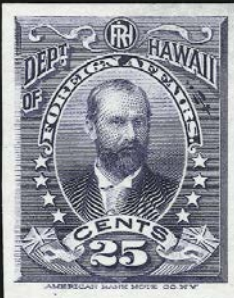
C-889

AMERICAN BANK NOTE CO. NEW YORK

794



793EX



795EX



796EX



- 789 P **1886, 2c Rose, Plate Proof on India (43P3).** Horizontal pair, on card, huge margins, intense color, Extremely Fine, Scott Retail as singles..... 280.00
- 790 P **\$1.00 Rose Red, Large Die Proof on India (49P1).** 49 x 60mm, on card and with additional card on top to appear as die sinkage, rich color, Very Fine and choice, unlisted in Scott, probably prepared by American Bank Note Co..... E. 500-750
- 791 P **1891, 2c Dull Violet, Large Die Proof on India (52P1).** Die sunk on 149 x 226mm card with full die sinkage and imprint, unusual color (possibly trial color), Very Fine and choice..... 850.00
- 792 P **1875-89, 2c-50c Proofs, Specimens.** Nine: Nos. 35P3, 36P3, 37P3 pair, 40P3, 41P3, 47P3, 48P3, 50P3 and 50S, large margins, rich colors, Very Fine and choice group.. 1,575.00
- 793 P **1894, 1c-25c 1894 Issue, Plate Proofs on India (74P3-79P3).** All on card except 12c, large margins, rich colors, Very Fine and choice set .....(Photo Ex) 840.00
- 794 P **1894, 25c Deep Blue, Large Die Proof on India (79P1).** Die sunk on 116 x 152mm card with full die sinkage and imprint, Very Fine and choice, only three are known.. 675.00
- 795 P **1896, 2c-25c Officials, Plate Proofs on India (O1P3-O6P3).** Large margins, deep rich colors, Very Fine and choice set .....(Photo Ex) 1,650.00
- 796 **Typographed Forgeries.** Two forgeries of Nos. 30 and 34, cancelled, few faults, Fine appearance, scarce and unusual items .....(Photo Ex) E. 50-75

- 797 ★ **1882, 5c Ultramarine, Vertical Pair, Imperforate Horizontally (39a).** Original gum, h.r., wide margins at top and bottom, bright and fresh  
EXTREMELY FINE. PROBABLY ONE OF THE FINEST PAIRS OF THIS PART-IMPERFORATE ERROR.  
With 1985 P.F. certificate. .... 4,250.00



797



798



799



800

- 798 ★ **1886, 2c Orange Vermilion, Reproduction (50).** Horizontal pair, huge margins all around, original gum, intense color, Extremely Fine, Scott Retail as singles..... 320.00
- 799 ★ **1890, 5c Deep Indigo (52C).** Original gum, lightly hinged, deep rich color and proof-like impression, Jumbo margins, Extremely Fine ..... 110.00
- 800 ★田 **1893, 2c Brown, No Period After "Govt" (56b).** Top part imprint block of four with bottom left stamp the error, original gum, top stamps h.r., rich color, wide margins, Extremely Fine, Scott Retail as singles..... 330.00



801



802



803

- 801 ★ **1893, 2c Dull Violet, Strong Double Ovpt. (57d).** Original gum, wide margins, clearly struck second overprint, Very Fine and choice, with 1984 P.F. certificate ..... 1,250.00
- 802 ★ **1893, 5c Deep Indigo, Double Ovpt., Missing Period After "Govt" (58f var).** Original gum, h.r., rich color, clear second strike of overprint, Very Fine and choice, a rare variety, ex Tows, with 1979 Hawaii Philatelic Society certificate..... E. 1,500-2,000
- 803 ★ **1893, 6c Green, Double Ovpt. (60a).** Original gum, h.r., clear strike of second overprint is split, Jumbo margins, Extremely Fine, scarce in such superb condition, with 1979 Hawaiian Philatelic Society certificate ..... 1,000.00





804

- 804 ★ **1893, 10c Red Brown, Red Overprint Error (61B).** Position 40 with **sheet margin at right**, original gum, unusually wide margins for this stamp, rich color  
 EXTREMELY FINE GEM. A SUPERB EXAMPLE OF THIS RARE ERROR IN THE FINEST CONDITION ATTAINABLE. FEWER THAN FORTY ARE BELIEVED TO EXIST.  
 Signed in pencil on back. .... 14,000.00



805

- 805 ☒ **1893, 10c Black, Double Ovpt. (61f).** Used with 5c Ultramarine and 15c Red Brown (59, 70) and tied by red "Honolulu, Hawaii Dec. 16, 1895" double-circle ds on registered cover to Denver Col., San Francisco (Dec. 23) and receiving (Dec. 26) backstamps, fresh and Very Fine, rare usage of the double overprint ..... E. 1,500-2,000



806

- 806 ★ **1893, 12c Black, Double Ovpt. (62d).** Clear second overprint which is split, original gum, sharp proof-like impression, wide margins, Extremely Fine, with 1984 P.F. certificate ..... 2,000.00



807



809



808

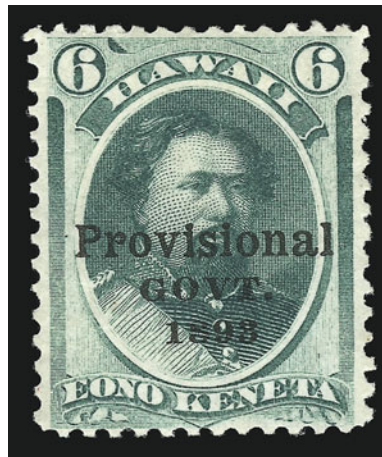
- 807 ★★ **1893, 12c Red Lilac (63).** Mint N.H. with sheet margin at right, bright color, wide margins, Extremely Fine Gem, with copy of 1984 P.F. certificate for block of six, Scott Retail as hinged ..... 150.00
- 808 ★田 **1893, 25c Dark Violet, No Period After "Govt" (64b).** Bottom left stamp in top left corner margin block of six, original gum, h.r., sharp proof-like impression, beautiful centering, Extremely Fine, Scott Retail as singles ..... 403.00
- 809 ★★ **1893, 2c Rose Vermilion (65).** Mint N.H., brilliant color, fresh and Extremely Fine, Scott Retail as hinged ..... 67.00



- 810 ★ **1893, 2c Rose, Double Ovpt. (66e).** Original gum, intense color, clear second overprint, wide margins, Very Fine and choice, with 1979 Hawaiian Philatelic Society certificate, Scott Retail as moderate strength of second overprint ..... 2,750.00



810



811

- 811 ★ **1893, 6c Green, Black Overprint Error (66C).** Position 44, original gum, well-balanced margins all around, rich color on fresh paper
- EXTREMELY FINE. AN OUTSTANDING ORIGINAL-GUM EXAMPLE OF THE RARE 1893 6-CENT BLACK OVERPRINT ERROR. A CONDITION RARITY IN SOUND ORIGINAL-GUM CONDITION. ONE OF THE FINEST COPIES IN EXISTENCE.
- Only one sheet of 50 was printed. Four copies are used, and some were lost in the San Francisco earthquake.
- With "W.H.C." (Colson) backstamp..... 14,000.00



812



813

- 812 ★ **1893, 10c Red Brown, Split Ovpt. (68 var).** Original gum, overprint shifted dramatically to right, wide margins, rich color, Very Fine and choice ..... E. 75-100
- 813 ★ **1893, 12c Red Lilac (69).** Original gum, small h.r., bright color, huge margins, Extremely Fine ..... 275.00



814

- 814 ★ **1893, 15c Red Brown, Double Ovpt. One Missing "9" in "1893" (70e var).** Original gum, second overprint diagonal at top right, choice centering, deep rich color, Extremely Fine, scarce variety, with 1979 Hawaiian Philatelic Society certificate, Scott Retail as normal double overprint variety ..... 2,000.00

- 815 ★ **1893, 18c Dull Rose, Double Ovpt., One Split (71d).** Horizontal pair, original gum, lightly hinged, wide margins, Very Fine and choice, Scott Retail as singles ..... 950.00



815





- 816 ★ 1893, 50c Red, No Period After "GOVT" (72b). Top left corner margin vertical pair, bottom stamp the variety, original gum, bright color, Very Fine and choice, Scott Retail as singles ..... 460.00
- 817 ★ 1893, 50c Red, No Period After "GOVT", Split Ovpt. (72b var). Position 6, original gum, h.r., brilliant color, Very Fine and choice, Scott Retail with no premium for split overprint ..... 400.00
- 818 (★) 1893, 50c Red, Double Ovpt. (72f). Position 19, unused (no gum), brilliant color, fresh and Very Fine, scarce double overprint which is only known with a faint second strike ... 1,000.00
- 819 ★ 1893, \$1.00 Rose Red, No Period After "GOVT" (73b). Original gum, intense color, wide margins, Extremely Fine ..... 450.00

- 820 ★★田 1894, 2c Brown (75). Mint N.H. pane of 50, Position 48 with "flying goose" variety, rich color, beautiful centering, fresh and Extremely Fine, Scott Retail as singles ..... 485.00



820



822



823



824



826



825



827

828





821

- 821 ★ **1899, 2c Rose, Vertical Pair, Imperforate Horizontally (81b).** Huge margins at top and bottom, original gum, lightly hinged, fresh and bright color  
EXTREMELY FINE. A BEAUTIFUL ORIGINAL-GUM PAIR OF THIS PART-IMPERFORATE ERROR.  
Only one sheet of 50 was ever found. .... 4,500.00
- 822 E **1c Brown, Essay on Watermarked Paper (Davey 201.9003).** Large margins to clear, few faint creases, otherwise Very Fine, scarce, unlisted in Scott, little is known about this rare essay..... E. 500-750
- 823 TC **1884, 1c Black, Large Die Trial Color Proof (U1TC).** Mounted on 117 x 93mm card, fresh and Very Fine, rare ..... 675.00
- 824 TC **1884, 2c Black, Large Die Trial Color Proof (U2TC).** Mounted on 108 x 92mm card, fresh and Very Fine, rare ..... 675.00
- 825 TC **1884, 2c Black, Large Die Trial Color Proof (U2TC).** 70 x 46mm, fresh and Very Fine, especially rare cut to this size ..... 675.00
- 826 P **1884, 10c Black, Large Die Proof on India (U5P).** Mounted on 139 x 101mm card, Very Fine and choice ..... 675.00
- 827 ☒ **1893, 2c Carmine, Double Black Ovpt. (U11a).** Clear strike of second overprint, unused, Very Fine and choice ..... 900.00
- 828 ☒ **Wells Fargo & Co.'s/Aug. 26, 1889/San Francisco.** Purple oval datestamp on 5c Brown on Amber entire (U223) with Wells Fargo & Co. printed frank **to Honolulu**, Very Fine, rare East-to-West usage, with 1985 P.F. certificate ..... E. 1,000-1,500



829EX



830



833



832



834



835EX



- 829 P **1877, 25c-\$100 Revenues, Plate Proofs on India (R1P3-R6P3).** Large margins incl. R2 with part imprint at left, all except Nos. R2 and R5 on card, deep rich colors, Very Fine and choice, scarce set .....**(Photo Ex)** 1,650.00
- 830 **1877, \$50.00 Slate Blue & Carmine (R6).** Wide margins, rich colors contrasted by purple "Theo. H. Davies & Co." cancel, fresh and Extremely Fine, with 1981 P.F. certificate..... 250.00

- 831 ★田 **1893, 20c on 25c Green, Inverted Surcharge (R7a).** Block of four, original gum, lightly hinged, deep rich color  
VERY FINE AND CHOICE. A SCARCE BLOCK OF THE 20-CENT INVERTED SURCHARGE.  
Scott Retail as singles..... 3,200.00



831

- 832 ★★ **1894, 20c Red, Imperforate (R9a).** Mint N.H. vertical pair, huge margins, rich color, Extremely Fine, Scott Retail as hinged singles ..... 350.00
- 833 ★ **1894, 25c Violet Brown (R10).** Original gum, barely hinged, intense color and proof-like impression, Very Fine and choice ..... 750.00
- 834 ★★ **1910, \$10.00 Reddish Brown & Green (R16).** Mint N.H. with sheet margin at right, brilliant colors, extra wide margins, Extremely Fine Gem, Scott Retail as hinged ..... 27.00
- 835 **5c-\$1.00 Kahului Railroad Co. (151-159).** Few different cancels, few small faults, Fine-Very Fine set .....**(Photo Ex)** E. 100-150
- 836 ★ **Hawaii Balance.** Twelve unused stamps: Nos. 31a, 36, 38, 40, 44, 46, 48, 61, 72, 79, 80, 81, fresh and Very Fine-Extremely Fine.....*Not illustrated* 599.00

PHILIPPINES



837

- 837 ★ **1899, 50c Orange (212).** Original gum, lightly hinged, brilliant color, wide margins, Extremely Fine, with 1983 P.F. certificate ..... 400.00



838

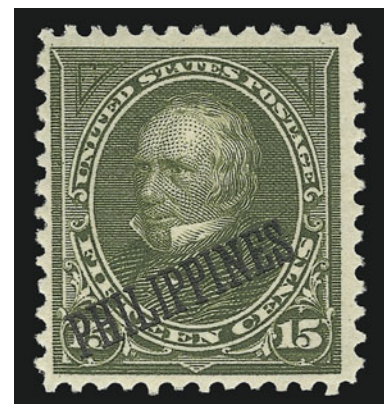
- 838 ★ **1899, 1c Yellow Green, Inverted Ovpt. (213a).** Original gum, small h.r., intense color  
 VERY FINE AND CHOICE. THIS EXAMPLE OF THE ONE-CENT PHILIPPINES WITH INVERTED  
 OVERPRINT IS BELIEVED TO BE UNIQUE.  
 Ex Tows. With 1990 P.F. certificate ..... 13,500.00





- 839 ★ **1899, 10c Orange Brown, Ty. II (217A).** Original gum, barely hinged, bright color, Extremely Fine Gem ..... 160.00
- 840 ★ **1899, 15c Olive Green (218).** Bottom plate no. 264 and imprint strip of three, original gum, center stamp h.r., others Mint N.H., deep rich color, fresh and Extremely Fine ..... 160.00
- 841 ★ **1899, 50c Orange (219).** Original gum, lightly hinged, vibrant color, extra wide margins, Extremely Fine Gem ..... 125.00
- 842 ★田 **1899, 50c Orange, Double Ovpt., One Albino and Split Horizontally (219 var).** Top margin block of four with plate no. 75 and part imprint, original gum, barely hinged, brilliant color, Very Fine and choice, unusual variety, with 1993 P.F. certificate, Scott Retail as normal block of four ..... 575.00

- 843 ★ **1900, 1c-50c Special Printing (213 var-219 var).** All values except 50c with red "Special Surcharge" hand-stamp, 50c natural s.e. at right  
FINE-VERY FINE. A RARE SET OF THE PHILIPPINES 1900 SPECIAL PRINTINGS.  
Only one pane of each was overprinted for the Paris and Pan-American expositions.  
The 50c with 1979 P.F. certificate. ....  
.....(Photo Ex) 5,425.00



843EX





844



845



847



848



851



852



855



849



850



853



854



- 844 ★★ **1901, 6c Lake (221).** With top left corner margin, stamp Mint N.H., h.r. at top of sheet margin, **broken first "P"** variety, intense color, perfectly centered, Extremely Fine Gem, Scott Retail as hinged with no premium for variety ..... 29.00
- 845 ★ **1901, \$1.00 Black, Ty. I (223).** Original gum, h.r., sharp proof-like impression, wide margins, Extremely Fine, with 1977 P.F. certificate..... 450.00

- 846 ★ **1901, \$1.00 Black, Ty. II (223A).** Original gum, crisp impression on bright paper  
VERY FINE AND CHOICE ORIGINAL-GUM EXAMPLE OF THE PHILIPPINES \$1.00 TYPE II STAMP.  
With 1983 P.F. certificate..... 2,400.00



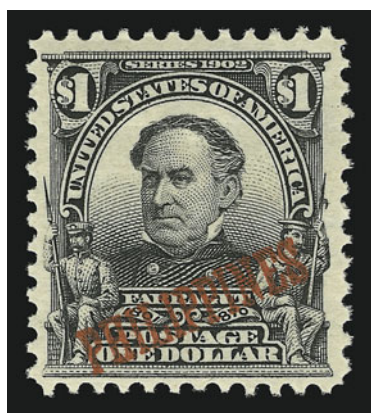
846

- 847 ★ **1901, \$2.00 Dark Blue (224).** Original gum, bright color on white paper, beautiful centering, Extremely Fine, with 1978 A.P.S. certificate ..... 475.00
- 848 ★ **1901, \$5.00 Dark Green (225).** Original gum, deep rich color and proof-like impression, almost perfectly centered with well-balanced margins, Extremely Fine Gem, with 1981 P.F. certificate ..... 825.00
- 849 ★田 **1903, 3c Bright Violet (228).** Left plate no. 1587 and imprint block of six, five stamps Mint N.H., center left stamp lightly hinged, intense shade, superb centering, Extremely Fine..... 1,100.00
- 850 ★田 **1903, 4c Brown (229).** Bottom plate no. 1797 and imprint block of six, five stamps Mint N.H., bottom left stamp barest trace of hinge, dark color, Very Fine and choice, scarce plate block..... 1,250.00
- 851 ★★ **1900, 4c Brown, Special Printing (229 var).** Mint N.H., brilliant color, fresh and Very Fine, rare — only one pane was overprinted — ex Todd, with 1985 P.F. certificate ..... 775.00
- 852 ★ **1903, 6c Brownish Lake (231).** Intense color and impression, extra wide margins, Extremely Fine..... 80.00
- 853 ★田 **1903, 10c Pale Red Brown (233).** Right plate no. 1592 and imprint block of six, slightly tropicalized original gum, brilliant color, fresh and Fine, scarce plate bloc, ex Todd ..... 800.00
- 854 ★田 **1903, 13c Purple Black (234).** Top plate no. 1474 and imprint block of six, side stamps at bottom Mint N.H., others lightly hinged, rich color, Very Fine and choice, scarce plate block ..... 1,150.00
- 855 ★ **1903, 50c Orange (236).** Barely hinged, brilliant color, wide margins, Extremely Fine, with 1983 P.F. certificate ..... 125.00



856

- 856 ★田 **1903, 50c Orange (236).** Top plate no. 1602 and imprint block of six, top center stamp lightly hinged, others Mint N.H., vibrant color, each stamp almost perfectly centered  
EXTREMELY FINE GEM. A SUPERB PLATE BLOCK OF THE PHILIPPINES 1903 50-CENT ISSUE. VERY FEW ARE KNOWN, AND THIS TOP PLATE BLOCK IS HIGHLY DESIRABLE AND RARE.  
Ex Todd. As the Scott Catalogue demonstrates, plate blocks of this issue are extremely rare. They assign a five-times premium to a plate block over six singles. .... 4,000.00

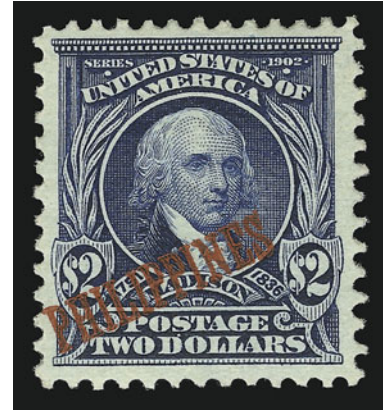


857

- 857 ★ **1903, \$1.00 Black (237).** Small h.r., bright shade, Very Fine and choice, with 1984 P.F. certificate..... 475.00



- 858 ★ **1903, \$2.00 Dark Blue (238).** Lightly hinged, bright color, wide margins, Very Fine and choice example of the scarcest of the high values, only 695 were issued, with 1983 P.F. certificate ..... 775.00



858



859

- 859 ★★田 **1903, \$2.00 Dark Blue (238).** Mint N.H. top plate no. 1630 and imprint block of six, deep rich color and sharp proof-like impression, choice centering throughout

EXTREMELY FINE GEM. A RARE PLATE BLOCK IN ANY FORM. WE FEEL CONFIDENT IN STATING THAT THIS MINT NEVER-HINGED PLATE BLOCK OF THE PHILIPPINES \$2.00 1903 ISSUE IS THE FINEST IN EXISTENCE.

Ex Todd, who also owned a bottom plate block with a small fault. With 1979 Friedl certificate. Scott Retail as hinged ..... 18,000.00



860



861

- 860 ★ **1903, \$5.00 Dark Green (239).** Lightly hinged, intense color and proof-like impression, wide margins, Very Fine and choice, only 746 printed, with 1982 P.F. certificate..... 975.00
- 861 ★ **1907, \$5.00 Dark Green, Special Printing (239 var).** Deep rich color on bright paper, wide margins  
 VERY FINE AND CHOICE. A RARE EXAMPLE OF THE \$5.00 BUREAU OF INSULAR AFFAIRS SPECIAL PRINTING. VERY FEW ARE KNOWN.  
 With 1980 P.F. certificate ..... 3,500.00



862

- 862 ★田 **1903, \$5.00 Dark Green (239).** Block of four, **bottom stamps Mint N.H.**, deep rich color and proof-like impression, each stamp perfectly centered  
 EXTREMELY FINE GEM. A SUPERB BLOCK OF FOUR OF THE PHILIPPINES 1903 \$5.00 ISSUE.  
 Only 746 issued. With 1981 P.F. certificate. Scott Retail with no premium for Mint N.H. stamps. .... 4,000.00



- 863 ★ **1903, 2c Carmine, Booklet Pane of Six (240a).** Tropicalized original gum, rich color, Very Fine, scarce booklet pane, accompanied by wax interleaving ..... 1,100.00



863



864EX

- 864 P **1913, 2c-10p Regular Issue, Panama-Pacific Small Die Proofs on Wove (241P2a-248P2a, 250P2a, 252P2a-254P2a).** Large margins, deep rich colors  
VERY FINE AND CHOICE, A RARE SET OF THE PANAMA-PACIFIC SMALL DIE PROOFS ON WOVE PAPER.  
Only 3 to 5 sets were made. ....(Photo Ex) 9,000.00

- 865 P **1913, 12c-2p Regular Issue, Panama-Pacific Small Die Proofs on Wove (255P2a-260AP2a, 275P2a).** Complete set of eight denominations, large margins, deep rich colors,  
VERY FINE AND CHOICE. A RARE COMPLETE SET OF THE PHILIPPINES PANAMA-PACIFIC SMALL DIE PROOFS FROM THE COLOR CHANGE SET.  
Only 3 to 5 sets were produced.....(Photo Ex) 4,000.00



865EX





866



867EX



868EX



869



871



872



873



875



870



874



- 866 ★ **1911, 10p Deep Green (274).** Barely hinged, intense color, Jumbo margins, Extremely Fine ..... 225.00
- 867 S **1917-26, 2c-4p Regular Issue, "Specimen" Overprints (290S-304S).** Most Mint N.H., 12c light diagonal crease, otherwise Fine-Very Fine .....(Photo Ex) 530.00
- 868 S **1926, 2c-1p Regular Issue, "Specimen" Overprints (319S-325S).** Mint N.H., 24c single short perf at right, otherwise Very Fine set .....(Photo Ex) 455.00
- 869 ★ **1926, 2c Green & Black, Vertical Pair, Imperforate Between (319b).** H.r., bright colors, wide margins, Extremely Fine, scarce variety ..... 625.00
- 870 ★ **1926, 4c Carmine & Black, Horizontal Pair, Imperforate Between (320a).** Brilliant colors, beautiful centering, Extremely Fine, signed in pencil by Sloane ..... 300.00
- 871 ★ **1926, 4c Carmine & Black, Vertical Pair, Imperforate Between (320b).** Single h.r. at center, rich colors, fresh and Extremely Fine, scarce variety ..... 575.00
- 872 ★ **1926, 16c Olive Green & Black, Vertical Pair, Imperforate Between (321b).** Tiny h.r., bright colors, wide margins, Extremely Fine example of this scarce variety..... 625.00
- 873 P **1926, 18c Light Brown & Black, Plate Proof on Glazed Card (322P4).** Top right corner margin vertical pair, large margins other sides, Very Fine and choice, the unique top right corner margin block, only one sheet was printed, signed in pencil by Sloane, W.B. Ruggman backstamp barely shows thru at top right, Scott Retail as two singles.. 700.00
- 874 ★ **1926, 18c Light Brown & Black, Double Impression of Center (322a).** H.r., intense colors and proof-like impressions, Very Fine and choice, only 150 printed, purple Sloane backstamp ..... 850.00
- 875 ★ **1926, 18c Light Brown & Black, Vertical Pair, Imperforate Between (322b).** Lightly hinged, crisp impressions, Very Fine and choice, scarce variety, small backstamp..... 675.00



876

- 876 ★ **1926, 20c Orange & Brown, Imperforate Pair (323c).** Vertical pair, large margins, bright colors, fresh and Very Fine, scarcer than Scott Catalogue would indicate, 50 pairs (100 total) were printed, many have been split into singles ..... 950.00



877



878



879

- 877 ★ **1926, 20c Orange & Black, Vertical Pair, Imperforate Between (323d).** H.r., brilliant colors, Very Fine and choice, signed in pencil by Sloane ..... 675.00
- 878 ★ **1926, 24c Gray & Black, Vertical Pair, Imperforate Between (324a).** Rich colors, almost perfectly centered, Extremely Fine, scarce variety, signed in pencil by Sloane.... 675.00
- 879 ★ **1926, 1p Rose Lilac & Black, Vertical Pair, Imperforate Between (325a).** Lightly hinged, fresh and bright colors, Extremely Fine, a beautiful example of this variety, signed in pencil by Sloane ..... 675.00



880EX

- 880 ■ **1925, 2c-10p Regular Issue, Imperforate, "Specimen" Overprints (340S-353S, E6S).** Blocks of four, neat red "Specimen" overprints, without gum as issued, large margins all around, fresh colors
- EXTREMELY FINE. A VERY RARE SET OF THE PHILIPPINES REGULAR ISSUE, IMPERFORATE AND OVERPRINTED "SPECIMEN".
- Only 200 of the 4p and 10p were released imperforate, and no more than 25 sets were originally handstamped with the "Specimen" overprints. ....(Photo Ex) 6,900.00



- 881 ★ 1934, 6c Ultramarine, Vertical Pair, Imperforate Between (381a). With bottom left corner margin, lightly hinged, fresh and bright color, Extremely Fine, beautiful position example of this scarce error, purple Sloane backstamp ..... 1,250.00



881



882

- 882 ★★ 1939, 2c Rose, Booklet Pane of Six, Bottom Left Stamp "Wealth Common-" (433b). Mint N.H., deep rich color, beautiful centering

EXTREMELY FINE GEM. A SUPERB MINT NEVER-HINGED EXAMPLE OF THE PHILIPPINES 2-CENT BOOKLET PANE WITH THE "WEALTH COMMON-" ERROR. ONE OF THE GREAT RARITIES OF PHILIPPINES. ONLY 24 WERE ISSUED.

With 1984 P.F. certificate ..... 4,000.00



883

- 883 ★ 1944, 6c Dark Brown, "Victory" Ovpt. (468). Tropicalized original gum, intense color, choice centering, Extremely Fine, only 206 printed, with copy of 1980 P.F. certificate for block of four, this being the bottom right stamp ..... 875.00



884

- 884 ★ 1944, 6c Orange, "Victory" Ovpt. (470). Slightly tropicalized original gum, brilliant color, wide margins, Very Fine and choice, only 141 printed, with copy of 1980 P.F. certificate for block of four, this being the bottom left stamp ..... 850.00



885

- 885 ★ 1944, 12c Ultramarine, "Victory" Ovpt. (475). Rare example from the early state of the overprint before it broke and was repaired, barely tropicalized original gum, bright color, choice centering, Extremely Fine Gem, only 221 printed in total, with 1981 A.P.S. certificate..... 750.00

- 886 ★ 1944, 20c Light Olive Green, "Victory" Ovpt. (481). Slightly tropicalized original gum, rich color, beautiful centering, Extremely Fine, only 1,401 printed. 35.00



886





- 887 ★ 1944, 30c Orange Red, "Victory" Ovpt. (483). Slightly tropicalized original gum, deep shade and impression, almost perfectly centered, Extremely Fine, only 200 printed ..... 475.00
- 888 ★田 1945, 2c Rose, "Commonwealth" Ovpt. (485 var). Bottom left corner margin block of six with unusual foldover causing overprint error on bottom left stamp, slightly tropicalized original gum, bright color, Extremely Fine, interesting variety, unlisted in Scott..... E. 200-300
- 889 ★ 1926, 2c Green, Air Post, Vermilion Ovpt. (C1 var). Tropicalized original gum, some slight toning affects overprint, Fine and rare, normal accompanies for comparison as does No. C18 with red overprint ..... E. 500-750
- 890 (★) 1926, 2c Green, Air Post, Split Ovpt. (C1 var). Right margin horizontal pair, unused (no gum), few faint toned spots, otherwise Very Fine, scarce, only one sheet known ..... E. 150-200

- 891 ★ 1926, 4c Carmine, Air Post, Inverted Ovpt. (C2a). Lightly hinged, deep rich color
- FRESH AND FINE. A RARE EXAMPLE OF THE PHILIPPINES 4-CENTAVOS 1926 AIR POST WITH INVERTED OVERPRINT. ONLY 100 ISSUED.
- With Sanabria and Kessler backstamps. .... 2,500.00



891



892

- 892 ★ **1926, 16c Olive Bister, Air Post (C8).** Slightly tropicalized original gum, bright color nicely contrasted by the overprint

FINE AND RARE EXAMPLE OF THE PHILIPPINES 1926 16-CENTAVOS AIR POST IN THE OLIVE BISTER SHADE. ONLY 100 ISSUED.

Signed Bloch and Galvez..... 3,750.00



893



894



895

- 893 ★ **1926, 12p Violet Brown, Air Post (C13).** Lightly hinged, intense color and impression, Extremely Fine, only 900 issued ..... 550.00

- 894 ★ **1926, 4p Dark Blue, Air Post (C14).** Slightly tropicalized original gum, deep rich color, beautiful centering, Extremely Fine, only 700 issued..... 750.00

- 895 ★ **1926, 10p Deep Green, Air Post (C15).** Lightly hinged, deep shade, Very Fine and choice, only 500 issued, T. Champion backstamps..... 1,250.00



896

- 896 ★ **1926, 26c Blue Green, Air Post, Wmk. PIPS, Perf 12 (C16).** Lightly hinged, intense color and proof-like impression, beautiful centering

EXTREMELY FINE. A SUPERB EXAMPLE OF THE PHILIPPINES 1926 26-CENTAVOS AIR POST PERF 12 ON WATERMARKED PAPER. A GREAT RARITY. ONLY 100 ISSUED.

Purple Bruggmann backstamp. With 1980 P.F. certificate..... 3,000.00



- 897 ★ 1926, 1p Pale Violet, Air Post, Wmk. PIPS, Perf 10 (C17). Bright color, wide margins all around, Extremely Fine, only 2,000 issued..... 200.00



897



898

- 898 ★ 1944, 4c Rose Carmine, Air Post, "Victory" Ovpt. (C63). Tropicalized original gum, deep rich color, wide margins

VERY FINE AND CHOICE. A RARE EXAMPLE OF THE 4-CENTAVOS "VICTORY" OVERPRINTED AIR POST ISSUE. ONLY 122 ISSUED.

With 1975 P.F. certificate .....  
..... 2,750.00



899



900



901

- 899 ★ **Air Post Balance.** Four original gum stamps: Nos. C5, C10-C12, first slightly tropicalized original gum, fresh and Very Fine group .....(Photo Ex) 267.00

- 900 ★ 1901, 10c Dark Blue, Special Delivery, Dots in Curved Frame Above Messenger (E1 var). Original gum, lightly hinged, sharp proof-like impression, faint corner crease at bottom left, otherwise Extremely Fine example of this variety which only comes from Plate 882 ..... 175.00

- 901 P 1913, 20c Ultramarine, Panama-Pacific Small Die Proof on Wove (E2P2a). Large margins, thin spot at center, otherwise Very Fine, scarce, only 3-5 were produced.....  
..... 250.00



902

- 902 ★田 **1907, 10c Ultramarine, Red Ovpt. (E2A).** Block of four, lightly hinged, brilliant color, beautiful centering, few minor toning specks mostly on back

VERY FINE-EXTREMELY FINE. AN EXCEEDINGLY RARE BLOCK OF THE 10-CENT SPECIAL DELIVERY SPECIAL PRINTING. ONLY 100 PREPARED.

This block comes from the 1907 Bureau of Insular Affairs Special Printing. Originally intended to supply requests for Philippine stamps, 100 of each denomination were prepared using the stamps currently on hand. This gave us the new Scott Catalogue listing, E2A, which is a different design than any regular-issue Philippines Special Delivery stamps. All known examples have a damaged transfer under the "N" of "Cents".

With 1975 P.F. certificate. .... 11,500.00



903



904

- 903 ★★ **1916, 20c Deep Ultramarine, Special Delivery (E4).** Mint N.H. with imprint at top, rich color, Very Fine and choice, Scott Retail as hinged..... 175.00

- 904 S **1919, 20c Ultramarine, Special Delivery, "Specimen" Ovpt. (E2SR).** Mint N.H., wide margins, rich color, Extremely Fine, Scott Retail as hinged..... 200.00





- 905 ★★田 1899, 2c Deep Claret, Postage Due (J2). Mint N.H. left arrow block, deep rich color, choice centering, Extremely Fine, scarce block, Scott Retail as four hinged singles ..... 26.00
- 906 ★田 1899, 5c Deep Claret, Postage Due (J3). Bottom plate no. 71 and imprint block of six, slightly disturbed original gum, brilliant color and crisp impression, almost perfect centering throughout, Extremely Fine..... 1,100.00
- 907 ★ 1899, 50c Deep Claret, Postage Due (J5). Original gum, barely hinged, detailed impression, extra wide margins, Extremely Fine Gem, a beautiful stamp..... 200.00
- 908 ★★ 1901, 3c Deep Claret, Postage Due (J6). Mint N.H., intense color and impression on bright paper, perfectly centered, Extremely Fine Gem, Scott Retail as hinged..... 17.00
- 909 ★ 1944, 10c Rose Carmine, Official, "Victory" Ovpt. (O41). Slightly tropicalized original gum, bright color, perfectly centered, light creases visible only from back of stamp, otherwise Extremely Fine, only 665 printed ..... 150.00
- 910 ★ 1944, 10c Rose Carmine, Official, "Victory" Ovpt., No Period After "O" (O41a). Top left corner margin (missing corner selvage), tropicalized original gum, almost perfectly centered, some slight toning, few faults in selvage only, otherwise Extremely Fine, exceedingly scarce variety, perhaps 13 or 14 were printed ..... E. 750-1,000
- 911 ☒ 1903, 2c Black, Postal Card (UX4). Unused, fresh and Very Fine, scarce Postal Card..... 700.00
- 912 ★ Philippines Balance, 1899-1904. Seven singles and a block of four: Nos. 213-216, 218, 227 block of four, 233a, 234, Nos. 213, 215, 218, 227, 233a and 234 Mint N.H., deep rich colors, Very Fine-Extremely Fine, No. 234 with 1982 P.F. certificate, Scott Retail as hinged ....*Not illustrated* 138.00
- 913 ★ Philippines Balance, 1918-45. 32 unused stamps: Nos. 289D (2), 411-424, 433-446, 495-496, most Mint N.H., Very Fine and choice group .....*Not illustrated* 412.00
- 914 ★ Philippines Back-of-Book Balance. Unused singles of Nos. E2, E2b, E3, J1 and J4, top plate no. and imprint pair of E6, bottom plate no. and imprint strip of three of J1, used E3, fresh and Very Fine group.....*Not illustrated* 272.00

PUERTO RICO



- 915 ★ 1898, 5c Black, Ty. II-III-IV (201). Horizontal strip of three, large part original gum, h.r., usual light gum soaks, vertical scissors-cut between right stamps, otherwise Very Fine, scarce combination strip, Scott Retail as singles..... 2,325.00
- 916 ★ 1899, 2c Reddish Carmine, 25 Degree Angle, "Portu Rico" Ovpt. (211a var). Position 46, original gum, brilliant color, perfectly centered, Extremely Fine ..... 35.00
- 917 ★ 1899, 5c Blue, 8c Violet Brown (212, 213, 213a). Original gum, last Mint N.H., rich colors, choice centering, Extremely Fine ..... (Photo Ex) 69.00
- 918 ★ 1900, 5c Blue, Special Printing (212 var). Lightly hinged, deep rich color and sharp proof-like impression, Very Fine and choice, rare, of the 100 overprinted, no more than fifteen are known, with 1982 P.F. certificate ..... 1,750.00
- 919 ★ 1899, 8c Violet Brown, "Porto Ric" Ovpt. (213c). Original gum, lightly hinged, deep shade, Extremely Fine ..... 125.00
- 920 ★ 1899, 10c Brown, Ty. I, "Forto Rico" Ovpt. (214 var). Original gum, h.r., brilliant color, Very Fine and choice ..... 85.00
- 921 ★ 1899, 10c Deep Claret, Postage Due (J3). Original gum, lightly hinged, rich color, beautiful centering, Extremely Fine..... 160.00
- 922 ☒ 1899, 2c Green entire, Double Ovpt. (U1a). Unused, Very Fine and choice, very rare, only two are known, with 1984 P.F. certificate, listed but unpriced in Scott ..... E. 500-750

END OF SALE — THANK YOU



**PRICES REALIZED FOR SALE 856---2/2003**  
**The Drucker Family Collection, Part 3: U.S. Possessions**

Robert A. Siegel Auction Galleries, Inc.  
60 East 56th Street, 4th Floor, New York, NY 10022  
Tel (212) 753-6421 Fax (212) 753-6429

Lot#	Realized	Lot#	Realized	Lot#	Realized	Lot#	Realized	Lot#	Realized	Lot#	Realized	Lot#	Realized	Lot#	Realized
501	475	546	1,000	590	280	635	4,750	680	800	724	75	767	300	810	3,500
502	1,500	547	700	591	3,500	636	2,700	681	230	725	3,750	768	625	811	9,000
503	425	548	2,600	592	325	637	625	682	375	726	5,500	769	2,100	812	350
504	500	549	200	593	750	638	3,500	683	1,400	727	4,500	770	450	813	270
505	500	550	160	594	475	639	1,800	685	1,600	728	900	771	4,750	814	2,300
506	5,750	551	1,600	595	190	640	325	686	500	729	5,750	772	400	815	900
507	6,500	552	2,700	596	2,500	641	4,875	687	210	730	4,500	773	270	816	400
508	1,600	553	2,100	598	175	643	1,800	688	650	731	2,500	774	850	817	850
509	475	554	2,600	599	2,000	644	125	689	1,000	732	230	775	500	818	850
510	300	555	1,600	600	1,050	645	170	690	270	733	120	776	500	819	350
511	325	556	800	601	120	646	1,200	691	3,250	734	190	777	500	820	1,100
512	800	557	375	602	1,100	647	2,200	692	900	735	170	778	500	821	3,250
513	7,500	558	325	603	1,600	648	1,350	693	425	736	325	779	450	822	1,250
514	280	559	4,000	604	575	649	1,350	694	525	737	1,900	780	290	823	700
515	650	560	180	605	500	650	5,750	695	75	738	300	781	625	824	700
516	600	561	4,050	606	1,150	651	400	696	4,500	739	160	782	475	825	2,600
517	9,000	562	750	607	350	652	700	697	1,350	740	260	783	325	826	750
518	475	563	6,000	608	2,200	653	1,200	698	2,300	741	1,050	784	140	827	1,000
520	3,500	565	3,250	609	325	654	700	699	1,250	742	325	785	325	828	1,300
521	850	566	3,000	610	450	655	375	700	85	743	130	786	625	829	1,350
522	1,050	567	80	611	550	657	2,300	701	1,800	744	350	787	575	830	350
523	40	568	15,000	612	325	658	625	702	500	745	350	788	3,500	831	1,350
524	425	569	3,500	613	350	659	475	703	600	746	6,000	789	300	832	425
525	25	570	2,300	614	1,500	660	7,500	704	400	747	2,100	790	1,600	833	750
526	1,000	571	200	615	2,500	661	7,500	705	5,250	748	625	791	3,500	834	75
527	1,000	572	2,700	616	350	662	300	706	5,500	749	5,500	792	1,300	835	2,300
528	160	573	240	617	180	663	350	707	400	750	750	793	950	836	475
529	95	574	220	618	400	664	260	708	850	751	150	794	650	837	325
530	325	575	500	619	800	665	250	709	475	752	110	795	1,200	838	29,000
531	650	576	650	620	575	666	350	710	550	753	290	796	60	839	220
532	1,300	577	750	621	1,250	667	3,000	711	375	754	375	797	4,750	840	400
533	1,400	578	375	622	1,000	668	950	712	5,250	755	10,000	798	250	841	160
534	1,080	579	70	623	3,750	669	2,400	713	210	756	5,000	799	120	842	4,000
535	1,150	580	400	624	1,600	670	2,800	714	1,600	757	4,250	800	250	843	4,000
536	625	581	7,500	625	375	671	475	715	1,050	758	675	801	1,250	844	350
537	4,500	582	160	626	4,000	672	230	716	300	759	500	802	1,900	845	350
538	1,700	583	115	627	240	673	6,250	717	270	760	550	803	1,100	846	1,600
539	1,250	584	260	628	6,000	674	325	718	4,000	761	5,000	804	12,000	847	400
540	9,000	585	950	629	850	675	50	719	525	762	3,500	805	3,500	848	600
542	115	586	475	630	6,500	676	1,250	720	300	763	280	806	1,600	849	3,250
543	65	587	575	632	2,300	677	375	721	625	764	1,000	807	200	850	1,700
544	140	588	140	633	325	678	180	722	4,500	765	750	808	400	851	550
545	1,250	589	950	634	4,250	679	900	723	3,750	766	575	809	100	852	120

**PRICES REALIZED FOR SALE 856---2/2003**  
**The Drucker Family Collection, Part 3: U.S. Possessions**

Robert A. Siegel Auction Galleries, Inc.  
60 East 56th Street, 4th Floor, New York, NY 10022  
Tel (212) 753-6421 Fax (212) 753-6429

Lot#	Realized	Lot#	Realized
853	1,900	897	210
854	3,250	898	2,100
855	160	899	135
856	16,000	900	100
857	400	901	500
858	600	902	8,000
859	13,500	903	210
860	800	904	325
861	3,250	905	85
862	3,750	906	1,500
863	550	907	260
864	6,000	908	80
865	4,500	909	270
866	180	910	3,750
867	280	911	750
868	200	912	325
869	550	913	300
870	325	914	200
871	550	915	1,600
872	575	916	50
873	1,600	917	170
874	800	918	750
875	500	919	160
876	950	920	40
877	675	921	180
878	750	922	3,250
879	750		
880	4,750		
881	850		
882	2,800		
883	4,000		
884	1,800		
886	400		
887	625		
888	280		
889	900		
890	1,300		
891	2,000		
892	4,000		
893	500		
894	650		
895	1,250		
896	4,500		