

Sale 858

Friday, February 28, 2003

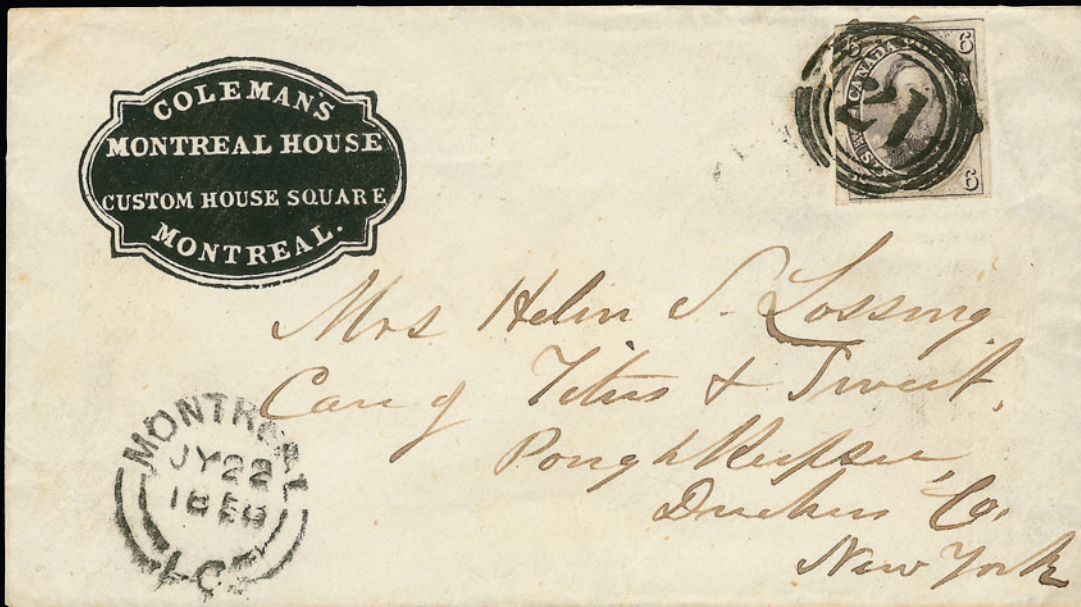
Foreign Stamps and Covers

Featuring

The Estate of Bruce G. Daniels

The Estate of Russell Logan

Collections Offered on Behalf of The City of New York



Robert A. Siegel

AUCTION GALLERIES, INC.

www.siegelauctions.com

Sale 858

Friday, February 28, 2003

Foreign Stamps and Covers

Featuring

The Russell Logan Collection of
Foreign Usages to the United States

Canada Pence Issues from
The Estate of Bruce G. Daniels

Collections Offered on Behalf of
The City of New York

Most lots are offered without reserves

Pre-sale exhibition

Monday, February 24 — 10:00 a.m. to 4:00 p.m.

Tuesday, February 25 — 10:00 a.m. to 12:00 p.m.
or by appointment (please call 212-753-6421)

**On-line catalogue, e-mail bid form, resources and
the Siegel Encyclopedia are available on our web site:**

www.siegelauctions.com



Lot 3119

Arrangement of Sale

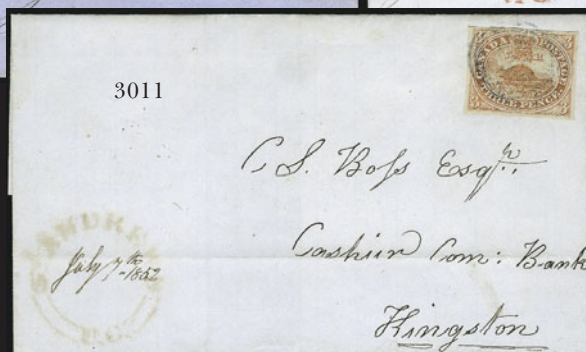
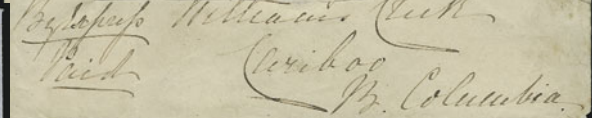
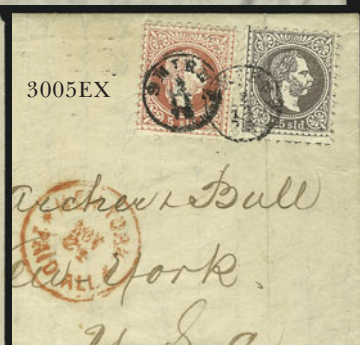
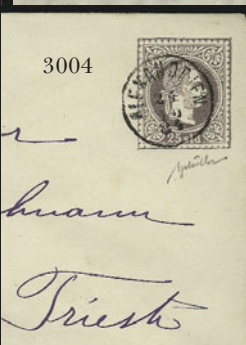
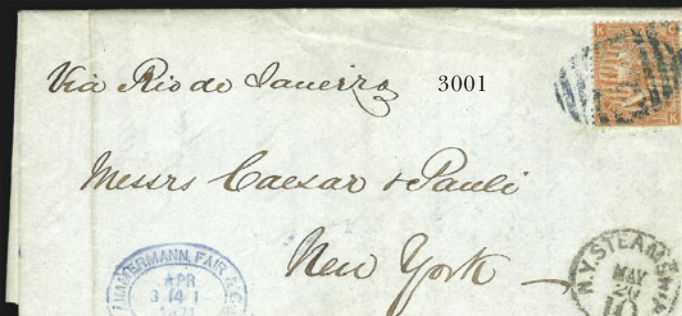
Afternoon session (lots 3001-3423)
Friday, February 28, at 4:00 p.m.

Postal History by Country	4-24
Stamps by Country	25-55
Collections and Accumulations	56-62
Color Plates	29-36

On the cover

Front Cover: Lot 3025

Back Cover: Lots 3030, 3127



AFTERNOON SESSION (LOTS 3001-3423)
FRIDAY, FEBRUARY 28, 2003, AT 4:00 P.M.

FOREIGN POSTAL HISTORY

Featuring the Russell Logan Collection of Foreign Usages to the United States
and Canada Pence Issues from The Estate of Bruce G. Daniels

- 3001 ☒ **Argentina to New York.** 1871 folded letter with blue “Buenos Ayres AP 14, 1871” backstamp, G.B. 4p Vermilion tied by matching large “B32” oval, neat “N.Y. Steamship May 20 10” circular datestamp, fresh and Very Fine, scarce..... E. 200-300
- 3002 ☒ **Argentina to Philadelphia.** 1869 folded letter bearing **France 20c Blue and vertical pair of 80c Rose** tied by **Anchor in Diamond of Dots** maritime cancel, neat “Buenos Ayres Paq. Fr. K No. 1 12 Mai 1869” French packet datestamp, endorsed “*Via Rio de Janeiro*”, red boxed “Affranchissement Insuffisant” handstamp, neat “**New York U.S. Notes 43 Jun. 21**” **depreciated currency** datestamp, receiving backstamp, one 80c stamp affected by minor edgewear, otherwise Very Fine, very unusual combination of markings..... E. 300-400
- 3003 ☒ **Austria to New York.** Three singles of 15k, two of 2k and one 10k cancelled by “Badgastein 23/7” circular datestamps on cover to New York, red “Aachen Paid 23cts 27/7” double-circle datestamp, transit and receiving datestamps, slightly reduced at right, some overall soiling, Very Fine and colorful usage, the 10kr Austrian domestic postage was paid in cash and is annotated on back E. 400-500
- 3004 ☒ **Austrian Offices in Turkish Empire, 1867, 25sld Violet, Coarse Print, Entire.** Cancelled by well-struck “Alexandrien 24/25 84” datestamp to Trieste, receiving backstamp, tiny nicks in corners, Extremely Fine Gem, a beautiful usage, signed Muller, ex Hall with 1948 Mercury Stamp Co. lot card E. 200-300
- 3005 ☒ **Austrian Offices Abroad to U.S.** Five covers, few interesting usages incl. three from Smyrna, Turkey to New York, one from Beirut to New York, few faults incl. file folds thru stamps, otherwise Fine**(Photo Ex)** E. 400-500
- 3006 ☒ **Bahamas Sea Floor.** 4d and ½d stamps tied by bold “Sea Floor Bahamas May 6, 1940” oval datestamp on cacheted cover to Elmwood Ct., **signed “J.E. Williamson” at bottom left**, with original enclosure, Miami Fla., Hartford Ct. and Elmwood Ct. registry and violet “Bahamas-Williamson Undersea Expedition” straightline backstamps, Extremely Fine*Not illustrated* E. 150-200
- 3007 ☒ **Belgium to Bremen.** Gray tissue paper folded cover to Bremen bearing **1850 10c and two 20c** tied by “33” in barred oval, red “Oison 10 Mai 1856” double-circle datestamp, red framed “Franco”, “Belg:lfR” and “PD” handstamps, red “Aus Belgien Per Aachen 11 5” backstamp, light horizontal bend affects one 20c stamp, minor edgewear, otherwise Fine E. 200-300
- 3008 ☒ **British Columbia & Vancouver Island, 1860, 2½p Dull Rose (2; SG 3).** Horizontal pair, tied by bold blue “Paid” in oval cancel, dated Oct. 28th (1864), on cover to Williams Creek, Cariboo, Br. Columbia with ms. “*By Express, Paid*” at bottom left, pair with minor faults, cover with large part of address panel cut out and adhesives on back, otherwise Fine, ex Caspary E. 500-750
- 3009 ☒ **British Columbia & Vancouver Island, 1869, 5c on 3p Bright Red (9, SG 29).** With “captured” sheet margin at right, tied by bold “35” in grid cancel, “Jan. 19, 1871” circular datestamp on cover to Victoria, top backflap mostly removed, otherwise Extremely Fine E. 400-500

CANADA

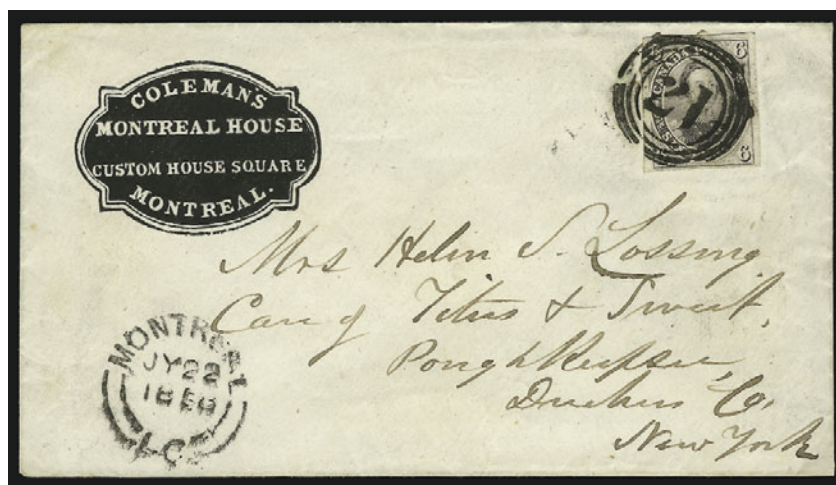
- 3010 ☒ **1851, 3p Red, Laid (1; SG 1).** Close to large margins, tied by bold target cancel, clear “Hamilton C.W. MY 29, 1852” rimless circular datestamp on blue cover to London, Canada, “London U.C. MY 30, 1852” rimless receiving backstamp, light horizontal fold at bottom, opening tear in side backflap, otherwise Very Fine E. 400-500
- 3011 ☒ **1851, 3p Red, Laid (1; SG 1).** Full margins, tied by target on 1852 folded cover to Kingston, light red “St. Andrews U.C. July 7th 1852” circular datestamp with date in ms., receiving backstamp, stamp with small sealed tear at top left, otherwise Very Fine..... E. 300-400
- 3012 ☒ **1851, 3p Red, Laid (1; SG 1).** Large margins to close at bottom left, tied by well-struck target cancel, red “St. Catharines U.C. Nov. 20, 1852” rimless double-circle datestamp on blue folded cover to Cornwall, red Cornwall and indistinct brown receiving backstamps, light central vertical file fold, otherwise Very Fine E. 300-400



- 3013 ☒ **1851, 6p Slate Violet, Laid (2; SG 2).** Large to huge margins incl. part of adjoining stamp at bottom, tied by target on 1852 folded letter to Boston, matching "Hamilton C.W. MR 7, 1852" circular datestamp, red "Canada/Paid 10 Cts" exchange handstamp, two light vertical file folds clear of stamp, Extremely Fine and choice, ex Dale-Lichtenstein and Hall.....(Color Photo, p. 29) E. 1,500-2,000
- 3014 **1851, 6p Slate Violet, Laid (2; SG 2).** Full to huge margins, tied by well-struck target on large part of cover front only to Montreal, red "Kemptville U.C. SP 17, 1852" circular datestamp, two strikes of red "Money-Letter" handstamp, two light file folds, Very Fine, the stamp is Extremely Fine, ex Dale-Lichtenstein and Hall(Color Photo, p. 29) E. 1,500-2,000
- 3015 ☒ **1852, 3p Red, Wove (4, SG 5).** Full to large margins, tied by bold target cancel, "London U.C. AP 24, 1855" rimless circular datestamp on fresh cover to Toronto, clear Toronto receiving backstamp, Extremely Fine..... E. 400-500
- 3016 ☒ **1852, 3p Red, Medium Wove (4 var; SG 18).** Clear to large margins, deep rich color on bright white paper, small corner crease, tied by target cancel, "Hamilton C.W. Jun. 1, 1857" rimless circular datestamp on cover to "The Commission of or for the disposal of Crown Lands, Toronto", top backflap with opening tear, Extremely Fine, ex Reford..... E. 300-400
- 3017 ☒ **1852, 3p Red (4; SG 5).** Horizontal pair, large margins incl. **sheet margin** at top, just barely in at bottom of left stamp, tied by targets on blue folded cover to New York, matching "London U.C. AU 18, 1855" circular datestamp, light horizontal file fold, cover with small tear at top, otherwise Very Fine, the right stamp is Extremely Fine, ex Dale-Lichtenstein (where illustrated in color) and Hall....(Color Photo, p. 29) E. 1,500-2,000
- 3018 ☒ **1852, 3p Brown Red, Wove (4a; SG 8).** Full to large margins, barely tied by clear target cancel, "Vienna U.C. NO 25, 1853" rimless circular datestamp on buff cover to Chatham, C.W., Chatham receiving, London and red Ingersoll transit backstamps, top backflap with opening tears incl. tiny tear at top, light vertical file fold, otherwise Fine..... E. 200-300



- 3019 ✉ **1852, 3p Scarlet Vermilion, Thin Wove (4d; SG 7).** Huge sheet margin at bottom, other three sides full to into, tied by bold target cancel, "Montreal NO 15, 1855" rimless circular datestamp on fresh folded cover to The Manager, Bank of British N. America, Kingston, red Kingston receiving backstamp, Extremely Fine..... E. 300-400
- 3020 ✉ **1852, 6p Greenish Gray, Wove (5b; SG 10).** Full to large margins, single pen stroke and tied by target and red "Canada" in oval, "Port-Sarnia JY 1, 1856" rimless circular datestamp on blue folded cover to New York City, London U.C. transit backstamp, two backflaps detached, repaired small tears at bottom, otherwise Fine..... E. 750-1,000
- 3021 ✉ **1857, 10p Blue, Wove (7; SG 20).** Full margins, tied by light target cancel on cover to **Aberdeen, Scotland**, red "Montreal Canada JU 13, 1859" tombstone cancel, red Liverpool transit and red "8Stg Paid 10dCt" straightline, Aberdeen receiving backstamp, light central vertical file fold and top backflap with tear, otherwise Very Fine (Color Photo, p. 30) E. 2,000-3,000
- 3022 ✉ **1857, 10p Blue, Thin Wove (7; SG 15).** Ample to full margins, tied by numeral in target cancel, bold "Quebec L.C. MY 16, 1859" rimless circular datestamp on cover to **London, England**, red London receiving cancel, cover with creases, tears on back, appears Fine, ex Brouse (Color Photo, p. 30) E. 1,000-1,500
- 3023 ✉ **1857, ½p Rose (8; SG 17).** Close to large margins, tied by square grid cancel on printed folded notice datelined "Toronto, 2nd Sept., 1858", to New York City, cover with light toning and light vertical file fold, otherwise Very Fine, ex Foxbridge E. 750-1,000
- 3024 ✉ **1857, ½p Rose, Horizontally Ribbed Paper (8a; SG 21).** Three full margins, into frame-line at left, tied by target, "Brockville C.W. 23 Apr. 1858" circular datestamp on locally addressed cover, cover and stamp with creases, cover with tear at top left, otherwise Fine, only four covers with this stamp as a single franking are known E. 750-1,000



3025

- 3025 ☒ **1857, 6p Reddish Purple, Very Thick Soft Wove (10; SG 23).** Three large margins to ample at bottom, tied by bold “21” in target cancel, “Montreal L.C. JY 22, 1858” rimless double-circle datestamp on fresh cover with black embossed **Montreal Boarding House corner card** to Poughkeepsie, New York

EXTREMELY FINE. AN OUTSTANDING USAGE OF THE 6-PENCE 1857 THICK-PAPER ISSUE ON A FRESH CROSS-BORDER CORNER CARD COVER.

With 1977 P.F. certificate(Color Photo, p. 30) E. 3,000-4,000



- 3026 ☒ **1858, ½p Rose, Perf 12 (11; SG 25).** Tied by square grid on folded printed circular date-lined “Toronto, June 28th, 1859”, to “Plattsville or Chesterfield”, cover with minor faults, Fine, a late usage of this issue as it was replaced by the Decimal issue on July 1 E. 400-500
- 3027 ☒ **1858, 3p Red, Perf 12 (12; SG 26).** Bright and fresh, centered to right, tied by numeral in grid cancel, neat “Hamilton U.C. JY 9, 1859” rimless circular datestamp on fresh mourning cover to Coteau Landing, sharp balloon “Mon. & Kings Gd. Trk R.W. Post Office No. 2, Jul. 1, 1859” backstamp, top backflap with two tears, Extremely Fine R.P.O. cover E. 750-1,000
- 3028 ☒ **1859, 10c Red Lilac, Violet (17, 17a).** Three covers, shades, each with single stamp tied by grid and Montreal circular datestamp to Monson Mass., 1864 (2) and 1867 usages, few toned perf tips, otherwise Fine(Photo Ex) E. 200-300
- 3029 ☒ **Cuba to Westfield Mass. 5c 1882** tied by purple oval datestamp, neat “Correos Habana Mar. 31, 1883” oval datestamp, New York (Apr. 5) and receiving backstamps, fresh and Very Fine..... E. 100-150

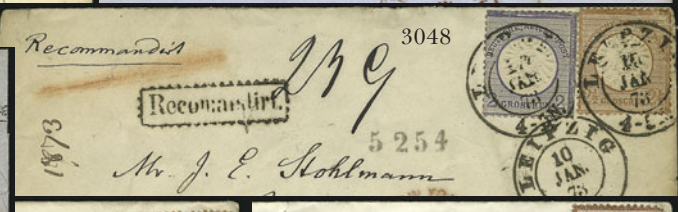


3030

- 3030 ☒ **Denmark, 1864-68, 2s Blue, 4s Red, 16s Olive Green (11, 13, 15).** Horizontal strip of three of 4s and block of four and pair of 16s, cancelled or tied by targets (pair on back), Copenhagen circular datestamp also tied 2s on cover to **Philadelphia Pa.**, red Aachen transit also ties 16s block, red crayon "24" credit, New York transit, back with "Kiobinhann 20/2" oval handstamp and blue Lubeck transit, few stamps affected from placement at edge of cover, otherwise Very Fine, a rare double-rate usage and extraordinary 16s franking.....(Color Photo, p. 31) E. 2,000-3,000



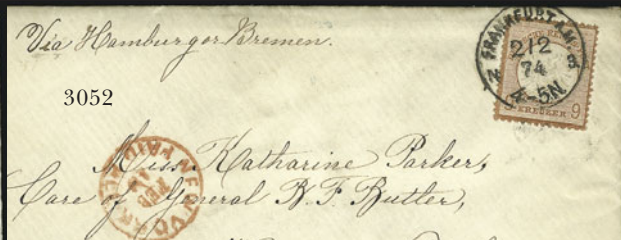
- 3031 ☒ **Egypt, 1931, 50m on 27m, 100m on 27m Graf Zeppelin (C3, C4).** No. C3 with surcharge in blue, No. C4 with surcharge in violet, tied by "10 Ap. 31 Cairo, Graf Zeppelin" circular datestamp (fourth day usage) with second strike at bottom on philatelic cover with printed cachet, corner card and address to Jerusalem, red Zeppelin handstamp cachet, Jerusalem receiving machine cancel on back, cover with tear and crease at bottom, otherwise Very Fine..... E. 300-400
- 3032 ☒ **France to New York.** Cover bearing horizontal pair of 25c and single 1fr Ceres tied by roller grids on cover to **Kingston N.Y.**, neat "Paris 4 Sep. 1851" datestamp also ties 1fr stamp, Boston transit, some slight wear, Very Fine E. 200-300
- 3033 ☒ **France to St. Croix.** Folded cover bearing horizontal pair of France 30c tied by "844" in diamond of dots cancel, "Chalons S. Marne 17 JUN 1874" datestamp, wide range of transits incl. Paris, Rotterdam and London, horizontal file fold does not affect stamps, Fine E. 100-150
- 3034 ☒ **Par Ballon Monte.** France 20c Dull Blue on Bluish (57) tied by "18" in six-pointed star of dots and "Paris 30 Oct. 70 D. Amsterdam" double circle datestamp on printed Lettre-Journal de Paris with handwritten letter to Abbeville, sent on the Balloon *Fulton*, Very Fine E. 150-200



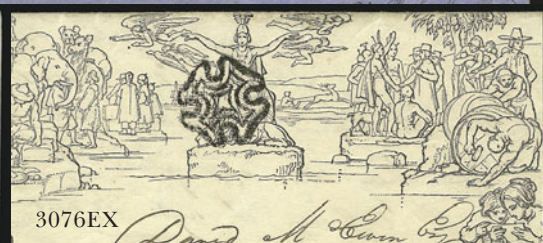
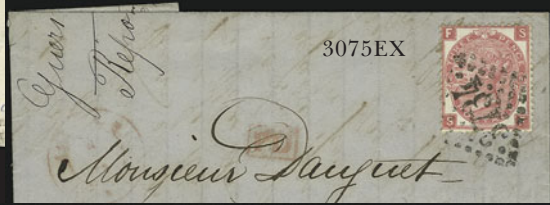
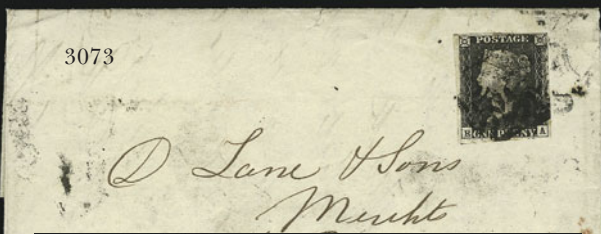
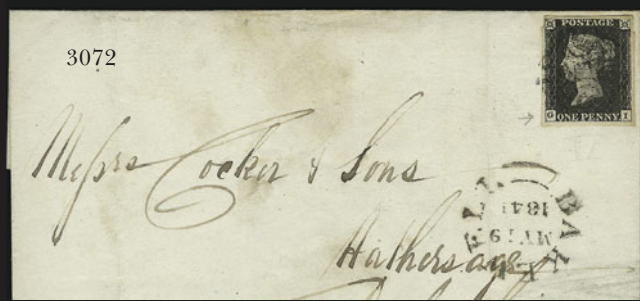
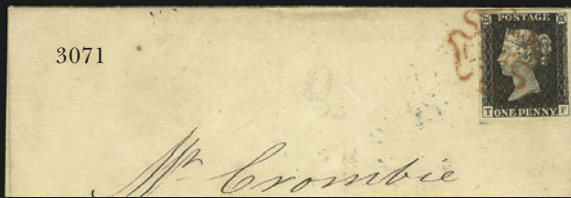
- 3035 **Par Ballon Monte.** Two unused printed Ballon Monte covers, one brown and one blue, each also accompanied by periodical "Lettre-Journal de Paris", one dated Nov. 5, other Nov. 16, 1870, blue cover with small stain at bottom right, otherwise Very Fine and interesting pair.....*Not illustrated* E. 300-400
- 3036 ☒ **France, 1923, 1fr Bordeaux Philatelic Congress (197).** Tied by bold "Exposition Philatelique Bordeaux 17-6 23" circular datestamp with second strike at left on unaddressed cover with Exposition corner card at top, Extremely Fine, 2001 Ceres FFr4000.....*Not illustrated* 400.00
- 3037 ☒ **French Colonies, Guadeloupe to Philadelphia.** Blue 1865 folded cover bearing three **40c and one 5c Eagle General Issue**, ample to large margins except two 40c just touched at corners, tied by diamond of dots cancel, neat "Guadeloupe Point-a-Pitre 11 Oct. 65" circular datestamp, red "**Paid at Guadeloupe**" crowned-circle handstamp, matching "Guadaloupe OC 12, 1865 A" British P.O. backstamp, St. Thomas (Oct. 13, 1865) transit backstamp, bold "Steamship 10" in circle handstamp applied at New York, ms. "1/-" for British rate, one 40c stamp small scissors-cut at right, faint file crease affects one 40c, otherwise Very Fine, colorful and rare usage.....(**Color Photo, p. 31**) E. 750-1,000
- 3038 ☒ **France Used in Uruguay, Montevideo to Philadelphia.** Folded letter with vertical pairs of **France 10c and 80c Napoleon** tied by **Anchor in Diamond of Dots** maritime cancel, neat "Montevideo 15 Mars. 1869" octagonal datestamp, red "New York Paid All Apr. 21" circular datestamp, red ms. "10, blue receiving backstamp, bottom 80c stamp small scuff, otherwise Very Fine, scarce usage..... E. 400-500

GERMAN STATES AND GERMANY

- 3039 ☒ **Bavaria to San Francisco.** Small cover with two **1868 7kr Imperforate**, large margins, cancelled by bold "Munchen 1 Apr. 1870" datestamp, second strike at left, red "New York Paid All Apr. 19" circular datestamp, neat "Franco" handstamp, red crayon "3" credit marking, one stamp with pre-use tear in margin only, barely reduced at left, Very Fine E. 150-200
- 3040 ☒ **Bavaria to New York.** Cover bearing **1870 1kr, 3kr and 6kr**, fresh and bright colors, tied by bluish black "Munchen 20 Apr. 4-5Nm." circular datestamp on 1873 cover, red receiving datestamp, Extremely Fine and colorful usage..... E. 300-400
- 3041 ☒ **Brunswick to New Jersey.** Cover to Hoboken N.J. bearing four singles of **1853 3sgr Black on Rose**, margins to cut in, tied by grids, blue "Braunschweig 30 JULI 1862" double-circle datestamp, red transits incl. 28c New York credit datestamp, one stamp affixed over edge of cover, Fine E. 200-300
- 3042 ☒ **Thurn & Taxis to New York.** Blue folded cover bearing **pairs of Southern District 1kr and 15kr and single 9kr**, margins to cut in, tied by "Bingen-Frankfurt Bahnpost 3/11" circular datestamps, red "Aachen Paid 23cts. 4/11" double-circle datestamp, transit backstamp and receiving datestamp, 1864 docketing, vertical file folds affect one 1kr and one 15kr stamp, otherwise Fine, colorful usage..... E. 300-400
- 3043 ☒ **Thurn & Taxis to Philadelphia.** Blue folded cover bearing **Southern District two 1kr, 9kr and 30kr**, margins to cut in, tied by bold "34" target cancels, "Mainz 6/1" datestamp, red "Aachen Paid 23cts 7/1" double-circle datestamp, red "**Portland Am. Pkt. 28 Paid Jan. 27**" credit datestamp, vertical file folds affect one 1kr and 30kr stamps, still Fine, scarce and colorful combination franking via Portland, ex Gibson(**Color Photo, p. 31**) E. 750-1,000
- 3044 ☒ **Thurn & Taxis to New York.** Folded part-printed invoice bearing five **Southern District 9kr Yellow**, margins to cut in, tied by bold "142" target cancels, "Offenbach 12 12 1860" circular datestamp, red New York 30c credit datestamp, two vertical file folds affect all stamps, Fine appearance. E. 300-400
- 3045 ☒ **Thurn & Taxis to Philadelphia.** Folded cover with **horizontal strip of three of Southern District 15kr**, large margins to just in, tied by "220" target cancels, bold "Frankfurt 4 Sep. 1861" circular datestamp, red Aachen transit, red Boston 30c credit datestamp, minor edgewear, and scarce franking(**Color Photo, p. 32**) E. 500-750
- 3046 ☒ **North German Confederation to New York.** Blue folded letter with 5gr tied by bold "Bielefeld 28 5 70" double-circle datestamp, red "New York Paid All Jun. 15" circular datestamp, "Franco" handstamp, vertical file fold does not affect stamp, Very Fine E. 100-150
- 3047 ☒ **North German Confederation to New York.** Blue folded letter bearing **two horizontal pairs of 2gr** tied by boxed "Bremen Stadtpost Exp. II 2/7.70" datestamps, third strike at top, red "New York Paid All Jul. 16" circular datestamp, red "Franco" handstamp ties one pair, some slight cover wear, Very Fine and choice double-rate usage E. 200-300
- 3048 ☒ **Germany to New York.** Registered cover bearing **1872 2gr and 2½gr Large Shield** tied by "Leipzig 10 Jan. 73" double-circle datestamp, neat "Recomandirt" handstamp and registry no., few edge tears also affect stamps, otherwise Fine, scarce 2½gr registered usage..... E. 200-300
- 3049 ☒ **Germany to Washington D.C.** Cover bearing **1872 9kr Large Shield** tied by boxed "Frankfurt A.M. 23/2 1874" datestamp, red "New York Paid All Mar. 11" datestamp, with original contents, fresh and Very Fine E. 200-300
- 3050 ☒ **Germany to Washington D.C.** Cover bearing **1872 9kr Large Shield** tied by boxed "Frankfurt A.M. 6/10 1873" datestamp, red "New York Paid All Oct. 23" datestamp, red "Franco" handstamp, with original contents, slightly reduced at left and small edge tear, Very Fine E. 200-300



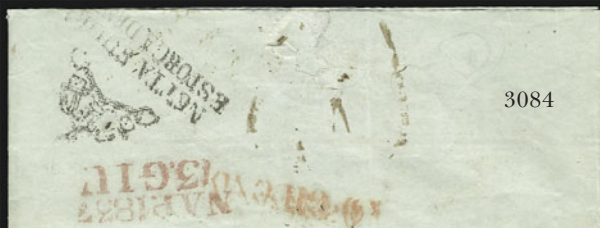
- 3051 ☒ **Germany to Lowell Mass.** Cover bearing **1872 9kr Large Shield** tied by “Frankfurt A.M. 10 11 1873” datestamp, red “New York Paid All Nov. 26” datestamp, red “Franco” handstamp, with original contents, slightly reduced at left, fresh and Very Fine.. E. 200-300
- 3052 ☒ **Germany to Washington D.C.** Cover bearing **1872 9kr Large Shield** tied by “Frankfurt A.M. 2/2 1874” datestamp, red “New York Paid All Feb. 19” datestamp, with original contents, fresh and Very Fine..... E. 200-300
- 3053 ☒ **Germany to Lowell Mass.** Cover bearing **1872 9kr Large Shield** tied by boxed “Frankfurt A.M. 24/11 1873” datestamp, red “New York Paid All Dec. 10” datestamp, red “Franco” handstamp, with original contents, fresh and Very Fine E. 200-300
- 3054 ☒ **Germany to New York City.** Folded cover bearing **1872 ½gr and 2½gr Large Shield** tied by “Chemnitz 26 2 1873” datestamps, bold “Franco” handstamp, red “New York Paid All Mar. 1?” datestamp also ties stamps, cover tear at top, 2½gr stamp affixed to cover by sender on small piece (either reused or removed from unused piece), Fine appearance, interesting item E. 150-200
- 3055 ☒ **Germany to Ohio.** Buff cover bearing **two 1kr and one 7kr 1872 Small Shield** tied by bold “Pifflicheim 9 10 1872” datestamps, red “New York Paid All Oct. 26” circular datestamp, blue “Franco” handstamp also ties stamps, docketing at left, slightly reduced at top and at right, some slight wear, Fine E. 150-200
- 3056 ☒ **Germany to New York City.** Folded letter bearing **vertical pair of 1gr and one ½gr 1872 Large Shield** tied by bold strikes of boxed “Bremen 25 9 1871” datestamp, red Oct. 10 receiving backstamp, Very Fine and colorful usage E. 150-200
- 3057 ☒ **Germany to New York.** Cover bearing **½gr and horizontal pair of 1gr 1872 Large Shield** tied by bold “Bremen 13 2 1874” datestamps, red “New York Paid All Mar. 2” datestamp also ties stamps, slightly reduced at left, right 1gr stamp small tear at top, otherwise Fine E. 150-200
- 3058 ☒ **Germany to New York.** Cover bearing **½gr, two 1gr 1872 Large Shield and 1874 2½gr Surcharge** tied by bold “Bremen 31 7 1874” datestamps, red New York Paid All backstamp, slightly reduced at left, stamps with small faults, otherwise Fine, colorful three-denomination franking E. 200-300
- 3059 ☒ **Germany to New York.** Cover bearing **½gr and 2gr 1872 Small Shield** tied by boxed “Bremen Stadtpost-Exp. III 24 5 1872” datestamp, bold “Franco” handstamp, red “New York Paid All Jun. ?” circular datestamp also ties ½gr, slightly reduced at left, Fine E. 150-200
- 3060 ☒ **Germany, 1930, 2m-4m South American Zeppelin (C38-C39).** Vertical pair of 4m, tied by “Friedrichshafen 18.9.30” datestamps on flown cover to Washington, red South America flight and green receiving handstamp cachets, Extremely Fine 975.00
- 3061 ☒ **Germany, DDR, 1949, Goethe Souvenir Sheet (7NB11).** Neat Berlin circular datestamp, used with Nos. 10N19 and 10N34 (both tied by second strike), on registered cover to Mekeel’s in Portland, Maine, 1949 New York and Maine registry backstamps, Extremely Fine, 1997 Michel DM1,400.....*Not illustrated* E. 200-250
- 3062 ☒ **1918, German Offices in Turkey.** Well-struck “14-1-1908 Feldpost Mil.Miss. Konstantinopel” circular datestamp on German fieldpostcard printed as official formular, ms. “40” in circle at top right, light edge toning, Fine E. 200-300
- 3063 ☒ **1913, November 9, Liegnitz to Katzbach (Sieger 18B).** Picture postcard depicting Zeppelin partly in hanger, bearing Germany 5pf stamp tied by bold “Liegnitz 9.11.13” datestamp, brown and yellow Liegnitz stamp affixed at left and tied by purple “Flugpost (Leignitz) 9.11.13 A.D. Katzbach” datestamp and addressed to Liegnitz, bold purple “Sachsen Hamburg-Amerika Linie Abtlg. Luftschiffahrt” handstamp
VERY FINE AND CHOICE. SCARCE WITH THE BROWN AND YELLOW LIEGNITZ STAMP.
With 2000 Simon certificate. Small handstamps at bottom right.
.....Sieger Catalogue DM 8,500
- 3064 ☒ **Graf Zeppelin Flights.** Ten covers or cards, frankings incl. Finland No. C1 (first day), Germany Nos. C36 (with three other stamps) on cover, C32, C36 and C37 on card, C32 and C37 on card, **C43-C45** on cover to USA with USA printed corner card, Liechtenstein No. C7 on card, No. C8 on cover and Nos. 98, 107, C2 and C3 on cover to U.S.A., and Switzerland incl. No. C14 used with 25c Tell on 10c card and Nos. C5, C8 and C15 on Iceland flight cover to USA, Very Fine group..... E. 500-750
- 3065 ☒ **Graf Zeppelin Flights.** 41 covers or cards, few different countries represented though most are Germany, several better incl. First Rome flight, few Malyguin flight covers, few first South America flights, few other better, also incl. 1934 printed timetable for South America flight, few small faults, most are Fine-Very Fine, valuable group
.....*Not illustrated* E. 2,000-3,000



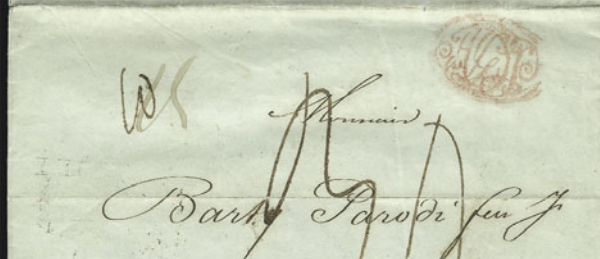
- 3066 ☒ **Graf Zeppelin Flights.** 20 covers and one card, flown with handstamp cachets, nineteen franked with Nos. C57 and/or C58, two South American flights to Argentina, others North American flights mostly to USA, also incl. four General Government first day covers incl. Poland Nos. N76-N90 on three, Fine-Very Fine*Not illustrated* E. 200-300
- 3067 ☒ **Graf Zeppelin Flights.** 25 covers and cards, better incl. Austria (four), Germany (six with frankings incl. Nos. C35, C37 and two C36), Liechtenstein (fourteen with frankings incl. Nos. C7 (three), C8 (two), C9-C13 on one cover, C15 & C16 on one cover, C15 (three solo), C16), many with original Harmer 1976 auction lot cards, Very Fine*Not illustrated* E. 500-750
- 3069 ☒ **Germany Cover Collection.** 31 stampless incl. twenty 1915-17 Feldpostbrief, and 1852 T.P.O. cover, Fine-Very Fine*Not illustrated* E. 100-150
- 3070 ☒ **Germany 20th Century Covers.** Over 150, wide range of issues, several better incl. 1949 Hannover Export Fair souvenir sheet on second day cover, black Berlin ovpts. on 1948 cover, usage from Finsterwalde to Hamburg in 1946, few small faults, most are Fine-Very Fine, fascinating group*Not illustrated* E. 2,000-3,000

GREAT BRITAIN

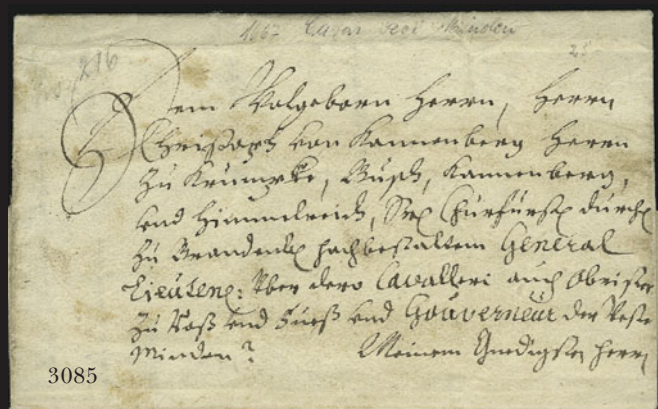
- 3071 ☒ **1840, 1p Black (1; SG 2).** Large to huge margins all around, tied by red Maltese Cross cancel on folded cover to Glasgow, blue "Newcastle on Tyne Ju. 30, 1840" rimless transit circular datestamp and "Glasgow Jy. 2, 1840 7:50 AM" three-line boxed receiving backstamp, Very Fine early usage 285.00
- 3072 ☒ **1840, 1p Black (1; SG 2).** Close at top left, otherwise large even margins, just tied by Maltese Cross cancel with "Bakewell MY 19, 1841" rimless circular datestamp on folded cover to Hathersage, Derbyshire, Very Fine 285.00
- 3073 ☒ **1840, 1p Black (1; SG 2).** Tied by bold Maltese Cross cancel on 1841 folded letter to Cork, Ireland, neat "Birmingham AP 2, 1841" and receiving backstamps, Fine E. 300-400
- 3074 ☒ **Geat Britain to Canada.** Large part of folded cover bearing G.B. 1p Red tied by bold Maltese Cros cancel, to Great Britain address and **forwarded** to Toronto, Canada, red "Shoreditch" handstamp, boxed "¼d" marking, 1842 backstamps, some wear, Fine and unusual usage E. 200-300
- 3075 ☒ **Channel Islands to France.** Three covers, used in 1858, 1865, and 1873, bearing G.B. 3p or 4p tied by **French** cancels, fresh and Fine**(Photo Ex)** E. 300-400
- 3076 ☒ **1840, 1p Black, Mulready (U1).** Two, No. A173 used to Chicester; other is No. A232 used within Dundee, few faults, both appear Fine**(Photo Ex)** E. 200-300
- 3077 ☒ **Great Britain Covers.** 23 covers or post cards, few better incl. 1p Mulready from Liverpool to Wavertree, 1sh No. 5 on folded cover to U.S., folded cover with 1sh No. 5 used with two 2p Blue and one 1p Red to New Brunswick, few faults, most are Fine-Very Fine*Not illustrated* E. 300-400
- 3078 ☒ **Hong Kong to Vermont.** Blue 1866 tissue cover bearing **1863-666 4c, 18c and 24c Victoria** tied by "B62" ovals, faint Hong Kong backstamp next to blue "Shanghai AU 1, 1866" datestamp, red "21 cents" credit handstamp ties 24c stamp, red "N. York Am. Pkt. Paid " datestamp, 4c stamp roughly separated with lower right corner off, some overall cover wear incl. slightly reduced at left, Fine appearance, scarce 18c franking E. 200-300
- 3079 ☒ **Hong Kong to Vermont.** Cover bearing **1863 6c and 48c Victoria** tied by bold "B62" oval, "Hong Kong MY 9, 1866" backstamp, neat strike of "**Forwarded by Thos. Hunt & Co. Hong Kong**" oval on back, red "21 cents" handstamp, London and New York transits, slightly reduced at left and some slight wear, Fine*Not illustrated* E. 200-300
- 3080 ☒ **India, Gun Covers.** Five, addressed to the Winchester Repeating Arms Co. in New Haven Ct., various frankings mostly on back and tied, unusual illustrations, two with censor markings, light wrinkling due to rough opening at top, otherwise Fine-Very Fine, the nucleus to a Grand Prix exhibit E. 100-150
- 3081 ☒ **Israel, 1948, 3m-10m First Doar Ivri Issue, Rouletted (1a-3b).** Tab singles, tied by two "Registered Petah Tiqva 16 MY 48" circular datestamps on cacheted cover with printed local address, 3m with tab slightly misaligned, otherwise Extremely Fine E. 300-400
- 3082° ☒ **Israel, 1949, 250p Road to Jerusalem (24, Bale 15).** Bottom right corner **tab single** tied by bold "Jerusalem 16 2 1949" large double-circle datestamp on registered locally addressed **first day cover**, stamp with light toning and cover with couple minor toned spots that in no way detract, signed twice lightly in pencil "Dr. J. Gotlib", with 1997 Muentz certificate E. 750-1,000
- 3083 ☒ **Israel, 1949, 2p-50p Postage Dues (J6-J11).** Tab singles, tied by four "Tel Aviv 18 12 1949" circular datestamps on unaddressed, cacheted **first day cover**, cleaned with stamps neatly replaced, otherwise Very Fine, with 1987 Tsachor certificate E. 200-300



3084



3085



3086



3087



3088



3089



3090



3091



3092



3094EX



3093



3095EX

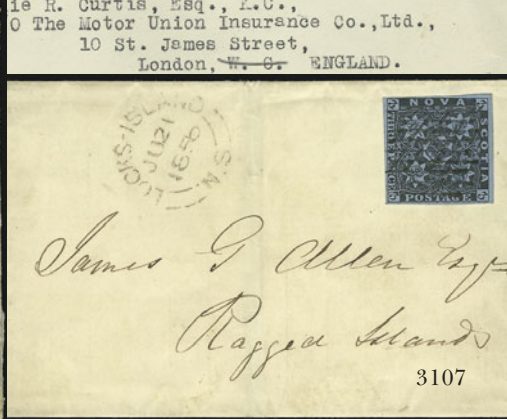
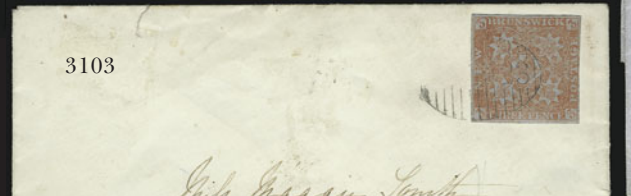
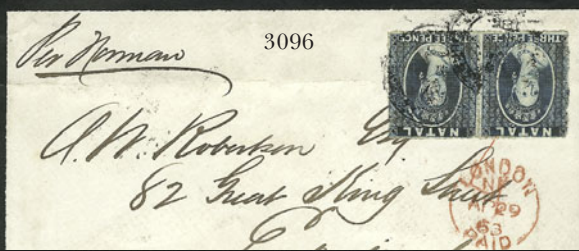
ITALIAN STATES AND ITALY

- 3084 ☒ **1837 Stampless Folded Letter from Naples to Genoa.** With printed invoice on one tab, fancy red cancel at top right, three cancels on top backflap incl. one with crown and **disinfection**, central horizontal file fold clear of markings, Very Fine E. 100-150
- 3085 ☒ **1667 Venice Stampless Folded Letter.** With two page letter on inside, with typed English translation, content regarding postage rates and fine for non-compliance, usual minor soiling, otherwise Very Fine E. 200-300



3086

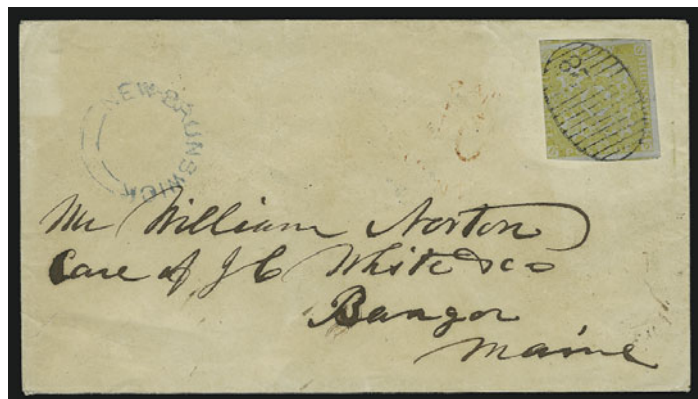
- 3086 ☒ **Modena to Philadelphia.** Blue 1855 folded letter bearing **1852 5c, 25c and horizontal strip of four of 40c** cancelled by grids, “Carrara 10 AGO” double-circle datestamp, “Via Di Sarzana” handstamp, 5c Boston debit, appropriate backstamps, two vertical file folds affect 5c and one 40c stamp, otherwise Fine, colorful franking from the Vito Viti correspondence.....(Color Photo, p. 32) E. 750-1,000
- 3087 ☒ **Naples (Two Sicilies) to New York.** Small 1859 cover bearing **Naples 1858 2g, 5g and two 20g** tied by bold framed “Annulato” handstamps, red “Partenza Da Napoli 12 Feb. 1859” backstamp, Marseilles and Paris transits, red New York 15c credit datestamp, some edgewear also affects stamps, one 20g stamp sealed tear, almost Fine, scarce usage.....(Color Photo, p. 32) E. 500-750
- 3088 ☒ **Roman States to Mass.** Cover bearing **1852 6b and vertical pair of 8b** tied by diamond grid cancels, “Roma 6 Apr. 1858” double-circle datestamp, Marseilles and indistinct red 36c credit datestamp, some slight wear affects stamps, otherwise Fine E. 150-200
- 3089 ☒ **Roman States to New York.** Cover to Saratoga Springs bearing **1867 5c, 10c, 20c and 80c** tied by grids, “Roma 5 Apr. 1868” double-circle datestamp, blue transit also ties two stamps, red “New York Paid All Apr. 23” circular datestamp and “3” credit handstamp, with original contents, slightly reduced at left, 5c stamp placed partly over top edge of cover, few faults to stamps, still Fine, a spectacular four-color franking with the 80c(Color Photo, p. 33) E. 500-750
- 3090 ☒ **Roman States to Boston.** Mourning cover bearing two pairs of **1852 8b** tied by diamond grids and indistinct 1860 double-circle datestamp, red French transit also ties one pair as does red “Boston Br. Pkt. Paid Mar. 31” datestamp, some edgewear incl. tear at left, otherwise Fine E. 150-200
- 3091 ☒ **Sicily, 1859, 1g Olive Green, 2g Blue (12, 13).** Margins to in, tied by handstamp on 1859 folded letter, indistinct datestamp, some slight wear, Fine E. 200-300
- 3092 ☒ **Tuscany to Boston.** Gray cover bearing **1851 1cr and vertical strip of three of 9cr** tied by “Firenze 16 Gui 1854” datestamps, red French transit, Boston 5c debit datestamp, slit in cover at right, few postmarks improved with pencil, otherwise Fine, scarce usage E. 400-500
- 3093 ☒ **Tuscany to Boston.** Tissue cover bearing **1851 1cr and vertical strip of three of 9cr** tied by “Firenze 9 Dic 1854” datestamps, red French transit, Boston 5c debit datestamp, some slight wear, 1cr stamp few faults, otherwise Fine..... E. 400-500
- 3094 ☒ **Italy to United States.** Two covers, each franked by same **5c, 20c and 30c** stamps tied by diamond grids, first is 1871 usage from Naples to New York, second is 1874 usage from Carrara to Philadelphia, few small faults, Fine usages(Photo Ex) E. 150-200
- 3095 ☒ **Italy to U.S.** Four covers, incl. one with 5c, 10c and 40c stamps (1872), another double rate with two of each (1873), one with 2c and 10c stamps (1869), last with pair of 60c (1868), few faults, all appear Fine.....(Photo Ex) E. 400-500



- 3096 ☒ **Natal, 1862, 3p Blue, Rough Perf 14 to 16 (12).** Horizontal pair, tied by indistinct Pietmaritzburg datestamps on mourning cover to Edinburgh, red “London AP 29, 1863” transit, receiving backstamp, stamps barely affected by horizontal file fold, otherwise Very Fine E. 150-200

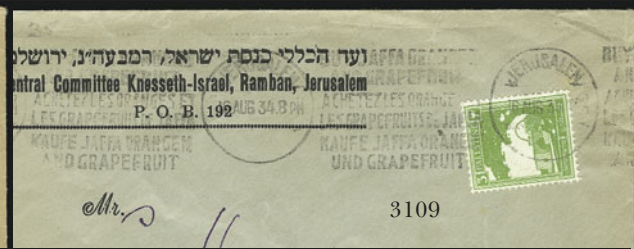
NETHERLANDS

- 3097 ☒ **Netherlands to New York.** Folded letter bearing **1852 10c and horizontal pair of 15c William III** tied by neat “Rotterdam 21/11” datestamp, red “Paid 23 NO 1855” datestamp, neat “N.York Br. Pkt. 5 Dec. 7” debit datestamp, minor edgewear, Very Fine and choice, scarce usage..... E. 300-400
- 3098 ☒ **Netherlands to New Jersey.** Blue tissue cover bearing **irregular strip of four of 5c and strip of four and single of 10c 1864 William III**, tied by boxed “Franco” handstamp, red “Amsterdam 21 ME 1867” circular datestamp, London and New York transits, red “21 cents” handstamp, some cover edgewear affects stamps, appears Fine..... E. 200-300
- 3099 ☒ **Netherlands to Mass.** Folded letter bearing **1864 10c and vertical strip of three of 15c William III** tied by bold “Franco” handstamps, red “Rotterdam 21 FE” circular datestamp, 1866 London transit and New York 5c debit datestamp, vertical file fold thru top 15c stamp (broken crease), otherwise Very Fine E. 200-300
- 3100 ☒ **Netherlands to Mass.** Folded letter bearing **vertical pair of 1864 5c and vertical pair and single of 15c William III** tied by bold boxed “Franco” handstamp, red “Rotterdam 5-16 1866” circular datestamp, red London transit also ties stamps, New York 5c debit datestamp, vertical file folds affect one 5c and one 10c stamp, otherwise Fine, colorful usage E. 200-300
- 3101 ☒ **Netherlands to Mass.** Blue folded letter bearing **1864 10c and vertical pair and single of 15c William III** tied by boxed “Franco” handstamps, red “Rotterdam 5-10 1866” circular datestamp, London transit and New York 5c debit datestamp, vertical file fold affects one 15c stamp, otherwise Fine..... E. 200-300
- 3102 ☒ **Netherlands to New York.** Two folded covers, first bears **1867 25c** tied by handstamp, “Amsterdam 28 Aug. 1872” double-circle datestamp with red “New York Paid All Sep. 10” circular datestamp, second bears **1867 20c and 5c** similarly tied with bold “Amsterdam 22 Oct. 1870” double-circle datestamp, horizontal file folds well away from stamp, Fine.....(Photo Ex) E. 100-150
- 3103 ☒ **New Brunswick, 1851, 3p Red (1; SG 1).** Ample to large margins, tied by light “23” in grid cancel, on cover to Buctouch N.B., “Richibucto N.B. OC 25, 1858” backstamp, cover with faults on back except tiny tear at top left, otherwise Very Fine E. 300-400



3104

- 3104 ☒ **New Brunswick, 1851, 6p Olive Yellow (2; SG 4).** Three large margins with traces of adjoining stamps on two sides, cut into on one side, perfectly struck “28” in grid cancel, blue “New Brunswick” rimless circular datestamp and red “Paid 10” cancel, on cover to **Bangor Me.**, blue “St. George N.B. JY 18, 1854” backstamp, light toning on face and small mounting adhesions on back, otherwise Fine, ex Dale, Brassler, with 2001 Greene Foundation certificate E. 750-1,000
- 3105 ☒ **Newfoundland, 1932, \$1.50 on \$1.00 DO-X (C12).** Tied by “St. John’s N’fd May 20, 1932” datestamp on cover to London, England, May 26 receiving backstamp, fresh and Very Fine..... E. 150-200
- 3106 ☒ **New South Wales to Mass.** Blue folded letter bearing **1850 2p and 3p Sydney View** tied by bold strikes of “60” oval cancels, red “Ship Letter Sydney JU 3, 1850” oval datestamp, to **Tapley Village Mass. and forwarded to Roxbury Mass.**, red New York backstamp, red “Tapleyville Mass. Oct. 25” forwarding datestamp with day in ms., lengthy postage due computation at right, some slight wear, 2p slightly toned, 3p defective, still Fine, Sydney View covers to the United States are extremely rare — if it were not for the faulty stamp, we would estimate value at \$3,000-4,000..... E. 400-500
- 3107 ☒ **Nova Scotia, 1851, 3p Dark Blue (3).** Large margins to clear, deep rich color, cancelled by ms. on folded cover to **Ragged Islands**, neat “Locks-Island N.S. JU 21, 1856” datestamp, Shelburn and second backstamp, vertical file fold well away from stamp, Very Fine and choice E. 200-300



- 3108° ☒ **Palestine, 1918, 5m on 1pi Ultramarine (3, Bale 4).** Used with No. 2 (Bale No. 3), each tied by bold "Army Post Office 13 MY 18" circular datestamps (**first day for No. 3**) on registered cover from Jaffa to Jerusalem, framed "Palestine Censorship No. 2" handstamp, Army receiving backstamp, Very Fine and scarce first day cover ... E. 500-750
- 3109 ☒ **Palestine, 1927, 3m Pictorial, Experimental Coil (63 var, Bale 91E).** Tied by "Jerusalem 16 Aug. 34" machine slogan cancel in three languages selling Jaffa Oranges and Grapefruit on cover to Milwaukee Wis., Central Committee, Knesseth-Israel, Ramban, Jerusalem printed corner card, minor creasing does not detract, Very Fine. E. 400-500
- 3110 ☒ **Palestine, 1927, 5m Pictorial, Experimental Coil (67 var, Bale 93E).** Two vertical pairs, used with 8m Scarlet, tied by bold "Jaffa Registered 2 5MY 39" circular datestamps on fresh registered cover to **Yugoslavia**, Banco di Roma printed corner card, Extremely Fine and rare coil use and destination..... E. 300-400
- 3111 ☒ **1899, Austrian Offices in Palestine.** Austria Levant 20p tied by violet "Jerusalem Post Oesterreichisch 25/12/99" double circle datestamp on picture postcard with beautiful multicolor nativity scene to Berlin, "Betleem 24.XII.99" cachet at left, Extremely Fine, a pretty card..... E. 300-400
- 3112 ☒ **Persia (Iran) Covers.** 1909-18, 59 in three groups comprising 19 with boxed Russian censor markings incl. one also with post office control handstamp, frankings incl. 6ch, 9ch and 12ch; 22 with variety of 1915-18 surcharges; and 18 with Lion issues, Fine-Very Fine.....*Not illustrated* E. 400-500
- 3113 ☒ **Portugal to New York.** Cover bearing vertical **pair of 1870 80r Luiz** tied by large "1" oval cancels, "Lisboa 11 2 1871" double-circle datestamp, red "2 cents" credit handstamp, also red "New York Paid All Mar. 2" circular datestamp, London transit backstamp, fresh and Fine, scarce usage E. 150-200
- 3114 ☒ **Spain to New York.** Cover bearing **horizontal strip of four of 1865 2rs Red Lilac (72)** tied by "3" handstamps, blue "Madrid 9 Ene 65" backstamp, oval "PD" also ties stamps, London transit, neat "N. York Am. Pkt. 21 Jan. 29" debit marking, some overall wear incl. sealed tear at left, otherwise Fine, scarce and very early usage E. 200-300
- 3115 ☒ **Spain to Philadelphia.** Gray folded letter bearing **four 2r Isabella (two different printings)**, two stamps affixed on back, cancelled or tied by handstamp, neat "Malaga 5 Jul. 1865" double-circle datestamp, neat "Philadelphia Am. Pkt. Jul. 25" receiving datestamp, Madrid transit, horizontal file fold well away from stamps, minor edgewear affects one stamp, Fine E. 150-200



3116

- 3116 ☒ **Straits Settlements to Vermont.** Blue cover bearing **two horizontal pairs of 1867 8c on 2a Surcharge** tied by "B73" in octagonal target, faint strike of red Singapore backstamp, red Dec. 1867 London transit and 5c New York debit datestamp, one stamp torn from cover opening at right, some wear, otherwise Fine, scarce usage.....
.....(Color Photo, p. 33) E. 300-400
- 3117 ☒ **Straits Settlements to Philadelphia.** Blue cover bearing **two 1867 4c and two 32c Victoria**, one of each is wing margin, tied by blue company control handstamps and bold numeral barred ovals, indistinct purple June 20 boxed backstamp, red London transit (Jul. 9, 1870), light file folds barely affect two stamps, Fine and scarce usage
.....(Color Photo, p. 33) E. 300-400
- 3118 ☒ **Straits Settlements to Philadelphia.** Cover bearing **two each of 1867 2c, 8c and 32c Victoria**, blue company control marks, cancelled by grids, red "Singapore Paid AU 11, 1872" circular datestamp, bold London transit, few cover edge tears, most stamps slightly affected by horizontal file fold or creases, still appears Fine, scarce double-rate usage
.....(Color Photo, p. 34) E. 300-400

SWITZERLAND



3120

3121

- 3119 ☒ **Switzerland to Brazil.** Folded letter to Rio de Janeiro with **1861 10r Dark Blue, 15r Dark Rose, 40r Dark Yellow Green (37, 38, 40)**, horizontal pairs of 10r and 40r, tied by neat "Couvet 1 Oct." circular datestamps, red Pontarlier transit, oval "PD" handstamp, horizontal file fold does not affect stamps, fresh and Fine, scarce destination and a colorful franking.....(Color Photo, p. 34) E. 1,000-1,500
- 3120 ☒ **Switzerland to New Jersey.** Cover bearing **nine singles of 1854 10c Blue and one 40c Yellow Green (16, 19)**, margins to slightly in, cancelled or tied by grids to Jersey City N.J., neat "Geneve Oct. 9, 1855" circular datestamp, "PD" in circle, Boston transit with ms. "5" due, slight edgewear, Fine, an extremely rare franking for the rate to the United States, ex Gibson.....(Color Photo, p. 34) E. 1,000-1,500
- 3121 ☒ **Switzerland to New Jersey.** Small folded cover with **vertical pair of 1855 15c and one 1fr** tied by diamond grids, neat "Zurich 25 Juni 1856" circular datestamp, "New-York Ship 5cts Jul. 15" debit datestamp, Le Havre backstamp, some slight wear, Fine.....(Color Photo, p. 35) E. 750-1,000



- 3122 ☒ **Switzerland to New York.** Tissue cover bearing **1855 15c and 1fr** tied by “Chateau D’Oex 27 Juil” double-circle datestamp, red 1858 French transit also ties stamps, transit backstamps, cover wear as is often associated with this fragile paper, otherwise Fine E. 200-300
- 3123 ☒ **Switzerland to San Francisco.** Blue folded letter with **left sheet margin horizontal strip of three of 1855 40c and single 15c** tied by neat “Langnau 15 Jan. 1860” double-circle datestamp, Bern and French transits, red New York 15c credit datestamp, endorsed “Via Panama” at top left, vertical file fold affects one 40c stamp, otherwise Very Fine, colorful usage to a destination rarely found with the Seated Helvetia issue (Color Photo, p. 35) E. 750-1,000
- 3124 ☒ **Switzerland to Wisconsin.** Blue folded letter bearing **1862 1fr Gold and 10c** tied by bold “Aarau 15.9.66” datestamp, red New York credit datestamp also ties stamps, horizontal file fold clear of stamps, few toned perf tips and slight cover wear, Fine usage E. 300-400
- 3125 ☒ **Switzerland to New York.** Small cover with **1862 1fr Gold and 10c** tied by “Lausanne Exp. Let. 31 Aout 66” datestamps on cover to New York, Bern backstamp, red “9” credit handstamp, boxed “PD” handstamp, some wear incl. tear at top, otherwise Fine..... E. 200-300
- 3126 ☒ **Switzerland to New York.** Cover bearing **1862 1fr Gold and 10c** tied by “Interlaken 15 AUG” double-circle datestamp, 1867 transits, fresh and Very Fine..... E. 300-400



3127

- 3127 ☒ **Tasmania, 1858, 1sh Vermilion (16).** Horizontal pair, large margins to just in, used with **1p Carmine, 4p Pale Blue and 6p Slate Blue, Perf 10 (11, 13, 26)**, tied by bold "55" on barred oval handstamps on **registered cover to Buffalo, New York**, red diamond "Post-Office Launceston 26 NO 1866" backstamp, red oval "Registered London 19 Jan. 1867" and Boston transits, some overall soiling, one 1sh stamp tiny scrape at top, Very Fine and rare combination franking (Color Photo, p. 35) E. 1,500-2,000



3128



3130EX

3129

- 3128 ☒ **Tasmania to California.** Cover to San Francisco bearing **1857 2p and two 1858 6c Imperforates** tied by "55" in barred oval, red "Post Office Launceston 19 MY 1868" backstamp, red London transit and San Francisco receiving datestamps, red "6d" crayon credit and "3 cents" handstamp, some slight overall soiling, Fine, scarce usage E. 500-750
- 3129 ☒ **Tasmania to California.** Cover to San Francisco bearing **two 1p and horizontal strip of three of 4p Perf 11½** cancelled by "80" in barred oval, red "Post Office Launceston 5 OC 1869" backstamp, London transit and red "3 cents" credit datestamp near "San Francisco Paid All Dec. 26" datestamp, some overall soiling, stamps mostly scissors-separated, still Fine, scarce usage E. 200-300
- 3130 ☒ **Uruguay Covers.** Three, incl. 1860 120c Thick Numerals used to Buenos Aires in 1861 (ex Gibson), 60c to Colonia, 60c to Montevideo, some slight wear, Fine-Very Fine group....(Photo Ex) E. 150-200
- 3131 ☒ **Foreign Cover Accumulation.** Over 150 covers, mostly first flights, strength incl. Canada, Liechtenstein and Luxembourg, some first days incl. Austria Nos. C54-C60 on five covers, generally Very Fine.....Not illustrated E. 500-750
- 3132 ☒ **Foreign Flight Covers.** Over 300, few better incl. cacheted 1929 First Round-the-World Flight, three carried aboard the Hindenburg (April and May 1936, latter two with "Return to Sender" handstamps), most of rest are F.A.M.'s incl. few better, mostly Fine-Very Fine.....Not illustrated E. 500-750
- 3133 ☒ **Foreign Covers.** Accumulation of over 600 covers, mostly 20th century, incl. stampless, flights, first days, commercial, postal stationery, mostly Fine-Very Fine, owner's retail approximately \$1,100Not illustrated E. 400-500
- 3134 ☒ **Mr. Crowell Visits the Far East in 1936.** Sixteen covers from Mr. Crowell to his wife on Martha's Vineyard from his trip, postmarks incl. San Francisco, Canal Zone, China (two), Hong Kong, Philippines (four) and Japan (seven), incl. six on legal-size covers with American-Hawaiian Steamship Co. corner card, five Japanese with Western dates, most with faults from rough opening, otherwise Fine, interesting correspondence before WWII changed everythingNot illustrated E. 150-200

FOREIGN STAMPS



- 3135 ★田 **ARGENTINA, Corrientes, 1867, (2c) Black on Yellow (5).** Sheet of sixteen comprised of two tete-beche panes of eight (setting II), original gum, huge margins, few selva tears not affecting stamps, otherwise Very Fine, Scott Retail as singles with no premium for tete-beche block*Not illustrated* 120.00
- 3136 ★ **AUSTRALIA, 1916, £1 Kangaroo (56; SG 44).** Lightly hinged, bright colors on fresh paper, Very Fine, a pretty stamp, SG £1,300 1,250.00
- 3137 ★ **AUSTRALIA, 1924, £2 Kangaroo (59; SG 45b).** Lightly hinged, choice centering on bright white paper, Extremely Fine, SG £1,800..... 1,750.00
- 3138 S **AUSTRALIA, 1924, £1 Kangaroo (57; SG 75).** Lightly hinged, bold "SPECIMEN" overprint, Extremely Fine, SG £75 E. 50-75
- 3139 **BRITISH COLUMBIA & VANCOUVER ISLAND, 1865, 5c Rose (3, SG 2).** Full to huge margins with wide sheet margin at left, bold cancel, expertly repaired at right and bottom, Very Fine appearing example of this rare stamp, with 2002 B.P.A. certificate, SG £8,000 7,250.00
- 3140 **BRITISH COLUMBIA & VANCOUVER ISLAND, 1869, \$1.00 on 3p Green (18; SG 27).** Bold "35" in grid cancel, short perf at left, repaired thins, otherwise Fine, SG £700, with 1990 B.P.A. certificate..... 1,200.00



3141EX



3142



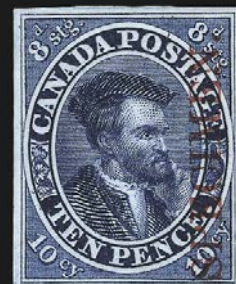
3143



3144



3146



3145



3148



3147



3149EX



3151



3152



3153



3154



3155



3156

CANADA
Featuring The Estate of Bruce G. Daniels
PROOFS AND SPECIMENS

- 3141 P **1851, 3c Red, Plate Proof on India, 6c Red Lilac, Trial Color Plate Proof on India (1P, 2TC).** Large margins, rich color, Very Fine and choice, Unitrade value(Photo Ex) 475.00
- 3142 P田 **1851, 3c Black, Trial Color Plate Proof on India (1TCv).** Top left corner margin block of four, Pane A, Positions 1-2/11-12, large margins other sides, small pinhole at top left corner, otherwise Very Fine, Unitrade value 900.00
- 3143 P **1851, 12c Black, Plate Proof on India (3Pi).** Large margins incl. sheet margin at left, sharp impression nicely contrasted by vertical ovpt., Extremely Fine, scarce, Unitrade value 1,750.00
- 3144 P田 **1854, 10p Blue, Plate Proof on India (7P).** Block of four, bright shade, large margins, Very Fine, Unitrade value as singles 1,000.00
- 3145 P **1854, 10p Blue, Plate Proof on India, Vertical Ovpt. (7Pi).** Large margins, rich color, Very Fine and choice, Unitrade value 300.00
- 3146 P **1854, 10p Blue, Plate Proof on India, Vertical Ovpt. (7Pi).** Horizontal pair, large margins, Very Fine and choice, Unitrade value as singles 600.00
- 3147 TC **1857, 10c Red Brown, Large Die Proof on Wove (7TCiii var).** Bright color, wide margins, Very Fine and choice, scarce, unlisted in Unitrade E. 150-200
- 3148 TC **1857, ½p Black, Trial Color Proof on India (8TCii).** Wide margins, intense shade, Very Fine, Unitrade value 250.00
- 3149 TC **1864, 7½p Black, Orange Yellow, Trial Color Plate Proofs on India (9TCi, 9TCiii).** Huge margins incl. first with sheet margin at bottom, Very Fine, Unitrade value(Photo Ex) 675.00

PENCE ISSUES



3150

- 3150 ★ **1851, 3p Red, Laid (1; SG 1).** Small part original gum, h.r., three large margins to close at top right, brilliant color
FINE. A SCARCE UNUSED EXAMPLE OF THE FIRST CANADIAN ISSUE IN SOUND CONDITION.
From the Daniels estate. SG £11,000(Color Photo, p. 36) 13,500.00
- 3151 **1851, 3p Red, Laid (1; SG 1).** Enormous margins incl. sheet margin at left, red target cancel, distinct laid lines, Extremely Fine, SG £650 800.00
- 3152 **1851, 3p Red, Laid (1; SG 1).** Full to large margins, fresh color, well-struck target cancel, distinct laid lines, Extremely Fine, SG £650 800.00
- 3153 **1851, 3p Red, Laid (1; SG 1).** Large to huge margins, target cancel, clear laid lines, Extremely Fine, SG £650 800.00
- 3154 **1851, 3p Orange Red, Laid (1 var; SG 1a).** Full to huge margins with sheet margin at top and trace of adjoining stamp at right, light target cancel, Greene Foundation notes a tiny natural inclusion and pinhole, but our 30X glass fails to detect either, appears Extremely Fine, a beautiful example of this scarce shade, with 1997 Greene Foundation certificate, SG £650 800.00
- 3155 **1851, 3p Red, Laid (1; SG 1).** Vertical pair, full to large margins, two target cancels, two light horizontal creases only visible in fluid, Very Fine appearing pair, SG £1,300 1,600.00
- 3156 **1851, 3p Red, Laid (1; SG 1).** Vertical pair, close to large margins, target cancels, clear laid lines, Fine, SG £1,300 1,600.00



3157

- 3157 **1851, 3p Red, Laid (1; SG 1).** Horizontal strip of four, just touching at sides, full to large margins at top and bottom, three bold target cancels, clear laid lines, left stamp with light vertical crease only visible in fluid

FINE-VERY FINE. A RARE USED STRIP OF FOUR OF THE BEAVER ISSUE ON LAID PAPER.

From the Daniels estate. SG £2,600 (as singles). Scott Retail as singles
(Color Photo, p. 36) 3,200.00

- 3158 **1851, 3p Red, Laid (1; SG 1).** Six, mostly full to large margins, each with clear and distinct laid lines and well-struck target cancels, three with light creases invisible on face, Very Fine appearing group, SG £3,900..... 4,800.00

- 3159 **1851-52, 3p Red, Laid, Wove (1, 4; SG 1, 5).** Used accumulation comprising No. 1 (two), No. 4 (fifteen singles and three horizontal pairs), ample to large margins, one pair No. 4 with square grid, and one No. 4 with segmented cork cancel, other stamps with target cancels, one No. 4 with diagonal preprinting paperfold, four with minor faults, Fine-Very Fine, SG £4,660 5,380.00

- 3160 **1851, 6p Grayish Purple, Laid (2; SG 2).** Full to huge margins, light target cancel, Extremely Fine, SG £900 1,350.00



3161

- 3161 **1851, 6p Grayish Purple, Laid (2; SG 2).** Huge margins all around, deep rich color, neat strike of target cancel

EXTREMELY FINE GEM. A SUPERB EXAMPLE OF THE 6-PENCE GRAYISH PURPLE ON LAID PAPER.

Ex "Alford". With 1991 P.F. certificate. SG £900(Color Photo, p. 36) 1,350.00



3013



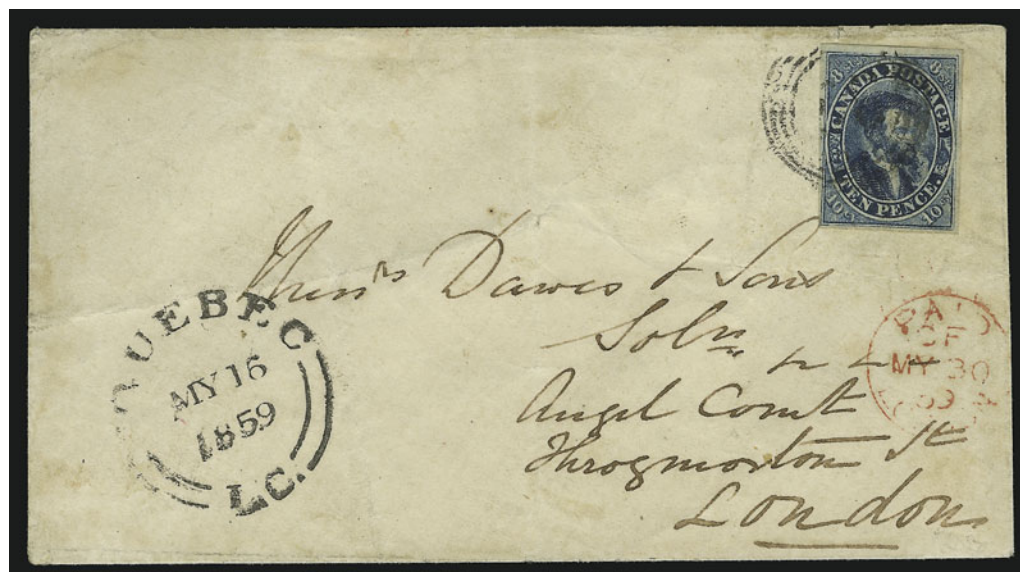
3014



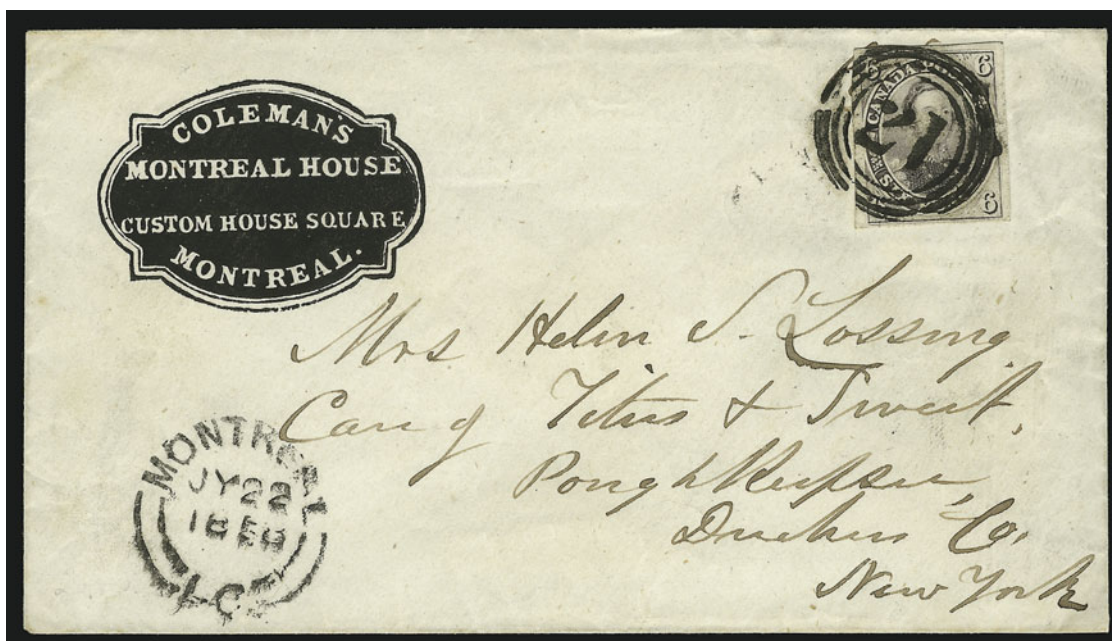
3017



3021



3022



3025



3030



3037



3043



3089



3116



3117



3118

3119



3120





3121



3123



3127



3150



3157



3161



3208



3238



3253EX



3250EX



3233



3228



3303



3332



3335



- 3162 **1851, 6p Grayish Purple, Laid (2; SG 2).** Full to large margins, light face-free cancels, Extremely Fine, SG £900..... 1,350.00
- 3163 **1851, 6p Grayish Purple, Laid (2; SG 2).** Large to huge margins all around, target cancel, clear laid lines, faint horizontal crease, appears Extremely Fine, SG £900..... 1,350.00
- 3164 **1851, 6p Grayish Purple, Laid (2; SG 2).** Full to large margins, light cancels, faint toning, otherwise Very Fine, SG £900..... 1,350.00
- 3165 **1851, 6p Grayish Purple, Laid (2; SG 2).** Large margins to clear, target cancel, sealed tear at right, otherwise Very Fine, SG £900 1,350.00
- 3166 **1851, 6p Grayish Purple, Laid (2; SG 2).** Three, each with full to large margins, bold target cancels, distinct laid lines, Very Fine group, SG £2,700(Photo Ex) 4,050.00

- 3167 ★田 **1852, 3p Red (4).** Bottom margin block of nine, Positions 76-78/86-88/96-98, unused (no gum), margins to in, defective with couple internal breaks along creases and small hole in margin at bottom, otherwise Fine, scarce large multiple, SG £9,900 as singles, Scott Retail as singles 11,250.00



- 3168 **1852, 3p Red, Wove (4; SG 5).** Large to huge margins incl. part of adjoining stamps at left and bottom, deep rich color on brilliant paper, **blue** target cancel, Extremely Fine Gem, a superb stamp, SG £160..... 180.00



3169



3170



3171



3172



3173



3174



3175



3176



3177



3178



3179



3182



3180



3181



3185



3186



3187



3188



3189



3190



3191



3192



3193

3169	1852, 3p Red, Wove (4; SG 5). Large even margins, bright color, bold "10" in target cancel, Extremely Fine, SG £160.....	180.00
3170	1852, 3p Red, Wove (4; SG 5). Full to enormous margins incl. sheet margin at bottom and trace of adjoining stamp at left, bold target cancel on bright white paper, Extremely Fine, SG £160	180.00
3171	1852, 3p Red, Wove (4; SG 5). Full to huge margins, brilliant color, light target cancel, Extremely Fine, SG £160.....	180.00
3172	1852, 3p Red, Wove (4; SG 5). Large to huge margins, dark shade, well-struck target cancel, tiny paper translucency, Extremely Fine, SG £160.....	180.00
3173	1852, 3p Red, Wove (4; SG 5). Large to huge margins, sharp impression, bold target cancel and trace of red cancel at right, Extremely Fine, SG £160.....	180.00
3174	1852, 3p Red, Wove (4; SG 5). Full to large margins, deep rich color, blue target cancel, Extremely Fine, SG £160.....	180.00
3175	1852, 3p Red, Wove (4; SG 5). Full to large margins, deep shade on fresh paper, clear target cancel, Extremely Fine, SG £160	180.00
3176	1852, 3p Red, Wove (4; SG 5). Full to enormous margins with part imprint at bottom , deep dark color, bold target cancel, couple light creases, otherwise Very Fine, SG £160..	180.00
3177	1852, 3p Red, Wove (4; SG 5). Full even margins, deep shade on fresh paper, bold square grid , Very Fine, SG £160	180.00
3178	1852, 3p Red, Wove (4; SG 5). Horizontal pair, full margins, radiant color, light blue target cancels, Extremely Fine, ex Reford, SG £320	360.00
3179	1852, 3p Red, Wove (4; SG 5). Horizontal pair, full to large even margins, brilliant color, light blue target cancels, Extremely Fine, an outstanding pair, ex Reford, SG £320	360.00
3180	1852, 3p Red, Wove (4; SG 5). Horizontal pair, full to large margins, lovely bright color, bold target cancels, Extremely Fine, ex Liechtenstein, SG £320	360.00
3181	1852, 3p Red, Wove (4; SG 5). Horizontal pair, ample to large margins, numeral in target cancels, Very Fine, with 1971 R.P.S. certificate, SG £320	360.00
3182	1852, 3p Red, Wove (4; SG 5). Vertical pair, ample to full margins, rich color on bright white paper, clear target cancels, Very Fine, SG £320.....	360.00
3183	1852, 3p Red, Brown Red, Scarlet Vermilion, Wove (4, 4a, 4d; SG 5, 7, 8). Used accumulation of twenty stamps comprising Nos. 4 (seven), 4a (three) and 4d (eight and pair), ample to large margins incl. four with parts of adjoining stamps on one side, target cancels incl. three in blue and five with numerals, three with light creases, Fine-Very Fine, SG £3,200	3,630.00
3184	1852, 3p Red, Brown Red, Scarlet Vermilion, Wove (4, 4a, 4d; SG 5, 7, 8). Used accumulation of 63 stamps incl. nine pairs, mostly full to large margins, most with target cancels incl. some in blue or with numerals, few square grids and one with rimless double-circle datestamp, few with light creases, Fine-Very Fine, SG £10,170.....	11,340.00
3185	1852, 3p Brown Red, Wove (4a; SG 8). Large to huge margins, deep shade, perfectly placed target cancel, Extremely Fine, a superb stamp, SG £170	190.00
3186	1852, 3p Brown Red, Wove (4a; SG 8). Large even margins, intense color, light target cancel, Extremely Fine Gem, ex Eno, SG £170.....	190.00
3187	1852, 3p Brown Red, Wove (4a; SG 8). Vertical pair, three large margins, ample at bottom, deep rich color, light "17" in target cancels, light internal wrinkles only visible in fluid, otherwise Very Fine and choice, SG £320.....	380.00
3188	1857, 3p Red, Ribbed (4c; SG 22). Large margins all around, deep rich color, clear ribbed paper lines, neat strike of numeral target cancel, fresh and Extremely Fine, with 1992 Greene certificate, SG £400	450.00
3189	1852, 3p Scarlet Vermilion, Thin Wove (4d; SG 7). Large to huge margins incl. trace of adjoining stamp at bottom, light target cancel, Extremely Fine, ex Pipkin, SG £170	180.00
3190	1852, 3p Red, Thin Wove (4d; SG 5). Full to large margins, light target cancels, Extremely Fine, SG £160.....	180.00
3191	1852, 3p Scarlet Vermilion, Thin Wove (4d; SG 7). Horizontal pair, full to large margins, radiant color nicely contrasted by light blue target cancels, Extremely Fine, SG £340	360.00
3192	1852, 3p Red, Thin Wove (4d; SG 5). Horizontal pair, ample to full margins, deep shade, light blue target cancels, Very Fine, SG £320	360.00
3193	1852, 3p Red, Thin Wove (4d; SG 5). Vertical pair, full to large margins, light target cancels, Very Fine, SG £320	360.00



3194



3195



3196



3197



3198



3199



3200



3201



3203



3204



3205



3207



3208



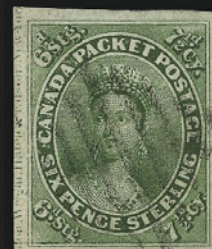
3209



3211



3212



3214

3194	1852, 3p Red, Thin Wove (4d; SG 5). Vertical pair, clear to enormous margins incl. wide sheet margin at right, light target cancels, light horizontal crease at top, appears Fine-Very Fine, ex Dale Lichtenstein, SG £320..... 360.00
3195	1855, 6p Slate Gray, Wove (5; SG 9). Large to huge margins incl. par of adjoining stamps at top and bottom, rich color and detailed impression, target cancel, Extremely Fine, with 1992 P.F. certificate, SG £950..... 1,000.00
3196	1855, 6p Slate Gray, Wove (5; SG 9). Large even margins, bold “21” in target cancel, deep shade, Extremely Fine, SG £950..... 1,000.00
3197	1855, 6p Slate Gray, Wove (5; SG 9). Ample to large margins, light square grid cancel, Very Fine, SG £950..... 1,000.00
3198	1855, 6p Slate Gray, Wove (5; SG 9). Clear to full margins, bold segmented cork cancel, fresh and Fine, SG £950..... 1,000.00
3199	1855, 6p Slate Gray, Wove (5; SG 9). Huge margins to just into at left with sheet margin at top with part imprint , numeral in target and red numeral cancels, Fine, SG £950..... 1,000.00
3200	1855, 6p Slate Gray, Wove (5; SG 9). Clear to large margins, light target cancel, fresh and Fine, SG £950..... 1,000.00
3201	1852, 6p Greenish Gray, Wove (5b; SG 10). Full to large margins, unobtrusive strike of numeral in target cancel, small corner crease at top right, light soiling affects color, otherwise Very Fine, with 2001 B.P.A. certificate and photocopy of 1976 P.F. certificate (the latter as gray violet), SG £950..... 1,250.00
3202	1855, 6p Slate Gray, 10c Blue Wove, ½c Rose (5, 7, 8; SG 9, 15, 17). Twelve used comprising No. 5 (eight), No. 7 (three) and No. 8, ample to large margins, most with target cancels, few with small faults incl. one No. 7 toned, Fine-Very Fine, SG £11,000... <i>Not illustrated</i> 12,225.00
3203	1857, 10p Blue, Wove (7; SG 15). Full to large margins, trace of frameline of adjoining stamp at bottom right, bright color, light numeral in target cancel, Extremely Fine, SG £1,200..... 1,250.00
3204	1857, 10p Blue, Wove (7; SG 15). Ample to full margins, lightened pen stroke, few faint horizontal creases, otherwise Very Fine, SG £1,200..... 1,250.00
3205	1857, 10p Blue, Wove (7; SG 15). Vertical strip of three, clear to full margins, deep color, light target cancels, vertical crease just breaks paper, otherwise Fine-Very Fine, a rare strip, SG £3,600..... 3,750.00
3207	1857, 7½p Green (9; SG 12). Full to huge margins incl. sheet margin at left with part imprint , bright color, cancel removed and regummed, otherwise Very Fine, with 1988 P.F. certificate, SG £1,500..... 2,000.00
3208	1857, 7½p Green (9; SG 12). Full balanced margins, deep shade, target and trace of red cancels, Very Fine and choice, SG £1,500..... (Color Photo, p. 36) 2,000.00
3209	1857, 7½p Green (9; SG 12). Close at top right, otherwise large even margins, intense color, light numeral in target cancels, Very Fine, SG £1,500..... 2,000.00
3211	1857, 7½p Green (9; SG 12). Close to large margins incl. sheet margin at top with part imprint , light target cancel, lightened contemporary ms. on front and back barely visible on face, Fine, SG £1,500..... 2,000.00
3212	1857, 7½p Green (9; SG 12). Full even margins, bold “21” in target cancel, deep rich color, tiny thin speck at top, Very Fine and choice appearance, ex Geldert, with 1960 R.P.S. certificate, SG £1,500..... 2,000.00
3213	1857, 7½p Green (9; SG 12). Margins to just in, rich color, faintly cancelled, vertical crease and thin spot, otherwise Fine, SG £1,500..... 2,000.00
3214	1857, 7½p Green (9; SG 12). Four used, ample to huge margins incl. one with part imprint at left, cancels incl. target, square grid and cork, three with tear and one with thin, otherwise Very Fine-Extremely Fine group, one with 1994 P.F. certificate, SG £6,000..... (Photo Ex) 8,000.00

LATER ISSUES

3215	3c Small Queens (38, 41). Collection of 1,660 used stamps formed by an employee of Stanley Gibbons Ltd. in the 1950's and 60's, mostly singles with few pairs and strips, wide variety of cancels and shades, arranged on stockcards, over 40 identified by town, cancels incl. “Prepaid by Publisher”, circular datestamps, corks, circles of wedges, circles of V's, grids, crossroads and other geometrics, targets with numerals, one with green cork and about 260 “Canada” in flags, also incl. copy of Robson Lowe article on the issue and a small book with the employee's hand-drawn examples of 425 postmarks found on the issue with their towns of origin and prices, few with faults but most are sound and Fine-Very Fine..... E. 400-500
------	--



3216



3219EX



3220EX



3221EX



3222



3223



3224



3225



3226



3227



3229EX



3230EX



3231

- 3216 ★ **1890, 6c Chocolate (43a; SG 86).** Bottom horizontal strip of ten with sheet margin on both sides and imprint at bottom, original gum, separated at center and hinged together, left sheet selvage also reattached by hinge, **other seven stamps Mint N.H.**, few light creases, otherwise Fine-Very Fine, SG £1,800 as singles, Scott Retail as hinged singles 1,750.00
- 3217 ★ **1893, 20c Vermilion, 50c Dark Blue (46, 47; SG 115, 116).** Original gum, bright colors, Fine..... *Not illustrated* 600.00
- 3218 ★ **1897, ½c-10c Jubilee (50, 51, 53, 54, 57).** Fifteen stamps comprising ½c, 2c and 10c (two each), 1c (five), 5c (four), original gum, few small faults, otherwise Fine *Not illustrated* 595.00
- 3219 ★ **1897, ½c-\$4.00 Jubilee (50-60, 64).** 3c, 50c and \$4.00 used, others original gum, h.r., rich colors, few small thin spots, otherwise Fine-Very Fine **(Photo Ex)** 1,722.00
- 3220 ★田 **1897, ½c-8c Jubilee (50, 52, 54, 56).** Blocks of four, eight stamps Mint N.H. incl. ½c and 8c (bottom pairs) and 2c (four), others original gum, 5c h.r., ½c and 8c (top pairs) lightly hinged, 2c with tiny toned spot at bottom right and 8c with corner creases at top right, otherwise Fine-Very Fine..... **(Photo Ex)** 1,205.00
- 3221 ★★田 **1897, 1c-3c Jubilee (51-53, SG 122, 124, 126).** Mint N.H. blocks of four, choice centering, rich colors, Very Fine-Extremely Fine, Scott Retail as Mint N.H. singles **(Photo Ex)** 470.00
- 3222 ★★ **1897, 3c Jubilee (53, SG 126).** Mint N.H. top plate no. 2 pair, rich color, almost perfect centering, Extremely Fine Gem, Scott Retail as singles 60.00
- 3223 ★田 **1897, 5c Jubilee (54, SG 128).** Block of four, rich color, original gum, bottom left stamp Mint N.H., others original gum, lightly hinged, Very Fine-Extremely Fine, with 1993 Green Foundation certificate 207.00
- 3224 ★ **1897, 10c Jubilee (57; SG 131).** Original gum, lightly hinged, sharp proof-like impression, perfectly centered, Extremely Fine Gem 85.00
- 3225 ★ **1897, 20c Jubilee (59; SG 133).** Original gum, single h.r., brilliant color, fresh and Extremely Fine.... 180.00
- 3226 ★田 **1897, 50c Jubilee (60; SG 134).** Block of four, original gum, lightly hinged, deep rich color, perf separations, left pair with vertical crease, bottom right stamp with tiny natural gum skips, otherwise Very Fine, Scott Retail as singles..... 800.00
- 3227 ★ **1897, \$1.00 Jubilee (61; SG 136).** Original gum, h.r., tiny gum soak at top, otherwise Fine... 575.00



3228

- 3228 ★田 **1897, \$1.00 Jubilee (61; SG 136).** Block of four, **three stamps Mint N.H.**, other stamp barest trace of hinge mark, deep rich color, choice centering with well-balanced margins
EXTREMELY FINE. A BEAUTIFUL BLOCK OF THE \$1.00 JUBILEE.
Scott Retail as singles **(Color Photo, p. 36)** 5,225.00
- 3229 ★ **1897, \$1.00, \$2.00 Jubilee (61, 62, SG 136, 137).** Original gum, deep rich colors, \$2.00 with light natural gum bends, Fine **(Photo Ex)** 1,450.00
- 3230 ★ **1897, \$1.00, \$2.00, \$4.00, \$5.00 Jubilee (61, 62, 64, 65; SG 136, 137, 139, 140).** Original gum, \$5.00 h.r., others lightly hinged, bright fresh colors, Fine-Very Fine **(Photo Ex)** 3,400.00
- 3231 ★ **1897, \$2.00 Jubilee (62; SG 137).** Original gum, lightly hinged, deep rich color on fresh paper, Very Fine 875.00



3232



3233



3234



3235EN



3236



3239



3240EN



3241



3242



3243



3244



3245



3246



3247



3248



3249EN

- 3232 (★) **1897, \$2.00 Jubilee (62; SG 137).** Unused (no gum), rich color, fresh and Fine. 875.00
- 3233 ★★ **1897, \$3.00 Jubilee (63; SG 138).** Mint N.H., intense color, almost perfectly centered, Extremely Fine, a beautiful stamp(Color Photo, p. 36) 2,750.00
- 3234 **1897, \$3.00 Jubilee (63; SG 138).** Vivid color nicely contrasted by purple Winnipeg circular datestamp, Very Fine 750.00
- 3235 (★) **1897, \$3.00-\$5.00 Jubilee (63-65; SG 138-140).** Unused (regummed), well-centered, rich colors, Extremely Fine.....(Photo Ex) 2,925.00
- 3236 ★ **1897, \$4.00 Jubilee (64; SG 139).** Original gum, h.r., fresh color, Very Fine..... 975.00



3237

- 3237 田 **1897, \$4.00 Jubilee (64; SG 139).** Right margin block of four, well-centered, bold purple Winnipeg datestamps but retaining original gum, Extremely Fine ... 3,000.00

- 3238 ★★ **1897, \$5.00 Jubilee (65; SG 140).** Mint N.H. with sheet selvage at right, deep rich color, light fingerprint on gum, Very Fine and choice(Color Photo, p. 36) 2,750.00



3238

- 3239 ★ **1897, \$5.00 Jubilee (65; SG 140).** Original gum, lightly hinged, fresh and Very Fine..... 900.00
- 3240 ★ **1897, \$5.00 Jubilee (65; SG 140).** Three with slightly disturbed original gum, rich color, one with small light crease and one with tiny inclusions on gum, Fine-Very Fine.....(Photo Ex) 2,925.00
- 3241 **1897, \$5.00 Jubilee (65; SG 140).** Rich color, neat face-free strike of purple cancel, Very Fine and choice 750.00
- 3242 **1897, \$5.00 Jubilee (65; SG 140).** Deep shade, neat purple Winnipeg datestamps, fresh and Fine 750.00
- 3243 ★ **1902, 7c Olive Yellow (81).** Top plate No. 1 strip of three, stamps Mint N.H., deep rich color and detailed impression, wide margins, Extremely Fine, a beautiful plate no. strip, Scott Retail as Mint N.H. singles..... 570.00
- 3244 ★★田 **1898, 10c Brown Violet (83).** Mint N.H. block of four, deep rich color and proof-like impression, choice centering, Extremely Fine Gem, a superb block, with 1991 Greene Foundation certificate, Scott Retail as Mint N.H. singles 1,800.00
- 3245 ★★田 **1898, 2c Map Issue (85).** Mint N.H. left margin block of four, rich colors, choice centering, Extremely Fine, Scott Retail as Mint N.H. singles..... 200.00
- 3246 ★★田 **1899, 2c on 3c Carmine (87).** Mint N.H. top plate no. 6 block of eight, intense color and impression, choice centering, Extremely Fine, an exceptional plate block, Scott Retail as Mint N.H. singles 220.00
- 3247 ★田 **1903, 10c Dull Lilac (93 var; Unitrade 93i).** Bottom left corner margin block of four, bottom stamps Mint N.H., bright color and crisp impression, choice centering, few sensibly reinforced perf separations at top, Extremely Fine, with 1998 Greene Foundation certificate, this shade unlisted in Scott, Unitrade value 1,500.00
- 3248 ★★田 **1903, 2c Carmine (90).** Mint N.H. top plate no. 81 block of six, brilliant color, wide margins, Extremely Fine, Scott Retail as Mint N.H. singles 300.00
- 3249 ★ **1c-8c 1928-29 Issue, Imperforate Pairs (149b-154a).** Large margins all around, one 4c stamp barely hinged, others Mint N.H., fresh and Very Fine.....(Photo Ex) 462.00



3250EX

- 3250 P **1928-29, 1c-\$1.00 Commemoratives, Plate Proofs (149P-159P).** Pairs, 1c-8c with right sheet margin, 10c-\$1.00 with bottom right corner margin, large margins other sides, rich colors, Extremely Fine set, Unitrade value(Color Photo Ex, p. 36) 5,000.00



3251EX

- 3251 P **1928-29, 1c-\$1.00 Commemoratives, Plate Proofs (149P-157P, 159P).** Inscription blocks of ten of 1c-20 and inscription block of eight of \$1.00, huge margins other sides, rich colors
 VERY FINE-EXTREMELY FINE. AN EXCEEDINGLY RARE GROUP OF INSCRIPTION BLOCKS OF THE 1928-29 SCROLL ISSUE.
 From the archives of the American Bank Note Company. Unlisted in Scott. Unitrade values the complete set in pairs at \$5,000.00(Photo Ex) E. 7,500-10,000



3252EX



3253EX

- 3252 ★★ **1928-29, 1c-\$1.00 Commemoratives, Horizontal Pair, Imperforate Vertically (Unitrade 149i-159i).** Mint N.H., 3c, 12c, 20c and \$1.00 with sheet margin at side, 1c and 3c sheet margin at top, large margins, Very Fine and choice, scarce set, unlisted in Scott, Unitrade value(Photo Ex) 5,325.00
- 3253 ★★ **1928-29, 1c-\$1.00 Commemoratives, Vertical Pairs, Imperforate Horizontally (Unitrade 149ii-159ii).** Mint N.H. set, large margins, rich colors, Very Fine and choice, unlisted in Scott, Unitrade value(Color Photo Ex, p. 36) 5,325.00



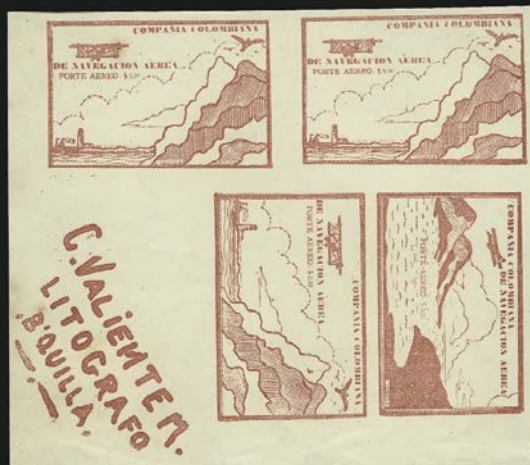
- 3254 ★★田 1929, 50c Bluenose (158). Mint N.H. block of four, rich color, Very Fine and choice..... 1,200.00
- 3255 ★★田 1946, \$1.00 Red Violet (273). Matched set of four corner plate no. blocks of four, Mint N.H., rich colors, fresh and Very Fine-Extremely Fine, Scott Retail as singles(Photo Ex) 720.00
- 3256 ★★田 1949, \$1.00 Red Violet, Official (O10). Matched set of four Mint N.H. plate no. 1 blocks of four, fresh and Very Fine-Extremely Fine, Scott Retail as singles ..(Photo Ex) 960.00
- 3257 ★★田 1950, 1c-\$1.00 Officials (O16-O25). Mint N.H. top right plate no. blocks of four, fresh colors, Very Fine-Extremely Fine, Scott Retail as singles(Photo Ex) 505.00
- 3258 ★★田 1950, 1c-\$1.00 Officials (O16-O25). Mint N.H. top left plate no. blocks of four, choice centering, Very Fine-Extremely Fine, Scott Retail as singles(Photo Ex) 505.00
- 3259 ★★田 1950, 1c-\$1.00 Officials (O16-O25). Mint N.H. bottom right plate no. blocks of four, fresh colors, Very Fine and choice, Scott Retail as singles.....(Photo Ex) 505.00
- 3260 ★★田 1950, 1c-\$1.00 Officials (O16-O25). Mint N.H. bottom left plate no. blocks of four, fresh color, choice centering with wide margins, Very Fine-Extremely Fine, Scott Retail as singles.....(Photo Ex) 505.00
- 3261 ★★田 1950, 1c-\$1.00 Officials (O16-O25). Mint N.H. blocks of ten except blocks of six and four of 50c, several with sheet margins and few with imprint, choice centering, rich colors, Very Fine-Extremely Fine, Scott Retail as singles.....*Not illustrated* 1,264.00



3262EX



3263



3264A EX



3265EX



3267



3269



3270



3271



3272



3273



3274



3275



3276



3277



3278



3279

- 3262 **CAPE OF GOOD HOPE, 1p, 4p Triangles (3, 9, 12).** Four stamps incl. No. 3 one unused (no gum) and one used, No. 9 used and No. 12 unused (no gum), clear to large margins, each with faults mostly invisible on face incl. No. 9 repaired, Fine-Very Fine appearing group **(Photo Ex)** 2,260.00
- 3263 (★) **COLOMBIA, 1861, 2½c Black (2).** Unused (no gum), full margins, described by the P.F. as bleached but has good color, Extremely Fine, with 2002 P.F. certificate 1,100.00
- 3264 **COLOMBIA, 1864-68.** Three items, incl. unused No. 30a tete-beche pair, used No. 42 block of four, unused No. 57a tete-beche pair, clear to large margins, Fine-Very Fine, first signed Buhler 500.00
- 3264A (★) **COLOMBIA, 1920, 10c Vermilion, Compania Colombiana de Navegacion Aerea.** Four items comprising se-tenant pair, tête-bêche pair in bottom margin strip of four, bottom left corner block of four with lithographer's imprint, and juxtapositioned corner block, last with original gum, other three unused (no gum), large margins, imprint block with two toned spots, pair and juxtapositioned block with small corner crease only in margins, strip of four with wrinkles mostly in sheet margin, Very Fine and exceedingly rare, pair with Sanabria backstamp, two pieces with Kessler and Sanabria backstamps, accompanied by photograph of original sheet, otherwise Very Fine and extremely rare, unlisted in Scott **(Photo Ex)** E. 1,000-1,500
- 3265 **FINLAND, 1856, 5k Blue, 10k Carmine (1, 2).** Full even margins, 5k with bold ms. "X" cancel, repaired in margins, 10k with cancel removed, Very Fine appearing pair, each with 2001 Nielsen certificate **(Photo Ex)** 1,725.00
- 3266 **FINLAND, 1860-85, 5k Gray Blue on Bluish, Ty. I, 5m Green & Rose (4 var, 36).** No. 4 horizontal pair, full teeth all around, neat boxed town handstamp, No. 36 with neat "Helsingfors 3-5 88" circular datestamp, Very Fine and choice, No. 4 ex Linz, ex Hall, with Carl Pelander lot cards E. 75-100
- 3267 (★) **FINLAND, 1867, 1m Yellow Brown, Ty. III (11).** Unused (regummed), long full perfs all around, tiny gum soak at top, otherwise Fine 1,300.00
- 3268 ★ **FRANCE, 1853-62, 10c Pale Bister Reprint, 10c Bister, Die I (10b, 14).** No. 10b without gum as issued, ample to large margins, No. 14 horizontal pair, original gum, left stamp lightly hinged with fingerprint on gum, right stamp small h.r., full to large margins, fresh color, Very Fine, No. 10b with 2002 Calves certificate *Not illustrated* 1,075.00
- 3269 **GERMAN STATES, Oldenburg, 1861, ½g Moss Green (10b, Michel 10b).** Clear to large margins, brilliant color nicely contrasted by blue Oldenburg double-circle datestamp, Very Fine, 1997 Michel DM7,000, signed Buhler and with 1990 Berger certificate 2,400.00

GREAT BRITAIN

- 3270 ★ **1840, 1p Black (1; SG 2).** BI, Large part original gum, full to large margins, horizontal crease at bottom, otherwise Very Fine, a scarce stamp with original gum, SG £3,250 3,000.00
- 3271 ★ **1840, 2p Blue (2; SG 5).** RG, original gum, clear to full margins, bright color, Very Fine example of this challenging issue, with 1977 R.P.S. certificate, SG £6,000 5,750.00
- 3272 (★) **1841, 2p Blue on Bluish Paper (4, SG 14).** Unused (regummed), large margins to just into at left and bottom, fresh color, Fine, SG £1,300 1,250.00
- 3273 (★) **1848, 10p Red Brown (6, SG 57).** Unused (no gum), large to huge margin at left, rich color, Very Fine, SG £2,750 2,750.00
- 3274 ★ **1854, 6p Red Violet (7, SG 58).** Original gum, just into on three sides, clear at bottom, rich color, Fine, SG £3,000 2,900.00
- 3275 (★) **1855, 4p Rose on White (22, SG 62a).** Unused (no gum), bright color, certificate notes surface abrasions but they are not visible, small ink "16a" on reverse does not show thru, Fine, with 1996 B.P.A. certificate, SG £3,000 2,500.00
- 3276 (★) **1856, 4p Rose on Thin White (25, SG 64).** Unused (regummed), Fine, SG £2,250 2,250.00
- 3277 (★) **1856, 4p Rose on White (25, SG 65).** Unused (regummed), small repair at bottom right, Fine, with 1991 P.F. certificate, SG £2,250 2,250.00
- 3278 (★) **1857, 4p Rose on White (26, SG 66).** Unused (regummed), Fine, SG £800 850.00
- 3279 (★) **1856, 1sh Green (28, SG 72).** Unused (regummed) over small corner crease at bottom left, fresh color, Fine, SG £725 750.00
- 3280 (★) **1862, 3p Pale Rose, 4p Vermilion, 6p Lilac (34, 37, 39, SG 77, 80, 84).** Unused (regummed), bright colors, 4p with two toned perfs, 3p reperfed at right and couple short perfs, 6p with few repaired and toned perfs at top left, otherwise Fine group, SG £2,250 *Not illustrated* 2,450.00



3281



3282



3283EN



3284



3285



3286



3287



3288



3289



3290EN



3291



3292EN



3293EN



3294



3295



3296



3297



3298



3299EN



3300



3302

3281 (★)	1862, 9p Straw (40, SG 86). Unused (regummed), short perf at top right, otherwise Fine, SG £1,600	1,750.00
3282 (★)	1862, 1sh Green (42, SG 90). Unused (no gum), tiny corner crease at bottom right, otherwise Very Good, SG £900.....	1,000.00
3283 (★)	1865, 3p-1sh Victoria (43-48). Unused (no gum or regummed), 3p and 1sh with natural s.e., Very Good, SG £2,875(Photo Ex)	2,900.00
3284 (★)	1867, 9p Bister (52, SG 110). Unused (regummed), Very Good, SG £725	750.00
3285 (★)	1867, 10p Red Brown (53, SG 112). Unused (regummed), crisp impression, light vertical crease, Very Good.....	1,400.00
3286 ★	1867, 2sh Blue (55, SG 119). Original gum, lightly hinged, precise centering, bright color, natural s.e. at right, Very Fine, SG £1,200	1,300.00
3287 (★)	1880, 2sh Pale Brown (56, SG 121). Unused (regummed), bright and fresh, Fine, a scarce stamp in unused condition, SG £7,500.....	8,000.00
3288	1880, 2sh Pale Brown (56, SG 121). Light cancel, faint vertical crease only shows in fluid, Fine, small Albertson backstamp, SG £1,600	1,500.00
3289 (★)	1867, 5sh Rose (57, SG 126). Unused (regummed) over large thin, otherwise Fine, SG £3,250	3,500.00
3290 (★)	1873, 3p-1sh Victoria (60-62, 64, SG 125, 144, 147, 150). Unused (regummed), No. 60 with natural s.e. at left, rich colors, Fine, SG £1,775(Photo Ex)	1,900.00
3291 (★)	1880, 1sh Salmon (65, SG 151). Plate 13, unused (no gum), fresh color, Fine, SG £1,500	1,600.00
3292 (★)	1875-80, 2½p Issues (66a, 67, 68, SG 139, 141, 142). Unused (regummed), No. 66a Plate 3, No. 67 Plate 14 and No. 68 Plate 17, bright colors, Fine, SG £1,050(Photo Ex)	1,050.00
3293 (★)	1876-80, 4p Vermilion, Pale Olive Green, Gray Brown (69-71, SG 152-154). Plate 15, 16 and 17 respectively, unused, No. 69 no gum, others regummed, No. 71 reperfed, otherwise Fine, SG £2,125(Photo Ex)	2,175.00
3294 ★	1876, 8p Orange (73, SG 156). Part original gum, intense color on brilliant paper, Fine, SG £675.....	700.00
3295	1878, 10sh Slate (74, SG 128). Proof-like impression, bold "Glasgow AP 26, 82" circular datestamp, experts small backstamp does not show thru, Fine, rare Scotland cancel, SG £1,200	1,250.00
3296	1878, 10sh Slate (74, SG 128). Rich color, bold cancel, Fine, SG £1,200	1,250.00
3297	1878, 10sh Slate (74, SG 128). Fresh color, small backstamp does not show thru, Fine, SG £1,200	1,250.00
3298	1878, £1 Brown Lilac (75, SG 129). Bold grid cancel, Fine, scarce in sound used condition, SG £1,700.....	1,750.00
3299 ★	1880-81, ½p-1sh Victoria (78-89). Nos. 84 and 85 unused (no gum), No. 86 unused (regummed), others original gum, rich colors, 1sh small thin, Fine-Very Fine(Photo Ex)	2,157.00
3300 (★)	1882, 5sh Rose on White (90a, SG 134). Unused (regummed), tiny adherence at top right, bright color on brilliant paper, Very Fine, SG £6,250	6,250.00



3301

- 3301 (★) **1882, 10sh Slate on White (91a, SG 135).** Unused (no gum), well-centered, repaired tear at bottom and few scuffs, otherwise Very Fine, an incredibly rare stamp in unused condition, with 1983 A.P.S. certificate, SG £26,000.....

27,500.00

- 3302 **1882, £1 Brown Lilac on White (92a, SG 136).** Well-centered, large blue crayon "X" and clear "Glasgow MY 14, 83" circular datestamp, Very Fine, SG £2,750

2,750.00



3304



3305



3306EN



3307EN



3308



3309



3313EN



3310



3311



3312



3314



3315



3316EN



3317EN



3318



3319



3320EN



3321



3321A



3322



3323



- 3303 ★★ **1882 £5 Bright Orange (93, SG 137).** Mint N.H. with sheet selvage at bottom, radiant color on brilliant paper, beautifully centered, couple usual minor natural gum creases noted only for accuracy and do not detract

EXTREMELY FINE. A GORGEOUS MINT NEVER-HINGED EXAMPLE OF THE £5 ORANGE. AN INCREDIBLE STAMP.

Scott Retail as hinged. SG £5,750
.....(Color Photo, p. 36) 6,500.00

3303

- 3304 **1882 £5 Bright Orange (93, SG 137).** Perfectly centered with even margins, vivid color, bold London circular datestamp and boxed cancels, Extremely Fine, SG £1,700 1,750.00
- 3305 S **1882 £5 Bright Orange, Specimen (93S, SG 137S).** Original gum, small h.r., bold handstamp, bright and fresh, Extremely Fine E. 500-750
- 3306 ★ **1883, 3d on 3d, 6d on 6d Surcharges (94, 95, SG 159, 162).** Original gum, 3d h.r., rich colors, Very Fine, 3d signed Richter, SG £550.....(Photo Ex) 540.00
- 3307 ★ **1883-84, ½p-1sh Victoria (98-107).** Nos. 99, 100, 102-106 unused (regummed), others original gum, Nos. 102 and 107 with faults, otherwise Fine-Very Fine.....(Photo Ex) 2,700.00
- 3308 ★ **1884, 5sh Carmine Rose (108, SG 180).** Original gum, lightly hinged, radiant shade on bright white paper, Very Fine, SG £500 500.00
- 3309 ★ **1884, 10sh Ultra (109, SG 183).** Original gum, slightly faded color, otherwise Very Fine, SG £1,000..... 1,100.00
- 3310 **1884 £1 Brown Violet (110, SG 185).** Choice centering, sharp impression, bold "London Western Office De 8, 87" circular datestamp and boxed cancel, Extremely Fine, SG £1,300..... 1,350.00
- 3311 **1891 £1 Brown Violet (123, SG 186).** Rich color on bright white paper, bold circular datestamp, Fine, SG £2,000..... 2,100.00
- 3312 ★ **1891, £1 Green (124, SG 212).** Sheet selvage at top, original gum, trace of hinge, rich color, detailed proof-like impression on bright paper, small backstamp does not show thru, Extremely Fine, SG £2,250..... 2,500.00
- 3313 ★ **1902-11, ½p-10sh King Edward VII (127-141, 143-145).** Most h.r., Nos. 135, 137-139 regummed, others lightly hinged, 6p crease, otherwise Fine-Very Fine..... 973.00
- 3314 ★ **1902, £1 Green (142, SG 266).** H.r., bright and fresh, Very Fine, SG £1,000 850.00
- 3315 **1902, £1 Green (142, SG 266).** Bold "Guernsey" straightline in circle cancel, choice centering, Extremely Fine, scarce Guernsey usage, SG £400..... 400.00
- 3316 ★ **1913, 2sh6p-10sh Seahorses (173-175; SG 400-402).** Lightly hinged, sharp impressions, Very Fine, SG £765(Photo Ex) 840.00
- 3317 ★ **1915, 2sh6p, 5sh Seahorses (173a, 174a; SG 406, 409).** Small h.r., beautifully centered, fresh and Extremely Fine, SG £400(Photo Ex) 450.00
- 3318 ★ **1915, 10sh Seahorse (175a; SG 412).** Lightly hinged, deep dark color on brilliant paper, Very Fine, SG £850..... 900.00
- 3319 (★) **1913, £1 Seahorse (176; SG 404).** Unused (regummed), bright color and sharp impression, couple short perfs at top, Very Fine, SG £1,250 1,250.00
- 3320 ★ **1918-19, 2sh6p-10sh Seahorses (179-181; SG 414, 416, 417).** H.r., rich colors and proof-like impressions, Very Fine, SG £545(Photo Ex) 480.00
- 3321 ★ **1929, £1 Black, Postal Congress (209; SG 438).** Lightly hinged, well-centered, tiny piece of string embedded in gum (not a brush hair), Very Fine and choice, SG £750 650.00
- 3321A **ICELAND, 1873, 16sk Yellow (4).** Brilliant color, neat Reykjavik circular datestamp, Very Fine and choice 2,000.00
- 3322 **LABUAN, 1905, \$5.00 Red Violet (122, SG 141).** Light "Labuan 13 Apl. 05" circular datestamp, Very Fine, SG £1,000, with 2002 B.P.A. certificate 850.00
- 3323 **MALAYA, SELANGOR, 1882, 2c Brown (3, SG 8).** Grid and red circular datestamp cancels, light horizontal crease at top only visible in fluid and small backstamp does not show thru, Fine appearing example of this rare stamp, with 2002 B.P.A. certificate, SG £2,000 1,400.00



3324EX



3325



3326



3327



3329



3328



3330



3331



3333EX



3334



3335



3336

NEWFOUNDLAND

- 3324 S **1897-1901, 1/2c-5c Royal Portraits, Specimen Overprints (78S-85S).** Ungummed, small punch holes, 3c slightly oxidized and small thin spot, others bright and fresh, otherwise Fine-Very Fine set.....(Photo Ex) E. 200-300
- 3325 ★★ **1932, \$1.50 on \$1.00 DO-X (C12).** Mint N.H., rich color on bright paper, Very Fine and choice..... 350.00
- 3326 ★★ **1932, \$1.50 on \$1.00 DO-X (C12).** Mint N.H., deep shade, Very Fine 350.00
- 3327 ★★田 **1933, \$4.50 on 75c Balbo, Air Post (C18).** Mint N.H. block of four, bright color, Very Fine-Extremely Fine, with 1972 P.F. certificate, Scott Retail as Mint N.H. singles..... 1,900.00
- 3328 E **NEW ZEALAND, Chalon Portrait of Queen Victoria, Vignette Only, Large Die Essay.** Die sunk on 88 x 126mm card, printed directly on card with full die sinkage, superb impression, Very Fine and choice, pencil notation on back "1861 Grenada", "1860 Natal" and "1855 Tasmania"..... E. 200-300
- 3329 **NEW ZEALAND, 1855, 1p Dull Carmine (1; SG 1).** Clear margins all around, light grid cancel, light soiling, Fine and scarce, with 2002 B.P.A. certificate, SG £9,000..... 14,000.00
- 3330° **PALESTINE, 1920, 3m Jerusalem II "Palestinb" Ovpt. (Bale 44B).** Pos. 111 with "B" in intermediate stage, light cancel at right, Very Fine, listed but unpriced in Bale, with 2002 Muentz certificate..... E. 750-1,000
- 3331 ★ **PERU, 1857, 1r Blue on Blue (1).** Original gum, paper h.r., full even margins, rich color, light gum toning at top barely shows thru at top but not noted on certificate, otherwise Extremely Fine, with 2002 P.F. certificate..... 1,250.00



3332

- 3332 ★ **RUSSIA, 1857, 10k Brown & Blue (1). Original gum,** small h.r., full to large margins, rich colors, small repair at top right, light pencil notes on gum do not show thru
EXTREMELY FINE APPEARING AND RARE ORIGINAL-GUM EXAMPLE OF THE FIRST ISSUE OF RUSSIA.
A search of past auction catalogue yielded only few examples of this stamp with original gum. Most copies have no gum, or at best traces of original gum. The Scott Catalogue states "Genuine unused copies of No. 1 are rare. The unused value is for an example without gum. The very few known stamps with original gum sell for much more."
With 2002 P.F. certificate.....(Color Photo, p. 36) 4,500.00
- 3333 ★ **SAUDI ARABIA, 1934, 1/4g-1s First Kingdom Issue (138-149).** Lightly hinged, wide even margins, bright colors on fresh paper, Extremely Fine set.....(Photo Ex) 1,477.00
- 3334 ★★ **SIERRA LEONE, 1923, £5 Gray Green & Orange (139; SG 148).** Mint N.H., beautifully centered, brilliant colors on fresh white paper, Extremely Fine..... 1,000.00
- 3335 **SWITZERLAND, 1850, 2½r Black & Red, Poste Locale, Without Frame Around Cross (4, Zumstein 14II).** Clear to large margins with full dividing lines at top and left, light federal black grid cancel, thinned and small tear
FINE APPEARING AND RARE USED EXAMPLE OF THE POSTE-LOCALE WITHOUT FRAME AROUND CROSS.
Signed Schlessenger. With 2001 Berra-Gautschy certificate(Color Photo, p. 36) 22,500.00
- 3336 (★) **WESTERN AUSTRALIA, 1855, 1sh Pale Brown (5, SG 6a).** Unused (no gum), full to large margins, fresh and Very Fine, SG £1,400 (as no gum)..... 400.00

COLLECTIONS BY COUNTRY

- 3337 **AUSTRALIA, GEORGE V.** Comprehensive study comprising thousands of ½d thru 5d issues, unused and used incl. blocks, gutter multiples, wide variety of cancels, on blank quadrille pages with typed descriptions, also incl. general collection with covers, 1949-63, Very Fine E. 2,000-3,000
- 3338 **AUSTRIA, 1858-63 Issues (6-21).** Collection of approximately 300 used stamps and 30 covers, stamps comprising Nos. 6 (9), 7, 8 (5), 9/9a (45), 10/10a (44), 11/11a (29), 12 (5), 13 (11), 14 (26), 15 (29), 16 (36), 17 (3), 18 (2), 19 (21), 20 (18), 21 (15), few reprints, wide variety of cancels, hinged on quadrille pages, Fine-Very Fine E. 750-1,000
- 3339 **AUSTRIA, 1863-83 Issues (22-46).** Collection of over 450 used stamps, about 30 unused stamps and 34 covers, used incl. 5-43 each incl. Nos. 33 (13), 39 (6), 40 (5), and 46 (8), few reprints, wide variety of cancels, hinged on quadrille pages, Fine-Very Fine, Scott Retail only for stamps exceeds \$3,800 E. 1,000-1,500
- 3340 **AUSTRIA, 1890-1932 Issues (51/343).** Collection of few hundred mostly used stamps and 63 cards/covers, stamps mostly Nos. 51-105, incl. many multiples, much duplication with wide variety of cancels, on blank quadrille pages in two albums, Fine-Very Fine E. 250-350
- 3341 **AUSTRIA NEWSPAPERS.** Collection of a few hundred mostly used stamps, incl. Nos. P1/P1a (14), P5 (2), P6, P8 (11), P9/P9B (41), PR1 (2), PR2 tied by circular datestamp on 1875 Newspaper in Hebrew, also incl. five misc. cards/covers, wide variety of cancels, hinged on blank quadrille pages, reprints not counted, mostly Fine-Very Fine E. 750-1,000
- 3342 ★ **AUSTRIA REFERENCE.** Six items incl. Nos. “3” (fake), 4b reprint, P6 reprint pair with fake Padova cancel, P7b reprint with fake cancel, Lombardy-Venetia Nos. 4g reprint and No. 5b with Roman States No. 9 “used” on folded letter to Ferrara, L-V No. 4g reprint with photocopy of 2001 P.F. certificate, Austria Nos. 3 and P7b with 2001 Ferchenbauer certificates E. 300-400
- 3343 ★ **BELGIUM.** Unused collection, 1910-56, better incl. Nos. 108-122 (perf and imperf), 124-137, 170a, 212-215, 221, B34-B47, B107-B113 (perf and imperf), B114-B122 (two unused and one used), B132-B143, also incl. **two of Nos. Q49-Q60** (without Nos. Q51 & Q53) with some signed Waroquiers, Gelli-Tanni or Federation Belge, Sanabria Nos. S1-S5, few other imperf sets, Fine-Very Fine, if genuine parcels, Scott Retail would be approximately 25,000.00
- 3344 ★ **BELGIUM.** Collection, mostly unused, better incl. Nos. 45-48 (imperforate blocks of four), 60-75, 171, B1-B24, B106, B114-B122, B125-B131 (two), B132-B143, B144-B150, B156-B162, B169, B458a and B605a, also incl. study of Nos. 1 and 2 incl. covers and cancellations, set of eight Moresnet locals (cto), and **1782 stampless cover with “Bruxelles” straightline addressed to Count Oginski, Grand General of Lithuania,** hinged or in mounts on blank quadrille pages, Fine-Very Fine E. 1,000-1,500
- 3345 P **BELGIUM, PROOFS AND ESSAYS.** Collection of 300 items incl. blocks and complete panes, mostly 19th and early 20th century issues with majority 1865-66 Leopold I and Coat of Arms issues, 1896 Brussels Exhibition essays, and 1912-13 Albert issues, also incl. 24 1923-27 Specimen Parcel Post issues to 50Fr, in mounts on blank quadrille pages, Very Fine E. 750-1,000
- 3346 **BELGIUM AND COLONIES, NETHERLANDS AND COLONIES, LUXEMBOURG.** Incl. Congo, Ruanda-Urundi, Netherlands Antilles, Netherlands Indies, Curacao, and Suriname, well-filled with many better stamps and complete sets, mixed unued and used with most unused, hinged or in mounts in two Scott specialty albums, 19th century with few faults, generally Fine-Very Fine E. 500-750
- 3347 **BRAZIL.** Accumulation of hundreds of stamps and about 30 covers, better incl. used Nos. 11, 22 (strip of five), unused blocks of Nos. 83, 88, 93, 167b (block of six), 168b (block of ten), singles of Nos. 496a-498a, J1-J9, P1-P18, and booklet of No. 177 (three panes), covers incl. about 15 Zeppelin flown incl. ten franked with “Zeppelin” ovpts., also incl. collection of souvenir items and a handwritten note by Brazilian President Kubitschek, on blank quadrille pages, few faults to be expected, generally Fine-Very Fine E. 1,000-1,500

- 3348 **BRITISH GUIANA.** 1901-61, approximately 100 unused and used stamps hinged on album pages, incl. Nos. 160-163, 165-170, 184-188, few small faults, most are Fine-Very Fine, Scott Retail approximately..... E. 550-0
- 3349 ★ **BULGARIA.** 1902-47, unused stamps in wholesale quantities, Fine-Very Fine ... 957.00
- 3350 **CANADA.** 1851-1967, home made album pages of unused and used stamps, incl. used Nos. 1, 4 (two), 5, 8, 9, 12, 19, 23, 26, 33, unused incl. Nos. 141 and 144 vertical pairs imperf horizontally, 149-159, 177, fairly complete from 1932, few small faults to be expected on earlier issues, mostly Fine-Very Fine, Scott Retail in excess of ... 10,000.00
- 3351 **CANADA.** Mostly unused collection, 1851-1976, used incl. Nos. 1, 2, 5, 9, 17-20, 25-27, 62, 63, 65, 151-159, unused incl. Nos. 22-24, 28 (no gum), 40, 46, 47, 50-61, 64, 66-73, 79-83, 93, 94, 96-103, 123-134, 136-138 (blocks of four), 241-262, E2-E11, F3 (no gum), nice group of revenues and related incl. New Brunswick used Nos. 1 and 2, unused Nos. 6-11, Newfoundland unused Nos. 3, 11A, 61-74, 104-126, 212-225, C6-C18, used Nos. 1, 24-31, 37-40, Nova Scotia used Nos. 1-5, many in mounts in Scott Specialty album, few 19th century with faults, Fine-Very Fine..... E. 5,000-7,500
- 3352 ★ **CANADA.** 19th-20th Century balance comprising a nice group of unused stamps on old lot cards, incl. Nos. 79, 81, 82, 84, 92-93, 90a, 99 block of four, 119-122, 162-177, 261 (two blocks of four), some Mint N.H., few small faults to be expected, mostly Fine-Very Fine..... E. 750-1,000
- 3353 **CANADA.** Well-filled mostly used collection, 1859-1984, used incl. Nos. 18, 22-26, 28, 47, 58, 74-84, 103, unused incl. Nos. 57, 60, also incl. group of Newfoundland, New Brunswick and P.E.I., hinged in Scott Specialty album, Fine-Very Fine, Scott Retail over \$2,500 E. 400-500
- 3354 **CANADA, BACK-OF-BOOK.** 1920's-50's, homemade album pages of unused and used stamps, few better incl. Nos. F3 unused and used, Air Post complete incl. No. C1 vertical pair imperforate horizontally with bottom sheet margin, interesting group of Air Mail Semi-Officials, few small faults to be expected, most are Fine-Very Fine, Scott Retail in excess of 1,800.00
- 3355 **CANADA USED ACCUMULATION.** 1850's-1950, incl. Victoria Heads, Maple Leafs, Admirals, and Back-of-Book issues, sorted on stockpages, some better, Fine-Very Fine.... E. 500-750
- 3356 **CANADA AND NEWFOUNDLAND.** Mixed unused and used collection, 1865-1974, better used incl. Canada Nos. 4, 14-17, 22-30, 35-47, 60-65, Newfoundland Nos. 1, unused incl. Canada Nos. 50-59, 96-103, Newfoundland Nos. 115-126, 212-225, also incl. few P.E.I., British Columbia and Nova Scotia, mixed condition, Fine-Very Fine, Scott Retail over \$13,000 E. 2,000-3,000
- 3357 **CANADA AND NEWFOUNDLAND.** Collection, 1851-1971, better Canada used incl. Nos. 1, 4, 7, 8, 9, 11, 12, 17-19, 21-30, 46-47, 62-65, unused incl. Canada Nos. 55, 58, 59, 61, 102, 103, Newfoundland Nos. 87-97, 104-114, 131-159, 212-225, C6-C11, C12, C13-C17, hinged in Scott Specialty album, Fine-Very Fine E. 2,000-3,000
- 3358 ★★ **CHANNEL ISLANDS.** 1969-75, Mint N.H. collection in Gibbons album, virtually complete comprising Guernsey Nos. 8-130, J1-J17, N1-N5, Jersey Nos. 1-136, J1-J20, N1-N8, also incl. few Isle of Man sets, Very Fine E. 200-300
- 3359 ★田 **COLOMBIA AIR POST.** Collection comprising hundreds of mostly unused stamps, better incl. Nos. C12-C16, C16 (block of eight), **C25-C32 (panes of 25)**, and quantities of 1923-28 issue with **wide variety of consular overprints** incl. "A", "B", "Bo", "Br", "Ch", "Cr", "D", "E", "EU", "F", "GB", "H", "I", "P", "PE", "S", "SU", many in multiples incl. complete panes, also incl. 22 covers incl. **No. C1**, and few used incl. Nos. C25-C35, in mounts on blank quadrille pages, Very Fine E. 3,000-4,000
- 3360 **DENMARK.** 1857-1985, mostly used collection with some better incl. Nos. 14, 17, 19, 30-34, 82, O1-O3, in two sporadically filled Lindner hingeless albums, Fine-Very Fine E. 200-300
- 3361 **FRANCE.** Collection, 1849-1982, many better incl. used No. 1, 7, 9, 37, unused incl. Nos. B285-B290, C1-C2, with few occupations and offices abroad, hinged or in mounts in Scott Specialty album, 19th century in mixed condition, generally Fine-Very Fine E. 1,000-1,500

- 3362 **FRANCE.** 1849-1975, well-filled collection, 19th century and 20th century regs and commems mostly used, Semi-Postals mostly complete unused incl. Nos. B285-B290, also incl. offices abroad, hinged on Scott Specialty pages, Fine-Very Fine, Scott Retail approximately 3,500.00
- 3363 ★★ **FRANCE.** Three Mint N.H. items incl. 1937 Pexip Sheet, No. 615a (two) with top left corner sheet selvage, and No. C27 with sheet selvage on three sides, Extremely Fine 412.00
- 3364 **FRANCE ACCUMULATION.** 21 stamps comprising No. 3 (three used), No. 9 (one with original gum and five used), No. 21 (two used) and No. 37 (nine used), mixed condition, few probably not genuine, Fine appearing group, assuming all are genuine, Scott Retail would be \$24,525 E. 1,500-2,500
- 3365 **FRANCE AND MEXICO.** Very well-filled collection, mixed unused and used, France with better post-war Semi-Postals unused, Mexico with Air Posts unused, hinged in Scott Specialty album, Fine-Very Fine E. 500-750
- 3366 ★ **FRENCH COLONIES.** Couple hundred stamps hinged on pages, strength in French India incl. Nos. 157-176, 185/190, 191-209, St. Pierre & Miquelon Nos. 207-216, 237, 238 (block of 25), 249-255, 260-279, J42, J43, J45, J48-J57, hinged on blank pages, Fine-Very Fine E. 1,000-1,500
- 3367 **GERMANY ACCUMULATION.** Thousands of stamps, strength in unused incl. Nos. C35-C39, C43-C45, Berlin Nos. 9N1-9N20, used incl. Nos. C38-C39, also incl. collection of mostly used on pages, and misc. additional foreign sets and covers with few better, generally Fine-Very Fine E. 750-1,000
- 3368 **GERMANY AND ZONES.** 1868-1977, collection of mostly used to 1900 incl. better small and large shield issues, and mostly unused 1901-1977 incl. Nos. 45-51, 702-721, B49-B57, B68 (usual faults), B316-B323, some unused and used with minor duplication, also incl. few offices abroad, in two Scott specialty albums, Fine-Very Fine E. 750-1,000
- 3369° **GERMANY.** 1872-1932, many hundreds of mostly used stamps, incl. Large and Small Shields to 18kr, No. C21 (Mi No. 345) with vertical watermark, unused incl. many tete-beche part booklet panes, in mounts in **four pristine Album Publishing Company specialized leather albums** with spaces for all varieties (original cost \$350), Very Fine, an outstanding beginner collection with room for expansion E. 500-600
- 3370 **GERMANY, 19TH & 20TH CENTURY.** Stockpages of unused and used stamps, several better incl. 9NB3a (appears Mint N.H., small backstamp), better Thuringen souvenir sheet, unused Post Horns set, few used Zeppelin stamps, few faults, most are Fine-Very Fine, valuable group E. 2,000-3,000
- 3371 ★ **GREAT BRITAIN, VICTORIA HEADS.** Collection comprising 32 unused and 7 used stamps, better unused incl. Nos. 3, 8, 9, 11, 12, 26, 27, 29, 30, 32, 49, 50a, 51, 59, 96, 111-122, 126, used incl. Nos. 5, 10, 13-15, 20, 21, 23, unused stamps mostly regummed, few faults incl. No. 50a reperfed, generally Fine, No. 50a with 1991 R.P.S. certificate 7,431.00
- 3372 **GREAT BRITAIN, 19TH CENTURY.** Exceptional collection beginning with few Tax stamps then 28 stampless covers with better incl. 1783 Sandwich to Fyff North Britain, 1788 London to Edinburgh, 1835 Colnbrook Penny Post, 1827 Barney Penny Post, 1839 cover with perfectly struck Free crown in circle cancel, used Mulready letter and letter-sheet (Nos. U1 and U3), then stamps and covers with used incl. Nos. 1 (2) No. 2 (2), 7, 22-26, 74, 110, covers incl. Nos. 1 (2), 5 (2), 22, 23, 28, 32, 44-46, 48, 49 (7), also incl. studies and platings of many stamps incl. No. 58 (Plate 9), in mounts on homemade pages, many of which feature informative descriptions, mixed condition, generally Fine-Very Fine E. 3,000-4,000
- 3373 **GREAT BRITAIN, 20TH CENTURY.** 1902-74, collection comprising hundreds of stamps and covers, stamps used to 1952, unused 1952-74, used incl. Nos. 127-142 (No. 142 perfin), 173-175, 179-181, 222-224, on homemade pages with typed descriptions, generally Fine-Very Fine E. 1,000-1,500
- 3374 ★ **GREAT BRITAIN, 20TH CENTURY.** Mostly complete unused collection, 1911-76, better incl. Nos. 151-172, 177-178, 183-200, 222-224, 249-251A, 286-289, 292-312, 317-333, 387P-417P, **J1-J91**, also incl. many QEII varieties and Regionals, in Lighthouse hingeless album, Very Fine, Scott Retail approximately 4,000.00

- 3375 **GREAT BRITAIN.** Used collection with strength in Victoria Heads, better incl. Nos. 1, 4 (two), 6, 7, 22, 24, 26-28, 37-46, 48-50, 52-55, 57, 59-62, 65, 70, 73, 80-83, 85, 94-96, 104, 108, 109, 124, 139-140, 142, also incl. unused Nos. J26-J33. J39-J42 and J46-J49, in small stockbook, mixed condition, generally Fine 9,325.00
- 3376 ☒ **GREAT BRITAIN, 1971 POSTAL STRIKE EMERGENCY SERVICES.** Interesting collection of the stamps and covers of the many firms and individuals who carried out postal duties during the seven week strike in early 1971, appears to be fairly complete, Very Fine E. 300-400
- 3377 **GREECE.** 19th-20th Century, two albums of unused and used stamps, first album contains several hand-made pages containing detailed study of Hermes heads identified by printing, few varieties, later issues incl. some Epirus, few faults, most are Fine-Very Fine, fascinating study E. 2,000-3,000
- 3378 **GREECE.** Outstanding mostly complete used collection to 1988, better incl. Hermes Heads, Nos. 117-128, 184-197, C38-C47, also incl. Occupation issues, hinged in Scott Specialty album, also incl. second Scott Specialty album of duplicates but some unused, few better, Very Fine E. 500-750
- 3379 **ICELAND.** Collection, 1873-1978, better used incl. Nos. 1-3, 7, 34-44A, 103, 178-186, C9, O3, O40-O49, O53-O56, O62, unused incl. Nos. 18-21, 24-28, 76-83, 94-98, 152-66, C4-C8, O25, mostly hinged in Scott Specialty album, generally Fine-Very Fine E. 2,000-3,000
- 3380 **INDIA.** 19th-20th Century, two albums, approx. 25 covers and group of coins, covers incl. 1935 from Madras to Bath, England and forwarded to Dorset, wide range of issues incl. Indian States, Ceylon, Burma, few faults, many Fine-Very Fine E. 300-400
- 3381 **IRELAND.** Collection, mixed unused and used to 1974, unused 1975-99, incl. nice group of Provisional overprints, later issues with high face value, hinged or in mounts in Scott Specialty album, mostly Very Fine E. 300-400
- 3382 ★ **ISRAEL, 1948-72.** Two Schaubek albums and small mint sheet file of unused stamps, mostly without tabs but some later issues with tabs, mostly Mint N.H., fairly complete with some duplication, fresh and Very Fine E. 300-400
- 3383 ★ **ISRAEL, 1948-71.** Collection of unused untabbed stamps, fairly complete from No. 10, most Mint N.H., Fine-Very Fine E. 150-200
- 3384 **ITALY AND AREAS.** 19th-20th Century, two albums of unused and used stamps, incl. some Italian States, Italy, Cyrenaica, Eritrea, few other areas, few faults, most Fine-Very Fine E. 200-300
- 3385 ★ **KUWAIT.** Mostly complete unused collection, 1923-56, better incl. Nos. 1-15, 17-32, 34, 82-116, O1-O6, O8-O14, also incl. used No. 15, hinged on blank pages, Fine-Very Fine, Scott Retail over 1,550.00
- 3386 ★ **LUXEMBOURG.** Mostly unused collection, better incl. **Nos. 1 (two incl. one ex Col Green),** 82-93 pairs, 82a, 125a, **151,** 272-277 (Mint N.H.), 318-320, 329-331, C16-C20, used incl. No. 1 (seven with variety of shades), also incl. eight 1914 issues trial color proof pairs on stamp paper, Nos. B117-B120 large die proofs and five flight covers incl. two Zeppelin and one Rocket (signed Dr. Bruijn), mostly in mounts on blank quadrille pages, others on Scott pages, Fine-Very Fine, Scott Retail approximately 7,000.00
- 3387 ★ **MEXICO AIR POST.** Collection comprising a few hundred unused stamps, better incl. Nos. C1 (block of four), C37a, C40a-C44a (two), C45a, **C54-C61 (singles and blocks of four),** C75 (pane of 60), C186-C198, C191b, C208-C211, C213-C217, CO3-CO9, **CO10,** also incl. 22 covers incl. Nos. C103-C107 on one cover, in mounts on blank quadrille pages, Nos. C54-C61 with three stamps each Mint N.H., Very Fine, Scott Retail over 9,150.00
- 3388 ★ **NETHERLANDS.** Mostly unused collection, better incl. Nos. 11 (no gum), 86, 278-281, B23-B32 (Mint N.H.), B144a-B145a (Mint N.H.), C13-C14 (Mint N.H.), GY1-GY7, also incl. No. 1 black trial color proof on card (vertical pair), 1S-3S, No. 2 on cover, and Nos. 4 & 5 on one cover, also incl. unused Netherlands Antilles Nos. C1-C8, Suriname Nos. 184-207, imperforate C15-C19 and West Irian Nos. 1-19 (blocks of four), Very Fine, Scott Retail over 5,500.00

- 3389 **NEWFOUNDLAND, 1857-1924.** Collection of unused stamps on home made album pages, incl. Nos. 1, 11A, 15A, several complete sets of later issues, few tiny faults, most are Fine-Very Fine, also incl. Nova Scotia used No. 1, Scott Retail approx. E. 2,680.00
- 3390 ★ **NEWFOUNDLAND BALANCE.** 19th-20th Century, small group of unused stamps and one proof, stamps incl. Nos. 48 (block of twelve), blocks of four of Nos. 55, 78-83, 104-111, and singles of Nos. C6-C8, many Mint N.H., on old auction pages, few small faults, mostly Fine-Very Fine E. 500-750
- 3391 ★ **NEW HEBRIDES AND VANUATU.** Mostly complete unused collection to 1996, British incl. Nos. 1-5, 10-30, 41-61, French incl. Nos. 1-32, 55-78, in mounts on homemade pages, Very Fine, Scott Retail approximately E. 1,500.00
- 3392 **PANAMA.** Two collections and stockbook, collections mostly unused and fairly complete, stockbook mostly map issues with overprints, incl. No. 368 with inverted ovpt., double ovpt., and double ovpt. with one inverted, imperforate pairs of Nos. C157-C180, and registration label sheet of twelve, also incl. some covers, hinged on blank quadrille pages, few faults, generally Fine-Very Fine E. 750-1,000
- 3393 ★ **RHODESIA DOUBLE HEADS.** Collection comprising Gibbons Nos. 147, 150, 160, 163, 170, 170b, 171b, and 177, lightly hinged, rich colors, Fine-Very Fine, Nos. 170, 170b and 171b with 1978/1980 B.P.A. certificates E. 1,500-2,000
- 3394° **SPANISH PHILIPPINES.** 1854-1946, impressive collection of unused and used single, blocks and covers mostly mounted on quadrille exhibition pages, also incl. some essays, specimen overprints and surcharge issues, provisional govt. handstamps, few early issues of Cuba used in Philippines, also nice group of Revenues with some complete sheets, Foreign Bills, Insurance Policies, Judicial Fees, Receipt Stamps, Telegraphs, some U.S. Administration issues, few faults to be expected, a Fine-Very Fine and impressive collection E. 7,500-10,000
- 3395 **ROMANIA.** 1865-1969, collection, mostly used 19th Century and unused 20th, better used incl. Nos. 33-47, unused incl. Nos. 196-206, many souvenir sheets and thematics, some duplication, in mounts in Minkus album, Fine-Very Fine E. 100-150
- 3396 **RUSSIA, 1858-1948.** Several hundred mostly used stamps on album pages, incl. used Nos. 2, 8-10, unused Nos. 6, 13, some Air Post, Special Delivery, Postage Due, range of cancels, some faults, some are Fine-Very Fine, Scott Retail approx. \$2,000.00 E. 500-750
- 3397 ★★田 **RUSSIAN OFFICES IN CHINA.** 1899-1908, 555 Mint N.H. stamps, incl. Nos. 1 (200 incl. four blocks of 50), 2 (152 incl. two blocks of 50), 3 (86), 6 (32), 7 (17), 9 (21), 13 (16), 15 (16), 16 (15), mostly blocks, Very Fine 772.00
- 3398 **SOUTH AND CENTRAL AMERICA.** Collection in three Scott Specialty albums, strength in Mexico incl. unused Nos. 304-320, with solid showings of Cuba, Dominican Republic, Haiti, Peru, Uruguay, and Venezuela, unused in mounts, used hinged, Fine-Very Fine E. 200-300
- 3399 **SWEDEN.** 1855-1985, collection, mostly used to 1964, mostly unused 1965-1985, better used incl. Nos. 5 (defective), 14, 199-206, 208-209, unused incl. Nos. 45, 59-93, 213-228, in three sporadically filled Lindner hingeless albums, Fine-Very Fine E. 400-500
- 3400 ★ **SWITZERLAND.** Unused collection, regs and commems mostly complete 1939-71, Semi Postals and Air Posts complete to 1973, better incl. Nos. 293-302 (two Mint N.H., one lightly hinged and one used), B105, B130-B132, B143, B144, B206, B229a, also incl. 10 Semi Postal booklets 1957-72, few first day covers and postal announcements, and collection of France 1961-78 Art stamps, hinged on blank pages, Very Fine ... E. 1,000-1,500
- 3401 ★ **VATICAN CITY.** 1929-74, fairly complete collection of unused stamps incl. Nos. 155a, C19, C20, some Special Delivery, Postage Dues, in hingeless album, mostly Fine-Very Fine E. 400-500

WORLDWIDE COLLECTIONS AND ACCUMULATIONS

- 3402 ★ **BALANCE.** Four unused stamps comprising Falkland Islands Nos. 1 and 21, and Canada Nos. 158 and 159, the first is regummed, others original gum, bright colors, Very Fine group 1,125.00
- 3403 **BRITISH AMERICA.** Collection comprising mostly used and sporadically filled 19th Century, and unused 20th century mostly complete to 1971, better unused incl. Antigua Nos. 21-38, 67-76, Bahamas No. 56, Bermuda Nos. 49-54, 94-97, British Honduras Nos. 92-104, Cayman Is. Nos. 69-80, 85-96, Falklands Nos. 28, 29, 65-75, 84-96, 128-142, 1L19-1L33, Jamaica Nos. 75-100, Leeward Is. Nos. 9-15, 20/40, 83, St. Kitts Nos. 24-64, also incl. better used Bahamas, hinged in two Scott Specialty albums, Fine-Very Fine..... E. 2,000-3,000
- 3404 ★ **BRITISH COMMONWEALTH.** Accumulation of better unused singles and sets incl. Bermuda No. 96, Caymans No. 45-47, MR3, Falklands Nos. 30-38, 41-48, Fiji Nos. 93-106, Gambia Nos. 87-96, Great Britain No. 176, Malta Nos. 167-183, Newfoundland Nos. 104-114 (two), 183-199 (blocks of four), St. Vincent Nos. 104-116, Sierra Leone Nos. 122-137, 153-165, mostly on auction lot cards, Fine-Very Fine E. 1,000-1,500
- 3405 ★ **BRITISH COMMONWEALTH, GEORGE V ISSUES.** Collection of hundreds of unused stamps, mostly complete sets, better incl. Antigua Nos. 42-76, Ascension Nos. 1-36, Bahamas Nos. 49S-56S, 65-84, Bahrain Nos. 1-14, Barbuda Nos. 1-11 (two), Basutoland Nos. 1-10, Bechuanaland Nos. 94, 95, 105-116, Canada Nos. 104-122, 217-230, Cayman Is. Nos. 69-80, 85-96, Cyprus Nos. 87, 114-135, Dominica Nos. 83-85, Falkland Is. Nos. 65-76, Hong Kong Nos. 109-124 and 129-146 with many extras incl. "China" ovpts. to \$10, India Nos. 106-125, Ireland Nos. 12-14, 44-58, 77b block of four, Kuwait Nos. O15-O25, Malta Nos. 77-84, Montserrat Nos. 43-84, Nauru Nos. 13-16, New Zealand Nos. 144-164, Nigeria Nos. 38-49, Northern Rhodesia Nos. 1-17, Rhodesia Nos. 113-116, St. Helena Nos. 61-70, 79-93, 101-110, Solomon Is. Nos. 28-56, and Southern Rhodesia Nos. 1-14, also incl. fifteen covers, and few other specimen sets not catalogued, in mounts on blank quadrille pages, Fine-Very Fine, Scott Retail as hinged over 21,000.00
- 3406 **BRITISH COMMONWEALTH OMNIBUS ISSUES.** Mint N.H., comprising 1935 Silver Jubilee, 1937 Coronation, 1945-46 Peace, 1953 Coronation, 1966 Churchill, 1972 Silver Wedding and 1973 Royal Wedding, mostly in mounts on blank pages, Very Fine E. 300-400
- 3407 **CONSIGNMENT BALANCE.** Accumulation of hundreds of stamps, comprising African and South American complete air post sets, hinged on blank pages in three binders with slipcases, also group of Churchill sets and souvenir sheets, worldwide souvenir sheets with many better incl. Saar B64a and CB1a (Mint N.H.), USA Nos. 730/751 (three each), sparse Ireland collection and small group of modern US plates, Very Fine E. 750-1,000
- 3408 **CONSIGNMENT BALANCE.** Accumulation of thousands of stamps and covers, strength in Benelux and Latin America, mostly unsorted, mixed condition, generally Fine-Very Fine E. 400-500
- 3409 **FIRST ISSUES BALANCE.** Eleven used stamps, incl. Great Britain No. 1 (four), Brazil 30r and 60r (two) Bullseyes, U.S. No. 9X1 (two), few faults, most appear Fine-Very Fine E. 400-500
- 3410 **FOREIGN ACCUMULATION.** 19th-20th Century, two cartons containing thousands of stamps mostly in stockbooks and on dealer pages with few loose, wide range of countries represented with strength in British Commonwealth, few better countries incl. Bermuda, Canada, Falkland Islands, many stamps Mint N.H., few faults to be expected, mostly Fine-Very Fine E. 3,000-4,000
- 3411 **FOREIGN ACCUMULATION.** 19th-20th Century, massive holding of unused and used stamps and some covers in seven albums, 22 stockbooks and in envelopes, wide range of countries incl. some better earlier France, Switzerland, Austria, Canada, Germany, nice group of new issues, some better topicals can be found, some faults, most are Fine-Very Fine E. 2,000-3,000
- 3412 **FOREIGN ACCUMULATION.** 19th-20th Century, two cartons of unused and used stamps and covers, better groups incl. French Offices, Russia, Germany, Canada and Provinces, few faults, many are Fine-Very Fine..... E. 500-750

- 3413 **FOREIGN ACCUMULATION.** 20th Century, small group of unused and used stamps and a few covers, mostly Germany incl. complete booklets, semi-postal cover, some D.D.R., also some Austria and a collection of Israel incl. Nos. 15, 24 31-32, 35-36, 46-47 with tabs, lightly hinged, Fine-Very Fine E. 150-200
- 3414 **LATIN AMERICA.** Accumulation of thousands of stamps and covers, strength in three volume general collection incl. Honduras No. CO31 unused block of four with inverted overprint (with 1977 S.P.A. certificate), also incl. group of better flight and Zeppelin flown covers, Chile and Nicaragua collections, and two stockbooks of stamps sorted, few faults to be expected, generally Fine-Very Fine E. 2,000-3,000
- 3415 ★ **WORLDWIDE AIR POST.** Well-filled collection, mostly Mint N.H., better incl. US Nos. C1-C6, plate blocks of Nos. C21-C24, Austria Nos. C29-C46, Cyrenaica Nos. CB1-CB10, Denmark Nos. C1-C3, Eritrea Nos. CB1-CB10, **Finland No. C1 (single and block of four)**, France Nos. 348, C1-C2, **C8-C17**, Germany Nos. **C27-C34, C35-C37, C38-C39, C46-C56, C59-C60 (blocks of four), Greece Nos. C8-C14, Iceland Nos. C1-C11, Italy Nos. C62-C65, Japan Nos. C3-C7, C8 (used)**, Liechtenstein Nos. C15-C16, Russia Nos. C15-C19, in mounts in Scott International Air-Post Album, Very Fine ... E. 3,000-4,000
- 3416 **WORLDWIDE.** Collection comprising thousands of stamps in Scott International Junior album, better used incl. US Nos. 1, 77, 113-115, 230-238, 547, E1-E6, unused incl. US Nos. C4-C6, also incl. strong showings of Austria, Belgium, Bavaria, Canada, Denmark, Egypt, Germany, Sweden and Switzerland, few faults as usual, Fine-Very Fine E. 750-1,000
- 3417 **WORLDWIDE.** Collection of many hundreds of mostly used stamps, sporadically filled, better countries incl. Belgium, China, Germany, and Italy, Fine-Very Fine.. E. 200-300
- 3418 **WORLDWIDE ACCUMULATION.** Massive holding in approx. 15 cartons, offered on behalf of the City of New York, the holding comprises various estates inherited by the city from deceased citizens who died intestate, incl. three cartons of U.S. First Day Covers, some postage, tremendous range of countries represented incl. unused, used, covers, mixed condition, some collections are better than others, overall a worthwhile holding and worth close inspection E. 2,000-3,000
- 3419 **WORLDWIDE ACCUMULATION.** Thousands of stamps in four sporadically filled worldwide albums and two boxes of loose stamps in mixed condition, better incl. US used Nos. Q1-Q12, strength in stockbook of Mint N.H. PRC, mostly 1970-77 (Scott Retail approx. \$1,500), Fine-Very Fine E. 500-750
- 3420 **WORLDWIDE ACCUMULATION.** Many hundreds of US and Worldwide stamps, better US incl. No. 241 used with small thin, No. 369, lightly hinged, reperfed, modern plate blocks, worldwide incl. Great Britain No. 1 on piece, and other 19th century used, collection of India fiscal and telegraph stamps, and four Canadian uncut press sheets (face approx C\$100), also incl. groups of kiloware and loose, Fine-Very Fine E. 400-500
- 3421 **WORLDWIDE.** 19th-20th Century, carton of unused and used stamps, wide range of countries represented incl. strength in Baltic countries, also better Memel, some faults, many Fine-Very Fine..... E. 1,500-2,000
- 3422 **WORLDWIDE.** 19th-20th Century, large carton of mostly international albums and loose stamps, tremendous range of countries represented, few other albums incl. Benelux, few faults to be expected, overall Fine-Very Fine..... E. 1,000-1,500
- 3423 **WORLDWIDE “RARITIES” OVERPRINT REFERENCE.** Comprising Belgium “No. Q60”, France “Nos.” C3 and C4 unused and C4 used, Iceland “No.” 56, Italy “Nos.” 39a (pair) and CO2, Liberia “Nos.” C17-C26, Zanzibar “No.” 1 horizontal pair on piece, also incl. France 1fr described as No. 87 by Diena in 1965 but not anymore and Trinidad No. 2 block of eight with original gum, Very Fine, most with 2001 or 2002 certificates from foreign experts E. 300-400

END OF SALE—THANK YOU

PRICES REALIZED FOR SALE 858---2/2003

Foreign Stamps and Covers

Robert A. Siegel Auction Galleries, Inc.
60 East 56th Street, 4th Floor, New York, NY 10022
Tel (212) 753-6421 Fax (212) 753-6429

Lot#	Realized	Lot#	Realized	Lot#	Realized	Lot#	Realized	Lot#	Realized	Lot#	Realized	Lot#	Realized	Lot#	Realized
3001	230	3052	100	3101	700	3147	525	3194	50	3244	1,350	3296	400	3344	2,700
3002	900	3053	180	3102	55	3148	50	3197	475	3245	135	3297	270	3345	2,600
3003	1,050	3054	100	3103	290	3149	100	3198	375	3246	130	3298	575	3346	1,800
3004	250	3055	150	3104	400	3151	950	3199	425	3247	1,100	3299	260	3347	1,900
3005	600	3056	115	3105	190	3152	625	3200	130	3248	200	3300	1,100	3348	105
3006	160	3058	220	3106	260	3153	600	3201	300	3249	140	3302	650	3350	1,600
3007	950	3059	100	3107	150	3154	425	3202	2,100	3254	600	3303	5,750	3351	5,250
3010	575	3060	210	3108	400	3156	800	3203	800	3255	220	3304	650	3352	700
3011	325	3061	130	3112	450	3157	3,500	3204	290	3256	350	3305	675	3353	400
3012	700	3062	150	3113	220	3158	1,200	3205	1,200	3257	180	3306	180	3354	575
3013	2,600	3063	1,600	3114	475	3159	1,150	3207	650	3258	180	3307	400	3355	575
3014	2,100	3064	1,900	3115	475	3160	600	3208	1,200	3262	190	3308	130	3356	2,400
3015	500	3065	2,700	3116	1,700	3161	1,500	3209	500	3263	160	3309	260	3357	3,250
3016	160	3066	325	3117	950	3163	525	3211	500	3264	85	3310	500	3358	210
3017	2,200	3067	1,200	3118	1,050	3164	350	3212	350	3264	325	3311	625	3359	3,500
3018	105	3069	20	3119	2,700	3165	180	3213	210	3265	220	3312	900	3360	150
3019	150	3070	1,700	3120	3,000	3167	5,000	3214	1,150	3266	30	3313	300	3361	1,100
3020	400	3072	85	3121	1,000	3168	1,350	3215	550	3267	125	3314	400	3362	675
3021	5,250	3073	120	3122	250	3169	525	3216	325	3268	135	3315	200	3363	115
3022	1,250	3074	150	3123	2,100	3170	290	3217	50	3269	270	3316	450	3364	1,400
3023	500	3075	250	3124	260	3171	200	3218	75	3272	105	3317	110	3365	1,150
3024	425	3076	180	3125	220	3172	80	3219	325	3273	650	3318	300	3366	950
3025	5,750	3077	180	3126	425	3173	200	3220	220	3274	300	3319	475	3367	1,150
3026	400	3078	700	3127	8,500	3174	140	3221	425	3275	350	3320	160	3368	1,100
3027	675	3079	900	3128	1,800	3175	80	3222	80	3276	270	3321	325	3369	525
3028	100	3080	80	3129	300	3176	60	3223	125	3277	350	3322	1,600	3370	2,900
3029	100	3081	230	3130	160	3177	80	3224	210	3278	50	3324	80	3371	650
3030	2,600	3083	160	3131	1,250	3178	650	3226	150	3279	210	3325	210	3372	3,500
3032	700	3086	900	3132	950	3179	700	3227	105	3280	260	3326	375	3373	1,250
3033	240	3087	1,050	3133	375	3180	325	3228	3,500	3281	230	3327	1,100	3374	1,000
3034	180	3088	270	3134	160	3181	300	3229	290	3282	100	3328	220	3375	900
3035	110	3089	550	3135	35	3182	375	3230	1,000	3283	325	3329	2,500	3376	150
3036	160	3090	210	3136	375	3183	1,000	3231	280	3285	140	3331	375	3377	3,500
3037	1,150	3091	250	3137	1,150	3184	3,500	3232	100	3286	140	3333	240	3378	3,000
3038	900	3092	350	3138	40	3185	475	3233	1,700	3287	1,400	3334	900	3379	1,900
3039	160	3093	450	3139	900	3186	450	3234	350	3288	280	3336	120	3380	1,050
3040	150	3094	210	3140	260	3187	425	3235	675	3289	260	3337	4,000	3381	1,200
3041	750	3095	650	3141	105	3188	350	3236	500	3290	375	3338	1,050	3382	375
3042	425	3096	425	3142	625	3189	425	3237	1,800	3291	300	3339	1,300	3383	110
3043	850	3097	1,250	3143	500	3190	80	3238	650	3292	150	3340	350	3384	500
3044	130	3098	750	3144	180	3191	800	3240	700	3293	220	3341	600	3385	610
3045	575	3099	475	3145	90	3192	190	3241	500	3294	200	3342	230	3386	2,100
3049	125	3100	475	3146	100	3193	170	3242	300	3295	450	3343	7,000	3387	5,000

PRICES REALIZED FOR SALE 858---2/2003

Foreign Stamps and Covers

Robert A. Siegel Auction Galleries, Inc.
60 East 56th Street, 4th Floor, New York, NY 10022
Tel (212) 753-6421 Fax (212) 753-6429

Lot#	Realized
3388	2,300
3389	525
3390	1,050
3391	475
3392	2,000
3393	1,700
3394	17,000
3395	325
3396	625
3397	115
3398	500
3399	650
3400	1,400
3401	375
3402	210
3403	4,750
3404	1,900
3405	9,500
3407	2,400
3408	3,250
3409	600
3410	13,000
3411	5,500
3412	2,300
3413	260
3414	5,000
3416	1,500
3417	325
3418	14,250
3419	950
3420	950
3421	2,000
3422	4,750
3423	1,500