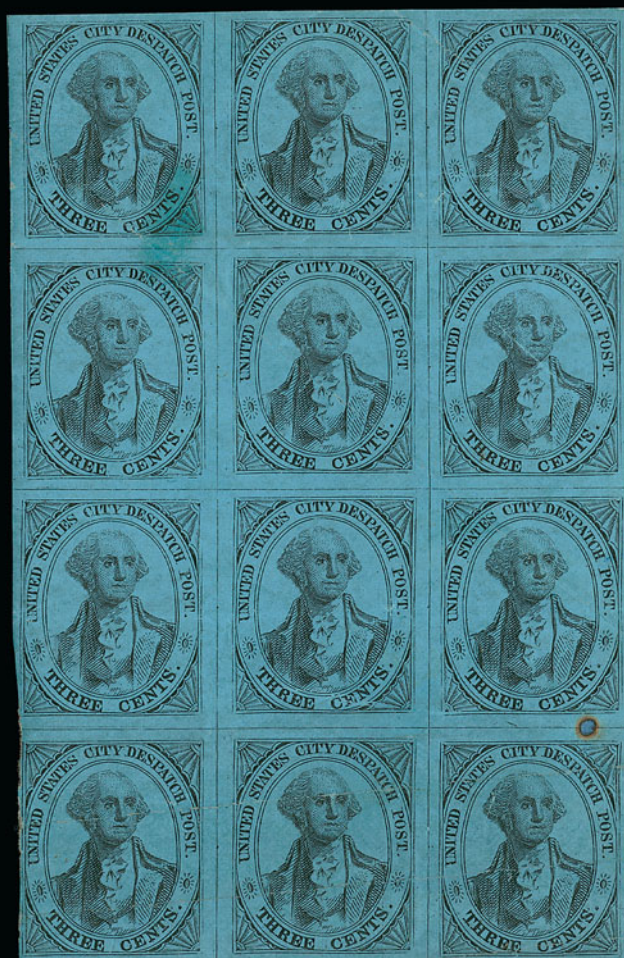


**Sale 868**

Friday, November 14, 2003

# The Gordon N. John Collection of United States Stamps Issued Before July 1845



*Robert A. Siegel*

AUCTION GALLERIES, INC.

[www.siegelauctions.com](http://www.siegelauctions.com)

# Sale 868

Friday, November 14, 2003

## The Gordon N. John Collection of United States Stamps Issued Before July 1845

**Offered without reserves**

### Pre-sale exhibition

Monday, November 10 — 10:00 a.m. to 4:00 p.m.  
Tuesday, November 11 — 10:00 a.m. to 4:00 p.m.  
or by appointment (please call 212-753-6421)

**On-line catalogue, e-mail bid form, resources and  
the Siegel Encyclopedia are available on our web site:**

[www.siegelauctions.com](http://www.siegelauctions.com)



Lot 2089

### Arrangement of Sale

**Evening session (lots 2001-2132)  
Friday, November 14, at 6:30 p.m.**

#### **City Despatch Post, New York, N.Y.:**

City Despatch Post.....pages	6-7
U.S. City Despatch Post (Carrier Dept.) ..	7-22

#### **Local Posts:**

Philadelphia Despatch Post and D. O. Blood & Co., Philadelphia, Pa. ....	23-33
Boyd's City Express, New York, N.Y. ....	34-38
City Mail Co., New York, N.Y. ....	39
Jones' City Express, Brooklyn, N.Y. ....	40

#### **Independent Mails:**

American Letter Mail Co.....	41-46
Brainard & Co. ....	47
Hale & Co. ....	48-51
Hartford Mail Route.....	51
Letter Express (Wells) ....	52-56
Pomeroy's Letter Express.....	57-58
W. Wyman ....	59-60

### On the cover

Front Cover: Lot 2029

Back Cover: Lots 2046 and 2094

## The World of Stamps Before July 1, 1845

**T**HERE IS A COMMON MISCONCEPTION THAT THE UNITED STATES LAGGED behind other countries in issuing stamps for prepayment of postage. It is true that the first stamps issued for *general distribution and use* in the U.S. were not released until July 1, 1847. It is also true that stamps were issued earlier in Great Britain, Brazil and Switzerland. However, the more significant fact is that prior to July 1, 1845, the day when major American postal reforms took effect, **49 of the 64 stamps issued worldwide** originated in the United States. They were issued both by the government and by private mail-carrying firms. Their appearance on mail delivered throughout this country must have aroused the public's interest and satisfied some of the demand for a simple means to send prepaid letters.

Great Britain issued the Penny Black and Two-Pence Blue in May 1840. Just 21 months later, in February 1842, the privately-owned City Despatch Post issued the first stamp in the United States and, from a broader perspective, the entire Western hemisphere. This 3c stamp, printed in black on grayish paper with a portrait of George Washington, is listed as 40L1 in the Local Post issues in the *Scott Catalogue*. In August 1842 the post was bought by the Post Office Department and re-established as the U.S. City Despatch Post carrier department. The same 3c stamp was then accepted by the U.S. government for prepayment of the carrier fee in New York City, thus becoming the first government-sanctioned postage stamp in the U.S. (Scott 6LB1) Within the first month of operation, the U.S. City Despatch Post issued its own newly-engraved stamp (Scott 6LB3 and separately-listed paper varieties).

The Act of March 3, 1845, which became law on July 1, paved the way for the U.S. government to issue stamps for general distribution and use. The effective date of this major postal reform is the logical demarkation point for this collection. Before July 1, stamps were issued exclusively by private enterprises and the New York City carrier department. Beginning July 1, postmasters in various cities issued their own stamps *provisionally* until two years later when the U.S. government released the first issue, the 5c Franklin and 10c Washington.

The impact of the United States as a stamp-issuing entity prior to July 1, 1845, can be seen from another perspective. Imagine you are a stamp collector in the 1840's, eagerly awaiting the arrival of "new issues" for your stamp album. In 1840 there would be only three stamps: Great Britain's Penny Black, Two-Pence Blue and the "VR" Official. In 1841 two more stamps from Great Britain would arrive: the Penny Red and Two-Pence with Lines. By the end of 1842, six of the earliest U.S. stamps would find places in the album: the City Despatch Post 3c (40L1 and 6LB1), U.S. City Despatch Post 3c (6LB2, 6LB3, 6LB4) and the Philadelphia Despatch Post 3c Black (15L2).

During the next year, 1843, six new stamps from Zurich, Geneva and Brazil would take their place alongside seven new U.S. issues from Philadelphia and New York City. In 1844 the rise of the Independent Mails would add no less than 28 of the 31 new U.S. issues to the album (along with three more from Brazil). By June 30, 1845, the album would contain spaces for 64 Scott-listed stamps, and 49 of those — **77% of the world's total** — would have come from the United States.

The concept of collecting Pre-July 1, 1845 stamps was the inspiration of a philatelist whose *nom-de-album* is Gordon N. John. It is this sort of fresh approach that makes stamp collecting so fascinating.

—SCOTT R. TREPEL

**49 of the 64 pre-July 1, 1845 stamps—77% of the world's total—were issued in the United States**

<u>Issue Date</u>	<u>Country</u>	<u>Issuing Authority</u>	<u>Type</u>	<u>Stamp</u>	<u>Scott No.</u>
1840 May 6	Great Britain	Post Office	Postage	1p Black	1
1840 May 6	Great Britain	Post Office	Postage	2p Blue	2
1840 May	Great Britain	Post Office	Postage	1p Black VR Official	O1
1841 February 10	Great Britain	Post Office	Postage	1p Red	3
1841 March 13	Great Britain	Post Office	Postage	2p Blue with Lines	4
1842 February 1	United States	City Despatch Post	Local Post	3c Black on Grayish	40L1
1842 August 16	United States	U.S. City Despatch Post	Govt. Carrier	3c Black on Grayish	6LB1
1842 September 1	United States	U.S. City Despatch Post	Govt. Carrier	3c Black on Light Blue	6LB3
1842 December	United States	Philadelphia Despatch Post	Local Post	3c Black	15L2
1842-43	United States	U.S. City Despatch Post	Govt. Carrier	3c Black on Rosy Buff	6LB2
1842-43	United States	U.S. City Despatch Post	Govt. Carrier	3c Black on Green	6LB4
1843-44	United States	U.S. City Despatch Post	Govt. Carrier	3c Black on Green Glazed	6LB5d
1843-44	United States	U.S. City Despatch Post	Govt. Carrier	3c Black on Blue Green Glazed	6LB5
1843-44	United States	U.S. City Despatch Post	Govt. Carrier	3c Black on Pink Glazed	Unlisted
1843-44	United States	U.S. City Despatch Post	Govt. Carrier	3c Black on Straw	Unlisted
1843 February	United States	Philadelphia Despatch Post	Local Post	3c Red	15L1
1843 March	Switzerland	Zurich Post Office	Postage	4r Black	11L1
1843 March	Switzerland	Zurich Post Office	Postage	6r Black	11L2
1843 August 1	Brazil	Post Office	Postage	30r Bull's Eye	1
1843 August 1	Brazil	Post Office	Postage	60r Bull's Eye	2
1843 August 1	Brazil	Post Office	Postage	90r Bull's Eye	3
1843 October 1	Switzerland	Geneva Post Office	Postage	10c Double Geneva	2L1
1843 October	United States	Philadelphia Despatch Post	Local Post	3c Black Striding Messenger	15L3
1844-45	United States	U.S. City Despatch Post	Govt. Carrier	3c Black on Blue Glazed	6LB5b
1844 January	United States	American Letter Mail Co.	Ind. Mails	5c Black Small Eagle	5L1
1844 ca. March	United States	Hale & Co.	Ind. Mails	5c Blue with Address	75L1
1844 ca. March	United States	Hale & Co.	Ind. Mails	5c Red with Address	75L2
1844 ca. June	United States	Hale & Co.	Ind. Mails	5c Red with Overprint	75L3
1844 ca. June	United States	Hale & Co.	Ind. Mails	5c Blue with Overprint	75L4
1844 ca. June	United States	Hale & Co.	Ind. Mails	5c Blue without Address	75L5
1844 ca. June	United States	Letter Express Wells	Ind. Mails	5c Black on Green	96L2
1844 ca. June	United States	Letter Express Wells	Ind. Mails	10c Black on Pink	96L3
1844 ca. June	United States	Pomeroy's Letter Express	Ind. Mails	5c Black on Yellow	117L1
1844 ca. June	United States	Pomeroy's Letter Express	Ind. Mails	5c Black on Yellow, Value Incomplete	117L2
1844 June	United States	Boyd's City Express	Local Post	5c Black on Green Large Eagle Ty. I	20L1
1844 July 1	Brazil	Post Office	Postage	30r Slanted Numeral	8
1844 July 1	Brazil	Post Office	Postage	60r Slanted Numeral	9
1844 July 1	Brazil	Post Office	Postage	90r Slanted Numeral	10
1844 ca. July	United States	Brainard & Co.	Ind. Mails	5c Black	24L1
1844 ca. July	United States	Brainard & Co.	Ind. Mails	5c Blue	24L2
1844 ca. July	United States	Hoyt's Letter Express	Ind. Mails	5c Black on Vermilion	85L1
1844 ca. July	United States	Letter Express Wells	Ind. Mails	5c Black on Pink	96L1
1844 ca. July	United States	Letter Express Wells	Ind. Mails	10c Black on Scarlet	96L4
1844 ca. July	United States	Overton & Co.	Ind. Mails	5c Black on Greenish	113L1
1844 ca. July	United States	Pomeroy's Letter Express	Ind. Mails	5c Blue	117L3
1844 ca. July	United States	Pomeroy's Letter Express	Ind. Mails	5c Black	117L4
1844 ca. July	United States	Pomeroy's Letter Express	Ind. Mails	5c Red	117L5
1844 ca. July	United States	Pomeroy's Letter Express	Ind. Mails	5c Lake	117L6
1844 ca. July	United States	Pomeroy's Letter Express	Ind. Mails	5c Orange (unissued)	117L7
1844 ca. July	United States	Pomeroy's Letter Express	Ind. Mails	5c Brown (unissued)	Unlisted
1844 ca. July	United States	Pomeroy's Letter Express	Ind. Mails	5c Yellow (unissued)	Unlisted
1844 ca. August	United States	American Letter Mail Co.	Ind. Mails	5c Black Large Eagle	5L2
1844 ca. August	United States	American Letter Mail Co.	Ind. Mails	5c or 10c? Blue Large Eagle	5L3
1844 ca. August	United States	Hartford Mail Route	Ind. Mails	5c Black on Yellow	80L1
1844 ca. August	United States	Hartford Mail Route	Ind. Mails	10c Black on Pink	80L3
1844 ca. September	United States	Wm. Wyman	Ind. Mails	5c Black	149L1
1844 September	United States	Boyd's City Express	Local Post	5c Black on Green Small Eagle Ty. II	20L2
1845 ca. January	United States	Jones' City Express	Local Post	5c Black on Pink Glazed	91L1
1845 February	United States	Boyd's City Express	Local Post	5c Black on Green Small Eagle Ty. III	20L3
1845 ca. February	United States	City Mail Co.	Local Post	5c Black	46L1
1845 month?	United States	D. O. Blood & Co.	Local Post	15L3 with "D.O.B.& Co." in ms.	15L4
1845 month?	United States	D. O. Blood & Co.	Local Post	3c Black Striding Messenger	15L5
1845 April 1	Switzerland	Geneva Post Office	Postage	5c Small Eagle	2L2
1845 ca. June	United States	Boyd's City Express	Local Post	5c Black on Green Small Eagle Ty. IV	20L4





2001



EVENING SESSION (LOTS 2001-2132)  
FRIDAY, NOVEMBER 14, 2003, AT 6:30 P.M.

THE GORDON N. JOHN COLLECTION OF  
UNITED STATES STAMPS ISSUED BEFORE JULY 1, 1845

CITY DESPATCH POST, NEW YORK, N.Y.—FEBRUARY 1842

2001 ★田 (Greig's) City Despatch Post, New York N.Y., 3c Black on Grayish (40L1). Complete sheet of 42, original gum, some very minor paper adherence along right, large margins except frameline just touched at upper right, very fresh, sound except for a small sealed tear between stamps at upper left (Positions 7 and 13), a couple of stamps lightly soiled

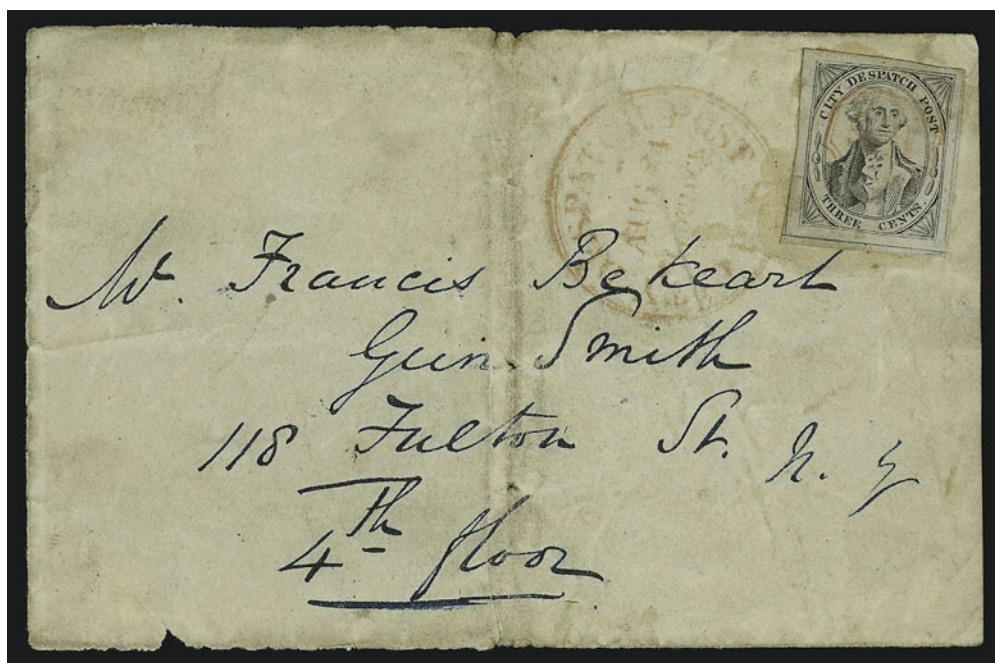
EXTREMELY FINE. ONE OF FIVE RECORDED COMPLETE SHEETS OF THE 1842 3-CENT CITY DESPATCH POST STAMP — THE FIRST ADHESIVE STAMP ISSUED IN THE WESTERN HEMISPHERE. AN IMPORTANT ARTIFACT OF AMERICAN POSTAL HISTORY.

Our records show five complete sheets of the City Despatch Post stamp issued by Alexander M. Greig in 1842. These are 1) the sheet offered here, ex Caspary, Lilly, Boker, Klein and Golden (realized \$21,000 hammer); 2) ex Middendorf; 3) ex Kapiloff, sold in our 1995 Rarities sale for \$30,000 hammer; 4) ex Norvin Green; and 5) illustrated in Perry's *100 Years Ago*, ex Ackerman and Hall (realized \$25,000 hammer).

Ex Caspary, Lilly, Boker, Klein and Golden. Scott Retail \$27,500.00 .. E. 25,000-35,000

*Photo on opposite page*

UNITED STATES CITY DESPATCH POST, NEW YORK, N.Y.  
AUGUST 1842



2002

2002 U.S. City Despatch Post, New York N.Y., 3c Black on Grayish (6LB1). Large margins, lightly struck orange-red "U.S." in frame, matching "U.S. City Despatch Post Aug. 24, 1 O'Clock" Type I double-line circular datestamp on cover front only to local street address, light stains and creases, still Fine, only fifteen 6LB1 covers are recorded, this is an extremely early usage only eight days after carrier operations began, with 1991 P.F. certificate..... E. 1,000-1,500



- 2003 (★) **U.S. City Despatch Post, New York N.Y., 3c Black on Light Blue Unsurfaced (6LB3).**  
Unused (no gum), large margins, bright paper shade, horizontal crease, otherwise  
Extremely Fine, ex Perry and Schwartz ..... 500.00
- 2004 (★) **U.S. City Despatch Post, New York N.Y., 3c Black on Light Blue Unsurfaced (6LB3).**  
Unused (no gum), full to large margins, bright shade, faint pressed crease and shallow  
thin, otherwise Very Fine, ex Schwartz..... 500.00
- 2005 **U.S. City Despatch Post, New York N.Y., 3c Black on Light Blue Unsurfaced (6LB3).**  
Double transfer at bottom, full to large margins, orange-red "U.S." in frame cancel, Very  
Fine, ex Schwartz..... 500.00
- 2006 **U.S. City Despatch Post, New York N.Y., 3c Black on Light Blue Unsurfaced (6LB3).**  
Full to large margins, orange-red "U.S." in frame cancel, corner crease and tiny margin  
tear at lower left, otherwise Very Fine, ex Schwartz ..... 500.00



2007

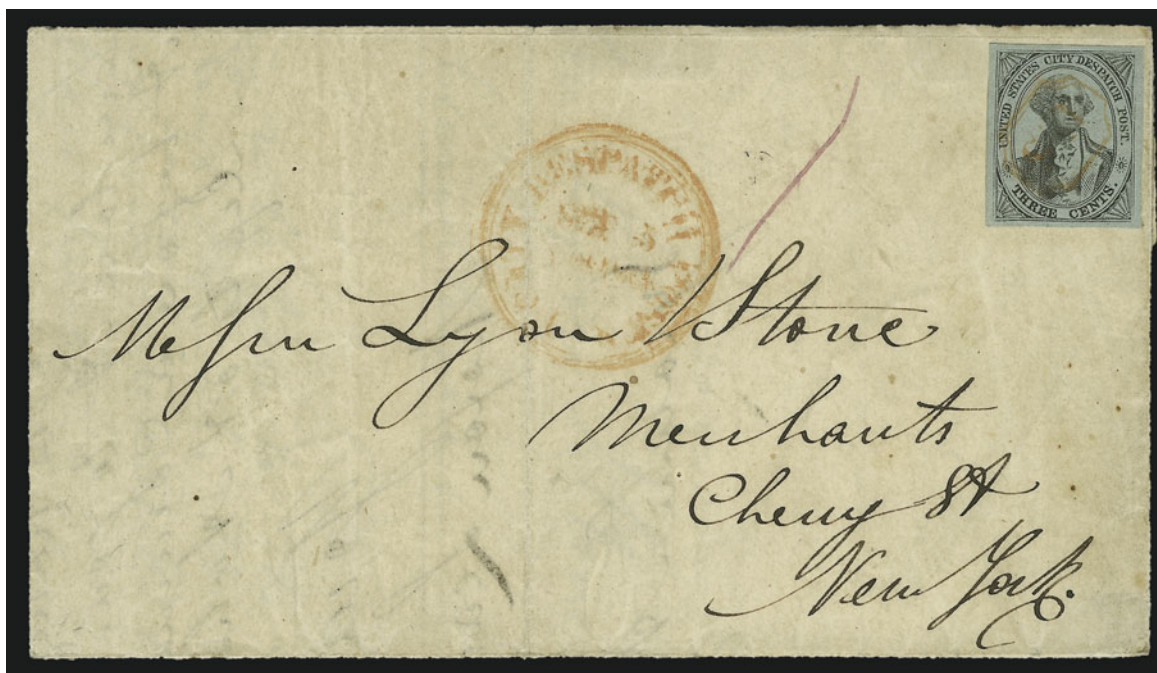
- 2007 ☒ **U.S. City Despatch Post, New York N.Y., 3c Black on Light Blue Unsurfaced (6LB3).**  
Position 14L, large margins, cancelled by red "Paid" arc (impression ties thru paper),  
matching "New-York Dec. 8" circular datestamp on mostly complete folded cover **to**  
**Philadelphia street address**, magenta ms. "12½" rate, negligible soiling, Very Fine,  
extremely rare use of the "Paid" cancellation applied by the New York City post office,  
also rare as a 6LB3 usage to another city, ex Caspary and Hall..... E. 1,000-1,500





2008

- 2008 ☒ **U.S. City Despatch Post, New York N.Y., 3c Black on Light Blue Unsurfaced (6LB3).** Large margins, cancelled by orange-red "U.S." in frame (tied by impression thru letter-sheet), used on Sep. 13, 1842 folded letter to New York street address, **redirected to Rye N.Y.**, faint red "Albany N.Y. Sep. 20" circular datestamp and ms. "12½" rate, orange-red "New-York Sep. 22" circular datestamp and blue ms. "6" for forwarding, Very Fine and unusual usage, ex Golden ..... E. 500-750



2009

- 2009 ☒ **U.S. City Despatch Post, New York N.Y., 3c Black on Light Blue Unsurfaced (6LB3).** Full margins all around, cancelled by orange-red "U.S." in frame (not tied), matching "U.S. City Despatch Post Sep. 5, 1 O'Clock" Type I double-line circular datestamp on folded letter **datelined Syracuse N.Y., Aug. 26, 1842**, bootlegged into New York and mailed by carrier department, magenta "1" drop rate (part of 3c prepayment), Very Fine and unusual, ex Schwartz ..... E. 400-500





2011



2010

- 2010 ☒ **U.S. City Despatch Post, New York N.Y., 3c Black on Light Blue Unsurfaced (6LB3).** Large margins, orange-red "U.S." in frame cancel (impression ties thru paper), matching "U.S. City Despatch Post Sep. 2, 9 O'Clock" Type I double-line circular datestamp on 1842 folded letter to local street address, torn across front, toned and edge faults, yet the stamp is Very Fine and this is the **second day of use** of the 6LB3 stamp, the first stamp printed and issued under U.S. authority (a Sep. 1 cover is recorded — see Golden sale, lot 297 for details)..... E. 500-750
- 2011 ☒ **U.S. City Despatch Post, New York N.Y., 3c Black on Light Blue Unsurfaced (6LB3).** Large to huge margins, tied by one of two strikes of red "U.S." in frame cancel, matching "U.S. City Despatch Post Sep. 14, 9 O'Clock" Type II circular datestamp on 1846 folded letter to local street address, minor edge stains and soiling along file fold, stamp has tiny corner crease, otherwise Fine, unusual very late use of 6LB3, with 1988 P.F. certificate... E. 200-300



2012



2013



2014

- 2012 **U.S. City Despatch Post, New York N.Y., 3c Black on Green Glazed (6LB5d).** Three large to huge margins, ample at bottom, bright paper color, red "U.S." in frame cancel, Very Fine, a beautiful example of the true Green paper, ex Schwartz..... 900.00
- 2013 **U.S. City Despatch Post, New York N.Y., 3c Black on Green Glazed (6LB5d).** Full even margins, red "U.S." in frame cancel, bright shade, couple tiny breaks in surface glazing, ink notation on back, still Very Fine, scarce early shade, ex Schwartz ..... 900.00
- 2014 **U.S. City Despatch Post, New York N.Y., 3c Black on Green Glazed (6LB5d).** Horizontal strip of three, red "U.S." in frame cancels, cut in and faulty but multiples of the Green are rare, Scott Retail \$2,700.00 as three singles ..... E. 100-150



2015

- 2015 ☒ **U.S. City Despatch Post, N.Y., 3c Black on Green Glazed (6LB5d).** Horizontal strip of four and single, Positions 1-4R and 7R, large to huge margins all around, slight creases in top margin, left stamp in strip has tear and crease, scissors-cut in bottom left corner of single, each stamp cancelled by red "U.S." in frame (impression ties thru paper), red "New-York Jun. 16" circular datestamp and matching "Paid" arc on 1843 folded letter to **Philadelphia**, blue ms. "12½" rate, beneath the stamps is the sender's ms. endorsement "Single Paid"

EXTREMELY FINE APPEARANCE. THE SECOND LARGEST MULTIPLE KNOWN ON COVER AND ONE OF EIGHT RECORDED EXAMPLES OF THE UNITED STATES CITY DESPATCH POST CARRIER STAMP USED TO PREPAY INTER-CITY POSTAGE. AN OUTSTANDING POSTAL HISTORY ARTIFACT.

This cover and seven other similar examples mark the beginning of prepayment of inter-city postage by adhesive stamps in the Western hemisphere. In each case, the United States City Despatch Post stamps prepaid the regular postage and carrier fee for delivery to the New York City post office, where the letters were marked "Paid" in full.

Our records contain eight inter-city covers with full prepayment, including one front and one with a stamp missing (listed chronologically by New York postmark date): 1) May 25 datestamp, 1843 folded letter to Henry Morris, Philadelphia, strip of 3 + pair, ex Caspary, Middendorf, Kapiloff, 1995 Rarities sale (realized \$37,500); 2) May 30 datestamp (1843), folded cover to F. Packard, Philadelphia, 2 pairs + 1, ex Caspary, Pope, Kapiloff, 1995 Rarities sale (realized \$42,500); 3) Jun. 16 datestamp, 1843 folded letter to Henry Morris, Philadelphia, strip of 4 + 1, ex Caspary, Hall (realized \$32,500 hammer), the cover offered here; 4) Jul. 5 datestamp, 1843 folded letter to Henry Morris, Philadelphia, strip of 5, ex Caspary, Middendorf (1990 private treaty sale at \$30,000); 5) Aug. 23 datestamp, 1843 folded letter to Henry Morris, Philadelphia, 4 singles (1 missing), ex Seybold, Hall; 6) Nov. 1 datestamp, 1843 folded letter to Julia Welling, Pleasant Valley N.Y., 5 singles, badly creased and restored, from a recent find; 7) Oct. 18 datestamp (1844), folded cover to Dr. Wheeler, Athens N.Y., strip of 3 + 1, ex Caspary, Hall, offered in this sale as lot 2034; and 8) Jun. 13 (ca. 1845), front only to Lewis Riley, Ridgefield Conn., ex Caspary, Middendorf, Kapiloff, 1995 Rarities sale (realized \$3,000). The last two covers have stamps on Blue paper (6LB5b) from the later printing. The others are Green or Blue Green (1843 printings).

Ex Caspary and Hall (realized \$32,500 hammer). Scott Retail \$36,000.00 .....  
..... E. 30,000-40,000





2016

- 2016 ☒ **U.S. City Despatch Post, New York N.Y., 3c Black on Green Glazed (6LB5d).** Large to huge margins, distinctive shade of Green paper, faint bend, cancelled by red "U.S." in frame (impression ties thru paper), red "New-York Mar. 17" circular datestamp and blue ms. "12½" rate on ca. 1843 folded letter to **Philadelphia street address**, Extremely Fine, the Green is a scarce early stamp, and it is rarely seen on outbound mail ..... E. 1,500-2,000



2017

- 2017 ☒ **U.S. City Despatch Post, N.Y., 3c Black on Blue Green Glazed (6LB5).** Large margins, slight creasing and cracks in enamel, tied by red "U.S." in frame cancel and "New-York Mar. 19" circular datestamp on 1844 folded letter to **Canton, Illinois**, ms. "25" rate unpaid, Very Fine, outbound use of the Green stamp is very scarce, this letter to Illinois is extremely rare ..... E. 750-1,000



- 2018 **U.S. City Despatch Post, N.Y., 3c Black on Blue Green Glazed (6LB5).** Ample to large margins, negligible cracks in enamel, tied by red "U.S." in frame cancel, matching "U.S. City Despatch Post, Nov. 11, 4 O'Clock" Type I double-line circular datestamp on rebaked cover front to **Miller's Bay N.Y.**, red "New-York Nov. 12" circular datestamp, magenta ms. "18¾" rate, no year date but 1843 based on use of Green stamp and Type I datestamp, tiny nick in fold at bottom, Very Fine, very scarce use of Green stamp on outbound letter, note on back describes stamp as ribbed paper variety ..... E. 300-400
- 2019 ☒ **U.S. City Despatch Post, New York N.Y., 3c Black on Green Glazed (6LB5d).** Large even margins, rich paper color, tied by red "U.S. City Despatch Post Apr. 3, 1 O'Clock" Type I double-line circular datestamp on 1843 folded letter to local street address, pristine and Extremely Fine, the Green stamp is seldom found tied by the datestamp, this is one of the finest extant..... E. 750-1,000
- 2020 ☒ **U.S. City Despatch Post, New York N.Y., 3c Black on Green Glazed (6LB5d).** Position 11R, large to huge margins, intense deep shade of Green paper, cancelled by red "U.S." in frame, which ties by impression thru paper, matching "U.S. City Despatch Post Jan. 19, 4 O'Clock" Type I double-line circular datestamp on 1843 folded letter to local street address, sender's notation "U.S. City Desp. Paid", certificate expressing opinion that stamp has been removed and replaced with gum residue at top right — we vehemently disagree based on strong cancel indentation, tying gum residue and preservation of enamel on stamp — Extremely Fine Gem stamp that has never left this fresh cover, scarce use of intense Green glazed paper, ex Caspary and Hall, with 2001 P.F. certificate..... E. 500-750





- 2021 ☒ **U.S. City Despatch Post, New York N.Y., 3c Black on Green Glazed (6LB5d).** Large to huge margins, cancelled by red "U.S." in frame, which ties by impression thru paper, matching "U.S. City Despatch Post June 6, 9 O'Clock" Type I double-line circular datestamp on 1843 folded letter to local street address, Extremely Fine, scarce use of Green glazed paper stamp, ex Mason, Ackerman and Hall..... E. 300-400
- 2022 ☒ **U.S. City Despatch Post, New York N.Y., 3c Black on Green Glazed (6LB5d).** Full to large margins, cancelled by red "U.S." in frame, which ties by impression thru paper, matching "U.S. City Despatch Post Apr. 12, 1 O'Clock" Type I double-line circular datestamp on 1843 folded cover to local street address, Very Fine and scarce use of Green stamp, ex Caspary and Hall..... E. 300-400
- 2023 ☒ **U.S. City Despatch Post, New York N.Y., 3c Black on Green Glazed (6LB5d).** Large even margins, trivial corner crease, cancelled by red "U.S." in frame, which ties by impression thru paper, used on small folded letter to local street address, Extremely Fine and scarce Green usage, ex Caspary and Hall..... E. 300-400
- 2024 ☒ **U.S. City Despatch Post, N.Y., 3c Black on Green (6LB5d).** Dark Moss Green shade, crease cracks enamel, tied by red "U.S. City Despatch Post, Feb. 16, - O'Clock" Type I double-line circular datestamp on folded cover, 1843 docketing confirms early Glazed paper use in Green shade — this variation is rare — also unusual for datestamp to be used as canceller at this stage, vertical fold with slight toning, otherwise Fine and scarce..... E. 300-400



2025

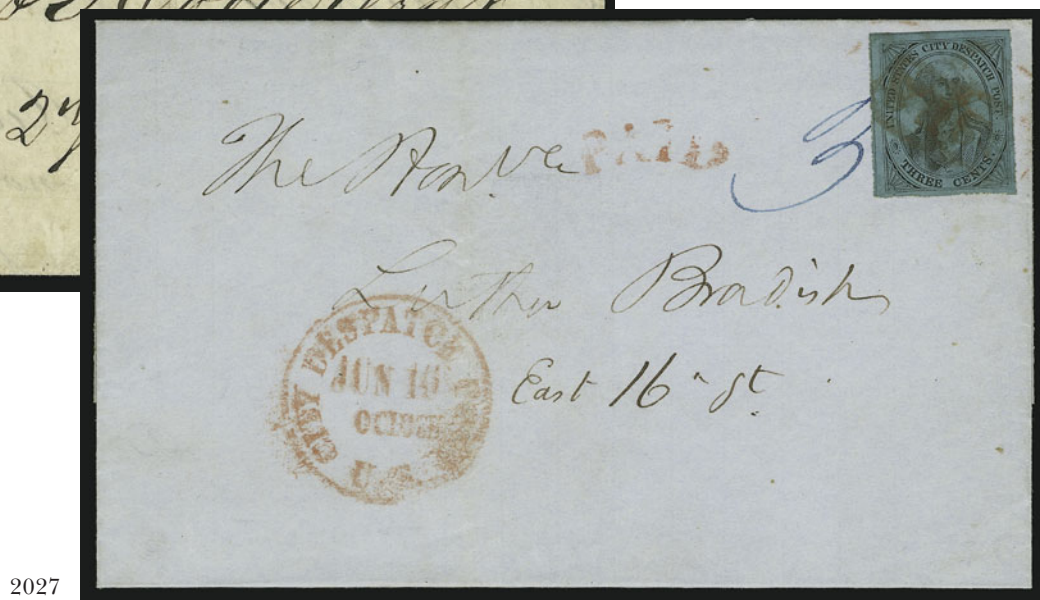


2026EX

- 2025 ★ **U.S. City Despatch Post, New York N.Y., 3c Black on Blue Green Glazed (6LB5).** Original gum, large margins, bright shade, creasing caused by gum, otherwise Extremely Fine ..... 175.00
- 2026 **U.S. City Despatch Post, New York N.Y., 3c Black on Blue Green Glazed (6LB5).** Two distinctive shades (one close to Green but not quite), red "U.S." in frame cancels, one has full to large margins, other clear to large, Fine-Very Fine .....(Photo Ex) 350.00



2028EX



2027

- 2027 ☒ **U.S. City Despatch Post, N.Y., 3c Black on Blue Green Glazed (6LB5).** Ample to large margins, tied by red "U.S." in frame cancel struck twice, **blue ms. "3"** partly under stamp, **red "Paid" in arc**, red "U.S. City Despatch Post, Jun. 16, - O'Clock" Type II circular datestamp on light blue folded cover, 1845 docketing on flap, Very Fine, letters bearing the "Paid" in arc and ms. rate were presumably paid with coin and received a stamp affixed by the carrier office, they are very scarce..... E. 200-300
- 2028 ☒ **U.S. City Despatch Post, New York N.Y., 3c Black on Blue Green Glazed (6LB5).** Three different shades — one could be classified as Green 6LB5d and another as Blue 6LB5b — on separate covers with red "U.S. in frame cancels and circular datestamps, stamps cut in or small faults, covers show wear, Fine group.....(Photo Ex) E. 150-200





2029

2029 ★田 **U.S. City Despatch Post, New York N.Y., 3c Black on Blue Glazed (6LB5b).** Positions 8-10/13-15/18-20/23-25L, block of twelve from the lower right corner of the left pane, original gum, full even margins except touched at lower left, beautiful impression on bright blue paper, four creases causing cracks in paper have been reinforced with hinges, small burn hole at lower right rebacked with paper, faint stain in two stamps at upper left

VERY FINE APPEARANCE. THIS REMARKABLE BLOCK OF TWELVE IS THE LARGEST RECORDED MULTIPLE AND ONLY KNOWN BLOCK OF THE UNITED STATES CITY DESPATCH POST CARRIER ISSUE. AN IMPORTANT ARTIFACT OF UNITED STATES PHILATELY.

The United States City Despatch Post government carrier issues are extremely rare in multiples, either used or unused. The largest multiple of 6LB3 (unsurfaced Light Blue paper) is believed to be an unused pair. There are a few used strips of the glazed surface-colored shades (Blue Green, Green, Blue) — a strip of five being the largest — and in unused condition there is at least one pair, one strip of three (lot 2030) and this block of twelve, which is the only block extant. Sometime after Ezra D. Cole acquired this block at the 1957 Caspary sale for Josiah K. Lilly, its margins were trimmed slightly, and a small hole was burned through the paper at lower right.

Ex Hawkins, Caspary, Lilly and Hall (realized \$21,000 hammer). Scott Retail \$23,000.00  
..... E. 20,000-30,000



2030

2030 ★ **U.S. City Despatch Post, New York N.Y., 3c Black on Blue Glazed (6LB5b).** Positions 5/10/15R, vertical strip of three from the upper right corner of right pane, original gum, large margins to cut in at bottom, horizontal creases

THE SECOND LARGEST UNUSED MULTIPLE OF THE UNITED STATES CITY DESPATCH POST CARRIER STAMP.

As noted in the description of the unique block (lot 2029), unused multiples of any of the U.S. City Despatch Post government carrier issues are rare. This strip is identical in shade and gum color to the block, and it possibly originated from the upper right corner of the same sheet (the block from the left pane, and the strip from the right pane).

Ex Ackerman and Hall. Scott Retail \$2,500.00.....  
..... E. 1,000-1,500



2031



2032



2033

2031 ★ **U.S. City Despatch Post, New York N.Y., 3c Black on Blue Glazed (6LB5b).** Original gum, large margins all around, bright shade, corner crease and tiny gum wrinkle, otherwise Extremely Fine, scarce with original gum ..... 650.00

2032 ★ **U.S. City Despatch Post, New York N.Y., 3c Black on Blue Glazed (6LB5b).** Original gum, large margins to clear at top, tiny gum wrinkle, otherwise Fine, scarce ..... 650.00

2033 **U.S. City Despatch Post, New York N.Y., 3c Black on Blue Glazed (6LB5b).** Full to large margins, deep shade, red "U.S." in frame cancel, Very Fine ..... 250.00





2034

- 2034 ☒ **U.S. City Despatch Post, New York N.Y., 3c Black on Blue Glazed (6LB5).** Vertical strip of three and single, Positions 10/15/20L and 12L, strip has huge margins, one stamp creased before use, single has three large margins, in at lower right, scissors-cut at lower left, tied by red "U.S." in frame cancels on folded cover to Athens N.Y., red "New-York Oct. 18" (1844) circular datestamp and matching "Paid" arc with ms. "12½" rate

VERY FINE. ONE OF EIGHT RECORDED EXAMPLES OF THE UNITED STATES CITY DESPATCH POST CARRIER STAMP USED TO PREPAY INTER-CITY POSTAGE. ONLY TWO COVERS ARE KNOWN WITH A STRIP OF THREE (TWO OTHERS EXIST WITH LARGER STRIPS), THIS BEING THE ONLY ON-COVER MULTIPLE OF 6LB5b (ON BLUE PAPER). A MAGNIFICENT CARRIER USAGE.

The description of lot 2015 provides a list of eight recorded covers, including one front and one with a stamp missing, with the United States City Despatch Post carrier issue used to prepay inter-city postage. The strips of five, four and three (two known) on four of these covers represent the largest on-cover multiples.

Ex Caspary and Hall (realized \$13,000 hammer). Scott Retail \$14,000.00 .....  
..... E. 10,000-15,000



2035

- 2035 ☒ **U.S. City Despatch Post, New York N.Y., 3c Black on Blue Glazed (6LB5b).** Large margins, cancelled by red "U.S." in frame (impression ties thru paper) on ca. 1845 folded cover **to Portsmouth Va.**, red "New-York Feb. 25" circular datestamp, blue "25" ms. rate, trivial wear, Very Fine, scarce outbound usage, with 1998 P.F. certificate (as Blue Green) ..... E. 500-750



2036

- 2036 ☒ **U.S. City Despatch Post, N.Y., 3c Black on Blue Glazed (6LB5b).** Large even margins, deep shade, red "U.S." in frame cancel strongly impressed (ties thru lettersheet), red "New-York May 18" circular datestamp and blue ms. "25" rate on ca. 1845 folded cover **to Charleston S.C.**, stamp has a few tiny scratches in enamel, otherwise Extremely Fine, choice and rare use Blue carrier stamp on mail to South Carolina ..... E. 750-1,000



- 2037 ☒ **U.S. City Despatch Post, New York N.Y., 3c Black on Blue Glazed (6LB5b).** Large even margins, cancelled by red "U.S." in frame, which ties by impression thru paper, matching "U.S. City Despatch Post Jun. 7, 1 O'Clock" Type II circular datestamp on ca. 1845-46 folded letter to local street address, Very Fine, ex Caspary and Hall, Scott Retail \$750.00 ..... E. 200-300
- 2038 ☒ **U.S. City Despatch Post, New York N.Y., 3c Black on Blue Glazed (6LB5b).** Large to huge margins, tied by red "U.S." in frame, matching "U.S. City Despatch Post Apr. 10, 1 O'Clock" Type II circular datestamp on ca. 1845-46 folded cover to local street address, Very Fine, ex Brown and Hall, Scott Retail \$750.00 ..... E. 200-300
- 2039 ☒ **U.S. City Despatch Post, New York N.Y., 3c Black on Blue Glazed (6LB5).** Large to huge margins, deep shade, cancelled by red "U.S." in frame, matching "U.S. City Despatch Post Mar. 25, 9 O'Clock" Type II circular datestamp on ca. 1845-46 folded cover to local street address, Very Fine, Scott Retail \$750.00 ..... E. 200-300
- 2040 ☒ **U.S. City Despatch Post, N.Y., 3c Black on Blue Glazed (6LB5b).** Large margins to just touched, light shade, faults, red "U.S." in frame cancel on 1846 folded letter with local address, sender's endorsement "Paid at the Western Hotel", pencil "3", red "Paid" in arc, red "U.S. City Despatch Post, May 7, 4 O'Clock" Type II circular datestamp, slightly toned, still Fine and rare usage, as noted in lot 2027 the red "Paid" arc and ms. "3" rate are indicative of cash prepayment, and in this case the endorsement supports that theory (the writer was a guest at the hotel). E. 300-400
- 2041 ☒ **U.S. City Despatch Post, New York N.Y., 3c Black on Blue Glazed (6LB5b).** Two locally-addressed covers, each stamp cancelled by red "U.S." in frame, matching circular datestamps, each with 1845 docketing, some toning, otherwise Fine-Very Fine .....Not illustrated E. 300-400





2042

2042

**U.S. City Despatch Post, New York N.Y., 3c Black on Blue Green Glazed, Double Impression (6LB5a).** Lightly struck red "U.S." in frame cancel, small margins and faults, still a presentable example of this rare error, approximately six or seven examples known, ex Hall ..... 1,500.00

2043

**U.S. City Despatch Post, New York N.Y., 3c Black on Yellow Green Unsurfaced (6LB4 var).** Full margins all around, faint red cancel or staining, faults including a few pinholes, otherwise Fine, very distinctive and rare colored-thru paper, probably produced concurrently with 6LB2 Rosy Buff, 6LB3 Light Blue and 6LB4 Green..... E. 1,000-1,500



2043



2044

2044

**U.S. City Despatch Post, N.Y., 3c Black on Yellow Straw Surface-Colored Glazed Paper (Unlisted; 6LB5 var).** Three large margins, cut into bottom, bold red "U.S." in frame cancel; this stamp was discovered by our firm among the pages of a United States collection; it is a genuinely used carrier stamp on paper with yellowish surface coloring, light glazing and a white back; the color differs from the unsurfaced Rosy Buff 6LB2 or the Pink glazed (see Hall lot 139)..... E. 1,000-1,500





2045

2045

**U.S. City Despatch Post, New York N.Y., 2c on 3c Black on Blue Green Glazed, Red Surcharge (6LB7).** Large to huge margins, clear overprint and deep paper shade, vertical crease

EXTREMELY FINE APPEARANCE. ONE OF FOUR RECORDED EXAMPLES OF THE WORLD'S FIRST GOVERNMENT-ISSUED OVERPRINTED STAMP. A MAJOR RARITY OF TREMENDOUS PHILATELIC SIGNIFICANCE AND APPEAL.

The world's first government-issued, overprinted stamp is the 2c on 3c U.S. City Despatch Post carrier issue, Scott 6LB7. It was overprinted in late 1845 or early 1846 to meet the need for a 2c stamp to prepay the carrier fee after the drop-letter rate was modified on July 1, 1845. Only four stamps are recorded, including three genuinely used on covers.

To understand why it was necessary to revalue U.S. City Despatch Post stamps from 3c to 2c, it is helpful to look at the effects of the July 1, 1845, postal reform (as per the Act of March 3, 1845). As is well-known to most U.S. stamp collectors, the July 1st reforms created the simplified 5c and 10c postage rates and laid the foundation for adhesive stamps to be used in this country. The postmasters' provisionals appeared first, followed in 1847 by the first General Issue (Scott 1 and 2). However, at the same time inter-city rates were lowered, Congress raised the drop-letter rate from 1c to 2c. A drop letter is one brought to a post office that is not transmitted to another post office. Congress raised the drop-letter rate out of fear that the new postage structure would cause a severe decline in postal revenues. By raising the intra-city rate, Congress hoped to offset some of the anticipated losses.

The consequences of this legislation for the U.S. City Despatch Post were immediate and dire. Prior to July 1, 1845, a drop letter could be taken by the carrier to or from the post office for 3c, which included 2c for the carrier department and 1c for the post office (drop postage). Beginning July 1, an extra cent was required for the drop postage, making the total amount equal to 4c. Although other classes of mail were unaffected by the drop-rate increase (including carrier letters that by-passed the main post office), the U.S. City Despatch found itself at a severe disadvantage competing with local posts, who generally charged 2c for a city letter. In the post-July 1 period, not only did Boyd flourish, but many smaller local posts entered the scene, hoping to capture a share of the market for intra-city letter delivery. By November 1846, the U.S. City Despatch Post was closed. Government carrier service would not appear again in New York City until 1849 under Robert Roberts' supervision.

The three recorded 6LB7 covers were mailed during the first eight months of the 2c drop-rate period. The covers are listed chronologically as follows: 1) Jan. 9, 1846 (red "New York 2 cts"), stamp cut in and tied by filing crease, addressee's name crossed out, no carrier markings, ex Ferrary, Hind, Waterhouse and Middendorf; 2) Feb. 14, 1846 (red "New-York 2 cts" and red carrier datestamp), stamp tied by filing crease, to Rev. R. S. Cook, Tract House, ex Hunter, Caspary, Boker, Golden and "D.K." (realized \$62,500 hammer); and 3) Mar. 2, 1846 (red carrier datestamp), stamp originally affixed on back over folds and torn in half upon opening, to W. A. Sesley, 213 Fulton St., no other markings, ex Caspary. This off-cover stamp was previously affixed to a cover dated Oct. 29 (1845 or 1846), but did not originate (the cover accompanies).

The rarity of the 2c on 3c stamp suggests that it was used on a very limited basis, during a period of decline for the U.S. City Despatch Post. By overlaying the "2" overprint on the "2" in the drop-rate datestamp, we have determined that they are identical in size and shape. The overprint was probably made from a modified integral-rate marker and struck by hand on each stamp.

Ex Grunin. With 1985 P.F. certificate ..... E. 15,000-20,000

## PHILADELPHIA DESPATCH POST AND D. O. BLOOD &amp; CO.

DECEMBER 1842—JULY 1845

**PHILADELPHIA DESPATCH POST.**—The subscribers inform the citizens that they have established a CITY DESPATCH POST for the delivery of LETTERS, PAPERS, &c., from any part of the city or its vicinity to another, with greater promptness and despatch. They have stationed letter boxes in careful hands at most of the public places, and at a corner of nearly every square, where, if letters, &c., are deposited before 9 A. M., will be taken out for delivery at 10 A. M. And if deposited before 2 P. M., will be taken out for delivery at 3 P. M. If deposited at the principal office before 10 A. M., or 3 P. M., they will be taken out for delivery at that time. The charge of postage is 3 cents, paid by the receiver of the letter. Those wishing to pay, may deposit the same in the boxes with their letters. There will soon be Free Stamps left for their accommodation at the different stations. Price 37½ cents per dozen. ROBERTSON & CO.'S. Principal Office, 83 South SECOND Street. N. B.—Letters and Notices of importance may be registered at the Principal Office, and delivered at 6½ cents each. d7-91

The local post established in 1845 by Daniel Otis Blood and his brother, Walter, was the most successful and longest surviving of the numerous private mail firms in Philadelphia. Its history from 1842 through 1862 has been explored by several postal historians, and the bibliography provided below is an essential source of information. We offer only a brief overview of this complex operation.

The Scott Catalogue places the Philadelphia Despatch Post under the D.O. Blood & Co. heading, although the Philadelphia Despatch Post existed as an independent firm for nearly three years prior to the formation of Blood's Despatch. There is some logic to this arrangement, because the Philadelphia Despatch Post is tied to the lineage of Blood's. However, researchers are still actively searching for documentation that establishes the exact timeline and specific participants in this transition.

The formation of the Philadelphia Despatch Post was announced by Robertson & Co. in an advertisement in the Philadelphia Public Ledger on December 8, 1842. This ad is reproduced above from a photograph in the Abt files. The address given is 83 South Second Street. Steven M. Roth has pointed out that this address is where James Halsey was listed as a shoemaker in the 1843 city directory (he is listed in 1844 at a different address). It has been reported that Halsey managed the post and is the person who sold it to Blood in July 1845.

The first stamps issued by the Philadelphia Despatch Post are the Red and Black handstamped adhesives (Scott 15L1 and 15L2), which are similar in appearance to the Bermuda provisionals issued by William B. Perot. The stamps were made from the circular datestamp device, which reads "Phila. Despatch Post", and each one was handstamped "Paid", "3" and initialled "R & Co.". The advertised price was 37½c per dozen (later reduced to 31c). The adhesives were used concurrently with handstamped markings on stampless covers. The latest recorded stampless Philadelphia Despatch Post cover is dated March 5, 1845 (ex Middendorf).

The Striding Messenger stamps (15L3-4) issued by the Philadelphia Despatch Post were lithographed by Thomas Sinclair, a local printer. The first printing was issued in late 1843 and appears on covers dated as early as October 10, 1843 (Siegel Sale 862, lot 62). This remarkable image — the world's first pictorial stamp — depicts a giant messenger stepping over the Merchant's Exchange Building, which housed the government post office (shown in a contemporary illustration below). Robertson & Co.'s Striding Messenger stamps were initialled "R & Co.". After the sale to Blood, the same stamps were initialled "D. O. B. & Co.". The subsequent issue, lithographed by Wagner & McGuigan in 1845, has the name "D. O. Blood & Co." added to the background.

Blood's Despatch prospered from 1845 through 1860. It moved to different locations and changed ownership during this period. By carefully adhering to the restrictions on post roads, Blood's Despatch was able to survive the government's effort to close down private posts. However, in 1860 the Post Office sued Blood's proprietor, Charles Kochersperger, claiming that his letter-carrying business was illegal. The judge's decision in this landmark case left the government with no choice but to seek legislation to declare the streets of a city or town to be post roads. Congress passed the bill in 1861. Blood's continued in 1860 and 1861, but the firm's closing was announced on January 11, 1862.

#### *Selected Blood's Bibliography*

W. Otis Blood Sr., "Recollections of Blood's Despatch Post", *The Penny Post*, Apr. 1995

Calvet M. Hahn, "The Beginning of Adhesive Postage in the U.S.", *The Penny Post*, Oct. 1995

Edward T. Harvey, "Blood's Despatch", *Chronicle* 144

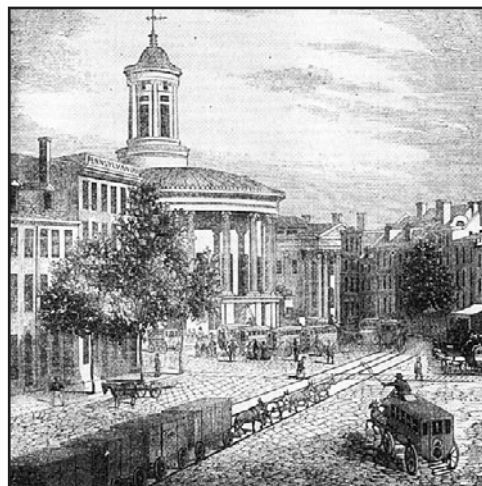
Robson Lowe, "Philadelphia Local Posts", *Chronicle* 90

Robson Lowe, "Blood's Penny Post", *Collectors Club Philatelist*, Vol. 43, No. 4

Donald S. Patton, "The American Local and Carriers' Stamps", *The Philatelist*, 1960-61

Steven M. Roth, "Blood's Despatch Revisited", *The Penny Post*, Nov. 1991

Norman Shachat, "Some Comments on Blood's Despatch Revisited", *The Penny Post*, Aug. 1992



*The Merchant's Exchange Building  
(courtesy of Library of Congress)*





2046

2046 ☒ **Philadelphia Despatch Post, Philadelphia Pa., 3c Black (15L2).** Cut to shape **clear of circle all around**, every letter of "Phila. Despatch Post" unusually well-defined, black "Paid" handstamp struck twice and "R & Co." ms. control, affixed with wax seal, cancelled by red "3" handstamp, matching partly struck "Phila. Despatch Post" circular timestamp folded cover dated "1842" on back (must be December) to the Treasurer of the American Sunday School Union at 146 Chesnut Street

EXTREMELY FINE. ONE OF THE TWO FINEST OF THE FIVE RECORDED COVERS BEARING THE PHILADELPHIA DESPATCH POST CIRCULAR BLACK STAMP. BASED ON THE 1842 DOCKETING, THIS IS THE EARLIEST EXAMPLE OF A UNITED STATES ADHESIVE STAMP USED OUTSIDE NEW YORK CITY.

The Philadelphia Despatch Post is documented in an advertisement in the *Philadelphia Public Ledger* (Dec. 8, 1842—see page 23) and in an expanded version with some differences (see Sale 825, p. 293, or go to [www.siegelauctions.com/enc/carriers/robertson.jpg](http://www.siegelauctions.com/enc/carriers/robertson.jpg) for an image of the revised ad). In the later ad, the stamps are priced at 3c individually, 31c per dozen and \$2 per hundred. Valuable-letter registration for 6¼c and a 6c rate on letters beyond two miles are quoted (no examples of either special service are known). The firm's address is 93 Chesnut Street, not 83 South Second Street as in the earlier advertisement.

The five recorded examples of the Black circular stamps 15L2, which was actually the first issued, are as follows in chronological order: 1) 1842 folded letter (docketed "1842" on back, must be December) to Treasurer American Sunday School Union, ex Caspary, lot 561, Hollowbush, Schwartz, the cover offered here; 2) Jan. 13, 1843 folded letter to Rev. George Boyd, stamp cancelled by red "T"-shaped handstamp, red "Paid" and "Phila. Despatch Post 10 A.M." timestamp (on flap), ex Hall (realized \$10,500 hammer); 3) Mar. 20 (1843) folded letter to N. R. Potts, stamp cancelled by dots in small circle, red "Phila. Despatch Post 3 P.M." timestamp (ms. "20" below time) and "Paid", ex Hall (realized \$22,000 hammer); 4) Apr. 20, 1843 folded letter to Shrack & Co., stamp cancelled by small red outline "3", no timestamp or postmark, ex Gibson, Middendorf; and 5) May 19, 1843 folded letter to Booth, stamp cancelled by large red "3", red "Phila. Despatch Post 10 A.M." timestamp, discovery example (1889), ex Caspary, Boker.

Ex Caspary, Hollowbush and Schwartz..... E. 20,000-30,000



2047

2047 ☒ **Philadelphia Despatch Post, Philadelphia Pa., 3c Red (15L1).** Octagonal margins just barely into letters "IL", bright white paper and remarkably clear impression of "Phila. Despatch Post P.M." handstamp, ms. "R & Co." control mark, perfectly clear strike of small red outline "3" cancel (not tied), used on folded letter addressed in blue to the local printing firm of Carter & Scattergood, dated Nov. 1, 1843, from a former employee telling them he has obtained financial backing and started a new venture of his own, red "Phila. Despatch Post — P.M." circular timestamp

A VERY FINE, COLORFUL AND REMARKABLY FRESH COVER. ONE OF THE FINEST OF THE FOURTEEN RECORDED EXAMPLES OF THE PHILADELPHIA DESPATCH POST RED 15L1 STAMP. A WONDERFUL "PRIMITIVE" AMONG PHILATELIC RARITIES.

A census of Philadelphia Despatch 15L2 stamps may be found in Sale 830, page 167, or at our website: [www.siegelauctions.com/2000/830/y83082.htm](http://www.siegelauctions.com/2000/830/y83082.htm).

Ex Schwartz. With 1983 P.F. certificate. .... E. 10,000-15,000





2048



2049

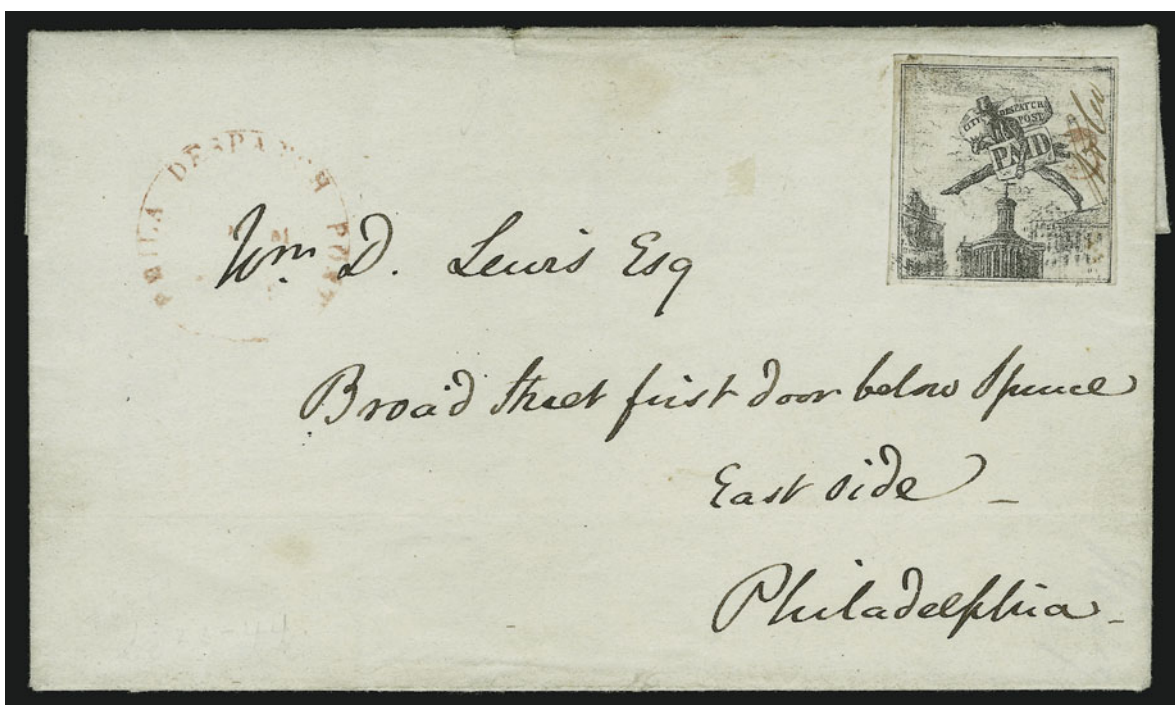


2050



2051EX

- 2048 **Philadelphia Despatch Post, Philadelphia Pa., (3c) Black on Grayish (15L3).** Large margins to ample at top, fine impression showing some of the background shading lines, red cancel, Very Fine, signed Sloane, ex Schwartz ..... 500.00
- 2049 **Philadelphia Despatch Post, Philadelphia Pa., (3c) Black on Grayish (15L3).** Ample margins to just touching, fine impression showing some background shading lines, ms. "X" cancel, thin spots, Fine appearance, ex Schwartz ..... 500.00
- 2050 **Philadelphia Despatch Post, Philadelphia Pa., (3c) Black on Grayish (15L3).** Close margins to touching, cleaned, which has washed out the contour mark, small thins, still a presentable and very scarce example of the first pictorial stamp in the world, ex Schwartz ..... 500.00
- 2051 **Philadelphia Despatch Post, Philadelphia Pa., (3c) Black on Grayish, "R & Co." Initials (15L3).** On thin paper with clear background lines, two, each with ms. cancel, clear margins but both are defective with small repaired hole, also included is a folded letter with 15L4, which was partly peeled off before mailing (still useful for comparison). .....(Photo Ex) 1,000.00



2052

- 2052 ✉ **Philadelphia Despatch Post, Philadelphia Pa., (3c) Black on Grayish, "R & Co." Initials (15L3).** On stout paper with very faint background lines, large even margins all around, cancelled by red outline "3" handstamp, impression ties stamp thru paper, matching "Phila. Despatch Post P.M." circular timestamp on Jan. 23, 1844 folded letter to local street address, sender's notation on back "Despatch Post From Dr. Ducachet"
- EXTREMELY FINE. A SUPERB EXAMPLE OF THE PHILADELPHIA DESPATCH POST STRIDING MESSENGER STAMP USED ON COVER. ISSUED IN 1843, THIS IS THE WORLD'S FIRST PICTORIAL STAMP.
- Ex Emerson, Hollowbush and Schwartz. .... E. 4,000-5,000

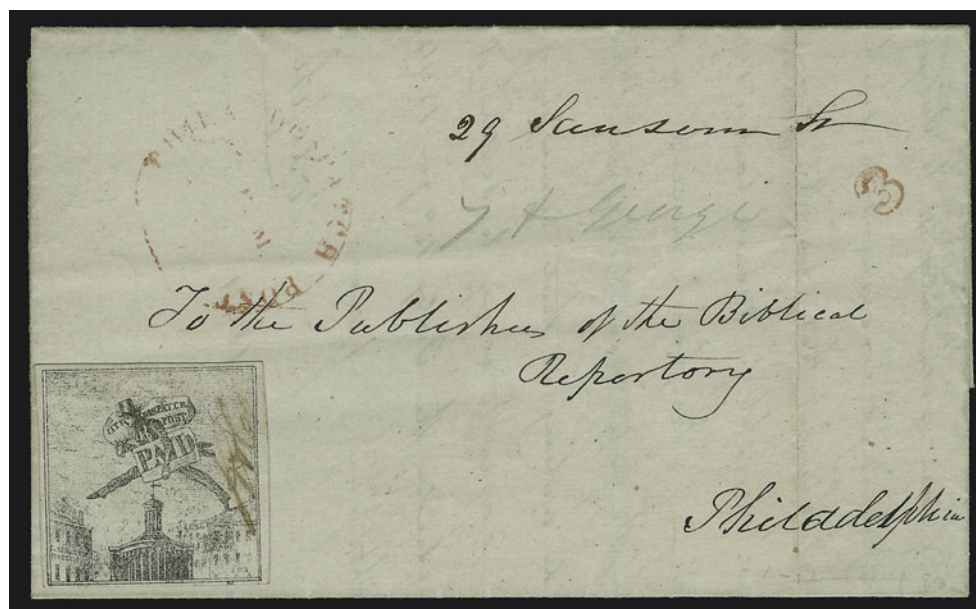


2053

- 2053 ☒ **Philadelphia Despatch Post, Philadelphia Pa., (3c) Black on Grayish, "R & Co." Initials (15L3).** On stout paper with very faint background lines, huge even margins all around, affixed over pencil "Paid" and cancelled by heavily impressed red outline "3" handstamp, impression ties stamp thru paper, matching "Phila. Despatch Post" circular timestamp on folded letter to local street address, dated Jan. 8, 1843 — obviously an error in year-dating just after the New Year (the issue was not released until October 1843), should be 1844 — few ink smears in address

VERY FINE. A CHOICE EXAMPLE OF THE PHILADELPHIA DESPATCH POST STRIDING MESSENGER STAMP ON COVER.

Ex Ackerman and Hall ..... E. 3,000-4,000



2054

- 2054 ☒ **Philadelphia Despatch Post, Philadelphia Pa., (3c) Black on Grayish (15L3).** On stout paper with faint background lines, large even margins, uncanceled, on folded letter from Brunswick Me., Jan. 2, 1844, to publisher of Biblical Repertory, street address written at top, red "Phila. Despatch Post P.M." timestamp and matching outline "3" handstamp, Very Fine, stamp may have been used for prepayment on this letter but offered "as is", ex Hollowbush and Schwartz..... E. 1,000-1,500





2055

- 2055 ☒ **Philadelphia Despatch Post, Philadelphia Pa., (3c) Black on Grayish, "R & Co." Initials (15L3).** On thin paper with clear background lines, three large margins, clear at top, cancelled by red outline "3" handstamp, matching faint "Phila. Despatch Post" circular timestamp on Jul. 6, 1844 folded letter from Schuylkill Haven Pa. to Philadelphia street address

VERY FINE. EXAMPLES OF THE PHILADELPHIA DESPATCH POST STRIDING MESSENGER PRINTING ON THIN PAPER — SHOWING THE FULL DESIGN WITH BACKGROUND LINES — ARE VERY RARE.

The Scott Catalogue still errs in differentiating between 15L3 and 15L4 by the presence of background lines — 15L3 has the "R & Co." control mark and comes from printings with and without background lines, while 15L4 has the "DOB & Co." control mark applied to stamps with the background lines (from a supply on hand when Blood took over the City Despatch Post).

Ex Mason and Hall..... E. 3,000-4,000



2056

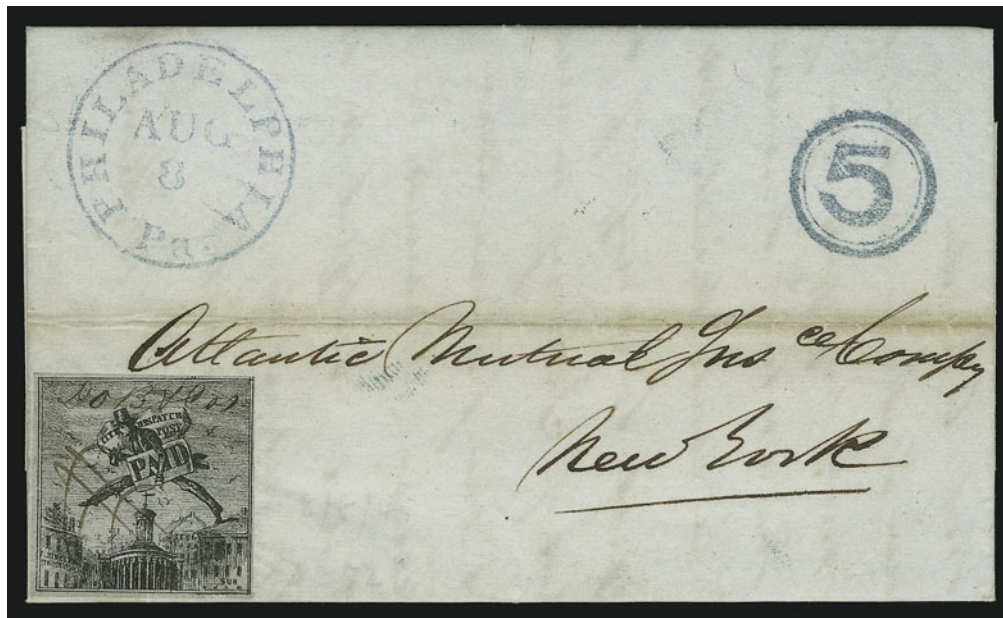
- 2056 ☒ **Philadelphia Despatch Post, Philadelphia Pa., (3c) Black on Grayish, "R & Co." Initials (15L3).** On thin paper with clear background lines, two large margins, clear at bottom and slightly in at right, tied by ms. "X" with large matching "1" on Sep. 29, 1844 folded letter from Philadelphia to **Richmond Va.**, red "Philadelphia Pa. Oct. 2" circular datestamp and blue ms. "18 $\frac{3}{4}$ " rate, Fine, a survey of our records produced no more than eight 15L3 covers addressed to other cities, with 1991 P.F. certificate .....

E. 1,000-1,500



2057

- 2057 ☒ **Philadelphia Despatch Post, Philadelphia Pa., (3c) Black on Grayish (15L3).** Thin paper showing clear background lines, two full margins to slightly in, tied by ms. "X" cancel on 1845 folded letter **to Huntington Pa.**, blue "Philadelphia Pa. Jan. 2" circular datestamp, red ms. "6" rate crossed out and re-rated "18<sup>3</sup>/<sub>4</sub>", stamp has small fault at lower right corner, otherwise Fine, outbound covers with the Striding Messenger 15L3 stamp are rare (approximately eight located in our records), ex Hollowbush and Schwartz..... E. 1,000-1,500



2058

- 2058 ☒ **D. O. Blood & Co., Philadelphia Pa., (3c) Black on Grayish, "D.O.B. & Cos." Initials (15L4).** Full to large margins, detailed impression with all of background lines showing clearly, cancelled by ms., blue "Philadelphia Pa. Aug. 8" circular datestamp with matching "5" in double-circle handstamp on 1845 folded letter to New York City  
EXTREMELY FINE. ONE OF THE FINEST EXAMPLES OF THE RARE BLOOD'S FIRST ISSUE WITH MANUSCRIPT CONTROL MARK.  
Ex Hollowbush and Schwartz. .... E. 3,000-4,000



2059 (★)田 **D. O. Blood & Co., Philadelphia Pa., (2c) Black (15L5).** Four blocks of 12 (each a so-called pane), unused (no gum), forming a **reconstruction of two-thirds of the original multiple of 72** from which five of the seven recorded blocks were cut (see notes below), margins generally large but just touching on two blocks, faint stains, some minor creases and small faults

VERY FINE APPEARANCE. A BREATHTAKING COMPILATION OF RARE MULTIPLES. WITH THE ADDITION OF TWO MORE BLOCKS OF TWELVE, IT IS POSSIBLE TO PRESENT THE ORIGINAL BLOCK OF 72, WHICH IS BELIEVED TO BE THE SIZE OF A COMPLETE SHEET AS PRINTED FOR D. O. BLOOD & CO.

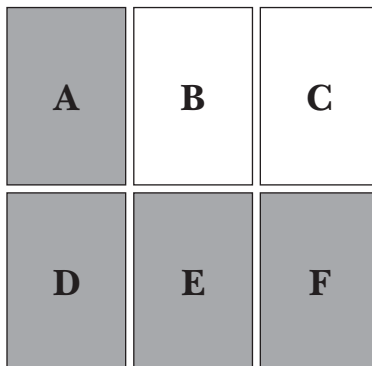
Our records contain five intact blocks of twelve, one block of twelve severed in half and rejoined, and one block of eleven (bottom right stamp removed). We have determined that six of the seven blocks come from different clusters of positions on the lithographic stone, each showing distinctive subject alignment and plate flaws. The seventh multiple (the severed pane) is an exact duplicate of one of the six clusters. Blood advertised stamps for sale at the rate of 25c per dozen; therefore, it follows that printed sheets comprised 72 subjects, which could be divided into six units of a dozen stamps for convenient sale.

The four blocks offered here were acquired individually. They are shown opposite in their original positions in the larger multiple. Assuming the sheet comprised six blocks of twelve (Blood's sale units), the letters A thru F may be used to identify the six distinctive block arrangements (see diagram below). We offer A, D, E and F in this lot. If a serious philatelist were so inclined, he could acquire units B and C (C was last offered in Shreve's Wampler sale) and reconstruct the complete printed sheet of one of the world's first stamps. Few philatelic artifacts would rival such an item.

As identified in the composite photo, the features and pedigrees of the blocks are: Position A) plate flaw at lower right of second stamp/third row, ex Schwartz; Position D) ex Hall; Position E) squeezed cliché and missing imprint on second stamp/third row, ex Gibson and Golden; and Position F) plate flaw at left of first stamp/second row, with 1998 P.F. certificate.

Regarding the other three recorded panes and their relationship to the 72-stamp multiple, one pane is intact and comes from Position C; its bottom margin aligns with the top of Position F in this lot. The severed pane is a duplicate of Position A and therefore could not have been part of the larger multiple reconstructed here. The pane with one stamp cut out from lower right does not match Positions A, C, D, E or F, and so logically becomes Position B, but its margins do not align with the multiples offered here, and therefore it must come from another sheet. Because all are creased horizontally between the second and third rows, we believe that the seven panes (possibly more and definitely from two sheets) were divided and folded when they were stored and discovered. The staining in the same relative positions on the panes also indicates that they were stacked together when the staining occurred. There is no written record of their discovery to confirm our speculations.

Scott Retail \$22,000.00..... E. 15,000-20,000



*Diagram showing six different units of twelve (each a distinctive group of clichés), which make up the larger multiple of 72 that was probably the size of a complete sheet. Units A, D, E and F are offered in lot 2059.*



2059







2060EX

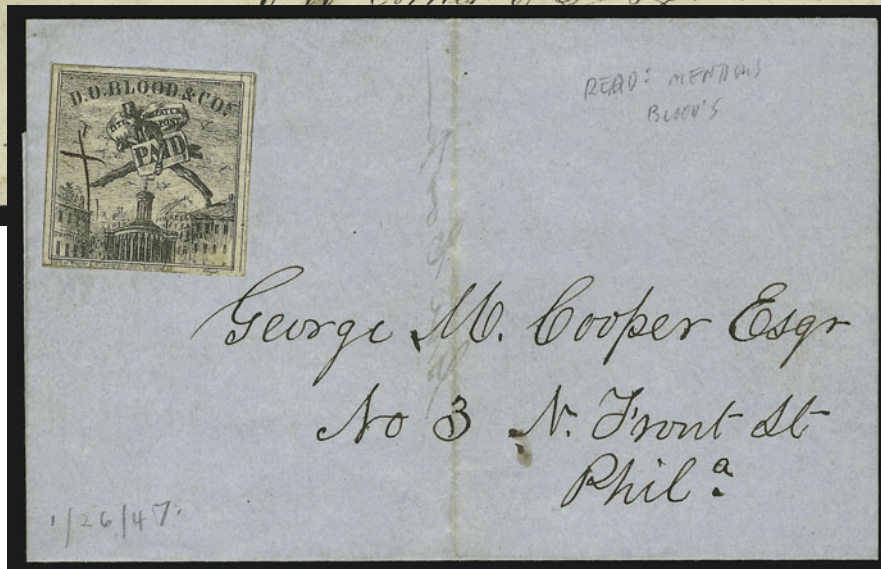


2061

- 2060 (★) **D. O. Blood & Co., Philadelphia Pa., (2c) Black (15L5).** Two, one with original gum (slightly toned), other unused (no gum), full to large margins, tiny flaws, Very Fine appearance ..... 250.00
- 2061 (★) **D. O. Blood & Co., Philadelphia Pa., (2c) Black (15L5).** Horizontal pair, unused (no gum), small faults, Very Fine appearance, scarce ..... 250.00



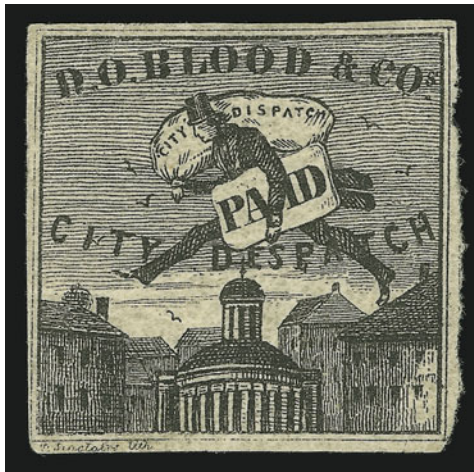
2063



2062

- 2062 ☒ **D. O. Blood & Co., Philadelphia Pa., (2c) Black (15L5).** Large margins, ms. "X" cancel, used on Jan. 26, 1847 folded letter to local street address, contents mentions using Blood's Despatch, Very Fine, ex Hollowbush and Schwartz ..... E. 500-750
- 2063 ☒ **D. O. Blood & Co., Philadelphia Pa., (2c) Black (15L5).** Large margins, cancelled by red "Paid", impression ties thru paper, on Feb. 25, 1846 folded letter to local street address, a bit worn but could easily be improved, Very Fine, ex Hollowbush and Schwartz ..... E. 500-750





2064



2065EX

- 2064 ★ **D. O. Blood & Co., Philadelphia Pa., (2c) Black (15L6).** Original gum, large margins except clear in two places at right, intense shade and impression, Very Fine, original-gum examples of the Striding Messenger 15L6 issue are extremely rare and unpriced in Scott, ex Schwartz ..... E. 500-750
- 2065 **D. O. Blood & Co., Philadelphia Pa., (2c) Black (15L6).** Two, different cancels, one has clear margins and small thin, other slightly in at one side but shows an unusual lithographic plate flaw at upper right, Fine and scarce, ex Schwartz ..... **(Photo Ex)** 300.00



2066

- 2066 ☒ **D. O. Blood & Co., Philadelphia Pa., (2c) Black (15L6).** Full margins to slightly in, faint gum toning, cancelled by small black "X" handstamp, not tied as usual, used on lady's small cover to local street address, Fine, the third Striding Messenger issue is rare on cover, ex Schwartz ..... E. 400-500

BOYD'S CITY EXPRESS, NEW YORK, N.Y.—JUNE 1844



2067

- 2067 ✉ **Boyd's City Express, New York N.Y., 2c Black on Green Glazed (20L1).** Huge margins at bottom and right, other sides full to large, intense shade and impression, cancelled by vivid red "Free", impression ties thru paper and faint red smear ties at upper left, matching "Boyd's City/Express Post/Aug 23 9 O'C." rectangular framed datestamp on 1844 folded letter to local street address

EXTREMELY FINE. ONE OF THE CHOICEST OF THE KNOWN COVERS BEARING THE FIRST BOYD'S STAMP. A SPECTACULAR EXAMPLE.

Specialists in Boyd's material have variously estimated the number of 20L1 covers from 15 to 20. The most current census figure reported in Larry LeBel's exhibit is 18.

Ex Golden (realized \$5,000 hammer) ..... E. 5,000-7,500



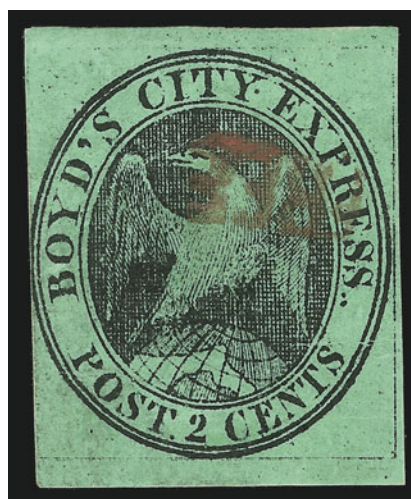


2068

- 2068 ☒ **Boyd's City Express, New York N.Y., 2c Black on Green Glazed (20L1).** Large margins all around, red "Free" cancel, matching "Boyd's City/Express Post/Sep 6 3 O'C" rectangular framed datestamp on folded cover to local street address, 1844 docketing on back, lightly cleaned and pressed file folds, stamp has scissors cut and tiny tear at bottom right (pre-use and barely noticeable)

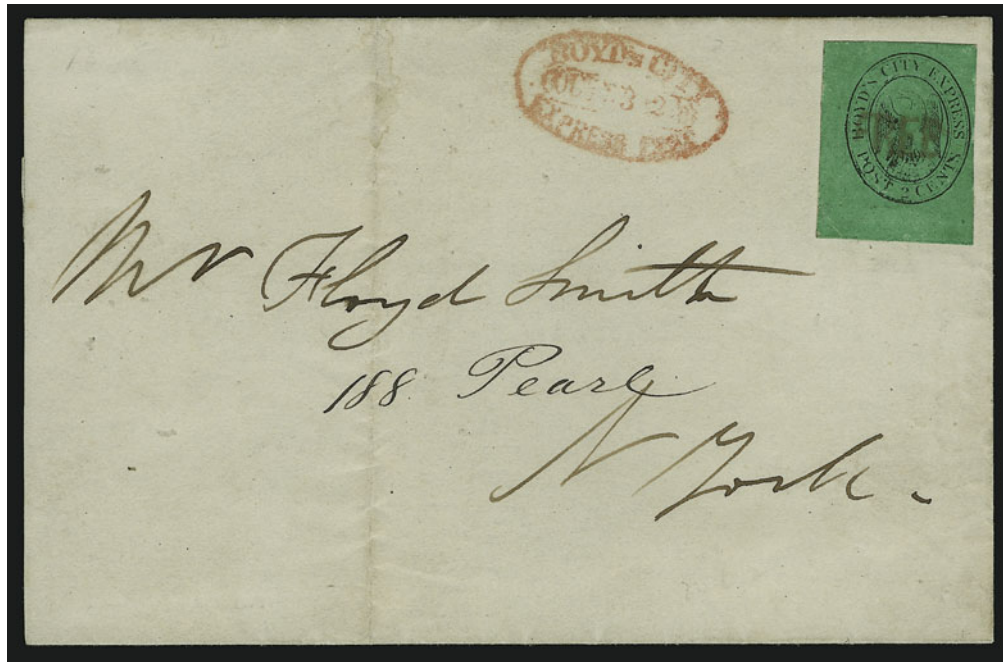
EXTREMELY FINE APPEARANCE. A BEAUTIFUL AND EXTREMELY RARE COVER BEARING BOYD'S LARGE EAGLE, THE FIRST ISSUE OF THIS PROSPEROUS LOCAL POST.

Only 18 covers have been reported by Larry LeBel. Ex Schwartz ..... E. 4,000-5,000



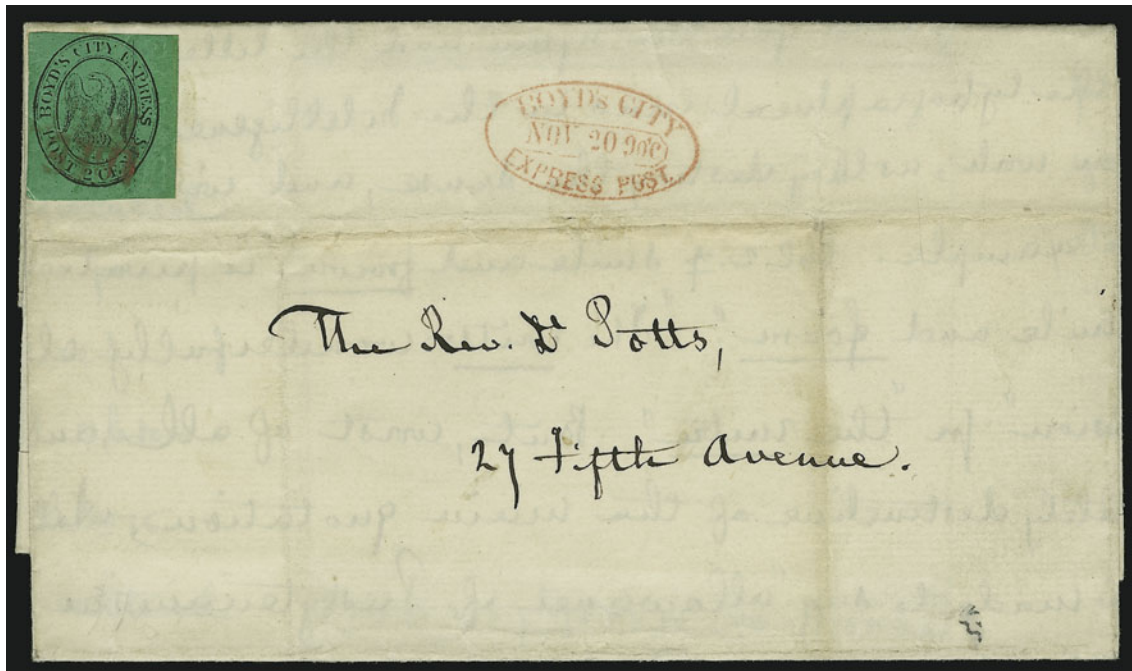
2069

- 2069 **Boyd's City Express, New York N.Y., 2c Black on Green Glazed (20L1).** Large margins to just barely shaved along outer oval at left, bright paper shade, red "Free" cancel, Very Fine, the Boyd's First Issue is rare and undervalued in Scott (only 18 covers reported by LeBel and very few off-cover stamps known), ex Schwartz ..... 500.00



2070

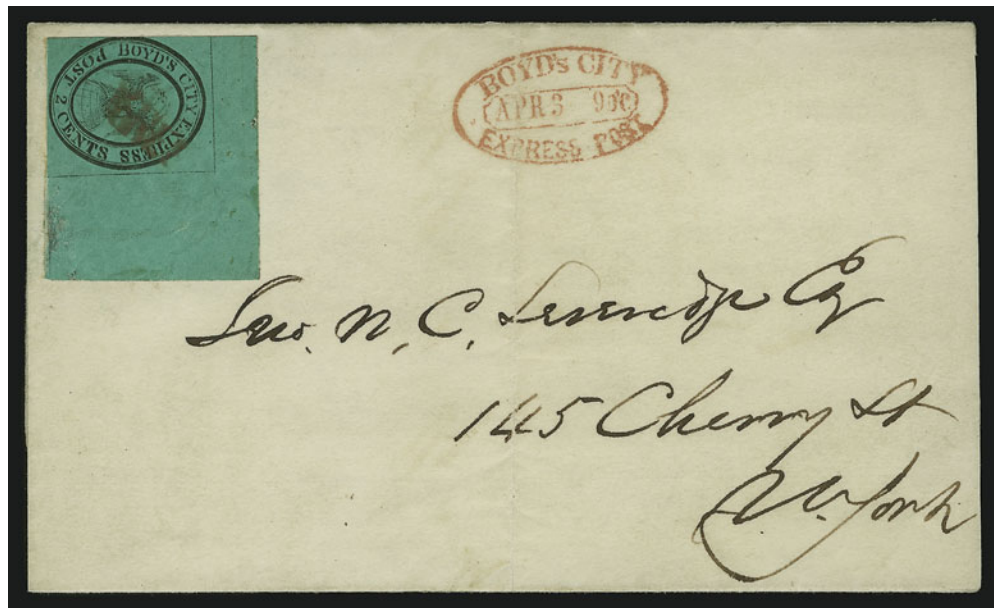
- 2070 ☒ **Boyd's City Express, New York N.Y., 2c Black on Yellow Green (20L2).** Huge bottom left corner sheet margins, other sides large, late worn impression, red "Free" cancel, matching "Boyd's City Express Post Oct. 3 2 O'C" oval datestamp on 1845 part-printed notice to local street address, Extremely Fine, late usage of Boyd's Second Issue, ex Schwartz ..... E. 500-750



2071

- 2071 ☒ **Boyd's City Express, New York N.Y., 2c Black on Yellow Green (20L2).** Bottom right corner sheet margins, other sides clear to full, unusual vertical line printed within design, trivial corner crease, cancelled by red "Free", impression ties thru paper, matching "Boyd's City Express Post, Nov. 20 9 O'C" oval datestamp on folded letter to local street address, file folds, Very Fine, ex Golden..... E. 400-500





2072

- 2072 ☒ **Boyd's City Express, New York N.Y., 2c Black on Bluish Green (20L3).** Spectacular stamp with enormous top right corner sheet margins, red "Free" cancel, impression ties thru paper, matching "Boyd's City Express Post, Apr. 3 9 O'C" oval datestamp on 1845 folded letter to local street address

EXTREMELY FINE. THIS IS THE LARGEST KNOWN SHEET-MARGIN EXAMPLE OF BOYD'S THIRD ISSUE ON OR OFF COVER.

The Third Issue (20L3) is widely regarded as the scarcest of the early Small Eagle & Globe. Covers are rare, and this enormous corner-margin stamp is undoubtedly the finest extant.

Ex Golden ..... E. 1,500-2,000



2073

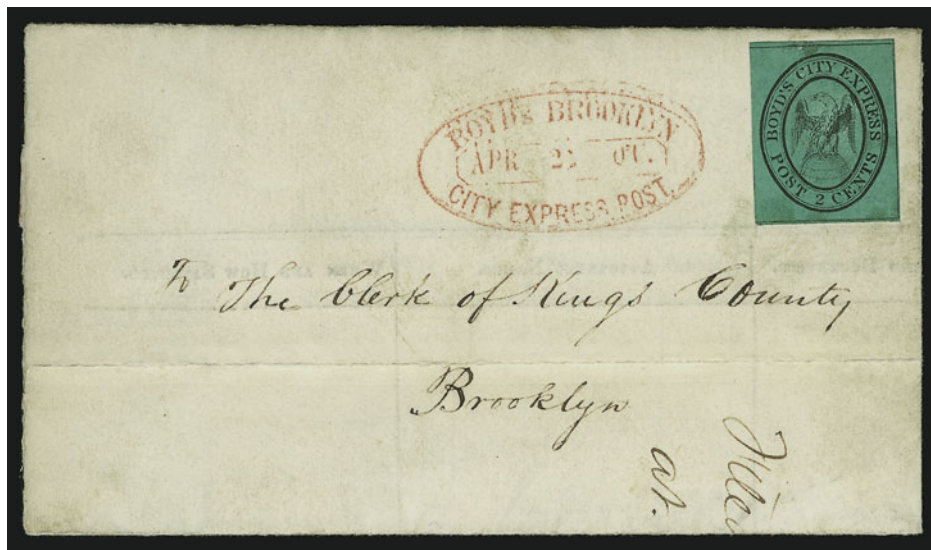
- 2073 ☒ **Boyd's City Express, New York N.Y., 2c Black on Bluish Green (20L3).** Large margins, intense shade and impression, red "Free" cancel, impression ties thru paper, matching "Boyd's City Express Post Apr. 5 9 O'C" oval datestamp clearly struck on ca. 1845 folded letter headed "Chelsea Square" to local street address, fresh and Extremely Fine, the scarce Third Issue 20L3 is rarely found on cover in this superb condition, ex Schwartz .....

E. 400-500



2074

- 2074 ☒ **Boyd's City Express, New York N.Y., 2c Black on Bluish Green (20L3).** Large to huge margins, red "Free" cancel, matching red "Boyd's City Express Post, May 7 4 O'C" oval datestamp on 1845 folded letter to **Philadelphia**, stamp tied by red "New-York May 8" circular datestamp, blue ms. "12½" rate, slight wear along file folds, Extremely Fine, choice early to-the-mails usage with the scarce Third Issue 20L3 stamp, ex Schwartz ..... E. 750-1,000



2075

- 2075 ☒ **Boyd's City Express, New York N.Y., 2c Black on Bluish Green (20L3).** Huge even margins, uncanceled, used in correct time period (Feb.-Jul 1845) and appears to have originated, red "Boyd's Brooklyn City Express Post, Apr. 22 — O'C" oval datestamp clearly struck on 1845 folded notice of legal judgment to the Clerk of Kings County, Brooklyn, file fold, Very Fine, extremely rare — Boyd's operated in Brooklyn from September 1844 through June 1845, but the July 1st postal reforms that closed post roads to private carriers ended Boyd's open involvement in servicing Brooklyn — ex Abt and Golden ..... E. 750-1,000



## CITY MAIL CO., NEW YORK, N.Y.—FEBRUARY 1845



2076

- 2076 ☒ **City Mail Co., New York N.Y., (2c) Black on Grayish (46L1).** Huge margins all around, appears to be a top left corner position, horizontal crease, uncanceled, used on May 15, 1845 folded letter to **New York City Postmaster Robert H. Morris**, red "Overton & Co.'s City Mail, Office, 7 Broad Street" oval handstamp, red crayon "0", the letter is a recommendation to appoint someone as a clerk in the post office

EXTREMELY FINE APPEARANCE. ONLY THREE GENUINE COVERS BEARING THE CITY MAIL COMPANY STAMP ARE RECORDED — ONLY SIX EXAMPLES OF 46L1 ARE KNOWN ON OR OFF COVER.

The City Mail Company was the successor to the New York office of Overton & Company, a letter-and-package express and foreign-mail forwarding agency founded by Richard Carleton Overton prior to July 3, 1844. The change in name was announced in the February 15, 1845, edition of the *New York Daily Express* and soon after the company's address changed from 3 Broad Street to 7 Broad Street. The handstamp on this cover shows the modified "3" appearing as a "7", reflecting the move.

Overton & Co. issued stamps in 1844 for use on inter-city letters (Scott 113L1); these are recorded on covers from Jul. 29, 1844 (see Hall sale, lot 370), through Jun. 30, 1845, the day before the independent mail firms were forced out of business by the July 1845 postal laws. The City Mail Co. issued its own stamps for use on city-delivery letters at 2c each. It is thought that these stamps were issued after the February 1845 announcement of the new City Mail Company. The ex-Caspary folded letter dated Jun. 18, 1844, is an improbable 46L1 usage, inasmuch as it predates both the issue date and documented formation of Overton & Company.

Three covers in the proper time period are recorded with 46L1: 1) uncanceled on May 15, 1845 folded letter to Robert H. Morris, red "Overton & Co. City Mail Office 7 [modified] Broad St." oval, ex Golden, the cover offered here; 2) cancelled by red "Paid" (not tied, creased) on Sep. 15, 1845 folded letter to Cornelius W. Lawrence, red framed "City Mail Co. Office 6 Wall Street", ex Boker; and 3) repaired stamp cancelled by red "Paid" (not tied) on Oct. 15 (1845) folded letter to Mr. Mathews, red framed "City Mail Co. Office 6 Wall Street", ex Hunter, Worthington, Mason, Richardson, Golden (realized \$7,500). Including the two stamps added to covers (ex-Caspary and ex-Hall), the ex-Ferrary stamp (defective, off cover) and the three genuine covers listed above, we count a total of six examples of 46L1.

Signed Sloane. Ex Golden. With 1999 P.F. certificate..... E. 10,000-15,000

## JONES' CITY EXPRESS, BROOKLYN, N.Y.—JANUARY 1845



2077

- 2077 ☒ **Jones' City Express, Brooklyn N.Y., 2c Black on Pink Glazed (91L1).** Full side margins, slightly in at top and bottom, uncanceled as usual, used on Feb. 17, 1845 folded letter from Brooklyn to New York City street address (pencil "44 Wall"), red "Boyd's City Express Post, Feb. 18 12 O'C" oval datestamp, file folds clear of stamp

VERY FINE. ONE OF THE FINEST OF THE NINE RECORDED FULL COVERS WITH THE RARE STAMP ISSUED BY JONES' CITY EXPRESS OF BROOKLYN, NEW YORK.

It has been written that Jones' City Express existed from late 1844 through early 1845 (Patton book), but dated covers are known only as early as Jan. 29, 1845, and as late as Nov. 4, 1845. It is supposed that the proprietor was George G. Jones, based on the 1844 Brooklyn directory, listing him as an engraver with residence at Clinton Avenue and Jamaica Road. George G. Jones is listed in later directories as manager of the Metropolitan Errand and Carrier Express Company in New York City (source: Abt notes). Conjunctive usages indicate that Jones linked with Boyd's in Manhattan for local city delivery and with American Letter Mail Co. and Hale & Co. for inter-city service (prior to July 1, 1845).

Our updated records contain nine covers and two fronts (or pieces) with the 91L1 stamp: 1) uncanceled, used on Feb. 17, 1845 folded letter to John Jay, New York City, red Boyd's oval, ex Caspary, Boker, Lilly, Golden (realized \$7,500 hammer); 2) uncanceled, used on cover to Junins L. Taylor, local addressee, "Paid" straightline, ex Caspary; 3) cut to shape, used with American Letter Mail Co. 5L2 cut to shape (tied), on folded cover to Counsellor Gieloeu (spelling?), Philadelphia, red Am. Letter Mail oval (NYC) and circle (Phila.) handstamps, ex Patton (Robson Lowe sale, Mar. 1, 1973, lot 1604); 4) uncanceled, ms. "Paid" on cover to J.D. & C.S. Pratt, East Chatham, N.Y., ex Boker; 5) uncanceled on Aug. 10, 1845 folded letter to Wm. Danforth, Hartford Conn., red Brooklyn datestamp and "5" rate, Siegel 1995 Rarities sale; 6) described as "Uncanceled on cover pmk. Boyd's Brooklyn City Express. Creased from letter fold and rubbed on face. Rare.", Siegel Sale 164, lot 759, no photo; 7) uncanceled on turned folded cover to Jno. W. Mitchell, New York City, red Brooklyn datestamp and "5" rate, ex Golden (realized \$3,000 hammer); 8) part of stamp (torn) on front only to Isaac Wendell, Philadelphia, with red American Letter Mail Co. (Phila.) circle and framed Collect handstamp, ex Golden (Siegel Sale 817, lot 1283, unsold); 9) tied by Hale & Co. oval with Collect box on large piece, Siegel Sale 358, lot 1004; 10) uncanceled on embossed Valentine cover to Miss Jane Case, Siegel Sale 841, lot 1629; and 11) uncanceled on 1845 folded letter to Constant Guilleau, Phila., red Brooklyn Nov. 4 datestamp, "Paid" and "5", Gronowski collection.

In terms of condition and the added feature of conjunctive usage with Boyd's, in our opinion the cover offered here is one of the three finest. Approximately six or seven off-cover 91L1 stamps are known.

Signed Sloane. Ex Caspary, Boker, Lilly and Golden. With 1999 P.F. certificate.....  
..... E. 7,500-10,000



1844-45 INDEPENDENT MAILS  
AMERICAN LETTER MAIL COMPANY—JANUARY 1844

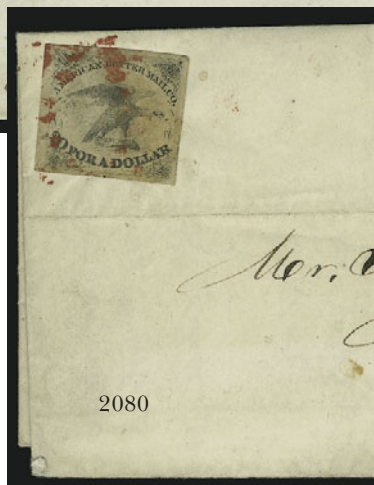
- 2078 (★) **American Letter Mail Co., 5c Black, Thick Paper (5L1).** Vertical pair, unused (no gum), large even margins, Extremely Fine, the unused remainders are on Thin Paper, unused examples of the earlier printing on Thick Paper are extremely rare (this is the only known multiple), ex Schwartz ..... E. 300-400



2078



2079



2080



2081

- 2079 ☒ **American Letter Mail Co., 5c Black, Thick Paper (5L1).** Full to large margins, early printing on Thick Paper with brown gum (usual paper saturation), tied by magenta brush "X" cancel on Feb. 19, 1844 folded letter from Boston to New York City, Very Fine, scarce ..... E. 300-400
- 2080 ☒ **American Letter Mail Co., 5c Black, Thick Paper (5L1).** Large margins, early printing on Thick Paper with brown gum (usual paper saturation), tied by red oval of stars cancel on May 1, 1844 folded letter from Boston to New York City street address, Very Fine, scarce ..... E. 300-400
- 2081 ☒ **American Letter Mail Co., 5c Black, Thick Paper (5L1).** Large margins except slightly rounded at bottom right, early printing on Thick Paper with brown gum (usual paper saturation), tied by red oval of stars cancel on ca. 1844 folded cover to New York City street address, no origin indicated, Fine and scarce ..... E. 150-200



2085EX

2083

- 2082 ☒ **American Letter Mail Co., 5c Black, Thick Paper (5L1).** Large even margins, ms. "S" cancel, used on folded cover to **New Haven Conn.**, Aug. 9, 1844 receipt docketing, small ms. "2" that may indicate 2c charge for delivery in New Haven, Extremely Fine, a very scarce example of American Letter Mail Co. service to New Haven..... E. 400-500
- 2083 ☒ **American Letter Mail Co., 5c Black, Thick Paper (5L1).** Position 7 with **double transfer**, three large margins, barely in at lower right, ms. "C" cancel, used on Jul. 9, 1844 folded letter to Philadelphia, scarce red "Forwarded by American Letter Mail Company" straightline (address portion struck off cover), Very Fine, ex Schwartz ..... E. 300-400
- 2084 ☒ **American Letter Mail Co., 5c Black, Thick Paper (5L1).** Position 4, three large margins, touched at bottom, ms. cancel, used on Aug. 6, 1844 folded letter from New York City to Boston street address, Very Fine ..... E. 200-300
- 2085 ★田 **American Letter Mail Co., 5c Black, Thin Paper (5L1).** Two complete sheets of 20, one has part original gum, some wrinkles, other unused (no gum), both Very Fine, these sheets come from the remainder printing .....(Photo Ex) 450.00
- 2086 R **American Letter Mail Co., 5c Black, Reprint Plate Proof on Card (5L1P).** Two complete sheets of 20, each die sunk on 8½ x 11 in. card, left positions show traces of corrosion on plate after cleaning, Very Fine and scarce card proofs (probably by Holton) .....Not illustrated E. 200-300
- 2087 **American Letter Mail Co., Study Collection of Small and Large Eagle Issues (5L1, 5L2).** 36 items, No. 5L1 includes Thick Paper (8 used plus one damaged stamp on cover not counted in Scott value), Thin Paper (complete sheet, unused blocks and singles, 3 used and 2 on covers), variety of cancels incl. red oval of stars, No. 5L2 includes 7 used singles, all ms. cancels, three with additional red "Paid", most of the 5L1 stamps are slightly cut into with small faults, the 5L2 stamps are Fine-Very Fine and generally sound, an excellent reference to papers and printings .....Not illustrated 4,100.00
- 2088 **American Letter Mail Co., Reference Collection.** Album pages containing variety of No. 5L1 Thin Paper remainders, reprints and forgeries, also includes printed banknotes and reward of merit with Eagle vignette, useful study group.....Not illustrated E. 200-300





2089

2089 ★田 **American Letter Mail Co., (5c) Black on Gray (5L2).** Block of twelve, Positions 5-8/9-12/13-16, small part original gum, mostly full to large margins, just barely in at bottom left, vertical and horizontal creases are hardly noticeable

VERY FINE. THE LARGEST RECORDED BLOCK OF THE AMERICAN LETTER MAIL COMPANY LARGE EAGLE STAMP — FIVE BLOCKS AND A STRIP OF FOUR ARE THE ONLY KNOWN MULTIPLES.

The Large Eagle stamp, issued in Blue and Black, was probably printed soon after Lysander Spooner left American Letter Mail Company in July 1844. It is reasonably scarce on cover, and multiples in any form are very rare. We record the following five blocks and one strip of four: 1) Pos. 5-8/9-12/13-16, block of twelve, part original gum, ex Worthington, Needham, Hollowbush and Golden (realized \$26,000 hammer), the block offered here; 2) Pos. 1-2/5-6, original gum, part of rejoined block of eight with No. 3 in this list, Puliafito collection; 3) Pos. 3-4/7-8, original gum, part of rejoined block of eight with No. 2 in this list, Puliafito collection; 4) Pos. 1-2/5-6 (ex Hall, realized \$5,500), and pair Pos. 9-10, rejoined block of six, Puliafito collection; 5) Pos. 15-16/19-20, ex Lilly, Schwartz, offered in this sale as lot 2090; and 6) Pos. 8/12/16/20, vertical strip of four with "ESS" watermark, ex Hall (realized \$2,800 hammer), Puliafito collection.

Ex Worthington, Needham (exhibited at The Collectors Club, Feb. 18, 1925, reported in CCP Apr. 1925) and Golden (realized \$26,000 hammer). ..... E. 20,000-30,000



2090

- 2090 ★田 **American Letter Mail Co., (5c) Black on Gray (5L2).** Positions 15-16/19-20, block of four with bottom right corner sheet margins, original gum, creases between stamps and faint diagonal crease at left, tiny pinhole at center and faint toning

EXTREMELY FINE APPEARANCE. ONE OF FIVE RECORDED BLOCKS OF THE AMERICAN LETTER MAIL LARGE EAGLE ISSUE.

A complete census of multiples is provided in the description of lot 2089.

Ex Lilly and Schwartz. Scott Retail \$4,000.00. .... E. 3,000-4,000



2091



2092EX



2093

- 2091 ★ **American Letter Mail Co., (5c) Black on Gray (5L2).** Position 4, top right corner sheet margins and large margins all around, original gum, Extremely Fine Gem..... 150.00
- 2092 **American Letter Mail Co., (5c) Black on Gray, Papermaker's Watermark (5L2 var).** Two, one with letters "SUP", large margins, ms. "X" cancel, tiny wrinkle, other with "ES", ample margins to cut in, blue ms. "X" cancel, very rare varieties that deserve Scott recognition, ex Schwartz.....(Photo Ex) E. 500-750
- 2093 **American Letter Mail Co., (5c) Black on Thick White Wove Paper (5L2 var).** Position 15, very distinctive proof-like impression on stout bright white paper, ample margins, ms. "X" cancel and traces of red, Very Fine and choice, an intriguing stamp that points to separate printing on different paper, ex Schwartz..... E. 200-300





2094

2094 ☒ **American Letter Mail Co., (5c) Blue on Gray (5L3).** Position 13, ample margins to mostly clear at right, **tied by ms. "DB"** cancel on Jun. 7, 1845 folded letter from Philadelphia to New York, red "Forwarded By American Mail Co. No. 101 Chestnut St. Philada." in circle with matching "Paid" straightline handstamp

EXTREMELY FINE. THE ONLY TIED EXAMPLE AMONG THE TWELVE RECORDED COVERS BEARING THE RARE BLUE EAGLE STAMP OF AMERICAN LETTER MAIL COMPANY.

This use of the rare Blue Eagle stamp probably occurred soon before the independent mail firms were effectively abolished by the government. On July 1, 1845, the postage rate for distances under 300 miles was reduced to 5c per half-ounce. By the same Act of Congress, Federal law prohibited the carrying of letters by private companies between cities where the Post Office Department offered inter-city mail service. American Letter Mail Company, which had aroused popular support for cheaper domestic postage, was a catalyst for the 1845 legislation. However, it could no longer sustain its fight with the government over mail routes and closed on June 30, 1845.

The Large Eagle stamp in Blue is recorded on covers dated from August 1844 through June 1845, with about half of the reported covers addressed to Hopkins & Weston in New York. The Blue and Black color scheme for the American Letter Mail Co. Large Eagle stamps, which lack a denomination (unlike their predecessor issue, the Small Eagle), may have been modeled upon Great Britain's 1840 Penny Black and Two-Pence Blue. The Blue stamp was used for the single rate, but its original purpose might have been to pay a double rate.

Ex Perry and Schwartz..... E. 12,000-15,000



2095

- 2095 **American Letter Mail Co., (5c) Blue on Gray (5L3).** Ample margins except barely shaved along top frameline, unusually sharp proof-like impression on bright paper (see lot 2093), ms. “#” cancel (on small piece), Very Fine and rare ..... 1,750.00



2096

- 2096 **American Letter Mail Co., (5c) Blue on Gray (5L3).** Ample margins to barely in at top, ms. “#” cancel, Very Fine and rare ..... 1,750.00



## BRAINARD &amp; CO.—JULY 1844



2097

- 2097 ☒ **Brainard & Co., (5c) Black (24L1).** Cut to shape slightly impinging on circle, pencil cancel (not tied), red "Forwarded by Brainard & Co. Albany" oval and "6" due hand-stamp, Hale's red Collect box on Sep. 9, 1844 folded letter to Philadelphia street address, file fold clear of stamp

FINE. ONE OF FOUR RECORDED COVERS SHOWING CONJUNCTIVE USE OF BRAINARD & COMPANY'S BLACK ADHESIVE AND HALE'S SERVICE TO PHILADELPHIA.

We record four Brainard & Co. 5c Black 24L1 covers from Albany to Cornelius & Co. in Philadelphia, each of which involved conjunctive service between Brainard (Albany to New York City) and Hale (New York City to Philadelphia). The dates are July (docketed "Jul/44"), Sep. 3, Sep. 9 (the cover offered here) and Nov. 26 (with two Brainard stamps). In three cases, the Brainard stamp paid half of the postage, and the other half (Hale's share) was represented by a "6" due marking and Hale's Collect box. The Nov. 26 cover (ex Peltz) bears *two* Black 24L1 stamps for both rates involved and *no due marking*, which corroborates the genuine double-rate franking and the three single frankings (half prepaid, half unpaid).

References: Perry-Hall (Schwartz, editor), "Brainard & Co.", *Chronicle*, May 2000; and Calvet M. Hahn, "The Brainard Independent Mail Companies", *Collectors Club Philatelist*, May-June 1984.

A similar cover realized \$10,500 hammer in our Hall sale. .... E. 4,000-5,000

## HALE &amp; CO.—MARCH 1844

James W. Hale is recognized as one of the driving forces behind the reforms that created cheaper and more uniform postage rates in the United States. The success of the independent mail firm Hale established in 1843 — at one point employing a network of 1,100 agents and 110 offices — forced Congress to pass the Act of March 3, 1845, which introduced the 5c and 10c simplified rates (effective July 1, 1845). As a result, Hale is known as the “Father of Cheap Postage.”

The Hale & Co. adhesive stamps depict a pile of stamped envelopes within an octagonal frame, which makes them the earliest “Stamps on Stamps” thematic issue. The earliest recorded date of use is March 14, 1844, which is probably very close to the date of issue. The stamps were printed from a typographic plate of 20 subjects — they were sold for 6c each, or 20 for a dollar — and at least some sheets were gummed for convenience. The impressions from the plate indicate three distinct states of the metal plate.

Hale & Co. moved its Boston office from 13 Court Street to 23 State Street sometime during the Spring of 1844. No later than June 1, stamps were issued from an altered plate with the address deleted from each subject (Second State). This plate was subsequently damaged along the perimeter of the left and right vertical columns (Third State), and impressions from the damaged plate are recorded as early as September 20, 1844. (Source: Michael Gutman database). Some stamps were overprinted with the new 23 State Street address, using a marking that reads “City Despatch Office, 23 State St.” or in a modified form “Office, 23 State St.” — in Red on the Blue stamp and in Black on the Red stamp. Others were modified by hand. Any example showing the change of address is rare.



2098

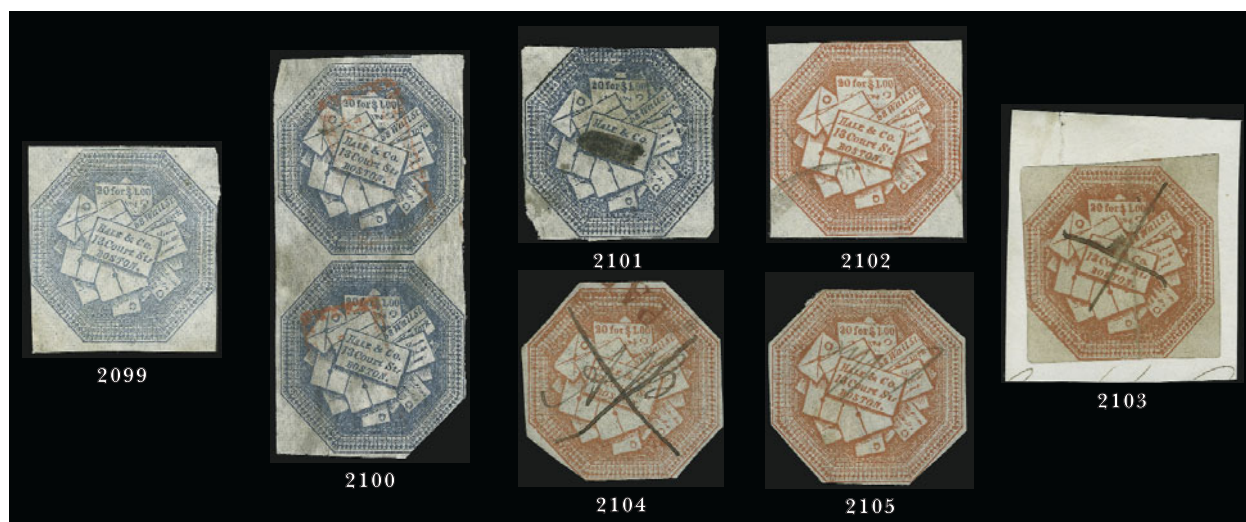
- 2098 ☒ **Hale & Co., (5c) Light Blue (75L1).** Positions 5/10/15, **vertical strip of three**, large margins to slightly in, blue ms. “X” cancels, matching ink smears on undated folded cover to New York City street address, from the Howland & Aspinwall correspondence (Boston origin), one side flap removed, stamps printed on very thin paper which has creased slightly from application

FINE. AN EXTREMELY RARE VERTICAL STRIP OF THE HALE FIRST ISSUE USED ON COVER. VERY FEW STRIPS ARE KNOWN ON COVER, AND THIS VERTICAL ARRANGEMENT IS HIGHLY UNUSUAL.

The impressions show a vertical line, which is a printing flaw, not a crease in the paper.

Ex Hall..... E. 2,000-3,000





- 2099 (★) **Hale & Co., (5c) Light Blue (75L1).** Pelure paper, unused (no gum), ample margins to just barely in, Very Fine, the "13 Court St." stamp is very scarce in unused condition (undervalued in Scott) 65.00
- 2100 **Hale & Co., (5c) Deep Blue (75L1).** Dark shade on pelure paper, vertical pair, ample margins except touched at right and partly cut to shape, red framed cancels, small tear and faint gum translucency, otherwise Fine, scarce multiple ..... 80.00
- 2101 **Hale & Co., (5c) Deep Blue, Address Deleted in Ms. (75L1 var).** Broad brush stroke thru address (done at New York City office), dark shade on pelure paper, slight wrinkles and thin speck typical of this paper, otherwise Fine, very scarce ..... E. 100-150
- 2102 **Hale & Co., (5c) Red on Bluish (75L2).** Margins just touching, rich color, black Boston oval cancel, tiny thin, Very Fine appearance ..... 200.00
- 2103 **Hale & Co., (5c) Red on Bluish (75L2).** Ample margins to slightly in, vibrant color, ms. "X" cancel, vertical crease and small tear (affixed to card), otherwise Very Fine ..... 200.00
- 2104 **Hale & Co., (5c) Red on Bluish (75L2).** Cut to shape, ms. "AB" (a. Bates) control mark, ms. "C" cancel and part of red "Paid", Very Fine ..... 75.00
- 2105 **Hale & Co., (5c) Red on Bluish (75L2).** Cut to shape, ms. "W" cancel, Very Fine ..... 75.00



- 2106 ☒ **Hale & Co., (5c) Red on Bluish (75L2).** Large margins all around, beautiful intense shade and impression, ms. "AB" (Amos Bates, Hale's agent) with orientation to stamp, thus mostly likely a control mark, clear "Paid" straightline cancel (impression ties thru paper), pencil "X" cancel just ties corner of stamp, lightly struck "Forwarded by Hale & Co. from New Bedford" oval handstamp on folded letter to Salem Mass., datelined "1st Day" with no other notation, few scattered soiling specks, Extremely Fine, the Red stamp is scarce on cover, especially from the New Bedford office ..... E. 1,000-1,500



2107

2107 (★)田 **Hale & Co., (5c) Blue, Street Address Omitted (75L5).** Complete sheet of twenty from the Third State of the plate (see notes below), unused (no gum), large sheet margins all around, bright fresh color and paper, several creases but hardly noticeable on the face of the sheet, couple tiny edge tears

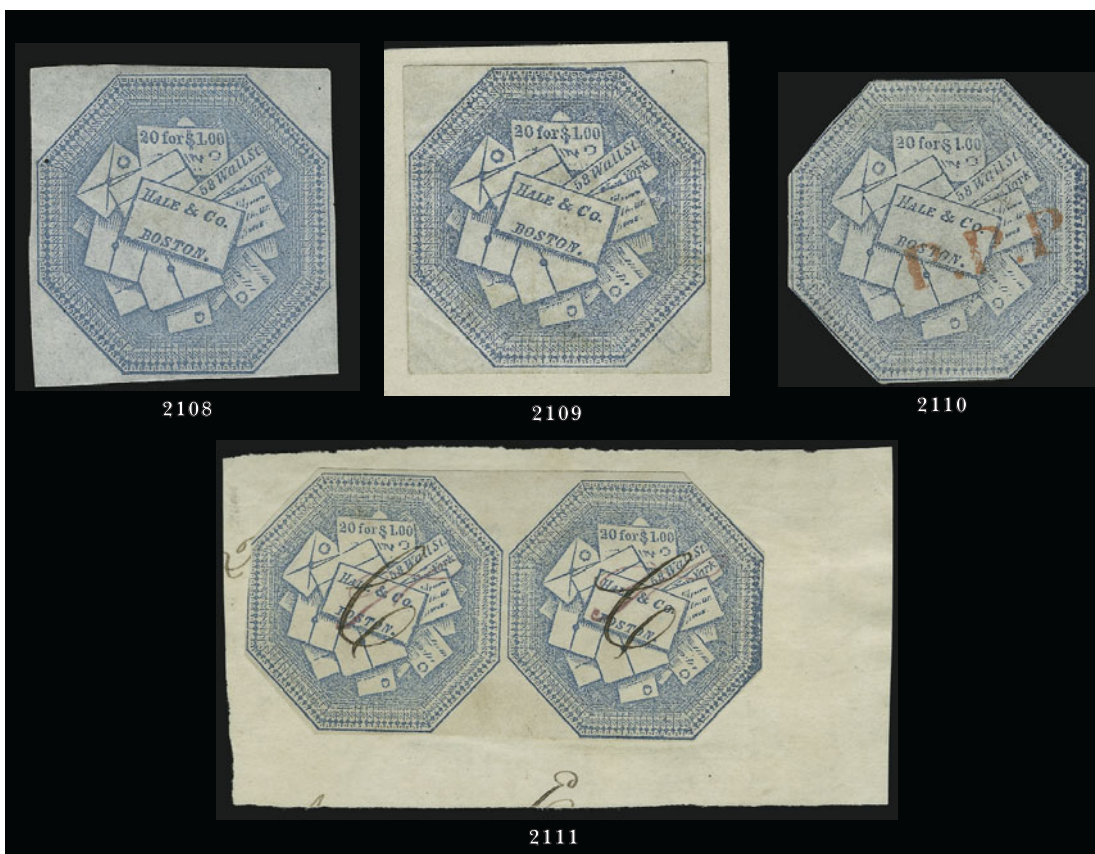
EXTREMELY FINE APPEARANCE. THE ONLY RECORDED COMPLETE SHEET AND LARGEST KNOWN MULTIPLE OF ANY HALE & COMPANY ISSUE. AN IMPORTANT AND SPECTACULAR ARTIFACT OF THE 1844-45 INDEPENDENT MAILS.

There are three distinct states of the stereotype plate used to print Hale's stamps. In the First State, the "13 Court St." address is included in the design (Scott 75L1 in Blue and 75L2 in Red). The address line was removed from each position on the plate after Hale moved its Boston office to 23 State Street, which gives us the Second State of the plate (Scott 75L5 in Blue only). Robson Lowe reported that Hale's move took place in April 1844. The earliest recorded date of use of a stamp from the modified plate is June 1, 1844, which establishes the widest range of dates during which time the plate was modified. The Third State of the plate resulted from damage to positions in the left and right vertical columns, especially Position 1, which shows a severe dent at upper left.

Unused blocks of Hale's stamps are extremely rare. We record three: 1) 75L5, the unique complete sheet, Third State, ex Lilly, Hall, offered here; 2) 75L5, block of fifteen with original gum, Second State Positions 1-3/6-9/11-14/16-19, ex Hall; and 3) 75L5, unused block of nine, Third State Positions 1-3/6-8/11-13, ex Schwartz. In a letter from James W. Hale, dated Dec. 12, 1887, he stated (in part): "I gave all the unused sheets of stamps to my children for playthings and presumed they were destroyed. But within a few days my youngest son informed me that he believed he had a few 'stowed away somewhere' and would try to hunt them up." (John R. Boker, Jr., *Collectors Club Philatelist*, Sep. 1962). This sheet may originate from the Hale family.

Ex Lilly and Hall (realized \$15,500 hammer)..... E. 15,000-20,000





- 2108 (★) **Hale & Co., (5c) Blue, Street Address Omitted (75L5).** Unused (no gum), large margins, faint creases, Extremely Fine appearance ..... 30.00
- 2109 (★) **Hale & Co., (5c) Blue, Street Address Omitted (75L5).** Unused (no gum), ample to large margins, corner creases, otherwise Very Fine..... 30.00
- 2110 **Hale & Co., (5c) Blue, Street Address Omitted (75L5).** Cut to shape, pale shade, red "P.P.P." Penny Post Paid cancel, Very Fine and scarce ..... E. 50-75
- 2111 **Hale & Co., (5c) Blue, Street Address Omitted (75L5).** Horizontal pair partly cut to shape, red ms. "T" (Thayer) control mark and "C" cancel on each stamp, on piece, Very Fine ..... E. 75-100
- 2112 **Hale & Co., (5c) Light Blue (75L1, 75L5).** More than 60 stamps plus reference material (forgeries etc.) on pages, includes partial plate reconstructions, cancellations and control marks, a couple on pieces, one 75L1 strip of three (defective), a fair number are cut to shape, condition appears Fine-Very Fine, a fascinating group upon which to build a collection of one of the world's first stamps .....*Not illustrated* E. 500-750

## HARTFORD MAIL ROUTE—AUGUST 1844



2113

- 2113 **Hartford Conn. Mail Route, (5c) Black on Yellow Glazed (80L1).** Ample margins to slightly in, ms. "South" and half of an "X" cancel (indicates this was part of a pair used on cover), slight thin, Fine appearance, extremely scarce ..... 1,000.00

## LETTER EXPRESS (WELLS)—JULY 1844



2114

2114 ★田 **Letter Express (Wells), 5c Black on Pink Glazed (96L1).** Top left sheet margin block of ten, original gum, mostly large margins, slight soiling at upper left, creases in two directions (couple breaks in paper)

VERY FINE DESPITE MINOR CREASING. THE ONLY RECORDED BLOCK OF ANY OF THE WELLS' LETTER EXPRESS ISSUES. ONE OF THE MOST IMPORTANT PHILATELIC ITEMS SURVIVING FROM THE 1844 INDEPENDENT MAIL ERA.

Henry Wells, William Fargo and D. Dunning formed Wells & Company's Letter Express in early 1844 to provide letter-carrying service between Buffalo N.Y. and points west of Buffalo, including the Great Lakes region. Offices were established in Chicago, Cleveland, Detroit and Milwaukee. By connecting with Pomeroy's Letter Express at Buffalo — who in turn arranged for local delivery with Boyd's in New York City — the Wells-Pomeroy-Boyd independent mail route was able to carry letters from the western frontier to the doorstep of a New York City addressee for considerably less than the post office charged for less-reliable service. The Letter Express ceased operations in November 1844, before all of the eastern inter-city expresses were effectively put out of business by the July 1845 postal reforms.

The stamps issued by Wells' Letter Express are remarkable both for the purpose they served and for their distinctive designs. The oval 96L1-96L2 stamps depict the Goddess of Commerce surrounded by bales and barrels with a merchant vessel in the background — symbols of private enterprise and the robust economic growth of America during the 1840's. The circular 96L3-96L4 stamps depict an American marine charging ashore with sword raised and Union Flag waving, and a naval vessel in the background. This design, chosen for stamps that would be used in the Great Lakes region, has been described as a commemoration of the Battle of Lake Champlain during the War of 1812, which may or may not be accurate.

All of the Letter Express stamps are scarce to rare. Used pairs and strips are rare. Unused or uncanceled multiples are extremely rare. This is the only block, unused or used, of any of the Letter Express issues we have located among the Sloane, Costales and Abt files.

Ex Weekes, Boker and Golden (realized \$26,000 hammer)..... E. 20,000-30,000



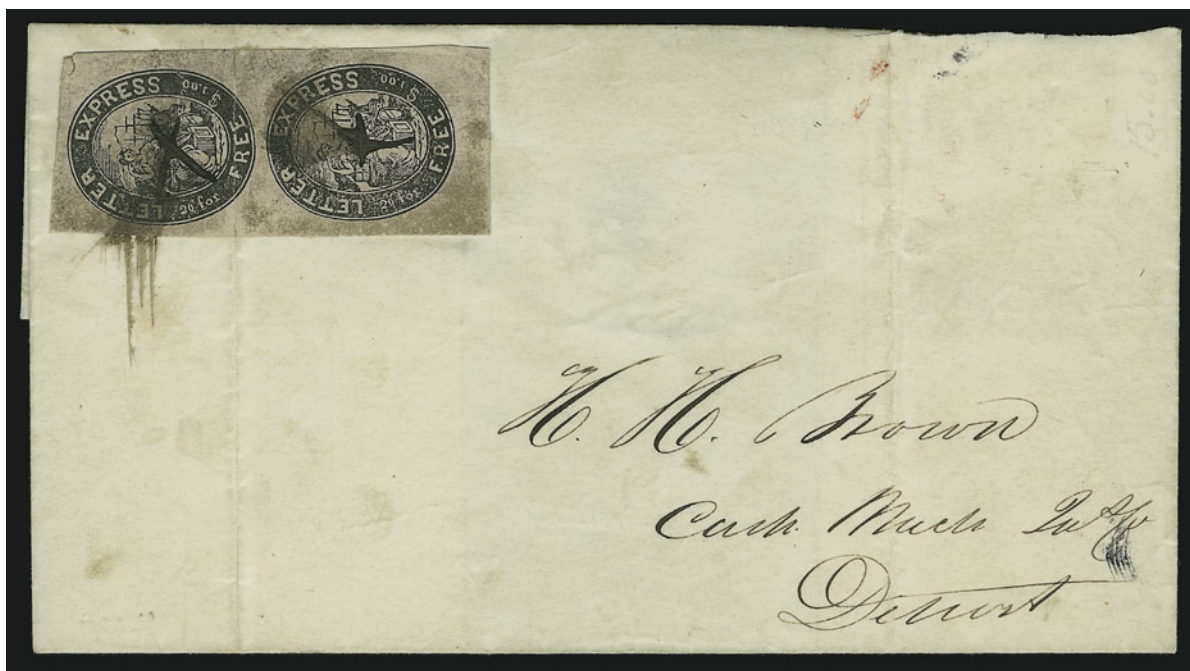


2115

2116

2117

- 2115 (★) **Letter Express (Wells), 5c Black on Pink Glazed (96L1).** Unused (no gum), ample to large margins except touched at bottom, nearly invisible creases, Fine appearance, very scarce ..... 300.00
- 2116 **Letter Express (Wells), 5c Black on Pink Glazed (96L1).** Intense shade, ample to large margins, ms. cancel, Very Fine and choice, scarce in this condition ..... 200.00
- 2117 **Letter Express (Wells), 5c Black on Pink Glazed (96L1).** Two on piece, large to huge margins, ms. "X" cancels, right stamp creased, otherwise Extremely Fine, scarce 400.00



2118

- 2118 ☒ **Letter Express (Wells), 5c Black on Pink Glazed (96L1).** Vertical pair, huge margins, tiny tear in extreme top left corner, slight oxidation, tied by smear from ms. "X" cancels on folded cover to Detroit, probably originated in Cleveland, file fold thru one stamp, otherwise Very Fine, scarce use between two midwestern cities ..... E. 1,000-1,500



2119



2120

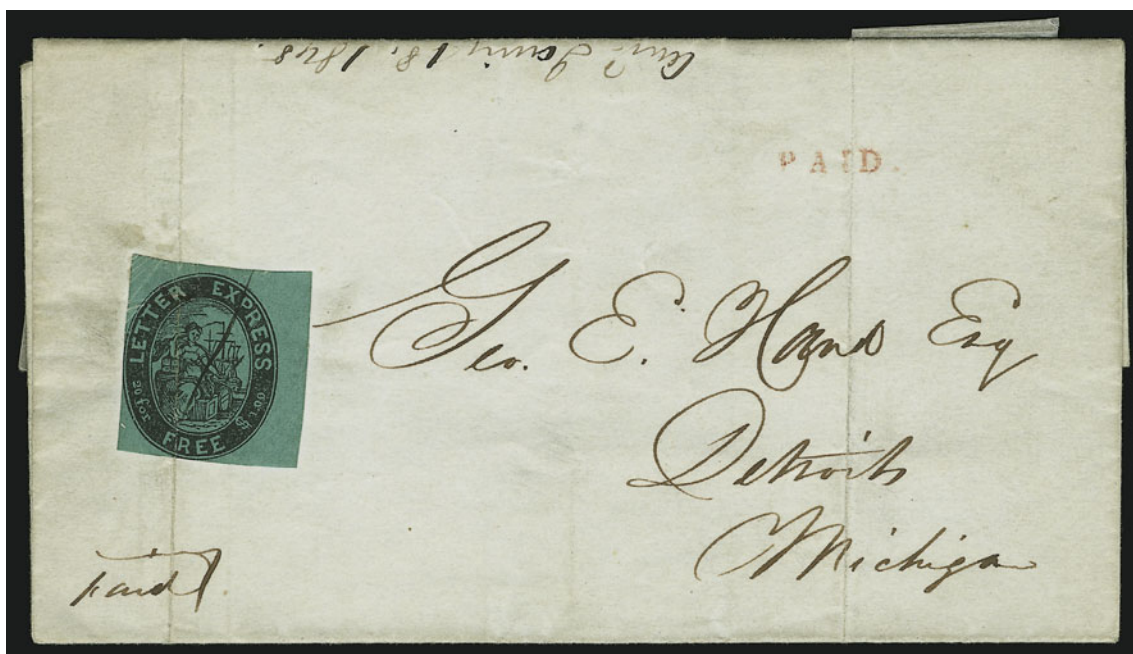
- 2119 **Letter Express (Wells), 5c Black on Green Glazed (96L2).** Ample to large margins, ms. cancel, vertical crease ending in tiny tear, otherwise Very Fine, scarce..... 500.00
- 2120 **Letter Express (Wells), 5c Black on Green Glazed (96L2).** Ample margins, deep shade, ms. "X" cancel on piece, small sealed tear at top right, otherwise Very Fine..... 500.00



2121

- 2121 ☒ **Letter Express (Wells), 5c Black on Green Glazed (96L2).** Horizontal pair, originally a strip of three, but one of the stamps has been cut out, the remaining pair has huge margins and sheet margins, uncanceled, tied by filing crease on Aug. 19, 1844 folded letter from Toledo to Coneant O., letter mentions two additional letters enclosed, thus three-times 6¼c rate, right stamp creased, still an Extremely Fine and very rare pair — the Green 96L2 is considerably rarer than the Pink 96L1 — ex Golden, Scott values a used pair \$1,500.00 (unused is unpriced in any form)..... E. 1,000-1,500





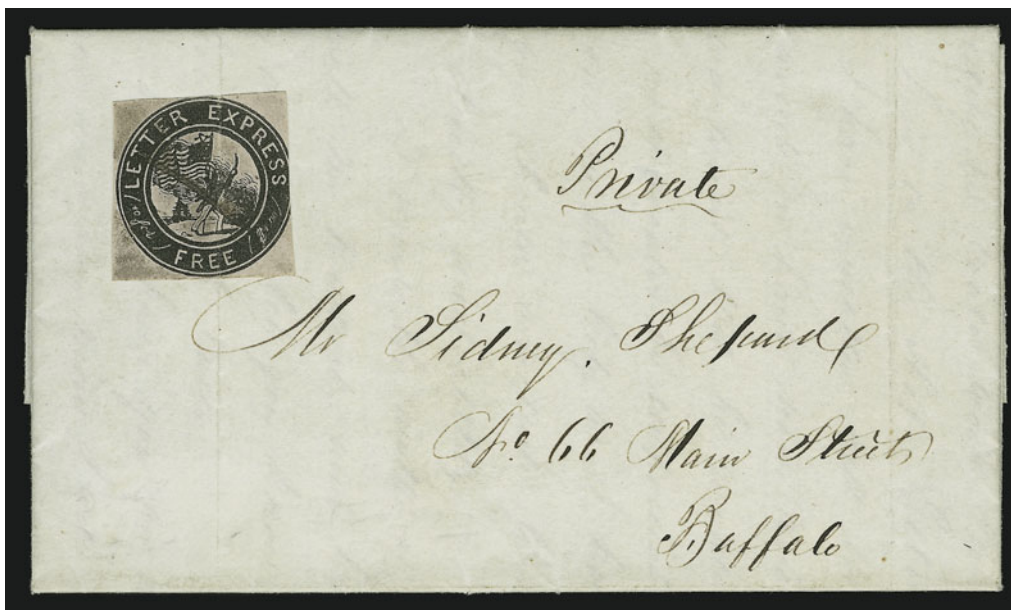
2122

- 2122 ☒ **Letter Express (Wells), 5c Black on Green Glazed (96L2).** Large margins to touched at bottom and left, ms. cancel, tied by file fold on folded cover to Detroit, docketed Jul. 25, 1844 on back (additional docketing indicates letter was answered in 1848), but no indication of origin except for small red "Paid" handstamp that was used by Pomeroy's Auburn N.Y. office, probably a conjunctive usage, stamp creased, otherwise Fine and very rare...  
..... E. 400-500



2123

- 2123 ☒ **Letter Express (Wells), 5c Black on Green Glazed (96L2).** Large to huge margins, tied by ms. "X" cancel on folded cover to New York City, docketed Aug. 24, 1844, red pencil street address and "2" for local delivery charge, file fold, another stamp removed from the cover, still a presentable and rare cover with an Extremely Fine Letter Express Black on Green stamp..... E. 400-500
- 2124 **Letter Express (Wells), 5c Black on Pink Glazed (96L1).** Large margins to slightly in, ms. cancel, part of a collection including printed bankcheck with same vignette, forgeries, etc., Fine .....*Not illustrated* E. 150-200



2125

- 2125 ☒ **Letter Express (Wells), 10c Black on Pink Glazed (96L3).** Ample margins to in at right, ms. cancel, tied by file fold on June 28, 1844 folded letter from Detroit to Buffalo, from the Shepard correspondence

FINE APPEARANCE. A VERY RARE COVER BEARING THE WELLS' LETTER EXPRESS 10-CENT STAMP DEPICTING A MARINE CHARGING ASHORE WITH SWORD AND FLAG.

The stamps issued by Wells' Letter Express are remarkable both for the purpose they served and for their distinctive designs. The oval 96L1-96L2 stamps depict the Goddess of Commerce surrounded by bales and barrels with a merchant vessel in the background — symbols of private enterprise and the robust economic growth of America during the 1840's. The circular 96L3-96L4 stamps depict an American marine charging ashore with sword raised and Union Flag waving, and a naval vessel in the background. This design, chosen for stamps that would be used in the Great Lakes region, has been described as a commemoration of the Battle of Lake Champlain during the War of 1812, which may or may not be accurate. .... E. 2,000-3,000



POMEROY'S LETTER EXPRESS—JUNE 1844



2126

- 2126 ✉ **Pomeroy's Letter Express, (5c) Black on Yellow, Value Incomplete (117L2).** Large to huge margins, beautiful bright Lemon Yellow shade, cancelled by perfectly clear red "Cd." (impression ties thru paper) on Jul. 10, 1844 folded letter from New York City to Albany, stamp has trivial pre-use corner crease at bottom right

EXTREMELY FINE. ONE OF THE EIGHTEEN REPORTED COVERS BEARING THE EXTREMELY RARE POMEROY FIRST ISSUE WITH BLANK VALUE TABLET.

This stamp comes from one of the positions on the plate with the value "20 for \$1" incomplete ("1" removed). This state of the plate was used only for printing stamps in Black on Yellow paper. The rarity of First Issue multiples presently makes it impossible to determine if the Value Incomplete positions co-existed with normal "\$1" positions on the same plate. .... E. 3,000-4,000



2126 Detail

2127



- 2127 ✉ **Pomeroy's Letter Express, (5c) Black on Yellow, Value Incomplete (117L2).** Ample to large margins, cancelled by faint red "Cd." (impression ties thru paper), used on Jul. 20, 1844 folded letter from Albany to New York City street address, ms. "Paid", red "**Boyd's City Express Post, July 21 9 O'C**" framed datestamp and matching "Paid/J.T.B." handstamp, repaired erosion along toned file fold (clear of stamp), small corner crease in stamp

ONE OF EIGHTEEN REPORTED COVERS BEARING THE EXTREMELY RARE POMEROY STAMP WITH BLANK VALUE.

From the recent D.K. Collection sale ..... E. 2,000-3,000

2128



2129EX

- 2128 ✉ **Pomeroy's Letter Express, 5c Black on Yellow (117L1).** Three huge margins including straddle-pane margin and guideline at left, touching at top, red "Cd." cancel (impression ties thru paper), used on Jul. 1844 folded letter from New York City to Rochester, file fold thru stamp, otherwise Fine ..... E. 400-500
- 2129 **Pomeroy & Co.'s Express, Labels.** Two complete sheets of 12 with original gum: Orange on Grayish White (with brown occlusions — see Stimmell article in *Penny Post*, Aug. 1992) and Black on Glazed Vermilion, both have creases and minor faults, otherwise Very Fine, scarce remaindered sheets .....(Photo Ex) E. 500-750
- 2130 **Pomeroy's Letter Express, Balance of Collection.** Several dozen stamps and ephemera items incl. Gavit advertisement, remaindered printings and forgeries, worthwhile group .....*Not illustrated* E. 300-400



## W. WYMAN—SEPTEMBER 1844



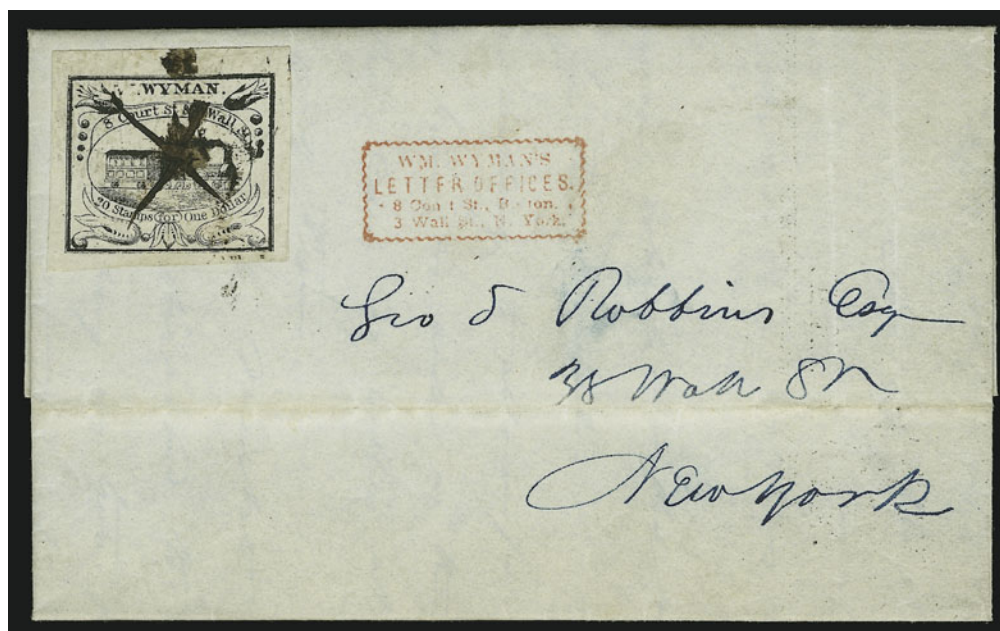
2131

- 2131 ☒ **W. Wyman, Boston Mass., 5c Black (149L1).** Huge even margins, cancelled by large ms. "X" on Dec. 28, 1844 folded letter from Boston to Peck & Co. in New York City, vertical file fold clear of stamp

EXTREMELY FINE. ONE OF THREE RECORDED COVERS SHOWING USE OF WYMAN'S STAMP AFTER TAKEOVER BY OVERTON & COMPANY.

William Wyman established his "cheap postage" letter express on August 1, 1844, with service between New York and Boston. On December 14, 1844, Wyman sold the business to Overton & Co. and announced that his distinctive Locomotive stamps — the first stamps in the world to depict a train — could be redeemed or used on mail given to Overton (reference: Richard Schwartz, *Opinions*). Only three recorded covers show acceptance of Wyman's stamps by Overton: the cover offered here, a Dec. 31 cover (ex Golden) and another with two Wyman stamps and the Overton oval.

Ex Foote..... E. 4,000-5,000



2132

- 2132 ☒ **W. Wyman, Boston Mass., 5c Black (149L1).** Incomplete “W” initial in design, large to huge margins, tied by smears from ms. “X” cancel on Nov. 21, 1844 blue folded letter from Boston to Geo. S. Robbins in New York City, red Wyman’s handstamp

EXTREMELY FINE. A SUPERB EXAMPLE OF THE RARE WYMAN’S LOCOMOTIVE STAMP USED ON A FRESH AND COLORFUL COVER.

Approximately 18 covers with Wyman’s stamp can be counted in our photo records. This example, with the distinctive Missing “W” plate flaw, is noteworthy.

Ex Hall..... E. 3,000-4,000

END OF SALE—THANK YOU



**PRICES REALIZED FOR SALE 868---11/14/2003**  
**The Gordon N. John Collection of U.S. Pre-July 1845 Stamps**

Robert A. Siegel Auction Galleries, Inc.  
60 East 56th Street, 4th Floor, New York, NY 10022  
Tel (212) 753-6421 Fax (212) 753-6429

Lot#	Realized	Lot#	Realized	Lot#	Realized
2001	26,000	2045	15,500	2089	21,000
2002	1,400	2046	29,000	2090	2,100
2003	250	2047	14,000	2091	400
2004	180	2048	1,300	2092	525
2006	200	2049	550	2093	575
2007	1,400	2050	105	2094	11,000
2008	1,000	2051	350	2095	1,300
2009	800	2052	4,750	2097	3,000
2010	750	2053	2,500	2098	1,600
2011	260	2054	1,050	2099	90
2012	800	2055	3,250	2100	90
2013	525	2056	800	2101	105
2014	220	2057	900	2102	260
2015	42,500	2058	3,000	2103	130
2016	2,100	2059	15,500	2104	85
2017	850	2060	550	2105	100
2018	525	2061	475	2106	1,300
2019	1,300	2062	525	2107	17,500
2020	750	2063	600	2108	95
2021	350	2065	260	2109	60
2022	260	2066	325	2110	90
2023	260	2067	6,750	2111	110
2024	200	2068	4,250	2112	850
2025	115	2069	850	2113	1,300
2026	425	2070	500	2114	18,500
2027	260	2071	200	2115	95
2028	230	2072	2,600	2116	625
2029	21,000	2073	500	2117	300
2030	850	2074	1,600	2118	800
2031	325	2075	1,700	2119	750
2032	160	2076	10,000	2120	250
2033	350	2077	7,500	2121	1,500
2034	11,500	2078	450	2122	475
2035	950	2079	375	2123	375
2036	750	2080	375	2124	500
2037	425	2081	105	2125	1,400
2038	500	2082	425	2126	4,750
2039	325	2083	350	2127	1,300
2040	250	2084	160	2128	375
2041	210	2085	240	2129	900
2042	800	2086	750	2130	450
2043	1,800	2087	900	2131	4,750
2044	1,600	2088	800	2132	2,600